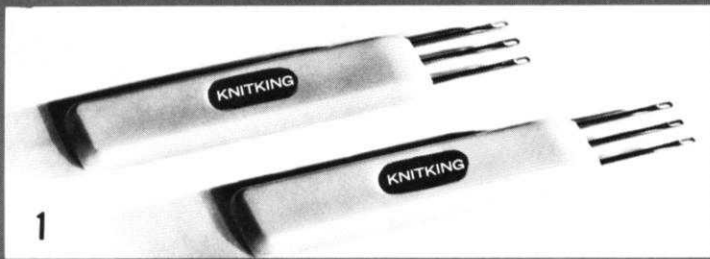


knitking

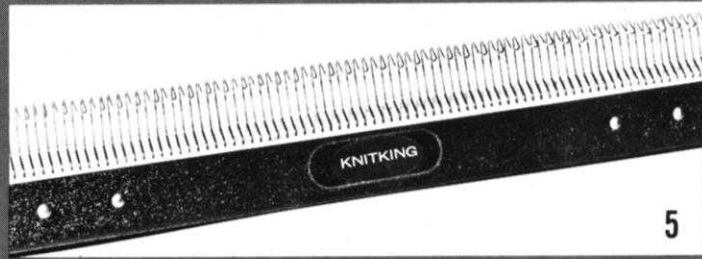
magazine



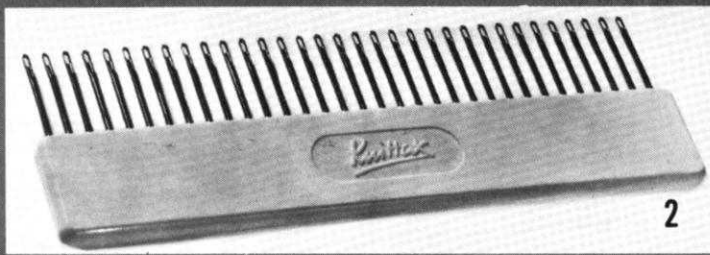
july/aug '71



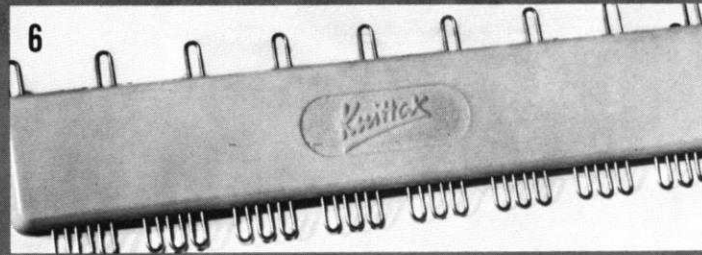
1



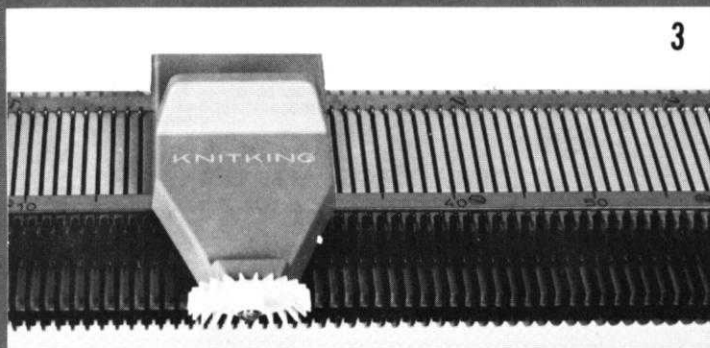
5



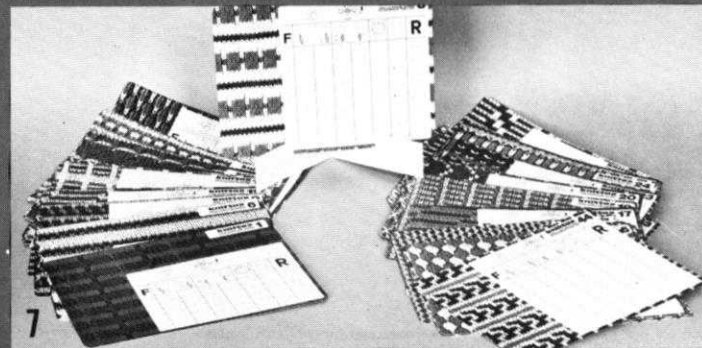
2



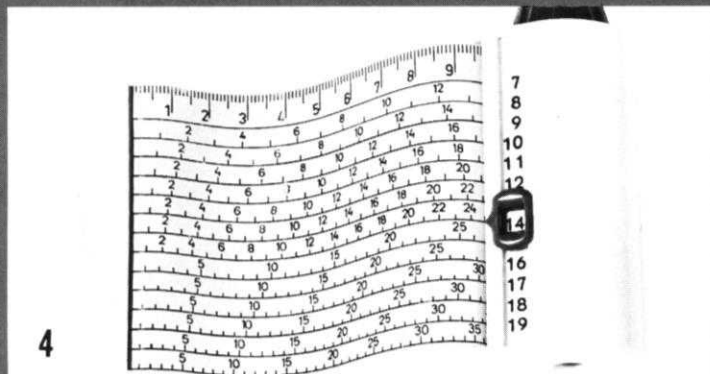
6



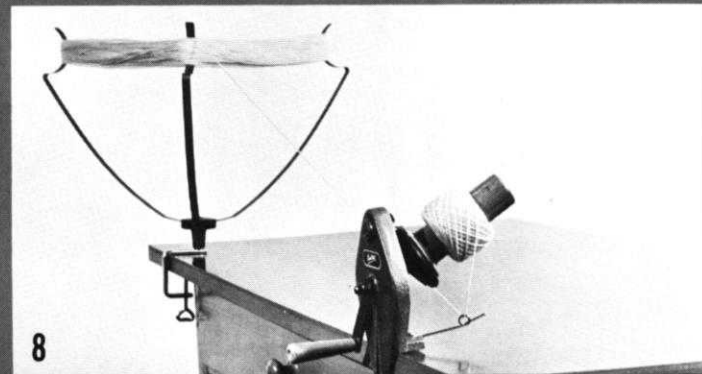
3



7



4



8

accessories

1. Treble Transfer Tools for rapid transfer of stitches and for Cable Stitch. \$1.50 pair plus 25¢ shipping.

2. 33 Needle Multi-Transfer Tool. For decreasing in the middle of a row. \$3.25 plus 25¢ shipping.

3. KNITKING Weaving Accessory (for AM 3 machine). Weaves an additional thread into your knitting and produces patterns with a woven appearance. \$6.95 plus 30¢ shipping.

4. Converta Tape. For simple and speedy charting of custom knits. \$6.95 plus 30¢ shipping.

5. Reversing Bar. For easy hem turning or reversing of knitting. \$17.95 plus \$1.50 shipping.

6. Adjustable Needle Selector. For setting unevenly spaced pattern stitches. \$3.50 plus 25¢ shipping.

7. KNITKING Pattern Stitch Cards (for AM 3 machine only). 48 Pattern Cards with 96 beautiful patterns in color and black and white. Simple row by row instructions. \$9.50 plus 95¢ shipping.

8. Yarn Winder and Skein Holder. Heavy cast frame and nylon gears. \$15.95 plus \$1.00 shipping. Without Skein Holder \$12.95 plus \$1.00 shipping.

California residents add 5% Sales Tax

KNITKING • 1128 Crenshaw Blvd., Los Angeles, California 90019

knitking magazine

INDEX	PAGE NO.
DK 7932	Woman's 2-piece Dress 14
DK 7903	Woman's Dress 15
DK 7940	Woman's 2-piece Dress 16
DK 7911	Woman's 2-piece Dress 17
DK 7937	Woman's Dress 18
DP 7913	Woman's Pullover 19
DK 7899	Woman's Dress 20
DK 7900	Woman's Long Vest 21
DK 7790	Woman's 3-piece Suit 22
DP 7906	Woman's Pullover 24
HP 3628	Man's Pullover 25
MK 5258	Girl's Pants and Dress 26
HP 3626	Man's Pullover 28
KK 5219	Boy's Pullover 29
MK 5220	Girl's Panty, Skirt and Pullover 30
MK 5261	Girl's Dress and Panty — Toddler . . . 31
KG 1926	Elephant Pad 32



Every season is KNITKING season and you can breeze through all your vacation spots wearing our wrinkle free — easy care knits designed for you and your family. Most of the patterns in this issue

are in more than one size, and this should make you happy because it gives you a wider choice range.

COVER MODEL DRESS DK 7932

Admiring eyes are on you when you wear our Cover Model two-piece Dress DK 7932. Knit it with KNITKING Subita Crepe 2 x 3. The Skirt is Stockinette Stitch and the Top is a Holding Position Design made by following the Chart or you may use JAC 40 and Pattern No. 73a. Size 18½

Publisher: KNITKING CORPORATION, 1128 Crenshaw Blvd., Los Angeles, Calif. 90019. Telephone: WEbster 8-2079. Published bi-monthly. Subscriptions: USA — \$6.00 annually, single copies \$1.50; Canada — \$7.00; other parts of the world — \$10.00. The entire contents of KNITKING MAGAZINE are copyright and must not be reproduced in any shape or form without the express permission, in writing of the publisher. COPYRIGHT © by KNITKING CORPORATION 1971.

Printed by George Rice & Sons, Los Angeles, California



KNITKING
1128 Crenshaw Blvd.
Los Angeles, Calif. 90019

ORDER IT NOW!

Every reader of KNITKING MAGAZINE needs the new big beautiful KNITKING YARN CATALOGUE with 329 actual yarn samples . . . the finest from around the world in an unbelievable range of colors.

I enclose one dollar
Please RUSH my beautiful new
KNITKING YARN CATALOGUE to me at:

Name _____

Address _____

City _____ State _____ Zip _____



NEW VOLUME AVAILABLE NOW

A complete seventh volume of **KNITKING MAGAZINES** with a flexible, transparent plastic cover and specially bound so that it will stay open at any page, is available at the special price of **\$6.95** (plus 95 cents mailing costs).

If purchased separately the magazines would cost a total of \$9.00.

The volume contains over 120 fully illustrated complete stylish patterns for all members of the family together with many valuable, practical knitting hints.

There is a very limited number of these volumes available and it will undoubtedly become a collectors item.

If you already have the entire set it will almost certainly be well thumbed and marked. Why not purchase a perfect mint condition volume for your bookshelf and ready reference at any time.

Place your order today and avoid disappointment. Send it to **KNITKING MAGAZINE**, 1128 Crenshaw Boulevard, Los Angeles, California 90019.

BOOKS by KNITKING

KNITKING CHILDREN'S BOOK

The Big, beautiful book of children's patterns. Over 50 complete and lovely patterns for infants and children to teenage. Buntings, Blankets and Baby outfits, cute Dresses, Leotites, Skirts, Suits, Pull-overs, Cardigans, Stockings, Trousers, etc. . . . The only Children's Book for the machine knitter published in the U.S.A. It sells for **\$2.95**

40 cents mailing
Calif. residents add 5% Sales Tax



PRACTICAL KNITTING HINTS

We call this book the **TEXT BOOK** for machine knitters because it answers the many questions that occur in machine knitting, from preparing to knit, taking measurements, shaping, making button-holes, special effects, bindings, bands and edges, etc., through finishing and blocking. It sells for **\$2.95**

40 cents mailing
Calif. residents add 5% Sales Tax



COLLECTING FILE

Keep your valuable **KNITKING MAGAZINES** in mint condition in a Collecting File. Each file holds twelve issues.

\$2.95
75 cents mailing
Calif. residents add 5% Sales Tax



I enclose \$7.90

Please **RUSH** my bound Seventh Volume of **KNITKING MAGAZINE** to me at:

Name

Address

City State Zip

knitking

magazine

The charting of a garment in a variety of sizes is much more complicated than it sounds . . . — especially if the garment is made up in several pieces . . . Sleeves have to fit in armhole shapings . . . Collars have to attach as though moulded into position . . . allowances have to be made for variations in bust darts . . . in waist shapings for Skirts and Pants . . . in width of shoulders . . . length of garment, etc., etc. Some readers do not easily understand this and have asked why, in the past, we have not included a range of sizes in each garment . . .

We recently saw an IBM Computer programmed for the sole purpose of charting Dresses and Suits in a complete range of sizes . . . After the Charts for one size were fed into the Computer, it produced, full size, on an enormous automatic drawing board, a complete set of Charts for every size . . . That is how involved and expensive, accurate charting has really become. (We have something of great interest to all machine knitters in regard to computerized Charts in KNITKING NEWS in this issue . . . Don't miss it.)

If every garment was a simple tank type without shapings, it would of course, be easy to make adjustments for various sizes and lengths, but where there are increases and decreases, darts, armholes and necklines, etc., there is not sufficient space on any accurate Chart to include the numerous figures needed . . . and even if we could squeeze them on, they would certainly only confuse the majority of readers.

We just had to devise a method that would permit the knitting of beautiful KNITKING garments in a range of sizes without complicating the Charts and written Instructions with innumerable figures . . . We believe we have succeeded in our endeavors and we are happy to offer for the first time in this issue, a range of sizes in many of the garments . . . One thing we must emphasize . . . if your garment is to knit up the right size, it is absolutely essential that you obtain the correct stitch and row gauge . . .

Watch out for the next issue of KNITKING MAGAZINE . . . It will have an excellent assortment of beautiful Mod patterns for the whole family . . . The Cover features a stunning Pants Suit in a Jacquard Design . . . We also have a Knicker Suit . . . a Goucho Pants Suit . . . and a "Hot Pants" Jump Suit . . . a long sleeveless Coat and some stylish Dresses . . . For the Men, a couple of handsome Sweaters plus some good looking garments for the Youngsters.



LETTER
from the
PUBLISHER



DK 7903

Here's the look you want for day or evening . . . A smashing Dress has Raglan Sleeves and a very new Pattern Design on the front and back sections. Follow the Chart for the Design. Size 12 is made in KNITKING Subita Crepe with Lurex; Size 14 is in Amore. See page 15.



DK 7940

A Bavarian Country style 2-piece Dress shows off a pretty figure with its fitted low necked Top and bright border on the Skirt. Follow the Chart for the Border Design or use JAC 40 and Pattern No. 434. For Size 12 KNITTING Crocus Crepe; Size 14 Excelsior. See page 16.



DK 7937

Perfect for Summer travel . . . the fitted Dress has a scoop Neckline and button front. The Sleeves and Belt are knitted in a Norwegian Design that follow a Chart or use your JAC 40 and Pattern No. 104, Size 12 and 14, both sizes knitted with KNITKING Subita Crepe 2 x 3. See page 18.





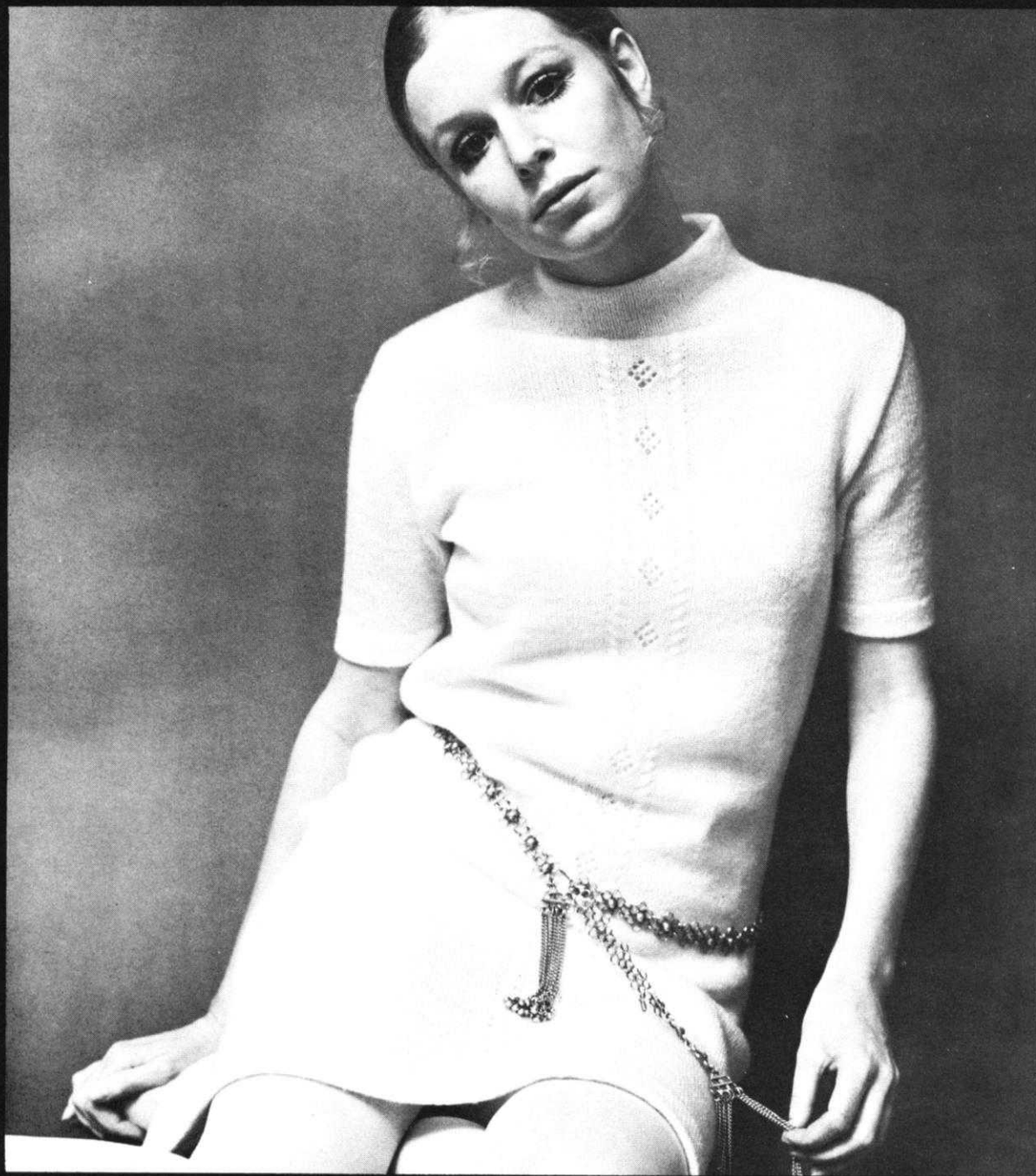
DK 7911

Off for a Summer holiday? . . . then pack this two-piece Dress for casual or dress up wear. The Skirt is knitted in Stockinette Stitch, the Shell in a Holding Position Design with Eyelets that follows the Chart. Knit Size 10 in KNITKING Subita 2 x 4; Size 14 Excelsior. See page 17.



DP 7913

An Eyelet Design on the front section of a Pullover is most attractive and feminine. For Size 8, knit it with KNITKING Subita Crepe 2 x 3 and Amore for Sizes 10 and 14. See page 19.



**DK 7899 and
DK 7900**

Look lovely . . . feel elegant in a pretty Dress with a new standing Neckline and set in Sleeves. It's knitted in Stockinette Stitch with an Eyelet and small Cable Design down the front. Loop a chain Belt around the



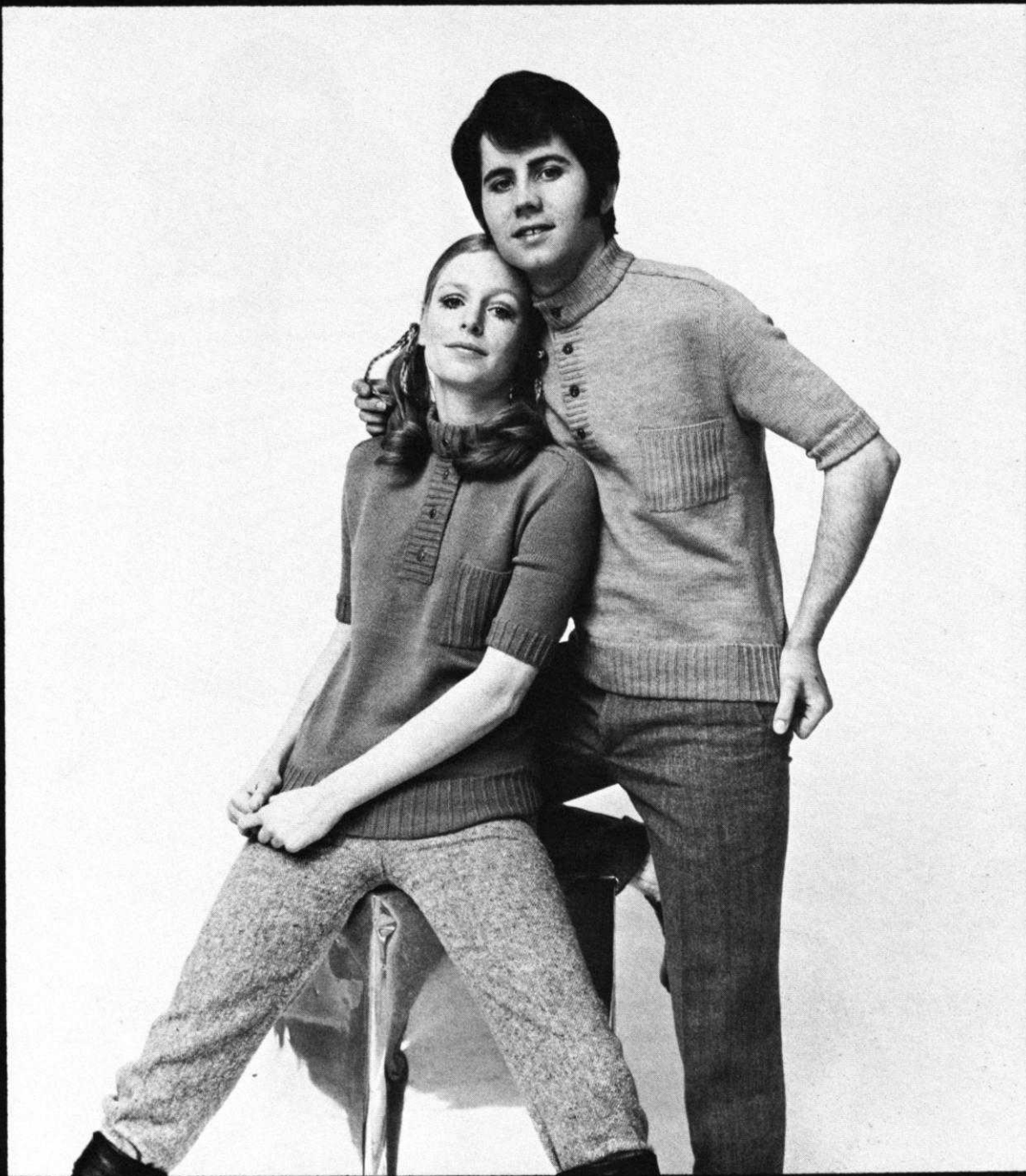
waistline. Be sure to knit the long Vest to wear over the Dress. It also has an Eyelet and Cable Design. Both are knitted in Size 10 using KNITKING Lovely; Size 14 is made in Double Knitting.

DK 7899 See page 20.
DK 7900 See page 21.



DK 7790

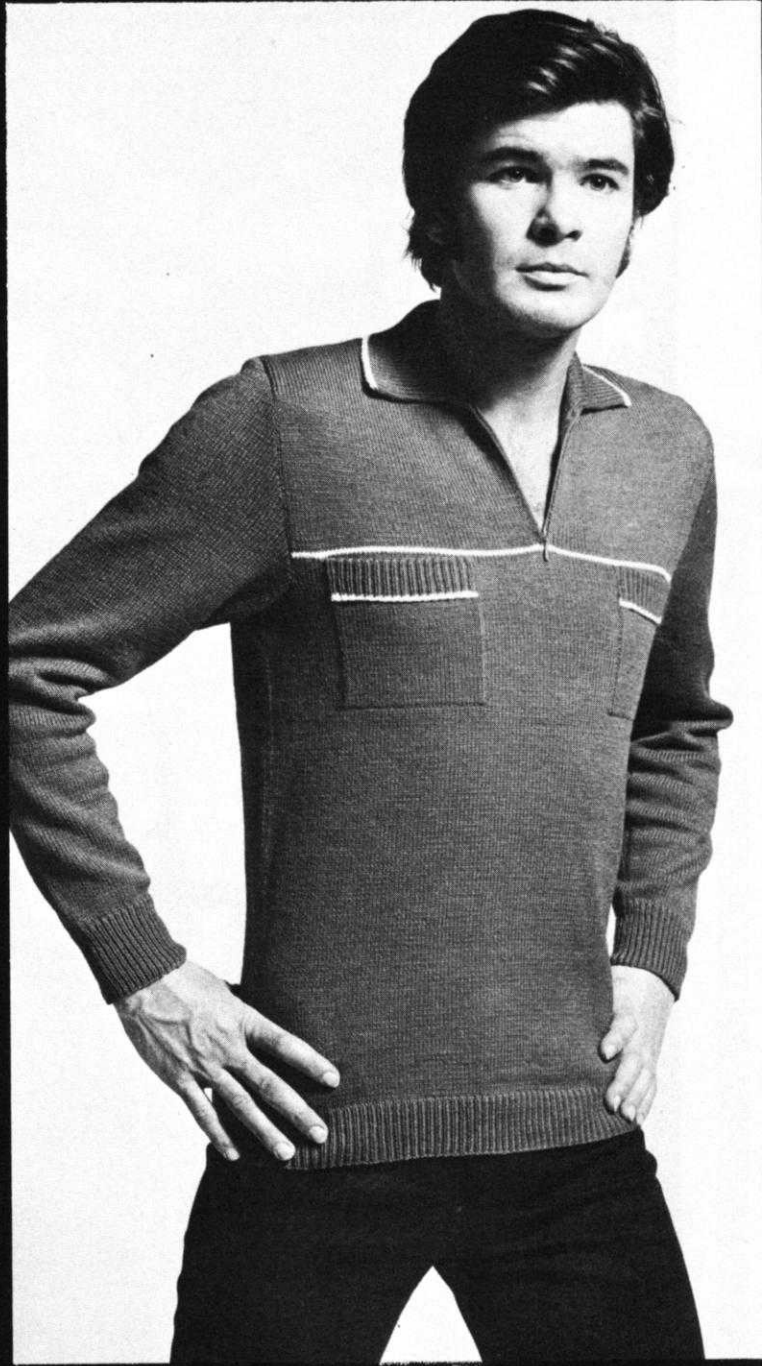
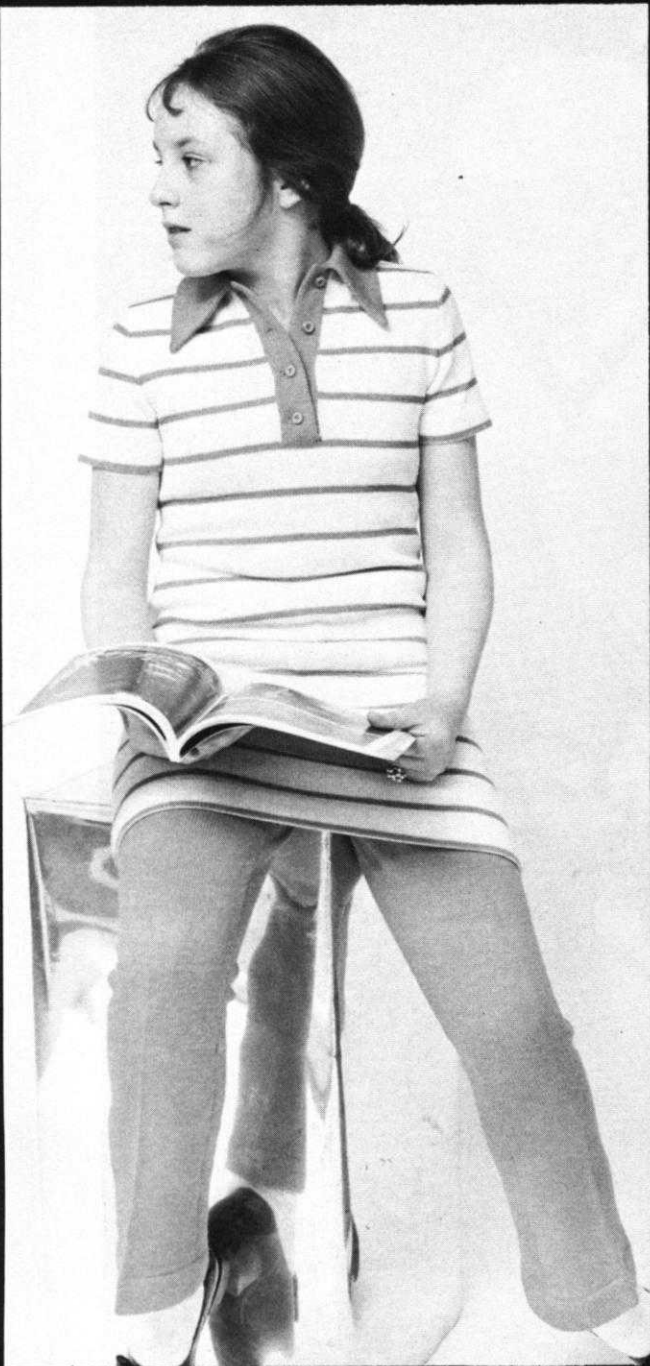
Here is a beautiful Suit designed specifically for the half size Gal. A sleeveless Dress knitted in Stockinette Stitch has a patterned Roll Collar, the Skirt is a Holding Position Design. Top either one with the Chanel type Jacket trimmed with the same Holding Position Design as the Skirt and Collar of Dress. For Size 14½ KNITKING Subita Crepe 2 x 3; Size 16½ Subita Crepe 2 x 4; Size 18½ Crocus Crepe. page 22.



DP 7906 and HP 3628

Match the style of his Saddle Shoulder Pullover with one for yourself and join the Jet Set. Use Stockinette Stitch with a 1 x 3 Rib for Bands and Pockets. DP 7906: For Size 12 use KNITKING Subita Crepe 2 x 4; Size 14 Excelsior; Size 16 Lovely. See page 24. HP 3628: For Size 40 use KNITKING Subita Crepe 2 x 4; Size 42 Crocus Crepe; Size 46 Lovely. See page 25.



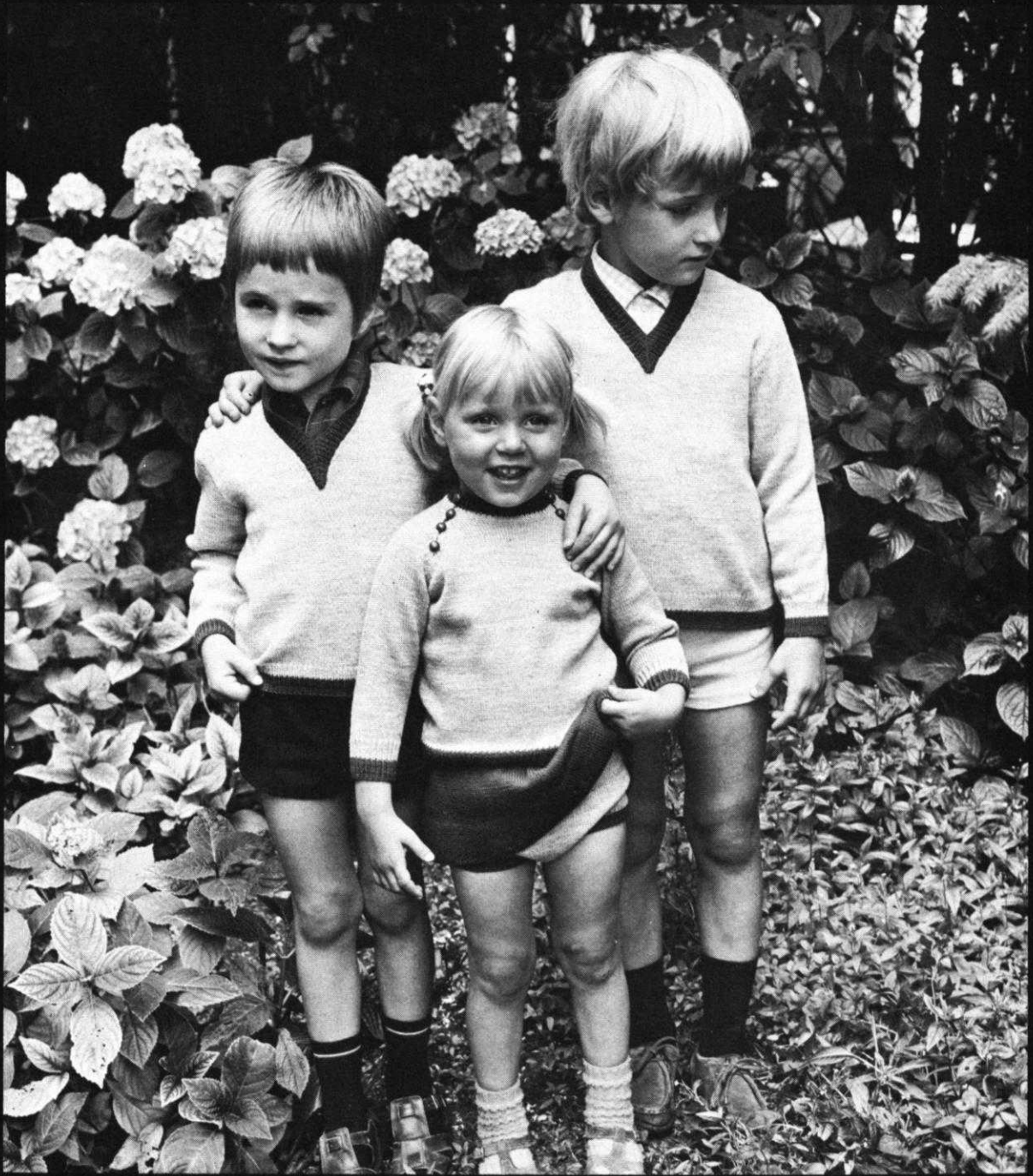


◀ MK 5258 ▶

Slacks and a striped Mini Dress are designed in 3 sizes for the young Girl. She'll wear the Dress alone, or over the beautifully tailored Pants. For Size 12 KNITKING Subita Crepe 2 x 3; Size 14 and 16 Amore. See page 26.

HP 3626

Use KNITKING Amore . . . and by changing the Tension on your machine, you can have 3 sizes for a Man's Pullover. Small amounts of contrast color make the stripe across the chest and on the Collar and Pockets. Sizes 36, 38, 40. See page 28.



KK 5219

A basic V Necked Pullover for Boys is given in two separate sizes. The V neck, Sleeve Cuffs and lower edge are ribbed in a contrasting color. Size 6 and Size 10, KNITKING Fortissima. See page 29.

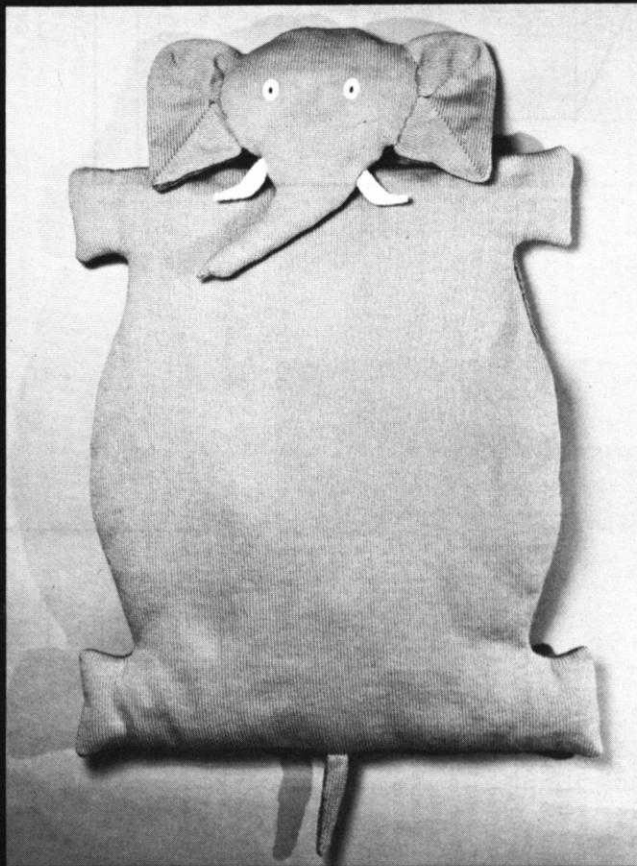
MK 5220

A complete outfit for a small Girl has a Raglan Sleeve Pullover, Skirt and matching Panties. It is very easy to knit in Stockinette Stitch using two colors of KNITKING Fortissima. Size 4 to 5. See page 30.



MK 5261

Here is your little dream Girl wearing the cutest Dress and Panties made for a Toddler. Flower appliques (you knit them yourself) perch on top of a chain stitch Stem, Scallops on Panties peek out from below Dress. Knit it with KNITKING Amore, trim it with 3-ply Dralon. Size: Toddler 1 to 2. See page 31.



KG 1926

Your loved and loving Pet will adore his or her own Elephant Pad to snooze on . . . Children, including teenagers will insist you knit one for them too. Make it into a charming Baby Blanket by increasing the size in width and length of the body section (knit only 1 piece for body and head) then attach head at one end, and finish with a crochet edging. Use KNITKING Double Knitting. See page 32.

SIZES: 18½ (Bust 41"-42½"). **MATERIAL:** 26¼ oz. (15 balls) KNITTING Subita Crepe 2 x 3. **TENSION:** Stockinette Stitch 3 to 5, GAUGE: 18 sts, 2", 25 rows 2". **PATTERN:** SKIRT and BAND: Stockinette Stitch, worn on the knit side; TOP: Holding Position Design according to Line Drawing, or use JAC 40 and Pattern No. 73a, but always knit 4 rows instead of 2 rows. The top is worn on the purl side. **SLEEVE EDGES** and **LOWER EDGE** of TOP: K1, P1, Ribbing. **SKIRT DECREASES:** After rows indicated, hang the 3rd st. on each side onto the 2nd st., then move the end sts. inward to fill the empty needle. **NECK-LINE DECREASES:** After rows indicated, hang the 1st st. ON NECK SIDE onto the 2nd st. The finished length of the skirt is about 24".

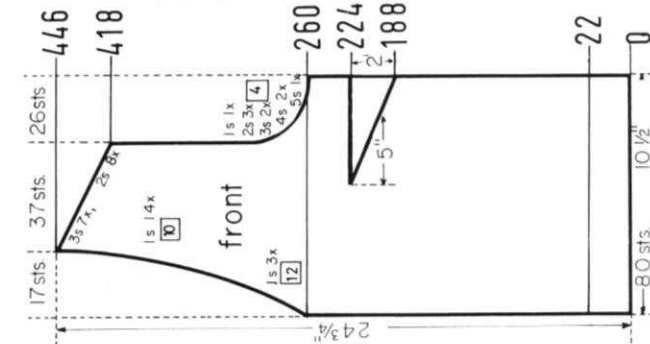
FINISHING: Block all sections. **TOP:** Sew the DARTS into the front sections. (See Diagram). Join front and back sections at sides and shoulders. Sew sleeves together and set in. Sew 1 edge of band to inside and 1 edge to outside of front edges and neckline. (Buttonholes on right front edge). Finish buttonholes, sew on buttons. **SKIRT:** Weave the skirt sections together, 1 st. in. from each edge. Turn under 20 rows on lower edge and 15 rows on upper edge and hem to wrong side. Insert an elastic band into upper hem.



710

neck and front band	—	176	—
	—	136	—
	—	96	—
	—	56	—
	3-7	23-27	16 R
			29 sts.

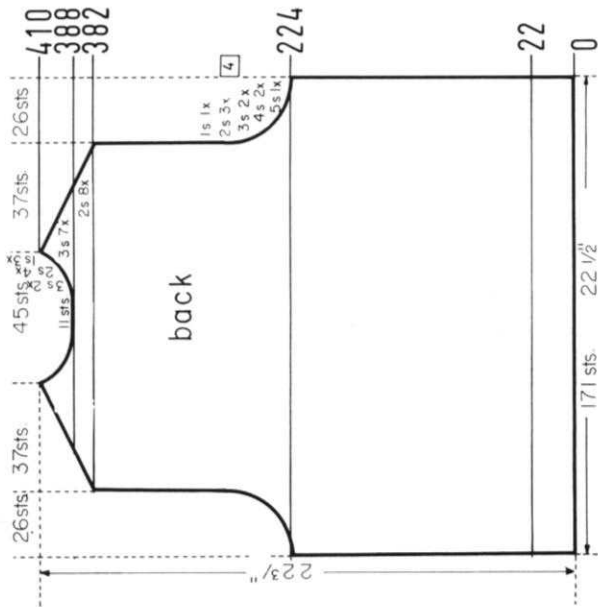
Cast on 29 st., and work stockinette st. Make buttonholes after Rows 16, 56, 96, 136, 176 over the 3rd-7th and 23-27th sts. After Row 710 bind off all sts.



Work the second front section with reverse shapings, casting on from right to left. (Cam Box will be on the LEFT side at Row 0).

Decrease 1 st. ON NECK SIDE after Rows in (). ON CAM BOX SIDE, bind off 5 sts. after Row 260. (260); 4 sts. after Rows 264, 268; 3 sts. after Rows 272, (272), 276; 2 sts. after Rows 280, 284, (284), 288; 1 st. after Row 292. The Armhole Shaping is now completed. Continue to decrease 1 st. ON NECK SIDE after Rows 296, 306, 316, 326, 336, 346, 356, 366, 376, 386, 396, 406, 416, then again after Row in (). For SHOULDER bind off 2 sts. after Rows 418, 420, 422, 424, 426, (426), 428, 430, 432; 3 sts. after Rows 434, 436, 438, 440, 442, 444, 446.

ROWS 23 to 260: Knit even. ROWS 0 to 22: Knit even, then transfer the ribber sts. to the main machine and work the Holding Position Design. Cast on 80 sts. and work K1, P1, Ribbing.



Bring the needles on the left side into working position, knit 1 row in PATTERN to the left side, turn the Row Counter back to 388 and complete the left half. Follow the instructions from *.

* ON CAM BOX SIDE, bind off 2 sts. after Row 388 (EVEN ROWS = SHOULDER SHAPING); 3 sts. after Row 389 (ODD ROWS = NECK SHAPING); 2 sts. after Row 390; 3 sts. after Row 391; 2 sts. after Rows 392, 393, 394, 395, 396, 397; 3 sts. after Row 398; 2 sts. after Row 399; 3 sts. after Row 400; 1 st. after Row 401; 3 sts. after Row 402; 1 st. after Row 403; 3 sts. after Row 404; 1 st. after Row 405; 3 sts. after Rows 406, 408, 410.

ON CAM BOX SIDE, bind off 2 sts. after Rows 382, 383, 384, 385, 386, 387, then knit to Row 388; bind off the center 11 sts., put the needles on the left side into holding position and complete the right half first.

ON CAM BOX SIDE, bind off 5 sts. after Rows 224, 225; 4 sts. after Rows 228, 229, 232, 233; 3 sts. after Rows 236, 237, 240, 241; 2 sts. after Rows 244, 245, 248, 249, 252, 253; 1 st. after Rows 256, 257, then knit to Row 382. ROWS 23 to 224: Knit even.

ROWS 0 to 22: Knit even, then transfer the ribber sts. to the main machine and work the Holding Position Design.

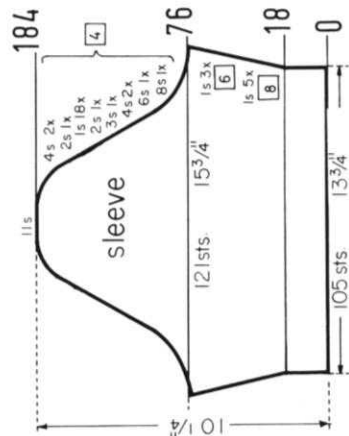
Cast on 171 sts. and work K1, P1, Ribbing.

ON CAM BOX SIDE, bind off 8 sts. after Rows 76, 77; 6 sts. after Rows 80, 81; 4 sts. after Rows 84, 85, 88, 89; 3 sts. after Rows 92, 93; 2 sts. after Rows 96, 97. ON EACH SIDE, hang the 1st st. onto the 2nd st. after Rows 100, 104, 108, 112, 116, 120, 124, 128, 132, 136, 140, 144, 148, 152, 156, 160, 164, 168. ON CAM BOX SIDE, bind off 2 sts. after Rows 172, 173; 4 sts. after Rows 176, 177, 180, 181; 11 sts. after Row 184.

ON CAM BOX SIDE, increase 1 st. after Rows 18, 19, 26, 27, 34, 42, 43, 50, 51, 58, 59, 64, 65, 70, 71, then knit to Row 76.

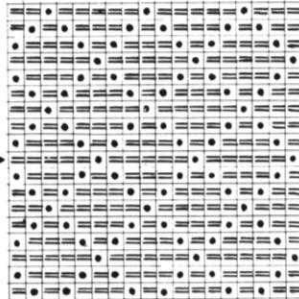
ROWS 0 to 18: Knit even, then transfer the ribber sts. to the main machine and work the Holding Position Design.

Cast on 105 sts. and work K1, P1, Ribbing.



Work 3 more sections the same. ON EACH SIDE, decrease 1 st. after Rows 70, 84, 98, 112, 126, 140, 154, 168, 182, 196, 210, 224, 234, 244, 254, 264, 274, 284, 294, 304, 314, then knit to Row 344 and bind off the remaining 88 sts.

ROWS 0 to 70: Knit even. Cast on 130 sts. and work stockinette st.



DK 7903

SIZE 12 (Bust 34"-35"), SIZE 14 (Bust 36"-37"), MATERIAL: SIZE 12: 19 1/4 oz. (11 balls) KNITTING Subita with Lurex. TENSION: KNITTING 5 to 7. GAUGE: 16 sts. 2", 23 rows 2". SIZE 14: 22 1/2 oz. (13 balls) KNITTING Amore. TENSION: KNITTING 7 to 9. GAUGE: 15 sts. 2", 23 rows 2". The instructions are the same for both sizes. PATTERN: Stockinette Stitch and an Eyelet Design on the front and back section. Follow the instructions on the Line Drawing. DECREASES: After rows indicated, hang the 3rd st. on the appropriate sides onto the 2nd st., then move the end sts. inward to fill the empty needle. INCREASES: After rows indicated, move the 2 end sts. on each side 1 needle outward, then place the 3rd st. from the row below onto the empty needle. The finished length for both sizes is about 37". FINISHING: Block all sections. Join front and back section at sides. Sew sleeves together and weave to front and back section, 1 st. in from each edge. Turn under 20 rows on lower edge and 12 rows on sleeve edges and hem to wrong side. Join short ends of neckband, then sew 1 edge of neckband to inside and 1 edge to outside of neckline.

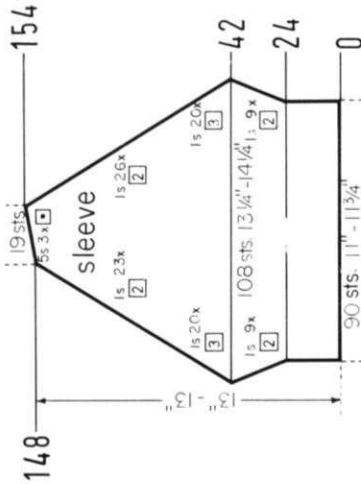


Work the second sleeve with reverse shaping, casting on from right to left. (Cam Box will be on the LEFT side at Row 0).

ON EACH SIDE, decrease 1 st. after Rows 42, 45, 48, 51, 54, 57, 60, 63, 66, 69, 72, 75, 78, 81, 84, 87, 90, 93, 96, 99, 102, 104, 106, 108, 110, 112, 114, 116, 118, 120, 122, 124, 126, 128, 130, 132, 134, 136, 138, 140, 142, 144, 146, then knit to Row 148. Continue to decrease 1 st. ON CAM BOX SIDE after Rows in (). ON OPPOSITE SIDE of CAM BOX put into holding position 5 needles after Rows 148, (148), 150, (150), 152, (152). After Row 154 bring all needles back into working position, then bind off the remaining 19 sts.

ON EACH SIDE, increase 1 st. after Rows 24, 26, 28, 30, 32, 34, 36, 38, 40, then knit to Row 42.

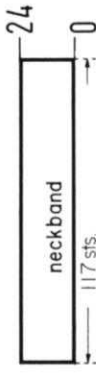
ROWS 0 to 24: Knit even. Cast on 90 sts. and work stockinette st.



Move the Cam Box to the left side, turn the Row Counter back to 432 and complete the left half. Follow the instructions from *.

* Decrease 1 st. after Row 432 (EVEN ROWS = RAGLAN SHAPING); 3 sts. after Row 433 (ODD ROWS = NECK SHAPING); 1 st. after Row 434; 3 sts. after Row 435; 1 st. after Row 436; 2 sts. after Row 437; 1 st. after Row 438; 2 sts. after Row 439; 1 st. after Rows 440, 441, 442, 443, 444, 445, 446, 447, 448. After Row 450 bind off the remaining 3 sts.

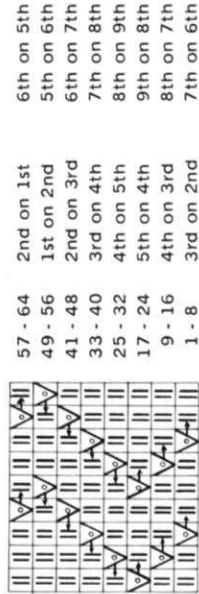
Work the Front Section the same as the Back Section to ROW 432, then bind off the center 11 sts., put the needles on the left side into holding position and complete the right half first.



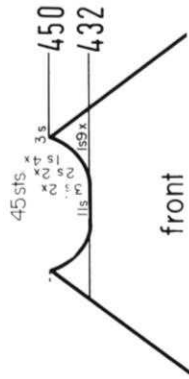
Cast on 117 sts. and work 24 rows stockinette st., then bind off all sts. the crochet method.

INSTRUCTIONS FOR LINE DRAWING 7903

Each Eyelet Stripe reaches over 9 sts. and is marked on the diagram. Cast on all sts., then mark the Pattern Needles. (Mark the rail with crayon). The instructions are for 1 Pattern Stripe, all others are worked the same. Always count from right to left. (1) On each Pattern Stripe, hang the 3rd st. onto the 2nd st. and 7th st. onto the 6th st. Leave empty needles in working position. Knit 8 rows. (2) Let the 3rd and 7th sts. slide off the needles and drop down 8 rows. (Down to Eyelet). (3) Hang the 4th st. onto the 3rd needle and the 8th st. onto



9 8 7 6 5 4 3 2 1



front

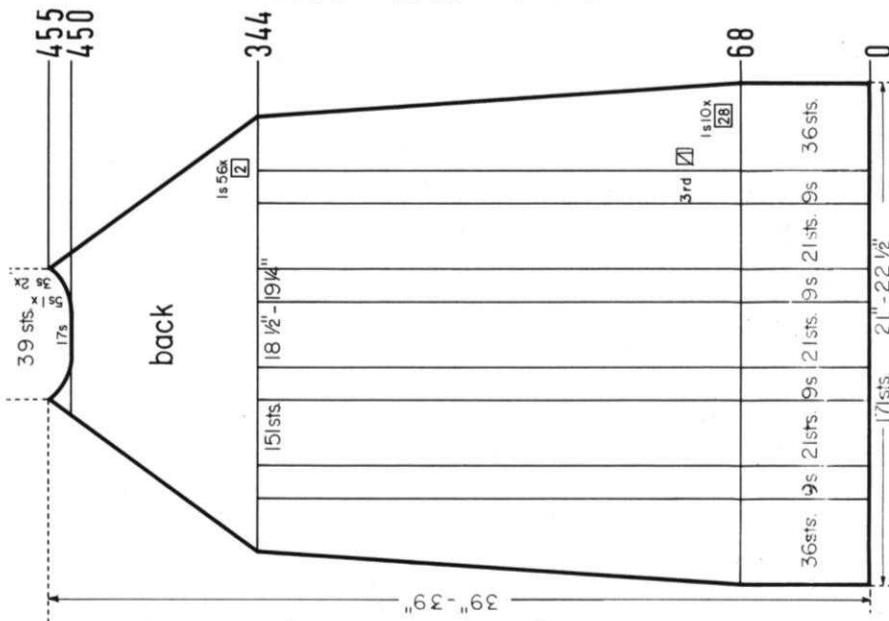
Move the Cam Box to the left side, turn the Row Counter back to 450, and complete the left half. Follow the instructions from *.

* Decrease 1 st. after Row 450 (EVEN ROWS = RAGLAN SHAPING); 5 sts. after Row 451 (ODD ROWS = NECK SHAPING); 1 st. after Row 452; 3 sts. after Row 453; 1 st. after Row 454; 3 sts. after Row 455.

ON EACH SIDE, decrease 1 st. after Rows 344, 346, 348, 350, 352, 354, 356, 358, 360, 362, 364, 366, 368, 370, 372, 374, 376, 378, 380, 382, 384, 386, 388, 390, 392, 394, 396, 398, 400, 402, 404, 406, 408, 410, 412, 414, 416, 418, 420, 422, 424, 426, 428, 430. (For FRONT SECTION, make decreases after Row 430, then knit to ROW 432) 432, then knit to Row 450, bind off the center 17 sts., put the needles on the left side into holding position and complete the right half first.

ON EACH SIDE, decrease 1 st. after Rows 64, 92, 120, 148, 176, 204, 232, 260, 288, 316, then knit to Row 344.

ROWS 0 to 64: Knit even. Cast on 171 sts., work stockinette st. and the Eyelet Design over the sts. marked on the diagram.

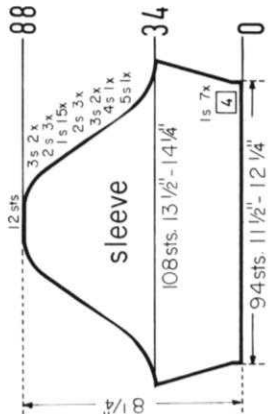


back

DK 7940

SIZE 12 (Bust 34"-35"), **SIZE** 14 (Bust 36"-37"). **MATERIAL:** **SIZE** 12: 24½ oz. (14 balls) charcoal, 1½ oz. (1 ball) olive and 1½ oz. (1 ball) red KNOTTING Crocus. **TENSION:** **KNITTING** 5 to 7. **GAUGE:** 16 sts. 2", 21 rows 2". **SIZE** 14: 26½ oz. (15 balls) black, 1½ oz. (1 ball) green and 1½ oz. (1 ball) red KNOTTING Excelsior. **TENSION:** **KNITTING** 6 to 8. **GAUGE:** 15 sts. 2", 21 rows 2". **BOTH SIZES:** About 4½ yards red wool binding. The instructions are the same for both sizes. **PATTERN:** Stockinette Stitch and a Norwegian Design according to Line Drawing, or use JAC 40 and Pattern No. 434. In the instructions each row in the Norwegian Design is counted as 1 row, but several movements of the Cam Box are needed to complete 1 row. **DECREASES:** After rows indicated, hang the 3rd st. on the appropriate sides onto the 2nd st., then move the end sts. inward to fill the empty needle. Begin the waistline Darts by hanging the sts. together as marked on the diagram, then move the end sts. inward to fill the empty needles. The following dart decreases, then increases lie directly above. **INCREASES:** After rows indicated, move the 2 end sts. on the appropriate sides 1 needle outward, then place the 3rd st. from the row below onto the empty needle. The finished length of the skirt is about 21".

FINISHING: Block all sections. **TOP:** Join front and back sections at sides and shoulders. Beginning at waistline or lower edge, sew rolled up binding to each front section. (See picture). Sew sleeves together and set in. Sew 1 edge of binding to inside and 1 edge to outside around all edges. Finish buttonholes. Sew on buttons. **SKIRT:** Weave the skirt sections together 1 st. in from each edge. Turn under 16 rows on lower edge and 15 rows on upper edge and hem to wrong side. Insert an elastic band into upper hem.



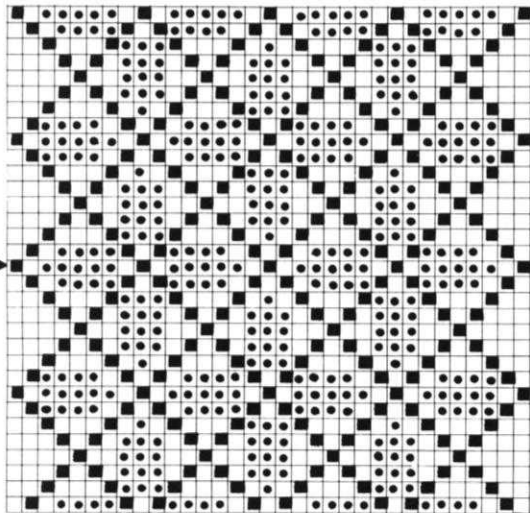
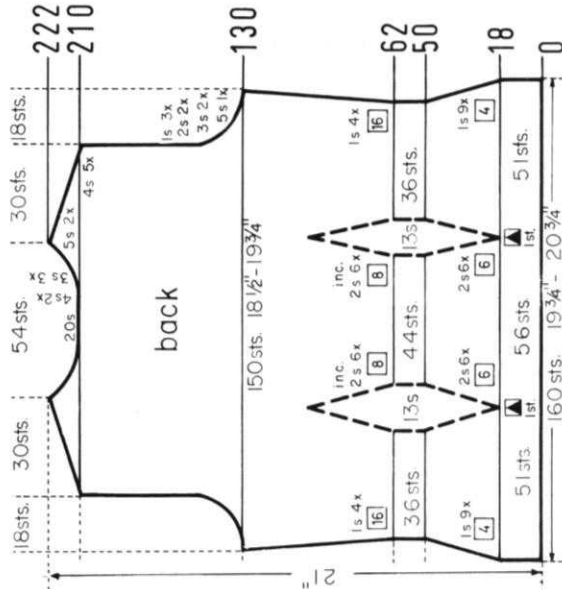
Move the Cam Box to the left side, turn the Row Counter back to 210 and complete the left half. Follow the instructions from *.

• ON CAM BOX SIDE, bind off 4 sts. after Rows 210 (EVEN ROWS = SHOULDER SHAPING), 211 (ODD ROWS = NECK SHAPING), 212, 213, 214; 3 sts. after Row 215; 4 sts. after Row 216; 3 sts. after Row 217; 4 sts. after Row 218; 3 sts. after Row 219; 5 sts. after Row 220, 222.

ON CAM BOX SIDE, bind off 5 sts. after Rows 130, 131; 3 sts. after Rows 132, 133, 134, 135; 2 sts. after Rows 136, 137, 138, 139; 1 st. after Rows 140, 141, 142, 143, 144, 145, then knit to Row 210, bind off the center 20 sts., put the needles on the left side into holding position and complete the right half first.

ON EACH SIDE, increase 1 st. after Rows in (). Increase 2 sts. for each DART after Rows 62, (62), 70, 78, (78), 86, 94, (94), 102, (110), then knit to Row 130. Decrease 2 sts. for each DART after Rows in (). ON EACH SIDE decrease 1 st. after Rows 18, (18), 22, (24), 26, 30, (30), 34, (36), 38, 42, (42), 46, (48), 50, then knit to Row 62.

ROWS 0 to 18: Knit even. Cast on 160 sts. and work stockinette st.



• = Red U
• = Black E
• = Green A

Work the second front section with reverse shapings, casting on from right to left. (Cam Box will be on the LEFT side at Row 0). Omit the buttonholes.

ON CAM BOX SIDE, bind off 5 sts. after Row 142 (EVEN ROWS = ARMHOLE SHAPING); 3 sts. after Rows 144, (Buttonhole after Row 145), 146; 2 sts. after Row 148; 15 sts. after Row 149 (ODD ROWS = NECK SHAPING); 2 sts. after Row 150; 3 sts. after Row 151; 1 st. after Row 152; 3 sts. after Row 153; 1 st. after Row 154; 2 sts. after Row 155; 1 st. after Row 156 (last time for Armhole); 2 sts. after Row 157; 1 st. after Rows 159, 161, 163, 165, 167, 171, 173. For SHOULDER bind off 4 sts. after Rows 222, 224, 226, 228, 230; 5 sts. after Rows 232, 234.

Work Short Rows for the Bust Dart. ON OPPOSITE SIDE of CAM BOX put into holding position 6 needles after Rows 111, 113, 115, 117, 119, 121. After Row 123 bring all needles back into working position. Make a Buttonhole after Row 124, then knit to Row 142.

ON CAM BOX SIDE, increase 1 st. after Rows in () and make Buttonholes after Rows indicated over the same sts. as before. Increase 2 sts. for the DART after Rows 62, (62), 70, 78, (78), (Buttonhole after Row 82), 86, 94, (94), 102, (Buttonhole after Row 103), (110), then knit to Row 111.

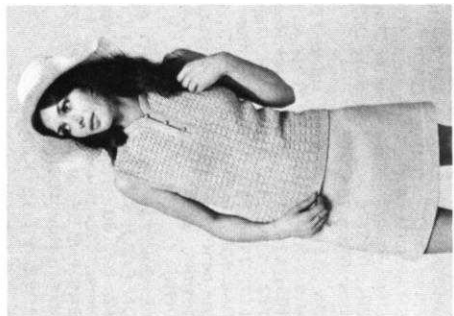
ON OPPOSITE SIDE of CAM BOX bring back into working position 5 needles after Rows 2, 4; 3 needles after Rows 6, 8; 2 needles after Rows 10, 12; 1 needle after Rows 14, 16, then knit to Row 18. Continue to bring 1 needle back into working position after Rows 18, 20, 22, 24, BUT AT THE SAME TIME decrease 2 sts. for the DART after Row 18 and 1 st. for the side seam after Row 18, then again 1 st. for the side seam after Row 22 and 2 sts. for the DART after Row 24. After Row 26 all needles for the front shaping are back in working position. Continue to decrease 2 sts. for the DART after Rows in (). ON CAM BOX SIDE decrease 1 st. for the side seam after Rows 26, 30, (30), 34, (36), 38, 42, (42), 46, (48), then knit to Row 49, cast on 9 sts. ON CAM BOX SIDE, knit to Row 50, decrease 1 more st. for side seam, then knit to Row 61. Work a Buttonhole over the 5th-9th sts. counting from the left side, then knit to Row 62.

ON OPPOSITE SIDE of CAM BOX put into holding position 26 needles after Row 0, then knit 2 rows. Cast on 76 sts., work stockinette st. and Short Rows for the front shaping.

DK 7911

SIZE 10 (Bust 33"-34"), **SIZE 14** (Bust 36"-37"). **MATERIAL:** SIZE 10: 24½ oz. (14 balls) KNITTING Subita Crepe 2 x 4. **TENSION:** KNITTING 6 to 8. **GAUGE:** Stockinette Stitch 16 rows 2"; Pattern Stitch 15 sts 2"; 30 rows 2"; **SIZE 14:** 29½ oz. (17 balls) KNITTING Excelsior. **TENSION:** KNITTING 6 to 8. **GAUGE:** Stockinette Stitch 15 sts 2"; 21 rows 2"; Pattern Stitch 14 sts 2"; 28 rows 2". The instructions are the same for both sizes. **PATTERN:** SKIRT: Stockinette Stitch worn on the knit side; SHELL: Holding Position Design with Eyelets according to Line Drawing. Worn on the purl side. **EDGES:** K1, P1, Ribbing. **SKIRT DECREASES:** After rows indicated, hand the 3rd st. on each side onto the 2nd st. then move the end sts. inward to fill the empty needle. The finished length of the skirt is about 20½" (21½").

FINISHING: Block all sections. **SKIRT:** Weave the sections together, 1 st. in from each edge. Turn under 18 rows on lower edge and 13 rows on upper edge and hem to wrong side. Insert an elastic band into upper hem. **SHELL:** Join front and back section at sides and shoulders, easing in the fullness at bustline of front section. Join short ends of armhole bands and join neckband sections at center back. Sew 1 edge of neckband to inside and 1 edge to outside of front edges and around neckline. Sew armhole bands to armholes in the same manner. Work 3 loops on the right side and sew 3 buttons to the left side of front opening.



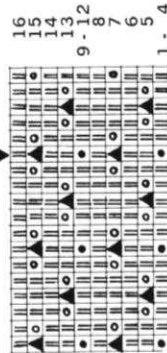
Bring the needles on the left side back into working position, knit 1 row in PATTERN to the left side, turn the Row Counter back to 202 and complete the left half. Follow the instructions from *.

ON CAM BOX SIDE, bind off 3 sts. after Row 293 (ODD ROWS = NECK SHAPING); 2 sts. after Rows 295, 297, 299, 301; 1 st. after Rows 303, 305, 307, 309, 311, 313. For SHOULDER bind off 3 sts. after Rows 316, 318, 320, 322, 324, 326, 328, 330, 332, 334.

* **ON CAM BOX SIDE,** bind off 5 sts. after Row 202; 3 sts. after Rows 204, 206; 2 sts. after Rows 208, 210; 1 st. after Rows 212, 214, 216, then knit to Row 293.

ROWS 191 to 202: Knit even, then bind off the center 9 sts., put the needles on the left side into holding position and complete the right half first.

Work the Front Section the same as the Back Section to ROW 190.

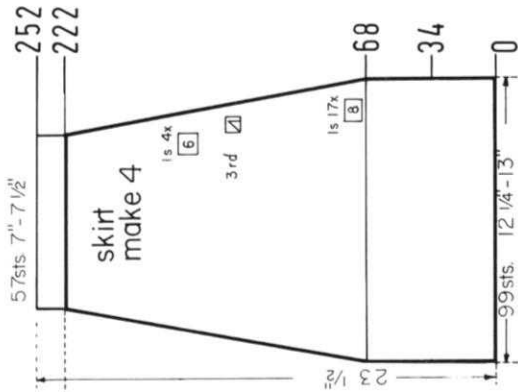


Work 3 more sections the same.

ON EACH SIDE, decrease 1 st. after Rows 44, 54, 64, 74, 84, 94, 104, 114, 124, 134, 144, 154, 164, 170, 176, 182, 188, 194, 200, 206, 212, 218, 224, 230, 236, then knit to Row 262 and bind off the remaining 52 sts.

Rows 0 to 44: Knit even.

Cast on 102 sts. and work stockinette st.



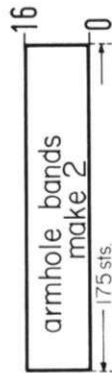
Work 3 more sections the same.

ON EACH SIDE, decrease 1 st. after Rows 68, 76, 84, 92, 100, 108, 116, 124, 132, 140, 148, 156, 164, 172, 180, 188, 196, 204, 210, 216, 222, then knit to Row 252 and bind off the remaining 57 sts.

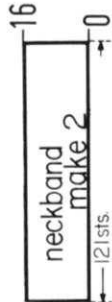
ROWS 35 to 68: Knit even, then continue with stockinette st.

ROWS 0 to 34: Knit even, then work the Norwegian Design.

Cast on 99 sts. and work stockinette st.



Cast on 175 sts. and work 16 rows K1, P1, Ribbing, then bind off all sts. the crocheted method for ribbing.



Cast on 121 sts. and work 16 rows K1, P1, Ribbing, then bind off all sts. the crocheted method for ribbing.

Bring the needles on the left side back into working position, knit 1 row in PATTERN to the left side, turn the Row Counter back to 304 and complete the left half. Follow the instructions from *.

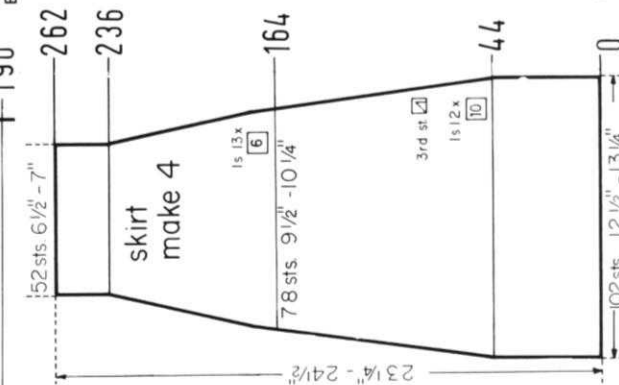
* **ON CAM BOX SIDE,** bind off 3 sts. after Rows 304 (EVEN ROWS = SHOULDER SHAPING), 305 (ODD ROWS = NECK SHAPING), 306, 307, 308; 2 sts. after Row 309; 3 sts. after Row 310; 2 sts. after Row 311; 3 sts. after Row 312; 2 sts. after Row 313; 3 sts. after Row 314; 1 st. after Row 315; 3 sts. after Row 316; 1 st. after Row 317; 3 sts. after Row 318; 1 st. after Row 319; 3 sts. after Rows 320, 322.

ON CAM BOX SIDE, bind off 5 sts. after Rows 190, 191; 3 sts. after Rows 192, 193, 194, 195; 2 sts. after Rows 196, 197, 198, 199; 1 st. after Rows 200, 201, 202, 203, 204, 205, then knit to Row 304, bind off the center 13 sts., put the needles on the left side into holding position and complete the right half first.

ROWS 17 to 190: Knit even.

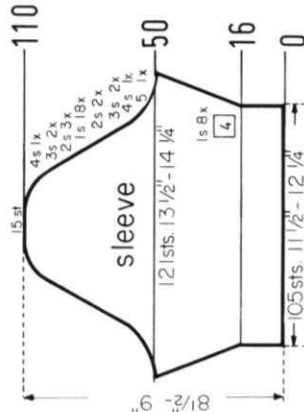
ROWS 0 to 16: Knit even, then transfer the ribber sts. to the main machine and work the Holding Position Design.

Cast on 139 sts. and work K1, P1, Ribbing.



SIZE 10 (Bust 33"-34"), **SIZE 14** (Bust 36"-37"), **MATERIAL:** SIZE 10: 19% oz. (11 balls) white and 1% oz. (1 ball) red **KNITTING** Subita Crepe 2 x 3. **TENSION:** KNITTING 3 to 5, GAUGE: 18 sts, 2" = 25 rows 2"; **SIZE 14:** 21 oz. (12 balls) white and 1% oz. (1 ball) red **KNITTING** Subita Crepe 2 x 3. **TENSION:** KNITTING 4 to 6, GAUGE: 17 sts, 2" = 24 rows 2". The instructions are the same for both sizes. **PATTERN:** Stockinette Stitch and a Norwegian Design on the sleeves and on the belt. Follow the Line Drawing, or use JAC 40 and Pattern No. 104. In the instructions each row in the Norwegian Design is counted as 1 row, but several movements of the Cam Box are needed to complete 1 row. **INCREASES:** After rows indicated, move the 2 end sts. on the appropriate sides 1 needle outward, then place the 3rd st. from the row below onto the empty needle. Begin the Waistline Darts by moving the sts. outward as marked on the diagrams, then place the appropriate sts. from the row below onto the empty needles. The following increases for the dart lie directly above. **SKIRT DECREASES:** After rows indicated, hang the 4th st. on each side onto the 3rd st., then move the end sts. inward to fill the empty needle. The finished length of the dress is: **SIZE 10** about 35", **SIZE 14** about 36 1/2".

FINISHING: Block all sections. Weave the skirt sections together 1 st. in from each edge. Join front and back sections of top at sides and shoulders. Beginning at waistline darts, sew knitted cords to front and back sections. (See picture). Sew sleeves together and set in. Gather upper edge of skirt to waistline measurement of the top, then join skirt to top. Turn under 20 rows on lower edge and 8 rows on sleeve edges and hem to wrong side. Work 2 rows of crochet around front edges and neckline as follows: Row 1. Single crochet keeping work flat. Row 2. Attach yarn to 1st st., * work 3 double crochet in next st., skip 2 sts. Repeat from *. Work the same 2 rows around sleeve edges. Finish buttonholes, sew on buttons. Join the belt sections, then line the belt with belt backing. Sew a buckle to the belt.



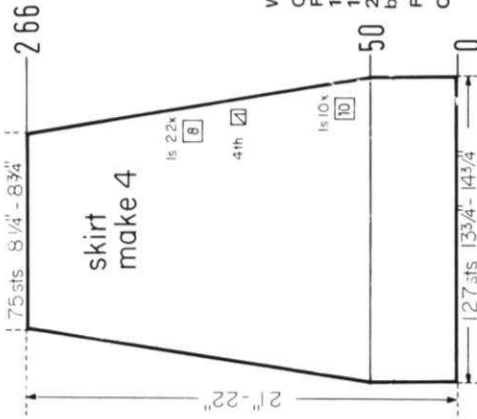
Move the Cam Box to the left side, turn the Row Counter back to 196 and complete the left half. Follow the instructions from *.

* ON CAM BOX SIDE, bind off 4 sts. after Row 196 (EVEN ROWS = SHOULDER SHAPING); 6 sts. after Row 197 (ODD ROWS = NECK SHAPING); 5 sts. after Row 198; 6 sts. after Row 199; 5 sts. after Rows 200, 201, 202; 4 sts. after Row 203; 5 sts. after Rows 204, 206.

ON CAM BOX SIDE, bind off 5 sts. after Rows 106, 107; 3 sts. after 108, 109, 110, 111; 2 sts. after Rows 112, 113, 114, 115; 1 st. after Rows 116, 117, 118, 119, 120, 121, then knit to Row 196, bind off the center 31 sts, put the needles on the left side into holding position and complete the right half first.

Increase 2 sts. for each DART and 1 st. ON EACH SIDE after Rows 12, 22, 32, 42, 52, 62. The Darts are now completed. Continue to increase 1 st. ON EACH SIDE after Rows 72, 82, then knit to Row 106.

ROWS 0 to 12: Knit even. Cast on 127 sts. and work stockinette st.

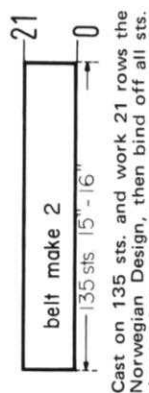


ON CAM BOX SIDE, bind off 5 sts. after Rows 50, 51; 4 sts. after Rows 52, 53; 3 sts. after Rows 54, 55, 56, 57; 2 sts. after Rows 58, 59, 60, 61. ON EACH SIDE, hang the 1st st. onto the 2nd st. after Rows 62, 64, 66, 68, 70, 72, 74, 76, 78, 80, 82, 84, 86, 88, 90, 92, 94, 96. ON CAM BOX SIDE, bind off 2 sts. after Rows 98, 99, 100, 101, 102, 103; 3 sts. after Rows 104, 105, 106, 107; 4 sts. after Rows 108, 109; 15 sts. after Row 110.

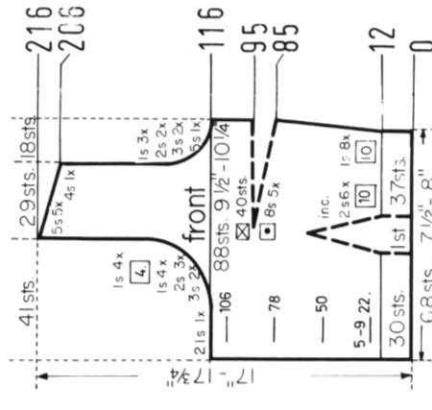
ON EACH SIDE, increase 1 st. after Rows 16, 20, 24, 28, 32, 36, 40, 44, then knit to Row 50.

ROWS 0 to 16: Knit even, then work the Norwegian Design.

Cast on 105 sts. with white and work stockinette st.



Cast on 135 sts. and work 21 rows the Norwegian Design, then bind off all sts. the crochet method.



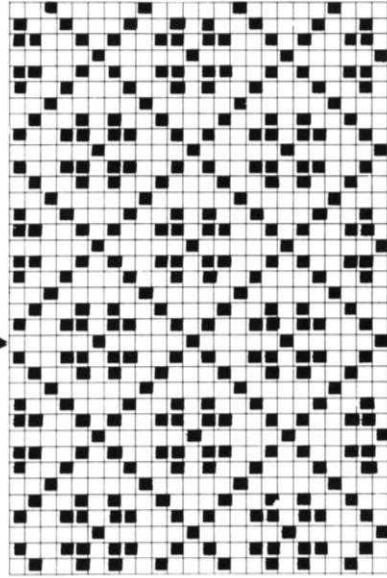
Work the second front section with reverse shapings, casting on from right to left. (Cam Box will be on the LEFT side at Row 0). Omit the buttonholes.

ON CAM BOX SIDE, bind off 5 sts. after Row 116 (EVEN ROWS = ARMHOLE SHAPING); 21 sts. after Row 117 (ODD ROWS = NECK SHAPING); 3 sts. after Rows 118, 119, 120, 121; 2 sts. after Rows 122, 123, 124, 125; 1 st. after Row 126; 2 sts. after Row 127; 1 st. after Rows 128, 129, 130, 131, 133, 135, 137, 141, 145, 149. For SHOULDER bind off 4 sts. after Row 206; 5 sts. after Rows 208, 210, 212, 214, 216.

Work Short Rows for the Bust Dart. ON OPPOSITE SIDE of CAM BOX put into holding position 8 needles after Rows 85, 87, 89, 91, 93. After Row 95 bring all needles back into working position. Knit to Row 106, make a buttonhole, then knit to Row 116.

Make buttonholes after Rows in () over the 5th-9th sts. counting from the left side. Increase 2 sts. for the DART and increase 1 st. ON CAM BOX SIDE after Rows 12, 22, (22), 32, 42, (50), 52, 62. The Dart is now completed. Continue to increase 1 st. on CAM BOX SIDE after Rows 72, (78), 82, then knit to Row 85. ROWS 0 to 12: Knit even.

Cast on 68 sts. and work stockinette st.



■ = Red

□ = White

KNITTED CORD.
Cast on 3 sts. with red, push in the right Cam Control Button, turn the tension to 1 and knit about 250 rows, then bind off. (The empty rows do count as rows). Work 3 more cords the same. (See Practical Knitting Hints Book Page 58 for more about knitted cords).

Work 3 more sections the same.

ON EACH SIDE, decrease 1 st. after Rows 50, 60, 70, 80, 90, 98, 106, 114, 122, 130, 138, 146, 154, 162, 170, 178, 186, 194, 202, 210, 218, 226, 234, 242, 250, 258, then knit to Row 266 and bind off the remaining 75 sts.

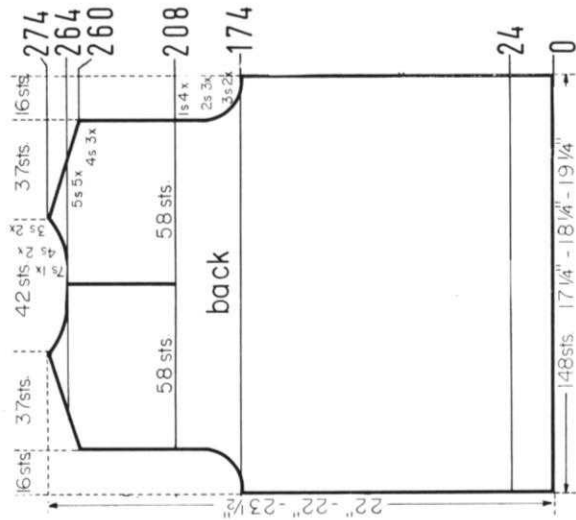
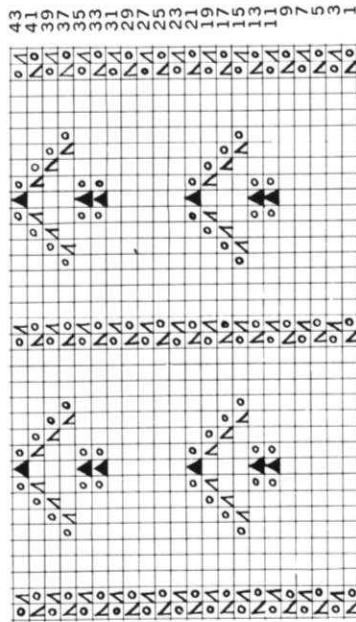
ROWS 0 to 50: Knit even.

Cast on 127 sts. and work stockinette st.

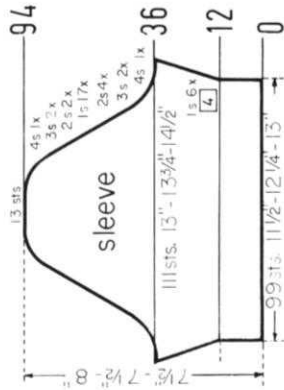
DP 7913

SIZE 8 (Bust 32"-33"), SIZE 10 (Bust 33"-34"), SIZE 14 (Bust 36"-37"). MATERIAL: SIZE 8: 8 1/2 oz. (5 balls) KNITTING Subita Crepe 2 x 3. TENSION: KNITTING 4 to 6. GAUGE: 17 sts. 2", 24 rows 2"; SIZE 10: 10 1/2 oz. (6 balls) KNITTING Amore. TENSION: KNITTING 6 to 8. GAUGE: 16 sts. 2", 24 rows 2"; SIZE 14: 12 1/4 oz. (7 balls) KNITTING Amore. TENSION: KNITTING 7 to 9. GAUGE: 15 sts. 2", 23 rows 2". The instructions are the same for all sizes. PATTERN: Stockinette Stitch and an Eyelet Design according to Line Drawing EDGES: K1, P1. Ribbing. SLEEVE INCREASES: After rows indicated, move the 2 end sts. on each side 1 needle outward, then place the 3rd st. from the row below onto the empty needle.

FINISHING: Block all sections. Join front and back section at sides and shoulders. Sew sleeves together and set in. Turn under 12 rows on lower edge and hem to wrong side. Sew neckband to neckline. Work 1 row of single crochet around back opening, then sew in a zipper.



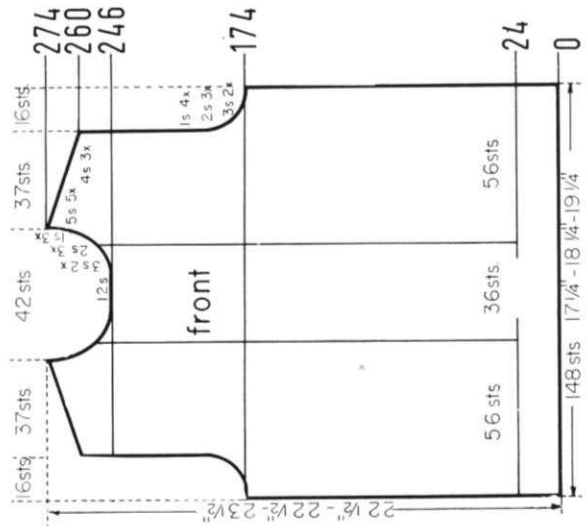
Cast on 127 sts. and work 14 rows K1, P1. Ribbing, then bind off all sts. the crochet method for ribbing.



ON CAM BOX SIDE, bind off 4 sts. after Rows 36, 37; 3 sts. after Rows 38, 39, 40, 41; 2 sts. after Rows 42, 43, 44, 45, 46, 47, 48, 49. ON EACH SIDE, hang the 1st st. onto the 2nd st. after Rows 50, 52, 54, 56, 58, 60, 62, 64, 66, 68, 70, 72, 74, 76, 78, 80, 82. ON CAM BOX SIDE, bind off 2 sts. after Rows 84, 85, 86, 87; 3 sts. after Rows 88, 89, 90, 91; 4 sts. after Rows 92, 93; 13 sts. after Row 94.

ON EACH SIDE, increase 1 st. after Rows 12, 16, 20, 24, 28, 32, then knit to Row 36.

ROWS 0 to 12: Knit even, then change to stockinette st.
Cast on 99 sts. and work K1, P1, Ribbing.



Bring the needles on the left side back into working position, knit 1 row in PATTERN to the left side, turn the Row Counter back to 246 and complete the left half. Follow the instructions from *.

* ON CAM BOX SIDE, bind off 3 sts. after Rows 247, 249 (ODD ROWS = NECK SHAPING); 2 sts. after Rows 251, 253, 255; 1 st. after Rows 257, 259; 4 sts. after Row 260 (EVEN ROWS = SHOULDER SHAPING); 1 st. after Row 261; 4 sts. after Rows 262, 264; 5 sts. after Rows 266, 268, 270, 272, 274.

ON CAM BOX SIDE, bind off 3 sts. after Rows 174, 175, 176, 177; 2 sts. after Rows 178, 179, 180, 181, 182, 183; 1 st. after Rows 184, 185, 186, 187, 188, 189, 190, 191, then knit to Row 246, bind off the center 12 sts., put the needles on the left side into holding position and complete the right half first.

ROWS 25 to 174: Knit even.
ROWS 0 to 24: Knit even, then work the Eyelet Design over the sts. marked on the diagram.
Cast on 148 sts. and work stockinette st.

Move the Cam Box to the left side, turn the Row Counter back to 208 and complete the left half. Follow the instructions from *.

ON CAM BOX SIDE, bind off 4 sts. after Rows 260, 262, 264 (EVEN ROWS = SHOULDER SHAPING); 7 sts. after Row 265 (ODD ROWS = NECK SHAPING); 5 sts. after Row 266; 4 sts. after Row 267; 5 sts. after Row 268; 4 sts. after Row 269; 5 sts. after Row 270; 3 sts. after Row 271; 5 sts. after Row 272; 3 sts. after Row 273; 5 sts. after Row 274.

* ROWS 209 to 260: Knit even.
ON CAM BOX SIDE, bind off 3 sts. after Rows 174, 175, 176, 177; 2 sts. after Rows 178, 179, 180, 181, 182, 183; 1 st. after Rows 184, 185, 186, 187, 188, 189, 190, 191, then knit to Row 208, put 58 needles on the left side into holding position and complete the right half first.

ROWS 0 to 174: Knit even.
Cast on 148 sts. and work stockinette st.

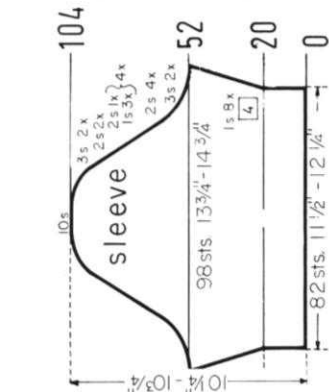
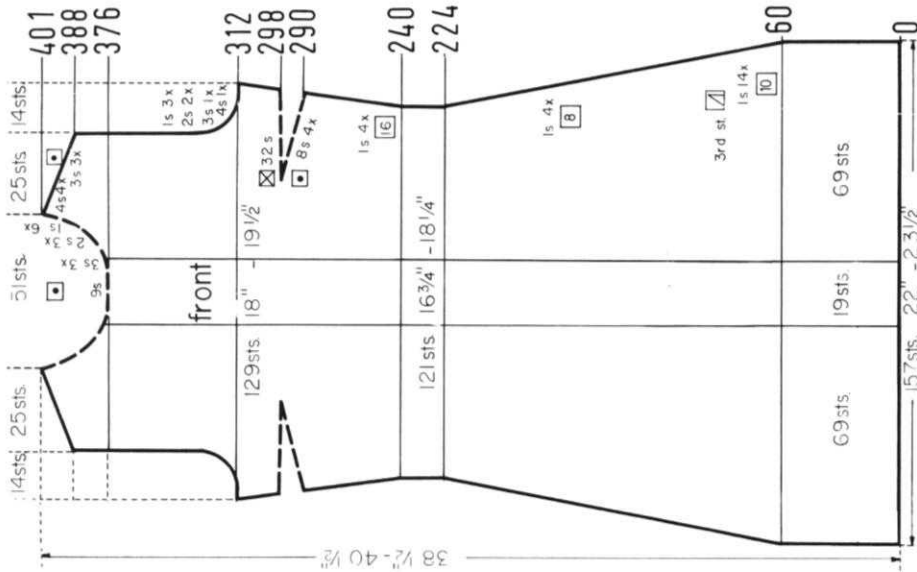
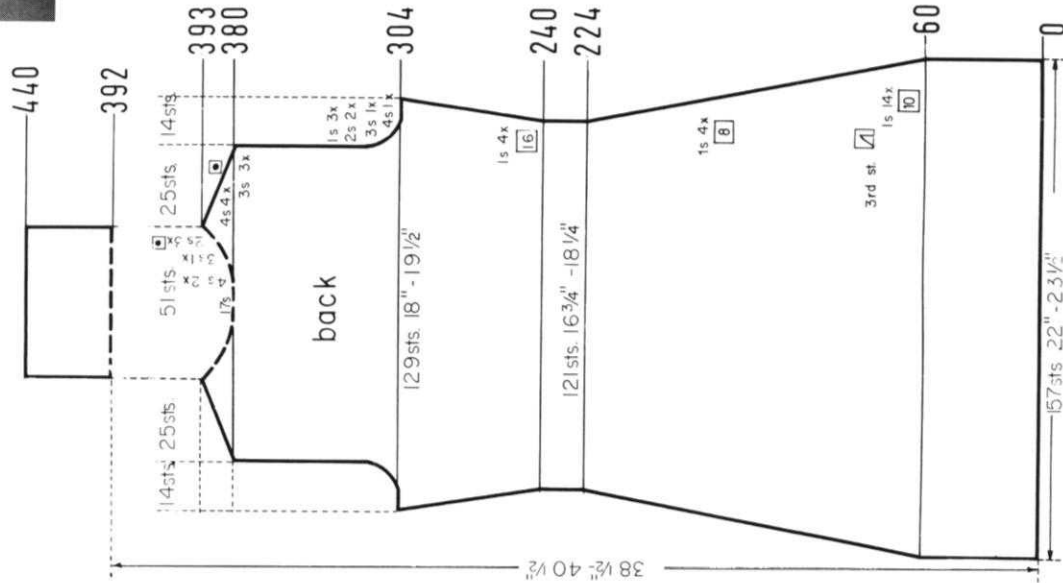
BE SURE TO NOTIFY US IMMEDIATELY OF ANY CHANGE OF ADDRESS. THE POST OFFICE WILL NOT FORWARD YOUR MAGAZINE TO YOU.

DK 7899

SIZE 10 (Bust 33"-34"), SIZE 14 (Bust 36"-37"). MATERIAL: SIZE 10: 29½ oz. (17 balls) KNITTING LOVELY. TENSION: KNITTING 7 to 9 GAUGE: 14 sts., 20 rows 2"; SIZE 14: 31½ oz. (18 balls) KNITTING DOUBLE KNITTING. TENSION: KNITTING 8 to 10 GAUGE: 13 st., 21, 19 rows 2". The instructions are the same for both sizes. PATTERN: Stockinette Stitch with a Cable and Eyelet Design on the front section. Follow the Line Drawing for the Design. The Collar is knitted on. DECREASES: After rows indicated, hang the 3rd st. on the appropriate sides onto the 2nd st., then move the end sts. inward to fill the empty needle. INCREASES: After rows indicated, move the 2 end sts. on the appropriate sides 1 needle outward, then place the 3rd st. from the row below onto the empty needle. Finished length: Size 10 about 36", Size 14 about 38".



FINISHING: Block all sections. Join front and back section at sides and shoulders. Weave the short ends of the collar together, 1 st. in from each edge. Fold collar to outside. Sew sleeves together and set in. Turn under 20 rows on lower edge and 10 rows on sleeve edges and hem to wrong side.



Move the Cam Box to the right side, bring the 51 neckline needles into working position, turn the Row Counter to 400 and work 48 rows stockinette st., then bind off all sts. the crochet method.

Move the Cam Box to the left side, bring the needles on the left of the center 9 needles into working position, turn the Row Counter back to 376 and complete the left half. Follow the instructions from *.

• ON OPPOSITE SIDE of CAM BOX put into holding position 3 needles after Rows 378, 380, 382 (AFTER EVEN ROWS = NECK SHAPING); 2 needles after Rows 384, 386, 388; 3 needles after Row 389 (AFTER ODD ROWS = SHOULDER SHAPING); 1 needle after Row 390; 3 needles after Row 391; 1 needle after Row 392; 3 needles after Row 393; 1 needle after Row 394; 4 needles after Row 395; 1 needle after Row 396; 4 needles after Row 397; 1 needle after Row 398; 4 needles after Row 399; 1 needle after Row 400. After Row 401 bring the 21 shoulder needles into working position, then bind off all 25 sts. the crochet method.

ON CAM BOX SIDE, bind off 4 sts. after Rows 312, 313; 3 sts. after Rows 314, 315; 2 sts. after Rows 316, 317, 318; 319; 1 st. after Rows 320, 321, 322, 323, 324, 325, then knit to Row 376, put the center 9 needles into holding position, mark these needles, then put the remaining needles on the left side into holding position and work Short Rows for the Neck and Shoulder Shaping. (Wrap yarn after next row too).

Work Short Rows for the Bust Darts. ON OPPOSITE SIDE of CAM BOX put into holding position 8 needles after Rows 290, 291, 292, 293, 294, 295, 296, 297.

ON OPPOSITE SIDE of CAM BOX bring all needles back into working position after Rows 298, 299, then knit to Row 312.

ON EACH SIDE, increase 1 st. after Rows 240, 256, 272, 288, then knit to Row 290.

ON EACH SIDE, decrease 1 st. after Rows 60, 70, 80, 90, 100, 110, 120, 130, 140, 150, 160, 170, 180, 190, 200, 208, 216, 224, then knit to Row 240.

ROWS 0 to 60: Knit even.

Cast on 157 sts, work stockinette st. and the Cable with Eyelet Design over the center 19 sts. Make the first Eyelet after Row 2 and cross the sts. the first time after Row 4.

ON CAM BOX SIDE, bind off 3 sts. after Rows 52, 53, 54, 55; 2 sts. after Rows 56, 57, 58, 59, 60, 61, 62, 63; 1 st. after Rows 64, 65, 66, 67, 68, 69; 2 sts. after Rows 70, 71; 1 st. after Rows 72, 73, 74, 75, 76, 77; 2 sts. after Rows 78, 79; 1 st. after Rows 80, 81, 82, 83, 84, 85; 2 sts. after Rows 86, 87; 1 st. after Rows 88, 89, 90, 91, 92, 93; 2 sts. after Rows 94, 95, 96, 97, 98, 99; 3 sts. after Rows 100, 101, 102, 103; 10 sts. after Row 104.

ON EACH SIDE, increase 1 st. after Rows 20, 24, 28, 32, 36, 40, 44, 48, then knit to Row 52.

ROWS 0 to 20: Knit even.

Cast on 82 sts. and work stockinette st.

Move the Cam Box to the right side, bring the 51 neckline needles into working position, turn the Row Counter to 392 and work 48 rows stockinette st. After Row 440 bind off all sts. the crochet method.

Move the Cam Box to the left side, bring the needles on the left of the center 17 needles into working position, turn the Row Counter back to 380 and complete the left half. Follow the instructions from *.

• ON OPPOSITE SIDE of CAM BOX put into holding position 3 needles after Row 381 (AFTER ODD ROWS = SHOULDER SHAPING); 4 needles after Row 382 (AFTER EVEN ROWS = NECK SHAPING); 3 needles after Row 383; 4 needles after Row 384; 3 needles after Rows 385, 386; 4 needles after Row 387; 2 needles after Row 388; 4 needles after Row 389; 2 needles after Row 390; 4 needles after Row 391; 2 needles after Row 392. After Row 393 bring the 21 shoulder needles into working position, then bind off all 25 sts. the crochet method.

ON CAM BOX SIDE, bind off 4 sts. after Rows 304, 305; 3 sts. after Rows 306, 307; 2 sts. after Rows 308, 309, 310, 311; 1 st. after Rows 312, 313, 314, 315, 316, 317, then knit to Row 380, put the center 17 needles into holding position, mark these needles, then put the remaining needles on the left side into holding position and work Short Rows for the Shoulder and Neck Shaping. (Wrap yarn after every row).

ON EACH SIDE, increase 1 st. after Rows 240, 256, 272, 288, then knit to Row 304.

ON EACH SIDE, decrease 1 st. after Rows 60, 70, 80, 90, 100, 110, 120, 130, 140, 150, 160, 170, 180, 190, 200, 208, 216, 224, then knit to Row 240.

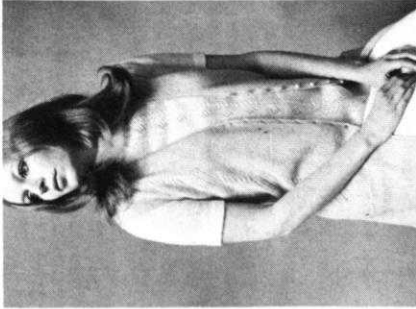
ROWS 0 to 60: Knit even.

Cast on 157 sts. and work stockinette st.

DK 7900

SIZE 10 (Bust 33"-34"), SIZE 14 (Bust 36"-37"). MATERIAL: SIZE 10: 26 1/2 oz. (15 balls) KNITTING Lovely. TENSION: KNITTING 7 to 9. GAUGE: 14 sts. 2", 20 rows 2"; SIZE 14: 28 oz. (16 balls) KNITTING Double Knitting. TENSION: KNITTING 8 to 10. GAUGE: 13 sts. 2", 19 rows 2". The instructions are the same for both sizes. PATTERN: Stockinette st. with a Cable and Eyelet Design on the front sections. Follow the Line Drawing for the Design. DECREASING: After rows indicated, hang the 3rd st. on the appropriate sides onto the 2nd st., then move the end sts. inward to fill the empty needle. INCREASES: After rows indicated, move the 2 end sts. on the appropriate sides 1 needle outward, then place the 3rd st. from the row below onto the empty needle.

FINISHING: Block all sections. Weave the back sections together, 1 st. in from each edge. Join front and back sections at sides and shoulders, easing in the fullness at bustline of front section. Turn under 1" on upper edge of pockets and hem to wrong side. Sew pockets in place. Work 3 rows of single crochet around all edges, keeping work flat. While working the second row, work 8 buttonholes evenly spaced on the right front edge. (See picture). For each buttonhole, chain 4, then skip the next 4 sts. Sew on buttons.



Work the second Front Section with reverse shapings, casting on from right to left. (Cam Box will be on the LEFT side at Row 0).

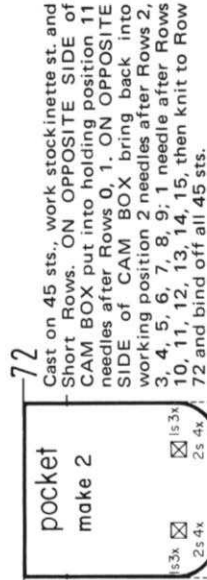
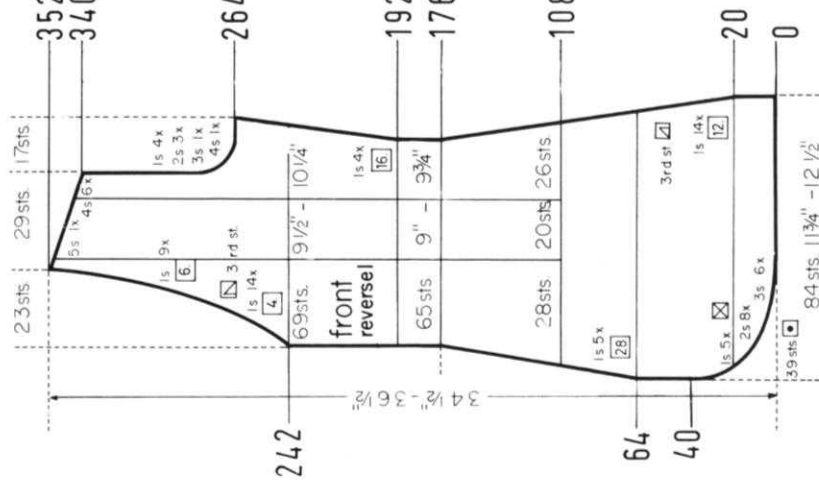
Decrease 1 st. ON NECK SIDE after Rows 242, 246, 250, 254, 258, 262, then again after Rows in (). ON CAM BOX SIDE, bind off 4 sts. after Row 264; 3 sts. after Row 266; (266), 2 sts. after Rows 268, 270, (270), 272; 1 st. after Rows 274, (274), 276, 278, (278), 280. The Armhole Shaping is now completed. Continue to decrease 1 st. NECK SIDE after Rows 282, 286, 290, 294, 298, 304, 310, 316, 322, 328, 334, then again after Rows in (). For SHOULDER bind off 4 sts. after Rows 340, (340), 342, 344, 346, (346), 348, 350; 5 sts. after Row 352.

ON CAM BOX SIDE, increase 1 st. after Rows 192, 208, 224, 240, then knit to Row 242.

Decrease 1 st. ON OPPOSITE SIDE of CAM BOX after Row 64, then again after Rows in (). Continue to decrease 1 st. ON CAM BOX SIDE after Rows 68, 80, 92, (92), 104, (BEGIN THE CABLE DESIGN AFTER ROW 108), 116, (120), 128, 140, (148), 152, 164, 176, (176), then knit to Row 192.

ON OPPOSITE SIDE of CAM BOX put into holding position 39 needles after Row 0, then knit 2 rows. ON OPPOSITE SIDE of CAM BOX bring back into working position 3 needles after Rows 2, 4, 6, 8, 10, 12; 2 needles after Rows 14, 16, 18, then knit to Row 20. Decrease 1 st. ON CAM BOX SIDE after Row 20, then again after Row in () AND AT THE SAME TIME, continue to bring 2 needles back into working position after Rows 20, 22, 24, 26, 28; 1 needle after Rows 30, 32, (32), 34, 36, 38. After Row 40 all needles are back in working position. Continue to decrease 1 st. ON CAM BOX SIDE Rows 44, 56, then knit to Row 64.

Cast on 84 sts., work stockinette st. and Short Rows for the Front Shaping.



Cast on 45 sts., work stockinette st. and Short Rows. ON OPPOSITE SIDE of CAM BOX put into holding position 11 needles after Rows 0, 1. ON OPPOSITE SIDE of CAM BOX bring back into working position 2 needles after Rows 2, 3, 4, 5, 6, 7, 8, 9; 1 needle after Rows 10, 11, 12, 13, 14, 15, then knit to Row 72 and bind off all 45 sts.

Work the second Back Section with reverse shapings, casting on from right to left. (Cam Box will be on the LEFT side at Row 0).

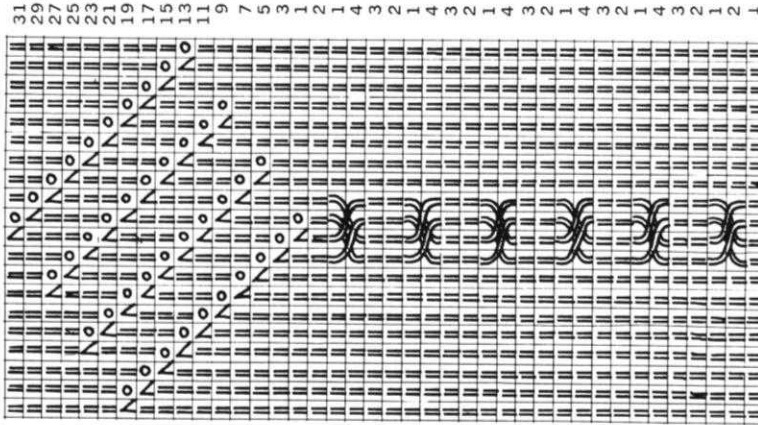
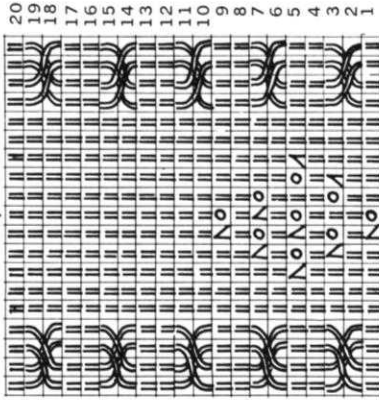
ON CAM BOX SIDE, bind off 4 sts. after Row 332. (EVEN ROWS = SHOULDER SHAPING); 9 sts. after Row 333 (ODD ROWS = NECK SHAPING); 4 sts. after Rows 334, 335, 336; 3 sts. after Row 337; 4 sts. after Row 338; 3 sts. after Row 339; 4 sts. after Row 340; 2 sts. after Row 341; 4 sts. after Row 342; 2 sts. after Row 343; 5 sts. after Row 344.

ON CAM BOX SIDE, bind off 4 sts. after Row 256; 3 sts. after Row 258; 2 sts. after Rows 260, 262, 264; 1 st. after Rows 266, 268, 270, 272, then knit to Row 332.

Increase 1 st. ON OPPOSITE SIDE of CAM BOX after Rows in (). ON CAM BOX SIDE, increase 1 st. after Rows 192, (192), 208, 224, (224), 240, (256), DO NOT KNIT after last increase.

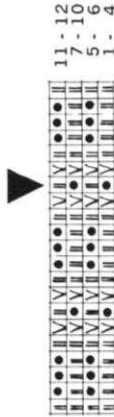
Decrease 1 st. ON OPPOSITE SIDE of CAM BOX after Rows in (). ON CAM BOX SIDE, decrease 1 st. after Rows 20, (20), 32, (42), 44, 56, (64), 68, 80, (86), 92, 104, (108), 116, 128, (130), 140, 152, (152), 164, (174), 176, then knit to Row 192.

ROWS 0 to 20: Knit even. Cast on 84 sts. and work stockinette st.

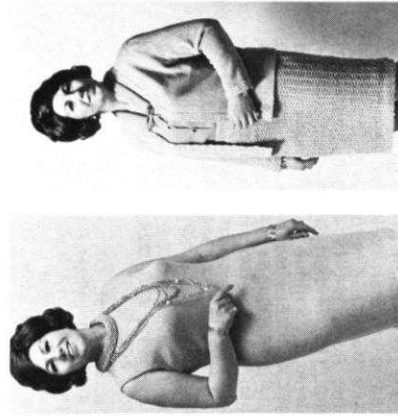


DK 7790

SIZE 14½ (Bust 37"-38½"), **SIZE** 16½ (Bust 39"-40½"), **SIZE** 18½ (Bust 41"-43"), **MATERIAL:** **SIZE** 14½: DRESS 17½ oz. (10 balls), JACKET 17½ oz. (10 balls), SKIRT 12½ oz. (7 balls) **KNITTING** Subita Crepe 2 x 3. **TENSION:** **KNITTING** 4 to 6. **GAUGE:** Stockinette Stitch 17 sts. 2", 23 rows 2". **PATTERN STITCH:** 17 sts. 2", 34 rows 2"; **SIZE** 16½: **DRESS** 22½ oz. (13 balls) **JACKET** 22½ oz. (13 balls) **SKIRT** 15½ oz. (9 balls) **KNITTING** Subita Crepe 2 x 4. **TENSION:** **KNITTING** 6 to 8. **GAUGE:** Stockinette Stitch 16 sts. 2", 22 rows 2". **PATTERN STITCH:** 16 sts. 2", 32 rows 2"; **SIZE** 18½: **DRESS** 26½ oz. (15 balls), **JACKET** 26½ oz. (15 balls), **SKIRT** 17½ oz. (10 balls) **KNITTING** Crocus Crepe. **TENSION:** **KNITTING** 7 to 9. **GAUGE:** Stockinette Stitch 15 sts. 2", 21 rows 2". **PATTERN STITCH:** 15 sts. 2", 30 rows 2". **INSTRUCTIONS** are the same for all sizes. **PATTERN:** **DRESS** and **JACKET:** Stockinette st. worn on the knit side. **SKIRT** and **TRIM:** Holding Position Design according to Line Drawing, worn on the purl side. The omitted needles in the **PATTERN** Design are counted as stitches in the **INSTRUCTIONS** and the **GAUGE.** **DECREASES:** After rows indicated, hang the 3rd st. on the appropriate sides on the 2nd st., then move the end sts. inward to fill the empty needle. Begin the waistline darts by hanging the sts. together as marked on the diagram, then move the end sts. inward to fill the empty needles. The following darts decrease, then increases lie directly above. **INCREASES:** After rows indicated, move the 2 end sts. on the appropriate sides 1 needle outward, then place the 3rd st. from the row below onto the empty needle. To bind off the bands, see Practical Knitting Hints Book Page 23. **SKIRT DECREASES:** After rows indicated, hang the 1st st. onto the 2nd st. Whenever the 2nd st. is an empty **PATTERN** needle, bring the empty needle into working position and hang the st. to be decreased onto the empty needle.



FINISHING: Block all sections. **DRESS:** Join front and back sections at sides and shoulders. Turn under 22 rows on lower edge and 3 sts. around armhole edges and hem to wrong side. Sew 1 edge of collar to inside and 1 edge to outside of neckline, then fold collar over to outside. Work 4 row of single crochet around back opening. Work 4 loops on one side and sew 4 buttons to other side of opening. **JACKET:** Join front and back sections at sides and shoulders. Sew sleeves together and set in. Fold over 19 rows on sleeve edges and hem to right side. Turn under 18 rows on lower edge and hem to wrong side. Sew bands together, then sew 1 edge of band to inside and 1 edge to outside of front edges and around neckline. **SKIRT:** Weave the skirt sections together, 1 st. in from each edge. Turn under 32 rows on lower edge and 13 rows on upper edge and hem to wrong side. Insert an elastic band into upper hem.



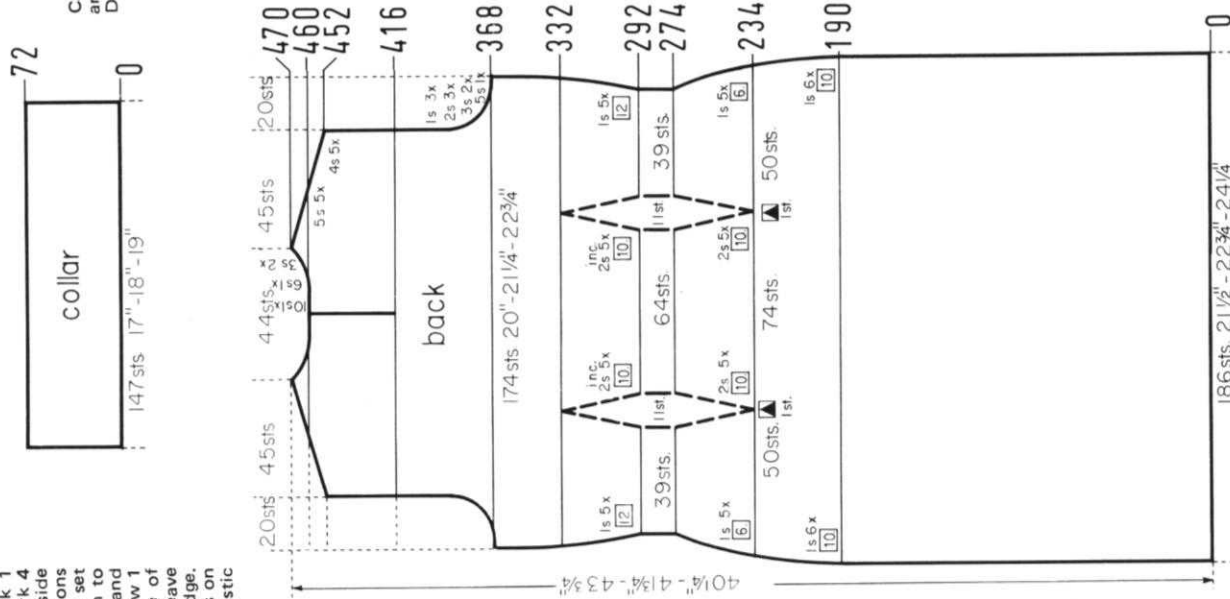
Move the Cam Box to the left side, turn the Row Counter back to 450 and complete the left half. Follow the instructions from *.

* ON CAM BOX SIDE, bind off 3 sts. after Rows 451, 453 (ODD ROWS = NECK SHAPING); 2 sts. after Rows 455, 457, 459; 1 st. after Rows 461, 463, 465, 467. For SHOULDER bind off 4 sts. after Rows 468, 470, 472, 474, 476; 5 sts. after Rows 478, 480, 482, 484, 486.

ON CAM BOX SIDE, bind off 5 sts. after Rows 384, 385; 3 sts. after Rows 386, 387, 388, 389; 2 sts. after Rows 390, 391, 392, 393, 394, 395; 1 st. after Rows 396, 397, 398, 399, 400, 401, then knit to Row 450, bind off the center 12 sts., put the needles on the left side into holding position and complete the right half first.

Work Short Rows for the BUST DARTS. ON OPPOSITE SIDE of CAM BOX put into holding position 4 needles after Rows 342, 343, 344, 345, 346, 347, 348, 349, 350, 351, 352, 353, 354, 355, 356, 357, 358, 359. ON OPPOSITE SIDE of CAM BOX bring all needles back into working position after Rows 360, 361, then knit to Row 384.

Work the Front Section the same as the Back Section to Row 342.



Cast on 147 sts., set up for **PATTERN** and work 72 rows the Holding Position Design, then bind off all sts.

Move the Cam Box to the left side, turn the Row Counter back to 416 and complete the left half. Follow the instructions from *.

ON CAM BOX SIDE, bind off 4 sts. after Rows 452, 454, 456, 458, 460 (EVEN ROWS = SHOULDER SHAPING); 10 sts. after Row 461 (ODD ROWS = NECK SHAPING); 5 sts. after Row 462; 6 sts. after Row 463; 5 sts. after Row 464; 3 sts. after Row 465; 5 sts. after Row 466; 3 sts. after Row 467; 5 sts. after Rows 468, 470.

* ROWS 417 to 452: Knit even.

ON CAM BOX SIDE, bind off 5 sts. after Rows 368, 369; 3 sts. after Rows 370, 371, 372, 373; 2 sts. after Rows 374, 375, 376, 377, 378, 379; 1 st. after Rows 380, 381, 382, 383, 384, 385, then knit to Row 416, put 67 needles on the left side into holding position and complete the right half first.

Increase 2 sts. for each DART after Rows in (). ON EACH SIDE, increase 1 st. after Rows 292, (292), (302), 304, (312), 316, (322), 328, (332), 340 then knit to Row 368. (For the FRONT section knit to Row 342).

Decrease 2 sts. for each DART after Rows in (). ON EACH SIDE, decrease 1 st. after Rows 190, 200, 210, 220, 230, (234), 240, (244), 250, (254), 256, 262, (264), 268, 274, (274), then knit to Row 292.

ROWS 0 to 190: Knit even. Cast on 186 sts. and work stockinette st.

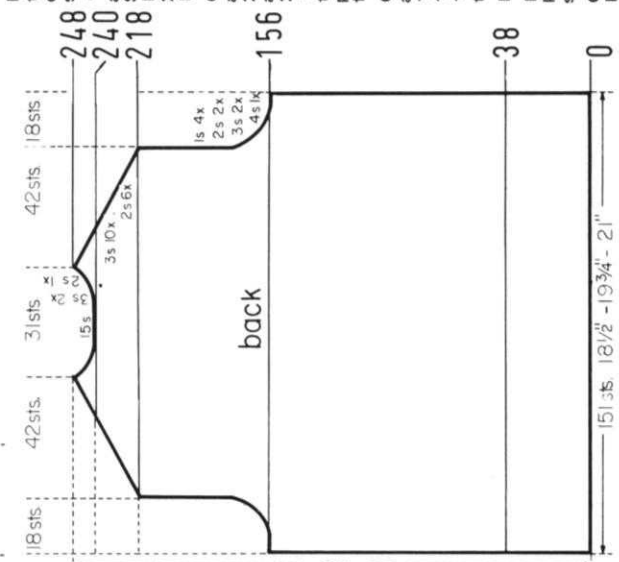
DP 7906

SIZE 12 (Bust 34"-35"), SIZE 14 (Bust 36"-37"), SIZE 16 (Bust 38"-39"), MATERIAL: 2 x 4, TENSION: KNITTING 5 to 7. GAUGE: 16 sts, 2", 22 rows 2". SIZE 14: 17 1/2 oz. (10 balls) KNITTING Excelsior. TENSION: KNITTING 6 to 8. (13 balls) KNITTING Lovely. TENSION: KNITTING 8 to 10. GAUGE: 14 sts, 2", 20 rows 2". The instructions are the same for all sizes. PATTERN: Stockinette Stitch, worn on the knit side. EDGES: K1, P3 Ribbing. (3 sts. on the main machine and 1 st. on the ribber). The ribbed section is worn on the purl side and has to be turned around before working stockinette st. Transfer the ribber sts. to the main machine, put all sts. onto a stitch holder, turn the knitting around and hang the sts. back onto the machine, or knit several rows with contrast waste yarn, then knit 1 row without yarn to remove the knitting from the machine, then turn the knitting around, hang the garment sts. back onto the machine and remove the waste yarn. SLEEVE DECREASES: After rows indicated, move the 2 end sts. on each side 1 needle outward, then place the 3rd st. from the row below onto the empty needle.

FINISHING: Block all sections. Join front and back section at sides. Sew sleeves together and join to front and back section. Sew the pocket in place. Sew the buttonhole band to the right side and the button band to the left side of front opening. Sew 1 edge of collar to inside and 1 edge to outside of neckline. Finish buttonholes, sew on buttons.



Cast on 33 sts. and work K1, P3, Ribbing. After Row 48 transfer the appropriate sts. from the main machine to the ribber and work K1, P1, Ribbing. After Row 52 bind off all sts.



Move the Cam Box to the left side, turn the Row Counter back to 240 and complete the left half. Follow the instructions from *.

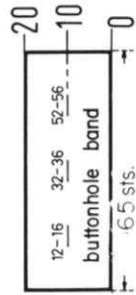
* ON CAM BOX SIDE, bind off 3 sts. after Rows 240 (EVEN ROWS = SHOULDER SHAPING), 241 (ODD ROWS = NECK SHAPING), 242, 243, 244; 2 sts. after Row 245; 3 sts. after Rows 246, 248.

ON CAM BOX SIDE, bind off 2 sts. after Rows 218, 219, 220, 222, 223, 224, 225, 226, 227, 228, 229; 3 sts. after Rows 230, 231, 232, 233, 234, 235, 236, 237, 238, 239, then knit to Row 240, bind off the center 15 sts., put the needles on the left side into holding position and complete the right half first.

ON CAM BOX SIDE, bind off 4 sts. after Rows 156, 157; 3 sts. after Rows 158, 159, 160, 161; 2 sts. after Rows 162, 163, 164, 165; 1 st. after Rows 166, 167, 168, 169, 170, 171, 172, 173, then knit to Row 218.

ROWS 39 to 156: Knit even. ROWS 0 to 38: Knit even, then turn the knitting and continue with stockinette st.

Cast on 151 sts. and work K1, P3, Ribbing.



Cast on 65 sts. and work K1, P3, Ribbing. Make buttonholes after Row 10 over the 12th-16th, 32nd-36th and 52nd-56th sts. counting from the left side. After Row 20 bind off all sts. Work the button band the same, but omit the buttonholes.

Move the Cam Box to the left side, turn the Row Counter back to 240 and complete the left half. Follow the instructions from *.

* ON CAM BOX SIDE, bind off 3 sts. after Rows 240 (EVEN ROWS = SHOULDER SHAPING), 241 (ODD ROWS = NECK SHAPING), 242, 243, 244; 2 sts. after Row 245; 3 sts. after Rows 246, 248.

ON CAM BOX SIDE, bind off 2 sts. after Rows 218, 219, 220, 222, 223, 224, 225, 226, 227, 228, 229; 3 sts. after Rows 230, 231, 232, 233, 234, 235, 236, 237, 238, 239, then knit to Row 240, bind off the center 15 sts., put the needles on the left side into holding position and complete the right half first.

ON CAM BOX SIDE, bind off 4 sts. after Rows 156, 157; 3 sts. after Rows 158, 159, 160, 161; 2 sts. after Rows 162, 163, 164, 165; 1 st. after Rows 166, 167, 168, 169, 170, 171, 172, 173, then knit to Row 218.

ROWS 39 to 156: Knit even. ROWS 0 to 38: Knit even, then turn the knitting and continue with stockinette st.

Cast on 151 sts. and work K1, P3, Ribbing.

Work the second sleeve with reverse shapings. (After ribbing has been turned, have the Cam Box on the LEFT side at Row 20).

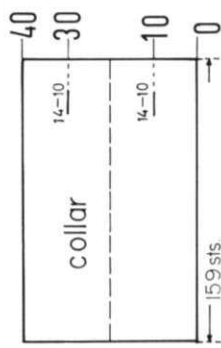
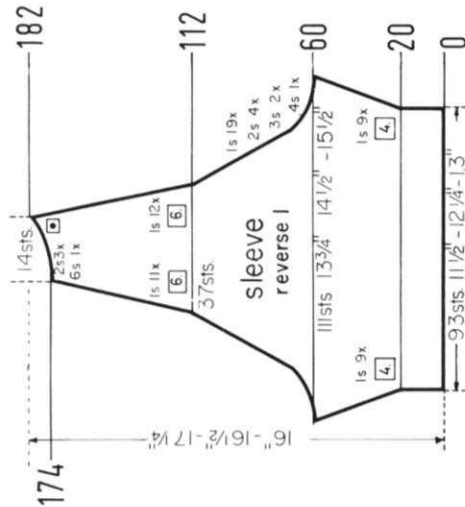
Decrease 1 more st. ON CAM BOX SIDE after Row in (). ON OPPOSITE SIDE of CAM BOX put into holding position 6 needles after Row 174; 2 needles after Rows 176, 178, (178), 180. After Row 182 bring all needles back into working position, then bind off the remaining sts.

ON CAM BOX SIDE, bind off 4 sts. after Rows 60, 61; 3 sts. after Rows 62, 63, 64, 65; 2 sts. after Rows 66, 67, 68, 69, 70, 71, 72, 73. ON EACH SIDE, decrease 1 st. after Rows 74, 76, 78, 80, 82, 84, 86, 88, 90, 92, 94, 96, 98, 100, 102, 104, 106, 108, 110, 112, 118, 124, 130, 136, 142, 148, 154, 160, 166, 172, then knit to Row 174.

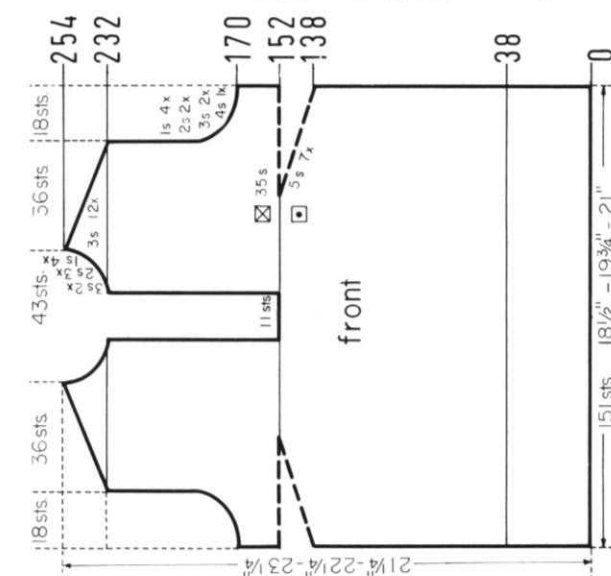
ON EACH SIDE, increase 1 st. after Rows 20, 24, 28, 32, 36, 40, 44, 48, 52, then knit to Row 60.

ROWS 0 to 20: Knit even, then turn the knitting and continue with stockinette st.

Cast on 93 sts. and work K1, P3, Ribbing.



Cast on 159 sts. and work K1, P3, Ribbing. Make buttonholes after Rows 10 and 30 over the 10th-14th sts counting from the right side. After Row 40 bind off all sts.



Move the Cam Box to the left side, turn the Row Counter back to 154 and complete the left half. Follow the instructions from *.

ON CAM BOX SIDE, bind off 3 sts. after Rows 232 (EVEN ROWS = SHOULDER SHAPING), 233 (ODD ROWS = NECK SHAPING), 234, 235, 236; 2 sts. after Row 237; 3 sts. after Row 238; 2 sts. after Row 239; 3 sts. after Row 240; 2 sts. after Row 241; 3 sts. after Row 242; 1 st. after Row 243; 3 sts. after Row 244; 1 st. after Row 245; 3 sts. after Row 246; 1 st. after Row 247; 3 sts. after Row 248; 1 st. after Row 249; 3 sts. after Rows 250, 252, 254.

ON CAM BOX SIDE, bind off 4 sts. after Row 170; 3 sts. after Rows 172, 174; 2 sts. after Rows 176, 178; 1 st. after Rows 180, 182, 184, 186, then knit to Row 232.

* ROWS 155 to 170: Knit even. Work Short Rows for the DARTS. ON OPPOSITE SIDE of CAM BOX put into holding position 5 needles after Rows 138, 139, 140, 141, 142, 143, 144, 145, 146, 147, 148, 149, 150, 151. Bring all needles back into working position after Rows 152, 153, then knit to Row 154, bind off the center 11 sts., put the needles on the left side into holding position and complete the right half first.

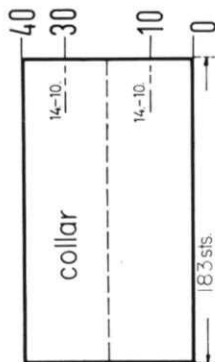
ROWS 39 to 138: Knit even. ROWS 0 to 38: Knit even, then turn the knitting and continue with stockinette st.

Cast on 151 sts. and work K1, P3, Ribbing.

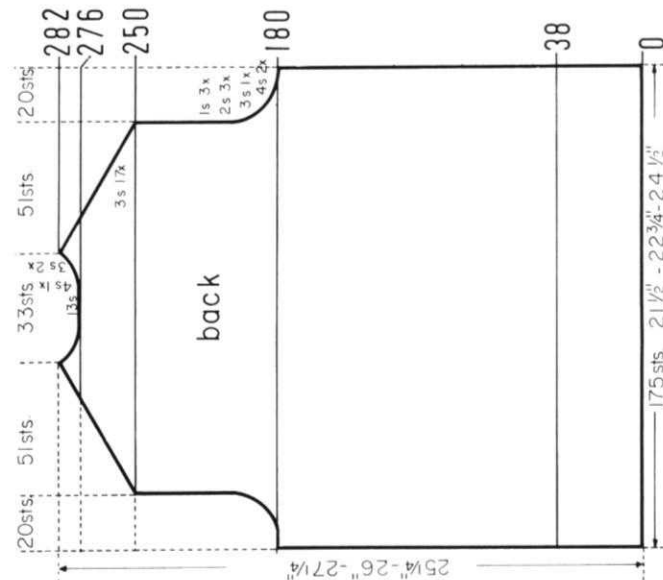
HP 3628

SIZE 40 (Chest 39"-40"), **SIZE 42** (Chest 41"-42"), **SIZE 46** (Chest 45"-46").
MATERIAL: SIZE 40: 19½ oz. (11 balls) KNITTING Subita Crepe 2 x 4. **TENSION:** KNITTING 5 to 7. **GAUGE:** 16 sts, 2", 22 rows 2"; **SIZE 42:** 22½ oz. (13 balls) KNITTING Crocus Crepe. **TENSION:** KNITTING 7 to 9. **GAUGE:** 15 sts, 2", 21 rows 2"; **SIZE 46:** 29½ oz. (17 balls) KNITTING Lovely. **TENSION:** KNITTING 8 to 10. **GAUGE:** 14 sts, 2", 20 rows 2". The instructions are the same for all sizes. **PATTERN:** Stockinette Stitch, worn on the knit side. **EDGES:** K1, P3, Ribbing. (3 sts. on the main machine and 1 st. on the ribber). The ribbed portion is worn on the purl side and has to be turned around before working stockinette st. Transfer the ribber st. to the main machine, put all sts. onto a stitch holder, turn the knitting around, then hang the sts. back onto the machine, or knit several rows with contrast waste yarn, then knit 1 row without yarn to remove the knitting from the machine, turn the knitting around, hang the garment sts. back onto the machine and remove the waste yarn. **INCREASES:** After rows indicated, move the 2 end sts. on each side 1 needle outward, then place the 3rd st. from the row below onto the empty needle. **DECREASES:** After rows indicated, hang the 3rd st. on each side onto the 2nd st., then move the end sts. inward to fill the empty needle.

FINISHING: Block the sections. Join front and back section at sides. Sew sleeves together, then sew sleeves to front and back section. Sew pocket in place. Sew buttonhole band to left and button band to right side of front opening. Sew 1 edge of collar to inside and 1 edge to outside of neckline, having the buttonholes on the left side. Finish buttonholes. Sew on buttons.



Cast on 183 sts. and work K1, P3, Ribbing. Make buttonholes after Rows 10 and 30 over the 10th-14th sts. counting from the right side. After Row 40 bind off all sts.



Move the Cam Box to the left side, turn the Row Counter back to 276 and complete the left half. Follow the instructions from *.

* ON CAM BOX SIDE, bind off 3 sts. after Row 276 (EVEN ROWS = SHOULDER SHAPING); 4 sts. after Row 277 (ODD ROWS = NECK SHAPING); 3 sts. after Rows 278, 279, 280, 281, 282.

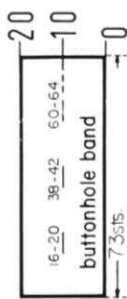
ON CAM BOX SIDE, bind off 3 sts. after Rows 250, 251, 252, 253, 254, 255, 256, 257, 258, 259, 260, 261, 262, 263, 264, 265, 266, 267, 268, 269, 270, 271, 272, 273, 274, 275, then knit to Row 276, bind off the center 13 sts, put the needles on the left side into holding position and complete the right half first.

ON CAM BOX SIDE, bind off 4 sts. after Rows 180, 181, 182, 183; 3 sts. after Rows 184, 185; 2 sts. after Rows 186, 187, 188, 189, 190, 191; 1 st. after Rows 192, 193, 194, 195, 196, 197, then knit to Row 250.

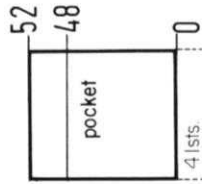
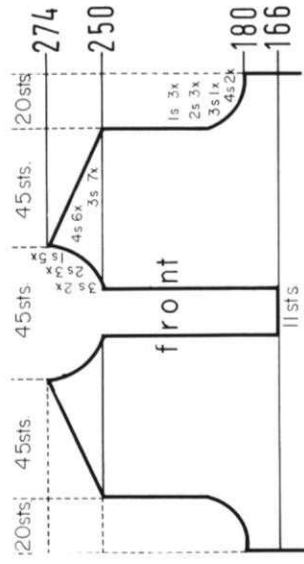
ROWS 39 to 180: Knit even.

ROWS 0 to 38: Knit even, then transfer the ribber sts. to the main machine, turn the knitting and continue with stockinette st.

Cast on 175 sts. and work K1, P3, Ribbing.



Cast on 73 sts. and work K1, P3, Ribbing. Make buttonholes after Row 10 over the 16th-20th, 38th-42nd and 60th-64th sts. counting from the left side. After Row 20 bind off all sts. Work the button band the same, but omit the buttonholes.



Cast on 41 sts. and work K1, P3, Ribbing. After Row 48 transfer the appropriate sts. to the ribber and work 4 rows K1, P1, Ribbing, then bind off all sts.

Work the second sleeve with reverse shapings. After turning the knitting, reverse the Cam Box at the LEFT side at Row 38.

ON CAM BOX SIDE, bind off 4 sts. after Rows 68, 69, 70, 71; 3 sts. after Row 72, 73, 74, 75; 2 sts. after Rows 76, 77, 78, 79, 80, 81. ON EACH SIDE, decrease 1 st. after Rows 82, 84, 86, 88, 90, 92, 94, 96, 98, 100, 102, 104, 106, 108, 110, 112, 114, 116, 118, 120, 122, 124, 126, 128, 134, 140, 146, 152, 158, 164, 170, 176, 182, 188, 194, then transfer 1 more st. ON CAM BOX SIDE of after Row 200. ON OPPOSITE SIDE of CAM BOX, put into holding position 5 needles after Row 200; 4 needles after Rows 202, 204, 206. After Row 208 bring all needles back into working position, then bind off the remaining 20 sts.

ON EACH SIDE, increase 1 st. after Rows 20, 26, 32, 38, 44, 48, 52, 56, 60, 64, then knit to Row 68.

ROWS 0 to 20: Knit even, then transfer the ribber sts. to the main machine, turn the knitting and continue with stockinette st.

Cast on 111 sts. and work K1, P3, Ribbing.

Move the Cam Box to the left side, turn the Row Counter back to 166 and complete the left half. Follow the instructions from *.

ON CAM BOX SIDE, bind off 3 sts. after Rows 250 (EVEN ROWS = SHOULDER SHAPING), 251 (ODD ROWS = NECK SHAPING), 252, 253, 254; 2 sts. after Row 255; 3 sts. after Row 256; 2 sts. after Row 257; 3 sts. after Row 258; 2 sts. after Row 259; 3 sts. after Row 260; 1 st. after Row 261; 3 sts. after Row 262; 1 st. after Row 263; 4 sts. after Row 264; 1 st. after Row 265; 4 sts. after Row 266; 1 st. after Row 267; 4 sts. after Row 268; 1 st. after Row 269; 4 sts. after Rows 270, 272, 274.

ON CAM BOX SIDE, bind off 4 sts. after Rows 180, 182; 3 sts. after Row 184; 2 sts. after Rows 186, 188, 190; 1 st. after Rows 192, 194, 196, then knit to Row 250.

* ROWS 167 to 180: Knit even.

ROWS 39 to 166: Knit even, then bind off the center 11 sts., put the needles on the left side into holding position and complete the right half first.

ROWS 0 to 38: Knit even, then transfer the ribber sts. to the main machine, turn the knitting and continue with stockinette st.

Cast on 175 sts. and work K1, P3, Ribbing.

SIZE 12 (Chest 29½"–30½"), **SIZE 14** (Chest 31"–32"), **SIZE 16** (Chest 32½"–33½").
MATERIAL: SIZE 12: Dress 8½ oz. (5 balls) white and 3½ oz. (2 balls) green; Pants 12½ oz. (7 balls) green. **KNITTING:** Subita crepe 2 x 3. **TENSION:** **KNITTING 4** to 6. **GAUGE:** 17 sts., 2", 24 rows 2"; **SIZE 14:** Dress 12½ oz. (7 balls) white and 5½ oz. (3 balls) green; Pants 15½ oz. (9 balls) green and 3½ oz. (2 balls) green. **TENSION:** **KNITTING 6** to 8. **GAUGE:** 16 sts., 2", 24 rows 2". **SIZE 16:** Dress 14 oz. (8 balls) white and 5½ oz. (3 balls) green; Pants 17½ oz. (10 balls) green. **KNITTING:** Amore. **TENSION:** **KNITTING 7** to 9. **GAUGE:** 15 sts., 2", 23 rows 2". The instructions are the same for all sizes. **PATTERN:** Stockinette. **Stitch and Color Stripes** as marked in the diagrams. **White = Color 1, green = Color 2. DECREASES:** After rows indicated, hang the 3rd st. on the appropriate sides onto the 2nd st. then move the end sts. inward to fill the empty needle. Begin the **DART** decreases by hanging the sts. together as marked on the diagrams, then move the end sts. inward to fill the empty needles. The following decreases for the darts lie directly above. **INCREASES:** After rows indicated, move the 2 end sts. on the appropriate sides 1 needle outward, then place the 3rd st. from the row below onto the empty needle.

FINISHING: Block all sections. **DRESS:** Join front and back section at sides and shoulders. Sew sleeves together and set in. Turn under 14 rows on sleeve edges and 20 rows on lower edge and hem to wrong side. Sew 1 edge of buttonhole band to inside and 1 edge to outside of right front opening. Sew button band to left side in the same manner. Fold collar in half lengthwise, sew short edges together, then sew 1 edge of collar to inside and 1 edge to outside of neckline, leaving 1/2" on each front edge free. Finish buttonholes, sew on buttons. **PANTS:** Join front and back sections at sides. Sew inner seams together. Join sections at center front and center back. Turn under 16 rows on upper edge and 19 rows on leg edges and hem to wrong side. Insert an elastic band into upper hem.



Cast on 102 sts. with green, work stockinette st. and Short Rows. ON OPPOSITE SIDE of CAM BOX put into holding position 24 needles after Rows 0, 1. ON OPPOSITE SIDE of CAM BOX bring back into working position 8 needles after Rows 2, 3, 4, 5, 6, 7. ON EACH SIDE, increase 1 st. after Rows 8, 10, 12, 14, 16, 18, 20, 22, 24, 26, 28, 30, 32, 34, 36, 38, 40, 42. ON EACH SIDE, decrease 1 st. after Rows 46, 48, 50, 52, 54, 56, 58, 60, 62, 64, 66, 68, 70, 72, 74, 76, 78, 80. After Row 82 bind off all sts. the crochet method.

ON CAM BOX SIDE, bind off 4 sts. after Rows 44, 45; 3 sts. after Rows 46, 47, 48, 49; 2 sts. after Rows 50, 51, 52, 53, 54, 55. ON EACH SIDE, hang the 1st st. onto the 2nd st. after Rows 56, 58, 60, 62, 64, 66, 68, 70, 72, 74, 76, 78, 80, 82, 84, 86, 88, 90, 92. ON CAM BOX SIDE, bind off 2 sts. after Rows 94, 95; 3 sts. after Rows 96, 97, 98, 99, 100, 101; 10 sts. after Row 102.

ON EACH SIDE, increase 1 st. after Rows 14, 20, 26, 32, 38, then knit to Row 44.

ROWS 0 to 14: Knit even.

Cast on 92 sts. with white, work stockinette st. and the color stripes as marked in the diagram.

Move the Cam Box to the left side, turn the Row Counter back to 398 and complete the left half. Follow the instructions from *.

* ON CAM BOX, bind off 5 sts. after Row 398 (EVEN ROWS = SHOULDER SHAPING); 4 sts. after Row 399 (ODD ROWS = NECK SHAPING); 5 sts. after Row 400; 4 sts. after Row 401; 5 sts. after Row 402; 3 sts. after Row 403; 5 sts. after Rows 404, 406.

ON CAM BOX SIDE, bind off 5 sts. after Rows 394, 395, 396, 397, then knit to Row 398, bind off the center 16 sts., put the needles on the left side into holding position and complete the right half first.

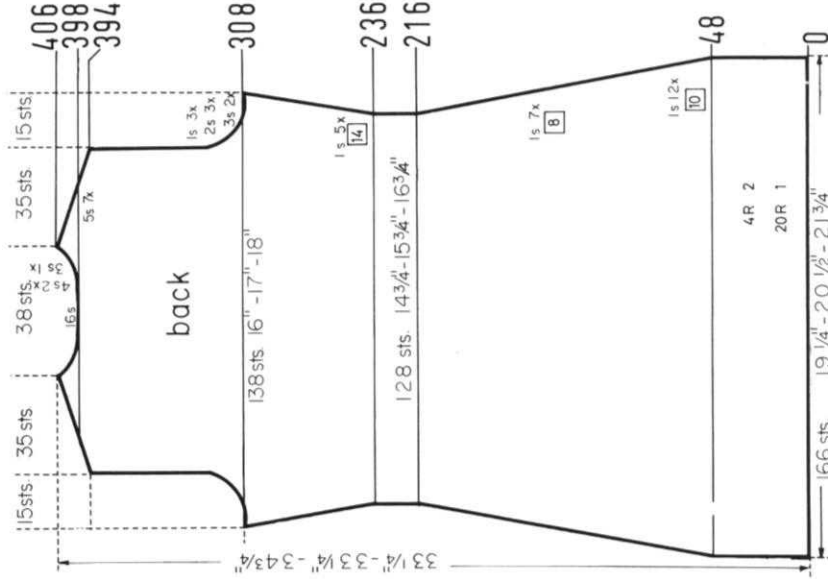
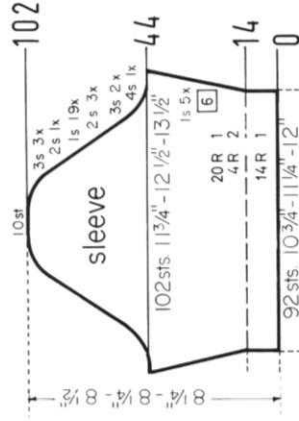
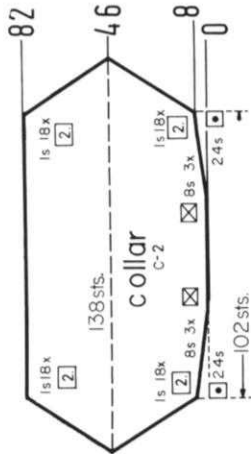
ON CAM BOX SIDE, bind off 3 sts. after Rows 308, 309, 310, 311; 2 sts. after Rows 312, 313, 314, 315, 316, 317; 1 st. after Rows 318, 319, 320, 321, 322, 323, then knit to Row 394.

ON EACH SIDE, increase 1 st. after Rows 236, 250, 264, 278, 292, then knit to Row 308.

ON EACH SIDE, decrease 1 st. after Rows 48, 58, 68, 78, 88, 108, 118, 128, 138, 148, 158, 168, 176, 184, 192, 200, 208, 216, then knit to Row 236.

ROWS 0 to 48: Knit even.

Cast on 166 sts. with white, work stockinette st. and the color stripes as marked in the diagram.



Move the Cam Box to the left side, turn the Row Counter back to 288 and complete the right half. Follow the instructions from *.

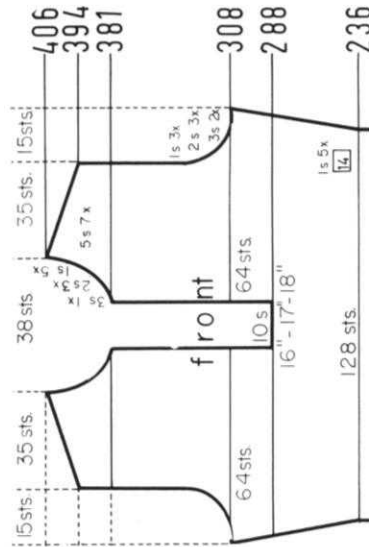
ON CAM BOX SIDE, bind off 3 sts. after Row 381 (ODD ROWS = NECK SHAPING); 2 sts. after Rows 383, 385, 387; 1 st. after Rows 389, 391, 393; 5 sts. after Row 394 (EVEN ROWS = SHOULDER SHAPING); 1 st. after Row 395; 5 sts. after Row 396; 1 st. after Row 397; 5 sts. after Rows 398, 400, 402, 404, 406.

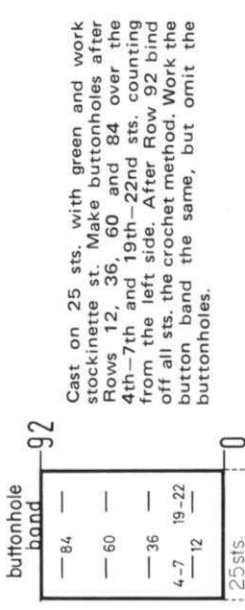
ON CAM BOX SIDE, bind off 3 sts. after Rows 308, 310; 2 sts. after Rows 312, 314, 316; 1 st. after Rows 318, 320, 322, then knit to Row 381.

* ON CAM BOX SIDE, increase 1 st. after Row 292, then knit to Row 308.

ON EACH SIDE, increase 1 st. after Rows 236, 250, 264, 278, then knit to Row 288, bind off the center 10 sts., put the needles on the left side into holding position and complete the right half first.

Work the Front Section the same as the Back Section to Row 236.





Cast on 25 sts. with green and work stockinette st. Make buttonholes after Rows 12, 36, 60 and 84 over the 4th-7th and 19th-22nd sts. counting from the left side. After Row 92 bind off all sts. the crochet method. Work the button band the same, but omit the buttonholes.

Work the second front section with reverse shapings, casting on from right to left. (Cam Box will be on the LEFT side at Row 0).

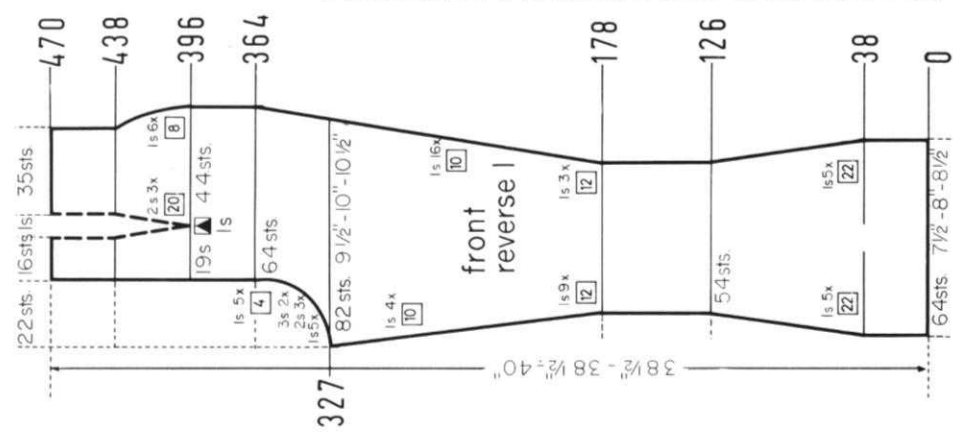
Decrease 2 sts. for the DART after Rows in (). ON CAM BOX SIDE, decrease 1 st. after Rows 396, (396), 404, 412, (416), 420, 428, 436, (436), then knit to Row 470 and bind off the remaining 52 sts.

Continue to increase 1 st. ON CAM BOX SIDE after Rows in (). ON CAM BOX SIDE, bind off 3 sts. after Rows 327, 329; 2 sts. after Rows 331, 333, (334), 335; 1 st. after Rows 337, 339, 341, 343, (344), 345, 347, 351, (354), 355, 359, 363, (364), then knit to Row 396.

Increase 1 st. ON OPPOSITE SIDE of CAM BOX after Rows in (). ON CAM BOX SIDE, increase 1 st. after Rows 178, (178), 190, (190), 202, (202), 214, (214), 224, (226), 234, (238), 244, (250), 254, (262), 264, 274, (274), 284, (286), 294, (296), 304, (306), 314, (316), 324, then knit to Row 327.

ON EACH SIDE, decrease 1 st. after Rows 38, 60, 82, 104, 126, then knit to Row 178.

ROWS 0 to 38: Knit even.
Cast on 64 sts. with green and work stockinette st.



front reverse I

Work the second back section with reverse shapings, casting on from right to left. (Cam Box will be on the LEFT side at Row 0).

ON OPPOSITE SIDE of CAM BOX put into holding position 6 needles after Rows 438, 440, 442, 444, 446, 448, 450. After Row 452 bring all needles back into working position, knit to Row 484 then bind off the remaining 52 sts.

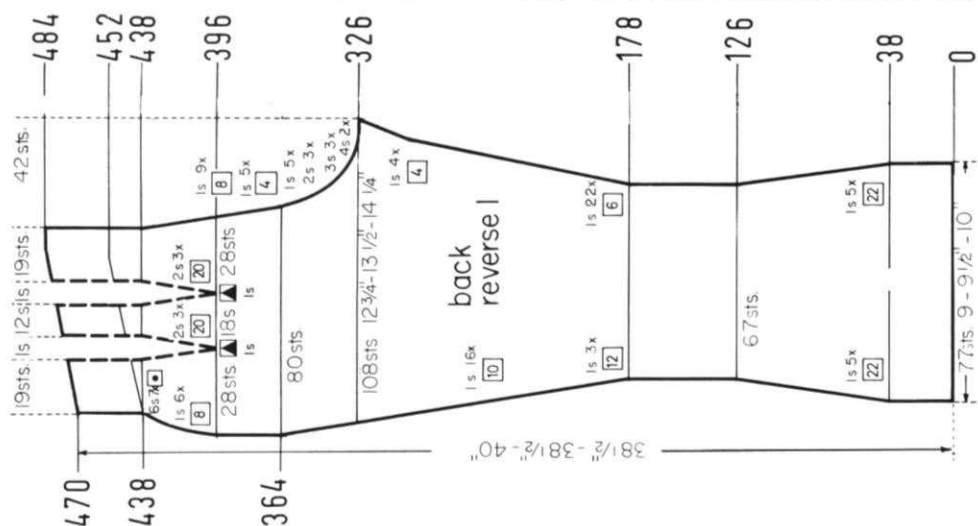
Decrease 2 sts. for each DART after Rows in (). ON EACH SIDE, decrease 1 st. after Rows 396, (396), 404, 412, (416), 420, 428, 436, (436), then knit to Row 438.

Continue to increase 1 st. ON OPPOSITE SIDE of CAM BOX after Rows in (). ON CAM BOX SIDE, bind off 4 sts. after Rows 326, 328; 3 sts. after Rows 330, 332, 334; (334), 2 sts. after Rows 336, 338, 340; 1 st. after Rows 342, 344, (344), 346, 348, 350, 352, (354), 356, 360, 364, (364 last increase), 368, 372, 380, 388, then knit to Row 396.

Increase 1 st. ON OPPOSITE SIDE of CAM BOX after Rows in (). ON CAM BOX SIDE, increase 1 st. after Rows 178, (178), 184, 190, (190), 196, 202, (202), 208, 214, (214), 220, (224), 226, 232, (234), 238, 244, (244), 250, (254), 256, 262, (264), 268, 274, (274), 280, (284), 286, 292, (294), 298, 304, (304), 310, 314, (314), 318, 322, (324), then knit to Row 326.

ON EACH SIDE, decrease 1 st. after Rows 38, 60, 82, 104, 126, then knit to Row 178.

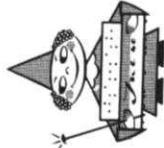
ROWS 0 to 38: Knit even.
Cast on 77 sts. with green and work stockinette st.



back reverse I

for fast easy knitting of
Jaquard and Ski-sweater
designs

jac40 is a must



Patterns are selected—row by row—through a pre-stamped card that is fed into the Jac. There are over 140 cards available and illustrations of them are included with each Jac. Jac 40's are made for most brands of machines. When ordering be sure to specify your brand of knitter as needle spacings vary. Simple to use and an essential tool for the modern knitter, Jac 40's are \$24.95 complete with 3 cards for practicing the 3 techniques, plus complete instructions.

Order from your dealer or direct from
KNITTING

1128 Crenshaw Boulevard, Los Angeles, Calif. 90019
Shipping Cost \$1.50—California residents add 5% sales tax.

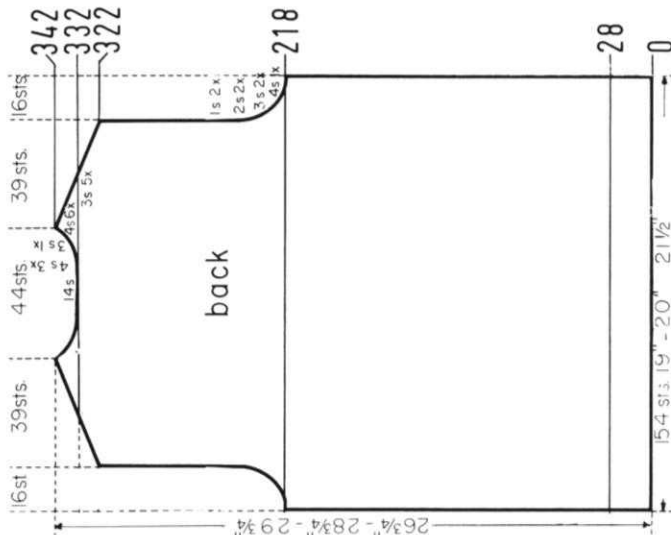
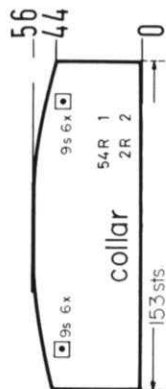
HP 3626



SIZE 36 (Chest 35"-36"), **SIZE 38** (Chest 37"-38"), **SIZE 40** (Chest 39"-40"), **MATERIAL:** KNITTING Amore; **SIZE 36:** 1 1/2 oz. (10 balls); **SIZE 38:** 1 9/16 oz. (11 balls); **SIZE 40:** 21 oz. (12 balls); **ALL SIZES:** a small amount of contrast color. **TENSION:** KNITTING; **SIZE 36:** 6 to 8 GAUGE; 16 sts., 2", 25 rows 2"; **SIZE 38:** 7 to 9 GAUGE; 15 sts., 2", 23 rows 2"; **SIZE 40:** 8 to 10 GAUGE; 14 sts., 2", 22 rows 2". The instructions are the same for all sizes. **PATTERN:** Stockinette Stitch and color stripes as marked in the diagrams. **COLLAR** and **EDGES:** K1, P1, Ribbing. **SLEEVE INCREASES:** After rows indicated, move the 2 end sts. on each side 1 needle outward, then place the 3rd st. from the row below onto the empty needle. When working Short Rows on the collar, transfer the appropriate ribber sts. to the main machine before putting the needles into holding position.

FINISHING: Block all sections. Join front and back section at sides and shoulders. Sew sleeves together and set in. Work 1 row of single crochet around the front opening. Sew bound-off edge of collar to neckline. Sew a zipper into front opening. Sew pockets in place. (See picture).

Cast on 153 sts. with contrast yarn and work K1, P1. Ribbing. Knit 2 rows contrast, then change to main color and knit to Row 44. Work Short Rows. ON OPPOSITE SIDE OF CAM BOX put into holding position 9 needles after Rows 44, 45, 46, 47, 48, 49, 50, 51, 52, 53, 54, 55. After Row 56 bring all needles back into working position, then bind off all sts. the crochet method for ribbing.



KK 5219

SIZE 6 (Chest 24"-25") **SIZE 10** (Chest 27"-28") **MATERIAL:** **SIZE 6:** 7 oz. (4 balls); **SIZE 10:** 8 1/2 oz. (5 balls) light gray = Color 1; **BOTH SIZES:** 1 1/2 oz. (1 ball) dark blue = Color 2 and 1 1/2 oz. (1 ball) red = Color 3 **KNITTING** Fortissima. **TENSION:** **KNITTING** 4 to 6. **GAUGE:** 16 sts. 2", 23 rows 2". **PATTERN:** Stockinette Stitch. **EDGES:** K1, P1. Ribbing with color stripes as marked in the diagrams. **INCREASES:** After rows indicated, move the 2 end sts. on each side 1 needle outward, then place the 3rd st. from the row below onto the empty needle. **NECKLINE DECREASES:** After rows indicated, hang the 3rd st. ON NECK SIDE onto the 2nd st., then move the end sts. inward to fill the empty needle. When working Short Rows for the neckband, transfer the appropriate ribber sts. to the main machine, before putting the needles in hold. Bind off the band the crochet method for ribbing. **FINISHING:** Block all sections. Join front and back section at sides and shoulders. Sew sleeves together and set in. Join neckband sections, then sew neckband to neckline.



Move the Cam Box to the left side, turn the Row Counter back to 138 and complete the left half. Follow the instructions from *.

* ON OPPOSITE SIDE of CAM BOX (NECK SIDE), decrease 1 st. after Rows in (). ON CAM BOX SIDE, bind off 4 sts. after Rows 138, (138), 140; 2 sts. after Rows 142, (142), 144, 146; (146), 1 st. after Rows 148, 150; (150). The Armhole Shaping is now completed. Continue to decrease 1 st. on NECK SIDE after Rows 154, 158, 162, 166, 170, 176, 182, 188, 194, 200, then again after Rows in (). For SHOULDER bind off 3 sts. after Rows 206, (206), 208, 210; 4 sts. after Rows 212, (212), 214, 216, 218, 220.

Work the Front Section the same as the Back Section to Row 138, then put 61 needles on the left side into holding position and complete the right half first.

Move the Cam Box to the left side, turn the Row Counter back to 210 and complete the left half. Follow the instructions from *.

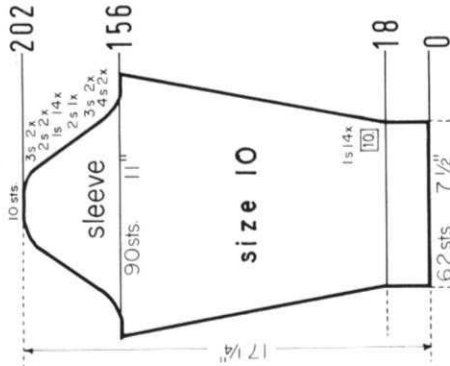
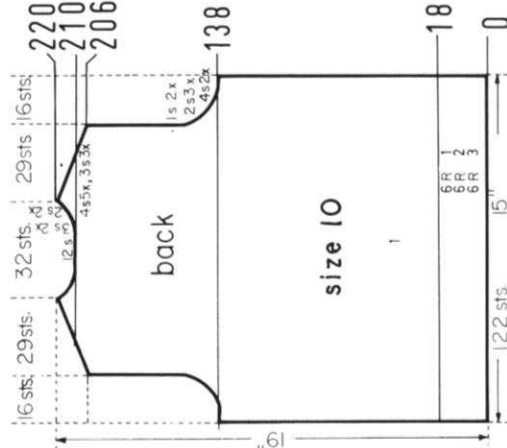
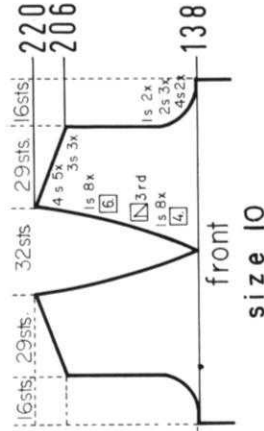
* ON CAM BOX SIDE, bind off 3 sts. after Rows 210 (EVEN ROWS = SHOULDER SHAPING), 211 (ODD ROWS = NECK SHAPING); 4 sts. after Row 212; 3 sts. after Row 213; 4 sts. after Row 214; 2 sts. after Row 215; 4 sts. after Row 216; 2 sts. after Row 217; 4 sts. after Rows 218, 220.

ON CAM BOX SIDE, bind off 3 sts. after Rows 206, 207, 208, 209, then knit to Row 210, bind off the center 12 sts., put the needles on the left side into holding position and complete the right half first.

ON CAM BOX SIDE, bind off 4 sts. after Rows 138, 139, 140, 141; 2 sts. after Rows 142, 143, 144, 145, 146, 147; 1 st. after Rows 148, 149, 150, 151, then knit to Row 206.

ROWS 19 to 138: Knit even. ROWS 0 to 18: Knit even, then change to stockinette st.

Cast on 122 sts. with red, work K1, P1. Ribbing and the color stripes as marked in the diagram.



ON CAM BOX SIDE, bind off 4 sts. after Rows 156, 157, 158, 159; 3 sts. after Rows 160, 161, 162, 163; 2 sts. after Rows 164, 165. ON EACH SIDE, hang the 1st st. onto the 2nd st. after Rows 166, 168, 170, 172, 174, 176, 178, 180, 182, 184, 186, 188, 190, 192. ON CAM BOX SIDE, bind off 2 sts. after Rows 194, 195, 196, 197; 3 sts. after Row 198, 199, 200, 201; 10 sts. after Row 202.

ON EACH SIDE, increase 1 st. after Rows 18, 28, 38, 48, 58, 68, 78, 88, 98, 108, 118, 128, 138, 148, then knit to Row 156.

ROWS 0 to 18: Knit even, then change to stockinette st.

Cast on 62 sts. with red, work K1, P1. Ribbing and the color stripes as marked in the diagram of the back section.

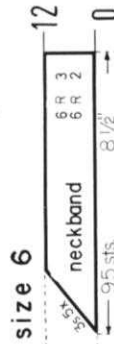
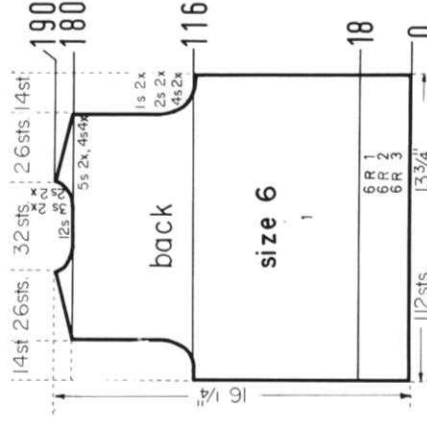
Move the Cam Box to the left side, turn the Row Counter back to 180 and complete the left half. Follow the instructions from *.

* ON CAM BOX SIDE, bind off 4 sts. after Row 180 (EVEN ROWS = SHOULDER SHAPING); 3 sts. after Row 181 (ODD ROWS = NECK SHAPING); 4 sts. after Row 182; 3 sts. after Row 183; 4 sts. after Row 184; 2 sts. after Row 185; 4 sts. after Row 186; 2 sts. after Row 187; 5 sts. after Rows 188, 190.

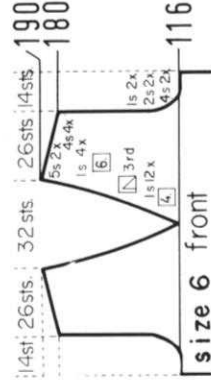
ON CAM BOX SIDE, bind off 4 sts. after Rows 116, 117, 118, 119; 2 sts. after Rows 120, 121, 122, 123; 1 st. after Rows 124, 125, 126, 127, then knit to Row 180, bind off the center 12 sts., put the needles on the left side into holding position and complete the right half first.

ROWS 19 to 116: Knit even. ROWS 0 to 18: Knit even, then change to stockinette st.

Cast on 112 sts. with red, work K1, P1. Ribbing and the color stripes as marked in the diagram.



Cast on 95 sts. with blue, work K1, P1. Ribbing and the color stripes as marked in the diagram. ON OPPOSITE SIDE of CAM BOX put into holding position 3 needles after Rows 2, 4, 6, 8, 10. After Row 12 bring all needles back into working position, then bind off all sts. Work the second neckband section with reverse shaping, casting on from right to left. (Cam Box will be on the LEFT side at Row 0).



Move the Cam Box to the left side, turn the Row Counter back to 116 and complete the left half. Follow the instructions from *.

* ON OPPOSITE SIDE of CAM BOX (NECK SIDE), decrease 1 st. after Rows in (). ON CAM BOX SIDE, bind off 4 sts. after Rows 116, (116), 118; 2 sts. after Rows 120, (120), 122; 1 st. after Rows 124, (124), 126. The Armhole Shaping is now completed. Continue to decrease 1 st. on NECK SIDE after Rows 128, 132, 136, 140, 144, 148, 152, 156, 160, 164, 170, 176, then 1 more time after Row in (). For SHOULDER bind off 4 sts. after Rows 180, 182, (182), 184, 186; 5 sts. after Rows 188, 190.

Work the Front Section the same as the Back Section to Row 116, then put 56 needles on the left side into holding position and complete the right half first.

MK 5220

SIZE: 4-5 (Chest 23"-24"). **MATERIAL:** 8½ oz. (5 balls) light gray = Color 1, 7oz. (4 balls) dark blue = Color 2 and 1½ oz. (1 ball) red = Color 3 **KNITTING** Fortissima. **TENSION:** 4 to 6. **GAUGE:** 16 sts, 2", 23 rows 2". **PATTERN:** Stockinette Stitch. **EDGES:** K1, P1. Ribbing with Color Stripes as marked in the diagrams. Bind off all bands the crochet method for ribbing. **SKIRT DECREASES:** After rows indicated, hang the 4th st. on each side onto the 3rd st., then move the end sts. inward to fill the empty needle. **RAGLAN DECREASES:** After rows indicated, hang the 3rd AND 4th sts. on the appropriate sides onto the 5th and 6th sts., then move the end sts. inward to fill the empty needles. (Use 2 double transfer tools, slip the 4 sts. to be moved onto the tools at the same time, then hang 2 sts. onto the next 2 occupied needles and 2 sts. onto the next 2 empty needles). To form the hems, hang the cast-on sts. back onto the machine behind the latch, then knit the following row with 2 tension settings higher.

FINISHING: Block all sections. **PULLOVER:** Join front and back section at sides. Sew the sleeves together, then weave the sleeves to front and back section, 1 st. in from each edge, leaving about 2½" open on each upper front seam. Work 1 row of single crochet around each opening. Sew the neckband sections to neckline. Close each opening with 4 loops and 4 buttons. **SKIRT:** Weave the skirt sections together, 1 st. in from each edge, leaving about 3" at the top of one seam open. Turn under 9 rows on upper edge and 22 rows on lower edge and hem to wrong. Insert an elastic band into upper hem and fasten to side edges. Turn under a small amount around the opening. Close opening with loops and buttons. **PANTY:** Join front and back section at sides. Weave the open sts. together. Join short ends of leg bands, then sew bands to leg edges. Insert an elastic band into upper hem.

Move the Cam Box to the left side, turn the Row Counter back to 138 and complete the left half. Follow the instructions from *.

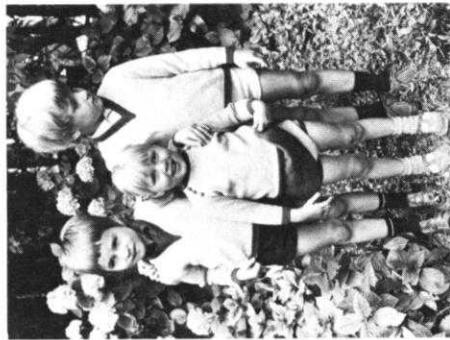
* Continue to decrease 2 sts. for RAGLAN after Rows in (). ON NECK SIDE, bind off 2 sts. after Row 139; (140), 1 st. after Rows 141, 143, (143), 145, (146), 147, 149; (149). After Row 152 bind off the remaining 3 sts.

Work the Front Section the same as the Back Section to ROW 138, then bind off the center 5 sts., put the needles on the left side into holding position and complete the right half first.

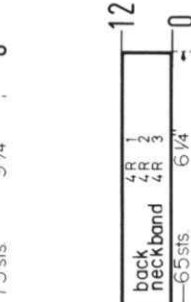
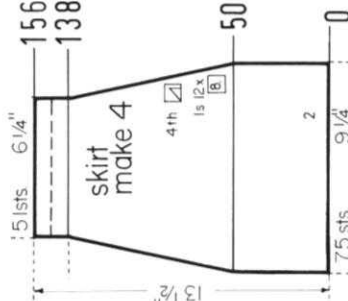
ON EACH SIDE, decrease 2 sts. after Rows 92, 95, 98, 101, 104, 107, 110, 113, 116, 119, 122, 125, 128, 131, 134, 137, 140, 143, 146, 149. After Row 152 bind off the remaining 25 sts. (Neck Stitches). For the front section make the decreases after Row 137, then knit to Row 138.

ROWS 15 to 92: Knit even.

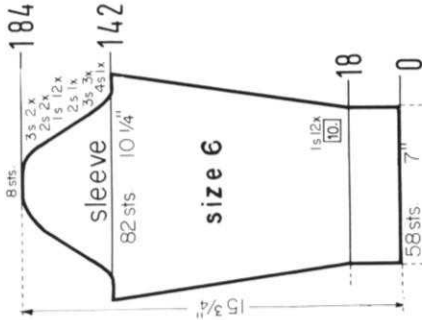
ROWS 0 to 14: Knit even, then change to stockinette st. Cast on 105 sts. with red, work K1, P1. Ribbing and the color stripes as marked in the diagram.



Cast on 41 sts. with red, work K1, P1. Ribbing and the color stripes as marked in the diagram. Knit 12 rows, then bind off all sts.



Cast on 65 sts. with red, work K1, P1. Ribbing and the color stripes as marked in the diagram. Knit 12 rows, then bind off all sts.

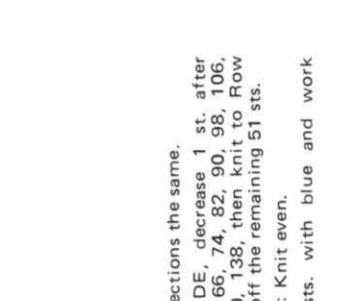
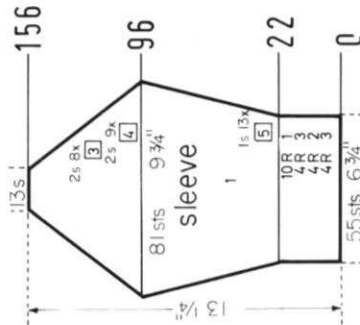


ON EACH SIDE, decrease 2 sts. after Rows 96, 100, 104, 108, 112, 116, 120, 124, 128, 132, 135, 138, 141, 144, 147, 150, 153, then knit to Row 156 and bind off the remaining 13 sts.

ON EACH SIDE, increase 1 st. after Rows 22, 27, 32, 37, 42, 47, 52, 57, 62, 67, 72, 77, 82, then knit to Row 96.

ROWS 0 to 22: Knit even, then change to stockinette st.

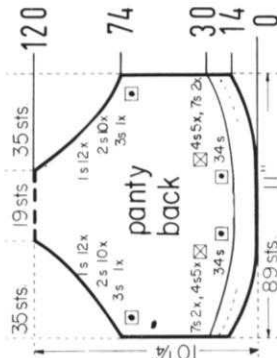
Cast on 55 sts. with red, work K1, P1. Ribbing and the color stripes as marked in the diagram.



Work 3 more sections the same.

ON EACH SIDE, decrease 1 st. after Rows 50, 58, 66, 74, 82, 90, 98, 106, 114, 122, 130, 138, then knit to Row 156 and bind off the remaining 51 sts.

ROWS 0 to 50: Knit even. Cast on 75 sts. with blue and work stockinette st.



Work Short Rows. ON OPPOSITE SIDE of CAM BOX put into holding position 3 needles after Rows 74, 75; 2 needles after Rows 76, 77, 78, 79, 80, 81, 82, 83, 84, 85, 86, 87, 88, 89, 90, 91, 92, 93, 94, 95; 1 needle after Rows 96, 97, 98, 99, 100, 101, 102, 103, 104, 105, 106, 107, 108, 109, 110, 111, 112, 113, 114, 115, 116, 117, 118, 119, then knit to Row 120. Over the center 19 sts. knit several rows with contrast waste yarn and 1 row without yarn to remove the sts. from the machine. Move the Cam Box to the right side, bring the 35 needles on the right side into working position and bind off the sts. the crochet method. Bind off the 35 sts. on the left side in the same manner.

Work Short Rows. ON OPPOSITE SIDE of CAM BOX put into holding position 34 needles after Rows 14, 15. ON OPPOSITE SIDE of CAM BOX bring back into working position 4 needles after Rows 16, 17, 18, 19, 20, 21, 22, 23, 24, 25; 7 needles after Rows 26, 27, 28, 29. After Row 30 all needles are back in working position. Knit even to Row 74.

ROWS 0 to 13: Knit even, then form the hem and knit to Row 14. Cast on 89 sts. with gray and work stockinette st.

ON CAM BOX SIDE, bind off 4 sts. after Rows 142, 143; 3 sts. after Rows 144, 145, 146, 147, 148, 149; 2 sts. after Rows 150, 151. ON EACH SIDE, hang the 1st st. onto the 2nd st. after Rows 152, 154, 156, 158, 160, 162, 164, 166, 168, 170, 172, 174. ON CAM BOX SIDE, bind off 2 sts. after Rows 176, 177, 178, 179; 3 sts. after Rows 180, 181, 182, 183; 8 sts. after Row 184.

ON EACH SIDE, increase 1 st. after Rows 18, 28, 38, 48, 58, 68, 78, 88, 98, 108, 118, 128, then knit to Row 142.

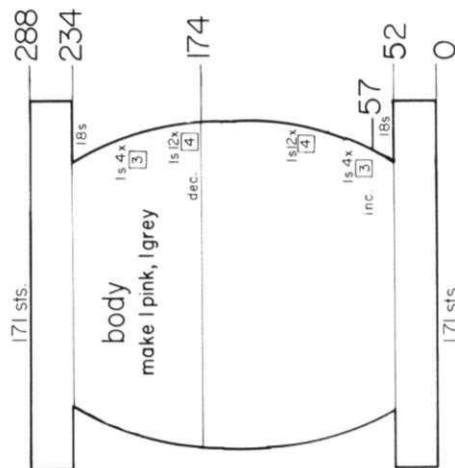
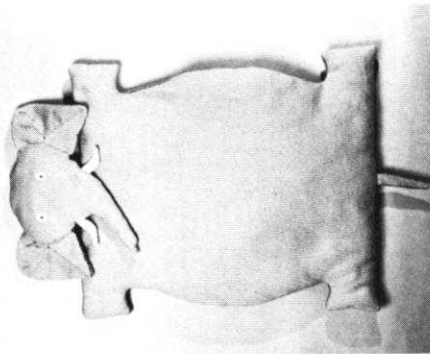
ROWS 0 to 18: Knit even, then change to stockinette st.

Cast on 58 sts. with red, work K1, P1. Ribbing and the color stripes as marked in the diagram of the back section.

KG 1926

MATERIAL: 12½ oz. (7 balls) Pink, 12¼ oz. (7 balls) Grey and small amount of White
KNITTING: Double Knitting, Dacron Filler for stuffing (do not use foam chips). Small piece of white felt for eyes. **TENSION:** 9 or 10. **GAUGE:** 13 sts. 2", 16 rows 2".

FINISHING: Body: With right sides together, sew around outside edge leaving an opening at top for stuffing. Turn and stuff, then sew up opening. With right sides together, sew around outside edge of Head and leave open at top of head and bottom of trunk. Turn to right side, stuff and close top of head, then put extra stuffing in at trunk end so it will be firm and pin gusset in place, then sew with an overcast stitch. Cut 4 oval eyes (approximately 1" in diameter) out of white felt. Pin in place as illustrated (on each side so head will be reversible) then blind stitch in place. Embroider pupils of eyes with black embroidery thread. With right sides together (leave open at top) sew around Tusks, turn and stuff, then close opening and sew in place as illustrated. Weave the open stitches of the Ears, remove waste yarn then sew to head as illustrated. With right sides together, overcast tail (leave open at top), turn and stuff lightly then close opening and sew on body.



BODY: Cast on 171 sts. with Pink. Rows 0-52: Knit even. Bind off 18 sts. beginning next 2 rows, then after Row 56, increase 1 st. ON EACH SIDE and again every 3rd row 3 times more and every 4th row 12 times. Knit even to Row 174. After Row 174, decrease 1 st. ON EACH SIDE and again every 4th row 11 times more and every 3rd row 4 times. After Row 234, cast on 18 sts. beginning next 2 rows, then knit even to Row 288. Bind off the crochet method. Make another body section in the same way using Grey Yarn.

EARS: Make 2 (reverse 1).

Open cast-on using waste yarn. After knitting several rows, end with Cam Box on the left side, knit 1 row to the right with a Ravel Cord, change to pink yarn and put Counter at 0.

ROWS 0-4: Knit even. After Row 4, knit short rows. Put 1 needle in holding position ON THE LEFT SIDE every 2nd row until 9 remain in work (be sure to wrap yarn to prevent a hole). Put back 1 needle on the left until all are in work. Put 1 needle in holding position ON THE LEFT SIDE until 3 remain in work. Put back 1 needle until all are in work. Knit 4 rows. Change to Grey yarn. Knit 4 rows, then begin short rows. 1 needle in holding position ON THE LEFT SIDE until 3 remain, then put back 1 needle until all are in work. ON THE LEFT SIDE holding position ON THE LEFT SIDE until 9 remain, then put back 1 needle until all are in work. Knit 4 rows. Leave an end for weaving, then take off the sts. onto contrast waste yarn.

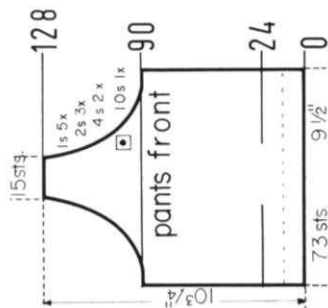
Make the second ear, casting on from Right to Left and knit the short rows on the right side.

GUSSET: With pink, cast on 7 sts., knit 10 rows. Decrease 1 st. each side and knit 6 rows. Decrease 1 st. each side, knit 2 rows. Bind off 3 sts.

TUSK: Make 4 with white (reverse 2 of them). With white, cast on 7 sts. ON THE LEFT SIDE, put 5 needles into holding position, knit 2 rows. Put back 2 sts. 2 times and 1 st. 1 time. KNIT 10 rows. Decrease 1 st. on the LEFT side EVERY ROW and increase 1 st. on the RIGHT side EVERY 2nd ROW until 2 sts. remain (Row 28). Bind off.

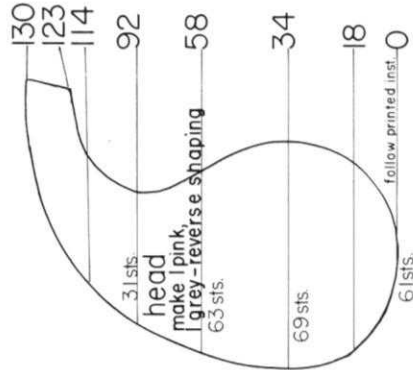
TAIL: Make 2 (1 pink, 1 grey). Cast on 9 sts. Knit 20 rows. Decrease 1 st. each side. Knit 12 rows. Decrease 1 st. each side. Knit 8 rows. Decrease 1 st. each side. Knit 4 rows. Bind off.

Work Short Rows. ON OPPOSITE SIDE of CAM BOX put into holding position 10 needles after Rows 90, 91; 4 needles after Rows 92, 93, 94, 95; 2 needles after Rows 96, 97, 98, 99, 100, 101; 1 needle after Rows 102, 103, 104, 105, 106, 107, 108, 109, 110, 111. After Row 112 knit over the remaining 15 sts. to Row 128 (Do NOT wrap the yarn), then knit several rows with contrast waste yarn and remove the sts. from the machine. (Knit 1 row without yarn). Move the Cam Box to the right side, bring the 29 needles on the right side into working position and bind off the 29 sts. the crochet method. Bind off the 29 sts. on the left side in the same manner. **ROWS 24 to 90:** Knit even. **ROWS 0 to 23:** Knit even, then form the hem. **Cast on 73 sts. and work stockinette st.**



HEAD:

With Pink, cast on 61 sts. Knit short rows. Put 20 needles opposite Cam Box into holding position beginning next 2 rows. On opposite side of Cam Box, bring back into working position 3 needles beginning next 2 rows and 2 needles beginning next 2 rows, then REPEAT these 4 rows 3 times more. After Row 18, increase 1 st. ON EACH SIDE and again every 4th row 3 times more. After Row 34, decrease 1 st. ON EACH SIDE and again after Row 38, 46, 54, 58, 61, 64 and continue to decrease 1 st. ON EACH SIDE every 2nd row to Row 92 (31 sts.). After Row 92 decrease 1 st. on the left side and continue to decrease 1 st. on the left after each of the following rows and increase 1 st. on the right after Rows in (). 94 (94) 96 (96) 97, 98 (98) 100 (100) 101, 102 (102) 104 (104) 105, 106 (106). Continue to decrease 1 st. on the left side EVERY ROW and at the same time increase 1 st. on the right side every second row to Row 114. Continue to decrease 1 st. on the left side EVERY ROW and at the same time cast on 2 sts. on the right side after Rows 114, 116, 118, 120. After Row 123, decrease 1 st. on the left and knit short rows on the right. Put 5 needles into holding position 3 times. After Row 129, bring all the needles into work and knit 1 row to the right. Bind off 21 sts. the crochet method. Knit the second section with Grey, casting on from right to left and reverse sides for the shaping.



CANADIAN READERS

Please note that KNITTING dealers based in the U.S.A. are unable to sell machines and accessories to residents of Canada. They are also unable to sell parts and service. Would all Canadian readers please contact the following appointed KNITTING dealer.

KNITTING Sales and Service

2243 Danforth Ave.
 Toronto 13, Ontario



KNITKING NEWS

July/August, 1971

OUR READERS WRITE

CHARTING ATTACHMENTS

We have, over the past few months, received a number of letters from readers asking our opinion regarding Charting accessories made available by some of our competitors.. and whether any similar product is likely to be sold by KNITKING....

The answer to the first part of the question is that we think they are fine and a step in the right direction... They make it easier to chart garments and to knit them without many mathematical calculations.... They are, however, limited by the capability of the operator... You do have to chart and draw your own charts... and that (as you will know if you have tried) is not a simple thing to do... Simple, perhaps, if you chart sleeveless garments and straight knitting without shapings, but where you need to fit sleeves..put in bust darts... make collars or shape pants, etc. it is far from easy... Study some of the charts of the garments in this issue and you will understand what we mean.

The answer to the second part of the question is.. Yes... KNITKING is certainly going to produce a Charting Machine... We have been developing one for some time... The actual designing and manufacturing of an efficient Charting Machine is relatively simple, but we do not want to market a product that the buyer decides is too difficult (because of charting problems) to use and that as a consequence, is stashed away out of sight.. and the payment for it wasted. The most difficult problem to overcome is in supplying a Charting Machine and pre-finished Charts for any garment in a complete range of sizes.. and that is the reason we have been investigating IBM Computerized Charting as referred to in the Letter From the Publisher in this issue.

As a result of much research and investigation, we have decided that it is possible to attain our goal and our factory in Europe is already tooling up for the production of a completely new design Charting Attachment which we will expect to market at a lower price than the competition.

We are negotiating with a computing organization for the furnishing of complete sets of Computed Charts in various sizes for KNITKING MAGAZINE garments...

It will take a few more months to complete our plans and perfect the system, but this is how we aim to further improve services to our customers: We will continue furnishing charts and instructions in KNITKING MAGAZINE in the same manner as we are doing now... but upon the introduction of the new KNITKING CHARTING MACHINE, we will make available (for a small fee) to our readers, fully prepared Charted Patterns, in any size, for the magazine garments... You will just order the size you want, insert charts into the KNITKING CHARTING MACHINE and be able to immediately see what to do on a row by row basis... completely confident that the sections will go together easily and that the finished garment will fit...!!

In order for our system to work effectively, it was necessary to produce a new type and size graph paper. This means that it will not be possible to use our Charts in other brands of Charting machines. We do, however, hope to make our Charting Machines adaptable to other machines.... We are very excited about this new and ambitious KNITKING project and will keep you informed in regard to our progress.

HOW CAN I MAKE MATCHING BUTTONS FOR MY KNITS?

It is very easy to make your own buttons and this issue of KNITKING MAGAZINE has a number of garments where you can certainly use them. One way is... Make covered buttons by using your knitted sample swatch.. (be sure to knit an extra large sample swatch if you plan to cover many buttons). Buy some Button Molds in the size you need. The metal ones are the easiest to use and they are usually sold in Department or Yardage stores. Follow the instructions given on the card for cutting the circles out of your swatch and you should cut a lining from some thin matching material. Put some Rubber Cement on the Button Mold, around the edges and just to the prongs - not over the prongs, then cut off all the excess material. Do not hook the lining over the prongs because it will give you too much bulk. Allow the cement to dry thoroughly. Now cover the Button Mold with your knitted material as the instructions tell you - hooking the knit over the prongs. A crochet hook is handy to press the knitted material over the prongs. Now cut off any excess or bulk BEFORE snapping the top into the frame... result - a beautiful covered button.

You can also make a crochet button. Buy some bone rings in the size you need. They can usually be found in the drapery section of department stores or in a yardage store. With a crochet hook (you may have to try out several to find the best size to use) make a single crochet into and over the ring, and continue with single crochet into the ring until it is filled completely - not too tight - but covered well. Pull the end of yarn into the last stitch and leave a long end. Thread this end into a tapestry needle and go all around the top of the single crochet into each stitch. Now turn the top edge into the center and pull up the thread tightly. Make a small cross stitch in the center and secure by taking several tiny stitches, leave a long end for sewing the button onto your garment.

RIBBING ATTACHMENTS and CONVERTERS for JAPANESE MACHINES

We have on hand, a quantity of brand new Ribbing Attachments and Converter-Kits for Japanese machines... These attachments have 200 needles and the standard Japanese (4.5 mm) needle spacing.... If you have anybody in the family with a mechanical aptitude, it is possible to adapt these Ribbers to most brands of Japanese machines... and our price is silly anyway...!! It is less than you would pay for 200 ribber needles alone.

The Converter with Ribbing Attachment normally sells for \$99.50... our price... \$30.00 each.. brand new and complete, F.O.B. Los Angeles..(California residents add \$1.50 Sales Tax).

BOUND VOLUMES KNITKING MAGAZINE

The next issue of KNITKING MAGAZINE will mark the start of our eighth year of publication... This means that a bound Seventh Volume is now available (there is an order form at the front of this magazine)... We bound some more of Volume Six and managed to find enough magazines to make up a small quantity of Volume Five. When they are gone there will be no more available. We have no Volumes prior to that time. Volumes Five, Six or Seven are available at the same low price of \$6.95 each plus 95¢ mailing costs.

We have available the following back issues of KNITKING MAGAZINE. They are \$1.50 each postpaid or any six for \$6.00 plus 95¢ postage.

Volume 1 - Numbers 2, 4, 5, 6
Volume 2 - Numbers 1, 2
Volume 3 - NONE AVAILABLE
Volume 4 - Numbers 4, 5, 6
Volume 5 - Numbers 1, 2, 3, 4, 5, 6
Volume 6 - Numbers 1, 2, 3, 4, 5, 6
Volume 7 - Numbers 1, 2, 3, 4, 5

The following list have some garments made for the larger person.

Volume 1, Numbers 2, 4, 5, 6; Volume 2, Numbers 1, 2; Volume 4, Numbers 4, 6; Volume 5, Numbers 4, 5, 6; Volume 6, Numbers 3, 4, 5, 6; Volume 7, Numbers 2, 3, 4, 5.

STITCH AND ROW CALCULATOR - FREE

We had a big run on the Calculator that we offered FREE in our last issue. It is an excellent accessory and explained in detail in the last NEWSLETTER... It is FREE with a 2 year (\$12.00 in U.S. \$14.00 in Canada) subscription to KNITKING MAGAZINE. This is a real good deal as the Stitch and Row Calculator sells alone for \$4.95...

If you already have a subscription that has not expired, you can extend it for an additional 2 years by sending \$12.00 to KNITKING MAGAZINE at 1128 Crenshaw Blvd., Los Angeles, California, 90019

USED MACHINES OF OTHER BRANDS

We take substantial numbers of machines of other brands in trade and have a warehouse full that we would like emptied as we desperately need the space... If you want an excellent buy, take a good look at the following list. Every machine is in excellent condition. Some of them have never had a garment made on them.

SINGLE BED

ARS Amoretta Super 8 - sold for \$159.50
Brothers 550 - Sells for \$75.00
Brothers Lacemaker - Model 588
Genie 1500
Speed O Knit Gold color with Auto-Lock, sells for \$269.50
Studio Cardmatic 312
Super Speed Color Ace - Sells for \$159.50
Toyota K506 - current model - Sells for \$220.00

DOUBLE BED

Orion 360 - Sold for \$329.00
Swiftomatic - 400 needles - never had a garment made on them
400 needles - used
Swiss Magic - 400 needles
Turmix - 400 needles
- 400 needles
Toyota K203 400 needles - 3 color automatic changer - Commercial type - has it's own table - Sells for \$499.00

CONDITON

Excellent \$ 45.00
Excellent 30.00
Like new 150.00
Like new 75.00
Excellent 45.00
Like new 150.00
Excellent 50.00
Brand new 100.00
Excellent 75.00
Like new 150.00
Excellent 75.00
Excellent 75.00
Like new 100.00
Excellent 75.00
Excellent 200.00

All prices F.O.B. Los Angeles.

and you will automatically receive the Calculator. If you have subscribed since May 1st of this year, you can obtain a Calculator by sending in an additional \$6.00 stating that you wish to extend your subscription and obtain the Calculator FREE.. If you do not wish to take advantage of this very generous offer, and would prefer to purchase a Calculator, its price is \$4.95 postpaid anywhere in North America (California residents must add 25¢ Sales Tax).

SUBSTITUTE YARN FOR CHILDRENS GARMENTS

Several of our KNITKING Customers have asked about knitting the cute childrens outfits shown on the back cover of KNITKING MAGAZINE, Volume 7 No. 5 for May/June 1971, using a yarn other than the Crocus Crepe recommended in the magazine. You can knit the garments using KNITKING machine washable Subita Dralon 3-ply or Subita Crepe 2 x 4. Here are the required amounts of yarn you will need and the Tensions to use.

MK 5273 - Dralon 3-ply: 4 balls white, 1 red, 1 blue. Tension 3 to 5.

KK 5272 - Dralon 3-ply: 6 balls white, 1 red, 1 blue. Tension 3 to 5.

MK 5273 - Subita Crepe 2 x 4: 5 balls white, 1 red, 1 blue. Tension 4 to 6.

KK 5272 - Subita Crepe 2 x 4: 7 balls white, 1 red, 1 blue. Tension 4 to 6.

NEW CAM WHEEL

The new KNITKING Cam Wheel No.4B (for the AM 3 KNITKING machines only) that we told you about in the March/April 1971 Newsletter, pushes every 4th and 6th needle into holding position. It was designed to be used with the KNITKING Weaver and for many other fancy stitches. The patterns in the Weaver Folder give instructions for using the Adjustable Needle Selector for designs from 7 to 12, but this fantastic Wheel will do all of these patterns automatically... so if you don't have one, be sure to order one now... the price is a small one... \$1.10 postpaid... California residents please add 5¢ Sales Tax.

NOTES TO KNIT BY . . .

STITCH AND ROW GAUGE

KNIT A SAMPLE SWATCH . . . before you begin to knit any garment . . . for this is the MOST IMPORTANT STEP toward the correct size and the proper fit of any garment you wish to make. You MUST use the SAME YARN for your sample swatch that you will use to knit your garment and your sample swatch must be knitted large enough and using several different tension numbers on your machine. When you have done this, then you can determine the number of stitches and the number of rows in a two-inch measure. KNITTING MAGAZINE PATTERNS give you 3 tensions to try and one of them should give you the correct stitch and row gauge if you are using the yarn we recommend or a similar weight yarn. Here is the way to make your sample swatch.

Cast on over a sufficient number of needles to produce a swatch at least 4 inches wide. (If the pattern calls for 16 stitches to 2", then 16 x 2 = 32 stitches to cast on). Now knit 4 inches of rows at the first suggested tension number. (If the pattern calls for 22 rows to 2", 22 x 2 = 44 rows to knit). Knit 2 rows using a contrast color, change to the next higher tension and with garment yarn knit another 4", knit 2 rows with contrast color, change to the 3rd higher tension and knit another 4" and then bind off.




Roll the swatch into a cylinder over its length and pull on both ends, unroll it and stretch it diagonally by pulling on the four corners. Allow the swatch to rest and settle (preferably overnight) and then using a stitch gauge or a ruler, count the number of stitches over a 2" width, then the number of rows over a 2" length in EACH of the 3 tensions. Select the tension number that produces the stitches and rows called for in the pattern. If none of them are correct, you are most likely using the wrong weight of yarn.




READING OF CHARTS


You will notice the instructions start at the bottom of the Chart and work UP. Follow the charts exactly as written and providing your sample stitch and row gauge is correct, your garment will come out the right size. Please remember that the section of garment as it is knitted on the machine, faces the same way as the Charts are in this magazine. Where two front pieces are needed, (or any other part of a garment that needs two sections) only one section is normally shown and the second section is usually made with reverse shaping. Set in sleeves are usually identical, but raglan sleeves have to be knitted with reverse shaping for the second sleeve.


READING OF SYMBOLS

To simplify Pattern Knitting, we use Symbols in the Line Drawings and the Chart Diagrams. In the Line Drawings the symbols are shown and are to be read as you look at them while knitting a garment. For instance, if

a Purl stitch faces you, the Purl stitch Symbol  is shown; if a knit stitch faces you (as when using the Ribber) then this Symbol  is shown. The Symbol  at the top of the Line Drawing is the center of the garment section and you use this as a guide for setting up the needles.

The following Symbols    are used for Eyelet Designs in the Line Drawings and also for Full Fashion shaping on the Charts. The Line Drawings have row numbers on the right side. Missing Row numbers are always knitted straight or plain.

In Holding Position Designs  selected needles are pushed into holding position for the stated number of rows. The numbers of rows appear at the right of the Line Drawings; Example: 1-4 means knit Rows 1 to 4; 5 to 7 means knit Rows 5 to 7, etc. This same Symbol is also shown on the Charts and is used for putting needles into holding position for Short Rows. The

Symbol  on the Charts is used to put needles back into working position when knitting Short Rows.

A number in a box stands for the number of rows to be knitted between shapings. Make shaping first, then knit the necessary number of rows. If for instance it reads:

1 st. 8 x



1 st. 10 x





As you will be reading the instructions from the bottom up, here is the way you will follow them: . . . Decrease or increase (depending on the direction of the garment outline) 1 st. at the row where the shaping begins, then knit 8 rows, make the next decrease, then knit 8 rows, until you have decreased (or increased) 1 st. 10 x and you have knitted 8 rows after each decrease (or increase) (1 st. 10 x +8 rows 10 x). Now begin the first decrease (or increase) for the shaping (which has to be made 8 x) in every 6th row. Decrease (or increase) 1 st. first, then knit 6 rows until you have decreased 1 st. 6 x and after each decrease (or increase) have knitted 6 rows (1 st. 8 x + 6 rows 8 x).


Where shapings are given without a boxed number as on most armholes, necklines, etc., make the shapings on every second row (on each side of course).


(See below for more Pattern Stitch Symbols.)


PATTERN STITCH SYMBOLS


 = knit stitch


 = purl stitch


 = empty needle (leave in working position)


 = needle not used (in the out of work position)


 = needle in the holding position

 = Needles back into working position.


 = 2 stitches on 1 needle - either transferred from the right side or the left side, then put the needle into holding position

 = needle holding 2 stitches. Stitch has been transferred from the LEFT

 = needle holding 2 stitches. Stitch has been transferred from the RIGHT

 = 3 stitches on 1 needle. The 1st and 3rd stitch in a group of 3 needles has been hung on the 2nd or center needle.

 = Center of Garment Section.

 = Number of rows to be knitted between shapings.

The diagrams (Line Drawings) for pattern work are followed just as they are shown and are to be read as you look at them while knitting the garment.

open darts



closed darts



YAKNS
by

knitking



For perfect garments you need perfect yarns... All of the garments in KNITKING MAGAZINE are made with gorgeous KNITKING YARNS... and they are available to you at approximately half what you would pay for comparable yarns at your local department store... A

big beautiful KNITKING Yarn Catalogue with 300 actual samples, in an assortment of colors you will not find elsewhere, literally costs you nothing... the two dollars you pay is deducted from your first ten dollar order. Send for your catalogue today.

KNITKING • 1128 Crenshaw Blvd., Los Angeles, California 90019