


knitking

magazine





DK 1069

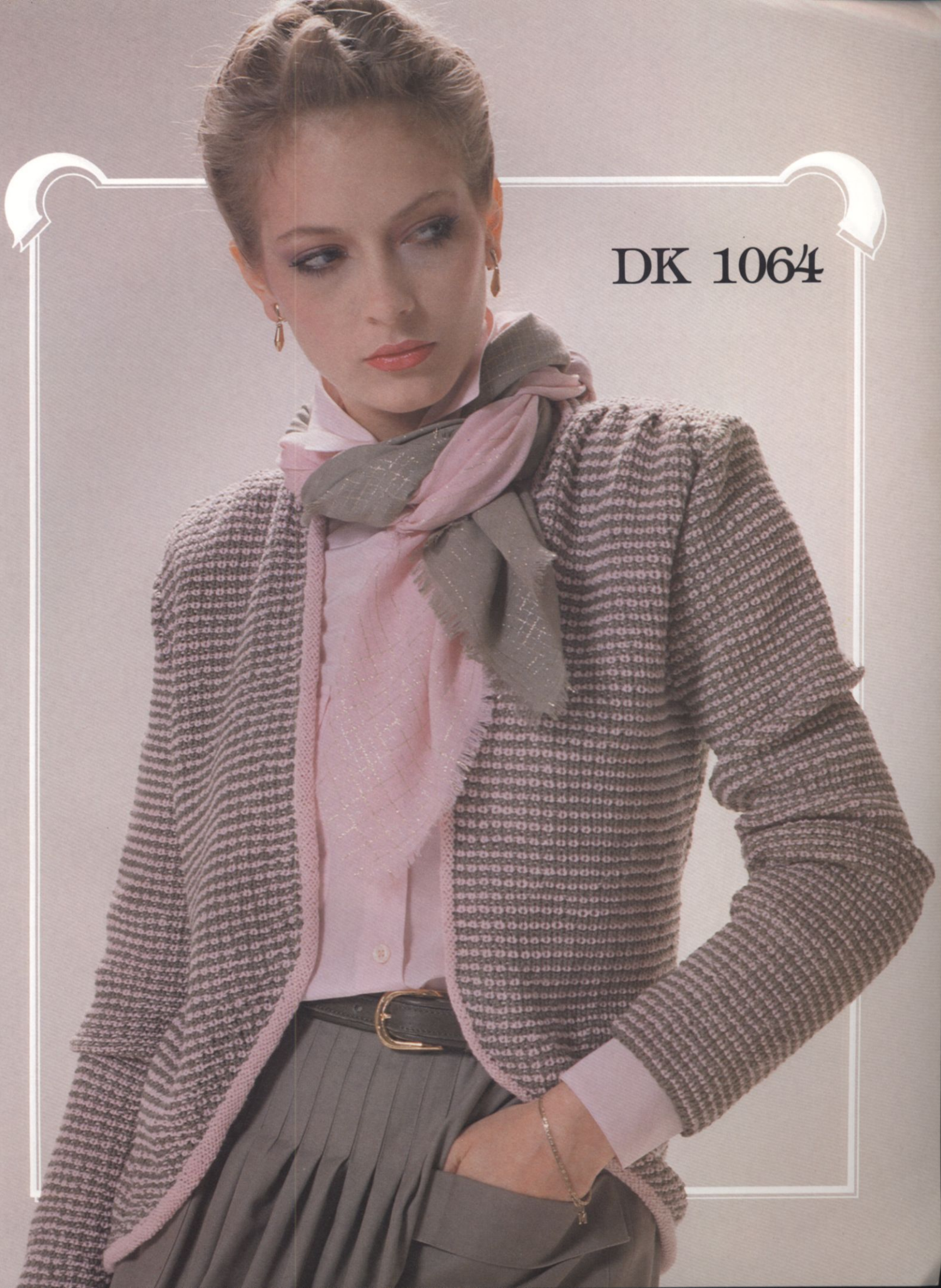


DK 1071

DK 1074



DK 1064



DK 1062

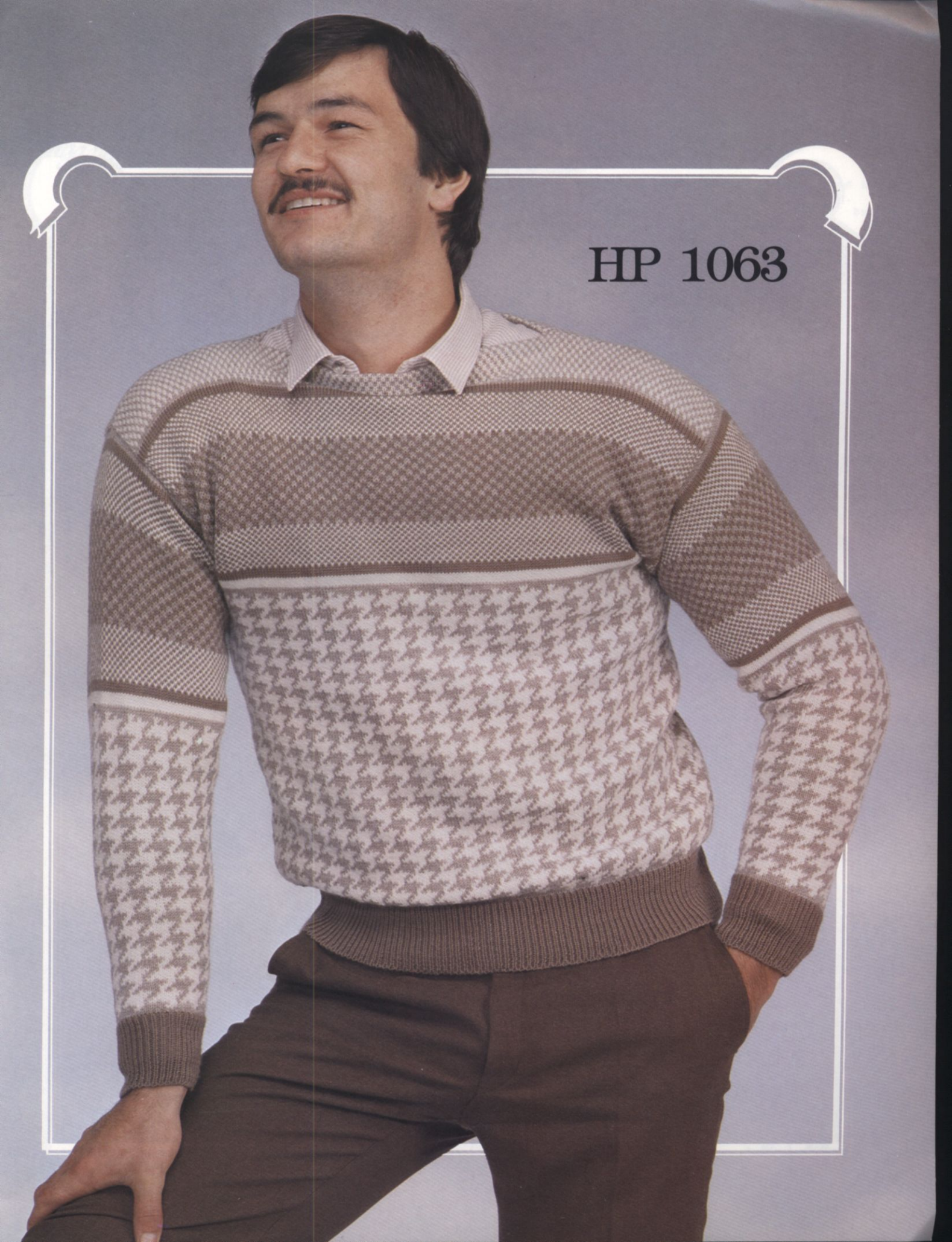


DK 1066

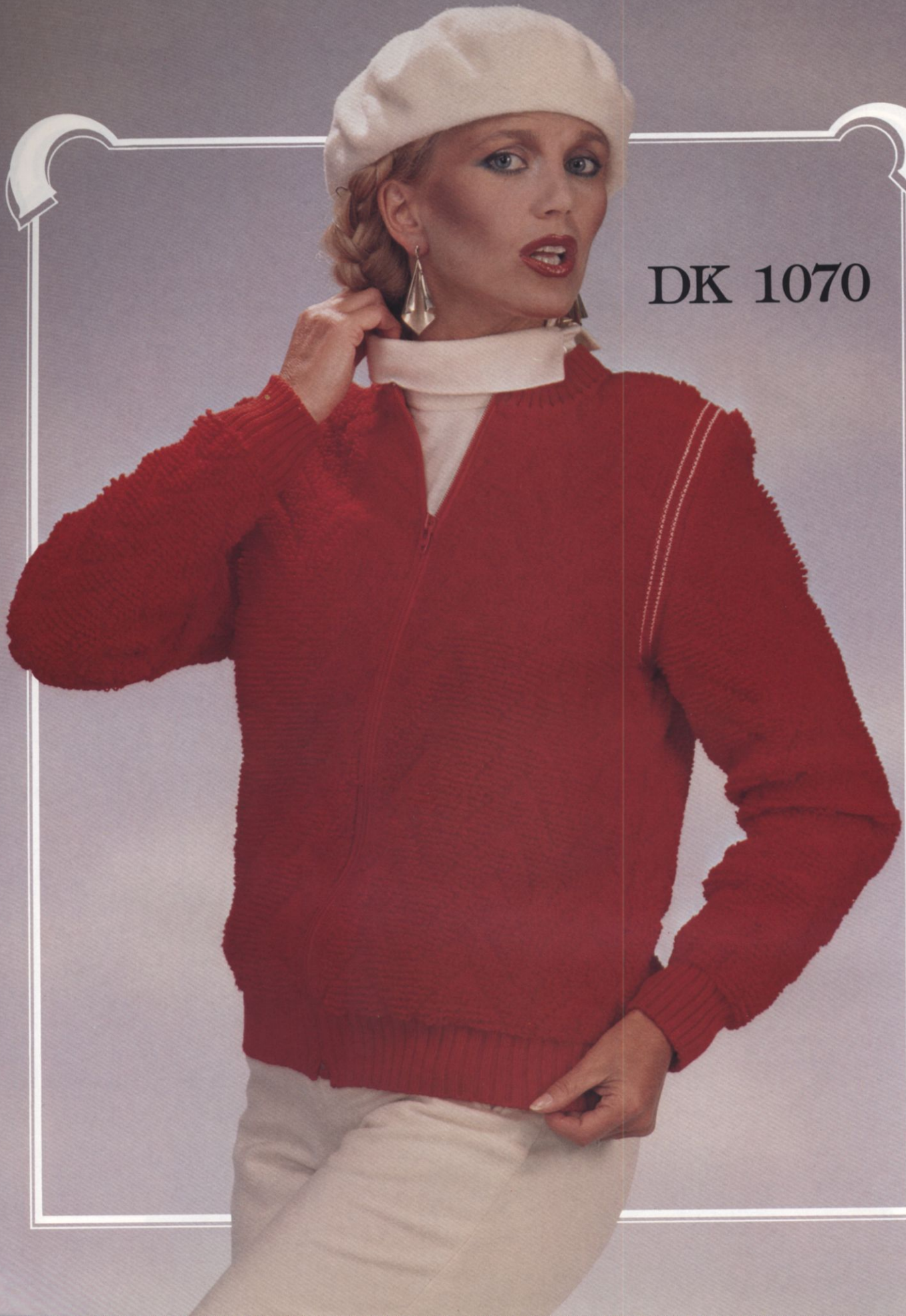


DK 1073





HP 1063



DK 1070

knitking

magazine

editorial

TABLE OF CONTENTS **PAGE NO.**

DK 1054 - Woman's Pullover, Hat, Mittens and Scarf	14
DK 1055 - Woman's Pullover	15
DK 1056 - Teen Age Pullover	16
DK 1057 - Woman's Vest	18
DK 1058 - Woman's Pullover	19
KK 1059 - Child's Pullover	21
KK 1060 - Child's Pullover	22
KK 1061 - Child's Pullover	23
DK 1062 - Woman's Sleeveless Pullover	24
HP 1063 - Man's Pullover	25
DK 1064 - Woman's Jacket	26
DK 1065 - Teen Age Pullover	27
DK 1066 - Woman's Pullover.	28
DK 1067 - Woman's two piece Dress	30
KK 1068 - Child's Pullover & Pants	32
DK 1069 - Woman's Robe or Housecoat	33
DK 1070 - Woman's Punch Pile Jacket	34
DK 1071 - Woman's Jacket	35
DK 1072 - Woman's Jacket	36
DK 1073 - Woman's Cardigan	37
DK 1074 - Woman's Jacket & Skirt	39

It's thirty years since KNITKING introduced home knitting machines to the American consumer. Their efficiency seemed magical at that time... but all they knitted was basic Stockinette stitch. Yarn was laid on the needles by hand and manual selection was necessary in order to make any kind of fancy stitch... Ribbers, Color Changers, Charting Accessories, Transfer Carriages etc. had not yet been invented. Machine knit Patterns were non-existent so most of the garments made were from converted hand knit patterns.

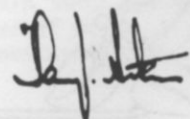
Demonstrating and selling knitting machines in the old days was much more complicated and difficult than it is with the marvelous automatic, programmed, computerized knitters of today. Consequently knitting machine owners were few and far between and Seminars were acknowledged as events for consideration in the future:

The future is now and Seminars are taking place every month in various parts of the country and from reports we receive, some of them are excellent. Some are used entirely as vehicles for promoting a particular brand of knitting machine and some are not as educational or advanced as some participants would like... Generally speaking however, Seminars are of great value to knitting machine owners... It is always of greater benefit to see a technique or skill demonstrated and be able to ask direct questions than it is to follow written instructions... Knitting machine Seminars are also a great medium for meeting people with similar interests, for making new friends and generally having a good time.

Visitors to our KNITKING premises in Los Angeles will tell you that it looks as though we are conducting Seminars six days a week, our School is always so crowded. We actually only have one Seminar a year and it's a big one... This year it will start on Monday, October 11th and run through Saturday, the 16th... Obviously, as the oldest and most respected name in knitting machines and service, we are expected to put on the best show.. and that is what we intend doing again this year. Please plan to be with us.

THE LINKER IS BACK

Several years ago we introduced the Bellinky Linking Machine to the U.S. market. It proved to be the ideal tool for the fast, accurate seaming of knits and we sold a lot of them. Unfortunately after approximately 3 years the manufacturers withdrew it from the market claiming that it was too expensive to produce and they were losing money on it. Since that time we have received many hundreds of enquiries for this excellent tool and have encouraged its reproduction. We are now happy to tell you that we have it once more. It is being made by another company but is exactly the same in design and only slightly higher in price. We are having it made in the KNITKING name and it will be known as the KNITKING LINKER. Our first delivery will be in late June and initially supplies will be limited so be sure to place your order early.



Publisher: KNITKING CORPORATION, 1128 Crenshaw Blvd., Los Angeles, Calif. 90019. Telephone: (213) 938-2079. Published bi-monthly. Subscriptions: USA-\$18.00 annually, single copies \$4.00. \$21.00 all other countries. The entire contents of KNITKING MAGAZINE are copyright and must not be reproduced in any shape or form without the express permission, in writing of the publisher. ©COPYRIGHT 1982 by KNITKING CORPORATION.

Pattern Symbols

Knitting – Chart Symbols

- Size Symbols (2nd Size)
 3rd Size
 Color Number
 Cast on
 Stitch
 Row
 Hem
 Bind off
 Stockinette stitch – worn on the Knit side.
 Stockinette stitch – worn on the Purl side.
 Knit 1, Purl 1 Ribbing
 Ribbing Pattern – worn on the Knit side.
 Ribbing Pattern – worn on the Purl side.
 Closed Dart
 Open Dart
 Put on a stitch holder
 Reverse 1 section
 On every other needle
 Number of Rows between Shapings. Make increase (or decrease) FIRST, then knit 4 rows. For example: 3 x 1 means decrease (or increase) 1 st., knit 4 rows; decrease 1 st., knit 4 rows; decrease 1 st., knit 4 rows; decrease 1 st., knit 4 rows. All decreasing (or increasing) without row numbers as shown must be shaped on every 2nd row.

- Increase
 Increase 2 sts. With a transfer tool, move the sts. over the left (or right) leaving 2 empty needles at the point of increase. At the increase point, move 1 st. to the left, (or right) so that there is an empty needles on each side of a stitch. On each side of the center stitch, pick up a stitch from the row below and hang it onto the empty needle.
 3 stitches on 1 needle. The 1st and 3rd stitch in a group of 3 has been hung on the 2nd or center needle.
 Short Row increase or decrease; for instance on a flared skirt knitted sideways.
 Pattern Stitch
 Pattern Stitch – worn on the Knit side.
 Pattern Stitch – worn on the Purl side.
 Repeat

- I = Front
- II = Back
- III = Sleeve
- IV = Skirt Front
- V = Skirt Back
- VI = Collar
- VII = Pocket
- VIII = Band
- IX = Belt
- X = Cuff
- XI = Pants Front
- XII = Pants Back

Finishing – Chart Symbols

- Match numbers on section for assembling.
 Ease
 Fold Line
 Turn to the wrong side and hem.

Stitch Symbols

 - Needles in holding position
 - Needles back into working position.
 - Empty needle (leave in working position)
 - Needle not used (in the out of work position).
 - Two stitches on 1 needle, either transferred from the right side or the left side, then put into holding position.
 - Needle holding 2 stitches. Stitch has been transferred from the RIGHT.
 - Needle holding 2 stitches. Stitch has been transferred from the LEFT.
 - Center of garment section



General Instructions

HOW TO READ THE CHARTS AND INSTRUCTIONS

There are 3 sizes given for each Pattern in KNITTING MAGAZINE. Above each Chart for the different sizes, you will see that the first and smaller sizes might be shown as 8/10, the second size as (12/14) and the third as [16/18]. Check the measurements at the bustline and hips on the Charts to be certain that you will knit the correct size, remembering these are ACTUAL measurements of the completed section and that there must be a bigger allowance at the bustline and hipline for a Jacket or a Coat than there would be for a fitted dress or a fitted blouse or pullover. The question in your mind should be "How do I want this garment to fit...?"

When you have chosen the size you need, you can follow the Charts as shown. You will notice that where the shapings are the same FOR ALL SIZES, only 1 set of shapings will be shown on the first Chart and if you are knitting the 2nd or 3rd size, you simply follow the shapings as given for the first size. If the shapings are different, this will be shown on the Charts and you should follow them as given.

On the Charts, increases and decreases will be shown as follows

5x1

6 The number in the box means number of ROWS between the shapings, while the 5x1 above the box means - 1 st. 5x... so you will increase or decrease 1 st. every 6th row 5x.

ARMHOLE SHAPINGS - NECK SHAPINGS - SHOULDER SHAPINGS - are made on every 2nd row UNLESS there is a number in a box along side or below the shapings. The rule is... where there is no box with a number, the shaping is made on every 2nd row.

THE PRINTED INSTRUCTIONS

You can follow the printed instructions or use them in combination with the Charts. Where there is any question in the printed instructions, you have the Charts to show you how the section will look.

The 3 sizes, with the different amounts of cast on stitches and the different shapings will look like this...

Cast on 124 (136) [148] sts. You will
Cast on 124 sts. for the first size.
Cast on 136 sts. for the 2nd size.
Cast on 148 sts. for the 3rd size.

The important thing to remember is that you MUST READ AHEAD so that you KNOW what to do for the size you are knitting. Sometimes where the number of stitches are the same but the number of times different, you will find shapings like this...
3 sts. 1x (2x) [3x], 2 sts. 1x (2x) [3x], 1 st. 3x (4x) [5x].
As you see, you MUST read ahead in order to follow the instructions as given for YOUR SIZE. The rows will be different for the different sizes in some cases... Shoulder and Neck shapings usually are worked at the SAME TIME for the back section - so watch for the words AT THE SAME TIME.

HOLDING STITCHES ON THE LEFT SIDE WHILE SHAPING THE RIGHT SIDE

When knitting a section of garment in stockinette stitch, it is easy to hold the stitches on the left side while knitting the right half, but when knitting a Pattern Stitch such as a Norwegian Design, a Holding Position Design, Weaving, etc., you should use the following method. For the NECK SHAPING, we tell you to bind off the center sts., put the needles on the left into holding position and complete the right half first.... so with a strand of contrast yarn, knit ALL of the left side stitches manually by hand, pulling each stitch back against the needle bed to the OUT OF WORK position. When the right side is completed, carefully pull the stitches held on contrast, forward into working position and as you do so, undo the contrast yarn, line up the needles (KNITTING AM 3 machine owners, put the stitches under the sinkers) and complete the left half.

If you own a Japanese machine, you may find that when knitting the right half with the left side held in this way, the sinker plate will mark the left side while you are knitting the right half. To prevent this marking, you can tape a piece of paper over the knitting, underneath the sinkers, or if you own a Reversing Bar, you can hang this onto the Sinkers while you are knitting the right half. When hanging the Reversing Bar, be sure the eyes of the bar go BETWEEN the Sinker Posts on the upper part of the bar so that the tips of the bar only - show above the needle bed.

FULL FASHION DECREASING OR INCREASING

For Stockinette stitch, always use the Full Fashion method for increasing or decreasing.

TO DECREASE: Hang the 3rd stitch onto the 2nd stitch then move the stitches in to fill the empty needle.

TO INCREASE: Move the 2 end stitches 1 needle outward, then pick up the 3rd stitch from the row below and hang it onto the empty needle.

FINISHING: Block all sections. For PULLOVERS, JACKETS, and DRESSES: Join front to back at sides and shoulders. Sew sleeves together and set in. Hem lower edge and sleeve edges if needed. For a double neckband or armhole band, sew 1 edge to the inside and 1 to the outside of neck or armhole. For a single ribbed band, sew 1 edge to the outside of neck or armhole edge. For a cardigan or jacket with buttonholes, finish buttonholes and sew on buttons.

PANTS: Join front to back at sides. Sew inside leg seams, then join center front and back. Make hem at waistline and insert elastic. Hem lower edge of pants legs.

THE SAMPLE SWATCH

Before you begin to knit any garment, you will need to knit a sample piece using the yarn you have chosen for your garment, so that you can check the stitch and row gauge which must measure the correct number of stitches and rows in 5 cm (2 inches).

For each Pattern in KNITTING MAGAZINE, we give you 3 tension numbers to work from and if you use the specified yarn for the garment, you should be able to get the correct stitch and row gauge using one of these numbers. Here is a very easy way to make your sample swatch and count the stitches and rows without actually counting, by using our KNITTING Converta Tape.

Supposing the Tension Numbers for the Stitch and Row Gauge are given as 5 to 7. Set the Tension Dial to the first number which is 5. With contrast waste yarn, and using the quick cast on method, cast on 60 stitches and knit 10 rows. Change to garment yarn and turn the Row Counter to 0. Knit 30 rows. Counting from each end, knit the 10th stitch on each side by hand with a small piece of contrast yarn. Leave the needles in working position and knit 30 rows (Row 60), then knit 4 rows with contrast waste yarn. Turn the Row Counter to 0 and the Tension Dial to 6 and with garment yarn, knit 30 rows. Mark the 10th stitch on each side as you did before, knit 30 rows, then 4 rows with contrast waste yarn. Turn the Row Counter to 0 and with Tension 7, repeat the above once more, ending with 10 rows of contrast waste yarn. Remove the work from the machine by passing the Slide across the needles without yarn (sometimes called 'dropping').

Pull and stretch the sample piece both lengthwise and diagonally from corner to corner, then lengthwise again. Do not count the stitches and rows immediately, but allow the sample to rest for several hours or even over night. This will allow the stitches and rows to return to their basic form.

When your sample has rested and you are ready to count the stitches and rows, the KNITTING CONVERTA TAPE will do the counting for you without any counting on your part. Use the Tape as follows:

Measure the stitches with the TAPE, BETWEEN the 40 stitches marked with contrast waste yarn. Push the SLIDE so that the LEFT EDGE lines up to this exact measurement. Now look down along side the SLIDE and find the number 40 on the TAPE. The number directly opposite on the SLIDE will be your Stitch Gauge to 5 cm (2"). To find the number of rows in 5 cm (2"), place the TAPE to measure over the 60 rows, push the SLIDE to this number with the left edge lined up, the look for the number 60 on the TAPE and directly opposite this will be the number of rows to 5 cm (2")

If you do not own a KNITTING CONVERTA TAPE, you must mark a 5 cm (2 inch) square in the center of the knitting, then count the number of stitches and rows within the square.

DK 1054

WOMAN'S PULLOVER, HAT, MITTENS, SCARF

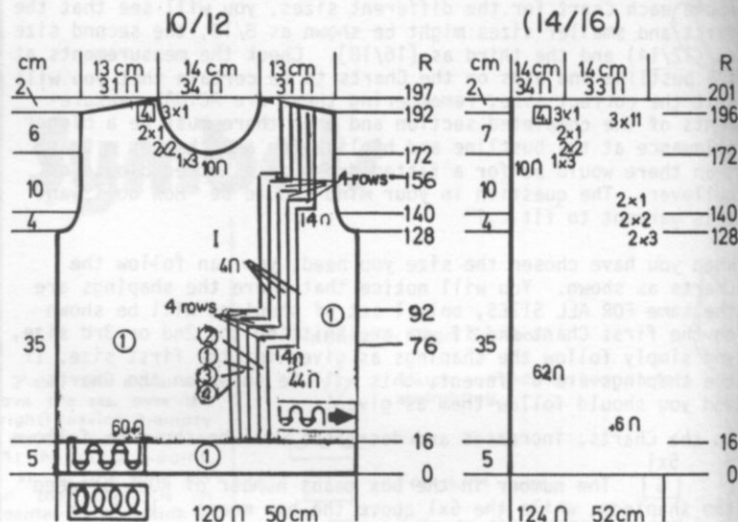
SIZES: 10/12 (14/16)
YARN: Euro Sport or any yarn to give stitch and Row Gauge.

GRAMS:
color 1 500 500
color 2 100 100
color 3 100 100
color 4 100 100

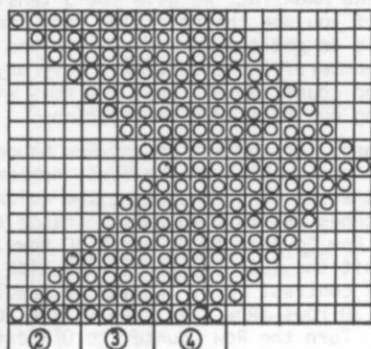
TENSION: 9 or 10
GAUGE: 12 sts. 16 rows = 5 cm (2")

Stockinette stitch with an INTARSIA Design. Follow the Line Drawing and Chart. Bands are K1, P1 Ribbing. If you prefer, you can work the Design on Hat, Mittens and lower sleeve using a duplicate stitch after pieces are completed.

FINISHING: See General Instructions. Work Duplicate stitch on Mittens, Hat and lower sleeve before completing seams if you did not knit the Design.



FRONT: I



SCARF:

Cast on 52 sts. with color 1 and work Stockinette stitch.
*Work 10 rows color 1, 4 rows color 4, 4 rows color 3, 4 rows color 2. REPEAT from * 2x more (Row 66).
Continue in Stockinette stitch with color 1 to Row 330, then REVERSE the color stripes to Row 396. Bind off.

COLLAR:

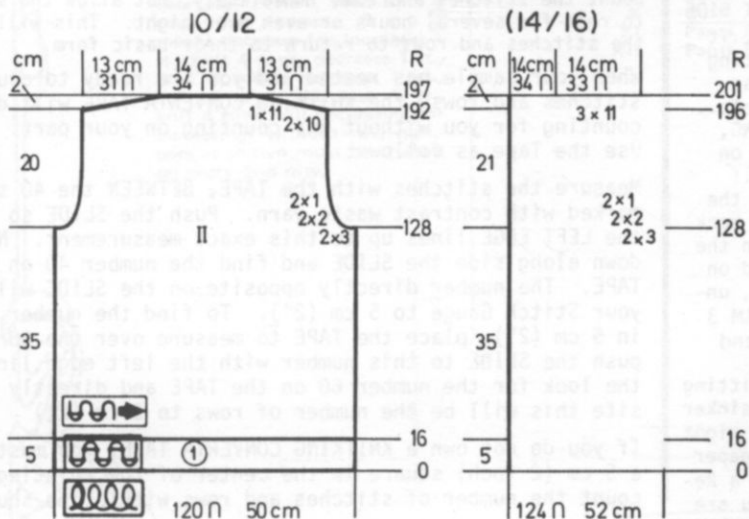
Cast on 128 sts. with color 1 and work 46 rows Ribbing. Bind off, or remove onto waste yarn.

Cast on 120 (124) sts. with color 1 and work 16 rows Ribbing. Continue in Stockinette stitch with INTARSIA Design as follows:

44 (46) sts. in color 1, 4 sts. color 2, 4 sts. color 1, 4 sts. color 3, 4 sts. color 4, 60 (62) sts. in color 1. Follow the Chart for the INTARSIA, moving the sts. as shown.

AT THE SAME TIME, after Row 128, SHAPE ARMHOLE same as the back and after Row 172, bind off the center 10 sts., put the needles on the left into holding position and complete the right side first. *ON NECK SIDE, bind off 3 sts. 1x, 2 sts. 2x, 1 st. 2x, then every 4th row 1 st. 3x. After Row 192 (196) SHAPE SHOULDER same as the back.

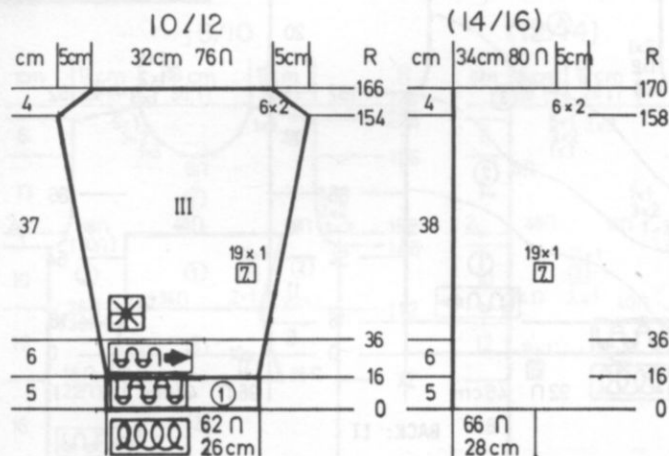
Bring the needles on the left into working position, knit 1 row to the left side, turn the Row Counter back to 172 and complete the left half. Follow the instructions from *.



BACK:

Cast on 120 (124) sts. with color 1 and work 16 rows Ribbing. Continue in Stockinette stitch. After Row 128, SHAPE ARMHOLE: ON EACH SIDE, bind off 3 sts. 2x, 2 sts. 2x, 1 st. 2x for both sizes. Knit to Row 192 (196). SHAPE SHOULDER: ON EACH SIDE bind off 10 sts. 2x, 11 sts. 1x. (11 sts. 3x). After Row 197 (201), bind off the remaining sts.

DK 1054



SLEEVES: III Make 1, reverse Design for second sleeve.
Cast on 62 (66) sts. with color 1 and work 16 rows Ribbing.
Continue in Stockinette stitch with color 1 to Row 36.
Work the Intarsia Design as shown on the Chart (or duplicate stitch it later) and AT THE SAME TIME, ON EACH SIDE, increase 1 st. every 7th row 19x.
After Row 154 (158) ON EACH SIDE, bind off 2 sts. 6x for both sizes.
After Row 166 (170), bind off the remaining sts.

HAT:

Cast on 120 sts. with color 1 and work 8 rows Ribbing.
Continue in Stockinette stitch with color 1.
Work 2 rows color 1, then center the ISOLATED INTARSIA design.
After Row 32, decrease 16 sts. evenly across and REPEAT these decreases every 2nd row 6x.
After Row 54, pull a double strand of yarn through the remaining sts. and pull up and tie securely.

MITTENS: Make 1, reverse 1

Cast on 24 sts. with color 1 and work 16 rows Ribbing.
Continue in Stockinette stitch with color 1 and AFTER knitting 2 rows, put in the INTARSIA DESIGN (isolated) with point of design on THUMB side.
After Row 36, ON THE LEFT, remove 8 sts. onto a stitch holder.
After Row 66, work SHORT ROWS: ON EACH SIDE, put into holding position 2 sts. 5x.
After Row 86, REVERSE the Short Rows. Bring 2 sts. back into working position every 2nd row ON EACH SIDE.
After Row 125, CAST ON 8 sts. on the LEFT (use contrast waste yarn - so you will have open sts).. Knit to Row 156, then transfer every other stitch to the Ribber and work K1, P1 Ribbing to Row 172. Bind off. REVERSE THE THUMB SIDE for second Mitten.
THUMB: - Pick up the open sts. of thumb (8 on each side). With color 1, knit 8 rows. Decrease 4 sts. evenly across. Knit 2 rows. Decrease 4 sts. evenly across, knit 2 rows. Remove the remaining sts. onto strand of yarn and pull up and secure.

DK 1055

WOMAN'S PULLOVER

SIZES: 8 (10/12)
YARN: Nomotta Orlanda
NO KIT AVAILABLE
color 1 150 200
color 2 100 100
color 3 100 100
color 4 250 300
TENSION: 9 or 10
GAUGE: 10 sts. 17 rows = 5 cm (2")

An INTARSIA DESIGN. Bands are K1, P1 Ribbing.

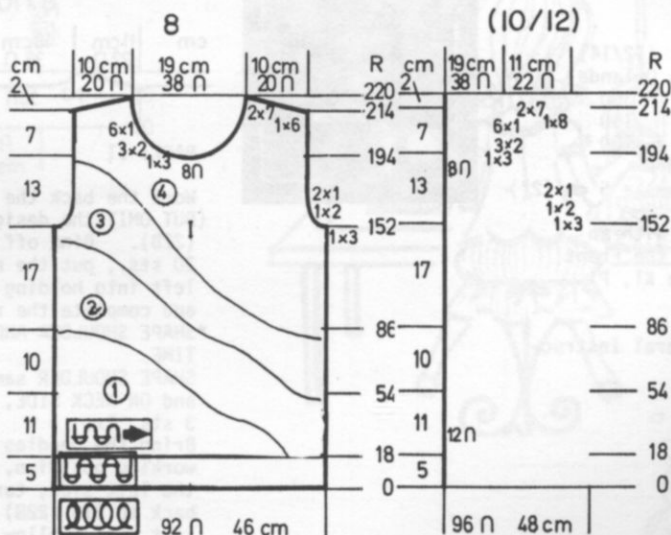
NOTE: - Draw the Chart and Design onto KNITLEADER then you can work the design using SHORT ROWS and change colors as shown on drawing.

FINISHING: See General Instructions.



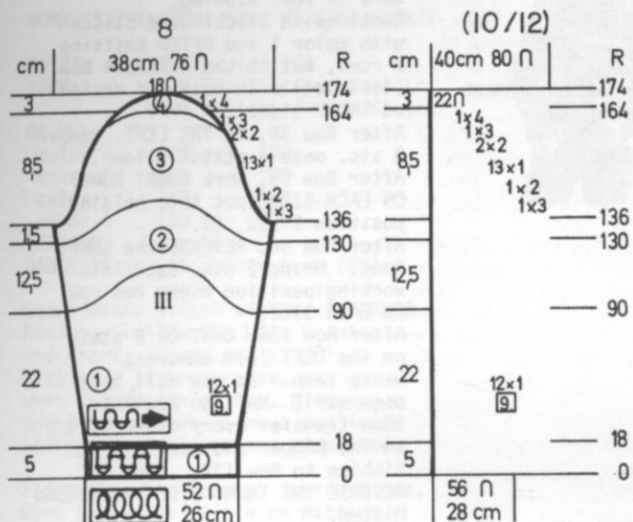
FRONT:

Work the front the same as the back (reverse Design) to Row 194. Bind off the center 8 sts., put the sts. on the left into holding position and complete the right side first.
*ON NECK SIDE, bind off 3 sts. 1x, 2 sts. 3x, 1 st. 6x for both sizes.
After Row 214, SHAPE SHOULDER same as the back.
Bring the needles on the left into working position, knit 1 row to the left side, turn the Row Counter back to 194 and complete the left half. Follow the instructions from *.



Continued →

DK 1055



SLEEVES: III

Cast on 52 (56) sts. with color 1 and work 18 rows Ribbing. Continue in Stockinette stitch and INTARSIA design as shown on the Chart.

ON EACH SIDE, increase 1 st. every 9th row 12x.

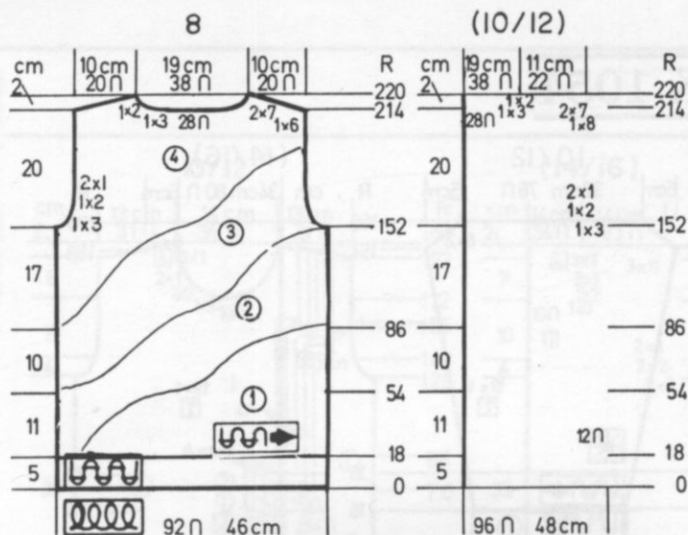
After Row 136, SHAPE CAP:

ON EACH SIDE, make the bind offs as shown on the Chart for YOUR SIZE.

After Row 174, bind off the remaining 18 (22) sts.

NECKBAND:

With color 4, cast on 94 sts. and work 10 rows Ribbing. Bind off or remove onto contrast waste yarn.



BACK: II

Cast on 92 (96) sts. with color 1 and work 18 rows Ribbing. Continue in the INTARSIA design, changing the colors as shown on the Chart.

AT THE SAME TIME, after Row 152, SHAPE ARMHOLE: ON EACH SIDE bind off

3 sts. 1x, 2 sts. 1x, 1 st. 2x for both sizes.

After Row 214, bind off the center 28 sts., put the sts. on the left into holding position and complete the right side first.

*SHAPE SHOULDER AND NECK at the same time.

FOR SHOULDER, bind off

6 sts. 1x, 7 sts. 2x (8 sts. 1x, 7 sts. 2x)

FOR NECK, bind off

3 sts. 1x, 2 sts. 1x for both sizes. Bring the needles on the left into working position, knit 1 row to the left side, turn the Row Counter back to 214 and complete the left half. Follow the instructions from *.

DK 1056

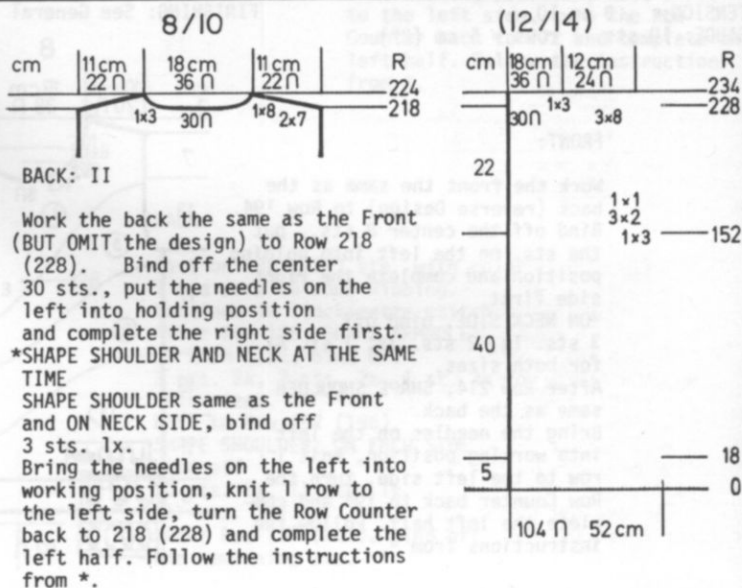
TEEN AGE PULLOVER

SIZES: 8/10 (12/14)
 YARN: Nomotta Orlanda
 color 1 300 350
 color 2 100 150
 color 3 100 100
 TENSION: 9 or 10
 GAUGE: 10 sts. 17 rows = 5 cm (2")



Stockinette stitch with an INTARSIA design on the Front section. Bands are K1, P1 Ribbing.

FINISHING: See General Instructions.



BACK: II

Work the back the same as the Front (BUT OMIT the design) to Row 218 (228). Bind off the center 30 sts., put the needles on the left into holding position and complete the right side first.

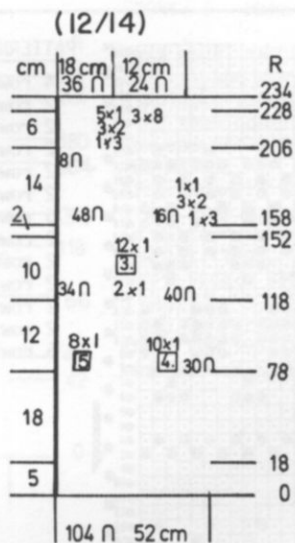
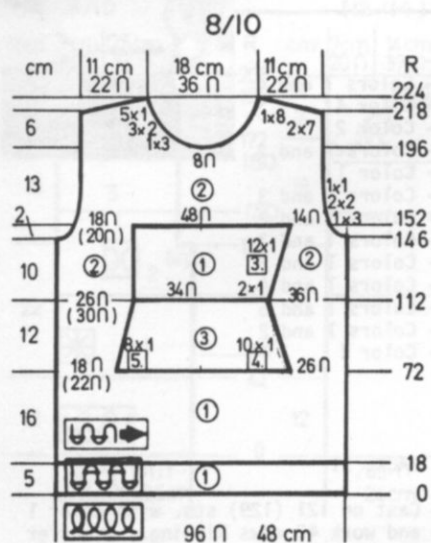
*SHAPE SHOULDER AND NECK AT THE SAME TIME

SHAPE SHOULDER same as the Front and ON NECK SIDE, bind off 3 sts. 1x.

Bring the needles on the left into working position, knit 1 row to the left side, turn the Row Counter back to 218 (228) and complete the left half. Follow the instructions from *.

DK 1056

FRONT: I



Cast on 96 (104) sts. with color 1 and work 18 rows Ribbing. Continue in Stockinette stitch with color 1 to Row 72 (78).

NOTE: You can work the INTARSIA design as shown on the Chart or if you prefer, you can knit EACH SECTION SEPARATELY but be sure to add an extra stitch on each side of each section for the seam.

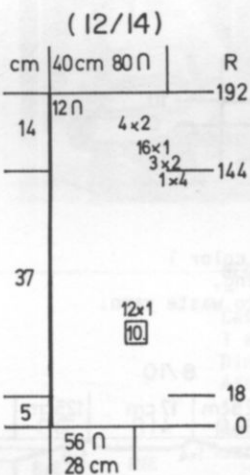
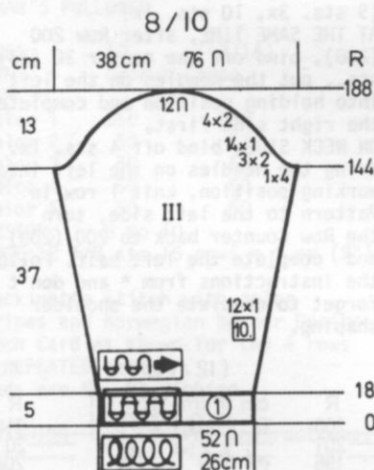
Follow the Chart for the INTARSIA design to Row 152 (158) BUT AT THE SAME TIME, after Row 146 (152), SHAPE ARMHOLE:

ON EACH SIDE, bind off 3 sts. 1x, 2 sts. 3x, 1 st. 1x for both sizes.

After Row 196 (206), bind off the center 8 sts., put the needles on the left into holding position and complete the right side first.

*ON NECK SIDE, bind off 3 sts. 1x, 2 sts. 3x, 1 st. 5x for both sizes and after Row 218 (228) SHAPE SHOULDER: Bind off 7 sts. 2x, 8 sts. 1x. (8 sts. 3x).

Bring the needles on the left into working position, knit 1 row to the left side, turn the Row Counter back to 196 (206) and complete the left half. Follow the instructions from *.



COLLAR:

Cast on 94 sts. with color 1 and work 36 rows Ribbing. Bind off or remove onto waste yarn.

SLEEVES: III

Cast on 52 (56) sts. with color 1 and work 18 rows Ribbing. Continue in Stockinette stitch. ON EACH SIDE, increase 1 st. every 10th row 12x for both sizes. After Row 144, SHAPE CAP: Please follow the bind offs ON EACH SIDE as shown on the Chart for your size. After Row 188 (192), bind off the remaining sts.



DK 1057



WOMAN'S VEST

SIZES: 8/10 (12/14)

YARN: Amore

GRAMS:

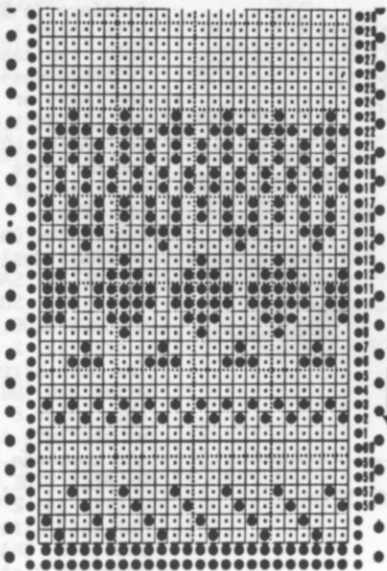
color 1	350	400
color 2	50	50
color 3	50	50
color 4	50	50
color 5	50	50

TENSION: 8 or 9

GAUGE: 12 1/2 sts. 16 rows = 5 cm (2")

A Norwegian Design using 3 Punch Cards. Punch your own Cards and follow the instructions for changes in Designs. Bands are K1, P1 Ribbing.

FINISHING: See General Instructions. Make twisted cord for tie at waist. Sew on Buttons.



PATTERN 3

- 4 rows - Colors 1 and 4
- 2 rows - Color 4
- 2 rows - Color 2
- 2 rows - Colors 1 and 2
- 2 rows - Color 1
- 2 rows - Colors 1 and 3
- 6 rows - Colors 1 and 2
- 2 rows - Colors 1 and 3
- 2 rows - Colors 1 and 5
- 2 rows - Colors 1 and 4
- 2 rows - Colors 1 and 5
- 2 rows - Colors 1 and 2
- 6 rows - Color 1

BACK: II

Cast on 121 (129) sts. with color 1 and work 42 rows Ribbing. Transfer the Ribber sts. and after Row 43, make 1 Picot Row for Cord tie. After Row 44, continue in Pattern 2 - one time only then continue with Pattern 1 to Row 70.

Continue with Pattern 2.

After Row 114 (118), SHAPE ARMHOLE: ON EACH SIDE, bind off 8 sts.

After Row 130 (134), continue in Pattern 3 to Row 160 (164).

Continue in Pattern 1.

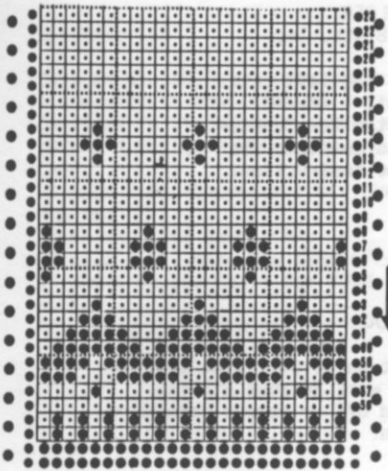
After Row 196 (204), SHAPE SHOULDER and watch for NECK SHAPING.

FOR SHOULDER, ON EACH SIDE, bind off 8 sts. 3x, 9 sts. 1x.

(9 sts. 3x, 10 sts. 1x)

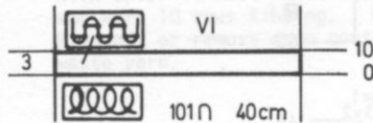
AT THE SAME TIME, after Row 200 (208), bind off the center 30 (33) sts., put the needles on the left into holding position and complete the right side first.

*ON NECK SIDE, bind off 4 sts. 1x. Bring the needles on the left into working position, knit 1 row in Pattern to the left side, turn the Row Counter back to 200 (208) and complete the left half. Follow the instructions from * and don't forget to complete the shoulder shaping.



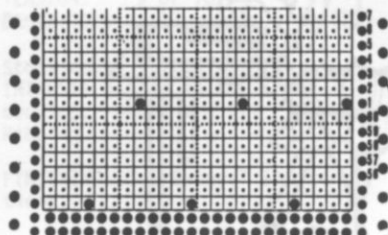
PATTERN 1 -

- 2 rows - Colors 3 and 5
- 1 row - Color 1
- 1 row - Color 1 and 4
- 2 rows - Colors 2 and 4
- 4 rows - Colors 1 and 2
- 1 row - Color 1
- 2 rows - Colors 1 and 5
- 2 rows - Colors 1 and 3
- 4 rows - Color 1
- 3 rows - Colors 1 and 3
- 6 rows - Color 1



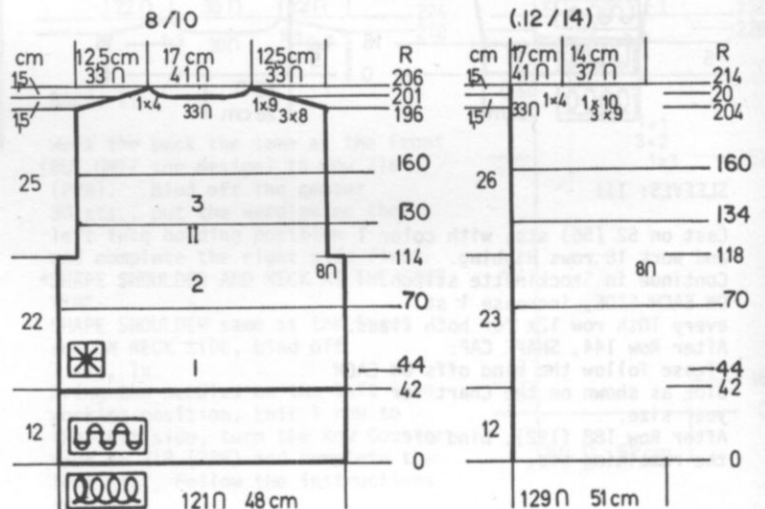
NECKBAND: VI

Cast on 101 sts. with color 1 and work 10 rows Ribbing. Bind off or remove onto waste yarn.

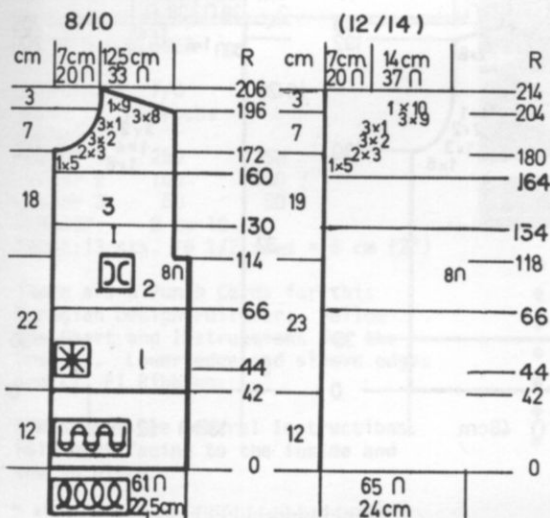


PATTERN 2 - Colors 1 and 3

REPEAT PUNCH CARD THROUGH ROW 49 then punch 2 rows of holes for connecting Card.



DK 1057



FRONT: I Make 1, reverse 1.

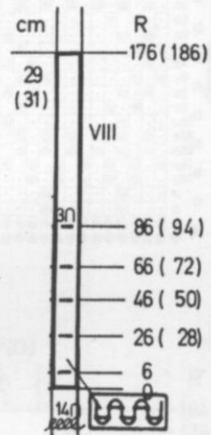
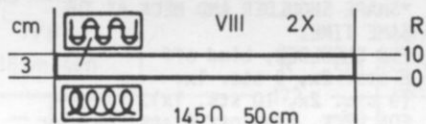
Cast on 61 (65) sts. with color 1 and work 42 rows Ribbing. Transfer the Ribber sts. then continue with Picot Row and PATTERNS SAME AS FOR THE BACK.
 After Row 114 (118), bind off 8 sts. for Armhole and continue in Pattern as established to Row 171 (179).
SHAPE NECK: Bind off 5 sts. 1x, 3 sts. 2x, 2 sts. 3x, 1 st. 3x for both sizes.
 After Row 196 (204) **SHAPE SHOULDER** same as the back.

FRONT BANDS: Make 2 but omit Buttonholes in 1 section.

Cast on 14 sts. and work K1, P1 Ribbing.
 After Row 6, **MAKE BUTTONHOLE** over needles 6, 7, 8, counting from the LEFT edge.
 Make **BUTTONHOLES** over same needles after the Rows as shown on the Chart.
 After Row 176 (186), bind off.

ARMBANDS: Make 2. VIII

Cast on 145 sts. with color 1 and work 10 rows Ribbing.
 Bind off or remove onto waste yarn.



DK 1058

WOMAN'S PULLOVER

SIZES: 10 (12/14)
 YARN: Crocus Crepe

GRAMS:
 color 1 550 600
 color 2 50 50
 color 3 50 50
 color 4 50 50
 color 5 50 50

TENSION: 8 to 10
 GAUGE: 12 1/2 sts. 16 rows = 5 cm (2")

Stockinette stitch with color stripes and Norwegian Border Design.
 Punch Card as shown for the 4 rows of REPEATED design.
 Bands are K1, P1 Ribbing.

FINISHING: See General Instructions.

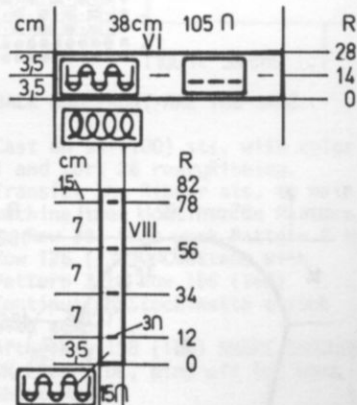


NECKBAND: VI

Cast on 105 sts. with color 1 and work 28 rows Ribbing.
 Bind off.
 After Sewing the front bands in place, sew 1 edge of neckband to inside and 1 to outside of neckline.

BUTTON & BUTTONHOLE BANDS.

Cast on 15 sts. and work in Ribbing.
 Make **BUTTONHOLES** over 3 center sts after Rows 12, 34, 56, 78.
 After Row 82, bind off.
 Make second band without the Buttonholes.



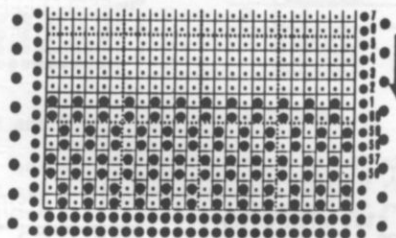
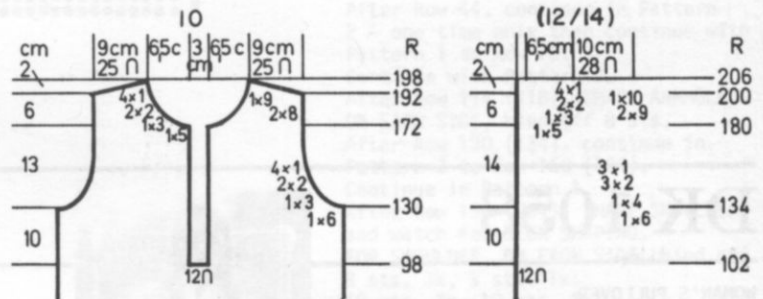
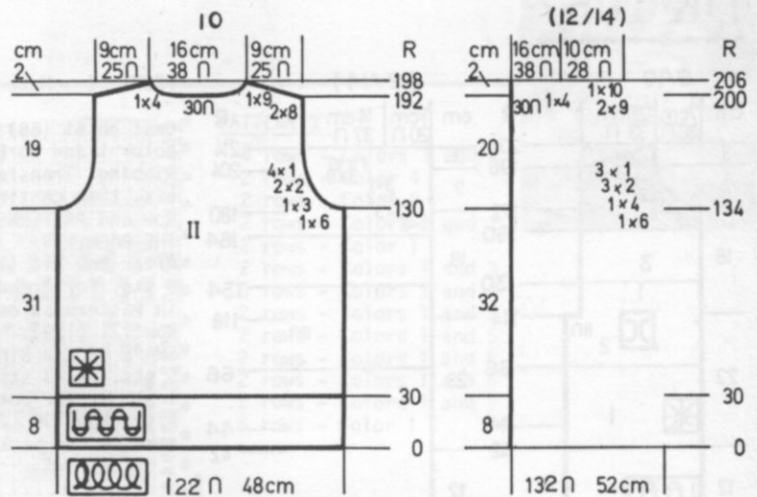
Continued →

DK 1058

BACK: II

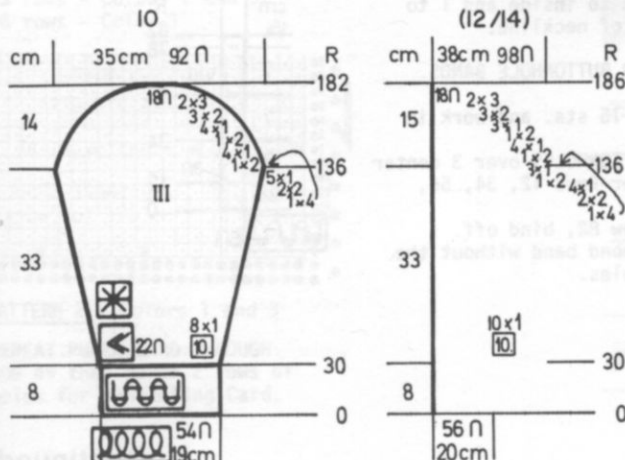
Cast on 122 (132) sts. with color 1 and work 30 rows Ribbing. Transfer the Ribber sts. to main machine and knit 2 rows color 1 then work in color stripes and Pattern as follows:

- *2 rows color 4
- 4 rows color 1
- 2 rows color 2
- 2 rows colors 3 and 5)
- 2 rows colors 1 and 5) Pattern
- Work 28 (30) rows Stockinette stitch with color 1 then REPEAT from * 3x more BUT AT THE SAME TIME, after Row 130 (134), SHAPE ARMHOLE. ON EACH SIDE, bind off 6 sts. 1x, 3 sts. 1x, 2 sts. 2x, 1 st. 4x. (6 sts. 1x, 4 sts. 1x, 2 sts. 3x, 1 st. 3x).
- After Row 192 (200), bind off the center 30 sts., put the needles on the left into holding position and complete the right side first.
- *SHAPE SHOULDER AND NECK AT THE SAME TIME.
- FOR SHOULDER, bind off 8 sts. 2x, 9 sts. 1x. (9 sts. 2x, 10 sts. 1x).
- FOR NECK, bind off 4 sts. 1x, for both sizes.
- Bring the needles on the left into working position, knit 1 row to the left side, turn the Row Counter back to 192 (200) and complete the left half. Follow the instructions from *.



FRONT: I

Work the front the same as the back to Row 98 (102). Bind off the center 12 sts., Put the needles on the left into holding position and complete the right side first. *Knit to Row 171 (179). SHAPE NECK: Bind off for both sizes, 5 sts. 1x, 3 sts. 1x, 2 sts. 2x, 1 st. 4x. After Row 192 (200) SHAPE SHOULDER same as the back. Bring the needles on the left into working position, knit 1 row to the left side, turn the Row Counter back to 98 (102) and complete the left half. Follow the instructions from *.



SLEEVES: III

Cast on 54 (56) sts. with color 1 and work 30 rows Ribbing. Continue in Stockinette stitch with Pattern 2x then continue in Stockinette - BUT AT THE SAME TIME, ON EACH SIDE, increase 1 st. every 10th row 8x (10x) After Row 136, SHAPE CAP: ON EACH SIDE, bind off Please follow the bind-offs ON EACH SIDE as shown on the Chart for your size. After Row 182 (186), bind off the remaining sts.

KK 1059



CHILD'S PULLOVER

SIZES: 7/8 (9/10)

YARN: Crocus

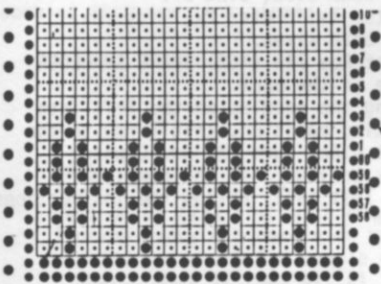
GRAMS:
 color 1 250 250
 color 2 100 100
 color 3 50 50

TENSION: 8 to 10

GAUGE: 13 sts. 16 1/2 rows = 5 cm (2")

There are 3 Punch Cards for this Norwegian Design Pullover. Follow the Chart and Instructions for the Designs. Lower edge and sleeve edges are K1, P1 Ribbing.

FINISHING: See General Instructions. Fold neck facing to the inside and sew in place.

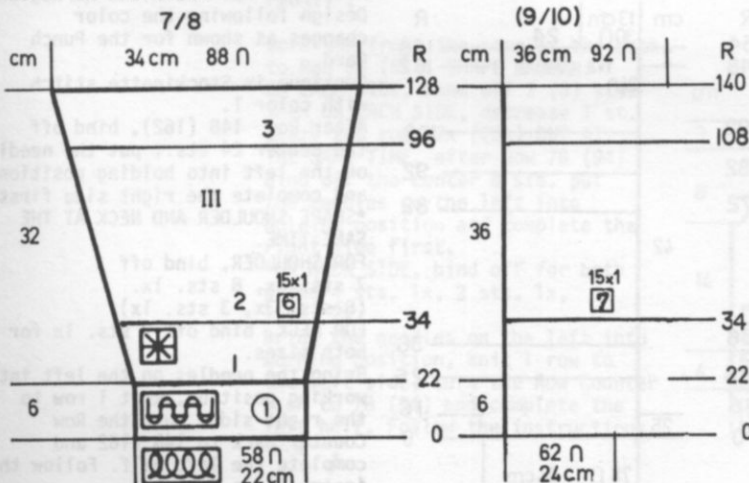


PATTERN 1

4 rows - colors 1 and 2
 3 rows - colors 3 and 2
 4 rows - colors 1 and 2

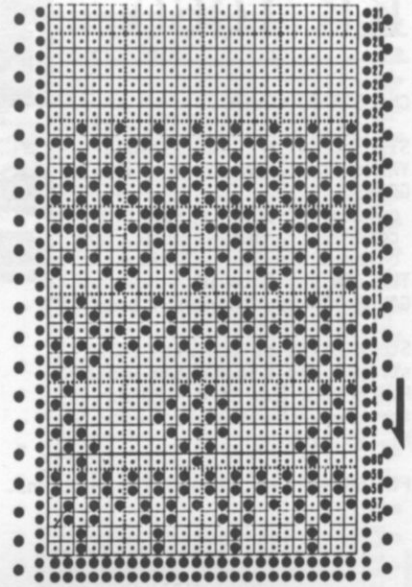
SLEEVES: III

Cast on 58 (62) sts. with color 1 and work 22 rows Ribbing. Transfer the ribber sts. then continue in Pattern 1 to Row 34. AT THE SAME TIME, ON EACH SIDE, increase 1 st. every 6th row 15x. (every 7th row 15x) and after Row 34, continue in Pattern 2 to Row 96 (108). Continue with Pattern 3 to Row 128 (140). Bind off or remove the sts. onto waste yarn and weave them to front and back.



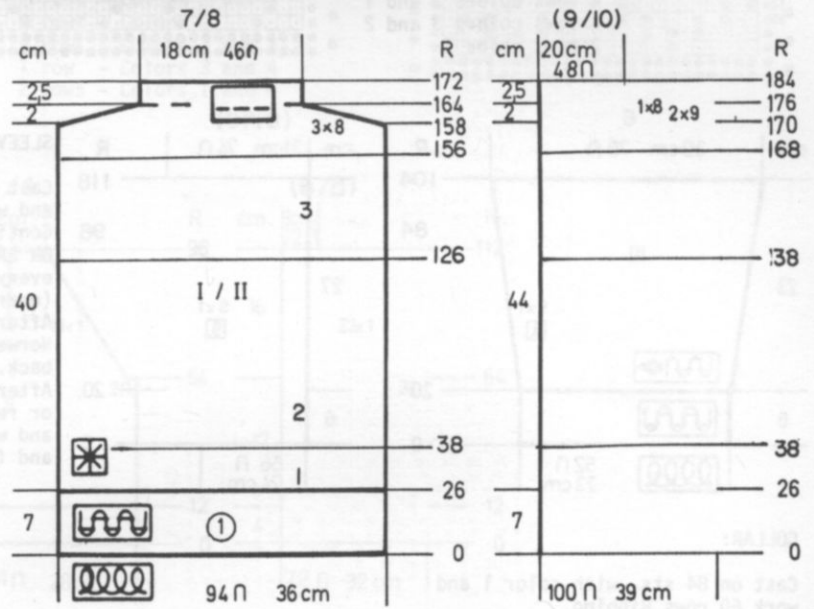
PATTERN 3

4 rows - colors 1 and 2
 2 rows - colors 3 and 2
 8 rows - colors 3 and 1
 2 rows - colors 3 and 2
 2 rows - colors 2 and 1
 4 rows - colors 2 and 3
 4 rows - colors 1 and 2
 4 rows - colors 1 and 3



PATTERN 2

Work with colors 1 and 2 to Row 126 (138)
 REPEAT THE PUNCH CARD THROUGH ROW 41 then Punch 2 rows of holes for connecting Card.



BACK AND FRONT ARE THE SAME.

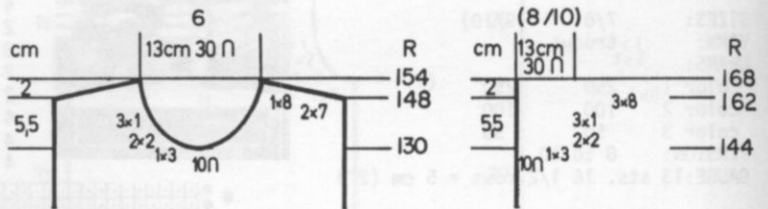
Cast on 94 (100) sts. with color 1 and work 26 rows Ribbing. Transfer the Ribber sts. to main machine then continue in Pattern 1 to Row 38, then work Pattern 2 to Row 126 (138). Continue with Pattern 3 to Row 156 (168). Continue in Stockinette stitch with color 1. After Row 158 (170) SHAPE SHOULDER. ON EACH SIDE, bind off (or work Short Rows) 8 sts. 3x. (9 sts. 2x, 8 sts. 1x). After Row 164 (176) knit even to Row 172 (184) then bind off loosely or remove onto waste yarn.

KK 1060



CHILD'S PULLOVER

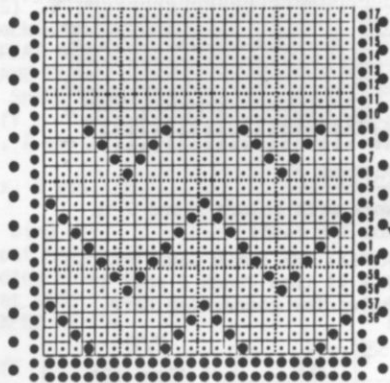
SIZES: 6 (8/10)
YARN: Crocus
GRAMS:
 color 1 300 350
 color 2 50 50
 color 3 50 50
TENSION: 8 to 10
GAUGE: 13 sts. 18 rows = 5 cm (2")



Stockinette stitch with color stripes and a Norwegian Design. Punch your own Card. Bands for sleeves and Collar are K1, P1 Ribbing.

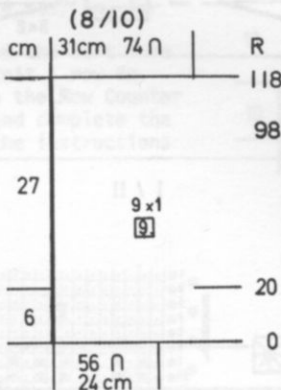
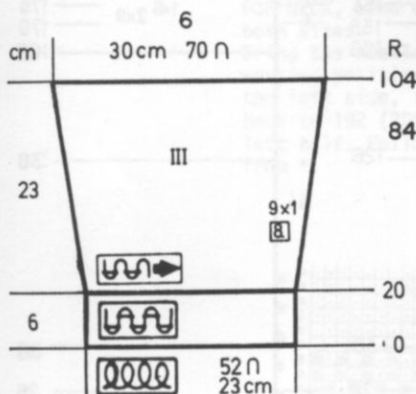
FINISHING: See General Instructions.

- 2 rows color 2
- 4 rows colors 2 and 3
- 4 rows colors 2 and 1
- 4 rows colors 3 and 1
- 4 rows colors 3 and 2
- 2 rows color 3



FRONT: I

Work the front the same as the back to Row 130 (144). Bind off the center 10 sts., put the needles on the right into holding position and complete the right side first.
 *ON NECK SIDE, bind off 3 sts. 1x, 2 sts. 2x, 1 st. 3x for both sizes.
 After Row 148 (162) SHAPE SHOULDER same as the back.
 Bring the needles on the left into working position, knit 1 row to the left side, turn the Row Counter back to 130 (144) and complete the left half. Follow the instructions from *.



SLEEVES: III

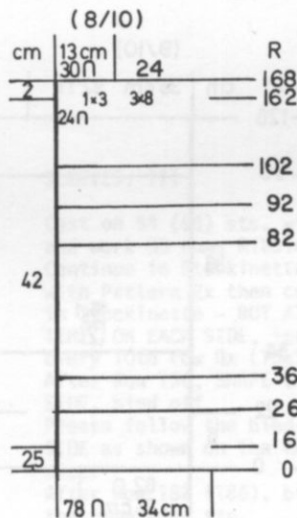
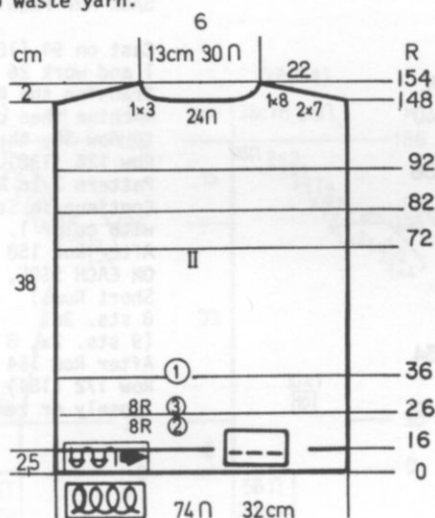
Cast on 52 (56) sts. with color 1 and work 20 rows Ribbing. Continue in Stockinette stitch. ON EACH SIDE, increase 1 st. every 8th row 9x. (every 10th row 9x). After Row 84 (98) work the Norwegian Design same as for back. After Row 104 (118), bind off or remove onto waste yarn and weave the sleeves to back and front.

BACK: II

Cast on 74 (78) sts. with color 1 and work Stockinette stitch. After Row 16, hang the hem then continue with 8 rows color 2, 8 rows color 3 and continue with color 1. After Row 72. Work the Norwegian Design following the color changes as shown for the Punch Card. Continue in Stockinette stitch with color 1. After Row 148 (162), bind off the center 24 sts., put the needles on the left into holding position and complete the right side first. *SHAPE SHOULDER AND NECK AT THE SAME TIME. FOR SHOULDER, bind off 7 sts. 2x, 8 sts. 1x. (8 sts. 3x, 3 sts. 1x). FOR NECK, bind off 3 sts. 1x for both sizes. Bring the needles on the left into working position, knit 1 row to the right side, turn the Row Counter back to 148 (162) and complete the left half. Follow the instructions from *.

COLLAR:

Cast on 84 sts. with color 1 and work 60 rows Ribbing. Bind off or remove onto waste yarn.



KK 1061

CHILD'S PULLOVER

SIZES: 3/4 (6/8)

YARN: Crocus

GRAMS:

color 1	150	150
color 2	50	50
color 3	50	50
color 4	50	50

TENSION: 7

GAUGE: 11 sts. 15 rows = 5 cm (2")
OVER EVERY OTHER NEEDLE.

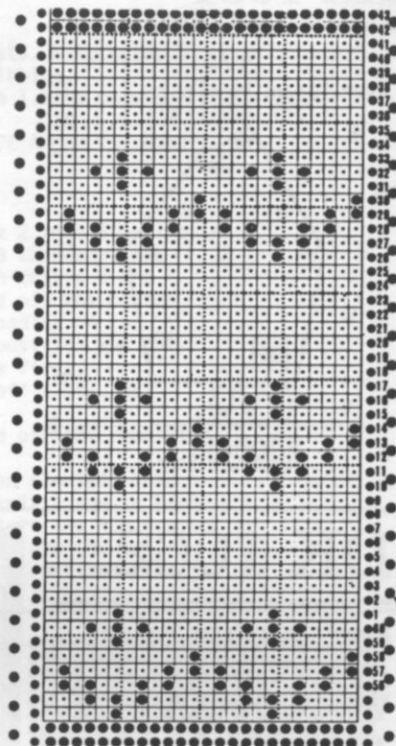


A Norwegian Design with bands in K1, P1 Ribbing. Knitted OVER EVERY OTHER NEEDLE. Punch your own Card.

FINISHING: See General Instructions. Single crochet around back neck opening then sew in a zipper.

Work the Punch Card 1 time only with changes in color as follows:

- 5 rows - Colors 1 and 3
- 1 row - Color 1 and 4
- 2 rows - Colors 2 and 4
- 8 rows - Color 2
- 5 rows - Colors 2 and 1
- 1 row - Color 2 and 4
- 2 rows - Colors 3 and 4
- 8 rows - Color 3
- 5 rows - Colors 3 and 2
- 1 row - Colors 3 and 4
- 2 rows - Colors 1 and 4



BACK: II

Cast on 64 (72) sts. with color 1 using every 4th needle on main machine and every 4th needle on Ribber. Work 12 rows K1, P1 Ribbing.

Transfer the Ribber sts. and continue in Pattern.

After Row 54 (64), SHAPE RAGLAN: ON EACH SIDE, bind off

2 sts. (3 sts.) then decrease 1 st.

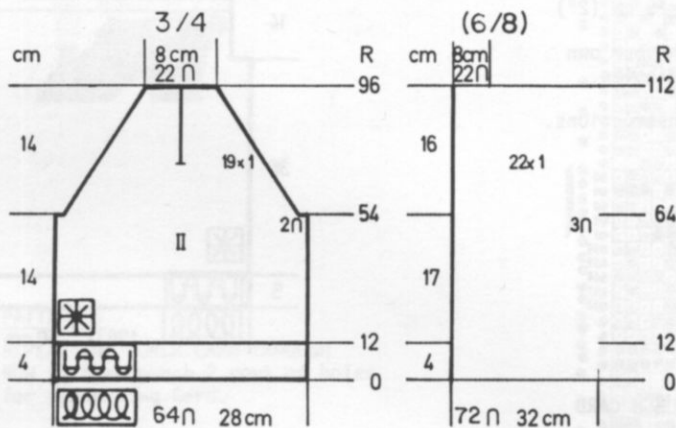
every 2nd row 19x (every 2nd row 22x)

BUT AT THE SAME TIME, after Row 66 (82) divide in the center.

Put the needles on the left into holding position and complete the right side first.

After Row 96 (112), bind off.

Bring the needles on the left into working position and knit 1 row to the right side, turn the Row Counter back to 66 (82) and complete the left half, completing the raglan shaping.



FRONT: I

Work the front the same as the back to Row 54. (64). SHAPE RAGLAN:

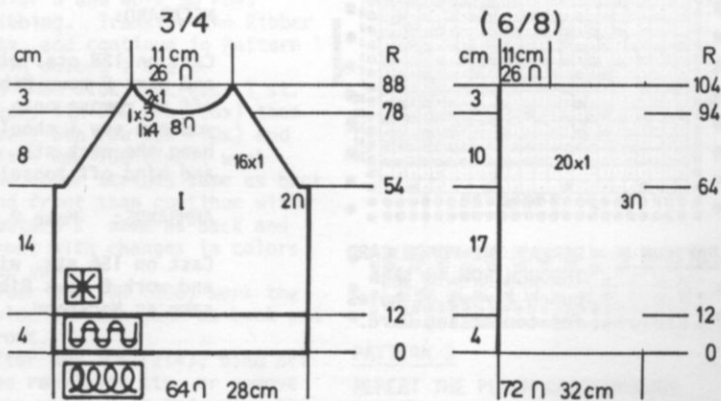
ON EACH SIDE, bind off 2 (3) sts. then ON EACH SIDE, decrease 1 st.

every 2nd row 17x (20x) BUT AT THE SAME TIME, after Row 78 (94)

Bind off the center 8 sts. put the needles on the left into holding position and complete the right side first.

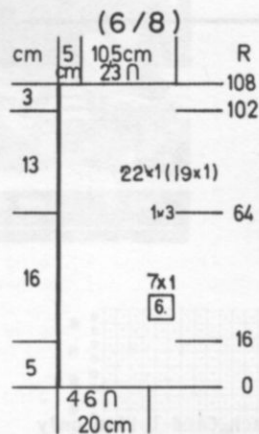
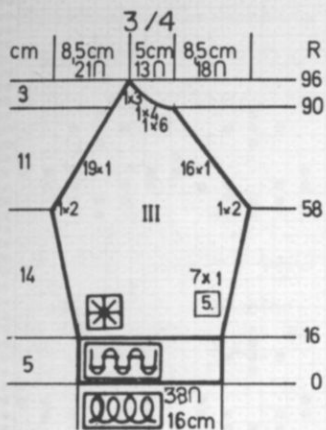
*ON NECK SIDE, bind off for both sizes 4 sts. 1x, 3 sts. 1x, 1 st. 2x.

Bring the needles on the left into working position, knit 1 row to the left side, turn the Row Counter back to 78 (94) and complete the left half. Follow the instructions from *.



Continued →

KK 1061



SLEEVES: III Make 1, reverse 1.

Cast on 38 (45) sts. with color 1 and work K1, P1 Ribbing same as you did for the back and front to Row 16.

Transfer the Ribber sts. and continue in Pattern.

ON EACH SIDE, increase 1 st. every 5th row 7x. (every 6th row 7x).

After Row 58 (64) SHAPE RAGLAN: ON EACH SIDE, bind off 2 (3) sts.

ON THE LEFT, decrease 1 st. every 2nd row 19x (22x) and ON THE RIGHT, decrease 1 st. 16x (22x).

After Row 90 (102) bind off 6 sts. 1x, 4 sts. 1x. 3 sts. 1x. Work the 2nd sleeve with reverse shaping.

COLLAR:

Cast on 71 sts. with color 1 and work 12 Rows K1, P1 Ribbing same as you did for the back and front. Bind off.

DK 1062

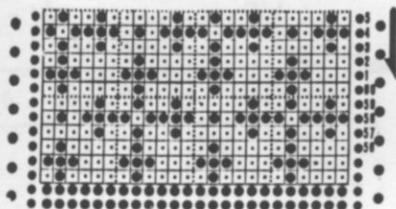
WOMAN'S SLEEVELESS PULLOVER

SIZES: 12 (14)
 YARN: Sport Weight Yarn
 NO KIT AVAILABLE
 color 1 250 300
 color 2 300 300
 color 3 Small amount.
 TENSION: 6 or 7
 GAUGE: 12 1/2 sts. 15 rows = 5 cm (2")

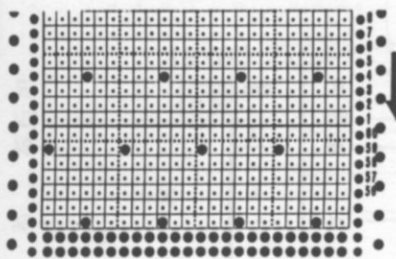


A Norwegian Design. Punch your own Cards. Bands are K1, P1 Ribbing.

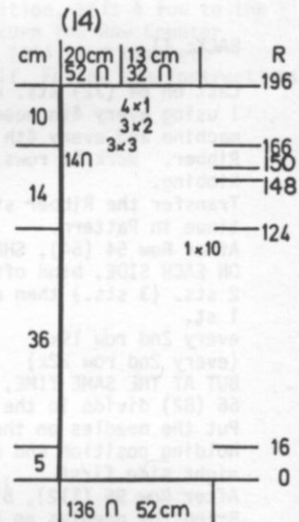
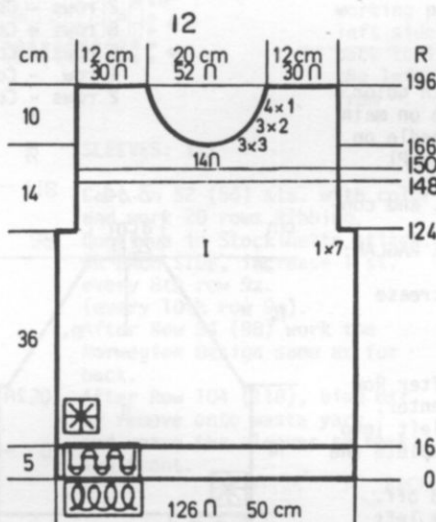
FINISHING: See General Instructions.



PATTERN 1 - REPEAT THE PUNCH CARD THROUGH ROW 53 then punch 2 rows of holes for connecting Card.



PATTERN 2 - REPEAT THE PUNCH CARD THROUGH ROW 48 then punch 2 rows of holes for connecting Card.



FRONT: I

Work the front the same as the back to Row 166.

Bind off the center 14 sts. put the needles on the left into holding position and complete the right side first.

ON NECK SIDE, bind off 3 sts. 3x, 2 sts. 3x, 1 st. 4x for both sizes.

After Row 196, bind off or remove onto waste yarn, the remaining sts.

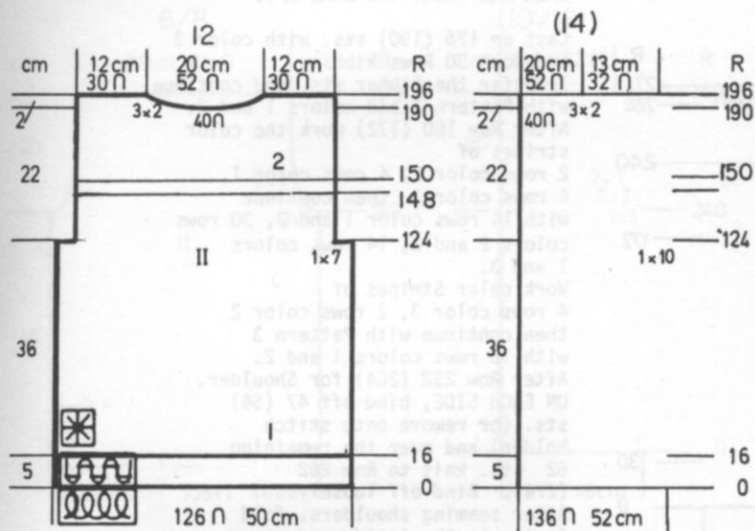
NECKBAND:

Cast on 128 sts. with color 1 and work 8 rows Ribbing. Bind off or remove onto waste yarn - OR you can sew 1 shoulder seam and hang the neck sts. to the band and bind off loosely.

ARMBANDS: Make 2.

Cast on 156 sts. with color 1 and work 8 rows Ribbing. Finish same as Neckband.

DK 1062



BACK: II

Cast on 126 (136) sts. with color 1 and work 16 rows Ribbing. Continue in Pattern 1 with colors 1 and 2. After Row 124, SHAPE ARMHOLE: Bind off ON EACH SIDE 7 sts. 1x (10 sts. 1x). After Row 148, work 2 rows Stockinette stitch with color 3 then continue with Pattern 2 with colors 2 and 1. After Row 190, bind off the center 40 sts., put the needles on the left into holding position and complete the left side first. *ON Neck side bind off 2 sts. 3x for both sizes. After Row 196, bind off the remaining sts. Bring the needles on the left into working position, knit 1 row in Pattern to the left side, turn the Row Counter back to 190 and complete the left half. Follow the instructions from *.

HP 1063

MAN'S PULLOVER

SIZES: 38/40 (42/44)
 YARN: Micaela
 GRAMS: color 1 300 350
 color 2 300 350
 color 3 100 100
 TENSION: 5 to 7
 GAUGE: 17 sts. 18 1/2 rows = 5 cm (2")



Three different Norwegian Designs. Punch your own Cards and follow the instructions for changing Patterns. Bands are K1, P1 Ribbing.

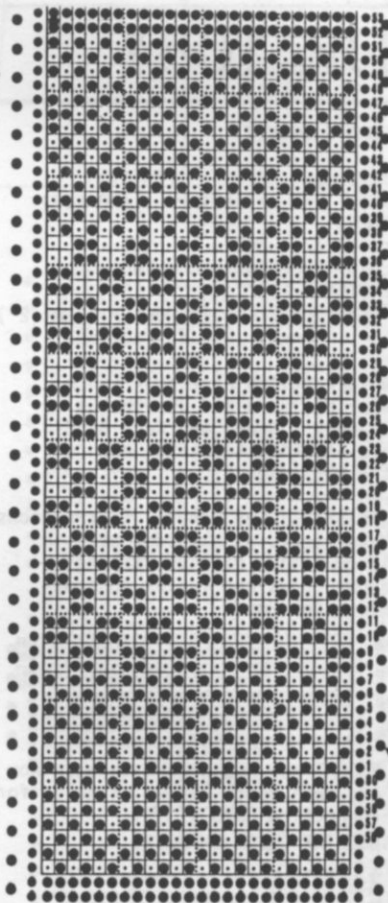
FINISHING: See General Instructions.

PATTERN 1

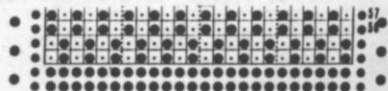
REPEAT THE PUNCH CARD THROUGH ROW 49 then punch 2 rows of holes for connecting Card.

SLEEVES: III

Cast on 82 (90) sts. with color 3 and work 30 rows Ribbing. Transfer the Ribber sts. and continue in Pattern 1 with colors 1 and 2. ON EACH SIDE, increase 1 st. every 4th row 27x (23x) then every 6th row 10x (10x) and after Row 130 (140), work the color stripes same as back and front then continue with Pattern 2 same as back and front with changes in colors the same. After Row 198 (208) work the color stripes same as back and front. After Row 204 (214), bind off the remaining sts. or remove onto waste yarn and weave the sleeves in place.

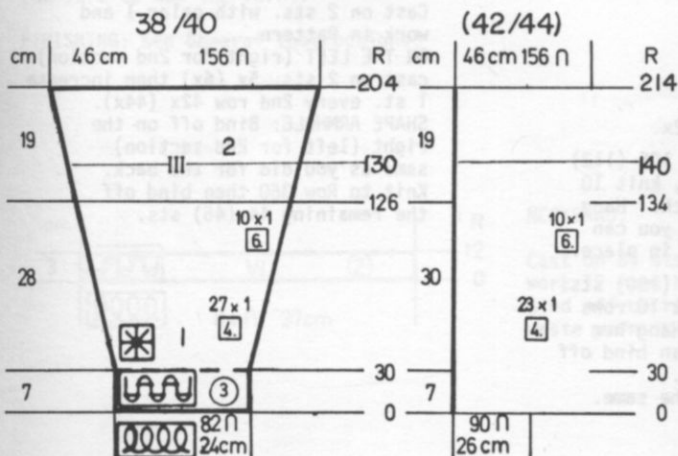


PATTERN 2



PATTERN 3

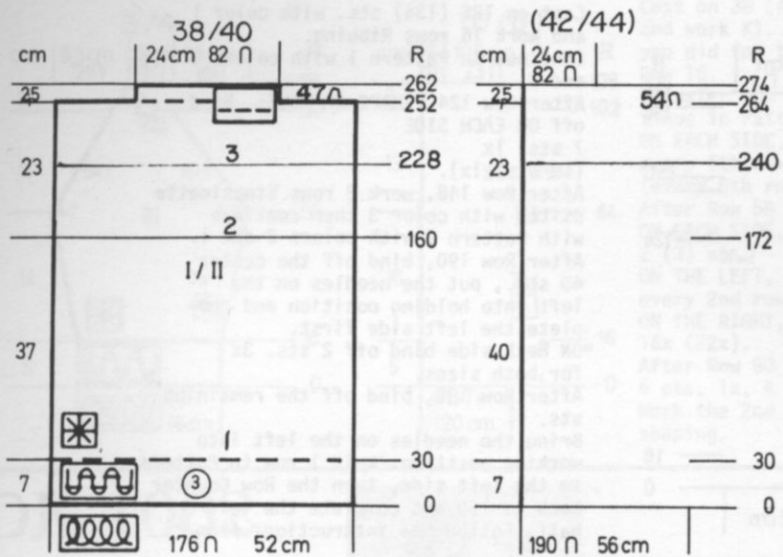
REPEAT THE PUNCH CARD THROUGH ROW 53 then punch 2 rows of holes for connecting Card.



Continued →

HP 1063

DK 1063



BACK AND FRONT THE SAME I/II

Cast on 176 (190) sts. with color 3 and work 30 Rows Ribbing. Transfer the Ribber sts. and continue with Pattern 1 and colors 1 and 2. After Row 160 (172) work the color stripes of 2 rows color 2, 4 rows color 1, 4 rows color 3 then continue with 14 rows color 1 and 3, 30 rows colors 2 and 3, 14 rows colors 1 and 3. Work color Stripes of 4 rows color 3, 2 rows color 2 then continue with Pattern 3 with 18 rows colors 1 and 2. After Row 252 (264) for Shoulder, ON EACH SIDE, bind off 47 (54) sts. (or remove onto stitch holder) and over the remaining 82 sts. knit to Row 262 (274). Bind off loosely. After seaming shoulders, fold facing to the inside and sew in place.

DK 1064

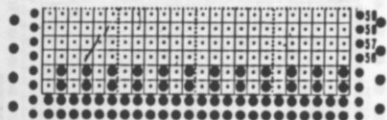


WOMAN'S JACKET

SIZES: 6/8 (10/12)
 YARN: Fine Yarn (NO KIT)
 GRAMS: color 1 300 350
 color 2 150 150
 TENSION 6
 GAUGE: 11 1/2 sts. 20 rows = 5 cm (2") in Pattern.

A Tuck Stitch Pattern. Punch your own Card and use the Color Changer. Front and Neck Bands are Stockinette stitch used on the Purl side.

FINISHING: See General Instructions. Make pleats at shoulder over 10 cm (4"). Pick up stitches along edges and follow instructions for Bands.



REPEAT the Punch Card through Row 41, then punch 2 rows of holes for connecting Card.

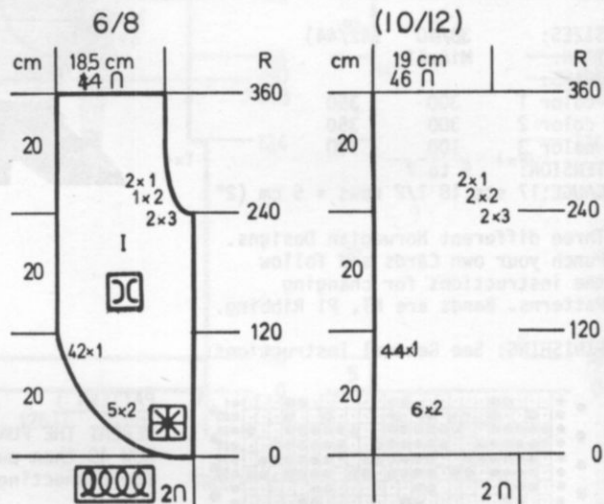
USE THE COLOR CHANGER.

1. Main Color - Card on STOP. Knit 1 row LEFT to RIGHT
2. Main Color - Set KC Knit 1 row RIGHT to LEFT.
3. CHANGE COLOR. Card on GO. Push in BOTH Tuck Buttons. Knit 2 rows contrast color.
- *4. CHANGE COLOR, RELEASE Tuck Buttons. Knit 4 rows main color.
5. CHANGE COLOR, push in BOTH Tuck Buttons. Knit 2 rows contrast color. REPEAT from *.

BANDS: (Purl side) 2x.

LOWER BACK: Pick up 106 (112) sts. and with color 2, knit 10 rows Stockinette stitch. Hang hem and bind off - or you can bind off and sew band in place.

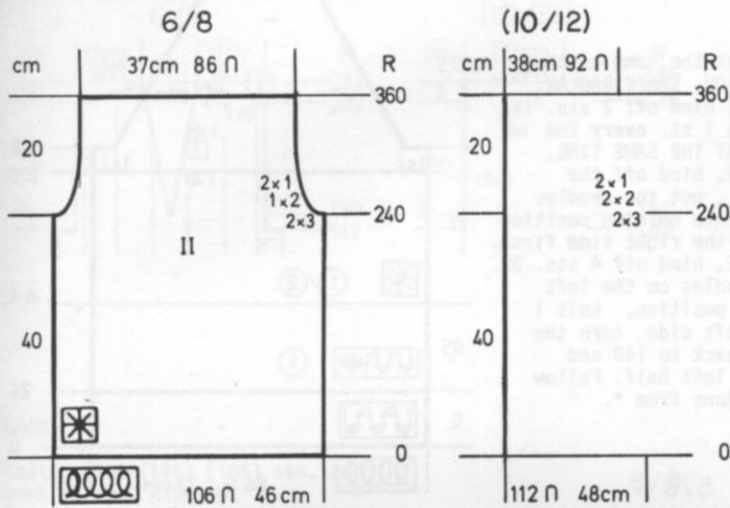
FRONT: Pick up 187 (190) sts. and with color 2, work 10 rows Stockinette stitch. Hang hem and bind off or you can bind off and sew band in place. Work 2nd front band the same.



FRONT: I Make 1, reverse 1.

Cast on 2 sts. with color 1 and work in Pattern. ON THE LEFT (right for 2nd section) cast on 2 sts. 5x (6x) then increase 1 st. every 2nd row 42x (44x). SHAPE ARMHOLE: Bind off on the right (left for 2nd section) same as you did for the back. Knit to Row 360 then bind off the remaining 44 (46) sts.

DK 1064

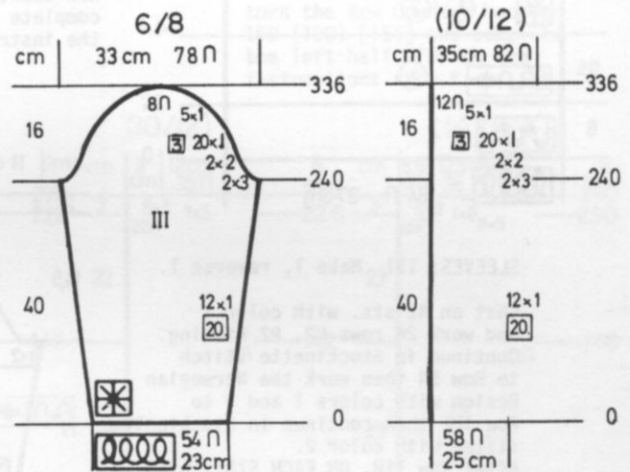


BACK: II

Cast on 106 (112) sts. with color 1 and work in Pattern.
Knit to Row 240.
SHAPE ARMHOLE: ON EACH SIDE, bind off 3 sts. 2x, 2 sts. 1x, 1 st. 2x. (3 sts. 2x, 2 sts. 2x, 1 st. 2x).
Knit to Row 360 then bind off.

SLEEVES: III

Cast on 54 (58) sts. with color 1 and work in Pattern.
ON EACH SIDE, increase 1 st. every 20th row 12x.
After Row 240, SHAPE CAP:
ON EACH SIDE, bind off 3 sts. 2x, 2 sts. 2x, 1 st. every 3rd row 20x, 1 st. 5x for both sizes.
After Row 336, bind off the remaining 8 (12) sts.



DK 1065

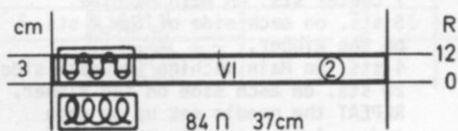
TEEN AGE PULLOVER

SIZE: 5/6
YARN: Euro Sport
GRAMS:
color 1 300
color 2 250
TENSION: 9 or 10
GAUGE: 11 1/2 sts. 16 rows = 5 cm (2")



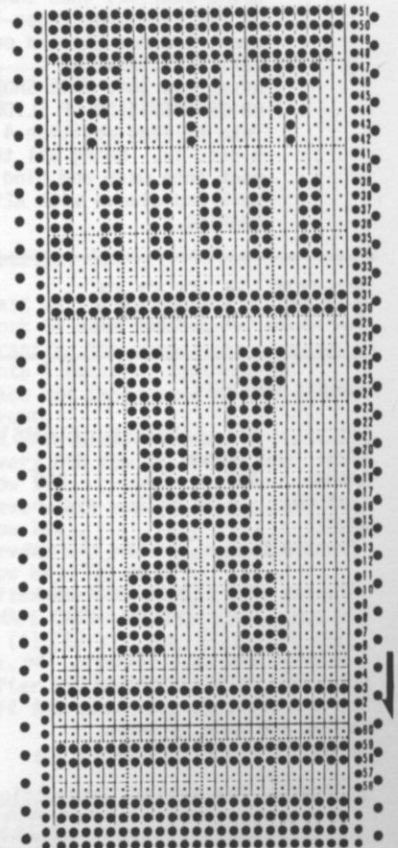
Stockinette stitch and a Norwegian Design. Punch your own Card. Bands are K2, P2 Ribbing. (Be sure to wax the Yarn).

FINISHING: See General Instructions.



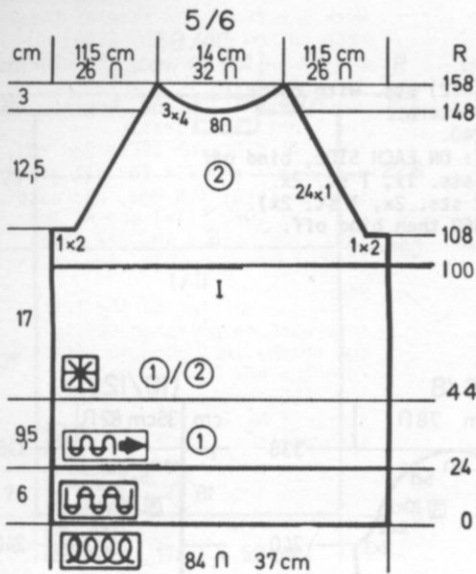
NECKBAND:

Cast on 84 sts. with color 2 and work 12 rows K2, P2 Ribbing. Bind off or remove onto waste yarn.



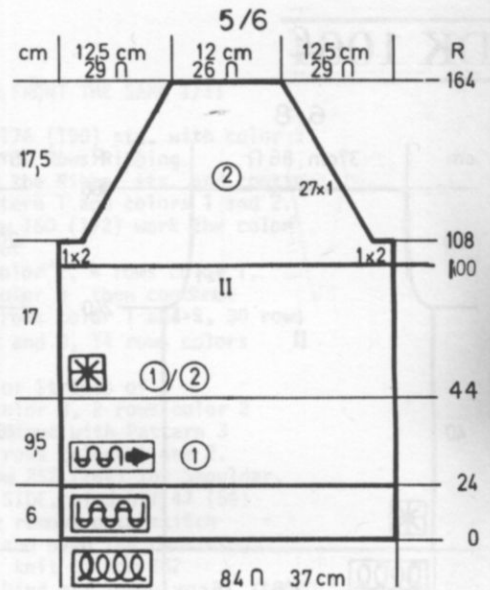
Continued →

DK 1065



FRONT: I

Work the front the same as the back to Row 108. SHAPE RAGLAN. ON EACH SIDE, bind off 2 sts. 1x, then decrease 1 st. every 2nd row 24x AND AT THE SAME TIME, after Row 148, bind off the center 8 sts., put the needles on the left into holding position and complete the right side first. *ON NECK SIDE, bind off 4 sts. 3x. Bring the needles on the left into working position, knit 1 row to the left side, turn the Row Counter back to 148 and complete the left half. Follow the instructions from *.

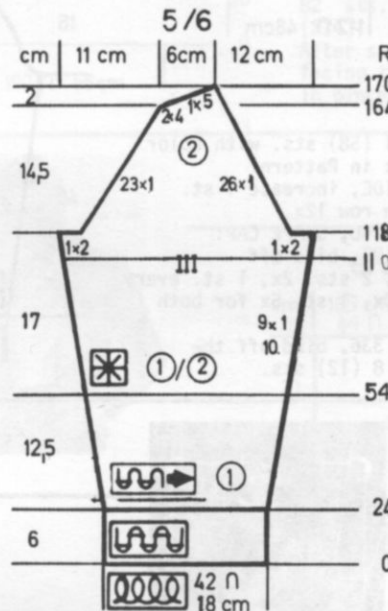


BACK: II

Cast on 84 sts. with color 1 and work 24 rows K2, P2 Ribbing. Continue in Stockinette stitch with color 1 to Row 44. Work the Norwegian Design with colors 1 and 2 to Row 100 then continue in Stockinette stitch with color 2. After Row 108, SHAPE RAGLAN. ON EACH SIDE, bind off 2 sts. 1x, then decrease 1 st. every 2nd row 27x. After Row 164, bind off or remove onto waste yarn the remaining sts.

SLEEVES: III Make 1, reverse 1.

Cast on 42 sts. with color 1 and work 24 rows K2, P2 Ribbing. Continue in Stockinette stitch to Row 54 then work the Norwegian Design with colors 1 and 2 to Row 110 then continue in Stockinette stitch with color 2. After Row 118, ON EACH SIDE, bind off 2 sts. 1x, then SHAPE RAGLAN. ON THE RIGHT, decrease 1 st. every 2nd row 26x and on the LEFT 1 st. 23x. After Row 164, WORK SHORT ROWS: ON OPPOSIT SIDE OF SLIDE, put into holding position 4 sts. 2x, 5 sts. 1x. Bring all the needles back into work and bind off. Work 2nd sleeve with REVERSE SHAPING.



DK 1066

WOMAN'S PULLOVER

SIZES: 6/8 (10/12) [14/16]

YARN: Amore

GRAMS: 450 500 550

TENSION: 6 to 8

GAUGE:

Front & Back - 16 sts. 19 rows = 5 cm (2")

Sleeves - 14 1/2 sts. 19 rows = 5 cm (2")

A Ribbing and Lace Pattern. The Purl side is the right side. The transfers for the Lace and Cables are made by hand. Bands are K1, P1 Ribbing.

FINISHING: See General Instructions.

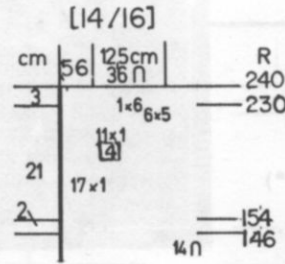
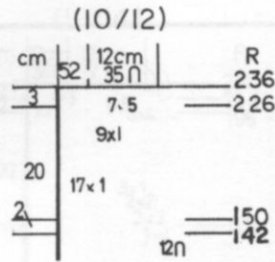
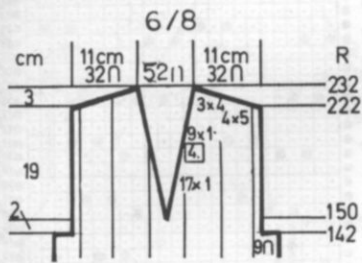


LACE: - Counting from the left, *Transfer needles 2, 4, 6, 1 needle to the right (2 together). Knit 2 rows. REPEAT from * 4x. After Every 10 rows, make CABLE: Counting from the left, cross needles 1, 2, 3, to the front with needles 4, 5, 6, 7, to the back. The Lace and Cable is always made over the 7 sts. on the main machine. See Picture.

NOTE: INSTRUCTIONS FOR LACE AND CABLE PATTERN.

7 center sts. on Main Machine. 5 sts. on each side of the 7 sts. on the Ribber. 4 sts. on Main machine (On each side) 20 sts. on each side on the Ribber. REPEAT the needle set up on each side - 4 sts. on main machine, 5 sts. on Ribber, 7 sts. on main machine, 5 sts. on Ribber. There are 3 Patterns across back and front - the remaining sts. are on the Ribber.

FRONT: I



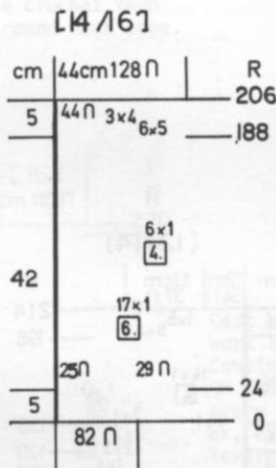
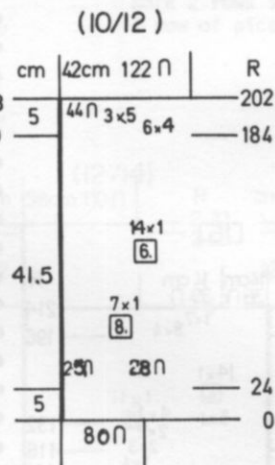
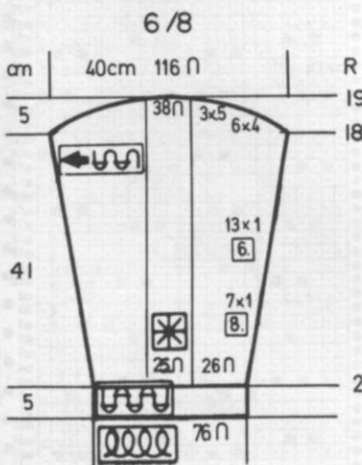
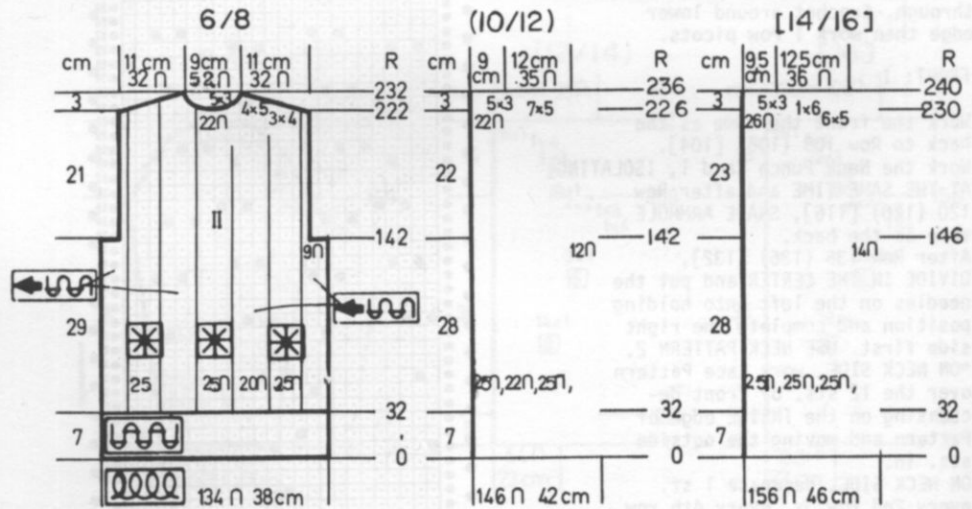
Work the front the same as the back to Row 150 (150) [154]. Divide in the Center. Put the needles on the left into holding position and complete the right side first.
 *ON NECK SIDE, on EVERY 2nd ROW, decrease 1 st. 17x for all sizes then ON EVERY 4th row, decrease 1 st. 9x (9x) [11x] and AT THE SAME TIME, after Row 222 (226) [230] SHAPE SHOULDER same as the back.
 Bring the needles on the left into working position, knit 1 row to the left side in Pattern, turn the Row Counter back to 150 (150) [154] and complete the left half. Follow the instructions from *.

BACK: II

Cast on 134 (146) [156] sts. and work 32 rows Ribbing. Transfer the Ribber sts. for Pattern as given in NOTE above and continue in Pattern.

After Row 142 (142) [146], SHAPE ARMHOLE: ON EACH SIDE, bind off 9 (12) [14] sts.
 After Row 222 (226) [230], bind off the center 22 (22) [26] sts. for neck, put the needles on the left into holding position and complete the right side first.
 SHAPE SHOULDER AND NECK AT THE SAME TIME:

*FOR SHOULDER, bind off
 4 sts. 3x, 5 sts. 4x
 (5 sts. 7x)
 [5 sts. 6x, 6 sts. 1x]
 FOR NECK, bind off
 3 sts. 5x for all sizes.
 Bring the needles on the left into working position, knit 1 row in Pattern to the left side, turn the Row Counter back to 222 (226) [230] and complete the left half. Follow the instructions from *.

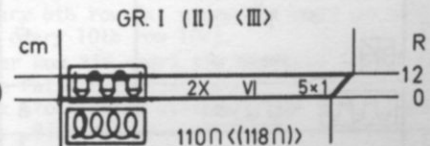


SLEEVES: III

Cast on 76 (80) [82] sts. and work 24 rows Ribbing. Transfer the proper sts. and set into 1 Pattern. Continue in Lace and Cable same as back and front.
 ON EACH SIDE, increase 1 st. every 8th row 7x, every 6th row 13x.
 (every 8th row 7x, every 6th row 14x).
 [every 6th row 17x, every 4th row 6x].
 After Row 180 (184) [188] SHAPE CAP: ON EACH SIDE, bind off 4 (4) [5] sts. 6x, 5 (5) [4] sts. 3x.
 After Row 198 (202) [206]. bind off the remaining sts.

NECKBAND: Make 2.

Cast on 110 (118) sts. and work K1, P1 Ribbing. ON THE RIGHT (left for 2nd section) increase 1 st. 5x. After Row 12, bind off or remove onto waste yarn.



DK 1067

WOMAN'S TWO PIECE DRESS

SIZES: 8/10 (12/14) [16]
 YARN: Micaela
 GRAMS:
 TENSION: 8 or 9
 GAUGE: 14 1/2 sts. 19 rows = 5 cm (2")

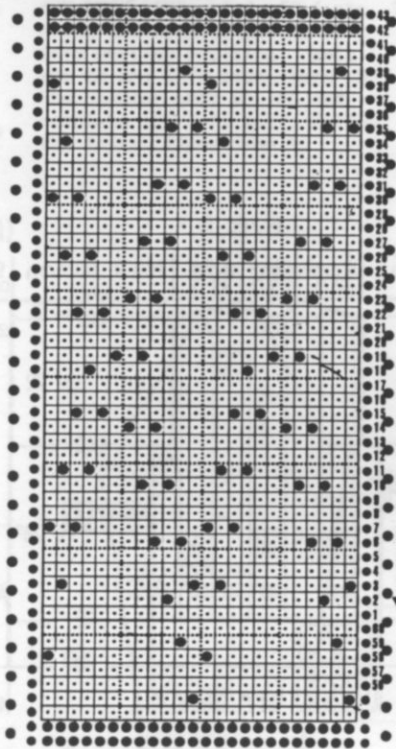


Stockinette stitch and Lace Pattern.
 There are 3 separate Cards to use for the Lace Pattern. One is for the Skirt, one for the Neck before dividing in center and the other for each side of divided neck. Bands are K1, P1 Ribbing.

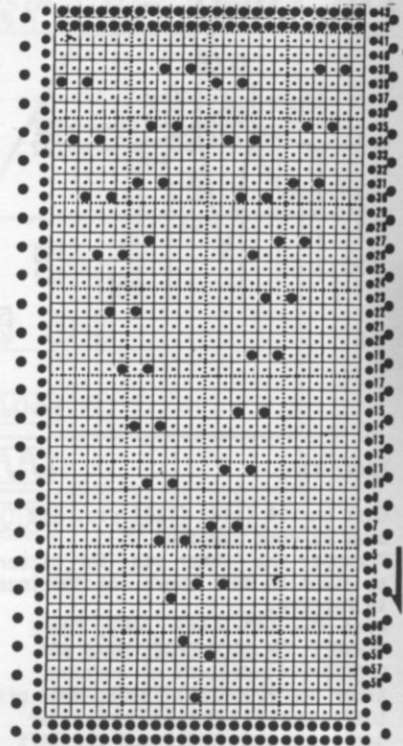
FINISHING: See General Instructions.
 Sew skirt seams. Turn under 12 rows for band at waist and pull elastic through. Crochet around lower edge then work 1 row picots.

FRONT: I

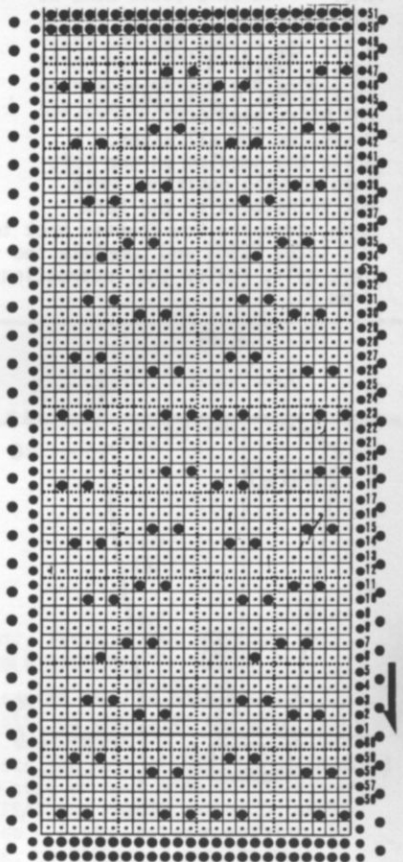
Work the front the same as the back to Row 108 (108) [104].
 Work the Neck Punch Card 1, ISOLATING AT THE SAME TIME and after Row 120 (120) [116], SHAPE ARMHOLE same as the back.
 After Row 136 (136) [132], DIVIDE IN THE CENTER and put the needles on the left into holding position and complete the right side first. USE NECK PATTERN 2.
 *ON NECK SIDE, work Lace Pattern over the 12 sts. of front decreasing on the INSIDE edge of Pattern and moving the outside sts. in.
 ON NECK SIDE, decrease 1 st. every 2nd row 3x, every 4th row 14x.
 (Same as first size).
 [every 2nd row 5x, every 4th row 14x].
 AT THE SAME TIME, after Row 192 (196) [196], SHAPE SHOULDER same as the back.
 Bring the needles on the left into working position and knit 1 row to the left side, (watch Pattern) turn the Row Counter back to 136 (136) [132] and complete the left half. Follow the instructions from * using Neck Pattern 2.



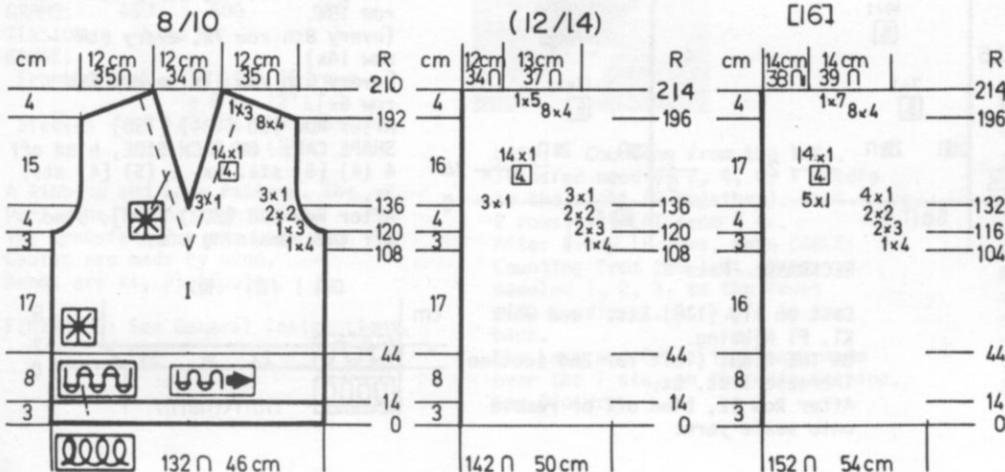
PATTERN FOR SKIRT.

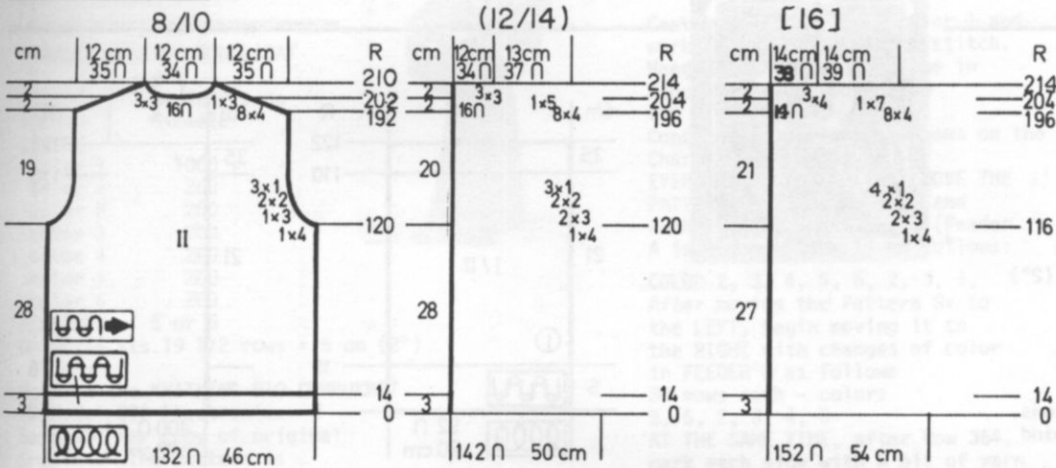


PATTERN 1 FOR NECK.



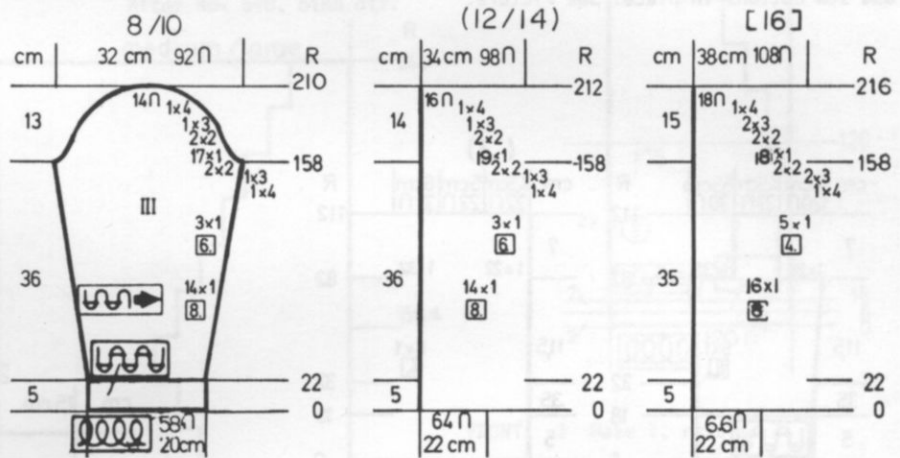
PATTERN 2 FOR NECK.





BACK: II

Cast on 132 (142) [152] sts. and work 14 rows Ribbing.
 Continue in Stockinette stitch.
 After Row 120 (120) [116] SHAPE ARMHOLE: ON EACH SIDE, bind off 4 sts. 1x, 3 sts. 1x, 2 sts. 2x, 1 st. 3x.
 (Same as first size).
 [4 sts. 1x, 3 sts. 2x, 2 sts. 2x, 1 st. 4x].
 After Row 192 (196) [196], SHAPE SHOULDER: ON EACH SIDE, bind off (Watch for Neck Shaping)
 4 sts. 8x, 3 sts. 1x
 (4 sts. 8x, 5 sts. 1x)
 [4 sts. 8x, 7 sts. 1x]
 AT THE SAME TIME, after Row 202 (206) [204] bind off the center 16 (16) [14] sts., put the needles on the left into holding position and complete the right side first.
 *ON NECK SIDE, bind off
 3 sts. 3x
 (Same as first size)
 [4 sts. 3x]
 Bring the needles on the left into working position, knit 1 row to the left side, turn the Row Counter back to 202 (206) [204] and complete the left half. Follow the instructions from *.

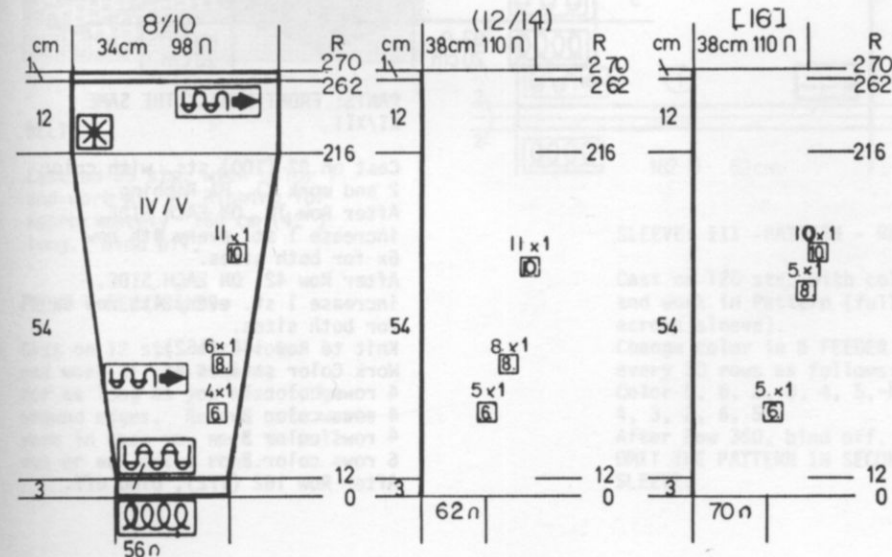


NECKBAND:

Work 2 rows single crochet then 1 row of picots around neck edge.

SLEEVES: III

Cast on 58 (64) [66] sts. and work 22 rows Ribbing.
 Continue in Stockinette stitch.
 ON EACH SIDE, increase 1 st. every 8th row 14x, every 6th row 3x.
 (Same as first size).
 [every 8th row 16x, every 4th row 5x].
 After Row 158, SHAPE CAP:
 Please follow the Chart in your size for the bind-offs on each side.
 After Row 210 (212) [216] bind off the remaining sts.



Cast on 56 (62) [70] sts. and work 12 rows Ribbing.
 Continue in Stockinette stitch.
 ON EACH SIDE, increase 1 st. every 6th row 4x, every 8th row 6x, every 10th row 11x.
 (every 6th row 5x, every 8th row 8x, every 10th row 11x).
 [every 6th row 5x, every 8th row 5x, every 10th row 10x].
 After Row 216, work the Skirt Lace Pattern to Row 262.
 Work Stockinette stitch to Row 270. Bind off.

KK 1068

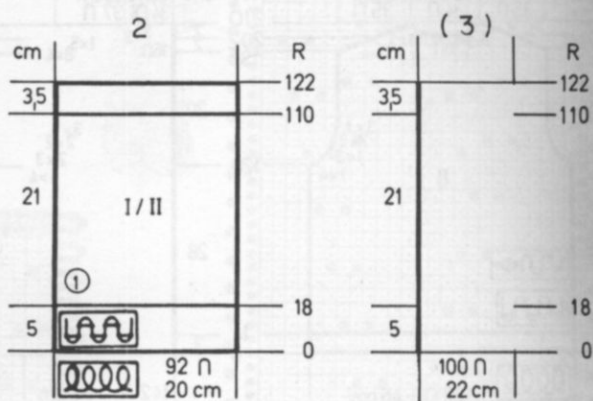


CHILD'S PULLOVER AND PANTS

SIZES: 2 (3)
YARN: Micaela
GRAMS:
 color 1 150 150
 color 2 150 150
 color 3 50 50
TENSION: 5/5
GAUGE: 22 1/2 sts. 22 rows = 5 cm (2")

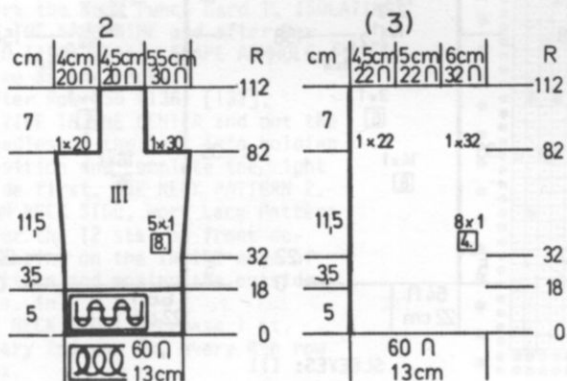
Work K1, P1 Ribbing for both pullover and pants with color stripes as in the Instructions.

FINISHING: See General Instructions. Sew sleeves in place with long bind off edge on the front section. Single crochet around neck edges and sew buttons in place. See Picture.



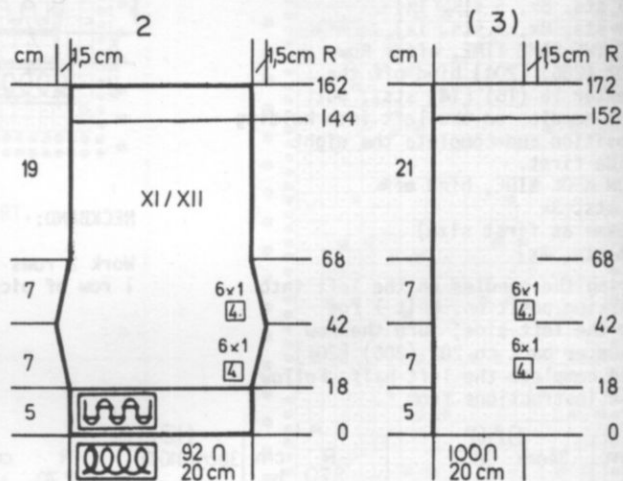
FRONT AND BACK THE SAME. I/II

Cast on 92 (100) sts. with color 1 and work K1, P1 Ribbing. Work 6 rows color 1
 4 rows color 2
 4 rows color 3
 4 rows color 2
 Continue with color 1 to Row 110 (122) then work color stripes of
 4 rows color 2
 4 rows color 3
 4 rows color 2
 After Row 122, bind off.



SLEEVES: III

Cast on 60 sts. with color 1 and work in Ribbing with color stripes same as the back and front. After Row 18, continue with color 1 and after Row 32, ON EACH SIDE, increase 1 st. every 8th row 5x. (every 4th row 8x. After Row 82, ON THE RIGHT, bind off 30 (32) sts. and on the LEFT, bind off 20 (22) sts. Knit even to Row 112 then bind off the remaining sts.



PANTS: FRONT & BACK THE SAME XI/XII

Cast on 92 (100) sts. with color 2 and work K1, P1 Ribbing. After Row 18, ON EACH SIDE, increase 1 st. every 4th row 6x for both sizes. After Row 42, ON EACH SIDE, increase 1 st. every 4th row 6x for both sizes. Knit to Row 144 (152). Work Color stripes of
 4 rows color 1
 4 rows color 2
 4 rows color 3
 6 rows color 2
 After Row 162 (172), bind off.

DK 1069

WOMAN'S ROBE OR HOUSECOAT

SIZE: Medium/Large
YARN: Micaela

GRAMS:
color 1 1000
color 2 200
color 3 200
color 4 200
color 5 200
color 6 200
TENSION: 5 or 6
GAUGE: 15 sts. 19 1/2 rows = 5 cm (2")

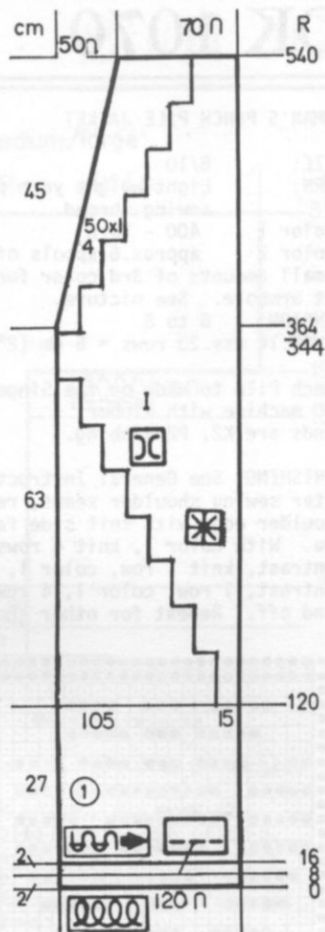
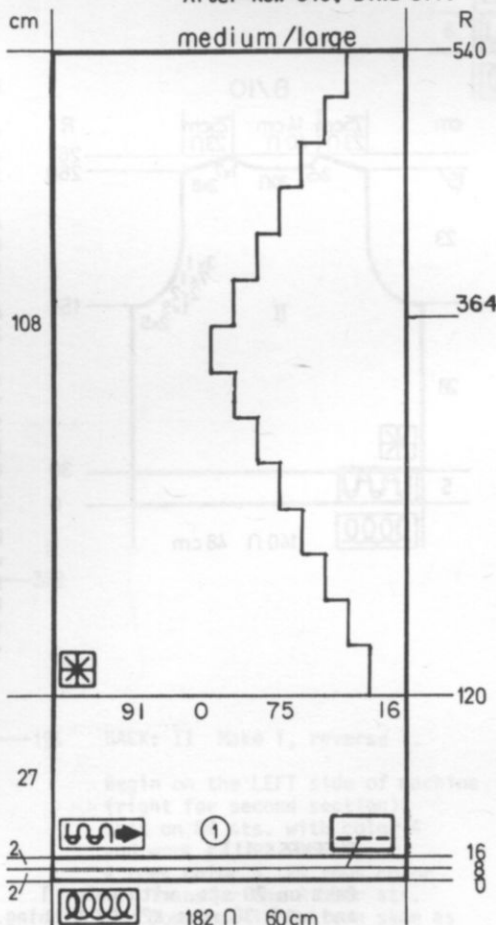
Made on the KNITTING 910 COMPUKNIT or Model 500 Electronic.
Send 50¢ for copy of original Drawing. The Pattern is isolated on ONE FRONT (Right) and on the back. The Pattern is not isolated on the Sleeve. Front band and belt are K1, P1 Ribbing.

FINISHING: See General Instructions. Sew front and neck bands in place. Turn under sleeve edges and hem.



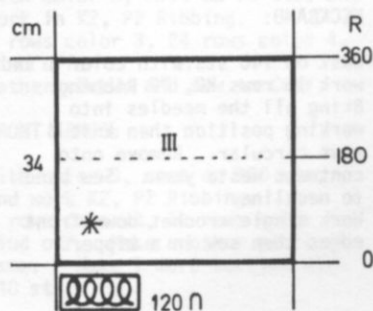
BACK: I

Cast on 182 sts. with color 1 and work 16 rows Stockinette stitch. Hang the hem then continue in Stockinette stitch to Row 120 with color 1. Continue in Pattern as shown on the Chart.
EVERY 30 Rows, you must MOVE THE PATTERN OVER to the LEFT and CHANGE COLOR IN FEEDER B (Feeder A is always color 1) as follows:
COLOR 2, 3, 4, 5, 6, 2, 3, 4.
After moving the Pattern 8x to the LEFT, begin moving it to the RIGHT with changes of color in FEEDER B as follows
30 rows each - colors
5, 6, 2, 3, 4, 5
AT THE SAME TIME, after Row 364, mark each side with a bit of yarn for setting in sleeve.
After Row 540, bind off.



FRONT: I Make 1, reverse 1

RIGHT FRONT WITH PATTERN.
Cast on 120 sts. with color 1 and work 16 rows Stockinette stitch. Hang the hem and continue with color 1 to Row 120.
BEGIN PATTERN ON THE RIGHT SIDE and EVERY 30 Rows, move the Pattern over 15 sts. to the LEFT.
Change colors every 30 rows same as you did for the BACK.
Mark Row 344, SHAPE NECK on the LEFT (right for 2nd section).
ON EVERY 4th Row, decrease 1 st. 50x AND AT THE SAME TIME, mark Row 364 for setting in Sleeve.
After Row 540, bind off.
OMIT THE PATTERN ON LEFT FRONT.



BELT:

Cast on 25 sts. with color 1 and work K1, P1 Ribbing for approximately 160 cm (42") long. Bind off.

FRONT & NECK BANDS.

Cast on 12 sts. with color 1 and work K1, P1 Ribbing for as long as you need to go around edges. Remove onto waste yarn in case you need to pull out or add extra rows.

SLEEVE: III -PATTERN - REFLECTION

Cast on 120 sts. with color 1 and work in Pattern (full Pattern across sleeve).
Change color in B FEEDER every 30 rows as follows:
Color 5, 6, 2, 3, 4, 5, -REFLECTION 5, 4, 3, 2, 6, 5.
After Row 360, bind off.
OMIT THE PATTERN IN SECOND SLEEVE.

DK 1070

WOMAN'S PUNCH PILE JACKET

SIZE: 8/10
 YARN: Light weight yarn plus sewing thread
 color 1 400 - Yarn
 color 2 approx. 6 spools of thread.
 Small amounts of 3rd color for trim at armhole. See picture.
 TENSION: 6 to 8
 GAUGE: 14 sts. 23 rows = 5 cm (2")

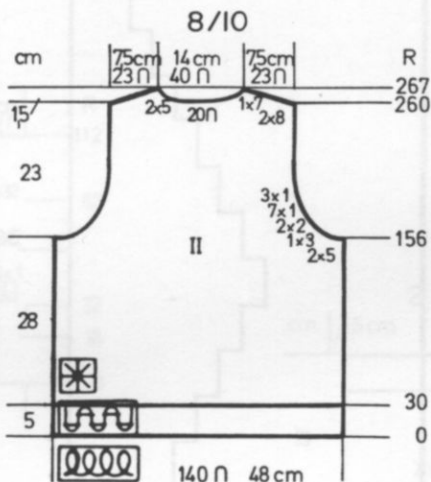
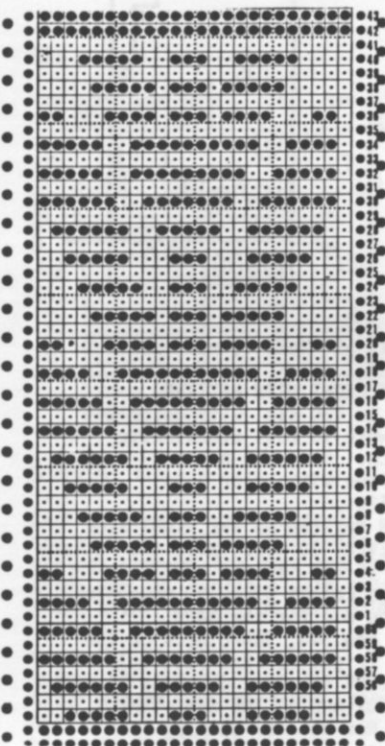
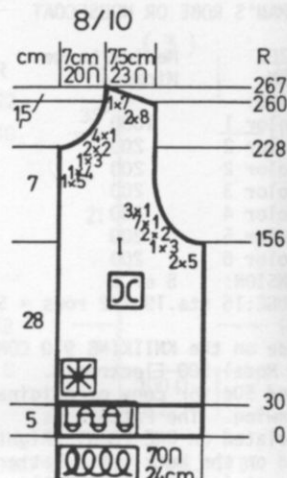
Punch Pile to made on the Singer 360 machine with Ribber.
 Bands are K2, P2 Ribbing.

FINISHING: See General Instructions. After sewing shoulder seams, rehang shoulder edge with knit side facing you. With color 1, knit 4 rows, with contrast, knit 1 row, color 1, 4 rows, contrast, 1 row, color 1, 4 rows then bind off. Repeat for other shoulder.



FRONT: I Make 1, reverse 1.

Cast on 70 sts. with color 1 and work the same as back to Row 156. SHAPE ARMHOLE same as the back then knit to Row 228. ON NECK SIDE, bind off 5 sts. 1x, 4 sts. 1x, 3 sts. 1x, 2 sts. 2x, 1 st. 4x and after Row 260, SHAPE SHOULDER same as the back.



BACK: II

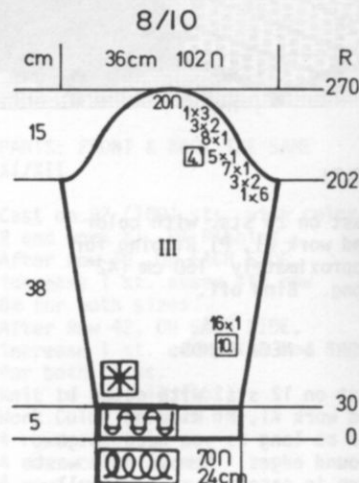
Cast on 140 sts. with color 1 and work 30 rows K2, P2 Ribbing. Set for Pattern and continue in Punch Pile Pattern. After Row 156, SHAPE ARMHOLE: ON EACH SIDE, bind off 5 sts. 2x, 3 sts. 1x, 2 sts. 2x, 1 st. 7x, 1 st. 3x. After Row 260, bind off the center 20 sts. put the needles on the left into holding position and complete the right side first. *SHAPE SHOULDER AND NECK AT THE SAME TIME. FOR SHOULDER, bind off 8 sts. 2x, 7 sts. 1x. FOR NECK, bind off 5 sts. 2x. Bring the needles on the left into working position, knit 1 row in Pattern to the left side, turn the Row Counter back to 260 and complete the left half. Follow the instructions from *.

NECKBAND:

Cast on 140 sts. with color 1 and work 16 rows K2, P2 Ribbing. Bring all the needles into working position then knit 4 rows circular. Remove onto contrast waste yarn. Sew band to neckline. Work single crochet down front edges then sew in a zipper.

SLEEVES: III

Cast on 70 sts. with color 1 and work 30 rows K2, P2 Ribbing. Continue in Punch Pile Pattern. ON EACH SIDE, increase 1 st. every 10th row 16x. After Row 202, SHAPE CAP: ON EACH SIDE, bind off 6 sts. 1x, 2 sts. 3x, 1 st. 7x, then 1 st. every 4th row 5x, then 1 st. every other row 8x, 2 sts. 3x, 3 sts. 1x. After Row 270, bind off the remaining sts.



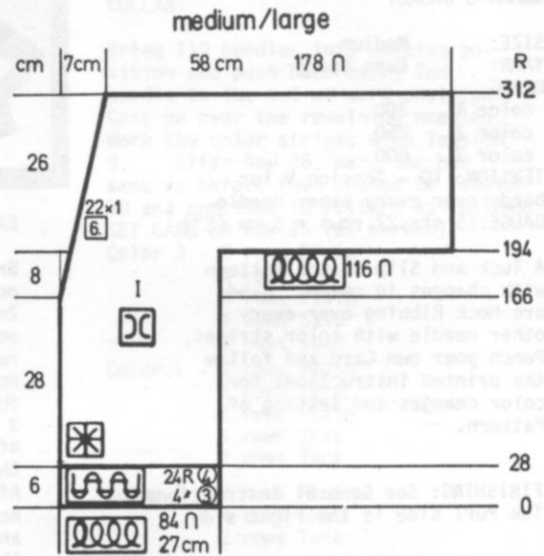
DK 1071

WOMAN'S JACKET

SIZE: Medium/Large
 YARN: Crocus
 GRAMS:
 color 1 50
 color 2 50
 color 3 250
 color 4 350
 color 5 200
 color 6 50
 TENSION: 5 or 6
 GAUGE: 15 1/2 sts. 20 rows = 5 cm (2")

Made on the 910 Electronic Machine. Send 50¢ for copy of original Design. Bands are K2, P2 Ribbing.

FINISHING: See General Instructions.



FRONT: I Make 1, reverse 1.

Begin on the left side of machine (right for 2nd section).

Cast on 84 sts. and work K2, P2 Ribbing with 4 rows color 3, 24 rows color 4.

Transfer the Ribber sts. then begin Pattern with color changes as follows:

- 10 rows colors 5 and 3
- 22 rows colors 4 and 3
- 2 rows colors 5 and 3
- 8 rows colors 4 and 1
- 4 rows colors 4 and 2
- 4 rows colors 4 and 3
- 2 rows colors 4 and 6
- 4 rows colors 4 and 3
- 2 rows colors 4 and 6
- 38 rows colors 4 and 3
- 28 rows colors 5 and 3
- 8 rows colors 4 and 3
- 10 rows color 4

REPEAT 1x more BUT AT THE SAME TIME, after Row 166, ON THE LEFT, decrease 1 st. every 6th row 22x and AT THE SAME TIME, after Row 194, cast on 116 sts. Continue in Pattern to Row 312. Bind off.

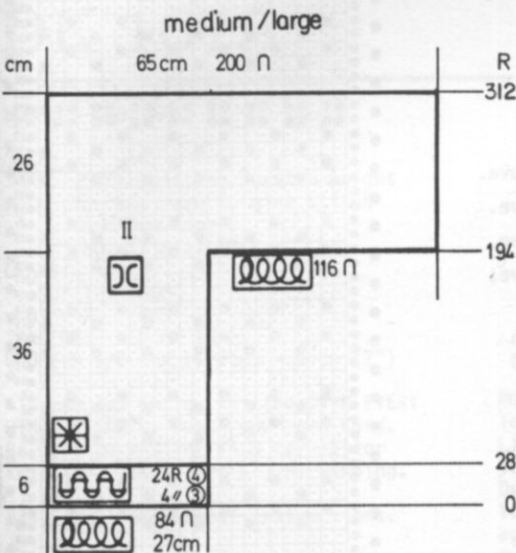
CUFFS: Make 2.

With color 3, cast on 70 sts. and work in K2, P2 Ribbing.

4 rows color 3, 24 rows color 4. Bind off. Gather sleeve and sew to Cuff.

FRONT BANDS:

With color 3, cast on 190 sts. and work K2, P2 Ribbing. 4 rows color 3, 18 rows color 4. Bind off. Make another piece the same. Make 1 more section with 140 sts.



BACK: II Make 1, reverse 1.

Begin on the LEFT side of machine (right for second section).

Cast on 84 sts. with color 4 and work K2, P2 Ribbing.

4 rows color 3, 24 rows color 4. Transfer the Ribber sts. and continue in Pattern same as the front.

After Row 194, ON THE RIGHT (left for 2nd section), cast on 116 sts. Continue in Pattern to Row 312 then bind off.

DK 1072



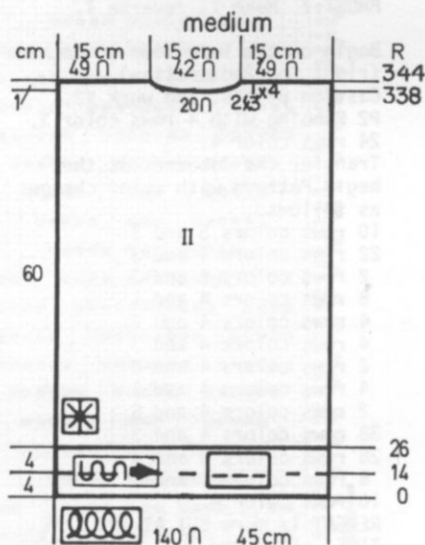
WOMAN'S JACKET

SIZE: Medium
 YARN: Euro Sport
 GRAMS:
 color 1 300
 color 2 250
 color 3 500

TENSION: 10 - Tension 9 for bands over every other needle.
 GAUGE: 15 sts. 27 rows = 5 cm (2")

A Tuck and Slip stitch Pattern with changes in color. Bands are Mock Ribbing over every other needle with color stripes. Punch your own Card and follow the printed instructions for color changes and setting of Pattern.

FINISHING: See General Instructions. The Purl side is the right side.



BACK: II

Bring 140 needles into working position, then push back every 2nd needle to the out of work position. Cast on over the remaining needles in work then work the color stripes as follows:

3 rows color 3, then 1 row each of colors 1, 3, 2, 3, 2, 3, 1 then 16 rows color 3.

After Row 26, bring the empty needles into working position and hang the hem (hang the cross thread onto the empty needles to prevent holes). Continue in Pattern - Knit 1 row to the left, Set KC and knit to the right. (This is your

*2 rows Plain with color 3)

4 rows Skip.
 REPEAT FROM * 5x.

Color 3 - 2 rows Plain
 4 rows Skip
 2 rows Tuck

Color 1 - 2 rows Plain
 4 rows Skip
 2 rows Plain
 4 rows Skip
 2 rows Tuck

Color 3 - 2 rows Plain
 4 rows Skip
 2 rows Tuck

Color 2 - 2 rows Plain
 2 rows Skip
 2 rows Tuck

Color 3 - REPEAT FOR COLOR 3 above.

Color 2 - REPEAT FOR COLOR 2 above.

Color 3 - REPEAT FOR COLOR 3 above.

Color 1 - REPEAT FOR COLOR 1 above,

After Row 338, bind off the center 20 sts., put the needles on the left into holding position and complete the right side first.

*ON NECK SIDE, bind off 3 sts. 2x, 4 sts. 1x.

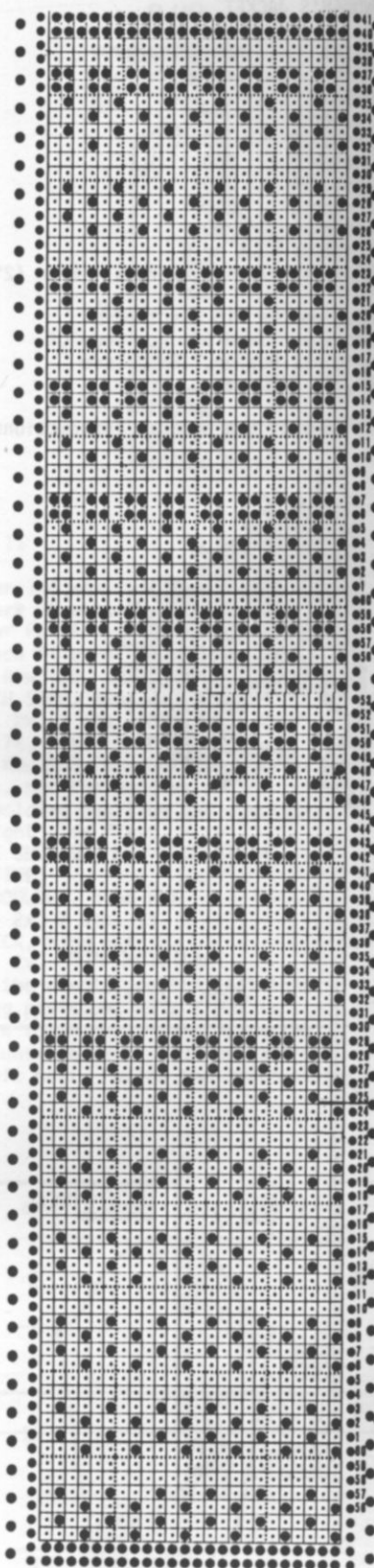
After Row 344, bind off the remaining sts.

Bring the needles on the left into working position, knit 1 row in Pattern to the left side, turn the Row Counter back to 338 and complete the left half. Follow the instructions from *.

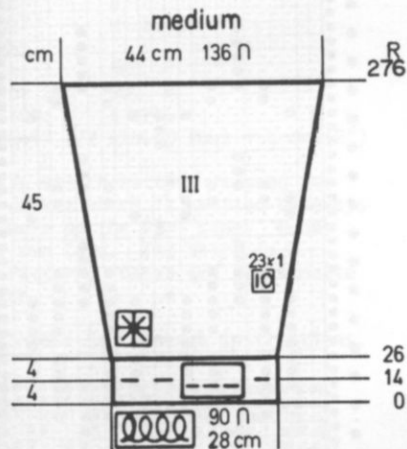
FRONT BANDS: Make 2.

Bring 200 needles into working position then push back every 2nd needle same as before for a Mock Rib. Cast on and work the color stripes same as before with Tension 9.

After Row 26, bind off or remove onto waste yarn.

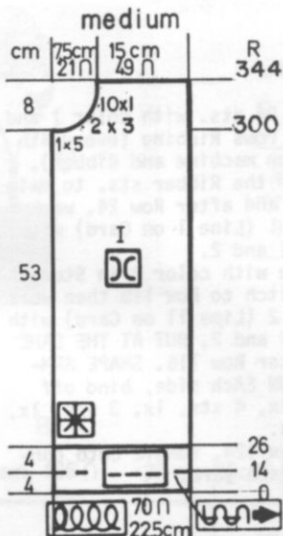


DK 1072



SLEEVES: III

Bring 90 needles into working position then push back every 2nd needle to out of work position. Cast on over the remaining needles and work Mock Ribbing. same as for back and front with the color stripes.
After Row 26, bring the empty needles into work and hang the hem same as you did before. Tension 10.
Continue in Pattern same as before BUT AT THE SAME TIME, ON EACH SIDE, increase 1 st. every 10th row 23x.
After Row 276, bind off.



FRONT: I Make 1, reverse 1.

Bring 70 needles into working position then push back every 2nd needle to the out of work position.
Cast on over the remaining needles in work same as for back.
Work the color stripes same as for back and after Row 26, hang the hem in the same way.
Continue in Pattern same as for back.
After Row 299, SHAPE NECK:
Bind off 5 sts. 1x, 3 sts. 2x,
After Row 344, bind off the remaining sts.

COLLAR:

Bring 110 needles into working position and push back every 2nd needle to the out of work position. Cast on over the remaining needles. Work the color stripes with Tension 9.
After Row 26, hang the hem same as before then change to Tension 10 and continue in Pattern as follows:
SET CARD ON ROW 25 (as marked).

Color 3 - 2 rows Plain
4 rows Skip
2 rows Plain
4 rows Skip
2 rows Tuck
Color 1 - 2 rows Plain
4 rows Skip
2 rows Plain
4 rows Skip
2 rows Tuck

*Color 3 - 2 rows Plain
4 rows Skip
2 rows Tuck

**Color 2 - 2 rows Plain
4 rows Skip
2 rows Tuck

Color 3 - Same as *Color 3.

Color 2 - Same as **Color 2.

Color 3 - Same as *Color 3.

Color 1 - Same as Color 1 above.

After Row 108, bind off.

DK 1073

WOMAN'S CARDIGAN

SIZE: 8/10
YARN: Soft Knitting Worsted weight or any yarn to give stitch and Row Gauge.
NO KIT AVAILABLE

GRAMS:
color 1 400
color 2 300
TENSION: 9 or 10
GAUGE: 9 1/2 sts. 14 rows = 5 cm (2")

A Norwegian Design knitted OVER EVERY OTHER NEEDLE. Punch your own Card. Be sure to WAX THE YARN for easier knitting. Bands are K1, P1 Ribbing.

FINISHING: See General Instructions.

ALWAYS COUNT THE EMPTY NEEDLES WHEN SHAPING - for instance, when increasing the sleeve edges, you will ACTUALLY increase 15 sts. on each side because you are counting the empty needles. When binding off at armholes, you must count the empty needles for the bind offs.



NOTE: It is important that you follow the printed instructions and Line Drawings which will explain to you the settings of the Norwegian Design and the decreases within the Yoke. When part of the back, fronts and sleeves have been knitted, you must remove them onto waste yarn then hang one half the back, 1 sleeve and 1 front back onto the machine as shown in the Line Drawing. Follow the instructions for completing the yoke. When you knit the 2nd half, you must be sure to place the sleeve and front on OPPOSITE SIDE.

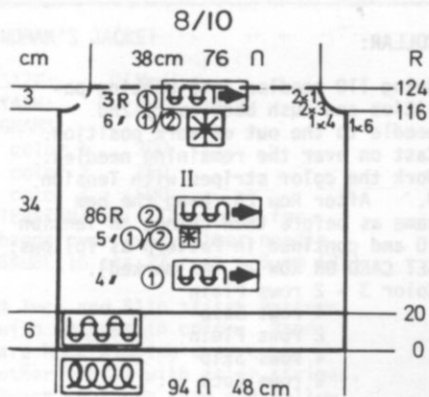
NECKBAND:

Cast on 36 sts. with color 1 and work 10 rows Ribbing same as back and front using Tension 7, then work 4 rows CIRCULAR (Ten. 8) knitting. With contrast waste yarn work 10 rows circular and remove from machine.
Weave 1 edge of circular knitting to the inside and 1 to the outside of neckline and remove waste yarn.

FRONT BANDS: Make 2.

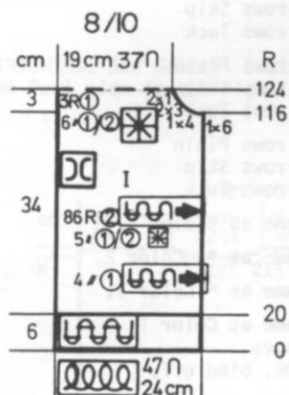
Cast on 50 sts. with color 1 and work Ribbing same as back and front, then work 4 rows CIRCULAR (Tension 8) knitting. With contrast waste yarn work 10 rows circular and remove from machine. Weave 1 edge of circular knitting to the inside and 1 to the outside of fronts.

Continued →



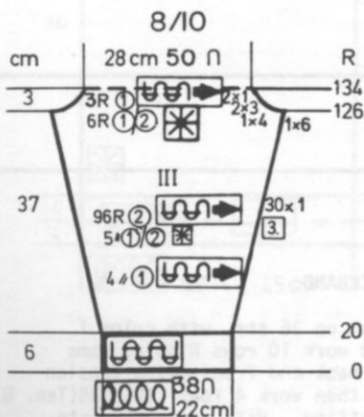
BACK: II

Cast on 94 sts. with color 1 and work 20 rows Ribbing (every 4th needle on machine and Ribber). Transfer the Ribber sts. to main machine and after Row 24, work Pattern 1 (Line 1 on Card) with colors 1 and 2. Continue with color 2 in Stockinette stitch to Row 115 then work Pattern 2 (Line 11 on Card) with colors 1 and 2, BUT AT THE SAME TIME after Row 116. SHAPE ARM-HOLE. ON EACH side, bind off 6 sts. 1x, 4 sts. 1x, 3 sts. 1x, 1 st. 2x. After Row 124, remove onto contrast waste yarn.



FRONT: I Make 1, reverse 1.

Cast on 47 sts. with color 1 and work Ribbing same as you did for back. After Row 20, transfer the sts. and after Row 24, work Pattern 1 same as you did for back (Line 1). Continue with color 2 and Stockinette stitch to Row 115. Set Pattern 2 (Line 11) and AT THE SAME TIME, after Row 116, SHAPE ARMHOLE same as back. After Row 124, remove onto contrast waste yarn.



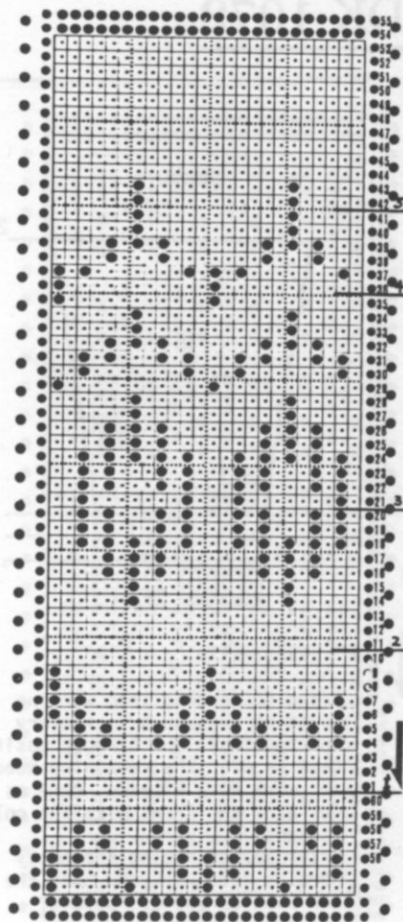
SLEEVES: III

Cast on 38 sts. with color 1 and work Ribbing same as Back and Front. After Row 24, work Pattern 1 same as before AND AT THE SAME TIME, ON EACH SIDE, increase 1 st. every 3rd row 30x, working Stockinette stitch with color 2 to Row 125. Set Pattern 2 (Line 11 on Card) and after Row 126 SHAPE UNDERARM. ON EACH SIDE, bind off 6 sts. 1x, 4 sts. 1x, 3 sts. 2x, 1 st. 2x. After Row 134, remove onto contrast waste yarn. Make second sleeve.

Hang the sts. back onto the machine, following the Line Drawing 1. Counter 124. Pattern 3 on Card - Line 21. Work 3 rows color 1 15 rows color 1 and 2. 3 rows color 1. Remove the sts. onto waste yarn.

Hang the sts. back onto the machine following Line Drawing 2. - Counter 145. Pattern 4 on Card - Line 36. Work 3 rows color 1 6 rows colors 1 and 2 3 rows color 1. Remove onto waste yarn.

Hang the sts. back onto the machine following Line Drawing 4 - but reduce EACH SET OF 5 sts. to 3 sts. and ON EVERY ROW pull every 4th needle (contrast color) by hand into D position to continue the design in its proper place (Row 169) After Row 180, bind off LOOSELY.



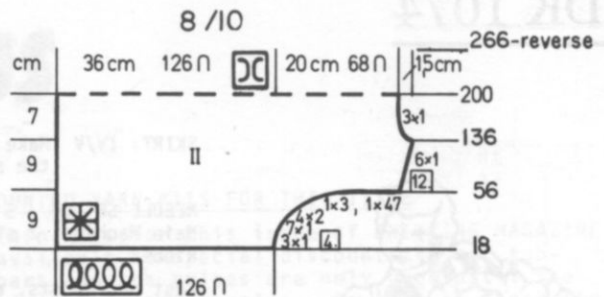
No. 4			Row 169
18	24	18	
1 + 60	-0-	59	
No. 3			Row 157
22	29	21	
1 + 60	-0-	83	
No. 2			Row 145
26	33	25	
1 + 84	-0-	83	
No. 1			Row 124
30	38	28	
1 + 96	-0-	95	

1/2 BACK SLEEVE FRONT
Be sure to Read Printed Instructions.

DK 1074

WOMAN'S JACKET AND SKIRT

SIZE: 8/10
 YARN: Micaela
 GRAMS: color 1 500
 color 2 500
 TENSION: 4 or 5
 GAUGE: 17 1/2 sts. 40 rows = 5 cm (2")

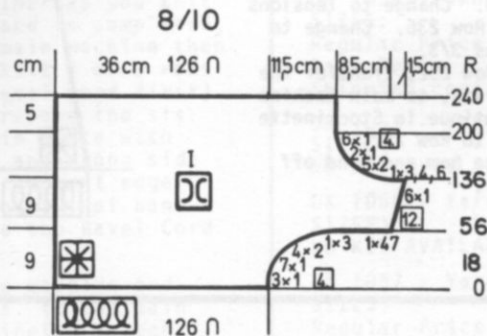
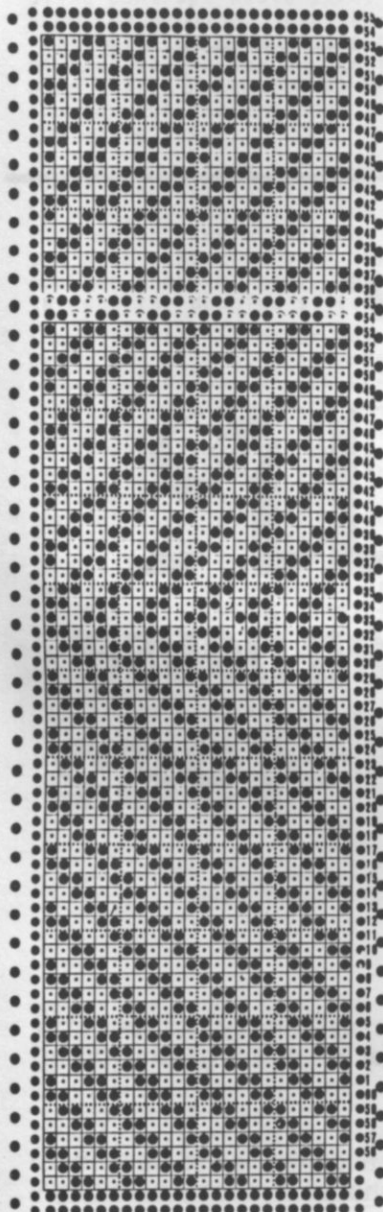


JACKET BACK: II

Cast on 126 sts. with color 1 and work in Pattern with 36 rows Color 1, 4 rows Color 2. After Row 18 ON THE RIGHT, ON EVERY 4th row, cast on 1 st. 3x, then every 2nd row, cast on 1 st. 7x, 2 sts. 4x, 3 sts. 1x, and After Row 54, cast on 47 sts.
 After Row 56, SHAPE SHOULDER: Increase 1 st. every 12th row 6x.
 After Row 136, SHAPE NECK: Decrease 1 st. every 2nd row 6x.
 After Row 266, REVERSE SHAPINGS.

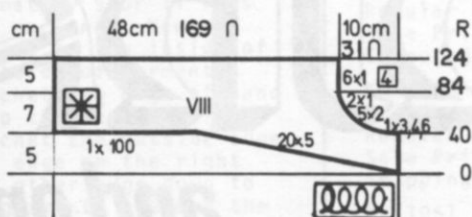
A Slip stitch Pattern is used for the Jacket which is knitted sideways and worn on the Purl side. Punch your own Card. The Skirt is a Rib Pattern. Bands are stockinette stitch.

FINISHING: See General Instructions.



FRONT: I Make 1, reverse 1.

Work the front the same as the back to Row 136. SHAPE NECK: Bind off 6 sts. 1x, 4 sts. 1x, 3 sts. 1x, 2 sts. 5x, 1 st. 2x, then 1 st. every 4th row 6x. Knit to Row 240. Bind off.

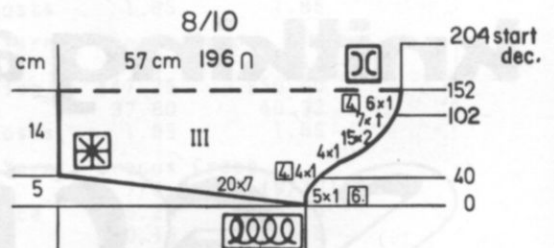


FRONT FACING: Make 1, reverse 1.

On the right (left for second piece) side of machine, cast on 5 sts. with color 1 20x and work in Pattern same as back and front. After Row 40, cast on 100 sts. on the left (right) and SHAPE NECK: Bind off 6 sts. 1x, 4 sts. 1x, 3 sts. 1x, 2 sts. 5x, 1 st. 2x, then 1 st. every 4th row 6x. After Row 124, bind off.

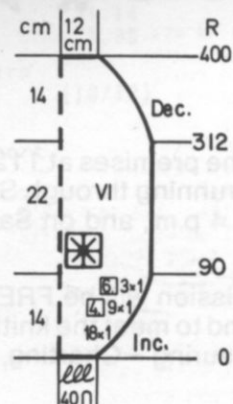
COLLAR: VI

Cast on 40 sts. with color 1 and work in Pattern same as front and back. ON THE RIGHT, increase 1 st. every 2nd row 18x, then increase 1 st. every 4th row 9x, every 6th row 3x. Continue in Pattern to Row 312. ON THE RIGHT, decrease 1 st. every 6th row 3x, every 4th row 9x, every 2nd row 18x. After Row 400, bind off the remaining sts.



SLEEVES: III

On the right side of machine, cast on 7 sts. then cast on 7 sts. to the LEFT of these sts. every 2nd row 19x more BUT AT THE SAME TIME, SHAPE CAP on the right. Increase 1 st. every 6th row 5x, every 4th row 4x, then every 2nd row cast on 2 sts. 15x, 1 st. 7x, then every 4th row 1 st. 6x. After Row 152, begin the decreases for Cap following the instructions in reverse. AT THE SAME TIME, after Row 204, ON THE LEFT, bind off 7 sts. 20x.



Continued →



SKIRT: IV/V Make 2 sections the same.

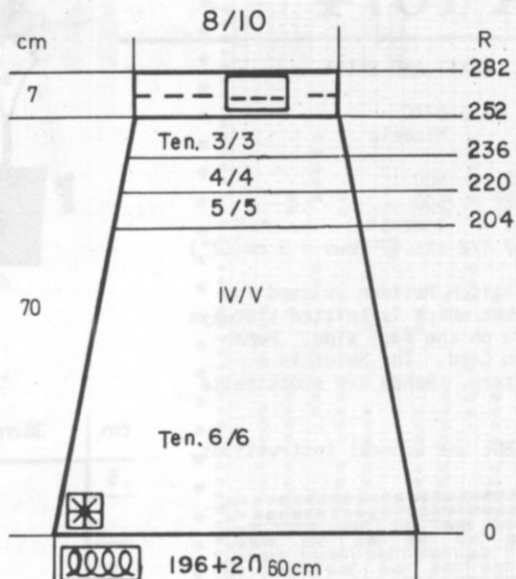
NEEDLE SET-UP - 5 sts. on the Main Machine, 2 sts. on the Ribber.

Cast on 198 sts. and set into Rib Pattern. Color 2. Begin with Tensions 6/6 to Row 204.

Change to Tensions 5/5 to Row 220. Change to Tensions 4/4 to Row 236. Change to Tensions 3/3.

After Row 252, transfer the Ribber sts. to main machine and continue in Stockinette stitch to Row 282.

Hang the hem and bind off loosely.



knitking announces their

SEMINAR

and open house

1982



On the premises at 1128 Crenshaw Blvd., Los Angeles, Calif. 90019. Commencing Monday, October 11th and running through Saturday, the 16th. During the five weekdays the Seminar will operate from 10 a.m. until 4 p.m., and on Saturday from 10 a.m. until 1 p.m.

Admission will be FREE - Coffee and Doughnuts will be available at 9:30 a.m. daily. Plan to be with us and to meet the knitting experts at KNITKING. Classes and Lectures on all phases of machine knitting - Measuring - Charting, etc., will continue throughout every day.



KNITTING NEWS

PRACTICAL KNITTING HINTS

RIBBED NECKBANDS, ARMBANDS, FRONT BANDS

If you make ribbed bands for the neck, armholes or fronts, there are different ways to attach them. Find the one that is easiest for you and use that method for attaching your bands. Later, you can try another method.

Most of the time, KNITTING MAGAZINE has you knit bands separately, so after the band is completed, transfer the Ribber sts. to the main machine then knit 1 row Stockinette stitch. Knit 7 or 9 rows Stockinette stitch (knit 1 row Ravel Cord first) using contrast waste yarn, then remove the sts. from the machine. Pin the band in place with right side of garment facing you and wrong side of band facing you on the top of garment edge. Slip stitch crochet into the open sts. of band and through garment edge. Remove the Ravel Cord and waste yarn.

You can also leave the band on the machine and after transferring the ribber sts. to the main machine, do not knit 1 row Stockinette stitch. With wrong side of garment facing you, pick up the same number of sts. (spaced evenly) on garment neck or armhole, etc., then bind off loosely through the doubled stitches now on the machine.

There is still another way for knitting ribbed bands and attaching to garment. Knit the band, then work 4 rows of CIRCULAR knitting with garment yarn, 2 rows of Ravel Cord (1 row back bed, 1 row front bed) - then continue the circular knitting using waste yarn for approximately 9 or 11 rows (each bed). Remove from the machine. Now you can sew or weave 1 edge of band to the inside of garment and 1 edge to the outside of garment. You can also slip stitch crochet one edge of band to the inside and one edge to the outside of garment - or slip stitch crochet the outside edge so that the crochet forms an edge on the right side of garment then sew the other edge down to the inside or wrong side of garment. Remove the Ravel Cord and waste yarn.

Try all methods and you will learn to use the one that is best for each garment you make. This will depend on the style and pattern stitch you have used for knitting the main sections.



CHOOSE YOUR YARN KITS FROM THE FOLLOWING COLORS.

AMORE... Pink, Yellow, Black, Turquoise, Rose, Burgundy, Royal Blue, Navy, Rust, Beige, Red, Dark Grey, Brown, Lilac, Jade, Orange.

VIENNA... Blue, Gold, Light Green, Beige, Peach, Aqua, Dark Aqua, Red, Coral, Yellow, Navy, Brown

EURO SPORT... Black, Green, Yellow

MICAELA... Peach, Rose, Green, Black.

DISCOUNTED YARN KITS FOR THIS ISSUE

The Yarn Kits for this issue of KNITTING MAGAZINE are available at special discounts to our subscribers and the prices are only good until the next issue of the magazine. Be sure to check the colors available listed at the end of this NEWS-LETTER and make certain to give alternate colors.

DK 1054 - Yarn: Euro Sport
SIZES: 10/12 (14/16)
Regular Price \$28.00 \$28.00
Sale Price 22.40 22.40
Shipping costs 1.85 1.85

DK 1055 - Yarn: Nomotta Orlanda
SIZES: 8 (10/12)
NO KIT AVAILABLE

DK 1056 - Yarn: Nomotta Orlanda
SIZES: 8/10 (12/14)
NO KIT AVAILABLE

DK 1057 - Yarn: Amore
SIZES: 8/10 (12/14)
Regular Price \$26.29 \$28.68
Sale Price 21.03 22.94
Shipping costs 1.85 1.85

DK 1058 - Yarn: Crocus Crepe
SIZES: 10 (12/14)
Regular Price \$47.25 \$50.40
Sale Price 37.80 40.32
Shipping costs 1.85 1.85

KK 1059 - Yarn: Crocus Crepe
SIZES: 7/8 (9/10)
Regular Price \$25.20 \$25.20
Sale Price 20.16 20.16
Shipping costs 1.85 1.85

KK 1060 - Yarn: Crocus Crepe
SIZES: 6 (8/10)
Regular Price \$25.20 \$28.35
Sale Price 20.16 22.68
Shipping costs 1.85 1.85

KK 1061 - Yarn: Sport Weight Yarn
SIZES: 3/4 (6/8)
NO KIT AVAILABLE

DK 1062 - Yarn: Sport Weight Yarn
SIZES: 12 (14)
NO KIT AVAILABLE

HP 1063 - Yarn: Micaela
SIZES: 38/40 (42/44)
Regular Price \$34.35 \$38.93
Sale Price 27.48 31.14
Shipping costs 1.85 1.85

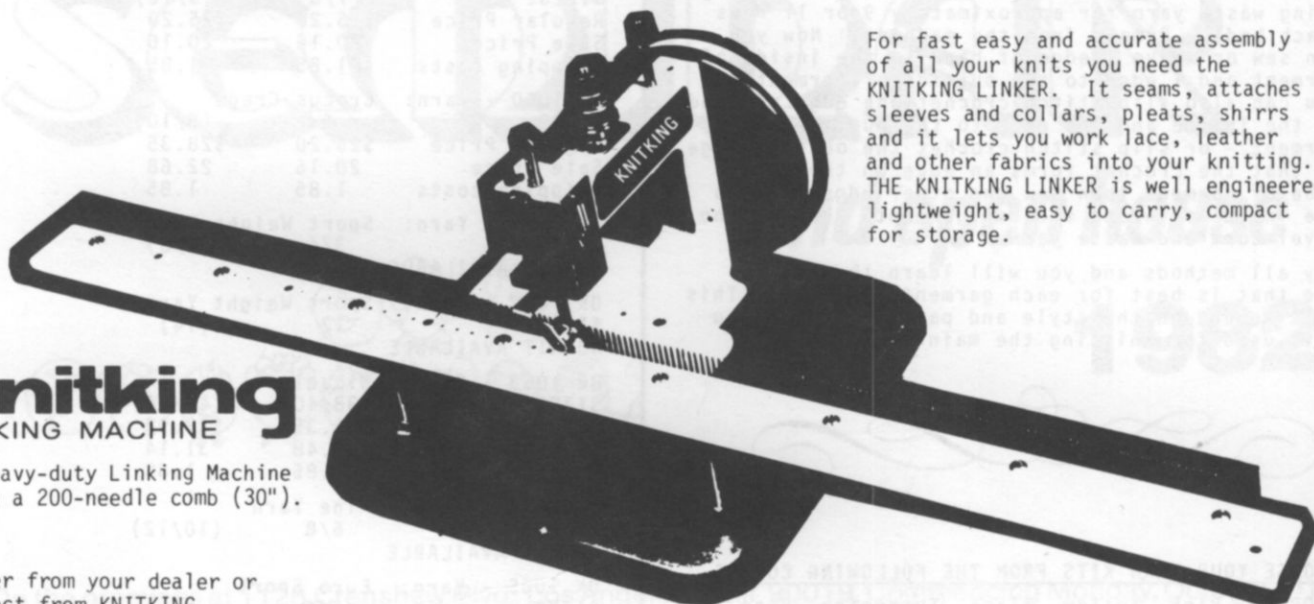
DK 1064 - Yarn: Fine Yarn
SIZES: 6/8 (10/12)
NO KIT AVAILABLE

DK 1065 - Yarn: Euro Sport
SIZES: 5/6
Regular Price \$19.25
Sale Price 15.40
Shipping costs 1.85

DK 1066 - Yarn:	Amore		
SIZES:	6/8	(10/12)	[14/16]
Regular Price	\$21.51	\$23.90	\$23.90
Sale Price	17.21	19.12	19.12
Shipping costs	1.85	1.85	1.85
DK 1067 - Yarn:	Vienna		
SIZES:	8/10	(12/14)	[16]
Regular Price	\$43.20	\$48.60	\$54.00
Sale Price	34.56	38.88	43.20
Shipping costs	1.85	1.85	1.85
KK 1068 - Yarn:	Micaela		
SIZES:	2	(3)	
Regular Price	\$16.03	\$16.03	
Sale Price	12.82	12.82	
Shipping costs	1.85	1.85	
DK 1069 - Yarn:	Micaela		
SIZES:	Medium/Large		
Regular Price	\$91.60		
Sale Price	73.28		
Shipping costs	3.50		

DK 1070 - Yarn:	Light weight Wool/Nylon
SIZES:	8/10
NO KIT AVAILABLE	
DK 1071 - Yarn:	Crocus Crepe
SIZE:	16
Regular Price	\$59.85
Sale Price	47.88
Shipping costs	1.85
DK 1072 - Yarn:	Euro Sport
SIZE:	Medium
Regular Price	\$36.75
Sale Price	29.40
Shipping costs	2.50
DK 1073 - Yarn:	Soft Knitting Worsted weight
SIZE:	Medium
NO KIT AVAILABLE	
DK 1074 - Yarn:	Micaela
SIZE:	8/10
Regular Price	\$45.80
Sale Price	36.64
Shipping costs	1.85

Your Knitter needs a Linker, like your Washer needs a Dryer



For fast easy and accurate assembly of all your knits you need the KNITKING LINKER. It seams, attaches sleeves and collars, pleats, shirrs and it lets you work lace, leather and other fabrics into your knitting. THE KNITKING LINKER is well engineered, lightweight, easy to carry, compact for storage.

knitking LINKING MACHINE

A heavy-duty Linking Machine with a 200-needle comb (30").

Order from your dealer or direct from KNITKING.


1128 Crenshaw Boulevard, Los Angeles, California 90019

DK 1054



DK 1057





DK 1058

DK 1055



A woman with blonde hair is shown in profile, looking to the left. She is wearing a long-sleeved knit sweater with a color-block design: a reddish-brown upper section, a grey middle section, and a tan lower section. She is also wearing tan trousers and tan boots with large, fluffy fur pom-poms. The background is a rough stone wall. The entire image is framed by a white decorative border with curved corners.

DK 1056

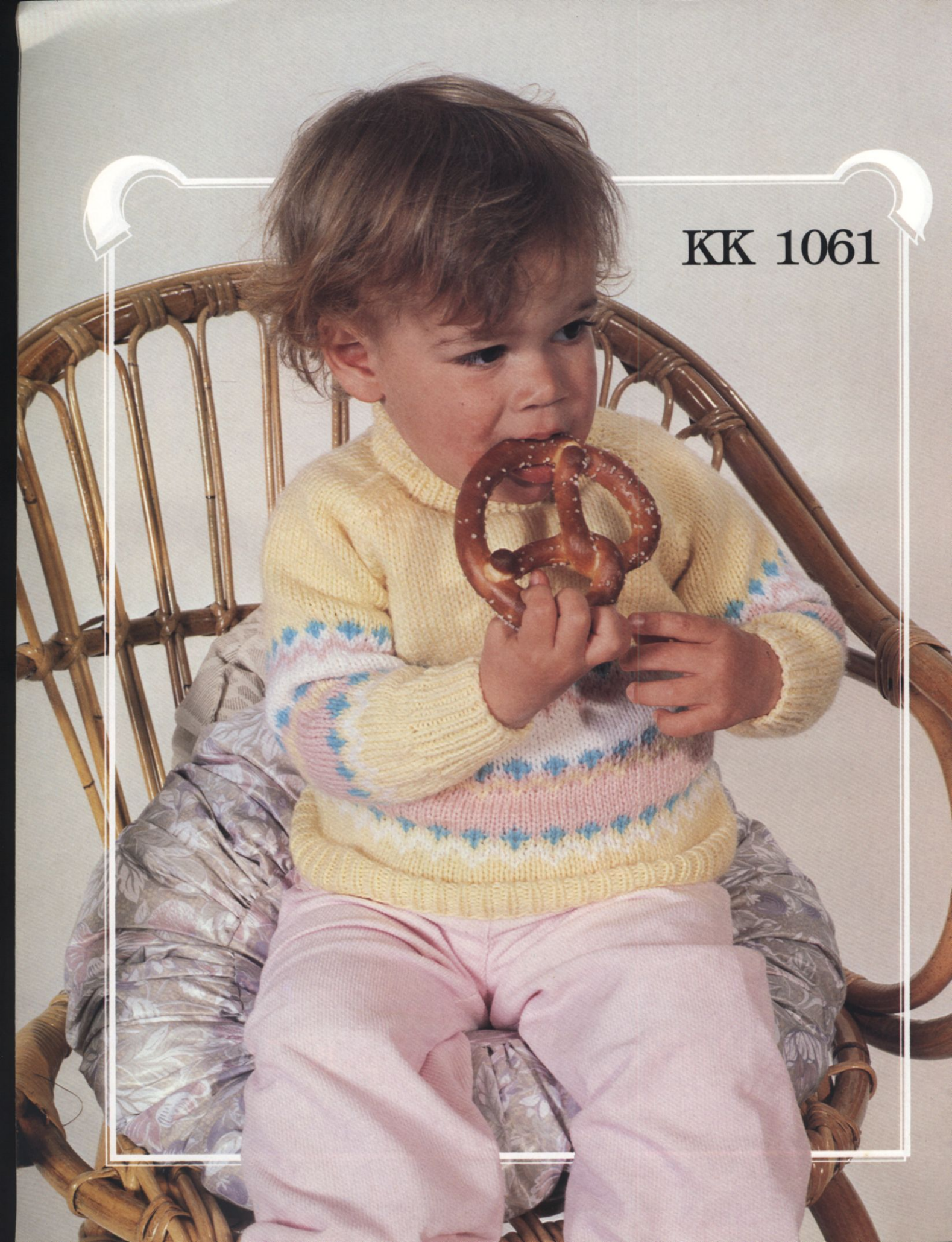


DK 1065



KK 1059

KK 1060



KK 1061



KK 1068

A woman with voluminous, styled brown hair is smiling and posing for a photograph. She is wearing a long-sleeved, brown knit dress. The dress features a V-neckline with a decorative, textured pattern. The skirt has a diamond or argyle pattern and a scalloped hem. She is sitting on a clear plastic stool, with her right hand on her hip and her left hand resting on her lap. She is wearing gold bangles on her right wrist and a ring on her left hand. The background is a plain, light brown wall. The entire image is framed by a white decorative border with curved corners.

DK 1067