

Jones

Pattern booklet No.4

Price 25p.



Child's Tunic Top with Short Trousers

Materials

- 8 (8) ounces Patons Courtelle Crepe. Main.
- 1 (1) ounce each Patons Courtelle Crepe. Medium and Light.
- 16 (17) inches 1-inch wide elastic.

Measurements

- To fit 22 (24) inch chest.
- Tunic:** 17½ (18) inches length (adjustable).
- 11 (11½) inches sleeve seam (adjustable).
- Trousers:** 12 (13) inches waist to hem.
- 4½ (5) inches inside leg (adjustable).

Tension

- 7 sts. and 10 rows to 1 inch on T.8.

Abbreviations

A, main; B, medium; C, light; T., tension; N., needles; st(s), stitch(es); pos., position; COR(L), carriage on right or left; 000, set row counter to 000; beg., beginning; alt., alternate; rem., remaining; rep., repeat; H.C.L's, holding cam levers; dec., decrease; inc., increase; S.D., slide dial; ff1, transfer the 4th st. to the 5th N., move up 3 edge sts. to fill space, push to A pos. the empty edge N., ff2, transfer 4th and 5th sts. to 6th N., move up 3 edge sts. to fill space, push to A pos. the 2 empty edge N.; fin., finishing.

Note

Instructions for the larger size are in (), where only one figure is given this applies to both sizes. The plain side, i.e., the side away from you when knitting, is the right side throughout.

Tunic - Back

*T.7. With A cast on by hand over every N. 96 (104) sts. K. 6 rows. T.10. K. 1 row for foldline. T.7. K. 6 rows. Make double hem by placing each cast on st. onto N. in B pos. T.8. K. 1 row. COR. 000. ff1 each end of every foll. 6th row to 80 (88) sts. K. to row 114 (120). (Adjust length at this stage if desired).

Shape Armholes

Cast off 4 (5) sts. at beg. of the next 2 rows. 72 (78) sts. 000. ff2 each end of every alt. row to 56 (62) sts. *K. to row 46.

Shape Shoulders

Cast off 4 sts. at beg. of the next 4 rows, then cast off 4 (6) sts. at beg. of the next 2 rows. Cast off rem. 24 (26) sts. loosely.

Front

Rep. from * to * as on back. 56 (62) sts. K. to row 34. COR.

Shape Front Neck

Cast off the centre 14 (16) sts. H.C.L's to III. Push left 21 (23) sts. to E pos. Cont. on right sts. dec. 1 st. every alt. row on neck edge to 16 (18) sts. K. to row 46.



Child's Tunic Top with Long Trousers

Shape Shoulder

Cast off 4 sts. at beg. of the next row and at this same edge every alt. row twice more fin. COR. Cast off rem. 4 (6) sts. H.C.L.'s to l Cont. on left sts. to match reversing shapings.

Sleeves

T.7. With A cast on by hand over every N. 54 (58) sts. K. 6 rows. T.10. K. 1 row for foldline. T.7. With C K. 6 rows, break off C. Make double hem as before. Cont. in A. T.8. K. 1 row. COR. 000. K. 14 rows S.D. on 2 (4). With A and B cont. in pattern from chart working steps 1 to 4 twice, then steps 1 to 2 once only. (10 pattern rows). Break off B. 000. Inc. 1 st. each end of every foll. 5th row to 74 (78) sts. K. to row 84 (92). (Adjust length at this stage if desired).

Shape Top

Cast off 4 (5) sts. at beg. of the next 2 rows. 66 (68) sts. 000. ff1 each end of every alt. row to 26 sts. K. 2 rows. Cast off 3 sts. at beg. of next 2 rows, then cast off rem. 14 sts.

Neckband

T.7. With B cast on by hand over every N. 70 (74) sts. K. 6 rows. Break off B, join on A. T.10. K. 1 row for foldline. T.7. K. 6 rows. Place each cast on st. onto N. in B pos. Press front and back. Join right shoulder seam. With wrong side of work facing you and working from right edge of B pos. N. place back neck to first 24 (26) N., right side neck to next 16 N., front neck to next 14 (16) N., left side neck to rem. 16 N. With A cast off band and neck edge together loosely.

Short Trousers (Right leg)

T.7. With A cast on by hand over every N. 82 (90) sts. K. 10 rows. T.10. K. 1 row for foldline. T.7. K. 6 rows. C, break off C. With A K. 4 rows. Make double hem as before. T.8. K. 1 row. COR. 000. K. 6 rows A. K. 6 rows C, break off C. K. 2 rows A.S.D. on 4. With A and B cont. on pattern from chart working steps 1 to 4 twice, then steps 1 to 2 once only. (10 pattern rows). Break off B. 000. Inc. 1 st. each end of the next row and then every foll. 3rd row on left edge 5 times more, and every foll. 4th row on right edge 3 times more. 92 (100) sts. K. to row 22. COR.

Shape Crutch

Cast off 2 sts. at beg. of the next row, then cast off 5 sts. at beg. of the foll. row. 85 (93) sts. Rep. these last 2 rows once more. 77 (86) sts. 000. ff1 on right edge every foll. 4th row 6 (7) times, at same time ff1 on left edge every alt. row 10 times, then every foll. 4th row 3 (4) times. 59 (65) sts. K. to row 68 (74).

Waistband

T.10. K. 1 row for sewing line. T.8. K. 10 rows. T.10. K. 1 row for foldline. T.8. K. 10 rows. Cast off loosely. Work left leg to match reversing shapings.

To Complete

Press work on wrong side with cool iron over dry cloth. On tunic join left shoulder seam and neckband. Sew in sleeves. Join sleeve and side seams. For trousers see long trouser making-up. Press all seams lightly.

Materials

12 (12) ounces Patons Courtelle Crepe. Main.
1 (1) ounce Patons Courtelle Crepe. Medium.
1 (1) ounce Patons Courtelle Crepe. Light.
16 (17) inches 1-inch wide elastic.
2 buttons.

Measurements

To fit 22 (24) inch chest.

Tunic: 17½ (18) inches length (adjustable).

11 (11½) inches sleeve seam (adjustable).

Trousers: 25 (26) inches waist to hem (adjustable).

19 (19½) inches inside leg (adjustable).

Tension

7 sts. and 10 rows to 1 inch on T.8.

Abbreviations

A, main; B, medium; C, light; T., tension; pos., position; N., Needles; K., knit; dec., decrease; inc., increase; 000, set row counter to 000; st(s), stitch(es); foll., following; beg., beginning; alt., alternate; rem., remaining; COR(L), carriage on right or left; rep., repeat; fin., finishing; ff1, transfer the 4th st. to the 5th N., move up the 3 edge sts. to fill space, push to A pos. the empty edge N.; ff2, transfer the 4th and 5th sts. to the 6th N., move up the 3 edge sts. to full space, push to A pos. the 2 empty edge N.

Note

Instructions for the larger sizes are in (), where only one figure is given this applies to both sizes. The purl side, i.e., the side facing you when knitting, is the right side throughout.

Tunic - Back

T.8. Push to B pos. 95 (104) N. * Push every 3rd N. back to A pos. With A cast on by hand over all B pos. N. K. 10 rows. Make hem by placing each cast on st. onto N. in B pos. Place long loops at cast on edge onto N. in A pos. * (inc. 1 st. on 1st size only) 96 (104) sts. 000. ff1 each end of every foll. 6th row to 80 (88) sts. K. to row 104 (110). (Adjust length at this stage if desired). ** K. 10 rows C, break off C. Cont. in A.

Shape Armholes

Cast off 4 (5) sts. at beg. of the next 2 rows. 72 (78) sts. 000. ff2 each end of every alt. row to 56 (62) sts. K. 10 rows B, break off B. Cont. in A to row 46.

Shape Shoulders

Cast off 4 sts. at beg. of the next 6 rows, then cast off 4 (6) sts. at beg. of the next 2 rows. Cast off rem. 24 (26) sts.

Front

Rep. from * to ** as on back. 80 (88) sts. Thread up and take off machine the right 40 (44) sts.

Front Opening

With C cast on 8 sts. to right edge of work. 48 (52) sts. K. 5 rows. Working from right edge and using odd yarn K. by hand the 3rd to 5th sts., then the 12th to 14th sts. for buttonholes. K. 5 rows. Break off C. Cont. in A. K. 1 row. COL.

Shape Armhole

Cast off 4 (5) sts. at beg. of the next row, K. to end COR. 44 (47) sts. 000. ff2 on left edge of work every alt. row to 36 (39) sts. K. 10 rows B, break off B. Cont. in A. K. 5 rows. With odd yarn K. by hand the buttonhole sts. as before. K. to row 34. COR.

Front Neck

Cast off 16 sts. on right edge. 20 (23) sts. Dec. 1 st. every alt. row on neck edge to 16 (18) sts. K. to row 35. COL.

Shape Shoulder

Cast off 4 sts. at beg. of the next row and at this same edge every alt. row 3 times more. Fin. COL. Cast off rem. 4 (6) sts. Place the right 40 (44) sts. back to N. and work to match reversing shapings and omitting buttonholes.

Sleeves

T.8. Push to B pos. 56 (59) sts. Rep. from * to * as on back. (Dec. 1 st. on 1st size only) 55 (59) sts. 000. Inc. 1 st. each end of every foll. 8th row to 75 (79) sts. K. to row 86 (92). (Adjust length at this stage if desired). K. 10 rows C, break off C. Cont. in A.

Shape Top

Cast off 4 (5) sts. at beg. of the next 2 rows. 67 (69) sts. 000. ff1 each end of every alt. row to 27 sts. at same time working the B stripe on the 9th to 18th rows inclusive. K. 2 rows. Cast off 3 sts. at beg. of the next 4 rows. Cast off rem. 15 sts.

Collar

T.8. Push to B pos. 64 (70) N. Working from the right edge push to A pos. the 4th and then every foll. 3rd N. leaving 3 sts. on left edge in B pos. With B cast on by hand over B pos. N. K. 90 rows. Make double collar by placing each cast on st. onto N. in B pos., then place long loops at cast on edge onto N. in A pos. K. 1 row. Cast off loosely.

Long Trousers (Right Leg)

T.8. Push forward to B pos. 86 (95) N. Rep. from * to * as on tunic back, knitting 20 rows instead of 10. (Inc. 1 st. on 1st size only) 87 (95) sts. 000. K. 10 rows in A. K. 10 rows in C, break off C. K. 10 rows in A. K. 20 rows in B, break off B. Cont. in A and K. to row 70. ff1 each end of next and every foll. 20th row to 81 (89) sts. K. to row 150 (156). (Adjust length at this stage if desired). 000. Inc. 1 st. each end of the next row and then every foll. 3rd row on left edge 5 times more, and every foll. 4th row on right edge 3 times more, 91 (99) sts. K. to row 22, COR.

Shape Crutch

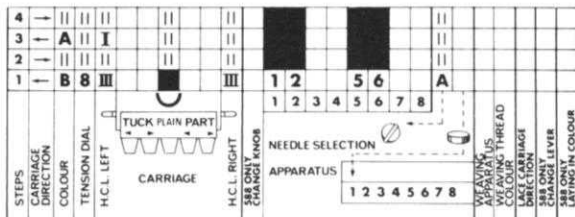
Cast off 2 sts. at the beg. of the next row, then cast off 5 sts. at beg. of the foll. row. 84 (92) sts. Rep. these last 2 rows once more. 77 (85) sts. 000. ff1 on right edge every foll. 4th row 6 (7) times, at same time ff1 on left edge every alt. row 10 times, then every foll. 4th row 3 (4) times. 58 (64) sts. K. to row 68 (74).

Waistband

T.10. K. 1 row for sewing line. T.8. K. 10 rows. T.10. K. 1 row for foldline. T.8. K. 10 rows. Cast off loosely. Work left leg to match reversing shapings.

To complete

Press work on wrong side with cool iron over dry cloth. On tunic join shoulder seams. Sew sleeves into armhole. Join sleeve and side seams. Fold front opening edges and sew down placing buttonholes one behind the other. Unpick odd yarn and oversew buttonholes. Join collar ends, sew collar to neck edge. Sew on buttons. On trousers sew leg seams. Sew back and front crutch seams. On waist turn facing on foldline to inside placing it over the elastic. Oversew facing loosely along sewing line. Press all seams lightly.



Child's Polo Neck Jumper

Materials

7 (7, 8, 9, 10, 11) ounces 4-ply wool.

Measurements

To fit chest sizes: 20 (22, 24, 26, 28, 30) inches.
Finished measurements: 22 (24, 26, 28, 30, 32) inches.
Length to back neck: 12½ (14, 15½, 17, 18½, 20) inches.
Sleeve Seam: 8 (9½, 11, 12½, 14, 15½) inches.

Tension

7½ sts. and 10 rows=1 inch.

Abbreviations

Sts., stitches; dec., decrease; inc. increase; rep., repeat; foll., following; alt., alternate; beg., beginning; T., tension; 000. set row counter to 000.

Notes

Figures in brackets refer to the larger sizes respectively. Fully fashioned Decs. for raglan edges are worked as follows:—Using double transfer tool, move the 2nd and 3rd stitch onto 4th and 5th needle, move end stitch two needles in. (2 sts. decreased each time).

Back

Bring forward 83 (91, 97, 105, 113, 121) needles to B position, and then return alternate needles to A position. *Using contrast wool knit several rows of waist knitting. T.4. Using main wool knit 31 rows. Bring forward all needles to B position. To make hem pick up first row loops in main colour. Place on empty needles. Knit the row. * 000. T.7. Knit 64 (72, 80, 88, 96, 102) rows.

Shape Raglan

000. Cast off 3 (4, 2, 2, 2, 2) sts. at beg. of next 2 rows. Knit 2 (4, 4, 4, 4, 4) rows. Dec. 2 sts. (see notes) at each end of next and every foll. 4th row until 33 (35, 37, 37, 41, 41) sts. remain. Knit 1 row. Cast off.

Front

Knit as Back until 26 (32, 40, 46, 52, 60) rows have been worked from the beg. of Raglan shaping. Carriage at right. H.C.L.'s III. With an odd length of wool cast off by hand, (or if preferred slip onto a stitch holder) centre 15 (17, 19, 17, 21, 21) sts. Push needles at left of cast off sts. to E position and knit on right side only. Continue raglan shaping as before. *At the same time* dec. 1 st. at neck edge on every alt. row 7 (7, 7, 8, 8, 8) times in all. 4 sts. remain. Knit 2 (2, 2, 2, 0, 0) rows. Dec. once more at raglan edge only. Cast off. H.C.L.'s I. Work second side as first reversing all shapings.

Sleeves

Bring forward 49 (51, 53, 55, 57, 59) needles to B position, and then return alternate needles to A position, knit as Back from * to *. 000. T.7. Knit 10 rows. Increase 1 st. at each end of next and every foll. 10th (9th, 9th, 8th, 8th, 8th) row until there are 57 (63, 69, 75, 81, 87) sts. Knit straight until 66 (80, 96, 110, 126, 140) rows have been worked. (Adjust length here if required).

Shape Raglan Top

000. Cast off 2 stitches at beg. of next 2 rows. **4th, 5th**

and 6th size only knit 4 rows. Dec. 2 sts. (see notes) at each end of next and foll. 6th row 2 (3, 3) times in all. **All sizes** knit 2 (4, 4, 3, 3, 3) rows. Dec. 2 sts. at each end of next and every foll. 4th row until 9 (11, 9, 11, 13, 13) sts. remain. Knit 1 row. Cast off.

Polo Collar

With right side facing pick up and place on machine 33 (35, 37, 37, 41, 41) sts. from back neck, 9 (11, 9, 11, 13, 13) sts. from first sleeve, 14 (14, 16, 18, 18, 18) sts. down right neck, 15 (17, 19, 17, 21, 21) sts. across centre front, 14 (14, 16, 18, 18, 18) sts. up left neck and 9 (11, 9, 11, 13, 13) sts. from second sleeve, 94 (102, 106, 112, 124, 124) sts. in all. 000. T.7. Knit 20 rows, T.8. Knit 12 (12, 18, 18, 24, 24) rows. T.7. Knit 20 rows. Cast off loosely.

To Make up

Pin out and press with a hot iron over a damp cloth. Sew raglan, side and sleeve seams. Fold collar to inside and slip-stitch in place. Press seams.





Boy's Sleeveless Cardigan

Weaving stitch in self colour.

Materials

8 (9, 9, 10) ounces 4-ply wool. 6 buttons.

Measurements

To fit chest sizes 26 (28, 30, 32) inches.
Finished measurements 28 (30, 32, 34) inches.
Length to Shoulder 16 (17½, 19, 20½) inches.

Tension

13 sts. and 21 rows to 2 inches over weaving stitch.

Abbreviations

Sts., stitches; inc., increase; dec., decrease; rep., repeat; alt., alternate; beg., beginning; T., tension; 000, return row counter to 000; S.L., Set Lever; N.S.B., Needle Selection Button.

Notes

Figures in brackets refer to larger sizes respectively.

Weaving Stitch

Weaving knobs on T. Press every alt. N.S.B. S. L. to set. Lay in wool and knit the row. Rep. this row throughout.

Back

Cast on 92 (98, 104, 110) sts. by hand T.7. Knit 1 row. 000. Following weaving pattern knit 106 (116, 128, 136) rows. This will give a length of 10 (11, 12, 13) ins. to armhole. Adjust length here if required.

Shape Armholes

000. Cast off 4 sts. at beg. of next 2 rows. Dec. 1 st. at both ends of next 5 (7, 7, 9) rows and then every alt. row until 66 (70, 74, 78) sts. remain. Knit straight until 64 (68, 72, 76) rows have been worked.

Shape Shoulder

Cast off 5 sts. at beg. of next 6 rows and 4 (5, 6, 7) sts. at beg. of next 2 rows. Cast off remaining 28 (30, 32, 34) sts.

Right Front

Cast on 51 (54, 57, 60) sts. by hand. T.7. Knit 1 row. 000. Following weaving pattern knit 106 (116, 126, 136) rows. (Knit 1 row extra for Left Front).

Shape Armhole

000. Cast off 4 sts. at beg. of next row. Knit 1 row. Dec. 1 st. at armhole edge on next 5 (7, 7, 9) rows and then every alt. row until 38 (40, 42, 44) sts. remain. Knit straight until 49 (51, 53, 55) rows have been worked.

Shape Neck

Cast off 10 (11, 11, 12) sts. at beg. of next row. Knit 1 row. Dec. 1 st. at neck edge on next 5 rows and then every foll. alt. row until 19 (20, 21, 22) sts. remain. Knit straight until 64 (68, 72, 76) rows have been worked.

Shape Shoulder

Cast off 5 sts. at beg. of next and every alt. rows until 4 (5, 6, 7) sts. remain. Knit 1 row. Cast off.

Left Front

Mark position on Right Front for 6 buttons, the first ¼-inch above cast-on edge and the final one ¼-inch below neck edge. Place remainder evenly between. Knit to match Right Front reversing all shapings and making buttonholes to match markers over needles 4-7 inclusive from front edge.

Front Edging

Beginning at extreme left of machine, push 13 needles to B position. Cast on by hand from right to left. T.6. Knit 1 row. Inc. 1 st. at right and dec. 1 st. at left. Knit 2 rows. Repeat these 2 rows. When at extreme right of machine, take work off and replace at left side again. Knit until long enough to go along lower edge, up both fronts and across back neck, stretching to fit. Cast off.

Armbands

Knit as Front band, stretching to fit.

To Make Up

Pin out and press with a hot iron over a damp cloth. Join side and shoulder seams. Sew on front edging easing round lower front edge and neck edge. Turn to wrong side and slip-st. in place. Sew armbands in place turn to wrong side and slip-st. in place. Neaten buttonholes and sew on buttons. Press seams.

Girl's Cardigan

Materials

Seven ounces 4-ply wool; 5 buttons.

Measurements

To fit bust size 24 inches.
Finished measurements 26 inches.
Length at back neck 15¼ inches.
Sleeve seam 11 inches.

Tension

14 sts. and 20½ rows to 2 inches after pressing.

Abbreviations

Sts., stitches; dec., decrease; rep., repeat; foll., following; alt., alternate; T., tension; 000, return row counter to 000.

Notes

Fully fashioning at raglan edges is worked by transferring 4th st. onto 5th needle and moving end 3 sts. 1 needle in. Fully fashioning at neck edge is worked by transferring 3rd st. onto 4th needle and moving end 2 sts. 1 needle in.

Boy's V Neck Sweater with Fairisle detail

Back

Cast on 93 sts. for 1 x 1 rib. * Knit 2 circular rows. T3/3. Knit 14 rows. Transfer sts. to main bed for st.-st. (**Single machines**, Push 93 sts. to B position. ** Take every alternate needle back to A position. Using contrast colour cast on over remaining sts. Knit a few rows. Change to main wool, T.5. Knit 29 rows. Make a hem and knit the row**.) 000. T.7. Knit 76 rows. This will give a length of 9 ins. from cast-on edge. Adjust length here if required*.

Shape Raglan Armholes

000. Cast off 2 sts. at beg. of next 2 rows. Knit 1 row. Dec. 1 st. (see Notes) at both ends of next and foll. 3rd row and then every foll. alt. row until 29 sts. remain. Knit 1 row. Knit 1 loose row. Cast off using chain method.

Right Front

Cast on 43 sts. for 1 x 1 rib. Knit as back from * to *. (**Single machines**, Push 43 needles to B position. Knit as Back from ** to *.)

Shape Raglan Armholes

000. Cast off 2 sts. Knit 2 rows. Dec. 1 st. (see Notes) at raglan edge on next row. Knit 2 rows. Dec. 1 st. at raglan edge on next and every foll. alt. rows at the same time dec. 1 st. at neck edge (see Notes) on next and every foll. 6th row until 6 sts. remain. Dec. 1 st. at raglan edge on foll. 2 alt. rows only then dec. 1 st. at neck edge (not fully fashioning) until 2 sts. remain. Cast off.

Left Front

Knit as Right Front reversing all shaping.

Sleeves

Cast on 47 sts. for 1 x 1 rib. Knit 2 circular rows. T3/3. Knit 14 rows. Transfer sts. to main bed for st.-st. (**Single machines**, Push 47 needles to B position. Knit as Back from ** to *.) 000. T.7. Knit 8 rows. Inc. 1 st. at both ends of next and every foll. 10th row until there are 67 sts. Knit straight until 98 rows have been worked. This will give a sleeve seam of 11 ins. Adjust length here if required.

Shape Raglan Top

000. Cast off 2 sts. at beg. of next 2 rows. Knit 1 row. Dec. 1 st. (see Notes) at both ends of next and every foll. 3rd row 8 times in all and then every alt. row until 9 sts. remain. Knit 1 row. Cast off.

Front Band

Mark right front for 5 buttonholes, the first $\frac{1}{2}$ inch above cast-on edge and the last at beg. of neck shaping. Space remainder evenly between. Cast on 13 sts. for 1 x 1 rib. Knit 2 circular rows. T3/3. Make buttonholes to match marker over centre 5 sts. (**Single machines**, Cast on 17 sts. by hand. T.6. Knit to match markers making buttonholes over centre 5 sts. 6 left each end.) Knit until long enough to go up fronts, across sleeve tops and back neck, stretching to fit. Cast off.

To Make Up

Pin out and press with a hot iron over a damp cloth. Join side, sleeve and raglan seams. Sew front band in position, neaten buttonholes and sew on buttons. Press seams.

Materials

9 (10, 11, 12) ounces Robin Vogue 4-ply. Main. 1 (2, 2, 3) ounces. Robin Vogue 4-ply. Light. 1 (1, 1, 2) ounces. Robin Vogue 4-ply. Dark.

Measurements

To fit 28 (30, 32, 34) inch Chest.
30 (32, 34, 36) inches all round at underarm.
19 $\frac{1}{2}$ (20 $\frac{1}{2}$, 21 $\frac{1}{2}$, 22 $\frac{1}{2}$) inches length (adjustable).
6 $\frac{1}{2}$ (7, 7 $\frac{1}{2}$, 8) inches armhole depth.
16 (16 $\frac{1}{2}$, 17, 17 $\frac{1}{2}$) inches sleeve seam (adjust.).
11 $\frac{1}{2}$ (12, 12 $\frac{1}{2}$, 13) inches sleeve width at widest point.

Tension

7 $\frac{1}{2}$ sts. and 10 rows to 1 inch on tension 6.

Abbreviations

A, main; B, light; C, dark; T., tension; N., needles; st(s), stitch(es); K., knit; pos., position; COR(L), carriage on right or left; 000, set row counter to 000; cont., continue; beg., beginning; alt., alternate; rem., remaining; rep., repeat; H.C.L's, holding cam levers; foll., following; inc., increase; ff1, transfer the 4th st. to the 5th st., move up the 3 edge sts. to fill space, push to A pos. the empty edge needle. ff2, transfer the 2nd and 3rd st. to the 4th st., move up the edge st., fill space, push to A pos. the empty edge needle; patt., pattern; fin., finishing.

Note

Instructions for the larger sizes are in (). Where only one figure is given this applies to all sizes.

Back

* T.3. With A cast on by hand over every N. 115 (123, 131, 139) sts. placing odd st. on right hand side. K.16 rows. T.10. K. 1 row for foldline. T.3. K. 16 rows. Make double hem by placing each cast on st. onto N. in F pos. T.6. K. 1 row COR. K. 4 rows. 000. ** Cont. in patt. from chart working from steps 1 to 32 (64 rows on counter), then steps 1 to 14 again once only (92 rows on counter). 000. Cont. in A to row 50 (56, 62, 63). (Adjust length at this stage if desired).

Shape Armholes

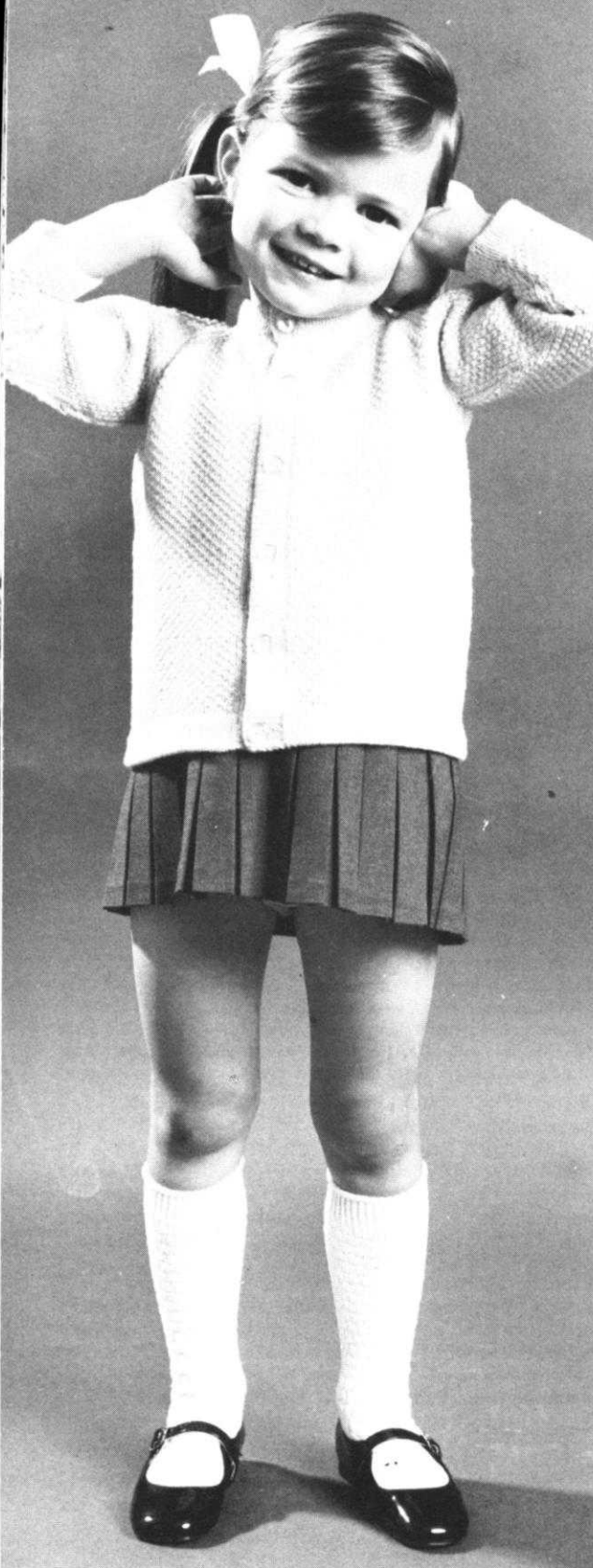
Cast off 5 (6, 7, 8) sts. at beg. of the next 2 rows. 105 (111, 117, 123) sts. 000. * ff1 each end of every alt. row to 89 (95, 101, 107) sts. K. to row 64 (70, 76, 82).

Shape Shoulders

Cast off 5 (5, 6, 6) sts. at beg. of the next 8 rows then cast off 4 (6, 4, 6) sts. at beg. of the next 2 rows. Cast off rem. 41 (33, 45, 47) sts.

Front

Rep. from * to * as on back.



Toddlers Cardigan

Written especially for 551 users

Materials

Seven ounces Sunbeam Mountain Maid Nova Crêpe 4-ply wool; 6 small buttons.

Measurements

To fit a 22-inch chest; length 12 inches; sleeve seams $9\frac{1}{2}$ inches.

Tension

6 sts. and 12 rows to 1 inch over pattern.

Abbreviations

K., knit; sts., stitches; rep., repeat; alt., alternate; foll., following; beg., beginning; inc., increase; dec., decrease; T., tension; 000, set row counter at 0; R., right; H.C.L., holding cam lever; L., left; F.F., transfer stitches from needles 1, 2 and 3 on to needles 2, 3 and 4; to make a buttonhole, transfer stitch on to next needle still leaving empty needle in B position to be knitted.

Back

T6. Fix comb. Cast on anti-clockwise 73 sts. K. 1 row. Release comb. K. 9 rows. T8. K. 1 row (for folding line). T6. K. 9 rows. Remove comb and transfer cast on loops on to every needle to make hem. K. 1 row. Proceed in pattern as follows (carriage at left hand side).

- T5:000: H.C.L.'s to I. Right Tuck button in.
1st row: Press Pattern Keys 1 and 3. Set lever. K. 1 row.
2nd row: K. 1 row back.
3rd row: Release Buttons. Press Pattern Keys 2 and 4. Set lever. K. 1 row.
4th row: K. 1 row back.

These four rows form the moss stitch pattern. Repeating them throughout the garment pattern 129 rows. Cast off 3 sts. at beg. of next 2 rows. Dec. 1 st. F.F. at both ends of next and every foll. alt. row until 23 sts. remain. Work 1 row. Cast off.

Right Front

T6. Work hem as for back casting on anticlockwise 36 sts. T5. 000. H.C.L.'s to I. Right Tuck button in. Pattern 129 rows. Shape raglan as follows: Cast off 3 sts. (R. hand side of needle bed). Work 1 row. Dec. 1 st. F.F. at R. armhole edge on next and every foll. alt. row until 19 sts. remain, finishing at front edge.

To Shape Neck

Cast off 6 sts. at neck edge and dec. 1 st. F.F. at armhole edge. Work 1 row. Work 1 more row. *Dec. 1 st. at neck edge and 1 st. F.F. at armhole edge on next and every foll. alt. row until 3 decs. at neck edge have been worked.

Continue to dec. 1 st. F.F. at armhole edge on next and every alt. row until 1 st. remains. Work 1 row. Fasten off.

Boy's V-Neck Sweater

Left Front

T6. Work hem as for back casting on anti-clockwise 36 sts. T5. 000 H.C.L.'s to I. Right Tuck button in. Pattern 128 rows. Shape raglan as follows: Cast off 3 sts. (L. hand side of needle bed). Work 1 row. Dec. 1 st. F.F. at L. armhole edge on next and every foll. alt. row until 19 sts. remain, finishing at front edge. Work 1 row.

To Shape Neck

Cast off 6 sts. at neck edge and dec. 1 st. F.F. at armhole edge. Work 1 row. Continue as R. front from *.

Sleeves (both alike)

T6. Work hem as for back casting on anti-clockwise 37 sts. T5. 000. H.C.L.'s. Right Tuck button in. Pattern as follows: Inc. 1 st. at both ends of next and every foll. 12th row until 55 sts. Work without further shaping until 120 rows from 000. To shape raglan top: Cast off 3 sts. at beg. of next 2 rows. Dec. 1 st. F.F. at both ends of next and every foll. alt. row until 5 sts. remain. Work 1 row. Cast off.

Left Front Band

T6. With wrong side of work facing pick up 69 sts. along edge of L. front. K. 4 rows. Make buttonholes at sts. 10, 24, 38, 52 and 66 (counting from left of machine). K. 5 rows. T8. K. 1 row. T6. K. 4 rows. Make corresponding buttonholes at sts. 10, 24, 38, 52 and 66. K. 5 rows. Break off wool. Put on spare thread K. 4 rows.

Right Front Band

K. to match left front band omitting buttonholes.

Making Up and Neckband

Join raglan shapings. Remove spare threads from L. and R. front bands and turn bands on to wrong side and catch down. With wrong side of garment facing pick up 6 sts. along top of L. front band (R. side of machine); 12 sts. along L. front; 4 sts. along sleeve top; 21 sts. across back of neck; 4 sts. along sleeve top; 14 sts. along R. front and 6 sts. along top of R. front band.

T6. K. 4 rows. Make buttonhole in L. front band by transferring st. 4 on to st. 5. K. 5 rows. T8. K. 1 row. T6. K. 4 rows. Make corresponding buttonhole in L. front band. K. 5 rows. Break off wool. Put on spare thread. K. 4 rows. Remove spare thread and turn neckband on to wrong side and catch down.

Join side and sleeve seams. Whip round buttonholes. Sew on 6 buttons to correspond with buttonholes. Press garment.

Materials

Seven (eight) ounces Sunbeam Mountain Maid Nova Crepe 4-ply wool.

Measurements

To fit 22 (24) inch chest. Length at centre back 14 (15½) inches. Sleeve seam 10 (11½) inches.

Tension

7 sts. and 10 rows to 1 inch over st.-st.

Abbreviations

K., knit; sts., stitches; ins., inches; rep., repeat; alt., alternate; foll., following; beg., beginning; inc., increase; dec., decrease; T., tension; 000, set row counter at 0; H.C.L., holding cam lever; pos., position; F.F., transfer sts. from needles 2 and 3 on to needles 3 and 4.

Back

T.10. Cast on over alt. needles 39 (43) sts. T.4. K. 40 rows. Bring empty needles forward to E position. Make hem by placing each cast on st. on to these empty needles. 77 (85) sts. T.7. 000 K. 75 (80) rows**.

Shape Raglan Armholes

Cast off 2 (4) sts. at beg. of next two rows. Dec. 1 st. F.F. at both ends of the next and every following alt. row until 21 (27) sts. remain. K. 1 row. Cast off.

Front

Work as back until ** is reached. Shape raglan armhole and 'V' neck as follows: Cast off 2 (4) sts. at beg. of next 2 rows. Set both H.C.L.'s to III. Bring out half the needles to E position (opposite side to carriage). Knit right side of 'V' neck first. **** Dec. 1 st. at centre 'V' knit across.

- 1st row: Knit.
- 2nd row: Dec. 1 st. F.F. at armhole edge. Knit across.
- 3rd row: Knit.
- 4th row: Dec. 1 st. at centre 'V' and dec. 1 st. F.F. at armhole edge. Knit across.

Rep. 1 st. to 4th row until all sts. are worked off. Break off wool. Take carriage to other side. Set both H.C.L.'s to I. Knit left side of 'V' neck to match starting****.

Sleeves (Both alike)

T.10. Cast on over alt. needles 23 sts. T.4. Knit 40 rows. Bring empty needles forward to E position. Make hem by placing each cast on st. on to these empty needles (45 sts.). T.7. 000 Knit two rows. Inc. 1 st. at both ends of next row and every foll. 8th row until 65 sts. work without further shaping until 75 (90) rows from 000. Shape raglan top: cast off 2 (4) sts. at beg., of next 2 rows.

- 1st row: Dec. 1 st. F.F. at both ends. Knit.
- 2nd row: Knit.
- 3rd row: Knit.
- 4th row: Knit.

Rep. these last 4 rows 5 (6) times. Then rep. 1st and 2nd rows 6 (7) times. Dec. 1 st. F.F. at both ends of every following row until 9 (13) sts. remain. Knit 1 row. Cast off.

Child's Jumper and Skirt



'V' Neck Band

With wrong side facing pick up 31 (35) sts. from centre 'V' up right side of 'V'; add 9 (13) sts. from top of sleeve and 21 (27) sts. from back of neck.

*** T.7. Knit 1 row T.5. dec. 1 st. every alt. row at centre 'V' 5 times. T.7. Knit 1 row. Break off wool. Put on spare thread and knit 4 rows. With wrong side facing pick up 31 (35) sts. from centre 'V' up the left side of 'V'. Add 9 (13) sts. from top of other sleeve. Repeat from *** to match other half of neckband.

To Make Up

Pin out and press with a warm iron over a damp cloth. Join raglan seams; join neckband at centre 'V' and shoulder. Pull out spare thread and turn neckband on to wrong side and catch down (double neckband). Join side and sleeve seams. Press all seams.

Materials

Jumper: 6 (7, 7) ounces Patons Nylox 4-ply.

Skirt: 6 (6, 7) ounces Patons Nylox 3-ply. 21½ (23½, 25½) inches ¾ inch wide elastic.

Measurements

To fit 22 (24, 26) inch chest.

14½ (16, 17½) inches jumper back length.

12 (13, 14) inches sleeve seam.

8½ (9½, 10½) inches length to skirt.

Tension

21 rows and 16 sts. to 2 inches over plain 4-ply. 10 rows and 13 sts. to 1 inch over rib 3-ply.

Abbreviations

T., tension; M.B., main bed; L.B., lower bed; alt., alternate; N., needle; st(s), stitch(es); C.K., set machine for circular knitting; R.K., set machine for rib knitting; K., knit; Trans., transfer; beg., beginning; rem., remaining; rep., repeat; Dec., decrease; Inc., increase; foll., following; 000, set row counter to 000; tog., together; pos., position; C.O.R., carriage on right; H.C.L., holding cam lever.

Note

Instructions for larger sizes in (). Where only 1 figure is given this applies to all sizes.

Jumper - Back

* T.1. M.B. and L.B. Cast on automatically over every alt. N. 89 (97, 105) sts. placing odd st. on right on M.B. T.2. M.B. and L.B. C.K. K. 3 rows. T.3. M.B. T.2. L.B. R.K. K. 10 rows. Trans. L.B.N. to M.B. *Drop L.B. and work on M.B. only. T.6. 000 K. to 74 (84, 94) rows.

Shape Armholes

Cast off 6 (7, 8) sts. at beg. of next 2 rows. 77 (83, 89) sts. 000. Dec. 1 st. at each end of every foll. 3rd row to 67 (73, 79) sts. K. to row 52 (58, 64).

Shape Shoulder

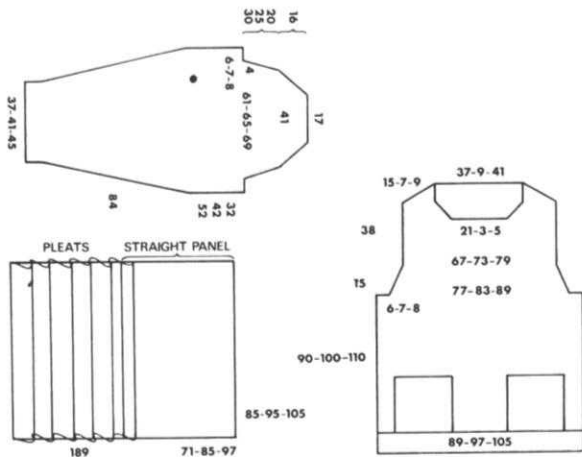
Cast off 4 sts. at beg. of next 4 rows. Cast off 4 (4, 5) sts. at beg. of next 2 rows. Cast off 3 (5, 5) sts. at beg. of next 2 rows. Cast off rem. 37 (39, 41) sts.

Pocket

T.1. M.B. and L.B. Cast on automatically over every alt. N. 31 sts. placing odd N. on right on M.B. T.2. M.B. and L.B. C.K. K. 3 rows. T.3. M.B. T.2. L.B. R.K. K. 30 rows. Trans. L.B.N. to M.B. T.6. K. 8 rows with scrap yarn, and take work off machine, K. 2 alike.

Front

Rep. from * to * as for Back. Trans. N. 7-35 to right of 0 on M.B. to L.B. and N. 6-34 to left of 0 on M.B. to L.B. Drop L.B. and place pocket sts. on to M.B. placing 2 edge sts. on the 35th N. from 0 on M.B. on right, and 2 sts. on the 7th N. placing rem. centre sts. on to M.B.N. Work left side to match, unravel spare yarn. Push up L.B. and trans. L.B.N. to M.B. Drop L.B. and work on M.B. only. T.6. 000 K. to 74 (84, 94) rows.



Shape Armhole

Cast off 6 (7, 8) sts. at beg. of next 2 rows. 77 (83, 89) sts. 000 Dec. 1 st. at each end of every foll. 3rd row to 67 (73, 79) sts. K. to row 44 (50, 56).

Shape Neck

Cast off 21 (23, 25) sts. at centre of work. Work on right 23 (25, 29) sts. only. Push left N. to E. pos. H.C.L.'s on II. Dec. 1 st. at neck edge on every row to 15 (17, 19) sts.

Shape Shoulder

C.O.R. Cast off 4 sts. at beg. of every foll. 2nd row twice. Cast off 4 (4, 5) sts. at beg. of foll. 2nd row. Cast off 3 (5, 6) sts. at beg. of foll. 2nd row. H.C.L.'s. to I.

Work left side to match right, reversing shapings.

Sleeves

T.1. M.B. and L.B. Cast on automatically over every alt. N. 37 (41, 45) sts. placing odd st. on right on M.B. T.2. M.B. and L.B. C.K. K. 3 rows. T.3. M.B. T.2. L.B. R.K. K. 10 rows. Trans. L.B.N. to M.B. Drop L.B. and work on M.B. only. 000 T.6. Inc. 1 st. at each end of every foll. 7th row to 61 (65, 69) sts. K. to row 116 (126, 136).

Shape Top

Cast off 6 (7, 8) sts. at beg. of next 2 rows. 49 (51, 53) sts. 000 Dec. 1 st. at each end of every foll. 5th row to 41 sts. K. to row 24 (30, 36). Dec. 1 st. at each end of every row to 17 sts. Cast off.

Neckband

T.1. M.B. and L.B. Cast on automatically over every alt. N. 95 (99, 103) sts. placing odd N. on right on M.B. T.2. M.B. and L.B. C.K. K. 3 rows. T.3. M.B. T.2. L.B. R.K. K. 24 rows. Trans. L.B.N. to M.B. Join left shoulder seam. With right side of work facing machine pick up and place on N. in B. pos. 18 sts. from side front, 22 (24, 26) sts. from centre front, 18 sts. from side front, and 37 (39, 41) sts. from back neck. Cast off tog. loosely.

To Complete

Press work on wrong side with hot iron over damp cloth, pressing pockets out to required size. Join right shoulder seam. Sew sleeves into armholes. Join side and sleeve seams. Slip st. neckband into place. St. side seams of pockets. Press all seams lightly.

Skirt - Pleated Panel

T.O. M.B. and L.B. cast on automatically over every alt. N. 189 sts. placing odd st. on right on M.B. T.1. M.B. and L.B. C.K. K. 3 rows. T.2. M.B. T.1. L.B. R.K. K. 2 rows. Trans. the 15th, 47th and 79th N. from 0 on right on M.B. to L.B. Trans. the 18th, 50th and 82nd N. from 0 on left on M.B. to L.B. Trans. the 26th, 58th and 90th N. from 0 on right on L.B. to M.B. Trans. the 7th, 39th and 71st N. from 0 on left on L.B. to M.B. T.3. M.B. T.2. L.B. K. 85 (95, 105) rows. Trans. L.B.N. to M.B. and cast off. K. 2 alike.

Plain Panel

T.O. M.B. and L.B. Cast on automatically over every alt. N. 71 (85, 97) sts. C.K. T.1. M.B. and L.B. K. 3 rows. R.K. T.2. M.B. T.1. L.B. K. 2 rows. T.3. M.B. T.2. L.B. K. 85 (95, 105) rows. Trans. L.B.N. to M.B. and cast off. K. 2 alike.

Waistband

T.3. Cast on by hand over every N. 126 (140, 152) sts. K. 16 rows. T.5. K. 1 row for foldline. T.3. K. 16 rows. Cast off. K. 2 alike.

To Complete

Press work on wrong side with hot iron over damp cloth, pressing pleats into place. Join pleated and plain panels tog. Join waistband tog. Sew waistband into place over pleated and plain panels. Sew elastic to inside of waistband with a loose st. Slip st. waistband into place. Press seams lightly.



Boy's Cardigan

ALL MODELS

Materials

(15, 16, 16, 17) ounces. Robin Vogue Double Knitting; 5 buttons.

Measurements

To fit a 26 (28, 30, 32, 34) inch chest.
Finished measurement 28 (30, 32, 34, 36) inches.
Length to top of shoulder 16½ (18, 19½, 21, 22½) inches.
Sleeve seam 15 (15½, 16, 16½, 17) inches. (adjustable).

Tension

26 sts. and 45 rows to 4 inches over pattern.

Abbreviations

Sts., stitches; rep., repeat; inc., increase; dec., decrease; alt., alternate; foll., following; beg., beginning; T., tension 000, set row counter at 000.

Notes

Leave casting-on comb on work and hand on side weights. Pull work on row 9 of each pattern to aid movement of carriage. Wax the wool.

The Pattern

1. K. 3 rows carriage at left.
2. Press pattern key 1 set lever. H.C.L.'s III knit 2 rows. Right H.C.L.1. K. 1 row. Release keys.
3. Press pattern keys 2 and 4. Set lever. H.C.L.'s III knit 2 rows. Left H.C.L.1. Knit 1 row. Release keys.
4. Press pattern key 3. Set lever. H.C.L.'s III. Knit 2 rows. Right H.C.L.1. Knit 1 row. Release keys (12 rows). Now knit stage 1, then 4, 3 and 2 (12 rows). These 24 rows complete 1 pattern.

Back

Using contrast wool, cast on 47 (50, 53, 56, 59) sts. on alt. needles. Knit a few rows. Change to main wool and T.6. Knit 32 rows. Make a hem by picking up 1st row loops of main colour and place on empty needles. 93 (99, 105, 111, 117) sts. 000. T.10. Following pattern knit 84 (96, 108, 120, 132) rows.

Shape Armholes

000. Cast off 4 sts. at beg. of next 2 rows. Dec. 1 st. at both ends of next and alt. rows 4 times in all and then every foll. 3rd row until 73 (77, 83, 87, 93) sts. remain. Knit straight until 68 (72, 78, 82, 88) rows have been worked.

Shape Shoulders

Cast off 4 (4, 4, 4, 5) sts. at beg. of next 10 rows and 2 (3, 5, 6, 2) sts. at beg. of next 2 rows. Change to T.9 and st.-st. knit 14 rows. Carriage on left. Cast off purlwise with knitting needles so that chain comes on knit side of border.

Left Front

Using contrast wool cast on 22 (24, 25, 27, 28) sts. on alt. needles. Knit a few rows. Change to main wool and T.6. Knit 32 rows. Make a hem as back. 43 (47, 39, 53, 55) sts. 000. T.10. Following pattern knit 84 (96, 108, 120, 132) rows.

Shape Armhole and Neck

000. Cast off 4 (5, 4, 5, 4) sts. at beg. of next row. Knit 1 row. Decreasing 1 st. at neck edge on next and every foll. 6th row at the same time dec. 1 st. at armhole edge on next and every foll. alt. rows 4 times in all and then every foll. 3rd row 2 (3, 3, 4, 4) times in all. 30 (32, 35, 36, 39) sts. remain. Keeping armhole edge straight, continue neck decreasing until 22 (23, 25, 26, 28) sts. remain. Knit straight until 68 (72, 78, 82, 88) rows have been worked.

Shape Shoulder

Cast off 4 (4, 4, 4, 5) sts. at beg. of next and every alt. row until 2 (3, 5, 6, 3) sts. remain. Knit 1 row. Cast off.

Right Front

Knit as Left Front reversing all shapings.

Sleeves

Using contrast wool cast on 24 (25, 26, 27, 28) sts. on alt. needles. Knit a few rows. Change to main wool and T.6. Knit 32 rows. Make a hem as back. 47 (49, 51, 53, 55) sts. 000. T.10. Beginning on row 1 (7, 1, 7, 1) of pattern knit 6 rows. Inc. 1 st. at both ends of next and every foll. 12th (10th, 10th, 10th, 10th) row 12 (13, 14, 14, 15) times in all. 71 (75, 79, 81, 85) sts. Knit straight until 144 (150, 156, 162, 168) rows have been worked. (This gives a sleeve seam of 15 (15½, 16, 16½, 17) ins. If adjusting length here adjust by a multiple of 12 rows so as to keep pattern correct.

Shape Top

Cast off 4 sts. at beg. of next 2 rows. Dec. 1 st. at both ends of next and every foll. alt. rows 4 times in all and then every foll. 3rd row until 37 (39, 41, 41, 43) sts. remain. Knit 0 (1, 2, 1, 2) rows. Cast off 2 sts. at beg. of next 4 rows and 3 sts. on foll. 4 rows. Cast off remaining 17 (19, 21, 21, 23) sts.

Button Band (right front)

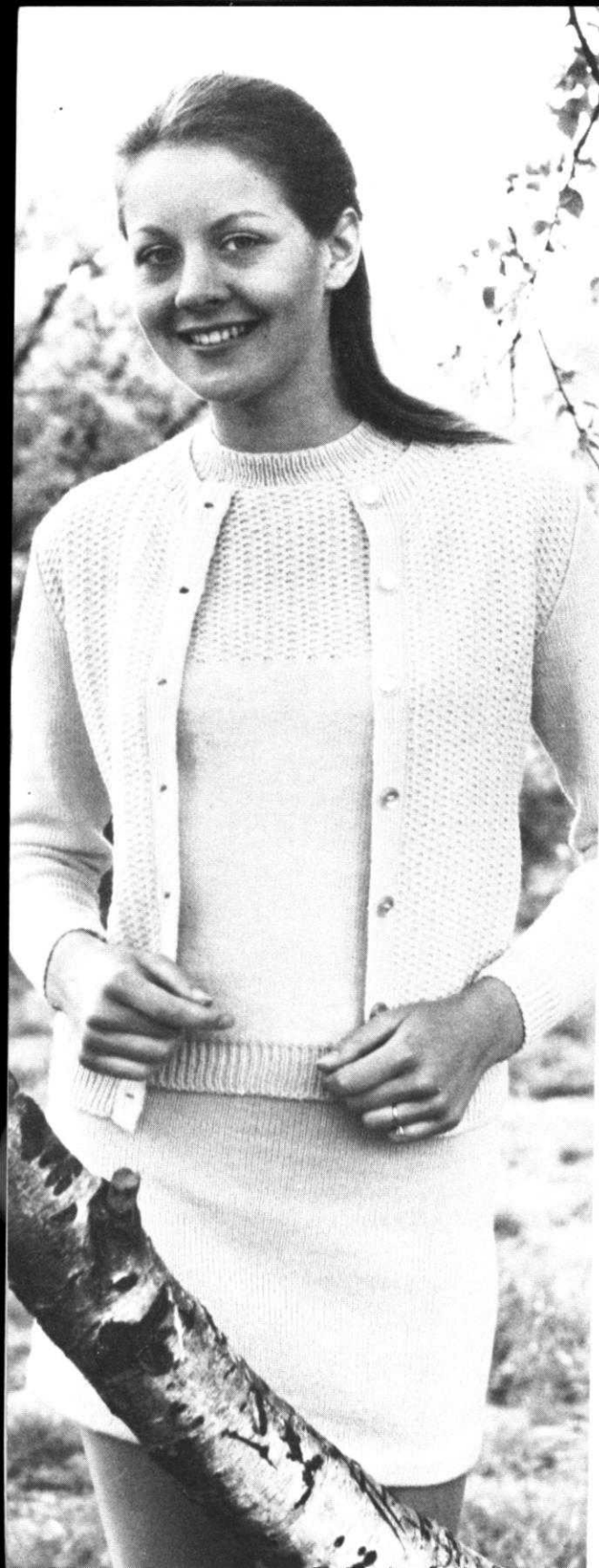
With knit side of work facing pick up 64 (67, 76, 80, 88) sts. to neck and 44 (48, 52, 56, 60) up neck. 108 (116, 128, 136, 148) sts. T.9. Knit 16 rows. Cast off purlwise with knitting needles so that chain comes on knit side of band.

Buttonhole Band

Pick up as Button Band T.9, Knit 3 rows. Counting from base of rib make buttonholes over needles 5-8 and every following 11-14 (12-15, 14-17, 15-18, 17-20) 5 times in all. Knit 9 rows. Make buttonholes as before. Knit 4 rows. Cast off as Button Band.

To Make Up

Pin out and press with a hot iron over a damp cloth. Join side and shoulder seams but sew front border seams on reverse side. Join sleeve seams and sew in sleeves. Turn border to right side of garment and sew down just behind cast off row. Sew on buttons. Press seams.



Girl's Three Piece Summer Outfit

Materials

Marriner Empress 4-ply.
Jumper: 5 (6, 7, 8, 8, 9) ounces. 4 buttons. Cardigan: 10 (11, 11, 12, 12, 13) ounces. 6 (6, 6, 7, 7, 7) buttons.
Skirt: 3 (4, 4, 5, 5, 6) ounces. $\frac{3}{4}$ -inch wide elastic for waist.

Measurements

To fit chest 24 (26, 28, 30, 32, 34) inches.
Jumper: Length to shoulder: 15 (16 $\frac{1}{4}$, 17 $\frac{1}{2}$, 18 $\frac{3}{4}$, 20, 21 $\frac{1}{4}$) inches. Sleeve seam: 2 (2, 2, 2 $\frac{1}{2}$, 2 $\frac{1}{2}$) inches.
Cardigan: Length to shoulder: 15 (16 $\frac{1}{4}$, 17 $\frac{1}{2}$, 18 $\frac{3}{4}$, 20, 21 $\frac{1}{4}$) inches. Sleeve seam: 11 (12 $\frac{1}{2}$, 14, 15 $\frac{1}{2}$, 16 $\frac{1}{2}$, 17 $\frac{1}{2}$) inches.
Skirt: Length: 10 $\frac{3}{4}$ (12, 13 $\frac{1}{4}$, 14 $\frac{1}{2}$, 15 $\frac{3}{4}$, 17) inches.

Tension

Pattern stitch, T.6. 10 $\frac{1}{2}$ sts. and 32 rows to 2 ins. Stocking stitch. T.7. 14 sts. and 20 rows to 2 ins.

Abbreviations

Sts., stitches; inc., increase; dec., decrease; rep., repeat; alt., alternate; beg., beginning; T., tension; 000, return row counter to 000.

Notes

Figures in brackets refer to the larger sizes respectively. When casting on, have the odd st. on right side of machine. When casting off in pattern, work a chain over empty needle. Full fashioning on skirt is worked by transferring 3rd st. onto 4th needle and moving 2 end sts. 1 needle in.

Skirt. Back and Front alike

Cast on 103 (107, 111, 115, 119, 123) sts. by hand. T.6. Knit 9 rows. Knit 1 loose row for hemline. 000. T.7. Knit 2 rows H.C.L.'s II. Always wind wool round first needle in E position push 8 (9, 9, 10, 10, 11) sts. at opposite end to Carriage to E position, on next 8 rows and back to C position on next 2 rows. Knit 6 rows. Dec. 1 st. at each end (see Notes) of next and every following 8th (9th, 10th, 11th, 12th, 13th) row until 81 (85, 89, 93, 97, 101) sts. remain. Knit straight until 98 (110, 122, 136, 148, 160) rows have been worked (including the rows worked in E position). This will give a finished length of 10 $\frac{3}{4}$ (12, 13 $\frac{1}{4}$, 14 $\frac{1}{2}$, 15 $\frac{3}{4}$, 17) ins. Adjust length here if required.

Ribbing attachment

Transfer every alt. st. onto front bed for 1 x 1 rib T.4. Knit to 10 rows. Knit 1 row, loosely. Transfer sts. to back bed. Cast off using chain method.

Single machine

T.5. Knit 10 rows. Knit 1 loose row. Drop every alt. st. down for 11 rows, and crochet up for 1 x 1 rib. Cast off using chain method.

To Make Up

Pin out and press with a hot iron over a damp cloth. Join side seams. Turn hem at lower edge to wrong side and slip stitch in place. Cut elastic to fit waist and join firmly into a ring. Place elastic inside waistband and work a herringbone casing over elastic onto every alt. st. of ribbing. Press seams.

Jumper. Back. Ribbing attachment

Cast on 93 (99, 107, 113, 121, 127) sts. for 1 x 1 rib. Knit 1 circular row. T.3. Knit 16 rows. Transfer sts. to back bed for stocking stitch.

Single machines

Cast on 93 (99, 107, 113, 121, 127) sts. Work as waistband of skirt, knitting 16 rows.

All machines

000. T.7. Knit 68 (78, 88, 98, 108, 118) rows. Transfer 3rd (4th, 4th, 3rd, 3rd, 4th) st. and every following 4th st. onto adjacent needles. 70 (75, 81, 85, 91, 96) sts. in B position. T.6. Following chart, knit 16 rows. This will give a length of $9\frac{1}{2}$ ($10\frac{1}{2}$, $11\frac{1}{2}$, $12\frac{1}{2}$, $13\frac{1}{2}$, $14\frac{1}{2}$) from cast on edge. Adjust length here if required.

Shape armholes

000. Cast off 2 (3, 3, 4, 4, 5) sts. at beg. of next 2 rows. Dec. 1 st. at each end of next and following alt. rows 2 (2, 2, 3, 3, 3) times in all and then every following 4th row 4 times in all. 54 (57, 63, 63, 69, 72) sts. *Knit straight until 92 (96, 100, 104, 108, 112) rows have been worked.

Shape shoulders

Cast off 3 (3, 4, 4, 4, 4) sts. at beg. of next 8 rows and 4 (5, 3, 3, 5, 5) sts. at beg. of next 2 rows. Cast off remaining 22 (23, 25, 25, 27, 30) sts.

Front

Work as given for Back to *. Knit straight until 74 rows have been worked.

Shape neck

Using odd amount of wool cast on 10 (11, 11, 11, 11, 12) sts. at centre. Push sts. at left to E position. H.C.L's II. Knit the right side first. Knit 2 rows. Dec. 1 st. at neck edge on next and alt. rows 4 times in all and then every following 4th row until 16 (17, 19, 19, 21, 21) sts. remain. Knit straight until 92 (96, 100, 104, 108, 112) rows have been worked.

Shape shoulder

Cast off 3 (3, 4, 4, 4, 4) sts. at beg. of next and every alt. row until 4 (5, 3, 2, 5, 5) sts. remain. Cast off. Return sts. to B position by hand and keeping pattern correct knit to match right side reversing all shapings.

Sleeves. Ribbing attachment

Cast on 55 (59, 63, 63, 67, 71) sts. for 1 x 1 rib. Knit 1 circular row. T.3. Knit 6 rows. Transfer sts. to back bed.

Single machines

Cast on 55 (59, 63, 63, 67, 71) sts. by hand. Work as waistband of skirt, knitting 6 rows.

All machines

Transfer every 4th st. onto adjacent needles. 42 (45, 48, 48, 51, 54) sts. 000. T.6. following pattern knit 6 rows. Inc. 1 st. at each end of next and every following 4th row until there are 50 (53, 56, 56, 59, 62) sts. Knit straight until 24 (24, 24, 32, 32, 32) rows.

Shape top

Cast off 3 (3, 4, 4, 4, 5) sts. at beg. of next 2 rows. Knit 2 rows. Dec. 1 st. at each end of next and every following 4th row 12 (12, 13, 14, 14, 15) times in all and then every following alt. row until 8 (9, 8, 8, 9, 8) sts. remain. Knit 1 row. Cast off.

Neckband

Join right shoulder seam. With wrong side facing and beg. at right side, pick up and place on machine 28 (30, 32, 34, 36, 38) sts. from back neck, 19 (21, 23, 25, 27, 29) sts. down neck slope, 13 (15, 15, 15, 17) sts. across front neck, 19 (21, 23, 25, 27, 29) sts. up front neck. 79 (87, 93, 99, 105, 113) sts. Knit 1 row.

Ribbing attachment

Transfer alt. sts. onto front bed. T.3. Knit 10 rows. Knit 1 loose row. Transfer sts. to back bed and cast off using chain method.

Single machines

Work as given for waistband of skirt, knitting 10 rows. Cast off.

To Make Up

Pin out and press with a hot iron over a damp cloth. Join side and sleeve seams. Join left shoulder seam, leaving seam open for $3\frac{1}{2}$ ins. Sew in sleeves. Work 2 rows of double crochet round shoulder opening making 4 loops on one side on 2nd row. Press seams.

Cardigan. Back. Ribbing attachment

Cast on 93 (99, 107, 113, 121, 127) sts. for 1 x 1 rib. Knit 1 circular row. T.3. Knit 16 rows. Transfer sts. to back bed for stocking stitch.

Single machines

Cast on 93 (99, 107, 113, 121, 127) sts. by hand. Work as waistband of skirt knitting 16 rows.

All machines

000. T.7. Knit 78 (88, 98, 108, 118, 128) rows. This will give a length of $9\frac{1}{2}$ ($10\frac{1}{2}$, $11\frac{1}{2}$, $12\frac{1}{2}$, $13\frac{1}{2}$, $14\frac{1}{2}$) ins. from cast on edge. Adjust length here if required.

Shape armholes

000. Cast off 4 (4, 5, 5, 6, 6) sts. at beg. of next 2 rows. Dec. 1 st. at each end of next 3 rows and then every following alt. row until 71 (77, 81, 87, 91, 97) sts. remain. Knit straight until 58 (60, 62, 66, 68, 70) rows have been worked.

Shape shoulders

Cast off 6 (6, 6, 7, 7, 7) sts. at beg. of next 6 rows and 3 (5, 6, 5, 6, 8) sts. at beg. of next 2 rows. Cast off remaining 29 (31, 33, 35, 37, 39) sts.

Left Front. Ribbing attachment

Cast on 43 (47, 51, 55, 59, 63) sts. for 1 x 1 rib. Knit 1 circular row. T.3. Knit 16 rows. Transfer sts. to back bed for pattern stitch.

Single machines

Cast on 43 (47, 51, 55, 59, 63) sts. by hand. Work as waistband of skirt, knitting 16 rows.

All machines

Transfer every 4th st. onto adjacent needles. 33 (36, 39, 42, 45, 48) sts. 000. T.6. Following chart knit 124 (140, 156, 172, 188, 204) rows.

Shape armhole

000. Cast off 2 (3, 3, 4, 4, 5) sts. at beg. of next row. Knit 1 row. Dec. 1 st. at beg. of next and every following alt. row 2 (2, 2, 3, 3, 3) times in all and then every following 4th row until 25 (27, 30, 31, 34, 36) sts. remain. Knit straight until 75 rows have been worked. Carriage at left.

Shape neck

Cast off 3 (4, 4, 5, 5, 6) sts. at beg. of next row. Knit 1 row. Dec. 1 st. at neck edge on next and every following alt. rows 4 times in all and then every following 4th row until 16 (17, 19, 19, 21, 21) sts. remain. Knit straight until 92 (96, 100, 104, 108, 112) rows have been worked.

Shape shoulder

Cast off 3 (3, 4, 4, 4, 4) sts. at beg. of next and alt. rows until 4 (5, 3, 3, 5, 5) sts. remain. Knit 1 row. Cast off.

Right front

Work as given for Left Front reversing all shapings.

Sleeves. Ribbing attachment

Cast on 49 (51, 53, 55, 57, 59) sts. for 1 x 1 rib. Knit 1 circular row. T.3. Knit 16 rows. Transfer sts. to back bed for stocking stitch.

Single machines

Cast on 49 (51, 53, 55, 57, 59) sts. by hand. T.5. Work as waistband of skirt knitting 16 rows.

All machines

000. T.7. Knit 6 (6, 6, 10, 10, 10) rows. Inc. 1 st. at each end of next and every following 8th (8th, 8th, 9th, 9th, 9th) row until there are 71 (75, 79, 83, 87, 91) sts. Knit straight until 96 (110, 126, 140, 150, 160) rows have been worked. This will give a sleeve seam of 11 (12½, 14, 15½, 16½, 17½) ins. Adjust length here if required.

Shape top

Cast off 4 (4, 5, 5, 6, 6) sts. at beg. of next 2 rows. Dec. 1 st. at each end of next 3 rows and then every following alt. row until 33 (37, 37, 39, 39, 41) sts. remain. Dec. 1 st. at each end of every row until 23 (23, 23, 25, 25, 25) remain. Cast off 3 sts. at beg. of next 4 rows. Cast off remaining 11 (11, 11, 13, 13, 13) sts.

Button Band. Ribbing attachment

Cast on 15 sts. for 1 x 1 rib. Knit 1 circular row. T.3. Knit straight until long enough to go up front stretching to fit. Slip sts. onto a knitting needle.

Buttonhole Band

Mark right front for 6 (6, 6, 7, 7, 7) buttonholes, the first ½ inch above cast on edge and allowing space for the final one to be worked in neckband. Place remainder evenly between. Cast on 15 sts. T.3. Knit straight making buttonholes to match markers over needles 6-10 inclusive. Slip sts. onto a knitting needle.

Neckband

Join shoulder seams. With wrong side facing pick up and place on machine 25 (27, 29, 31, 33, 35) sts. up front neck, 29 (31, 33, 35, 37, 39) sts. from back neck, and 25 (27, 29, 31, 33, 35) sts. down front neck. 79 (85, 91, 97, 103, 109) sts. Using odd length of wool, knit 1 row. Place buttonband sts. at right of work and buttonhole band at left. Keeping rib correct transfer alt. sts. to front bed for 1 x 1 rib. T.3. Knit 5 rows. Make last buttonhole on left side over needles 6-10 from end. Knit 5 rows. Knit 1 loose row. Transfer sts. to back bed and cast off using chain method.

Single machines. Front Bands

Cast on 15 sts. by hand. Work as given for Ribbing attachment but knitting in st. st., dropping alt. sts. and crocheting up at convenient intervals for 1 x 1 rib.

Neckband

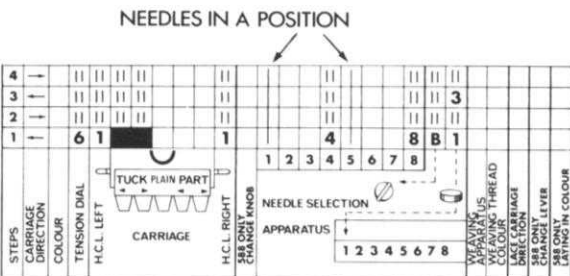
Work as given for Ribbing attachment but knitting in st. st., dropping alt. sts. and crocheting up for 1 x 1 rib.

To Make Up

Pin out and press with a hot iron over a dampcloth. Join side and sleeve seams. Set in sleeves. Sew front bands in position, neatening buttonholes and sew on buttons. Press seams.

4	→																2			
3	→																2			
2	→																			
1	→		6	1					1											4

(For model 551 machine)



Girls' Cardigan with Collar

Materials

6 (6, 7, 8, 9, 10) ounces 4-ply wool.

Measurements

To fit chest sizes: 20 (22, 24, 26, 28, 30) inches.
Finished measurement: 22 (24, 26, 28, 30, 32) inches.
Length to back of neck: 12½ (14, 15½, 17, 18½, 20) inches.
Sleeve Seam: 8 (9½, 11, 12½, 14, 15½) inches.

Tension

7½ sts. and 10 rows=1 inch.

Abbreviations

Sts., stitches; dec., decrease; inc., increase; rep., repeat; foll., following; alt., alternate; beg., beginning; T., tension; 000, set row counter to 000.

Notes

Figures in brackets refer to the larger sizes respectively. Fully fashioned decs. for raglan edges are worked as follows:—Using double transfer tool, move the 2nd and 3rd stitch onto 4th and 5th needle, move end stitch two needles in. (2 sts. decreased each time).

Back

Bring forward 83 (91, 97, 105, 113, 121) needles to B position, and then return alternate needles to A position. * Using contrast wool knit several rows of waste knitting. T.4. Using main wool knit 31 rows. Bring forward all needles to B position. To make hem pick up first row loops in main colour. Place on empty needles. Knit the row *. 000. T.7. Knit 64 (72, 80, 88, 96, 102) rows.

Shape Raglan

000. Cast off 3 (4, 2, 2, 2, 2) sts. at beg. of next 2 rows. Knit 2 (4, 4, 4, 4, 4) rows. Dec. 2 sts. (see notes) at each end of next and every foll. 4th row until 33 (35, 37, 37, 41, 41) sts. remain. Knit 1 row. Cast off.

Right Front

Bring forward 39 (43, 45, 49, 53, 57) needles to B position and then return alternate needles to A position. Knit as Back from * to *. 000. T.7. Knit 64 (72, 80, 88, 96, 102) rows.

Shape Raglan

000. Cast off 3 (4, 2, 2, 2, 2) sts. at beg. of next row. Knit 3 (5, 5, 5, 5, 5) rows. Dec. 2 sts. (see notes) at beg. of next and every foll. 4th row, until 27 (33, 41, 47, 53, 61) rows have been worked. (Carriage at left side).

Shape Neck

Cast off 5 (6, 6, 5, 7, 7) sts. at beg. of row. Continue raglan shaping as before, *at the same time* decrease 1 st. at neck on every alt. row 7 (7, 7, 8, 8, 8) times in all, 4 sts. remain. Knit 2 (2, 2, 2, 0, 0) rows. Dec. once more at raglan edge only. Cast off.

Left Front

Knit as right front reversing all shapings.



Sleeves

Bring forward 49 (51, 53, 55, 57, 59) needles to B position, and then return alternate needles to A position, knit as Back from * to *. 000. T.7. Knit 10 rows. Increase 1 st. at each end of next and every foll. 10th (9th, 9th, 8th, 8th, 8th) row until there are 57 (63, 69, 75, 81, 87) sts. Knit straight until 66 (80, 96, 110, 126, 140) rows have been worked. (Adjust length here if required).

Shape Raglan Top

000. Cast off 2 stitches at beg. of next 2 rows. **4th, 5th, and 6th size only** knit 4 rows. Dec. 2 stitches (see notes) at each end of next and foll. 6th row 2 (3, 3) times in all. **All sizes** knit 2 (4, 4, 3, 3, 3) rows. Dec. 2 sts. at each end of next and every foll. 4th row until 9 (11, 9, 11, 13, 13) sts. remain. Knit 1 row. Cast off.

Buttonband

With wrong side facing pick up 80 (85, 103, 113, 124, 135) sts. evenly along front edge 000. T.6. Knit 24 rows. Cast off loosely.

Buttonhole Band

Mark positions on Left Front for 5 buttons, the first ¼ in. above lower edge and the last ¼ in. below neckline. Space remainder evenly between. Knit as Buttonband making buttonholes over 2 needles to match markers on rows 6 and 18.

Collar

000. T.6. Cast on 30 (34, 40, 44, 50, 54) sts. Knit 1 row. Increase 9 sts. at beg. of next 8 rows 102 (106, 112, 116, 122, 126) sts. T.7. Knit 32 (32, 36, 36, 40, 40) rows. T.6. Decrease 9 sts. at beg. of next 8 rows, 30 (34, 40, 44, 50, 54) sts. remain. Knit 1 row. Cast off.

To Make Up

Pin out and press with a hot iron over a damp cloth. Sew raglan side and sleeve seams. Fold buttonband to wrong side and slip-stitch in place. Join narrow ends of collar. Turn to right side sew curved edge of collar to neckline beginning and ending halfway across front bands. Neaten buttonholes. Sew on buttons. Press seams.

Jones

-the knitting machine people

Jones Sewing Machine Co. Ltd.,
Britannia House, 964 High Road
Finchley, London N12.