

stitchin' time

No 40

60p





Editorial:

Jones + Brother,
J & B House,
869, High Road,
Finchley,
London N12 8QW.

Subscription administration:

Shepley Street,
Guide Bridge,
Audenshaw,
Manchester M34 5JD.

Contents

Ladies add-to set	3 - 4
Childrens anoraks	5 - 7
Mans fancy fairisle yolk sweater	8 - 9
Fairisle for the more manual machines	10 - 11
One size fairisle poncho	12 - 14
Motifs and hand selection	14 - 15
Teenage sweater and scarf	16 - 17
Lacy sweater with tie waist	18 - 19
Woven popover	20
Mans drop shoulder fairisle sweater	21 - 22
Drawstring polo neck sweater	22 - 23
Ribbed scarf and hat	24
Childs tuck stitch jacket	24 - 25
Childs picture sweater	26 - 27
Womans ribbed waistcoat	28
Ladies sweater with pouch pockets	29 - 30
Scarf with pockets	30
Focus on knitting	31 - 32
Outsize trouser suit	33 - 35

Broadly Speaking

We hear on the grapevine that there are some exciting new machine knitting yarns coming onto the market from some well known spinners. These are to be announced at a forthcoming trade show so we will include full details in the next issue and be asking our designers to feature them in garments they are preparing.

In fact it's really exciting that so many new things are happening in our world of machine knitting, so much new interest from magazines, from yarn spinners, from designers and of course from you, the ultimate user. We'll be keeping our eyes and ears open for all that's new in machine knitting and bringing you details through *Stitchin Time*.

This issue the emphasis is on colour, fairisle and bold patterning. Today's punch card machines have really made intricate patterning so easy and this is beautifully demonstrated by our one size PONCHO on page 12 - 14. It is one time when colour would really bring to life this really attractive garment, because the choice of colours is magnificent. We appreciate of course that many readers are still using the more manual machines to great advantage and to help those readers cope with fairisle patterning we have included an interesting and informative article on just this subject. We have also included an article on "hand selected" patterns which will show how to achieve garments similar to those used in our recent advertising campaign.

Our chief designer thought it would be nice to take a basic, fashionable, everyday garment and demonstrate how easily you can create a complete set of garments around this basic design by adding different tops, bottoms and varying the initial choice of patterning. We've called this a LADIES ADD-TO SET and the first of these garments, a blouse style top and skirt appears on pages 3 - 4. We'll be adding to these items in forthcoming issues.

Happy knitting.

Printed by McCarthy's (Colour Printers) Ltd., London, E2

©Jones Sewing Machine Co. Ltd. No section of this magazine may be reproduced without the written consent of the editor.

LADIES ADD-TO SET

See *Broadly Speaking* for
a detailed explanation.

Measurements

To fit 34 (36, 38) in. bust.
Skirt length 25½ in.

Materials

Zip—Petersham.

Hayfields Machine Knit 2 cones

Patterns

Tuck st. patt.
820 patt. No. 597 from book.
800 patt., page 68 from book.
588 patt., page 68 from book.

Tensions

St. St. 8 st. × 11½ rows = 1 in. T.D.
approx. 4.
Tuck st. 6½ sts. × 16 rows = 1 in.
T.D. approx. 6.

SKIRT

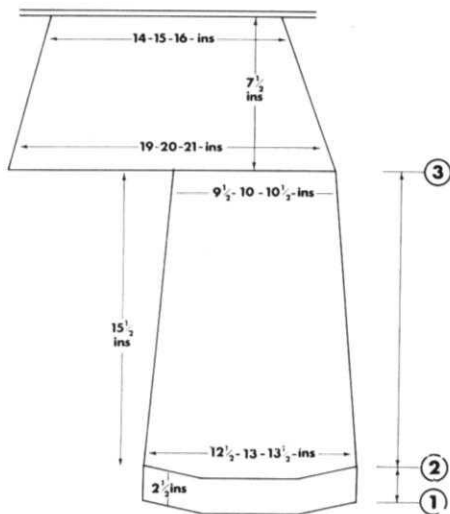
Pannels knit × 2 sets of 2.

Step 1. With waste yarn cast on 100 (104, 108) sts. knit a few rows waste. With main yarn T.3 K.60 rows. Turn hem H.P., push 30 nds. into H.P. at the end of the next 2 rows. Ret. 5 nds. to W.P. at the end of the next 12 rows. C.O.R. 000. Change to main T.

Step 2. Dec. 1 at both ends every 16th row 11 times to 78 (82, 86) sts. K. to row 178. Place sts. onto waste yarn. Knit another panel.

Step 3. Place sts. from top of 2 pannels to 154 (162, 170) nds. starting 1 st. in on centre edges for seam allowance. Dec. 1 st. at both ends of





every 4th row 21 times to 112 (120, 128) sts. K. to row 86. Mark end sts. with waste yarn. 000.

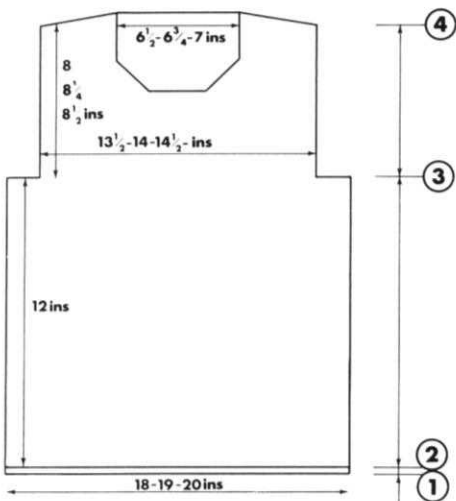
Step 4. (Waistband). T.3 K.30 rows. Turn hem picking up marked row, cast off loosely, but firmly. K. back to match. Press all pieces gently. Join seams leaving opening for zip. Thread petersham through waistband. Sew in zip.

TOP

Step 1. Cast on with waste yarn 117 (123, 131) sts. K. a few rows. With main yarn T.4 K.19 Rs. Turn hem set M/c. for patt. K.1 R. C.O.R. 000. M.T.

Step 2. K.190 Rs. Cast off 15 (16, 18) sts. st. beg. of next 2 Rs. 000.

Step 3. K. to R. 128 (132, 136). Cast off 5 sts. at beg. of next 8 Rs., cast off 2 (3, 4) sts. at beg. of next 2 Rs. Place rem. 43 (45, 47) on waste yarn.



FRONT

Cast on as for back, on R. 6 of step 1, make hole for cord over centre st. K. as for back to R. 64 (68, 72) of step 3, cast off centre 19 sts., working on right side only, dec. 1 st. at neck edge every 3rd R. 12 (13, 14) times. K. to R. 128 (132, 136) shape shoulder as on front.

SLEEVE

Step 1. Cast on with waste yarn 71 (75, 77) sts. K. a few Rs. with waste yarn. C.O.R. Change to main yarn K.1 R. set M/c. for patt. K.1 R. C.O.R. 000. Inc. 1 st. at both ends of every 24 (25, 26)th R. to 93 (97, 99) sts. K. to R. 272 (280, 288).

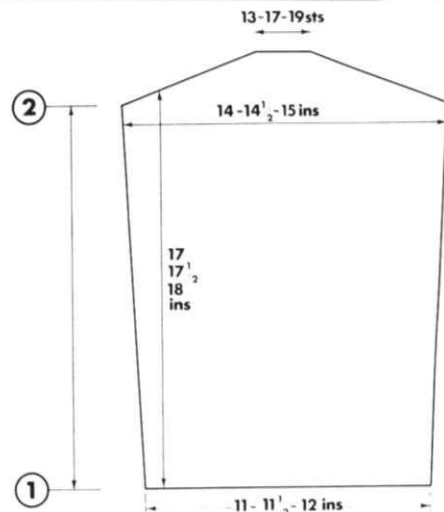
Step 2. Cast off 2 sts. at beg. of next 40 Rs. Cast off rem. sts. Press all pieces gently.

CUFF

Cast on with waste yarn 50 sts. K. a few Rs. waste. With main yarn T.3 K.20 Rs. turn hem. With right side of work facing M/c. place sts. from bottom of sleeve onto cuff gathering evenly. Cast off loosely but firmly.

NECKBAND

With waste yarn cast on 120 (122,



124) sts. K. a few Rs. waste change to main yarn T.3 K.12 Rs., T.6 K.1 R., T.3 K.12 Rs., turn hem with right side of work facing M/c. place back neck to 43 (45, 47) sts., side neck to 29 (29, 29) sts., centre front to 19 sts., side neck to 29 sts. cast off loosely, but firmly.

Crochet or K. cord to thread through bottom hem.

childrens anoraks

Materials

Lister Concorde Easy Wash D.K.
16 (18, 20, 22) balls for Style A with
pouched sleeve.
15 (17, 19, 21) balls for Style B with
standard sleeve.
18 (20, 22, 24) in. double ended zip.

Measurements

To fit 26 (28, 30, 32) in. chest.
Total length 19 (21, 23, 25) ins.

Tensions

$6\frac{1}{2}$ sts. \times 10 Rs. = 1 in. T.D. approx. 10.

Notes

Cable patt. Counting from each side
of centre "0" place ev. 3rd and 10th
Nd. in N.W.P. leaving panels of 4 and

6 Nds. in W.P. Make cable over ev.
set of 6 Nds. Always twisting cables
in same direction. Twist cables ev. 12
Rs.

BACK (both styles)

Step 1. C.O.B.H. 96 (102, 108, 114)
sts. T.9. K.10 Rs. Turn hem. 000.

Step 2. K.108 (122, 138, 152) Rs.
Set cables (see notes). 000.

Step 3. K.4 Rs., twist cables next
and every following 12th R. K. to
R.68 (74, 78, 84). C/O 5 sts. at beg.
of next 2 (0, 0, 0) Rs. C/O 6 sts. at
beg. of next 8 (8, 2, 0) Rs. C/O 7 sts.
at beg. of next 0 (2, 8, 8) Rs.. C/O 8
sts. at beg. of next 0 (0, 0, 2) Rs.

Place rem. 38 (40, 40, 42) sts. on
waste yarn.

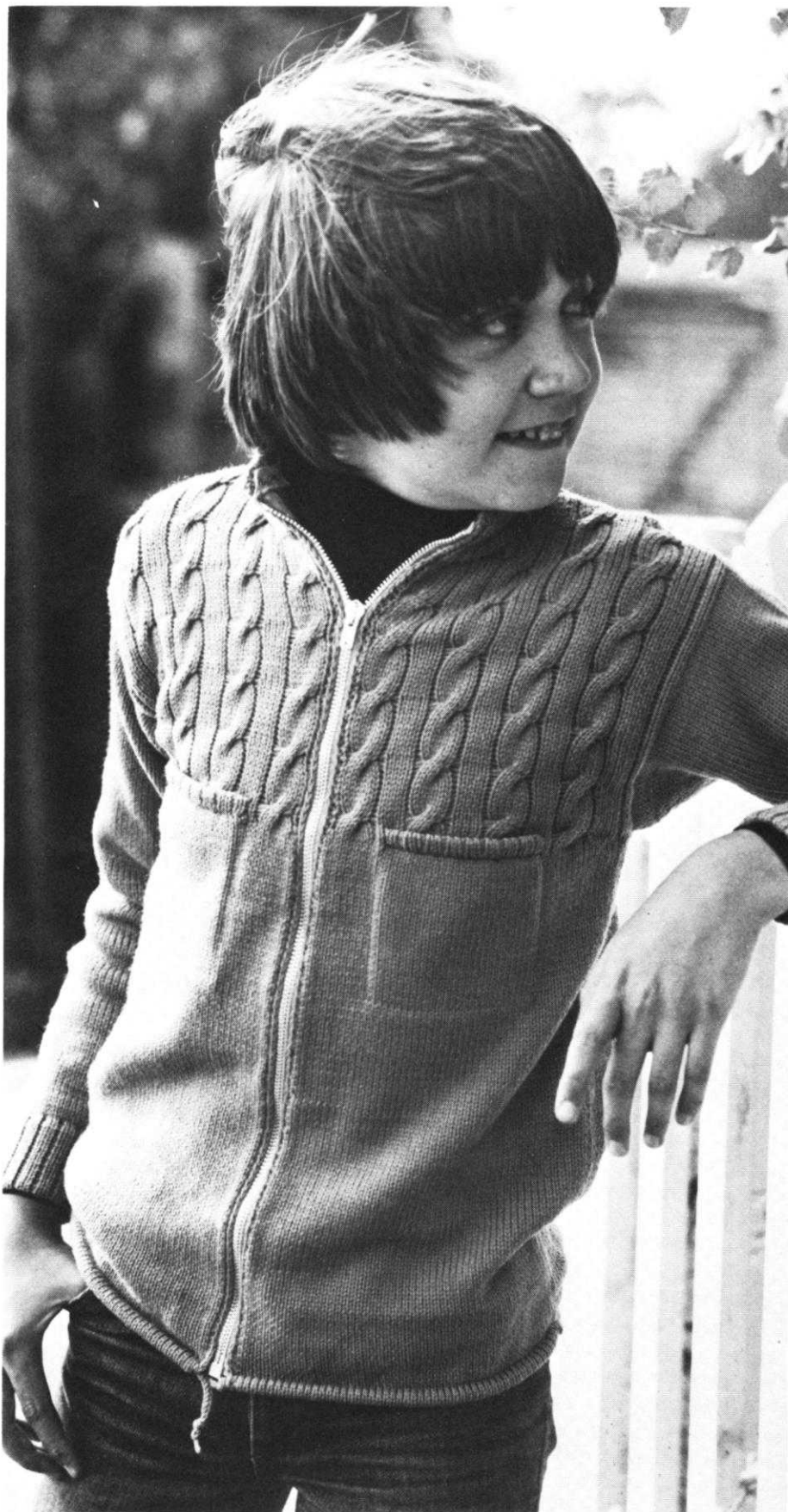
FRONT STYLE A (patch poc- kets)

Step 1. C.O.B.H. 47 (50, 53, 56) sts.
T.9. K.10 Rs. Turn hem. 000.

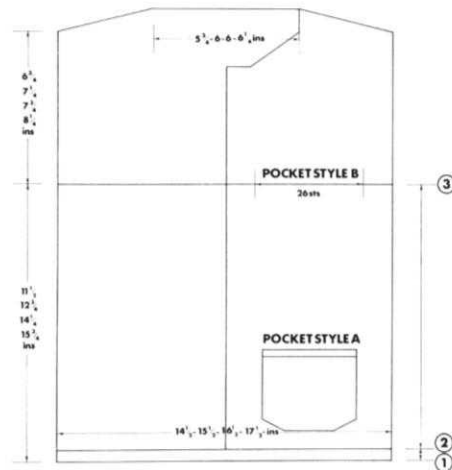
Step 2. K.108 (122, 138, 152) Rs.
000.

Step 3. Set cables. Starting 2 sts. in
from lt. edge (centre front). K.4 Rs.
Twist cables next and ev. foll. 12th R.
K. to R.51 (57, 61, 67). C/O 7 (8, 8,
9) sts. at beg. of next R. K.1 R. C/O 4
sts. at beg. of next R. Dec. 1st. at neck
edge ev. alt. R. 7 times. K. to R.68
(74, 78, 84) C/O 5 sts. at beg. of next





and ev. alt. R. 1 (0, 0, 0) times. C/O 6 sts. at beg. of next and ev. alt. R. 4 (4, 1, 0) times. C/O 7 sts. at beg. of next and ev. alt. R. 0 (1, 4, 4) times. C/O 8 sts. at beg. of next 0 (0, 0, 1) R. K. other front to match reversing all shaping.



POCKETS—STYLE A

C.O.B.H. for 2×1 mock rib. 26 sts., T.8. K.10 Rs. Turn hem. 000. T.10. K.1 R. Place 4th Nd. each side of centre "0" in N.W.P. K.3 Rs. Twist cable next and ev. foll. 12th R. K. to R.30. Dec. 1st. at both ends ev. R. 6 times. C/O rem. sts.

FRONT—STYLE B

Pocket linings: C.O.B.H. 26 sts. T.10. K.40 Rs. place sts. on waste yarn. K. as for Style A to end of Step 2. Starting on the 11th Nd. in from lt. edge (centre front) place 26 sts. onto waste yarn, replace 26st. from pocket lining onto these empty Nds. K. as for Style A.

Pocket tops: C.O.B.H. for 2×1 mock rib. 26 sts. T.8. K.10 Rs. Turn hem with rt. side of work facing M/c. sts. from pocket front onto these sts. C/O.

SLEEVE—STYLE A

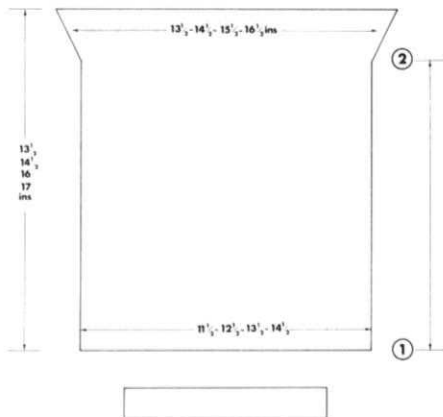
Cast on with waste yarn. 74 (81, 87, 94) sts. K. a few Rs. waste. C.O.R.

Step 1. T.10. K.110 (120, 136, 146) Rs.

Step 2. Inc. 1st. at both ends of next and ev. foll. 3rd R. 7 times to 88 (95, 101, 108) sts. K. to R.134 (144, 160, 170). C/O loosely, press sleeve.

Cuff: Cast on for 2×1 mock rib. 50 (53, 56, 59) sts. T.8. K.40 Rs. Turn hem. With rt. side of work facing M/c. place sts. from bottom of sleeve onto the cuff. C/O loosely.

SLEEVE STYLE A



SLEEVE—STYLE B

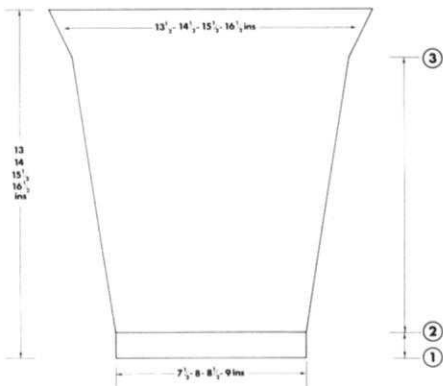
Step 1. Cast on for 2×1 mock rib. 50 (53, 56, 59) sts. T.8. K.40 Rs. Turn hem. 000.

Step 2. Inc. 1st. at edge on 3rd and 4th sizes only. 50 (53, 57, 60) sts. Inc. 1st. at both ends of ev. 8th R 12 (14, 15, 17) times to 74 (81, 87, 94) sts. K. to R.104 (114, 130, 140).

Step 3. Inc. 1st. at both ends of next and ev. foll. 3rd R. 7 times to 88 (95, 101, 108) sts. K. to R.128 (138, 154, 164). C/O loosely.

Press all pieces. Join shoulder seams. Attach sleeves. Join side seams. Sew pocket into place.

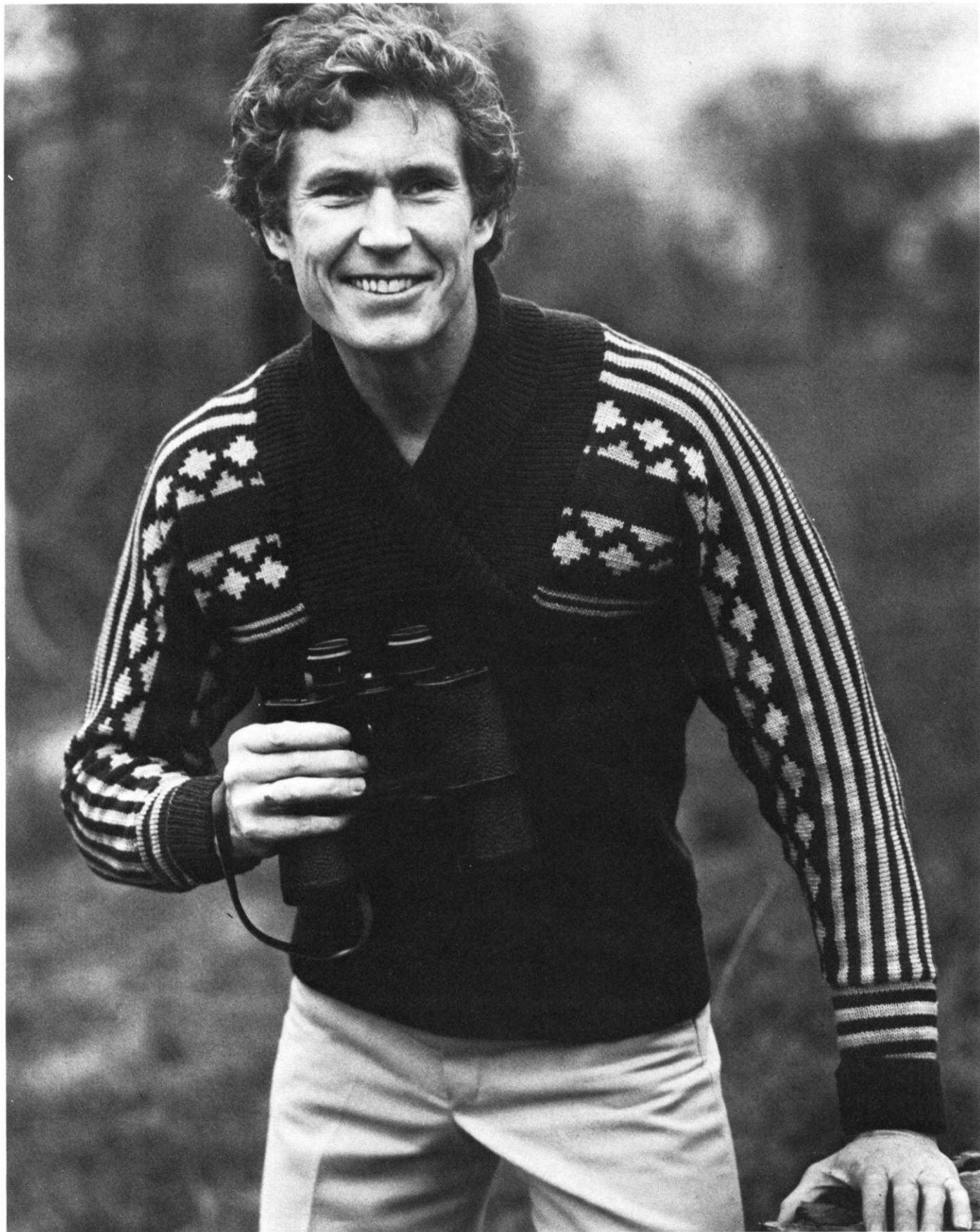
SLEEVE STYLE B



NECK BAND

Cast on for 2×1 mock rib. 98 (104, 107, 110) sts. T.8. K.40 Rs. Turn hem. With rt. side of work facing M/c. place neck edge to these sts. C/O. Work 1 R. of single crochet down each front edge. Sew in zip Cord. C.O.B.H. 3 sts. Depress rt. part button T.5. K. until enough to go around bottom and tie. Thread cord through bottom hem.





mans fancy fairisle yolk sweater

Materials

Lee Target Motoravia 4 ply.
16 (17, 19) balls Col. A.
2 balls Col. B.
2 balls Col. C.

Measurements

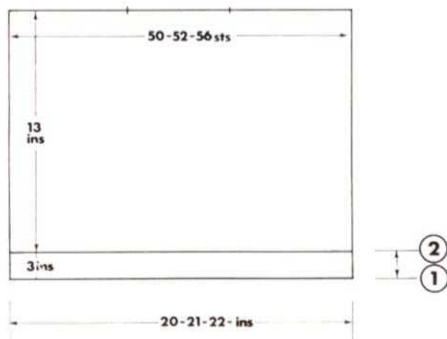
To fit 38 (40, 42) in. chest.
Total length 25½ (26, 26½) ins.
Sleeve seam.

Tensions

7 sts. × 10 Rs. T.D. approx., 8 over
st. st.

Pattern Notes

Following shaping on sleeve at the same time K. pattern as folls. ** K.4 Rs., Col. A, 2 Rs. Col. C, 2 Rs. Col. B, 4 Rs. Col. A, setting M/c. for F.I. on last R. K.16 Rs. from chart 1, K.16 Rs. Col. A, K.16 Rs. from chart 2** K.4 (4, 6) Rs. Col. A* 2 Rs. B, 2 Rs. C, 4 Rs. A* K. for * to * 7 (8, 9) times K.0 (0, 2) Rs. Col. A, rep. from ** to ** knitting pattern in reverse.

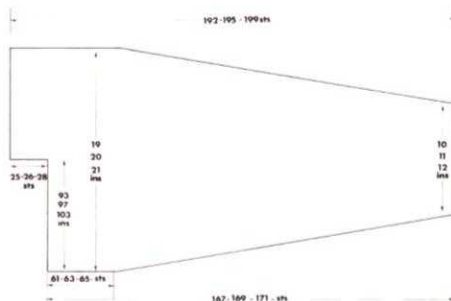


BACK AND FRONT BODY PIECES

Step 1. Ribbers cast on for 1 × 1 rib 141 (147, 155) sts. T.5 K.32 Rs., trans. sts. to main bed. 000.

S/bed M/c. Cast on for 1 × 1 mock rib 141 (147, 155) sts. T.6 K.60 Rs., turn hem. 000.

Step 2. T.8 K.32 Rs. Cast off loosely, but firmly. On front mark sts. each end of centre 49 (51, 55) sts. with waste yarn.



SLEEVE SECTION

Step 1. C.O.B.H. 61 (63, 65) sts. to left of centre "O" K.2 Rs. Cast on 4 sts. at right edge every alt. R. 22 times to 149 (151, 153) sts., cast on 18 sts., at right edge next alt. R. K. to R.144 (152, 164). Cast off 18 sts. at beg. of next R. (right edge). Cast off 4 sts. at right edge every alt. R. 22 times. K.2 Rs., cast off rem. sts. AT THE SAME TIME after 93 (97, 103) cast on 25 (26, 28) sts. at left edge for back neck.

K. other sleeve section to match, casting on to right of centre "O" and reversing all shaping.

COLLAR

K. 2 pieces.

Ribbers, cast on for 1 × 1 rib 123 (129, 135) sts. T.5, K. 82 Rs., cast off loosely. S/beds M/cs. cast on for 1 × 1 mock rib 123 (129, 135) T.6 K. 160 Rs. rib, turn hem K.1 R., cast off loosely.

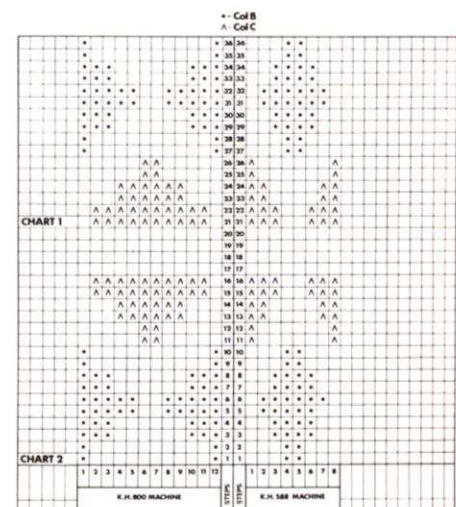
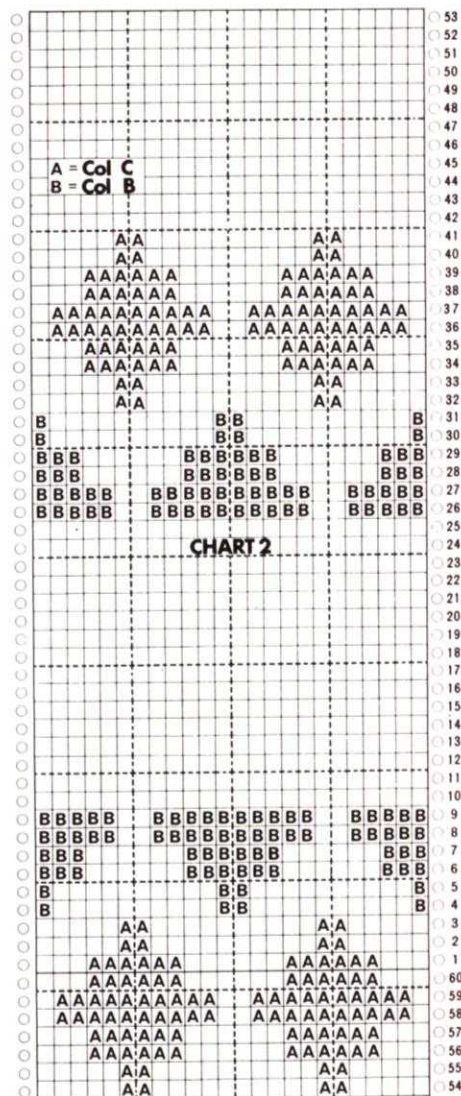
CUFF

Ribbers, cast on 59 (63, 69) sts., for 1 × 1 rib K.32 Rs., trans. to main bed 000. S/beds, M/cs. cast on for 1 × 1 mock rib 59 (63, 69) sts., T.6 K.60 Rs., turn hem 000.

K. stripe sequence of *4 Rs., Col. A, 2 Rs. Col. C, 2 Rs. Col. B* rept. from * to * until R. 40, cast off loosely.

TO MAKE UP

Press all pieces. Join back seam on sleeves, join back yolk, join front yolk lining up side front necks to markers. Sew cuffs onto end of sleeves. Join back seam on collar, press collar out stretching it and pressing into shape. Sew collar into place. Press all seams. Join rem. seams.



The basic principle of knitting fairisle patterns on the above models is that in a row of pattern where two or more colours appear, the needles taking colour 'A' are selected first, colour 'A' is threaded into the sinker plate and the needles are knitted, then the needles taking colour 'B' are selected, colour 'B' is threaded into the sinker plate and those needles are knitted. Therefore, you are knitting one row of pattern in two steps but it is still only one row. You are able to do this because both part buttons are pushed in and therefore only needles which are brought forward by selection will knit, the others remaining behind do not.

As you will see, it is necessary to change the yarn in the sinker plate feed, virtually every row. Therefore, we simplify the operation slightly by knitting each operation twice. i.e.:—

With the carriage on right the needles taking colour 'A' are selected and colour 'A' is threaded into the sinker plate feed, both part buttons are pressed and the carriage is taken from right to left. The same needles are selected again and the carriage taken from left to right. Then the reverse lever is put to 'B' and the set lever pulled, this will select the other needles which are to take colour 'B'. Colour 'A' is taken out of the sinker plate feed and hooked onto the right hand end of the needle bed. Re-thread the sinker plate with colour 'B' and take the carriage from right to left. Select the same needles and take the carriage from left to right.

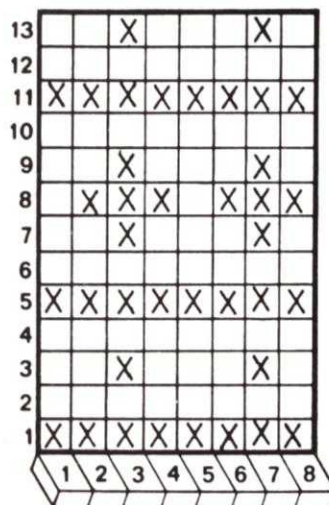
In this way you will see that the yarns are changed only when the carriage is on the right hand side. This method being much easier.

If, of course, it is necessary to knit a row in one colour only, then all needles must be selected (i.e. depress all buttons 1-8) and brought forward by the set lever, the sinker plate is threaded up with the colour to be used and the carriage is taken from right to left. The set lever is pulled again and the carriage is taken from left to right. That is the complete operation for that step.

(By using this method it is, therefore, not necessary to change the carriage settings in the middle of a pattern, if a row in one colour only appears).

FAIRISLE

for the more manual machines
KH585, 583,
580 & 552.



Diagram

= Colour A.

= Colour B.

Therefore, by referring to the diagram you will see that:—

Step 1. will require two movements of the carriage (i.e. right to left, left to right).

Step 2. will require two movements of the carriage.

Step 3. will require four movements of the carriage (i.e. right to left, left to right for needles in colour B. right to left, left to right for needles in colour A).

FAIRISLE ON MACHINES PRIOR TO KH.588 i.e. KH.552. KH.580. KH.583. KH.585

Cast on 20 – 30 stitches in colour 'A'. Knit 10 rows finish with carriage on right.

Thread colour 'B' through Yarn Tension Unit and Hang on clip.

Referring to chart:—

= Colour A.

= Colour B.

Take out colour 'A' from Sinker Plate and hook onto end of needle bed (See Fig.101 in Instruction Book). Re-thread with colour 'B'. Press in both part buttons.

Step 1 Press all Buttons 1–8. Pull Set Lever (Hold work back against needle bed when selecting all needles). Take carriage from right to left. Pull Set Lever. Take carriage from left to right.

Step 2 Take colour 'B' out of Sinker Plate and re-thread with colour 'A'. Leave all buttons 1–8 depressed. Pull Set Lever. Take carriage from right to left. Pull Set Lever. Take carriage from left to right.

- Step 3 Take out colour 'A' from Sinker Plate and re-thread with colour 'B'.
Cancel needle selector buttons and Press No.3 and No.7.
Pull Set Lever, take carriage from right to left.
Pull Set Lever, take carriage from left to right.
Take out Colour 'B' from Sinker Plate and re-thread with Colour 'A'.
Put reverse lever from 'A' to 'B' (to select needles not selected in previous operation).
Pull Set Lever.
Take carriage from right to left.
Pull Set Lever.
Take carriage from left to right.
- Step 4 Put Reverse Lever back to 'A'.
Leave colour 'A' in Sinker Plate.
Depress all buttons 1-8.
Pull Set Lever.
Take carriage from right to left.
Pull Set Lever.
Take carriage from left to right.
- Step 5 Take out colour 'A' from Sinker Plate and re-thread with colour 'B'.
Leave all buttons 1-8 depressed.
Pull Set Lever.
Take carriage from right to left.
Pull Set Lever.
Take carriage from left to right.
- Step 6 Take out colour 'B' from Sinker Plate and re-thread with colour 'A'.
Leave all buttons 1-8 depressed.
Pull Set Lever.
Take carriage from right to left.
Pull Set Lever.
Take carriage from left to right.
- Step 7 Take out colour 'A' from Sinker Plate and re-thread

- with colour 'B'.
Cancel buttons 1-8 and depress button No.3. and No.7.
Pull Set Lever.
Take carriage from right to left.
Pull Set Lever.
Take carriage from left to right.
Take out colour 'B' from Sinker Plate and re-thread with colour 'A'.
Put reverse lever to 'B' (to select needles not selected previously i.e. 1,2,4,5,6,8.)
Pull Set Lever.
Take carriage from right to left.
Pull Set Lever.
Take carriage from left to right.
- Step 8 Take out colour 'A' from Sinker Plate and re-thread with colour 'B'.
Put reverse lever back to 'A'.
Depress buttons 2,3,4 and 6,7,8.
Pull Set Lever.
Take carriage from right to left.
Pull Set Lever.
Take carriage from left to right.
Take out colour 'B' from Sinker Plate and re-thread with colour 'A'.
Put reverse lever to 'B'.
Pull Set Lever.
Take carriage from right to left.
Pull Set Lever.
Take carriage from left to right.
- Step 9 Put reverse lever back to 'A'.
Take out colour 'A' from Sinker Plate and re-thread with colour 'B'.
Depress button 3 and 7.
Pull Set Lever.
Take carriage from right to left.
Pull Set Lever.
Take carriage from left to right.
Take out colour 'B' from Sinker Plate and re-thread with colour 'A'.
Put reverse lever to 'B'.
Pull Set Lever.

- Take carriage from right to left.
Pull Set Lever.
Take carriage from left to right.
- Step 10 Put reverse lever back to 'A'.
Depress all buttons 1-8.
Leave colour 'A' in Sinker Plate.
Pull Set Lever.
Take carriage from right to left.
Pull Set Lever.
Take carriage from left to right.
- Step 11 Take out colour 'A' from Sinker Plate and re-thread with colour 'B'.
Leave buttons 1-8 depressed.
Pull Set Lever.
Take carriage from right to left.
Pull Set Lever.
Take carriage from left to right.
- Step 12 Take out colour 'B' from Sinker Plate and re-thread with colour 'A'.
Leave buttons 1-8 depressed.
Pull Set Lever.
Take carriage from right to left.
Pull Set Lever.
Take carriage from left to right.
- Step 13 Take out colour 'A' from Sinker Plate and re-thread with colour 'B'.
Release buttons 1-8 and depress No.3. and No.7.
Pull Set Lever.
Take carriage from right to left.
Pull Set Lever.
Take carriage from left to right.
Put reverse lever to B.
Take out colour 'B' from Sinker Plate and re-thread with colour 'A'.
Pull Set Lever.
Take carriage from right to left.
Pull Set Lever.
Take carriage from left to right.
Reverse part buttons and knit several rows plain.
Remove knitting from machine.

ONE SIZE FAIRISLE PONCHO

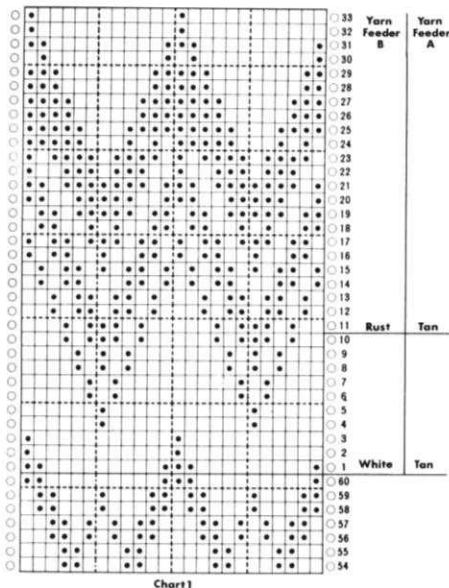


Chart 1

Materials

- Emu Scotch Superwash wool 4 ply.
- 11 balls tan.
- 8 balls brown.
- 5 balls rust.
- 2 balls white.
- 3 yards of fringing.

Measurements

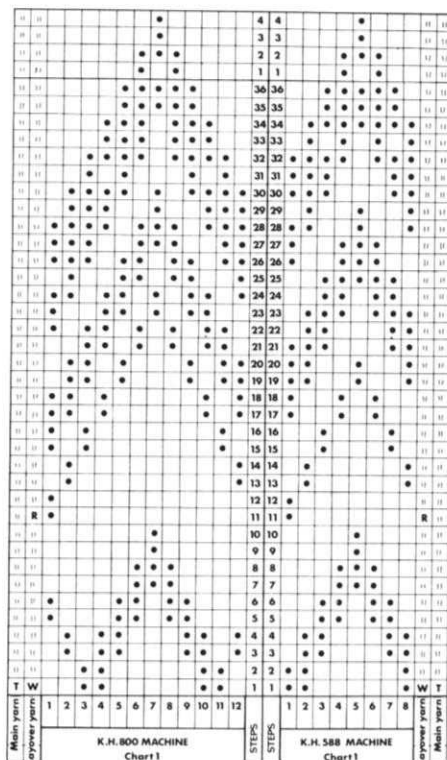
To fit up to 38 in. bust.

Tensions

7.5 sts. × 9.5 Rs. = 1 in. over fairisle.
T.D. approx. 8.

Notes

Fairisle patterning is shown separately at beg. of patt. K,4 pieces of poncho shaping as indicated. At the same time follow patterning from beg. and continue rep. throughout.



K.H. 800 MACHINE

Chart 1

STEPS

STEPS

K.H. 588 MACHINE

Chart 1

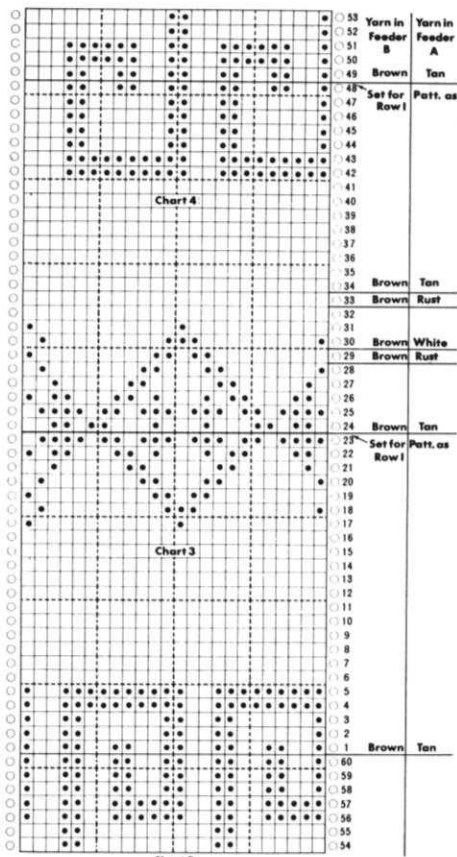


Chart 2



PATTERNS

-by hand selection

Step 2.

Dec. 1st at left edge every R. 96 times (after R. 34 make a button hole over 60, 61, 62, 63, nds. from left edge) then every alt. R. 35 times. K. to R. 167 (C.O.L.) cast off 14 sts. at beg. of next R. K.1 R. cast off 4 sts. at beg. of next and every alt. R. 5 times. At the same time after R. 124 dec. 1st at right edge every 3rd R. 15 times. K. other half to match rev. all shaping knitting 21 Rs. waste and starting with C.O.L.

½ BACK

K. as for front omitting button holes to R. 166.

Continue shaping every alt. R. on left edge until 26 sts. rem. C.O.R.

Cast off 13 sts. at beg. of next and foll. alt. R.

K. other half rev. all shaping.

COLLAR

Cast on by hand 113 sts. in Col. Brown T.7. Inc. 1st at both ends every 3rd R. 12 times K. to R. 44. T.9 K.1 R. T.8. K. from patt. chart starting at step 4 at the same time dec. 1 st. at both ends every 3rd R. 12 times. K. to R. 44. Cast off.

TO MAKE UP

Press all pieces. Fold collar in half and press again.

Join seams of poncho matching patts. carefully and leave an approx. 11 ins. open at top of front seam. Sew collar into pos.

EDGING

Using Brown yarn C.O.B.H. 10 sts. at left edge of bed. T.8. +K.2 Rs., inc. 1st at right edge, dec. 1st at left edge, rept. from + until band is long enough to reach from point of collar down 1 side of front opening up other side of opening to point of other edge of collar. Press band sew into position.

Sew fringing all around bottom edge. Give final press remove waste yarn from cast on edges.

BELT

6 strands of brown. Rept. 3 times in all.

2 strands of tan. Rept. 3 times in all.
2 strands of white. Rept. 3 times in all.

2 strands of rust. Rept. 3 times in all.
Make a platt approx. 66 ins. long.



NEW PUNCHER FROM BROTHER

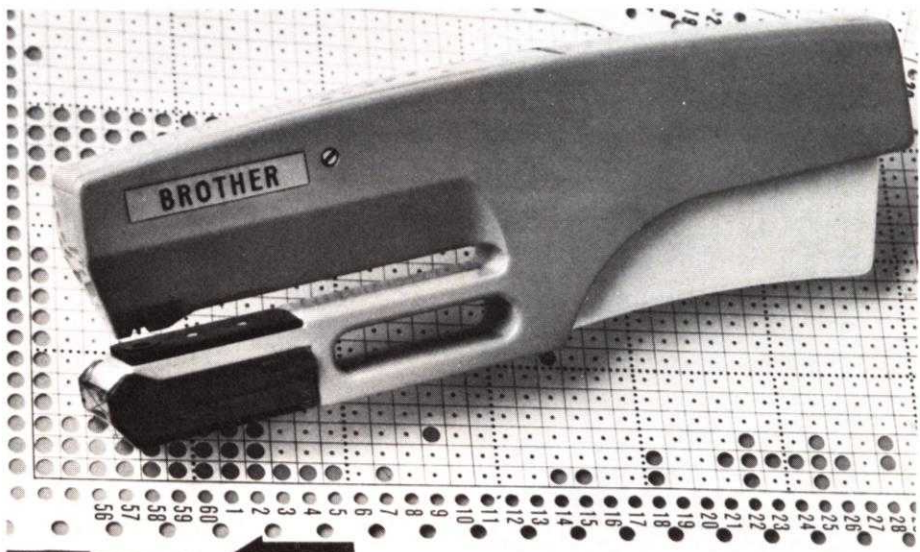
Here's an attractive and very functional addition to the range of Brother accessories, a card puncher with a built in safety device. The special pin in the puncher locates with the pin holes in the cards to ensure accurate hole punching. If the pin does not locate with the pin hole the cutter will not

function — so you can ensure clean, clear, accurate punched cards every time.

PRICES: Punch £3.65

Set of 10 blank cards £1.50.

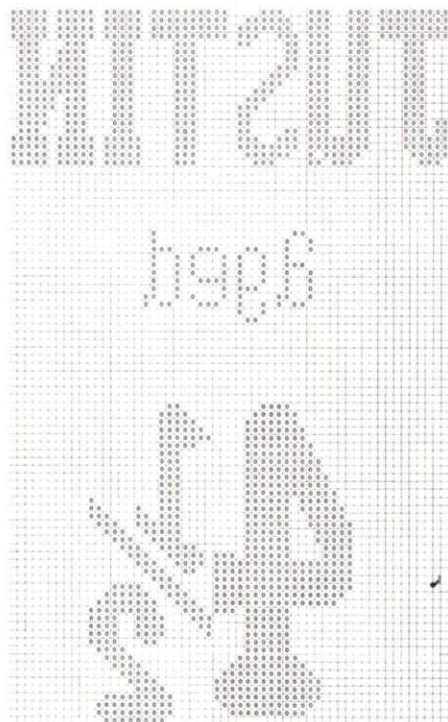
NOTE. This new punch can ONLY be used in conjunction with the new type card. Both the old and new cards can be used with previous style punches.



In the last issue we featured some garments we had used in our advertising. Since then we have had a continual stream of requests from readers, asking exactly how to achieve patterning by hand selection. So to help you all achieve these exciting bold motifs here are some simple instructions.

[Hand Selection Patterns for 588.](#)

After completion of the correct number of plain rows, finish with the carriage on the right. Put change knob to MC and change lever to MC. Knit 2 rows to bring all needles to D1 position. Depress all buttons 1 to 8, put both holding cam levers to position 11. Press in both part buttons, pull set lever to bring all needles forward to D11 position. Take back to D1 position the needles indicated by the chart, bring forward to 'E' position the 3rd needle to the right of the last selected needle on the right hand side. Lay contrast colour yarn across all needles, take carriage from right to left. All needles will have returned to 'B' position except the one needle remaining in 'E' position. Using a separate ball of main colour yarn put a loop of this yarn into the hook of the needle, take the needle back to D1 position to knit the stitch. A loop of the



contrast colour should now be held by this stitch. Again pull the set lever to bring forward all needles to D11 position, take back to D1 position the needles indicated by the chart. This time bring forward to 'E' position the 3rd needle to the LEFT of the last selected needle on the left hand side.

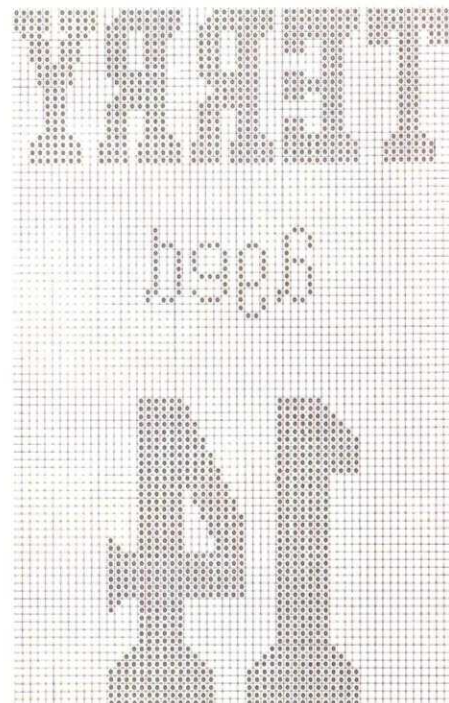
Lay contrast colour yarn across all needles, take the carriage from left to right. Again put a loop of the main yarn from the separate ball into the hook of the needle remaining in 'E' position, then take the needle back to D1 position to form the stitch. Repeat this process following the chart.

[Hand Selection Patterns for 800.](#)

After completion of the correct number of plain rows, finish with the carriage on the right. Put change knob to MC and change lever to MC. Knit 2 rows to bring all needles to D1 position. Put a blank punch card (without any holes punched) into card holder, pull set lever to bring all needles forward to D11 position. Put holding cam lever to No. 1 and press both part buttons, take back to D1 position the needles indicated by the chart, then bring forward to 'E' position the 3rd needle to the right of the last selected needle on the right hand side. Lay contrast yarn over all needles (i.e. immediately in front of the gate pegs), take the carriage from right to left, all needles will have returned to D1 position except the one needle remaining in 'E' position. Using a separate ball of the main colour yarn, put a loop of this yarn into the hook of the needle, then take the needle back to D1 position to knit the stitch. A loop of the contrast colour should now be held by this stitch. Again pull the set lever to bring all needles forward to D11 position. Take back to D1 position the needles indicated by the chart and bring forward to 'E' position the 3rd needle to the left of the last selected needle on the left hand side and lay the contrast colour across all needles and take the carriage from left to right. Again put a loop of the main yarn from the separate ball into the hook of the needle remaining out in 'E' position, then take the needle back to D1 position to form the stitch. Repeat this process following the chart.

[Hand Selection Patterns for 820/830.](#)

After completion of the correct number of plain rows, finish with the carriage on the right, press in the MC button and put the holding cam lever to 'H'. Thread contrast colour B into 'B' feeder of sinker plate, bring forward to 'D' position the needles indicated by the pattern chart, then bring forward 'E' position the needle to the right of the last selected needle on the right hand side. Take the carriage from right to left. All needles will now have returned to 'B' position except the one needle remaining in 'E' position. Using a separate ball of main colour yarn put a loop of this yarn into the hook of the needle, take the needle back to 'B' position to knit the stitch. A loop of the contrast colour should now be held by the stitch. Again select the needles according to the chart, but this time bring to 'E' position the 3rd needle to the LEFT of the last selected needle on the left hand side. Take the carriage from left to right. Again put a loop of the main yarn from the separate ball into the hook of the needle remaining out in position 'E', then take the needle back to 'B' position to form the stitch. Repeat this process following the chart.



'BEEFY' Teenage sweater and scarf

Materials

Lister Concord Easywash 4 ply.

11 (13, 14) balls red.

1 ball black.

Measurements

To fit 28 (30, 32) in. bust.

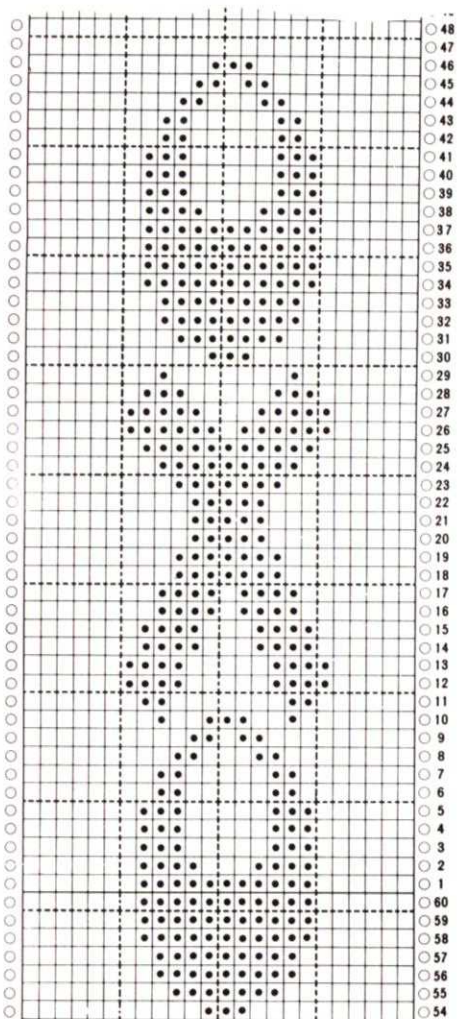
Sleeve seam 12 (13½, 14½) ins.

Total length 18 (18¾, 20) ins.

Tensions

7¼ sts. × 12 Rs. = 1 in. T.D. approx.

7.



Pattern Notes

Start pattern on R. 10 of step 3. Follow patts. from chart 1.

MATCHING SCARF

Materials

9 balls red.
1 ball black.

Tensions

As for jumper.

Pattern Notes

Patterns from charts 2, 588 work needle selection by hand from 820/830 chart. Work 1 rept. of pattern between nds. No. 18 to 31 on left of centre "O".

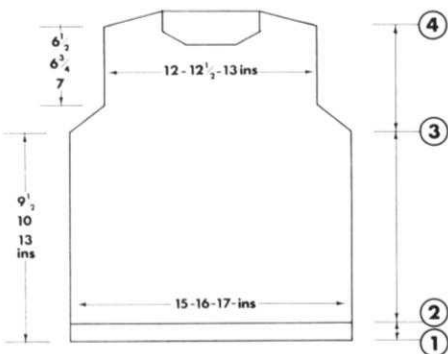
BACK

Step 1. Ribbers cast on for 1 × 1 rib 109 (117, 125) sts. T.4/4 K.26 Rs. rib, trans. sts. to main bed. C.O.R. 000.S/bed, cast on for 1 × 1 mock rib 109 (117, 125) sts. T.5 K.50 Rs., turn hem. C.O.R. 000.

Step 2. Main T. K.114 (120, 132) Rs., cast off 5 sts. at beg. of next 2 Rs. 000.

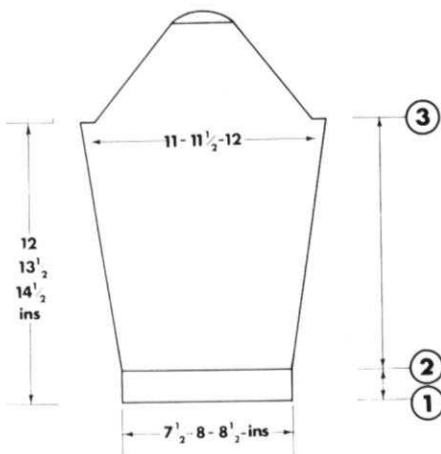
Step 3. Dec. 1st at both ends every alt. R. 6 (8, 10) times to 78 (82, 84) sts. K. to R. 78 (82, 84).

Step 4. Cast off 6 sts. at beg. of next 6 Rs., cast off 6 (8, 10) sts. at beg. of next 2 Rs. Place rem. 39 sts. on waste yarn.



FRONT

K. as for back to R. 10 of step 3, set M/c. for hand selection and K. motif. K. to R. 44 (48, 50). Working on right side only cast off centre 15 sts. dec. 1st at neck edge every alt. R. 12 times K. to R. 78 (82, 84), cast off 6 sts. at beg. of next 3 alt. Rs. Cast off rem. sts. Replace sts. from left side and K. to match.



SLEEVE

Step 1. Cast on over 55 (59, 61) sts., K. as for step 1 of back.

Step 2. Inc. 1 st. at both ends every 10 (12, 13)th R. 13 times to 81 (85, 87) sts. K. to R. 144 (162, 174). Cast off 5 sts. at beg. of next 2 Rs. C.O.R. 000.

Step 3. Dec. 1st at both ends every 3rd R. 17 (19, 20) times to 37 sts. Dec. both ends every R. 8 times. Cast off 21 sts.

TO MAKE UP

Press all pieces. Join 1 shoulder seam.

NECKBAND

Cast on 109 sts., ribbers K.14 Rs. Trans. to main bed. S/bed M/c.,

K.28 Rs. turn hem. With right side of work facing M/c. place neck edge onto sts. and cast off loosely. Sew in sleeves, join rem. seams.

SCARF

C.O.B.H. in red 96 sts.

K.10 Rs. red.

K. 6 Rs. black.

K. 8 Rs. red.

K. 4 Rs. black.

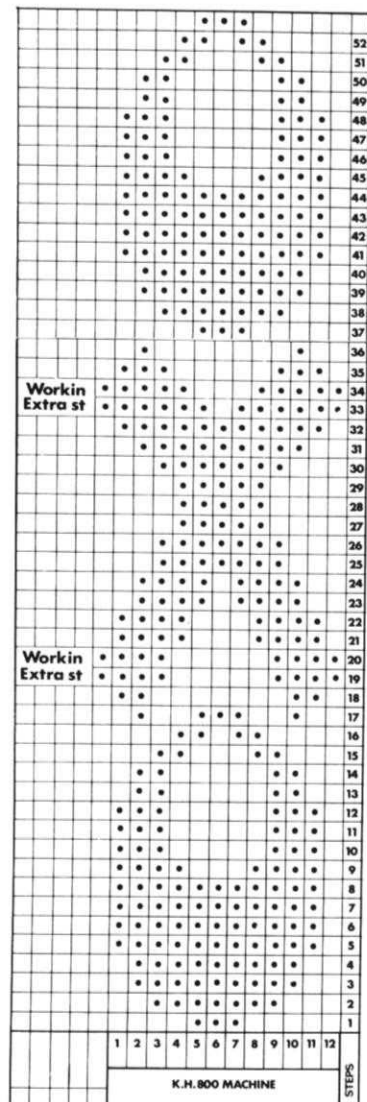
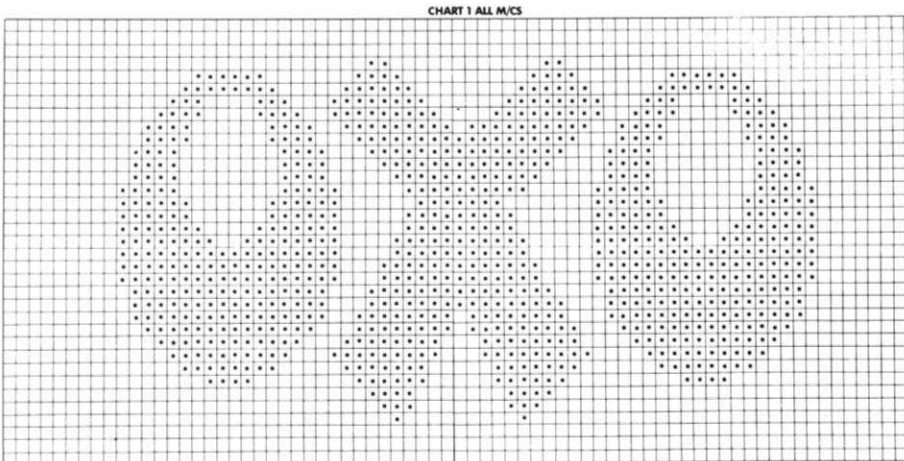
K. 6 Rs. red.

K. 2 Rs. black.

10 Rs. red set M/c. for patt., K.53 Rs. of patt. K. to R. 500. Turn patt. upside down K.53 Rs. of patt., K.10 Rs. red. K. stripe sequence in reverse. Cast off. Press join seam. Make fringe.

NOTE

For a flatter finish crochet edges together. Work another R. of crochet down fold to match. Make fringe.



LACY SWEATER

with
tie waist

Machines

Suitable for KH830 or KH820 machines, or any machine if alternative lace pattern substituted.

Sizes

To fit 32 (34, 36 38) in. Bust.

Materials

1 cone of Hayfield's Machine knit, 50/50 acrylic/nylon, available from your local stockist on 340 gm. cones, or by mail order from Stagport Ltd., P.O. Box 24, Slough, Berks., SL1 2NW (send 15p for shade cards and samples).

Tensions

32 sts. and 44 Rs. to 4 ins. measured over lace patt. Punchcard 402. Available in punchcard set Vol. 5—Lace Patterns Big and Bold. T.D. approx. 4.

BACK

Step 1. C.O.B.H. 140 (148, 156, 164) sts. T.D. at M.T., K.20 Rs. plain and turn hem.

Step 2. Set M/c. for lace knitting and continue in lace patt. throughout. RC000. K. 4 (6, 8, 8) Rs. straight, then dec. 1 st. at both sides on next and every foll. 5th R., 12 times in all. Giving 116 (124, 132, 140) sts. K. straight in lace patt. to RC 64 (68, 70, 72).

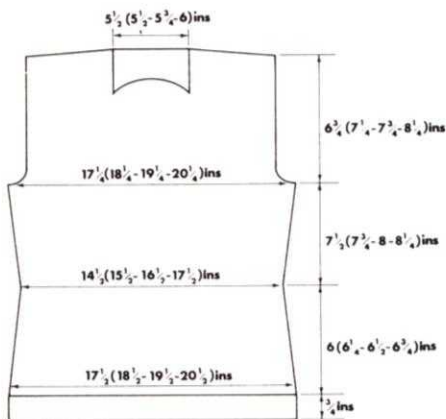
Step 3. K.2 extra Rs. plain and then make picot holes on every 4th st. by

transferring every 4th st. to its adjacent nd., leaving empty nds. in work. K. another 4 Rs. straight and then resume lace patt.

Step 4. K.6 Rs. in patt. and then inc. 1 st. at both sides on next and every foll. 6th R., 11 times in all, giving 138 (146, 154, 162) sts.

Step 5. Cast off 5 (6, 7, 7) sts. at the beg. of the next 2 Rs. Cast off 2 sts. at the beg. of the next 6 Rs. Dec. 1 st. at both sides on the next and foll. alt. Rs. 4 (5, 6, 7) times in all, leaving 108 (110, 116, 122) sts. * K. in patt. to Rc 224 (234, 244, 252).

Step 6. Cast off at the beg. of the next 2 Rs. 7 (7, 7, 8) sts. Cast off at the beg. of the next 2 Rs. 7 (7, 7, 7) sts. Cast off at the beg. of the next 6 Rs. 6 (6, 7, 7) sts. Cast off rem. 44 (44, 46, 48) sts.



FRONT

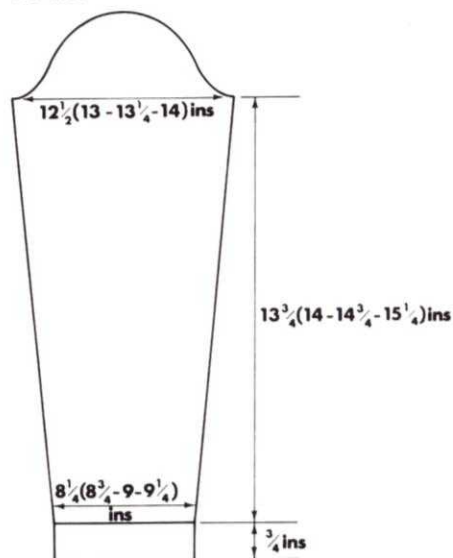
Step 1. K. as Back from step 1 through to * in step 5.

Step 2. K. in patt. to R.C. 190 (204, 214, 222). Put 32 nds. at opp. side to Carr. into H.P. on next 2 rows—continue rem. of knitting in plain K. Put 2 nds. into H.P. at opp. side to Carr., on next and foll. row, until 4 nds. at centre left in W.P., put 2 nds. at opp. side to Carr. back into W.P. until 44 (44, 46, 48) sts., back in W.P., then put rem. of nds. back into W.P. on next 2 Rs.

Step 3. Cast off centre 24 (24, 26, 28) sts. Put L.H.S. into H.P. and K. R.H.S. as folls. Dec. 1 st. at neck edge on next and every foll. 3rd R. 10 times in all. K. straight to T.C. 224 (234, 244, 252).

Step 4. Cast off 7 (7, 7, 8) sts. at the beg. of the next R., K.1 R. Cast off 7 (7, 7, 7) sts. at the beg. of the next R., K.1 R. Cast off 6 (6, 7, 7) sts. at the beg. of the next and foll. alt. Rs. 3 times in all.

Step 5. Put Carr. at L.H.S., return nds. to W.P. and K. L.H.S. to match R.H.S.



SLEEVES

C.O.B.H. 66 (70, 72, 74) sts. T.D. at M.T., K.20 Rs. and turn hem. Set M/c. for lace knitting.

Step 2. T.D. at M.T., lace patt. throughout, RC000. K.2 Rs. and inc. 1 st. on next and every foll. 8th R. 17 (18, 19, 20) times in all. Giving 100 (104, 108, 112) sts. K. to RC 150 (156, 162, 168).

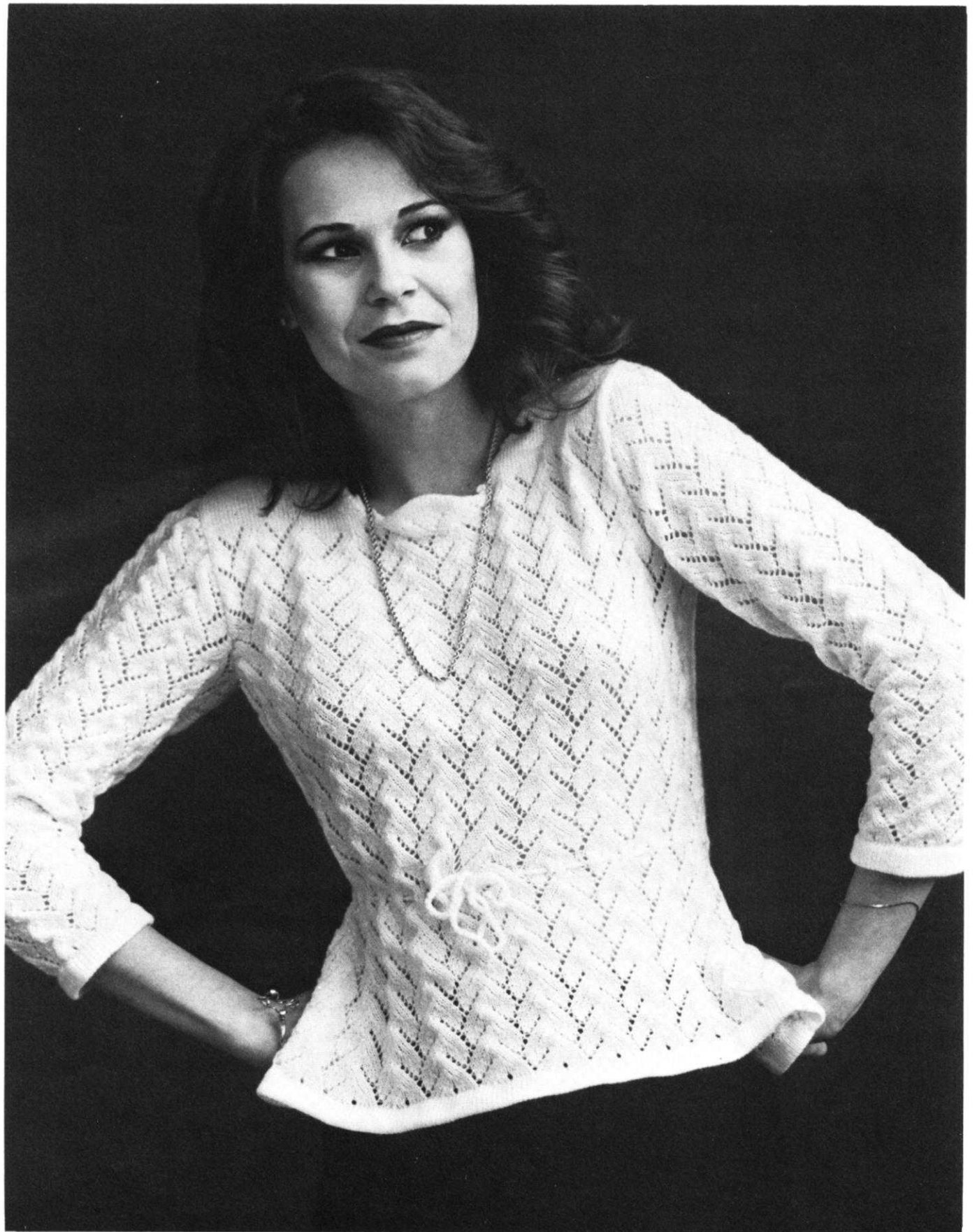
Step 3. Cast off 5 (6, 7, 7) sts. at the beg. of the next 2 Rs. K.1 R. and dec. 1 st. at the beg. of the next and every foll. alt. R. 17 (18, 19, 22) times in all. Dec. 1 st. on both sides on next and every foll. R. 18 (18, 19, 16) times in all. Cast off rem. 20 (20, 20, 22) sts.

NECKBAND

Join shoulder seams. With 3.00mm crochet hook, starting with right side of work facing at left of neck edge (after partial knitting), slip st. into edge, then do 3 chain, do 1 double crochet into 3rd chain from hook (picot made), do 4 double crochet along edge and repeat picot, right around side and back, then side neck. Fasten off.

TO MAKE UP

Set in sleeves after joining shoulder seams. Sew side and sleeve seams. Using 2 strands of yarn together and 3.5mm crochet hook, crochet a long chain until long enough to thread through waist and tie neatly. Thread cord through, turn partial knitting at centre in half and slip st. down. Give final press with a dry cloth and warm iron.



Woven pop-over

Machines

Suitable for KH830 or KH820 machine, or any machine if suitable weaving pattern substituted.

Sizes

To fit 32 (34, 36, 38) in.

Materials

1-cone Hayfield's Machine Knit 50/50 acrylic/nylon (obtainable on 340 gms. cones from your local stockist, or via mail order from Stagport Ltd., P.O. Box 24, Slough, Berks., SL1 2NW—send 15p for samples and order form) and 6 (7, 7, 8) balls Hayfield's Superblend Double Knit 75% acrylic/25% wool in contrast C.

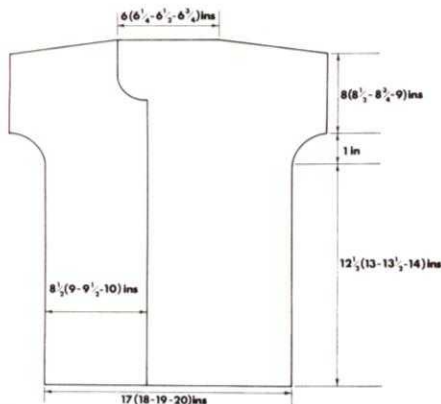
Tensions

23 sts. and 47 Rs. to 4 ins. over weaving patt. (Card 4D from basic KH830 set).

T.D.: Approx. 5.

Notes

Card used 4D from basic KH830 patt. set.



BACK

Using machine knit (background yarn), C.O.B.H. 98 (104, 110, 116) sts. T.D. at M.T. + 1, K.6 Rs. straight, setting the punchcard on 6th R.

Step 2. RC000. With machine knit, knitting and C. as the weaving yarn, start the weaving patt. with T.D. at M.T. and K. straight to RC 146 (152, 158, 164).

Step 3. Cast on 2 sts. at the beg. of the next 10 Rs.—giving 118 (124, 130, 136) sts. at the beg. of the next 6 (4, 2, 6) Rs. Cast off 0 (4, 4, 0) sts. at the beg. of the next 0 (2, 4, 0) Rs. Cast off rem. 34 (38, 38, 40) sts.

FRONT (Left Hand Side).

Using M., C.O.B.H. 48 (52, 54, 58) sts. T.D. at M.T. + 1, K.6 Rs., setting punchcard on 6th R.

Step 2. RC000, continue in weaving patt. with T.D. at M.T. and K. to RC 146 (152, 158, 164).

Step 3. Cast on 2 sts. at the beg. of the next and every foll. alt. R. 5 times in all. K. straight to RC 175 (185, 189, 197). (K. 1 extra R. for R.H.S.).

Step 4. Cast off 3 (3, 3, 4) sts. at the beg. of the next R., K.1 R. Cast off 2 (2, 2, 3) sts. at the beg. of the next R., K.1 R. Dec. 1 st. at neck edge on next and every foll. alt. R. 11 (14, 13, 13) times in all. K. to R.C. 250 (262, 270, 280).

Step 5. Cast off 3 (3, 3, 3) sts. at the beg. of the next and foll. alt. Rs. 4 times in all. K.1 R. Cast off 3 (3, 3, 4)

sts. at the beg. of the next and foll. alt. R. 3 (2, 1, 3) times in all. K.1 R. and cast off 0 (4, 4, 0) sts. at the beg. of the next and every foll. alt. R. 0 (1, 2, 0) times in all.

TO MAKE UP

Sew side and shoulder seams. Turn under the plain Rs. first knitted and slip stitch to wrong side. With contrast weaving yarn C., and crochet hook approx. 3.5 mm, work 1 R. of double crochet right around front edging, neckline and second front edging. Make 2 chain, turn and do 1 R. of half trebles right around from one front edge, along neckline, and down 2nd front edge. Finish off. To finish sleeve edges, do 1 R. of half trebles once around sleeve edge.

Give final press using damp pressing cloth and medium iron.



mans drop shoulder fairisle sweater

Machines

Suitable for KH830 or KH820 machine, or any machine if alternative fairisle design is substituted.

Sizes

To fit 38 (40, 42, 44) in. chest.

Materials

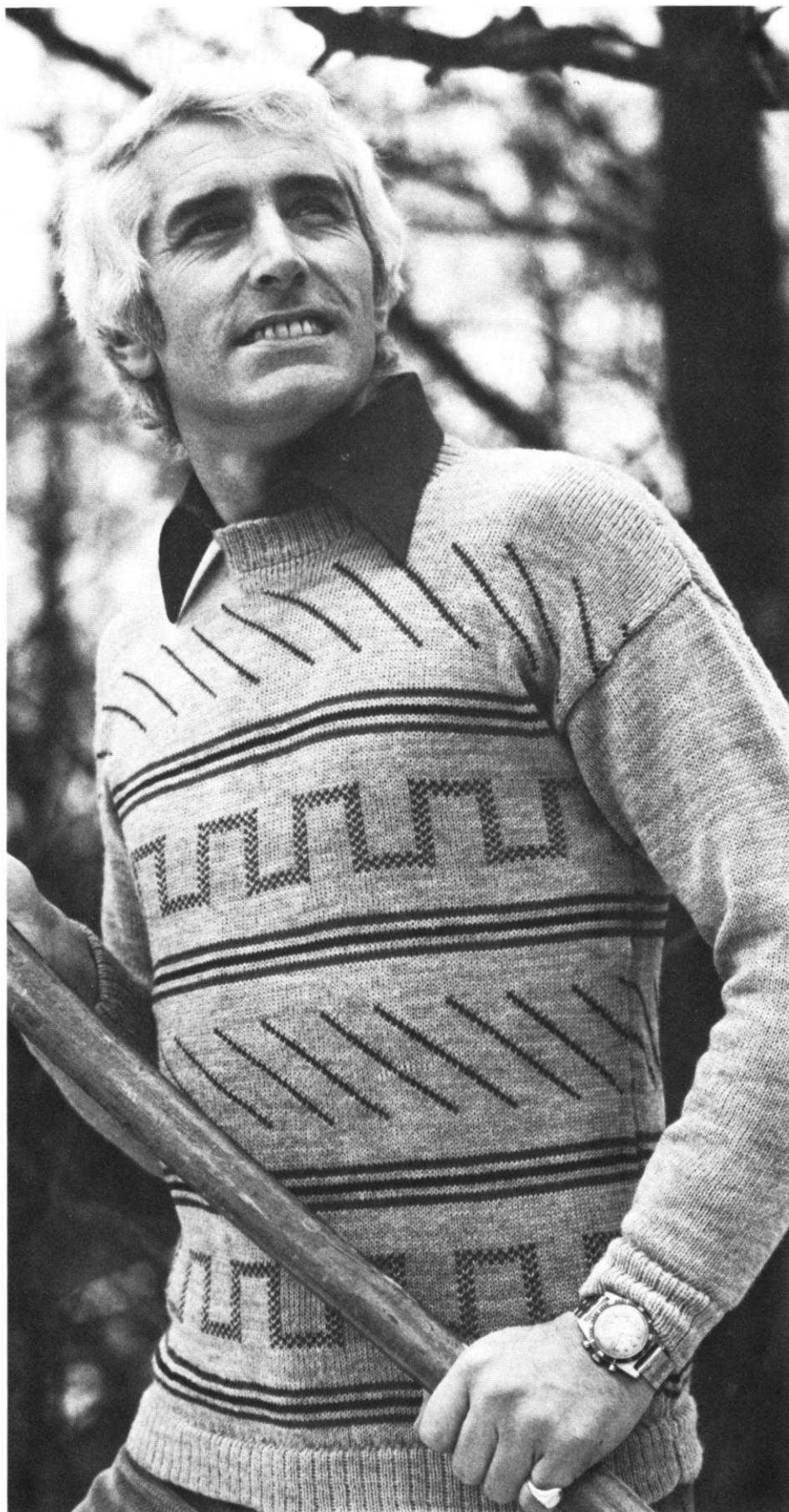
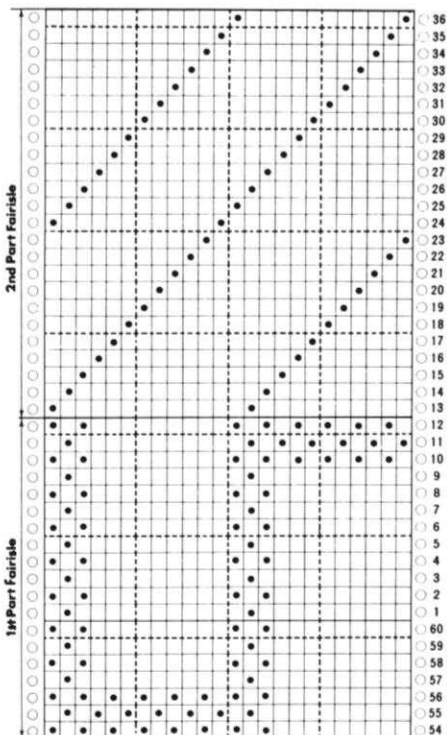
Pure New Wool 2/16s available by mail order from Stagport Ltd., P.O. Box 24, Slough, Berks., SL1 2NW—(send 15p for shade cards and order form). 300 (300, 350, 400) gms. Main 50 (50, 75, 75) gms. each of contrasts A, B & C.

Tensions

29 sts. & 40 Rs. to 4 in. over st.st., T.D. approx. 7.

Notes

Follow chart to make fairisle punch-card.

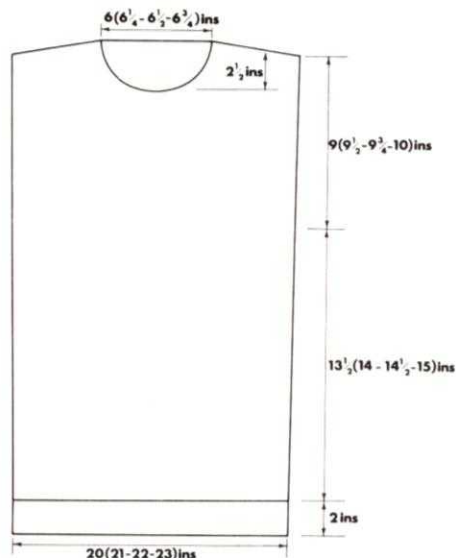


drawstring

POLO

NECK

sweater



BACK

Step 1. Cast on 2×1 rib in M., 146 (152, 161, 167) sts. T.D. at M.T. -2, K.38 Rs. Turn hem and dec. 0 (0, 1, 1) sts.

Step 2. RC000, T.D. & M.T., K.4 (6, 8, 10) Rs. straight * Change to A and K.2 Rs., change to M. and K.2 Rs., change to B. and K.2 Rs., change to M. and K.2 Rs., change to C. and K.2 Rs. Change to M. and K.10 Rs*.

Step 3. With M. in feeder 1 and C in feeder 2, start first part of fairisle patt. and K.19 Rs. in fairisle. Change to 10 in. knitting and with M. K.11 Rs. straight.

Step 4. Repeat stripe sequence from *—*.

Step 5. With M. in feeder 1 and C. in feeder 2, start 2nd part of fairisle and K.24 Rs. in fairisle. K.10 Rs. M **.

Step 6. Repeat from *—** once more MARKING SIDE EDGES when RC136 (140, 146, 150) with a contrast piece of yarn. Continue in M. and K. straight to RC226 (234, 244, 250).

Step 7. Cast off at the beg. of the next 2 Rs., 11 (12, 13, 14) sts. Cast off at the beg. of the next 2 Rs. 10 (11, 12, 13) sts. Cast off at the beg. of the next 2 Rs. 10 (10, 11, 11) sts. Cast off at the beg. of the next 2 Rs. 10 (10, 10, 11) sts. Cast off 10 sts. at the beg. of the next 2 Rs. Cast off the rem. 44 (46, 48, 50) sts.

FRONT

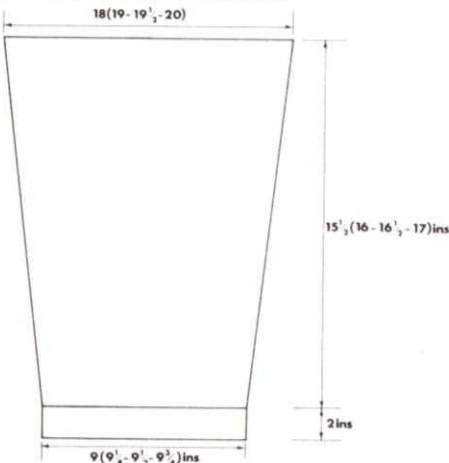
K. as Back Step 1 through to Step 5.

Step 6. Repeat from *—** once more, MARKING SIDE EDGES WITH CONTRAST YARN at RC136 (140, 146, 150). K. straight (continuing in M.) through to RC202 (210, 220, 226).

Step 7. Cast off centre 18 (18, 20, 22) sts. Put L.H.S. into H.P. and K. R.H.S. as folls. K.1 R. and cast off 3

sts. at the beg. of the next R., K.1 R., dec. 1 st. at the neck edge on next and every foll. alt. R. 10 (11, 11, 11) times in all.

K. straight to RC226 (234, 244, 250). **Step 8.** Cast off at the beg. of the next R. 11 (12, 13, 14) sts. K.1 R. and cast off 10 (11, 12, 13) sts., K.1 R. Cast off 10 (10, 11, 11) sts. at the beg. of the next R., K.1 R. Cast off 10 (10, 11, 11) sts. at the beg. of the next R., K.1 R. Cast off rem. 10 sts. Take carr. to L.H.S., put nds. into W.P., and K. L.H.S. to match R.H.S.



SLEEVES

Using M., cast on in 2×1 rib, 65 (68, 68, 71) sts. T.D. at M.T.-2, K.38 Rs. straight and turn hem. Dec. 1 (2, 0, 1) sts.

Step 2. RC000, T.D. at M.T., K.10 (8, 8, 8) Rs. straight. Inc. 1 st. at both sides on next and every foll. 4th R. 33 (36, 37, 38) times in all, giving 130 (138, 142, 146) sts.

Step 3. K. straight to RC156 (160, 166, 170) sts. and cast off.

NECKBAND

With carr. at L.H.S. push forward 118 (125, 130, 136) nds. to W.P. With wrong side facing pick up sts. from back and front neck as folls.:-

44 (46, 48, 50) sts. from back and 74 (79, 82, 86) sts. from front. T.D. at M.T., K.1 R. Transfer sts. for 2×1 rib, T.D. at M.T.-2, K.28 Rs. Push out of work nds. back into work and with T.D. at M.T., K.4 Rs. Either cast-off (and slip st. neck down inside), or pick up and replace onto M/c. every 3rd st. from the first R. knitted for neckband and cast off all sts. together loosely.

MAKE UP

Finish ends of stripes and fairisle. Set in sleeves between marked points on body. Sew sleeves and side seams. Give final press (using a hot iron over a wet pressing cloth).

Machines

Suitable for any machine.

Sizes

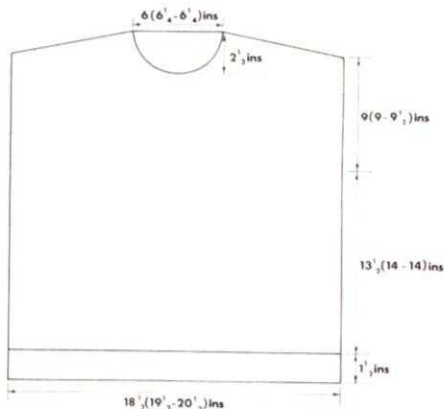
To fit 34 (36, 38) in.

Materials

16 (20, 24) balls of Hayfield's Monique in Main colour and 8 (10, 12) balls of Hayfield's Babykin brushed Double knit in Contrast C.

Tensions

25 sts. & 37 Rs. to 4 in., T.D. approx. 10.



BACK

*Using C, cast on 116 (122, 128) sts., T.D. at M.T., K.20 Rs. and turn hem.

Step 2. RC000, T.D. at M.T., K.2 Rs. C. Change to M. and K. to RC100. Change to C and K.20 Rs., change to M. and K.4 Rs., change to C and K.20 Rs. AT THE SAME TIME, K. to R.C. 124 (130, 130) and cast off 5 sts. at the beg. of the next 2 Rs.* K.30 Rs. M., 20 Rs. C., 4 Rs. M. and continue rem. in C. K. to RC208 (214, 218).

Step 3. Cast off 12 (12, 13) sts. at the beg. of the next 2 Rs. Cast off 11 (12, 13) sts. at the beg. of the next 2 Rs. Cast off 11 (12, 13) sts. at the beg. of the next 2 Rs. Cast off rem. sts.



FRONT

K. as back from *—* and continuing to knit stripe pattern as Back, K. straight to RC184 (190, 194).
Step 2. Cast off centre 8 (10, 10) sts.

Put L.H.S. into H.P. and K. R.H.S. as folls.:- K.1 R. and cast off 3 sts. at the beg. of the next R., K.1 R. Cast off 2 sts. at the beg. of the next R., K.1 R. Dec. 1 st. at neck edge on next

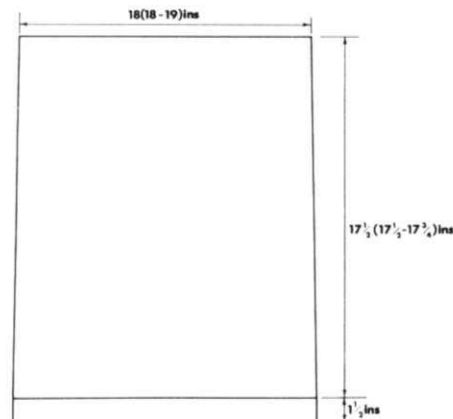
and every foll. alt. R. 10 times in all. K. to RC208 (214, 218).

Step 3. Cast off 12 (12, 13) sts. at the beg. of the next R., K.1 R. Cast off 11 (12, 13) sts. at the beg. of the next and foll. alt. R.

SLEEVES

Cast on using C., 112 (112, 118) sts. T.D. at M.T. and K.20 Rs., turn hem.

Step 2. RC000, K.2 Rs. C. Change to M. and K. to RC140 (142, 144) change to C. and K. to RC162 (164, 166). Cast off.



NECKBAND

(Knitted all in M.). With wrong side facing and carr. at L.H.S., push 107 (107, 111) nds. into W.P. Pick up sts. from front and back neck and replace onto M/c. K.1 R. at M.T., then transfer sts. for 1 × 1 rib, T.D. at M.T.-1, K.20 Rs. T.D. at M.T.—K.20 Rs., T.D. at M.T., K.40 Rs., T.D. at M.T., K.20 Rs., T.D. at M.T.—1 K. 20 Rs. Push out of work nds. back into work. T.D. at M.T., K.4 Rs. Either cast off, or pick up every 3rd st. from first R. knitted on neckband and, cast off all sts. together loosely.

MAKE UP

Sew shoulder seams. Finish off neckband seam. Sew sleeves in between cast off points on back and front and then sew these points to sleeve seam. Join side and sleeve seams except for hems—leave these edges open. Using 2 strands of M., crochet 2 sets of chain for lower edge, until they are long enough to go through the bottom hem and 10 in. over. Crochet 1 long chain for each sleeve hem. Thread crochet cords through the sleeve hems, pull up to fit comfortably. Thread one cord through the back hem and one through the front hem, tying them together, after pulling up slightly, at the sides. Give final press with a warm iron over a pressing cloth.



childs TUCK STITCH jacket

Machines

Most suitable for KH830 or KH820 machine with single bed colour changer but can be knitted by any machine provided the colours are changed manually.

Sizes

To fit 26 (28, 30, 32) in. chest.

Materials

Hayfield's Machine Knit, 50/50 Acrylic Nylon, available on 340 gms. cones from your local stockist, or by mail order from Stagport Ltd., P.O. Box 24, Slough, Berks., SL1 2NW (send 15p for shade cards and order form).

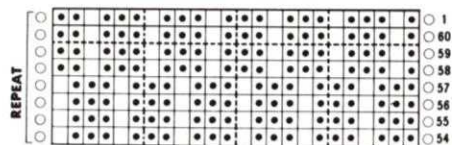
150 (150, 175, 200) gms. main colour.
75 (75, 125, 150) gms. each of A & B.

Tensions

30 sts. & 62 Rs. to 4 ins. over 3-col., tuck pattern. Tuck pattern see diag. T.D. approx. 4.

NOTES

Tuck pattern worked in 3 colours by knitting in tuck, 4 rows M, 4 rows A, 4 rows B, throughout. Thread all colours through the colour changer in appropriate order to start.



Ribbed scarf and hat

Materials

Poppletons Pagent.

Scarf—7 balls.

Hat—3 balls.

Patterns

820 pattern No. 699 from book. Either side of fabric may be used.

800 pattern No. 384 from book. Either side of fabric may be used.

588 pattern No. 1259 from book. Either side of fabric may be used.

SCARF

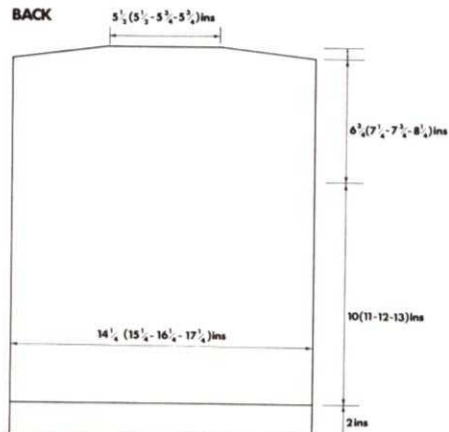
Cast on as for pattern 77 sts. T.7/7 K.

approx. 880 Rs. (using 6½ balls). Thread end of yarn through loops of sts. and secure thread length of yarn through cast on sts. and secure. Make 2 tassels with rem. yarn, sew one onto each end.

HAT

Cast on as for scarf 161 sts. T.7/7 K. 172 Rs. Thread end of yarn through loops of sts. secure join seam thread shearing elastic through cast on edge if required.

BACK



BACK

Step 1. Cast on 106 (114, 122, 130) sts., T.D. at M.T. plus 1 K. 40 Rs. straight and turn hem. K. 1 R., setting punch card with this R., carr., at L.H.S. R.C. 000.

Step 2. T.D. at M.T., start stripe sequence with M. and K. 156 (170, 186, 208) Rs. straight. Mark both sides with contrast yarn*. K. straight to R.C. 260 (282, 306, 334).

Step 3. Cast off at beg. of next 4 Rs., 10 (12, 13, 14) sts. Cast off at beg. of next 2 Rs. 11 (12, 13, 15) sts. Cast off

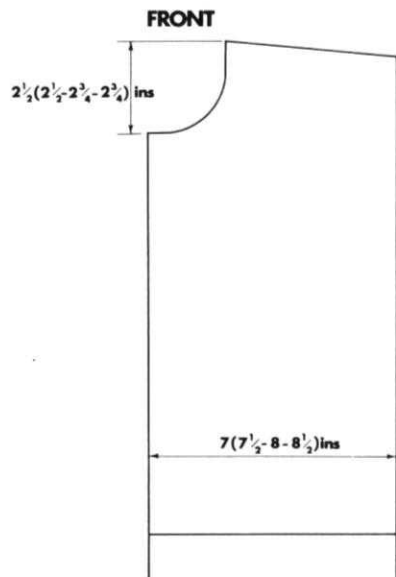
rem. 42 (42, 44, 44) sts.

FRONT L.H.S.

Step 1. Cast on 52 (56, 60, 64) sts. K. as back, step 1, step 2 to *.

Step 2. K. straight to R.C. 223 (243, 263, 291). (K. 1 extra R. for R.H.S.). Cast off 3 (3, 4, 4) sts., at the beg. of the next R., K. 1 R. Dec. 1 st. at beg. of next and every following alt. R. 17 times in all. K. to R.C. 260 (282, 306, 334).

Step 3. Cast off at the beg. of the next and foll. alt. R. 10 (12, 13, 14) sts. K. 1 R. Cast off rem. 11 (12, 13, 15) sts.

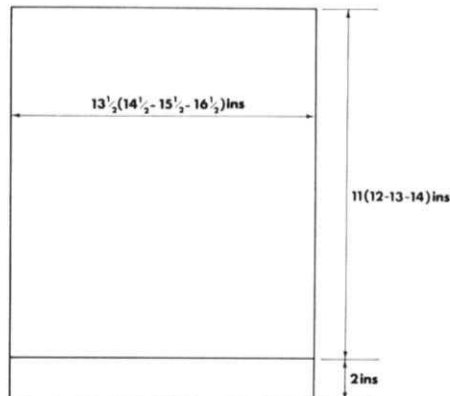


SLEEVES

Using M., cast on 100 (108, 116, 124) sts. T.D. at M.T. plus 1, K. 40 Rs. straight. Turn hem R.C. 000.

Step 2. K. 1 R. towards L.H.S., using this R. to set patt. and start stripe tuck sequence with M. T.D. at M.T., tuck patt., K. 170 (186, 200, 216) Rs. straight. Cast off.

SLEEVE



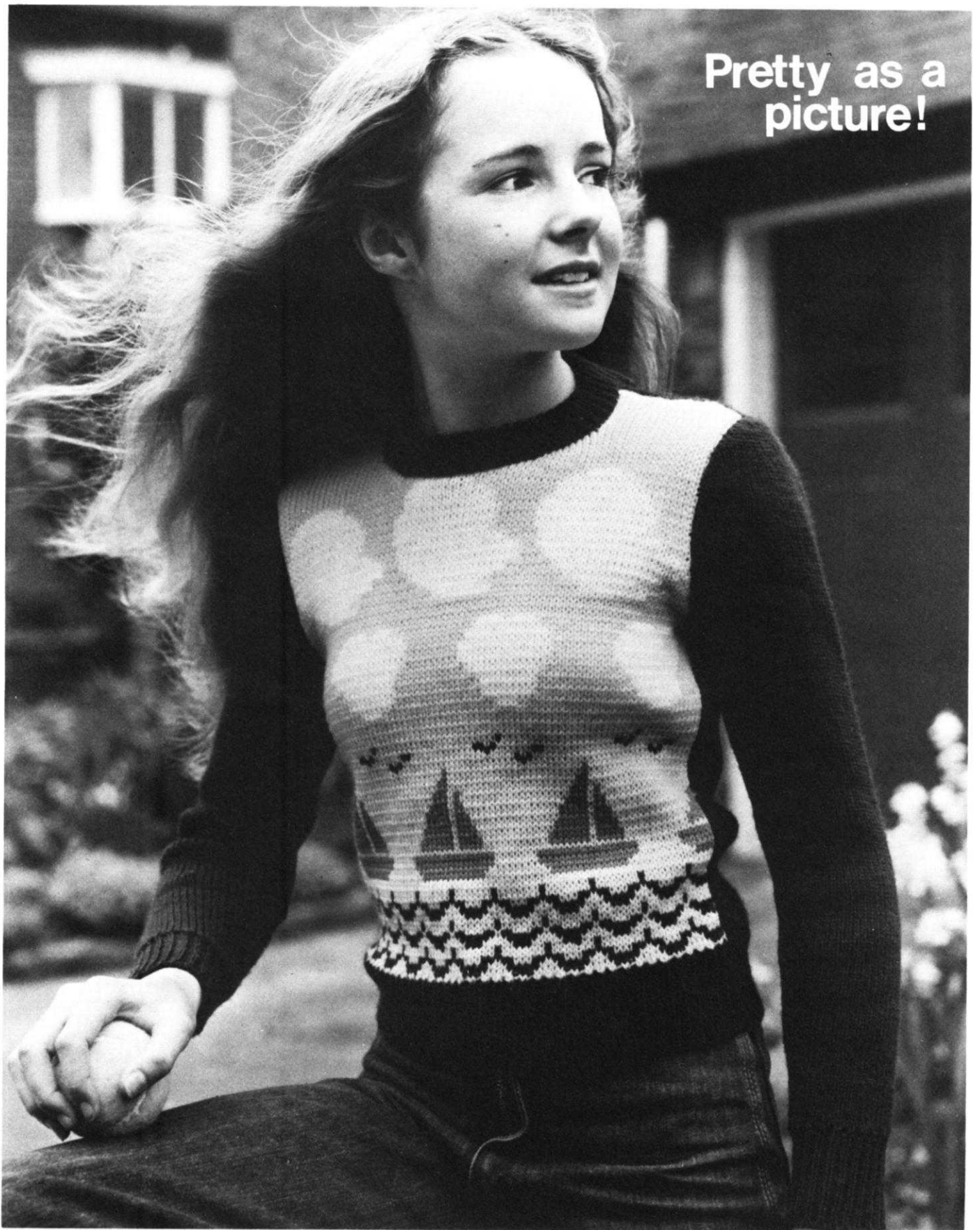
FRONT EDGES

With wrong side of work facing (i.e. tuck side facing) pick up from front and place onto M/c. 94 (100, 106, 112) sts. T.D. at M.T. plus 1, K. 20 Rs. Pick up every 3rd stitch from first edging R. K. and cast of sts. together loosely.

NECKBAND

Pick up and replace onto M/c. sts. from neck as folls. (with wrong side facing):- 42 (42, 44, 44) sts. from back neck, 38 (38, 39, 39) sts. from front neck. T.D. at M.T. plus 1, K. 20 Rs., pick up every 3rd st. from first R. K. after pick-up and cast off all sts. together loosely.

Pretty as a picture!



(For 820/830 models only with 830 colour changer).....

Measurements

To fit 28 in. chest.
Total length: 15 ins.
Sleeve seam: 12 ins.

Materials

Argyle Ferntex.
Col. 1 170 gms = background—urban blue.
Col. 2 50 gms. = sky—sky blue.
Col. 3 20 gms. = clouds—white.
Col. 4 20 gms. = boat—mustard.

Tensions

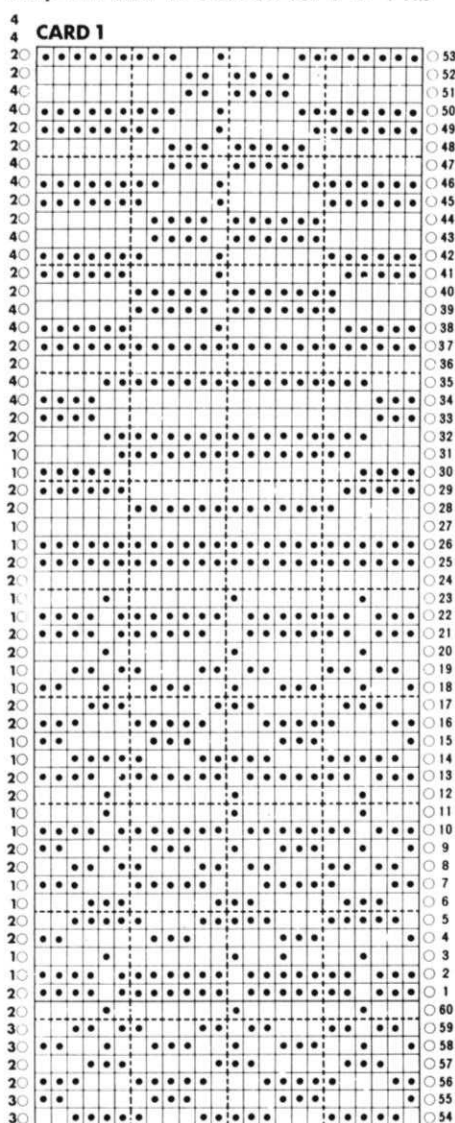
7.25 sts. × 15 Rs. = 1 in. over multi colour rib. T.D. approx. 4.
6.25 sts. × 11 1/2 Rs. = 1 in. over full needle rib. T.D. approx. 4.

Pattern

As graph join card 1 to card 2, card 2 to card 3, card 3 to card 1.

FRONT

Step 1 in Col. 1. Cast on for 1 × 1 rib



109 sts. T.3/3 K.25 Rs. Bring into W.P. empty nds. as for full needle rib. 000.

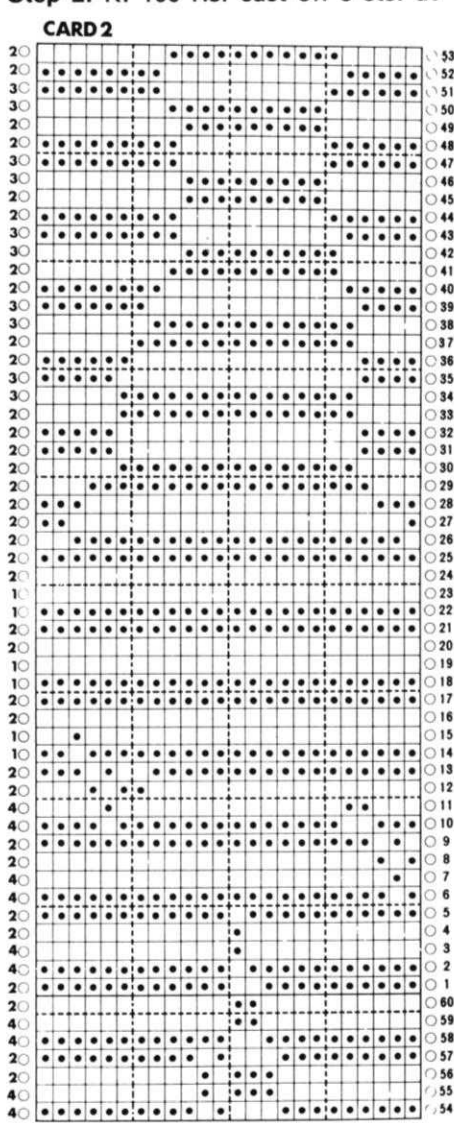
Step 2. Set M/c. for multi-colour rib (pages 11/12 instruction manual for colour changer) K. punch card at the same time shape as follows. K. to R. 130 cast off 6 sts. at beg. of next 2 Rs. 000 (after R. 60 of punch card No. 3 K. in col. 2.

Step 3. Dec. 1 st. at both ends of every 3rd R. 11 times to 75 sts. K. to R.50. Cast off centre 19 sts. Cont. working on right side only dec. 1st at neck edge every alt. R. 8 times. K. to R.84. Cast off 4 sts. at beg. of next and every alt. R. 5 times. Replace sts. from left side and K. to match rev. all shaping.

BACK

Step 1. In col. 1 cast on for 1 × 1 rib 93 sts. K. as for step 1 of front.

Step 2. K. 100 Rs. cast off 5 sts. at



beg. of next 2 Rs. 000.

Step 3. Dec. 1st at both ends of every 3rd R. 10 times to 63 sts. K. to R.66. Cast off 4 sts. at beg. of next 8 Rs. Place rem. 31 sts. on waste yarn.

SLEEVE

Step 1 in Col. 1. Cast on for 1 × 1 rib 47 sts. K. as for step 1 of front.

Step 2. Inc. 1 st. at both ends every 11th R. to 69 sts. K. to row 134. Cast off 5 sts. at beg. of next 2 Rs. 000.

Step 3. Dec. 1st at both ends every 3rd R. 12 times. Cast off 2 sts. at beg. of every R. 10 times. Cast off rem. sts.

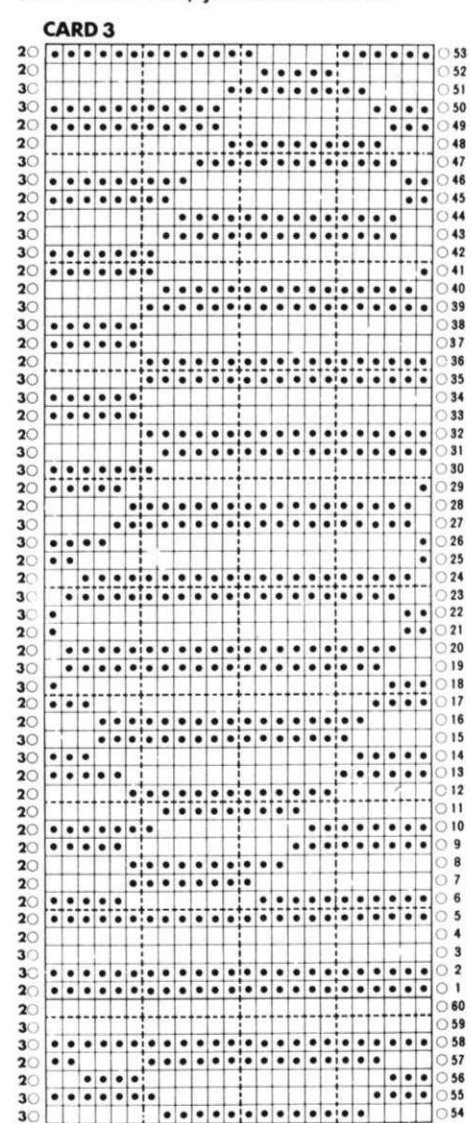
Join one shoulder seam.

Neck band.

Cast on for 1 × 1 rib 91 sts. T.3/3 K.25 Rs. With right side of work facing M/c. place neck edge to these sts. Cast off loosely.

Join rem. shoulder seam, fold neck band in half and sew down into pos.

Sew in sleeves, join rem. seams.



Womans Waistcoat for ribbers only

Materials

Lister lavender 3 ply.
17 (19, 21) balls.

Measurements

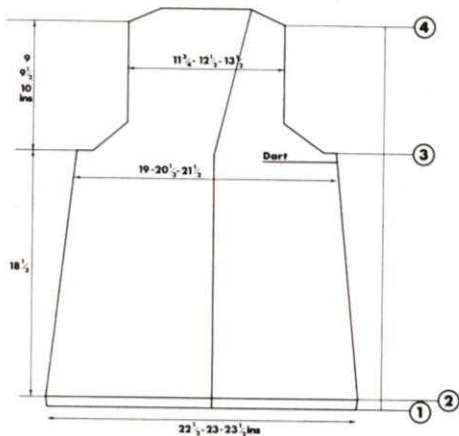
To fit 38 (40, 42) bust.
Total length 28 1/2 (29, 29 1/2) ins.

Tensions

8.5 sts. x 15.5 Rs. = 1 in. over patt.
T.D. approx. 5/5.

Pattern

820 patt. No. 697 from book.
800 patt. No. 388 from book.
588 patt. No. 377 from book.



BACK

Step 1. Cast on for full nd. rib 192 (196, 200) sts. To/o K.2 Rs. Tub T3/3 K.15 Rs. T.5/5 K.1 R. Set M/c. for patt. 000.

Step 2. Dec. 1st at both ends of every 23rd/25th 31st R. 12 (11, 9) times to 166 (174, 182) sts. K. to R. 286. 000.

Step 3. Cast off 8 sts. at beg. of next 2 Rs. Cast off 4 sts. at beg. of next 2 Rs. Cast off 2sts. at beg. of next 2 Rs. Dec. 1st at both ends of every alt. R. 11 (12, 13) times Dec. 1st at both ends of every 3rd R. 8 times to 100 (106, 112) sts. K. to R. 140 (148, 156).

Step 4. Cast off 3 sts. at beg. of next 12 (8, 4) Rs. Cast off 4 sts. at beg. of next 4 (8, 12) Rs. Cast off rem. 48 (50, 52) sts.

FRONT

Step 1. Cast on for full nd. rib 90 (92, 94) sts. K. as for step 1 of back.

Step 2. Dec. 1st at right edge (side seam) every 23 (25, 31) R. 12 (11, 9) times to 78 (81, 85) sts. K. to R. 285



make dartpush 3 sts. at the right edge into H.P. every alt. R. 9 (10, 11) times. Ret. all nds. to W.P. K.1 R. C.O.R.

Step 3. Shape armhole edge as for back on right edge only at the same time shape neck edge by dec. 1st on next and every foll. 8th R. 19 (19, 20) times then every 9th R. 0 (8, 8) times. K. to R. 140 (148, 156).

Step 4. Cast off 3 sts. at beg. of next and every alt. R. 6 (4, 2) times. Cast off 4 sts. at beg. of next and every alt.

R. 2 (4, 6) times. K. other front to match rev. all shaping.

Join shoulder and side seams.

EDGING BRAID

Cast on for full nd. rib 8 sts. T.2/2 K.2 Rs. tub set nds. as follows:

1-1-1-1-1-1 1 = needle in W.P.

1-1-1-1-1-1 - = needle in N.W.P.

T/3/3+ racking pos. 5 K.2 Rs. Racking pos. 4 K.2 Rs. + rept. from + to +. K.1 strip long enough to go all around from edge and 1 strip for each armhole. Sew on braid.

Ladies Sweater with pouch pockets

Materials

Yvette from 3 Suisses.
10 (10, 11, 12) balls.
1 button.

Measurements to fit

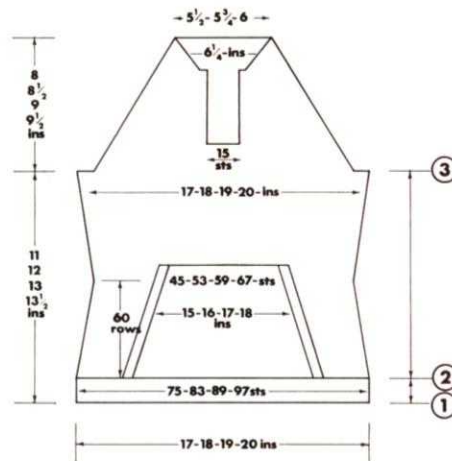
To fit 32 (34, 36, 38) inch bust.
Sleeve seam 16 (16¼, 17½, 18¼)
ins.

Total length 19 (20½, 22, 23) ins.

Tensions

7½ sts. × 10½ sts. = 1 inch.

T.D. approx. 7.



BACK

Step 1. Cast on for 2 × 1 mock rib 128 (134, 140, 149) sts. T5 K48 rows turn hem adj. sts. to 127 (135, 149). 000.

Step 2. K1 row mark each edge of centre 75 (83, 89, 97) sts. Dec. 1st at both ends of every 5th row 7 times to 113 (121, 127, 135) sts., K. to row 54. Inc. 1st at both ends of next and every following 8 (10, 11, 12)th row to 127 (135, 141, 149) sts., at the same time mark each end of the centre 45 (53, 59, 67) sts. on row 60, K. to row 116 (126, 136, 142). Cast off 5 sts. at beg. of next 2 rows. 000.

Step 3. Dec. 1 st. at both ends every 3rd row 8 times. Dec. 1st at both ends every alt. row 30 (33, 35, 38) times, K. to row 84 (90, 94, 100). Cast off rem. 41 (43, 45, 47) sts.

FRONT

K. as for back to row 24 of step 3. Cast off centre 15 sts. Working on right side only place nd. on left into H.P. Cont., shaping armhole edge as on back, K. to row 62 (68, 72, 78). K1 row, cast off 2 (3, 4, 5) sts. at beg. on next row. Dec. 1st at neck edge every row 11 times. Replace sts. from left side and work to match.

SLEEVE

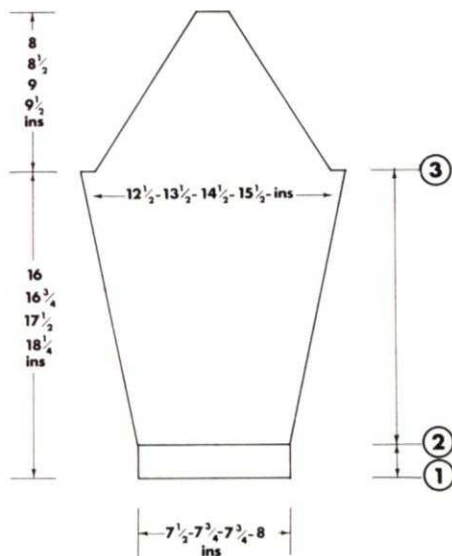
Step 1. Cast on for 2 × 1 rib 57 (59, 59, 61) sts. T5 K48 rows, turn hem. C.O.R. 000.

Step 2. Inc. 1st at both ends every 9 (8, 7, 6)th row 18 (21, 25, 28) times to 93 (101, 109, 117) sts. K. to row 168 (176, 184, 192). Cast off 5 sts. at beg. of next 2 Rs.

Step 3. Dec. 1 st. at both ends every 3rd row 12 (10, 8, 6) times, then every



alt. row 24 (30, 36, 41) times, K. to row 84 (90, 94, 100), cast off rem. 11 (11, 13, 13) sts.



FRONT BANDS

Cast on 35 st. for 2 × 1 rib. T5 K12 rows, make buttonhole over 7/8th nds. from right edge K.24 rows make buttonhole over 7/8th nds. from right edge. K.12 rows turn hem. With right side of work facing M/c. place right front edge to these sts., cast off loosely. Rept. from * to * omitting buttonholes place to left from edge. Join rem. seams.

COLLAR

Cast on for 2 × 1 rib 140 (143, 146, 149) sts. H.P. Push 8 nds. into H.P. at the end of the next 12 rows, ret. all nds. to K. pos. K.90 rows. Push 8 nds. into H.P. at the end of the next 12 rows, ret. all nds. to K. pos. K.1 row turn hem, cast off. Gently press collar into shape sew on collar. Sew on button.

FRONT POUCH

With waste yarn cast on 75 (83, 89, 97) sts., knit a few rows waste 000. Knit 4 rows dec. 1st at both ends of next and every following 3rd row 15 times to 45 (53, 59, 67) sts. K. to row 60 K. a few rows with waste yarn, remove from M/c., press gently.

Pouch edging

Cast on for 2 × 1 rib 47 sts. T.5 K.26 rows, turn hem. With right side of work facing M/c. place side edge of pocket onto these sts., cast off loosely. Rep. for other edge. Graft pocket into position using marker as the 4 corners, excluding the edging, secure edging.



SCARF
with pockets

Materials

Poppleton Pop Print 4 ply—10 balls. Cast on for 1 × 1 rib 97 sts. T.3/3 K. approx. 82 ins., cast off loosely. Fold up approx. 8 ins. at each end of scarf to form pockets. Join seams of pockets.

focus on knitting

GETTING THE KNIT-KNACK!

(Vols 1 and 2)

Two publications from Brother to introduce you to the knitleader and its truly fantastic pattern making potential.

KNIT-KACK 1 is a pictorial guide for beginners, giving a very instructive guide to the basic operations required to use the knitleader, names of parts, their functions, tensions, hints and tips on knitting and instructions for your first knitleader garment — a child's sweater.

KNIT-KNACK 2 is a more advanced publication, an intermediate guide for family knitting. It features a whole range of garments for all the family including a lady's pullover, lady's V neck cardigan, man's sleeveless V neck, girl's sweater, boy's jacket and pants, scarf, hat and socks — all for production on your knitleader.



Both publications are available direct from your local Jones-Brother dealer or the Knitting Machine Dept.,

Jones Sewing Machine Co Limited,
Shepley Street, Guide Bridge,
Audenshaw, Manchester M34 5JD.

Knit-Knack Vol. 1 priced at £1.00

Knit-Knack Vol. 2 priced at £3.50

This must be a record! A scarf 500 feet long. Yes 500 feet!

It appears that Christchurch Cathedral in New Zealand, were in urgent need of restoration funds, so our Brother NZ distributors came up with the super idea of knitting this fantastic scarf, dissecting into 1.5mm lengths and selling each length for \$5.00.

Teams of knitters, armed with some 1000 balls of 4ply yarn, set to work in the foyer of the local 3ZB radio station and working in 2-3 hour stints set about creating this black and red striped monster — the colours of the local Canterbury province, With various city celebrities being encouraged to add a few of the last rows of knitting, 500 feet of scarf was achieved, resulting in a mammoth addition to the restoration funds.



Photography by courtesy of the Christchurch Star.

With publicity for Brother, publicity for Kiapo Woolen Mills and the 3ZB radio station, funds for the Cathedral and a lot of fun had by all, this just has to be the most successful promotion we have heard about. Congratulations to all concerned.

Note. We understand that the inmates of Dartmoor Prison have recently shown tremendous interest in machine knitting and are attempting to beat this record scarf length, we hope for similar charitable ends!

With over 60 people attending the '78 meeting of the Cardiff Knitting Club I am sure that other knitters in the Cardiff area can expect a well organised

and interesting evening should they wish to visit the club. Mrs. D.G. Mayer has kindly sent us full details — meetings are held every second Tuesday of each month in the Llandaff Memorial Hall starting at 7.00 p.m. (for March only — second Wednesday). Bonnie and Allen Ashford, two very exceptional and well known people in the machine knitting field, visit the club and give members the benefit of their vast experience on machines plus of course the opportunity to purchase a tremendous range of coned yarns at attractive prices. The entrance free is just 50p which includes tea and a raffle ticket.

From Joanna Nicholas a positive frenzy of information and a few good tips to boot.

Do you find that silk and rayon yarns tend to slip off the cone when you are knitting? A simple remedy, pop a piece of nylon stocking over the cone making a hole for the yarn to feed through. A tip for pushing a number of stitches into the holding position. Cut a piece of thick card to the exact length that will push forward the correct number of needles. Saves counting every time and you can prepare a selection of cards for various numbers of stitches with the relevant numbers clearly marked. Two hints for using double knitting, always wax your yarn and then rewind it and during knitting, every 5 or 6 rows give your knitting a gentle downwards tug below the needlebed to stop your knitting riding up on the needles.

More? When casting on by hand, some knitters find that stitches fall off on the second row. Set the carriage to knit back from holding position and bring the needles all the way forward for about 4-6 rows until the brushes can get a purchase on the knitting. Never attempt to start knitting a garment without the all important tension square and if you are able, get your knitting really organised. Create an area when you can leave your machine set up permanently and plan ahead by having your tension swatches already made up for your next garments.

Well there are a few thoughts to add to your collections and thanks Mrs JN for your efforts in writing such an epistle to us. We will hold over some more of your ideas for future issues.

As we briefly mentioned in issue 38, Kathryn Hobbs the very experienced machine knitter based in South London has now formed a club in BALHAM. The club meets the second Friday in each month at the Balham Swimming Baths, Elmbourne Road, Balham. Those who know Kathryn will know the wealth of her experience in the subject and the value of attending club meetings both from a knitting point of view and as a social gathering. So go on, take the plunge, join her at the Wandsworth Knitting Club at the Balham Baths. She promises not to throw novice knitters in at the deep end.

Tel: 01-672 3906

SILVERKNIT YARNS, have recently published their catalogue No. 4 featuring two new 100% cotton yarns. ADAH, a 3 ply mercerised and CLEO a slub cotton. Both available in a wide range of colours on 200 g cones. The catalogue costs 60p which is refundable on the special order form the company provides with the catalogue. Write to: Silverknit Yarns, Edwalton, Nottingham NG12 4DF.

Mrs. Ina Willis has dropped us a line with details of their club in MONMOUTH. Membership is already over the 20 mark and meets fortnightly at the Monmouth Leisure Centre from 7-9 p.m. They plan to cater for all levels of knitting machine skills, pooling experiences to everyone's benefit and will feature use of the knitleader, the ribbing attachment and garment make-up as part of their forthcoming meetings. A fashion show will also be held at the end of their first term and spares, coned yarns and a pattern library are just part of the facilities available. Just telephone Mrs. Willis on Monmouth 3372 for further details.

For those new knitting machine owners in and around the Exmouth area you have a new experienced knitter who has joined your ranks—Mrs. Rushworth. Mr. and Mrs. Rushworth have recently moved to Exmouth as part of their retirement plan and what a super part of the country to choose to enjoy ones retirement. Mrs. Rushworth would also love to share her knitting experience with others. Just write to

her at 40, Partridge Road, Exmouth, Devon EX8 4PH.

With so many knitting machine owners realising the tremendous potential of their hobby the call for experienced knitters becomes even greater and the requests for them to share their expertise through clubs, schools and similar group meetings grows daily.

Miss Jean Aubrey is one such knitter caught up in the exciting whirlpool of creative knitting. Not only is she running a weekly knitting machine school and club but also three morning sessions as well. The school /club is held every Friday from 7-10 p.m. at St. Barnabas Church Hall, Long Elms, Harrow Weald, Harrow and morning sessions at The Chequers, Bun Hill Road, London EC1 on Tuesday, Wednesday and a workshop on Saturday mornings.

Jean is familiar with many makes of machines and has recently attended advanced knitting courses so can really claim wide experience in the subject. Drop her a line for more details of the meetings.

wollengers

sewing and knitting centres

For Jones+Brother
knitting machines
and accessories
and sewing
machines too!

**NOW ALL
AVAILABLE
MAIL ORDER!!**

Quality mail order coned
yarns available too.

4ply acrylic yarn at only
£1.85 per 12oz. (336g) cones.

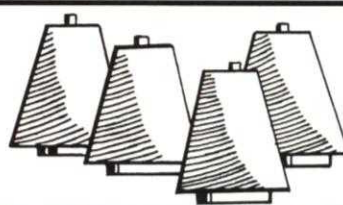
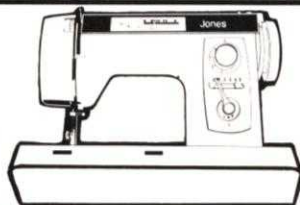
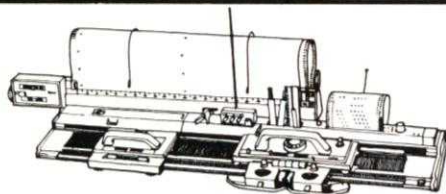
Other qualities available
in mixed lots. Knitting clubs
specially catered for.

**SEND NOW FOR
SHADE CARD
enclosing 40p & SAE to:—**

Mail Order Dept., Wollengers
Sewing & Knitting Centres,
91, Oldham Street, Piccadilly,
Manchester 061-834-7331.

other branches at:
19, Paddock Row, Chester.
Tel. Chester 45868

4, Lord Street, Wrexham.
Tel. Wrexham 3700





outside trouser suit

Materials

Paton Purple Heather 4 ply 25g

Top

20 (21,23,25) balls Col A. 2 balls

Col B. 12 inch zip

Trousers

25 (26,28,29) balls. 7 in. zip

Measurements

To fit 38 (40,42,44) in. bust 96.5

(102,107,112) cm.

Length from shoulder 30 (30½,
31,31½) ins. 76 (77.5, 78.5, 80)
cms

Sleeve seam 18½ ins. 47 cms.

Inside leg 32 ins. 81 cms.

Tensions

7½ sts x 10½ rows = 1 inch

15 st x 21 rows = 5 cms over st.st.

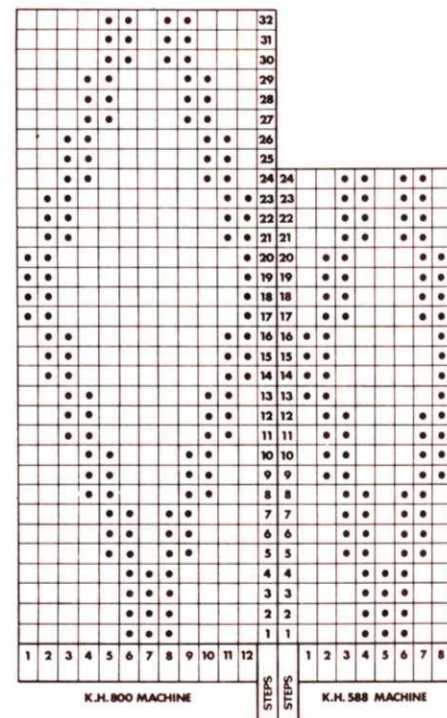
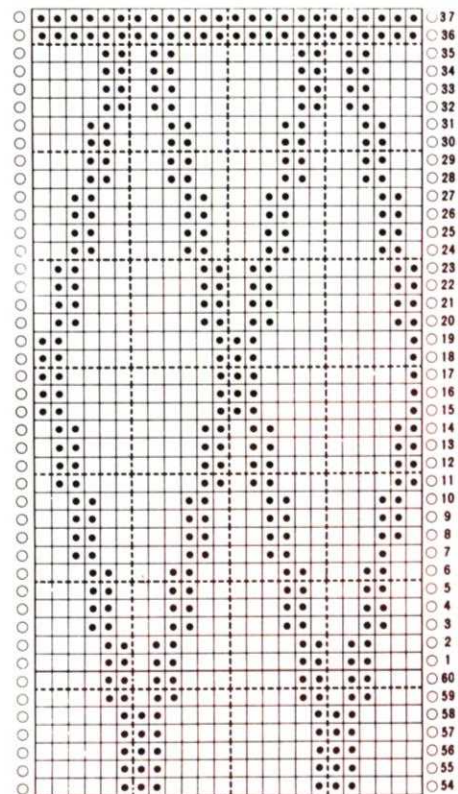
T.D. approx 7

7½ st x 9½ rows = 1 inch

15 sts x 19 rows = 5 cms over patt.

T.D. approx 8

Patt. from charts.



TOP

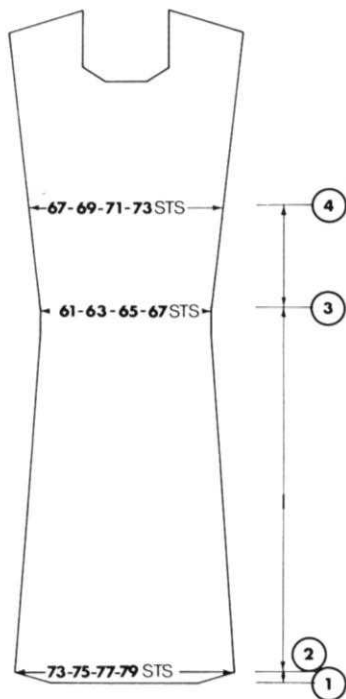
Centre Front Panel

Step 1. C.O.B.H. 73 (75, 77, 79) sts. T5. K.10 Rows. T7. K.1 row. T5. K.10 rows. Turn hem. T7. K.1 row. Set m/c for patt. T.8. 000.

Push 5 sts. into H.P. at the end of the next 4 rows. Ret. nds. to B. pos. 000.

Step 2. Dec. 1 st. at both ends every 22 rows 6 times. Knit to row 142. 000 Mark end st. with waste yarn.

Step 3. Inc. 1 st at both ends every 19th row 3 times. Knit to row 58. 000.

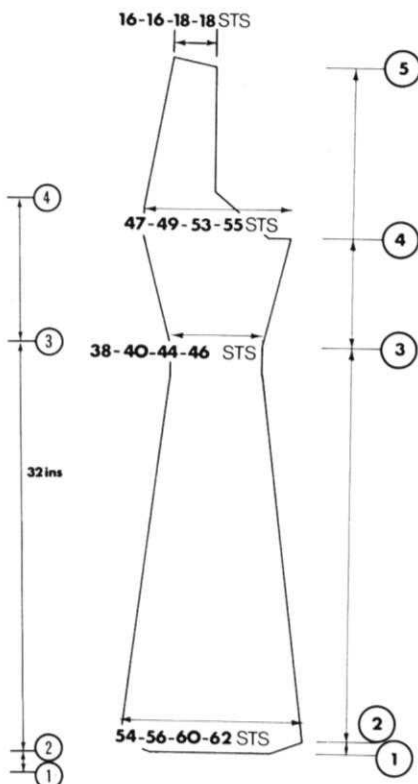


Step 4. Knit 10 (16,15,12) rows inc. 1 st at both ends of next and every following 10 (10,11,12)th row 8 times at the same time shape neck after row 54 (58,64,68) as follows. Cast off centre 15 (17,19,21) sts. working on one side only make note of patt. row. Cast off 3 sts. at neck edge at beg. of next alt. row. Dec. 1 st at neck edge every alt. row 2 times. Dec. 1 st at neck edge every 3rd row 5 times. K to row 82 (86,92,96). Cast off 8 sts. at beg. of next 3 alt. rows. Knit other side of neck to match, reversing all shaping.

Side Panels

Step 1. C.O.B.H. 54 (56,60,62) sts. T5. K.10 rows. T7. K.1 row. T5. K.10 rows. Turn hem. T7. K.1 row. Push 4 sts. into H.P. at the end of the next 4 rows. Ret. all ndls. to B pos. C.O.R. 000

Step 2. Dec. 1 st. both ends of every 18th row 8 times. Knit to row 156. 000. Mark end st. with waste yarn.



Step 3. Inc. 1 st. on right edge every 10th row 6 times, at the same time inc. 1 st on left edge every 20th row 3 times. Knit to row 64. 000. 47 (49,53,55) sts.

Step 4. Cast off 6 (7,8,9) sts. at beg. of next row. K.1 row. Cast off 4 sts. at beg. of next row. K.1 row. Dec. 1 st. at right edge (armhole edge) every alt. row 14 (15,16,17) times at the same time after 12 (18,18,16) rows dec. 1 st on left edge next and every following 12 (12,13,14)th row 7 times. Knit to row 84 (90,96,100) 16 (16,18,18) sts.

Step 5. Cast off 5 sts. at beg of next 2 (2,0,0) alt. row. Cast off 6 sts. at beg. of next 1 (1,3,3) alt. row.

Knit other front panel to match, reversing all shaping.

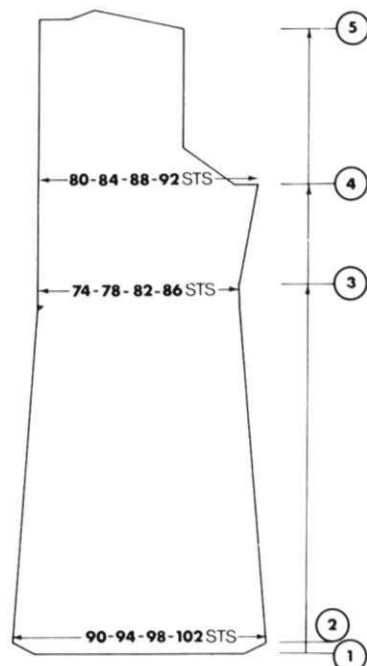
BACK

Step 1. C.O.B.H. 90 (94,98,102) sts. knit as for step 1 of side panel.

Step 2. As for side panel.

Step 3. Inc. 1 st at right edge every 10th row 6 times, at the same time after row 45 cast off 2 sts at left edge for zip opening. Knit to row 64. 000

Step 4. Cast off 6 (7,8,9) sts at beg of next row. K.1 row. Cast off 4 sts at beg of next row. K.1 row. Dec. 1



st on right edge (armhole edge) every alt. row 14 (15,16,17) times. Knit to row 84 (90,96,100).

Step 5. Cast off 6 (6,6,7) sts at beg of next row. K.1 row. Cast off 6 (6,7,7) at beg of next row, cast off 12 (13,14,15) sts. at beg of next row (neck edge). Cast off 6 (7,7,7) sts at beg of next row. Cast off 5 sts at beg. of next row. Cast off 7 sts at beg. of next row. Cast off 5 sts at beg of next row. Cast off rem. 7 sts. Knit other back to match reversing all shaping.

SLEEVE

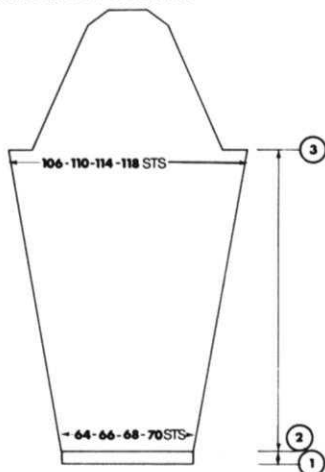
Step 1. C.O.B.H. 64 (66,68,70) sts. T.5. Knit 20 rows. T7. K.1 row. T.5 K.20 rows. turn hem, 000

Step 2. Inc. 1 st at both ends of every 8 (8,7,7)th row to 106 (110,114,118) sts knit to row 178. 000

Step 3. Cast off 6 (7,8,9) sts at beg of next 2 rows. Cast off 4 sts at beg of next 2 rows. Dec. 1 st. at both ends of every alt. row 3 (2,1,0) times. Dec. 1 st at both ends of every 3rd row 14 (15,16,17) times. Dec. 1 st. at both ends every alt. row 3 times. Dec. 1 st at both ends every row 4 times. Cast off 3 sts at beg. of next 10 rows. Cast off rem. sts.

TO MAKE UP

Press all pieces. Join side panels to centre panels lining up markers. Join shoulder seams.



Neckband

C.O.B.H. 127 (131,135,139) sts. T.5 K.10 rows. T.7 K.1 row. T.5 K.10 rows turn hem. With right side of work facing m/c place neck edge onto these sts. Cast off loosely. Join rem. seams sew in sleeves. Work 1 row of sngl. crochet round zip opening. Sew in zip give final pressing.

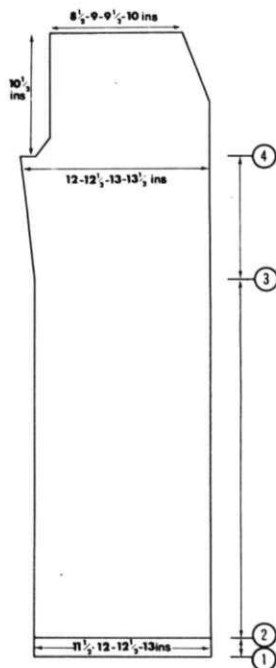
TROUSERS

FRONT (left)

Step 1. C.O.B.H. 86 (90,94,98) sts. T.5 K.22 rows. 000

Step 2. T.7. Knit 268 rows. 000 (lengthen or shorten here)

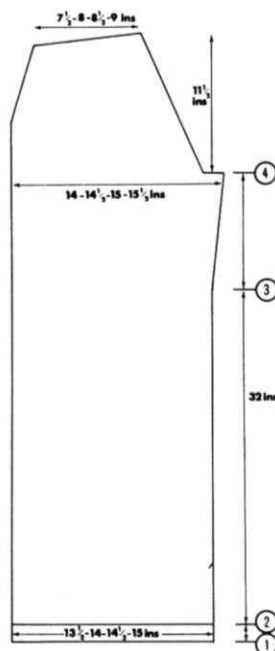
Step 3. Inc. 1 st at right edge next and every following 18th row 4 times 90 (94,98,102) sts. Knit to row 68. Cast off 8 sts at beg of next row. K.1 row. 000.



Step 4. Dec. 1 st at right edge every alt. row 8 times. K. to row 40 mark end st. on left with waste yarn for zip opening. K to row 60. Dec. 1 st at left edge next and every 4th row 12 times. K to row 110. Place rem. 62 (66,70,74) sts. on waste yarn.

Right Front

Knit as for left front reversing all shaping and omitting marker in Step 4.



BACK (right)

Step 1. C.O.B.H.

(104,108,112) sts. T.5. K 22 rows. 000.

Step 2. T.7. Knit 268 rows. 000 (lengthen or shorten here)

Step 3. Inc. 1 st at right edge next and every 18th row 4 times 104 (108,112,116) sts. Knit to row 68. Cast off 6 sts at beg of next row. K.1 row. 000.

Step 4. Cast off 3 sts at beg of next row. K.1 row. Cast off 2 sts at beg of next row. K.1 row. Dec. 1 st at right edge every 4th row 26 times at the same time after row 60 dec. 1 st. at left edge every 4th row 12 times. Knit to row 110. C.O.R. H.P. Push 10 needles into H.P. at the end of the next and every alt. row 5 (5,6,6) times. Place all sts. onto waste yarn.

Back (left)

Rept. as for right back reversing all shaping and placing a marker on the right edge on row 40 of step 4. for zip opening.

ZIP FACING

With right side of work facing m/c place zip opening from left front onto 43 sts. T.6. Knit 8 rows. Cast off loosely. Rept. for back opening.

FRONT WAIST BAND

C.O.B.H. 122 (130,138,146) sts. T.5. K.7 rows. Make buttonhole over 4th,5th,6th,7th needles in from left edge. K.7 rows. T.7. K.1 row. K.7 rows. Make another buttonhole. K.7 rows. Turn hem. With right side of work facing m/c place sts. from two fronts onto these sts. folding zip facing back. Cast off loosely.

BACK WAIST BAND

C.O.B.H. 114 (122,130,138) sts. Knit as for front waist band omitting buttonholes. Place sts. from two backs onto these sts. starting at left edge and leaving extra 6 sts. on right edge. Fold zip facing back. Cast off all sts.

TO MAKE UP

Join all pieces. Join front and back, seams. Join side seams. Sew back zip facing. Insert zip. Turn up bottoms along fold line. Give final press.

SPECIAL OFFER



THESE THREE MACHINE KNITTING BOOKS FOR £5.05*

1. "Your First Machine Knitting Patterns" is a step-by-step guide to machine knitting. Its 96 pages and 21 "learn as you knit" patterns are ideal for the new machine knitter, and also provide invaluable guidance to the experienced knitter. Many of the patterns are "classics" which can be adapted over and over again.
2. "Machine Knitting" by Hazel Ratcliffe covers such topics as: how your machine works; how to control its different functions; adjusting tensions and sizes; punching patterns plus knitting for profit and lots, lots more. 80 pages of good advice written as only Hazel can.
3. "The Craft of Machine Knitting" by Linda Gartshore consists of 126 pages on machine knitting including such items as: cut and sew; dyeing your own yarn; starting your own business; how to give your garments professional finishing touches, etc. Illustrated with many explanatory diagrams — Linda's enthusiasm for the subject which she teaches and for the thriving business which she runs shines through every page.

We cannot sell these books at less than the Publisher's retail selling price but what we can do is to save you the costs of postage and packing.

Complete the form below and post it together with a cheque/postal order/money order made payable to Worldwide Offers, for £5.05* for each pack ordered (representing the actual price of the three books, postage and packing free) and you will receive your pack of 3 books by parcel post.

*PRICE PER PACK (Post and Packing Free)

U.K., Eire, B.F.P.O. & Channel Islands

£5.05

U.S.A. (by Surface Mail)

US\$14.35

All other countries (by Surface Mail) at equivalent to US\$ price.

OFFER SUBJECT TO AVAILABILITY OF STOCKS.

Orders received before 28th February, 1978 will be despatched by 1st March, 1978. Please allow 21 days for receipt of orders received after 1st March, 1978 (49 days Overseas despatches).

To: Worldwide Offers, 183 Kingston Road, London SW19 1LH, England.

Please send me the number of 3-book packs ordered below for which I enclose my remittance for the total price stated:

No. of 3-book packs ordered.	Price per pack	Total Payment enclosed (*)

(*) Please make cheques, money orders, postal orders, etc. payable to "WORLDWIDE OFFERS".

BLOCK CAPITALS PLEASE

Name: _____

Street Address: _____

City/Town: _____

County/State: _____

Post/Zip Code: _____

Country: _____

This offer is made by Worldwide Knitting Services Ltd. Registered in England No. 1328275.

