

stitchin' time



No42 60p



Contents

Editorial:

Jones + Brother,
J & B House,
869, High Road,
Finchley,
London N12 8QW.

Subscription administration:

Shepley Street,
Guide Bridge,
Audenshaw,
Manchester M34 5JD.

Baby coat in double knit	3 - 4
Double knit pram cover	4
Tabbard for all ages	5 - 6
Girls tiered fairisle and lace skirt	7
Mens sports shirts	8 - 9
Lacy skirt suit	10 - 11
Childs Leotard	12
Girls sweater with ribbon and lace details	13 - 14
Mans Jacket with checked front and back	14 - 15
Funtop, shorts and top	16 - 18
Men's bronze vest	19
Focus on Knitting	20 - 21
Womans lace top with shoulder frill	22
Ladies woven jacket	23 - 24
Open stitch sweater with puff sleeves	24 - 25
Fancy lace skirt and top	26 - 27
Boy's or Girl's woven jacket	27 - 28
Man's skip stitch sweater	28 - 30
Sheared evening dress	31 - 32
Ladies evening dress with lace dolman sleeves	32 - 33
Cherry brandy sweater	34 - 35

Broadly Speaking

In this issue we have included a few light and lacy garments for you to catch these last glimpses of summer as well as warmer, chunky garments for the Autumn. There are two or three patterns that are ideal for beginners and one sweater — Cherry Brandy Sweater — which, I am sure, will greatly interest our advanced knitters.

We have two apologies before we go any further. As you will notice we have no additional garment for the Add-To-Set. This is mainly because of a changeover of designers recently. A polo necked jumper is planned for the next issue in a contrasting colour to the skirt and waistcoat. Secondly, a misprint in the last issue's Ladies open stitch sweater pattern caused much confusion. The tuck stitch method used should have been card 5 from the basic set.

PINS AND NEEDLES are offering a booklet of 20 super machine knitting patterns which is advertised on the back page.

It is available from newsagents but we will have a supply of these booklets in our offices. If you would like to send your 75p + 10p p+p we will be happy to send you a copy.

In Focus on Knitting there is a variety of news ranging from the new Autumn yarns to new courses, both residential and advanced. We have some news from readers and club members but we would like a lot more. We receive information about new clubs but rarely do you let us know what your clubs are doing once they are established! So how about writing to us before the next issue which is due to be published at the beginning of December.

The next issue will be our Christmas issue and we are hoping to feature toys and gifts as well as things to wear over the Christmas period. There will be another pattern using the 3 Suisse — Soiree yarn for evening wear and some chunky jumpers and cardigans for winter wear. See you again in December.

BABY COAT IN DOUBLE KNIT

Materials

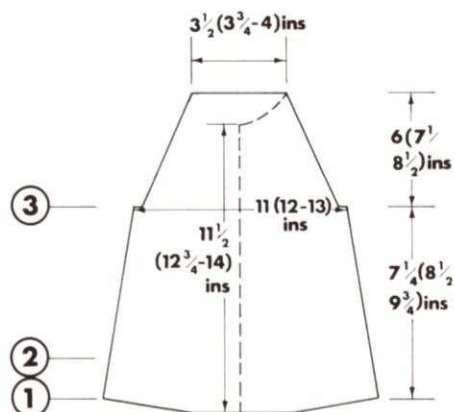
1 cone Superfine woolmark DK from Holmfirth, 1 oz contrast (25g), Few buttons.

Measurements

20 (22, 24) in chest.

Tension

Measured on wrong side 7 sts. x 9rs = 1 in TD 10 Card 2 Basic set.



Back

Step 1. C.O.B.H. 70 (76, 82) sts. TD10 Depress one part button only inc. 2 sts. beginning next 10 rows.

Step 2. R.C.000. Dec 1st each end every 12th row to 072 (084, 096) K1 row c/o 3 sts. beginning next 2rs.

Step 3. R.C.000. Dec 1st each end every 3rd row to 066 (078, 090) K1 r st. st. c/o.

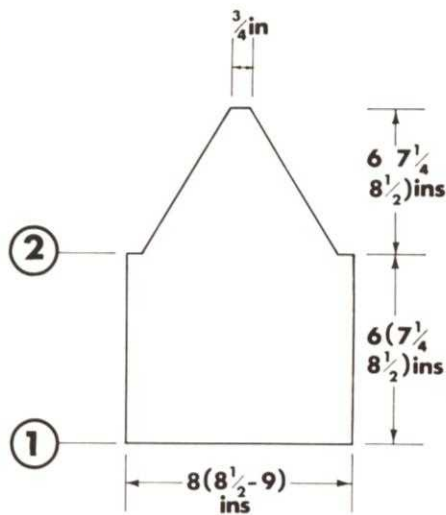
Front 2 alike reversing shapings.

Step 1. C.O.B.H. 35 (38, 41) sts. Inc 2 sts. at rt every alternate r to 010.

Step 2. R.C.000. Dec 1st at rt every 12th r to 072 (084, 096) K1 row c/o 3 sts at rt.

Step 3. R.C.000. Dec 1st at rt every 3rd row to 051 (063, 075). c/o 8 (7, 6) sts. at left. Dec 1st each end every 3rd row till all sts. are removed.



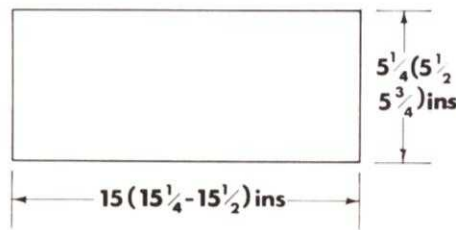


Sleeves

Step 1. C.O.B.H. 58 (62, 66) sts. K to row 072 (084, 096) c/o 3 sts. beg. next 2rs.

Step 2. R.C.000. Dec 1st each end every 3rd r to R 066 (078, 090) c/o.

HOOD



Hood

Step 1. C.O.B.H. 100 (102, 104) sts. K 60 (63, 66) rs K1 r st. st. c/o.

To make up

Join all seams. Fold hood in half to join back seam, then apply to neck.

Edging

Using contrast yarn cast on 5 sts. over alt. Ns i.e. lolololol * K 2rs bring into H.P. 2nd and 4th Ns K 4rs. Push back 2nd and 4th Ns to working position. Repeat from * until there is sufficient edging for raw edge. Knit 2 more edging bands for sleeves. Sew on edging, apply buttons to appropriate side and work hooks.

DOUBLE KNIT PRAM COVER

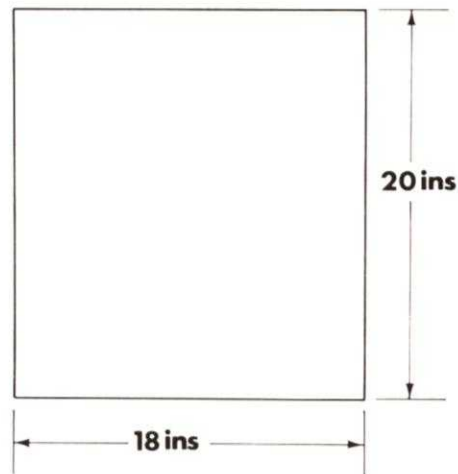


Materials

Holmfirth DK Superfine Woolmark 1 cone.

Measurements

1 1/2 shell shapes in width & length = 1 in.

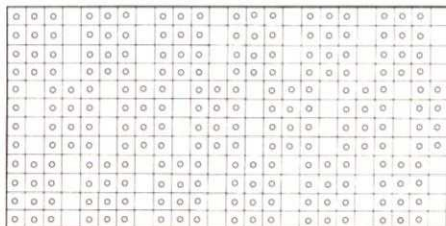


Tension

TD 8 stretch swatch vertically to measure tension. Card as shown.

Step 1. Cast on by hand over whole N bed in 3 Ns working, 3 Ns not in use, making sure 3 Ns to rt of centre are in working position. Depress both tuck buttons K200 rows c/o loosely.

Step 2. Stretch work vertically, allow to settle. Work 2rs double crochet, working 2 sts. into each "shell" shape, along both short edges.



TABBARD FOR ALL AGES

Materials

Argyll Nice 'n' Easy Crepe 4 ply.
10 (11, 13) balls colour A.
2 balls each Colour B and C all sizes.

Measurements

To fit 24 (26, 28) in. chest.
Total length: 20 $\frac{3}{4}$ - 23 - 24.
Sleeve seam: 11 $\frac{1}{2}$ - 12 $\frac{1}{2}$ - 14 $\frac{1}{2}$.

Tensions

7.5 stitches \times 12 Rs. = 1 in. Tension dial approx. 7.

Pattern Notes

Pattern from Charts

820/830 m/c patt. card on. ●

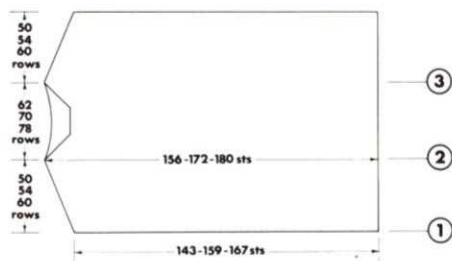
8rs, B set m/c for F.I. on last R. K. 2 Rs. with B in main feed A as contrast. K. 2 Rs. col. A.

6rs, C set m/c for F.I. on last R. K. 2 Rs. with C in main feed A as contrast. K. 4 Rs. in Colour A.

4rs, B set m/c for F.I. on last R. K. 2 Rs. with B in main feed A as contrast. K. 6 Rs. in Colour A.

2rs, C set m/c for F.I. on last R. K. 2 Rs. with C in main feed A as contrast. (40 rs patt.)

Mark with waste yarn the 50 (54, 57) stitch in from left edge on cast on and cast off edges of back and front, for sleeve edges.

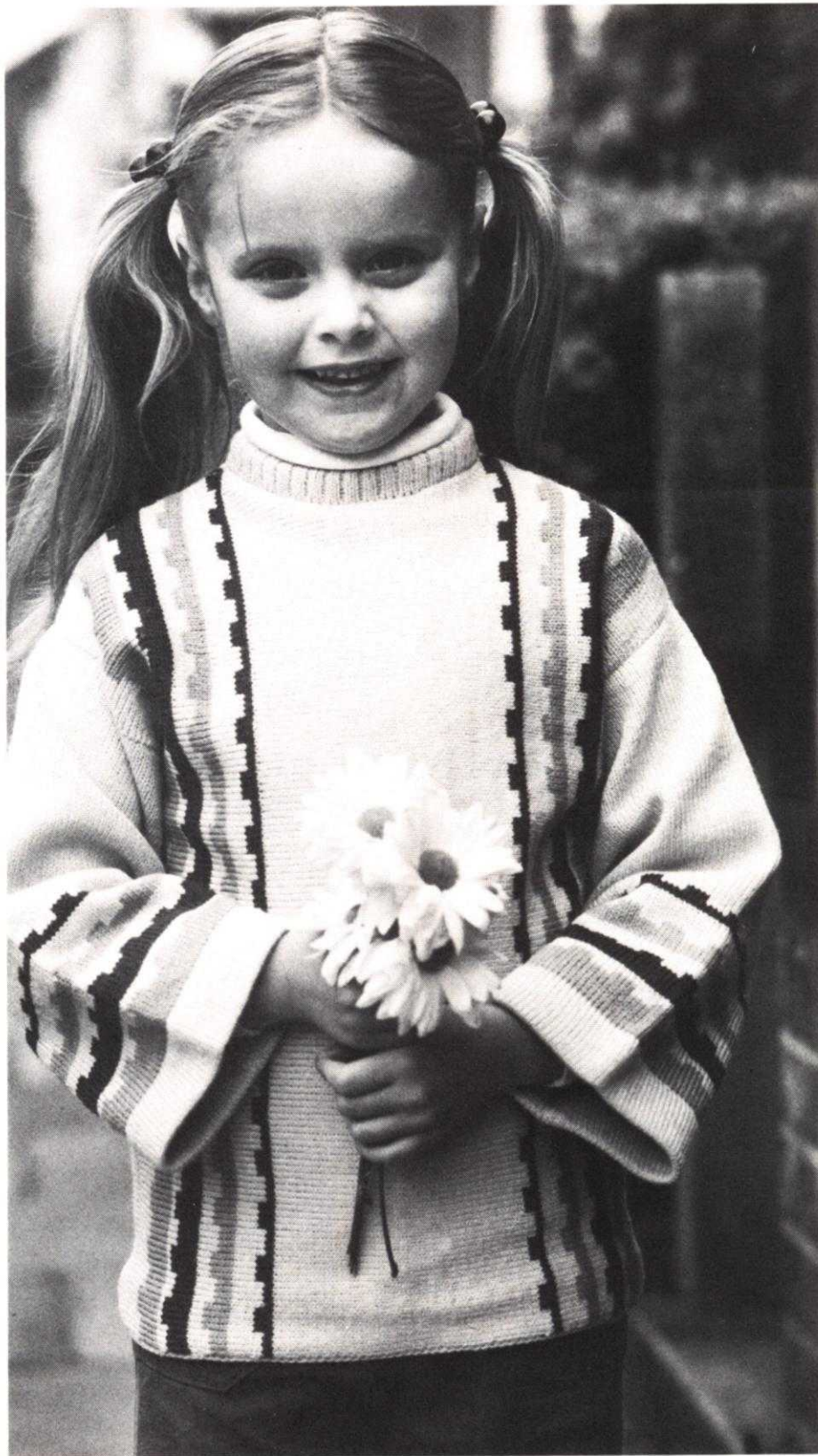


FRONT

Step 1. In colour A C.O.B.H. 143 (159, 167) sts. Tension 7. K. 10 (14, 20) Rs. col. A then 40 Rs. patt. **at the same time** inc. 1 st. at left edge every 3rd R. 5 (1, 1, 0) times then every 4th R. 8 (12, 9) times then every 5th R. 0 (0, 4) times K. to R. 50 (54, 60). 000. Change to col. A.

Step 2. K. 1 R. cast off 3 (2, 1) sts. at beg. of next R. Dec. 1 st. at left edge every alt. R. 11 (12, 13) times. K. to R. 38 (44, 50) inc. 1 st. at left edge every alt. R. 11 (12, 13) times K. 1 R. cast on 3 (2, 1) sts. at beg. of next R. to R. 62 (70, 80). 000

Step 3. K. 40 Rs. of patt. then 10 (14, 20) Rs. in col. A **at the same time** dec. 1 st. at left edge every 5th



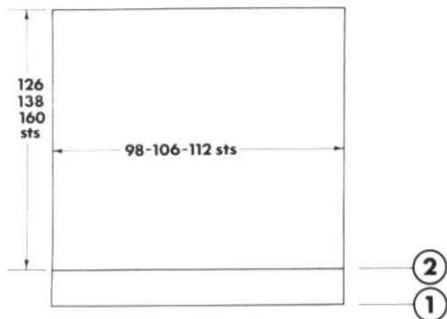
R. 0 (0, 4) times, then every 4th R. 8 (12, 9) times, then every 3rd R. 5 (1, 0) times. Cast off loosely.

BACK

K. as for Front to Step 2.

Step 2. K. 4 Rs. Dec. 1 st. at left edge next and every foll. 6th R. 3 times (4 sts. dec.) K. to R. 40 (48, 56) inc. 1 st. next and every foll. 6th R. 3 times (4 sts. inc.) K. 4 Rs. to R. 62 (70, 80) 000.

Step 3. K. as for Front.



SLEEVE

Step 1. With waste yarn cast on 98 (106, 112) sts. Tension 5 in col. A K. 36 Rs. turn hem. 000

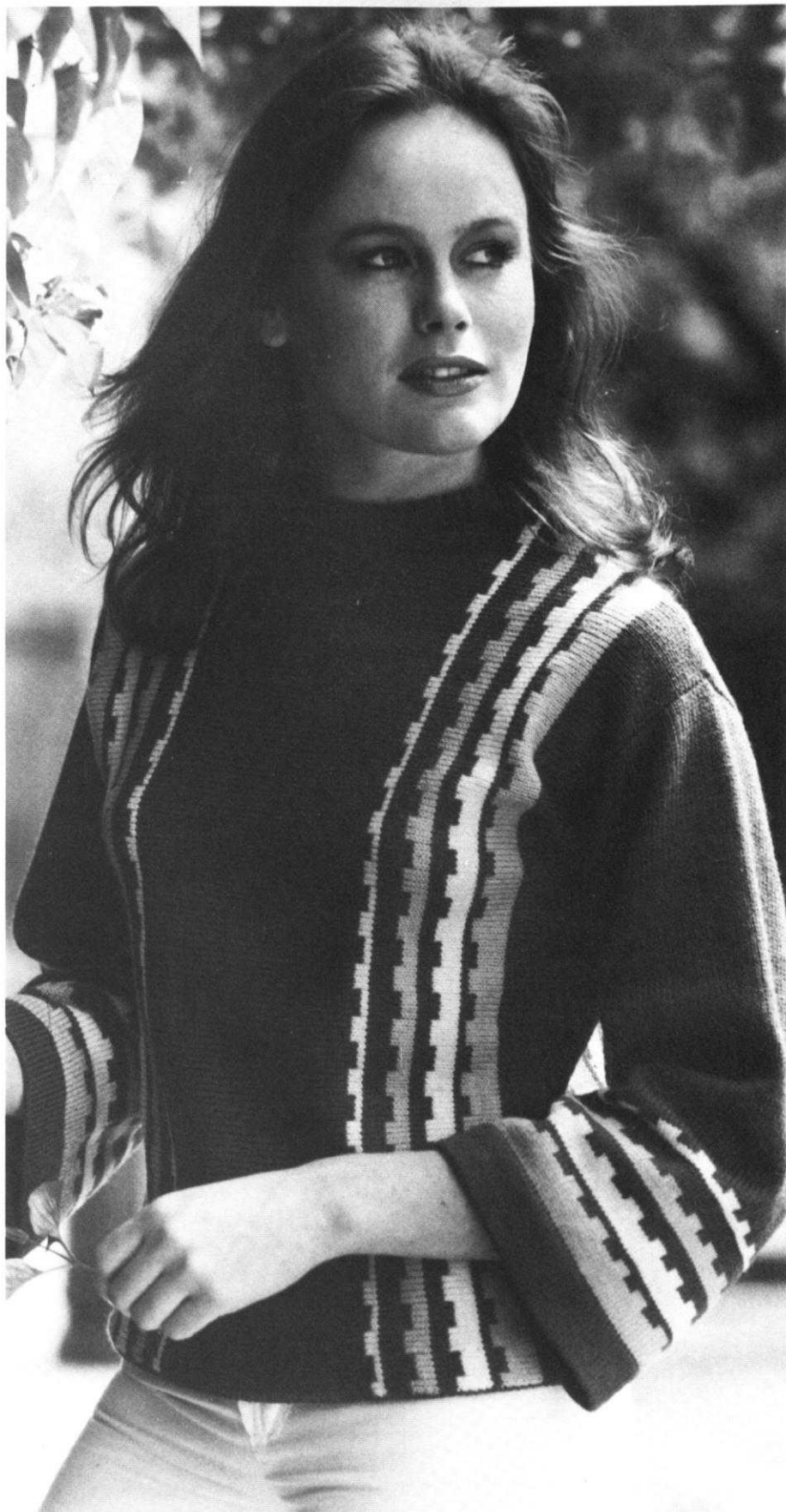
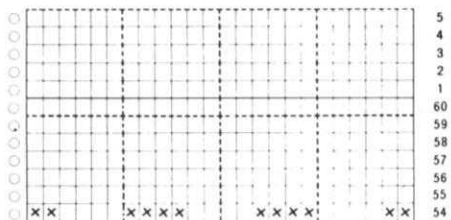
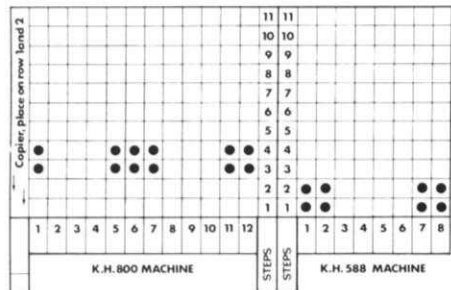
Step 2. Tension 7 K. 40 Rs. of patt. In col. A K. to R. 126 (138, 160) cast off loosely.

TO MAKE UP

Press all pieces. Join one shoulder seam.

NECK BAND

Cast on for 2x1 mock rib 110 (114, 118) sts. Tension 6 K. 20 Rs. Turn hem. With right side of work facing m/c place neck edge onto these sts. cast off loosely. Join shoulder seam and neck band. Sew on sleeves join side seams. Turn up bottom edge. A R. of crochet may be worked around bottom edge for a firmer finish.



Girls Tiered Fairisle and Lace Skirt

Step 2. As lower tier.
Upper Tier (knit two).
Step 1. Cast on 182 sts. continue as for step 1 for lower tier.
Step 2. K72 rs fairisle. K6 rows st. st. transfer every alt. N K1 row. K few rs waste.
Drawstring — Knit a cord over 4 Ns T2 approx. 40" long.

To Make Up
Catch down hem for waistband. Join side seams. Join tiers together behind the picot hems. Machine lace over hems and attach broderie anglais for petticoat effect. Press broderie anglais to form small pleats, press remaining work with warm iron using a cloth.

Notes: Suitable for beginners. To alter length, knit 12 extra rows for each inch longer required. If making much longer, you will require two cones of each colour.

Lower Tier

Card A 3 sts. x 4 rs checks.



Middle Tier

Card B 2 sts. x 2rs checks.



Lower Tier

Card C 1st x 1r checks i.e. card 1 basic set.

Materials

Listers Conifer Acrylic/nylon — 2 Cones col A, 1 Cone col B

Lace 7 metres fine lace — 3 metres broderie anglais.

Measurements

One size to suit 32-38" hips.

Overall length, not inc. lace trim 22".

Tension

8½ sts. x 12rs = 1 inch. T.D. approx. 5.

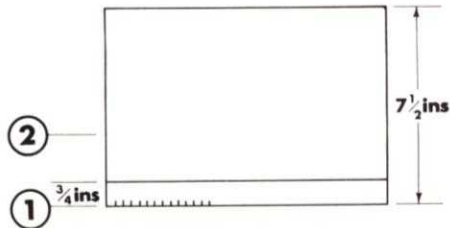
Lower Tier (knit four)

Step 1. Cast on 154 sts. over alt. Ns, col. A. Knit 1 row T4. Bring empty Ns. forward K9 rows T5. Transfer every alt. N for picot edge. K10 rs MDE.

Step 2. 000 Knit 72rs fairisle. K 1r st. st., K 1r st. st. T.10 C/O.

Middle Tier (knit four)

Step 1. Cast on 136 sts. continue as for step 1 for lower tier.





MENS SPORT SHIRTS

Materials

Wendy, Marina, 4 ply crepe

Round neck

13 balls col A 2 balls col B

V neck

12 balls col A, 3 balls col B

Measurements

To fit 38-42 inches

Total length 28 inch

Tensions

7.25 sts x 11.5 rows = 1 inch

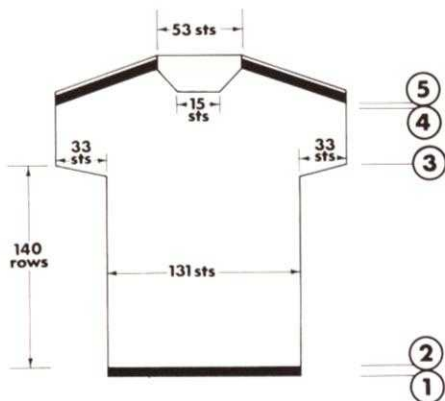
T.D. approx 7.

Notes

Begin motif A on row 176 of step 1 between nds 20-30 on right half only.

Begin motif B on row 154 of step 1 between nds 13-36 on right half only.

588 m/c use hand selection method described in issue No 40 810/820 knit isolated motif



BACK

Step 1. C.O.B.H. in col B 131 sts. T5 K24 rows turn hem 000

Step 2. Col. A T7. K190 rows cast on 11 sts at beg. of next 6 rows. 000

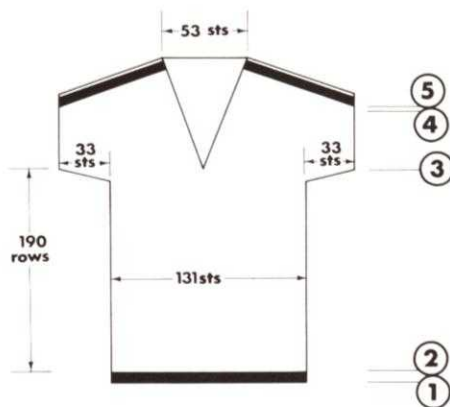
Step 3. K68 rows. 000

Step 4. H.P. Push 2 sts to H.P. at the end of the next 6 rows, 3sts next 18 rows, 4sts next 10 rows, 5sts next 8 rows (RC 42) ret nds to W.P. Cast off centre 3 sts.

Step 5. Working on right side only knit 8 rows col. B 4 rows Col. A *at the same time* push 4sts into H.P. at neck edge every alt row 6 times. Place 24sts from neck edge onto waste yarn cast off rem. 73 sts. Complete left side to match rev. all shaping.

FRONT round neck

Knit as for back to row 16 of step 4. Cast of centre 15sts. Working on right side only cont. shaping as for back *at the same time* dec. 1st at neck edge every alt row 18 times. Complete left side to match rev. all shaping.



FRONT V neck

Work as for back to end of step 2. Dec centre sts.

Step 3. Working on right side only, continue to shape as for back *at the same time* dec. 1st at neck edge every 5th row 24 times. Complete left side to match.

Press both pieces

NECKBANDS

Round

In col. B C.O.B.H. 116 sts. *T5 K10 rows T7 K1 row, T5 K10 rows. Turn hem* with right side of work facing m/c place neck edge to band cast off loosely.

V. neck

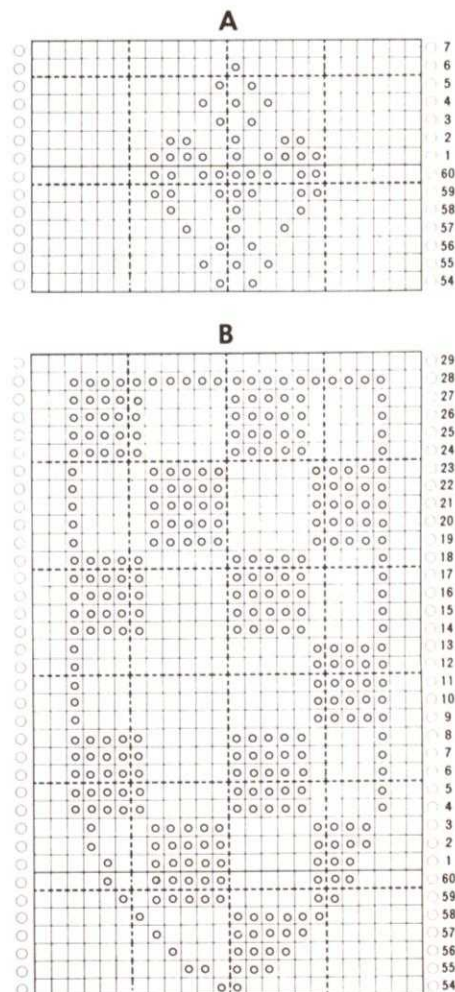
Back. C.O.B.H. in col B 53 sts knit as for round neck from * to * With right side of work facing m/c and starting 1st in from each place back neck to band cast off loosely.

Front C.O.B.H. 77 sts knit from * to * of round neck at the same time dec 1st at left edge every alt. row 5 times then inc. 1st at left edge every alt. row 5 times. Turn hem with right side of work facing m/c place one front edge to band cast off loosely (shaped end at centre front) rept. for other front shaping at right edge only. Join shoulder seams.

SLEEVEBANDS

C.O.B.H. 86 sts knit as round neck band from * to * with right side of work facing m/c place bottom edge of sleeve to these sts cast off loosely.

Join rem. seams. Press.





Lacy Skirt Suit

Materials

I used 3 strands of 2/28's for this garment.

Skirt approx. 15 ozs

Top Approx. 8 ozs

Main Colour

A very small amount of 2 contrast colours used — not even an ounce of each colour.

Measurements

To fit Bust: — 30 (32, 34, 36, 38) in 77 (82, 87, 92, 97) cm.

To fit Waist: — 22 (24, 26, 28, 30) in 56 (61, 66, 71, 76) cm.

Length of skirt 27½ in or 70 cm.

Notions

¾ in elastic -waist measurement + 2 in. Interlining for collar.

Tension

T. Square as per Instruction Book: —
T.4. 40 sts. = 12.5 cm. 60 Rs. = 11.5 cm.

Notes

Lace card No. 21 D. from Instruction manual for K. m/c KH-830.

Skirt

T.4. Main Colour C.O. 116 (119, 122, 125, 128) sts. in W.W1 or on comb.

Cont in st. st. K.20 Rs. Turn up Hem.

K. 2 Rs. Change to Col 1, K.2 Rs.

Change to Col. 2, K.2 Rs. Change to

Main Colour K. 2 Rs.

Cont in Lace Patt. Dec. 1 st. Ev 8th R

until R. Counter reads 88. Change to

st. st. Col. 1 K 2 Rs., Col. 2 K 2 Rs.

change to Main Col. K 2 Rs.

Punch Card set to 0, Change to Lace

Patt. Cont. until Row Counter reads

102. Change to st. st. Change to Col.

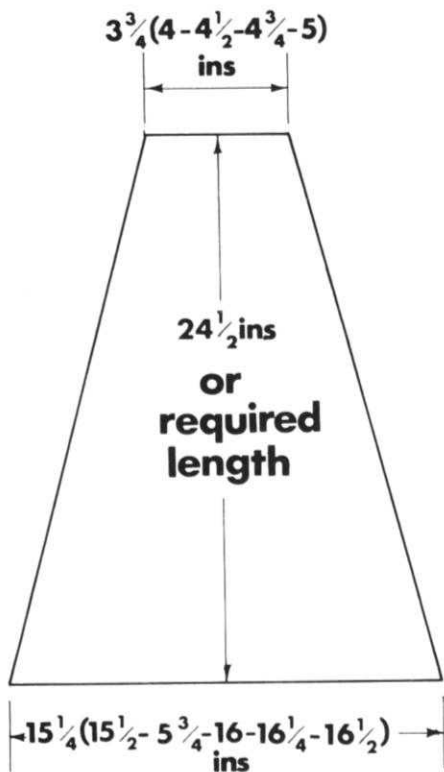
1 K. 2 Rs. Change to Col. 2 K. 2 Rs.

Cont. in st. st. in Main Col. dec. Ev.

8th R until 32 (35, 38, 41, 43) sts.

remain. Change to W.W1, K a few Rs

and take off m/c.



SKIRT

Make two more panels in this way keeping the third panel on the m/c. Undo the W.W1 and place the other two panels on the m/c put the last 2 sts. at each end of the panels on to one N. trans. Ev. 3rd st. to make 2 x 1 Rib. Change to T.3 and rib 20 Rs. Pick up the first R. and c/o. Make other three panels in the same way.

Press

All pieces to be pressed. Skirt seams to be joined, elastic put through waist and joined, waistband joined. Press again.

All parts of sweater to be pressed. Shoulder seams joined. Sleeves set set in and side seams and sleeve seams joined in one. Press.

Cut and sew collar

T.4 Main Col. in st. st. K a piece of fabric large enough to make 4 collar sides. Apply non-woven, iron-on interlining to half of fabric. Make paper patt. from diagram. Cut 2 pieces with interlining and two without.

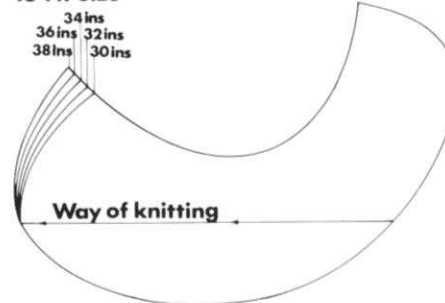
To make collar trim:— measure round the outer edge of collar and C.O. corresponding No. of sts. on m/c in W.W1 or on comb. (Change to Col.1, K 4 Rows. change to Col. 2 K.4 Rs) repeat. Turn up hem and C/O.

Tack C/O edge of trim to outer edge of collar piece on Right Side of fabric. Place the two collar pieces together right sides facing and sew round outer edge.

Turn right way out, press and attach to neck-line. Repeat.

Make cord in Main Colour, attach at C.F. tie in bow.

To Fit Size

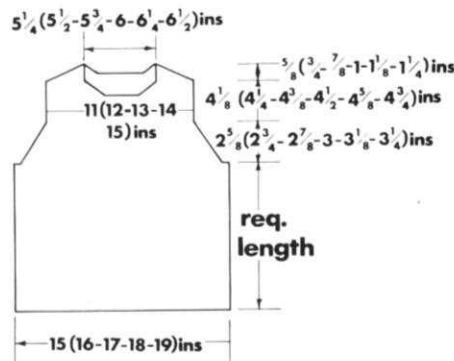


Sewing Line

Trim



SWEATER



FRONT AND BACK

Front

T.3 C.O. 122 (130, 138, 146, 154) sts. 2 x 1 Rib 80 Rs. Turn Up hem 000. T.4 K 2 Rs st. st. Change to Col. 1, K 2 Rs, Change to Col. 2, K 2 Rs, Change to Main Col. K. 2 Rs. Change to Lace Patt and K until R. Counter reads 166 or required length. C/O 5 sts. at beg of next 2 Rs. Dec. 1 st. at each end of Ev foll. 4th R until 92 (100, 108, 116, 124) sts. remain. Cont. until R. Counter reads 240 (243, 246, 249, 251) C/O centre 28 (30, 32, 34, 36) sts.

Put Ns on L.H. Side into H.P. complete rest of work in st. st. K 4 Rs dec 1 st. at neck edge only Ev 2nd R until 26 (28, 30, 32, 34) sts. remain. (Carriage to L.H.S. of work put 4 Ns into H.P. Carriage to R.H.S. of work, put 1 N into H.P.) repeat until all Ns are in H.P. C/O. Work other side in reverse.

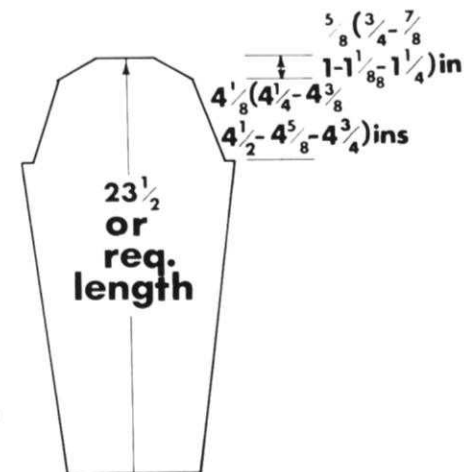
Back

As front until 92 (100, 108, 116, 124) sts. remain.

K. until R. Counter reads 260 (263, 266, 269, 272) C/O centre 28 (30, 32, 34, 36) sts.

Put Ns on L.H. Side into H.P.

(Working on R.H. Side Carriage on Left put 4 Ns into H.P. Carriage to Right, dec 2 sts. at neck edge and put 1 N on Left H. Side into H.P.) repeat until all Ns are in H.P. C/O. Work other side in reverse.



SLEEVE

Sleeves — both alike.

T4 Main Col. st. st. C.O. 66 (70, 74, 78, 82) sts. K. 20 Rs. Turn up Hem, Change to Col. 1 K 2 Rs. Change to Col. 2 K. 2 Rs., Change to Main Col. K2 Rs.000.

Cont. in Lace Patt. Inc. 1 st. at each end of Ev. 25th, (26th, 26th, 26th, 27th) R until there are 80 (84, 88, 92, 96) sts. Row Counter 186 (189, 192, 195, 198).

C/O 5 sts. at beg. of next 2 Rs. Dec. 1 st. at each end of Ev. 3rd (4th, 4th, 4th, 4th) R. until there are 44 (48, 52, 56, 60) sts. remaining.

Row Counter should read 235 (241, 247, 253, 259).

Dec. 1 st. at each end of Ev. R 9 (10, 11, 12, 14) times. Dec. 3 (4, 3, 2, 0) at each end of next 2 Rs C/O 16, (20, 24, 28, 32) remaining sts.

CHILDS LEOTARD

Materials

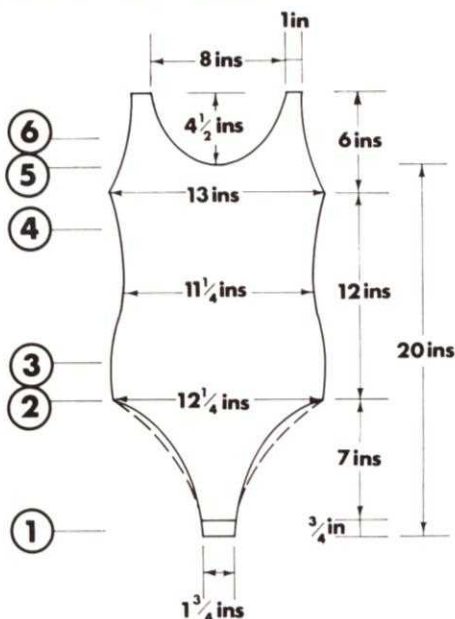
3 Suisses Michelle 3 ply crepe 4 50g balls available by post from Holmfirth, Briggate, Shipley, Yorks.
1 packet strong press studs.

Measurements

To fit 26-30 in chest.

Tension

8 sts. x 12 rs = 1 in TD 6.



Back

Step 1. Cast on 14 sts. TD 6 K18 rs MDE. R.C.000 inc 1st each end next row K4 rows inc. 1st each end next row * K2 rs inc 1st each end next row. Repeat from * once. Inc 1st each end every alternative row to row 078. Inc 3 sts. beg. next four rows (ie to R082).

Step 2. K straight to 100.

Step 3. R.C.000 Dec 1st each end every 20th row to R090.

Step 4. R.C.000 Inc 1st each end every 3rd row to R026.

Step 5. R.C.000 Dec 1st each end every 3rd row to R019.

Step 6. R.C.000 Divide for neck. Bring into H.P. all -Ns to right of centre and 10 Ns to left of centre.

Continue to dec 1st at side every 3rd row, and at the same time c/o 1st at neck every alternate row to r 020. At this point dec 1st each end every 3rd row to R040. K straight to R058 c/o.

Knit other side of neck to match.

Knit off the centre 20 sts. on waste yarn.

Front

Step 1. Cast on 14 st. TD6 K18 rows M.D.E. R.C.000** Inc 1st each end next row K4 rows repeat from ** five times *** Inc 1st each end next row K2 rows Repeat from *** five times. Inc 1st each end every alternate row to R070. Inc 3 sts. beg. next 12 rows (ie to R082) K steps 2-6 as for back.

Sleeves

Step 1. Cast on 48 sts. K18 rows MDE.

Step 2. Inc. 1st each end every 5th r ro R110.

Step 3. R.C.000 Dec 2 sts. beginning every row until all sts. are removed.

Leg bands (4 alike)

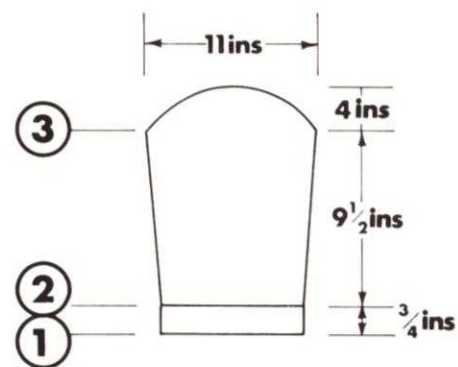
Cast on 74 sts. TD3 in 1 x 1 mock rib K16 rows MDE. With right side facing m/c attach leg opening to band.

Neck band (2 alike)

Cast on 108 sts. in 1 x 1 mock rib. K24 rows MDE. Attach garment with rt side facing m/c, placing centrally the sts. knitted off in waste yarn.

To make up

Join all seams except gusset. Apply 4-5 press studs to overlap gusset. If wished apply a decorative trim to seams of neck/leg bands.



Girls Sweater with Ribbon & Lace details

Materials

Sirdar Snuggly 3 ply 13 (14, 14) 20 gm balls.

3 lengths ribbon in 3 colours each $1\frac{1}{4}$

metres long. Or if preferred $3\frac{3}{4}$ metres narrow ribbon in one colour.

Measurements



28 (30, 32) in. bust. Length: see diag.

Tension

12 rows \times $9\frac{1}{2}$ sts = 1 in. over st.st. T.D. approx. 4.

11 rows \times 10 sts. = 1 in. over lace st. T.D. approx. 5.

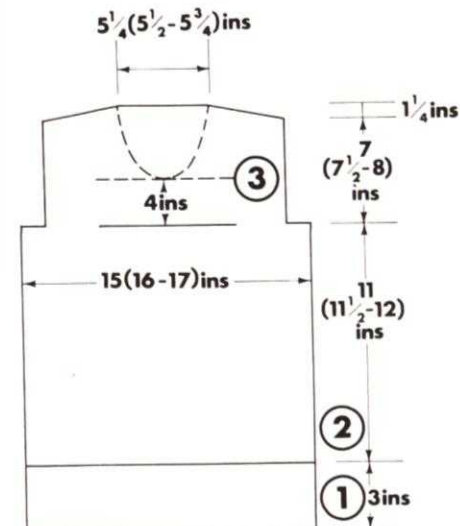
Card No. 411, vol. 6, small lace patterns, 6 rows plain at Step Nos. 18 and 36.

BACK

Step 1. Ribbers: Cast on 140 (146, 152) sts. for 1 \times 1 rib. K. 3 Rs. tub. K. 30 Rs. T 2/2. Trans. to main bed.

Single-Bed M/cs: Cast on 140 (146, 152) sts. for 1 \times 1 mock rib, K. 60 Rs. T2. M.D.E.

Step 2. K. straight in st.st. to R. 130 (136, 142). Dec. 15 (15, 15) sts. at beg. next 2 Rs., leave R. counter turning. Cont. straight to R. 210 (216, 222). Dec. 1st beg. of each R. to R. 230 (236, 242). K. off remaining sts. in waste yarn. K. 10 Rs. waste, remove from m/c.



FRONT

Step 1. As Back for ribbers and single-bed m/cs.

Step 2. K. 29 Rs. straight. Transf. every 3rd st. to adjacent Ns. for eyelet R. for ribbons, bringing empty Ns. back to working post. Repeat eyelet R. for R. 60, 90, 120 etc. (i.e., every 30th R.).

Cont. in patt. to R. 130 (136, 142). Dec. 15 (15, 15) sts. at beg. next 2 Rs.

Cont. in patt. to R. 180. Leave row counter turning.

Step 3. Divide for neck.

Work on 32 (34, 36) sts. at left *K. 4 Rs., dec. 1st. at neck edge, repeat from * 3 times.

Cont. in patt. to R. 210 (216, 222). Dec. 1st. at armhole edge every R. to

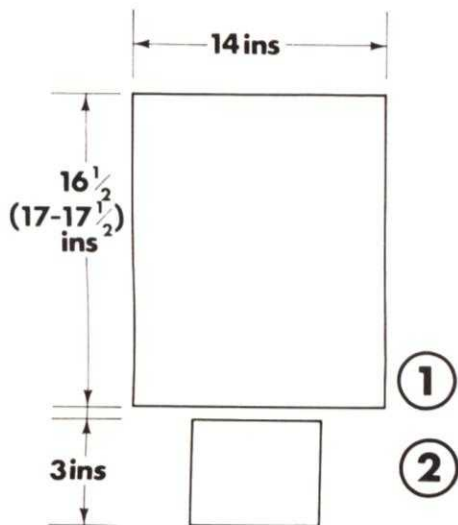
R. 230 (236, 242). Cast off remaining sts. loosely.

K. other side to match. K. off centre 46 (48, 50) sts. in waste yarn.

NECKBAND

Ribbers: Cast on 146 (152, 158) sts. for 1×1 rib. K. 3 Rs. tub. K. 12 Rs. T 2/2. Transf. to main bed. With right side work facing m/c, attach front and back to band. Cast off.

Single-Bed M/cs: Cast on 146 (152, 158) sts. for 1×1 mock rib. K. 12 Rs. (T2) M.D.E. With right side facing m/c attach front and back to band. Cast off.



SLEEVES

Step 1. Using waste yarn, cast on 120 (120, 120) sts. K. a few Rs. R.C.000, K. 4 Rs. st.st. Cont. in lace without shaping to R. 174 (186, 198). K. a few Rs. waste yarn, remove from m/c.

Step 2. Cuffs (knit 2). Ribbers cast on 80(80,80) sts for 1x1 rib. K3 rows tub. K 30 rs T2/2. Transfer to main bed. With rt side facing m/c attach sleeve to cuff placing 2 sts to 1st N, one st to next N, 2 sts to next N. etc across row. CO.

S/bed m/cs cast on 80(80,80) sts for 1x1 mock rib K60 rs T2 MDE.

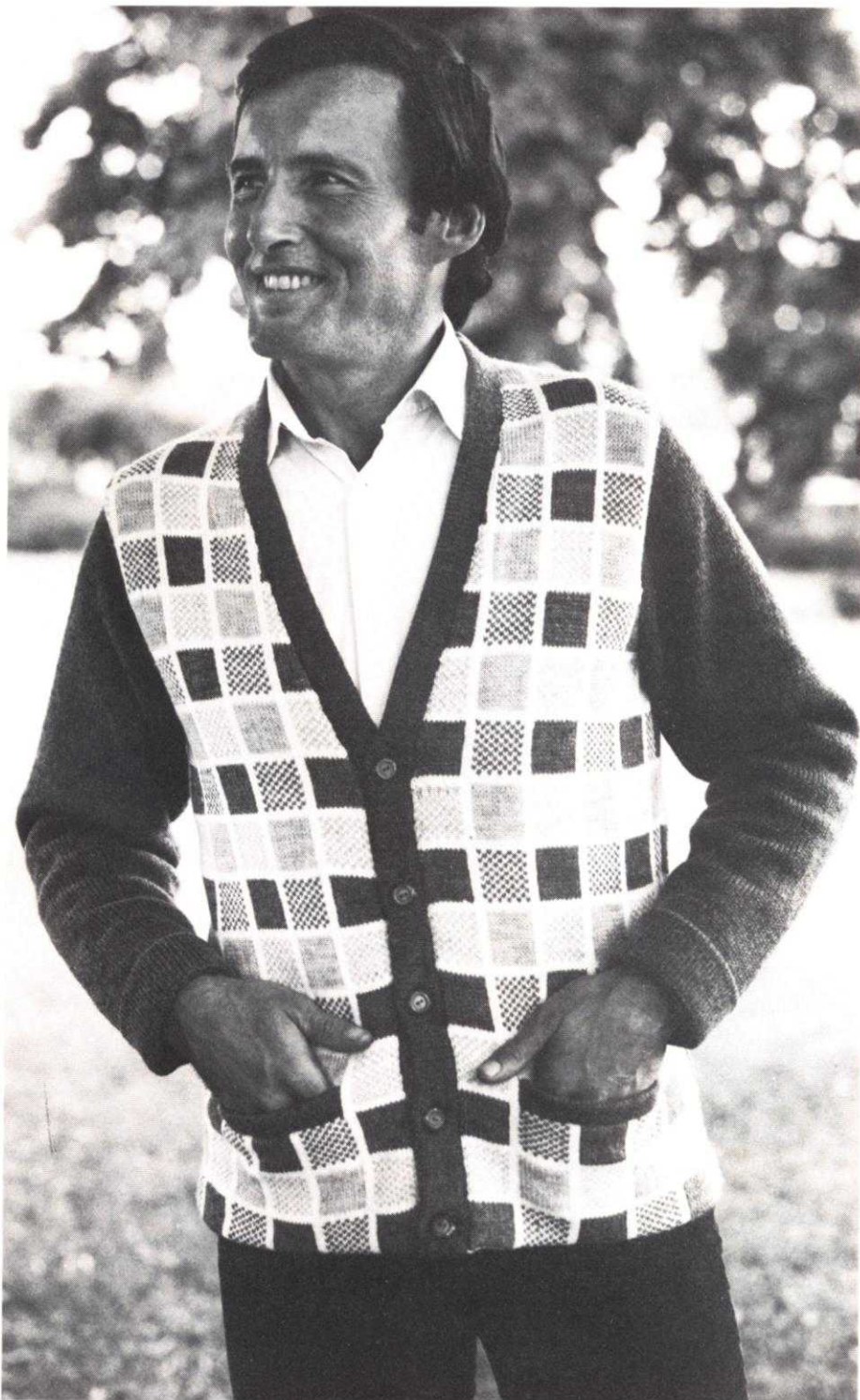
With rt side facing m/c attach sleeve to cuff, placing 2 sts to 1st N, one st to next N, 2 sts to next N etc. across row. CO.

TO MAKE UP

Join sleeve seams and shoulder seams.

Thread ribbons in eyelet rows and secure at edges.

Join remaining seams.



Mans Jacket with Checked Front and Back

Materials

Lister/Leve Target MONTORAVIA 4 ply and D.K.

Col. A (white D.K.) 10-10-11-12 balls

Col. B (light grey 4 ply) 3-3-4-4 balls

Col. C (dark grey 4 ply) 3-3-4-4 balls

Col. D (dark grey D.K.) 13-14-15-16 balls

5 buttons

Measurements

To fit 38-40-42-44 in chest
Sleeve seam 16½-17-17½-18 in.
Total length 26½-27-27½-28 in

Tensions

7.25 sts. x 8.5 rows = 1 in over fair isle pattern using cols A/B & A/C. T.D. approx. 10.

7 sts. x 9 rows over st. st. Using yarn D T.D. approx. 10.

Patterns

From charts

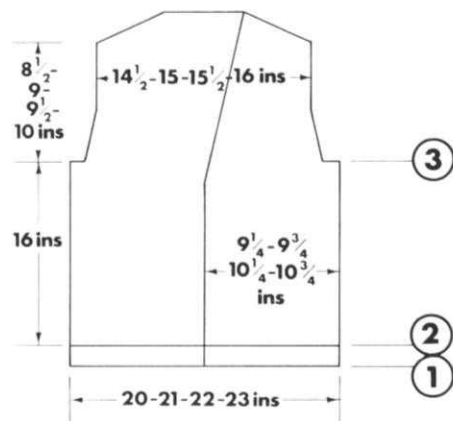
This pattern is suitable only for 820/830 m/c other m/c use any alt. pattern.

*Using Col. A in main feed and Col. D in secondary feed K12 rows F.I. remove yarn from secondary feed K2 rows. Col. B in secondary feed K12 rows. Remove yarn from secondary feed K2 rows * rept from * to *.

Notes:

Right front, cast on 7 sts. to left of centre 0.

Left front, cast on 7 sts. to right of centre 0.



BACK

Step 1. In Col. A C.O.B.H. 146 (153, 161, 168) sts. T8 K14 rows setting m/c for pattern on last row. 000. See notes.

Step 2. T10 K136 rows cast off 7 (8, 9, 9) sts. at beg of next 2 rows 000.

Step 3. Dec. 1st at both ends every row 4 (6, 6, 6) times then every alt row 9 (8, 9, 9) times to 106-109-113-116 sts. K to row 72 (76, 82, 86) Cast off 3 sts. at beg of next 4 (2, 4, 6) rows, cast off 4 sts. at beg. of next 12 (14, 10, 12) rows. Place rem 45 (47, 49, 51) sts. on waste yarn.

Front (see notes)

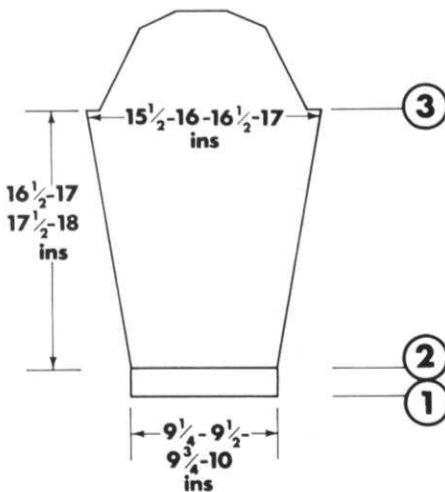
Pocket lining. C.O.B.H. 36 sts. T8 K30 rows. Place sts. on waste yarn.

Step 1. In col. A C.O.B.H. 67 (71, 75,

78) sts. T8 K14 rows set m/c for pattern on last row. 000.

Step 2. K to row 40. Starting 14st in from front edge place 34 sts. on waste yarn. Replace sts. from top of pocket onto these nds placing 1st from each end either side of the 34 nds. Cont. in patt to row 124 (122, 124, 130) continue shaping right edge as for back at the same time dec 1st at neck edge (left edge) every 6 (6, 6, 5)th row 17 (18, 19, 21) times to 30-31-32-33 sts. K to row 72 (76, 82, 86) cast off 3 sts. at beg. of next and every alt. row 2 (1, 4, 3) times then 4 sts. 6 (7, 5, 6) times.

Knit left side to match rev all shaping.



Sleeve

Step 1. In col D C.O.B.H. 65 (68, 69, 71) sts. T8 K20 rows T10 K1 row T8 K20 rows. Turn hem T10 K1 row 000.

Step 2. Inc. 1st at both ends every 6th row 22 (22, 23, 24) times to 109 (112, 115, 119) sts. K to row 148 (154, 158, 162) cast off 7 (8, 9, 9) sts. at beg of next 2 rows. 000

Step 3. Dec 1st at both ends every 3rd row 0 (0, 0, 6) times then every alt row 15 (14, 20, 13) times, then every row 7 (8, 0, 0) times, to 53 (56, 59, 63) sts. cast off 3 sts. at beg. of next 6 (4, 2, 0) rows then 4 sts. 4 (6, 8, 10) times cast off rem sts.

Press all pieces.

Pocket Tops.

C.O.B.H. in col. D 36 sts. K8 rows T10 K1 row T8 K8 rows. Turn hem with right side of work facing m/c place sts. from top of pocket onto these nds starting 1st in from each end. Cast off.

Back neck band.

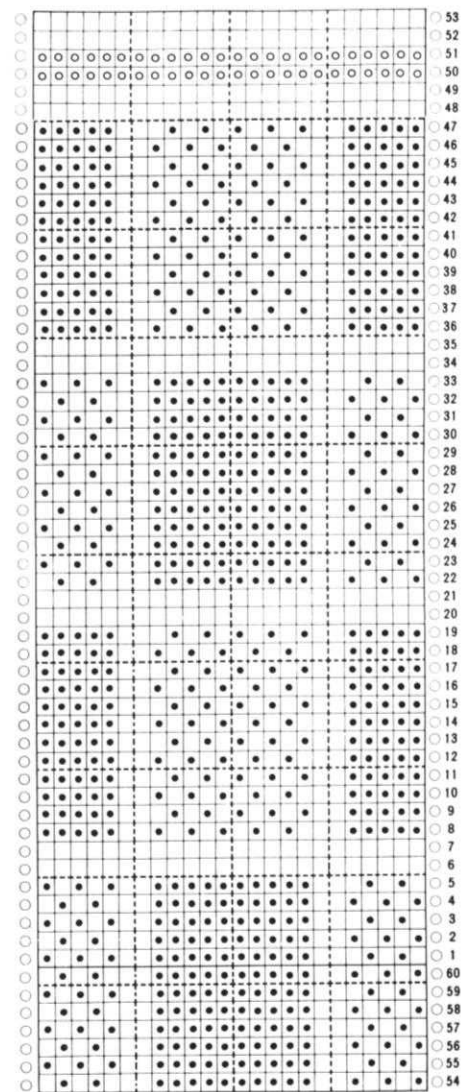
In co. D C.O.B.H. 47 (49, 51, 53) sts. T8* K12 rows T10 K1 row T8 K12

rows. Turn hem* with right side of work facing m/c place sts. from back neck to band starting 1 sts. in from each end. Cast off.

Button band for right front.

C.O.B.H. in col D. 174 (180, 185, 191) sts. T8 knit from * to * of back band with right side of work facing m/c place centre front edge to 81 (87, 92, 93) sts. and neck edge to rem 93 (93, 93, 98) sts. cast off loosely. Knit buttonhole band as button band making 5 button holes on rows 6 and 19 as follows counting from right edge miss the first 4 nds ** make button hole over next 5 nds miss 15 nds ** rept from ** to ** for 5 buttonholes. Place left front to band.

Join shoulder seams and end of bands. Sew in sleeves. Join rem. seams sew tops of pockets. Sew pocket linings into pos. Turn up hem, around bottom. Sew on buttons.



FUN TOP, SHORTS AND SMOCK set in Argyll Ferntex



Materials

1 cone each col A, B & C.

1 metre gathered lace for sleeves.

(i) Fairisle & lace drawstring top.

Measurements

To fit 32 (34, 36) in bust.

Tension

8 sts. x 9 rows = 1 inch TD 5.

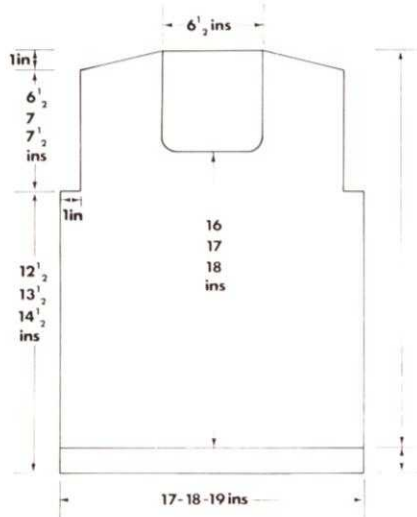
Cards

No 1 from basic set, locked throughout for stripe effect.

No 6 from cassette book for sleeve contrast. To set Ns for beginning of pattern, card should be locked on row 4.

BACK

Step 1. Cast on 150 (160, 170) sts. K 1r col A, 11 rows fairisle col A & B M.D.E. bringing fwd Ns which were in 'O' Position after turning up hem.



Step 2. R.C.000. Knit straight to row 112 (119, 126) Cast off 9 (10, 11) sts. beg. next 2 rs.

Step 3. R.C.000. Knit straight to row 060 (067, 074) Cast off 5 sts. at beg. of each row until 50 sts. in centre remain. K 1r st. st. in col A. K few rows waste yarn.

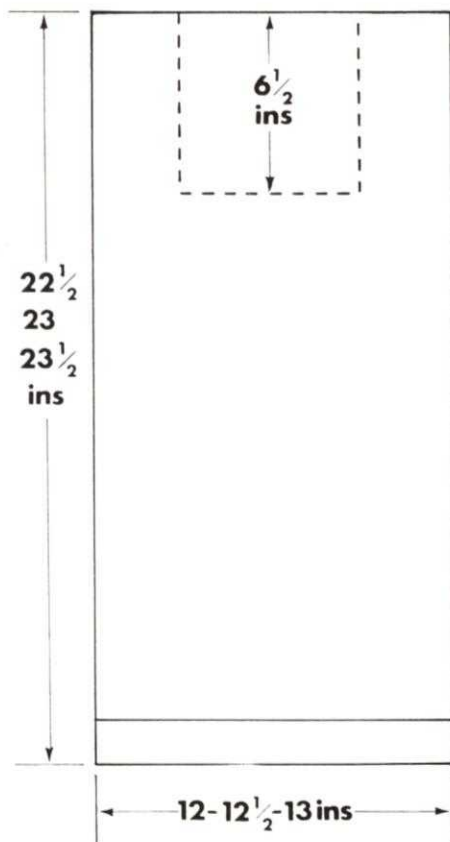
FRONT

Step 1 & 2 as for back.

Step 3. R.C. 000. Knit straight to row 036. Divide for neck. Working on 45 (50, 55) sts. at left dec. st. at neck edge every row, five times 40 (45, 50) sts. Contine straight to row 060 (067, 074) Cast off 5 sts. at arm edge every alt. row until all sts. removed. Knit the 45 (50, 55) sts. at right side to match.

To remove centre neck section, knit

1r st. st. in a col A knit a few rows waste yarn. Remove from m/c.



SLEEVE

Step 1. Cast on 110 (118, 126) sts. Knit hem as for back.

Step 2. R.C. 000. knit straight to row 153 (160, 167). Work on 43 (47, 51) sts. at left, taking all remaining sts. back to 'A' pos. with nylon cord. K 52 rows straight. c/o loosely. K 52rs over 43 (47, 51) st. at right. c/o

Step 3. Insert contrasting card. Remove col B from feeder. K 2rs st. st. in col A, K 49rs fairisle with col C K 1r st. st. col A. Cast off.

Drawstrings

Knit 2 cords approx 36" long over 4 sts. T.D. 2 for waist.

Knit 2 cords approx 18" long over 4 sts. T.D. 2 for sleeves.

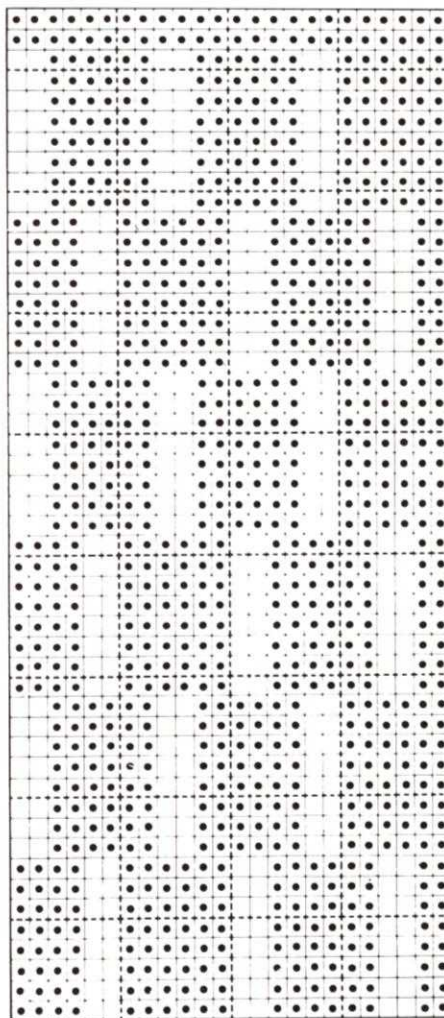
Neckband

Ribbers cast on 152 (158, 164) sts. for 1x1 rib. K 3rs tub. K 12rs T 1/2. Transf. to main bed. With rt side facing m/c join front & back c/o. S/bed m/cs cast on 152 (158, 164) sts. for 1x1 mock rib K 22rs T3. M.D.E.

With rt side facing mc join front and back to band c/o.

To make up

Join seams and contrast parts on sleeves. Insert cords and sew lace round the contrast section on the sleeves.



SMOCK IN SKIP LACE STITCH

Special card

See inset.

Materials

Argyll Ferntex in three colours, A, B and C.

Measurements

Ladies' medium i.e. 34-36 in bust.

Tension

8 actual sts. x 18 rows = 2 in. T.D. 8, press swatch.

Note: Smock worked over N. arrangement of two Ns. in working position, two Nds, in A position throughout, with two Ns. to right of centre 0 in working position. When setting pattern on K.C. each alternative pair of 2 Ns. should come forward.

Back & Front alike, knit 2.

Step 1. Using waste yarn, cast on 160 sts. in 2x2 arrangement. Knit a

few rows. Using col. A knit 8 rows, T.D. 8. M.D.E. onto existing needle arrangement. Depress both part buttons. Set row counter to 000, knit 32 rows col. A, knit 8 rows col. B, knit 8 rows col. C, knit 8 rows col. B. Continue in col. A to row 248 (256). Cast off 10 actual sts. at beg. next two rows. Knit few rows st. st. waste yarn, remove from m/c.

Step 2. Using col. A cast on 98 sts. T.D. 5, knit 16 rows M.D.E.

Step 3. With right side facing m/c, join back to band placing * two sts. on first two Ns, miss two Ms., place next 2 sts. on next 2 Ns, miss one N, repeat from * across band. C/O.

Ties

Knit four cords over 3 Ns. T.D. 1-2, approx. 18 in in length.

To Make Up

Press garment to open out the lacy stitch. Join shoulder ties to ends of band. Work one row crochet under arms, making four double crochet sts., into edge of band, one chain, one double crochet into next two cast-off sts., one chain, repeat along armhole edge.

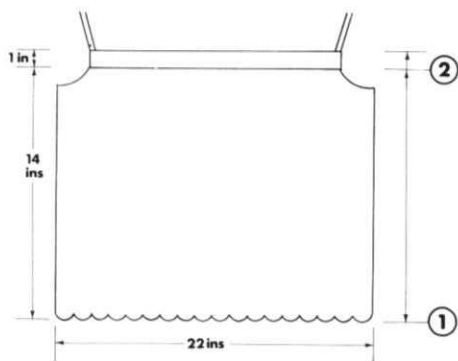
Join seams carefully using mattress stitch, over-lapping edges to match up pattern. Oversew back part of seam.

Raglans! Set-in-Sleeves! Sleeveless!

V Neck, Round Neck,
Jumpers, Cardigans, all sizes.
Easy to follow instructions/
D.I.Y. pattern making

YES! They're all here in the
Basic Pattern cards
for machine knitting. **complete**
set £5.50 plus 50p p & p

Available by post only from
Marion Nelson,
Banc-Y-Felin, Aberbechan,
Newtown, Powys. or call or
write to SUPA KNIT,
7 THORNTON ROAD,
THORNTON HEATH,
SURREY, Tel: 01-684 8679



SHORTS WITH DRAWSTRING WAIST

Materials

Argyll Ferntex Co. C.

Measurements

To fit 34, 36 38 in hips.

Tension

7 sts. x 12 rows = one in. T.D. approx. 5.

Note

Shorts made in two pieces without a side seam. Knit two pieces, reversing shapings.

Step 1. Cast on 186 (190, 194) sts. over 1 x 1 arrangement. T.D.2. Knit one row. Bring forward empty Ns. Knit 9 rows, T.D.5, knit one row T.D.7, knit 10 rows T.D.5, M.D.E.

Step 2. R.C.000. Knit 13 rows. Cast off two sts. beg. of next 2 rows.

Step 3. Knit 1 row, dec. 1 st. at left, repeat twice, knit 1 row, dec. 1 st. each end next row. Repeat step 3 once.

Step 4. Dec. 1st. each end next 10 rows *knit 5 rows, dec. 1 st. at left. Repeat from * 5 times. Knit 5 rows, dec. 1st. at each end. Repeat from ** 5 times.

***Knit 5 rows, dec. 1st. at left. Repeat from *** 6 times.

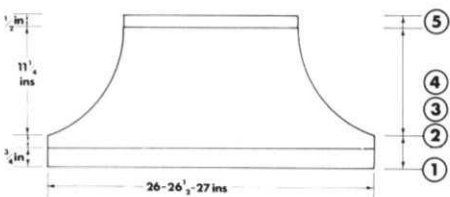
Step 5. Knit 6 rows, knit 1 row T7, knit 5 rows T5. Transfer every alternate N., knit one row T2. Knit a few rows in waste yarn.

Tie

Knit a cord approx. 50 in long for waist over 4 Ns. T.D.2.

To Make Up

Turn over hem at waist and catch down. Join leg seams, then front and back seams. Insert cord into waistband.



Men's Bronze Vest

Materials

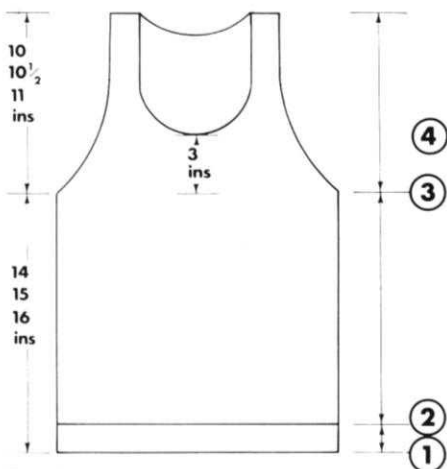
1 lb cone random bronze boucle in Viscose. Send for shade card No 11 to Texere Yarns, College Mill, Barkerend Road, Bradford.

Measurements

To fit 30 (32, 34) in chest.

Tension

5 sts. x 9½ rows = one in TD 7 approx. Worked over alternate Ns throughout. Purl side will give the best texture.



Back

Step 1. Cast on 156 (160, 164) sts. in 1x1 arrangement. TD 6. K 20rs MDE onto existing N arrangement.

Step 2. R.C.000. TD 7. K 120 (132, 144) rs. Cast off 6 (7, 8) actual sts. at beg. next 2 rs.

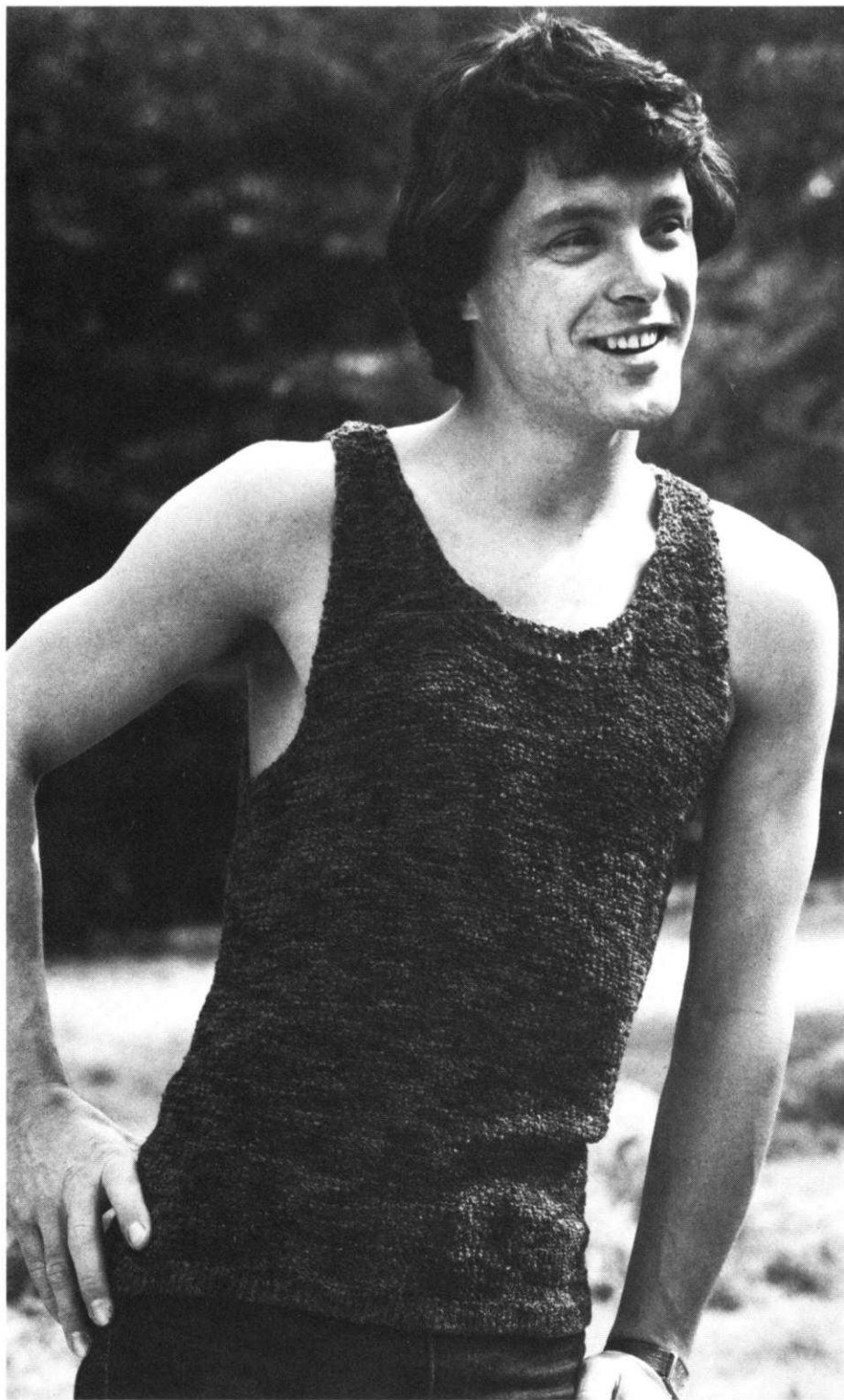
Step 3. R.C.000. * K 4rs. Dec 1st each end next row. Rep from * 11 (12, 12) times to row 055 (060, 060) K. straight to row 080 (085, 085) divide for neck.

Step 4. Bring fwd. 26 sts. at centre, and those to left (right) K 5rs Dec 1st at neck edge, K 5rs dec 1st at neck K 1r C/O. Cast on centre sts., knit other shoulder to match. Stretch hem on a bar or thick knitting needle.

Front

Step 1 and Step 2 as for back.

Step 3. R.C.000. ** K 4rs Dec 1st each end next row. Rep from ** 5 (6,



7) times to row 030 (035, 040). Divide for neck.

Step 4.

Bring fwd 20 (20, 20) sts. at centre and those to left (right). Continue to dec one st every 5th row at arm edge; and also one st at neck edge every 5th r to row 055 (060, 060) k. straight

to row 090 (090, 090) C.O. Cast on centre neck sts. (ie 20) and knit other shoulder to match.

To Make Up

Join side and shoulder seams (Use a non boucle thread). Work 2 rs double crochet quite tightly round neck and armholes.

FOCUS ON KNITTING

We have news from 4 yarn companies in this issue, all focusing on the new Autumn fashions. EMU "Mix 'n' match" double double yarn consists of 12 super shades in their own right but co-ordinated to give 4 groups of 2 solid and one marl. This yarn is 75% acrylic, 25% wool in 50gm balls at 52p per ball. There are 8 support leaflets in your shops now with 4 more to follow. PATONS & BALDWINS have introduced two new ranges. Melange

is a lightweight chunky yarn in ten colours — 5 in ecru with contrasting twists of colour, complimented by five matching self shades to produce a palette of country tones. Melange lends itself to give definite shapes related to the sporty outdoor mood in fashion. This yarn contains 55% acrylic and 45% wool and costs about 69p for 50g ball.

PATONS new Beehive is available in double knitting and Shetland Style Chunky yarns. This is a soft, warm yarn for the Autumn. Beehive double knitting contains 75% courtelle and 25% wool and comes in 20 colours. The recommended tension $5\frac{1}{2}$ st x $7\frac{1}{2}$ rows per sq. in. on 4mm needles. The approximate cost is 58p for 50gm ball. The Shetland Style Chunky is also made up of 75% courtelle and 25% wool and comes in 16 colours. The cost is 58p per 50gm ball.

JAEGAR have brought out a yarn called Gabrielle. It is a blend of acrylic, mohair and wool, and delicately brushed to give a smooth, soft look. Gabrielle can be quickly and easily knitted into fashion garments. It comes in 10 colours at a

cost of 99p for 50gm ball. The yarn content is 70% courtelle, 15% lustre wool and 15% mohair.

PINGOUIN have created three new yarns — Caline, La Houle and Nuage. Caline is a soft and subtle yarn in 12 misty shades, 11 tweeds and 1 plain. It contains 80% acrylic, 10% mohair and 10% wool. Caline knits up into an Aran thickness and costs 69p per 50gm ball.

La Houle also knits up into an Aran thickness. It contains 55% acrylic and 45% wool and retails at 65p per 50gm ball. There are 12 carefully tweed colours.

Nuage is 55% wool and 45% acrylic. It is available in 15 shades and is ideal for those soft, cuddly winter jackets. Pingouin have introduced 12 designs for Caline and La Houle 4 for Nuage — with more to follow.

That completes the news on the Autumn yarns for now. We have had some news back from Worldwide Machine Club about their weekend residential course that they held in Newcastle recently. Seventy machine knitters attended lectures, informal discussions and demonstrations. The course included: the history of machine knitting, stitch techniques, garment design, garment finishing and knitting for profit. Further courses are being held in September at the Universities of London, Manchester, Brighton and Exeter. All the students confirmed that the weekend was a success and they requested further courses in the near future.

We have heard from members of knitting clubs from Redditch, Solihull, Erdington and South Barr who visited the Argyll Wools Limited Mills at Pudsey recently. As you can see from their photograph they had a most enjoyable day seeing the various processes that fibres go through right up to the finished balled and packaged state. The visit was organised by Mr. Collins, who is a member of the M.A.S.K. Group in the Midlands.

Mrs. McMenemy of Raheny, Dublin has sent us two photographs of garments she has knitted for one of her little girls. She tells us that Stitchin Time is always encouraging her to experiment with patterns and so she designed a suit and jacket. Mrs. McMenemy has seven children and knits for them all plus her husband. If any more of you would like to tell us about your own designs we would be happy to print your ideas.



PHOTOGRAPH: Pictures from left to right:— Barbara Harrow, Knitting Machine Advisor of Jones + Brother. Bonnie Ashford of Bonnie's Wools, Birmingham. Sandra Williams, Chairman of the Worldwide Machine Knitters' Club. Allan Ashford, of Bonnie's Wools, Birmingham.

The BRECON KNITTING MACHINE CLUB recently held their very first club fashion show and with an audience of some 200 it was obviously a tremendous success. Proceeds from the show amounted to some £150 which was donated to the Brecon Hospital X Ray Equipment Fund. Well done Brecon and good luck with your future activities.

Meetings are held fortnightly on Tuesday evenings from 7.30 – 9.30 in the Lecture Room, Church House, Brecon from the beginning of September through to the end of May.

Vera Hotchin's MACHINE KNITTER'S CIRCLE has reached a membership of 590 and she is aiming for 1000 by the end of this year. If you would like to swell these numbers, write to 276 Ashby High Street, Scunthorpe, South Humberside DN16 2RX. The subscription is £2.

She sends out quarterly newsletters explaining all about new developments and informing members of new yarns etc.

Vera and her husband run the Knitting and Sewing Centre at Scunthorpe and can supply spares and accessories, usually by return of post. Vera was, at one time, a Jones tutor and the Machine Knitters Club new sessions are due to start on Sept 5th at Bottesford and Yaddlethorpe Hall, Manor Road, Bottesford, Scunthorpe at 7 pm.

THE KNITTING AND CROCHET GUILD held their inaugural meeting at the end of last month. The aims are 'The preservation of the old and the exploration of new methods and techniques of crafts such as crochet, hand knitting and machine knitting'. Their members come from all over Britain and if you are interested in gaining more information the person to contact is Miss Laura Richardson, Pool Foot, Clappersgate, Ambleside, Cumbria LA22 9NE.

The guild will be organising residential courses at Gawthorpe Hall during the Autumn/Winter – details in the next issue. There is also a Machine Knitting Course being held at Aston Hall, Longridge, Preston in November details from Ann Lightfoot, The Principal, Alston Hall, Tel: Longridge 3589.

Finally, some information on three knitting clubs, a new club and two that will already be familiar to you all. The Leagrave Machine knitters Club has started up in Luton. It meets on the 1st and 3rd Wednesday of each



The photograph shows from left to right, Mr. J. Watterson, Midlands Area Representative for Argyll Wools, Mr. A. Burrow, Sales Manager for Argyll Wools, Mr. D. Collins of Fabric Galleries, Solihull and Birmingham, his wife and Club members.

month at the Hockwell Day Centre, Hockwell Ring, between 7.30 and 9.30. If you are interested in contacting this club the address is, 46 London Road, Luton, Beds and the secretary is Mr. W.G. Littlewood.

We mentioned in the last issue that the National Knitting and Crochet Guild was being formed. We have now received their first newsletter and numbers of members are growing steadily, more or less equally balanced between crochet, hand knitting and machine knitting. The newsletter contains news on future meetings, requests for members hints and many articles and competitions. Applications are being taken by Miss Wood, 10 Westbourne Road, Lancaster LA1 5DB. The membership fee is £5.

Carol Chambers has given us details of her Advanced Tuition Course. The course comprises of 12 different lessons which are as follows:-

1. Knitradar, Knitleader, Knit-tracer adaptations — basic shape alterations to standard outlines.
2. Slip stitch — stitch make-up and special uses on certain yarn types.
3. Basic design.
4. Ribbers — problems, cast-ons, tensions and measurements.
5. Transfer patterns — manual transfer techniques in lace work, double bed work with cables.

6. Edgings — new stitch patterns for finishing knitting. Basic crochet included.

7. Weaving — basic methods. Designing punchcards.

8. Knitrader, Knitleader, Knit-tracer adaptations. More adaptations from basic styles.

9. Lace Knitting — manual techniques, punch lace and "real lace".

10. Pictures — single motif techniques. Use of fairisle. Use of Knitrader/Knitleader in large scale picture work.

11. Ribbers — punch card patterning on ribbers. Fine lace work and tuck rib.

12. Tuck stitch — texture effects available. Designing stitch patterns for colour work.

Carol is still running her basic tuition course and if you are interested in receiving either of her courses the yearly fee is £9.50. You will also receive a monthly newsletter full of knitting gossip tips and special offers. For those readers who have not got her address, it is 48 Wellington St., Slough, Berks SL1 1UB.

Also Carol tells us that the Bracknell Club is doing well and she would be happy to hear from more knitters in the area. They have quite a few ideas planned for the future and have already entered a competition and won prizes.



Woman's lace top with Shoulder Frill

Measurements

To Fit: 32 (34, 36, 38) in.

Materials

1 (1, 1, 2) Cones of Crystal Rayon — available from Vegas Yarns Ltd., PO Box 60, Doyle House, St. Peter Port, Guernsey C.I. (Send 40p for shade card).

Tension

28 sts. & 38 rows to 4 in (10 cms) over plain knitting with T.D. approx. 6 26 sts. & 30 rows to 4 in over lace patt. with T.D. approx. 6.

Pattern

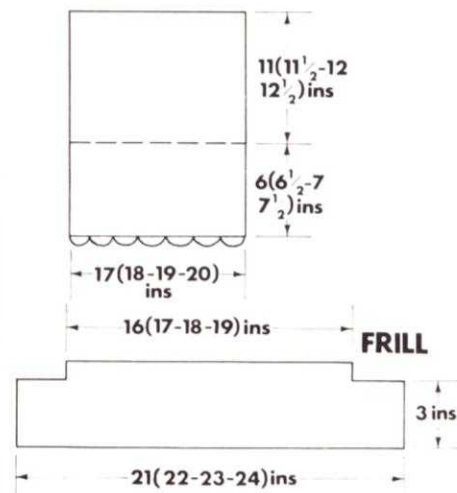
Lace Card 411 from **Vol 6**, set for KH820 & KH830 machines.

BACK & FRONT ALIKE

Step 1. C.O.B.H. 146 (152, 160, 166) sts. T.D. at M.T., knit 6 rows and turn hem. Put 10th and every foll. 10th sts. into H.P. and leaving them in H.P., knit 6 rows. Put all Ns. to W.P. and knit 2 rows.

Step 2. R.C.000. T.D. at M.T., working in lace patt. knit to R.C. 46 (48,52,56). Change to plain knitting and knit 2 rows. Make 'holes' for drawstring by transferring 4th and

every foll. 4th sts. to their adj. Ns, leaving empty Ns in work. Knit to R.C. 142 (150, 158, 168) and cast off.



FRILL Make 3 altogether.

Step 1. C.O.B.H. 146 (152, 160, 166) sts. T.D. at M.T., knit 6 rows and turn hem. Put every 6th sts. into H.P. and knit 6 rows. Return all Ns. to W.P. and knit 2 rows.

Step 2. R.C.000. T.D. at M.T., Knit in lace patt. to R.C. 024. Change to plain knitting and knit 2 rows. Knit several rows with waste yarn and strip off machine. Replace sts. as folls: — 1 sts. on 1st. 5 Ns, *2 sts. on next Ns, 1 sts. on next Ns*. Repeat from * to * until last 5 sts., 1 sts. on next 5Ns. Push empty Ns. back to rest and knit 2 rows. Strip off machine with waste yarn and repeat replacement as before. Knit 2 rows and cast off.

TO MAKE UP

Press carefully with a warm iron and very slightly damp cloth. Sew side seams. With right side of work facing place centre back seam of frill to centre back and tack the frill evenly along back and front parts, leaving equal length of frill at sides to form straps. Crochet 1 row of double crochet to fasten frill to back and then break off and repeat with front. Leaving equal length of frill at sides to form straps. Crochet 1 row of double crochet on neck side of straps. Crochet a chain and thread right along front neck, strap edge, back neck, strap edge and back to centre front. Pull and gather as required. Thread ribbon or crochet cord through waist and gather to fit. Give final light press.

LADIES WOVEN JACKET

Materials

Listers Conifer Acrylic Nylon 1 cone Col. A, Texere Viscose spiral 1 16oz cone. Send for shade card 169 to Texere Ltd, College Mill, Barkerend Rd, Bradford.

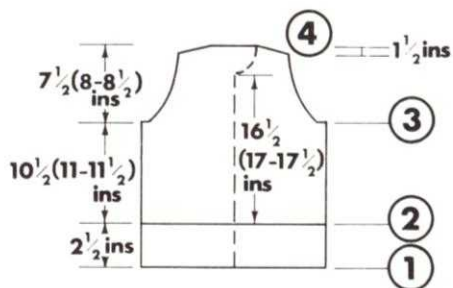
Measurements

To fit 34 (36, 38)

Tension

29sts x 40 rows = 4" over weaving TD 7 approx.

Card No 299 from punch card pattern book



BACK

Step 1. Ribbers. Cast on 128 (134, 140) sts for 1 x 1 rib K3 rows tub K32 rows T $\frac{3}{4}$ Transfer to main bed.

S.bed m/cs Cast on 128 (134, 140) sts for 1 x 1 mock rib K64 rows T3 MDE.

Step 2. 000 Weave without shaping to row 110 (115, 120) Cast off 6 (7, 8) sts beg. next 2 rows.

Step 3. 000 Dec 1st each end every 3rd row 8 times. Continue straight to row 070 (075 080)

Step 4. 000 c/o four sts beg. each row until 44 (46, 48) centre sts remain K1 row st. st. K few rows waste.

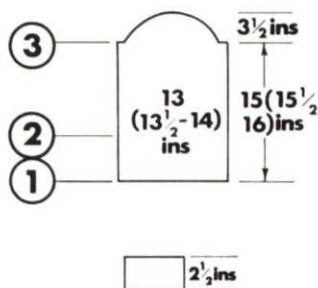
FRONT

Step 1. Cast on 64 (67, 70) sts complete as step 1 for back.

Step 2. 000 Weave to row 110 (115, 120) c/o 6 (7, 8) at right (left)

Step 3. 000 Dec 1st at Right (left) every 3rd row 8 times. Continue straight to row 050 (055 060). Cast off 12 (13, 14) at left (right) for neck. Dec 1st at left (right) every alt row 10 times. Continue straight to row 070 (075 080).

Step 4. 000 c/o four sts at armhole edge every alt. row till all sts are c/o.



OPEN STITCH SWEATER WITH PUFF SLEEVES

Materials

Listers Conifer Acrylic Nylon — 1 Cone.


Measurements

To fit 32 (34, 36) in bust — loose fitting.

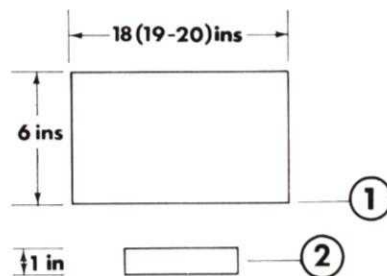
Tension

4 sts (over 7Ns) x 12 rows = 1" T.D. approx 7.

Notes

Card is 2 x 2 check  pattern worked over alternate Ns. When asked to cast off, this refers to actual sts.

Step 3. 000 Knit to row 50 (56, 62) T7. Thread up centre 23 (25, 27). Knit one side first. Knit 2 rows. C/O 1st at neck. K to row 100 (112, 124). C/O. Knit other side to match.



SLEEVES

Step 1. Using waste yarn cast on 94 (100, 106) K few rs K1 row st. st. main yarn.

Step 2. 000 Weave without shaping to row 160 (165, 170) c/o 6 (7, 8) sts beg. next 2 rows.

Step 3. 000 Dec. 1st each end every alt. row five times. Dec. 1st each end every row twenty times. c/o.

CUFFS

Ribbers Cast on 60 (62, 64) 1 x 1 rib K3 rows tub K 32rs. Trans to MD. Attach sleeve above waste yarn c/o. S.bed M/cs cast on 60 (62, 64) for 1 x 1 mock rib. K64 rows MDE. Attach sleeve above waste c/o.

NECKBAND

Cast on 130 (134, 138) for 1 x 1 mock rib.

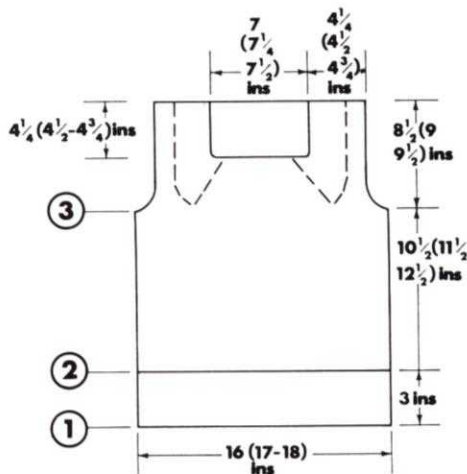
Knit 20 rows T3 MDE Attach back centrally above waste yarn, attach fronts on either side of back, rt sides facing m/c c/o.

CORD

Take a length of weaving yarn approx 240" long. Fold in two, attach to hook or door handle on fold, twist yarns over each other. When well twisted fold in half and tie knot in each end. Insert into neck.

To make up

Join seams, insert zip.



BACK

Step 1. Ribbers cast on 140 (148, 156) Ns for 1 x 1 rib K3 rows tub. Knit 40rs T2/3. Transfer to main bed to Ns already carrying a stitch.

S/bed m/cs. Cast on 140 (148, 156) Ns for 1 x 1 mock rib K 80rs T3 MDE, placing sts onto Ns already carrying a stitch.

Step 2. 000 Knit in tuck stitch to row 160 (172, 184). Cast off 5 (5 5) sts beginning next 2rs.

Step 3. 000 Knit to row 100 (112, 124) K1 row st.st. T10 C/O

FRONT

Steps 1 and 2

As back.

SLEEVES

Step 1. Using waste yarn cast on 140 (144, 148) sts., K100 rows T7. C/O loosely.

Step 2. Ribbers. Cast on 70 (72, 74) sts. Knit 3rs tub. K 12rs in 1 x 1 rib. Transfer sts. to main bed bringing in empty Ns. With rt side facing m/c attach sleeve above waste. C/O. S. Bed M/Cs. Cast on 70 (72, 74) sts in 1 x 1 mock rib. K12rs T3. MDE onto empty Ns. With rt side facing m/c attach sleeve above waste. C/O.



COLLAR

COLLAR (optional)

Cast on 200 Ns for 1 x 1 mock rib. K8 rs T8. MDE placing sts. onto Ns already carrying a stitch K34 rs tuck stitch, T7, K 1r st. st. T10. c/o.

TO MAKE UP

Join seams. Work 2 rows double crochet around neck working into stitches rather than spaces. Sew on collar.



FANCY LACE SKIRT AND TOP

Materials

Adah (3 ply) from Silverknit — 2 cones.

Measurements

To fit: — Bust 30 (32, 34, 36, 38) in 77 (82, 87, 92, 97) cm.

Waist 22 (24, 26, 28, 30) in 56 (61, 66,

71, 76) cm.

Length of skirt — $27\frac{1}{2}$ in or 70 cm.

Notions

1 in elastic — waist measurement + 2 in. Lace — approx. $4\frac{1}{2}$ m.



Tension

T. Square as per Instruction Book.
40 sts. — 11 cm. 60 rows — 12 cm.
T.D. 2.

Notes

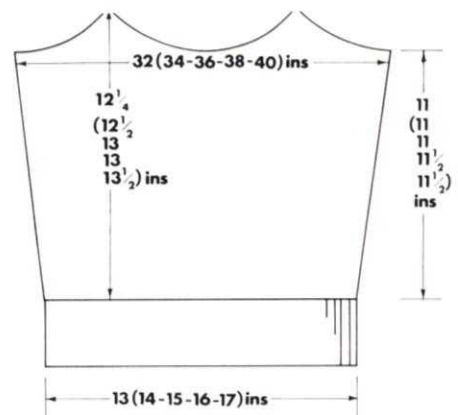
Lace Card No. 182 (From "Brother Punch-Card Pattern" book).

SUN TOP

Frill strip

T.D. 2. C. O. 14 sts.

Using 13 Ns. one side of 0 and 1 N on other side, Work measures 150 cm. C/O. (It is a good idea to press and add lace at this stage)



Front and back alike

C.O. 124 (132, 140, 148, 156) sts. T.1. in W. W.1. Work 2 x 1 rib for 80 rows. Turn up hem 000 T. 2.

Inc 1 st. at each end of Ev. foll. 11th (11th, 12th, 12th, 12th), R until there are 144 (152, 160, 168, 176) sts. K until counter reads 122 (126, 130, 134, 138).

C/O 10 sts. at beg of next 2 Rs. At arm edge Dec. 2 sts every 3rd R until counter reads 150 (152, 154, 156, 158).

Put all Ns. on L.H. Side of M.B. into H.P. + 10 sts on R.H. side of centre, at the same time as dec. for arm edge, *(K. 2 Rs, put 5 Ns on R.H. side into H.P.)* repeat twice. *(K. 2 Rs, put 2 Ns into H.P.)* repeat until all Ns are in H. Pos.

Break yarn and work L.H. side in reverse. When all Ns are in H. Pos. C/O.

SKIRT

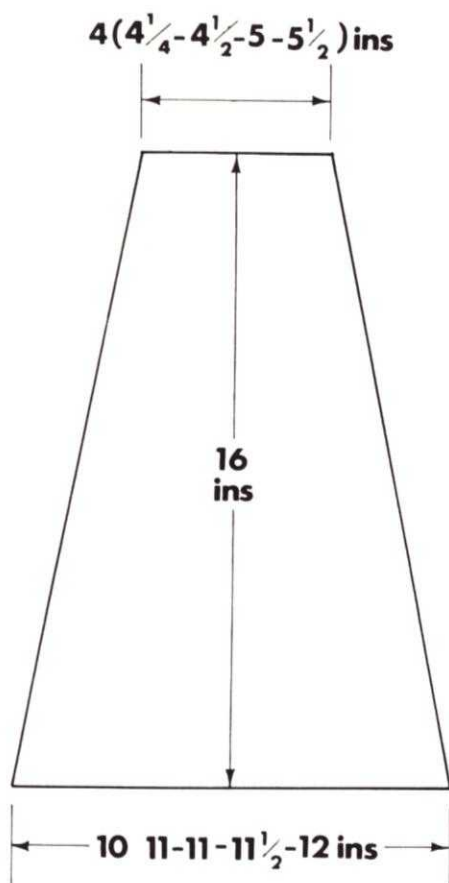
C.O. 36 (40, 44, 48, 52) sts. in W.W1 000. Work in st. st. T2. inc. 1 st. at each end of Ev. foll. 7th R until 92 (96, 100, 104, 108) sts. K. until counter reads 200 C/O. Repeat 5 times more

WAISTBAND

Take 3 skirt pieces, remove W.W1

and place on m/c ready to K. 2 x 1 rib (put end two sts. of each piece on same N) T.1 Rib 30 Rs. Pick up C.O. row and C/O. Repeat once more.

BOY'S OR GIRL'S WOVEN JACKET



SKIRT FRILL

C.O. 110 sts. T.2 work in Lace until work measures 3 metres C/O.

Put Frill to Top

Mark the frill strip into four sections with pins. Gather each section onto 50 Ns., W.S. of work facing.

Again with W.S. of work facing take Front and ease neck edge onto first 45 Ns on L.H. side of M.B.

With W.S. of work facing take Back and ease neck edge onto first 45 Ns on R.H. side of M.B.

T. 4 K. 1 R, T.1 K. 10 Rs. pick up first R and C/O.

Make up

Press all pieces. Join seams on skirt. Thread elastic through waistband and join, finish waistband seams. Add lace to skirt frill both edges. Put running st. (gathering) approx. 2 cm from top of frill. Place frill on top of hem and attach along gathered line. Join neck frill and small band at neck edge. Press hem and join side seams.

Materials

Argyll Ferntex 4 ply, 1 cone col. A. Sirdar Pullman Wool 7 (7, 7) 50 gm. balls, col. B.

Measurements

30 (32, 34) in. chest. Length: see diag.

Tension

12 Rs. x 7 sts. = 1 in. Measured on wrong side of sample. T.D. approx. 6. Card.

One row kept locked ...0...0...One hole punched, three not punched across row.

BACK

Step 1. Ribbers: Cast on 108 (112, 116) sts. for 1 x 1 rib. K. 3 Rs. tub, K. 30 Rs. T₃. Transfer sts. to main bed.

Single-Bed M/cs: Cast on 108 (112, 116) sts. for 1 x 1 mock rib, K. 30 Rs. T4, K. 1 R. T5, K. 30 Rs. M.D.E.

Step 2. R.C.000. Set m/c for weaving. T.D. at 6. Weave with card locked to R. 095 (101, 107). Cast off 5 sts. beg. of next 2 Rs.

Step 3. R.C.000. K. 2 Rs. Dec. 1st each end every alt. R. 5 times. Cont. straight to R. 076 (082, 088). Cast off 2 sts. each end every R. to R. 088 (094, 100). Cast off.

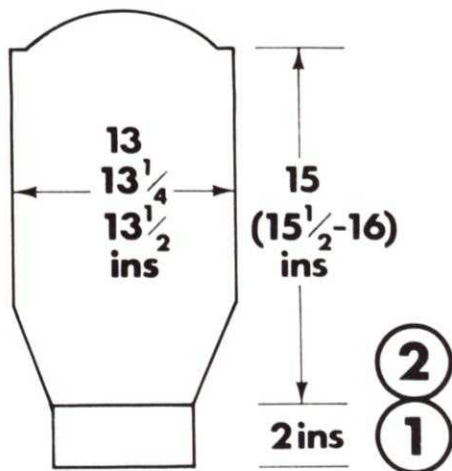
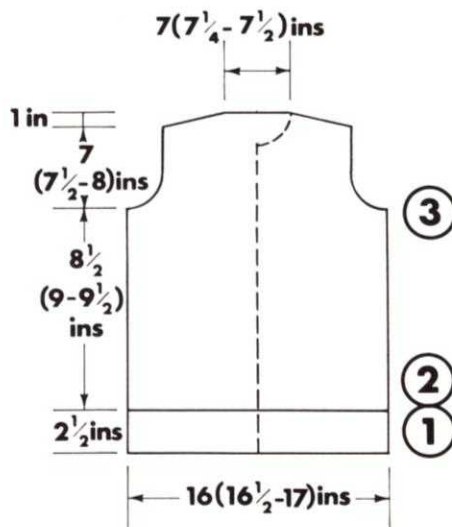
FRONT 2 alike reversing shaping.

Step 1. Ribbers: Cast on 54 (56, 58), K. as Step 1 for Back.

Single-Bed M/cs: Cast on 54 (56, 58), K. as Step 1 for Back.

Step 2. As for Back, but cast off 5 sts. at armhole edge only R. 095 (101, 107) etc.

Step 3. R.C.000. K. 2 Rs. Dec. 1st at armhole edge every alt. R. 5 times. K. straight to R. 070. Cast off 9 sts. at neck edge. Cast off 1st at neck edge every alt. R. to R. 076 (082, 088). Cast off 2 sts. every R. at shoulder edge and 1 st. every alt. R. at neck edge to R. 088 (094, 100).



SLEEVES

Step 1. Ribbers: Cast on 48 (50, 52) sts. for 1 x 1 rib. K. 3 Rs. tub, K. 25

Rs. T $\frac{3}{4}$, transf. to main bed.

Single-Bed M/cs: Cast on 48 (50, 52) sts. for 1×1 mock rib, K. 50 Rs. M.D.E.

Step 2. Weave 4 Rs., inc. 1 st. each end next and every 5th R. until you have 80 (82, 84) sts. Cont. straight to R. 165 (168, 171). Cast off 5 (6, 7) sts. at beg. of next 2 Rs. K. 4 Rs., dec. 1st each end next R. *K. 3 Rs., dec. 1st each end next R. Repeat from * 5 times. Dec. 1st each end every alt. R.

till R. 22 (24, 26) sts. remain. Cast off.

NECK BAND

Cast on 90 (92, 94) sts. for 1×1 mock rib. K. 20 Rs. T3. M.D.E. Attach fronts and back with right side facing m/c., leaving $\frac{1}{2}$ in. at front neck edges without facing to enclose top of zip. Cast off.

TO MAKE UP

Join seams, insert zip and oversew ends of neckband over top of zip.

MAN'S SKIP STITCH SWEATER

Measurements

To Fit: 38 (40, 42, 44, 46) in.

Materials

18 (21, 24, 27, 30) 20 gm Balls Robin Columbine 4 ply crepe.

Tension

30 sts. & 54 rows measured over Skip stitch patt. with T.D. approx. 7 28 sts. & 40 rows measured over plain knitting with T.D. approx. 6.

Machines

KH820, 830 and 800 machines.

Pattern

Punch card from diag. shown. NOTE: Back and sleeves knitted in plain knitting, Front only in skip stitch patt.

BACK (Plain knitting throughout)

Step 1. Cast on in 2x1 rib 140(146, 152, 160, 168) sts. T.D. at M.T.-2, knit 44 rows and turn hem.

Step 2. R.C.000. T.D. at M.T., knit to R.C.160 (164, 174, 180). Cast off 6 (6, 6, 7, 7) sts. at the beg. of the next 2 rows. Cast off 3 (4, 4, 5, 6) sts. at the beg. of the next 2 rows. Cast off 3 (3, 4, 4, 5) sts. at the beg. of the next 2 rows. Dec. 1 sts. at both sides of next and every foll. alt. row 6 times in all — 104 (108, 112, 116, 120) sts. remain.

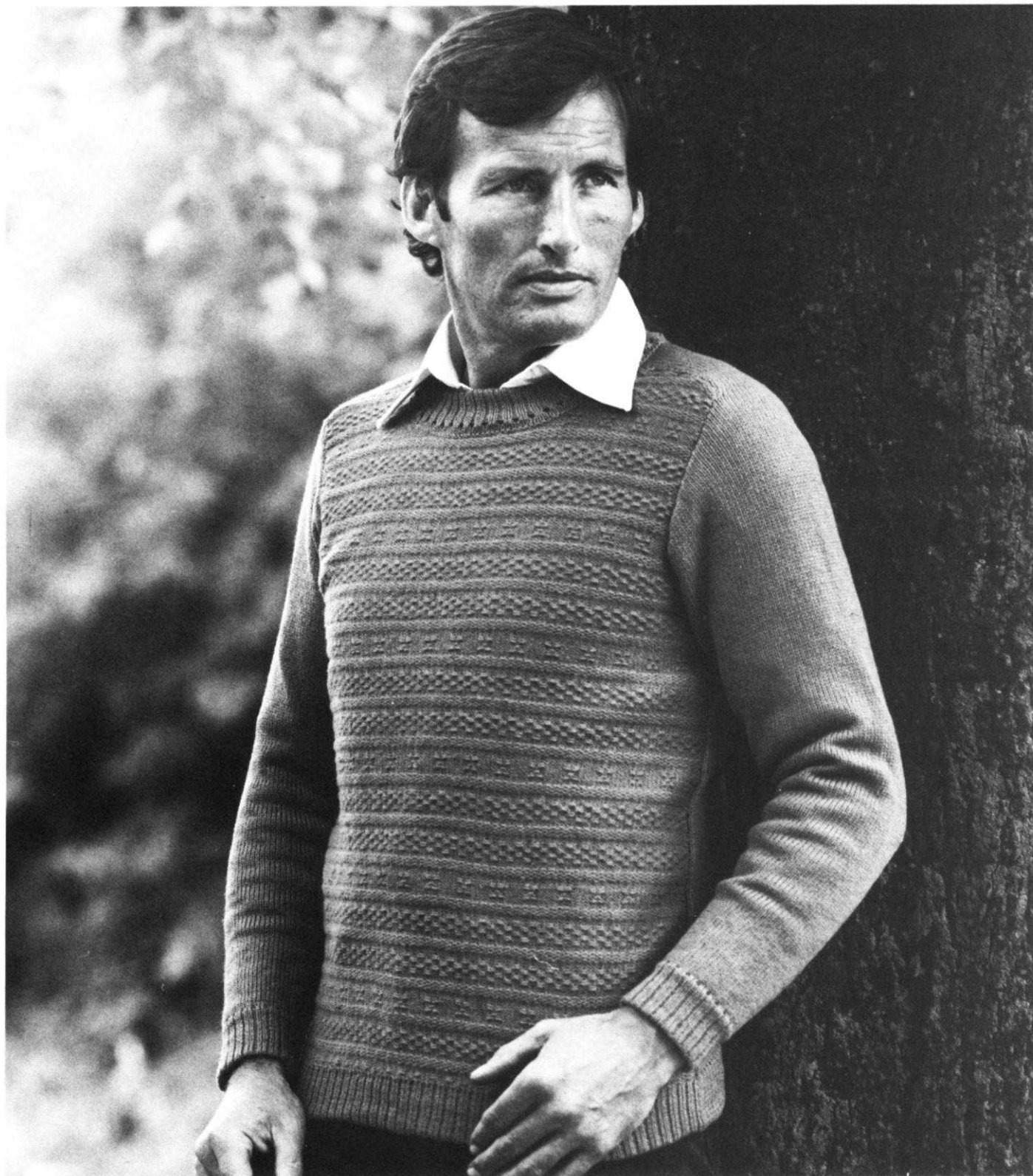
Step 3. Knit to R.C.230 (240, 250, 260, 270). Cast off 7 sts. at the beg. of the next 2 rows. Cast off 6 (7, 7, 7, 7) sts. at the beg. of the next 2 rows. Cast off 6 (6, 7, 7, 7) sts. at the beg. of the next 2 rows. Cast off 6 (6, 6, 7, 7) sts. at the beg. of the next 2 rows. Cast off 6 (6, 6, 6, 7) sts. at the beg. of the next 2 rows. Cast off rem. 42 (44, 46, 48, 50) sts.

FRONT (Main part, after hem in skip stitch patt.)

Step 1. Cast on in 2x1 146 (152, 160, 166, 174) sts. and continue as Step 1. Back.

Step 2. R.C.000. T.D. at M.T., start and work in skip stitch patt. throughout. Knit to R.C. 216 (222, 230, 236, 242). Cast off 7 sts. at the beg. of the next 2 rows. Cast off 3 (4, 5, 5, 6) sts. at the beg. of the next 2



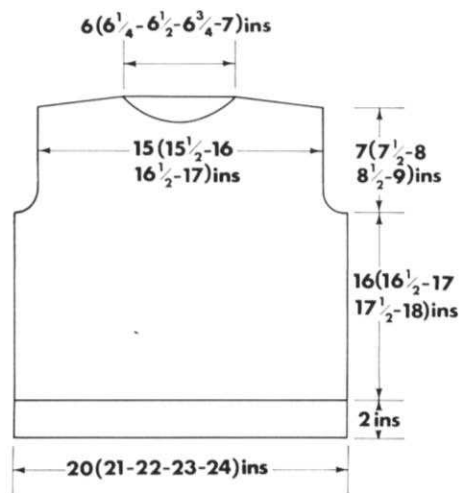


rows. Cast off 3 (3, 4, 5, 6) sts. at the beg. of the next 2 rows. Dec. 1 sts. at both sides of next and every foll. alt. row 6 times in all — 108 (112, 116, 120, 124) sts. rem.

Step 3. Knit to R.C. 284 (298, 312,

324, 336). Cast off 22 (22, 24, 24, 24, 26) sts at centre, knit LHS back to rest using cord, note patt. row showing and continue to knit R.H.S. as folls:— Knit 1 row, cast off 3 (4, 4, 4, 4) sts. at the beg. of the next row,

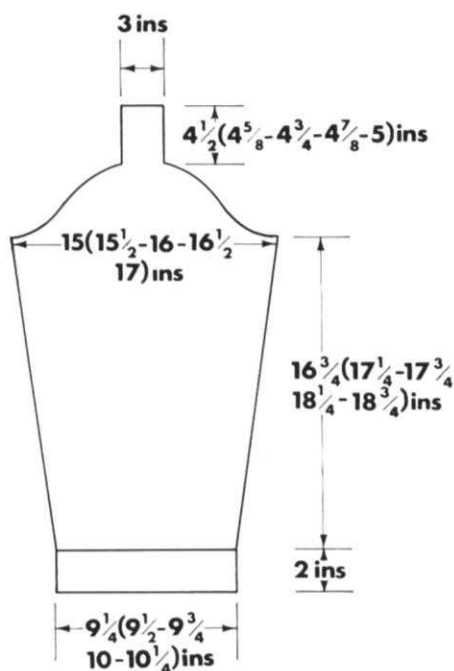
knit 1 row. Cast off 2 (2, 2, 3, 3) sts. at the beg. of the next row, knit 1 row. Cast off 2 sts. at the beg. of the next row, knit 1 row. Dec. 1 sts. at neck edge on next and every foll. 3rd row 4 times in all. — 32 (33, 34, 35,



36) sts. remain.

Step 4. Knit to R.C. 310 (324, 338, 350, 362). Cast off 7 (7, 7, 7, 8) sts. at the beg. of the next row, knit 1 row. Cast off 7 sts. at the beg. of the next row, knit 1 row. Cast off 6 (7, 7, 7, 7) sts. at the beg. of the next row, knit 1 row. Cast off 6 (6, 7, 7, 7) sts. at the beg. of the next row, knit 1 row. Cast off rem. 6 (6, 6, 7, 7) sts.

Take Carr. to left of machine, turn R.C. back to 284 (298, 312, 324, 336), reset patt. at row noted and knit L.H.S. to match R.H.S.



SLEEVES (Plain knitting throughout)

Step 1. Cast on in 2x1 rib 64 (65, 68, 70, 71) sts. T.D. at M.T.-2, knit 44 rows and inc. 0 (1, 0, 0, 1) sts. — 64 (66, 68, 70, 72) sts.

Step 2. R.C.000 T.D. at M.T., knit 4 (2, 2, 2, 2) rows and inc. 1 sts. at both sides of next and every foll. 8th row 20 (21, 22, 23, 24) times in all — 104 (108, 112, 116, 120) sts.

Step 3. Knit to R.C. 168 (172, 178, 182, 188). Cast off 6 (6, 6, 7, 7,) sts. at the beg. of the next 2 rows. Dec. 1 sts at both sides of the next and every foll. alt. row 11 (13, 15, 18, 18) times in all. Dec. 1 sts. at both sides of next and every foll. row 24 (24, 24, 22, 24) times in all — 22 sts. remain. Knit 46 rows straight and cast off.

NECKBAND

Sew sleeves into shoulder seams of back and front — leaving one seam open. With right side of work facing, pick and replace sts. on to machine as follows:—

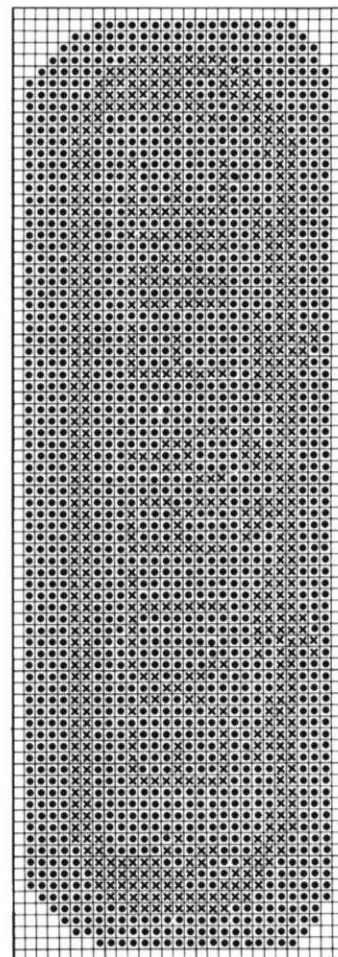
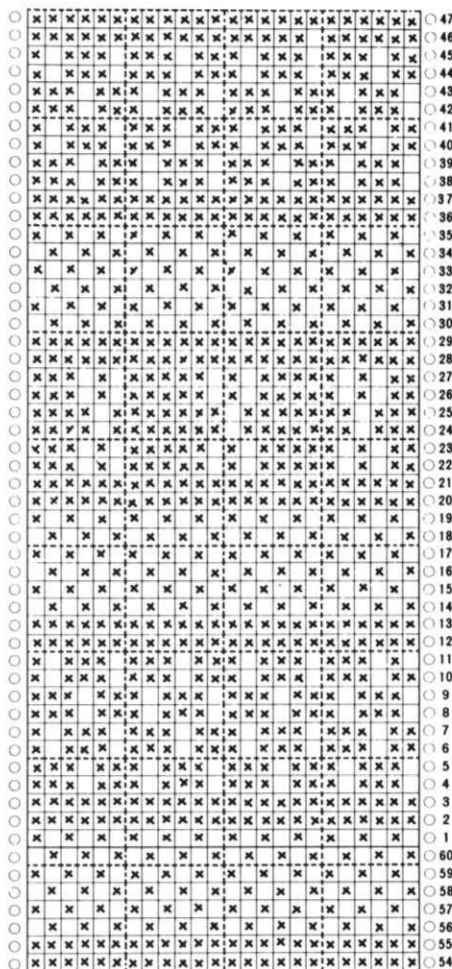
22 sts. from top of each sleeve, 70 (72, 76, 80, 82) sts. from Front and 42 (44, 46, 48, 50) sts. from Back. T.D. at 6, knit 1 row. Transfer sts. to 2x1 rib and with T.D. at M.T.-1, knit 4 rows. T.D. at M.T.-2, knit 6 rows.

T.D. at M.T.-2. Knit 8 rows, T.D. at M.T.-2 knit 6 rows, T.D. at M.T.-1 knit 4 rows, Push out of work Ns. back into work and with T.D. at M.T., knit 4 rows. Knit several rows with waste yarn and strip off machine.

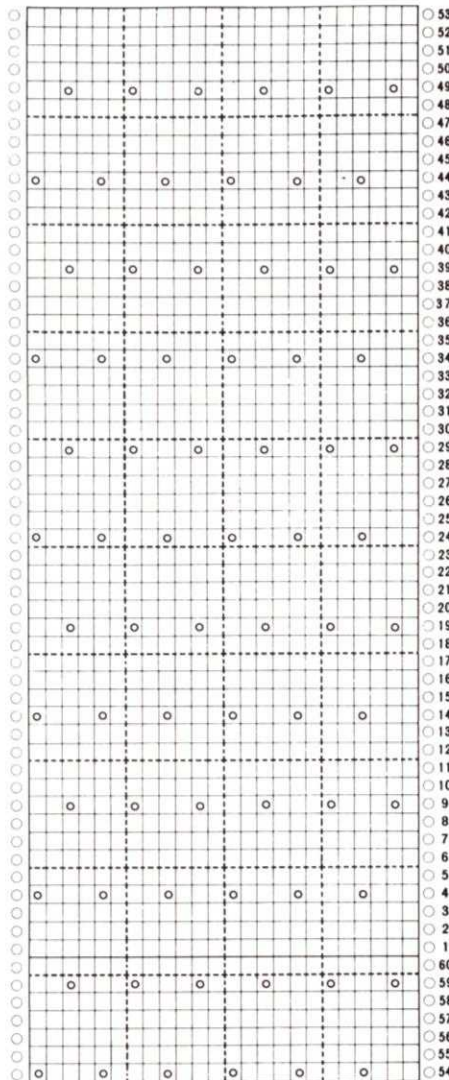
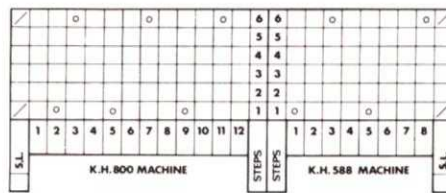
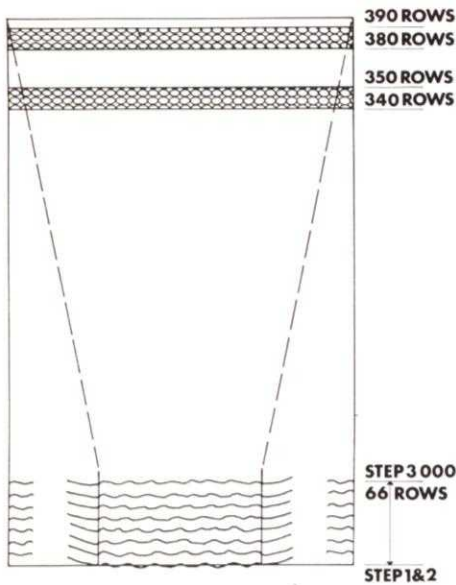
TO MAKE UP

Sew final shoulder seam. Fold neckband in half onto right side — so that last 4 rows lap over pick up point around neck. Backstitch through the last loops knitted in the main colour and remove waste yarn. Set in sleeve head. Sew side and sleeve seams. Give final light press with a warm iron and dry cloth.

Second chart for Cherry Brandy Sweater pages 34/35.



Ladies Evening Dress with lace dolman sleeves



Step 2. Change to col. A. Using shearing elastic as weaving thread knit to row 66 (weaving elastic every 5th row) C.O.R. 000.

Step 3. Cease weaving pattern cont in st. st. Knit to row 340 (lengthen or shorten here). Using lace pattern chart trans first set of holes. Change to col. B knit 10 rows lace pattern (R.C. 350) trans next set of holes. Change to col. A K30 rows st. st. (R.C. 380) trans next set of holes. Change to col B. work 12 rows in lace pattern. T5 K8 rows st. st. Cast off.

To make up

Pull ends of shearing elastic so that each piece measures approx. seal ends of elastic. Join side seams. Turn up hem.

Straps. Knit 2.

In col. A C.O.B.H. 50 sts. T7 K2 rows. Trans 1 row of lace patt. Change to col. B work 4 rows lace patt. Change to col. A K4 rows st. st. Trans 1 row of lace pattern. Change to col. B work 4 rows lace patt. Change to col A. K2 rows st. st. Turn hem cast off.

Sew straps into pos.

Materials

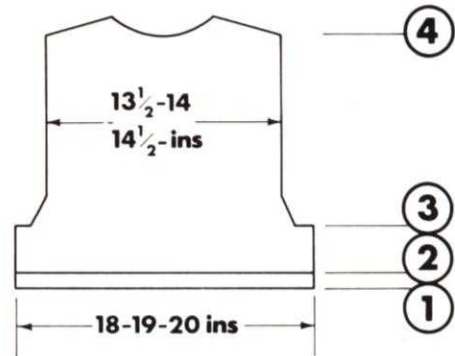
3 Suisse — Soiree, knits as 3 ply, 6 balls. Elastic.

Measurements

To fit 34 (36, 38) inch bust. Total length 16½ in. Sleeve seam 14½ in.

Tension

6.5 sts. x 10 rows = 1 in over st. st. Pattern 820/830 card no. 436 from pre punched set Vol. 10 588 pattern no. 210 from book.



Back

Step 1. C.O.B.H. 117 (123, 129) sts. on alt nds. T5 K10 rows turn hem bringing other nds into W.P. 000.

Step 2. T7 K30 rows. Cast off 5 sts. at beg. of next 2 rows. 000.

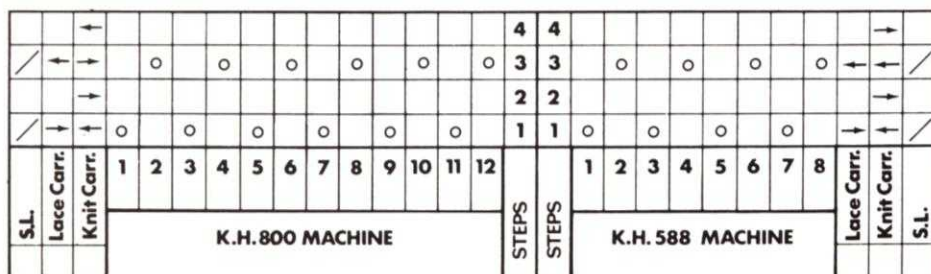
Step 3. Cast off 2 sts. at beg. of next 4 rows, dec. 1st at both ends every alt row to 87 (91, 95) sts. k to row 120.

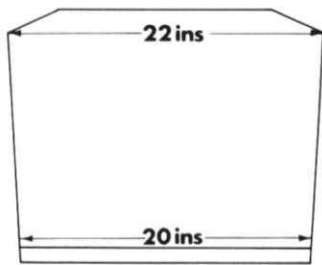
Step 4. Cast off centre 3 (5, 7) sts. Place sts. to left in H.P. continue on right side only. Cast off 4 sts. at neck edge every alt. row 4 times *at the same time* * cast off 5 sts. at beg of next and every alt row 4 (3, 2) times the 6 sts. 1 (2, 3) times. Knit left side to match rev. shaping.

Front

Knit as for back to end of step 2 dec. centre sts. working on right side only shape armhole edge as for back at the same time dec. 1st at neck edge every 7 (7, 6) th row 17 (18, 19) times 26 (27, 28) sts. knit as for back from * knit left side to match rev. all shaping.

Chart B





③

Sleeves

Step 1. C.O.B.H. 130 sts. knit as for step 1 of back.

Step 2. Set m/c for lace patt T7 inc. 1st at both ends every 18th row to 144 sts. K to row 146.

Step 3. Cast off 2 sts. at beg. of next 12 rows. Cast off rem sts.

②

To make up

Join shoulder seams.

①

Neck band

Cast on 195 (197, 199) sts. T5 dec. 1st

at beg of next 10 rows. Inc. 1st at beg of next 10 rows. Turn hem. With right side of work facing m/c place back neck to centre 35 (37, 39) sts. place one side of neck to 80 nds cast off loosely. Place other front neck to rem 80 nds cast off loosely. Sew "V" edges tog. Sew in sleeves. Join rem. seams.

Thread elastic through bottom of cuffs and bodice.



CHERRY BRANDY SWEATER

Materials

Wendy 4 ply wool.
16 (17, 18, 19) 25g balls in green
2 balls each red, black, white.
Wendy Minuite Lurex. 2 balls bright gold.

Measurements

To fit 32 (34, 36, 38) in. bust.
81 (86, 91, 97) cms.

Total length 24 ins.=61 cms.

Sleeve seam 17 ins.=43 cms.

Tensions

7 sts.×9 Rs. =1 in.
14 sts.×18Rs.=5 cms.
T.D. approx. T.

BACK

Step 1. Ribbers: Cast on 122, (130, 138, 146) sts. for 2×2 rib. T. K.22 Rs. Trans to main bed. 000. Single/Bed, M/C. Cast on for 2×1 mock rib 122 (130, 138, 146) sts. T.5 Knit 44 Rs. Turn hem 000.

Step 2. With M.T. K.130, (126, 126, 126) Rs. mark end sts. with waste yarn. K. to R. 198.

Step 3. Cast off. 10 (11, 12, 13) sts. at beg. of next 6 Rs. Cast off. rem. 62 (64, 66, 68).

FRONT

Step 1. Knit as for back, increasing 1st at right at end of step 1.

Step sts. . K.33 Rs. Start motif, follow chart to row (see notes) 160, K. to R. 174. Cast off centre 45 sts. Working on right side only place sts. on left to H.P. Dec. 1 st. at neck edge at beg. of next 9 (10, 11, 12) Rs. K. to R. 198. Cast off 10 (11, 12, 13) at beg. of next and following alt. Rs. Ret. sts. from left side of neck and knit to match reversing all shaping.

SLEEVES

Cast on with waste yarn 107 (115, 115, 115) sts. knit a few Rs. waste C.O.R. 000.

Step 1. K.136 Rs. Cast off loosly. Press sleeve.

CUFF

Ribbers: Cast on for 2 × 2 rib 56 (64, 64, 64) sts. T. knit 22 Rs. Trans. sts. to main bed.

S/bed. M/C cast on for 2 × 1 mock rib 56 (64, 64, 64) sts. T.5 K. 44 Rs. Turn hem.

With right side of work facing M/C place sts from bottom edge of sleeve evenly onto cuff, cast off. Remove waste yarn.

Step 2.

Cuffs (knit 2)

Ribbers: Cast on 80 (80, 80) sts. for 1×1 rib. K. 3 Rs. tub. K. 30 Rs. T2/2. Transf. to main bed. With right side facing m/c, attach sleeve to cuff placing 2 sts. to 1st Ns., one st. to next Ns, 2 sts. to next Ns., etc., across R. Cast off.

Single-Bed M/cs: Cast on 80 (80, 80) sts. for 1×1 mock rib. K. 60 Rs. T2. M.D.E.

With right side facing m/c attach sleeve to cuff, placing 2 sts. to 1st Ns., one st. to next Ns., 2 sts. to next Ns. etc. across R. Cast off.

COLLAR

Back with waste yarn cast on 62 (64, 66, 68) sts. K. a few Rs. waste C.O.R. 000.

Using M.T. K.126 Rs. Turn hem with right side of work facing M/C. place back neck to collar and Cast off

loosly. Front, with waste yarn cast on 92 sts. knit a few Rs. waste. C.O.R. 000. Using M.T. K.26 Rs, follow motif from chart to R. 53. K. to row 126, turn hem, with right side of work facing M/C place front neck to these sts. cast off loosly.

Press all pieces. Join seams. Sew in sleeves between markers.

TO MAKE UP

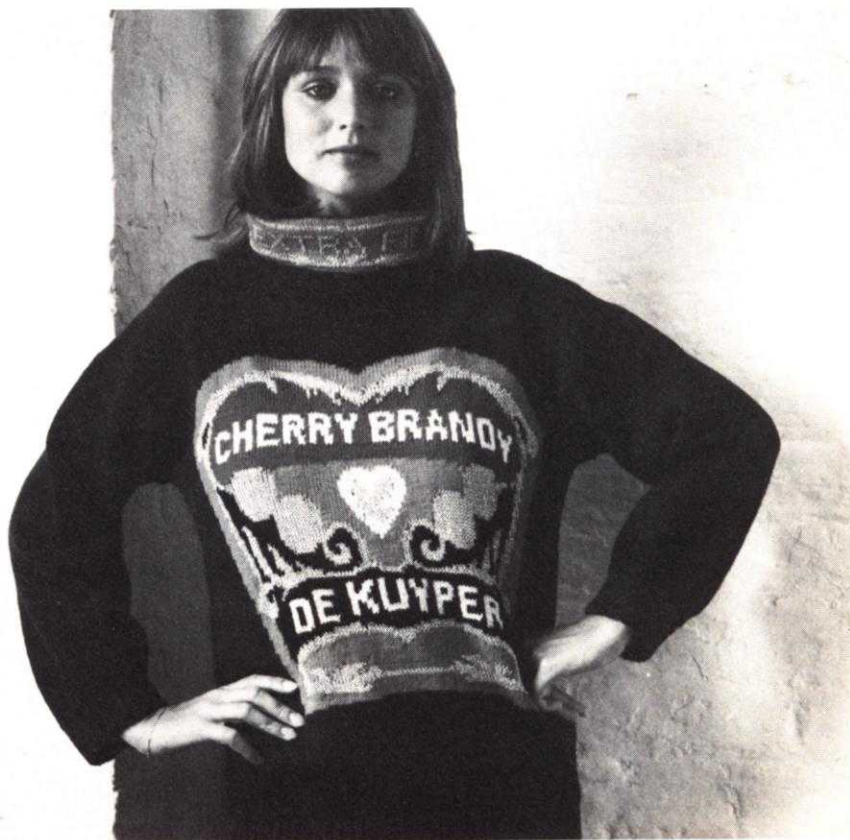
Join sleeve seams and shoulder seams. Thread ribbons in eyelet Rs. and secure at edges. Join remaining seams.

NOTE

This type of sweater is only suitable for 588/800 machines where the contrast yarns are laid over needles by hand following the hand selection method laid out in Issue No. 39 of Stitches' Time. Follow charts weaving the different colours over the corresponding needles, make sure to seal all colours at beg. of each row. Although time consuming, you should get a great deal of satisfaction from making this type of motif.

SHOULD NOT BE ATTEMPTED BY NOVICES

For extra effect go over each letter in gold lurex on the collar, using the Swiss Embroidery method to make it stand out more.



●: RED x: GOLD ○: BLACK /: WHITE

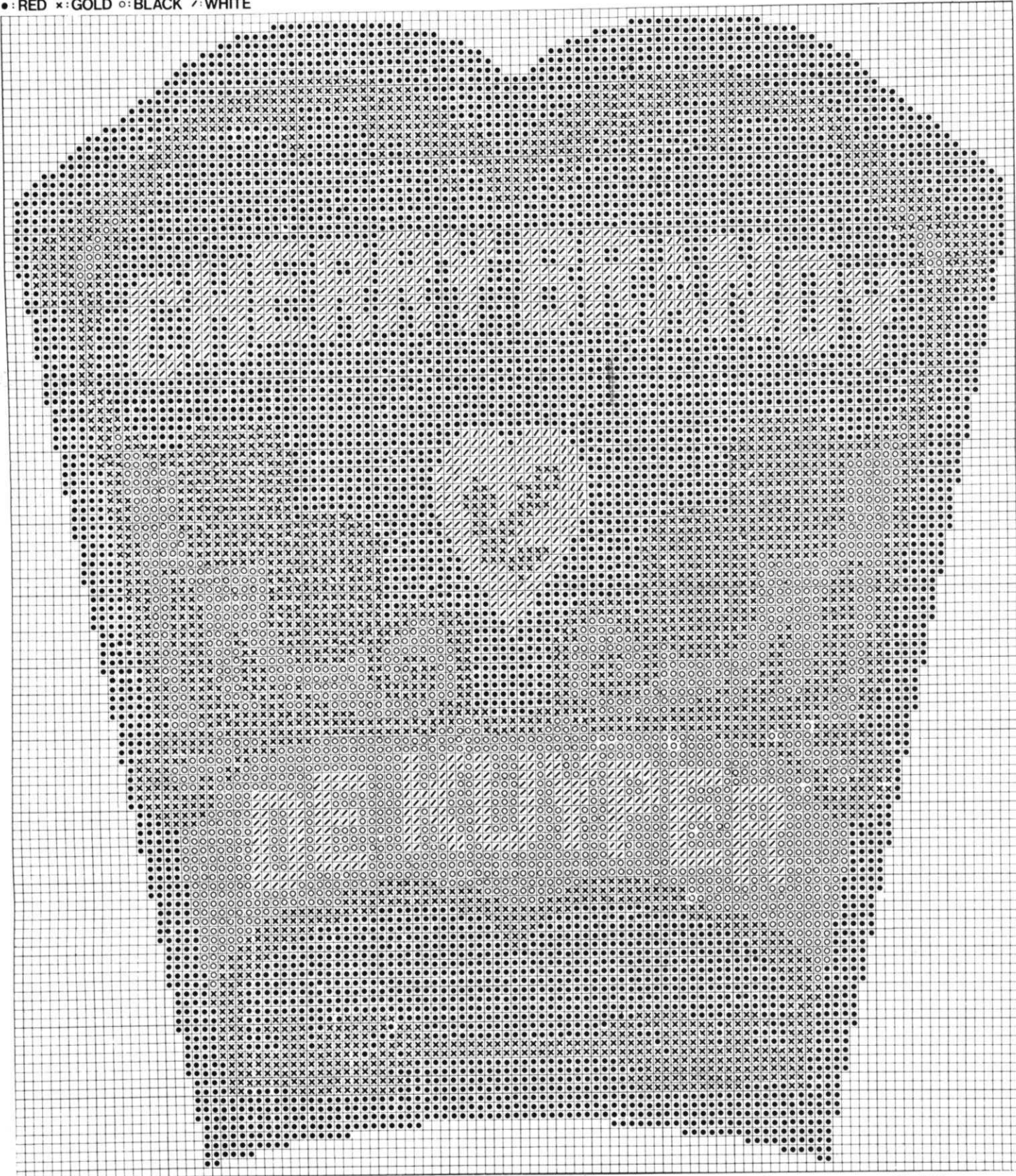


Chart for neck detail on page 30 column 3. Second chart for Cherry Brandy Sweater pages 34/35.

**PINS
& NEEDLES**

**OFFERS
YOU**



20 SUPER MACHINE-KNITTING PATTERNS

- * Designs for all the family
- * How to choose and use a Knitting machine
- * Only 75p
- * On Sale September 1st

Get your copy today: available from W.H. Smith
John Menzies, and all good Newsagents