

Stitchin' Time

No. 32 40p



Jones/brother

contents

Two boys' jumpers	3-5
Pleated dress and jacket	6-9
Two fishermen's tops	10-12
Negligee and nightdress	13-16
Man's lacey top	16-18
Mid calf length dress	18-20
Pinafore dress and blouse	21-22
Three summer strappy tops	23-26
Lacey halter top & cardigan	28-30
Girl's embroidered jumper	30-32
Teenage skirt and top	32-34
Girl's peasant-style dress	34-35

broadly speaking

Our new knitting machine, the Knit-O-Matic, has really been a roaring success. The ease with which complicated lace and fairisle are knitted over the 24 stitch repeat has completely won over all those who have treated themselves to a demonstration. We have found that a large number of stores and dealers are giving good part exchange allowances on earlier models, some giving as much as £50 for certain machines and this has enabled many owners to buy the new machine without the bother of selling their old one privately. If you are interested in learning more about the Knit-O-Matic's capabilities just drop us a line with a s.a.e. and we'll send you an attractive colour brochure and information on your nearest local stockist. But please write as soon as possible because we still only have limited supplies coming into the country and we don't want you to be disappointed.

There are, however, still large areas in Gt. Britain where it is not possible to have a demonstration of a knitting machine before you buy it and we want to fill these gaps. If you are a knitting machine enthusiast and think you could demonstrate and sell machines why not drop us a line because this Autumn, through a new advertising programme, we will receive enquiries from all areas of the country and we will need all the help we can get to deal with them. If you are successful at selling this could be a very lucrative part time job.

Mrs. Sandra Black has recently started a new knitting service offering personal knitting tuition at home. Either individual lessons or a course of 5 in the Inner London or Croydon areas. Tel: 237-9443.

SPECIAL NOTE:

We would like to stress once again the importance of correct tension when knitting the patterns in 'Stitchin' Time'. In all the patterns, the number of stitches and rows to the inch are stated for different models. Different tension dial settings may be necessary and those mentioned in the instructions are *only a guide*. You still need to double check before you start knitting the garment. *Remember* if you do not like the stitch suggested you can easily select another from the stitch pattern book but you must ensure you get the same number of stitches and rows to the inch on your sample as stated in the pattern if you want the garment to turn out the right size.

With the knitting season fast approaching many of you will be taking your machine out of its case for the first time after the last knitting spree earlier this year. If that is the case make sure you give it a good clean and oil before you start.

The way we normally do this is to cast on over all the needles with some waste 'white' wool and knit a dozen or so rows on varying tensions from 5-10. We then push all the needles to E position and knit them back to B position once or twice and then remove the waste wool. This makes sure the needles are clean. To oil the machine take a clean piece of cloth and soak it in a light oil and wipe the needle butts. Repeat this about every 100-150 rows. In this way oil will not get on the work and your machine will stay free running.

Due to the rapid rise in postal rates we will have to charge postage on our overseas subscribers when they require pattern books.

Happy knitting.

N.B. CHARTS SUBMITTED BY DESIGNERS VARY DEPENDING ON WHICH MACHINE THE DESIGNER HAS USED. MOST PATTERNS USING EIGHT BUTTONS CAN BE DONE ON EITHER THE 588 OR THE 585. THE DIFFERENCES ARE

588	585
REVERSE LEVER+	REVERSE DIAL A
REVERSE LEVER-	REVERSE DIAL B

SUBSCRIPTION RATES FOR U.S.A. AND CANADIAN MEMBERS \$7.00.

These rates include postage.

two boy's jumpers

Two boys jumpers. Style A features diamond slip pattern and buttoned front neck. Style B features block slip pattern and buttoned sleeves.

Materials

Style A 6×20g. balls of colour A. 3 buttons.

4×20g. balls of colour B.

Style B 4×20g. balls of colour A. 12 buttons.

6×20g. balls of colour C.

Lister or Lee Target Tricel with nylon 4 ply crepe.

Measurements

To fit 24 (26, 28, 30, 32) in. chest.

Length from back neck 15½ (16½, 18, 19½, 21) ins.

Sleeve seams. **Style A** 2 (2½, 2½, 2½, 3) ins. **Style B** 3 (3½, 3½, 3½, 4) ins.

Tensions

820 M/c.

Style A 7 sts.×15 Rs. = 1 in. over skip-patt. no. 420 from patt. book knitted on T.9. (Y.F.).

Style B 7 sts.×15Rs. = 1 in. over skip-patt. no. 427 from patt. book knitted on T.7. (Y.F.).

800 M/c.

Style A Skip-patt. no. 107 from cassette book on T.7.

Style B Skip-patt. no. 105 from cassette book on T.6.



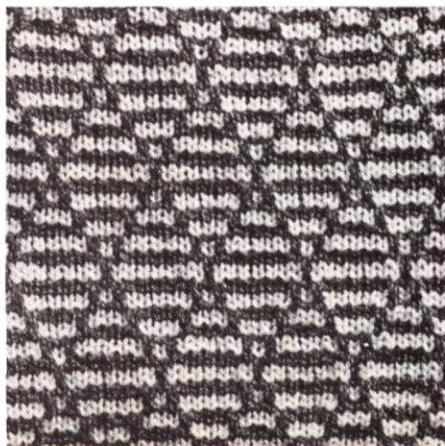
588 M/c.

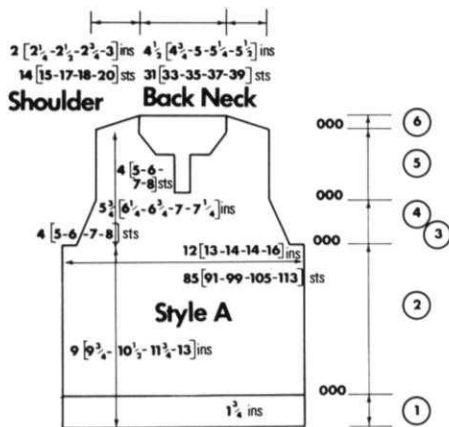
Style A Slip-patt. no. 106 from patt. book 7 sts.×15 Rs. = 1 in.

Style B Slip-patt. no. 552 from patt.

book 7 sts.×15 Rs.= 1 in.

Either patt. may be used for each style, as long as correct tension is used (as above).





STYLE A BACK

Ribbers: In colour A. Cast on 86 (90, 98, 106, 114) sts. as 2x2 rib. T.1/1. K.4 Rs. tub. T.3/3. Slide lever on 1. K.23 rs. rib. Trans. ns. to M.B. Inc. or dec. to 85 (91, 99, 105, 113) sts. C.O.L.

Single bed M/cs: With W.wl. cast onto 85 (91, 99, 105, 113) sts. K. a few Rs. Trans. ev. alt. st. to rt. Push ns. back to A. pos. Change to colour A. T.6. K.21 Rs. T.8. K.1. T.6. K.21 Rs. M.D.E. Unravel W.wl. C.O.L. Set M/c. for patt. T.8. K.1. C.O.R.000. Start patt.

Step 2. K. 108 (120, 132, 150, 168) Rs. straight.

Step 3. C/O 4 (5, 6, 7, 8) sts. at beg. next 2 Rs. C.O.R.000.

Step 5. K. 50 (58, 66, 70, 74) Rs. straight. C.O.R.000.

Step 6. H.P. * Push 3 (3, 4, 4, 4) ns. to E. pos. at opp. end to carr. on next 8 (6, 4, 6, 8) Rs. Then 2 (3, 3, 3, 4) ns. to E. pos. on next 2 (4, 6, 4, 2) Rs. Return ns. on lt. to D. pos. K.1. Return ns. on rt. to D. pos. K.1. C/O shoulders. Thread up back neck sts.

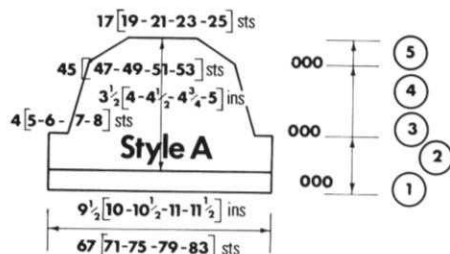
FRONT

(As for back to end of step 4).

Step 5. K.4 (6, 8, 8, 8) Rs. straight. C/O centre 5 sts. Thread up sts. to lt. of centre. (Make note of next R. on punch card). K.26 (30, 34, 36, 38) Rs. straight. On lt. edge thread up 4 (5, 6, 7, 8) sts. and take off M/c. Then on neck edge dec. 1 st. ev. alt. R. 9 times. K. to 50 (58, 66, 70, 74) Rs. C.O.R.000.

Rt. shoulder: Step 6. K.1. H.P. * Push 3 (3, 4, 4, 4) ns. to E. pos. on rt. edge ev. alt. R. 4 (3, 2, 3, 4) times. Then 2 (3, 3, 3, 4) ns. to E. pos. 1 (2, 3, 2, 1) times. Return ns. to D. pos. K.1. C/O shoulder. Return lt. sts. to M/c. starting the 3rd st. to lt. of centre and set for patt. C.O.R.004 (6, 8, 8, 8) Rs. K.26 (30, 34, 36, 38) Rs. straight. On rt. edge thread up 4 (5, 6, 7, 8) sts. dec. 1 st. on rt. edge ev. alt. R. 9 times. K. to 50 (58, 66, 70, 74) Rs. C.O.R.000.

Lt. shoulder: Step 6. H.P. * Push 3 (3, 4, 4, 4) ns. to E. pos. on lt. edge ev. alt. R. 4 (3, 2, 3, 4) times. Then 2 (3, 3, 3, 4) ns. to E. pos. 1 (2, 3, 2, 1) times. Return ns. to D. pos. K.1. C/O.



SLEEVE A

Step 1. Ribbers: In colour A. Cast on 66 (70, 74, 78, 82) sts. * as 2x2 rib. T.1/1. K.4 Rs. tub. T.3/3. K.11 Rs. rib. Trans. ns. to M.B. * inc. 1 st. to 67 (71, 75, 79, 83) sts. C.O.L.

Single bed M/cs: With W.wl. cast onto 67 (71, 75, 79, 83) sts. * K. a few Rs. Trans. ev. alt. st. to rt. Push empty ns. back to A. pos. Change to colour A. T.6. K.11 Rs. T.8. K.1. T.6. K.11 Rs. M.D.E. Unravel W.wl. * C.O.L. Set M/c. for patt. T.8. K.1. C.O.R.000. Start patt.

Step 2. K. 18 (22, 26, 30, 34) *Rs. straight.

Step 3. As for back.

Step 4. Dec. 1 st. on each edge ev. 5 (6, 7, 8, 9) Rs. 7 times. K. to 36 (44, 52, 56, 64) Rs. C.O.R.000.

Step 5. H.P. * Push 2 ns. to E. pos. at opp. end to carr. on next 14 Rs. Return ns. on lt. to D. pos. K.1. Return ns. on rt. to D. pos. K.1. C/O. Repeat.

TO MAKE UP

Press all pieces. Join shoulders. Sew tops of sleeves into armholes. Join side and sleeve seams.

NECKBAND

Ribbers: In colour A. Cast on 70 (78, 86, 94, 102) sts. as 2x2 rib. * T.1/1. K.4 rs. tub. T.3/3. K.10 Rs. rib. Trans. ns. to M.B. *

Single bed M/cs: In colour A. C.O.B.H. 70 (78, 86, 94, 102) sts. * T.7. K.10. T.9. K.1. T.7. K.10. M.D.E. *

With rt. side of work facing M/c., place 1/2 front neck to 4 (5, 6, 7, 8) sts., place side neck to 15 (17, 19, 21, 23) sts. C/O up to this point. Place back neck to 31 (33, 35, 37, 29) sts., side neck to 16 (18, 20, 22, 24) sts. and 1/2 front neck to rem. 4 (5, 6, 7, 8) sts. C/O to end.

FRONT BUTTONBAND

Ribbers: In colour A. Cast on 18 (20, 22, 24, 26) sts. as 2x2 rib. K. as for neckband from * to *.

Single bed M/cs: In colour A. C.O.B.H. 18 (20, 22, 24, 26) sts. As for neckband from * to *.

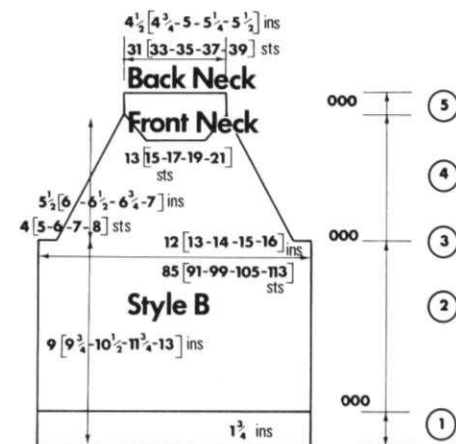
With rt. side of work facing M/c. and starting 1 st. in from lt. edge, place rt. front opening evenly onto ns. and C/O to end.

BUTTONHOLE BAND

Ribbers: K. as before. **At the same time:** after 5 Rs. starting from rt. edge trans. the 5th st. to rt. and the next st. to lt. * Leave space of 3 (4, 5, 6, 7) sts. Trans. to next st. to rt. and next to lt. * Repeat from * to * leaving 2 sts. on lt. edge. K.5 Rs. Trans. ns. to M.B.

Single bed M/cs: K. as before. **At the same time:** after 5 Rs. make holes as for ribber band. K.5 Rs. T.9. K.1. T.7. K.5. Make holes. K.5 Rs. M.D.E. With rt. side of work facing M/c., and starting 1 st. in from rt. edge place opening evenly onto ns. and C/O to end.

Finish off tops of bands. S. st. lower edge of lt. band to C/O edge on front. On inside st. rt. band to seam of lt. band. Press all seams and bands. Sew on buttons.



STYLE B BACK

As for style A to end of step 3.

Step 4. Dec. 1 st. on each edge ev. 4 Rs. 13 (18, 20, 21, 19) times. Then ev. 3 Rs. 10 (6, 6, 6, 10) times. To 82 (90, 98, 102, 106) Rs. C.O.R.000.

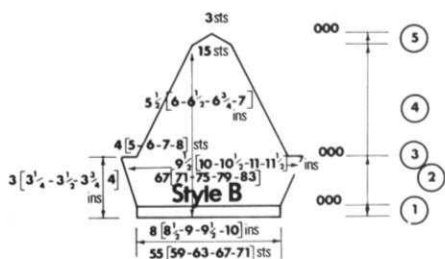
Step 5. K.14 Rs. straight. Thread up back neck sts.

FRONT

As for back.

Step 4. At the same time: after 64 (72, 80, 84, 88) Rs. Thread up centre 13 (15, 17, 19, 21) sts. and take off M/c. Thread up sts. to lt. of centre and take off. Make note of next R. on punch card. On rt. neck edge, dec. 1 st. ev. alt. R. 9 times. To 82 (90, 98, 102, 106) Rs. C/O.

Return ns. on lt. to original ns. on M/c. and set for patt. dec. 1 st. on lt. neck ev. alt. R. 9 times. To 82 (90, 98, 102, 106) Rs. C/O.



SLEEVE

Ribbers: **Step 1.** Cast on 54 (58, 62, 66, 70) sts. K. as for sleeve A from * to *. Inc. 1 st. to 55 (59, 63, 67, 71) sts. C.O.L.

Single bed M/cs: With W.wl. cast onto 55 (59, 63, 67, 71) sts. K. as for sleeve A from * to *.

C.O.L. Set M/c. for patt. T.7. K.1. Start patt. C.O.R.000.

Step 2. Inc. 1 st. on each edge ev. 2 (2, 3, 3, 3) Rs. 6 times. K. to 16 (18, 20, 22, 24) Rs.

Step 3. C/O 4 (5, 6, 7, 8) sts. at beg. next 2 Rs. C.O.R.000.

Step 4. Dec. 1 st. on each edge ev. 4 (4, 5, 5, 5) Rs. 16 (21, 2, 2, 2) times. Then ev. 3 (3, 4, 4, 4) Rs. 6 (2, 22, 23, 24) times. To 82 (90, 98, 102, 106) Rs. C.O.R.000.

Step 5. H.P. * Push 2 ns. to E. pos. at opp. end to carr. on next 6 Rs. Return ns. on lt. to D. pos. K.1. Return ns. on rt. to D. pos. K.1. C/O.

TO MAKE UP

Press all pieces. Join raglans. Press seams.

BACK NECK BAND

Ribbers: In colour A. Cast in 38 (40, 42, 44, 46) sts. as 2x2 rib. * T.1/1. K.4 rs. tub. T.3/3. K.11 Rs. rib. Trans. ns. to M.B. inc. 1 st. *.

Single bed M/cs: With W.wl. cast onto 39 (41, 43, 45, 47) sts. * K. a few Rs. Trans. ev. alt. st. to rt. Push empty ns. back to A. pos. Change to colour A. T.6. K.11 Rs. T.8. K.1. T.6. K.11 Rs. M.D.E. Unravel W.wl. *.

With rt. side of work facing M/c., place back neck sts. to centre 31 (33, 35, 37, 39) sts. on band. To either side of back neck place 1/2 inch of sleeve top to 3 sts. (leaving 1 st. extra on each end). C/O to end.

Sleeve Ribs: In colour A. cast on 70 (78, 86, 90, 94) sts. as 2x2 rib. K. as * to * of neckband. **At the same time:**

Buttonhole: after 5 Rs. starting 2 sts. in from rt. edge make buttonhole over next 4 sts. K.6 Rs. C/O to end.

Single bed M/cs: Cast on with W.wl. 71 (79, 87, 91, 95) sts. K. as * to * of neckband. **At the same time:** after 5 Rs. make buttonhole as for ribber band. K.6 Rs. T.8. K.1. T.6. K.6 Rs. Make buttonhole. K.5 Rs. M.D.E. Unravel W.wl. C/O to end. Repeat

band making buttonhole on lt. edge. With rt. side of sleeves uppermost lay bands flat along centre of sleeves. C/O edges of bands should face towards back and buttonhole end of band meets back band. Sl.st. C/O edge of bands along sleeves, joining back neck band edges to sleeve bands.

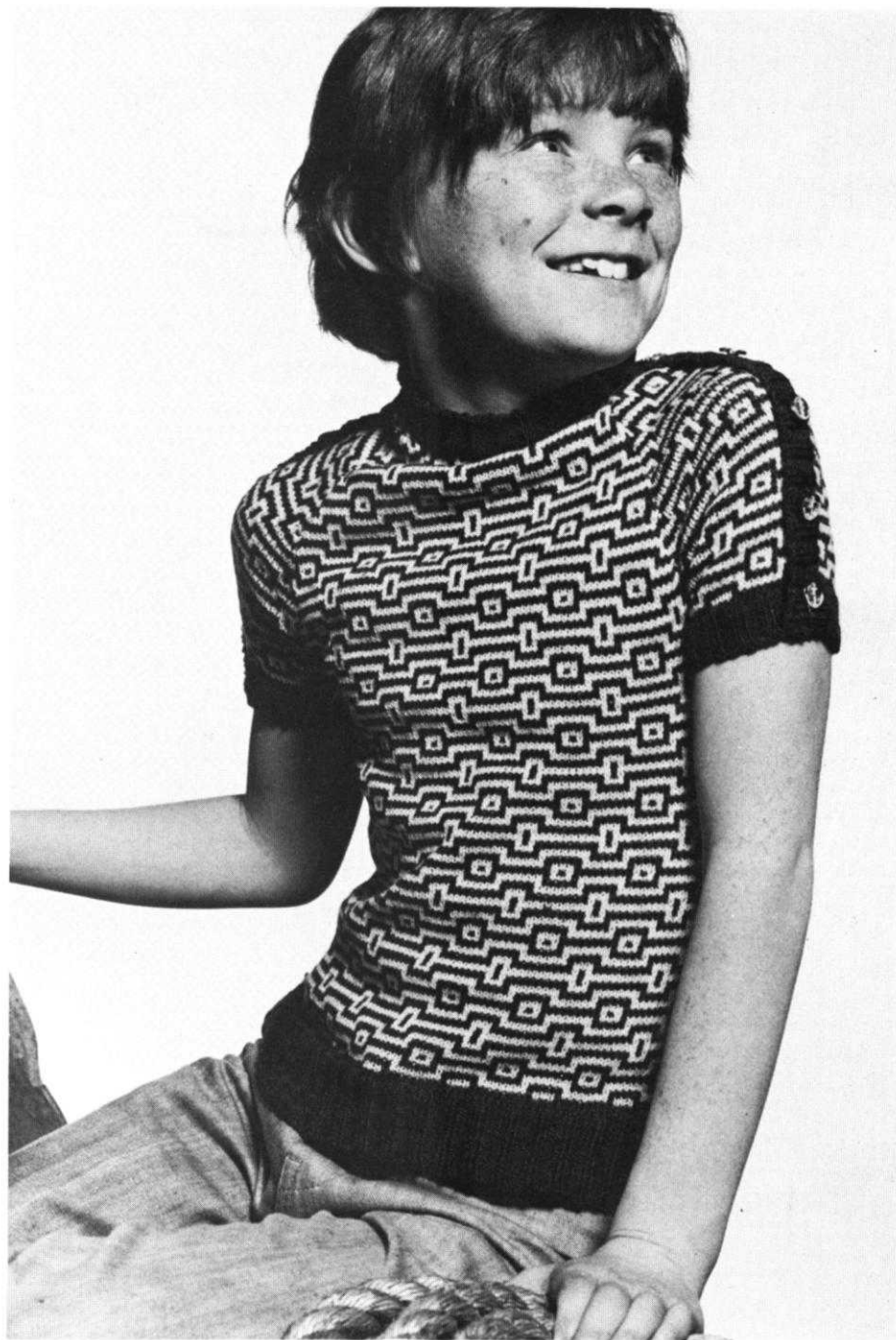
FRONTBAND

Ribbers: In colour A. Cast onto 58 (60, 62, 64, 66) sts. K. as for back neckband from * to *.

Single bed M/cs: With W.wl. cast onto 59 (61, 63, 65, 67) sts. K. as for back neckband from * to *.

With rt. side of work facing M/c., place front neck sts. onto 13 (15, 17, 19, 21) sts. at centre of M/c. To either side place side neck to 12 sts. Place sleeves, up to back neckband, to 11 sts. C/O to end.

Press neckband seams. On each side of neck, sew one button onto front neckband to correspond with sleeve buttonhole. Place rem. buttons along sleeve bands with equal distance between them. Sew in place, working through both layers of band to give mock-opening appearance. Join side and sleeve seams. Press.



pleated dress and jacket

Ladies edge-to-edge jacket in large jacq. patt. Worn with pleated dress in smaller patt.

Materials

Jacket 9x25g. balls of colour A. 5x25g. balls of colour B.

Dress 13x25g. balls of colour A. 16x25g. balls of colour B.

Lister Lavenda three ply wl.

16 (16, 18, 18, 18) in. zip. Buckle. 1 in. wide x desired length petersham for belt.

Measurements

To fit 32 (34, 36, 38, 40) in. bust.

Jacket: Finished meas's 34 (36, 38, 40, 42) ins. bust.

Length from back neck 23½ (24, 24½, 25, 25½) ins.

Sleeve seams 4 (4¼, 4½, 4¾, 5) ins.

Dress: Finished meas's 33 (35, 37, 39, 41) ins. bust.

Length from back neck to hem 39 (40, 41, 42, 42) ins.

Sleeve seams 17 (17, 17½, 17½, 18) ins.

Tensions

820 M/cs.

7½ sts. x 12 Rs. = 1 in. on T.6. over st.st.

8 sts. x 10½ Rs. = 1 in. on T.8. over patt. 1 (jacq. no. 29 from patt. book).

8 sts. x 10½ Rs. = 1 in. on T.7. over patt. 2 (jacq. no. 473 from patt. book).

588 M/c.

St.st. knitted on T.6.

Patt. 1 knitted on T.8. (jacq. no. 115 from patt. book).

Patt. 2 knitted on T.7. (jacq. no. 147 from patt. book).

800 M/c.

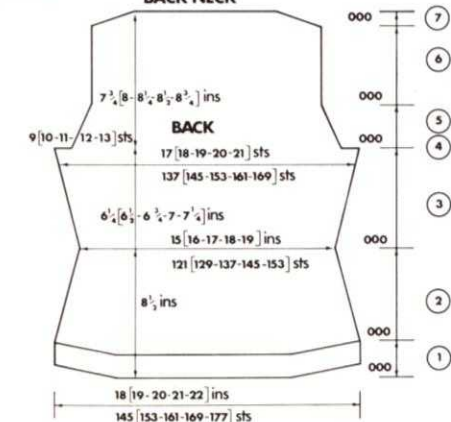
St.st. knitted on T.5. 1. Y.F. tight.

Patt. 1 knitted on T.6. 1 (jacq. no. 141 from patt. book).

Patt. 2 knitted on T.6. 1 (jacq. no. 155 from patt. book).

2½ [2½-3-3½-3½] ins 7 [7½-7½-7½-8] ins

20 [22-24-26-28] sts 57 [59-61-63-65] sts



JACKET

BACK

Step 1. In colour A. C.O.B.H. 145 (153, 61, 169, 177) sts. * T.5. K.16 Rs. T.7. K.1. T.5. K.16 Rs. M.D.E. * Set M/c. for patt. 1. T.6. K.1. C.O.R. Start patt. T.8. H.P. * Push 8 ns. to E. pos. at opp. end to carr. on next 8 Rs. Return ns. on lt. to B. pos. and set patt. K.1. Return ns. on rt. to D. pos. K.1. C.O.R.000.

Step 2. Dec. 1 st. on each edge ev. 5 Rs. 12 times. K. to 68 Rs. C.O.R.000.

Step 3. Inc. 1 st. on each edge at 000. Then inc. 1 st. ev. 9 (9, 9, 10, 10) Rs. 7 times. K. to 66 (68, 70, 72, 74) Rs.

Step 4. C/O 9 (10, 11, 12, 13) sts. at beg. next 2 Rs. C.O.R.000.

Step 5. Dec. 1 st. on each edge ev. 3 Rs. 11 times. K. to 34 Rs. C.O.R.000.

Step 6. K. 50 (52, 54, 56, 58) Rs.

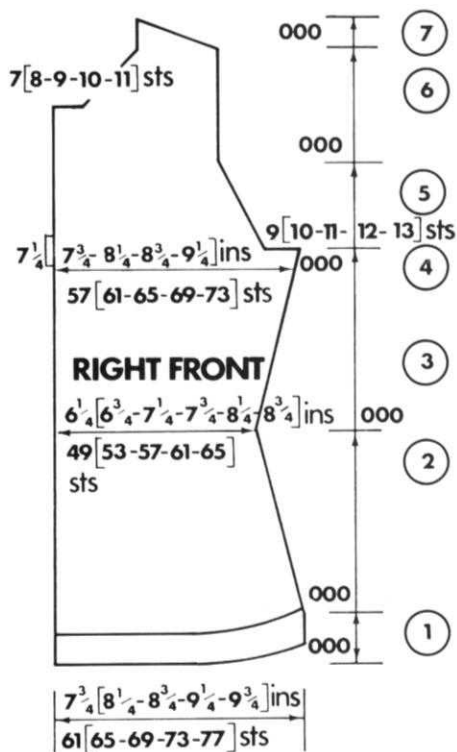
straight. C.O.R.000.

Step 7. H.P. * Push 4 (5, 5, 6, 6) ns. to E. pos. at opp. end to carr. on next 6 (4, 8, 2, 6) Rs. then 4 (4, 4, 5, 5) ns. to E. pos. on next 4 (6, 2, 8, 6) Rs. Return ns. on lt. to D. pos. K.1. Return ns. on rt. to D. pos. K.1. C/O shoulders. Thread-up back neck sts.

RIGHT FRONT

Step 1. In colour A. C.O.B.H. 61 (65, 69, 73, 77) sts. 5 5sts. to lt. of centre. Rest to rt. K. hem as * to * of back. At the same time: inc. 1 st. on lt. edge ev. alt. R. 8 times. Then dec. 1 st. on lt. edge ev. alt. R. 8 times. Set M/c. for patt. 1. T.6. K.1. C.O.R. Start patt. T.8. K.1. H.P. * Push 8 ns. to E. pos. on rt. edge ev. alt. R. 4 times. Return ns. to B. pos. set patt. K.1. C.O.R.000.





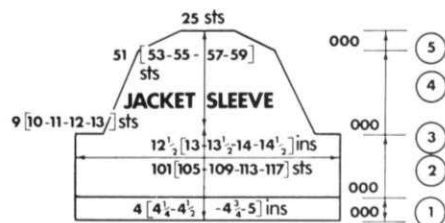
Step 2 to 5. K. as for back, shaping on rt. edge only.

Step 6. K. 28 (30, 32, 34, 36) Rs. to front neck. On lt. edge, thread-up 7 (8, 9, 10, 11) sts. and take off M/c. Then dec. 1st. on neck edge ev. alt. R. 10 times. K. to 50 (52, 54, 56, 58) Rs. C.O.R.000.

Step 7. K.1. H.P. * Push 4 (5, 5, 6, 6) ns. to E. pos. on rt. edge ev. alt. R.3 (2, 4, 1, 3) times. Then 4 (4, 4, 5, 5) ns. to E. pos. on next 2 (3, 1, 4, 2) times. Return ns. to D. pos. K.1. C/O.

LEFT FRONT

In colour A. C.O.B.H. 61 (65, 69, 73, 77) sts. 7 sts. to rt. of centre. Rem. to lt. K. as for rt. front, reversing all shapings.



SLEEVES

Step 1. In colour A. C.O.B.H. 101 (105, 109, 113, 117) sts. K. as from * to * of back. Set M/c. for patt. 1. T.6. K.1. C.O.R.000.

Step 2. T.8. Start patt. K. 30 (32, 34, 36, 38) Rs. straight.

Step 3. C/O 9 (10, 11, 12, 13) sts. at beg. next 2 Rs. C.O.R.000.

Step 4. Dec. 1 st. on each edge ev. 3 Rs. 16 times. To 48 Rs. C.O.R.000.

Step 5. H.P. * Push 5 (4, 3, 3, 3) ns. to E. pos. at opp. end to carr. on next 2 (4, 6, 8, 6) Rs. Then push 4 (3, 3, 2, 2) ns. to E. pos. on next 4 (4, 4, 4, 8) Rs. Return ns. on lt. to D. pos. K.1. Return ns. on rt. to D. pos. K.1. C/O.

TO MAKE UP

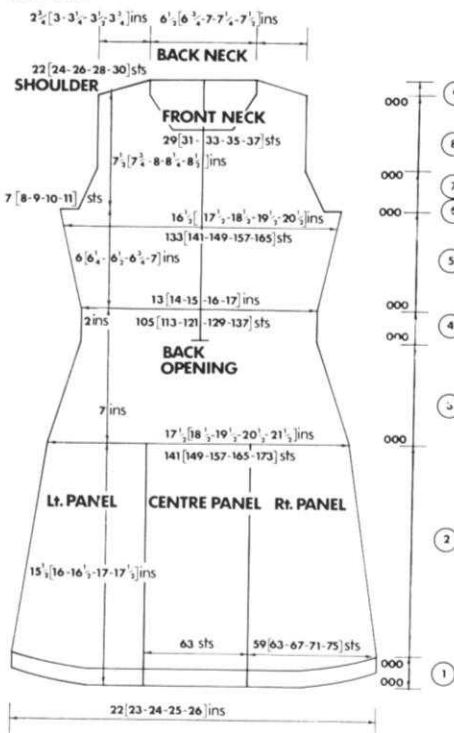
Press all pieces. Join shoulders. Sew tops of sleeves into armholes. Press seam. Join side and sleeve seams.

Front bands. Right: In colour A. C.O.B.H. 133 (137, 141, 145, 149) sts. K. as for back from * to * step 1. **At the same time:** inc. 1 st. on each edge ev. alt. R. 8 times. Then dec. 1st. on each edge ev. alt. R. 8 times. With rt. side of work facing M/c. and starting 1 st. in from each edge, place rt. front evenly onto ns. and C/O to end.

Left: Repeat band and place lt. front evenly onto ns. C/O.

Neck Band: In colour A. C.O.B.H. 127 (131, 135, 139, 143) sts. K. band as for front bands. With rt. side of work facing M/c. and starting 1 st. in from each edge, place front neck to 7 (8, 9, 10, 11) sts., place side neck to 27 sts., place back neck to 57 (59, 61, 63, 65) sts. C/O up this point. Place side neck to 27 sts., and front neck to 7 (8, 9, 10, 11) sts. C/O to end.

Join mitred edges. Press all seams and bands.



FRONT OF DRESS

RIGHT PANEL

Step 1. In colour A. C.O.B.H. 59 (63, 67, 71, 75) sts. * T.5. K.12 Rs. T.7. K.1. T.5. K.12 Rs. M.D.E. Set M/c. for patt. 2 T.6. K.1. * Change to B.

C.O.R. Start patt. T.7. H.P. * K.1. Push 10 ns. to E. pos. on rt. edge ev. alt. R. 4 times. Return ns. to B. pos. set patt. K.1. C.O.R.000.

Step 2. Dec. 1 st. on rt. edge ev. 8 (9, 9, 9, 10) Rs. 14 (2, 8, 14, 2) times. Then ev. 7 (8, 8, 8, 9) Rs. 4 (16, 10, 4, 16) times. K. to 140 (146, 152, 158, 164) Rs. Dec. 1 st. on lt. edge. With W.wl. K. a few Rs. Take off M/c.

LEFT PANEL

K. as for rt. panel, reversing all shapings.

CENTRE PANEL

In colour A. C.O.B.H. 63 sts. K. hem as for rt. panel * to * C.O.R. Change to colour B.

Step 2. Start patt. T.7. K. 150 (156, 162, 168, 174) Rs. straight. Dec. 1st. on each edge.

Replace rt. panel onto M/c. to rt. of centre panel and lt. panel to lt. of centre. C.O.R.000. Set ns. for patt.

Step 3. Dec. 1st. on each edge ev. 4 Rs. 18 times. To 72 Rs. C.O.R.000.

Step 4. K.22 Rs. straight. C.O.R.000. (Lengthen or shorten here.)

Step 5. Inc. 1 st. on each edge at 000. Then ev. 4 (4, 4, 5, 5) Rs. 5 (3, 1, 12, 10) times. Then ev. 5 (5, 5, 6, 6) Rs. 8 (10, 12, 1, 3) times. K. to 64 (66, 68, 70, 72) Rs.

Step 6. C/O 7 (8, 9, 10, 11) sts. at beg. next 2 Rs. C.O.R.000.

Step 7. Dec. 1 st. on each edge ev. 3 Rs. 11 times. K. to 34 Rs. C.O.R.000.

Step 8. K. 24 (26, 28, 30, 32) Rs. straight.

FRONT NECK

Thread-up 29 (31, 33, 35, 37) sts. at centre of M/c. and take off. Push ns. to lt. of centre to E. pos. H.P. On neck edge dec. 1st. ev. alt. R. 12 times. K. to 48 (50, 52, 54, 56) Rs. C.O.R.000.

Step 9. H.P. * K.1. C.O.L. Push 5 (5, 6, 6, 6) ns. to E. pos. on rt. edge ev. alt. R. 2 (4, 1, 3, 4) times. Then 4 (4, 5, 5, 6) ns. to E. pos. 3 (1, 4, 2, 1) times. Return ns. to D. pos. K.1. C/O shoulder sts.

Return ns. on lt. to E. pos. Set ns. for patt. K. as for rt. neck reversing all shapings.

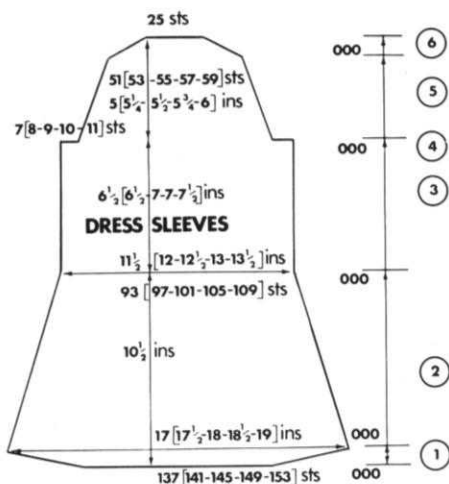
BACK

Knit as for front to end of step 3.

Step 4 Thread-up sts. to lt. of centre and take off M/c. (Make note of next R. on punch card.) Cont. as for front, making shapings on rt. edge only, to end of step 7.

Step 8. K. 48 (50, 52, 54, 56) Rs. straight. C.O.R.000.

Step 9. As for front. C/O shoulders. Thread-up back neck sts. Return ns. for lt. back onto M/c. and set for patt. K. as for rt. back, reversing all shapings.



SLEEVES

Step 1. In W.w.l. cast onto 137 (141, 145, 149, 153) sts. K. a few Rs. C.O.L. in colour B. T.6. Set M/c. for patt. K.1. C.O.R.000.

T.7. Start patt. H.P. * Push 8 ns. to E. pos. at opp. end to carr. on next 8 Rs. Return ns. on lt. to D. pos. K.1. Return ns. on rt. to D. pos. K.1. C.O.R.000.

Step 2. Dec. 1 st. on each edge ev. 5 Rs. 12 times. Then ev. 4 Rs. 10 times C.O.R.000.

Step 3. K. 68 (68, 74, 74, 80) Rs. straight. (Lengthen or shorten here.)

Step 4. C/O 7 (8, 9, 10, 11) sts. at beg. next 2 Rs. C.O.R.000.

Step 5. Dec. 1st. on each edge ev. 3 Rs. 14 times. K. to 48 Rs. C.O.R.000.

Step 6. H.P. * Push 5 (4, 3, 3, 3) ns. to E. pos. at opp. end to carr. on next 2 (4, 6, 8, 6) Rs. Then 4 (3, 3, 2, 2) ns. to E. pos. on next 4 (4, 4, 4, 8) Rs. Return ns. on lt. to D. pos. K.1. Return ns. on rt. to D. pos. K.1. C/O.

PLEAT PANELS KNIT FOUR

Step 1. By hand. Push 53 ns. to E. pos. in centre of M/c. Return centre n. to A. pos. (26 ns. to either side of centre). In colour A cast onto these ns. T.5. K.12 Rs. T.7. K.1. T.5. K.12 Rs. M.D.E. T.6. K.1. C.O.R.000.

Step 2. Dec. 1 st. on each edge ev. 7 (8, 8, 8, 8) Rs. 24 (5, 11, 17, 23) times. Then ev. 6 (7, 7, 7, 7) Rs. 1 (20, 14, 8, 2) times. To 174 (180, 186, 192, 198) Rs. C/O rem. 2 sts.

TO MAKE UP

Press all pieces.

Pin sides of pleats to edges of skirt panels and sl. st. in place. Join back and front at shoulders.

Sleeve cuffs: In colour B. C.O.B.H. 59 (63, 63, 67, 67) sts. T.5. K.6. T.7. K.1. T.5. K.6 Rs. M.D.E. With rt. side of sleeve facing M/c., place sts. onto ns. (gather onto ns. at centre of M/c.). Unravel W.w.l. C/O.



Press cuffs. Sew tops of sleeves into armholes. Press all seams. Join side and sleeve seams. Press seams. Fold pleats together along loose Rs. and press. Fold back along seams and press.

Neck band: In colour A. C.O.B.H. 171 (173, 175, 177, 179) sts. (start at extreme lt. of M/c.). Inc. 1 st. on rt. edge ev. alt. R. 21 times. Then dec. 1 st. on rt. edge ev. alt. R. 21 times. **At the same time:** T.5. K.14 Rs. H.P. * Push 71 (73, 75, 77, 79) sts. on lt. edge to E. pos. K.2 Rs. C.O.R. Push 9 ns. on lt. edge to E. pos. ev. alt. R. 13 times. C.O.R. T.7. K.1. T.5. K.1. C.O.R. Push 188 (190, 192, 194, 196) sts. to E. pos. on lt. edge. K.2 Rs. Return 9 ns. to D. pos. on lt. ev. alt. R. 13 times. Return rem. ns. to D. pos. K.15 Rs. straight.

On lt. edge M.D.E. over 71 (73, 75, 77, 79) ns. With rt. side of work facing M/c., starting from lt. edge, place $\frac{1}{2}$ back neck to 26 (27, 28, 29, 30) ns., place side neck to 30 ns., place $\frac{1}{2}$ front neck to 15 (16, 17, 18, 19) ns. C/O up

to this point in colour B. C/O to end in colour A.

Repeat band, reversing **all shapings**. On rt. edge M.D.E. over 71 (73, 75, 77, 79) sts. Starting from rt. edge place $\frac{1}{2}$ back neck to 27 (28, 29, 30, 31) sts., place side neck to 30 ns. place $\frac{1}{2}$ front neck to 14 (15, 16, 17, 18) ns. C/O up to this point in Colour B. C/O to end in colour A. Press band and tie. Sl. st. edges of tie together and finish ends. Crochet round zip opening. Sew in zip.

Belt: In colour B. C.O.B.H. 105 (113, 121, 129, 137) sts. T.5. K.8. T.7. K.1 R. T.5. K.16 Rs. T.7. K1 R. T.5. K.8. M.D.E.

C/O C.O.B.H. 168 (176, 184, 192, 200) sts. K. as before. **At the same time:** on rt. edge dec. 1 st. ev. alt. R. 4 times. T.7. K.1. Inc. 1 st. ev. alt. R. 4 times. Dec. 1 st. ev. alt. R. 4 times. T.7. K.1. Inc. 1 st. ev. alt. R. 4 times. M.D.E. C/O.

Join belt. Press. Insert petersham. Shape rt. edge to fit belt. Finish ends of belt. Secure lt. end to buckle.

abbreviations

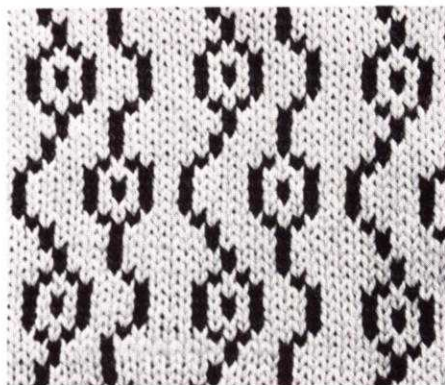
This list of abbreviations can be cut out and glued to a piece of thick card or board. It can then be moved to whichever part of a pattern you are working on to save you constantly referring to the beginning.

•••••

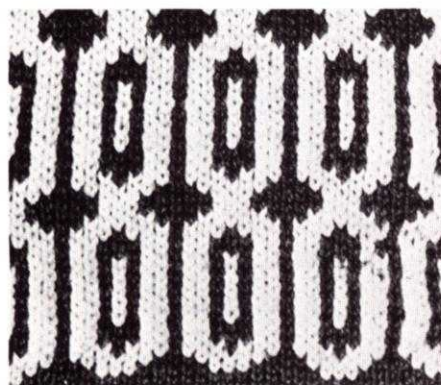
M.B.	main bed
st.st.	stocking stitch
sts.	stitches
beg.	beginning
dec.	decrease
inc.	increase
alt.	alternate
trans.	transfer
opp.	opposite
carr.	carriage
S.D.	side dial
W. Wl.	waste wool
M. Wl.	main wool
M1c(s).	machine(s)
pos.	position
000	set counter at 000
foll.	following
T.	tension
K.	knit
M.D.E.	make double edge
Ns.	needles
COL(R)	carriage on left (right)
patt.	pattern
rem.	remaining
H.P.	holding cam lever(s) on holding position
H.P.+	holding cam lever(s) on holding position and always take yarn around inside needle in E position
C.O.B.H.	cast on by hand
on(s).	inch(es)
oz(s).	ounce(s)
tub.	tubular
p.b.	part button
f.f.	fully fashioned
Ev.	every
Lt.	left
Rt.	right
Rs.	rows
jacq.	jacquard
C/O	cast off



▲588: STITCH PATTERN 147



▲800: STITCH PATTERN 155



▲588: STITCH PATTERN 115



▲800: STITCH PATTERN 141

Although most of the patterns are adapted to both machines, occasionally a designer who does not know the conversion, writes patterns merely for either the model 800 or the earlier models. If this occurs, please check with the chart below to find the correct settings for your H.C.L.'s.

800 H.C.L. 3 = I for all others
 800 H.C.L. 1 = II for all others
 800 H.C.L. 2 = III for all others

two fisherman's tops

Two fisherman's tops — one featuring blanket stitch detail and the other with anchor motifs.

Materials

Style A 20 (21, 22, 23) 25g. balls main wl.

1 ball contrast wl.

3 buttons.

Style B 6 (6, 7, 7) balls main wl.

4 (4, 5, 5) balls col. B.

1 ball colour C.

Hayfields Terylene double knitting machine washable.

Measurements

To fit 28 (30, 32, 34) in. chest

Finished meas's 30 (32, 34, 36) ins.

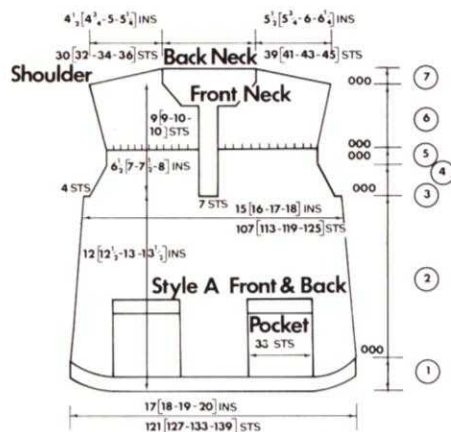
Sleeve seam 12½ (13½, 14½, 15½) ins.

Length from back neck 19½ (20½, 21½, 22½) ins.

Tensions

820 M/c

7 sts. x 10 Rs = 1 in. over st.st. T.9. (y.f.+)



STYLE A

BACK
Step 1. In main wl. C.O.B.H. 121 (127, 133, 139) sts. T.8. K.12. T.10. K.1. T.8. K.12. M.D.E. T.9. K.1. C.O.R. H.P.* Push 5 ns. to E. pos. at opp. end to carr. on next 8 Rs. Return ns. to D. pos. on next 2 Rs. C.O.R. 000.

Step 2. Dec. 1 st. on each edge ev. 13 (14, 14, 15) Rs. 7 times K. straight to 104 (110, 114, 120) Rs.

Step 3. C/O 4 sts. at beg. of next 2 Rs. C.O.R. 000.

Step 4. Dec. 1 st. on each edge ev. 3 Rs. 7 times K. 22 Rs. C.O.R. 000.

Step 5. K. 6 (8, 10, 12) Rs. straight.

Step 6. Inc. 1 st. at each edge at 000 then every 6 (6, 7, 8) Rs. 6 times. K. to 40 (44, 48, 52) Rs. C.O.R. 000.

Step 7. H.P. * Push 8 (8, 9, 9) ns. to E. pos. at opp. end to carr. on next 4 Rs. Then 7 (8, 8, 9) ns. to E. pos. with next 4 Rs. return ns. to D. pos. at opp. end

to carr. on next 2 Rs. C/O shoulder. Thread up back neck sts.

FRONT

As for back. **At the same time:** after hem make **pockets.** Starting 13 (14, 15, 16) sts. to right and to left of centre st. thread up next 31 sts. and take off M/c. With spare wl. in main col. by hand cast onto these sts. Cont. front as for back. Push pocket sts. to E. pos. for next few Rs. to end step 3.

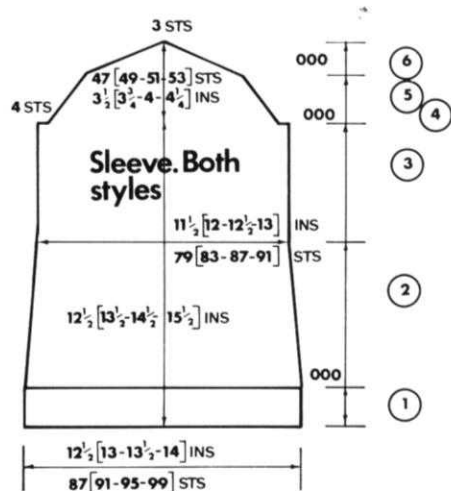
Step 4. Front opening: C/O centre 7 sts. and take off M/c. Thread up rem. sts. to left of centre and take off. Cont. as for back shaping for rt. edge until end step 5.

Step 6. Shape as for back. **At the same time:** after 26 (28, 32, 34) Rs. thread up 9 (9, 10, 10) sts. on lt. edge and dec. 1 st. on neck edge ev. alt. R. 7 (8, 9, 9) times to 40 (44, 48, 52) Rs. C.O.R. 000.



Step 7. K.1. * Push 8 (8, 9, 9) ns. to E. pos. at opp. end to carr. every alt. R. 2 times. 7 (8, 8, 9) ns. to E. pos. 2 times. Return ns. to D. pos. K.1. C/O*. Return ns. to lt. to M/c. Cont. as for rt. neck to end of step 6 reversing shaping.

Step 7. As for rt. shoulder from * to *.



SLEEVE

Step 1. In main wl. C.O.B.H. 87 (91, 95, 99) sts. T.8. K.16. T.10. K.1. T.8. K.16. M.D.E. T.9. K.1. C.O.R. 000.

Step 2. Dec. 1 st. on each edge ev. 13 (16, 19, 22) Rs. 4 times to 52 (64, 76, 88) Rs. C.O.R. 000.

Step 3. K.64 (62, 60, 58) Rs. straight.

Step 4. As for back.

Step 5. Dec. 1 st. on each edge ev. alt. R. 12 (13, 14, 15) times to 24 (26, 28, 30) Rs. C.O.R. 000.

Step 6. H.P. * Push 4 ns. to E. pos. at opp. end to carr. on next 10 Rs. Then 2 (3, 4, 5) to E. pos. at next 2 Rs. Return ns. to D. pos. at opp. end to carr. on next 2 Rs. C/O. Repeat.

TO MAKE UP

Press all pieces to shape. Join shoulders.

Neckband Ribbers In main wl. cast onto 81 (87, 91, 97) sts. on 1x1 rib. T6/6. K.2 Rs. tub. T.10/8. K.12 Rs. rib. Trans. ns. to M.B.

Single bed M/cs. T.8. K.12. T.10. K.1. T.8. K.12. M.D.E. With rt. side of work (purl side) facing M/c, place front neck to 9 (9, 10, 10) sts., side neck to 12 (14, 14, 16) sts., back neck to 39 (41, 43, 45) sts., side neck to 12 (14, 14, 16) and front neck to rem. sts. C/O to end.

Front opening band Ribbers and single bed M/cs. Main wl. cast on to 43 (47, 51, 55) sts. as 1x1. K. as from neck band. With rt. side of work facing M/c, starting 1 st. in from rt. edge,

place rt. front opening evenly onto ns (placing neck band edge to 8 sts) and C/O to end. Repeat band, **At the same time:** after 6 Rs. for ribber M/cs, and after 6 and 19 Rs. for single bed M/cs, make **buttonholes**. With waste wl. start 4th st. in from lt. edge K.5 sts. by hand. Leave space of 8 (9, 10, 11) sts. between holes. Make 3 holes in all (leaving 9 (11, 13, 15) sts. on rt. edge. Starting 1 st. in from lt. edge, place lt. front opening on to ns. and C/O.

POCKETS

On front pick up pocket sts. and return to M/c. Inc. 1 st. on each edge to 33 sts. T.9. K.42 Rs. straight. Thread up sts.

Band Ribbers. Cast on 33 sts. 1x1. T6/6. K.2 Rs. tub. T8/8. K.14 Rs. rib. Trans. ns. to M.B.

Single bed M/cs. C.O.B.H. 33 sts. T.8. K.14. T.10. K.1. T.8. K.14. M.D.E. With rt. (purl) side of work facing M/c, place pocket sts. on to ns. C/O.

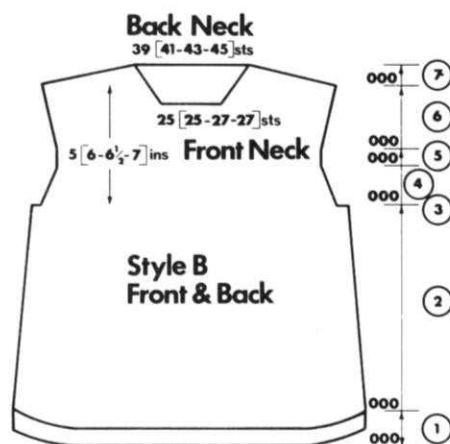
Repeat for other pocket.

Pin pockets in pos. on to fronts and sl. st. in place. On wrong side sl. st. pocket lining to hem. Press all seams and bands.

Blanket Stitch. Using long double strand contrast wl., work blanket st. round seams, pockets and armholes. Work across front and back bodices approx. 3 ins. up from armhole. Join side sleeve seam. Finish off buttonholes. Press seams and sew on buttons.

STYLE B BACK

Step 1. Col. B. C.O.B.H. 121 (127, 133, 139) sts. T.8. K.12. T.10. K.1. T.8. K.12. M.D.E. In main wl. T.9. Set M/c for patt. K.1 C.O.R. Start patt. and cont. as for style A. to end step 5.



Step 6. Inc. 1 st. on each edge at 000 then ev. 7 (8, 9, 10) Rs. 4 times to 30 (34, 38, 42) Rs. C.O.R. 000.

Step 7. H.P. * Push 7 (8, 8, 9) sts. to E. pos. at opp. end to carr. on next 2 Rs. and 7 (7, 8, 8) ns. to E. pos. on next 2 Rs. Return ns. to D. Pos. on next 2 Rs. C/O shoulder. Thread up back neck sts.

FRONT

As for back to end step 3.

Step 4. As for back, Start motif after 10 (14, 20, 24) Rs.

Steps 5 and 6. As for back.

At the same time: After 24 (26, 30, 32) Rs. Start **front neck**. Thread up centre 25 (25, 27, 27) sts. Take off. Thread up sts. on left and take off. Dec. 1 st. on rt. neck edge ev. alt. R. 7 (8, 8, 9) times. After 30 (34, 38, 42) Rs. shape rt. shoulder.

Step 7. K.1. * H.P. * Push 7 (8, 8, 9) ns. to E. pos. at rt. edge ev. alt. R. 2 times. 7 (7, 8, 8) ns. to E. pos. 2 times. Return ns. to D. pos. K.1. C/O.* Return lt. sts to M/c. Shape as for rt. neck reversing shaping.

Work shoulder as for rt. shoulder from * to *.

SLEEVES

Step 1 In col. B. C.O.B.H. 87 (91, 95, 99) sts. T.8. K.16. T.10. K.1. T.8. K.16. M.D.E. in main wl. set M/c for patt. T.9. K.1. C.O.R. 000.

Start patt. K. sleeves as for Style A.

TO MAKE UP

Press all pieces to shape.

Back neckband Ribbers. In col. B. cast onto 41 (43, 45, 47) sts. as 1x1 rib. T6/6. K.2 Rs. tub. T8/8. K.12 Rs. Trans. ns. to M.B.

Single bed M/cs. In col. B. C.O.B.H. 41 (43, 45, 47) sts. T.8. K.12. T.10. K.1. T.8. K.12. M.D.E. With rt. side (plain) of work facing M/c, and starting 1 st. in from each edge, place back neck sts. to band and C/O to end in main wl.

Front neckband Ribbers. Col. B. cast onto 51 (55, 57, 61) sts. K. as for back neckband.

Single bed M/cs. C.O.B.H. 51 (55, 57, 61) sts. K. as for back. For rt. side of work facing M/c, starting 1 st. in from each edge, place side neck to 12 (14, 14, 16) sts., front neck to 25 (25, 27, 27) sts. and side neck to 12 (14, 14, 16) sts. C/O in main wl.

Shoulder Bands Ribbers. Col. B. cast onto 29 (31, 33, 35) sts. as 1x1. T6/6. K.2 Rs. tub. T8/8. Inc. 1 st. on lt. edge ev. 3 Rs. 4 times and dec. 1 st. ev. 3 Rs. 4 times. Trans. ns. to M.B.



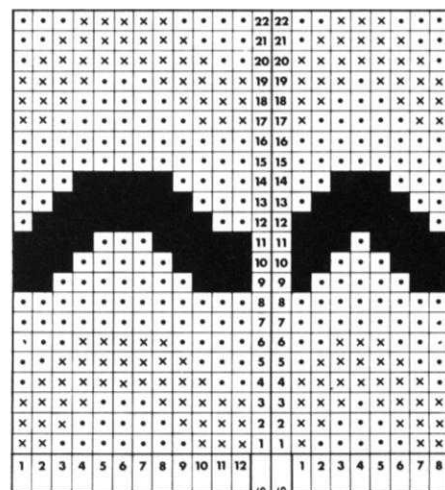
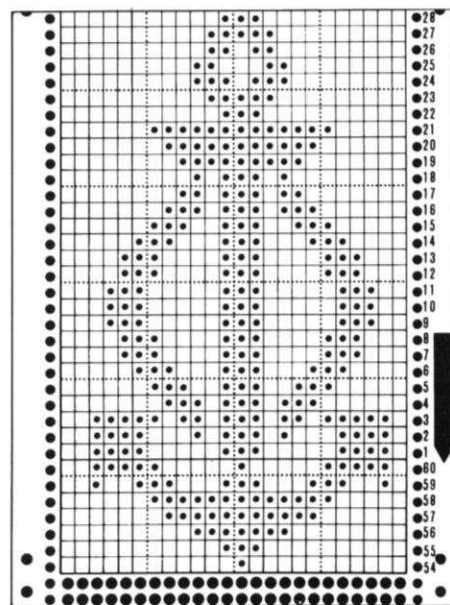
Single bed M/cs. C.O.B.H. 29 (31, 33, 35) sts. T.8 K.24. Inc. 1 st. on lt. edge ev. 3 Rs. 4 times. Dec. 1 st. ev. 3 Rs. 4 times. T.10. K.1. T.8. Inc. 1 st. ev. 3 Rs. 4 times. Dec. 1 st. ev. 3 Rs. 4 times. M.D.E.

With rt. side of work facing M/c, place back shoulders to band.

With rt. edge to neck edge of band C/O to end in main wl.

Repeat for other shoulder reversing shaping.

S1. st. front edge of shoulder band to front shoulder. S1. st. mitred edge of band to neckband edges. Sew tops of sleeves into armholes. Join side and sleeve seams and press all seams and bands.



- - Unpunched hole & Main Colour
- - Colour B
- × - Colour C

negligee and nightdress



Ladies Negligee and Nightdress set.
For 820 M/cs. only.

Materials Negligee 15 (16, 17)×25g.
balls of main wl.

3 balls of contrast wl.

4 buttons. (Shaft)

Nightdress 12 (13, 14) balls of main
wl.

2 balls of contrast wl.

4 buttons. 1½ yards of 1 in. wide
ribbon.

Templetons H and O Shetland lace.

Measurements

To fit 32 (34, 36) in. bust

Negligee: Finished meas's 33 (35, 37)
ins.

Length from back neck 51½ (53,
54½) ins.

Sleeve seams 15½ (16, 16½) ins.

Nightdress: Finished meas's 32 (34,
36) ins.

Tensions

Negligee: 7½ sts.×12 Rs. = 1 in. over
st.st. on T.5.

Nightdress: 7½ sts.×11 Rs. = 1 in. over
lace patt. on T.5.

Lace-edgings knitted on T.5.

Patterns

Lace-edgings: Lace patt. no. 154
from patt. book.

Nightdress: Lace patt. no. 172 from
patt. book.

Notes: When knitting lace-edgings,
one edge is scalloped.

To fashion scallops on **Rt. edge**, cast
on 19 sts. 7 sts. to rt. of centre, 12 sts.
to lt. of centre. Having set M/c. for
lace-patt. on R. 1 on punch-card,
C.O.R., start lace-patt. * On K. Rs, inc.
1 st. on rt. edge ev. alt. R. 5 times. K.2
Rs. (12 Rs. in all.) Dec. 1 st. on rt.
edge ev. alt. R. 5 times. K.2. Rs. (24
Rs. in all.) * This should bring you back
to R. 1 on punch-card. * Repeat from *
to * for each scallop.

To fashion scallops on **Lt. edge**, cast
on 13 sts. to rt. of centre, 6 sts. to lt. of
centre. Set M/c. for lace-patt. on R. 31
on punch-card. C.O.R. Repeat from *
to * as before making incs. and decs.
on lt. edge. This should bring you back
to R. 31 on punch-card.

Always dec. or inc. on edge st. when
shaping scollapes. For fashioning gar-
ment use three-pronged transfer tool.

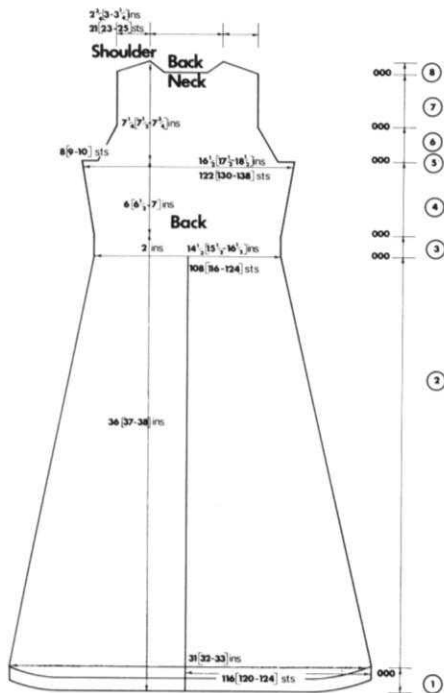
NEGLIGEE

RT. BACK PANEL

Step 1. In M.wl. C.O.B.H. 116 (120,
124) sts. * T.4. K.13 Rs. T.6. K.1.

Make picot edge by trans. ev. alt. st.
to rt. T.4. K.14 Rs. M.D.E. * C.O.R.
T.5. K.1. H.P. * Push 8 ns. to E. pos.
on rt. edge ev. alt. R. 5 times. Return
ns. to D. pos. K.1. C.O.R.000.

Step 2. Dec. 1 st. on rt. edge ev. 7 (7,
8) Rs. 42 (54, 5) times. Then ev. 6 (6,
7) Rs. 19 (7, 56) times. K. to 408 (420,



432) Rs. Dec. 1 st. on lt. edge here. Thread-up sts. and take off M/c.

LT. BACK PANEL

K. as for rt. panel, reversing all shapings.

BODICE BACK

Replace rt. back panel sts. onto M/c., to rt. of centre: and lt. panel sts. to lt. of centre.

Step 3. K. 24 Rs. straight. C.O.R.000.

Step 4. Inc. 1 st. on each edge at 000. Then ev. 11 (12, 13) Rs. 6 times. K. to 72 (78, 84) Rs.

Step 5. C/O 8 (9, 10) sts. at beg. next 2 Rs. C.O.R.000.

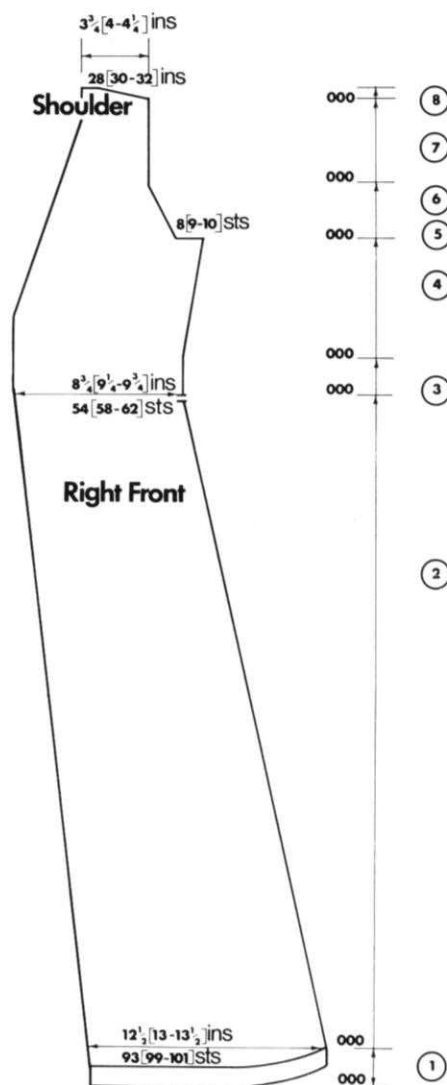
Step 6. Dec. 1 st. on each edge ev. 3 Rs. 12 times. To 36 Rs. C.O.R.000.

Step 7. K. 50 (54, 58) Rs. straight. C.O.R.000.

Step 8. Thread-up 28 (30, 32) sts. on back neck and take off M/c. Push ns. to lt. to E. pos. On rt. neck edge dec. 1 st. ev. alt. R. 6 times. **At the same time:** work **Rt. shoulder.** K.1. H.P. * Push 4 (4, 5) ns. to E. pos. on rt. edge ev. alt. R. 3 (5, 1) times. Then 3 (3, 4) ns. to E. pos. 3 (1, 5) times. Return ns. on rt. to D. pos. K.1. C/O rt. shoulder. Return ns. on lt. to D. pos. Shape lt. neck as for rt. at the same time work **Lt. shoulder.** H.P. * Push 4(4, 5) ns. to E. pos. on lt. edge ev. alt. R. 3 (5, 1) times. Then 3 (3, 4) ns. to E. pos. 3 (1, 5) times. Return ns. to D. pos. K.1. C/O shoulder.

RIGHT FRONT

Step 1. In M.wl. C.O.B.H. 93 (99, 101) sts. Shape rt. edge as for rt. back panel. **At the same time:** on lt. edge inc. 1 st. ev. 12 (12, 13) Rs. 24 (34, 12)



times. Then ev. 11 (0, 12) Rs. 10 (0, 22) times. (On lt. edge work scollaped edging as for notes to end of front.) K. to 408 (420, 432) Rs. C.O.R.000.

On rt. edge mark edge st. with contrast coloured wl.

Step 3. K. as for back.

Step 4. Shape rt. edge as for back. **At the same time:** after 24 Rs. on lt. edge dec. 1 st. and then dec. 1 st. ev. 5 Rs. 20 (24, 27) times. Then ev. 4 Rs. 5 (2, 0) times to 72 (78, 84) Rs.

Step 5. On rt. edge C/O 8 (9, 10) sts. K.2 Rs. C.O.R.000.

Step 6 and 7. Shape rt. edge as for back.

Step 8. Work rt. shoulder as for back.

LEFT FRONT

K. as for rt. front, reversing all shapings.

NEGLIGEE SLEEVES

Step 1. In M.wl. C.O.B.H. 119 (123, 127) sts. T.5. K.2 Rs. H.P. * Push 10 ns. to E. pos. at opp. end to carr. on next 6 Rs. Return ns. on lt. to D. pos.

K.1. Return ns. on rt. to D. pos. K.1. C.O.R.000.

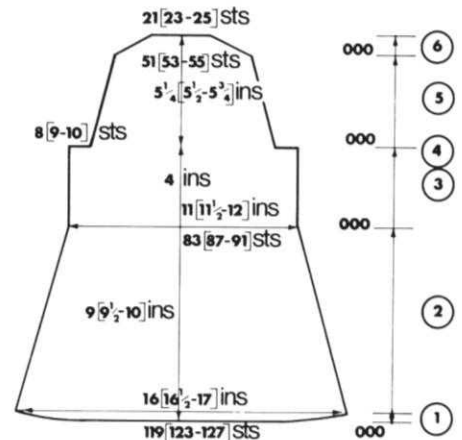
Step 2. Dec. 1 st. on each edge ev. 6 (6, 7) Rs. 10 (16, 4) times. Then ev. 5 (5, 6) Rs. 8 (2, 14) times. To 100 (106, 112) Rs. C.O.R.000.

Step 3. K.48 Rs. straight.

Step 4. C/O 8 (9, 10) sts. at beg. next 2 Rs. C.O.R.000.

Step 5. Dec. 1 st. on each edge ev. 7 Rs. 4 (6, 8) times. Then ev. 6 Rs. 4 (2, 0) times. K. to 52 (54, 56) Rs. C.O.R.000.

Step 6. H.P. * Push 3 ns. to E. pos. at opp. end to carr. on next 10 Rs. Return ns. on lt. to D. pos. K.1. Return ns. on rt. to D. pos. K.1. C/O.



TO MAKE UP

Press all pieces.

Rt. lace-edging: T.5. In contrast wl. C.O.B.H. 19 sts. (7 sts. to rt. of centre, 12 sts. to lt. of centre) K.1. Set for lace-patt. R. 1. K.1. C.O.R.000.

Step 2. Work scalloped edging on rt edge as for notes. K. 604 (626, 648) Rs. straight.

Step 3. C/O 4 sts. ev. alt. R. 4 times. C/O rem. 3 sts.

Lt. lace-edging: C.O.B.H. 19 sts. 13 sts. to rt. of centre, 6 sts. to lt. K.1. Set for lace-patt. R. 31 K.1. C.O.R.000.

Step 2. As for rt., work scalloped edging on lt. edge.

Step 3. K.1. C/O 4 sts. ev. alt. R. 4 times. C/O rem. 3 sts.

With plain side of rt. lace-edging uppermost, place onto rt. side of rt. front. Pin scallops of front and edging together. Working through edge st. on edging and edge st. on front, work single crochet chain up front.

Smooth edging onto front so that it measures 3 ins. across widest part. Pin in pos. on straight edge of lace. Sl.st. in place onto front. Sl.st. cast on edge of lace to top of picot band on front hem. Close end on band. Press edging. Pin lt. lace-edging onto lt. front and sl.st. in place as before.

BACK NECK BAND

In M.wl. C.O.B.H. 49 (51, 53) sts. T.4. K.15 Rs. T.6. K.1. Make picot edge. T.4. K.16 Rs. M.D.E. With rt. side of work facing M/c., place side neck to 10 sts. Back neck to 28 (30, 32) sts. and side neck to 11 sts. C/O to end.

Working through both thicknesses of edging and front, join fronts to back at shoulders. Join edge of back band to remainder of shoulders on fronts.

SLEEVE EDGINGS

T.5. In contrast wl. starting the 12th n. to lt. of centre C.O.B.H. 3 sts. K.2 Rs. C.O.B.H. 4 sts. ev. alt. R. 4 times. (Finishing the 7th st. to rt. of centre.) After 9 Rs. C.O.L. Set M/c. for lace-patt. R. 1. K.1. C.O.R.000. Start patt. Work scalloped edging on rt. edge.

K. 198 (204, 210) Rs. straight. C/O 4 sts. ev. alt. R. 4 times. C/O rem. 3 sts. Repeat lace-edging.

Crochet single chain st. into edge st. on scalloped edges. Pin straight edges of lace onto cast on edges of sleeves. Sl.st. in pos. Sew tops of sleeves into armholes. Press seams.

BELTS

In M.wl. C.O.B.H. 121 (127, 133) sts. T.4. K.18 Rs. Inc. 1 st. on rt. edge ev. alt. R. 9 times. T.6. K.1. T.4. K.18 Rs. Dec. 1 st. on rt. edge ev. alt. R. 9 times C/O. Repeat belt, shaping on lt. edge only. C/O. Fold belts along loose Rs. and sl.st. edges together. Close mitred ends. Close straight ends.

Pin straight ends of belts to side seam above marked sts.

Join side seams, st. back edge of belt to back and front edge of belt to front. Join sleeve seams. Press all seams and bands.

On rt. front at waist, work a loop onto edge of scallop, 4 times. On lt. front sew on 4 buttons to correspond with loops.

NIGHTDRESS

CENTRE PANEL — KNIT TWO

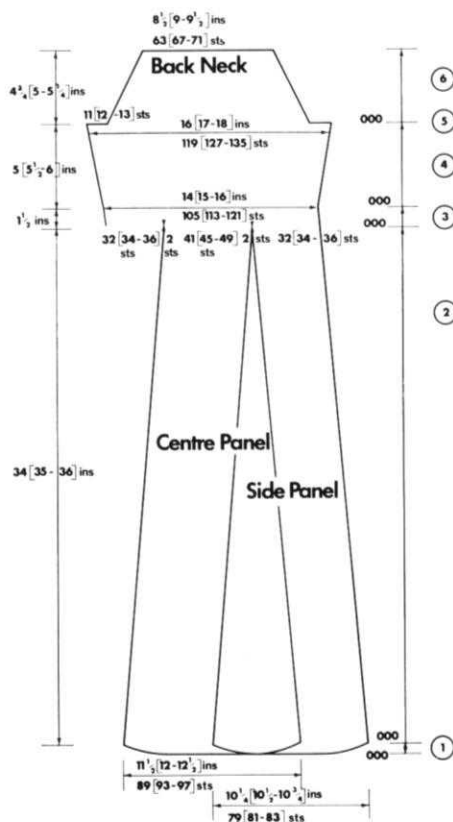
Step 1. In M.wl. C.O.B.H. 89 (93, 97) sts. * T.5. K.1. C.O.L. H.P. * Push 7 ns. to E. pos. at opp. end to carr. on next 6 Rs. Return ns. on rt. to D. pos. K.1. Return ns. on lt. to D. pos. K.1. Set M/c. for nightdress lace-patt. K.1. C.O.R.000.

Step 2. Start lace-patt. Dec. 1 st. on each edge ev. 17 (17, 18) Rs. 4 (16, 5) times. Then ev. 16 (16, 17) Rs. 19 (7, 18) times. To 372 (384, 396) Rs. Thread-up sts. and take off M/c. *

SIDE PANELS

KNIT TWO

Step 1. In M.wl. C.O.B.H. 79 (81, 83) sts. K. as for centre panels from * to *.



BACK

Return one centre panel to centre of M/c. (extra st. on rt.). Dec. 1 st. on each edge. Return one side panel to rt. of centre panel, dec. 1 st. on lt. edge. Return one side panel to lt. of centre panel, dec. 1 st. on rt. edge.

Set M/c. for lace-patt. C.O.R.000.

Step 3. K.16 Rs. straight. C.O.R.000.

Step 4. Inc. 1 st. on each edge at 000. Then inc. 1 st. ev. 8 (9, 10) Rs. 6 times. K. to 54 (60, 66) Rs.

Step 5. C/O 11 (12, 13) sts. at beg. next 2 Rs. C.O.R.000.

Step 6. Dec. 1 st. on each edge ev. 3 Rs. 17 (18, 19) times. to 54 (56, 58) Rs. C/O.

FRONT

RIGHT SIDE PANEL

K. as for back to end of step 2. Do not take off M/c.

Step 3. Do not dec. lt. st. (33 (35, 37) sts.) K. as for back.

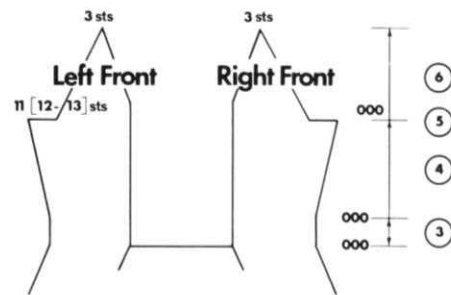
Step 4. As for back, inc. on rt. edge only.

Step 5. C/O 11 (12, 13) sts. on rt. edge. K.2 Rs. C.O.R.000.

Step 6. Dec. on rt. edge as for back. On lt. edge, after 12 Rs. dec. 1 st. Then dec. 1 st. on lt. edge ev. 5 Rs. 8 (6, 4) times. Then ev. 6 Rs. 0 (2, 4) times. C/O rem. 3 sts.

LEFT SIDE PANEL

K. as for rt. panel, reversing all shapings.



TO MAKE UP

Press all pieces. Join panel edges, (including centre front panel). Join side seams.

Press seams.

SKIRT LACE-EDGING

In contrast wl. C.O.B.H. 3 sts. (Finishing the 7th n. to rt. of centre. K.1. Cast on 4 sts. ev. alt. R. 4 times. C.O.L. set M/c. for lace-edging patt. R. 1. K.1. C.O.R.000 (12 sts. to lt. of centre).

Make shaping on rt. edge, see notes. K. 746 (770, 794) Rs. straight.

C/O 3 sts. on rt. edge. C/O 4 sts. ev. alt. R. 4 times.

On scalloped edge, make single crochet chain st. into edge st. Press edging.

Starting from lt. panel seam on back, pin edging in pos. around edge of hem.

Sl.st. in place. Close ends of edging. Press seam.

SIDE BANDS

In M.wl. C.O.B.H. 87 (91, 95) sts. T.4. K.6 Rs. Inc. 1 st. on each edge ev. alt. R. 3 times. T.6. K.1. Make picot edge. T.4. K.7 Rs. Dec. 1 st. on each edge ev. alt. R. 3 times. M.D.E.

With rt. side of work facing M/c., place armhole evenly onto ns. and C/O to end. Repeat.

FRONT LACE-EDGINGS

Lt. edging: In contrast wl. C.O.B.H. 19 sts. 7 sts. to rt. of centre, 12 sts. to lt. K.1. Set for lace-patt. R. 1 K.1. C.O.R.000. (Make scalloped edging on rt. edge.) K. 168 (180, 192) Rs. straight. K.1. C.O.L. C/O 4 sts. ev. alt. R. 4 times. C/O rem. 3 sts.

Rt. edging: C.O.B.H. 13 sts. to rt. of centre, 6 sts. to lt. K.1. Set M/c. for patt. R. 31 K.1. C.O.R.000. (Make scalloped edge on lt.) K. 168 (180, 192) Rs. C/O 4 sts. ev. alt. R. 4 times. C/O rem. 3 sts. Make single-crochet chain st. into edge st. on scalloped edges.

Back Lace-edging: In contrast wl. C.O.B.H. 3 sts. (starting the 12th st. to lt. of centre). K.2 Rs. C.O.B.H. 4 sts. ev. alt. R. 4 times. (Finishing the 7th n. to rt. of centre.) C.O.R.000. (Make scalloped edge on rt.) R. 1 on punch-card. K. 100 (108, 116) Rs. straight. C/O 4 sts. ev. alt. R. 4 times. C/O 3

sts. Join ends of front edgings to ends of back edging. Press edging.

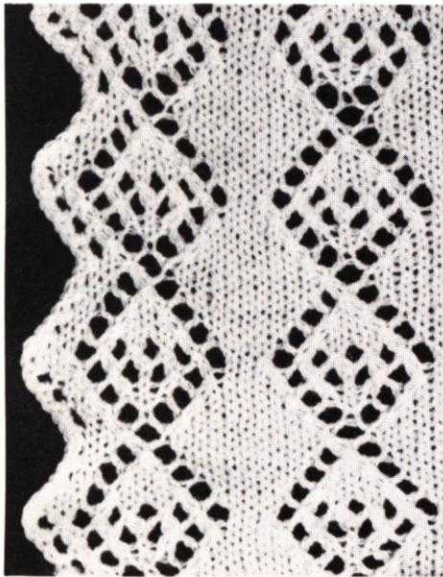
Pin straight edge of rt. edging along rt. front edge. Leaving $3\frac{3}{4}$ (4, $4\frac{1}{4}$) ins. of lace for shoulder strap. Sl.st. in place. Repeat for lt. front. Pin cast on edges of lace to centre front panel, to meet at centre, sl.st. in place. Fold edging along shoulder seams. Pin back of edging across back of bodice, leaving same amount for shoulder straps. Sl.st. in place.

Crochet into edge st. along straight edges of shoulder straps. Pin back neck edging, on pressing foam, into

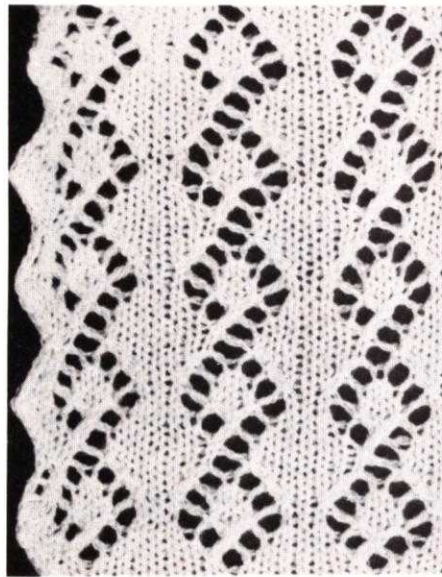
curve to fit neck. Crochet around scollaped edge, working into ev. alt. st. and pulling scollapes together to fit. Press all seams and bands.

On rt. lace edging, make a loop on each scollap curve for 4 scollapes on lower bodice. Sew 4 buttons onto lt. edging to correspond with loops. Cut ribbon in half. Turn back $\frac{1}{4}$ in. on one end of each piece. Pin each end onto side seam, at waist, and blind-st. in place. Pin across bodice along waist-line and st. to secure along seams of lace-edging. Cut ends of ribbon into mitre-shape. Tie into bow at front.

STITCH PATTERN SUGGESTIONS FOR OWNERS OF OTHER MODELS (NOT FOR BEGINNERS)



▲ FOR MODEL 800



▲ FOR MODEL 588



▲ FOR MODEL 800



▲ FOR MODEL 588

Man's lace-patterned top featuring short sleeves, buttoned front opening and collar.

Materials

19 balls of M.wl. **Wendy Invitation**.
1 ball of contrast wl. **crochet cotton**.
2 buttons.

Measurements

To fit 38 (40, 42, 44) in. chest.
Length from back neck $23\frac{3}{4}$ ($23\frac{3}{4}$, $24\frac{1}{4}$, $24\frac{3}{4}$) ins.
Sleeve seams $4\frac{1}{2}$ ins.

Tensions

820 M/cs.

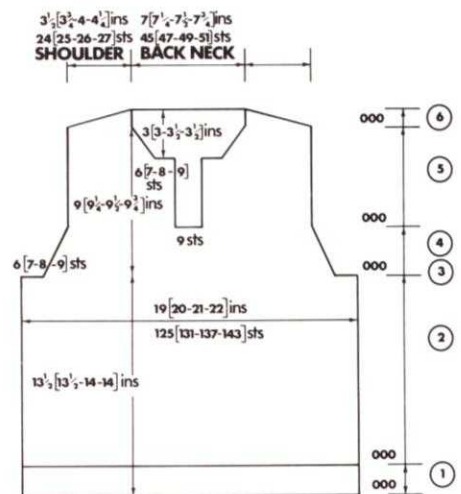
$6\frac{1}{2}$ sts. \times 10 Rs. = 1 in. on T.8. over lace patt. Lace patt. set. vol. 5, punch card no. 406.

588 M/c.

Knitted on T. over lace patt. no. 811 from patt. book.

800 M/c.

Knitted on T. over lace patt. no. 177 from patt. book.



BACK

Step 1. In W.wl. Cast onto 125 (131, 137, 143) sts.

* K. a few Rs. change to M.wl. Trans. ev. alt. st. to rt. Push empty ns. back to A. pos. * T.5. K.20 Rs. T.7. K.1. T.5. K.16 Rs. Change to contrast wl. K.4 Rs. M.D.E. over all ns. Rem. W.wl. Set M/c. for lace-patt. T.7. In M.wl. K.1. C.O.R.000.

Step 2. K.114 (114, 120, 120) Rs. straight.

Step 3. C/O 6 (7, 8, 9) sts. at beg. next 2 Rs. C.O.R.000.

Step 4. Dec. 1st. on each edge ev. 3 Rs. 10 times. To 30 Rs. C.O.R.000.

Step 5. K.60 (62, 64, 66) Rs. straight. C.O.R.000.

Step 6. C/O 5 sts. at beg. next 8 Rs. Then C/O 4 (5, 6, 7) sts. at beg. next 2 Rs. Thread-up. Rem. back neck sts. and take off M/c.

FRONT

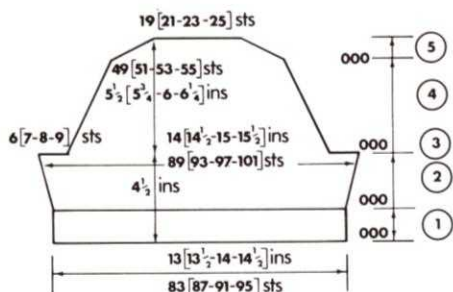
As for back to end of step 4.

lace top

Step 5. C/O 9 sts. at centre of M/c. Thread-up sts. to lt. of centre and take off. (Note number of next R. on punch-card).

* K.36 (38, 40, 42) Rs. straight. Thread-up 6 (7, 8, 9) sts. on neck edge. Dec. 1 st. on neck edge ev. alt. R. 12 times to 60 (62, 64, 66) Rs. C.O.R.000.

Step 6. C/O 5 sts. on rt. edge ev. alt. R. 4 times. Then C/O 4 (5, 6, 7) sts. *. Replace lt. thread-up sts. onto M/C. (starting the 5th st. to lt. of centre.) Set for lace-patt. Repeat as for rt. neck from * to * reversing all shapings.



SLEEVES

Step 1. In W.wl. cast onto 83 (87, 91, 95) sts. As for back from * to * T.5. K.14 Rs. T.7. K.1. T.5. K.10 Rs. Change to contrast wl. K.4 Rs. M.D.E. over all ns. Rem. W.wl. Set M/c. for lace-patt. T.8. In M.wl. K.1. C.O.R.000.

Step 2. Inc. 1st. on each edge ev. 9 Rs. 3 times K. to 30 Rs.

Step 3. As for back.

Step 4. Dec. 1st. on each edge ev. 4 Rs. 4 (6, 8, 10) times. Then ev. 3 Rs. 10 (8, 6, 4) times. K. to 46 (48, 50, 52) rs. C.O.R.000.

Step 5. C/O 3 sts. at beg. next 10 Rs. C/O rem. sts.

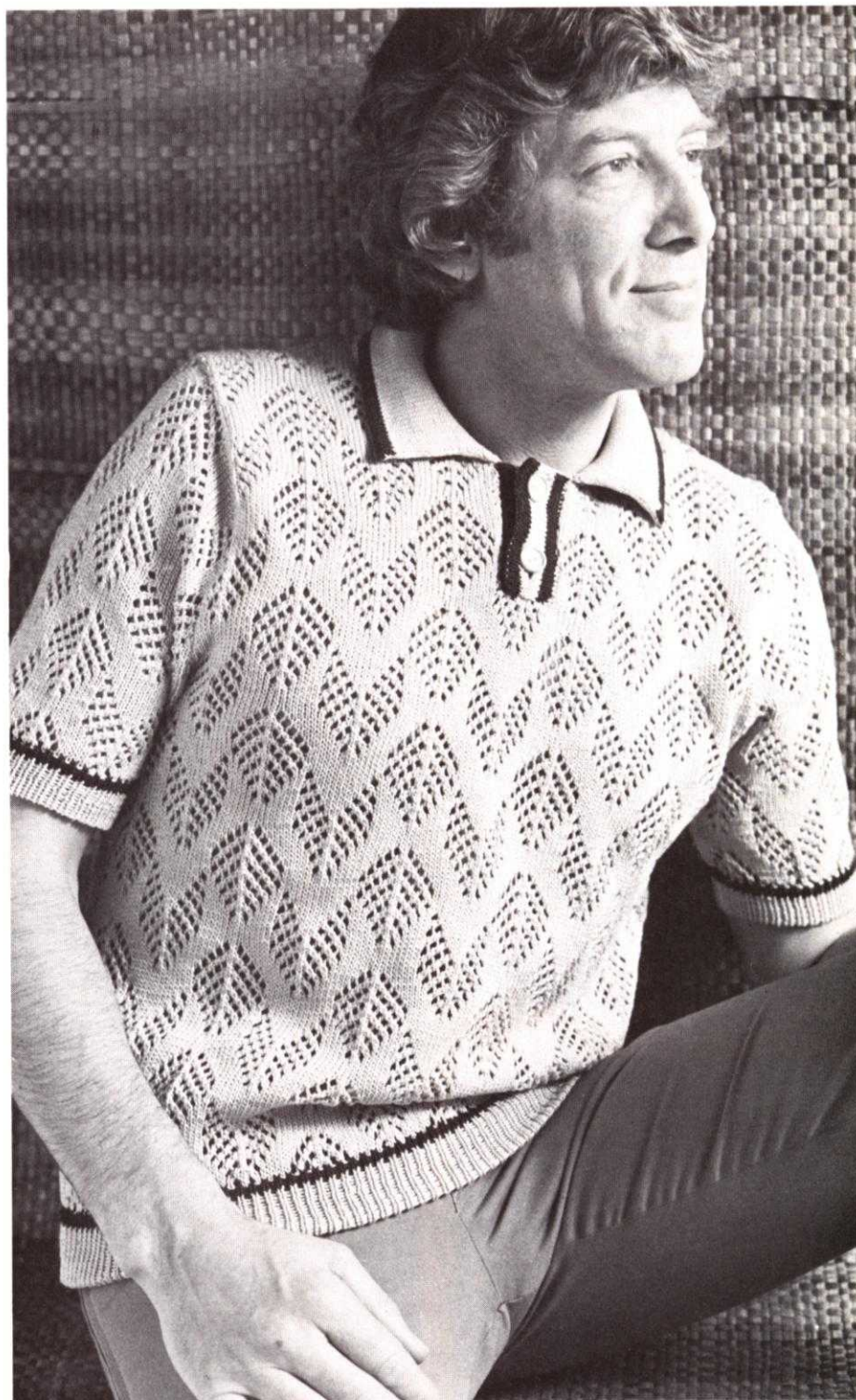
TO MAKE UP

Press all pieces. Join shoulders. Sew tops of sleeves into armholes. Press seams. Join side and sleeve seams.

COLLAR

In M.wl. cast onto 117 (121, 125, 129) sts.

H.P. * T.6. Push 18 (20, 22, 24) ns. to E. pos. at opp. end to carr. on next 2 Rs. Then push 1 n. to E. pos. at opp. end to carr. on next 30 Rs. Return ns. on lt. to D. pos. K.1. Return ns. on rt. to D. pos. K.1. K.24 Rs. straight. Change to contrast wl. K.4 Rs. T.8. K.1. Change to M.wl. T.6. K.28 Rs. straight. H.P. * Push 33 (35, 37, 39) sts. to E. pos. at opp. end to carr. on next 2 Rs. Return 1 n. to D. pos. at opp.



end to carr. on next 30 Rs. Return ns. on rt. to D. pos. K.1. Return ns. on lt. to D. pos. K.1. M.D.E.

With wrong (purl) side of work facing M/c., place front neck to 6 (7, 8, 9) sts. Place side neck to 30 sts. and back next to 45 (47, 49, 51) sts. C/O up to this point. Place side neck to 30 sts. and front neck to Rem. 6 (7, 8, 9) sts. C/O to end.

BUTTON BAND

In contrast wl. C.O.B.H. 25 (26, 27, 28) sts. T.6. K.4 Rs. Change to M.wl. K.6 Rs. Change to contrast wl. K.4 Rs. T.8. K.1. Change to M.wl. T.6. K.14 Rs. M.D.E. (29 Rs. in all).

With rt. side of work facing M/c. place rt. neck opening edge evenly onto ns., starting 1st. in from lt. edge. C/O to end in M.wl.

midcalf length dress

BUTTONHOLE BAND

K. as for button band. **At the same time:** after 7 Rs. starting from the lt. edge thread-up the 3rd to the 8th st. and take off, miss next 8 (9, 10, 11) sts. Thread-up the next 6 sts. Leaving 3 sts. on rt. edge. K. next 15 Rs. as for button-band. Make buttonholes as before. K. next 7 Rs. M.D.E. starting 1 st. in from rt. edge., place lt. front opening edge evenly onto Ms. and C/O to end.

Join lower edge of button band to C/O edge on front. On wrong side stitch button band to seam. Close ends of bands at neck and collar edges. Finish off buttonholes. Press all seams and bands. Sew on buttons to correspond with holes.



▲588: STITCH PATTERN 811



▲800: STITCH PATTERN 177



Ladies mid-calf length dress in Linen/knop yarn featuring Lace/tuck pattern.

Materials

4 cones of **Lynette**, 149p per cone approx., by **Silverknit**, Edwalton, Nottingham, NG12 4DF.
18 in. zip. Round buckle with 1½ in. shaft (approx.).

Measurements

To fit 32 (34, 36) in. bust.
Finished meas's 33 (35, 37) ins.
Length from back neck 42 (43½, 45) ins.
Sleeve seam 16½ (17, 17½) ins.

Tensions

820 M/cs.

6 sts.×11 Rs. = 1 in. on T.8. (Y.F. loose -), over patt. 1.

6 sts.×10 Rs. = 1 in. on T.8. (Y.F. loose), over patt. 2.

800 M/cs.

Patt. 1 knitted on T.8. (Y.F. -).

Patt. 2 knitted on T.8. (Y.F. -).

588 M/cs.

Patt. 1 knitted on T.8. (Y.F. on Δ, or or half).

Patt. 2 knitted on T.8. (Y.F. on Δ, or half).

Patterns

820 M/cs.

Patt. no. 1: Pull-up Lace patt. no. 251 from patt. book

Patt. no. 2: Pull-up patt. from graph.

800 M/cs.

Patt. no. 1: Pull-up patt. no. 902 from Cassette Book.

Patt. no. 2: Pull-up patt. no. 12 from Cassette Book.

588 M/cs.

Patt. no. 1: Pull-up Lace patt. no. 246 from patt. book.

Patt. no. 2: Pull-up patt. no. 23 from patt. book.

Note: For patt. no. 1, when knitting lace-rows, do not forget to release Tuck buttons.

DRESS FRONT

SIDE PANELS Knit 2

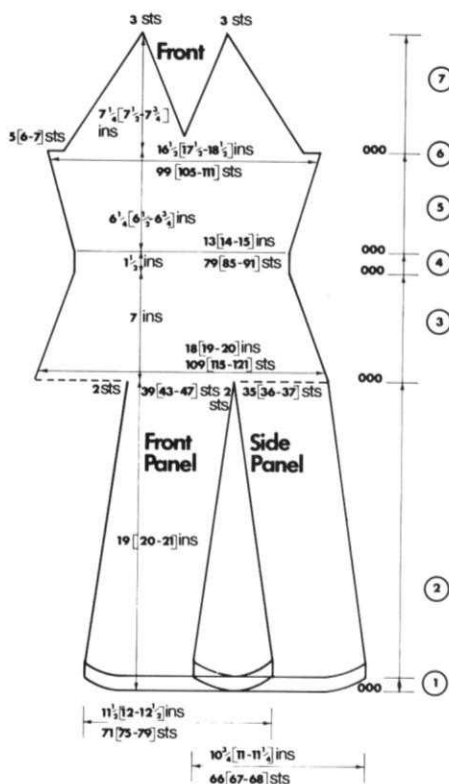
Step 1. C.O.B.H. 64 (66, 68) sts.

HEM

* T.7. K.10 Rs. T.9. K.1. T.7. K.10 Rs. M.D.E. T.8. Set M/c. for R. 37 on punch-card of patt. 1. K.1. C.O.R.000 *

Step 2. Start patt. dec. 1 st. on each edge ev. 12 (12, 13) Rs. 3 (13, 8) times. Then ev. 11 (11, 12) Rs. 12 (2, 7) times.

After 59 Rs. Remove punch-card and replace with punch-card no. 2. (R. 1). K.1. C.O.R. Start patt. 2. H.P. * Push 3 ns. to E. pos. at opp. end to carr. on next 8 Rs. Return ns. on lt. to D. pos. K.1. Return ns. on rt. to D. pos. K.1.



C.O.R. Reset row-counter to 062 Rs. K. to 176 (186, 196) Rs. Thread-up sts. and take off M/c. Repeat. Press panels.

FRONT PANEL

Step 1. C.O.B.H. 71 (75, 79) sts. K. as side panel * to *.

Step 2. As for side panel, to 176 (186, 196) Rs. Dec. each edge st. to 39 (43, 47) sts. Replace sts. of side panel to ns. to rt. of front panel, dec. 1 st. on lt. edge. Replace sts. of other side panel to lt. of front panel, dec. 1 st. on rt. edge. 109 (115, 121) sts. in all. C.O.R.000. Set ns. for next R. of patt.

Step 3. Dec. 1 st. on each edge at 000. Then ev. 5 Rs. 14 times. To 70 Rs. C.O.R.000.

Step 4. K.1. Remove punch-card and replace with punch-card no. 1. (R. 1). K.1. C.O.R. K. to 16 Rs. in all. (Lengthen or shorten here.) C.O.R.000.

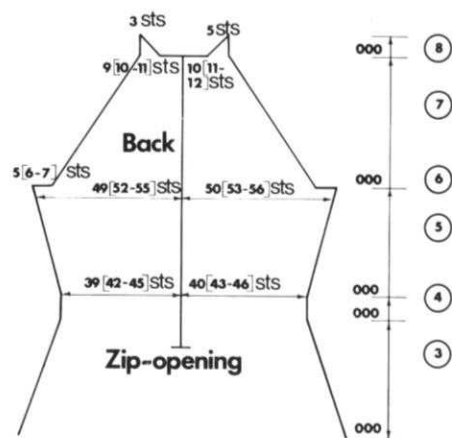
Step 5. Inc. 1 st. on each edge at 000. Then ev. 7 (7, 8) Rs. 9 times. K. to 68 (72, 76) Rs.

Step 6. C/O 5 (6, 7) sts. at beg. next 2 Rs. C.O.R.000.

Step 7. Dec. 1 st. on each edge ev. 3 Rs. 22 (24, 26) times. Then ev. 2 Rs. 5 (4, 3) times. **At the same time:** after 12 Rs. start front neck. Dec. centre st. to rt. Thread-up sts. to lt. of centre and take off M/c. (Note next R. on punch-card.) On rt. neck edge, dec. 1 st. ev. 4 Rs. 6 (7, 8) times. Then ev. 5

Rs. 8 times. (To 3 sts.) K. to 78 (82, 86) Rs. C/O rem. sts.

Replace lt. sts. onto M/c. to lt. of centre and set ns. for patt. C.O.R.012. Repeat as for rt. neck, reversing shapings.



BACK

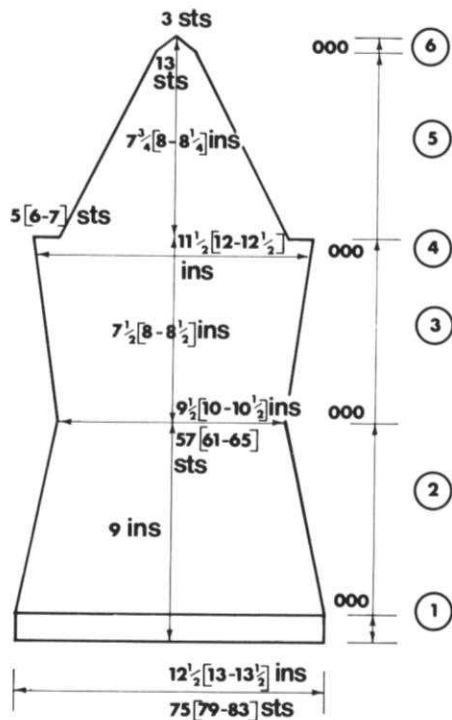
As for front to end of step 2.

Step 3. Shape sides as for front. **At the same time:** after 52 (56, 60) Rs. make **back-opening**. Thread-up sts. to lt. of centre and take off M/c. (Note next R. on punch-card.) On rt. back K. to 70 Rs. C.O.R.000.

Steps 4 and 5. As for front, shaping on rt. edge only.

Step 6. C/O 5 (6, 7) sts. on rt. edge. K.2 Rs. C.O.R.000.

Step 7. As for front, shaping on rt. edge only, and omitting front neck.



pinafore dress and blouse

Materials

Dress 4×25g. balls of colour A.

2×25g. balls of colour B.

Blouse 4 ×25g. balls of colour B. 3 buttons.

1×25g. balls of colour C. ¼ in. elastic.

Measurements

To fit 16 (18, 20, 22) in. chest.

Pinafore: Length from back neck 12 (13½, 14½, 15½) ins.

Blouse: Length from back neck 12½ (13½, 15, 16½) ins.

Sleeve seam 2¼ (2½, 2¾, 3) ins.

Tensions

820 M/cs.

7 sts.×12 Rs. = 1 in. on T.7. (Y.F.) over st.st.

7½ st.×9½ Rs. = 1 in. on T.8. (Y.F.) over Fair Isle patt.

No. 90 from patt. book.

800 M/cs.

Fair Isle patt. no. 124 knitted on T.

St.st. knitted on T.7.

588 M/cs.

Fair Isle patt. no. 124 knitted on T.

St.st. knitted on T.6.

PINAFORE DRESS

BACK AND FRONT

Step 1. In colour A. C.O.B.H. 97 (105, 113, 121) sts.

T.6. K.10 Rs. T.8. K.1. T.6. K.10 Rs. M.D.E. Set M/c. for jacq. T.7. K.1. C.O.R. Start patt. H.P. * Push 5 (6, 6, 7) sts. to E. pos. at opp. end to carr. on next 8 Rs. Return ns. on lt. to D. pos. K.1. Return ns. on rt. to D. pos. K.1. C.O.R.000.

Step 2. T.8. Dec. 1 st. on each edge ev. 4 (4, 5, 6) Rs. 13 times. K. to 52 (62, 72, 82) Rs.

Step 3. C/O 9 (11, 13, 15) sts. at beg. next 2 Rs. C.O.R.000.

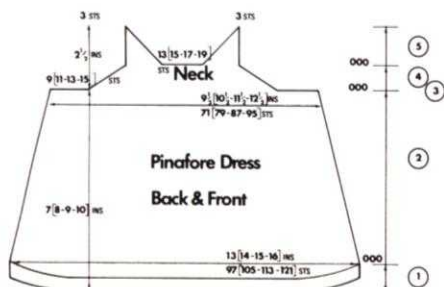
Step 4. Dec. 1 st. on each edge ev. R. 9 times. K. to 10 Rs. C.O.R.000.

Step 5. Thread-up centre 13 (15, 17, 19) sts. and take off M/c. Thread-up sts. to lt. of centre and take off M/c. (Note next R. on punch-card.)

On rt. neck edge, dec. 1 st. ev. alt. R. 6 (5, 4, 3) times. Then ev. R. 2 (4, 6, 8) times. To 14 Rs. C/O rem. 3 sts.

Return lt. sts. to original ns. and set for jacq. K. lt. neck edge as for rt. neck. To 14 Rs. C/O rem. 3 sts.

Repeat.



TO MAKE UP

Press both pieces. Join side seams.

Front and back band: In colour A. C.O.B.H. 154 (166, 178, 190) sts.

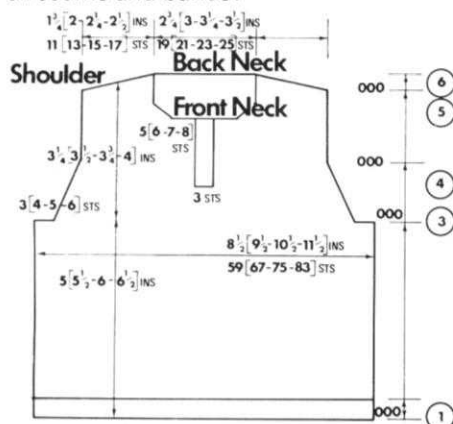
* T.6. K.6 Rs. T.8. K.1. T.6. K.6 Rs. M.D.E. * With rt. side of work facing M/c., and * starting 16 (18, 20, 22) sts. in from lt. edge, place side of front neck to 16 ns. Place front neck to 13 (15, 17, 19) ns. and side neck to 16 ns. * C/O up to centre of M/c. Repeat from * to * C/O to end.

Armhole band: In colour A. C.O.B.H. 88 (96, 104, 112) sts. K. as from * to * of front band.

With rt. side of work facing M/c., and starting 16 (18, 20, 22) sts. in from lt. edge, place side arm-shaping to 21 ns., place under-arm to 14 (18, 22, 26) ns., place side-arm to 21 ns. Leaving 16 (18, 20, 22) sts. on rt. edge. C/O to end.

Repeat band and C/O as before.

Join neck band and sleeve band ends at shoulders. Sl.st. armbands to neck band along C/O edges of straps. Press all seams and bands.



BLOUSE BACK

Step 1. In colour C. C.O.B.H. 59 (67, 75, 83) sts. T.6. K.5 Rs. T.8. K.1. * Make picot edge by trans. ev. alt. st. to rt. * T.6. K.6 Rs. M.D.E. Change to colour B. C.O.R.000.

Step 2. T.7. K. 54 (60, 66, 72) Rs. straight.

Step 3. C/O 3 (4, 5, 6) sts. at beg. next 2 Rs. C.O.R.000.

Step 4. Dec. 1 st. on each edge ev. 3 Rs. 6 times to 18 Rs. C.O.R.000.

Step 5. K.20 (24, 26, 28) Rs. straight. C.O.R.000.

Step 6. H.P. * Push 3 (4, 4, 5) ns. to E. pos. at opp. end to carr. on next 6 (2, 6, 2) Rs.

Then 2 (3, 3, 4) ns. to E. pos. on next 2 (6, 2, 6) Rs. Return ns. on lt. to D. pos. K.1.

Return ns. on rt. to D. pos. K.1. C/O shoulders. Thread-up back neck sts.

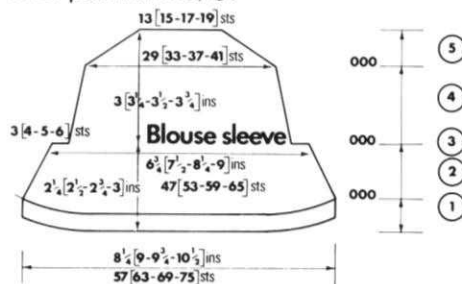
FRONT

As for back to end of step 3.

Step 4. As for back. **At the same time:** after 12 Rs. Thread-up centre 3 sts. and take off M/c. Thread-up sts. to lt. of centre and take off. * K. 20 (24, 26, 30) Rs. straight. On lt. edge thread-up 5 (6, 7, 8) sts. and take off. Dec. 1 st. on neck edge ev. alt. R. 3 times. To 20 (24, 26, 28) Rs. * C.O.R.000.

Step 6. H.P. * K.1. Push 3 (4, 4, 5) ns. to E. pos. on rt. edge ev. alt. R. 3 (1, 3, 1) times. Then 2 (3, 3, 4) ns. to E. pos. ev. alt. R. 1 (3, 1, 3) times. Return ns. on rt. to D. pos. K.1. C/O. Return lt. ns. to original ns. K. 20 (24, 26, 30) Rs. straight. On rt. edge thread-up 5 (6, 7, 8) sts. and take off. Dec. 1 st. on neck edge ev. alt. R. 3 times. C.O.R.000.

Step 6. H.P. * Push 3 (4, 4, 5) ns. to E. pos. on lt. edge ev. alt. R. 3 (1, 3, 1) times. Then 2 (3, 3, 4) ns. to D. pos. ev. alt. R. 1 (3, 1, 3) times. Return ns. to D. pos. K.1. C/O.



SLEEVES

Step 1. In colour C. C.O.B.H. 47 (53, 59, 65) sts. T.6. K.4. T.8. K.1. Make picot edge as for back * to *. T.6. K.5 Rs. M.D.E. C.O.R. Change to colour B. H.P. * Push 3 ns. to E. pos. at opp. end to carr. on next 8 Rs. Return ns. on lt. to D. pos. K.1. Return ns. on rt. to D. pos. K.1. C.O.R.000.

Step 2. Dec. 1 st. on each edge ev. 4 (4, 5, 5) Rs. 5 times. K. to 22 (24, 26, 28) Rs.

Step 3. As for back.

Step 4. Dec. 1 st. on each edge ev. 4 (5, 5, 6) Rs. 6 times. K. to 26 (30, 32, 36) Rs. C.O.R.000.

Step 5. H.P. * Push 2 (3, 3, 3) ns. to E. pos. at opp. end to carr. on next 6 (2, 4, 6) Rs. Then 2 ns. to E. pos. on next 2 (6, 4, 2) Rs. Return ns. on lt. to D. pos. K.1. Return ns. on rt. to D. pos. K.1. C/O to end. Repeat.

TO MAKE UP

Press all pieces. Join shoulders. Sew tops of sleeves into armholes, gathering at top. Press seams. Join side and sleeve seams, inserting elastic into hems of sleeves to fit arms.

FRONT BUTTON BAND

In colour B. T.6. K.3 Rs. In colour C. K.2 Rs. T.8. K.1. Make picot edge by trans. ev. alt. st. to rt. T.6. K.2 Rs. In colour B. K.4 Rs. M.D.E. With rt. side

of work facing M/c., and starting 1 st. in from rt. edge, place lt. neck opening evenly onto ns. C/O.

Repeat band **at the same time:** after 2 Rs. make buttonholes. Trans. the 3rd. st. in from rt. edge to rt. and the next st. to lt. * Leave space of 3 (4, 5, 6) sts. Trans. the next st. to rt. and the next st. to lt. * Repeat from * to * leaving 3 sts. on lt. edge. K.1. In colour C. K.2. T.8. K.1. Picot. T.6. K.2. In colour B. K.2. Make holes as before. K.2 Rs. M.D.E. Starting 1 st. in from lt. edge, place rt. neck opening onto N/S. C/O. Sl.st. lower edge of button band to cast off edge of opening. On wrong side of front, sl.st. edge of buttonband to seam. Finish off buttonholes.

COLLAR

In colour B. C.O.B.H. 49 (53, 57, 61) sts. T.6. H.P. * Push 2 ns. to E. pos. at opp. end to carr. on next 14 (16, 18, 20) Rs. Change to colour C. Return ns. on lt. to D. pos. K.1. Return ns. on rt. to D. pos. K.1. T.8. K.1. Make picot edge. Change to colour B. T.6. Push 14 (16, 18, 20) ns. to E. pos. at opp. end to carr. on next 2 Rs. Return 2 ns. to D. pos. at opp. end to carr. on next 14 (16, 18, 20) Rs. M.D.E. With rt. side of work facing M/c., place front neck to 4 (5, 6, 7) sts. place side neck to 11 sts. and back neck to 19 (21, 23, 25) sts. C/O up to this point. Place side neck to 11 sts. and rem. neck to rem. sts. C/O to end.

Finish off tops of front bands. Press all seams and bands. Sew on buttons.



▲ 588: STITCH PATTERN 124



▲ 800: STITCH PATTERN 124

three summer strappy tops

Three 'strappy-tops' with gathered bodice detail.

Style A features handkerchief edging with flower fairisle.

Style B is in pull-up lace pattern with picot trimmings.

Style C features anchor fairisle and lace-stripe detail on bodice.

Materials

Style A 11 (12, 14) balls of M.wl.
2 balls of contrast wl.

3 small buttons if desired.

Style B 9 (10, 11) balls of M.wl.

1 small decorative button.

Style C 6 (6, 7) balls of M.wl.

7 (8, 8) balls of contrast wl.

ROBIN Crochet courtelle: Machine washable.

Measurements

To fit 32 (34, 36) in. Bust.

Tensions

820 M/cs.

Style A 7 sts. \times 10 $\frac{1}{2}$ Rs. = 1 in. on T.7. over st.st. Y.F. Fairisle patt. from graph.

Style B 7 sts. \times 12 Rs. = 1 in. on T.7. over pull-up lace patt. no. 1. patt. no. 250 from pattern book.

7 sts. \times 10 $\frac{1}{2}$ Rs. = 1 in. on T.7. over pull-up patter. no. 2.

Patt. no. 258 from pattern book.

Style C 7 sts. \times 10 $\frac{1}{2}$ Rs. = 1 in. on T.8 over fairisle from graph. Stripe sequence knitted on T.7 as in instructions.

800 M/cs.

Style A Knitted on T.6. Y.F.+ over fairisle as from graph.

Style B Pull-up patt. no. 1 knitted on T.6. Y.F. from graph. Pull-up patt. no. 2. Knitted on T.6. Y.F.+ . Patt. no. 231 from Cassette book.

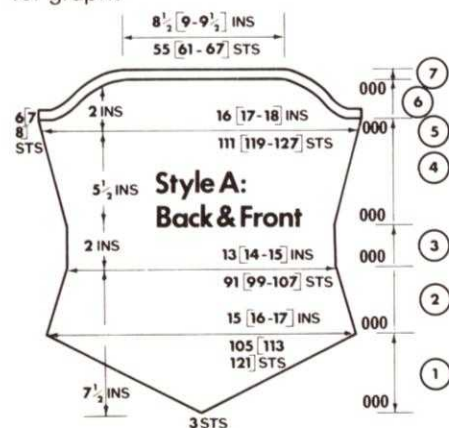
Style C Fairisle knitted on T.7.2 YF+ as for graph.

588 M/cs.

Style A Knitted on T.7 as for graph.

Style B Pull-up patt. no. 1 knitted on T.7. Patt no. 237, Pull-up patt. no. 2 knitted on T.7, patt no. 228.

Style C Fairisle knitted on T.7 $\frac{2}{3}$ as for graph.



STYLE A BACK AND FRONT

Step 1. In M.wl. cast on 3 sts. T.7. K.2 Rs. C.O.R. Cast on 3 sts. at beg. next 22 (30, 38) Rs. Then cast on 2 sts. at beg. next 18 (10, 2) Rs. to 42 Rs. 105 (113, 121) sts. C.O.R.000.

Step 2. Dec. 1 st. on each edge ev. 5 Rs. 7 times. K. to 36 Rs. C.O.R.000.

Step 3. K.22 Rs. straight. (Lengthen or shorten here.) C.O.R.000.

Step 4. Inc. 1 st. on each edge at 000. Then ev. 6 Rs. 9 times. K. to 58 Rs.

Step 5. H.P. Push 6 (7, 8) sts. at opp. end to E. pos. on next 2 Rs. C.O.R.000.

Step 6. H.P. * Push 2 ns. to E. pos. at opp. end to carr. on next 22 Rs. Return

ns. to B. pos. C.O.R.000.

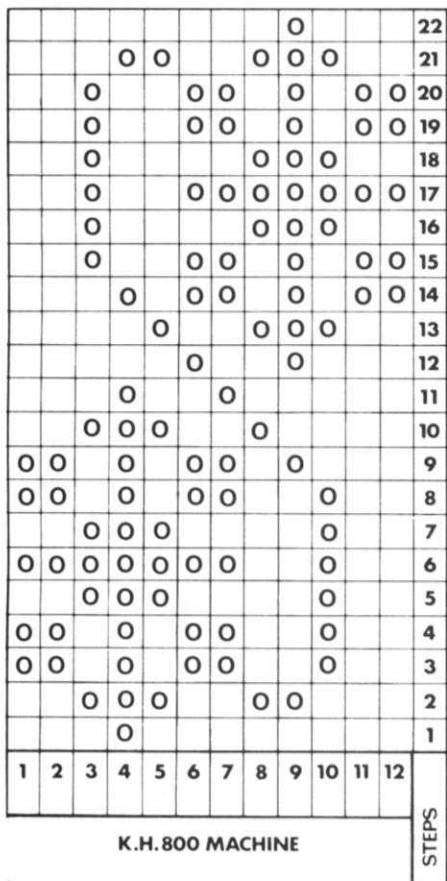
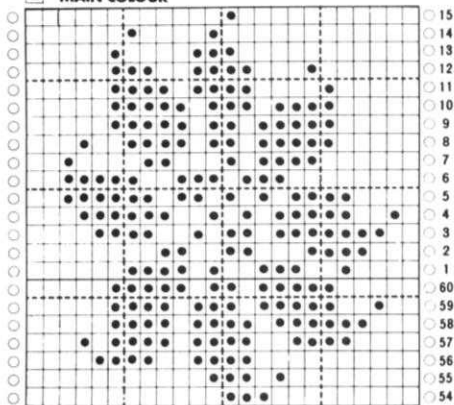
Step 7. T.6. K.5 Rs. T.8. K.1. T.6. K.5 Rs. M.D.E. C/O Repeat.

Edgings: In contrast wl. Reverse (Pattern first half) C.O.B.H. 62 (65, 68) sts. T.7. K.40 Rs. Inc. 1 st. on lt. edge ev. 3 Rs. 12 times. Dec. 1 st. on rt. edge ev. 5 Rs. 7 times. * **At the same time:** in contrast wl. K.5 Rs. in M.wl. K.3 Rs. Set M/c for patt. K.1. K.22 Rs. of patt. In M.wl. K.4 Rs. In contrast wl. K.5 Rs. * In contrast wl. T.9. K.1. T.7. K.40 Rs. Dec. 1 st. on lt. edge ev. 3

Rs. 12 times. Inc. 1 st. on rt. edge ev. 5 With rt. side of work facing M/c., and starting 1 st. in from lt. edge, place lower edge of rt. side of back evenly



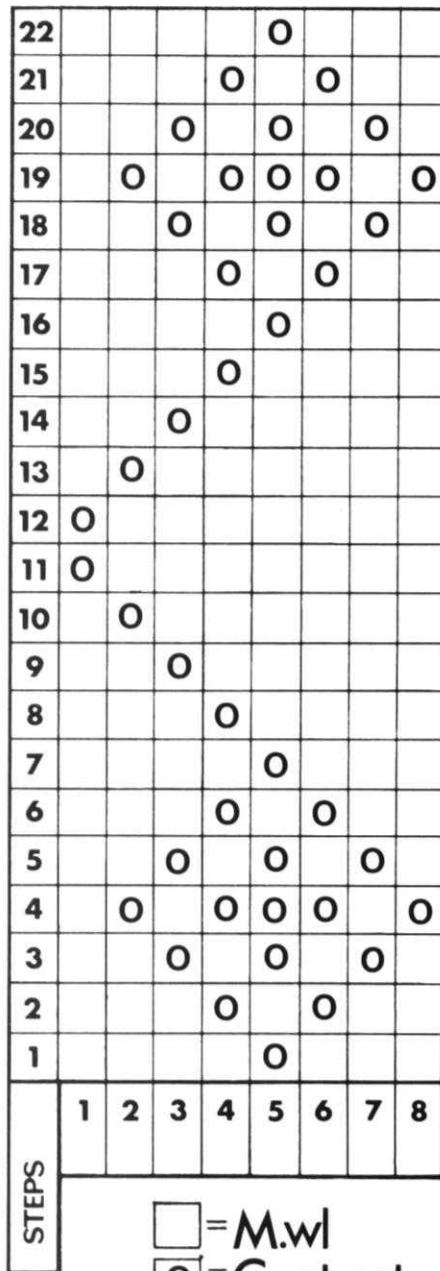
820 FAIRISLE FOR STYLE A
 ● = PUNCH HOLE CONTRAST
 □ = MAIN COLOUR



K.H. 800 MACHINE

onto ns. and C/O to end.
 Repeat band reversing shaping. Place edge of lt. side of back and C/O as before.
 Repeat for front in same way.
 Join edgings on front and back. Press both pieces.

Front Tab: In M.wl. C.O.B.H. 49 sts. T.6. Dec. 1 st. on lt. edge ev. alt. R. 4 times. T.8. K.1. T.6. Inc. 1 st. on lt. edge ev. alt. R. 4 times. Dec. 1 st. on lt. ev. alt. R. 4 times. T.8. K.1. T.6. Inc. 1 st. on lt. ev. alt. R. 4 times. M.D.E. C/O. Fold tab along loose Rs. Finish both ends. Press.
 Fold band in half (length-wise) and



□ = M.wl
 ○ = Contrast wl

place mitred half of tab onto centre of front bodice and turn other half of tab onto wrong side of front bodice. On wrong side, pulling edges of band down on front to make gathers, secure bands together, stitching through front. Sew on buttons (if desired). Join side seams.

Shoulder bands: In M.wl. C.O.B.H. 94 (98, 102) sts. T.6. K.10 Rs. T.8. K.1. T.6. K.20 Rs. T.8. K.1. T.6. K.10 Rs. M.D.E. C/O. Repeat band. Fold bands along loose Rs. Press. Secure one end of each band onto wrong side of front bodice at band seam, repeat for other ends on back bodice. Press all seams.

**STYLE B
 BACK AND FRONT**

Step 1. C.O.B.H. 119 (127, 135) sts. T.6. K.8 Rs. T.8. K.1. * Make picot edge by trans. ev. alt. st. to rt. * T.6. K.9 Rs. M.D.E. C.O.R.000.

Step 2. T.7. K.15 Rs. of st.st. Set M/c. for pull-up patt. no. 1. (for 820 M/cs. R.29 on punch card, for 800 M/cs. R.22 on punch card) K.1. C.O.R. K.48 Rs. of patt. K.16 Rs. of st.st. (80 Rs. in all). **At the same time:** dec. 1 st. on each edge ev. 6 Rs. 10 times. Then ev. 5 Rs. 4 times. C.O.R.000.

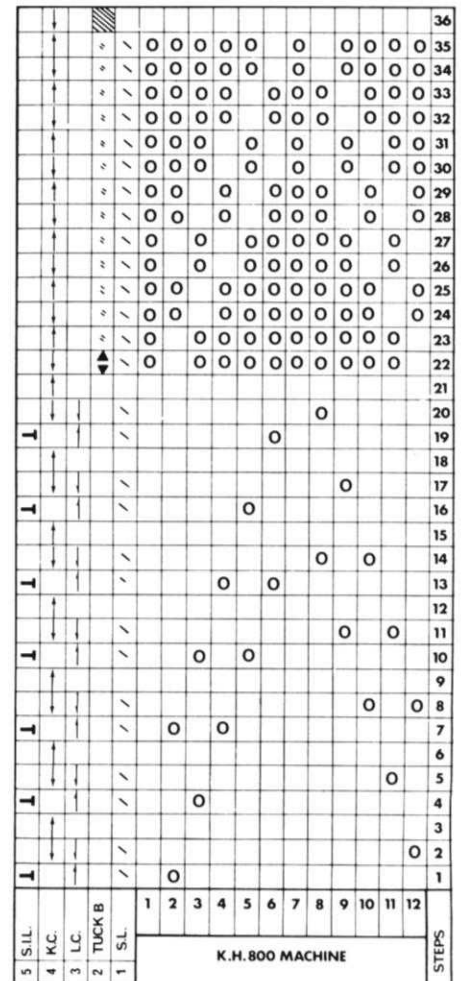
Step 3. K.11 Rs. st.st. trans. ev. 4th. st. to rt. K.10 Rs. st.st. Set M/c. for pull-up lace patt. no. 2. K.1. C.O.R. (22 Rs. in all. Lengthen or shorten here). 000.

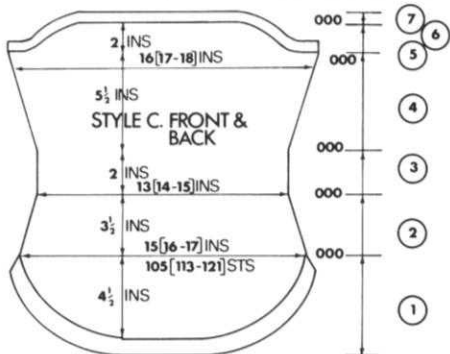
Step 4. K. lace patt. to end of piece. Shape as for style A.

Step 5. As for style A.

Step 6. Shape as for style A, but instead of pushing ns. to E. pos. thread up sts. and take off M/c. Return all ns. to M/c. after shaping. Thread-up sts. and take off M/c. (Reverse) work.

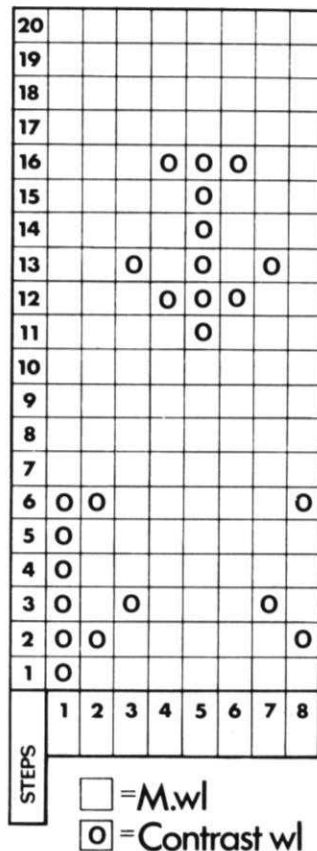
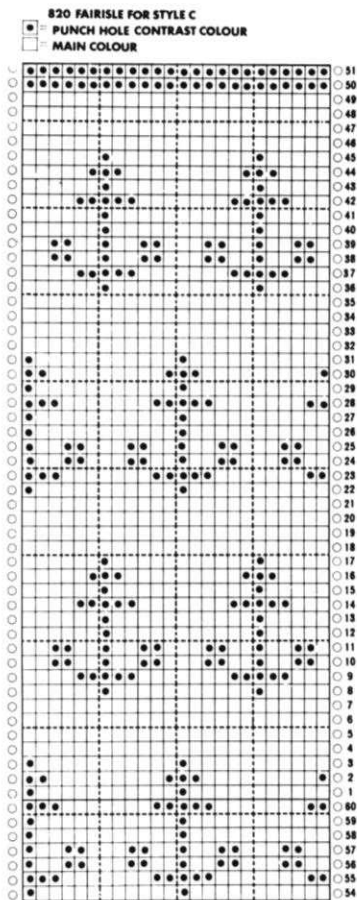
STYLE B. PULL-UP LACE PATTERN NO.1





Tab: In contrast wl. knit as for style A. and secure to front bodice. Join side seams.

Shoulder Bands: In contrast wl. C.O.B.H. 184 (192, 200) sts. T.6. K.3. T.8. K.1. T.6. K.6. T.8. K.1. T.6. K.3. M.D.E. C/O. Repeat band three times more. Press. Secure one end of each of two bands to front band seam on wrong side, and other ends of two bands to back. Press all seams. Tie bands at shoulders.



HERE
THEY
ARE!

THE FABULOUS

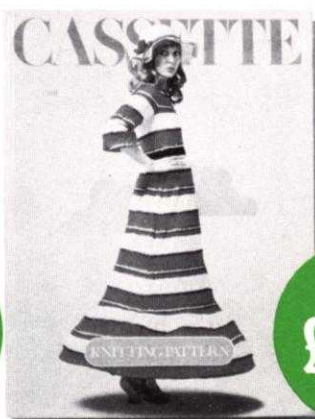
three

stitch
pattern
books

Whichever JONES knitting machine you use there's a stitch pattern book to use with the machine.



820
£4.50



800
£2.50



588
£2.25

These hard cover manuals contain literally hundreds and hundreds of different pattern stitches with actual photographs of the patterns – many in colour – together with all the necessary charts and punch card patterns to achieve the stitches illustrated.

Lace, fairisle, weaving, ribbing, page upon page of variations and different designs – in fact a lifetime of knitting pleasure.

These stitch pattern books really are a must so if you haven't already ordered a book just complete the coupon and despatch it together with your cheque/PO and we'll send a copy by return.



TO: STITCHIN TIME, Jones Sewing Machine Co Limited,
Britannia House, 964 High Road, Finchley, London N12 8LE.

820 800 588

PLEASE TICK THE STITCH
PATTERN BOOK YOU REQUIRE!

Name _____

Address _____



I enclose my cheque/PO for

all around your home

lacy halter top and cardigan

Twinset. Halter Top and Long Sleeved Cardigan. MODEL 800 ONLY.

Materials

Pearl Rayon from **Silverknit**.

3 cones main colour. 1 cone contrast.

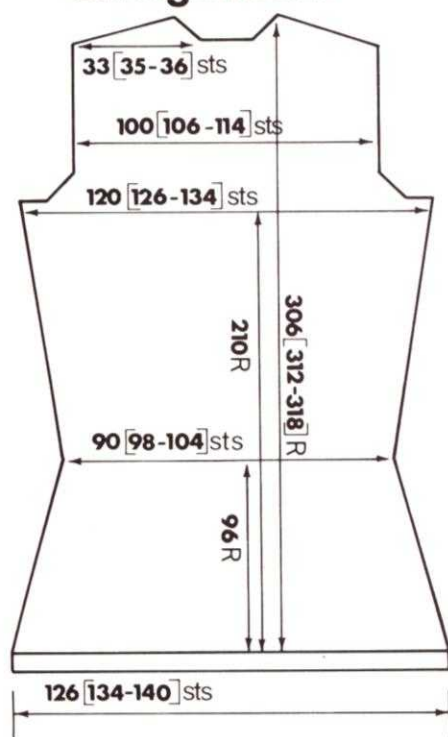
Measurements

To fit 34 (36, 38) bust.

Tension

7 sts. and 12 Rs. = 1 in. T.4.

Cardigan back



CARDIGAN BACK

Step 1. By machine, cast on 126 (134, 140) sts. in W.wl. K. several Rs. C.O.R. Change to contrast Y. K. 19 Rs. C.O.L. Turn up hem. K.1 R.

Step 2. 000. Change to main Y. Start lace patt. Dec. 1 st. each end of ev. 5 R. for 90 Rs. 90 (98, 104) sts. K.6 Rs. (96 Rs.)

Step 3. Inc. 1 st. each end of ev. 7 (8, 7) Rs. to 201 (208, 201) Rs. 120 (126, 134) sts. K. 9 (2, 9) Rs. 210 Rs.

Step 4. Armhole. (Start on R. 210). Cast off 5 sts. on each side of ev. other R. for 10 Rs. 222 Rs. 100 (106, 114) sts.

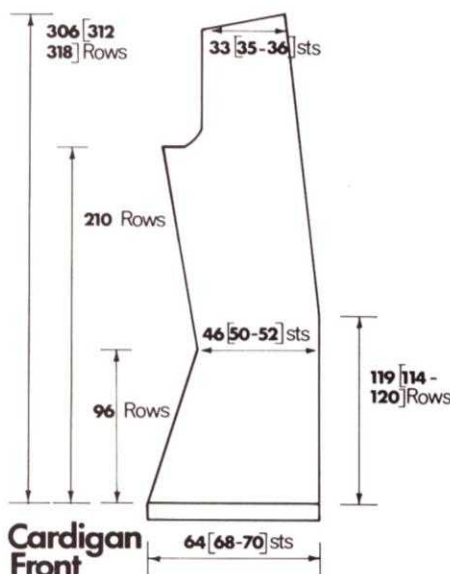
Step 5. K. to 294 (300, 306) Rs. Divide for neck. Push ns. from lt. of M/c. to 5 (6, 6) ns. to rt. of centre to E. pos. Set H.C.L. to 1. Cast off 5 (5, 6) sts. from rt. of knitting alt. R. Push out 1 more n. on neck edge to E. pos. ev. R. Cont. for 12 Rs. to 306 (312, 318) Rs. Cast off remaining 3 (5, 0) sts.

Step 6. Reset H.C.L. to 3. K.1 R. C.O.L. Push sts. on rt. of centre to E. pos. and 5 (6, 6) sts. on lt. of

centre. Cast off 5 (5, 6) sts. alt. R. Push out 1 more n. on lt. neck edge to E. pos. ev. R. Cont. for 12 Rs. to 306 (312, 318) Rs. Cast off remaining 3 (5, 0) sts.

Note: When you reach this stage the stitch trans. will need to be done manually, i.e., use sl. as normal but trans. stitches with trans. tool.

Step 7. Put sts. on back neck onto stitch holder.



Cardigan Front

CARDIGAN FRONT

Left Front

(Reverse directions for Right Front.)

Step 1. By M/c., cast on 64 (68, 70) sts. K. several Rs. C.O.R. Change to contrast Y. K.19 Rs. C.O.L. Turn up hem. K.1 R.

Step 2. 000 Change to main Y. Start patt. On lt. side of knitting dec. 1 st. ev. 5 Rs. to 90 Rs. 46 (50, 52) sts. K. to R. 96.

Step 3. Inc. 1 st. on lt. side of ev. 7 (8, 7) Rs. to 201 (208, 201) Rs. K. to R. 210. On rt. edge of knitting at R. 119 (114, 120) dec. 1 st. and ev. following R. 11 to end. 306 (312, 318) Rs.

Step 4. Armhole. At R. 210. K.1 R. C.O.L. Cast off 5 sts. K.1 R. 212 Rs. Dec. 1 st. ev. alt. R. on lt. side for 10 Rs. to 222 Rs.

Step 5. At 294 (300, 306) Rs. Cast off 5 (5, 6) sts. ev. alt. R. for 12 Rs. Finish on R. 306 (312, 318) Rs. Cast off remaining 3 (5, 0) sts.

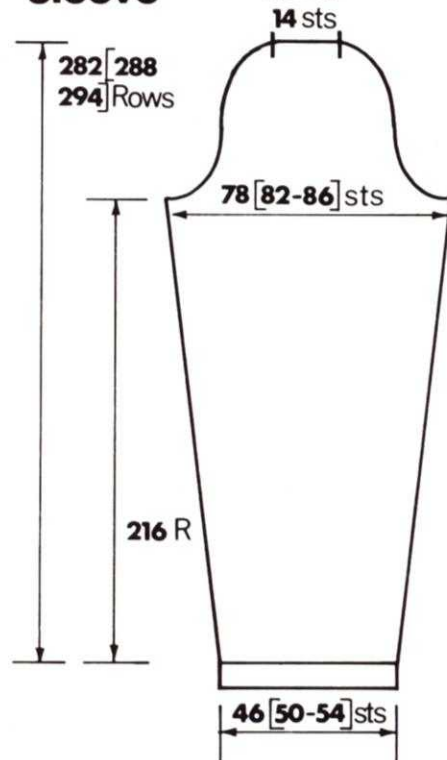
Right Front

As lt. front reverse directions.

SLEEVE

Step 1. Cast on by M/c. in W.wl. 46 (50, 54) sts. K. several Rs. C.O.R. Change to contrast Y. K.19 Rs. Turn up hem. K.1 R. 20 Rs.

Sleeve



Step 2. 000. Change to main Y. Start patt. Inc. 1 st. each end ev. 13 Rs. to 208 Rs. K.8 Rs. 78 (82, 86) sts. 216 Rs.

Step 3. Sleeve head. Cast off 5 sts. each side. 218 Rs. 68 (72, 76) sts. Dec. 1 st. each end of ev. R. to 222 (223, 224) Rs. 60 (62, 64) sts. Dec. 1 st. each end of ev. other R. to 230 (232, 232) Rs. 52 (54, 56) sts. Dec. 1 st. each end ev. 5 Rs. to 240 (242, 242) Rs. 48 (50, 52) sts. K. to R. 258 (260, 262). Dec. 1 st. each end ev. 3 (4, 5) Rs. to 267 (272, 277) Rs. 42 (44, 46) sts. Dec. 1 st. each end ev. alt. R. to 275 (280, 285) Rs. 34 (36, 38) sts. Dec. 1 st. each end ev. R. to 279 (285, 291) Rs. 26 (26, 26) sts. Cast off 2 sts. each end ev. R. to 282 (288, 294) Rs. Cast off remaining 14 (14, 14) sts.

FRONTS AND BACK NECK EDGING

Step 1. Cast on 14 sts. by hand in contrast Y. K.2 Rs.

Step 2. Pick up edge of lt. front from hem, onto lt. edge of knitting. K.2 Rs. Pick up edge of 3 R. of lt. front. K.2 Rs. Cont. picking up edge of ev. other R. on lt. front edge and K.2 Rs. until you reach the shoulder.

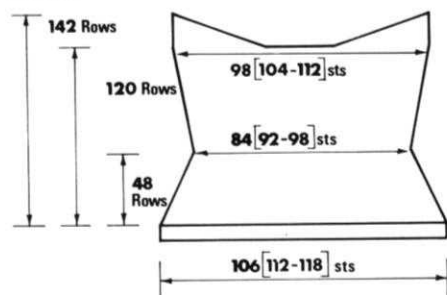
Step 3. Neck: Pick up 1st. st. on stitch holder from lt. K.2 Rs. Pick up next stitch, K.2 Rs. Cont. to rt. shoulder.

Step 4. Rt. front: Pick up ev. other R. to ev. 2 Rs. K. from shoulder. Cont. down rt. front to hem. Cast off.

TO MAKE UP

Press all pieces. Stitch shoulder seams. Fold front edging and stitch down at join. Stitch sleeve head into armhole. Press seam. Stitch up side seams and sleeve seams.

Back



HALTER TOP BACK

Step 1. In W.wl. cast on 106 (112, 118) by M/c. K. several Rs. C.O.R. Change to contrast Y. K. 19 Rs. Turn up hem. K. 1 R. C.O.R.

Step 2. 000. Change to main Y. Dec. 1 st. each end ev. 4 Rs. Start patt. on R. 26. Cont. dec. to R. 44 (40, 40). 84 (92, 98) sts. K. 4 (8, 8) Rs. to R. 48.

Step 3. Inc. 1 st. each end ev. 10 (11, 10) Rs. Finish patt. on R. 70. You will have completed the Chevron twice. Cont. inc. to 118 (114, 118) Rs. 98 (104, 112) sts. K. 2 (6, 2) Rs. to R. 120.

Step 4. 000. Set H.C.L. on 1. Push 62 (68, 76) ns. from lt. edge of knitting into E. pos. K. 2 Rs. on remaining sts. Push 4 more ns. into E. pos. from lt. K. 2 Rs. Cont. pushing out 4 ns. into E. pos. and K. 2 Rs. until 18 Rs. are completed (9 times). 4 sts. lt. in knitting pos. Set H.C.L. to 3. K. 1 R. C.O.L.

Step 5. 000. Set H.C.L. on 1. Push 62 (68, 76) ns. from right of knitting into E. pos. K. 2 Rs. Cont. as step 4 reversing directions, i.e., right becomes lt. and lt. becomes rt. Finish on R. 18. C.O.L.

Step 6. Knit 3 rows. C.O.R. Place sts. on stitch holder.

FRONT

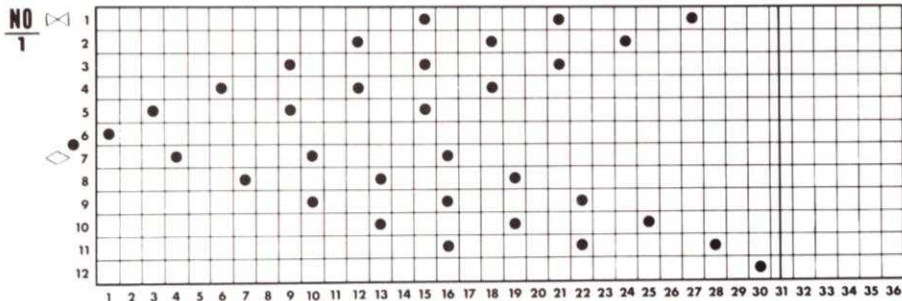
Steps 1 and 2. As back.

Step 3. Inc. 1 st. each end ev. 4 Rs. Finish patt. on R. 70. Cont. inc. to 104 (100, 104) Rs. 112 (118, 126) sts. K. 6 (10, 6) Rs. to R. 110.

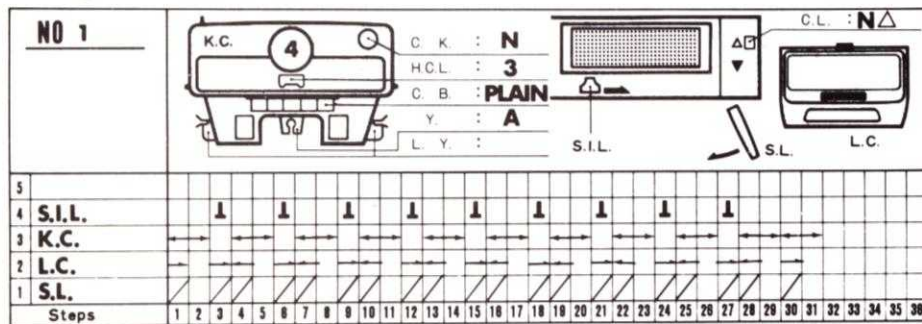
Step 4. Bust dart: Raise row counter tripper so Rs. are not counted. Set H.C.L. at 1. C.O.R.



TWINSET Long Sleeved Cardigan & Hatter Top

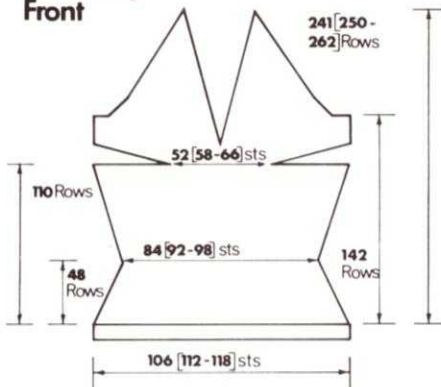


Cardigan Back



* Push 5 ns. into E. pos. on lt. edge of knitting. K.1 R. C.O.L. Push 5 ns. into E. pos. from rt. of M/c. K.1 R. Repeat from * for 12 Rs., until 52 (58, 66) sts.

Halter Top Front



remain in knitting pos. C.O.R. Push ns. on lt. of knitting back into knitting pos. Lower R. counter tripper. K.1 R. Set H.C.L. to 3. K.1 R. 112 Rs.

Step 5. Divide for neck at 112 Rs. Push ns. on lt. side of M/c. into E. pos. Set H.C.L. on 1. K. on needles on rt. side knitting. On neck edge (centre) dec. 1 st. ev. 8 Rs. to 248 Rs.

ARMHOLE

On R. 142. Cast off 5 sts. at rt. edge. K.2 Rs. R. 144. Dec. 1 st. every other R. to 154 Rs. Dec. 1 st. ev. 3 Rs. to 241 (250, 262) Rs. Cast off.

Step 6. Push carr. across knitting on lt, without knitting a R. C.O.L. Set H.C.L. at 3. Push ns. back to knitting pos. Dec. 1 st. every 8 Rs. on neck edge. Cont. as rt. side reversing directions.

NECK EDGE

Cast on 14 sts. by hand in contrast Y. Pick up edge of every other R. on lt. neck edge onto last n. of knitting on M/c. K.2 Rs. between each pick up. Cont. to shoulder. Dec. 1 st. each side ev. R. until 2 sts. are left. K.1 R. Cast off. Repeat on rt. neck edge, picking up stitches onto right hand edge of knitting on M/c. **BACK EDGE**

Step 1. Cast on 14 sts. by hand in contrast Y. K.100 Rs. Pick up edge of lt. front starting from shoulder (pick up edge as for neck edge). Cont. to armhole.

Step 2. Pick up 1 st. from stitch holder onto edge of knitting on M/c. K.2 Rs. Cont. across back knitting 2 Rs. to ev. stitch picked up.

Step 3. Pick up rt. front edge from armhole to shoulder.

Step 4. K.100 Rs. Cast off.

TO MAKE UP

Press both pieces. Stitch side seams. Fold neck edges and stitch down at join. Fold back and armhole edge and stitch down at join. Stitch shaped edge of neck edge into back edge join. Stitch ends to form ties.

Girls jumper featuring embroidered lace patt. down sleeves and around yoke.

Materials

8 (9, 10, 11)×25g. balls of **Wendy** Whisper in M.wl.
Small ball each of contrast wl.

Measurements

To fit 28 (30, 32, 34) in. bust.
Finished meas's 29 (31, 33, 35) ins.
Length from back neck 18½ (18½, 19½, 19½) ins.
Sleeve seam 14½ (15½, 16½, 17½) ins.

Tensions

820 M/cs.

7 sts.×10½ Rs. = 1 in. over st.st. on T.6.

800 M/cs.

Knitted on T.5.

588 M/cs.

Knitted on T.6.

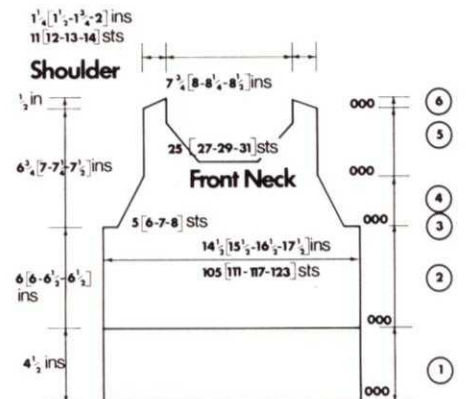
Pattern

820 M/cs.

Make punch card as on graph.

800 and 588 M/cs.

Follow same graph, transfer sts. for lace by hand in direction shown on graph.



FRONT

Step 1. Ribbers: In M.wl. cast on 105 (111, 117, 123) sts. as 1×1 rib. T.1/1. K.4 Rs. Tub. T.3/3. K.42 Rs. rib. trans. ns. to M.B.

Single-Bed M/cs: With W.wl. cast onto 105 (111, 117, 123) sts. * K. a few Rs.

Trans. ev. alt. n. to rt. Push empty ns. back to A. pos. Change to M.wl. * T.4. K.44 Rs. T.6. K.1. T.4. K.44 Rs. M.D.E. Remove W.wl. T.6. K.1. C.O.R.000.

Step 2. K. 62 (62, 68, 68) Rs. straight.

Step 3. C/O 5 (6, 7, 8) sts. at beg. next 2 Rs. C.O.R.000.

Step 4. Dec. 1 st. on each edge ev. 3 Rs. 10 times to 30 Rs. C.O.R.000.

Step 5. K. 38 (42, 46, 50) Rs. straight.

At the same time: after 4 (6, 8, 10) Rs. start **front neck.** C/O 25 (27, 29, 31) sts. at centre of M/c. and take off.

-ered jumper

Thread-up sts. to lt. of centre and take off.

Dec. 1 st. on front neck ev. alt. R. 14 times. Then K. straight to shoulder. C.O.R.000.

Step 6. Rt. shoulder: K.1. H.P. * Push 3 (4, 5, 6) ns. to E. pos. on rt. edge. K.2 Rs. Then 4 ns. to E. pos. ev. alt. R. twice. Return ns. to D. pos. K.1. C/O.

Replace lt. sts. onto M/c. Dec. on front neck as before.

Step 6. Lt. shoulder: C.O.R. Push 3 (4, 5, 6) ns. to E. pos. on lt. edge ev. alt. R. once. Then 4 ns. ev. alt. R. twice. Return ns. to D. pos. K.1. C/O.



BACK

K. as for front to end of step 4.

Step 5. K. 38 (42, 46, 50) Rs. straight.

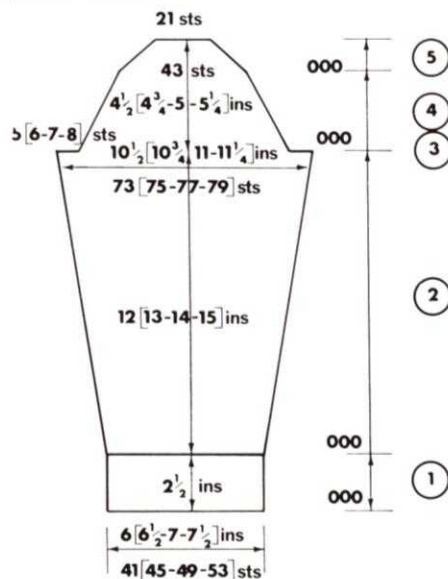
At the same time: after 16 (20, 24, 28) Rs. start **back neck**. C/O 25 (27, 29, 31) sts. at centre of M/c. and take off. Thread-up sts. to lt. of centre and take off.

Dec. 1 st. on neck edge ev. alt. R. 14 times. After 22 Rs. start shoulder.

Step 6. Rt. shoulder: As for front. (Cont. neck decs.)

Replace lt. sts. onto M/c. Dec. on neck as before.

Step 6. Lt. shoulder: As for back. (Cont. neck decs.)



SLEEVES

Step 1. Ribbers: In M.wl. cast on 41 (45, 49, 53) sts. as 1×1 rib.



skirt and top

T.1/1. K.4 Rs. Tub. T.3/3. K.22 Rs. rib. trans. ns. to. M.B.

Single-Bed M/cs.: With W.wl. cast onto 41 (45, 49, 53) sts. K. as * to * of front. T.4. K.24 Rs. T.6. K.1. T.4. K.24 Rs. M.D.E. Remove W.wl. T.6. K.1. C.O.R.000.

Step 2. T.6. K.1. C.O.L. Set M/c. for patt. K.1. Start patt.

Work lace-patt. over centre 17 sts. only. Push other selected ns. back to B. pos. on ev. R. by hand.

At the same time: inc. 1 st. on each edge ev. 7 (8, 9, 10, 11) Rs. 16 (15, 14, 13) times. K. to 126 (136, 146, 156) Rs.

Step 3. As for front.

Step 4. Dec. 1 st. on each edge ev. 4 Rs. 10 times to 40 Rs. C.O.R.000.

Step 5. C/O 4 (3, 3, 2) ns. at beg. of next 4 (6, 2, 10) Rs. Then 3 (2, 2, 1) sts. at beg. next 2 (2, 8, 2) Rs. C/O rem. 21 sts. Repeat sleeve.

TO MAKE UP

Press all pieces.

On sleeves using contrast wl. double thickness, embroider cross in centre of each diamond of lace-sts. Change colour ev. alt. diamond.

Sew tops of sleeves into armholes. Press seams. Join side and sleeve seams.

Lace yoke: In M.wl. C.O.B.H. 17 sts. * T.5. K.4. T.7. K.1. Make picot edge by trans. ev. alt. st. to rt. T.5. K.5 Rs. M.D.E. * T.6. K.1. Set M/c. for patt. K.1. C.O.R.000.

K. 228 (236, 244, 252) Rs. straight. K. hem. as * to *. M.D.E. C/O. Press. Starting from centre back neck, pin yoke around neck edge: with rt. band on yoke overlapping lt. band. Sl.st. in place. Embroider as on sleeves, starting at centre front.

Neck band: In M.wl. C.O.B.H. 73 (77, 81, 85) sts. K. as * to * of yoke.

With rt. side of work facing M/c., and starting at top of yoke band, place band edge (working through both layers) to 3 ns. Place centre of yoke edge to centre st. on band, place yoke evenly onto ns. (doubling-up on some sts.). C/O up to this point. Place yoke band edge on lt. to /ns. and yoke evenly onto ns. C/O to end. Finish off ends of bands.

Rouletteau: In M.wl. cast onto 3 sts. Press 1 part button in, T.2. K. until tie meas's 3 ins approx. C/O. Thread band through rt. neck band edge making a small loop. Make another loop at centre of yoke band edge. Secure loops in place. Press all seams and bands.

Sew on buttons.

Fluff up jumper all over with stiff brush.

Teenage skirt and top peasant style featuring flowers and patchwork patt.

Materials

Top 7 (8, 9)×25g. balls of medium colour.

2 balls each of light and dark colours.

Skirt 12 (13, 14)×25g. balls of medium colour.

11 (12, 13) balls of dark colour.

1½ in. elastic of desired length. 7 in. zip.

Measurements

To fit 30 (32, 34) in. bust.

Top: Finished meas's, length from back neck 17½ (18, 18½) ins.

Skirt: Length from waist to bottom of frill 37 (38½, 40) ins.

To fit up to waist 26 (28, 30) ins.

Tension

820 M/cs.

8 sts.×10 Rs. = 1 in. on T.7. over flower patt.

8 sts.×10 Rs. = 1 in. on T.8. over patchwork patt.

This bold patterned peasant style teenage skirt and top is only suitable for 820 machines.

Note: Flower patt. Medium colour in M.F. (background).

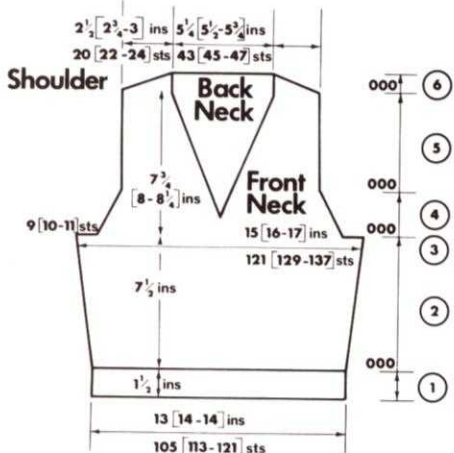
1st R. of flowers in dark colour, in jacq. feeder.

2nd R. of flowers in light colour, in jacq. feeder.

Repeated.

Patchwork patt. Dark colour in M.F. medium colour in jacq., feeder for first 18 Rs. Then dark colour in M.F., light colour in jacq. feeder for next 18 Rs.

Repeated.



TOP BACK

Step 1. In medium colour, C.O.B.H. 105 (113, 121) sts. T.6. K.18 Rs. T.8. K.1. * Make picot edge by trans. ev. alt. st. to rt. * T.6. K.19 Rs. C.O.R. M.D.E. T.7. K.1. Set M/c. for flower patt. K.1. C.O.R.000. Start patt.

Step 2. Inc. 1 st. on each edge ev. 9 Rs. 8 times. K. to 74 Rs.

Step 3. C/O 9 (10, 11) sts. at beg. next 2 Rs. C.O.R.000.

Step 4. Dec. 1 st. on each edge ev. 3 Rs. 10 times. To 30 Rs. C.O.R.000.

Step 5. K. 48 (50, 52) Rs. straight. C.O.R.000.

Step 6. H.P. * Push 5 (6, 6) ns. to E. pos. at opp. end to carr. on next 4 Rs.

Then 5 (5, 6) ns. to E. pos. on next 4 Rs. Return ns. to D. pos. at opp. end to carr. on next 2 Rs. C/O shoulders.

Thread-up back neck sts.

FRONT

As for back to end of step 3.

Step 4. Shape sides as for back, **at the same time:** after 12 Rs. dec. centre st. to rt. Thread-up sts. to lt. of centre and take off M/c.

Dec. 1 st. on rt. neck edge ev. 3 Rs. 21 (22, 23) times. K. to 48 (50, 52) Rs. C.O.R.000.

Step 5. K.1. * H.P. * Push 5 (6, 6) ns. to E. pos. at opp. end to carr. ev. alt. R. 2 times. Then push 5 (5, 6) ns. to E. pos. at opp. end to carr. 2 times.

Return ns. to D. pos. K.1. C/O shoulder *.

Return lt. ns. to M/c., to lt. of centre. (Set M/c. for patt. R. 35 on punch-card.) C.O.R.012. Dec. lt. neck as for rt. neck.

Step 6. As for rt. shoulder from * to *.

Return lt. ns. to M/c., to lt. of centre. (Set M/c. for patt. R. 35 on punch-card.) C.O.R.012. Dec. lt. neck as for rt. neck.

Return lt. ns. to M/c., to lt. of centre. (Set M/c. for patt. R. 35 on punch-card.) C.O.R.012. Dec. lt. neck as for rt. neck.

Return lt. ns. to M/c., to lt. of centre. (Set M/c. for patt. R. 35 on punch-card.) C.O.R.012. Dec. lt. neck as for rt. neck.

Return lt. ns. to M/c., to lt. of centre. (Set M/c. for patt. R. 35 on punch-card.) C.O.R.012. Dec. lt. neck as for rt. neck.

Return lt. ns. to M/c., to lt. of centre. (Set M/c. for patt. R. 35 on punch-card.) C.O.R.012. Dec. lt. neck as for rt. neck.

Return lt. ns. to M/c., to lt. of centre. (Set M/c. for patt. R. 35 on punch-card.) C.O.R.012. Dec. lt. neck as for rt. neck.

Return lt. ns. to M/c., to lt. of centre. (Set M/c. for patt. R. 35 on punch-card.) C.O.R.012. Dec. lt. neck as for rt. neck.

Return lt. ns. to M/c., to lt. of centre. (Set M/c. for patt. R. 35 on punch-card.) C.O.R.012. Dec. lt. neck as for rt. neck.

Return lt. ns. to M/c., to lt. of centre. (Set M/c. for patt. R. 35 on punch-card.) C.O.R.012. Dec. lt. neck as for rt. neck.

Return lt. ns. to M/c., to lt. of centre. (Set M/c. for patt. R. 35 on punch-card.) C.O.R.012. Dec. lt. neck as for rt. neck.

Return lt. ns. to M/c., to lt. of centre. (Set M/c. for patt. R. 35 on punch-card.) C.O.R.012. Dec. lt. neck as for rt. neck.

Return lt. ns. to M/c., to lt. of centre. (Set M/c. for patt. R. 35 on punch-card.) C.O.R.012. Dec. lt. neck as for rt. neck.

Return lt. ns. to M/c., to lt. of centre. (Set M/c. for patt. R. 35 on punch-card.) C.O.R.012. Dec. lt. neck as for rt. neck.

Return lt. ns. to M/c., to lt. of centre. (Set M/c. for patt. R. 35 on punch-card.) C.O.R.012. Dec. lt. neck as for rt. neck.

Return lt. ns. to M/c., to lt. of centre. (Set M/c. for patt. R. 35 on punch-card.) C.O.R.012. Dec. lt. neck as for rt. neck.

Return lt. ns. to M/c., to lt. of centre. (Set M/c. for patt. R. 35 on punch-card.) C.O.R.012. Dec. lt. neck as for rt. neck.

Return lt. ns. to M/c., to lt. of centre. (Set M/c. for patt. R. 35 on punch-card.) C.O.R.012. Dec. lt. neck as for rt. neck.

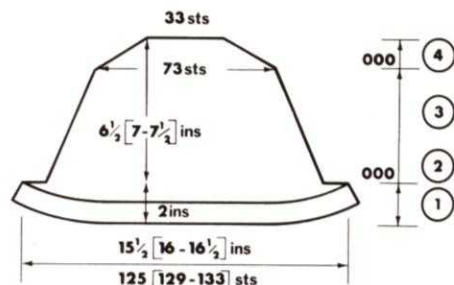
Return lt. ns. to M/c., to lt. of centre. (Set M/c. for patt. R. 35 on punch-card.) C.O.R.012. Dec. lt. neck as for rt. neck.

Return lt. ns. to M/c., to lt. of centre. (Set M/c. for patt. R. 35 on punch-card.) C.O.R.012. Dec. lt. neck as for rt. neck.

Return lt. ns. to M/c., to lt. of centre. (Set M/c. for patt. R. 35 on punch-card.) C.O.R.012. Dec. lt. neck as for rt. neck.

Return lt. ns. to M/c., to lt. of centre. (Set M/c. for patt. R. 35 on punch-card.) C.O.R.012. Dec. lt. neck as for rt. neck.

Return lt. ns. to M/c., to lt. of centre. (Set M/c. for patt. R. 35 on punch-card.) C.O.R.012. Dec. lt. neck as for rt. neck.



SLEEVES

Step 1. In dark colour, C.O.B.H. 125 (129, 133) sts. * T.6. K.5 Rs. T.8. K.1.

Make picot edge as * to * of back step 1. T.6. K.6 Rs. M.D.E. * T.7. K.4 Rs.

Change to light colour. K. * as * to * as for dark colour. Change to medium colour. T.7. K.1. C.O.L. Set M/c. for flower patt. (R. 11 on punch-card).

K.1. C.O.R. Start patt. **At the same time:** H.P. * Push 8 ns. to E. pos. at opp. end to carr. on next 8 Rs.

Return ns. to D. pos. at opp. end to carr. on next 2 Rs. C.O.R.

Step 2. C/O 9 (10, 11) sts. at beg., next 2 Rs. C.O.R.000.

Step 3. Dec. 1 st. on each edge ev. 3 Rs. 17 (18, 19) times. K. to 52 (56, 60) Rs. C.O.R.000.

Step 4. * H.P. Push 4 ns. to E. pos. at opp. end to carr. on next 4 Rs. Then

push 3 ns. to E. Pos. at opp. end to carr. on next 8 Rs. Return ns. to D. pos. at opp. end to carr. on next 2 Rs. C/O to end.

TO MAKE UP

Press all pieces. Join front to back at shoulders. Sew tops of sleeves into armholes, gathering at shoulders. Press seams. Join side and sleeve seams.

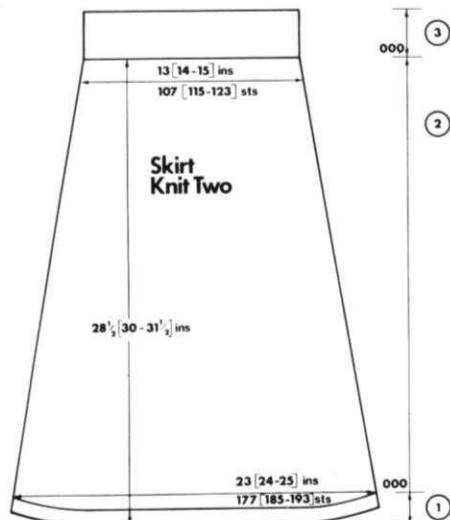
Neck band: In medium colour, C.O.B.H. 59 (163, 167) sts. T.6. Dec. 1 st. on each edge ev. alt. R. 3 times. T.8. K.1. Make picot edge as * to * of back step 1. T.6. Inc. 1 st. on each edge ev. alt. R. 3 times. K.1. M.D.E. With rt. side of work facing M/c., and starting 1 st. in from each edge, place side neck to 57 (58, 59) sts. Place back neck to 43 (45, 47) sts. and side neck to rem. 57 (58, 59) sts. C/O to end. Join mitre at front neck. Press all seams and band.



SKIRT FRILLS KNIT FOUR

Step 1. In medium colour. C.O.B.H. 195 sts. T.6. K.6. T.8. K.1. Make picot edge T.6. K.7 Rs. M.D.E. T.7. K.1. Set M/c. for flower patt. K.1. Start patt. C.O.R.002.

Step 2. K. straight to 80 Rs. Thread-up sts. and take off M/c. Press frills. Join two frills together, repeat for the two frills.



SKIRT PANEL KNIT TWO

Step 1. In dark colour, C.O.B.H. 177 (185, 193) sts. * T.6. 1 st. on each edge ev. alt. R. 3 times. T.8. K.1. Make picot edge. T.6. Dec. 1 st. on each edge ev. alt. R. 3 times. K.1. M.D.E. *

T.7. K.1. With rt. side of frills facing M/c., place one frill piece onto M/c., doubling-up on sts. K.2. Dec. 1 st. on each edge. K.3 Rs. Dec. 1 st. on each edge. Change to light colour. K. as * to * of dark colour. C.O.R. Set ns. for patchwork patt. (to do this — place C.O.L. Set M/c. for patt. Press rt. P.B. in K.1. C.O.R. Release P.B.) Start patt. T.8.

H.P. * Push 8 ns. to E. pos. at opp. end to carr. on next 8 Rs. Return ns. to D. pos. at opp. end to carr. on next 2 Rs. C.O.R.000.

Step 2. Dec. 1 st. on each edge ev. 9 (9, 10) Rs. 0 times. Then ev. 8 (8, 9) Rs. 27 (11, 28) times. K. to 278 (296, 314) Rs. C.O.R.000.

Step 3. In dark colour. T.6. K.21 Rs. st.st. T.8. K.1. T.6. K.21 Rs. M.D.E. C/O.

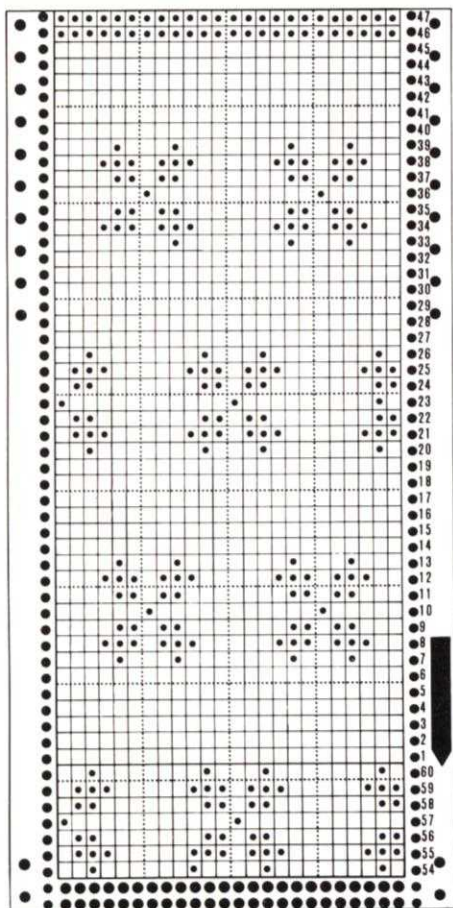
TO MAKE UP

Press. Join seams, leaving 7 in. opening on lt. side for zip. Insert elastic and secure at each end. Make single crochet st. down opening. Press all seams and band.

Sew in zip. Press.

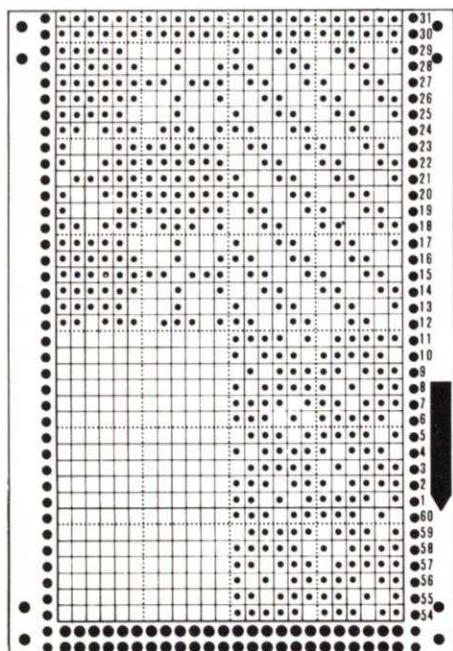


young girl's dress



FLOWER PATTERN

820: STITCH PATTERN CARDS



PATCHWORK PATTERN

Girl's peasant-style dress featuring flowers and patchwork patt.

Materials

Dress 9 (10, 11)×25g. balls of light colour.

4 balls each of medium and dark colours.

14 (14, 16) in. zip.

Measurements

To fit 24 (26, 28) in. bust.

Finished meas's. 25 (27, 29) in. bust.

Length from back neck to bottom of hem 26 (28, 30) ins.

Sleeve seams 6 (6½, 6½) ins.

Tensions

820 M/cs.

8 sts.×10 Rs. = 1 in. on T.7. (Y.F.) over flower patt.

8 sts.×10½ Rs. = 1 in. on T.8. over patchwork patt.

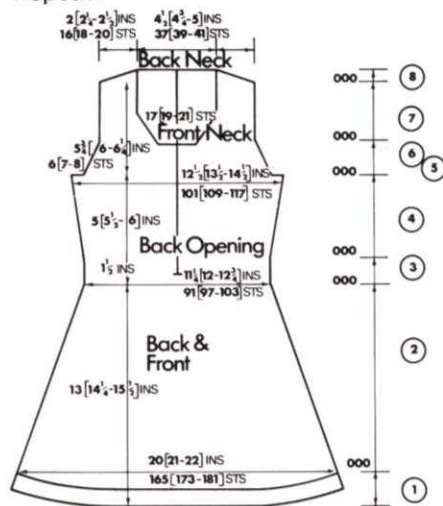
588 M/cs.

800 M/cs.

Note: Flower patt. Light colour in M.F. (background). 1st R. of flowers in medium colour, in jacq. feeder. 2nd R. of flowers in dark colour, in jacq. feeder.

Patchwork patt. Medium colour in M.F. light colour in jacq. feeder for just 18 Rs. The dark colour in M.F., light colour in jacq. feeder for next 18 Rs.

Repeat.



DRESS

BACK

Step 1. In dark colour, C.O.B.H. 165 (173, 181) sts. * T.6. inc. 1 st. on each edge ev. alt. R. 3 times (6 Rs.). T.8. K.1. * Make picot edge by trans. ev. alt. st. to rt. * T.6. dec. 1 st. on each edge ev. alt. R. 3 times. K.1. (14 Rs.). M.D.E. T.7. dec. 1 st. on each edge ev. 3 Rs. 2 times. (6 Rs.) C.O.R. Change to light colour. T.6. inc. 1 st. on each edge ev. alt. R. 3 times. T.8. K.1. Make picot as before. T.6. dec. 1 st. on each edge ev. alt. R. 3 times. K.1. M.D.E. *

Set ns. for patchwork patt. (To do this place carr. on lt. Set M/c for patt. Press rt. P.B. in. K.1. C.O.R. Release P.B.) Start patt.

T.8. H.P. * Push 8 ns. to E. pos. at opp. end to carr. on next 8 Rs. Return ns. to D. pos. at opp. end to carr. on next 2 Rs. C.O.R.000.

Step 2. Dec. 1 st. on each edge ev. 4 Rs. 11 (22, 33) times. Then ev. 3 Rs. 24 (14, 4) times. K. to 116 (130, 144) Rs.

For last size only: after 13 Rs. make back-opening.

Back opening: Thread-up sts. to lt. of centre and take off. Make note of next R. on punch-card. Cont. knitting rt. side. C.O.R.000.

Step 3. For 1st. size only make back-opening here. K.7. Rs. straight. Insert flower punch-card into M/c. K.1. C.O.R. Start patt. T.7. For 2nd size make back-opening here. K.8 Rs. straight. C.O.R.000 (Lengthen or shorten here).

Step 4. Inc. 1 st. on rt. edge at 000. Then ev. 12 (10, 9) Rs. 4 (5, 6) times. K. to 52 (56, 60) Rs.

Step 5. C/O 6 (7, 8) sts. on rt. edge. K.2 Rs. C.O.R.000.

Step 6. Dec. 1 st. on rt. edge ev. alt. R. 10 times. To 20 Rs. C.O.R.000.

Step 7. K. 42 (44, 46) Rs. straight. C.O.R.000.

Step 8. K.1. * H.P. * Push 4 (5, 5) ns. to E. pos. at opp. end to carr. ev. alt. R. 2 times. Then 4 (4, 5) ns. E. pos. 2 times. Return ns. to D. pos. K.1. C/O shoulder. * Thread-up 19 (20, 21) B.N. sts.

Return lt. ns. to M/C. and set for patt. K. as for rt. reversing all shapings.

Step 8. K. as for rt. from * to *. Thread-up 18 (19, 20) B.N. sts.

FRONT

As for back end of step 6, (omitting back-opening).

Step 7. Thread-up centre 17 (19, 21) sts. and take off M/c. Thread-up lt. sts. Make note of next R. on punch-card. On rt. neck dec. 1st. ev. alt. R. 10 times. Cont. to 42 (44, 46) Rs. C.O.R.000.

Step 8. K. as for back.

Return ns. on lt. to M/c. and set for patt. K. as for rt. side, reversing shaping.

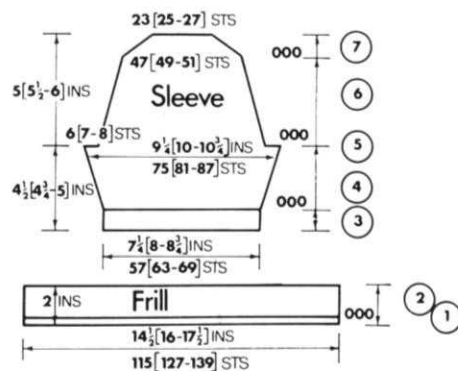
Step 8. As for back.

SLEEVES

Frills: Step 1. In light colour. C.O.B.H. 115 (127, 139) sts. * T.6. K.6. T.8. K.1. Make picot edge. T.6. K.7. M.D.E. * C.O.R.000.

Step 2. T.7. K.14 Rs. straight. Thread-up sts. and take off. Repeat frill. Press.

Step 3. In medium colour, C.O.B.H. 57 (63, 69) sts. T.6. K.5 Rs. T.8. K.1.



Make picot. T.6. K.6 Rs. M.D.E. T.7. K.1. With rt. side of frill facing M/c., place sts. onto ns. (doubling-up on sts.). K.3 Rs. C.O.R. Change to dark colour. K. as before from * to *. C.O.R.000.

Set ns. for patt. R. 25 (27, 29) on flower punch-card. C.O.R. T.7.

Step 4. Inc. 1 st. on each edge ev. 4 Rs., 9 times. K. to 36 (38, 40) Rs.

Step 5. C/O 6 (7, 8) sts. at beg. next 2 Rs. C.O.R.000.

Step 6. Dec. 1 st. on each edge ev. 5 Rs. 8 (9, 10) times. K. to 40 (46, 50) Rs. C.O.R.000.

Step 7. H.P. * Push 4 ns. to E. pos. at opp. end to carr. on next 6 Rs. Return ns. to D. pos. at opp. end to carr. on next 2 Rs. C/O to end. Repeat.

TO MAKE UP

Press all pieces. Join front to back at shoulders. Sew tops of sleeves into armholes. Press seams. Join side and sleeve seams.

NECKBAND

In light colour, C.O.B.H. 125 (131, 137) sts. K. as * to * of frill, step 1. With rt. side of work facing M/c., place $\frac{1}{2}$ back neck to 18 (19, 20) sts. Place side neck to 36 (37, 38) sts., and front neck to 17 (19, 21) sts. C/O up to this point. Place side neck to next 36 (37, 38) sts., and $\frac{1}{2}$ back neck to 19 (20, 21) sts. C/O to end.

Work single crochet chain in light colour, down back-opening. Press all seams and band. Sew in zip.

BELT

In light colour C.O.B.H. 143 (155, 167) sts.

T.6. K.2. In medium colour. K.5. T.8. K.1. Make picot edge. T.6. K.5. In light colour, K.4 Rs. In dark colour K.5. T.8. K.1. Make picot. T.6. K.5 Rs. In light colour, K.2 Rs. C/O.

Press belt. Sew straight edges together. Press seam.

Roulleaus: On front edge of belt, pick-up 4 sts. from light colour and place onto M/c. T.4. (One part-button in). K. until belt meas's. 30 ins. approx. C/O. Repeat for other side of belt. Close ends of belt.

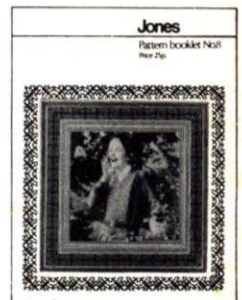
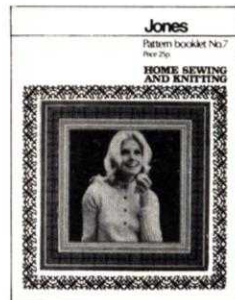
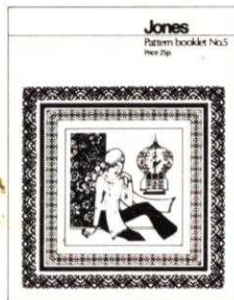
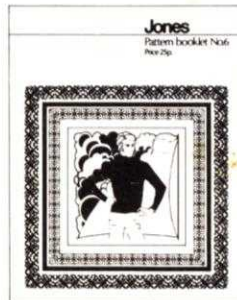
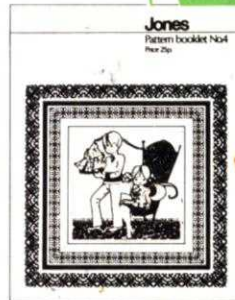
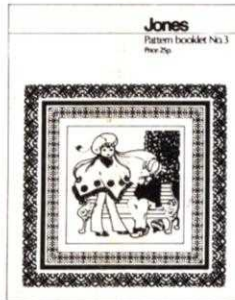
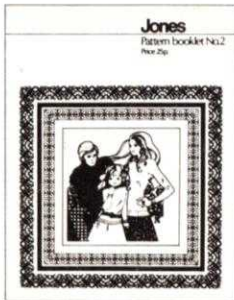
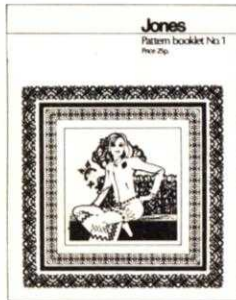
PATTERNS

from Jones the knitting machine people

Here's the new style pattern service from Jones - superb collections of garments in attractive booklet form, each booklet containing a series of garments for one section of your family.

BOOK 1. ribbed garments 2. general family garments
3. toddlers garments 4. garments for children
5. ladies garments 6. garments for men 7. garments from 'Home Sewing and Knitting' 8. a series of simple basic patterns
BOOKLETS 1-8 25p

**AND NOW
2 NEW BOOKLETS**
BOOK 9
Classic baby garments
BOOK 10
Toddlers garments
BOOKLETS 9-10
30p



Start collecting the set now - they'll give you many hours of enjoyable knitting and a whole new range of garments for the family!

They are obtainable from your local Jones stockist or direct from
**Pattern Book Dept.,
Jones Sewing Machine
Co. Ltd., Shepley Street,
Guide Bridge, Audenshaw,
Manchester M34 5JD.**



all around your home