

# stitchin' time

Vol 5 No 4

25p



Jones/brother



# contents

Ladies Sweater	3
Child's V-Neck Cardigan	4-5
Baby's Romper with Bib	5
Family Sleeveless Jackets	6-8
Baby's V-Neck Cardigan	8-9
Fuller Figure Suit	9-10
Pram Set	11-12
Woven Pinafore Dress	13
Peg-Rug Jacket and Jumper	14-16
Ladies Suit with Jumper	17-20
Kimono Style Jacket	21-22
You Write	23
Child's Dress	24-25
His 'n' Hers Shetland Sweaters	25-27
Child's Jumper and Shorts	27-28
Ladies Fair-Isle Sweater	28-29
Child's Skirt and Bolero	30
Child's V-Neck Sweater	31-32
Ladies Cable Sweater	33-34
Mouse and Rabbit Toys	34-35

# broadly speaking

This issue unfortunately leaves the man of the house with a very poor selection of garments and we promise to try and rectify this as soon as possible.

The young designers mentioned in the last 'Broadly Speaking' have now started to produce designs and we hope to have these in the next issue which of course will be the Christmas issue.

In response to your demand for giving you toys prior to Christmas you will find that we have included two toys in this issue and will be including more in the Christmas issue.

The list of knitters is growing every day and as we explain to those who write to join the list we cannot guarantee work to all who write but we have given the list of names and addresses to a number of firms and designers requiring knitters and left them to write and contact the various people concerned. If you would like us to include your name, please send a card or letter with your name printed in block capitals, the type of machine you have, if you have a ribber or any other attachment and your level of experience regarding knitting. If you are on the telephone please include this as well as this may help the designer to get in touch with you if she requires work urgently.

With the steep rise in costs we are torn between the idea of limiting the pages per issue or raising the cost of the subscription rate. At present, we feel the magazine is giving true value for money in its present form with 36 pages. In all possibility we will keep the size of the issue the same and if humanly possible avoid raising the subscription rate, however, if you have any alternative views these would be appreciated.

The 'You Write' page will give you an insight into the type of experience various people have with their knitting machines and if you have any interesting experiences with your machine drop us a line and let us know.

We wish you happy knitting and once again offer our apologies to the men of the household who we feel we have ignored in this particular issue.

Although most of the patterns are adapted to both machines, occasionally a designer who does not know the conversion, writes patterns merely for either the model 800 or the earlier models and therefore if this occurs, please check with the chart below to find the correct settings for your H.C.L.'s.

800 H.C.L. 3 = I for all others  
 800 H.C.L. 1 = II for all others  
 800 H.C.L. 2 = III for all others.

N.B. CHARTS SUBMITTED BY DESIGNERS VARY DEPENDING ON WHICH MACHINE THE DESIGNER HAS USED. MOST PATTERNS USING EIGHT BUTTONS CAN BE DONE ON EITHER THE 588 OR THE 585. THE DIFFERENCES ARE

588	585
REVERSE LEVER+	REVERSE DIAL A
REVERSE LEVER-	REVERSE DIAL B

**SUBSCRIPTION RATES FOR U.S.A. AND CANADIAN MEMBERS \$6.00.**

These rates include postage.



# ladies sweater



## Materials

7 (7, 7, 8) ozs. H.O. Shetland Lace. 1 oz. for Collar.

## Measurements

To fit bust sizes 32 (34, 36, 38) ins.  
Length to back neck 21 (21 $\frac{1}{4}$ , 21 $\frac{1}{2}$ , 21 $\frac{3}{4}$ ) ins.  
Sleeve seam 17 $\frac{1}{2}$  ins.

## Tension

T4. 18 sts. and 25 rows to 2 ins. after pressing.

## Abbreviations

K., knit; sts., stitches; ins., inches; inc., increase; dec., decrease; foll., following; alt.,

alternate; rem., remain; beg., beginning; trans., transfer; H.C.L's., holding cam levers; T., tension; 000., set row counter at 000; M.B., main bed.

## Notes

This rib is not suitable for 'mock rib'. It can either be knitted by hand with No. 12 knitting needles, or else knit the number of rows required as st.st. on T3, drop sts. and crochet up with the lachet hook.

## BACK

Cast on 142 (152, 162, 172) sts. for 2 x 2 rib. T2/2. K. 76 rows. Trans. ribber sts. to M.B. 000. T4. K. 100 rows.

## Shape Armholes

000. Cast off 6 sts. at beg. of next 2 rows. Dec. 1 st. each end of next 9 (11, 11, 11) rows and foll. alt. rows 2 (2, 3, 5) times in all. 108 (114, 122, 128) sts. rem. \* K. straight to 78 (82, 84, 88) rows.

## Shape Shoulders

Cast off 7 sts. at beg. of next 8 rows and 2 (4, 6, 7) sts. at beg. of next 2 rows. Cast off rem. 48 (50, 54, 58) sts.

## FRONT

K. as Back to \* K. 1 row.

## Neck Opening

Push 54 (57, 61, 64) needles at left to E position. H.C.L's III. K. right side first. K. straight to 53 (55, 57, 61) rows.

## Shape Neck

Cast off 14 (15, 16, 17) sts. at beg. of next row. K. 1 row. Dec. 1 st. at beg. of next and foll. alt. row until 30 (32, 34, 35) sts. rem. K. straight to 78 (82, 84, 88) rows.

## Shape Shoulder

Cast off 7 sts. at beg. of next and foll. alt. rows 4 times in all. K. 1 row. Cast off rem. 2 (4, 6, 7) sts. H.C.L's I. K. left side to match reversing all shapings.

## SLEEVES

Cast on 66 (68, 70, 72) sts. for 2 x 2 rib. T2/2. K. 38 rows. Trans. ribber sts. to M.B. 000. T4. K. 2 rows. Inc. 1 st. each end of next and foll. 14th (12th, 10th, 8th) row, 10 (14, 18, 22) times in all. 86 (96, 106, 116) sts. K. straight to 182 rows. (Adjust length here if required.)

## Shape Top

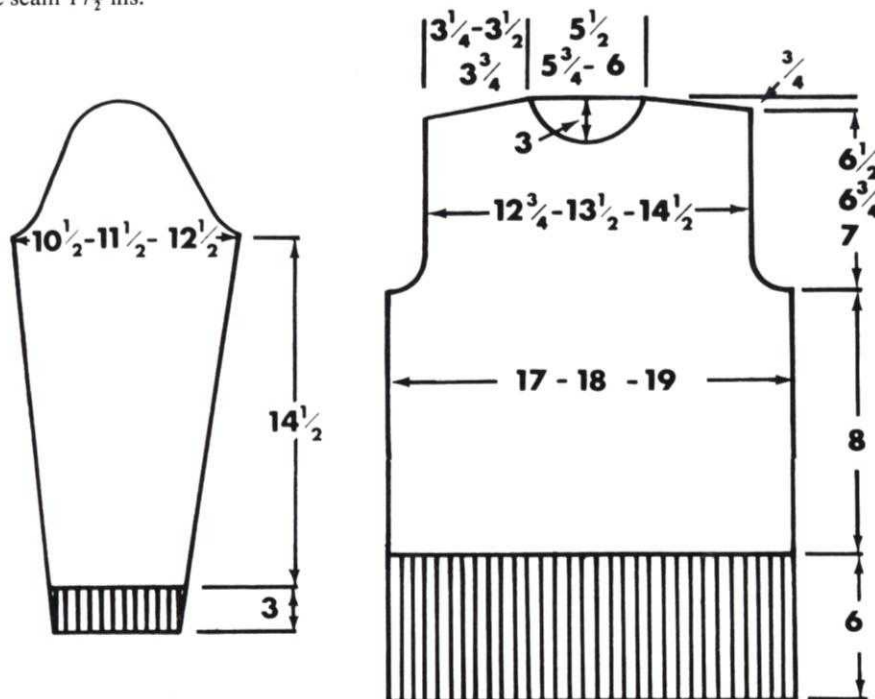
000. Cast off 6 sts. at beg. of next 2 rows. Dec. 1 st. each end of next 11 rows, then on every foll. 8th row 8 times. 36 (46, 56, 66) sts. K. 3 rows. Dec. 1 st. each end of next and foll. 4th row 4 times in all, then each end of every row until 22 sts. rem. Cast off.

## COLLAR

With contrast wool cast on 102 (108, 114, 120) sts. by hand. 000. T3. K. 2 rows. H.C.L's II. Always winding wool round first needle in E pos. \* push 6 (7, 7, 8) needles at opposite end to carriage to E pos. on next 10 rows. Push all needles at opposite end to carriage to C pos. on next 2 rows. \* T4. K. 34 rows. T7. K. 1 row. T4. K. 34 rows. T3. K. from \* to \* K. 2 rows. Cast off loosely.

## TO MAKE UP

Pin out and press with a warm iron over a damp cloth. Join shoulder, side and sleeve seam. Gather top of sleeve head to fit armhole. Sew in place. Join ends of collar, sew shaped edge to neck. Work row of double crochet round front opening. Make loop at neck and sew on button. Press seams.





# childs v-neck cardigan



## Materials

9 (11, 13, 15) Balls Templetons Ayr Wool.  
D.K. 4 buttons.

## Measurements

To fit chest sizes 24 (26, 28, 30) ins.  
Actual measurements 25 (27, 29, 31) ins.  
Length to back neck 15½ (17½, 19½, 21½) ins.

Sleeve seam 12½ (14, 15½, 16½) ins.

## Tension

T9. 13 sts. and 17 rows to 2 ins.

## Abbreviations

K., knit; sts., stitches; inc., increase; dec., decrease; beg., beginning; alt., alternate; tog., together; foll., following; rem., remain; tran., transfer; H.C.L.'s., holding cam levers; 000., set row counter at 000; T., tension; M.B., main bed.

## Notes

Fully fashioning on raglan dec. is worked by trans. the 3rd st. onto the 4th needle and moving 2 end sts. one needle in.

## BACK

**Ribbers** Cast on 83 (89, 95, 101) sts. as 1 x 1 rib. T6/6. K. 12 rows. Trans. ribber sts. to M.B.

**Single machines** With waste wool cast on 42 (45, 48, 51) sts. on alt. needles. K. a few rows. Change to main wool. T7. K. 23 rows. Make a hem and K. the row. 83 (89, 95, 101) sts.

**All machines** 000. T9. K. 2 rows. Foll. lace chart for 12 rows K. straight until 64 (76, 90, 102) rows.

## Shape Raglan

000. Cast off 2 sts. at beg. of next 2 rows. K. 2 rows. Dec. 1 st. (see notes) at each end of next and foll. 4th row, then on every alt. row until 29 (31, 33, 35) sts. rem. K. 1 row. Cast off.

## RIGHT FRONT

**Ribbers** Cast on 39 (41, 45, 47) sts. as 1 x 1 rib. T6/6. K. 12 rows. Trans. ribber sts. to M.B. Dec. 1 st. on 1st and 3rd sizes. 38 (41, 44, 47) sts.

**Single machines** With waste wool cast on 20 (21, 23, 24) sts. on alt. needles. K. a few rows. Change to main wool. T7. K. 23 rows. Make a hem and K. the row. Dec. 1 st. on 1st and 3rd size 38 (41, 44, 47) sts.

**All machines** 000. T9. K. 2 rows. Following lace chart, K. 12 rows. K. straight until 53 (61, 71, 79) rows have been worked. (K. 1 row extra for Left Front.)

## Neck Shaping

Dec. 1 st. at beg. (neck edge) of next and every foll. 8th row. K. to 64 (76, 90, 102) rows. (1 extra row for left front.)

## Shape Raglan

000. Continue to dec. on every 8th row at neck edge. **At the same time** cast off 2 sts. at beg. of next row. K. 3 rows. Dec. 1 st. at raglan edge on next and foll. 4th row then on alt. rows until 3 sts. rem. K. 1 row. Cast off.

## LEFT FRONT

K. as Right front reversing all shapings.

## SLEEVES

**Ribbers** Cast on 41 (45, 49, 53) sts. as 1 x 1 rib. T6/6. K. 12 rows. Trans. ribber sts. to M.B.

**Single machines** With waste wool cast on 21 (23, 25, 27) sts. on alt. needles. K. a few

↑															4	4							↑				
↑		0	0	0	0	0	0	0	0	0					3	3	■	■	■	■	■	■	■	■			
↑															2	2								↑			
↑		0	0	0	0	0	0	0	0						1	1	■	■	■	■	■	■	■	↑			
K.C.	L.C.	S.L.	K.H.800 MACHINE												STEPS	STEPS	K.H.588 MACHINE								REVERSE LEVER	L.C.	K.C.
1	2	3																							1	2	3



# babys romper with bib

rows. Change to main wool. T7. K. 23 rows. Make a hem and K. the row. 41 (45, 49, 53) sts.

**All machines** (Work lace band as on back if desired.) 000. T9. K. 10 rows. Inc. 1 st. each end of next and foll. 8th (9th, 10th, 11th) row 10 times in all 61 (65, 69, 73) sts. K. straight to 94 (106, 120, 128) rows. (Adjust length here if required.)

## Shape Raglan

000. Cast off 2 sts. at beg. of next 2 rows. K. 2 rows. Dec. 1 st. each end of next and foll. 4th row 4 times in all then on alt. rows until 11 sts. rem. Cast off.

## FRONT BAND

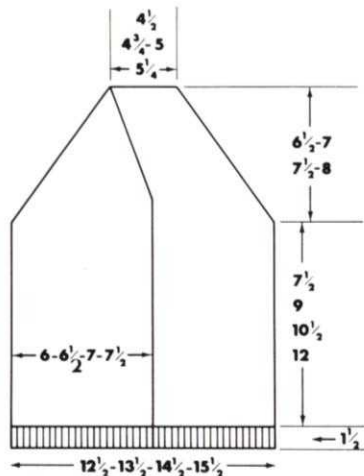
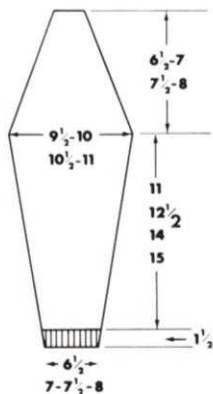
Mark position on appropriate front for 4 buttons the first  $\frac{1}{2}$  in. above lower edge and the last one at beg. of neck shaping.

**Ribbers** Cast on 13 sts. as 1 x 1 rib. T5/5. K. straight until long enough to fit along both fronts and across back neck stretching slightly to fit, and make buttonholes to match markers, on centre st.

**Single machines** Cast on 15 sts. by hand. T7. K. straight until long enough to fit along both fronts and across back neck, stretching slightly to fit. Make buttonholes to match markers over needles 4 and 5 from each end.

## TO MAKE UP

Join raglan, side and sleeve seams. Sew on front band. Turn stocking st. band to inside and slip-st. in place. Neaten buttonholes and sew on buttons.



## Materials

2 ozs. Emu Scotch 4 ply. Small ball contrast for trimming Crochet hook. Elastic for waist.

## Measurements

To fit baby 6–12 months.  
Size round seat 19 ins.  
Length from top of bib  $12\frac{1}{2}$  ins.

## Tension

T7. 14 sts. and 18 rows to 2 ins.

## Abbreviations

K., knit; sts., stitches; inc., increase; dec., decrease; beg., beginning; alt., alternate; rem., remain; pos., position; H.C.L's., holding cam levers; T., tension; 000., set row counter at 000.

## BACK

Cast on 66 sts. by hand. T6. K. 10 rows.

## Shape Back

000. T7. H.C.L's II (800 H.C.L. I). Always winding wool round first needle in E pos. Push 6 sts. at opposite end to carriage to E pos. on next 8 rows. Push all needles at opposite end to carriage to C pos. on next 2 rows. K. straight to 64 rows.

## Shape Legs and Crutch

\* 000. Cast off 2 sts. at beg. of next 24 rows. 18 sts. rem. K. straight for 14 rows.

Cast on 2 sts. at beg. of next 16 rows. 8 sts. at beg. of next 2 rows. 66 sts.

## FRONT

000. K. 54 rows.

## Shape Bib

H.C.L's II (800 H.C.L. I). Push 14 sts. at each end of bed to E pos. Work on centre 38 sts. first. K. 32 rows. Cast off. Push 14 sts. at right to C pos. T6. K. 10 rows. Cast off. K. left side to match.

## STRAPS (Knit 2)

000. T6. Cast on 12 sts. by hand. K. until long enough to fit over shoulders and cross at back.

## TO MAKE UP

Pin out and press with a warm iron over a damp cloth. Join side seams. Using contrast wool work 1 row of double crochet round legs and 1 row of shell pattern. Work 2 rows of double crochet round bib and 1 row of shell pattern. Turn hem at waist to inside and sew in place. Thread elastic through hem and sew ends in pos. at each side. Fold straps so that seam is at centre back and slip-st. in place. Using contrast wool work 1 row of chain-st. along centre. Sew straps to bib, cross over and sew to waist hem at back. Press work.



# family sleeveless jackets





## Materials

**Plain Jacket** 8 (9, 10, 11) ozs. Robin Vogue 4 ply wool.

**Jacket Contrast Edgings** 7 (8, 8, 9) ozs. Main. 2 (2, 2, 2) ozs. contrast.

**Jacket Stripes** 6 (6, 7, 7) ozs. A. 3 (3, 4, 4) ozs. B. 7 buttons.

## Measurements

To fit chest sizes 26 (28, 30, 32) ins.

Length to shoulder 20 (21½, 23, 24½) ins.

## Tension

T7. 14½ sts. and 19 rows to 2 ins.

## Abbreviations

K., knit; sts., stitches; inc., increase; dec., decrease; beg., beginning; alt., alternate; foll., following; rem., remain; H.C.L's., holding cam levers; 000., set row counter at 000; T., tension.

## Notes

This garment may be knitted in one colour, or alternatively all bands, pocket edging and first 16 rows of garment may be knitted in a contrast colour or in stripes of 8 rows in each colour.

## BACK

Cast on 96 (104, 112, 120) sts. by hand. T6. K. 7 rows. T9. K. 1 row. 000. T7. K. 124 (134, 142, 152) rows.

## Shape Armholes

000. Cast off 5 (6, 6, 7) sts. at beg. of next 2 rows. Dec. 1 st. each end of next 5 rows, then on every alt. row 1 (1, 2, 3) times. 74 (80, 86, 90) sts. K. straight to 66 (72, 76, 80) rows.

## Shape Shoulders

Cast off 5 (5, 6, 6) sts. at beg. of next 6 rows, 5 (7, 6, 7) sts. at beg. of next 2 rows. 34 (36, 38, 40) sts. rem. T6. K. 16 rows. Cast off loosely.

## RIGHT FRONT

Cast on 46 (50, 54, 58) sts. by hand. T6. K. 7 rows. T9. K. 1 row. 000. T7. K. 50 rows. Carriage is at right. Break wool.

## POCKET

H.C.L's III (800 H.C.L's II). Push 10 (12, 14, 16) sts. at left and 10 (12, 14, 16) sts. at right to E position. K. on rem. 26 sts. T6. K. 18 rows. Pick up loops of first row in T6 and place on needles. T7. K. 74 rows. Break wool. Take carriage to right side of work. H.C.L. I (800 H.C.L's III). 000. K. 74 (84, 92, 102) rows. (1 extra row on left front.)

## Shape Armhole

000. Cast off 5 (6, 6, 7) sts. at beg. of next row. K. 1 row. Dec. 1 st. at armhole edge on next 5 rows, then on every alt. row 1 (1, 2, 3) times. 35 (38, 41, 43) sts.

## Shape Neck

Cast off 10 (10, 11, 11) sts. at beg. of next row. K. 1 row. Dec. 1 st. at beg. of next and foll. alt. rows until 20 (22, 24, 25) sts. rem. K. straight to 66 (72, 76, 80) rows.

## Shape Shoulder

Cast off 5 (5, 6, 6) sts. at beg. of next and foll. alt. rows until 5 (7, 6, 7) sts. rem. K. 1 row. Cast off.

## LEFT FRONT

K. to match right front reversing all shapings.

## BUTTONBAND

Cast on 16 sts. by hand. T6. K. until long enough to fit up front stretching slightly

ending at left side for boys and right for girls. Cast off 8 sts. leave rem. 8 sts. on a pin.

## BUTTONHOLE BAND

Mark position on appropriate front for 7 buttons. The first to come ¼ in. above lower edge, and the final one to come in the neckband. Space the remainder evenly between. K. as buttonband making buttonholes to match markers over needles 4 and 5 from each end, ending at left side for girls and right for boys.

## RIGHT FRONT NECKBAND

With wrong side facing pick up and place on machine 56 (60, 62, 64) sts. from round neck and 8 sts. from right front band. T6. Making buttonhole on row 4 and 12 for girls. K. 16 rows. Cast off loosely.

## LEFT FRONT NECKBAND

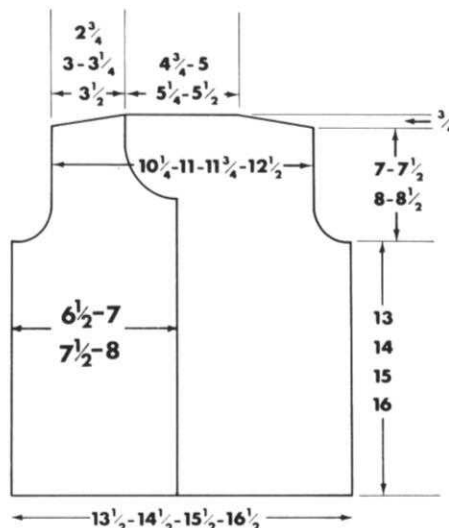
K. to match right neck making buttonhole for boys.

## ARMBANDS

Join shoulder seams. With wrong side facing pick up and place on machine 112 (120, 128, 136) sts. from round armholes. T6. K. 16 rows. Cast off loosely.

## TO MAKE UP

Pin out and press with a warm iron over a damp cloth. Join side seams. Sew front bands in place. Turn all bands to inside and slip-st. down. Join seams of pockets and sew down ends of top bands. Neaten buttonholes. Sew on buttons. Press seams.



## Materials

**Plain Jacket** 10 (11, 12, 13, 14) ozs. Robins Vogue 4 ply wool. Jacket with contrast edging 8 (9, 10, 11, 12) ozs. Main. 3 ozs. contrast.

Jacket with stripes 6 (6, 7, 8, 8) ozs. A. 5 (5, 6, 7, 7) B.

## Measurements

To fit chest and bust sizes 34 (36, 38, 40, 42) ins.

Length to shoulder 26 (26½, 26½, 26½, 27) ins.

## Tension

T7. 14½ sts. and 19 rows to 2 ins.

## Abbreviations

K., knit; sts., stitches; inc., increase; dec., decrease; beg., beginning; alt., alternate; foll., following; rem., remain; H.C.L's., holding cam levers; 000., set row counter at 000; T., tension.

## Notes

This garment may be knitted in one colour or alternatively all bands, pocket edging and first 20 rows of garment may be knitted in a contrast colour, or in stripes of 10 rows in each colour.

## BACK

Cast on 126 (134, 142, 150, 158) sts. by hand. T6. K. 9 rows. T9. K. 1 row. 000. T7. K. 156 rows.

## Shape Armholes

000. Cast off 6 sts. at beg. of next 2 rows. Dec. 1 st. each end of next and every foll. row until 96 (100, 104, 108, 112) sts. rem. K. straight to 90 (92, 94, 96, 100) rows.

## Shape Shoulders

Cast off 6 sts. at beg. of next 8 rows, 4 (5, 6, 7, 8) sts. at beg. of next 2 rows. 40 (42, 44, 46, 48) sts. rem.

## NECKBAND

T6. K. 20 rows. Cast off loosely.

## RIGHT FRONT

Cast on 60 (64, 68, 72, 76) sts. by hand. T6. K. 9 rows. T9. K. 1 row. 000. T7. K. 56 rows. Carriage is at right. Break wool.

## POCKET

H.C.L's III (800 H.C.L's II). Push 15 (17, 19, 21, 23) sts. left and 15 (17, 19, 21, 23) sts. at right to E position. K. on rem. 30 sts. T6. K. 20 rows. Pick up loops of first row in T6 and place on needles. T7. K. 80 rows. Break wool. Take carriage over to right side of work. H.C.L. I (800 H.C.L's III). 000. K. 100 rows. (1 extra row on left front.)

## Shape Armholes

000. Cast off 6 sts. at beg. of next row. K. 1 row. Dec. 1 st. at armhole edge of next 9 (11, 13, 15, 17) rows. 45 (47, 49, 51, 53) sts.

## Shape Neck

Cast off 11 (11, 12, 12, 12) sts. at beg. of next row. K. 1 row. Dec. 1 st. at beg. of next and foll. alt. rows until 28 (29, 30, 31, 32) sts. rem. K. straight to 90 (92, 94, 96, 100) rows.

## Shape Shoulder

Cast off 6 sts. at beg. of next and foll. alt. rows until 4 (5, 6, 7, 8) sts. rem. K. 1 row. Cast off.

## LEFT FRONT

K. to match right front reversing all shapings.

## BUTTONBAND

Cast on 20 sts. by hand. T6. K. until long



# babys v-neck cardigan

enough to fit up front stretching slightly ending at left side for gentlemen and right for ladies. Cast off 10 sts. leave rem. 10 sts. on a pin.

## BUTTONHOLE BAND

Mark position on appropriate front for 7 buttons. The first to come  $\frac{1}{4}$  in. above lower edge, and the final one to come in neckband. Space remainder evenly between. K. as buttonband making buttonholes to match markers over needles 5 and 6 from each end, ending at left side for ladies and right for gentlemen.

## RIGHT FRONT NECKBAND

With wrong side facing pick up and place on machine 68 (70, 72, 74, 76) sts. from round neck, 10 sts. from right neckband. T6. Making buttonhole on row 5 and 15 for ladies. K. 20 rows. Cast off loosely.

## LEFT FRONT NECKBAND

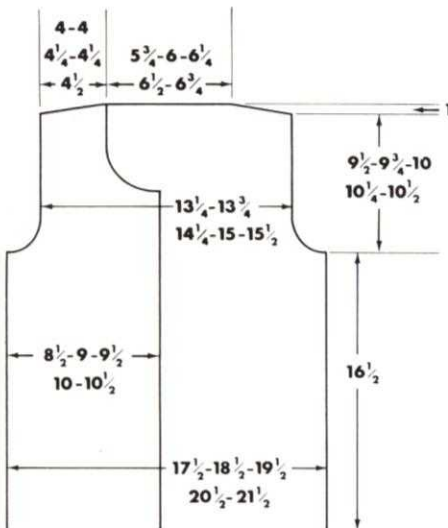
K. to match right neckband, making buttonhole for men.

## ARMBANDS

Join shoulder seams. With wrong side facing pick up and place on machine 150 (154, 158, 162, 164) sts. from round armholes. T6. K. 20 rows. Cast off loosely.

## TO MAKE UP

Pin out and press with a warm iron over a damp cloth. Join side seams. Sew front bands in place. Turn all bands to inside and slip-st. down. Join seams of pockets and sew down ends of top bands. Neaten buttonholes, sew on buttons. Press seams.



## KH-800

### Materials

4 (4, 5) 20 grms., balls of Listers 2 spun 4 ply crepe in main colour and 1 (1, 1) in contrast colour. 4 buttons.

### Measurements (actual)

Chest 18 (20, 22) ins.

Sleeve seam 6 (7, 8) ins.

Length from back neck to hem  $9\frac{1}{2}$  (11,  $12\frac{1}{2}$ ) ins.

### Tension

T7. 7 sts. and 10 rows to 1 in.

### Abbreviations

Sts., stitches; alt., alternate; pos., position; beg., beginning; rem., remaining; f.f., fully fashioned (by moving 3rd st. onto 4th st. and moving end 2 sts. along to close gap); COR./L., carriage on right or left; foll.,



following.

### BACK and FRONTS (worked in one piece to armholes)

**Ribbers** With main colour, cast on 131 (147, 163) sts. and work 10 rows at T5 in K. 1. P. 1 rib. Transfer sts. from front bed to back bed. **Single bed machines** Bring forward 131 (147, 163) needles, return every alt. needle to pos. A and cast on by hand over rem. needles. Work 18 rows T5, bring forward the alt. empty needles and hang up the cast on sts. onto these.

**All machines** T7. K. 6 rows. T8 and work from Fair-Isle chart. Re-set tension to 7 and work in st.st. to 6 (7, 8) ins. from bottom edge. Break off yarn. Divide work for armholes as follows, put first and last 31 (34, 38) sts. onto a holder or waste wool.







## Materials

**Top** 11 (12, 12, 13, 13, 14) ozs. Listers Lavenda 4 ply wool in main colour, 2 ozs. in Contrasts A and B. 4 ins. zip. Bias binding for neck.

**Skirt** 10 (11, 12, 12, 13, 14) ozs. Listers Lavenda 4 ply wool. Elastic to fit waist.

## Measurements

**Top** To fit bust sizes 38 (40, 42, 44, 46, 48) ins.

Finished measurements 40 (42, 44, 46, 48, 50) ins.

Length to shoulder 21 (21½, 22, 22½, 23, 23½) ins.

Sleeve seam 11 ins.

**Skirt** To fit hip sizes 40 (42, 44, 46, 48, 50) ins.

Length 23 ins.

## Tension

T6. 15 sts. and 22 rows to 2 ins. after pressing.

## Abbreviations

K., knit; sts., stitches; inc., increase; dec., decrease; foll., following; alt., alternate; beg., beginning; rem., remain; T., tension; H.C.L.'s., holding cam levers; 000., set row counter at 000.

## TOP

### BACK

Cast on 149 (157, 163, 171, 177, 185) sts. by hand. T5. K. 10 rows. 000. T6. K. 8 rows. Dec. 1 st. at each end of next and foll. 8th row 7 times in all 135 (143, 149, 157, 163, 171) sts. K. to 72 rows. Inc. 1 st. at each end of next and foll. 11th row 7 times, 149 (157, 163, 171, 177, 185) sts. K. straight to 148 rows.

### Shape Armholes

000. Cast off 7 (7, 8, 8, 9, 9) sts. at beg. of next 2 rows. Dec. 1 st. at each end of next 9 rows, then every alt. row 5 (6, 6, 7, 7, 8) times 107 (113, 117, 123, 127, 133) sts. K. straight to 40 (46, 52, 58, 64, 70) rows.

### Divide for Opening

Transfer centre st. onto adjacent needle and push needles at left to E position. H.C.L.'s III (800 H.C.L. I). K. the right side first. K. straight to 82 (88, 94, 100, 106, 112) rows.

### Shape Shoulder and Neck

Cast off 7 sts. at beg. of next row and 7 (8, 9, 10, 11, 12) sts. at beg. of next row. Cast off 7 sts. at beg. of next row, and 5 sts. at beg. of next row. Repeat the last 2 rows twice more. Cast off rem. 3 (5, 6, 8, 9, 11) sts. K. left side to match.

## FRONT

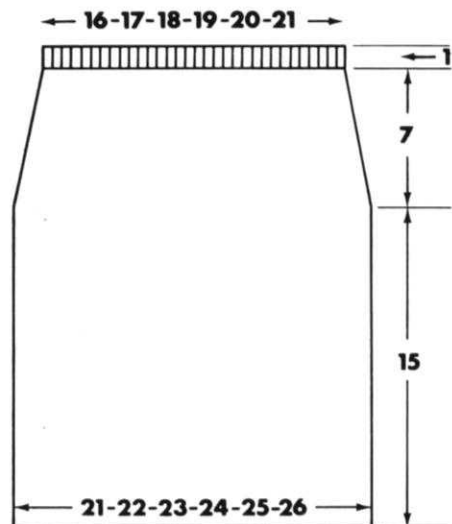
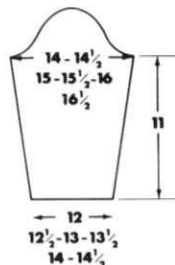
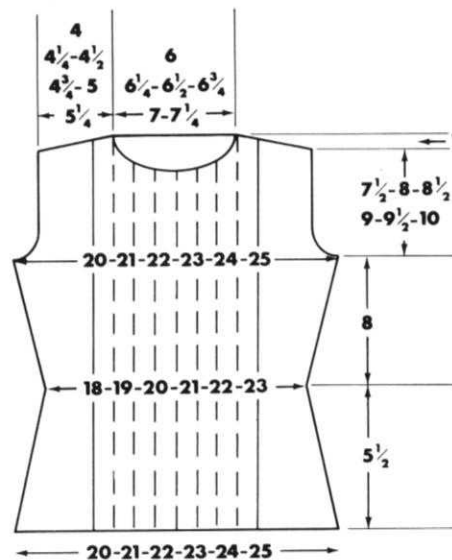
### Centre Panel (knitted sideways)

Using B cast on 173 (177, 181, 186, 190, 194) sts. by hand. 000. T6. K. 5 rows. Inc. 1 st. at right on next row. K. 1 row. Change to A. Working in stripes of 6 rows each in A, M and B, K. 2 rows. Inc. 1 st. at right side on next and foll. 4th row 2 (2, 2, 1, 1, 1) times. 176 (180, 184, 188, 192, 196) sts. K. 4 (2, 2, 4, 4, 2) rows. 18 (16, 16, 14, 14, 12) rows. Carriage at right.

### Shape Neck

Cast off 5 sts. at beg. of next row and 3 sts. on foll. alt. rows 3 times. Dec. 1 st. at right on next 3 rows then alt. rows 3 times. K. 2 rows. Dec. 1 st. at right on next and foll. 3rd row. 154 (158, 162, 166, 170, 174) sts. rem. K. straight to 55 rows (last 6 rows in

M is centre front of neck). Continue in stripes of A, B and M, K. 63 (65, 65, 67, 67, 69) rows. Inc. 1 st. at right on next and foll. 3rd row 3 times, then alt. rows 3 times. Inc. 1 st. at right side on next 2 rows. Cast on 3 sts. at beg. of next and alt. rows 3 times and 5 sts. on foll. alt. row 176 (180, 184, 188, 192, 196) sts. 84 (86, 86, 88, 88, 90) rows. K. 4 (2, 2, 4, 4, 2) rows. Dec. 1 st. at right on next and every foll. 4th row 3 (3, 3, 2, 2, 2) times 173 (177, 181, 186, 190, 194) sts. rem. K. another 6 rows in B (7 rows in all) 104 rows.



**N.B.** Cast off loosely.

### Right Side Panel

Using M cast on 40 (44, 47, 51, 54, 58) sts. by hand. T5. K. 10 rows. 000. T6. K. 8 rows. Dec. 1 st. at right on next and foll. 8 rows 7 times in all 33 (37, 40, 44, 47, 51) sts. K. straight to 72 rows. Inc. 1 st. at right on next and foll. 11th rows. 7 times in all. 40 (44, 47, 51, 54, 58) sts. Carriage at left.

### Bust Dart

H.C.L.'s III (800 H.C.L. I). Always winding wool round first needle in E position, push 5 (5, 5, 6, 6, 6) needles at opposite end to Carriage to E position on next and alt. rows 7 times in all. K. 1 row. H.C.L. I (800 H.C.L.'s III). K. straight to 162 rows. Carriage at right.

### Shape Armhole

000. Cast off 7 (7, 8, 8, 9, 9) sts. at beg. of next row. K. 1 row. Dec. 1 st. at armhole edge on next 9 rows then every alt. rows 5 (6, 6, 7, 7, 8) times. 19 (22, 24, 27, 29, 32) sts. K. straight to 82 (88, 94, 100, 106, 112) rows.

### Shape Shoulder

Cast off 7 sts. at beg. of next and alt. rows until 5 (8, 10, 6, 8, 11) sts. rem. K. 1 row. Cast off.

### Left Side Panel

K. as right side panel reversing all shapings by starting with carriage at left and reading left for right and right for left throughout.

## SLEEVES

Cast on 89 (93, 97, 101, 105, 109) sts. by hand. T5. K. 10 rows. 000. T6. K. 10 rows. Inc. 1 st. at each end of next and every foll. 14th row 8 times in all 105 (109, 113, 117, 121, 125) sts. K. straight to 120 rows.

### Shape Top

Cast off 7 (7, 8, 8, 9, 9) sts. at beg. of next 2 rows. Dec. 1 st. at each end of next 7 rows. K. 3 rows, dec. 1 st. at each end of next and every foll. 4th row 6 (7, 8, 9, 10, 10) times. Then every alt. row 3 (2, 2, 2, 3, 3) times. Dec. 1 st. at each end of next 9 (11, 11, 11, 9, 12) rows. Cast off 3 sts. at beg. of next 6 rows. Cast off rem. 23 (23, 23, 25, 25, 25) sts.

## TO MAKE UP

Pin out and press with a warm iron over a damp cloth. Sew front panel in position. Join side, shoulder and sleeve seams. Set in sleeves. Turn 10 rows at lower edge, and sleeve edge to inside and slip-st. in place. Sew bias binding round neck. Sew in zip. Press seams.

### SKIRT (back and front alike)

Cast on 156 (164, 172, 180, 188, 196) sts. T5. K. 10 rows. 000. T6. K. straight to 160 rows. Dec. 1 st. at each end of next and foll. 6th row 6 times in all, then every 4th row 6 times, then every 3rd row 7 times 118 (126, 134, 142, 150, 158) sts. K. to 238 rows. Transfer every 3rd st. onto adjacent needle. Push empty needles to A position. T5. K. 20 rows. Cast off making a chain over empty needles.

## TO MAKE UP

Pin out and press with a warm iron over a damp cloth. Join side seams. Turn under 10 rows at lower edge and slip-st. in place. Fold waistband in half enclosing the elastic and slip-st. in place. Press seams.



## pram set

### Materials

11 ozs. Lister Lavenda 4 ply crisp crepe. 7 small buttons. Elastic for waist. Crochet hook.

### Measurements

**Jacket** To fit chest size 18 ins.

Length to back neck  $10\frac{1}{2}$  ins.

Sleeve seam  $6\frac{1}{4}$  ins.

**Leggings** Waist to ankle  $15\frac{1}{2}$  ins.

Foot length 4 ins.

### Tension

T7. 15 sts. and 28 rows to 2 ins. in pattern st.

T7. 15 sts. and 21 rows to 2 ins. in st.st.

These garments were knitted on K. 800. If using other models please check tension carefully.

### Abbreviations

K., knit; sts., stitches; inc., increase; dec., decrease; alt., alternate; rem., remaining; tog., together; beg., beginning; foll., following; T., tension; 000., set row counter at 000; trans., transfer.

### Note

Buttonholes are worked on right front, on needles 3 and 9 from left (front edge) on rows 54. After armhole on row 8, 36. Work on left front for boys. All other machines H.C.L. 1=II, H.C.L's 3=I, H.C.L's 2=III.

### JACKET

#### BACK

Cast on 82 sts. by hand. T6. K. 9 rows. T9. K. 1 row. T6. K. 10 rows \* 000. T7. Follow pattern chart. K. 28 rows. Dec. 1 st. each end of next and foll. 18th row 3 times in all. 76 sts. K. straight to 76 rows.

#### Shape Raglan

000. Cast off 2 sts. at beg. of next 2 rows. K. 2 rows. Dec. 1 st. each end of next and foll. 4th row 8 times in all, then on every alt. row until 28 sts. rem. K. 1 row. Cast off.

#### RIGHT FRONT

##### BUTTONHOLES (see notes)

Cast on 47 sts. by hand. K. as back to \* 000. T7. Follow pattern chart. K. 28 rows. Dec. 1 st. at beg. of next and foll. 18th row 3 times in all. 44 sts. K. straight to 76 rows.

#### Shape Raglan

000. Cast off 2 sts. at beg. of next row. K. 3 rows. Dec. 1 st. at beg. of next and foll. 4th row 8 times in all, then on every alt. row until 45 rows have been worked.

#### Shape Neck

Cast off 12 sts. at beg. of next row. K. 1 row. Dec. 1 st. at neck edge on next and foll. alt. rows 6 times, **at the same time** continue to dec. at raglan edge until 2 sts. rem. K. 1 row. Cast off.

#### LEFT FRONT

K. as Right Front, but cast on from opposite side of machine.

#### SLEEVES

Cast on 44 sts. by hand. K. as back to \* 000. T7. Follow pattern chart. K. 6 rows. Inc. 1 st. each end of next and foll. 10th row 6 times in all. 56 sts. K. straight to 76 rows.

#### Shape Raglan

000. Cast off 2 sts. at beg. of next 2 rows. K. 2 rows. Dec. 1 st. each end of next and foll. 4th row 8 times in all, then on every alt. row until 8 sts. rem. Cast off.

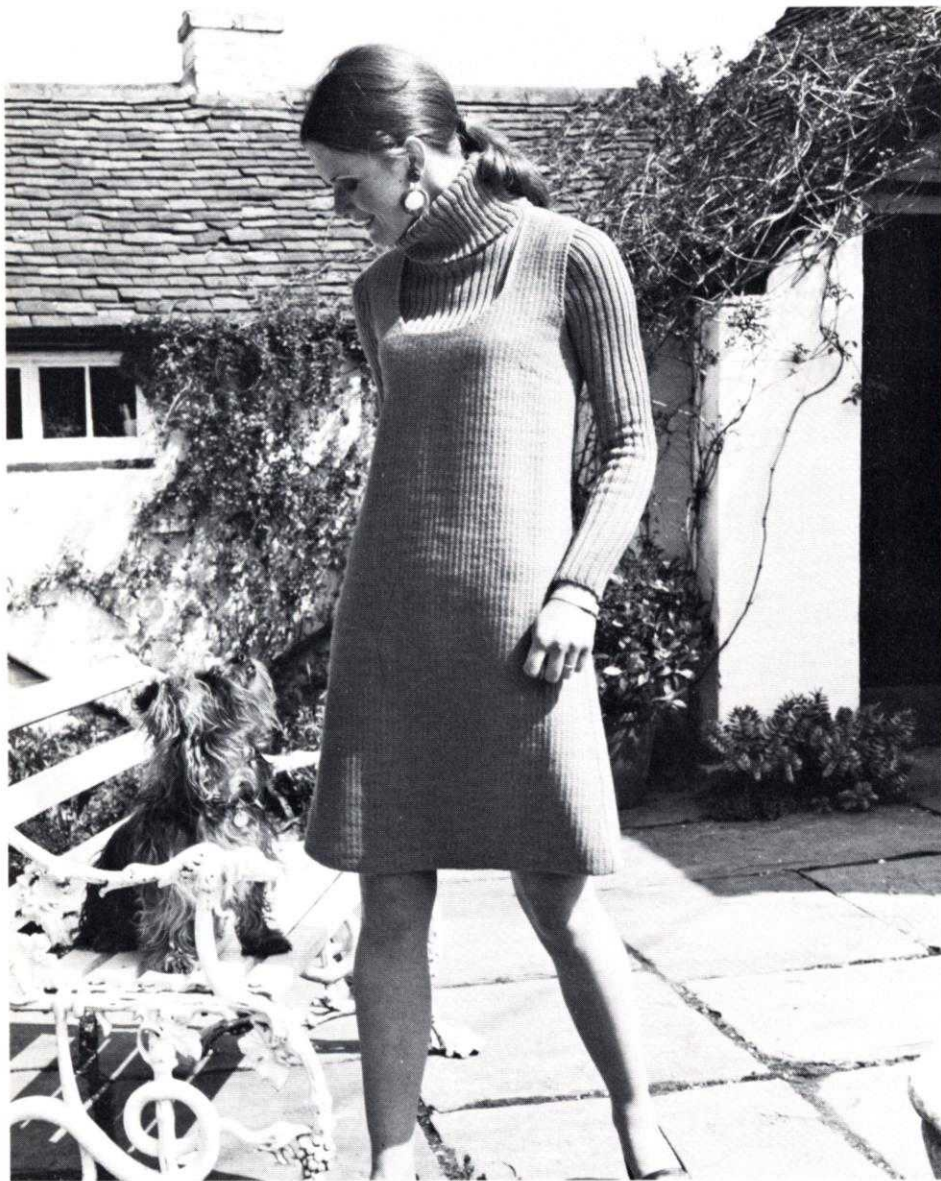








# woven pinafore dress



## Materials

12 (13, 14) ozs. Listers Lavenda 4 ply wool.  
6 (7, 7) ozs. Listers Lavenda Double Knitting wool.

## Measurements

To fit bust sizes 34 (36, 38) ins.  
To fit hip sizes 36 (38, 40) ins.  
Length to shoulder 36 (36½, 37) ins.

## Tension

T6. 13 sts. and 21 rows to 2 ins. (check tension carefully).

## Abbreviations

K., knit; sts., stitches; inc., increase; dec., decrease; beg., beginning; alt., alternate; foll., following; rem., remain; H.C.L.'s.,

holding cam levers; 000., set row counter at 000; T., tension;

## BACK

With 4 ply wool cast on 144 (150, 156) sts. by hand. 000. T6. K. 12 rows. Set machine for weaving pattern and continue foll. chart throughout. 000. T6. Always winding wool round first needle in E position. H.C.L.'s II. (800 H.C.L. I.) Push 50 sts. at opposite end to carriage on next 2 rows to E position. Return 10 sts. to working position at end of every row 10 times in all. H.C.L. I. (800 H.C.L.'s III.) K. 14 rows. Dec. 1 st. each end of next and foll. 14th row 11 times in all. 122 (128, 134) sts. K. 30 rows. Dec. 1 st. at

each end of next and foll. 30th row 3 times in all. 116 (122, 128) sts. \* (adjust length here if required). K. straight to 300 rows.

## Shape Armholes

000. Cast off 8 sts. at beg. of next 2 rows. Dec. 1 st. each end of next and foll. alt. row 9 (10, 11) times in all. K. straight to 70 (74, 80) rows.

## Shape Back Neck

Cast off 26 (28, 30) sts. at centre. Push 28 (29, 30) sts. at left to E position. H.C.L.'s II. (800 H.C.L. I.) K. right side first. Dec. 1 st. at neck edge on next 8 rows. 20 (21, 22) sts. K. 1 row.

## Shape Shoulders

Cast off 5 sts. at beg. of next and foll. alt. rows until 5 (6, 7) sts. rem. K. 1 row. Cast off. H.C.L.× I. (800 H.C.L.'s III.) K. left side to match reversing all shapings.

## FRONT

K. as Back to \* K. straight to 278 rows. **Bust darts.** H.C.L.'s II. (800 H.C.L. I.) Always winding wool round first needle in E position. Push 5 sts. at opposite end to carriage to E position on next 10 rows. H.C.L. I. (800 H.C.L.'s III) Return needles to K. position on next 2 rows. K. 20 rows.

## Shape Armholes and Neck

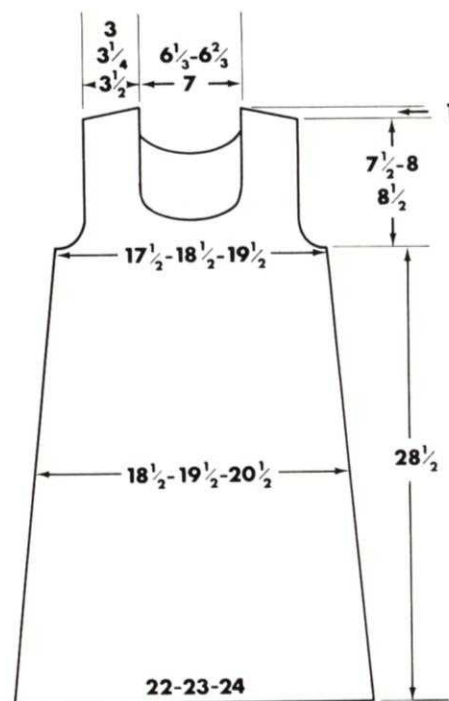
Cast off 24 sts. at centre. K. right side first. 000. Cast off 8 sts. at beg. of next row. K. 1 row. Dec. 1 st. each end of next and foll. alt. rows 9 (10, 11) times. 20 (21, 22) sts. K. straight to 80 (84, 90) rows.

## Shape Shoulder

Cast off 5 sts. at beg. of next and foll. alt. rows until 5 (6, 7) sts. rem. K. 1 row. Cast off. K. left side to match.

## TO MAKE UP

Pin out and press with a warm iron over a damp cloth. Join shoulder and side seams. Turn under hem at lower edge. Work 1 row of double crochet round neck and armholes. Press seams.



↑	B	A	0	0	0	0	0	0	0	0	2	2							A	B	→											
↓	B	A	0	0	0	0	0	0	0	0	1	1	■	■	■	■	■	■	I	+	A	B	←									
K.C.	L.Y.	M.A.Y.	S.L.	1	2	3	4	5	6	7	8	9	10	11	12	STEPS	STEPS	1	2	3	4	5	6	7	8	S.D.	R.L.	M.Y.	L.Y.	K.C.		
4	3	2	1	K.H. 800 MACHINE												K.H. 588 MACHINE								1	2	3	4	5				
22-23-24																																







**For KH-588 and 800 machines**

**Materials**

**Jacket** 12 (13, 14) ozs. Double Knitting Wool. 8, 2 oz. balls thickknit Wool.

**Jumper** 10 (10, 11) ozs. 4 ply Wool. Shade A. 1 oz. 4 ply wool in shades B, C and D. 7 in. zip fastener.

**Measurements**

To fit 32 (34, 36) ins. Bust.

**Tension**

6 sts. and 8½ rows to 1 in. over vertical lace pattern on T10. with loose yarn tension unit for jacket.

7½ sts. and 11 rows to 1 in. over st.st. and jacquard on T7. with tight yarn tension unit for jumper.

**Abbreviations**

COBH., cast on by hand over every N.; st(s), stitch(es); T., tension; K., knit; MDE., make double each by placing each loop at cast on edge onto N. in B pos.; COR(L), carriage on right or left; 000., set row counter to 000; cont., continue; foll., following; inc., increase; dec., decrease; fin., finishing; beg., beginning; alt., alternate; rem., remaining; N., needles; pos., position; tog., together.

**JACKET**

**BACK**

COBH. 85 (91, 97) sts. centrally placing odd st. on right hand edge. \* T8. K. 8 rows. T10. K. 1 row for foldline. T8. K. 8 rows. MDE. T10. K. 1 row. COR. 000. Working from chart 1 cont. as folls. \* Inc. 1 st. each end of every foll. 4th row 8 times to 101 (107, 113) sts. K. to 38 rows. fin. COR. (Adjust length at this stage if desired.)

**Shape Armholes**

Cast off 3 (4, 5) sts. at beg. of the next 2 rows fin. COR. 95 (99, 103) sts. 000. Dec. 1 st. each end of every foll. 3rd row 9 times to 77 (81, 85) sts. K. row 28 fin. COR. 000. K. 44 (48, 52) rows.

**Back Neck and Shoulders**

Thread up and take off machine the centre 23 (25, 27) sts. Cont. on right 27 (28, 29) sts. dec. 1 st. every row on neck edge 8 times, at the same time, casting off 5 sts. at the beg. of the next row and at this same edge every alt. row twice more fin. COR. Cast off rem. 4 (5, 6) sts. K. on left sts. to match reversing shapings.

**RIGHT FRONT**

On right side of the centre O leave the first 9 N. in A pos., and keeping to the right side of centre O, COBH. 34 (37, 40) sts. onto next N. Rep. \* to \* as on back. On right edge inc. 1 st. every foll. 4th row 8 times to 42 (45, 48) sts. K. to 38 rows fin. COR. (Adjust length to match back.)

**Shape Armhole**

Cast off 3 (4, 5) sts. on the right edge. K. 2 rows fin. COR. 39 (41, 43) sts. 000. On right edge dec. 1 st. every foll. 3rd row 9 times to 30 (32, 34) sts. K. to row 28 fin. COR. 000.

**Shape Neck**

On left edge dec. 1 st. on the next and then every foll. 4th row 11 (12, 13) times to 19 (20, 21) sts. K. to 44 (48, 52) rows fin. COR.

**Shape Shoulder**

Cast off 5 sts. at beg. of the next row and at

this same edge every foll. alt. row twice more fin. COR. Cast off rem. 4 (5, 6) sts.

**LEFT FRONT**

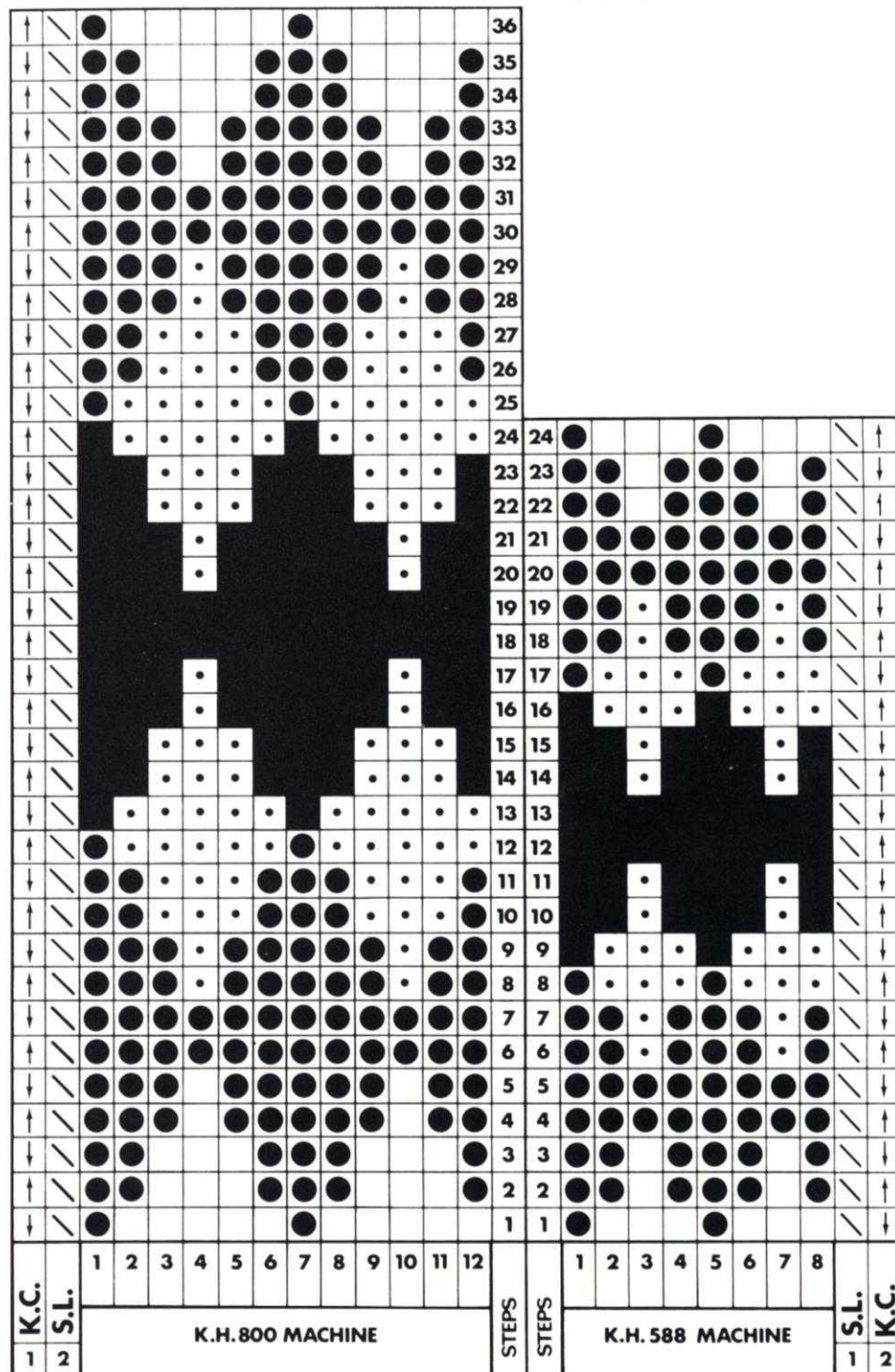
On left side of centre O leave the first 8 N. in A pos., and keeping to the left of the centre O, COBH. 34 (37, 40) sts. onto next N. K. this front to match the right reversing shapings.

**SLEEVES**

COBH. 67 (71, 75) sts. centrally placing odd st. on the right hand edge. Rep. \* to \* as on back. K. for 122 (126, 130) rows fin. COR. (Adjust length at this stage if desired.)

**Shape Top**

Cast off 3 (4, 5) sts. at beg. of the next 2 rows. 61 (63, 65) sts. 000. Dec. 1 st. each



**CHART 2**

□ = SHADE A    ● = SHADE B    ○ = SHADE C    ■ = SHADE D



end of every foll. 4th row 9 (10, 11) times to 43 sts. K. to 40 (44, 48) rows. Cast off 3 sts. at beg. of the next 8 rows. Cast off rem. 19 sts.

**BACK NECKBAND**

COBH. 39 (41, 43) sts. \* T8. K. 8 rows. T10. K. 1 row for foldline. T8. K. 8 rows. MDE. \* With right side of back neck facing machine place side neck to first 8 N., back neck sts. to next 23 (25, 27) N., other side neck to rem. 8 N. Cast off back neck and band tog.

**RIGHT FRONT BAND**

COBH. 80 (84, 88) sts. Rep. \* to \* as on neckband. With right side of front facing machine and working from right edge of N., place side neck evenly to first 32 (36, 40) N., the front edge, including the double hem edges, to the next 48 N. Cast off front and band tog. Work band for left front to match.

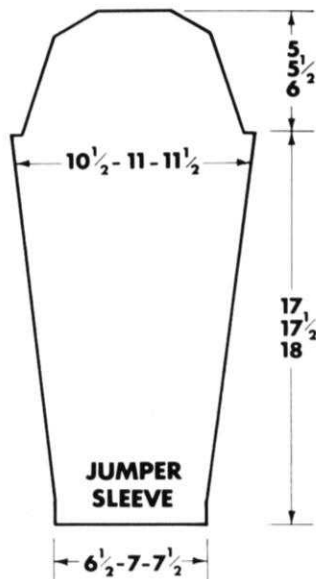
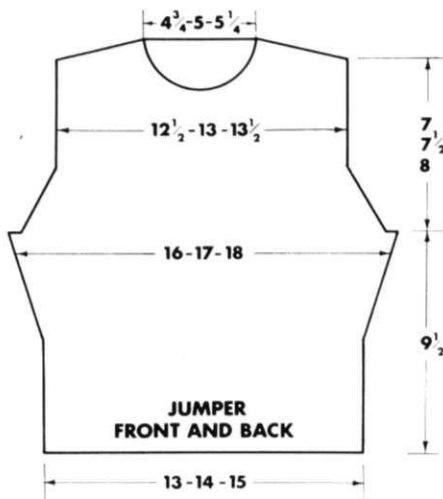
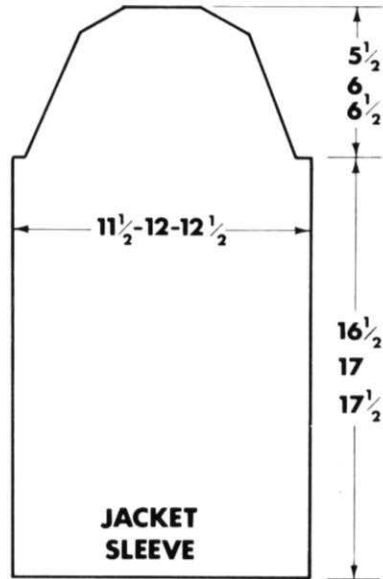
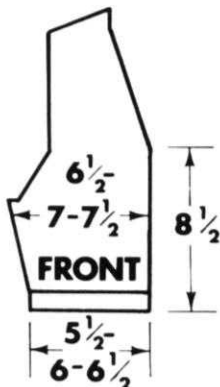
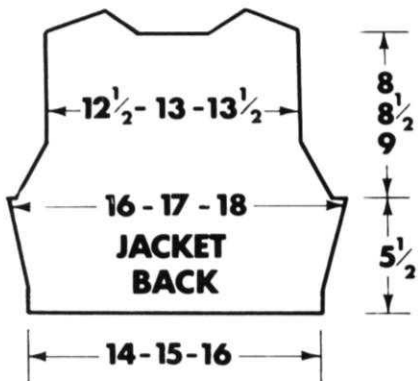
**TO MAKE UP**

Press pieces. Cut thick knit wool into approx. 4½ in. lengths. Peg rug each piece through each hole formed by the lace patterning. Join shoulder and band seams at neck. Sew up band ends at lower front edges. Sew sleeve into armholes. Sew up side and sleeve seams.

**JUMPER**

**BACK (in A throughout)**

\*\* COBH. 99 (107, 115) sts. centrally placing odd st. on the right hand edge. \* T5. K. 10 rows. T7. K. 1 row for foldline. T5. K. 10 rows. MDE. T7. K. 1 row. COR. 000. \*\* K. 44 rows straight. 000. Inc. 1 st.



each end of the next and then every foll. 5th row 10 times to 119 (127, 135) sts. K. to 50 rows fin. COR.

**Shape Armholes**

Cast off 3 (4, 5) sts. at beg. of the next 2 rows. fin. COR. 113 (119, 125) sts. 000. Dec. 1 st. each end of every foll. 3rd row 10 times to 93 (99, 105) sts. fin. COR. 000. \*\*\* K. 4 (8, 12) rows fin. COR.

**Back Opening**

On right side of the centre O transfer the first st. to the adjacent N. Cont. on right 46 (49, 52) sts. to row 44 (48, 52) fin. COR.

**Shape Shoulder**

Cast off 6 sts. at beg. of the next row and at this same edge every foll. alt. row 3 times more fin. COR. Cast off 5 (7, 9) sts. at beg. of next row, K. this row to end. K. a few rows with scrap yarn on rem. 17 (18, 19) sts. and take this side off machine. K. left side to match reversing shapings.

**FRONT**

Beg. with A as folls. Rep. \*\* to \*\* as on back. K. 22 rows straight. Cont. in foll. patt. K. the 36 rows for 800, and the 24 rows for the 588 machines from chart II, then K. 10 rows in shade A. Rep. these patt. rows throughout, at the same time working the front to match back in shape rep. from \*\* to \*\*\* as on back. K. to 26 (30, 34) rows fin. COR.

**Front Neck**

Thread up and take off machine the centre 19 (21, 23) sts. Cont. on right 37 (39, 41) sts. dec. 1 st. every alt. row on neck edge to 29 (31, 33) sts. K. to 44 (48, 52) rows fin. COR.

**Shape Shoulder**

Cast off 6 sts. at the beg. of the next row and at this same edge every foll. alt. row 3 times more fin. COR. Cast off rem. 5 (7, 9) sts. Work left sts. to match reversing shapings.

**SLEEVES (in A throughout)**

COBH. 55 (59, 63) sts. Rep. \* to \* as on back. Inc. 1 st. each end of every foll. 14th row 12 times to 79 (83, 87) sts. K. to 172 (176, 180) rows fin. COR.

**Shape Top**

Cast off 3 (4, 5) sts. at beg. of the next 2 rows. 73 (75, 77) sts. 000. Dec. 1 st. each end of every foll. 4th row 11 (12, 13) times to 51 sts. K. to 46 (50, 54) rows. Cast off 3 sts. at beg. of the next 10 rows. Cast off rem. 21 sts.

**NECKBAND (in A throughout)**

COBH. 89 (93, 97) sts. T6. K. 26 rows. T8. K. 1 row for foldline. T6. K. 26 rows. MDE. Press front and back, join shoulder seams. With right side of work facing machine and working from right edge of N. place half back neck to first 17 (18, 19) N., front side neck to next 18 N., front neck sts. to next 19 (21, 23) N., cast off band and neck tog. to this point., place rem. of neck to rest of N. to correspond and cast off tog. to end.

**TO MAKE UP**

Press sleeves and sew tops into armholes. Join sleeve and side seams. Crochet tog. the double edges of neckband then around the back opening edges. Press. Sew in zip. Press opening and all seams.



For 585, 588 and 800 machines

**Materials**

**Jacket** 24 (26, 28, 30) ozs. Double Knitting Wool. 5 buttons.

**Skirt** 14 (16, 18, 20) ozs. Double Knitting Wool. 8 in. zip fastener. 23 (25, 27, 29) ins. 1 in. wide elastic.

**Jumper (not illustrated)** 11 (12, 12, 13) ozs. 4 ply wool in shade A. 1 oz. each for shades B, C and D. 7 in. zip fastener.

**Measurements**

To fit 34 (36, 38, 40) ins. Bust.

24 (26, 28, 30) ins. Waist.

36 (38, 40, 42) ins. Hips.

**Tension**

**Jacket** 6½ sts. and 10 rows to 1 in. on T10 with loose YTU.

**Skirt** 6½ sts. and 9 rows to 1 in. on T10 with loose YTU.

**St.st. for jacket sleeves** 6½ sts. and 8½ rows to 1 in. on T10 with loose YTU.

**St.st. for jumper** 7½ sts. and 11 rows to 1 in. on T7 with tight YTU.

**Abbreviations**

COBH., cast on by hand; st(s), stitch(es); T., tension; K., knit; fin., finishing; COL(R), carriage on left or right of work; MDE., make double edge by placing each loop at cast on edge onto N. in B pos.; 000., set row counter to 000; cont., continue; patt., pattern; foll(s), following (follows); dec., decrease; inc., increase; beg., beginning; rem., remaining; N., needles; pos., position; rep., repeat; alt., alternate; st.st., stocking stitch; tog., together; YTU., yarn tension unit.

**Note**

The jacket has st.st. sleeves, collar, front band and pockets with diamond tuck st. back and fronts. The skirt is worked in diagonal tuck st. patt. in 4 panels, which when joined tog. form chevron patt. seams. The jumper is in st.st. throughout with stripe front, plain back, sleeves and neckband.

**JACKET**

**BACK**

COBH. 129 (137, 145, 153) sts. centrally placing odd st. on the right hand edge. \* T8. K. 10 rows. T10. K. 1 row for foldline. T8. K. 10 rows. MDE. T10. K. 1 row. COR. 000. \* Cont. in patt. from chart I as folls. Work straight for 20 rows. 000. \*\* Dec. 1 st. each end of the next and then every foll. 6th row 12 times more to 103 (111, 119, 127) sts. 000. Work straight for 32 rows. 000. Inc. 1 st. each end of the next and then every foll. 6th row 6 times to 117 (125, 133, 141) sts. K. to 42 rows fin. COR.

**Shape Armholes**

Cast off 6 (7, 8, 9) sts. at beg. of the next 2 rows fin. COR. 105 (111, 117, 123) sts. 000. Dec. 1 st. each end of every foll. 3rd row 10 (11, 12, 13) times to 85 (89, 93, 97) sts. Cont. straight to 70 (74, 78, 82) rows fin. COR.

**Shape Shoulders**

Cast off 6 sts. at beg. of the next 8 rows, then cast off 5 (6, 7, 8) sts. at beg. of the next 2 rows. Cast off rem. 27 (29, 31, 33) sts.

**RIGHT FRONT**

On the left side of the centre 0 leave the first





CHART 1

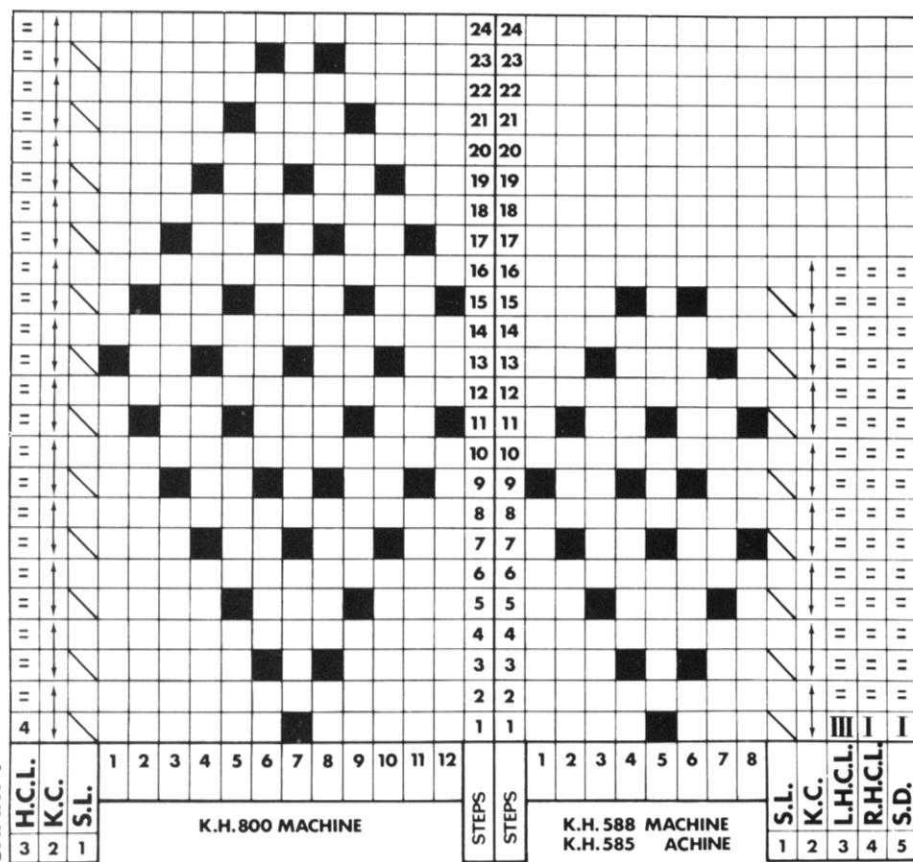
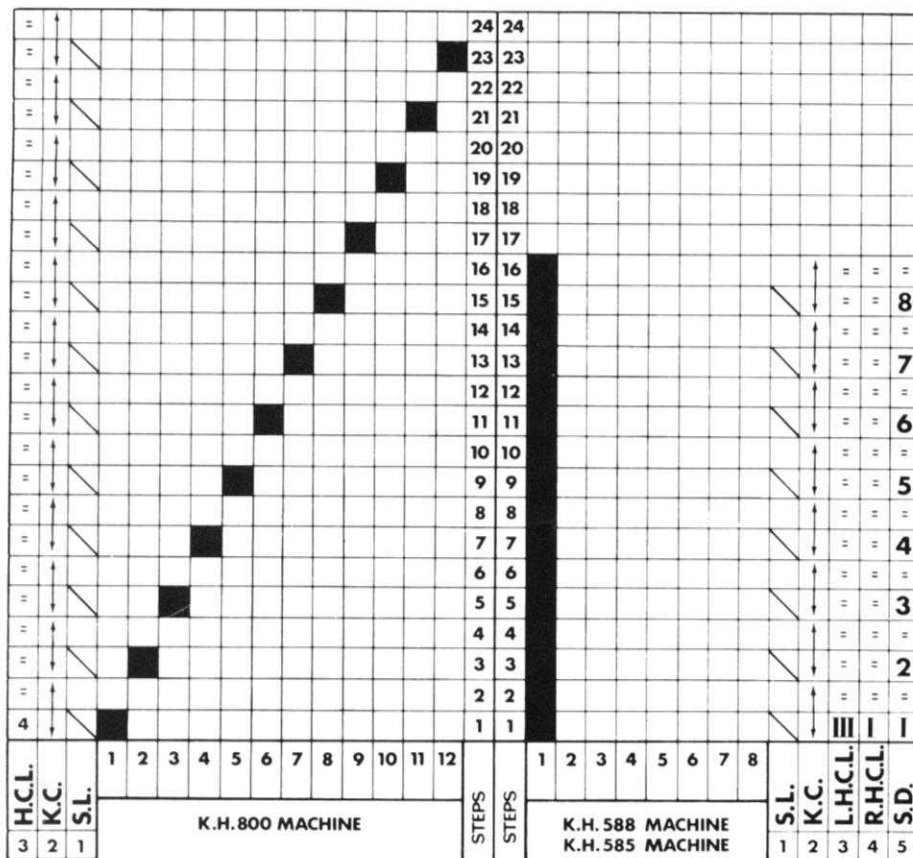


CHART 2



6 N. in A pos., and keeping to the left side of centre O. COBH. 58 (62, 66, 70) sts. Rep. from \* to \*\* as on back. On left edge dec. 1 st. on the next and on this same edge every foll. 6th row 12 times more to 45 (49, 53, 57) sts. fin. COR. 000. Work straight for 32 rows. 000. Shape neck on right edge by dec. 1 st. on the next row and on this same edge every foll. 8th row until 14 (15, 16, 17) sts. have been dec. on neck from beg., at the same time, shaping side edge by inc. 1 st. on the next and on this same edge every foll. 6th row 6 times more fin. COR. K. 1 row. COL. (For first size cont. straight to row 43 fin. COL.)

**Shape Dart (for second, third and fourth sizes only)**

Cast off 20 (24, 28) sts. on left edge. K. 1 row. COR. Cont., casting on 4 sts. at the beg. of every foll. alt. row 5 (6, 7) times fin. COR. K. 3 rows fin. COL.

**Shape Armhole (all sizes)**

Cast off 6 (7, 8, 9) sts. on left edge. K. to end. COR. Dec. 1 st. every foll. 3rd row on armhole 10 (11, 12, 13) times. Keeping armhole edge straight cont. dec. on neck to 22 (23, 24, 25) sts. Cont. straight to 113 (127, 133, 139) rows fin. COL.

**Shape Shoulder**

Cast off 4 sts. at beg. of the next row and at this same edge every foll. alt. row 3 times more fin. COL. Cast off rem. 6 (7, 8, 9) sts.

**LEFT FRONT**

On the right side of the centre O leave the first 7 N. in A pos., and keeping to the right side of the centre O. COBH. 58 (62, 66, 70) sts. Cont. with this front to match the right reversing shapings.

**SLEEVES**

COBH. 64 (68, 72, 76) sts. Rep. \* to \* as on back. Cont. in st.st. only at the same time inc. 1 st. each end of every foll. 22nd row 5 times to 74 (78, 82, 86) sts. Cont. straight to 144 rows fin. COR. (Adjust length at this stage if desired.)

**Shape Top**

Cast off 6 (7, 8, 9) sts. at beg. of the next 2 rows. 62 (64, 66, 68) sts. 000. Dec. 1 st. each end of every foll. 5th row to 46 sts. Cont. straight to row 44 (48, 52, 56). Cast off 2 sts. at beg. of the next 8 rows, then cast off 3 sts. at beg. of the next 2 rows, then cast off 4 sts. at beg. of the next 2 rows fin. COR. (16 sts.).

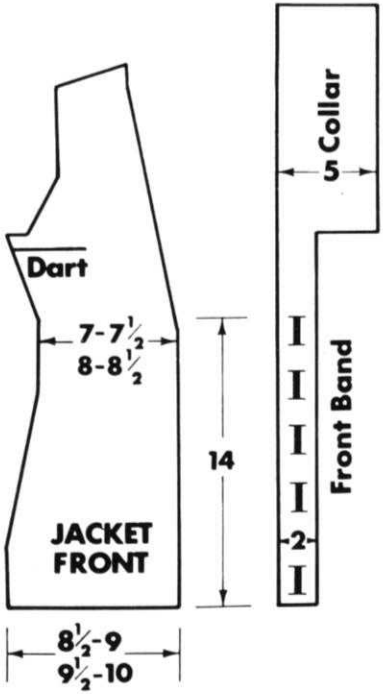
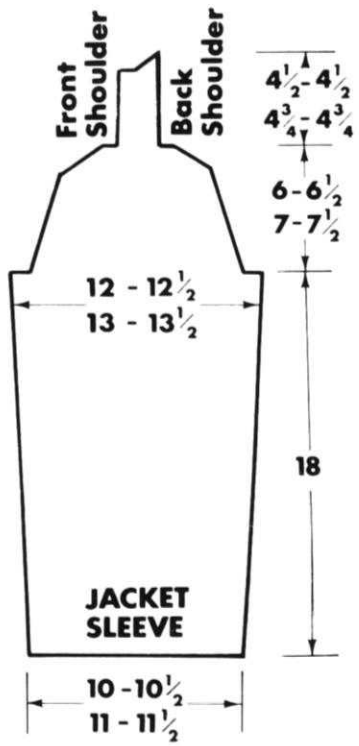
**Shape Saddle Strap (right sleeve)**

000. K. 30 (30, 32, 32) rows fin. COR. For side neck cast off 8 sts. Cont. on rem. 8 sts. dec. 1 st. every row on neck edge to 1 rem. st. Fasten off. On left sleeve reverse pos. of the side neck and neck edge shaping.

**RIGHT FRONT BAND AND COLLAR**

COBH. 180 (186, 192, 198) sts. T8. K. 10 rows. To make buttonholes and working from left edge of N., leave the first 6 sts. \* cast off next 4 sts., leave the next 12 sts. Rep. from \* 3 times more, cast off the next 4 sts., cast on over the 4 empty buttonhole N., K. 10 rows. To form collar K. 52 rows on the right 84 sts. only. Cont. on all sts. for the next 10 rows. Work buttonholes as before. K. 10 rows more. MDE. Press back front and sleeves. Sew longer edge of saddle to back shape shoulder, the shorter edge to





the front shape shoulder. Sew sleeve tops into armholes. With right side of right front facing and working from left edge of N. place right front edge from hem point to first dec. on neck evenly onto the first 74 N., place half the back neck onto the end right edge N., place front neck, saddle side neck cast off and shaped neck edge of saddle evenly onto the rem. N. Cast off band and garment edge tog. Work left front band and collar to match omitting buttonholes.

**POCKETS**

COBH. 36 (38, 40, 42) sts. T8. K. 6 rows. K. 10. K. 1 row for foldline. T8. K. 6 rows. MDE. T10. K. 1 row. COR. 000. K. 44 rows. Cast off.

**SKIRT (worked in 4 panels)**

COBH. 89 (93, 97, 101) sts. centrally placing odd st. on the right hand edge. Rep. \* to \* as on jacket back. Cont. in patt. from chart II at the same time dec. 1 st. each end of every foll. 8th row 22 times to 45 (49, 53, 57) sts. K. to 180 rows. (Adjust length at this stage if desired.) K. a few rows with scrap yarn and take panel off machine. Work another panel exactly the same. Work 2 more panels the same shape working diagonal patt. in opposite direction from chart III.

**WAISTBAND**

COBH. 90 (98, 106, 114) sts. T8. K. 12 rows. T10. K. 1 row for foldline. T8. K. 12

rows. MDE. Press panels. Sew 2 panels tog. forming chevron patt. seam. With right side of panels facing machine, place sts. onto band N. Cast off panels and band tog. Work band for the other 2 panels the same.

**TO MAKE UP**

**Jacket** Join side and sleeve seams. Sew on pockets. Over sew buttonholes. Sew up band ends at hems. Join collar at back neck. Sew up collar ends. Press seams and pockets. Sew on buttons.

**Skirt** Join side seams leaving 8 ins. open at top on one side for opening. Join waistband on other side. Thread in elastic into waistband and secure at ends. Crochet around opening edges working through both layers of waistband. Sew in zip. Press opening and all seams.

**JUMPER**

**BACK (in A throughout)**

\*\* COBH. 108 (116, 124, 132) sts. \* T4. K. 10 rows. T7. K. 1 row for foldline. T4. K. 10 rows. MDE. T6. K. 1 row. COR. 000 \*\* K. 44 rows. (Adjust length at this stage if desired.) 000. Inc. 1 st. each end of the next and then every foll. 5th row 9 times to 128 (136, 144, 152) sts. \*\*\* K. to 50 rows fin. COR.

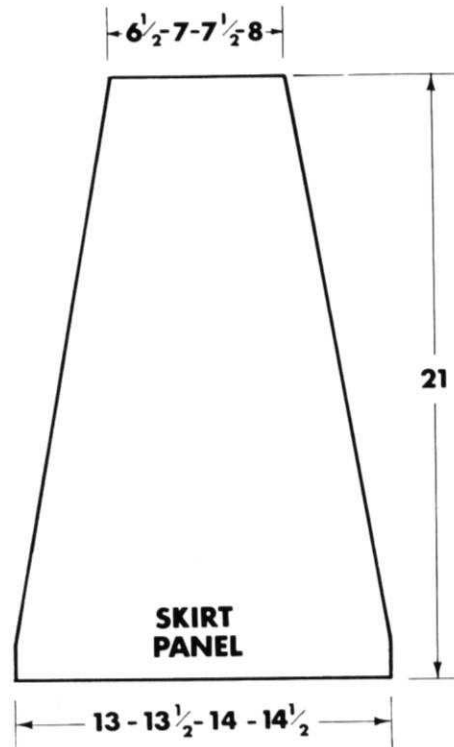
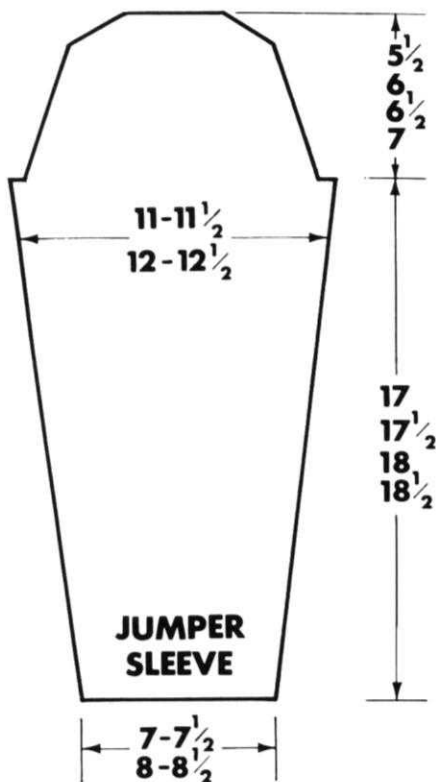
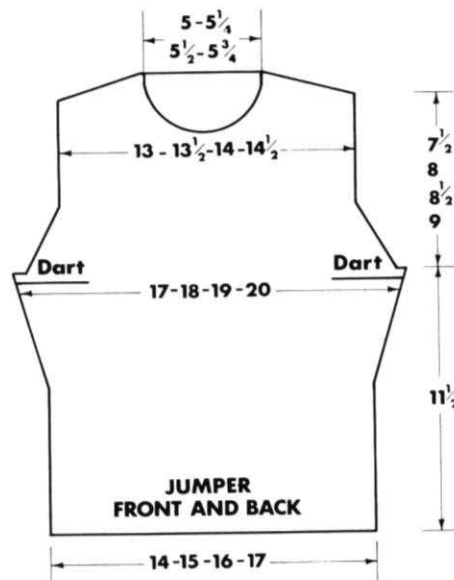
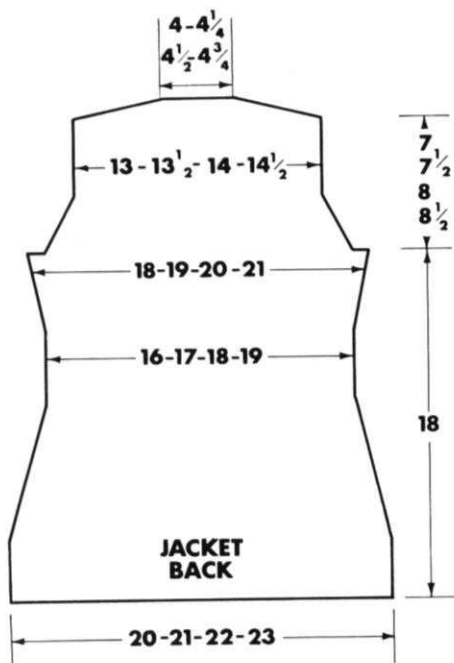
**Shape Armholes**

\*\*\*\* Cast off 4 (5, 6, 7) sts. at beg. of the next 2 rows. 120 (126, 132, 138) sts. 000. Dec. 1 st. each end of every foll. 3rd row 10 (11, 12, 13) times to 100 (104, 108, 112)

**CHART 3**

H.C.L.	K.C.	S.L.	1	2	3	4	5	6	7	8	9	10	11	12	STEPS	STEPS	1	2	3	4	5	6	7	8	S.L.	K.C.	L.H.C.L.	R.H.C.L.	S.D.
3	2	1													24	24													
															23	23													
															22	22													
															21	21													
															20	20													
															19	19													
															18	18													
															17	17													
															16	16													
															15	15													
															14	14													
															13	13													
															12	12													
															11	11													
															10	10													
															9	9													
															8	8													
															7	7													
															6	6													
															5	5													
															4	4													
															3	3													
															2	2													
															1	1													
															4														





sts. \*\*\*\*\* K. to 38 (42, 46, 50) rows fin. COR.

**Back Opening**

Cont. on right 50 (52, 54, 56) sts. to 78 (82, 86, 90) rows fin. COR.

**Shape Shoulder**

Cast off 7 sts. at beg. of the next row and at this same edge every foll. alt. row 3 times more fin. with COR. Cast off 4 (5, 6, 7) sts. at beg. of the next row, K. to end. With scrap yarn K. a few rows and take work off machine. Work left sts. to match reversing shapings.

**FRONT**

Rep. \*\* to \*\* as on back. Cont. in foll. 12 row stripe patt. throughout front. K. 2 rows B, 2 rows A, 2 rows C, 2 rows A, 2 rows D, 2 rows A, at same time rep. \*\* to \*\*\* to same shape as on back. (Adjust length as before if necessary.) (K. to 50 rows for 1st size only fin. COR.) (K. to 46 rows for 2nd, 3rd and 4th sizes fin. COR.)

**Shape Dart (for 2nd, 3rd and 4th sizes only)**

Cast off 24 (28, 32) sts. at beg. of the next 2 rows fin. COR. Cast on 4 sts. at beg. of the next 12 (14, 16) rows. K. 4 rows straight fin. COR.

**Shape Armholes (all sizes)**

Rep. \*\*\*\* to \*\*\*\*\* as on back. K. 60 (64, 68, 72) rows fin. COR.

**Front Neck**

Thread up and take off machine the centre 20 (22, 24, 26) sts. Cont. on right sts. only dec. 1 st. every alt. row on neck to 32 (33, 34, 36) sts. K. to 78 (82, 86, 90) rows fin. COR.

**Shape Shoulder**

Cast off 7 sts. at beg. of the next row and at this same edge every foll. alt. row 3 times more fin. COR. Cast off rem. 4 (5, 6, 7) sts. Cont. on left sts. to match reversing shapings.

**SLEEVES (in A throughout)**

COBH. 60 (64, 68, 72) sts. Rep. \* to \*\* as on back. Inc. 1 st. each end of every foll. 14th row 12 times to 84 (88, 92, 96) sts. K. to 176 (180, 184, 188) rows fin. COR. (Adjust length at this stage if desired.)

**Shape Top**

Cast off 4 (5, 6, 7) sts. at beg. of the next 2 rows. 76 (78, 80, 82) sts. 000. Dec. 1 st. each end of every foll. 4th row to 52 sts. K. to 50 (54, 58, 62) rows. Cast off 3 sts. at beg. of the next 10 rows. Cast off rem. 22 sts.

**NECKBAND**

With A., COBH. 92 (96, 100, 104) sts. T5. K. 28 rows. T7. K. 1 row for foldline. T5. K. 28 rows. MDE. Press front and back. Join shoulder seams. With right side of work facing machine and working from right edge of N., place half back neck to first 18 (19, 20, 21) N., front side neck to next 18 N., front neck to next 20 (22, 24, 26) N., cast off band and neck edge tog. to this point, place rem. of neck edge to rest of N., to correspond and cast off tog. to end.

**TO MAKE UP**

Press sleeves and sew them into armholes. Join side and sleeve seams. Crochet round opening working through both layers of neckband. Sew in zip. Press opening and all seams.



# kimono style jacket

For KH-800 machines

## Materials

**Kimono** 10 (11, 11) ozs. Double Knitting Wool. Shade A (Dark Red). 6 (7, 7) ozs. Double Knitting Wool. Shade B (Purple). 11 (12, 12) ozs. Double Knitting Wool. Shade C (Brown). 3 (3, 3) ozs. Double Knitting Wool. Shade D (Orange). 1 (1, 1) oz. Double Knitting Wool. Shade E (Yellow).

**Skirt** 12 (13, 13) ozs. Double Knitting Wool. Shade C (Brown). 8 in. zip fastener. 20 (22, 34) ins. 1 in. wide elastic.

## Measurements

To fit 32 (34, 36) ins. Bust.

22 (24, 26) ins. Waist.

34 (36, 38) ins. Hips.

## Tension

6½ sts. and 8½ rows to 1 in. on T10 with loose yarn tension unit.

## Abbreviations

COBH., cast on by hand over every needle; st(s), stitch(es); T., tension; K., knit; MDE., make double edge by placing each st. at cast on edge onto B pos. needles; 000., set row counter to 000; dec., decrease; inc., increase; foll., following; COR(L), carriage on right or left of work; fin., finishing; beg., beginning; rem., remaining; alt., alternate; rep., repeat; patt., pattern; tog., together; N., needles.

## KIMONO

### BACK

With A, COBH. 130 (136, 142) sts. \* T8. K. 10 rows. T10. K. 1 row for foldline. T8. K. 10 rows. MDE. T10. K. 1 row. 000. \* Dec. 1 st. each end of every foll. 5th row 13 times to 104 (110, 116) sts. K. 1 row. COR. (66 rows) 000. K. 38 rows straight. Change to shade B.

### Shape Armholes

000. Inc. 1 st. each end of the next and then every foll. 3rd row 26 times to 156 (162, 168) sts. K. to 78 rows fin. COR.

### Shape Shoulder

Cast off 5 sts. at the beg. of the next 12 rows. 96 (102, 108) sts. Cast off 4 (5, 5) sts. at the beg. of the next 4 rows. 80 (82, 88) sts. Cast off 4 (4, 5) sts. at the beg. of the next 4 rows. 64 (66, 68) sts. Cast off 4 sts. at the beg. of the next 6 rows. 40 (42, 44) sts. K. a few rows with scrap yarn and take work off machine.

### RIGHT FRONT

With A, COBH. 80 (83, 86) sts. Rep. \* to \* as on back. On right edge dec. 1 st. every foll. 5th row 13 times to 67 (70, 73) sts. K. 1 row. COR. (66 rows). 000. K. 26 rows straight. Change to shade B.

### Shape Neck

000. On left edge dec. 1 st. on the next and then every foll. alt. row to 12 rows fin. COR.

### Shape Armhole

On the right edge inc. 1 st. on the next and on this same edge every foll. 3rd row until 26 sts. have been inc. from beg., at the same time, cont. dec. on neck until 26 (28, 30) sts. have been dec. from beg., then dec. 1 st. every foll. 4th row until 35 (36, 37) sts. have been dec. from beg. of neck shaping. 58 (60, 62) sts. K. to 90 rows fin. COR.

### Shape Shoulder









# you write...

**Mrs. L. Naylor**  
54 Summergate Place  
Parkinson Lane  
Halifax  
Yorkshire

Dear *Stitchin' time*,

You asked us to write about what we want, well now you're going to get it, and the 'why' too!!

I am 23, 5 ft. 3 ins. and weigh 9 st. 10 lb. I'm what you'd call well built! The double knit cardigans look fine on slim models, me, I look and I feel like an elephant, hence I always end up buying Marks & Spencer's fine knit cardigans and jumpers, as 4 ply and 3 ply, have the same effect, especially the ribs.

Dresses?? My hips are 38½ ins., I'm your average English pear shape!! Woolly dresses emphasise this fact, woven more so.

All right why am I griping? I only use my machine, for my 3 children and friends, and I'm fed up that nothing is ever really catered for me. I'm too self conscious, but the difference in looks and size between tweed and lace might make you understand.

R. S. Duncan (Falcon Wools) do a Botony 2 ply. I wouldn't mind a really *feminine* blouse, all lacy and dainty. Or perhaps something glamorous for wear over a long evening dress (well cardigans look out of place) perhaps a short sleeveless 'affair', or perhaps a stole or lacy shawl (they're back in fashion!). Or an exotic 'shortie' cape (elbow length?). What I want is something I can wear with utmost confidence, knowing that I don't appear too outsize in *your fashion designs*.

Something I can wear, and 'show off', on a hot summers day or perhaps for a night out in glamorous surroundings!! (Those places where they charge twice the price to pay for the surroundings!!)

I'm not ungrateful, its just that my children and friend get the *most* benefit. I'm also sure that I'm not the only plump, knitting machine owner, judging by some of your past photos, published of members!! As for those knitted sock patterns for ladies, design wise beautiful, but me I could only wear them for a game of Rugby.

Also the trouser suit (especially the trousers) on page 22 (Vol. 5 No. 2) would be ghastly. The poor girl's hips and thighs look three times the size of mine. I liked the jacket style though, it would be great over a long or short skirt, (if a little longer, or more nearer the waist, and in a finer texture).

I ought to have been a critic!!! It gets me cross when absolutely nothing is for me!!

All the knitwear in the shops is 'dainty' for

women and rugged for kids. I know home-made goods last longer, but it's no good if they last longer because they're still in the drawer!! What are you going to do about it? Surely, one of your designers is a WOMAN, and one who's a 'plumpy' like me!!! Ask the girls in the office, you'll find some of the slim ones are the same as I! I found this out from my sister. She's lovely and slim, but refused point blank to some of the patterns, as they'd make her look fat!! I was filled with envy.

How about a 'slimmers corner' section. Designs to slim. All 'we've' ever wanted and more!! Flowing dress, demure blouses, see-through (only slightly!) blouses, long sleeves or sleeveless. Fine knit skirts in slimming designs. Pamper us, we always come back for more!!

*Please help.* Perhaps I'm getting thought waves, from *all* the other plump knitting machine owners!!

You've made a good start, by omitting the sewing section. Now try for a *good* future. I know I'm right—have you asked the office girls yet???

I'll end, or else I'll go on forever, the worst punishment I could get would be to be 'banished' for good, but I'd go down fighting!!

Yours most hopefully,  
Mrs. Lynne Naylor

## SUBSCRIPTION WINNER

**Mr. H. Robinson**  
8 Oaklands Terrace  
Darlington  
Co. Durham

Dear Editor,

My wife decided to knit a pullover for our son. Having first purchased a Jones Pattern Book No. 8, I said to her 'Here's the pattern, follow the experts for success'. Tension spot on 7 sts. and 9 rows to 1 in. and away we go. Back no trouble. The front was a bit queer and I quote from book, 52 sts. into H.P., work on 20 sts., until all worked off. *Cast off at centre 20 sts.* This leaves 32 sts. to work on. Just the sleeves now, first the rib, 000, now 170 rows and shape Raglan.

Pullover finished but our son does not like it. You see we had to suspend him by the thumbs overnight and fasten a heavy weight on one side of his neck to get him the right shape for the pullover.

Is this normal or could there be something amiss with the pattern.

Yours faithfully,  
J. H. Robinson

*Your very amusing letter conjured up a series of images which left most of the office with tears in their eyes. I must thank you for cheering us up and also for drawing our attention to two very annoying errors in our latest pattern book. Firstly, for the line regarding the sleeves, work straight until 142, 142, 142, 150, 154, 158 rows and not as stated and the front regarding centre stitches should read cast off at centre until 18, 20, 22, 20, 22, 24 stitches remain.*

*I hope this enables you to get your son back to the right shape and leaves you with a garment which is suitable for any normal shaped adult.*

EDITOR

**Miss I. S. Trim**  
27 Wellington Road  
Bowerham  
Lancaster

Dear Madam or Sir,

I read in my issue of *Stitchin' time* received yesterday that you invite readers to write in.

I think that this is an excellent idea, if readers could write in and ask about whatever puzzles them as these questions will also help others who reach them. Perhaps you could give a small prize for the best letter?

I would also like to hear different views of other machine knitters, whether they spend a lot of time knitting or else like myself, a pensioner, who is learning to knit by machine in retirement.

May I also say that the Postal Course of Home Knitting Tuition is very good. I had this when I bought my machine 18 months ago and found it very good, you could progress at the speed to suit yourself, when completed the book is always there to refer back to.

I would also like to know if there are any more 'Machine Knitters' in Lancashire.

Yours sincerely,  
I. S. Trim (Miss)

**Mrs. G. J. Roberts of 7 Gerrard Close, Pennington Green, Hindley, Nr. Wigan** is forming a Jones Club in her area, and anyone interested is welcome to go along to any of the meetings listed below, which are to be held at the Conservative Club, Market Street, Hindley, Nr. Wigan. The dates are: Monday 24th September 8 p.m., Monday 29th October 8 p.m., Monday 26th November 8 p.m., Monday 17th December 8 p.m.





**800 machines. (For all others substitute a Fair-Isle patterns of your own choice.)**

**Materials**

4 (4, 5, 6) ozs. Listers Lavenda 3 ply wool in main colour. 1 (1, 2, 2) ozs. of Listers Lavenda 3 ply wool in contrast colour. 4 ins. zip.

**Measurements**

Chest 18 (20, 22, 24) ins.  
Actual measurements 20 (22, 24, 26) ins.  
Sleeve seam 5 (7, 8½, 10) ins.  
Back length from neck to hem 16 (17, 18, 19) ins.

**Tension**

T7. 8 sts. and 10 rows to 1 in. over st.st. unpressed.

**Abbreviations**

Sts., stitches; inc., increase; dec., decrease; foll., following; patt., pattern; cont., continue; st.st., stocking stitch; R.C., row counter; 000., set row counter to 000; beg., beginning; alt., alternate.

**SKIRT (2 panels both alike)**

With main colour, cast on 154 (158, 162, 166) sts. T6. K. 8 rows. T10. K. 1 row for foldline. 000. T7. K. 10 rows. Make hem. Change to T8 and work through patt. chart twice. Dec. 1 st. at both ends of every 10th row. After completion of two colour work, reset to T7 and cont. to work in st.st. still dec. at both ends of every 10th row. Work to R.C. 110 (115, 120, 125) or length desired. Cast off.

**BODICE FRONT**

With main colour wool, cast on 80 (90, 100, 110) sts. T7. K. 4 (4, 6, 6) rows. T8 and work from chart as on skirt to R.C. 12 (14, 16, 18). Still working from chart, shape armholes by casting off 4 (5, 6, 6) sts. at beg. of next 2 rows. Dec. 1 st. at both ends of next and every foll. alt. row to 68 (74, 80, 84) sts. When patt. is completed from chart, reset to T7 working in st.st. to R.C. 34 (40, 44, 48). With spare wool cast off centre 10 (12, 14, 16) sts. Work on sts. at right side of neck, putting those at left side into position E and H.C.L's on 2. Keeping armhole edge straight, cast off 2 (3, 3, 3) sts. at beg. of next neck edge row and dec. 1 st. at neck edge on every row to 21 (22, 24, 26) sts. Work to R.C. 50 (54, 58, 64).

**Shoulder Shaping**

Cast off 8 (8, 9, 9) sts. at beg. of next two armhole edge rows. K. 1 row, cast off rem. sts. Put H.C.L's on 3 and work other side to match.

**BACK BODICE**

With main colour wool cast on 42 (46, 50, 54) sts. T7. K. 4 (4, 6, 6) rows. T8. Join in contrast and work from chart. At R.C. 12 (14, 16, 18) shape armhole by casting off 4 (5, 6, 6) sts. Dec. 1 st. at armhole edge of every foll. alt. row to 34 (38, 42, 44) sts. Work without further shaping changing to T7 when patt. is completed. K. to R.C. 50 (54, 58, 64).

**Shape Shoulder**

Cast off 8 (8, 9, 9) sts. at beg. of next 2 alt. rows at armhole edge. K. 1 row. Cast off rem. sts. Work other side to match reversing all shapings.

**SLEEVES**

With main colour wool, cast on 62 (72, 82,



# his 'n' hers shetland sweaters

92) sts. T7. K. 10 (12, 14, 16) rows. T8. Work 1 patt. from chart. T7. Cont. in st.st. inc. 1 st. at beg. of next 2 rows and every foll. 9th and 10th rows to 66 (78, 88, 94) sts. K. to R.C. 50 (70, 84, 100). Adjust length here if required.

### Shape Top

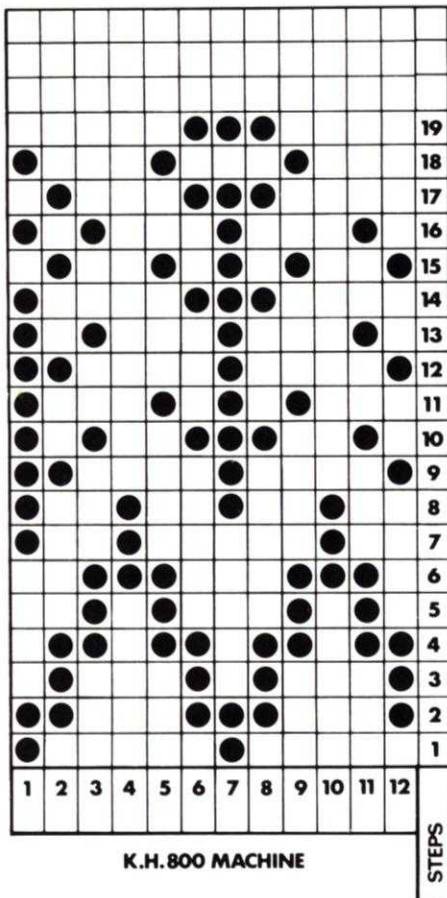
Cast off 3 (4, 5, 5) sts. at beg. of next 2 rows. Dec. 1 st. at both ends of every row to 26 (28, 30, 32) sts. Cast off.

### CORDING

With contrast wool, cast on 4 sts. Press right part button in, hold end of cast on wool and at T7. K. a length of cording to go round the bodice. Make two more pieces for the bottoms of the sleeves.

### TO MAKE UP

Pin out to size and press on wrong side with a hot iron over a damp cloth. Join shoulder seams, skirt seams, and sleeve seams. Then press them. Work a row of double crochet around back edge of bodice and neck. Run a gathering thread along top edge of skirt and draw in to fit bodice. Taking care not to get it too tight or too slack. Sew bodice onto skirt neatly, set in sleeves. Work a row of double crochet around bottom edge of sleeve, gathering it in at the same time. Sew in zip. Catch stitch the cording around sleeve ends and on bottom edge of bodice.



H.C.L.'s in this pattern are for 588

### Materials

10 (11, 11, 12, 12, 13) ozs. H.O. Shetland Fleece (M) 1 oz. each in contrast A, B and C.

### Measurements

To fit chest or bust sizes 30 (32, 34, 36, 38, 40) ins.

Finished measurements 32 (34, 36, 38, 40, 42) ins.

Length to shoulder 25 (25½, 25½, 25½, 26, 26½) ins.

Sleeve seam 17½ (17½, 17½, 18, 18, 18) ins.

### Tension

T6. 15½ sts. and 20 rows to 2 ins.

### Abbreviation\*

K., knit; sts., stitches; inc., increase; dec.,

decrease; beg., beginning; alt., alternate; foll., following; rem., remain; trans., transfer; H.C.L.'s., holding cam levers; 000., set row counter at 000; T., tension; M.B., main bed.

### BACK

**Ribbers** Cast on 123 (131, 139, 147, 155, 163) sts. as 1 x 1 rib. T4/4. K. 18 rows. Trans. ribber sts. to M.B.

**Single machines** With waste wool cast on 62 (66, 70, 74, 78, 82) sts. on alt. needles. K. a few rows. Change to M wool. T4. K. 35 rows. Make a hem and K. the row. 123 (131, 139, 147, 155, 163) sts.

**All machines** 000. T6. (Machines 588 and 800 set to M.C.) K. 2 rows. Set







# childs jumper and shorts

then inc. 1 st. on alt. rows 5 times in all. Cast off making chain over empty needles.

## SLEEVES

**Ribbers** Cast on 53 (57, 61, 65, 69, 73) sts. as 1 x 1 rib. T4/4. K. 18 rows. Trans. ribber sts. to M.B.

**Single machines** With waste wool cast on 27 (29, 31, 33, 35, 37) sts. on alt. needles. K. a few rows. Change to M. wool. T4. K. 35 rows. Make a hem and K. the row 53 (57, 61, 65, 69, 73) sts.

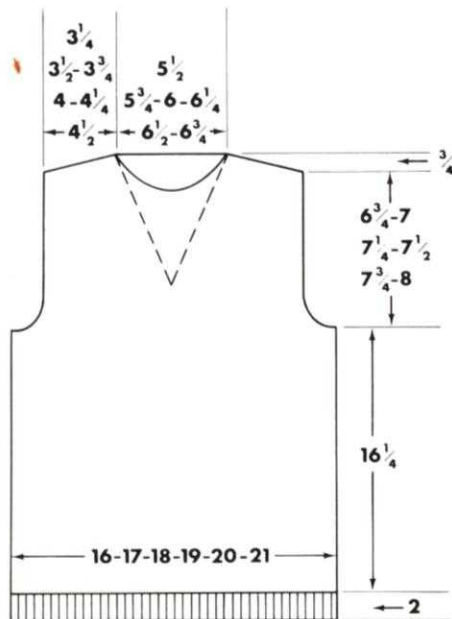
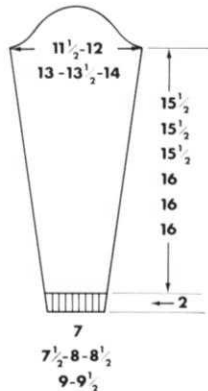
**All machines** 000. T6. K. 10 rows. Inc. 1 st. each end of next and foll. 7th row 18 times in all. 89 (93, 97, 101, 105, 109) sts. K. straight to 156 (156, 156, 160, 160, 160) rows. (Adjust length here if required.)

## Shape Top

000. Cast off 6 sts. at beg. of next 2 rows. Dec. 1 st. each end of next 9 rows. K. 3 rows., dec. 1 st. each end of next and foll. 4th row 4 times in all, then on alt. rows 3 (3, 3, 4, 4, 4) times. Dec. 1 st. each end of every row until 21 sts. rem. Cast off.

## TO MAKE UP

Pin out and press with a warm iron over a damp cloth. Join shoulders, side and sleeve seams. Set in sleeves. Join neckband and turn to inside and slip-st. in place. Press seams.



## Materials

Listers Lavenda 3 ply. 6 ozs. Spring Violet. 2 ozs. Buttercup. 2 ozs. Turquoise Tint. 4 ins. zip. 1 yd. elastic. No. 10 crochet hook.

## Measurements

To fit 24 (26, 28) ins. chest.  
Back length 16 (16 1/2, 17) ins.  
Sleeve seam 10 1/2 (11, 11 1/2) ins.  
Leg seam 4 (4 1/2, 5) ins.  
Waist to hem 11 (11 1/2, 12) ins.

## Tension

T5 or to give 16 sts. and 23 rows to 2 ins. square over st.st.

## Abbreviations

K., knit; COL(R.), carriage on left or right; sts., stitches; beg., beginning; rem., remaining; R.C., row counter; dec., decrease; alt., alternate; foll., following; inc., increase.

## JUMPER

## BACK

With violet wool cast on for 2 x 2 rib 101 (106, 112) sts. 000. T3/3 work 16 rows rib. T5/4 and work in stripes of 10 rows in each colour (i.e. 10 Turquoise, 10 Buttercup, 10 Violet) until 10 (10, 11) stripes have been worked (including the 1st 16 row one); continue in Violet only and for the 2nd and 3rd sizes K. 6 more rows.

## Shape Armholes

000. Cast off 4 (4, 4) sts. at beg. of next 2 rows. Dec 1 st. at each end of next 4 rows, then dec. 1 st. at both ends of every alt. row 2 (3, 4) times. Work without further shaping to R.C. 16 (18, 20). Now divide for back opening, leaving half the sts. on thread, continue as follows. Work straight to R.C. 54 (58, 62).

## Shape Shoulders





# fair-isle sweater

By casting off at armhole edge on every alt. row 6 (6, 7) sts. twice, and 6 (8, 8) sts. once. K. 1 row, cast off. K. other side to match.

## FRONT

Work as given for back, working to R.C. 36 (40, 44) after armhole shaping.

## Shape Neck

With spare wool, cast off centre 16 (18, 20) sts. putting set of sts. (furthest from carriage) on thread. Work as follows, dec. 1 st. at neck edge on next 6 (6, 7) rows and then on every alt. row to 18 (20, 22) sts. Work straight to R.C. 54 (58, 62).

## Shape Shoulder

Cast off at beg. of every armhole edge row 6 (6, 7) sts. twice and 6 (8, 8) sts. once. Work other side to 6 (6, 7) sts. twice and 6 (8, 8) sts. once. Work other side to match.

## SLEEVES (both alike)

Cast on for 2 x 2 rib 60 (64, 68) sts. and using Violet wool only. 000. T3/3. K. 20 rows. T5/4 continue, inc. 1 st. at beg. of next 2 rows and every foll. 7th and 8th rows to 82 (86, 90) sts. Continue without further shaping to R.C. 98 (102, 106) adjust length here.

## Shape Top

Cast off 4 (4, 5) sts. at beg. of next 2 rows. Dec. 1 st. at both ends of next 6 rows, then at both ends of every foll. 4th row 4 (5, 6) times. Dec. 1 st. at both ends of every alt. row 6 times then both ends of every row to 20 (22, 24) sts. Cast off.

## NECKBAND

Cast on for K. 1. P. 1 rib 112 (116, 120) sts. 000. T2/2 work 6 rows. T3/3 work 2 rows. Transfer sts. from front bed to back bed and with wrong side of work facing you, hang up 20 (21, 22) sts. from back neck, 28 (28, 28) down side front neck, and cast these off together, then hang up the centre 16 (18, 20) sts. from centre front neck, and 28 (28, 28) from side front of neck and 20 (21, 22) sts. from back neck and cast these off together.

## SHORTS (made in two pieces)

With Violet wool, cast on for 2 x 2 rib 112 (116, 120) sts. 000. T3/2 and work 6 (10, 16) rows. T5/4 and working in stripes as given for the back, inc. 1 st. at beg. of every 2nd and 3rd row to 132 (136, 140) sts. Work to R.C. 36 (40, 46). Dec. 1 st. at both ends of next and every foll. 3rd row to 108 (112, 116) sts. Keeping left edge straight, continue to dec. 1 st. at right edge of every 4th row to 100 (104, 108) sts. Work without further shaping to R.C. 98 (106, 120). With COL. Cast off 24 (28, 32) sts. K. the row and K. back. Then cast off 12 (14, 16) sts. at beg. of next and foll. 3 alt. rows. K. 1 row and cast off. Work second side the same reversing shaping.

## TO MAKE UP

Join shoulder, side and sleeve seams; set in sleeves. Work a row of double crochet round back neck opening. Join shorts seams and turn in at waist  $\frac{1}{2}$  in. and catch down neatly, leaving a small gap in sewing to thread elastic through. Press all seams lightly on wrong side with a hot iron over a damp cloth. Sew in zip, easing opening to fit zip.

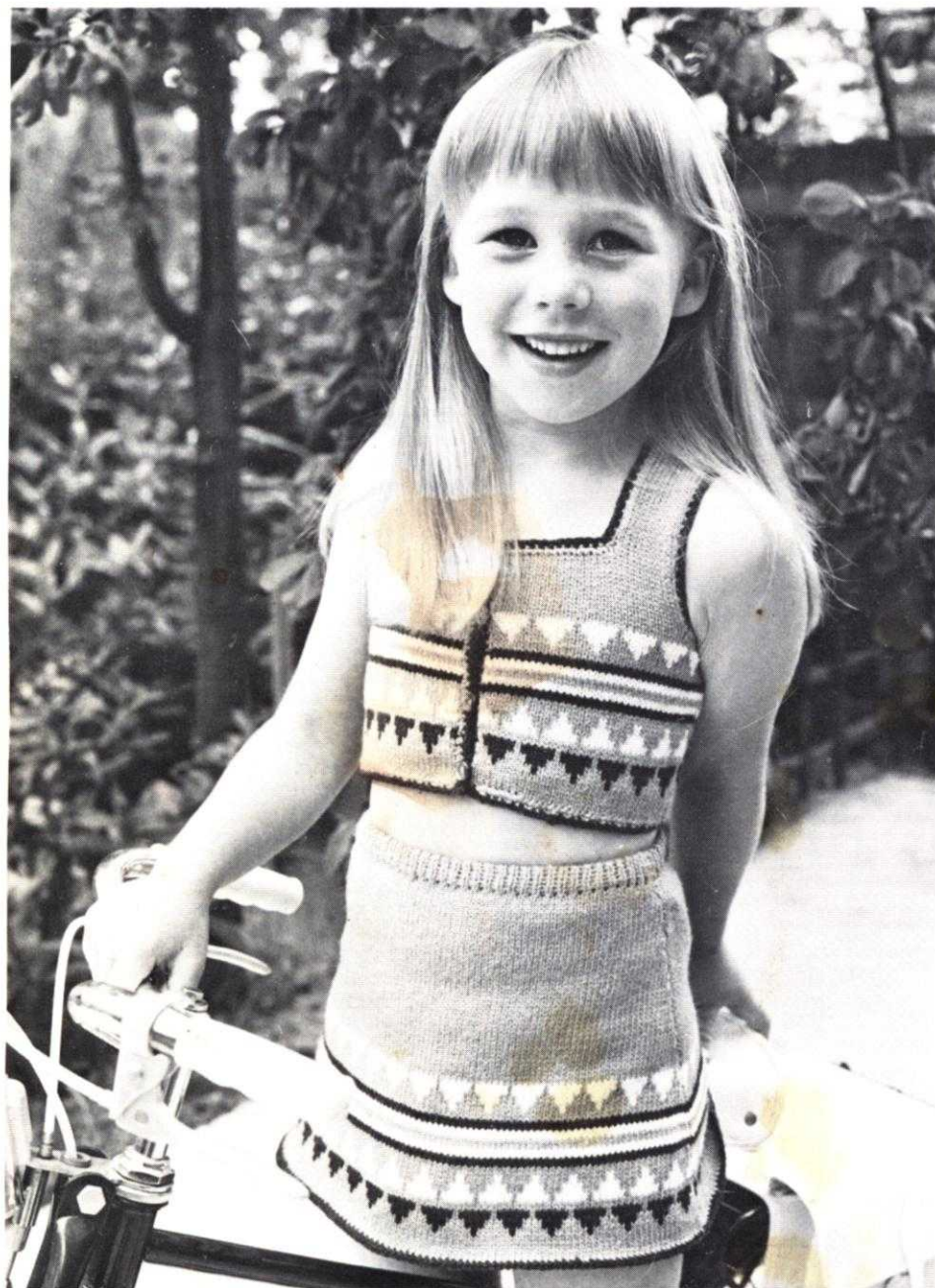








# childs skirt and bolero



For 800 machine (but alternative Fair-Isle pattern can be used on other models)

### Materials

5 (6, 7) 20 grms. balls of Listers 2 spun, 4 ply Tricel and Nylon Crepe in main colour. 1 (1, 2) 20 grms. balls each of light and dark contrast in Listers 2 spun 4 ply Tricel and Nylon Crepe. Elastic to fit waist. 4 small buttons. No. 10 crochet hook.

### Measurements

Chest (actual measurement) 22 (24, 25) ins.  
Bolero length (neck to hem) 8 (9, 10) ins.  
Skirt length 8½ (9½, 10½) ins.

### Tension

T8. 14 sts. 19 rows to 2 ins. when pressed.

### Abbreviations

Col., colour; incl., inclusive; beg., beginning; cont., continue; 000., set row counter to 000; st., stitch; foll., following; st.st., stocking stitch.

### SKIRT (2 pieces alike)

With main col. cast on by hand 102 (110, 118) sts. 000. T8. K. 4 (6, 8) rows plain. Cont. as follows, dec. 1 st. at beg. of next and every foll. 6th row. \* T10 using dark col. for laying in thread, work from chart steps 1 to 6 incl. K. 2 rows plain in main col. Using light contrast as laying thread, work steps 9 to 14 incl. T8 work 2 rows main, 2 rows dark, 2 rows light, 2 rows

main, 2 rows light, 2 rows dark, 2 rows main, T10. Using light as laying thread, work steps 1 to 6 incl. T8 cont. in st.st. with main col. \* Dec. 1 st. at both ends of every 4th row to 74 (78, 82) sts. Work to R.C. 75 (85, 95). Adjust length here if required. Transfer every alt. st. to adjacent needles, putting the empty needles to position A. K. 6 rows. K. 1. T10 for foldline. T7. K. 6 rows. Cast off.

### BOLERO

#### BACK

With main col. cast on by hand 78 (84, 92) sts. T8. K. 6 rows. T10 and working from \* to \* as on skirt, shape armholes at R.C. 40 (42, 48) by casting off 10 (10, 10) sts. at beg. of next 2 rows. Cont. without further shaping to R.C. 78 (84, 96). Shape shoulders. Cast off 7 (8, 9) sts. at beg. of next 4 rows. Cast off rem. sts.

#### RIGHT FRONT

Cast on by hand with main col. 40 (44, 48) sts. and work as for back to armhole shaping at R.C. 40 (42, 48) 1 row extra for left front. Shape armhole by casting off 10 sts. at beg. of next row. Work without further shaping to R.C. 51 (55, 59) ending at left side. Cast off 16 (19, 20) sts. for neck at beg. of next row. Work straight to R.C. 78 (84, 96). Shape shoulder by casting off 7 (8, 9) sts. at beg. of next and foll. alt. row. Work left front to match reversing shapings.

#### TO MAKE UP

Join shoulder seams on bolero. Sew down waistband on skirt panels. Pin out to size and press on wrong side. Join side seams of skirt and bolero. Press. Work 1 row of double crochet around lower edge of skirt with main col. and a 2nd row of double crochet in dark. Repeat on bolero all around armholes and all around fronts, neck and hem, making 4 evenly spaced loops for the buttons on the 2nd row. Give a final press. Thread in elastic and sew on buttons.

			0						0											14
			0						0											13
			0	0	0				0	0	0									12
			0	0	0				0	0	0									11
			0	0	0	0	0		0	0	0	0	0	0						10
			0	0	0	0	0		0	0	0	0	0	0						9
																				8
																				7
																				6
			0	0	0				0	0	0	0	0	0						5
			0	0					0	0	0									4
			0	0					0	0	0									3
			0						0											2
			0						0											1
			1	2	3	4	5	6	7	8	9	10	11	12						

K.H. 800 MACHINE

STEPS



# childs v-neck sweater

## Materials

6 (7, 8, 9) ozs. Templetons 4 ply Crepe. 1 (1, 2, 2) ozs. Templetons 4 ply Contrast.

## Measurements

To fit chest sizes 24 (26, 28, 30) ins.  
Actual measurements 25 (27, 29, 31) ins.  
Length to back neck  $15\frac{1}{2}$  ( $17\frac{1}{2}$ ,  $19\frac{1}{2}$ ,  $21\frac{1}{2}$ ) ins.  
Sleeve seam 12 ( $13\frac{1}{2}$ , 15,  $16\frac{1}{2}$ ) ins.

## Tension

T7. 15 sts. and 20 rows to 2 ins. over st.st.

## Abbreviations

K., knit; sts., stitches; inc., increase; dec., decrease; beg., beginning; alt. alternate; foll., following; rem., remain; trans., transfer; H.C.L's., holding cam levers; 000., set row counter to 000; T., tension; M.B., main bed.

## Notes

This garment has been knitted on machine 800. If knitted on any other model please check tension carefully.

Fully fashioning on raglan dec. is worked by trans. the 3rd st. onto the 4th needle and moving the 2 end sts. 1 needle in.

**Ribbers** Dec. on neck shaping. Trans. the 2nd st. on each bed onto the 3rd needle move the end sts. 1 needle in.

## BACK

**Ribbers** Cast on 93 (101, 109, 117) sts. as 1 x 1 rib. T4/4. K. 14 rows. Trans. ribber sts. to M.B. **Single machines** With waste wool cast on 47 (51, 55, 59) sts. on alt. needles. K. a few rows. Change to main wool T4. K. 27 rows. Make a hem and K. the row. 93 (101, 109, 117) sts.

**All machines** 000. T7. K. 2 rows. Follow Fair-Isle chart. K. straight to 74 (90, 104, 120) rows. \*

## Shape Raglans

000. Cast off 2 (2, 2, 3) sts. at beg. of next 2 rows. K. 2 rows. Dec. 1 st. (see notes) each end of next and foll. 4th row 3 times in all, then on every foll. alt. rows until 33 (35, 37, 39) sts. rem. K. 1 row.

## BACK NECKBAND

**Ribbers** Trans. alt. sts. to ribber. T4/4. K. 10 rows. T10/8. K. 1 row. Cast off chain method.

**Single machines** Trans. alt. sts. to adjacent needles and return empty needles to A position. T4. K. 20 rows. Cast off loosely, making chain over empty needles.

## FRONT

K. as Back to \*.

## Shape Raglan and Neck

Trans. centre st. to adjacent needle. Push all sts. at left to E position. Work right side first. H.C.L's II. 000. Cast off 2 (2, 2, 3) sts. at beg. of next row. K. 3 rows. Dec. 1 st. at beg. of next and foll. 4th row 3 times in all then on every foll. alt. rows **at the same time**, dec. 1 st. at neck edge on next and every foll. 4th row until 2 (3, 4, 4) sts. rem. Keep neck edge straight and continue to dec. on raglan edge as before until 1 st. rem. Fasten off. K. left side to match reversing all shapings.

## SLEEVES

**Ribbers** Cast on 49 (53, 57, 61) sts. for 1 x 1 rib. K. as back rib.

**Single machines** With waste wool cast on 25 (27, 29, 31) sts. on alt. needles. K. as









# ladies cable sweater



## Materials

10 (11, 12, 13, 14) ozs. Listers Lavenda 3 ply wool.

## Measurements

To fit bust sizes 32 (34, 36, 38, 40) ins.

Length to shoulder 23 $\frac{1}{4}$  (23 $\frac{1}{2}$ , 23 $\frac{3}{4}$ , 24, 24 $\frac{1}{2}$ ) ins.

Sleeve seam 17 $\frac{1}{2}$  ins.

## Tension

T5. 17 sts. and 22 rows to 2 ins. over st.st.

## Abbreviations

K., knit; sts., stitches; inc., increase; dec., decrease; alt., alternate; beg., beginning; foll., following; rem., remaining; T., tension; 000., set row counter at 000; H.C.L.'s., holding cam levers; M.B., main bed.

## Cable Stitch (one panel)

K. 6 rows. **Left Cable** Cross sts. 1, 2 and 3

over 4, 5 and 6. K. 6 rows. **Right Cable** Cross sts. 3, 4 and 5 over 1, 2 and 3. These 12 rows complete 1 pattern repeat.

## BACK

**Ribbers** Cast on 145 (153, 161, 169, 177) sts. as 1 x 1 rib. T2/2. K. 22 rows. Transfer ribber sts. to M.B. \*

**Single machines** Using waste wool cast on 73 (77, 81, 85, 89) sts. on alt. needles. K. a few rows. Change to main wool. T3. K. 43 rows. Make a hem and K. the row. 145 (153, 161, 169, 177) sts. \*

**All machines** 000. T5. K. straight to 160 rows. This will give a length of 16 $\frac{1}{2}$  ins. Adjust length here if required.

## Shape Armholes

000. Cast off 4 (4, 4, 5, 5) sts. at beg. of next 2 rows. Dec. 1 st. at each end of next 7 (7, 9, 9, 9) rows, then every alt. row 6 (7, 6, 6, 7) times. 111 (117, 123, 129, 135) sts. \*\* K. straight to 76 (78, 80, 82, 84) rows.

## Shape Shoulders and Neck

Cast off 7 sts. at beg. of next 2 rows. Cast off 19 (21, 23, 25, 27) sts. at centre of work and push needles at left to E position. K. the right side first. H.C.L.'s III (800 H.C.L. I). \*\*\*. Cast off 7 sts. at beg. of next row and 5 sts. at neck edge on next row. Repeat the last 2 rows twice more. Cast off rem. 3 (5, 7, 9, 11) sts. H.C.L. I (800 H.C.L.'s III). Rejoin wool at armhole edge and K. to match right side, from \*\*\*.

## FRONT

K. as Back to \*. Arrange needles for cable pattern as follows; transfer the centre st. and the 7th st. each side to adjacent needles. Miss 23 (24, 25, 26, 27) sts. each side. Transfer the next and foll. 7th and 14th st. to adjacent needles. Push empty needles to A position. Following cable stitch pattern, K. as Back to \*\*. K. straight to 48 (50, 52, 54, 56) rows.

## Shape Neck

Cast off 21 (23, 25, 27, 29) sts. loosely at centre of work. Push needles at left to E position. H.C.L.'s III (800 H.C.L. I). K. the right side first. K. 1 row. Dec. 1 st. at neck on next 8 rows, then every alt. row 6 times. 31 (33, 35, 37, 39) sts. K. straight to 76 (78, 80, 82, 84) rows.

## Shape Shoulders

Cast off 7 sts. at beg. of next and alt. rows until 3 (5, 7, 9, 11) sts. rem. K. 1 row. Cast off. H.C.L. I (800 H.C.L.'s III). Rejoin wool at armhole edge and K. to match right side.

## SLEEVES

**Ribbers** Cast on 69 (73, 77, 81, 85) sts. as 1 x 1 rib. T2/2. K. 22 rows. Transfer ribber sts. to M.B.

**Single machines** Using waste wool cast on 35 (37, 39, 41, 43) sts. on alt. needles. K. a few rows. Change to main wool. T3. K. 43 rows. Make a hem and K. the row 69 (73, 77, 81, 85) sts.

**All machines** Arrange needles for cable pattern as Front centre group. 000. T5. Foll. cable stitch pattern K. 8 rows. Inc. 1 st. at each end of next and every foll. 8th row 19 times in all. 107 (111, 115, 119, 123) sts. K. straight to 166 rows. This will give a sleeve seam of 17 $\frac{1}{2}$  ins. Adjust length here if required.

## Shape Top



# mouse and rabbit toys

000. Cast off 4 (4, 4, 5, 5) sts. at beg. of next 2 rows. Dec. 1 st. at each end of next 5 rows, then every alt. row 4 times. K. 3 rows. Dec. 1 st. at each end of next and every 4th row 5 (5, 5, 6, 6) times in all, then every alt. rows 2 (3, 3, 2, 2) times. Dec. 1 st. at each end of next 7 (5, 7, 5, 7) rows. Cast off 3 sts. at beg. of next 4 (6, 6, 8, 8) rows and 4 sts. on next 4 rows. Cast off rem. 25 sts.

## NECKBAND

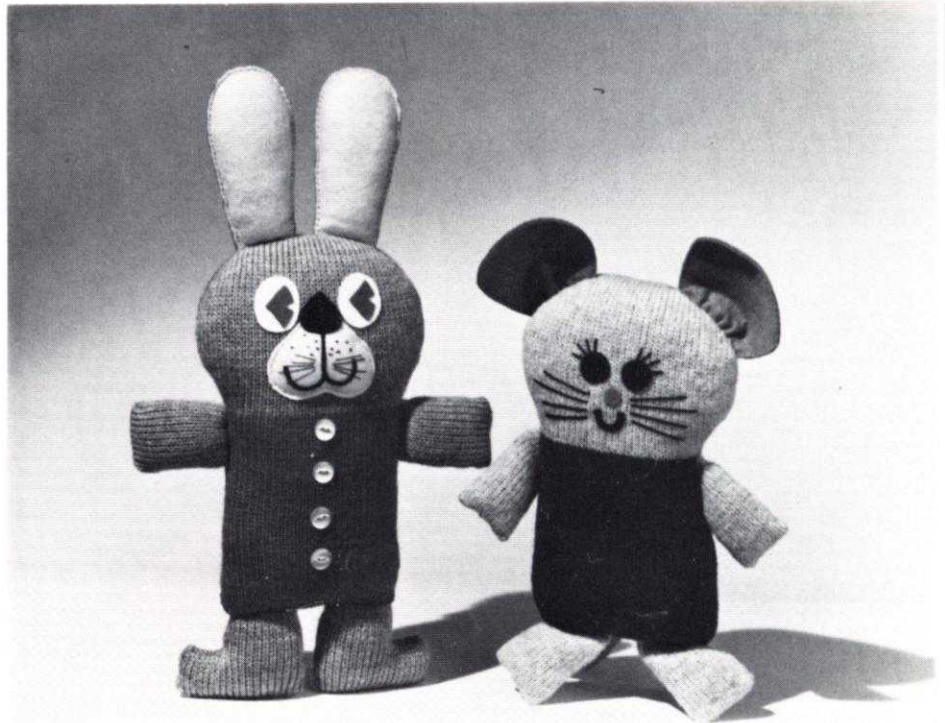
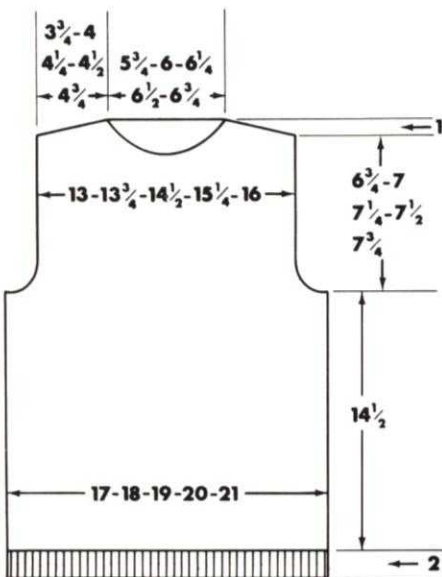
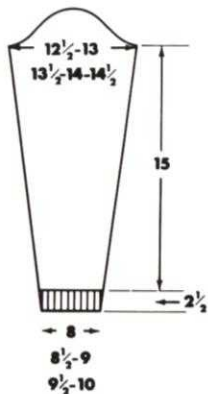
Join right shoulder seam. With wrong side facing, and beg. at right, pick up and place on machine 52 (54, 56, 58, 60) sts. from back neck, 30 sts. down front neck, 21 (23, 25, 27, 29) sts. at centre and 30 sts. up front neck. 133 (137, 141, 145, 149) sts. T5. K. 1 row.

**Ribbers** Transfer alt. sts. to ribber T2/2. K. 20 rows. T7/7. K. 1 row. Transfer ribber sts. to M.B. and chain cast off.

**Single machines** Transfer alt. sts. to adjacent needles and push empty needles to A position. T3. K. 39 rows. Bring empty needles to B position. T9. K. 1 row and chain cast off.

## TO MAKE UP

Pin out pieces and press with a warm iron over a damp cloth. Join side, left shoulder and sleeve seams. Turn neckband to inside and slip-st. in place. Press seams.



## MOUSE and RABBIT (Fabric)

### Materials

Dressmaking scraps or good pieces from discarded knitted garments. Matching thread. Kapok for stuffing. Felt for ears, and features.

### TO CUT OUT

As indicated on pattern allowing  $\frac{1}{4}$  in. turnings for fabric.

### TO MAKE

With right sides facing machine or back-stitch C to C attaching head to body. Join ears together in pairs, stuff rabbit ears, gather lower edge of mouse ears. Insert in position and stitch in place as two sides of head are machined from C, through X and Y, to C. With matching thread machine side seams C to A. Turn to right side and stuff firmly. Close opening with ladder stitch. Join foot and hand sections, stuff lightly and sew in position. Sew side seam of tail, turn and stuff lightly. Sew in place. Make a wool pompon as tail for rabbit. Using felt and embroidery thread mark features. (Cut a felt mouth-piece for rabbit, sew in place and stuff lightly before closing join.) Sew on buttons or trimming if desired.

## MOUSE and RABBIT (From same basic body shape.) (Knitted.)

Tension 8 for Double Knitting wool.

Tension 7 for 4 ply (makes toy slightly smaller).

### Materials

50 grms. ball grey or beige D.K. wool—body, head, arms, legs, tail. 1 oz. or 25 grms. ball in a bright colour—main body. Small pieces toning felt for ears and features. Matching thread, embroidery

thread for whiskers. Kapok for stuffing. If 4 ply wool is used 1 oz. is sufficient for head, arms, etc.  $\frac{1}{4}$  oz. for main body. Dressmaking scraps were used for fabric mouse—pattern drawn on squares. Size of toy varied by using  $\frac{3}{4}$  in.,  $1\frac{1}{4}$  in. spacing.

### BODY

Make two pieces. With bright wool cast on 32 sts. and knit 52 rows. Change to beige or grey and knit two rows. Increase 1 st. at beginning of every row to 42 sts. Knit 18 rows. Decrease 1 st. at both ends of next and every alternate row to 34 sts. Knit 1 row. Decrease 1 st. at both ends of next 7 rows leaving 20 sts. Knit 1 row. Cast off.

### MOUSE HANDS (make two)

Cast on 24 sts. and knit 20 rows. Decrease 1 st. at both ends of next and every following row until 2 sts. remain. Knit 1 row. Cast off.

### MOUSE FEET (make two)

Cast on 28 sts. and knit 20 rows. Decrease 1 st. at both ends of next and every following row until 2 sts. remain. Knit 1 row. Cast off.

### RABBIT FEET (make two)

Cast on 26 sts. and knit 12 rows. Cast on 8 sts. at beginning of next 2 rows. Knit 12 rows. Cast off.

### RABBIT HANDS (make two)

Cast on 26 sts. and knit 24 rows. Cast off.

### MOUSE TAIL

Cast on 7 sts. press in right part button, knit 50 rows pulling knitting downwards with left hand. Draw thread through.

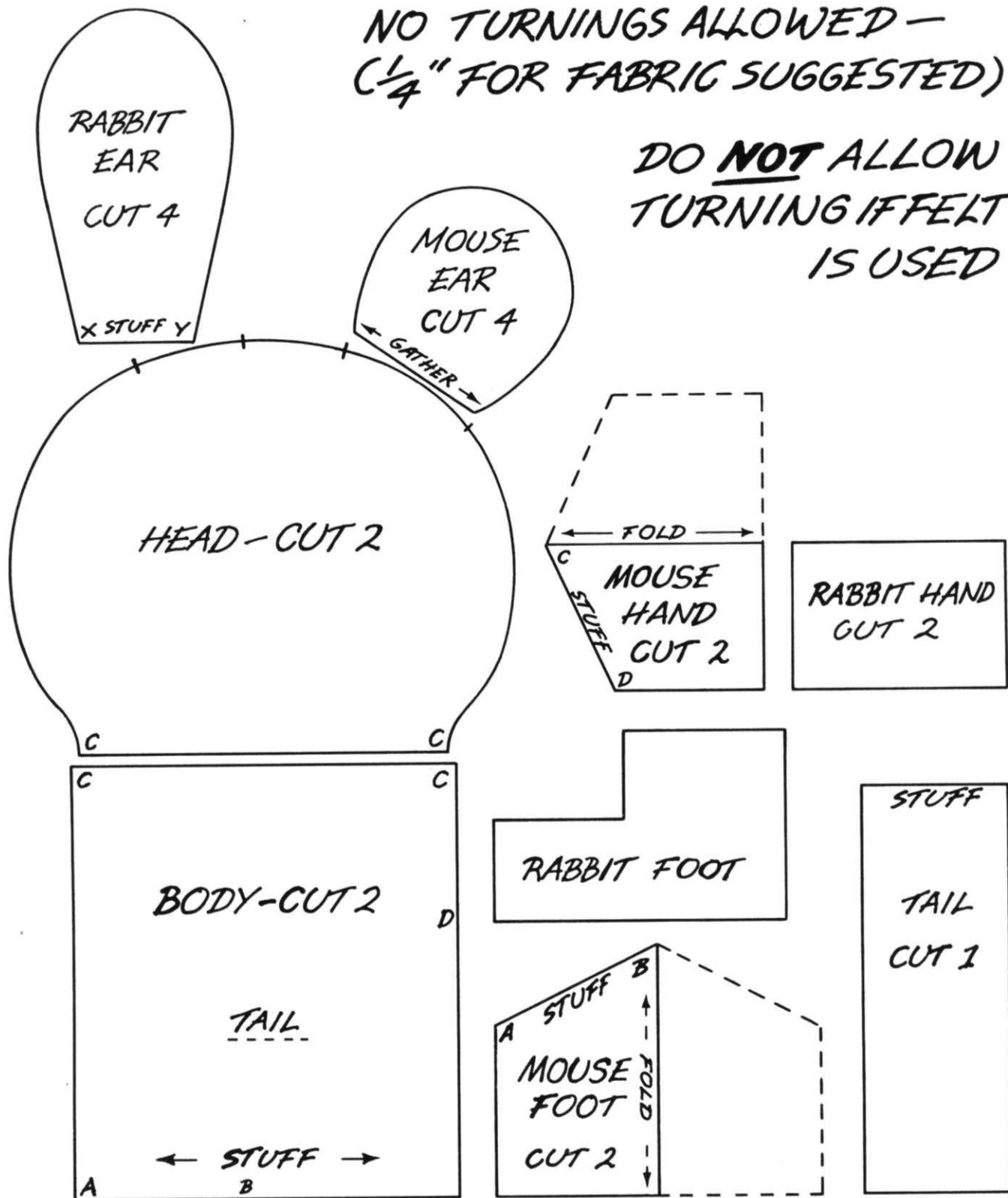
### RABBIT EARS

From felt cut two rectangles approx.  $4\frac{1}{2}$  ins. x  $2\frac{1}{4}$  ins., and shape as illustrated. Cut two in contrast felt; st. together in pairs and stuff lightly.



NO TURNINGS ALLOWED -  
(1/4" FOR FABRIC SUGGESTED)

DO NOT ALLOW  
TURNING IF FELT  
IS USED





# PATTERNS PATTERNS PATTERNS PATTERNS PATTERNS

from Jones the knitting  
machine people

Here's the new style pattern service from Jones - superb collections of garments presented in attractive booklet form, each booklet containing a series of garments for one section of your family.



Booklet 1: features ribbed garments. 2: general family garments. 3: toddlers' garments. 4: garments for children. 5: garments for ladies. 6: garments for men.



AND NOW TWO MORE ADDITIONS TO THE RANGE - Booklet 7: features garments from the very popular magazine "HOME SEWING AND KNITTING" and Booklet 8: a series of simple and basic patterns.



Each booklet is only 25p including postage and packing and can either be obtained from your local Jones stockist or direct from Jones Sewing Machine Co. Ltd, Audenshaw, Manchester.



Start collecting the set now - they'll give you many hours of enjoyable knitting and super garments for all your family.



**Jones** Jones Sewing Machine Co. Ltd.,  
Britannia House, 964 High Road, Finchley, London, N.12