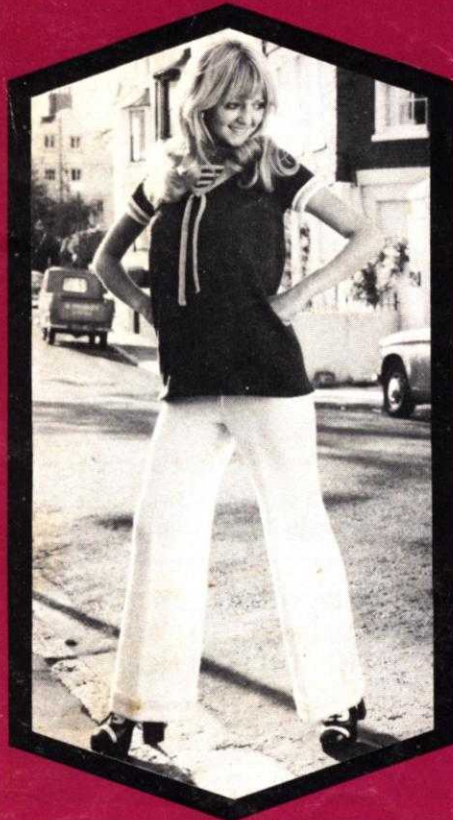
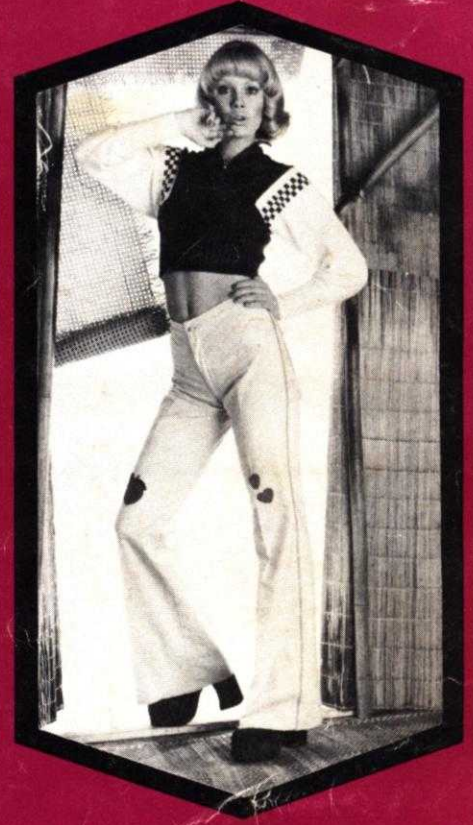
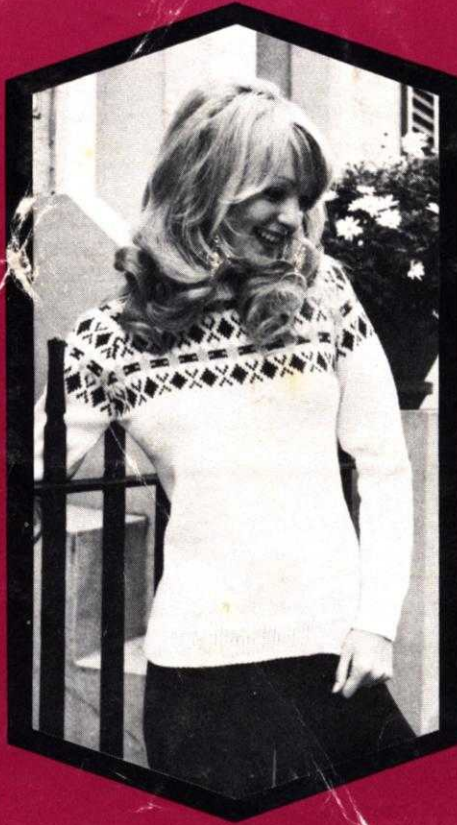


stitchin' time

Vol 5 No 1

25p



Jones/brother

contents

Two Colour Batwing Sleeve Jumper	3-4
Twin Set	4-6
Man's Fair-Isle Waistcoat	7-8
Girl's Fair-Isle Sweater	8-9
Raglan Jumper	9-10
Poodle Bottle Cover	10
Shirred Evening Top	11
Baby's Booties, Coat and Hat	12
Child's Skirt and Jumper	13-14
Gauche Pants and Bolero	14-15
Ribbed Sweater with Polo Neck	16
Tank Top	17
Family Sweaters	18-20
Baby's Cardigan	20-21
Battle Top	21-23
Girl's Fair-Isle Sweater	23-24
Man's Jacket	25-26
Jacquard Vest and Jumper	27-28
Child's V-Neck Sweater	29-30
Trousers and Smock	30-32
Cocktail Dress	32-33
Pram Cover	34
Batwing Jumper	35

broadly speaking

Spring is almost here and we would like to open the year with this bumper edition of *Stitchin' time*. As you will see we no longer include the section on sewing machines and therefore have a great deal more room for extra knitting patterns. In this issue there are 23 patterns for all the family, patterns in Fair-Isle, lace and the automatic stitches possible on the machine. Members who have the model 800 will find that most of the patterns are either adaptable or have a chart included to enable them to be knitted. As a response to readers who have asked for more up-to-date outfits, on pages 3, 11 and 27, we have three very modern outfits which should be popular. We would like to hear your comments on these outfits, favourable or otherwise, as this gives us a guide when planning future issues. We have now produced two more pattern booklets, pattern books No. 7 and No. 8. Pattern book No. 7 is produced in conjunction with *Home Sewing & Knitting* and has garments for all the different members of the family. Pattern book No. 8 is a basic pattern book for cardigans and jumpers, V-necks and round necks with raglan sleeves, sizes 22"-44". These are all in 4-ply wool. Paton & Baldwins have produced a machine knitting book No. 3, this is available for the price of 20p, direct from: Paton & Baldwins Ltd., Department 305, P.O. Box 22, Darlington, Co. Durham, cash with order. This contains patterns for the different members of the family and should prove very popular indeed. After mentioning the linking machine in our previous issue we have now sold out of our entire stock and do not intend to buy any more for sale in this country. For our readers in the London area, we announce the news that the London Knitting Centre is now closed. This is due mainly to the success of our postal tuition course—this has been very successful and all our customers are now being taught in this way and therefore the Knitting Centre is no longer necessary. Accessories and spare parts can now be ordered from our Manchester depot.

We look forward to hearing your comments on the new issue. As you will see in this issue there are no readers' letters, this is due to the lack of letters in this office and we would love to hear from you.

N.B. CHARTS SUBMITTED BY DESIGNERS VARY DEPENDING ON WHICH MACHINE THE DESIGNER HAS USED. MOST PATTERNS USING EIGHT BUTTONS CAN BE DONE ON EITHER THE 588 OR THE 585. THE DIFFERENCES ARE

588

585

REVERSE LEVER +
REVERSE LEVER -

REVERSE DIAL A
REVERSE DIAL B

SUBSCRIPTION RATES FOR U.S.A. AND CANADIAN MEMBERS \$6.00. These rates include postage.

two colour batwing sleeve jumper

Materials

6 (6, 7) 20 g. balls Wendy Tricel Nylon 4 ply. Dark.

8 (9, 9) 20 g. balls Wendy Tricel Nylon 4 ply. Light.

9 ins. zip fastener. No. 11 crochet hook. 1 pair No. 11 knitting needles.

Measurements

To fit bust 32 (34, 36) ins.

Length back 16½ (17, 17½) ins.

Neck to waist. (Adjustable.)

19½ (20, 20½) ins. sleeve seam allowing for bloused cuff. (Adjustable.)

Tension

8 sts. and 11 rows to 1 in. on T7.

CHECK YOUR TENSION VERY CAREFULLY

Abbreviations

dk., dark; lt., light; No., number; N., needles; st(s), stitch(es); K., knit(ing); P., purl; rep., repeat; ins., inches; fin., finishing; MB., main bed; LB., lower bed; T., tension; COL(R), carriage on left or right; trans., transfer; 000., set row counter to 000; beg., beginning; inc., increase; dec., decrease; foll(s), following, follows; cont., continue; pos., position; alt., alternate; rem., remaining, remainder; H.C.L's., holding cam levers; patt., pattern.

BACK

(Worked in dk. throughout.)

For hand knit rib Using No. 11 N., cast on 106 (114, 122) sts.

1st row K. 2, *. P. 2, K. 2. Rep. from * to end.

2nd row P. 2, *. K. 2, P. 2. Rep. from * to end.

Rep. these 2 rows for 5 ins. fin. with 1 st. rib row. Place these sts. on to centre 106 (114, 122) N. on MB. with ball on right edge of work. **For machine knit rib** T1. COL. Racking lever on 5. Half pitch lever on 'P'. Cast on 106 (114, 122) sts. in 2 x 2 rib placing the 2 edge N. on each end on MB. only. Half pitch lever to 'H'. Racking lever to 4. Push to B pos. 1 N. on LB. between the 2 edge B on left hand edge of MB. Cast on. COR. Set machine for circular K. T2 on LB. and MB. K. 4 rows. Trans. the left LB. st. to edge N. on MB. COR. 000. Set machine for plain rib K. T4 on LB. and MB. K. 62 rows. Trans. LB. sts. to MB. empty N. Lower MB.

Cont. for both versions as folls.

000. T7. K. 10 rows. 000. COR. (Adjust length at this stage.)

Shape Armholes

Cast off 2 sts. at beg. of the next 24 rows fin. COR. 58 (66, 74) sts. 000. Inc. 1 st. each end of every foll. 5th row to 24 (30, 36) rows fin. COR.

Back Opening

Push to E pos. left half N. H.C.L's to III. Cont. on right N., still inc. as before until 16 sts. have been inc. from beg. 45 (49, 53) sts. Cont. straight to 82 (88, 94) rows. fin. COR.

Shape Shoulder

Cast off 5 (6, 7) sts. at beg. of the next row and at this same edge every alt. row 3 times more fin. COR. Cast off 6 (5, 4) sts. at beg. of the next row, K. 2 rows fin. COR. Thread up and take off machine the rem. 19 (20, 21) sts. H.C.L's to I. Cont. on left sts. to



twin set

match reversing shapings.

FRONT

(Worked in dk. throughout)

Work same as Back to the 64th (70th, 76th) inc. row on armhole fin. COR.

Shape Front Neck

Thread up and take off machine the centre 22 (24, 26) sts. Push to E pos. the left N. H.C.L's to III. Cont. on right sts., still inc. on armhole to match back. At the same time dec. 1 st. every alt. row on neck to 26 (29, 32) sts. Cont. straight to 82 (88, 94) rows fin. COR.

Shape Shoulder

Cast off 5 (6, 7) sts. at beg. of the next row and at this same edge every alt. row 3 times more fin. COR. Cast off rem. 6 (5, 4) sts. H.C.L's to I. Cont. on left sts. to match reversing shapings.

SLEEVES

(Worked in lt. throughout with dk. patt. at top.)

For both versions

With scrap yarn cast on 92 (96, 100) sts. and K. a few rows. Join on lt. T7. 000. Inc. 1 st. each end of every foll. 5th (5th, 6th) rows to 148 (152, 156) sts. Cont. straight to 158 (164, 170) rows fin. COR. (Adjust length at this stage.)

Shape Top

000. Slide Dial on 3. K. 10 rows lt., 18 rows patt. from chart, 10 rows lt., at the same time dec. 1 st. each end of the next and then every foll. 3rd row 12 times more to 122 (126, 130) sts. Cont. to row 38. Cast off.

CUFFS

For hand knit rib Using No. 11 N. cast on 54 (58, 62) sts. Work in same patt. of rib as before for 5 ins. fin. 1st rib row, place sts. on to machine N.

For machine knit rib Set machine as before and cast on 54 (58, 62) sts. Work to same rib patt. as before and trans. LB. sts. to MB. Lower LB.

Cont. for both versions as foll.

With wrong side of sleeve facing you place the 1st row of lt. sts. on to cuff N. at the same time dec. the sleeve sts. evenly along the row. Cut away scrap yarn. T4. K. 1 row lt. and cast off loosely.

NECKBAND

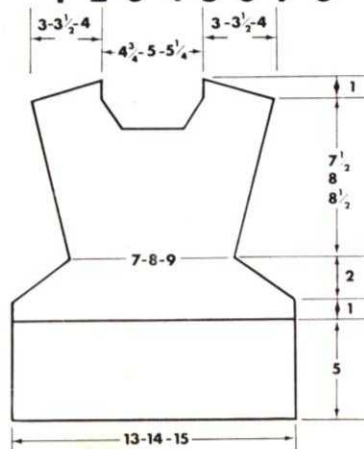
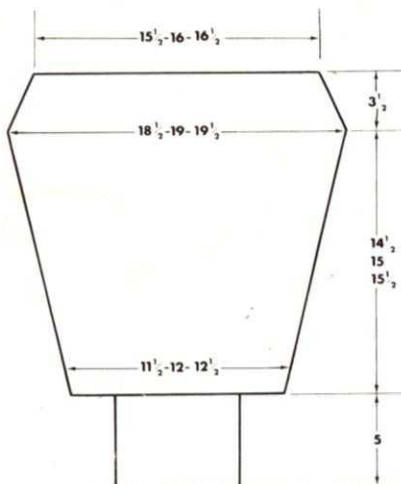
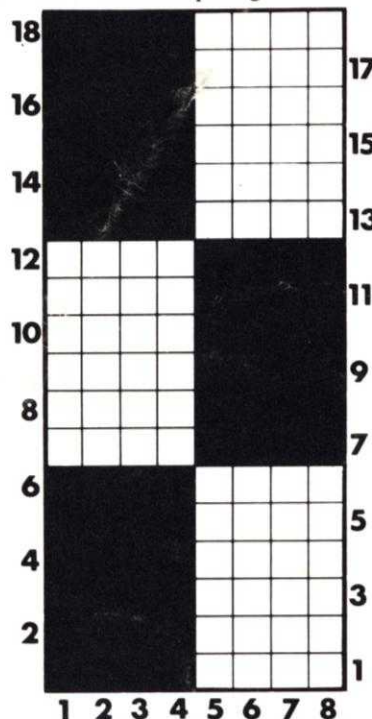
(Worked in dk.) Join shoulder seams.

For hand knit rib With right side of left back neck facing you K. the 19 (20, 21) sts., pick up and K. 1 st. in from edge 17 sts. at side neck, K. the front sts., work rem. of neck edge to correspond. 94 (98, 102) sts. Cont. in same rib as before for 2½ ins. Cast off loosely.

For machine knit rib Set machine as before and cast on 94 (98, 102) sts. K. 28 rows rib after the 4 circular rows. Trans. LB. sts. to MB. Lower LB. With wrong side right back neck facing you and working from right edge of N. place sts. to first 19 (20, 21) N., place side neck to next 17 N., front neck to next 22 (24, 26) N., cast off band and neck edge together to this point, place rem. of neck to rest of N. to correspond and cast off to end.

TO MAKE UP

Press all pieces except ribbings. Sew sleeves into armholes, join sleeve and side seams. Work a row of single crochet at back opening including neckband edges. Sew in zip. Press seams and opening.



Materials

Cardigan 16 (17, 19, 20, 22) ozs. Lister Lavenda 4-ply

Jumper 11 (12, 13, 14, 15) ozs.

Measurements

To fit bust sizes 38 (40, 42, 44, 46) ins.

Cardigan

Finished bust measurements 40 (42, 44, 46, 48) ins.

Length to back neck 23½ (24, 24½, 24½, 24½) ins.

Sleeve seam 17½ ins.

Jumper

Finished bust measurements 39 (41, 43, 45, 47) ins.

Length to back neck 22½ (23, 23½, 23½, 23½) ins.

Sleeve seam 6 ins.

Tension

T6. 15½ sts. and 21 rows = 2 ins.

Abbreviations

K., knit; sts., stitches; inc., increase; dec., decrease; beg., beginning; alt., alternate; rem., remain; T., tension; 000., set row counter at 000.

Notes

Fully fashioning at raglan shaping is worked by transferring the 3rd st. on to 4th needle and moving the 2 end sts. 1 needle in. **Bust Darts** Using odd length of wool, K. number of sts. given by hand and take each needle back to A position.

Lace Panels, Cardigan These are worked on needles 6 to 20 from front edge (i.e. 2 patterns).

Jumper on 47 centre sts. (i.e. 6 patterns) extra st. is on right side.

Welts and Cuffs

Ribbers K. the number of rows given for 1 x 1 rib. T4/3. Transfer ribber sts. to Main bed.

Single machines Cast on number of sts. given on alt. needles. K. a few rows. Change to M wool. T4. K. rows given. Make a hem and K. the row.

CARDIGAN

BACK

Ribbers cast on 155 (163, 171, 179, 187) sts. K. 20 rows (see notes).

Single machines Cast on 78 (82, 86, 90, 94) sts. on alt. needles. K. 39 rows (see notes).

All machines

000. T6. K. straight to 126 rows.

Shape raglan

000. Cast off 3 (5, 6, 6, 6) sts. at beg. of next 2 rows.

Sizes 44 and 46 only Dec. 1 st. each end of next 4 (6) rows.

All sizes Dec. 1 st. (see notes) each end of next and foll. alt. row until 49 (51, 53, 55, 57) sts. rem. K. 1 row. Slip sts. on to a knitting needle.

RIGHT FRONT

Ribbers Cast on 75 (79, 83, 87, 91) sts. with extra st. on right side. K. 20 rows.

Single machines Cast on 38 (40, 42, 44, 46) sts. with extra st. on right side on alt. needles. K. 39 rows.

All machines 000. T6. S.D. on 5 (3, 1, 7, 5). Work lace panel (see notes) on left side. K. 111 rows. Carriage is at front edge. (K. 1 extra row for left front.)

Bust Darts K. 6 sts. (see notes) at opposite side to carriage on next and alt. rows 6

girls fair-isle sweater

fol. alt. row until 6 (7, 8, 5, 6) sts. rem. K. 1 row. Cast off.

LEFT FRONT

K. as Left Front reversing all shapings.

ARMBANDS

Join shoulder seams. With wrong side of work facing, pick up and place on machine 151 (157, 163, 169, 175) sts. T7. with M. K. 1 row.

Ribbers Transfer alt. sts. to ribber. T4/4. K. 9 rows. T10/8. K. 1 row. Transfer sts. to main bed. Cast off chain method.

Single machines Trans. alt. sts. to adjacent needles. T5. K. 20 rows. Cast off loosely making chain over empty needle.

FRONT BAND

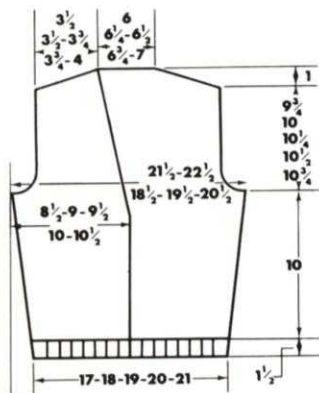
Mark position on front for 5 buttons the first $\frac{1}{4}$ -inch above lower edge the last at beg. of neck shaping.

Ribbers With M. Cast on 13 sts. for 1 x 1 rib. T4/4. K. until long enough to fit along both fronts and across back neck when slightly stretched. Make buttonholes to match markers over centre 3 sts.

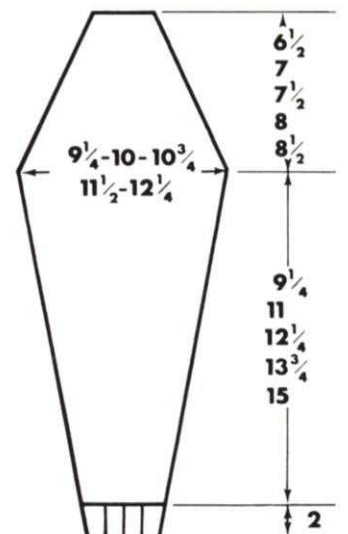
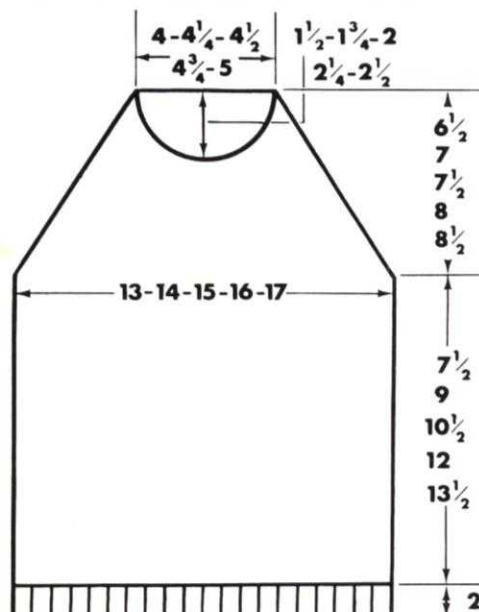
Single machines With M. Cast on 17 sts. by hand. T6. K. until long enough to fit along both fronts and across back neck when slightly stretched. Make buttonholes to match markers on sts. 4, 5 and 6 from each side.

TO MAKE UP

Pin out and press with a warm iron over a damp cloth. Join side seams. Sew front band in position. Turn st.st. band to inside and slip st. in place. Neaten buttonholes. Sew on buttons. Turn mock rib armbands to inside and slip st. in place. Press seams.



				x	x	x									12
				x	x	x									11
		x			x				x						10
		x			x				x						9
				x	x	x									8
				x	x	x									7
		x	x	x					x	x	x				6
		x	x	x					x	x	x				5
		x			x				x						4
		x			x				x						3
		x	x	x					x	x	x				2
		x	x	x					x	x	x				1
1	2	3	4	5	6	7	8	9	10	11	12				



raglan jumper

Materials

5 (6, 7, 8, 9) ozs. Templetons Double Scotch in colour A, 3 (4, 4, 5, 5) ozs. in colour B, 3 (4, 4, 5, 5) ozs. in colour C and 3 (4, 4, 5, 5) ozs. in colour D.

Measurements

To fit chest sizes 24 (26, 28, 30, 32) ins. Finished measurements 25 (27, 29, 31, 33) ins.

Length to back neck 16 (18, 20, 22, 24) ins. Sleeve seam 11½ (13, 14½, 15½, 17) ins.

Tension

T10. 13½ sts. and 17½ rows to 2 ins. after pressing.

Abbreviations

K., knit; sts., stitches; inc., increase; dec., decrease; alt., alternate; beg., beginning; foll., following; rem., remain; T., tension; H.C.L.'s., holding cam levers; 000., set row counter at 000; M.B., main bed.

BACK

Using A. **Ribbers** Cast on 86 (94, 100, 108, 114) sts. as 1 x 1 rib. T6/6. K. 18 rows. Transfer ribber sts. to M.B.

Single machines Using waste wool, cast on 44 (48, 51, 55, 58) sts. on alt. needles. K. a few rows, change to A. T8. K. 35 rows. Make a hem and K. the row. Dec. 1 st. at right edge 86 (94, 100, 108, 114) sts.

All machines 000. T10. S.D. on 2. Using C, K. 6 rows. Foll. Fair-isle chart K. 68 (80, 92, 104, 116) rows. *

Shape Raglan

000. Cast off 2 (3, 3, 4, 4) sts. at beg. of next 2 rows. Dec. 1 st. at each end of next and foll. alt. rows 28 (30, 32, 34, 36) times in all. Slip rem. 26 (28, 30, 32, 34) sts. on to a knitting needle.

FRONT

K. as Back to *.

Shape Raglan and Neck

000. Cast off 2 (3, 3, 4, 4) sts. at beg. of next 2 rows. Dec. 1 st. at each end of next and foll. alt. rows 21 (22, 23, 24, 25) times 40 (44, 48, 52, 56) sts. rem. K. 1 row. Cast off 14 (16, 16, 18, 18) sts. at centre. H.C.L.'s II. Push needles at left to E position. K. the right side first. Continue to dec. at raglan edge as before at the same time dec. 1 st. at neck edge on next and foll. alt. row 3 times in all, then every 4th row 2 (2, 3, 3, 4) times. K. 1 (3, 1, 3, 1) rows. Cast off. Return needles at left to knitting position by hand. H.C.L.'s I. K. to match right side reversing all shapings.

SLEEVES

Ribbers Using A, cast on 42 (46, 50, 54, 58) sts. as 1 x 1 rib. T6/6. K. 18 rows. Transfer ribber sts. to M.B.

Single machines Using waste wool, cast on 22 (24, 26, 28, 30) sts. on alt. needles. K. a few rows. Change to A. T8. K. 35 rows. Make a hem and K. the row. Dec. 1 st. at right edge 42 (46, 50, 54, 58) sts.

All machines 000. T10. Beg. on row 15 of Fair-isle chart K. 10 rows. Inc. 1 st. at each end of next and every foll. 6th (8th, 10th, 10th, 12th) rows, 10 times in all 62 (66, 70, 74, 78) sts. K. straight to 84 (96, 108, 120, 132) rows.

Shape Raglan Top

000. Cast off 2 (3, 3, 4, 4) sts. at beg. of next 2 rows. K. 2 rows. Dec. 1 st. at each

end of next and foll. 4th row 3 (3, 4, 5, 5) times, then every alt. row 22 (22, 24, 24, 26) times in all. Slip rem. 8 sts. on to a knitting needle.

NECKBAND

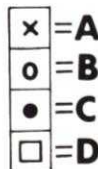
With wrong side facing replace on machine 26 (28, 30, 32, 34) sts. from back neck, 8 sts. from 1 sleeve, 16 (18, 20, 22, 24) sts. down front neck, 14 (16, 16, 18, 18) sts. from centre, 16 (18, 20, 22, 24) sts. up front neck and 8 sts. from 1 sleeve. 88 (96, 102, 110, 116) sts. T10. Using A, K. 1 row.

Ribbers Transfer alt. sts. to ribber. T7/7. K. 16 rows. Cast off loosely by hand.

Single machines Transfer alt. sts. to adjacent needles. Push empty needles to A position. T8. K. 16 rows. Cast off loosely making a chain over empty needles.

TO MAKE UP

Pin out and press with a warm iron over a damp cloth. Join side, raglan and sleeve seams. Fold neck band to wrong side and slip-st. in place. Press seams.



K 6 rows in C

30	●	●	×	×	●	●	×	×
29	●	●	×	×	●	●	×	×
28	×	×	×	×	×	×	×	×
27	×	×	×	×	×	×	×	×
26	□	□	×	×	□	□	×	×
25	□	□	×	×	□	□	×	×

K 6 rows in D

18	□	□	×	×	□	□	×	×
17	□	□	×	×	□	□	×	×
16	×	×	×	×	×	×	×	×
15	×	×	×	×	×	×	×	×
14	o	o	×	×	o	o	×	×
13	o	o	×	×	o	o	×	×

K 6 rows in B

6	o	o	×	×	o	o	×	×
5	o	o	×	×	o	o	×	×
4	×	×	×	×	×	×	×	×
3	×	×	×	×	×	×	×	×
2	●	●	×	×	●	●	×	×
1	●	●	×	×	●	●	×	×
	1	2	3	4	5	6	7	8

Materials

14 (14, 15) ozs. main colour and 1 oz. each in light and dark contrasting colours of Popplettons 4 ply fingering. 4 small buttons.

Measurements

To fit 36 (38, 40) ins. Underarm Seam 15½ ins. Sleeve Seam 19½ ins. Back length from neck 25 ins.

Tension

T8 to give 14 sts. and 20 rows to 2 ins. over st.st.

Abbreviations

K., knit; sts., stitches; inc., increase; dec., decrease; foll., following; alt., alternate; rem., remain; beg., beginning; H.C.L.'s., holding cam levers; T., tension; 000., set row counter at 000.

BACK

Cast on 120 (126, 132) sts. and work 18 rows K. 1 P. 1 rib at T5 transfer sts. from front bed to back bed. (For continental rib, cast on over alt. needles and work 38 rows T5 then hang up.) 000. T8. K. 2 rows main, 2 rows dark, 2 rows light, 4 rows dark, 2 rows main, 4 rows dark, 2 rows light, 2 rows dark. Continue in main colour only and work straight to row 120 (126, 130). (Adjust length here.)

Shape Armholes Cast off 8 sts. at beginning of next 2 rows. K. 6 rows. On next row, dec. 2 sts. at both ends, moving 3rd and 4th sts. on to 5th and 6th needles and moving end sts. in. Continue dec. 2 sts. at both ends of every 6th row to 40 (44, 46) sts. K. 2 rows. Cast off.

FRONT

Work as back to armholes. Cast off 8 sts. at beg. of next 2 rows. With an odd length of wool, cast off centre 8 sts. and put rem. sts. at left hand side into position E. With H.C.L.'s on 3, work on right side. K. 6 rows, now dec. 2 sts. at armhole edge of next and every foll. 6th row (in same way as for back), until 26 (27, 29) sts. rem. K. to neck edge. Cast off 11 (12, 13) sts. Keeping raglan shaping as before, dec. 1 st. at beg. of next neck edge row, and three foll. alt. rows, then 1 st. at neck edge on every foll. 4th row to 4 sts., K. 2 together twice. Fasten off. Work other side to match, starting with carriage at left hand side and H.C.L.'s back on 1.

Right Front Banding (underlap)

With wrong side of work facing you, pick up and hang on to machine 48 (48, 51) sts. T6, K. 12 rows, T10, 1 row, T5 12 rows. Cast off.

Left Front Banding

Pick up 48 (48, 51) sts. as before, T6. K. 6 rows, make 3 buttonholes (over the central 4 sts. and 8 sts. in from either end). K. 6 rows, 1 row T10, 6 rows T5, work a corresponding set of buttonholes. K. 6 rows and cast off.

SLEEVES (both alike)

Cast on 52 (54, 56) and work welt as for body. 000. T8. K. 2 rows main, 2 rows dark, 2 rows light, 4 rows dark, then continue in main only, inc. 1 st. at beg. of every foll. 5th and 6th rows to 94 (100, 106) sts. Work straight to row 108 (112, 116). (Adjust length here.)

poodle bottle cover



For Model 800

Materials

4 ozs. of 4 ply wool.

Tension

T7.

Abbreviations

K., knit; sts., stitches; inc., increase; dec., decrease; alt., alternate; foll., following; rem., remain; beg., beginning; H.C.L's., holding cam levers; T., tension; 000., set row counter at 000.

BODY AND NECK

000. Cast on 52 sts. K. 2 rows. Put pattern card No. 2 in cassette. Set lever. Lace carriage across. K. 2 rows. Set Lever. Lace carriage across. K. 2 rows. Continue until 100 shows on row counter. Dec. for neck. K. 5, K. 2 tog. to end of row. K. 4 rows altogether with dec. row. K. 4, K. 2 tog. to end of row. 38 sts. K. 4 rows with dec. row. K. 3, K. 2 tog. to end of row 31 sts. K. 4 rows with dec. row. K. 2, K. 2 tog. to end of row 24 sts. K. 4 rows with dec. row. Cast off loosely.

HEAD

Cast on 50 sts. T7. Using No. 2 pattern and one tuck button in. Complete 20 rows of pattern. Next row run lace carriage across to make holes for ribbon. Next row. Dec. row K. 5, K. 2 tog. to the end 43 sts. Tuck pattern for another 3 ins. Next row. K. 2 tog. all along the row. Cast off and pull up.

EARS

Cast on 9 sts. tuck pattern No. 2. for 70 rows. Cast off.

NOSE

Cast on 12 sts. and K. 1½ ins. Dec. row. K. 1, K. 2 tog. to end. Next K. 1 row. Next K. 2 tog. all along row. Cast off.

TO MAKE UP

Sew up and make 8 pompons. Stuff nose and sew on to face. Thread ribbon round neck. By making this in various sizes you can cover bottles of hair spray, toilet roll cover, and you can also stuff the whole lot for a toy. You may vary the head by using 5 pompons on the head instead of long ears, placing this way.



Shape top

Cast off 8 sts. at beg. of next 2 rows, K. 6 rows, dec. 2 sts. at both ends of next and every foll. 6th row (as on back) to 22 (24, 26) sts. Cast off.

NECKBAND

Cast on by hand 136 (140, 144) sts. and K. 5 rows T6, work buttonhole at right hand end 4 sts. in from edge, K. 1 row, K. 8 rows T5, 1 row T10. K. 8 rows T4, 1 row T5, work buttonhole to correspond with first, K.

another 5 rows. Cast off loosely.

TO MAKE UP

First join raglan seams and neaten banding and buttonholes. Pin out and press with a hot iron over a damp cloth on wrong side. Join side and sleeve seams. Sew inside edge (the cast off edge) of neckband to inside edge of neck, press, then neatly sew top on right side. Give a final press and sew on buttons.

shirred evening top



Materials

10 (10, 11) ozs. Lister Bel Air Starspun 4 ply knitting. (88% Courtelle, 12% Glitter Yarn Effect.)

2 reels 'Ripple-Lastic' Elastic Yarn.

Measurements

To fit bust 32 (34, 36) ins.

Side seams 9½ (9½, 10½) ins.

Sleeve seams 17½ (18, 18½) ins.

Tension

7 sts. and 11 rows to 1 in. over stocking

stitch on T6.

16 sts. to 1 in. over elastic weaving.

Approximately 1½ ins. to 1 pattern repeat.

Abbreviations

T., tension; st(s), stitch(es); K., knit; COL(R), carriage on left or right; pos., position; N., needles; 000., set row counter to 000; ins., inches; inc., increase; S.D., slide dial.

Note

When weaving place elastic over extended

N. without stretching it, move carriage towards knitting until a few N. have knitted in the elastic, then pull elastic taut, continue to move carriage across N. very slowly to enable the elastic to pass over and under the weaving N. For the 10 rows of stocking stitch between the weaving, continue to set the lever every row and place the elastic over the edge extend weaving N., rather than take the elastic directly from one band of weaving to the next.

FRONT AND BACK ALIKE

Gathered Peplum

T4. Cast on 118 (128, 138) sts. * K. 8 rows. K. 8. K. 1 row for foldline. T4. K. 8 rows fin. with COL. Make double edge by placing each loop at cast on edge on to N. in B. pos. T6. K. 1 row. COR. 000. * K. 26 (30, 34) rows. With scrap yarn K. a few rows and take work off machine. Work another piece the same. Press both pieces to measure 17 (18, 19) ins. by 3 (3½, 4) ins. COL. Push to B pos. the centre 118 (128, 138) N. Place both peplum pieces on to N. by placing 2 sts. to each N. T6. K. 1 row. COR. 000. Inc. 1 st. on the right hand edge. 119 (129, 139) sts. Set machine for weaving. S.D. on 2 (1, 2). Press buttons 1, 3, 5, 7 **. Set lever. K. 4 rows at same time weaving in elastic. K. 10 rows at same time inc. 1 st. each end of every alt. row 4 times. 127 (137, 147) sts. Rep. from ** 4 times more. 159 (169, 179) sts. Cont. straight as folls. Weave 4 rows elastic, then K. 10 rows, once for the 1st and 2nd sizes, twice for the 3rd size. Weave 6 rows more of elastic for all sizes.

Top Edge Frill

T4. K. 8 rows. T8. K. 1 row for foldline. T4. K. 8 rows fin. COL. Make double edge by placing the loops of the row directly above the last row of elastic weaving on to B pos. N. K. 5 rows. Place the loops of the row directly below the last band of elastic weaving and cast off both sets of loops together.

SLEEVES

T4. Cast on 81 (85, 89) sts. Rep. from * to * as on back and front. ***. Weave 4 rows as before. K. 10 rows at same time inc. 1 st. each end of the 3rd, and 7th rows. 85 (89, 93) sts. Rep. from *** 9 times more. 121 (125, 129) sts. Weave 4 rows with elastic, then K. 10 rows, twice for the 1st and 2nd sizes, 3 times for the 3rd size. Weave 4 rows more of elastic for all sizes. Work top edge frill as before.

TO MAKE UP

Join centre front and back seams of each peplum. Pin out front and back to measure 22 (23, 24) ins. across at the top, 17 (18, 19) ins. at the waist with 9½ (9½, 10½) ins. side seams. Press without touching peplum. Pin out sleeve to measure 17 (17½, 18) ins. across at the top, 11 (11½, 12) ins. at the wrist with 17½ (18, 18½) ins. sleeve seams. Press all over. Join side and sleeve seams. Attach side seam and sleeve seam together at the top edge frills. To K. shoulder straps, if required, cast on 3 sts. Press in right part button. T3. K. to required length, cast off. Sew straps to underside of top edge frills on back and front to secure garment.

babys booties coat and hat



Materials
4 ozs. Beaulon 4 ply fingering, crochet hook. 2½ yds. frilling, 1½ yds. narrow ribbon, 1½ yds. 1 inch wide ribbon.

Measurements

JACKET

Chest 20 ins.
Length to Back neck 9½ ins.
Sleeve seam 5 ins.

BONNET

All round face edge 12 ins.

BOOTEE

Length of foot 3½ ins.

Tension

T7. 14 sts. and 19½ rows to 2 ins. (Please check tension carefully.)

Abbreviations

K., knit; sts., stitches; inc., increase; dec., decrease; alt., alternate; foll., following;

rem., remain; beg., beginning; H.C.L's., holding cam levers; T., tension; 000., set row counter at 000.

JACKET—BACK

Cast on 74 sts. by hand. 000. T7. K. 58 rows.

Shape Sleeves

000. Cast on 34 sts. at beg. of next 2 rows. 142 sts. K. to 34 rows.

Divide for Fronts and shape Neck

Cast off centre 22 sts. Push all needles at left to E pos. K. right side first. 60 sts. H.C.L's III. K. 5 rows. Inc. 1 st. at neck edge of next and foll. alt. rows. 4 times in all. K. 1 row. Cast on 6 sts. at beg. of next row. 48 rows. 70 sts. K. straight to 68 rows. 000. Cast off 34 sts. at beg. of next row. K. straight to 58 rows. Cast off. H.C.L's I. Join wool at outside edge and K. to match right

front from * reversing all shapings.

TO MAKE UP

Pin out and press with a cool iron over a dry cloth. Join under arm and sleeve seam. Work 1 row of d.c. all round jacket and cuffs. Sew frilling round jacket and sleeve edges. Make 4 rosettes from frilling and sew 2 on each front. Sew ribbon to each side of neck. Press seams lightly.

BONNET

Cast on 86 sts. by hand. 000. T7. K. 38 rows.

Shape Back

000. Cast off 29 sts. at beg. of next 2 rows. K. on centre 28 sts. K. 4 rows. Dec. 1 st. each end of next and foll. 4th row 7 times in all. K. straight to 34 rows. Cast off.

TO MAKE UP

Press with a cool iron over a dry cloth. Sew cast off ends to flap.

Beginning at lower front edge, work 2 rows of d.c. along back neck (pulling in to fit) and round face.

Next row Work 1 treble, * 1 chain, miss 1 d.c. 1 treble into next d.c. rep. from * to end of back neck, ending with 1 treble. Sew frilling round face and a length of wide ribbon each side for tie. Make 2 rosettes and sew each side of bonnet. Press seams lightly.

BOOTEES

Cast on 45 sts. by hand. 000. T7. K. 16 rows. **Eyelet holes for ribbons** Trans. alt. sts. to adjacent needles. K. 2 rows. Break wool.

Divide for instep

Slip 11 sts. from each end on to 2 safety pins. Work on centre sts. only. Dec. 1 st. at beg. of next row. K. 18 rows.

Shape Toe

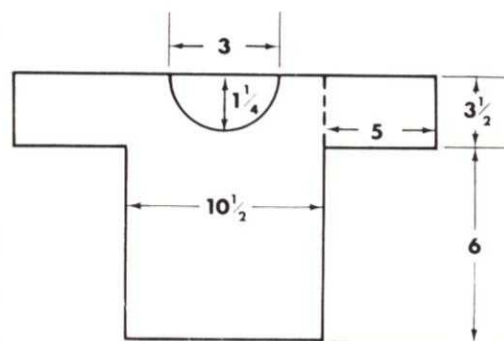
* H.C.L's III. Always winding wool round first needle in E pos. Push 1 needle at opposite end to carriage to E. pos. on next 10 rows and back to C on next 10 rows.* Slip sts. on to a pin.

Shape Heel

With purl side of work facing replace the 2 sets of sts. on machine, with outer edge to centre 22 sts. K. as toe from * to * K. 18 rows. Slip sts. on to a knitting needle. With plain sides facing each other replace the 2 sets of sts. back on machine and cast off as one.

TO MAKE UP

Join back and side foot seams. Work 1 row of d.c. round leg opening and sew on frilling. Thread ribbon through holes at ankle. Press seams lightly.



childs skirt and jumper

Materials

Jumper 6 (7, 8, 9) ozs. Robin Vogue 4 ply.
Skirt 5 (5, 6, 6) ozs. Robin Vogue 4 ply. $\frac{1}{4}$ -inch wide elastic to fit waist.

Measurements

Jumper To fit chest sizes 22 (24, 26, 28) ins.
 Finished measurements 24 (26, 28, 30) ins.
 Length at back neck $12\frac{1}{2}$ (14, $15\frac{1}{2}$, 17) ins.
 Sleeve seam 10 ($11\frac{1}{2}$, 13, $14\frac{1}{2}$) ins.
Skirt Length $8\frac{1}{2}$ ($9\frac{1}{2}$, $10\frac{1}{2}$, $11\frac{1}{2}$) ins.

Tension

T6. $15\frac{1}{2}$ sts. and 21 rows to 2 ins. after pressing.

Abbreviations

K., knit; sts., stitches; inc., increase; dec., decrease; rep., repeat; alt., alternate; beg., beginning; foll., following; patt., pattern; H.C.L's., holding cam levers; T., tension; 000., set row counter at 000; M.B., main bed.

Cable pattern stitch

K. 6 rows. Cross sts. 1 and 2 **over** 3 and 4, and 7 and 8 **over** 5 and 6. These 6 rows complete 1 pattern.

Notes

Needles in A position are counted as 1 st. when shaping.

JUMPER

BACK

Cast on 101 (109, 119, 125) sts. T5. K. 10 rows. 000. T6. Counting from each side transfer 22nd (26th, 30th, 34th) st. and foll. 9th st. onto adjacent needle. Push empty needles to A position. Foll. cable patt. K. 6 rows, dec. 1 st. each end of next and foll. 16th (18th, 20th, 22nd) row 4 times in all 93 (101, 109, 117) sts. K. straight to 82 (92, 102, 112) rows.

Shape Armhole

000. Cast off 4 (4, 5, 5) sts. at beg. of next 2 rows. Dec. 1 st. at each end of next 5 rows and every foll. alt. rows 2 (3, 3, 4) times in all 71 (77, 83, 89) sts. rem. *. K. straight to 46 (50, 54, 58) rows.

Shape Shoulder

Cast off 5 sts. at beg. of next 6 rows and 4 (6, 8, 10) sts. on next 2 rows. Slip rem. 33 (35, 37, 39) sts. on to a knitting needle.



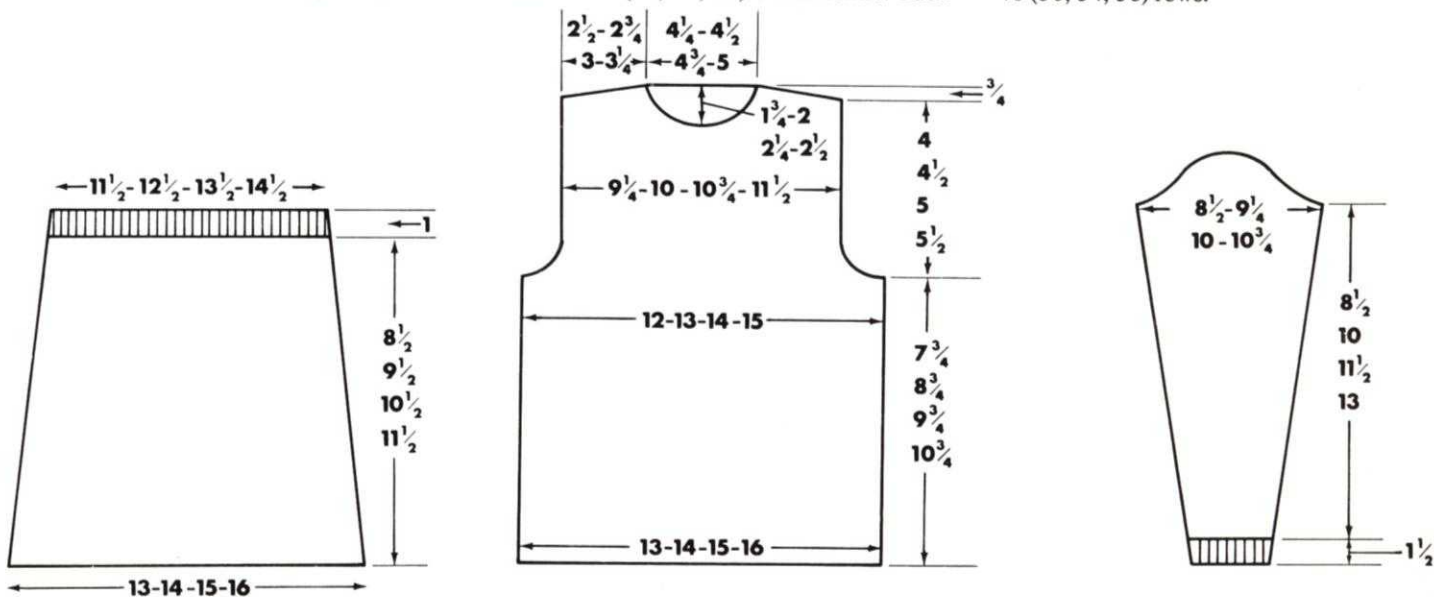
FRONT

K. as back to *. K. straight to 34 (36, 38, 40) rows.

Divide for Neck

Cast off 17 (19, 21, 23) sts. at centre. Push

needles at left to E position. H.C.L's III. K. the right side first. Dec. 1 st. at neck edge on next 5 rows, then every foll. alt. row 3 times in all 19 (21, 23, 25) sts. rem. K. straight to 46 (50, 54, 58) rows.



gaucho pants and bolero

Shape Shoulder

Cast off 5 sts. at beg. of next and alt. rows until 4 (6, 8, 10) sts. rem. K. 1 row. Cast off. K. left side to match.

SLEEVES

Ribbers Cast on 39 (43, 47, 51) as 1 x 1 rib. T4/4. K. 16 rows. Transfer ribber sts. to M.B.

Single machines Using waste wool cast on 20 (22, 24, 26) sts. K. a few rows. Change to main wool. T5. K. 31 rows. Make a hem and K. the row. 39 (43, 47, 51) sts.

All machines 000. T6. K. 6 rows. Inc. 1 st. at each end of next and every foll. 6th (6th, 7th, 8th) row. 13 (14, 15, 16) times in all 65 (71, 77, 83) sts. K. straight to 90 (106, 122, 138) rows.

Shape Top

000. Cast off 4 (4, 5, 5) sts. at beg. of next 2 rows. Dec. 1 st. at each end of next 3 rows, and every foll. alt. row 7 (7, 10, 9) times in all. Dec. 1 st. at each end of next 7 (7, 5, 9) rows. Cast off 3 sts. at beg. of next 4 (6, 6, 6) rows. Cast off rem. 11 (11, 13, 13) sts.

POLO COLLAR

Push 86 (94, 102, 110) needles to B position with wrong side facing and beg. at right side replace on machine 33 (35, 37, 39) sts. from back neck, pick up 18 (20, 22, 24) sts. down front neck, 17 (19, 21, 23) sts. from centre and 18 (20, 22, 24) sts. up front neck. T6. K. 1 row.

Ribbers Transfer alt. sts. to ribber T4/4. K. 28 (34, 40, 46) rows. K. 1 loose row. Transfer ribber sts. to M.B. Cast off chain method.

Single machines Transfer alt. sts. to adjacent needles. T5. K. 6 rows. T4. K. 44 (56, 68, 80) rows. T5. K. 6 rows. Cast off making a chain over empty needles.

TO MAKE UP

Pin out and press with a hot iron over a damp cloth. Join side, shoulder and sleeve seams. Set in sleeves. Turn mock rib collar to inside and slip-st. in place. Press seams.

SKIRT (Back and Front alike)

Cast on 101 (109, 117, 125) sts. by hand. T5. K. 12 rows. 000. T6. Arrange cable panels as follows. Counting from each side transfer 22nd (26th, 30th, 34th) st. and foll. 9th st. on to adjacent needles. Push empty needles to A position. Foll. cable patt. K. 4 rows. Dec. 1 st. at each end of next and every foll. 14th (16th, 18th, 20th) row 6 times in all 89 (97, 105, 113) sts. rem. K. straight to 90 (100, 110, 120) rows. (Adjust length here if required.)

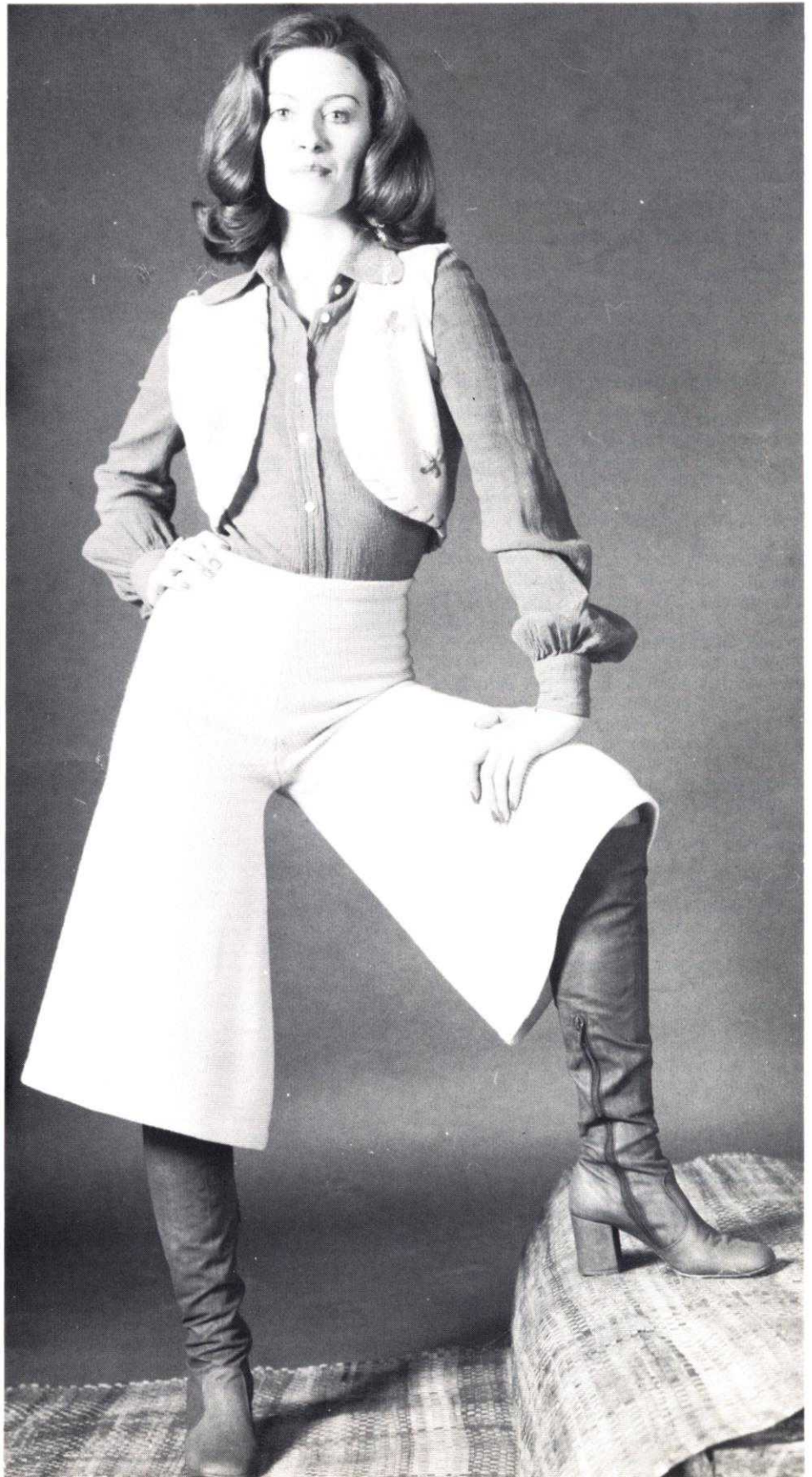
WAISTBAND

Ribbers Transfer alt. sts. to ribber. T4/4. K. 10 rows. K. 1 loose row. Transfer sts. to M.B. Cast off chain method.

Single machines Transfer alt. sts. to adjacent needles and push empty needles to A position. T5. K. 10 rows. Cast off making a chain over empty needles.

TO MAKE UP

Pin out and press with a hot iron over a damp cloth. Join side seams. Turn hem at lower edge to wrong side and slip-st. in place. Cut elastic to fit waist and join firmly into a ring. Place elastic inside waistband and work a herringbone casing over elastic into every alt. st. of ribbing. Press seams.



Materials

GaUCHO PANTS 13 (15, 16, 19) ozs. Patons Purple Heather 4 ply wool, 3 (3, 4, 4) 50 grms. balls Double Knitting wool, 6-inch zip.
Bolero 3 (4, 4, 5) ozs. 4 ply wool, oddments for motifs.

Measurements

Pants To fit hip sizes 34 (36, 38, 40) ins. Inside leg seam 16 (16½, 17, 17½) ins.
Bolero To fit bust sizes 32 (34, 36, 38) ins. Length to shoulder 13½ (13¾, 14, 14½) ins.

Tension

Weaving pattern 12 sts. and 21 rows to 2 ins.

Stocking st. 15 sts. and 20 rows to 2 ins.

Abbreviations

K., knit; sts., stitches; inc., increase; dec., decrease; foll., following; alt., alternate; beg., beginning; rem., remain; T., tension; 000., set row counter at 000.

Notes

The pants are made up on the stocking st. side, but can be reversed if preferred.

GAUCHO PANTS

RIGHT LEG

With 4 ply wool, cast on 178 (184, 190, 196) sts. by hand. T6. K. 10 rows. 000. T6. Foll. pattern chart K. 24 (26, 28, 30) rows. Dec. 1 st. each end of next and foll. 6th row, 24 times in all. 130 (136, 142, 148) sts. K. straight to 168 (174, 178, 184) rows. (Adjust length here if required.)

Shape to Waist

000. Cast off 2 sts. at beg. of next 2 rows. Dec. 1 st. at right side (back seam) on next 15 rows, **at the same time** K. 2 rows. Dec. 1 st. at left side (front seam) on next and alt. row 7 times in all. K. 1 row. Dec. 1 st. at left side, K. 1 row. 103 (109, 115, 121) sts. rem. Dec. 1 st. at right side at beg. of next and every foll. 4th row 9 times in all, **at the same time** dec. 1 st. at left side on next and foll. 8th row 5 times in all. K. 7 rows. Dec. 1 st. at each end of next and every foll. 8th row 6 times in all. 77 (83, 89, 95) sts. rem. K. straight to 104 (106, 108, 110) rows. Using 4 ply wool only K. 10 rows. K. 1 loose row. Cast off chain method.

LEFT LEG

K. as right leg reversing all shapings.

TO MAKE UP

Pin out and press with a warm iron over a damp cloth. Join inner leg seams. Join back and front seam, leaving front open for zip. Insert zip. Turn st.st. facing to inside and slip-st. in place. Turn under hem at base of legs. Press seams.

BOLERO

BACK

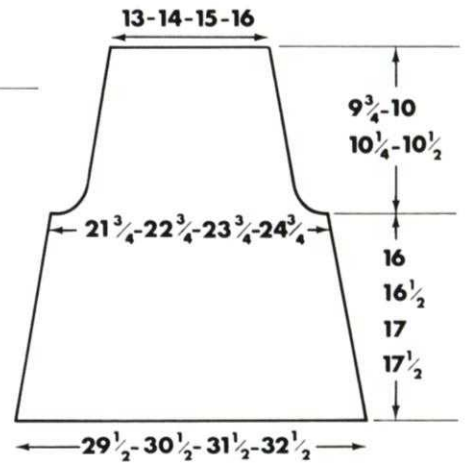
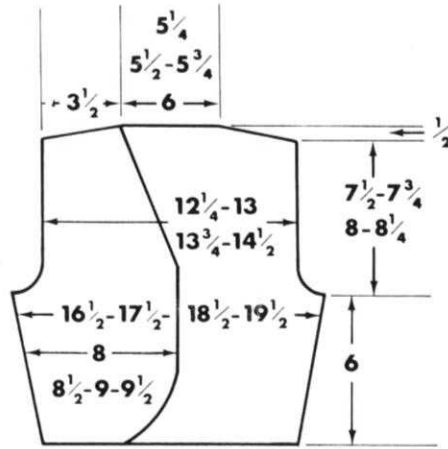
With 4 ply wool cast on 108 (116, 124, 132) sts. by hand. 000. T6. K. 8 rows. Inc. 1 st. each end of next and foll. 8th row 7 times in all. 122 (130, 138, 146) sts. K. straight until 60 rows have been worked.

Shape Armholes

000. Cast off 6 sts. at beg. of next 2 rows. Dec. 1 st. each end of next 4 rows, then every alt. row until 92 (98, 104, 110) sts. rem. K. straight until 76 (78, 82, 84) rows have been worked.

Shape Shoulders

Cast off 10 sts. at beg. of next 4 rows and 6 (8, 10, 12) sts. on next 2 rows. Cast off rem.



40 (42, 44, 46) sts.

RIGHT FRONT

000. T6. Cast on 31 (35, 39, 43) sts. by hand. K. 1 row. Cast on 2 sts. at beg. of next and foll. alt. row. Inc. 1 st. at left side on next 4 rows. Inc. 1 st. at right side (side seam) on next and every foll. 8th row, **at the same time** inc. 1 st. at left side (front edge) on next and every foll. alt. rows 7 times in all, then every foll. 4th row 5 times. 56 (60, 64, 68) sts. Continue to inc. 1 st. on every 8th row on side seam until there are 58 (62, 66, 70) sts. K. straight to 60 rows.

Shape Armholes

000. Cast off 6 sts. at beg. of next row. K. 1 row. Dec. 1 st. at armhole edge on next 4 rows. K. 1 row. Dec. 1 st. at armhole edge on next and every foll. alt. row 5 (6, 7, 8) times in all, **at the same time** dec. 1 st. at front edge on next and foll. 4th row 3 (3, 4, 4) times. Keeping armhole edge straight, continue to dec. 1 st. at neck edge on every 4th row until 26 (28, 30, 32) sts. rem. K.

straight until 76 (78, 82, 84) rows have been worked.

Shape Shoulder

Cast off 10 sts. at beg. of next and foll. alt. row. K. 1 row. Cast off rem. 6 (8, 10, 12) sts.

LEFT FRONT

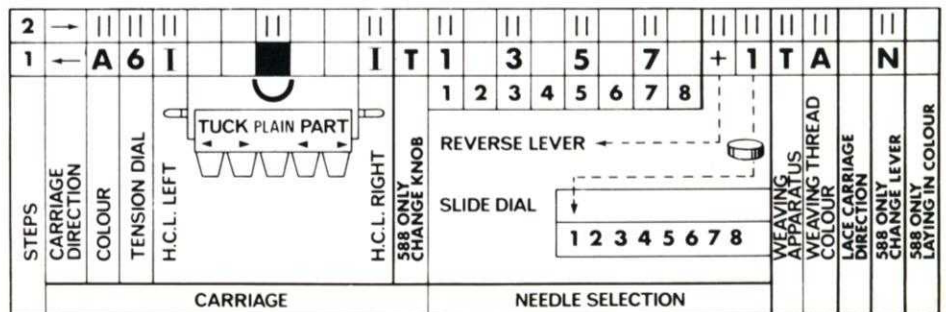
K. as Right Front. Cast on at left of machine and reverse all shapings.

BIAS BINDING

Cast on 12 sts. by hand at left hand side of machine. T4. K. 2 rows. Dec. 1 st. at left and inc. 1 st. at right on next and every foll. alt. rows until binding is long enough to fit around outer edges of bolero. Cast off. K. two more pieces in the same way for armhole binding.

TO MAKE UP

Pin out and press with a warm iron over a damp cloth. Join shoulder and side seams. Sew bias knitting round all outer edges and armholes. Work daisies and trimming over edging as shown. Press seams.



ribbed sweater with polo neck



Materials
16 (16, 17) ozs. Poppletons 4 ply fingering.
Measurements
Sleeve Seam 18½ (19, 19½) ins.

Under-arm Seam 16½ (17, 17½) ins.
Length from back of neck 26 ins.
Size
36 (38, 40) ins.

Tension

8 or to give 14 sts. and 20 rows to 2 ins. over st.st.

Abbreviations

K., knit; sts., stitches; inc., increase; dec., decrease; alt., alternate; foll., following; rem., remain; beg., beginning; H.C.L's., holding cam levers; T., tension; 000., set row counter at 000.

BACK

Cast on 130 (136, 142) sts. T4 and work 20 rows of K. 1. P. 1. rib. Transfer sts. from front bed starting from centre O so that every 5th st. remains on front bed. Reset Row Counter to 000 and tension to 8 and work 116 (120, 122) rows to armholes.

Armhole shaping

Cast off 5 sts. at beg. of next 2 rows. Cast off 2 sts. at beg. of next 4 rows and 1 st. at beg. of next 6 rows. K. 4 rows. Dec. 1 st. at both ends of next and every foll. 6th row to 90 (96, 104) sts. * *. Work 10 (12, 14) more rows.

Shape Shoulders

Cast off 6 (6, 6) sts. at beg. of next 6 rows and 5 (5, 6) at beg. of next 6 rows. Cast off rem. sts.

FRONT

As for back to * *. K. 2 rows (Carriage at right side). Using an odd length of wool, cast off centre 12 (14, 16) sts., put sts. at left hand end from front bed to back bed and K. each st. by hand with the nylon thread, pulling needles and sts. right down to position A. K. 1 row. Cast off 2 sts. at beg. on next and foll. alt. row. K. 1 row. Dec. 1 st. at beg. of next and foll. alt. row.

Shape Shoulder

Cast off 7 (7, 8) sts. at beg. of next row and dec. 1 st. at beg. of next. Rep. the last 2 rows twice more. Cast off rem. sts. Take carriage to left hand side, raise needles to wkg. position and unravel thread. Return the single rib sts. back to the front bed and work to match previous piece.

SLEEVES

Cast on 60 (62, 64) sts. and work 16 rows single rib for cuff. 000. T8. Transfer sts. as on back for body rib. Inc. 1 st. at beg. of every 5th and 6th row to 100 (104, 108) sts. Work without further shaping to row 126 (130, 134) or desired length.

Shape Top

Cast off 4 sts. at beg. of next 2 rows then 2 sts. at beg. of next 2 rows. Dec. 1 st. at both ends of next 10 (10, 12) rows. Dec. 1 st. at beg. of next 50 (50, 50) rows. K. 40 (40, 42) rows, 1 extra for second sleeve. Cast off 7 (7, 8) sts. at beg. of next and foll. alt. row K. 1 row. Cast off rem. sts. Work second sleeve in same manner, reversing shapings.

POLO NECK

Cast on 150 (156, 162) sts. T7. K. 12 rows, T5. K. 12 rows, T3. K. 8 rows, T6. K. 10 rows, cast off loosely.

TO MAKE UP

Pin out and press lightly with a hot iron over a damp cloth. Join side and sleeves seams. Press. Sew sleeves into armholes and extension piece along shoulder edges. Join polo collar and sew neatly to neck edge of sweater. Give a final press.

battle top

2 rows.

Shape Raglan Armholes

000. Cast off 2 (3, 3) sts. at beg. of next 2 rows. Dec. 1 st. (see notes) at each end of next and every alt. row, 24 (26, 29) times in all. K. 1 row. Slip rem. 24 (26, 28) sts. on to a knitting needle. *50 rows*

RIGHT FRONT

Using waste yarn cast on 32 (36, 40) sts. and K. a few rows. K. as given for Back from * to *. Push 36 (40, 44) needles to B position. Replace sts. on machine, **inc.** 4 sts. evenly along the row. T5. Working in st.st. only, K. 2 rows. (K. 1 row more for Left Front.)

Shape Raglan Armhole

000. Cast off 2 (3, 3) sts. at beg. of next row. K. 1 row. Dec. 1 st. (see notes) at beg. of next and every alt. row 18 (19, 21) times. 16 (18, 20) sts. rem. Carriage at left.

Shape Neck

Cast off 4 sts. at beg. of next row. Continue raglan decs as before, **at the same time**, dec. 1 st. at neck edge on next and every alt. row, 3 (4, 5) times in all, then every 3rd row twice. 1 st. rem. Fasten off.

LEFT FRONT

K. as Right Front, reversing shapings.

SLEEVES

Using waste yarn cast on 41 (45, 49) sts. and K. a few rows. Change to main yarn. T5. K. 19 rows. Make a hem and K. the row. 000. T5. Foll. chart, K. 8 rows. Inc. 1 st. at each end of next and every foll. 10th (12th, 12th) row, 5 (6, 7) times in all. 51 (57, 63) sts. K. to 58 (80, 102) rows. Slip sts. on to a knitting needle. Push 56 (62, 68) needles to B position. Replace sts. on machine, **inc.** 5 sts. evenly along the row. Working in st.st. only K. 2 rows.

Shape Raglan Top

000. Cast off 2 (3, 3) sts. at beg. of next 2 rows. K. 1 row. Dec. 1 st. (see notes) at each end of next and every 3rd row, 2 times in all, then every alt. row until 6 sts. rem. K. 1 row. Slip sts. on to a knitting needle.

BUTTON BAND

Ribbers cast on 11 sts. as 1 x 1 rib. T2/2.

K. until long enough to fit up front to beg. of neck shaping, stretching slightly. Slip sts. on to a knitting needle.

Single machines Cast on 14 sts. by hand. T4. K. until long enough to fit up front to beg. of neck shaping, stretching slightly and ending at right side for girls and left side for boys. Cast off 7 sts. at beg. of next row and slip rem. sts. on to a knitting needle.

BUTTONHOLE BAND

Mark positions on appropriate side for 5 buttons, the first $\frac{1}{4}$ -inch above lower edge and allowing for the final one to come in the neckband. Space remainder evenly between.

Ribbers K. as Button band, making buttonholes to match markers over centre needle.

Single machines K. as Button band making buttonholes to match markers over needles 4 and 5 from each end, and ending at left side for girls and right side for boys. Cast off 7 sts. at beg. of next row and slip rem. sts. on to a knitting needle.

NECKBAND

With wrong side facing and beg. at right, replace 11 (7) sts. from appropriate front band on machine, pick up 12 (14, 16) sts. up front neck, 6 sts. from one sleeve, 24 (26, 28) sts. from back neck, 6 sts. from other sleeve, 12 (14, 16) down front neck and 11 (7) sts. from other front band. K. 1 row.

Ribbers 82 (88, 94) sts. **Single machines** 74 (80, 86) sts.

Ribbers T5. K. 1 row. Transfer alt. sts. to ribber. T2/2. K. 4 rows. Make a buttonhole on appropriate side on 6th needle. K. 5 rows. K. 1 loose row. Transfer ribber sts. to M.B. and chain cast off.

Single machines T4. K. 5 rows. Make a buttonhole on appropriate side over needles 3 and 4 from end. K. 10 rows. Make a buttonhole as before. K. 5 rows. K. 1 loose row and chain cast off.

TO MAKE UP

Join side, sleeve and raglan seams. Sew front bands in position. Turn st.st. front bands and neckband to wrong side and slipst. in place. Neaten buttonholes. Sew on buttons. Press seams lightly.

(Suitable for all machines with 170 needles or more)

Materials

Patons 4 ply Random Escapade 6763 16 (16, 17, 18) ozs. 5 Large Brass Blazer Buttons. 10 Brass Blazer Cuff Buttons to match. 3 Press-stud fasteners.

Measurements

To fit a 32 (34, 36, 38) ins. Bust.

Garment measures 34 (36, 38, 40) ins.

Length at centre back without collar and including waistband 22 (22 $\frac{1}{2}$, 23, 23 $\frac{1}{2}$) ins.

Sleeve seam 14 $\frac{1}{2}$ (15, 15 $\frac{1}{2}$, 16) ins. without cuff.

Tension

Main: T7. 14 sts. and 20 rows to 2 ins.

Ribbing: T5/4 28 sts. and 16 rows to 2 ins.

Abbreviations

K., knit; sts., stitches; ins., inches; inc., increase; dec., decrease; T., tension; 000., set row counter at 000; beg., beginning.

BACK

Cast on 142 (150, 158, 166) sts. by hand. T7. 000. K. 6 (10, 14, 18) rows. Dec. 1 st. at each end of next row. K. 8 rows. Repeat last 9 rows 9 times. (122, (130, 138, 146) sts. 96 (100, 104, 108) rows.)

Shape Armhole

Cast off 7 (6, 5, 5) sts. at the beg. of next 2 rows. Cast off 4 (4, 4, 3) sts. at beg. of next 2 rows. Size 34, 36 and 38 only, cast off 2 sts. at beg. of next 2 rows. All sizes, repeat last 2 rows 0 (0, 1, 2) times. Dec. 1 st. at each end of next row. K. 1 row. Repeat last 2 rows 5 times. (88 (94, 100, 106) sts. 112 (118, 124, 130) rows.) K. 72 rows.

Shape Shoulders

Cast off 5 sts. at the beg. of next 2 rows. Cast off 4 sts. at the beg. of next 2 rows. Repeat last 2 rows 5 times. Cast off remaining 30 (36, 42, 48) sts. 198 (204, 210, 216) rows.

FRONTS

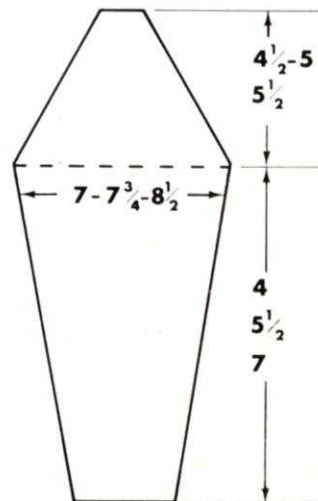
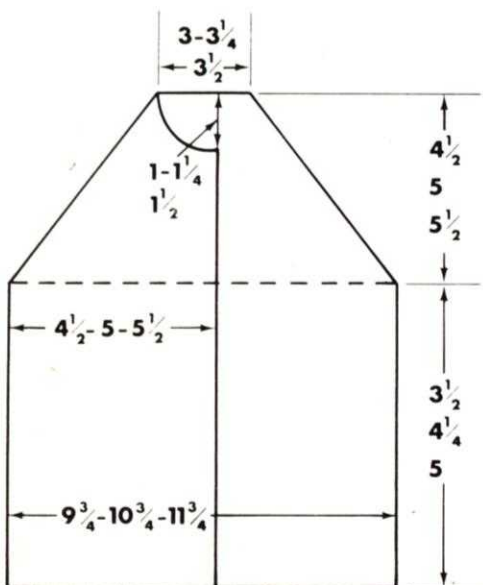
Cast on 78 (82, 86, 90) sts. by hand. T7. 000. K. 6 (10, 14, 18) rows. Dec. 1 st. at side edge of next row. K. 8 rows. Repeat last 9 rows 9 times, at the same time on right front at rows 10, 45, 80, 115, 150 make buttonhole at front edge over needles 3, 4, 5 and 9, 10, 11. (68 (72, 76, 80) sts., 96 (100, 104, 108) rows.) Left front only K. 1 row.

Shape Armhole

Cast off 7 (6, 5, 5) sts. at the beg. of next row. K. 1 row. Cast off 4 (4, 4, 3) sts. at the beg. of next row. K. 1 row. Size 34, 36, 38 only, cast off 2 sts. at the beg. of next row. K. 1 row. All sizes, repeat last 2 rows 0 (0, 1, 2) times. Dec. 1 st. at the beg. next row. K. 1 row. Repeat last 2 rows 5 times. (51 (54, 57, 60) sts., 112 (118, 124, 130) rows), (will read 1 row extra on left front.) K. 61 rows.

Shape Neck

Keeping armhole edge straight, cast off 10 (11, 10, 11) sts. at beg. next row. K. 1 row. Cast off 3 (3, 3, 4) sts. at beg. next row. K. 1 row. Cast off 2 (2, 3, 3) sts. at beg. of next row. K. 1 row. Dec. 1 st. at beg. next row. K. 1 row. Repeat last 2 rows 3 times. Dec. 1 st. at beg. next row. K. 3 rows. Repeat last 4 rows 2 times, at the same time when row counter reads 184 (190, 196, 202), (will read 1 row extra on left front), cast off 5 sts.





at beg. next row. K. 1 row. Cast off 4 sts. at beg. next row. K. 1 row. Repeat last 2 rows 4 (5, 5, 5) times. Size 32 only cast off 2 sts. at beg. of next row. K. 1 row. Cast off remaining 2 (2, 5, 6) sts. 198 (204, 210, 216) rows (will read 1 row extra for left

front).

SLEEVES

Cast on 80 (84, 88, 92) sts. by hand. T7. 000. K. 13 rows. Inc. 1 st. at each end of next row. Repeat last 14 rows 9 times. K. 6 (10, 14, 18) rows (100 (104, 108, 112) sts.,

146 (150, 154, 158) rows), adjust length at this point if necessary.

Shape Armhole

Cast off 5 (6, 7, 9) sts. at beg. next 2 rows. Cast off 3 (4, 5, 5) sts. at beg. next 2 rows. Cast off 2 sts. at beg. of next 2 rows. Repeat last 2 rows 2 times. Dec. 1 st. at each end of next row. K. 1 row. Repeat last 2 rows 5 times. Dec. 1 st. at each end of next row. K. 2 rows. Repeat last 3 rows 4 times. Dec. 1 st. at each end of next row. K. 1 row. Repeat last 2 rows 9 times. Cast off 2 sts. at beg. of next 2 rows. Repeat last 2 rows once. Cast off 5 sts. at beg. of next 2 rows. Cast off remaining 12 sts. 209 (213, 217, 221) rows.

POCKETS (2 alike)

Cast on 24 sts. by hand. T7. 000. K. 40 rows. Dec. 1 st. at each end of next row. K. 2 rows. Repeat last 3 rows 3 times. Inc. 1 st. at each end of next row. K. 2 rows. Repeat last 3 rows 3 times. K. 4 rows. Cast off.

EPAULETTES (2 alike)

Cast on 10 sts. by hand. T7. 000. K. 20 rows. Dec. 1 st. at each end of next row. K. 4 rows. Repeat last 5 rows 2 times. Inc. 1 st. at each end of next row. K. 4 rows. Repeat last 5 rows 2 times. K. 20 rows. Cast off.

COLLAR (2 alike)

Cast on 6 sts. by hand. T7. 000. K. 2 rows. Cast on 9 sts. K. 2 rows. Cast on 10 sts. K. 2 rows. Cast on 11 sts. K. 2 rows. Cast off 2 sts. at beg. of next row. K. 1 row. Repeat last 2 rows 4 times. Dec. 1 st. at right edge of next row. K. 2 rows. Repeat last 3 rows 3 times. Dec. 1 st. at right edge of next row. K. 3 rows, repeat last 4 rows once, at same time at left edge dec. 1 st. on next row. K. 5 rows. Repeat last 6 rows 6 times. K. 40 (48, 56, 64) rows. (13 sts., 112 (120, 128, 136) rows.) Inc. 1 st. at left edge of next row. K. 5 rows. Repeat last 6 rows 6 times, at same time when row counter reads 146 (154, 162, 170) inc. 1 st. at right edge of next row. K. 3 rows. Repeat last 4 rows once. Inc. 1 st. at right edge of next row. K. 2 rows. Repeat last 3 rows 3 times. Cast on 2 sts. at right edge on next row. K. 1 row. Repeat last 2 rows 4 times. Cast off 11 sts. at beg. of next row. K. 1 row. Cast off 10 sts. at beg. of next row. K. 1 row. Cast off remaining 6 sts.

WAISTBAND

Ribbers Cast on 27 sts. as 1 x 1 rib. T5/4. 000. K. 260 (276, 292, 306) rows. Cast off.

Single machines Cast on 28 sts. by hand. T7. 000. K. 325 (345, 365, 385) rows. Cast off.

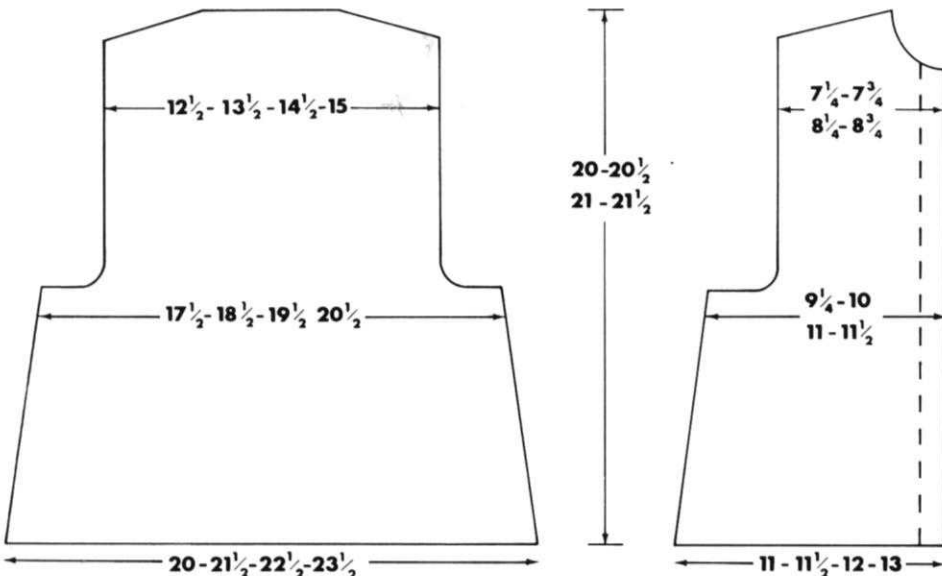
CUFFS (2 alike)

Ribbers Cast on 27 sts. as 1 x 1 rib. T5/4. 000. K. 6 rows. Make buttonhole over needles 7, 8, 9 and 19, 20, 21. K. 60 (64, 68, 72) rows. Cast off.

Single machines Cast on 28 sts. by hand. T7. 000. K. 7 rows. Make buttonholes over needles 3, 4, 5; 10, 11, 12; 17, 18, 19; 24, 25, 26. K. 75 (80, 85, 90) rows. Cast off.

TO MAKE UP

Press each piece excluding the ribbing. Join shoulder seams and insert sleeve. Join side seams and sleeve seams. Fold front edges in 1 inch matching buttonholes on right front,



		0				0				32
		0				0				31
0				0				0		30
0				0				0		29
		0	0	0						28
		0	0	0						27
x	x	0	0	0	x	x	x			26
x	x	0	0	0	x	x	x			25
0	0	0	0	0	0	0	0	x		24
0	0	0	0	0	0	0	0	x		23
x	x	0	0	0	x	x	x			22
x		0	0	0	x	x	x			21
		0	0	0						20
		0	0	0						19
0			0					0		18
0			0					0		17
	0					0				16
	0					0				15
	x		x		x					14
	x		x		x					13
x		x	x	x		x				12
x		x	x	x		x				11
	x	x	x	x	x					10
	x	x	x	x	x					9
x	x	x	x	x	x	x				8
x	x	x	x	x	x	x				7
	x	x	x	x	x					6
	x	x	x	x	x					5
x		x	x	x		x				4
x		x	x	x		x				3
	x		x		x					2
	x		x		x					1
1	2	3	4	5	6	7	8			

□ = M
 x = A
 0 = B

Materials

13 (14, 15, 16, 17) ozs. Emu Scotch 4 ply in Main Colour (M), 2 (2, 2, 3, 3) ozs. in Contrast A, 1 (2, 2, 2, 3) ozs. in Contrast B.

Measurements

To fit chest or bust sizes 34 (36, 38, 40, 42) ins.

Finished measurements 36 (38, 40, 42, 44) ins.

Length to back neck 24½ (24½, 24½, 25, 25½) ins.

Sleeve seam 17½ ins.

Tension

T6. 15½ sts. and 20 rows to 2 ins. over st.st.

Abbreviations

K., knit; sts., stitches; inc., increase; dec., decrease; alt., alternate; rep., repeat; beg., beginning; foll., following; rem., remain; T., tension; H.C.L's., holding cam levers; 000., set row counter to 000; M.B., main bed.

BACK

Ribbers Using M, cast on 139 (147, 155, 163, 171) sts. as 1 x 1 rib. T3/3. K. 20 rows. Transfer sts. to M.B.

Single machines Using waste wool, cast on 70 (74, 78, 82, 84) sts. over alt. needles and K. a few rows. Change to M. T4. K. 39 rows. Make a hem and K. the row. 139 (147, 155, 163, 171) sts.

All machines 000. T6. K. straight to 132 rows*.

Shape Raglan Armholes

000. Making sure that diamond is at centre of work and foll. chart, cast off 1 (2, 3, 4, 5) sts. at beg. of next 2 rows. Dec. 1 st. at each end of next and foll. alt. row 44 times in all. Dec. 1 st. at each end of next 2 (4, 6, 8, 10) rows. Slip remaining 45 (47, 49, 51, 53) sts. on to a knitting needle.

FRONT

K. as Back to*.

Shape Raglan

000. Foll. Fair-isle chart cast off 1 (2, 3, 4, 5) sts. at beg. of next 2 rows. Dec. 1 st. at each end of next and foll. alt. row 30 (31, 32, 33, 34) times in all. K. 1 row.

Shape Neck

* Cast off 21 (25, 29, 33, 37) sts. at centre. H.C.L's II. (All other machines H.C.L's III) Push needles at left to E position. K. the right side first. Continue Raglan shaping as before at the same time dec. 1 st. at neck edge on next 3 rows then foll. alt. rows 5 times. K. 3 rows. Dec. 1 st. at neck edge on next and foll. 4th row 3 times in all. 4 sts. rem. K. 1 row. Dec. 1 st. at raglan edge only on next and foll. alt. row. 2 sts. rem. Cast off. H.C.L. 3. (H.C.L's I) K. left side to match reversing shaping.

SLEEVES

Ribbers Using M, cast on 61 (65, 69, 73, 77) sts. as 1 x 1 rib. T3/3. K. 20 rows. Transfer sts. to M.B.

Single machines Using waste wool, cast on 31 (33, 35, 37, 39) sts. on alt. needles. K. a few rows. Change to M. T4. K. 39 rows. Make a hem and K. the row. 61 (65, 69, 73, 77) sts.

All machines

000. T6. K. 10 rows. Inc. 1 st. at each end of next and foll. 7th row 20 times in all. 101 (105, 109, 113, 117) sts. K. straight to 156 rows. (Adjust length here if required.)

Shape Raglan Top

000. Foll. Fair-isle chart, cast off 1 (2, 3, 4, 5) sts. at beg. of next 2 rows. K. 2 rows. Dec. 1 st. at each end of next and foll. 4th row then every alt. row until 13 sts. rem. K. 1 row. Slip rem. sts. on to a knitting needle.

NECK BAND

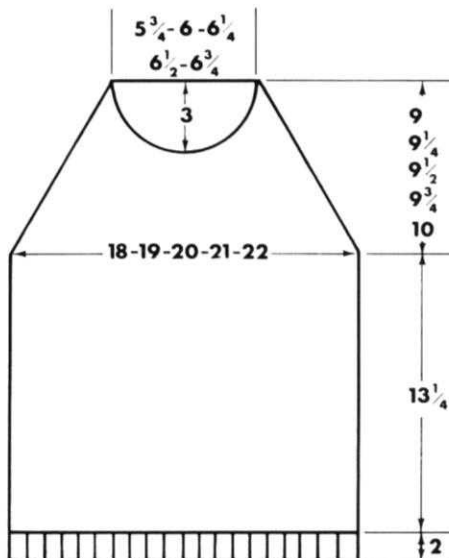
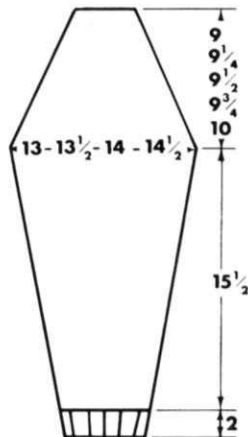
With wrong side facing and starting at right edge, place on machine 45 (47, 49, 51, 53) sts. from back neck. 13 sts. from one sleeve, 26 sts. down front neck, 21 (25, 29, 33, 37) sts. from centre, 26 sts. up front neck and 13 sts. from other sleeve. 144 (150, 156, 162, 168) sts. T6. Using M, K. 1 row.

Ribbers Transfer alt. sts. to ribber. T3/3. K. 20 rows. K. 1 loose row. Transfer ribber sts. to M.B. and cast off chain method.

Single machines Transfer alt. sts. to adjacent needles and push empty needles to A position. T4. K. 20 rows. Return empty needles to B position. K. 1 loose row. Cast off chain method.

TO MAKE UP

Pin out and press with a hot iron over a damp cloth. Join side, sleeve and raglan seams. Fold neckband in half and slip-st. in place. Press seams.



before until 24 (26, 28, 30, 32) sts. rem. K. straight to 88 (90, 94, 96, 100) rows.

Shape Shoulder

Cast off 5 (5, 5, 6, 6) sts. at beg. of next and alt. rows until 4 (6, 8, 6, 8) sts. rem. K. 1 row. Cast off.

RIGHT FRONT

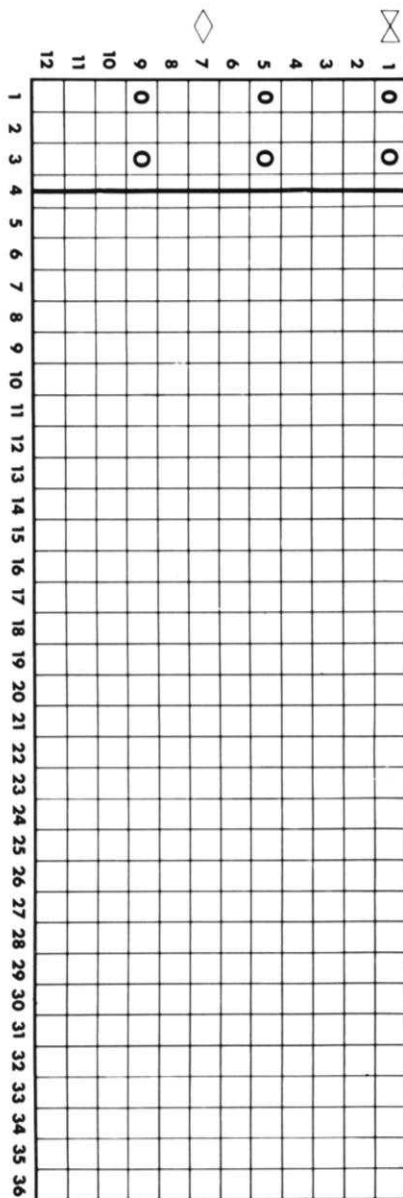
K. as Left Front reversing all shapings.

SLEEVES

Ribbers Cast on 47 (51, 55, 59, 63) sts. as 1 x 1 rib. T7/7. K. 16 rows. Transfer ribber sts. to M.B.

Single machines Using waste wool, cast on 24 (26, 28, 30, 32) sts. on alt. needles. K. a few rows. Change to main wool. T7. K. 31 rows. Make a hem and K. the row. 47 (51, 55, 59, 63) sts.

All machines 000. T10. Foll. pattern chart K. 12 rows. Inc. 1 st. at each end of next and foll. 8th (8th, 10th, 10th, 10th) row 16



times in all. 79 (83, 87, 91, 95) sts. K. straight to 170 (170, 176, 176, 176) rows. (Adjust length here if required.)

Shape Top

000. Cast off 4 sts. at beg. of next 2 rows. Dec. 1 st. at each end of next 3 rows then foll. alt. rows twice. K. 3 rows. Dec. 1 st. each end of next and foll. 4th row 8 times in all. K. 1 row. Dec. 1 st. at each end of next and foll. alt. row 5 (5, 5, 6, 6) times in all, then at each end of next 3 (5, 7, 5, 7) rows. Cast off 3 sts. at beg. of next 4 (4, 4, 6, 6) rows. Cast off rem. 17 sts.

FRONT BAND

Mark appropriate side for 5 buttonholes, the first 1/4-inch above lower edge and the final one at beg. of neck shapings. Space remainder evenly between.

Ribbers Cast on 12 sts. as 1 x 1 rib. T7/7. K. straight making buttonholes to match markers over 4 centre sts. K. until long enough to fit along both fronts and across back neck, stretching to fit.

Single machines Cast on 20 sts. by hand. T9. K. straight making buttonholes to markers over needles 5, 6 and 7 from each end. K. until long enough to fit along both fronts and across back neck, stretching to fit.

POCKET TOPS

Ribbers Replace 30 (31, 30, 31, 30) sts. from top of pocket on machine. Transfer alt. sts. to ribber. T7/7. K. 10 rows. Cast off loosely by hand.

Single machines Replace 30 (31, 30, 31, 30) sts. from top of pocket on machine. T10. K. 16 rows. Cast off loosely.

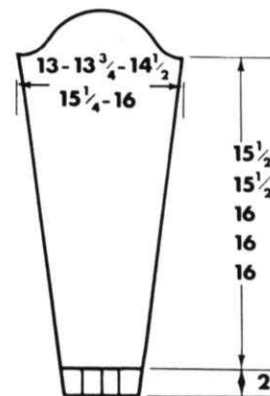
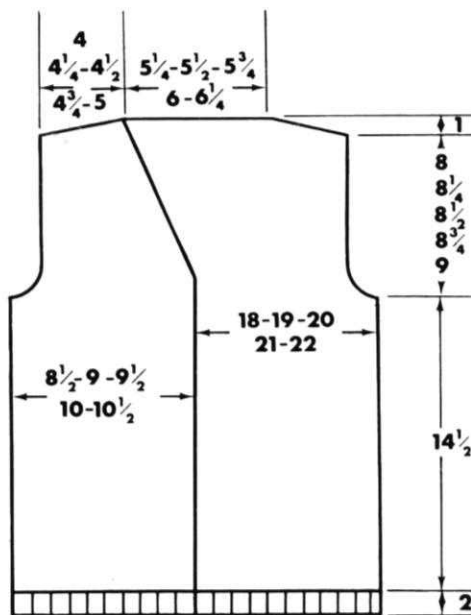
COLLAR (optional)

Ribbers Cast on 85 (89, 93, 97, 101) sts. as 1 x 1 rib. 000. T7/7. K. 44 rows. K. 1 loose row. Transfer ribber sts. to M.B. and chain cast off.

Single machines Cast on 85 (89, 93, 97, 101) sts. T10. K. 44 rows. Cast off loosely.

TO MAKE UP

Pin out and press with a warm iron over a damp cloth. Join side, shoulder and sleeve seams. Set in sleeves. Sew ribbed front band in position and neaten buttonholes. Sew on buttons. Sew stocking st. front band in position, turn to wrong side and slip-st. in place. Neaten buttonholes and sew on buttons. Catch down side edges of ribbed pocket tops. Fold top of st.st. pocket tops in half and slip-st. in place. Sew pocket linings in place. Sew ribbed collar in place as shown. Fold stocking st. collar in half lengthways and sew in place as shown. Close side seams. Press all seams.



NO	K.C.		C. K. : N	H.C.L.		S.I.L.		S.L.		L.C.																										
	H.C.L.		C. B. : Plain	Y. : A		L. Y. :																														
3	K.C.	→ → → →																																		
2	H.C.L.	2 3																																		
1	S.L.	1																																		
Steps	1	2	3	4	5	6	7	8	9	10	11	12	13	14	15	16	17	18	19	20	21	22	23	24	25	26	27	28	29	30	31	32	33	34	35	36

jacquard vest and jumper

Materials

For the **vest** you require:

4 (5, 5) ozs. Hayfields Beaulon 4 ply Dark.
1 (1, 1) ozs. Hayfields Beaulon 4 ply
Medium.

1 (1, 1) ozs. Hayfields Beaulon 4 ply Light.

For the **jumper** you require:

11 (11, 12) ozs. Hayfields Beaulon 4 ply
Light.

7 inch zip fastener.

Shirring Elastic to match in colour.

No. 9 Crochet hook.

Measurements

To fit 32 (34, 36) ins. bust.

17 (18, 19) ins. back neck to waist length.

20½ (21, 21½) ins. sleeve seam allowing for
bloused cuff.

Tension

7½ sts. and 10 rows to 1 in. on T8 for vest.

7 sts. and 11 rows to 1 in. on T7 for jumper.

Abbreviations

dk., dark; med., medium; lt., light; T.,
tension; st(s), stitch(es); 000., set row
counter to 000; K., knit; COL(R), carriage
on left or right; MDE., make double edge by
placing each loop at cast on edge on to B
position N; SD., slide dial; cont., continue;
fin., finishing; inc., increase; dec., decrease;
alt., alternate; N., needles; rep., repeat; tog.,
together; foll., following; beg., beginning;
pos., position; H.C.L's., holding cam levers;
rem., remaining.

VEST

Back and Front Alike

T5. With dk. cast on 89 (97, 105) sts.
placing odd st. on right hand edge. 000. K.
24 rows. T8. K. 1 row for foldline. T5. K.
24 rows, fin. COL. MDE. T8. K. 1 row.
COR. 000. SD. on I. Join on med. Cont. in
pattern from chart throughout to 20 rows.
fin. COR. Inc. 1 st. each end of the next and
then every foll. 3rd row 11 times more to
113 (121, 129) sts. Cont. straight to 56
rows fin. COR. (Adjust length at this stage if
desired.)

Shape Armholes and Neck

Cast off 8 sts. at each end of the work.
Thread up and take off machine the centre
31 (39, 47) sts. for centre neck. Thread up
and take off machine the left 33 sts. Cont.
on right 33 sts. as folls. 000. Dec. 1 st. each
end of every alt. row 8 times to 17 sts. fin.
COR. 000.

Shoulder Strap

Cont. straight to 84 (90, 96) rows. Cast off.
Place left 33 sts. back to same N. as before
and work to match.

NECKBAND

T5. With dk. cast on 139 (159, 179) sts. *.
000. K. 8 rows. T8. K. 1 row for foldline.
T5. K. 8 rows, fin. COL. MDE. K. 1 row.
COR. *. With right side of work facing
machine place strap neck edge to first 42
(48, 54) N., then dec. neck edge to next 12
N., centre neck to next 31 (39, 47) N., place
rem. of edge to rest of N., to correspond.
Cast off edge and band tog. Work band for
other neck edge the same.

ARMBANDS

Press both pieces. Join shoulder and
neckband seams. T5. With dk. cast on 124
(136, 148) sts. Rep. from * to * as on
neckband. With right side of work facing



machine place cast off armhole to first 8 N., dec. armhole edge to next 12 N., the strap armhole edge to shoulder seam to next 42 (48, 54) N., place rem. of edge to rest of N. to correspond. Cast off edge and band tog. Work other armband the same.

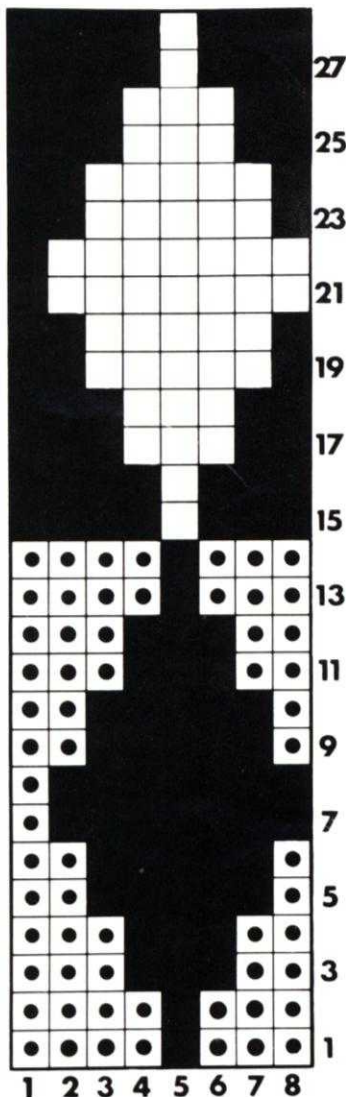
TO MAKE UP

Join side and armband seams. Press all seams.

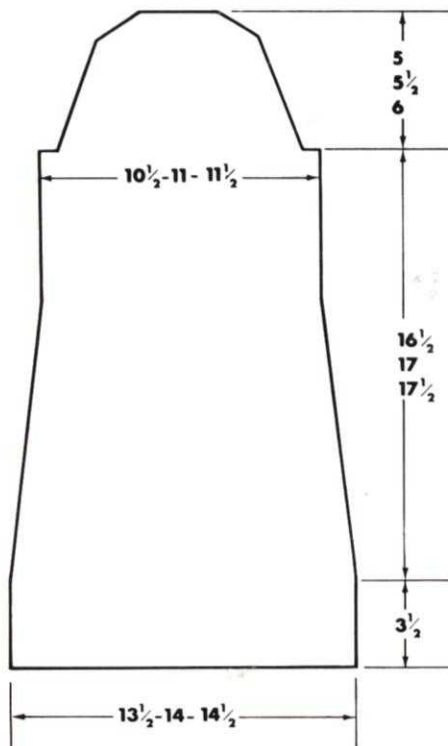
JUMPER (Worked in light throughout.)

BACK

*. T5. Cast on 82 (90, 98) sts. K. 12 rows. K. 8. K. 1 row for foldline, T5. K. 12 rows, fin. COL. MDE. T7. K. 1 row. COR. 000. K. straight for 28 rows. (Adjust length at this stage if desired.) 000. Inc. 1 st. each end of the next and then every foll. 4th row 12 times more to 108 (116, 124) sts. K.



■ Dark
● Medium
□ Light



straight to 52 (58, 64) rows fin. COR.

Shape Armholes

Cast off 3 (4, 5) sts. at beg. of the next 2 rows fin. COR. 102 (108, 114) sts. 000. Dec. 1 st. each end of every foll. 3rd row 10 times to 82 (88, 94) sts. 000. *. K. to 10 (16, 22) rows fin. COR.

Back Opening

Push left N. to E pos. H.C.L.'s to III. Cont. on right sts. to 52 (58, 64) rows fin. COR.

Shape Shoulder

Cast off 5 sts. at the beg. of the next row and at this same edge every alt. row 3 times more fin. COR. Cast off 4 (6, 8) sts. on right edge, K. 2 rows. Thread up and take off machine the rem. 17 (18, 19) sts. H.C.L.'s to I. K. left sts. to match reversing shapings.

FRONT

Rep. from * to * as on back. K. straight to 34 (40, 46) rows fin. COR.

Shape Neck

Thread up and take off machine the centre 18 (20, 22) sts. Push to E pos. the left N. H.C.L.'s to III. Cont. on right sts. at same time dec. 1 st., every alt. row on neck to 24 (26, 28) sts. K. to 54 (58, 64) rows fin. COR.

Shape Shoulder

Cast off 5 sts. at beg. of the next row and at this same edge every alt. row 4 times more fin. COR. Cast off rem. 4 (6, 8) sts. H.C.L.'s to I, K. left sts. to match reversing shapings.

SLEEVES

T5. Cast on 96 (100, 104) sts. K. 6 rows. K. 8. K. 1 row for foldline. T5. K. 6 rows, fin. COL. MDE. T7. K. 1 row. COR. 000. K. 26 rows straight. Set machine for weaving. Press buttons 1/3/5/7. SD on I. Set lever. Weave 2 rows tightly with elastic. K. 1 row. Reset buttons to 1 and 5. Set lever. Transfer with lace carriage an even

number of sts. for the drawstring. K. 1 row. Weave 2 more rows with elastic. Secure elastic. 000. Dec. 1 st. each end of every foll. 11th row to 74 (78, 82) sts. K. to 184 (190, 196) rows fin. COR. (Adjust length at this stage if desired.)

Shape Top

Cast off 3 (4, 5) sts. at beg. of the next 2 rows, fin. COR. 68 (70, 72) sts. 000. Dec. 1 st. each end of every foll. 4th row to 48 sts. K. to 42 (48, 54) rows. Cast off 3 sts. at beg. of the next 10 rows. Cast off the rem. 18 sts.

NECKBAND

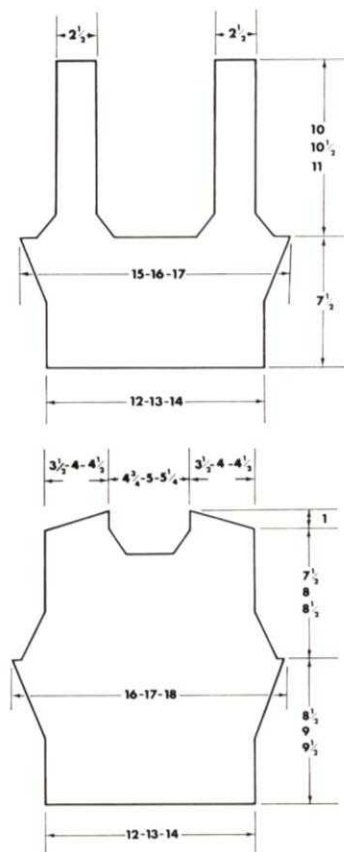
Press back and front, join shoulder seams. T5. Cast on 84 (88, 92) sts. K. 28 rows. T8. K. 1 row for foldline. T5. K. 28 rows. MDE. With right side of garment facing machine and working from right hand edge of N. place the right back neck sts. to the first 17 (18, 19) N., side neck to next 16 N., front neck to next 18 (20, 22) N., cast off band and neck edge to this point, place rem. of neck edge to rest of N. to correspond and cast off tog. to end.

WRISTCORDS

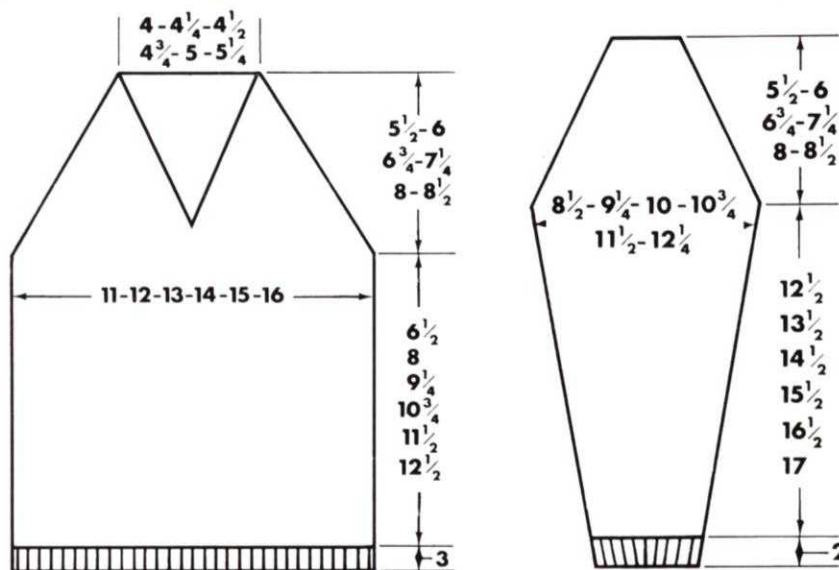
T3. Cast on 3 sts. Press in right part button. K. to a length of 36 ins. and fasten off. Work another cord.

TO MAKE UP

Press sleeves and sew them into armholes. Sew side and sleeve seams. Press neckband. Work a row of single crochet on neckband and back opening edges. Sew in zip. Thread in drawstring at wrists. Press seams and back opening.



childs v-neck sweater



Materials

9 (10, 11, 12, 14, 15) ozs. Listers Lavenda Double Knitting Wool.

Measurements

To fit chest sizes 22 (24, 26, 28, 30, 32) ins. Finished measurements 24 (26, 28, 30, 32, 34) ins.

Length at Back Neck 14 (16, 18, 20, 21 1/2, 23) ins.

Sleeve seam 9 (11, 13, 15, 16, 17) ins.

Tension

T10. 13 sts. and 16 rows to 2 ins. after pressing.

Abbreviations

K., knit; sts., stitches; inc., increase; dec., decrease; ins., inches; alt., alternate; foll., following; beg., beginning; rep., repeat; rem., remain; H.C.L.'s., Holding cam levers; T., tension; 000., set row counter at 000; M.B., main bed.

Notes

Fully fashioned raglan edge is worked by transferring the 4th st. on to the 5th needle and moving the three end sts. 1 needle in. Shaping at neck edge is worked on 2nd needle and moving the end st. 1 needle in. Wax Wool.

BACK

Ribbers Cast on 79 (85, 91, 97, 103, 109) sts. as 1 x 1 rib. T6/6. K. 16 rows. Transfer sts. to M.B.

Single machines Using waste wool, cast on 40 (43, 46, 49, 52, 55) sts. on alt. needles. K. a few rows. Change to main wool. T8. K. 31 rows. Make a hem and K. the row. 79 (85, 91, 97, 103, 109) sts.

All machines 000. T10. K. straight to 52 (64, 74, 86, 92, 100) rows. * (Adjust length here if required.)

Shape Raglan Armholes

000. Cast off 3 sts. at beg. of next 2 rows. Dec. 1 st. (see notes) at each end of next and every foll. alt. row 19 (21, 25, 27, 31, 33) times in all.

1st, 2nd, 3rd, 4th Sizes only Dec. 1 st. at each end of next 4 (4, 2, 2) rows.

All machines 27 (29, 31, 33, 35, 37) sts. rem. K. 1 row.

Ribbers Transfer alt. sts. to ribber. T6/6. K. 6 (6, 6, 8, 8, 8) rows. K. 1 loose row. Transfer ribber sts. to M.B. Chain cast off.

Single machines Transfer alt. sts. to adjacent needles. T8. K. 12 (12, 12, 16, 16, 16) rows. Cast off loosely making a chain over empty needles.

FRONT

K. as Back to *

Shape Raglan Armhole and Neck

000. Cast off 3 sts. at beg. of next 2 rows. Transfer centre sts. on to adjacent needle. Push needles on left to E position. H.C.L.'s III. K. right side first. Dec. 1 st. at raglan edge on next and every foll. alt. row **at the same time** K. 2 rows. Dec. 1 st. at neck edge on next and alt. rows 6 (6, 3, 3, 3, 3) times in all then every foll. 4th row 7 (8, 11, 12, 12, 13) times. 2 (2, 2, 2, 5, 5) sts. rem. **5th and 6th sizes only.** Dec. at raglan edge on foll. alt. rows 3 times more, 2 sts. rem. **All sizes** Cast off. H.C.L.'s I. Rejoin wool at raglan edge and K. to match right side.

SLEEVES

Ribbers Cast on 43 (45, 47, 49, 51, 53) sts. as 1 x 1 rib. T6/6. K. 16 rows. Transfer sts. to M.B.

Single machines Using waste wool, cast on 22 (23, 24, 25, 26, 27) sts. over alt. needles. K. a few rows. Change to main wool. T8. K. 31 rows. Make a hem and K. the row. 43 (45, 47, 49, 51, 53) sts.

All machines 000. T10. K. 6 rows. Inc. 1 st. at each end of next and every foll. 7th (8th, 8th, 9th, 9th) rows 7 (8, 9, 10, 11, 12) times in all. 57 (61, 65, 69, 73, 77) sts. K. straight to 56 (72, 88, 104, 112, 120) rows. (Adjust length here if required.)

Shape Raglan Top

000. Cast off 3 sts. at beg. of next 2 rows. **3rd, 4th, 5th, 6th sizes only.** K. 2 rows. Dec. 1 st. at each end of next row. K. 1 (1, 3, 3) rows. **All sizes** Dec. 1 st. at each end of next and every foll. alt. row 21 (23, 24, 26, 28, 30) times in all. K. 1 row. Slip rem. 9 sts. on

trousers and smock

to a knitting needle.

FRONT NECKBAND

With wrong side facing replace on machine 9 sts. from one sleeve and pick up 38 (40, 44, 46, 50, 52) sts. along one front edge. 47 (49, 53, 55, 59, 61) sts. T10. K. 1 row.

Ribbers Transfer alt. sts. to ribber. T6/6. K. 1 row. Dec. 1 st. at Centre front on next and alt. rows 3 (3, 3, 4, 4, 4) times in all. K. 1 loose row. Transfer ribber sts. to M.B. and chain cast off. K. other front to match.

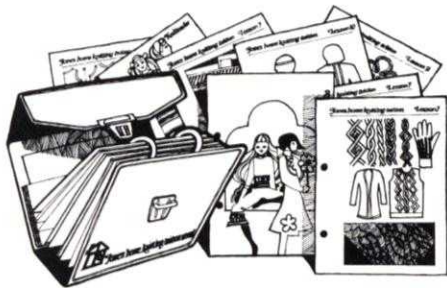
Single machines Transfer alt. sts. to adjacent needles. T8. K. 1 row. Dec. 1 st. at centre front on next and alt. rows 3 (3, 3, 4, 4, 4) times in all, and inc. 1 st. at centre front on every foll. alt. row 3 (3, 3, 4, 4, 4) times in all. Cast off loosely making a chain over empty needles. K. other front to match.

TO MAKE UP

Pin out and press with a hot iron over a damp cloth. Join side, raglan and sleeve seams. Join neckband at centre front. Fold mock rib to inside and slip-st. in place. Press seams.

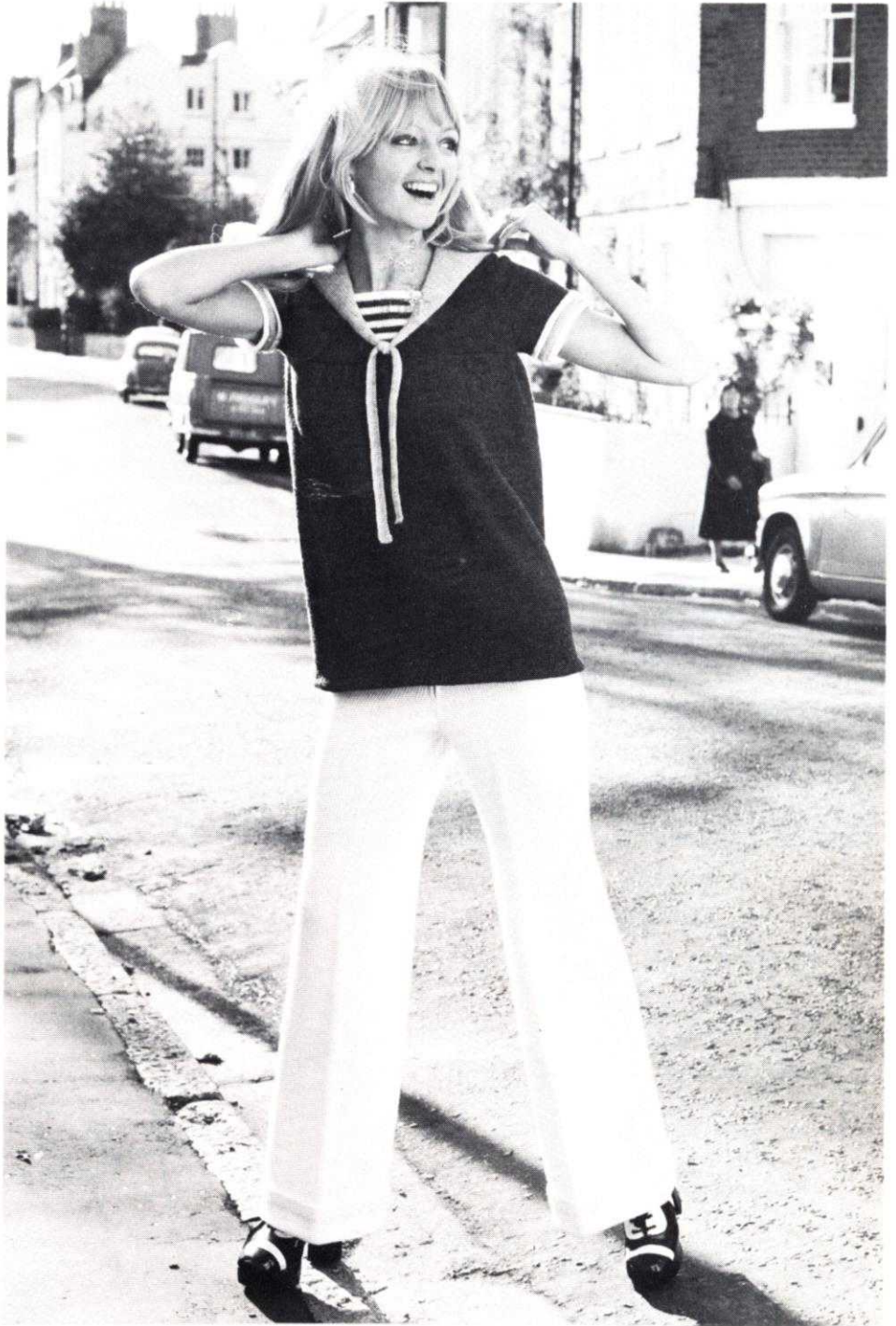
The Jones 588 HOME KNITTING POSTAL TUITION COURSE

is so easy to follow and the complete answer to all shortcomings encountered in the tuition of knitting machines. There are twelve easy to follow lessons, leading you step by step from basic knitting right through to knitwear design. You are able to knit at your own pace. You can take out the machine and pick up the course exactly when you feel like it and all in the comfort of your own home. It's the best way to learn to use a knitting machine properly.



£12.50

inc. £3.00 of wool



2	→										1	3	5	7														
1	←	A	5	I					I	T	1	3	5	7		+	1	T	A					△				
STEPS	CARRIAGE DIRECTION	COLOUR	TENSION DIAL	H.C.L. LEFT	TUCK PLAIN PART		H.C.L. RIGHT	588 ONLY CHANGE KNOB	REVERSE LEVER								WEAVING APPARATUS	WEAVING THREAD COLOUR	LACE CARRIAGE DIRECTION	588 ONLY CHANGE LEVER	588 ONLY LAYING IN COLOUR							
											1	2	3	4	5	6	7	8										
											SLIDE DIAL																	
											1	2	3	4	5	6	7	8										
CARRIAGE											NEEDLE SELECTION																	

Materials

Trousers 15 (16, 17, 18) ozs. Emu Scotch 4 ply in A, 8 (8, 9, 9) ozs. Double Knitting wool in A, 1/4-inch wide elastic to fit waist motifs.

Smock 12 (13, 14, 15) ozs. Emu Scotch 4 ply in B, 2 (2, 2, 3) ozs. Scotch 4 ply in C, 1 oz. Scotch 4 ply in A, 2 ozs. Double Knitting in C, crochet hook.

Measurements

Smock To fit bust sizes 32 (34, 36, 38) ins. Finished measurements 33 (35, 37, 39) ins. Length to shoulder 25 (25 1/2, 26, 26 1/2) ins. Sleeve seam 3 ins.

Trousers To fit hip sizes 34 (36, 38, 40) ins. Inner leg seam 29 (29 1/2, 30, 30 1/2) ins.

Tension

Weaving 12 1/2 sts. and 22 rows to 2 ins.

Stocking Stitch 15 sts. and 19 1/2 rows to 2 ins.

Abbreviations

K., knit; sts., stitches; inc., increase; dec., decrease; foll., following; beg., beginning; alt., alternate; rem., remain; rep., repeat; H.C.L's., holding cam levers; T., tension; 000., set row counter at 000.

Notes

The trousers were made up on the knit side but either side of work may be used.

TROUSERS

RIGHT BACK LEG

Using waste wool, cast on 76 (79, 82, 85) sts. and K. a few rows. Change to 4 ply A. T5. K. 2 rows. 000. Foll. weaving chart K. 46 rows. Dec. 1 st. at each end of next and every foll. 43rd row 7 times in all 62 (65, 68, 71) sts. rem. K. straight to 318 (324, 330, 336) rows. * Carriage at right side. (Adjust length here if required.) (K. 1 row extra for Left Back Leg.)

Shape to Waist

000. Cast off 2 sts. at beg. of next row. K. 1 row. Dec. 1 st. at right side (centre back seam) on next 7 rows, then every alt. row 5 times 48 (51, 54, 57) sts. rem. K. 6 rows. Dec. 1 st. at right side on next and every foll. 7th row 6 times in all. 42 (45, 48, 51) sts. rem. * *. K. straight to 88 (90, 92, 94) rows. Continue in 4 ply only. Transfer every 3rd st. on to adjacent needles and push empty needles to A position. K. 22 rows. Cast off loosely making a chain over empty needles.

LEFT BACK LEG

K. as Right Back Leg, reversing all shapings.

LEFT FRONT LEG

K. as Right Back Leg to *. (K. 1 row extra for Right Front Leg.)

Shape to Waist

000. Cast off 2 sts. at beg. of next row. K. 1 row. Dec. 1 st. at right side (centre front seam) on next and every alt. row 5 times in all. 55 (58, 61, 64) sts. rem. K. 3 rows. Dec. 1 st. at right side on next and every foll. 10th row 5 times in all 50 (53, 56, 59) sts. rem. K. as Right Back Leg from ** to end.

RIGHT FRONT LEG

K. as Left Front Leg, reversing all shapings.

TURN-UPS

Pin out pieces and press with a hot iron over a damp cloth. Push 152 (158, 164, 170) needles to B position. Unravel waste wool. With right side facing, pick up loops from 1

half back and 1 half front leg, placing outside leg seams to centre and place on machine. 000. T5. Foll. weaving chart, K. straight for 30 rows. Using 4 ply wool only and st.st. T6. K. 10 rows. Cast off. Join leg seams then front and back crutch seams. Cut elastic to fit waist and join into a ring. Fold waistband over elastic to wrong side and sew in place. Turn hem of turn-up to right side as shown and catch each side on leg seams. Sew on motifs if required. Press a crease down centre front and back of each leg. Press seams.

SMOCK

SKIRT Back and Front alike

Using 4 ply B, cast on 176 (184, 192, 200) sts. by hand. T6. 000. K. straight for 178 (180, 184, 186) rows. Slip sts. on to a knitting needle. Replace sts. on machine dec. 52 sts. evenly along the row. 124 (132, 140, 148) sts. T6. K. 1 row and cast off.

BODICE

BACK

Using 4 ply B, cast on 124 (132, 140, 148) sts. by hand. T5. K. 6 rows.

Shape Armholes

000. T6. Cast off 6 sts. at beg. of next 2 rows. Dec. 1 st. at each end of the next 5 (5, 7, 7) rows, then every alt. row 4 (5, 4, 5) times. 94 (100, 106, 112) sts. rem. K. straight to 66 (68, 70, 72) rows.

Shape Shoulders

Cast off 6 sts. at beg. of next 8 rows and 2 (4, 6, 8) sts. on next 2 rows. Cast off rem. 42 (44, 46, 48) sts.

FRONT

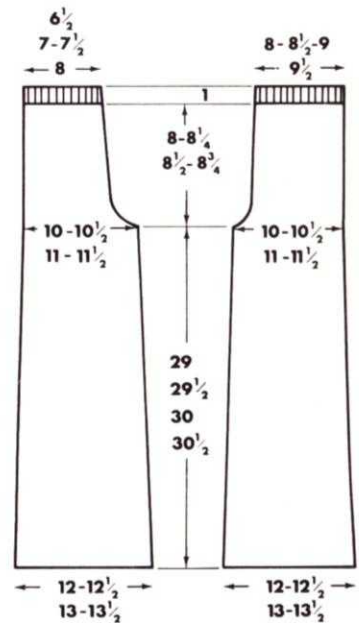
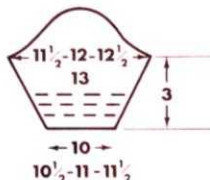
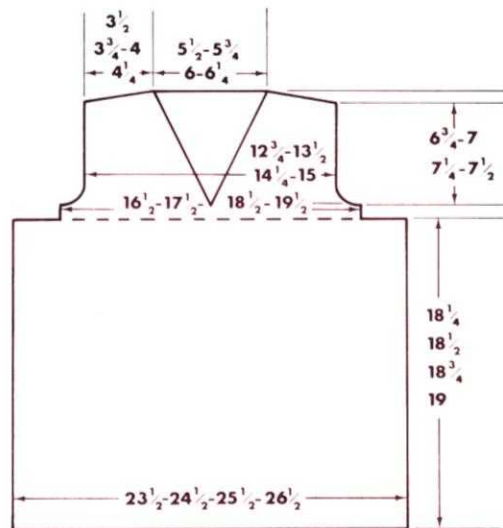
Using 4 ply B, cast on 124 (132, 140, 148) sts. by hand. T5. K. 4 rows.

Divide for Neck

Push 62 (66, 70, 74) needles at left to E position. H.C.L's III. K. 2 rows.

Shape Armhole

000. T6. Dec. 1 st. at neck edge on next and every foll. alt. row 8 (9, 9, 10) times in all, at the same time, cast off 6 sts. at beg. of next



Send for details of your nearest stockist

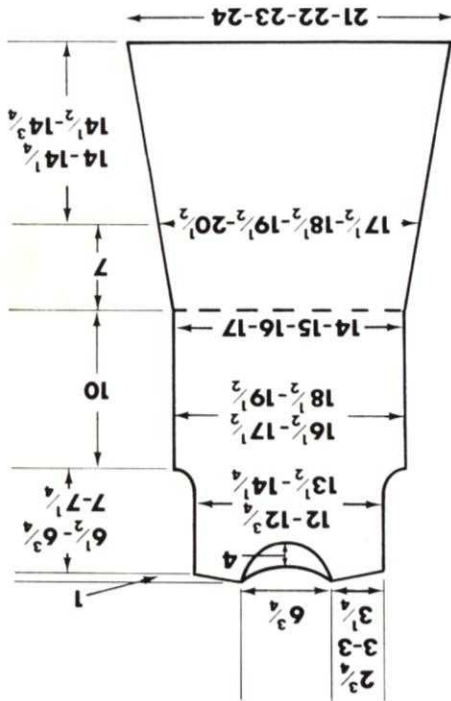
NOW BUY BEFORE VAT.

A Jones Knitting Machine worked in conjunction with the latest Jones Ribbing Attachment opens the door to a complete new world of ribbed garments—many, many combinations of knit and purl, fishermans rib, half fishermans, circular knitting, honey-comb patterns, permanent pleats all achieved quickly and easily with you and your Jones Ribber.

THE JONES RIBBER



PUSH BUTTON RIBBING IS HERE WITH THE JONES



on next 2 rows. H.C.L.'s 1, T7, K, 10 rows. Cast off loosely chain method.

TO MAKE UP
Pin out and press carefully with a warm iron over a damp cloth. Join side and shoulder seam. Work 2 rows of double crochet round neck and armholes, then 1 row of shell pattern. Turn hem at lower edge to wrong side and slip-st. in place. Make a narrow cord for belt and thread through holes at waist. Make a tassel and tie to each end of cord. Press seams.

1 row. Cast off rem. 4 (5, 6, 7) sts. Replace sts. on machine and K. to match right side, reversing shapings.

FRONT
K, as given for Back to *. K, straight to 54 (58, 62, 66) rows. Carriage at right.

Shape Neck
Cast off 20 (22, 24, 26) sts. at centre. Slip sts. at left on to a knitting needle. K, the right side first. K, 1 row. Dec. 1 st. at neck edge on next 4 (6, 6, 8) rows, then every alt. row 6 (5, 6, 5) times. K, 3 rows. Dec. 1 st. at back edge on next and every foll. 4th row 1 until 19 (20, 21, 22) sts. rem. K, straight to 94 (98, 102, 106) rows.

Shape Shoulder
Cast off 3 sts. at beg. of next and alt. rows until 4 (5, 6, 7) sts. rem. K, 1 row. Cast off. Replace sts. on machine and K. to match right side reversing shapings.

SKIRT (back and front alike)
Push 100 (108, 116, 124) needles to B position. Unravel waste wool. Replace sts. on machine, dec. 14 sts. evenly along the row. 000, T8. Using angora only K, 2 rows. Make eyelet holes on every 4th needle by transferring st. to adjacent needle. Leave empty needles in B position. K, 4 rows. Inc. 1 st. at each end of next and every foll. 9th row 13 times in all. 152 (160, 168, 176) sts. K, straight to 184 (186, 188, 190) rows, or desired length.

Shape Hem
H.C.L.'s II. Always winding wool round first needles at opposite end to Carriage to E position on next 4 rows. Push all needles at opposite end to Carriage back to C position

Materials
15 (17, 19, 21) balls Patons Fuzzy Wuzzy, A. 3 ozs. Silverknit S. (Mail order from Silverknit, Dept. K, Edwalton, Nottingham, NG12 4DF), crochet hook.

Measurements
To fit bust sizes 32 (34, 36, 38) ins. and hip sizes 34 (36, 38, 40) ins. Finished bust measurements 33 (35, 37, 39) ins.
Length to shoulder (allowing for blouse top) 35 1/2 (36, 36 1/2, 37) ins.

Tension
St. 14 1/2 sts. and 18 rows to 2 ins.
Pattern 14 sts. and 29 rows to 2 ins.

Abbreviations
K., knit; ins., inches; sts., stitches; inc., increase; dec., decrease; foll., following; alt., alternate; beg., beginning; rem., remain; H.C.L.'s., holding cam levers; T., tension; 000, set row counter at 000.

Notes
Leave casting-on comb on when working pattern stitch.

BACK
Using waste wool, cast on 114 (122, 130, 138) sts. and K, a few rows. Change to angora. T7, 000, K, 2 rows. Foll. chart, K, straight to 144 rows.

Shape Armholes
000, Cast off 4 sts. at beg. of next 2 rows, 3 sts. on next 2 rows and 2 sts. on next 2 rows. Dec. 1 st. at each end of next and every alt. row 4 (5, 6, 7) times in all then every foll. 4th row twice. 84 (90, 96, 102) sts. rem. * K, straight to 94 (98, 102, 106) rows. Carriage at right.

Shape Neck and Shoulders
Cast off 22 (26, 30, 34) sts. at centre. Slip sts. at left on to a knitting needle. K, this side first. Cast off 3 sts. at beg. of next 8 rows. Cast off 3 sts. at beg. of next row. K.

batwing jumper



for machines with ribbing attachment

Materials

7 (8, 9, 10) ozs. Patons Random Cameo 4 ply crepe (M). 4(5, 5, 6) ozs. Contrast (C).

Measurements

To fit bust sizes 32 (34, 36, 38) ins.
Length to shoulder 19 (19½, 20, 20½) ins.
Length from cuff to cuff 53½ (54½, 55½, 56½) ins.

Tension

15 sts. and 19 rows to 2 ins.

Abbreviations

K., knit; sts., stitches; inc., increase; dec.,

decrease; foll., following; alt., alternate; rem., remain; beg., beginning; H.C.L's., holding cam levers; T., tension; 000., set row counter at 000.

Notes

The main part of garment is made up on purl side, but can be reversed if desired. All rib sections are worked in stripes of 6 rows C. 2 rows M.

MAIN PART

Upper Sleeve With waste wool cast on 114 (122, 130, 138) sts. K. a few rows. Change to M. 000. T6. K. 4 rows. Inc. 1 st. each

end of next and foll. 4th row 25 times in all. 164 (172, 180, 188) sts. K. 3 rows. Mark each end of row with contrast wool.

Body Section 000. K. straight for 44 (48, 52, 56) rows.

Divide for Neck

000. Push 100 (104, 108, 112) sts. at left to E position. H.C.L's II. K. right (front) side first. K. 1 row. Dec. 1 st. at neck edge next and foll. alt. row 8 times in all 56 (60, 64, 68) sts. K. straight until 48 (50, 52, 54) rows have been worked. Inc. 1 st. at (neck edge) on next and foll. alt. rows 8 times in all. 64 (68, 72, 76) sts. 64 (66, 68, 70) rows. Break wool. Push these needles to E position. Cast off the inner 22 sts. at left and return rem. needles to C position. K. 64 (66, 68, 70) rows. Carriage at right. Cast on over 22 empty needles by hand. Break wool. Rejoin wool at right hand side. 000. H.C.L's I. K. straight for 44 (48, 52, 56) rows. Mark each end of row with contrast wool.

Upper Sleeve 000. K. 4 rows. Dec. 1 st. each end of next and foll. 4th row 25 times in all 114 (122, 130, 138) sts. K. 3 rows. K. a few rows in waste wool.

Sleeve Ribbing

Bring forward 76 (78, 80, 82) needles to B position. Unravel waste wool and with wrong side facing replace sts. of one sleeve on machine dec. 38 (44, 50, 56) sts. evenly along the row. T6. K. 1 row. Arrange the needles for 2 x 2 rib. 000. T4/4. Working in stripes (see notes). K. 8 rows. Dec. 1 st. each end of next and foll. 8th row 8 times in all. 60 (62, 64, 66) sts. K. until 78 rows have been worked. T10/8. K. 1 row. Transfer sts. to M.B. and chain cast off. K. second sleeve to match.

WAIST RIB

With wrong side facing pick up and place on machine 112 (120, 128, 136) sts. from between markers at lower edge. T6. K. 1 row. Arrange the needles for 2 x 2 rib. 000. T4/4. Working in stripes K. 78 rows. T10/8. K. 1 row. Transfer sts. to M.B. and chain cast off.

POLO COLLAR

Cast on 154 (158, 162, 164) sts. for 2 x 2 rib. T4/4. K. 26 rows. T5/5. K. 36 rows. T10/8. K. 1 row. Transfer sts. to M.B. and chain cast off.

TO MAKE UP

Pin out and press with a warm iron over a damp cloth. Do not press rib. Join side seams. Join edges of collar, and sew cast on edge to neck. Press seams.

