

Jones / brother

Stitchin' time

Vol4 No2

25p



contents

	Page
Girl's Dress with Variations	3-4
Ladies' Woven Coat	5-6
Boy's Sweater	6
Ladies' 'V' Neck Cardigan	8
Ties	9
Patterns Galore	10-11
Check Bolero	12
Man's Casual Jacket	13
Child's Classic Cardigan	14
Sew Easy Lesson 7	15-22
Ladies' 'V' Neck Jacket	23
Child's Cardigan with Collar	24
Toddler's Sweater	25
Child's Cardigan with Pocket	26-27
Jones Clubs	28-29
Long Line Cardigan	30
Child's Sweater, Trousers and Hat	31-32
Ladies' Cardigan with lace	33
Toddler's Cardigan	34
Man's Fair-isle Waistcoat	35
Photographic Competition Back Cover	

SUBSCRIPTION RATES FOR U.S.A.

AND CANADIAN MEMBERS

CANADA \$8.00

U.S.A. \$7.50

(These rates include postage)

Broadly Speaking

Lots of cardigans, sweaters and versatile knitwear in this issue; with holiday plans in mind. This kind of topwear is probably the most useful item in any holiday wardrobe, to cover up on cooler days; team with trousers, shorts and dresses, or wear casually in the evening. You will find a really attractive selection to adapt for all the family.

Time for Competition results - and we are very pleased to announce the winner of the Knitting and Photographic Competition. Congratulations to Mrs. Eileen Greenwood of Ealing, London W13, who will receive a fabulous new Knitleader attachment for her winning entry. You can see the beautifully woven coat and handbag made by Mrs. Greenwood further on in the magazine, together with a selection of eight of the entries from runners-up. We had great fun judging the competition and would like to thank all our readers who took such trouble with their entries.

To complement the first prize - and as an incentive to our other readers! - a super double-page spread on the Knitleader and the paper sewing patterns which can be used for knitting. In the last issue, we told you how paper sewing patterns could be used with the Knitleader, cutting out the need for written instructions. This month we follow-up with a spread of designs from Simplicity, Style and Butterick. Plenty there to interest even the beginner. It's quite a thought to know that all those beautiful Fashion Catalogues in the *sewing* department, can now work wonders for the knitting machine, too.

For some time, we have been receiving a number of plaintive requests for a good tie pattern. Experiments with wool and similar, heavy yarns did not produce a particularly good texture for a tie; an item which - and we think our male readers would agree - should not appear to be knitted. Finally, our designer tried some cotton yarn by Silverknit, and this has given a light and textured effect. An attractive, simple to make accessory which lends itself to any number of patterns or motifs, to complement the plainest shirt.

Talking about Silverknit yarn; we should like to make an apology to J. Henry Smith Ltd. In the last issue of *Stitchin'time*, we inadvertently gave their address incorrectly for mail order customers. We would ask you to please note that when ordering yarn direct from J. Henry Smith Ltd., the correct address is Silverknit, Dept. K, Edwalton, Nottingham.

Coming in the next issue of *Stitchin'time* - a special new feature combining something knitted with something sewn; Knitting by Jones - Sewing by Simplicity; plus a special offer of a unique knitting gadget to speed up your calculations - and more news on the Knitleader.

Keep in touch!

N.B. CHARTS SUBMITTED BY DESIGNERS VARY DEPENDING ON WHICH MACHINE THE DESIGNER HAS USED. MOST PATTERNS USING EIGHT BUTTONS CAN BE DONE ON EITHER THE 588 OR THE 585.

THE DIFFERENCES ARE

588

585

REVERSE LEVER +
REVERSE LEVER -

REVERSE DIAL A
REVERSE DIAL B

girls dress

WITH VARIATIONS

Materials

Plain sleeveless Dress, 8 (8, 9, 9, 10) ozs. Emu Scotch 4 ply wool. Allow 1 (1, 1, 2, 2) ozs. extra for short sleeves, and 2 (2, 3, 3, 4) ozs. extra for long sleeves, zip to fit neck for back or front opening 3 (3, 4, 4, 4) buttons (optional). If Fair Isle or stripes are used less wool will be needed in the main colour.

Measurements

To fit bust sizes 24 (26, 28, 30, 32) ins.

Finished measurements 26 (28, 30, 32, 34) ins.

Length at back neck 19 (22, 25, 28, 32) ins.

Short sleeve seam 2 (2½, 2½, 2¾, 3) ins.

Long sleeve seam 11½ (13, 14½, 16, 17½) ins.

Tension

T7. 14 sts. and 20 rows to 2 ins.

Abbreviations

K., knit; sts., stitches; inc., increase; dec., decrease; alt., alternate; foll., following; beg., beginning; rep., repeat; rem., remain; HCL's., Holding cam levers, T., tension; 000., set row counter at 000.

Notes

Always cast off chain method unless stated otherwise.

BACK (vee-neck and front opening)

Cast on 115 (121, 129, 135, 143) sts. by hand. T6. K. 16 rows. 000. T7. Using pattern of your choice, K. 16 rows. Dec. 1 st. at both ends of next and every foll. 10th (12th, 14th, 16th, 18th, 20th) row until 93 (99, 107, 113, 121) sts. rem. K. straight to 140 (166, 190, 216, 240) rows. This will give a finished length to armhole of 14 (16½, 19, 21½, 24) ins.**

Shape Armholes

000. Cast off 4 (4, 5, 5, 5) sts. at beg. of next 2 rows. Dec. 1 st. at both ends of next 3 (3, 3, 5, 5) rows then every alt. row until 71 (75, 81, 85, 91) sts. rem.* K. straight to 50 (56, 60, 66, 70) rows.

Shape Shoulders

Cast off 5 (5, 5, 6, 6) sts. at beg. of next 6 rows and 6 (7, 9, 7, 9) sts. on next 2 rows. 29 (31, 33, 35, 37) sts. Change to contrast wool. T5. K. 12 rows. Cast off loosely.

BACK (round neck)

K. as Back to *.

Divide for opening

Transfer centre st. onto adjacent needle and push needles at left to E position. HCL's III. K. the right side first. K. straight to 50 (56, 60, 66, 70) rows.

Shape Shoulder

Cast off 5 (5, 5, 6, 6) sts. at beg. of next and alt. row 3 times and 6 (7, 9, 7, 9) sts. on foll. alt. row. Change to contrast wool. T5. K. 12 rows on rem. 14 (15, 16, 17, 18) sts. Cast off loosely. HCL's I. Rejoin wool at centre and K. to match right side.

FRONT (round neck)

K. as Back to *. K. straight to 36 (40, 42, 46, 48) rows.



Divide for neck

Using odd length of self colour wool cast off 19 (21, 23, 25, 27) sts. at centre. Push sts. at left to E position. HCL's III. K. the right side first. Dec. 1 st. at neck edge on next and every foll. alt. row 3 times in all, then foll. 4th row twice. 21 (22, 24, 25, 27) sts. rem. K. straight to 50 (56, 60, 66, 70) rows.

Shape Shoulder

Cast off 5 (5, 5, 6, 6) sts. at beg. of next and alt. rows until 6 (7, 9, 7, 9) sts. rem. K. 1 row. Cast off loosely. HCL's I. Rejoin wool at centre and K. to match right side.

FRONT (zip opening)

K. as Back to **.

Shape Armholes and divide for opening

Push needles at left to E position. HCL's III. 000. Transfer centre st. onto adjacent needle. K. the right side first. Cast off 4 (4, 5, 5, 5) sts. at beg. of next row, K. 1 row. Dec. 1 st. at armhole edge on next 3 (3, 3, 5, 5) rows then every alt. row 4 (5, 5, 4, 5) times, 35 (37, 40, 42, 45) sts. rem. K. straight to 35 (39, 41, 45, 47) rows.

Shape Neck

Cast off 9 (10, 11, 12, 13) sts. at beg. of next row. Dec. 1 st. at neck edge on next and every foll. alt. row 3 times in all, then foll. 4th row twice. 21 (22, 24, 25, 27) sts. rem. K. straight to 50 (56, 60, 66, 70) rows.

Shape Shoulder

K. as Round neck front shoulder to end.

FRONT (vee-neck)

K. as Back to *. K. 1 row.

Divide for neck. Transfer centre st. onto adjacent needle and push needles at left to E position. HCL's III. K. the right side first. K. 2 rows. Dec. 1 st. at neck edge on next and every foll. alt. rows 8 (7, 7, 7, 6) times in all, then every foll. 3rd row 6 (8, 9, 10, 12) times. 21 (22, 24, 25, 27) sts. rem. K. straight to 50 (56, 60, 66, 70) rows.

Shape Shoulder

K. as Round neck front shoulder to end.

SHORT SLEEVES

Using waste yarn cast on 28 (30, 31, 33, 34) sts. on alt. needles. K. a few rows. Change to main wool. T5. K. 15 rows. Make a hem

and K. the row 55 (59, 61, 65, 67) sts. 000. T7. K. 2 rows. Inc. 1 st. at both ends of next and every alt. rows 5 (6, 7, 8, 9) times in all. 65 (71, 75, 81, 85) sts. K. straight to 14 (16, 18, 20, 22) rows.

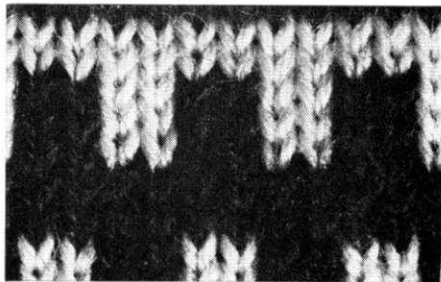
Shape Top

000. Cast off 4 (4, 5, 5, 5) sts. at beg. of next 2 rows. Dec. 1 st. at both ends of next 5 rows then every foll. 4th row 3 (3, 4, 4, 4) times. K. 1 row. Dec. 1 st. at both ends of next and every foll. alt. rows 2 (3, 3, 4, 5) times in all. K. 1 row. Cast off 2 sts. at beg.

28									
27									
26	X	X	X	X	^	X	X	X	
25	X	X	X	X	X	X	X	X	
24	X	X	.	.	X	X	.	.	
23	X	X	.	.	X	X	.	.	
22	X	X	.	.	X	X	.	.	
21	
20	
19	.	.	X	X	.	.	X	X	
18	.	.	X	X	.	.	X	X	
17	.	.	X	X	.	.	X	X	
16	X	X	X	X	X	X	X	X	
15	X	X	X	X	X	X	X	X	
14									
13									
12	X	X	X	X	X	X	X	X	
11	X	X	X	X	X	X	X	X	
10			X	X			X	X	
9			X	X			X	X	
8			X	X			X	X	
7									
6									
5	X	X			X	X			
4	X	X			X	X			
3	X	X			X	X			
2	X	X	X	X	X	X	X	X	
1	X	X	X	X	X	X	X	X	

● = B X = A □ = M

VARIATION C



of next 4 (6, 6, 8, 10) rows and 3 sts. on next 4 rows. Cast off rem. 17 sts. loosely.

LONG SLEEVES

Using waste wool, cast on 23 (25, 26, 28, 29) sts. on alt. needles. K. a few rows. Change to main wool. T5. K. 31 rows. Make a hem and K. the row. 45 (49, 51,

55, 57) sts. 000. T7. K. 8 rows. Inc. 1 st. at both ends of next and every foll. 9th (9th, 10th, 10th, 10th) row, 10 (11, 12, 13, 14) times. 65 (71, 75, 81, 85) sts. K. straight to 100 (116, 130, 146, 160) rows. This will give a sleeve seam of 11½ (13, 14½, 16, 17½) ins. Adjust length here if required.

Shape Top

K. as top of short sleeve.

NECKBAND (round neck)

With wrong side facing, pick up and place on machine 15 (17, 19, 21, 23) down front neck, 19 (21, 23, 25, 27, 29) sts. at centre front and 15 (17, 19, 21, 23) sts. up front neck. 49 (55, 61, 69, 75) sts. T5. Using contrast wool K. 12 rows. Cast off loosely.

NECKBAND (zip opening)

With wrong side facing pick up and place on machine 25 (27, 31, 33, 37) sts. along one front neck. T5. Using contrast wool K. 12 rows. Cast off loosely. K. other side to match.

NECKBAND (vee-neck)

With wrong side facing, pick up and place on machine 33 (37, 41, 45, 49) sts. from shoulder to centre front. Shaping is worked on 2nd needle from end. T5. Using contrast wool K. 6 rows, dec. 1 st. at centre front on every row and inc. 1 st. on next 6 rows. Cast off loosely. K. other side to match.

FRONT TAB

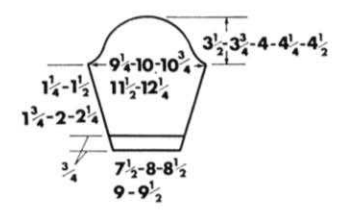
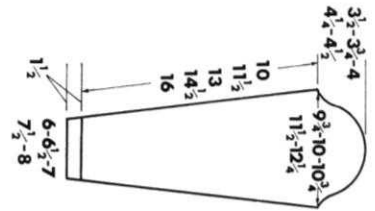
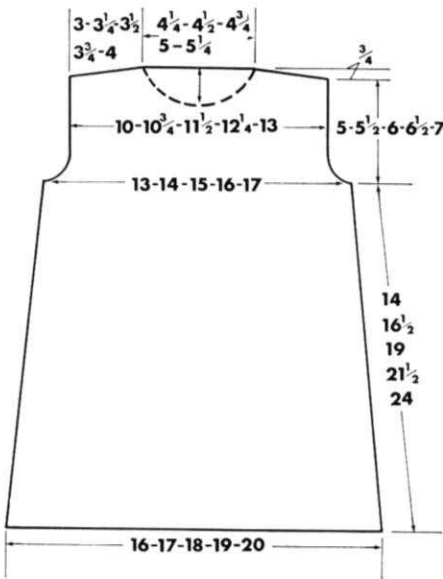
Using contrast wool cast on 16 sts. by hand. T6. K. straight for 50 (54, 58, 62, 66) rows. Cast off loosely.

BELT

Cast on 6 sts. in contrast colour. T3. Work in tube knitting until desired length. Cast off. Tie a knot at each end.

TO MAKE UP

Pin out and press with a hot iron over a damp cloth. Join side, shoulder and sleeve seams. Sew in sleeves. Join neckband at Vee in centre front. Turn all neckbands to wrong side and slip st. in place. **Zip opening.** Work 1 row of double crochet with contrast colour. Sew in zip. Fold front tab lengthways and slip st. seam. Place seam in centre of band. Catch down narrow ends. Place tab in position as shown and sew on buttons through all thicknesses. Turn hem at lower edge to wrong side and slip st. in place. Press seams.



SUGGESTIONS FOR VARIATIONS TO BASIC DRESS

1. Stripes (in any width) at base of dress and all over on sleeves. Zip or tab in same colour as contrast.
2. Stripes on dress with plain sleeves in contrast.
3. Fair Isle as inset or C.
4. Fair Isle back and front of dress, plain sleeves.
5. Bands of Fair Isle working up dress with contrast plain sleeves.
6. Plain back and front with Fair Isle or striped sleeves. Round neck with tab in Fair Isle or stripes. Any combination can be used to make a basic plain dress "interesting".

			X	X			X	X	21
			X	X			X	X	20
X	X				X	X			19
X	X				X	X			18
									17
									16
			/	/	/				15
			/			/			14
			/	/	/				13
			/			/			12
			/	/	/				11
									10
			.						9
			.	.					8
			.	.	.				7
			.	.	.				6
									5
X	X				X	X			4
X	X				X	X			3
		X	X			X	X		2
		X	X			X	X		1

X = A
 ● = B
 / = C

lady's woven coat

Materials

29 (31, 33, 35, 37) ozs. Patons Purple Heather (knitting).

20 (22, 24, 26, 28) ozs. Double Knitting (weaving), 6 buttons, 1 large press stud.

Measurements

To fit bust sizes 34 (36, 38, 40, 42) ins.

Finished measurements at bust 38 (40, 42, 44, 46) ins.

Length to shoulder (41 (41½, 42, 42½, 43) ins.

Sleeve seam 17½ ins.

Tension

14 sts. and 22 rows = 2 ins. over weaving st.

Abbreviations

K., knit; sts., stitches; inc., increase; dec., decrease; foll., following; alt., alternate; rep., repeat; beg., beginning; rem., remain; T., tension; 000., set row counter at 000.

Loop st.

Cast on number of sts. required by hand. T5. K. 2 rows. Carriage is at right.

Loop row. Place 1 ball of 4 ply and 1 ball of D.K. on floor. Using 4 ply from floor, K. 1st st. by hand.* Push next needle to E position. Place 1st finger of left hand under needle. Using D.K. wind wool over needle and round finger 4 times. K. this st. by hand with 4 ply wool. K. next st. by hand. Rep. from * to * all along the row. K. 3 rows in st.st. with carriage. Now rep. loop row but placing 1st. finger of right hand under needle. Continue knitting for required length. K. 2 rows after last loop row. Cast off.

BACK

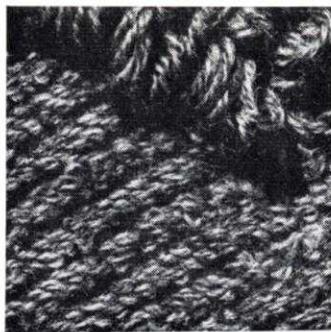
Using 4 ply wool cast on 172 (178, 186, 192, 200) sts. by hand. T5. K. 16 rows. 000. T6. Foll. weaving chart K. 16 rows. Dec. 1st. at both ends of next and every foll. 11th row 24 times in all. 124 (130, 138, 144, 152) sts. K. straight until 286 rows have been worked. This will give a finished length to armhole of 33 ins. Adjust length here if required. Mark ends with coloured wool. K. 10 rows. Inc. 1st at both ends of next and every foll. 10th row until there are 136 (142, 150, 156, 164) sts. K. straight until 364 rows have been worked.

Shape Armholes

000. Cast off 4 (4, 5, 5, 6) sts. at beg. of next 2 rows. Dec. 1st. at both ends of next 5 (7, 7, 9, 9) rows then every alt. rows until 104 (108, 114, 118, 124) sts. rem. K. straight until 88 (94, 100, 106, 112) rows have been worked.

Shape Shoulders and Neck

Cast off 5 sts. at beg. of next 4 rows. Using odd length of 4 ply cast off 14 (16, 18, 20, 22) sts. at centre. Push needles at left to E position. K. the right side first. H.C.L's II. Cast off 5 sts. at beg. of next 6 rows. Cast off rem. 5 (6, 8, 9, 11) sts. H.C.L's I. Return needles to B position. Rejoin wool at centre and K. to match right side.

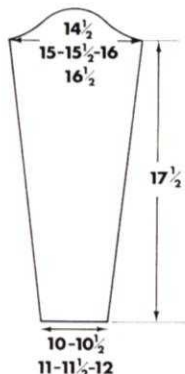
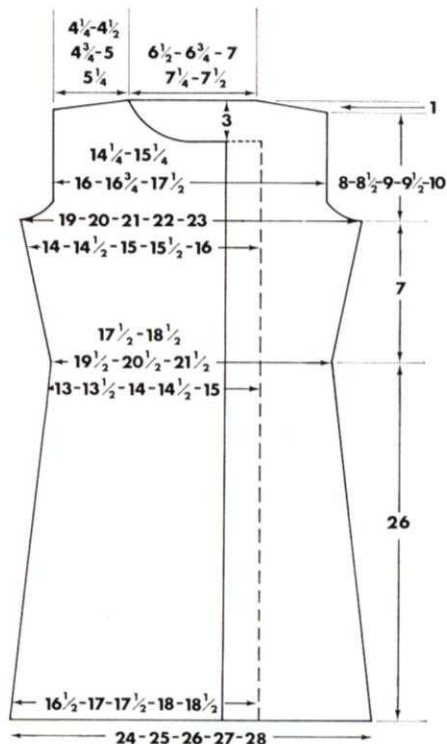


8	→																		8								
7	←																		7								
6	→																		6								
5	←																		5								
4	→																		4								
3	←																		3								
2	→																		2								
1	←	A	6	I															1	T	B				△		
		CARRIAGE																	NEEDLE SELECTION								
STEPS	CARRIAGE DIRECTION	COLOUR	TENSION DIAL	H.C.L. LEFT	TUCK PLAIN PART		H.C.L. RIGHT	588 ONLY CHANGE KNOB	REVERSE LEVER								SLIDE DIAL	WEAVING APPARATUS		WEAVING THREAD COLOUR	LACE CARRIAGE DIRECTION	588 ONLY CHANGE LEVER	588 ONLY CHANGING IN COLOUR				
									1	2	3	4	5	6	7	8											

boys sweater

LEFT FRONT

Using 4 ply wool cast on 72 (75, 79, 82, 86) sts. by hand. T5. K. 13 rows. Cast on 44 sts. at beg. of next row. 116 (119, 123, 126, 130) sts. K. 2 rows. 000. T6. * Foll. weaving chart but pushing 22 sts. at left side back to B position on every row, K. 16 rows. Dec. 1st. at right side (side seam) on next and every foll. 11th row 24 times in all. 92 (95, 99, 102, 106) sts. K. straight until 286 rows have been worked. Mark right side with coloured wool. K. 10 rows. Inc. 1st at right side on next and every foll. 10th row until there are 98 (101, 105, 108, 112) sts. K. 2 rows. (K. 1 row extra for Right Front). Carriage is at left.



Shape Bust. H.C.L's II. Always winding wool round first needle in E position, push 4 (4, 4, 5) sts. at opposite end to Carriage on next and every foll. alt. rows 6 times in all. K. 1 row. Return needles to B position by hand. K. straight until 376 rows have been worked. (K. 1 row extra for right front).

Shape Armhole

000. Cast off 4 (4, 5, 5, 6) sts. at beg. of next row. K. 1 row. Dec. 1st at armhole edge on next 5 (7, 7, 9, 9) rows. then every alt. row until 82 (84, 87, 89, 102) sts. rem. K. straight until 67 (73, 79, 85, 91) rows have been worked.

Shape Neck

Cast off 38 (39, 39, 40, 40) sts. at beg. of next row. K. 1 row. Cast off 3 (3, 4, 4, 5) sts. at beg. of next row. K. 1 row. Dec. 1st at neck edge on next 6 rows. then every alt. row until 30 (31, 33, 34, 36) sts. rem. K. straight until 88 (94, 100, 106, 112) rows have been worked.

Shape Shoulder

Cast off 5 sts. at beg. of next and alt. rows until 5 (6, 8, 9, 11) sts. rem. K. 1 row. Cast off.

RIGHT FRONT

Mark positions on Left Front for 6 buttons, the first $\frac{1}{2}$ inch below neck edge and 4th at waist level (wool marker). Place remainder evenly. Using 4 ply wool, cast on 72 (75, 79, 82, 86) sts. by hand. T5. K. 14 rows. Cast on 44 sts. at beg. of next row 116 (119, 123, 126, 130) sts. K. 1 row. 000. T6. K. as for Left Front, reversing all shapings and making buttonholes over needles 12 to 17 and 28 to 33 from front edge.

SLEEVES

Using 4 ply wool, cast on 74 (78, 82, 86, 90) sts. by hand. T5. K. 16 rows. 000. T6. Foll. weaving chart K. 12 rows. Inc. 1st. at both ends of next and every foll. 12th row until there are 102 (106, 110, 114, 118) sts. K. straight until 192 rows have been worked. This will give a finished sleeve seam of 17 $\frac{1}{2}$ ins. Adjust length here if required.

Shape Top

000. Cast off 4 (4, 5, 5, 6) sts. at beg. of next 2 rows. Dec. 1st at both ends of next 5 rows then alt. rows 3 times. K. 3 rows. Dec. 1st at both ends of next and every foll. 4th row 6 (6, 7, 9, 10) times in all. K. 1 row. Dec. 1st at both ends of next and every alt. rows 5 (7, 7, 4, 4) times. K. 1 row. Cast off 3 sts. at beg. of next 4 (4, 4, 6, 6) rows and 4 sts. on next 6 rows. Cast off rem. 20 sts.

LOOPED COLLAR

Using 4 ply wool, cast on 18 sts. by hand. T5. Knitting 1st and 2nd st. by hand, work loop st. pattern until band is long enough to fit round neck less 2 ins. K. 2 rows in st.st. only. Cast off.

LOOPED CUFF

Cast on 15 sts. Work loop st. pattern until long enough to go round cuff without stretching. Cast off. Lower edge as cuff.

To make up

Pin out and press with a hot iron over a damp cloth. Join side, shoulder and sleeve seams. Set in sleeves. Turn hem at lower edge and sleeves to wrong side and slip-st. in place. Turn front facing to wrong side and slip-st. in place. Sew collar to neckband beg. and ending 1 inch in from front edges. Pin looped cuffs in place, join narrow ends, then sew along top and bottom on wrong side. Neaten buttonholes and sew on buttons. Sew press-stud on left front at neck edge. Press seams.

Materials

12 (13, 14, 15, 16) ozs. Patons Purple Heather 4-ply, 2 buttons.

Measurements

To fit chest sizes 26 (28, 30, 32, 34) ins. Finished measurements 28 (30, 32, 34, 36) ins. Length to shoulder 18 $\frac{1}{2}$ (20, 21 $\frac{1}{2}$, 23, 24 $\frac{1}{2}$) ins. Sleeve seam 15 $\frac{1}{2}$ (16, 16 $\frac{1}{2}$, 17, 17 $\frac{1}{2}$) ins.

Tension

13 $\frac{1}{2}$ sts. and 28 rows to 2 ins. after pressing.

Abbreviations

K., knit; sts., stitches; inc., increase; dec., decrease; foll., following; beg., beginning; rem., remain; alt., alternate; H.C.L's, Holding Cam Levers; T., tension; M.B., main bed; 000., set row counter at 000.

Notes

Figures in brackets refer to the larger sizes respectively. Wax wool.

BACK

Ribbers. Cast on 98 (104, 113, 119, 125) sts. as 2 x 1 rib. T4/4. K. 20 rows. Transfer ribber sts. to M.B. Dec. 1 st. on sizes 3, 4 and 5, 98 (104, 112, 118, 124,) sts. *

Single machines. Push 98 (104, 113, 119, 125) needles to B position. Take every 3rd needle back to A position. Using waste wool cast on over rem. needles. K. a few rows. Change to main wool T5. K. 39 rows. Make a hem and k. the row. Dec. 1 st. on sizes 3, 4 and 5. 98 (104, 112, 118, 124) sts. *

All machines. 000. T7. K. 4 rows. Foll. chart, k. straight until 148 (162, 176, 190, 204) rows have been worked. This will give a length to armhole of 10 $\frac{1}{2}$ (11 $\frac{1}{2}$, 12 $\frac{1}{2}$, 13 $\frac{1}{2}$, 14 $\frac{1}{2}$) ins. Adjust length here if required.

Shape Armholes

000. Cast off 4 (4, 5, 5, 6) sts. at beg. of next 2 rows. Dec. 1 st. at both ends of next and foll. alt. rows. 4 times in all then every foll. 4th row until 76 (80, 86, 90, 94) sts. rem. K. straight until 84 (92, 98, 106, 112) rows have been worked.

Shape Shoulders

Cast off 4 sts. at beg. of next 10 rows and 4 (5, 7, 8, 9) sts. on next 2 rows. Cast off rem. 28 (30, 32, 34, 36) sts.

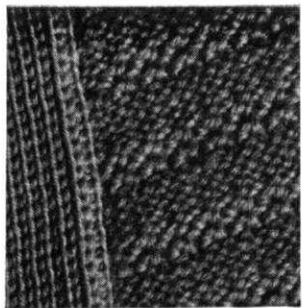
FRONT

K. as Back to *.

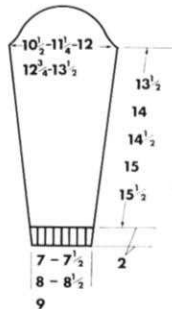
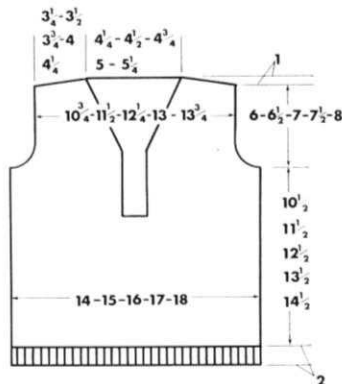
All machines. 000. T7. K. 4 rows. Foll. chart, k. straight until 104 (114, 124, 134, 144) rows have been worked.

Front opening

Using odd length of wool, cast off 12 sts.



STEPS	CARRIAGE DIRECTION	COLOUR	TENSION DIAL	H.C.L. LEFT	TUCK PLAIN PART	H.C.L. RIGHT	588 ONLY CHANGE KNOB	NEEDLE SELECTION	WEAVING APPARATUS	WEAVING THREAD COLOUR	LACE CARRIAGE DIRECTION	588 ONLY CHANGE LEVER	588 ONLY LAYING IN COLOUR
10	→												
9	↑												
8	→												
7	↑												
6	→					I							
5	↑												
4	→			III				1 3 5 7					
3	↑			I									
2	→												
1	↑	A 7 III			III	N		1 3 5 7 A 1 N					△



at centre. Slip sts. at left on to a knitting needle. K. the right side first. Continue patt. k. straight until 148 (162, 176, 190, 204) rows have been worked. (K. 1 row extra for Left side).

Shape Armhole and Neck

000. Cast off 4 (4, 5, 5, 6) sts. at beg. of next row. K. 1 row. Dec. 1 st. at armhole edge on next and foll. alt. rows 3 times in all. K. 1 row. Mark neck edge with coloured wool. Dec. 1 st. at armhole edge on next and every foll. 4th row 4 (5, 5, 6, 6) times in all, at the same time dec. 1 st. at neck edge on next and every foll. 10th (10th, 8th, 8th, 8th) row 4 (4, 4, 4, 6) times then every foll. 10th row until 24 (25, 27, 28, 29) sts. rem. K. straight until 84 (92, 98, 106, 112) rows have been worked.

Shape Shoulder

Cast off 4 sts. at beg. of next and alt. rows until 4 (5, 6, 8, 9) sts. rem. K. 1 row. Cast off. Replace sts. on machine. Rejoin wool at neck edge and k. to match right side.

SLEEVES

Ribbers. Cast on 50 (53, 56, 59, 62) sts. as 2 × 1 rib. T4/4. K. 20 rows. Transfer ribber sts. to M.B. Inc. 1 st. on sizes 2 and 4, 50 (54, 56, 60, 62) sts.

Single machines. Push 50 (53, 56, 59, 62) needles to B position. Take every 3rd needle down to A position. Using waste wool cast on over rem. needles. K. a few rows. Change to main wool T5. K. 39 rows. Make a hem and k. the row. Inc. 1 st. on sizes 2 and 4, 50 (54, 56, 60, 62) sts.

All machines. 000. T7. Beg. on row 5 (7, 9, 7, 1) of chart, k. 16 rows. Inc. 1 st. at both ends of next and every foll. 16th (14th, 14th, 14th, 12th) row until there are 72 (78, 82, 88, 92) sts. k. straight until 190 (196, 204, 210, 218) rows have been worked. This will give a sleeve seam of 15½ (16, 16½, 17, 17½) ins. Adjust length here if required.

Shape Top

000. Cast off 4 (4, 5, 5, 6) sts. at beg. of next 2 rows. Dec. 1 st. at both ends of next and every foll. 4th row 9 (9, 11, 12, 13) times in all, then every alt. row 4 (5, 3, 3, 3) times. K. 1 row. Cast off 2 sts. at beg. of next 12 (14, 14, 16, 16) rows. Cast off rem. 14 (14, 16, 16, 16) sts.

FRONT BAND

Mark position on Right Front for 2 buttons, the first at beg. of neck shaping and the 2nd spaced evenly between 1st button and beg. of front opening.

Ribbers. Cast on 18 sts. as 1 × 1 rib. T3/3. K. straight making buttonholes to match markers over 2 centre needles. Now k. straight until long enough to fit along both fronts and across back neck, stretching to fit. Cast off.

Single machines. Cast on 30 sts. by hand. T6. K. straight making buttonholes to match markers over needles 8 and 9 from each end. Now k. until long enough to fit along both fronts and across back neck stretching to fit. Cast off.

TO MAKE UP

Pin out and press with a hot iron over a damp cloth. Join side, shoulder and sleeve seams. Sew in sleeves. Sew ribbed front band in position overlapping ends at centre front. Sew st. st. front bands in place. Overlap short ends at centre front and catch down. Neaten buttonholes and sew on buttons. Press seams.

ladies Vneck cardigan

WITH LACE PANEL
UP FRONT

Materials

13 (14, 15, 16) ozs. Sirdar Fontein Crepe
4-ply. 5 Buttons.

Measurements

To fit bust sizes 36 (38, 40, 42) ins.
Finished measurements 38 (40, 42, 44) ins.
Length to shoulder 22 (22½, 22½, 22¾) ins.
Sleeve seam 17½ ins.

Tension

14 sts. and 20 rows to 2 ins.

Abbreviations

K., knit; sts., stitches; inc., increase; dec.,
decrease; rep., repeat; foll., following;
alt., alternate; beg., beginning; rem.,
remaining; H.C.L's, Holding cam levers;
st.-st., stocking-stitch; trans., transfer;
M.B., main bed; S.D., slide dial; 000, set
row counter at 000; T., tension.

Notes

Figures in brackets refer to larger sizes
respectively.

Bust Darts: Using odd length of wool knit
number of sts. given, by hand and take each
needle back to A position.

Lace panels up fronts: These are worked on
needles 9 to 21 from front edge (i.e. 2
patterns). Decreasing at V neck edge.
Transfer 23rd st. on to 24th needle and
move 22 sts. 1 needle in. Decreasing must
be worked before setting the lace pattern.

Welts and Cuffs

Ribbers: K. the number of rows given for
1 x 1 rib at T4/3.

Stocking stitch hem: K. double the number
of rows given at T6.

BACK

Cast on 135 (141, 149, 155) sts. K. 16
rows (see notes). Trans. ribber sts. to M.B.
for st.-st. 000. T7. K. 126 rows.

Shape Armholes

000. Cast off 5 sts. at beg. of next 2 rows.
Dec. 1 st. at each end of next 13 rows. 99
(105, 113, 119) sts. K. until 80 (82, 86, 88)
rows have been worked.

Shape Shoulder

Cast off 6 (6, 8, 8) sts. at beg. of next 8
rows and 6 (9, 4, 7) sts. at beg. of next 2
rows. Cast off rem. 39 (39, 41, 41) sts.

RIGHT FRONT

Cast on 63 (66, 70, 73) sts. (having the
extra stitch on sizes 1 and 4 at right side).



K. 16 rows (see notes). Trans. ribber sts. to
M.B. for st.-st. 000. T7. S.D. on 5 (3, 1, 8).
Working lace panel (see notes) on left side,
K. 115 rows. Carriage is at front edge. K. 1
row extra for Left Front.

Bust Darts

K. 5 sts. (see notes) at opposite side to
carriage on next and alt. rows 6 times in all.
K. 1 row. Unravel odd wool and bring
needles to B. position. K. the row. K. 10
rows.

Shape Armhole and Neck

000. Cast off 5 sts. at beg. of next row.
Dec. 1 st. at armhole edge on next 13 rows,

at the same time begin neck shaping,
keeping pattern correct by moving S.D. 1
position every time a dec. st. is worked,
dec. 1 st. at neck edge on next and every
foll. 4th row 11 times in all then every 8th
row until 30 (33, 36, 39) sts. remain. K. 6
(8, 4, 6) rows.

Shape Shoulder

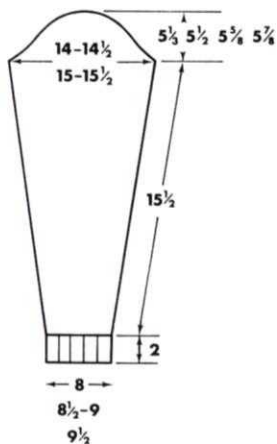
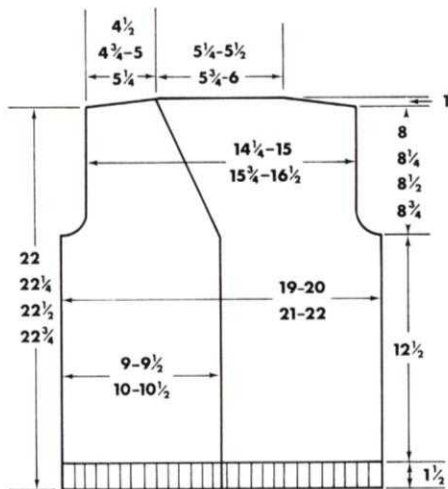
Cast off 6 (6, 8, 8) sts. at beg. of next and
every alt. row until 6 (9, 4, 7) sts. rem. K. 1
row. Cast off.

LEFT FRONT

Work as right front reversing all shaping
and setting S.D. on 7 (8, 2, 4).

STEPS	CARRIAGE DIRECTION	COLOUR	TENSION DIAL	H.C.L. LEFT	CARRIAGE	H.C.L. RIGHT	588 ONLY CHANGE KNOB	NEEDLE SELECTION APPARATUS	WEAVING APPARATUS	WEAVING THREAD COLOUR	LACE CARRIAGE DIRECTION	588 ONLY CHANGE LEVER	588 ONLY LAYING IN COLOUR
8	U							1 2 3 4 5 6 7 8					
7													
6	U												
5								2					
4	U							2					
3													
2	U												
1			7 I			I							

ties



SLEEVES

Cast on 57 (59, 63, 67) sts. K. 20 rows (see notes). Trans. ribber sts. to M.B. for st.-st. 000. T7. K. 10 rows. Inc. 1 st. at each end of next and foll. 6th row until there are 99 (101, 105, 109) sts. knit until 156 rows have been worked. (Adjust length here if required).

Shape top

000. Cast off 5 sts. at beg. of next 2 rows. Dec. 1 st. at each end of next 13 rows, then on every foll. 4th row 7 times in all. K. 1 row. Dec. 1 st. at each end of next and foll. alt. row 4 (5, 6, 7) times in all. K. 1 row. Cast off 3 sts. at beg. of next 8 rows. Cast off rem. 17 (17, 19, 19) sts.

FRONT BAND

Mark position on left front for 5 buttons, the first 3/8 inch above lower edge and the last one at beg. of neck shaping. Space the remainder evenly between. **Ribbers:** Cast on 15 sts. for 1 x 1 rib T4/3. Knit straight and make buttonholes to match markers on centre st. until long enough to fit along both fronts and across back neck stretching to fit. Cast off.

Single machines: Cast on 18 sts. by hand. T6. K. as Ribbers making buttonholes over needles 4 to 6 from each end. Cast off.

TO MAKE UP

Pin out and press with a hot iron over a damp cloth. Join side, shoulder and sleeve seams. Sew in sleeves. Sew ribbed front band in position. Sew st.-st. band in position, turn to inside and slip-st. in place. Neaten buttonholes and sew on buttons. Press seams.

STRIPED TIE

Materials

2 Balls Turlleys Lysbet Super Cotton in main colour (M), 1 ball in contrast (C).

FANCY STITCH TIE

Materials

2 ozs. 6 strand cotton. Mail order from J. Henry Smith Ltd., Dept. K., Edwalton, Nottingham NG12 30F.

Measurements

Standard length. Width 2 ins.

Tension

Striped Tie st.st. T4. 16 sts. and 24 rows to 2 ins.

Pattern st. Tie T2. 34 rows to 2 ins.

Abbreviations

K., knit; sts., stitches; foll., following; alt., alternate; rem., remain; dec., decrease; inc., increase; T., tension; 000., Set row counter at 000.

TO KNIT

Striped Tie

Cast on 36 sts. by hand. 000. T4. Using M, K. 12 rows. Change to C, K. 8 rows. Change to M, K. 8 rows. Change to C, K. 4 rows. Change to M, K. 4 rows. Change to C, K. 2 rows. Either continue in stripes or work in M only, K. straight to 260 rows. Dec. 1 st. at both ends of next and every foll. alt. rows until 22 sts. remain. K. straight to 462 rows. Inc. 1 st. at both ends of next and every foll. alt. rows until there are 36 sts. K. straight to 620 rows. Cast off loosely.

TO MAKE UP

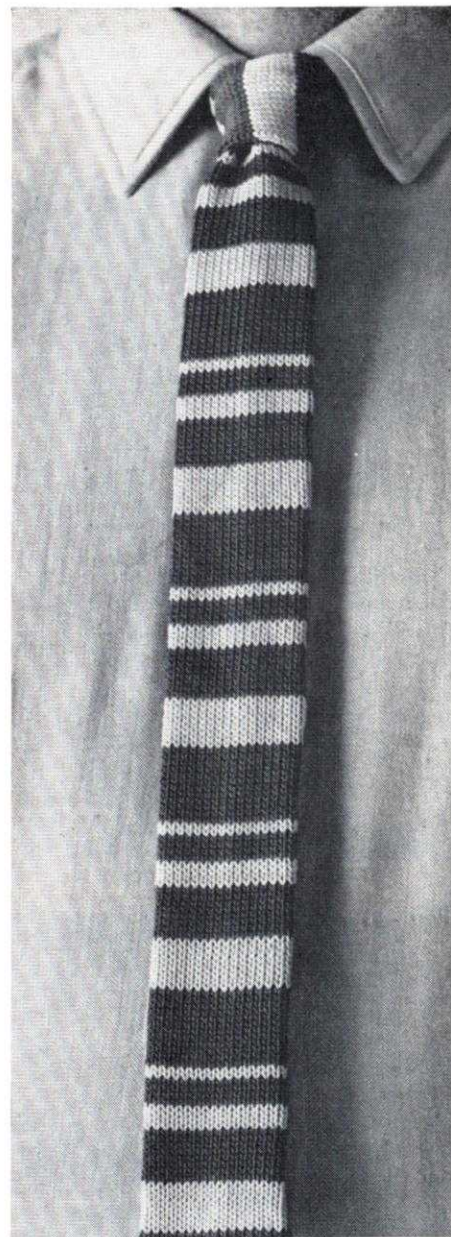
Pin out and press with a hot iron over a damp cloth. Fold work lengthways, join both short ends and long seam leaving 4 ins. open at centre. Turn to right side and close opening. Press seams.

Pattern Stitch Tie

Cast on 30 sts. by hand. T2. K. 3 rows. Foll. chart, K. 260 rows. Dec. 1 st. at both ends of next and every foll. 15th row 6 times in all. 18 sts. rem. K. straight to 614 rows. Inc. 1 st. at both ends of next and every foll. 6th row 6 times in all. 30 sts. K. straight to 810 rows. K. 3 rows in st.st. Cast off loosely.

TO MAKE UP

Follow instructions as Striped Tie.



4	→																														
3	←											1	3	5	7	B															
2	→																														
1	←	A	2					I	N	1	3	5	7	A	1	N							△								
		TUCK PLAIN PART																													
												1	2	3	4	5	6	7	8												
STEPS	CARRIAGE DIRECTION																														
	COLOUR																														
	TENSION DIAL																														
H.C.L. LEFT		REVERSE LEVER ←																													
H.C.L. RIGHT		SLIDE DIAL ↓																													
588 ONLY CHANGE KNOB												1 2 3 4 5 6 7 8																			
												WEAVING APPARATUS																			
												WEAVING THREAD COLOUR																			
												LACE CARRIAGE DIRECTION																			
												588 ONLY CHANGE LEVER																			
												588 ONLY LAYING IN COLOUR																			
CARRIAGE												NEEDLE SELECTION																			

Patterns Galore!

That's the promise that comes with the Jones KNITLEADER attachment. Now, you have a quick and reliable alternative to written patterns, and almost unlimited choice into the bargain.

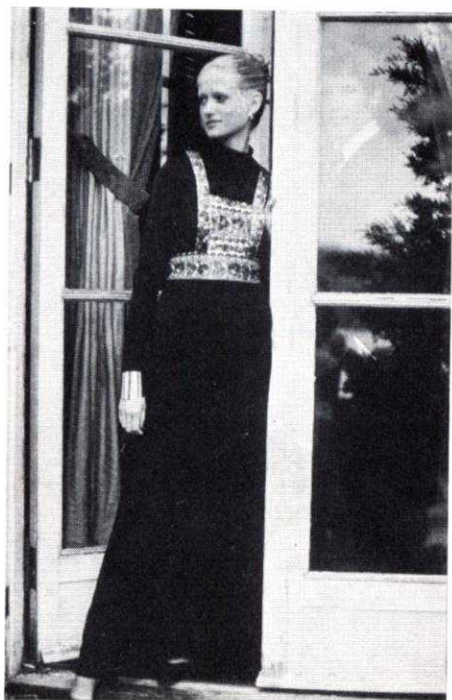
And the bargains start amongst those gorgeous, glossy catalogues at your local sewing counter. With the KNITLEADER, nearly all those patterns can be made on your machine!

This is knitting in the '70s; as straightforward and versatile as sewing. Take the pattern of your choice; then trace one of the pattern shapes on to the KNITLEADER graph with a pen.

You need only work a test piece to give stitches and rows to the inch, and you're away! The KNITLEADER tells you how many stitches to cast on; and you will see as the graph unrolls, where to increase or decrease on each row.

A collection of knitwear has been made in this way by Jones, using Simplicity and Style patterns, and is currently on tour in the West Country. In the next issue of *Stitchin'time*, we will explain in detail, how to use the KNITLEADER and show you some more of the fantastic garments that can be made.

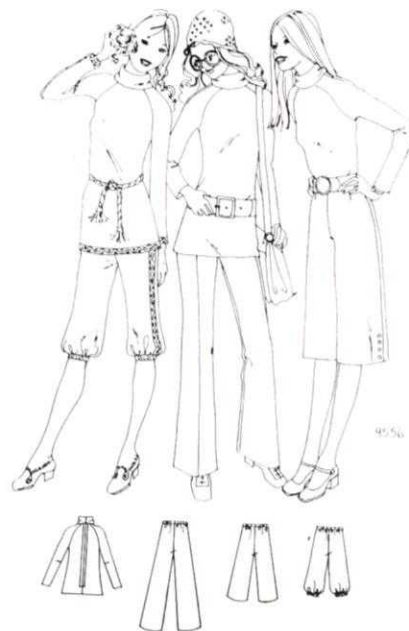
Meanwhile, just to wet your appetite, why not start by looking through the designs on this page. And remember, there are hundreds more waiting for you, at your nearest sewing department.



Miss Vogue 8132



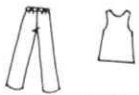
Vogue Paris Original 2615



Simplicity 9556



9430



Simplicity 9430



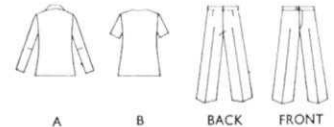
9756



Simplicity 9756



Style 3462



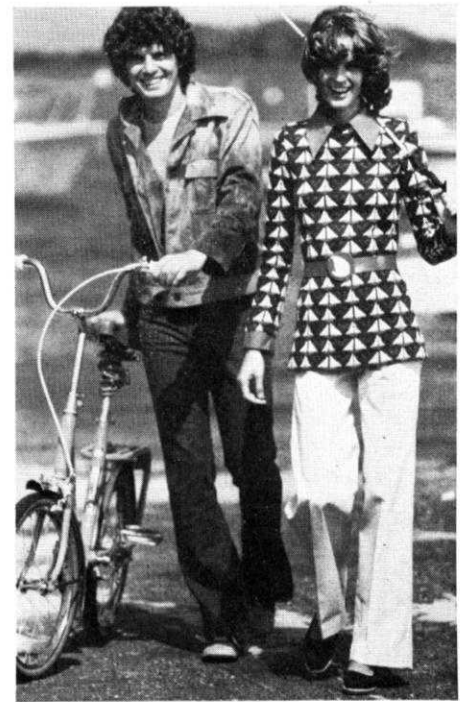
A B BACK FRONT



Butterick 6413



Butterick 6505



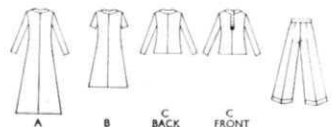
Butterick 6517



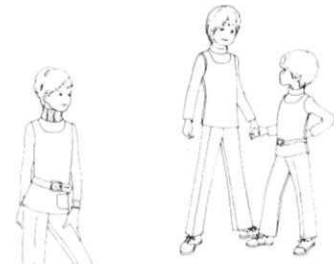
Butterick 6354



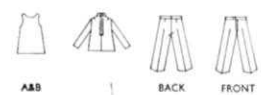
Style 3532



A B C BACK C FRONT



Style 3500



A&B C BACK FRONT

check bolero



Materials

2 (2, 2, 3) ozs. Lister Lavenda Crisp Crepe 4 ply in White, (L) 3 (4, 4, 4) ozs. in mid-blue (M), 2 (2, 2, 3) ozs. in royal blue (D), fringe or trimming, bias binding.

Measurements

To fit bust sizes 30 (32, 34, 36) ins.
Length to shoulder 13½ (14, 14½, 15) ins.

Tension

16½ sts. and 20 rows to 2 ins. after pressing.

Abbreviations

K., knit; sts., stitches; inc., increase; dec., decrease; foll., following; alt., alternate; beg., beginning; rem., remain; T., tension; 000., set row counter at 000.

Notes

K.M. 588. Row counter will register 1 row for every row knitted.

All other machines. Row counter will register 2 rows for every row knitted. Wax wool.

BACK

Beginning at right side end. Using L cast on 114 (122, 132, 140) sts. by hand. T7. K. 1 row. 000. Foll. chart K. 8 rows. Inc. 1 st. at both ends of next and every foll. 8th row until there are 128 (136, 146, 154) sts. K. straight until 64 (66, 68, 70) rows have been worked.

Shape armholes

000. Cast off 6 (6, 7, 7) sts. at beg. of next 2 rows. Dec. 1 st. at both ends of next 5 (5, 7, 7) rows then every alt. row until 96 (102, 108, 114) sts. rem. K. straight until 72 (74, 78, 80) rows have been worked.

Shape shoulders

Cast off 10 sts. at beg. of next 4 rows and 7 (9, 11, 13) sts. on next 2 rows. Cast off rem. 42 (44, 46, 48) sts.

RIGHT FRONT

Beginning at right side and using L cast on 32 (36, 41, 45) sts. T7. K. 1 row. 000. Foll. chart K. 1 row (K. 1 row extra for Left Front). Cast on 3 sts. at beg. of next and foll. alt. row. Inc. 1 st. at left side on next 4 rows. Inc. 1 st. at right side (side seam) on next and every foll. 8th row *at the same time* inc. 1 st. at left side (front edge) on next and every foll. alt. rows 7 times in all then every foll. 4th row 5 times. 59 (63, 68, 72) sts. Continue inc. 1 st. at side seam until there are 61 (65, 70, 74) sts. K. straight until 64 (66, 68, 70) rows have been worked. (K. 1 row extra for Left Front).

Shape Armholes

000. Cast off 6 (6, 7, 7) sts. at beg. of next row. K. 1 row. Dec. 1 st. at armhole edge on next 5 (5, 7, 7) rows. K. 1 row. Dec. 1 st. at armhole edge on next and every foll. alt. row 5 (6, 5, 6) times in all *at the same time* dec. 1 st. at front edge on next and every foll. alt. row 6 (6, 7, 7) times. Keeping armhole edge straight, continue to dec. 1 st. at neck edge on every foll. 4th row until 27 (29, 31, 33) sts. rem. K. straight until 72 (74, 78, 80) rows have been worked.

Shape Shoulder

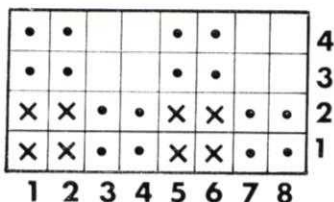
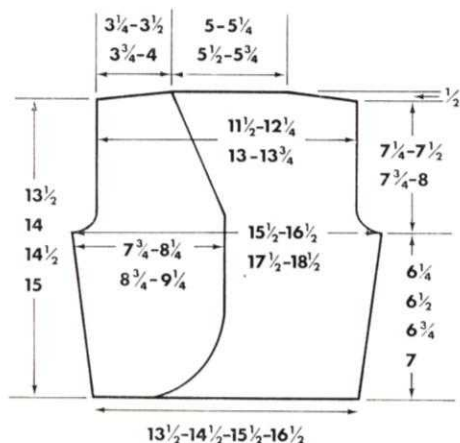
Cast off 10 sts. at beg. of next and alt. row. K. 1 row. Cast off rem. 7 (9, 11, 13) sts.

LEFT FRONT

K. as Right Front reversing all shapings.

TO MAKE UP

Pin out and press with a warm iron over a damp cloth. Join side and shoulder seams. Face armholes with bias binding. Sew fancy trimming all round edges. Press seams.



X = LIGHT • = MEDIUM

□ = DARK

Casual jacket

For machines with ribbing attachment.

Materials

33 (35, 37, 39, 41, 43) ozs. Robin Vogue 4 ply wool, 6 buttons, wool braid for edging.

Measurements

To fit chest sizes 38 (40, 42, 44, 46, 48) ins.
Finished measurements 42 (44, 46, 48, 50, 52) ins.
Length to shoulder 26½ (26¾, 27, 27¼, 27½, 27¾) ins.
Sleeve seam 18½ ins.

Tension

Every needle rib. 11 sts. and 32 rows to 2 ins. over patt. st.

Abbreviations

K., knit; sts., stitches; inc., increase; dec., decrease; foll., following; alt., alternate; beg., beginning; rep., repeat; rem., remain; patt., pattern; R.L., racking lever; M.B., main bed; T., tension; 000., set row counter at 000.

Notes

Figures are given for M.B. only, those sts. on ribber being decreased and increased automatically when they occur at the edge.

PATTER STITCH

Half Pitch	M.B.	T3.	1111111111
Lever on H.	Ribber	T3.	1111111111
			<u>N</u> <u>PR</u>

Carriage on R.H.S. P

R.L. on 6. K. 2 rows. R.L. on 5. K. 2 rows. Rep. 4 rows.

BACK

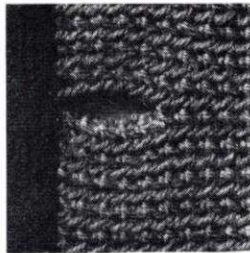
Cast on 106 (112, 118, 122, 128, 134) sts. on each bed in every needle rib. 000. T3/3. Foll. patt. st. K. 42 rows. Inc. (see notes) at both ends of next and every foll. 42nd row until there are 118 (124, 130, 134, 140, 146) sts. K. straight until 272 rows have been worked. This will give a length to armhole of 17 ins. Adjust length here if required.

Shape Armholes

000. Cast off 4 sts. (see notes) at beg. of next 2 rows. Dec. 1 st. at both ends of next and every foll. alt. rows 6 (7, 7, 7, 8, 8) times in all then every 4th row until 90 (94, 100, 104, 108, 114) sts. rem. K. straight until 154 (158, 162, 166, 170, 174) rows have been worked.

Shape Shoulders

Cast off 4 (4, 4, 5, 5, 5) sts. at beg. of next 6 rows. Transfer centre 14 (16, 18, 18, 20, 22) ribber sts. to M.B. and cast off with odd length of wool. With waste wool K. the sts. on both beds at left by hand, taking each needle down to A position. K. the right side first. * Cast off 4 sts. at beg. of next row and 3 sts. at beg. of next row. Rep. last 2 rows twice more. Cast off rem. 5 (6, 8, 4, 5, 7) sts. Unravel waste wool and bring needles to B position. Rejoin wool at neck edge and K. 1 row. K. to match right side from*.



RIGHT FRONT

Cast on 56 (59, 62, 64, 67, 70) sts. on each bed in every needle rib. 000. T3/3. Foll. patt. st. K. 42 rows. Inc. 1st at side seam (right side) on next and every foll. 42nd row until there are 62 (65, 68, 70, 73, 76) sts. K. straight until 272 rows have been worked. (K. 1 row extra for Left Front).

Shape Armholes

000. Cast off 4 sts. at beg. of next row. K. 1 row. Dec. 1 st at beg. of next and ever foll. alt. row 6 (7, 7, 7, 8, 8) times in all, then every 4th row until 48 (50, 53, 55, 57, 60) sts. rem. K. straight until 115 (119, 123, 127, 131, 135) rows have been worked.

Shape Neck

Cast off 9 (10, 10, 11, 12, 13) sts. at beg. of next row. K. 2 rows. Dec. 1 st at neck edge on next and every foll. alt. rows 7 times in all then every 4th row until 29 (30, 32, 34, 35, 37) sts. rem. K. straight until 154 (158, 162, 166, 170, 174) rows have been worked.

Shape Shoulder

Cast off 4 (4, 4, 5, 5, 5) sts. at beg. of next and alt. rows until 5 (6, 8, 4, 5, 7) sts. rem. K. 1 row. Cast off.

LEFT FRONT

Mark positions on Right Front for 6 buttons, the first 1 in. above lower edge and

the last ½ in. below neckline. Space remainder evenly between. K. to match Right Front reversing all shapings and making buttonholes to match markers over needles 4 to 8 from front edge.

SLEEVES

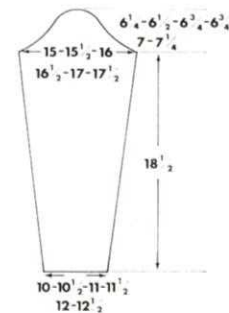
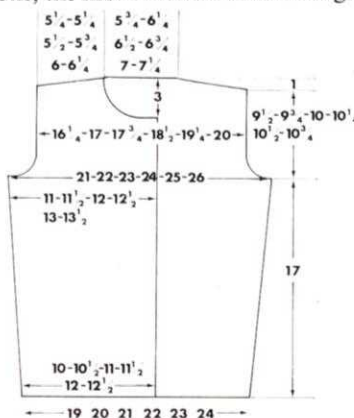
Cast on 54 (58, 60, 64, 66, 70) sts. on each bed in every needle rib. T3/3. Foll. patt. st. K. 22 rows. Inc. 1 st at both ends of next and every foll. 16th row until there are 84 (88, 90, 94, 96, 100) sts. K. straight until 296 rows have been worked. This will give a sleeve seam of 18½ ins. Adjust length here if required.

Shape Top

000. Cast off 4 sts. at beg. of next 2 rows. K. 2 rows. Dec. 1 st at both ends of next and every foll. 4th row 9 times in all then every 8th row 4 (4, 5, 5, 5, 5) times K. 7 (7, 5, 5, 7, 7) rows. Dec. 1 st at both ends of next and every foll. alt. rows 8 (8, 6, 7, 8, 8) times in all. K. 1 row. Cast off 2 sts. at beg. of next 10 (12, 14, 14, 14, 16) rows. Cast off rem. 14 (14, 14, 16, 16, 16) sts.

To make up

Sew side, shoulder and sleeve seams. Sew in sleeves. Sew wool braid round all edges of Jacket and cuffs. Neaten buttonholes and sew on buttons. Press seams.



childs classic cardigan

Materials

7 (7, 8, 8, 9, 9) ozs. Lister Lavenda 3 ply wool. 4 (4, 5, 5, 5, 5) buttons, 2 Motifs.

Measurements

To fit chest sizes 22 (24, 26, 28, 30, 32) ins. Finished measurements 24 (26, 28, 30, 32, 34) ins.

Length at back neck 13½ (15½, 17, 19, 21, 23) ins.

Sleeve seam 9½ (11½, 13, 14½, 16, 17) ins.

Tension

17 sts. and 22 rows to 2 ins. after pressing.

Abbreviations

K., knit; sts., stitches; inc., increase; dec., decrease; alt., alternate; foll., following; beg., beginning; rem., remaining; T., tension; 000., set row counter at 000.

Notes

Fully fashioning at raglan decreasing is worked by transferring the 3rd st. onto 4th needle and moving 2 end sts. 1 needle in. Decreasing on neck edge is worked by transferring 2nd st. onto 3rd needle and moving the end st. 1 needle in.

Picot hem. Cast on number of sts. required with waste yarn. K. a few rows. Change to main wool. T4. K. 10 rows. Transfer alt. sts. to adjacent needles. K. the row. K. 10 rows. Pick up first row loops in main colour and make a hem. T5. K. the row.

BACK

Cast on 103 (111, 121, 129, 137, 145) sts. and K. the hem, (see notes). 000. T5. K. 80 (92, 102, 118, 136, 152) rows. (Adjust length here if required).

Shape Raglan Armholes

000. Cast off 6 (4, 2, 2, 3, 3) sts. at beg. of next 2 rows. Dec. 1 st. (see notes) at each end of next 3 rows and then every alt. row until 33 (35, 39, 41, 43, 45) sts. rem. K. 1 row. T4. K. 10 rows. Work picot edge row as for hem. K. 10 rows. Cast off loosely using chain method.

RIGHT FRONT

Cast on 48 (52, 57, 61, 65, 69) sts. and K. hem (see notes). 000. T5. K. 80 (92, 102, 118, 136, 152) rows. K. 1 row extra for left front.

Shape Raglan Armhole and Neck

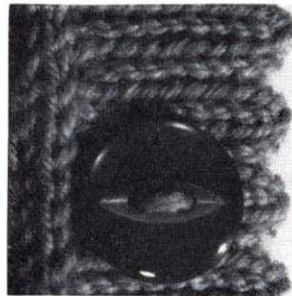
000. Cast off 6 (4, 2, 2, 3, 3) sts. at beg. of next row. K. 1 row. Dec. 1 st. (see notes) at raglan edge on next 3 rows. K. 1 row. Dec. 1 st. at beg. of next and foll. alt. rows, at the same time dec. 1 st. at neck edge on next and foll. 4th row 6 (4, 5, 5, 6, 6) times in all, then every foll. 6th row until 4 sts. rem. Dec. 1 st. at neck edge only on next 2 rows. Cast off rem. 2 sts.

LEFT FRONT

K. as Right Front reversing all shaping.

SLEEVES

Cast on 51 (55, 61, 65, 69, 73) sts. and K. hem (see notes). 000. T5. K. 8 rows. Inc. 1 st. at each end of next and foll. 8th (8th,



10th, 10th, 10th, 10th) row until there are 73 (79, 87, 93, 99, 107) sts. K. straight until 98 (118, 136, 152, 168, 180) rows have been worked. (Adjust length here if required).

Shape Raglan Armhole

000. Cast off 5 (3, 2, 2, 2, 2) sts. at beg. of next 2 rows. Dec. 1 st. (see notes) at each end of next and foll. alt. rows until 7 (7, 7, 7, 9, 11) sts. remain. K. 1 row. Slip sts. onto a pin.

BUTTONBAND

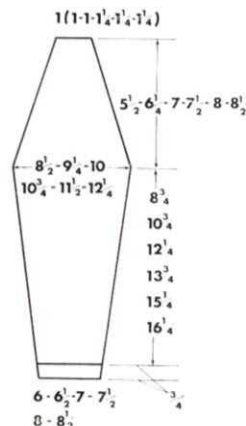
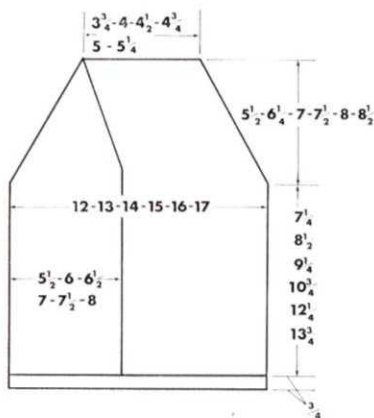
With wrong side facing, pick up and place on machine approximately 100 (116, 130, 146, 160, 176) sts. along left front edge and 7 (7, 7, 7, 9, 11) sts. from one sleeve. T4. K. 10 rows. Work picot edge row as hem. K. 10 rows. Cast off loosely using chain method.

BUTTONHOLE BAND

Mark position on right front for 4 (4, 5, 5, 5, 5) buttonholes. The first ½ in. above lower edge and the final one at beg. of neck shaping. Starting with second sleeve pick up the same number of sts. down right front as for buttonband. K. 5 rows. Make buttonholes over 3 needles to match markers. K. 5 rows. Work picot edge row. K. 5 rows. Make buttonholes as before. K. 5 rows. Cast off loosely using chain method.

TO MAKE UP

Pin out and press with a hot iron over a damp cloth. Join side, sleeve with raglan seams. Turn front bands to inside and slip st. in place. Neaten buttonholes and sew on buttons. Sew on Motifs. Press seams.



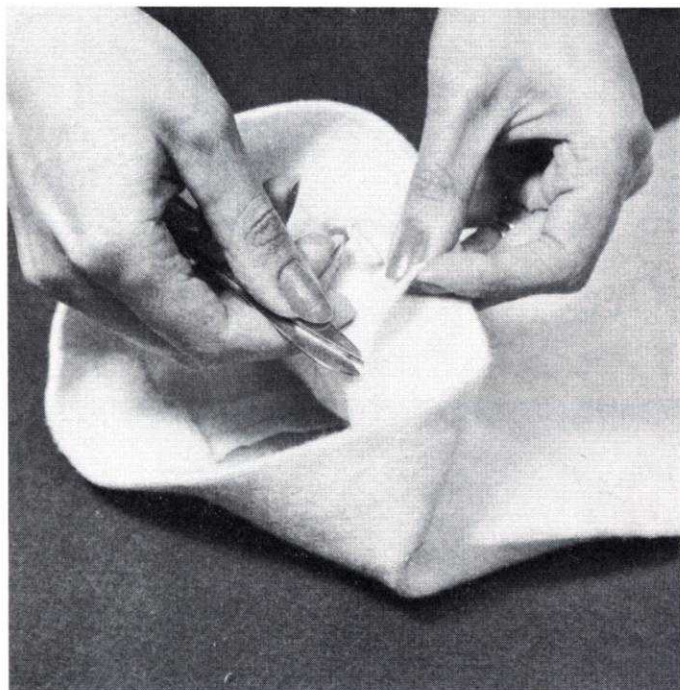
Jones Course

Lesson 7

A FALSE HEM USING BIAS BINDING

This method is applicable to hems on trousers, skirts, shorts, dresses and coats. Choose a matching bias binding 1"–1½" wide. A piece of matching lining, cut on the bias, can also be used.

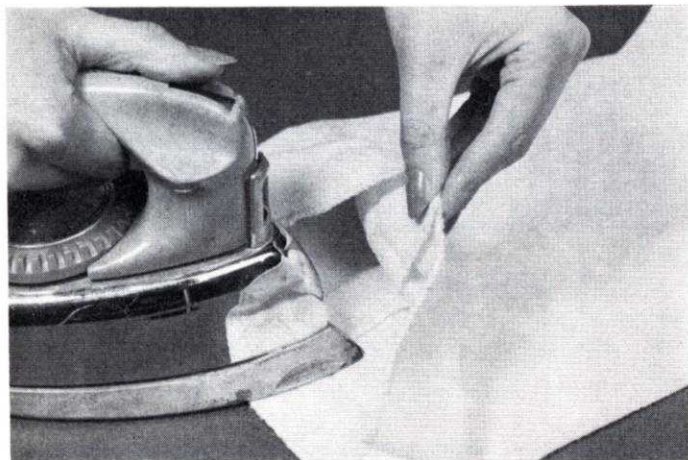
(A contrasting colour has been used in this article for illustration purposes only.)



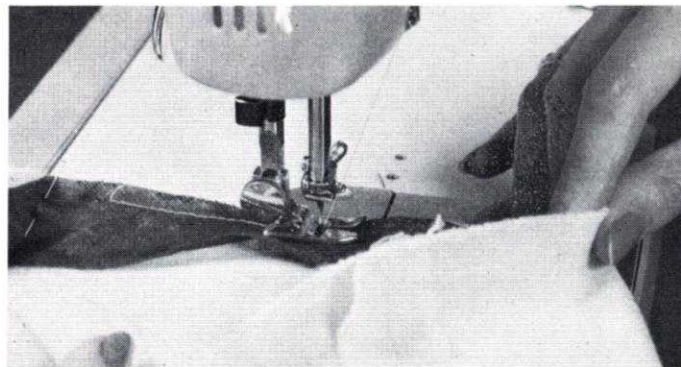
1
Unpick the hem of the garment. Remove all surplus threads.



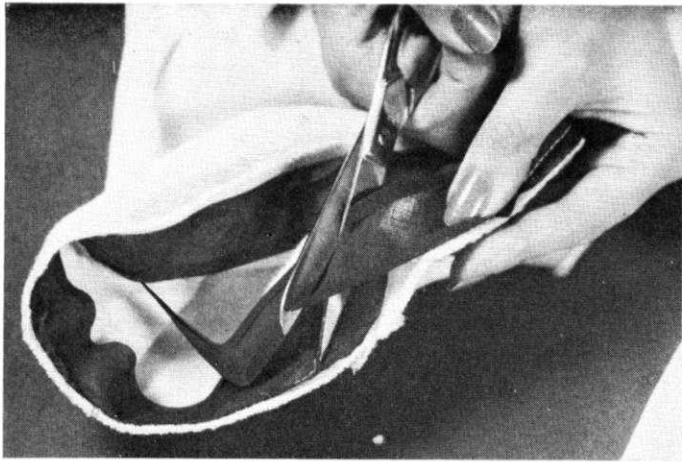
3
Cut a bias strip the length of the hem plus 2–3 inches. Bias binding purchased by the yard is usually folded over ¼" on either side. Unfold one of these edges and pin to the right side of the lower edge of the garment. Tack.



2
Place the point of the iron on the inside of the garment and press away the crease line with difficult creases, press with a damp cloth (depending of course on the type of fabric).

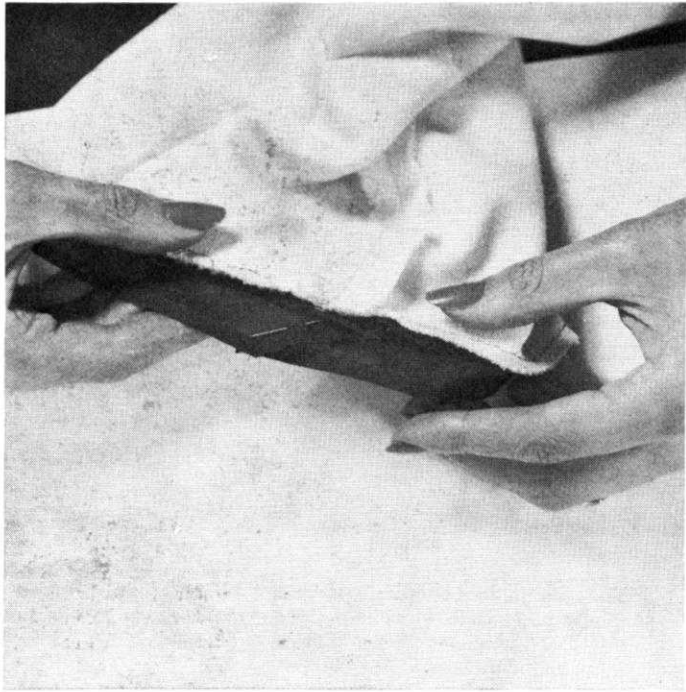


4
Begin to machine 1½" away from the start of the binding, to within 3–4" away from the completed circle. This is to enable you to join the bias strip accurately.



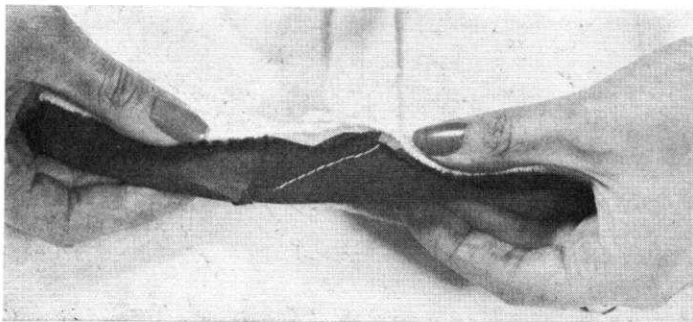
5

Remove the garment from the machine. Fold the bias strips over each other and cut along the straight grain of the strip.



6

This will give a diagonal join. Allow $\frac{1}{4}$ " seaming on either piece. Cut both pieces following in the same direction. A join on the bias of the fabric would give a stretched seam that is why it is necessary to join as described.



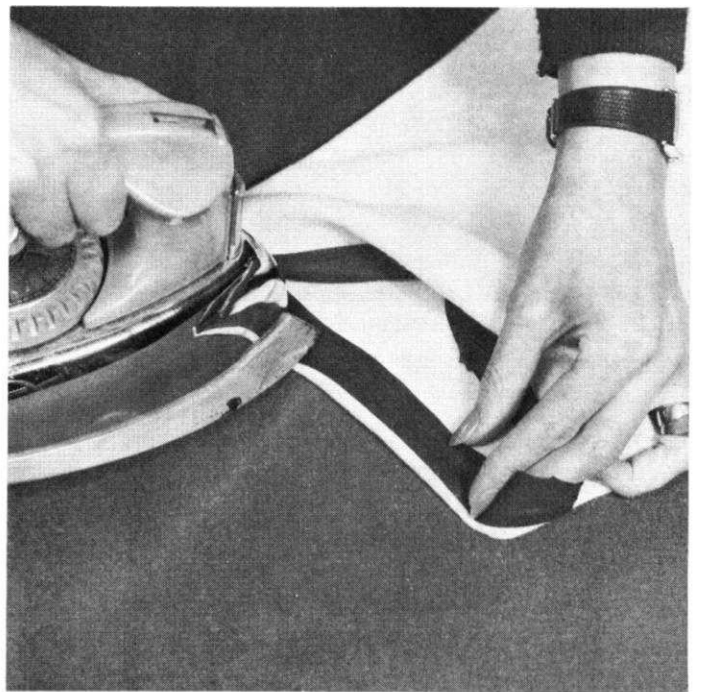
7

Machine the bias strips together.



8

Continue to machine the bias strips to the hem $\frac{1}{4}$ " away from the edges as before.

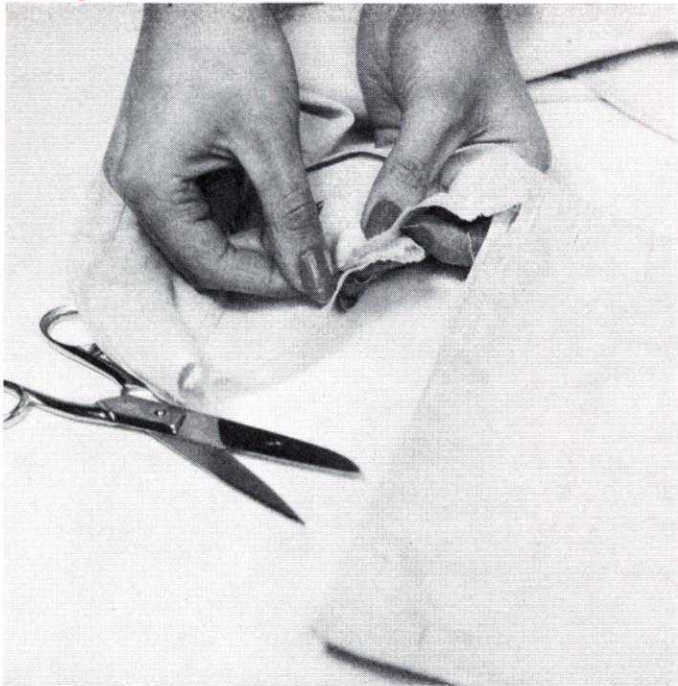


9

Turn to the inside and press the binding inwards. Pin, tack and slip hem.

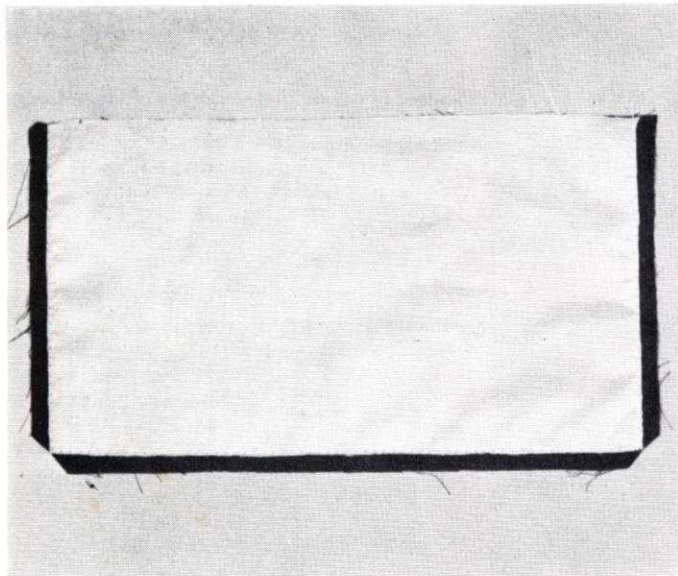


RENEWING WORN CUFFS



1

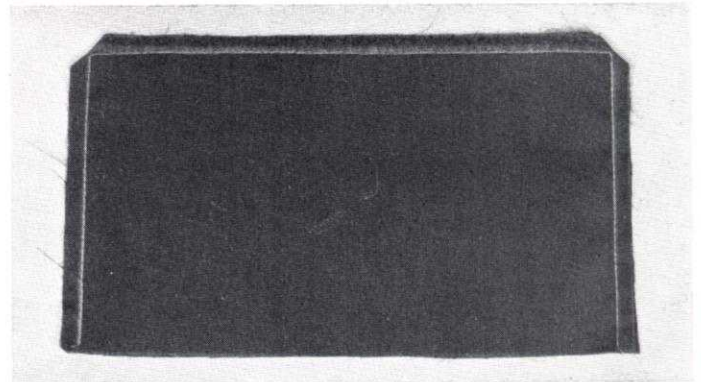
Remove the old cuff from the shirt. If the sleeve is pleated onto the cuff pin or tack these in this position before removing the cuff. With a gathered sleeve re-gather (if by machine, use the largest stitch on the machine) $\frac{1}{4}$ " away from the edge of the sleeve.



2

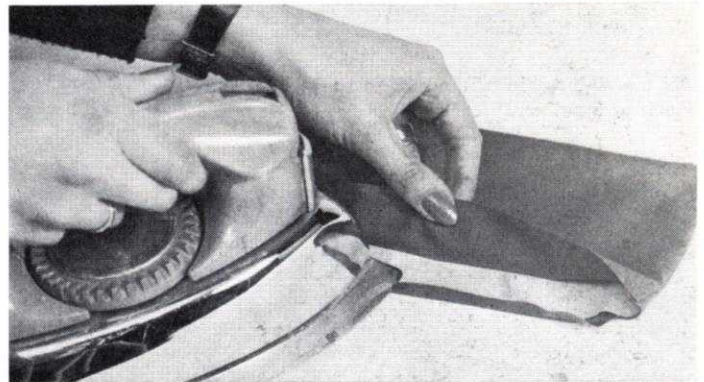
Cut a new cuff to the old cuff measurements leaving $\frac{1}{4}$ " seam allowance on three sides and $\frac{1}{2}$ " seam allowance on the long side to be attached to the sleeve.

Interface the cuff with a fusible interfacing and with the right sides facing and the interfacing on the outside machine round three sides of the cuff $\frac{1}{4}$ " away from the edge.



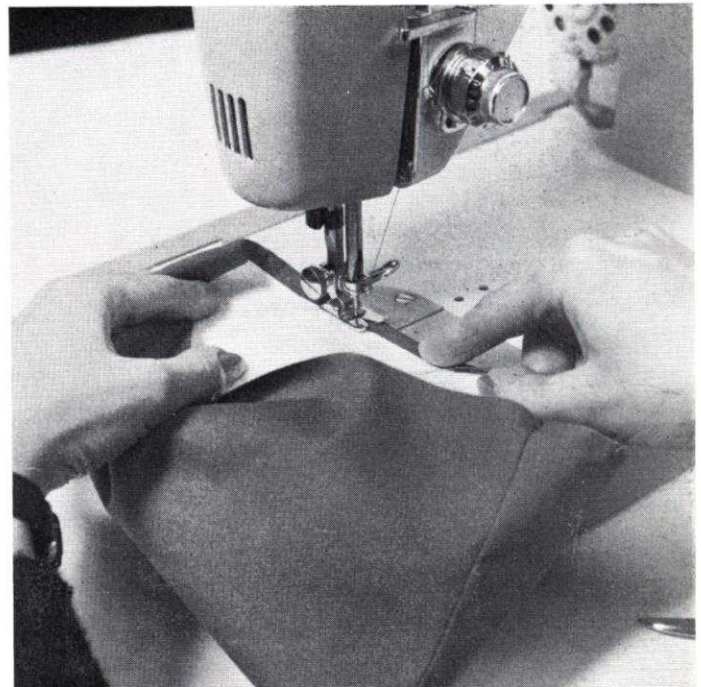
3

Mitre the corners and trim away the interfacing to the machine line to eliminate bulk. Turn through and press.



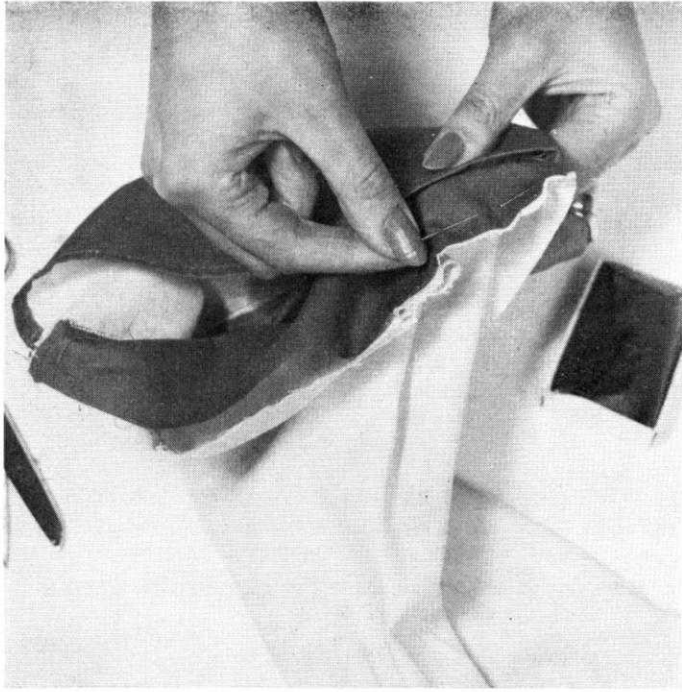
4

Trim away the interfacing $\frac{1}{2}$ " from the raw edge. Fold the cuff over onto the inside and press.



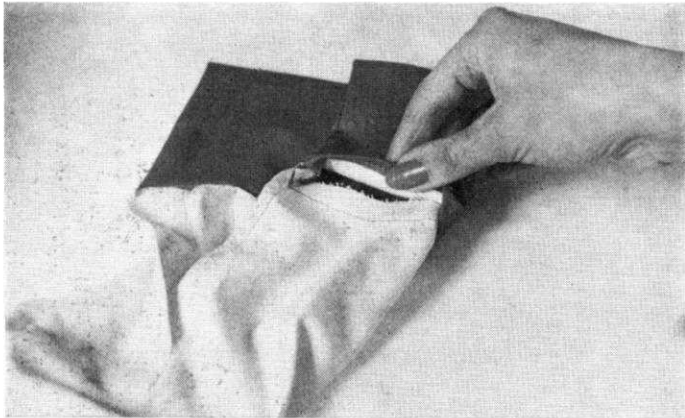
5

Machine along this edge $\frac{1}{4}$ " away from the fold.



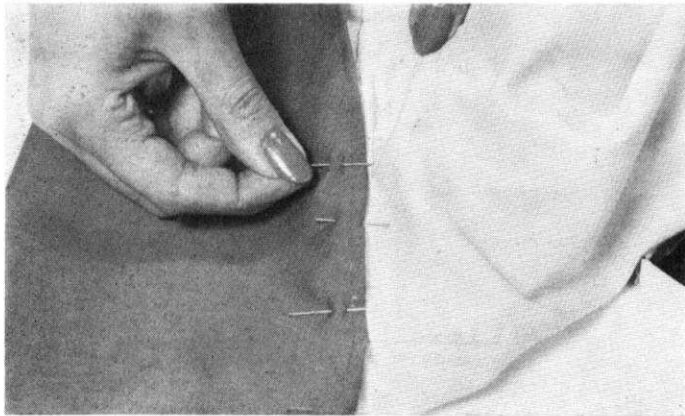
6

Pin the single side of the cuff to the inside of the sleeve. Tack and machine together.



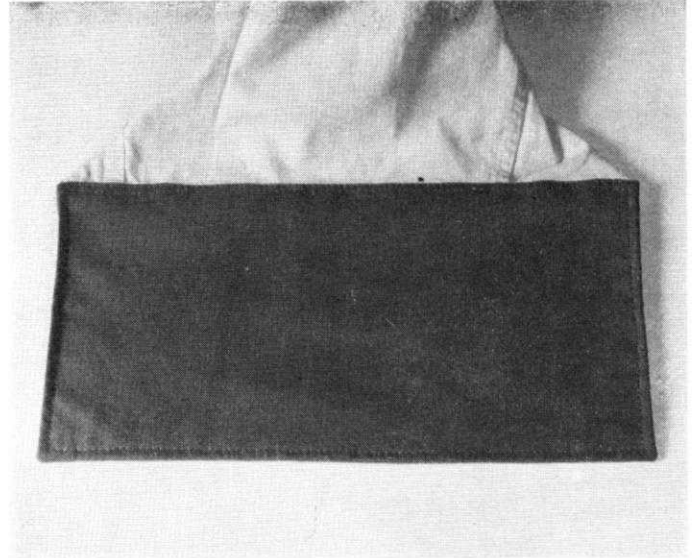
7

Turn the seams into the cuff and press.



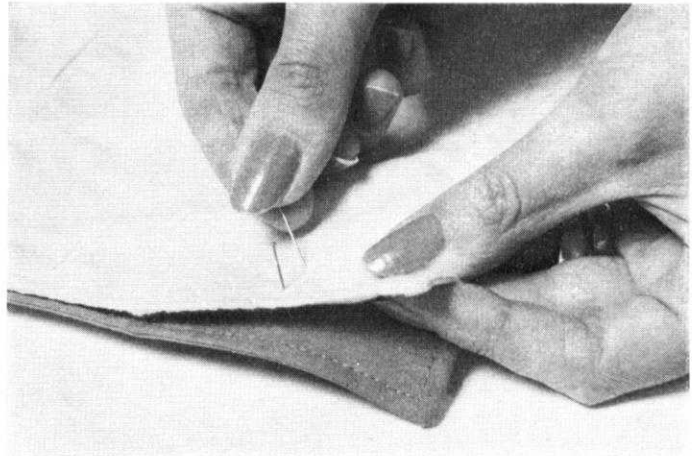
8

Pin the topside of the cuff to the sleeve. Tack and machine from the top side and running close to the folded edge.



9

Machine $\frac{1}{4}$ " away from the outer edges of the remaining three sides and this will complete the top stitching linking up with the first row.



10

Lay the old cuff over the new one and pin through the old buttonholes to transfer these positions onto the new cuff. Machine the new buttonholes and press.

BRIGHTEN your wardrobe

With up to the minute fashionable JEANS

Fashion is always changing and one of the latest innovations is a gingham or contrast turn-up, on a shortened trouser leg. Here's how to do it!



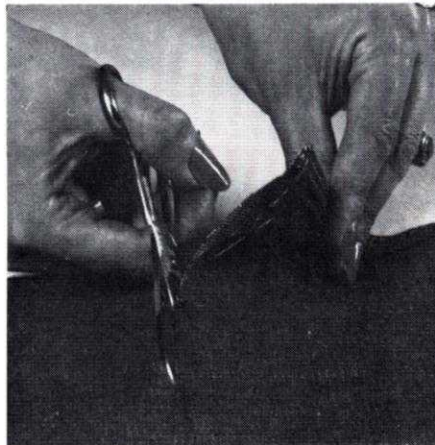
1

1

After deciding upon the new length of the jeans (about mid-calf) place the jeans flat on the table and with an inch tape, measuring up from the hem, mark the cutting line with tailor's chalk or pins.

2

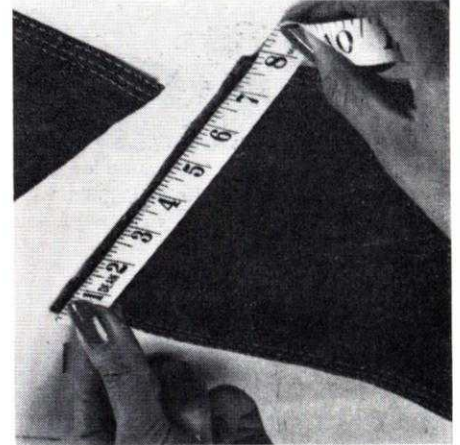
Cut across each leg, cutting away the lower part of the trouser.



2

3

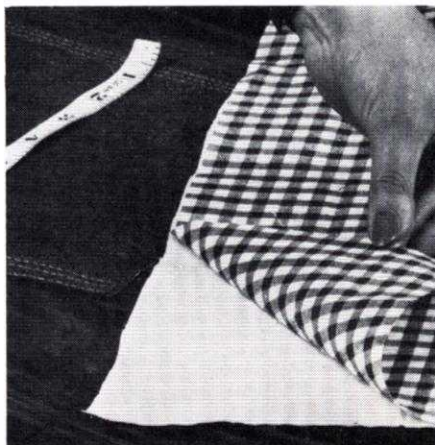
In order to calculate the amount of gingham needed for the turn up band, measure the new width across the raw edge. Double this width.



3

4

Cut a piece of gingham twice the width of the leg, by twice the depth of the finished turn up required. Stiffen this with a fusible interlining (iron on vilene).



4

5

Fold this in half depth wise and taking the centre of the gingham piece pin to the outside seam of the trouser leg. (The trousers are turned to the wrong side.)

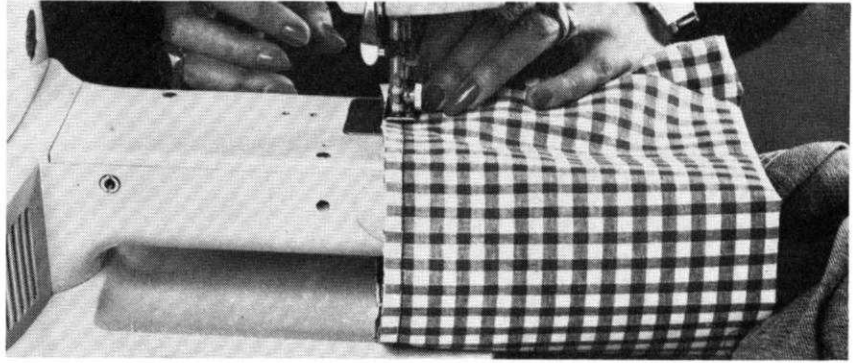


5



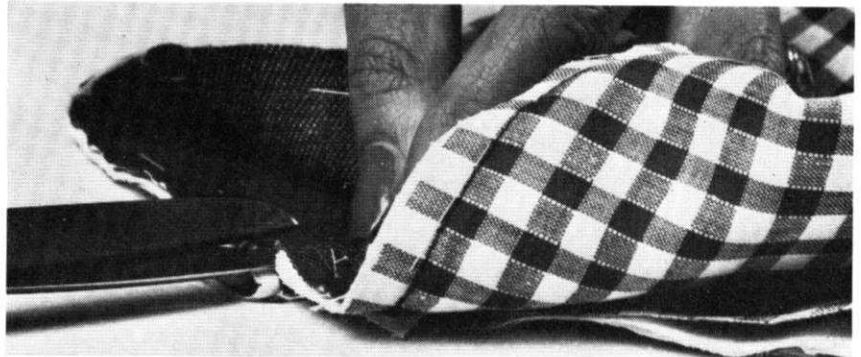
6

Tack the new band to the trouser leg. Leave the raw edges on the inside leg to be dealt with later.



7

7
Begin to machine from the inside leg, using the free arm of the machine slotted inside the trouser leg. Continue machining until reaching the inside leg again.



8

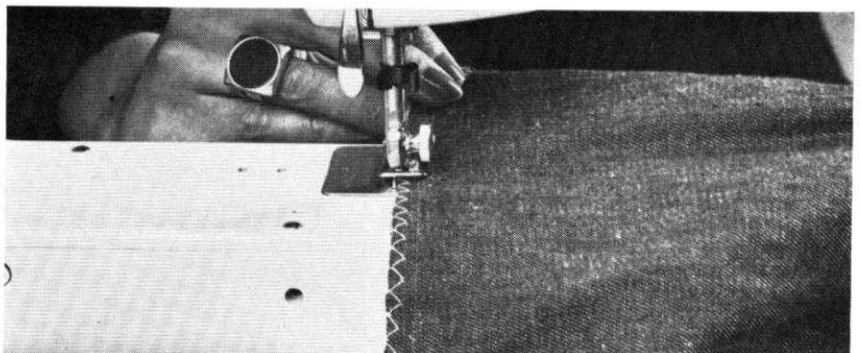
8
Cut open the seam of the jeans up to the machine line at the point where the gingham band joins (inside seam).



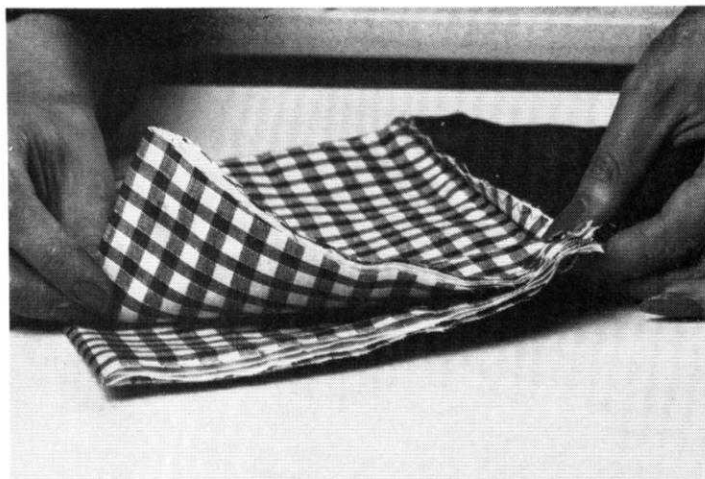
9

9
Illustration showing the seam cut open, this is to release the seam when turning the new cuff back.

10
Overlock (wide zig-zag) the raw edges of the jeans and the gingham turn up together.



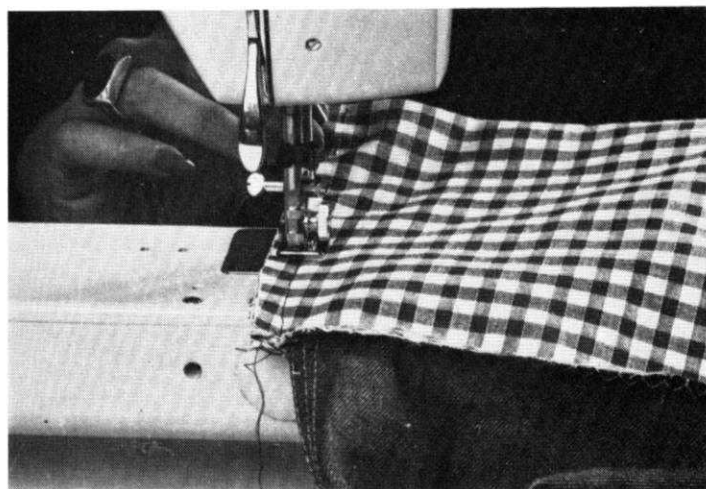
10



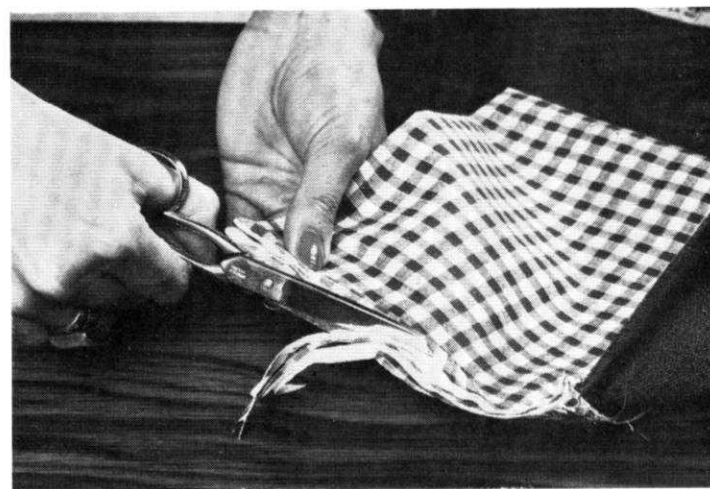
11 Turn the jeans through to the right side and place the raw edges of the turn-up together (side seams).



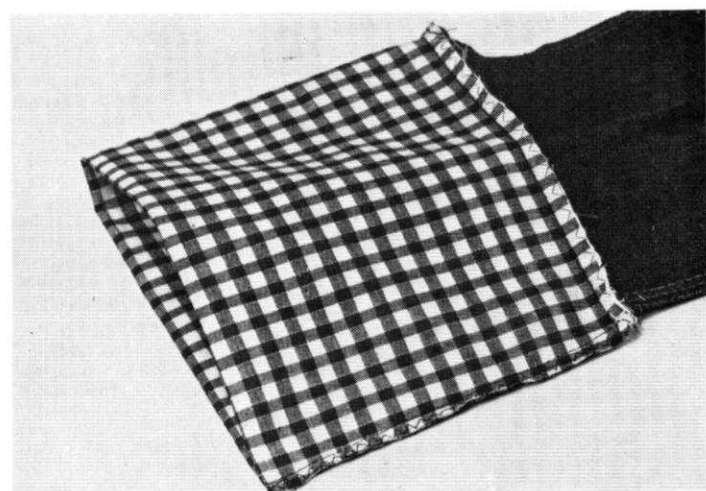
12 Pin down the side of the turn-up, and tack.



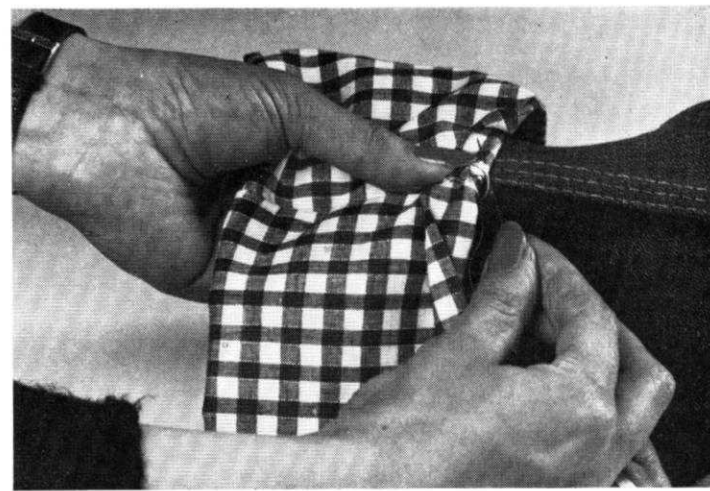
13 Machine $\frac{1}{2}$ " away from the edge, joining the sides together. With tapered jeans the new gingham band will have to get progressively wider to allow for the increased width required when the cuff is turned back.



14 Trim away some of the surplus bulk down this seam by folding back the outer edges of the gingham, and cutting away the inner layers.



15 Zig-Zag these raw edges together. This quick and easy method of adding a new turn-up is made possible by this simple and effective finishing off of these raw edges.

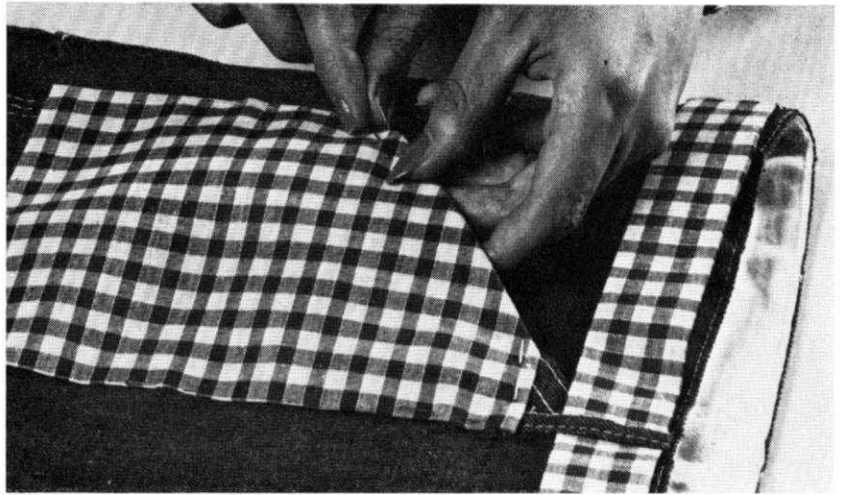


16 Fold the cuff back on to the leg and secure this with a bar-tack, holding the seam to the inside leg.



17

17
Illustration showing the trouser leg with new attractive turn up.



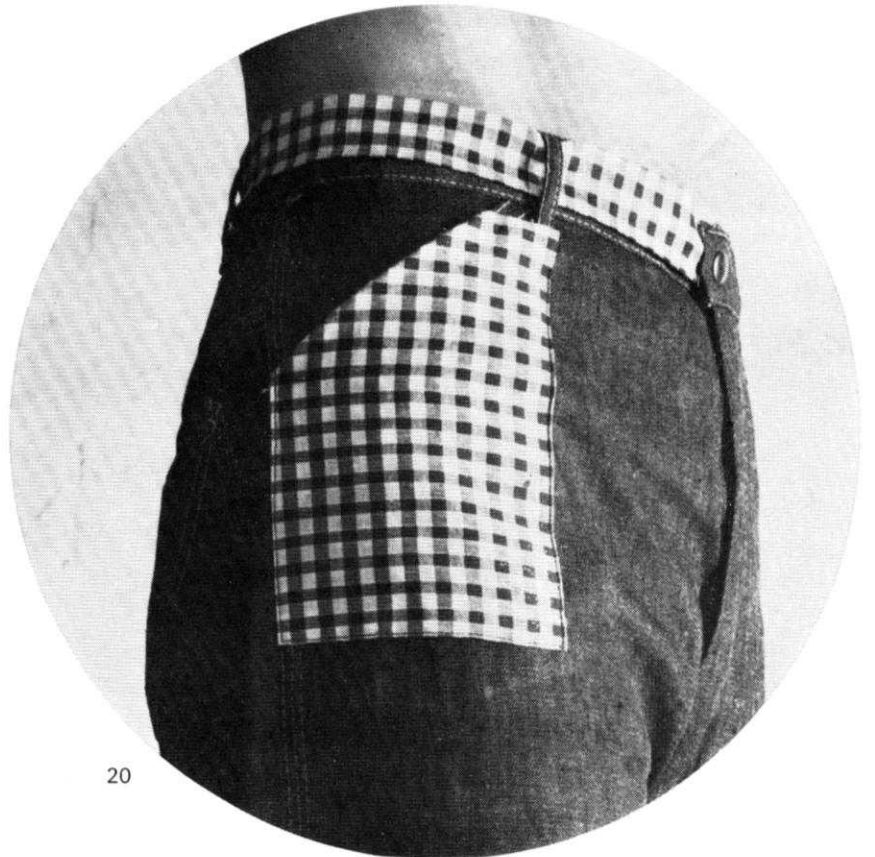
18



19

18
Cut a gingham patch to cover the shape of the pocket. Pin in position over the existing pocket.

19
Tack through the old pocket and top machine round the pocket. The patch can be sewn by hand as this only covers the outside of the pocket and is not used as such, only as an outer cover.



20

20
The jeans can be completed by adding a matching gingham belt. Adhesive belt stiffening can be bought by the yard together with simple do-it-yourself buckle kits.

22

Ladies Vneck jacket

Materials

12 (12, 13, 13, 14) ozs. Patons Four Seasons.
7 (8, 8, 9, 9) ozs. Patons Fiona. 5 Buttons.

Measurements

To fit bust sizes 34 (36, 38, 40, 42) ins.
Finished measurements 36 (38, 40, 42, 44)
ins.

Length to back neck $26\frac{1}{2}$ ($26\frac{1}{2}$, $26\frac{3}{4}$, 27 , $27\frac{1}{2}$)
ins.

Sleeve seam $17\frac{1}{4}$ ins.

Tension

13 sts. and 18 rows to 2 ins.

Abbreviations

K., knit; sts., stitches; inc., increase; dec.,
decrease; rep., repeat; foll., following; alt.,
alternate; beg., beginning; rem., remaining;
HCL's., Holding cam levers; 000., set row
counter at 000; T., tension.

Notes

To Work Stripes. K. 8 rows in Four
Seasons and 4 rows in Fiona. This garment
is made up on purl side of work.

BACK

Using Four Seasons wool, cast on 118
(124, 130, 138, 144) sts. by hand. T8.
K. 12 rows. 000. T9. Working in stripe
pattern (see notes). K. 156 rows.

Shape Raglan Armholes

000. Cast off 2 (3, 4, 5, 6) sts. at beg. of
next 2 rows. Dec. 1 st. at both ends of next
and every foll. alt. row until 36 (38, 40, 42,
44) sts. rem. Cast off.

RIGHT FRONT

Using Four Seasons wool, cast on 56 (59,
62, 66, 69) sts. by hand. T8. K. 12 rows.
000. T9. Working in stripe pattern, K. 146
rows.

Bust Darts. HCL's III. Always winding
wool round first needle in E position, push
4 needles at opposite end to carriage to
E position on next and foll. alt. rows
6 times in all. HCL's I. K. until 169 rows
have been worked. Carriage is at left.

Shape Raglan Armhole and Front Neck

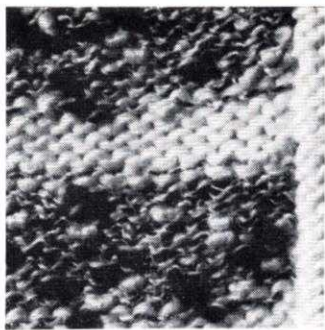
000. Cast off 2 (3, 4, 5, 6) sts. at beg. of next
row. K. 1 row. Dec. 1 st. at beg. of next and
foll. alt. rows, at the same time dec. 1 st.
at front edge on next and foll. 4th row
2 (4, 6, 7, 9) times in all then every foll.
6th row until 1 st. remains. Fasten off.

LEFT FRONT

Work as Right Front, but commence
knitting with Carriage at Left side.

SLEEVES

Using Four Seasons wool, cast on 52 (56,
60, 64, 66) sts. by hand. T8. K. 12 rows.
000. T9. Working in stripe pattern K. 14
rows. Inc. 1 st. at both ends of next and
every foll. 8th row until there are 88 (92, 96,
100, 102) sts. K. straight until 156 rows
have been worked.



Shape Raglan Top

000. Cast off 3 (4, 5, 4, 4) sts. at beg. of next
2 rows. Dec. 1 st. at both ends of next and
foll. 4th row 6 (6, 6, 5, 5) times in all, then
every foll. alt. row until 14 sts. rem. Cast off

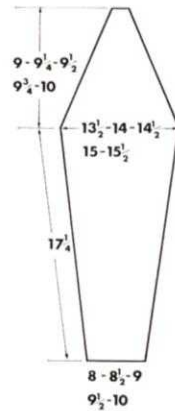
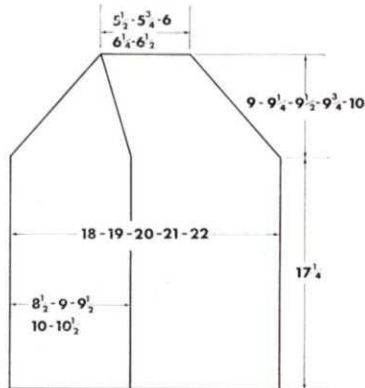
FRONT BAND

Mark position on Right Front for 5
buttonholes, the first $\frac{1}{2}$ in. above lower
edge and the final one at beg. of neck
shaping. Space the remainder evenly
between. Using Fiona wool, Cast on 22 sts.
by hand. T8. K. straight making button-
holes to match markers over needles 5-7

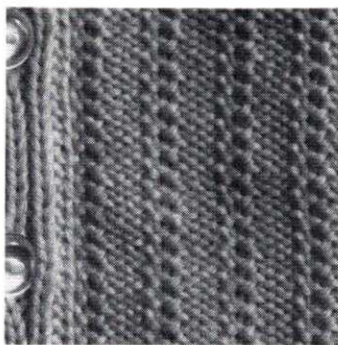
from each end. Continue to knit until long
enough to fit up both fronts, across sleeve
tops and back neck, stretching to fit. Cast
off.

TO MAKE UP

Pin out and press with a cool iron over a
dry cloth. Join side, sleeve and raglan
seams. Turn hems at lower edge and
sleeves to wrong side and slip st. in place.
Sew front band in position, turn to wrong
side and slip st. in place. Neaten button-
holes and sew on buttons. Press seams.



childs cardigan with collar



Materials

9 (9, 10, 10, 11) ozs. Templetons Double Knitting, 5 (5, 6, 6, 6) buttons.

Measurements

To fit sizes 20 (22, 24, 26, 28) ins.

Finished measurements 22 (24, 26, 28, 30) ins.

Length at back neck 11½ (13, 14½, 16, 17½) ins.

Sleeve seam 7 (9, 11, 13, 15) ins.

Tension

11½ sts. and 22 rows to 2 ins. over pattern st.

Abbreviations

K., knit; sts., stitches; inc., increase; dec., decrease; foll., following; rep., repeat; alt., alternate; beg., beginning; rem., remain; T., tension; 000., set row counter at 000; M.B., main bed.

Notes

Figures in brackets refer to the larger sizes respectively, Wax wool. Either side may be used as the right side.

BACK

Ribbers. Cast on 65 (71, 77, 83, 89) sts. as 1 x 1 rib. T6/6. K. 12 rows. Transfer ribber sts. to M.B.

Single machines. Using waste wool, cast on 33 (36, 39, 42, 45) sts. on alt. needles. K. a few rows. Change to main wool. T8. K. 23 rows. Make a hem and k. the row.

All machines. 000. T10. Foll. chart, k. straight for 60 (68, 78, 86, 94) rows. This will give a length to raglan of 7 (7½, 8½, 9½, 10) ins. Adjust length here if required.

Shape Raglan Armholes

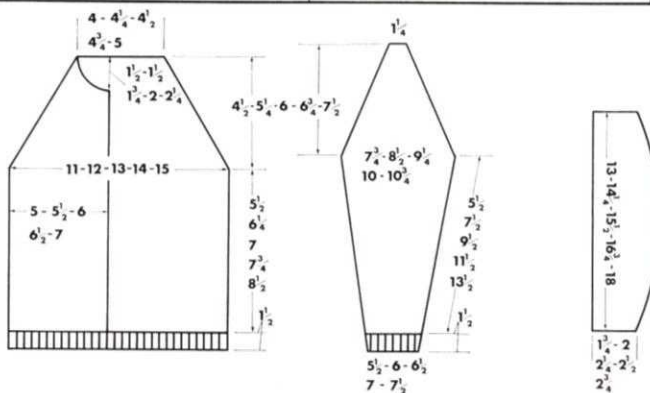
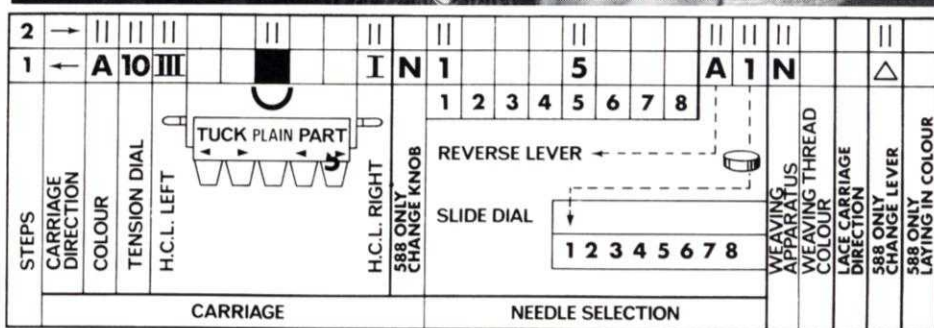
000. Cast off 2 sts. at beg. of next 2 rows. K. 2 rows. Dec. 1 st. at both ends of next and every foll. 4th row 6 (8, 9, 11, 13) times in all then every alt. row until 25 (27, 29, 31) sts. rem. Cast off.

LEFT FRONT

Ribbers. Cast on 29 (33, 35, 39, 41) sts. as 1 x 1 rib. T6/6. K. 12 rows. Transfer ribber sts. to M.B. Inc. 1 st. at left side on sizes 1, 3 and 5. 30 (33, 36, 39, 42) sts. (Inc. 1 st. at right side on Right Front).

Single machines. Using waste wool cast on 15 (17, 18, 20, 21) sts. on alt. needles. K. a few rows. Change to main wool. T8. K. 23 rows. Make a hem and k. the row. Inc. 1 st. at left side on sizes 1, 3 and 5. (Inc. 1 st. on right side for Right Front) 30 (33, 36, 39, 42) sts.

All machines. 000. T10. Foll. chart, k. straight for 60 (68, 78, 86, 94) rows. (K. 1 row extra for Right Front).



toddler's sweater

Shape Raglan Armholes

000. Cast off 2 sts. at beg. of next row. K. 3 rows. Dec. 1 st. at raglan edge on next and every foll. 4th row 6 (8, 9, 11, 13) times in all, then every alt. row until 19 (20, 22, 23, 26) sts. rem.

Shape Neck

Cast off 4 (5, 4, 5, 5) sts. at beg. of next row. Continue raglan shaping as before, *at the same time* k. 2 rows. Dec. 1 st. at neck edge on next and every foll. 4th row until 3 sts. rem. K. 1 row. Dec. 1 st. at raglan edge on next row. Cast off rem. 2 sts.

RIGHT FRONT

K. as Left Front reversing all shapings.

SLEEVES

Ribbers. Cast on 33 (37, 39, 43, 45) sts. as 1×1 rib. T6/6. K. 12 rows. Transfer ribber sts. to M.B.

Single machines. Using waste wool cast on 17 (18, 20, 21, 23) sts. on alt. needles. K. a few rows. Change to main wool. T8. K. 23 rows. Make a hem and k. the row. 33 (35, 39, 43, 45) sts.

All machines. 000. T10. Foll. chart, k. 8 rows. Inc. 1 st. at both ends of next and every foll. 7th (9th, 11th, 13th, 15th) row until there are 47 (51, 55, 59, 63) sts. K. straight until 60 (82, 104, 126, 148) rows have been worked. This will give a sleeve seam to raglan of 7 (9, 11, 13, 15) ins. Adjust length here if required.

Shape Raglan Top

000. Cast off 2 sts. at beg. of next 2 rows. K. 2 rows. Dec. 1 st. at both ends of next and every foll. 4th rows 6 (8, 10, 12, 14) times in all, then every alt. rows until 7 sts. rem. Cast off.

BUTTON BAND

Ribbers. Cast on 11 sts. as 1×1 rib. T6/6. K. until long enough to go up front edge stretching to fit. Cast off.

Single machines. Cast on 17 sts. by hand. T9. K. until long enough to go along front edge stretching to fit. Cast off.

BUTTONHOLE BAND

Mark position on one side for 5 (5, 6, 6, 6) buttons, the first $\frac{3}{4}$ inch above lower edge and the final one $\frac{1}{2}$ inch below neck shaping. Space remainder evenly between.

Ribbers. Cast on 11 sts. as 1×1 rib. T6/6. K. as Buttonband making buttonholes to match markers over centre st. Cast off.

Single machines. Cast on 17 sts. by hand. T9. K. as Buttonband making buttonholes to match markers over needles 4 and 5 from each end.

COLLAR

All machines. Using waste wool, cast on 75 (82, 89, 96, 105) sts. K. a few rows. Change to main wool. T9. K. 13 rows. Make a hem and k. the row. Using odd length of wool cast off 12 (14, 16, 18, 20) sts. at opposite end to Carriage. 000. T10. Foll. chart, cast off 12 (14, 16, 18, 20) sts. at beg. of next row. K. straight for 18 (22, 26, 30, 34) rows. Cast off 5 (5, 6, 6, 6) sts. at beg. of next 6 rows. Cast off rem. sts.

TO MAKE UP

Pin out and press with a hot iron over a damp cloth. Join side, sleeve and raglan seams. Sew ribbed front bands in position. Sew st.-st. bands in position, turn to wrong side and slip-st. in place. Sew cast off hems to narrow ends of Collar easing round corner. Sew collar to neck, beg. and ending halfway across front bands. Neaten buttonholes and sew on buttons. Press seams.



Materials

4 (5, 6, 7) ozs. Patons Cameo Crepe 4-ply, 4 buttons, oddment of coloured wool for embroidery.

Measurements

To fit chest sizes 18 (20, 22, 24) ins. Finished measurements 20 (22, 24, 26) ins. Length at back neck 10 $\frac{1}{2}$ (11 $\frac{1}{2}$, 12 $\frac{1}{2}$, 13 $\frac{1}{2}$) ins. Sleeve seam 6 (7 $\frac{1}{2}$, 9, 10 $\frac{1}{2}$) ins.

Tension

14 $\frac{1}{2}$ sts. and 19 rows to 2 ins.

Abbreviations

K., knit; sts., stitches; dec., decrease; inc., increase; foll., following; beg., beginning; rem., remain; rep., repeat; H.C.L.'s, Holding Cam Lever; T., tension; 000., set row counter at 000; M.B., main bed.

Notes

Decs. at raglan and neck edges is worked by transferring the 2nd st. on to 3rd needle and moving end st. 1 needle in. Wax wool. Figures in brackets refer to larger sizes respectively.

BACK

Ribbers. Cast on 73 (81, 89, 97) sts. as 1×1 rib. T3/3. K. 12 rows. Transfer ribber sts. to M.B.

Single machines. Using waste wool cast on 37 (41, 45, 49) sts. on alt. needles. K. a few rows. Change to main wool. T5. K. 23 rows. Make a hem and k. the row. 73 (81, 89, 97) sts.

All machines. 000. T7. * K. straight until 54 (58, 62, 66) rows have been worked. Adjust length here if required.

Shape Raglan Armholes

000. Cast off 2 (3, 3, 4) sts. at beg. of next 2 rows. Dec. 1 st. (see notes) at both ends of next and every foll. alt. rows until 37 (39, 41, 43) sts. rem. Dec. 1 st. at both ends of next 4 rows. Slip rem. 29 (31, 33, 35) sts. on to a knitting needle.

FRONT

K. as Back to *. Counting from each end transfer the 21st (23rd, 25th, 27th) st. and the foll. 8th st. on to adjacent needles outwards from each other (7 sts. in panel between holes). Leave empty needles in B position. K. 2 rows. Rep. these 2 rows until 54 (58, 62, 66) rows have been worked.

Shape Raglan Armholes

000. Cast off 2 (3, 3, 4) sts. at beg. of next 2 rows. Dec. 1 st. at both ends of next and every foll. alt. rows *at the same time* shape top of lace panel. Transfer 1st and 7th st. of panel 1 st. in towards centre. Leave empty needle in B position. K. 2 rows. Transfer 2nd and 6th st. of panel in 1 st. towards centre. K. 2 rows. Transfer 3rd and 5th st. of panel in 1 st. towards centre. K. 2 rows. Transfer 4th st. to left. K. 2 rows. Continue in st.-st. and raglan shaping until 43 (45, 49, 51) sts. rem. Using odd length of wool cast off 17 (19, 19, 21) sts. at centre. Push sts. at left to E position. K. the right side first. H.C.L.'s III. Dec. 1 st. at neck edge on next and alt. rows 5 (5, 6, 6) times in all, *at the same time* dec. 1 st. at raglan edge on next and alt. rows 3 (3, 4, 4) times then every row until 1 st. rem. Fasten off. H.C.L.'s I. Join wool at raglan edge and k. to match right side.

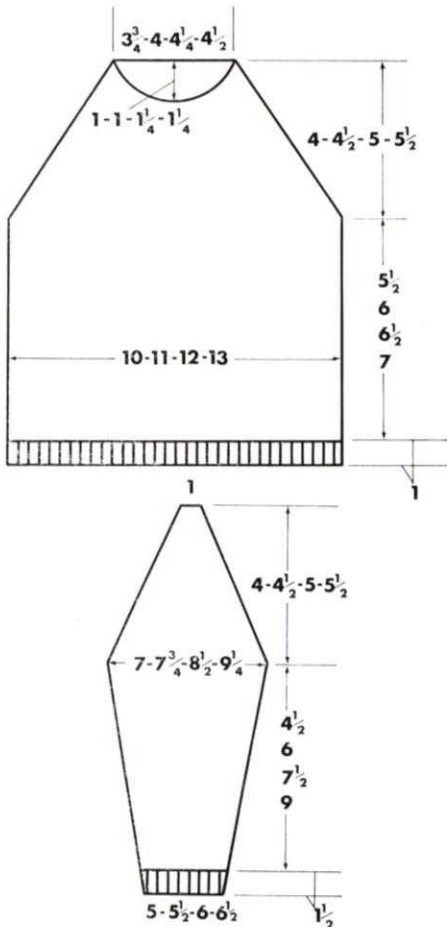
SLEEVES

Ribbers. Cast on 37 (41, 45, 49) sts. as 1×1 rib. T3/3. K. 18 rows. Transfer ribber sts. to M.B.

Single machines. Using waste wool cast on 19 (21, 23, 25) sts. on alt. needles. K. a few rows. Change to main wool. T5. K. 35 rows. Make a hem and k. the row. 37 (41, 45, 49) sts.

All machines. 000. T7. Transfer the 4th st. each side of centre st. on to adjacent needle. Leave empty needles in B position. K. 2

childs cardigan with pocket



rows. Repeating these 2 rows as Front, k. 4 rows. Inc. 1 st. at both ends of next and every foll. 4th (6th, 6th, 8th) row 5 times in all. Begin to shape top of panel as Front and continue inc. as before until there are 53 (57, 63, 67) sts. K. straight until 42 (58, 70, 86) rows have been worked. This will give a sleeve seam of 6 (7½, 9, 10½) ins. Adjust length here if required.

Shape Raglan Top

000. Cast off 2 (3, 3, 4) sts. at beg. of next 2 rows. Dec. 1 st. (see notes) at both ends of next and every foll. alt. rows until 19 (15, 15, 11) sts. rem. then every row until 7 sts. rem. Slip sts. on to a knitting needle.

NECKBAND

With wrong side facing and beg. at right, place on machine 29 (31, 33, 35) sts. from back neck, 7 sts. from one sleeve, pick up 32 (34, 36, 38) sts. evenly round front neck and 7 sts. from 2nd sleeve 75 (79, 83, 87) sts. K. 1 row.

Ribbers. Transfer alt. sts. to ribber. T3/3. K. 18 rows. K. 1 loose row. Transfer ribber sts. to M.B. and cast off chain method.

Single machines. Transfer alt. sts. to adjacent needles. Push empty needles to A position. T6. K. 18 rows. Cast off making a chain over empty needles.

TO MAKE UP

Pin out and press with a hot iron over a damp cloth. With coloured wool, work daisies in panels as shown. Join side, sleeve and raglan seams, leaving left back raglan open for 3 ins. Turn neckband to wrong side and slip-st. in place. Work 2 rows of double crochet round opening, making 3 loops on one side on 2nd row. Sew on buttons. Press seams.

Materials

9 (10, 11, 12) ¾ oz. balls of Hayfield Courtier BriNylon 4-ply, 4 (4, 5, 5) buttons.

Measurements

To fit bust/chest sizes 20 (22, 24, 26) ins. Finished measurements 22 (24, 26, 28) ins. Length to shoulder 12 (13½, 15, 16½) ins. Sleeve seam 8 (9½, 11, 12½) ins.

Tension

13½ sts. and 31 rows to 2 ins. over pattern st. 2.

Abbreviations

sts., stitches; inc., increase; dec., decrease; alt., alternate; foll., following; beg., beginning; T., tension; 000, set row counter to 000.

Notes

Decreasing at neck edge is worked by transferring the 2nd st. onto 3rd needle and moving the end st. 1 needle in.

BACK

Cast on 77 (83, 89, 95) sts. (with the extra stitch at right side), by hand. T6. Knit 14 rows. Following chart 1 knit 20 rows. 000. T7. Following chart 2 knit 108 (124, 140, 156) rows. This will give a finished length to armhole of 8 (9, 10, 10) ins. Adjust length here if required.

Shape armholes

000. Cast off 2 (3, 3, 4) sts. at beg. of next 2 rows. Dec. 1 st. at each end of next and every foll. alt. row 4 (4, 5, 5) times in all then every foll. 4th row twice 61 (65, 69, 73) sts. Knit straight until 62 (70, 78, 86) rows have been worked.

Shape Shoulders

Cast off 5 sts. at beg. of next 6 rows and 4 (5, 6, 7) sts. at beg. of next 2 rows. Cast off remaining 23 (25, 27, 29) sts.

LEFT FRONT

Pocket Linings

Cast on 20 (22, 23, 25) sts. by hand. T7. Knit 30 rows. Slip sts. onto a knitting needle.

Cast on 41 (44, 47, 50) sts. with the extra stitch at right side, by hand (see Right Front for buttonhole if knitting boys' version). T6. Knit 14 rows. Following

chart 1 knit 20 rows *. Slip 6 sts. at left side (neck edge) onto a safety pin. 000. T7. Following chart 2 knit 40 rows. Counting from the left, slip sts. 8-27 (9-30, 10-32, 11-35) onto a knitting needle. Place pocket linings sts. onto empty needles. Continue knitting until 108 (124, 140, 156) rows have been worked. (Knit 1 row extra for Right Front).

Shape Armhole

000. Cast off 2 (3, 3, 4) sts. at beg. of next row. Knit 1 row. Dec. 1 st. at right side on next and every foll. alt. row 4 (4, 5, 5) times in all then every foll. 4th row twice 27 (29, 31, 33) sts. Knit 1 row. Mark left side (front edge) with coloured wool.

Shape Neck

Keeping armhole edge straight, dec. 1 st. at front edge on next and every foll. 6th row until 19 (20, 21, 22) sts. remain. Knit straight until 62 (70, 78, 86) rows have been worked.

Shape Shoulder

Cast off 5 sts. at beg. of next and every alt. row until 4 (5, 6, 7) sts. remain. Knit 1 row. Cast off.

RIGHT FRONT

Cast on 41 (44, 47, 50) sts. (with extra stitch at right side) by hand. T6. Knit 7 rows. Transfer 4th st. from right edge onto adjacent needle and leave empty needle in B position. Knit 7 rows. Following chart 1 knit 10 rows. Make buttonhole as before. Knit 10 rows. Knit as Left Front from * to end, reversing all shapings.

SLEEVES

Cast on 35 (39, 43, 47) sts. (with the extra stitch at right side) by hand. T6. Knit 14 rows. Following chart 1 knit 20 rows. 000. T7. Following chart 2 knit 12 rows. Inc. 1 st. at each end of next and every foll. 8th (10th, 12th, 14th) row until there are 57 (61, 65, 69) sts. Knit straight until 106 (132, 156, 180) rows have been worked. This will give a finished sleeve seam of 8 (9½, 11, 12½) ins. Adjust length here if required.

10	→											1													
9	←											1													
8	→											2				8									
7	←											2				8									
6	→											3			7										
5	←											3			7										
4	→													4	6										
3	←													4	6										
2	→														5										
1	←	7	I												5			B	1						

STEPS

CARRIAGE DIRECTION

COLOUR

TENSION DIAL

H.C.L. LEFT

H.C.L. RIGHT

588 ONLY CHANGE KNOB

TUCK PLAIN PART

CARRIAGE

NEEDLE SELECTION

APPARATUS

WEAVING APPARATUS

WEAVING THREAD COLOUR

LACE CARRIAGE DIRECTION

588 ONLY CHANGE LEVER

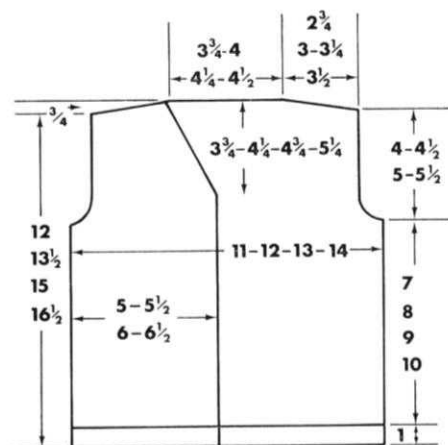
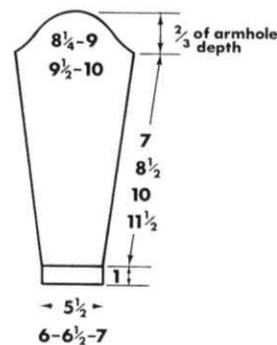
588 ONLY LAYING IN COLOUR

CHART 1

2	→										1	3	5	7	B								
1	←	6	I							I	1	3	5	7	A	1							

1	2	3	4	5	6	7	8
NEEDLE SELECTION							
APPARATUS							
1	2	3	4	5	6	7	8

TUCK PLAIN PART
CARRIAGE
NEEDLE SELECTION
APPARATUS
WEAVING APPARATUS
WEAVING THREAD
COLOUR
LACE CARRIAGE
DIRECTION
588 ONLY
CHANGE LEVER
588 ONLY
LAYING IN COLOUR



Shape Top

Cast off 2 (3, 3, 4) sts. at beg. of next 2 rows. Dec. 1 st. at each end of next and every foll. alt. row 4 (4, 5, 5) times in all then every foll. 4th row until 33 (31, 33, 31) sts. remain. Knit 3 (1, 3, 1) rows. Cast off 3 sts. at beg. of next 6 rows. Cast off remaining 15 (13, 15, 13) sts.

FRONT BAND

Replace 6 sts. from safety pin of one front onto machine. Inc. 1 st. at inside edge. Keeping pattern correct knit until long enough to fit up front and across half of back neck stretching slightly. Slip sts. onto a safety pin. Mark positions on Left Front for girls and Right Front for boys for 3 (3, 4, 4) more buttons, the last at beg. of neck shaping. Space remainder evenly between. Replace 6 sts. from safety pin and place on machine. Inc. 1 st. at inside edge. Knit to match first front band making buttonholes to match markers over 4th st. from outer edge. Slip sts. onto a safety pin. With right sides facing replace the 2 sets of sts. together on machine and cast off as one.

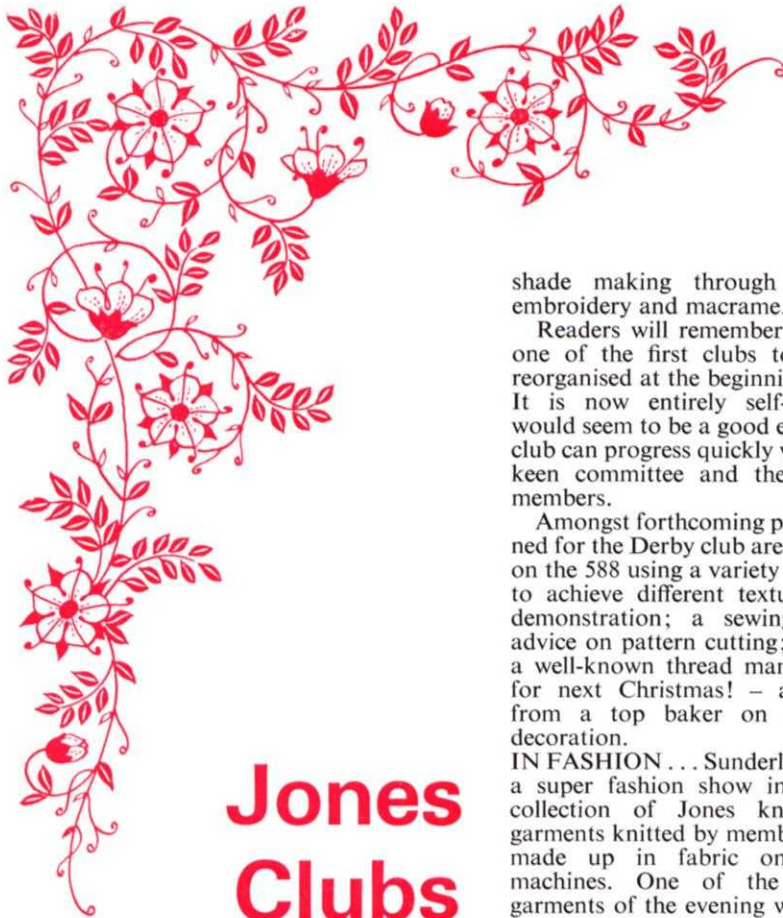
POCKET TOPS

With right side of work facing replace sts. from knitting needle onto machine. T6. Following chart 1 knit 14 rows. Cast off using chain method.

To Make Up

Pin out and press lightly with a warm iron over a dry cloth. Slip stitch pocket linings in place, then sew side edges of pocket tops to garment. Join side, shoulder and sleeve seams. Sew in sleeves. Turn stocking stitch hem to wrong side and slip stitch in place. Sew front bands in place. Sew on buttons. Press seams lightly.

◀ CHART 2



Jones Clubs

It's almost time for the summer break, which is taken by the majority of clubs from May to September. There are a few clubs which will stay open right through the summer, and holidaymakers may like to know that the Christchurch and Brighton clubs will not be closing. Apart from their regular club night on the last Monday evening of each month; the Brighton club also meets on the third Thursday of every month from 11 a.m. to 4 p.m., at the home of Mrs. Whitaker. Bournemouth meetings will continue as usual, every third Wednesday evening, right through the summer. Both secretaries have asked that we extend an open invitation to Jones members and friends who find themselves in the Brighton or Bournemouth areas during the holiday season.

ANNUAL FEE . . . A good idea from Christchurch club secretary, Mrs. Turner, which other clubs may like to copy. This is the introduction of an annual subscription fee, payable every six or twelve months; and offered to regular members at a reduced rate. This idea benefits the club itself as the accumulated fees enable the hall to be booked for a full year ahead. An idea that could prove successful for other clubs.

DERBY . . . A very popular season of meetings has been produced by the Derby club, and full credit must go to the committee members who have provided a varied assortment of ideas throughout the season. The committee now plan to introduce handicrafts, beginning with lamp-

shade making through to patchwork, embroidery and macrame.

Readers will remember that Derby was one of the first clubs to be completely reorganised at the beginning of the season. It is now entirely self-supporting and would seem to be a good example of how a club can progress quickly with the help of a keen committee and the support of its members.

Amongst forthcoming programmes planned for the Derby club are: demonstrations on the 588 using a variety of modern yarns to achieve different textures; a cosmetic demonstration; a sewing evening with advice on pattern cutting; film show from a well-known thread manufacturer and – for next Christmas! – a demonstration from a top baker on icing and cake decoration.

IN FASHION . . . Sunderland club enjoyed a super fashion show in March with a collection of Jones knitted garments; garments knitted by members; and designs made up in fabric on Jones sewing machines. One of the most unusual garments of the evening was a very pretty evening dress made by Mrs. Grey of Binns, for just 90p! The fabric was purchased from the store and cost just 25p per yard, sale-price. Mrs. Grey used a paper pattern (included in the 90p price) and within a few hours a full-length, long-sleeved dress was made, taking 3½ yards of fabric.

Last year, twenty Sunderland club members went to Holland with Clarksons for a long weekend. They enjoyed the break so much that they have arranged another holiday for this year – a long weekend in Paris during April.

AUSTRALIA . . . A few months ago, we reported on the Jones Club activities in Australia. Earlier this year, Mrs. Ivy Caston of Norwich visited Australia to see her daughter, and brought back some more news for our page.

Whilst in Australia, Mrs. Caston visited Adelaide, Sydney and Canberra, staying in Melbourne for most of the holiday. There, Mrs. Caston found time to visit the Empisal Knitting Centre where the manageress and staff wanted to know all about our own London Centre; Knitting Club activities and fashion in Britain. There is still considerable interest in the idea of local Jones Clubs in Australia, and they hope to introduce more clubs in the future.

Mrs. Caston left Australia with plans to write to some of the people she met during her stay; to exchange machine knitting patterns and knitting know-how. As an added bonus for her own club, Mrs. Caston will be showing the colour slides taken during her visit.

ROUND-AND-ABOUT . . . Welcome to a new club, shortly to begin meetings in Maldon, Essex. The club will be held in

the home of Mrs. Marie Daines and will in a sense replace the Chelmsford club which closed last season. Mrs. Daines will be holding meetings one afternoon per month; details to be given in the next issue of *Stitchin'time*; or readers may write to London and we will pass on enquiries to Mrs. Daines.

. . . Another new club to begin in August will be held in the home of Mrs. Olive Horsfall, who runs the Wool Centre in Todmorden, Lancs. Readers who would like to know more about the proposed club meetings, should write to London office, and we will pass letters on to Mrs. Horsfall.

. . . Welcome again; not to a new club this time, but a new member of the Springett family – Sarah Jane, born 22nd February, 1972, in Tunbridge Wells. Congratulations to Mr. and Mrs. Springett on the arrival of their new daughter.

. . . South Shields club received a write-up in their local paper, headed "Make your very own spring collection". The article appeared on the Woman's Page, after Mrs. MacTaggart, club secretary, telephoned the paper to talk about the club. After reading about club activities and the sewing and knitting know-how which could be learned, sixteen new members came to the next meeting.

. . . Aberdeen club members have enjoyed two trips to wool mills in the vicinity, and are planning another for June of this year. They have already enjoyed tours round the Glen Gordon and Kirkburn Mills, and hope to visit the Grandholme Mill in Aberdeen during the summer.

. . . An interesting talk for the Leeds club last month; with a visit from the local Scholl Footwear Representative, invited by Mrs. Johnson.

. . . The London Knitting Centre at 6/7 Pollen Street, off Hanover Street, W.1, has held two opening evenings since February. These are not intended as Jones Clubs as such; but are informal evenings when anybody is welcome to call in at the Centre from 6–8 p.m. Manageress Mrs. Diane Spieler opens the Centre in this way on the first Thursday in the month; when machines, garments, patterns and books are on display, and Jones staff will give demonstrations and advice on knitting. London readers may like to bear in mind the date of May 4th as the next open evening.

Beverly
Martin

Club Secretary	Venue	Dates
BIRMINGHAM Mrs. Taylor, Birmingham Knitting Centre, 1st Floor, Somerset House, Temple Street, Birmingham	Friends Meeting House, Dr. Johnson House, Bull Street, Birmingham	May 17th, June 21st
BRADFORD Mrs. H. Holland, 25 Thornton Lane, Bradford, Yorkshire	The Co-op Institute, Odd Fellows Court, Thornton Road, Bradford. Start 7.30.	May 4th, 18th
BLACKPOOL Mrs. C. Beaumont, 5 Scarborough Road, St. Annes-on-Sea, Lancs.	Highlands Hotel, Promenade, Bispham, Blackpool (opp. Red Bank Road Tram Stop). Start: 8 p.m.	Dates not yet known
BRIGHTON Mrs. E. Whitaker, Bristol Lodge, Bristol Gate, Brighton	10 Hillside, Moulsecoomb, Brighton. Start: 6.30 p.m.	Last Monday in every month
BRISTOL Mrs. J. Bolwell, Ivanhoe, Lodge Lane, Wraxhall, Nr. Bristol, BS19 1BQ	Quakers Hall, 298 Gloucester Road, Bristol (nr. corner of Radnor Road). Start: 7 p.m.	May 3rd, June 7th, July 5th
BROMLEY Mrs. G. M. Dalton, 13 New Farm Avenue, Bromley	The Soames Road, St. Mark's Hall, Mason's Hill, Bromley. Start: 7.45 p.m.	May 2nd
CHICHESTER Mrs. E. G. Parker, 118 Oving Road, Chichester	118 Oving Road, Chichester. Start: 6.30 p.m.	May, 11th 25th, June 8th, 22nd, July 6th, 20th
CHRISTCHURCH Mrs. C. Turner, 25 Queens Road, Christchurch	N.A.D.S. Club, Bridge Street, Christchurch. Start: 7.30 p.m.	May 2nd. Every 3rd Wednesday during summer months
DERBY Mrs. A. Buchan, 287 Uttoxeter Road, Mickleover, Derby	The Guildhall (large clubroom), Market Place, Derby. Start: 7.30 p.m.	May 30th, June 27th, July 25th, August 29th
DURHAM Mrs. W. Keefe, 16 Marlene Avenue, Bowburn, Durham	16 Marlene Avenue, Bowburn, Durham. Start 2 p.m.	May 24th, June 14th, July 19th
HARROW Mrs. Janes, 6 Kingsway Crescent, North Harrow, Middx.	North Harrow Assembly Hall, Station Road, N. Harrow. Start: 8 p.m.	May 24th
HULL Mrs. E. Parrott, 16 Westcott Street, Hull, Yorks.	Young People's Institute, George Street, Hull. Start: 7.30 p.m.	May 25th
LANARKSHIRE Mrs. C. Paton, 168 Alexander Street, Wishaw, Lanark.	Masonic Hall, Hope Street, Motherwell, Lanark. Start: 7.30 p.m.	May 31st
LEICESTER Mrs. D. Mirams, 130 Harborough Road, Oadby, Leicester	Oadby Adult School, Chapel Street, Oadby Start: 7.30 p.m.	May 18th
LEEDS Mrs. P. Johnson, Jones Knitting Centre, 101 The Headrow, Leeds	Leeds Co-op Restaurant, 10 Albion Street, Leeds 1 Start: 7.30 p.m.	Dates not yet known
LOWESTOFT Mrs. E. Shanahan, 18 The Avenue, Lowestoft	18 The Avenue, Lowestoft. Start: 7.30 p.m.	May 4th
NORTHAMPTON Mrs. S. Rees, 18 Prince Street, Earls Barton, Northants.	Y.M.C.A., Cheyne Walk, Northampton. Start: 7.30 p.m.	May 25th
PATRICROFT Mrs. D. Box, 13 Green Lane, Patricroft, Manchester, M30 0RP	13 Green Lane, Patricroft, M30 0RP. Start: 7.30 p.m.	Every Monday evening
NORWICH Mrs. I. Caston, 28 Winchester Tower, Vauxhall Street, Norwich	Chantry Hall, Norwich. Start: 7.30 p.m.	May 2nd
ROMFORD Mrs. D. Ellis, 28 Hall Road, Chadwell Heath, Romford	Wykenham Hall, Market Place, Romford	May 18th, June 15th, July 20th
SUNDERLAND Mrs. I. Gray, 31 Esdale, Ryhope	Top Rank Suite, Park Lane, Sunderland. Start: 7.30 p.m.	May 24th
SOUTH SHIELDS Mrs. P. McTaggart, 33 Salmon Street, South Shields, NE33 2HF	Youth Service Centre, Anderson Street, South Shields Start: 7.30 p.m.	May 5th
TUNBRIDGE WELLS Mrs. F. Noakes, Greenways, Sandhurst Park, Tunbridge Wells	Greenways, Sandhurst Park, Tunbridge Wells. Start: 7.30 p.m.	May 29th
GREAT YARMOUTH Mrs. N. Scott, Belmont Guest House, 31 Northgate Street, Great Yarmouth	Belmont Guest House, 31 Northgate Street, Great Yarmouth. Start: 7.30 p.m.	Further dates not known

long-line cardigan

Materials

19 (20, 21, 22, 23, 24) ozs. Sirdar Fontein Crepe 4 ply. 6 buttons.

Measurements

To fit bust sizes 32 (34, 36, 38, 40, 42) ins. Finished measurements 34 (36, 38, 40, 42, 44) ins.

Length to shoulder 31½ (32, 32½, 32¾, 33) ins.

Sleeve seam 16½ (17, 17½, 18, 18, 18) ins.

Tension

T6. 16 sts. and 20 rows to 2 ins. measured over st.st after pressing.

Abbreviations

K., knit; sts., stitches; inc., increase; dec., decrease; rep., repeat; foll., following; alt., alternate; beg., beginning; rem., remaining; T., tension; 000., set row counter at 000.

Notes

Dec. at neck edge. Transfer 2nd st. onto 3rd needle, move end st. 1 needle in. When dec. and casting off count needles in A position as 1 stitch.

Cable pattern. Transfer sts. given to adjacent needles. Return empty needles to A position.

Cable stitch. K 6 rows. Cross sts. 1 and 2 over 3 and 4. Repeat these six rows twice more. 18 rows. Work first pattern on panels 1, 3 and 5. Repeat 18 rows on panels 2 and 4. These 36 rows completes 1 pattern.

BACK

Cast on 152 (160, 168, 176, 184, 192) sts. by hand T5. K. 16 rows. 000. T6. K. 28 rows. Dec. 1 st. at each end of next and foll. 28th row until 136 (144, 152, 160, 168, 176) sts. rem. K. straight until 246 rows have been worked.

Shape Armhole

000. Cast off 5 (6, 7, 5, 6, 7) sts. at beg. of next 2 rows. Dec. 1 st. at each end of next 9 (9, 9, 11, 11, 11) rows. K. 1 row. Dec. 1 st. at each end of next and foll. alt. row 3 (3, 3, 4, 4, 4) times in all. 102 (108, 114, 120, 126, 132) sts. K. straight until 72 (76, 78, 80, 84, 86) rows have been worked.

Shape Shoulders

Cast off 6 (6, 6, 8, 8, 8) sts. at beg. of next 8 rows and 6 (8, 10, 4, 6, 8) sts. at beg. of next 2 rows. Cast off rem. 42 (44, 46, 48, 50, 52) sts.

RIGHT FRONT

Cast on 76 (80, 84, 88, 92, 96) sts. by hand. T5. K. 16 rows. 000. T6. Set needles for cable pattern as follows. Counting from left (front edge), trans. 23rd (25th, 27th, 31st, 33rd, 35th) st. and foll. 5th st., 6 times in all to adjacent needle. (5 panels). Foll. cable pattern (see notes) K. 28 rows. Dec. 1 st. at beg. of next (side edge) and foll. 28th row until 68 (72, 76, 80, 84, 88) sts. rem. K. straight until 246 rows have been worked. (K. 1 row extra for left front).

Armhole and front neck shaping

000. Cast off 5 (6, 7, 5, 6, 7) sts. at beg. of next row. K. 1 row. Dec. 1 st. at armhole edge on next 9 (9, 9, 11, 11, 11) rows and foll. alt. rows 3 (3, 3, 4, 4, 4) times in all, at the same time dec. 1 st. at neck edge on



next and foll. alt. row 6 (6, 7, 8, 8, 9) times in all then every foll. 4th row until 30 (32, 34, 36, 38, 40) sts. rem. K. 1 row. 72 (76, 78, 80, 84, 86) rows.

Shape Shoulder

Cast off 6 (6, 6, 8, 8, 8) sts. at beg. of next and foll. alt. rows until 6 (8, 10, 4, 6, 8) sts. rem. K. 1 row. Cast off.

LEFT FRONT

K. as Right Front reversing all shaping and setting cable panel counting from right side.

SLEEVES

With waste wool, cast on 68 (72, 76, 80, 84, 88) sts. K. a few rows. Change to main wool. T5. K. 39 rows. Make a hem and K. the row 000. T6. K. 12 rows. Inc. 1 st. at each end of next and foll. 8th (8th, 8th, 9th, 9th, 9th) rows until there are 100 (104, 108, 112, 116, 120) sts. K. straight until 146 (150, 156, 160, 160, 160) rows have been worked. (Adjust length here).

Shape Top

000. Cast off 5 (6, 7, 5, 6, 7) sts. at beg. of

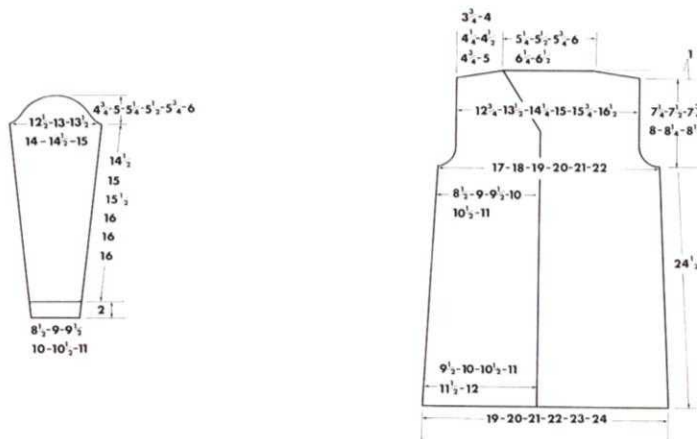
next 2 rows. Dec. 1 st. each end of next 9 (9, 9, 11, 11, 11) rows, then every alt. row 3 (4, 5, 5, 6, 7) times, then every foll. 4th row 5 times. K. 1 row. Cast off 2 sts. at beg. of next 4 rows, and 4 sts. at beg. of next 6 rows. Cast off rem. 24 (24, 24, 28, 28, 28) sts.

FRONT BAND

Mark position on Right Front for 6 buttonholes, the first 1 in. above lower edge and the final one at beg. of neck shaping, space the remainder evenly between. Cast on 23 sts. by hand. T5. K. straight making buttonholes to match markers over needles 5, 6 and 7 from each end. Continue to K. until long enough to fit up both fronts and across back neck, stretching to fit. Cast off.

TO MAKE UP

Pin out and press with a hot iron over a damp cloth. Join side shoulder and sleeve seams. Sew front band in position turn to inside and slip st. in place. Neaten buttonholes and sew on buttons. Press seams.



childs sweater, trousers and hat

Materials

Sweater. 8 (8, 9, 9, 10) ozs. Emu Scotch Double Knitting.

Trousers. 7 (8, 8, 9, 9) ozs. Emu Scotch Double Knitting. $\frac{3}{4}$ inch wide elastic for waist.

Hat. 2 (2, 3, 3, 3) ozs. Emu Scotch Double Knitting.

Measurements

Sweater. To fit chest sizes 22 (24, 26, 28, 30) ins.

Finished measurements 24 (26, 28, 30, 32) ins.

Length at back neck 14 (16, 18, 20, 22) ins.

Sleeve seam 10 (11 $\frac{1}{2}$, 13 $\frac{1}{2}$, 14, 16) ins.

Trousers. To fit hip sizes 24 (26, 28, 30, 32) ins.

Inside leg seam 16 $\frac{1}{2}$ (19, 21 $\frac{1}{2}$, 24, 26 $\frac{1}{2}$) ins.

Hat. To fit average size head. Depth 6 $\frac{1}{2}$ (6 $\frac{3}{4}$, 7, 7 $\frac{1}{4}$, 7 $\frac{1}{2}$) ins.

Tension

St.st. 12 sts. and 16 rows to 2 ins. after pressing.

Abbreviations

K., knit; sts., stitches; inc., increase; dec., decrease; rep., repeat; alt., alternate; beg., beginning; foll., following; patt., pattern; H.C.L's., Holding Cam Levers; T., tension; 000., set row counter at 000; M.B., main bed.

CABLE PATTERN STITCH

IIIIII.III.IIIIII.III.IIIIII

Rep. 11 sts. out to end each side.

1 = Needles in B position.

. = Needles in A position.

K. 6 rows. Cross sts. 1, 2 and 3 at left over 4, 5 and 6 in group of 6 sts. Rep. these 6 rows.

Notes

Fully fashioning shaping is worked by transferring the 4th st. onto 5th needle and moving the 3 end sts. 1 needle in.

SWEATER

BACK

Ribbers. Cast on 73 (79, 85, 91, 97) sts. as 1 x 1 rib. T6/6. K. 8 rows. Transfer ribber sts. to M.B. Inc. 1 st. at left side. 74 (80, 86, 92, 98) sts.

Single machines. Using waste wool cast on 37 (40, 43, 46, 49) sts. on alt. needles. K. a few rows. Change to main wool. T8. K. 15 rows. Make a hem and k. the row. Inc. 1 st. at right side. 74 (80, 86, 92, 98) sts.

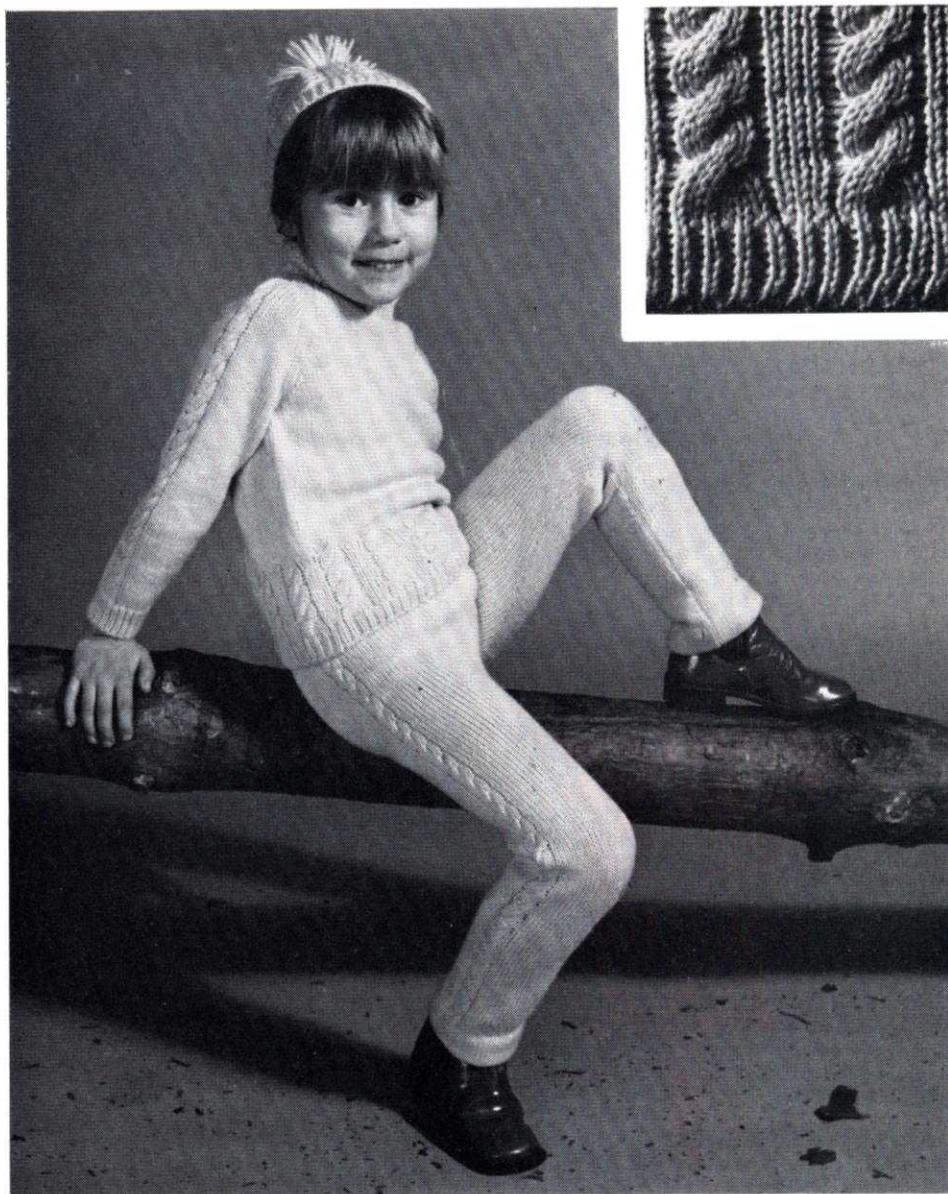
All Machines. 000. T10. Arrange needles for cable patt. Foll. cable patt. st. k. 24 (24, 24, 30, 30) rows. Rep. cable row only. Pick up loops from adjacent sts. and place on empty needles. Continue in st.-st. only. K. until 60 (72, 84, 96, 108) rows have been worked. This will give a finished length to raglan of 8 $\frac{1}{2}$ (10, 11 $\frac{1}{2}$, 13, 14 $\frac{1}{2}$) ins. Adjust length here if required.

Shape Raglan Armholes

000. Cast off 3 sts. at beg. of next 2 rows. * Dec. 1 st. (see notes) at both ends of next and every foll. alt. rows until 26 (28, 30, 32, 34) sts. rem. K. 1 row. Slip sts. on to a knitting needle.

FRONT

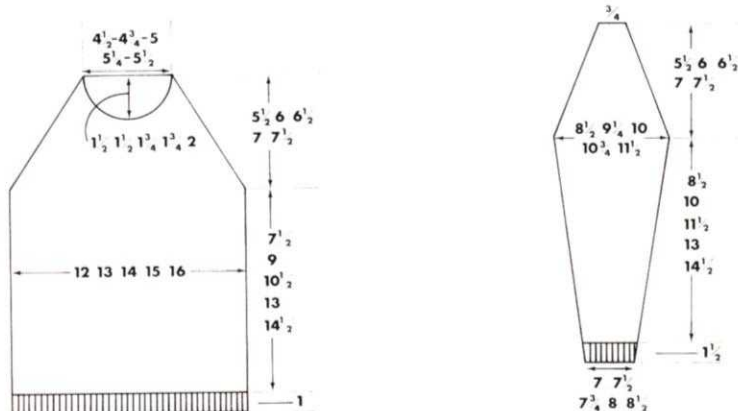
K. as Back to * Dec. 1 st. (see notes) at both ends of next and every foll. alt. rows until 38 (40, 44, 46, 50) sts. rem. K. 1 row



Divide for neck

Slip 12 (14, 14, 16, 16) sts. at centre on to a knitting needle. Push needles at left to E position. K. the right side first. H.C.L's III. * Continue raglan shaping at the same time dec. 1 st. at neck edge on next 3 rows then

every alt. row 2 (2, 3, 3, 4) times. K. 1 row. Keeping raglan edge straight dec. 1 st. at neck edge on next and foll. alt. row. Cast off rem. 2 sts. H.C.L's I. Rejoin wool at raglan edge and k. to match right side from *.



SLEEVES

Ribbers. Cast on 43 (45, 47, 49, 51) sts. as 1×1 rib. T6/6. K. 12 rows. Transfer ribber sts. to M.B. Inc. 1 st. at left side.

Single machines. Using waste wool, cast on 22 (23, 24, 25, 26) sts. on alt. needles. K. a few rows. Change to main wool. T9. K. 23 rows. Make a hem and k. the row. Inc. 1 st. at right side. 44 (46, 48, 50, 52) sts.

All machines. Transfer the 4th st. at both sides of centre st. on to adjacent needles. Push empty needles to A position. 000. T10. Foll. cable patt. st. on the centre 6 sts. k. 8 rows. Inc. 1 st. at both ends of next and every foll. 12th row until there are 54 (58, 62, 66, 70) sts. K. straight until 68 (80, 92, 104, 116) rows have been worked. This will give a sleeve seam of 10 ($11\frac{1}{2}$, 13, $14\frac{1}{2}$, 16) ins. Adjust length here if required.

Shape Raglan Top

000. Cast off 3 sts. at beg. of next 2 rows. Dec. 1 st. (see notes) at both ends of next and every foll. alt. rows until 6 sts. rem. K. 1 row. Slip sts. on to a knitting needle.

NECKBAND

Push 80 (84, 88, 92, 96) needles to B position. With wrong side facing and beg. at right side replace 26 (28, 30, 32, 34) sts. from back neck on to machine, 6 sts. from 1st sleeve, pick up 15 (15, 16, 16, 17) sts. down front neck, 12 (14, 14, 16, 16) sts. from centre front, 15 (15, 16, 16, 17) sts. up front neck and 6 sts. from 2nd sleeve. K. 1 row.

Ribbers. Transfer alt. sts. to ribber for 1×1 rib. T6/6. K. 32 (32, 36, 36, 40) rows. K. 1 loose row. Transfer ribber sts. to M.B. and cast off chain method.

Single machines. Dec. 1 st. at right side. Transfer alt. sts. to adjacent needles. Push empty needles to A position. T9. K. 16 rows. T8. K. 32 (32, 40, 40, 48) rows. T9. K. 16 rows. Cast off making a chain over empty needles.

TO MAKE UP

Pin out and press with a hot iron over a damp cloth. Join side, sleeve and raglan seams. Press seams.

Single machines. Turn polo collar to inside and slip-st. in place.

TROUSERS - LEFT LEG

All machines. Cast on 60 (66, 72, 78, 84) sts. by hand T9. K. 10 rows. 000. T10. Arrange centre sts. for cable patt. st. as Sleeves. Foll. cable patt. st. k. 10 (12, 14, 16, 18) rows. Inc. 1 st. at both ends of next and every foll. 22nd (26th, 30th, 34th, 38th) row until there are 70 (76, 82, 88, 94) sts. K. straight until 110 (130, 150, 170, 190) rows have been worked. This will give a finished inside leg seam of $16\frac{1}{2}$ (19, $21\frac{1}{2}$, 24, $26\frac{1}{2}$) ins. Adjust length here if required.

Shape to crutch

Inc. 1 st. at both ends of next and every foll. 4th row 4 times in all, then every alt. row until there are 86 (92, 98, 104, 110) sts. K. 1 row. (K. 1 row extra for Right leg).

Shape to waist

000. Cast off 2 sts. at beg. of next 2 rows. Dec. 1 st. at both ends of next and every foll. alt. rows 3 times in all then every 4th row twice, 72 (78, 84, 90, 96) sts. Keeping front seam (right side) straight continue dec. at left side until 67 (73, 79, 85, 91) sts. rem. K. straight until 51 (55, 59, 63, 67) rows have been worked. Pick up loops from adjacent sts. and place on empty needles.

Shape back

H.C.L.'s III. Always winding wool round 1st needle in E position push 36 (39, 42, 45, 48) needles at opposite end to Carriage to E position on next row and 10 (10, 11, 11, 12) sts. on next 2 alt. rows. K. 1 row. H.C.L.'s I. K. 1 row.

Waistband

Ribbers. Transfer alt. sts. to ribber for 1×1 rib. T6/6. K. 8 rows. K. 1 loose row. Transfer ribber sts. to M.B. and cast off chain method.

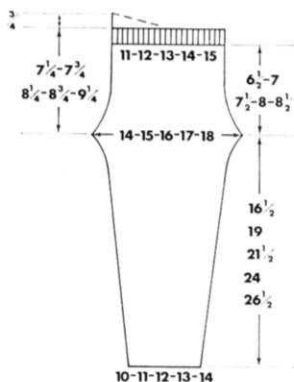
Single machines. Transfer alt. sts. on to adjacent needles. T9. K. 8 rows. Cast off making a chain over empty needles.

RIGHT LEG

K. to match Left leg reversing all shapings.

TO MAKE UP

Pin out and press with a hot iron over a damp cloth. Join inner leg seams to crutch, then front and back seams. Turn 10 rows at lower edge to inside and slip-st. in place. Cut elastic to fit waist. Join ends and holding it to inside of rib work a herringbone st. over elastic catching every alt. st. of rib. Press seams.



HAT

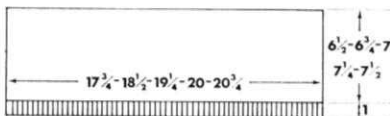
Ribbers. Cast on 107 (111, 115, 119, 123) sts. as 1×1 rib. T6/6. K. 8 rows. Transfer ribber sts. to M.B. Inc. 1 st. at left side.

Single machines. Using waste wool cast on 52 (54, 56, 58, 60) sts. on alt. needles. K. a few rows. Change to main wool. T9. K. 17 rows. Make a hem and k. the row. Inc. 1 st. at right side 104 (108, 112, 116, 120) sts.

All machines. 000. T10. Arrange needles for cable patt. st. as back of Sweater. K. straight for 52 (54, 56, 58, 60) rows. Slip sts. on to No. 10 Knitting needles. K. 2 tog. all along row. Break wool leaving end long enough for threading through loops and sewing seam. Thread wool through loops.

TO MAKE UP

Pin out and press with a hot iron over a damp cloth. Draw up stitch loops and join seam. Press seam. Make pompon and sew on top of hat.



Materials

15 (16, 16, 17, 17) ozs. Listers Lavenda 4-ply: 7 buttons, crochet hook.

Measurements

To fit chest sizes 34 (36, 38, 40, 42) ins. Finished measurements 36 (38, 40, 42, 44) ins.

Length to shoulder $23\frac{1}{2}$ ($23\frac{3}{4}$, 24, $24\frac{1}{4}$, $24\frac{1}{2}$) ins.

Sleeve seam 20 ins.

Tension

St.-st. 14 sts. and 20 rows to 2 ins. after pressing.

Lace st. 13 sts. and 25 rows to 2 ins. after pressing.

Abbreviations

K., knit; sts., stitches; inc., increase; dec., decrease; foll., following; beg., beginning; alt., alternate; patt., pattern; rem., remain; T., tension; 000., set row counter at 000; N.S.B., Needle Selector Button.

Notes

Either side may be used as the right side. This garment was made up on the purl side. Figures in brackets refer to larger sizes respectively.

BACK

Using waste wool cast on 127 (133, 141, 147, 155) sts. with odd st. at right side. * K. a few rows. Change to main wool. T6. K. 6 rows. H.C.L.'s III. Push N.S.B. 1 and 5. K. 5 rows. H.C.L.'s I. K. 6 rows. Make a hem and k. the row. 000. T7. Foll. patt. chart k. 10 rows *. Dec. 1 st. at both ends of next and every foll. 6th row until 101 (107, 115, 121, 129) sts. rem. K. straight until 96 rows have been worked. Dec. 1 st. at both ends 99 (105, 113, 119, 127) sts. Continue in st.-st. only. 000. T7. K. 4 rows. Inc. 1 st. at both ends of next and every foll. 5th row until there are 127 (133, 141, 147, 155) sts. K. straight until 76 rows have been worked. This will give a length to armhole of 16 ins. Adjust length here if required.

Shape armholes

000. Cast off 4 (5, 5, 6, 6) sts. at beg. of next 2 rows. Dec. 1 st. at both ends of next 5 rows then every alt. row until 99 (103, 109, 113, 119) sts. rem. K. straight until 76 (78, 80, 82, 84) rows have been worked.

Shape Shoulders

Cast off 9 sts. at beg. of next 6 rows and 4 (5, 7, 8, 10) sts. on next 2 rows. Slip rem. 37 (39, 41, 43, 45) sts. on to a knitting needle.

LEFT FRONT

Using waste wool cast on 62 (66, 70, 72, 76) sts. with odd st. at right side. K. as Back from * to * (Knit 1 row extra for Right Front). Dec. 1 st at beg. (side seam) of next and every foll. 6th row until 49 (53, 57, 59, 63) sts. rem. K. straight until 96 rows have been worked. Continue in st.-st. only. 000. T7. K. 4 rows. Inc. 1 st. at right side on next and every foll. 5th row until there are 62 (65, 69, 72, 76) sts. K. 1 row. Carriage is at left.

Shape Darts

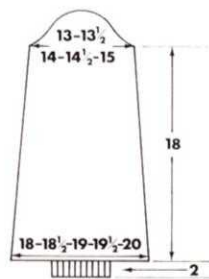
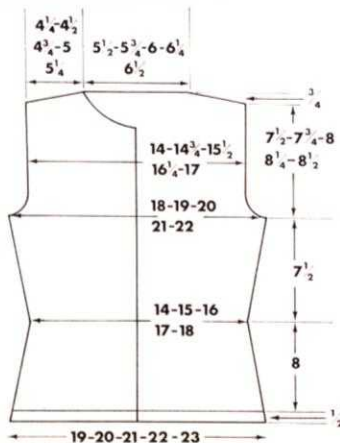
H.C.L.'s III. Always winding wool round first needle in E position push 5 needles at opposite end to Carriage to E position on next and alt. rows 4 times in all. K. 1 row. H.C.L.'s I. K. straight until 84 rows have been worked.

lady's cardigan with lace



STEPS	CARRIAGE DIRECTION	COLOUR	TENSION DIAL	H.C.L. LEFT	H.C.L. RIGHT	588 ONLY CHANGE KNOB	REVERSE LEVER	SLIDE DIAL	WEAVING APPARATUS	WEAVING THREAD COLOUR	LACE CARRIAGE DIRECTION	588 ONLY CHANGE LEVER	588 ONLY LAYING IN COLOUR	
6	→													
5	↑				I									
4	→													
3	↑													
2	↺													
1		A	7	I		I	N	1	3	5	7	A	2	N

CARRIAGE	NEEDLE SELECTION
TUCK PLAIN PART	1 2 3 4 5 6 7 8



Shape Armhole

000. Cast off 4 (5, 5, 6, 6) sts. at beg. of next row. K. 1 row. Dec. 1 st. at armhole edge of next 5 rows then every foll. alt. row until 48 (50, 53, 55, 58) sts. rem. K. straight until 47 (49, 51, 53, 55) rows have been worked.

Shape neck

Cast off 6 (7, 8, 9, 10) sts. at beg. of next row. K. 1 row. Dec. 1 st. at neck edge on next 4 rows then every alt. row until 31 (32, 34, 35, 37) sts. rem. K. straight until 76 (78, 80, 82, 84) rows have been worked.

Shape Shoulder

Cast off 9 sts. at beg. of next and alt. rows until 4 (5, 7, 8, 10) sts. rem. K. 1 row. Cast off.

RIGHT FRONT

K. as Left Front reversing all shapings.

SLEEVES

Using waste wool, cast on 117 (121, 125, 129, 133) sts. with odd st. at right side. K. a few rows. Change to main wool. T7. K. 2 rows. 000. Foll. patt. chart, k. 114 rows. Continue in st.-st. only. 000. T7. K. 6 rows. Dec. 1 st. at both ends of next and every foll. 7th row until 93 (97, 101, 105, 109) sts. rem. K. straight until 90 rows have been worked.

Shape Top

000. Cast off 4 (5, 5, 6, 6) sts. at beg. of next 2 rows. Dec. 1 st. at both ends of next 3 rows then every 4th row 7 (7, 7, 7, 6) times in all. K. 1 row. Dec. 1 st. at both ends of next and every foll. alt. row 2 (3, 4, 5, 8) times in all. K. 1 row. Cast off 3 sts. at beg. of next 8 rows and 4 sts. on next 4 rows. Cast off rem. 21 (21, 23, 23, 23) sts.

CUFF

Push 59 (61, 63, 65, 67) needles to B position. Unravel waste wool and with wrong side facing place 2 loops on each needle and 1 loop on last needle. T7. K. 1 row. Remember whether plain or purl side is being used as right side.

Ribbers. Transfer alt. needles to ribber for 1 x 1 rib. T3/3. K. 20 rows. K. 1 loose row. Transfer ribber sts. to main bed and cast off chain method.

Single machines. Transfer alt. sts. to adjacent needles. T6. K. 40 rows. Cast off making a chain between each st.

NECKBAND

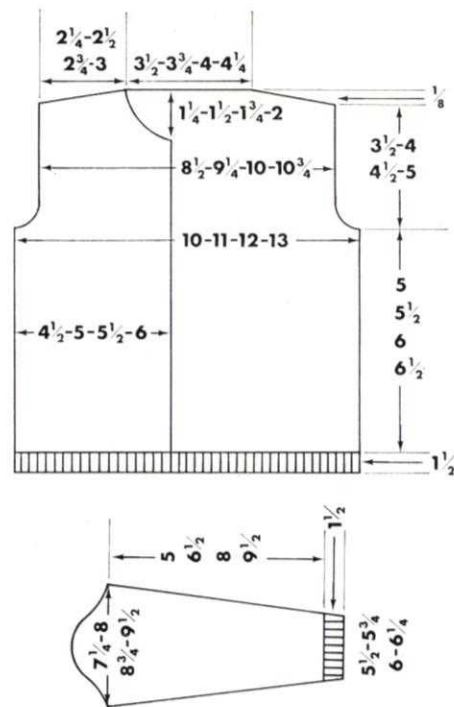
Push 99 (103, 107, 111, 115) needles to B position. With wrong side of garment facing pick up 31 (32, 33, 34, 35) sts. up front neck 37 (39, 41, 43, 45) sts. from back neck and 31 (32, 33, 34, 35) sts. down front neck. T6. K. 5 rows. T5. N.S.B. 1 and 5 S.D. on 1 (3, 1, 3, 1) H.C.L.'s III. K. 5 rows. H.C.L.'s I. T6. K. 4 rows. T10. K. 1 row. Cast off chain method.

TO MAKE UP

Pin out pieces and press with a hot iron over a damp cloth. With right side of garment facing, work 4 rows of double crochet along front edge of left front. Mark position on Left Front for 7 buttons. Space remainder evenly between. Work 4 rows of double crochet making button-holes on 3rd row to match markers by working 2 chain in place of 2 double crochet. **4th row:** Work 1 more row in d.c. working 2 d.c. in each 2 chain space.

Join side, shoulder and sleeve seams. Sew in sleeves. Turn neckband to wrong side and slip-st. in place. Turn mock rib at cuffs to wrong side and slip-st. in place. Sew on buttons. Press seams.

toddler's cardigan



Materials

5 (5, 6, 6) ozs. Patons Beehive Baby 3-ply wool, 5 buttons.

Measurements

To fit chest sizes 18 (20, 22, 24) ins.
Finished measurements 20 (22, 24, 26) ins.
Length to shoulder 10 (11, 12, 13) ins.
Sleeve seam $6\frac{1}{2}$ (8, $9\frac{1}{2}$, 11) ins.

Tension

Pattern st. No. 2. 18 sts. and 48 rows to 2 ins.

Abbreviations

K., knit; sts., stitches; inc., increase; dec., decrease; alt., alternate; foll., following; beg., beginning; rem., remain; patt., pattern; H.C.L.'s., Holding Cam Lever; T., tension; 000., set row counter at 000.

Note. Figures in brackets refer to larger sizes respectively.

Pattern stitch 1

N.S.B. 1, 2, 5 and 6. Push both TUCK buttons.

S.D. on 1 (1, 2, 2). R.D. on A(+). H.C.L.'s I. K. 1 row. R.D. on B(-). K. 1 row. Rep. these 2 rows.

Pattern stitch 2

N.S.B. 1, 2, 5 and 6. Push PLAIN button. S.D. on 1 (1, 2, 2). R.D. on A(+). H.C.L.'s III. K. 4 rows. H.C.L.'s I. K. 2 rows. Repeat 6 rows with R.D. on B(-). These 12 rows form 1 complete pattern.

BACK

Using waste wool cast on 92 (100, 110, 118) sts. K. a few rows. Change to main wool. T2. K. 20 rows. 000. Foll. patt. st. 1, K. 30 rows. Make a hem and k. 2 rows. 000. T3. Foll. patt. st. 2, K. 120 (132, 144, 156) rows. This will give a finished length to armhole of $6\frac{1}{2}$ (7, $7\frac{1}{2}$, 8) ins. Adjust length here if required.

Shape Armholes

000. Cast on 2 (3, 4, 5) sts. at beg. of next 2 rows. K. 2 rows. Dec. 1 st. at both ends of

next and every foll. 4th row 3 (3, 4, 4) times in all, then foll. 6th row twice. 78 (84, 90, 96) sts. K. straight until 84 (96, 108, 120) rows have been worked.

Shape Shoulders

Cast off 6 sts. at beg. of next 6 rows and 4 (6, 8, 10) sts. on next 2 rows. Slip rem. 34 (36, 38, 40) sts. on to a knitting needle.

RIGHT FRONT

Using waste wool cast on 42 (46, 50, 54) sts. K. a few rows. Change to main wool. T2. K. 20 rows. 000. Foll. patt. st. 1, K. 30 rows. Make a hem and k. 2 rows. 000. T3. Foll. patt. st. 2, k. 120 (132, 144, 156) rows. (K. 1 row extra for Left Front).

Shape Armhole

000. Cast off 2 (3, 3, 4) sts. at beg. of next row. K. 3 rows. Dec. 1 st. at beg. of next and foll. 4th rows 3 (3, 4, 4) times in all, then foll. 6th row twice, 35 (38, 41, 44) sts. K. straight until 55 (63, 71, 79) rows have been worked.

Shape Neck

Cast off 5 (6, 7, 8) sts. at beg. of next row. K. 2 rows. Dec. 1 st. at neck edge on next and every foll. alt. row 4 times in all, then every foll. 4th row until 22 (24, 26, 28) sts. rem. K. straight until 84 (96, 108, 120) rows have been worked.

Shape Shoulder

Cast off 6 sts. at beg. of next and alt. rows until 4 (6, 8, 10) sts. rem. K. 1 row. Cast off.

LEFT FRONT

K. as Right Front reversing all shapings.

SLEEVES

Using waste wool cast on 52 (54, 56, 58) sts. K. a few rows. Change to main wool. T2. K. 20 rows. 000. Foll. patt. st. 1, k. 30 rows. Make a hem and k. 2 rows. 000. T3. Foll. patt. st. 2, k. 16 rows. Inc. 1 st. at both ends of next and every foll. 12th (12th, 14th, 14th) row until there are 68 (74, 80,

86) sts. K. straight until 120 (156, 192, 228) rows have been worked. This will give a finished sleeve seam of $6\frac{1}{2}$ (8, $9\frac{1}{2}$, 11) ins. Adjust length here if required.

Shape Top

000. Cast off 2 (3, 4, 5) sts. at beg. of next 2 rows. K. 2 rows. Dec. 1 st. at both ends of next and every foll. 4th row 3 times in all, then every 6th row 4 (5, 6, 7) times. K. 3 (5, 5, 7) rows. Cast off 2 sts. at beg. of next 16 (16, 18, 18) rows. Cast off rem. 18 (20, 18, 20) sts.

NECKBAND

Join shoulder seams. With wrong side facing pick up and place on machine 19 (21, 23, 25) sts. up front neck. Dec. 6 sts. from back neck, place 28 (30, 32, 34) sts. on machine, 19 (21, 23, 25) sts., down front neck 66 (72, 78, 84) sts. T4. K. 1 row. 000. T2. Foll. patt. st. 1, k. 18 rows. Change to st.-st. K. 10 rows. K. 1 loose row. Cast off chain method.

BUTTON BAND

Turn neckband to wrong side and slip-st. in place. With wrong side facing, pick up 70 (80, 90, 100) sts. evenly along one Front. T4. K. 1 row. 000. S.D. on 1 (2, 1, 2). T2. Foll. patt. st. 1, K. 20 rows. Change to st.-st. K. 14 rows. K. 1 loose row. Cast off chain method.

BUTTONHOLE BAND

Mark position on first Front for 5 buttons, the first $\frac{1}{2}$ inch above lower edge and the last in the centre of neckband. Space remainder evenly between. Pick up sts. as Buttonband. T4. K. 1 row. T2. Foll. patt. st. 1, k. 10 rows. Make buttonholes to match markers over 2 sts. K. 10 rows. Change to st.-st. K. 7 rows. Make buttonholes as before. K. 7 rows. Cast off as Buttonband.

TO MAKE UP

Pin out and press with a warm iron (lightly) over a damp cloth. Join side and sleeve seams. Sew in sleeves. Turn front bands to wrong side and slip-st. in place. Neaten buttonholes and sew on buttons. Press seams.

mans fair-isle waistcoat



Materials

9 (10, 10, 11) ozs. Sirdar Double Knitting wool in main colour (M).

7 (6, 6, 7) ozs. on contrast wool (C), 10 inch pen-ended zip.

Measurements

To fit chest sizes 36 (38, 40, 42) ins.

Finished measurements 38 (40, 42, 44) ins.

Length to shoulder 20½ (21, 21½, 22) ins.

Tension

14½ sts. and 16 rows to 2 ins. over Fair Isle.

Abbreviations

K., knit; sts., stitches; inc., increase; dec., decrease; foll., following; beg., beginning; rep., repeat; alt., alternate; rem., remain; T., tension; 000., set row counter at 000; M.B., main bed.

BACK

Ribbers. Using M, cast on 125 (131, 139, 145) sts. as 1 x 1 rib. T6/6. K. 8 rows. Transfer ribber sts. to M.B.

Single machines. Using waste wool, cast on 125 (131, 139, 145) sts. K. a few rows. Change to M. T9. K. 15 rows. Make a hem and K. the row.

All machines. 000. T10. Foll. Fair Isle chart, K. 8 rows. Inc. 1st at both ends of next and every foll. 10th row until there are 139 (145, 153, 159) sts. K. straight until 80 rows have been worked.

Shape armholes

000. Cast off 5 sts. at beg. of next 2 rows and 4 sts. on next 2 rows. Dec. 1st at both ends of next 5 rows then every alt. row until 103 (109, 115, 121) sts. rem. K. straight until 76 (80, 84, 88) rows have been worked.

Shape shoulders

Cast off 8 sts. at beg. of next 6 rows and 5 (7, 9, 11) sts. on next 2 rows. Cast off rem. 45 (47, 49, 51) sts.

RIGHT FRONT

Pocket linings (2)

Using M. cast on 33 sts. by hand. T10. K. 28 rows in st.st. Slip sts. onto a knitting needle.

Ribbers. Using M. cast on 55 (59, 63, 65) sts. as 1 x 1 rib. T6/6. K. 8 rows. Transfer ribber sts. to M.B. Inc. 1st on 1st and 4th sizes 56 (59, 63, 66) sts.

Single machines. Using waste wool, cast on 56 (59, 63, 66) sts. K. a few rows. Change to M. T9. K. 15 rows. Make a hem and K. the row.

All machines. 000. T10. Foll. chart K. 8 rows. Inc. 1st at right on next and foll. 10th row. K. 9 rows. Beg. on st. 17 (19, 21, 23) from front edge, slip 33 sts. onto a stitch holder. Place pocket lining sts. onto empty needles. Inc. 1st at right side on next and every foll. 10th row until there are 63 (66, 70, 73) sts. K. straight until 72 rows have been worked. Mark front edge with coloured wool.

Shape front neck

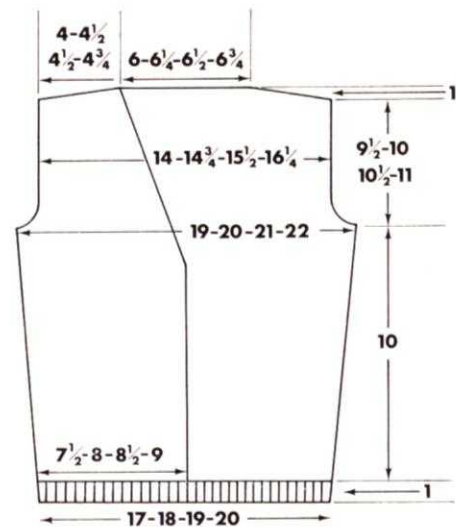
Dec. 1st at left side on next and foll. 4th row. K. 3, rows. (80 rows.)

Shape armhole

000. Continue to dec. 1st at neck edge on next and every foll. 4th row 5 times in all, at the same time cast off 5 sts. at beg. of next row and 4 sts. on foll. alt. row. K. 1 row. Dec. 1st at armhole edge on next 5 rows then every alt. row 4 (4, 5, 5) times. 38 (41, 44, 47) sts. K. 3 (3, 1, 1) rows. Keeping armhole edge straight, dec. 1st at neck edge on next and every foll. 6th row until 29 (31, 33, 35) sts. rem. K. straight until 76 (80, 84, 88) rows have been worked.

Shape shoulder

Cast off 8 sts. at beg. of next and alt. rows until 5 (7, 9, 11) sts. rem. K. 1 row. Cast off.



X					X				X							8
X	X	X		X	X	X		X	X	X						7
X		X	X	X		X	X	X		X	X					6
			X			X								X		5
			X			X								X		4
X	X	X	X		X	X	X		X	X		X	X			3
X	X	X		X	X	X		X	X	X						2
X				X				X								1

1 2 3 4 5 6 7 8 9 10 11 12

X = Contrast colour

LEFT FRONT

Knit as Right Front reversing all shapings.

FRONT BAND

Ribbers. Using M, cast on 11 sts. as 1 x 1 rib. T6/6. K. straight until band is long enough to fit up both fronts and across back neck stretching slightly. Cast off.

Single machines. Using M, cast on 15 sts. by hand. T9. K. straight until band is long enough to fit up both fronts and across back neck stretching to fit. Cast off.

ARMBANDS

Join shoulder seams. With wrong side facing pick up 137 (145, 153, 161) sts. evenly round armhole. Using M. K. 1 row.

Ribbers. Transfer alt. sts. to ribber. T6/6. K. 8 rows. K. 1 loose row. Transfer ribber sts. to M.B. and cast off chain method.

Single machines. T9. K. 8 rows dec. 1st at both ends of next and alt. rows 4 times, then K. 8 rows, inc. 1st at both ends of next and alt. rows 4 times. Cast off loosely.

POCKET TOPS

With wrong side facing replace 33 sts. on machine.

Ribbers. Transfer alt. sts. to ribber. T6/6. Using M, K. 6 rows. K. 1 loose row. Transfer ribber sts. to M.B. and cast off as Armband.

Single machines. T9. Using M, K. 16 rows. Cast off.

To make up

Pin out and press with a hot iron over a damp cloth. Join side seams. Sew pocket linings in place then catch down narrow ends of pocket tops. Sew ribbed front band in position. Sew st.st. band in position, turn to wrong side and slip-st. in place. Sew in zip placing top of zip at beg. of neck shaping. Press seams.

Results of the Knitting and Photographic competition

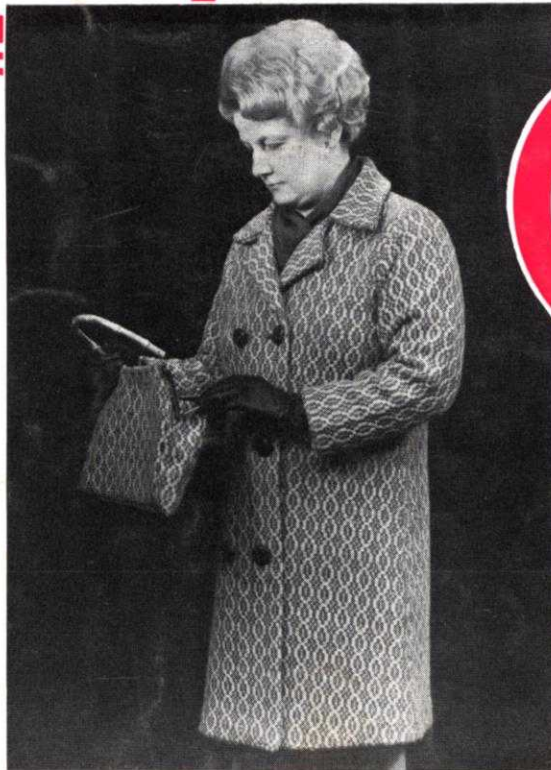
We received so many delightful entries for our Knitting and Photographic Competition, that it was no easy task to select the winner. It was obvious that all competitors had taken a great deal of care with their entries, and the standard of both knitting and photographic skill was high.

When judging the entries, we took into account the length of time taken to make the outfit; the finish of the garment and the way it was shaped; neat seams and attention to detail.

Our first prize winner passed such scrutiny with flying colours! And for her entry of a beautifully-made, woven coat with matching hand-bag, FIRST PRIZE goes to

**Mrs. Eileen Greenwood
of Ealing, London, W.13.**

Mrs Greenwood will be presented with a brand new KNITLEADER attachment, to make knitting with



Jones even more versatile.

Space does not permit us to mention more than eight other entries in this issue of *Stitchin'time*, but winners of the £5 vouchers will be notified by post, with the address of their local Jones stockist.

We hope you have all had a lot of fun making and photographing the outfits; we have certainly enjoyed sifting through the results of your work and we look forward to setting another super competition in the not too distant future.

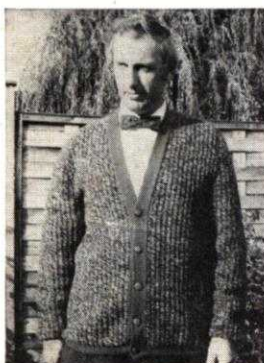


Far left:
From Mrs. A. Lynch,
Dublin.

Left:
From Mrs. A. Maclean,
New Zealand.

Right:
From Mrs. M. Brown,
Chelmsford, Essex.

Far right:
From Mrs. J. Johnson,
Watford, Herts.



Far left:
From Mrs. V. Hatchett,
Tollerton, Notts.

Left:
From Mrs. J. Mahon,
Wirral, Cheshire.

Far right:
From Mr. H. Tomlin,
Peterborough, Hunts.

Right:
From Mrs. Gibson,
Co. Down, N. Ireland

