

knitking

magazine

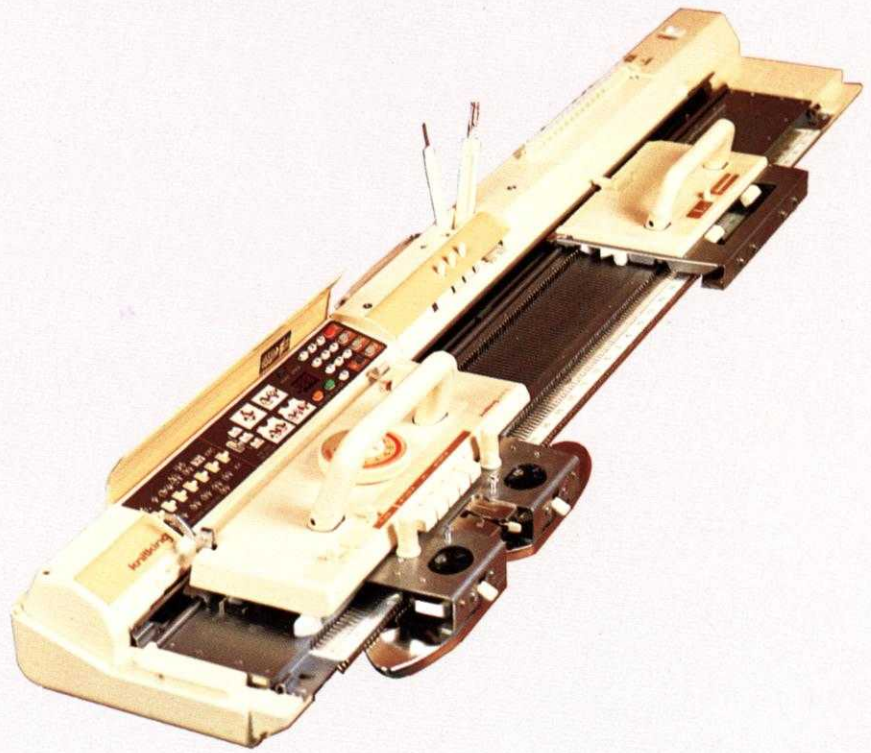


FABULOUS
NEW PATTERNS
FOR EASY TO MAKE,
LOVELY TO WEAR
KNITS!

339 EVENING GLAMOUR

Electronic machines are fun and you can design for yourself a motif that will make your garment absolutely unique... the only one in the entire world. Our designers enjoyed creating this elegant evening gown especially for electronic machine owners. Wear it for a special evening and be prepared for admiration. Size 8/10.





V18/1

Table of Contents

319	Page 13
320	Page 14
321	Page 15
322	Page 16
323	Page 17
324	Page 18
325	Page 19
326	Page 20
327	Page 21
328	Page 22
329	Page 25
330	Page 26
332	Page 27
333	Page 29
334	Page 29
335	Page 30
336	Page 31
337	Page 32
338	Page 32
339	Page 34
KNITKING NEWS	Page 35

EDITORIAL

It took 19 years to achieve our independence... 19 years of collaboration with KNITKING of Germany in the production of a magazine for knitting machine owners in the USA and other English speaking countries plus knitting machine owners in Germany and Italy.

The production of a quality magazine such as this, without benefit of outside advertising is very costly and only by sharing costs has its production been possible.

We have over the years experienced a multitude of problems. Collaborating at a distance of over 6,000 miles combined with language problems and cultural differences is no simple proposition. We at KNITKING have always considered KNITKING MAGAZINE a most important part of our customer service and although it in itself has never been financially successful, the benefits we have gained through continued contact with our readers and customers cannot easily be measured.

Since the original magazine planning stage in 1963, KNITKING Corporation has steadily grown into one of the most successful knitting machine companies in the world and the largest independent knitting machine company in the USA.

19 years of correspondence with our readers has left no doubt regarding the types of patterns and information you need and that is what we aim to supply. So please keep those cards and letters coming in, tell us what size and type of garment plus other items you would like to see featured in KNITKING MAGAZINE. We pledge its production entirely with you in mind.

One continuing request we receive from readers is for garments to suit the fuller figure. Our next edition will feature several of them together with some outstanding fashions for all members of the family and some useful household items. Watch out for it.

We always wanted to produce KNITKING MAGAZINE our way... This is it... and we can only get better.




The first issue of our Volume 18 is exciting, it's new and it's filled with beautiful knitted garments for all our many loyal subscribers... to make... to wear... to enjoy... OUR COVER MODEL is an up-to-the minute design. Black and white checkers in a diagonal design on the Pullover. Flip the skirt around to select any combination to complement the top. Sizes 6/8, 10/12, 14/16.

330

Publisher: KNITKING CORPORATION, 1128 Crenshaw Blvd., Los Angeles, Calif. 90019. Telephone: (213) 938-2079. Published bi-monthly. Subscriptions: USA — \$18.00 annually, single copies \$4.00, \$21.00 all other countries. The entire contents of KNITKING MAGAZINE are copyright and must not be reproduced in any shape or form without the express permission, in writing of the publisher. ©COPYRIGHT 1983 by KNITKING CORPORATION.

322

VACATION LEISURE

The look of crochet for a cool Cover Up that is very easy to knit in a Lace Design. The shaping is simple and flattering as well. Sizes 6 to 12.



328 ARGYLE CHALLENGE

You can too knit a large Argyle design on your knitter... and "Short Rows" do it all in big diamonds on the front only. You duplicate stitch the outlines. Size 12/14.



329 PRETTY WAYS WITH STRIPES...

A Tuck Stitch Pattern using fine yarn and soft colors make a flattering body skimmer shift. Simple to make (GREAT for beginners), you are sure to want more than one... Sizes 6/8, 10/12, 14/16.





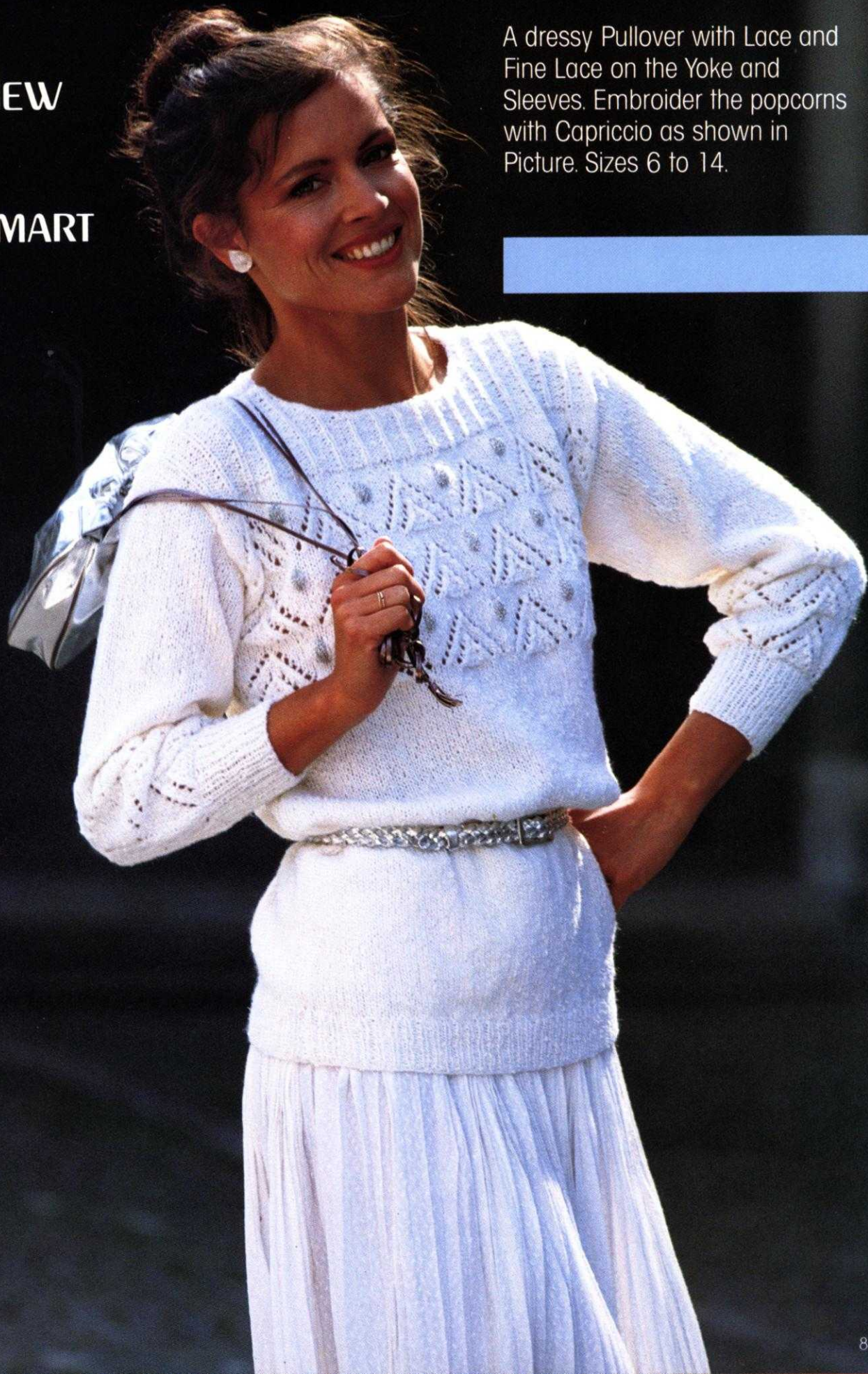
319

A VERY SPECIAL VEST

Try a new dimension in knitting... POPCORNs and LACE form a large diamond design made on the Electronic 910 machine. The popcorns are actually knitted in and we tell you how. The purl side is the right side and the sizes are from 4 to 14.

327
VERY NEW
AND
VERY SMART

A dressy Pullover with Lace and Fine Lace on the Yoke and Sleeves. Embroider the popcorns with Capriccio as shown in Picture. Sizes 6 to 14.



324

SUPER SOFT RIBBING

Fisherman's Rib makes a super soft casual Jacket with stripes for accent. You will wear it everywhere. Use your Color Changer to knit the stripes. Sizes 4 to 10.



325

A Go ANYWHERE Pullover

He will make good use of this sleeveless Pullover. It's a racking pattern and is knitted sideways on the machine using your Ribber. Sizes 34 to 38.



332

Simple And Smart

Flattering to all figures, the softly gathered skirt sections of this dress hang from a patterned bodice. The pattern accents the lower edge of skirt and sleeve cuffs. Size 12/14.



GENERAL INSTRUCTIONS

THE PRINTED INSTRUCTIONS

Follow the printed instructions or use them in combination with the Charts. Where there is any question in the instructions, you have the Charts to show you how the section will look.

Be sure to READ AHEAD so that you KNOW what to do for the size you are knitting. In the shapings, where the number of stitches are the same but the number of times different, you might find shapings like this . . . 3 sts. 1x (2x) [3x] - so that for the first size you will bind off 3 sts. 1x, 2nd size 3 sts. 2x, 3rd size 3 sts. 3x. Sometimes the ROWS will be different for each size - so you must watch out for different row numbers.

Shoulder and neck shapings for the back section of a garment usually are shaped at the same time - so ALWAYS WATCH for the words AT THE SAME TIME.

HOLDING STITCHES ON THE LEFT SIDE WHILE SHAPING THE RIGHT SIDE

There are different ways to hold stitches on one side while completing the other side. Usually, we tell you to bind off the center sts. for neck and put the left side into holding position while completing the right side. The easiest way and really the best way for beginners is to take a piece of RAVEL CORD and hand knit the center neck stitches, pulling them back against the needle bed of machine to the "A" or out of work position. The stitches remain in the HOOKS of the needles so you are really only knitting them HALF WAY. With another color of Ravel Cord, knit the remaining sts. on the left side in the SAME WAY.

It is important to protect these held stitches in some way - so you can either hang a REVERSING BAR so that the EYES of the Bar go BETWEEN the Gate Pegs on the machine and that the UPPER TIPS of Bar only - show above the needle bed . . . OR the simplest way is to use a piece of 1 inch masking tape and GENTLY place it beneath the knitting - right below the gate pegs. Do NOT press the tape - only enough pressure to hold it in place. This will prevent the Carriage (or Slide) from marking the held section.

It is VERY IMPORTANT that you mark the PATTERN ROW where you divide for the split for NECK (or SHOULDER) shaping . . . If you are using a PUNCH CARD - MARK THE CARD - if you are using an ELECTRONIC machine, MARK THE DESIGN WINDOW. Also take note of the Row number for the division. When you are ready to work the left section, bring the HELD stitches back to B (working) position by pulling each end of the Ravel Cord GENTLY and rip it off - be sure to align all needles straight in the B or knitting position.

Now you are ready to REFER TO YOUR OWN INSTRUCTION MANUAL for your machine - to set the controls to begin knitting the left half. The neck stitches can be bound off after completing the right side or you can leave them in hold until each side is finished, then bind them off or remove them onto contrast waste yarn ready to be picked up for knitting a neckband or for other finishing.

FULL FASHION DECREASING OR INCREASING

For Stockinette stitch, use the Full Fashion method for decreasing or increasing (except for regular cap shaping on sleeves where you decrease the edge stitch).

TO DECREASE: Hang the 3rd stitch onto the 2nd stitch then move the end stitches in to fill the empty needle.

TO INCREASE: Move the 2nd end stitches 1 needle outward, then pick up the 3rd stitch from the row below and hang it onto empty needle.

THE SAMPLE SWATCH

Before you knit any garment, you must knit a sample swatch using the yarn you have chosen for your garment. If you do not get the correct Stitch and Row Gauge as given for a Pattern in KNITKING MAGAZINE - try different tensions. If you are using the specified yarn, you should be able to get the correct gauge using one of the tensions shown. If you are using other yarns, you may have to make several swatches - but the gauge is very important.

To make a sample swatch - Cast on 60 stitches with waste yarn and knit 6 rows. Mark the tension number for your sample swatch by making holes (you can do this with a Lace Carriage or by hand), 4 transfers for Tension 4, 6 transfers for Tension 6, etc. Knit 6 more rows.

Change to garment yarn and set Counter at 0. Knit 30 rows (in Stockinette stitch or Pattern Stitch - according to the garment). With contrast waste yarn knit the 10th stitch ON EACH SIDE - by hand. Knit 30 rows. Change to waste yarn and knit 12 rows. Remove the sts. from the machine by pushing the Carriage (or Slide) across without yarn.

Pull and stretch the sample swatch both lengthwise and diagonally from corner to corner, then lengthwise again. Gently block the swatch (KNITKING PRESSING CLOTHS are great for this) - or you can allow the sample rest several hours or even over night so that the stitches can return to their basic form.

USE KNITKING CONVERTA TAPE for MEASURING YOUR SAMPLE (or the KNITKING INSTANT STITCH AND ROW GAUGE MEASURE.)

If you use the Converta Tape, pull out the Tape to measure BETWEEN the 40 marked stitches in the center of your swatch. Move the red marker on the Tape so that it points to 40 stitches on the TAPE. Your stitch gauge to 2" (5 cm) will show in the RED WINDOW. To find the number of rows in 2" (5 cm), place the Tape to measure over the 60 rows, push the red marker to 60 on the Tape and your row gauge for 2" (5 cm) will show in the red window.

If you do not own a KNITKING CONVERTA TAPE or a Stitch and Row Measure, you must count the number of stitches and rows to 2" (5 cm) after marking a 2-inch square in the center of your knitting.

12 ROWS		12 ROWS
		30 ROWS
60 ROWS	10 ● ↑ MARK	● 10 ↑ MARK
		30 ROWS
12 ROWS	oooo TENSION HOLES	CONTRAST YARN
		6 ROWS
		6 ROWS

FINISHING

Gently block all sections - For PULLOVERS, JACKETS and DRESSES: Join the front to back at shoulders and sides. Sew sleeves together and set in. Hem lower edge and sleeve edges if needed. For a double neckband or armhole, band sew 1 edge to inside and 1 to the outside of neck or armhole. For a single ribbed band, sew 1 edge to the outside of neck or armhole edge. For a cardigan or jacket with buttonholes, finish buttonholes and sew on buttons.

PANTS: Join front to back at sides. Sew inside leg seams, then join to center front and back. Make hem at waistline and insert elastic. Hem lower edge of pants' legs.

PATTERN SYMBOLS

() Symbol for 2nd size.

[] Symbol for 3rd size.

There are up to 3 sizes given for Patterns in KNITKING MAGAZINE. For example, the Charts and printed instructions will show the cast-on as... 124-First size. (132)-Second size. [140]-Third size.

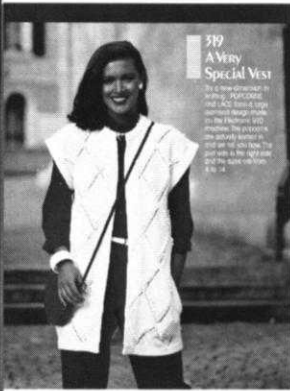
R = ROW

◻ Needles in holding position. } For Short Row
 ⊗ Needles back into working position. } Knitting

☑ Needle not used - in out of work position.

3 x 1
4

The number in the box is the number of Rows between shapings. The 3 x 1 above the box gives you the sts. and number of times to make the decreases (or increases) - FOR EXAMPLE: 3 x 1 over the box with 4 means - At the given Row number, *decrease 1 st. knit 4 rows* and REPEAT from * to * 2 times more for a total of 3 times in all. All decreasing (or increasing) WITHOUT ROW NUMBER IN BOX must be made on EVERY 2nd ROW.



WOMAN'S LONG VEST

SIZES: 4/6 (12/14)
 YARN: Nomotta Extra
 GRAMS: 650 800
 TENSION: 9 to 10
 GAUGE: 12 1/2 sts, 17 1/2 rows = 2"

Made on the 910 Electronic machine.
 Lace with Popcorns. The purl side
 is the right side. Bands are
 Stockinette stitch.

FINISHING: See General Instructions.

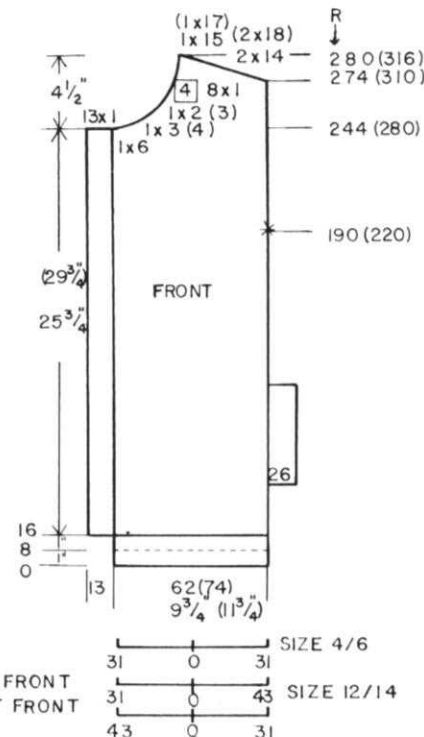
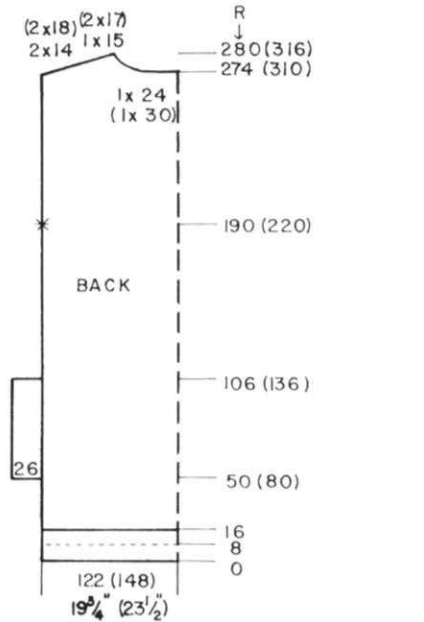
SEE KNITTING NEWS.

BACK:

Cast on 122 (148) sts. using the 'e' cast on and work Stockinette stitch.
 Knit Row 8 with larger tension for turning row. Return Tension.
 After Row 16, begin Pattern A.
 After Row 50 (80) ON EACH SIDE, cast on 26 sts. ('e' cast on). The center 122 (148) sts. are in Stockinette stitch.
 After Row 106 (136), ON EACH SIDE bind off 26 pocket sts.
 Continue in Pattern to Row 190 (220). Mark each side for Armhole. Continue in Pattern.
 Knit to Row 274 (310).
 SHAPE NECK: Bind off the center 24 (30) sts., put the needles on the left into holding position 'A' and complete the right side first.
 *SHAPE NECK AND SHOULDER AT THE SAME TIME.
 FOR SHOULDER, bind off 14 (18) sts. 2x, 15 (17) sts. 1x.
 FOR NECK, bind off 3 sts. 2x.
 Bring the needles on the left into working position, knit 1 row in Pattern to the left side, turn the Row Counter back to 274 (310) and complete the left half. Follow the instructions from *.

FRONT: Make 1, reverse 1.

Cast on ('e') 62 (74) sts. and work the same as the back to Row 16.
 ON LEFT EDGE, cast on 13 sts. leaving 1 needle OUT OF WORK ON INNER EDGE for facing.
 Continue in Pattern with facing in Stockinette stitch.
 After Row 50 (80) make POCKET on SIDE EDGE same as the back.
 After Row 190 (220) mark side edge for armhole.
 After Row 244 (280) SHAPE NECK on the LEFT (right for 2nd section).
 ON FRONT EDGE remove 19 sts. (including the needle out of work) onto contrast waste yarn.
 ON NECK SIDE, bind off 3 (4) sts. 1x., 2 (3) sts. 1x, 1 st. every 4th row 8x BUT AT THE SAME TIME, after Row 274 (310) SHAPE SHOULDER same as the back.



Prepare 50" lengths of yarn to use for the Popcorns. Fold in half so that each half can be used separately for wrapping needles.

Work Pattern as follows after programming correctly.

***Lace Carriage plus knitting -**
 Follow the markings on the right side of pattern sheet for working the Lace Carriage plus knitting. When groups of 3 needles are selected - bring each set of 3 needles into holding position. With 1 strand of wrapping yarn (remember it must be folded in half and you use strand from center) wrap each set of 3 needles 3 times. Push the wrapping up against the gate pegs and hold strands down with left half as you knit 2 rows slowly.
 Lace Carriage plus knitting until single needles are selected. Bring these single needles to holding position. Wrap each single needle from inside to the outside 1 time only. Push the wrapping against gate pegs and hold strands down while you knit 2 rows slowly.
 Lace Carriage plus knitting till sets of 3 needles are selected. Bring the selected needles to holding position and wrap each set of 3 needles from INSIDE to OUTSIDE 3 time. Push wrapping against the gate pegs and hold strands down as before and knit 2 rows slowly.

REPEAT the procedure from **
 When Pattern A is completed, be sure to knit the 2 rows to complete the lace, THEN KNIT 4 rows STOCKINETTE STITCH.

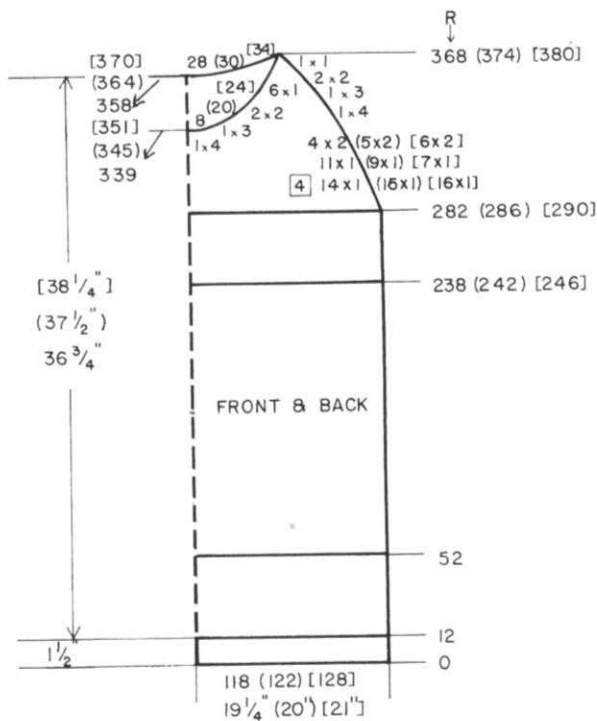
GO TO PATTERN 'B' - Set up NEW PROGRAM for Pattern "B". Continue the same procedure as for Pattern 'A' when needles are selected - following from **.
 When changing back to 'A' Pattern DO NOT KNIT THE EXTRA 4 ROWS.

NECKBAND

Sew shoulders first.
 Cast on 108 (124) sts. and work Stockinette stitch.
 Knit Row 8 with larger tension. Change back to garment tension. Knit to Row 16.
 With knit side facing you, pick up the sts. around neck and hang onto machine OMITTING the 13 sts. of Front facings (counting out of work st.) Now hang the facing sts. on each side by folding over and placing onto the first 12 sts. on the machine. Bind off loosely across. Fold neckband in half and sew to the inside.

ARMBANDS

Cast on 118 (126) sts. and work same as neckband. With knit side facing you, pick up the sts. around armhole and bind off. Fold to the inside and sew in place.



WOMAN'S DRESS

SIZES: 4/6 (8/10) [12/14]
 YARN: Nomotta Viola & Beatrice Silver
 GRAMS: color 1 600 650 700 -Viola
 color 2 100 100 100 -Beatrice
 TENSION: 7 to 8
 GAUGE: 12 sts. 19 rows = 2"

Stockinette stitch with an Eyelet Design and color stripes.
 Punch Card.

FINISHING: See General Instructions.

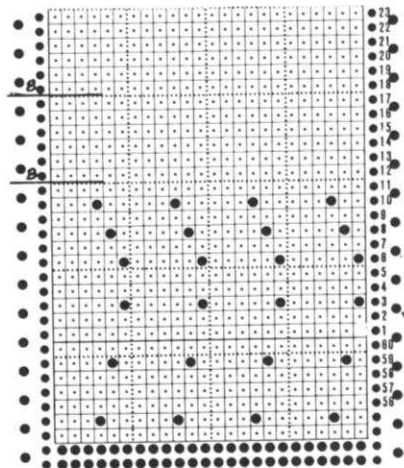


BACK:

With color 2, cast on 118 (122) [128] sts. and work 12 rows K1, P1 Ribbing. Transfer the Ribber sts. to main machine.
 With color 1 continue in Pattern to Row 52, working the color stripes with color 2.
 Continue in Stockinette stitch with color 1 to Row 238 (242) [246]. Work in Pattern to Row 282 (286) [290].
SHAPE RAGLAN: ON EACH SIDE, on every 4th row, decrease 1 st. 14x (15x) [16x], every 2nd row 1 st. 11x (9x) [7x] then bind off 2 sts. 4x (5x) [6x] BUT AT THE SAME TIME, after Row 358 (364) [370], **SHAPE NECK:** Bind off the center 28 (30) [34] sts., put the needles on the left into holding position and complete the right side first.
 *ON NECK SIDE, bind off 4 sts. 1x, 3 sts. 1x, 2 sts. 2x, 1 st. 1x.
 Bring the needles on the left into working position and complete the left half. Row Counter to 358 (364) [370]. Follow the instructions from * but don't forget to complete the raglan shaping.

FRONT:

Work the front the same as the back to Row 338 (344) [350]. **SHAPE NECK:** Bind off the center 18 (20) [24] sts., put the needles on the left into holding position and complete the right side first.
 *ON NECK SIDE, bind off 4 sts. 1x, 3 sts. 1x, 2 sts. 2x, 1 st. 6x.
 Bring the needles on the left into working position, turn the Row Counter back to 338 (344) [350] and complete the left half. Follow the instructions from *.



Begin Pattern for lower edge of Skirt Sections and Sleeves as follows:

With color 1 work
 4 rows plain knitting
 6 rows Lace
 6 rows plain knitting.

With color 2, work GARTER STITCH - REVERSE THE KNITTING EVERY ROW 4.

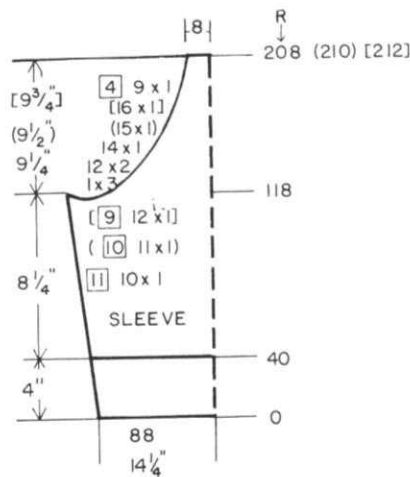
With color 1 work
 4 rows plain knitting
 6 rows Lace
 6 rows plain knitting.

REPEAT FROM * to * 1x for GARTER STITCH.

The Pattern for the BODICE begins and ends with the GARTER STITCH ROWS with 2 Lace Patterns in between.

SLEEVES:

Cast on 88 sts. with contrast waste yarn. Knit 9 to 11 rows then 1 row with ravel cord. Put Counter at 0 and with color 1 knit in Pattern to Row 40 BUT AT THE SAME TIME, ON EACH SIDE, increase 1 st. every 11th row 10x. (every 10th row 11x). [every 9th row 12x].
After Row 118, SHAPE ARMHOLE: ON EACH SIDE, bind off 3 sts. 1x, 2 sts. 12x, 1 st. 14x (15x) [16x], then every 4 row 1 st. 9x.
 After Row 208 (210) [212], bind off the remaining sts.



* CONTINUED

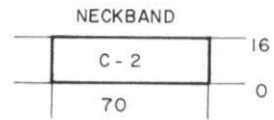


SLEEVE CUFFS:

Cast on 70 sts., with color 2 and work 16 rows K1, P1 Ribbing. Transfer the ribber sts. and with purl side facing you, hang the open sts. of sleeve onto these needles, decreasing evenly across. Bind off.

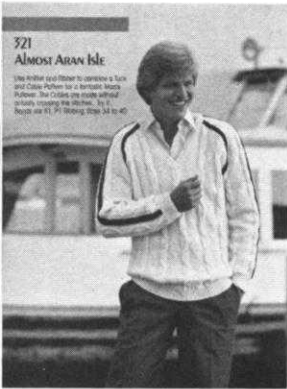
RAGLAN BANDS - Make 2.

With purl side facing you, pick up 190 (196) [200] sts. from front and back raglan shaping. With color 2, work 12 rows K1, P1 Ribbing but AT THE SAME TIME, ON EACH SIDE, decrease 1 st. every 2nd row 3x. After Row 12, transfer the ribber sts. to main machine and knit 1 row stockinette st. Bind off or take off on waste yarn. Sew to sleeve (see picture.)



NECKBAND:

Cast on 190 (194) [200] sts. with color 2 and work 10 rows K1, P1 Ribbing then 4 rows circular. Remove the sts. onto contrast waste yarn. Sew band to neckline.



MAN'S PULLOVER

SIZES: 34/36 (38/40)
YARN: Acrylic/Mohair -2 strands
GRAMS:
 color 1 700 750
 color 2 50 50
TENSION: 9 or 10
GAUGE: 12 1/2 sts. 14 rows = 2"

A Tuck and Cable Design with bands in K1, P1 Ribbing. The Purl side is the right side.

FINISHING: See General Instructions.

SLEEVES: MAKE 2 of A and 2 of B.- REVERSE 1 of each.

'A' - Cast on 32 (34) sts. with color 1 and work 12 rows K1, P1 Ribbing. Transfer the Ribber sts. to main machine and set into PATTERN. Continue in Pattern and ON THE LEFT SIDE ONLY, increase 1 st. every 5th row 20x (23x). Knit to Row 128. SHAPE ARMHOLE ON THE LEFT. Bind off 4 sts. 1x, 3 sts. 8x, 2 sts. 2x, 1 st. 11x (16x) then on EVERY 4th ROW, 1 st. 5x (3x). After Row 194, bind off the remaining sts. Work second 'A' section with REVERSE SHAPING.

'B' - Cast on 34 sts. with color 1 and work 12 rows K1, P1 Ribbing. Transfer the ribber sts. and set into PATTERN. Continue in Pattern and ON THE RIGHT SIDE ONLY, increase 1 st. every 5th row 20x (23x). After Row 128, SHAPE ARMHOLE ON THE RIGHT. Bind off 4 sts. 1x, 3 sts. 8x, 2 sts. 2x, 1 st. 11x (16x) then on EVERY 4th ROW, 1 st. 5x (3x). After Row 194, work SHORT ROWS. ON THE LEFT, bring into holding position 2 sts. 3x. After Row 200, bring all the needles into work and bind off. Work second 'B' section with REVERSE SHAPING.

BACK:

Cast on 138 (148) sts. with color 1 and work 12 rows K1, P1 Ribbing. Transfer the ribber sts. to main machine then set up in PATTERN. Work in Pattern to Row 136. SHAPE RAGLAN: ON EACH SIDE, bind off 5 sts. 1x, then decrease 1 st. 1x, then ON EVERY 4th ROW, decrease 1 st. 4x, every 2nd row 1 st. 11x (12x) then bind off 2 sts. 5x, 3 sts. 1x, 4 (5) sts. 2x, 8 sts. 1x. Bind off the remaining sts.

FRONT:

Work the front the same as the back to Row 144 (shaping raglan same as the back). Divide in the center. Transfer the LEFT side ribber sts. to the main machine then put all needles on the left into holding position and complete the right side first. *ON NECK SIDE, decrease 1 st. 14x (16x) then on EVERY 4th ROW decrease 1 st. 5x. Bring the needles on the left into working position, transfer the correct ribber sts. to the ribber. Knit 1 row (watch Pattern) to the left side, turn the Row Counter back to 144 and complete the left half. Follow the instructions from *.

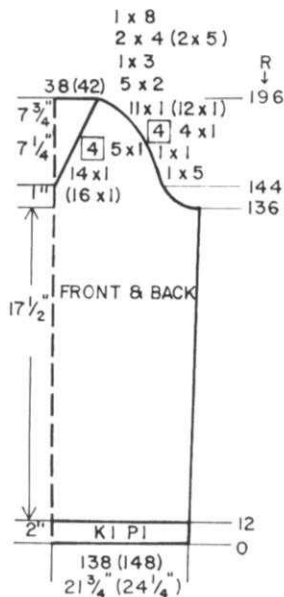
RAGLAN BANDS

With knit side of garment facing you, hang 1 edge of front raglan onto 72 sts. BE SURE the UNDERARM is in the CENTER with straight edge on the outside. Hang 1 edge of back raglan with underarm in the center onto 78 sts. on other side of 0. (150 sts.). With color 2, knit 6 rows. Bind off loosely. Reverse for 2nd raglan band. Sew the bind off edge of band to other half of garment (see picture).

SLEEVE STRIPES - Make 2.

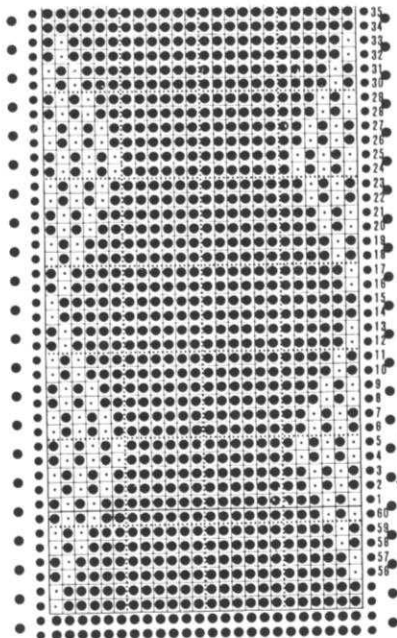
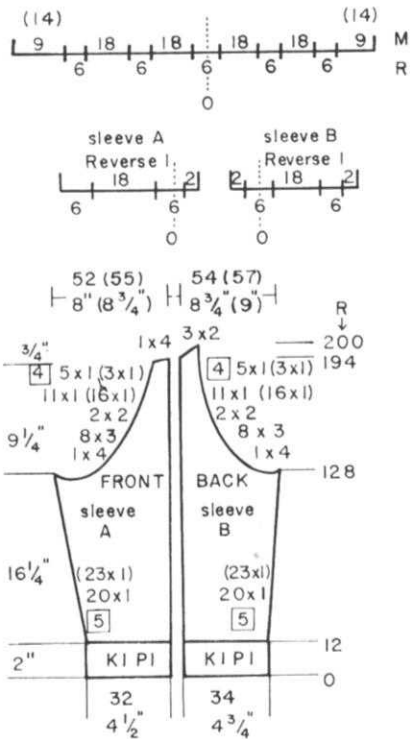
Pick up 160 (164) sts. along 1 straight edge of sleeve with knit side facing you. With color 2, knit 6 rows. Bind off loosely. Sew bind off edge to other half of sleeve.

321



NECKBAND - Make 2.

Cast on 72 (78) sts. with color 1 and work K1, P1 Ribbing. ON THE RIGHT (LEFT for 2nd section) decrease 1 st. every 2nd row 4x. After Row 8, bind off. Weave shaped ends together for V, then sew to neckline.



NEEDLE SET UP AND PATTERN

EVERY NEEDLE ON BOTH MAIN MACHINE AND RIBBER. Punch Card.

Bring 3 needles on EACH SIDE of 0 on the RIBBER into working position (6 sts.)
 ON EACH SIDE of the Ribber needles, bring 18 needles on MAIN MACHINE into working position, then continue with 6 needles on the Ribber and 18 needles on the main machine, etc., etc. for the required number of sts. needed. RACKING LEVER on 5.
 Set Card, left to right. Push in BOTH TUCK BUTTONS. Knit 20 rows.
 *RACKING LEVER on 8. With 3 needle transfer tool, transfer 3 sts. on the left ribber sts. to 3 EMPTY needles on the right (this makes cable). Bring the 6 Ribber needles to holding position so the next row will knit easily. Knit 20 rows.
 Rack to the LEFT to 5. Move the 3 sts. on right (ribber) to the left 3 empty needles. Bring Ribber needles to holding position. Knit 20 rows. REPEAT FROM *.

322

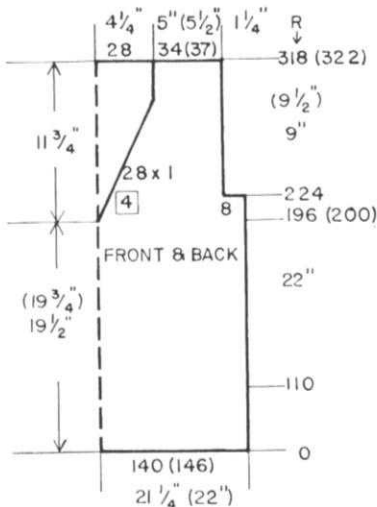


WOMAN'S BEACH COVER UP

SIZES: 6/8 (10/12)
 YARN: Nomotta Gladiola
 GRAMS: 450 500
 TENSION: 7 to 8
 GAUGE: 13 sts., 20 rows = 2"

Double Eyelet Lace Pattern. Punch Card. Bands are K1, P1 Ribbing.

FINISHING: See General Instructions. Sew side seams to markers. Work single crochet around edges of sleeves, side slits and lower edge.



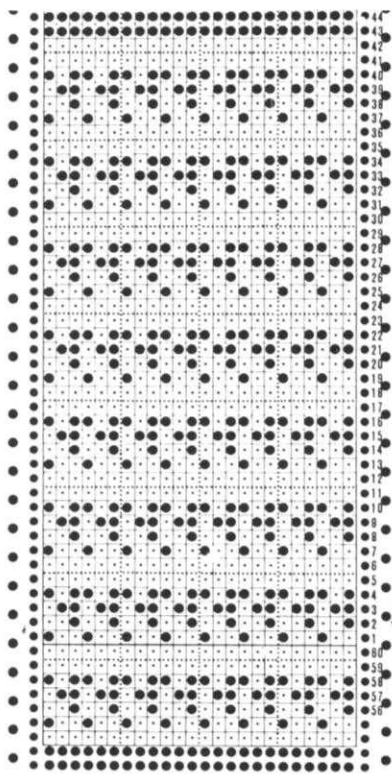
BACK:

With contrast waste yarn, cast on 140 (146) sts. After knitting 9 to 11 rows, knit 1 row with Ravel Cord. Put Counter at 0 and change to garment yarn. Knit 2 rows and continue in Lace Pattern. After Row 110, Mark each side with bit of waste yarn then knit to Row 224. SHAPE ARMHOLE: ON EACH SIDE, bind off 8 sts. then knit to Row 318 (322). Bind off (or you can remove sts. onto waste yarn) 34 (37) sts. ON EACH SIDE for SHOULDER, then remove the remaining sts. onto separate yarn for neck.

FRONT:

Work the front the same as the back to Row 196 (200). Divide in the center. Mark Card so that you will be able to work the second half later. Put the needles on the left into holding position (BE SURE TO use ravel cord to knit the left half - pulling the sts. back against the needle bed to 'A' position. Put a piece of masking tape across the knitting that is being held so that you will not mark it as you complete the right side. *ON NECK SIDE, decrease 1 st. every 4th row 28x but DO NOT FORGET to SHAPE ARMHOLE after Row 224. After Row 318 (322), bind off or remove 34 (37) sts. onto waste yarn. Bring the needles on the left into working position and Row Counter to 196 (200) and complete the left half. Watch Pattern and follow instructions from *.

***CONTINUED**



PUNCH CARD

Leave KC on

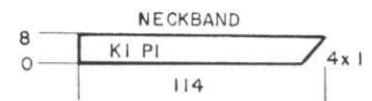
*LACE CARRIAGE - 4 times

Knit 1 row - push in both Tuck Buttons

Knit 2 rows tuck - RELEASE TUCK BUTTONS

Knit 1 row

REPEAT FROM *.

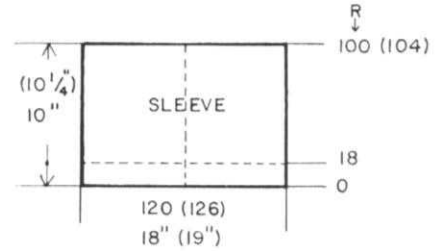


NECKBAND - Make 2.

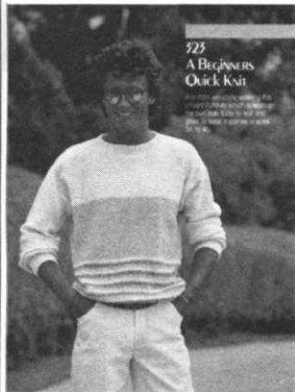
Cast on 114 sts. and work K1, P1 Ribbing with Tension 6. ON THE RIGHT (left for second section) decrease 1 st. every 4th row 4x. After Row 8, transfer the ribber sts. to main machine and hang half the back neck and half the front onto these needles then bind off. Repeat for other half of band.

SLEEVE:

With contrast waste yarn, cast on 120 (126) sts. After knitting 9 to 11 rows, knit 1 row with Ravel Cord. Put Counter at 0 and change to garment yarn. Knit in Pattern. After Row 18, mark each side with bit of waste yarn (fold mark for cuff) then continue to Row 100 (104). Bind off or remove onto waste yarn.



323



MAN'S PULLOVER

SIZES 34/36 (38/40)
 YARN: Nomotta Viola
 GRAMS:
 color 1 350 400
 color 2 150 200
 color 3 100 150
 TENSION: 7 to 8
 GAUGE: 12 sts. 19 rows = 2"

Stockinette stitch with color stripes. The purl side is the right side. Bands are K1, P1 Ribbing.

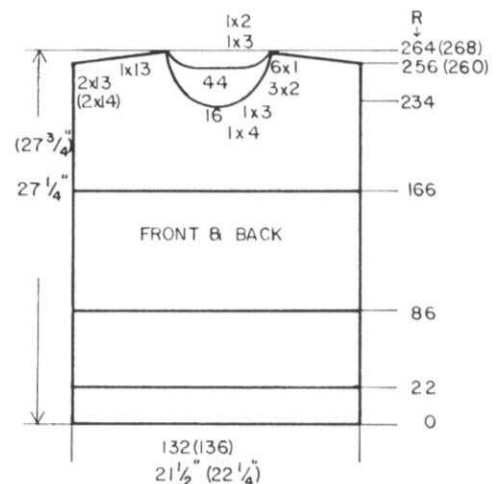
FINISHING: See General Instructions.

BACK:

Cast on 132 (136) sts. with color 3 and with tension 5 or 6, work 22 rows K1, P1 Ribbing. Transfer the Ribber sts. to main machine and continue in stockinette stitch with color stripes. Ten. 7 to 8.
 *Work 4 rows color 1
 4 rows color 2
 4 rows color 3
 REPEAT FROM * 4x.
 Work 4 rows color 1 then continue with color 2 to rows 166.
 Continue with color 1 to Row 256 (260).
 Bind off the center 44 sts. put the needles on the left into holding position and complete the right side first.
 *SHAPE SHOULDER AND NECK AT THE SAME TIME.
 FOR SHOULDER, bind off 13 sts. 3x. (14 sts. 2x, 13 sts. 1x).
 FOR NECK, bind off 3 sts. 1x, 2 sts. 1x.
 Bring the needles on the left into working position, knit 1 row to the left side, turn the Row Counter back to 256 (260) and complete the left half. Follow the instructions from *.

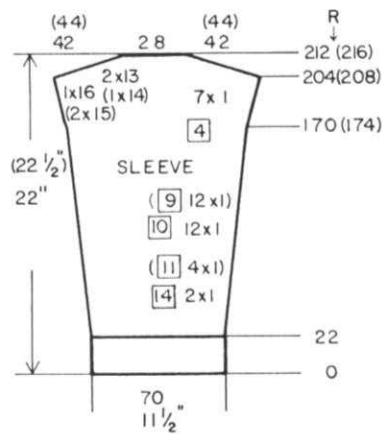
FRONT:

Work the front the same as the back to Row 234, bind off the center 16 sts., put the needles on the left into holding position and complete the right side first.
 *ON NECK SIDE, bind off 4 sts. 1x, 3 sts. 1x, 2 sts. 3x, 1 st. 6x and SHAPE SHOULDER same as the back after Row 256 (260).
 Bring the needles on the left into working position, knit 1 row to the left side, turn the Row Counter back to 234 and complete the left half. Follow the instructions from *.



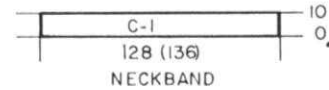
SLEEVES:

With color 1, cast on 70 sts. and with tension 5 or 6 work 22 rows K1, P1 Ribbing. Transfer the Ribber sts. and continue in Stockinette stitch. ON EACH SIDE, increase 1 st. Every 14th row 2x, every 10th row 12x. (Every 11th row 4x, every 9th row 12x). After Row 170 (174) ON EACH SIDE, increase 1 st. every 4th row 7x. After Row 204 (208) SHAPE CAP. Bind off - or work short rows EACH SIDE 16 sts. 1x, 13 sts. 2x. (15 sts. 2x, 14 sts. 1x). After Row 212 (216), bind off the remaining sts.

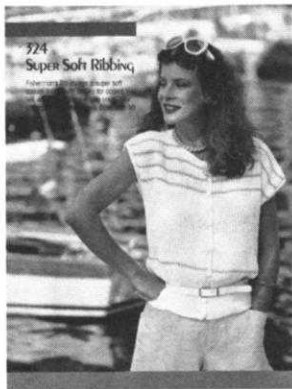


NECKBAND

With color 1, cast on 128 (136) sts. and work 10 rows K1, P1 Ribbing. Work 4 rows circular knitting then remove onto contrast waste yarn. Sew to neck edge.



324



WOMAN'S RIBBED JACKET

SIZES: 4/6 (8/10)
YARN: Amore
GRAMS:
 color 1 400 450
 color 2 50 50
TENSION 6 = Main Machine
 6 = Ribber
 Slide Lever #2
 Use Color Changer.
GAUGE: 13 sts. 30 rows = 2"

Fisherman's Rib with color stripes using the Ribber COLOR CHANGER. Bands are K1, P1 Ribbing.

FINISHING: See General Instructions. Work 2 rows single crochet around armholes, neck and front edges then 1 row reverse single crochet. Make 7 Buttonholes on right front. Sew on buttons.

BACK:

Cast on 126 (132) sts. with color 1 and work K1, P1 Ribbing with Tension 5 to Row 32. Set machine for FISHERMAN'S RIB (See your Ribber Instruction Manual).

Tension 6 on both main machine and Ribber - Slide Lever on 2. With color 1, knit to Row 81. Change to color 2 and knit 2 rows. Change to color 1 and knit to Row 194. Mark each side for Arm opening, then knit to Row 225.

Change to color 2 and knit 2 rows. *Knit 18 rows color 1
 Knit 2 rows color 2*
 REPEAT FROM * to * 2x.
 Continue in color 1 to Row 302 (308).

Bind off the center 32 sts. (Transfer the ribber sts. to main machine FIRST then bind off the neck sts.). It is easier to bind off sts. for neck and shoulder shaping as you go along.

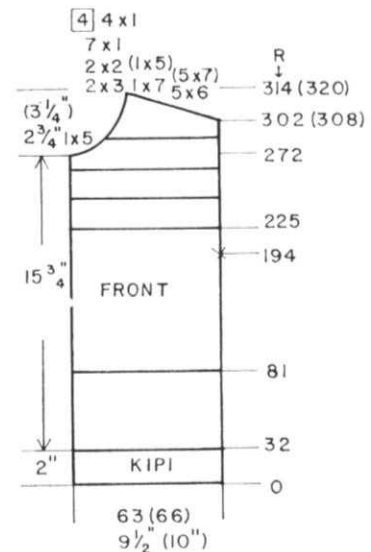
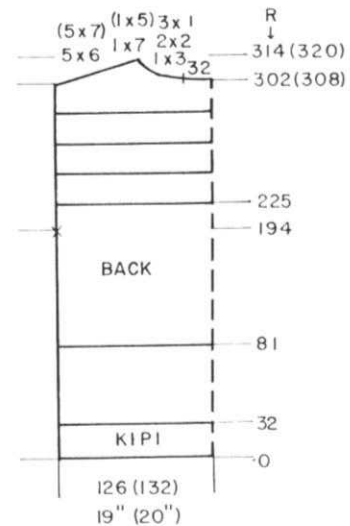
Put all the needles on the left into holding position and complete the right side first. *SHAPE SHOULDER AND NECK AT THE SAME TIME.

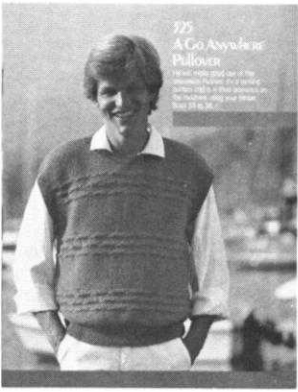
FOR SHOULDER, bind off 6 (7) sts. 5x, 7 (5) sts. 1x. FOR NECK, bind off 3 sts. 1x, 2 sts. 2x, 1 st. 3x. Bring all the needles on the left into working position, knit 1 row to the left, turn the Row Counter back to 302 (308) and complete the left half. Follow the instructions from *.

FRONT: Make 1, reverse 1.

RIGHT FRONT:

Cast on 63 (66) sts. with color 1 and work the same as the back to Row 272. SHAPE NECK: ON THE LEFT (right for second section), bind off 5 sts. 1x, 3 sts. 2x, 2 sts. 2x, 1 st. 7x, then 1 st. every 4th row 4x and SHAPE SHOULDER same as the back after Row 302 (308). Work the LEFT FRONT with reverse shaping.





MAN'S PULLOVER

SIZES: 34/36 (38)
 YARN: Nomotta Regia - 4-ply
 GRAMS: 350 400
 TENSION: 8 or 9
 GAUGE: 14 1/2 sts. 20 rows = 2"

Knitted sideways on the machine in a Ribbing and Cable Pattern. Waist and Arm Bands are K1, P1 Ribbing.

FINISHING: See General Instructions

NOT FOR BEGINNERS

NEEDLE SET UP FOR CABLE PATTERN.

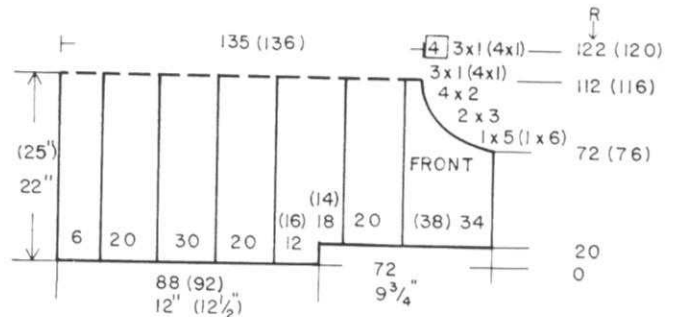
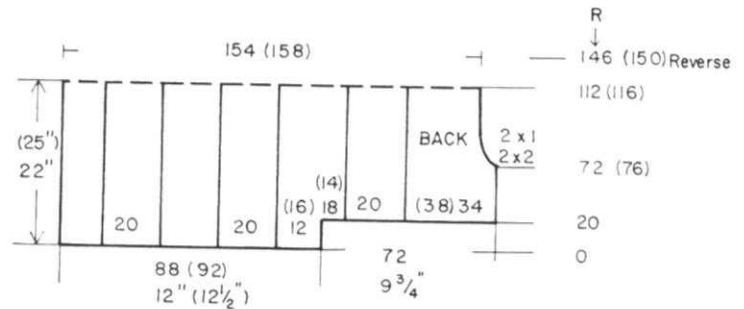
4 sts. on Main Machine = A
 4 sts. on Ribber
 4 sts. on Main Machine = B
 4 sts. on Ribber
 4 sts. on Main Machine = C

KNITTING THE CABLE PATTERN

RACKING LEVER on 0.
 Knit 2 rows.
 RACKING LEVER on 2
 Make Cable - Transfer the right 2 sts. of A and C to the LEFT 2 empty needles.
 Move Group B to the LEFT (2 sts. at a time)
 Bring the groups of 4 sts. on main machine into holding position (they will be easier to knit) then knit 2 rows.
 RACK RIBBER to 4.
 Repeat the transfer in the same way.
 Knit 2 rows.
 Keep Racking to 6, then 8 then 10, repeating the transfers as before.
 RACK BACK TO 8.
 CABLE ONLY THE CENTER GROUP, moving the 2 sts. to the RIGHT.
 Transfer the the LEFT 2 sts. of A and C to the RIGHT 2 empty needles.
 Continue in this manner to 0 on Racking.
 Go back to the beginning and REPEAT CONTINUOUSLY.

WAISTBAND

Cast on 136 (140) sts. and work 20 rows K1, P1 Ribbing.
 With knit side facing you, pick up front waist edge then bind off.
 Repeat for back waist.



BACK

TO THE LEFT SIDE OF 0,
 with contrast waste yarn, cast on 88 (92) sts. After Knitting 9 to 11 rows, knit 1 row with Ravel Cord to the right. Counter at 0.
 With garment yarn, knit 2 rows.
 Set up the needles for CABLE PATTERN. Start from the LEFT SIDE.
 6 sts. on the Ribber
 20 sts. for Cable (See needle set up).
 30 sts. on the Ribber
 20 sts. for Cable (See needle set up).
 12 (16) sts. on the Ribber.
 Knit 20 rows in PATTERN (See instructions for knitting Cable Pattern).
 ON THE RIGHT SIDE, cast on 72 sts. (Use a piece of waste knitting and hang onto 72 needles on the right side, then cast on - This makes it easier for you.)
 Set up the NEW STITCHES as follows then continue in Pattern.
 Begin on the left - 18 (14) sts. on the Ribber, 20 sts. for CABLE PATTERN, 34 (38) sts. on the Ribber.
 Knit in Pattern to Row 72 (76).
 SHAPE NECK: ON THE RIGHT, bind off 2 sts. 2x, 1 st. 2x.
 Knit to Row 112 (116) which is Center Back.
 REVERSE SHAPING. Knit to Row 146 (150) the begin the INCREASING for NECK.

FRONT:

Work the front the same as the back to Row 72 (76).
 SHAPE NECK: On the RIGHT, bind off 5 (6) sts. 1x, 3 sts. 2x, 2 sts. 4x, 1 sts. 3x (4x) then every 4th row bind off 1 st. 3x (4x).
 Knit to Row 112 (116).
 REVERSE SHAPING. Knit to Row 122 (120) then begin the neck increasing.

NECKBAND:

Sew up 1 shoulder first.
 Cast on 138 (144) sts. and work 12 rows K1, P1 Ribbing.
 With Knit side facing you, pick up the sts. from neck opening and then bind off.

ARMBANDS: Make 2.

Be sure both shoulders are sewn together.
 Cast on 138 sts. and work 12 rows K1, P1 Ribbing. Pick up sts. around armhole with knit side facing you and bind off.



326

WOMAN'S SLEEVELESS PULLOVER

SIZES: 6/8 (10/12) [14/16]
 YARN: Nomotta Extra
 GRAMS: 350 400 450
 TENSION: 9 or 10
 GAUGE: 12 sts. 17 rows = 2"

Made on the 910 Electronic machine. Lace, combined with Fine Lace and Stockinette stitch. Bands are K1, P1 Ribbing.

FINISHING: See General Instructions.

SEE KNITTING NEWS

NECKBAND:

Cast on 114 (134) [154] sts. and with Tension 7, work 8 rows K1, P1 Ribbing. Transfer the Ribber sts. to main machine and after sewing up 1 shoulder, hang the neck sts. onto machine and bind off. Or you can bind off the rib sts. then sew band to neckline.

ARMBANDS: Make 2.

Cast on 114 (120) [126] sts. and with Tension 7, work 10 rows K1, P1 Ribbing. Attach same as you did for the neckband after both shoulders are sewn together.

BACK:

Cast on 98 (114) [130] sts. and work 18 rows K1, P1 Ribbing. Transfer the ribber sts. to main machine and continue in Lace Pattern to Row 78.

Continue in Stockinette stitch.

After Row 138, SHAPE ARMHOLE.

ON EACH SIDE, bind off 7 sts.

Continue in Lace Pattern.

After Row 212 (216) [220], bind off the center 24 (32) [40] sts. (or you may remove the sts. onto waste yarn).

Put the needles on the left into holding position in the following manner. Mark Card. Use a Ravel Cord to knit the left half - pulling the sts. back against the needle bed to 'A' position. Put a piece of masking tape across the knitting that is being held so that you will not mark it as you complete the right side first.

*SHAPE SHOULDER AND NECK AT THE SAME TIME.

FOR SHOULDER, bind off

6 (7) [8] sts. 4x.

FOR NECK, bind off

3 sts. 1x, 2 sts. 1x, 1 st. 1x.*

Bring the needles on the left into working position by pulling the sts. held on Ravel Cord forward carefully so the sts. transfer to the hooks of needles. Move Card back to marked row.

Card on STOP - Move Lace Carriage

LEFT TO RIGHT, then put Card on

GO. Complete Lace transfers

and when you knit 1 row with Knit

Carriage, put Counter back to

212 (216) [220] and complete the

left half. Follow the instructions from *

FRONT:

Work the front the same as the back to Row 188 (192) [196].

Bind off the center 8 (10) [14] sts.

put the needles on the left into

holding position using SAME METHOD

as given for back and complete the

right side first.

*ON NECK SIDE, bind off

3 (4) [5] sts. 1x, 2 sts. 3x,

1 st. 3x (5x) [6x] then 1 st.

every 4th row 2x BUT AT THE SAME

TIME, after Row 212 (216) [220]

SHAPE SHOULDER same as the back.

Bring the needles on the left into

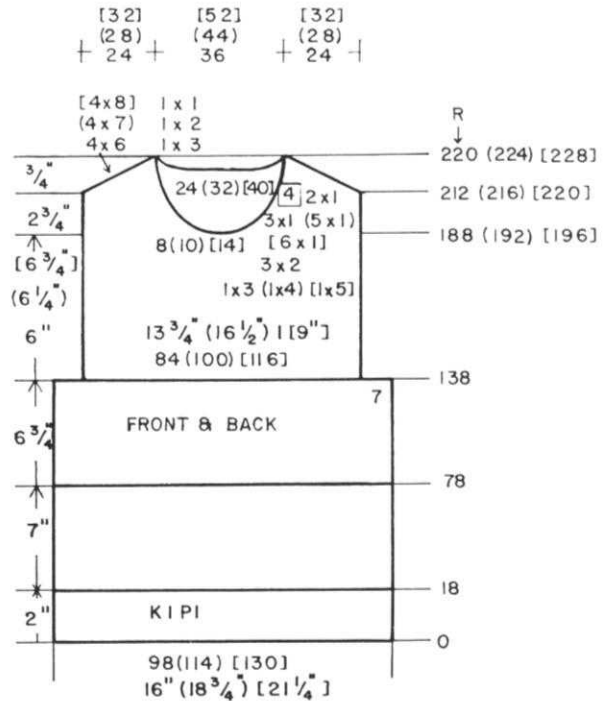
working position same method as for

back and after knitting 1 row to the

left side, turn the Row Counter

back to 188 (192) [196] and complete

the left half. Follow the instructions from *.



F = FINE LACE (F on Lace Carriage)
 N = NORMAL LACE (N on Lace Carriage)

* Lace Carriage on F - 2x
 N - 4x

Knit 2 rows
 Lace Carriage on F - 2x
 N - 4x

Knit 2 rows
 Lace Carriage on F - 2x
 N - 4x

Knit 2 rows
 Lace Carriage on F - 2x
 N - 4x

Knit 2 rows
 Lace Carriage on N - 6x
 Knit 2 rows
 Lace Carriage on N - 4x

Knit 2 rows.
 REPEAT FROM *





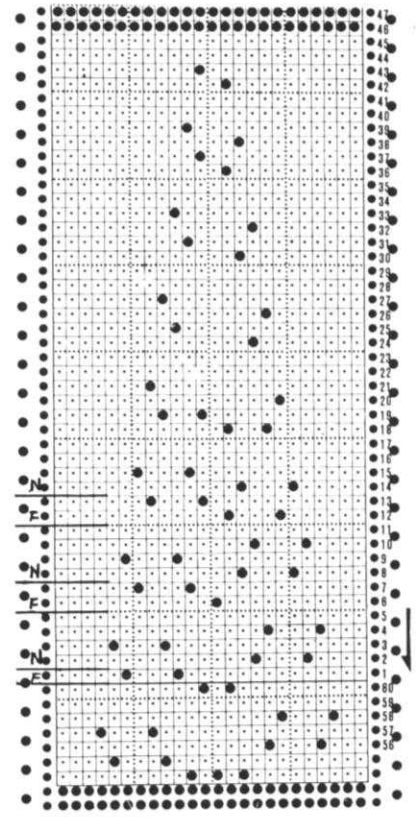
327

WOMAN'S PULLOVER

SIZES: 6/8 (12/14)
YARN: Nomotta Viola & Capriccio
GRAMS:
 color 1 400 500 = Viola
 color 2 Small amounts Capriccio
 for embroidering Popcorns.
TENSION: 9
 6 for Ribbing.
GAUGE: 11 sts. 17 rows = 2"

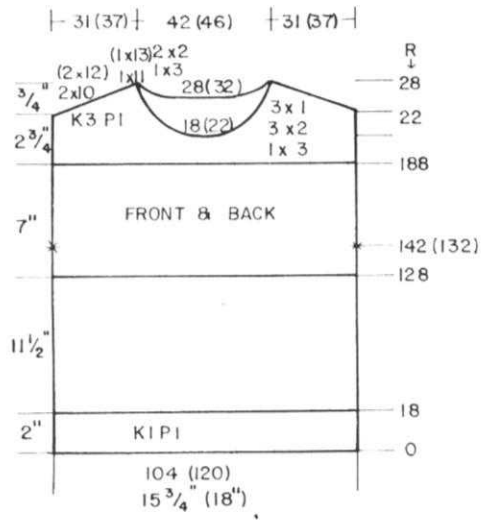
Stockinette stitch with Lace Pattern using both normal and Fine Lace. Bands for waist and sleeves are K1, P1 Ribbing. Neck Yoke is K3, P1 Ribbing. The Knit side is the right side.

FINISHING: See General Instructions. Work the Popcorns using 3 or 4 strands of Capriccio. Thread strands of Capriccio into large eyed needle and work over 6 rows, going into the same holes 3 or 4 times. Use picture as guide for placement of popcorns.



BACK:

Cast on 104 (120) sts. with color 1 and work 18 rows K1, P1 Ribbing. Transfer the Ribber sts. to main machine and continue in Stockinette stitch to Row 118. Continue in LACE PATTERN. After Row 132 (122), mark each side for sleeve opening. Continue in Lace Pattern to Row 178. Change to K3, P1 Ribbing. After Row 202, bind off the center 28 (32) sts., put the needles on the left into holding position and complete the right side first.
 *SHAPE SHOULDER AND NECK AT THE SAME TIME.
 FOR SHOULDER, bind off 10 (12) sts. 2x, 11 (13) sts. 1x.
 FOR NECK, bind off 3 sts. 1x, 2 sts. 2x.
 Bring the needles on the left into working position, knit 1 row in rib pattern to the left side, turn the Row Counter back to 202 and complete the left half. Follow the instructions from *.



FRONT:

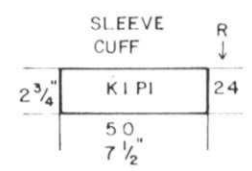
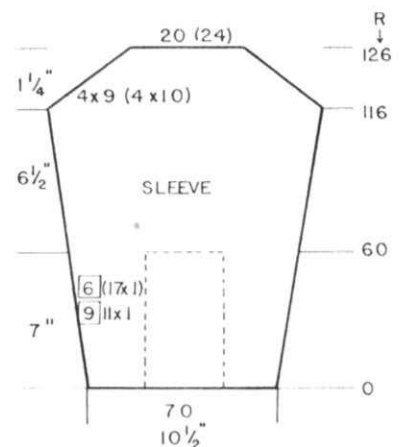
Work the front the same as the back to Row 190. Bind off the center 18 (22) sts., put the needles on the left into holding position and complete the right side first.
 *ON NECK SIDE, bind off 3 sts. 1x, 2 sts. 3x, 1 st. 3x, and after Row 202, SHAPE SHOULDER same as the back.
 Bring the needles on the left into working position, knit 1 row in rib pattern to the left side, turn the Row Counter back to 190 and complete the left half. Follow the instructions from *.

SLEEVES: Make 2.

With contrast waste yarn, cast on 70 sts. After knitting 9 to 11 rows, knit 1 row with Ravel Cord then put Counter at 0. Isolate 1 LACE PATTERN in center of sleeve to Row 60 BUT AT THE SAME TIME, ON EACH SIDE, increase 1 st. every 9th row 11x. (every 6th row 17x). After Row 60, change to Stockinette stitch. After Row 116, SHAPE CAP: ON EACH SIDE, bind off 9 (10) sts. 4x then bind off the remaining sts.

SLEEVE CUFFS

Cast on 50 sts. and with Tension 6, work 24 rows K1, P1 Ribbing. Transfer the Ribber sts. then hang the sts. of sleeve held on waste yarn (doubling as needed) then bind off.





WOMAN'S ARGYLE PULLOVER

SIZE: 12/14
 YARN: KNITTING Tempom (Acrylic/Mohair)

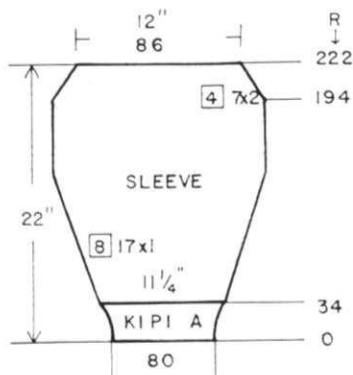
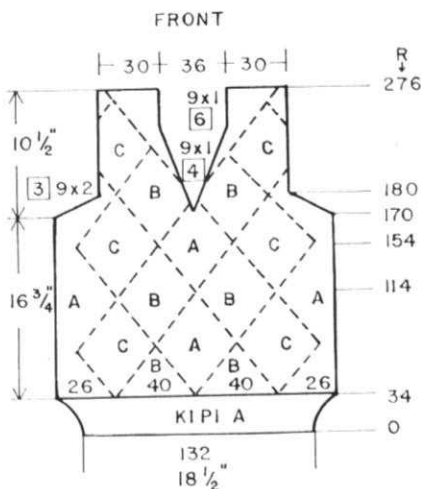
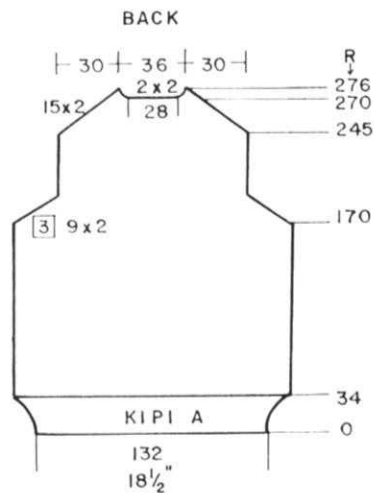
GRAMS:
 color A 1 Cone
 color B 50
 color C 50
 Small amount for duplicate
 stitch as shown in picture.
 TENSION: 6
 Ribber Tension 1.1
 0.1

The Back and Sleeves are in Stockinette stitch. The front is an Argyle Design knitted with Short Rows. Bands are K1, P1 Ribbing.

FINISHING: Weave shoulders together first, then weave sleeve decreases to armhole decreases. Hang armhole onto machine over 86 needles then with purl side facing you, hang the sleeve sts. onto these same needles. Knit 1 row then bind off loosely. Work duplicate stitch to form diamonds as shown in Picture.

FRONT:

Cast on 132 sts. with color A and work 34 rows K1, P1 Ribbing. Transfer the ribber sts. to main machine. Knit 2 rows Stockinette stitch with color A then begin the Argyle Design. Mark the needle bed of your machine to make it easy for you. ALWAYS work the DECREASE short rows FIRST across the row and you can use the regular short row method by wrapping the inside needle in holding position or the AUTOMATIC short row method, whichever is easiest for you. Follow the drawing for changes in color. When you begin the INCREASE short rows, begin with 2 sts. (1 from each side. Make a practice piece first. After Row 170, SHAPE ARMHOLE same as the back and after Row 180, divide in the center. Put the needles on the left into holding position and complete the right side first. *ON NECK SIDE, decrease 1 st. every 4th row 9x, every 6th row 9x. After Row 276, bind off the remaining sts. Bring the needles on the left into working position, continue in pattern and SHAPE NECK following the instructions from *.

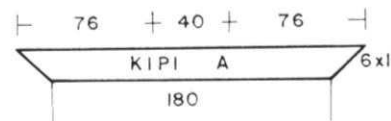


SLEEVES:

Cast on 80 sts. with color 1 and work 34 rows K1, P1 Ribbing. Transfer the ribber sts. to main machine and continue in Stockinette stitch. ON EACH SIDE, increase 1 st. every 8th row 18x. After Row 194, SHAPE CAP: ON EACH SIDE, decrease 2 sts. (full fashion same as back) every 4th row 7x. After Row 222, bind off the remaining sts.

BACK:

Cast on 132 sts. with color A and work 34 rows K1, P1 Ribbing. Transfer the ribber sts. to main machine and continue in Stockinette stitch. Knit to Row 170. SHAPE ARMHOLE: ON EACH SIDE decrease 2 sts. every 3rd row 9x using the full fashion method. To work the full fashion decreases, hang sts. 3 and 4 onto needles 5 and 6 then move stitches in to empty needles. Put emptied needles out of work. Work all 2 st. decreases in this way. After Row 245, SHAPE SHOULDERS: ON EACH SIDE, decrease 2 sts. every 2nd row 15x and after Row 270, bind off the center 26 sts. put needles on the left into holding position and complete the right side first. *ON NECK SIDE, bind off 2 sts. 2x. Bring the needles on the left into working position, knit 1 row to the left side, turn the Row Counter back to 270 and complete the left half. Follow the instructions from * and don't forget to complete the shoulder shaping.



NECKBAND:

Cast on 180 sts. with color A and work K1, P1 Ribbing. ON EACH SIDE, INCREASE 1 st. every 2nd row 6x. then remove the sts. onto contrast waste yarn. Weave band to neckline.

Every Body looks better in knits. . . and when you look good you feel

You do not have to be a thin model to wear knits. Wear knitted clothes in the style and fit of your choice and you will feel like a million dollars. . .

The dollar savings when you knit clothes on a knitting machine for yourself and the entire family is far greater than if you sewed them on a sewing machine.

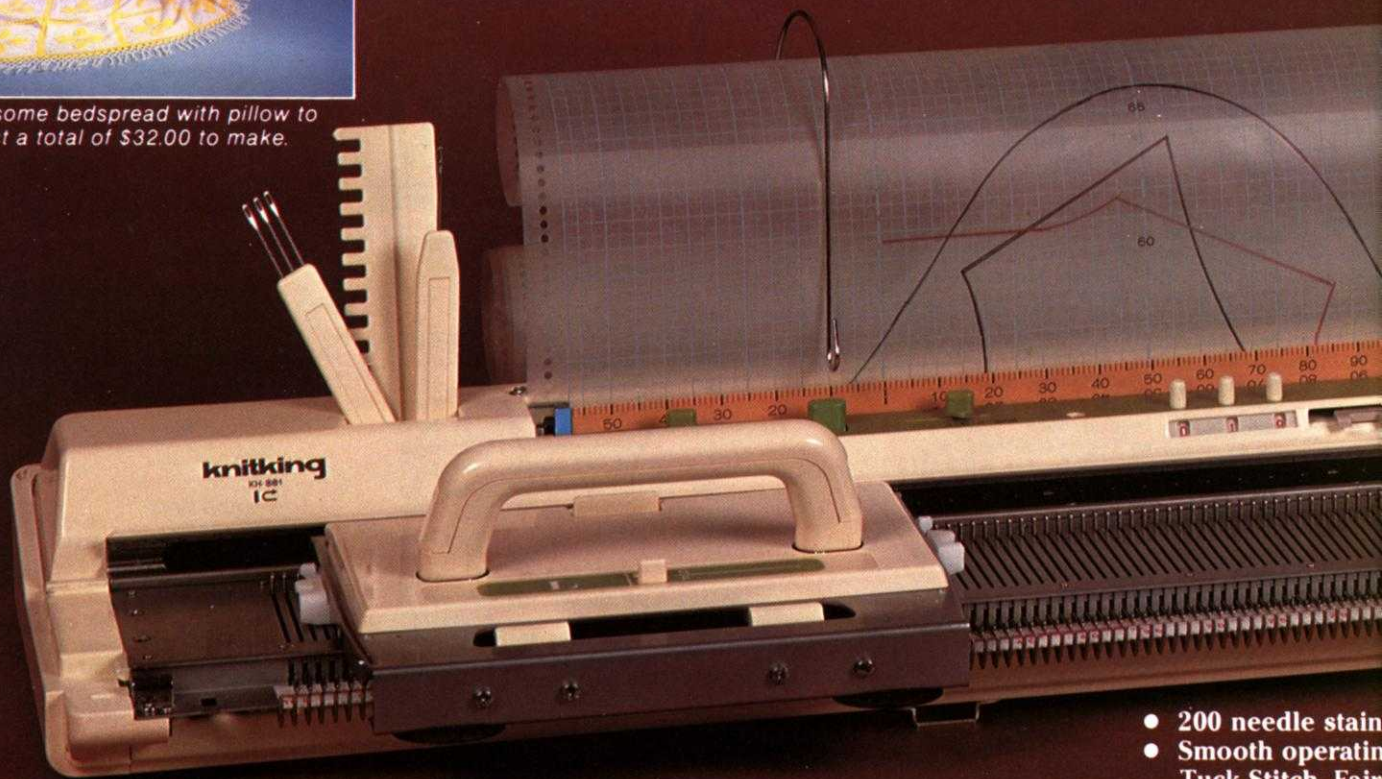
Invest in an easy to operate versatile KNITKING automatic Knitter. . . You will be amazed at how much money you save, your friends and neighbors will envy you your outstanding collection of knits and you will experience the joy of accomplishment in knitting them yourself.

You can also knit household items; drapes, bedspreads, table covers, afghans, cushion covers, wall hangings, etc. etc.

KNITKING is a full service company. . . We publish beautiful full color bi-monthly KNITKING MAGAZINE with up to 30 complete patterns in each issue, garments for women, men and children plus household items. We manufacture and import top quality yarns and make them available to our customers at special discount prices.



The handsome bedspread with pillow to match cost a total of \$32.00 to make.



KH 881

- 200 needle stainless steel
- Smooth operating carriage
- Tuck Stitch, Fair Isle
- Lace Carriage for fine lace.
- 20 Pre-punched punch cards for
- Stitch knitting.

el good.

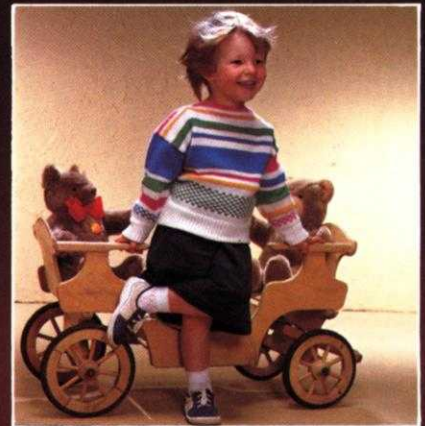
A stunning KNITKING MAGAZINE pullover in a programmed Fairisle Design. You can make it in any colors you choose for \$18.50.



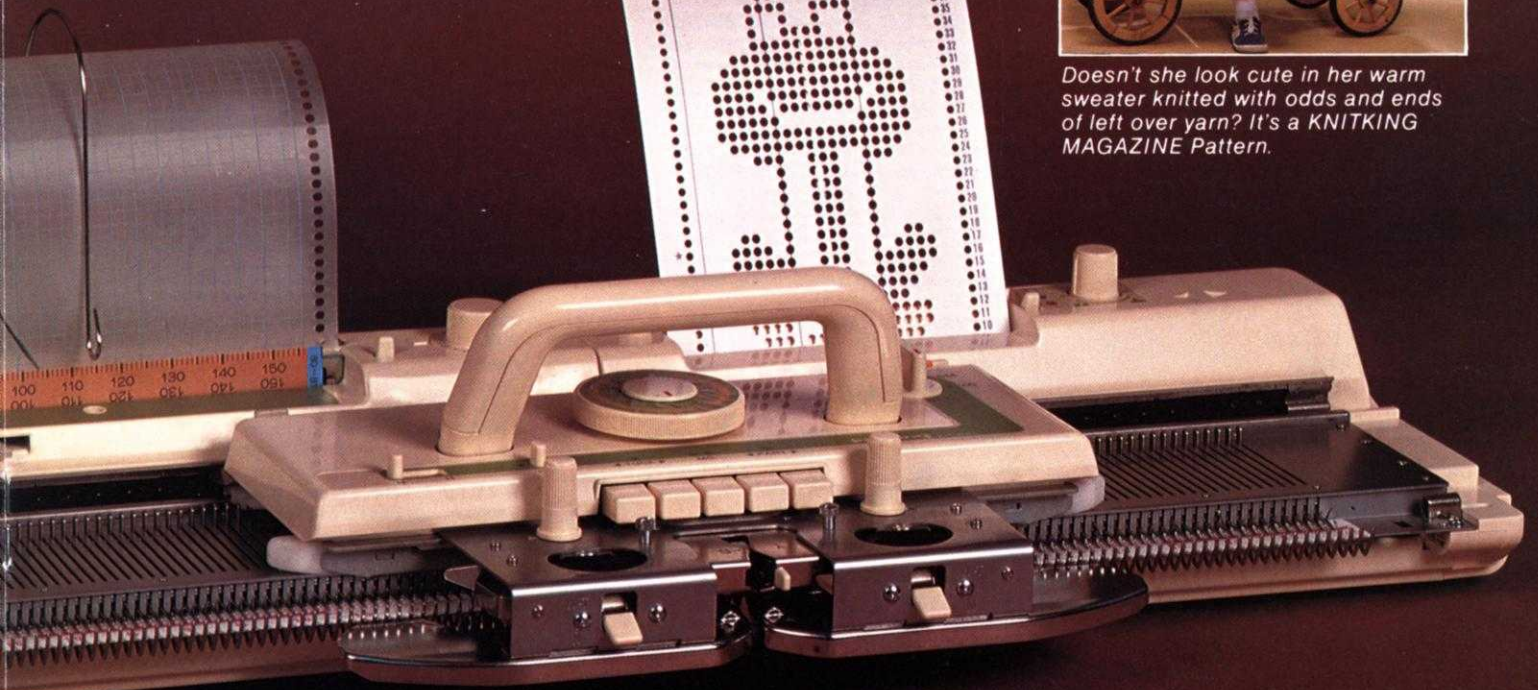
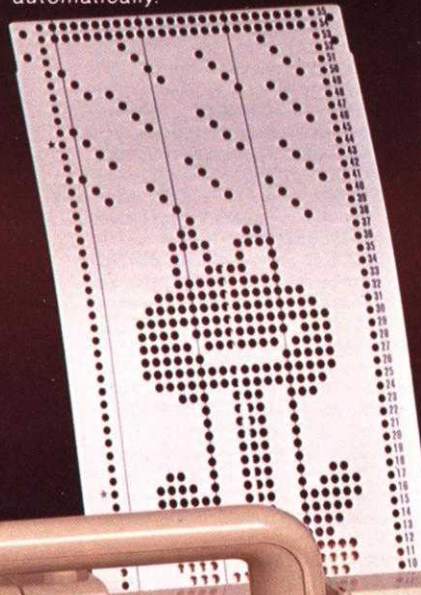
One for you and one for the man in your life. Make them both in a few hours for less than \$20.00.



Here's a fun pullover that would sell for around \$300.00. It's an original from KNITKING MAGAZINE and cost less than \$30.00 to make. All of the fancy stitches were pre-programmed and knitted automatically.



Doesn't she look cute in her warm sweater knitted with odds and ends of left over yarn? It's a KNITKING MAGAZINE Pattern.



Your KNITKING KH 881 is complete with :

less steel needle bed.
g Main Carriage for Stockinette Stitch,
isle, Weaving, Plating, etc.
r lovely lace work—both standard and
Pattern Cards for all types of Pattern

- Two step-by-step Instruction Manuals with over 400 illustrations.
- Complete Kit of Tools with spare Needles, special lubricating oil, cabling Tools, etc. etc.
- Built in Knitleader Charting accessory that tells you on a row by row basis when to increase and when to decrease. Simplifies the knitting of garments to accurate size.
- One year warranty on parts and service.

329 Pretty Ways With Stripes...

A fun little pattern using the open-stitch and color makes a charming look anyone can wear. Change to make suitable for teenagers, too. Use any color you like to add more fun. Size 8-12, 14-16.

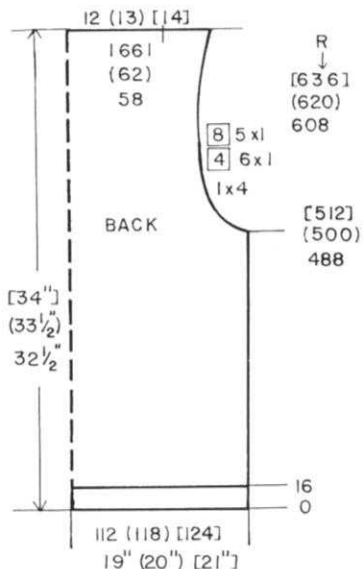
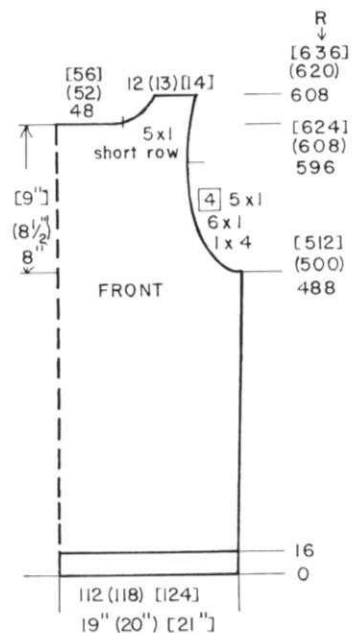


WOMAN'S STRIPED DRESS

SIZES: 6/8 (10/12) [14/16]
YARN: KNITKING SHETLAND
GRAMS:
 color 1 200 200 250
 color 2 200 200 250
 color 3 200 200 250
TENSION: 6 to 7
GAUGE: 11 sts. 30 rows = 2" in Pat.

A Tuck Stitch Pattern knitted in Stripes. Punch Card. Push in LEFT TUCK BUTTON ONLY for Pattern. The Knit side is the right side. Bands are Stockinette stitch.

FINISHING: See General Instructions. Slip stitch crochet the sleeves into armholes first, matching stripes and gathering the top of sleeve to fit. Be sure shoulder band is caught at each end on the INSIDE but do not catch the band as you slip stitch sleeve into place as it would be too bulky. Catch armhole and sleeve only. Sew or weave or slip stitch crochet side and sleeve seams being sure to match stripes perfectly.



BACK:

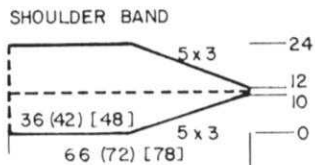
Cast on 112 (118) [124] sts. with color 1 and work 16 rows Stockinette stitch then hang the hem. Continue in TUCK PATTERN - PUSH IN THE LEFT TUCK BUTTON ONLY. Work color changes as follows.
 *30 rows color 1
 30 rows color 2
 30 rows color 3
 REPEAT FROM * THROUGHOUT. When 19 stripes are completed, continue in Pattern with last color used. Knit to Row 488 (500) [512].
SHAPE ARMHOLE: ON EACH SIDE, bind off 4 sts. 1x, 1 st. every 4th row 6x, 1 st. every 8th row 5x.
 After row 608 (620) [636], ON EACH SIDE, remove 12 (13) [14] sts. onto contrast waste yarn, then continue in stockinette stitch for neckband. ON EACH SIDE, decrease 1 st. after Rows 2, 4, 6, then INCREASE 1 st. after Rows 10, 12, 14.
 After Row 16, bind off LOOSELY.

FRONT:

Work the front the same as the back except for ARMHOLE AND NECK SHAPING.
 After Row 488 (500) [512] **SHAPE ARMHOLE:** ON EACH SIDE, bind off 4 sts. 1x, 1 st. 6x, 1 st. every 4th row 5x.
 After Row 596 (608) [624], **SHAPE NECK:** Put the center 48 (52) [56] sts. into holding position and complete the right side first.
 *WORK SHORT ROWS. ON OPPOSITE SIDE OF CARRIAGE, put into holding position on every 2nd row, 1 st. 5x.
 After Row 608 (620) [636], remove 12 (13) [14] sts. onto contrast waste yarn.
 Leave the 48 (52) [56] center sts. in holding position and bring the remaining sts. into work. Attach yarn on the right, knit 1 row to the left side, turn the Row Counter back to 596 (608) [624] and complete the left half. Follow the instructions from *.

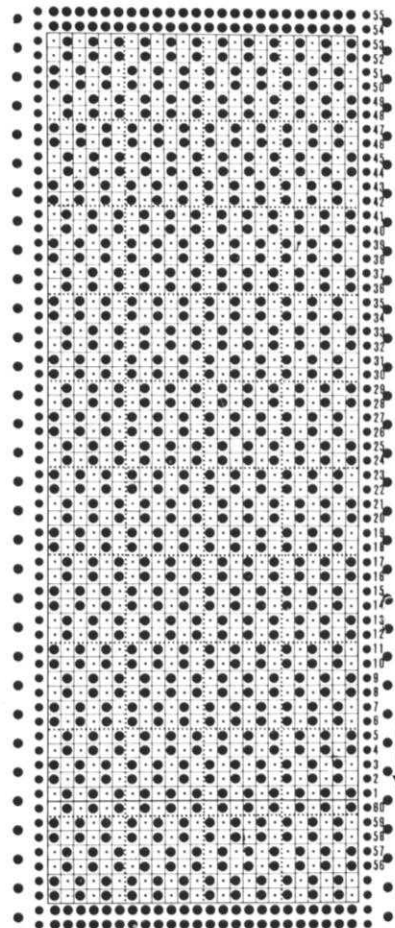
SHOULDER BAND.

You must close the shoulders first. Hang the back shoulder sts. with KNIT SIDE facing you onto the machine and put the sts. behind the latches.



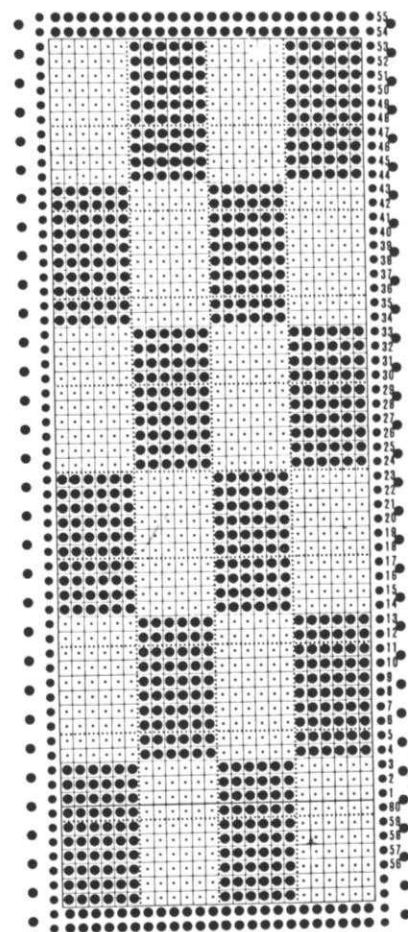
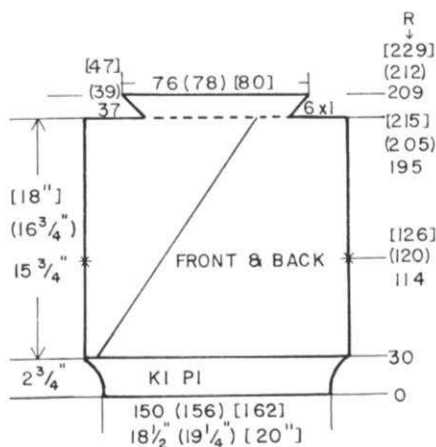
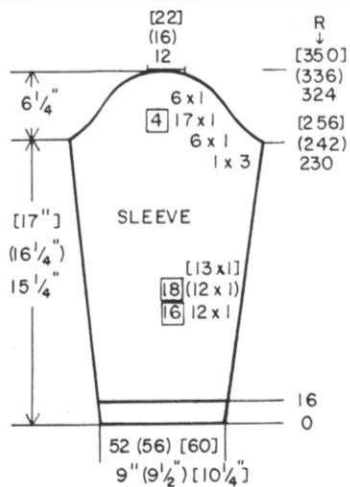
SLEEVES:

Cast on 52 (56) [60] sts. with color 1 and work 16 rows Stockinette stitch. CONTINUE IN STRIPE PATTERN SAME AS FRONT AND BACK. ON EACH SIDE, increase 1 st. every 16th row 12x (every 18th row 12x) [every 18th row 13x]. After Row 230 (242) [256], **SHAPE CAP:** ON EACH SIDE, bind off 3 sts. 1x, 1 st. 6x, 1 st. every 4th row 17x, 1 st. 6x. After Row 324 (336) [350], bind off the remaining sts.



Hang the front shoulder sts. with PURL side facing you onto these same needles in the HOOKS of the needles. Gently pull front sts. through the back sts. then bind off using the crochet method making sure the yarn goes around the gate pegs so the bind off is neat and even. With purl side facing you, hang the armhole of front and back onto 66 (72) [78] needles. Using the same color as neckband, Knit 1 row right to left. Bring every 2nd needle into selecting position ('D') Push in both part buttons and knit 1 row. Release Part buttons then work SHORT ROWS. ON OPPOSITE SIDE OF CARRIAGE, bring into holding position 15 sts. knit 1 row, bring 15 sts. OPPOSITE CARRIAGE into holding position, knit 1 row. Bring back into working position 3 sts. 5x ON EACH SIDE.

All needles in work, knit 2 rows. ON OPPOSITE SIDE OF CARRIAGE, put into holding position 3 sts. 5x ON EACH SIDE. All needles in work, knit 2 rows. Hang every other loop onto machine to form hem then bind off.

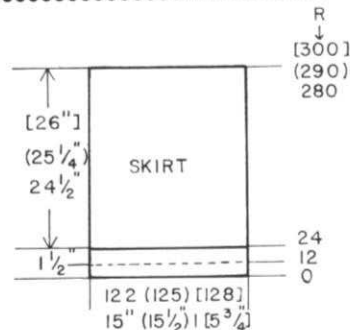


TOP - FRONT AND BACK
REVERSE PATTERN SIDE
ON 2nd SECTION.

Cast on 150 (156) [162] sts. with black. With Tension 5, work 30 rows K1, P1 Ribbing. Transfer the ribber sts. to main machine and continue in Pattern with Tension 6 and WHITE as color 1 and BLACK as color 2.

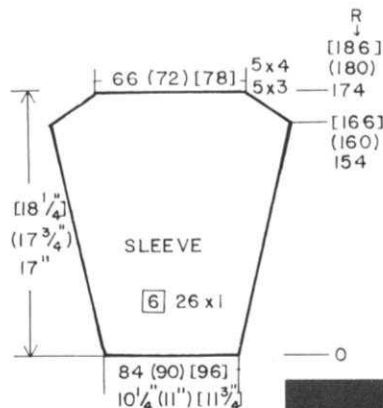
As you knit in Pattern you must push back selected needles for one pattern set every 10 rows to form the diagonal (see picture). Knit in Pattern as given to Row 114 (120) [126] then mark each side with a bit of contrast yarn for setting in the sleeves. After Row 195 (205) [215], ON EACH SIDE, remove 37 (39) [41] sts. onto waste yarn.

Form band over the center 76 (78) [80] sts. ON EACH SIDE increase 1 st. every other row 6x. Bind off LOOSELY. When front and back is completed, hang 1 shoulder plus band onto machine with knit side facing you, hang other side to this with purl side facing you. Bind off the doubled sts. together. Repeat for 2nd shoulder.



SKIRT: Make 2 sections white and 2 sections black.

Cast on 122 (125) [128] sts. and work Stockinette stitch to Row 280 (290) [300]. Remove onto contrast waste yarn,



SLEEVES: Make 1 White, 1 Black.

With contrast waste yarn, cast on 84 (90) [96] sts. Stockinette st. After knitting 9 to 11 rows, change to garment yarn and put counter at 0. ON EACH SIDE, increase 1 st. every 6th row 26x. After Row 154 (160) [166], work SHORT ROWS: ON OPPOSITE CARRIAGE, put into holding position 3 sts. 5x, 4 sts. 5x ON EACH SIDE. Bring all the needles into work, knit 1 row and remove onto contrast waste yarn.

When shoulders are finished on front and back, hang front and back checkerboard side with knit side facing you onto machine from mark to mark. 136 (142) [148] sts. Hang the open sts. of BLACK SLEEVE onto these same needles. Bind off the doubled sts. REPEAT for other side using WHITE sleeve.



330

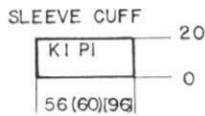
2-PIECE CHECKERBOARD DRESS

SIZES: 6/8 (10/12) [14/16]
YARN: Venetia
GRAMS:
color 1 400 450 500
color 2 400 450 500
TENSION: 5 to 7
GAUGE: 16 sts. 20 rows = 2"

The Skirt is Stockinette stitch with half black and half white for front and back. The Pullover has Checkerboard pattern on the diagonal for front and back. Punch Card for Pattern using Norwegian (Fairisle) technique. Sleeves are Stockinette stitch with 1 black, 1 white. Lower edge and sleeve bands are K1, P1 Ribbing.

FINISHING: Weave or sew 1 white section of skirt and 1 black together for center seam, then sew side seams. Pull elastic through casing at waist. Sew or weave side and sleeve seams. Fold neckband to the inside and sew in place. Give final pressing.

* CONTINUED



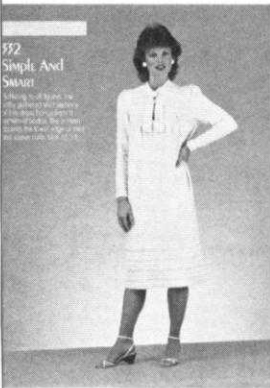
SLEEVE CUFFS: Make 1 White, 1 Black.

Cast on 56 (60) [64] sts. and work K1, P1 Ribbing with Tension 5. Work 20 rows then transfer ribber sts. to main machine. Purl side facing, hang the open sts. 1, then 2, 1, 2 etc. across. Bind off doubled sts. together loosely.

WAISTBAND

With PURL side facing you, you will hang 1 black section and 1 white section onto the machine as follows: Bring 124 (130) [136] needles into working position. Use Tension 5 and black. Be sure to sew at least the top part of center seams before hanging the sts. onto machine. There will be 12 pleats across.

Hang 10 sts. on each side of 0. *Now fold 5 back and hang onto machine then fold 5 back again (3 sts. on 5 needles). Working from side to side, hang 10 sts. then REPEAT from *, hang 10 sts. etc. etc. across on each side. Knit 32 rows Stockinette stitch then hang hem and bind off loosely. REPEAT for 2nd band.

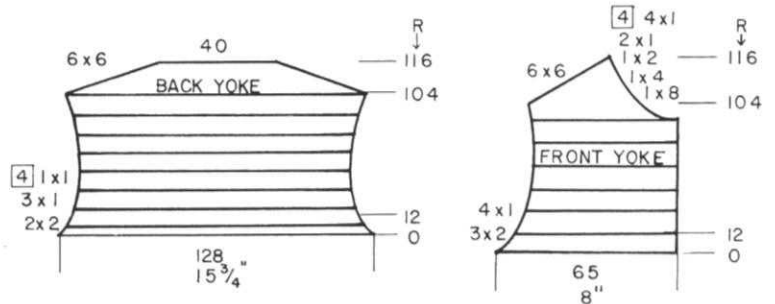


EASY FIT YOKE DRESS

SIZE: 12/14
 YARN: Venetia & Chenille
 color 1 1 Cone - Venetia
 color 2 50 gr. Chenille- Dress weight (not heavy)
 TENSION: 4
 GAUGE: 16 sts. 25 rows = 2"

Stockinette stitch with a Slip Stitch and needles out of work for the Design.

FINISHING: See General Instructions. When gathering body to yoke, omit 6 sts. on each side of body. These are for armhole shaping and for attaching sleeve. When gathering body, put more fullness in center back and over the bust. Neck Opening: Work 1 row single crochet with main yarn, 1 row single crochet with Chenille. Sew small button and loop to close opening before tying. COLLAR & Tie: Weave beginning and end rows together on left side (for tie only) Attach Collar side to neck of dress. Repeat for other side. Make 2 Shoulder Pads over 36 sts.



BACK YOKE:

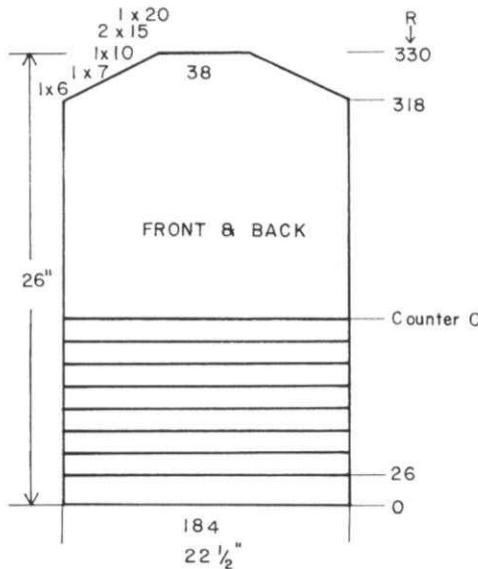
Bring 128 needles into working position then push back to the out of work position every 3rd needle. With color 1, cast on over the remaining needles. Knit 2 rows color 1, *2 rows color 2, 12 rows color 1. REPEAT FROM * for Stripes. There will be 8 Chenille stripes to SHOULDER SHAPING. AT THE SAME TIME, ON EACH SIDE, bind off 2 sts. every 2nd row 2x, 1 st. every 2nd row 3x, 1 st. every 4th row 1x. After Row 104, SHAPE SHOULDER. ON EACH SIDE, bind off 6 sts. 6x. After Row 116, bind off the remaining sts.

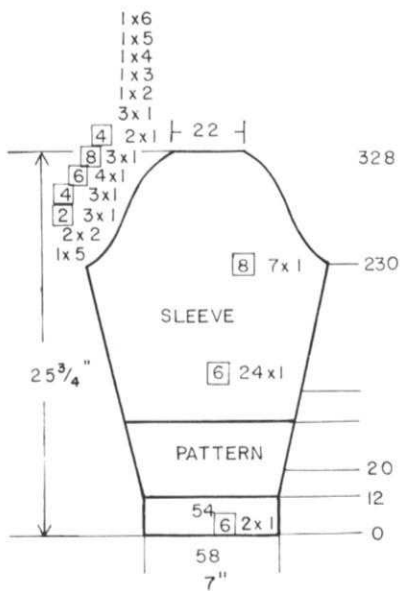
FRONT YOKE: Make 1, reverse 1.

Bring 65 needles into working position then push back to the out of work position every 3rd needle. Cast on over the remaining needles with color 1. Knit 2 rows color 1. *2 rows color 2 (Chenille) 12 rows color 1 REPEAT FROM *. There will be 6 Chenille stripes to Neck Shaping, 8 to Shoulder Shaping. AT THE SAME TIME, ON THE LEFT SIDE (right for 2nd section), bind off 2 sts. every 2nd row 3x, then 1 st. every 2nd row 4x. When you have completed the 6 stripes of Chenille (color 2), work 2 rows Stockinette stitch with color 1 then SHAPE NECK. (continue in Stripes) Increase 1 st. ON ARM SIDE and ON NECK SIDE, bind off 8 sts. 1x, 4 sts. 1x, 2 sts. 1x, 1 st. every 2nd row 2x, 1 st. every 4th row 4x. After Row 104, SHAPE SHOULDER. Bind off 6 sts. 6x. Work 2nd section with REVERSE shaping.

BACK & FRONT: 2 sections the same.

Cast on 184 sts. with color 1. Knit 26 rows Stockinette stitch for hem. Do not hang hem as purl side is the right side. After Row 26, *transfer every 3rd stitch to neighboring needle and put empty needle out of work. Knit 2 rows with color 2 (Chenille). 12 rows color 1, 2 rows color 2. Bring back all empty needles to working position and pick up horizontal loop from stitch in front of empty needle and hang onto machine. Knit 12 rows color 1. REPEAT FROM * until there are 8 stripes of Chenille. PUT COUNTER AT 0 and knit to Row 318. ON EACH SIDE, WORK SHORT ROWS: ON OPPOSITE OF CARRIAGE, put into holding position 6 sts. 1x, 7 sts. 1x, 10 sts. 1x, 15 sts. 2x, 20 sts. 1x. Bring all the needles into working position and knit 1 row. Remove 38 sts. in center onto waste yarn then EACH SIDE on separate waste yarn. Remove work from machine.





SLEEVES:

Cast on 58 sts. with color 1 and work Stockinette stitch.

ON EACH SIDE, decrease 1 st. every 6th row 2x.

*Bring every 3rd stitch to 'D' position. Push in BOTH PART BUTTONS. Knit 1 row with Color 2 (Chenille). Release part buttons and knit 1 row more with Chenille,*then continue with color 1.

After Row 20, ON EACH SIDE, increase 1 st. every 6th row 24x, every 8th row 7x BUT AT THE SAME TIME, after Row 26, transfer every 3rd st. to neighboring needle and put empty needles out of work.

With color 2 (Chenille) knit 2 rows then work 12 rows color 1.

Bring empty needles into working position and hang cross thread onto empty needles. Knit 2 rows color 2, 12 rows color 1. REPEAT from * to * 1x then continue in Stockinette st. with color 1.

After Row 230, SHAPE CAP:

ON EACH SIDE, bind off 5 sts. 1x, 2 sts. every 2nd row 2x, 1 st. every 2nd row 3x, 1 st. every 4th row 3x, 1 st. every 6th row 4x, 1 st. every 8th row 3x, 1 st. every 4th row 2x, 1 st. every 2nd row 3x, then on every 2nd row, bind off ON EACH SIDE, 2 sts. 1x, 3 sts. 1x, 4 sts. 1x, 5 sts. 1x, 6 sts. 1x then bind off the remaining sts.

When putting in the sleeve, make 2 pleats on each side of center cap (see picture).

Sew in Shoulder pads.

COLLAR: Make 2 sections. Reverse the shapings.

Cast on 150 sts. with contrast waste yarn. After knitting 9 to 11 rows change to color 1 and put counter at 0.

Knit 2 rows. CHANGE TO COLOR 2. Bring 90 needles on the left into holding position. of the remaining 60 bring every 3rd needle to selecting ('D' for 381 and 910 machines) position. Push in both part buttons and knit 1 row to the left. Release buttons and knit to the right side.

With color 1, knit 2 rows OVER ALL NEEDLES.

*ON THE RIGHT, put 90 needles into holding position, knit 2 rows, Bring all needles into work and knit 2 rows. REPEAT FROM * 4 1/2 times (for tie) ending on the LEFT.

All needles in work, knit 1 row LEFT TO RIGHT.

ON THE LEFT, bring 90 needles into holding position, knit 2 rows IN PATTERN same as above with color 2. All needles in work and with color 1 knit 1 row.

*Bring 90 needles on the right into holding position, knit 2 rows. All needles in work, knit 2 rows.

REPEAT FROM * 4 1/2 times.

All needles in work, knit 1 row LEFT TO RIGHT. Remove onto waste yarn.

SHOULDER PAD

Bring 36 needles into working position then work the Cast on Comb cast-on over every 2nd needle.

Knit 1 row back to the right side over all needles. Work AUTOMATIC WRAP SHORT ROWS.

ON OPPOSITE SIDE OF CARRIAGE bring 14 needles into holding position, knit across then bring 1 more needle into holding position. ON OPPOSITE SIDE OF CARRIAGE, bring 14 needles into holding position, knit across to the right and bring 1 more into holding.

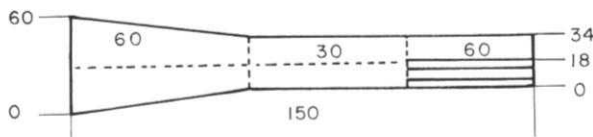
*ON OPPOSITE SIDE OF CARRIAGE, Push back 2 needles, knit across then bring 1 back into holding position. REPEAT FROM * until all needles are in work.

ON SAME SIDE AS CARRIAGE, bring 1 needle into holding position 15x ON EACH SIDE.

ON OPPOSITE SIDE OF CARRIAGE, bring all needles into work, knit across then bring all needles opposite carriage into work and knit back.

Hang the sts. held on cast on comb onto every other needle and bind off all sts. TIGHTLY.

COLLAR & TIE



IT'S READY NOW!

KNITTING MAGAZINE
BOUND VOLUME NO. 17



- HARD BOARD COVER
- APPROXIMATELY 180 PATTERNS
- COMPLETE INSTRUCTIONS

PRICE \$22.95
Shipping Costs \$3.23



Order direct from
KNITTING, 1128 Crenshaw Blvd.
Los Angeles, Calif. 90019

333
Boy On Gaid...
A child that looks like you...
No. 80 size, for ages 4-6.
Design used of same material
for made using our knit
yarn - perfect for children's
garments because of its
soft texture and wash and
wear quality.

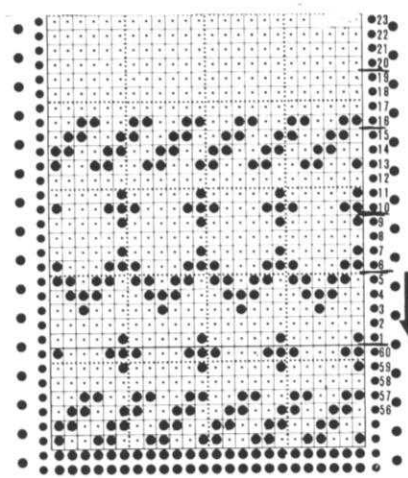
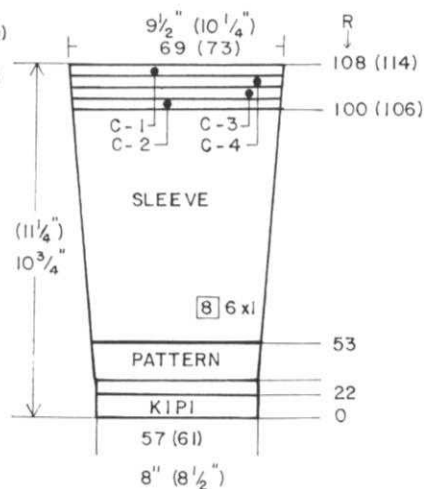
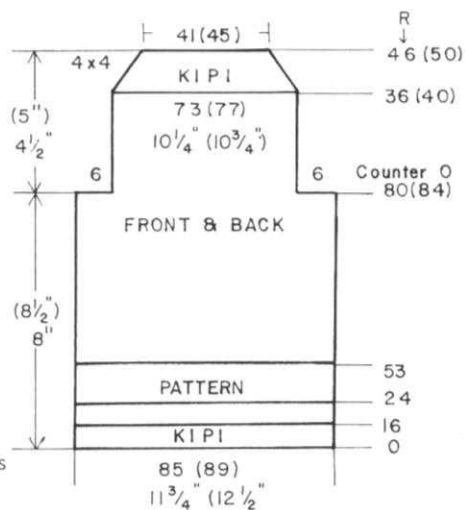


CHILD'S BOAT NECK PULLOVER

SIZES: 3/4 (5/6)
YARN: Amore
GRAMS:
color 1 100 150
color 2 50 50
Small amounts for colors 3 and 4 - not included in Kit.
TENSION: 6 to 7
GAUGE: 14 sts. 20 rows = 2".

Stockinette stitch with color stripes and a Norwegian Design. Make Punch Card and follow the instructions. Bands are K1, P1 Ribbing.

FINISHING: Close shoulders about 1". Set in Sleeves, Sew side and underarm seams. Sew 2 buttons on front shoulders and make 2 loops on back shoulders. Block gently.



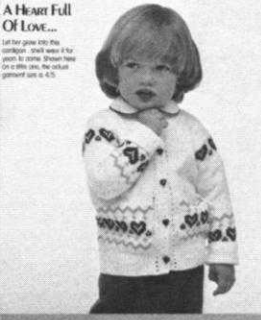
BACK AND FRONT - The Same.

With color 1, cast on 85 (89) sts. and work 16 rows K1, P1 Ribbing. Transfer the ribber sts. to main machine and continue in Stockinette stitch to Row 8, setting Pattern Card before knitting the last row from LEFT to Right. Work the Norwegian Pattern Card 1 time only changing colors as shown on the Card. Continue in Stockinette stitch with color 1. After Row 80 (84), SHAPE ARMHOLES: ON EACH SIDE bind off 6 sts. 1x. PUT COUNTER AT 0. Knit to Row 36 (40). Transfer every other stitch to Ribber and work K1, P1 Ribbing and AT THE SAME TIME, SHAPE SHOULDERS. ON EACH SIDE bind off 4 sts. 4x. After Row 42 (46), bind off the remaining sts. Make another section the same.

SLEEVES:

Cast on 57 (61) sts. with color 1 and work 22 rows K1, P1 Ribbing. Transfer the ribber sts. to main machine and with color 1, work 8 rows Stockinette stitch. After Row 30, work the Pattern Card 1 time only BUT AT THE SAME TIME, ON EACH SIDE, increase 1 st. every 8th row 6x. When Pattern is completed, continue the increases on each side and work stockinette stitch with color 1. After Row 100 (106) work the color stripes of 2 rows color 2, 2 rows color 3, 2 rows color 4, 2 rows color 1. After Row 108 (114), bind off.

334
A Heart Full Of Love...
Let her glow into the world...
No. 80 size, for ages 4-6.
Design used of same material
for made using our knit
yarn - perfect for children's
garments because of its
soft texture and wash and
wear quality.



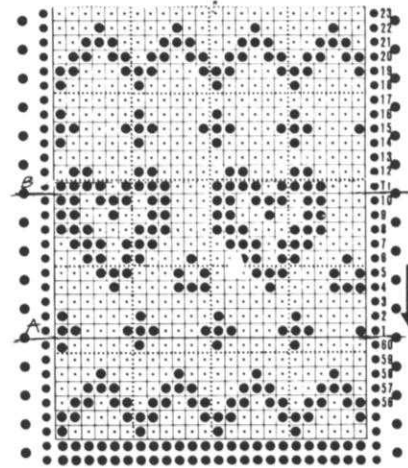
CHILD'S HEART CARDIGAN

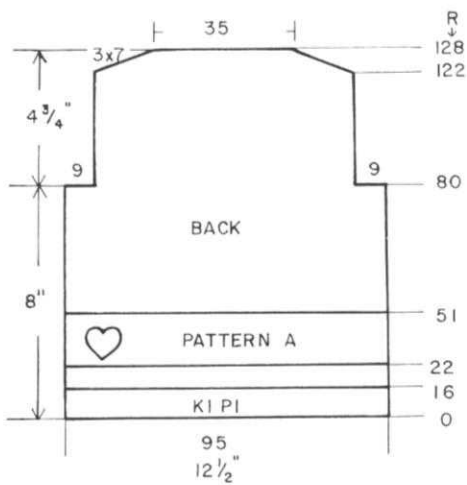
SIZE: 4/5
YARN: Amore
GRAMS:
color 1 100
color 2 50
color 3 50
color 4 50
TENSION: 6 to 8
GAUGE: 15 sts. 20 rows = 2"

Stockinette stitch with Norwegian Design. Punch Card. Bands are K1, P1 Ribbing.

FINISHING: Sew shoulders, set in Sleeves, Seam underarm and side seams.

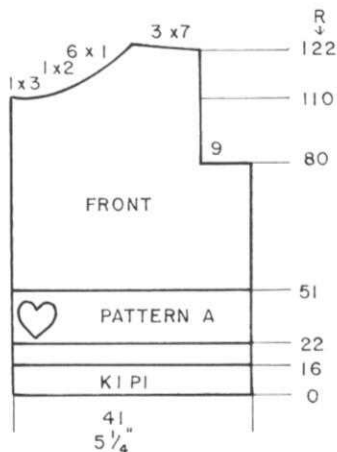
FRONT BANDS: Work 2 rows single crochet, then next row work *Yarn over, pull loop out of same stitch, yarn over, pull yarn thru all loops at once, ch1.* 6 rows single crochet, repeat from * to *, then work 2 rows single crochet, making 5 BUTTON-HOLES at the same time. Block gently. **NECKBAND:** Work 2 rows single crochet, 1 row from * to * of front band. Sew on 5 buttons.





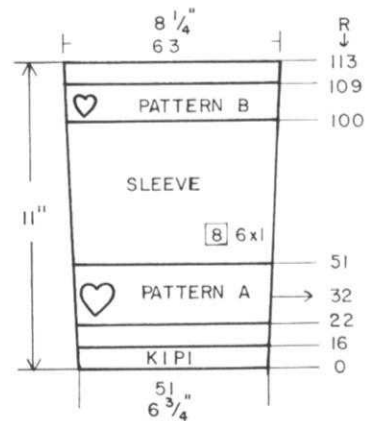
BACK:

Cast on 95 sts. with color 1 and work 16 rows K1, P1 Ribbing. Transfer the ribber sts. to main machine and work 6 rows Stockinette stitch then continue in Pattern A. When pattern A is completed, continue in Stockinette stitch with color 1. After Row 80, SHAPE ARMHOLE: ON EACH SIDE, bind off 9 sts. Continue in Stockinette stitch to Row 122. SHAPE SHOULDERS: ON EACH SIDE, bind off 7 sts. 3x. After Row 128, bind off the remaining sts.



FRONT: Make 1, reverse 1.

Cast on 41 sts. with color 1 and work same as for the back. After Row 80, SHAPE ARMHOLE same as back then knit to Row 111. SHAPE NECK: Bind off 3 sts. 1x, 2 sts. 1x, 1 st. 6x and SHAPE SHOULDER after Row 122 same as the back. REVERSE second section.



SLEEVES:

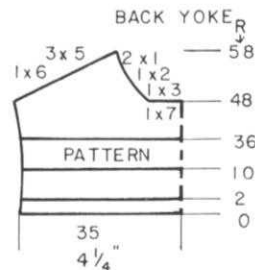
Cast on 51 sts. with color 1 and work 16 rows K1, P1 Ribbing. Transfer the ribber sts. to main machine and work 6 rows stockinette stitch with color 1. Work PATTERN A and after Row 32, ON EACH SIDE, increase 1 st. every 8th row 6x. When pattern is completed, continue in stockinette stitch with color 1 to Row 100. Work PATTERN B 1x. When pattern is completed, work 4 rows Stockinette stitch with color 1.



FINISHING: See General Instructions. Work 2 rows single crochet on back opening then loops for 3 buttons. Make 4 rows single crochet for under-lap on opposite edge. Use narrow ribbon to pull through at waist and sleeves - 1 1/2 yards to make bow in front and 3/4 yards for sleeves, or you can make cords and pull through and tie. Work 1 row single crochet and 1 row picot around neckline.

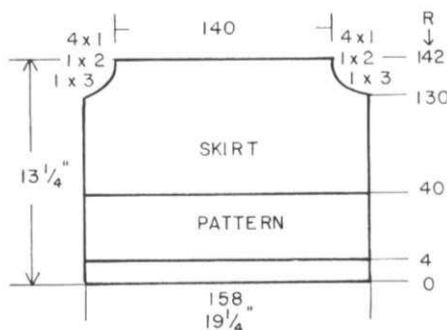
BACK YOKE:

Hang half the sts. of the back that are held on waste yarn onto 35 needles. Knit same as for the front yoke to Row 48. SHAPE NECK: ON NECK SIDE bind off 7 sts. 1x, 3 sts. 1x, 2 sts. 1x, 1 st. 2x AND AT THE SAME TIME, SHAPE SHOULDER SAME AS THE FRONT after Row 50. Work 2nd half with reverse shaping.



SKIRT SECTIONS: Make 2.

Bring 158 needles into working position then put every 2nd needle into holding position. 'e' cast on over every other needle. All needles in work. Work 4 rows stockinette stitch. Work 4 sets of the Design then continue in Stockinette stitch to Row 130. SHAPE ARMHOLE: ON EACH SIDE bind off. 3 sts. 1x, 2 sts. 1x, 1 st. 4x. REMOVE THE STS. ONTO WASTE YARN. Make 2nd section the same.

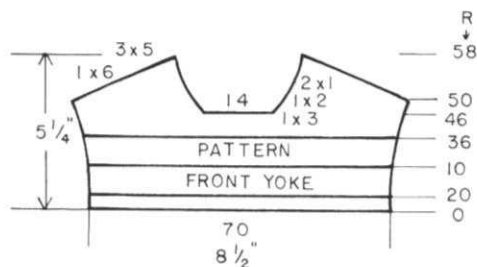
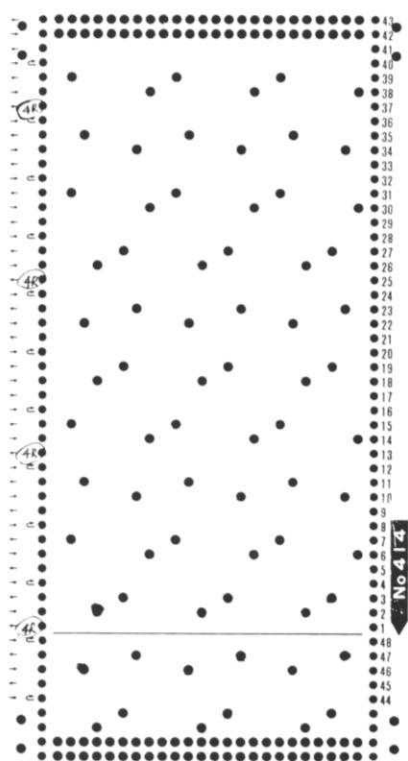


BABY DRESS

SIZE: 1 to 2
YARN: Amore
GRAMS: 200
TENSION: 5 or 6
GAUGE: 16 sts. 21 rows = 2"

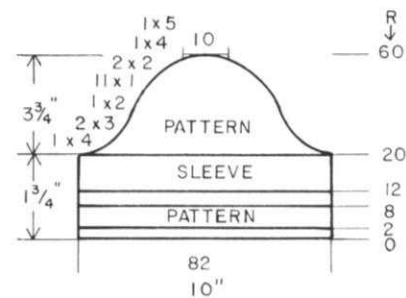
Stockinette stitch with an Eyelet Design. Punch Card if you do not have Card No. 414 from Punch Card Set No. 6.

*** CONTINUED**



FRONT YOKE:

Hang the 140 sts. held on waste yarn onto 70 needles.
 Knit 1 row then make eyelet row for cord (or ribbon) by transferring every 2nd stitch to neighboring needle. Leave empty needles in work (For ribbon, leave needle empty for 1 row as you need a larger hole).
 Work in Stockinette stitch to Row 10.
 Work in Pattern to Row 36 then continue in Stockinette stitch to Row 46.
 Bind off the center 14 sts., put the needles on the left into holding position and complete the right side first.
 *ON NECK SIDE, bind off 3 sts. 1x, 2 sts. 1x, 1 st. 2x.
 After Row 50, SHAPE SHOULDER:
 Bind off 6 sts. 1x, 5 sts. 3x.
 Bring the needles on the left into working position, knit 1 row to the left side, turn the Row Counter back to 46 and complete the left half. Follow the instructions from *.



SLEEVES:

Bring 82 needles into working position the 'e' cast on over every other needle same as you did for skirt sections. With Tension 6 knit 2 rows then continue in Pattern to Row 8. Work eyelets across same as you did for Yoke.
 Row 12, knit across with Tension 8. Change to Tension 6 and continue in Stockinette stitch to Row 20. Continue in Pattern and SHAPE CAP:
 ON EACH SIDE, bind off
 4 sts. 1x, 3 sts. 1x, 2 sts. 1x, 1 st. 11x, 2 sts. 2x, 4 sts. 1x, 5 sts. 1x.
 After Row 60, bind off the remaining stitches.

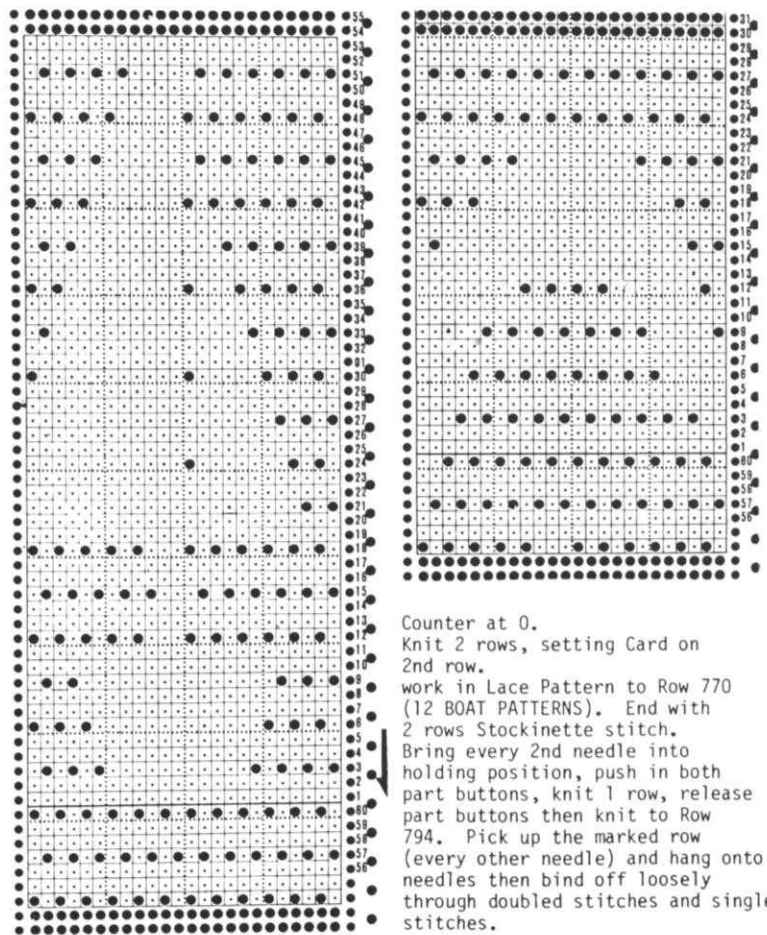


SPREAD - For single bed.

YARN: - Combed Cotton
 GRAMS: - 2 Cones of approx. 2 lbs. each.
 TENSION: 6 (3 1/2 lbs. for spread)
 GAUGE: 12 sts. 21 rows = 5 cm (2")
 SIZE: -

Punch Card for Boat Lace Pattern.

FINISHING: Pin right sides together and OVERCAST with spread yarn, keeping edges FLAT and stitches close together. Match pattern and do not pull too tight. Open flat and press gently.



Counter at 0.
 Knit 2 rows, setting Card on 2nd row.
 work in Lace Pattern to Row 770 (12 BOAT PATTERNS). End with 2 rows Stockinette stitch.
 Bring every 2nd needle into holding position, push in both part buttons, knit 1 row, release part buttons then knit to Row 794. Pick up the marked row (every other needle) and hang onto needles then bind off loosely through doubled stitches and single stitches.

336

Make 3 sections the same.

Bring needle 61 on the left into work then all needles through needle 85 on the RIGHT. 144 sts. for Pattern plus 2 sts. for seams. (146 stitches). Use cast on comb cast-on for hem. Begin with 2nd needle on the left and bring every other needle into holding position. Push in both part buttons, knit 1 row. Release part buttons and drop comb. Knit 24 rows Stockinette stitch, then hang the hem.



CURTAIN

YARN: - Fine yarn - 1 cone will make 2 or more curtains 39 to 40" long.
TENSION: 3 or 4
GAUGE: Stitch gauge not important. Row Gauge - Make sample swatch then measure LENGTH OF WINDOW. Wash and Starch Sample.

A Lace Pattern. Punch Card. Top heading is Stockinette stitch.

FINISHING: Wash and lightly starch curtains. Pin to padded surface placing the two sections together so they will match perfectly. Allow to dry. Mark top for casing then sew two rows of machine stitching to form casing for rod.

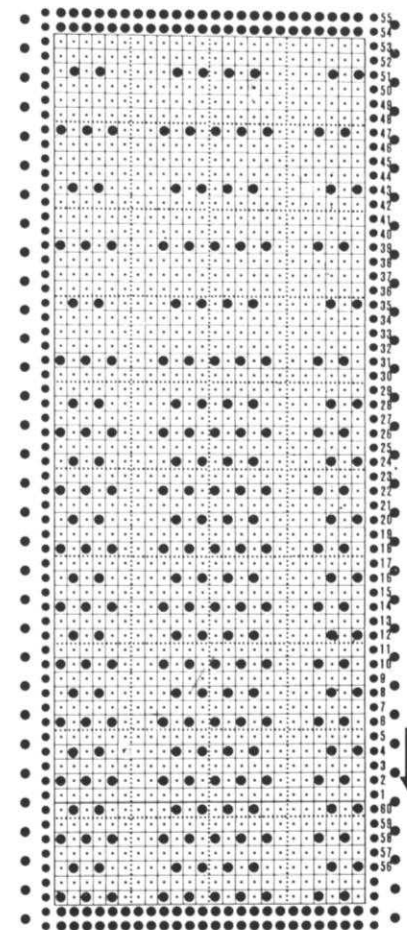
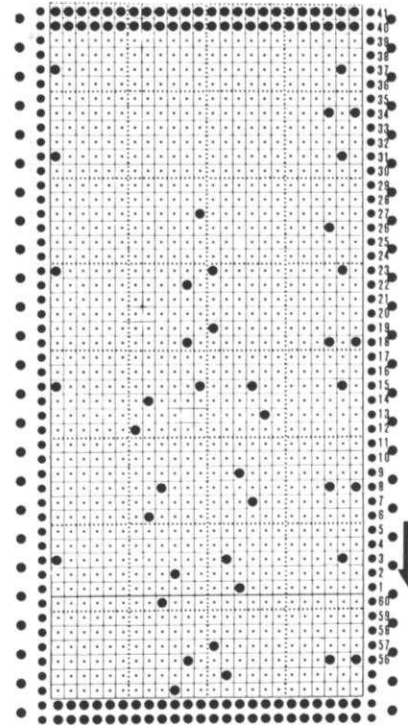
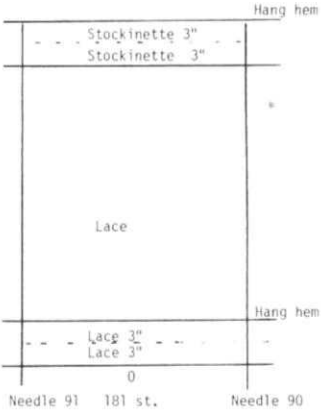
Bring 181 needles into working position. Make CAST ON COMB HEM. Knit 4 rows Stockinette stitch before beginning Lace Pattern. Count these rows as part of underhem. Work in Lace for 3", then hang hem.

Continue in Lace Pattern for length you need minus top heading.

Hang Cast on comb after the last 2 rows which completes the lace.

Knit 6" Stockinette stitch then hang the cast on comb to form hem.

KNIT 1 VERY LOOSE ROW over the doubled stitches then bind off the crochet method.



PILLOW COVER

YARN: Venetia or similar yarn. Amount - Approx. 5 oz.
Tension 5 or 6
GAUGE: 40 st. = 23.4 cm.
 60 rows = 16.7 cm.
 1 16" Pillow Form.
 2 buttons to cover.
 Velvet to cover form.

A Lace Pattern. Punch your own Card.

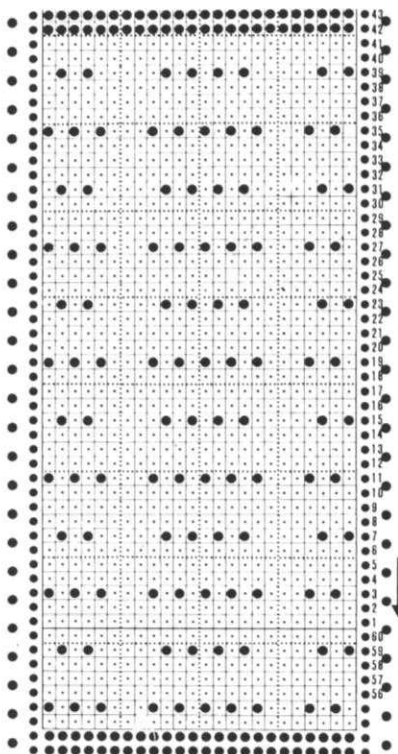
FINISHING: Cover Pillow form with velvet. Pull lace cover over pillow. With double strand of yarn, go through each of the 6 points and pull tightly. Do the same with other side. Cover buttons and attach to each side as follows: Use double strand of yarn and large pointed needle. Go through 1 button, then back through the center of pillow. Go through 2nd button and pull tight. Tie securely under the button. Sew each point together up to the button.

Start your Pattern knitting for Pillow Cover with the Card at the left, attach the Card on the next page to it and clip the Cards together.





With contrast waste yarn, cast on 72 sts. Knit 12 rows, then 1 row with Ravel Cord. Carriage on the LEFT. Attach main yarn and knit 1 row to the right side. Now begin Lace Pattern.
 REPEAT PATTERN 6x in all and end with 1 row stockinette stitch instead of 2.
 Knit 12 rows waste knitting, and remove from machine.
 Turn cover over and hang first row of main yarn onto the machine then last row of main yarn on top of these sts. Carefully remove waste knitting and bind off through the doubled sts. loosely.



knitking SEMINAR

& OPEN HOUSE 1983

It will run from October 10th through the 15th and will be held as usual on our premises at 1128 Crenshaw Blvd., Los Angeles, Calif. 90019.

All the experts at KNITKING will be in attendance plus many acknowledged guest authorities including Yuko Okada, the leading teacher for BROTHER INDUSTRIES, JAPAN.

This year we will have a fashion contest daily with daily prizes and the daily winners will be eligible for the finals and a **GRAND PRIZE** at the end of the Seminar. All types of garments and household items will be eligible. So start preparing now. Knitting machine dealers and KNITKING employees will not be eligible for the contests.

Admission to KNITKING Seminars is **FREE**. Coffee and doughnuts are available all day every day free of charge.

Regular Seminar visitors will tell you that ours are the best... So enter the dates in your diary now... **October 10th through the 15th** and plan to be with us.



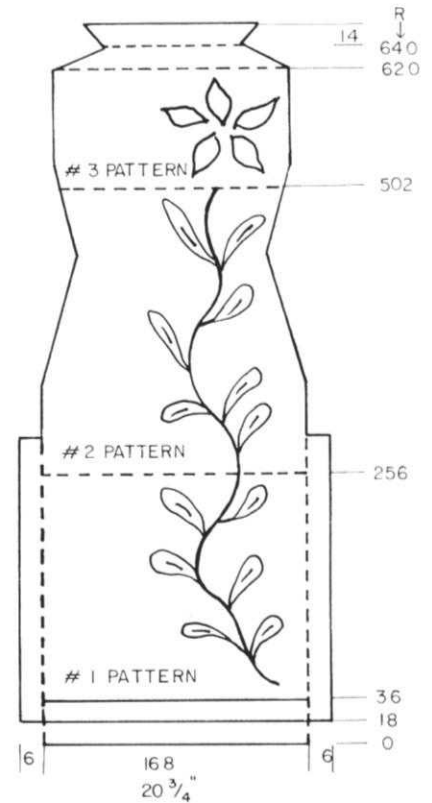
339

WOMAN'S SLEEVELESS EVENING DRESS

SIZE: 8/10
 YARN: Venetia and Angora
 GRAMS:
 color 1 - Venetia - 1 Cone
 color 2 - Green Angora - 60 grams
 color 3 - Red Angora - 30 grams
 A small amount of gold or silver for embroidering center of flower.
 TENSION: 5 to 6
 GAUGE: 16 sts. 22 rows = 2"

Made on the ELECTRONIC 910 machine.
 The back is Stockinette stitch. The front has an isolated Design.
 Send \$1.50 plus large envelope (No.10) stamped and addressed to yourself for full size copies of the original 3 drawings plus exact instructions for all settings.

FINISHING: Sew side seams to the slits. Fold facing slits to the inside and sew in place. Turn under neck facing and sew in place. With Green, continue the stem of flower up a bit closer to the flower using a duplicate stitch. Work center of flower with gold or silver. See Picture.



FRONT:

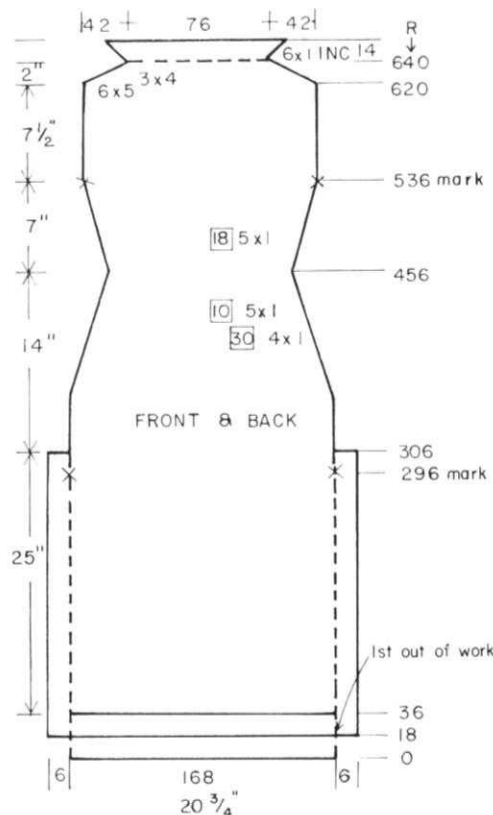
Work the front the same as back except for Design.
 After Row 36, work Pattern Card 1.
 After Row 256, work Pattern Card 2.
 After Row 502, work Pattern Card 3.
 After Row 620, continue in Stockinette stitch with all shapings the same as the back.

ARMBANDS: Make 2.

Sew shoulders first then with purl side facing you, pick up 50 sts. for front armhole and 50 sts. for back armhole. With Tension 4, knit 10 rows. Hang the hem then bind off LOOSELY.

BACK:

Cast on 168 sts. with color 1 using the CAST-ON COMB method over EVERY 2nd needle.
 With Tension 4, knit 18 rows.
 ON EACH SIDE, cast on 6 sts. but leave 1 needle ON INSIDE EDGE in the out of work position (for fold line) then cast on.
 Knit to Row 36, then hang the hem. Change to garment tension and knit to Row 296.
 Mark each side with bit of waste yarn.
 Knit to Row 306. ON EACH SIDE bind off 6 sts. and put the empty 6 needles out of work.
 ON EACH SIDE, decrease 1 st. every 30th row 4x, then every 10th row 5x.
 After Row 456, ON EACH SIDE INCREASE 1 st. every 18th row 5x.
 After Row 536, mark each side with waste yarn for armhole.
 Knit to Row 620.
 SHAPE SHOULDER: ON EACH SIDE, bind off 5 sts. 6x, 4 sts. 3x.
 After Row 640, make NECKBAND: ON EACH SIDE, increase 1 st. every 2nd row 6x. After completing 14 rows for band, bind off LOOSELY.



KNITKING NEWS

PRACTICAL KNITTING HINTS

KNITTING A CORD ON THE 230 BULKY KNITTER

We have had inquiries for instructions to make a Cord on the 230 BULKY knitter. On most machines with regular needle spacings, you would set your controls to knit in one direction and slip or skip in the other direction. On the KNITKING 881 or 910, you would push in the left (or right PART Button but on the 230 BULKY, you have only ONE PART SETTING... However you CAN make a cord... Move the CONTROL LEVER to HALF WAY BETWEEN the setting for PLAIN and PART. It works beautifully. Do remember to hold down the cord as you are knitting or place a weight onto the knitting, moving it up periodically.

CHANGING SIZES FOR SOME PATTERNS IN KNITKING MAGAZINE

As you know, we do try to give a selection of various sizes in KNITKING MAGAZINE but because of time and space, it is virtually impossible to include instructions to fit everyone. There are ways however that you as a knitter can change instructions to your size. Naturally, this will depend on the type of garment, the yarn and the pattern stitch.

The simplest way to change the size is to CHANGE THE TENSION SETTINGS. Make a sample swatch using a lower tension for a SMALLER size, a bigger tension for a LARGER size. This does not necessarily mean that you should move the tension dial one whole number down (or up) - you might get the correct size by moving the dial one notch or two, the 3rd notch goes to the next whole number. Try them ALL on a sample. You just might be surprised at what you can do. Of course this will change your ROW GAUGE and so if you do not make an adjustment for the Rows, your garment could be too long (if a larger tension is used) or too short (if a lower tension is used)... so... it is quite easy to adjust for the rows. Once you know how many rows you need to the underarm, put in your own row number then SHAPE THE ARMHOLE exactly as given in the magazine. Change the Row number at the shoulder shaping and neck shaping but AGAIN, shape the shoulders and neck as given in the magazine. If you are knitting in a Pattern stitch, watch your pattern... You do not want to distort your pattern so be sure that you do your shaping (especially at neck) on a row of the pattern that is attractive and is easy to do... A few rows more or less at this point really does not matter.

Try this method for changing sizes and see what you can do. At another time, we will tell you how to change the size by adding or subtracting stitches and rows.

DISCOUNTED YARN KITS FOR THIS ISSUE

The Yarn Kits for this issue of KNITKING MAGAZINE are available at special discounts to our subscribers and the prices are only good until the next issue of the magazine. Be sure to give alternate colors.

No. 319 - Yarn: Extra			
SIZES:	4/6	(12/14)	
Price	\$28.60	\$35.20	
Shipping	3.50	3.50	
No. 320 - Yarn: Viola			
SIZES:	4/6	(8/10)	[12/14]
Price	\$30.10	\$32.25	\$34.40
Shipping	2.50	2.50	2.50

No. 321 - Yarn: Templon			
SIZES:	34/36	(38/40)	
See end of list for colors and prices			
No. 322 - Yarn: Gladiola			
SIZES:	6/8	(10/12)	
Price	\$20.70	\$23.00	
Shipping	1.85	1.85	
No. 323 - Yarn: Viola			
SIZES:	34/36	(38/40)	
Price	\$25.80	\$32.25	
Shipping	2.50	2.50	
No. 324 - Yarn: Amore			
SIZES:	4/6	(8/10)	
Price	\$21.15	\$23.50	
Shipping	1.85	1.85	
No. 325 - Yarn: Regia 4-ply			
SIZES:	34/36	(38)	
Price	\$15.40	\$17.60	
Shipping	1.85	1.85	
Only two colors available - Med.Blue - Grey			
No. 326 - Yarn: Extra			
SIZES:	6/8	(10/12)	[14/16]
Price	\$15.40	\$17.60	\$19.80
Shipping	1.85	1.85	1.85
No. 327 - Yarn: Viola & (Capriccio NOT INCLUDED)			
SIZES:	6/8	(12/14)	
Price	\$17.20	\$19.35	
Shipping	1.85	1.85	
No. 328 - Yarn: Templon			
SIZES:	12/14		
See end of list for colors and prices.			
No. 329 - Yarn: Shetland			
SIZES:	6/8	(10/12)	[14/16]
See end of list for colors and prices.			
No. 330 - Yarn: Venetia			
SIZES:	6/8	(10/12)	[14/16]
Price	\$35.60	\$35.60	\$35.60
Shipping	3.50	3.50	3.50
No. 332 - Yarn: Venetia & Chenille			
SIZES:	12/14		
Price	\$22.74		
Shipping	3.50		
No. 333 - Yarn: Amore			
SIZES:	3/4	(5/6)	
Price	\$ 7.05	\$9.40	
Shipping	1.85	1.85	
No. 334 - Yarn: Amore			
SIZES:	4/5		
Price	\$11.75		
Shipping	1.85		
No. 335 - Yarn: Amore			
SIZES:	1/2		
Price	\$ 9.40		
Shipping	1.85		
No. 336 - Yarn: Combed Cotton			
See end of list for colors and prices.			
No. 337 - Yarn: Fine yarn - Cotton, Linen or Acrylic			
NO KIT AVAILABLE			
No. 338 - Yarn: Venetia - or any similar left over yarns. Small amount needed.			
NO KIT AVAILABLE			
No. 339 - Yarn: Venetia			
SIZES:	8/10		
Price	\$77.98		
Shipping	3.50		

No's 321 and 328 were knitted with our TEMPLON Yarn. No. 329 was knitted with our Shetland Yarn. Both of these yarns were former KNITKING SALE YARN and we still have some colors available. Cones are 49¢ an ounce and a cone weighs approximately 1 1/2 lbs. California residents add Sales Tax. Please be sure to include shipping costs of \$2.50 for first cone plus \$1.00 for each additional cone.

TEMLON COLORS - Wild Olive, Sapphire, Deep Mocha Rich Sapphire, Olive, Brown Combo, Pumpkin, Deep Plum.

SHETLAND COLORS - Mauve, Eggplant, Misty Blue and New Claret.

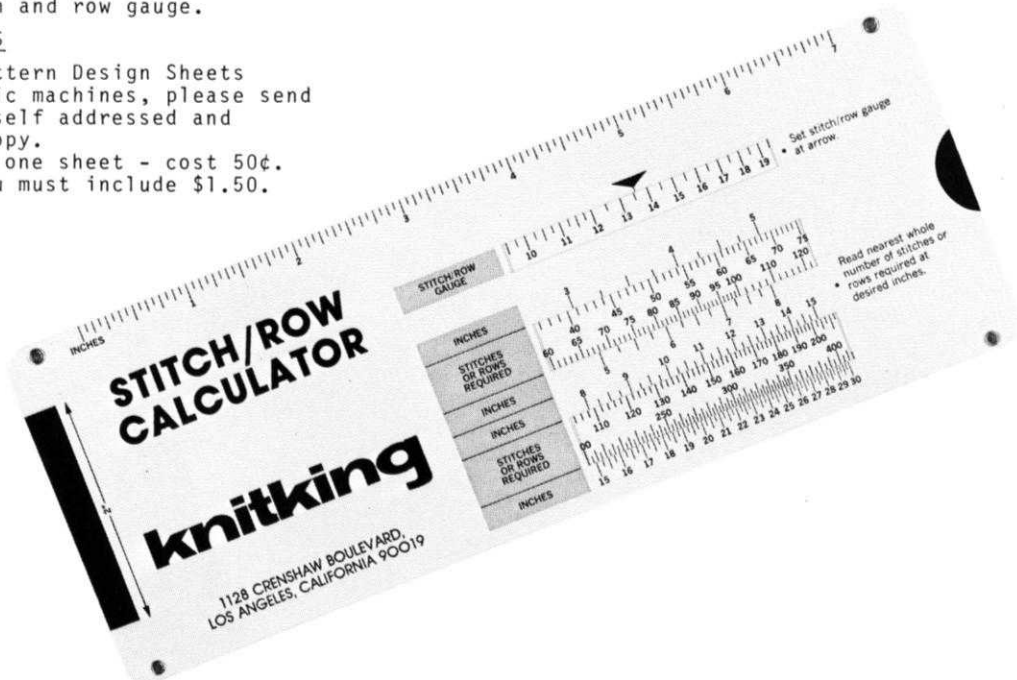
COMBED COTTON - One color - Slate and it is 29¢ an ounce. Cones are approximately 1 1/2 lbs. Be sure to include Sales Tax (if Calif. resident) and Shipping costs as given for the other cone yarns. If you do not like the color 'Slate', you can knit the Bedspread No. 336 using any yarn that will give you the correct stitch and row gauge.

ELECTRONIC MACHINE PATTERNS

For full size copies of Pattern Design Sheets to be used on the Electronic machines, please send 50¢ plus a large (No. 10) self addressed and stamped envelope for each copy. No. 319 and No. 326 are on one sheet - cost 50¢. No. 339 has 3 sheets so you must include \$1.50.

STITCH AND ROW CALCULATOR

Here's a new knitting accessory made to relieve your headaches and remove the tedium from mathematical calculations. It's fast, it's simple and it's accurate!! All you do is count your stitch or row gauge, set the slide rule to the number of stitches or rows to one inch and the rule will show you immediately and exactly how many stitches or rows you need for any number of inches from 3" to 30". Our low Introductory Price is \$3.50 (Calif. residents add Sales Tax) and the mailing costs are 50¢.



GOOD NEWS!

Singer* Knitting Machines are Here!

New in the United States — Singer Knitting Machines, with the same quality and versatility you have come to expect from Singer.

The Memo-Matic* 360 Knitter lets you create the very latest fashions in a wide variety of yarns quickly, simply — and at a fraction of the ready made cost. Just slip one of the handy pre-programmed punch cards into the knitter. You'll find the patterns you want — or the versatile Memo-Matic permits you to design your own patterns.

No Extra Charge for Lessons

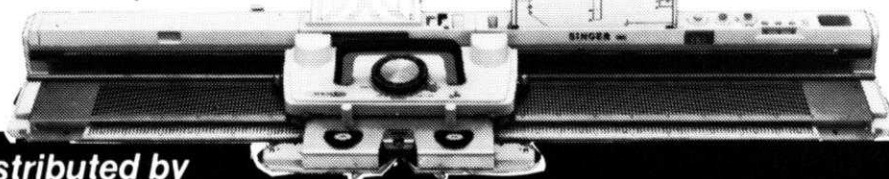
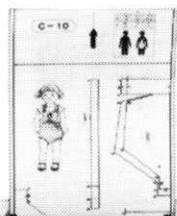
While the Singer Memo-Matic 360 Knitter is easy to operate, we'd like to make sure you know how to

use it to its fullest potential. So we'll give you lessons upon purchase — at no extra charge.

Come see the amazing Memo-Matic 360 Knitter at your local Singer dealer and ask for a demonstration. Also ask about the

Lace Carriage attachment (optional) for the Memo-Matic 360 Knitter that transfers stitches automatically and permits you to knit both single and multiple transfer lace.

Singer is also proud to announce the introduction of its brand new Electronic Knitting Machine. Ask your local dealer for more information.



*A Trademark of THE SINGER COMPANY. Authorized user Singer Company of Canada Ltd.

Distributed by

KNITKING

1128 CRENSHAW BOULEVARD
LOS ANGELES, CALIFORNIA 90019

321

ALMOST ARAN ISLE

Use Knitter and Ribber to combine a Tuck and Cable Pattern for a fantastic Man's Pullover...The Cables are made without actually crossing the stitches... Try it... Bands are K1, P1 Ribbing. Sizes 34 to 40.



326 LACE IT, LOVE IT

Electronic KH 910 —Lace and
Fine Lace

Wear this shell—
over pants or skirt and feel
quite dressed up for any
occasion. The bands are
ribbed. Sizes 6 to 16.



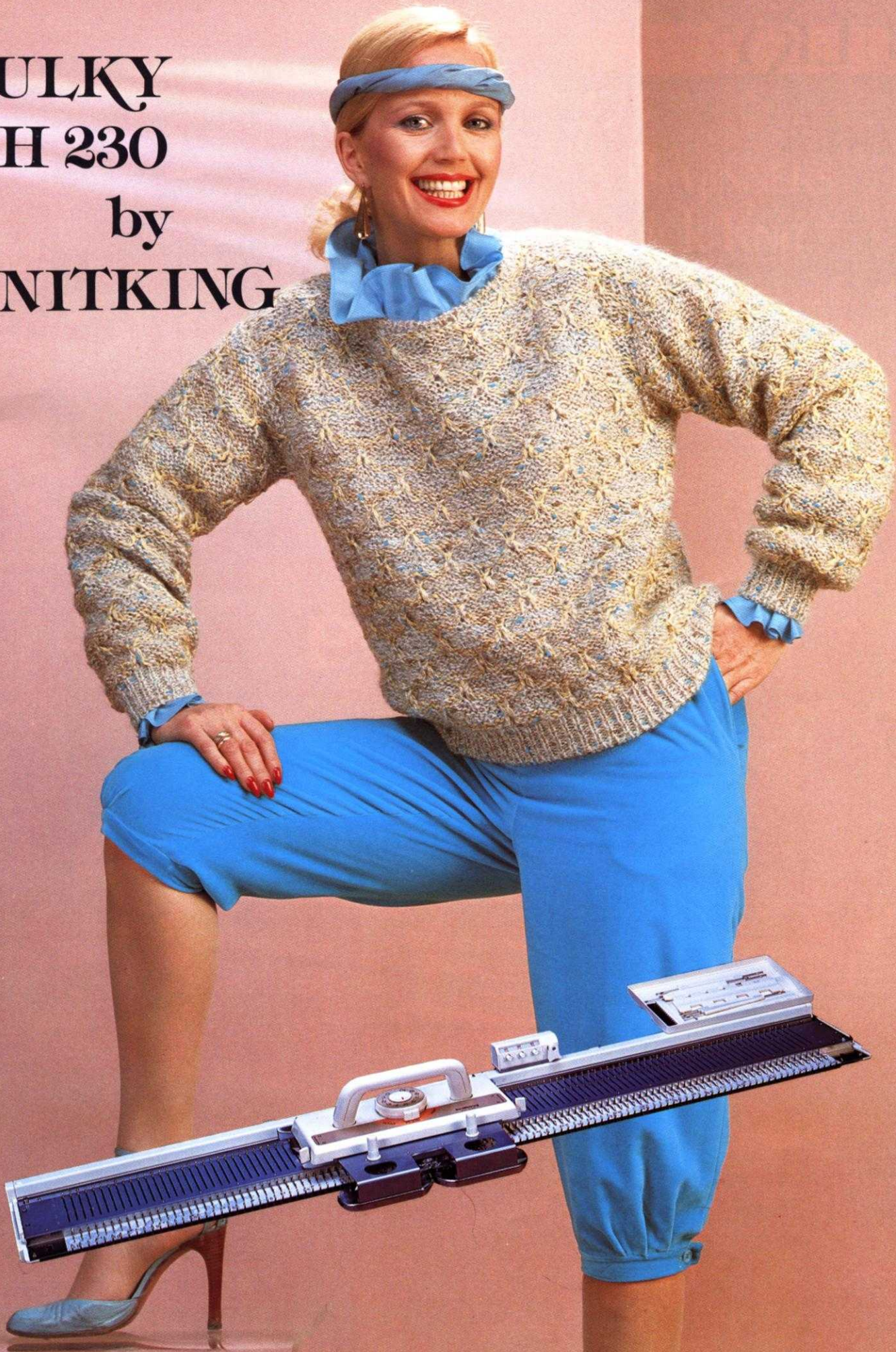
320

Easy Fit

Flattering to most everyone, an easy fit dress with bands of soft glitter and small lace design between. Learn to really use your Garter Bar to reverse the knitting for the garter stitch bands. Sizes 4 to 14.



BULKY
KH 230
by
KNITKING



BULKY

Model

KH

230

ESPECIALLY for yarns impossible to knit on standard knitting machines.

If you like bulky knit garments—the KNITKING BULKY is for you... If you like multi-color Intarsia Designs in your knits, the KNITKING BULKY is for you...

If you like knitting with heavy boucle and thick and thin yarns—the KNITKING BULKY is for you...

If you like heavy Fisherman's Rib sweaters that you can't buy at any price—the KNITKING BULKY with RIBBER is for you...

If you like to start knitting and to finish a garment the same day—the KNITKING BULKY is for you...

If you like knitting handsome Afghans, Bedspreads, Cushion Covers, Rugs, etc., for yourself and your friends—THE KNITKING BULKY is for you...

Its 110 Bulky heavy-duty needles will allow you to knit up to 36" wide and from 3 stitches to the inch. Its triple strength stainless steel needle bed will stand all the heavy duty you can give it. Its built in Intarsia Control and fancy stitch controls make it the easiest of all Bulky Knitters to use.

For increased versatility add the KR 230 Ribbing Attachment and really have fun with an unbelievable variety of rib stitches from the standard 1 x 1, 2 x 2, 3 x 1, 1 x 5 or any other combination plus zig-zag fancy ribs, Fisherman's Rib (double or single) and many more.

Comes complete with tools plus easy to follow step-by-step Instruction Manuals and a one-year guarantee on parts and service.

For complete versatility add the famous KNITLEADER Charting Accessory. It carries full-size charts of your garment sections. It rotates as you knit and tells you exactly when to increase or decrease, to shape and to bind off. You can use pre-drawn charts (obtainable from KNITKING). You can draw your own or you can trace a sewing pattern and duplicate it in a knit with the yarn and colors of your choice.

knitking



knitking

Order from your local dealer or direct from KNITKING at 1128 Crenshaw Blvd., Los Angeles, Calif. 90019 Telephone: (213) 938-2077

VISA and MASTERCARD accepted.



323

A BEGINNERS Quick Knit

Any man will enjoy wearing this striped Pullover which is worn on the purl side. Easy to knit and great to wear. It comes in sizes 34 to 40.

334

A HEART FULL OF LOVE...

Let her grow into this cardigan... she'll wear it for years to come. Shown here on a little one, the actual garment size is 4/5.



333

Boy Or Girl...

A child's Boat Neck Pullover has an easy Norwegian Design and of course should be made using our Amore yarn... perfect for children's garments because of its hard wearing and wash and wear quality.



335

AND THE WINNER IS!

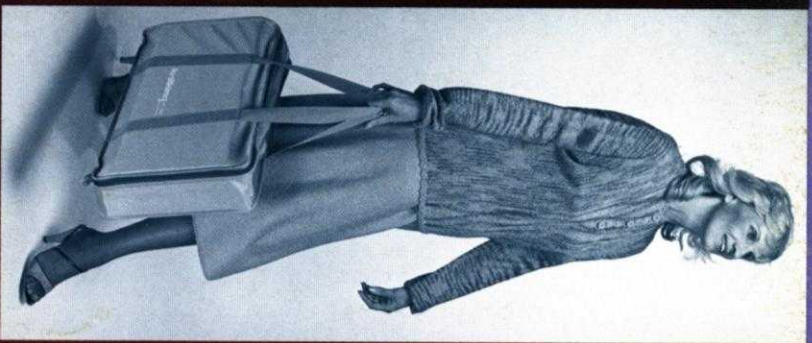
A darling dress is so easy to knit for that special little one. It's in Stockinette stitch with lace border designs. Use Amore for wash and wear easy care. Size 1 to 2 years.



336, 337, 338 ONE... TWO... THREE...

Knit any one or all three of our patterns for your home or make them for gifts... The coverlet fits a single size bed, but you can make it larger by adding sections and making it longer. The curtains are fresh and lacy (a nice beginner's pattern). Use leftover yarn for the pillow sham...





KNITTING—KH 341 Portable (folding) Knitter

It knits with the speed of a hundred hands and... You can take it with you.

It's a full-size 200-needle knitting machine with a built-in garment charting accessory and controls for Intarsia knitting plus fancy stitch knitting, yet it all folds up into a nylon carrying bag measuring 22" x 12½" x 4½" and weighs 12 lbs.

This versatile KNITTING Knitter will knit with yarn from crochet thread weight up to sport weight. The built-in Knitleader Charting Accessory (sold as an extra on many other machines) automatically feeds garment charts in the shape and style garment you wish to knit and instructs you, row by row, when to increase and when to decrease, etc. You can trace sewing patterns and duplicate them in knits... You can draw your own pattern or you can obtain pre-drawn charts, in a range of sizes and for all members of the family, direct from KNITTING. You can duplicate hand knitting patterns on the KNITTING KH 341 portable or you can use patterns from KNITTING MAGAZINE.

The 200 needles are plated to prevent rust and the machine's high impact synthetic needle bed is practically indestructible.

Because it is easily transportable the KNITTING portable can be carried with you on vacation or weekend trips away from home, etc. Because it is easy to use and low in price it is an ideal learning machine for newcomers to machine knitting.

The KNITTING KH 341 portable comes complete with tools, an easy to follow step-by-step Instruction Manual and a one-year warranty on parts and service.

Order from your local Dealer or direct from **KNITTING at**
1128 Crenshaw Blvd.

Los Angeles, CA 90019

Telephone: (213) 938-2077

