

# knitking

*magazine*



BEAUTIFUL  
NEW KNITS  
TO MAKE-  
FOR GREAT  
LOOKS  
AND GREAT  
COMPLIMENTS!

# 349

## SOFT and sensational

A powder soft dress is knitted in Stockinette stitch with a double border Lace Design on sleeves and lower edge. It skims the figure but you could belt it. Make it with our shiny Nylon Boucle yarn. Sizes 10/12 (14/16) [18/20].



# 348

## new FOR TODAY and TOMORROW

Made on the Electronic machine using the Color Changer, the Skirt is knitted sideways on the machine in a Tuck, Short Rows and Stripe Design. The Top too is knitted sideways with color stripes and can be made on any machine. Venetia and shiny Nylon Boucle. Sizes 6/8 (10/12) [14/16].



## TABLE OF CONTENTS

	PAGE NO.
331—Man's Argyle Pullover .....	13
340—Woman's Striped Top .....	14
341—Woman's Dress .....	15
342—Woman's Lace Top .....	16
343—Woman's Top .....	17
344—Woman's Lace Top .....	18
345—Girl's Skirt & Lace Top .....	19
346—Girl's Striped Top .....	20
347—Woman's Lace Top & Pleated Skirt .....	21
348—Woman's Two-Piece Dress .....	22
349—Woman's Lace Dress .....	23
350—Woman's Striped Top .....	25
351—Man's Eyelet Pullover .....	26
352—Woman's Dress .....	27
353—Woman's Eyelet with Puff Trim Jacket .....	28
354—Men's and Women's Travel Shoe Bags .....	30
355—Baby Bunting .....	31
356—Woman's Pullover .....	32
357—Woman's Boat Neck Pullover .....	33
358—Woman's Long Skirt with attached Tube Top & Lace Pullover .....	34
KNITKING NEWS .....	36

## EDITORIAL

YOU LIKE IT!! In fact, the most frequently used word is LOVE... 'Just love your new format'... 'love the new KNITKING MAGAZINE'... 'love the variety of patterns in the latest magazine'... 'love the colors and the styles'....

We thank you for your letters and your comments and at the risk of being repetitious, we say again, KNITKING MAGAZINE is your magazine. In its pages, we aim to satisfy your needs for excellent styles, patterns and instructions, so please don't stop writing... We claim in our advertising that KNITKING is the oldest name in knitting machines in North America and the claim is a valid one. It was a little over 30 years ago that the name KNITKING was Registered as a Trademark and we have been at our Los Angeles address for 27 years. We have several workers that have been with us for more than 20 years and we would find it difficult to calculate the cumulative number of years of knitting machine knowledge and experience possessed by our team of experts.

We function primarily as a knitting machine sales organization and I, as Publisher and Editor of KNITKING MAGAZINE, am proud of the skill developed by the people who concentrate mainly on the production of KNITKING MAGAZINE... the design and knitting of garments... the grading of the various sizes... the drawing of charts... the composition and typing of the instructions... the checking, double checking and final proof reading of the proof copies before going to press... What is most interesting is that not one of the team has previous experience in the publishing business... they are all knitters of course... some have office and sales experience, but all of the skills that go into the preparation of this fine magazine were learned on the job... Fortunately for us, the enthusiasm, the cooperative spirit, the determination to do a superior job plus the many years of knitting experience, are all reflected in the finished product and we are glad that you love it... We love you too!!




## COVER

By day, by night, our round the clock fashions have something special for everyone. Our COVER MODEL sets the scene with a whirl of a pleated Skirt and lovely lace Pullover. Knit it with Venetia in sizes 6/8 (10/12) [14/16].

# 347



**343**

**TRAVEL LIGHT  
AND BRIGHT**

in a Norwegian Design (also called Fairisle) Pullover. It is knitted with 4 colors of Amore. Sizes 6/8 (10/12) [14/16].

# 358 DRAMATIC EVENING DRESSING

A festive Gown is strapless and has its own Lace Cover-up. The tube top in ribbing is attached to Stockinette stitch Skirt that has a slit on side. Knit the Cover-up sideways on the machine, then add the wide ribbed waistband. Venetia is the perfect yarn. Sizes 10/12 (14/16) [18/20].





## 341 PARFAIT PERFECTION

Wear this lovely dress for any special occasion. It's loosely knitted so that it drapes beautifully. Isolate the diamond lace design on bodice and sleeves. Sizes 8/10 (12/14) [16/18] and the yarn is Venetia.

# 340 STRIPES ARE RIGHT

Different widths of color stripes make up an easy fit, flattering Pullover. The side panels form the sleeves for front and back and are knitted all in one piece then attached to the front and back panels. Venetia is the yarn and the sizes are 8/10 (12/14) [16/18].







# 331 GREAT ARGYLE CLASSIC

A big and bold Argyle Design on the front section of a Man's Pullover. It's made using 'Short Rows.' You'll love the soft touch of our Shetland yarn. Size 42/44.

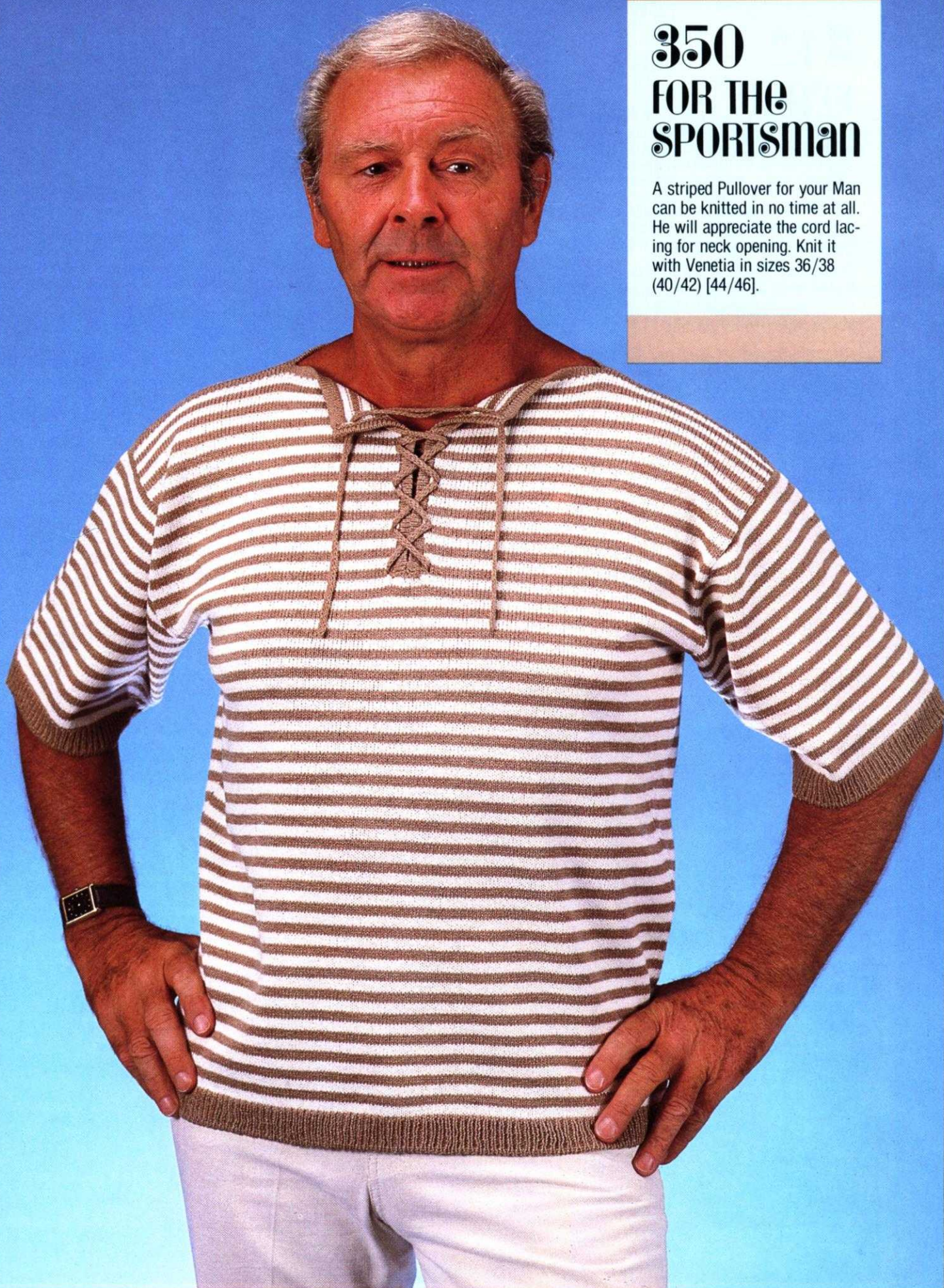
# 353 SUNSHINE BRIGHT

A short sleeved Jacket with a very different look has an Eye-let Design outlined with a puff stitch. Amore yarn.  
Sizes 6/8 (10/12) [14/16].



# 350 FOR THE SPORTSMAN

A striped Pullover for your Man can be knitted in no time at all. He will appreciate the cord lacing for neck opening. Knit it with Venetia in sizes 36/38 (40/42) [44/46].



# 342

## SUBTLE SIMPLICITY

An Eyelet Design begins at the center of bodice then increases on each side and into the cap sleeves to form a lacy Yoke. It is easy to knit and an excellent lesson in isolating lace. Use our Amore and you can knit it in sizes 6/8 (10/12) [14/16].



# GENERAL INSTRUCTIONS

## THE PRINTED INSTRUCTIONS

Follow the printed instructions or use them in combination with the Charts. Where there is any question in the instructions, you have the Charts to show you how the section will look.

Be sure to READ AHEAD so that you KNOW what to do for the size you are knitting. In the shapings, where the number of stitches are the same but the number of times different, you might find shapings like this...3 sts. 1 x (2x) [3x]—so that for the first size you will bind off 3 sts. 1x, 2nd size 3 sts. 2x, 3rd size 3 sts. 3x. Sometimes the ROWS will be different for each size—so you must watch out for different row numbers.

Shoulder and neck shapings for the back section of a garment usually are shaped at the same time—so ALWAYS WATCH for the words AT THE SAME TIME.

## HOLDING STITCHES ON THE LEFT SIDE WHILE SHAPING THE RIGHT SIDE

There are different ways to hold stitches on one side while completing the other side. Usually, we tell you to bind off the center sts. for neck and put the left side into holding position while completing the right side. The easiest way and really the best way for beginners is to take a piece of RAVEL CORD and hand knit the center neck stitches, pulling them back against the needle bed of machine to the "A" or out of work position. The stitches remain in the HOOKS of the needles so you are really only knitting them HALF WAY. With another color of Ravel Cord, knit the remaining sts. on the left side in the SAME WAY.

It is important to protect these held stitches in some way—so you can either hang a REVERSING BAR so that the EYES of the Bar go BETWEEN the Gate Pegs on the machine and that the UPPER TIPS of Bar only—show above the needle bed...OR the simplest way is to use a piece of 1 inch masking tape and GENTLY place it beneath the knitting—right below the gate pegs. Do NOT press the tape—only enough pressure to hold it in place. This will prevent the Carriage (or Slide) from marking the held section.

It is VERY IMPORTANT that you mark the PATTERN ROW where you divide for the split for NECK (or SHOULDER) shaping....If you are using a PUNCH CARD—MARK THE CARD—if you are using an ELECTRONIC machine, MARK THE DESIGN WINDOW. Also take note of the Row number for the division. When you are ready to work the left section, bring the HELD stitches back to B (working) position by pulling each end of the Ravel Cord GENTLY and rip it off—be sure to align all needles straight in the B or knitting position.

Now you are ready to REFER TO YOUR OWN INSTRUCTION MANUAL for your machine—to set the controls to begin knitting the left half. The neck stitches can be bound off after completing the right side or you can leave them in hold until each side is finished, then bind them off or remove them onto contrast waste yarn ready to be picked up for knitting a neckband or for other finishing.

## FULL FASHION DECREASING OR INCREASING

For Stockinette stitch, use the Full Fashion method for decreasing or increasing (except for regular cap shaping on sleeves where you decrease the edge stitch).

TO DECREASE: Hang the 3rd stitch onto the 2nd stitch then move the end stitches in to fill the empty needle.

TO INCREASE: Move the 2nd end stitches 1 needle outward, then pick up the 3rd stitch from the row below and hang it onto empty needle.

## PATTERN SYMBOLS

( ) Symbol for 2nd size.

[ ] Symbol for 3rd size.

There are up to 3 sizes given for Patterns in KNITTING MAGAZINE. For example, the Charts and printed instructions will show the cast-on as...124—First size. (132)—Second size. [140]—Third size.

R = ROW

◻ Needles in holding position.

⊗ Needles back into working position.

◁ For Short Row Knitting

## THE SAMPLE SWATCH

Before you knit any garment, you must knit a sample swatch using the yarn you have chosen for your garment. If you do not get the correct Stitch and Row Gauge as given for a Pattern in KNITTING MAGAZINE—try different tensions. If you are using the specified yarn, you should be able to get the correct gauge using one of the tensions shown. If you are using other yarns, you may have to make several swatches—but the gauge is very important.

To make a sample swatch—Cast on 60 stitches with waste yarn and knit 6 rows. Mark the tension number for your sample swatch by making holes (you can do this with a Lace Carriage or by hand), 4 transfers for Tension 4, 6 transfers for Tension 6, etc. Knit 6 more rows.

Change to garment yarn and set Counter at 0. Knit 30 rows (in Stockinette stitch or Pattern stitch—according to the garment). With contrast waste yarn knit the 10th stitch FROM EACH SIDE—by hand. Knit 30 rows. Change to waste yarn and knit 12 rows. Remove the sts. from the machine by pushing the Carriage (or Slide) across without yarn.

Pull and stretch the sample swatch both lengthwise and diagonally from corner to corner, then lengthwise again. Gently block the swatch (KNITTING PRESSING CLOTHS are great for this)—or you can allow the sample to rest several hours or even over night so that the stitches can return to their basic form. USE KNITTING CONVERTA TAPE for MEASURING YOUR SAMPLE (or the KNITTING INSTANT STITCH AND ROW GAUGE MEASURE).

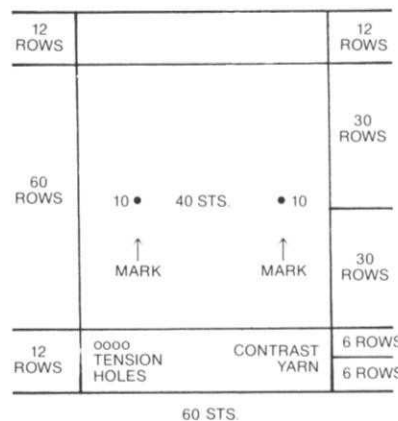
If you use the Converta Tape, pull out the Tape to measure BETWEEN the 40 marked stitches in the center of your swatch. Move the red marker on the Tape so that it points to 40 stitches on the TAPE. Your stitch gauge to 2" (5 cm) will show in the RED WINDOW. To find the number of rows in 2" (5 cm), place the Tape to measure over the 60 rows, push the red marker to 60 on the Tape and your row gauge for 2" (5 cm) will show in the red window.

If you do not own a KNITTING CONVERTA TAPE or a Stitch and Row Measure, you must count the number of stitches and rows to 2" (5 cm) after marking a 2-inch square in the center of your knitting.

## FINISHING

Gently block all sections—For PULLOVERS, JACKETS and DRESSES: Join the front to back at shoulders and sides. Sew sleeves together and set in. Hem lower edge and sleeve edges if needed. For a double neckband or armhole, band sew 1 edge to inside and 1 to the outside of neck or armhole. For a single ribbed band, sew 1 edge to the outside of neck or armhole edge. For a cardigan or jacket with buttonholes, finish buttonholes and sew on buttons.

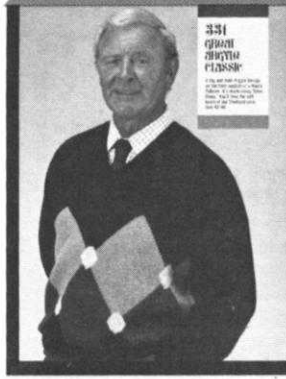
PANTS: Join front to back at sides. Sew inside leg seams, then join to center front and back. Make hem at waistline and insert elastic. Hem lower edge of pants' legs.



◻ Needle not used—in out of work position.

3x1

4 The number in the box is the number of Rows between shapings. The 3 x 1 above the box gives you the sts. and number of times to make the decreases (or increases)—FOR EXAMPLE: 3 x 1 over the box with 4 means—At the given Row number, \*decrease 1 st. knit 4 rows\* and REPEAT from \* to \* 2 times more for a total of 3 times in all. All decreasing (or increasing) WITHOUT ROW NUMBER IN BOX must be made on EVERY 2nd ROW.



# 331

## MAN'S ARGYLE PULLOVER

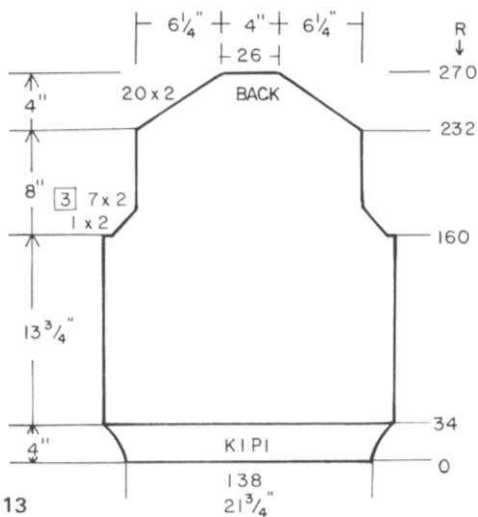
SIZE: 42/44  
 YARN: KNITKING ALPACANA  
 GRAMS:  
 color 1 250  
 color 2 50  
 color 3 50  
 color 4 50  
 TENSION: 9  
 GAUGE: 12 1/2 sts. 18 rows = 2"

The back and sleeves are in Stockinette stitch with the front in an Argyle Design worked with Short Rows. Bands are K1, P1 Ribbing.

FINISHING: See General Instructions. Weave the sleeves to shoulders and armholes. Slip stitch crochet neckband to neckline or you can weave the band in place.

### BACK:

With Color A, cast on 137 sts. and work 34 rows K1, P1 Ribbing - Ten.4/5 Transfer the Ribber sts. to main machine and increase 1 st. (138 sts.) Work in Stockinette stitch to Row 160. SHAPE ARMHOLE: ON EACH SIDE decrease 2 sts. full fashion method then decrease 2 sts. each side every 3rd row 7x. To work the full fashion decreases, hang sts. 2 and 3 onto needles 4 and 5 then move stitch 1 in to needle 3. Put empty needles out of work. Work all 2 st. decreases in this way. After Row 232, SHAPE SHOULDERS: ON EACH SIDE, decrease 2 sts. every 2nd row 20x. After Row 272, bind off the remaining sts.



### FRONT:

Cast on 137 sts. with color A and work 34 rows K1, P1 Ribbing. Transfer the ribber sts. to main machine and increase 1 st. (138 sts.) Knit 2 rows Stockinette stitch then MARK THE NEEDLE BED to set up the Argyle Design. Mark needle 1 on each side of 0 then mark needles 46 and 47 on each side.

You must work SHORT ROWS for each half diamond and each whole diamond. You can use the regular short row method - wrapping the inside needle in holding position or you can use the automatic wrapping method whichever is the easiest for you. The most important thing to remember is that you MUST ALWAYS work the short row DECREASES FIRST.

Remember that all needles not being worked must be in HOLDING POSITION. Only needles needed for each section are in working position. Begin on the RIGHT SIDE and the first 23 sts. with color A. The decrease short rows are on the left of the 23 sts. until you have 5 sts. left then the decreases must be worked on EACH SIDE 2x more. This is to allow for the beginning of the small diamond. Drop color A and go to the next 46 sts.

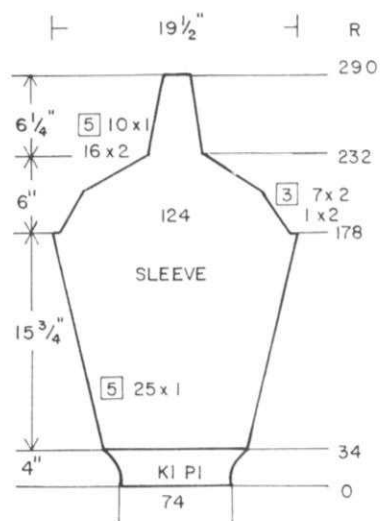
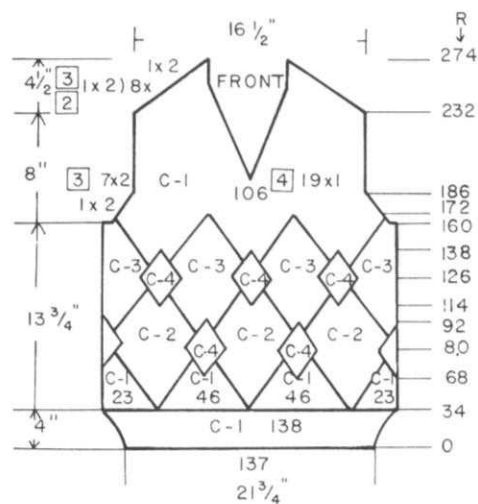
With color A, work short rows on each side until 10 sts. remain.

When there are 10 sts. left, divide in the center and work EACH SIDE separately, decreasing 1 st each side 2x more. Drop yarn A and work the other little point. With color A, work the next 46 sts. in the same way and when completed work the last 23.

As you look at the drawing, you can see that you must now FILL IN with color D for PART of the small diamond before you pick up color B and work the short row INCREASES up to the small diamonds then DECREASE. 12 sts. in color D is for the small diamond. Work across each group of sts. with colors as shown remembering that DECREASE short rows must always be worked FIRST for any section. When you have completed the Argyle Design, continue in Stockinette st. with color A.

After Row 160, SHAPE ARMHOLE same as the back and after Row 186, Divide in the center, put needles on the left into holding position and complete the right side first.

\*ON NECK SIDE, decrease 1 st. every 4th row 19x and after Row 232, SHAPE SHOULDER: ALTERNATE first 2 rows then 3 rows and decrease 2 sts. 17x. Bring the needles on the left into working position, knit 1 row to the left, put Row Counter back to 186 and complete the left half. Follow the instructions from \*.



### SLEEVES:

Cast on 73 sts. with color A and work 34 rows K1, P1 Ribbing. Transfer the ribber sts. to main machine and increase 1 st. stitch.

ON EACH SIDE, increase 1 st. every 5th row 25x.

After Row 178, SHAPE CAP: ON EACH SIDE, bind off 2 sts. then decrease 2 sts. (full fashion same as back and front) every 3rd row 7x, then every 2nd row decrease 2 sts. each side 16x.

After Row 232 ON EACH SIDE, decrease 1 st. every 5th row 10x. After Row 290, bind off the remaining sts.

### NECKBAND:

Cast on 180 sts. with color A and work K1, P1 Ribbing. ON EACH SIDE, INCREASE 1 st. every 2nd row 6x. After Row 12, remove the sts. onto contrast waste yarn. Weave the neckband to neckline.

FRONT & BACK CENTER - The same.

With contrast waste yarn, cast on 64 sts. Knit 7 or 9 rows, then 1 row with Ravel Cord.

Change to garment yarn and put Counter at 0.

Work in COLOR STRIPES of

\*2 rows color 1

6 rows color 2

2 rows color 1

6 rows color 3

REPEAT FROM \* for color

stripes throughout.

After Row 138, Remove the center

44 sts. onto contrast waste yarn.

Put the needles on the left into

holding position and complete the

right side first.

\*\*ON NECK SIDE, bind off

2 sts. 5x.

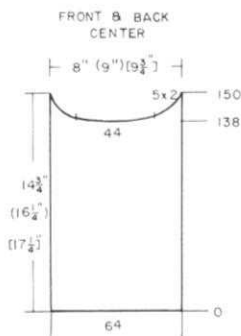
Bring the needles on the left into

working position. Watch stripe

pattern. Turn Row Counter to

138 and complete the left half.

Follow the instructions from \*\*.



#### SIDE PANELS WITH SLEEVES.

Make 1, reverse 1.

With contrast waste yarn, cast on 36 sts.

After waste knitting (same as for front and back center sections) put Counter at 0 and continue with garment yarn and color stripes as follows:

2 rows color 3

2 rows color 1

2 rows color 2

2 rows color 1

REPEAT STRIPE PATTERN, BUT AT THE

SAME TIME ON THE RIGHT (left for

second section) increase 1 st.

every 9th row 8x, then every 2nd

row 1 st. 4x.

This is for the FRONT SHAPING.

Work even in stripe pattern to

Row 226.

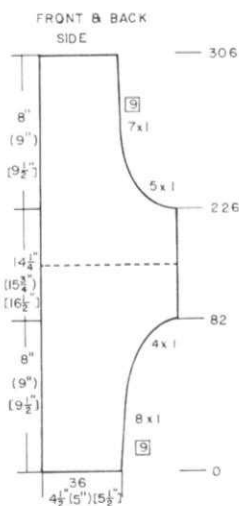
Begin the BACK SHAPING.

Decrease 1 st. every 2nd row

5x, then 1 st. every 9th row 7x.

After Row 306. Remove onto

contrast waste yarn.



#### WAISTBAND

Cast on 155 sts. with color 1

Tension 1

0.2 Slide Lever II

Knit 5 rows circular then put Counter at 0.

Work 1 row color 1

\*4 rows color 2

4 rows color 1

4 rows color 3

4 rows color 1\*

REPEAT FROM \* to \* 1x.

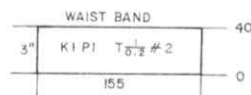
4 rows color 2

3 rows color 1

Transfer the ribber sts. to main

machine, knit 1 row then remove

the sts. onto contrast waste yarn.



#### WOMAN'S STRIPED TOP

SIZES: 8/10 (12/14) [16/18]

YARN: Venetia

GRAMS

color 1 85 100 100

3 oz. 3.5 oz. 3.5 oz.

color 2 85 100 100

oz. same as above.

color 3 85 100 100

oz. same as above.

TENSION: 7 - (8 to 9) - [9 to 10]

GAUGE: To 2 inches or 5 cm

Size 8/10 - 16 sts. 20 rows

Size 12/14 - 14 sts. 18 rows

Size 16/18 - 13 sts. 17 rows

Stockinette stitch with color stripes. Waistband is K1, P1 Ribbing.

FINISHING: On the Right sides, single crochet down each edge of center bodice and side bodice pieces. Working on the right side (wrong sides together) slip stitch crochet the sections together. Sew side seams then work 1 row single crochet and 1 row reverse single crochet around armholes and neckline. Use whatever color you wish for the crochet. Sew on waistband, decreasing as needed to fit the band.



# 341

## WOMAN'S DRESS

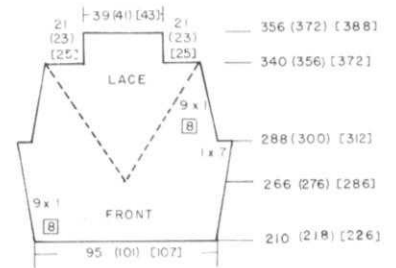
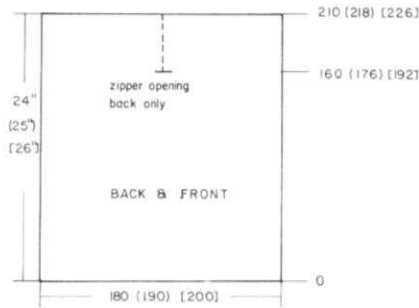
**SIZES:** 8/10 (12/14) [16/18]  
**YARN:** Venetia (Standard)  
 Approximately a 1 1/2 lb. Cone  
**TENSION:** 10  
**GAUGE:** 13 sts. 17 rows = 2" (5 cm)  
 22" Zipper  
 2 1/4" Buttons  
 30" 1/4" Elastic

Stockinette stitch with Lace at Bodice and top of sleeves. Design is Isolated. Punch Card.

**FINISHING:** See General Instructions. Work 1 row single crochet, then 1 row reverse single crochet around neck. At lower edge of high collar, on the inside, work 1 row slip stitch crochet (to hold shape). At waistline on the inside, make a casing for elastic. Attach yarn,\*chain 3, single crochet into garment, chain 3, single crochet into garment, forming a zig zag stitch around waist. Pull elastic through. Work 2 rows single crochet around lower edge of dress. For zipper opening, work 1 row single crochet all around, then work 2 buttonholes along collar edge and sew buttons to other side. Sew zipper in from bottom of opening to lower edge of collar. Make cord belt using 3 or 5 sts. on machine. Set machine for knitting a cord and make approximately 80" long. Double in half and tie around waist.

**DRESS BACK & FRONT:** Two sections the same except for back opening.

Cast on 180 (190) [200] sts. and work Stockinette stitch. **FOR FRONT**, knit to Row 210 (218) [226]. Remove the sts. onto contrast waste yarn. Hang the sts. back onto the machine decreasing to 95 (101) [107] sts. Work 6 rows with TENSION 6. Change back to Tension 10. **ON EACH SIDE**, increase 1 st. every 8th row 9x **BUT AT THE SAME TIME** after Row 266 (276) [286] **BEGIN LACE PATTERN.** After Row 288 (300) [312], **SHAPE ARMHOLE:** **ON EACH SIDE**, bind off 7 sts., then **ON EACH SIDE**, decrease 1 st. every 8th row 9x. After Row 340 (356) [372], **ON EACH SIDE**, bind off 21 (23) [25] sts. and continue in Lace Pattern to Row 356 (372)[388], then bind off.



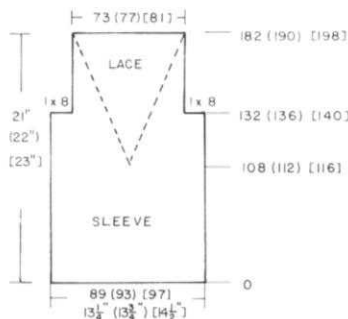
Work the **BACK** in the same way to Row 160 (176) [192] then **DIVIDE** in the **CENTER**. Knit each side separately to Row 210 (218) [226] and remove onto waste yarn. Continue same as the front but work **ONE SIDE AT A TIME**. Be sure you hang sts. on same needles that were used for front so pattern will be correct.

## SLEEVES:

With contrast waste yarn, cast on 89 (93) [97] sts. After knitting 1 rows, knit 1 row to the right side with a Ravel Cord. Change to garment yarn and put Counter at 0. Work Stockinette stitch to Row 108 (112) [116] then **BEGIN ISOLATED PATTERN** same as you did for front. After Row 132 (136) [140], **ON EACH SIDE**, bind off 8 sts. After Row 182 (190) [198], bind off the remaining sts.

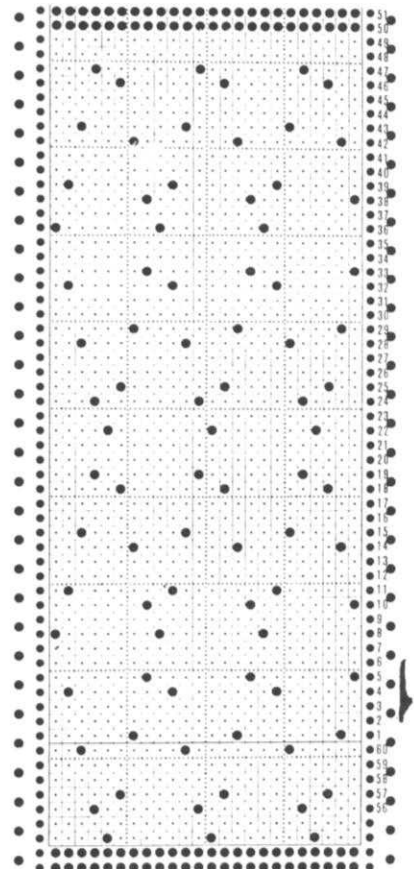
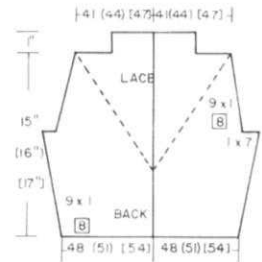
## SLEEVE CUFFS:

Cast on 43 (47) [49] sts. and work 16 rows K1, P1 Ribbing with Tension 6. Transfer the Ribber sts. to main 5 machine, knit 1 row then hang the open sts. from sleeve onto same needles, decreasing evenly across. Bind off the doubled sts. together.



## SHOULDER PADS: Make 2.

Cast on 60 sts. and work Stockinette stitch. Tension 10. Knit 40 rows and bind off. Roll up onto approximately 1 1/2" diameter then fasten with running stitch along the roll and pull tight to form half crescent (doughnut). Sew to puff sleeve seam of sleeve at shoulders.





WOMAN'S LACE TOP

SIZES: 6/8 (10/12) [14/16]  
 YARN: Amore  
 GRAMS: 250 250 300  
 TENSION: Lace - 6 to 8  
 Stockinette - 6 to 8  
 GAUGE: Lace - 14 sts. 18 rows,  
 Stockinette - 15 sts. 18 rows =  
 2" (5 cm).

FRONT & BACK (the same).

Cast on 124 (134) [144] sts. and with tension 2 work 16 rows K1, P1 Ribbing.

Transfer the Ribber sts. to main machine and change to garment tension. Continue in Stockinette stitch to Row 106.

MARK NEEDLE 52 to the LEFT of 0 and NEEDLE 53 to the RIGHT of 0. Begin the CENTER TRIANGLE in Lace (See Picture), adding 1 more eyelet ON EACH SIDE every 2 rows - the triangles ON EACH SIDE begin after Row 122, BUT AT THE SAME TIME, After Row 114 (120) [126], begin the SLEEVE increasing ON EACH SIDE on every 2nd row, 1 st. 4x, then 2 sts. 2x, then 1 st. every 5th row 11x.

After Row 164 (174) [184], bind off the center 20 (24) [30] sts. for neck. Put the needles on the left into holding position A and complete the right side first. (Be sure to mark Punch Card row).

\*ON NECK SIDE bind off

3 sts. 3x, 2 sts. 6x, 1 st. 3x and after Row 182 (192) [202]

SHAPE SHOULDER: Bind off

12 sts. 2x, 11 sts. 2x.

Bring the needles on the left

into working position, turn

Row Counter to 164 (174) [184]

Set Punch Card and complete the

left half. Follow the instructions

from \*.

An Isolated Lace Pattern as given in Instructions for Yoke and Cap Sleeves.

Punch Card. Bands are K1, P1 Ribbing.

FINISHING: See General Instructions.

Single Crochet around sleeve edges.

Work 1 row single crochet around

neckline then 1 row Picot. Make

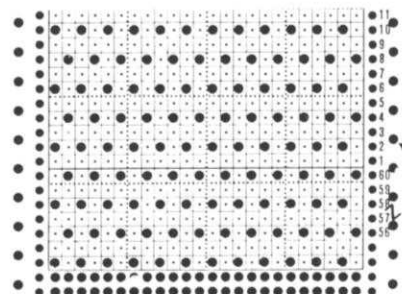
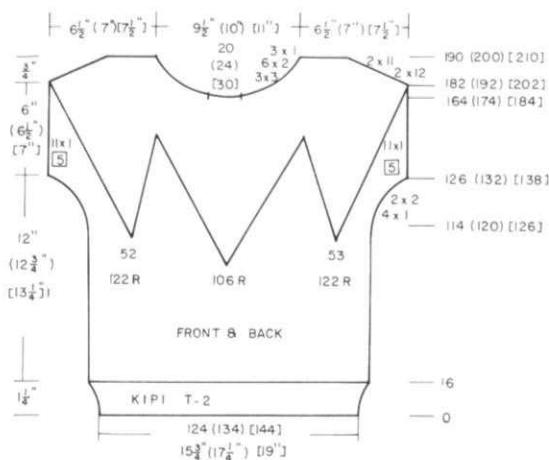
twisted cord 55" or 60" long and

pull through at neckline (see

Picture).



342



IT'S READY NOW!

KNITTING MAGAZINE  
 BOUND VOLUME NO. 17

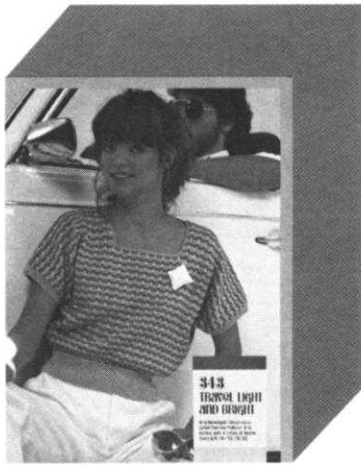


- HARD BOARD COVER
- APPROXIMATELY 180 PATTERNS
- COMPLETE INSTRUCTIONS

PRICE \$22.95  
 Shipping Costs \$3.23



Order direct from  
 KNITTING, 1128 Crenshaw Blvd.  
 Los Angeles, Calif. 90019



WOMAN'S TOP

SIZE: 6/8 (10/12) [14/16]  
 YARN: Amore  
 GRAMS:  
 color 1 100 150 150  
 color 2 100 100 100  
 color 3 100 100 100  
 color 4 100 100 100  
 TENSION: 7 to 9  
 GAUGE: 15 sts. 18 rows = 2" (5 cm)

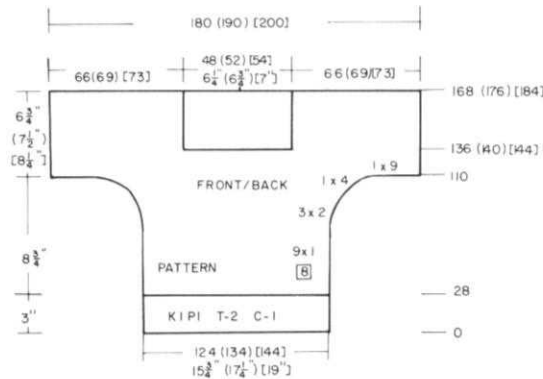
A Norwegian Design with bands in  
 K1, P1 Ribbing.  
 Punch Card.

FINISHING: See General Instructions.  
 Work 1 row single crochet with  
 color 1 around neck opening then  
 1 row REVERSE single crochet.

# 343

BACK:

Cast on 124 (134) [144] with color 1 and work 28 Rows K1, P1 Ribbing. Transfer the Ribber sts. to main machine and continue in Pattern. ON EACH SIDE, increase 1 st. every 8th row 9x, then ON EACH SIDE, cast on 2 sts. 3x, 4 sts. 1x, 9 sts. 1x. (Row 110). Knit to Row 168 (176) [184]. ON EACH SIDE, bind off 66 (69) [73] sts. for SHOULDER, then bind off the remaining sts. for NECK.

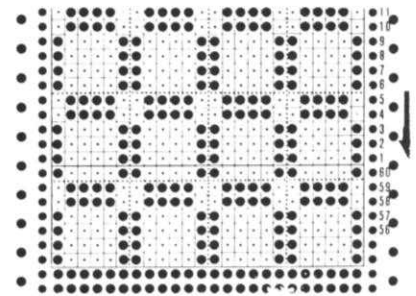
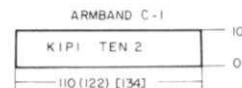


FRONT:

Work the front the same as the back to Row 136 (140) [144]. MARK PAT. ROW. Bind off the center 48 (52) [54] sts., put the needles on the left into holding position and complete the right side first. Knit to Row 168 (176) [184] then bind off the shoulder sts. Bring the needles on the left into working position - SET PATTERN then knit to the LEFT side and turn the Row Counter back to 136 (140) [144] and knit in Pattern to Row 168 (176) [184] then bind off the shoulder sts.

ARMBANDS: Make 2. - Tension 2.

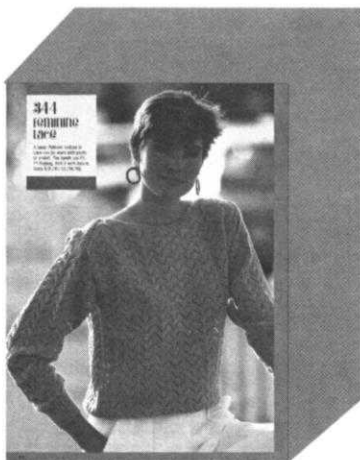
Cast on 110 (122) [134] sts. with color 1 and work 10 rows K1, P1 Ribbing. Transfer the Ribber sts. to main machine, knit 1 row Stockinette stitch. Remove onto waiste yarn. After sewing shoulders, you can slip stitch the band onto cap sleeve or you can hang armhole onto machine then band and bind them off together.



REPEAT PUNCH CARD THROUGH ROW 41 then Punch 2 rows of holes for connecting Card.

NORWEGIAN PATTERN

YARN FEEDER A      YARN FEEDER B  
 \* Color 4      Color 2-Knit 2 Rows  
 Color 1      Color 3-Knit 2 Rows  
 Color 4      Color 2-Knit 2 Rows  
 REPEAT FROM \* for PATTERN.



## WOMAN'S LACE TOP

SIZES: 6/8 (10/12) [14/16]  
 YARN: Amore  
 GRAMS: 300 350 400  
 TENSION: 8 to 9  
 GAUGE: 13 sts. 19 rows = 2" (5 cm)

A Lace Design with bands in K1, P1 Ribbing. Punch Card.

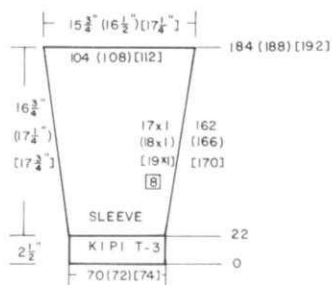
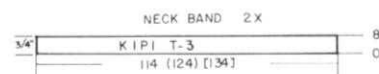
FINISHING: See General Instructions. Overlap shoulder to markings on bodice - back over front (see picture) then sew sleeves in place.

## SLEEVES:

Cast on 70 (72) [74] sts. and with tension 3, work 22 rows K1, P1 Ribbing. Transfer the Ribber sts. to main machine and with garment tension, continue in Lace Pattern. ON EACH SIDE, INCREASE 1 st. EVERY 8th row 17x (18x) [19x]. After Row 184 (188) [192], bind off.

## NECKBAND: Make 2.

Cast on 114 (124) [134] sts. and work 8 rows K1, P1 Ribbing. Ten. 3. Transfer the ribber sts. to main machine, knit 1 row stockinette stitch with garment tension. Hang 1 neck edge to the sts. then bind off the doubled sts. together LOOSELY.



## BACK & FRONT (the same).

Cast on 114 (124) [134] sts. and with Tension 3, work 28 rows K1, P1 Ribbing.

Transfer the Ribber sts. to main machine and change to Tension 8 or 9. Continue in Lace Pattern.

After Row 134, mark each side for setting in sleeve.

After Row 194 (198) [202], mark each side for shoulder band then bind off the center 26 (28) [30] sts. for neck. Put the needles on the left into holding position A and complete the right side first.

\*ON NECK SIDE, bind off

3 sts. 12x, 2 sts. 4x.

(3 sts. 16x).

[4 sts. 4x, 3 sts. 12x].

After Row 228 (232) [236], right side is completed.

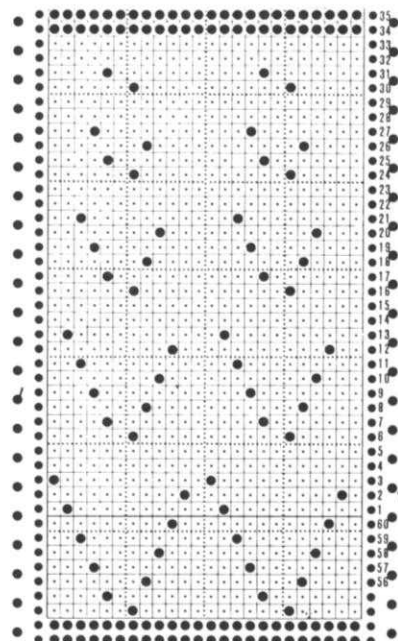
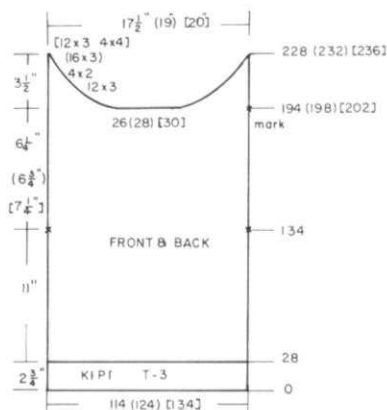
Bring the needles on the left into working position and BE SURE TO SET PATTERN CORRECTLY. Turn

the Row Counter back to 194

(198) [202] and complete the

left half. Follow the in-

structions from \*.



GIRL'S SKIRT & LACE TOP

SIZES: 6/7 (8/10)  
 YARN: Amore  
 GRAMS: 300 350  
 TENSION: 6 to 7  
 GAUGE:

Stock: 14 1/2 sts. 20 rows =  
 2" (5 cm)  
 Lace: 13 sts. 20 1/2 rows =  
 2" (5 cm)

The Skirt is Stockinette stitch.  
 The top Lace. Punch Card.

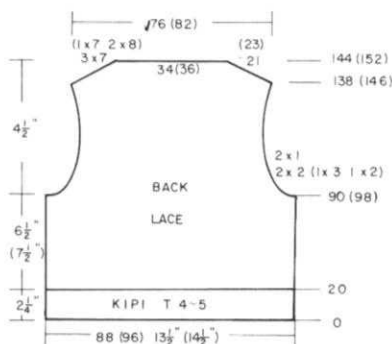
FINISHING: See General Instructions.



# 345

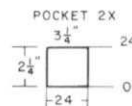
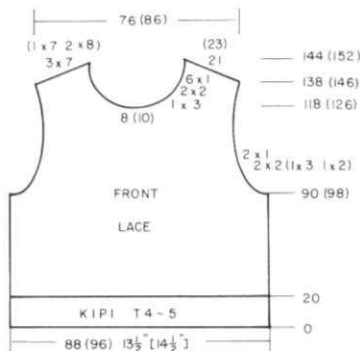
TOP BACK:

Cast on 88 (96) sts. and work 20 rows K1, P1 Ribbing. Transfer the ribber sts. to main machine and continue in Lace Pattern. After Row 90 (98) SHAPE ARMHOLE: ON EACH SIDE, bind off 2 sts. 2x (3 sts. 1x, 2 sts. 1x) then bind off 1 st. 2x. After Row 138 (146), SHAPE SHOULDERS: ON EACH SIDE, bind off 7 sts. 3x. (7 sts. 1x, 8 sts. 2x). After Row 144 (152), bind off the remaining sts.



FRONT:

Work the front the same as the back to Row 118 (126). Bind off the center 8 (10) sts. for neck, put the needles on the left into HOLDING POSITION 'A' (See GENERAL INSTRUCTION PAGE IN THIS ISSUE FOR HOLDING NEEDLES IN 'A' POSITION) Complete the right side first. \*ON NECK SIDE, bind off 3 sts. 1x, 2 sts. 2x, 1 st. 6x. After Row 138 (146) SHAPE SHOULDER same as the back. Bring the needles on the left into working position (see General Instruction page to bring back the needles when held in 'A' position), and complete the left half. Follow the instructions from \*.

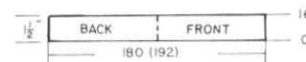
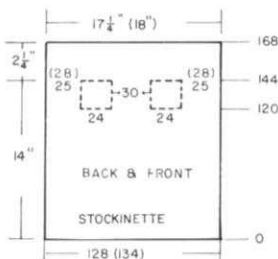


SKIRT POCKETS: Make 2.

With contrast waste yarn cast on 24 sts. Knit 9 to 11 rows, 1 row with Ravel Cord. Change to garment yarn and knit 24 rows Stockinette stitch. Remove onto contrast waste yarn.

SKIRT:

Cast on 128 (134) sts. and work Stockinette stitch. After Row 120, hang the pockets with knit side facing you. Leave center 30 sts. and hang the pockets on each side of these sts. onto 24 needles. Knit to Row 144. Leave the center 30 sts. then remove 24 sts. ON EACH SIDE onto waste yarn. Hang the other edge of pockets onto the empty needles and knit to Row 168. Remove onto contrast waste yarn. Make another section for back Skirt but OMIT THE POCKETS.



SKIRT WAISTBAND:

Sew 1 seam of skirt first then hang the open sts. onto 180 (192) needles, decreasing evenly across. Knit 16 rows Stockinette stitch. Bind off LOOSELY or remove onto waste yarn. Fold band in half to the inside and sew in place.

## LEFT BACK:

To the RIGHT OF 0, cast on 90 (96) sts. with color 1.  
With Tension 3 or 4, work 19 rows of K1, P1 Ribbing.

Transfer the ribber sts. to main machine and knit 1 row (garment tension) Stockinette stitch. Remove 22 sts. on the RIGHT SIDE onto contrast waste yarn.

Work Stripe Pattern.

- \*15 rows color 2
- 15 rows color 3
- 15 rows color 4
- 15 rows color 1
- 15 rows color 5

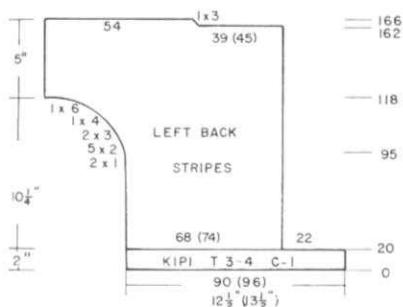
REPEAT THE STRIPE PATTERN FROM \*.

After Row 95, SHAPE SLEEVE.

ON EVERY 2nd row, cast on 1 st. 2x, 2 sts. 5x, 3 sts. 2x, 4 sts. 1x, 6 sts. 1x.

After Row 162, SHAPE BACK NECK: Bind off 39 (45) sts. (or remove them onto waste yarn).

ON NECK SIDE, bind off 3 sts. 1x. Remove the remainig sts. onto contrast waste yarn.

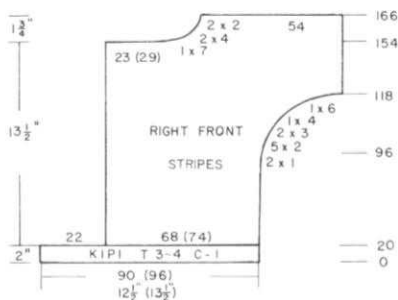


## RIGHT FRONT:

Work the same as LEFT BACK BUT REVERSE SHAPING on to the LEFT of 0.

After Row 154, SHAPE FRONT NECK. ON THE LEFT, bind off (or remove onto waste yarn) 23 (29) sts.

then ON EVERY 2nd ROW, bind off 7 sts. 1x, 4 sts. 2x, 2 sts. 2x. After Row 166, remove the sts. onto contrast waste yarn.



## RIGHT BACK:

With contrast waste yarn, cast on over needle 18 through 53 on the RIGHT SIDE OF 0.

Worn in Stripe Pattern

- \*8 rows color 3
- 8 rows color 2
- 8 rows color 5
- 8 rows color 1
- 8 rows color 4

REPEAT THE STRIPES FROM \*.

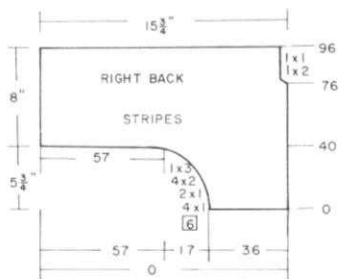
After Row 40, ON THE LEFT side, increase 1 st. every 6th row 4x then ON EVERY 2nd row, increase 1 st. 2x, 2 sts. 4x, 3 sts. 1x. After Row 41, cast on 57 sts. on the LEFT.

After Row 76, SHAPE NECK on the RIGHT side.

ON EVERY 2nd row, bind off

2 sts. 1x, then 1 st. 1x.

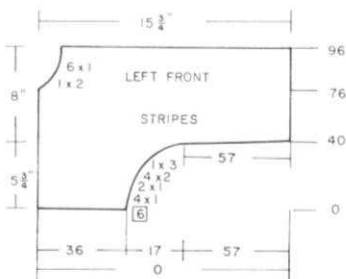
After Row 96, remove the sts. onto contrast waste yarn.



## LEFT FRONT:

Work the same as right back with REVERSE SHAPING, beginning on the LEFT SIDE OF 0. to Row 76. Front Neck opening, bind off 2 sts. every 2nd row 1x, then 1 st. 6x.

After Row 96, remove the sts. onto contrast waste yarn.



## GIRL'S STRIPED TOP

SIZES: 5/6 (7/8)

YARN: Amore

GRAMS:

color 1	50	50
color 2	50	50
color 3	50	50
color 4	50	50
color 5	50	50

TENSION: 8 to 9

GAUGE: 14 sts. 19 rows = 2" (5 cm)

Stockinette stitch with horizontal and vertical color stripes. Bands are K1, P1 Ribbing.

FINISHING: See General Instructions. After attaching front and back sections together, attach ribbed bands that are held on waste yarn.



ARM BANDS: Make 2.

Cast on 72 sts. with color 1 and with Tension 3 or 4, work 12 rows K1, P1 Ribbing. Transfer the Ribber sts. to main machine, knit 1 row Stockinette stitch. Shoulders should be sewn together, then hang sleeve onto machine and bind off doubled sts. together LOOSELY.

NECKBAND - Make the Neckband after sections have been put together but LEAVE 1 shoulder open so that you can hang neckline to band.

Cast on 130 (140) sts. with color 1 and work the same as Arm bands.





WOMAN'S LACE TOP & PLEATED SKIRT

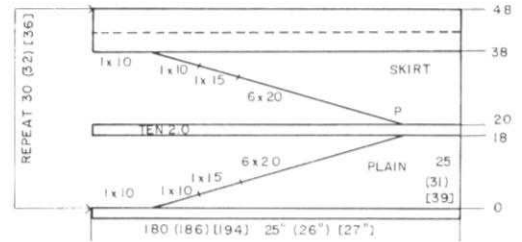
SIZES: 6/8 (10/12) [14/16]  
 YARN: Venetia  
 AMOUNT: 2 lb. Cone 2 1/2 lb. Cone  
 TENSION: 4 to 5= Lace and Stockinette.  
 GAUGE: 17 sts. 21 rows = Lace } 2"  
 14 sts. 24 rows = Stock. )  
 1/2" Elastic for Skirt Waist.

The Skirt is Stockinette stitch with SHORT ROWS. The top is Lace. Bands are K, P Ribbing.

FINISHING: See General Instructions. Work 1 row single crochet around lower edge of Skirt.

SKIRT:

With contrast waste yarn, cast on 180 (186) [194] sts. After knitting 11 rows, knit 1 row Ravel Cord to the right side.  
 Change to garment yarn. Tension 4' or 5. Knit 2 rows.  
 Put Counter at 0.  
 \*WORK SHORT ROWS. Use either the wrap method or AUTOMATIC WRAP.  
 ON OPPOSITE SIDE of Slide, put into holding position  
 10 sts. 2x, 15 sts. 1x, 20 sts. 6x.  
 All needles in work.  
 TENSION 2, knit 2 rows (inner fold). Bring all needles except 25 (31) [39] on the right side into holding position. Change back to garment tension. Knit 2 rows.  
 REVERSE SHORT ROWS; Bring back to working position  
 20 sts. 6x, 15 sts. 1x, 10 sts. 2x.  
 Knit 5 rows.  
 Carriage on the LEFT.  
 TENSION 9 - knit 1 row to the right. Change to garment tension and knit 4 rows.  
 REPEAT FROM \* 29x (31x) [35x] more ending with only 2 rows for last panel instead of 4 so that when weaving the seam the rows will be correct. Remove the sts. onto contrast waste yarn. Press then weave the open sts. together and remove waste yarn.



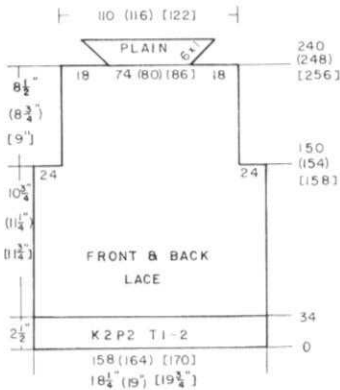
SKIRT WAISTBAND: Make 2 pieces.

With contrast waste yarn, cast on 126 (130) [134] sts. After waste knitting (see Skirt cast on), change to garment yarn and Tension and knit 14 rows. Remove onto waste yarn. Make another piece the same.  
 With wrong side facing you, hang 1/2 skirt waist onto 126 (130) [134] needles then with wrong side facing you hang 1 edge of band held on waste yarn onto these same needles. Knit 14 rows. Pick up other edge of band from waste yarn and bind off the double sts. together.

347

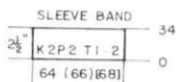
FRONT AND BACK: Both sections the same.

Cast on 158 (164) [170] sts. and work 34 rows K2, P2 Ribbing with tension 1 or 2.  
 Transfer the Ribber sts. to main machine and continue in Lace Pattern. Knit to Row 150 (154) [158].  
 ON EACH SIDE, bind off 24 sts. Knit to Row 240 (248) [256].  
 ON EACH SIDE, bind off 18 sts. then continue in Stockinette stitch for FACING.  
 ON EACH SIDE, increase 1 st. every other row 6x.  
 Bind off LOOSELY.



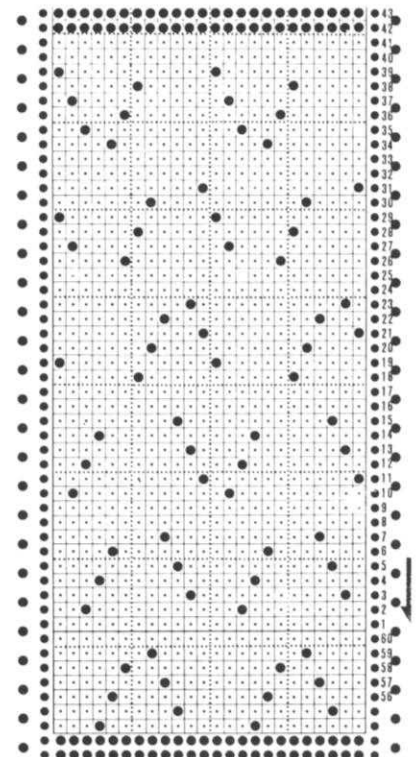
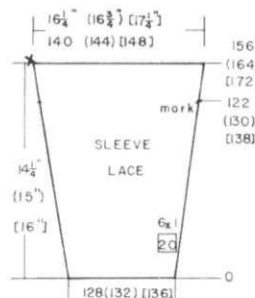
SLEEVE BAND:

Cast on 64 (66) [68] sts. and work 34 rows K2, P2 Ribbing with Tension 1 or 2.  
 Transfer the Ribber sts. to main machine then hang the open sts. of sleeve edge onto these needles, decreasing evenly across. Knit 1 row then bind off.



SLEEVES:

With contrast waste yarn, cast on 128 (132) [136] sts.  
 After the waste knitting (see Skirt cast on), put Counter at 0 and change to garment yarn.  
 Work Lace Pattern.  
 ON EACH SIDE, increase 1 st. every 20th row 6x.  
 MARK ROW 122 (130) [138] ON EACH SIDE (for setting into armhole)  
 After Row 156 (164) [172], bind off.



SKIRT:  
USE COLOR CHANGER.

PROGRAM PATTERN FIRST (See 910 Pattern Card.)  
Mark Needlebed as follows.  
LEFT of 0 - opposite needle 4.  
RIGHT of 0 - opposite needles 2, 7, 12, 17.  
Put only color 2 into No. 2 yarn guide on color changer.  
Bring needles 1 to 80 on the RIGHT of 0 and all needles to 80 (86) [92] on LEFT of 0 into working position.  
Cast on with waste yarn and knit approximately 1 inch ending with 1 row Ravel Cord from LEFT to RIGHT.  
Put color 1 in A Feeder. SET KC.  
Knit 1 row RIGHT to LEFT.  
Move the Slide BEYOND COLOR CHANGER then put color 1 into No. 1 yarn guide of color changer.  
Push button No. 2 of color changer and push in BOTH TUCK BUTTONS.  
Put Counter at 0. Knit 2 rows.  
Change to color 1.

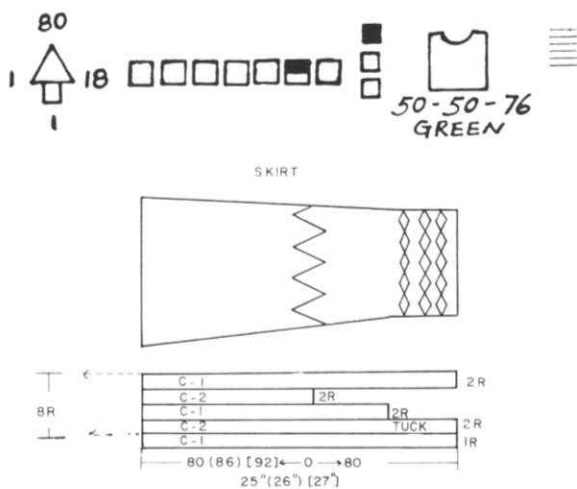
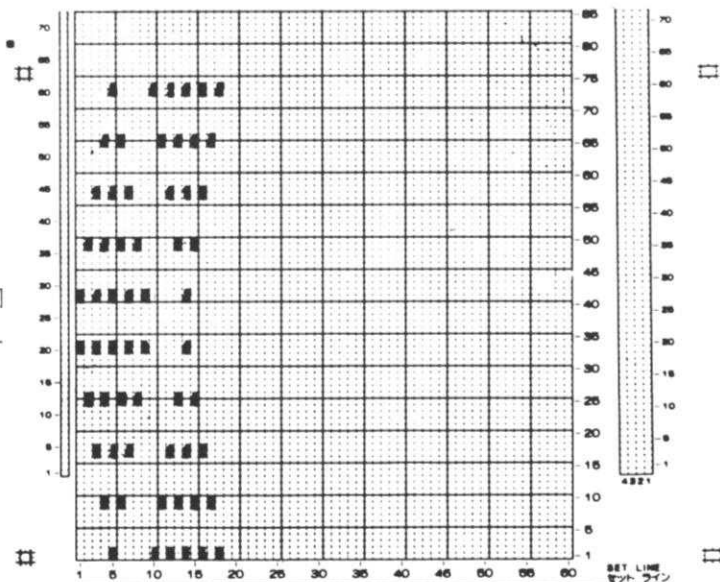
\*ON THE RIGHT, bring 28 needles into holding position. (Set Holding Cam Lever for working SHORT ROWS).  
Knit 1 row (wrap inside needle in holding position to prevent a hole) (A) Short row.  
\*\* Knit 1 row, CHANGE COLOR.  
Bring all needles to first marking on needlebed to holding position.  
Knit 1 row, wrap inside needle same as before (B) Short Row.  
Knit 1 row, CHANGE COLOR.  
Release Holding Cam Lever and knit 2 rows OVER ALL NEEDLES.  
CHANGE COLOR. Knit 2 rows, CHANGE COLOR.  
REPEAT FROM \* but EACH TIME for (A) Short Rows there will be 1 MORE NEEDLE TO HOLDING POSITION - 29, 30, 31, 32 AND EACH TIME AT \*\* for (B) Short Row, you MOVE OVER TO THE NEXT MARKING ON NEEDLE BED.  
The color is ALWAYS CHANGED EVERY 2 rows.

The Pattern moves 5x to the LEFT then moves BACK 5x so that the last Pattern Set is actually worked 2x before you move to the left or right.  
FOR SIZE 6/8, you will need 12 sections - 960 rows.  
FOR SIZE 10/12 - 13 sections (1040 rows)  
FOR SIZE 14/16 - 14 sections [1120] rows.  
Remove onto contrast waste yarn.  
Weave the open sts. together, or you can hang the two edges back onto the machine and bind them off.

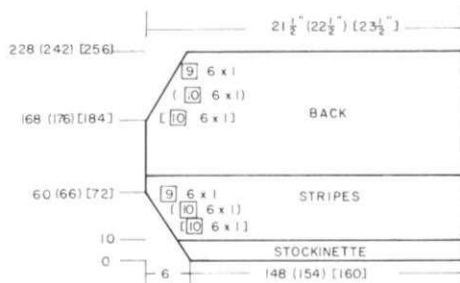
WAIST BAND - Make 2.  
With purl side facing you, pick up half of skirt waist onto 126 (130) [134] needles.  
Work Stockinette stitch with color 1 using Tension 4.  
After Row 24, bind off loosely or you can hang the hem by picking up first row of band then bind off.  
Repeat for other side of waist.

TOP BACK - USE COLOR CHANGER

148 (158) [160] sts. cast on with waste yarn and ravel cord.  
1 row right - left.  
Put Counter at 0 and change to color 1.  
Work 10 rows Stockinette Stitch BUT AT THE SAME TIME, INCREASE



1 st. on the left every 9th row  
6 x (every 10th row 6x) [every 10th row 6x] WHILE YOU WORK THE COLOR STRIPES AS FOLLOWS:  
\*2 rows color 2  
4 rows color 1\*  
REPEAT FROM \* TO \* 7 x (8x) [9x]  
8x (9x) [10x] in all.  
\*\* 2 rows color 2  
2 rows color 1 \*\*  
REPEAT FROM \*\* to \*\* 7 x, 8 x. in all for all sizes.  
Continue in color 1 to row 168 (176) [184].  
ON THE LEFT, decrease 1 st. every 9th (10th) [10th] row 6x.  
After row 228 (242) [256] remove onto contrast waste yarn.



WOMAN'S TWO-PIECE DRESS

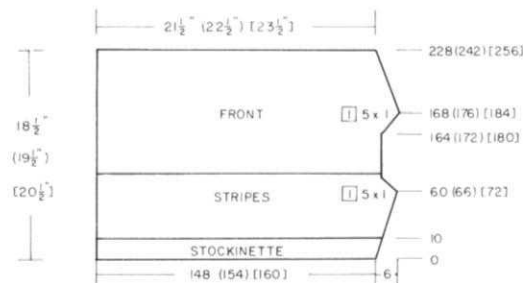
SIZES: 6/8 (10/12) [14/16]  
YARN: Venetia = color 1  
Loop Nylon = color 2  
AMOUNT: 2 lbs. color 1 (all sizes)  
8 oz. color 2 (all sizes)  
TENSION: 5 or 6 for Stockinette  
5 or 6 for Tuck  
GAUGE: 14 sts. 25 rows = 2" Stock.  
12 sts. 30 rows = 2" Tuck

Knitted sideways on the machine.  
The Skirt is in Tuck and Stripe Pattern. MADE ON THE 910 Electronic machine. The Top is Stockinette stitch with stripes. USE COLOR CHANGER.

FINISHING: See General Instructions.  
Work single crochet around neck and 1 row REVERSE single crochet.  
Work single crochet around lower edge of Skirt.

TOP FRONT:

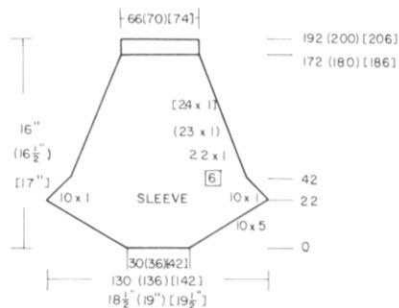
Work the front the same as the back BUT THE SHOULDER AND NECK SHAPING WILL BE ON THE RIGHT SIDE instead of the left.  
FOR THE NECK SHAPING, after Row 60 (66) [72] ON THE RIGHT, decrease 1 st. EVERY ROW 5x.  
After Row 164 (172) [180] increase 1 st. every row 5x after row 168 (176) [184]. SHAPE SHOULDER SAME AS THE BACK.



**SLEEVES:**

Close shoulders first.  
 Bring 130 (136) [142] needles into working position then hang 65 (68) [71] sts. from back and then front arm edge with purl side facing you. Work from shoulder down to pick up the sts.  
**WORK SHORT ROWS:**  
 Put 50 needles on the left into holding position, knit across. (Be sure to always wrap inside needle in holding position when working short rows).  
 Put 50 needles on the RIGHT into holding position, knit across.

ON OPPOSITE SIDE OF SLIDE, bring back into working position 5 needles 10x ON EACH SIDE. ON EACH SIDE, DECREASE 1 st. every 2nd row 10x.  
 After Row 42, ON EACH SIDE, decrease 1 st. every 6th row 22x (23x) [24x].  
 After Row 172 (180) [186], bring every other needle into holding position, push in BOTH PART Buttons and knit 1 row. Release part buttons. Knit to Row 192 (200) [206]. Pick up each loop made by every other needle row and hang on corresponding needle then bind off LOOSELY.



# 349



**WOMAN'S LACE DRESS**

**SIZES:** 10/12 (14/16) [18/20]  
**YARN:** Fine Nylon Boucle  
**AMOUNT** 1 Cone will make all sizes.  
**TENSION**  
 Stockinette - 1.2  
 Lace - 2.2  
**GAUGE:**  
 Stock: 17 sts. 24 rows = 2"  
 Lace: 13 sts. 20 rows = 2"

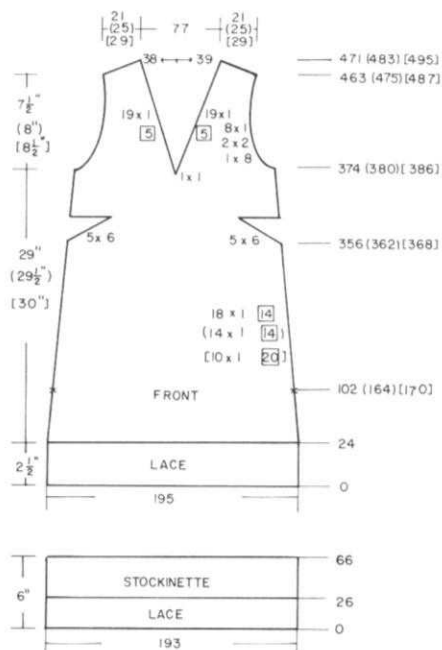
Stockinette stitch with Lace Borders.  
 Punch Card.  
 Finished length - 43" (44") [45"]

**FINISHING:** See General Instructions.

**FRONT:**

Make Lace Border overhang FIRST. With contrast waste yarn, cast on 193 sts. After knitting 11 rows, knit 1 row Ravel cord from left to right. With garment yarn 'e' cast on. Tension 2.2. Counter at 0. Knit 4 rows Stockinette stitch THEN BEGIN LACE PATTERN. Knit in Lace pattern to Row 26. Make 1 more row of Eyelets across, change to Stockinette stitch Tension 1.2 and knit to Row 66. Knit 1 row with Ravel Cord then remove the sts. onto contrast waste yarn and put aside for now.

For the actual front section, cast on 195 sts. in the same manner as you did for BORDER and work the Lace Card with tension 2.2 to Row 24. With purl side facing you, hang the border sts. held on waste yarn onto these needles. (There will be doubled sts. on all but the two end needles.) Knit 2 rows then make 1 row of eyelets across. Stop Card, change to tension 1.2 and continue in Stockinette st. After Row 102 (164) [170], ON EACH SIDE, decrease 1 st. every 14th row 18x (14x) [every 20th row 10x]. After Row 956 (362) [368], MAKE BUST DARTS. ON OPPOSITE SIDE OF SLIDE, PUT INTO HOLDING POSITION 6 sts. 5x ON EACH SIDE. (The darts do not count so put Counter back to Row 356 (362) [368]. ON OPPOSITE SIDE OF SLIDE, Bring all needles back into working position before knitting the next 2 rows. Knit to Row 374 (380) [386]. Divide in the center, Put the needles on the left into holding position and complete the right side first.



\*SHAPE ARMHOLE AND NECK AT THE SAME TIME.

FOR ARMHOLE, ON EACH SIDE bind off 8 sts. 1x, 2 sts. 2x, 1 st. 8x AND AT THE SAME TIME, ON NECK SIDE decrease 1 st. 1x then 1 st. every 5th row 19x.  
 After Row 463 (475) [487] work SHORT ROWS FOR SHOULDER.  
 Put into holding position 6 sts. 1x, 3 sts. 5x. (7 sts. 1x, 6 sts. 3x) [8 sts. 1x, 7 sts. 3x].  
 Bring all the needles into working position, knit 1 row then bind off or you can remove the sts. onto contrast waste yarn.  
 Bring the needles on the left into working position, knit 1 row to the left side, turn the Row Counter back to 374 (380) [386] and complete the left half, following the instructions from \*.



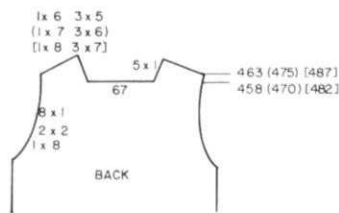
**BACK:**

Work the back the same as the front to Row 374 (380) [386].(Omit Darts)  
ON EACH SIDE SHAPE ARMHOLE SAME AS THE FRONT then knit to Row 458 (470) [482].

Bind off the center 67 sts., put the needles on the left into holding position and complete the right side first.

\*ON NECK SIDE, bind off 1 st. 5x and AT THE SAME TIME, after Row 463 (475) [287] SHAPE SHOULDER SAME AS THE FRONT.

Bring the needles on the left into working position, knit 1 row to the left side, turn the Row Counter back to 458 (470) [482] and complete the left half. Follow the instructions from \*.



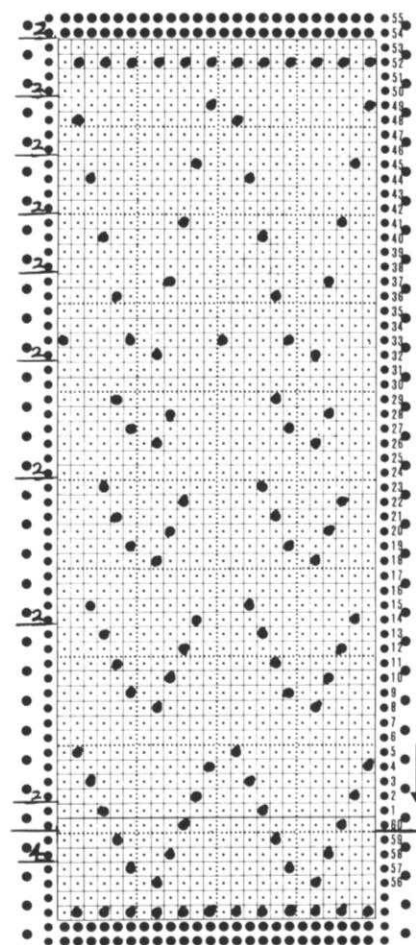
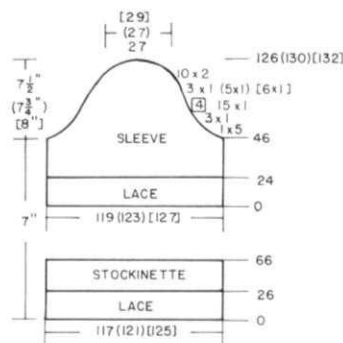
**SLEEVES:**

Make Lace Borders FIRST. Tension 2.2 Cast on 117 (121) [125] sts. and work same as for Lace Border for front and back. Remove onto waste yarn after Row 66.

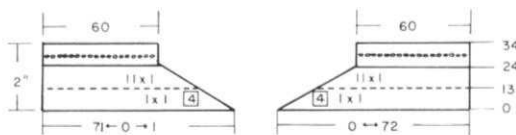
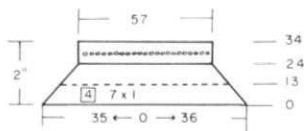
SLEEVE: Cast on 119 (123) [127] sts. and work lace to Row 24 same as for front and back then hang the border in the same way.

Knit 2 rows then make 1 row of eyelets across. Stop Card, change to tension 1.2 and continue in Stockinette st. After Row 46, SHAPE CAP: ON EACH SIDE bind off

5 sts. 1x, 1 st. 3x, 1 st. every 4th row 15x then 1 st. every 2nd row 3x (5x) [6x] then bind off 2 sts. 10x.



**COLLAR**

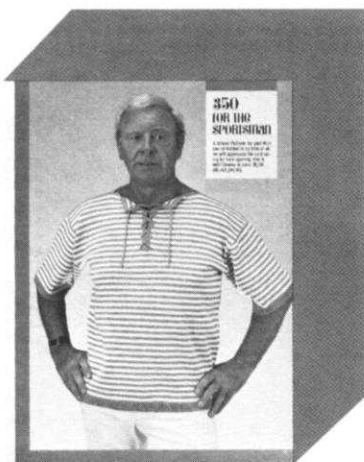


**BACK COLLAR SECTION:**

Cast on 71 sts. 35 to left of 0 and 36 to the right of 0. Work in Lace Pattern same as you did before but ON EACH SIDE, decrease 1 st. every 4th row 7x AND AT THE SAME TIME after row 13, with Slide on the LEFT, hang the BACK NECK with purl side facing you onto these needles. Knit 1 row to the right and continue in Lace Pattern. After Row 24, knit 5 rows then make picot across by hanging every 2nd st. to neighboring needles. Knit 5 rows (for facing). Bind off loosely. Fold facing to inside and sew loosely in place.

**RIGHT FRONT COLLAR:**

Cast on 72 sts. to the right of 0. Work Lace Pattern same as before BUT ON THE LEFT EDGE, decrease 1 st. on 4th row 1x, then every 2nd row 11x and AT THE SAME TIME after Row 13, with Slide on the LEFT, hang the RIGHT FRONT NECK EDGE with purl side facing you onto these needles. Knit 1 row to the right and continue in Lace Pattern. After Row 24, knit 5 rows then make picot across the same as you did for back collar. Knit 5 rows and bind off loosely. Fold facing to inside and sew loosely in place. REPEAT THE INSTRUCTIONS FOR LEFT FRONT COLLAR but the shaping will be on the RIGHT side.



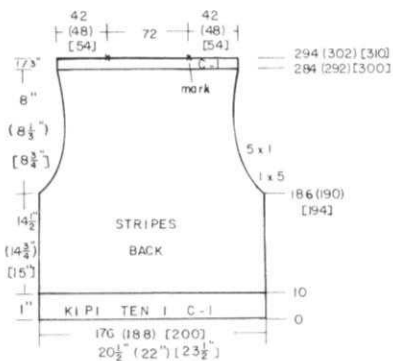
# 350

## MAN'S STRIPED TOP

SIZES: 36/38 (40/42) [44/46]  
 YARN: Venetia  
 GRAMS:  
 color 1 250 250 300  
 color 2 200 200 250  
 TENSION: 4  
 GAUGE: 17 sts. 24 rows = 2" (5 cm)

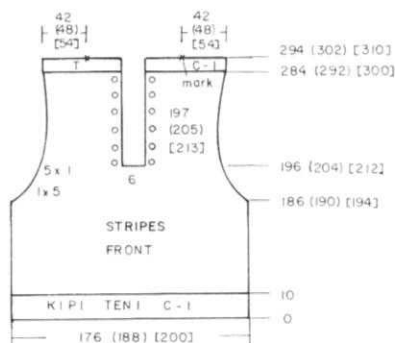
Stockinette stitch with color stripes. Bands are K1, P1 Ribbing.

FINISHING: See General Instructions. Make Cord for front neck. Cast on 4 sts. Set machine for knitting a cord and with Tension 3, knit 700 rows. Bind off. Pull cord through eyelets (see Picture). Sew up shoulders to marked sts.



### BACK:

Cast on 176 (188) [200] sts. with color 1 and with tension 1 on both beds, work 10 rows K1, P1 Ribbing. Transfer the ribber sts. to main machine and continue in color stripes of 4 rows color 2, 4 rows color 1.  
 After Row 186 (190) [194], SHAPE ARMHOLE: ON EACH SIDE, bind off 5 sts. 1x, 1 st. 5x.  
 Knit to Row 284 (292) [300]. Turn Tension down 1 number then with color 1, work 10 rows color 1. Hang hem, picking up first row of color 1. Tie a strand of yarn ON EACH SIDE onto stitch 42 (48) [54] to mark for weaving shoulders together. Bind off loosely.

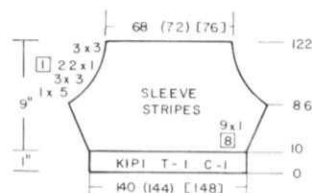


### FRONT:

Work the front the same as the back to Row 186 (190) [194]. SHAPE ARMHOLE same as the back and after Row 196 (204) [212] remove the center 6 sts. onto contrast waste yarn. Put the needles on the left into holding position and complete the right side first.  
 \*After Row 197 (205) [213], make eyelet for cord by transferring the 3rd st. to the 4th needle at neck edge. Leave empty needle in work. REPEAT THE EYELET every 17th row 5 x more. (6 eyelets).  
 After Row 284 (292) [300], tighten tension same as you did for back and with color 1, knit 10 rows. Hang hem same as for back and mark needle 42 (48) [54] for shoulder. Bind off loosely. Bring the needles on the left into working position, turn Row Counter back to 186 (190) [194] and complete left half.

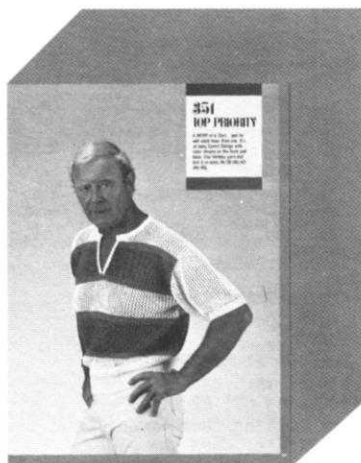
### SLEEVES:

Cast on 140 (144) [148] sts. with color 1 and work 10 rows K1, P1 Ribbing same as for front and back.  
 Transfer the ribber sts. and continue in color stripes of 4 rows color 2, 4 rows color 1. ON EACH SIDE, increase 1 st. every 8th row 9x.  
 After Row 86, SHAPE CAP:  
 ON EACH SIDE, bind off 5 sts. 1x, 3 sts. 3x, 1 st. EVERY ROW 22x then bind off 3 sts. 3x.  
 After Row 122, bind off the remaining sts.



### FRONT NECK BANDS. Make 2.

Bring 50 needles into working position. With wrong side facing you, hang 1 edge of neck opening onto these needles, including the front neckband. With tension 3 and color 1, knit 12 rows. Hang hem and bind off.



## MAN'S EYELET PULLOVER

SIZES: 36/38 (40/42) [44/46]

YARN: Venetia

GRAMS:

color 1	200	250	250
color 2	100	100	100
color 3	50	50	50

TENSION: 8

GAUGE: 12 sts. 18 rows = 2" (5 cm)

An Eylet Design with color stripes.  
Punch Card. Bands are K1, P1 Ribbing.

FINISHING: See General Instructions.

The color stripes for the different sizes are not the same - so follow the color stripes for YOUR SIZE.

SIZE 36/38

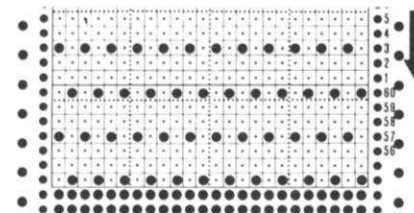
\*32 rows color 1  
8 rows color 3  
34 rows color 2  
8 rows color 3  
REPEAT FROM \*

SIZE 40/42

\*34 rows color 1  
8 rows color 3  
34 rows color 2  
8 rows color 3  
REPEAT FROM \*

SIZE 44/46

\*36 rows color 1  
8 rows color 3  
34 rows color 2  
8 rows color 3  
REPEAT FROM \*



## BACK:

Cast on 124 (134) [144] sts. with color 1 and with Tension 2, work 24 rows K1, P1 Ribbing.

Transfer the ribber sts. to main machine and continue in Eyelet pattern with color stripes as given for your size. Garment Tension.

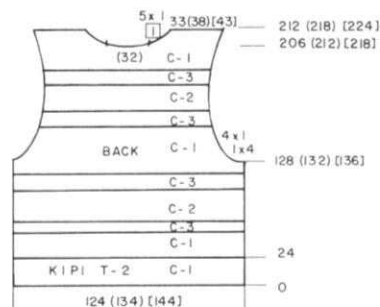
After Row 128 (132) [136] SHAPE ARMHOLE: ON EACH SIDE, bind off 4 sts. 1x, 1 st. 4x.

After Row 206 (212) [218] bind off (or remove onto waste yarn) the center 32 sts. for neck.

Put the needles on the left into holding position (knit them back to A position with piece of ravel cord). Mark row on punch card.

\*ON NECK SIDE, bind off 1 st. EVERY ROW 5x. After Row 212 (218) [224], remove the shoulder sts. onto contrast waste yarn.

Bring the needles on the left into working position, Counter at 206 (212) [218] and complete the left half. Follow the instructions from \*.



## FRONT:

Work the front the same as the back to Row 146 (150) [154].

Bind off or remove onto waste yarn the center 6 sts., put the needles on the left into holding position same as you did for back and complete the right side first. Mark Card.

\*Knit to Row 191 (195) [199].

ON NECK SIDE, bind off 6 sts. 1x, then 1 st. EVERY ROW 12x. After Row 212 (218) [224] remove the remaining sts. onto contrast waste yarn.

Bring the needles on the left into working position and complete the left half. Follow the instructions from \* (be sure to put Counter to 146 (150) [154] first.

## SLEEVES:

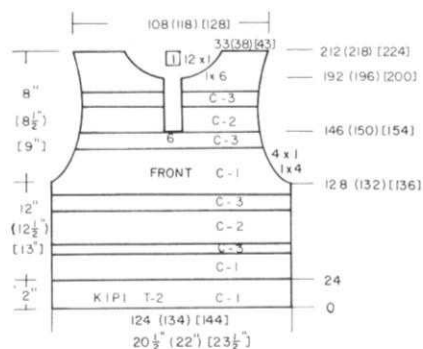
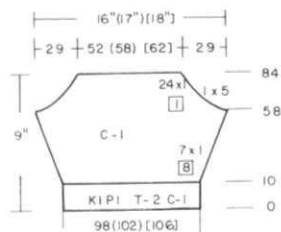
Cast on 98 (102) [106] sts. with color 1 and with tension 2, work 10 rows K1, P1 Ribbing.

Transfer the ribber sts. same as you did before and continue with eyelet pattern with color 1. Omit the color stripes and use garment tension.

ON EACH SIDE, increase 1 st. every 8th row 7x.

After Row 58, SHAPE CAP: ON EACH SIDE, bind off 5 sts. 1x then ON EACH SIDE, decrease 1 st. EVERY ROW 24x.

After Row 84, remove the remaining sts. onto contrast waste yarn.

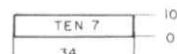


## NECKBAND:

Close the shoulders first. Pull out 100 needles and hang the neckline sts. with wrong side facing you onto these needles. With color 1, and using tension 7, knit 10 rows Stockinette stitch. Make hem and bind off the double sts. loosely.

## FRONT NECK BANDS.

Pull out 34 needles to working position and hang the front neck opening (including neckband) onto these needles. With color 1 and tension 7, work 10 rows Stockinette stitch. Hang hem and bind off the double sts. loosely. REPEAT for other edge.





# 352

## WOMAN'S DRESS

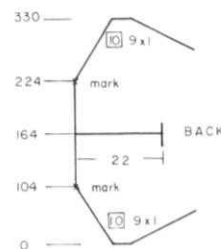
SIZE: 18/20  
 YARN: Venetia = color 1  
 Capriccio = colors 2, 3, 4.  
 GRAMS:  
 color 1 500  
 colors 2, 3, 4 = 2 grams each  
 TENSION: 7 to 8  
 GAUGE: Card No. 1 = 14 sts. 20 rows  
 2" (5 cm)  
 Card No. 2 = 8 sts. 36 rows  
 2" (5 cm)

Punch 2 Cards for Tuck stitch Patterns. The purl side of dress is the right side with the Insert on the KNIT side.

FINISHING: Sew sides and shoulders. Pin then sew in inserts for front and back.  
 CROCHET as follows: On right side with double strand of yarn (color 1) work 1 row single crochet then 1 row reverse single crochet around lower edge of dress and around sleeve openings. With wrong side facing you, and using double yarn, work 1 row single crochet around neckline. With right side facing you, and with color 4 (single strand) work 1 row \*single crochet, chain 1\* and REPEAT from \* across. REPEAT ROW 2 using color 2. ROW 4 - With right side facing you, Use 2 strands of color 1 and working LOOSELY, \*single crochet into FIRST ROW, making a large stitch then chain 1, skip next stitch and REPEAT FROM \* across. For neck opening down back, work 1 row single crochet with single strand of color 1, make loop for button on left back and sew on button on other side.

### BACK & FRONT THE SAME

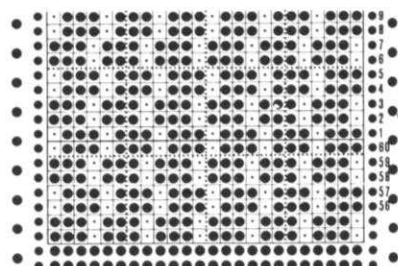
With contrast waste yarn, cast on 166 sts. After knitting 9 to 11 rows, knit 1 row left to right with ravel cord.  
 Change to color 1, Set in Card No. 1. Knit 1 row right to left over all needles. Set KC, knit 1 row left to right, Card on GO, push in BOTH TUCK BUTTONS.  
 WORK SHORT ROWS. Set Holding Cam Lever. ON THE LEFT, bring into holding position, 53 needles, knit across (wrap inside needle to prevent hole). Bring 53 needles on right into holding position, knit across (and wrap inside needle in holding for all short row knitting)  
 ON OPPOSITE SIDE OF SLIDE, bring back into working position, 15 sts. 3x, 8 sts. 1x ON EACH SIDE. When short rows are completed and all needles are back in working position, put COUNTER AT 0. Continue in Pattern.  
 After Row 220, divide in the center, put the needles on the left into holding position and complete the right side first. (Mark Card Row).  
 \*ON NECK SIDE, decrease 1 st. every 10th row 22x.  
 After Row 350, mark side edge with bit of waste yarn for sleeve opening.  
 After Row 435, WORK SHORT ROWS for SHOULDER SHAPING. Put into holding position 11 sts. 1x, 10 sts. 5x. Bring all the needles into work and knit 1 row over all needles and bind off loosely or you can remove the sts. onto waste yarn. Bring the needles on the left into working position and complete the left half. Follow the instructions from \*. Put Counter at 220 and set Pattern at the correct row.



### BACK INSERT

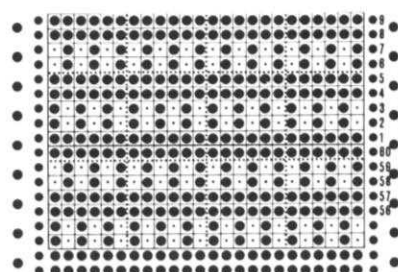
Work the back the same as the front with the exception of NECK SHAPING.  
 Mark Row 104 at neck edge with bit of yarn and after Row 164, bind off 22 sts. for neck opening then immediately cast on 22 sts. -(OR you can knit these 22 sts. BY HAND with waste yarn for 6 rows and continue knitting then remove the waste knitting when crocheting the opening later).  
 After Row 224, mark neck edge as before then SHAPE SHOULDER same as the front.

### Card No. 1



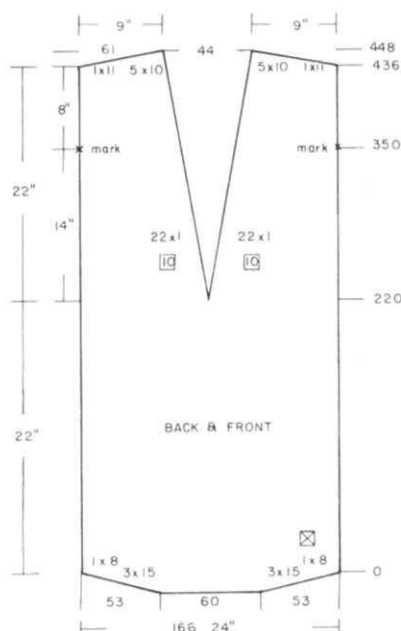
Punch Card through Row 41 then punch 2 rows of holes for connecting card. Use Color 1 only.

### Card No. 2



REPEAT PUNCH CARD THROUGH ROW 41 THEN PUNCH 2 ROWS OF HOLES FOR CONNECTING CARD.

\* 2 rows color 1  
 2 rows color 2  
 REPEAT FROM \* 5X MORE  
 2 rows color 1  
 2 rows color 3  
 REPEAT 3x MORE  
 2 rows color 1  
 2 rows color 4  
 REPEAT 3x MORE \*\*  
 REPEAT FROM \* to \*\*.



FRONT INSERT- USE COLOR CHANGER

With contrast waste yarn, cast on 86 sts. Knit at least 2 inches of waste yarn, then 1 row with Ravel Cord.

Put colors 2, 3 and 4 into Color Changer Guides and Punch Card No. 2 in machine.

Make CROCHET CAST ON FROM LEFT TO RIGHT (See your Instruction Manual) Put color 1 in Color Changer Feeder.

Set KC, Knit 1 row right to left. Bring Slide all the way to left beyond Color Changer and then put color 1 in Feeder 1 of Color Changer.

Change to color 2 and push in BOTH TUCK BUTTONS.

Work SHORT ROWS.

Bring 82 needles on the right into holding position. Set holding Cam Lever. For color changing

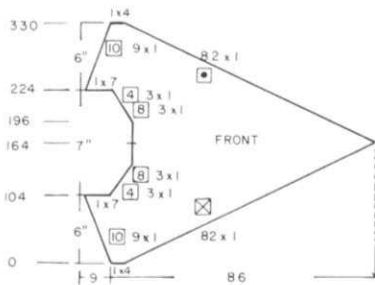
follow instructions alongside Punch Card - but BEGIN with\*2 rows color 1, 2 rows color 2 and REPEAT from \* 1x BUT AT THE SAME TIME Bring back 1 needle to working position every 2 rows 82x, AND AT THE SAME TIME SHAPE SHOULDER, increase 1 st. every 10th row 9x.

After Row 104, Bind off 7 sts. then on NECK SIDE, decrease 1 st. every 4th row 3x, every 8th row 3x. Mark Row 164 for center front. BEGIN THE SHORT ROW DECREASES ON THE RIGHT SIDE.

Put 1 needle into holding position 82x BUT AT THE SAME TIME after Row 196, SHAPE NECK. INCREASE 1 st. every 8th row 3x, then 1 st. every 4th row 3x.

After Row 224, cast on 7 sts. SHAPE SHOULDER, DECREASE 1 st. every 10th row 9x.

After Row 330, bind off the remaining 4 sts.



353

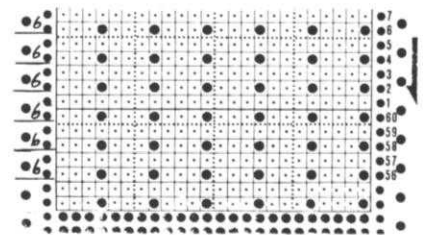


Bring the 2 needles to HOLDING position. Start on the left needle (leave about 4" hanging down) and wrap with long right ends OVER the two held needles then under and over 7x in all. By hand, with right end of yarn knit the 1 stitch 2x from inside to outside by hand, pulling the end of yarn through the whole stitch the 2nd time to lock the stitch. REPEAT for the left side. Remove from machine and pull tight on each end to form the puff. Pull loose ends to the wrong side, secure ends and cut off. Make puffs along the eyelets as shown in picture on jacket and sleeves.

When garment is completed, work 2 rows single crochet down fronts and around neckline with first row from the WRONG side. Work PUFF STITCH as follows from the WRONG side. Yarn over hook, go into first stitch and pull up loop approximately 1/2" long. \*Yarn over, go into same stitch and pull up loop. REPEAT from \* 2 times more (4x in all). Yarn over and pull through all stitches on hook, chain 1 tightly to close puff. Single crochet into next stitch.\*\* Yarn over, go into next stitch, pull up loop and REPEAT from \* to \*\*.

BACK:

Cast on 112 (124) [136] sts. and work 30 rows K1, P1 Ribbing. Transfer the ribber sts. to main machine and continue in Stockinette stitch to row 118 (122) [126]. SHAPE SLEEVE: ON EACH SIDE, cast on 3 sts. 2x, 4 sts. 1x, 5 sts. 1x. Knit to Row 194 (202) [210]. SHAPE SHOULDER: Bind off ON EACH SIDE, 17 sts. 1x, 16 sts. 2x. (18 sts. 3x) [21 sts. 1x, 19 sts. 2x]. Bind off the remaining sts.



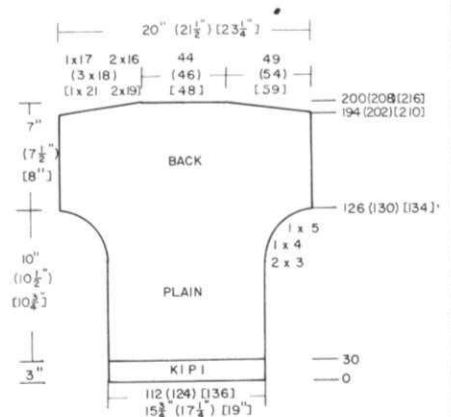
WOMAN'S EYELET WITH PUFF TRIM JACKET

SIZES: 6/8 (10/12) [14/16]  
YARN: Amore  
GRAMS: 250 250 300  
TENSION: 7  
GAUGE: 14 sts. 19 rows = 2" (5 cm)

An Eyelet Design with Puff trim. Punch Card. Waist Band K1, P1 Ribbing. Crochet around edges.

FINISHING: See General Instructions. PUFF TRIM: Made on the right (knit side) of garment along row of eyelets. (See Picture).

Bring out 6 needles, then push back to out of work position, the center 4 needles. Hang a cross thread of garment BETWEEN two eyelets on EACH SIDE. Cut a 30" strand of yarn and fold in half to make 15".

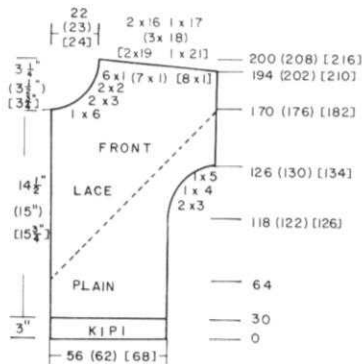


Continued

FRONT: Make 1, reverse 1.

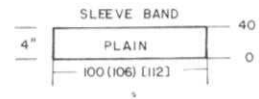
For the RIGHT FRONT, cast on using needles from 0 to 20 on the LEFT and needles from 0 to 36 (42) [48] on the RIGHT. 56 (62) [68] sts. Work 30 rows K1, P1 Ribbing. Transfer the ribber sts. same as for back and continue in Stockinette stitch to Row 64. The pattern is worked on the diagonal so begin with 1 hole on the LEFT (right for 2nd section) and increase 1 more hole after knitting the 6 rows between each set of holes as shown on the Punch Card. AT THE SAME TIME, after Row 118 (122) [126], SHAPE SLEEVE on the RIGHT (left) same as the back. After Row 169 (175) [181], SHAPE NECK on the LEFT (right). Bind off 6 sts. 1x, 3 sts. 2x, 2 sts. 2x, 1 st. 6x (7x) [8x]. After Row 194 (202) [210], SHAPE SHOULDER same as the back.

Work the LEFT front in the same way using needles from 0 to 37 (43) [49] on the LEFT and needles from 0 to 19 on the RIGHT. The eyelet design will begin on the RIGHT.



20-0-36(42) [48]

[49](43) 37-0-19



SLEEVE BANDS: Sew shoulders first.

Bring 106 needles into working position then hang sleeve edge with right side facing you onto these needles. Knit 40 rows Stockinette stitch. Bind off. Sew band in place (see Picture).

# IT'S READY NOW...

The new **KNITTING YARN CATALOGUE** with actual samples of all the gorgeous imported yarns we use for patterns in **KNITTING MAGAZINE**.

The colors are all new for 1984 and prepared for **KNITTING** by one of Europe's foremost yarn spinners.

For catalogue and price list send \$3.00 to:

**KNITTING**—1128 Crenshaw Blvd.,  
Los Angeles,  
California 90019

yarns by  
**KNITTING**

KNITTING • 1128 Crenshaw Blvd., Los Angeles, California 90019



## MEN'S AND WOMEN'S TRAVEL SHOE BAGS

YARN: Amore

GRAMS:  
 color 1 50  
 color 2 50  
 color 3 50  
 color 4 50

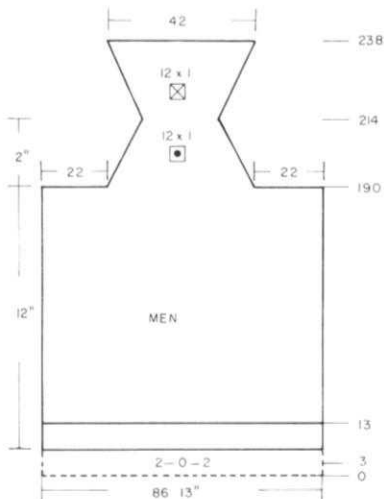
TENSION: 5

GAUGE: 13 sts. 30 rows = 2" (5 cm)  
 in Pattern.

You can make 2 pair by changing the main color 1 to another color for the 2nd pair.

A Tuck Stitch Pattern with color changes as shown on the Punch Card. Punch card and mark the numbers as shown for changing color. USE COLOR CHANGER.

FINISHING: Close back seam being careful to leave a channel for cord to go through at hem seam. Match pattern as you either slip stitch crochet the seam or use KNITTING LINKER. Make 2 cords over 3 needles with tension 2 for 260 rows for for Women and 270 rows for Men. Give final pressing gently but be sure to place a folded piece of fabric or piece of cardboard inside while pressing the seam so that the seam line does not show on the fronts. Pull cord through 1 eyelet and out the other.



Directions given are for Women's size with Men's in ( ). Put all colors into Color Changer. Hang the cast on comb. Use Card No. 1 for Women, No. 2 for Men. Insert proper card into machine and roll to LINE 7 for Card No. 1 and LINE 5 for Card No. 2. Card on STOP.

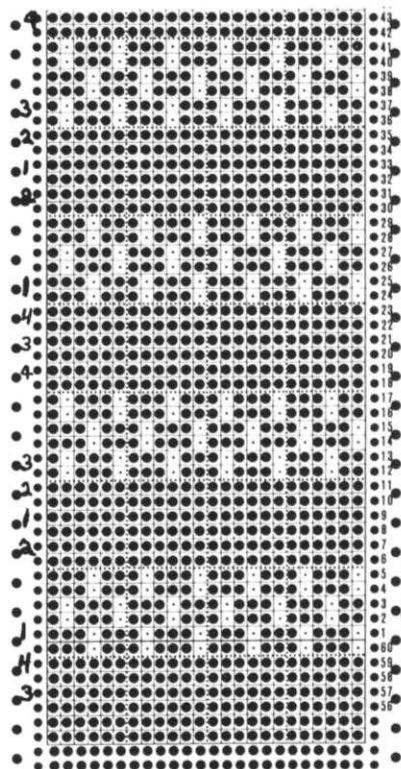
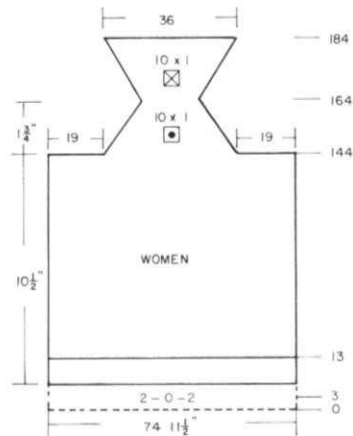
Bring 74 (86) sts. into working position.. Move Slide across to the LEFT to pick up color 1 - do NOT knit yet. Starting on the left, bring the 2nd and every other needle to holding position. Knit across to the RIGHT but do not drop comb as yet. Bring the 1st and every 2nd (counting from the left) needles into holding position, Knit back to the left side. NOW DROP COMB and RELEASE PART BUTTONS. Put Counter at 0. Knit 3 rows. Make 2 eyelets by transferring the 2nd st. ON EACH SIDE OF 0 to the 3rd needle. Leave empty needles in work. Knit Stockinette stitch to Row 13. Slide is on the right. Bring the 1st and every other needle counting from the left into D (or selecting position). Lift cast on comb (you can hang weights on back of knitting to make it easier for you) and hang the hem onto these needles, then carefully bring all remaining needles through, as well, before removing the comb so that you are actually hanging a hem onto EVERY NEEDLE. Remove the comb. BRING ALL NEEDLES TO HOLDING. SET KC - leave Card on Stop - Line 7 for Card No. 1 - Line 5 for Card No. 2. Knit 1 row to the LEFT, Put Card on GO, push in BOTH TUCK BUTTONS, CHANGE COLOR as shown on Card and knit in Pattern to Row 144 (190). STOP PATTERN.

You will now continue in Stockinette stitch so you can remove the Color Changer Feeder from Slide. and continue with color 1 in regular Feeder.

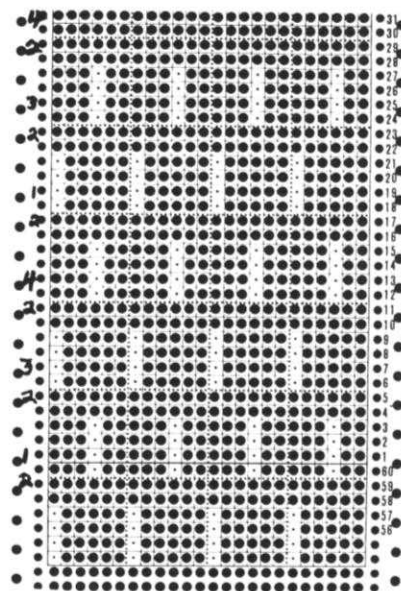
ON EACH SIDE, remove 19 (22) sts. onto contrast waste yarn. WORK SHORT ROWS.

ON EACH SIDE, put into holding position 1 st. 10x (12x)  
 ON EACH SIDE bring back 1 st. 10x (12x).

Fold the 19 (22) sts. held on waste yarn from EACH SIDE and hang the sts. onto the 36 (42) sts. on the machine. You must hang 2 sts. onto needle 1 on each side of 0 (the extra stitch makes it easy to close the seam later.) Be sure you pick up every stitch then remove the waste yarn. If there seems to be a hole at the corners, pick up a thread so as to close it. Now bind off the DOUBLE stitches together.



PATTERN CARD NO. 1



PATTERN CARD NO. 2



# 355

## BABY BUNTING

SIZES: Infant to 6 Months

YARN: Amore

GRAMS:

color 1 350 - Blue

color 2 50 - Green

color 3 100 - Red

color 4 50 - White

TENSION: 6

GAUGE: 15 sts. 22 rows = 2" (5 cm)

Approximately 1 yard 45" percale

type fabric for lining

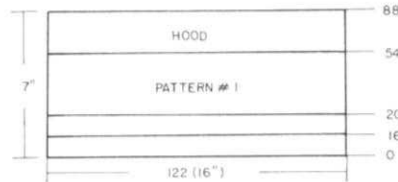
1 - 16" Zipper

A Norwegian Design plus Stockinette stitch. 2 cards must be punch and they are for use with Color Changer. Be sure to reverse the punching if you do not own a Color Changer.

FINISHING: Press sections gently. Make paper pattern for lining before putting together.

With right side of back facing you, hang the open sts. of shoulder sleeve onto machine then with wrong side facing you hang open sts. of front onto same needles. Remove waste knitting carefully and bring all needles to holding position. Knit 1 row with TENSION 10 - holding yarn loosely then bind off the crochet method, pulling one stitch through previous stitch. REPEAT for other side. Bring 61 needles into work, then with right side of Hood hang HALF the sts. onto these needles, fold over and hang other half onto same needles then bind off the crochet method same as above.

Work 1 row single crochet down fronts with blue on the right side then work 2 rows single crochet with red - first the wrong side then right side. Sew up sides and sleeve seams. Put lower edges together, easing in the fronts to fit back so that the crochet edges just meet. Pin then sew in Zipper and close the lower portion to edge of zipper. Pin center back of hood to center back of neckline then bring front of hood to front neck edge and pin. Sew hood in place. Sew lining then slide into Bunting and sew edges to cover edge of zipper tape, folding edge of lining in. Sew hood lining in place. Work 3 or 4 rows single crochet around sleeve edges with blue and red then fold and sew sleeve lining to edge of crochet.



### HOOD - MAKE HOOD FIRST.

SET UP COLOR CHANGER AND PUT CARD NO. 1 in MACHINE. Leave on STOP.

Cast on 122 sts. with color 1 and work 16 rows Stockinette stitch then hang the hem.

After Row 19 - Slide on the RIGHT, move color 1 from A to B Feeder. Set KC and push in MC button and BRING ALL NEEDLES TO 'E' (holding) position.

Knit across to the LEFT side.

Be sure to pass the left end of color changer THEN push in color 2 button and put CARD ON GO.

Work Card No. 1 to Row 54.

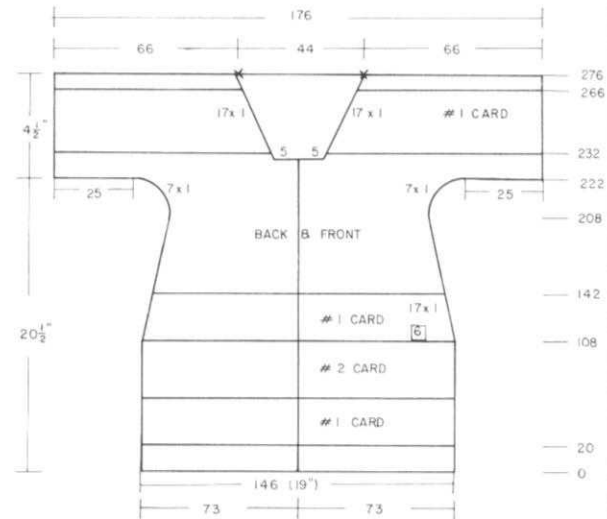
BE SURE TO PUSH RELEASE BUTTON ON COLOR CHANGER when you see a DOT on Card - all needles will be set in 'D' (selecting) position and you will knit with color 1 only - the other color MUST BE RELEASED.

Knit 1 row with color 1 to the right side.

Move color 1 back to Feeder A and STOP CARD, RELEASE KC and MC. Knit 1 row to the LEFT then push in color 1 Button of color changer.

Continue in Stockinette stitch to Row 88.

Remove the sts. onto contrast waste yarn.



### BACK

Please make the Hood first so that you understand the changing from Stockinette stitch to Pattern and back to Stockinette stitch.

We will NOT repeat the procedure here.

Clip Card No. 1 and No. 2 together then connect cards to revolve.

Cast on 146 sts. using NEEDLES 61 on the LEFT and 85 on the RIGHT.

(A total of 6 Patterns plus 2 sts.)

Knit 20 rows Stockinette stitch

(Set Card after Row 19 from right to left).

Work Card No. 1, then 2 then 1 again, making sure you follow the markings on the left side of cards for changing colors.

AT THE SAME TIME, after Row 108, ON EACH SIDE, decrease 1 st. every 6th row 17x, stopping card after Row 109.

Continue in Stockinette stitch with color 1 and continuing the decreases on each side.

After Row 208, ON EACH SIDE, increase 1 st. every 2nd row 7x on each side.

After Row 222, ON EACH SIDE, cast on 25 sts.

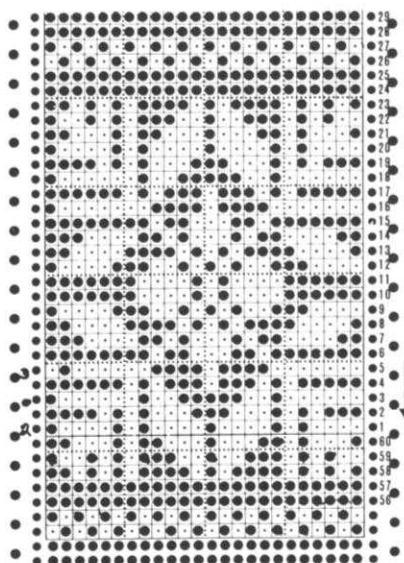
Continue in Stockinette stitch with color 1 to Row 232 (Set Card No. 1 after Row 231).

Stop Pattern after Row 267 same as before and continue in Stockinette stitch with color 1 to Row 276. Remove 66 shoulder/sleeve st. on each side onto one color waste yarn then remove the 44 sts. for neck onto another color waste yarn.

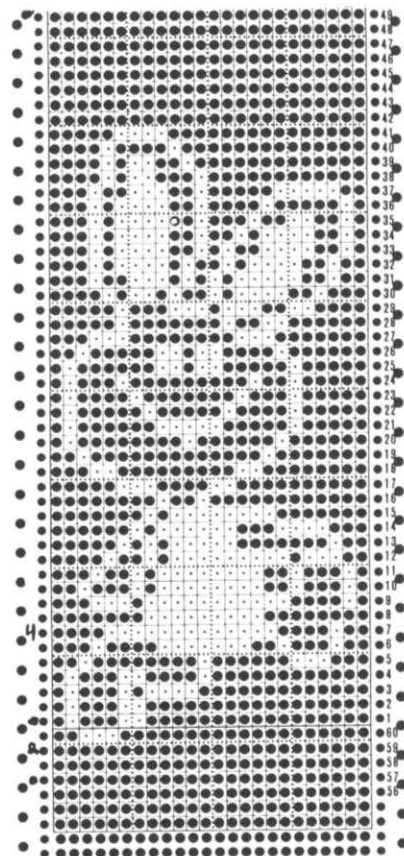


FRONT: Make 1, reverse 1.

RIGHT FRONT: Cast on 73 sts. using needles 12 on the LEFT and 61 on the RIGHT. (A total of 3 patterns plus 1 st.) Work same as the back but make side decreases on the right edge and increase and cast on for sleeve on the right side. After Row 232 (Be sure to set Pattern after Row 231), bind off 5 sts. for neck, then ON NECK SIDE, decrease 1 st. every 2nd row 17x working in Pattern and Stockinette stitch same as the back. After Row 276, remove the sts. onto contrast waste yarn. Make LEFT FRONT WITH REVERSE SHAPINGS, using needles 13 on the LEFT and 60 on the RIGHT.



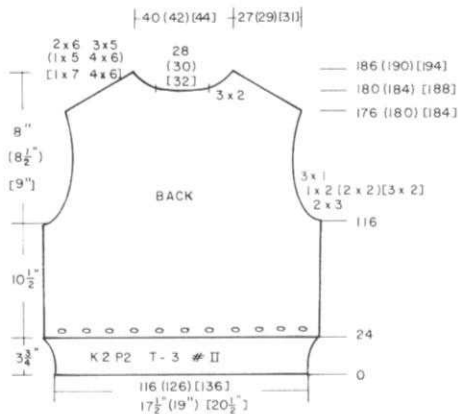
CARD NO. 1



CARD NO. 2

BACK:

Cast on 116 (126) [136] sts. and work 24 rows K2, P2 Ribbing with TENSION 3. Transfer the ribber sts. to main machine and change to garment tension. Continue Stockinette stitch. Knit 2 rows then make eyelets across by transferring every 4th st. to neighboring needle and leave empty needles in work. Knit to Row 176 (180) [184]. SHAPE ARMHOLE: ON EACH SIDE, bind off 3 sts. 2x 2 sts. 1x (2x) [3x] 1 st. 3x. Knit to Row 116. SHAPE SHOULDER and WATCH FOR NECK SHAPING. FOR SHOULDER, ON EACH SIDE bind off 6 sts. 2x., 5 sts. 3x (5 sts. 1x, 6 sts. 4x) [7 sts. 1x, 6 sts. 4x] AT THE SAME TIME, after Row 180 (184) [188] bind off the center 28 (30) [32] sts. put the needles on the left into holding position and complete the right side first. \*ON NECK SIDE, bind off 2 sts. 3x. Bring the needles on the left into working position, knit 1 row to the left side, turn the Row Counter back to 180 (184) [188] and complete the left half. Follow the instructions from \* and don't forget to complete the shoulder shapings.



# 356



## WOMAN'S PULLOVER

SIZES: 6/8 (10/12) [14/16]  
 YARN: Acrylic Boucle  
 AMOUNT: 1 lb. for each size.  
 GAUGE: 13 sts./17 rows = 2" (5 cm).

Stockinette stitch with bands in K2, P2 Ribbing. Worn on the pur1 side.

FINISHING: See General Instructions. Make a cord 60 to 70 inches long and pull through eyelets.

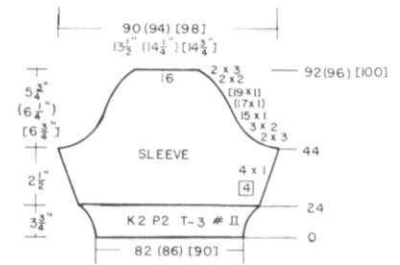
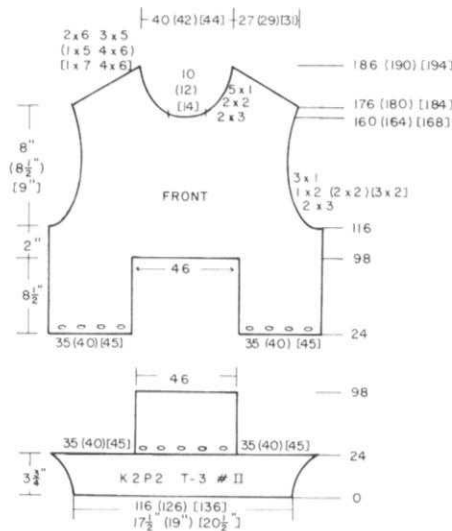
**FRONT:**

Cast on 116 (126) [136] sts. and work 24 rows K2, P2 Ribbing with Tension 3. Transfer the Ribber sts. to main machine. change to garment tension. ON EACH SIDE, remove 35 (40) [45] sts. onto contrast waste yarn. Stockinette stitch. Knit 2 rows, then make eyelets same as you did for back. Knit to Row 98. Remove the sts. from the machine onto contrast waste yarn. With knit side facing, pick up the right side 35 (40) [45] sts. held on waste yarn.

Put Row Counter back to 24. Knit 2 rows garment tension then make eyelets across same as you did before. Knit to Row 98. Knit 6 rows with waste yarn then put these needles into holding position. Knit the other side the same. Pick up the center sts. held on waste yarn then bring the needles on the right side back to working position. Continue knitting over all sts. to Row 116. SHAPE ARMHOLE SAME AS THE BACK. After Row 160 (164) [168], bind off the center 10 (12) [14] sts. for neck. Put the needles on the left into holding position and complete the right side first. \*WATCH FOR SHOULDER SHAPING.

Bring the needles on the left into working position, knit 1 row to the left side, turn the Row Counter back to 160 (164) [168] and complete the left half. Follow the instructions from \*.

**ON NECK SIDE, bind off**  
3 sts. 2x, 2 sts. 2x, 1 st. 5x  
BUT AT THE SAME TIME, after Row 176 (180) [184]. SHAPE SHOULDER same as the back.



**SLEEVES:**

Cast on 82 (86) [90] sts. and work 24 rows K2, P2 Ribbing with Tension 3. Transfer the Ribber sts. to main machine, change to garment tension and continue in Stockinette stitch. ON EACH SIDE, increase 1 st. every 4th row 4x. After Row 44, SHAPE CAP: ON EACH SIDE, bind off 3 sts. 2x, 2 sts. 3x, 1 st. 15x (17x) [19x] then bind off 2 sts. 2x, 3 sts. 2x. After Row 92 (96) [100], bind off the remaining sts.



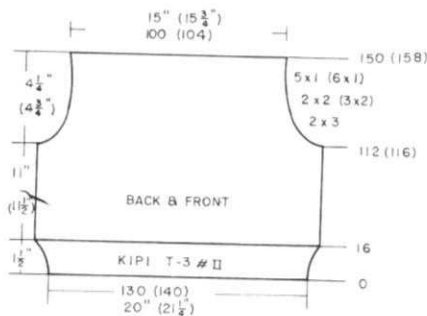
**357**

**WOMAN'S BOAT NECK PULLOVER**

**SIZES:** 6/10 (12/16)  
**YARN:** Acrylic Boucle  
**AMOUNT:** 1 lb. Cone  
**TENSION:** 6 to 7  
**GAUGE:** 13 sts. 17 rows = 2" (5 cm)

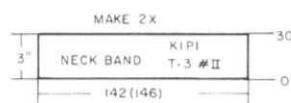
Stockinette stitch with K1, P1 Ribbing for bands.

**FINISHING:** See General Instructions. Purchased belt optional.



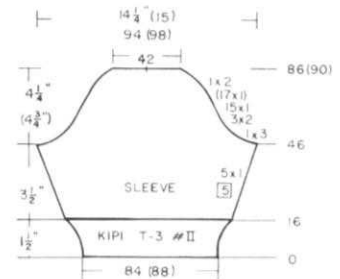
**BACK & FRONT:** Two sections made the same.

Cast on 130 (140) sts. and work 16 rows K1, P1 Ribbing. Ten. 3. Transfer the Ribber sts. to main machine and continue in Stockinette stitch with garment tension. After Row 112 (116), SHAPE ARMHOLE: ON EACH SIDE, bind off 3 sts. 2x then bind off 2 sts. 2x. (3x), 1 st. 5x (6x). After Row 150 (158), remove the sts. onto contrast waste yarn. Make another section the same.



**SLEEVES:**

Cast on 84 (88) sts. and work 16 rows K1, P1 Ribbing with Tension 3. Transfer the ribber sts. same as for back and front and continue in Stockinette stitch with garment tension. ON EACH SIDE, increase 1 st. every 5th row 5x. After Row 46, SHAPE CAP: ON EACH SIDE, bind off 3 sts. 1x, 2 sts. 3x, 1 st. 15x (17x) then bind off 2 sts. 1x. Remove the remaining sts. onto contrast waste yarn.



**NECKBAND:** Make 2.

Cast on 142 (146) sts. and work K1, P1 Ribbing to Row 30 -Ten. 3. Rehang the front sts. held on waste yarn and 1/2 sleeves working from LEFT TO RIGHT. Bind off the doubled sts. Make another neckband and hang other half of sleeves and back and bind off.

SKIRT: Make 1, reverse 1.

TUBE TOP BACK: Make this FIRST.

Cast on 150 (160) [170] sts. and with tension 0 on both beds work K1, P1 Ribbing to Row 130 (134) [138].

Transfer the ribber sts. to main machine, knit 1 row stockinette stitch then remove the sts. onto contrast waste yarn.

TUBE TOP BACK BAND - Make this SECOND.

Hang the Tube Top CAST ON EDGE onto 110 (116) [122] needles. Work Stockinette stitch to Row 24, then bind off LOOSELY.

SKIRT: Make this 3rd.

Bring 140 (148) [156] needles into working position.

Hang the TUBE TOP EDGE HELD ON WASTE YARN onto these needles doubling approximately every 18th st. Remove the waste yarn.

Put counter at 0. Work Stockinette stitch.

ON EACH SIDE, increase 1 st. every 6th row 10x, every 20th row 9x. After Row 250, ON THE RIGHT (left for 2nd section), bind off 5 sts. or remove them onto contrast waste yarn.

ON EACH SIDE, increase 1 st. every 20th row 5x.

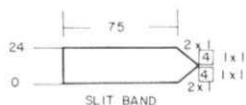
After Row 400 WORK SHORT ROWS. ON OPPOSITE SIDE OF SLIDE, put into holding position 20 sts. 3x ON EACH SIDE.

ON OPPOSITE SIDE OF SLIDE bring back all needles before knitting the next 2 rows. Remove the sts. onto contrast waste yarn.

SKIRT HEM BAND: Make this 4th

Bring 155 (160) [165] needles into working position and with purl side facing you, hang the lower edge of skirt held on waste yarn onto these needles. Work Stockinette stitch.

ON THE RIGHT (left for 2nd section) increase 1 st. every 2nd row 2x then 1 st. every 4th row 1x, then DECREASE 1 st. every 4th row 1x, every 2nd row 2x. After Row 24, bind off LOOSELY.



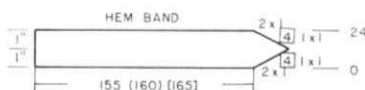
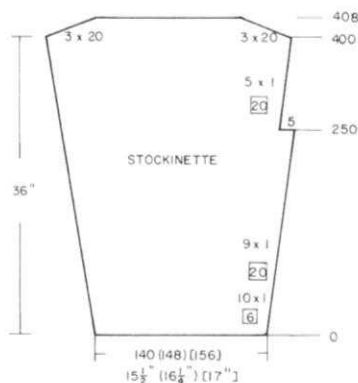
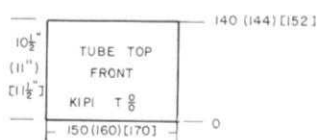
SLIT BAND: Make this 5th.

With purl side facing you, pick up 75 sts. along slit edge. Work Stockinette stitch.

ON THE LEFT (right for 2nd section) increase 1 st. every 2nd row 2x, every 4th row 1x.

DECREASE 1 st. every 4th row 1x every 2nd row 2x. After Row 24, bind off LOOSELY.

When this section of Skirt is completed, make the second section with REVERSE SHAPING AND THE TUBE TOP FRONT IS KNITTED TO ROW 140 (144) [152] - SEE CHART.



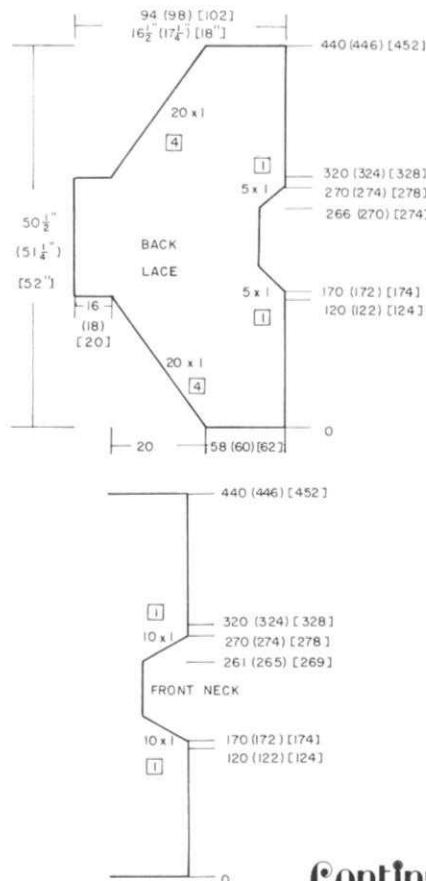
LACE TOP BACK:

Cast on ON THE RIGHT OF 0 Needle 4 to 62 -58 sts. (Needle 2 to 62 -60 sts.) [Needle 1 to 62 -62 sts.] and work in LACE PATTERN. ON THE LEFT, increase 1 st. every 4th row 20x. After Row 120 (122) [124], on the LEFT, cast on 16 (18) [20] sts. After Row 170 (172) [174] ON NECK SIDE, decrease 1 st. EVERY ROW 5x.

After Row 266 (270) [274] INCREASE 1 st. EVERY ROW 5 x. After Row 320 (324) [328], on the LEFT SIDE, bind off 16 (18) [20] sts. then on the left, DECREASE 1 st. every 4th row 20x After Row 440 (446) [452], bind off the remaining sts.

LACE TOP FRONT:

Work the front the same as the back EXCEPT FOR NECK SHAPING. FOR NECK, after Row 170 (172) [174], decrease 1 st. EVERY ROW 10x. After Row 261 (265) [269] INCREASE 1 st. EVERY ROW 10x. The remainder of the front is same as the BACK.



358



WOMAN'S LONG SKIRT WITH ATTACHED TUBE TOP & LACE PULLOVER.

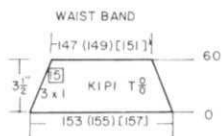
SIZES: 10/12 (14/16) [18/20]  
YARN: VENETIA  
AMOUNT: 2 Cones  
TENSION: Stockinette 5 to 6  
Lace 9  
Ribbing - 0 on both beds  
GAUGE: 18 sts, 22 rows = 2" Stock.  
10 sts, 16 rows = 2" Lace

The Skirt is Stockinette stitch with attached Tube Top in K1, P1 Ribbing. The Dolman sleeved Top is Lace work on the Purl side. Punch Card.

FINISHING: See General Instructions. Fold all facings to the inside and sew in place. Fold bands in half to the wrong side and sew in place.

WAISTBAND: Make 2.

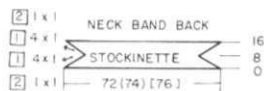
Cast on 153 (155) [157] sts. and work K1, P1 Ribbing. ON EACH side, decrease 1 st. every 15th row 3x. After Row 60, transfer the ribber sts. to main machine and with knit side of garment facing you hang waist edge of garment onto machine and bind off loosely. REPEAT for other section.



BACK NECK BAND:

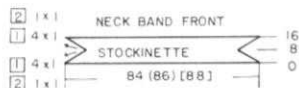
Put bands on neck pieces before closing shoulders.

Hang the back neck edge onto 72 (74) [76] needles with knit side facing you. Work Stockinette stitch. ON EACH SIDE, decrease 1 sts. every 2nd row 1x, then EVERY row 1 st. 4x. ON EACH SIDE, INCREASE 1 st. EVERY ROW 4x, then every 2nd row 1 st. 1x. After Row 16, bind off LOOSELY.



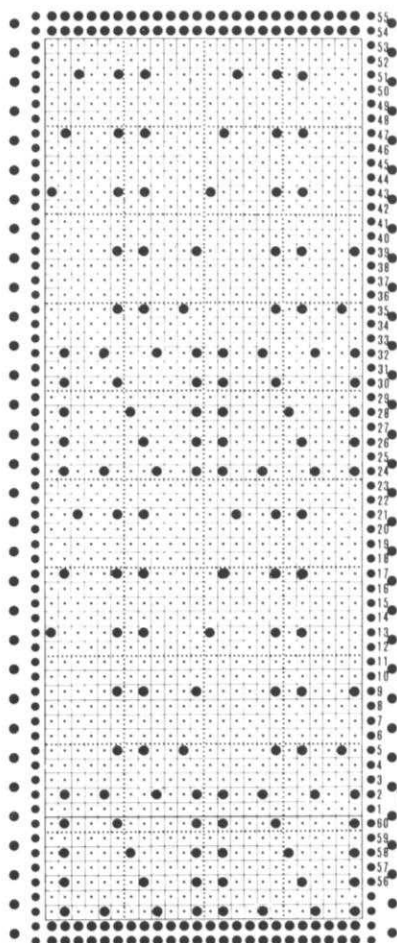
FRONT NECK BAND:

Hang the front neck edge onto 84 (86) [88] needles with knit side facing you. Work the same as for back neck band.



SLEEVE BANDS: Make 2.

Close shoulders first then make the bands. With knit side facing you, hang the sleeve edge onto 106 (110) [114] needles. Work Stockinette stitch to Row 10. Bind off LOOSELY.



## KNITKING BINDERS — Holds One Complete Year's Copies

Keep all your KnitKing Magazines together and build a beautiful library of patterns

\$5.95 ea. Available from KNITKING: 1128 Crenshaw Blvd., Los Angeles, Calif. 90019



I enclose \$\_\_\_\_\_ for \_\_\_\_\_ Binders (Calif. residents add Sales Tax) plus \$1.25 Shipping costs. (Canada \$2.75)

Name \_\_\_\_\_

Address \_\_\_\_\_

ZIP \_\_\_\_\_

# KNITTING NEWS

## PRACTICAL KNITTING HINTS

We frequently receive letters asking how to either increase or reduce the sizes of patterns in KNITTING MAGAZINE. New knitters especially are confused regarding correct sizing. In the last issue of the magazine, we suggest adjusting the tension number to obtain larger or smaller stitches and as a consequence obtain larger or smaller garments.

The important thing to know when altering the size of a garment is your own measurements. You must know how much 'ease' to allow. Knitted garments do not look their best if they hang like a sack and they certainly do not look good if they are too tight. We allow ease on all of our garments. The ease depends on measurements plus the STYLE of garment. A fitted dress has less ease than a jacket or cardigan, or even a pullover... so depending on the type of garment, whether it is an outer garment or to be worn under a pullover or jacket, you must judge how much ease you will need. One easy way to determine this is to use a dress, blouse, sweater, jacket that you own... one you are fond of, that fits well. Use its measurements as your guide. You must always knit a SAMPLE SWATCH with your garment yarn and although this takes time, it is really the most important part of knitting. We have a new GENERAL INSTRUCTION PAGE in our magazine. Please find it, read and study it well because it is full of important information - not only for knitting a sample swatch, but also it tells you HOW TO do your shaping, how to hold one side while knitting the other (for neck and shoulder shapings) and ESPECIALLY for holding stitches while you are knitting one side in LACE. Once you fully understand our General Instructions, you can knit just about anything you wish.

Make a rough sketch of the Chart for the garment you wish to knit. Put in YOUR OWN MEASUREMENTS. If you need 1 inch more on front and on the back, cast on the additional 1 inch of stitches. Try to keep all shaping almost the same as given in the magazine. You will need to get rid of the extra stitches - so if the stitch gauge is 8 sts. to one inch, you have 8 stitches to divide between the armhole, neck and shoulder shaping. If you have narrow shoulders, you should take off more at the underarm shaping. If you have wide shoulders, then you need extra stitches at the shoulder. Some designers subtract 10% of stitches from the actual shoulder to shoulder measurement to prevent sagging shoulders. There is no specific formula for everyone... we are all different. Most of the time you can use the rows as given in a pattern but should you need longer or shorter lengths in any area, add or subtract these rows in an area where there is NO SHAPING. When you reach the shaping area, TURN YOUR ROW COUNTER to the row given and continue on. After all you have your sketch and measurements to go by PLUS the MAGAZINE directions.

The easiest way of all to obtain garments the exact size you need is to use your Knitleader or comparable Charting Accessory. Once you have a Chart drawn to your own size you can use it over and over again with any type and weight of yarn and with any fancy stitch... and providing you take an accurate stitch gauge (our new easy to read Stitch and Row Gauge Measure is ideal for this) your finished garments will always fit you perfectly.

We believe that Charting Accessories are the most important of all accessories. In Japan, where practically every family has a knitting machine, knitters almost without exception work from pre-drawn charts and would not think of starting a garment without one... So if you have a Knitleader and are not using it, set it up and make a garment using it as your guide. Once you get hooked, you will wonder how you ever got by without it.

We have pre-drawn Knitleader Patterns and Knit Contour Patterns for sale in our current sale literature. You can make minor adjustments on them to conform with your own measurements. TRY IT... you'll like it.

## CORRECTIONS FOR VOLUME 18, No. 1

We ask that you make the following corrections in your KNITTING MAGAZINE Volume 18, No. 1 and thank two of our readers for pointing them out to us. NO. 327, page 21. The printed instructions are correct, the numbers along side the CHART for front and back should read: 0 - 118 - 132 (122) - 178 - 190 - 202 - 208. Please correct your Chart. No. 322, page 17. Punch Card. Please punch ROW 42 across the card and CUT OFF the top row of holes. There should only be 1 blank row at the top as there is a blank row at the bottom of card. When clipped together the card will revolve correctly. The blank row at bottom is correct because the first transfer must go from left to right. No. 328, page 22. The Gauge for this garment was omitted. The Gauge is 14 sts., 20 rows = 2" (5 cm).

## DISCOUNTED YARN KITS FOR THIS ISSUE

The Yarn Kits for this issue of KNITTING MAGAZINE are available at special discounts to our subscribers and the prices are only good until the next issue of the magazine. Be sure to give alternate colors.

No. 331 - Yarn: Alpacana  
SIZES: 42/44  
Price \$20.80  
Shipping 1.85

This garment was made with the Shetland Yarn featured in a recent sale but you would need to order 4 cones (8 lbs.) to make the garment. We suggest (and offer the kit) our gorgeous new Alpacana, an ideal blending of Alpaca Wool and Acrylic.

No. 340 - Yarn: Venetia  
SIZES: 8/10 (12/14) [16/18]  
Price \$ 7.11 \$9.48 \$9.48  
Shipping 1.85 1.85 1.85

No. 341 - Yarn: Venetia  
SIZES: 8/10 (12/14) [16/18]  
Price \$25.38 - A 1 1/2 lb. cone  
for every size. Shipping \$1.85 for one cone.

No. 342 - Yarn: Amore  
SIZES: 6/8 (10/12) [14/16]  
Price \$11.95 \$11.95 \$14.34  
Shipping 1.85 1.85 1.85

No. 343 - Yarn: Amore  
SIZES: 6/8 (10/12) [14/16]  
Price \$21.51 \$21.51 \$23.90  
Shipping 1.85 1.85 1.85

Because one ball of each color is not sufficient, you need to order 2 balls of each and you will have some wastage.

No. 344 - Yarn: Amore  
SIZES: 6/8 (10/12) [14/16]  
Price \$14.34 \$16.73 \$19.12  
Shipping 1.85 1.85 1.85

No. 345 - Yarn: Amore  
SIZES: 6/7 (8/10)  
Price \$14.34 \$16.73  
Shipping 1.85 1.85

No. 346 - Yarn: Amore  
 SIZES: 5/6 (7/8)  
 Price \$11.95 \$11.95  
 Shipping 1.85 1.85

No. 347 - Yarn: Venetia  
 SIZES: 6/8 (10/12) [14/16]  
 Price \$28.48 \$28.48 \$35.60

A 2 lb. cone is needed for first two sizes and  
 2 1/2 lb. cone for 14/16.

No. 348 - Yarn: Venetia and Rayon/Nylon  
 SIZES: 6/8 (10/12) [14/16]  
 Price for 2 lb. cone of Venetia is  
 \$25.28 (enough for all  
 Shipping 1.85 sizes).  
 You do not need a large cone of  
 Rayon/Nylon - only 8 oz. is needed.  
 If you order the Kit for No. 349 which  
 takes a 2 lb. cone of Rayon/Nylon,  
 The left over Yarn can be used for this  
 outfit.

No. 349 - Yarn: Rayon/Nylon  
 SIZES: 10/12 (14/16) [18/20]  
 Price for 2 lb. cone of Rayon/Nylon is  
 \$25.28 (enough for all  
 Shipping 1.85 sizes).  
 You will have enough left over to use  
 with No. 348. See above.

No. 350 - Yarn: Venetia  
 SIZES: 36/38 (40/42) [44/46]  
 Price \$12.64 \$12.64 \$14.22  
 Shipping 1.85 1.85 1.85

No. 351 Yarn:  
 SIZES: 36/38 (40/42) [44/46]  
 Price \$10.27 \$12.64 \$12.64  
 Shipping 1.85 1.85 1.85

No. 352 - Yarn: Venetia & Capriccio  
 SIZES: 18/20  
 Price \$33.08  
 Shipping 2.50

No. 353 - Yarn: Amore  
 SIZES: 6/8 (10/12) [14/16]  
 Price \$11.95 \$11.95 \$14.34  
 Shipping 1.85 1.85 1.85

No. 354 - Yarn: Amore  
 No sizes for Travel Shoe Bags.  
 Price \$9.56  
 Shipping 1.85

No. 355 - Yarn: Amore  
 SIZE: Infant to 6 months.  
 Price \$21.51  
 Shipping 1.85

No. 356 - Yarn: Acrylic Boucle  
 SIZES: 6/8 (10/12) [14/16]  
 ORDER FROM OUR CURRENT SALE LITERATURE  
 in the color of your choice.

No. 357 - Yarn: Acrylic Boucle  
 SIZES: 6/10 (12/16)  
 Order one cone from our CURRENT SALE LIT-  
 ERATURE in the color of your choice.

No. 358 - Yarn: Venetia  
 SIZES: 10/12 (14/16) [18/20]  
 Price \$25.28 for all sizes.  
 Shipping 2.50 2.50 2.50

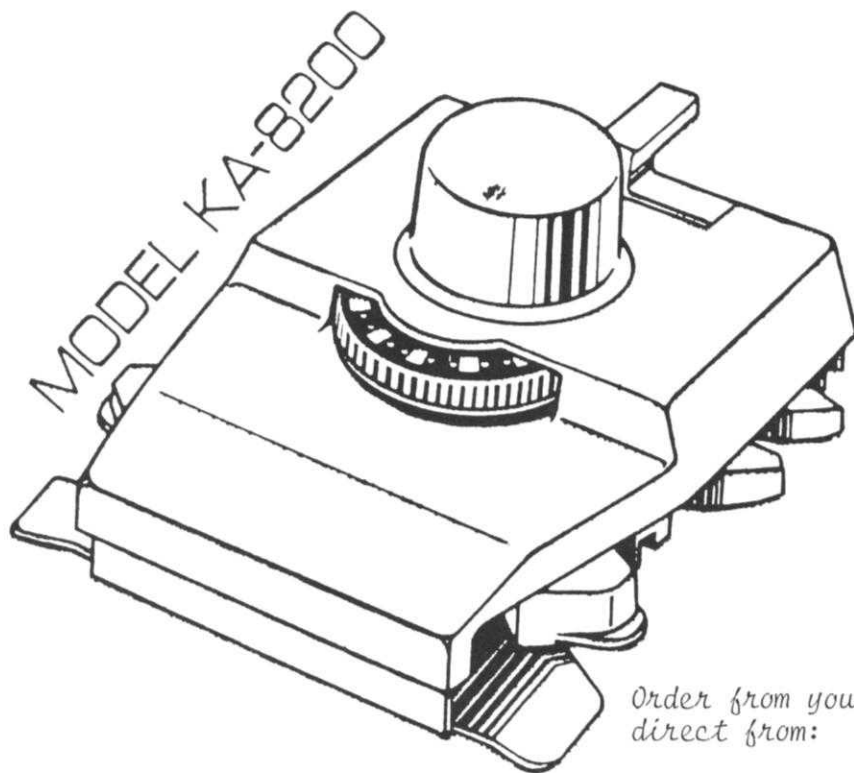
COLORS AVAILABLE - Please be sure to give alter-  
 nate colors.

ALPACANA - White, Black, Brown, Red, Rust, Medium  
 Blue, Pink, Camel, Olive.

AMORE - Same colors as Alpacana plus the following  
 colors. Light Green, Mauve, Light Grey,  
 Dark Grey, Yellow.

VENETIA - White, Black, Coral, Medium Blue, Light  
 Blue, Pink, Coral, Medium Grey, Maroon,  
 Brown, Celery, Royal Blue, Red, Navy.

# INTARSIA CARRIAGE



*With the new KA-8200 Intarsia Carriage, you can knit large pictures, argyle designs and blocks of different textures in many colors into your knitting without strands of yarn (floats) carried over the purl side of your knitting. When knitting Intarsia designs, the Intarsia Carriage replaces the main carriage on your knitter. It has a tension control dial to match the dial on your machine and it comes complete with a detailed instructions manual in English, Spanish, German, French, and Italian.*

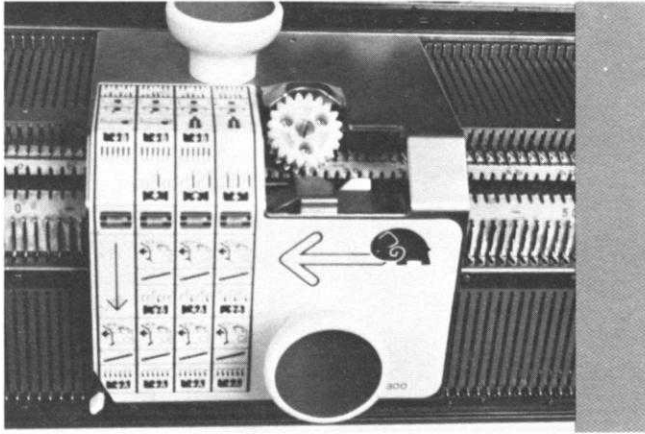
*The KA-8200 is for use with KNITKING/BROTHER machines, Model numbers KH 820, KH 830, KH 840, KH 860, KH 881, KH 910. It is not suitable for other models or other brands.*

Order from your local dealer or Price: \$29.95  
 direct from:

KNITKING CORPORATION  
 1128 Crenshaw Blvd., LA, CA 90019

# essentials...

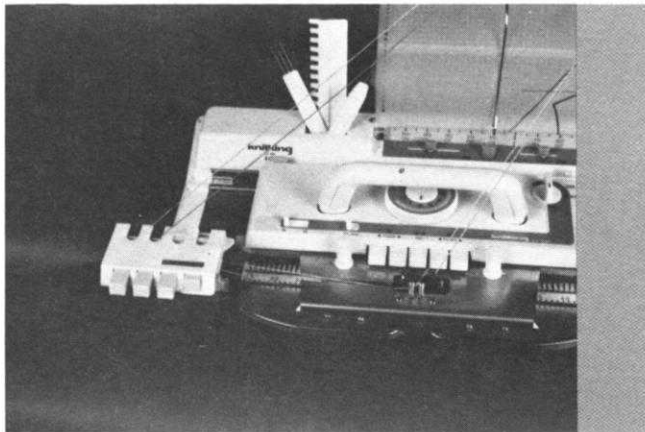
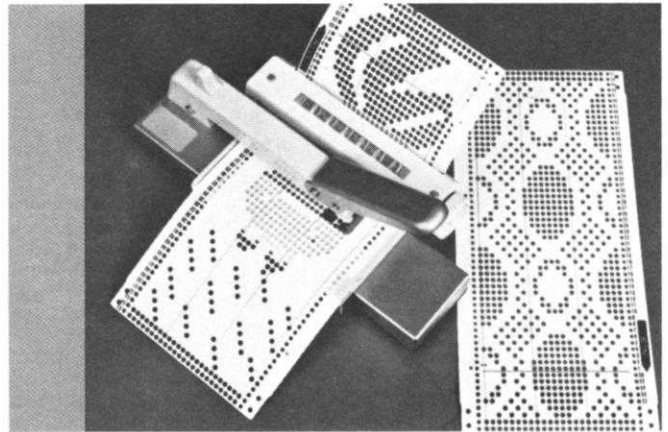
Order from your local Dealer or direct from  
**KNITKING**—1128 Crenshaw Blvd.,  
Los Angeles, California 90019



For fast and accurate transfer of stitches from Ribber to Knitter, the Automatic Transfer Carriage is ESSENTIAL.

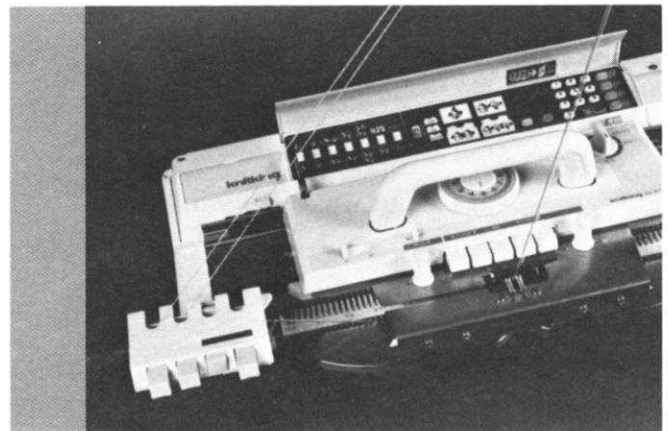
Model 8300 is for Ribbers KR 830, KR 850 and KR 900 and machine models KH 830, KH 840, KH 860, KH 881 and KH 910. Model 7100 is for the KH 710 GENIE with KR 710 Ribber.

The PM 10 Automatic Punch Card puncher is essential for speedy punching of all your punch card designs. It's O.K. for all KNITKING, Brother, Singer, Studio and Toyota punch card machines except the Singer/Studio F-370 machine which uses the PM 70 Automatic Puncher.



The KHC 820 Color Changer is essential for automatic changing of colors when knitting on KNITKING/BROTHER machines Models KH 820, KH 830, KH 840, KH 860, KH 881 and KH 910.

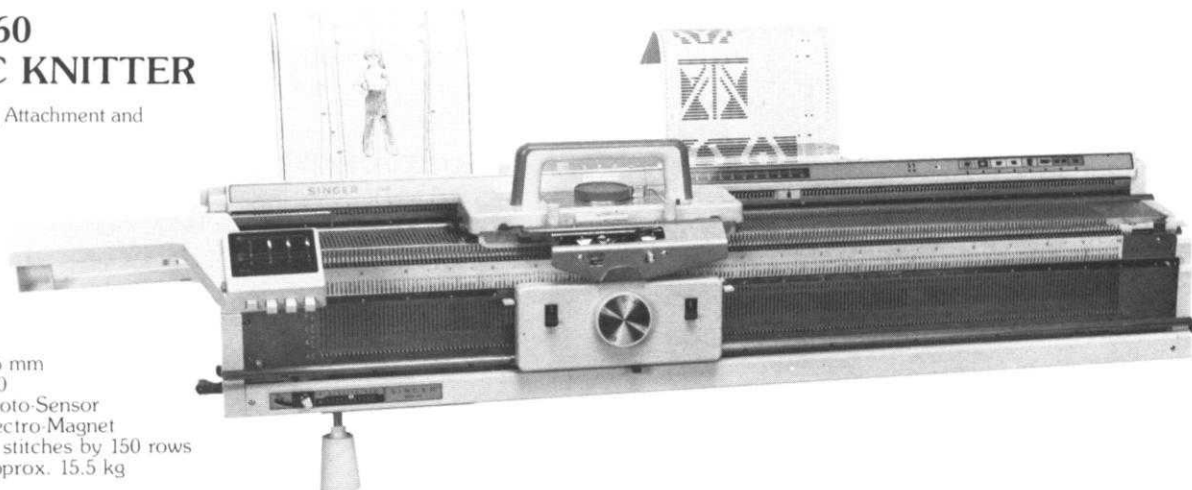
The KRC 830 Color Changer is essential for automatic color changing and the knitting of four color designs when using a Knitter and Ribber combination. It operates on Models KH 820, KH 830, KH 840, KH 860, KH 881 and KH 910 with Ribbing Attachment.



# SINGER\* KNITTING MACHINES

## MODEL SK-560 ELECTRONIC KNITTER

Shown with optional Ribbing Attachment and Automatic 4 Color Changer.



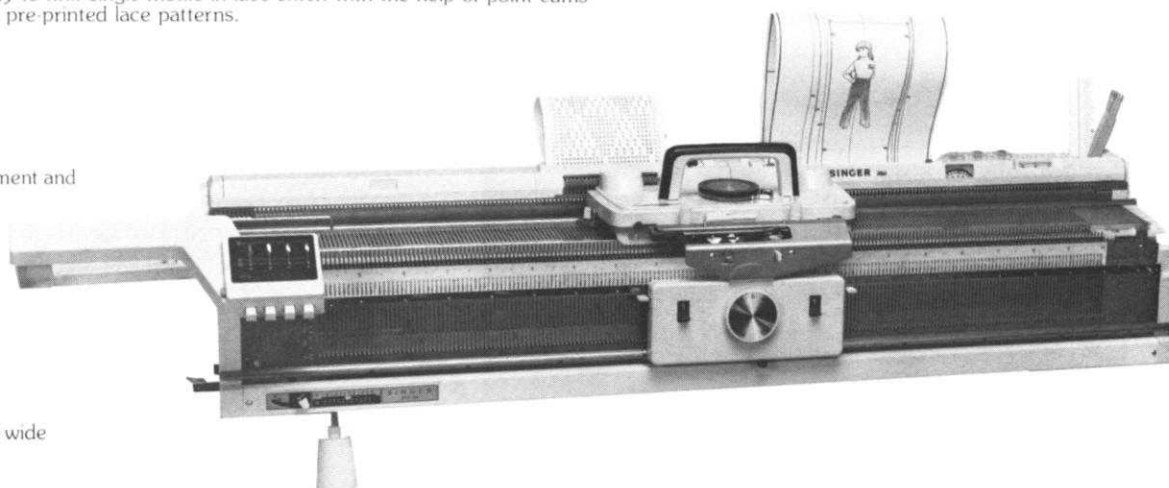
### SPECIFICATIONS:

Needle spacing: 4.5 mm  
 Number of needles: 200  
 Pattern reading: Photo-Sensor  
 Needle selection: Electro-Magnet  
 Standard Pattern Size: 60 stitches by 150 rows  
 Weight: Approx. 15.5 kg

- Built-in Knit Contour: 19 patterns for adults and infants are included.
- Carriage: will automatically knit Fair Isle, Punch Lace, Slip Stitch, Tuck Stitch, Weaving and Plaiting at the touch of a lever.
- 45 pre-printed patterns are included and five re-usable blank cards are supplied for drawing your own design.
- Patterns may be modified five ways:
  - reversing colours
  - reversing pattern direction
  - changing width or length sizes, or both
  - reversing pattern to produce mirror image
  - knitting any standard pattern with the ribber and automatic yarn changer.
- Multi-functional Lace Carriage (Built-in)
  - Transfers stitches automatically
  - Knits across the full width of the needle bed without adding extension rails
  - Knits multiple transfer lace, as well as single-action transfer lace, and also produces a perfect stockinet stitch
  - Has capacity to knit single motifs in lace stitch with the help of point cams
  - Includes 20 pre-printed lace patterns.

## MODEL SK-360 MEMO-MATIC\*

Shown with optional Ribbing Attachment and 4 Color Changer.



### SPECIFICATIONS:

Needle spacing: 4.5 mm  
 Number of needles: 200  
 Standard pattern size: 24 stitches wide  
 Weight: 12.5 kg

- Built-in Knit Contour: - 19 patterns are provided
  - eliminates counting of rows and stitches when increasing or decreasing for shaping garments.
- Punch Cards: 20 punch cards are included to produce various knitting patterns.
- Magic Knitting: The magic cams produce a single motif pattern anywhere in the garment.
- Twin Yarn Feeder: Feeds out two different yarns for pattern knitting in two colours.
- LACE CARRIAGE - OPTIONAL
  - Without adding an extension rail, the Lace Carriage will transfer stitches automatically
  - The Lace Carriage knits multiple transfer lace, as well as single action transfer lace, and also produces a stockinet stitch.
  - Includes 10 lace punch cards.

## MODEL F-370 FINE GAUGE KNITTER

### SPECIFICATIONS:

Needle spacing: 3.6 mm  
 Number of needles: 250  
 Standard Pattern Size: 30 stitches by 60 rows  
 Weight: 13 kg

The F-370 looks and operates the same as the SK-360, but has 50 more needles. A ribbing Attachment, Lace Carriage and 4 Color Changer are also optional.

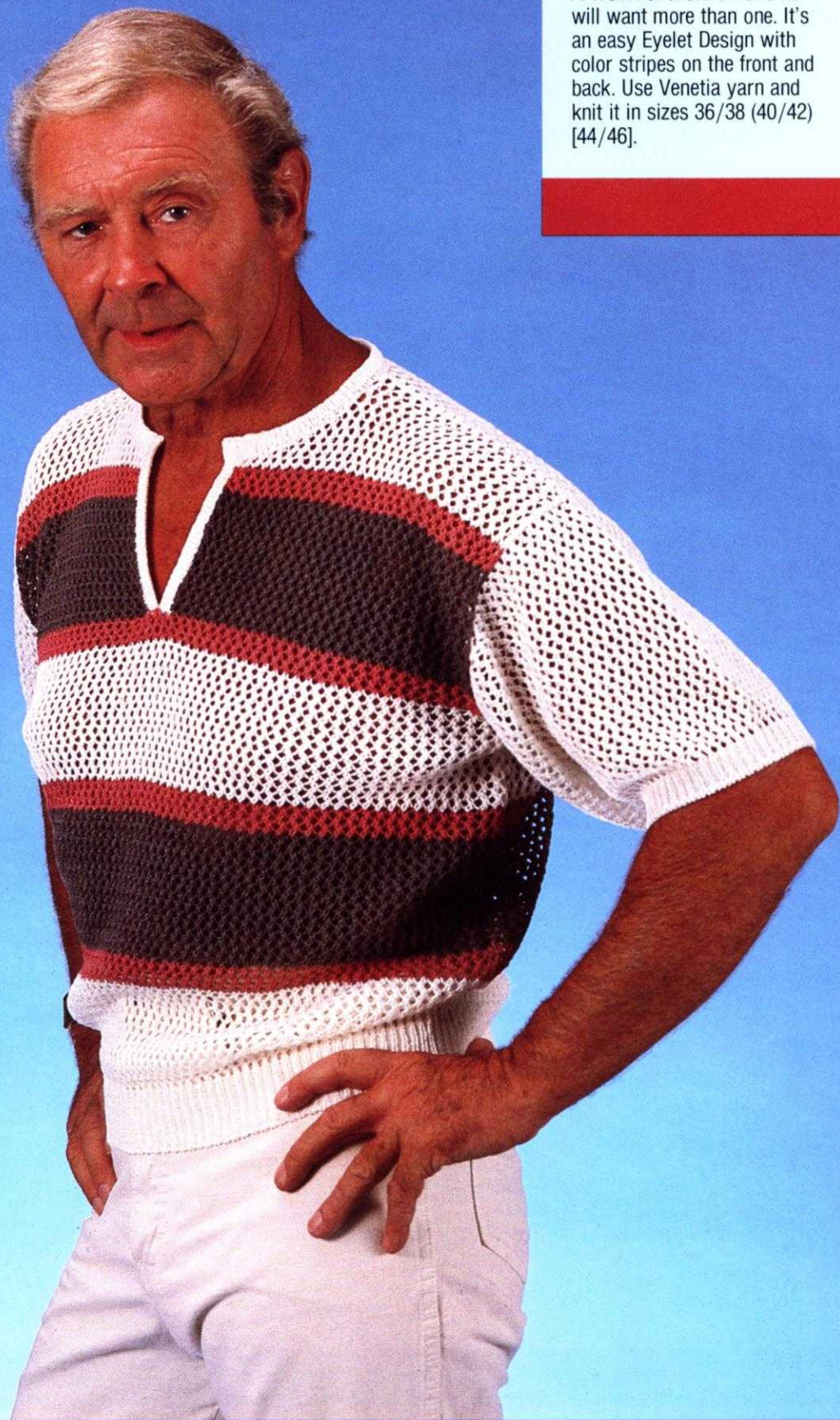
**SINGER**, the first name in sewing, the last word in knitting

\* A trademark of THE SINGER COMPANY



# 351 TOP PRIORITY

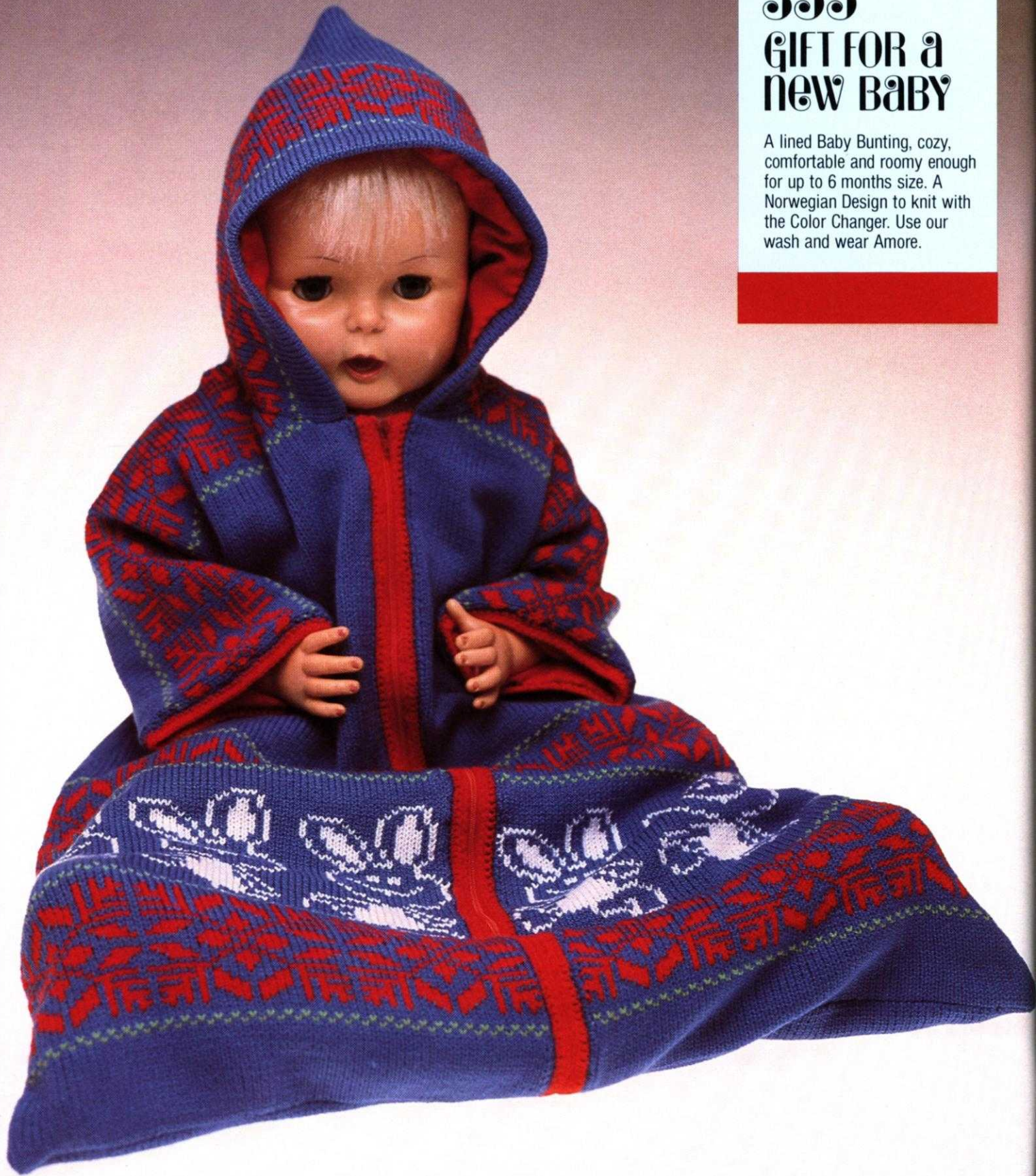
A WOW! of a Shirt...and he will want more than one. It's an easy Eyelet Design with color stripes on the front and back. Use Venetia yarn and knit it in sizes 36/38 (40/42) [44/46].



# 355

## GIFT FOR a NEW BABY

A lined Baby Bunting, cozy, comfortable and roomy enough for up to 6 months size. A Norwegian Design to knit with the Color Changer. Use our wash and wear Amore.





## 354 GIFTS FOR HER, GIFTS FOR HIM

Travel Shoe Bags protect your shoes (polish them too) and clothing when off on a holiday. Each has its own Punch Card Design in a Tuck stitch. Use your Color Changer and you can use either the purl or knit side as the right side. Amore yarn.

# BULKY

## Model

## KH

## 230

ESPECIALLY for yarns impossible to knit on standard knitting machines.

If you like bulky knit garments—the KNITKING BULKY is for you...If you like multi-color Intarsia Designs in your knits, the KNITKING BULKY is for you...

If you like knitting with heavy boucle and thick and thin yarns—the KNITKING BULKY is for you...

If you like heavy Fisherman's Rib sweaters that you can't buy at any price—the KNITKING BULKY with RIBBER is for you...

If you like to start knitting and to finish a garment the same day—the KNITKING BULKY is for you...

If you like knitting handsome Afghans, Bedspreads, Cushion Covers, Rugs, etc., for yourself and your friends—THE KNITKING BULKY is for you...

Its 110 Bulky heavy-duty needles will allow you to knit up to 36" wide and from 3 stitches to the inch. Its triple strength stainless steel needle bed will stand all the heavy duty you can give it. Its built in Intarsia Control and fancy stitch controls make it the easiest of all Bulky Knitters to use.

For increased versatility add the KR 230 Ribbing Attachment and really have fun with an unbelievable variety of rib stitches from the standard 1 x 1, 2 x 2, 3 x 1, 1 x 5 or any other combination plus zig-zag fancy ribs, Fisherman's Rib (double or single) and many more.

Comes complete with tools plus easy to follow step-by-step Instruction Manuals and a one-year guarantee on parts and service.

# knitking

For complete versatility add the famous KNITLEADER Charting Accessory. It carries full-size charts of your garment sections. It rotates as you knit and tells you exactly when to increase or decrease, to shape and to bind off. You can use pre-drawn charts (obtainable from KNITKING). You can draw your own or you can trace a sewing pattern and duplicate it in a knit with the yarn and colors of your choice.



**knitking**

Order from your local dealer or direct from KNITKING at 1128 Crenshaw Blvd., Los Angeles, Calif. 90019 Telephone: (213) 938-2077

VISA and MASTERCARD accepted.

# 352 SPECIAL REQUEST

A most flattering dress in a larger size is knitted in Tuck stitch Designs. Venetia is the main color and the front insert sparkles with 3 colors of Capriccio.  
Size 18/20.





# 357 CLASSIC BOAT NECK PULLOVER

can go from day into evening. Drape it off a shoulder or pull it up, depending on your mood. It's quickly knitted in Stockinette stitch with K1, P1 Ribbing for the bands. Acrylic Boucle is the yarn. Sizes 6/10 (12/16).

# 356 easy KNITTING

The purl side is the right side for this classic Pullover made a little different with a tie cord at waist. The bands are K2, P2 Ribbing. Acrylic Boucle is the yarn.  
Sizes 6/8 (10/12) [14/16].



**knitking**  
**trimlock**

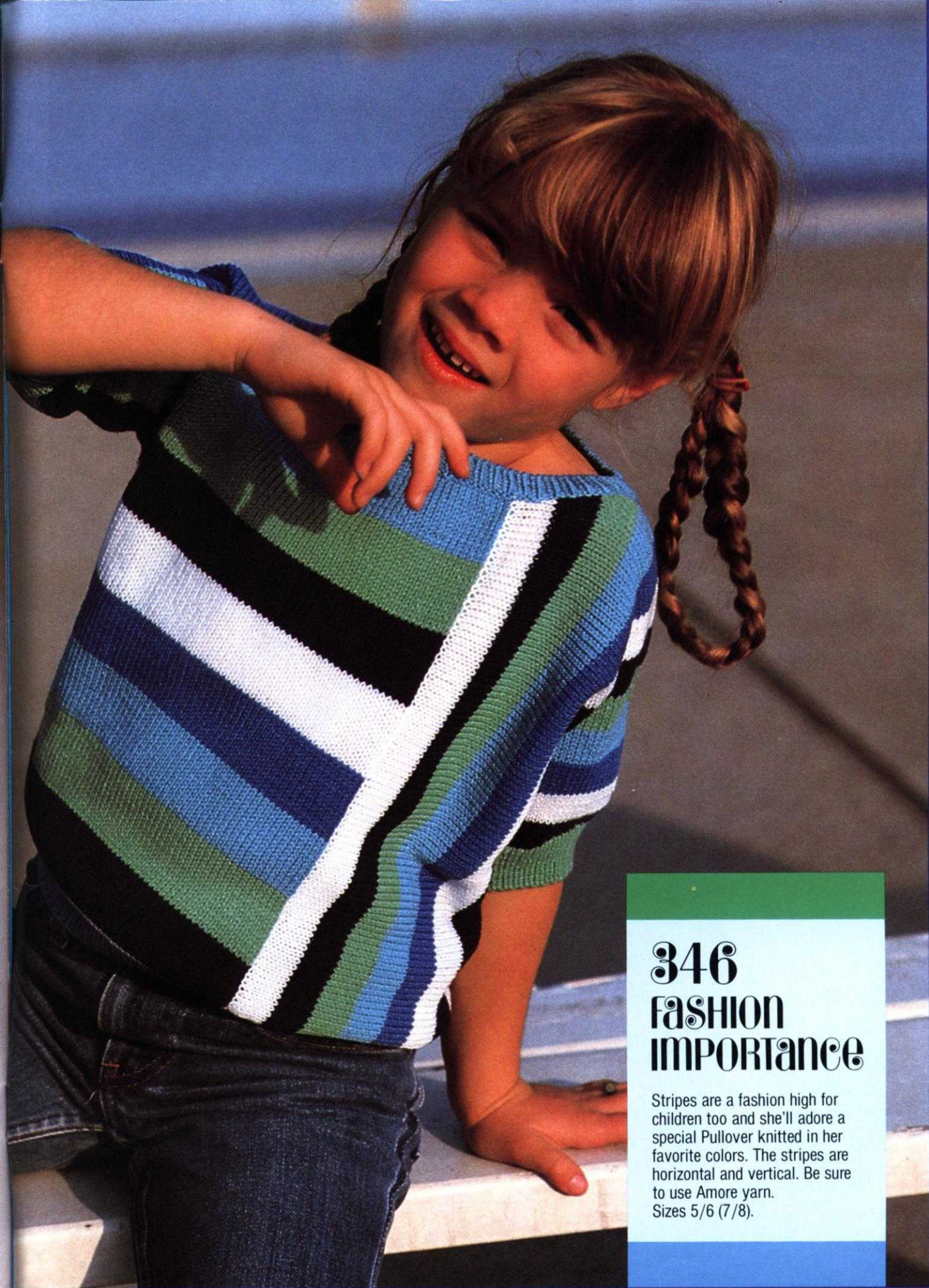
THE CUT, SEW, OVERLOCK  
MACHINE FOR ALL FABRIC  
From fine Silk to Denim

NEW MODEL 524



It's a 2 needle, 4 thread Serger that cuts, sews and overlocks all at the same time. You can also overedge only, straight stitch only and if you don't want to cut, you can swing the blade out of action.





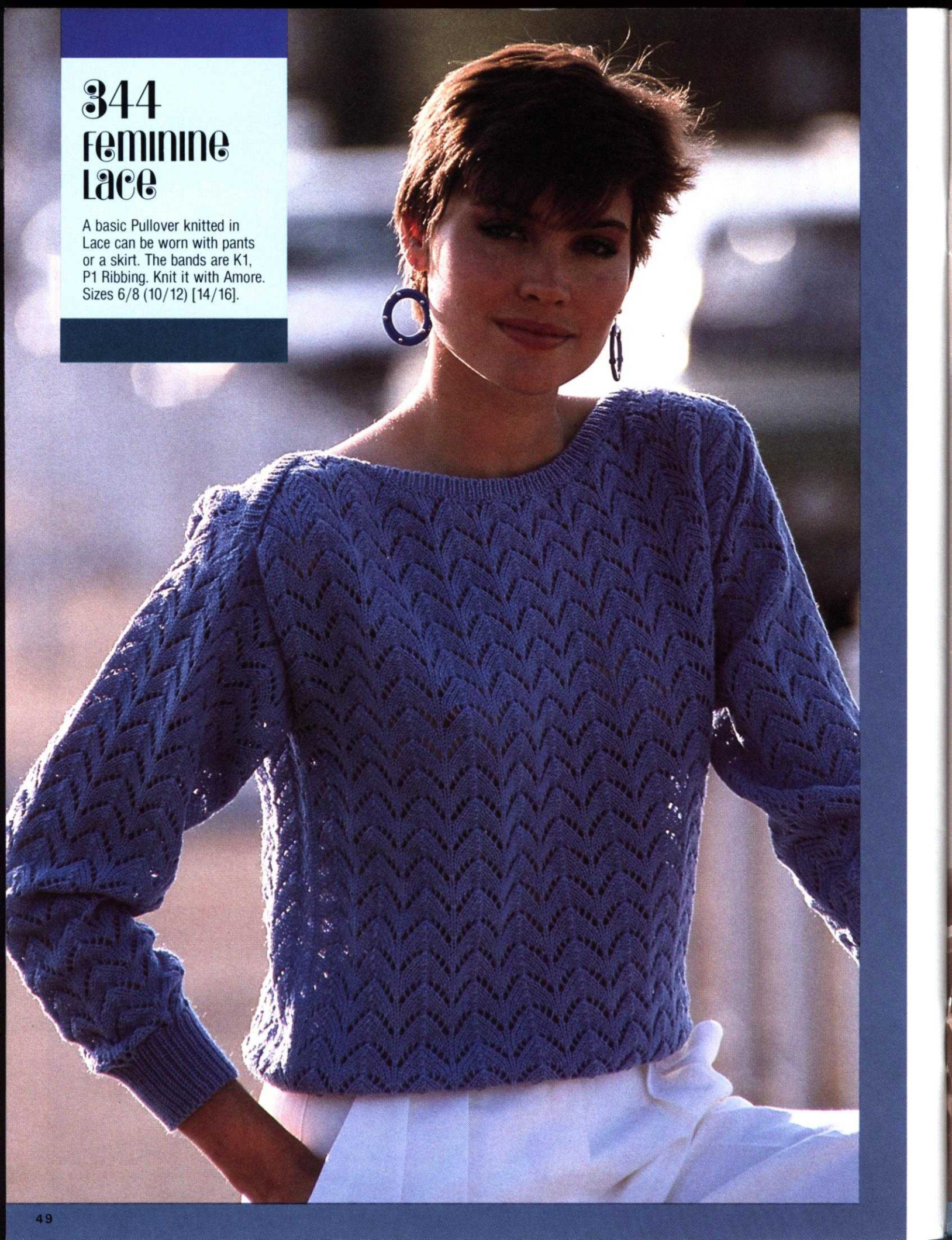
## 346 FASHION IMPORTANCE

Stripes are a fashion high for children too and she'll adore a special Pullover knitted in her favorite colors. The stripes are horizontal and vertical. Be sure to use Amore yarn. Sizes 5/6 (7/8).

# 344

## feminine lace

A basic Pullover knitted in  
Lace can be worn with pants  
or a skirt. The bands are K1,  
P1 Ribbing. Knit it with Amore.  
Sizes 6/8 (10/12) [14/16].



# 345

## PARTY TIME

Pretty separates for a young girl boast lace trimmed pockets on the softly gathered Stockinette stitch Skirt. The Top is knitted in a lace pattern with ribbed waistband and then trimmed to match. Amore yarn. Sizes 6/7 (8/10).



# COMPUKNIIT KH 910

'the world's finest knitting machine'

- Incredibly versatile... Anything you can trace or draw is automatically reproduced in your knitting in the colors and yarns of your choice.
- Simple to program and easy to operate, the COMPUKNIIT KH 910 is the 'State of the Art' in home knitting machines. It is the only knitter made that has a memory unit to retain your program if you suffer a power outage or wish to move your knitter from one place to another.
- The maximum width of motif or pattern design possible on any punch card machine is 30 stitches (the standard is 24). The COMPUKNIIT has no limit. It is possible to knit a single picture or lace design over the full width (200) needles of the needle bed. It will, in fact, do everything that's possible on a punch card machine and much much more.
- If you already own a knitting machine, you must consider trading up to a fantastic COMPUKNIIT 910. If you have never owned a knitter before, start at the top and save money and save all the intermediate steps.



Order from your local Dealer or direct from  
VISA and MASTERCARD accepted

## KNITTING

1128 Crenshaw Blvd.  
Los Angeles, CA 90019  
Telephone: (213) 938-2077