



knitking

magazine

SUCCESSFUL!

**LOOK IT... FEEL IT...
WHEN YOU CREATE
THESE NEW KNIT
FASHIONS!**

390 FOR THE PETITE WOMAN

A Lace Dress can be worn for any occasion and you will appreciate this easy to knit beauty. Use Venetia yarn. Sizes are 5 to 8.



397 A NEW CABLE DESIGN

Special Cables connect as you knit the front and sleeve sections of this Pullover using 3 colors. You will learn a new trick and love the results. Knit the Skirt in Stockinette Stitch. Use Venetia and make the two-piece Dress in Sizes 4 to 14.



TABLE OF CONTENTS

| | PAGE NO. |
|---|----------|
| 379—Woman's Vest | 13 |
| 380—Woman's Two-Piece Dress | 14 |
| 381—Man's V-Neck Pullover | 15 |
| 382—Woman's Top with Drive Knit Sleeves | 16 |
| 385—Woman's Dress | 17 |
| 386—Woman's Two-Piece Dress | 18 |
| 387—Woman's Pullover | 20 |
| 388—Woman's Two-Piece Suit | 21 |
| 389—Woman's Top with Dolman Sleeves | 23 |
| 390—Woman's Small Size Dress | 23 |
| 391—Woman's Basket Weave Pullover | 24 |
| 392—Woman's Top and Pants | 25 |
| 393—Man's Cardigan | 26 |
| 394—Girl's Dress | 27 |
| 395—Baby Cape with Hood | 28 |
| 396—Baby Pullover with Hood | 29 |
| 397—Woman's Cable Top and Skirt | 30 |
| 398—Woman's Mumu Dress | 31 |
| 399—Woman's V-Neck Top | 33 |
| KNITKING NEWS | 35 |

COVER



380

SUIT YOURSELF

Everyone needs a lovely two-piece Suit in simple Chanel styling. Knit it with Cordella and Viola in a Weaving Pattern. The Trim has its own Punch Card and is exceptionally beautiful. Sizes 6 to 16.

Publisher: KNITKING CORPORATION, 1128 Crenshaw Blvd., Los Angeles, Calif. 90019. Telephone: (213) 938-2079. Published quarterly. Subscriptions: USA — \$18.00 annually, single copies \$5.00. \$21.00 all other countries. The entire contents of KNITKING MAGAZINE are copyright and must not be reproduced in any shape or form without the express permission, in writing, of the publisher.
©COPYRIGHT 1984 by KNITKING CORPORATION.

knitking

magazine

EDITORIAL

In our last Editorial, we talked at length regarding the tremendous advances in knitting machine designs and versatility made since KNITKING introduced automatic knitters to the American market over 30 years ago. We referred to the KNITKING KNITTING COMPUTER that computes instructions for the knitting of garments by machine or by hand. Our first advertisement for this marvelous new knitting tool appears in this issue. Our first shipment is expected in July and it will sell out fast so please get your orders in early.

Another new product we can now tell you about is an electrically propelled carriage that operates on the KH 881 and KH 910 Computer. The KG 88 Carriage is a completely self contained carriage that fits on your needle bed similarly to a standard carriage. The motor that propels it is actually built into the carriage and pattern selection is by punch card on the KH 881 and pattern sheets on the KH 910.

This, however, is not a standard carriage...its performance is amazing...! It will knit—without a Ribbing Attachment—rib stitches from Knit 1, Purl 1, to Knit 6, Purl 6. It knits fancy stitches previously impossible on any home knitting machine. Garter Stitch is just one of them. It will automatically bind off...if you run out of yarn, it will switch off automatically and you can preset it to switch off when any desired number of rows is completed. Beautiful knitting is assured irrespective of the skill of the operator.

Motorized units for knitting machines have been available for several years. They are generally large, cumbersome, expensive and do no more than can be done by pushing a carriage manually. The electric KNITKING KG 88 is compact, easy to operate and vastly increases the versatility of the knitting machines for which it is designed. For the first time, you will be able to watch television, cook dinner or do anything else you wish while your knitter knits merrily away unattended.

Delivery to us is promised for October and the relatively low price for this clever electric knitting carriage will be \$299.95. Adaptors for the 910 will cost an additional \$20.00.

We thank all the good people who took the time to write, or to telephone and tell us how much they liked the last issue of KNITKING MAGAZINE. Judging from the rave unsolicited reviews it was our most popular issue ever. We promise to do our best to maintain its standard.

387 DESIGNERS DELIGHT

It's a new Bulky Pullover with colorful chain stitch stripes on the front Yoke. Stripe the Sleeves and Collar. Rib the Bands. The yarn is Alanda. Sizes 6 to 16.



398 FRESH AND NEW

A soft, loosely fitted Dress has the Skirt section knitted in tiers. The lovely Norwegian Borders are outlined with Pin Tucks. Use two colors of Venetia. Sizes 8 to 18.



386 ELEGANT BULKY KNIT

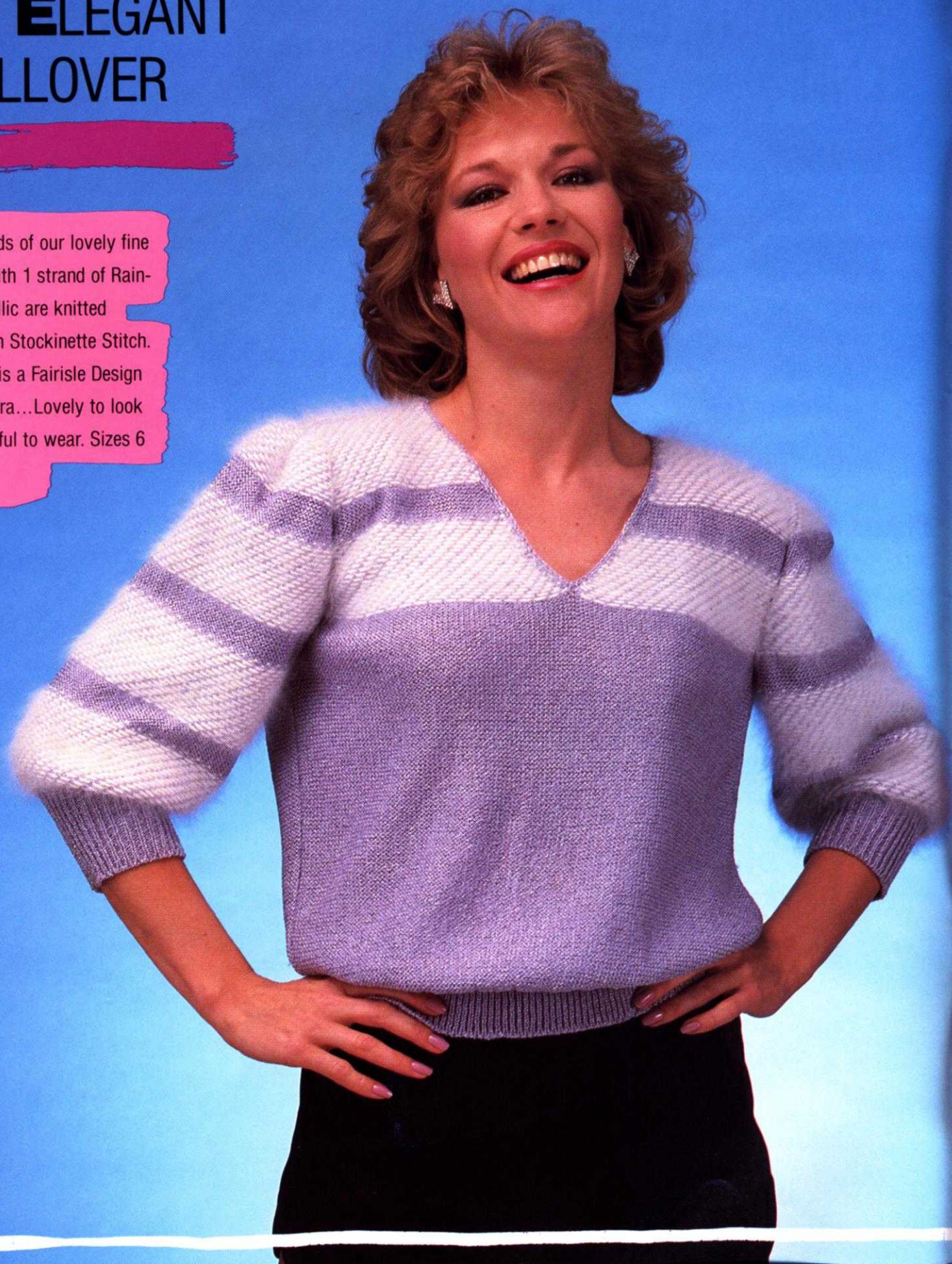
Make this elegant two-piece Dress with its surplice front on your Bulky machine. The upper section of sleeves is knitted with matching Angora in an eyelet Pattern that is hand transferred. When completed, sew pretty beads or pearls in place. Angora and beads are used at wrist. Use multiple strands of Venetia for Stockinette Stitch Top and Skirt. Sizes 6 to 16.



399

AN ELEGANT PULLOVER

Two strands of our lovely fine Venetia with 1 strand of Rainbow Metallic are knitted together in Stockinette Stitch. The Yoke is a Fairisle Design with Angora...Lovely to look at, delightful to wear. Sizes 6 to 16.



391 ANOTHER BULKY BEAUTY

Not for beginners...this Basket Weave Pullover is a challenge in machine knitting on your Bulky machine. Practice first, and then you will be happy with the results. The yarns are Multi-Show and Bravo. Sizes 6 to 16.



389 BIG FASHION NEWS

A Flattering Dolman Sleeved
Top is for everyone. The insert
is knitted using Short Rows
with lovely Capriccio yarn.
Venetia is the main color.
Sizes Small, Medium, Large.



385 CLASSIC AND CLASSY

A Beautiful Dress...It's simple to knit in Stockinette Stitch with glitter bands for Trim.

Make the buttons by crocheting over small bone rings. Venetia with Capriccio for the Bands.

Sizes 6 to 16.



388 SUBTLE SHADING

For the Jacket, Venetia and Multi Show are knitted in a Holding Position Design on the Bulky machine. The Skirt is Stockinette Stitch and made on a 200 needle machine.



GENERAL INSTRUCTIONS

THE PRINTED INSTRUCTIONS

Follow the printed instructions or use them in combination with the Charts. Where there is any question in the instructions, you have the Charts to show you how the section will look.

Be sure to READ AHEAD so that you KNOW what to do for the size you are knitting. In the shapings, where the number of stitches are the same but the number of times different, you might find shapings like this...3 sts. 1 x (2x) [3x]—so that for the first size you will bind off 3 sts. 1x, 2nd size 3 sts. 2x, 3rd size 3 sts. 3x. Sometimes the ROWS will be different for each size—so you must watch out for different row numbers.

Shoulder and neck shapings for the back section of a garment usually are shaped at the same time—so ALWAYS WATCH for the words AT THE SAME TIME.

HOLDING STITCHES ON THE LEFT SIDE WHILE SHAPING THE RIGHT SIDE

There are different ways to hold stitches on one side while completing the other side. Usually, we tell you to bind off the center sts. for neck and put the left side into holding position while completing the right side. The easiest way and really the best way for beginners is to take a piece of RAVEL CORD and hand knit the center neck stitches, pulling them back against the needle bed of machine to the "A" or out of work position. The stitches remain in the HOOKS of the needles so you are really only knitting them HALF WAY. With another color of Ravel Cord, knit the remaining sts. on the left side in the SAME WAY.

It is important to protect these held stitches in some way—so you can either hang a REVERSING BAR so that the EYES of the Bar go BETWEEN the Gate Pegs on the machine and that the UPPER TIPS of Bar only—show above the needle bed...OR the simplest way is to use a piece of 1 inch masking tape and GENTLY place it beneath the knitting—right below the gate pegs. Do NOT press the tape—only enough pressure to hold it in place. This will prevent the Carriage (or Slide) from marking the held section.

It is VERY IMPORTANT that you mark the PATTERN ROW where you divide for the split for NECK (or SHOULDER) shaping....If you're using a PUNCH CARD—MARK THE CARD—if you are using an ELECTRONIC machine, MARK THE DESIGN WINDOW. Also take note of the Row number for the division. When you are ready to work the left section, bring the HELD stitches back to B (working) position by pulling each end of the Ravel Cord GENTLY and rip it off—be sure to align all needles straight in the B or knitting position.

Now you are ready to REFER TO YOUR OWN INSTRUCTION MANUAL for your machine—to set the controls to begin knitting the left half. The neck stitches can be bound off after completing the right side or you can leave them in hold until each side is finished, then bind them off or remove them onto contrast waste yarn ready to be picked up for knitting a neckband or for other finishing.

FULL FASHION DECREASING OR INCREASING

For Stockinette stitch, use the Full Fashion method for decreasing or increasing (except for regular cap shaping on sleeves where you decrease the edge stitch).

TO DECREASE: Hang the 3rd stitch onto the 2nd stitch then move the end stitches in to fill the empty needle.

TO INCREASE: Move the 2nd end stitches 1 needle outward, then pick up the 3rd stitch from the row below and hang it onto empty needle.

PATTERN SYMBOLS

() Symbol for 2nd size.

[] Symbol for 3rd size.

There are up to 3 sizes given for Patterns in KNITTING MAGAZINE. For example, the Charts and printed instructions will show the cast-on as...124—First size. (132)—Second size. [140]—Third size.

R= ROW

☐ Needles in holding position.

☒ Needles back into working position.

< For Short Row Knitting

THE SAMPLE SWATCH

Before you knit any garment, you must knit a sample swatch using the yarn you have chosen for your garment. If you do not get the correct Stitch and Row Gauge as given for a Pattern in KNITTING MAGAZINE—try different tensions. If you are using the specified yarn, you should be able to get the correct gauge using one of the tensions shown. If you are using other yarns, you may have to make several swatches—but the gauge is very important.

To make a sample swatch—Cast on 60 stitches with waste yarn and knit 6 rows. Mark the tension number for your sample swatch by making holes (you can do this with a Lace Carriage or by hand), 4 transfers for Tension 4, 6 transfers for Tension 6, etc. Knit 6 more rows.

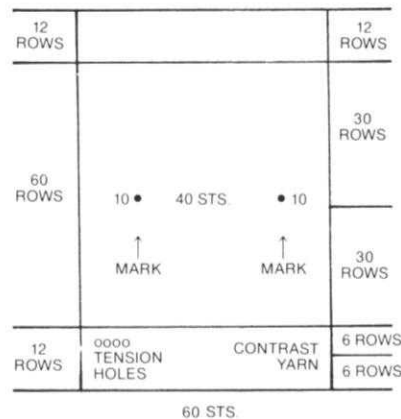
Change to garment yarn and set Counter at 0. Knit 30 rows (in Stockinette stitch or Pattern stitch—according to the garment). With contrast waste yarn knit the 10th stitch FROM EACH SIDE—by hand. Knit 30 rows. Change to waste yarn and knit 12 rows. Remove the sts. from the machine by pushing the Carriage (or Slide) across without yarn.

Pull and stretch the sample swatch both lengthwise and diagonally from corner to corner, then lengthwise again. Gently block the swatch (KNITTING PRESSING CLOTHS are great for this)—or you can allow the sample to rest several hours or even over night so that the stitches can return to their basic form. USE KNITTING CONVERTA TAPE for MEASURING YOUR SAMPLE (or the KNITTING INSTANT STITCH AND ROW GAUGE MEASURE).

If you use the Converta Tape, pull out the Tape to measure BETWEEN the 40 marked stitches in the center of your swatch. Move the red marker on the Tape so that it points to 40 stitches on the TAPE. Your stitch gauge to 2" (5 cm) will show in the RED WINDOW. To find the number of rows in 2" (5 cm), place the

Tape to measure over the 60 rows, push the red marker to 60 on the Tape and your row gauge for 2" (5 cm) will show in the red window.

If you do not own a KNITTING CONVERTA TAPE or a Stitch and Row Measure, you must count the number of stitches and rows to 2" (5 cm) after marking a 2-inch square in the center of your knitting.



FINISHING

Gently block all sections—For PULLOVERS, JACKETS and DRESSES: Join the front to back at shoulders and sides. Sew sleeves together and set in. Hem lower edge and sleeve edges if needed. For a double neckband or armhole, band sew 1 edge to inside and 1 to the outside of neck or armhole. For a single ribbed band, sew 1 edge to the outside of neck or armhole edge. For a cardigan or jacket with buttonholes, finish buttonholes and sew on buttons.

PANTS: Join front to back at sides. Sew inside leg seams, then join to center front and back. Make hem at waistline and insert elastic. Hem lower edge of pants' legs.

☑ Needle not used—in out of work position.

3x1

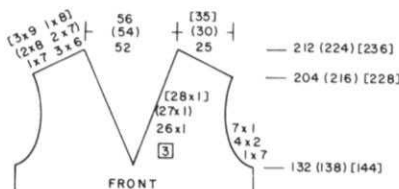
☐ The number in the box is the number of Rows between shapings. The 3 x 1 above the box gives you the sts. and number of times to make the decreases (or increases)—FOR EXAMPLE: 3 x 1 over the box with 4 means—At the given Row number, decrease 1 st. knit 4 rows^o and REPEAT from ^o to ^o 2 times more for a total of 3 times in all. All decreasing (or increasing) WITHOUT ROW NUMBER IN BOX must be made on EVERY 2nd ROW.



379

FRONT:

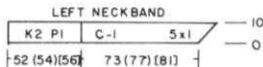
Work the front the same as the back to Row 132 (138) [144].
 SHAPE ARMHOLE AND NECK AT THE SAME TIME.
 Divide in the CENTER, put the stitches on the left into holding position or remove them onto waste yarn.
 Mark Card and needles. Complete the right side first.
 *FOR ARMHOLE, bind off
 7 sts. 1x, 2 sts. 4x, 1 st. 7x
 AND AT THE SAME TIME, ON NECK SIDE, decrease 1 st.
 every 3rd row 26x (27x) [28x].
 AT THE SAME TIME, after Row 204 (216) [228] SHAPE SHOULDER same as the back.
 Hang the sts. held on waste yarn onto the marked needles. Set Row Counter back to 132 (138) [144] and set Punch Card in the same way as you did for the back. Complete the left half. Follow the instructions from *.



WOMAN'S VEST

SIZES: 6/8 (10/12) [14/16]
 YARN: Beatrice
 GRAMS:
 color 1 200 200 250
 color 2 150 150 150
 TENSION: 6
 GAUGE: 17 sts. 19 rows = 2" (5 cm)

A Norwegian Houndstooth Design.
 Bands are K2, P1 Ribbing with Tension 4. See "Different method for 2 x 2 Rib" in Instruction Manual.

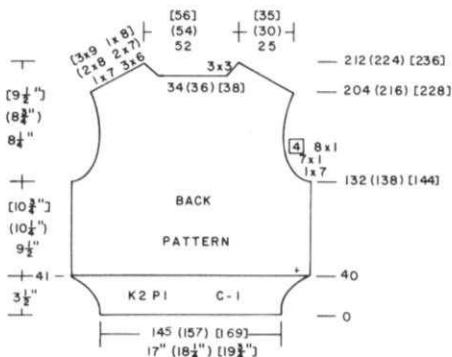


LEFT NECK BAND

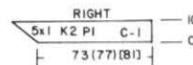
Seam Left Shoulder together first. With color 1, cast on 52 (54) [56] sts. to the LEFT of 0 and 73 (77) [81] sts. to the RIGHT of 0.
 With Tension 4, work K2, P1 Ribbing. MAKE PERFECT SELVEDGE after the cast on row as follows:
 1 Row with Ribber knitting
 1 Row with Knitter
 1 Row with Ribber
 Continue with K2, P1 Ribbing for 10 Rows BUT AT THE SAME TIME, on the RIGHT, increase 1 st. every 2nd row 5x.
 Transfer the ribber sts. to main machine. With wrong side facing you, hang the left edge of neck from point to right shoulder seam onto the band stitches.
 Knit 1 row with tension 10 then latch off from Right to Left by pulling 1 stitch through the next (crochet bind off).

BACK:

With color 1 cast on 145 (157) [169] sts. and work 40 rows K2, P1 Ribbing with Tension 4. Transfer the Ribber sts. to main machine and change to garment tension. Knit 1 row to the left then SET PATTERN on next row. Continue in Norwegian Design. Knit in Pattern to Row 132 (138) [144].
 SHAPE ARMHOLE: ON EACH SIDE, bind off
 7 sts. 1x, then ON EACH SIDE, decrease 1 st. every 2nd row 7x, every 4th row 8x.
 Knit to Row 204 (216) [228].
 BACK NECK AND SHOULDER SHAPING. ON THE LEFT SIDE, remove 34 (39) [44] sts. onto contrast waste yarn. Mark these needles and mark Card. Put center 34 (36) [38] sts. onto separate waste yarn. Complete the right side first.
 *SHAPE NECK AND SHOULDER AT THE SAME TIME.
 ON NECK SIDE, bind off
 3 sts. 3x and FOR SHOULDER bind off
 7 sts. 1x, 6 sts. 3x
 (8 sts. 2x, 7 sts. 2x)
 (9 sts. 3x, 8 sts. 1x).
 Hang the left 34 (39) [44] sts. back onto the marked needles and set Card to the correct row. (SEE PRACTICAL KNITTING HINTS this issue).
 Row Counter back to 204 (216) [228] and complete the left half. Follow the instructions from *

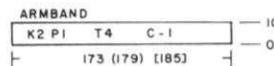


REPEAT THE PUNCH CARD THROUGH ROW 49, then punch 2 rows of holes for connecting Card.



RIGHT NECK BAND

Cast on 73 (77) [81] sts. in the same way as you did for the Left Band. After Selvedge, knit in Ribbing for 10 rows, increasing 1 st. every 2nd row 5x ON THE LEFT. Transfer the ribber sts. to main machine. Hang the right side of garment neck with wrong side facing you onto these needles. Knit 1 row Tension 10 and latch off the same as for left neck band.

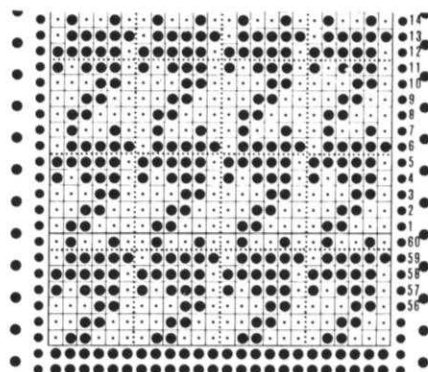


ARMBANDS: Make 2.

With color 1, cast on 173 (179) [185] sts. Work 10 rows K1, P1 Ribbing. Transfer the ribber sts. to main machine. With wrong side of garment facing you, hang armhole (sew shoulder first) onto these needles. Knit 1 row with Tension 10 then latch off the same as neckbands.

FINISHING:

Weave side seams together.





380

WOMAN'S TWO-PIECE SUIT

SIZES: 6/8 (10/12) [14/16]
YARN: Cordella = color 1
 Viola = color 2 (for Weaving)
GRAMS:
 color 1 500 500 550
 color 2 300 300 350
TENSION: 6.1 - 7 for Trim
GAUGE: 12 sts. 20 rows = 2" (5 cm)

METHOD: A Weaving Pattern using Punch Card #1. Always PUSH BACK into working position, the beginning needle if it is selected in Pattern. This will make seaming easier.
TRIM: Use Tension 7 and Punch Card #2. Do NOT hang weights, just pull down gently by hand.

BACK:

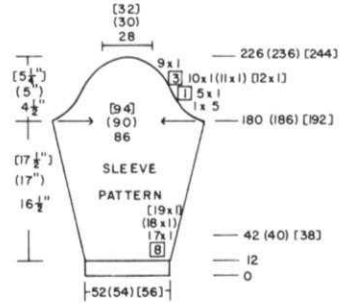
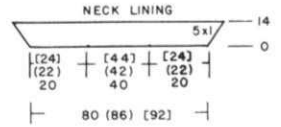
With color 1 cast on 112 (118) [124] sts. using the "e" wrap method.
 Knit 14 rows Stockinette stitch then continue in Weaving Pattern. ON EACH SIDE, decrease 1 st. every 30 rows 2x.
 After Row 74 (78) [82], increase 1 st. every 20 rows 4x.
 After Row 164 (168) [172] SHAPE ARMHOLE: ON EACH SIDE, bind off
 6 sts. 1x, then decrease 1 st. every 2nd row 5x, every 4th row 6x.
 Knit in Pattern to Row 236 (244) [252].
 SHAPE SHOULDER and WATCH FOR NECK SHAPING.
 FOR SHOULDER, bind off ON EACH SIDE
 5 sts. 3x, 4 sts. 2x
 (5 sts. 5x)
 [6 sts. 2x, 5 sts. 3x]
 BUT AT THE SAME TIME, after *Row 242 (250) [258] SHAPE NECK. Bind off the center 28 (30) [32] sts., put the needles on the left into holding position and complete the right side first. ON NECK SIDE, decrease 1 st. EVERY ROW 4x.
 Bring the needles on the left into working position, knit 1 row in Pattern to the LEFT SIDE, turn the Row Counter back to 242 (250) [258] and complete the left half. Follow the instructions from * but don't forget to complete the shoulder shaping.

FRONT: Make 1, reverse 1.

CHECK CHART FOR NEEDLE ARRANGEMENT.
 With color 1, "e" wrap cast on 62 (65) [68] sts.
 Work 14 rows Stockinette stitch. Cast on 10 sts. on the right side for facing (left for 2nd section). Continue in Weaving Pattern but ALWAYS PUSH BACK THE 10 FACING sts. into working position so they will knit in Stockinette stitch with color 1.
 ON THE LEFT, (right for 2nd section) decrease 1 st. every 30th row 2x. Knit in Pattern to Row 64. Mark Card and stop Pattern. Bring 10 (10) [14] sts. on the left side and 35 (36) [37] sts. on the right side into holding position. Knit 14 rows Stockinette stitch over the remaining 26 sts. with color 1. Bind off.
 Now hang pocket lining onto these empty needles, doubling up every 3rd st. to account for the 8 stitch difference.
 All needles back to working position. Set the needles into Pattern from left to right, then continue in Pattern. (Row Counter 64).
 After Row 74 (78) [82], increase 1 st. every 20th row 4x.
 Knit to Row 164 (168) [172].
 SHAPE ARMHOLE: ON THE LEFT SIDE, bind off 6 sts. 1x, then decrease 1 st. every 2nd row 6x.
 Continue in Pattern to Row 218 (224) [230].
 NECK SHAPING: Bind off 19 sts. then decrease 1 st EVERY ROW 8x, then 1 st. every 2nd row 7x (8x) [9x] BUT AT THE SAME TIME, after Row 236 (244) SHAPE SHOULDER on the left.
 Bind off 4 sts. 2x, 5 sts. 3x.
 (5 sts. 5x)
 [6 sts. 2x, 5 sts. 3x].

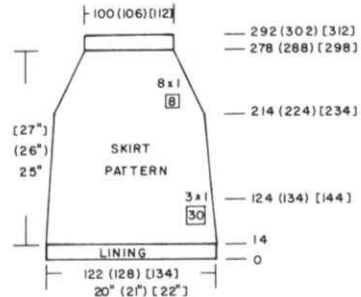
NECK FACING:

With right side of garment facing you, pick up 80 (86) [92] sts. DO NOT INCLUDE the 19 sts. bound off for facing.
 With color 1, work Stockinette stitch. ON EACH SIDE, increase 1 st. every 2nd row 5x.
 After Row 14, remove the sts. onto waste yarn.



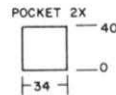
SLEEVES:

With color 1, "e" cast on 52 (54) [56] sts.
 Work 12 rows Stockinette stitch then continue in Pattern.
 After Row 42 (40) [38], ON EACH SIDE, increase 1 st. every 8th row 17x (18x) [19x].
 After Row 180 (186) [192] SHAPE CAP: ON EACH SIDE, bind off 5 sts. 1x, then 1 st. EVERY ROW 5x then decrease 1 st. every 3rd row 10x (11x) [12x]. then 1 st. every 2nd Row 9x.
 After Row 226 (236) [244], bind off the remaining sts.



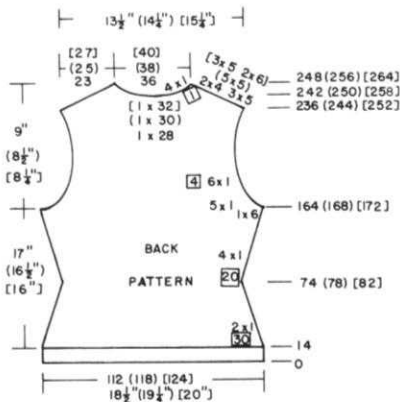
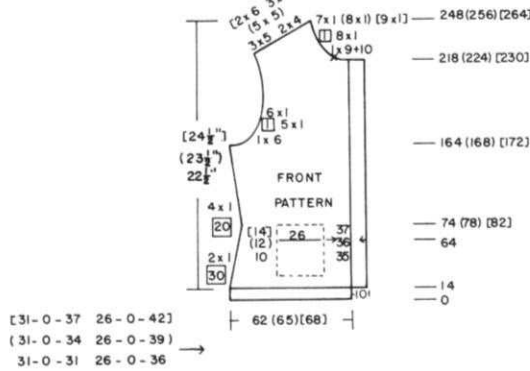
SKIRT: Make 2 sections.

With color 1, "e" cast on 122 (128) [134] sts. Knit 14 rows Stockinette stitch then continue in Pattern.
 After Row 124 (134) [144], ON EACH SIDE, decrease 1 st. every 30th row 3x.
 After Row 214 (224) [234], ON EACH SIDE, decrease 1 st. every 8th row 8x.
 After Row 278 (288) [298] Stop Pattern and continue in Stockinette stitch with color 1 to row 292 (302) [312]. Bind off the remaining sts. loosely.



POCKET LININGS. Make 2.

With contrast waste yarn, cast on 34 sts. Knit 11 rows. Knit 1 row with Ravel Cord. Change to color 1 and work Stockinette stitch. Knit 40 rows then remove the sts. onto contrast waste yarn.



CONTINUED

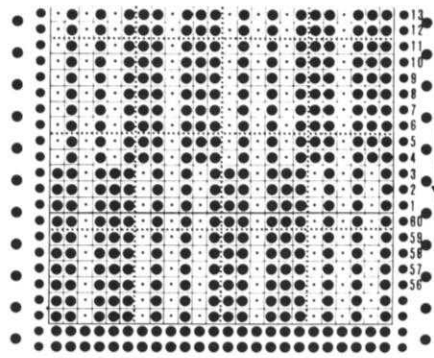
TRIM:

Bring 5 needles into working position, 2 needles to the left of 0 and 3 needles to the right of 0. Use Card #2 and Tension 7. Pull out the needles to holding position then "e" cast on over the 5 needles with COLOR 2. Knit 1 row to the left then set Card and knit 1 row to the right to set the needles. PUSH IN BOTH PART BUTTONS. Hold the knitting down gently while you knit the trim. Make 2 Sleevebands 12" long. Make 1 band for the border around Jacket approximately 92" (94") [96"]. Make 1 band for the Skirt edge 40" (42") [44"]. Make 2 Pocket Bands 5" long.

FINISHING:

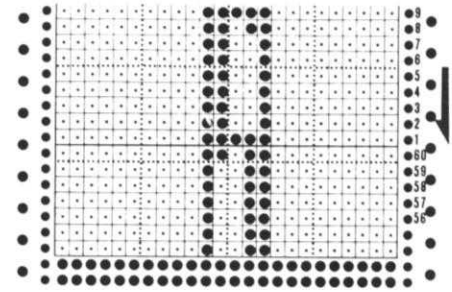
Fold over all facings to the wrong side, steam gently then sew in place. Sew Cord Trim in place (see picture).

No. 1



NO. 1 - Punch Card through Row 53 then punch 2 rows of holes for connecting Card.

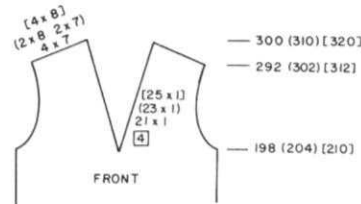
No. 2



NO.2 - Punch Card through Row 41 then punch 2 rows of holes for connecting Card.

FRONT:

Work the front the same as the back to Row 198 (204) [210]. Divide in the Center. Put the needles on the left into holding position and complete the right side first. *SHAPE ARMHOLE same as the back and ON NECK SIDE, decrease 1 st. every 4th row 21x (23x) [25x] and after Row 292 (302) [312], SHAPE SHOULDER same as the back. Bring the needles on the left into working position, Knit 1 row in Pattern to the left side, turn the Row Counter back to 198 (204) [210] and complete the left half. Follow the instructions from *.

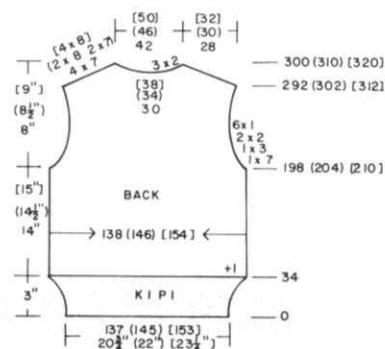


381

MAN'S V-NECK PULLOVER

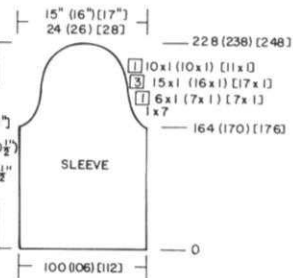
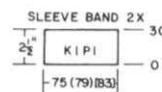
SIZES: 34/36 (38/40) [42/44]
YARN: Venetia
AMOUNT: 1 lb. 1 lb. 1 lb.
TENSION: 5.1
GAUGE: 14 sts. 23 rows = 2" (5 cm)

Lace Pattern alternated with 6 rows Stockinette stitch. (See instructions along side Punch Card. Bands are K1, P1 Ribbing with Tension 2/2 II. Work 4 rows single crochet around neck edge.



BACK:

Cast on 137 (145) [153] sts. and work K1, P1 Ribbing to Row 34. Transfer the ribber sts. to main machine and increase 1 st. on the right side. Garment tension. Knit 2 rows Stockinette stitch then continue in Lace Pattern. After Row 198 (204) [210], SHAPE ARMHOLE: ON EACH SIDE, bind off 7 sts. 1x, 3 sts. 1x, 2 sts. 2x, 1 st. 6x. After Row 292 (302) [312] Bind off the center 30 (34) [38] sts. for NECK. (You may use the SHORT ROW METHOD for Neck and Shoulder Shaping, knitting the sts. with a Ravel Cord and pulling them back to "A" position). Put the needles on the left into holding position and complete the right side first. SHAPE NECK AND SHOULDER AT THE SAME TIME. *FOR NECK, bind off 2 sts. 3x. FOR SHOULDER, bind off 7 sts. 4x (8 sts. 2x, 7 sts. 2x) [8 sts. 4x] Bring the needles on the left into working position, Knit 1 row in Pattern, turn the Row Counter back to 292 (310) [320] and complete the left half. Follow the instructions from *



SLEEVES: Make 2.

With contrast waste yarn, cast on 100 (106) [112] sts. Knit at least 2 inches then 1 row with Ravel Cord from LEFT TO RIGHT. Change to garment yarn. Knit 2 rows. Continue in Pattern to Row 164 (170) [176]. SHAPE CAP: ON EACH SIDE, bind off 7 sts. 1x, then ON EACH SIDE, decrease 1 st. EVERY ROW 6x (7x) [7x], Every 3rd row 15x (16x) [17x] EVERY ROW 10x, (10x) [11x] Bind off the remaining sts. after Row 228 (238) [248].

SLEEVE BAND: Make 2.

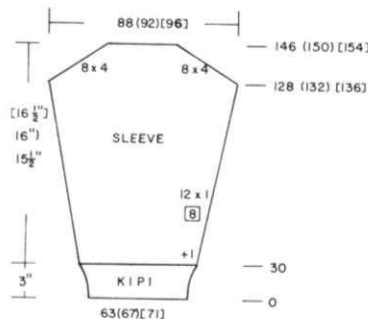
Cast on 75 (79) [83] sts. and work K1, P1 Ribbing to Row 30. Transfer the ribber sts. to main machine. Hang bottom edge of sleeve with Purl side facing you back onto the band sts. Double every 3rd stitch. Knit 1 row with larger Tension and bind off LOOSELY.

FINISHING: See General Instructions.



382
DRIVE KNIT
DRIVE LACE

382



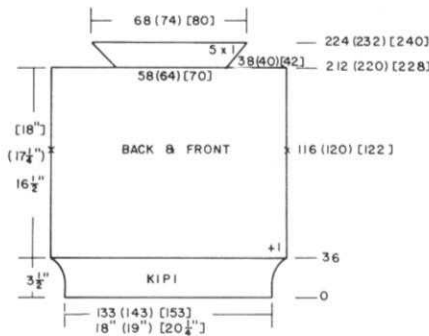
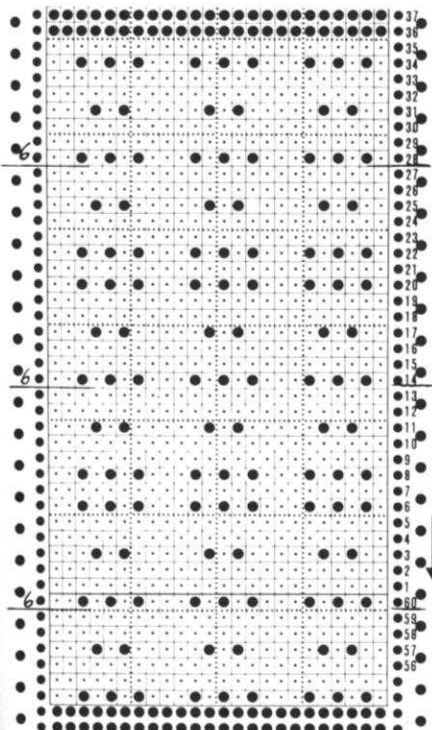
WOMAN'S TOP WITH DRIVE KNIT SLEEVES

SIZES: 8/10 (12/14) [16/18]
YARN: Alpacana
AMOUNT:
 color 1 7 balls-7 balls - 8 balls
 color 2 2 balls-3 balls - 3 balls
TENSION
 Stockinette - 6
 Drive Knit - 6/6 II
 K1, P1 Rib - 2/2 II
GAUGE:
 Stock, 15 sts. 21 rows = 2" (5 cm)
 Drive Knit - 10 sts. 12 1/2 rows = 2" (5 cm)

DRIVE KNITTING (Drop Stitch) is the process of knitting primarily on one bed, while knitting alternate groups of stitches on the other bed, dropping them periodically to cause the extra length stitch. In this case, stockinette stitches are knitted on the Ribber while the Pattern is set out electronically on the 910 or by Punch Card on the Main Machine. Stitches on the main machine are set out in groups of 4 in Design position and 4 in working position. The stitches are alternated every 4 rows. BOTH PART BUTTONS ARE IN. The Pattern Card or Punch Card has 5 rows. This is ACCURATE. The extra row is the DROP ROW.

SLEEVES: Make 2.

USE THE RIBBER COLOR CHANGER. Place Main color in 1, second color in 2.
 Using color 1, make ribbed band. Cast on 63 (67) [71] sts. and work K1, P1 Ribbing to Row 30. Transfer the MAIN machine stitches to the empty needles on Ribber then bring 64 (68) [72] needles on Main Machine (opposite Ribber Needles) into working position. You will use EVERY NEEDLE on Main machine and Ribber for Pattern. Ribber Half Pitch Lever on H. Change to Tension 6/6 I. Color 1 still in Yarn Feeder. Carriage at Right.
 SET KC, CARD ON STOP. PUSH IN BOTH PART BUTTONS on Main Machine and knit 1 row to the Left. Put Card on GO.
 *Change to Color 2 and knit 4 rows on both beds. RELEASE Color 2 from YARN FEEDER. Push BOTH PR Buttons on Ribber UP and TURN OFF ROW COUNTER. Move Carriage Left to Right with NO YARN IN FEEDER. (Stitches drop off Main bed needles). Move Carriage Right to Left. Alternate needles are selected on Main machine. Pick up Color 1, Row Counter ON and PR Buttons on Ribber DOWN. Knit 4 rows. Carriage on the Left. RELEASE Color 1 from Yarn Feeder. Push BOTH PR Buttons on Ribber UP and TURN OFF ROW COUNTER. Move Carriage Left to Right with no yarn in Feeder. (Stitches drop off Main bed needles). Move Carriage Right to Left. Alternate needles are selected on Main machine. * REPEAT from * to * AND AT THE SAME TIME, ON EACH SIDE, increase 1 st. every 12th row for all sizes. Knit in Pattern to Row 128 (132) [136].
 ON EACH SIDE, bind off 4 sts. every 2nd row 8x. If stitches to be bound off are involved with Pattern, transfer Main Machine sts. to the Ribber and then bind them off. After Row 146 (150) [154], bind off the remaining sts.

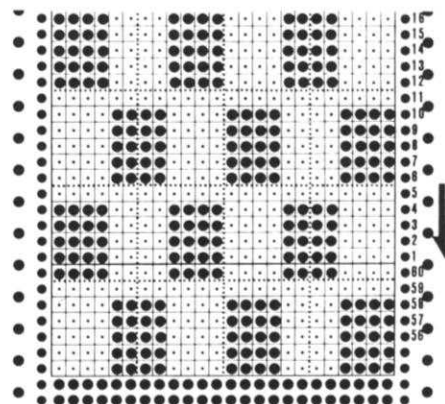


BACK AND FRONT: Make 2 sections.

Cast on 133 (143) [153] sts. with color 1 and work K1, P1 Ribbing with Tension 2/2 II to Row 36. Transfer the Ribber sts. to main machine and increase 1 st. on the right.
 Change to garment Tension and continue in Stockinette stitch. Knit to Row 116 (120) [122]. MARK THIS ROW with contrast yarn. Knit to Row 212 (220) [228]. ON EACH SIDE, remove 38 (40) [42] sts. onto waste yarn. Over the center 59 (64) [70] sts. for the facing, increase 1 st. every 2nd row 5x ON EACH SIDE. After Row 224 (232) [240], bind off the remaining sts. LOOSELY.

FINISHING:

Seam shoulders together. Set sleeves in armhole from Mark to Mark. Turn under neck facing and tack down loosely. Weave the remaining seams together.



Continue to Punch Card through Row 53, then punch 2 rows of holes for connecting Card.

Knit 2 rows

- * 2x Lace Carriage - Knit 2 rows
 - 4x Lace Carriage - Knit 2 rows
 - 2x Lace Carriage - Knit 2 rows
 - 4x Lace Carriage - Knit 2 rows
 - 2x Lace Carriage - Knit 6 rows
- REPEAT FROM *



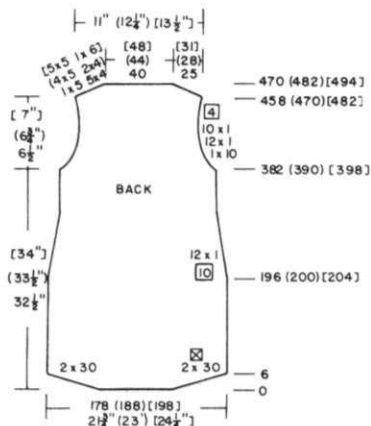
WOMAN'S DRESS

SIZES: 6/8 (10/12) [14/16]
YARN: Color 1 = Venetia
 Color 2 = Capriccio
AMOUNT:
 color 1 2 lbs. 2 lbs. 2 lbs.
 color 2 1 ball 1 ball 1 ball
TENSION: 4 to 5
GAUGE: 17 sts. 23 rows = 2" (5 cm)

Stockinette stitch with trim using Plating Feeder. Venetia in Plating Feeder and Capriccio in Main Feeder.
 Use Tension 5 for Trim.
 11 Buttons, 2 Hooks and Eyes and 2 small Shoulder Pads.

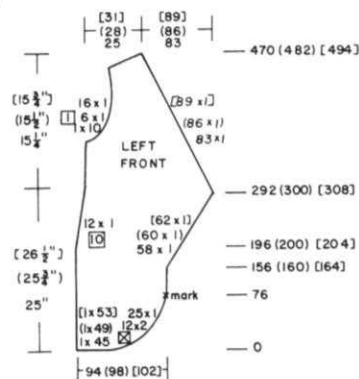
BACK:

With contrast waste yarn, cast on 178 (188) [198] sts. Knit 11 rows then 1 row with Ravel Cord to the right side. Change to garment yarn and put Counter at 0.
 Knit 2 rows, then work SHORT ROWS. Remember to ALWAYS wrap the inside needle in holding position when working Short Rows.
 ON OPPOSITE SIDE OF CARRIAGE, put into holding position 60 sts. Knit 1 row. ON OPPOSITE SIDE OF CARRIAGE, put into holding position 60 sts., knit 1 row. ALWAYS working OPPOSITE CARRIAGE, push back into working position 30 sts. 2x ON EACH SIDE. Counter at 6.
 Knit to Row 196 (200) [204]. ON EACH SIDE, decrease 1 st. every 10th row 12x.
 Knit to Row 382 (390) [398]. SHAPE ARMHOLE: ON EACH SIDE, bind off 10 sts. then decrease 1 st. every 2nd row 12x then 1 st. every 4th row 10x.
 After Row 458 (470) [482] SHAPE SHOULDER: Use SHORT ROWS or bind off ON EACH SIDE 5 sts. 1x, 4 sts. 5x (5 sts. 4x, 4 sts. 2x) [5 sts. 5x, 6 sts. 1x]
 After Row 470 (482) [494] remove the remaining sts. onto waste yarn.



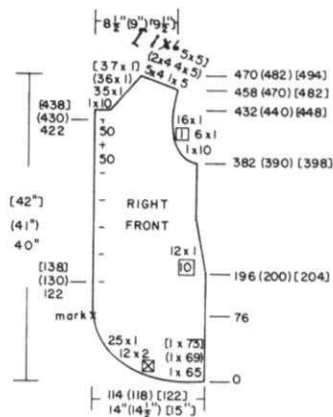
LEFT FRONT:

With contrast waste yarn, cast on 94 (98) [102] sts. Knit 11 rows then 1 row with Ravel Cord. Change to garment yarn. Set Counter to 0. Knit 1 row then work SHORT ROWS on the RIGHT (left for Right Front).
 ON OPPOSITE SIDE OF CARRIAGE, put into holding position 49 sts. Push back into working position on every 2nd row, 2 sts. 12x, then 1 st. 25x.
 After Row 76, MARK the RIGHT EDGE. Knit to row 156 (160) [164]. ON THE RIGHT, increase 1 st. every 2nd row 58x (60x) [62x] BUT AT THE SAME TIME, ON THE LEFT, after Row 196 (200) [204] Decrease 1 st. every 10th row 12x.
 After Row 292 (300) [308] ON THE RIGHT, decrease 1 st. every 2nd row 83x (86x) [89x] AND AT THE SAME TIME, after Row 381 (389) [397], SHAPE ARMHOLE on the LEFT.
 Bind off 10 sts. then decrease 1 st. EVERY ROW 6x, then 1 st. every 2nd row 16x.
 After Row 458 (470) [482], SHAPE SHOULDER same as the back.



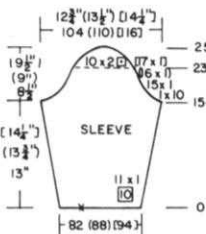
RIGHT FRONT:

With contrast waste yarn, cast on 114 (118) [122] sts. Knit 10 rows, then 1 row with Ravel Cord. Change to garment yarn and Put Counter at 0.
 CARRIAGE IS ON THE LEFT SIDE and EVEN NUMBERS will be on the LEFT to make it easier for you to knit the Right Front section. Knit 1 row to the right THEN WORK SHORT ROWS.
 ON OPPOSITE SIDE OF CARRIAGE, put into holding position 49 sts. ON EVERY 2nd ROW, push back into working position 2 sts. 12x then 1 st. 25x.
 After Row 76, MARK the LEFT EDGE. Begin the BUTTONHOLES after Rpw 122 (130) [138]. Make the Buttonholes 3 sts. in from the left edge by transferring 1 st. to the left and 1 st. to the right. On the following row, 'e' cast on the empty needles. Buttonholes are made every 50 rows and last one is made after Row 422 (430) [438]. (See Chart).
 After Row 196 (200) [204] on the RIGHT, decrease 1 st. every 10th row 12x.
 Knit to Row 381 (389) [397] and don't forget to continue making BUTTONHOLES.
 SHAPE ARMHOLE same as the BACK.
 After Row 432 (440) [448] Bind off 10 sts. for neck then ON NECK SIDE, decrease 1 st. every 2nd row 35x (36x) [37x] and after Row 458 (470) [482], SHAPE SHOULDER same as the back.



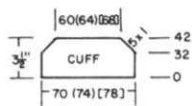
SLEEVES:

With contrast waste yarn, cast on 82 (88) [94] sts. Knit 11 rows then 1 row with Ravel Cord. Change to garment yarn and put Counter at 0.
 Counting from the LEFT edge, mark needle 22 (24) [26] for left sleeve (reverse for right sleeve).
 ON EACH SIDE, increase 1 st. every 10th row 11x.
 After Row 154 (160) [166] SHAPE CAP: ON EACH SIDE, bind off 10 sts. then decrease 1 st. each side every 2nd row 15x (16x) [17x].
 After Row 231 (243) [253] WORK SHORT ROWS. ON EACH SIDE, put into holding position 2 sts. 10x then bring all the needles into working position on one side, knit across, all needles in work on other side and knit across. Bind off LOOSELY.



CUFF:

OPEN CAST ON same as you did before on waste yarn. 70 (74) [78] sts. After the Ravel Cord row, change to garment yarn and counter at 0.
 Knit to Row 32. ON EACH SIDE, bind off 1 st. every 2nd row 5x.
 After Row 42, bind off remaining sts.



FINISHING:

Hand weave the trim edges together with main color from the right side. Sew on Buttons. Sew Hook and Eye at waistline and at point of right neck edge. Gather puffed sleeve cap and fit into armhole. Sew in small shoulder pads. Sew all seams using your favorite method. Put cuff together with sleeve edge. The side trim must meet at the MARK on the lower sleeve edge. With wrong side of sleeve and right side of cuff facing each other, slipstitch crochet carefully, catching several of the sleeve edge sts. in one stitch evenly around the seam. There are more stitches at the bottom of sleeve than on cuff edge. Turn cuff up onto place and sew buttons on in curve of the trim.

TRIM: Basic Instructions.

Before putting trim on garment, practice on your sample swatch. Replace Yarn Feeder with PLATING FEEDER.

Use TENSION 5. With wrong side of garment facing you, pick up required number of sts along the edge. To be certain all stitches on the first row will knit, bring the needles into holding position. (Be sure the Holding Cam Lever is on Normal). Thread garment yarn (color 1) into the Plating slot and Capriccio (color 2) into main feeder. Knit 10 row stockinette stitch with both yarns. To hang the hem, pick up the edge row of garment. REMOVE BOTH YARNS from feeder. Put color 1 into main feeder and knit 1 row at a LOOSE TENSION. Latch tool bind off, pulling 2nd st. through first st, 3rd through 2nd, etc.

BACK HEM TRIM:

Pick up 160 (170) [180] sts. at lower edge of back. Work Trim following basic Instructions.

RIGHT LOWER EDGE TRIM:

Pick up 114 (118) [122] sts. between the MARK and the side seam.

RIGHT FRONT SECTION:

Pick up 184 (190) [196] sts. between the MARK and the Neckline.

RIGHT NECK SECTION:

Pick up along RIGHT neck edge 44 (48) [52] sts.

BACK NECK SECTION:

Pick up at back neck edge 38 (42) [46] sts.

LEFT NECK EDGE SECTION:

Pick up 126 (130) [134] sts. between shoulder and point of left front section.

LEFT FRONT SECTION:

Pick up 148 (152) [156] sts. between point and MARK on left front.

LEFT LOWER EDGE TRIM

Pick up 94 (98) [102] sts. between MARK and left side seam.

CUFF TRIM: 3 sections for EACH cuff. 2 side trims: Pick up 22 sts. Center cuff: Pick up 60 (64) [68] sts.



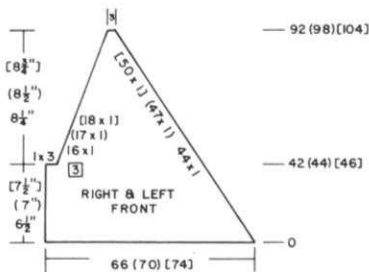
386

WOMAN'S TWO-PIECE DRESS

SIZES: 6/8 (10/12) [14/16]
YARN: Venetia = Color 1
 Angora = Color 2

AMOUNT:
 color 1 1 1/2 lbs. for all sizes.
 color 2 2 balls for all sizes.
TENSION: 5
GAUGE: 9 sts, 12 1/2 Rows = 2" (5 cm)

The 230 BULKY machine (or any Bulky machine) with RIBBER must be used for knitting this Dress. Use 3 strands of Venetia for Top and Skirt. Use 2 strands of Venetia for Skirt Band with Tension 2. Sleeve Cap section is an Eyelet Design with Plaiting. 1 oz. of Beads for Trimming. Crochet Hook No. 00 or E.



FRONT: Make 1, reverse 1.

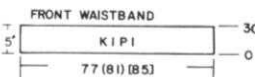
LEFT FRONT: With contrast waste yarn, cast on 66 (70) [74] sts. Knit 11 rows then 1 row with Ravel Cord to the right. Change to garment yarn and put Counter at 0. Knit Stockinette stitch (3 strands color 1 with Tension 5).

ON THE RIGHT, decrease 1 st. **FULL FASHION METHOD** (See General Instruction page in front of magazine) every 2nd row 44x (47x) [50x] **BUT AT THE SAME TIME,** after Row 41 (43) [45], **ON THE LEFT side,** bind off 3 sts. then decrease (full fashion) every 3rd row 16x (17x) [18x]. After Row 92 (98) [104], bind off the remaining 3 sts.. **REVERSE SHAPING FOR RIGHT FRONT.**

FRONT WAISTBAND:

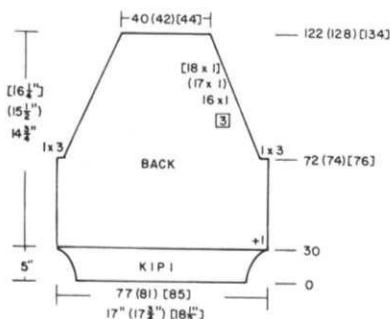
Cast on 77 (81) [85] sts. with 3 strands of color 1 and work K1, P1 Ribbing with Tension 0/0 to Row 30.

Transfer the Ribber sts. to main machine. With wrong side facing you, hang the point of the right front onto the 11th needle from the right edge. Continue hanging the rest of the right front stitches across to the left. Now hang the left front stitches beginning at point, onto the 11th needle from the left with the remaining sts. across to the right. Knit 1 row then bind off LOOSELY.



BACK:

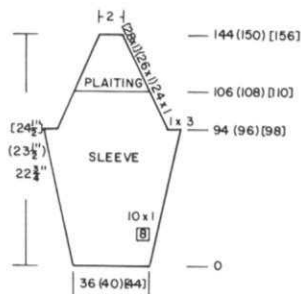
Cast on 77 (81) [85] sts. with 3 strands of color 1 and work K1, P1 Ribbing with Tension 0/0 to Row 30. Transfer the ribber sts. to main machine. Increase 1 st. and change to Tension 5. Continue in Stockinette stitch to Row 72 (74) [76]. **ON EACH SIDE,** bind off 3 sts. then decrease 1 st. every 3rd row 16x (17x) [18x]. After Row 122 (128) [134], bind off the remaining sts.



CONTINUED

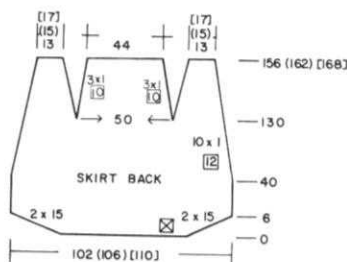
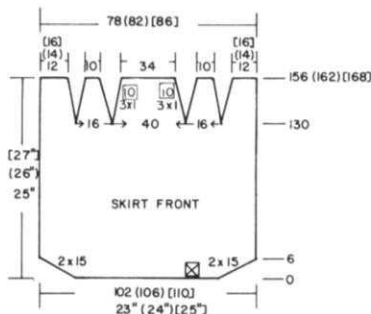
SLEEVES: Make 2.

OPEN CAST ON with waste yarn same as you did for fronts. 36 (40) [44] sts.
 After Ravel Cord row, change to 3 strands of garment yarn. Tension 5 and put Counter at 0. Continue in Stockinette stitch. ON EACH SIDE, increase 1 st. every 8tg row 10x.
 After Row 94 (96) [98] ON EACH SIDE, bind off 3 sts. then decrease 1 st. every 2nd row 24x (26x) [28x]. AT THE SAME TIME, after Row 106 (108) [110], begin the Eyelet Lace Design. The Angora must be in the Main Feeder and the 3 strands of garment yarn in PLAITING Feeder. Transfer the stitches with single eyed transfer tool as follows:
 *Every other stitch to needle on the LEFT.
 Knit 2 rows.
 Every other stitch to needle on the RIGHT.
 Knit 2 rows.
 REPEAT FROM * BUT AT THE SAME TIME, don't forget to continue the Raglan Shaping on each side. After Row 144 (150) [156], bind off the remaining sts.



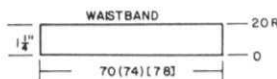
SKIRT FRONT:

OPEN CAST ON same as you did before. 102 (106) [110]. Tension 5. After Ravel Cord row, change to 3 strands of color 1, Counter at 0. Work the SHORT ROWS same as you did for the back. Counter at 6. Continue in Stockinette stitch to Row 130.
 Mark the 20th and 36th stitch ON EACH SIDE of 0 with contrast waste yarn same as you did for Back. There are 4 Darts on the Front.
 ON EACH SIDE hang the 19th and 21st st. onto the 20th needle and the 35th and 37th st. onto the 36th needle. Move all sts. toward the center to fill the empty needles. Push empty needles on each side edge to out of work.
 Knit 10 rows.
 Using the marked stitches as a guide, REPEAT THE DARTS and knit 10 rows 2x MORE.
 After Row 156 (162) [168], remove the sts. onto waste yarn. Rehang the the sts., doubling up 8 sts. evenly across the row. Knit 1 row Right to Left. Change to 2 strands of color 1 and put Tension at 2. Make the WAISTBAND same as the Back Waistband.



SKIRT BACK:

OPEN CAST ON with waste yarn same as you did before. 102 (106) [110] sts.
 After Ravel Cord Row, change to 3 strands of color 1 and Tension 5. Counter 0. Knit 2 rows then WORK SHORT ROWS.
 ON OPPOSITE SIDE OF CARRIAGE, bring into holding position 30 needles, knit 1 row. Always Wrap inside needle in holding position in order to prevent a hole.
 ON OPPOSITE SIDE OF CARRIAGE bring into holding position 30 needles and knit 1 row.
 ON OPPOSITE SIDE OF CARRIAGE, bring back 15 sts. 2x ON EACH SIDE.



SHOULDER PAD: Make 2.

"e" Cast on over 25 needles with 3 strands of color 1. Tension 4. Knit 52 rows. Knit 1 row with Tension 10. Crochet bind off, pulling 2nd stitch through 1st st., 3rd through 2nd, etc.

FINISHING: See General Instructions.
 SKIRT LOWER EDGE: With 3 strands of color 1, work 1 row of single crochet.
 NECK EDGE: With 3 strands of color 1, work 1 row single crochet.
 WRIST EDGE: With 2 strands of Angora and 1 strand of color 1, work 2 rows single crochet.
 Sew Beads on Cuff and Sleeve Cap (See Picture).

Counter reads 6.
 Knit straight to Row 130.
 Mark the 25th stitch (NOT THE NEEDLE) ON EACH SIDE OF 0 with contrast yarn (tie a small piece of contrast right into the stitch). Move the 24th and 25th stitches onto the 25th stitch ON EACH SIDE. (3 sts. on 1 needle). Using Transfer Tool or Garter Bar, move the stitches toward the center to fill in the empty needles. Push the end empty needles to out of work position. Knit 10 rows.
 Using the Marks on knit stitches as a guide, REPEAT THE DARTS 2x MORE and knit 10 rows.
 After Row 156 (162) [168] continue knitting over the remaining sts. for WAISTBAND. Change to Tension 2 and use 2 strands of color 1.
 With 1 x 1 Needle Selector, bring every other needle beginning with 2nd needle on the LEFT into holding position. Set your machine so that it will knit ONLY the holding needles (KNITTING and Brother machines, push in BOTH Part Buttons). Knit 1 row. RELEASE the Part Buttons (or Skip controls on other machines). Knit 20 rows. Beginning with first needle on the Left, Bring every other needle into Selecting position (D position on KNITTING or Brother machines) then hang the LOOPS from the first row of Waistband onto these needles for Hem. Latch Tool bind off LOOSELY.

KNITTING BINDERS

Holds Two Complete Volumes

Keep all your KNITTING Magazines together and build a beautiful library of Patterns.

● PRICE: \$6.95

California residents please add Sales Tax.

Shipping costs \$1.25 (Canada and all other countries \$2.75)





387
DESIGNERS
DELIGHT

WOMAN'S PULLOVER

SIZES: 6/8 (10/12) [14/16]

YARN: Alanda

GRAMS:

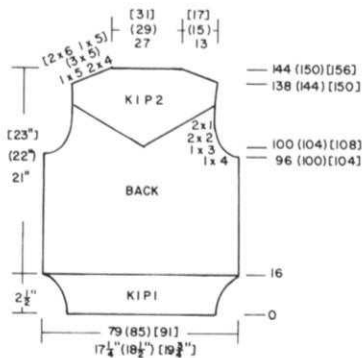
| | | | |
|---------|-----|-----|-----|
| color 1 | 300 | 300 | 300 |
| color 2 | 50 | 50 | 50 |
| color 3 | 50 | 50 | 50 |
| color 4 | 50 | 50 | 50 |

TENSION: 5

GAUGE: 9 sts. 12 rows = 2" (5 cm)

MADE ON THE BULKY MACHINE AND RIBBER.

Bands are K1, P1 Ribbing with Tension as tight as possible. Neck Yoke is K1, P2 with Tension 5/5. Collar and Sleeves are striped. Puff Sleeves.



FRONT:

Work the front the same as the back to Row 126 (132) [138]. Remove the 11 center sts. onto waste yarn. ON THE LEFT SIDE, knit the sts. on the main machine by hand with a Ravel Cord, pulling them back to A (out of work) position. Knit the Ribber sts. with a separate Ravel Cord in the same way, pulling them down to out of work. Complete the right side first. Keeping in Rib Pattern always transfer the Ribber sts. to main machine before binding off. *ON NECK SIDE, bind off 3 sts. 1x, 2 sts. 1x, 1 st. 3x (4x) [5x] and after Row 133 (144) [150], SHAPE SHOULDER same as the back. Bring the sts. on the left into working position, remove Ravel Cords. Complete the left half. Counter at 126 (132) [136], bind off the remaining sts.

BACK:

Cast on 79 (85) [91] sts. with 39 (42) [45] sts. to the LEFT of 0 and 40 (43) [46] to the RIGHT of 0. Color 1. Work K1, P1 Ribbing with Tension as tight as possible on both beds.

Knit to Row 16, then transfer the Ribber sts. to main machine.

Change to Tension 5 and continue in Stockinette stitch. After Row 96 (100) [104], SHAPE ARMHOLE: ON EACH SIDE bind off

4 ts. 1x, 3 sts. 1x, 2 sts. 2x, then 1 st. 2x BUT AT THE SAME TIME, bring Ribber into position and change to Ribber Feeder.

Leave first stitch to the RIGHT of 0 on main machine. (center st.) Transfer 1 st. ON EACH SIDE of center st. to the Ribber.

*Put empty needles out of work. Knit 1 row.

Transfer the next st. ON EACH SIDE from main machine onto the Ribber. Put empty needles out of work.

Knit 2 rows. Skip 1 st. ON EACH SIDE of Main Machine.

Transfer next st. ON EACH SIDE to the Ribber.

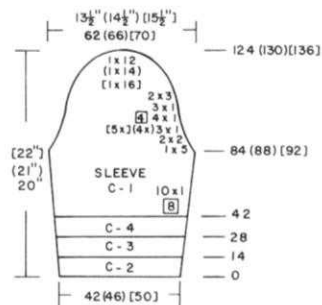
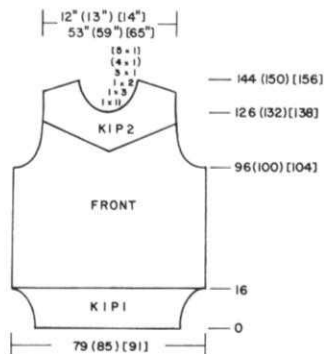
REPEAT FROM * until all sts. are K2, P1 facing you on machine. Continue in Rib Pattern to Row 138 (144) [150].

SHAPE SHOULDER: Always transfer Ribber sts. to main machine before binding off

5 sts. 1x, 4 sts. 2x. (5 sts. 3x).

[6 sts. 2x, 5 sts. 1x].

REMOVE THE CENTER 27 (29) [31] sts. onto waste yarn (transfer the ribber sts. to main machine first) then knit 1 row with garment yarn and after Row 144 (150) [156], remove the remaining sts. onto waste yarn.



SLEEVES: Make 2.

OPEN CAST ON with waste yarn, 42 (46) [50] sts.

After Ravel Cord row to the right, put Counter at 0 and change to color 2. Knit 14 rows Stockinette stitch.

AT THE SAME TIME, ON EACH SIDE, increase 1 st. every 8th row 10x and CHANGE COLOR AS SHOWN ON THE CHART.

After Row 84 (88) [92], SHAPE CAP: Please follow the bind offs ON EACH SIDE as shown for YOUR SIZE on the Chart.

After Row 124 (130) [136], bind off the remaining sts.

CUFF: Make 2.



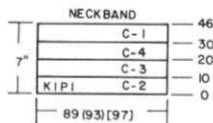
Cast on 35 (35) [37] sts. with color 1 and work K1, P1 Ribbing at TIGHTEST TENSION AND AFTER ZIG-ZAG ROW, SET MACHINE TO KNIT 2 ROWS ON RIBBER and 1 ROW ON MAIN MACHINE for the 3 cast on rows.

All controls normal, work 16 rows Ribbing. Transfer the ribber sts. to main machine. Hang sleeve edge onto these needles doubling every 5th st. (approximately) with wrong side facing you. Knit 1 row at a LARGE tension and bind off loosely.

COLLAR:

Cast on 89 (93) [97] sts. with color 2 and work K1, P1 Ribbing with TIGHTEST TENSION.

Knit 10 rows. Follow the Chart for color changes to Row 46. Transfer the ribber sts. to main machine. Knit 1 row in garment tension and remove the sts. onto waste yarn.



FINISHING:

See General Instructions. Seam one shoulder first. Make sure the ribs line up at the shoulder seam. Weave Collar to neck edge, matching garment tension. Seam second shoulder. Set in Sleeves, allowing for slight puff on cap. With DOUBLE STRAND OF YARN in large tapestry needle, embroider a simple chain stitch on top of the knit stitches going under 2 ROWS each time and keeping the chains even. See Picture for color changes. Center stitch is color 2 then work ON EACH SIDE with colors 3, 4 then 2, 3, 4, etc.



WOMAN'S TWO-PIECE SUIT

SIZES: 6/8 (10/12) [14/16]

YARN: Venetia = Color 1
Multi-Show = Color 2

AMOUNT:

color 1 2 lbs. for all sizes.
color 2 6 balls 6 balls 7 balls

TENSION: For Jacket

TUCK STITCH with color 1 on KH 230
or any BULKY Machine use Tension 3.

Stockinette stitch with color 2,
use Tension 5.

Stockinette Stitch with color 1
on KH 881 or any similar machine
(for Skirt) use Tension 3.2.

GAUGE: For Jacket (Tuck Pattern)
7.5 sts. 21 rows = 2" (5 cm)

GAUGE: For Skirt in Stockinette
17 sts. 25 rows = 2" (5 cm)

TUCK PATTERN FOR JACKET

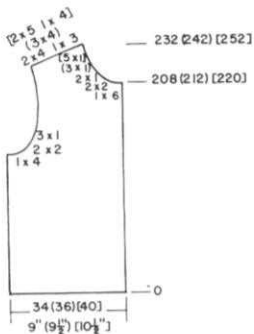
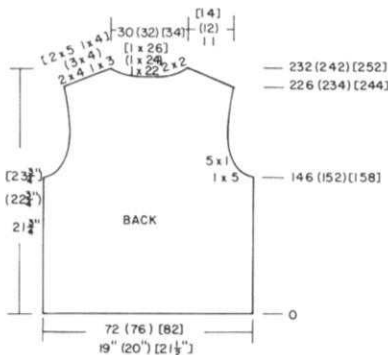
This is a Holding Position Design.
* With Needle Selector, bring every
other needle into HOLDING POSITION.
Set your Controls on machine for
HOLDING the needles.

With 2 strands of Venetia (color 1)
and Tension 3, knit 4 rows.

All needles in working position,
Change to Tension 5 and with Multi-
Show, knit 2 rows over all needles.

REPEAT FROM * FOR PATTERN.

BE SURE TO WATCH PATTERN - ALWAYS
BRING THE SAME NEEDLES TO HOLDING
POSITION - Do NOT alternate them.



JACKET FRONT: Make 1, reverse 1.

OPEN CAST ON with waste yarn
same as you did for back.

34 (36) [40] sts.

After Ravel Cord row. Put
Counter at 0. Tension 5.

Knit 2 rows with Multi-Show
over all needles.

Continue in TUCK PATTERN

same as back to Row

146 (152) [158].

SHAPE ARMHOLE ON THE LEFT

(use separate yarn to make

the bind offs). Bind off

4 sts. 1x, 2 sts. 2x, 1 st. 3x.

Knit in Pattern to Row 208

(212) [220].

SHAPE NECK: Bind off

6 sts. 1x, 2 sts. 2x, 1 st. 2x

(3x) [5x] and after Row 232

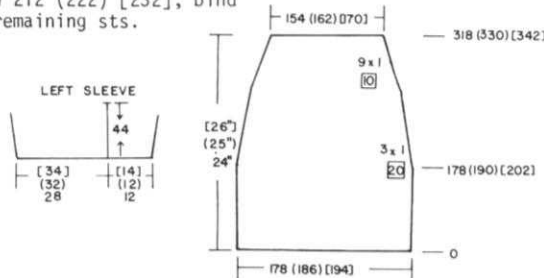
(242) [252], SHAPE SHOULDER

same as the back.

LEFT SLEEVE:

OPEN CAST ON same as right
sleeve over 12 (12) [14] sts.
to the RIGHT of 0.

Work the same as right sleeve
but reverse the needle posi-
tions and the shaping.



SLEEVES:

RIGHT SLEEVE:

OPEN CAST ON with waste
yarn same as you did for
back over 12 (12) [14] sts.
to the LEFT of 0.

After Ravel Cord row, put
Counter at 0. Tension 5.

Knit 2 rows over all needles
with color 2, then work in
Pattern to Row 44.

Remove the sts. onto contrast
waste yarn.

Cast on in the same manner over

28 (32) [34] sts. to

the RIGHT OF 0 and work in

the same way to Row 44.

Re-hang the small piece to

the left of 0 and continue

over all sts. in Pattern

to Row 50.

ON EACH SIDE, increase 1 st.

every 10th row 6x.

After Row 154 (160) [166],

SHAPE CAP: ON EACH SIDE, bind

off 4 sts. 1x, then decrease

1 st. every 4th row 12x (13x)

[14x] and 1 st. EVERY ROW 6x.

After Row 212 (222) [232], bind

off the remaining sts.

JACKET BACK

With contrast waste yarn, cast
on 72 (76) [82] sts. Knit 11

rows then 1 row with Ravel Cord
to the right side.

Counter at 0. TENSION 5.

Knit 2 rows with Multi-Show over
all needles.

Continue in TUCK PATTERN FOR
JACKET.

Knit to Row 146 (152) [158].

SHAPE ARMHOLE: ON EACH SIDE,

bind off

5 sts. 1x, then decrease 1 st.

every 2nd row 5x.

Knit to Row 226 (234) [244].

Bind off the center 22 (24) [26]

sts. for neck. Put the needles

on the left into holding position

by knitting them with a Ravel

Cord and pulling them back to A

(out of work) position.

Complete the right side first.

*SHAPE SHOULDER AND NECK AT

THE SAME TIME. (Make note of

Pattern).

FOR SHOULDER, bind off

4 sts. 2x, 3 sts. 1x

(4 sts. 3x)

[5 sts. 2x, 4 sts. 1x]

FOR NECK, bind off 2 sts. 2x

for all sizes.

Bring the needles on the left

into working position. WATCH

PATTERN. Knit 1 row to the

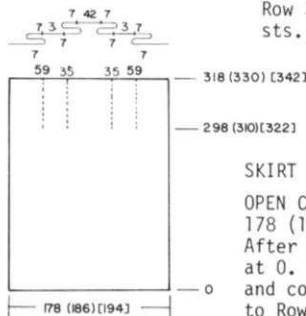
left side, turn the Row Counter

back to 226 (234) [244]

and complete the left half.

Follow the instructions from

*



SKIRT BACK: ON 881 or any 200 needle
Standard Machine. Ten. 3.2

OPEN CAST ON WITH WASTE YARN

same as you did before.

178 (186) [194] sts.

After Ravel Cord Row, put

Counter at 0.

With SINGLE STRAND of color 1

(Venetia), knit Stockinette stitch

to Row 178 (190) [202].

ON EACH SIDE, decrease 1 st.

every 20th row 3x then 1 st.

every 10th row 9x. Knit to

Row 318 (330) [342]. Remove the

sts. onto contrast yarn.

SKIRT FRONT:

OPEN CAST ON same as Skirt Back.

178 (186) [194] sts.

After Ravel Cord Row, put Counter

at 0. Change to 1 strand of color 1

and continue in Stockinette stitch

to Row 298 (310) [322].

*ON EACH SIDE OF 0, bring into

holding position the 35th and 59th

needle. Set your Controls for

holding needles. Knit 1 row to

the LEFT. Release holding control

and knit 1 row to the RIGHT.

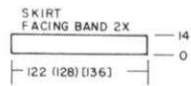
REPEAT FROM * until Row 318

(330) [342]. Remove the sts. onto

waste yarn.

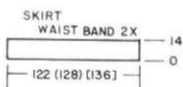
INSIDE FACING BAND for SKIRT:
Make 2 and KNIT THEM BEFORE
MAKING WAIST BAND. Make 2.

OPEN CAST ON with WASTE YARN.
122 (128) [136] sts.
After Ravel Cord Row, put Counter
at 0 and change to color 1 (Venetia).
Knit 14 rows. Remove the sts. onto
waste yarn and put aside.



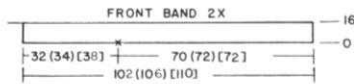
BACK WAIST BAND for SKIRT.

With wrong side facing you, hang
the Skirt Back onto 122 (128)
[136] needles doubling every 5th
stitch. With wrong side facing you,
hang first row of Facing onto these
needles. Knit 14 rows. Pick up
other end of facing and hang onto
same needles. Bind off the crochet
method (with yarn behind the gate
pegs).



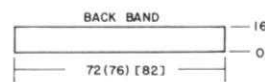
FRONT WAIST BAND FOR SKIRT.

With wrong side facing you, hang
the Skirt Front back onto 122 (128)
[136] needles as follows:
Hang the 42 center sts. onto machine
then make PLEATS ON EACH SIDE as
shown on the Chart with 3 single sts.
between pleats. Hang the remaining
sts. on each side, doubling the sts.
as needed. Knit 14 rows. Pick up
other end of facing then complete
same as Back Waist Band.



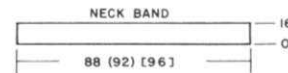
FRONT JACKET BANDS: Make 2

OPEN CAST ON with waste yarn
same as for back.
102 (106) [110] sts.
After Ravel Cord row, put Counter
at 0 and with 2 strands of
color 1, knit 8 rows with Tension
4 then 8 rows with Tension 3.
Hang the hem.
With knit side facing you hang
front edge of Jacket from neck
to front bottom onto 70 (72)
[72] sts. on the machine. Bind
off using the crochet method
with yarn held in BACK of
gate pegs. Remove the sts. from
the pegs then hang the remain-
ing 32 (34) [38] sts. from the
lower edge of Jacket to side
seam onto the band and bind
them off in the same way.
Repeat for other side of
front and lower edge.



BACK BAND:

Cast on 72 (76) [82] sts. with
waste yarn and work the same
as for back.
After Ravel Cord row, put
Counter at 0 and work the band
the same as front bands.
After hanging the hem, pick up
the sts. from lower edge of
back and bind off crochet
method with yarn held in back
of gate pegs.

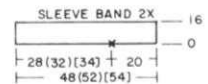
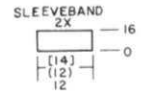


NECK BAND:

OPEN CAST ON with waste yarn
same as you did before. 88 (92)
[96] sts. After Ravel Cord row,
Counter at 0 and work band
the same as front and back
band with TENSION 3 and 2
Pick up 88 (92) [96] sts.
from neck edge (include the
front neck band edges). Bind
off the crochet method with
yarn held behind the gate pegs.

SLEEVE BANDS:

You must make 2 bands for each
sleeve. Make them before
sewing up sleeves.
Make small band first same
way as other bands - over
waste yarn first. (12 (12) [14])
sts. Hang the SHORT edge of
sleeve with knit side facing
you and bind off the same
as other bands.
For the larger band, cast
on 48 (52) [54] sts.
After hanging the hem,
pick up the sts. from short
edge first (lower edge)
20 (20) [20] sts. bind them
off, then hang the remaining
sts. up the opening 28 (32)
[34] sts. and bind them off
same as before.



FINISHING: See General Instructions.

Fold finished edge of Sleeve slit
band over to unfinished edge and
sew in place. Single crochet over
button rings with single strand
of Venetia. Sew 3 buttons along
edge of finished slit band. Sew
a button each side of neck band.
Sew hook and eye at neck.
SKIRT: Close 1 side of waistband
then insert elastic through casing.
Close opening.
Work single crochet around lower
edge of skirt with 2 strands of
Venetia, *picking up 1 st. along
edge of skirt, single crochet, then
pick up 2 sts. along edge and
single crochet and REPEAT FROM *.

IT'S READY NOW!

KNITTING MAGAZINE
BOUND VOLUME NO. 18

- * HARD BOARD COVER
- * COMPLETE INSTRUCTIONS
- * WILL HOLD ANOTHER COMPLETE VOLUME

PRICE \$23.95
Shipping Costs \$3.25



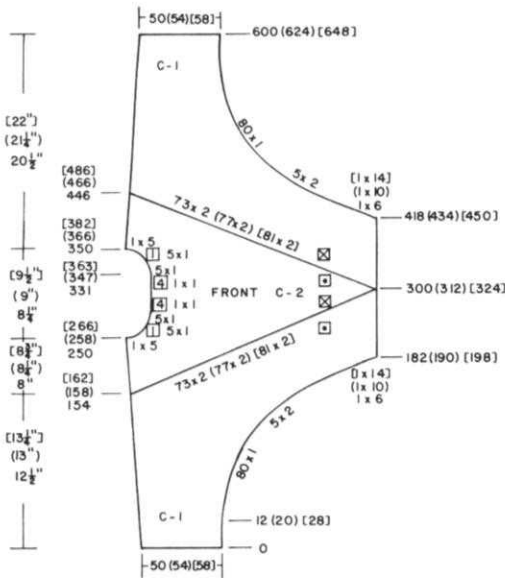
389



WOMAN'S TOP WITH DOLMAN SLEEVES

SIZES: Small Medium Large
YARN: Venetia = color 1
 Capriccio = color 2
AMOUNT:
 color 1 1 lb. for all sizes.
 color 2 4 balls for all sizes
TENSION: 4.1 - 5.1
GAUGE: 16 sts. 24 rows = 2" (5 cm)

Stockinette stitch with SHORT ROWS.
 Bands are K1, P1 Ribbing
 For Skirt, use Skirt Pattern in
 Volume 18 No. 3 - Pattern 367.



FRONT:

To the extreme LEFT of machine, with contrast waste yarn, cast on 50 (54) [58] sts. Knit 11 rows then 1 row with Ravel Cord to the right. Change to color 1. Counter at 0.

Knit to Row 12 (20) [28]. ON THE RIGHT, work FULL FASHION increases (See Instruction Manual). Increase 1 st. every 2nd row 80x, then 'e' cast on 2 sts. every 2nd row 5x and 6 (10) [14] sts. 1x.

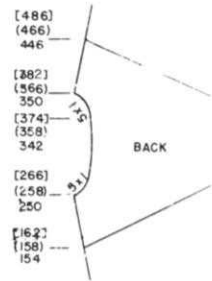
AT THE SAME TIME after Row 154 (158) [162], begin SHORT ROWS. Set your controls for holding needles. (Partial knitting) ON THE LEFT, bring 2 needles into holding position every 2nd row 73x (77x) [81x]. Remember to always wrap the inside needle in holding position to prevent a hole when working Short Rows. After Row 300 (312) [324], All needles are in holding position. Remove color 1 and move Carriage to the left side.

Color 2 in Yarn Feeder. Turn Row Counter back to 154 (158) [162]. ON CARRIAGE SIDE, push 2 sts. back into working position every 2nd row 73x (77x) [81x], BUT AT THE SAME TIME, after Row 250 (258) [266], SHAPE NECK. Bind off 5 sts., then decrease 1 st. EVERY ROW 5x and 1 st. every 4th row 1x.

After Row 300 (312) [324], on the RIGHT, bring 2 sts. into holding position every 2nd row 73x (77x) [81x] and AT THE SAME TIME after Row 331 (347) [363], reverse the neck shaping. Increase 1 st. every 4th row 5x then 1 st. EVERY ROW 5x and cast on 5 sts.

After Row 350 (366) [382], continue with SHORT ROWS on the right until all needles are in holding position. Move Carriage to the right side. Set Counter back to Row 300 (312) [324]. Change to color 1. Push 2 sts. back into working position every 2nd row 73x (77x) [81x] and AT THE SAME TIME, on the RIGHT, after Row 418 (434) [450], bind off 6 (10) [14] sts. then 2 sts. every 2nd row 5x and decrease 1 st. 80x.

After Row 600 (624) [648], remove the sts. onto waste yarn.

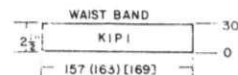


BACK:

Work the back the same as the front to Row 250 (258) [266]. NECK SHAPING: Bind off 1 st. every 2nd row 5x. Continue the Short Rows on the right side SAME AS FRONT to Row 342 (358) [374] then increase 1 st. every 2nd row 5x at neck edge. Knit to Row 600 (624) [648] same as front.

WRIST BANDS: Make 2.

Seam Shoulder together. Cast on 77 (79) [81] sts. and work K1, P1 Ribbing. Make perfect Selvedge opposite to Instruction Manual (1 row with Ribber knitting, 1 row with Knitter and 1 row with Ribber). Work 36 rows K1, P1 Ribbing. Transfer the ribber sts. to main machine. Hang cuff edge of sleeve on top of these stitches with wrong side facing you. Knit 1 row LARGE TENSION then bind off the crochet method, pulling 2nd st. through 1st st., 3rd through 2nd, etc.



WAIST BAND: Make 2.

Cast on 157 (163) [169] sts. using same method as WRIST BAND. Knit 30 rows K1, P1 Ribbing then transfer ribber sts. to main machine. Hang waist edge of garment onto these needles with point stitches at 0. Knit 1 row LARGE TENSION then bind off the crochet method.

FINISHING: See General Instructions.

Work 1 row single crochet around neck edge with color 1 then 1 row reverse single crochet with color 2.



390

WOMAN'S SMALL SIZE DRESS

SIZES: 5/6 (7/8)
YARN: Venetia
AMOUNT: 1 lb. 1 1/4 lbs.
TENSION: 5 to 6
GAUGE: 16 sts. 20 rows = 2" (5 cm)

Lace Pattern No. 427-A or you can punch your own Card.

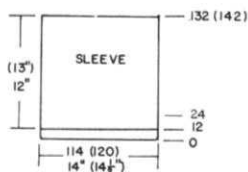
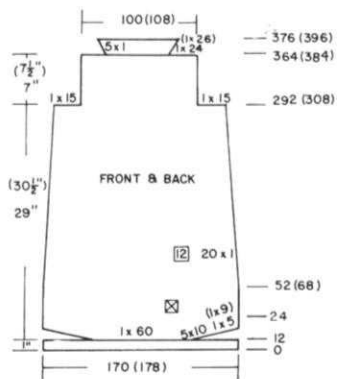
IMPORTANT: - WORKING SHORT ROWS WHEN KNITTING A LACE PATTERN.

Normally when knitting SHORT ROWS, we bring the needles to holding (E) position, but when knitting a Lace Pattern, we cannot hold the needles in this way.

To work SHORT ROWS IN LACE, you must hand knit the stitches to be held using a Ravel Cord and pull them back to the OUT OF WORK (A) position. The stitches remain in the hooks of the needles and held on the Ravel Cord - so actually you are knitting them HALF WAY. When you need to bring them back into work, you bring the required number of stitches back to the working position and gently pull out the Ravel Cord from these stitches.

To AUTOMATICALLY WRAP the inside needle to prevent a hole, ALWAYS place 1 LESS stitch than called for onto the Ravel Cord, knit across then place 1 more stitch on the Ravel Cord and knit back.

When returning the stitches to working position, bring 1 MORE than pattern calls for into working position, knit across and place the last stitch knitted back onto the Ravel Cord and out of work (A) position. Remember that SHORT ROWS ARE ALWAYS worked OPPOSITE CARRIAGE. Make a sample first so that you can actually see what is happening.



SLEEVES: Make 2.

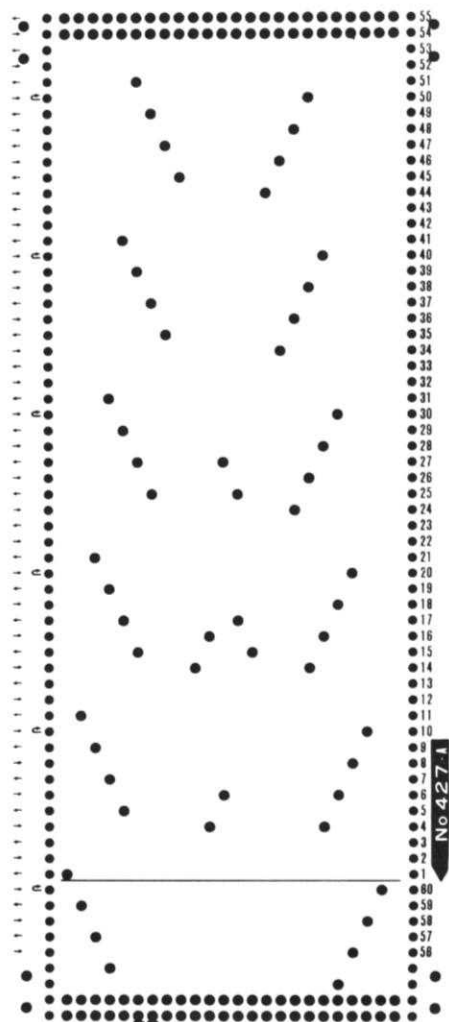
Cast on 114 (120) sts. and work 12 rows Stockinette stitch. Continue in Lace Pattern. After Row 24, bring needles to selecting position and hang the hem. Continue in Lace Pattern to Row 132 (142). Remove the sts. onto waste yarn.

FINISHING:

With right side of back facing you, hang the shoulder sts. onto machine. With each side of front facing you, hang shoulder sts. onto same needles. Bind off the double sts. together. With right side facing you, hang the armhole edge of garment (NOT THE BIND OFF STS.) onto machine then hang the Sleeve sts. onto the same needles with wrong side facing you. Bind off the double sts. together. Turn neck facing to the wrong side and hem loosely. Finish side and sleeve seams.

BACK AND FRONT:

Cast on 170 (178) sts. and work 12 rows Stockinette stitch with Tension 4.2. Change to garment tension. BEGIN LACE PATTERN AND SHORT ROWS. ON OPPOSITE SIDE OF CARRIAGE, Put into holding position 50 sts. before knitting the next 2 rows. ON OPPOSITE SIDE OF CARRIAGE, bring back into working position 10 sts. 5x, 5 sts. 1x (9 sts. 1x) ON EACH SIDE. After Row 52 (68) ON EACH SIDE, decrease 1 st. every 12th row 20x. After Row 292 (308) ON EACH SIDE, bind off 15 sts. After Row 364 (384) ON EACH SIDE, remove 24 (26) sts. onto waste yarn. Continue in Stockinette stitch. ON EACH SIDE, increase 1 st. 5x. After Row 376 (396), bind off the remaining sts. LOOSELY. Make another section the same.



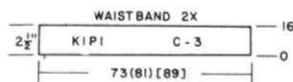
391

WOMAN'S BASKET WEAVE PULLOVER

SIZES: 6/8 (10/12) [14/16]
YARN: color 1 = Multi-Show
color 2 = Multi-Show
color 3 = Bravo

AMOUNT:
color 1- 7 7 8 Balls
color 2- 4 4 4 Balls
color 3- 2 2 2 Balls
TENSION: 7
GAUGE: 8 sts. 11 rows = 2" (5 cm)

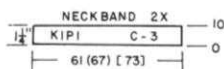
Made on the BULKY Machine. Basket Weave Pattern. Practice at least 3 levels before knitting garment. Bands are K, P1 Ribbing with color 3 using Tension 0/0



MAKE WAISTBANDS AND NECKBANDS FIRST.

WAISTBAND: Make 2.

Cast on 73 (81 [89] sts. with color 3 and work 16 rows K1, P1 Ribbing with Tension 0/0 or 1/1. Transfer ribber sts. to main machine. Remove onto contrast waste yarn.

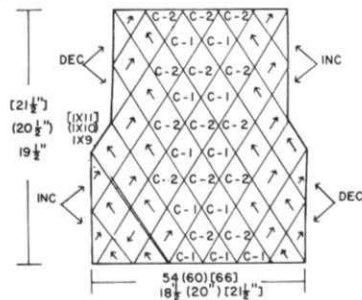


NECKBAND: Make 2.

Cast on 61 (67) [73] sts. with color 3. Work 10 rows K1, P1 Ribbing Tension 0/0 or 1/1. Transfer ribber sts. to main machine. Remove onto waste yarn.

FRONT AND BACK:
FIRST LEVEL - COLOR 1

Bring into working position 54 (60) [66] needles. MARK EACH END STITCH ON NEEDLE BED. Rehang 1 waistband with wrong side facing you, doubling every 3rd st. Knit 2 rows over all needles. WORK SHORT ROWS. Bring all needles into holding position. (Carriage on the right). *Push 1 needle nearest Carriage back into working position. Knit 2 rows. REPEAT FROM * until 8 (9) [10] needles are in work. Row 16 (18) [20]. **Push 2 needles back to working position, knit to the LEFT. ON OPPOSITE SIDE OF CARRIAGE, Bring 9 (10) [11] needles into holding position. Knit 1 row to the right (DO NOT WRAP this time). ON OPPOSITE SIDE OF CARRIAGE, push 1 needle back to working position, knit 2 rows until 8 (9) [10] needles are in work. REPEAT FROM ** until 6 sections are completed. This complete first level. Break yarn. REMOVE EACH SET of 9 (10) [11] sts. from machine onto separate waste yarn.



CONTINUED

SECOND LEVEL: COLOR 2

Carriage on left.

Hang left end stitch from waste yarn onto 9th (10th) [11th] needle counting from left end mark on Needlebed.

*Knit 2 rows. Pick up next open st. and hang on SAME end needle on right.

Increase 1 st. on left end. REPEAT FROM * until all sts. have been picked up from first section 9 (10) [11] sts. in work on machine.

CARRIAGE ON THE LEFT.

*Pick up finished edge of section on the right, 9 (10) [11] sts.

Hang first open stitch from next section onto end needle in work. Knit 1 row to the right.

ON THE LEFT, bring 9 (10) [11] sts. to holding position. Knit to the left.

**Hang next open st. onto end needle in work. Knit 2 rows.

REPEAT FROM ** till all 9 (10) [11] open sts. have been picked up. REPEAT FROM * THROUGH ** 4x MORE.

CARRIAGE ON THE LEFT.

Pick up finished edge of last section to the right 9 (10) [11] stitches.

*Knit 2 rows.

Decrease 1 st. on right edge. REPEAT FROM * till last stitch and bind this off.

THIRD LEVEL - COLOR 3

CARRIAGE ON THE RIGHT.

Pick up right finished edge from marked end needle to the left. 9 (10) [11] sts.

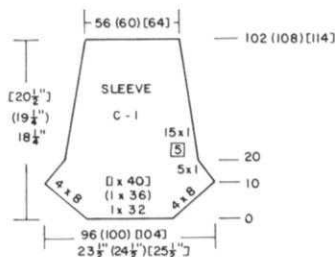
Pick up 1 open st. from 2nd section on the left.

Continue to follow the instructions from SECOND LEVEL but REVERSE RIGHT FOR LEFT.

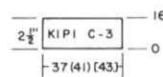
Continue to follow Chart.

After 5 levels are completed, on the LEFT EDGE bind off 9 (10) [11] sts. for armhole (right armhole shapes itself).

Follow the Chart, noting that the end triangles NOW are REVERSED from before so that you must DECREASE ON THE LEFT and INCREASE ON THE RIGHT. When you reach the 10th level, you will work only HALF the triangle AND AT THE SAME TIME, as you knit EACH ONE, DECREASE 1 st. every 2nd row on the LEFT SIDE and bind off the last stitch.



CUFF: Make 2 - COLOR 3.



Cast on 37 (41) [43] sts. and work 16 rows K1, P1 Ribbing. Transfer the ribber sts. to main machine then hang the open sts. of sleeve with 2 sts. on every 2nd needle. Knit 1 row LOOSELY then bind off the latch tool method.

SLEEVES: Make 2 - COLOR 1.

ON EACH SIDE OF 0, pick up and hang 3 sts. from end of one Neck Band, then pick up 6 sts. from end of other Neck Band and hang onto same needles.

ON EACH SIDE pick up 45 (47) [49] sts. from armhole edge. (96 (100) [104] sts.

Knit 2 rows then WORK SHORT ROWS: ON OPPOSITE SIDE OF CARRIAGE, put into holding position 32 sts. before knitting the next 2 rows.

ON OPPOSITE SIDE OF CARRIAGE, bring back into working position 8 sts. 4x ON EACH SIDE.

ON EACH SIDE, decrease 1 st. every 2nd row 5x, then decrease 1 st. every 5th row 15x.

Knit to Row 102 (108) [114]. Remove the sts. onto waste yarn.

392

392 LEISURE WEAR



WOMAN'S TOP AND PANTS

SIZES: 6/8 (10/12 [14/16])

YARN: Venetia

AMOUNT:

color 1 2 lbs. for all sizes.

color 2 5 ozs. for all sizes.

TENSION: LACE STOCKINETTE

3.1 - 4.1 4.2 - 5.2

GAUGE:

Lace - 15 sts. 18 rows = 2" (5 cm)

Stockinette - 16 sts. 22 rows = 2"

The Top is double eyelet Lace

Pants are Stockinette stitch.

Bands are K1, P1 Ribbing with Tension 0/0 II in color 2 except for pants waistband.

Collar is crochet Lace.

5 Buttons

32" non-roll elastic.

BACK:

With color 2, cast on 135 (145) [155] sts. Work K1, P1 Ribbing to Row 22 with Tesnion 0/0 II. Transfer the Ribber sts. to main machine and increase 1 st. on the right side. Knit 2 rows color 1. Continue in Lace Pattern. After Row 96 (102) [108], ON EACH SIDE, bind off 16 sts. Continue in Pattern to Row 172 (182) [192].

ON EACH SIDE, remove 30 (33) [36] sts. onto waste yarn. Bind off the remaining 44 (48) [52] sts.

FRONT:

Work the front the same as the back to Row 96 (102) [108].

Mark the Card Row.

Bind off the center 4 sts. and

PUT ALL STS. ON THE LEFT SIDE INTO OUT OF WORK POSITION WITH RAVEL CORD.

ON THE RIGHT, bind off 16 sts. for armhole then continue in Pattern.

After Row 157 (165) [174]

SHAPE NECK: Bind off

7 sts. 1x, 3 sts. 2x, 1 st.

EVERY ROW 7x (9x) [11x].

After Row 172 (182) [192], re

move the remaining sts. for

shoulder onto waste yarn.

Bring the needles on the left

into working position by gently

pulling the Ravel Cord.

Set Card back to marked row and

set the needles for pattern

from left to right with card

on STOP. then put Card on GO.

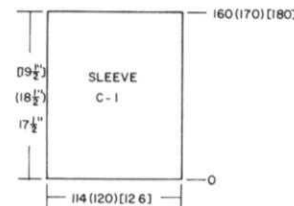
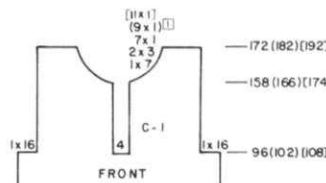
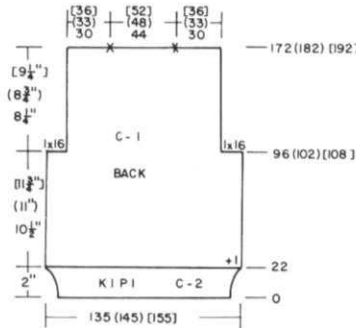
Row Counter 96 (102) [108].

ON THE LEFT, bind off 16 sts.

for ARMHOLE (knit across first)

Complete the left side with

reverse shapping.



SLEEVES: Make 2.

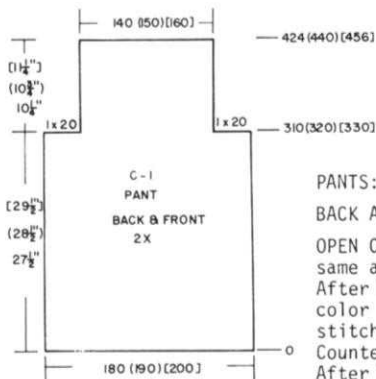
With contrast waste yarn, cast on 114 (120) [126]. Knit 11 rows, then 1 row with Ravel Cord to the right side.

Put Row Counter at 0 and use garment tension. Color 1.

Knit 2 rows Stockinette stitch then continue in Lace Pattern.

After Row 160 (170) [180].

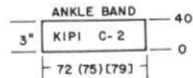
Bind off.



PANTS:
BACK AND FRONT: Make 2 sections.
OPEN CAST ON WITH WASTE YARN same as you did for the Sleeves. After Ravel Cord row, change to color 1 and work Stockinette stitch with Tension 4.2 - 5.2. Counter at 0. After Row 310 (320) [330], ON EACH SIDE, bind off 20 sts. Knit to Row 424 (440) [456] then remove the sts. onto waste yarn.

WAIST BAND: Make 2.

Bring 112 (120) [128] needles into working position. With wrong side facing you, hang the sts. held on waste yarn at waist edge, onto these needles doubling every 3rd stitch. Bring every 2nd needle into holding position. Set your machine for Partial or Skip knitting. Knit 1 row from right to left. Release Part or Skip controls and knit 24 rows. Bring alternate needles (every 2nd) into the selecting position (D on KNITTING and Brother machines) then hang the loops from the first row onto these needles. Knit 1 row then bind off LOOSELY.

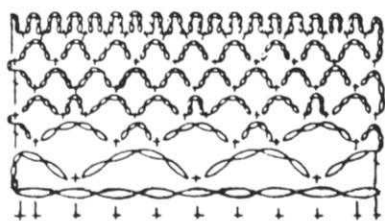


ANKLE BANDS: Make 2.

Bring 90 (95) [100] needles into working position. Hang the bottom edge of pant legs back onto these needles with 2 sts. on each needle. Knit 2 rows then remove the sts. onto waste yarn. Cast on 72 (75) [79] sts. with color 2 and work K1, P1 Ribbing to Row 40. Transfer the ribber sts. to main machine then hang the pant edges stitches with wrong side facing you onto these needles with 2 sts. on every 4th needle. Knit 1 row then bind off LOOSELY.

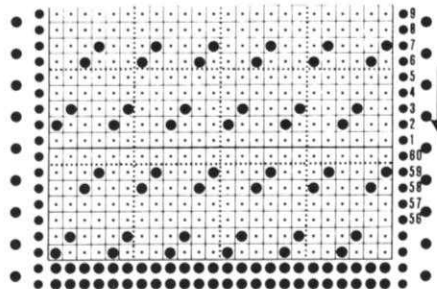
FINISHING:

See General Instructions. With color 1, work 1 row single crochet around neck edge. At front slit, work 3 rows single crochet, making Buttonholes on the 3rd row of RIGHT FRONT. Follow the Line Drawing for crocheting Collar in color 1. The last row is color 2. Sew on Buttons.



3 stitches = 1 pattern

- ⑦
- ⑥
- ⑤
- ④
- ③
- ②
- ①



REPEAT the Punch Card through Row 53.

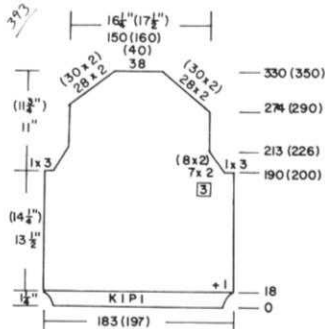
393



MAN'S CARDIGAN

SIZES: Small Large
YARN: Vienna
AMOUNT: Color 1 12 balls for both sizes. 4 colors embroidery floss or yarn.
 5 Buttons
TENSION: 4
GAUGE: 18 sts. 25 rows = 2" (5 cm)

Stockinette stitch with Chevron Design embroidered on the LEFT FRONT. Bands are K1, P1 Ribbing with Tension 2/2 II

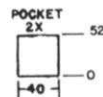


BACK:

Cast on 183 (197) sts. and with Tension 2/2 work K1, P1 Ribbing to Row 18. Transfer the ribber sts. to main machine. Increase 1 st. on the right side. Continue in Stockinette stitch with Tension 4. Knit to Row 190 (200) SHAPE ARMHOLE: ON EACH SIDE, bind off 3 sts. then ON EACH SIDE, decrease (full fashion) 2 sts. every 3rd row 7x (8x). Mark Row 213 (226) with contrast yarn at each edge. Knit to Row 274 (290). SHAPE SHOULDER: ON EACH SIDE, decrease (full fashion method) using 3 prong transfer tool, 2 sts. every 2nd row 28x (30x). After Row 330 (350), bind off the remaining sts.

POCKET LINING: Make 2.

With contrast waste yarn, cast on 40 sts. Knit 11 rows then 1 row with Ravel Cord to the right side. Change to garment yarn and put Counter at 0. Knit to Row 52. Knit 1 row with Ravel Cord and remove the sts. onto waste yarn.



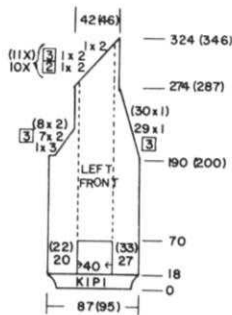
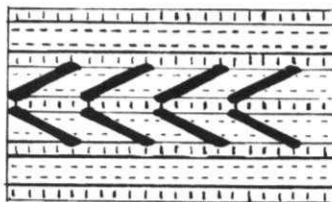
RIGHT FRONT:

Cast on 87 (95) sts. Work K1, P1 Ribbing to Row 18. Transfer the ribber sts. to main machine. Change to garment tension. With right side facing you, hang 40 sts. of pocket lining onto needles beginning with the 21st (23rd) needle from the RIGHT. Knit to Row 70. BIND OFF 40 sts. between 21st (23rd) needle on the right and 28th (34th) on the left. (See CHART). Hang 40 sts. from pocket lining with wrong side facing you onto the empty needles. Continue on all sts. to row 190 (200). SHAPE ARMHOLE: On the right, bind off 3 sts. 1x, then decrease (full fashion method) 2 sts. every 3rd row 7x (8x) AND AT THE SAME TIME, ON NECK SIDE, decrease (full fashion method) 1 st. every 3rd row 29x (30x). After Row 274 (287) SHAPE SHOULDER. Decrease 2 sts. every 2nd row 1x and 2 sts. every 3rd row 1x, ALTERNATELY 10x (11x). Decrease 2 sts. 1x.

CONTINUED

LEFT FRONT:

Work the same as the Right Front to Row 70. Bring Ribber into position and change to ribber yarn feeder. Move the 21st (23rd) stitch from the left DOWN to the Ribber, then move every 3rd st. down to the Ribber, ending with the 28th (34th needle from the right on the main machine. (OR DROP STITCHES AND LATCH UP IN A KNIT STITCH). Continue in this knitting pattern. After Row 190 (200) reverse the shapings of armhole and neck. After Row 274 (287), work the decreases for shoulder same as the Right Front. If Ribber sts. are involved, transfer them to the main machine then decrease.

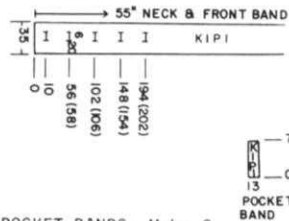


SLEEVES: Make 2.

Cast on 85 (95) sts. Work K1, P1 Ribbing to Row 40. Transfer the ribber sts. to main machine and increase 1 st. on the right. ON EACH SIDE, increase 1 st. every 6th row 31x (32x). After Row 234 (244) SHAPE CAP: ON EACH SIDE, bind off 3 sts. then decrease (full fashion method) 2 sts. every 3rd row 7x (8x). After Row 257 (270) ON EACH SIDE, decrease 2 sts. every 2nd row 21x (22x). ON EACH SIDE, after Row 299 (314), decrease 1 st. every 7th row 10x (11x). After Row 376 (396) bind off the remaining 10 (12) sts.

NECK AND FRONT BAND:

Cast on 35 sts. and work 10 rows K1, P1 Ribbing. MAKE BUTTONHOLE: *With contrast yarn, manually rib over 6 sts. starting with the 21st st. from the right edge.* Continue ribbing over all stitches with garment yarn to Row 56 (58) and REPEAT THE BUTTONHOLE from * to *. Continue ribbing and making BUTTONHOLES in the same way after Rows 102 (106), 148 (154), 194 (202). Continue ribbing for approximately 55". Remove onto waste yarn.

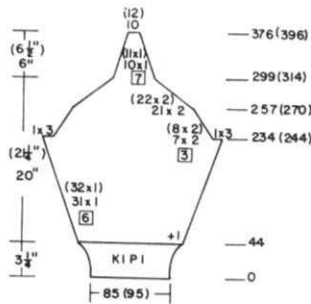


POCKET BANDS: Make 2.

Cast on 13 sts. and work 70 rows K1, P1 Ribbing. Bind off.

FINISHING:

Weave all seams by hand with right sides facing you. Weave Pocket bands to pocket edge and weave front and neck band in place. Start weaving the BUTTONHOLE side of band to garment first then you can unravel any extra rows on the other side, making sure the last row matches the bottom edge. EMBROIDERY: Follow the Line Drawing. Start Chevron Design on the second purl row (See Picture).



394

394 LITTLE MISS FASHION



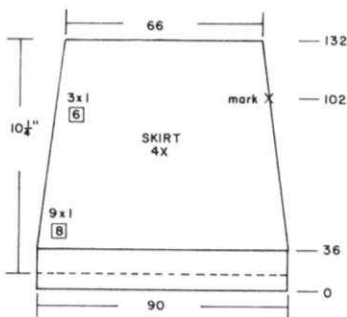
GIRL'S DRESS

SIZES: 7/8
YARN: Cordella
AMOUNT:
color 1 6 balls
color 2 Small amount of White
TENSION: 5 to 6
GAUGE: 15 sts. 22 rows = 2" (5 cm)
14" Zipper
5 Pearl Buttons
Small Belt Buckle

Stockinette stitch. Single crochet and Shell crochet for trim.

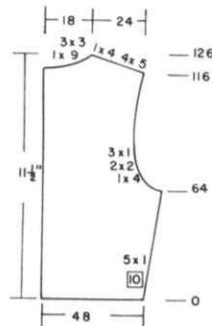
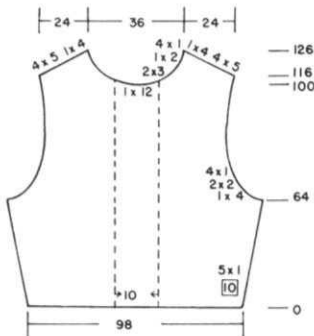
SKIRT: Make 4.

Cast on 90 sts. (You may use the PART or SKIP method for hem cast on). Knit to Row 36 then hang the hem. ON EACH SIDE, decrease 1 st. every 8th row 9x, then 1 st. every 6th row 3x. Mark 2 of the skirt sections after Row 102 for zipper opening. After Row 132, remove the sts. onto contrast waste yarn.



FRONT BODICE:

With purl side facing you, hang 2 unmarked skirt sections onto 98 needles, 2 stitches on every 3rd needle. Knit 1 row right to left. Hang the 6th stitch on each side of 0 onto the neighboring needle and put the empty needle out of work. ON EACH SIDE, increase 1 st. every 10th row 5x. Knit to Row 64. SHAPE ARMHOLE: ON EACH SIDE bind off 4 sts. 1x, 2 sts. 2x, 1 st. 4x. Knit to Row 100. SHAPE NECK: Bind of the center 12 sts. (include the out of work needle in counting). Put the needles on the left into holding position or remove onto waste yarn. *AT NECK EDGE, bind off 3 sts. every 2nd row 2x, 2 sts. 1x and 1 st. 4x. AT THE SAME TIME, after Row 116, SHAPE SHOULDER: Bind off 5 sts. 4x, 4 sts. 1x. Bring the needles on the left into working position, knit 1 row to the left then set Counter to 100 and complete the left half. Follow the instructions from *.

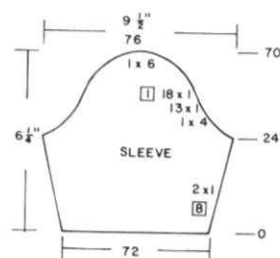


BACK BODICE: Make 1, reverse 1.

Bring 48 needles into working position. Hang the sts. from 1 skirt section onto these needles with 2 sts. on every 3rd needle. ON THE RIGHT (left for 2nd section), increase 1 st. every 10th row 5x. After Row 64, SHAPE ARMHOLE: Bind off 4 sts. 1x, 2 sts. 2x, 1 st. 3x. After Row 116, SHAPE SHOULDER AND NECK AT THE SAME TIME. FOR SHOULDER, bind off 5 sts. 4x, 4 sts. 1x. FOR NECK: Bind off 9 sts. 1x, 3 sts. 3x.

SLEEVES: Make 2.

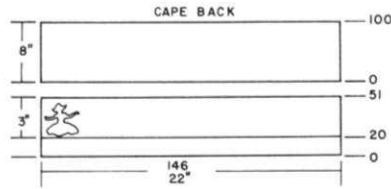
With contrast waste yarn, cast on 72 sts. Knit 11 rows then 1 row with Ravel Cord to the right. Change to garment yarn and put Counter at 0. ON EACH SIDE, increase 1 st. every 8th row 2x. After Row 24, SHAPE CAP: ON EACH SIDE, bind off 4 sts. 1x then decrease 1 st. every 2nd row 13x, 1 st. EVERY ROW 18x. After Row 70, bind off the remaining sts.





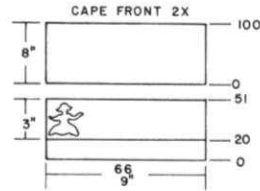
395
COZY
WRAP-UP

395



CAPE BACK:

Cast on 146 sts. with color 1. Knit 20 rows Stockinette stitch then hang the hem. (You can use PART or SKIP METHOD hem). Program Pattern A as shown for BACK. Knit in Pattern to Row 51. Remove the sts. onto waste yarn. Hang back onto the same needles with RIGHT SIDE facing you. Counter at 0. SET TUCKING PATTERN B. Knit to Row 100. Remove onto waste yarn.



LEFT FRONT:

Cast on 66 sts. with color 1 and knit 20 rows Stockinette stitch then hang the hem (same as you did for back). PROGRAM PATTERN A FOR LEFT FRONT. Knit in Pattern to Row 51. Remove onto waste yarn. Hang back onto machine with right side facing you on the same needles. Counter at 0. SET TUCKING PATTERN B. Knit to Row 100. Remove onto waste yarn.

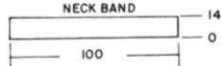
RIGHT FRONT:

Cast on same as Left Front. Knit 20 rows Stockinette stitch then hang the hem using same method you used before. PROGRAM PATTERN A FOR RIGHT FRONT. Knit in Pattern to Row 51. Remove onto waste yarn and reverse the knitting the same as for other sections. Counter at 0. SET TUCKING PATTERN B. Knit to Row 100. Remove onto waste yarn.

BABY CAPE WITH HOOD

SIZE 6 Months to 1 year.
YARN: Cordella
AMOUNT:
color 1 4 balls
color 2 1 ball
TENSION: TUCK - 8 to 9
FAIRISLE - 8 to 9
GAUGE: Tuck - 13 sts. 25 rows
Fairisle - 14 sts. 19 rows
= 2" (5 cm).

A Tuck stitch on the PURL side with Fairisle Design on Knit side. Made on the KH 910 Electronic machine. Can be made on any Punch Card machine using a Tuck and any border Fairisle Punch Card. Draw Design on Mylar Sheet and set Variation and Pattern Selector as shown.



NECKBAND:

OPEN CAST ON SAME AS FOR SLEEVES. 100 sts. After Ravel Cord row, change to garment yarn and put Counter at 0. Knit 14 rows. Pick up the first row to form band. SEAM THE BODICE SHOULDERS TOGETHER. Hang the neck edge of garment with right side facing you on top of the band stitches. Knit 1 row Tension 5. Latch Tool Bind off with yarn.

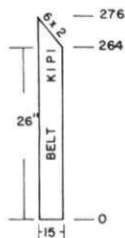
BELT:

Cast on 15 sts. Work K1, P1 Ribbing with Tension 3/3. Work approximately 26" (264 rows).

BELT:

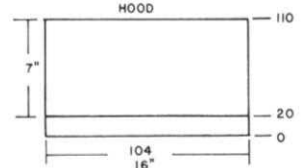
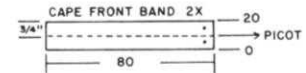
With color 1, cast on 15 sts. Work K1, P1 Ribbing with Tension 3/3. Knit approximately 26" (264 rows). Bind off 2 sts. every 2nd row 6x, then bind off the remaining sts.

FINISHING: See General Instructions. Weave Skirt sections together, leaving the upper part of the center back open for the zipper. Set in sleeves. Crochet one row single crochet around zipper opening. Set in zipper. Work Shell Crochet with single strand of color 2 around sleeves and down center out of work needle rows and around neck. Crochet chains for belt loops and attach at side seams. Sew Buckle on belt.



FRONT BANDS: Make 2.

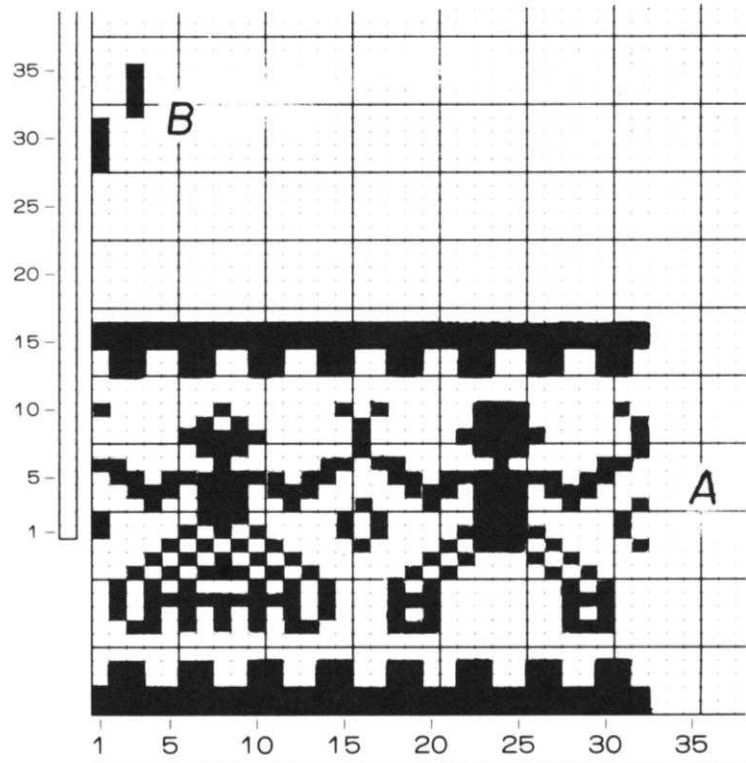
With wrong side of Fairisle Design Facing you, pick up 80 sts. along the front edge. Work Stockinette st. Knit 9 rows with Tension 7, 1 row with Tension 8. Transfer every 2nd stitch to neighboring needle (for picot). Leave empty needles in work. Knit 10 rows with Tension 7 then hang the hem by picking up first row of band. Bind off LOOSELY. Make small buttonhole on left Neck edge of front band. Use a transfer tool to spread the stitches apart to form a small buttonhole. Finish with buttonhole stitch.



HOOD:

Cast on 104 sts. with color 1 and knit 20 rows Stockinette st. Hang the hem the same as before. SET TUCKING PROGRAM B. Knit in Pattern to Row 110. Remove onto waste yarn.

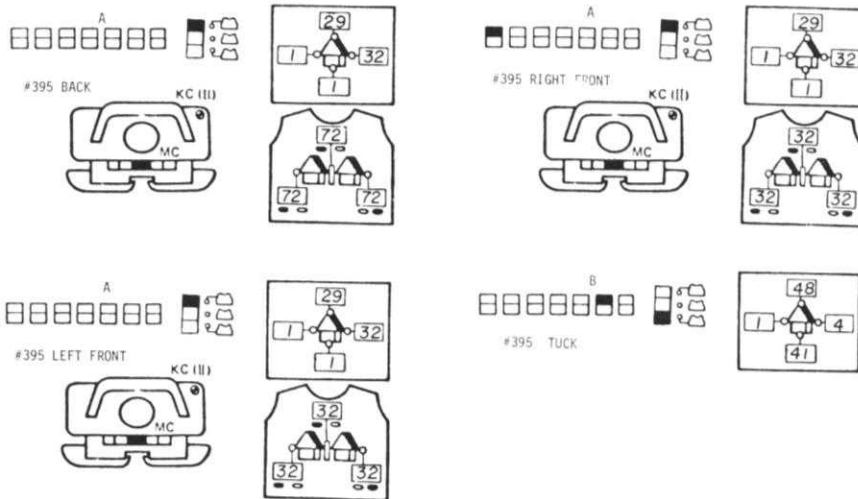
CONTINUED



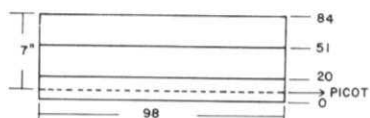
TOP EDGE BAND:

Bring 147 needles into working position. Hang neck edge of garment with purl side facing you onto these needles. Pick up 4 stitches from front bands and hang on the outside 4 needles. Pick up the rest of the stitches from waste yarn, 2 sts. on 1 needle. Knit 2 rows. Make eyelets by transferring every 3rd st. to neighboring needle. Leave empty needles in work. Knit 2 rows. Bind off 24 sts. ON EACH SIDE. 99 sts. left on the machine. Weave back seam of hood together. Hang neck edge of hood, stockinette stitch facing you onto the 99 needles on machine. Bind off FIRMLY.

FINISHING: See General Instructions. Sew seams. Make a cord and thread through eyelets at neck. Work picot with color 2 around hood band. Make a cord over 3 needles with Tension 5 or 6, approximately 50" long.



396



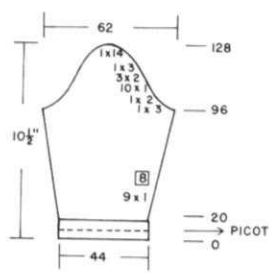
HOOD:
Cast on 98 sts. with color 1 and Tension 7 or 8. Knit 8 rows, then 1 row with larger tension. Make Picot by transferring every other st. to neighboring needle. Leave empty needles in work. Turn Tension back to garment tension. Knit to Row 20. Hang hem same as you did before. Tension 8 or 9. PROGRAM PATTERN A as shown. Knit in Pattern to Row 51. Tension back to 7 or 8. Continue in Stockinette stitch with color 1 to Row 84. Remove onto waste yarn.

FRONT AND BACK: Make 2.

Cast on 98 sts. with color 1 and work Stockinette stitch with Tension 7 or 8. Knit 20 rows then hang the hem. (You can use PART or SKIP METHOD hem). Program PATTERN A as shown. Knit in Pattern to Row 51 with Tension 8 or 9. Change to Tension 7 or 8 and continue in Stockinette stitch to Row 92. SHAPE ARMHOLE: ON EACH SIDE bind off 3 sts. 1x, 2 sts. 1x, 1 st. 3x. Knit to Row 132. ON EACH SIDE, bind off 14 sts. Knit 2 rows. Transfer every 3rd st. to neighboring needle. Leave empty needles in work (eyelets). Knit 2 rows then bind off. Make 2nd section the same.

SLEEVES: Make 2.

Cast on 44 sts. with color 1 and follow instructions for HOOD to Row 20. Hang the hem same as before. Continue in Stockinette stitch with color 1. ON EACH SIDE, increase 1 st. every 8th row 9x. After Row 96, SHAPE CAP: ON EACH SIDE, bind off 3 sts. 1x, 2 sts. 1x, 1 st. 10x, 2 sts. 3x, 3 sts. 1x. After Row 128, bind off the remaining sts.



KNITTED BALLS: Make 2.

Cast on 14 sts. with color 1 and work Stockinette stitch. (USE PART OR SKIP METHOD FOR CAST ON). Knit 20 rows. Break yarn. Thread end of yarn into double eye needle or tapestry needle and remove each stitch onto yarn. Sew along one edge with a running stitch then pull tight and secure the end. Take yarn from first row, thread needle and pull tight. With purl side on the outside, stuff with cotton. Run stitches along the other edge and pull tight. Weave together to form a ball. Attach to ends of Cord after cord has been pulled through eyelets.

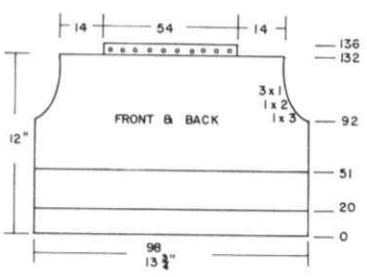
FINISHING: See General Instructions. Weave back of hood together. Sew hood to neck edge leaving 7 1/2" FREE at center neck. Set in sleeves. Thread Cord through eyelets. (Make twisted cord approximately 50" long) Attach balls. See Picture.



BABY PULLOVER WITH HOOD

SIZE: 6 Months to 1 Year
YARN: Cordella
GRAMS:
color 1 150
color 2 50
TENSION: Stockinette 7 to 8
Fairisle 8 to 9
GAUGE:
Stock: 14 sts. 20 rows = 2"
Fairisle: 14 sts. 19 rows = 2"

Made on the ELECTRONIC Machine KH 910 - SK 560. Draw Design on Mylar Sheet and set Variation and Pattern Selector as shown. Can be made on the KH 881 or any Punch Card machine by using a Similar Border Design on a Punch Card.



397
A NEW
CABLE DESIGN



WOMAN'S CABLE TOP AND SKIRT

SIZES: 4/6 (8/10) [12/14]
YARN: Venetia

AMOUNT:
color 1 1 lb. 1 lb. 1 1/2 lbs.
color 2 6 ozs. 6 ozs. 6 ozs.
color 3 6 ozs. 6 ozs. 6 ozs.
TENSION: 4
GAUGE: 17 sts. 23 rows = 2" (5 cm)

Hem is a Tuck Pattern. Every other needle Tucks on alternating rows.
KH 881 - Use Punch Card No. 1
KH 910 - Use Pattern Sheet No. 1-1
Front and Sleeves are a Cable Pattern. Out of work Needles ARE COUNTED.

IMPORTANT: - You will be knitting each color section separately although the FULL amount of sts. for Sleeves and Front are cast on. 8 rows are knitted in EACH COLOR across the row, then Cables are made. Your Counter will have to be turned back each time AFTER you move the Carriage across without yarn - OR you can turn the Counter off after you complete the first 8 rows for first section and turn it on again AFTER you complete the 8 rows for all sections. MAKE SLEEVES FIRST and the rest will be easy.

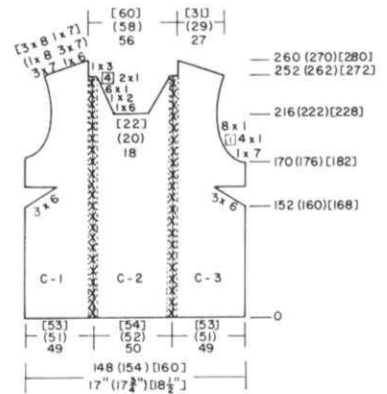
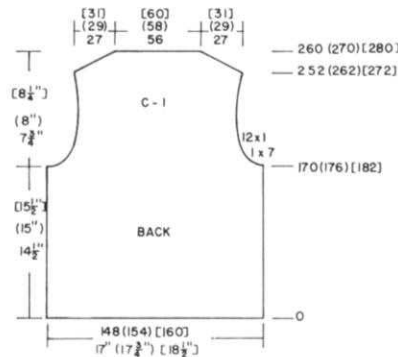
SLEEVES: Make 2.
Right Sleeve - colors 1 and 2
Left Sleeve - colors 2 and 3

Bring into working position, 70 (74) [78] needles.
Push back into the OUT OF WORK (A) position, the 3rd needle on EACH SIDE of 0.
Cast on with waste yarn (OPEN CAST ON). Knit 11 rows then 1 row with Ravel Cord.
Set your controls for HOLDING NEEDLES. Counter at 0.
Bring all needles on the LEFT SIDE of 0 to HOLDING POSITION.
With color 2, knit 8 rows on the right. Remove color 2 from feeder but DO NOT CUT YARN.
ALL NEEDLES IN HOLDING POSITION. Move Carriage to the left side without yarn.
Turn Counter back to 0.
Put needles on the LEFT SIDE of 0 back into working position. Color 1 in Feeder. Knit 8 rows. DO NOT remove yarn from feeder. MAKE CABLE. Using 2 Transfer Tools, remove 2 sts. ON EACH SIDE OF 0 and transfer the 2 sts. on the right onto the 2 empty needles

397

BACK:

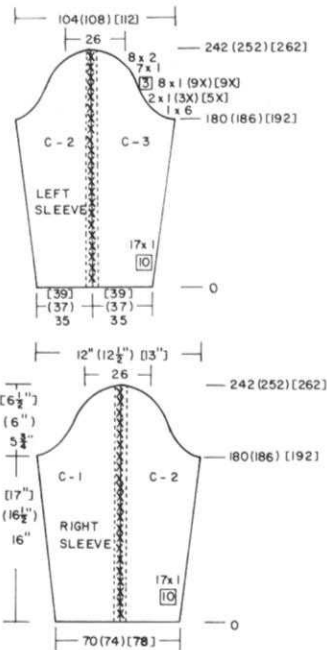
OPEN CAST ON with waste yarn same as you did for sleeves.
After Ravel Cord Row, Knit Stockinette stitch with color 1.
After Row 170 (176) [182] SHAPE ARMHOLE: ON EACH SIDE bind off
7 sts. 1x, then decrease 1 st. every 2nd row 12x.
After Row 252 (262) [272] SHAPE SHOULDERS: ON EACH SIDE bind off
7 sts. 3x, 6 sts. 1x.
(8 sts. 1x, 7 sts. 3x.
[8 sts. 3x, 7 sts. 1x]
After Row 260 (270) [280]. bind off the remaining sts.



FRONT:

Bring into working position, 148 (154) [160] needles.
Push back into out of work position, the 23rd and 28th (24th and 29th) [25th and 30th] needles ON EACH SIDE OF 0.
OPEN CAST ON WITH WASTE YARN. Knit 11 rows, 1 row with Ravel Cord.
Put 99 (103) [107] needles on the left into holding position. SET CONTROL FOR HOLDING NEEDLES. With color 3, knit 8 rows over the 49 (51) [53] sts. on the right. Take color 3 out of feeder BUT DO NOT CUT YARN. Put these sts. into holding position.
Move Carriage to the left. Put Center 50 (52) [54] sts. in- to working position. Pick up color 2, knit 8 rows. Remove color 2 from feeder, put these sts. into holding position. Move Carriage to the LEFT. Put the left 49 (51) [53] needles into working position. Pick up color 1, knit 8 rows. MAKE CABLE IN SAME MANNER AS SLEEVE between color 2 and 3 and color 1 and 2.
Carriage ON LEFT. Color 1 is still in Feeder. Knit the LEFT stitches for 8 rows. REMOVE COLOR 1 and bring these stitches into holding position. Put color 2 needles into working position, Color 2 in Feeder. Knit 8 rows. Put these sts. into holding position. Remove color 2, move Carriage to the right. Pick up color 3. Put right side needles into working position, knit 8 rows.
MAKE CABLE. ADJUST ROW COUNTER MANUALLY EVERY 8 ROWS. Continue in Pattern to Row 152 (160) [168].
BUST DARTS: WORK SHORT ROWS. ON OPPOSITE SIDE OF CARRIAGE, put into holding position 6 sts. every 2nd row 3x ON EACH SIDE, continuing the Pattern with the PROPER COLORS, working each section same as before (See Chart) DO NOT COUNT THE BUST DART SHORT ROWS.
When color 1 is completed, Carriage is on the left. Put color 1 Bust Dart needles into working position and MAKE CABLES ACROSS as before. Continue in Pattern to Row 170 (176) [182].

on the left, then transfer the 2 sts. from the left onto the empty needles on the right. ALWAYS TRANSFER FOR CABLES IN THE SAME DIRECTION.
Knit 8 rows on the left side. Put these needles into holding position and move Carriage across to the right without yarn. Turn Counter back.
Push needles on the right side back into working position and pick up color 2.
Knit 8 rows. DO NOT remove yarn from Feeder.
MAKE CABLE. Knit 8 rows. Continue in this way for Pattern BUT AT THE SAME TIME, ON EACH SIDE, increase 1 st. every 10th row 17x.
After Row 180 (186) [192] SHAPE CAP: ON EACH SIDE, bind off 6 sts. 1x, 1 st. every 2nd row 2x (3x) [5x], then 1 st. every 3rd row 8x (9x) [9x], then decrease 1 st. every 2nd row 7x and bind off 2 sts. 8x.
After Row 242 (252) [262], bind off the remaining sts.
Make 2nd Sleeve with colors 2 and 3.

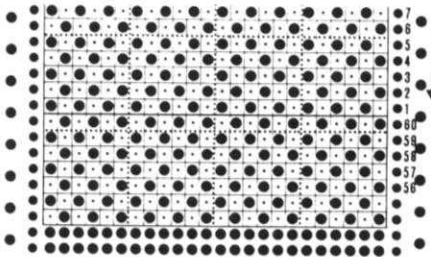


CONTINUED

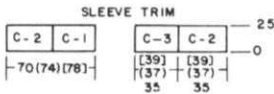
SHAPE ARMHOLE:
CONTINUING IN PATTERN as before,
FOLLOW THE CHART FOR ARMHOLE
SHAPING.

After Row 216 (222) [228], remove
the center 18 (20) [22] sts. for
neck onto waste yarn. Put the
needles on the left into holding
position and complete the right
side first.

*ON NECK SIDE, bind off
as SHOWN ON THE CHART, BUT
AT ROW 252 (262) [272], ON NECK
SIDE, TRANSFER THE LAST 3 sts.
TO THE RIGHT (left for other side)
TO THE NEXT 3 sts (FOR HALF CABLE).
After Row 251 (262) [272], WORK
SHORT ROWS FOR SHOULDER SHAPING,
7 sts. 3x, 1 st. 6x
(8 sts. 1x, 7 sts. 3x)
[8 sts. 3x, 7 sts. 1x]
Knit 1 row over all shoulder sts.
then remove onto waste yarn..
Turn the Row Counter back to
216 (222) [228] and complete
the left half. Follow the
Instructions from *.



Punch Card through Row 41 then
punch 2 rows of holes for
connecting Card.

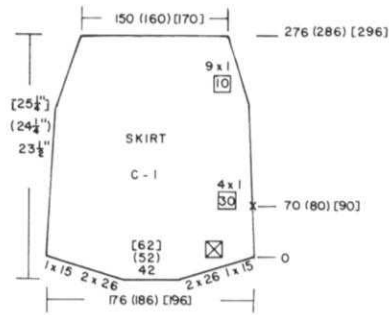


SLEEVE TRIMS:

Pick up each color separately
and work same as Skirt Trim.

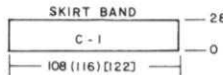
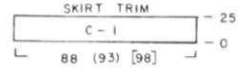
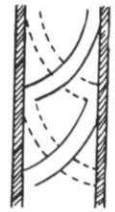
SKIRT: Make 2 sections.

With contrast waste yarn,
Cast on 176 (186) [196] sts.
Knit 11 rows, 1 row with Ravel
Cord to the right. Counter at
0 and change to color 1. Knit
2 rows Tension 4.1.
WORK SHORT ROWS: ON OPPOSITE
SIDE OF CARRIAGE, put into hold-
int position 67 sts. BEFORE KNIT-
TING the next 2 rows.
ON OPPOSITE SIDE OF CARRIAGE,
bring back into working position
26 sts. 2x, 15 sts. 1x ON EACH
SIDE.
Counter at 0. Knit to Row 70.
ON EACH SIDE, decrease 1 st.
every 30th row 4x, then 1 st.
every 10th row 9x.
After Row 276 (286) [296], remove
the sts. onto waste yarn.



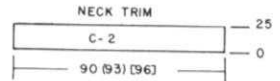
SKIRT TRIM: Tension 4.1

With wrong side facing you,
pick up lower edge of Skirt,
2 sts. on 1 needle across.
Insert Punch Card. Color 1.
Bring all needles into holding
position and knit 1 row over
all needles.
Set Control to select needles
and also bring every other needle
into holding position and set
machine for SKIP (or Slip).
Knit 1 row to the right.
(Needles are selected) Put
Card on GO and work 25 rows
TUCKING Pattern.
Pick up the loops formed on
first row of trim and hang
the hem on every other
OPPOSITE NEEDLE. Bind off.
REPEAT for 2nd section of
Skirt.



SKIRT WAIST BAND:

Bring 108 (116) [122] needles in-
to working position. Color 1.
With wrong side facing you, hang
skirt waist onto machine, * 1 st.
on each of 6 needles, then 4 sts.
on ONE NEEDLE AND REPEAT FROM *.
Knit 1 row. Beginning with 2nd
needle on the left, bring every
other needle into holding position.
Knit 1 row. All needles in work,
knit 28 rows. Beginning with first
needle on the left, bring every
other needle into selecting (D)
position then hang the hem, picking
up the loops from first row of band.
Bind off.

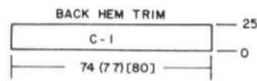


NECK TRIM:

Close 1 shoulder first.
Bring 90 (93) [96] needles into
working position. With wrong
side facing you, hang the back
neck sts. with 2 sts. on 1
needle 2x, then 1 st. on 1
needle 1x and REPEAT across.
Pick up sts. along side neck,
then pick up the center neck sts.
the same way as back neck, then
pick up sts. along other side
neck. Work same as Skirt Trim.

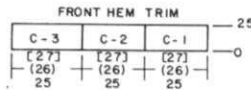
FINISHING:

See General Instructions.
Weave edges of trims together
with right side facing you.



BACK HEM TRIM:

Same as Skirt Trim.



FRONT HEM TRIM:

Knit each color separately
and follow directions for
Skirt Trim.



398

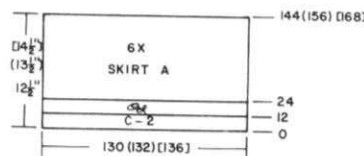
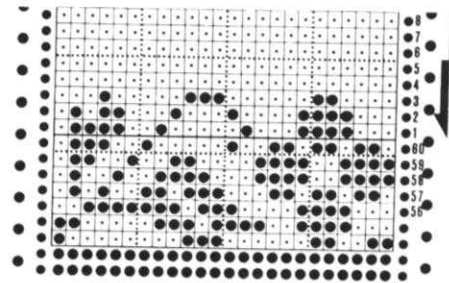
WOMAN'S MUMU DRESS

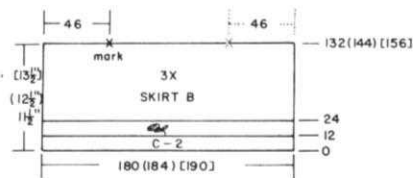
SIZES: 8/10 (12/14) [14/16]
YARN: Venetia
AMOUNT:
color 1 2 lbs. 2 lbs. 3 lbs.
color 2 8 ozs. 8 ozs. 10 ozs.
TENSION: 4.2
GAUGE: 17 sts. 22 rows = 2" (5 cm)

Stockinette stitch and Fairisle
Design. The Skirt is made in
3 tiers. Punch Card.

SKIRT: SECTION A - Make 6

Bring 130 (132) [136] needles
into working position.
Tension 3.2, Color 2.
*Work 1 row OVER EVERY OTHER NEEDLE
WITH CONTROL SET FOR SKIP (or SLIP).
RELEASE SKIP (or Slip) CONTROL.
Knit 11 rows.
Hang the LOOPS on every other
OPPOSITE NEEDLES.
Change to Tension 6 and color 1.
Knit 1 row. Carriage on LEFT.
SET CARD ON NEXT ROW TO THE RIGHT.
Knit Fairisle Design with color
2 in B Feeder to Row 24.
Remove color 2 and continue in
Stockinette stitch with color 1
and Tension 4.2.*
After Row 144 (156) [168], remove
the sts. onto waste yarn.



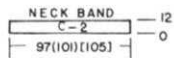


SKIRT SECTION B - Make 3.

Bring 180 (184) [190] needles into work. Rehang 2 pieces of each section A, 1 stitch on EACH of 6 needles and 4 sts. on 1 needle and REPEAT across. *Tension 3.2 and Color 2. Bring all needles into holding position (this makes sure the stitches will knit on next row). Knit 1 row from LEFT to RIGHT OVER ALL NEEDLES. DO NOT COUNT THIS ROW. FOLLOW INSTRUCTIONS IN SKIRT SECTION A FROM * to *. After Row 132 (144) [156], ON EACH SIDE, mark the 46th st. from each end with bit of contrast yarn. Remove the sts. onto waste yarn. Mark 2 sections ONLY.

BACK BODICE: Make 1

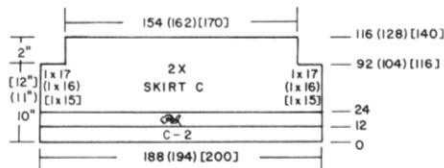
Bring 110 (116) [122] needles into working position. Hang BACK SECTION C onto these needles same as before. Make hem same as you did before and work the Fairisle Design with REVERSE COLORS - Color 2 in A Feeder and color 1 in B Feeder. After Row 24, Make another HEM with color 2 same as before completing it after Row 36. Continue in Stockinette stitch with color 1 to Row 104 (108) [112]. SHAPE SHOULDER: ON EACH SIDE, bind off (or use Short Row Method) 8 sts. 1x, 7 sts. 3x. (8 sts. 3x, 7 sts. 1x). [9 sts. 1x, 8 sts. 3x]. After Row 114 (118) [122] Remove the remaining sts. onto waste yarn.



SHORT NECKBAND:

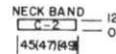
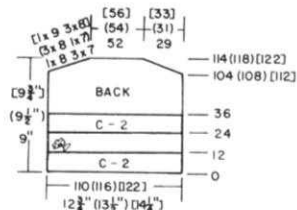
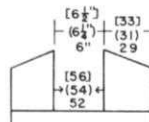
Pick up 45 (47) [49] sts. from right neck edge to right shoulder. Work same as Back and Side Neckband.

SKIRT: FRONT SECTION C. Make 1.
Bring 188 (194) [200] needles into working position. Hang the sts. back with unmarked section in the center, then hang the 46 sts. of marked sections ON EACH SIDE in the same manner as you did before with 1 st. on EACH of 6 needles then 4 sts. on 1 needle until all needles are filled. FOLLOW INSTRUCTIONS FROM SKIRT SECTION B. After Row 92 (104) [116], ON EACH SIDE, bind off 15 (16) [17] sts. Knit to Row 116 (128) [140]. Remove the sts. onto waste yarn.



FRONT BODICE: Make 1.

Work the front the same as the back to Row 36. BIND OFF CENTER 52 (54) [56] sts. Put the needles on the left into holding position and complete the right side first. *With color 1, knit to Row 104 (108) [112] then SHAPE SHOULDER same as the back. Pick up color 1 at NECK edge, Bring needles into work. Knit 1 row from right to left, turn the Row Counter back 36 and complete the left half. Follow the instructions from *

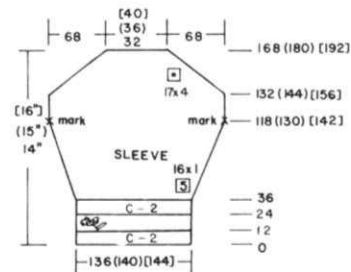


BACK AND SIDE NECKBAND:

Seam left shoulder. Pick up 45 (47) [49] sts. from the left neck edge to back neck edge with WRONG side facing you, then pick up 52 (54) [56] sts. across the back neck edge. With Color 2, work the same as you did for lower edge of skirt. After hanging the hem, bind off.

SKIRT: BACK SECTION C. Make 1.

Bring 188 (194) [200] needles into working position. Pick up remaining sts. from the 2 B Sections and hang in the same way as before with 6 sts. on each of 6 needles, 4 sts. on 1 needle. Work the same as FRONT SECTION C.



SLEEVES:

With color 2, cast on 136 (140) [144] sts. using same method as cast on for Skirt section A. After Hanging Hem as before, Work the Fairisle Design with color 2 in main Feeder A and color 1 in B Feeder B. After Row 24, REPEAT THE HEM with color 2 same as before, hanging the sts. after Row 35. Continue in Stockinette stitch with color 1. ON EACH SIDE, increase 1 st. every 5th row 16x. After Row 118 (130) [142], mark each side with a bit of yarn. After Row 132 (144) [156], WORK SHORT ROWS: Put into holding position 4 sts. 17x ON EACH SIDE. After Row 168 (180) [192] Knit 2 rows OVER ALL STS. Remove onto contrast waste yarn.

FINISHING:

Hang armhole edge onto 168 (172) [176] needles with RIGHT SIDE facing you. Hang the Sleeve sts. with wrong side facing you onto these needles. Bind off FIRMLY. Hang the underarm sts. onto machine with right side facing you and hang stitches from shoulder edge to mark on side of sleeve with wrong side facing you. Bind off Sew side and sleeve seams. Weave center back seam.

nicely knit

CABLE CLASSICS

HOW FOR MACHINE KNITTING

MARY LOUISE NORMAN

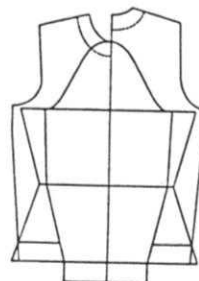
CABLE CLASSICS by MARY LOUISE NORMAN

A new book to fill an old need. Every knitter asks about cables at one time or another. Mary Louise satisfies the need in her latest book. 60 - 8 1/2" x 11" pages filled with every conceivable cable stitch plus easy to follow instructions. Price: \$14.50. Calif. add Sales Tax. Professional Pattern Drafting. Price: \$24.95. Calif. add Sales Tax. 3rd class mailing costs - \$1.15 for one book, \$2.50 for two books. Buy both books and save \$4.00 - \$35.00 for two.

Order direct from: KNITKING - 1128 Crenshaw Blvd., Los Angeles CA, 90019

NICELY KNIT LINES

PROFESSIONAL PATTERN DRAFTING FOR MACHINE KNITTERS

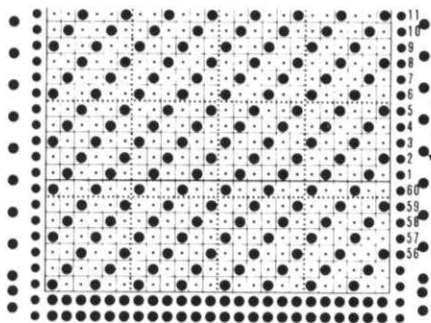




WOMAN'S 'V' NECK TOP

SIZES: 6/8 (10/12) [14/16]
YARN: Color 1 = Venetia (Fine)
 Color 2 = Angora
 Color 3 = Mami Rex Metallic
AMOUNT:
 color 1 1 lb. for all sizes
 color 2 4 balls for all sizes
 color 3 1 Spool
TENSION: 10
 Ribbing Tension 10/8 II
GAUGE: 14 sts. 17 rows = 2" (5 cm)

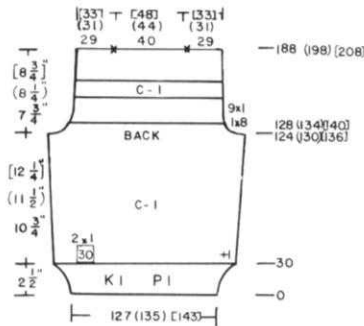
Stockinette stitch with double strands of Venetia and 1 strand of Rainbow Mami Rex knitted together. Punch Card. Fairisle Design with Angora in B Feeder. Bands are K1, P1 Ribbing with Tension 10/8 II. The PURL SIDE is the RIGHT SIDE.



Punch Card through Row 38 then punch 2 rows of holes for connecting Card.

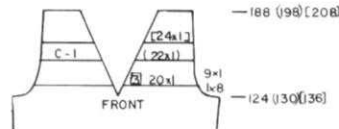
BACK:

Cast on 127 (135) [143] sts. with 2 strands of Venetia and 1 strand Mami Rex and work K1, P1 Ribbing with Tension 10/8 II to Row 30. Transfer the ribber sts. to main machine and continue in Stockinette stitch. Increase 1 st. on the right side. ON EACH SIDE, increase 1 st. every 30th row 2x. After Row 124 (130) [136], SHAPE ARMHOLE: ON EACH SIDE bind off 8 sts. 1x, 1 st. 9x, BUT AT THE SAME TIME after Row 128 (134) [140], work the Fairisle Pattern Stripes as follows: Always have Venetia and Mami Rex in A Feeder, Angora in B Feeder. 18 (20) [22 Rows Color 1 plus color 2. 12 rows Color 1 28 (30) [32] rows color 1 plus color 2. After Row 188 (198) [208] remove 29 (31) [33] sts. ON EACH SIDE onto separate waste yarn then remove the center 40 (44) [48] sts. for neck onto waste yarn.



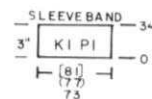
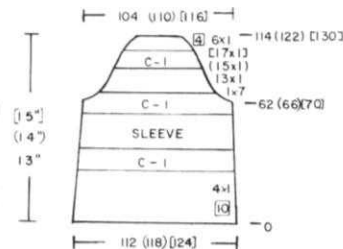
FRONT:

Work the front the same as the back to Row 124 (130) [136]. Divide in the center, put the needles on the left into holding position and complete the right side first. *Work ARMHOLE SHAPING same as for back AND AT THE SAME TIME, begin the Fairisle Design same as the back after Row 128 (134) [140] AND ON NECK SIDE, decrease 1 st. every 3rd row 20x (22x) [24x]. After Row 188 (198) [208], remove the shoulder sts. onto waste yarn or bind them off loosely. Bring the needles on the left into working position and complete the left half. Counter at 124 (130) [136]. Watch Pattern and follow the instructions from *.



SLEEVES: MAKE 2

OPEN CAST ON with waste yarn 112 (118) [124] sts. After Ravel Cord Row, begin Fairisle Design as follows. Put Counter at 0 and AT THE SAME TIME, decrease 1 st. ON EACH SIDE every 10th row 4x (see Chart). 24 (26) [28] rows color 1 and 2 12 rows color 1 20 (22) [24] rows color 1 and 2 12 rows color 1 18 (20) [22] rows color 1 and 2 12 rows color 1 16 (18) [20] rows color 1 and 2 BUT AT THE SAME TIME, after Row 62 (66) [70], SHAPE CAP: ON EACH SIDE, bind off 7 sts. 1x, 1 st. 13x (15x) [17x] then every 4th row 1 st. 6x. After Row 114 (122) [130], bind off the remaining sts.

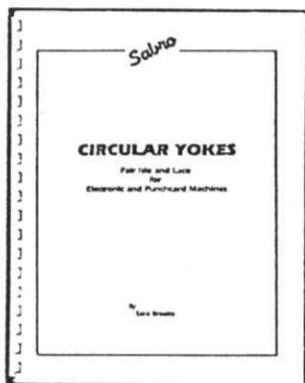


SLEEVE BANDS:

Cast on 73 (77) [81] sts. and work K1, P1 Ribbing with Tension 10/8 II. After Row 34, transfer the ribber sts. to main machine and hang the open sts. with wrong side facing you onto these needles. decreasing evenly across. Bind off

FINISHING:

See General Instructions. Work 2 rows slip stitch with double Venetia and Mami Rex around neckline.



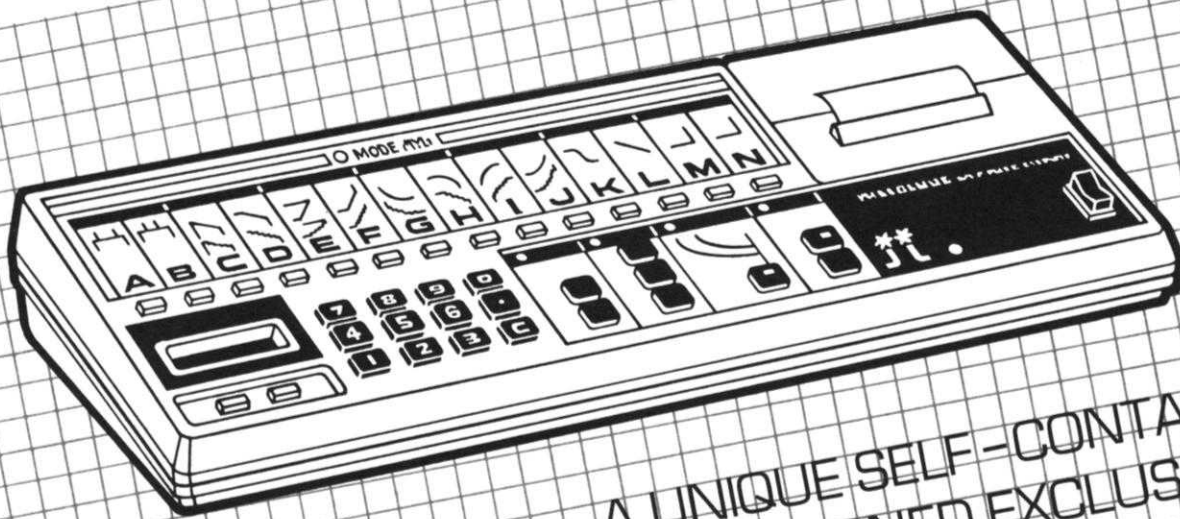
CIRCULAR YOKES

Here's another excellent 'How To' Book from the expert pen of Sara Books. It follows two others - 'Garment Shaping Electronically' and 'Software for Electronic Knitting.' Featured in 'Circular Yokes' are classic Fair Isle yoked Cardigans. Complete knitting instructions are illustrated for Punch Card machines and special instructions are included for Electronic machines. Price \$12.00.

'Garment Shaping Electronically' and 'Software for Electronic Knitting' are \$12.00 each. Buy any two books for \$22.00 or all three for \$32.00. California residents add Sales Tax. Mailing costs 3rd class \$.95 for 1 book, \$1.25 for 2 books, \$1.50 for 3 books.

Order direct from: KNITTING - 1128 Crenshaw Blvd., Los Angeles, Calif. 90019

knitking KNITTING COMPUTER



A UNIQUE SELF-CONTAINED
COMPUTER DESIGNED EXCLUSIVELY
FOR HAND AND MACHINE KNITTERS.

Every shape of garment sections, necklines, armholes, etc., is represented by a 'MODE' button. Push a Mode Button, program in your Stitch and Row Gauge, follow it with the Width and Length of the garment section, then watch the printer print out complete knitting instructions.

The Computing of knitting patterns can be done with standard computers plus expensive software, and you can easily spend thousands of dollars to obtain the same results as produced by the KNITKING Knitting Computer at a fraction of the price.

The KNITKING Knitting Computer operates with built in re-chargeable Nickel Cadmium Batteries... A charger is standard equipment as is a detailed Instruction Manual and some spare rolls of print out tape.

Price: \$499.00 (California residents add Sales Tax)
Order from your local dealer or direct from

**KNITKING — 1128 Crenshaw Blvd.,
Los Angeles, CA 90019**

KNITTING NEWS

PRACTICAL KNITTING HINTS

SPLITTING FOR NECK OR SHOULDER SHAPING WHEN WORKING IN PATTERN ON PUNCH CARD OR ELECTRONIC MACHINE

Some knitters get confused when it is time to divide the stitches to work Neck or Shoulder Shaping. Our Patterns tell you to put the left side needles into holding position and complete the right side first. There are different ways to do this, but this is the one we prefer. The instructions are given for the KH 881 and KH 910 COMPUKNIT. If you own another machine, you can use the same methods but you must set the different controls on YOUR MACHINE that will accomplish the exact same results.

FOR ALL PATTERN KNITTING with the EXCEPTION OF LACE ON THE KH 881.

'V' Neck: - To Divide in the center: Set Card on STOP. Mark the Card on the stopped row. You can also stop the Row Counter. Release KC. Bring all the selected needles into working position. With a Ravel Cord, knit across ALL needles to the LEFT SIDE. Bring the right side (half the stitches for neck and shoulder) into holding position. Put Cam on 'H' (for holding needles) and with waste yarn, knit 10 rows over the left side stitches. Before removing these stitches from the machine, MARK THE NEEDLEBED AT EACH END for first and last stitch on machine and then remove the sts. from the machine. Set Cam to 'N' Normal (so holding needles will knit) and with another piece of Ravel Cord, knit over the right side sts. Carefully remove the 2 rows of Ravel Cord. Make sure all needles are in 'B' (knitting) position. Be sure all sts. are in the HOOKS of the needles). Push in PART buttons (to slip or skip) and go across to the left with no yarn. SET KC, move Carriage to the right with no yarn (to set the needles in Pattern). Push in correct buttons for Pattern and attach yarn and put Card on GO. Be sure Row Counter is at the correct row. Follow the instructions for shaping and complete the right side. Turn off Controls and move the Carriage to the LEFT SIDE.

Hang the sts. for the left side that are held on waste yarn back onto the machine onto the EXACT MARKED NEEDLES on the needlebed. Remove waste yarn and Ravel Cord. Be sure all sts. are in the HOOKS of the needles.

Set KC and turn Card back to marked row. Card on STOP. Push in Part buttons (to Slip or Skip) and go across to the right with no yarn. Release Part Buttons and put yarn in feeder. Push in the correct buttons for Pattern and put Card on GO. After knitting 1 row in Pattern to the left side, set Counter to DIVIDED ROW so that EVEN NUMBERS will now be on the left instead of right side. This makes it easy for you to work shapings on the same Row Number as for the right side. Complete the left half.

FOR LACE KNITTING ON THE KH 881

You must be sure to divide the knitting ONLY AFTER A KNIT ROW IS COMPLETED. The only difference from all other Pattern knitting, is that you must leave the CARD ON GO because the Card DOES NOT MOVE except when you actually use the Lace Carriage.

FOR THE KH 910 COMPUKNIT - EXCEPT FOR LACE KNITTING

The knitting of all Patterns on the KH 910 actually are the same as for the KH 881. The Controls on the Carriage are the same. The only real difference is in the return to marked row on the Mylar Sheet. Mark the left side window on the sheet at the divided row. GO BACK TO SET LINE by pressing the return button (RR). Push Card Feed button (CF) and the sheet moves to the FIRST ROW OF PATTERN. If you marked Row 6, for instance, you must now hit the number 5 (one row below marked row) then hit Card Feed again. This will move the sheet to the correct row. DO NOT TOUCH MEMORY BUTTON. Complete the right side first by following the Pattern Instructions.

To prepare for knitting the LEFT SIDE is the same as for the 881 (Controls on Carriage are the same) but follow the instructions as given above for SETTING THE PATTERN ON THE MYLAR SHEET.

LACE KNITTING ON THE KH 910

You must be sure to divide the knitting ONLY AFTER A KNIT ROW IS COMPLETED.

This is the same as for the KH 881 Lace Knitting except the Mylar Sheet must go back to the marked row. If you marked Row 6, hit the Return Button (RR) to go back to Set Line. Hit Card Feed Button (CF) and Mylar Sheet moves to FIRST ROW OF PATTERN. Hit #6 then Card Feed (CF) again and Mylar Sheet will move to marked row. DO NOT TOUCH MEMORY. To prepare for knitting the LEFT SIDE is the same as the KH 881 but set the Mylar Sheet same as given above.

YARN KITS FOR GARMENTS IN THIS ISSUE

Most of the garments in this issue of KNITTING MAGAZINE were knitted with yarns from our YARN CATALOGUE which illustrates the full range of colors available and includes actual yarn samples. If you do not have our Catalogue, please send \$3.00 and we will mail you one immediately and you will be able to choose your own colors.

VENETIA, our best selling yarn is not shown in the Catalogue. We have 20 colors available and if you tell us the color or colors you want, we will select a color as close as possible to your selection.

| | | | |
|---------------------------------------|---------|---------|---------|
| No. 379 - Yarn: Beatrice | | | |
| SIZES: | 6/8 | (10/12) | [14/16] |
| Price: | \$19.95 | \$19.95 | \$22.80 |
| Shipping: | 1.85 | 1.85 | 1.85 |
| No. 380 - Yarn: Cordella & Viola | | | |
| SIZES: | 6/8 | (10/12) | [14/16] |
| Price: | 32.80 | \$32.80 | \$36.94 |
| Shipping: | 1.85 | 1.85 | 1.85 |
| No. 381 - Yarn: Venetia | | | |
| SIZES: | 34/36 | (38/40) | [42/44] |
| Price: | \$14.24 | \$14.24 | \$14.24 |
| Shipping: | 2.50 | 2.50 | 2.50 |
| No. 382 - Yarn: Alpacana | | | |
| SIZES: | 8/10 | (12/14) | [16/18] |
| Price: | \$26.00 | \$26.00 | \$28.60 |
| Shipping: | 2.50 | 2.50 | 2.50 |
| No. 385 - Yarn: Venetia and Capriccio | | | |
| SIZES: | 6/8 | (10/12) | [14/16] |
| Price: | \$31.13 | \$31.13 | \$31.13 |
| Shipping: | 2.50 | 2.50 | 2.50 |

- | | |
|---|--|
| <p>No. 393 - Yarn: Vienna SIZES: Small (Medium) Price: \$32.40 \$32.40 Shipping: 1.85 1.85</p> <p>No. 394 - Yarn: Cordella SIZE: 7/8 Price: \$11.94 Shipping: 1.85</p> <p>No. 395 - Yarn: Cordella SIZE: 6 Months to 1 Year Price: \$9.95 Shipping: 1.85</p> <p>No. 396 - Yarn: Cordella SIZE: 6 Months to 1 Year Price: \$7.96 Shipping: 1.85</p> <p>No. 397 - Yarn: Venetia SIZES: 4/6 (8/10) [14/14] Price: \$24.92 \$24.92 \$32.04 Shipping: 2.50 2.50 2.50</p> <p>No. 398 - Yarn: Venetia SIZES: 12/14 (16/18) [20/22] Price: \$30.26 \$30.26 \$51.62 Shipping: 2.50 2.50 2.50</p> <p>No. 399 - Yarn: Venetia (fine) Angora & Mami-Rex SIZES: 6/8 (10/12) [14/16] PRICE: \$39.99 \$45.49 \$45.49 Shipping: 2.50 2.50 2.50</p> | <p>No. 386 - Yarn: Venetia & Angora SIZES: 6/8 (10/12) [14/16] Price: \$46.60 \$46.60 \$46.60 Shipping: 2.50 2.50 2.50</p> <p>No. 387 - Yarn: Alanda SIZES: 6/8 (10/12) [14/16] Price: \$14.40 \$14.40 \$14.40 Shipping: 1.85 1.85 1.85</p> <p>No. 388 - Yarn: Venetia & Multi-Show SIZES: 6/8 (10/12) [14/16] Price: \$46.18 \$46.18 \$49.13 Shipping: 2.50 2.50 2.50</p> <p>No. 389 - Yarn: Venetia & Capriccio SIZES: Small (Medium) [Large] Price: \$24.84 \$24.84 \$27.49 Shipping: 2.50 2.50 2.50</p> <p>No. 390 - Yarn: Venetia SIZES: 5/6 (7/8) Price: \$14.24 \$17.80 Shipping: 2.50 2.50</p> <p>No. 391 - Yarn: Multi-Show & Bravo SIZES: 6/8 (10/12) [14/16] Price: \$35.55 \$35.55 \$38.50 Shipping: 2.50 2.50 2.50</p> <p>No. 392 - Yarn: Venetia SIZES: 6/8 (10/12) [14/16] Price: \$32.93 \$35.60 \$35.60 Shipping: 2.50 2.50 2.50</p> |
|---|--|



knitking SEMINAR & OPEN HOUSE 1984

It will run from October 8th through the 13th and will be held as usual on our premises at **1128 Crenshaw Blvd., Los Angeles, Calif. 90019.**

All experts at KNITKING will be in attendance plus many **acknowledged guest authorities**... We will repeat our very successful daily Fashion Show and Contest with daily prizes and the daily winners will be eligible for the finals and a **GRAND PRIZE** at the end of the Seminar. All types of garments and household items will be eligible. So, start preparing now. Knitting machine dealers and KNITKING employees will not be eligible for the contests.

You will be seeing the **NEW KNITKING KNITTING COMPUTER** and the **NEW ELECTRIC CARRIAGE KG 88.**

Admission to KNITKING Seminars is **FREE.** Coffee and doughnuts are available all day every day free of charge.

Regular Seminar visitors will tell you that ours are the best... So, enter the dates in your diary now... **October 8th through the 13th** and plan to be with us.

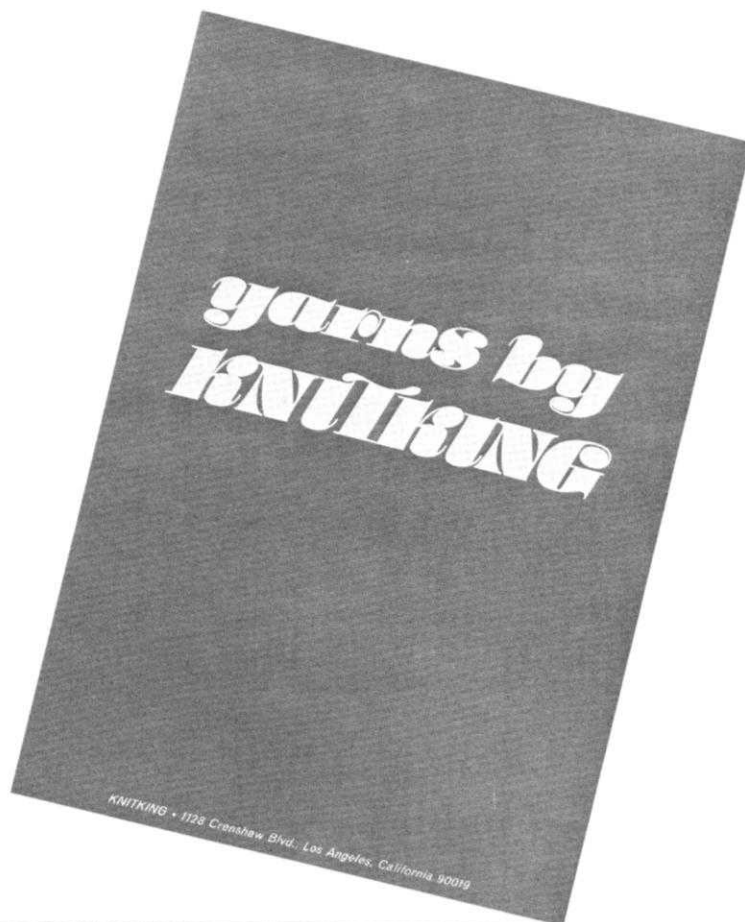
IT'S READY NOW...

The new **KNITKING YARN CATALOGUE** with actual samples of all the gorgeous imported yarns we use for patterns in **KNITKING MAGAZINE**.

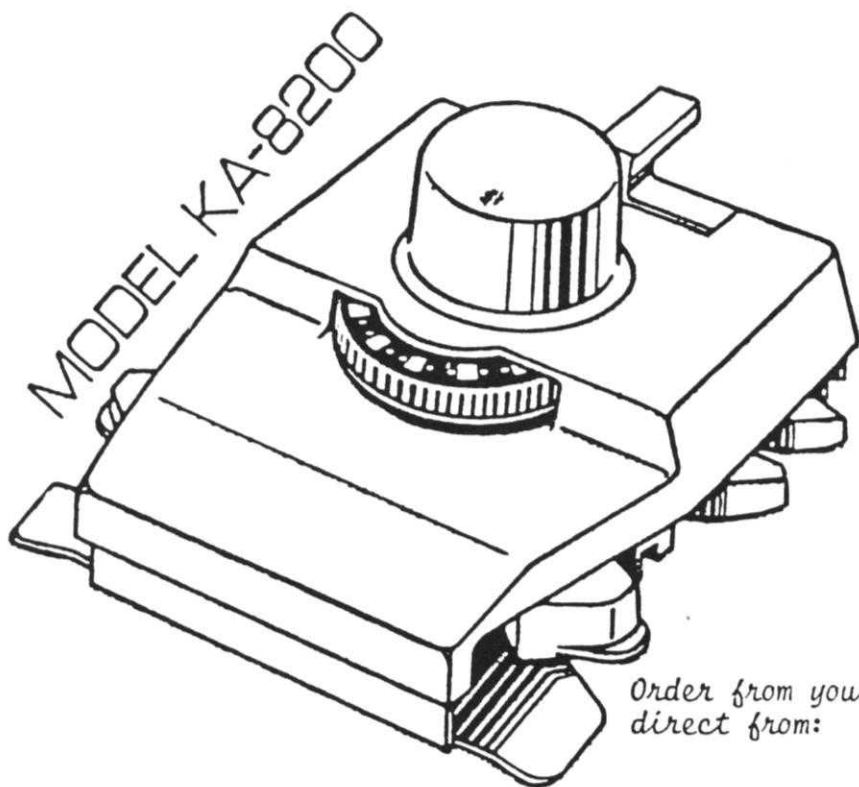
The colors are all new for 1984 and prepared for **KNITKING** by one of Europe's foremost yarn spinners.

For catalogue and price list send \$3.00 to:

KNITKING—1128 Crenshaw Blvd.,
Los Angeles,
California 90019



INTARSIA CARRIAGE



With the new KA-8200 Intarsia Carriage, you can knit large pictures, Argyle Designs and blocks of different textures in many colors into your knitting without strands of yarn (floats) carried over the purl side of your knitting. When knitting Intarsia Designs, the Intarsia Carriage replaces the main carriage on your knitter. It has a tension control dial to match the dial on your machine and it comes complete with a detailed Instruction Manual in English, Spanish, German, French and Italian.

The KA-8200 is for use only with Model numbers KH 820, KH 830, KH 840, KH 860, KH 881, KH 910.

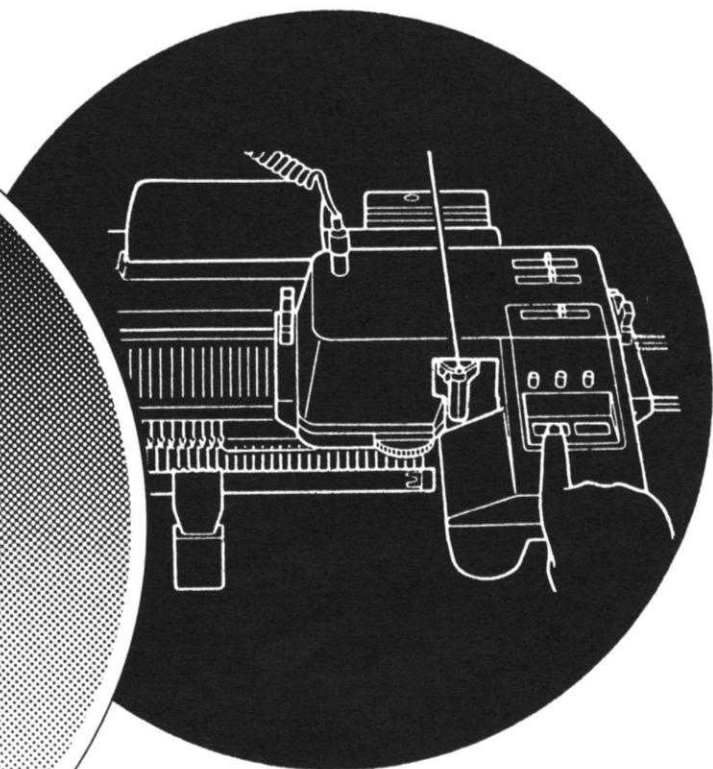
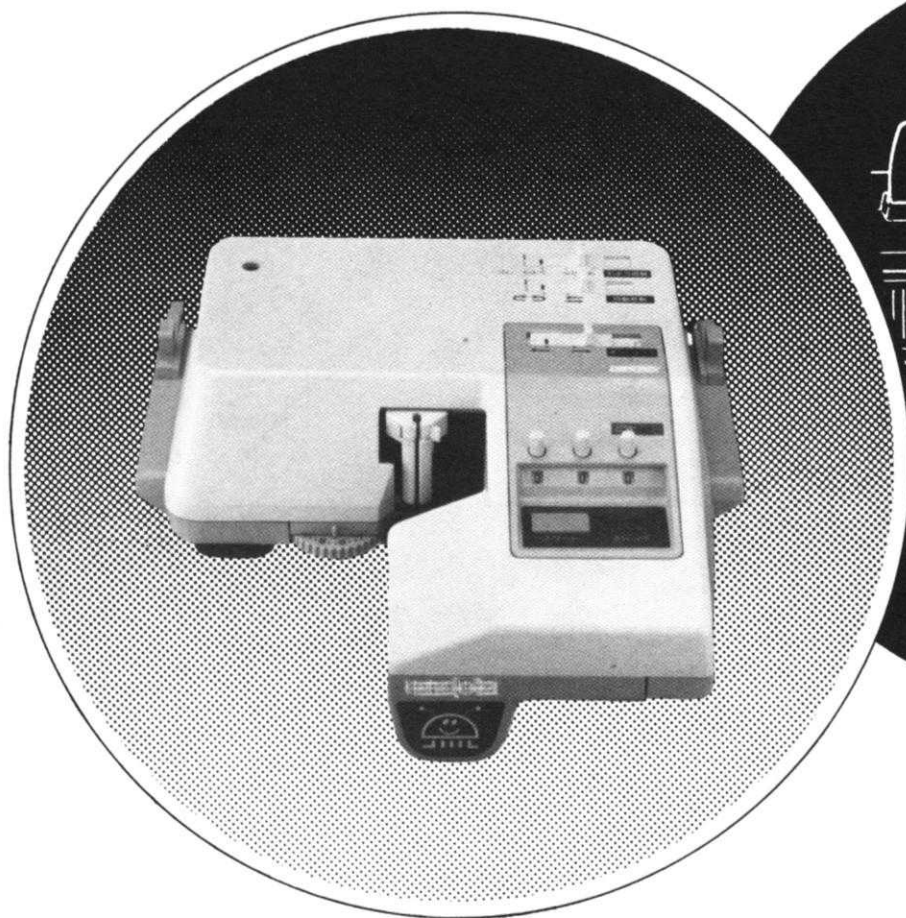
Price: \$29.95

Order from your local dealer or
direct from:

KNITKING CORPORATION
1128 Crenshaw Blvd., LA, CA 90019

WE ARE TAKING ORDERS . . .

for the 'NEW' and amazing KG 88 Electric Carriage that will knit fancy stitches never before possible on a single bed knitter (Garter Stitch is just one of them). It Knits Knit 1, Purl 1 to Knit 6, Purl 6 in any combination.



Selection is by Punch Card on Models KH 860 and KH 881 and by Mylar Pattern Stitch Sheets on the KH 910. - The Carriage will not operate on any other Models, - a built in Row Counter can be pre-set to any required number of rows and it will switch off when the counter reaches zero... If the yarn supply runs out, it will switch off...

You will now be able to watch favorite TV programs with your family, cook a meal, even go shopping while your knitter knits merrily away unattended using a low 20 watts of electricity.

We are promised delivery in October but are sure that our first shipments will be sold out before they arrive... so if you want to be among the first to own this completely new and unique Electric Carriage, send \$20.00 deposit with your name and address. We will confirm your order and notify you as soon as our first shipment arrives.

Order from your local dealer or direct from

knitking

KNITKING - 1128 Crenshaw Blvd.
Los Angeles, CA 90019

Price of K.G. 88 for KH 860 or 881 \$ 299.95

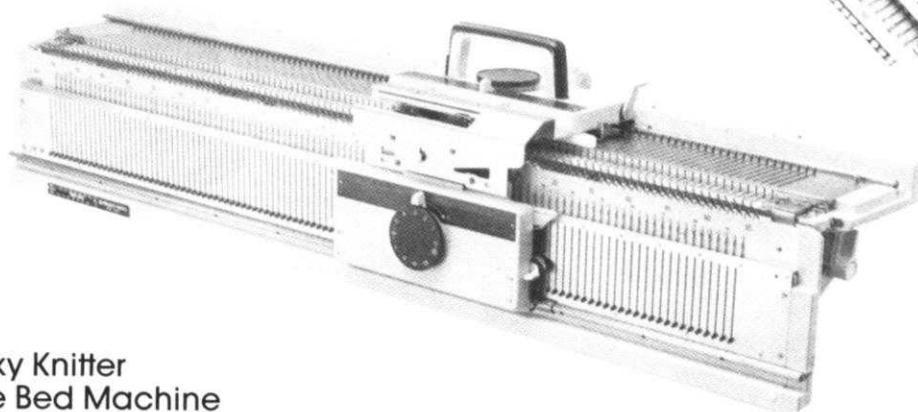
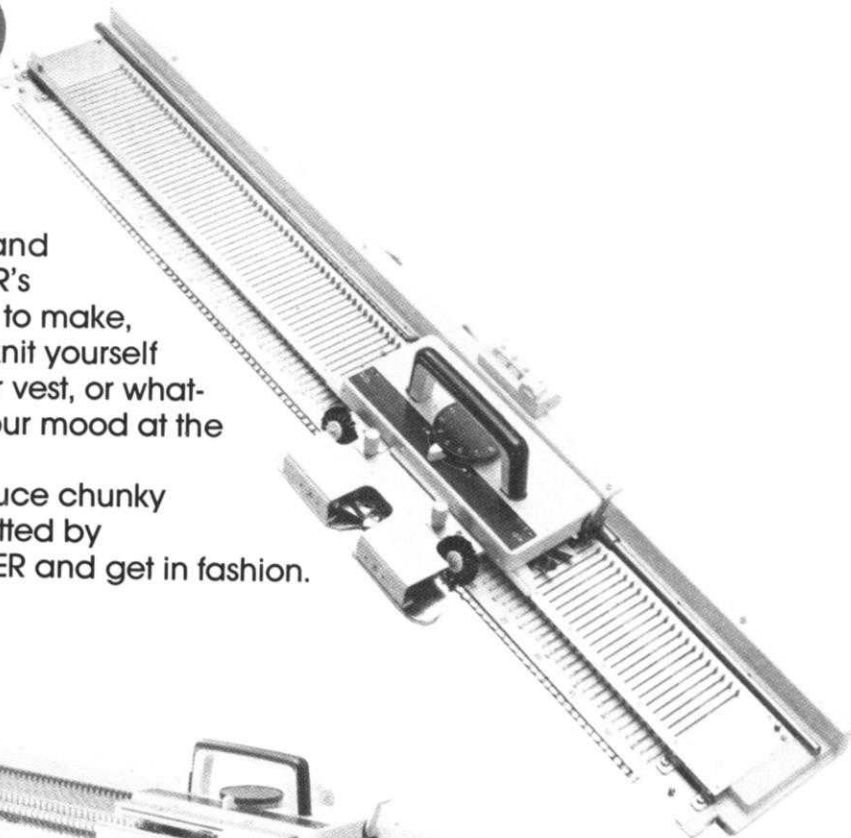
Price of KG 88 for KH 910 \$ 319.95

Chunky Knitter MOD.150

CHEERFUL, CHARMING CHUNKY KNITS

Chunky knits are attractive, practical and fashionable. And now, thanks to SINGER's Model 150 Chunky Knitter, they're easy to make, too. Take any bulky yarn you like and knit yourself a new chunky pullover, or cardigan, or vest, or whatever catches your fancy or matches your mood at the time, in any pattern, too.

It's so easy, even a beginner can produce chunky knitwear that looks as if it was hand-knitted by a professional. So go chunky with SINGER and get in fashion.



Model SR-150 Chunky Ribber (Option)

Transform your Chunky Knitter into a Chunky Double Bed Machine with this easy-to-attach Ribber.

Capable of creating highly fashionable rib knit garments using a wide variety of chunky rib stitches.

Model 150 Chunky Knitter

| | |
|----------------------|--|
| Number of needles | 110 |
| Needle pitch | 9 mm |
| Approximate weight | 12.5 kg |
| Dimensions | 1160 x 190 x 93 mm (L x W x H) |
| Optional Attachments | Knit Contour Attachment KR-6 Chunky Ribber SR-150 |

Price \$ 337.95

Model SR-150 Chunky Ribber

| | |
|--------------------|---|
| Number of needles | 110 |
| Needle pitch | 9 mm |
| Dimensions | 1144 x 185 mm (L x W) |
| Approximate weight | 13.5 kg |
| Racking | 6 needle pitch, half pitch at any position |
| Drop | 2-stage drop of Ribber Bed |
| Suitable yarns | Normal to extra-thick yarns |
| Stitch types | 1K. 1P Rib, Double Rib, Tubular Knitting, 2K. 2P Rib, Wide Ribs, English Rib, Swing English Rib, Pin Tuck Rib, Swing Ribs, Herringbone, Tuck Rib, Rahben Slip Rib, Drive knit, etc. |

Price \$ 318.95

Specifications are subject to change without notice.

SINGER*

Order from your local Dealer or direct from **KNITKING at**

1128 Crenshaw Blvd.

Los Angeles, CA 90019

knitking
trimlock

THE CUT, SEW, OVERLOCK
MACHINE FOR ALL FABRIC
From fine Silk to Denim

NEW MODEL 524



It's a 2 needle, 4 thread Serger that cuts, sews and overlocks all at the same time. You can also overedge only, straight stitch only and if you don't want to cut, you can swing the blade out of action.

393 MAN TALK

He'll be the talk of his friends if you knit your man this special Cardigan. When completed, you work the Chevrons in Duplicate Stitch. Vienna is the yarn and Sizes are Small, Medium and Large.



379 CHILL CHASER

Knit a Vest in a Houndstooth Design with ribbed bands. It's made with 2 colors of Beatrice in a wide range of sizes—from 6 to 16.



382

DRIVE KNIT...

DRIVE LACE

The sleeves on this Pullover are a soft lacy Design in 2 colors. You use the Knitter and Ribber combination. Do practice on a sample first and learn a new trick. Sizes are 8 to 18.



392

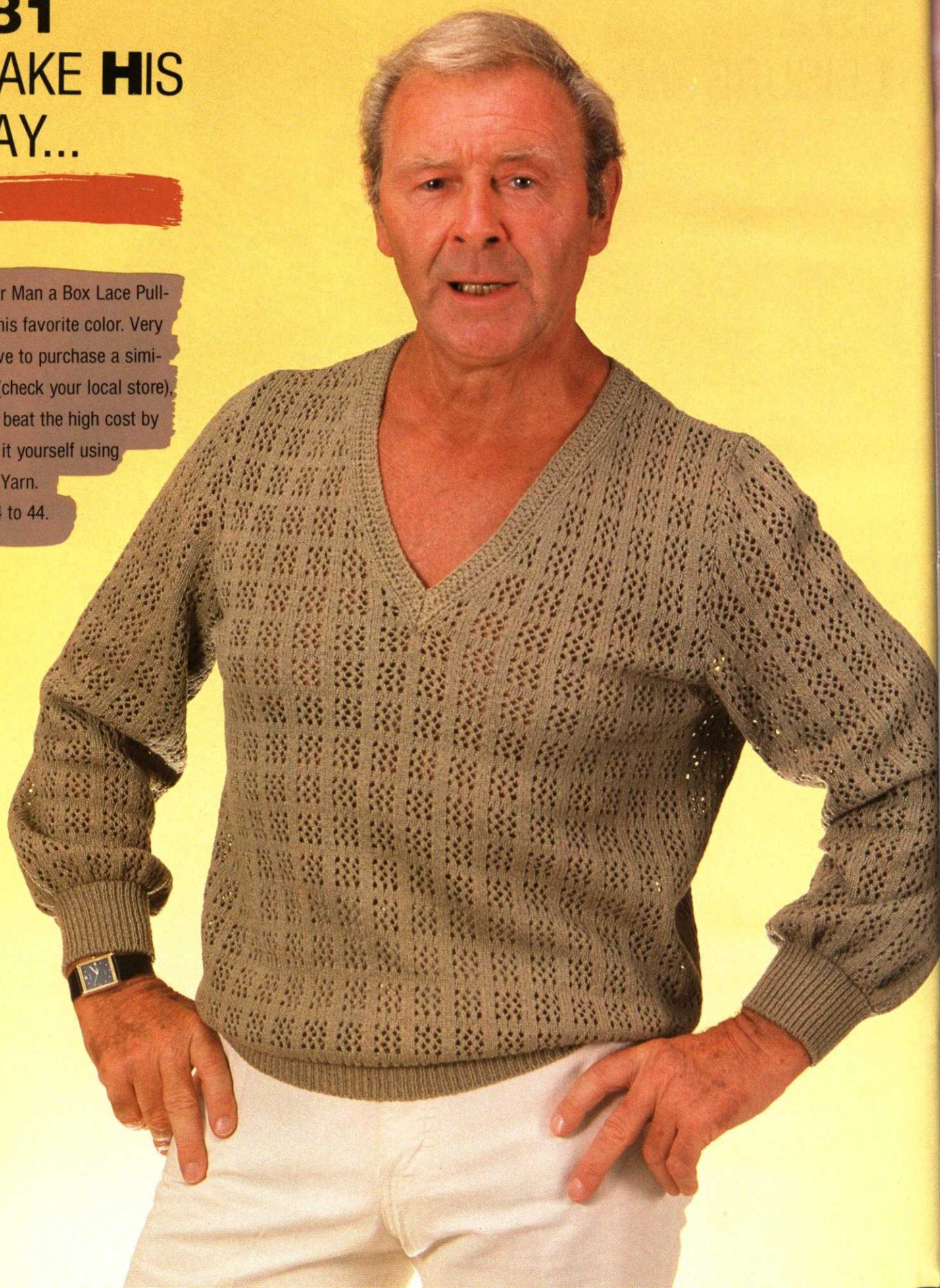
LEISURE WEAR

Soft and sensational is this Lace Top with crochet ruffles at neckline. The Pants are the very latest styling with ribbed bands. Knit it with Venetia in Sizes 6 to 16.



381 MAKE HIS DAY...

Knit your Man a Box Lace Pull-over in his favorite color. Very expensive to purchase a similar one (check your local store), you can beat the high cost by knitting it yourself using Venetia Yarn. Sizes 34 to 44.



BULKY
KH 230
by
KNITTING



BULKY

Model

KH

230

ESPECIALLY for yarns impossible to knit on standard knitting machines.

If you like bulky knit garments—the KNITKING BULKY is for you...If you like multi-color Intarsia Designs in your knits, the KNITKING BULKY is for you...

If you like knitting with heavy boucle and thick and thin yarns—the KNITKING BULKY is for you...

If you like heavy Fisherman's Rib sweaters that you can't buy at any price—the KNITKING BULKY with RIBBER is for you...

If you like to start knitting and to finish a garment the same day—the KNITKING BULKY is for you...

If you like knitting handsome Afghans, Bedspreads, Cushion Covers, Rugs, etc., for yourself and your friends—THE KNITKING BULKY is for you...

Its 110 Bulky heavy-duty needles will allow you to knit up to 36" wide and from 3 stitches to the inch. Its triple strength stainless steel needle bed will stand all the heavy duty you can give it. Its built in Intarsia Control and fancy stitch controls make it the easiest of all Bulky Knitters to use.

For increased versatility add the KR 230 Ribbing Attachment and really have fun with an unbelievable variety of rib stitches from the standard 1 x 1, 2 x 2, 3 x 1, 1 x 5 or any other combination plus zig-zag fancy ribs, Fisherman's Rib (double or single) and many more.

Comes complete with tools plus easy to follow step-by-step Instruction Manuals and a one-year guarantee on parts and service.

knitking

For complete versatility add the famous KNITLEADER Charting Accessory. It carries full-size charts of your garment sections. It rotates as you knit and tells you exactly when to increase or decrease, to shape and to bind off. You can use pre-drawn charts (obtainable from KNITKING). You can draw your own or you can trace a sewing pattern and duplicate it in a knit with the yarn and colors of your choice.



knitking

Order from your local dealer or direct from KNITKING at 1128 Crenshaw Blvd., Los Angeles, Calif. 90019 Telephone: (213) 938-2077

VISA and MASTERCARD accepted.

394

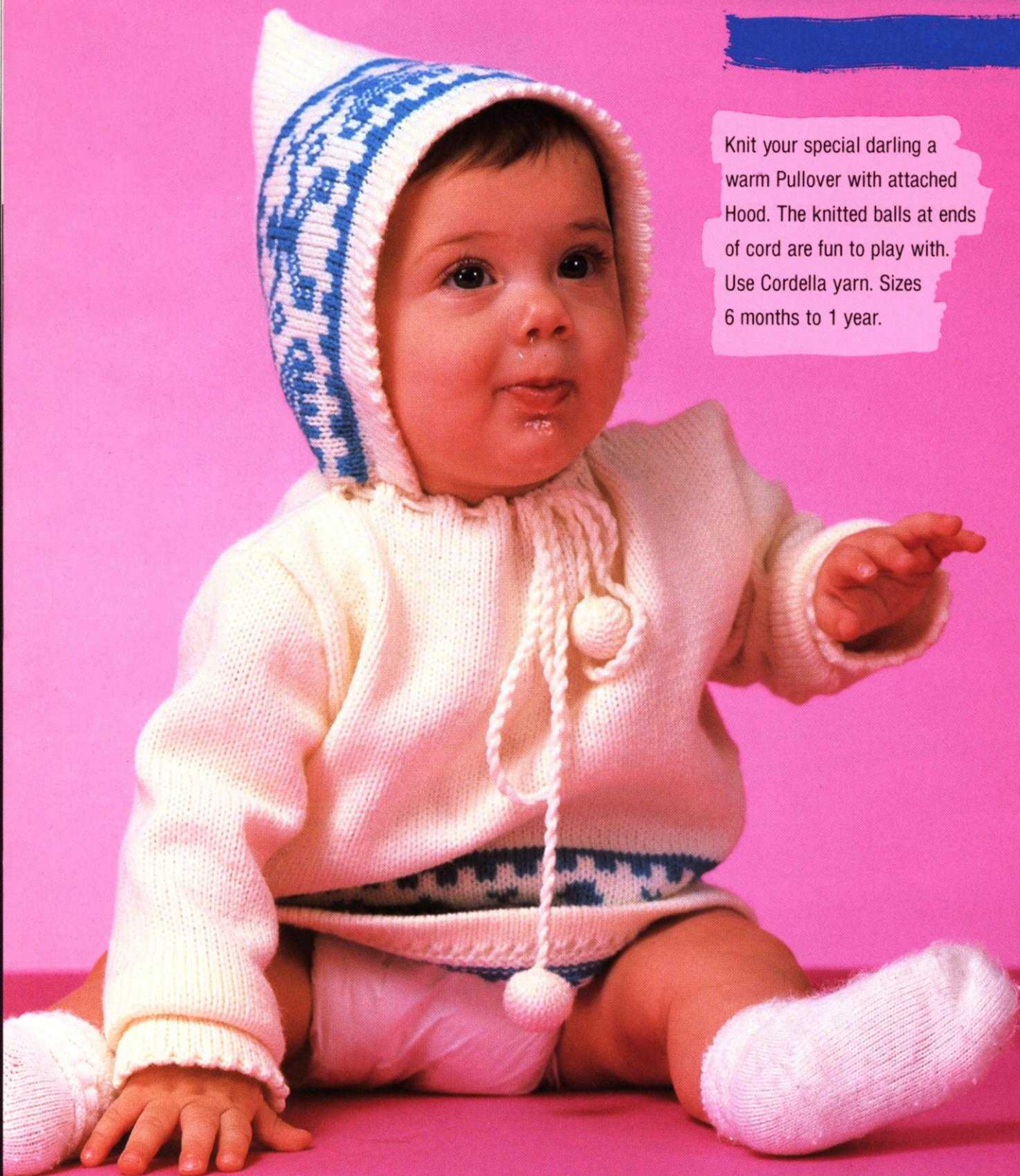
LITTLE MISS FASHION

All little girls love a pretty dress. This one has lowered bodice and a full skirt for twirling. Crochet the scallops down the front in a contrast color. Use Cordella yarn. Sizes are 7 to 8.



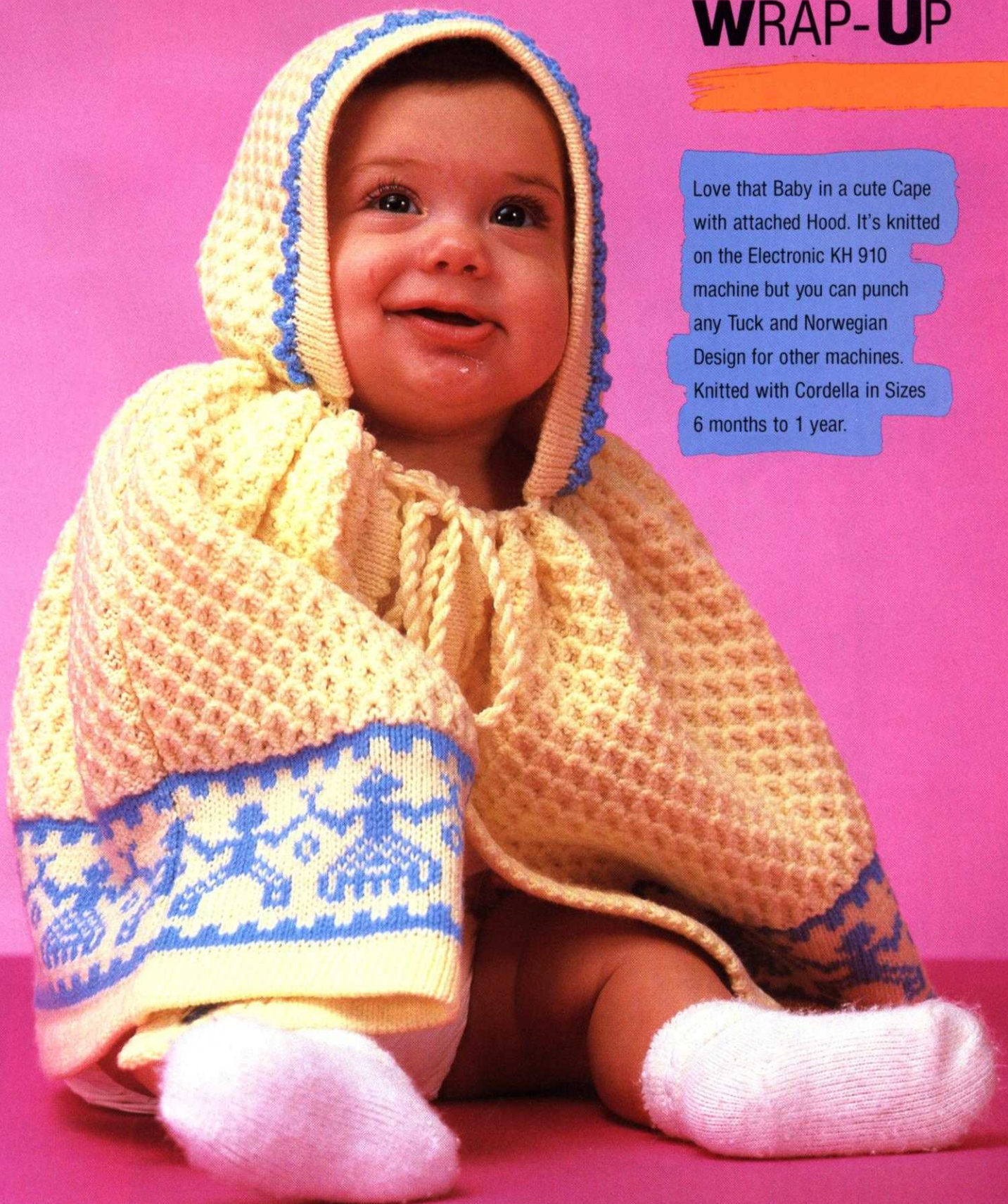
396 LET THE WINDS BLOW!

Knit your special darling a warm Pullover with attached Hood. The knitted balls at ends of cord are fun to play with. Use Cordella yarn. Sizes 6 months to 1 year.



395 COZY WRAP-UP

Love that Baby in a cute Cape with attached Hood. It's knitted on the Electronic KH 910 machine but you can punch any Tuck and Norwegian Design for other machines. Knitted with Cordella in Sizes 6 months to 1 year.



COMPUKNIT KH 910

'the world's finest knitting machine'

- Incredibly versatile... Anything you can trace or draw is automatically reproduced in your knitting in the colors and yarns of your choice.
- Simple to program and easy to operate, the COMPUKNIT KH 910 is the 'State of the Art' in home knitting machines. It is the only knitter made that has a memory unit to retain your program if you suffer a power outage or wish to move your knitter from one place to another.
- The maximum width of motif or pattern design possible on any punch card machine is 30 stitches (the standard is 24). The COMPUKNIT has no limit. It is possible to knit a single picture or lace design over the full width (200) needles of the needle bed. It will, in fact, do everything that's possible on a punch card machine and much much more.
- If you already own a knitting machine, you must consider trading up to a fantastic COMPUKNIT 910. If you have never owned a knitter before, start at the top and save money and save all the intermediate steps.



Order from your local Dealer or direct from
VISA and MASTERCARD accepted

KNITTING

1128 Crenshaw Blvd.
Los Angeles, CA 90019
Telephone: (213) 938-2077