

# knitking

*magazine*





DK 2002

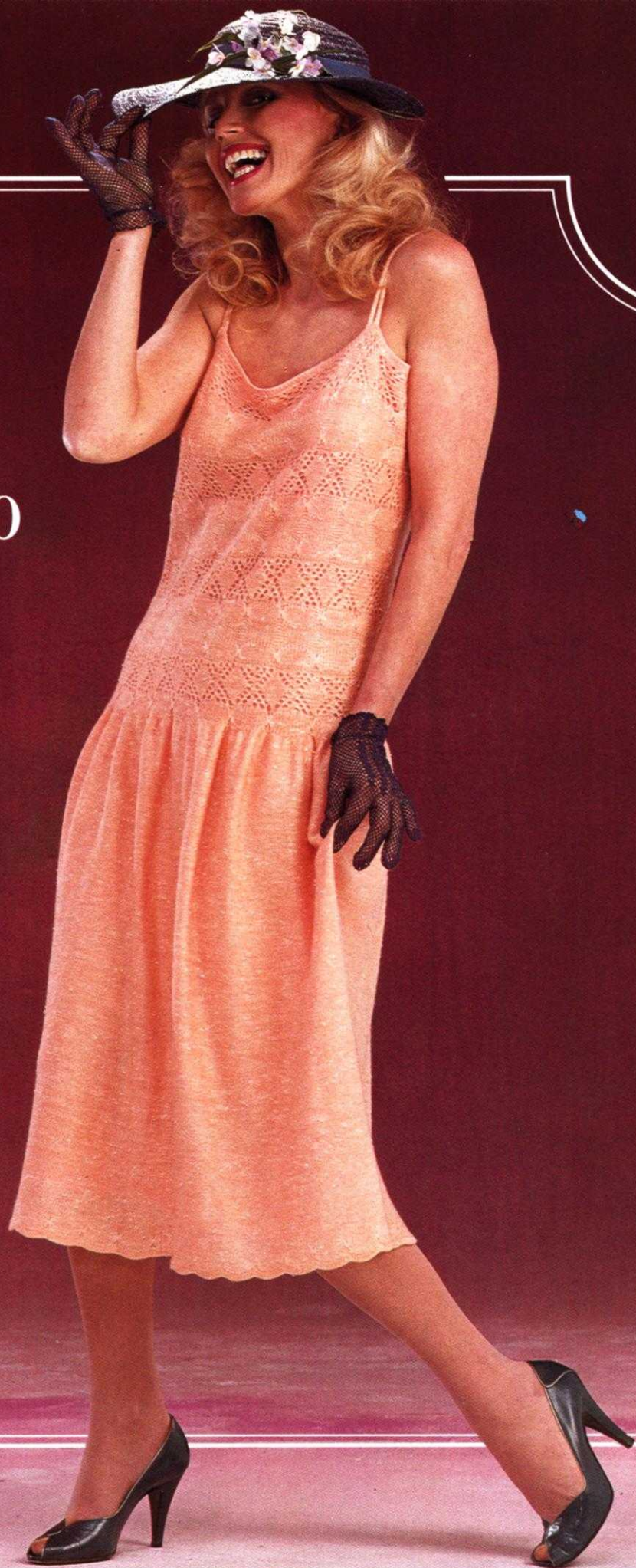
A woman with blonde, wavy hair is smiling and wearing a two-piece pink knit outfit. The top is long-sleeved with a lace-like pattern and a tie-up detail at the V-neckline. The skirt is a matching solid pink color with a flared hem. The entire scene is framed by a white decorative border on a dark red background.

DK 2003

DK 1099



DK 2000





DK 1098

DK 2001

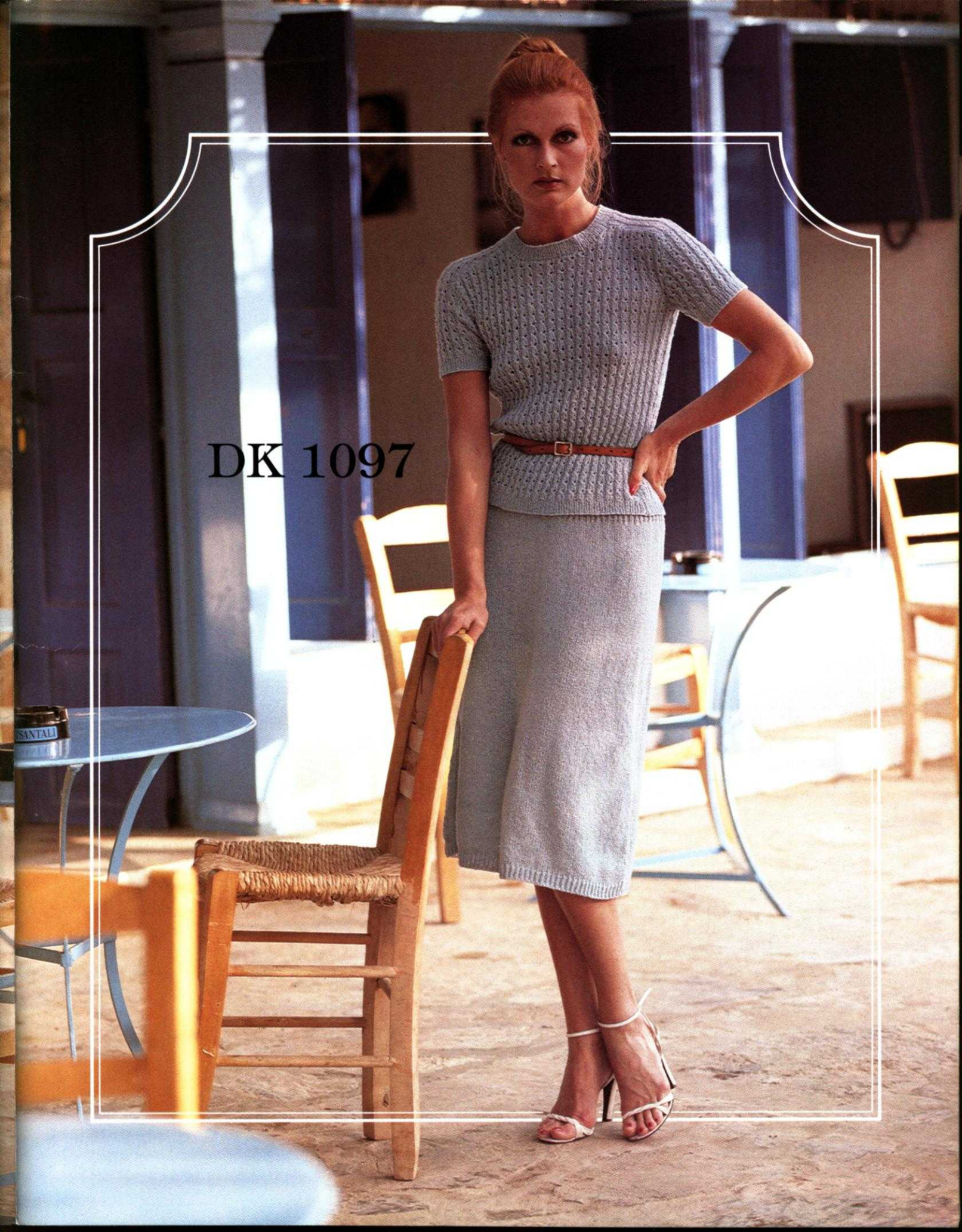


A woman with long, wavy brown hair is standing in a cafe or restaurant. She is wearing a beige, sleeveless, form-fitting knit dress with a ribbed waistband and hem. She has her hands on her hips and is looking towards the camera. She is wearing light-colored, open-toe high-heeled sandals. The background features a rustic stone wall on the left and several wooden chairs and tables in the foreground and background. The lighting is warm and natural, suggesting an outdoor or semi-outdoor setting.

**DK 1096**



DK 1097



DK 2005



TABLE OF CONTENTS PAGE NO.

DK 1095 - Woman's Sleeveless Pullover . . . . .	14
DK 1096 - Woman's Camisole & Skirt . . . . .	15
DK 1097 - Woman's Two Piece Dress . . . . .	16
DK 1098 - Woman's Long Lace Pullover and Bermuda Shorts . . . . .	17
DK 1099 - Woman's Dress . . . . .	18
DK 2000 - Woman's Dress . . . . .	19
DK 2001 - Woman's Dress . . . . .	20
DK 2002 - Woman's Dress . . . . .	21
DK 2003 - Woman's Two-Piece Dress . . . . .	22
KK 2004A - Boy's Pullover . . . . .	23
KK 2004B - Girl's Pullover . . . . .	24
DK 2005 - Woman's Pullover . . . . .	25
DK 2006 - Woman's Pullover . . . . .	26
HP 2007 - Man's Pullover . . . . .	26
KK 2008 - Child's Pullover . . . . .	28
HP 2009 - Man's Sleeveless Pullover . . . . .	29
HP 2010 - Man's Pullover . . . . .	30
HP 2011 - Man's Pullover . . . . .	31
DK 2012 - Woman's Pullover . . . . .	32
DK 2013 - Woman's Pullover . . . . .	33
DK 2014 - Woman's Pullover . . . . .	34

When KNITKING introduced machine knitting into the United States over 30 years ago, there was only one model available. Yarn was laid over its needles by hand, all transferring of stitches for lace designs was done manually and there was no automatic pattern selection... As the years have gone by we have added more and more of the world's finest knitting machines to our range, to the point where we know that we are able to offer the most complete range in North America and we believe the entire world.

We are introducing with this edition, two entirely new machines... The KNITKING KH 341 portable and the Singer 370 Memo-Matic.

The KH 341 is a very cleverly designed portable knitter... It has 200 needles (with the same spacing as the 881 and the 910), twin yarn feeders that feed without the use of overhead feeders. Yarn is fed from cones or balls placed on the floor to your right and left as you knit. The built in Knitleader functions the same as the 881 Knitleader... The carriage is similar to that of the very popular KH 230 Bulky with controls for Intarsia and Part knitting. There are no punch cards or automatic pattern selector controls. Selector combs are supplied for pattern selection. Tools and Instructions are included and the clamps for attaching the machine to a table swivel out from the under side of the machine for easy attachment. All of this folds up and fits easily into a zippered nylon carrying bag that measures 22" x 14" x 4" thick and weighs a total of 11 lbs. 12 oz.

The KH 341 is an ideal second machine, perfect to carry on a bus, train, plane or in your car and its price is a very reasonable \$269.50.

The Model 370 Memo-Matic Singer will fill a long felt need for a fine needle punch card knitter. It has 250 needles and 30 stitch repeat punch cards plus a Lace Carriage as an extra accessory. A 250 needle Ribbing Attachment is available. It allows you to do fine rib designs with up to 500 stitches.

The 370 operates the same way as the standard 200 needle 360 model with the Lace Carriage knitting and transferring at the same time. It is an ideal machine for the larger person. Using a dress yarn that knits up at 8 stitches to the inch, it will produce knitting up to 31 1/4" wide compared to 25" on a standard 200 needle machine. The 30 stitch punch cards certainly lend themselves to a much wider range of punch card designs in Fair Isle, Tuck and Lace. We believe the 370 will be a very popular addition to our line with a retail price under \$600.00.

At the time of writing this Editorial, we know of 15 different model knitting machines offered for sale in North America. KNITKING has 12 of them. We do not sell the one model imported by Toyota or the two sold under the names Passap and Superba. We carry parts and supply service for all the machines we handle and we know that our services are second to none.


KNITLEADER/AND KNIT CONTOUR CHARTS FOR KNITKING PATTERNS



In the last edition of KNITKING MAGZINE we introduced a new service, the supply of computer drawn charts for selected magazine patterns... It looks as though the service will be a hit... at the time of writing we have mailed enough of the charts to more than cover the high cost of providing the service, so we are continuing the service in this issue. If it is again successful we will increase the number of Knit-leader Chart sets in the next edition.


Publisher: KNITKING CORPORATION, 1128 Crenshaw Blvd., Los Angeles, Calif. 90019. Telephone: (213) 938-2079. Published bi-monthly. Subscriptions: USA-\$18.00 annually, single copies \$4.00. \$21.00 all other countries. The entire contents of KNITKING MAGAZINE are copyright and must not be reproduced in any shape or form without the express permission, in writing of the publisher. ©COPYRIGHT 1982 by KNITKING CORPORATION.

# Pattern Symbols

## Knitting – Chart Symbols

- Size Symbols  
( ) 2nd Size  
< > 3rd Size  
① Color Number
- Cast on
- Stitch
- R Row  
H Hem
- Bind off
- Stockinette stitch – worn on the Knit side.
- Stockinette stitch – worn on the Purl side.
- Knit 1, Purl 1 Ribbing
- Ribbing Pattern – worn on the Knit side.
- Ribbing Pattern – worn on the Purl side.
- Closed Dart
- Open Dart
- Put on a stitch holder
- Reverse 1 section
- On every other needle
- Number of Rows between Shapings. Make increase (or decrease) FIRST, then knit 4 rows. For example: 3 x 1  means decrease (or increase) 1 st., knit 4 rows; decrease 1 st., knit 4 rows; decrease 1 st., knit 4 rows; decrease 1 st., knit 4 rows. All decreasing (or increasing) without row numbers as shown must be shaped on every 2nd row.

-  Increase
-  Increase 2 sts. With a transfer tool, move the sts. over the left (or right) leaving 2 empty needles at the point of increase. At the increase point, move 1 st. to the left, (or right) so that there is an empty needles on each side of a stitch. On each side of the center stitch, pick up a stitch from the row below and hang it onto the empty needle.

-  3 stitches on 1 needle. The 1st and 3rd stitch in a group of 3 has been hung on the 2nd or center needle.

-  Short Row increase or decrease; for instance on a flared skirt knitted sideways.

-  Pattern Stitch



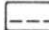

-  Pattern Stitch – worn on the Knit side.

-  Pattern Stitch – worn on the Purl side.









-  Repeat

- I = Front  
II = Back  
III = Sleeve  
IV = Skirt Front  
V = Skirt Back  
VI = Collar  
VII = Pocket  
VIII = Band  
IX = Belt  
X = Cuff  
XI = Pants Front  
XII = Pants Back

## Finishing – Chart Symbols

-  Match numbers on section for assembling.
-  Ease
-  Fold Line
-  Turn to the wrong side and hem.

## Stitch Symbols

-  Needles in holding position
-  Needles back into working position.
-  Empty needle (leave in working position)
-  Needle not used (in the out of work position).
-  Two stitches on 1 needle, either transferred from the right side or the left side, then put into holding position.
-  Needle holding 2 stitches. Stitch has been transferred from the RIGHT.
-  Needle holding 2 stitches. Stitch has been transferred from the LEFT.
-  Center of garment section



# General Instructions

## HOW TO READ THE CHARTS AND INSTRUCTIONS

There are 3 sizes given for each Pattern in KNITTING MAGAZINE. Above each Chart for the different sizes, you will see that the first and smaller sizes might be shown as 8/10, the second size as (12/14) and the third as [16/18]. Check the measurements at the bustline and hips on the Charts to be certain that you will knit the correct size, remembering these are ACTUAL measurements of the completed section and that there must be a bigger allowance at the bustline and hipline for a Jacket or a Coat than there would be for a fitted dress or a fitted blouse or pullover. The question in your mind should be "How do I want this garment to fit...?"

When you have chosen the size you need, you can follow the Charts as shown. You will notice that where the shapings are the same FOR ALL SIZES, only 1 set of shapings will be shown on the first Chart and if you are knitting the 2nd or 3rd size, you simply follow the shapings as given for the first size. If the shapings are different, this will be shown on the Charts and you should follow them as given.

On the Charts, increases and decreases will be shown as follows

5x1

**6** The number in the box means number of ROWS between the shapings, while the 5x1 above the box means - 1 st. 5x... so you will increase or decrease 1 st. every 6th row 5x.

ARMHOLE SHAPINGS - NECK SHAPINGS - SHOULDER SHAPINGS - are made on every 2nd row UNLESS there is a number in a box along side or below the shapings. The rule is... where there is no box with a number, the shaping is made on every 2nd row.

## THE PRINTED INSTRUCTIONS

You can follow the printed instructions or use them in combination with the Charts. Where there is any question in the printed instructions, you have the Charts to show you how the section will look.

The 3 sizes, with the different amounts of cast on stitches and the different shapings will look like this...

Cast on 124 (136) [148] sts. You will  
Cast on 124 sts. for the first size.  
Cast on 136 sts. for the 2nd size.  
Cast on 148 sts. for the 3rd size.

The important thing to remember is that you MUST READ AHEAD so that you KNOW what to do for the size you are knitting. Sometimes where the number of stitches are the same but the number of times different, you will find shapings like this...  
3 sts. 1x (2x) [3x], 2 sts. 1x (2x) [3x], 1 st. 3x (4x) [5x].  
As you see, you MUST read ahead in order to follow the instructions as given for YOUR SIZE. The rows will be different for the different sizes in some cases... Shoulder and Neck shapings usually are worked at the SAME TIME for the back section - so watch for the words AT THE SAME TIME.

## HOLDING STITCHES ON THE LEFT SIDE WHILE SHAPING THE RIGHT SIDE

When knitting a section of garment in stockinette stitch, it is easy to hold the stitches on the left side while knitting the right half, but when knitting a Pattern Stitch such as a Norwegian Design, a Holding Position Design, Weaving, etc., you should use the following method. For the NECK SHAPING, we tell you to bind off the center sts., put the needles on the left into holding position and complete the right half first... so with a strand of contrast yarn, knit ALL of the left side stitches manually by hand, pulling each stitch back against the needle bed to the OUT OF WORK position. When the right side is completed, carefully pull the stitches held on contrast, forward into working position and as you do so, undo the contrast yarn, line up the needles (KNITTING AM 3 machine owners, put the stitches under the sinkers) and complete the left half.

If you own a Japanese machine, you may find that when knitting the right half with the left side held in this way, the sinker plate will mark the left side while you are knitting the right half. To prevent this marking, you can tape a piece of paper over the knitting, underneath the sinkers, or if you own a Reversing Bar, you can hang this onto the Sinkers while you are knitting the right half. When hanging the Reversing Bar, be sure the eyes of the bar go BETWEEN the Sinker Posts on the upper part of the bar so that the tips of the bar only - show above the needle bed.

## FULL FASHION DECREASING OR INCREASING

For Stockinette stitch, always use the Full Fashion method for increasing or decreasing.

TO DECREASE: Hang the 3rd stitch onto the 2nd stitch then move the stitches in to fill the empty needle.

TO INCREASE: Move the 2 end stitches 1 needle outward, then pick up the 3rd stitch from the row below and hang it onto the empty needle.

FINISHING: Block all sections. For PULLOVERS, JACKETS, and DRESSES: Join front to back at sides and shoulders. Sew sleeves together and set in. Hem lower edge and sleeve edges if needed. For a double neckband or armhole band, sew 1 edge to the inside and 1 to the outside of neck or armhole. For a single ribbed band, sew 1 edge to the outside of neck or armhole edge. For a cardigan or jacket with buttonholes, finish buttonholes and sew on buttons.

PANTS: Join front to back at sides. Sew inside leg seams, then join center front and back. Make hem at waistline and insert elastic. Hem lower edge of pants legs.

## THE SAMPLE SWATCH

Before you begin to knit any garment, you will need to knit a sample piece using the yarn you have chosen for your garment, so that you can check the stitch and row gauge which must measure the correct number of stitches and rows in 5 cm (2 inches).

For each Pattern in KNITTING MAGAZINE, we give you 3 tension numbers to work from and if you use the specified yarn for the garment, you should be able to get the correct stitch and row gauge using one of these numbers. Here is a very easy way to make your sample swatch and count the stitches and rows without actually counting, by using our KNITTING Converta Tape.

Supposing the Tension Numbers for the Stitch and Row Gauge are given as 5 to 7. Set the Tension Dial to the first number which is 5. With contrast waste yarn, and using the quick cast on method, cast on 60 stitches and knit 10 rows. Change to garment yarn and turn the Row Counter to 0. Knit 30 rows. Counting from each end, knit the 10th stitch on each side by hand with a small piece of contrast yarn. Leave the needles in working position and knit 30 rows (Row 60), then knit 4 rows with contrast waste yarn. Turn the Row Counter to 0 and the Tension Dial to 6 and with garment yarn, knit 30 rows. Mark the 10th stitch on each side as you did before, knit 30 rows, then 4 rows with contrast waste yarn. Turn the Row Counter to 0 and with Tension 7, repeat the above once more, ending with 10 rows of contrast waste yarn. Remove the work from the machine by passing the Slide across the needles without yarn (sometimes called 'dropping').

Pull and stretch the sample piece both lengthwise and diagonally from corner to corner, then lengthwise again. Do not count the stitches and rows immediately, but allow the sample to rest for several hours or even over night. This will allow the stitches and rows to return to their basic form.

When your sample has rested and you are ready to count the stitches and rows, the KNITTING CONVERTA TAPE will do the counting for you without any counting on your part. Use the Tape as follows:

Measure the stitches with the TAPE, BETWEEN the 40 stitches marked with contrast waste yarn. Push the SLIDE so that the LEFT EDGE lines up to this exact measurement. Now look down along side the SLIDE and find the number 40 on the TAPE. The number directly opposite on the SLIDE will be your Stitch Gauge to 5 cm (2"). To find the number of rows in 5 cm (2"), place the TAPE to measure over the 60 rows, push the SLIDE to this number with the left edge lined up, the look for the number 60 on the TAPE and directly opposite this will be the number of rows to 5 cm (2")

If you do not own a KNITTING CONVERTA TAPE, you must mark a 5 cm (2 inch) square in the center of the knitting, then count the number of stitches and rows within the square.

# DK 1095



## WOMAN'S SLEEVELESS PULLOVER

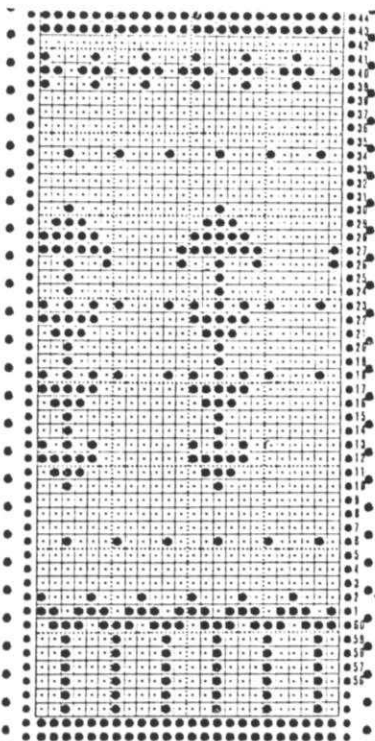
SIZES: 8/10 (12)  
 YARN: Sport Weight Yarn  
 GRAMS: NO KIT AVAILABLE  
 color 1 200 200  
 color 2 100 100  
 color 3 100 100  
 TENSION: 10  
 GAUGE: 13 sts. 17 rows = 5 cm (2")

### CARD NO. 2

5 Rows color 1 (Set Pattern)  
 \*3 Rows colors 1 and 2  
 6 Rows color 1  
 3 Rows colors 1 and 3  
 7 Rows color 1  
 REPEAT FROM \*.

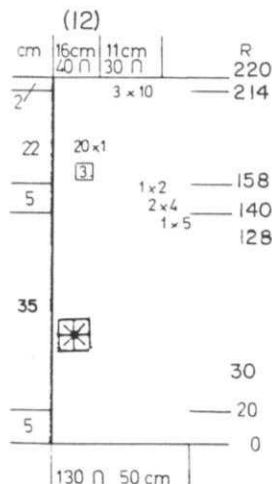
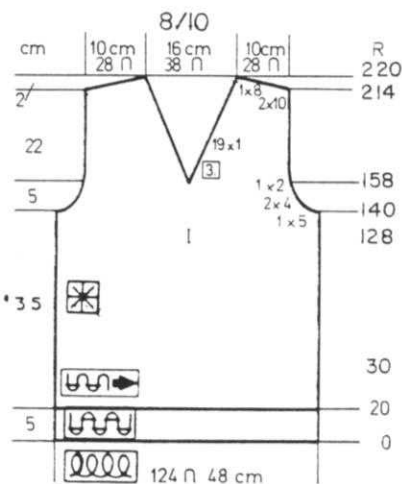
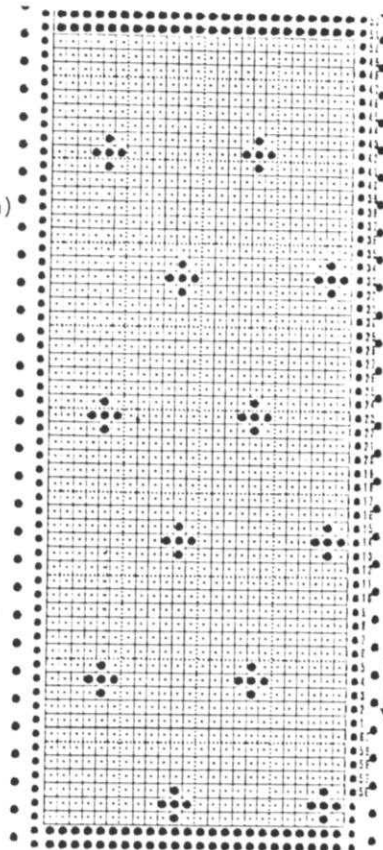
Stockinette stitch with a Norwegian (Fair Isle) Design. Punch your own Cards. Bands are K1, P1 Ribbing.

FINISHING: See General Instructions.



### FRONT: I

Work the front the same as the back to Row 158.  
 Divide in the center, put the needles on the left into holding position and complete the right side first.  
 \*ON NECK SIDE, decrease 1 st. every 3rd row 19x (20x). After Row 214, SHAPE SHOULDER same as the back.  
 Bring the needles on the left into working position, knit 1 row in Pattern to the left side, turn the Row Counter back to 158 and complete the left half. Follow the instructions from \*.



### CARD NO. 1.

11 Rows color 1 (Set Carriage on RIGHT)  
 18 Rows colors 1 and 3  
 6 Rows color 1  
 2 Rows colors 1 and 3  
 6 Rows color 1  
 32 Rows colors 1 and 2  
 10 Rows colors 1 and 3  
 6 Rows color 1  
 2 Rows colors 1 and 3  
 4 Rows color 1  
 2 Rows color 2  
 6 Rows colors 2 and 3  
 2 Rows color 2

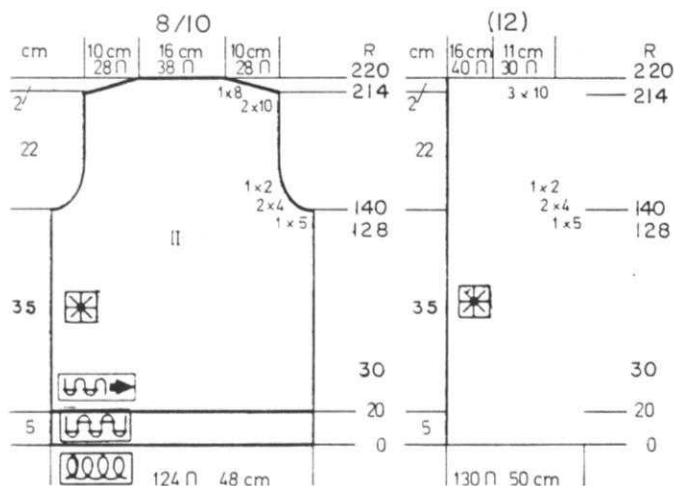
### NECKBAND:

ARMBANDS: Make 2.

Cast on 112 sts. with color 2 and work 10 rows K1, P1 Ribbing. Bind off or remove onto contrast waste yarn.

Cast on 146 sts. with color 2 and work K1, P1 Ribbing. ON EACH SIDE, decrease 1 st. every 2nd row. After Row 10, bind off or remove onto contrast waste yarn.

# DK 1095



BACK: II

Cast on 124 (130) sts. with color 1 and work 20 rows K1, P1 Ribbing. Transfer the Ribber sts. and continue in Stockinette stitch with color 1 to Row 30. Carriage is on the RIGHT SIDE. Continue in Pattern No. 1 as follows: Set KC on right side, knit across to the left. Push in MC Button and Card Lock Lever to Elongate. Continue in Pattern. Pattern 1 will be completed at Row 128. Knit 5 rows Stockinette stitch with color 1 (Set Pattern 2 after Row 4). Work in Pattern 2 (do not elongate). After Row 140, SHAPE ARMHOLE: ON EACH SIDE, bind off (both sizes) 5 sts. 1x, 4 sts. 2x, 2 sts. 1x. After Row 214, SHAPE SHOULDER: ON EACH SIDE, bind off 10 sts. 2x, 8 sts. 1x, (10 sts. 3x). After Row 220, bind off the remaining sts.

# DK 1096

WOMAN'S CAMISOLE & SKIRT

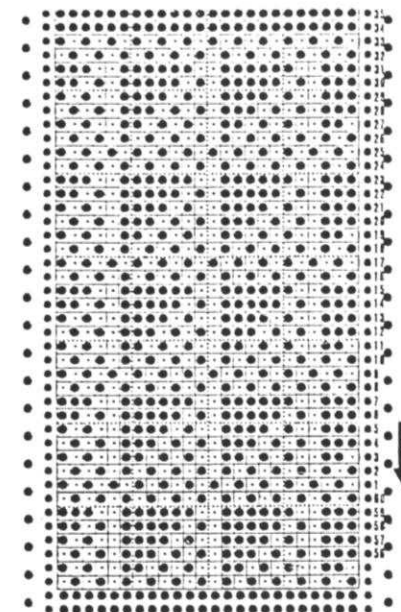
SIZES: 6/8 (10/12)  
 YARN: Amore  
 GRAMS: 450 500  
 TENSION: 9 or 10 for Top  
 5 or 6 for Skirt  
 GAUGE: 12 sts. 18 rows = 5 cm  
 for Top.  
 15 sts. 20 rows = 5 cm  
 for Skirt.



CORD FOR STRAPS: Make 2.

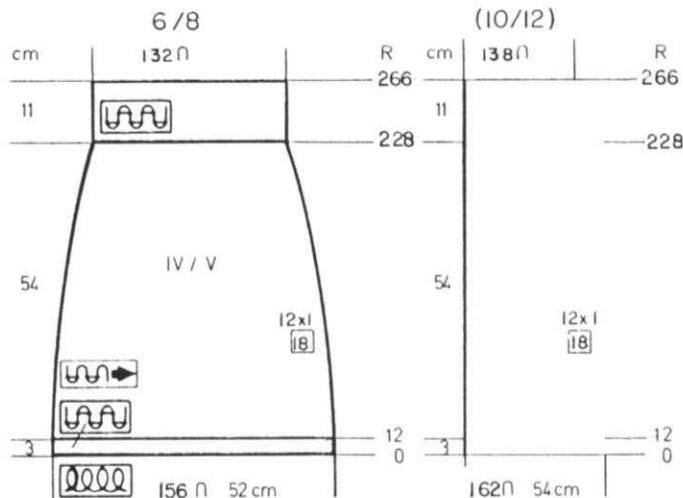
Cast on 3 sts. and set your machine for knitting a cord. With Tension 1, make cord approximately 30" long. Bind off. Fold cord in half and twist then sew to top. (See Picture).

FINISHING: See General Instructions. Make CORD for Straps.



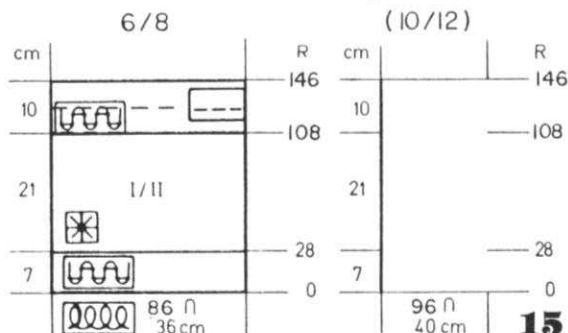
TOP: I/II 2 sections the same. The PURL side is the right side.

Cast on 86 (96) sts. and work K1, P1 Ribbing with Tension 5 to Row 28. CHANGE TO TENSION 10. Set into Pattern as follows. On the RIGHT of 0, \*1 st. on the Ribber, 7 sts. on the main machine. and REPEAT across from \* On the LEFT of 0, \*7 sts. on the main machine, 1 st. on the Ribber and REPEAT across from \*. Put in Card and knit 2 rows setting the Card on 2nd row. \*Push in BOTH TUCK BUTTONS, knit 6 rows, release buttons. Push in PART BUTTONS, Knit 2 rows, release buttons. REPEAT FROM \*. After Row 108, Set needles for K1, P1 Ribbing and change to Tension 5. After Row 146, bind off loosely.



SKIRT: IV/V Make 2 sections the same.

Cast on 156 (162) sts. and work with Tension 5 or 6. Work 12 rows K1, P1 Ribbing. Transfer the Ribber sts. and continue in Stockinette stitch. ON EACH SIDE, decrease 1 st. every 18th row 12x. After Row 228, transfer every other stitch to the Ribber and work with Tension 2/2 to Row 266. Bind off loosely.



# DK 1097

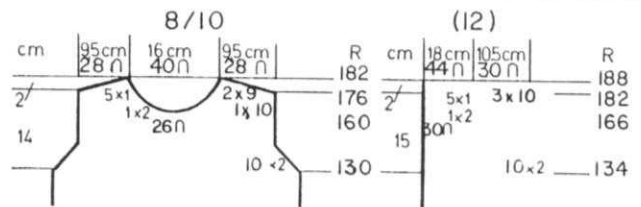


## WOMAN'S TWO PIECE DRESS

**SIZES:** 8/10 (12)  
**YARN:** Amore  
**GRAMS:** 550 600  
**TENSION:** 6 to 8 = Pullover  
 5 to 6 = Skirt  
**GAUGE:** 15 sts. 18 rows - 5 cm  
 (2") for Pullover  
 15 sts. 20 rows  
 = 5 cm (2") for Skirt.

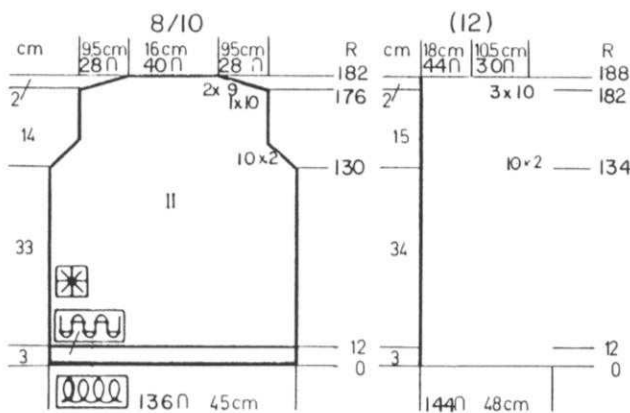
A Ribbing Pattern with an eyelet Design. The eyelets are transferred by hand.  
 Bands are K1, P1 Ribbing.

**FINISHING:** See General Instructions.



FRONT: I

Work the front the same as the back to Row 160 (166). Bind off the center 26 (30) sts. put the needles on the left into holding position and complete the right side first.  
 \*ON NECK SIDE, bind off 2 sts. 1x, 1 st. 5x. After Row 176 (182), SHAPE SHOULDER same as the back. Bring the needles on the left into working position, knit 1 row in Pattern to the left side, turn the Row Counter back to 160 (166) and complete the left half. Follow the instructions from \*.

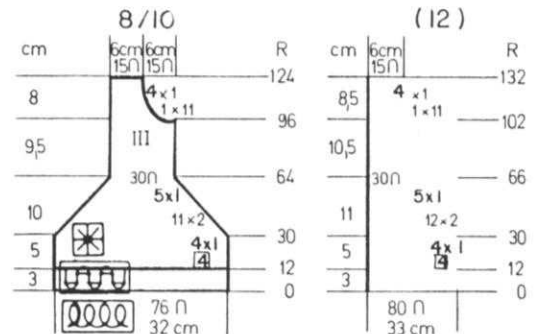


PULLOVER BACK: II

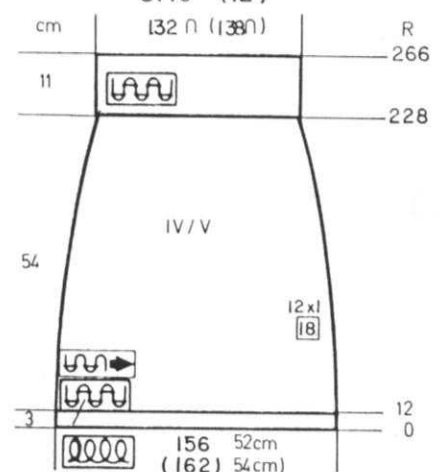
Cast on 136 (144) sts. and work 12 rows K1, P1 Ribbing. Transfer the Ribber sts. and Set into Pattern as follows: 3 sts. on the main machine, 2 sts. on the Ribber.  
 \*Knit 6 rows.  
 Transfer the LEFT END ST. of EACH group of 3 on main machine to the 3rd stitch ON THE RIGHT. REPEAT ACROSS.  
 REPEAT from \* for Pattern.  
 After Row 130 (134), SHAPE ARM-HOLE: ON EACH SIDE, bind off 2 sts. 10x.  
 After Row 176 (182) SHAPE SHOULDER. ON EACH SIDE bind off 10 sts. 1x, 9 sts. 2x. (10 sts. 3x).  
 After Row 182 (188), bind off the remaining sts.

SLEEVES: III Make 1, reverse 1.

Cast on 76 (80) sts. and work 12 rows K1, P1 Ribbing. Transfer and set into Pattern same as front and back. Continue in Pattern.  
 ON EACH SIDE, increase 1 st. every 4th row 4x.  
 After Row 30, ON EACH SIDE, decrease 2 sts. 11x (12x) then 1 st. 5x.  
 Knit even to Row 96 (102).  
 ON THE RIGHT, bind off 11 sts. 1x, 1 st. 4x.  
 After Row 124 (132), bind off the remaining sts.  
 Make second sleeve with reverse shaping after Row 96 (102) with the bind offs on the LEFT.



8/10 (12)



SKIRT: IV/V Make 2 sections the same.

Cast on 156 (162) sts. and work 12 rows K1, P1 Ribbing. Continue in Stockinette stitch. ON EACH SIDE, decrease 1 st. every 18th row 12x.  
 After Row 228, transfer every other stitch to the Ribber and with Tension 2/2 work K1, P1 Ribbing to Row 266. Bind off loosely.

### NECKBAND:

Cast on 122 (126) sts. and work 10 rows K1, P1 Ribbing. Bind off or remove onto contrast waste yarn.



# DK 1098

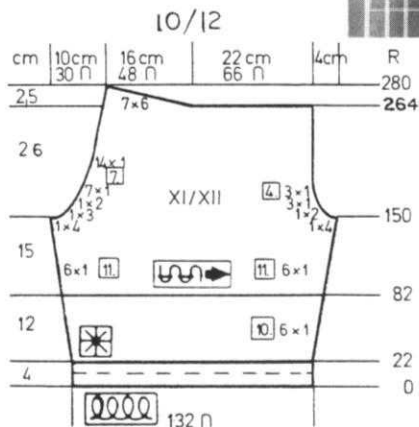
WOMAN'S LONG LACE PULLOVER  
AND BERMUDA SHORTS

SIZE: 10/12  
YARN: Amore  
GRAMS:  
TOP: 350  
SHORTS: 250  
TENSION 5 or 6

GAUGE:  
Lace -15 sts. 20 rows = 5 cm  
Stock-15 sts. 22 rows = 5 cm

Lace and Stockinette stitch.  
Punch your own Card.  
Singer Machines 260, 360  
can use Card No. 385 from  
Series 62 BUT YOU MUST  
PUNCH HOLES COMPLETELY ACROSS  
ROWS 44, 47, 50, 53.  
KNITTING MACHINE OWNERS  
of 820, 830, 840, 881 must  
be sure to knit 4 rows between  
lace transfers EXCEPT for  
ROWS SHOWN ON THE RIGHT SIDE  
OF PUNCH CARD THAT ARE MARKED  
WITH BLACK LINE and you must  
knit 2 rows at these points.

FINISHING: See General Instructions.  
Work 1 row single crochet around  
Waist of shorts, then 1 row  
double crochet. Pull elastic  
through double crochet.  
FRONT NECKBAND: Pick up  
144 sts. along neck edge  
and work hem same as bottom  
edge of top.  
BACK NECKBAND: Pick up  
58 sts. and work same as  
front neckband.  
SLEEVE BANDS: Pick up  
140 sts. along sleeve edge  
and make hem same as lower  
edge.

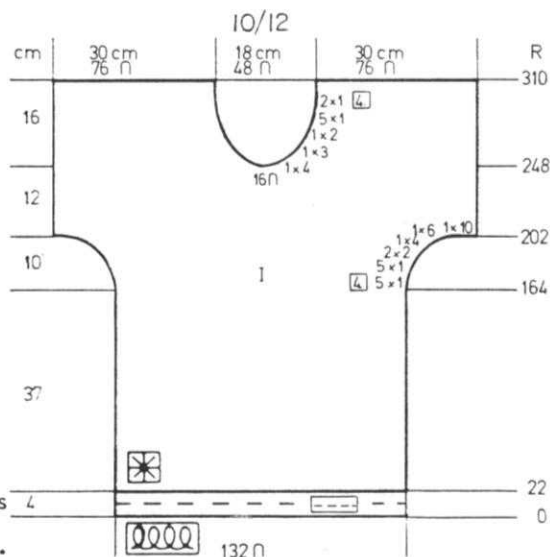
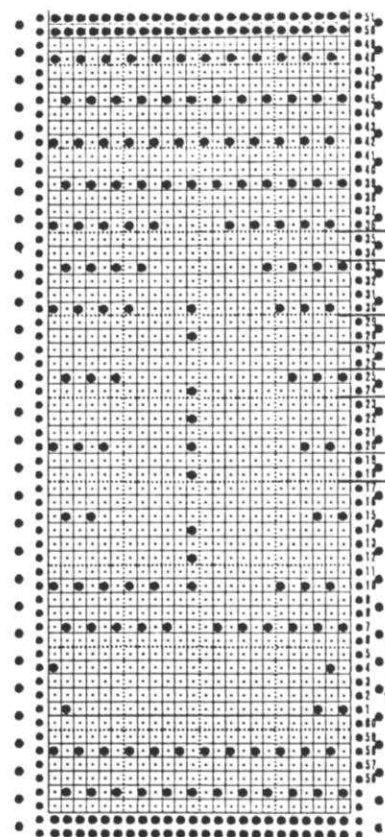
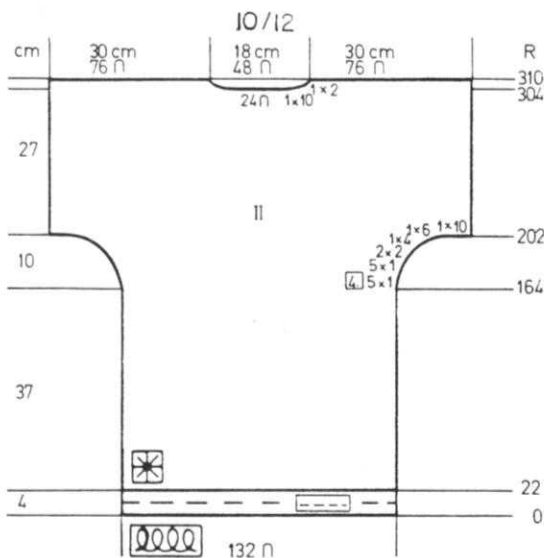


SHORTS: XI/XII 2 sections but  
reverse shaping on 2nd section.

Cast on 132 sts. and work 22 rows  
Stockinette stitch. Hang the  
hem and continue in Pattern to Row  
82 BUT AT THE SAME TIME, increase  
1 st. ON EACH SIDE, every 10th  
row 6x. Continue Stockinette st.  
After Row 82, ON EACH SIDE, in-  
crease 1 st. every 11th row 6x.  
After Row 150, ON THE RIGHT SIDE,  
bind off 4 sts. 1x, 2 sts. 1x, 1 st.  
3x, then 1 st. every 4th row 3x.  
AT THE SAME TIME, ON THE LEFT,  
bind off 4 sts. 1x, 3 sts. 1x,  
2 sts. 1x, 1 st. 7x, then 1 st.  
every 7th row 14x.  
After Row 264, bind off 66 sts.  
then bind off 6 sts. 7x.  
Make second section with reverse  
shaping.

BACK: II

Cast on 132 sts. and work 22 rows  
Stockinette stitch. Hang the  
hem and continue in LACE PATTERN.  
IMPORTANT - Knit 4 rows after  
lace transfers EXCEPT on rows  
marked on Card where you will  
knit 2 rows.  
After Row 164, SHAPE SLEEVE.  
ON EACH SIDE, increase 1 st.  
every 4th row 5x, then on  
every 2nd row, increase 1 st.  
5x, 2 sts. 2x, 4 sts. 1x,  
6 sts. 1x, 10 sts. 1x.  
Knit to Row 304.  
Bind off the center 24 sts., put  
the needles on the left into  
holding position and complete the  
right side first.  
\*ON NECK SIDE, bind off 10 sts. 1x,  
2 sts. 1x. After Row 310, bind off  
the remaining sts.  
Bring the needles on the left into  
working position, knit 1 row in  
Pattern to the left side, turn the  
Row Counter back to 304 and com-  
plete the left half. Follow the  
instructions from \*.



FRONT: I

Work the front the same as the  
back to Row 202, completing the  
sleeve shapings.  
Knit to Row 248.  
Bind off the center 16 sts., put  
the needles on the left into  
holding position and complete the  
right side first.  
\*ON NECK SIDE, bind off  
4 sts. 1x, 3 sts. 1x, 2 sts. 1x,  
1 st. 5x, then 1 st. every 4th  
row 2x.  
After Row 310, bind off the remain-  
ing sts.  
Bring the needles on the left into  
working position, knit 1 row in  
Pattern to the left side, turn the  
Row Counter back to 248 and  
complete the left half. Follow  
the instructions from \*.

# DK 1099

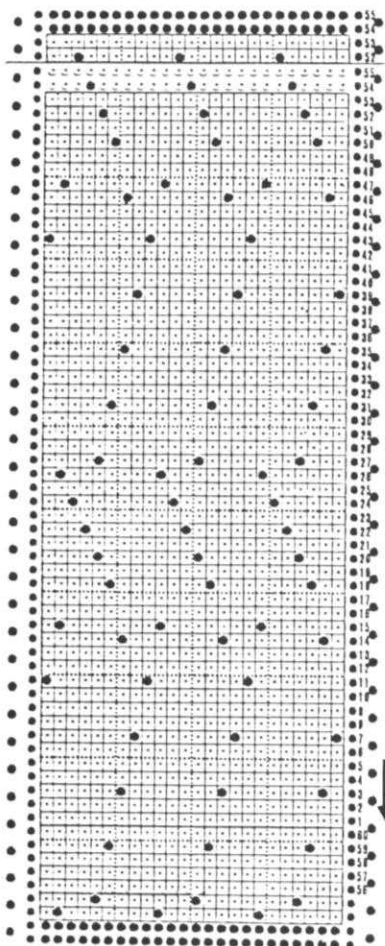
WOMAN'S DRESS

SIZE: 6  
 YARN: Venetia or Micaela  
 GRAMS: color 1 500  
 color 2 50  
 TENSION: 4 to 6  
 GAUGE: 15 sts. 22 rows = 5 cm (2")



A Lace Design. Punch your own Card. Bands are Stockinette stitch.

FINISHING: See General Instructions.

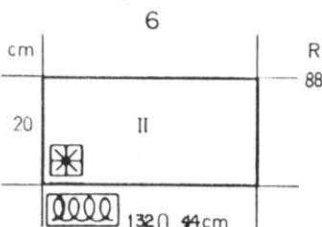


### ARMBANDS:

Pick up 70 sts. around armholes. With color 2, work same as for hem of skirt, then hang the hem and bind off loosely.

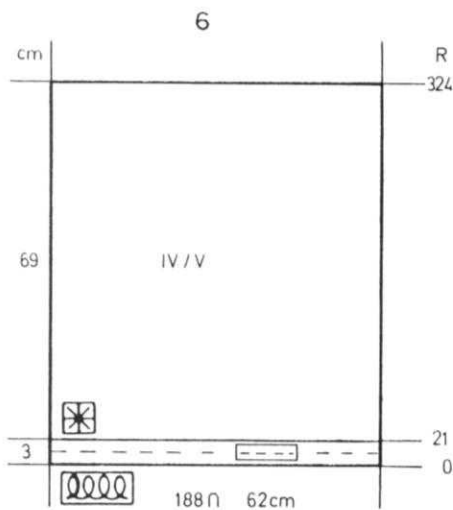
### BACK NECK BAND:

Pick up the sts. at top of back bodice, decreasing to 100 sts. With color 2, work band same as for skirt. Hang hem and bind off.



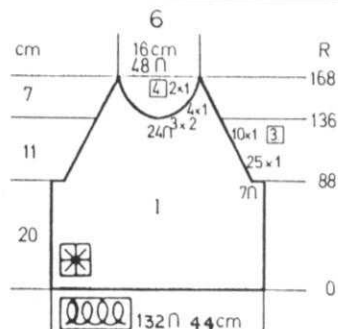
### BACK BODICE: II

Cast on 132 sts. with waste yarn. (same as you did for skirt). After Ravel Cord Row - knit 2 rows, setting Pattern on 2nd row then continue in Pattern with color 1 to Row 88. Remove the sts. onto different color waste yarn.



### SKIRT: IV/V Make 2 sections.

With contrast waste yarn, cast on 188 sts. Knit 9 rows then 1 row with Ravel Cord. Change to color 2 (Counter at 0). Knit 10 rows with lower tension, 1 row PICOT ROW with tension 6. Change to garment tension and knit 10 rows. Hang the hem. Change to color 1 and knit in Pattern to Row 324. Remove the sts. onto contrast waste yarn. Make second section the same.



### BODICE FRONT: I

Cast on 132 sts. with waste yarn same as for back bodice. After Ravel Cord Row - continue in Pattern to Row 88 with color 1. ON EACH SIDE, bind off 7 sts. then ON EACH SIDE, decrease 1 st. every 2nd row 25x, then every 3rd row 10x, BUT AT THE SAME TIME, after Row 136, bind off the center 24 sts., put the needles on the left into holding position and complete the right side first. \*ON NECK SIDE, bind off 2 sts. 3x, 1 st. 4x, then 1 st. every 4th row 2x. Bring the needles on the left into working position, knit 1 row in Pattern to the left side, turn the Row Counter back to 136 and complete the left half. Follow the instructions from \*.

### WAIST BAND:

Hang the sts. from one section of skirt back onto the machine decreasing to 110 sts. (Hang 2, 2, 1 and REPEAT across). Knit 30 rows with color 1. Take the lower edge of back bodice and hang the open sts. onto the 110 needles, decreasing evenly across -(Hang 1-1-1-1-2 and repeat across). Knit 1 row then bind off. REPEAT for other section of Skirt and hang the front bodice same as you did for the back.

### NECKBAND AND SHOULDER STRAPS:

First, make 2 pieces of waste knitting over 66 sts. Knit 10 rows of 1 color, then 4 rows contrast color. Remove from machine. Pick up 66 sts. from front neck edge then on each side, hang the waste knitting pieces onto 66 needles (198 sts.). With color 2, work band same as you did for the Skirt. After 21 rows, hang hem at neckline and pick up the 1st row of color 2 from the waste knitting on each side (straps). Bind off the double sts. across the needle bed. Remove the waste knitting from the straps.

# DK 2000

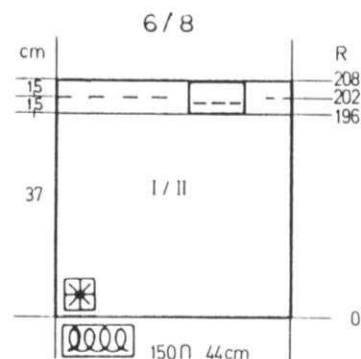


## WOMAN'S DRESS

SIZE 6/8  
 YARN: Fine Yarn such as 2/23  
 or 2/24  
 GRAMS: 400  
 NO KIT AVAILABLE  
 TENSION: 2 to 4  
 GAUGE: 17 sts. 23 1/2 rows = 5 cm (2")

A holding position Design with  
 Lace Pattern. Punch Card for  
 Lace. The PURL side is the  
 right side.

FINISHING: See General Instructions.  
 Sew cords on Bodice (see Picture).



## BODICE: I/II

Hang the skirt back onto the  
 machine as follows:

Take 1 section of skirt and hang  
 2 sts. on each needle in the  
 center of machine - so that you  
 will begin with needle 50 on the  
 right and end with needle 50 on  
 the left. (100 sts.).

Now ON EACH SIDE, hang only 1/4  
 of each of the 2 sections - so that  
 you will double up 50 sts. ON EACH  
 SIDE. There will be a total of  
 150 needles in work (100 sts. in the  
 center and 25 sts. on each side).  
 Knit 2 rows then work same as skirt  
 bottom. \*8 rows holding position,  
 knit 4 rows plain, then Lace Pattern  
 with Punch Card - 18 rows Lace, 4  
 rows plain, 8 rows holding position,  
 12 rows plain. REPEAT FROM \* 2x  
 MORE. Now work 8 rows holding po-  
 sition, 4 rows plain, 18 rows Lace,  
 2 rows Plain.

Continue with Stockinette stitch  
 5 rows tension 1, 1 row tension 6,  
 6 rows tension 1.

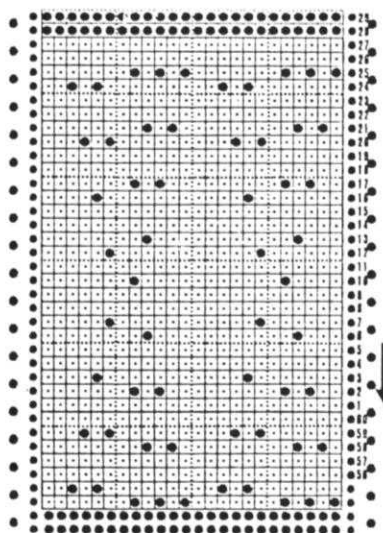
Bind off very loosely.

Turn and hem the top of bodice to the  
 inside.

FOR THE BACK BODICE, hang the  
 remaining sts. of each skirt section  
 back onto the machine (seam will be  
 in center) facing each other, doubling  
 the sts. in the same way (150 sts.)  
 Work same as the front bodice.

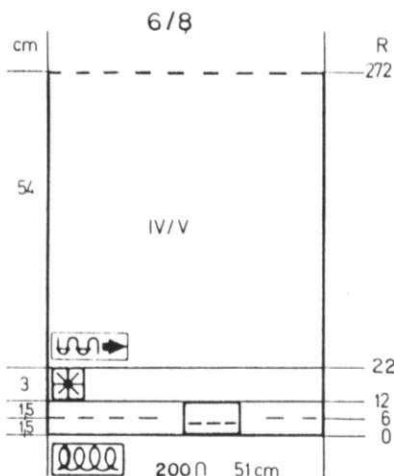
## STRAPS:

Make 4 cords over 4 or 5 needles.  
 Set your machine for knitting a  
 Cord then knit approximately 15"  
 long. Sew to bodice front and back  
 (see Picture).



SKIRT: IV/V Make 3 sections the  
 same.

Cast on 200 sts. with contrast  
 waste yarn. and knit 9 rows.  
 Knit 1 row with Ravel Cord.  
 Change to garment yarn and with  
 Tension 1, knit 5 rows.  
 Change to Tension 6 and knit  
 1 row.  
 Change to Tension 1 and knit 6  
 rows. Hang the hem.  
 Change to garment tension.  
 Knit 2 rows.  
 Bring the first needle to  
 the RIGHT of 0 into holding  
 position and EVERY FOLLOWING  
 12th needle ON EACH SIDE  
 into holding position.  
 Set HOLDING CAM to H.  
 Knit 8 rows, RELEASE H  
 (to normal).  
 Continue in Stockinette stitch  
 to Row 272. Remove onto  
 contrast waste yarn.  
 Make 3 sections the same.



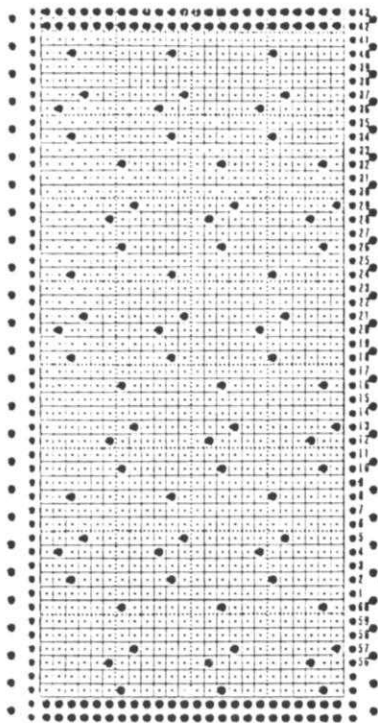
# DK 2001

## WOMAN'S DRESS

SIZE: 4/6  
 YARN: Vienna  
 GRAMS: 500  
 TENSION: 4 to 5  
 GAUGE: 15 1/2 sts. 21 rows = 5 cm (2")  
 Purchase 8 yds. Lace (See Picture)  
 and 3 buttons for back opening.

Stockinette stitch with a Lace Pattern. Punch your own Card.

FINISHING: See General Instructions. Sew Lace onto lower edge of ruffle, around top of ruffle, neck, bodice and sleeves (see picture). Make Cord for belt over 4 or 5 needles by setting machine for knitting a cord. Knit enough to go around waist and tie leaving long ends to hang. Make knot at ends. Work single crochet around back neck opening, making loops for 3 buttons. Sew buttons in place. Pull elastic through hem on sleeves.

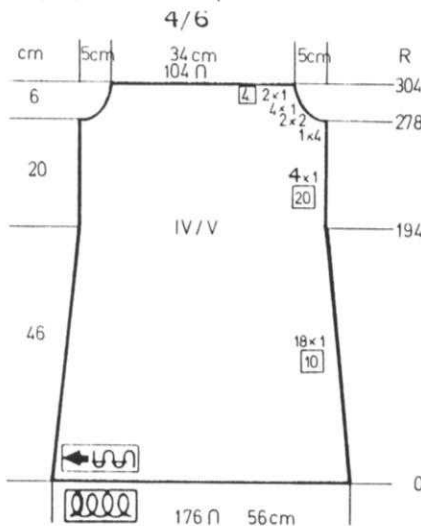


### SLEEVES: III

Cast on 112 sts. and work Stockinette stitch. After Row 8, hang hem. Knit to Row 202. ON EACH SIDE, bind off 5 sts. 1x, 2 sts. 3x, 1 st. 23x, 2 sts. 5x. After Row 266, bind off the remaining sts.

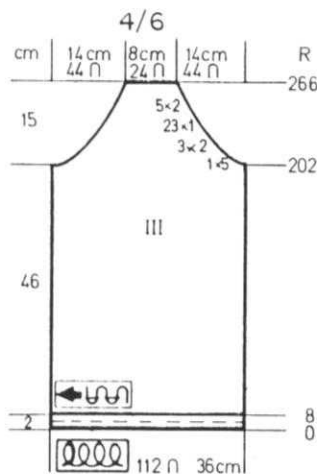
### NECKBAND:

Sew up 1 shoulder first, then pick up 120 sts. around neckline. Knit 8 rows Stockinette stitch. Bind off loosely or you can hang hem and bind off loosely. Turn 4 rows to the inside and sew in place.

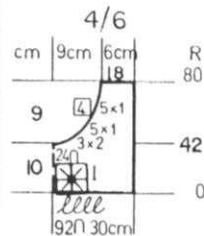


DRESS FRONT & BACK - IY/V Two sections the same. The Purl side is the right side.

With knit side of ruffle facing you, hang the open sts. back onto the machine decreasing to 176 sts. Hang 7 single sts. then 2 sts. on next needle and REPEAT across. Work in Stockinette stitch. ON EACH SIDE, decrease 1 st. every 10th row 18x. Mark Row 194 for waistline. ON EACH SIDE, increase 1 st. every 20th row 4x. After Row 278, SHAPE ARMHOLE: ON EACH SIDE, bind off 4 sts. 1x, 2 sts. 2x, 1 st. 4x, 1 st. every 4th row 2x. After Row 304, remove the sts. onto contrast waste yarn.



BODICE FRONT: I

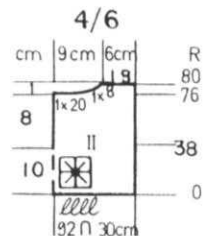


With knit side facing you, hang 1 section dress back onto the machine, decreasing to 92 sts. Hang 7 single lsts. then 2 sts. on next needle and REPEAT across. When 6 Lace Patterns have been completed, CONTINUE IN STOCKINETTE STITCH.

After Row 42, bind off the center 24 sts., put the needles on the left into holding position and complete the right side first.

\*ON NECK SIDE, bind off 2 sts. 3x, 1 st. 5x, 1 st. every 4th row 5x. After Row 80, bind off the remaining sts.

Bring the needles on the left into working position, knit 1 row to the left side, turn the Row Counter back to 42 and complete the left half. Follow the instructions from \*.



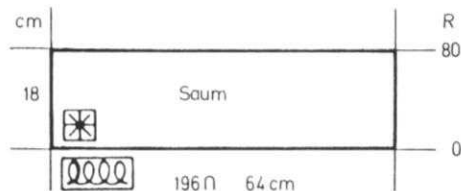
BODICE BACK: II

With knit side facing you, hang 1 section of dress back onto the machine, decreasing to 92 sts. Hang 7 single sts. then 2 sts. on next needle and REPEAT across. When 6 Lace Patterns are completed, CONTINUE IN STOCKINETTE STITCH.

After Row 38, divide in the center. Put the needles on the left into holding position and complete the right side first.

Knit to Row 76. \*ON NECK SIDE, bind off 20 sts. then bind off 8 sts. 1x. After Row 80, bind off the remaining sts.

Bring the needles on the left into working position, turn the Row Counter back to 38 and complete the left half. Follow the instructions from \*.



RUFFLE: MAKE FIRST. Two sections, one for front, 1 for back.

Cast on 196 sts. and work in Lace Pattern to Row 80. Remove onto contrast waste yarn.

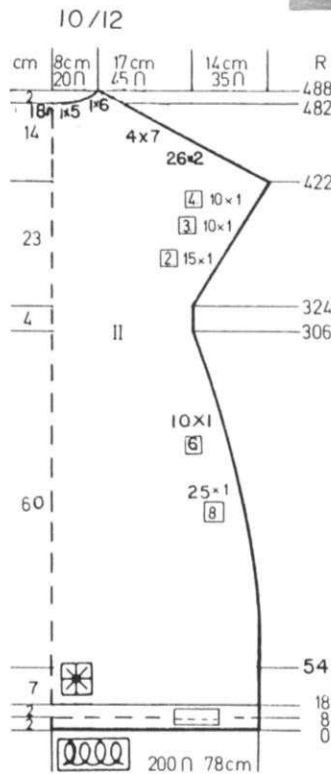
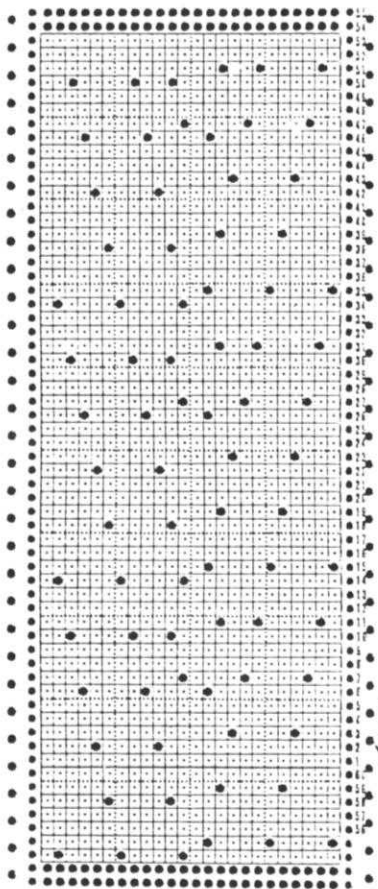
# DK 2002

## WOMAN'S DRESS

SIZE: 10/12  
 YARN: Venetia  
 GRAMS: 700  
 TENSION: 4 to 6  
 GAUGE: 13 sts. 21 1/2 rows = 5 cm (2")

A Lace Design. Punch your own Card. Singer Machine owners, use Card No. 391, Series 63.

FINISHING: Sew up 1 shoulder, then pick up the sts. around the neck and work same as hem for lower edge. Sew other shoulder seam then pick up sts. on sleeve edge and work same as for neckband. Repeat for other sleeve. Sew side seams. For Belt, cast on 14 sts., knit in Stockinette stitch for 160 cm or as long as you wish. Bind off.



### BACK: II

Cast on 200 sts. and work 18 rows Stockinette stitch. Hang the hem.

Continue in Lace Pattern. After Row 54, ON EACH SIDE, decrease 1 st. every 8th row 25x, every 6th row 10x.

Mark Row 306 for waist.

After Row 324, ON EACH SIDE, increase 1 st.

every 2nd row 15x, every 3rd row 10x, every 4th row 10x.

After Row 422, SHAPE SHOULDER.

(WATCH FOR NECK SHAPING)

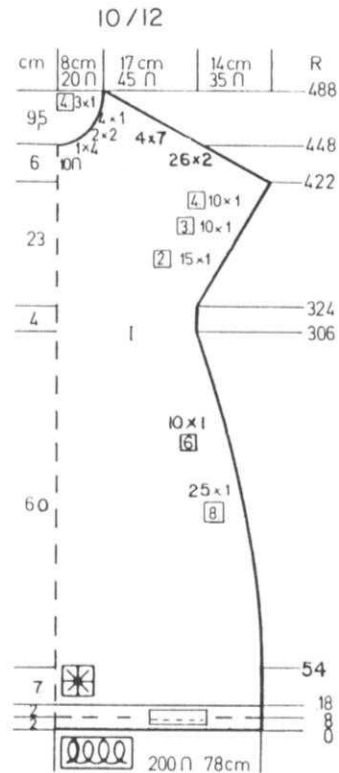
For shoulder, bind off

2 sts. 26x, 7 sts. 4x, AND AT THE SAME TIME, after Row 482, bind off the center 18 sts., put the needles on the left into holding position and complete the right side first.

\*ON NECK SIDE, bind off

5 sts. 1x, 6 sts. 1x.

Bring the needles on the left into working position, knit 1 row in Pattern to the left side, turn the Row Counter back to 482 and complete the left half. Follow the instructions from \* and don't forget to complete the shoulder shaping.



### FRONT: I

Work the front the same as the back to Row 422.

SHAPE SHOULDER SAME AS THE BACK BUT AT THE SAME TIME, after Row 448, bind off the center 10 sts., put the needles on the left into holding position and complete the right side first.

\*ON NECK SIDE, bind off 4 sts. 1x, 2 sts. 2x, 1 st. 4x then 1 st. every 4th row 3x. Bring the needles on the left into working position, knit 1 row in Pattern to the left side, turn the Row Counter back to 448 and complete the left half. Follow the instructions from \* and don't forget to complete the shoulder shaping.



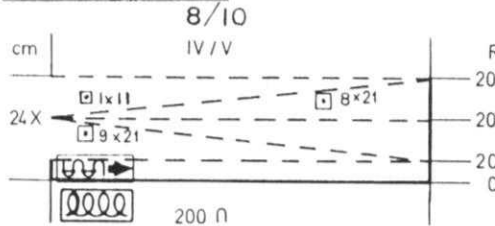
# DK 2003

## WOMAN'S TWO\_PIECE DRESS

SIZE: 8/10  
 YARN: Fine yarn such as 2/23 or 2/24  
 GRAMS: 500  
 NO KIT AVAILABLE  
 TENSION: 2 to 4  
 GAUGE: Pat: 15 sts. 24 1/2 rows = 5 cm (2")  
 Stock: 17 sts. 27 rows = 5 cm (2")

The Skirt is Stockinette stitch using Short Rows and single and double yarn. The Top is Stockinette stitch with Lace Sleeves. Punch your own Card.

FINISHING: See General Instructions. Weave Skirt seams. Make casing (hem) at waist and pull elastic through. Work 1 row single crochet down front opening. Pull cord through casing at neck and tie (see picture).



### SKIRT:

Cast on 200 sts. with contrast waste yarn- After knitting 9 to 11 rows, knit 1 row with ravel cord.

Set Counter at 0 and change to garment yarn.

\*With single strand of yarn, knit 20 rows.

with DOUBLE strands of yarn, work SHORT ROWS.

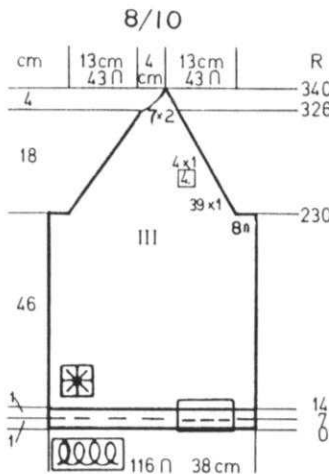
ON OPPOSITE SIDE OF CARRIAGE, put into holding position,

21 sts. 9x. Be sure to wrap the yarn around the inside needle in holding position each time to prevent a hole.

ON OPPOSITE SIDE OF CARRIAGE bring back into working position 11 sts. 1x, 21 sts. 8x.

REPEAT FROM \* 23x MORE.

Remove onto contrast waste yarn.



### SLEEVES: III Make 1, reverse 1.

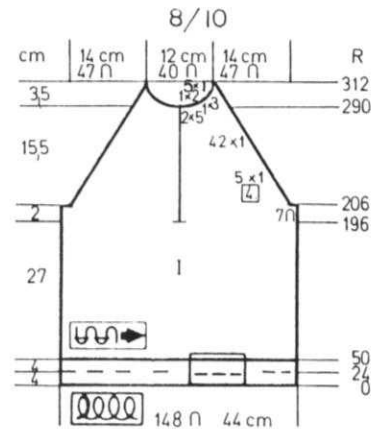
Cast on 116 sts. with double strands of yarn.

Work 14 rows Stockinette stitch then hang the hem.

Continue in Lace Pattern.

After Row 230, ON EACH SIDE, bind off 8 sts. then ON EACH SIDE, decrease 1 st. every 2nd row 39x, every 4th row 4x.

After Row 325, bind off 2 sts. 7x. Reverse for 2nd sleeve.

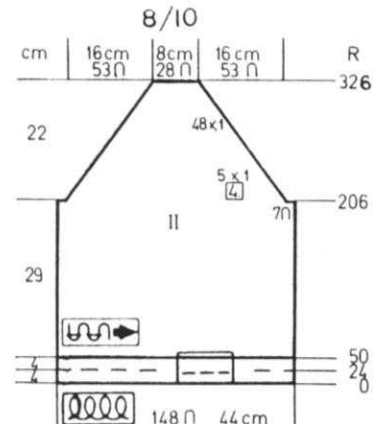


### FRONT: I

Work the front the same as the back to Row 196. Divide in the center and put the needles on the left into holding position and complete the right side first. \*Knit to Row 206.

SHAPE ARMHOLE: Bind off 7 sts. then decrease 1 st. every 4th row 5x, then every 2nd row 42x BUT AT THE SAME TIME, after Row 291, ON NECK SIDE, bind off 5 sts. 2x, 3 sts. 1x, 2 sts. 1x, 1 st. 5x.

Bring the needles on the left into working position, knit 1 row to the left side, turn the Row Counter back to 196 and complete the left half. Follow the instructions from \*.



### BACK: II

Cast on 148 sts. with double yarn and work Stockinette stitch.

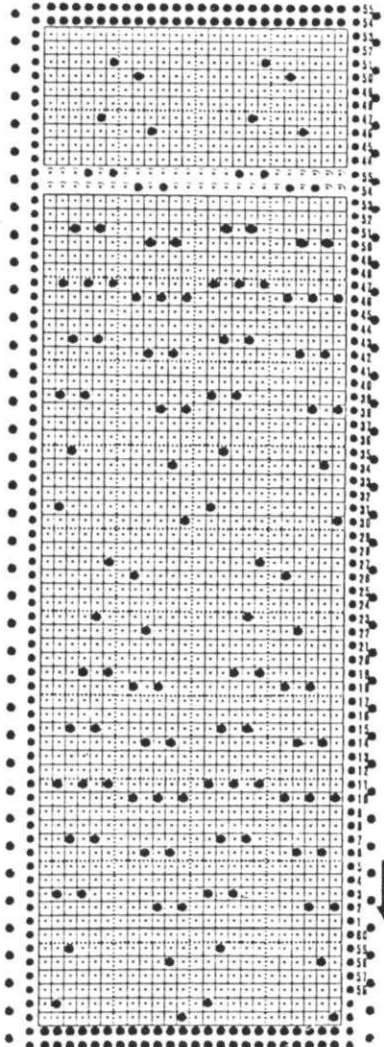
After Row 50, hang the hem.

Knit to Row 206.

ON EACH SIDE, bind off 7 sts. then decrease 1 st. every 4th row 5x, every 2nd row 48x. After Row 326, bind off the remaining sts.

### NECKBAND:

Pick up 100 sts. around neckline. Knit 16 rows. Turn to the outside and sew in place. Make Cord over 3 sts. 45" or 50" long. Pull cord through casing at neck. See Picture.



# KK 2004A

## BOY'S PULLOVER

SIZES: 4 (6) [8]  
 YARN: Nomotta Cordella or Cherie  
 GRAMS: NO KIT AVAILABLE  
 color 1 250 300 300  
 Small amounts of White and Yellow  
 for Intarsia Design on front section.  
 TENSION: 6 or 7  
 GAUGE: 14 1/2 sts. 20 rows = 5 cm (2")

Stockinette stitch with an Intarsia Design on the front section.  
 Bands are K1, P1 Ribbing.

FINISHING: See General Instructions.

### FRONT: I

Work the front the same as the back BUT INSERT THE INTARSIA DESIGN ON THE LEFT SIDE beginning after Row 70 (86) [98] Leave 14 sts. counting from center front and begin with the following 6 sts. in White - toward the left.

Now follow the Line Drawing for the Intarsia Design.

After Row 78 (94) [106], SHAPE ARMHOLE same as the back.

After Row 106 (122) [138], bind off the center 14 (16) [16] sts. put the needles on the left into holding position and complete the right side first.

\*ON NECK SIDE, bind off

3 sts. 1x, 2 sts. 2x, 1 st. 5x. (Same as first size).

[3 sts. 2x, 2 sts. 1x, 1 st. 5x].

After Row 126 (146) [162] SHAPE SHOULDER same as the back.

Bring the needles on the left into working position, knit 1 row to the left side, turn the Row Counter back to 106 (122) [138] and complete the right side. Follow the instructions from \*.



### BACK: II

Cast on 88 (92) [100] sts. with color 1 and work 14 rows K1, P1 Ribbing.

Continue in Stockinette stitch. After Row 78 (94) [106], SHAPE

ARMHOLE: ON EACH SIDE, bind off 3 sts. 1x, 2 sts. 1x, 1 st. 2x. (Same as first size).

[3 sts. 1x, 2 sts. 2x, 1 st. 2x]. After Row 126 (146) [162], bind off the center 20 (22) [24] sts. put the needles on the left into holding position and complete the right side first.

\*SHAPE SHOULDER AND NECK AT THE SAME TIME.

FOR SHOULDER, bind off

3 sts. 2x, 4 sts. 3x. (3 sts. 1x, 4 sts. 4x). [4 sts. 5x].

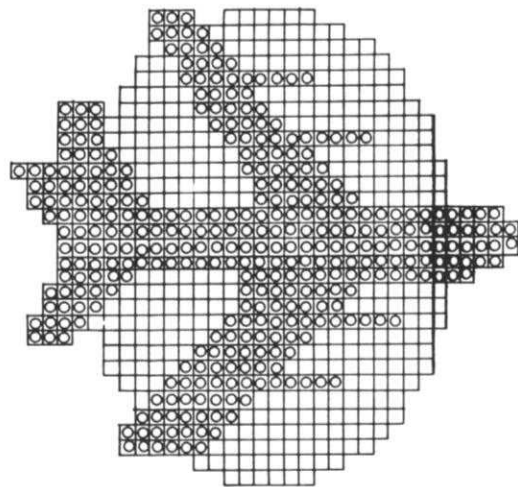
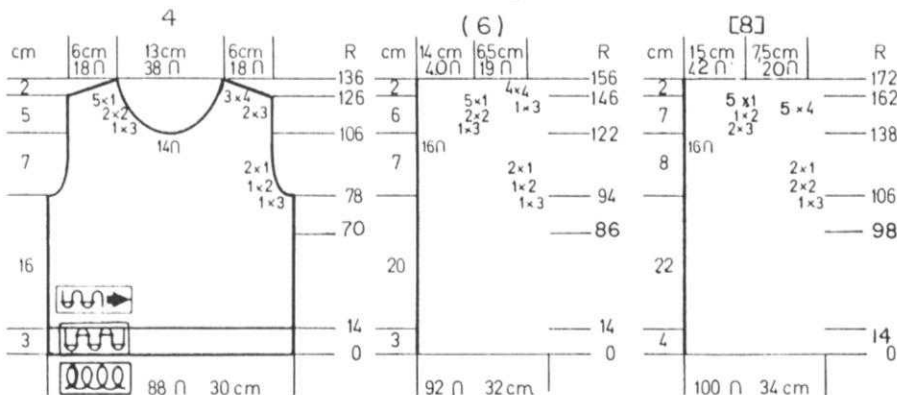
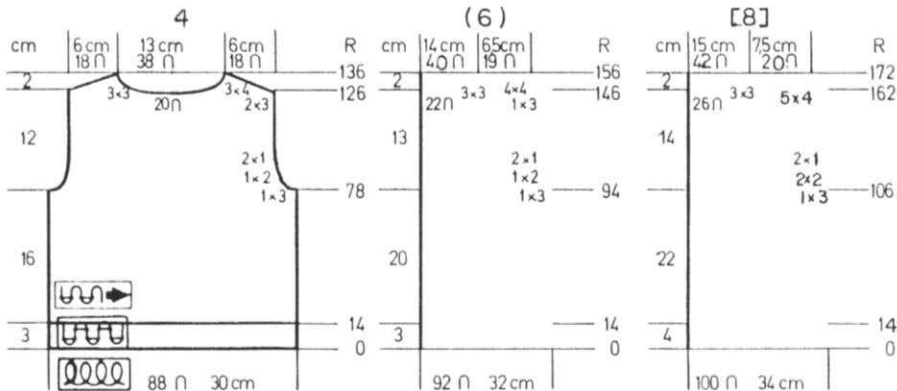
FOR NECK, bind off

3 sts. 3x for all sizes.

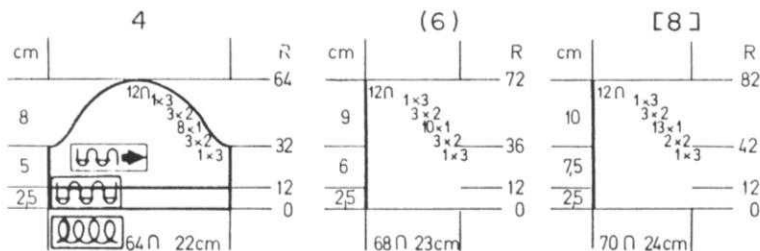
Bring the needles on the left into working position, knit 1 row to the left side, turn the Row Counter back to 126 (146) [162] and complete the left half. Follow the instructions from \*.

### NECKBAND:

Cast on 126 (136) [146] sts. with color 1 and work 16 rows K1, P1 Ribbing. Bind off or remove onto contrast waste yarn.



### SLEEVES: III



Cast on 62 (68) [70] sts. with color 1 and work 12 rows K1, P1, Ribbing.

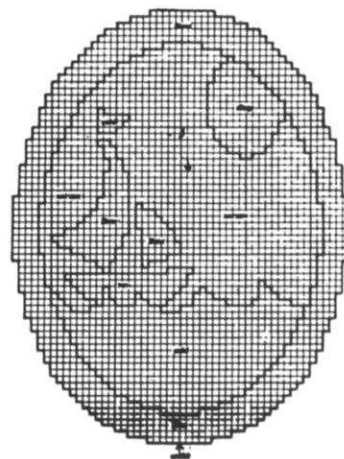
Continue in Stockinette stitch. After Row 32 (36) [42], SHAPE

CAP. Please follow the cap shaping on each side as shown on the Chart for YOUR SIZE. After Row 64 (72) [82], bind off the remaining sts.

# KK 2004B

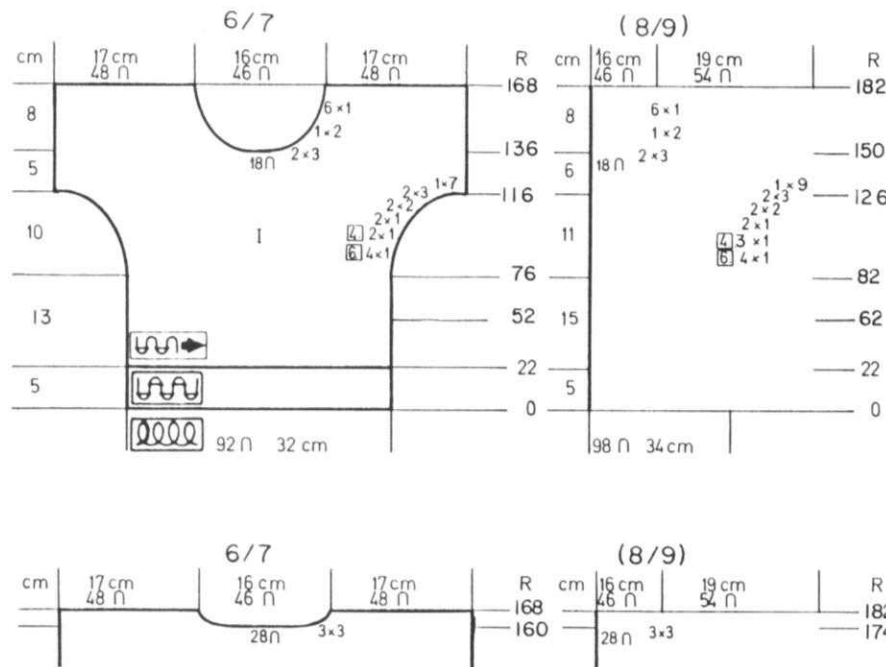
## GIRL'S PULLOVER

SIZES: 6/7 (8/9)  
 YARN: Nomotta Cordella or Cherie  
 GRAMS: NO KIT AVAILABLE  
 color 1 250 300 (Marine Blue)  
 color 2 50 50 (White)  
 color 3 50 50 (Red)  
 Small amounts of Medium Blue and Yellow  
 TENSION: 6 to 7  
 GAUGE: 14 1/2 sts. 20 rows = 5 cm (2")



Stockinette stitch with an Intarsia Design on front section. Bands are K1, P1 Ribbing.

FINISHING: See General Instructions.



### FRONT: I

Cast on 92 (98) sts. with color 1 and work 22 rows K1, P1 Ribbing. Continue in Stockinette stitch. After Row 52 (62), begin the INTARSIA DESIGN, centering it and following the Line Drawing. After Row 76 (82) ON EACH SIDE, INCREASE 1 st.

every 6th row 4x, every 4th row 2x (3x), then every 2nd row 1 st. 2x, cast on 2 sts. 2x, 3 sts. 2x, 7 (10) sts. 1x. Pattern is completed after Row 120 (130).

After Row 136 (150), SHAPE NECK: Bind off the center 18 sts., put the needles on the left into holding position and complete the right side first.

\*ON NECK SIDE, bind off 3 sts. 2x, 2 sts. 1x, 1 st. 6x. After Row 168 (182), bind off the remaining sts.

Bring the needles on the left into working position, knit 1 row to the left side, turn the Row Counter back to 136 (150) and complete the left half. Follow the instructions from \*

### BACK: II

Work the back the same as the front (OMIT INTARSIA DESIGN) to Row 160 (174). SHAPE NECK:

Bind off the center 28 sts., put the needles on the left into holding position and complete the right side first.

\*ON NECK SIDE, bind off 3 sts. 3x. After Row 168 (182), bind off the remaining sts.

Bring the needles on the left into working position, knit 1 row to the left side, turn the Row Counter back to 160 (174) and complete the left half. Follow the instructions from \*.

### NECKBAND:

Cast on 126 (138) sts. with color 3 and work K1, P1 Ribbing, 6 rows with color 3, 6 rows with color 2. Bind off or remove onto contrast waste yarn.

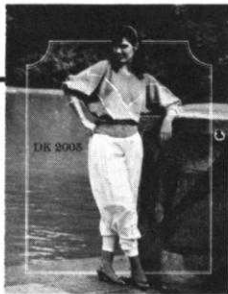
### SLEEVE BANDS: Make 2.

Cast on 78 (84) sts. with color 3 and work K1, P1 Ribbing, 6 rows color 3, 6 rows color 2. Bind off or remove onto contrast waste yarn.





# DK 2005



## WOMAN'S PULLOVER

SIZES: Small Medium  
 YARN: Nomotta Smoky  
 GRAMS: NO KIT AVAILABLE  
 color 1 250 300  
 color 2 150 200  
 color 3 100 150  
 color 50 50  
 TENSION: 10  
 GAUGE: 12 1/2 sts. 18 rows = 5 cm (2")

Stockinette stitch with color stripes. Knitted in 4 sections. Bands are K1, P1 Ribbing.

FINISHING: See General Instructions.

WAISTBAND: Make 2.

Cast on 110 (120) sts. with color 1 and work 30 rows K1, P1 Ribbing. Bind off or remove onto contrast waste yarn.

ARMBANDS: Make 2.

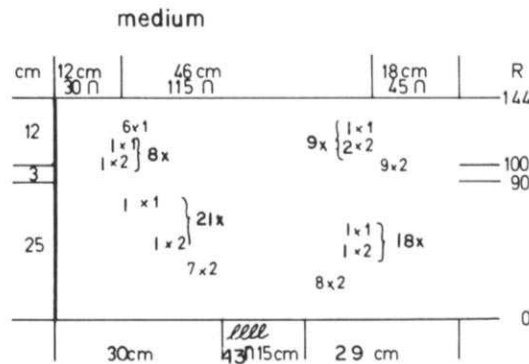
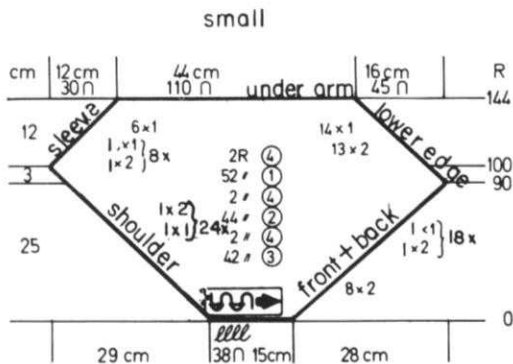
Cast on 64 (70) sts. with color 1 and work 30 rows K1, P1 Ribbing. Bind off or remove onto contrast waste yarn.

NECKBAND: Make 2.

Cast on 90 sts. with color 3 and work 10 rows K1, P1 Ribbing. Bind off or remove onto contrast waste yarn.

Make 4 sections - 2 with REVERSE SHAPING.

Cast on 38 (43) sts. with color 3 and work color stripes as follows.  
 42 rows color 3, 2 rows color 4, 44 rows color 2, 2 rows color 4, 52 rows color 1, 2 rows color 4 BUT AT THE SAME TIME, SHAPE BOTH SIDES -  
 ON THE RIGHT, increase 2 sts. 8x, then \*2 sts. 1x, 1 st. 1x, and REPEAT from \* 17x MORE and  
 ON THE LEFT, \*\* increase 1 st. 1x, 2 sts. 1x and REPEAT FROM \*\* 23x MORE.  
 (2 sts. 7x, \*1 sts. 1x, 2 sts. 1x and REPEAT from \* 20x MORE).  
 After Row 90, ON THE RIGHT, DECREASE 2 sts. 13x, 1 st. 14x. (\*2 sts. 2x, 1 st. 1x and REPEAT from \* 8x MORE).  
 ON THE LEFT, after Row 101, decrease \*2 sts. 1x, 1 st. 1x and REPEAT from \* 7x MORE then decrease 1 st. 6x.  
 After Row 144, bind off the remaining sts.  
 Make another section the same then make 2 more with REVERSE SHAPING, reading LEFT for RIGHT and RIGHT for LEFT.



## KNITKING BINDERS - Holds One Complete Year's Copies

Keep all your KnitKing Magazines together and build a beautiful library of patterns

\$5.95 ea. Available from KNITKING: 1128 Crenshaw Blvd., Los Angeles, Calif. 90019

I enclose \$\_\_\_\_\_ for \_\_\_\_\_ Binders (Calif. residents add Sales Tax) plus \$1.25 Shipping costs. (Canada \$2.75)

Name \_\_\_\_\_

Address \_\_\_\_\_

ZIP \_\_\_\_\_

# DK 2006

knitking  
magazine

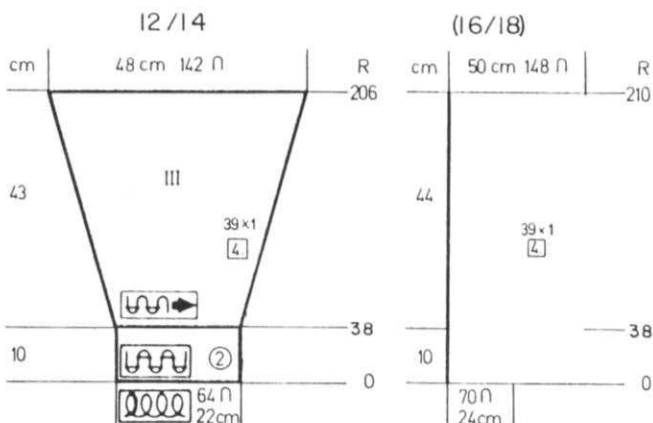
## WOMAN'S PULLOVER

SIZES: 12/14 (16/18)  
YARN: Nomotta Regia  
GRAMS: NO KIT AVAILABLE.  
color 1 250 300 (Blue)  
color 2 150 200 (Gold)  
color 3 100 150 (White)  
color 4 100 100 (Yellow)  
TENSION: 8 or 9  
GAUGE: 15 sts. 19 rows = 5 cm (2")



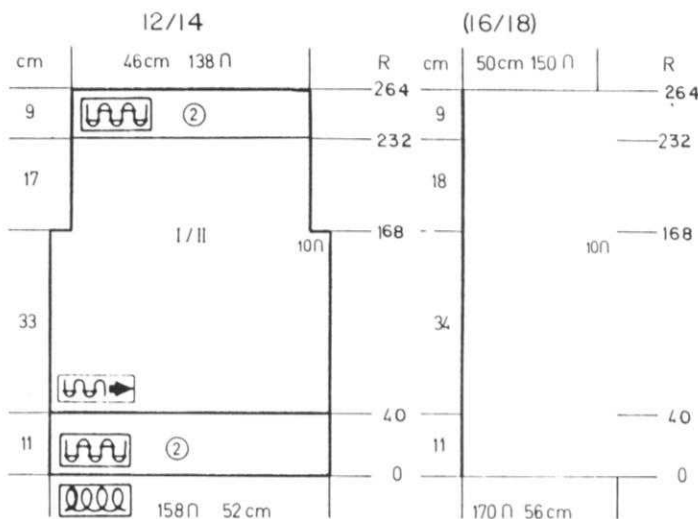
Stockinette stitch with color stripes.  
Bands are K2, P2 Ribbing.

FINISHING: See General Instructions.  
Sew shoulder seams 6 cm (2 1/2")  
then sew Button to each shoulder.



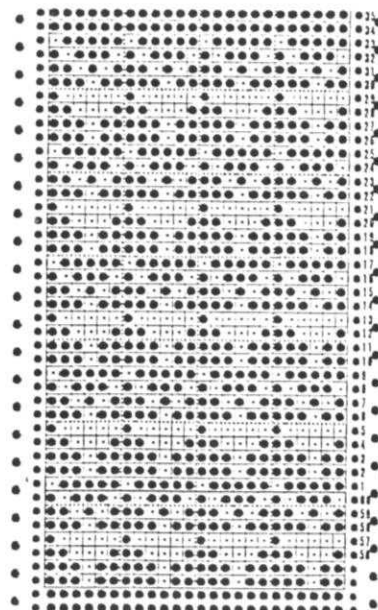
### SLEEVES: III

Cast on 64 (70) sts. with color 2 and work 38 rows K2, P2 Ribbing. Continue in Stockinette stitch with color stripes as follows: 16 rows color 4, 16 rows color 1, 16 rows color 3 then continue with color 1 BUT AT THE SAME TIME ON EACH SIDE, increase 1 st. every 4th row 39x. After Row 206 (210), bind off loosely.



BACK & FRONT: I/II Both sections the same.

Cast on 158 (170) sts. with color 2 and work 40 rows K2 P2 Ribbing. Continue in Stockinette stitch with color stripes as follows: 16 rows color 4, 16 rows color 1, 16 rows color 3 and REPEAT FROM \* 3 times MORE then 16 rows color 4. AT THE SAME TIME, after Row 168, SHAPE ARMHOLE. ON EACH SIDE, bind off 10 sts. After Row 232, work K2, P2, Ribbing with color 2 to Row 264. Bind off.



# HP 2007

## MAN'S PULLOVER

SIZES: 36/38 (40/42)  
YARN: Nomotta Regia  
GRAMS: NO KIT AVAILABLE  
color 1 400 400  
color 2 200 200  
color 3 100 100  
color 4 100 100  
TENSION: 7 to 9  
GAUGE: 14 1/2 sts. 18 rows = 5 cm (2")



2 rows color 1 (Set Card)  
\*4 rows colors 1 and 2.  
2 rows colors 1 and 3  
2 rows colors 1 and 4  
REPEAT FROM \*.

### NECKBAND:

Sew 1 shoulder seam. Bring 132 needles into working position then push every other needle back to the out of work position. Pick up the sts. around neckline (66 sts.). LOWER TENSION. With color 4, knit 1 row. With color 1, knit 12 rows. Pick up the first row and bind off.

A Fair Isle Design. Use the Color Changer. Punch Card. Bands are MOCK RIBBING over every other needle.

FINISHING: See General Instructions.

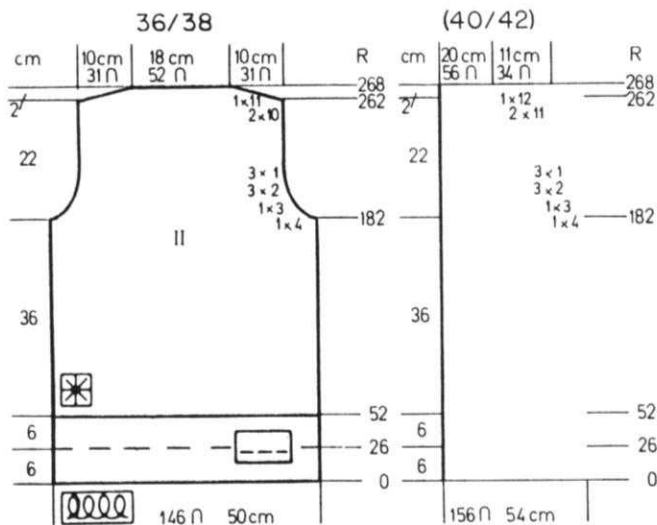
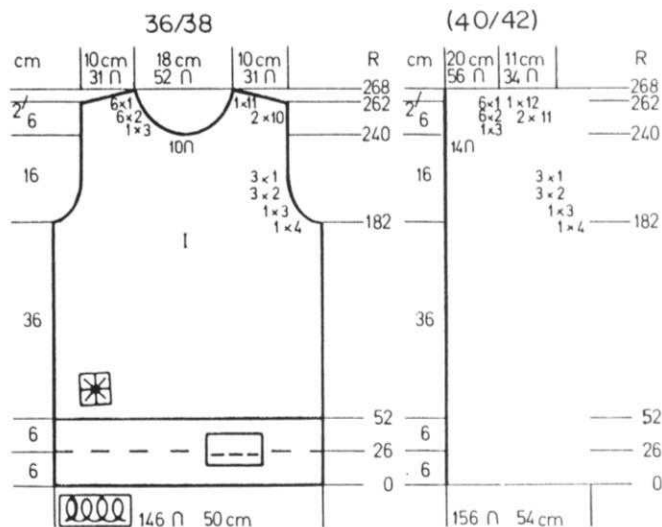
## FRONT: I

Work the front the same as the back to Row 240. Bind off the center 10 (14) sts., put the needles on the left into holding position and complete the right side first.

\*ON NECK SIDE, bind off 3 sts. 1x, 2 sts. 6x, 1 st. 6x for both sizes.

After Row 262, SHAPE SHOULDER same as the back.

Bring the needles on the left into working position, knit 1 row in pattern to the left side, turn the Row Counter back to 240 and complete the left half. Follow the instructions from \*.



## BACK: II

Bring 146 (156) needles into working position, then push back into the out of work position every 2nd needle.

Cast on over the remaining needles in work with color 1.

Use TIGHTER TENSION.

Knit to Row 52, then hang the hem, Change to garment tension and continue in Pattern.

After Row 182, SHAPE ARMHOLE:

ON EACH SIDE, bind off 4 sts. 1x, 3 sts. 1x, 2 sts. 3x, 1 st. 3x for both sizes.

After Row 262 SHAPE SHOULDER:

ON EACH SIDE, bind off 10 sts. 2x, 11 sts. 1x. (11 sts. 2x, 12 sts. 1x).

After Row 268, bind off the remaining sts.

## SLEEVES: III

Bring 70 (76) needles into working position, then push back every 2nd needle to the out of work position.

Cast on over the remaining needles in work.

After Row 52, hang the hem.

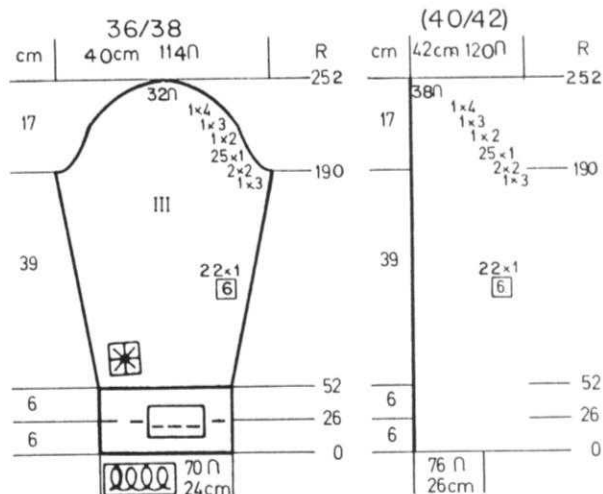
Continue in Pattern.

ON EACH SIDE, increase 1 st. every 6th row 22x.

After Row 190, SHAPE CAP:

Please follow the instructions for Cap shaping ON EACH SIDE as shown on the Chart for YOUR SIZE.

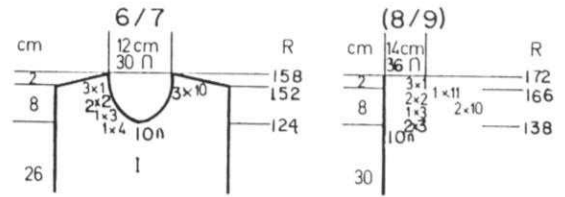
After Row 252, bind off the remaining sts.



# KK 2008

## CHILD'S PULLOVER

**SIZES:** 6/7 (8/9)  
**YARN:** Nomotta Cherie  
**GRAMS:** NO KIT AVAILABLE  
 color 1 150 200 = Dark Blue  
 color 2 50 50 = Burgundy  
 color 3 50 50 = Red  
 color 4 50 50 = White  
**TENSION:** 7 or 8  
**GAUGE:** 14 sts. 18 rows = 5 cm (2")

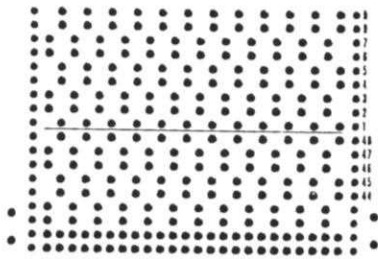


FRONT: I

Work the front the same as the back, except for NECK SHAPING. After Row 124 (138), bind off the center 10 sts., REMOVE THE LEFT SIDE STS. ONTO CONTRAST WASTE YARN (MARK NEEDLE POSITIONS) and complete the right side first. \*ON NECK SIDE, bind off 3 sts. 1x (2x), 2 sts. 1x, 1 st. 3x AND AFTER ROW 152 (166), SHAPE SHOULDER SAME AS THE BACK. Hang the sts. held on waste yarn back onto the machine being sure they are placed on MARKED needles. Knit 1 row in Pattern to the left side, turn the Row Counter back to 124 (138) and complete the left half. Follow the instructions from \*.

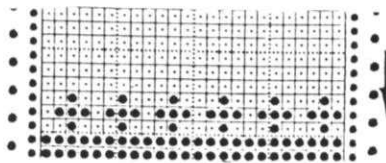
There are various designs used for this garment and should be made by experienced knitters only. The Ribber is used as well as a Tuck Stitch and Fair Isle Design. Knitting is reversed from time to time. Follow printed instructions exactly and punch your own Cards. Bands are K1, P1 Ribbing.

**FINISHING:** See General Instructions.



PATTERN NO. 1

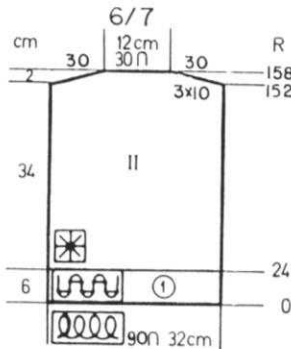
Punch Card through Row 41 then punch 2 rows of holes for connecting Card.



PATTERN NO. 2.

### NECKBAND:

Cast on 98 (106) sts. with color 1 and work 14 rows K1, P1 Ribbing. Bind off or remove onto contrast waste yarn.



BACK: II

Cast on 90 (98) sts. with color 1 and work 23 rows K1, P1 Ribbing. Transfer the Ribber sts. to the main machine and knit 1 row.

\*Knit 2 rows color 4. SET PATTERN NO. 1 and KC on the RIGHT.

Knit 1 row color 3 to the left. Carriage on LEFT, Push in BOTH TUCK BUTTONS.

Knit 14 rows. Release Tuck and KC. Knit 1 row.

Knit 2 rows color 4, 1 row color 1.

Use Reversing Bar and REVERSE the knitting.

Knit 3 rows.

Knit 2 rows color 4, 2 rows color 2, 2 rows color 4, 4 rows color 3.

REVERSE THE KNITTING.

Knit 2 rows color 4.

Knit 1 row color 1, then transfer every other stitch to Ribber.

Work 12 rows K1, P1 Ribbing.

Transfer the ribber sts. to main machine, knit 1 row.

Knit 2 rows color 4.

Knit 1 row color 2.

REVERSE THE KNITTING, knit 4 rows.

SET PATTERN NO. 2, knit 1 row on KC.

Push in MC Button, knit 3 rows with colors 2 and 3. RELEASE MC and KC.

Knit 3 rows color 2.

REVERSE THE KNITTING.

REPEAT FROM \* BUT CHANGE FAIR ISLE

PATTERN TO COLORS 2 and 4.

AT THE SAME TIME, after Row 152 (166)

SHAPE SHOULDER. ON EACH SIDE, bind

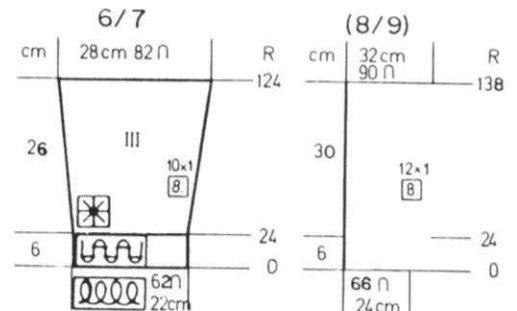
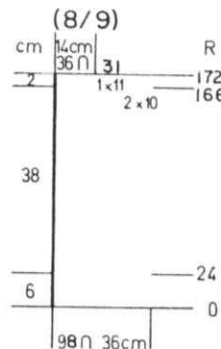
off

10 sts. 3x.

(10 sts. 2x, 11 sts. 1x).

After Row 158 (172), bind off the

remaining sts.



SLEEVES: III

Cast on 62 (66) sts. with color 1 and work 23 rows K1, P1 Ribbing, Transfer the Ribber sts. to main machine and with color 1 knit 1 row, then with color 4, knit 2 rows. START PATTERN WITH FAIR ISLE DESIGN. (See Picture). ON EACH SIDE, increase 1 st. every 8th row 10x (12x). After Row 124 (138), bind off.

# HP 2009

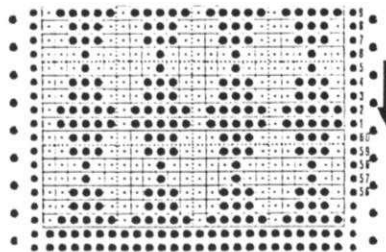


## MAN'S SLEEVELESS PULLOVER

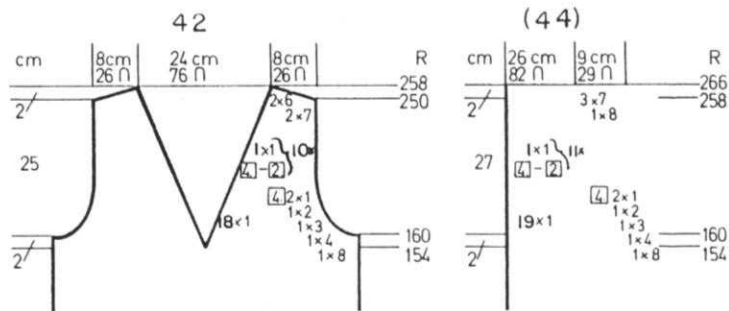
**SIZES:** 42 (44)  
**YARN:** Venetia  
**GRAMS:**  
 color 1 250 250  
 color 2 150 150  
**TENSION:** 7 or 8  
**GAUGE:** 16 sts. 18 rows = 5 cm (2")

Norwegian (Fair Isle) design  
 with bands in K2, P2 Ribbing.  
 Punch your own Card.

**FINISHING:** See General Instructions.

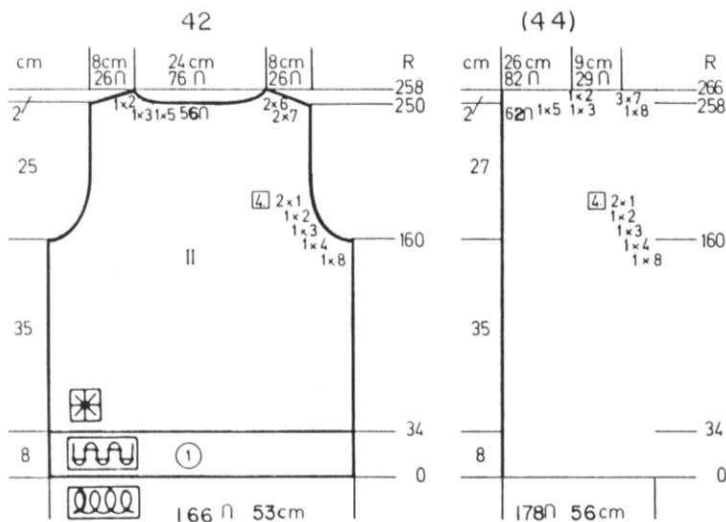


Punch Card through Row 41 then  
 punch 2 rows of holes for  
 connecting Card.



### FRONT: I

Work the front the same as the  
 back to Row 154.  
 Divide in the center, put the  
 needles on the left into holding  
 position and complete the right  
 side first.  
 \*ON NECK SIDE, decrease 1 st.  
 every 2nd row 18x (19x) (BE SURE  
 TO SHAPE ARMHOLE SAME AS THE  
 BACK AFTER ROW 160) then  
 on neck side, decrease 1 st.  
 \*\* every 4th row 1x, every 2nd  
 row 1x and REPEAT FROM \*\* 9x  
 more (10x more).  
 After Row 250 (258), SHAPE SHOULDER  
 same as the back.  
 Bring the needles on the left into  
 working position, knit 1 row in  
 Pattern to the left side, turn the  
 Row Counter back to 154 and  
 complete the left half. Follow the  
 instructions from \*.



### BACK: II

Cast on 166 (178) sts. with color  
 1 and work 34 rows K2, P2 Ribbing.  
 Continue in Pattern with colors  
 1 and 2.  
 After Row 160, SHAPE ARMHOLE:  
 ON EACH SIDE, bind off  
 8 sts. 1x, 4 sts. 1x, 3 sts. 1x,  
 2 sts. 1x, 1 st. every 4th row 2x.  
 (Same as first size).  
 Knit to Row 250 (258).  
 Bind off the center 56 (62) sts.,  
 put the needles on the left into  
 holding position and complete the  
 right side first.  
 \*SHAPE SHOULDER AND NECK AT THE  
 SAME TIME.  
 FOR SHOULDER, bind off  
 7 sts. 2x, 6 sts. 2x.  
 (8 sts. 1x, 7 sts. 3x).  
 FOR NECK, bind off for both sizes,  
 5 sts. 1x, 3 sts. 1x, 2 sts. 1x.

**ARMBANDS:** Make 2.

Cast on 186 sts. with color 1  
 and work 12 rows K2, P2 Ribbing.  
 Bind off or remove onto contrast  
 waste yarn.

**NECKBAND:** Make 2.

Cast on 134 (144) sts. with  
 color 1 and work 12 rows  
 K2, P2 Ribbing.  
 Bind off or remove onto contrast  
 waste yarn.

# HP 2010



## MAN'S PULLOVER

SIZES: 38/40 (42/44)  
 YARN: Nomotta Cherie  
 GRAMS: NO KIT AVAILABLE  
 color 1 350 400  
 color 2 100 100  
 color 3 100 100  
 TENSION: 6 to 7  
 GAUGE: 15 sts. 20 rows = 5 cm (2")

Stockinette stitch with color stripes. Bands are K2, P2 Ribbing.

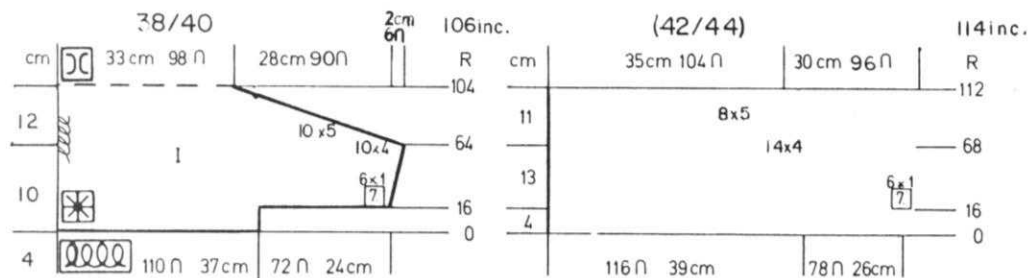
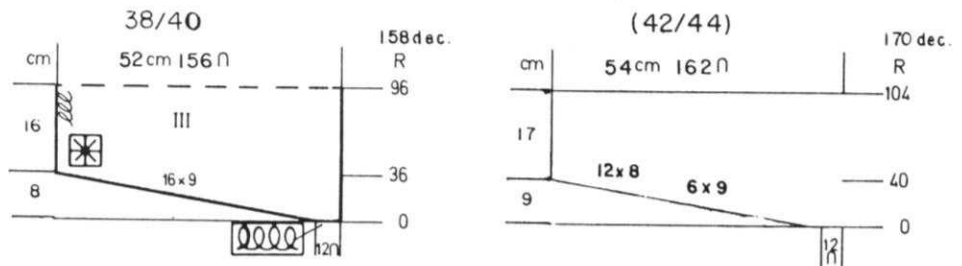
FINISHING: See General Instructions.

SLEEVE BANDS: Make 2.

Cast on 78 (84) sts. with color 1 and work 34 rows K2, P2 Ribbing. Bind off or remove onto contrast waste yarn.

## SLEEVES: III

To the extreme RIGHT of machine, cast on 12 sts. Work Stripe Pattern. ON THE LEFT, increase 9 sts. 16x. (9 sts. 6x, 8 sts. 12x). Continue in Stripe Pattern to Row 158 (170), then work backwards, decreasing instead of increasing. When sleeve is completed, bind off loosely.



## FRONT: I

To the extreme left of machine, cast on 110 sts. with color 1 (116 sts. with color 3). Work in established stripe pattern same as before. After Row 16, cast on 72 (78) sts. ON THE RIGHT, increase 1 st. every 7th row 6x. After Row 64 (68) SHAPE NECK. Bind off 4 sts. 10x, 5 sts. 10x. (4 sts. 14x, 5 sts. 8x). Knit 2 rows (Row 106 (114)). Now work backwards, increasing for neck and decreasing for shoulder. When 2nd half is completed, bind off loosely.

WAIST BAND: Make 2.

Cast on 144 (156) sts. with color 1 and work 34 rows K2, P2 Ribbing. Bind off or remove onto contrast waste yarn.

NECKBAND: Make 2.

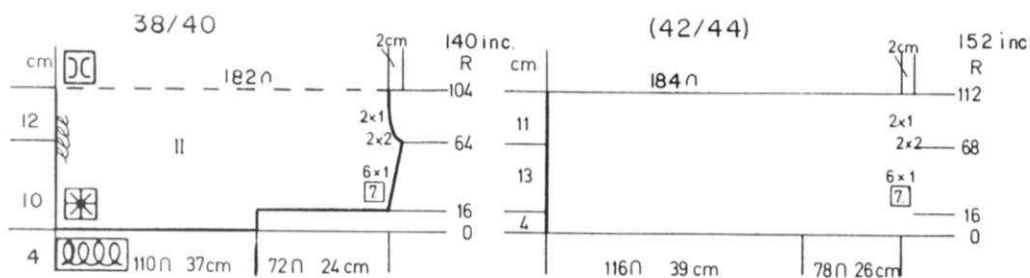
Cast on 128 (138) sts. with color 1 and work 14 rows K1, P1 Ribbing. Bind off or remove onto contrast waste yarn.

## BACK: II BEGIN TO EXTREME LEFT OF MACHINE.

Cast on 110 sts. with color 1 (116 sts. with color 3) Work Stockinette stitch with color stripes as follows.

FOR SIZE 38/40  
 \*16 rows color 1  
 4 rows color 2  
 4 rows color 3  
 REPEAT FROM \* throughout.

FOR SIZE 42/44  
 \*4 rows color 3  
 4 rows color 2  
 16 rows color 1  
 REPEAT FROM \* throughout.  
 After Row 16, cast on 72 (78) sts. SHAPE SHOULDER: ON THE RIGHT, increase 1 st. every 7th row 6x. After Row 64 (68) SHAPE NECK: Bind off 2 sts. 2x, 1 st. 2x. Mark Row 104 (112) for center back, then continue to Row 140 (152). Now you must work BACKWARDS, increasing for the neck first, then shaping shoulder. When 2nd half is completed, bind off the remaining sts.



# HP 2011

MAN'S PULLOVER

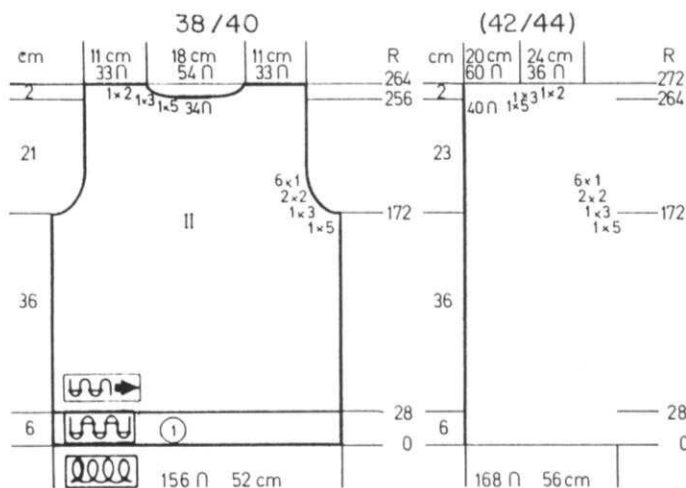
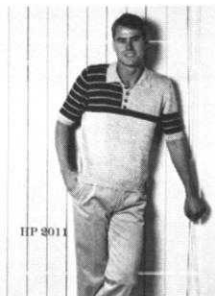
SIZES: 38/40 (42/44)  
 YARN: Nomotta Cherie  
 GRAMS:  
 color 1 300 350  
 color 2 50 50  
 color 3 50 50  
 color 4 50 50

NO KIT AVAILABLE

TENSION: 6 or 7  
 GAUGE: 15 sts. 20 rows = 5 cm (2")

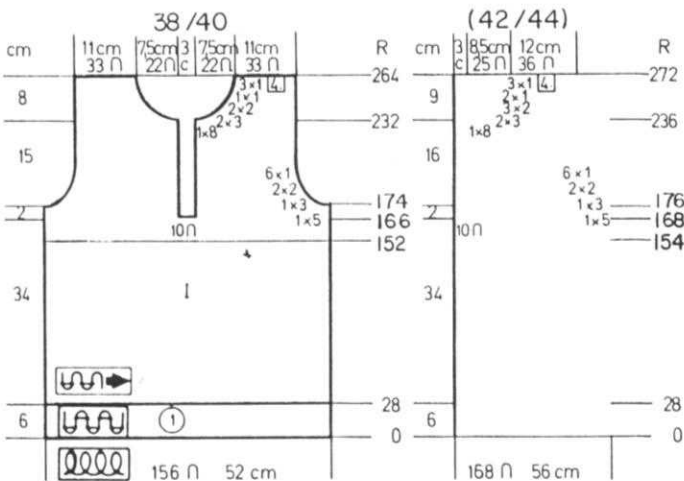
Stockinette stitch with color stripes. Bands and Collar are K1, P1 Ribbing.

FINISHING: See General Instructions.



BACK: II

Cast on 156 (168) sts. with color 1 and work 28 rows K1, P1 Ribbing. Continue in Stockinette stitch. After Row 172, SHAPE ARMHOLE: ON EACH SIDE, bind off 5 sts. 1x, 3 sts. 1x, 2 sts. 2x, 1 st. 6x for both sizes. After Row 256 (264), bind off the center 34 (40) sts., put the needles on the left into holding position and complete the right side first. \*ON NECK SIDE, bind off 5 sts. 1x, 3 sts. 1x, 2 sts. 1x for both sizes. After Row 264 (272), bind off the remaining sts. Bring the needles on the left into working position, knit 1 row to the left side, turn the Row Counter back to 256 (264) and complete the left half. Follow the instructions from \*.



FRONT: I

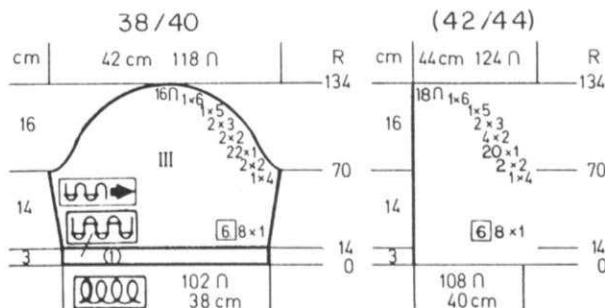
Work the front the same as the back to Row 152 (154). Work 14 rows color 2 to Row 166 (168). Bind off the center 10 sts. or you can remove the sts. to a stitch holder. Put the needles on the left into holding position and complete the right side first. Continue in color stripes as follows (BUT SHAPE ARMHOLE SAME AS THE BACK AFTER ROW 174 (176)). \*Work 2 rows color 1, 14 rows color 3, 2 rows color 1, 14 rows color 4, 2 rows color 1, 14 rows color 2, AND REPEAT FROM \*. After Row 233 (237), SHAPE NECK: Bind off 8 sts. 1x, 3 sts. 2x, 2 sts. 2x (3x), 1 st. 1x (2x), then 1 st. every 4th row 3x. After Row 264 (272), bind off the remaining sts. Bring the needles on the left into working position, knit 1 row to the left side, turn the Row Counter back to 166 (168). OMIT THE COLOR STRIPES AND CONTINUE IN STOCKINETTE STITCH with color 1 only. After Row 174 (176), SHAPE ARMHOLE SAME AS BEFORE and after Row 233 (237), SHAPE NECK SAME AS BEFORE. After Row 264 (272), bind off the remaining sts.

SLEEVES: III

Cast on 102 (108) sts. with color 1 and work 14 rows K1, P1 Ribbing. Continue in Stockinette stitch with color stripes same as the front. FOR ONE SLEEVE, work the stripes to Row 70 for second sleeve, work the stripes same as front for the complete sleeve. (See Picture). AT THE SAME TIME, ON EACH SIDE, increase 1 st. every 6th row 8x. After Row 70, SHAPE CAP: Please follow the Cap Shaping ON EACH SIDE as shown on the Chart for YOUR SIZE. After Row 134, bind off the remaining sts.

COLLAR:

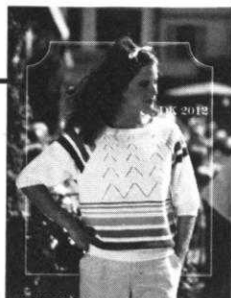
Cast on 184 (200) sts. with color 1 and work 42 rows K1, P1 Ribbing. Bind off or remove onto contrast waste yarn.



BUTTON AND BUTTONHOLE BAND.

Cast on 68 (72) sts. with color 1 and work 14 rows K1, P1 Ribbing. Bind off or remove onto contrast waste yarn. Make another section the same for BUTTONHOLE BAND. Make BUTTONHOLES after Row 6. There are 18 (19) sts. BETWEEN buttonholes. Use 2 sts. for the buttonholes - leave 3 sts. at each end.. After Row 14, bind off or remove onto waste yarn.

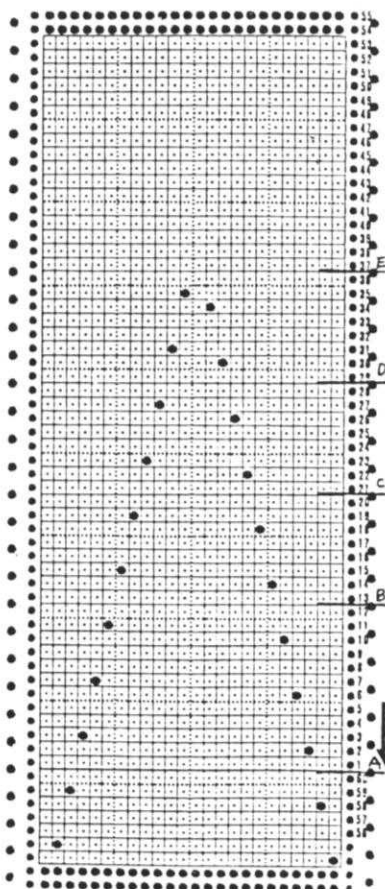
# DK 2012



## WOMAN'S PULLOVER

SIZES: 6/8 (10/12)  
 YARN: Amore  
 color 1 250 300  
 color 2 50 50  
 color 3 50 50  
 color 4 50 50  
 TENSION: 7 or 8  
 GAUGE: 14 sts. 20 rows - 5 cm (2")

Stockinette stitch with color stripes and a Lace Design on the front and back sections. Bands are K1, P1 Ribbing. Punch your own Card and be sure to follow instructions alongside Card.



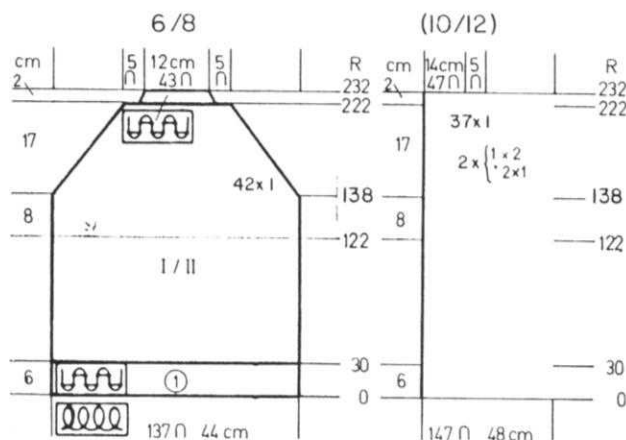
Begin on Line 1 for Pattern A  
 When A is completed, knit 8 rows.  
 Begin on Line 13 for Pattern B  
 When B is completed, knit 8 rows.  
 Begin on Line 21 for Pattern C  
 When C is completed, knit 8 rows.  
 Begin on Line 29 for Pattern D  
 When D is completed, knit 6 rows.  
 Begin on Line 37 for Pattern E  
 When E is completed, knit 6 rows.

### SLEEVE BANDS: Make 2.

Cast on 62 (68) sts. with color 1 and work 16 rows K1, P1 Ribbing. Transfer the Ribber sts. to main machine, then hang the open sts. of sleeve onto these needles, DECREASING 28 sts. EVENLY ACROSS. Bind off.

### SLEEVES: III

OPEN CAST ON WITH WASTE YARN, 90 (96) sts.  
 After waste knitting put Counter at 0 and with color 1 work Stockinette stitch.  
 ON EACH SIDE, increase 1 st. every 6th row 11x.  
 After Row 68, ON EACH SIDE, \*decrease 1 st. every 2nd row 1x, every 4th row 2x and REPEAT from \* 7x MORE, then decrease 1 st. 1x.  
 (\*decrease 1 st. every 4th row 1x, every 2nd row 1x and REPEAT FROM \* 12x MORE, then decrease 1 st. 2x).  
 BUT AT THE SAME TIME, after Row 80, work color stripes of 12 rows color 2, 6 rows color 1, 12 rows color 3, 6 rows color 1, 12 rows color 4.  
 Continue in Color 1.  
 After Row 152, Transfer every other stitch to the Ribber and continue in K1, P1 Ribbing.  
 ON EACH SIDE, decrease 1 st. every 2nd row 5x.  
 After Row 162, bind off the remaining sts.



FRONT & BACK: I/II Both sections the same.

Cast on 137 (147) sts. with color 1 and work 30 rows K1, P1 Ribbing. Continue in Stockinette stitch with color stripes as follows:

22 rows color 1, 12 rows color 2, 6 rows color 1, 12 rows color 3, 6 rows color 1, 12 rows color 4, 6 rows color 1, 2 rows color 4, 6 rows color 1, 2 rows color 3, 4 rows color 1, 2 rows color 2.

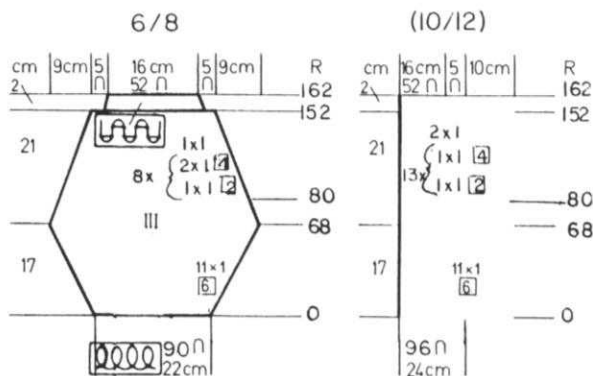
After Row 122, continue in Lace Pattern with color 1. Please follow the instructions for Lace as shown alongside the Punch Card.

AT THE SAME TIME, after Row 138, SHAPE RAGLAN:

ON EACH SIDE, bind off (or decrease) 1 st. 42x.

(\*2 sts. 1x, 1 st. 1x and REPEAT from \* 1x, then decrease 1 st. every 2nd row 37x).

After Row 222, transfer every other stitch to Ribber and work K1, P1 Ribbing. ON EACH SIDE, on every 2nd row, decrease 1 st. 5x.  
 After Row 232, bind off the remaining sts.





# DK 2013

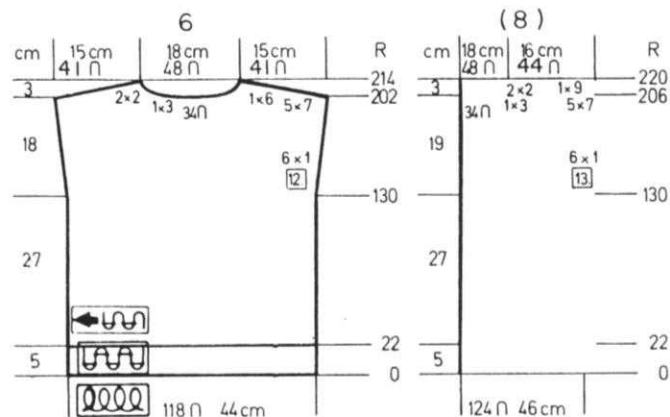
## WOMAN'S PULLOVER

**SIZES:** 6 (8)  
**YARN:** 2/11 Orlon  
**GRAMS:** NO KIT AVAILABLE  
 color 1 250 300  
 color 2 50 50  
 color 3 50 50  
**TENSION:** 7 to 8  
**GAUGE:** 13 1/2 sts. 20 rows = 5 cm (2")



Stockinette stitch with color stripes. The PURL SIDE is the right side. Bands are K1, P1 Ribbing. BE SURE TO READ PRINTED INSTRUCTIONS FOR FRONT.

**FINISHING:** See General Instructions.



### BACK:

Cast on 118 (124) sts. with color 1 and work K1, P1 Ribbing with color stripes of 4 rows color 1, 4 rows color 2, 4 rows color 1, 4 rows color 2, 4 rows color 1, 2 rows color 2. After Row 22, transfer the ribber sts. to main machine and continue in Stockinette stitch with color 1. After Row 130, ON EACH SIDE, increase 1 st. every 12th (13th) row 6x. After Row 202 (206), bind off the center 34 sts., put the needles on the left into holding position and complete the right side first.

\*SHAPE SHOULDER AND NECK AT THE SAME TIME.

FOR SHOULDER, bind off

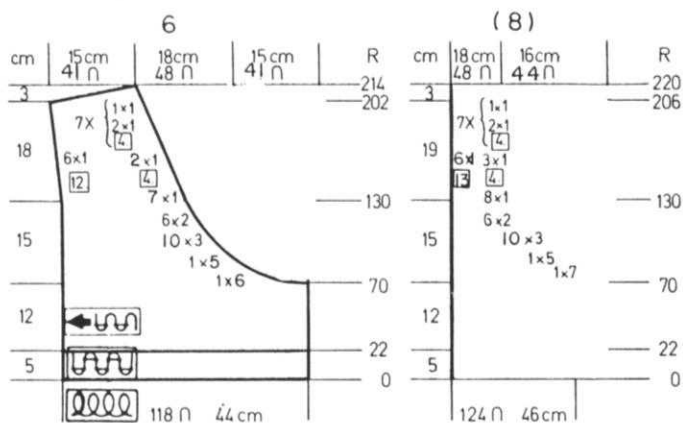
7 sts. 5x, 6 sts. 1x.

(7 sts. 5x, 9 sts. 1x).

FOR NECK, bind off

3 sts. 1x, 2 sts. 2x.

Bring the needles on the left into working position, knit 1 row to the left side, turn the Row Counter back to 202 (206) and complete the left half. Follow the instructions from \*.



### RIGHT FRONT:

Cast on 118 (124) sts. with color 1 and work in Ribbing same as the back to Row 22. Continue in Stockinette stitch with color 1 to Row 70.

SHAPE FRONT: ON THE RIGHT SIDE, bind off 6 (7) sts. 1x, 5 sts. 1x, 3 sts. 10x, 2 sts. 6x, 1 st. 7x (8x) 1 st. every 4th row 2x (3x) then

\*on every 4th row, decrease 1 st. 2x, 1 st. 1x and REPEAT FROM \* 6x MORE BUT AT THE SAME TIME, after Row 130, ON ARM SIDE, INCREASE 1 st. every 12th (13th) row 6x.

After Row 203 (207) SHAPE SHOULDER SAME AS THE BACK.

### ARMBANDS: Make 2.

Cast on 117 (121) sts. with color 1 and work 10 rows K1, P1 Ribbing. Bind off or remove onto contrast waste yarn.

### NECKBAND: Make 2.

Cast on 120 sts. with color 3 and work 12 rows K1, P1 Ribbing. Bind off or remove onto contrast waste yarn.

### LEFT FRONT:

Cast on 60 (63) sts. with color 2 and work Stockinette stitch with REPEATED COLOR STRIPES of

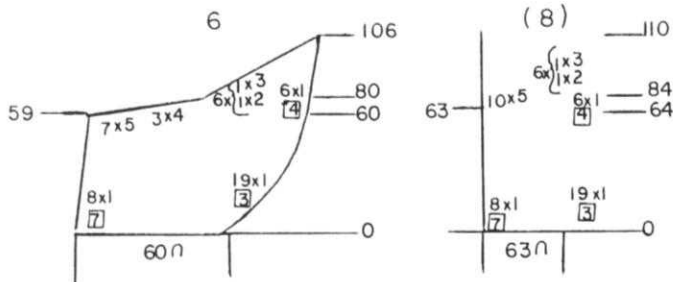
\*6 rows color 2, 2 rows color 3, 4 rows color 1 and REPEAT from \* throughout.

ON THE RIGHT SIDE, INCREASE 1 st. every 3rd row 19x AND AT THE SAME TIME ON THE LEFT, DECREASE 1 st. every 7th row 8x.

Continue to INCREASE ON THE RIGHT 1 st. every 4th row 6x AND AT THE SAME TIME, after Row 59 (63) ON THE LEFT, bind off

5 sts. 7x, 4 sts. 3x, then \*2 sts. 1x, 3 sts. 1x, and REPEAT from \* 5x MORE.

(5 sts. 10x, then \*2 sts. 1x, 3 sts. 1x and REPEAT from \* 5x MORE.



# DK 2014

## WOMAN'S PULLOVER

SIZES: 6/8 (10/12)

YARN: Nomotta Crocus

GRAMS:

color 1 300 350

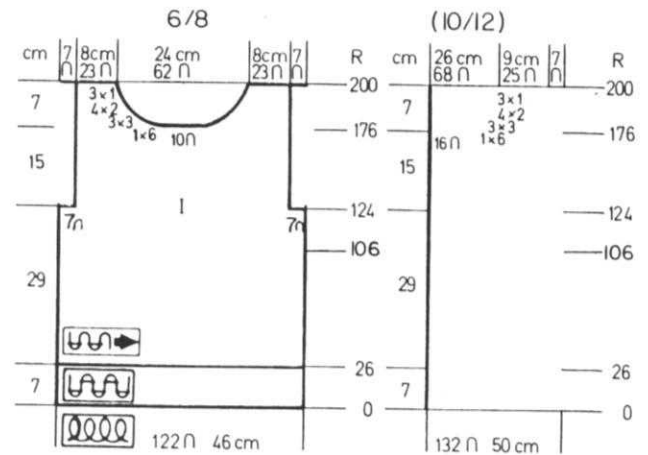
Small amounts of Pink, Red and dark Green for leaves (see Picture).

TENSION: 10

GAUGE: 13 sts. 17 rows = 5 cm (2")

Stockinette stitch with Intarsia Design. Follow the Chart for Design. Bands are K1, P1 Ribbing.

FINISHING: See General Instructions.



### FRONT: I

Cast on 122 (132) sts. with color 1 and work 26 rows K1, P1 Ribbing. Continue in Stockinette stitch.

After Row 106, begin the Intarsia in the center of front and after Row 124, ON EACH SIDE, bind off 7 sts.

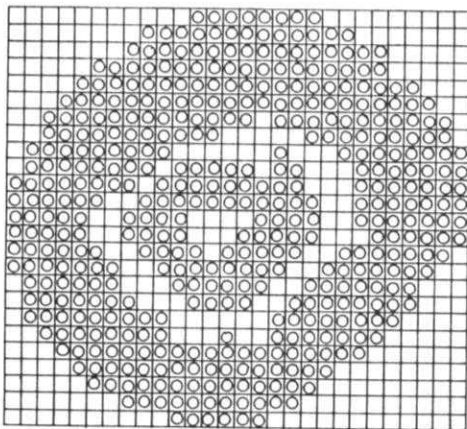
Work the LEFT HALF of FLOWER on the right side, close to armhole.

After Row 176, bind off the center 10 (16) sts., put the needles on the left into holding position and complete the right side first.

\*ON NECK SIDE, bind off 6 sts. 1x, 3 sts. 3x, 2 sts. 4x, 1 st. 3x for both sizes.

After Row 200, bind off the remaining sts.

Bring the needles on the left into working position, knit 1 row to the left side, turn the Row Counter back to 176 and complete the left half. Follow the instructions from \*.



ARMBANDS: Make 2. Tension 8. Cast on 120 sts. with color 1 and work 10 rows K1, P1 Ribbing. Bind off or remove onto contrast waste yarn.

NECKBAND: Tension 8.

Cast on 12 sts. and work 180 rows K1, P1 Ribbing. Bind off.



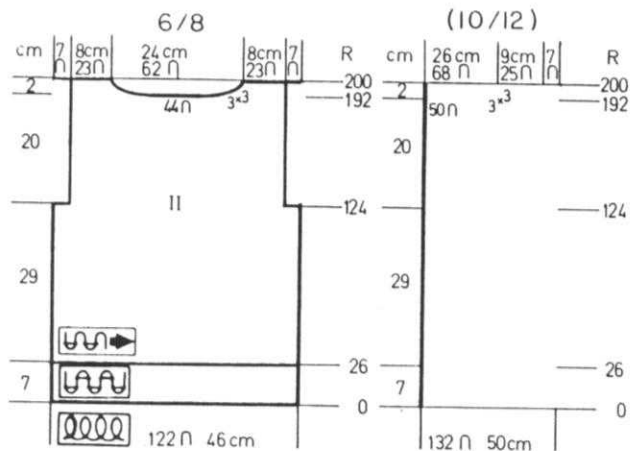
### BACK: II

Cast on 122 (132) sts. with color 1 and work 26 rows K1, P1 Ribbing. Continue in Stockinette stitch. After Row 124 ON EACH SIDE, bind off 7 sts., then knit to Row 192.

Bind off the center 44 (50) sts., put the needles on the left into holding position and complete the right side first.

\*ON NECK SIDE, bind off 3 sts. 3x. After Row 200, bind off the remaining sts.

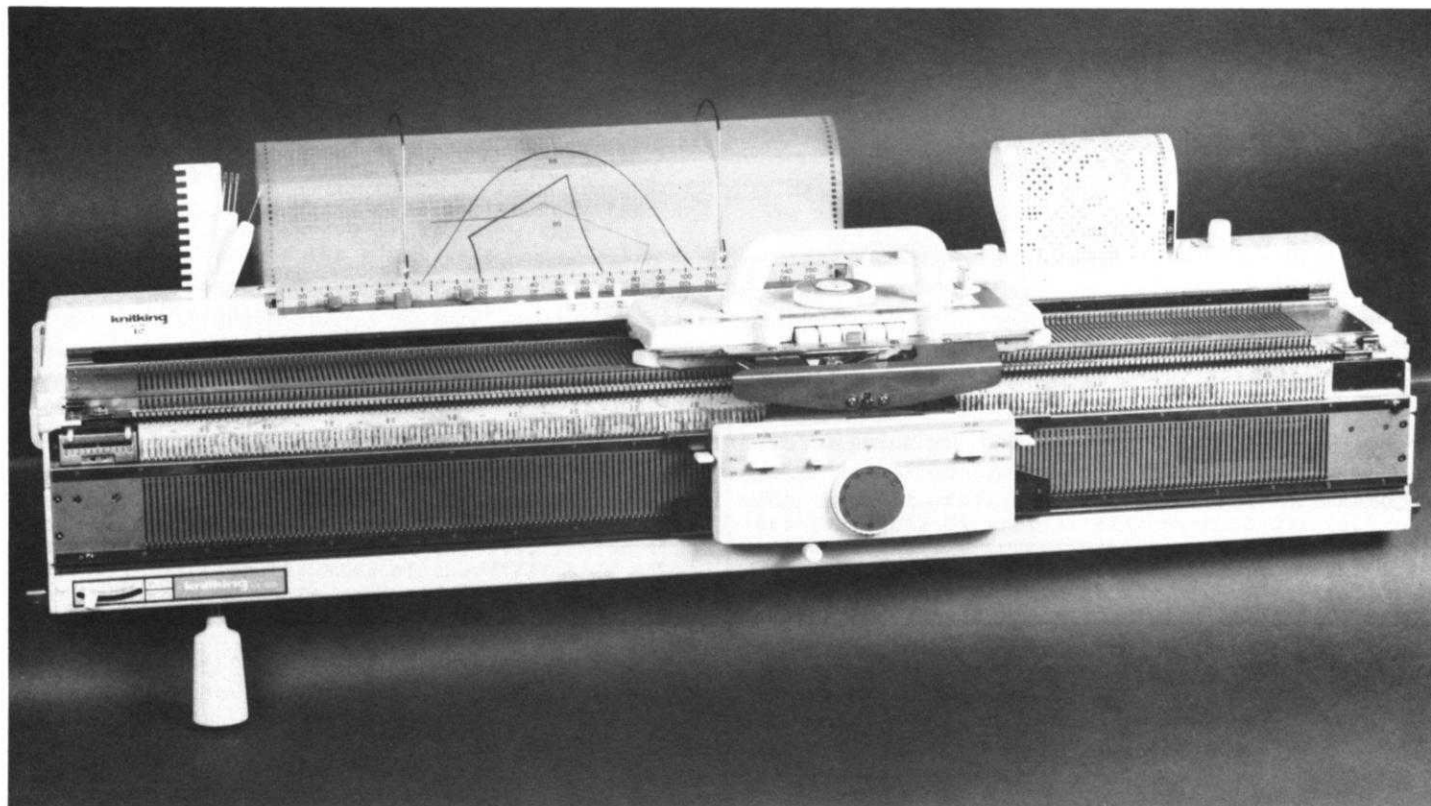
Bring the needles on the left into working position, knit 1 row to the left side, turn the Row Counter back to 192 and complete the left half. Follow the instructions from \*.



---

# THE LATEST .. THE GREATEST .. THE MOST VERSATILE PUNCH CARD KNITTER EVER MADE.

(SHOWN WITH THE KR 880 RIBBING ATTACHMENT)



Your KNITKING KH 881 is complete with :

- 200 needle stainless steel needle bed.
- Smooth operating Main Carriage for Stockinette Stitch, Tuck Stitch, Fairisle, Weaving, Plating, etc.
- Lace Carriage for lovely lace work—both standard and fine lace.
- 20 Pre-punched Pattern Cards for all types of Pattern Stitch knitting.
- Two step-by-step Instruction Manuals with over 400 illustrations.
- Complete Kit of Tools with spare Needles, special lubricating oil, cabling Tools, etc. etc.
- Built in Knitleader Charting accessory that tells you on a row by row basis when to increase and when to decrease. Simplifies the knitting of garments to accurate size.
- One year warranty on parts and service.

---

**knitking**

---

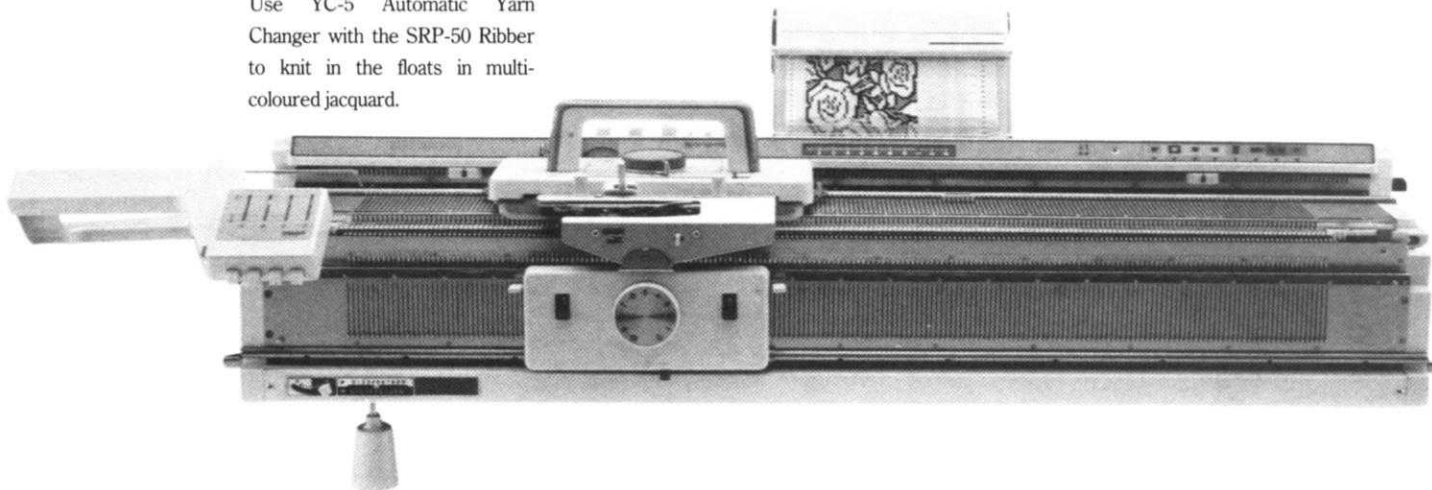
**KH - 881**

---

# MODEL 560

## Electronic Knitter with multi-functional Lace Carriage

Use YC-5 Automatic Yarn Changer with the SRP-50 Ribber to knit in the floats in multi-coloured jacquard.



The Model 560 knitter combines advanced electronic technology with a transfer lace carriage for the prettiest lace around. And that's only the beginning: the Model 560 knitting carriage will automatically knit Fair Isle, Punch Lace, Slip Stitch, Tuck Stitch, Weaving and Plating. Forty-five pre-printed patterns come with the machine, and five re-usable blank cards are

supplied for drawing your own design.

Pop a pattern card into the card stand, and position the point cams wherever you desire on the needle bed. Place the needle-1 cam between the point cams to centre the pattern.

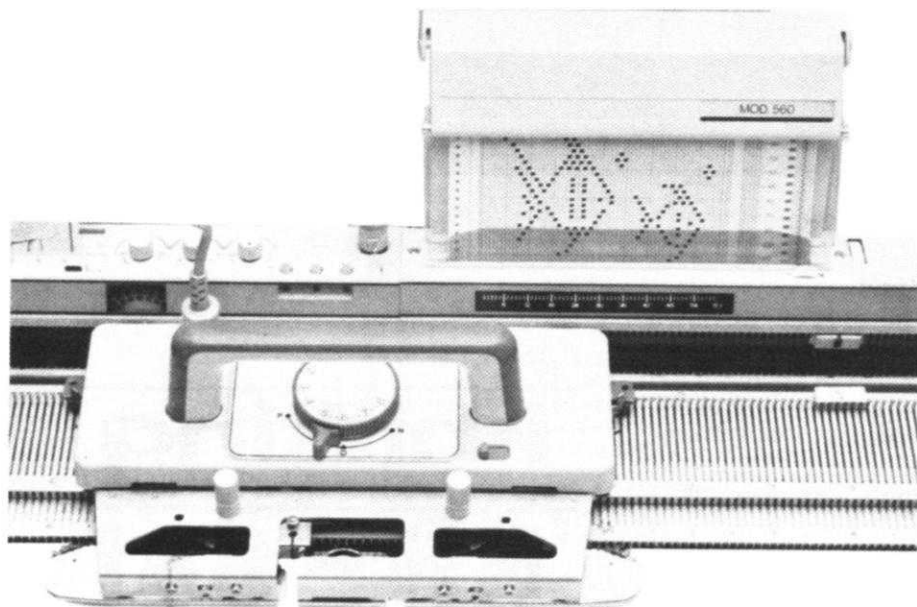
You can knit your pattern any width, from two to two hundred stitches, and motif patterns from two to sixty stitches wide, and upto one

hundred fifty rows long.

Vary the standard pattern using the pattern buttons, to reverse the colours, to change the pattern direction, change the size widthways, lengthways, or both, and knit a mirror repeat—all at the touch of a button.

Built-in knit contour helps you knit every garment in a perfect fit.

## Lace Carriage



### Transfer and knit—all in one row

The Model 560 lace carriage will transfer stitches automatically and knit the row in one smooth and easy action.

Without adding extension rails, you can knit on the full width of the needle bed.

With the lace carriage you can knit multiple transfer lace, as well as single action transfer lace. And, of course, the same carriage knits stocking stitch perfectly.

Twenty pre-printed lace patterns are packed with the lace carriage. By using the point cams, motif pattern in lace stitch is easily knitted.

# SINGER

Distributed by: **knitking**

1128 Crenshaw Blvd.  
Los Angeles, CA 90019  
Ph. (213) 938-2077



# KNITTING NEWS

## PRACTICAL KNITTING HINTS

### KNITTED WAISTBAND

Here are instructions for a beautifully finished waistband. It will take a bit of extra time but is well worth it.

Before knitting a section of skirt, you must knit half the number of rows for a section of band and remove it onto contrast waste yarn. Set this aside when completed. This is the way to do it.

Determine the number of stitches needed for one half your waist measurement (this would be for a skirt knitted in two sections).

With contrast waste yarn, cast on the required number of sts. and knit 9 or 11 rows, then 1 row with a Ravel Cord to the right side.

Change to garment yarn and knit one half the number of rows needed for band. For instance, if you need 28 rows for completed band, you would knit 14 rows. Knit 10 or 12 rows with contrast waste yarn and remove the work from the machine by knitting across without yarn.

Now knit your skirt to the waist. Take the half band that is held on waste yarn and with wrong side (purl side) facing you hang the sts. (from the ravel cord side) of the band onto the skirt sts. on the machine. Continue knitting the 2nd half of band (14 rows). Place the sts. BEHIND the Latches. Pick up the sts. of the first half of band that are on waste yarn and leave in the HOOKS of the needles (front of the latches). Pull these sts. through each st. which is behind the latches. You will have only one st. on each needle.

Turn the tension up to Tension 10. You need one VERY LOOSE ROW - so if tension 10 is not loose enough, knit this row BY HAND. Bind off by removing the first stitch onto a latch tool and allow it to go behind the latch, then remove the 2nd stitch and pull this through the stitch on tool, allow it to go behind the latch and continue in this way across. When you reach the last st. pull end of yarn through to lock the stitch.

If you have knitted a circular skirt, you can make a band for it in the same way, but since your skirt is already knitted, you need only to hang the top of the skirt onto the machine, then hang the HALF KNITTED band onto these same needles. The remainder of the instructions are the same. Try it on a small sample first. If you are a proficient knitter and know how to use your Reversing Bar, you can knit half the band and take it off onto the Reversing Bar, then hang the band onto the skirt from the Bar, then knit the second half of band.

### COMPUTERIZED KNITLEADER CHARTS

In the last issue we introduced our new services... the preparation and sale of computerized KNITLEADER CHARTS for certain of the patterns in that issue... It seems that the service is going to be popular, the demand so far has been excellent so we are continuing the service with garments DK 2002, DK 2013 and HP 2010 in this issue.

Charts are available full size for the KNITLEADER and for other charting accessories that use full size Charts, and half size for the Knit Contour/Radar or Singer/Studio machines. Charts are free when Yarn Kits are purchased for the featured garments or there is a charge of \$5.00 for each set of Charts.

Ladies sizes are available in 8, 10, 12, 14, 16 and 18. You must specify the size you need. Men's sizes are available in 34, 36, 38, 40, 42 and 44.

### SINGER MACHINE PUNCH CARDS FOR THIS ISSUE OF KNITTING MAGAZINE

If you own a Singer machine 360 or a Studio Punch Card machine, you can send for a copy of the Lace Punch Cards available for the following garments. DK 1099, DK 1098, DK 2002 and DK 2003. Be sure however, to send us 50¢ EACH plus a self-addressed stamped envelope to cover our handling costs. We will send you a full size copy of the Cards. The Lace Punch Cards as shown in the magazine can only be used for KNITTING 881, 860, 840, 830, 820 machines.

### DISCOUNTED YARN KITS FOR THIS ISSUE

The Yarn Kits for this issue of KNITTING MAGAZINE are available at special discounts to our subscribers and the prices are only good until the next issue of the magazine. Be sure to check the colors available listed at the end of this NEWSLETTER and make certain to give alternate colors.

DK 1095 - Yarn: Sport weight  
SIZES: 8/10 (12)  
NO KIT AVAILABLE

DK 1096 - Yarn: Amore  
SIZES: 6/8 (10/12)  
Regular Price \$21.51 \$23.90  
Sale Price 17.21 19.12  
Shipping costs 1.85 1.85

DK 1097 - Yarn: Amore  
SIZES: 8/10 (12)  
Regular Price \$26.29 28.68  
Sale Price 21.03 22.94  
Shipping costs 1.85 1.85

DK 1098 - Yarn: Amore  
SIZES: 10/12  
Regular Price \$28.68  
Sale Price 22.94  
Shipping costs 1.85

DK 1099 - Yarn: Venetia (approximately 1 1/2 lbs.)  
SIZE: 6  
Regular Price \$30.00  
Sale Price 24.00  
Shipping Costs 2.10

DK 2000 - Yarn: Fine Yarn such as 2/23 or 2/24  
SIZES: 6/8  
NO KIT AVAILABLE

DK 2001 - Yarn: Vienna  
SIZES: 4/6  
Regular Price \$27.00  
Sale Price 21.60  
Shipping costs 1.85

DK 2002 - Yarn: Venetia (approximately 1 1/2 lbs.)  
 SIZE: Medium  
 Regular Price \$30.00  
 Sale Price 24.00  
 Shipping costs 2.10

DK 2003 - Yarn 2/23 or 2/24 (fine yarn)  
 SIZES: 8/10  
 NO KIT AVAILABLE

KK 2004A - Yarn: Nomotta Cordella  
 SIZES: 4 (6) [8]  
 NO KIT AVAILABLE

KK 2004B - Yarn: Nomotta Cordella  
 SIZES: 6/7 (8/9)  
 NO KIT AVAILABLE

DK 2005 - Yarn: Nomotta Smoky  
 SIZES: Small (Medium)  
 NO KIT AVAILABLE

DK 2006 - Yarn: Nomotta Regia  
 SIZES: 12/14 (16/18)  
 NO KIT AVAILABLE

HP 2007 - Yarn: Nomotta Regia  
 SIZES: 36/38 (40/42)  
 NO KIT AVAILABLE

KK 2008 - Yarn: Nomotta Cherie  
 SIZES: 6/7 (8/9)  
 NO KIT AVAILABLE

HP 2009 - Yarn: Venetia (because of small amounts  
 use left over yarns).  
 SIZES: 42 (44)  
 NO KIT AVAILABLE

HP 2010 - Yarn: Nomotta Cherie  
 SIZES: 38/40 (42/44)  
 NO KIT AVAILABLE

HP 2011 - Yarn: Nomotta Cherie  
 SIZES: 38/40 (42/44)  
 NO KIT AVAILABLE

DK 2012 - Yarn: Amore  
 SIZES: 6/8 (10/12)  
 Regular Price \$19.12 \$21.51  
 Sale Price 15.30 17.21  
 Shipping costs 1.85 1.85

DK 2013 - Yarn: 2/11 Orlon  
 SIZES: 6 (8)  
 NO KIT AVAILABLE

DK 2014 - Yarn: Nomotta Crocus  
 SIZES: 6/8 (10/12)  
 NO KIT AVAILABLE.

**CHOOSE YOUR YARN KITS FROM THE FOLLOWING COLORS**

VENETIA... Navy, Brown, Rust, White, Black, Forest Green, New Celery, Coral Ice, Mint, Blue, Sand, Creme.

AMORE... Dark Turquoise, Dark Green, Jade, Light Green, Celery, Yellow, Beige, Off White, White, Black, Aqua, Powder Blue, Sapphire, Light Grey, Dark Grey, Plum, Lilac, Pink, Hot Pink, Peach, Coral, Red, Strawberry, Rust, Burgundy, Rose, Brown, Navy

VIENNA... White, Yellow, Gold, Beige, Brown, Light Blue, Medium Blue, Navy, Grey, Black, Coral, Tomatoe, Light Red, Mauve, Dark Red, Light Green, Aqua, Sea Green, Dark Green, Forest Green, Plum.

# GOOD NEWS!

## Singer\* Knitting Machines are Here!

**New in the United States — Singer Knitting Machines, with the same quality and versatility you have come to expect from Singer.**

The Memo-Matic\* 360 Knitter lets you create the very latest fashions in a wide variety of yarns quickly, simply — and at a fraction of the ready made cost. Just slip one of the handy pre-programmed punch cards into the knitter. You'll find the patterns you want — or the versatile Memo-Matic permits you to design your own patterns.

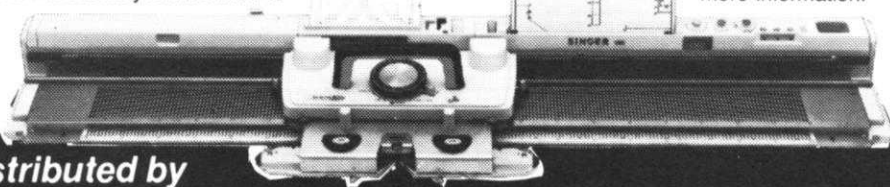
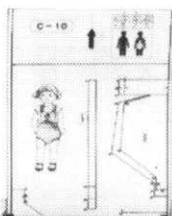
**No Extra Charge for Lessons**

While the Singer Memo-Matic 360 Knitter is easy to operate, we'd like to make sure you know how to

use it to its fullest potential. So we'll give you lessons upon purchase — at no extra charge.

Come see the amazing Memo-Matic 360 Knitter at your local Singer dealer and ask for a demonstration. Also ask about the Lace Carriage attachment (optional) for the Memo-Matic 360 Knitter that transfers stitches automatically and permits you to knit both single and multiple transfer lace.

Singer is also proud to announce the introduction of its brand new Electronic Knitting Machine. Ask your local dealer for more information.



\*A Trademark of THE SINGER COMPANY. Authorized user Singer Company of Canada Ltd.

Distributed by

**KNITKING**

1128 CRENSHAW BOULEVARD  
 LOS ANGELES, CALIFORNIA 90019



**DK 2013**



HP 2011



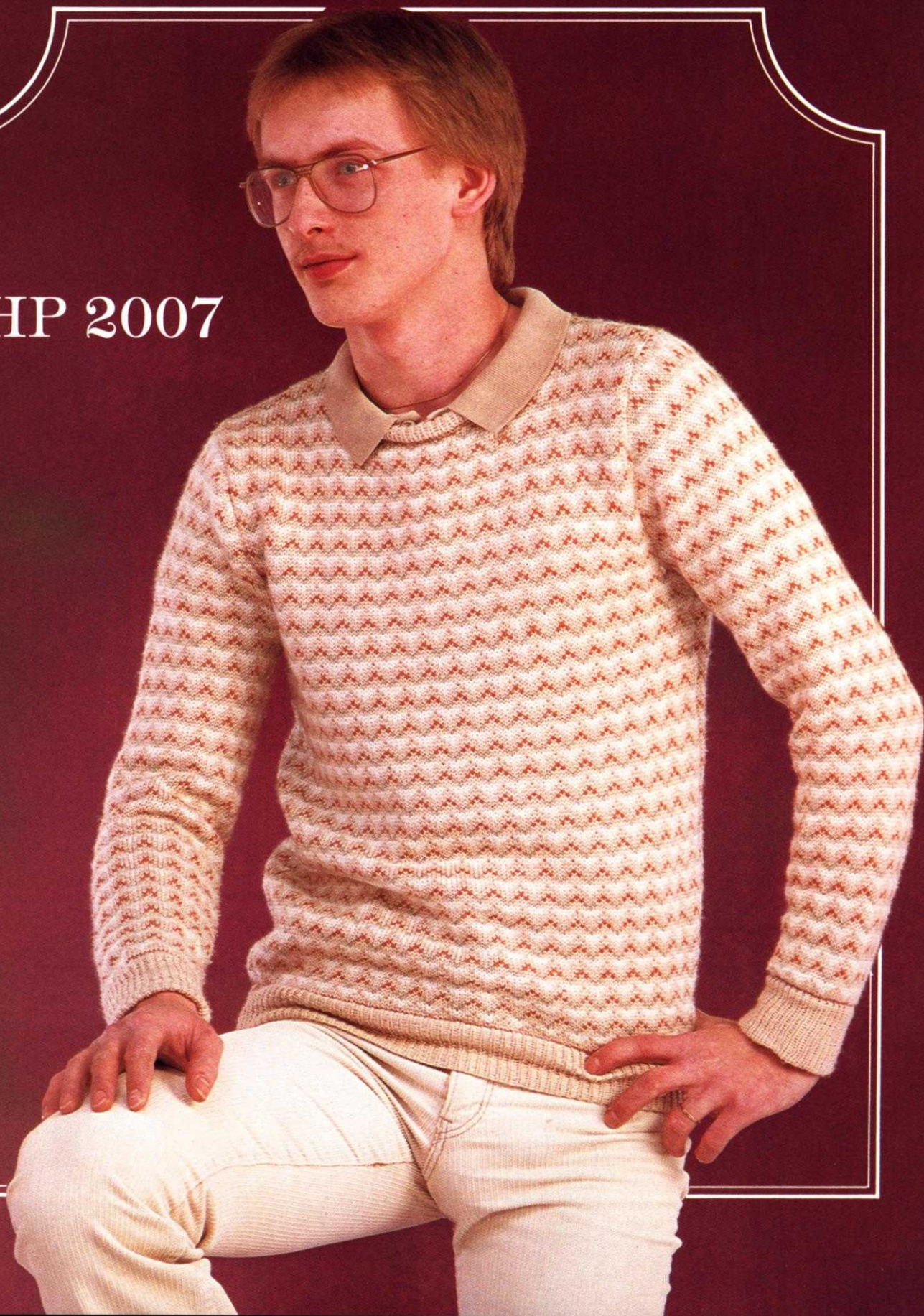


DK 2014



DK 2012

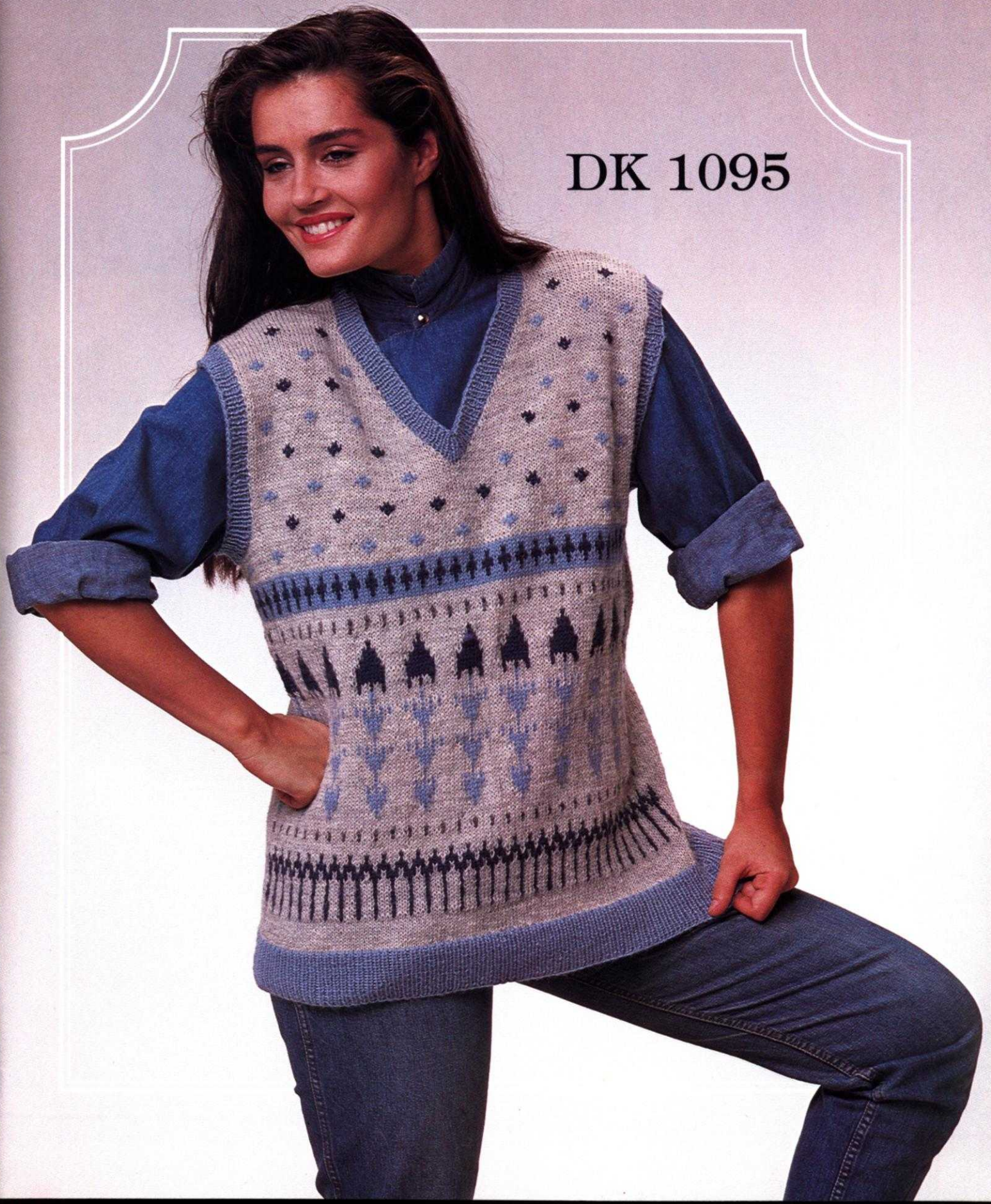
HP 2007



A man with dark, curly hair is shown in profile, looking towards the right. He is wearing a white long-sleeved shirt under a red and white patterned V-neck sweater vest, and light-colored trousers. His right arm is extended, pointing towards the right side of the frame. To his right is a surveying instrument, likely a theodolite or transit, mounted on a tripod with three wooden legs. The instrument is green and silver, with a telescope and various adjustment knobs. The background is a dark, solid color with a white decorative border. The text "HP 2009" is printed in the lower-left corner.

HP 2009

DK 1095



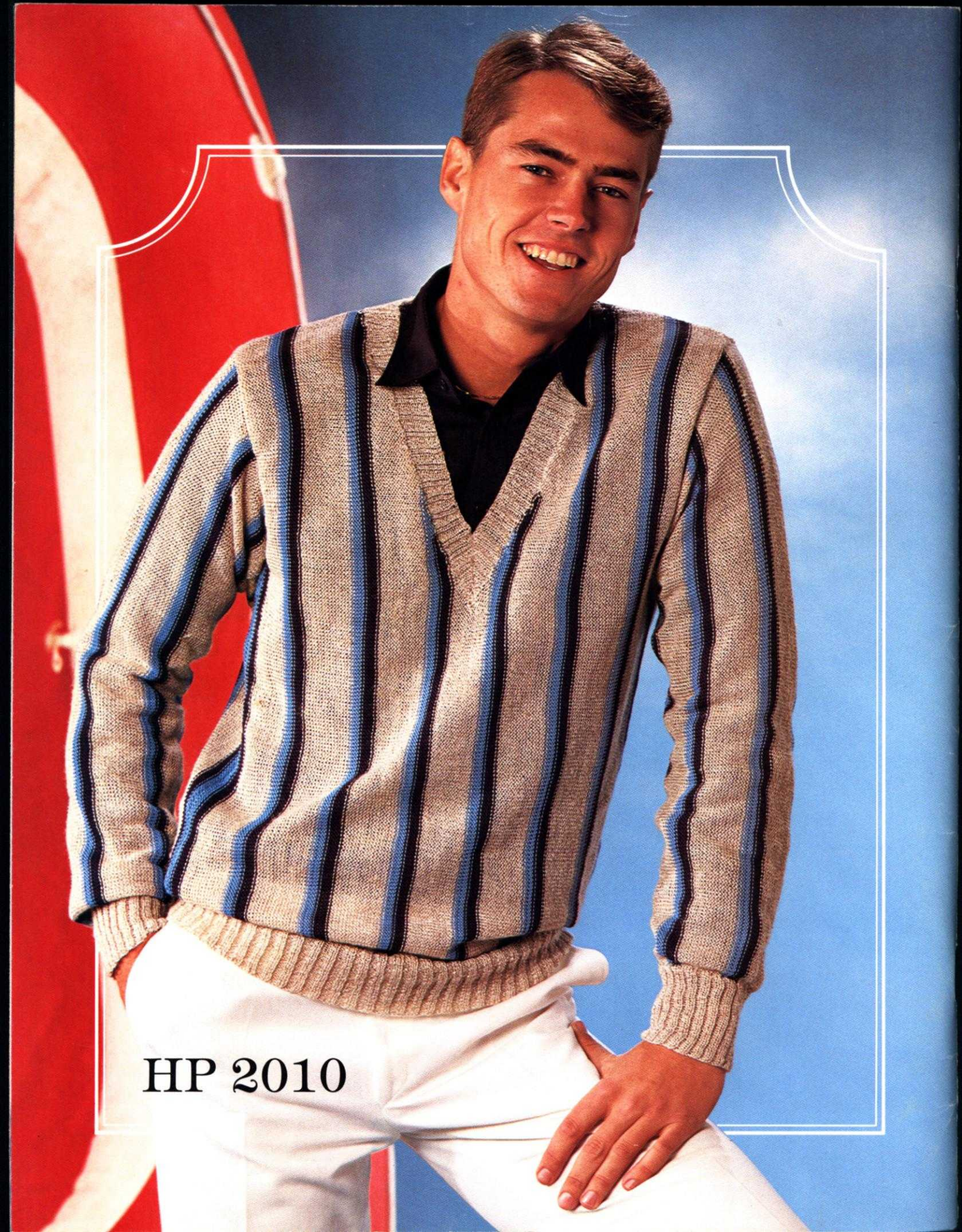


KK 2004 b

KK 2004 a

KK 2008





HP 2010