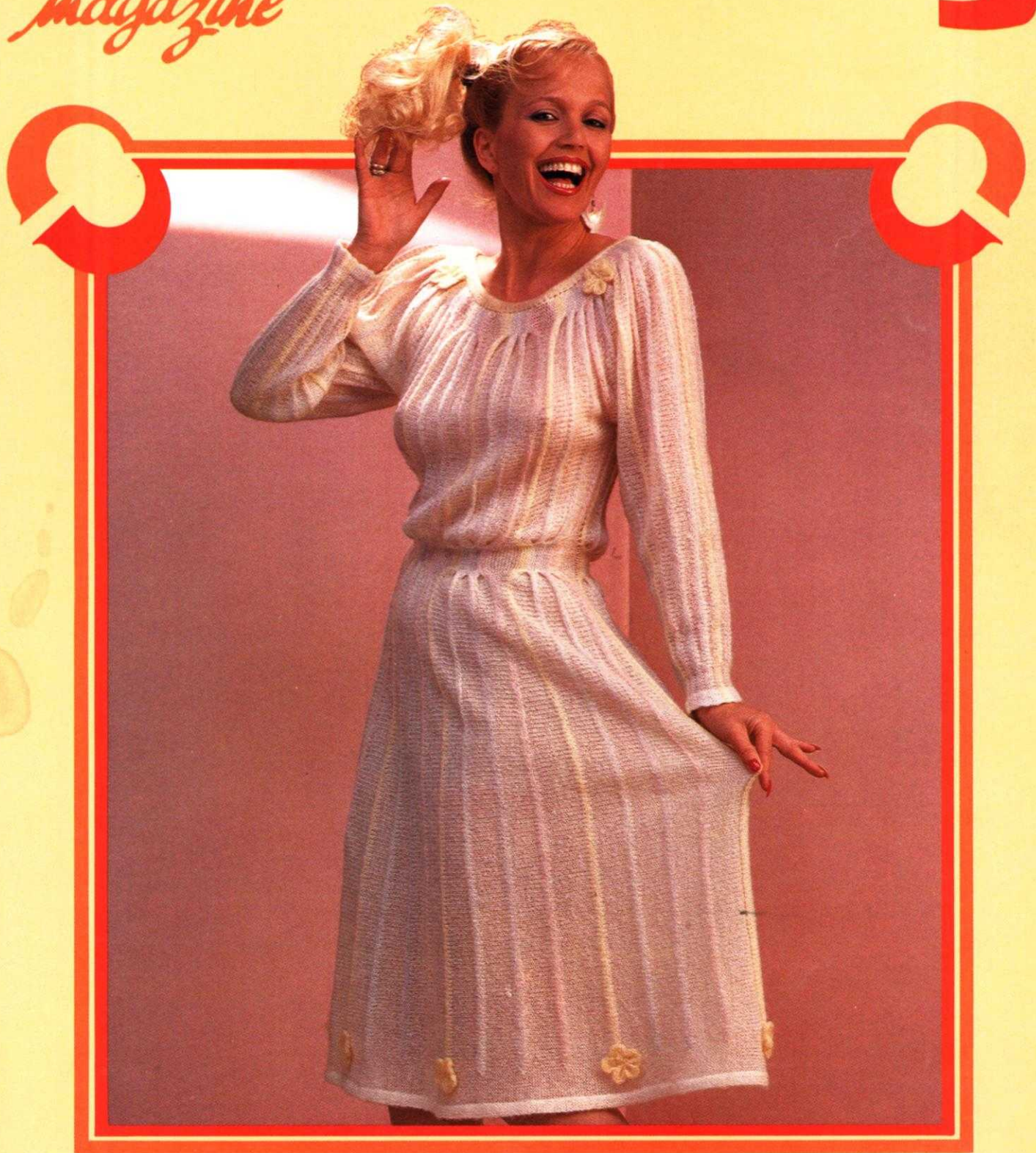
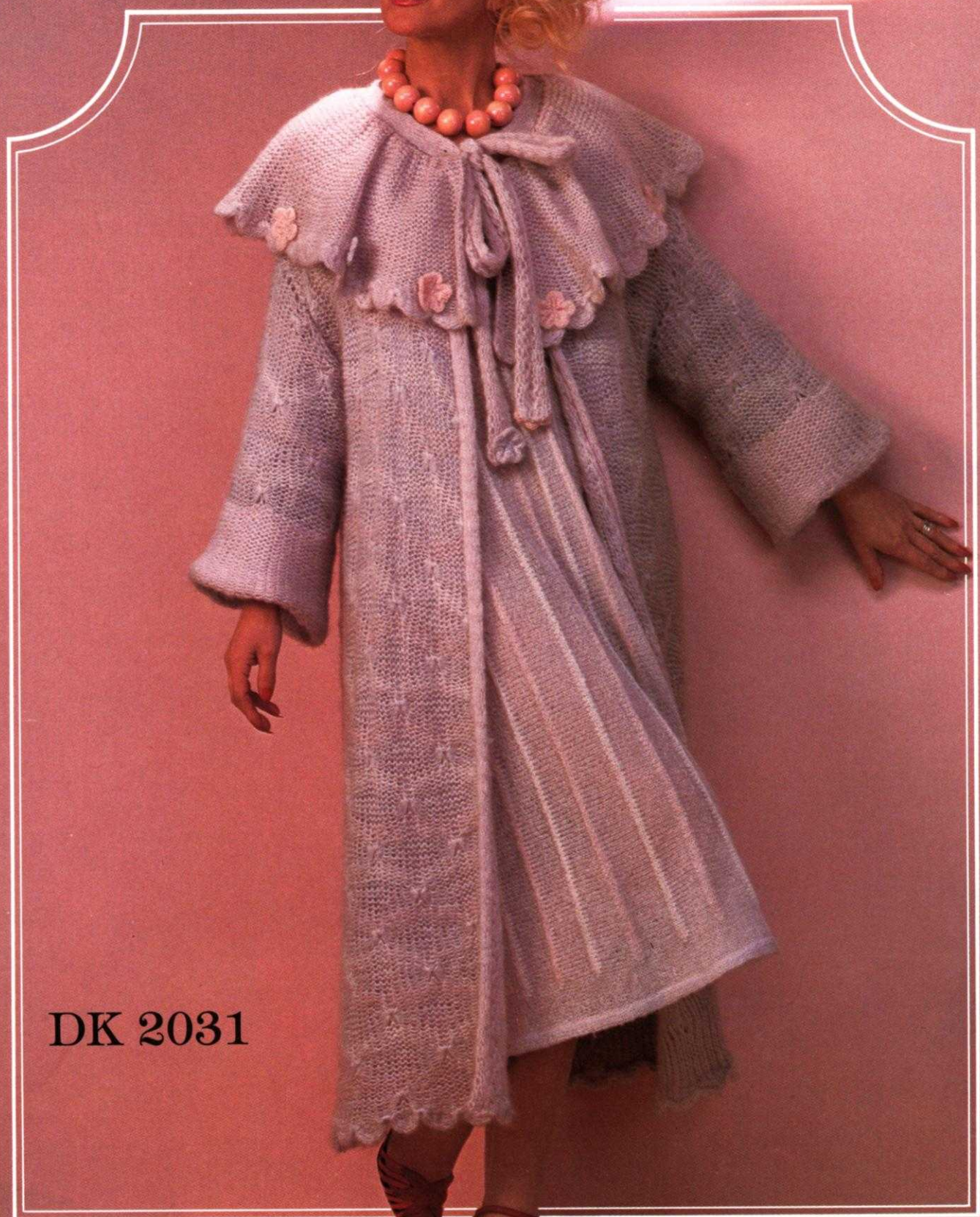


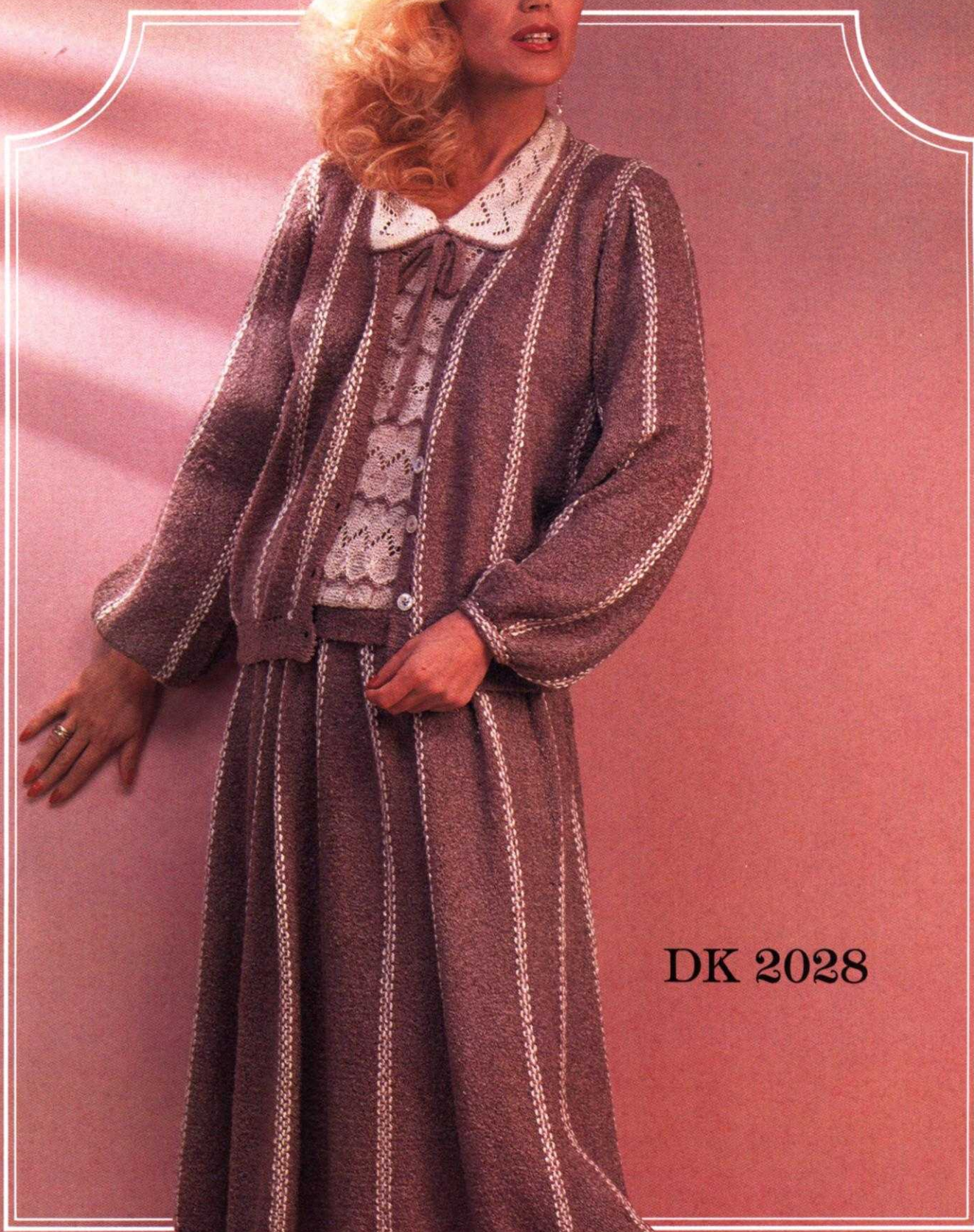
knitking

magazine





DK 2031



DK 2028



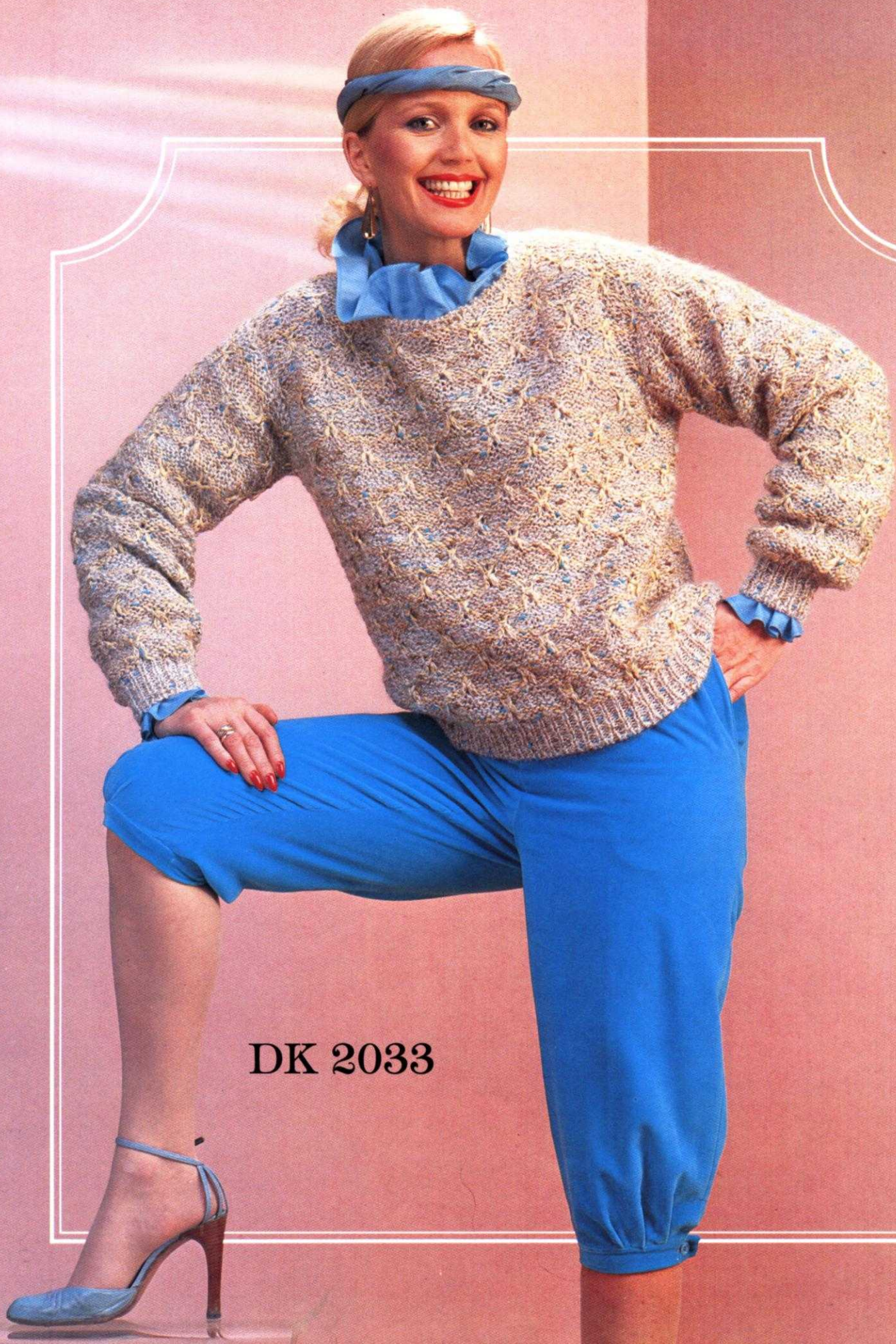
DK 2025

DK 2026

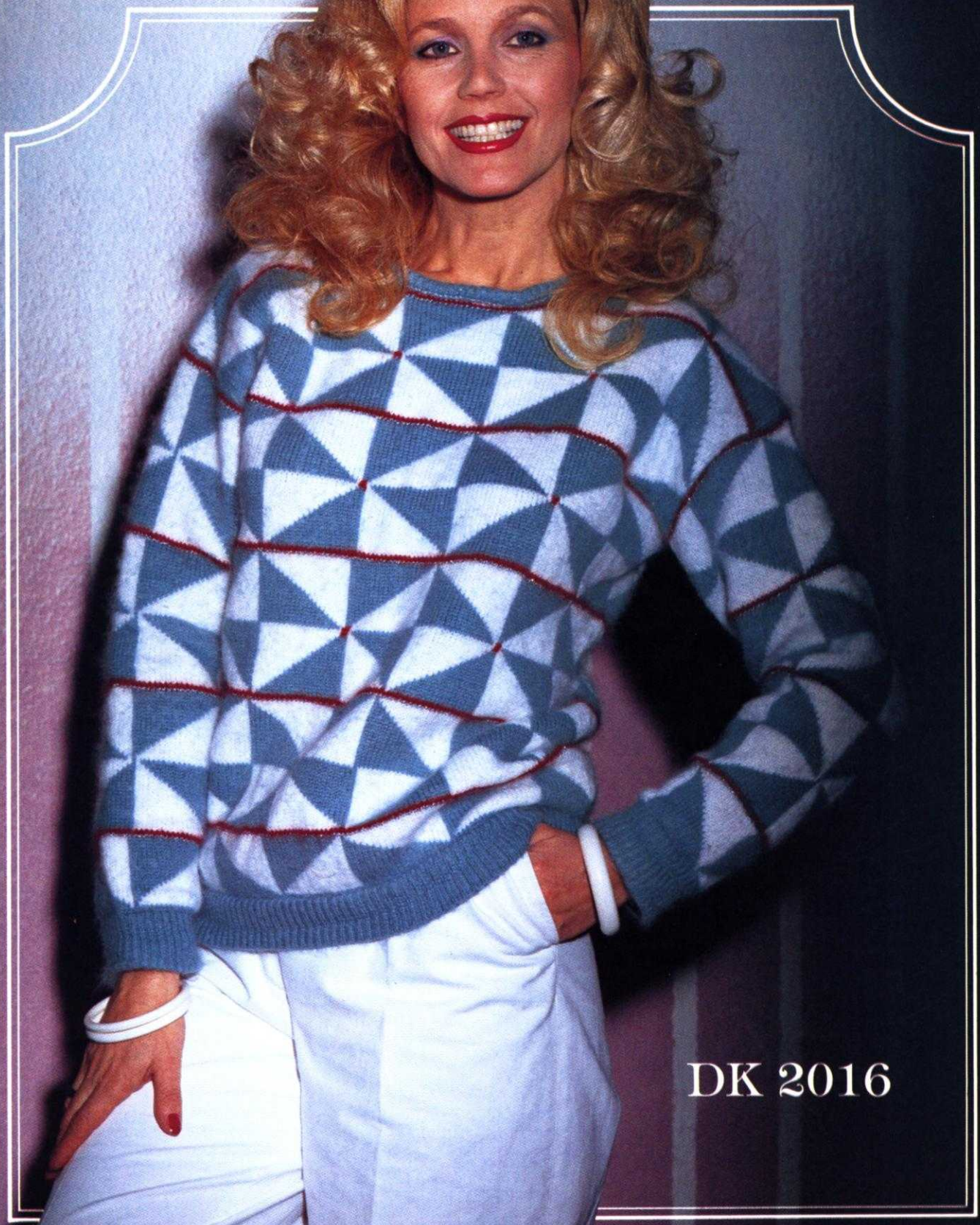


DK 2029





DK 2033



DK 2016

HP 2023

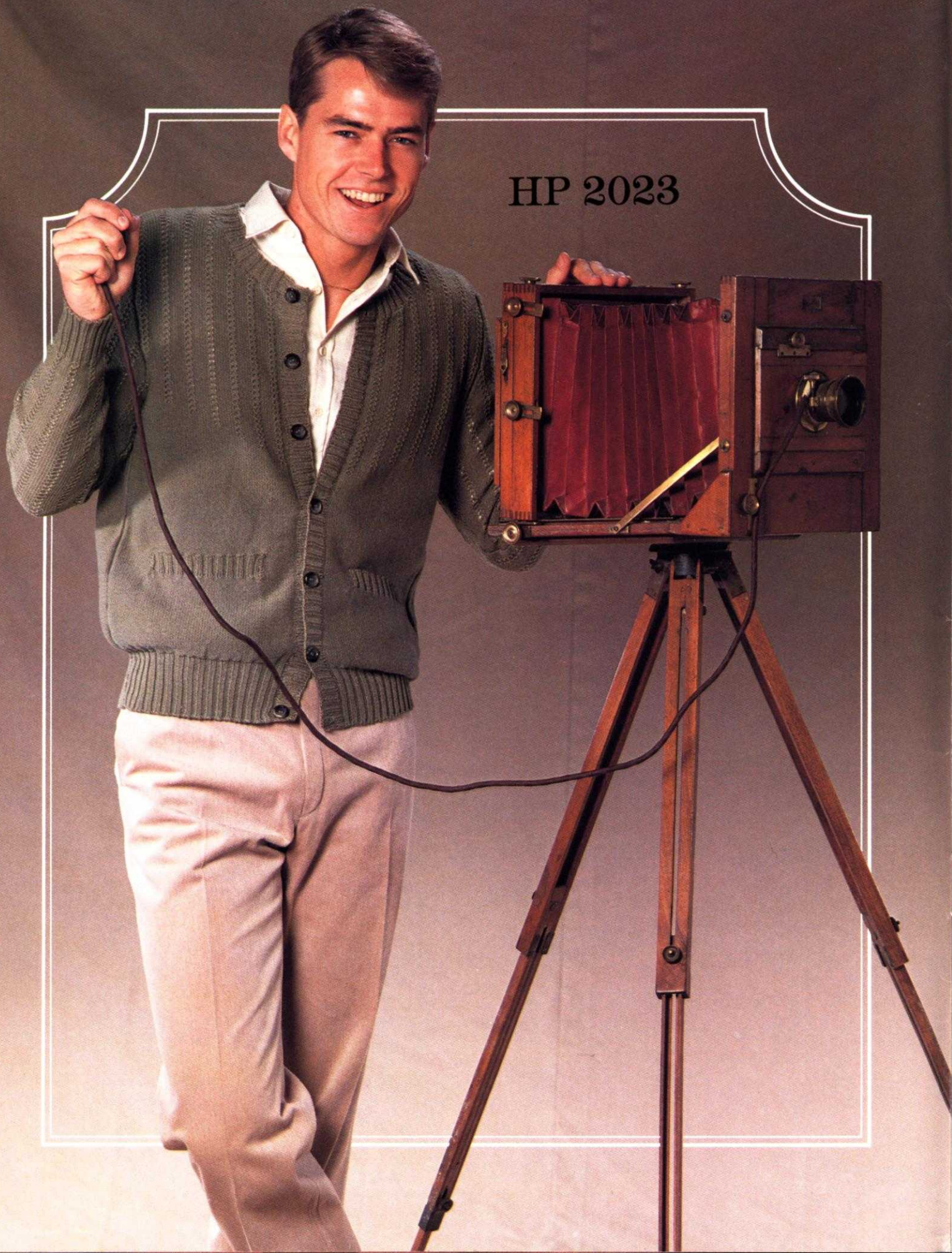


TABLE OF CONTENTS	PAGE NO.
DK 2015 - Woman's Pullover	14
DK 2016 - Woman's Pullover	15
DK 2017 - Woman's Jacket	16
DK 2018 - Woman's Two Piece Dress	17
HP 2019 - Man's Pullover	19
DK 2020 - Woman's Chanel Suit	20
DK 2021 - Woman's Skirt and Top	21
HP 2022 - Man's Pullover	22
HP 2023 - Man's Jacket	23
KK 2024 - Child's Cardigan	24
DK 2025 - Woman's Coat	25
DK 2026 - Woman's Dress and Shawl	27
DK 2027 - Woman's Three Piece Suit	28
DK 2028 - Woman's Three Piece Suit	29
DK 2029 - Woman's Jacket and Pants	31
DK 2030 - Woman's Dress	33
DK 2031 - Woman's Coat	34
DK 2032 - Woman's Dress	35
DK 2033 - Woman's Pullover	36
DK 2034 - Woman's Pants and Top	36

It was in September of 1964 that KNITKING MAGAZINE made its entry into the world of machine knitting. It was a momentous occasion and a rather risky venture at a time when a very limited number of Americans had seen or heard of home knitting machines, but KNITKING machine sales were growing at a steady rate and we believed then, as we do now, that service to our customers after sales was of paramount importance. It was obvious that the most needed service would be a continuing supply of top quality, stylish patterns for all members of the family plus patterns for household and gift items.

Because KNITKING MAGAZINE has never managed to pay its own way, it has been necessary to work to a budget which in turn created a multitude of problems, we have nevertheless persisted and continued publication while continuously improving the quality of the magazine, and we consider it no coincidence that our parent company, KNITKING CORPORATION, has prospered to the point of being the largest independent importer and distributor of knitting machines in the U.S.A. In 1964 we had two different model knitting machines to offer customers, today we have twelve. Our sales volume in 1982 was more than 1500% greater than in 1964. By taking care of our customers by the provision of complete service, we have also taken care of ourselves.

During the 18 years that we have published KNITKING MAGAZINE, we have cooperated with the company in West Germany which made the original KNITKING knitting machines sold by us. That manufacturing company has since gone out of business and its owners switched to the importation of machines made by the Silver Seiko Company of Japan.

By sharing production costs over the years, we have been able to reduce our losses. We have, until this issue, been printing color pages for a German and an Italian edition.

The sharing of patterns with other nationalities has never been entirely satisfactory and we have suffered some inconveniences because of delays in the delivery of materials plus errors in instruction, etc., but most of all the preparation of a magazine acceptable in three languages and to three different cultures has restricted us in regard to layout and instruction presentation, so much so that we have made the decision to publish KNITKING MAGAZINE just the way we want it to be. We have ended the cooperative program with Germany and starting with Volume 18, No. 1, we will have a magazine prepared and printed entirely in the U.S.A. KNITKING MAGAZINE will have a new format... it will include more of the items our American readers have been asking for... it will be larger in size, yet contain even more simplified instructions. There will be 4 issues a year instead of 6 and we will maintain the current subscription rates as long as the economic situation allows. We promise a bigger and better KNITKING MAGAZINE than ever... our 18 years of experience in the publication of KNITKING MAGAZINE and 30 years of dealing with customers in the knitting machine business will be invaluable in the preparation and presentation of a KNITKING MAGAZINE we know you will look forward to from issue to issue.

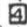
A BIG THANK YOU



To all of our customers and dealers for their great support in 1982. You made it the biggest ever for KNITKING at a time of recession, unemployment and the closing of many businesses, ours continues to prosper and grow. We look forward with great enthusiasm to a continuance of the trend and your continued support in 1983.



Publisher: KNITKING CORPORATION, 1128 Crenshaw Blvd., Los Angeles, Calif. 90019. Telephone: (213) 938-2079. Published bi-monthly. Subscriptions: USA-\$18.00 annually, single copies \$4.00. \$21.00 all other countries. The entire contents of KNITKING MAGAZINE are copyright and must not be reproduced in any shape or form without the express permission, in writing of the publisher. ©COPYRIGHT 1983 by KNITKING CORPORATION.

Pattern Symbols

Knitting – Chart Symbols

- Size Symbols
(2nd Size)
< > 3rd Size
① Color Number
- Cast on
- Stitch
- Row
- Hem
- Bind off
- Stockinette stitch – worn on the Knit side.
- Stockinette stitch – worn on the Purl side.
- Knit 1, Purl 1 Ribbing
- Ribbing Pattern – worn on the Knit side.
- Ribbing Pattern – worn on the Purl side.
- Closed Dart
- Open Dart
- Put on a stitch holder
- Reverse 1 section
- On every other needle
- Number of Rows between Shapings. Make increase (or decrease) FIRST, then knit 4 rows. For example: 3 x 1  means decrease (or increase) 1 st., knit 4 rows; decrease 1 st., knit 4 rows; decrease 1 st., knit 4 rows; decrease 1 st., knit 4 rows. All decreasing (or increasing) without row numbers as shown must be shaped on every 2nd row.





-  Increase
-  Increase 2 sts. With a transfer tool, move the sts. over the left (or right) leaving 2 empty needles at the point of increase. At the increase point, move 1 st. to the left, (or right) so that there is an empty needles on each side of a stitch. On each side of the center stitch, pick up a stitch from the row below and hang it onto the empty needle.

-  3 stitches on 1 needle. The 1st and 3rd stitch in a group of 3 has been hung on the 2nd or center needle.
-  Short Row increase or decrease; for instance on a flared skirt knitted sideways.









-  Pattern Stitch
-  Pattern Stitch – worn on the Knit side.
-  Pattern Stitch – worn on the Purl side.

-  Repeat
- I = Front
II = Back
III = Sleeve
IV = Skirt Front
V = Skirt Back
VI = Collar
VII = Pocket
VIII = Band
IX = Belt
X = Cuff
XI = Pants Front
XII = Pants Back

Finishing – Chart Symbols

-  Match numbers on section for assembling.
-  Ease
-  Fold Line
-  Turn to the wrong side and hem.

Stitch Symbols

-  Needles in holding position
-  Needles back into working position.
-  Empty needle (leave in working position)
-  Needle not used (in the out of work position).
-  Two stitches on 1 needle, either transferred from the right side or the left side, then put into holding position.
-  Needle holding 2 stitches. Stitch has been transferred from the RIGHT.
-  Needle holding 2 stitches. Stitch has been transferred from the LEFT.
-  Center of garment section



General Instructions

HOW TO READ THE CHARTS AND INSTRUCTIONS

There are 3 sizes given for each Pattern in KNITTING MAGAZINE. Above each Chart for the different sizes, you will see that the first and smaller sizes might be shown as 8/10, the second size as (12/14) and the third as [16/18]. Check the measurements at the bustline and hips on the Charts to be certain that you will knit the correct size, remembering these are ACTUAL measurements of the completed section and that there must be a bigger allowance at the bustline and hipline for a Jacket or a Coat than there would be for a fitted dress or a fitted blouse or pullover. The question in your mind should be "How do I want this garment to fit...?"

When you have chosen the size you need, you can follow the Charts as shown. You will notice that where the shapings are the same FOR ALL SIZES, only 1 set of shapings will be shown on the first Chart and if you are knitting the 2nd or 3rd size, you simply follow the shapings as given for the first size. If the shapings are different, this will be shown on the Charts and you should follow them as given.

On the Charts, increases and decreases will be shown as follows

5x1

6 The number in the box means number of ROWS between the shapings, while the 5x1 above the box means - 1 st. 5x... so you will increase or decrease 1 st. every 6th row 5x.

ARMHOLE SHAPINGS - NECK SHAPINGS - SHOULDER SHAPINGS - are made on every 2nd row UNLESS there is a number in a box along side or below the shapings. The rule is... where there is no box with a number, the shaping is made on every 2nd row.

THE PRINTED INSTRUCTIONS

You can follow the printed instructions or use them in combination with the Charts. Where there is any question in the printed instructions, you have the Charts to show you how the section will look.

The 3 sizes, with the different amounts of cast on stitches and the different shapings will look like this...

Cast on 124 (136) [148] sts. You will

Cast on 124 sts. for the first size.

Cast on 136 sts. for the 2nd size.

Cast on 148 sts. for the 3rd size.

The important thing to remember is that you MUST READ AHEAD so that you KNOW what to do for the size you are knitting. Sometimes where the number of stitches are the same but the number of times different, you will find shapings like this... 3 sts. 1x (2x) [3x], 2 sts. 1x (2x) [3x], 1 st. 3x (4x) [5x]. As you see, you MUST read ahead in order to follow the instructions as given for YOUR SIZE. The rows will be different for the different sizes in some cases... Shoulder and Neck shapings usually are worked at the SAME TIME for the back section - so watch for the words AT THE SAME TIME.

HOLDING STITCHES ON THE LEFT SIDE WHILE SHAPING THE RIGHT SIDE

When knitting a section of garment in stockinette stitch, it is easy to hold the stitches on the left side while knitting the right half, but when knitting a Pattern Stitch such as a Norwegian Design, a Holding Position Design, Weaving, etc., you should use the following method. For the NECK SHAPING, we tell you to bind off the center sts., put the needles on the left into holding position and complete the right half first... so with a strand of contrast yarn, knit ALL of the left side stitches manually by hand, pulling each stitch back against the needle bed to the OUT OF WORK position. When the right side is completed, carefully pull the stitches held on contrast, forward into working position and as you do so, undo the contrast yarn, line up the needles (KNITTING AM 3 machine owners, put the stitches under the sinkers) and complete the left half.

If you own a Japanese machine, you may find that when knitting the right half with the left side held in this way, the sinker plate will mark the left side while you are knitting the right half. To prevent this marking, you can tape a piece of paper over the knitting, underneath the sinkers, or if you own a Reversing Bar, you can hang this onto the Sinkers while you are knitting the right half. When hanging the Reversing Bar, be sure the eyes of the bar go BETWEEN the Sinker Posts on the upper part of the bar so that the tips of the bar only - show above the needle bed.

FULL FASHION DECREASING OR INCREASING

For Stockinette stitch, always use the Full Fashion method for increasing or decreasing.

TO DECREASE: Hang the 3rd stitch onto the 2nd stitch then move the stitches in to fill the empty needle.

TO INCREASE: Move the 2 end stitches 1 needle outward, then pick up the 3rd stitch from the row below and hang it onto the empty needle.

FINISHING: Block all sections. For PULLOVERS, JACKETS, and DRESSES: Join front to back at sides and shoulders. Sew sleeves together and set in. Hem lower edge and sleeve edges if needed. For a double neckband or armhole band, sew 1 edge to the inside and 1 to the outside of neck or armhole. For a single ribbed band, sew 1 edge to the outside of neck or armhole edge. For a cardigan or jacket with buttonholes, finish buttonholes and sew on buttons.

PANTS: Join front to back at sides. Sew inside leg seams, then join center front and back. Make hem at waistline and insert elastic. Hem lower edge of pants legs.

THE SAMPLE SWATCH

Before you begin to knit any garment, you will need to knit a sample piece using the yarn you have chosen for your garment, so that you can check the stitch and row gauge which must measure the correct number of stitches and rows in 5 cm (2 inches).

For each Pattern in KNITTING MAGAZINE, we give you 3 tension numbers to work from and if you use the specified yarn for the garment, you should be able to get the correct stitch and row gauge using one of these numbers. Here is a very easy way to make your sample swatch and count the stitches and rows without actually counting, by using our KNITTING Converta Tape.

Supposing the Tension Numbers for the Stitch and Row Gauge are given as 5 to 7. Set the Tension Dial to the first number which is 5. With contrast waste yarn, and using the quick cast on method, cast on 60 stitches and knit 10 rows. Change to garment yarn and turn the Row Counter to 0. Knit 30 rows. Counting from each end, knit the 10th stitch on each side by hand with a small piece of contrast yarn. Leave the needles in working position and knit 30 rows (Row 60), then knit 4 rows with contrast waste yarn. Turn the Row Counter to 0 and the Tension Dial to 6 and with garment yarn, knit 30 rows. Mark the 10th stitch on each side as you did before, knit 30 rows, then 4 rows with contrast waste yarn. Turn the Row Counter to 0 and with Tension 7, repeat the above once more, ending with 10 rows of contrast waste yarn. Remove the work from the machine by passing the Slide across the needles without yarn (sometimes called 'dropping').

Pull and stretch the sample piece both lengthwise and diagonally from corner to corner, then lengthwise again. Do not count the stitches and rows immediately, but allow the sample to rest for several hours or even over night. This will allow the stitches and rows to return to their basic form.

When your sample has rested and you are ready to count the stitches and rows, the KNITTING CONVERTA TAPE will do the counting for you without any counting on your part. Use the Tape as follows:

Measure the stitches with the TAPE, BETWEEN the 40 stitches marked with contrast waste yarn. Push the SLIDE so that the LEFT EDGE lines up to this exact measurement. Now look down along side the SLIDE and find the number 40 on the TAPE. The number directly opposite on the SLIDE will be your Stitch Gauge to 5 cm (2"). To find the number of rows in 5 cm (2"), place the TAPE to measure over the 60 rows, push the SLIDE to this number with the left edge lined up, the look for the number 60 on the TAPE and directly opposite this will be the number of rows to 5 cm (2")

If you do not own a KNITTING CONVERTA TAPE, you must mark a 5 cm (2 inch) square in the center of the knitting, then count the number of stitches and rows within the square.

DK 2015



WOMAN'S PULLOVER

SIZES 6/8 (10/12)

YARN: Amore

GRAMS:

color 1	400	450
color 2	200	200
color 3	50	50
color 4	50	50
color 5	50	50

TENSION: 5 to 6

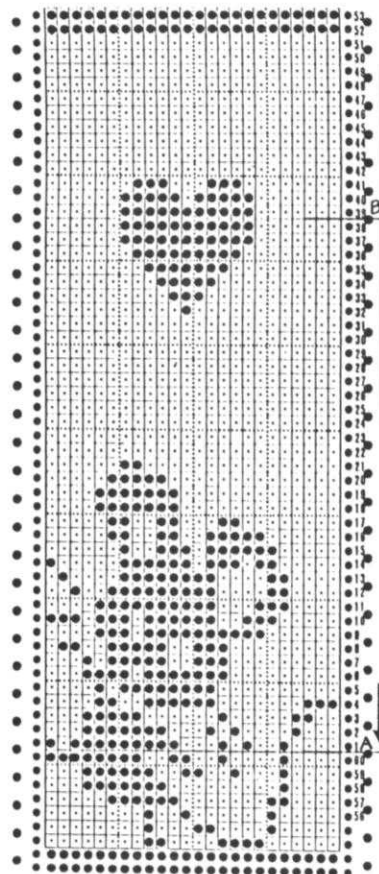
GAUGE: 14 sts., 22 rows = 5 cm (2")

A Fair Isle Pattern. Punch your own Card and follow the color changes as shown along side the Punch Card. Bands are K1, P1 Ribbing for 26 rows OR USE A MOCK RIBBING as shown on the Chart for 52 rows then hang the hem.

FINISHING: See General Instructions.

2 Rows color 1
2 Rows color 2
10 Rows color 1 (Set pattern B on last Row)

10 Rows color 1 and 3
10 Rows color 1
28 Rows color 1 and 2
10 Rows color 1
10 Rows color 1 and 4
10 Rows color 1
28 Rows color 1 and 2
10 Rows color 1
10 Rows color 1 and 5
10 Rows color 1
28 Rows color 1 and 2
10 Rows color 1
10 Rows color 1 and 3
When completed, continue in Stockinette stitch with color 1.



SLEEVES: III

Cast on 90 (96) sts. with color 1 and work the Ribbing same as you did for the front and back. Counter at 0.

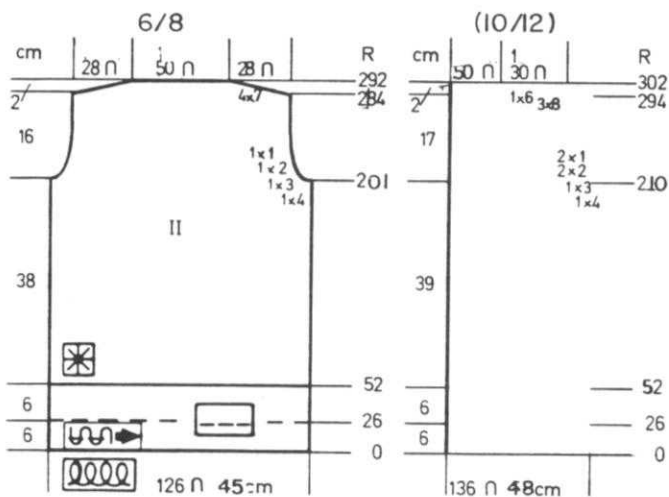
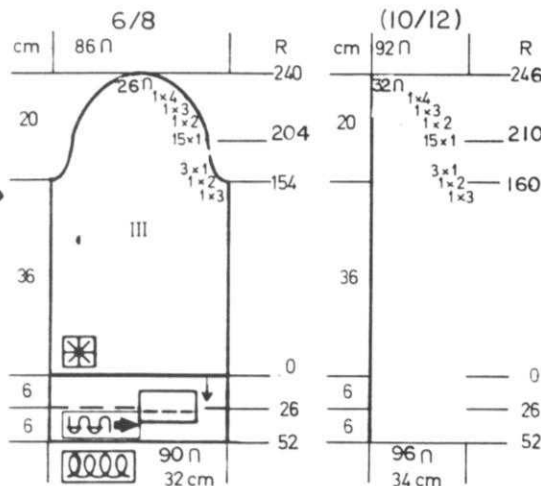
Knit in Stockinette stitch to Row 154, then begin Pattern A.

AT THE SAME TIME, after Row 154 (160)

SHAPE CAP:

ON EACH SIDE, bind off for both sizes 3 sts. 1x, 2 sts. 1x, 3 sts. 1x, Knit 20 rows PLAIN, then ON EACH SIDE, bind off 1 st. 15x, 2 sts. 1x, 3 sts. 1x, 4 sts. 1x.

AT THE SAME TIME, after Pattern B is completed, knit 10 rows color 1 (Row 212). Knit 2 rows color 2, 14 rows color 1, 2 rows color 2. After Row 240 (246), bind off the remaining sts.



BACK: II

Cast on 126 (136) sts. with color 1 and work 26 rows K1, P1 Ribbing then BE SURE TO PUT THE COUNTER AT 52. If you do not own a Ribber, work MOCK RIBBING FOR 52 Rows then Hang the hem.

CONTINUE IN PATTERN as SHOWN LONG SIDE THE PUNCH CARD.

After Row 202 (210), SHAPE ARMHOLE:

ON EACH SIDE, bind off 4 sts. 1x, 3 sts. 1x, 2 sts. 1x, 1 st. 1x.

(4 sts. 1x, 3 sts. 1x, 2 sts. 2x, 1 st. 2x).

After Row 284 (294), SHAPE SHOULDER:

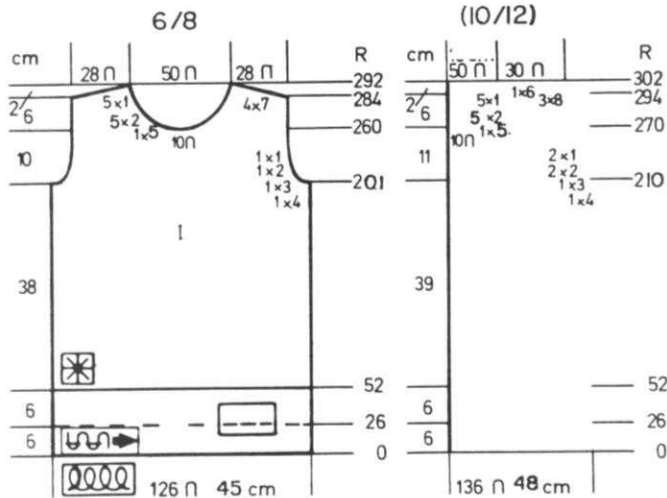
ON EACH SIDE, bind off

7 sts. 4x.

(8 sts. 3x, 6 sts. 1x).

After Row 292 (302), bind off the remaining sts.

DK 2015



FRONT: I

Work the front the same as the back to Row 260 (270). Bind off the center 10 sts., put the needles on the left into holding position and complete the right side first.

*ON NECK SIDE, bind off 5 sts. 1x, 2 sts. 5x, 1 st. 5x. After Row 284 (294), SHAPE SHOULDER same as the back. Bring the needles on the left into working position, knit 1 row in Pattern to the left side, turn the Row Counter back to 260 (270) and complete the left half. WATCH PATTERN. Follow the Instructions from *.

NECKBAND:

Sew 1 shoulder seam. Cast on 160 sts. with color 1 and work K1, P1 Ribbing (OR USE MOCK RIB). Work 10 rows color 1, 2 rows color 2, 8 rows color 1. (If you use a Mock Ribbing, be sure to knit DOUBLE the amount) Transfer the Ribber sts. (or hang hem, then hang the neck sts. onto these needles and bind off loosely.

DK 2016

WOMAN'S PULLOVER

SIZE: 10/12
 YARN: Nomotta Alpacana
 GRAMS:
 color 1 400
 color 2 350
 color 3 50
 color 4 50
 NO KIT AVAILABLE
 TENSION: 7 to 8
 GAUGE: 14 1/2 sts. 18 rows = 5 cm (2")



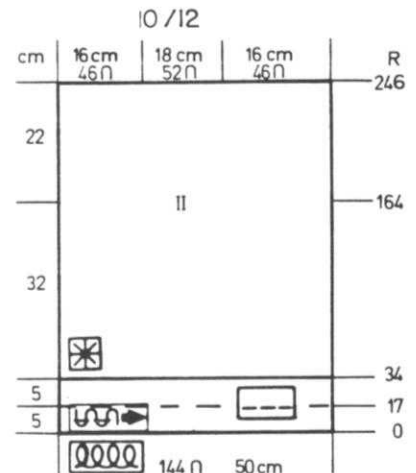
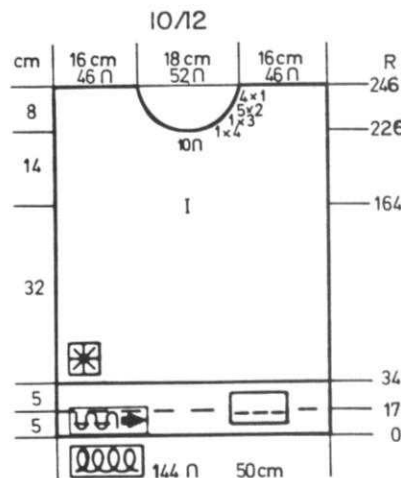
A Fair Isle Design made on the ELECTRONIC MACHINE. Send 50¢ plus self addressed, stamped 9 1/2" envelope for copy of original drawing. Bands are Mock Ribbing.

FINISHING: See General Instructions.

FRONT: I

Work the front the same as the back to Row 226. Bind off the center 10 sts., put the needles on the left into holding position and complete the right side first.

*ON NECK SIDE, bind off 4 sts. 1x, 3 sts. 1x, 2 sts. 5x, 1 st. 4x. After Row 246, bind off the remaining sts. Bring the needles on the left into working position, knit 1 row in Pattern to the left side, turn the Row Counter back to 226 and complete the left half. Follow the Instructions from *.

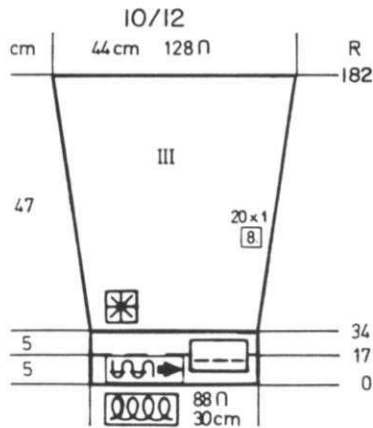


BACK: II

Bring 144 needles into working position, then push back every 2nd needle to the out of work position. With color 1, cast on over the remaining sts. and work 34 rows Stockinette stitch. Bring all the empty needles into working position and hang the hem. Continue in Pattern. Mark Row 164 for setting in sleeve. After Row 246, bind off.

continued

DK 2016

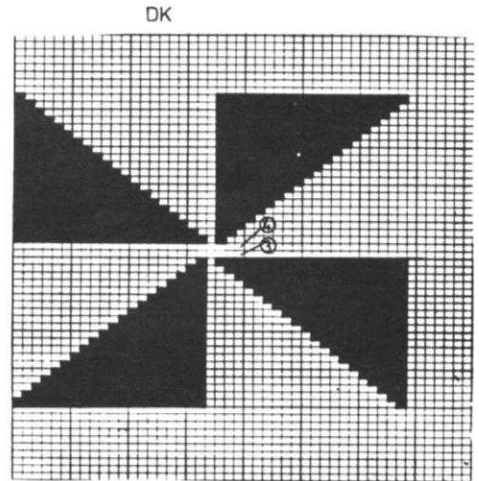


SLEEVES: III

Bring 88 needles into working position then push back every 2nd needle to the out of work position. Color 1. Knit 34 rows for Mock Ribbing. Bring empty needles into working position and hang the hem. Continue in Pattern. ON EACH SIDE, increase 1 st. every 8th row 20x. After Row 182, bind off.

NECKBAND:

Bring 200 needles into working position then push back every 2nd needle to the out of work position. With color 1, knit 20 rows. Bind off VERY LOOSELY. Sew 1 edge of band to inside and 1 to the outside of neckline.



PATTERN COLOR CHANGES

24 Rows colors 1 & 2
*2 Rows color 3
2 Rows color 4
42 Rows colors 1 & 2
REPEAT FROM * THROUGHOUT

DK 2017

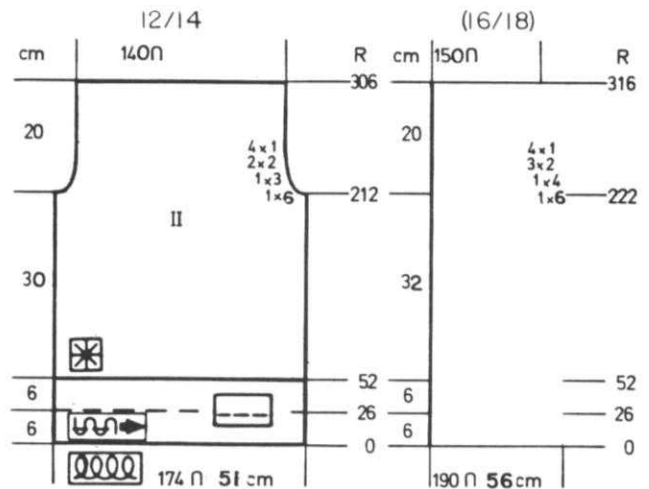
WOMAN'S JACKET

SIZES: 12/14 (16/18)
YARN: Venetia, Capriccio & Light weight Angora or Mohair
color 1 400 450 = Venetia
color 2 250 250 = Capriccio
color 3 100 100 = Lt.weight Angora or Mohair
TENSION: 4.1 to 5.1
GAUGE: 17 sts. 24 rows = 5 cm (2")



Made on the KNITTING 910 (can also be made on the SINGER SK 500 or 560. Send 50¢ plus self addressed Stamped - 9 1/2" envelope for copy of original drawing. A Fair Isle (Norwegian technique) Design. Bands are MOCK Ribbing.

FINISHING: See General Instructions.

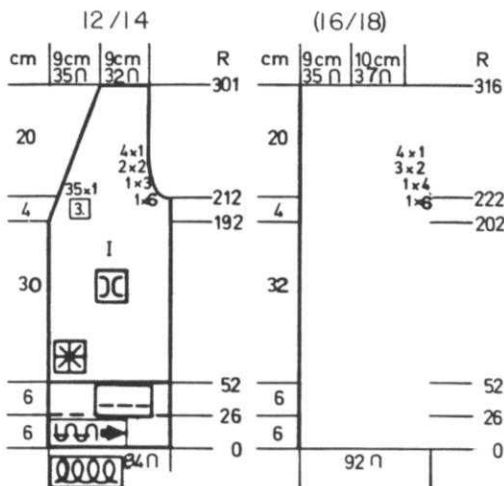


RIGHT FRONT: I (REVERSE FOR LEFT).

Bring 84 (92) needles into working position, then push back every 2nd needle to out of work position. Cast on and work Mock Ribbing same as for the back then hang the hem the same. Continue in Pattern to Row 192. (202). ON NECK SIDE, decrease 1 st. every 3rd Row 35x for both sizes BUT AT THE SAME TIME, after Row 212 (222) SHAPE ARMHOLE same as the back. After Row 301 (316), bind off the remaining sts. Work left front with reverse shaping.

BACK: II

Bring 174 (190) sts. into working position, then push back every 2nd needle to the out of work position. With color 1, cast on over the remaining needles. Stockinette st. Work 40 rows color 1, 2 rows color 2 3 rows color 1, 2 rows color 3, 5 rows color 1. Bring the empty needles into working position and hang the hem. (Be sure to pick up a stitch from row below to hang on empty needles to prevent a hole). Continue in Pattern with colors 1 and 2. After Row 212 (222), SHAPE ARMHOLE: ON EACH SIDE, bind off 6 sts. 1x, 3 sts. 1x, 2 sts. 2x, 1 st. 4x. (6 sts. 1x, 4 sts. 1x, 2 sts. 3x, 1 st. 4x). After Row 306 (316) bind off the remaining sts.



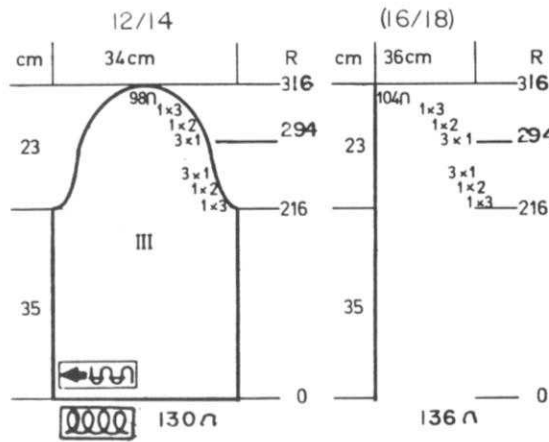
DK 2017

BACK NECK BAND

Back Neck Band - Bring 68 needles into working position then push back every 2nd needle (for Mock Rib). USE CAST ON COMB. Cast on over the remaining needles in work with color 1. Drop Comb after 1 row. Knit 6 rows color 1, 2 rows color 3, 3 rows color 1, 2 rows color 2, 30 rows color 1. Bring the empty needles to D position. Hang the loops from the cast on comb onto the empty needles. Hang the neck sts. onto these needles. Knit 1 row with color 1 and bind off loosely.

FRONT BANDS - MAKE 2.

Bring 176 needles into working position, then push back every 2nd needle (for Mock Rib) and work the same as the back Neckband.



SLEEVE BAND:

With knit side facing you, hang the sts. of sleeve held on waste yarn onto 66 (70) needles, doubling the sts. across. Knit 1 row with color 1, then transfer every other stitch to neighboring needle for the MOCK RIBBING. Stockinette stitch. Work 3 rows color 1, 2 rows color 3, 3 rows color 1, 2 rows color 2, 40 rows color 1. Hang the hem or you can bind off and fold cuff to inside and hem in place.

SLEEVES: III

The PURL side is the right side of sleeve. USE OPEN CAST ON WITH CONTRAST WASTE YARN. Cast on 130 (136) sts. After knitting 9 rows, knit 1 row with Ravel Cord. Counter at 0. With color 1, work Stockinette stitch to Row 216. ON EACH SIDE, SHAPE CAP AS SHOWN ON THE CHART FOR YOUR SIZE BUT AT THE SAME TIME after Row 226 work COLOR STRIPES as follows:
*2 rows color 2, 4 rows color 1, 2 rows color 3, 2 rows color 1. REPEAT THE COLOR STRIPES from *. After Row 316 bind off the remaining sts.

DK 2018

WOMAN'S TWO PIECE DRESS

SIZE: 6
YARN: Mohair and Acrylic
GRAMS: 500
TENSION: 1 to 3
GAUGE: 14 1/2 sts, 24 1/2 rows = 5 cm (2")

A Lace Pattern. Punch your own Card. Bands are K2, P2 Ribbing. The Skirt is knitted sideways with bands of Lace using single strand of yarn and Short Rows with double strand of yarn.

FINISHING: See General Instructions. Weave the open sts. of Skirt together then work single crochet around lower edge. Make hem at waist and pull elastic through casing.

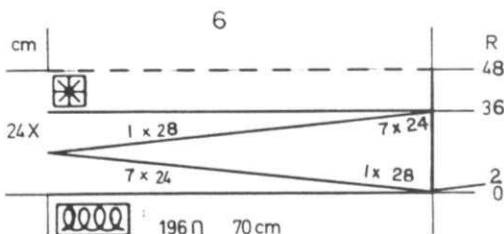
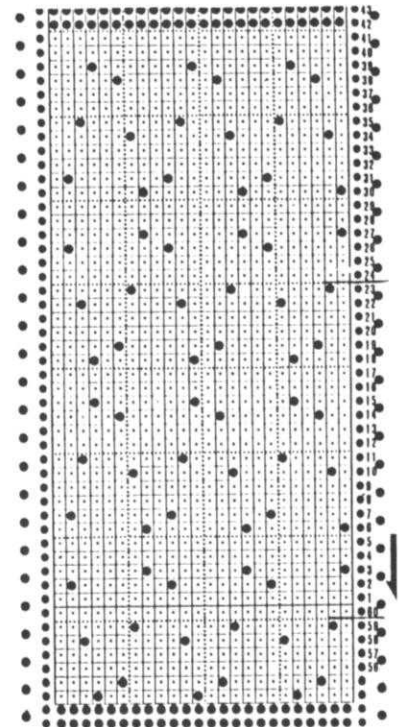


SKIRT:

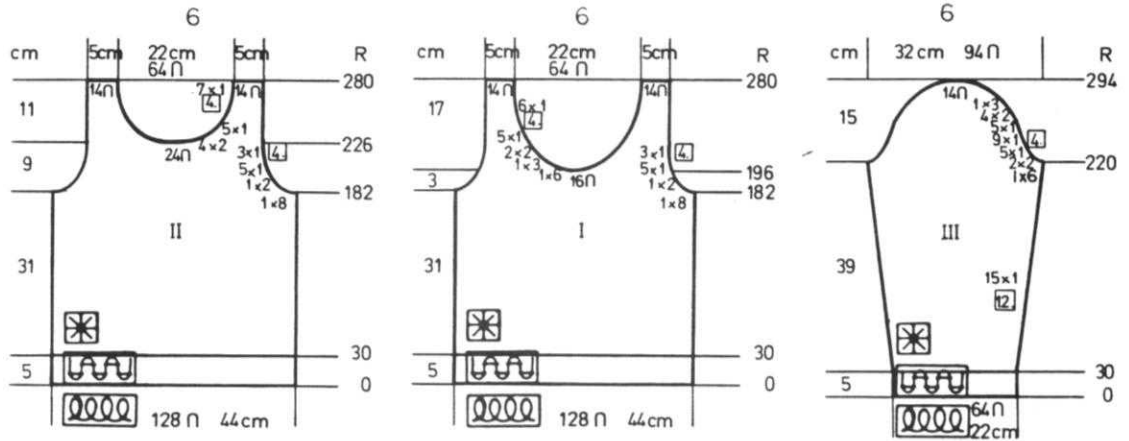
OPEN CAST ON USING WASTE YARN. Cast on 192 sts. After knitting 11 Rows, knit 1 row with Ravel Cord. USING DOUBLE garment yarn, begin Skirt. Knit 2 rows. *WORK SHORT ROWS. ON OPPOSITE SIDE OF CARRIAGE, put into holding position 24 sts. 8x. REVERSE the Short Rows. Bring back into working position 24 sts. 8x. Change to SINGLE YARN. Insert Punch Card and snap together. Set Card on Row 1, then work 1 complete pattern to Row 24 on Card. CHANGE TO DOUBLE YARN and REPEAT FROM * except that you need not set Card on Row 1 but continue from Row 24. REPEAT 24x. Knit 1 row Ravel Cord then 12 rows Waste Yarn. Remove work from machine.

NECKBAND: Make 2.

Cast on 146 sts. with DOUBLE YARN. Work 14 rows K2, P2 Ribbing. Work 4 rows Circular knitting then remove onto waste yarn. Sew 1 edge to inside and 1 to outside of neckline.



continued



BACK: II

Cast on 128 sts. and work 30 rows K2, P2 Ribbing with DOUBLE YARN. Transfer the Ribber sts. to main machine and continue in Lace Pattern. After Row 182, SHAPE ARMHOLE: ON EACH SIDE, bind off 8 sts. 1x, 2 sts. 1x, 1 st. 5x, 1 st. every 4th row 3x. After Row 226, bind off the center 24 sts., put the needles on the left into holding position and complete the right side first. *ON NECK SIDE, bind off 2 sts. 4x, 1 st. 5x then every 4th row 1 st. 7x. After Row 280, bind off the remaining stitches. Bring the needles on the left into working position, (watch pattern) Turn the Row Counter back to 182 and complete the left half. Follow the instructions from *.

FRONT: I

Work the front the same as the back to Row 182. SHAPE ARMHOLE same as the back but AT THE SAME TIME, after Row 196, bind off the center 18 sts., put the needles on the left into holding position and complete the right side first. *ON NECK SIDE, bind off 6 sts. 1x, 3 sts. 1x, 2 sts. 2x, 1 st. 5x, then every 4th row, 1 st. 6x. After Row 280, bind off the remaining sts. Bring the needles on the left into working position, turn the Row Counter back to 196 (watch Pattern) and complete the left half. Follow the instructions from * and don't forget to complete the armhole shaping.

SLEEVES: III

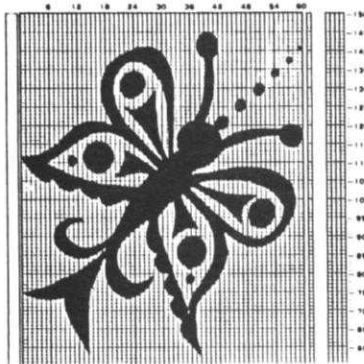
Cast on 64 sts. and work 30 rows K2, P2 Ribbing with DOUBLE YARN. Continue in Pattern. ON EACH SIDE, increase 1 st. every 12th row 15x. After Row 220, SHAPE CAP: ON EACH SIDE, bind off 6 sts. 1x, 2 sts. 2x, 1 st. 5x, then 1 st. every 4th row 9x, then every 2nd row, 1 st. 5x, 2 sts. 4x, 3 sts. 1x. After Row 294, bind off the remaining sts.

SPECIAL SERVICE TO OWNERS OF ELECTRONIC MACHINES

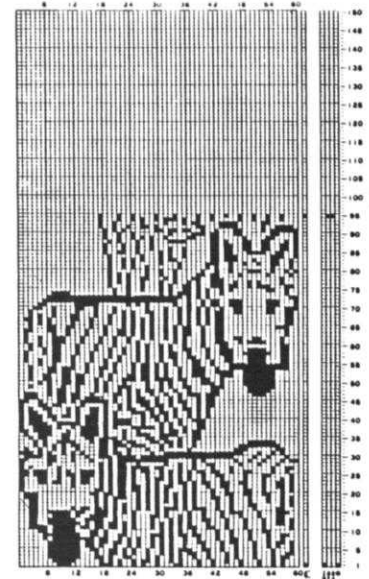
We cannot reproduce original drawings for the Design Cards needed to select fancy stitches on Electronic Machines, but we will supply full size copies of original drawings for 50 cents each copy. You must include a self addressed envelope (at least 9" x 4" in size) for each order.

Also available for this issue - DK 2016.

DK 2027



DK 2017 and HP 2019



ORDER DIRECT FROM:
KNITTING CORPORATION
 1128 Crenshaw Blvd., Los Angeles, Calif, 90019
 Telephone: (213) 938-2079

HP 2019

MAN'S PULLOVER

SIZES: 36/38 (40/42)

YARN: Amore

GRAMS:

color 1 400 450

color 2 300 350

TENSION: 4 or 5

GAUGE: 15 sts. 22 rows = 5 cm (2")

Made on the KNITKING 910 (can also be made on the SINGER SK 500 or 560). Send 50¢ plus self addressed stamped 9 1/2" envelope for copy of original drawing. A Fair Isle Design with bands in K1, P1 Ribbing.

FINISHING: See General Instructions.

BACK: II

Cast on 156 (166) sts. with color 1 and work 28 rows K1, P1 Ribbing.

Transfer the Ribber sts. to main machine then continue in Pattern.

After Row 204 (212) SHAPE ARMHOLE: ON EACH SIDE, bind off

4 sts. 1x, 3 sts. 1x, 2 sts. 2x, 1 st. 1x.

(4 sts. 1x, 3 sts. 1x, 2 sts. 3x, 1 st. 1x).

After Row 268 (276), continue in Stockinette st. with color 1.

After Row 298 (306), bind off the center 46 sts., put the needles on the left into holding position and complete the right side first.

*SHAPE SHOULDER AND NECK AT THE SAME TIME.

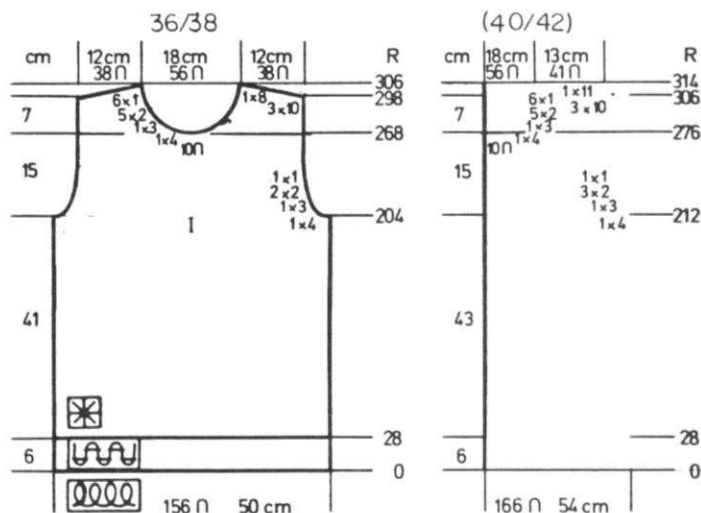
FOR SHOULDER, bind off

10 sts. 3x, 8 sts. 1x. (10 sts. 3x, 11 sts. 1x).

FOR NECK, bind off for both sizes,

3 sts. 1x, 2 sts. 1x.

Bring the needles on the left into working position, knit 1 row to the left side, turn the Row Counter back to 298 (306) and complete the left half. Follow the instructions from *.



FRONT: I

Work the front the same as the back to Row 268 (276).

Bind off the center 10 sts., put the needles on the left into holding position and complete the right side first.

*Continue in Stockinette stitch with color 1.

ON NECK SIDE, bind off

4 sts. 1x, 3 sts. 1x, 2 sts. 5x, 1 st. 6x for both sizes.

After Row 298 (306) SHAPE SHOULDER same as the back.

Bring the needles on the left into working position, knit 1 row to the left side, turn the Row Counter

back to 268 (276) and complete the left half. Follow the instructions from *.

NECKBAND:

Cast on 148 sts. with color 1 and work 14 rows K1, P1 Ribbing.

Bind off or remove onto contrast waste yarn.

SLEEVES: III

Cast on 68 (74) sts. with color 1 and work 28 rows K1, P1 Ribbing.

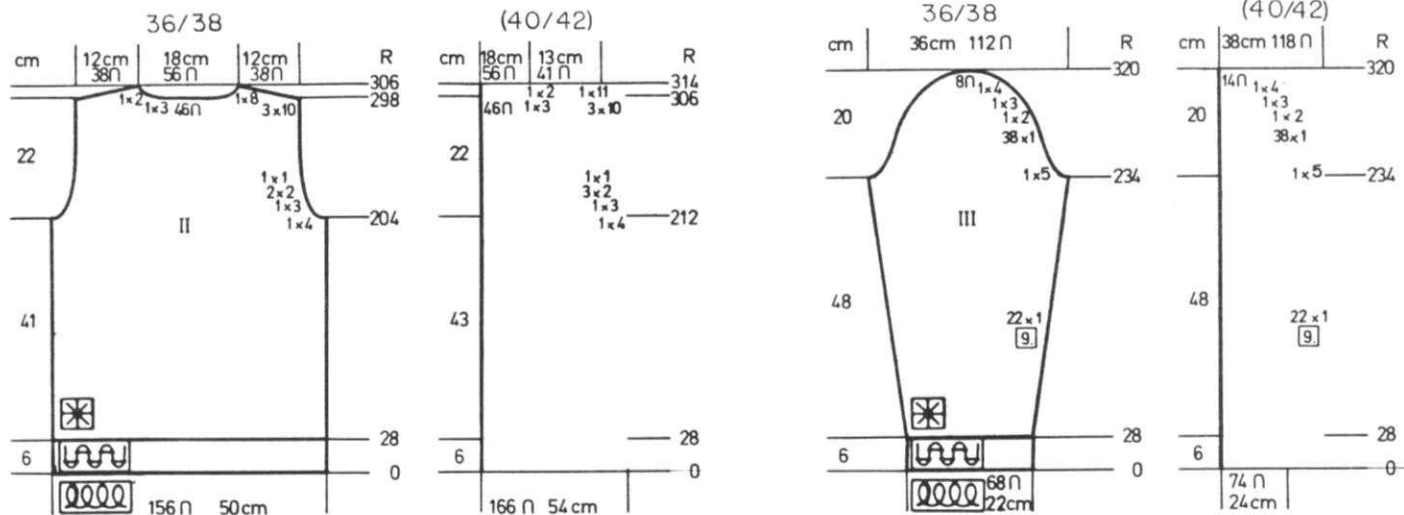
Transfer the ribber sts. to main machine and continue in Pattern same as front and back.

ON EACH SIDE, increase 1 st. every 9th row 22x.

After row 234, SHAPE CAP.

Please follow the cap shaping ON EACH SIDE as shown on the Chart for your size.

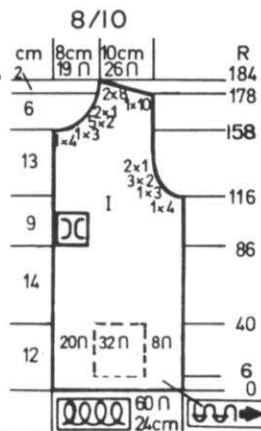
After Row 320, bind off the remaining sts.



DK 2020

WOMAN'S CHANEL SUIT

SIZE: 8/10
 YARN: Nomotta Smoky
 GRAMS:
 color 1 750
 color 2 50
 color 3 50
 NO KIT AVAILABLE
 TENSION: 10
 GAUGE: 12 1/2 sts. 17 rows = 5 cm (2")



RIGHT FRONT: I

Cast on 60 sts. with color 1 and work Stockinette stitch. After Row 6, hang 1 pocket A as follows: Leave 8 sts. on the right then hang the sts. from 1 pocket A onto the next 32 needles. Remove the waste yarn. Knit over all needles to Row 40. Leave 8 sts. on the right. Remove the next 32 sts. onto waste yarn.

Hang other edge of pocket onto the empty needles.

Knit over all needles to Row 116.

SHAPE ARMHOLE same as the back.

After Row 159, SHAPE NECK:

Bind off 4 sts. 1x, 3 sts. 1x, 2 sts. 2x, 1 st. 2x, and SHAPE SHOULDER same as the back after Row 178.

LEFT FRONT: Work the same as the right front with reverse shaping and after Row 52, hang Pocket B held on waste yarn as follows: Leave 20 sts. on the right then hang pocket onto the next 28 needles. Remove waste yarn and knit to Row 86. Hang other end of pocket in the same way as you did for A pocket.

SHAPE ARMHOLE after Row 115 on the LEFT side and NECK after Row 158 on the RIGHT SIDE.

Stockinette stitch with crochet
 Trim using color 2 and 3.

FINISHING: See General Instructions. For the bands and Pocket trim. With color 2, work 1 row double crochet around edges. Row 2, with color 3, work 2 double crochet, chain 1 and repeat around. Row 3, with color 2 work 1 row double crochet.

JACKET FRONT: I

WORK THE POCKET FIRST.
 Make 2 A Pockets, 1 B Pocket.

A = Cast on 32 sts. with contrast waste yarn. Knit 9 rows, 1 row with Ravel Cord. Change to color 1 and put Counter at 0. Knit 34 rows. Remove onto waste yarn.

B = Cast on 28 sts. with contrast waste yarn and work same as for Pocket A.

After Row 34, remove onto contrast waste yarn.

JACKET BACK: II

Cast on 120 sts. with color 1 and work Stockinette stitch. Knit to Row 116.

SHAPE ARMHOLE: ON EACH SIDE, bind off

4 sts. 1x, 3 sts. 1x, 2 sts. 3x, 1 st. 2x.

Knit to Row 178.

Bind off the center 28 sts., put the needles on the left into holding position and complete the right side first.

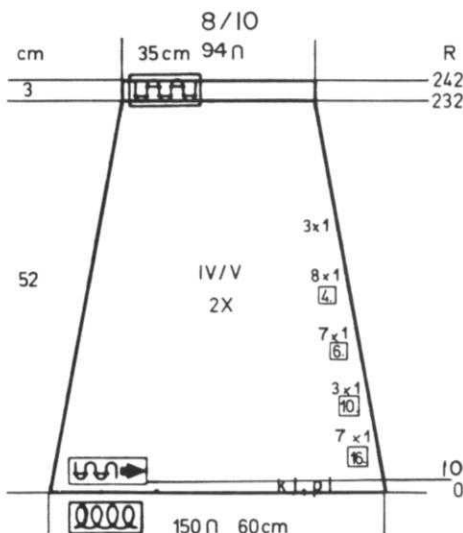
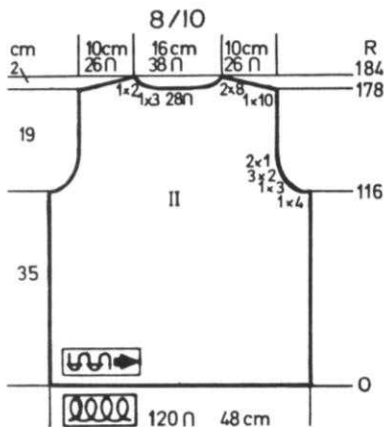
*SHAPE SHOULDER AND NECK AT THE SAME TIME.

FOR SHOULDER, bind off

10 sts. 1x, 8 sts. 2x.

FOR NECK, bind off 3 sts. 1x, 2 sts. 1x.

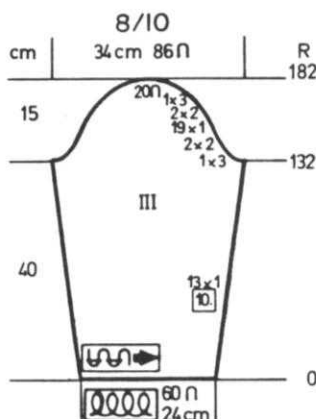
Bring the needles on the left into working position, knit 1 row to the left side, turn the Row Counter back to 178 and complete the left half. Follow the instructions from *.



SKIRT: IV/V Make 2 sections.

Cast on 150 sts. with color 1 and work 10 rows K1, P1 Ribbing. Transfer the ribber sts. to main machine and continue in Stockinette stitch.

ON EACH SIDE, decrease 1 st. every 16th row 7x, then every 10th row, decrease 1 st. 3x, every 6th row 1 st. 7x, every 4th row 1 st. 8x, every 2nd row 1 st. 3x. After Row 234, transfer for K1, P1 Ribbing and knit to Row 242. Bind off.



SLEEVES: III

Cast on 60 sts. with color 1 and work Stockinette stitch.

ON EACH SIDE, increase 1 st. every 10th row 13x.

After Row 132, SHAPE CAP:

ON EACH SIDE, bind off 3 sts. 1x, 2 sts. 2x, 1 st. 19x, 2 sts. 2x, 3 sts. 1x.

After Row 182, bind off the remaining sts.

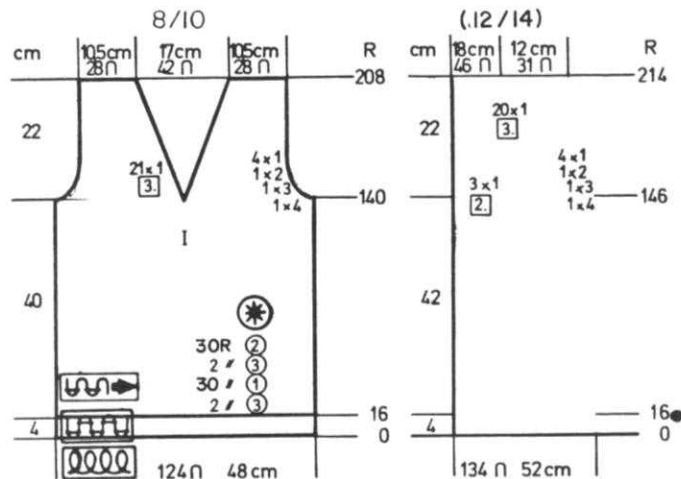
DK 2021

WOMAN'S SKIRT & TOP

SIZES: 8/10 (12/14)
YARN: Nomotta Super Show or Alpaca

GRAMS:
 color 1 200 200
 color 2 750 750
 color 3 50 50

NO KIT AVAILABLE
TENSION: 7 to 9
GAUGE: 13 sts, 15 1/2 rows = 5 cm (2")

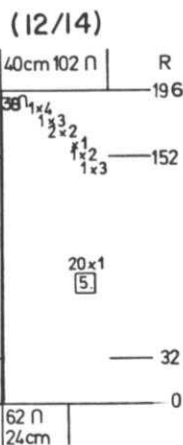
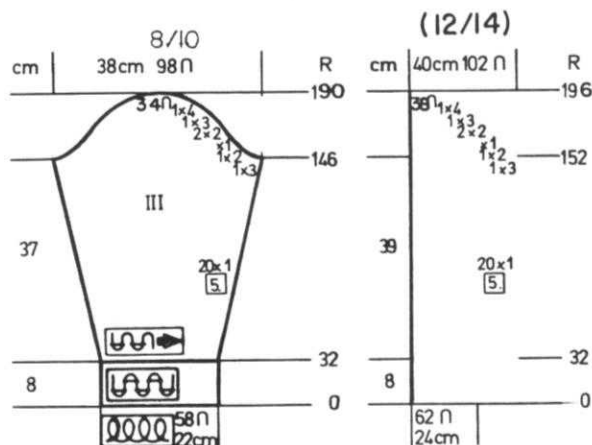
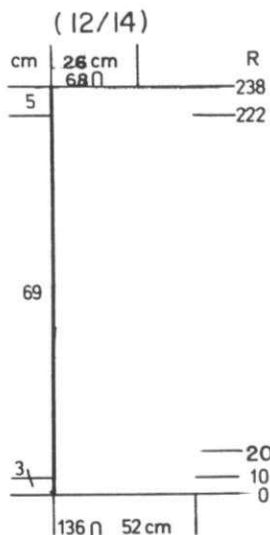
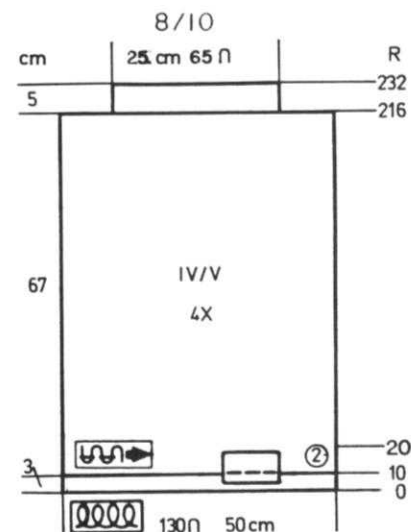


FRONT: I
 Make Pocket first.

Work the front the same as the back up to Row 50. Leave 13 sts. ON EACH SIDE and 26 (36) in the center. Remove the 36 sts. ON EACH SIDE onto contrast waste yarn. With KNIT SIDE FACING you, hang the POCKET STS. held on waste yarn onto the empty needles, then hang the garment sts. onto these same needles. Continue to Row 140 (146). Divide in the center and put the needles on the left into holding position and complete the right side first.
 *SHAPE ARMHOLE same as the back and AT THE SAME TIME, ON NECK SIDE, decrease 1 st. every 3rd row 21x. (every 2nd row 3x, every 3rd row 20x). After Row 208 (214) bind off the remaining sts. Bring the needles on the left into working position, knit 1 row in stripe pattern to the left side, turn the Row Counter back to 140 (146) and complete the left half. Follow the instructions from *.

SLEEVES: III

Cast on 58 (62) sts. with color 2 and work 32 rows K1, P1 Ribbing. Change to Stockinette st. Continue in stripe pattern as follows:
 20 rows color 1
 *2 rows color 3
 30 rows color 1
 2 rows color 3
 30 rows color 2
 REPEAT FROM * for stripe pattern. AT THE SAME TIME, ON EACH SIDE, increase 1 st. every 5th row 20x. After Row 146 (152) SHAPE CAP: Please follow the bind offs ON EACH SIDE as shown on the Chart for your size. After Row 190, (196) bind off the remaining sts.

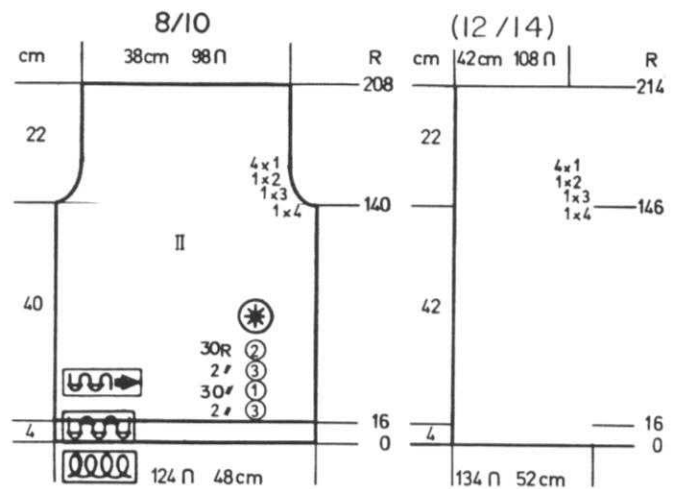


continued

DK 2021

BACK: II

Cast on 124 (134) sts. with color 2 and work 16 rows K1, P1 Ribbing. Continue with Stockinette stitch with color stripes of
 *2 rows color 3,
 30 rows color 1,
 2 rows color 3,
 30 rows color 2.
 REPEAT FROM * throughout.
 After Row 140 (146), SHAPE ARMHOLE:
 ON EACH SIDE, bind off
 4 sts. 1x, 3 sts. 1x, 2 s-s. 1x,
 1 st. 4x for both sides.
 Knit in stripe pattern to
 Row 208 (214).
 Bind off.



HP 2022

MAN'S PULLOVER

SIZES: 38/40 (42/44)

YARN: Euro Sport

GRAMS:

color 1 700 800

color 2 50 50

color 3 50 50

TENSION: 10

GAUGE: 11 st., 14 rows = 5 cm (2")

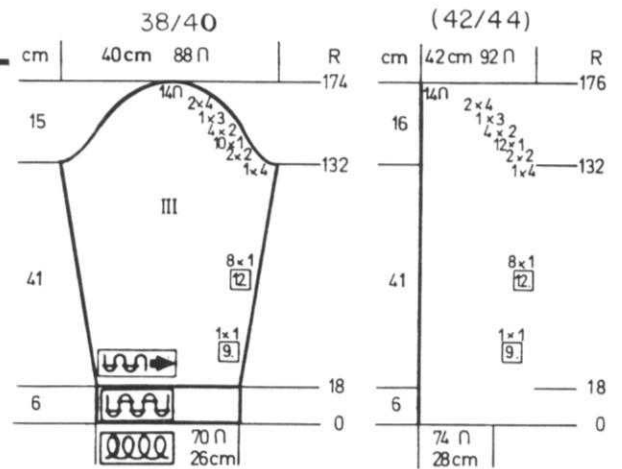
The Pattern is an INTARSIA DESIGN or can be knitted using SHORT ROWS.

Bands are K2, P2 Ribbing.

FINISHING: See General Instructions.

FRONT: I

Work the front the same as the back EXCEPT for Intarsia Design and NECK SHAPING. To work the SHORT ROWS for the DESIGN, after transferring the Ribber sts., knit 1 row to the LEFT with color 1 then BEGIN THE SHORT ROWS. Bring 1 needle on the RIGHT into holding position on every 2nd row. Use whatever method that is easiest for you to work the Short Rows. If you use the AUTOMATIC WRAP, you must bring 1 needle to holding ON SAME SIDE AS CARRIAGE (carriage on the right). and BE SURE TO BEGIN THE ARMHOLE SHAPING at Row 127 on the left. FOLLOW THE CHART for each section changing colors as shown. Each of the colored sections has 10 sts., so when you begin the first color section, begin with 1 st. in work, push back 1 st. on the left until there are 10 in work then you must push back 1 on the left and put 1 in hold on the right. Each section is worked in the same way. SHAPE ARMHOLE as shown on Chart after Row 126 (132) and SHAPE SHOULDER after Row 184 (196) same as the back.

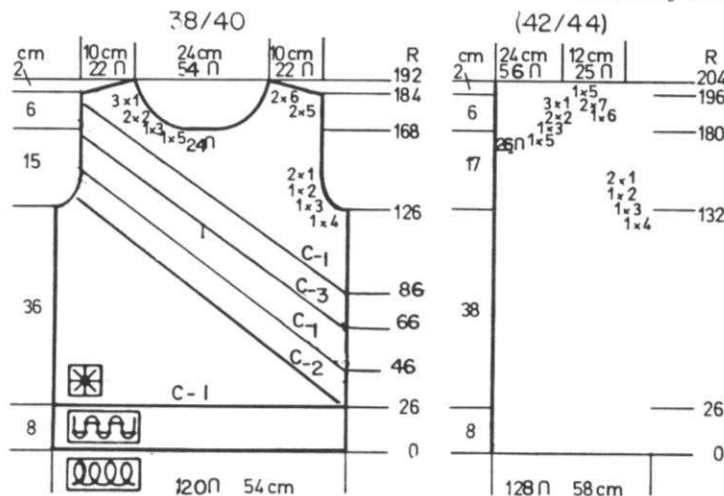


SLEEVES: III

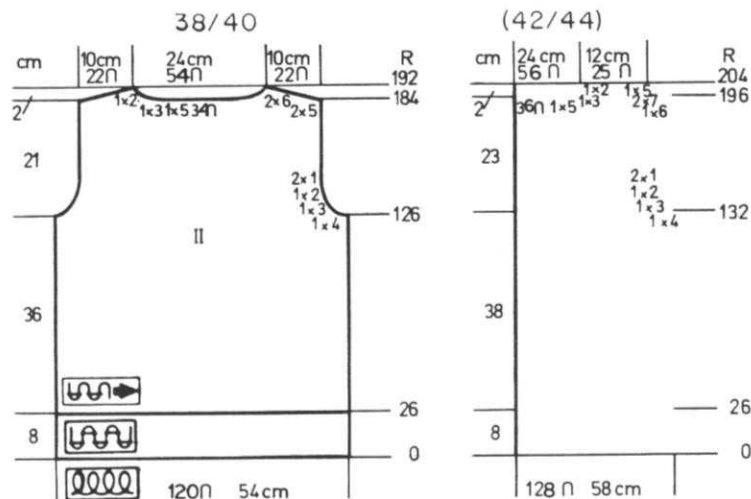
NECKBAND:

Cast on 124 sts. with color 1 and work K2, P2 Ribbing for 8 rows. Transfer the Ribber sts. to main machine and after sewing up 1 shoulder, hang the neck sts. onto same needles and bind off.

Cast on 70 (74) sts. with color 1 and work 18 rows K2, P2, Ribbing. Transfer the Ribber sts. then continue in Stockinette stitch. ON EACH SIDE, increase 1 st. every 9th row 1x, then every 12th row 8x. After Row 132, SHAPE CAP: Please follow the bind-offs ON EACH SIDE as shown on the Chart for your size. After Row 174 (176) bind off the remaining sts.



HP 2022



BACK: II

Cast on 120 (128) sts. with color 1 and work 26 rows K2, P2 Ribbing. Transfer the ribber sts. to main machine and continue in Stockinette stitch.

Knit to Row 126 (132).
SHAPE ARMHOLE: ON EACH SIDE, bind off 4 sts. 1x, 3 sts. 1x, 2 sts. 1x, 1 st. 2x for both sizes.
After Row 184 (196) bind off the center 34 (36) sts. and put the needles on the left into holding position and complete the right side first.

*SHAPE SHOULDER AND NECK AT THE SAME TIME.

FOR SHOULDER, bind off 5 sts. 2x, 6 sts. 2x (6 sts. 1x, 7 sts. 2x, 5 sts. 1x)
FOR NECK, bind off 5 sts. 1x, 3 sts. 1x, 2 sts. 1x.

Bring the needles on the left into working position, knit 1 row to the left side, turn the Row Counter back to 184 (196) and complete the left half. Follow the instruction. from *.

HP 2023

MAN'S JACKET

SIZES: 42/44 46/48
YARN: Vienna
GRAMS: 600 600
TENSION: 5 to 6
GAUGE: 15 sts. 24 rows = 5 cm (2")



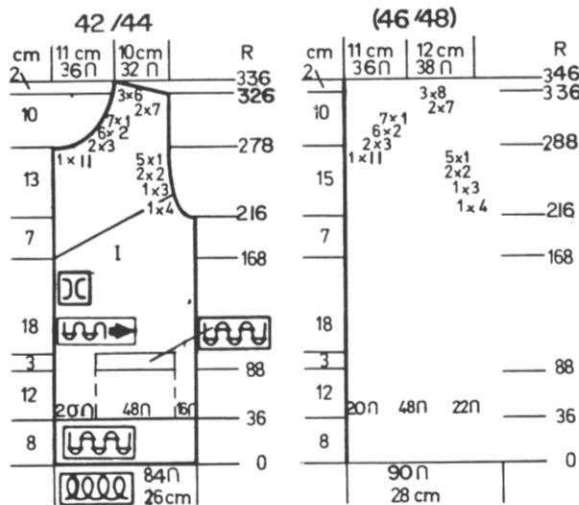
Stockinette stitch combined with a Tuck Stitch. Bands are K2, P2 Ribbing. Punch your own Card.

FINISHING: See General Instructions.

LEFT FRONT: I Make 1, reverse 1.

Make POCKET FIRST. Make 2.

Cast on 48 sts. and work 52 rows Stockinette stitch. Remove onto contrast waste yarn.
Cast on 84 (90) sts. for front. Work 36 Rows K2, P2 Ribbing. Transfer the Ribber sts. and continue in Stockinette stitch. After Row 88, Leave 20 sts. on the left (right for 2nd section) then remove the next 48 sts. onto contrast waste yarn. With purl side facing you hang the pocket sts. held on waste yarn onto the empty needles. Remove the waste yarn and continue stockinette stitch to Row 168. Begin the TUCK PATTERN with only 1 Pattern then ON EVERY 8th Row INCREASE 1 More Pattern. (See Picture).
AT THE SAME SAME, after Row 216, SHAPE ARMHOLE same as the back. After Row 279 (289), SHAPE NECK: Bind off 11 sts. 1x, 3 sts. 2x, 2 sts. 6x, 1 st. 7x and after Row 326 (336) SHAPE SHOULDER same as the back.



Cast on 172 (184) sts. and work 36 rows K2, P2 Ribbing. Transfer the Ribber sts. and continue in Stockinette stitch. Knit to Row 216.

SHAPE ARMHOLE: ON EACH SIDE, bind off 4 sts. 1x, 3 sts. 1x, 2 sts. 2x, 1 st. 5x for both sizes.

After Row 326 (336), bind off the center 56 sts., put the needles on the left into holding position and complete the right side first.
*SHAPE SHOULDER AND NECK AT THE SAME TIME.

FOR SHOULDER, bind off 7 sts. 2x, 6 sts. 3x (7 sts. 2x, 8 sts. 3x)
FOR NECK, bind off 4 sts. 1x, 3 sts. 1x, 2 sts. 1x. Bring the needles on the left into working position, knit 1 row to the left side, turn the Row Counter back to 326 (336) and complete the left half. Follow the instructions from *.

continued

HP 2023

SLEEVES: III

Cast on 90 (102) sts. and work 28 Rows K2, P2 Ribbing. Transfer the Ribber sts. then continue in TUCK PATTERN. ON EACH SIDE, increase 1 st. every 5th row 1x, every 14th row 12x. After Row 210, SHAPE CAP: Please follow the bind-offs ON EACH SIDE as shown on the chart for your size. After Row 294 (300), bind off the remaining sts.

POCKET BAND Make 2

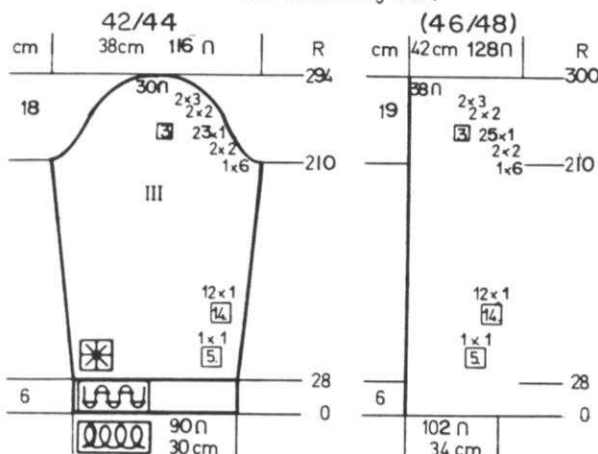
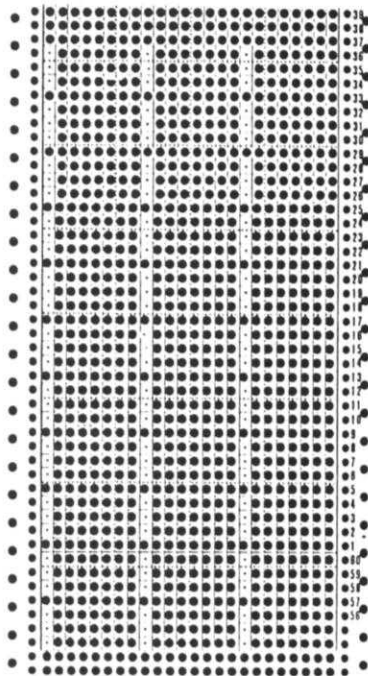
Cast on 48 sts. and work K2, P2, Ribbing to Row 12. With knit side of pocket facing you, hang pocket onto same needles then bind off. Sew each side of ribbing to jacket.

FRONT BANDS: Make 2, 1 with Buttonholes.

Cast on 188 sts. and work 16 rows K2, P2 Ribbing. Bind off or remove onto contrast waste yarn, or you can hang the front onto the same needles (after transferring them to main machine) and bind off. FOR BUTTONHOLE BAND, work the Buttonholes as follows: Leave 8 sts. on each side then make buttonhole over next 2 sts. You will have 32 sts. between each of the 2 stitch buttonhole. A total of 6 buttonholes across.

NECKBAND:

Cast on 192 sts. and work 16 rows K2, P2 Ribbing. Transfer the ribber sts. and finish same as front bands.



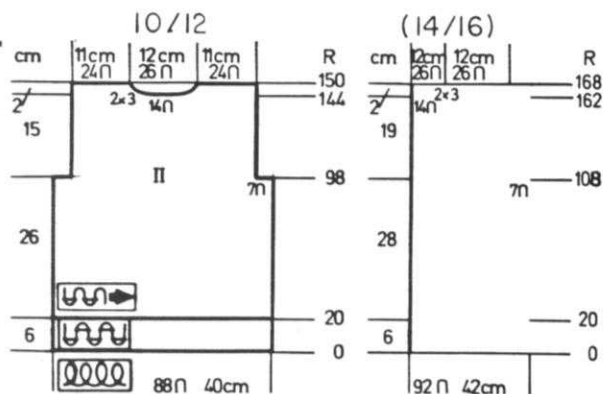
KK 2024

CHILD'S CARDIGAN

SIZES: 10/12 (14/16)
YARN: Euro Sport
GRAMS: color 1 350 350
color 2, 3, 4 = Small Amounts
NO KIT AVAILABLE
TENSION: 10
GAUGE: 11 sts. 15 rows = 5 cm (2")

Stockinette stitch with isolated Fair Isle Design on the front sections. Bands are K1, P1 Ribbing.

FINISHING: See General Instructions. Make Tassels and sew to lower point of Design. See Picture.



BACK: II

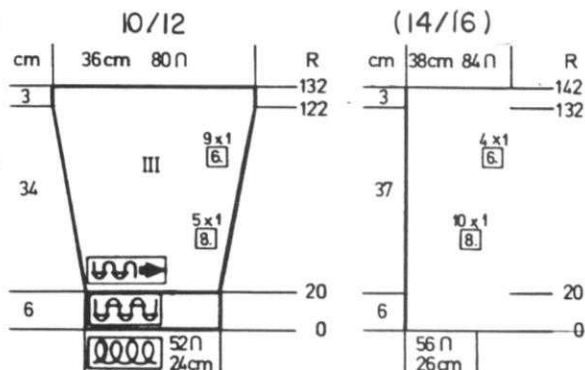
Cast on 88 (92) sts. with color 1 and work 20 rows K1, P1 Ribbing. Transfer the Ribber sts. to main machine and continue in Stockinette stitch. Knit to Row 98 (108). SHAPE ARMHOLE: ON EACH SIDE, bind off 7 sts. then knit to Row 144 (162). Bind off the center 14 sts., put the needles on the left into holding position and complete the right side first. Knit to Row 150 (168)*ON NECK SIDE, bind off 3 sts. 2x. After Row 150 (168), bind off the remaining sts. Bring the needles on the left into working position, knit 1 row to the left side, turn the Row Counter back to 144 (162) and complete the left half. Follow the instructions from *.

SLEEVES: III

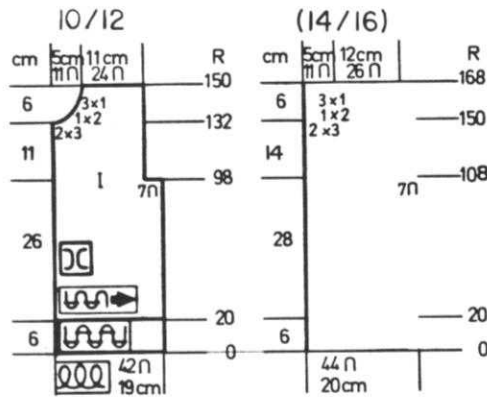
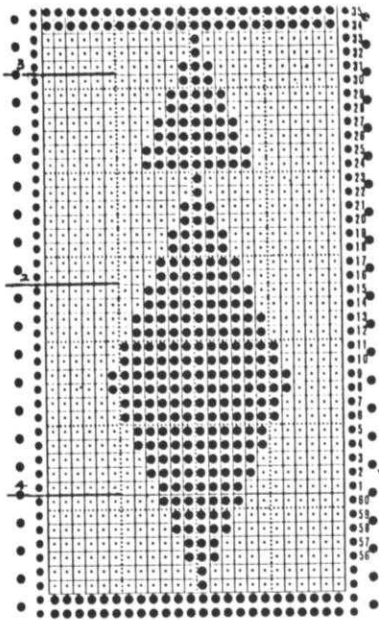
Cast on 52 (56) sts. with color 1 and work 20 rows K1, P1 Ribbing. Continue in Stockinette stitch. ON EACH SIDE, increase 1 st. every 8th row 5x (10x) every 6th row 9x (4x). MARK ROW 122 (132) for setting in sleeve. After Row 132 (142), bind off.

NECKBAND:

Cast on 100 sts. with color 1 and work 8 rows K1, P1 Ribbing. Bind off or remove onto contrast waste yarn.



KK 2024



BUTTON AND BUTTONHOLE BAND.
Make 1 without buttonholes.

Cast on 116 (128) sts. with color 1 and work K1, P1 Ribbing.
After Row 5 - MAKE BUTTONHOLES.
There are 7 buttonholes made over 2 sts. Begin with 3 sts. on machine and end with 3 on machine. Make Buttonholes over 2 sts. with 16 (18) sts. in between each thereafter.
After Row 10, bind off or remove onto Contrast waste yarn.

FRONT: I Make 1, reverse 1.

IMPORTANT NOTE: The Fair Isle Design for the RIGHT SECTION, begins at a LOWER Row Number than for the LEFT SECTION - See Picture. Please watch for this in the instructions given.

RIGHT FRONT: - Cast on 42 (44) sts. with color 1 and work 20 rows K1, P1 Ribbing.
Continue in Stockinette stitch with FAIR ISLE DESIGN to begin after Row 62 (80).
ON THE RIGHT, leave 23 (24) sts. and ON THE LEFT, 18 (19) sts. with the FAIR ISLE Design in between. Follow the changes in color as shown on the PUNCH CARD until design is completed 1 time only.
After Row 98 (108) SHAPE ARMHOLE on the right same as you did for the back and after Row 131 (149), SHAPE NECK: Bind off 3 sts. 2x, 2 sts. 1x, 1 st. 3x. After Row 150 (168), bind off the remaining sts.

FOR THE LEFT SECTION - Work Same as right EXCEPT, work the FAIR ISLE DESIGN after Row 82 (100) leaving 18 (19) sts. on the RIGHT and 23 (24) sts. on the LEFT with Fair Isle Design in between. Work Armhole Shaping on the left and Neck Shaping on the right.

DK 2025

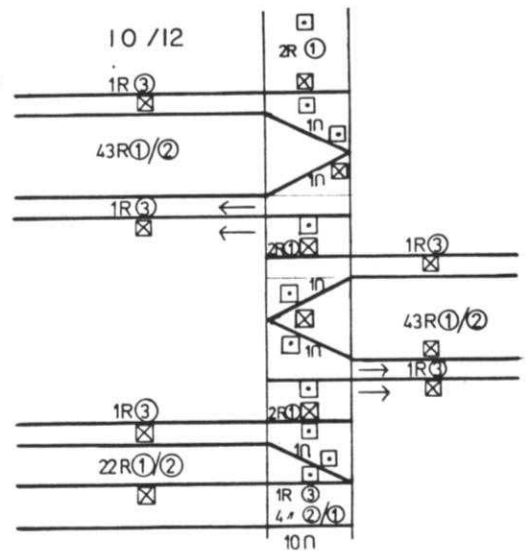
WOMAN'S COAT - EVERY OTHER NEEDLE

SIZE: 10/12
YARN: SEE KNITTING NEWS
color 1 500
color 2 400
color 3 150 Use 3 strands.
TENSION: 5 for Stockinette
6 for Pattern
GAUGE: Stockinette stitch
20 sts. 18 rows = 5 cm (2")
Pattern
13 1/2 sts. 23 rows = 5 cm (2")



SLEEVE BAND:

With knit side facing you, pick up 25 sts. from sleeve edge over EVERY OTHER NEEDLE.
With color 1 and 2 knit 2 rows.
1 row color 3
2 rows color 2
1 row color 3
2 rows color 1 and 2
Bind off.
Fold in half and sew in place.

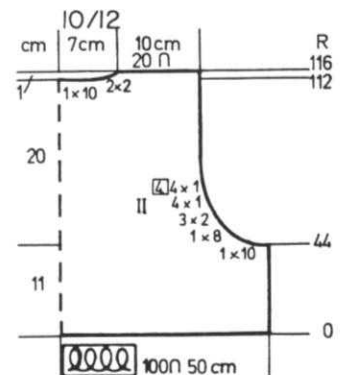


NECKBAND: LEFT SIDE.

Before knitting the neckband, you must sew the YOKE and CAPELET shoulders together. The sleeves are sewn to the Yoke and Capelet as well.
With right side facing, pick up the sts. for 1 half of neckband beginning at center back and working toward front.
Pick up 30 sts. on the LEFT side then cast on 70 sts. on the RIGHT. Knit 40 rows with colors 1 and 2. Bind off loosely.
Reverse for other half.

BACK YOKE II (Be sure you have made the lower section of coat first.)

Pick up 100 sts. along top edge of coat, beginning at side edge marked by ARROW. (EVERY NEEDLE)
With color 1 and 2, work Stockinette stitch. (8 points across back)
After Row 44, SHAPE ARMHOLE: ON EACH SIDE, bind off 10 sts. 1x, 8 sts. 1x, 2 sts. 3x, 1 st. 4x, 1 st. every 4th row 4x.
After Row 111, SHAPE NECK; Bind off 10 sts. 1x, 2 sts. 2x.
After Row 116, bind off the remaining sts.



continued

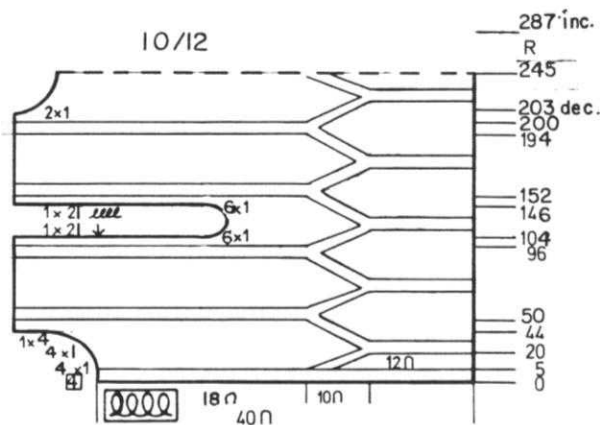
DK 2025

CAPELET:

Permanent (e) cast on 40 sts. over every other needle with colors 1 and 2. Please follow the instructions for LOWER Coat POINTS changing the number of sts. used for short rows as shown on the Chart.

Front neck shaping is on the left as is armhole and back neck shaping. Follow the chart for all shapings. Mark Row 245 for center of back. Begin at row 287, to INCREASE for back neck, then work in REVERSE for 2nd half.

When completed, bind off loosely.



DK 2026

WOMAN'S DRESS & SHAWL

SIZE: 6/8
 YARN: SEE KNITTING NEWS
 color 1 300
 color 2 300
 color 3 100 Heavy Silky Yarn.

TENSION 9 or 10 plus Ten. 4.
 GAUGE:
 2 strands, 6 sts. 26 rows EVERY OTHER NEEDLE
 1 strand, 5 sts. 26 rows



Stockinette stitch plus SHORT ROWS in a STRIPE Pattern as given in the instructions.

FINISHING: See General Instructions. Crochet lower section to skirt (See Picture) using a slip stitch on the right side with color 3. Weave seam. Attach band to neck edge and sew on straps. Sew fringe onto each end of shawl.

FRINGE:

Permanent cast on (e) 5 sts. on the left (EVERY NEEDLE). Skip 60 needles, cast on 1 needle. Knit Stockinette stitch with color 1 as long as needed for ends of Shawl. Every 10 rows, drop single end needle, cast on again. This must be unravelled (see picture). Sew Fringe to edges of Shawl.

SHAWL: Make 1, reverse 1.

STRIPE PATTERN:

4 rows color 1
 6 rows color 2
 ALL SINGLE STRAND OF YARN.

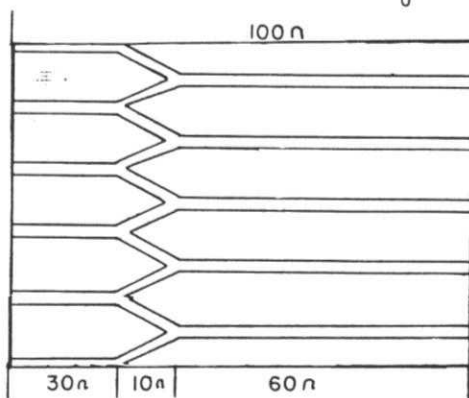
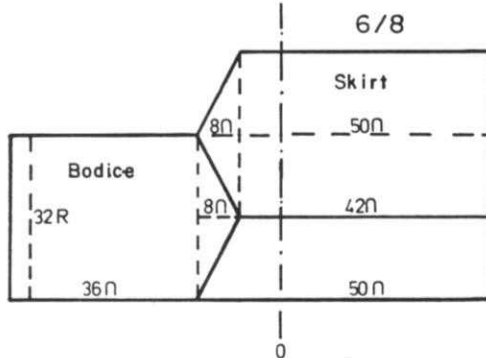
Permanent (e) cast on 100 sts. OVER EVERY OTHER NEEDLE. Knit 10 rows color 1. Follow POINTS same as on the Instructions for Dress. 1 color point, make 5. Stripe Pattern Point, make 5. After points are completed end with 10 rows color 1 over all needles. Bind off loosely.

BODICE WITH POINTS

USE 2 STRANDS OF YARN THROUGHOUT. STRIPE PATTERN:

4 rows color 1
 6 rows color 2

With contrast waste yarn, cast on 86 sts. OVER EVERY OTHER NEEDLE. Knit 9 rows waste yarn, 1 row Ravel Cord left to right side. ON THE LEFT, put into holding position 36 needles. Knit 2 rows color 2.



*Bring 1 needle into holding position, knit 2 rows 8x in stripe Pattern. Bring carriage across to the left without yarn.

ON THE RIGHT, put 50 needles into working position.

Knit 1 row color 3 to the right.

All needles in working position, knit 3 rows color 1 (1 strand).

ON THE LEFT, leave 44 needles in working position, 42 needles on the RIGHT in holding position.

Knit 1 row with color 3.

Bring carriage across without yarn to the left BUT DO NOT CUT YARN.

ON THE RIGHT, bring 8 needles into holding position, knit 2 rows color 1.

Push back 1 needle, knit 2 rows 8x.

Bring into holding position 1 needle, knit 2 rows 8x.

Bring carriage across without yarn to the right.

Push back 8 needles on the right into working position (total 44 needles).

Knit 1 row color 3.

1 point is completed.

Knit 3 rows color 1 (1 strand) over all needles.

Bring 36 needles on the left into holding position.

Knit 1 row color 3.

Bring carriage across to the right without yarn.

Bring 8 needles on the left into holding position (total 44 needles in holding).

Knit 2 rows color 2.

Push back 1 needle and knit 2 rows 8x in stripe pattern.

REPEAT FROM * 9x MORE (10x in all).

Remove onto contrast waste yarn.

continued

DK 2026

STRAPS: EVERY OTHER NEEDLE
 Make 2.
 Permant (e) cast on approximate
 50 sts. (EVERY OTHER NEEDLE)
 Knit 4 rows color 1 with 1 strand.
 1 row color 3
 * 4 rows color 1 with 2 strands.
 1 row color 3
 REPEAT FROM * 2x MORE.
 Knit 4 rows color 1 (1 strand
 Bind off.
 Fold strap to the center and sew
 seam.

LOWER EDGE OF DRESS -Made Separately.
 using 1 strand of yarn.
 Permanent (e) cast on 20 sts.
 OVER EVERY OTHER NEEDLE with color 1.
 Knit in Stockinette stitch long
 enough to go around full width of
 dress(front and back).
 Bind off loosely. Sew short ends
 together.

POINTS for lower edge of dress.
 Use 1 strand of yarn throughout
 and work STRIPES as follows.
 4 Rows color 1, 6 rows color 2.
 Permanent cast on (e) 15 sts. over
 EVERY OTHER NEEDLE.
 Knit 1 row color 1.
 *Knit 1 row color 3.
 Continue with stripes and SHORT
 ROWS.
 Bring Carriage across machine
 without yarn to the left side,

then on the right side, put into
 holding position 11 sts. knit
 2 rows color 2.
 Bring back into working position
 1 st. knit 2 rows 11x.
 Put into holding position
 1 st., knit 2 rows 11x.
 Bring carriage across machine
 without yarn to the right side.
 Knit 1 row over all needles right
 to left with color 3.
 Knit 1 row with color 1 left to
 right.
 Bind off 11 sts. loosely on the
 right.
 Immediately cast on over same
 needles (e cast on).
 All needles in work, knit 1 row
 color 1.
 REPEAT FROM * 11x MORE.
 Bind off.

DK 2027

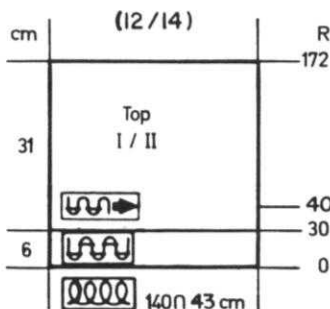
WOMAN'S 3-PIECE SUIT

SIZE 12/14
 YARN: Venetia
 GRAMS:
 color 1 600
 color 2 50
 color 3 50
 TENSION: 5 for Top and Jacket
 4 for Skirt
 GAUGE: Top & Jacket = 16 sts.
 23 rows = 5 cm (2")
 Skirt = 18 sts, 23 1/2
 rows = 5 cm (2")



The Top and Jacket are
 Stockinette stitch. The Skirt
 is a Rib Pattern. The Design
 on Top is isolated and is
 knitted on the 910 machine
 (or any Electronic machine).
 Send 50¢ and a large self
 addressed stamped envelope
 for copy of original drawing.
 You can knit the suit on any
 Punch Card machine, but use
 a 24 stitch Pattern of your choice
 for isolation, making sure you
 place it in a suitable position.
 Ribbing is used for waistband
 of top. Bands for the Jacket
 are a special Decorative Hem
 which is given in the Practical
 Knitting Hints for this issue.

FINISHING: See General Instructions.
 Turn bands to the inside and sew
 in place. Carefully press bands
 as shown in picture.

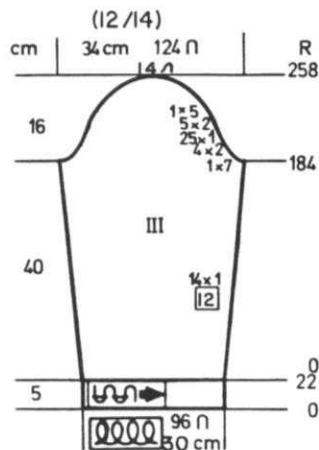
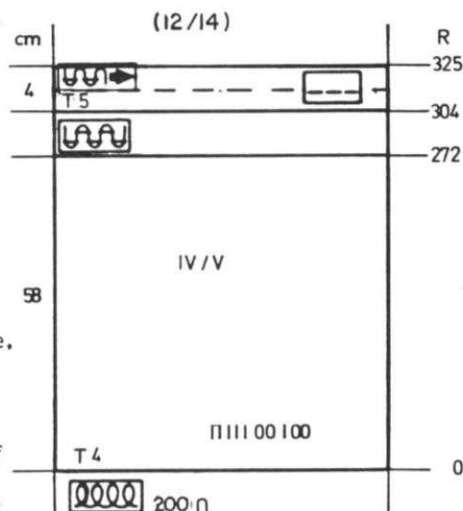


SKIRT: IV/V Make 2 sections the same.

Full Needle cast on both beds. Ten.4,
 200 sts. each bed. Color 1.
 After The Cast on Rows (see your
 instruction Manual) Set up Pattern of
 *5 sts. on the Main machine, 2 sts.
 on the Ribber, 1 st. on main machine,
 2 sts. on the Ribber. REPEAT from *.
 Continue in Ribbing Pattern.
 After Row 272, Set up for K1, P1
 Ribbing. Knit to Row 304.
 Transfer all sts. to main machine
 and with Tension 3 knit in Stock-
 inette stitch to Row 325. Bind off.
 Turn Stockinette stitch to the
 inside and sew in place. Pull
 elastic through casing.

TOP: I/II Make 2 sections the same.

Cast on 140 sts. with color 1 and
 work 30 rows K2, P2 Ribbing.
 Transfer the Ribber sts. to main
 machine and continue in Stockin-
 ette stitch. After Row 40,
 Begin the Fair Isle Design
 on the LEFT side.
 When design is completed, con-
 tinue in Stockinette stitch to
 Row 172. Bind off or remove
 onto contrast waste yarn.
 Make the Decorative Hem for
 top (SEE PRACTICAL KNITTING
 HINTS - this issue) and with
 purl side facing you, hang the
 sts. across the top edge (140)
 onto these needles and bind off
 loosely.

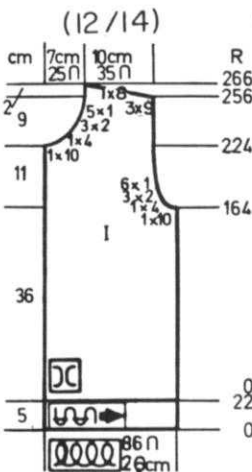


SLEEVES: III

Cast on 96 sts. with color 1
 and work the DECORATIVE HEM same
 as you did for back and fronts.
 After hanging the hem, put Counter
 at 0.
 ON EACH SIDE, increase 1 st. every
 12th row 14x.
 After Row 184, SHAPE CAP:
 ON EACH SIDE, follow the bind-offs
 as shown on the Chart. After Row
 258, bind off the remaining sts.

DK 2027

JACKET FRONT: I Make 1, reverse 1.

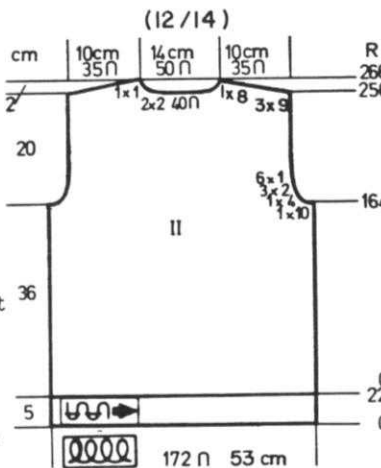


Cast on 86 sts. with color 1 and work the DECORATIVE HEM same as you did for the back. Continue in Stockinette stitch. R After Row 164, SHAPE ARMHOLE same as the back, then knit to Row 225. SHAPE NECK: Bind off 10 sts. 1x, 4 sts. 1x, 2 sts. 3x, 1 st. 5x and after Row 256, SHAPE SHOULDER same as the back.

FRONT BANDS AND NECKBAND.

With purl side facing you, pick up the sts. along 1 side of front and work the DECORATIVE HEM as before. Bind off loosely. Turn hem to inside and sew in place. Make band on second front in the same way. Pick up sts. around neckline and work Decorative Hem in the same way.

JACKET BACK: II



Cast on 172 sts. with color 1 and work the DECORATIVE HEM (SEE PRACTICAL KNITTING HINTS, this issue). Continue in Stockinette stitch. R After Row 164, SHAPE ARMHOLE: ON EACH SIDE, bind off 10 sts. 1x, 4 sts. 1x, 2 sts. 3x, 1 st. 6x. After Row 256, bind off the center 40 sts., put the needles on the left into holding position and complete the right side first. *SHAPE SHOULDER AND NECK AT THE SAME TIME. FOR SHOULDER, bind off 9 sts. 3x, 8 sts. 1x. FOR NECK, bind off 2 sts. 2x, 1 st. 1x. Bring the needles on the left into working position, knit 1 row to the left side, turn the Row Counter back to 256 and complete the left half. Follow the instructions from *.

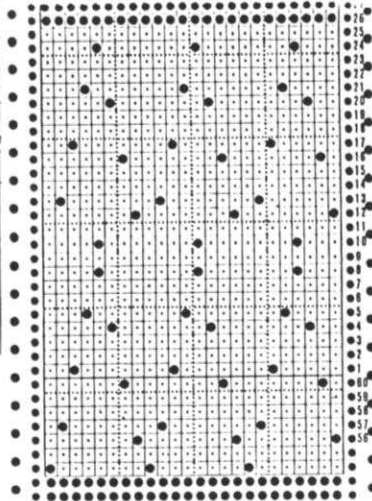
DK 2028

WOMAN'S 3-PIECE SUIT

SIZE: 8/10
YARN: Light weight loopy yarn using 1 or 2 strands as Pattern instructions.

GRAMS:
JACKET & SKIRT
color 1 800
color 2 200 HEAVY SILK YARN
PULLOVER
color 1 200
color 2 200
color 3 100

NO KIT AVAILABLE
TENSION: 5
GAUGE: Jacket & Skirt
6 sts. 23 rows = 5 cm (2")
Pullover
13 1/2 sts. 26 rows = 5 cm (2")



PULLOVER COLLAR:
Punch Lace Card No. 2.

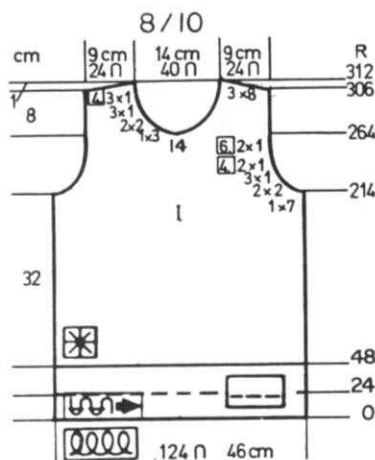
Cast on 158 sts. with color 3. Work Stockinette stitch. 4 rows color 3 4 rows color 1 4 rows color 3. Hang the hem. Knit 1 row with color 2 then break yarn. ON EACH SIDE, remove 16 sts. onto waste yarn. Work Pattern as follows: *4 rows Stockinette stitch 10 rows Lace REPEAT FROM * 1x MORE. 4 rows Stockinette stitch. Bind off loosely. Bring the 16 sts. ON EACH SIDE held on waste yarn up on side edge of collar and sew in place. Sew collar to neckline (see picture).

The Jacket & Skirt is knitted sideways on the machine OVER EVERY OTHER NEEDLE in Pattern Stripes. The Pullover is a Tuck and Lace Pattern knitted over EVERY needle. The Purl side of garment is the right side. Punch Cards.

FINISHING: See General Instructions.

JACKET SLEEVE BANDS

With color 1 (2 strands), cast on 24 sts. OVER EVERY OTHER NEEDLE. Knit 2 rows color 1 1 row color 2 2 rows color 1 (1 strand) 1 row color 2 4 rows color 1 (2 strands) With knit side of sleeve facing you, hang the sleeve edge onto these needles doubling as needed, then bind off. Fold band to the inside and sew in place. (See picture).

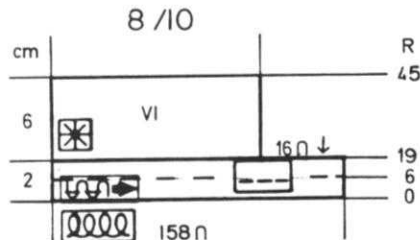


PULLOVER FRONT: I

Work the front the same as the back except for NECK SHAPING. Please follow the Chart.

PULLOVER TIE

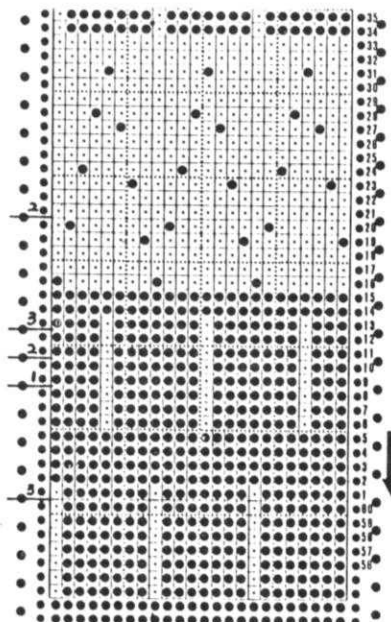
Cast on 10 sts. with single strand of color 1. Work Stockinette stitch for 24 inches (60 cm). Bind off. Make bow and sew to center front.



continued

DK 2028

2 rows color 1 (1 strand) Set Card from right to left on 2nd row. (for color changer).
 *8 rows TUCK with color 3, release Tuck.
 2 rows color 1
 2 rows color 2, then push in Tuck Buttons.
 8 rows color 3, release Tuck
 2 rows color 2
 10 rows LACE with color 2, push in Tuck. REPEAT FROM * THROUGHOUT.



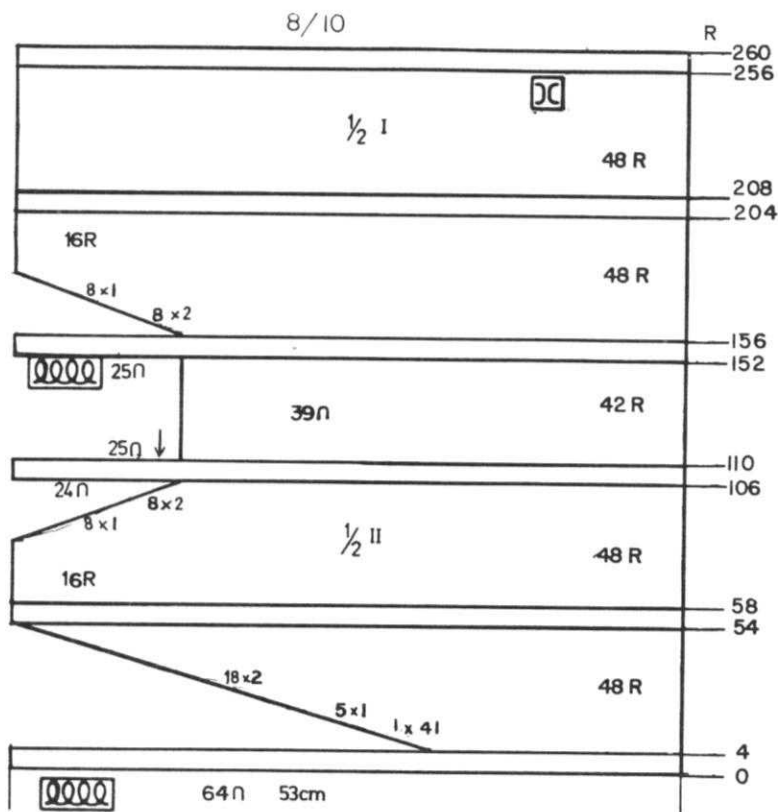
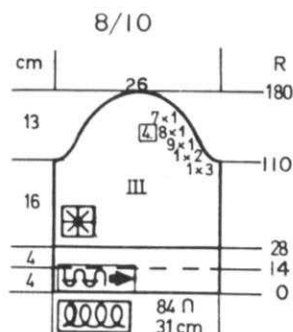
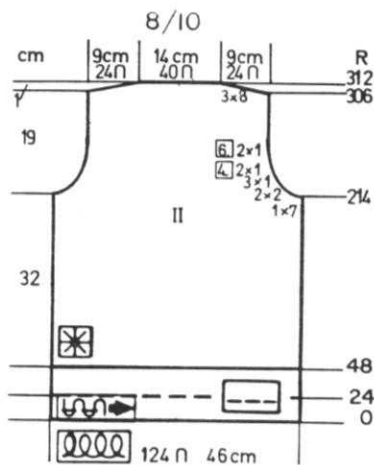
PULLOVER BACK: Punch Card No. 1. II USE THE COLOR CHANGER. Follow the changes of color and Tuck and Lace Pattern as shown along side the Punch Card.

Bring 124 needles into working position, then push back to the out of work position every 3rd needle.
 Cast on over the remaining needles in work with color 1 (2 strands).
 With Tension 4, knit 23 rows.
 Tension 6, knit 1 row.
 Tension 4, knit 24 rows.

Bring empty needles into working position and hang the hem.
 Continue in Pattern, following the instructions along side the Punch Card for color and Tuck and Lace Pattern.
 After Row 214, SHAPE ARMHOLE ON EACH SIDE as shown on the Chart.
 After Row 306, SHAPE SHOULDER as shown on Chart.
 After Row 312, bind off the remaining sts.

SLEEVE: III

Bring 84 needles into working position then push back every 3rd needle. Work the MOCK RIBBING same as you did before. After Row 28, bring empty needles into working position. then hang hem.
 Continue in Pattern same as front and back and after Row 110, ON EACH SIDE SHAPE CAP AS SHOWN ON THE CHART.
 After Row 180, bind off the remaining sts.

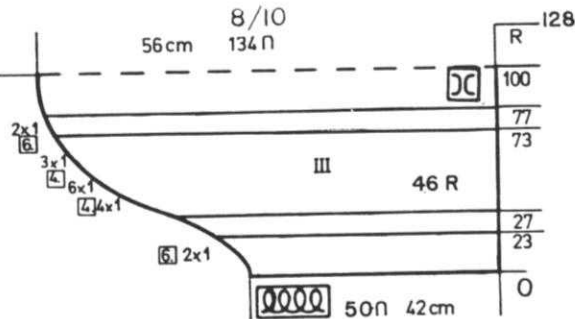


JACKET: Knitted sideways.

Permanent edge cast on ('e') 64 sts. with color 1 OVER EVERY OTHER NEEDLE using 2 strands.
 Knit 2 rows color 1
 *Knit 1 row color 2
 2 rows color 1 (1 strand)
 1 row color 2 **

Knit 48 rows with color 1 (2 strands) BUT AT THE SAME TIME, WORK SHORT ROWS.
 ON THE LEFT, put into holding position 41 sts. 1x.
 Bring back into working position 1 st. 5x, 2 sts. 18x.
 ALL NEEDLES IN WORK, work the color stripes from * to **.
 Knit 16 rows with color 1 (2 strands).
 WORK SHORT ROWS: ON THE LEFT, put into holding position, 1 st. 8x, 2 sts. 8x.
 ALL NEEDLES IN WORK, then work the color stripes from * to **.
 ON THE LEFT, bind off 25 sts. (Armhole).
 Knit 42 rows with color 1 (2 strands). ON THE LEFT, cast on 25 sts.
 Work the color stripes from * to **.
 WORK SHORT ROWS: ON THE LEFT, put into holding position, 24 sts.
 Bring back into working position, 2 sts. 8x, 1 st. 8x.
 Knit 16 rows.
 Work the color stripes from * to **.
 Work 48 rows with color 1 (2 strands). You have completed half the jacket. Work the second half in REVERSE.
 When Jacket is completed, bind off loosely.

DK 2028



SLEEVES:

Permanent cast on same as for Jacket. 50 sts. with color 1 (2 strands). FOLLOW THE CHART, working the color stripes same as for Jacket beginning with 23 rows color 1 followed by 46 rows between the color stripes. AT THE SAME TIME, SHAPE CAP ON THE LEFT SIDE AS SHOWN ON THE CHART. AFTER ROW 128, REVERSE THE SHAPINGS. When sleeve is completed, bind off loosely.

JACKET LOWER BAND (Be sure to knit this BEFORE FRONT BANDS).

Cast on 100 sts. OVER EVERY OTHER NEEDLE with color 1 (2 strands). Knit 36 rows Stockinette st. then HANG HEM. Hang the lower edge of Jacket onto these sts. with knit side facing you. Bind off loosely.

JACKET FRONT & NECK BANDS
Make 1 with Buttonholes.

Cast on 100 sts. OVER EVERY OTHER NEEDLE with color 1 (2 strands).
Work 24 rows Stockinette stitch making BUTTONHOLES after Rows 8 and 16 as follows: Leave 4 sts. make buttonhole over NEXT 1 st. Leave 6, buttonhole over next st. Make 2 more buttonholes with 6 sts. in between.
After Row 24, HANG HEM. With knit side facing you, hang the front and half the back neck onto these needles. Bind off loosely.
Work the left side band in the same way but OMIT buttonholes.

SKIRT: IV/V

With contrast waste yarn, cast on 82 sts. OVER EVERY OTHER NEEDLE. Knit 9 rows waste knitting, 1 row with ravel cord. Change to color 1 (2 strands).
*Knit 14 rows.
Knit 1 row color 2.
2 rows color 1 (1 strand).
1 row color 2
Knit 32 rows color 1 (2 strands) ON THE LEFT, pick up 6 sts. from the first of the 32 rows color 1 to form a pleat.
REPEAT FROM * for a total of 20 stripes ending with 18 rows of color 1 (2 strands).

SKIRT WAIST BAND: Make 2

Measure your waist, then cast on the required number of sts. OVER EVERY OTHER NEEDLE and with color 1 (2 strands) Knit 20 rows stockinette st. Hang half the skirt waist to these needles and bind off. Fold to the inside and sew in place.

BAND FOR LOWER EDGE OF SKIRT
Make 2 sections.

Cast on 100 sts. OVER EVERY OTHER NEEDLE. WORK THE SAME AS FOR THE SLEEVE BANDS.

DK 2029

WOMAN'S JACKET & PANTS

SIZE: 6/8
YARN: SEE KNITTING NEWS
color 1 300
color 2 300
color 3 100 -Heavy silky Yarn
NO KIT AVAILABLE.
TENSION: 9 or 10 for double yarn, tension 4 for single strand of yarn.
GAUGE: 2 strands = 6 sts. 26 rows = 5 cm (2")
Single Strand = 5 sts. 26 rows = 5 cm (2")

Stockinette stitch and Short Rows using single or double strands of yarn as given in the instructions. KNITTED OVER EVERY OTHER NEEDLE and knitted sideways. The Purl side is the right side. Front band is stockinette stitch using double yarn.



FINISHING: See General Instructions. Gather Peplum and sew onto bodice. Make cord 60" long and pull through at waist. Finish buttonholes and sew on buttons. Make cords for legs 20" long and pull through casing and tie.

FRONT BANDS:

LEFT FRONT EDGE: With knit side facing you, hang left front and half the back neck onto 57 needles (EVERY OTHER).
Knit 20 rows.
Bind off. Fold to the inside and hem in place.

RIGHT FRONT EDGE: Work in the same manner, but make 4 buttonholes evenly spaced down the front.

SLEEVE BANDS:

Cast on 24 sts. OVER EVERY OTHER NEEDLE with color 1 and permanent edge ('e').
Knit 6 rows color 1, 1 row color 3, 2 rows color 1, 1 row color 3, 2 rows color 1.
With knit side facing you, hang the edge of the sleeve onto these 24 needles.
Bind off. Fold in half to the inside and hem in place.

continued

DK 2029

6/8

JACKET BODICE - DO NOT COUNT THE SHORT ROW DESIGN at top of Bodice.

Permanent cast on ('e') color 1 EVERY OTHER NEEDLE -16 sts. to the right of 0, 38 to the left of 0. Knit 2 rows then work Short Rows. ON THE LEFT SIDE, put into holding position 38 needles, knit 2 rows. Push back into working position (each time knitting 2 rows) 2 sts. 11x, then 1 st. 4x, 6 sts. 2x.

ON THE LEFT, bring into holding position 5 sts. 1x, 1 st. 9x (total 14 needles).

All needles in work, knit 1 row with color 3.

Knit 1 row with color 1 with 1 strand of yarn and Tension 4.

Return Carriage to the left side WITHOUT YARN.

Leave 14 needles on the left in working position, all other needles in holding position.

With color 3, knit 1 row left to right.

Remove yarn from Feeder but do not cut yarn.

Return carriage to the left side WITHOUT YARN.

Bring 9 needles on the right into holding position.

With color 2, knit 2 rows.

With with A STRIPES.

Push back into working position 1 st., knit 2 rows 9x.

Bring 1 st. into holding position knit 2 rows 9x.

Remove yarn from feeder and bring carriage across from left to right WITHOUT YARN.

All 14 needles in working position, Knit 1 row with color 3.

Remove yarn from feeder and go CLEAR ACROSS to the right without yarn.

ALL NEEDLES IN WORKING POSITION, With 1 strand of color 1, knit 1 row across all needles.

Knit 1 row color 3.

ON THE LEFT SIDE, Bring 14 needles into holding position.

Knit 2 rows color 1

*Push back 1 st. knit 2 rows color 1 and REPEAT till 9 sts. are back in working position.

ALL NEEDLES across needle bed in working position.

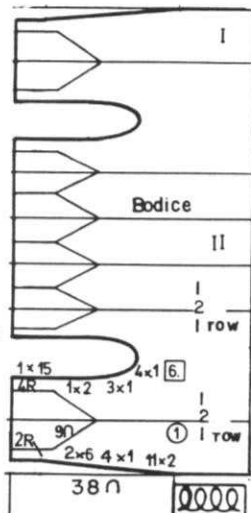
Knit 4 rows color 1.

SHAPE ARMHOLE: ON THE LEFT, bind off 15 sts. 1x, 2 sts. 1x, 1 st. 3x, 1 st. every 6th row 4x.

Cast on the sts. for armhole in REVERSE.

Knit 4 rows, then REPEAT THE POINTS 4x ending with 4 rows color 1 then make armhole same as before, knit 4 rows color 1 then make 1 more point.

Knit 2 rows, then reverse the FRONT SHAPING as shown on the Chart. Bind off.



JACKET PEPLUM

Cast on 23 sts. using permanent cast on ('e') and color 1 Work color stripes as follows:

A = 4 rows color 1 } 2 strands
4 rows color 2

B = 1 row color 3
2 rows color 1 = 1 strand Ten.4
1 row color 3

Knit the A Stripes 10x
Knit the B Stripes 1x

Knit 4 rows color 2 with 2 strands
Work the A Stripes 24x
Work the B Stripes 1x

*Knit 4 rows color 2 - 2 strands
Knit A Stripes 10x
Knit B Stripes 1x
REPEAT FROM * 2x

Knit 4 rows color 2 - 2 strands
Knit A Stripes 24x
Knit B Stripes 1x

Knit 4 rows color 2 - 2 strands
Knit A Stripes 9x

Knit 4 rows color 1 - 2 strands
Bind off.

SLEEVES: III

Permanent ('e') cast on EVERY OTHER NEEDLE with color 1.

ON THE LEFT side, 30 sts. and ON THE RIGHT 15 sts.

Knit 4 rows color 1, 4 rows color 2 AND REPEAT these stripes throughout.

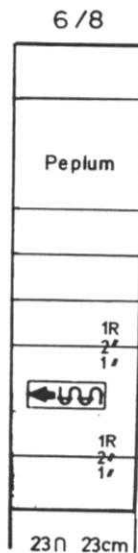
AT THE SAME TIME, after Row 10 SHAPE CAP:

Increase 1 st. 1x, then every 4th row, increase 1 st. 7x, every 8th row 1 st. 6x.

Knit 20 rows, then increase 1 st. Continue in stripes to Row 154.

REVERSE THE SHAPING (bind off) for the sleeve.

Bind off the remaining 15 sts.



PANTS: IV/V Make 1, reverse 1.

Permanent edge ('e') cast on OVER EVERY OTHER NEEDLE - 9 needles on the LEFT, 43 needles on the RIGHT. COLOR 1.

Knit 1 row color 1 - 1 strand. *ON THE RIGHT, put into holding position, 20 needle, knit 1 row color 3.

Remove yarn from feeder, don't cut yarn but move the carriage without yarn to the left side.

Bring 10 needles into holding position the RIGHT (total 30 needles in holding).

Work color stripes of 4 rows color 2, 4 rows color 1 BUT AT THE SAME TIME, push back into working position (SHORT ROWS) 1 st. 10x.

AT THE SAME TIME, ON THE LEFT SIDE, after Row 23,

follow the increases as shown the Chart and ON THE LEFT SIDE, bring into holding position, 1 st. 10x. Remove yarn from feeder, bring Carriage across to the right WITHOUT YARN.

Leave 20 needles on the right in holding position, and with color 3, knit 1 row to the left side.

All needles in work. With color 1 - 1 strand, knit 3 rows.

ON THE RIGHT SIDE, leave 30 needles in working position, all others in holding.

Knit 1 row color 3.

Remove yarn from feeder, bring carriage to the right without yarn.

Bring 10 needles on the left into holding position, knit 2 rows color 1.

Push back 1 needle, knit 2 rows 10x.

Bring 1 needle into holding position, knit 2 rows 10x.

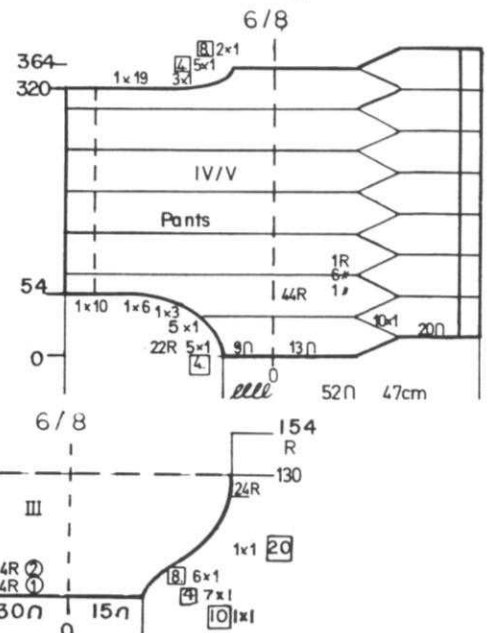
Remove yarn from feeder and move carriage to the LEFT without yarn.

30 needles in work on the RIGHT. With color 3, knit 1 row.

All needles in working position, knit 3 rows color 1 (1 strand).

REPEAT FROM * 6x MORE.

AT THE SAME TIME, after Row 321, work the FRONT CROTCH SHAPING on the LEFT as shown on the Chart.



DK 2030

WOMAN'S DRESS

SIZE: 6/8
 YARN: Mohair and Acrylic
 GRAMS:
 color 1 300
 color 2 50
 color 3 50
 NO KIT AVAILABLE
 TENSION: 9
 GAUGE: 10 sts. 15 1/2 rows = 5 cm (2")



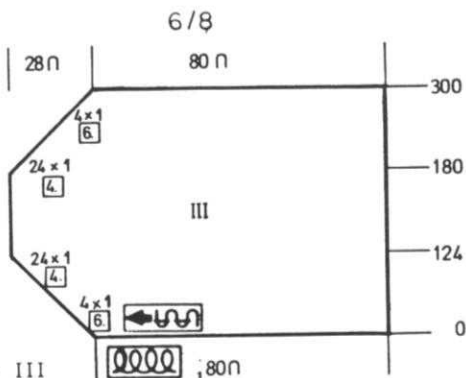
Stockinette stitch using single and double yarn. Knitted sideways on the machine. The purl side is the right side.

FINISHING: See General Instructions. Make hem at lower edge 1 1/2 cm (approx. 1/2"). Fold sleeve band to the inside and sew in place. Sew on flowers.

PATTERN STRIPES

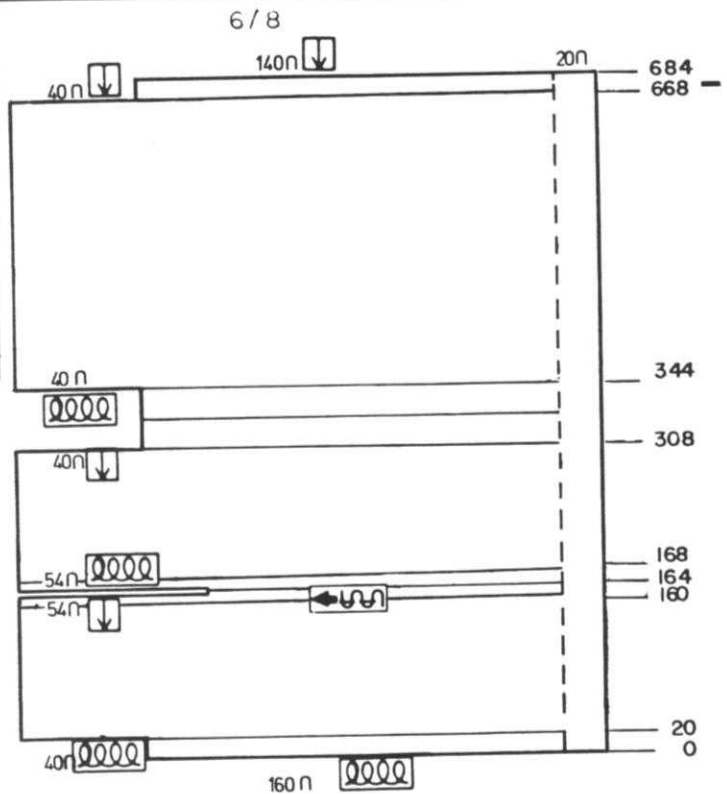
*16 rows color 1
 4 rows colors 1 and 2
 16 rows color 1
 4 rows colors 1 and 3
 REPEAT FROM *
 ALWAYS FEED Main color and Contrast color together in A Feeder.
 If you have Plating Yarn Feeder feed the contrast yarn in Plating position.

FLOWERS: Make 4 color 2, 2 color 1 FOR FLOWER INSTRUCTIONS, See DK 2032.



SLEEVES: IIII

Cast on 80 sts. with colors 1 and 3.
 Knit 4 rows.
 Continue in Stripe Pattern BUT AT THE SAME TIME, ON THE LEFT increase 1 st. every 6th row 4x, every 4th row 24x.
 After Row 124 *ON THE LEFT, put into holding position 1 st., knit 2 rows 6x.
 Knit 8 rows over ALL NEEDLES.
 REPEAT FROM * 2x MORE.
 After Row 180, ON THE LEFT, decrease 1 st. every 4th row 24x, every 6th row 4x.
 After Row 300, bind off loosely.



FRONT & BACK: I/II

With contrast waste yarn, cast on 60 sts. to the LEFT of 0 (160 sts.)
 Knit 8 rows waste yarn then 1 row with Ravel Cord. Counter at 0. Carriage is on the LEFT.
 ON THE RIGHT, put into holding position 20 needles.
 With colors 1 and 2, knit 4 rows. All needles in work, knit 16 rows BUT AT THE SAME TIME, after Row 19, cast on 40 sts. on the LEFT. (total 200 sts.)
 *ON THE RIGHT, put 20 needles into holding position, knit 4 rows colors 1 and 3.
 All needles in work, knit 1 row with color 1.
 ON THE LEFT, put 24 needles into holding position, knit 2 rows, then put into holding position 2 needles, knit 2 rows 6x.
 Knit 1 row over all needles. Being sure to continue with color stripes as given.

NECKBAND:

Cast on 140 sts. with color 1.
 *Knit 2 rows color 1
 2 rows color 2
 2 rows color 1
 2 rows color 3
 REPEAT FROM * BUT AT THE SAME TIME ON EACH SIDE, decrease 1 st. every 2nd row, then increase 1 st. every 2nd row.
 After Row 36, bind off.
 Sew one edge of band to neckline then fold in half and sew in place. (See Picture).

REPEAT FROM * to Row 160.
 Knit 2 rows with colors 1 and 2 over all needles.
 Leave 54 needles on the left in work, all others in holding position.
 Knit 2 rows with colors 1 and 2. With contrast waste yarn, knit 10 or 12 rows over the 54 sts. TURN ROW COUNTER BACK to Row 164. Knit 2 rows over the 54 needles with colors 1 and 2.
 ALL NEEDLES IN WORK, knit 2 rows colors 1 and 2.
 Continue in Pattern as given to Row 308.
 ON THE LEFT, bind off 40 sts. Knit 16 rows with color 1.
 Knit 4 rows colors 1 and 2.
 Knit 16 rows color 1.
 After Row 344, cast on 40 sts. (200 sts. in all).
 Continue in Pattern to Row 668. Bind off 40 sts. on the left. Knit 16 rows color 1.
 Remove the sts. onto contrast waste yarn.

SLEEVE BANDS:

Cast on 40 sts. with color 1
 Knit 36 rows.
 With knit side facing you, hang edge of sleeve to these sts., doubling as needed.
 Bind off loosely.
 Fold in half to the inside and sew in place.

DK 2031

WOMAN'S COAT

SIZE: 10/12

YARN: Mohair and Acrylic

GRAMS:

color 1 550

color 2 300

color 3 250

TENSION: 3 or 4

GAUGE: 6 sts. 10 rows = 5 cm (2")

A HOLDING POSITION DESIGN.

Select the needles BY HAND.

MADE ON THE BULKY KH 230 or

can be made on any Bulky machine.

The lower edge and collar edges are

scalloped. Follow the printed

instructions. The purl side is

the right side.

FINISHING: See General Instruc-

tions. Sew flowers in place.

See picture.

PATTERN for BODY OF COAT AND SLEEVES:

*Bring the 6th then every 12th needle into holding position, Knit 6 rows with colors 1 and 3. All needles in work, knit 4 rows with color 1 and 2. Bring the 12th and every 12th needle into holding position, knit 6 rows with colors 1 and 3. All needles in work, knit 4 rows with colors 1 and 2. REPEAT FROM *.

FLOWERS: Make 7 flowers with double strands of color 2 and 6 with double strands of color 1.

'e' cast on 31 sts. Knit 1 row. Bring the 1st, then every 6th needle into holding position, Knit 6 rows. Be sure to wrap the yarn around the outside needles in holding position. All needles in work, Knit 1 row. (make sure all needles knit). Remove the sts. onto long end of yarn (use tapestry needle or double eye transfer tool). Pull up and tie.

SLEEVES:

Cast on ('e') 48 sts. with colors 1 and 3 and work 40 rows Stockinette stitch then put Counter and 0 and mark for turn up cuff. Continue in Pattern. After Row 30, SHAPE SLEEVE: ON EACH SIDE, decrease 2 sts. every 2nd row 9x. After Row 50, bind off the remaining sts.



BACK: II

Cast on 80 st. using permanent cast on ('e') with colors 1 and 3.

Bring every 8th needle into holding position.

Knit 6 rows. All needles in work, knit 2 rows.

Put Counter at 0. Continue in Pattern as given.

ON EACH SIDE, decrease 1 st. every 38 rows 4x.

After Row 194, Mark each side for setting in sleeves.

After Row 214, bind off the center 24 sts., put the needles on the left into holding position and complete the right side first.

SHAPE SHOULDER AND NECK AT THE SAME TIME.

*FOR SHOULDER, bind off 7 sts. 3x.

FOR NECK, bind off 3 sts. 1x.

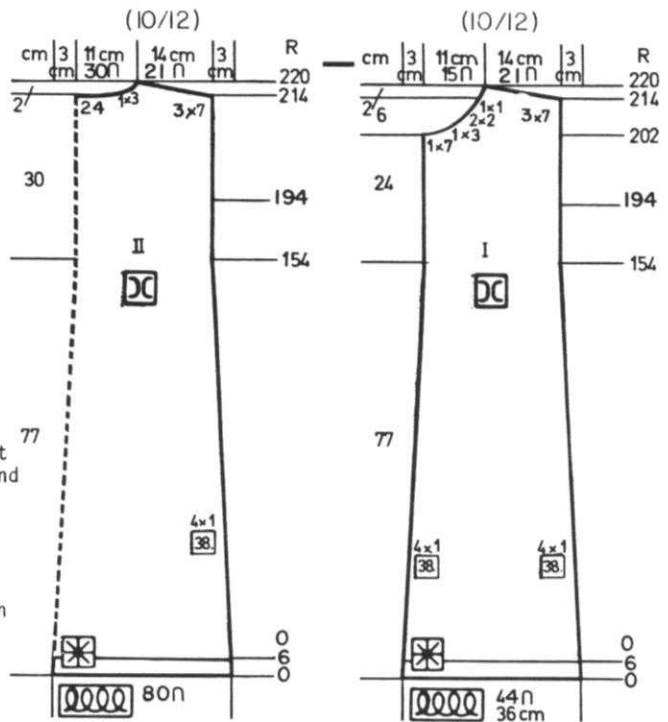
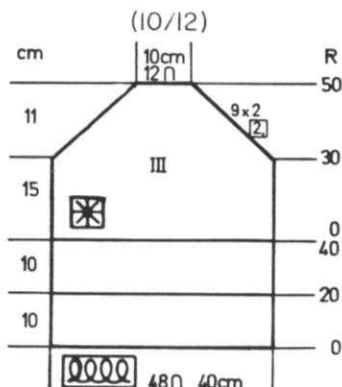
Bring the needles on the left into working position, knit 1 row to the left side, turn the Row Counter back to 214 and complete the left half. Follow the instructions from *.

COLLAR: Make 2 sections.

Cast on 60 sts. ('e') with colors 1 and 3 and work the scalloped edge same as you did for back and front.

Put Counter at 0 and continue in Stockinette stitch.

After Row 30, remove onto contrast waste yarn.



FRONT: I Make 1, reverse 1.

Cast on 44 sts. ('e') same as you did for the back.

Work the scalloped edge same as back then put Counter at 0 and continue in Pattern.

ON EACH SIDE, decrease 1 st. every 38th row 4x.

Mark Row 194 for setting in sleeve.

After Row 203, SHAPE NECK.

Bind off 7 sts. 1x, 3 sts. 1x, 2 sts. 2x, 1 st. 1x and after Row 214, SHAPE SHOULDER same as the back.

FRONT BANDS: Make 2.

With knit side facing you, pick up 110 sts. along front edge. Knit 16 rows Stockinette stitch with color 1 and 2. Bind off VERY LOOSELY. Turn band to the inside and sew in place (see picture).

NECKBAND:

Sew back seam of Collar first. (Shoulders should be completed). Cast on 110 sts. with color 1 and 2. You can use 'e' cast on or a loose crochet cast on. Knit 16 rows. With knit side of Collar facing you, couple up the sts. of Collar onto 19 sts. on each side of 0. (36 sts.). Now hang the neckline of coat onto these same 36 needles. Knit 1 row very loosely then make a loose crochet bind off. Fold band in half and sew to the inside. You can sew up the ties or leave them free.

DK 2032

WOMAN'S DRESS

SIZE: 6/8
 YARN: Mohair & Acrylic
 color 1 300
 color 2 50
 color 3 50
 color 4 50
 color 5 50
 NO KIT AVAILABLE
 TENSION: 9
 GAUGE: 10 sts. 15 1/2 rows = 5 cm (2")

Knitted sideways on the machine with color stripes and changes in color.

FINISHING: See General Instructions.



PATTERN STRIPES

The contrast color is always fed with the main color. If you have a plating yarn feeder, feed the contrast color in the plating position.

Knit 16 rows color 1
 4 rows colors 1 and 2
 16 rows color 1
 4 rows colors 1 and 3
 16 rows color 1
 4 rows colors 1 and 4
 16 rows color 1
 4 rows color 1 and 5

SLEEVES: III

Use contrast waste yarn for cast on same as dress.

Cast on 74 sts. to the LEFT of 0. After the waste knitting and Ravel Cord, put 10 needles on the LEFT into holding position and with color 1, knit 2 rows 4x in all. Knit 2 rows colors 1 and 5 OVER ALL NEEDLES.

Put 14 needles on the left into holding position and knit 2 rows with colors 1 and 5.

ON THE RIGHT SIDE, cast on 40 sts. *Knit 2 rows over all needles with color 1

ON THE LEFT, put into holding position, 14 needles, knit 2 rows.

Put 10 needles into holding position, knit 2 rows 6x in all.

ON THE RIGHT SIDE, pick up 10 sts. and hang them onto needles (same as for neck yoke).

ALL NEEDLES IN WORK, knit 2 rows colors 1 and 4.

Put 14 needles on the left into holding position, knit 2 rows colors 1 and 4.

REPEAT FROM *, changing colors every 4 rows.

After Row 307, pick up 10 sts. same as you did before.

Knit 1 row color 1

With color 1, bind off 40 sts. on the RIGHT. Cut yarn.

All needles in work, knit 2 rows with color 1 and 2.

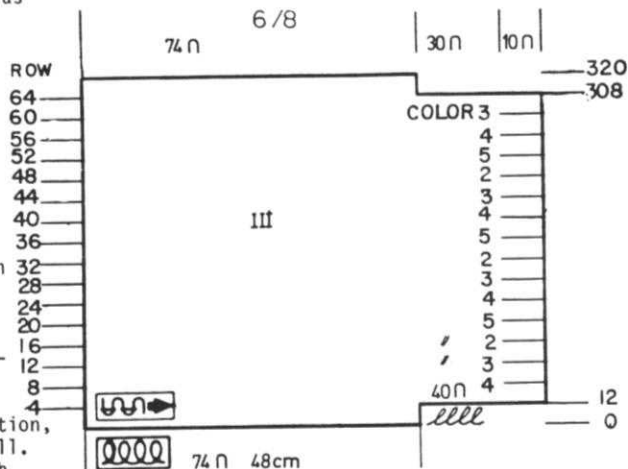
ON THE LEFT, put into holding position, 14 needles, knit 2 rows with colors 1 and 2.

Put 10 needles into holding position, knit 2 rows with color 1 3x in all.

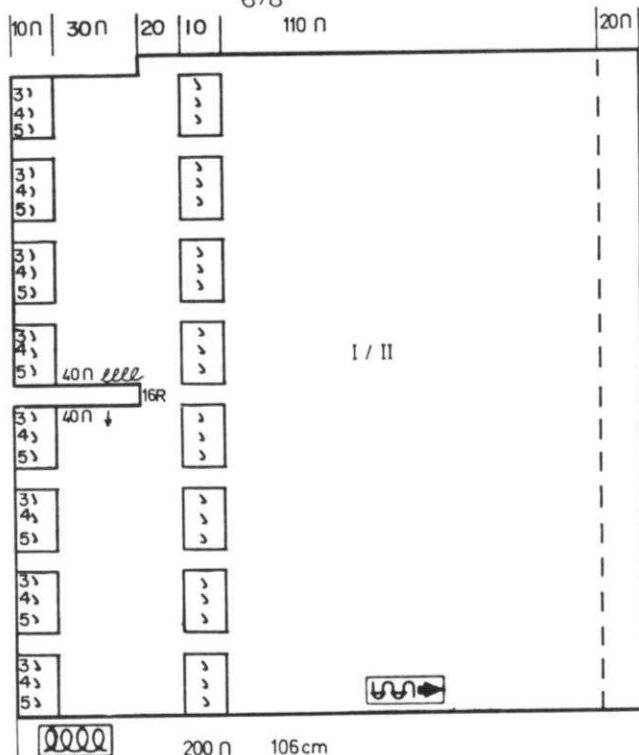
Knit 2 rows over all needles with color 1 then remove onto contrast waste yarn.

FLOWERS: Make 10, color 5.

Cast on (e) 31 sts. OVER EVERY OTHER NEEDLE.
 Bring the 1st and every 6th needle into holding position and knit 6 rows. Be sure to always wrap the end needles in holding position. All needles in work, knit 1 row. Break yarn, leaving a 6" end. Thread yarn into tapestry needle or double eye transfer needle and remove the sts. onto yarn. Pull up and tie securely.



6/8
110 n



DRESS: I/II

With contrast waste yarn, cast on 200 sts. After knitting 11 rows, knit 1 row to the right with Ravel Cord.

*Knit 4 rows colors 1 and 5. 16 rows color 1.

ON THE LEFT SIDE, pick up 10 sts. from the 4 rows color stripe and hang onto the last 10 needles. (You are forming the neck. See picture).

ON THE SAME ROW, you must form the WAIST in the same way as for the neck. Pick up the 30th to 21st st. ON THE LEFT and hang the sts. onto the needles.

Knit 4 rows color 1 and 4, 16 rows color 1

Form neck and waist same as before.

Knit 4 rows color 1 and 3, 16 rows color 1.

Form neck and waist same as before.

Knit 4 rows color 1 and 2, 16 rows color 1 - DO NOT HANG STS.*

REPEAT FROM * to * 4 times.

ON THE LEFT SIDE, remove 40 sts. onto contrast waste yarn.

Knit 16 rows color 1

ON THE LEFT SIDE, cast on 40 sts

REPEAT FROM * TO * 4 times.

ON THE LEFT SIDE, remove 40 sts. onto contrast waste yarn

Knit 16 rows color 1.

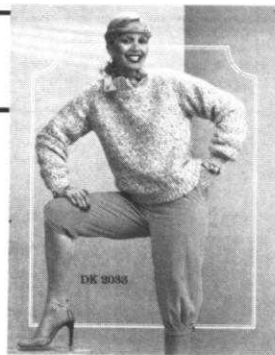
Remove onto contrast waste yarn.

NECKBAND:

Sew sleeves into place, leaving 1 section open.

With knit side facing you, hang 116 sts. from neckline onto machine. With color 5, knit 14 rows. Bind off or hang hem then bind off.

DK 2033



WOMAN'S PULLOVER

SIZE: 8
 YARN: Mohair & Acrylic
 color 1 200
 color 2 200
 color 3 200
 color 4 100
 NO KIT AVAILABLE
 TENSION: 4 to 6
 GAUGE: 8 1/2 sts. 10 rows = 5 cm (2")

Made on a Bulky Machine -
 KNITTING KH 230, CH 110, SK 120.

A Holding Position Design using every 12th needle. Select the needles by hand, placing them into position "E" (HOLDING). Knit with multiple strands of yarn as given for Pattern.

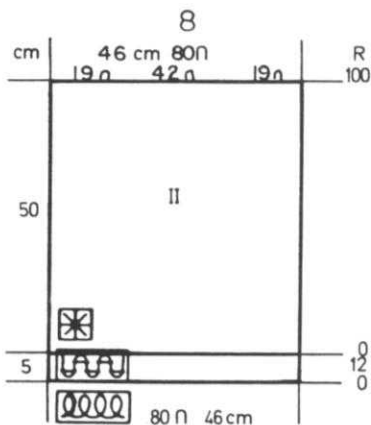
FINISHING: See General Instructions.

PATTERN: FEED MULTIPLE YARNS TOGETHER

*Put the 6th then every 12th needle into holding position.
 Knit 2 rows with colors 1, 2, 3, 4.
 Knit 4 rows with colors 1, 2, 3
 All needles in working position.
 Knit 2 rows with colors 1, 2, 3
 Put the 12th then every 12th needle into holding position.
 Knit 2 rows with colors 1, 2, 3, 4.
 Knit 4 rows with color 1, 2, 3
 All needles in working position.
 Knit 2 rows with colors 1, 2, 3
 REPEAT FROM * for Pattern.
 The Purl side is the right side.

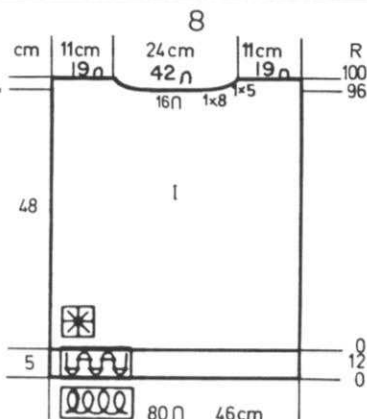
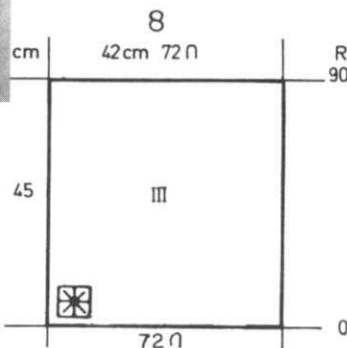
BACK: II

Cast on 80 sts. using colors 1, 2, 3 and work 12 rows K1, P1 Ribbing. CONTINUE IN PATTERN as given. Put COUNTER AT 0.
 Knit to Row 100.
 Remove 19 sts. ON EACH SIDE onto contrast waste yarn (for shoulder). Bind off or remove onto waste yarn, the center 42 sts.



SLEEVES: III

Cast on using Contrast waste yarn
 Knit 9 rows and 1 row with Ravel Cord.
 Put Counter at 0 and with garment yarn, continue in Pattern.
 After Row 90, bind off.



FRONT: I

Work the front the same as the back to Row 96.
 Bind off the center 16 sts. put the needles on the left into holding position and complete the right side first.
 *ON NECK SIDE, bind off 8 sts. 1x, 5 sts. 1x.
 After Row 100, remove the shoulder sts. onto contrast waste yarn. Bring the needles on the left into working position, turn the Row Counter back to 96 and complete the left half. Follow the instructions from *.

SLEEVE BAND:

Cast on 44 sts. with colors 1, 2, 3 and work 12 rows K1, P1 Ribbing. Transfer to main machine. Hang the open sts. of sleeve, decreasing 28 sts. evenly across. Bind off the sts. together loosely.

NECKBAND:

Leave 1 shoulder OPEN,
 Cast on 84 sts. with colors 1, 2, 3 and work 6 rows K1, P1 Ribbing. Transfer the Ribber sts. then hang the neck sts. onto these needles and bind off loosely together.

DK 2034



WOMAN'S PANTS & TOP

SIZE: 6/8
 YARN: Acrylic Mohair & 4-ply worsted yarn.
 GRAMS:
 color 1 400
 color 2 400
 color 3 100
 NO KIT AVAILABLE
 TENSION 7 to 8
 GAUGE: 11 1/2 sts. 20 rows = 5 cm (2")

Knitted sideways on the machine in Stockinette stitch with a special Weaving Design. The purl side is the right side. USE EVERY OTHER NEEDLE and the empty needles DO NOT COUNT in the gauge or instructions.

WAISTBAND:

Cast on 100 sts. over EVERY OTHER NEEDLE with colors 1 and 2. Knit 20 rows Stockinette stitch. Hang the center front of pants onto the center needles with back section of pants ON EACH END. Bind off loosely. Turn to the inside and sew in place. Pull Elastic through casing.

PATTERN:

Bring every 2nd needle into holding position.
 With color 3, 'e' wrap left to right.
 Knit 1 row with colors 1 and 2.
 Bring the same needles (every other) to holding position.
 With color 3, 'e' wrap from right to left.
 Knit 1 row with colors 1 and 2 from left to right.



KNITTING NEWS

PRACTICAL KNITTING HINTS

There are different ways for making and completing a Mock Rib. You can leave every 2nd needle out of work or every 3rd needle out of work. Usually, you will knit twice the amount of rows so that when you pick up the stitches and hang them onto the machine, you will form a hem to give more body to the ribbing.

Make a practice piece for each of the 3 methods using the yarn you will use for your garment then you can decide which one you prefer.

Bring 100 needles into working position, push back every 2nd needle to the out of work position (or you can push back every 3rd needle).

Cast on over the remaining needles in work, using whatever cast on method you prefer.

Lower Tension at least 2 numbers below garment tension. Knit 40 rows (20 for under side and 20 for upper half).

Bring the empty needles into working position.

1. Hang the cast on sts. so that you will fill the empty needles. Your hem will be slightly off center (1 stitch off) but you will NOT have a hole when you knit the 1 row to close the hem. Always knit the hem closing row using 1 tension larger than garment tension, then remember to turn tension to correct number.

2. Hang the cast on sts. onto needles with stitches on them then knit the closing row as given in 1. You will have a hole across the top of the Ribbing hem, but sometimes you might like this for added decoration.

3. Hang the cast on sts. onto needles with stitches on them, then pick up a stitch from the row below to hang onto the empty needles. There will be no hole when you knit the closing row as given in 1.

BANDS FOR DK 2027

The Decorative Bands for DK 2027 are used for the front, back and Sleeve of Jacket and for the top of the Camisole. Work as follows:

Knit 4 rows color 1, 2 rows color 2.

Picot across - Transfer every other stitch to neighboring needle (can use Lace Carriage).

Leave empty needles in working position.

Knit 2 rows color 2, 6 rows color 1, 2 rows color 3. Picot across same as before.

Knit 2 rows color 3, 4 rows color 1.

Hang the hem and bind off.

IMPORTANT

If you are knitting DK 2025, DK 2026, DK 2028, DK 2029, DK 2030, DK 2032, DK 2034, these garments are knitted sideways on the machine and it is necessary for you to pull the swatch in width (across the stitches) so as to get the correct stitch gauge for the LENGTH of garment.

The above garments are all made using our new Mohair/Acrylic yarn. DK 2031 is also made with this yarn. See SPECIAL SALE LITERATURE included in this issue.

DISCOUNTED YARN KITS FOR THIS ISSUE

The Yarn Kits for this issue of KNITTING MAGAZINE are available at special discounts to our subscribers and the prices are only good until the next issue of the magazine. Be sure to give alternate colors.

DK 2015 - Yarn: Amore
SIZES: 7/8 (10/12)
Regular Price \$35.85 \$38.24
Sale Price 28.68 30.59
Shipping costs 1.85 1.85

DK 2016 - Yarn: Nomotta Alpaca
SIZE: 10/12
NO KIT AVAILABLE

DK 2017 - Yarn: Venetia
SIZES: 12/14 (16/18)
Regular Price \$44.50 \$44.50
Sale Price 35.60 35.60
Shipping costs 3.00 3.00

DK 2018 - Yarn: Mohair and Acrylic
SIZE: 6
NO KIT AVAILABLE

HP 2019 - Yarn: Amore
SIZES: 36/38 (40/42)
Regular Price \$33.46 \$38.24
Sale Price 26.77 30.59
Shipping costs 1.85 1.85

DK 2020 - Yarn: Nomotta Smoky
SIZE: 8/10
NO KIT AVAILABLE

DK 2021 - Yarn: Nomotta Super Show or Alpaca
SIZES: 8/10 (12/14)
NO KIT AVAILABLE

HP 2022 - Yarn: Euro Sport
SIZES: 38/40 (42/44)
NO KIT AVAILABLE

HP 2023 - Yarn: Vienna
SIZES: 42/44 (46/48)
Regular Price \$32.40 \$32.40
Sale Price 25.92 25.92
Shipping costs 1.85 1.85

KK 2024 - Yarn: Euro Sport
SIZE: 10/12 (14/16)
NO KIT AVAILABLE

DK 2025 - Yarn: See Special Sale Literature this issue.
SIZE: 10/12

DK 2026 - Yarn: See Special Sale Literature this issue.
SIZE: 6/8

DK 2027 - Yarn: Venetia
SIZE: 12/14
Regular Price \$40.00
Sale Price 32.00
Shipping costs 2.25

DK 2028 - Yarn: See Special Sale Literature this issue.
SIZE: 8/10

DK 2029 - Yarn: See Special Sale Literature this issue.
SIZE: 6/8

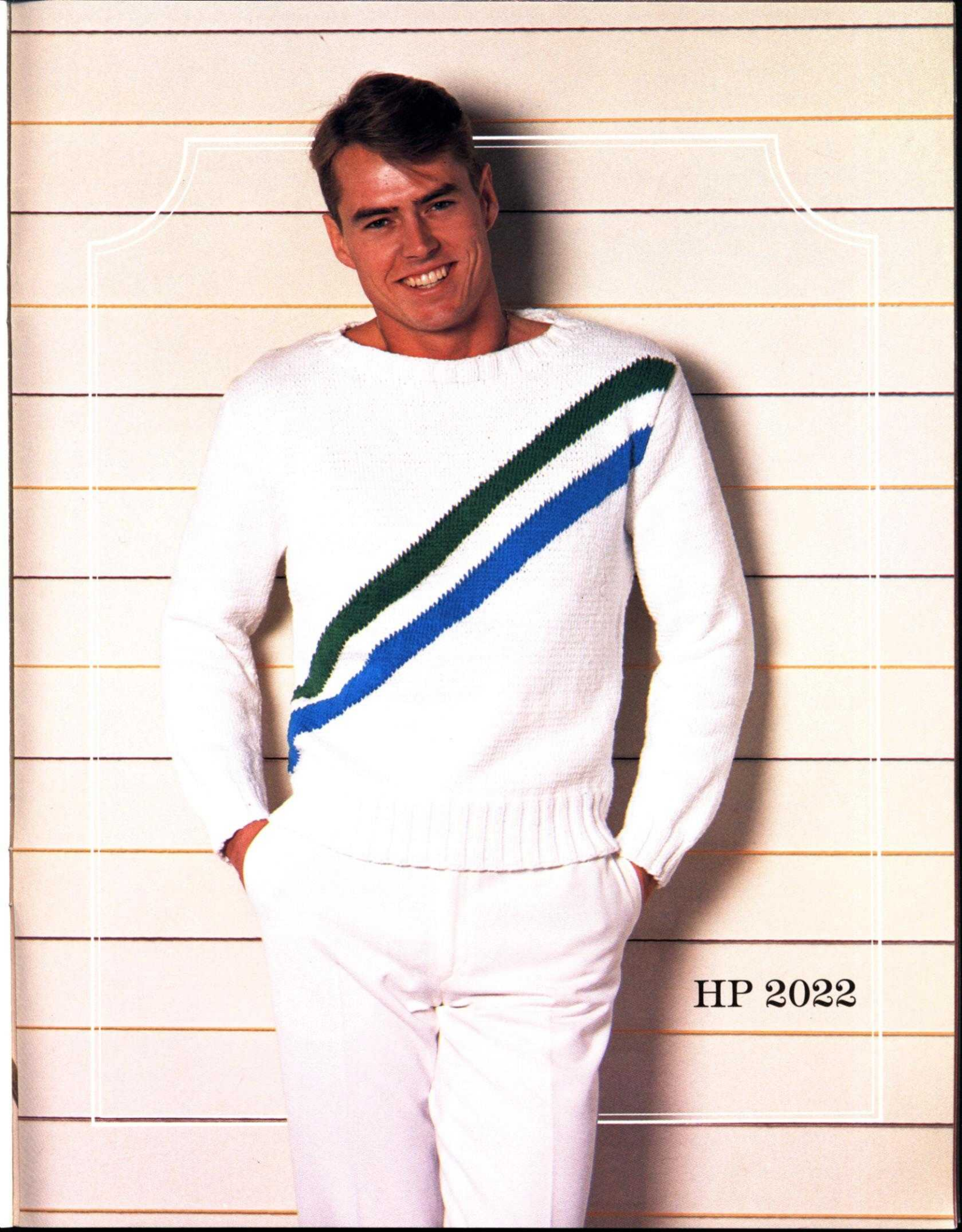
DK 2030 - Yarn: See Special Sale Literature this issue.
SIZE: 6/8

DK 2031 - Yarn: See Special Sale Literature this issue.
SIZE: 10/12

DK 2032 - Yarn: See Special Sale Literature this issue.
SIZE: 6/8

DK 2033 - Yarn: Mohair and Acrylic
SIZE: 8
NO KIT AVAILABLE

DK 2034 - Yarn: See Special Sale Literature this issue.
SIZE: 6/8



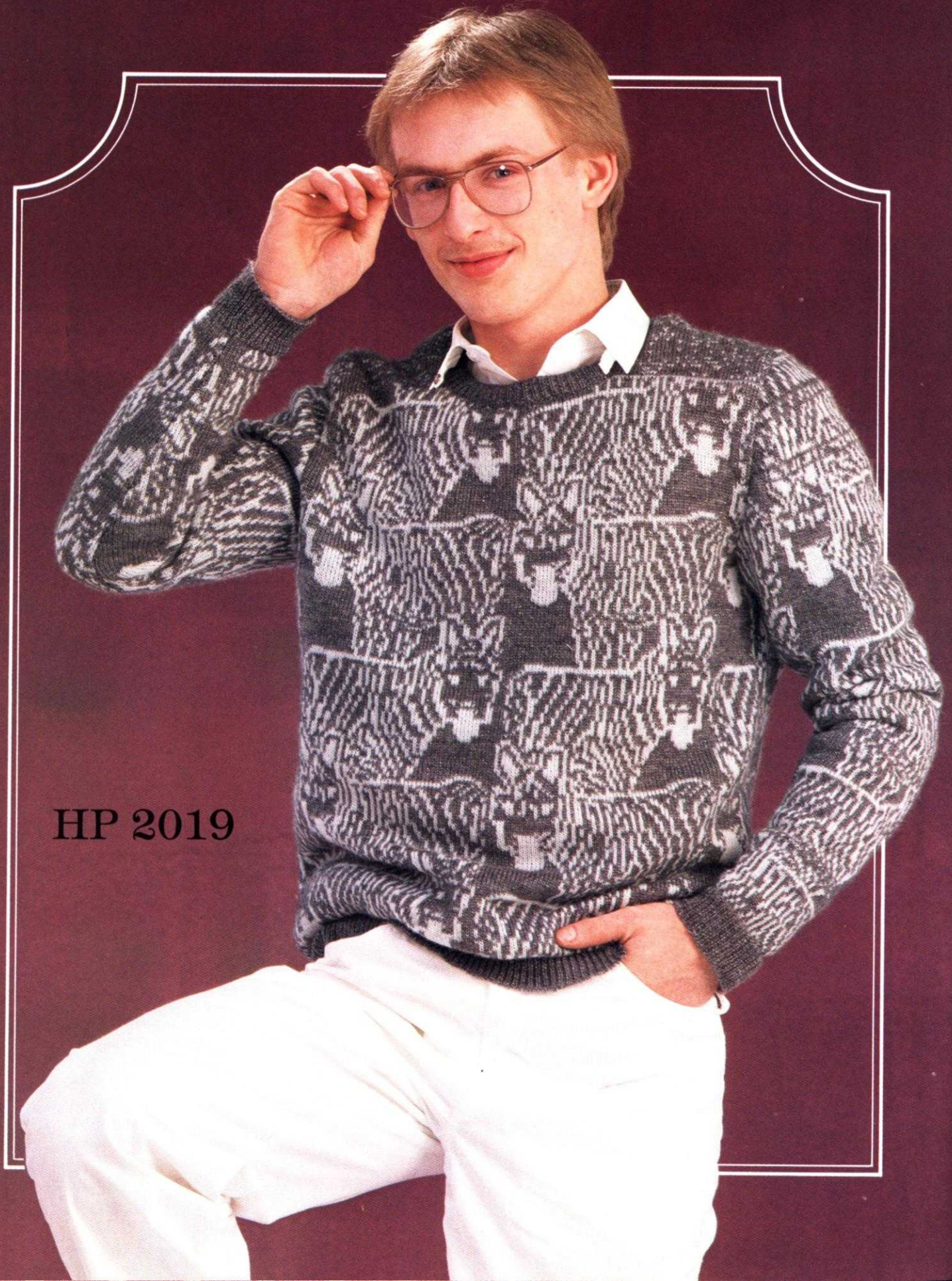
HP 2022



DK 2020



DK 2027



HP 2019



DK 2017

A fashion photograph of a woman walking in a field of dry grass and fallen leaves. She is wearing a dark blue beret, a long-sleeved sweater with horizontal stripes in dark blue, grey, and red, and a grey skirt. She is also wearing dark tights and dark loafers. The scene is framed by a white decorative border.

DK 2021



DK 2018



DK 2034

DK 2015



KK 2024

