

knitking

magazine



VIVACIOUS VEST
Fashionable Hits
for the
Whole Family

**TERRIFIC
TECHNIQUES**
Learn
Innovative
Weaving;
Short Row
Intarsia
Made Easy

BULKY BRIGADE
Coats, Vests and
Sweaters Galore

**OVER 25 ITEMS
TO KNIT**

144

COLOR AND TEXTURE

A very stylish and beautiful Sweater is made with an easy Weaving Pattern that takes top honors in Design. A fantastic mix of color and texture as you combine the yarns, Alpine, Pebble, Rubane, Caprinae and Night Music. The bands and soft, loose collar are in 1 x 1 Ribbing. Knit it on Electronic or Punch Card Bulky machine with Ribber. Choose your favorite color combination.



A man with dark hair and a slight smile is sitting in a dark wicker chair. He is wearing a white collared shirt under a thick, colorful V-neck sweater. The sweater features vertical stripes of red, dark green, purple, and white. The background is a dimly lit room with a large indoor plant and a window with a view of the outdoors.

145

FASHION IMPACT

The Man of today will enjoy the colorful and different look of a newly designed Pullover made just for him, so be sure to knit your man this one and keep him happy. Knit it sideways in a Tuck stitch Pattern on a Compuknit or Punch Card Bulky machine with our Alpine yarn. The bands are 1 x 1 Ribbing.

TABLE OF CONTENTS

KNITKING MAGAZINE - VOLUME 26 NO. 4

0000	GENERAL INSTRUCTIONS	13
142	MENS JACQUARD PULLOVER	15
143	TWO-PIECE DRESS with DOUBLE JACQUARD PULLOVER	16
144	BULKY WOVEN PULLOVER	18
145	MENS SIDEWAYS KNIT BULKY TUCK PULLOVER	19
146	GARTER CARRIAGE CARDIGAN	20
147	SHORT ROW INTARSIA VEST	22
148	BULKY TUCK JACKET	25
149	WOMENS SHEATH DRESS	27
150	WOMENS FAIRISLE VEST	29
151	DENIM WOVEN VEST	30
152	WOMENS BULKY TUCK CROP TOP	32
153	CHILDS VEST	33
154	FAIRISLE CARDIGAN with DROP YOKE SKIRT	34
0000	KNITKING NEWS	36
155	MENS CREW-NECK FAIRISLE PULLOVER	37
156	TWO-PIECE SUIT	38
157	TWO-PIECE SUIT with COLOR ACCENTS	40
158	BULKY TUCK PULLOVER with DECOCKING TRIM	42
159	FAIRISLE PULLOVER with CRISS-CROSS SASH	43
160	WOMENS TWO-PIECE DRESS	45
161	PULL-UP STITCH COAT	47
162	MENS FAIRISLE VEST	49
0000	TECHNICAL TIPS	50

EDITORIAL

Dear Readers,

Well, here we are bidding farewell to another year. The year has flown by with lots of exciting new developments in Knitkings world . . . terrific, new, innovative products like the DesignaKnit software program and the all-new Compuknit V. It's been an exciting year!

With each issue we review and reflect on our goals and accomplishments for Knitkings Magazine. We measure our success by the comments and feedback we receive from you, our readers. Many of you have written to tell us how much you like the magazine and the garments included in each issue. Other comments have shown us that our goal of being a teaching magazine is being reached.

We set out to create a wide selection of garments in each issue focusing on many different facets of machine knitting. Our primary goal is to demonstrate the wide variety of garment shapes and stitch patterns that can be created on any and all models of Knitkings machines. Second, we create garments using the latest fashion trends from the classic traditional to the trendy avant-garde. Each garment becomes a teaching tool, featuring a technique. Whether it's an advanced pattern technique such as our three-color-in-a-row jacquard pattern on the cover (#142 and #143) to our woven vest (#151) that uses fabric in the place of yarn for weaving, you can be sure to learn all about the wide array of looks and textures available to you. Other exciting ideas in this issue feature Garter Carriage texture with stockinette stitch, pin tuck accents (#146), fairisle on the "wrong" side working floats into the pattern for texture (#161) and Short Row Intarsia made easy by pre-planning your needle selection on a stitch pattern design (#147).

The instructions are easy to follow for each exciting technique presented. You can knit the garment exactly like we do—we love that!—or pick and choose from the many innovative and unusual techniques to create your own fashion statement. It's all in the pages of Knitkings Magazine—yours for the reading!

Happy Knitting,

Suzanne Stein

142 & 143

DRAMATIC DUO



A gorgeous double jacquard pullover for men is selected from a built-in 3 color in a row Pattern on the Compuknit V machine. The bands are 1x1 Ribbing and the yarns are Woolana, Venetia and Lumiyarn

A bit of innovation of the same jacquard pattern lends itself to a flattering Woman's ensemble. The sleeves, bands and the Skirt are made with a special needle set-up on main bed and ribber with beautiful results.

Publisher: KNITKING CORPORATION, 1128 Crenshaw Blvd.
Los Angeles, CA 90019. Telephone: (213) 938-2077. Published quarterly.
Subscriptions: USA-\$24.00 annually; single copies \$7.95. \$29.00-all other countries. The entire contents of KNITKING MAGAZINE are copyrighted and must not be reproduced in any shape or form without the express permission, in writing, of the publisher.
© COPYRIGHT 1992 KNITKING CORPORATION

Photography by : NILS VIDSTRAND STUDIOS



146

HERS OR HIS

The famous Garter Carriage easily perfects a Cardigan that can be worn by a Woman or a Man by simply changing the side of button-hole band. The different colors accent the design and show off the interesting texture. Pin Tucks separate the sleeves from bodice. Bands are 2 x 2 Ribbing. Knit it on the standard gauge Compuknit machine with Garter Carriage.

147

FASHION IMPACT

Make your own fashion statement by knitting this great Short Row Intarsia Vest.

The needles are automatically selected for the short rows to help with each color section of the design.

When completed, embellish it using the DecoKing II Embellishment machine and be proud of your creativity.

Bands are Stockinette stitch and you knit it with Alpine on the Compuknit/Bulky machine.





148

A TASTE OF COMFORT

Everything you could possibly want in a lovely zippered Jacket. Full needle ribbing makes the front, while the back and sleeves are a Tuck Pattern that includes the use of ribber. Knit in Pockets and 1 x 1 ribbing completes the waistband and cuffs. Knit it with Alpine on the Compuknit or Punch Card Bulky machine.

149

SIMPLE AND ELEGANT

A perfect example of a flattering Dress designed for any figure. It is easy to knit in Stockinette stitch on any standard gauge machine with Ribber for the full needle rib trim. Large pockets and beautiful buttons complete its elegance.

Knit it with Venetia on standard gauge machine with Ribber.





150

COLOR HARMONY

Colorful Vests are definitely in the height of fashion today and you and your family will appreciate this

Fairisle one that combines a mixture of beautiful yarns that set off the design. The front, sleeve bands and

Collar are Stockinette stitch with the waistband in 1 x 1 ribbing.

Be sure to use your main bed Color Changer for ease in knitting as well as for perfect results. Knit it on

the standard gauge Compuknit or Punch Card machine with Woolana, Pearlyte, Venetia, Caprinae and Night Music.

151

CLEVER WEAVING

Denim Fabric strips are used for the weaving pattern on a great new and fun to knit Vest.

Added interest is the Lace trim that is bonded to the knitting.

The edges are finished with a Stockinette stitch binding. Knit it on the Compuknit or Punch Card Bulky. The yarn is Panache.





152

IRRESISTIBLY
PRETTY

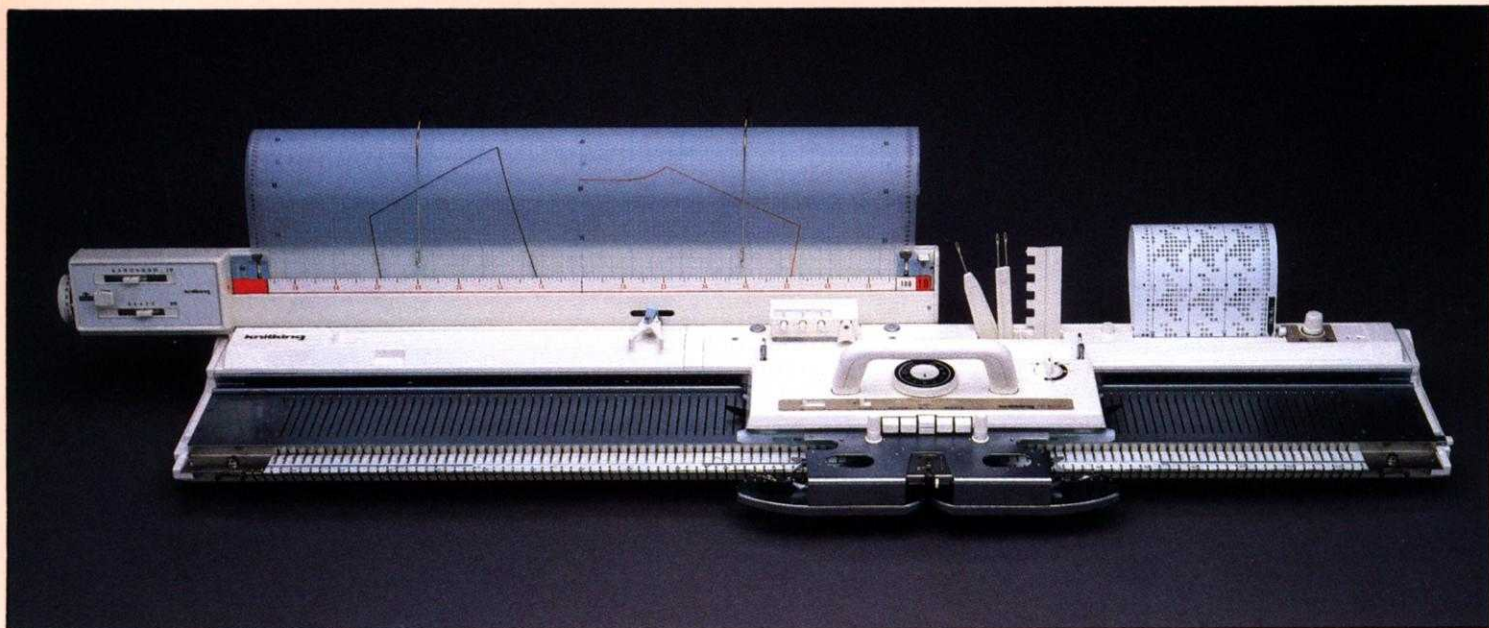
A warm Pullover you will enjoy wearing is knitted in a combination of a Tuck stitch for the Yoke and Sleeves using the Purl side as the right side and the remainder in Stockinette stitch worn on the knit side.

Pin Tucks are placed for accents.

Knit it on the Compuknit or Punch Card Bulky with Mirage.

The bands are Stockinette stitch.

Punch Card Programmed Bulky



The **Knitking PC Bulky** is easily the most versatile of all Bulky knitting machines. It offers **Knitking's** exclusive **Automatic 24 Stitch Repeat Punch Card Pattern Selection** and **Single Motif Isolation** capabilities. It knits a range of yarns from sport weight to jumbo, including Angora, Mohair, Boucle, Ribbon, Cotton, Acrylic, etc.; with 114 stainless steel needles you can knit up to 38" wide, at 3 stitches per inch. The Tension Control Dial has 30 tension positions for knitting different weights of yarn.

The **PC Bulky** comes complete with **Twin Overhead Yarn Feeders**, **15 Pre-Punched Cards** (you can also make your own pattern stitch cards), **Row Counter**, complete **Tool Kit**, **Stitch Measure Scales for Knitleader**, **Carrying Case**, a detailed, well illustrated, easy-to-understand **Instruction Manual** and a one year warranty on parts and service.

The **Knitleader** is a charting accessory that fits on the back of the knitter. You draw, or trace a garment, full-size, on the furnished Mylar sheet. The chart rotates as you knit, and shows you, on a row-by-row basis, exactly where to increase and decrease stitches.

knitking

Where Savings And Value
Are Always In Fashion

1128 Crenshaw Blvd., Los Angeles, CA 90019 213-938-2077

GENERAL INSTRUCTIONS

THE SAMPLE SWATCH

It is imperative that you knit a sample swatch for every garment. Although you may be using the identical yarn and machine model as the pattern suggests, many variables such as dye lot difference, speed of knitting and just machine to machine differences can all cause a variance in the gauge achieved. Knit Magazine publishes the tension and gauge for each garment shown. We strongly urge you to knit a swatch representing three tensions - the recommended tension, and .1 or .2 higher and lower. These different tensions can be knitted in one piece with waste yarn separating the sections. This will eliminate unnecessary rethreading while allowing you to obtain the gauge published in the magazine.

To make a sample swatch on standard gauge machines cast on 60 stitches with waste yarn. Knit approximately 6 rows. *Mark the tension number for your swatch by making holes. For example 4 eyelet holes for Tension 4, 6 eyelet holes for Tension 6. Knit 6 more rows.

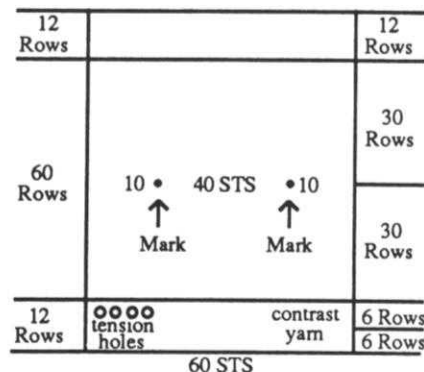
Change to garment yarn and reset row counter to 0. Knit 30 rows (in Pattern stitch). With contrast yarn, mark the 10th stitch FROM EACH SIDE by hand. Knit 30 Rows. Change to waste yarn and knit 6 rows. Change tension up or down for second section and repeat from *. Make third section with another tension. Remove on 12 Rows of waste yarn. Remove the sts. from the machine

by pushing the Carriage across without yarn.

Pull and stretch the swatch both lengthwise and diagonally from corner to corner. Gently block the swatch. Treat the swatch as you would the finished garment before measuring the gauge. For example, if you plan to wash this garment and dry it in the dryer, you should do so, measuring before and after to see the difference.

Measure between the stitches marked and the beginning and ending rows for the inches/cms. knitted. Divide the total number of stitches/rows by the inches measured to calculate sts. and rows per inch.

For Bulky knitters, make swatch with 30 Sts. and 30 Rows. If so desired, or for large pattern repeats, we suggest a wider and longer swatch to provide more accurate gauges.



HEMS

Two methods of knitting hems are described below. Variations on these instructions will allow you to knit plain hems, picot edge hems and more.

Method One

With waste yarn cast on the required number of stitches and knit about 10-12 rows ending with the carriage on the left. Knit 1 Row to the right with Ravel Cord. Change to garment yarn and knit 1 Row to the left at garment body tension. (i.e. Skirt at Tension 4, 1st row at T 4). Turn tension down approximately 2 full tension numbers lower (tighter) and knit to mid point. (i.e. Row 14 of a 28-row hem). Change tension to 1 full point lower than garment body and knit remainder of hem rows. Pick up the stitches from the first row of garment yarn - shown between the stitches of Ravel Cord. Hem is now completed. Proceed with pattern as per chart and instruc-

tions. Remove waste yarn and Ravel Cord when you have completed section.

Method Two

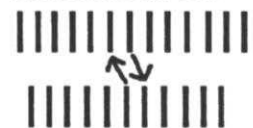
Bring required number of needles to "B" (working) position. Attach cast-on comb. Beginning with the 2nd needle on the LEFT, bring every other needle to "D" or "E" position. Push in both Part buttons. Knit 1 Row to the left. Release the part buttons and drop the cast-on comb. (DO NOT REMOVE cast on comb from work). Knit required number of rows for hem. Attach weights to the back of work close to the cast-on comb (about 1/4" above the comb). Beginning with the 1st needle on the LEFT, bring every other needle to "D" position. Carefully LIFT the cast-on comb and hang loops onto the needles in "D" position. Turn the comb back away from you and make sure the needles are through the loops. Pull the needles out to "E" position and remove the cast-on comb.

BUTTONHOLES

The following methods of buttonholes are the general manner in which small and large buttonholes are created.

Small Buttonholes in Ribbing
Make small eyelet style buttonholes by following chart below.

Buttonhole Transfer
Center St. of Each Bed to Next St. of Other Bed



Large Buttonholes in FNR

Vertical buttonholes are made by knitting each side separately (partial or short-row knitting). Knit the right side first, end with yarn on left. Without breaking yarn, knit left side. The strand of yarn inside the buttonhole can be picked up every other row when knitting the left side, but this is not necessary for a small buttonhole.

SHORT ROWS

Method One

With carriage on opposite side start placing appropriate number of ndls in HP. Knit across and wrap the inside needle. Again, place appropriate number of ndls in HP on opposite side from carriage, knit across and repeat wrapping. The wrapping will eliminate any holes in the knitting.

Method Two - Automatic Wrap

Example follows for shoulder short rows. This method can be used for other Short Rowing as well. For example if pattern says to Short Row at shoulder every other row 7 sts, 1 x and 6 sts. 1 x . . . With carriage on opposite side put 6 sts in HP, knit 1 row across and put one additional needle in HP. Opposite carriage place 6 ndls in HP. Knit 1 row across and bring one extra needle to HP. Repeat until shortrowing is completed.

GENERAL INSTRUCTIONS

AT THE SAME TIME - Two functions are to be performed at the same time, such as shaping the neck and shoulder. Be sure to read both instructions before proceeding.

BO - Bind Off. To take off more than 1 St. at a time. When two or more stitches are to be bound off (or cast on) the carriage and yarn must be on the same side as the bind off. If the instruction is, "At R 100 BO 6 Sts on each side.", on the carriage side BO six stitches, knit one row and then bind off six stitches on the other side. See DECR and FF DECR.

BOLT - Slip Stitch Bind Off with a Latch Tool. Knit one row to the left at a tension at least five numbers higher (looser) than the garment tension. Bring all needles to holding position ("E") and then, pick up the first stitch on a latch tool allowing it to slip behind the latch, then pick up the next stitch and pull it through the stitch already on the latch hook, thus creating a slip stitch. If you cannot set the tension at least five full tension numbers higher, knit a row loosely manually.

CO - Cast on stitches for knitting. (**CHECK INSTRUCTION MANUALS TO MAKE SURE DIFFERENT METHODS ARE SHOWN**) In our instructions, CO is used either for a finished edge at the beginning of the garment, or to add edge stitch(es). If two or more stitches are to be cast on the carriage and yarn must be on the same side as the cast on. If the instruction is, "At R 100 CO 6 Sts on each side.", on the carriage side cast on six stitches, knit one row and then cast on six stitches on the other side.

COR - Carriage on Right

COL - Carriage on Left

DECR - Use the transfer tool to move the edge stitch(es) inward to the next needle. Usually used to transfer one edge stitch to the next needle, but may be used to transfer the two edge stitches to the next two needles.

EON - Every other needle

EOR - Every other row

EOS - Every other stitch

FF DECR - Used to make an even edge for seaming and decorative seams for raglans. If one stitch is to be decreased, use a two-prong transfer tool to move the two edge stitches inward one needle. If two stitches are to be decreased, use a three-prong transfer tool to move the three edge stitches in two needles. If three stitches are to be decreased, use two two-prong transfer tools and move the edge stitches in four needles. See DECR, BO and SHAPING.

FF INCR - To increase one stitch move the two edge stitches outward one needle, then fill the empty needle by picking up a bar from the row below and hanging it on the empty needle.

FNR - Full Needle Rib

G.C. - Garter Carriage

HP - Holding position or "E" position.

INCR - Increase. Usually used for "full-fashion" shaping, see FF Incr., or in conjunction with short row shaping. A simple incr can be made by pulling additional needle on side of carriage out to "E" position and knit across.

MB - Main Bed

MC - Main Color

Ndls - Needles

NWP - Non-working position or position "A"

R(s) - Row(s)

RB - Ribber Bed

RC - Row Counter.

RC 0 - Set RC to zero.

SET PATTERN - Follow the step-by-step instructions in your manual for setting the pattern and carriage controls for the pattern to be knit, e.g., Fairisle, tuck, single motif, etc.

SHAPING: The method used for shaping is a matter of personal preference. In our definitions we have described the methods commonly in use at Knitking. Which method is chosen for a particular pattern depends upon the garment, the yarn and the personal preference of the designer.

SHR - Short Row or Partial Knitting. Used for shaping shoulders, necklines, darts, gores, etc. Set carriage on H(old). **Every other row SHR:** On the opposite side of the carriage, place the specified number of stitches in holding position, knit across, wrap the inner needle or use an "automatic wrap". After all specified stitches have been placed in HP change the carriage setting to N (knit) to return the needles to WP. **Every row SHR:** On the side being shaped, place one stitch in HP every row. It is recommended you refer to your manual or an instruction book for detailed instructions about how to short row.

St(s) - Stitch(es)

St. St. - Stockinette stitch.

T - Tension.

WP - Working Position or "B" position.

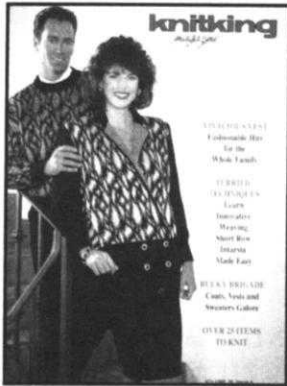
WY - Waste yarn.

YM - Yarn marker. To place a yarn marker, use a short piece of contrasting yarn and loop it over the needle specified or the end needle of the row specified.

SEAMING GARMENTS

Any number of popular methods are suggested. We encourage you to experiment with any and all. If a garment in Knitking Magazine requires special seaming information it will be provided in the individual pattern instruction. Otherwise, methods include: linking on the knitting machine, Knitking's Lectrolink, the electric linker, crochet slip stitch, tapestry needles with back stitch sewing by hand. Bar to bar weaving for seamless appearance and seaming on a sewing machine.

142



MENS JACQUARD PULLOVER

YARN: Venetia, Woolana and Lumiyarn

SIZES: Small (Medium) [Large]

AMOUNT:
Col. 1: Venetia - Black Tweed
1 lb. all sizes

Col. 2: Woolana - Black
1 lb. all sizes

Col. 3: Lumiyarn - Copper
3 spools (4 spools) [4 spools]

KIT PRICE:
\$85.50 (\$92.00) [\$92.00]

TENSION:
Jacquard: T 3.1/4 I
Rib: T 1/1 I or 0/0 I (See Chart)

GAUGE:
Jacquard: 7.1 Sts., 19.0 Rs. = 1"

Make on Compuknit III/IV/V Machine with Ribber and Ribber Color Changer. Pattern is built-in #860 in Compuknit V.

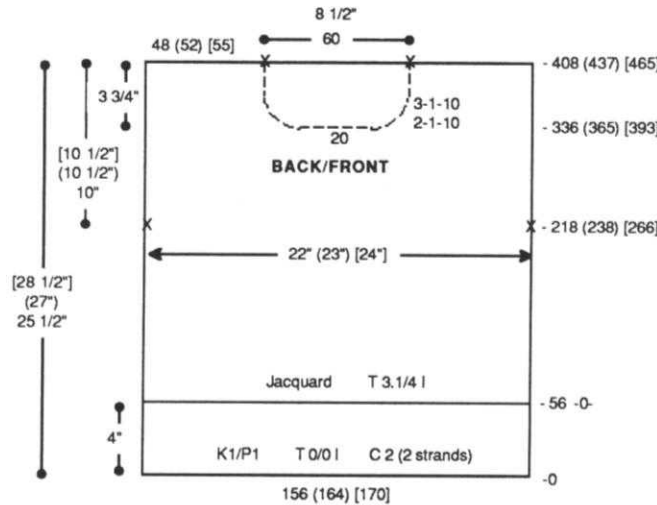
Note: Use 2 strands of Woolana for Rib only.

BACK:

With C 2 (2 strands) CO 156 (164) [170] sts. for K1/P1 Rib. After selvedge T 0/0 I. RC 0. Knit to R 56. Set ndls. for FNR. Reset RC to 0. T 3.1/4 I. COR. With 1 strand C 1, knit 1 R from right to left. Knit in 3-color Jacquard Pattern. At R 218 (238) [266] mark each side with YM for arm-hole. At R 408 (437) [465] mark center 60 sts. for neckline and remove sts. on WY.

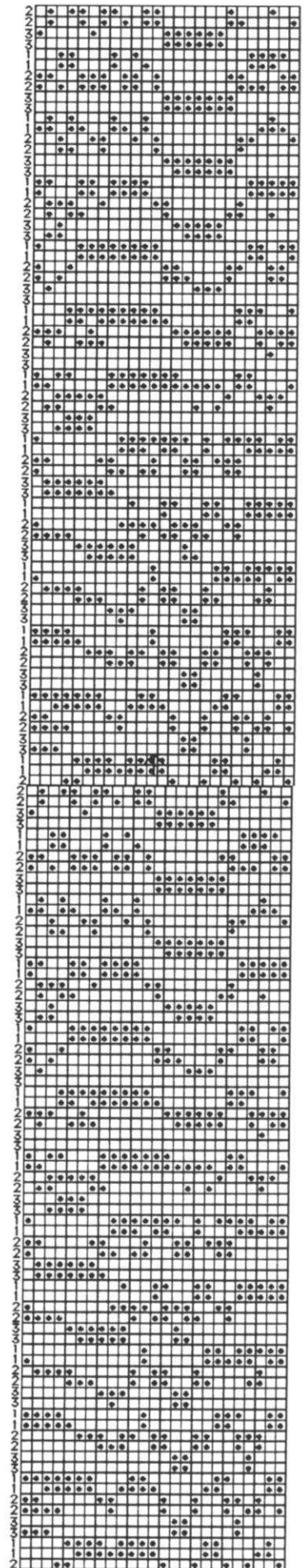
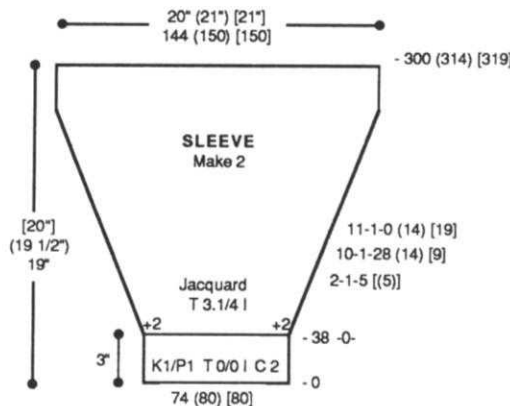
FRONT:

Knit front same as back to R 336 (365) [393]. Begin neckline shaping. BO center 20 sts. Place all sts. to the left in HP. Note pattern row. *On neckline edge decr. EOR 1 St. 10x and every 3 Rs. 1 St. 10x. At R 408 (437) [465] remove shoulder sts. on WY. Reset RC to R 336 (365) [393]. Reset pattern to row noted above and shape left neckline from *, reversing shapings.



Color Chart

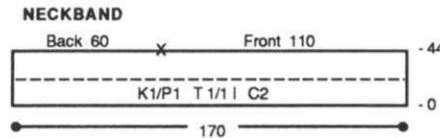
# Rows Repeat	Color
2	3
2	2
2	1



strand C 1, knit 1 R from right to left. Incr. 2 sts. on each side. Knit in 3-color Jacquard Pattern while shaping sleeve by incr. on each side EOR 1 St. 5 [(5)]x, every 10 Rs. 1 St. 28 (14) [9]x and every 11 Rs. 1 St. 0 (14) [19]x. At R 300 (314) [319] transfer RB sts. to MB. Knit 1 row at T 10 and BOLT.

NECKBAND:

Close one shoulder. With C 2 (2 strands) CO 170 sts. for K1/P1 Rib. After selvedge T 1/1 I. RC 0. Knit to R 44. Transfer RB sts. to

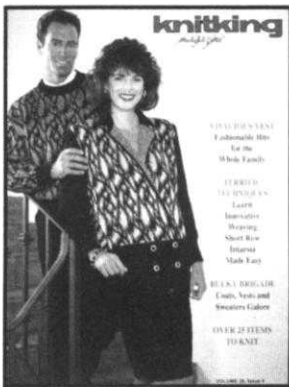


MB. With purl side facing, rehang neckline on 170 ndls. following chart. Knit 1 row at T 10 and BOLT.

FINISHING:

Close all remaining seams. Fold neckband to inside and whip stitch in place to form doubled band.

143



TWO-PIECE DRESS with DOUBLE JACQUARD PULLOVER

YARN: Venetia, Woolana and Lumiyarn

SIZES: 6/8 (10/12) [14] [16/18]

AMOUNT:

- C 1: Venetia - Black Tweed 1 (1) [1] {1-1/2} lbs.
- C 2: Woolana - Black 1-1/2 (1-1/2) {[2]} lbs.
- C 3: Lumiyarn - Silver 2 spools all sizes

KIT PRICE:

\$90 (\$90) [\$102] {\$120}

TENSION:

- Jacquard: T 3.1/4 I
- Collar & Bands: T 5/5 I
- Sleeve: T 9
- Skirt: T 5/5 I

GAUGE:

- Jacquard: 7.1 Sts., 18 Rs. = 1"
- Collar/Bands: 8 Sts., 12.58 Rs. = 1"
- Sleeve: 9.74 Sts., 10.25 Rs. = 1"

Skirt: 7.5 Sts., 11.12 Rs. = 1"

NOTIONS:

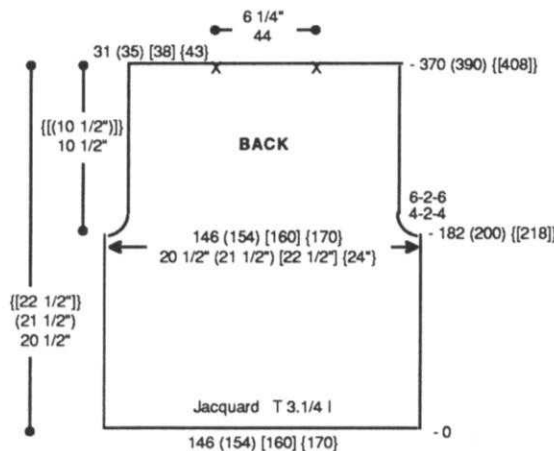
- 4 - 1" Buttons for jacket.
- Elastic for skirt waistband.

Make on Compuknit III, IV or V with Ribber. Pattern #860 is built-in Compuknit V knitter.

Note: Use 2 strands of Woolana for Sleeves, Cuff, Waistband and Skirt.

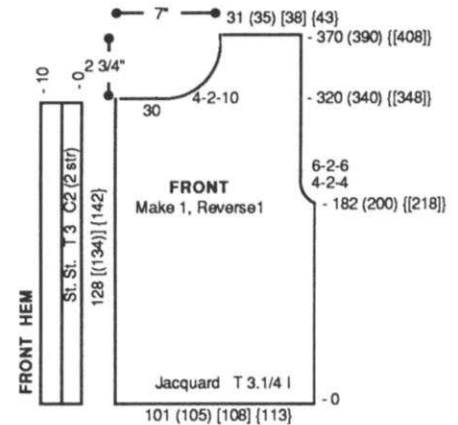
BACK:

With C 2 (1 strand) CO 146 (154) [160] [170] sts. for FNR. After selvedge RC 0. Select KC I and knit 1 row from left to right. Depress both PART buttons and knit in 3 color jacquard. At R 182 (200) {[218]} shape armhole. On each side decr. every 4 Rs. 2 Sts. 4x and every 6 Rs. 2 Sts. 6x. At R 370 (390) {[408]} mark center 44 sts. for neck opening and remove sts. on WY.



FRONT: Make 1, Reverse 1.

With C 2 (1 strand) CO 101 (105) [108] [113] sts. for FNR. After selvedge RC 0. Select KC I and knit 1 row from left to right. Depress both PART buttons and knit in 3 color jacquard. At R 182 (200) {[218]} shape armhole. On right side decr. every 4 Rs. 2 Sts. 4x and every 6 Rs. 2 Sts. 6x. At R 320 (340) {[348]} shape neckline. On left side BO 30 sts. then decr. every 4 Rs. 2 Sts. 10x. At R 370 (390) {[408]} remove sts. on WY.



FRONT HEM:

With knit side facing rehang front edge of jacket on 128 [(134)] [142] ndls. RC 0. T 3. C 2 (2 strands). Knit in St. St. to R 10. Pick up sts. from first row to form doubled band. Knit 1 row at T 8 and BOLT.

SLEEVE: Make 2.

With WY CO 146 [(146)] sts. After several rows, end with 1 row Ravel Cord to the right. RC



BULKY WOVEN PULLOVER

YARN: Alpine, Night Music, Pebble, Softon, and Rubane

SIZES:

6/8 (10/12) [14] [16]

AMOUNT: Same all sizes

C 1: Alpine - Black

2 cones - approx. 1-3/4 lb.

C 2: Night Music - Copper

1 ball

C 3: Pebble - Black/White

2 oz.

C 4: Softon - Jungle - 3 oz.

C 5: Rubane - White - 1 ball

C 6: Softon - Violet - 2 oz.

C 7: Rubane - Taupe - 1 ball

C 8: Knit-in elastic - Black

1 spool

KIT PRICE: \$80.00

Specify Color Choice:

A: Large Photo

B, C, or D - Inset Photos

TENSION:

Body: T 5

Rib: T -0/-0 I & T 0/0 I

GAUGE:

Body: 4 Sts., 6.54 Rs. = 1"

Make on Compuknit/Bulky or Punch Card Bulky with Ribber.

Note: Use 2 strands of Softon and 2 strands of Night Music throughout.

BACK:

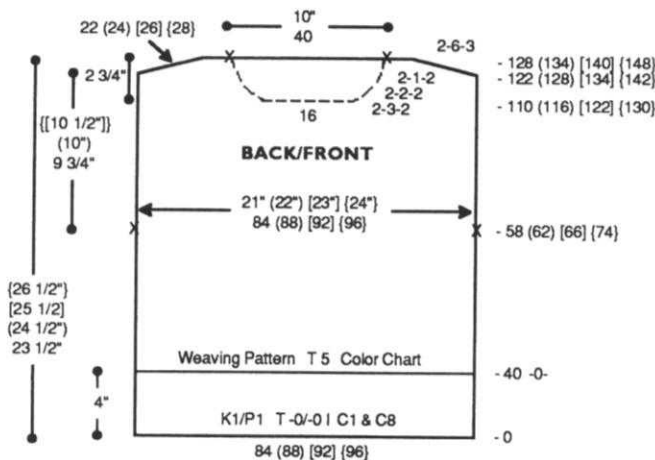
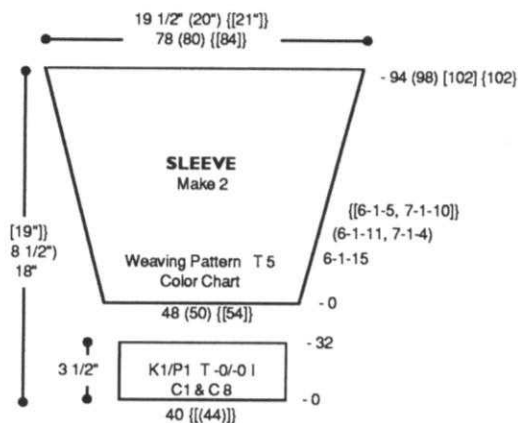
With C 1 and C 8 CO 84 (88) [92] [96] sts. for K1/P1 Rib. After selvedge RC 0. T -0/-0 I. Knit to R 40. Transfer RB sts. to MB. RC 0. T 5. Knit in Weaving

Pattern following Color Chart. At R 58 (62) [66] [74] place a YM on each side for armhole. At R 122 (128) [134] [142] SHR shoulders EOR 6 Sts. 3x. At R 128 (134) [140] [148] mark center 40 sts. for neckline. Knit 1 row at T 10 and BOLT.

FRONT:

Knit front same as back to R 110 (116) [122] [130]. Shape neckline. BO center 16 sts. Place all sts. to the left in HP. Noe pattern row. *On neckline edge decr. EOR 3 Sts. 2x, 2 Sts. 2x and 1 St. 2x. At R 122 (128) [134] [142] SHR shoulder EOR 6 Sts. 3x. At R 128 (134) [140] [148] knit 1 row over shoulder sts. at T 10 and BOLT. Reset RC to R 110 (116) [122] [130] and pattern to correct row. Shape left neckline and shoulder from *, reversing shapings.

Ravel Cord to the right. RC 0. T 5. Knit in Weaving Pattern following Color Chart while incr. on each side every 6 Rs. 1 St. 15x (every 6 Rs. 1 St. 11x and every 7 Rs. 1 St. 4x) {[every 6 Rs. 1 St. 5x and every 7 Rs. 1 St. 10x]}. At R 94 (98) {[102]} knit 1 row at T 10 and BOLT.



COLOR CHART

# Rows	MC	CC
4		7
4		6
2		3
2		2
2		3
4		4
4		5
4		6
2		3
2		2
2	1	

Repeat from *

SLEEVE:

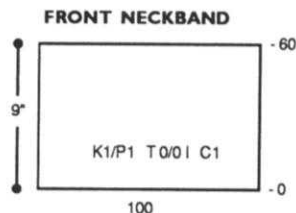
Make 2 the same. With WY CO 48 (50) {[54]} sts. After several rows, end with 1 row

CUFF: Make 2.

With C 1 and C 8 CO 40 {[44]} sts. for K1/P1 Rib. After selvedge RC 0. T -0/-0 I. Knit to R 32. Transfer RB sts. to MB. With knit side facing rehang lower edge of sleeve on these ndls. decr. evenly across. Knit 1 row at T 10 and BOLT.

FRONT NECKBAND:

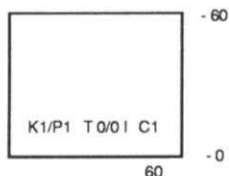
With C 1 CO 100 sts. for K1/P1 Rib. After selvedge RC 0. T 0/0 I. Knit to R 60. With knit side facing rehang front neckline on these ndls. Knit 1 row at T 10 and BOLT.



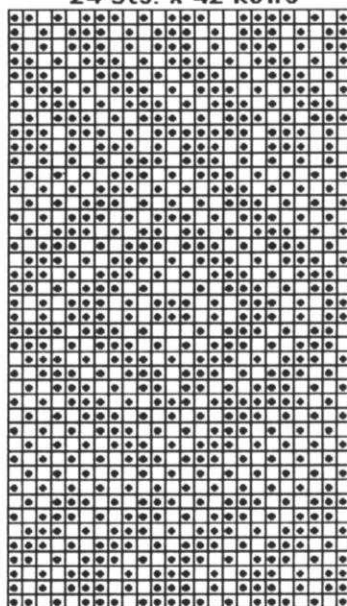
BACK NECKBAND:

With C 1 CO 60 sts. for K1/P1 Rib. After selvedge RC 0. T 0/0 I. Knit to R 60. With knit side facing rehang back neckline on these ndls. Knit 1 row at T 10 and BOLT.

BACK NECKBAND



**#144 Weaving Pattern
24 Sts. x 42 Rows**



KK Mag Disk: Track 2; Pat. 901

FINISHING:

Join shoulders and close neckband seams. Close all remaining seams.

145



Rib: T 0/0 I

GAUGE:

Tuck: 3.67 Sts., 11.25 Rs. = 1"

Make on Compuknit/Bulky or Punch Card bulky with Ribber. Pattern is #306 in Punch Card Pattern Book Vol. 5.

Note: Sweater is worn on the purl side.

BACK: Knit first

With WY CO 78 (82) [86] sts. After several rows, end with 1 row Ravel Cord to the right. RC 0.

T 4. C 2. Mark 42 (42) [45] sts. at the left for armhole with YM. Knit in Tuck Pattern following Color Chart. At R 79 (84) [90] place a YM on left side for neck opening. At R 124 (129) [135] place a YM on left side for center. At R 169 (174) [180] place a YM on left side for neck opening. At R 248 (258) [270] mark 42 (42) [45] sts. at the left for armhole and remove sts. on WY.

FRONT: Reverse shaping.

Knit front same as back to R 79 (84) [90] reversing shaping. Shape

**MENS SIDEWAYS KNIT
BULKY TUCK PULLOVER**

YARN: Alpine

SIZES:

Small (Medium) [Large]

AMOUNT: Same all sizes

C 1: Jungle -

1 cone - approx. 14 oz.

C 2: Grape - 5 oz. all

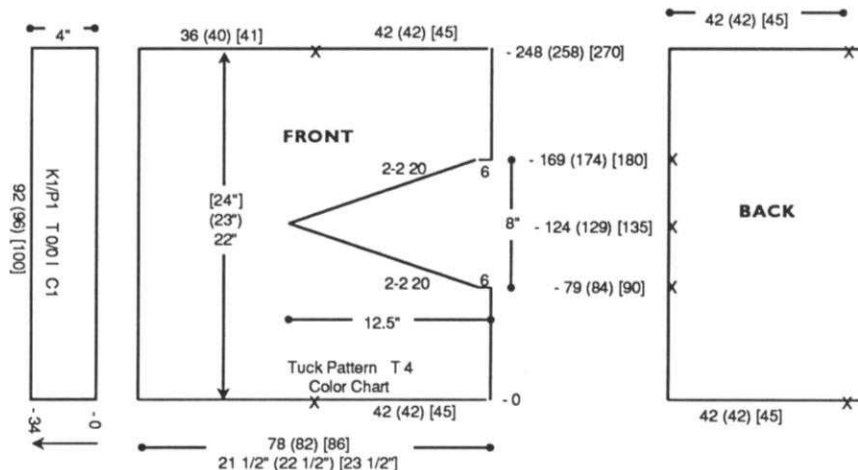
C 3: White - 5 oz. all

C 4: Burgundy - 10 oz. all

KIT PRICE: \$58.00

TENSION:

Tuck: T 4



BODY COLOR CHART

Row	Color
20	3
10	3
30	1
10	2
40	4
10	3
4 (9) [15]	1
4 (9) [15]	1
10	3
40	4
10	2
30	1
10	3
20	2

Garment Center

neckline. On right side BO 6 sts. then decr. EOR 2 Sts. 20x. At R 124 (129) [135] incr. EOR 2 Sts. 20x. At R 169 (174) [180] CO 6 sts. at the right. At R 248 (258) [270] mark 42 (42) [45] sts. at the right for armhole and remove sts. on WY.

NECKBAND: Make in two pieces. Close one shoulder first.

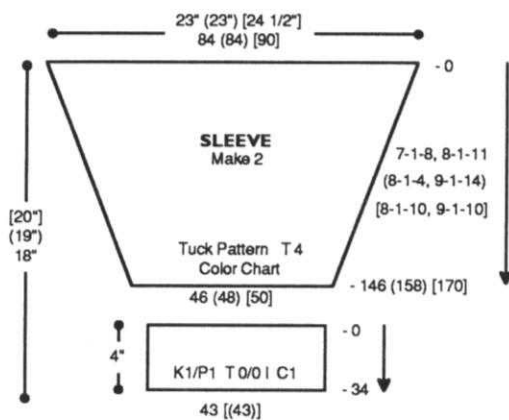
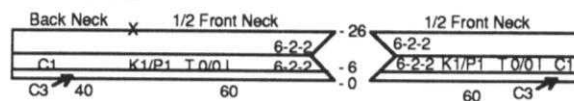
Back & 1/2 Front:

With C 3 CO 100 sts. for K1/P1 Rib. After selvedge RC 0. T 0/0 I. Knit 1 R then decr. on right side every 6 Rs. 2 Sts. 2x. AT THE SAME TIME at R 6 change to C 1. At R 14 incr. on right side every 6 Rs. 2 Sts. 2x. At R 26 rehang back neckline and 1/2 of front neckline on these ndls. following chart. Knit 1 row at T 10 and BOLT.

1/2 Front:

Knit same as back and 1/2 front except CO 60 sts. and shape on the left side.

NECKBAND



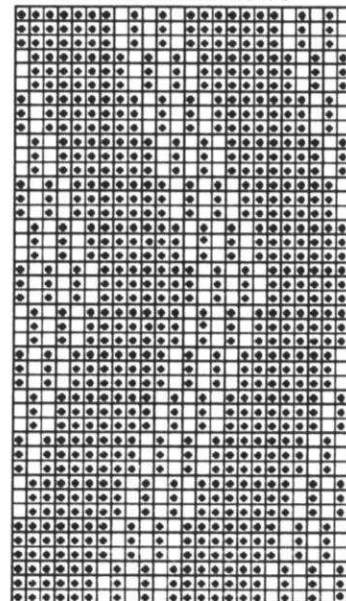
SLEEVE COLOR CHART

Row	Color
10	2
30	1
10	3
40	4

SLEEVE: Make 2.

Close remaining shoulder. With purl side facing rehang back and front between armhole markers on 84 (84) [90] ndls. Knit in Tuck Pattern following Color Chart while decr. every 7 Rs. 1 St. 8x and every 8 Rs. 1 St. 11x (every 8 Rs. 1 St. 4x and every 9 Rs. 1 St. 14x) [every 8 Rs. 1 St. 10x and every 9 Rs. 1 St. 10x]. At R 146 (158) [170] remove sts. on WY.

**#145 Tuck Pattern
24 Sts. x 42 Rows**



KK Mag Disk: Track 3; Pat. 90 I

CUFF: Make 2.

With purl side facing rehang lower edge of sleeve on 43 [(43)] ndls. decr. evenly across. With C 1 knit 1 row at T 4 from right to left. Transfer EOS to RB for K1/P1 Rib. RC 0. T 0/0 I. Knit to R 34, knitting last row at T 8/4. Transfer RB sts. to MB and BOLT.

FINISHING:

Close all remaining seams.

146



**GARTER CARRIAGE
CARDIGAN**

YARN: Alpine

SIZES:

Small (Medium) [Large]

AMOUNT:

C 1: Rust

1 lb 4 oz (1 lb 4 oz) {[1 lb 6 oz]}

C 2: Taupe - 1 cone all sizes approx. 14 oz.

C 3: Beige

6oz. (6 oz.) {[7 oz.]}

KIT PRICE:

\$62.50 (\$62.50) {[\$71.00]}

TENSION:

Body: T 9.1

Cuff and Waistband Rib: T 7.1

Front Band: T 8.1 (8.1) {[9.0]}

GAUGE:

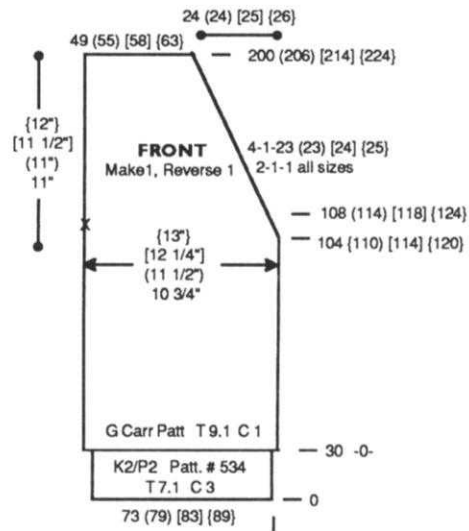
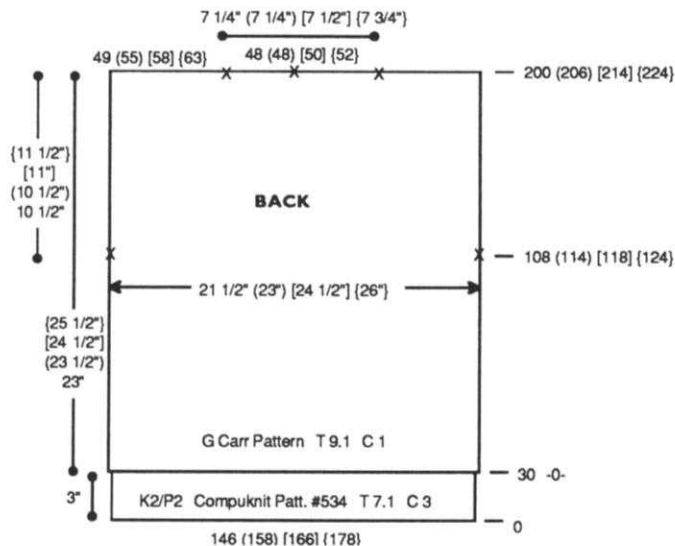
Body: 6.8 Sts., 8.75 Rs. = 1"

NOTIONS:

4 - 1" Buttons

Make on Standard 24-Stitch Punch Card or Standard Electronic machine with Garter Carriage.

Note: Pattern for ribbing is #534 in the Compuknit III/IV/V Pattern Book.



BACK:

With C 3 CO 146 (158) [166] [178] sts. at T 7.1. RC 0. Set Garter Carriage for K2/P2 rib pattern and knit to R 30. Knit 1 row with K-Carriage at T 10. RC 0. T 9.1. C 1. Set Garter Carriage for body pattern. Knit to R 108 (114) [118] [124] and mark each side with YM for armhole. Continue in pattern to R 200 (206) [214] [224]. Mark center 48 (48) [50] [52] sts. for neckline with YM and remove neckline and shoulder sts. on separate WY.

FRONT: Make 1, Reverse 1.

Use Variation Key #1 on Compuknit for Reverse Side. With C 3 CO 73 (79) [83] [89] sts. at T 7.1. RC 0. Set Garter Carriage for K2/P2 rib pattern and knit to R 30. Knit 1 row with K-Carriage at T 10. RC 0. T 9.1. C 1. Set Garter Carriage for body pattern. Knit to R 104 (110) [114] [120] and shape neckline. On neckline edge decr. EOR 1 St. 1x and every 4 Rs. 1 St. 23 (23) [24] [25] x. AT THE SAME TIME at R 108 (114) [118] [124] mark left

side with YM for armhole. Continue in pattern to R 200 (206) [214] [224]. Remove sts. on WY.

SLEEVE: Make 2.

With WY CO 74 (78) [82] [86] sts. After several rows end with 1 row Ravel Cord to the left. With C2 knit 1 row with K-Carriage at T 10. RC 0. T 9.1. Set Garter Carriage for body pattern. Shape sleeve by incr. on each side EOR 1 St. 3x and every 4 Rs. 1 St. 32x

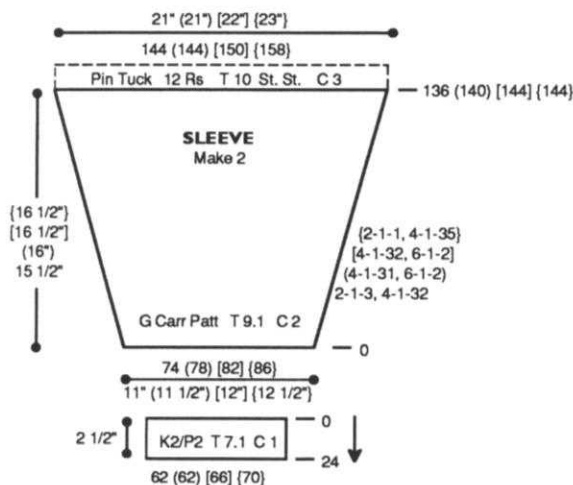
(continued on next page)

IT'S HERE NOW!!
KNITTING MAGAZINE
BOUND VOLUME 26

- HARD BOARD COVER
- COMPLETE INSTRUCTIONS
- WILL HOLD ANOTHER COMPLETE VOLUME

PRICE: \$27.95
+ Ship/Hndlg: \$4.00

(continued from previous page)



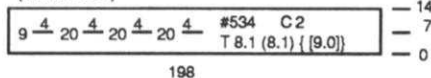
CUFF: Make 2.

With purl side facing rehang lower edge of sleeve on 62 (62) [66] [70] ndls. C1. Knit 1 row with K-Carriage at T 10. RC 0. T 7.1. Set Garter Carriage for rib pattern. Knit to R 24, knitting last row at T 10+ and BOLT.

BAND: (Make 1 w/buttonholes, 1 w/o buttonholes.)

With purl side facing rehang front and 1/2 of back neck on 198 ndls. C 2. Knit 1 row with K-Carriage at T 10. RC 0. T 8.1 (8.1) {[9.0]}. Set Garter Carriage for rib pattern. Knit to R 7 and make buttonholes over 4 sts. with WY following chart. Knit to R 14, knitting last row at T 10+ and BOLT.

BAND (Make 1 with buttonholes, 1 without)
(Not to Scale)

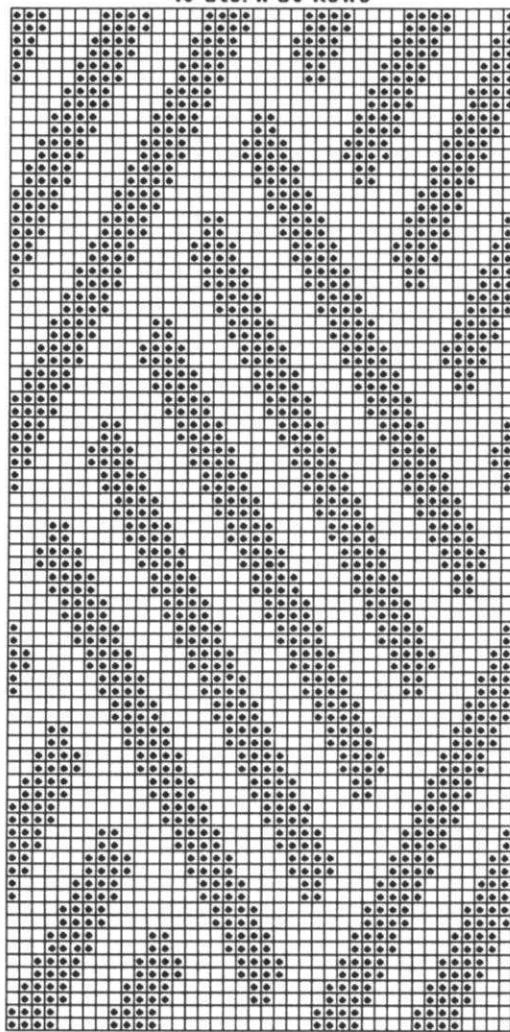


(every 4 Rs. 1 St. 31x and every 6 Rs. 1 St. 2x) [every 4 Rs. 1 St. 32x and every 6 Rs. 1 St. 2x] {EOR 1 St. 1x and every 4 Rs. 1 St. 35x}. At R 136 (140) [144] [144] knit Pin Tuck with K-Carriage. RC 0. T 10. C 3. St. St. Knit to R 12. Pick up 1st row of st. st. for pin tuck. Knit 1 R and remove sts. on WY.

FINISHING:

Join shoulder seams. Attach front bands. Close all remaining seams.

#146 Garter Carriage Pattern
40 Sts. x 80 Rows



KK Mag Disk: Track 4; Pat. 901

147



SHORT ROW INTARSIA VEST

YARN: Alpine

SIZES:

Small (Medium) [Large]

AMOUNT: Same all sizes

C1: Black

1 cone (approx 14 oz.)

C 2: Burgundy - 2 oz.

C 3: Turquoise - 2 oz.

C 4: Charcoal - 2 oz.

C 5: Bronze - 2 oz.

KIT PRICE: \$42.00

TENSION:

Fairisle SHR: T 5.1

St. St.: T 5.1

Trim: T 7

GAUGE:

Fairisle SHR: 4.7 Sts., 6 Rs. = 1"

St. St.: 4.61 Sts., 6 Rs. = 1

Make on Compuknit/Bulky .

SHORT ROW KNITTING IN

FAIRISLE: Select KC and depress MC button.

Read special notes and instructions before knitting.

To make color changing easier, cut little pieces of yarn and tape on Color Chart where color changes occur.

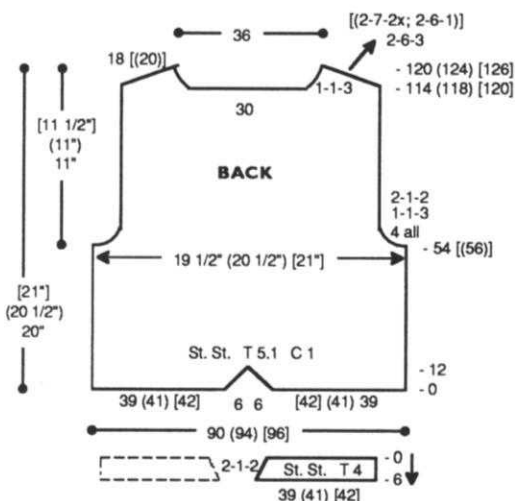
Special Note: Fairisle - Changing Colors. Pay special attention to the needle setup. Remember ndls. in 'B' position will knit yarn in "A" Feeder and ndls. in 'D' position will knit yarn in "B" Feeder.

Short Row: When wrapping, contrast color will be under the ndls. in 'D' position. Make sure you bring yarn up and lay it on top between the 1st St. and the 2nd ndl. Carefully pull up the slack on contrast yarn until it begins to knit.

Please practice this procedure before attempting to knit the vest.

BACK:

With WY CO [42] (41) 39 sts. to the right of -0- starting at ndl. #7. *After several rows end with 1 row Ravel Cord to the right. RC 0. T 5.1. C 1. Knit in St. St. while incr. on the left side EOR 1 St. 6x. At R 12 remove these sts. on WY. With WY CO 39 (41) [42] sts. to the left of -0- starting at ndl. #7. Repeat from *, reversing shaping. At R 12 rehang right side (90 (94) [96] sts. total). Knit to R 54 [(56)] and shape armhole. On each side BO 4 sts. all sizes, then decr. every R 1 St. 3x and EOR 1 St. 2x. At R 114 (118) [120] shape neckline. BO center 30 sts. for all sizes. Place all sts. to the left in HP. **On neckline edge decr. every R 1 St. 3x. AT THE SAME TIME SHR shoulder EOR 6 Sts. 3x [(EOR 7 Sts. 2x and 6 Sts. 1x)]. At R 120 (124) [126] knit 1 row over all sts. at T 10 and BOLT. Reset RC to R 114 (118) [120] and shape left neckline and shoulder from **, reversing shapings.

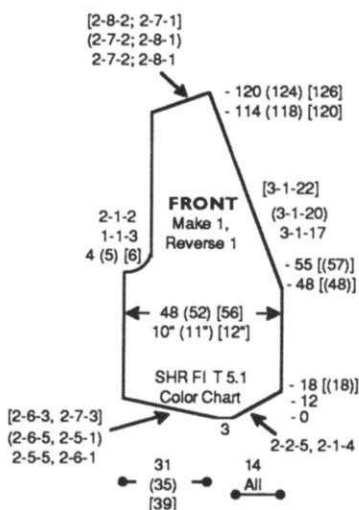


LOWER HEM:

With purl side facing rehang right half of back lower edge on 39 (41) [42] ndls. C 1. T 4. RC 0. St. St. On left side incr. EOR 1 st. 2x. At R 6 remove on WY. Repeat for other half of back, reversing shaping.

LEFT FRONT:

Use Variation Key #1 (Reverse). With WY CO 48 (52) [56] sts. After 10 to 12 rows end with 1 row Ravel Cord to the left. RC 0. T 5.1. C 1. Select KC and knit 1 R to set pattern. Depress MC button. Cut yarn. Place sts. on each side to HP (ndls. will be in 'D' position). Place appropriate color in "B" Feeder. On right side SHR EOR 2 Sts. 5x and 1 St. 4x. AT THE SAME TIME on the left side SHR EOR 5 Sts. 5x and 6 Sts. 1x (EOR 6 Sts. 5x and 5 Sts. 1x) [EOR 6 Sts. 3x and 7 Sts. 3x]. When ndls. on left side select to 'B' position add yarn to "A" Feeder (see Color Chart). Continue in pattern following Color Chart. At R 48 [(48)] shape neckline. On right side decr. every 3 Rs. 1 St. 17x (every 3 Rs. 1 St. 20x) [every 3 Rs. 1 St. 22x]. AT THE SAME TIME at R 55 [(57)] shape armhole. On left side BO 4 (5) [6] Sts. then decr. every R 1 St. 3x and EOR 1 St. 2x. At R 114 (118) [120] SHR shoulder EOR 7 Sts. 2x and 8 Sts. 1x (7 Sts. 2x and 8 Sts. 1x) [8 sts. 2x and 7 sts. 1x]. At R 119 (123) [125] release "H" button. With C 1 knit 1 row over all sts. at T 10 and BOLT.



RIGHT FRONT:

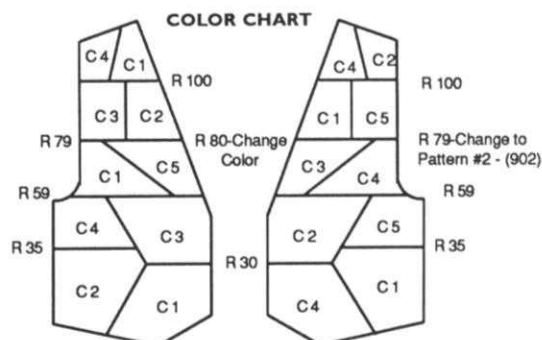
Do not use Variation Key #1. Knit same as left front reversing shapings and following Color Chart.

TRIM:

C 1. St. St. T 7. CO 4 sts. and knit pieces as follows:
Armhole - Make 2 pieces approximately 24" long each.
Back Neck, Front, Lower Edge - Make 1 piece approximately 120" long.

DECOKING TRIM:

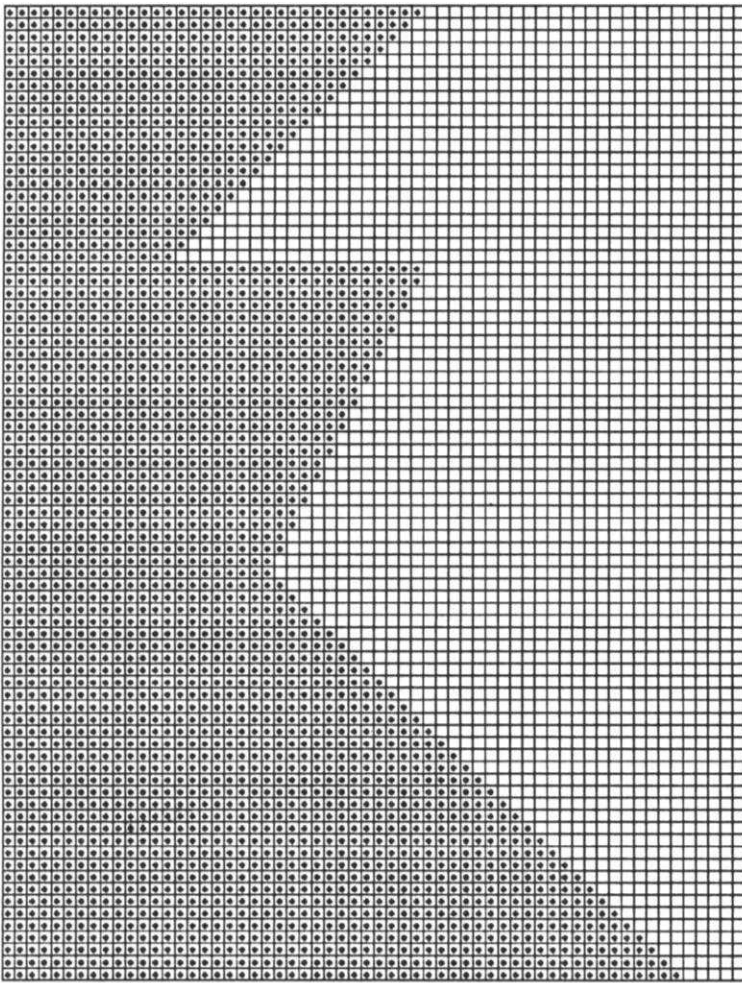
Press freezer paper on to purl side of fronts and back to stabilize. Using Alpine yarn and medium feed finger, trim along lines connecting SHR colors and place designs in color blocks as desired. See sketches for shapes and direction of DecoKing stitches. After stitching, remove freezer paper. If desired use iron-in fusible knit (Easy-Knit lining). Press to purl side of each section. This will provide additional stability to garment.



FINISHING:

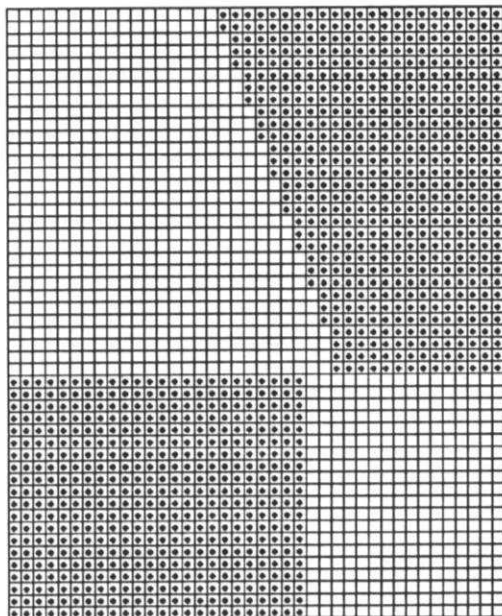
With C 1 slip st. crochet around lower edge of fronts. For lower back hem: Split yarn and overcast hem. When steaming the knit side move down toward hemline. On the purl side, press from lower hemline up. This will eliminate ridge. Close shoulder and side seams. Attach trim around front, back neck, front and lower edge. Attach a vest clip to the back if desired for "cinched-in" look.

#147 Short Row Intarsia
60 Sts. x 80 Rows



KK Mag Disk: Track 5; Pattern 901

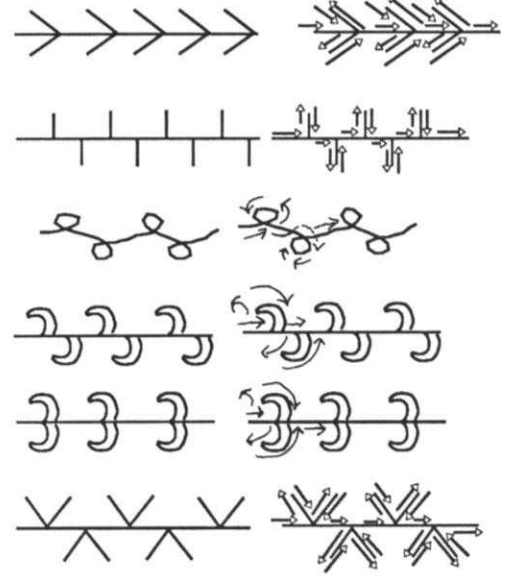
#147 Short Row Intarsia
40 Sts. x 50 Rows
Pattern 2 (902)



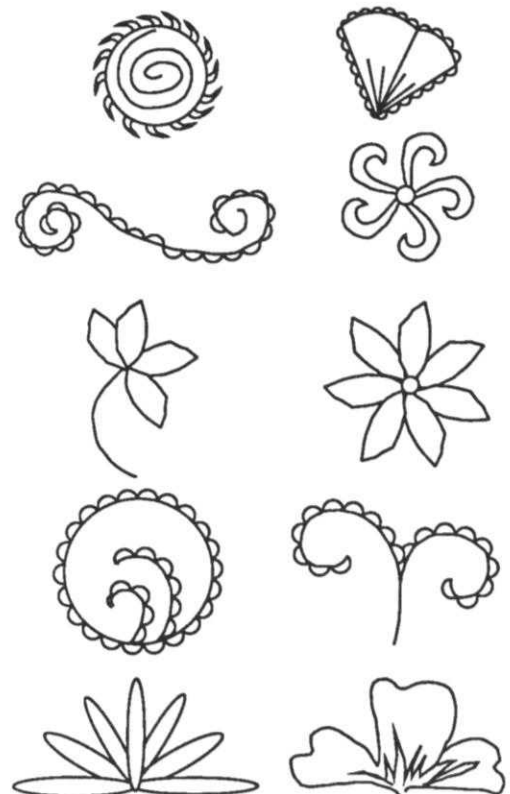
KK Mag Disk: Track 5; Pattern 902

GUIDE TO DECOKING
DECORATIVE STITCHES

Stitches Between Color Block



DECOKING EMBELLISHMENT
STITCHES



148



BULKY TUCK JACKET

YARN: Alpine - Turquoise

SIZES:

6/8 (10/12) [14/16]

AMOUNT: 2 lbs. all sizes

KIT PRICE: \$55.00

TENSION:

Tuck: T 1.2/1.1 I

FNR: T 0.2/0.2 I

Rib: T -0/-0 I

St. St.: T 3

GAUGE:

Tuck: 3.84 Sts., 7.53 Rs. = 1"

FNR: 4.7 Sts., 7.53 Rs. = 1"

NOTIONS:

21" (22") [24"] Zipper.

Make on Compuknit/Bulky or Punch Card Bulky with Ribber.

Note: Follow charts for ndl. arrangement and carriage position.

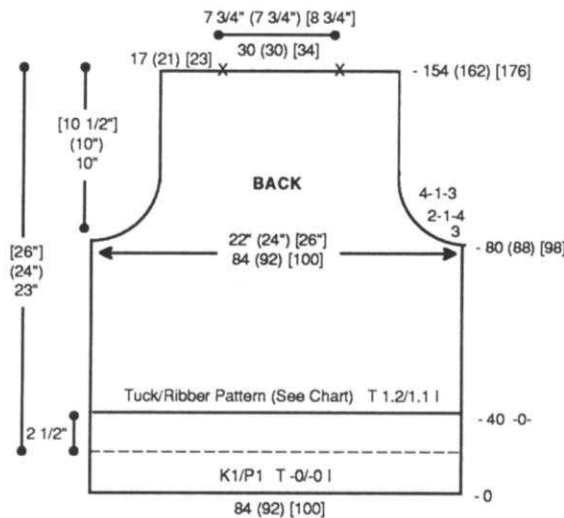
BACK:

CO 84 (92) [100] sts. for K1/P1 Rib. After selvedge T -0/-0 I. RC 0. Knit to R 40. Transfer RB sts. to MB. RC 0. T 1.2/1.1. Arrange ndls. for Tuck/Ribber Pattern following chart. Knit to R 80 (88) [98]. Shape armhole. On each side BO 3 sts., then decr. EOR 1 St. 4x and every 4 Rs. 1 St. 3x. At R 154 (162) [176] knit 1 R at T 8/4. Mark center 30 (30) [34] sts. for neckline. Transfer RB sts. to MB and BOLT.

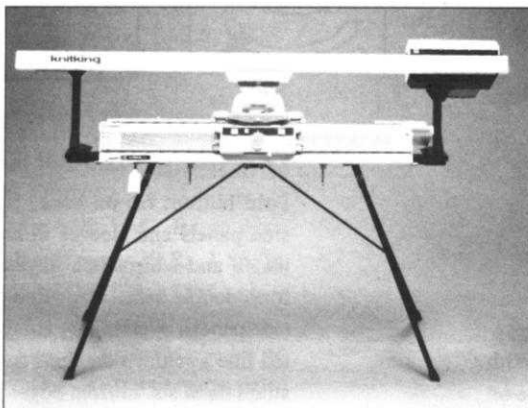
FRONT: Make 1, Reverse 1.

CO 36 (40) [44] sts. for K1/P1 Rib. After selvedge T -0/-0 I. RC 0. Knit to R 40. Transfer RB sts. to MB. RC 0. T 0.2/0.2. Arrange ndls. for FNR. Place a YM on right side for pocket. Knit to R 60 and place a YM on right side for pocket. At R 134 (140) [156] shape neckline. On left side BO 10 (10) [12] sts., then decr. EOR 1 St. 8x. At R 154 (162) [176] knit 1 row at T 8/4. Transfer RB sts. to MB and BOLT.

(continued on next page)



CUT KNITTING TIME IN HALF!



For many, the appeal of Machine Knitting is one of speed . . . it very well could take only a few hours to machine knit a garment that would take a few weeks to do by hand.

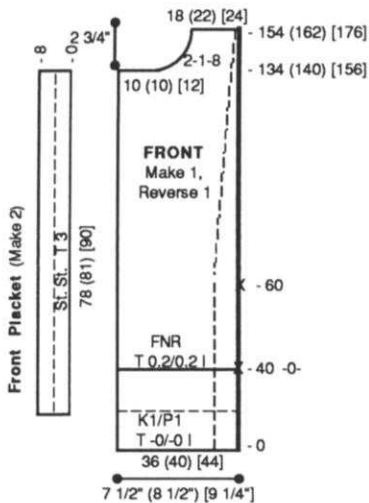
If you're in this majority, then the **Power Drive Unit** is for you. As its name implies, the **PDU** attaches to the K-Carriage of your knitting machines—Punch Card or Electronic, Standard or Bulky—and automatically moves it back and forth across the knitting bed, reducing your knitting time by half or more! If you're a **KNITKING** owner with a serious knitting passion, this accessory is a must!

But don't feel "shutout" if you own a different brand of knitting machine. **KNITKING's PDU** will work with all Brother machines, and most Studio and Singer models as well (Adaptor Kit available).



NOW Save \$140.00 — Only \$959.95 . . . Buy One Today!

(continued from previous page)

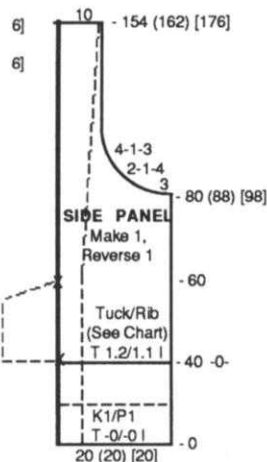


SIDE PANEL:

Make 1, Reverse 1.
CO 20 [(20)] sts. for K1/P1 Rib. After selvedge T -0/-0 I. RC 0. Knit to R 40. Transfer RB sts. to MB. RC 0. T 1.2/1.1. Arrange ndls. for Tuck/Ribber Pattern following chart. Place a YM on left side for pocket. Knit to R 60 and place a YM on left side for pocket. At R 80 (88) [98] shape armhole. On right side BO 3 sts., then decr. EOR 1 St. 4x and every 4 Rs. 1 St. 3x. At R 154 (162) [176] knit 1 row at T 8/4. Transfer RB sts. to MB and BOLT.

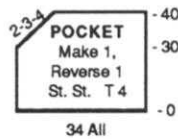
FRONT PLACKET: Make 2.

With purl side facing, rehang front edge on 78 (81) [90] ndls. RC 0. T 3. St. St. Knit to R 8. Pick up sts. from first row to form doubled hem. Knit 1 row at T 10 and BOLT.



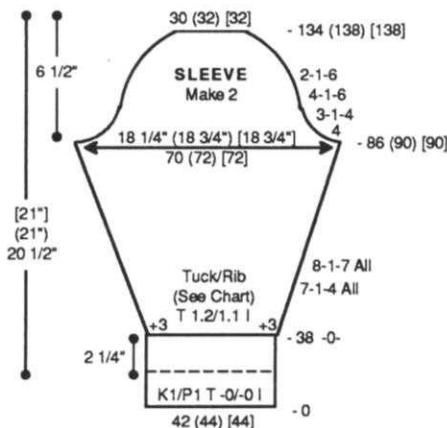
POCKET: Make 1, Reverse 1.

With knit side facing, rehang side panel as shown on chart on 34 ndls. RC 0. T 4. St. St. Knit to R 30. On left side SHR EOR 3 Sts. 4x. At R 40 knit 1 row at T 10 and BOLT.



SLEEVE: Make 2.

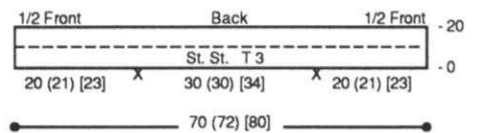
CO 42 (44) [44] sts. for K1/P1 Rib. After selvedge T -0/-0 I. RC 0. Knit to R 38. Transfer RB sts. to MB. RC 0. T 1.2/1.1. Incr. 3 sts. on each side. Knit in Tuck/Ribber Pattern while incr. on each side every 7 Rs. 1 St. 4x and every 8 Rs. 1 St. 7x for all sizes. At R 86 (90) [90] shape sleeve cap. On each side BO 4 sts., then decr. every 3 Rs. 1 St. 4x, every 4 Rs. 1 St. 6x and EOR 1 St. 6x. At R 134 (138) [138] knit 1 row at T 8/4. Transfer RB sts. to MB and BOLT.



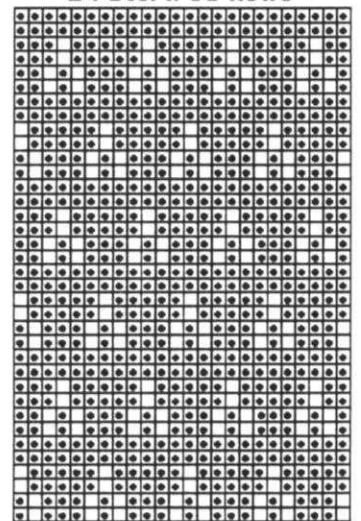
NECKBAND:

Close shoulder seams first. With purl side facing rehang neckline on 70 (72) [80] ndls. following chart. RC 0. T 3. St. St. Knit to R 20, knitting last row at T 10 and BOLT. Turn hem to inside and whip stitch in place.

NECKBAND

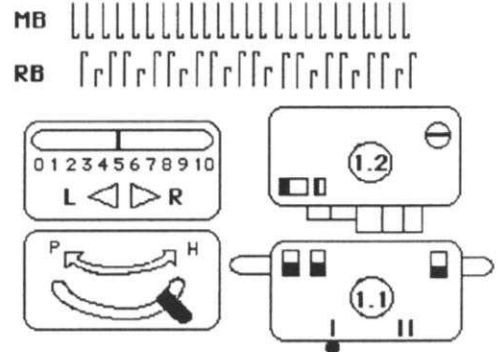


**#148 Tuck Pattern
24 Sts. x 36 Rows**



KK Mag Disk: Track 6; Pat. 901

#148 Tuck Needle Arrangement



FINISHING:

Fold bottom rib on back, fronts, side panels and sleeves in half to inside and whip stitch in place to form double hem. Place front over side panels, overlapping along dotted line as shown on chart and top stitch three sts. in from edge. Then single crochet along the edge. Stitch pocket in place between markers on front of jacket. Close all remaining seams. Sew zipper in front opening.



WOMENS SHEATH DRESS

YARN: Venetia - Jungle

SIZES:

10/12 (14/16) [18] {20}

AMOUNT:

1-1/2 (1-1/2) {[2]} lbs.

KIT PRICE:

\$42.00 (\$42.00) {[56.50]}

TENSION:

Body: T 4.2

Rib: T 0/0 I

GAUGE:

Body: 8.3 Sts., 12.45 Rs. = 1"

NOTIONS:

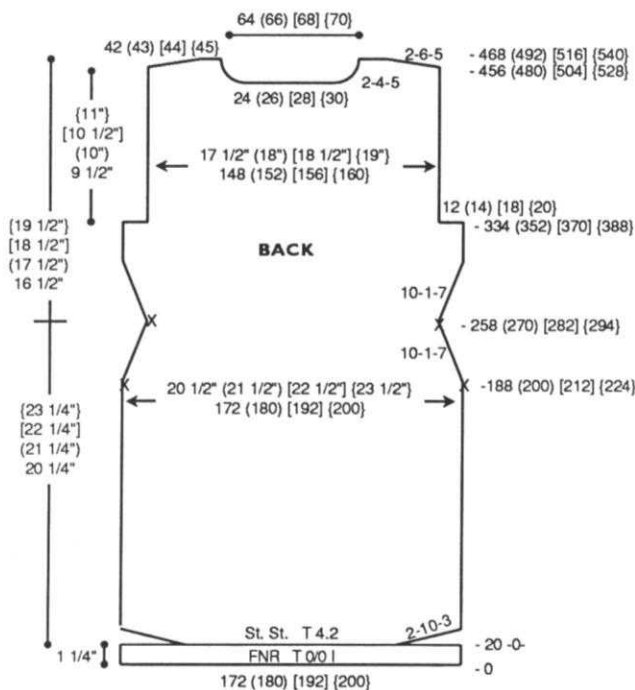
6 - 1" buttons for front

2 - 3/8" buttons for pockets.

Make on any Standard Machine with Ribber.

BACK:

CO 172 (180) [192] {200} sts. for FNR. After selvedge RC 0. T 0/0 I. Knit to R 20. Transfer RB sts. to MB. RC 0. T 9. St. St. Knit 1 row to the left. Change to T 4.2. Knit shaping lower edge by SHR shaping on each side EOR 10 Sts. 3x. At R 188 (200) [212] {224} mark each side with YM. Begin decr. on each side every 10 Rs. 1 St. 7x. At R 334 (352) [370] {388} shape armhole. On each side BO 12 (14) [18] {20} sts. At R 456 (480) [504] {528} shape neckline. Place center 24 (26) [28] {30} sts. in HP and all sts. to the

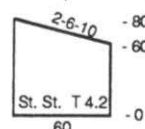


left. *On neckline edge decr. EOR 4 Sts. 5x. AT THE SAME TIME SHR shoulder EOR 6 Sts. 5x. AT R 468 (492) [516] {540} remove shoulder sts. on WY. Reset RC to R 456 (480) [504] {528} and shape left neckline and shoulder from *, reversing shapings. Remove shoulder and neckline sts. on separate WY.

POCKET: Make 2.

Must be made prior to Front. With WY CO 60 sts. After several rows, end with 1 R Ravel Cord to the right. Change to main yarn. RC 0. T 4.2. St. St. Knit to R 60. SHR EOR 6 Sts. 10x. Knit 1 R over all sts. and remove on WY.

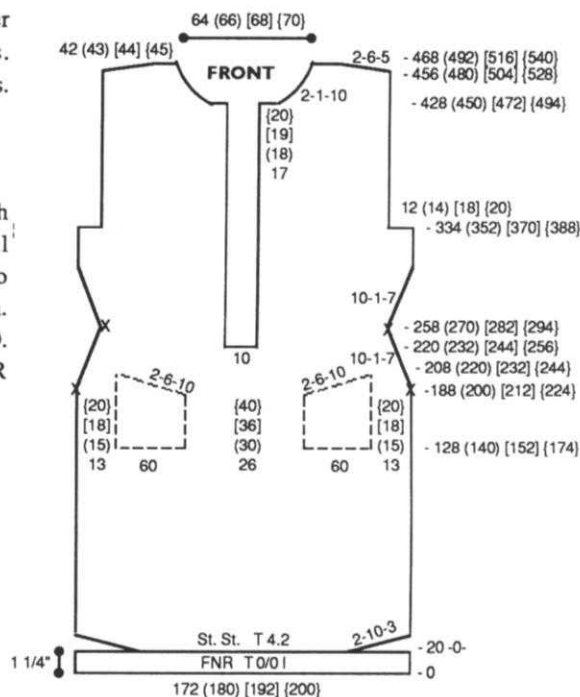
POCKET
Make 2 (Not to scale)



FRONT:

Knit front same as back to R 128 (140) [152] {174}. With purl side facing rehang bottom of pockets (see chart for spacing). At R 188 (200) [212] {224} remove 60 sts.

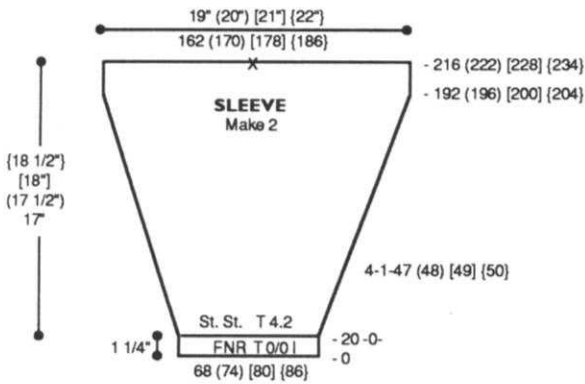
on each side on WY (see chart). Rehang top of pockets on these ndls. Shape right side first. *Leave 13 (15) [18] {20} sts. on the right in WP. Place all ndls. on the left in HP. SHR EOR 6 Sts. 10x. AT THE SAME TIME shape skirt. Decr. every 10 Rs. 1 St. 7x. Reset RC to R 188 (200) [212] {224} and complete left pocket from *, reversing shapings. At R 220 (232) [244] {256} shape neckline. BO center 10 sts. Place all sts. to the left in HP. **Knit to R 258 (270) [282] {294} place a YM on right side for waist. Begin incr. every 10 Rs. 1 St. 7x. At R 334 (352) [370] {388} shape armhole. BO 12 (14) [18] {20} sts. At R 428 (450) [472] {494} on neckline edge BO 17 (18) [19] {20} sts. then decr. EOR 1 St. 10x. At R 456 (480) [504] {528} SHR shoulder EOR 6 Sts. 5x. At R 468 (492) [516] {540} remove shoulder sts. on WY. Reset RC to R 220 (232) [244] {256} and shape left side from **, reversing shapings.



SLEEVE: Make 2.

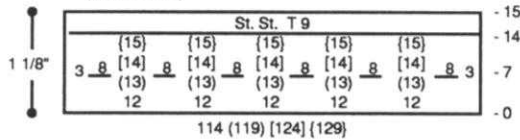
CO 68 (74) [80] {86} sts. for FNR. After selvedge RC 0. T 0/0 I. Knit to R 20. Transfer RB sts. to MB. RC 0. T 9. Knit 1 R to the

left. Change to T 4.2. Knit in St. St. while incr. shaping on each side every 4 Rs. 1 St. 47 (48) [49] {50}x. At R 216 (222) [228] {234} mark center and remove sts. on WY.



FRONT BAND

Make 1 with buttonholes, 1 without (Not to Scale)



T 0/0 I. Knit to R 7 and make buttonholes over 8 sts. following chart. At R 14 transfer RB sts. to MB. Knit 1 row at T 9 and remove sts. on WY.

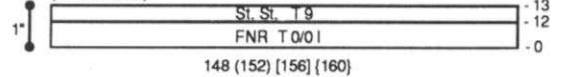
R 7 and make a buttonhole over 4 sts. following chart. At R 14 transfer RB sts. to MB. Knit 1 R at T 9 and remove sts. on WY.

NECKBAND:

CO 148 (152) [156] {160} sts. for FNR. After selvedge RC 0. T 0/0 I. Knit to R 12. Transfer RB sts. to MB. Knit 1 R at T 9 and remove sts. on WY.

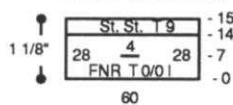
NECKBAND

(Not to Scale)



POCKET BAND

Make 2 (Not to scale)



POCKET BAND: Make 2. CO 60 sts. for FNR. After selvedge RC 0. T 0/0 I. Knit to

FRONT BAND: Make 1 with buttonholes, 1 without. CO 114 (119) [124] {129} sts. for FNR. After selvedge RC 0.

FINISHING:

Attach front bands. Close shoulder seams. Attach neckband and pocket bands. Close all remaining seams.

Patterns, Patterns Everywhere!

PATTERN DISKS for COMPUKNIT/BULKY, COMPUKNIT III, IV or the newest, COMPUKNIT V



A Pre-Programmed Floppy Disk with all of the Pattern Stitches (except Intarsia) for the garments in this issue. Just insert the Disk into your Floppy Disk Drive, enter the Pattern Stitch of your choice and... Away You Go!!!

Also available for back issues starting with 22 #1

The price is **ONLY \$9.95** plus \$.75 for shipping.

FDD 19

FLOPPY DISK DRIVE for COMP/BULKY, COMP/ST, COMPUKNIT III, IV or the newest, COMPUKNIT V

For Use With:



The Floppy Disk Drive makes pattern work unbelievably easy. There are many programmed disks available from a variety of designers. In fact, as the ad to the left explains, several of the unique creations found on the pages of this magazine are available on disk.

Invest in a Floppy Disk Drive today... and start your own Design Collection tomorrow! — **ONLY \$369.95**



WOMENS FAIRISLE VEST

YARN: Woolana, Night Music, Pearlyte, Primo and Caprinae
SIZES:

- | | | |
|---------------------------|---------|----------|
| 6/8 | (10/12) | [14] |
| AMOUNT: | | |
| C 1: Woolana - Burgundy | | |
| 8 oz. | (8 oz.) | [12 oz.] |
| C 2: Night Music - Copper | | |
| 2 balls all sizes | | |
| C 3: Pearlyte - Royal | | |
| 2 oz. | (3 oz.) | [4 oz.] |
| C 4: Pearlyte - Beige | | |
| 2 oz. | (3 oz.) | [4 oz.] |
| C 5: Primo - Jungle | | |
| 2 oz. | (3 oz.) | [4 oz.] |
| C 6: Caprinae - Tan | | |
| 2 oz. | (2 oz.) | [2 oz.] |

KIT PRICE:
 \$42.00 (\$46.50) [\$53.00]

TENSION:
 Fairisle: T 6
 Rib: T 1/1 I
 St. St. T 6

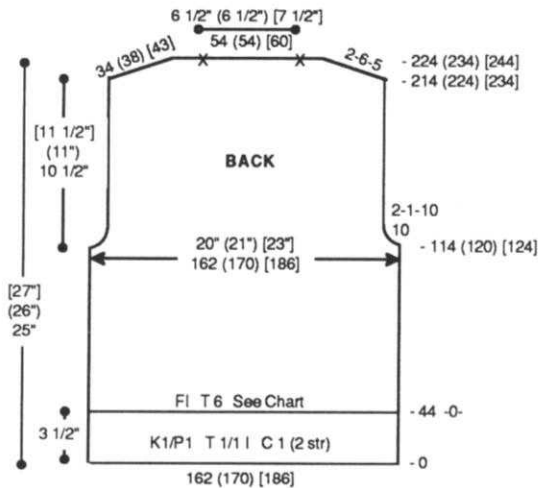
GAUGE:
 Fairisle: 8.1 Sts., 10.4 Rs. = 1"
NOTIONS: 5 - 3/4" Buttons

Make on Standard 24-Stitch Punch Card or Standard Electronic Machine with Ribber.

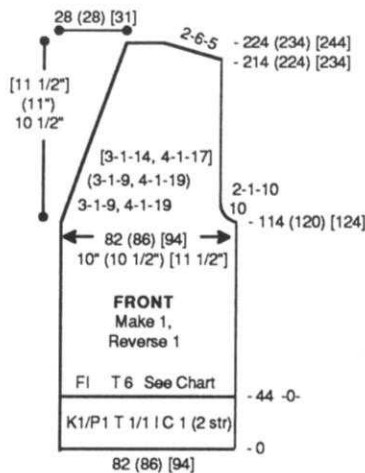
Note: Use 2 strands of C 1 throughout.

BACK:
 With C 1 (2 strands) CO 162 (170) [186] sts. for K1/P1 Rib. After selvedge RC 0. T 1/1 I. Knit to R 44. Transfer RB sts. to MB. RC 0. T 6. Knit in fairisle following

Color Chart. At R 114 (120) [124] shape armhole. On each side BO 10 sts. then decr. EOR 1 St. 10x. At R 214 (224) [234] SHR shoulders EOR 6 Sts. 5x. At R 224 (234) [244] mark center 54 (54) [60] sts. for neckline. Knit 1 row over all sts. at T 10 and BOLT.

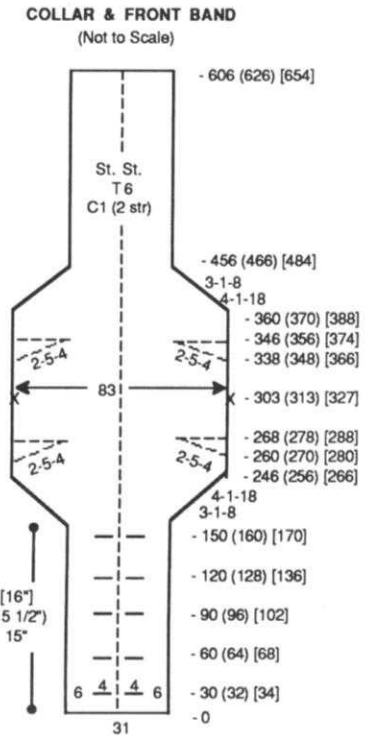


FRONT: Make 1, Reverse 1.
 With C 1 (2 strands) CO 82 (86) [94] sts. for K1/P1 Rib. After selvedge RC 0. T 1/1 I. Knit to R 44. Transfer RB sts. to MB. RC 0. T 6. Knit in fairisle following Color Chart. At R 114 (120) [124] shape armhole. On right side BO 10 sts. then decr. EOR 1 St. 10x. AT THE SAME TIME shape neckline. On left side decr. every



3 Rs. 1 St. 9x and every 4 Rs. 1 St. 19x (every 3 Rs. 1 St. 9x and every 4 Rs. 1 St. 19x) [every 3 Rs. 1 St. 14x and every 4 Rs. 1 St. 17x]. At R 214 (224) [234] SHR shoulder EOR 6 Sts. 5x. At R 224 (234) [244] knit 1 row over shoulder sts. at T 10 and BOLT.

COLLAR & FRONT BAND:
 With WY CO 31 sts. After several rows, end with 1 row Ravel Cord to the right. RC 0. T 6. C 1 (2 strands). Knit in St. St. making buttonholes over 4 Sts. with WY following chart at Rs. 30 (32) [34],



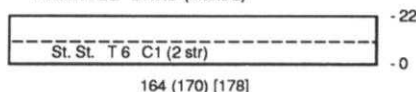
60 (64) [68], 90 (96) [102], 120 (128) [136] and 150 (160) [170]. Then incr. on each side every 3 Rs. 1 St. 8x and every 4 Rs. 1 St. 18x. At R 260 (270) [280] SHR on each side EOR 5 Sts. 4x. At R 268 (278) [288] return all ndls. to WP. At R 303 (313) [327] place a YM on each side for center. At R 338 (348) [366] SHR on each side EOR 5 Sts. 4x. At R 346 (356)

[374] return all ndls. to WP. At R 360 (370) [388] decr. on each side every 4 Rs. 1 St. 18x and every 3 Rs. 1 St. 8x. At R 606 (626) [654] remove sts. on WY.

ARMHOLE BAND: Make 2.

With purl side facing rehang armhole on 164 (170) [178] ndls. St. T 6. C 1 (2 strands). Knit to R 22. Pick up sts. from first row to form double band. Knit 1 row at T 10 and BOLT.

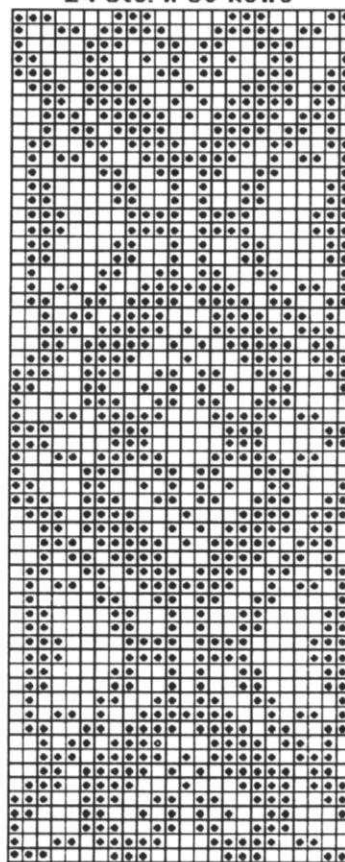
ARMHOLE BAND (Make 2)



FINISHING:

Close all seams. Attach collar on front band.

**#150 Fairisle Pattern
24 Sts. x 60 Rows**



KK Mag Disk: Track 7; Pat. 901

151



DENIM WOVEN VEST

YARN: Panache

SIZES:

Small (Medium) [Large]

AMOUNT:

C 1: Panache -Denim

1 lb. all sizes

C 2: Denim Fabric - 1 yd.

Cut in 1/2" strips (See note)

C 3: Lace Fabric - 1/2 yd.

KIT PRICE: \$16.00

TENSION:

Weaving: T 8

Back: T 8

Trim: T 0

GAUGE:

Weaving: 3.15 Sts., 5.6 Rs. = 1"

Back: 4.61 Sts., 6 Rs. = 1"

NOTIONS:

1 yd. Denim fabric

1/2 yd. lace fabric

4 Buttons

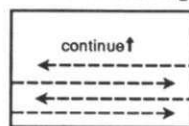
Make on Compuknit/Bulky or Punch Card Bulky. Pattern is #5 in Compuknit/Bulky Pattern Book. Use variation key #4 (elongated).

Note: Use 1 strand Panache for weaving and trim, 2 strands Panache for back. See drawing for instructions on cutting fabric in continuous strip.

Weaving Instructions: Knit in weaving pattern bring selected ndls ('D' position) slightly forward so the yarn is behind the latch (close latch). Lay the strip of denim fabric behind the latches

next to the gate pegs. Note: If you bring these ndls too far forward they will not knit because you have the carriage in 'H' position.

Directions for Cutting Fabric for Weaving



cutting line and direction of cut

Special Note:

After each woven piece is completed:

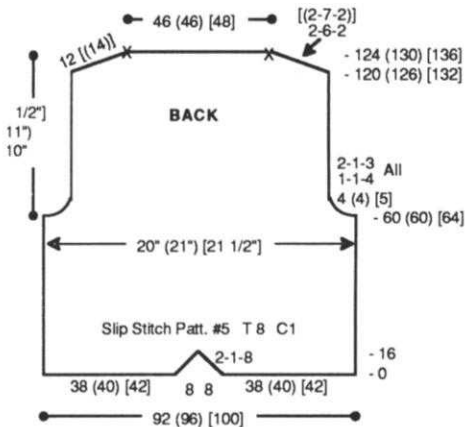
1. Hand wash in cold water.
2. Wrap in towel to remove excess moisture.
3. Place in dryer with towel at a low temperature.
4. Edge of strips will fray to add texture.

OPTION:

You can knit the front in 1 piece, then cut and sew creating proper shaping, overlapping edges to eliminate bulky seam.

BACK:

With WY CO 38 (40) [42] sts. to the right of -0- starting at ndl. #9.
*After several rows end with 1 row Ravel Cord to the right. RC 0. T 8. C 1 (2 strands). Pattern #5,



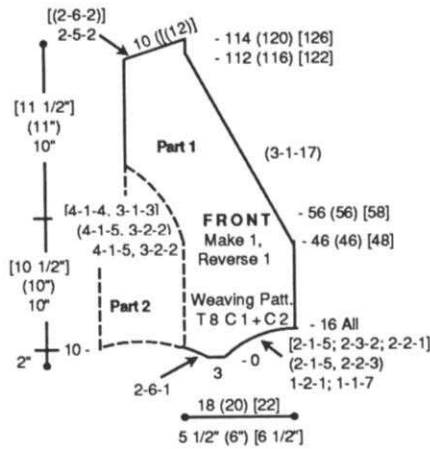
Variation Key #4. Select KC and knit 1 row to select pattern. Depress 1 PART button. Knit while incr. on left side EOR 1 St. 8x. At R 16 remove sts. on WY. With WY CO 38 (40) [42] sts. to the left of -0- starting at ndl. #9. Repeat from *, reversing shaping. At R 16 rehang right side, setting pattern manually (92 (96) [100] sts. total). Knit to R 60 (60) [64] and shape armhole. On each side BO 4 (4) [5] sts. then decr. every R 1 St. 4x and EOR 1 St. 3x for all sizes. At R 120 (126) [132] SHR shoulders EOR 6 Sts. 2x [(EOR 7 Sts. 2x)]. At R 124 (130) [136] marke center 46 (46) [48] sts. for neck opening. Knit 1 row at T 10 and BOLT.

FRONT: Make in 2 pieces.

Part 1:

Using weaving CO method and C 1 (2 strands) CO 18 (20) [22] sts. Select KC and knit 1 row to select pattern. Cut yarn. Bring

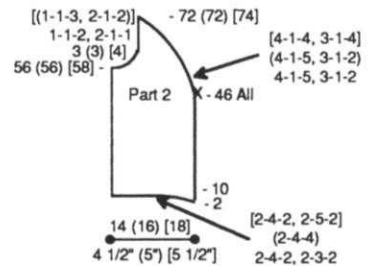
ndls. on each side of the 3 sts. (see chart) to HP. Select 'H' button. Using 1 strand of C1 and strips of denim, knit in weaving pattern. (See directions above.) On the left side reverse SHR EOR 6 Sts. 1x. AT THE SAME TIME on the right side reverse SHR EOR 2 Sts. 1x and 1 st. 7x (1 St. 5x and 2 Sts. 3x) [1 St. 5x; 3 sts. 2x and 2 sts. 1x]. After all ndls. are in WP release 'H' button and bring selected ndls. to 'E' position, lay fabric behind latch against the gate peg and close latches. At R 46 (46) [48] shape neckline. On the right side decr. every 3 Rs. 1 St. 17 x for all sizes. AT THE SAME TIME on the left side at R 46 for all sizes incr. every 4 Rs. 1 St. 5x and every 3 Rs. 2 Sts. 2x [every 4 Rs. 1 St. 4x and every 3 Rs. 1 St. 3x]. At R 112 (116) [122] SHR shoulder EOR 5 Sts. 2x [(EOR 6 Sts. 2x)]. Knit 1 R over all sts. at T 10 and BOLT.



Part 2:

With C 1 (2 strands) rapid CO 14 (16) [18] sts. Knit in weaving pattern while reverse SHR on the left side EOR 4 Sts. 2x and 3 Sts. 2x (EOR 4 Sts. 4x) [EOR 4 Sts. 2x and 5 Sts. 2x]. At R 46 for all sizes start shaping. On the right side decr. every 4 Rs. 1 St. 5x and every 3 Rs. 1 St. 2x (every 4 Rs. 1 St. 5x and every 3 Rs. 1 St. 2x) [every 4 Rs. 1 St. 4x and every 3 Rs. 1 St. 4x]. AT THE SAME

SIDE PANEL



TIME at R 56 (56) [58] shape armhole. On the left side BO 3 (3) [4] Sts. then decr. every R 1 St. 2x and EOR 1 St. 1x [(every R 1 St. 3x and EOR 1 St. 2x)]. At R 72 (72) [74] BO.

TRIM:

C 1 (1 strand). St. St. T 0. CO 7 sts. and knit cord (depress 1 part button) pieces as follows:
Armhole - Make 2 pieces approximately 25" each. Back Neck, Front, Lower Edge - Make 1 piece approximately 130" long.

#151 Weaving and Slip Pattern



KK Mag Disk:
Track 8; Pat. 901
Use elongation variation for vest back

FINISHING:

After washing and drying woven pieces, place lace over side panel (Part 2) and sew to Part 1. Close all other seams. Attach trim, leaving opening for 4 buttons 1-1/2" apart (opening will depend on size of button used). Add vest clip to back to cinch in waistline if desired. Single crochet 1 R around lower back hem.



WOMENS BULKY TUCK CROP TOP

YARN: Mirage - Jade

SIZES:

Small (Medium) [Large]

AMOUNT:

1 1/2 lbs. all sizes

KIT PRICE: \$19.00

TENSION:

St. St.: T 3

Tuck: T 5

GAUGE:

St. St.: 4 Sts., 7 Rs. = 1"

Tuck: 3.5 Sts. 8 Rs. = 1"

Make on Compuknit/Bulky or Punch Card Bulky Machine.

Note: 8 Rs. of Pin Tuck not included in # of Rs.

BACK:

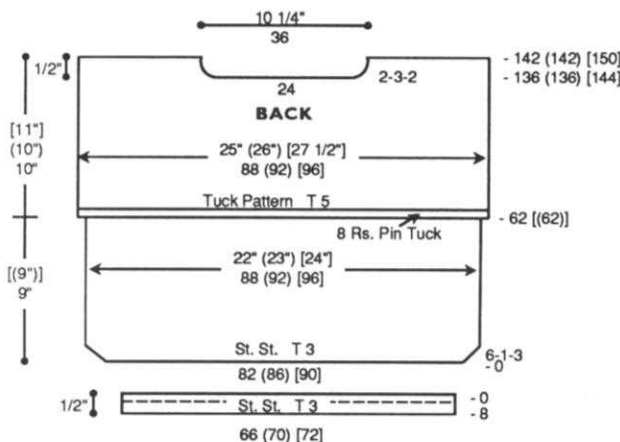
With WY CO 82 (86) [90] sts. After several rows, end with 1 row Ravel Cord to the right. RC 0. T 3. Knit in St. St. while incr. on each side every 6 Rs. 1 St. 3x. At R 62 [(62)] knit 8 Rs. Pick up sts. from first row to form pin tuck band. Remove sts. on Garter Bar or WY. With knit side facing, rehang garment on same ndls. Place center 24 sts. in HP and all sts. to the left. Note pattern row. *On neckline edge SHR EOR 3 Sts. 2x. At R 142 (142) [150] remove shoulder sts. on WY. Reset RC to R 136 (136) [144] and pattern to correct row and shape

left neckline from *, reversing shapings. Remove shoulder and neckline sts. on separate WY.

each side every 8 Rs. 1 St. 13 (13) [15] x. AT THE SAME TIME at R 22 [(22)] place RC in OWP and knit 8 Rs. Pick up sts. from first row to form pin tuck band. Remove sts. on Garter Bar or WY. With knit side facing, rehang garment on same ndls. Place RC in WP. T 5 Tuck Pattern. At R 118 (118) [126] remove sts. on WY.

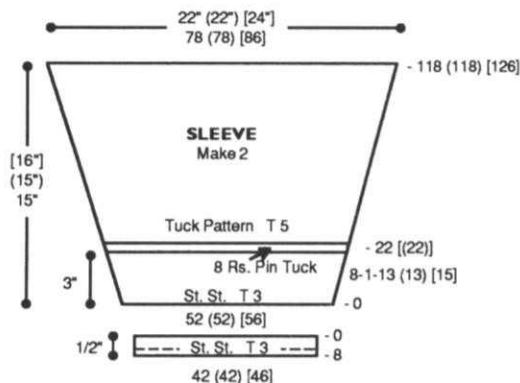
SLEEVE CUFF: Make 2.

With purl side facing rehang lower edge of sleeve doubling stitches the same as waistband. RC 0. T 3. St. St. Knit 8 Rs. Pick up first row to form double hem. Knit 1 R at T 10 and BOLT.



FRONT:

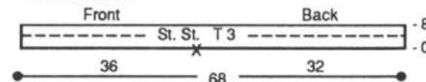
Knit front same as back to R128 (128) [136]. Shape neckline. Place center 16 sts. in HP and all sts. to the left. Note pattern row. *On neckline edge SHR EOR 2 Sts. 5x. At R 142 (142) [150] remove shoulder sts. on WY. Reset RC to R 128 (128) [136] and pattern to correct row and shape left neckline from *, reversing shapings. Remove shoulder and neckline sts. on separate WY.



NECKBAND:

Join one shoulder. With knit side facing rehang neckline on 68 sts. following chart. RC 0. T 3. St. St. Knit 8 Rs. Pick up first row to form double hem. Knit 1 R at T 10 and BOLT.

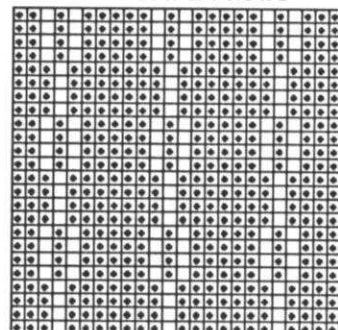
NECKBAND



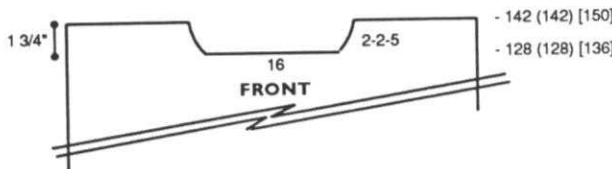
FINISHING:

Close all remaining seams.

#152 Tuck Pattern 24 Sts. x 24 Rows



KK Mag Disk: Track 9; Pat. 901



WAISTBAND: Make 2.

With purl side facing rehang lower edge of back/front as follows: *5 sts. on ndls. then double next 2 sts. on 1 ndl. Repeat from * until lower edge has been rehung. RC 0. T 3. St. St. Knit 8 Rs. Pick up first row to form double hem. Knit 1 R at T 10 and BOLT.

SLEEVE:

Make 2 the same.

With WY CO 52 (52) [56] sts. After several rows, end with 1 row Ravel Cord to the right. RC 0. T 3. Knit in St. St. while incr. on



CHILDS VEST

YARN: Softon

SIZES:

5/6 (7/8) [10/12]

AMOUNT:

C 1: Black (2 strands)
8 oz. (8 oz.) [12 oz.]

C2-7: 1 strand
2 oz. each all sizes

C 2: Emerald
C 3: Wine
C 4: Winter White
C 5: Red
C 6: Goldenrod
C 7: Violet

KIT PRICE:

\$27.00 (\$27.00) [\$33.00]

TENSION:

Body: T 5
Rib: T -0/-0 I or T 0/0 I

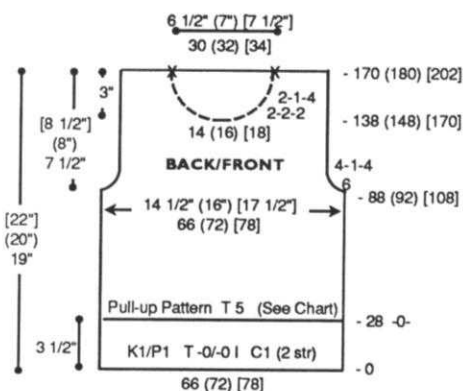
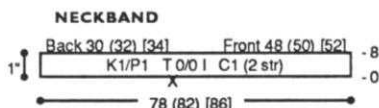
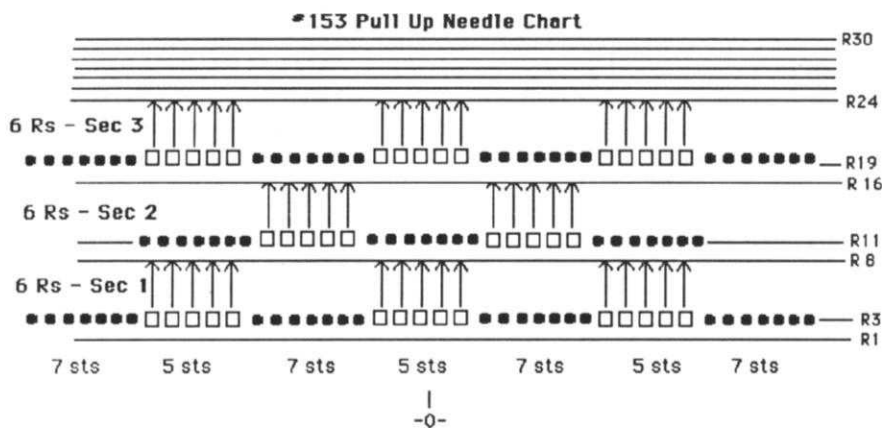
GAUGE:

Body: 4.5 Sts., 10.96 Rs. = 1"

Make on any Bulky Machine with Ribber.

Pull-Up Pattern:

1. Knit 2 Rs. with C 1 (R 2).
2. Knit 6 Rs. with C 2 (R 8).
3. With 5-prong tool pull 5 sts. up from R 3 to R 8 following ndl. chart. (Sec. 1).
4. Knit 2 Rs. with C 1 (R 10).
5. Knit 6 Rs. with C 3 (R 16).
6. With 5-prong tool pull 5 sts. up from R 11 to R 16 following ndl. chart. (Sec. 2).
7. Knit 2 Rs. with C 1 (R 18).
8. Knit 6 Rs. with C 4 (R 24).
9. Pull up following ndl. chart for Sec. 1.
10. Knit 6 Rs. with C 1 (R 30).
11. Repeat steps 2 through 10 following color chart and ndl. chart.



BACK:

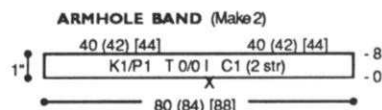
With C 1 (2 strands) CO 66 (72) [78] sts. for K1/P1 Rib. After selvedge T -0/-0 I. RC 0. Knit to R 28. Transfer RB sts. to MB. RC 0. T 5. Pull-up Pattern. See Color Chart. Knit to R 88 (92) [108] and shape armhole. On each side BO 6 sts., then dec. every 4 Rs. 1 St. 4x. At R 170 (180) [202] mark center 30 (32) [34] sts. for neckline. Knit 1 row at T 10 and BOLT.

FRONT:

Knit front same as back to R 138 (148) [170]. Shape neckline. Place center 14 (16) [18] sts. in HP and all sts. to the left. Note pattern row. *On neckline edge SHR EOR 2 Sts. 2x and 1 St. 4x. At R 170 (180) [202] knit 1 row over shoulder sts. at T 10 and BOLT. Reset RC to R 138 (148) [170] and pattern to row noted above. Shape left side from *, reversing shaping. Remove neckline sts. on WY.

NECKBAND:

Close one shoulder. With purl side facing rehang neckline on 78 (82) [86] ndls. following chart. Knit 1 row. Transfer EOS to RB for K1/P1 Rib. T 0/0 I. Knit to R 8 knitting last row at T 8/4. Transfer RB sts. to MB and BOLT



ARMHOLE BAND: Make 2.

Close remaining shoulder. With purl side facing rehang armhole on 80 (84) [88] ndls. following chart. Knit 1 row. Transfer EOS to RB for K1/P1 Rib. T 0/0 I. Knit to R 8 knitting last row at T 8/4. Transfer RB sts. to MB and BOLT.

COLOR CHART

# Rows	Color	Repeat
6	1	
6	7	↑
2	1	
6	5	
2	1	
6	6	
6	1	
6	3	
2	1	
6	4	
2	1	
6	2	
6	1	
6	7	
2	1	
6	6	
2	1	
6	5	
6	1	
6	4	
2	1	
6	3	
2	1	
6	2	
2	1	

FINISHING:

Close all remaining seams.



FAIRISLE CARDIGAN with DROP YOKE SKIRT

YARN: Silkie

SIZES:

6/8 (10/12) [14]

AMOUNT: Same all sizes

C 1: Black - 2 lb.

C 2: Royal - 4 oz.

C 3: Mint - 4 oz.

C 4: Burgundy - 4 oz.

C 5: Peach - 4 oz.

KIT PRICE: \$42.00

TENSION:

Fairisle: T 7

Rib: T 1/1 I

GAUGE:

Fairisle: 8 Sts., 10 Rs. = 1"

Rib: 10 Rs. = 1"

NOTIONS:

6 - 3/4" buttons and elastic for skirt waistband.

Make on Standard 24-Stitch Punch Card or Standard Electronic Machine with Ribber.

CARDIGAN BACK

WAISTBAND:

With C 1 CO 160 (176) [192] sts. for K1/P1 Rib. After selvedge RC 0. T 1/1 I. Knit to R 30 and mark center with YM. Remove sts. on WY.

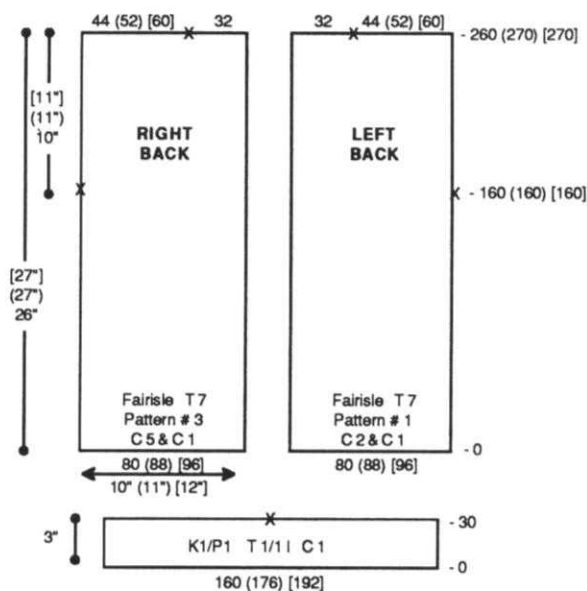
RIGHT BACK:

Bring 80 (88) [96] ndls. to WP and rehang half of waistband on these ndls. RC 0. T 7. Pattern # 3. With C 5 in 'A' Feeder and C 1 in 'B' Feeder knit in fairisle. At R 160 [(160)] place a YM on the left

for armhole. At R 260 (270) [270] mark 32 sts. at the right for neckline. Remove neckline and shoulder sts. on separate WY.

LEFT BACK:

Bring 80 (88) [96] ndls. to WP and rehang half of waistband on these ndls. RC 0. T 7. Pattern # 1. C 2 in 'A' Feeder and C 1 in 'B' Feeder. Knit same as Right Back reversing shapings.

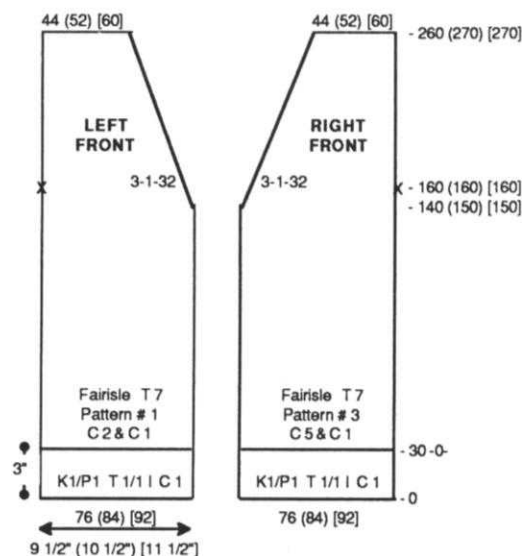


LEFT FRONT:

With C 1 CO 76 (84) [92] sts. for K1/P1 Rib. After selvedge RC 0. T 1/1 I. Knit to R 30. Transfer RB sts. to MB. RC 0. T 7. Pattern # 1. With C 2 in 'A' Feeder and C 1 in 'B' Feeder knit in fairisle. At R 140 (150) [150] shape neckline. On right side decr. every 3 Rs. 1 St. 32x. At R 260 (270) [270] remove shoulder sts. on WY.

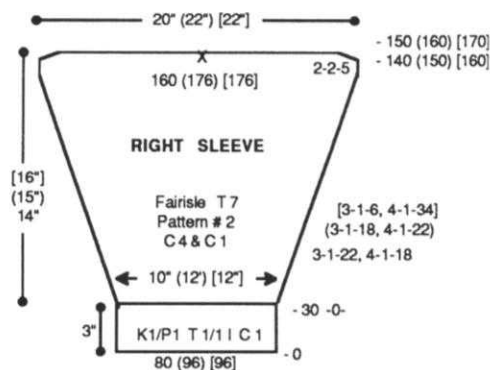
RIGHT FRONT:

With C 1 CO 76 (84) [92] sts. for K1/P1 Rib. After selvedge RC 0. T 1/1 I. Knit to R 30. Transfer RB sts. to MB. RC 0. T 7. Pattern # 3. C 5 in 'A' Feeder and C 1 in 'B' Feeder. Knit same as Left Front reversing shapings.



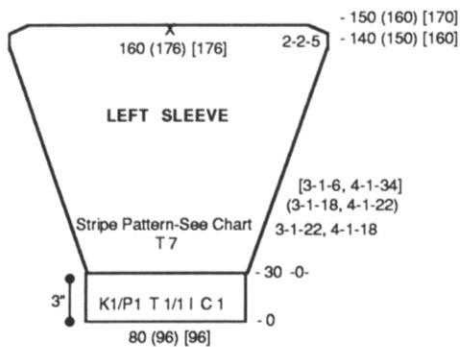
RIGHT SLEEVE:

With C 1 CO 80 (96) [96] sts. for K1/P1 Rib. After selvedge RC 0. T 1/1 I. Knit to R 30. Transfer RB sts. to MB. RC 0. T 7. Pattern # 2. With C 4 in 'A' Feeder and C 1 in 'B' Feeder knit in fairisle while incr. on each side every 3 Rs. 1 St. 22x and every 4 Rs. 1 St. 18x (every 3 Rs. 1 St. 18x and every 4 Rs. 1 St. 22x) [every 3 Rs. 1 St. 6x and every 4 Rs. 1 St. 34x]. At R 140 (150) [160] SHR sleeve cap EOR 2 Sts. 5x. At R 150 (160) [170] knit 1 row at T 10 and BOLT.



LEFT SLEEVE:

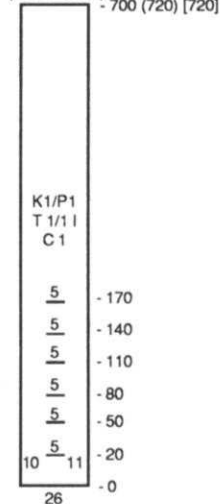
With C 1 CO 80 (96) [96] sts. for K1/P1 Rib. After selvedge RC 0. T 1/1 I. Knit to R 30. Transfer RB sts. to MB. RC 0. T 7. Stripe Pattern. See Chart. Knit same as Right Sleeve.



STRIPE PATTERN

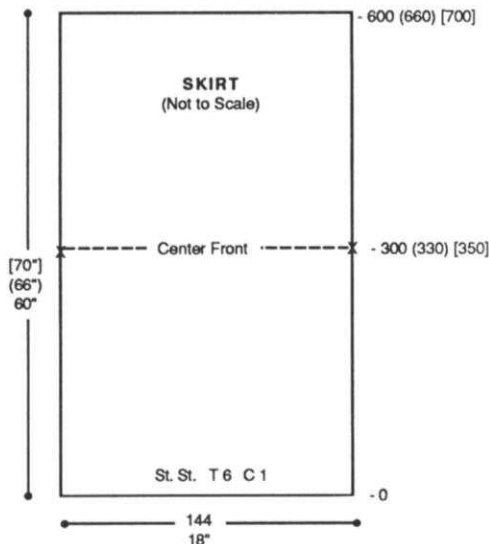
# Rows	Color	Repeat
4	1	↑
4	3	

FRONT PLACKET
(Not to Scale)



FRONT PLACKET:

With C 1 CO 26 sts. for K1/P1 Rib. After selvedge RC 0. T 1/1 I. Knit to R 700 (720) [720] making buttonholes over 5 sts. with WY at Rs. 20, 50, 80, 110, 140 and 170 following chart for placement.



SKIRT:

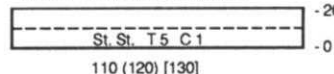
With WY CO 144 sts. for all sizes. After several rows, end with 1 row Ravel Cord to the right. RC 0. T

6. C 1. Knit in St. St. to R 300 (330) [350]. Place a YM on each side for center front. At R 600 (660) [700] remove sts. on WY.

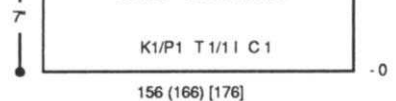
SKIRT YOKE: Make 2.

Bring 156 (166) [176] ndls. to WP. With purl side facing, rehang 1/2 skirt (along side selvedge) on these ndls. gathering evenly across. C 1. Knit 1 row at T 6. Transfer EOS to RB for K1/P1 Rib. RC 0. T 1/1 I. Knit to R 70. Transfer RB sts. to MB and remove sts. on WY.

SKIRT WAISTBAND Make 2



SKIRT YOKE Make 2



SKIRT WAISTBAND:

Make 2.

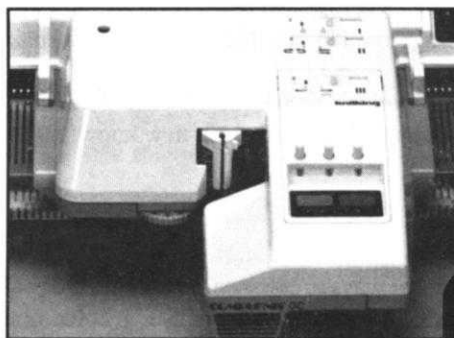
With purl side facing rehang upper edge of yoke on 110 (120) [130]

(continued on next page)

Garter Carriage Knits Ribbing Automatically . . . and More!

The Knitkng Garter Carriage makes knitting Ribbing a breeze. With the press of a button, the Garter Carriage moves across your knitting machine on its own power! You can leave the room and your ribbing will be finished when you return!

But ribbing is only the beginning of the story: The Garter Carriage automatically casts on, binds off and knits a multitude of fancy Garter Stitch patterns—beautiful, textured 3-dimensional designs impossible to knit any other way.



- Select desired pattern on knitting machine.
- Set number of rows; switch GC on and leave to do other things.
- It will turn off after completion or if yarn runs out or breaks.

**Buy It For
As Little As
\$15/Mo.**

Available for all standard COMPUKNITS, including the brand new COMPUKNIT V, and most standard Knitkng punch card knitters going all the way back to the KH-B40.



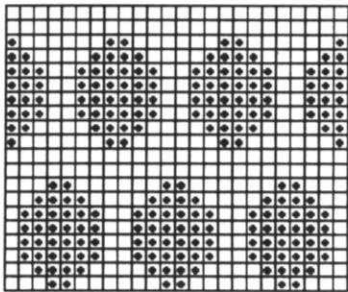
Order yours now from your local Knitkng Dealer, or if there are none in your area, from:

knitkng

1128 Crenshaw Boulevard • Los Angeles, CA 90019 • Phone: (213) 938-2077

(continued from previous page)

***154 Fairisle Pattern #1**
24 Sts. x 20 Rows

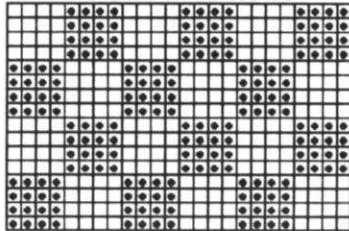


KK Mag Disk: Track 10; Pat. 901

ndls. decr. evenly across. RC 0. T
5. C 1. Knit in St. St. to R 26.
Pick up sts. from first row to form

doubled band. Knit 1 row at T 10
and BOLT.

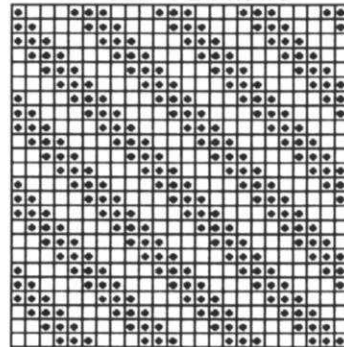
***154 Fairisle Pattern #2**
24 Sts. x 16 Rows



KK Mag Disk: Track 10; Pat 902

FINISHING:
Join shoulder seams. Attach front

***154 Fairisle Pattern #3**
24 Sts. x 24 Rows



KK Mag Disk: Track 10; Pat. 903

placket. Close all remaining
seams.

knitkng news

SENSATIONAL SELVEDGE

Full Needle Rib Selvedge and Bulky Rib Selvedge

When knitting a Cast-on in either of the two methods above, use two rows of selvedge knitting instead of the customary three rows. This will eliminate the slight flare at the lower edge of the ribbing in both of these methods and provide a much "cleaner" looking lower edge on the garment.

SHORT ROW INTARSIA MADE EASY

A New Twist on the Use of Pre-programmed Short Row Needle Selection

Pattern #147 this issue (Pages 6 & 22), you will notice that the short row needle selection is automatically moved into position through a patterned "punch card" (electronic) grid. Many knitters have used this method when short row shaping shoulders. The needles are pre-selected through the pattern design and move to position without having to be manually "set" in place by the knitter.

We've carried this technique one step further and pre-programmed short row intarsia needle selection through the pattern design. This eliminates the need for counting and keeping track of how many needles, on what row short rowing occurs and how many times you repeat the short row shaping. By pre-programming the short row pattern it makes all these steps automatic and knitting is a pleasure.

Think of the great ways you can apply this exciting technique on your standard and bulky knitter. Study pattern #147, enjoy practicing this method by knitting our easy vest and then apply your new knowledge to your own colorful creations!

PIN TUCK ACCENTS

Main Bed and Double Bed Color Accents

Pin Tucks can be applied to knitting in all sorts of ways to enhance the texture, the color and the overall interest of a relatively simple garment. We have used main bed pin tucks to highlight the striking color combination of our Garter Carriage Cardigan (Pattern #146 — Pages 5 & 20). These are easy to add at the top of a sleeve, between a cuff and sleeve, in the body of a garment (Pattern #152 — Pages 11 & 32) to "frame" or highlight separate "sections" of a garment. The pin tuck accent can be as bold as you like. Use a small number of rows for the fold to make a tiny texture accent, or a large number of rows for a bold band. Generally the pin tuck accent rows are not counted in the garment total. Since the pin tuck is folded in half and knitting continues on, the number of rows of the pin tuck are "lost" in the fold.

Another exciting use of pin tucks created automatically with the correct carriage settings involve the use of the ribber and main bed together. By using partial part knitting and color changes you can create lovely accents for collars, bands and even entire garments. Check our Pattern #161 — Pages 47 & 61) to see this exciting technique exhibited.



MENS CREW-NECK FAIRISLE PULLOVER

YARN: Softon and Silkie

SIZES:

Small (Medium) [Large]

AMOUNT: Same all sizes

C 1: Softon - Black - 1 lb.

C 2: Silkie - Royal - 1 lb.

C 3: Knit-in Elastic - Black

1 spool

KIT PRICE: \$36.50

TENSION:

Fairisle: T 7

Rib: T 1/1 II

GAUGE:

Fairisle: 8.5 Sts., 9.75 Rs. = 1"

Rib: 16 Rs. = 1"

Make on Standard 24-Stitch Punch Card or Standard Electronic Machine with Ribber.

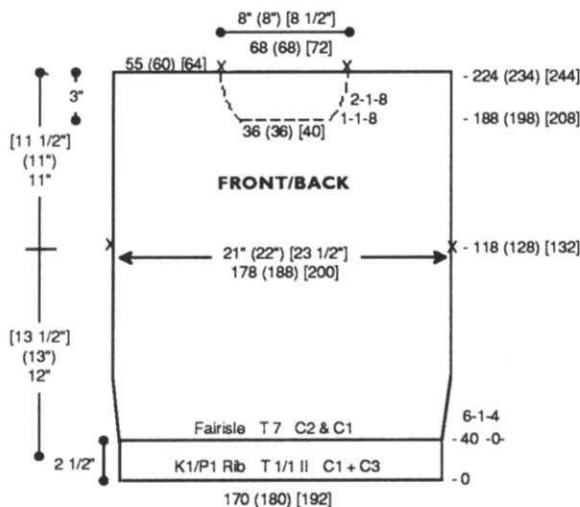
BACK:

With C 1 and C 3 CO 170 (180) [192] sts. for K1/P1 Rib. After selevedge RC 0. T 1/1 II. Knit to R 40. Transfer RB sts. to MB. RC 0. T 7. With C 2 in 'A' Feeder and C 1 in 'B' Feeder knit in fairisle while incr. on each side every 6 Rs. 1 St. 4x. At R 118 (128) [132] place a YM on each side for arm-hole. At R 224 (234) [244] mark center 68 (68) [72] sts. for neckline. Knit 1 row at T 10 and BOLT.

FRONT:

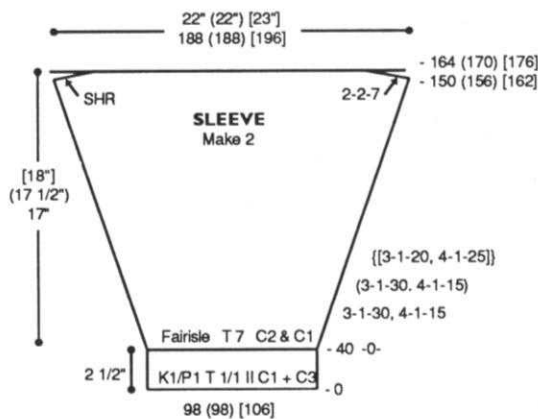
Knit front same as back to R 188 (198) [208]. Shape neckline. Place center 36 (36) [40] sts. in HP and all sts. to the left. Note pattern row.

*On neckline edge SHR every row 1 St. 8x and EOR 1 St. 8x. At R 224 (234) [244] knit 1 row over shoulder sts. at T 10 and BOLT. Reset RC to R 188 (198) [208]. Reset pattern to row noted above and shape left neckline from *, reversing shaping. Remove neckline sts. on WY.

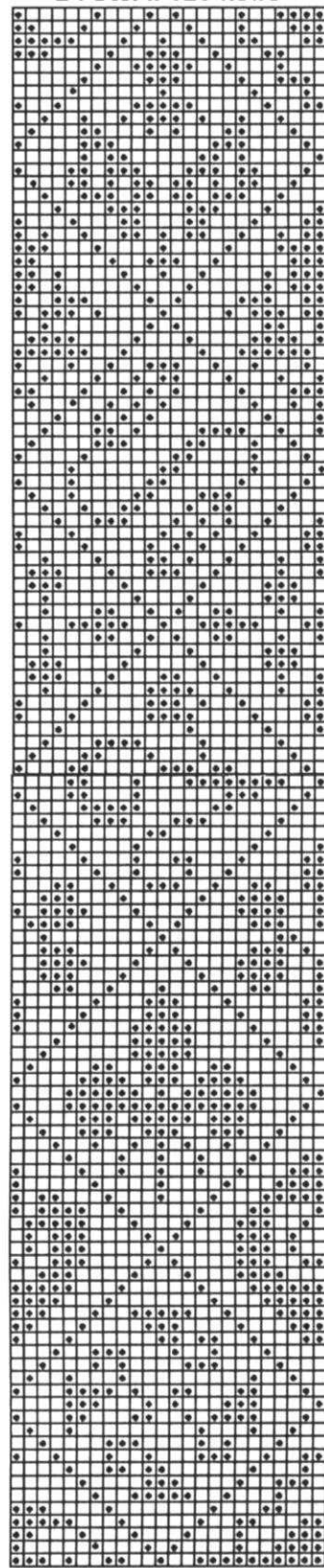


SLEEVE: Make 2.

With C 1 and C 3 CO 98 (98) [106] sts. for K1/P1 Rib. After selevedge RC 0. T 1/1 II. Knit to R 40. Transfer RB sts. to MB. RC 0. T 7. With C 2 in 'A' Feeder and C 1 in 'B' Feeder knit in fairisle while incr. on each side every 3 Rs. 1 St. 30x and every 4 Rs. 1 St. 15x (every 3 Rs. 1 St. 30x and every 4 Rs. 1 St. 15x) {[every 3 Rs. 1 St. 20x and every 4 Rs. 1 St. 25x]}. At R 150 (156) [162] SHR sleeve cap EOR 2 Sts.



*155 Fairisle Pattern 24 Sts. x 120 Rows



KK Mag Disk: Track 11; Pat. 901

(continued on next page)

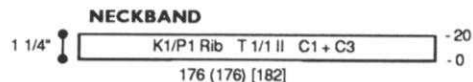
(continued from previous page)

7x. At R 164 (170) [176] knit 1 row at T 10 and BOLT.

NECKBAND:

With C 1 and C 3 CO 176 (176)

[182] sts. for K1/P1 Rib. After selvedge RC 0. T 1/1 II. Knit to R 20. Transfer RB sts. to MB and remove sts. on WY.



FINISHING:

Close all seams. Attach neckband to neckline with a crochet hook.

156



TWO-PIECE SUIT

YARN: Venetia

SIZES:

6/8 (10/12) [14] [16]

AMOUNT: Same all sizes

C 1: Venetia - Goldenrod

1 1/2 lb. all sizes

C 2: Venetia - Black

12 oz. all sizes

KIT PRICE: \$70.00

TENSION:

Body: T 4.2

FNR: T 0/0 I

GAUGE:

C 1: 8.4 Sts., 12.7 Rs. = 1"

C 2: 8.3 Sts., 12.3 Rs. = 1"

NOTIONS:

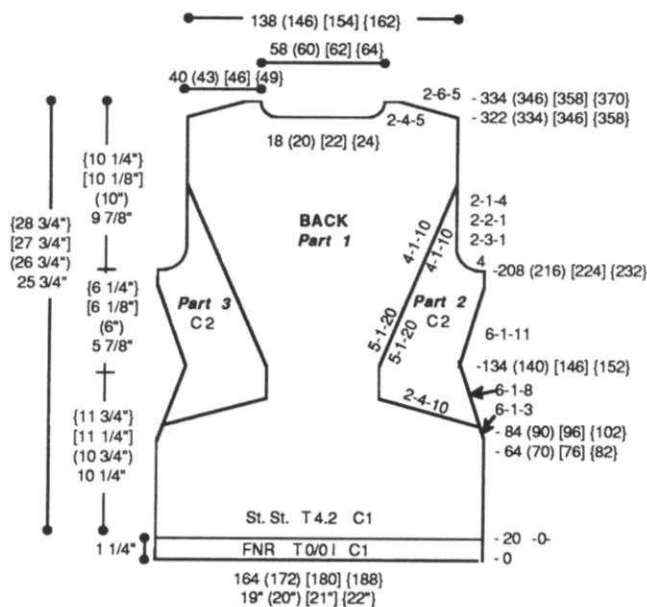
6 - 1" Buttons, elastic for skirt waistband and shoulder pads for jacket.

Make on any Standard Machine with Ribber.

Note: All incr. and decr. are FF.

JACKET BACK:

Part 1: With C 1 CO 164 (172) [180] [188] sts. for FNR. After selvedge, T 0/0 I. RC 0. Knit to R 20. Transfer RB sts. to MB. RC 0. T 8. St. St. Knit 1 R to the left. Change to T 4.2. Knit to R 64 (70)



[76] [82] and shape jacket. On each side decr. every 6 Rs. 1 St. 3x. At R 84 (90) [96] [102] on each side bring 4 ndls. to HP EOR 10x and remove these sts. on WY. At R 134 (140) [146] [152] incr. on each side every 5 Rs. 1 St. 20x and every 4 Rs. 1 St. 10x. At R 322 (334) [346] [358] shape neckline. Place center 18 (20) [22] [24] sts. in HP and all sts. to the left. *On neckline edge decr. EOR 4 Sts. 5x. AT THE SAME TIME SHR shoulder EOR 6 Sts. 5x. At R 334 (346) [358] [370] remove shoulder sts. on WY. Reset RC to 322 (334) [346] [358] and shape left neckline and shoulder from *, reversing shapings. Remove shoulder and neckline sts. on separate WY.

Part 2: C 2. Bring 40 ndls. to WP. RC 84 (90) [96] [102]. With purl side facing rehang 40 sts. on these ndls. and SHR EOR 4 Sts. 10x. AT THE SAME TIME continue shaping right side by decr. every 6 Rs. 1 St. 8x. At R 134 (140) [146] [152] on left

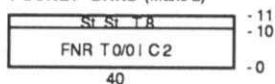
side decr. every 5 Rs. 1 St. 20x and every 4 Rs. 1 St. 10x. AT THE SAME TIME on the right side incr. every 6 Rs. 1 St. 11x. At R 208 (216) [224] [232] shape armhole. On the right side BO 4 sts. then decr. EOR 3 Sts. 1x, 2 sts. 1x and 1 St. 4x.

Part 3: Knit the same as Part 2 reversing shapings. Join Part 2 and Part 3 to Part 1 by sewing vertical seams together.

POCKET BAND: Make 2.

With C 2 CO 40 sts. for FNR. After selvedge, T 0/0 I. RC 0. Knit to R 10. Transfer RB sts. to MB. St. St. Knit 1 R at T 8 and remove sts. on WY.

POCKET BAND (Make 2)

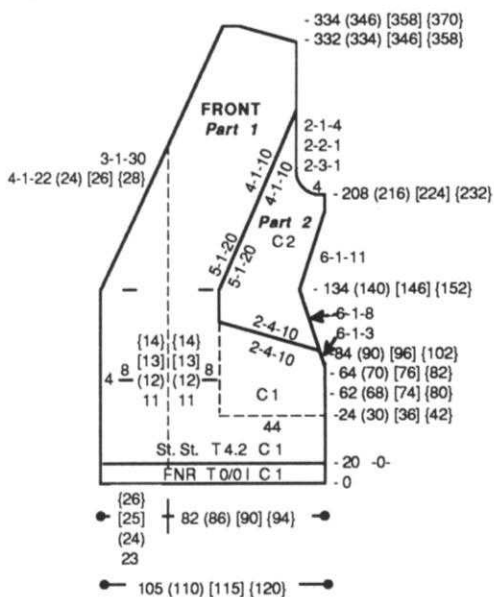


JACKET FRONT: Make 1, Reverse 1.

Part 1: With C 1 CO 105 (110) [115] [120] sts. for FNR. After selvedge, T 0/0 I. RC 0. Knit to R 20. Transfer RB sts. to MB. RC 0. T 8. St. St. Knit 1 R to the left. Change to T 4.2. Knit to R 62 (68) [74] [80] and make buttonholes over 8 sts. with WY following chart for placement. At R 64 (70) [76] [82] shape jacket. On right side decr. every 6 Rs. 1 St. 3x. At R 84 (90) [96] [102] on right side SHR EOR 4 Sts. 10x. Remove these sts. on WY. At R 134 (140) [146] [152] make buttonholes over 8 sts. with WY following chart for placement. On right side incr. every 5 Rs. 1 St. 20x and every 4 Rs. 1 St. 10x. AT THE SAME TIME on left side shape neckline. Decr. every 4 Rs. 1 St.

22 (24) [26] {28}x and every 3 Rs. 1 St. 30x. At R 322 (334) [346] [358] SHR shoulder EOR 6 Sts. 5x. At R 334 (346) [358] [370] remove shoulder sts. on WY.

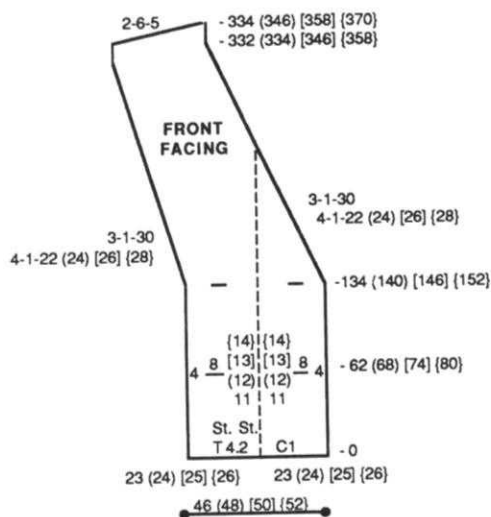
Part 2: Make separately. With C 1 'e' wrap CO 44 sts. T 4.2. RC 24 (30) [36] [42]. Knit to R 64 (70) [76] [82]. On right side decr. every 6 Rs. 1 St. 3x. AT THE SAME TIME at R 84 (90) [96] [102] on right side SHR EOR 4 Sts. 10x. Change to C 2. Reset RC to 84 (90) [96] [102] and reverse SHR EOR 4 Sts. 10x. Continue shaping right side by decr. every 6 Rs. 1 St. 8x. At R 134 (140) [146] [152] on left side decr. every 5 Rs. 1 St. 20x and every 4 Rs. 1 St. 10x. AT THE SAME TIME on the right side incr. every 6 Rs. 1 St. 11x. At R 208 (216) [224] [232] shape armhole. On the right side BO 4 sts. then decr. EOR 3 Sts. 1x, 2 sts. 1x and 1 St. 4x. Sew vertical seam and attach pocket band.



FRONT FACING: Make 1, Reverse 1.

With C 1 'e' wrap CO 46 (48) [50] [52] sts. RC 0. T 4.2. St. St. Knit to R 62 (68) [74] [80] and make buttonholes following chart for placement. At R 134 (140) [146]

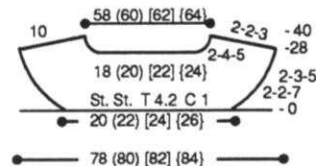
{152} make 2 more buttonholes. On left side incr. every 4 Rs. 1 St. 22 (24) [26] {28}x and every 3 Rs. 1 St. 30x. AT THE SAME TIME on right side decr. every 4 Rs. 1 St. 22 (24) [26] {28}x and every 3 Rs. 1 St. 30x. At R 332 (334) [346] [358] SHR shoulder EOR 6 Sts. 5x. At R 334 (346) [358] [370] remove shoulder sts. on WY.



BACK FACING:

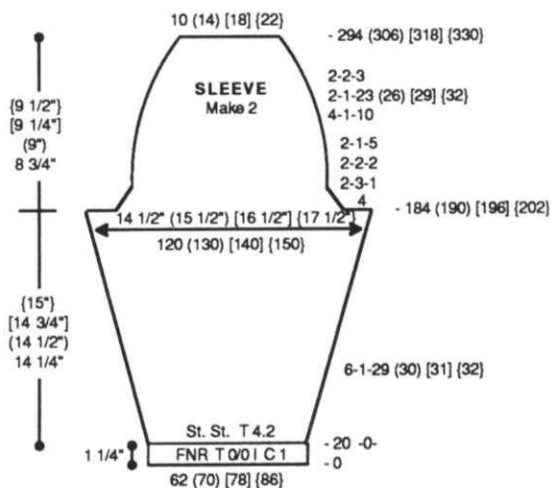
With C 1 'e' wrap CO 78 (80) [82] [84] sts. RC 0. T 4.2. St. St. Knit 1 row to the left. Place all sts. to HP except center 20 (22) [24] [26] sts. On each side SHR by pushing to WP EOR 2 Sts. 7x and 3 Sts. 5x. At R 28 begin neckline and shoulder shaping. Place center 18 (20) [22] [24] sts. in HP and all sts. to the left. *On neckline edge SHR EOR 4 Sts. 5x. AT THE SAME TIME SHR shoulder EOR 2 Sts. 3x. Return the 10 shoulder sts. to WP, knit 1 row and BO. Reset RC to 28 and complete left neckline and shoulder from *, reversing shapings. Remove neckline sts. on WY.

BACK FACING



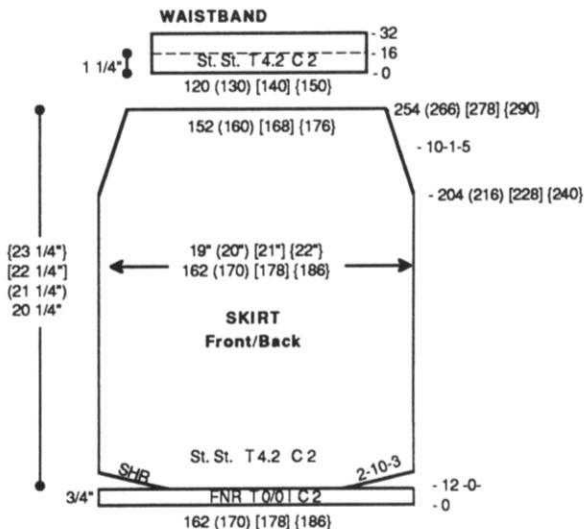
SLEEVE:

Make 2 the same. With C 1 CO 62 (70) [78] [86] sts. for FNR. After selvedge, T 0/0 I. RC 0. Knit to R 20. Transfer RB sts. to MB. RC 0. T 8. Knit 1 R to the left. Change to T 4.2. Knit in St. St. while incr. on each side every 6 Rs. 1 St. 29 (30) [31] [32] x. At R 184 (190) [196] [202] shape sleeve cap. On each side BO 4 sts. then BO EOR 3 Sts. 1x, 2 Sts. 2x and 1 St. 5x. Continue shaping by decr. every 4 Rs. 1 St. 10x, EOR 1 St. 23 (26) [29] [32]x and EOR 2 Sts. 3x. At R 294 (306) [318] [330] BO remaining sts.



SKIRT FRONT/BACK:

With C 2 CO 162 (170) [178] [186] sts. for FNR. After selvedge, T 0/0 I. RC 0. Knit to R



12. Transfer RB sts. to MB. RC 0. T 8. St. St. Knit 1 R to the left. Change to T 4.2. Knit shaping lower edge by SHR shaping on each side EOR 10 Sts. 3x. At R 204 (216) [228] [240] begin decr. on each side every 10 Rs. 1 St. 5x. At R 254 (266) [278] [290] remove sts. on WY.

WAISTBAND: Make 2.

Bring 120 (130) [140] [150] ndls. to WP. Rehang skirt front/back with purl side facing on these ndls. decr. evenly across. T 4.2. Col. 2. St. St. Knit to R 32. Pick up sts. from first row to form doubled band. Knit 1 row at T 10 and BOLT.

FINISHING:

Close shoulder seams of jacket. Join back and front facing pieces. With knit sides together attach facing to jacket. Turn facing to inside and whip stitch in place. Finish buttonholes with crochet hook. Close all remaining seams.

157



TWO-PIECE SUIT with COLOR ACCENTS

YARN: Venetia

SIZES:

6/8 (10/12) [14] [16]

AMOUNT:

C 1: Black

1 1/2 [(1 1/2)] [2] lbs.

C 2: Special Tangerine

1 oz. all sizes

C 3: Goldenrod - 1 oz. all sizes

C 4: Red - 1 oz. all sizes

C 5: Special Mari Blue

1 oz. all sizes

C 6: Emerald - 1 oz. all sizes

KIT PRICE:

\$64.00 [(\$64.00)] {\$80.00}

TENSION:

Body: T 4.2

Hem: T 0/0 I

GAUGE:

Body: 8.4 Sts., 12.7 Rs. = 1"

NOTIONS:

Elastic for skirt waistband

6 - 1" buttons for cardigan top.

Make on any Standard Machine with Ribber.

SKIRT FRONT/BACK:

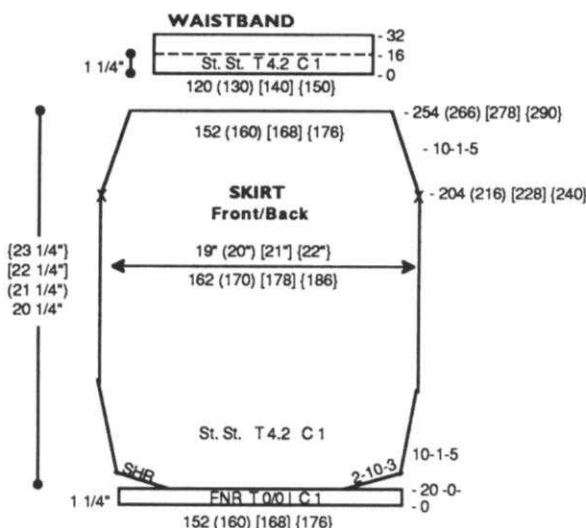
With C 1 CO 152 (160) [168] [176] sts. for FNR. After selvedge, RC 0. T 0/0 I. Knit to R 20. Transfer RB sts. to MB. RC 0. T 7. St. St. Knit 1 row. Change to T 4.2. Shape lower edge by SHR shaping on each side EOR 10 Sts. 3x. Incr. on each side every 10 Rs. 1 St. 5x. At R 204 (216) [228] [240] begin shaping. On each side decr. every 10 Rs. 1 St. 5x. At R 254 (266) [278] [290] remove sts. on WY.

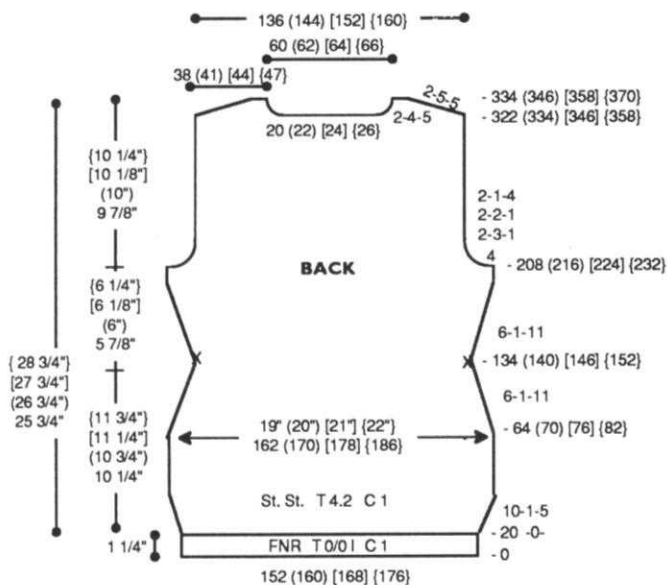
WAISTBAND: Make 2.

Bring 120 (130) [140] [150] ndls. to WP. With purl side facing, rehang upper edge of skirt front/back on these ndls. decr. evenly across. RC 0. T 4.2. St. St. C 1. Knit to R 32. Pick up sts. from first row to form doubled band and BO.

CARDIGAN JACKET BACK:

With C 1 CO 152 (160) [168] [176] sts. for FNR. After selvedge, RC 0. T 0/0 I. Knit to R 20. Transfer RB sts. to MB. RC 0. T 7. St. St. Knit 1 row. Change to T 4.2. On each side incr. every 10 Rs. 1 St. 5x. At R 64 (70) [76] [82] begin decr. on each side every 6 Rs. 1 St. 11x. At R 134 (140) [146] [152] place a YM on each side for waist. Begin incr. on each side every 6 Rs. 1 St. 11x. At R 208 (216) [224] [232] shape armhole. On each side BO 4 Sts. then decr. EOR 3 Sts. 1x, 2 Sts. 1x and 1 St. 4x. At R 322 (334) [346] [358] begin neckline shaping. Place center 20 (22) [24] [26] sts. in HP and all sts. to the left. *On neckline edge decr. EOR 4 Sts. 5x. AT THE SAME TIME SHR shoulder EOR 5 Sts. 5x. At R 334 (346) [358] [370] remove shoulder sts. on WY. Reset RC to R 322 (334) [346] [358] and shape left neckline and shoulder from * reversing shapings. Remove shoulder and neckline sts. on separate WY.

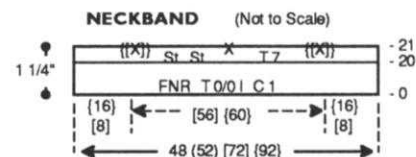




134 (140) [146] [152] place a YM on right side for waist. Begin incr. on each side every 6 Rs. 1 St. 11x. At R 208 (216) [224] [232] shape armhole. On right side BO 4 Sts. then decr. EOR 3 Sts. 1x, 2 Sts. 1x and 1 St. 4x. **AT THE SAME TIME** shape neckline. On left side decr. every 5 Rs. 1 St. 23 (24) [25] [26] x. At R 322 (334) [346] [358] SHR shoulder EOR 5 Sts. 5x. At R 334 (346) [358] [370] remove shoulder sts. on WY.

Left Side:

Knit left side same as right with C 1, reversing shapings.



NECKBAND:

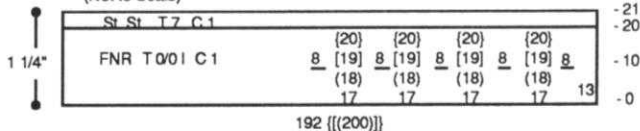
With C 1 CO 48 (52) [72] [92] sts. for FNR. After selvedge RC 0. T 0/0 I. Knit to R 20. Transfer RB sts. to MB. Knit 1 row at T 7. Mark center 48 (52) [56] [60] sts. and center with YM. For size [14] [16] mark [8] [16] sts. on each side for shoulder seams (see chart). Remove sts. on WY.

CARDIGAN JACKET FRONT:

Right Side:

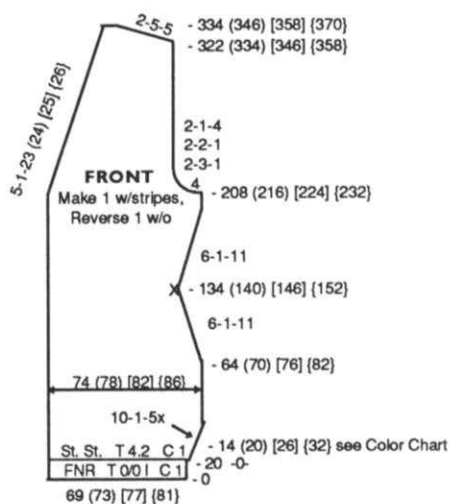
With C 1 CO 69 (73) [77] [81] sts. for FNR. After selvedge, RC 0. T 0/0 I. Knit to R 20. Transfer RB sts. to MB. RC 0. T 7. St. St. Knit 1 row. Change to T 4.2. On right side incr. every 10 Rs. 1 St. 5x. **AT THE SAME TIME** at R 14 (20) [26] [32] start stripe pattern (see Color Chart). At R 64 (70) [76] [82] begin decr. on right side every 6 Rs. 1 St. 11x. At R

FRONT BAND (Make 1 w/buttonholes, 1 w/o buttonholes)
(Not to Scale)



FRONT BAND:

Make 1 with buttonholes, 1 without buttonholes. With C 1 CO 192 [(200)] sts. for FNR. After selvedge RC 0. T 0/0 I. Knit to R 10. Make buttonholes over 8 sts. with WY following chart for placement. Knit to R 20. Transfer RB sts. to MB. Knit 1 row at T 7 and remove sts. on WY.



SLEEVE: Make 2.

With C 1 CO 66 (74) [82] [90] sts. for FNR. After selvedge, RC 0. T 0/0 I. Knit to R 20. Transfer RB sts. to MB. RC 0. T 7. St. St. Knit 1 row. Change to T 4.2. On each side incr. every 5 Rs. 1 St. 27 (28) [29] [30] x. At R 158 (158) [166] [172] shape sleeve cap. On each side BO 4 Sts., then decr. EOR 3 Sts. 1x, 2 Sts. 2x and 1 St. 5x. Then decr. every 4 Rs. 1 St. 10x, EOR 1 St. 23 (26) [29] [32] x and EOR 2 Sts. 3x. At R 268 (274) [288] [300] BO remaining sts.

FINISHING:

Close shoulder seams on jacket. Attach neckband and front bands. Close all remaining seams.

COLOR CHART

# Rows	C
	1 to end
20	6
30	1
20	5
30	1
20	4
30	1
20	3
30	1
20	2



BULKY TUCK PULLOVER with DECOKING TRIM

YARN: Woolana (use 3 strands throughout)

SIZES:

Small (Medium) [Large]

AMOUNT:

- C 1: Woolana - Black
2 cones (approx 2 lbs. all sizes)
- C 2: Knit-in-Elastic - Black
1 spool all sizes

KIT PRICE: \$60.00

TENSION:

Tuck: T 6/5 II

GAUGE:

Tuck: 4.8 Sts., 6.15 Rs. = 1"

Make on Compuknit/Bulky or Punch Card Bulky with Ribber. Embellished on the DecoKing Custom Embellishment Machine.

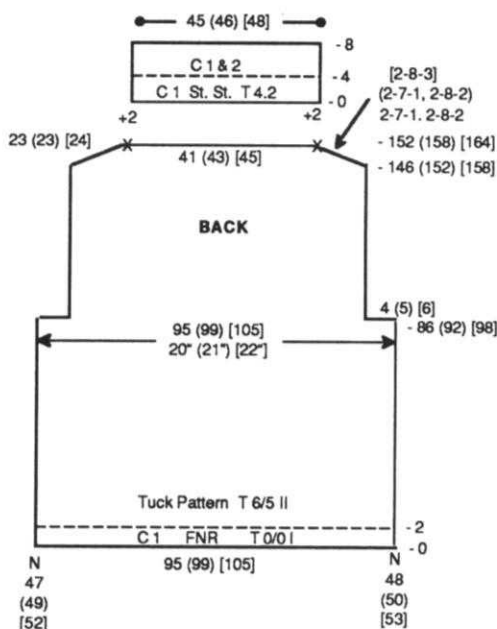
Note: Size Small fits as oversized pullover for Pre-teen Small or Childrens Size 14.

DecoKing Trim: Use any color yarn to match garment that sweater will be worn with, such as printed fabric, or any color accent. Trim vertically up tuck pattern "stripes".

BACK:

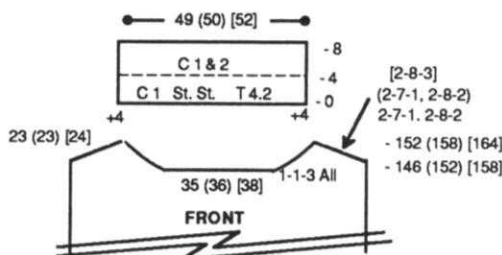
With C 1 (3 strands) CO 95 (99) [105] sts. for FNR. After selvedge RC 0. T 0/0 I. Knit 2 rows. Transfer RB sts. to MB. Select KC and knit 1 row to set pattern. Following chart, transfer appropri-

ate sts. to RB. T 6/5 II. Depress both TUCK buttons. Knit to R 86 (92) [98] and shape armhole. On each side BO 4 (5) [6] sts. At R 146 (152) [158] shape shoulders. If necessary, transfer RB sts. to MB. On each side BO EOR 7 sts. 1x and 8 sts. 2x (7 Sts. 1x and 8 Sts. 2x) [8 Sts. 3x]. At R 152 (158) [164] transfer RB sts. to MB. Start neckband. Add 2 sts. on each side. RC 0. T 4.2. St. St. C 1. Knit to R 4 and add C 2. Knit to R 8 and remove sts. on WY.



FRONT:

Knit front same as back to R 146 (152) [158]. Shape neckline. Place center 35 (36) [38] sts. in HP and all sts. to the left. Note pattern row. * SHR neckline edge every row 1 St. 3x for all sizes. AT THE SAME TIME shape shoulder. BO EOR 7 sts. 1x and 8 sts. 2x (7 Sts. 1x and 8 Sts. 2x) [8 Sts. 3x]. At R 152 (158) [164] transfer RB sts. to MB and remove on WY. Reset RC



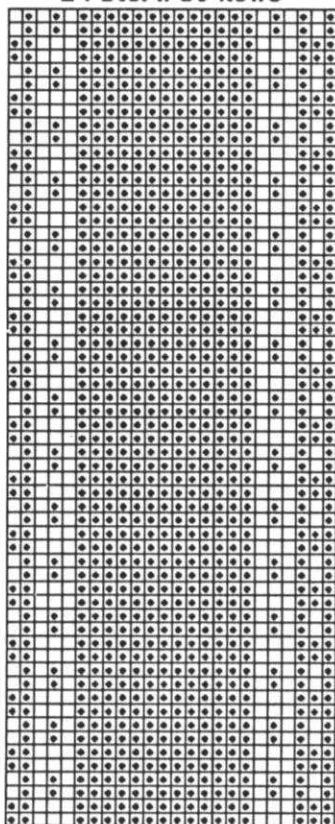
to R 146 (152) [158]. Reset pattern to correct row and shape left neckline and shoulder from * reversing shapings. Start neckband. Pick up 4 sts. on each side of center sts. for a total of 49 (50) [52] sts. RC 0. T 4.2. St. St. C 1. Knit to R 4 and add C 2. Knit to R 8 and remove sts. on WY.

SLEEVE:

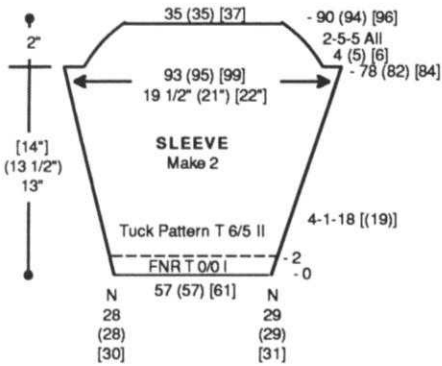
Make 2 the same.

With C 1 CO 57 (57) [61] sts. for FNR. After selvedge RC 0. T 0/0 I. Knit 2 rows. Transfer RB sts. to MB. Select KC and knit 1 R to set pattern and transfer appropriate sts. to RB. T 6/5 II. Knit in tuck pattern while incr. on each side every 4 Rs. 1 St. 18 [(19)]x. At R 78 (82) [84] shape

***158 Tuck Pattern
24 Sts. x 60 Rows**



KK Mag Disk: Track 12; Pat. 901



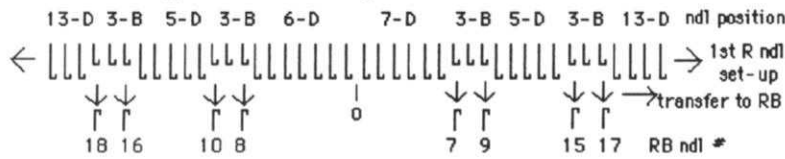
sleeve cap. On each side BO 4 (5) [6] sts., then SHR EOR 5 Sts. 5x for all sizes. At R 90 (94) [96] knit 1 R over all sts. at T 10 and BOLT.

FINISHING:

Fold neckband to the outside (knit side showing) and back stitch into open sts. Unravel WY. DecoKing

up along the 13 sts. using the color and design from whatever you choose to wear with the sweater if it is a print fabric. Otherwise, choose any color you desire. Close shoulders and neckband side seams. Slip stitch sleeve to body. Close all remaining seams.

**#158 Needle Set-Up for Main Bed and Ribber
Arrange After Setting 1st Row of Pattern**



159



**FAIRISLE PULLOVER with
CRISS-CROSS SASH**

YARN: Venetia and Pearlyte

SIZES:

6/8 (10/12) [14]

AMOUNT:

C 1: Venetia - Black

12 oz. all sizes

C 2: Pearlyte - Creme

1 cone all sizes (approx. 1 lb.)

KIT PRICE: \$50.00

TENSION:

Fairisle: T 5

Rib: T 1/1 I

GAUGE:

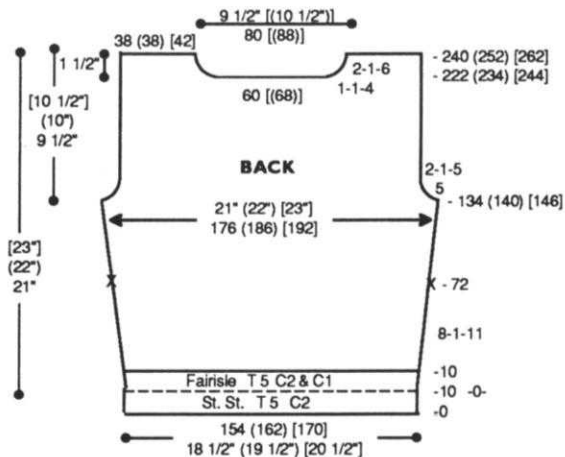
Fairisle: 8.3 Sts., 11.4 Rs. = 1"

Make on Standard 24-Stitch Punch Card or Standard Electronic Machine with Main Bed Color Changer.

BACK:

With WY CO 154 (162) [170] sts.

After several rows, end with 1 row Ravel Cord to the right. RC 0. T 5. C 2. St. St. Knit 10 Rs. Reset RC to 0. Knit 10 Rs in fairisle pattern with C 2 in 'A' feeder and C 1 in 'B' feeder. Pick up sts. from first row to form double hem. Continue in fairisle while incr. on each side every 8 Rs. 1 St. 11x. AT THE SAME TIME at R 72 place a YM on each side for sash placement. At R 134 (140) [146] shape armhole. On each side BO



5 sts., then decr. EOR 1 St. 5x. At R 222 (234) [244] shape neckline. Place center 60 [(68)] sts. in HP and all sts. to the left. Note pattern row. *On neckline edge SHR every R 1 St. 4x and EOR 1 St. 6x. At R 240 (252) [262] remove shoulder sts. on WY. Reset RC to R 222 (234) [244] and pattern to correct row and shape left neckline from *, reversing shaping. Remove shoulder and neckline sts. on separate WY.

FRONT:

With WY CO 168 (176) [184] sts. After several rows, end with 1 row Ravel Cord to the right. RC 0. T 5. C 2. St. St. Knit 10 Rs. Reset RC to 0. Knit 10 Rs in fairisle pattern with C 2 in 'A' feeder and C 1 in 'B' feeder. Pick up sts. from first row to form double hem. Continue in fairisle while incr. on each side every 10 Rs. 1 St. 4x. At R 62 (68) [74] shape armhole. On each side BO 5 sts., then decr. EOR 1 St. 5x. At R 136 (146) [158] shape neckline. Place center 40 [(48)] sts. in HP and all sts. to the left. Note pattern row. *On neckline edge SHR every R 1 St. 8x and EOR 1 St. 12x. At R 172 (182) [194] remove shoulder sts. on WY. Reset RC to R 136 (146) [158] and pattern to correct row and shape left neckline from *, reversing shaping. Remove shoulder and neckline sts. on separate WY.

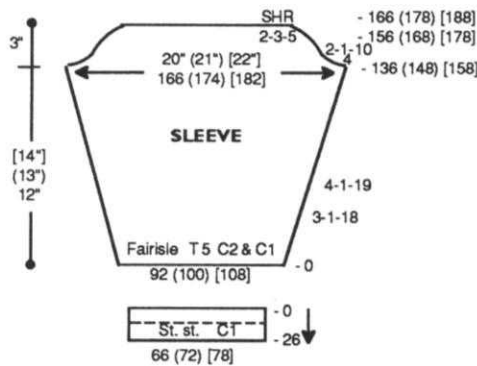
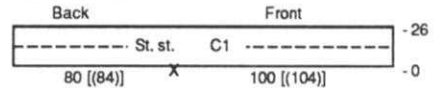
SLEEVE: Make 2.

With WY CO 92 (100) [108] sts. After several rows, end with 1 row Ravel Cord to the right. RC 0. T 5. C 2 in "A" Feeder and C 1 in "B" Feeder, knit in fairisle while incr. on each side every 3 Rs. 1 St. 18x and every 4 Rs. 1 St. 19x. At R 136 (148) [158] shape sleeve cap. On each side BO 4 sts., then decr. EOR 1 St. 10x. At R 156 (168) [178] SHR EOR 3 Sts. 5x. At R 166 (178) [188] knit 1 row at T 10 and BOLT.

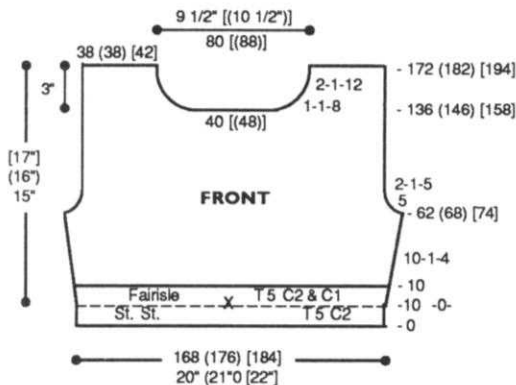
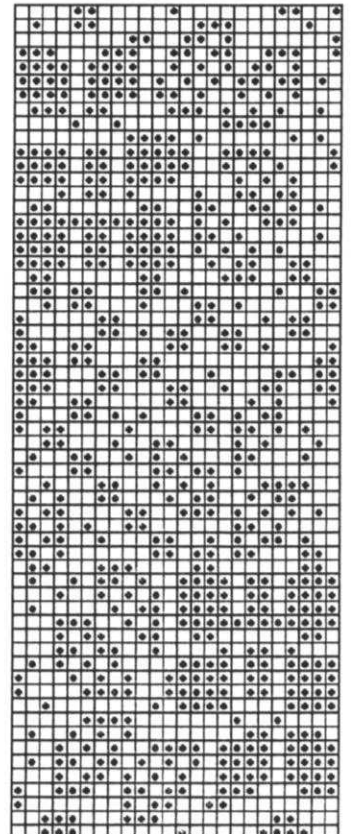
SLEEVE CUFF: Make 2.

With purl side facing, rehang lower edge of sleeve on 66 (72) [78] ndls. decr. evenly across. With C 1 knit 1 row from right to left. RC 0. T 4.1. Knit to R 26. Pick up sts. from first row to form double band. Knit 1 row at T 10 and BOLT.

NECKBAND



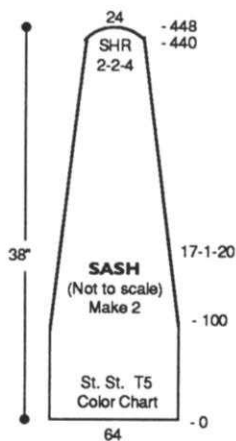
***159 Fairisle Pattern
24 Sts. x 60 Rows**



NECKBAND:

Close one shoulder. With purl side facing, rehang neckline on 180 [(188)] ndls. following chart. With C 1 knit 1 row from right to left. RC 0. T 4.1. Knit to R 26. Pick up sts. from first row to form double band. Knit 1 row at T 10 and BOLT.

SASH: Make 2 the same using Main Bed Color Changer. With WY CO 6 sts. After several rows, end with 1 row Ravel Cord to the right. RC 0. T 5. St. St. Knit in stripe pattern following Color Chart. At R 100 begin shaping. On each side decr. every 17 Rs. 1 St. 20x. At R 440 on each side SHR EOR 2 Sts. 4x. At R 448 knit 1 row at T 10 and BOLT.



COLOR CHART

# Rows	Color	Repeat
4	2	↑
4	1	
4	2	
4	1	

FINISHING:

Attach sash on each side of back from marker down and across the bottom of front to center marker. (Tie sash at the back.) Close all remaining seams

160



WOMENS TWO-PIECE DRESS

YARN: Venetia

SIZES:

6/8 (10/ 12) [14] {16}

AMOUNT: Same all sizes

C 1: White - 1 lb.

C 2: Navy

1 cone (ave. 1-1/2 lb.)

KIT PRICE: \$74.00

TENSION:

St. St.: T 4.1

FNR: T 0/0 I

Engl. Rib: T 0/0 I

GAUGE:

C 1 St. St.:

8.25 Sts., 12.25 Rs. = 1"

C 2 St. St.:

8.55 Sts., 12.95 Rs. = 1"

NOTIONS:

Elastic for skirt waistband and 5 - 1/2" buttons for top.

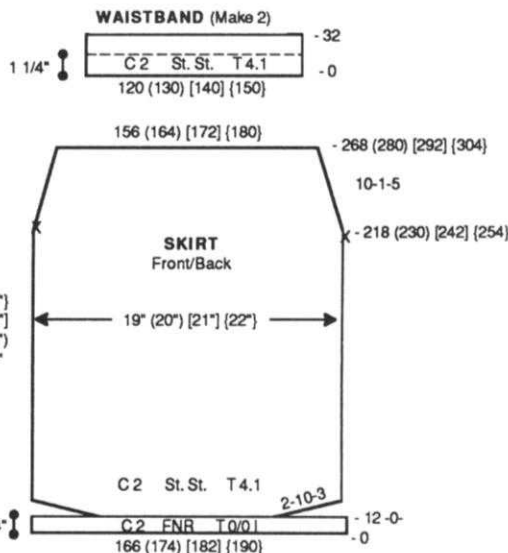
Make on any Standard Machine with Ribber.

SKIRT FRONT/BACK: Make 2 the same.

With C 2 CO 166 (174) [182] {190} sts. for FNR. After selvedge, RC 0. T 0/0 I. Knit to R 12. Transfer RB sts. to MB. RC 0. T 4.1. St. St. Knit shaping lower edge by SHR shaping on each side EOR 10 Sts. 3x. At R 218 (230) [242] {254} mark each side with a YM for aid in seaming. Begin decr. on each side every 10 Rs. 1 St. 5x. At R 268 (280) [292] {304} remove sts. on WY.

WAISTBAND: Make 2.

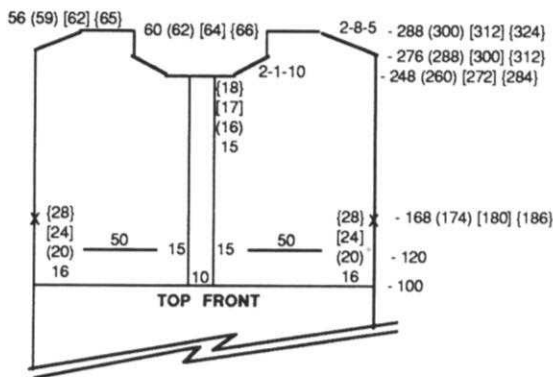
Bring 120 (130) [140] {150} ndls. to WP. Rehang upper edge of skirt front/back with purl side facing on these ndls. decr. evenly across. RC 0. T 4.1. St. St. C 2. Knit 32 Rs. Pick up sts. from first



row to form doubled band. Knit 1 row at T 10 and BOLT.

TOP BACK:

With C 2 CO 172 (180) [188] {196} sts. for K1/P1 Rib. After selvedge RC 0. T 0/0 I. Set machine for English Rib. Knit to R 60. Transfer RB sts. to MB. RC 0. T 4.1. St. St. C 1. Knit to R 100 following Stripe Chart. Change to C 1. Knit to R 168 (174) [180] {186} and place a YM on each side for armhole. At R 276 (288) [300] {312} shape shoulders. On each side SHR EOR 8 Sts. 5x. At R 288 (300) [312] {324} mark center 60 (62) [64] {66} sts. for neck opening. Remove neckline and shoulder sts. on separate WY.

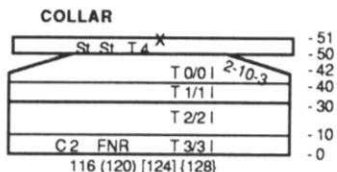


TOP FRONT:

Knit front same as back to R 100. BO center 10 sts. for front placket and remove all sts. to the left on WY. T 4.1. C 1. *Knit to R 120. Bring 15 ndls. at left to HP and 16 (20) [24] {28} ndls. at right to HP. Remove remaining 50 sts. in the middle on WY. With purl side facing rehang pocket band on these ndls., then rehang the 50 sts. you just removed on these same ndls. Knit to R 168 (174) [180] {186} and place a YM on the right side for armhole. At R 248 (260) [272] {284} shape neckline. On neckline edge BO 15 (16) [17] {18} sts., then decr. EOR 1 St. 10x. At R 276 (288) [300] {312} SHR shoulder EOR 8 Sts. 5x. At R 288 (300) [312] {324} remove sts. on WY. Rehang left side. Reset RC to 100 and complete left side same as right from *, reversing shapings.

COLLAR:

With C 2 CO 116 (120) [124] {128} sts. for FNR. After selvedge RC 0. T 3/3 I. Knit to R 10. Change to T 2/2 I. Knit to R 30. Change to T 1/1 I. Knit to R 40. Change to T 0/0 I. Knit to R 42 and SHR shape on each side EOR 10 sts. 3x. At R 50 transfer RB sts. to MB and knit 1 row at T 4. Mark center and remove sts. on WY.

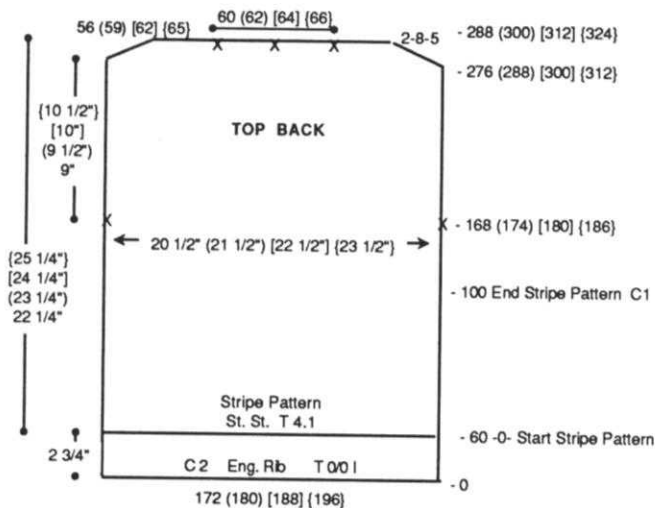


SLEEVE: Make 2.

With WY CO 152 (160) [168] {176} sts. After several rows, end with 1 row Ravel Cord to the right. RC 0. T 4.1. C 1. Knit in St. St. while decr. on each side EOR 1 St. 5x. Then decr. on each side every 6 Rs. 1 St. 29 (30) [31] {32} x. At R 190 (196) [202] {208} remove sts. on WY.

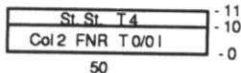
SLEEVE BAND:

With C 2 CO 54 (60) [66] {72} sts. for K1/P1 Rib. After selvedge T 0/0 I. RC 0. Set machine for English Rib. Knit to R 60. Transfer RB sts. to MB. Knit 1 row at T 4 and remove sts. on WY.



STRIPE CHART	
# Rs.	Col.
Repeat 4 more times	
10	2
10	1

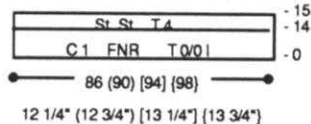
POCKET BAND (Make 2)



POCKET BAND: Make 2.

Must be made prior to Front. With C 2 CO 50 sts. for FNR. After selvedge RC 0. T 0/0 I. Knit to R 10. Transfer RB sts. to MB and knit 1 row at T 4. Remove sts. on WY.

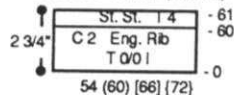
FRONT BAND (Make 2)



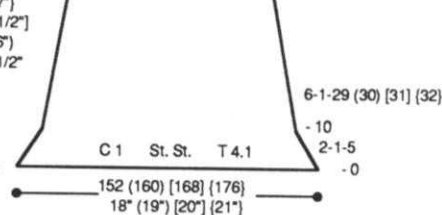
FRONT BAND: Make 2.

With C 1 CO 86 (90) [94] {98} sts. for FNR. After selvedge RC 0. T 0/0 I. Knit to R 14. Transfer RB sts. to MB and knit 1 row at T 4. Remove sts. on WY.

SLEEVE BAND (Make 2)



SLEEVE



FINISHING:

Front Bands: Bring 86 (90) [94] [98] ndls. to WP. With knit side facing, rehang front opening on these ndls. With purl side facing, rehang front band on these same

ndls. and BO.

Close shoulder seams and attach collar.

Sleeve Bands: Bring 54 (60) [66] [72] ndls. to WP. With knit side facing, rehang sleeve band on

these ndls. With purl side facing, rehang lower edge of sleeve on these same ndls. doubling up sts. as needed and BO.

Sew sleeves in place and close all remaining seams.

161



PULL-UP STITCH COAT

YARN: Woolana and Mini Pebble

SIZES:

Small/Medium (Large/X-Large)

AMOUNT: Same all Sizes

C 1: (Use 2 strands throughout)

Woolana-Silver Grey-2-1/2 lbs.

C 2: (Use 2 strands throughout)

Woolana - Dark Grey-12 oz.

C 3: Mini Pebble - Grey/Scarlet

KIT PRICE: \$105.00

TENSION:

Body: T 8

Rib: T 3.1/3.1 I

FNR: T 5.1/5.1 I

GAUGE:

Body: 8 Sts., 16 Rs., = 1"

Rib: 14 Rs. = 1"

NOTIONS: 7 - 1" Buttons.

Make on Punch Card or Electronic Standard Gauge Knitter with Ribber.

Note: Coat is worn on the purl side.

Fairisle Pull-up Pattern:

1. Knit 8 Rs. in fairisle with C1 in 'A' Feeder and C3 in 'B' feeder.
2. Using a 3-prong transfer tool

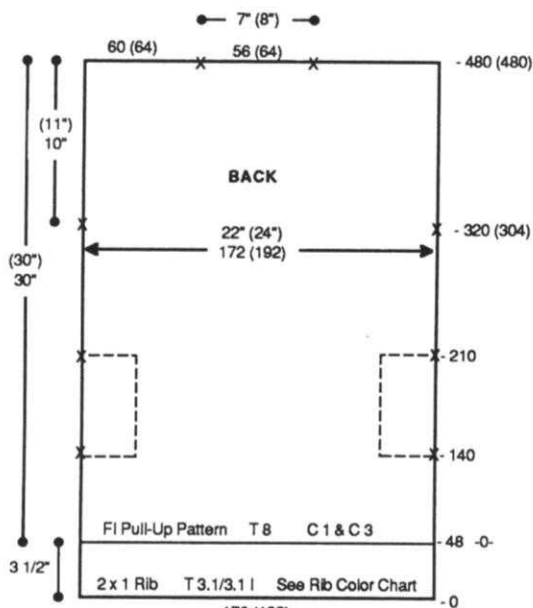
pick up 3 sts. (see chart).

3. Knit the next 4 Rs. of pattern in C 1.

4. Repeat steps 1 thru 3 to end.

BACK:

With C 2 CO 176 (192) sts. for 2 x 1 Rib as shown on ndl. chart. After selvedge RC 0. T 3.1/3.1 I. Knit to R 48 following color chart. Transfer RB sts. to MB. RC 0. T 8. Fairisle Pull-up Pattern. Knit to R 140 and place a YM on each side for pocket. At R 210 place a YM on each side for pocket. At R 320 (304) place a YM on each side for armhole. At R 480 (480) mark center 56 (64) sts. for neckline with YM and remove neckline and shoulder sts. on separate WY.



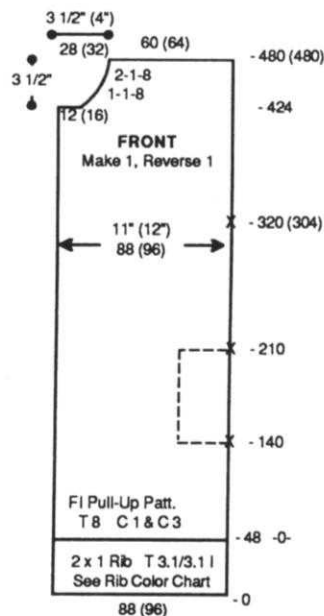
Rib Color Chart

# Rs	Color
Repeat	
↑	↑
4	1
4	2

FRONT: Make 1, Reverse 1.

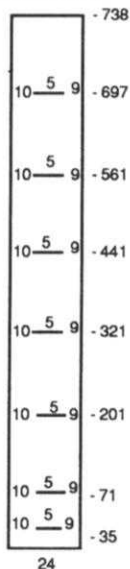
With C 2 CO 88 (96) sts. for 2 x 1 Rib as shown on ndl. chart. After

selvedge RC 0. T 3.1/3.1 I. Knit to R 48 following color chart. Transfer RB sts. to MB. RC 0. T 8. Fairisle Pull-up Pattern. Knit to R 140 and place a YM on right side for pocket. At R 210 place a YM on right side for pocket. At R 320 (304) place a YM on right side for armhole. At R 424 shape neckline. On left side BO 12 (16) sts. then decr. every R 1 St. 8x and EOR 1 St. 8x. At R 480 (480) remove neckline and sts. on WY.



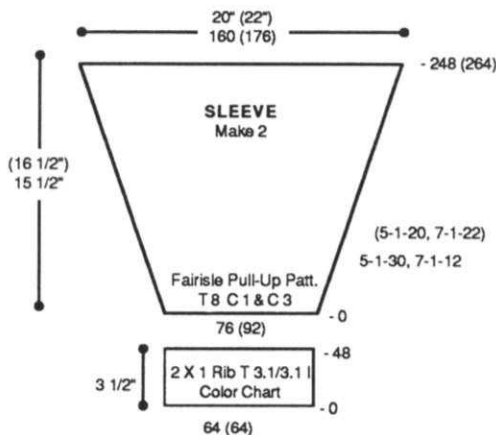
FRONT PLACKET: Make 1 with buttonholes, 1 without. (For Pin Tuck refer to Ribber Manual "How to Pin Tuck"). With C 2 CO 24 sts. for FNR. After selvedge RC 0. T 5.1/5.1 I. Knit in FNR/Pin Tuck Pattern following chart, making buttonholes over 5 Sts. with WY at Rs. 35, 71, 201, 321, 441, 561 and 697 as shown on chart. At R 738 transfer RB sts. to MB and BO.

FRONT PLACKET
Make 1 w/ Buttonholes, 1 w/o
FNR/Pin Tuck Pattern
T 5.1/5.1 | C 2

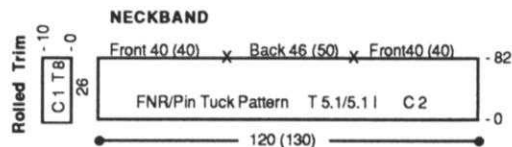


SLEEVE: Make 2.

With C 2 CO 64 sts. for 2 x 1 Rib as shown on ndl. chart. After selvedge RC 0. T 3.1/3.1 I. Knit to R 48 following color chart. Remove sts. on WY. Bring 76 (92) ndls. to WP and rehang ribbing decr. evenly across. RC 0. T 8. Knit in Fairisle Pull-up Pattern while incr. on each side every 5



Rs. 1 St. 30x and every 7 Rs. 1 St. 12x (every 5 Rs. 1 St. 20x and every 7 Rs. 1 St. 22x). At R 248 (264) transfer RB sts. to MB. Knit 1 row at T 10 and BOLT.

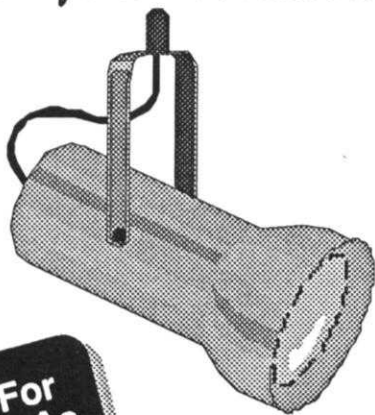


NECKBAND:

Join shoulder seams first. With C 2 CO 120 (130) sts. for FNR. After selvedge RC 0. T 5.1/5.1 I. Knit in FNR/Pin Tuck Pattern following chart. At R 82 transfer RB sts. to MB. With knit side facing rehang neckline on these ndls. following chart. Knit 1 row at T 10 and BOLT.

Rolled Trim: Bring 26 ndls. to WP. With knit side facing rehang

Put Your Creativity into the Spotlight: Compuknit KC



Buy It For As Little As \$20/Mo.



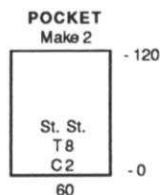
By turning your color television set into a theater of knitwear designs, the Compuknit KC Pattern Design Computer allows you to make your own creativity the star, while at the same time make fine-tuning adjustments in your beautiful designs with the push of a button. Then, you can experiment with different yarn color combinations right on your T.V. screen and in seconds start knitting your new pattern automatically!

Next to Knitking's exclusive Garter Carriage, the Compuknit KC is easily the most popular of accessories. Complete with its "Omni Cartridge," the Compuknit KC works with all of Knitking's Compuknit knitters. And, using the Compuknit KC in conjunction with Knitking's exciting DesignaKnit computer-aided software design package allows DesignaKnit creations to be transferred into the Compuknit/Bulky as well as the brand-new Compuknit V.

Only \$549.95—a savings of \$80.00! Order yours today.



right end of neckband on these ndls. RC 0. T 8. C 1. St. St. Knit 10 Rs., knitting last row at T 10 and BOLT.

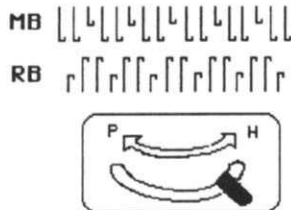


POCKET: Make 2.

With knit side facing, rehang back between pocket markers on 60

ndls. RC 0. T 8. St. St. C 2. Knit to R 120 and remove sts. on WY.

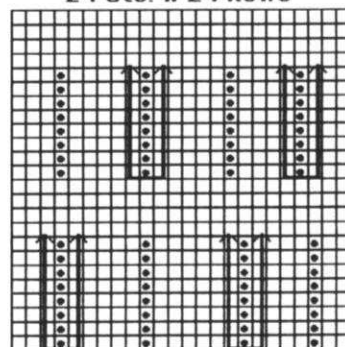
#161 Rib Needle Arrangement



FINISHING:

With purl side facing attach pocket to front between pocket markers.

#161 Fairisle Pull-up Pattern 24 Sts. x 24 Rows



KK Mag Disk: Track 14; Pat. 901

Attach front plackets and finish buttonholes with a crochet hook. Close all remaining seams.

162



MENS FAIRISLE VEST

YARN: Venetia

SIZES:

Small (Medium) [Large]

AMOUNT:

C 1: Black - 1/2 lb. all sizes

C 2: Black Tweed

3 oz. (4 oz.) [4 oz.]

C 3: Taupe Tweed

3 oz. (4 oz.) [4 oz.]

C 4: Aust. White

4 oz. (4 oz.) [4 oz.]

KIT PRICE:

\$35.00 (\$41.00) [\$41.00]

TENSION:

Fairisle: T 5.2

Rib: T -0/-0 I or 0/0 I

GAUGE:

Fairisle: 8.34 Sts., 12.3 Rs. = 1"

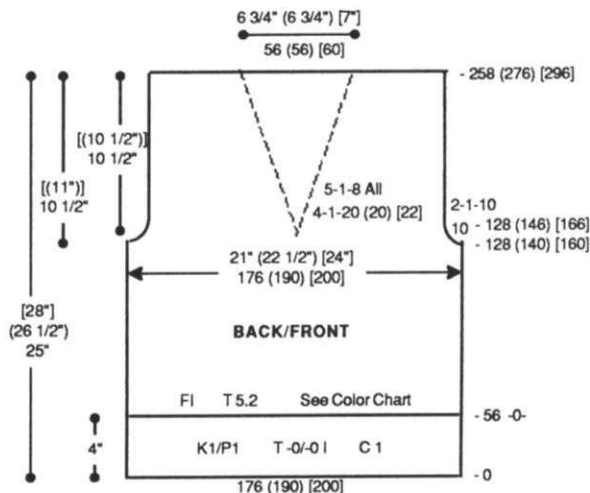
Make on Punch Card or Electronic Standard Gauge Machine with Ribber.

BACK:

With C 1 CO 176 (190) [200] sts. for K1/P1 Rib. After selvedge T -0/-0 I. RC 0. Knit to R 56. Transfer RB sts. to MB. RC 0. T 5.2. Knit in fairisle following Color Chart. At R 128 (140) [160] shape armhole. On each side BO 10 sts. then decr. EOR 1 St. 10x. At R 258 (276) [296] mark center 56 (56) [60] sts. for neckline. Knit 1 R at T 10 and BOLT.

FRONT:

Knit front same as back to R 128 (146) [166]. Shape neckline. Place all sts. to the left of -0- in HP. Note pattern row. *On neckline edge decr. every 4 Rs. 1 St. 20 (20) [22]x and every 5 Rs. 1 St. 8x for all sizes. At R 258 (276) [296] knit 1 row over shoulder sts. at T 10 and BOLT. Reset RC to R 128 (146) [166]. Reset pattern to row noted above. Shape left side from *, reversing shapings.



COLOR CHART

# Rs	MC	CC	Repeat
8	1	3	↑
10	1	4	
10	1	3	
10	1	2	

NECKBAND: Make in two pieces. Close one shoulder first.

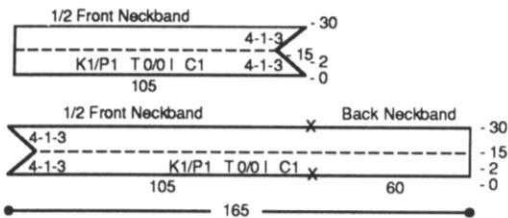
Back & 1/2 Front:

With C 1 CO 165 sts. for K1/P1 Rib. After selvedge RC 0. T 0/0 I. Knit to R 2. On left side decr. every 4 Rs. 1 St. 3x. At R 15 incr. every 4 Rs. 1 St. 3x. At R 30 with purl side facing rehang back neckline and 1/2 of front neckline on these ndls. following chart. Knit 1 row at T 10 and BOLT.

1/2 Front:

Knit same as back and 1/2 front except CO 105 sts. and shape on the right side.

NECKBAND

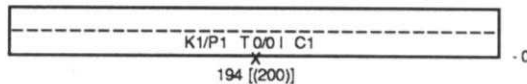


ARMHOLE BAND: Make 2.

Close remaining shoulder. With purl side facing rehang armhole on

194 [(200)] ndls. following chart. C 1. Knit 1 row. Transfer EOS to RB for K1/P1 Rib. T 0/0 I. Knit to R 30. Transfer RB sts. to MB. Knit 1 row at T 10 and BOLT.

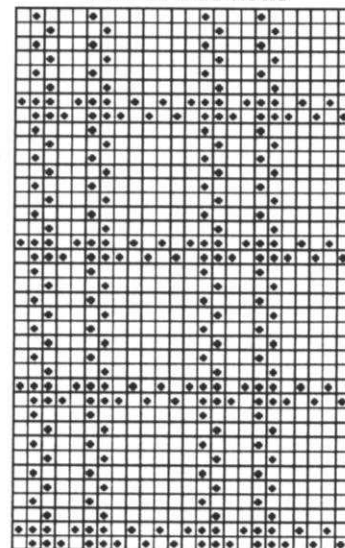
ARMHOLE BAND (Make 2)



FINISHING:

Close all remaining seams. Turn neckband and armhole bands to inside and whip stitch in place.

#162 Fairisle Pattern 24 Sts. x 38 Rows



KK Mag Disk: Track 15; Pat. 901



knitting technical tips

This issue's Technical Tips comes to us courtesy of the **DesignaKnit Technical Hotline's** own Jill Stern. She's compiled some of the more commonly asked user questions that have come up regarding **DesignaKnit Version 5.0**. Here, then, are "The Top 5:"

Q. "How can I get a listing of all pattern or file names that are saved in the designated directory?"

- A. At the point where the program asks you the name of the file to load, press the **Space Bar** to remove the name shown in the **Highlight Bar** and then press **Enter**. The listing of files will appear on the right hand side of the screen. You can then move up or down a name at a time with the **arrow keys** or you can use the **page up** or **page down** keys to scroll to the next group of names.

Q. "My color pattern will not print . . . all I get is a white box! What happened?!"

- A. In the **Woolbox** you will be given the chance to enter: the identifying symbol of the color, the name of the color (i.e. pink or flower) and the color or shades of gray information for your printer. In order to be able to printout formats which contain color or shades (Formats F, G, K and L), **DesignaKnit** needs to know what **printer colors** or shades of gray to use. The choice of **printer colors** are shown at the bottom of the second screen in the **Woolbox** after the display of the color palette. Your selection will go in the third column.

Q. "Do I need to have my T.V. on when I Up Load and Down Load using the KC/PPD?"

- A. When **Up Loading** or **Down Loading** to/from the **KC/PPD**, it is not necessary to use the T.V. screen. However, the **KC/PPD** must be set to the initial screen, i.e. the screen that appears immediately after turning on the **KC/PPD**.

Q. "What does the screen prompt, 'Do you want to Invert the pattern?' mean?"

- A. In order to knit a pattern on the machine as it is drawn, it will be necessary to invert it (flipping it over from left to right). This is not necessary for hand knitters because they begin a pattern on the knit side; therefore, they can knit as the pattern is drawn.

Q. "What does, 'Easily Knitting Stitches' in the Adjust menu mean?"

- A. If you say "Yes" to this prompt, you have the option of customizing your shaping directions. That is, you are able to set the program to allow the number of stitches you want to increase or decrease at the end of the row. For machine knitters, it is best to set it to "1" so you will never be in the position of needing to add or decrease a number of stitches on the opposite side of the carriage.

**NEW
VERSION 5.0**

Links Available For:
**KNITTING, BROTHER,
STUDIO, SINGER**

DesignaKnit

IS NOW EVEN BETTER!

OVER 50 NEW ENHANCEMENTS

KNIT FROM SCREEN CAPABILITY • FABRIC TEXTURE VIEWING • RANDOM COLOR CHANGE VIEWING
• SCALABLE ALPHABET • STANDARD SIZING AND SIZE GRADING OPTIONS • MUCH, MUCH MORE!

NOW COMPATIBLE WITH STUDIO AND SINGER KNITTING MACHINES TOO!

THE ULTIMATE KNITWEAR DESIGN PACKAGE IS HERE

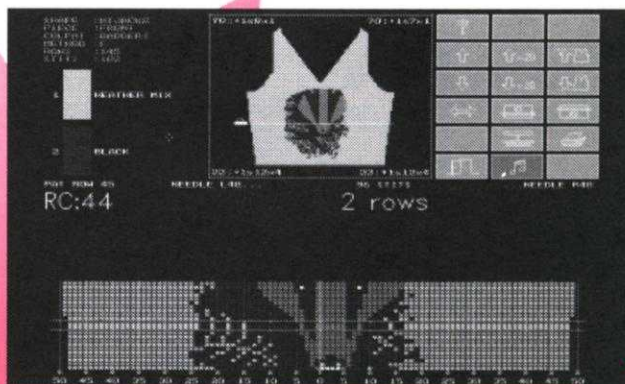
What Can You Do with DESIGNAKNIT?

- Design your own automatically-sized garments by choosing the basic shape, sleeve and neckline from the extensive built-in offerings, then easily alter garment features on the computer screen.
- Create and modify stitch patterns for fairisle, intarsia, tuck, skip, weaving, lace and jacquard—and make your color decisions from thousands of choices.
- Import computerized graphic files—original or scanned—for your design.
- Superimpose your stitch pattern anywhere on your garment shape—you can see the finished product on your screen or print it out.
- Print scaled drawings, instructions, stitch patterns, punch card and mylar templates, and much more.
- *Professional Version:* Includes above + ability to create your own shapes, and override stitch shaping or color layout stitch by stitch.
- *Optional interface allows transferring patterns into your CompuKnit V (KH 965), CompuKnit IV (KH940), III (KH930) or Comp/Bulky (KH270).* An interface is even available for your Studio/Singer SK 830,840,860,890,560 or 580!

What Do You Get With DESIGNAKNIT?

- PC-computer compatibility (with EGA or VGA screen) • 3.5 or 5.25 disk.
- Nationwide support through Knitking's *DesignaKnit Technical Assistance Hotline* to compliment the built-in Tutorial program and Instruction Manual.

▲ Unmatched Design Features
▲ Technical Assistance Hotline
▲ Low Introductory Prices



Packages Start As Low As: \$259.95



Contact your local Dealer to order, or to request a Demo Disk (\$10.00). If there is no Dealer near you, contact:

 **knitking**

Call: (800) 962-6446, ext.1

Dealer Inquiries Welcome

Knitknig Sizing Chart

MENS										
Size	34	36	38	40	42	44				
Chest	34	36	38	40	42	44				
Waist	30	32	34	36	38	40				
Hip	35	37	39	41	43	45				
Neck	15 1/2	16	16 1/2	17	17 1/2	17 1/2				
Back Waist Length	18	18 1/2	19	19 1/2	20	21				
Shoulder to Shoulder	15 1/2	16	16 1/2	17	17 1/2	18				
Upper Arm Circumference	9 5/8	10 3/8	11 1/8	11 7/8	12 5/8	13 3/8				
Armhole Depth	8	8 1/2	9	9 1/2	10	10 1/2				
Sleeve Length	19	19 1/2	19 1/2	20	20	20 1/2				
Under Arm										
Wrist	6 1/2	7	7	7	7 1/2	8				
Hip Depth	8 3/8	8 1/2	8 5/8	8 3/4	8 3/4	9				

These are actual body sizes. Proper ease allowance is necessary as determined by the style.

CHILDREN										
Size	12 mo	2 yr	4	6	8	10	12	14		
Chest	19	21	23	25	27	28	30	32		
Waist	19	20	21	22	23	24	25	26 1/2		
Hip	20	22	24	26	28	30	32	34		
Neck	9 1/4	10	10 3/4	11 1/2	12 1/8	12 5/8	13 1/8	13 5/8		
Back Waist Length	7	8 1/2	9 1/2	10 1/2	12	12 3/4	13 1/2	14 1/4		
Shoulder to Shoulder	7 1/2	8 1/2	9 1/2	10	11	11 1/2	12	12 1/4		
Upper Arm Circumference	7	7 1/2	8	8 1/2	9	9 1/2	10	10 1/2		
Armhole Depth	3 1/2	4	4 1/2	5 1/4	6	6 1/2	6 3/4	7		
Sleeve Length	6	8 1/2	10	11 1/2	13	14 1/2	15 1/2	16 1/2		
Under Arm										
Wrist	5	5 1/4	5 1/2	5 1/2	5 3/4	5 3/4	6	6		
Hip Depth	5	5 1/4	5 1/2	5 1/2	5 3/4	6 1/4	6 3/4	7		

These are actual body sizes. Proper ease allowance is necessary as determined by the style.

WOMENS										
Size	6	8	10	12	14	16	18	20	22	
Bust	30 1/2	31 1/2	32 1/2	34	36	38	40	42	44	
Waist	22	23	24	25 1/2	27	29	31	34	36	
Hip	32 1/2	33 1/2	34 1/2	36	38	40	42	44	46	
Neck	13 1/8	13 3/8	13 5/8	14	14 3/8	14 3/4	15 1/4	15 3/4	16 1/4	
Back Waist Length	15 1/2	15 3/4	16	16 1/4	16 1/2	16 3/4	17	17 1/4	17 1/2	
Shoulder to Shoulder	13 1/2	13 1/2	14	14 1/2	15	15 1/2	16	16 1/2	17	
Upper Arm Circumference	9 3/4	9 3/4	10 1/4	10 1/2	11	11 1/2	12	13	13 1/2	
Armhole Depth	7	7	7 1/2	7 1/2	7 1/2	8	8	8 1/4	8 1/4	
Sleeve Length	16 1/2	16 1/2	17 1/2	17 1/2	17 1/2	18	18	18 1/2	18 1/2	
Under Arm										
Wrist	6	6	6 1/4	6 1/4	6 1/2	6 1/2	6 1/2	7	7	
Hip Depth	7 3/4	8	8 1/4	8 1/2	8 3/4	9	9 1/4	9 1/2	9 3/4	

These are actual body sizes. Proper ease allowance is necessary as determined by the style.

IS YOUR ADDRESS CHANGING?

If so, you can insure the proper handling of this change by following the three suggestions below:

- 1) When advising us of your new address, please also indicate your old address.
- 2) Please provide us with six weeks notice to affect this change.
- 3) PLEASE PRINT ALL INFORMATION LEGIBLY.



The finest quality KNITKNIG yarns are used to create the beautiful fashions found in KNITKNIG Magazine. Photographic representations may not accurately reflect the true color of the yarn due to lighting and printing processes. Please refer to your Knitknig Yarn Color Book for actual colors. Kit prices are located with the instructions for each garment. Each yarn comes in a wide selection of colors. The different types of yarns have been selected to allow for blending, mixing, and contrasting—both color and texture.

Yarn Color Book is available through KNITKNIG or an authorized Knitknig dealer. Content and approximate yardage of each yarn is included in

	<u>Yds./Pound</u>		<u>Yds./Pound</u>		
Alpine	100% Wool	1600	Pearlyte	100% Rayon Boucle	2200
Angora	100% Rabbit Hair (10 gr. ball)	33 yds/ball	Pebble	Boucle Cotton/Acrylic/Rayon	700
Acrylite	2/12 Acrylic	2400	Primo	100% Mercerized Cotton	2500
Caprinae	78% Mohair/13% Wool/9% Nylon	980	Rayon Nubs	100% Rayon Nub Filler Yarn	5500
Glace	100% Slinky Bright Rayon	2400	Roma	80% Acrilan/20% Antron	2600
Glace Plus	100% Slinky Bright Rayon	1650	Rubane	(50 gr ball) 100% Polyamid 1/8" ribbon	82/ball
Ice Cream	54% Cotton/46% Rayon	2100	Silkie	2-Ply Orlon	2100
Lumiyarn	Thin Metallic Yarn (50 gr. cone)	1200/cone	Softon	100% Soft Cotton	2000
Mini Acrylite	2/24 Weight 100% Acrylic	3600	Sorbet	54% Cotton/46% Rayon	2200
Mini Pebble	100% Rayon Slub Filler Yarn	3350	Starlite	Acrylic w/Metallic Thread	2400
Mirage	100% 4-Ply Worsted Acrylic	1000	Venetia	70% Wool/30% Rayon	2400
Night Music	Polyester Thread w/Metallic Twist	115/ball	Woolana	100% 2/12 Merino Wool	3000
Panache	100% 3-ply Acrylic	2400	Knit-in Elastic	79% Nylon/21% Elastic	430/spool

Yarn Color Book: \$25.00 + Shipping and Handling

Order your Knitknig kits in the color of your choice from Knitknig color cards. Kit and yarn prices subject to change without notice.

153

STRIPE IT BRIGHT

A child's bright Vest will make any boy or girl happy. It is knitted in a Pull-up stitch with multi-color stripes that form a bubbly, blister pattern. Knit the bands in 1 x 1 ribbing. Knit it on any Bulky machine with Ribber. The yarn is Softon.



154

SPECIAL EFFECTS

A striking two-piece ensemble uses multi-colors for the different Fairisle Designs on the Cardigan that is sure to attract attention. Wear the Cardigan over a Stockinette stitch sideways knitted Skirt.

The bands are ribbed, the yarn is Silkie, the machine a standard gauge with Ribbing attachment.



A man with dark hair and a slight smile is standing in a room. He is wearing a dark blue sweater with a complex, repeating geometric and floral pattern. Underneath, a white collared shirt is visible. He is standing next to a dark wood railing. In the background, there is a large window with multiple panes, and a brown curtain hangs above it. The lighting is warm, suggesting an indoor setting with natural light from the window.

155

INSTANT WINNER

Extend your man's wardrobe and uplift his spirits with a brand new Fairisle Pullover.

The design is perfect for any man.

The bands are 1 x 1 ribbing.

Knit it with Softon and Silkie on the standard gauge Electronic or Punch Card machine.

156

FOCUS ON BEAUTY

A beautiful and easy to knit two-piece Suit is perfect for town or country wear. It's Stockinette stitch with color accent inserts on the double breasted Jacket. The Skirt is slim fitting. Knit it on a standard gauge knitter with Venetia.



157

HIGH STYLE

A delightful two-piece Dress catches the eye with its bright color stripe accents on one side of the Jacket. Both Cardigan and skirt are in Stockinette stitch with full needle rib for bands and hem of Skirt. Knit it with Venetia on standard gauge machine with ribber.



158

DELIGHTFUL
ENTICEMENT

Warm up to this lovely Pullover made for a Teen or Adult in a Tuck stitch and Rib pattern. It's knitted on the Punch Card or Compuknit Bulky machine with ribber. Band the neckline in Stockinette stitch. Trim it with garlands of flowers using the DecoKing II Embellishment machine. The yarn is Woolana.





159

SPECIAL
ATTRACTION

You'll feel terrific wearing this easy to knit Pullover. Combine an interesting Fairisle Design with a sideways knit color stripe sash that hugs the waist and ties in the back. The neck and sleeve bands are Stockinette stitch. Knit it on the Electronic or Punch Card standard gauge machine with Pearlyte.

160

REFRESHING

You will wear this two-piece Dress on many occasions because of its classy look and pure comfort. It is knitted in Stockinette stitch and the Top has mock pockets and color stripes at waist edge for accent.

Collar and button front plackets are in full needle ribbing with the waistband and cuffs in 1 x 1 rib.

You can knit it on the standard gauge knitter with ribber. The yarn is Venetia.





161

WARM AND COZY

Wrap yourself in this marvelous textured Coat that is warm and elegant.

It's a new Pull-up Pattern stitch with a Pin Tuck trim for Collar and Bands using the main bed and ribber.

The striped lower bands are 1 x 1 ribbing. Knit it on the standard gauge Electronic or Punch Card knitter with ribbing attachment.

The yarns are Woolana and Mini Pebble.

162

FAIRISLE PLAID

Every man will surely want this masculine Vest that is perfect in its subtle shadings for the plaid Fairisle Design. Get out your main bed Color Changer and find out how easy it is to knit. The bands are 1 x 1 ribbing. Make it on the standard gauge Electronic or Punch Card machine with Ribber using Venetia.



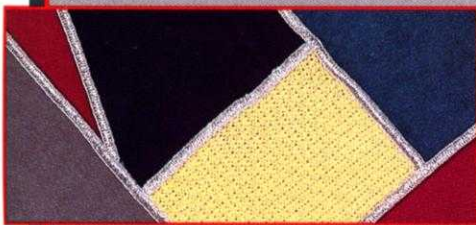
Make Machine Knitting Even Easier ... Without Worrying About Shaping

Shaping your garments while knitting them can be a somewhat complicated and time-consuming task. Now, there is an easier way.

With the new Knitking 4/3-Thread King Lock 900D Serger, all you do is knit rectangular pieces in shapes approximating the different pieces of the garment you are making. Then, let the King Lock 900D cut and "overlock stitch" the pieces to the exact measurements for a perfect fit. Quickly. Easily. Using three threads or even four (for added durability).

And, with the special, built-in Differential Feed feature, the King Lock 900D assures a smooth, neat, unruffled edge for *any* fabric — ideal for your knitwear creations!

**Buy It For
As Little As
\$15/Mo.**



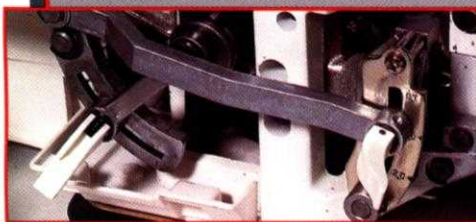
Flatlocked Seams allow mixing and matching of different fabric textures and colors using a decorative topstitch.



Create your own Lace fabric trim and use it to put a unique finishing edge on your knitted garments.



Narrow/Rolled Hem accessory is included and easily attaches for beautiful fine and narrow rolled hem edge finishing.



One-Touch sewing pitch adjustment and One-Touch Differential Feed adjustment are both conveniently located.

knitking

**KING LOCK 900D
DIFFERENTIAL FEED**



Two-Position Presser Foot allows presser foot height adjustment of up to 6 mm to accommodate thicker knitted fabrics.

1128 Crenshaw Boulevard
Los Angeles, CA 90019

For the Knitking Dealer near you
Call Toll-Free: 1-800-962-6446

We're Giving Away Cash. Check It Out.



When you take advantage of our Holiday Rebate Program to buy a brand new Knitking Knitting Machine and make an additional purchase . . . we'll send you cash back!

That's right. Buy a new Compuknit V, the latest addition to the Knitking family, or a Compuknit /ST, or a Compuknit/Bulky, or an Auto KK98. . . or just about any of the knitting machines or major accessories we sell, and you'll receive a Rebate Check, as long as you make an additional purchase for at least as much as the rebate you're entitled to.

Plus Holiday Prices to SAVE You Even More!

Special Holiday Sale Prices—on all knitting machines and major accessories—can help double or triple your Savings. And, you can use your Knitking Credit Card to Make It Happen NOW!

For further details, call:

1-800-962-6446

There's no limit, so the more you buy, the bigger the Rebate.

If you've been eyeing that Knitking Knitting Machine or Major Accessory, but need some extra incentive, now's the time to indulge yourself!

So, do yourself — and your pocketbook — a favor. **Contact your local, authorized Knitking Dealer, or call Knitking at 1-800-962-6446**, to find out how you can get cash back.

And we'll make sure to save one of our checks just for you.

 **knitking**
The First Name in Machine Knitting

To receive your Cash Giveaway from Knitking, you must purchase at least one of the items eligible between 11/19/92 and 1/31/93 (Excludes trade-in transactions and used machines—your Knitking Dealer can identify those items that qualify). Then, purchase any additional Knitking products equal to or greater than the rebate value you have accrued (qualifying additional products may not include any items for which there is a rebate value). Prior to March 15, 1993, mail the following to Knitking at 1128 Crenshaw Blvd., Los Angeles, CA 90019: (i) a copy of your original purchase invoice (include serial nos.); (ii) a copy of your invoice for the additional products you purchased; and (iii) your name, address and telephone number. Knitking will mail you a refund check for the rebate amount you are entitled to within 3 to 4 weeks. This offer cannot be used in conjunction with any other Knitking promotion.