

# knitking

*magazine*

sept/oct '72





# NEW! NEW!! NEW!!!

## 1. THREE COLOR YARN FEEDER

For Easy Multi-Color Knitting - Jacquard Designs, etc. Feeders are Self-Adjusting.

Fits AM 3 Model KNITKING only.

Price Complete - \$17.50 plus \$1.50 Shipping costs (Calif. residents add 88 cents Sales Tax).

## 2. AUTOMATIC COMPENSATOR FOR INCREASING - DECREASING

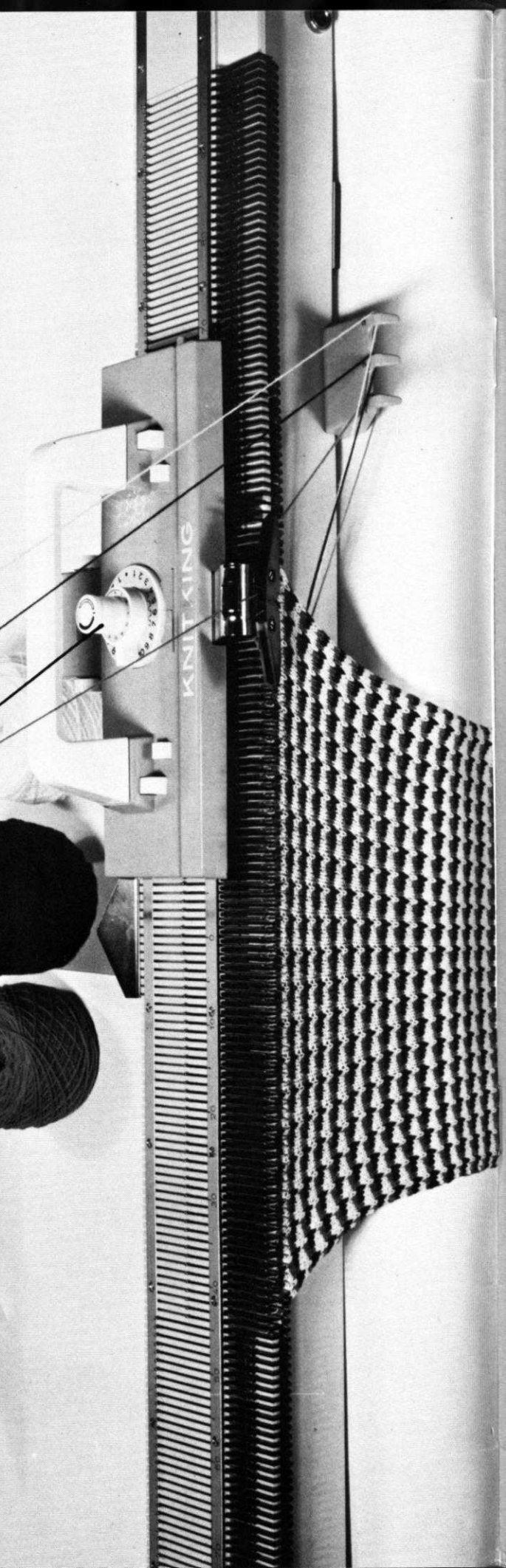
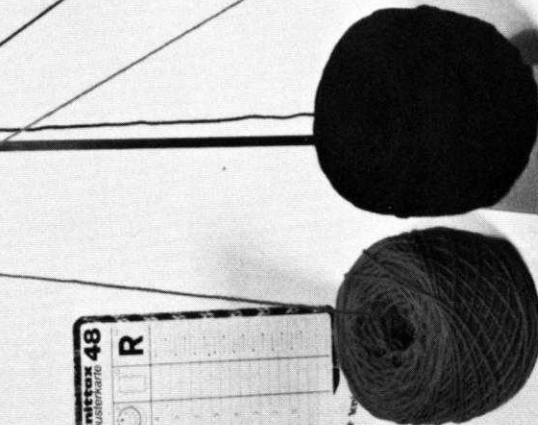
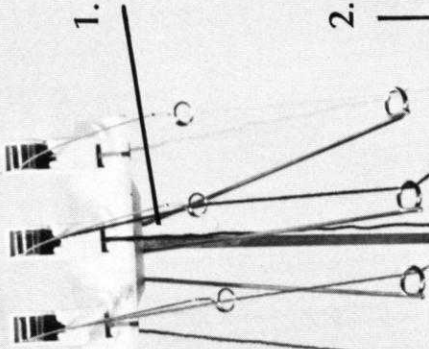
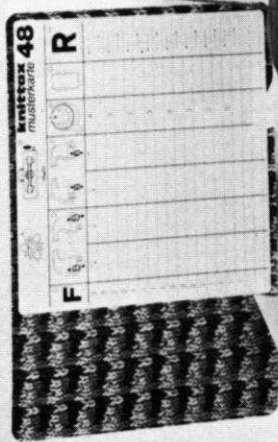
Simple to use . . . Overcomes the need to reset Dial when increasing or decreasing . . .

Send your AM 3 Cam Box to KNITKING (pack it in a good sized box stuffed with tightly rolled sheets of newspaper). We will service it completely . . . fit new Controls and supply new set (eleven) of Cams. Your old Cams are not suitable for the new Controls.

Total Price - \$19.50 plus \$2.00 Shipping costs (Calif. residents add 98 cents Sales Tax).

Order Direct From **KNITKING**

1128 Crenshaw Blvd. • Los Angeles, California 90019





# knitking magazine

INDEX	PAGE NO.
DP 8131	Woman's Shell . . . . . 9
DK 8133	Woman's Skirt and Vest . . . . . 9
DK 8134	Woman's Jumper . . . . . 10
DK 8138	Woman's Dress . . . . . 12
DP 8094	Woman's Pullover . . . . . 12
HP 3676	Man's Sleeveless Pullover . . . . . 14
MK 5396	Girl's Jacket and Pullover . . . . . 14
HP 3674	Man's Pullover . . . . . 16
DP 8104	Woman's Pullover . . . . . 16
KG 1947	Hat . . . . . 17
DK 8130	Woman's Vest and Skirt . . . . . 18
KG 1948	Hand Bag . . . . . 19
DK 8136	Woman's Jacket and Shell . . . . . 20
DK 8129	Woman's Top and Skirt . . . . . 22
DP 8132	Woman's Pullover and Jacket . . . . . 22
HP 3686	Man's Jacket . . . . . 24
KK 5394	Boy's Pullover and Pants . . . . . 25
KK 5395	Boy's Jacket . . . . . 26
DK 8135	Woman's Suit . . . . . 27

**FRONTPIECE  
COLOR IT BEAUTIFUL !!!**

We turn the wheel of progress to blaze the way for our 9th year of publication, KNITKING MAGAZINE presents its newest innovation...vibrant color to inspire you...and of course we will continue to give you the very best in machine knits...

**FRONT COVER:** Weave yourself a dream of a Skirt and Vest DK 8133. You can follow the Chart

for the weaving design but it's more fun if you own a KNITKING Weaving Accessory (for KNITKING machines only) and use your JAC 40 and Pattern No. 462. Size 12 and 14 is knitted with Regia... Dunja is the weaving Yarn.

**BACK COVER:** Suit yourself !! A lovely two-piece outfit knitted in a neutral color is enhanced with a colorful Belt (the matching Shell is DP 8131). Ribbing is for the bands and top of patch pockets. Knit Size 12 with Subita Crepe 2 x 3; Size 14, Beatrice; Size 16, Melodie.

Publisher: KNITKING CORPORATION, 1128 Crenshaw Blvd., Los Angeles, Calif. 90019. Telephone: WEbster 8-2079. Published bi-monthly. Subscriptions: USA - \$7.00 annually, single copies \$1.50; Canada - \$8.00; other parts of the world - \$10.00. The entire contents of KNITKING MAGAZINE are copyright and must not be reproduced in any shape or form without the express permission, in writing of the publisher. COPYRIGHT © by KNITKING CORPORATION 1972.

Printed by George Rice & Sons, Los Angeles, California

## editorial

All manner of wonderful things are happening at KNITKING... This issue of KNITKING MAGAZINE starts our 9th year of publication and our first issue ever with Color on the inside pages... We think it is beautiful... and that the headaches, the problems and the substantially increased costs are all worthwhile... We hope that our readers will agree and continue to subscribe, thereby helping us go on to even greater improvements.

**KNITKING YARNS...** Our new YARN CATALOGUE is out and it too is beautiful... We doubt that you will find a more magnificent assortment of the World's Finest Yarns anywhere... or that you can obtain such high quality yarns at our low prices.

The Nomotta Yarns from West Germany are acknowledged as among the World's Greatest and we have been appointed exclusive U.S. distributors for them... they are included in our new Catalogue.

The Big, Big news in regard to KNITKING YARNS is that we are making them available to all yarn shops in the U.S... This means that as more and more yarn stores stock our range, you will be able to go to your local yarn store and pick up the KNITKING YARNS you need for KNITKING patterns... You can help speed up our yarn distribution by taking your own Catalogue to your local yarn store and asking the owner to stock KNITKING YARNS... If she writes to us, we will send her a Catalogue and all the information she needs.

Patterns in back issues of KNITKING MAGAZINE call for some yarns that are not included in our new range... You will find a chart in KNITKING NEWS, this issue, listing the replacement yarns from our new Catalogue... Be sure to retain it for future use.

**NEW ACCESSORIES FOR KNITKING MACHINES...** We illustrate two new accessories for KNITKING machines on the inside front cover of this issue... A Three Color Yarn Feeder that simplifies the knitting of multi-color designs and an entirely new tension control Pattern Stitch Selector Dial with increasing-decreasing compensator and complete set of 11 Cams that permit the knitting of an unlimited number of fancy stitches.

These Accessories are only suitable for AM 3 KNITKING machines. The Model AM 3 is the only Fully Automatic Cam Operated machine in the world... and it is the easiest automatic knitter to use... insert a Cam and all pattern stitches (for Knitter and Ribber) are selected with one centrally located dial... with KNITKING all the thinking is done for you. The Cams have a built in re-setting mechanism... anytime you wish to duplicate a pattern stitch, you press one button... The AM 3 KNITKING is just fantastic.

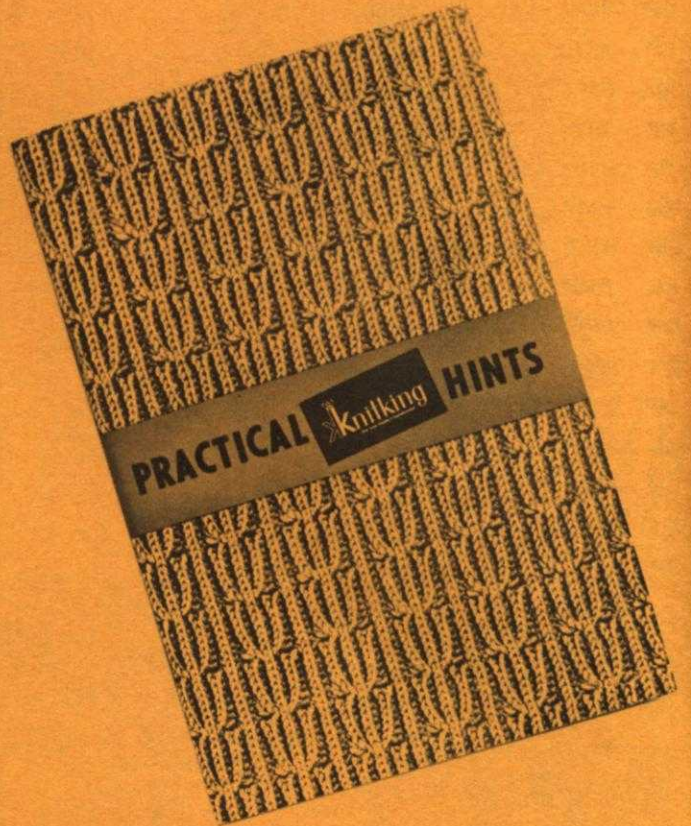
**NOVEMBER/DECEMBER KNITKING MAGAZINE..** You can depend on it... we have a colorful issue in preparation with some outstanding garments for the entire family. Pretty winter dresses... Handsome Cardigans and Sweaters... Happy and Charming clothes for the children plus an assortment of original Gift Items.....



---

## BOOKS by KNITTING

---



### PRACTICAL KNITTING HINTS

We call this book the **TEXT BOOK** for machine knitters because it answers the many questions that occur in machine knitting, from preparing to knit, taking measurements, shaping, making buttonholes, special effects, bindings, bands and edges, etc., through finishing and blocking. It sells for **\$2.95**

40 cents mailing  
Calif. residents add 5% Sales Tax



## NEW VOLUME AVAILABLE NOW

A complete eighth volume of **KNITTING MAGAZINES** with a flexible, transparent plastic cover and specially bound so that it will stay open at any page, is available at the special price of **\$6.95** (plus 95 cents mailing costs).

If purchased separately the magazines would cost a total of **\$9.00**.

The volume contains over 120 fully illustrated complete stylish patterns for all members of the family together with many valuable, practical knitting hints.

There is a very limited number of these volumes available and it will undoubtedly become a collectors item.

If you already have the entire set it will almost certainly be well thumbed and marked. Why not purchase a perfect mint condition volume for your bookshelf and ready reference at any time.

Place your order today and avoid disappointment. Send it to **KNITTING MAGAZINE**, 1128 Crenshaw Boulevard, Los Angeles, California 90019.





## PULLOVERS

## FOR PARTY GOING

HP 3676 — Take him to any gala affair in a dazzling sleeveless Pullover. All sizes are knitted with gorgeous Beatrice Silver with bands of plain Beatrice. Sizes 34, 38 and 40.

DP 8094 — A sumptuous Party Pullover has a Holding Position Design on the front section only (Purl side is the right side). All other sections are knitted in Stockinette stitch with K1, P1, Ribbing for the bands. Use beautiful Beatrice Silver for Sizes 12, 14 and 18.





FOR THE OFFICE  
OR FOR LEISURE

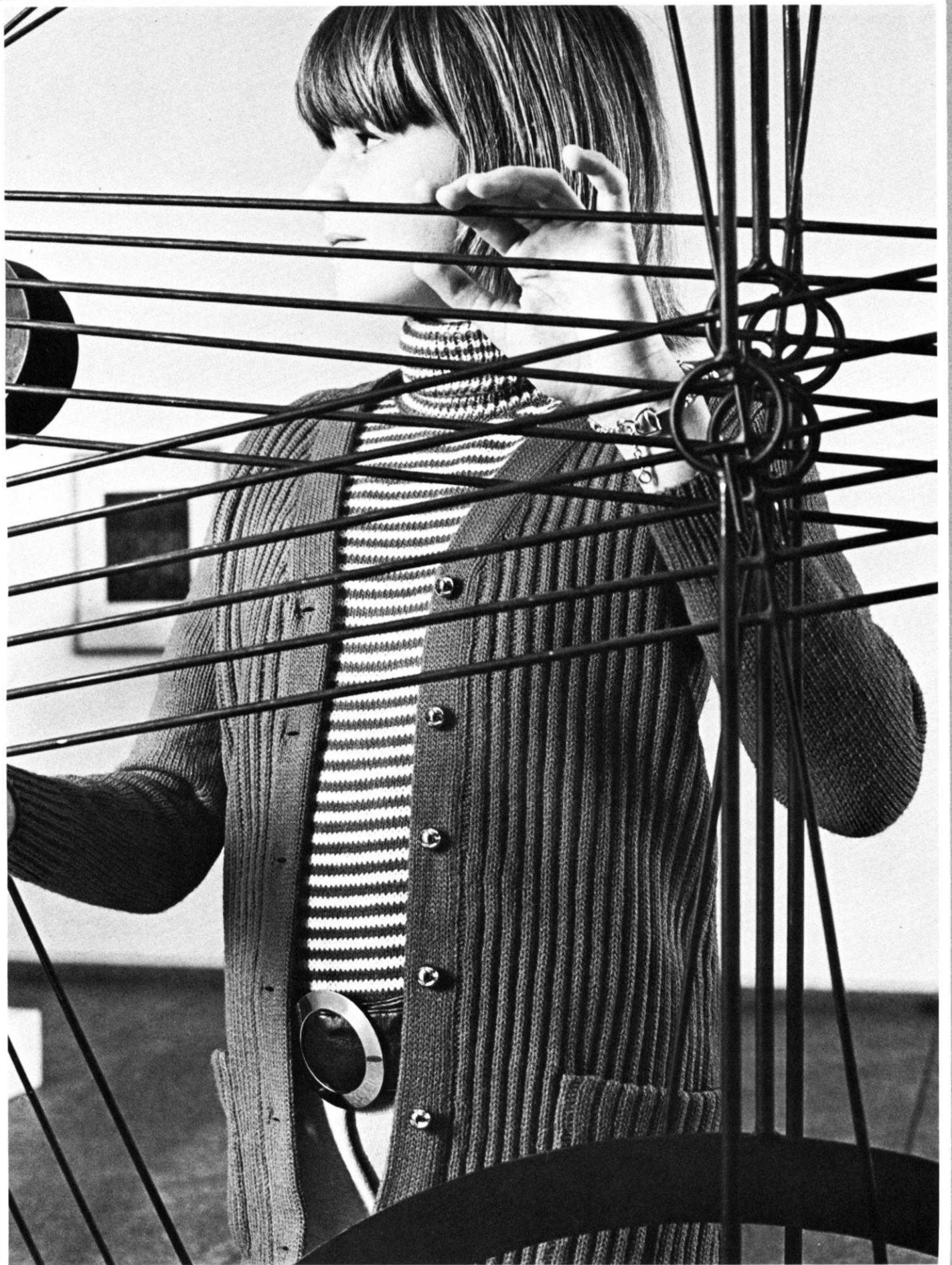
DK 8138 — Beautiful Simplicity . . . A Dress to flatter any figure. Knit it in Stockinette stitch with bands of contrast color for the trim and belt. Zip the front with a Jacket type zipper. Size 14, Subita Crepe 2 x 3; Size 16, Beatrice; Size 18, Regia.



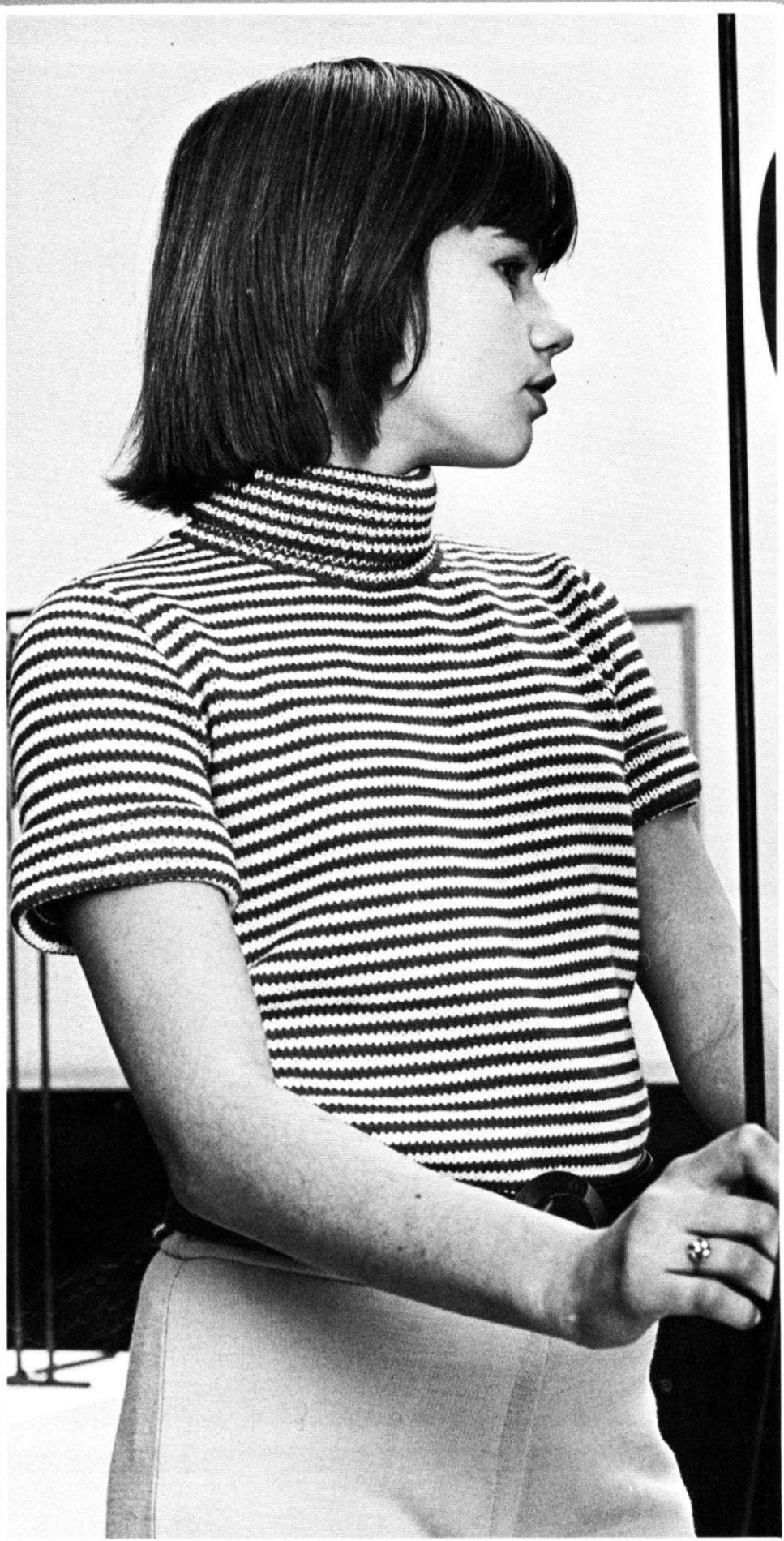


DK 8134 – On Call..! Jump into a carefree Jumper to take you anywhere. It's fitted slightly and belted at the waistline. All bands are a 1 x 1 Rib. Size 12 and 14 are knitted with Amoretta; Size 16 with Summertime.









## WARM KNITS FOR THE FALL

MK 5396 — Perfect Partners  
... A Jacket and Pullover for a  
young lady to wear through the  
fall and winter months. Knit the  
Jacket in an easy Holding Posi-  
tion Design, the Pullover in  
stripes of Stockinette stitch. For  
Sizes 6 and 8, use Flamingo  
Dralon; Size 10, Dolly Dralon  
Crepe.









THE  
ACCESSORIES  
COMPLETE  
THE OUTFIT

DP 8104 — Color Coordinates for Fall..! Select three favorite colors and knit a beautiful Pullover in Stockinette stitch with Ribbed bands and collar. For Size 12 and 14, use Sport Prima; for Size 18, Alanda . . .

THEN

KG 1947: Knit the softly shaped Hat to match

AND

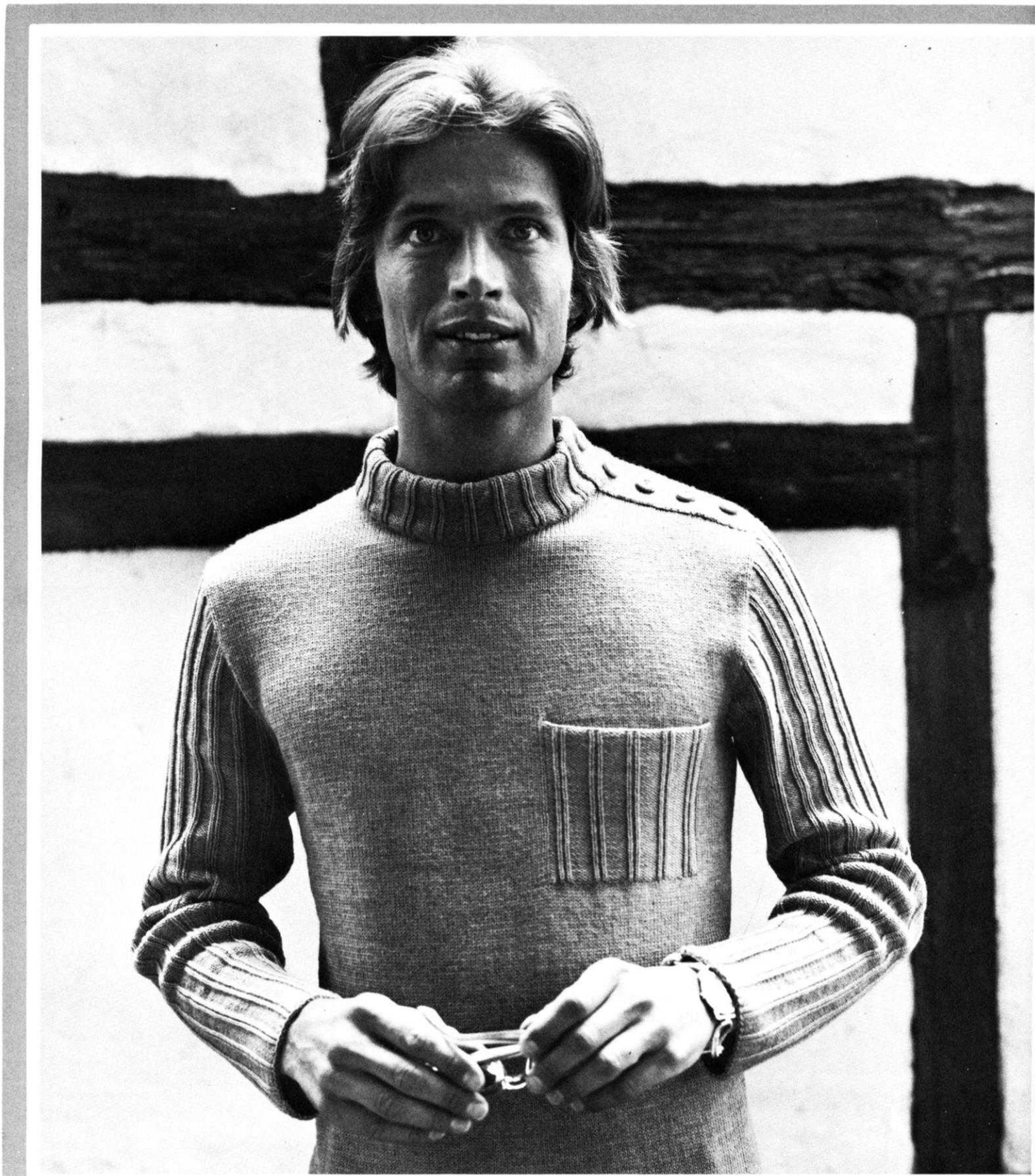
KG 1948: Knit the elegant Handbag . . .

Combine them and look GORGEOUS . . .



# FOR COMFORT AND RELAXATION

HP 3674 — Stockinette stitch with a new Rib Pattern stitch (worn on the purl side) for the Sleeves, Collar, Pockets and Bands, make an exceptionally smart Pull-over for a Man. Use Sport Prima for Size 40 and 42; Dolly Dralon Crepe for Size 46.



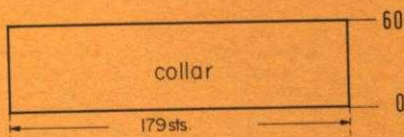
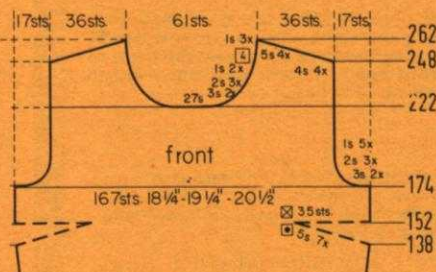


# DP 8131

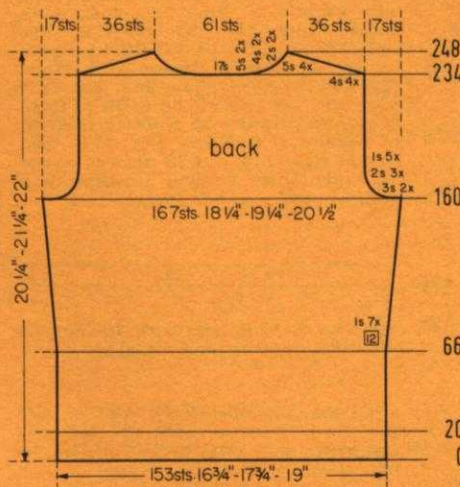
SIZE:	12 (Bust 34")	14 (Bust 36")	16 (Bust 38")
YARN:	Subita Crepe 2 x 3	Mohana	Mohana
50 gr. BALLS:	5	6	7
TENSION:	3 to 5	4 to 6	5 to 7
GAUGE:	2" 18 sts. 24 rows	17 sts. 23 rows	16 sts. 22 rows

The instructions are the same for all sizes. PATTERN: Stockinette Stitch. EDGES: K1, P1, Ribbing. INCREASES: Move the 2 end sts. 1 needle outward, then place the 3rd st. from the row below onto the empty needle.

FINISHING: Block all sections. Join front and back section at sides and shoulders. Work 1 row of single crochet around the armhole edges, then turn under a small amount and hem to wrong side. Join the short ends of collar, then sew the collar to neckline and fold over to outside.



Cast on 179 sts. and work 60 rows K1, P1, Ribbing, then bind off all sts. the crochet method for ribbing.



Move the Cam Box to the left side, turn the Row Counter back to 222 and complete the left half. Follow the instructions from\*.

\*ON CAM BOX SIDE, bind off 3 sts. after Rows 223, 225; 2 sts. after Rows 227, 229, 231; 1 st. after Rows 233, 235, 237, 241, 245. For SHOULDER bind off 4 sts. after Rows 248, 250, 252, 254; 5 sts. after Rows 256, 258, 260, 262.

ON CAM BOX SIDE, bind off 3 sts. after Rows 174, 175, 176, 177; 2 sts. after Rows 178, 179, 180, 181, 182, 183; 1 st. after Rows 184, 185, 186, 187, 188, 189, 190, 191, 192, 193, then knit to Row 222, bind off the center 27 sts., put the needles on the left side into holding position and complete the right half first.

Work the front section the same as the back section to ROW 138, then work Short Rows for the Darts. ON OPPOSITE SIDE of CAM BOX put into holding position 5 needles after Rows 138, 139, 140, 141, 142, 143, 144, 145, 146, 147, 148, 149, 150, 151. ON OPPOSITE SIDE of CAM BOX bring all needles back into working position after Rows 152, 153, then knit to Row 174.

Move the Cam Box to the left side, turn the Row Counter back to 234 and complete the left half. Follow the instructions from\*.

\*ON CAM BOX SIDE, bind off 4 sts. after Row 234 (EVEN ROWS = SHOULDER SHAPING); 5 sts. after Row 235 (ODD ROWS = NECK SHAPING); 4 sts. after Row 236; 5 sts. after Row 237; 4 sts. after Rows 238, 239, 240, 241; 5 sts. after Row 242; 2 sts. after Row 243; 5 sts. after Row 244; 2 sts. after Row 245; 5 sts. after Rows 246, 248.

ON CAM BOX SIDE, bind off 3 sts. after Rows 160, 161, 162, 163; 2 sts. after Rows 164, 165, 166, 167, 168, 169; 1 st. after Rows 170, 171, 172, 173, 174, 175, 176, 177, 178, 179, then knit to Row 234, bind off the center 17 sts., put the needles on the left side into holding position and complete the right half first.

ON EACH SIDE, increase 1 st. after Rows 66, 78, 90, 102, 114, 126, 138, then knit to Row 160. (For the FRONT Section make the increases after Row 138, but do not knit).

ROWS 21 to 66: Knit even.

ROWS 0 to 20: Knit even, then change to stockinette st.

Cast on 153 sts. and work K1, P1, Ribbing.

# DK 8133

SIZE:	12 (Bust 34"-35")	14 (Bust 36"-37")
YARN:	Basic = 1 Weaving = Dunja	
50 gr. BALLS:	8 color 1 (Regia) 5 color 2 (Dunja)	9 color 1 (Regia) 6 color 2 (Dunja)
TENSION:	4 to 6	6 to 8
GAUGE:	2" 13 sts. 30 rows	12 sts. 28 rows

The instructions are the same for both sizes. PATTERN: Weaving Pattern with the Weaving Attachment according to the Line Drawing, or use JAC 40 and Pattern No. 462. Regia is the Basic Yarn and Dunja is the Weaving Yarn. Lower edge of the Skirt and the Vest: Stockinette Stitch. The purl side is the right side. DECREASES: Hang the end st. onto the next occupied needle. INCREASES: Place the end st. from the row below onto the next empty needle.

FINISHING: Block all sections. SKIRT: Sew the open darts together, then join the front and back section at sides, leaving about 7" on the upper left side free. Turn under a small amount around the opening and hem to wrong side. On the wrong side, sew an elastic band against the upper edge. Sew the zipper in place and sew on a hook and eye. Turn under 24 rows on lower edge. VEST: Join the back and the front sections at sides and shoulders, easing in the fullness at bustline of the front sections. Work 2 rows of single crochet around front edges, neckline and armhole edges. Turn under 14 rows on lower edge and hem to wrong side.



Continued on Page 10 & 11



# DK 8134

SIZE:	12 (Bust 34")	14 (Bust 36")	16 (Bust 38")
YARN:	Amoretta	Amoretta	Summertime
50 gr. BALLS:	11	11	16
TENSION:	6 to 8	7 to 9	6 to 8
GAUGE:	16 sts, 23 rows	15 sts, 22 rows	14 sts, 22 rows

The instructions are the same for all sizes. PATTERN: Stockinette Stitch, worn on the purl side. EDGES and BELT: K1, P1, Ribbing. DECREASES: Hang the 3rd st. onto the 2nd st., then move the end sts. inward to fill the empty needle. Begin the DARTS by hanging the sts. together as marked in the Diagram, then move the sts. together to fill the empty needles. The following decreases, then increases lie directly above. INCREASES: Move the 2 end sts. 1 needle outward, then place the 3rd st. from the row below onto the empty needle. Bind off the bands the crochet method for ribbing.

FINISHING: Block all sections. Join front and back sections at sides and shoulders. Turn under 20 rows on lower edge and hem to wrong side. Join the short ends of armhole bands, then sew the bands in place. Join the neckband sections at center back, then sew the band to neckline. Work 1 row of slip st. crochet around the front opening. Sew the front band to center front and sew on buttons. Close the opening with snaps. (See picture).

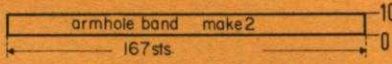
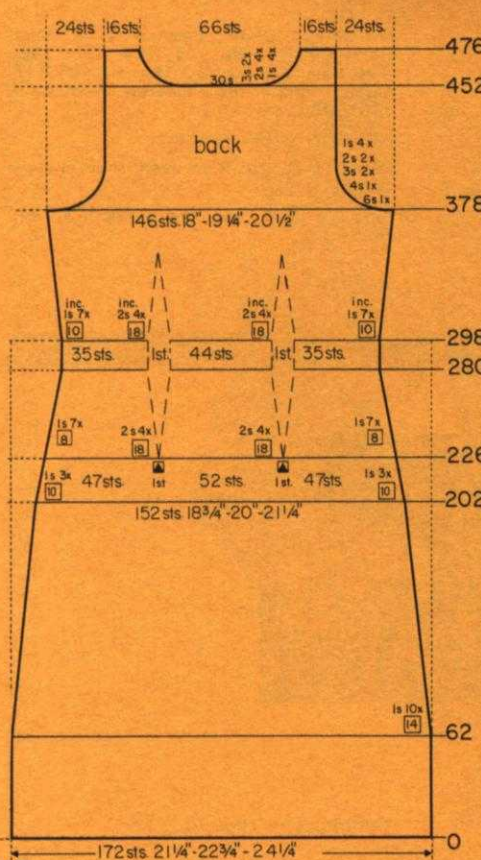
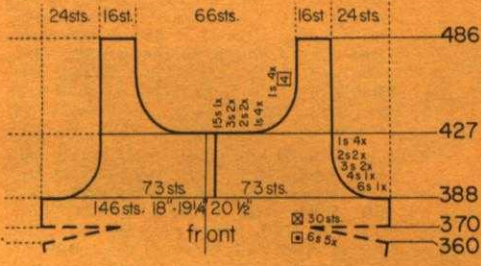


Move the Cam Box to the left side, turn the Row Counter back to 388 and complete the left half. Follow the instructions from\*.

ON CAM BOX SIDE, bind off 15 sts. after Row 427; 3 sts. after Rows 429, 431; 2 sts. after Rows 433, 435; 1 st. after Rows 437, 439, 441, 443, 445, 449, 453, 457, then knit to Row 486 and bind off the 16 shoulder sts.

\*ON CAM BOX SIDE, bind off 6 sts. after Row 388; 4 sts. after Row 390; 3 sts. after Rows 392, 394; 2 sts. after Rows 396, 398; 1 st. after Rows 400, 402, 404, 406, then knit to Row 427.

Work the Front Section the same as the back section to Row 360, then work Short Rows for the DARTS. ON OPPOSITE SIDE of CAM BOX put into holding position 6 needles after Rows 360, 361, 362, 363, 364, 365, 366, 367, 368, 369. ON OPPOSITE SIDE of CAM BOX bring back into working position all needles after Rows 370, 371, then knit to Row 388, put 73 needles on the left side into holding position and complete the right half first.



Cast on 167 sts. and work 10 rows K1, P1, Ribbing, then bind off all sts.

Move the Cam Box to the left side, turn the Row Counter back to 452 and complete the left half. Follow the instructions from\*.

\*ON CAM BOX SIDE, bind off 3 sts. after Rows 453, 455; 2 sts. after Rows 457, 459, 461, 463; 1 st. after Rows 465, 467, 469, 471, then knit to Row 476 and bind off the 16 shoulder sts.

ON CAM BOX SIDE, bind off 6 sts. after Rows 378, 379; 4 sts. after Rows 380, 381; 3 sts. after Rows 382, 383, 384, 385; 2 sts. after Rows 386, 387, 388, 389; 1 st. after Rows 390, 391, 392, 393, 394, 395, 396, 397, then knit to Row 452, bind off the center 30 sts., put the needles on the left side into holding position and complete the right half first.

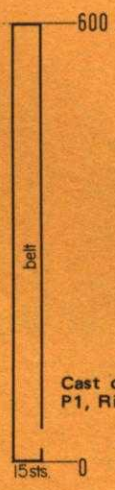
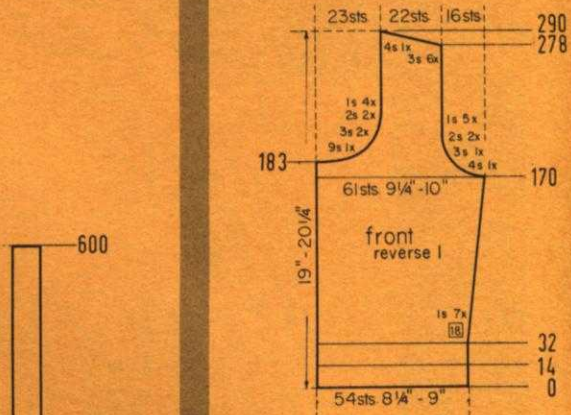
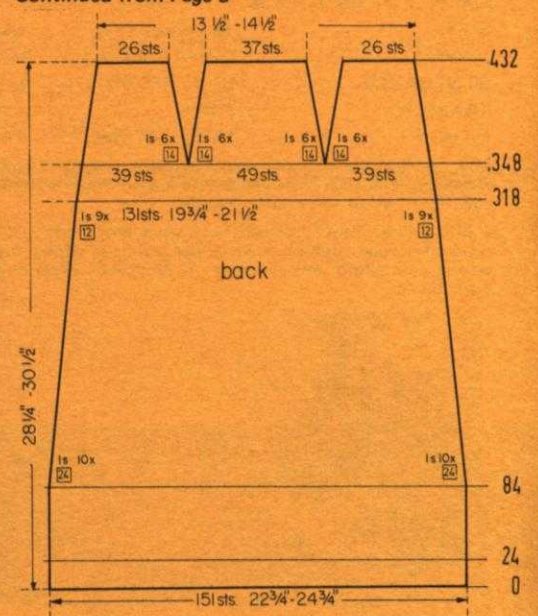
For EACH DART, increase 2 sts. after Rows in ( ). ON EACH SIDE, increase 1 st. after Rows 298, (298), 308, (316), 318, 328, (334), 338, 348, (352), 358, then knit to Row 378.

For EACH DART, decrease 2 sts. after Rows in ( ). ON EACH SIDE, decrease 1 st. after Rows 62, 76, 90, 104, 118, 132, 146, 160, 174, 188, 202, 212, 222, (226), 232, 240, (244), 248, 256, (262), 264, 272, 280, (280), then knit to Row 298.

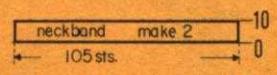
ROWS 0 to 62: Knit even.  
Cast on 172 sts. and work stockinette st.

## DK 8133

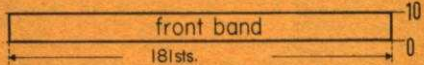
Continued from Page 9



Cast on 15 sts. and work 600 rows K1, P1, Ribbing, then bind off all sts.



Cast on 105 sts. and work 10 rows K1, P1, Ribbing, then bind off all sts.



Cast on 181 sts. and work 10 rows K1, P1, Ribbing, then bind off all sts.



Bring the remaining 39 needles into working position, knit 1 row in PATTERN to the left side, turn the Row Counter back to 348 and complete the left section. Follow the instructions from \* to \*.

Bring the next 49 needles into working position, turn the Row Counter back to 348 and work the center section. ON EACH SIDE, decrease 1 st. after Rows 348, 362, 376, 390, 404, 418, then knit to Row 432 and bind off the remaining 37 sts.

\*ON OPPOSITE SIDE of CAM BOX decrease 1 st. after Rows in ( ). ON CAM BOX SIDE, decrease 1 st. after Rows 348, (348), 360, (362), 372, (376), 384, (390), 396, (404), 408, (418), 420, then knit to Row 432 and bind off the remaining 26 sts.\*

ON EACH SIDE, decrease 1 st. after Rows 84, 108, 132, 156, 180, 204, 228, 252, 276, 300, 324, 336, then knit to Row 348, put 88 needles on the left side into holding position and complete the right section first. (For the FRONT SECTION knit to ROW 348).

ROWS 25 to 84: Knit even.

ROWS 0 to 24: Knit even, then begin the Weaving Pattern.

Cast on 151 sts. with Regia and work stockinette st.

To work the second section with reverse shapings, cast on and knit the same as the first section to ROW 32. Now knit 1 row in PATTERN to the left side, turn the Row Counter back to 32 and follow the instructions. (Cam Box will be on the LEFT side at even numbered rows).

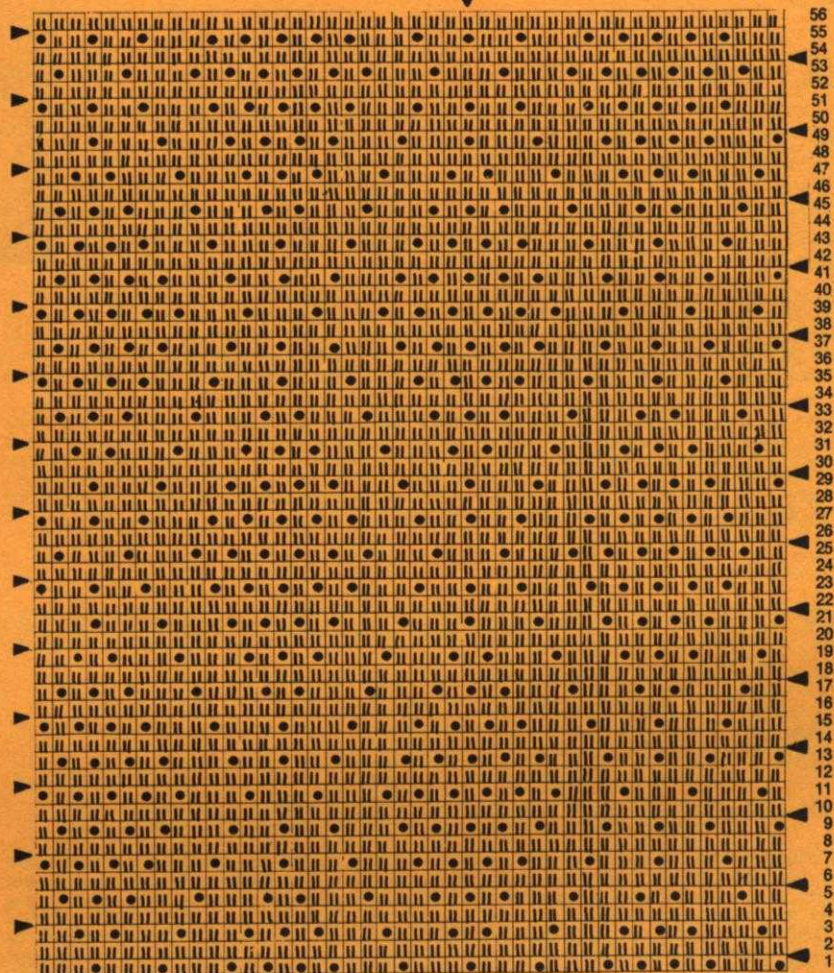
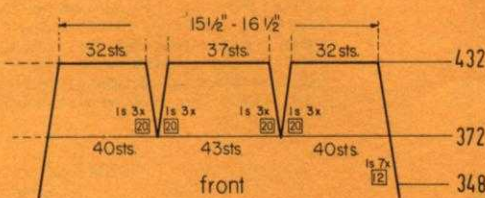
ON CAM BOX SIDE, bind off 4 sts. after Row 170 (EVEN ROWS = ARM-HOLE SHAPING); 3 sts. after Row 172; 2 sts. after Rows 174, 176; 1 st. after Rows 178, 180, 182; 9 sts. after Row 183 (ODD ROWS = NECK SHAPING); 1 st. after Row 184; 3 sts. after Row 185; 1 st. after Row 186; 3 sts. after Row 187; 2 sts. after Rows 189, 191; 1 st. after Rows 193, 195, 197, 199, then knit to Row 278. For SHOULDER bind off 3 sts. after Rows 278, 280, 282, 284, 286, 288; 4 sts. after Row 290.

ON CAM BOX SIDE, increase 1 st. after Rows 32, 50, 68, 86, 104, 122, 140, then knit to Row 170.

ROWS 15 to 32: Knit even.

ROWS 0 to 14: Knit even, then begin the Weaving Pattern.

Cast on 54 sts. with Regia and work stockinette st.



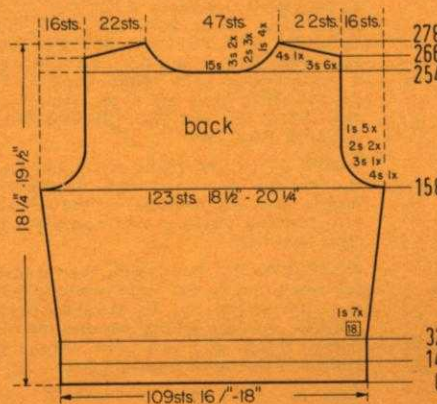
Bring the remaining 40 needles into working position, knit 1 row in PATTERN to the left side, turn the Row Counter back to 372 and complete the left section. Follow the instructions from \* to \*.

Bring the next 43 needles into working position, turn the Row Counter back to 372 and work the center section. ON EACH SIDE, decrease 1 st. after Rows 372, 392, 412, then knit to Row 432 and bind off the remaining 37 sts.

\* ON OPPOSITE SIDE of CAM BOX decrease 1 st. after Rows in ( ). ON CAM BOX SIDE, decrease 1 st. after Rows 372, (372), 384, (392), 396, 408, (412), 420, then knit to Row 432 and bind off the remaining 32 sts.\*

ON EACH SIDE, decrease 1 st. after Rows 348, 360, then knit to Row 372, put 83 needles on the left side into holding position and complete the right section first.

Work the front section the same as the back section to ROW 348.



Bring the needles on the left side into working position, knit 1 row in PATTERN to the left side, turn the Row Counter back to 254 and complete the left half. Follow the instructions from \*.

\*ON CAM BOX SIDE, bind off 3 sts. after Rows 255, 257 (ODD ROWS = NECK SHAPING); 2 sts. after Rows 259, 261, 263; 1 st. after Row 265; 3 sts. after Row 266 (EVEN ROWS = SHOULDER SHAPING); 1 st. after Row 267; 3 sts. after Row 268; 1 st. after Row 269; 3 sts. after Row 270; 1 st. after Row 271; 3 sts. after Rows 272, 274, 276; 4 sts. after Row 278.

ON CAM BOX SIDE, bind off 4 sts. after Rows 158, 159; 3 sts. after Rows 160, 161; 2 sts. after Rows 162, 163, 164, 165; 1 st. after Rows 166, 167, 168, 169, 170, 171, 172, 173, 174, 175, then knit to Row 254, bind off the left side into holding position and complete the right half first.

ON EACH SIDE, increase 1 st. after Rows 32, 50, 68, 86, 104, 122, 140, then knit to Row 158.

ROWS 15 to 32: Knit even.

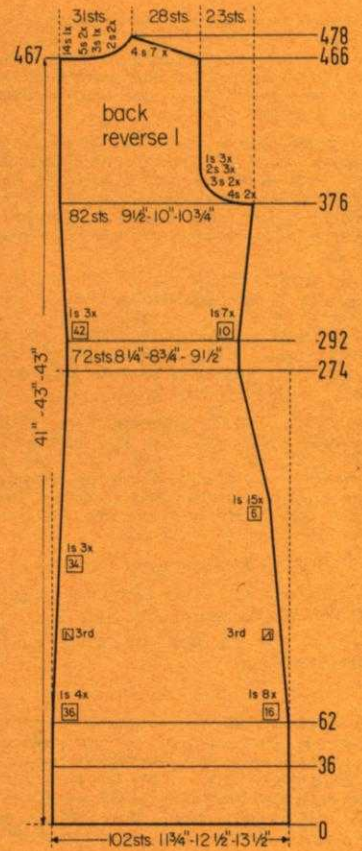
ROWS 0 to 14: Knit even, then begin the Weaving Pattern.

Cast on 109 sts. with Regia and work stockinette st.



# DK 8138

SIZE:	14 (Bust 36")	16 (Bust 38")	18 (Bust 40")
YARN:	Subita Crepe 2 x 3	Beatrice	Regia
50 gr. BALLS:	10 color 1 3 color 2	13 color 1 4 color 2	11 color 1 3 color 2
TENSION:	4 to 6	5 to 7	5 to 7
GAUGE:	2" 17 sts, 23 rows	16 sts, 22 rows	15 sts, 22 rows
ALL SIZES:	29" Jacket Type Zipper		



The instructions are the same for all sizes. **PATTERN:** Stockinette Stitch. **BELT:** K1, P1, Ribbing. **DECREASES:** Hang the 3rd st. onto the 2nd st., then move the end sts. inward to fill the empty needle. **INCREASES:** Move the 2 end sts. 1 needle outward, then place the 3rd st. from the row below onto the empty needle. To form the hem, hang the cast-on sts. back onto the machine behind the latches and knit the following row with 2 tension settings higher.

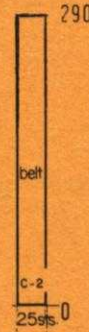
**FINISHING:** Block all sections. Weave the back sections together, 1 st. in from each edge. Join back and front section at sides and shoulders. Sew the sleeves together and set in. Fold the sleeve hem to form cuff, separate the 2 layers on the hems and fold up, having the hem seam line at the center of the hem, then press. Weave the band to fronts and neckline, 1 st. in from each edge, then fold the band in half and sew the edge against the seam line on wrong side. Sew the zipper in place. Sew a buckle to the belt.

# DP 8094

SIZE:	12 (Bust 34"-35")	14 (Bust 36"-37")	18 (Bust 39"-40")
YARN:	Beatrice Silver	Beatrice Silver	Beatrice Silver
50 gr. BALLS:	8	9	10
TENSION:	Stk. 4 to 6 Pattern 3 to 5	5 to 7 4 to 6	6 to 8 5 to 7
GAUGE:	2" Stk. 17 sts, 23 rows Pattern 17 sts, 25 rows	16 sts, 22 rows 16 sts, 24 rows	15 sts, 21 rows 15 sts, 23 rows

The instructions are the same for all sizes. **PATTERN:** Back Section and Sleeves: Stockinette Stitch, worn on the knit side; Front Section: Holding Position Design with omitted needles according to the Line Drawing, worn on the purl side. The omitted needles in the pattern are counted as stitches in the Gauge and Instructions. **EDGES:** K1, P1, Ribbing. **NECK DECREASES:** Hang the end st. ON NECK SIDE onto the next needle. When binding off, or decreasing, keep in mind that the empty needles in the Pattern do count as stitches. **INCREASES:** Move the 2 end sts. 1 needle outward, then place the 3rd st. from the row below onto the empty needle.

**FINISHING:** Block all sections. Join front and back section at sides and shoulders, easing in the fullness at bustline of the front section. Sew the sleeves together and set in. Join the neckband sections at center front and center back, then sew the band to neckline.



Cast on 25 sts. with color 2 and work 290 rows K1, P1, Ribbing, then bind off all sts.



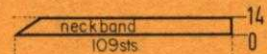
Bring the needles on the left side into working position, knit 1 row in **PATTERN** to the left side, turn the Row Counter back to 184 and complete the left half. Follow the instructions from\*.

\*ON OPPOSITE SIDE of CAM BOX (NECK SIDE) decrease 1 st. after Rows in ( ). ON CAM BOX SIDE, bind off 5 sts. after Row 184; 3 sts. after Rows 186, 188, (188), 2 sts. after Rows 190, 192, (192), 194; 1 st. after Rows 196, (196), 198, 200, (200), 202. The Arm-hole Shaping is now completed. Continue to decrease 1 st. ON NECK SIDE after Rows 204, 208, 212, 216, 220, 224, 228, 232, 236, 240, 244, 248, 252, 256, 260, 264, 268, 272, 276, then 1 time more after Row in ( ). For SHOULDER bind off 4 sts. after Rows 280, (280), 282, 284, 286, 288, 290, 292; 5 sts. after Row 294.

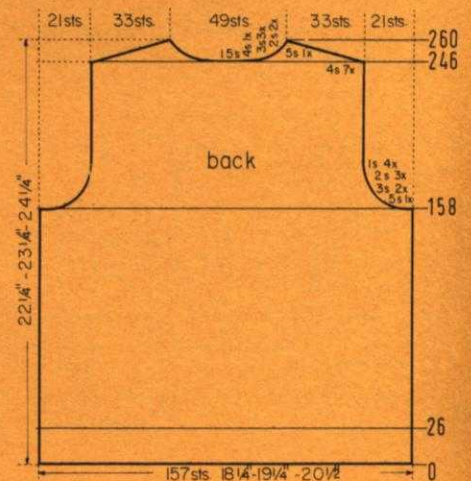
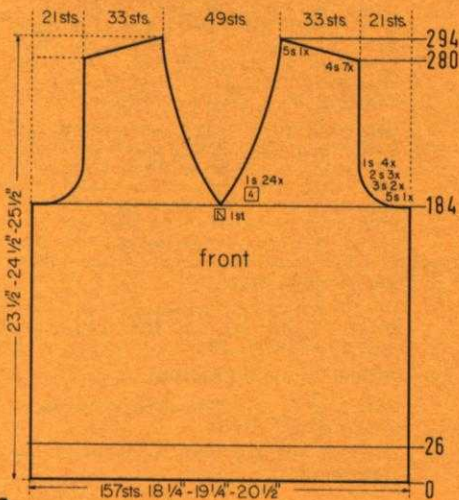
**ROWS 27 to 184:** Knit even, then hang the center st. onto the neighboring needle, put the needles on the left side into holding position and complete the right half first.

**ROWS 0 to 26:** Knit even, then transfer the ribber sts. to the main machine, hang the appropriate sts. to the neighboring needles, put the empty needles into the non-working position and work the Holding Position Design.

Cast on 157 sts. and work K1, P1, Ribbing.



Cast on 109 sts., work K1, P1, Ribbing and Short Rows. ON OPPOSITE SIDE of CAM BOX put into holding position 2 needles after Rows 2, 4, 6, 8, 10, 12. After Row 14 bring all needles back into working position, then bind off all sts. the crochet method for ribbing. Work the second neckband section with reverse shaping, casting on from right to left. (Cam Box will be on the LEFT side at Row 0).





Work the second back section with reverse shapings, casting on from right to left. (Cam Box will be on the LEFT side at Row 0).

ON CAM BOX SIDE, bind off 4 sts. after Row 466 (EVEN ROWS = SHOULDER SHAPING); 14 sts. after Row 467 (ODD ROWS = NECK SHAPING); 4 sts. after Row 468; 5 sts. after Row 469; 4 sts. after Row 470; 5 sts. after Row 471; 4 sts. after Row 472; 3 sts. after Row 473; 4 sts. after Row 474; 2 sts. after Row 475; 4 sts. after Row 476; 2 sts. after Row 477; 4 sts. after Row 478.

ON CAM BOX SIDE, bind off 4 sts. after Rows 376, 378; 3 sts. after Rows 380, 382; 2 sts. after Rows 384, 386, 388; 1 st. after Rows 390, 392, 394, then knit to Row 466.

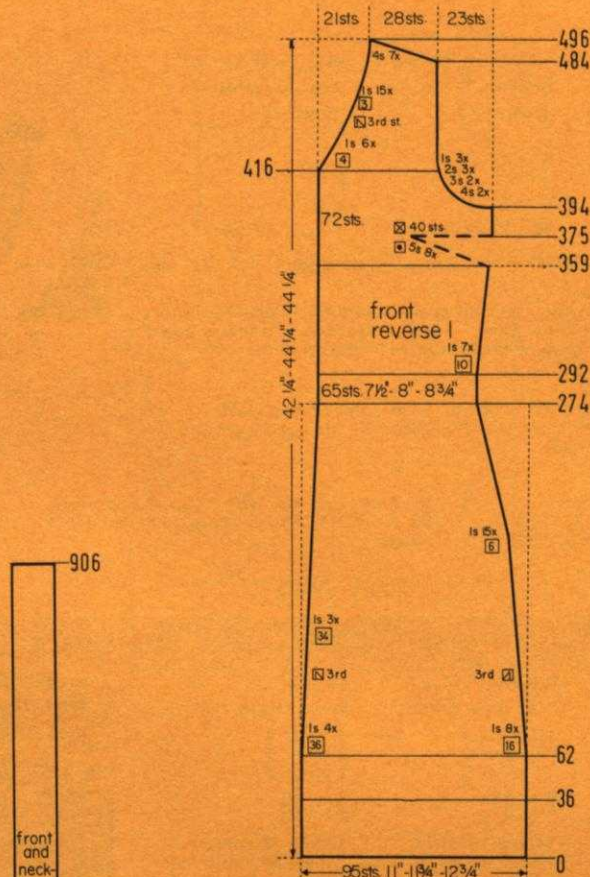
ON OPPOSITE SIDE OF CAM BOX increase 1 st. after Rows in ( ). ON CAM BOX SIDE, increase 1 st. after Rows 292, (292), 302, 312, 322, 332, (334), 342, 352, (376), but do not knit after the last increase.

ON OPPOSITE SIDE OF CAM BOX decrease 1 st. after Rows in ( ). ON CAM BOX SIDE, decrease 1 st. after Rows 62, (62), 78, 94, (98), 110, 126, (134), 142, 158, (170), 174, 190, 196, 202, (206), 208, 214, 220, 226, 232, 238, (240), 244, 250, 256, 262, 268, 274, (274), then knit to Row 292.

ROWS 37 to 62: Knit even.

ROWS 0 to 36: Knit even, then form the hem.

Cast on 102 sts. and work stockinette st.



Cast on 21 sts. with color 2 and work 906 rows stockinette st., then bind off all sts.



Work the second front section with reverse shapings, casting on from right to left. (Cam Box will be on the LEFT side at Row 0).

ON NECK SIDE, decrease 1 st. after Rows 416, 420, 424, 428, 432, 436, 440, 443, 446, 449, 452, 455, 458, 461, 464, 467, 470, 473, 476, 479, 482. For SHOULDER bind off 4 sts. after Rows 484, 486, 488, 490, 492, 494, 496.

ON CAM BOX SIDE, bind off 4 sts. after Rows 394, 396; 3 sts. after Rows 398, 400; 2 sts. after Rows 402, 404, 406; 1 st. after Rows 408, 410, 412.

ON CAM BOX SIDE, increase 1 st. after Rows 292, 302, 312, 322, 332, 342, 352, then knit to Row 359 and work Short Rows for the DART. ON OPPOSITE SIDE OF CAM BOX put into holding position 5 needles after Rows 359, 361, 363, 365, 367, 369, 371, 373. After Row 375 bring all needles back into working position, then knit to Row 394.

ON OPPOSITE SIDE OF CAM BOX decrease 1 st. after Rows in ( ). ON CAM BOX SIDE, decrease 1 st. after Rows 62, (62), 78, 94, (98), 110, 126, (134), 142, 158, (170), 174, 190, 196, 202, (206), 208, 214, 220, 226, 232, 238, (240), 244, 250, 256, 262, 268, 274, (274), then knit to Row 292.

ROWS 37 to 62: Knit even.

ROWS 0 to 36: Knit even, then form the hem.

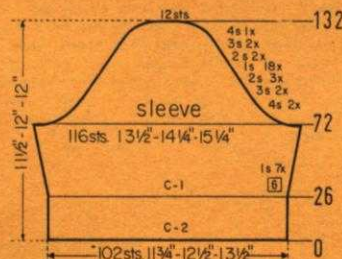
Cast on 95 sts. and work stockinette st.

ON CAM BOX SIDE, bind off 4 sts. after Rows 72, 73, 74, 75; 3 sts. after Rows 76, 77, 78, 79; 2 sts. after Rows 80, 81, 82, 83, 84, 85. ON EACH SIDE, hang the 1st st. onto the 2nd st. after Rows 86, 88, 90, 92, 94, 96, 98, 100, 102, 104, 106, 108, 110, 112, 114, 116, 118, 120. ON CAM BOX SIDE, bind off 2 sts. after Rows 122, 123, 124, 125; 3 sts. after Rows 126, 127, 128, 129; 4 sts. after Rows 130, 131; 12 sts. after Row 132.

ON EACH SIDE, increase 1 st. after Rows 26, 32, 38, 44, 50, 56, 62, then knit to Row 72.

ROWS 0 to 26: Knit even, then form the hem and change to color 1.

Cast on 102 sts. with color 2 and work stockinette st.



Move the Cam Box to the left side, turn the Row Counter back to 246 and complete the left half. Follow the instructions from \*.

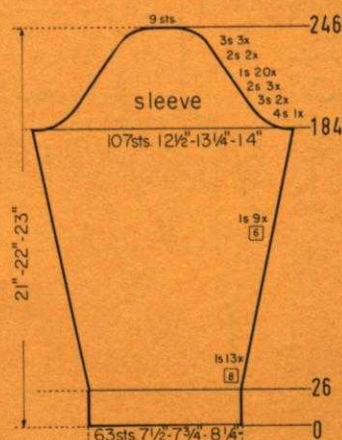
\*ON CAM BOX SIDE, bind off 4 sts. after Rows 246 (EVEN ROWS = SHOULDER SHAPING), 247 (ODD ROWS = NECK SHAPING), 248; 3 sts. after Row 249; 4 sts. after Row 250; 3 sts. after Row 251; 4 sts. after Row 252; 3 sts. after Row 253; 4 sts. after Row 254; 2 sts. after Row 255; 4 sts. after Row 256; 2 sts. after Row 257; 4 sts. after Row 258; 5 sts. after Row 260.

ON CAM BOX SIDE, bind off 5 sts. after Rows 158, 159; 3 sts. after Rows 160, 161, 162, 163; 2 sts. after Rows 164, 165, 166, 167, 168, 169; 1 st. after Rows 170, 171, 172, 173, 174, 175, 176, 177, then knit to Row 246, bind off the center 15 sts., put the needles on the left side into holding position and complete the right half first.

ROWS 27 to 158: Knit even.

ROWS 0 to 26: Knit even, then change to stockinette st.

Cast on 157 sts. and work K1, P1, Ribbing.



ON CAM BOX SIDE, bind off 4 sts. after Rows 184, 185; 3 sts. after Rows 186, 187, 188, 189; 2 sts. after Rows 190, 191, 192, 193, 194, 195. ON EACH SIDE, hang the 1st st. onto the 2nd st. after Rows 196, 198, 200, 202, 204, 206, 208, 210, 212, 214, 216, 218, 220, 222, 224, 226, 228, 230, 232, 234. ON CAM BOX SIDE, bind off 2 sts. after Rows 236, 237, 238, 239; 3 sts. after Rows 240, 241, 242, 243, 244, 245; 9 sts. after Row 246.

ON EACH SIDE, increase 1 st. after Rows 26, 34, 42, 50, 58, 66, 74, 82, 90, 98, 106, 114, 122, 130, 136, 142, 148, 154, 160, 166, 172, 178, then knit to Row 184.

ROWS 0 to 26: Knit even, then change to stockinette st.

Cast on 63 sts. and work K1, P1, Ribbing.



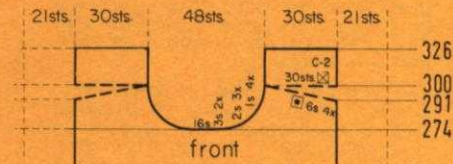
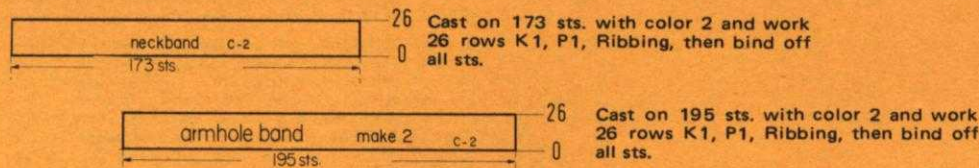
# HP 3676

SIZE:	34 (Chest 34"-35")	38 (Chest 37"-38")	40 (Chest 39"-40")
MAIN YARN:	Beatrice Silver	Beatrice Silver	Beatrice Silver
ACCENT YARN:	Beatrice	Beatrice	Beatrice
50 gr. BALLS:			
Main Yarn	5	6	6
Accent Yarn	2	2	2
TENSION:	5 to 7	6 to 8	8 to 10
GAUGE:	2" 16 sts, 22 rows	15 sts, 21 rows	14 sts, 20 rows



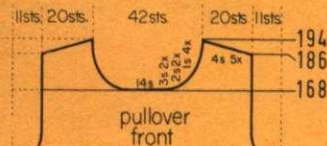
The instructions are the same for all sizes. PATTERN: Stockinette Stitch. EDGES and SHOULDER SECTION: K1, P1, Ribbing.

FINISHING: Block the sections. Join front and back section at sides and shoulders. Join short ends of neckband and short ends of armhole bands. Sew 1 edge of neckband to inside and 1 edge to outside of neckline. Sew the armhole bands to the armholes in the same manner.



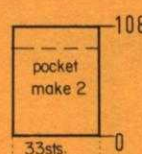
# MK 5396

SIZE:	6 (Chest 24"-25")	8 (Chest 26"-27")	10 (28"-29")
YARN:	Flamingo Dralon	Flamingo Dralon	Dolly Dralon Crepe
50 gr. BALLS:	Jacket 9 color 1 Pullover 3 color 1 3 color 2	10 color 1 4 color 1 4 color 2	8 color 1 3 color 1 3 color 2
TENSION:	Stk. 7 to 9 Pattern 6 to 8	8 to 10 7 to 9	9 to 10 8 to 10
GAUGE:	2" Stk. 15 sts, 20 rows Pattern 16 sts, 38 rows	14 sts, 19 rows 15 sts, 36 rows	13 sts, 18 rows 14 sts, 34 rows



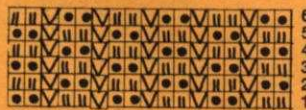
The instructions are the same for all sizes. PATTERN: JACKET: Fronts and back; Holding Position Design with omitted needles according to the Line Drawing. The omitted needles are counted as stitches in the Gauge and Instructions. Set up the needles for the Pattern manually, then use the needle shifter. SLEEVES: Stockinette Stitch. Sleeve Edges; K1, P1, Ribbing. PULLOVER: Stockinette Stitch with repeated color stripes as marked in the Diagrams. JACKET DECREASES: Hang the end st. onto the next occupied needle, keeping in mind that the empty needles in the PATTERN do count as sts. SLEEVE INCREASES: Move the 2 end sts. 1 needle outward, then place the 3rd st. from the row below onto the empty needle.

FINISHING: Block all sections. JACKET: Join back and front sections at sides. Turn under 28 rows on lower edge and 22 rows on upper pocket edges and hem to wrong side. Sew the pockets in place. Sew the sleeves together, then sew to armholes and shoulders. Sew 1 edge of the front band to inside and 1 edge to outside of front edges and neckline. Finish buttonholes, sew on buttons. PULLOVER: Join front and back section at sides and shoulders. Sew the sleeves together and set in. Turn under 16 rows on lower edge and hem to wrong side. Fold the sleeve hem to form cuff, separate the 2 layers on the hems and fold up, having the hem seam line at the inner center of the hem, then press.



Cast on 33 sts. over 33 needles, knit 2 rows stockinette st., then transfer the appropriate sts. to the neighboring needles, put the empty needles into the non-working position, turn the Row Counter back to 0 and work the Holding Position Design to Row 108, then bind off all sts.

Work the second front section with reverse shapings, casting on from right to left. (Cam Box will be on the LEFT side at Row 0).

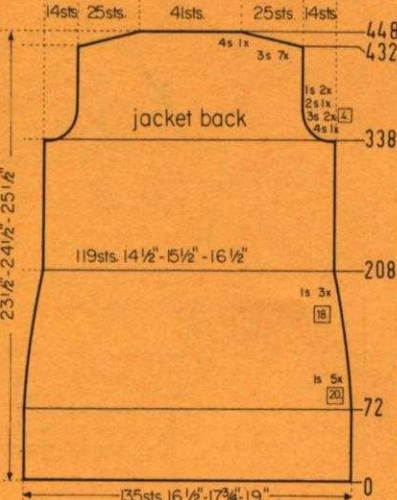
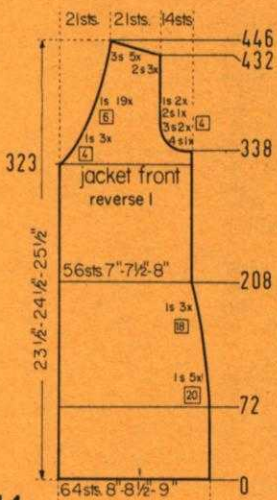


ON CAM BOX SIDE, (NECK SIDE) decrease 1 st. after Rows 323, 327, 331, 335, then again after Rows in ( ). ON CAM BOX SIDE, (ARMHOLE SIDE) bind off 4 sts. after Row 338; (341), 3 sts. after Rows 342, 346; (347), 2 sts. after Row 350; (353), 1 st. after Rows 354, 358; (359). The Armhole Shaping is now completed. Continue to decrease 1 st. ON NECK SIDE after Rows 365, 371, 377, 383, 389, 395, 401, 407, 413, 419, 425, 431, then again after Rows in ( ). For SHOULDER bind off 2 sts. after Rows 432, 434, 436; (437), 3 sts. after Rows 438, 440, 442, (443), 444, 446.

ON CAM BOX SIDE, decrease 1 st. after Rows 72, 92, 112, 132, 152, 172, 190, 208, then knit to Row 323.

ROWS 0 to 72: Knit even.

Cast on 64 sts. over 64 needles, knit 2 rows stockinette st., then transfer the appropriate sts. to the neighboring needles, put the empty needles into the non-working position, turn the Row Counter back to 0 and work the Holding Position Design.



ON CAM BOX SIDE, bind off 3 sts. after Rows 432, 433, 434, 435, 436, 437, 438, 439, 440, 441, 442, 443, 444, 445; 4 sts. after Rows 446, 447. After Row 448 bind off the 41 neck sts.

ON CAM BOX SIDE, bind off 4 sts. after Rows 338, 339; 3 sts. after Rows 342, 343, 346, 347; 2 sts. after Rows 350, 351; 1 st. after Rows 354, 355, 358, 359, then knit to Row 432.

ON EACH SIDE, decrease 1 st. after Rows 72, 92, 112, 132, 152, 172, 190, 208, then knit to Row 338.

ROWS 0 to 72: Knit even.

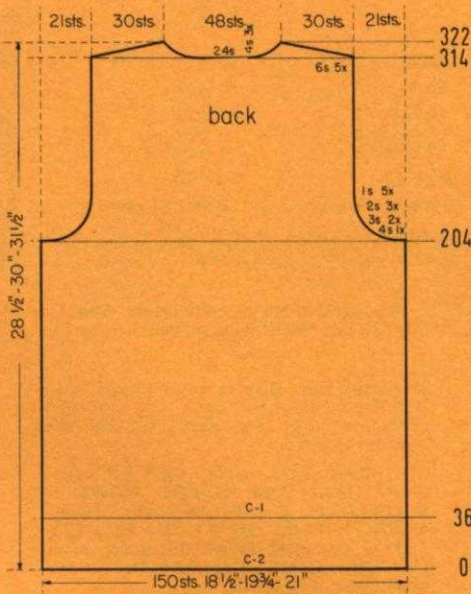
Cast on 135 sts. over 135 needles, knit 2 rows stockinette st., then transfer the appropriate needles to the neighboring needles, put the empty needles into the non-working position, turn the Row Counter back to 0 and work the Holding Position Design.



Move the Cam Box to the left side, turn the Row Counter back to 274 and complete the left half. Follow the instructions from\*.

\*ON CAM BOX SIDE, bind off 3 sts. after Rows 275, 277 (ODD ROWS = NECK SHAPING); 2 sts. after Rows 279, 281, 283; 1 st. after Rows 285, 287, 289, 291, but do not knit after the last decrease. Work Short Rows for the Shoulder Shaping. ON OPPOSITE SIDE of CAM BOX put into holding position 6 needles after Rows 291, 293, 295, 297. After Row 299 bring all needles back into working position, knit to Row 300, transfer every other st. to the ribber, change to color 2 and work K1, P1, Ribbing to Row 326, then bind off all sts.

Work the front section the same as the back section to ROW 274, then bind off the center 16 sts., put the needles on the left side into holding position and complete the right half first.



Move the Cam Box to the left side, turn the Row Counter back to 314 and complete the left half. Follow the instructions from\*.

\*ON CAM BOX SIDE, bind off 6 sts. after Row 314 (EVEN ROWS = SHOULDER SHAPING); 4 sts. after Row 315 (ODD ROWS = NECK SHAPING); 6 sts. after Row 316; 4 sts. after Row 317; 6 sts. after Row 318; 4 sts. after Row 319; 6 sts. after Rows 320, 322.

ON CAM BOX SIDE, bind off 4 sts. after Rows 204, 205; 3 sts. after Rows 206, 207, 208, 209; 2 sts. after Rows 210, 211, 212, 213, 214, 215; 1 st. after Rows 216, 217, 218, 219, 220, 221, 222, 223, 224, 225, then knit to Row 314, bind off the center 24 sts., put the needles on the left side into holding position and complete the right half first. (For the FRONT SECTION knit to Row 274).

ROWS 37 to 204: Knit even.

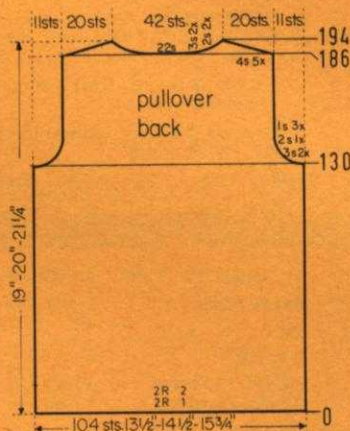
ROWS 0 to 36: Knit even, then change to stockinette st. and continue working with color 1.

Cast on 150 sts. with color 2 and work K1, P1, Ribbing.

Move the Cam Box to the left side, turn the Row Counter back to 168 and complete the left half. Follow the instructions from\*.

\*ON CAM BOX SIDE, bind off 3 sts. after Rows 169, 171; 2 sts. after Rows 173, 175; 1 st. after Rows 177, 179, 181, 183. For SHOULDER bind off 4 sts. after Rows 186, 188, 190, 192, 194.

Work the front section the same as the back section to ROW 168, then bind off the center 14 sts., put the needles on the left side into holding position and complete the right half first.



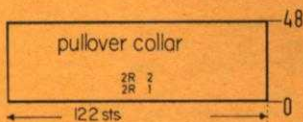
Move the Cam Box to the left side, turn the Row Counter back to 186 and complete the left half. Follow the instructions from\*.

\*ON CAM BOX SIDE, bind off 4 sts. after Row 186 (EVEN ROWS = SHOULDER SHAPING); 3 sts. after Row 187 (ODD ROWS = NECK SHAPING); 4 sts. after Row 188; 3 sts. after Row 189; 4 sts. after Row 190; 2 sts. after Row 191; 4 sts. after Row 192; 2 sts. after Row 193; 4 sts. after Row 194.

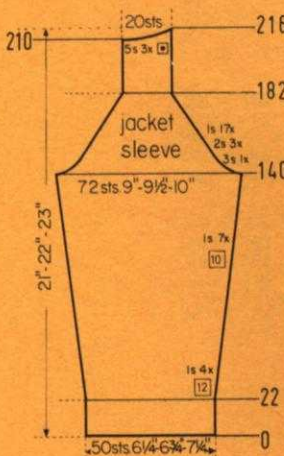
ON CAM BOX SIDE, bind off 3 sts. after Rows 130, 131, 132, 133; 2 sts. after Rows 134, 135; 1 st. after Rows 136, 137, 138, 139, 140, 141, then knit to Row 186, (for the FRONT SECTION knit to ROW 168), bind off the center 22 sts., put the needles on the left side into holding position and complete the right half first.

ROWS 0 to 130: Knit even.

Cast on 104 sts. with color 1, work stockinette st. and the repeated color stripes as marked in the Diagram.



Cast on 122 sts. with color 1, work K1, P1, Ribbing and the repeated color stripes as marked in the Diagram. After Row 48 bind off all sts. the crochet method for ribbing.



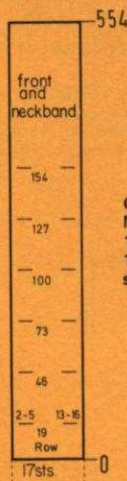
Work the second sleeve with reverse shaping, casting on from right to left. (Cam Box will be on the LEFT side at Row 0).

ON CAM BOX SIDE, bind off 3 sts. after Rows 140, 141; 2 sts. after Rows 142, 143, 144, 145, 146, 147. ON EACH SIDE, decrease 1 st. after Rows 148, 150, 152, 154, 156, 158, 160, 162, 164, 166, 168, 170, 172, 174, 176, 178, 180, then knit to Row 210 and work Short Rows. ON OPPOSITE SIDE of CAM BOX put into holding position 5 needles after Rows 210, 212, 214. After Row 216 bring all needles back into working position, then bind off all 20 sts.

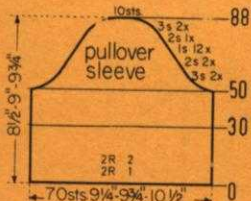
ON EACH SIDE, increase 1 st. after Rows 22, 34, 46, 58, 70, 80, 90, 100, 110, 120, 130, then knit to Row 140.

ROWS 0 to 22: Knit even, then change to stockinette st.

Cast on 50 sts. and work K1, P1, Ribbing.



Cast on 17 sts. and work stockinette st. Make buttonholes after Rows 19, 46, 73, 100, 127, 154 over the 2nd-5th and 13th-16th sts. counting from the left side. After Row 554 bind off all 17 sts.



ON CAM BOX SIDE, bind off 3 sts. after Rows 50, 51, 52, 53; 2 sts. after Rows 54, 55, 56, 57. ON EACH SIDE, hang the 1st st. onto the 2nd st. after Rows 58, 60, 62, 64, 66, 68, 70, 72, 74, 76, 78, 80. ON CAM BOX SIDE, bind off 2 sts. after Rows 82, 83; 3 sts. after Rows 84, 85, 86, 87; 10 sts. after Row 88.

ROWS 0 to 50: Knit even to ROW 30, then hang the cast-on sts. back onto the machine behind the latches, knit the following row with 1 tension setting higher, then knit to ROW 50.

Cast on 70 sts. with color 1, work stockinette st. and the repeated color stripes as marked in the Diagram.

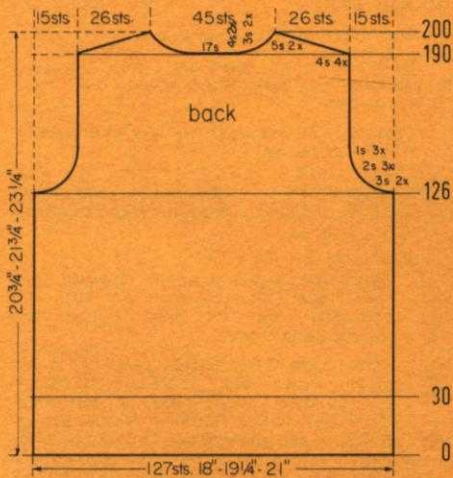


# DP 8104

SIZE:	12 (Bust 34")	14 (Bust 36")	18 (Bust 40")
YARN:	Sport Prima	Sport Prima	Alanda
50 gr. BALLS:	9 color 1 1 color 2 1 color 3	10 color 1 1 color 2 1 color 3	11 color 1 1 color 2 1 color 3
TENSION:	8 to 10	9 to 10	9 to 10
GAUGE:	2" 14 sts, 19 rows	13 sts, 18 rows	12 sts, 17 rows

The instructions are the same for all sizes. PATTERN: Stockinette Stitch. EDGES: K1, P1, Ribbing. INCREASES: Move the 2 end sts. 1 needle outward, then place the 3rd st. from the row below onto the empty needle.

FINISHING: Block all sections. Join back and front section at sides and shoulders. Sew the sleeves together and set in. Join the short ends of collar, then sew the collar to neckline and fold over to outside.



Move the Cam Box to the left side, turn the Row Counter back to 190 and complete the left half. Follow the instructions from\*.

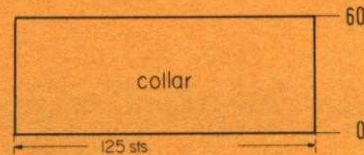
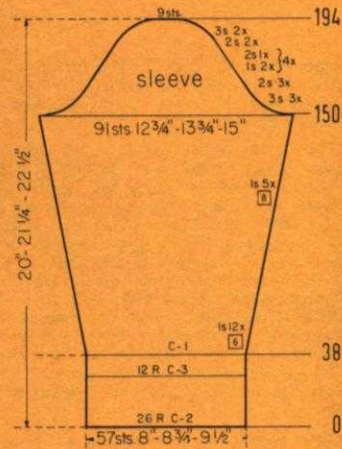
\*ON CAM BOX SIDE, bind off 4 sts. after Rows 190 (EVEN ROWS = SHOULDER SHAPING), 191 (ODD ROWS = NECK SHAPING), 192, 193, 194; 3 sts. after Row 195; 4 sts. after Row 196; 3 sts. after Row 197; 5 sts. after Rows 198, 200.

ON CAM BOX SIDE, bind off 3 sts. after Rows 126, 127, 128, 129; 2 sts. after Rows 130, 131, 132, 133, 134, 135; 1 st. after Rows 136, 137, 138, 139, 140, 141, then knit to Row 190, bind off the center 17 sts., put the needles on the left side into holding position and complete the right half first.

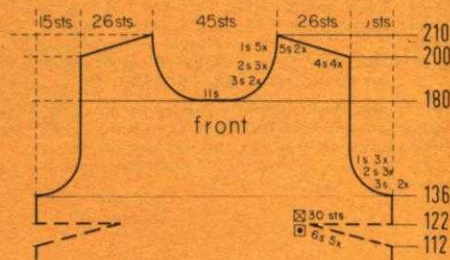
ROWS 31 to 126: Knit even. (For the FRONT SECTION knit even to ROW 112).

ROWS 0 to 30: Knit even, then change to stockinette st.

Cast on 127 sts. with color 1 and work K1, P1, Ribbing.



Cast on 125 sts. with color 1 and work 60 rows K1, P1, Ribbing, then bind off all sts.

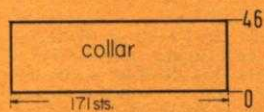


# HP 3674

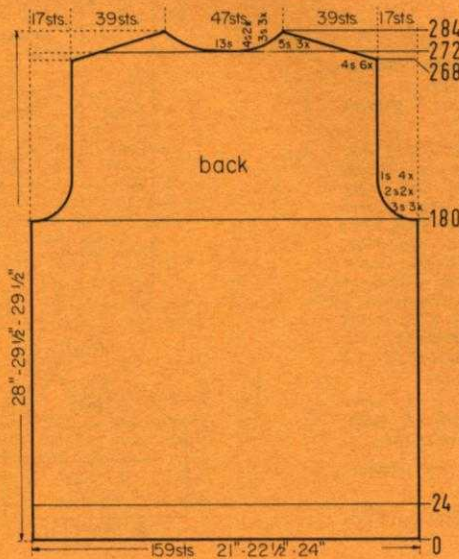
SIZE:	40 (Chest 39"-40")	42 (Chest 41"-42")	46 (Chest 45"-46")
YARN:	Sport Prima	Sport Prima	Dolly Dralon Crepe
50 gr. BALLS:	13	14	12
TENSION:	7 to 9	8 to 10	9 to 10
GAUGE:	2" Stk. 15 sts, 20 rows Pattern 19 sts, 23 rows	14 sts, 19 rows 18 sts, 22 rows	13 sts, 19 rows 17 sts, 22 rows

The instructions are the same for all sizes. PATTERN: Front and Back Section: Stockinette Stitch, worn on the knit side; Sleeves, Pocket, Collar and Edges: Purl 5, knit 1, purl 1, knit 1, ribbing, according to the Line Drawing, worn on the purl side. SLEEVE INCREASES: Place the end st. from the row below onto the next empty needle and work the Pattern as established. After completing the back and front section bands, transfer the ribber sts. to the main machine, then turn the knitting around.

FINISHING: Block all sections. Join front and back section at sides and shoulders. Sew the sleeves together and set in. Join the short ends of collar, then sew 1 edge of collar to inside and 1 edge to outside of neckline. Sew the button band to left shoulder, leaving the long back edge free. Sew buttons in the center of the band. Sew the pocket in place. (See picture).



Cast on 171 sts. and work purl 5, knit 1, purl 1, knit 1 ribbing. After Row 46 bind off all sts.



Move the Cam Box to the left side, turn the Row Counter back to 272 and complete the left half. Follow the instructions from\*.

\*ON CAM BOX SIDE, bind off 4 sts. after Rows 272 (EVEN ROWS = SHOULDER SHAPING); 273 (ODD ROWS = NECK SHAPING); 274, 275, 276; 3 sts. after Row 277; 4 sts. after Row 278; 3 sts. after Row 279; 5 sts. after Row 280; 3 sts. after Row 281; 5 sts. after Rows 282, 284.

ON CAM BOX SIDE, bind off 4 sts. after Rows 268, 269, 270, 271, then knit to Row 272, bind off the center 13 sts., put the needles on the left side into holding position and complete the right half first.

ON CAM BOX SIDE, bind off 3 sts. after Rows 180, 181, 182, 183, 184, 185; 2 sts. after Rows 186, 187, 188, 189; 1 st. after Rows 190, 191, 192, 193, 194, 195, 196, 197, then knit to Row 268. (For the FRONT SECTION knit to ROW 248).

ROWS 25 to 180: Knit even.

ROWS 0 to 24: Knit even, then change to stockinette st.

Cast on 159 sts. and work purl 5, knit 1, purl 1, knit 1, ribbing.



# KG 1947

**YARN:** Sport Prima  
**50 gr. BALLS:** 2 color 2  
**TENSION:** 9 to 10  
**GAUGE:** 2" 13 sts, 18 rows

**Alanda**  
 2 color 2  
 9 to 10  
 13 sts, 18 rows

ON CAM BOX SIDE, bind off 3 sts. after Rows 150, 151, 152, 153, 154, 155; 2 sts. after Rows 156, 157, 158, 159, 160, 161; 1 st. after Rows 162, 163, 164, 165; 2 sts. after Rows 166, 167; 1 st. after Rows 168, 169, 170, 171; 2 sts. after Rows 172, 173; 1 st. after Rows 174, 175, 176, 177; 2 sts. after Rows 178, 179; 1 st. after Rows 180, 181, 182, 183; 2 sts. after Rows 184, 185, 186, 187, 188, 189; 3 sts. after Rows 190, 191, 192, 193; 9 sts. after Row 194.

ON EACH SIDE, increase 1 st. after Rows 38, 44, 50, 56, 62, 68, 74, 80, 86, 92, 98, 104, 110, 118, 126, 134, 142, then knit to Row 150.

ROWS 0 to 38: Work 26 rows with color 2, 12 rows with color 3, then change to stockinette st. and continue working with color 1.

Cast on 57 sts. with color 2, work K1, P1, Ribbing and the color stripes.

Move the Cam Box to the left side, turn the Row Counter back to 180 and complete the left half. Follow the instructions from\*.

\*ON CAM BOX SIDE, bind off 3 sts. after Rows 181, 183; 2 sts. after Rows 185, 187, 189; 1 st. after Rows 191, 193, 195, 197, 199. For SHOULDER bind off 4 sts. after Rows 200, 202, 204, 206; 5 sts. after Rows 208, 210.

ON CAM BOX SIDE, bind off 3 sts. after Rows 136, 137, 138, 139; 2 sts. after Rows 140, 141, 142, 143, 144, 145; 1 st. after Rows 146, 147, 148, 149, 150, 151, then knit to Row 180, bind off the center 11 sts., put the needles on the left side into holding position and complete the right half first.

Work the front section the same as the back section to ROW 112, then work Short Rows for the DARTS. ON OPPOSITE SIDE of CAM BOX put into holding position 6 needles after Rows 112, 113, 114, 115, 116, 117, 118, 119, 120, 121. ON OPPOSITE SIDE of CAM BOX bring all needles back into working position after Rows 122, 123, then knit to Row 136.

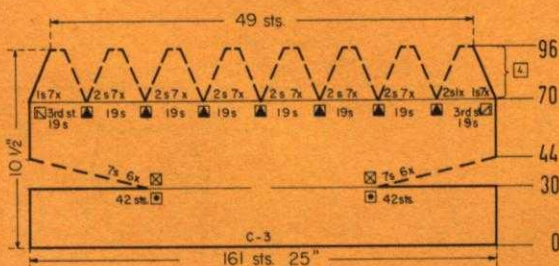
The instructions are the same for both types of yarn, PATTERN: Stockinette Stitch and K1, P1, Ribbing. DECREASES: ON EACH SIDE, hang 3rd st. onto the 2nd st., then move the end sts. inward to fill the empty needle. Begin the DART Decreases by hanging the sts. together as marked on the Diagram, then move the sts. together to fill the empty needles. The following decreases for the Darts lie directly above.

FINISHING: Weave the section together at center back, 1 st. in from each edge. Pull the strands of yarn-holding the open sts. - tightly together and sew in the ends.

ON OPPOSITE SIDE of CAM BOX put into holding position 42 needles after Rows 30, 31. ON OPPOSITE SIDE of CAM BOX bring back into working position 7 needles after Rows 32, 33, 34, 35, 36, 37, 38, 39, 40, 41, 42, 43, then knit to Row 70. Decrease 1 st. ON EACH SIDE and 2 sts. for EACH DART after Rows 70, 74, 78, 82, 86, 90, 94. After Row 96 remove the sts. from the machine by transferring first the 1st, 3rd, 5th, 7th, etc. sts. onto a length of yarn and then the 2nd, 4th, 6th, 8th, etc. sts. onto a separate length of yarn. (Use a ribber transfer needle).

ROWS 0 to 30: Knit even, then transfer the ribber sts. to the main machine, hang the cast-on sts. back onto the machine behind the latches to form the hem. Continue with stockinette st. and work Short Rows.

Cast on 161 sts. with color 3 and work K1, P1, Ribbing.

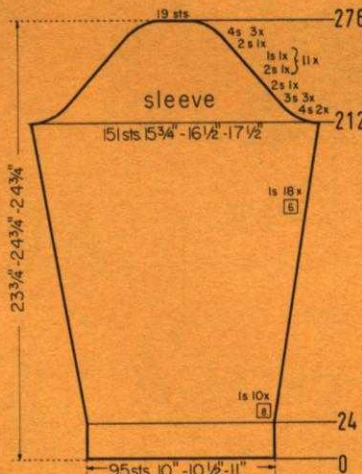


ON CAM BOX SIDE, bind off 4 sts. after Rows 212, 213, 214, 215; 3 sts. after Rows 216, 217, 218, 219, 220, 221; 2 sts. after Rows 222, 223, 224, 225; 1 st. after Rows 226, 227; 2 sts. after Rows 228, 229; 1 st. after Rows 230, 231; 2 sts. after Rows 232, 233; 1 st. after Rows 234, 235; 2 sts. after Rows 236, 237; 1 st. after Rows 238, 239; 2 sts. after Rows 240, 241; 1 st. after Rows 242, 243; 2 sts. after Rows 244, 245; 1 st. after Rows 246, 247; 2 sts. after Rows 248, 249; 1 st. after Rows 250, 251; 2 sts. after Rows 252, 253; 1 st. after Rows 254, 255; 2 sts. after Rows 256, 257; 1 st. after Rows 258, 259; 2 sts. after Rows 260, 261; 1 st. after Rows 262, 263; 2 sts. after Rows 264, 265; 1 st. after Rows 266, 267; 2 sts. after Rows 268, 269; 4 sts. after Rows 270, 271, 272, 273, 274, 275; 19 sts. after Row 276.

ON EACH SIDE, increase 1 st. after Rows 24, 32, 40, 48, 56, 64, 72, 80, 88, 96, 104, 110, 116, 122, 128, 134, 140, 146, 152, 158, 164, 170, 176, 182, 188, 194, 200, 206, then knit to Row 212.

ROWS 0 to 24: Knit even.

Cast on 95 sts. and work purl 5, knit 1, purl 1, knit 1, ribbing.

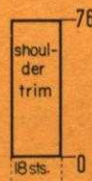
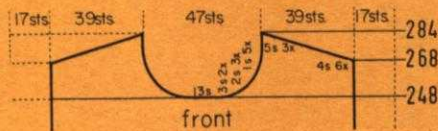


Cast on 18 sts. and work 76 Rows stockinette st., then bind off all sts.

Move the Cam Box to the left side, turn the Row Counter back to 248 and complete the left half. Follow the instructions from\*.

\*ON CAM BOX SIDE, bind off 3 sts. after Rows 249, 251; 2 sts. after Rows 253, 255, 257; 1 st. after Rows 259, 261, 263, 265, 267. For SHOULDER bind off 4 sts. after Rows 268, 270, 272, 274, 276, 278; 5 sts. after Rows 280, 282, 284.

Work the front section the same as the back section to ROW 248, then bind off the center 13 sts., put the needles on the left side into holding position and complete the right half first.



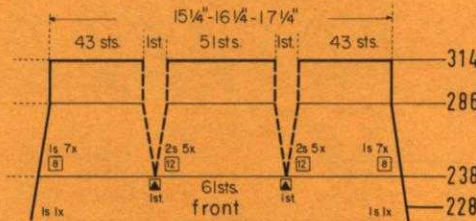
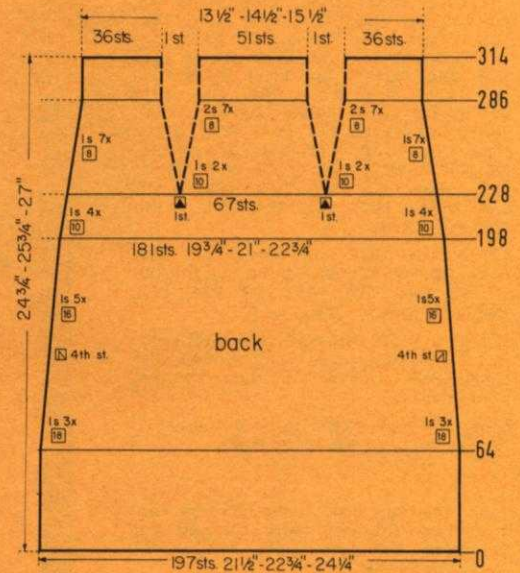


# DK 8130

<b>SIZE:</b>	<b>14 (Bust 36")</b>	<b>16 (Bust 38")</b>	<b>18 (Bust 40")</b>
<b>YARN:</b>	<b>Subita Crepe 2 x 3</b>	<b>Beatrice</b>	<b>Crocus Crepe</b>
<b>50 gr. BALLS:</b>	<b>Skirt: 7 color 1 Vest: 6 color 1 6 color 2</b>	<b>8 color 1 7 color 1 7 color 2</b>	<b>10 color 1 9 color 1 9 color 2</b>
<b>TENSION:</b>	<b>Stk. 3 to 5 Pattern 4 to 6</b>	<b>5 to 7 6 to 8</b>	<b>5 to 7 6 to 8</b>
<b>GAUGE:</b>	<b>2" Stk. 18 sts, 25 rows Pattern 16 sts, 46 rows</b>	<b>17 sts, 24 rows 15 sts, 44 rows</b>	<b>16 sts, 23 rows 14 sts, 42 rows</b>

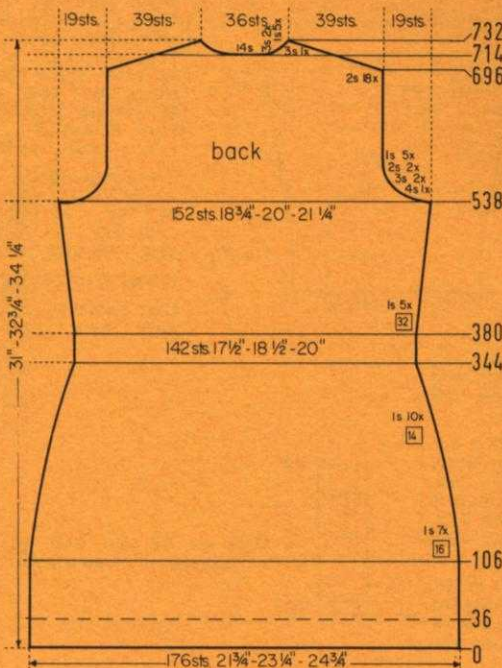
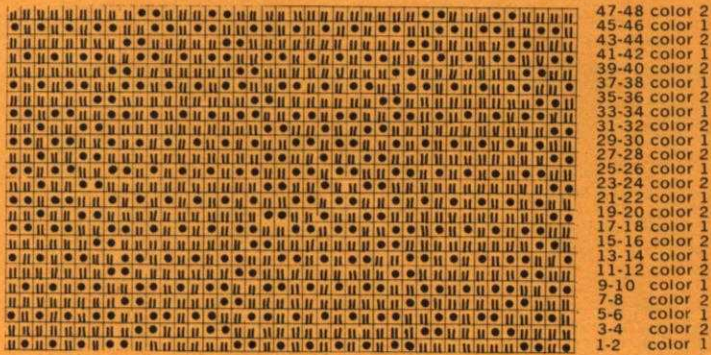
The instructions are the same for all sizes. **PATTERN:** SKIRT: Stockinette Stitch; VEST: Holding Position Design according to Line Drawing, or use JAC 40 and Pattern No. 448. The knit side is the right side. **DECREASES:** SKIRT: ON EACH SIDE, hang the 4th st. onto the 3rd st. then move the end sts. inward to fill the empty needle. Begin the DARTS by hanging the sts. together as marked on the Diagrams, then move the sts. together to fill the empty needles. The following decreases for the darts lie directly above; **JACKET:** Hang the end st. onto the next occupied needle. **INCREASES:** Place the end st. from the row below onto the next empty needle.

**FINISHING:** Block all sections. **SKIRT:** Weave the sections together at sides, 1 st. in from each edge. Turn under 18 rows on lower edge and 14 rows on upper edge and hem to wrong side. Insert an elastic band into the upper hem. **VEST:** Join back and front sections at sides and shoulders, easing in the fullness at bustline of the front sections. Join the facing at center back, then sew the facing to neckline. Turn under 36 rows on lower edge and 12 sts. around front edges and neckline, then hem to wrong side. Work 1 row of single crochet around the armhole edges, then turn under a small amount and hem to wrong side. Finish the buttonholes, sew on buttons.



Decrease 2 sts. for EACH DART after Rows in ( ). ON EACH SIDE, decrease 1 st. after Rows 228, 238, (238), 246, (250), 254, 262, (262), 270, (274), 278, 286, (286), then knit to Row 314 and bind off the remaining 139 sts.

Work the front section the same as the back section to ROW 228.



Bring the needles on the left side into working position, knit 1 row in PATTERN to the left side, turn the Row Counter back to 714 and complete the left half. Follow the instructions under \*.

\*ON CAM BOX SIDE, bind off 2 sts. after Row 714 (EVEN ROWS = SHOULDER SHAPING); 3 sts. after Row 715 (ODD ROWS = NECK SHAPING); 2 sts. after Row 716; 3 sts. after Row 717; 2 sts. after Row 718; 1 st. after Row 719; 2 sts. after Row 720; 1 st. after Row 721; 2 sts. after Row 722; 1 st. after Row 723; 2 sts. after Row 724; 1 st. after Row 725; 2 sts. after Row 726; 1 st. after Row 727; 2 sts. after Rows 728, 730; 3 sts., after Row 732.

ON CAM BOX SIDE, bind off 2 sts. after Rows 696, 697, 698, 699, 700, 701, 702, 703, 704, 705, 706, 707, 708, 709, 710, 711, 712, 713, then knit to Row 714, bind off the center 14 sts., put the needles on the left side into holding position and complete the right half first.

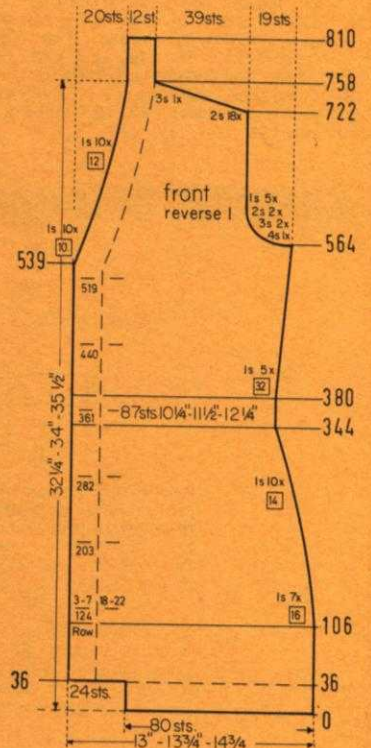
ON CAM BOX SIDE, bind off 4 sts. after Rows 538, 539; 3 sts. after Rows 540, 541, 542, 543; 2 sts. after Rows 544, 545, 546, 547; 1 st. after Rows 548, 549, 550, 551, 552, 553, 554, 555, 556, 557, then knit to Row 696.

ON EACH SIDE, increase 1 st. after Rows 380, 412, 444, 476, 508, then knit to Row 538.

ON EACH SIDE, decrease 1 st. after Rows 106, 122, 138, 154, 170, 186, 202, 218, 232, 246, 260, 274, 288, 302, 316, 330, 344, then knit to Row 380.

ROWS 0 to 106: Knit even.

Cast on 176 sts. with color 1 and work the Holding Position Design.





# KG 1948

<b>YARN:</b>	<b>Sport Prima</b>	<b>Alanda</b>
<b>50 gr. BALLS:</b>	3 color 1 1 color 2 1 color 3	3 color 1 1 color 2 1 color 3
<b>TENSION:</b>	9 to 10	9 to 10
<b>GAUGE:</b>	2" 13 sts, 18 rows	13 sts, 18 rows

The instructions are the same for both types of yarn. **PATTERN:** Stockinette Stitch and color stripes as marked in the Diagram.

**FINISHING:** Block the section to the measurements given. On the wrong side, press iron-on type stiffener to the entire surface. Join back to front at sides, then join the bottom section to sides. Insert and fasten a 4 1/2" x 11" card-board into the bottom of the bag. Turn under 6" on the upper edge of the flap and sew the side edges together. Turn under 1 1/2" on the upper edge of the bag and sew in place. Line the bag. Work 1 row of single crochet around 2 large rings, then sew the rings in place. (See picture). Using 20 strands of color 1 yarn, work a twisted cord (See Practical Knitting Hints Book page 58). Fasten the cord onto the rings as shown. Work 2 loops onto the lower edge of the flap, then sew 2 covered buttons in place. (For making the covered buttons see Knitkings news letter in the July/August, 1971 issue of Knitkings Magazine).

Decrease 2 sts. for EACH DART and 1 st. ON EACH SIDE after Rows 228, 238, 246, 254, 262, 270, 278, 286, then knit to Row 314 and bind off the remaining 125 sts.

ON EACH SIDE, decrease 1 st. after Rows 64, 82, 100, 118, 134, 150, 166, 182, 198, 208, 218, then knit to Row 228. (Knit the front section the same to ROW 228).

ROWS 0 to 64: Knit even.

Cast on 197 sts. and work stockinette st.

Work the second front section with reverse shapings, casting on from right to left. (Cam Box will be on the LEFT side at Row 0). Omit the buttonholes.

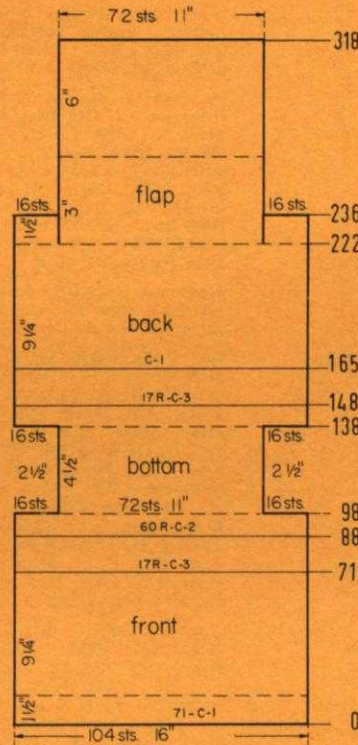
ON CAM BOX SIDE (NECK SIDE) decrease 1 st. after Rows 539, 549, 559, then again after Rows in ( ). ON CAM BOX SIDE (ARMHOLE SIDE) bind off 4 sts. after Row 564; 3 sts. after Rows 566, 568; (569), 2 sts. after Rows 570, 572; 1 st. after Rows 574, 576, 578, (579), 580, 582. The Armhole Shaping is now completed. Continue to decrease 1 st. ON NECK SIDE after Rows 589, 599, 609, 619, 629, 639, 651, 663, 675, 687, 699, 711, then again after Rows in ( ). For SHOULDER bind off 2 sts. after Rows 722, (723), 724, 726, 728, 730, 732, 734, (735), 736, 738, 740, 742, 744, 746, (747), 748, 750, 752, 754, 756; 3 sts. after Row 758. Knit over the remaining 12 sts. (FACING) to Row 810, then bind off.

Continue to make buttonholes after Rows in ( ). ON CAM BOX SIDE, increase 1 st. after Rows 380, 412, (440), 444, 476, 508, (519), then knit to Row 539.

Make buttonholes after Rows in ( ) over the 3rd-7th and 18th-22nd sts. counting from the left side. ON CAM BOX SIDE, decrease 1 st. after Rows 106, 122, (124), 138, 154, 170, 186, 202, (203), 218, 232, 246, 260, 274, (282), 288, 302, 316, 330, 344, (361), then knit to Row 380.

ROWS 0 to 36: Knit even, then cast on 24 sts. ON OPPOSITE SIDE of CAM BOX. (Use a separate length of yarn.) Knit to Row 106.

Cast on 80 sts. with color 1 and work the Holding Position Design.



ROWS 139 to 222: Change to color 3 after Row 148 and to color 1 after Row 165. After Row 222 put 88 needles on the left side into holding position, then knit 14 rows over the 16 sts. on the right side. After Row 236 bind off these 16 sts. Move the Cam Box to the left side, bring 16 needles on the left side into working position, turn the Row Counter back to 222 and knit 14 rows over the 16 sts. on the left side. After Rows 236 bind off these 16 sts. Move the Cam Box to the right side, bring the remaining 72 needles back into working position, turn the Row Counter back to 222. Knit to Row 318, then bind off all sts.

ROWS 99 to 138: Knit even, then cast on 16 sts. ON EACH SIDE. (Use a separate length of yarn for the left side).

ROWS 0 to 98: Work 71 rows with color 1, 17 rows with color 3. After Row 88 change to color 2. After Row 98 bind off 16 sts. ON EACH SIDE. (Use a separate length of yarn for the left side).

Cast on 104 sts. with color 1 and work stockinette st.

## jac40 is a must

for fast easy knitting of  
Jaquard and Ski-sweater  
designs









ON CAM BOX SIDE, bind off 5 sts. after Rows 190, 191; 3 sts. after Rows 192, 193, 194, 195; 2 sts. after Rows 196, 197, 198, 199, 200, 201, 202, 203; 1 st. after Rows 204, 205, 206, 207; 2 sts. after Rows 208, 209; 1 st. after Rows 210, 211, 212, 213; 2 sts. after Rows 214, 215; 1 st. after Rows 216, 217, 218, 219; 2 sts. after Rows 220, 221; 1 st. after Rows 222, 223, 224, 225; 2 sts. after Rows 226, 227; 1 st. after Rows 228, 229, 230, 231; 2 sts. after Rows 232, 233; 1 st. after Rows 234, 235, 236, 237; 2 sts. after Rows 238, 239, 240, 241, 242, 243; 3 sts. after Rows 244, 245, 246, 247; 12 sts. after Row 248.

ON EACH SIDE, increase 1 st. after Rows 26, 34, 42, 50, 58, 66, 74, 82, 90, 98, 106, 114, 122, 130, 136, 142, 148, 154, 160, 166, 172, 178, 184, then knit to Row 190.

ROWS 0 to 26: Knit even, then form the hem.

Cast on 72 sts. and work stockinette st.

Cast on 111 sts., work stockinette st. and Short Rows. ON OPPOSITE SIDE of CAM BOX put into holding position 32 needles after Rows 0, 1. ON OPPOSITE SIDE of CAM BOX bring back into working position 4 needles after Rows 2, 3, 4, 5, 6, 7, 8, 9, 10, 11; 2 needles after Rows 12, 13, 14, 15, 16, 17, 18, 19, 20, 21, 22, 23, then knit to Row 74 and again work Short Rows. ON OPPOSITE SIDE of CAM BOX put into holding position 2 needles after Rows 74, 75, 76, 77, 78, 79, 80, 81, 82, 83, 84, 85; 10 needles after Rows 86, 87, 88, 89. ON OPPOSITE SIDE of CAM BOX bring all needles back into working position after Rows 90, 91. After Row 92 bind off all sts.

Move the Cam Box to the left side, turn the Row Counter back to 320 and complete the left half. Follow the instructions from\*.

\*ON CAM BOX SIDE, bind off 4 sts. after Rows 320 (EVEN ROWS = SHOULDER SHAPING); 321 (ODD ROWS = NECK SHAPING), 322; 3 sts. after Row 323; 4 sts. after Row 324; 3 sts. after Row 325; 5 sts. after Rows 326, 328.

ON CAM BOX SIDE, bind off 4 sts. after Rows 312, 313, 314, 315, 316, 317, 318, 319, then knit to Row 320, bind off the center 22 sts., put the needles on the left side into holding position and complete the right half first.

ON CAM BOX SIDE, bind off 5 sts. after Rows 224, 225; 3 sts. after Rows 226, 227, 228, 229; 2 sts. after Rows 230, 231, 232, 233, 234, 235; 1 st. after Rows 236, 237, 238, 239, 240, 241, 242, 243, 244, 245, then knit to Row 312.

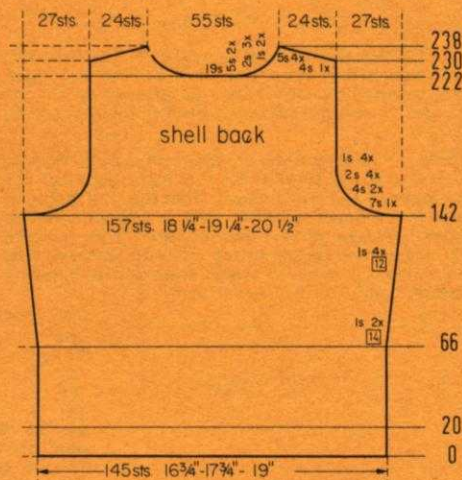
ON EACH SIDE, increase 1 st. after Rows 146, 158, 170, 182, 194, 206, then knit to Row 224.

ON EACH SIDE, decrease 1 st. after Rows 52, 58, 64, 70, 76, 82, 88, 94, 100, 106, 112, 118, 124, 130, then knit to Row 146.

ROWS 35 to 52: Knit even.

ROWS 0 to 34: Knit even, then form the hem.

Cast on 178 sts. and work stockinette st.



Move the Cam Box to the left side, turn the Row Counter back to 222 and complete the left half. Follow the instructions from\*.

\*ON CAM BOX SIDE, bind off 5 sts. after Rows 223, 225 (ODD ROWS = NECK SHAPING); 2 sts. after Rows 227, 229; 4 sts. after Row 230 (EVEN ROWS = SHOULDER SHAPING); 2 sts. after Row 231; 5 sts. after Row 232; 1 st. after Row 233; 5 sts. after Row 234; 1 st. after Row 235; 5 sts. after Rows 236, 238.

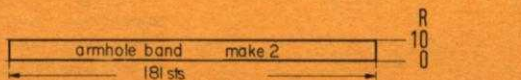
ON CAM BOX SIDE, bind off 7 sts. after Rows 142, 143; 4 sts. after Rows 144, 145, 146, 147; 2 sts. after Rows 148, 149, 150, 151, 152, 153, 154, 155; 1 st. after Rows 156, 157, 158, 159, 160, 161, 162, 163, then knit to Row 222, bind off the center 19 sts., put the needles on the left side into holding position and complete the right half first.

ON EACH SIDE, increase 1 st. after Rows 66, 80, 94, 106, 118, 130, then knit to Row 142. (For the FRONT Section make the increases after Row 130, but do not knit).

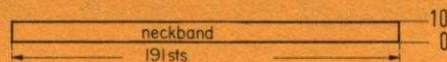
ROWS 21 to 66: Knit even.

ROWS 0 to 20: Knit even, then change to stockinette st.

Cast on 145 sts. and work K1, P1, Ribbing.



Cast on 181 sts. and work 10 rows K1, P1, Ribbing, then bind off all sts.



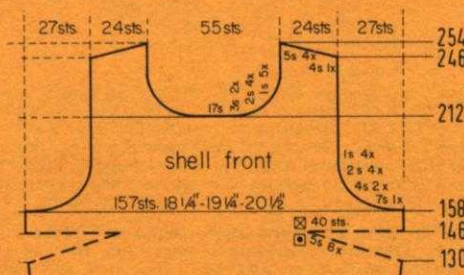
Cast on 191 sts. and work 10 rows K1, P1, Ribbing, then bind off all sts.

Move the Cam Box to the left side, turn the Row Counter back to 212 and complete the left half. Follow the instructions from\*.

\*ON CAM BOX SIDE, bind off 3 sts. after Rows 213, 215; 2 sts. after Rows 217, 219, 221, 223; 1 st. after Rows 225, 227, 229, 231, 233. For SHOULDER bind off 4 sts. after Row 246; 5 sts. after Rows 248, 250, 252, 254.

ON CAM BOX SIDE, bind off 7 sts. after Rows 158, 159; 4 sts. after Rows 160, 161, 162, 163; 2 sts. after Rows 164, 165, 166, 167, 168, 169, 170, 171; 1 st. after Rows 172, 173, 174, 175, 176, 177, 178, 179, then knit to Row 212, bind off the center 17 sts., put the needles on the left side into holding position and complete the right half first.

Work the front section the same as the back section to ROW 130, then work Short Rows for the DART. ON OPPOSITE SIDE of CAM BOX put into holding position 5 needles after Rows 130, 131, 132, 133, 134, 135, 136, 137, 138, 139, 140, 141, 142, 143, 144, 145. ON OPPOSITE SIDE of CAM BOX bring all needles back into working position after Rows 146, 147, then knit to Row 158.



**BE SURE TO NOTIFY US IMMEDIATELY OF ANY CHANGE OF ADDRESS. THE POST OFFICE WILL NOT FORWARD YOUR MAGAZINE TO YOU.**

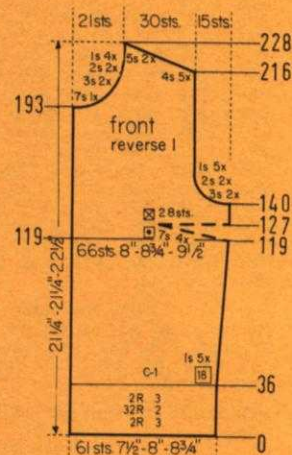


# DK 8129

SIZE:	10 (Bust 32½")	12 (Bust 34"-35")	16 (Bust 37"-38")
YARN:	Crocus Crepe	Allegro Dralon	Dolly Dralon Crepe
50 gr. BALLS:	9 color 1 1 color 2 1 color 3	7 color 1 1 color 2 1 color 3	9 color 1 1 color 2 1 color 3
TENSION:	6 to 8	6 to 8	8 to 10
GAUGE:	16 sts, 21 rows	15 sts, 21 rows	14 sts, 20 rows

The instructions are the same for all sizes. PATTERN: Stockinette Stitch. TOP EDGES: K1, P1, Ribbing. The Top has color stripes on the lower edge and on the sleeve edges. DECREASES: Hang the 4th st. onto the 3rd st., then move the end sts. inward to fill the empty needle. INCREASES: Move the 2 end sts. 1 needle outward, then place the 3rd st. from the row below onto the empty needle.

FINISHING: Block all sections. TOP: Join back and front sections at sides and shoulders. Sew the sleeves together and set in. Work 1 row of slip-stitch crochet on the front edges of the top and the front edges of the facing. Sew the zipper to the front edges, then sew the facing in place. Fold the collar in half and sew the open front edges together. Sew 1 edge of collar to inside and 1 edge to outside of neckline. SKIRT: Weave all sections together, 1 st. in from each edge. Work 1 row of Slip-stitch crochet along the center stitch of each section. (See Practical Knitting Hints Book, page 48). Turn under 17 rows on upper edge and 16 rows on lower edge and hem to wrong side. Insert an elastic band into the upper hem.

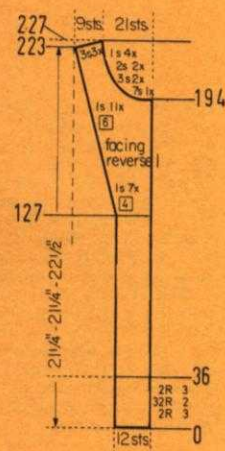


ON CAM BOX SIDE, bind off 4 sts. after Rows 60, 61; 3 sts. after Rows 62, 63, 64, 65, 66, 67; 2 sts. after Rows 68, 69, 70, 71. ON EACH SIDE, hang the 1st st. onto the 2nd st. after Rows 72, 74, 76, 78, 80, 82, 84, 86, 88, 90, 92, 94, 96, 98, 100. ON CAM BOX SIDE, bind off 2 sts. after Rows 102, 103, 104, 105; 4 sts. after Rows 106, 107, 108, 109; 11 sts. after Row 110.

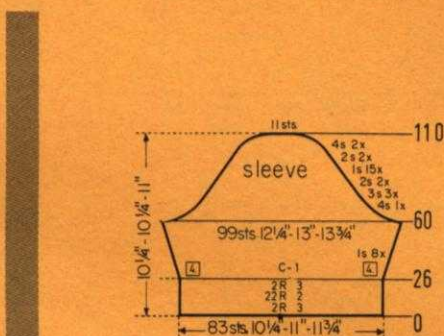
ON EACH SIDE, increase 1 st. after Rows 26, 30, 34, 38, 42, 46, 50, 54, then knit to Row 60.

ROWS 0 to 26: Knit even, then change to stockinette st. and continue working with color 1.

Cast on 83 sts. with color 3, work K1, P1, Ribbing and the color stripes as marked in the Diagram.



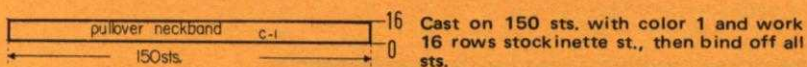
# DP 8132



SIZE:	10 (Bust 32½"-34")	14 (Bust 35"-36")	16 (Bust 38"-39")
YARN:	Regia	Regia	Mohana
50 gr. BALLS:	Pullover 5 color 2 1 color 1 1 color 3	Jacket 7 color 1 1 color 2 1 color 3	8 color 2 1 color 1 1 color 3
TENSION:	5 to 7	6 to 8	7 to 9
GAUGE:	2" 15 sts, 22 rows	14 sts, 21 rows	13 sts, 20 rows

The instructions are the same for all sizes. PATTERN: Stockinette Stitch. EDGES: K1, P1, Ribbing with Color Stripes as marked in the Diagram. INCREASES: Move the 2 end sts. 1 needle outward, then place the 3rd st. from the row below onto the empty needle. To form the hem, hang the cast-on sts. back onto the machine behind the latches, then knit the following row with 2 tension settings higher.

FINISHING: Block all sections. PULLOVER: Join front and back section at sides and Shoulders. Sew the sleeves together and set in. Join the short ends of neckband, then sew 1 edge of neckband to inside and 1 edge to outside of neckline. JACKET: Join back and front sections at sides and shoulders. Sew the sleeves together and set in. Join front bands to neckband, then sew the band in place. Finish the buttonholes, sew on buttons.



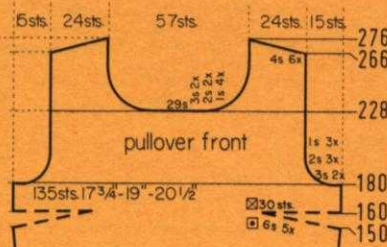
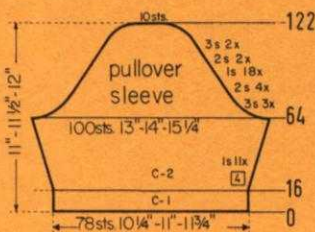
Cast on 150 sts. with color 1 and work 16 rows stockinette st., then bind off all sts.

ON CAM BOX SIDE, bind off 3 sts. after Rows 64, 65, 66, 67, 68, 69; 2 sts. after Rows 70, 71, 72, 73, 74, 75, 76, 77. ON EACH SIDE, hang the 1st st. onto the 2nd st. after Rows 78, 80, 82, 84, 86, 88, 90, 92, 94, 96, 98, 100, 102, 104, 106, 108, 110, 112. ON CAM BOX SIDE, bind off 2 sts. after Rows 114, 115, 116, 117; 3 sts. after Rows 118, 119, 120, 121; 10 sts. after Row 122.

ON EACH SIDE, increase 1 st. after Rows 16, 20, 24, 28, 32, 36, 40, 44, 48, 52, 56, then knit to Row 64.

ROWS 0 to 16: Knit even, then form the hem and change to color 2.

Cast on 78 sts. with color 1 and work stockinette st.



Move the Cam Box to the left side, turn the Row Counter back to 228 and complete the left half. Follow the instructions from\*.

\*ON CAM BOX SIDE, bind off 3 sts. after Rows 229, 231; 2 sts. after Rows 233, 235; 1 st. after Rows 237, 239, 241, 243. For SHOULDER bind off 4 sts. after Rows 266, 268, 270, 272, 274, 276.

ON CAM BOX SIDE, bind off 3 sts. after Rows 180, 181, 182, 183; 2 sts. after Rows 184, 185, 186, 187, 188, 189; 1 st. after Rows 190, 191, 192, 193, 194, 195, then knit to Row 228, bind off the center 29 sts., put the needles on the left side into holding position and complete the right half first.

Work the front section the same as the back section to ROW 150, then work Short Rows for the DARTS. ON OPPOSITE SIDE of CAM BOX put into holding position 6 needles after Rows 150, 151, 152, 153, 154, 155, 156, 157, 158, 159. ON OPPOSITE SIDE of CAM BOX bring back into working position all needles after Rows 160, 161, then knit to Row 180.





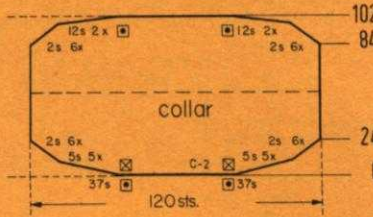


# HP 3686

SIZE:	38 (Chest 37"-38")	40 (Chest 39"-40")	44 (Chest 43"-44")
YARN:	Regia	Amore	Dolly
50 gr. BALLS:	8 color 1 3 color 2	9 color 1 3 color 2	11 color 1 4 color 2
TENSION:	4 to 6	7 to 9	7 to 9
GAUGE:	2" 16 sts, 23 rows	15 sts, 23 rows	14 sts, 21 rows

The instructions are the same for all sizes. PATTERN: Stockinette Stitch. EDGES: K1, P1, Ribbing. INCREASES: Move the 2 end sts. 1 needle outward, then place the 3rd st. from the row below onto the empty needle.

FINISHING: Block all sections. Join back and front section at sides and shoulders. Sew the sleeves together and set in. Turn the facing under at front edges, matching the buttonholes. Fold the collar in half. Sew the open front edges together. Sew 1 edge of the collar to inside and 1 edge to outside of neckline. Turn over about 2" on upper edges of the pockets and hem to right side. Sew the pockets in place. Finish the buttonholes, sew on buttons.



Cast on 120 sts. with color 2, work stockinette st. and Short Rows. ON OPPOSITE SIDE of CAM BOX put into holding position 37 needles after Rows 0, 1. ON OPPOSITE SIDE of CAM BOX bring back into working position 5 needles after Rows 2, 3, 4, 5, 6, 7, 8, 9, 10, 11; 2 needles after Rows 12, 13, 14, 15, 16, 17, 18, 19, 20, 21, 22, 23, then knit to Row 84 and work Short Rows. ON OPPOSITE SIDE of CAM BOX put into holding position 2 needles after Rows 84, 85, 86, 87, 88, 89, 90, 91, 92, 93, 94, 95; 12 needles after Rows 96, 97, 98, 99. ON OPPOSITE SIDE of CAM BOX bring all needles back into working position after Rows 100, 101. After Row 102 bind off all sts.

Move the Cam Box to the left side, turn the Row Counter back to 316 and complete the left half. Follow the instructions from\*.

\*ON CAM BOX SIDE, bind off 4 sts. after Rows 316 (EVEN ROWS = SHOULDER SHAPING), 317 (ODD ROWS = NECK SHAPING), 318, 319, 320; 3 sts. after Row 321; 4 sts. after Row 322; 3 sts. after Row 323; 4 sts. after Rows 324, 326.

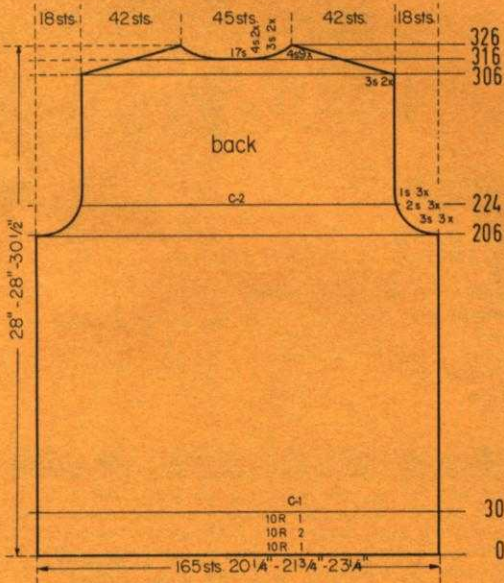
ON CAM BOX SIDE, bind off 3 sts. after Rows 306, 307, 308, 309; 4 sts. after Rows 310, 311, 312, 313, 314, 315, then knit to Row 316, bind off the center 17 sts., put the needles on the left side into holding position and complete the right half first.

ON CAM BOX SIDE, bind off 3 sts. after Rows 206, 207, 208, 209, 210, 211; 2 sts. after Rows 212, 213, 214, 215, 216, 217; 1 st. after Rows 218, 219, 220, 221, 222, 223. Knit to Row 224, change to color 2 and knit to Row 306.

ROWS 31 to 206: Knit even.

ROWS 0 to 30: Knit even, then change to stockinette st. and continue working with color 1.

Cast on 165 sts. with color 1, work K1, P1, Ribbing and the color stripes as marked in the Diagram.



Work the second front section with reverse shaping, casting on from left to right. (Cam Box will be on the RIGHT side at Row 0). Omit the buttonholes.

Move the Cam Box to the right side, turn the Row Counter back to 292 and complete the FACING. Continue to increase 1 st. for FACING after Rows in ( ). For NECK bind off 3 sts. after Rows 293, 295, (296), 297; 2 sts. after Rows 299, 301, (302); 1 st. after Rows 303, 305, 307, (308), 309, 311, 315. For SHOULDER bind off 3 sts. after Rows 322, 324, 326.

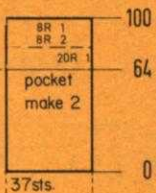
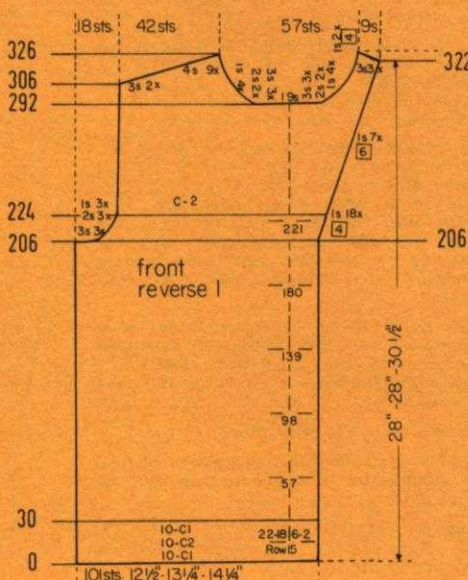
ON CAM BOX SIDE, bind off 3 sts. after Rows 293, 295, 297, (ODD ROWS = NECK SHAPING); 2 sts. after Rows 299, 301; 1 st. after Rows 303, 305; 3 sts. after Row 306 (EVEN ROWS = SHOULDER SHAPING); 1 st. after Row 307; 3 sts. after Row 308; 1 st. after Row 309; 4 sts. after Row 310; 1 st. after Row 311; 4 sts. after Rows 312, 314; 1 st. after Row 315; 4 sts. after Rows 316, 318, 320, 322, 324, 326.

ON OPPOSITE SIDE of CAM BOX (FACING) increase 1 st. after Rows in ( ). ON CAM BOX SIDE, bind off 3 sts. after Rows 206, (206), 208, 210, (210); 2 sts. after Rows 212, 214, (214), 216; 1 st. after Rows 218, (218), 220, (make buttonholes after ROW 221 over the same sts. as before); 222; (222), then knit to Row 224 and change to color 2. The Armhole Shaping is now completed. Continue to increase 1 st. for FACING after Rows 226, 230, 234, 238, 242, 246, 250, 254, 258, 262, 266, 270, 274, 278, 284, 290, then knit to Row 292, bind off the 62nd-80th sts. counting from the Shoulder side; put the sts. on the facing side into holding position and complete the Shoulder side first.

ROWS 31 to 206: Make buttonholes after Rows 57, 98, 139, 180, over the same sts. as before.

ROWS 0 to 30: Make buttonholes after Row 15 over the 2nd-6th and 18th-22nd sts. counting from the right side. After Row 30 change to stockinette st. and continue working with color 1.

From right to left, cast on 101 sts. with color 1, work K1, P1, Ribbing and the color stripes as marked in the Diagram. (Cam Box will be on the LEFT side at Row 0).



Cast on 37 sts. with color 1 and work stockinette st. Knit to Row 64, then transfer every other st. to the ribber, work K1, P1, Ribbing and the color stripes as marked in the Diagram. After Row 100 bind off all sts. the crochet method for ribbing.



Work the second front section with reverse shapings, casting on from right to left. (Cam Box will be on the LEFT side at Row 0).

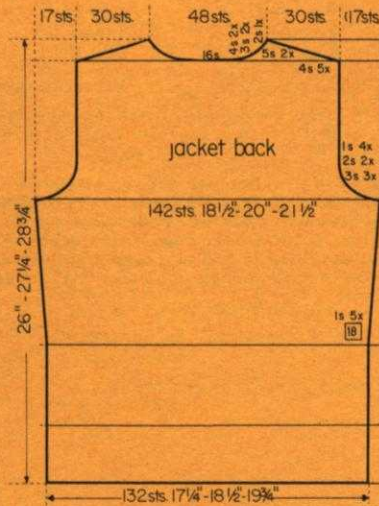
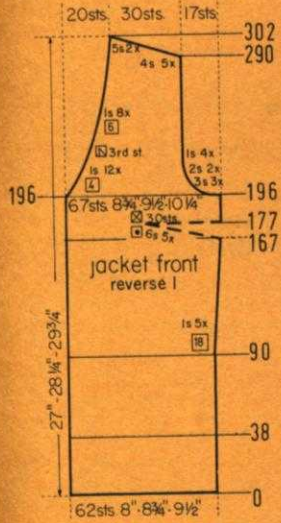
ON OPPOSITE SIDE of CAM BOX decrease 1 st. after Rows in ( ). ON CAM BOX SIDE, bind off 3 sts. after Rows 196, (196), 198, 200; (200), 2 sts. after Rows 202, 204; (204), 1 st. after Rows 206, 208, (208), 210, 212; (212). The Armhole Shaping is now completed. Continue to decrease 1 st. ON NECK SIDE after Rows 216, 220, 224, 228, 232, 236, 240, 244, 250, 256, 262, 268, 274, 280, 286. For SHOULDER bind off 4 sts. after Rows 290, 292, 294, 296, 298; 5 sts. after Row 300, 302.

ON CAM BOX SIDE, increase 1 st. after Rows 90, 108, 126, 144, 162, then knit to Row 167 and work Short Rows for the DART. ON OPPOSITE SIDE of CAM BOX put into holding position 6 needles after Rows 167, 169, 171, 173, 175. After Row 177 bring all needles back into working position, then knit to Row 196.

ROWS 39 to 90: Knit even.

ROWS 0 to 38: Knit even, then form the hem.

Cast on 62 sts. with color 1 and work stockinette st.



Move the Cam Box to the left side, turn the Row Counter back to 280 and complete the left half. Follow the instructions from \*.

\*ON CAM BOX SIDE, bind off 4 sts. after Rows 280 (EVEN ROWS = SHOULDER SHAPING), 281 (ODD ROWS = NECK SHAPING), 282, 283, 284; 3 sts. after Row 285; 4 sts. after Row 286; 3 sts. after Row 287; 4 sts. after Row 288; 2 sts. after Row 289; 5 sts. after Rows 290, 292.

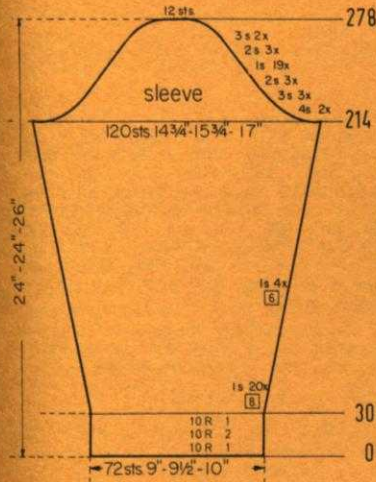
ON CAM BOX SIDE, bind off 3 sts. after Rows 186, 187, 188, 189, 190, 191; 2 sts. after Rows 192, 193, 194, 195; 1 st. after Rows 196, 197, 198, 199, 200, 201, 202, 203, then knit to Row 280, bind off the center 16 sts., put the needles on the left side into holding position and complete the right half first.

ON EACH SIDE, increase 1 st. after Rows 90, 108, 126, 144, 162, then knit to Row 186.

ROWS 39 to 90: Knit even.

ROWS 0 to 38: Knit even, then form the hem.

Cast on 132 sts. with color 1 and work stockinette st.

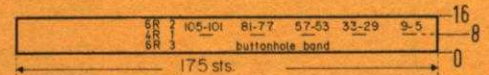


ON CAM BOX SIDE, bind off 4 sts. after Rows 214, 215, 216, 217; 3 sts. after Rows 218, 219, 220, 221, 222, 223; 2 sts. after Rows 224, 225, 226, 227, 228, 229. ON EACH SIDE, hang the 1st st. onto the 2nd st. after Rows 230, 232, 234, 236, 238, 240, 242, 244, 246, 248, 250, 252, 254, 256, 258, 260, 262, 264, 266. ON CAM BOX SIDE, bind off 2 sts. after Rows 268, 269, 270, 271, 272, 273; 3 sts. after Rows 274, 275, 276, 277; 12 sts. after Row 278.

ON EACH SIDE, increase 1 st. after Rows 30, 38, 46, 54, 62, 70, 78, 86, 94, 102, 110, 118, 126, 134, 142, 150, 158, 166, 174, 182, 190, 196, 202, 208, then knit to Row 214.

ROWS 0 to 30: Knit even, then change to stockinette st. and continue working with color 1.

Cast on 72 sts. with color 1, work K1, P1, Ribbing and the color stripes as marked in the Diagram.



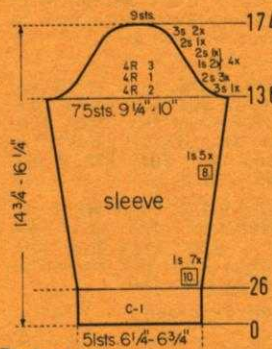
Cast on 175 sts. with color 3 and work K1, P1, Ribbing. Work the color stripes as marked in the Diagram and make buttonholes after Row 8 over the 5th-9th, 29th-33rd, 53rd-57th, 77th-81st and 101st-105th sts. counting from the right side. After Row 16 bind off all sts. the crochet method for ribbing. Work the button band the same, but omit the buttonholes.

ON CAM BOX SIDE, bind off 3 sts. after Rows 136, 137; 2 sts. after Rows 138, 139, 140, 141, 142, 143; 1 st. after Rows 144, 145, 146, 147; (Continue with color 1 after Row 148); 2 sts. after Rows 148, 149; 1 st. after Rows 150, 151, 152, 153; 2 sts. after Rows 154, 155; 1 st. after Rows 156, 157, 158, 159; 2 sts. after Rows 160, 161; 1 st. after Rows 162, 163, 164, 165; 2 sts. after Rows 166, 167, 168, 169; 3 sts. after Rows 170, 171, 172, 173; 9 sts. after Row 174.

ON EACH SIDE, increase 1 st. after Rows 26, 36, 46, 56, 66, 76, 86, 96, 104, 112, 120, 128, then knit to Row 136, change to color 2 and work the color stripes as marked in the Diagram.

ROWS 0 to 26: Knit even, then change to stockinette st.

Cast on 51 sts. with color 1 and work K1, P1, Ribbing.



## KK 5394

SIZE:	4 (Chest 23"-24")	6 (Chest 24"-25")
YARN:	Regia	Allegro Dralon
50 gr. BALLS:	Pullover 4 color 1 1 color 2 1 color 3	Pants 3 color 2 2 color 1
TENSION:	Pullover 4 to 6 5 to 7	Pants 6 to 8 7 to 9
GAUGE:	2" Stk. 16 sts, 23 rows Pattern 16 sts, 19 rows	15 sts, 21 rows 15 sts, 17 rows

The instructions are the same for both sizes. PATTERN: PANTS: Norwegian Design according to the Line Drawing, using the adjustable needle selector. In the instructions, each row in the Norwegian Design is counted as 1 row, but several movements of the Cam Box are needed to complete 1 row. PULLOVER: Stockinette Stitch with Color Stripes as marked in the Diagrams. EDGES: K1, P1, Ribbing. DECREASING: Hang the end st. onto the next occupied needle. INCREASES: PANTS: Place the end st. from the row below onto the next empty needle. SLEEVE: Move the 2 end sts. 1 needle outward, then place the 3rd st. from the row below onto the empty needle.

FINISHING: Block all sections. PANTS: Sew the inner leg seams together and turn-under 12 rows on lower edge and hem to wrong side. Join the sections at center back and close 3 1/4" at center front. Turn under a small amount around the opening and hem to the wrong side. Turn under 10 rows on upper edge, hem to wrong side and insert an elastic band. Sew the zipper in place. PULLOVER: Join the back and front section at sides and shoulders, leaving about 2" free on the left shoulder. Turn under a small amount around the opening and hem to wrong side. Sew the neckband to neckline, then sew the zipper in place.



Continued on page 26 & 27



# KK 5395

SIZE:	8 (Chest 25"-26")	10 (Chest 27"-28")	12 (Chest 29"-30")
YARN:	Sport Prima	Sport Prima	Sport Prima
50 gr. BALLS:	7 color 1 2 color 2	7 color 1 2 color 2	8 color 1 3 color 2
TENSION:	7 to 9	8 to 10	9 to 10
GAUGE:	2" 15 sts, 20 rows	14 sts, 19 rows	13 sts, 18 rows

The instructions are the same for all sizes. PATTERN: Stockinette Stitch, INCREASES: Move the 2 end sts. 1 needle outward, then place the 3rd st. from the row below onto the empty needle.

**FINISHING:** Block all sections. Join back and front sections at sides and shoulders. Sew the sleeves together and set in. Turn under 16 rows on lower edge, 12 rows on sleeve edges and 11 rows on upper edges of pockets and hem to wrong side. Sew the pockets in place. Sew 1 edge of buttonhole band to inside and 1 edge to outside of left front edge. Sew the button band to the right front edge in the same manner. Fold the collar in half and close the short ends. Sew 1 edge of collar to inside and 1 edge to outside of neckline, leaving about 1 1/4" on each front edge free. Finish the buttonholes, sew on buttons.



Move the Cam Box to the left side, turn the Row Counter back to 202 and complete the left half. Follow the instructions from\*.

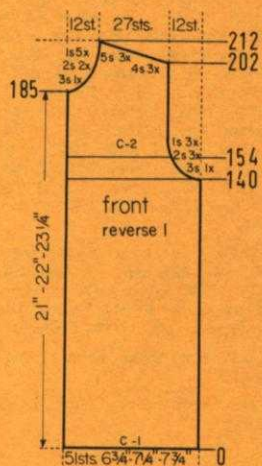
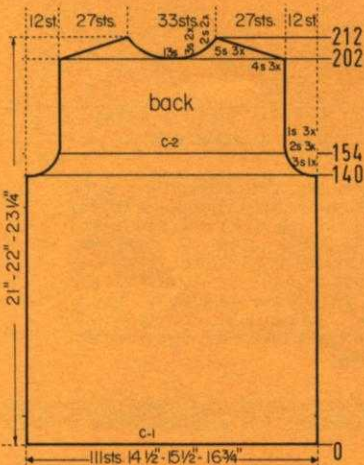
\*ON CAM BOX SIDE, bind off 4 sts. after Row 202 (EVEN ROWS = SHOULDER SHAPING); 3 sts. after Row 203 (ODD ROWS = NECK SHAPING); 4 sts. after Row 204; 3 sts. after Row 205; 4 sts. after Row 206; 2 sts. after Row 207; 5 sts. after Row 208; 2 sts. after Row 209; 5 sts. after Rows 210, 212.

Knit even to Row 202, then bind off the center 13 sts., put the needles on the left side into holding position and complete the right half first.

ON CAM BOX SIDE, bind off 3 sts. after Rows 140, 141; 2 sts. after Rows 142, 143, 144, 145, 146, 147; 1 st. after Rows 148, 149, 150, 151, 152, 153, then knit to Row 154 and change to color 2.

ROWS 0 to 140: Knit even.

Cast on 111 sts. with color 1 and work stockinette st.



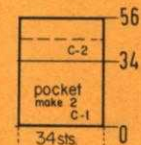
Work the second front section with reverse shapings, casting on from right to left. (Cam Box will be on the LEFT side at Row 0).

ON CAM BOX SIDE, bind off 3 sts. after Row 185; 2 sts. after Rows 187, 189; 1 st. after Rows 191, 193, 195, 197, 199. For SHOULDER bind off 4 sts. after Rows 202, 204, 206; 5 sts. after Rows 208, 210, 212.

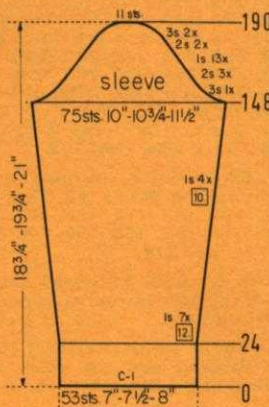
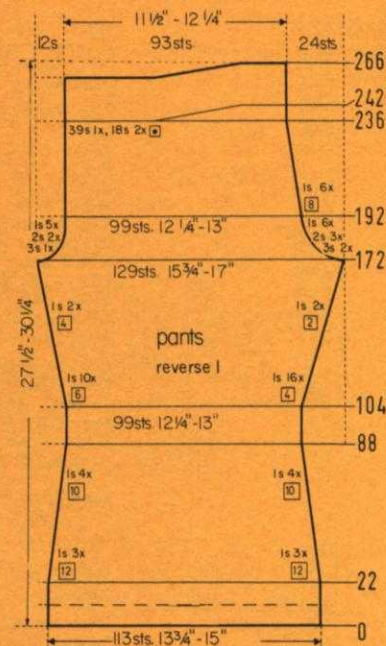
ON CAM BOX SIDE, bind off 3 sts. after Row 140; 2 sts. after Rows 142, 144, 146; 1 st. after Rows 148, 150, 152, then knit to Row 154, change to color 2 and knit to Row 185.

ROWS 0 to 140: Knit even.

Cast on 51 sts. with color 1 and work stockinette st.



Cast on 34 sts. with color 1 and work stockinette st. After Row 34 change to color 2 and knit to Row 56, then bind off all sts.

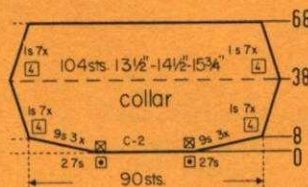


ON CAM BOX SIDE, bind off 3 sts. after Rows 148, 149; 2 sts. after Rows 150, 151, 152, 153, 154, 155. ON EACH SIDE, hang the 1st st. onto the 2nd st. after Rows 156, 158, 160, 162, 164, 166, 168, 170, 172, 174, 176, 178, 180. ON CAM BOX SIDE, bind off 2 sts. after Rows 182, 183, 184, 185; 3 sts. after Rows 186, 187, 188, 189; 11 sts. after Row 190.

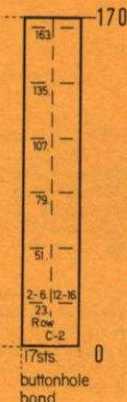
ON EACH SIDE, increase 1 st. after Rows 24, 36, 48, 60, 72, 84, 96, 108, 118, 128, 138, then knit to Row 148.

ROWS 0 to 24: Knit even.

Cast on 53 sts. with color 1 and work stockinette st.



Cast on 90 sts. with color 2, work stockinette st. and Short Rows. ON OPPOSITE SIDE of CAM BOX put into holding position 27 needles after Rows 0, 1. ON OPPOSITE SIDE of CAM BOX bring back into working position 9 needles after Rows 2, 3, 4, 5, 6, 7. ON EACH SIDE, increase 1 st. after Rows 12, 16, 20, 24, 28, 32, 36. ON EACH SIDE, decrease 1 st. after Rows 40, 44, 48, 52, 56, 60, 64. After Row 68 bind off all sts.



Cast on 17 sts. with color 2 and work stockinette st. Make buttonholes after Rows 23, 51, 79, 107, 135 and 163 over the 2nd-6th and 12th-16th sts. counting from the left side. After Row 170 bind off all sts. Work the button band the same, but omit the buttonholes.



Work the second pants section with reverse shapings, casting on from right to left. (Cam Box will be on the LEFT side at Row 0).

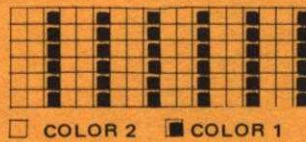
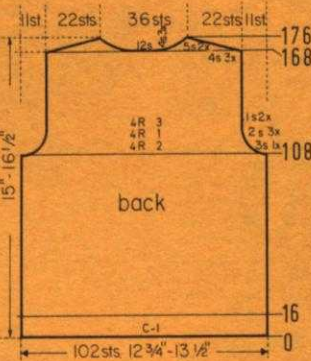
ON CAM BOX SIDE, bind off 3 sts. after Rows 172 (EVEN ROWS = CENTER BACK SHAPING), 173 (ODD ROWS = CENTER FRONT SHAPING), 174; 2 sts. after Rows 175, 176, 177, 178; 1 st. after Row 179; 2 sts. after Row 180; 1 st. after Rows 181, 182, 183, 184, 185, 186, 187, 188, 190, 192, 194, 202, 210, 218, 226, 234, then knit to Row 236 and work Short Rows. ON OPPOSITE SIDE OF CAM BOX put into holding position 39 needles after Row 236; 18 needles after Rows 238, 240. After Row 242 bring all needles back into working position, change to stockinette st. Knit to Row 266, then bind off all 93 sts.

ON OPPOSITE SIDE OF CAM BOX increase 1 st. after Rows in ( ). ON CAM BOX SIDE, increase 1 st. after Rows 104, (104), 108, (110), 112, 116, (116), 120, (122), 124, 128, (128), 132, (134), 136, 140, (140), 144, (146), 148, 152, (152), 156, (158), 160, 164, (164), 168, (168), 170, then knit to Row 172.

ON EACH SIDE, decrease 1 st. after Rows 22, 34, 46, 58, 68, 78, 88, then knit to Row 104.

ROWS 0 to 22: Knit even.

Cast on 113 sts. and work the Norwegian Design.



Move the Cam Box to the left side, turn the Row Counter back to 168 and complete the left half. Follow the instructions from\*.

\*ON CAM BOX SIDE, bind off 4 sts. after Rows 168 (EVEN ROWS = SHOULDER SHAPING), 169 (ODD ROWS = NECK SHAPING), 170, 171, 172, 173; 5 sts. after Rows 174, 176.

ON CAM BOX SIDE, bind off 3 sts. after Rows 108, 109; 2 sts. after Rows 110, 111, 112, 113, 114, 115; 1 st. after Rows 116, 117, 118, 119. After Row 120 change to color 1. Knit to Row 168, (for the FRONT Section knit to ROW 152) then bind off the center 12 sts., put the needles on the left side into holding position and complete the right half first.

ROWS 17 to 108: Knit even, then change to color 2 and work the color stripes as marked in the Diagram.

ROWS 0 to 16: Knit even, then change to stockinette st.

Cast on 102 sts. with color 1 and work K1, P1, Ribbing.

Cast on 103 sts. with color 3, work 16 rows K1, P1, Ribbing, then bind off all sts. the crochet method for ribbing.

Move the Cam Box to the left side, turn the Row Counter back to 152 and complete the left half. Follow the instructions from\*.

\*ON CAM BOX SIDE, bind off 3 sts. after Row 153; 2 sts. after Rows 155, 157, 159; 1 st. after Rows 161, 163, 165, 167. For SHOULDER bind off 4 sts. after Rows 168, 170, 172; 5 sts. after Rows 174, 176.

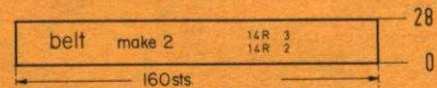
Work the front section the same as the back section to ROW 152, then bind off the center 10 sts., put the needles on the left side into holding position and complete the right half first.

## DK 8135

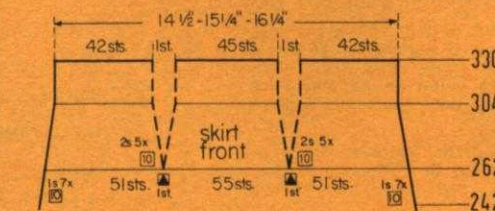
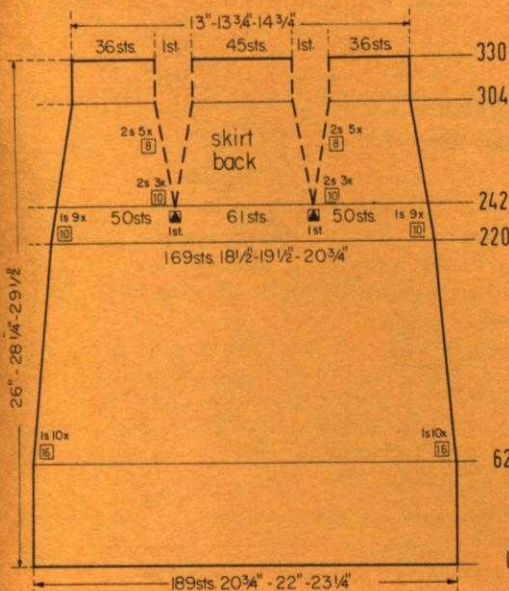
SIZE:	12 (Bust 34")	14 (Bust 36")	16 (Bust 38")
YARN:	Subita Crepe 2 x 3	Beatrice	Melodie
50 gr. BALLS:	10 color 1 1 color 2 1 color 3	12 color 1 1 color 2 1 color 3	14 color 1 1 color 2 1 color 3
TENSION:	3 to 5	4 to 6	4 to 6
GAUGE:	2" 18 sts, 25 rows	17 sts, 23 rows	16 sts, 22 rows
ALL SIZES:	16" Jacket Type Zipper		

The instructions are the same for all sizes. PATTERN: Stockinette Stitch. EDGES: K1, P1, Ribbing. DECREASES: Hang the 3rd st. onto the 2nd st., then move the end sts. inward to fill the empty needle. Begin the Skirt DARTS by hanging the sts. together as marked on the Diagram, then move the sts. together to fill the empty needles. The following decreases for the darts lie directly above. INCREASES: Move the 2 end sts. 1 needle outward, then place the 3rd st. from the row below onto the empty needle.

FINISHING: Block all section. SKIRT: Weave the sections together 1 st. in from each edge. Turn under 18 rows on lower edge and 13 rows on upper edge and hem to wrong side. Insert an elastic band into upper hem. JACKET: Join back and front sections at sides and shoulders. Sew the sleeves together and set in. Turn under 18 rows on lower edge and hem to wrong side. Sew the pockets in place. Join the band sections, then sew the band to front and neckline. Sew in the zipper. Join the belt sections at center back. Sew belt facing to wrong side of the belt. Sew the buckle in place.



Cast on 160 sts. with color 2 and work stockinette st. Change to color 3 after Row 14. Bind off all sts. after Row 28.

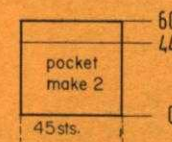


Decrease 2 sts. for EACH DART after Rows in ( ). ON EACH SIDE, decrease 1 st. after Rows 242, (242), 252, (252), 262, (262), 272, (272), (280), 282, (288), 292, (296), 302, (304), then knit to Row 330 and bind off the remaining 119 sts.

ON EACH SIDE, decrease 1 st. after Rows 62, 78, 94, 110, 126, 142, 158, 174, 190, 206, 222, 232, then knit to Row 242. (For the Front Section knit the same to ROW 242).

ROWS 0 to 62: Knit even.

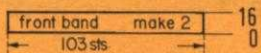
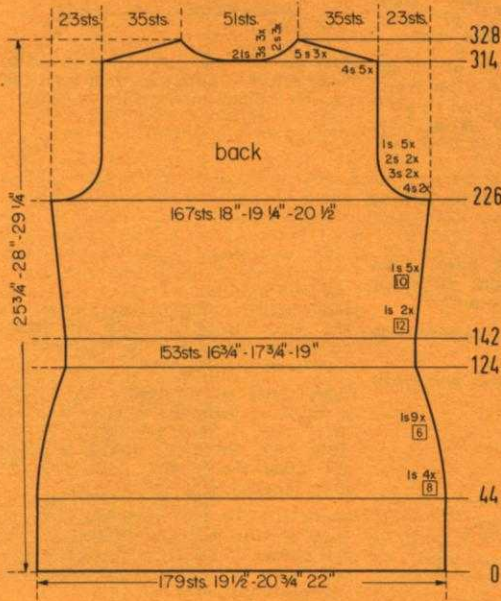
Cast on 189 sts. and work stockinette st.



Cast on 45 sts., work 44 rows stockinette st., then transfer every other st. to the ribber and work 16 rows K1, P1, Ribbing. After Row 60 bind off all sts.

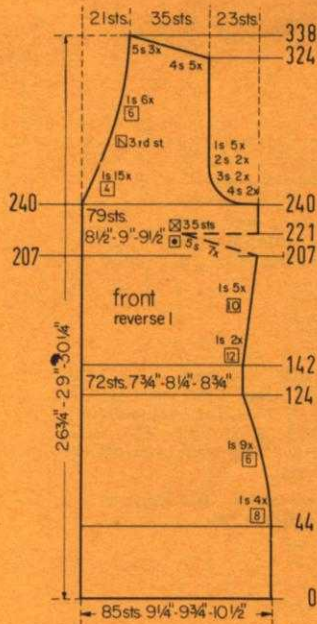
Continued on page 28





Cast on 103 sts. and work 16 rows K1, P1, Ribbing, then bind off all sts.

Work the second front section with reverse shapings, casting on from right to left. (Cam Box will be on the LEFT side at Row 0).



ON NECK SIDE, decrease 1 st. after Rows in ( ). ON CAM BOX SIDE, bind off 4 sts. after Rows 240, (240), 242; 3 sts. after Rows 244, (244), 246; 2 sts. after Rows 248, (248), 250; 1 st. after Rows 252, (252), 254, 256, (256), 258, 260, (260). The Armhole Shaping is now completed. Continue to decrease 1 st. ON NECK SIDE after Rows 264, 268, 272, 276, 280, 284, 288, 292, 296, 300, 306, 312, 318, then again after Rows in ( ). For SHOULDER bind off 4 sts. after Rows 324 (324), 326, 328, 330, (330), 332; 5 sts. after Rows 334, 336, 338.

ON CAM BOX SIDE, increase 1 st. after Rows 142, 154, 166, 176, 186, 196, 206, then knit to Row 207 and work Short Rows for the DART. ON OPPOSITE SIDE of CAM BOX put into holding position 5 needles after Rows 207, 209, 211, 213, 215, 217, 219. After Row 221 bring all needles back into working position, then knit to Row 240.

ON CAM BOX SIDE, decrease 1 st. after Rows 44, 52, 60, 68, 76, 82, 88, 94, 100, 106, 112, 118, 124, then knit to Row 142.

ROWS 0 to 44: Knit even.  
Cast on 85 sts. and work stockinette st.

Move the Cam Box to the left side, turn the Row Counter back to 314 and complete the left half. Follow the instructions from \*.

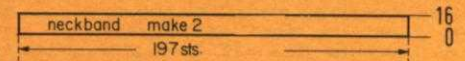
\*ON CAM BOX SIDE, bind off 4 sts. after Row 314 (EVEN ROWS = SHOULDER SHAPING); 3 sts. after Row 315 (ODD ROWS = NECK SHAPING); 4 sts. after Row 316; 3 sts. after Row 317; 4 sts. after Row 318; 3 sts. after Row 319; 4 sts. after Row 320; 2 sts. after Row 321; 4 sts. after Row 322; 2 sts. after Row 323; 5 sts. after Row 324; 2 sts. after Row 325; 5 sts. after Rows 326, 328.

ON CAM BOX SIDE, bind off 4 sts. after Rows 226, 227, 228, 229; 3 sts. after Rows 230, 231, 232, 233; 2 sts. after Rows 234, 235, 236, 237; 1 st. after Rows 238, 239, 240, 241, 242, 243, 244, 245, 246, 247, then knit to Row 314, bind off the center 21 sts., put the needles on the left side into holding position and complete the right half first.

ON EACH SIDE, increase 1 st. after Rows 142, 154, 166, 176, 186, 196, 206, then knit to Row 226.

ON EACH SIDE, decrease 1 st. after Rows 44, 52, 60, 68, 76, 82, 88, 94, 100, 106, 112, 118, 124, then knit to Row 142.

ROWS 0 to 44: Knit even.  
Cast on 179 sts. and work stockinette st.



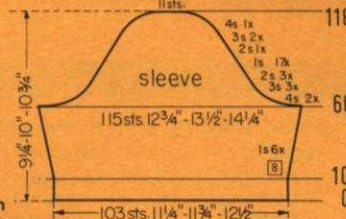
Cast on 197 sts. and work 16 rows K1, P1, Ribbing, then bind off all sts.

ON CAM BOX SIDE, bind off 4 sts. after Rows 60, 61, 62, 63; 3 sts. after Rows 64, 65, 66, 67, 68, 69; 2 sts. after Rows 70, 71, 72, 73, 74, 75. ON EACH SIDE, hang the 1st st. onto the 2nd st. after Rows 76, 78, 80, 82, 84, 86, 88, 90, 92, 94, 96, 98, 100, 102, 104, 106, 108. ON CAM BOX SIDE, bind off 2 sts. after Rows 110, 111; 3 sts. after Rows 112, 113, 114, 115; 4 sts. after Rows 116, 117; 11 sts. after Row 118.

ON EACH SIDE, increase 1 st. after Rows 10, 18, 26, 34, 42, 50, then knit to Row 60.

ROWS 0 to 10: Knit even, then change to stockinette st.

Cast on 103 sts. and work K1, P1, Ribbing.



for fast easy knitting of  
Jaquard and Ski-sweater  
designs



Patterns are selected - row by row - through a pre-stamped card that is fed into the Jac. There are over 300 cards available and illustrations of them are included with each Jac.

Jac 40's are made for most brands of machines. When ordering be sure to specify your brand of knitter as needle spacings vary. Simple to use and an essential tool for the modern knitter, Jac 40's are \$26.95 complete with 3 cards for practicing the 3 techniques, plus complete instructions.

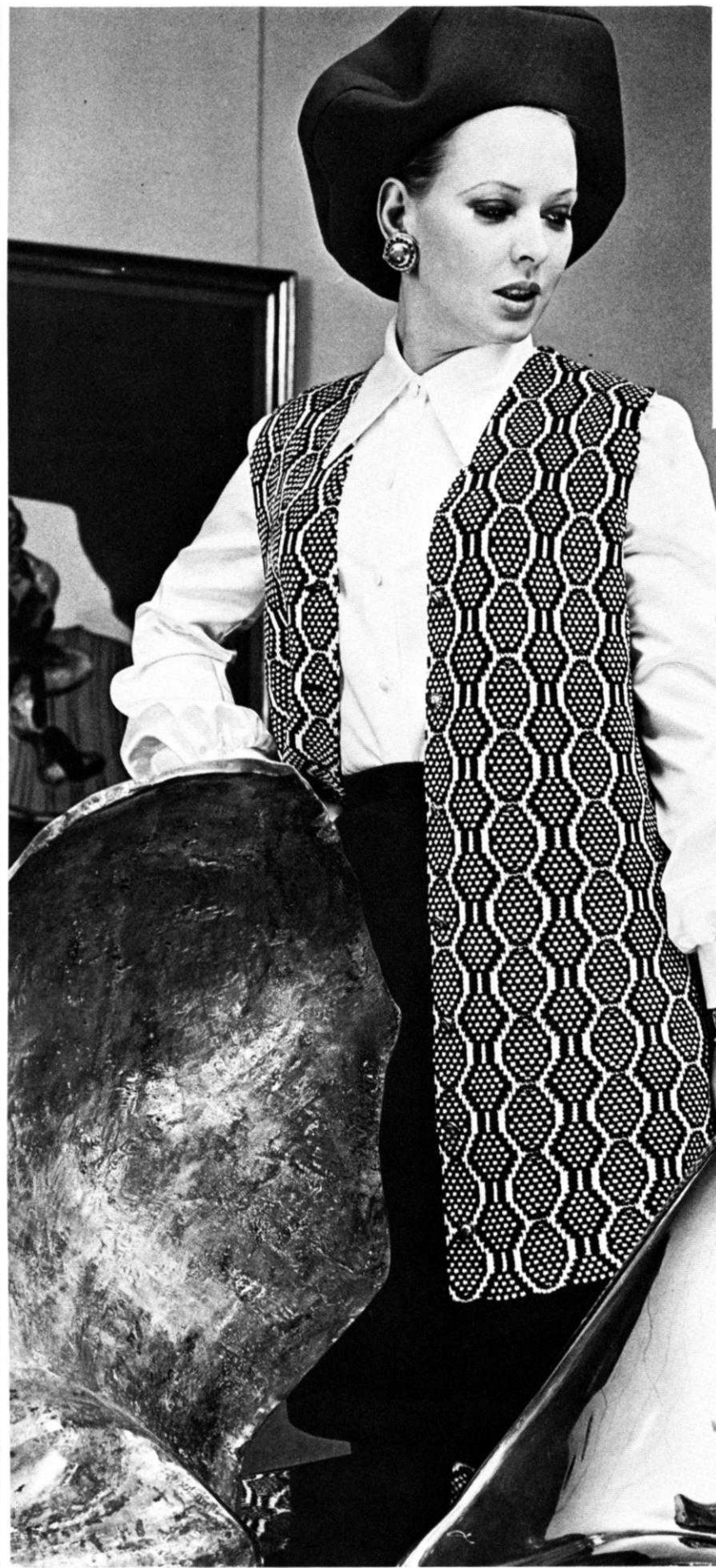


Order from your dealer or direct from  
KNITTING

1128 Crenshaw Boulevard, Los Angeles, Calif. 90019

Shipping Cost \$1.25 - California residents add 5% sales tax.





DK 8130 — Pattern and solids combine for the newest look in knits . . . Make the Skirt in Stockinette stitch - the long lovely Vest in a Holding Position Design that follows the Chart . . . or use your JAC 40 and Pattern No. 448. Size 14 is knitted with Subita Crepe 2 x 3; Size 16, Beatrice; Size 18, Crocus Crepe.







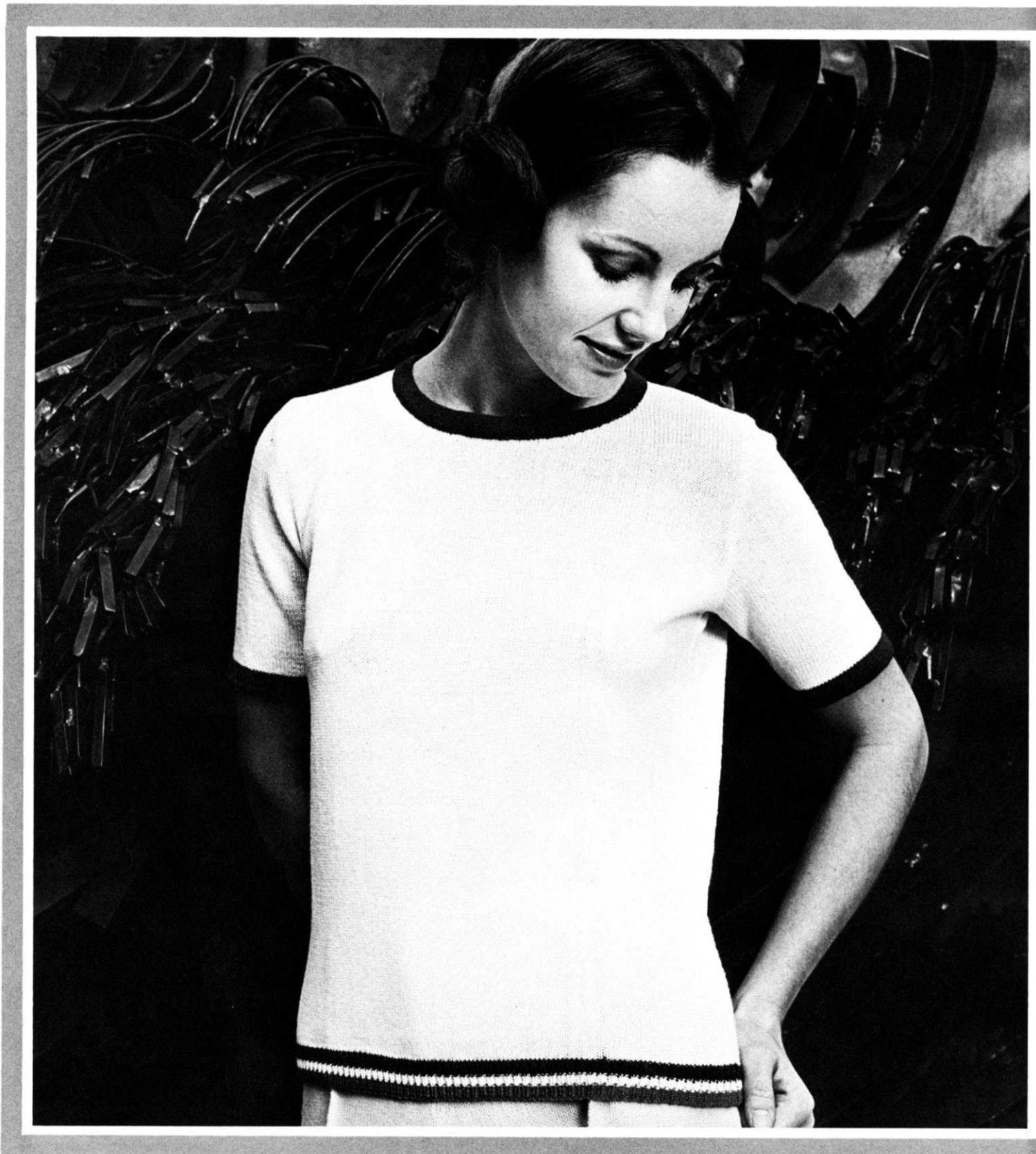


## GOLD WITH BLUE

DK 8129 – Knit a sporty two-piece Dress with the new wide Ribbing in contrast color to band the sleeves and lower edge of the zippered top. The softly flared Skirt is made in four sections. Crocus Crepe for Size 10; Allegro Dralon for Size 12; Dolly Dralon Crepe for Size 16.

DK 8136 – Mix or Match . . . the choice is yours . . . but do knit this attractive Blazer and Shell. Quick to knit in Stockinette stitch with Ribbing for bands on Shell. Size 12, Beatrice; Size 14 and 16, Crocus Crepe.





CLASSIC TWINSET





DP 8132 — Sweater weather is here and classic Twin-Sets are always in style. Knit the Pullover in a light shade with neck and sleeve bands in a dark color and the lower edge striped with three colors. The Cardigan is the dark color with neck and front band striped. Size 10 and 14 is knitted with Regia; Size 16, Mohana.



# FATHER & CO.

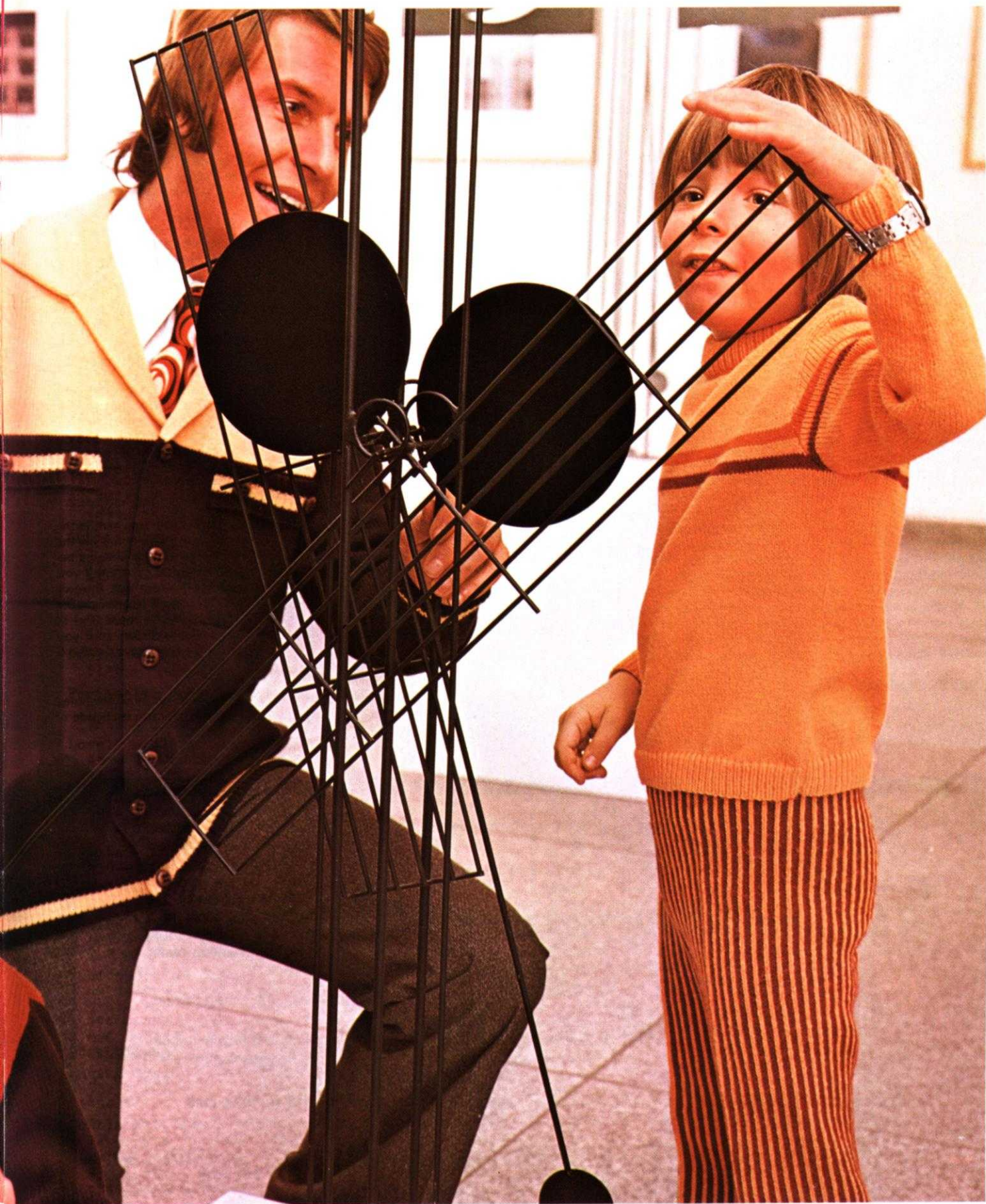
HP 3686 – Light and warm, a two-toned Jacket for Fall is perfect for your Man. It's knitted in Stockinette stitch with Ribbing on bands and pockets. Use Regia for a Size 38; Amore for Size 40; Dolly Dralon Crepe for Size 44.

KK 5394 – Time and Motion . . . is fascinating to all youngsters visiting a Museum . . . and the handsome Pullover with striped Pants can be knitted for a Boy or a Girl. Knit Size 4 with Regia; Size 6 with Allegro Dralon.

KK 5395 – Similar to his Dad's Jacket, but with hip pockets, your Boy will be happy with his two-toned version. Use two colors of Sport Prima for Sizes 8, 10, 12.









# NOTES TO KNIT BY . . .

## STITCH AND ROW GAUGE

KNIT A SAMPLE SWATCH . . . before you begin to knit any garment . . . for this is the MOST IMPORTANT STEP toward the correct size and the proper fit of any garment you wish to make. You MUST use the SAME YARN for your sample swatch that you will use to knit your garment and your sample swatch must be knitted large enough and using several different tension numbers on your machine. When you have done this, then you can determine the number of stitches and the number of rows in a two-inch measure. KNITTING MAGAZINE PATTERNS give you 3 tensions to try and one of them should give you the correct stitch and row gauge if you are using the yarn we recommend or a similar weight yarn. Here is the way to make your sample swatch.

Cast on over a sufficient number of needles to produce a swatch at least 4 inches wide. (If the pattern calls for 16 stitches to 2", then 16 x 2 = 32 stitches to cast on). Now knit 4 inches of rows at the first suggested tension number. (If the pattern calls for 22 rows to 2", 22 x 2 = 44 rows to knit). Knit 2 rows using a contrast color, change to the next higher tension and with garment yarn knit another 4", knit 2 rows with contrast color, change to the 3rd higher tension and knit another 4" and then bind off.




Roll the swatch into a cylinder over its length and pull on both ends, unroll it and stretch it diagonally by pulling on the four corners. Allow the swatch to rest and settle (preferably overnight) and then using a stitch gauge or a ruler, count the number of stitches over a 2" width, then the number of rows over a 2" length in EACH of the 3 tensions. Select the tension number that produces the stitches and rows called for in the pattern. If none of them are correct, you are most likely using the wrong weight of yarn.




## READING OF CHARTS


You will notice the instructions start at the bottom of the Chart and work UP. Follow the charts exactly as written and providing your sample stitch and row gauge is correct, your garment will come out the right size. Please remember that the section of garment as it is knitted on the machine, faces the same way as the Charts are in this magazine. Where two front pieces are needed, (or any other part of a garment that needs two sections) only one section is normally shown and the second section is usually made with reverse shaping. Set in sleeves are usually identical, but raglan sleeves have to be knitted with reverse shaping for the second sleeve.


## READING OF SYMBOLS

To simplify Pattern Knitting, we use Symbols in the Line Drawings and the Chart Diagrams. In the Line Drawings the symbols are shown and are to be read as you look at them while knitting a garment. For instance, if

a Purl stitch faces you, the Purl stitch Symbol  is shown; if a knit stitch faces you (as when using the Ribber) then this Symbol  is shown. The Symbol  at the top of the Line Drawing is the center of the garment section and you use this as a guide for setting up the needles.

The following Symbols    are used for Eyelet Designs in the Line Drawings and also for Full Fashion shaping on the Charts. The Line Drawings have row numbers on the right side. Missing Row numbers are always knitted straight or plain.

In Holding Position Designs  selected needles are pushed into holding position for the stated number of rows. The numbers of rows appear at the right of the Line Drawings; Example: 1-4 means knit Rows 1 to 4; 5 to 7 means knit Rows 5 to 7, etc. This same Symbol is also shown on the Charts and is used for putting needles into holding position for Short Rows. The

Symbol  on the Charts is used to put needles back into working position when knitting Short Rows.

A number in a box stands for the number of rows to be knitted between shapings. Make shaping first, then knit the necessary number of rows. If for instance it reads:

1 st. 8 x



1 st. 10 x



As you will be reading the instructions from the bottom up, here is the way you will follow them: . . . Decrease or increase (depending on the direction of the garment outline) 1 st. at the row where the shaping begins, then knit 8 rows, make the next decrease, then knit 8 rows, until you have decreased (or increased) 1 st. 10 x and you have knitted 8 rows after each decrease (or increase) (1 st. 10 x +8 rows 10 x). Now begin the first decrease (or increase) for the shaping (which has to be made 8 x) in every 6th row. Decrease (or increase) 1 st. first, then knit 6 rows until you have decreased 1 st. 6 x and after each decrease (or increase) have knitted 6 rows (1 st. 8 x + 6 rows 8 x).

Where shapings are given without a boxed number as on most armholes, necklines, etc., make the shapings on every second row (on each side of course).

(See below for more Pattern Stitch Symbols.)

### PATTERN STITCH SYMBOLS



= knit stitch



= purl stitch



= empty needle (leave in working position)



= needle not used (in the out of work position)



= needle in the holding position



= Needles back into working position.



= 2 stitches on 1 needle - either transferred from the right side or the left side, then put the needle into holding position



= needle holding 2 stitches. Stitch has been transferred from the LEFT



= needle holding 2 stitches. Stitch has been transferred from the RIGHT



= 3 stitches on 1 needle. The 1st and 3rd stitch in a group of 3 needles has been hung on the 2nd or center needle.



= Center of Garment Section.



= Number of rows to be knitted between shapings.

The diagrams (Line Drawings) for pattern work are followed just as they are shown and are to be read as you look at them while knitting the garment.

open darts



closed darts





# KNITTING NEWS



## Yarn Sale ..... Yarn Sale

### EXTRA!...EXTRA!... SPECIAL LATE BULLETIN

Our new Yarns have arrived... and we are bursting our britches!! for space... So, all you "Bargain" hunters... here's a SPECIAL WOW SALE...only while stocks last... and they are limited. Yes, you can buy any of the following at 50% off... at the time of going to press...!! But, you must hurry to send your orders and please... please...alternates... alternates... and more alternates... so that you will not be disappointed.

The minimum quantity of any one color you can purchase in this 50% off KNITTING MAGAZINE SUBSCRIBER SALE is one Kilo (we cannot break packages) and the following is a list of colors available at the time of going to press...If you want your first choice of colors, please rush your order in... No refunds on Catalogue coupons, but you can use your BankAmericard or Master Charge Card for orders in excess of \$25.00.

- Subita Crepe 2 x 3 - \$13.00 per Kilo (35 oz.)  
157 - 156 - 111 - 142 - 118 - 125 - 126 -
- Subita Crepe 2 x 4 - \$13.00 per Kilo (35 oz.)  
3 - 64 - 27 - 16 - 4 - 45 - 41 - 51 - 68 - 69 -  
72 - 74 - 34 - 57 - 56 - 5 - 18 - 31 - 42 - 2 -  
70 - 71 - 33 - 26 - 25 -
- Gardenia Baby - \$11.00 per Kilo (35 oz.)  
9106 - 2039 - 5184 - 1086 - 9104-S - 7186-S -  
6210-S - 7184-S - 1086-S
- Crocus Crepe - \$13.00 per Kilo (35 oz.)  
8146 - 5431 - 8100 - 9733 - 9773 - 6404 -
- Fortissima Sock & Sweater - \$11.00 per Kilo(35 oz.)  
9705 - 9760 - 6759 - 9106 - 5338 - 3258 - 9000 -  
7612 - 7108 - 109 - 5767 - 8924 -
- Lovely - \$13.00 per Kilo (35 oz.)  
48 - 29 - 43 - 28 - 55 - 53 - 36 - 26 - 58 -  
27 - 24 -
- Rhapsodie - \$13.00 per 8/10 Kilo (28 oz.)  
20 - 31 - 19 - 06 - 21 - 09 - 30 - 02 - 37 -  
07 - 08 - 03 -
- Subita - Lurex-\$16.00 per Kilo (35 oz.)  
230 - 203 - 227 - 222 - 216 -
- Excelsior - \$16.00 per Kilo (35 oz.)  
19 - 23 - 05 -
- Subita Dralon 2-ply - \$13.00 per Kilo (35 oz.)  
424 - 434 - 490 - 431 - 492 - 441 - 439 -  
417 - 427 - 448 -
- Subita Dralon 3-ply - \$13.00 per Kilo (35 oz.)  
427 - 445 - 406 - 426 - 401 - 425 - 434 - 403 -  
436 - 437 - 407 - 490 - 431 - 417 - 492 - 450 -  
444 - 442 - 448 - 424 - 409 - 441 - 440 - 447 -  
405 - (449 - Wedgewood Blue - not shown in  
Catalogue).
- Sonika Dralon - \$13.00 per Kilo (35 oz.)  
401 - 441 - 444 - 407 - 435 - 414 - 411 - 436 -  
404 -
- Double Knitting - \$9.90 per Kilo (35 oz.)  
72 - 50 - 71 - 61 - 68 -
- Amorina - \$13.00 per Kilo (35 oz.)  
742 - 743 - 746 - 747 - 750 - 751 - 752 - 744 -  
745 - 748 - 749 -
- Amoretta - \$12.00 per Kilo (35 oz.)  
120 - 122 - 135 - 134 - 128 - 130 - 136 - 131 -

All Color Numbers listed - available at time of going to press.

California residents add 5% Sales Tax. Be sure to include Shipping costs - \$1.00 for first Kilo plus 70¢ each additional Kilo.

### OUR READERS WRITE

Mrs. Janet Robison of Michigan is one of several customers who have experienced problems with washing and drying knitted garments.

When you have spent hours knitting plus more hours blocking and assembling a beautiful knit garment, it is important that you care for it properly so that you will enjoy it for years and years.

Up until recently, all woolens had to be dry cleaned or washed gently by hand in cool water using a cold water soap such as Woolite. It is now possible to machine wash SOME WOOL yarns and even in some cases to spin them dry... Some Manufacturers have information on the labels such as "Hand Wash - Machine Wash - Dry Clean Only - Machine Wash and Dry..." etc... but they do not tell you exactly HOW to follow through with the procedure so that your knit looks like new again. Here is the way our experts wash and care for their knitted garments.

### WASH BY HAND

Unless you know the exact measurements of the garment you are washing, it is a good idea to prepare a drying space, then lay the unwashed garment out flat and mark all around the outside edges by sticking pins (be sure they are the rust-proof kind) into the toweling or padding that will be your drying surface. Incidentally, a large size ironing board - the top of a washer or dryer, a table top - a vacant bed - even the floor can be used for a drying area, but remember to place some padding such as an old blanket or bed pad down first and then cover this with a sheet of plastic and on top of that some toweling. Make sure the toweling is the velour type - or as smooth as possible - not one with the big loops that might mark your knits. After you have prepared your drying area, wash the garment with Woolite or Ivory Liquid using COLD WATER. Completely immerse the garment in the water and squeeze the suds through again and again. NEVER leave the garment sitting in water for any length of time. If the garment is badly soiled, squeeze the water out and wash it a second time. NEVER WRING the garment, just gently squeeze with your hands. You must remember to support the weight of your knit in your hands at all times and never lift the garment from the water by corners or edges. Rinse several times using cold water. If the garment is made with more than one color, add 1/4 cup white vinegar to the last rinse water (it helps to set the colors). After the last rinse (make sure all the suds are out), gently squeeze the water out, then roll the garment in a bath towel. Immediately unroll the garment and place it on your prepared surface, smoothing it gently into place with your hands, bringing the edges up close against the pin outline. After you have it all in place, take a smooth glass jar



(a large size Olive jar is good) and roll it gently over the knit, smoothing every little wrinkle out. (You can use a smooth glass bottle if you don't have a jar). Now remove the pins and cover the garment with another towel. Change the drying towels if they become wet to speed the drying of your garment. Leave the garment until it is thoroughly dry. Your garment should need no further blocking. If the sides have creases (usually they fall out anyway), you can steam the side seams a little... Perhaps this seems like a great deal of work, but it really isn't, and the finished results are absolutely perfect.. You need only to fold and put your garment away. Be sure to place tissue paper between the folds to prevent creases.

**WASH BY MACHINE - SPIN - TUMBLE DRY (whether it be Synthetic, Wool or Wool blend)**

When a label says you can wash by machine and tumble dry, it does not mean that you can throw your knit into your washing machine and have it go through the same cycle ordinary laundry such as sheets and towels go through. Some washing machines have a gentle wash and a gentle spin and you can set the machine to fill with cold water (to any level you require) and a one minute wash cycle. This is great, and you can use this for any yarns that are machine washable including some wools and wool blends. ALWAYS turn your knitted garment inside out before washing or drying in a machine and do use a liquid soap such as Woolite or Ivory liquid. Add the soap after the water is in the machine, allow it to agitate for a few seconds (to make suds), put your knit into the washer, let it soak for 3 minutes, then set your washer for a one minute wash and gentle cycle.

Not everyone has a fully automatic machine with a gentle wash cycle. If you do not have this type of machine, you will need to improvise a bit. Most washers can be stopped in the middle of any cycle and you can utilize this when washing your knits. (If you cannot stop your machine in the middle of any cycle, you will have to wash by hand.) Fill the machine with cool water to the level you require (depending on how many garments you are washing), add the liquid soap and agitate the water for a few seconds to make suds. Turn your garment inside out, put it into the washer and allow it to soak for 3 minutes. Now set the machine for a one minute wash (or if you cannot set it for one minute, time it yourself). Allow most of the water to spin out but not all. You do not want wrinkles put into the knit by a complete dry spin. The machine can do the rinsing for you but each time, stop the machine BEFORE it goes into that last FAST SPIN. Most of the water will be out of the garment. (Don't forget to add 1/4 cup white Vinegar to the last rinse water if the garment has more than one color.

If you have a dryer that has a gentle warm dry, you can put your knit into the dryer (still inside out please) providing the yarn is machine wash and machine dryable. KNITTING Yarn information can be found in our KNITTING YARN CATALOGUE. Take the garment out of the dryer the moment it is dry - do not allow it to remain in the dryer because this will put wrinkles into it. If you do not have a gentle setting on your dryer (the wash and wear setting) you can still use it, but you must remove it quickly in from 3 to 5 minutes. Shake the garment when you take it out of the dryer then fold it (put tissue paper between the folds) and hang it over the rod of a covered hanger.

Always remember that with wool or wool blend yarns, it is not only the temperature of the water that is important to prevent matting of the fibers, but it is also the amount of TIME used for the washing and rinsing and spinning that can cause the matting and ruin your garment.

**PRACTICAL KNITTING HINTS**

The Skirt in Pattern No. DK 8133 (Cover Model this issue) is a Weaving Design and it has OPEN DARTS. An easy way of working the darts is as follows:

**BACK SECTION:** After Row 348, put 39 needles on the Right side and 39 needles on the Left side into holding position. Mark down the Row Number on your JAC Card at Row 348. (you will need to know this so that you can turn the JAC Pattern back to this number when working each section). Remove the garment yarn from the Yarn Container, release the Right Cam Control Button and with contrast waste yarn, knit about 10 rows over the center 49 sts. Now... make note of the FIRST and LAST Needle Numbers of the center section so that when you hang them back (later) you will put them onto the EXACT same needles. Remove the center 49 sts. from the machine by moving the Cam Box across without yarn. Move the Cam Box to the RIGHT side, push in the Right Cam Control Button, turn the Row Counter back to 348 and continue with the Weaving Pattern as in the instructions. After Row 432, the first section is completed. Bring the needles on the left side into working position, turn your Row Counter back to 348 (Put your JAC Card to the correct number) and work the left side section. After this is completed, move the Cam Box to the right side. Now you must hang the garment sts. of the center section back onto the machine being sure the sts. are placed on the same needles they were on originally (you made note of these needles). Remove the waste yarn, put the sts. under the sinkers, turn the Row Counter back to 348 (your JAC Card to the correct number) and work the center section.

**FRONT SECTION:** Your Darts begin at Row 372 and are worked in the same manner as the back section.

Open Darts are always made in garments that are knitted with a Pattern Stitch and you should work them using the same method as given above.

**SUBSTITUTE YARNS - for KNITTING MAGAZINE Patterns**

OLD CATALOGUE	NEW CATALOGUE
Subita Crepe 2 x 4	Crocus Crepe Melodie
Subita Dralon 3-ply	Beatrice Subita Crepe 2 x 3
Gardenia Baby	Subita Crepe 2 x 3 Beatrice
Sonika Dralon	Allegro Dralon Melodie
Conchita Crylor	Summertime Allegro Dralon
Fortissima	Regia Subita Crepe 2 x 3
Subita Lurex	Beatrice Silver
Double Knitting	Alanda
Lovely	Melodie Dolly Dralon Crepe
Excelsior	Melodie Beatrice Silver



DK 8131 — A basic Shell is very easy and quick to knit in Stockinette stitch with Ribbed bands. Wear it under a Jacket (See Back Cover) or as a pretty top over any Skirt. Knit Size 12 with Subita Crepe 2 x 3; Size 14 and 16 with Mohana.





