

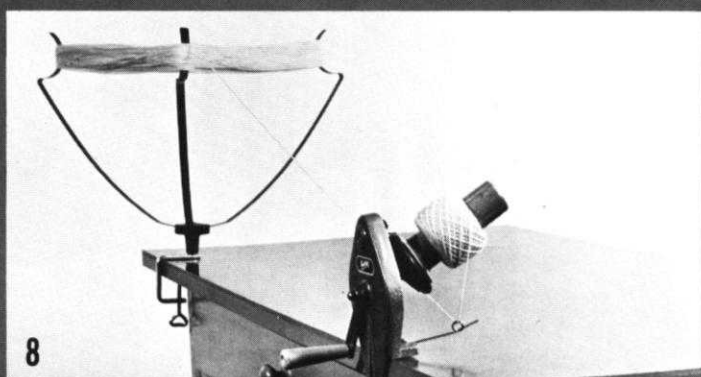
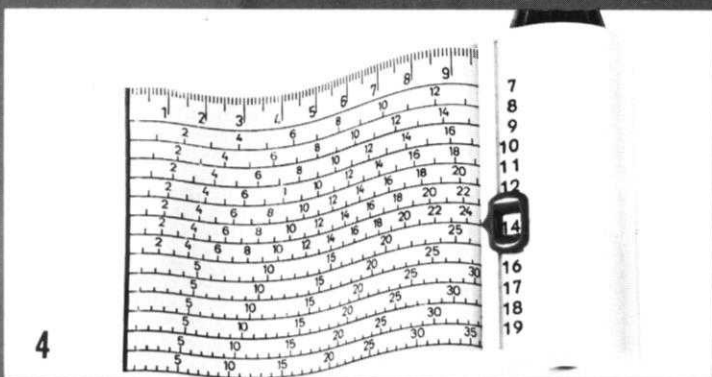
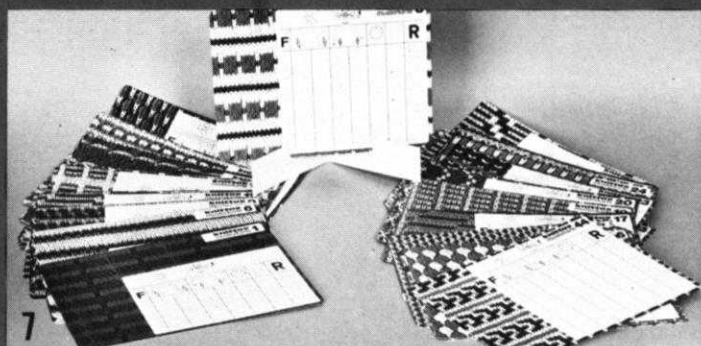
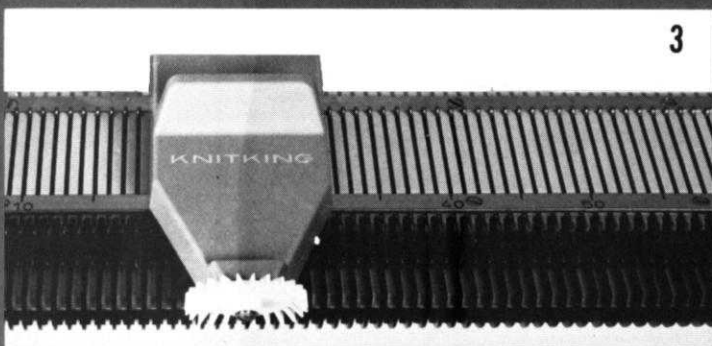
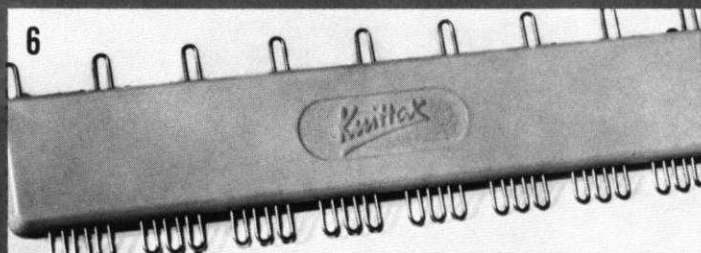
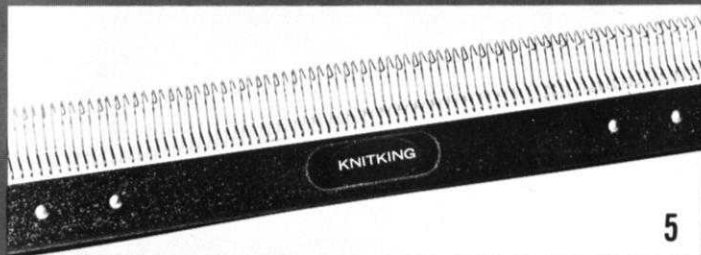
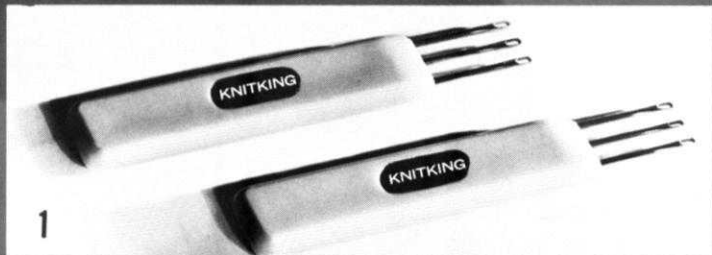
# knitking

*magazine*



mar/apr '71





1. Treble Transfer Tools for rapid transfer of stitches and for Cable Stitch. \$1.50 pair plus 25¢ shipping.

2. 33 Needle Multi-Transfer Tool. For decreasing in the middle of a row. \$3.25 plus 25¢ shipping.

3. KNITKING Weaving Accessory (for AM 3 machine). Weaves an additional thread into your knitting and produces patterns with a woven appearance. \$6.95 plus 30¢ shipping.

4. Converta Tape. For simple and speedy charting of custom knits. \$6.95 plus 30¢ shipping.

# accessories

5. Reversing Bar. For easy hem turning or reversing of knitting. \$17.95 plus \$1.50 shipping.

6. Adjustable Needle Selector. For setting unevenly spaced pattern stitches. \$3.50 plus 25¢ shipping.

7. KNITKING Pattern Stitch Cards (for AM 3 machine only). 48 Pattern Cards with 96 beautiful patterns in color and black and white. Simple row by row instructions. \$9.50 plus 95¢ shipping.

8. Yarn Winder and Skein Holder. Heavy cast frame and nylon gears. \$15.95 plus \$1.00 shipping. Without Skein Holder \$12.95 plus \$1.00 shipping.

California residents add 5% Sales Tax

KNITKING • 1128 Crenshaw Blvd., Los Angeles, California 90019

# knitking magazine

INDEX		PAGE NO.
DP 7935	Woman's Blouse	12
DK 7898	Woman's Dress	13
HP 3624	Man's Pullover	14
DK 7896	Woman's 2-piece Dress	16
HP 3622	Man's Shirt	17
DK 7897	Woman's 2-piece Dress	18
HP 3623	Man's Pullover	19
DK 7892	Woman's Dress	20
DK 7894	Woman's Dress	22
DK 7895	Woman's 2-piece Dress	24
DK 7893	Woman's Dress	25
DK 7908	Woman's Dress	26
MK 5252	Girl's Dress	27
MK 5257	Girl's Dress	28
KK 5256	Boy's Pullover	29
MK 5253	Girl's Dress	30
KK 5255	Teen Boy's Sport Shirt	31
KG 1922	Toy Duck	32
KG 1923	Place Mat	32

## knitking magazine



A whirlwind collection of Springtime knits sets the happy scene for this issue of KNITKING MAGAZINE. Our Cover Model Blouse, DK 7935 is in the latest Peasant style with stretchy shirring to shape up arms and waist. Knit it with KNITKING Subita Crepe 2 x 3 and trim it with Rickrack and Braid. Size 8/10. See page 12.

Publisher: KNITKING CORPORATION, 1128 Crenshaw Blvd., Los Angeles, Calif. 90019. Telephone: WEbster 8-2079. Published bi-monthly. Subscriptions: USA - \$6.00 annually, single copies \$1.50; Canada - \$7.00; other parts of the world - \$10.00. The entire contents of KNITKING MAGAZINE are copyright and must not be reproduced in any shape or form without the express permission, in writing of the publisher. COPYRIGHT © by KNITKING CORPORATION 1971.

Printed by George Rice & Sons, Los Angeles, California



## ORDER IT NOW!

Every reader of KNITKING MAGAZINE needs the new big beautiful KNITKING YARN CATALOGUE with 329 actual yarn samples . . . the finest from around the world in an unbelievable range of colors.

KNITKING  
1128 Crenshaw Blvd.  
Los Angeles, Calif. 90019

I enclose one dollar . . .  
Please RUSH my beautiful new  
KNITKING YARN CATALOGUE to me at:

Name \_\_\_\_\_

Address \_\_\_\_\_

City \_\_\_\_\_ State \_\_\_\_\_ Zip \_\_\_\_\_





# BOOKS by KNITKING

## KNITKING CHILDREN'S BOOK

The Big, beautiful book of children's patterns. Over 50 complete and lovely patterns for infants and children to teenage. Buntings, Blankets and Baby outfits, cute Dresses, Leotites, Skirts, Suits, Pull-overs, Cardigans, Stockings, Trousers, etc. . . . The only Children's Book for the machine knitter published in the U.S.A. It sells for **\$2.95**

40 cents mailing  
Calif. residents add 5% Sale\*



## PRACTICAL KNITTING HINTS

We call this book the **TEXT BOOK** for machine knitters because it answers the many questions that occur in machine knitting, from preparing to knit, taking measurements, shaping, making buttonholes, special effects, bindings, bands and edges, etc., through finishing and blocking. It sells for **\$2.95**

40 cents mailing  
Calif. residents add 5% Sales Tax



## COLLECTING FILE

Keep your valuable **KNITKING MAGAZINES** in mint condition in a Collecting File. Each file holds twelve issues. **\$2.95**

75 cents mailing  
Calif. residents add 5% Sales Tax



## INTERCHANGEABLE YARN CHART

Specially prepared to allow you to substitute Nationally distributed brand name yarns for the **KNITKING YARNS** used in **KNITKING MAGAZINE**. **CHARTS** are complete with **ROWS** and **STITCHES** per inch at various Tensions. Order from **KNITKING**, 1128 Crenshaw Blvd., Los Angeles, California 90019.

**\$1.00**

plus 12 cents mailing  
Calif. residents add 5% Sales Tax

# NEW VOLUME AVAILABLE NOW

A complete sixth volume of **KNITKING MAGAZINES** with a flexible, transparent plastic cover and specially bound so that it will stay open at any page, is available at the special price of **\$6.95** (plus 85 cents mailing costs).

If purchased separately the magazines would cost a total of **\$9.00**.

The volume contains over 120 fully illustrated complete stylish patterns for all members of the family together with many valuable, practical knitting hints.

There is a very limited number of these volumes available and it will undoubtedly become a collectors item.

If you already have the entire set it will almost certainly be well thumbed and marked. Why not purchase a perfect mint condition volume for your bookshelf and ready reference at any time.

Place your order today and avoid disappointment. Send it to **KNITKING MAGAZINE**, 1128 Crenshaw Boulevard, Los Angeles, California 90019.

I enclose \$7.80  
Please RUSH my bound Sixth Volume of  
**KNITKING MAGAZINE** to me at:

Name \_\_\_\_\_

Address \_\_\_\_\_

City \_\_\_\_\_ State \_\_\_\_\_ Zip \_\_\_\_\_



# knitking

*magazine*

Most subscribers to KNITKING MAGAZINE recently received a letter from us detailing the Specials available during our annual Pre-Inventory Sale . . . One of the many advantages to subscribing is inclusion in our mailing list and being informed of Special Sales, new products etc. . . In fact, the substantial savings on many included items in our Pre-Inventory Sale can more than pay for a subscription to KNITKING MAGAZINE . . . and nowhere else in the U.S. can you obtain quality patterns specially prepared for machine knitters.

Beautiful KNITKING Yarns are available during the Pre-Inventory Sale at prices substantially lower than our normal discount prices . . . If you have already used KNITKING Yarns, we feel that there is a good chance you will take advantage of the very low sale prices . . . If you have not yet tried them, we suggest that you do so while the Sale is on . . . Once you use KNITKING Yarns you will find it difficult to go back to yarns of inferior quality . . . and remember even our 100% Virgin Wools are machine washable.

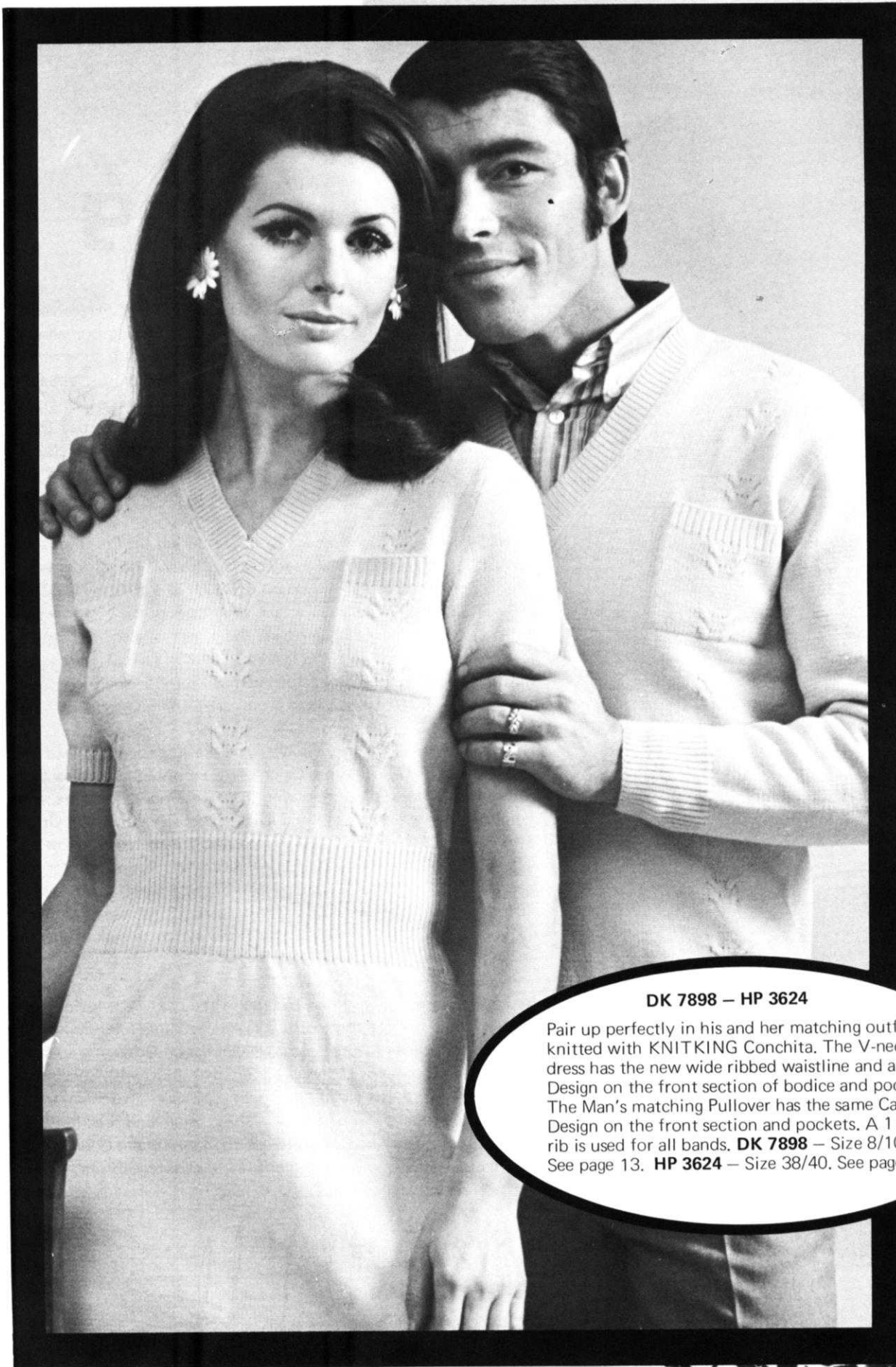
The new range of Orlon yarns we have are just superb . . . we are sure that you have seen other Orlon yarns before but we know that you cannot obtain Orlons anything like our Amore, Amorina, and Amoretta anywhere else in America. It is a strange fact that Orlon is an American fiber that is spun into this superb range in Europe and then shipped back to the U.S. entirely and exclusively for the pleasure of KNITKING Customers. All of the garments in this issue are made with gorgeous KNITKING Yarns . . . Knit any of them for yourself in KNITKING Yarns and discover how beautiful your finished knits can look.

We have some exciting things coming in the next issue including a 3-piece Pants Suit for the sporty Girl, a cute Tunic top for wearing at the beach or over Slacks . . . two eyelet design Dresses, one made with a JAC 40 pattern . . . a two piece outfit (Skirt with Shell top), two Sport Shirts for Men . . . Father and Son matching front zippered Jackets . . . Brother and Sister matching outfits that caused quite a stir when exhibited at the Los Angeles County Fair last year . . . an attractive Beach outfit for a young Girl plus several outstanding interesting knits.



LETTER  
from the  
PUBLISHER





**DK 7898 – HP 3624**

Pair up perfectly in his and her matching outfits knitted with KNITKING Conchita. The V-necked dress has the new wide ribbed waistline and a Cable Design on the front section of bodice and pockets. The Man's matching Pullover has the same Cable Design on the front section and pockets. A 1 x 1 rib is used for all bands. **DK 7898** – Size 8/10. See page 13. **HP 3624** – Size 38/40. See page 14.




**HP 3622**

For Spring . . . For Summer . . . A Man tailored Sport Shirt is knitted in a Holding Position Design using KNITKING Linen Cotton (See KNITKING NEWS). Rib the Bands and Collar and zip the front opening. Size 40/42. See page 17.

**DK 7896**

The top of a most attractive 2-piece Dress is knitted with KNITKING Linen Cotton (See KNITKING NEWS) combined with Subita Dralon 3-ply. The Pattern Stitch is an easy one and has a 3 dimensional effect. Knit the Skirt in 4 sections with Linen Cotton then weave it together. Rib the Bands and Collar. Size 12/14. See page 16.





**HP 3623**

Any sportive Man will gladly add this good looking Pullover to his wardrobe. It is knitted with KNITKING Subita Crepe 2 x 4 in a wide Rib design with 1 x 1 ribbing at neckline and on the bands. Zip the front opening. Size 40/42. See page 19.

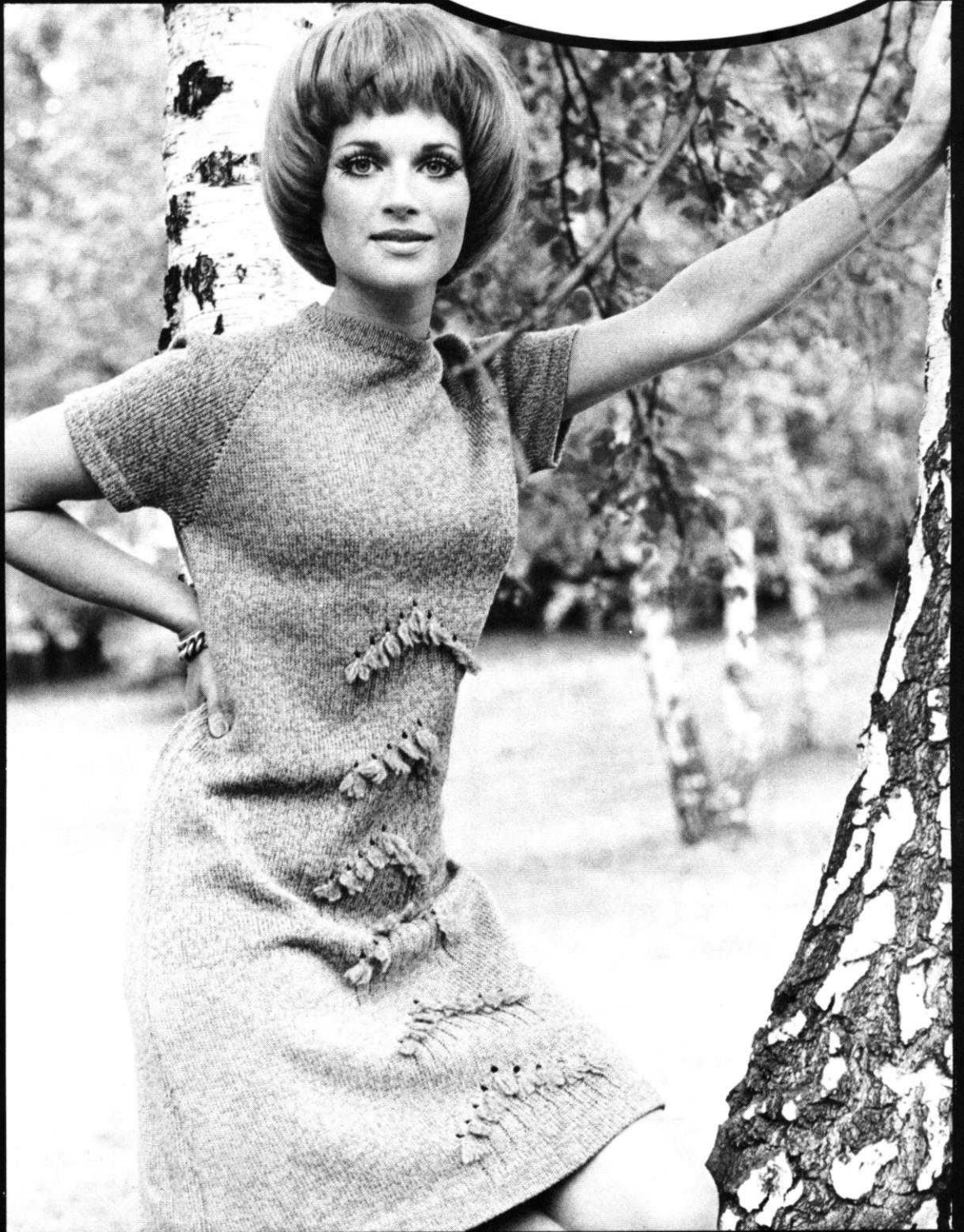
**DK 7897**

A widely spaced Rib makes a sleek and slimming 2-piece Dress. Knit it with KNITKING Subita Crepe 2 x 4. Belt it low and button the Neckline. Size 16/18. See page 18.

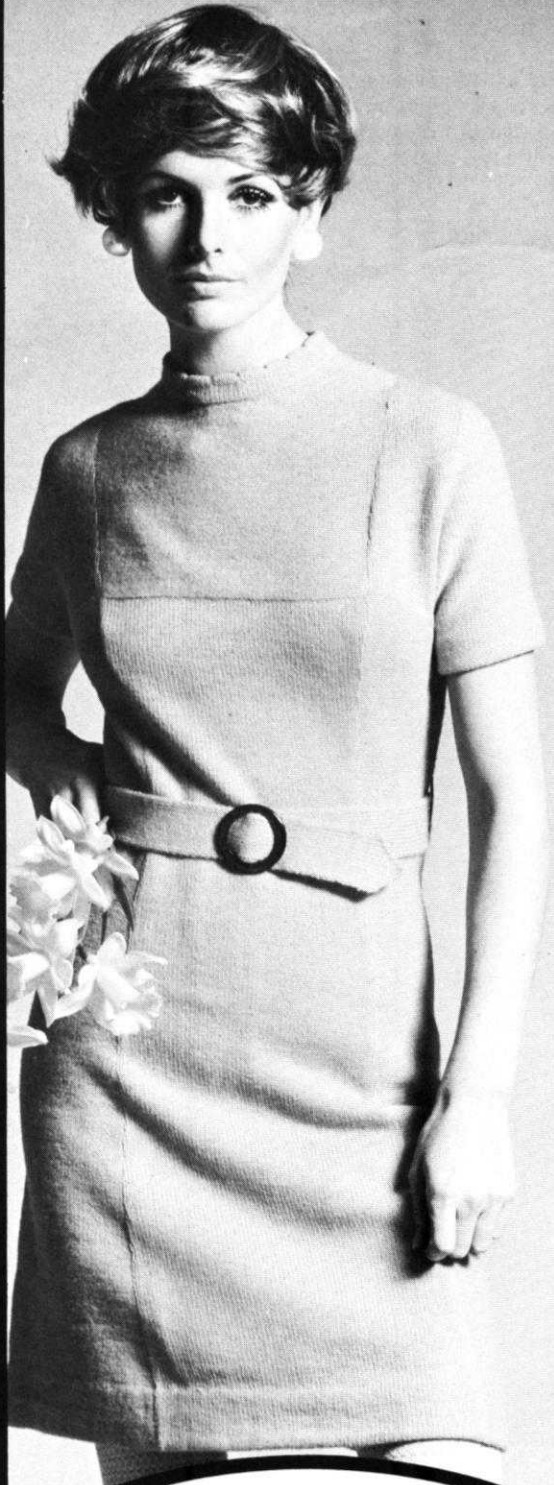


**DK 7892**

A Dress to delight anyone is knitted in stockinette stitch with KNITKING Double Knitting. The Model is in a soft Gold color. Raglan Sleeves (See Practical Knitting Hints), soft shaping at the sides, an open work design on the front section (made with needles out of work), then a feathery fringe tied to the top of the design make it a special favorite. Size 14/16. See page 20.







**DK 7894**

A combination of the knit side and the purl side is used for this Dress knitted with KNITKING Crocus Crepe. Take note of the new Collar with a scalloped edge made by using a Holding Position Design at the turning point. Size 14/16. See page 22.



**DK 7895**

Be sure to include this 2-piece Dress for your Spring selection of knits . . . Truly lovely when made with KNITKING Excelsior in two colors. Stockinette stitch with ribbed Bands and Belt. Size 10/12. See page 24.





**DK 7893**

The younger set still wants Mini dresses, but if you prefer yours Midi . . . or even Maxi . . . add extra stripes at the lower edge, then turn your Row Counter back to 34 and continue instructions as given. Stripe it in two colors of KNITKING Subita Crepe 2 x 3. Size 10/12. See page 25.



**DK 7908**

Be a jump ahead of the season and knit a striped sleeveless Dress with an attractive shaping of the plain colored yoke. Use two colors of KNITKING Subita Crepe 2 x 3. Size 10/12. See page 26.



**MK 5257**

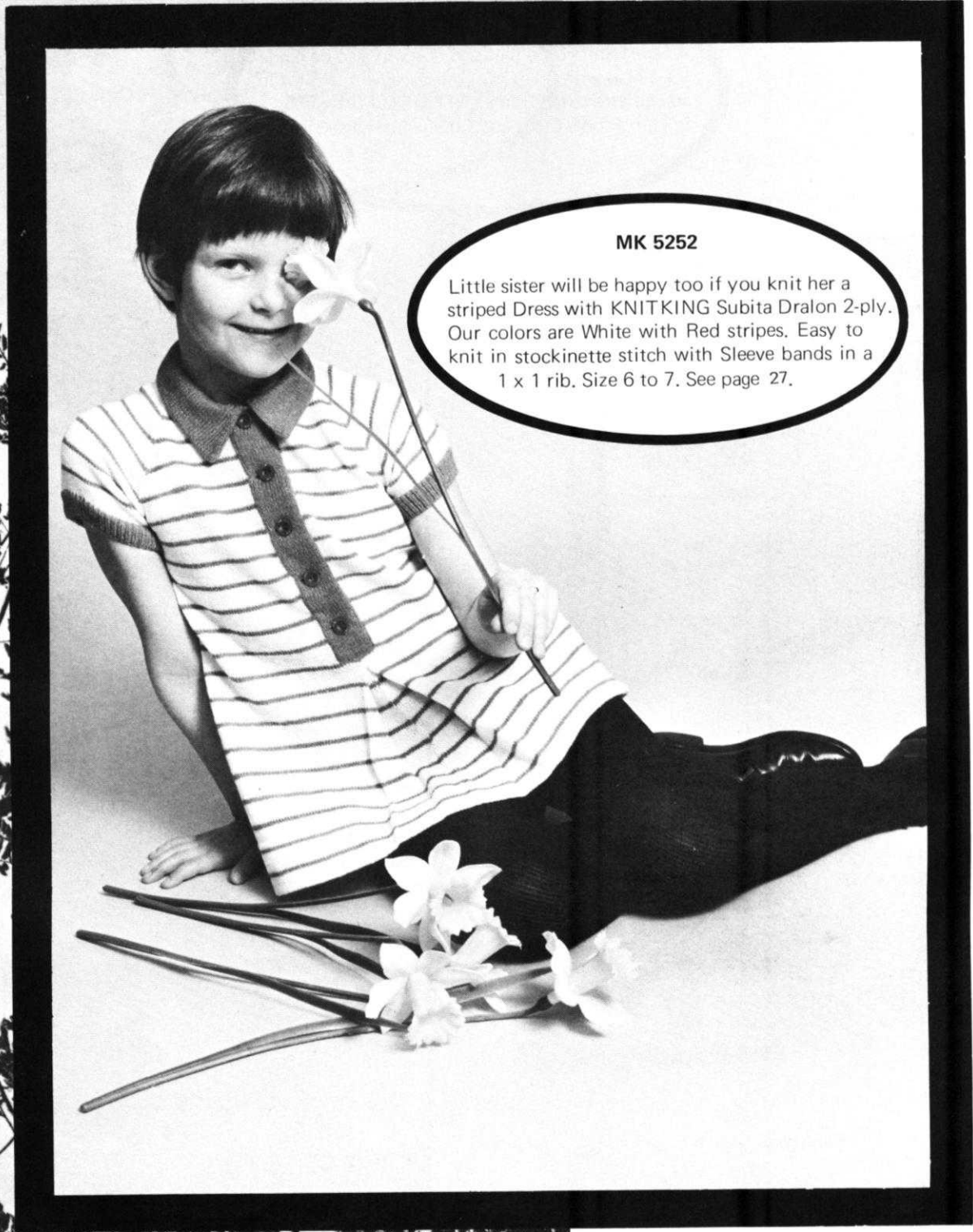
Machine washable KNITKING Sonika Dralon in two colors is knitted into a pretty Spring Dress with a lowered waistline. The inverted pleats and the shoulder sections boast a Norwegian border Design that follows the line drawing. Stripes accent the Collar and Sleeves. Size 7 to 8.  
See page 28.



**KK 5256**

Spring is here and a young man is wearing a bright new Pullover knitted with 3 colors of KNITKING Subita Crepe 2 x 3. The Holding Position Design follows the line drawing (you can use Wheel 3). The Collar and Bands are a 1 x 1 Rib, the front is zipped. Size 4 to 6. See page 29.



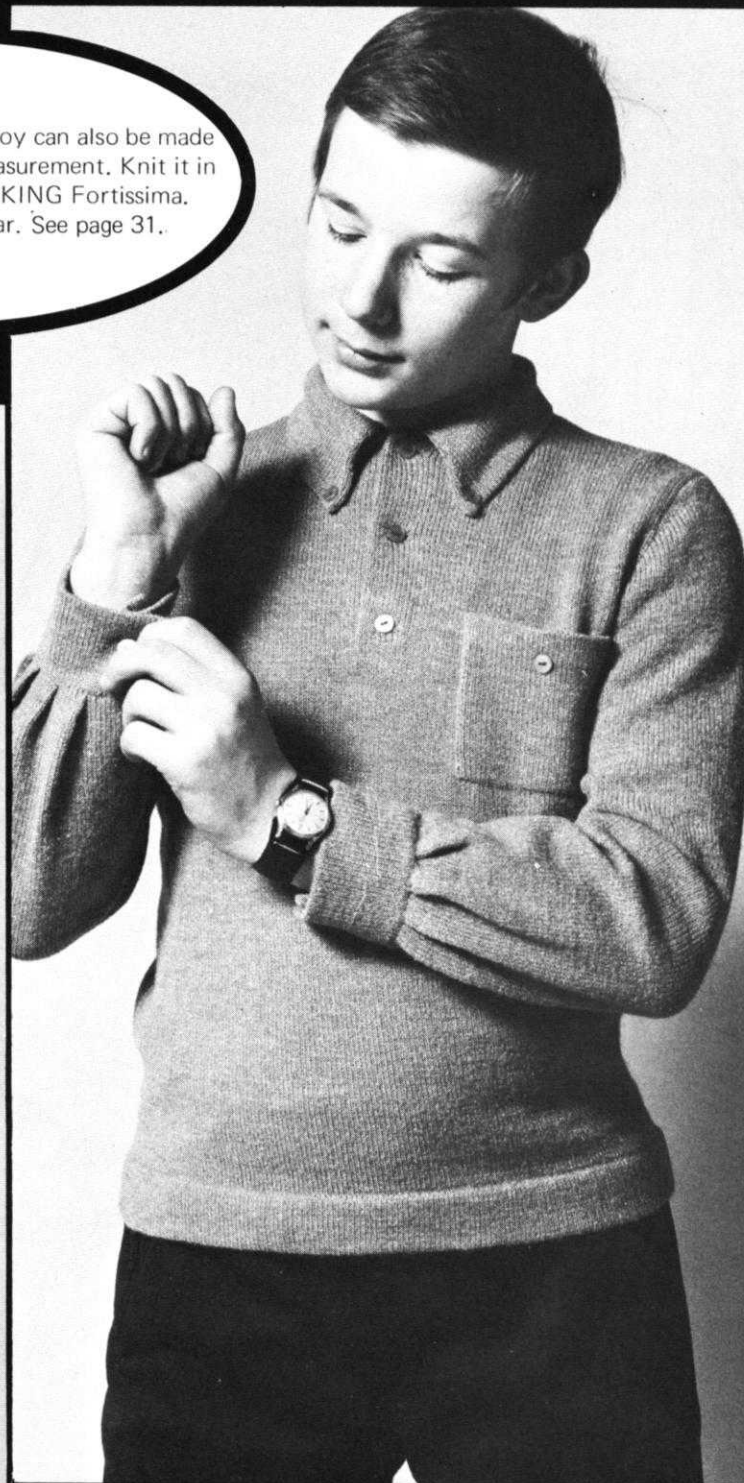


**MK 5252**

Little sister will be happy too if you knit her a striped Dress with KNITKING Subita Dralon 2-ply. Our colors are White with Red stripes. Easy to knit in stockinette stitch with Sleeve bands in a 1 x 1 rib. Size 6 to 7. See page 27.

**KK 5255**

A Sport Shirt for a teen age boy can also be made for a Man with 34" Chest measurement. Knit it in stockinette stitch using KNITKING Fortissima. Button Front, Cuffs and Collar. See page 31.



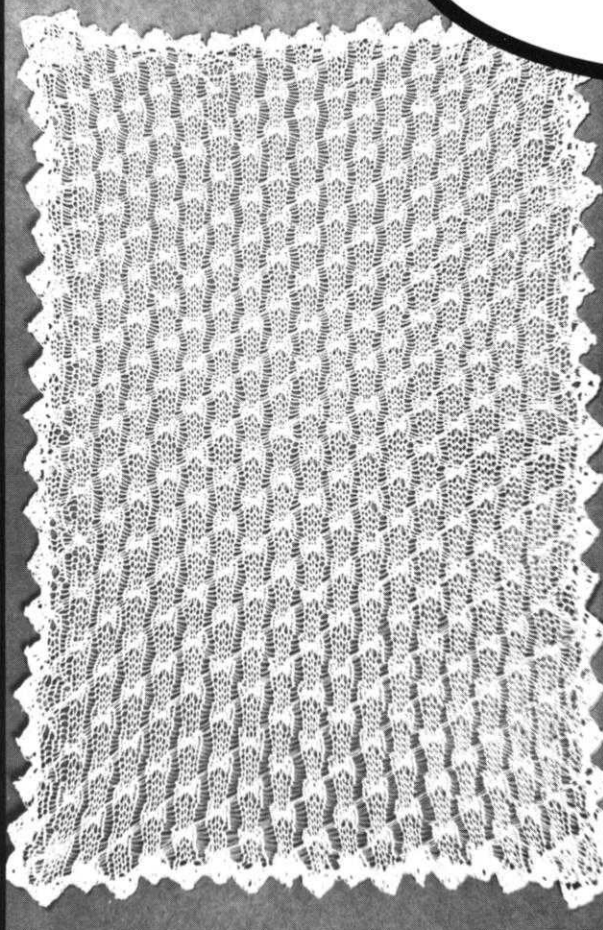
**MK 5253**

A Holding Position Design and bright stripes are used for a darling Easter Dress for a pre-teen girl. Knit it with KNITKING Linen Cotton (See KNITKING NEWS) and stripes of Red Subita Dralon. The Purl side of the pattern is the right side. All bands and Collar are stockinette stitch on the knit side. Size 10 to 11. See page 30.



**KG 1923 LACE PLACE MAT**

Knit some elegant lace Place Mats for yourself or as a Wedding Gift for some lucky Bride . . . Holding Position Design with out of work needles. Use J.P. Coats Crochet Cotton No. 20. See page 32.



**KG 1922 TOY DUCK**

Need an Easter gift for small fry? . . . then delight any youngster with a saucy toy Duck. Knit it with KNITKING Frigate over every other needle. See page 32.

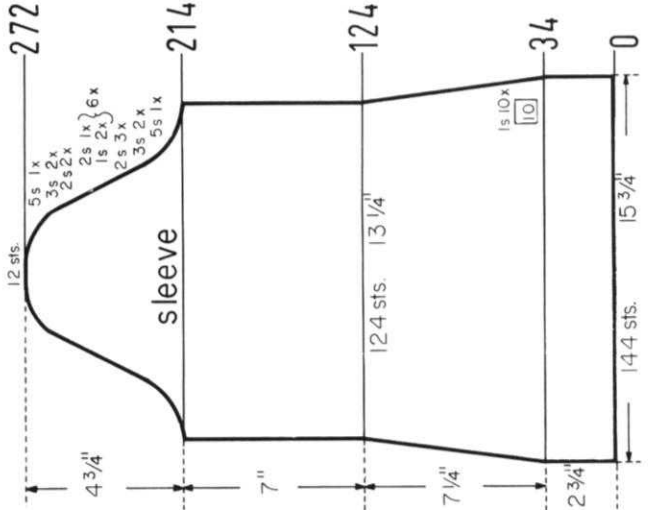
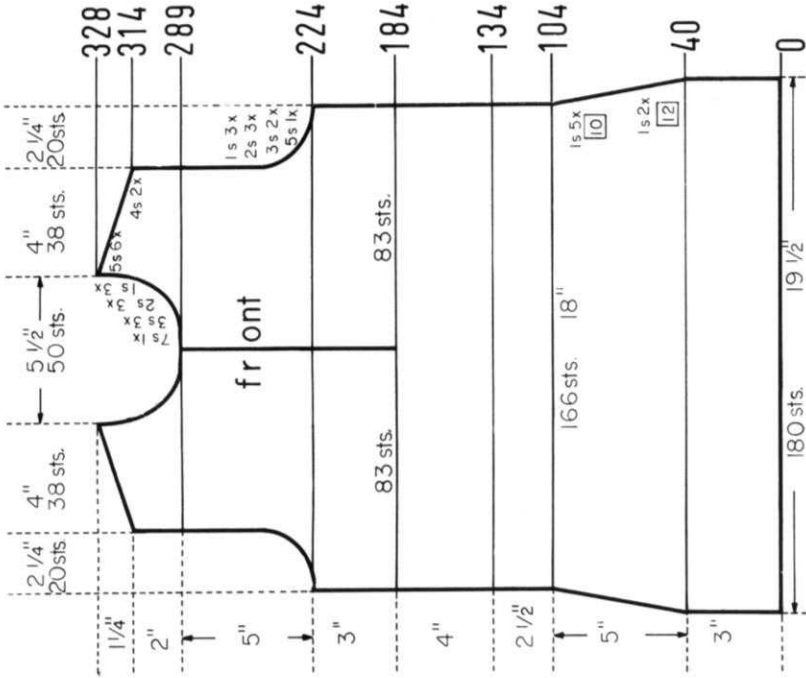


# DP 7935

**SIZE:** 8/10. **MATERIAL:** 14 oz. (8 balls) red KNITTING Subita Crepe 2 x 3, 7 yards Rick-Rack and 1½ yards embroidered border trim. **TENSION:** KNITTING 3 to 5. **GAUGE:** 18 sts, 2", 25 rows 2". **PATTERN:** Stockinette Stitch. **DECREASES:** After rows indicated, hang the 3rd st. ON EACH SIDE onto the 2nd st., then move the end sts. inward to fill the empty needle.

**FINISHING:** Block all sections to measurements given. Using elastic thread, make 3 rows of shirring about 3/4" apart at waistline and at lower edge of sleeves. Join front and back section at sides and shoulders. Sew sleeves together and set in. Turn under 15 rows at lower edge and hem to wrong side. Work 2 rows of single crochet around front opening, neckline and sleeve edges. Sew embroidered trim and Rick-Rack to blouse as pictured.

**knitting**  
*magazine*



Move the Cam Box to the left side, turn the Row Counter back to 184 and complete the left half. Follow the instructions from \*.

ON CAM BOX SIDE, bind off 7 sts. after Row 289 (ODD ROWS = NECK SHAPING); 3 sts. after Rows 291, 293, 295; 2 sts. after Rows 297, 299, 301; 1 st. after Rows 303, 305, 307. For SHOULDER, bind off 4 sts. after Rows 314, 316; 5 sts. after Rows 318, 320, 322, 324, 326, 328.

ON CAM BOX SIDE, bind off 5 sts. after Row 224; 3 sts. after Rows 226, 228; 2 sts. after Rows 230, 232, 234; 1 st. after Rows 236, 238, 240, then knit to Row 289.

\* ROWS 185 to 224: Knit even.  
ON EACH SIDE, decrease 1 st. after Rows 40, 52, 64, 74, 84, 94, 204, then knit to Row 184, put 83 needles on the left side into holding position (or put the sts. on a stitch holder) and complete the right half first.

ROWS 0 to 40: Knit even.  
Cast on 180 sts. and work stockinette st.

ON CAM BOX SIDE, bind off 5 sts. after Rows 214, 215; 3 sts. after Rows 216, 217, 218, 219; 2 sts. after Rows 220, 221, 222, 223, 224, 225; 1 st. after Rows 226, 227, 228, 229; 2 sts. after Rows 230, 231; 1 st. after Rows 232, 233, 234, 235; 2 sts. after Rows 236, 237; 1 st. after Rows 238, 239, 240, 241; 2 sts. after Rows 242, 243; 1 st. after Rows 244, 245, 246, 247; 2 sts. after Rows 248, 249; 1 st. after Rows 250, 251, 252, 253; 2 sts. after Rows 254, 255; 1 st. after Rows 256, 257, 258, 259; 2 sts. after Rows 260, 261, 262, 263, 264, 265; 3 sts. after Rows 266, 267, 268, 269; 5 sts. after Rows 270, 271; 12 sts. after Row 272.

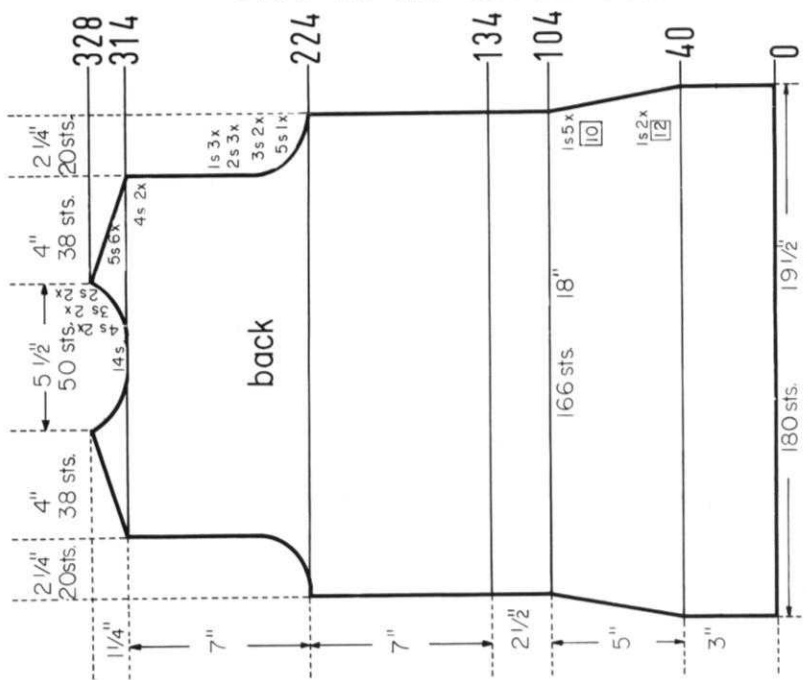
ON EACH SIDE, decrease 1 st. after Rows 34, 44, 54, 64, 74, 84, 94, 104, 114, 124, then knit to Row 214.  
ROWS 0 to 34: Knit even.  
Cast on 144 sts. and work stockinette st.

Move the Cam Box to the left side, turn the Row Counter back to 314 and complete the left half. Follow the instructions from \*.

\* ON CAM BOX SIDE, bind off 4 sts. after Row 314 (EVEN ROWS = SHOULDER SHAPING), 315 (ODD ROWS = NECK SHAPING); 316, 317; 5 sts. after Row 318; 3 sts. after Row 319; 5 sts. after Row 320; 3 sts. after Row 321; 5 sts. after Row 322; 2 sts. after Row 323; 5 sts. after Row 324; 2 sts. after Row 325; 5 sts. after Rows 326, 328.

ON CAM BOX SIDE, bind off 5 sts. after Rows 224, 225; 3 sts. after Rows 226, 227, 228, 229; 2 sts. after Rows 230, 231, 232, 233, 234, 235; 1 st. after Rows 236, 237, 238, 239, 240, 241, then knit to Row 314, bind off the center 14 sts., put the needles on the left side into holding position and complete the right half first.

ON EACH SIDE, decrease 1 st. after Rows 40, 52, 64, 74, 84, 94, 104, then knit to Row 224.  
ROWS 0 to 40: Knit even.  
Cast on 180 sts. and work stockinette st.

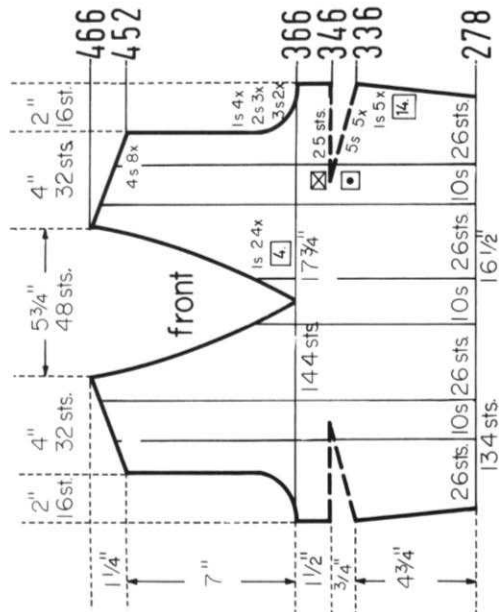
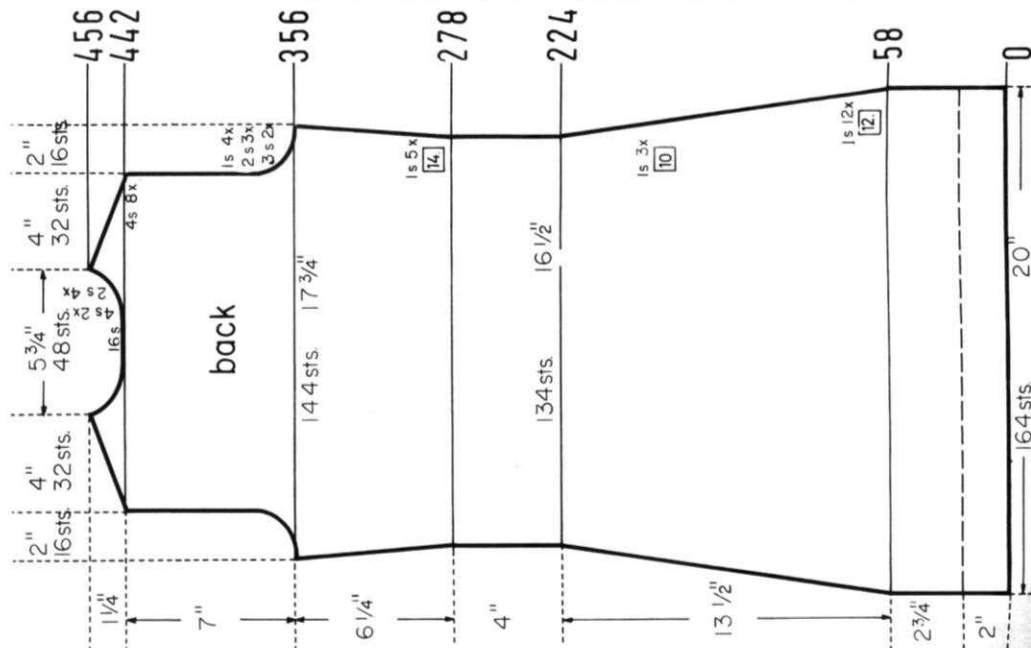




# DK 7898

SIZE: 8/10. MATERIAL: 17½ oz. (10 balls) pink KNITTING Conchita. TENSION: KNITTING 5 to 7. GAUGE: 16 sts, 2", 24 rows 2". PATTERN: Stockinette Stitch, K1, P1, Ribbing at the waistline and a Cable Design on the upper part of the front section. EDGES: K1, P1, Ribbing, DECREASES: After rows indicated, hang the 3rd st. on the appropriate sides onto the 2nd st., then move the end sts. inward to fill the empty needle. INCREASES: After rows indicated, move the 2 end sts. on each side 1 needle outward, then place the 3rd st. from the row below onto the empty needle. When knitting Short Rows for the neckband shaping, transfer the appropriate ribber sts. to the main machine. The finished length is about 35".

FINISHING: Block all sections to measurements given. Join front and back section at sides and shoulders. Sew sleeves together and set in. Turn under 2" at lower edge and hem to wrong side. Join short ends of neckband sections, then sew band to neckline. Sew pockets in place.



Move the Cam Box to the left side, turn the Row Counter back to 366 and complete the left half. Follow the instructions from \*.

\* ON OPPOSITE SIDE of CAM BOX (NECK SIDE) decrease 1 st. after Rows in ( ). ON CAM BOX SIDE, bind off 3 sts. after Rows 366 (366), 368; 2 sts. after Rows 370, (370), 372, 374; (374), 1 st. after Rows 376, 378, (378), 380, 382, (382). The Armhole Shaping is now completed. Continue to decrease 1 st. ON NECK SIDE after Rows 386, 390, 394, 398, 402, 406, 410, 414, 418, 422, 426, 430, 434, 438, 442, 446, 450, then again after Rows in ( ). For SHOULDER bind off 4 sts. after Rows 452, 454, (454), 456, 458, (458), 460, 462, 464, 466.

ON EACH SIDE, increase 1 st. after Rows 278, 292, 306, 320, 334, then knit to Row 336 and work Short Rows for the DARTS. ON OPPOSITE SIDE of CAM BOX put into holding position 5 needles after Rows 336, 337, 338, 339, 340, 341, 342, 343, 344, 345. ON OPPOSITE SIDE of CAM BOX bring all needles back into working position after Rows 346, 347, then knit to Row 366, put 72 needles on the left side into holding position and complete the right half first.

Work the front section the same as the back section to ROW 278, then continue with stockinette st. and worked the Cable Design over the sts. marked on the Diagram. (Mark the appropriate needles before the first increase).

Move the Cam Box to the left side, turn the Row Counter back to 442 and complete the left half. Follow the instructions from \*.

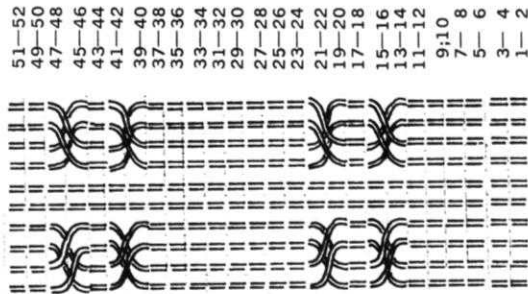
\* ON CAM BOX SIDE, bind off 4 sts. after 442 (EVEN ROWS = SHOULDER SHAPING), 443 (ODD ROWS = NECK SHAPING), 444, 445, 446; 2 sts. after Row 447; 4 sts. after Row 448; 2 sts. after Row 449; 4 sts. after Row 450; 2 sts. after Row 451; 4 sts. after Row 452; 2 sts. after Row 453; 4 sts. after Rows 454, 456.

ON CAM BOX SIDE, bind off 3 sts. after Rows 356, 357, 358, 359; 2 sts. after Rows 360, 361, 362, 363, 364, 365; 1 st. after Rows 366, 367, 368, 369, 370, 371, 372, 373, then knit to Row 442, bind off the center 16 sts, put the needles on the left side into holding position and complete the right half first.

ON EACH SIDE, increase 1 st. after Rows 278, 292, 306, 320, 334, then knit to Row 356.

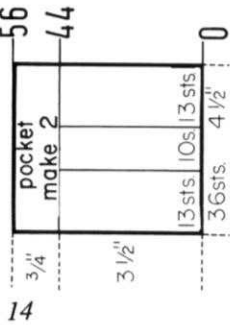
ON EACH SIDE, decrease 1 st. after Rows 58, 70, 82, 94, 106, 118, 130, 142, 154, 166, 178, 190, 202, 212, 222, then knit to Row 224, transfer every other st. to the ribber and work K1, P1, Ribbing to Row 278. After Row 278 transfer the ribber sts. back to the main machine and continue working stockinette st.

ROWS 0 to 58: Knit even  
Cast on 164 sts. and work stockinette st.



Each Cable Stripe reaches over 10 sts. When the instructions state to begin the Cable Design, knit 6 rows before crossing the stitches for the first time. STEP 1. Using 2 double transfer tools, hang the 1st and 2nd sts. ON EACH SIDE within the 10 Cable stitches onto the 3rd and 4th needles, then hang the 3rd and 4th sts. onto the 1st and 2nd needles. STEP 2. KNIT 6 rows. STEP 3. Cross the sts. the same as you did in STEP 1. STEP 4. Knit 20 rows. Repeat STEPS 1 to 4 for Pattern.

- 51-52
- 49-50
- 47-48
- 45-46
- 43-44
- 41-42
- 39-40
- 37-38
- 35-36
- 33-34
- 31-32
- 29-30
- 27-28
- 25-26
- 23-24
- 21-22
- 19-20
- 17-18
- 15-16
- 13-14
- 11-12
- 9-10
- 7-8
- 5-6
- 3-4
- 1-2

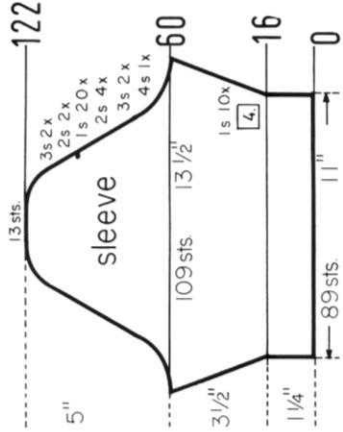


Cast on 36 sts., work stockinette st. and the Cable Design over the sts. marked on the diagram. After Row 44 transfer every other st. to the ribber and work 12 rows K1, P1, Ribbing, then bind off all sts. the crochet method for ribbing.  
NECKBAND, DK 7898



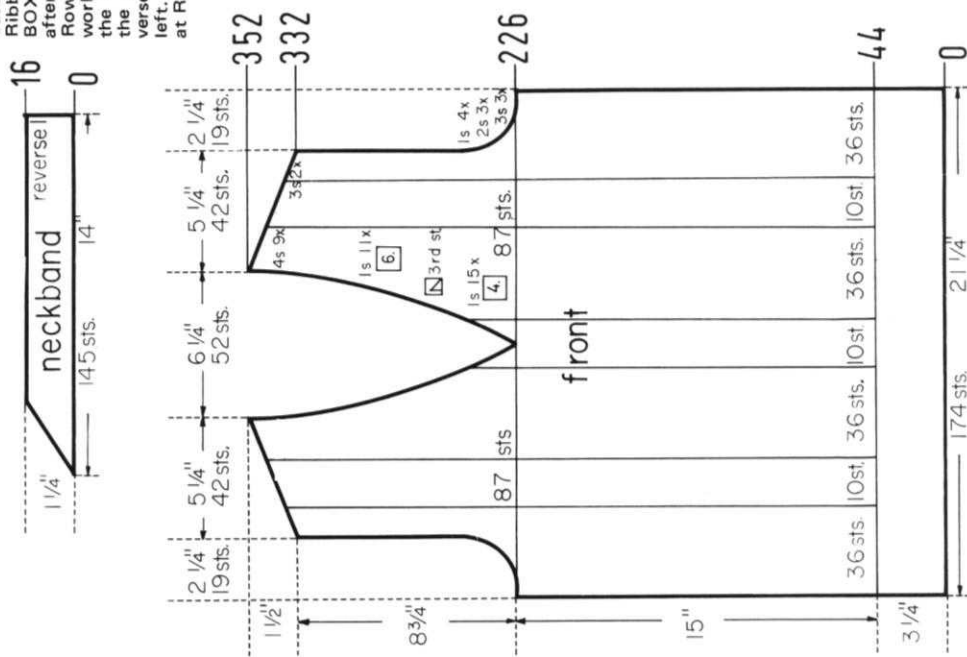
Cast on 123 sts. and work K1, P1, Ribbing. ON OPPOSITE SIDE of CAM BOX put into holding position 3 needles after Rows 2, 4, 6, 8, 10, 12, 14. After Row 16 bring all needles back into working position, then bind off all sts. the crochet method for ribbing. Work the second neckband section with reverse shaping, casting on from right to left. (Cam Box will be on the LEFT side at Row 0).

ON CAM BOX SIDE, bind off 4 sts. after Rows 60, 61; 3 sts. after Rows 62, 63, 64, 65; 2 sts. after Rows 66, 67, 68, 69, 70, 71, 72, 73. ON EACH SIDE hang the 1st st. onto the 2nd st. after Rows 74, 76, 78, 80, 82, 84, 86, 88, 90, 92, 94, 96, 98, 100, 102, 104, 106, 108, 110, 112. ON CAM BOX SIDE, bind off 2 sts. after Rows 114, 115, 116, 117; 3 sts. after Rows 118, 119, 120, 121, 13 sts. after Row 122.  
ON EACH SIDE, increase 1 st. after Rows 16, 20, 24, 28, 32, 36, 40, 44, 48, 52, then knit to Row 60.  
ROWS 0 to 16: Knit even, then change to stockinette st.  
Cast on 89 sts. and work K1, P1, Ribbing.



## HP 3624

SIZE: 38/40. MATERIAL: 1 1/2 oz. (10 balls) peach KNITTING Conchita. TENSION: KNIT-KING 5 to 7. GAUGE: 16 sts. 2", 24 rows 2".  
PATTERN: Stockinette Stitch and a Cable Design on the front section. (See instructions on Line Drawing). EDGES: K1, P1, Ribbing, NECKLINE DECREASES: After rows indicated, hang the 3rd st. ON NECK SIDE onto the 2nd st. then moved the end sts. inward to fill the empty needle.  
SLEEVE INCREASES: After rows indicated, move the 2 end sts. ON EACH SIDE 1 needle outward, then place the 3rd st. from the row below onto the empty needle. Before putting the needles on the neckband into holding position, transfer the appropriate ribber sts. to the main machine.  
FINISHING: Block all sections to measurements given. Join front and back section at sides and shoulders. Sew sleeves together and set in. Join short ends of neckband sections, then sew neckband to neckline. Sew pocket in place.



Cast on 145 sts. and work K1, P1, Ribbing. ON OPPOSITE SIDE of CAM BOX put into holding position 3 needles after Rows 2, 4, 6, 8, 10, 12, 14. After Row 16 bring all needles back into working position, then bind off all sts. the crochet method for ribbing. Work the second neckband section with reverse shaping, casting on from right to left. (Cam Box will be on the LEFT side at Row 0).

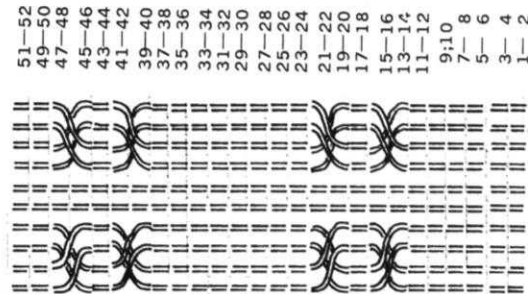
Move the Cam Box to the left side, turn the Row Counter back to 226 and complete the left half. Follow the instructions from \*.

\* Decrease 1 st. ON NECK SIDE after Rows in ( ). ON CAM BOX SIDE, bind off 3 sts. after Rows 226, (226), 228, 230; (230), 2 sts. after Rows 232, 234, (234), 236; 1 st. after Rows 238, (238), 240, 242, (242), 244. The Armhole Shaping is now completed. Continue to decrease 1 st. ON NECK SIDE after Rows 246, 250, 254, 258, 262, 266, 270, 274, 278, 282, 286, 292, 298, 304, 310, 316, 322, 328, then again after Rows in ( ). For SHOULDER bind off 3 sts. after Rows 332, 334; (334), 4 sts. after Row 336, 338, 340, (340), 342, 344, 346, (346), 348, 350, 352.

ROWS 45 to 226: Knit even, then put 87 needles from the left side onto a stitch holder, (or put needles in holding position) and complete the right half first.

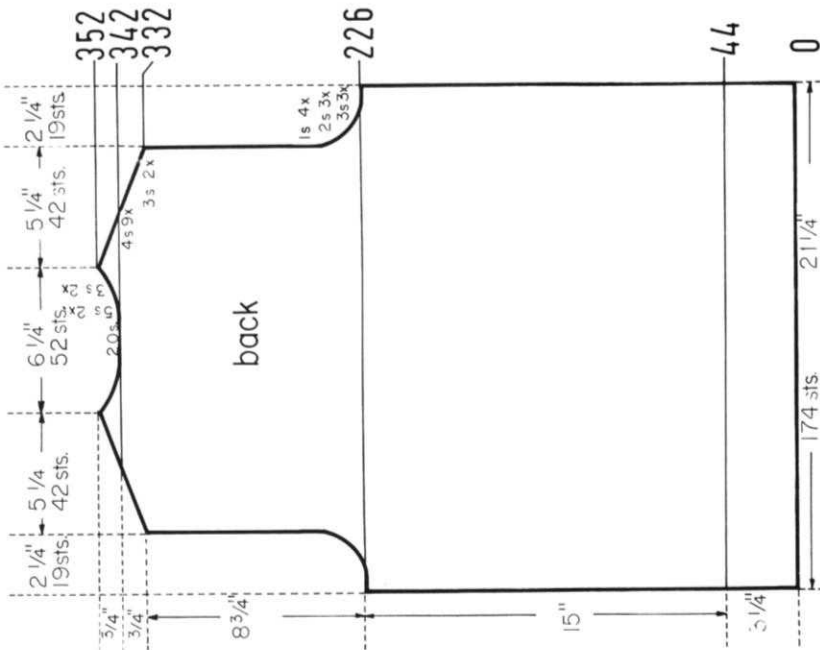
ROWS 0 to 44: Knit even, then change to stockinette st. and work the Cable Design over the sts. marked on the Diagram. Cross the sts. the first time after Row 50.

Cast on 174 sts. and work K1, P1, Ribbing.



Each Cable Stripe reaches over 10 sts. When the instructions state to begin the Cable Design, knit 6 rows before crossing the stitches for the first time. STEP 1. Using 2 double transfer tools, hang the 1st and 2nd sts. ON EACH SIDE within 13-14th needles, then hang the 3rd and 4th sts. onto the 1st and 2nd needles. STEP 2. KNIT 6 rows. STEP 3. Cross the sts. the same as you did in STEP 1. STEP 4. Knit 20 rows. Repeat STEPS 1 to 4 for Pattern.





Move the Cam Box to the left side, turn the Row Counter back to 342 and complete the left half. Follow the instructions from \*.

\* ON CAM BOX SIDE, bind off 4 sts. after Row 342 (EVEN ROWS = SHOULDER SHAPING); 5 sts. after Row 343 (ODD ROWS = NECK SHAPING); 4 sts. after Row 344; 5 sts. after Row 345; 4 sts. after Row 346; 3 sts. after Row 347; 4 sts. after Row 348; 3 sts. after Row 349; 4 sts. after Rows 350, 352.

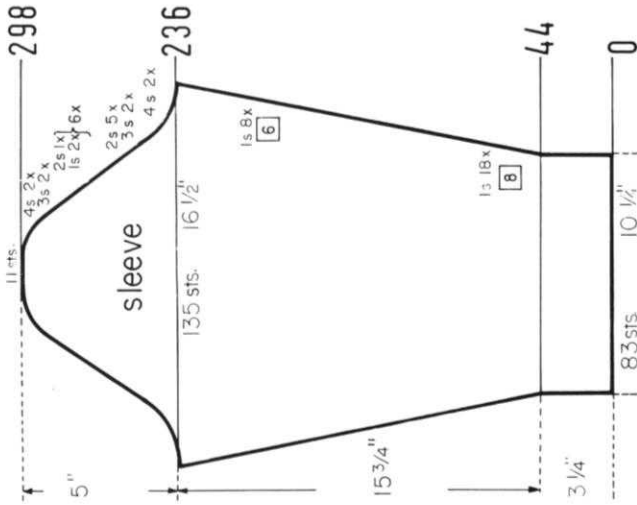
ON CAM BOX SIDE, bind off 3 sts. after Rows 332, 333, 334, 335; 4 sts. after Rows 336, 337, 338, 339, 340, 341, then knit to Row 342, bind off the center 20 sts., put the needles on the left side into holding position and complete the right half first.

ON CAM BOX SIDE, bind off 3 sts. after Rows 226, 227, 228, 229, 230, 231; 2 sts. after Rows 232, 233, 234, 235, 236, 237; 1 st. after Rows 238, 239, 240, 241, 242, 243, 244, 245, then knit to Row 332.

ROWS 45 to 226: Knit even.

ROWS 0 to 44: Knit even, then change to stockinette st.

Cast on 174 sts. and work K1, P1, Ribbing.

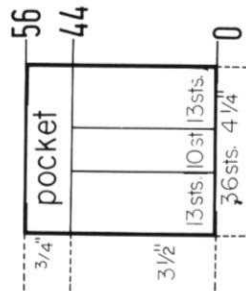


ON CAM BOX SIDE, bind off 4 sts. after Rows 236, 237, 238, 239; 3 sts. after Rows 240, 241, 242, 243; 2 sts. after Rows 244, 245, 246, 247, 248, 249, 250, 251, 252, 253; 1 st. after Rows 254, 255, 256, 257; 2 sts. after Rows 258, 259, 1 st. after Rows 260, 261, 262, 263; 2 sts. after Rows 264, 265; 1 st. after Rows 266, 267, 268, 269; 2 sts. after Rows 270, 271; 1 st. after Rows 272, 273, 274, 275; 2 sts. after Rows 276, 277; 1 st. after Rows 278, 279, 280, 281; 2 sts. after Rows 282, 283; 1 st. after Rows 284, 285, 286, 287; 2 sts. after Rows 288, 289; 3 sts. after Rows 290, 291, 292, 293; 4 sts. after Rows 294, 295, 296, 297; 11 sts. after Row 298.

ON EACH SIDE, increase 1 st. after Rows 44, 52, 60, 68, 76, 84, 92, 100, 108, 116, 124, 132, 140, 148, 156, 164, 172, 180, 188, 194, 200, 206, 212, 218, 224, 230, then knit to Row 236.

ROWS 0 to 44: Knit even, then change to stockinette st.

Cast on 83 sts. and work K1, P1, Ribbing.



Cast on 36 sts., work stockinette st. and the Cable Design over the sts. marked on the Diagram. Cross the sts. the first time after Row 6. After Row 44 transfer every other st. to the ribber and knit 12 rows K1, P1, Ribbing. After Row 56 bind off all sts. the crochet method for ribbing.

If purchased separately the magazines would cost a total of \$9.00.

The volume contains over 120 fully illustrated complete stylish patterns for all members of the family, together with many valuable, practical knitting hints.

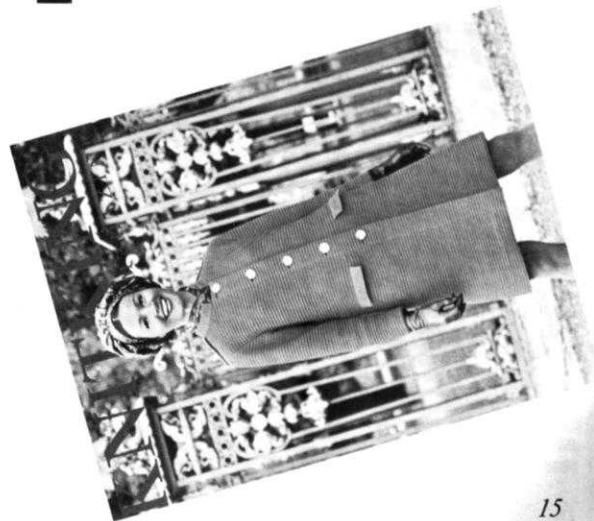
There is a very limited number of these volumes available and it will undoubtedly become a collectors item.

If you already have the entire set it will almost certainly be well thumbed and marked. Why not purchase a perfect mint condition volume for your bookshelf and ready reference at any time.

Place your order today and avoid disappointment. Send it to **KNITTING MAGAZINE, 1128 Crenshaw Boulevard, Los Angeles, California 90019.**

# a few left... BOUND VOLUME 5.

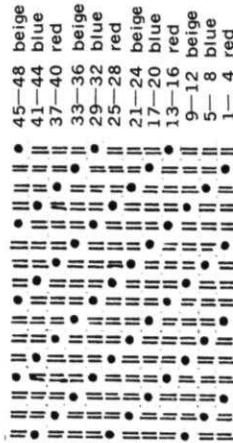
A complete fifth volume of **KNITTING MAGAZINES** with a flexible, transparent plastic cover and specially bound so that it will stay open at any page, is available at the special price of \$6.95 (plus 85 cents mailing costs).



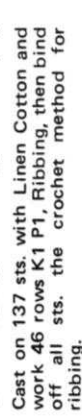
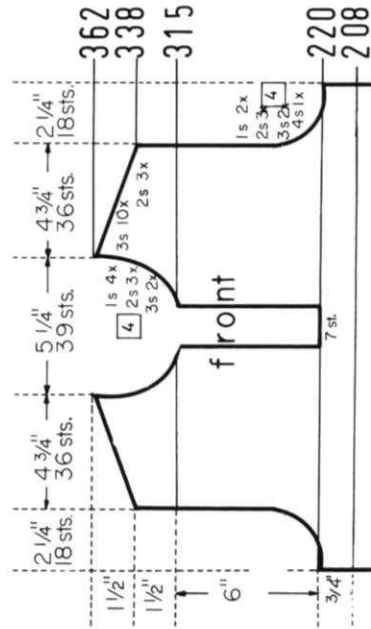
**SIZE:** 12/14. **MATERIAL:** 15½ oz. (9 balls) KNITTING Linen Cotton, 5½ oz. (3 balls) red and 5¼ oz. (3 balls) blue KNITTING Subita Dralon 3 ply. **TENSION:** KNITTING 5 to 7. **GAUGE:** Stockinette Stitch 15 sts. 2", 21 rows 2"; Pattern Stitch 15 sts. 2", 31 rows 2". **PATTERN:** SKIRT: Stockinette Stitch, worn on the purl side; BLOUSE: Holding Position Design according to Line Drawing, worn on the knit side; KNITTING machines use Wheel No. 3. **EDGES:** K1, P1, Ribbing. **SKIRT DECREASES:** After rows indicated, hang the 3rd st. ON EACH SIDE onto the 2nd st., then move the end sts. inward to fill the empty needle. **SLEEVE INCREASES:** After rows indicated, hang the st. from the row below ON EACH SIDE onto the next empty needle. (Check Pattern Disc Setting after all shapings). After the center sts. for neck shaping have been bound off, both halves can be knitted at the same time. See Practical Knitting Hint in Jan/Feb Issue of KNIT-KING Magazine.

**FINISHING:** Block all sections to measurements given. **SKIRT:** Weave the skirt sections together, 1 st. in from each edge. Turn under 15 rows on upper edge and 20 rows on lower edge and hem to wrong side. Insert an elastic band into upper hem. (If skirt is to be lined, leave the left side seam on upper section open for the zipper.) **BLOUSE:** Join front and back section at sides and shoulders, easing in the fullness at bustline of front section. Sew sleeves together and set in. Sew buttonhole band and button band to front opening. Sew collar to neckline. Finish buttonholes, sew on buttons.

USE WHEEL No. 3



- 45-48 beige
- 41-44 blue
- 37-40 red
- 33-36 beige
- 29-32 blue
- 25-28 red
- 21-24 beige
- 17-20 blue
- 13-16 red
- 9-12 beige
- 5-8 blue
- 1-4 red



Cast on 137 sts. with Linen Cotton and work 46 rows K1 P1, Ribbing, then bind off all sts. the crochet method for ribbing.

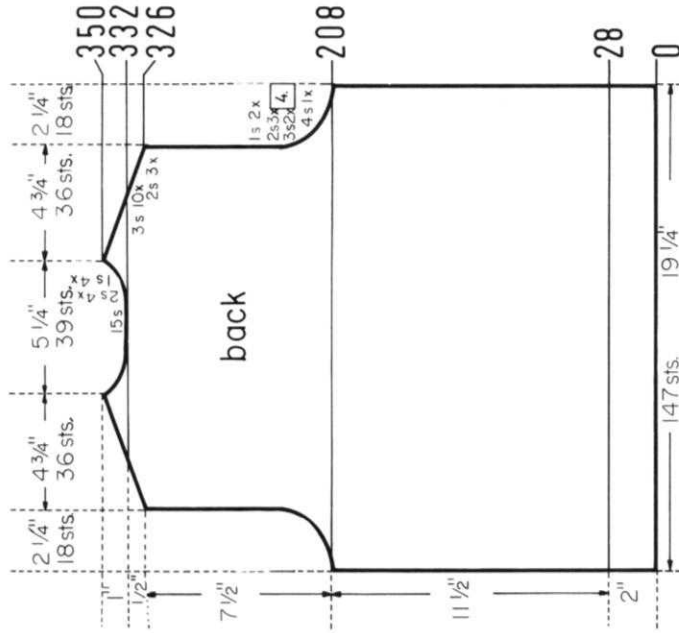
Bring the needles on the left side back into working position, knit 1 row in PATTERN to the left side, turn the Row Counter back to 220 and complete the left half. Follow the instructions from \*.

ON CAM BOX SIDE, bind off 3 sts. after Rows 315, 319, (ODD ROWS = NECK SHAPING); 2 sts. after Rows 323, 327, 331; 1 st. after Row 335, then continue to decrease 1 st. ON NECK SIDE after Rows in ( ). For SHOULDER bind off 2 sts. after Rows 338, (339), 340, 342; (343), 3 sts. after Rows 344, 346, (347 last time for Neck), 348, 350, 352, 354, 356, 358, 360, 362.

ON CAM BOX SIDE, bind off 4 sts. after Row 220; 3 sts. after Rows 224, 228; 2 sts. after Rows 232, 236, 240; 1 st. after Rows 244, 248, then knit to Row 315.

ROWS 209 to 220: Knit even, then bind off the center 7 sts., put the needles on the left side into holding position and complete the right half first.

Work the front section the same as the back section to ROW 208.



Bring the needles on the left side back into working position, knit 1 row in PATTERN to the left side, turn the Row Counter back to 332 and complete the left half. Follow the instructions from \*.

ON CAM BOX SIDE, bind off 3 sts. after Row 332 (EVEN ROWS = SHOULDER SHAPING); 2 sts. after Row 333 (ODD ROWS = NECK SHAPING); 3 sts. after Row 334; 2 sts. after Row 335; 3 sts. after Row 336; 2 sts. after Row 337; 3 sts. after Row 338; 2 sts. after Row 339; 3 sts. after Row 340; 1 st. after Row 341; 3 sts. after Row 342; 1 st. after Row 343; 3 sts. after Row 344; 1 st. after Row 345; 3 sts. after Row 346; 1 st. after Row 347; 3 sts. after Rows 348, 350.

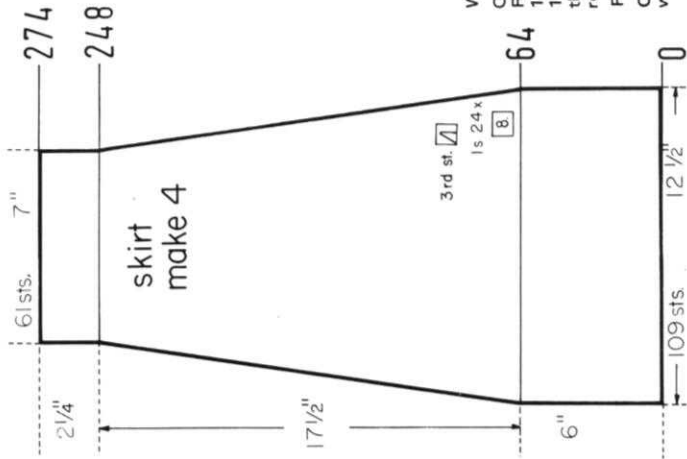
ON CAM BOX SIDE, bind off 2 sts. after Rows 326, 327, 328, 329, 330, 331, then knit to Row 332, bind off the center 15 sts., put the needles on the left side into holding position and complete the right half first.

ON CAM BOX SIDE, bind off 4 sts. after Rows 208, 209; 3 sts. after Rows 212, 213, 216, 217; 2 sts. after Rows 220, 221, 224, 225, 228, 229; 1 st. after Rows 232, 233, 236, 237, then knit to Row 326.

ROWS 29 to 208: Knit even.

ROWS 0 to 28: Knit even, then transfer the ribber sts. to the main machine and work the Holding Position Design.

Cast on 147 sts. with Linen Cotton and work K1, P1, Ribbing.



Cast on 55 sts. with Linen Cotton and work K1, P1, Ribbing. Make buttonholes after Row 7 over the 7th-11th, 21st-25th, 35th-39th and 49th-53rd sts. counting from the left side. After Row 14 bind off all sts. the crochet method for ribbing.

Work the button band the same, but omit the buttonholes.

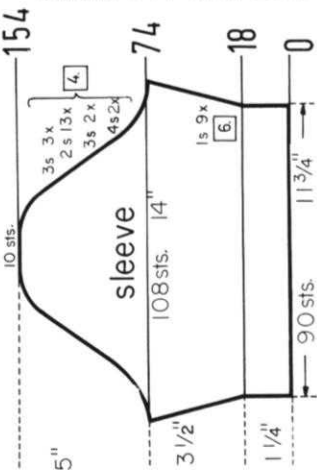
Work 3 more sections the same.

ON EACH SIDE, decrease 1 st. after Rows 64, 72, 80, 88, 96, 104, 112, 120, 128, 136, 144, 152, 160, 168, 176, 184, 192, 200, 208, 216, 224, 232, 240, 248, then knit to Row 274 and bind off the remaining 61 sts.

ROWS 0 to 64: Knit even.

Cast on 109 sts. with Linen Cotton and work stockenette st.





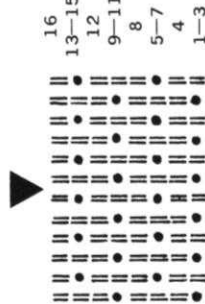
# HP 3622

**SIZE:** 40/42. **MATERIAL:** 17½ oz. (10 balls) KNITTING Linen Cotton. **TENSION:** KNITTING 4 to 6. **GAUGE:** 13 sts. 2", 45 rows 2".

**PATTERN:** Holding Position Design according to Line Drawing, worn on the purl side. KNITTING machines use Wheel No. 6. (Reset Pattern Disc number after shapings to keep in PATTERN.)

**EDGES:** K1, P1, Ribbing.

**FINISHING:** Block all sections to measurements given. Join front and back section at sides and shoulders. Sew sleeves together and set in. Sew collar to neckline. Sew zipper to front opening.



ON CAM BOX SIDE, bind off 4 sts. after Rows 74, 75, 78, 79; 3 sts. after Rows 82, 83, 86, 87; 2 sts. after Rows 90, 91, 94, 95, 98, 99, 102, 103, 106, 107, 110, 111, 114, 115, 118, 119, 122, 123, 126, 127, 130, 131, 134, 135, 138, 139; 3 sts. after Rows 142, 143, 146, 147, 150, 151; 10 sts. after Row 154.

ON EACH SIDE, increase 1 st. after Rows 18, 24, 30, 36, 42, 48, 54, 60, 66, then knit to Row 74.

ROWS 0 to 18: Knit even, then transfer the ribber sts. to the main machine and work the Holding Position Design.

Cast on 90 sts. with Linen Cotton and work K1, P1, Ribbing.

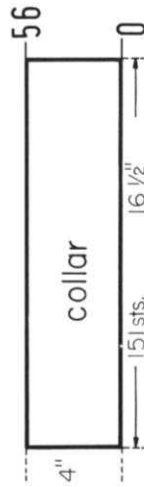
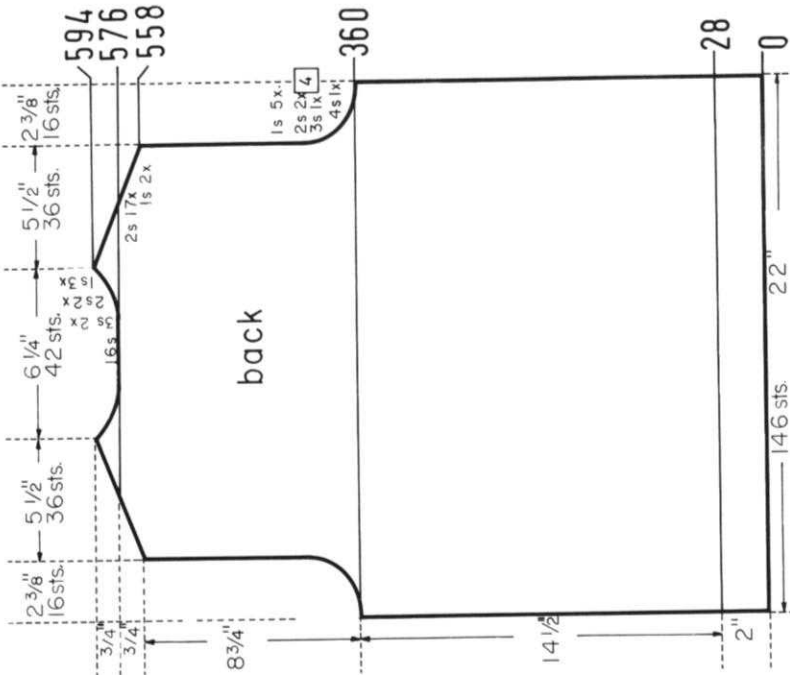


ON CAM BOX SIDE, bind off 4 sts. after Rows 126, 127; 3 sts. after Rows 130, 131, 134, 135; 2 sts. after Rows 138, 139, 142, 143. ON EACH SIDE, hang the 1st st. onto the second st. after Rows 146, 150, 154, 158, 162, 166, 170, 174, 178, 182, 186, 190, 194, 198, 202, 206, 210, 214, 218, 222, 226. ON CAM BOX SIDE, bind off 2 sts. after Rows 230, 231, 234, 235; 3 sts. after Rows 238, 239, 242, 243, 9 sts. after Row 246.

ON CAM BOX SIDE, increase 1 st. after Rows 18, 19, 40, 41, 62, 63, 84, 85, 106, 107, then knit to Row 126.

ROWS 0 to 18: Knit even, then transfer the ribber sts. to the main machine and work the Holding Position Design.

Cast on 89 sts. and work K1, P1, Ribbing.



Cast on 151 sts. and work 56 rows K1, P1. Ribbing, then bind off all sts. the crochet method for ribbing.

Bring the needles on the left side into working position, knit 1 row in PATTERN to the left side, turn the Row Counter back to 360 and complete the left half. Follow the instructions from \*.

ON CAM BOX SIDE, bind off 4 sts. after Row 513 (ODD ROWS = NECK SHAPING); 3 sts. after Rows 517, 521; 2 sts. after Rows 525, 529, 533; 1 st. after Rows 537, 541, 545, 549, 553. For SHOULDER bind off 1 st. after Rows 558, 560; 2 sts. after Rows 562, 564, 566, 568, 570, 572, 574, 576, 578, 580, 582, 584, 586, 588, 590, 592, 594.

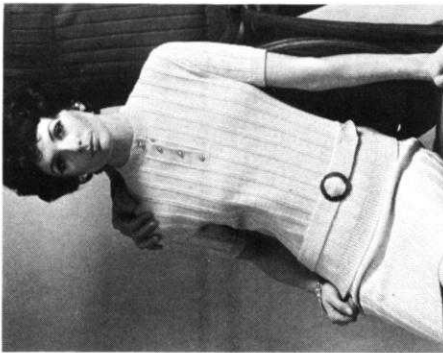
ON CAM BOX SIDE, bind off 4 sts. after Row 360; 3 sts. after Row 364; 2 sts. after Rows 368, 372; 1 st. after Rows 376, 380, 384, 388, 392; then knit to Row 513.

Work the front section the same as the back section to Row 360, then put 73 needles on the left side into holding position and complete the right half first.

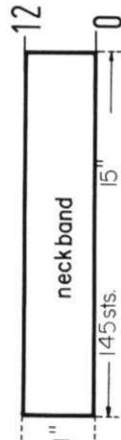
# DK 7897

SIZE: 16/18. MATERIAL: 28 oz., (16 balls) yellow KNITTING Subita Crepe 2 x 4. TENSION: KNIT-KING 5 to 7. GAUGE: Pattern Stitch 17 sts., 2", 22 rows 2". PATTERN: Ribbed Pattern according to Line Drawing, worn on the purl side. EDGES: K1, P1, Ribbing, SKIRT DECREASES: After rows indicated, hang the 3rd st. on each side onto the 2nd st., then move the end sts. inward to fill the empty needle. When putting needles into holding position, transfer first the appropriate ribber sts. to the main machine. Bind off all K1, P1, sections the crocheted method for ribbing. The finished length of the skirt is about 23".

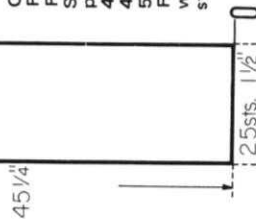
FINISHING: Block all sections to measurements given. SKIRT: Weave the sections together, 1 st. in from each edge. Turn under half of upper ribbed edge and hem to wrong side, then insert an elastic band. PULLOVER: Join front and back section at sides and shoulders. Sew sleeves together and set in. Sew neckband to neckline and bands to front opening edges. Finish buttonholes, sew on buttons.



Cast on 145 sts. and work 12 rows K1, P1, Ribbing, then bind off all sts.



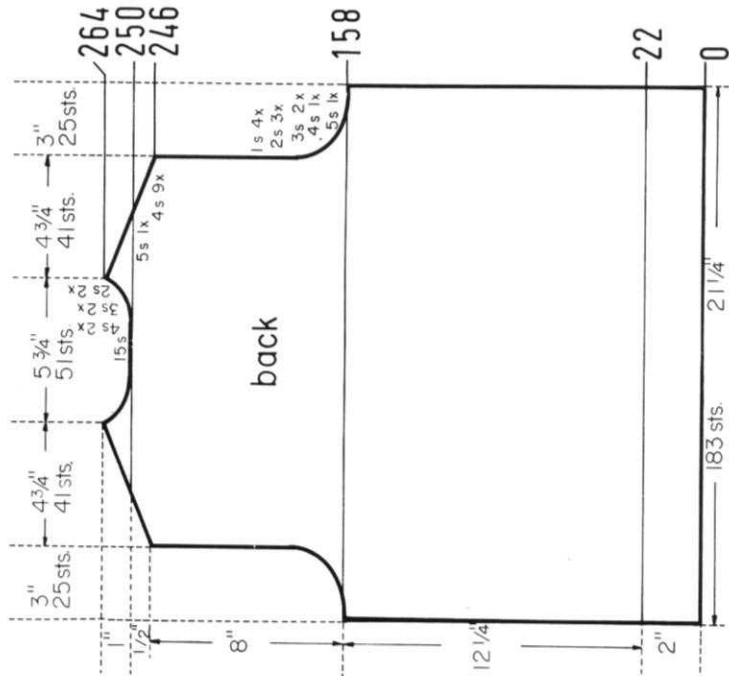
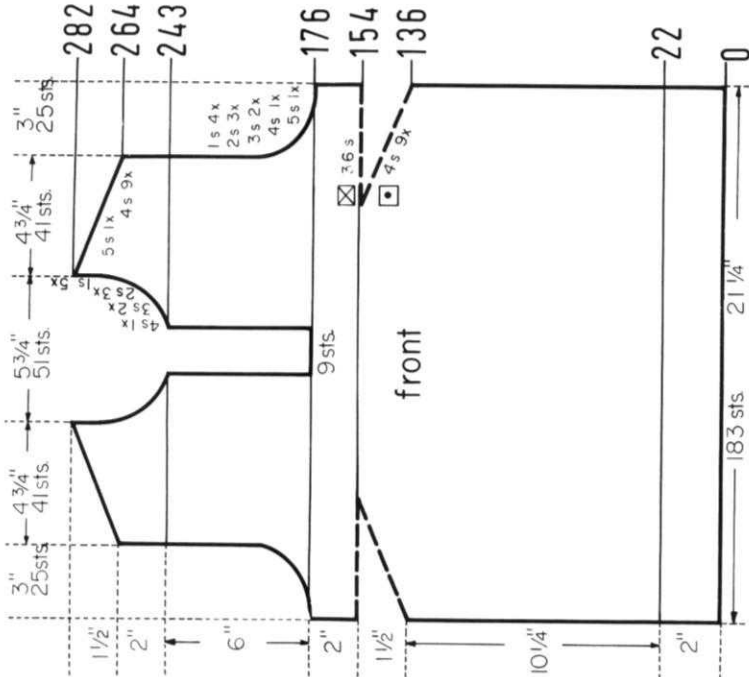
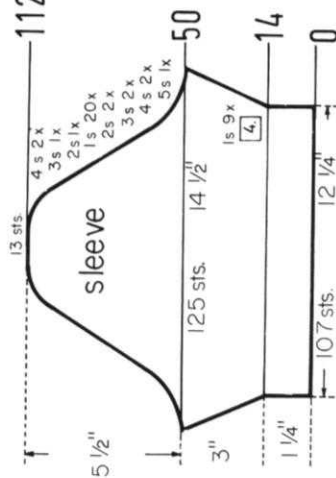
Cast on 25 sts. and work K1, P1, Ribbing. After Row 484 work Short Rows for the shaping. ON OPPOSITE SIDE of CAM BOX, put into holding position 1 needle after Rows 484, 485, 486, 487, 488, 489, 490, 491, 492, 493, 494, 495, 496, 497, 498, 499, 500, 501, 502, 503, 504, 505, 506, 507. After Row 508 bring all needles back into working position, then bind off all 25 sts.



ON CAM BOX SIDE, bind off 5 sts. after Rows 50, 51; 4 sts. after Rows 52, 53, 54, 55; 3 sts. after Rows 56, 57, 58, 59; 2 sts. after Rows 60, 61, 62, 63. ON EACH SIDE, hang the 1st st. onto the 2nd st. after Rows 64, 66, 68, 70, 72, 74, 76, 78, 80, 82, 84, 86, 88, 90, 92, 94, 96, 98, 100, 102. ON CAM BOX SIDE, bind off 2 sts. after Rows 104, 105; 3 sts. after Rows 106, 107; 4 sts. after Rows 108, 109, 110, 111; 13 sts. after Row 112.

ON CAM BOX SIDE, increase 1 st. after Rows 14, 15, 18, 19, 22, 23, 26, 27, 30, 31, 34, 35, 38, 39, 42, 43, 46, 47, then knit to Row 50.

ROWS 0 to 14: Knit even, then transfer the appropriate ribber sts. to the main machine and work the Ribbed Pattern. Cast on 107 sts. and work K1, P1, Ribbing.



Move the Cam Box to the left side, turn the Row Counter back to 176 and complete the left half. Follow the instructions from \*.

ON CAM BOX SIDE, bind off 4 sts. after Row 243 (ODD ROWS = NECK SHAPING); 3 sts. after Rows 245, 247; 2 sts. after Rows 249, 251, 253; 1 st. after Rows 255, 257, 259, 261, 263. For SHOULDER, bind off 4 sts. after Rows 264, 266, 268, 270, 272, 274, 276, 278, 280; 5 sts. after Row 282.

\* ON CAM BOX SIDE, bind off 5 sts. after Row 176; 4 sts. after Row 178; 3 sts. after Rows 180, 182; 2 sts. after Rows 184, 186, 188; 1 st. after Rows 190, 192, 194, 196, then knit to Row 243.

Work Short Rows for the DARTS. ON OPPOSITE SIDE of CAM BOX, put into holding position 4 needles after Rows 136, 137, 138, 139, 140, 141, 142, 143, 144, 145, 146, 147, 148, 149, 150, 151, 152, 153. ON OPPOSITE SIDE of CAM BOX, bring all needles back into working position after Rows 154, 155, then knit to Row 176, bind off the center 9 sts., put the needles on the left side into holding position and complete the right half first.

ROWS 23 to 136: Knit even.

ROWS 0 to 22: Knit even, then transfer the appropriate ribber sts. to the main machine and work the Ribbed Pattern. Cast on 183 sts. and work K1, P1, Ribbing.

Move the Cam Box to the left side, turn the Row Counter back to 250 and complete the left half. Follow the instructions from \*.

\* ON CAM BOX SIDE, bind off 4 sts. after Rows 250 (EVEN ROWS = SHOULDER SHAPING), 251 (ODD ROWS = NECK SHAPING), 252, 253, 254; 3 sts. after Row 255; 4 sts. after Row 256; 3 sts. after Row 257; 4 sts. after Row 258; 2 sts. after Row 259; 4 sts. after Row 260; 2 sts. after Row 261; 4 sts. after Row 262; 5 sts. after Row 264.

ON CAM BOX SIDE, bind off 4 sts. after Rows 246, 247, 248, 249, then knit to Row 250, bind off the center 15 sts., put the needles on the left side into holding position and complete the right half first.

ON CAM BOX SIDE, bind off 5 sts. after Rows 158, 159; 4 sts. after Rows 160, 161; 3 sts. after Rows 162, 163, 164, 165; 2 sts. after Rows 166, 167, 168, 169, 170, 171; 1 st. after Rows 172, 173, 174, 175, 176, 177, 178, 179, then knit to Row 246.

ROWS 23 to 158: Knit even.

ROWS 0 to 22: Knit even, then transfer the appropriate ribber sts. to the main machine and work the Ribbed Pattern. Cast on 183 sts. and work K1, P1, Ribbing.



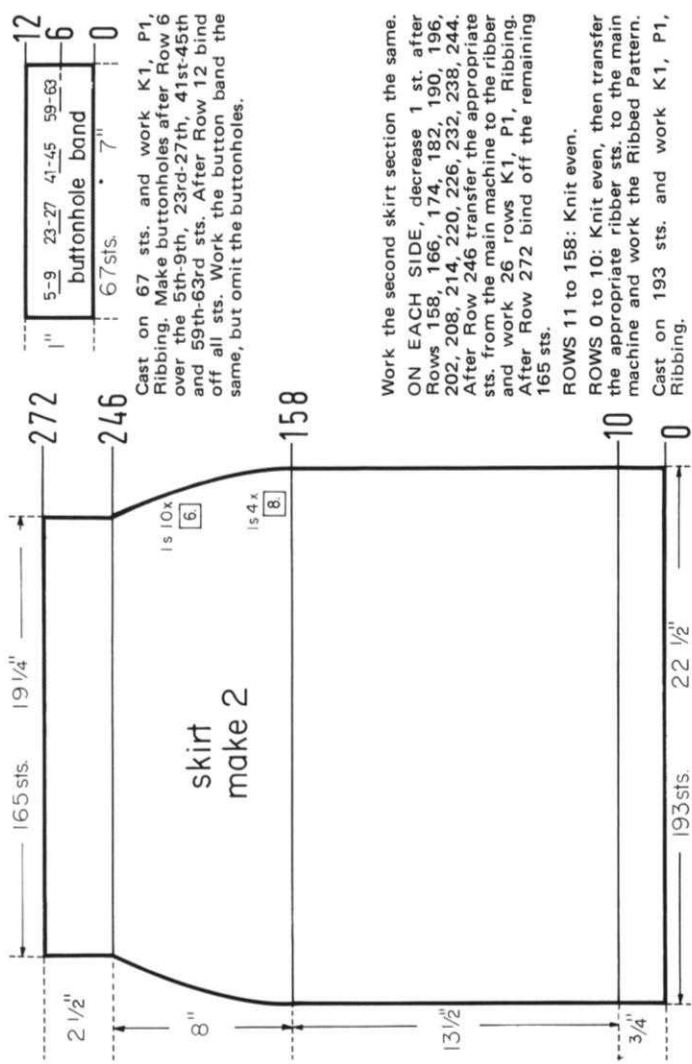
# HP 3623

SIZE: 40/42. MATERIAL: 19 1/2 oz. (11 balls) red KNITTING Subita Crepe 2 x 4. TENSION: KNITTING 5 to 7. GAUGE: 16 sts., 2", 23 rows 2". PATTERN: Knit 7, Purl 2, Ribbing according to Line Drawing, worn on the knit side. The needles in the non-working position between the 2 purl sts. do count as stitches in the Gauge and Instructions. EDGES: K1, P1, Ribbing. When putting the needles into holding position for the neckline shaping, the ribber sts. have to be transferred to the main machine. SLEEVE INCREASES: After rows indicated, hang the end st. from the row below ON EACH SIDE onto the next empty needle.

FINISHING: Block all sections to measurements given. Join front and back section at sides and shoulders. Sew sleeves together and set in. Sew pocket in place. Sew neckband to neckline. Work 1 row of single crochet around front opening, then sew in a zipper.

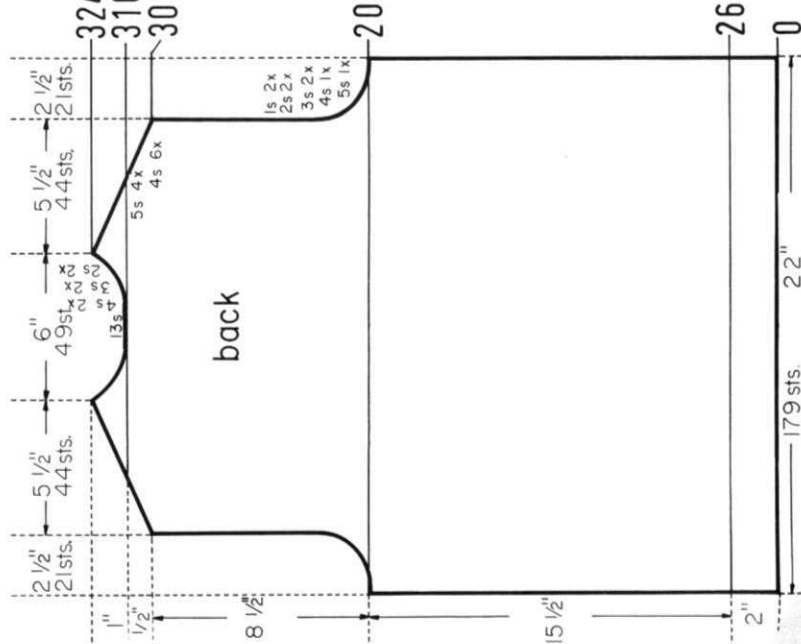


Cast on 161 sts. and work 18 rows K1, P1, Ribbing, then bind off all sts. the crochet method for ribbing.



Work the second skirt section the same. ON EACH SIDE, decrease 1 st. after Rows 158, 166, 174, 182, 190, 196, 202, 208, 214, 220, 226, 232, 238, 244. After Row 246 transfer the appropriate sts. from the main machine to the ribber and work 26 rows K1, P1, Ribbing. After Row 272 bind off the remaining 165 sts.

ROWS 11 to 158: Knit even. ROWS 0 to 10: Knit even, then transfer the appropriate ribber sts. to the main machine and work the Ribbed Pattern. Cast on 193 sts. and work K1, P1, Ribbing.



324 Move the Cam Box to the left side, turn the Row Counter back to 310 and complete the left half. Follow the instructions from \*.

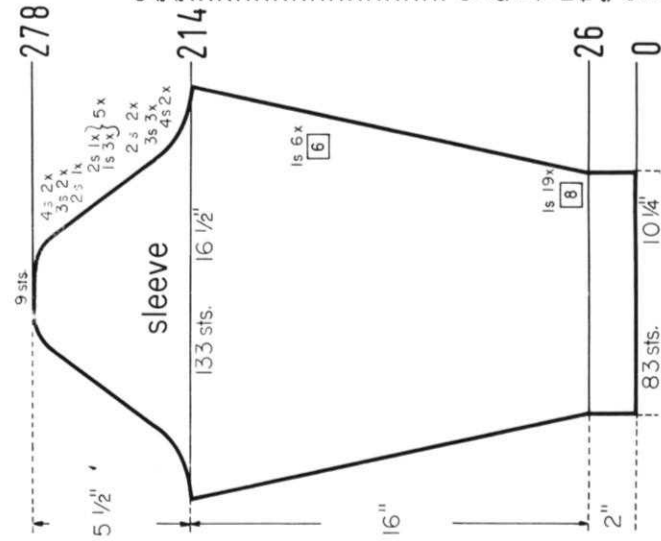
310 ON CAM BOX SIDE, bind off 4 sts. after Rows 310 (EVEN ROWS = SHOULDER SHAPING), 311 (ODD ROWS = NECK SHAPING), 312, 313, 314; 3 sts. after Row 315; 4 sts. after Row 316; 3 sts. after Row 317; 5 sts. after Row 318; 2 sts. after Row 319; 5 sts. after Row 320; 2 sts. after Row 321; 5 sts. after Rows 322, 324.

206 ON CAM BOX SIDE, bind off 4 sts. after Rows 306, 307, 308, 309, then knit to Row 310, bind off the center 13 sts., put the needles on the left side into holding position and complete the right half first.

ON CAM BOX SIDE, bind off 5 sts. after Rows 206, 207; 4 sts. after Rows 208, 209; 3 sts. after Rows 210, 211, 212, 213; 2 sts. after Rows 214, 215, 216, 217; 1 st. after Rows 218, 219, 220, 221, then knit to Row 306. (After completing the Armholes on the FRONT section, knit to ROW 222.)

ROWS 27 to 206: Knit even. ROWS 0 to 26: Knit even, then transfer the appropriate ribber sts. to the main machine, hang the sts. which are to be omitted onto the neighboring ribber needle, leave the empty needles in the non-working position and work Knit 7, Purl 2, Ribbing.

Cast on 179 sts. and work K1, P1, Ribbing.



ON CAM BOX SIDE, bind off 4 sts. after Rows 214, 215, 216, 217; 3 sts. after Rows 218, 219, 220, 221, 222, 223; 2 sts. after Rows 224, 225, 226, 227; 1 st. after Rows 228, 229, 230, 231, 232, 233; 2 sts. after Rows 234, 235; 1 st. after Rows 236, 237, 238, 239, 240, 241; 2 sts. after Rows 242, 243; 1 st. after Rows 244, 245, 246, 247, 248, 249; 2 sts. after Rows 250, 251; 1 st. after Rows 252, 253, 254, 255, 256, 257; 2 sts. after Rows 258, 259; 1 st. after Rows 260, 261, 262, 263, 264, 265; 2 sts. after Rows 266, 267, 268, 269; 3 sts. after Rows 270, 271, 272, 273; 4 sts. after Rows 274, 275, 276, 277; 9 sts. after Row 278.

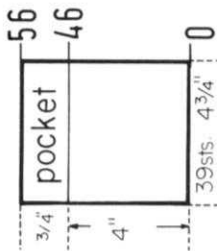
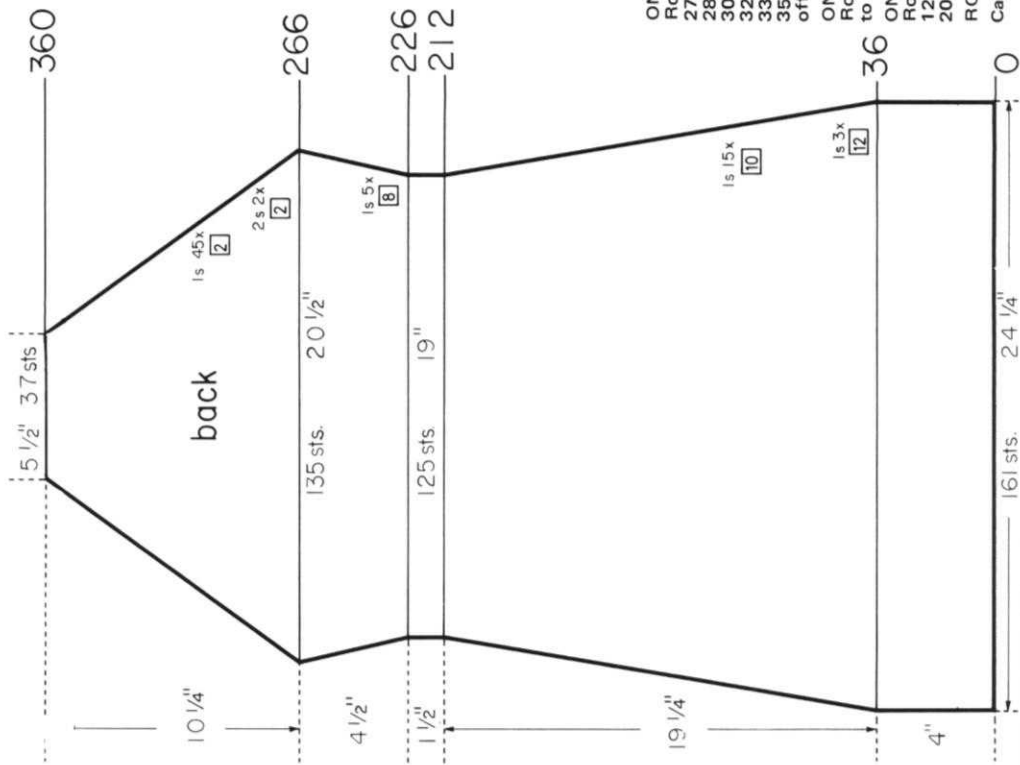
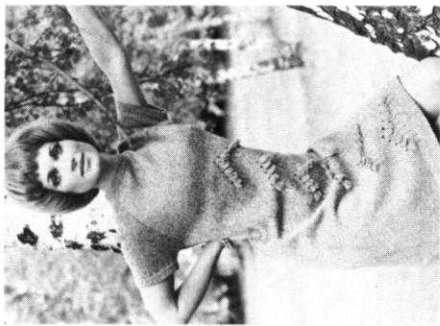
ON EACH SIDE, increase 1 st. after Rows 26, 34, 42, 50, 58, 66, 74, 82, 90, 98, 106, 114, 122, 130, 138, 146, 154, 162, 170, 178, 184, 190, 196, 202, 208, then knit to Row 214.

ROWS 0 to 26: Knit even, then set up for PATTERN as you did on the back section and work knit 7, purl 2 Ribbing. Cast on 83 sts. and work K1, P1, Ribbing.

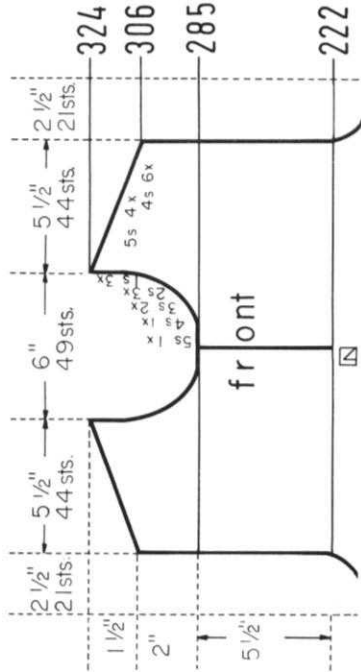
# DK 7892

**SIZE:** 14/16. **MATERIAL:** 23 3/4 oz. (13 balls) **KNITTING** Double Knitting. **TENSION:** KNIT-KING 8 to 10. **GAUGE:** 13 sts. 2", 18 rows 2". **PATTERN:** Stockinette Stitch and a Design made with needles in the non-working position on the front section. Follow the instructions on the Line Drawing. Make all shapings of 1 st. Full-fashion. **DECREASES:** After rows indicated, hang the 2nd st. on the appropriate side onto the 3rd st., then move the end st. inward to fill the empty needle. When decreasing 2 sts. at one time, hang the 2nd and 3rd sts. onto the 4th and 5th sts., then move the end st. inward. **INCREASES:** After Rows indicated, move the 2 end sts. on each side 1 needle outward, then place the 3rd st. from the row below onto the empty needle.

**FINISHING:** Block all sections to measurements given. Join front and back section at sides. Sew sleeves together and set in. Turn under 9 rows on sleeve edges and 11 rows on lower edge and hem to wrong side. Join short ends of neckband, then sew 1 edge of neckband to inside and 1 edge to outside of neckline. With 3 strands of yarn form short fringe into the last 2 rows of each Design Set. (See picture).



Cast on 39 sts. and work 46 rows Knit 7, Purl 2, Ribbing, then transfer the appropriate sts. from the main machine to the ribber, bring the empty needles between the 2 purl sts. into working position and work 10 rows K1, P1, Ribbing. After Row 26 bind off all sts. the crochet method for ribbing.

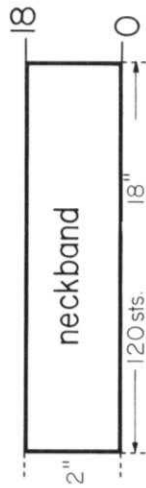


Move the Cam Box to the left side, turn the Row Counter back to 222 and complete the left half. Follow the instructions from \*.

**ON CAM BOX SIDE**, bind off 5 sts. after Row 285 (ODD ROWS = NECK SHAPING); 4 sts. after Row 287; 3 sts. after Rows 289, 291; 2 sts. after Rows 293, 295, 297; 1 st. after Rows 299, 301, 303. For SHOULDER bind off 4 sts. after Rows 306, 308, 310, 312, 314, 316; 5 sts. after Rows 318, 320, 322, 324.

\* ROWS 223 to 285: Knit even.

Work the front section the same as the back section to ROW 222, then put the center st. onto the neighboring needle, put the needles on the left side into holding position and complete the right half first.



Cast on 120 sts. and work 18 rows stockinette st., then bind off all sts. the crochet method.

The Design is worked over the center 33 sts. of the front section. Each Design Set is worked over 40 rows. The 1st Set begins after Row 22 and the last Set is completed after Row 258. Each Set consist of 9 individual Stripes which are 20 rows long. To begin each Stripe, hang the appropriate st. onto the inner neighboring st. and leave the empty needle in the non-working position. After completing each Stripe, bring the empty needle back into working position.

**ON EACH SIDE**, decrease 2 sts. after Rows 266, 268; 1 st. after Rows 270, 272, 274, 276, 278, 280, 282, 284, 286, 288, 290, 292, 294, 296, 298, 300, 302, 304, 306, 308, 310, 312, 314, 316, 318, 320, 322, 324, 326, 328, 330, 332, 334, 336, 338, 340, 342, 344, 346, 348, 350, 352, 354, 356, 358. After Row 360 bind off the remaining 37 sts.

**ON EACH SIDE**, increase 1 st. after Rows 226, 234, 242, 250, 258, then knit to Row 266.

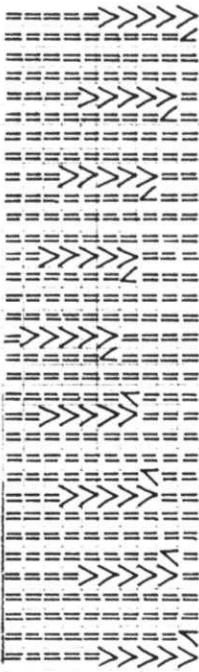
**ON EACH SIDE**, decrease 1 st. after Rows 36, 48, 60, 72, 82, 92, 102, 112, 122, 132, 142, 152, 162, 172, 182, 192, 202, 212, then knit to Row 226.

ROWS 0 to 36: Knit even.

Cast on 161 sts. and work stockinette st.



37-40  
33-36  
29-32  
25-28  
21-24  
17-20  
13-16  
9-12  
5-8  
1-4



## THE JAC 40 IS A MUST



for fast easy knitting of  
Jaquard and Ski-sweater  
designs

Patterns are selected—row by row—  
through a pre-stamped  
card that is fed into the Jac.

There are over 140 cards available and illustrations of them  
are included with each Jac.  
Jac 40's are made for most brands of machines. When order-  
ing be sure to specify your brand of knitter as needle spacings  
vary. Simple to use and an essential tool for the modern  
knitter, Jac 40's are \$24.95 complete with 3 cards for practic-  
ing the 3 techniques, plus complete instructions.



Order from your dealer or direct from  
**KNITTING**

1128 Crenshaw Boulevard, Los Angeles, Calif. 90019

Shipping Cost \$1.50—California residents add 5% sales tax.

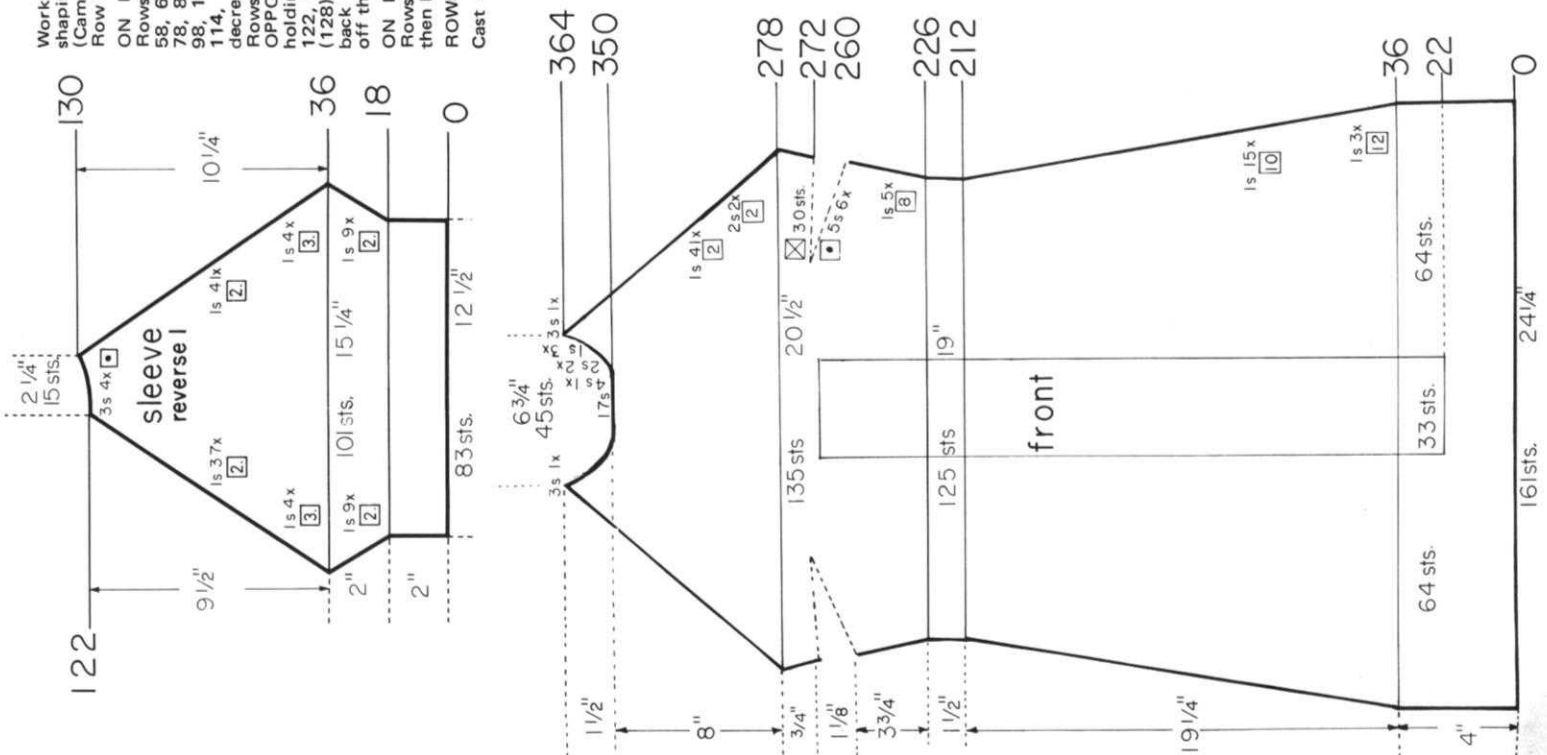
Work the second sleeve with reverse  
shaping, casting on from right to left.  
(Cam Box will be on the LEFT side at  
Row 0).

ON EACH SIDE, decrease 1 st. after  
Rows 36, 39, 42, 45, 48, 50, 52, 54, 56,  
58, 60, 62, 64, 66, 68, 70, 72, 74, 76,  
78, 80, 82, 84, 86, 88, 90, 92, 94, 96,  
98, 100, 102, 104, 106, 108, 110, 112,  
114, 116, 118, 120, then continue to  
decrease 1 st. ON CAM BOX SIDE after  
Rows in ( ). Knit to Row 122. ON  
OPPOSITE SIDE of CAM BOX put into  
holding position 3 needles after Rows  
122, (122), 124, (124), 126, (126), 128,  
(128). After Row 130 bring all needles  
back into working position, then bind  
off the remaining 15 sts.

ON EACH SIDE, increase 1 st. after  
Rows 18, 20, 22, 24, 26, 28, 30, 32, 34,  
then knit to Row 36.

ROWS 0 to 18: Knit even.

Cast on 83 sts. and work stockinette st.



Move the Cam Box to the left side, turn  
the Row Counter back to 350 and  
complete the left half. Follow the in-  
structions from \*.

\* Continue to decrease 1 st. ON CAM  
BOX SIDE for RAGLAN after Row 350,  
then again after Rows in ( ). ON CAM  
BOX SIDE, bind off 4 sts. after Row  
351 (ODD ROWS = NECK SHAPING);  
(352), 2 sts. after Rows 353, (354), 355;  
(356), 1 st. after Rows 357, (358), 359,  
(360), 361, (362). After Row 364 bind  
off the remaining 3 sts.

ON EACH SIDE, decrease 2 sts. after  
Rows 278, 280; 1 st. after Rows 282,  
284, 286, 288, 290, 292, 294, 296, 298,  
300, 302, 304, 306, 308, 310, 312, 314,  
316, 318, 320, 322, 324, 326, 328, 330,  
332, 334, 336, 338, 340, 342, 344,  
346, then knit to Row 350, bind off the  
center 17 sts., put the needles on the left  
side into holding position and complete  
the right half first.

ON EACH SIDE, increase 1 st. after  
Rows 226, 234, 242, 250, 258, then knit  
to Row 260. Work Short Rows for the  
DARTS. ON OPPOSITE SIDE of CAM  
BOX put into holding position 5 needles  
after Rows 260, 261, 262, 263, 264,  
265, 266, 267, 268, 269, 270, 271. ON  
OPPOSITE SIDE of CAM BOX bring all  
needles back into working position after  
Rows 272, 273, then knit to Row 278.

ON EACH SIDE, decrease 1 st. after  
Rows 36, 48, 60, 72, 82, 92, 102, 112,  
122, 132, 142, 152, 162, 172, 182, 192,  
202, 212, then knit to Row 226.

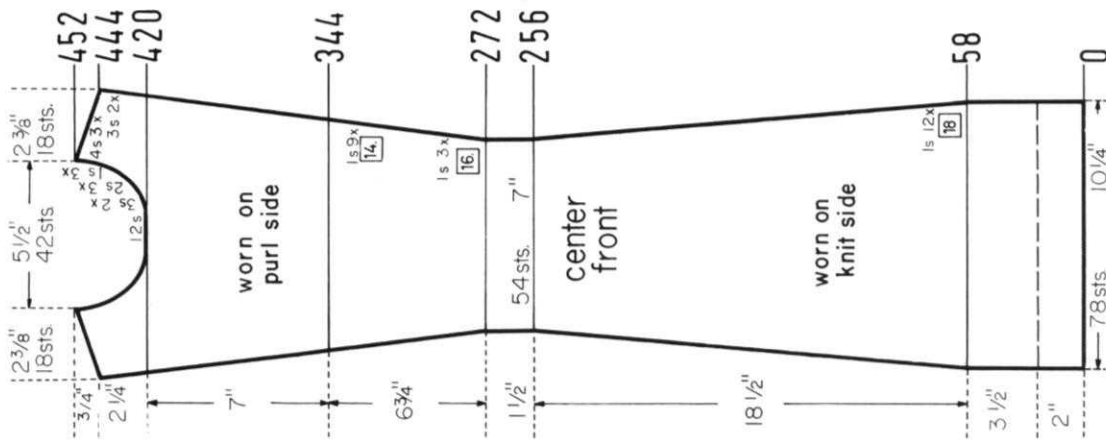
ROWS 23 to 36: Knit even.

ROWS 0 to 22: Knit even, then begin  
the Design over the center 33 sts. as  
marked on the diagram.

Cast on 161 sts. and work stockinette st.

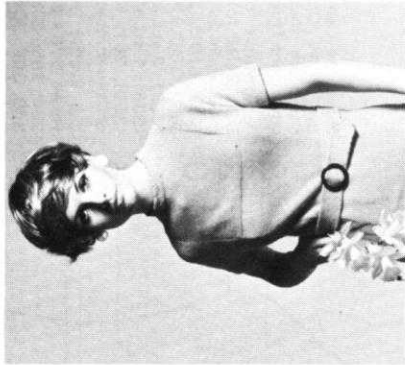
# DK 7894

**SIZE:** 14/16. **MATERIAL:** 19 1/4 oz. (11 balls) green **KNITTING CROCHUS.** **TENSION:** KNITTING 7 to 9. **GAUGE:** 15 sts. 2", 21 rows 2". **PATTERN:** Stockinette Stitch. On the back section and on the sleeves the purl side is the right side. The 3 front sections are divided into knit and purl sections. The Diagrams state the type of stitch to use for right side. The front sections have to be turned after Row 344. To turn the knitting, use your reversing bar, or knit several rows with contrast waste yarn, then remove the knitting from the machine, turn around and hang the garment waste yarn, turn the Row Counter back to 344 and continue knitting. **DECREASES:** After rows indicated, hang the 3rd st. on the appropriate sides onto the 2nd st. then move the end sts. inward to fill the empty needle. **INCREASES:** After rows indicated, move the 2 end sts. on the appropriate



sides 1 needle outward, then place the 3rd st. from the row below onto the empty needle. Begin the back section DARTS by hanging the sts. together as marked on the diagram, then moving the end sts. inward to fill the empty needles. The following decreases, then increases for the darts lie directly above. The NECKBAND has a Holding Position Design. The Line Drawing is inside the diagram. The Neckband is worn on the knit side. The finished length of the dress is about 38 1/2".

**FINISHING:** Block all sections to measurements given. Weave the front sections together 1 st. in from each edge. (Center section has purl sts. on yoke section, side sections have knit sts. on yoke section worn on the right side. Back and sleeves are worn on the purl side, neckband is worn on the knit side). Join front and back section together at sides and shoulders. Sew sleeves together and set in. Turn under 10 sts. on sleeve edges and 20 rows on lower edge and hem to wrong side. Sew 1 edge of neckband to inside and 1 edge to outside of neckline. Work 1 row of single crochet around back opening. Form 2 loops on 1 side and sew 2 buttons to other side of opening. Sew a buckle to straight end of belt.



Move the Cam Box to the left side, turn the Row Counter back to 420 and complete the left half. Follow the instructions from \*.

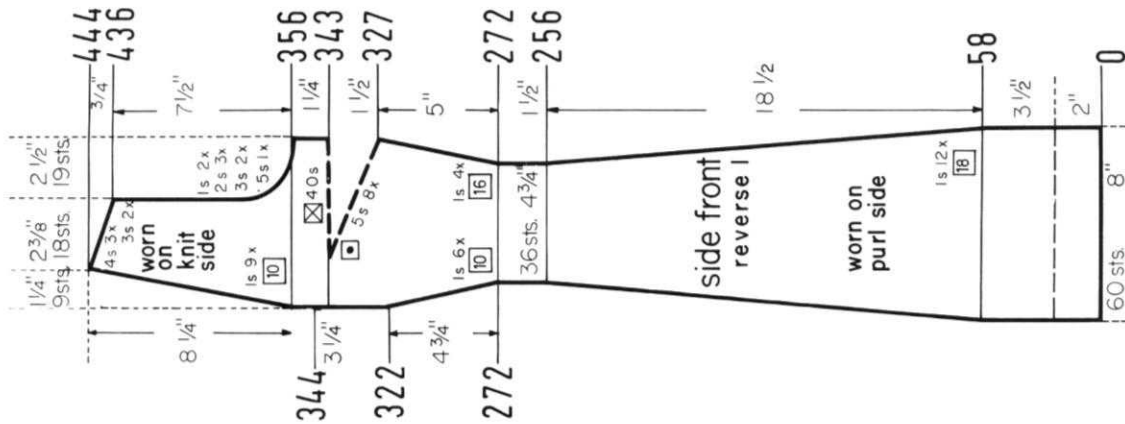
\* ON CAM BOX SIDE, bind off 3 sts. after Rows 421, 423 (ODD ROWS = NECK SHAPING); 2 sts. after Rows 425, 427, 429; 1 st. after Rows 431, (432), 433, 435. For SHOULDER bind off 3 sts. after Rows 444, 446; 4 sts. after Rows 448, 450, 452.

ON EACH SIDE, increase 1 st. after Rows 272, 288, 304, 320, 334, then knit to Row 344. Now turn the knitting, then continue to increase 1 st. ON EACH SIDE after Rows 348, 362, 376, 390, 404, 418, then 1 more time after Row in (.). Knit to Row 420, bind off the center 12 sts., put the needles on the left side into holding position and complete the right half first.

ON EACH SIDE, decrease 1 st. after Rows 58, 76, 94, 112, 130, 148, 166, 184, 202, 220, 238, 256, then knit to Row 272.

ROWS 0 to 58: Knit even.

Cast on 78 sts. and work stockinette st.



Work the second side section with reverse shapings, casting on from right to left. (Cam Box will be on the LEFT side at Row 0).

ON OPPOSITE SIDE of CAM BOX (NECK SIDE) decrease 1 st. after Rows in (.). ON CAM BOX SIDE, bind off 5 sts. after Row 356; (356), 3 sts. after Rows 358, 360; 2 sts. after Rows 362, 364, 366; (366), 1 st. after Rows 368, 370. The Armhole Shaping is now completed. Continue to decrease 1 st. ON NECK SIDE after Rows 376, 386, 396, 406, 416, 426, then 1 more time after Row in (.). For SHOULDER bind off 3 sts. after Rows 436, (436), 438; 4 sts. after Rows 440, 442, 444.

ON OPPOSITE SIDE of CAM BOX increase 1 st. after Rows in (.). ON CAM BOX SIDE, increase 1 st. after Rows 272, (272), (282), 288, (292), (302), 304, (312), 320, (322), then knit to Row 327 and work Short Rows for the DART. ON OPPOSITE SIDE of CAM BOX put into holding position 5 needles after Rows 327, 329, 331, 333, 335, 337, 339, 341. After Row 343 bring all needles back into working position, then knit to Row 344. Now turn the knitting and knit to Row 356.

ON EACH SIDE, decrease 1 st. after Rows 58, 76, 94, 112, 130, 148, 166, 184, 202, 220, 238, 256, then knit to Row 272.

ROWS 0 to 58: Knit even.

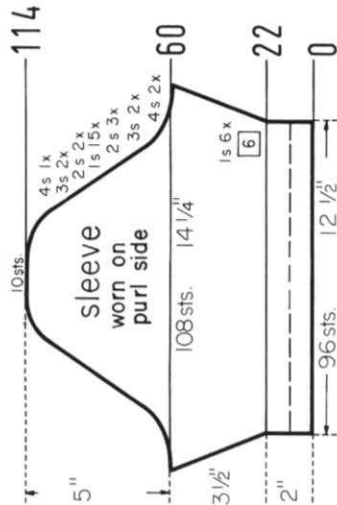
Cast on 60 sts. and work stockinette st.

ON CAM BOX SIDE, bind off 4 sts. after Rows 60, 61, 62, 63; 3 sts. after Rows 64, 65, 66, 67; 2 sts. after Rows 68, 69, 70, 71, 72, 73. ON EACH SIDE, hang the 1st st. onto the 2nd st. after Rows 74, 76, 78, 80, 82, 84, 86, 88, 90, 92, 94, 96, 98, 100, 102. ON CAM BOX SIDE, bind off 2 sts. after Rows 104, 105, 106, 107; 3 sts. after Rows 108, 109, 110, 111; 4 sts. after Rows 112, 113; 10 sts. after Row 114.

ON EACH SIDE, increase 1 st. after Rows 22, 28, 34, 40, 46, 52, then knit to Row 60.

ROWS 0 to 22: Knit even.

Cast on 96 sts. and work stockinette st.











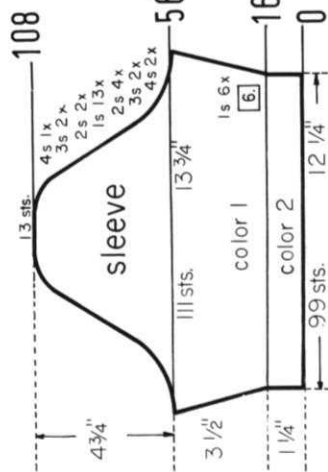
ON CAM BOX SIDE, bind off 4 sts. after Rows 56, 57, 58, 59; 3 sts. after Rows 60, 61, 62, 63; 2 sts. after Rows 64, 65, 66, 67, 68, 69, 70, 71. ON EACH SIDE, hang the 1st st. onto the 2nd st. after Rows 72, 74, 76, 78, 80, 82, 84, 86, 88, 90, 92, 94, 96. ON CAM BOX SIDE, bind off 2 sts. after Rows 98, 99, 100, 101; 3 sts. after Rows 102, 103, 104, 105; 4 sts. after Rows 106, 107; 13 sts. after Row 108.

ON EACH SIDE, increase 1 st. after Rows 16, 22, 28, 34, 40, 46, then knit to Row 56.

ROWS 0 to 16: Knit even, then change to stockinette st. and work with blue.

Cast on 99 sts. with yellow and work K1, P1, Ribbing.

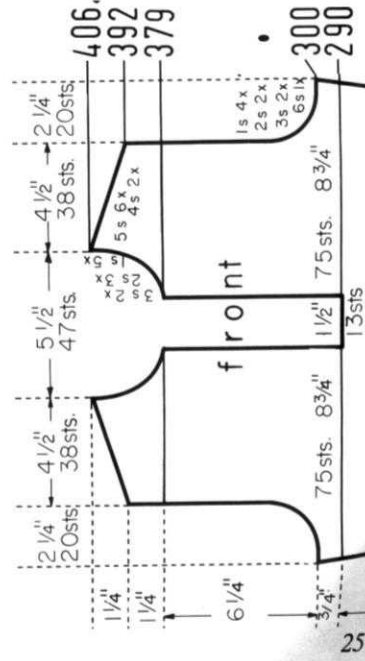
Cast on 151 sts. with yellow and work 16 rows K1, P1. Ribbing, then bind off all sts. the crochet method for ribbing.



## DK 7893

**SIZE:** 10/12. **MATERIAL:** 8 3/4 oz. (5 balls) white = color 1 and 8 3/4 oz. (5 balls) dark blue = color 2. **KNITTING:** Subita Crepe 2 x 3. **TENSION:** KNITTING 4 to 6. **GAUGE:** 17 sts, 2", 24 rows 2". **PATTERN:** Stockinette Stitch and repeated color stripes as marked in the diagram. **DECREASES:** After rows indicated, hang the 3rd st. on each side onto the 2nd st. then move the end sts. inward to fill the empty needle. **INCREASES:** After rows indicated, move the 2 end sts. on each side 1 needle outward, then place the 3rd st. from the row below onto the empty needle. The finished length of the dress is about 32".

**FINISHING:** Block all sections to measurements given. Join front and back section at sides and shoulders. Sew sleeves together and set in. Turn under 20 rows on sleeve edges and lower edge and hem to wrong side. Sew 1 edge of buttonhole band to inside and 1 edge to outside of right front edge. Sew button band to left front edge in the same manner. Line the under section of the collar with press-on type facing, then fold collar in half and sew side edges. Sew 1 edge of collar to inside and 1 edge to outside of neckline, leaving about 3/4" on each front edge free. Finish buttonholes, sew on buttons.



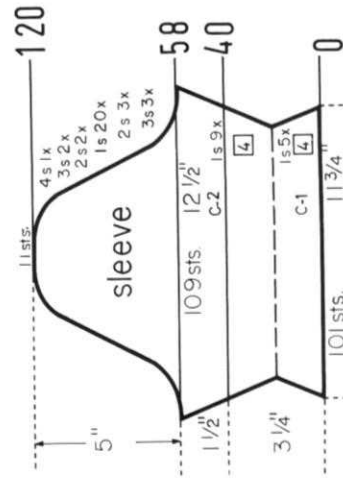
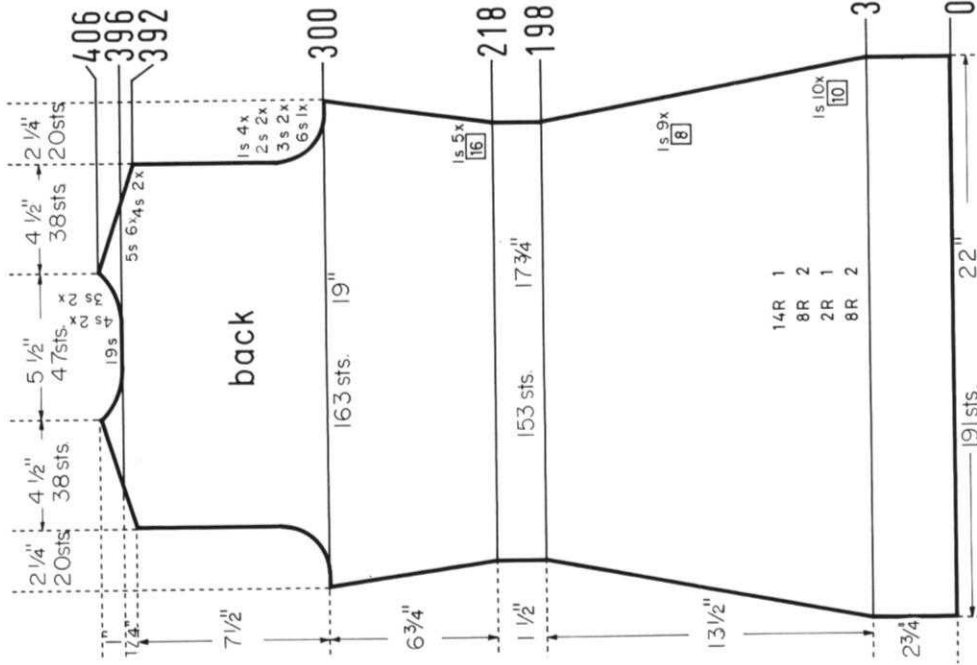
Move the Cam Box to the left side, turn the Row Counter back to 290 and complete the left half. Follow the instructions from \*.

ON CAM BOX SIDE, bind off 3 sts. after Rows 379, 381, (ODD ROWS = NECK SHAPING); 2 sts. after Rows 383, 385, 387; 1 st. after Rows 389, 391; 4 sts. after Row 392 (EVEN ROWS = SHOULDER SHAPING); 1 st. after Row 393; 4 sts. after Row 394; 1 st. after Row 395; 5 sts. after Row 396; 1 st. after Row 397; 5 sts. after Rows 398, 400, 402, 404, 406.

ON CAM BOX SIDE, bind off 6 sts. after Row 300; 3 sts. after Rows 302, 304; 2 sts. after Rows 306, 308; 1 st. after Rows 310, 312, 314, 316, then knit to Row 379.

\* ROWS 291 to 300: Knit even.

Work the front section the same as the back section to Row 290, then bind off the center 13 sts., put the needles on the left side into holding position and complete the right half first.



Move the Cam Box to the left side, turn the Row Counter back to 396 and complete the left half. Follow the instructions from \*.

\* ON CAM BOX SIDE, bind off 5 sts. after Row 396 (EVEN ROWS = SHOULDER SHAPING); 4 sts. after Row 397 (ODD ROWS = NECK SHAPING); 5 sts. after Row 398; 4 sts. after Row 399; 5 sts. after Row 400; 3 sts. after Row 401; 5 sts. after Row 402; 3 sts. after Row 403; 5 sts. after Rows 404, 406.

ON CAM BOX SIDE, bind off 4 sts. after Rows 392, 393, 394, 395, then knit to Row 396, bind off the center 19 sts., put the needles on the left side into holding position and complete the right half first.

ON CAM BOX SIDE, bind off 6 sts. after Rows 300, 301; 3 sts. after Rows 302, 303, 304, 305; 2 sts. after Rows 306, 307, 308, 309; 1 st. after Rows 310, 311, 312, 313, 314, 315, 316, 317, then knit to Row 392.

ON EACH SIDE, increase 1 st. after Rows 218, 234, 250, 266, 282, then knit to Row 300. (Knit to Row 290 for the FRONT section).

ON EACH SIDE, decrease 1 st. after Rows 34, 44, 54, 64, 74, 84, 94, 104, 114, 124, 134, 142, 150, 158, 166, 174, 182, 190, 198, then knit to Row 218.

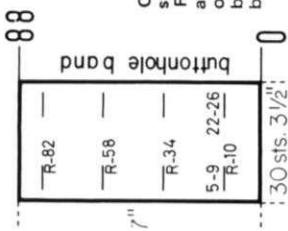
ROWS 0 to 34: Knit even, then change to blue and work the repeated color stripes as marked in the diagram.

Cast on 191 sts. with white and work stockinette st.

ON CAM BOX SIDE, bind off 3 sts. after Rows 58, 59, 60, 61, 62, 63; 2 sts. after Rows 64, 65, 66, 67, 68, 69. ON EACH SIDE, hang the 1st st. onto the 2nd st. after Rows 70, 72, 74, 76, 78, 80, 82, 84, 86, 88, 90, 92, 94, 96, 98, 100, 102, 104, 106, 108. ON CAM BOX SIDE, bind off 2 sts. after Rows 110, 111, 112, 113; 3 sts. after Rows 114, 115, 116, 117; 4 sts. after Rows 118, 119; 11 sts. after Row 120.

ON EACH SIDE, decrease 1 st. after Rows 2, 6, 10, 14, 18. ON EACH SIDE, increase 1 st. after Rows 22, 26, 30, 34, 38. (CHANGE TO BLUE after Row 40) 42, 46, 50, 54, then knit to Row 58.

Cast on 101 sts. with white and work stockinette st.



Cast on 30 sts. with white and work stockinette st. Make buttonholes after Rows 10, 34, 58, 82, over the 5th-9th and 22nd-26th sts. After Row 88 bind off all sts. the crochet method. Work the button band the same, but omit the buttonholes.

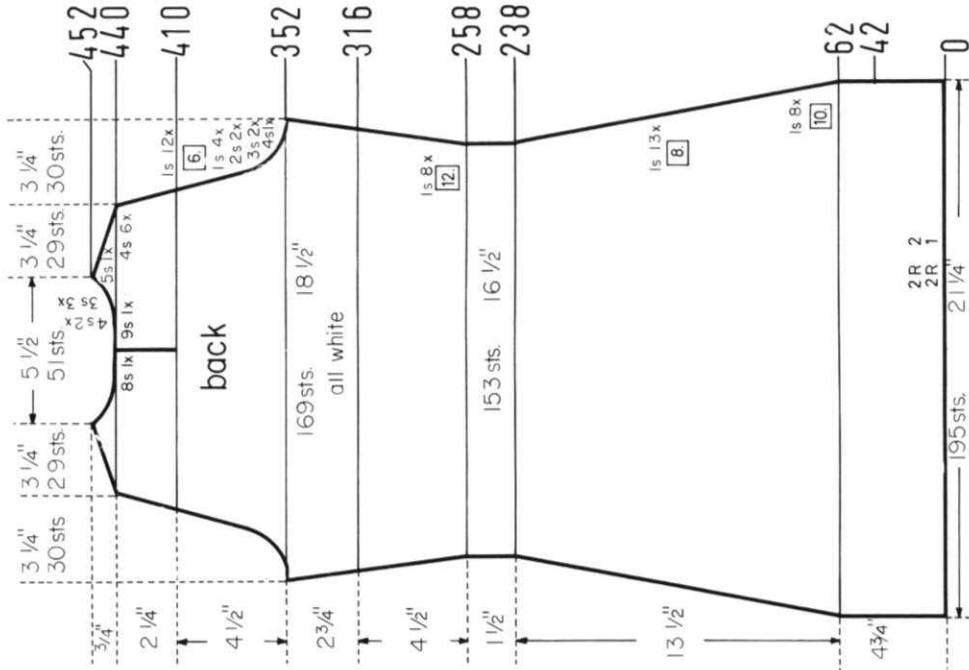
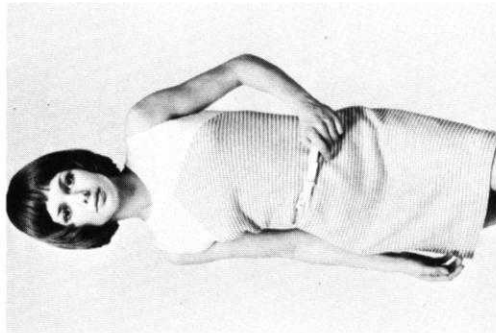
## DK 7908

**SIZE:** 10/12. **MATERIAL:** 10½ oz. (6 balls) white = color 1 and 5¼ oz. (3 balls) turquoise = color 2. **KNITTING** Subita Crepe 2 x 3. **TENSION:** KNIT-KING 3 to 5. **GAUGE:** 18 sts. 2", 26 rows 2". **PATTERN:** Stockinette Stitch and repeated Color Stripes as marked in the Diagram. The back section is worked with white after Row 316. The Color Stripes on the front section change after Row 318 gradually to all white. See the instructions below. **DECREASES:** After rows indicated, hang the 3rd st. on the appropriate sides onto the 2nd st. then move the end sts. inward to fill the empty needle. **INCREASES:** After rows indicated, move the 2 end sts. on each side 1 needle outward, then place the 3rd st. from the row below onto the empty needle. The finished length of the dress is about 33".

**FINISHING:** Block the sections to measurements given. Join front and back section at sides and shoulders. Turn under 4 sts. around armholes and hem to wrong side. Turn under 20 rows on lower edge and hem to wrong side. Work 2 rows of single crochet around neckline, turn crochet edge under and hem to wrong side. Work 1 row of single crochet around back opening. Form 3 loops on 1 side and sew 3 buttons to other side of opening.

### INSTRUCTIONS FOR DK 7908 (COLOR STRIPES)

Work with 3 balls of yarn, 2 white and 1 turquoise. After Row 318, increase 1 st. on each side. There are now 165 sts. Lay white yarn over the first 5 needles, then cross the turquoise yarn with the white yarn before laying it over the following 155 needles, then cross the white yarn of the second ball with the turquoise before laying it over the remaining 5 needles. Knit 1 row to the left side. Lay white yarn over the first 6 needles cross the yarn and lay turquoise over the following 153 needles, then cross the yarn and lay white yarn over the remaining 6 needles. Knit 1 row to the right side. Knit the following 2 rows with white over all needles, then lay white yarn over the first 9 needles, cross the yarn and lay turquoise over the following 147 needles, cross the yarn and lay white yarn over the following 9 needles. Knit 1 row to the left side. For each row knitted (INCLUDING the all white rows), 1 less st. on each side is knitted with turquoise. After Row 390 the striped pattern is completed, then work with white over all needles. Always cross the yarns at meeting points to prevent a hole.



Cast on 113 sts. with white, work stockinette st. and Short Rows. ON OPPOSITE SIDE of CAM BOX put into holding position 30 needles after Rows 0, 1. ON OPPOSITE SIDE of CAM BOX bring back into working position 10 needles after Rows 2, 3, 4, 5, 6, 7. ON EACH SIDE, increase 1 st. after Rows 8, 10, 12, 14, 16, 18, 20, 22, 24, 26, 28, 30, 32, 34, 36, 38, 40, 42, 44, 46, 48, 50, 52. ON EACH SIDE, decrease 1 st. after Rows 56, 58, 60, 62, 64, 66, 68, 70, 72, 74, 76, 78, 80, 82, 84, 86, 88, 90, 92, 94, 96, 98, 100. After Row 102 bind off all 113 sts. the crochet method.

Move the Cam Box to the left side, turn the Row Counter back to 410 and complete the left half. Follow the instructions from \*.

ON CAM BOX SIDE, bind off 4 sts. after Row 440 (EVEN ROWS = SHOULDER SHAPING); 9 sts. (8 sts. for the left half) after Row 441 (ODD ROWS = NECK SHAPING); 4 sts. after Rows 442, 443, 444, 445, 446; 3 sts. after Row 447; 4 sts. after Row 448; 3 sts. after Row 449; 4 sts. after Row 450; 3 sts. after Row 451; 5 sts. after Row 452.

\* Continue to decrease 1 st. ON CAM BOX SIDE after Rows 412, 418, 424, 430, 436, then knit to Row 440.

ON CAM BOX SIDE, bind off 4 sts. after Rows 352, 353; 3 sts. after Rows 354, 355, 356, 357; 2 sts. after Rows 358, 359, 360, 361. ON EACH SIDE, decrease 1 st. after Rows 362, 364, 366, 368, 370, 376, 382, 388, 394, 400, 406, then knit to Row 410, put 59 needles on the left side into holding position and complete the right half first.

ON EACH SIDE, increase 1 st. after Rows 258, 270, 282, 294, 306, then knit to Row 316. The Striped Pattern is now completed. Change to white and work stockinette st. Continue to increase 1 st. ON EACH SIDE after Rows 318, 330, 342, then knit to Row 352.

ON EACH SIDE, decrease 1 st. after Rows 62, 72, 82, 92, 102, 112, 122, 132, 142, 150, 158, 166, 174, 182, 190, 198, 206, 214, 222, 230, 238, then knit to Row 258.

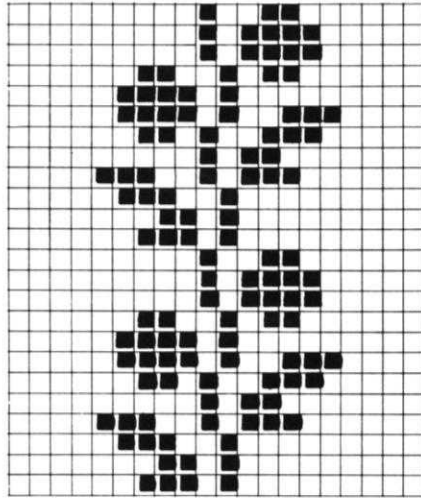
ROWS 0 to 62: Knit even. Cast on 195 sts. with white, work stockinette st. and the repeated color stripes as marked in the diagram.



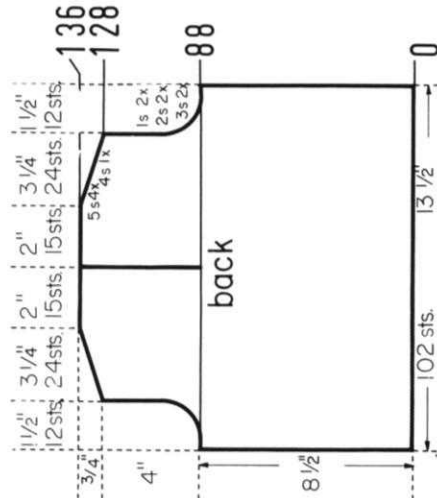


SIZE: 7-8. (Chest 25"-26"). MATERIAL: 8 3/4 oz. (5 balls) light blue = color 1 and 1 1/2 oz. (1 ball) white = color 2. KNOTTING: Sonika Dralon. TENSION: KNOTTING 6 to 8. GAUGE: 15 sts, 20 rows 2". PATTERN: Stockinette Stitch and a Norwegian Design (see Line Drawing) on the sideways knitted skirt and on the shoulder sections. In the instructions each row in the Norwegian Design is counted as 1 row, but several movements of the Cam Box are needed to complete 1 row. Sleeve Edges and Collar: K1, P1. Ribbing with color stripes as marked in the Diagrams. SLEEVE INCREASES: After rows indicated, move the 2 end sts. ON EACH SIDE 1 needle outward, then place the 3rd st. from the row below onto the empty needle.

FINISHING: Block all sections to measurements given. Join front and back section at sides. Sew shoulder sections to front and back section. Sew sleeves together and set in. Sew the collar sections to neckline, overlapping the front edges of the collar about 1/2". Work 1 row of single crochet around back opening, then sew in a zipper. Weave the open sts. of the skirt together. Turn under 2" on lower skirt edge and hem to wrong side. Form 1" deep pleats on each side of the Pattern Stripes. Join skirt to bodice. Using 2 strands of yarn, embroider lazy daisy sts. over the seam lines of the skirt and the shoulder sections. (See picture).



□ = White ■ = Blue



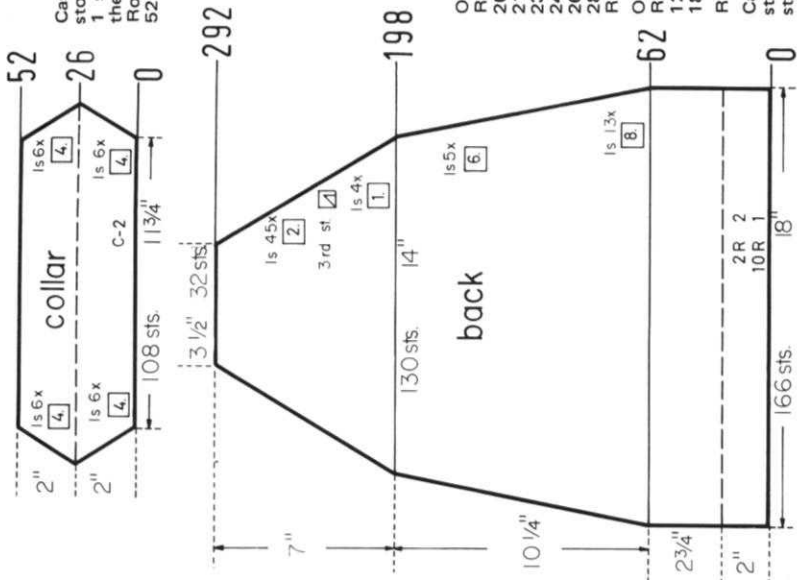
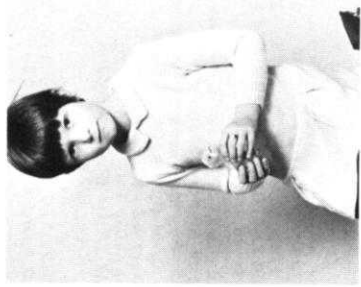
Move the Cam Box to the left side, turn the Row Counter back to 88 and complete the left half. Follow the instructions from \*.

For SHOULDER bind off 4 sts. after Row 128; 5 sts. after Rows 130, 132, 134; 20 sts. after Row 136. (15 sts. are NECKLINE sts.)

\* ON CAM BOX SIDE, bind off 3 sts. after Rows 88, 90; 2 sts. after Rows 92, 94; 1 st. after Rows 96, 98, then knit to Row 128.

ROWS 0 to 88: Knit even, then put 51 needles on the left side into holding position and complete the right half first.

Cast on 102 sts. with blue and work stockinette st.



Cast on 108 sts. with red and work stockinette st. ON EACH SIDE, increase 1 st. after Rows 4, 8, 12, 16, 20, 24, then decrease 1 st. ON EACH SIDE after Rows 28, 32, 36, 40, 44, 48. After Row 52 bind off all sts. the crochet method.

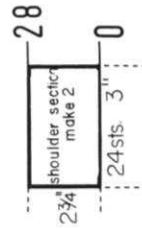
ON EACH SIDE, decrease 1 st. for RAGLAN after Rows 198, 199, 200, 201, 202, 204, 206, 208, 210, 212, 214, 216, 218, 220, 222, 224, 226, 228, 230, 232, 234, 236, 238, 240, 242, 244, 246, 248, 250, 252, 254, 256, 258, 260, 262, 264, 266, 268, 270, 272, 274, 276, 278, 280, 282, 284, 286, 288, 290. After Row 292 bind off the remaining 32 sts.

ON EACH SIDE, decrease 1 st. after Rows 62, 70, 78, 86, 94, 102, 110, 118, 126, 134, 142, 150, 158, 166, 172, 178, 184, 190, then knit to Row 198.

ROWS 0 to 62: Knit even.

Cast on 166 sts. with white, work stockinette st. and the repeated color stripes as marked in the diagram.

Cast on 24 sts. with blue, work 4 rows stockinette st., then change to white and work the Norwegian Design. After Row 24 change to blue and work 4 rows stockinette st., then bind off all sts. Work the second shoulder section the same.



ROWS 173 to 212: Work stockinette st. with blue. After Row 212 knit several rows with contrast waste yarn, then remove the knitting from the machine.

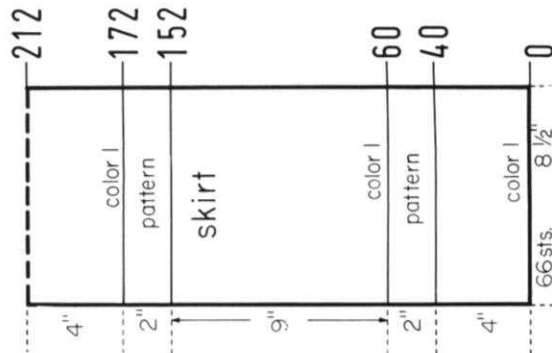
ROWS 153 to 172: Work the Norwegian Design.

ROWS 61 to 152: Work stockinette st. with blue.

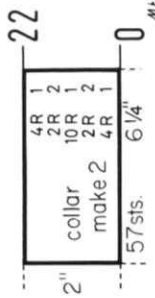
ROWS 41 to 60: Work the Norwegian Design.

ROWS 2 to 40: Knit even.

Cast on 66 sts. with contrast waste yarn, knit several rows, ending with the Cam Box on the left side. Turn the Row Counter to 1, change to blue and work stockinette st. (The omitted row will be made up when weaving the section together).



Cast on 57 sts. with blue, work K1, P1, Ribbing and the color stripes as marked in the diagram. After Row 22 bind off all sts. the crochet method for ribbing. Work the second collar section the same.

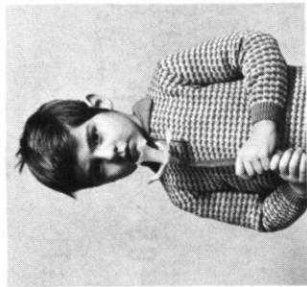
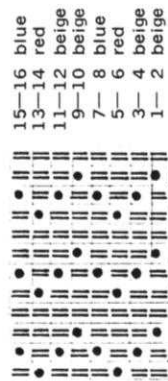




# KK 5256

SIZE: 4-6 (Chest 24"-25"). MATERIAL: 3½ oz. (2 balls) blue, 3½ oz. (2 balls) beige and 1¼ oz. (1 ball) red KNITTING Subita Crepe 2 x 3. TENSION: KNITTING 3 to 5, GAUGE: Holding Stitch 18 sts, 2", 38 rows 2". PATTERN: Holding Position Design according to Line Drawing, worn on the knit side, KNITTING machines use Wheel No. 3. EDGES: K1, P1, Ribbing.

FINISHING: Block all sections to measurements given. Join front and back section at sides and shoulders. Sew sleeves together and set in. Sew collar to neckline. Work 1 row of single crochet around front opening, then sew in a zipper.



Bring the needles on the left side back into working position, knit 1 row in PATTERN to the left side, turn the Row Counter back to 178 and complete the left half. Follow the instructions from \*.

ON CAM BOX SIDE, bind off 3 sts. after Rows 241, 243 (ODD ROWS = NECK SHAPING); 2 sts. after Rows 245, 247, 249, 251; 1 st. after Rows 253, 255, 257, 259, 261, 263. For SHOULDER bind off 3 sts. after Rows 270, 272, 274, 276, 278, 280, 282, 284, 286.

ON CAM BOX SIDE, bind off 3 sts. after Rows 178, 180; 2 sts. after Rows 182, 184; 1 st. after Rows 186, 188, 190, 192, then knit to Row 241.

Work the front section the same as the back section to ROW 178, then put 61 sts. on the left side into holding position and complete the right half first.

Bring the needles on the left side back into working position, knit 1 row in PATTERN to the left side, turn the Row Counter back to 270 and complete the left half. Follow the instructions from \*.

ON CAM BOX SIDE, bind off 3 sts. after Rows 270 (EVEN ROWS = SHOULDER SHAPING), 271 (ODD ROWS = NECK SHAPING), 272, 273, 274; 2 sts. after Row 275; 3 sts. after Row 276; 2 sts. after Row 277; 3 sts. after Row 278; 2 sts. after Row 279; 3 sts. after Row 280; 2 sts. after Row 281; 3 sts. after Rows 282, 284, 286.

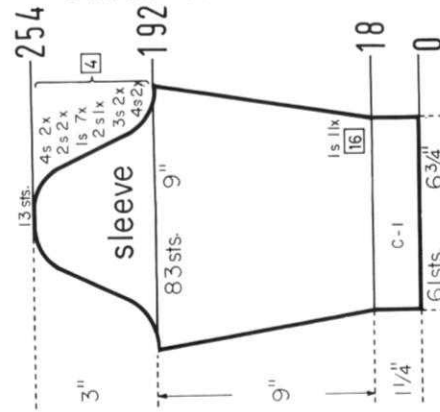
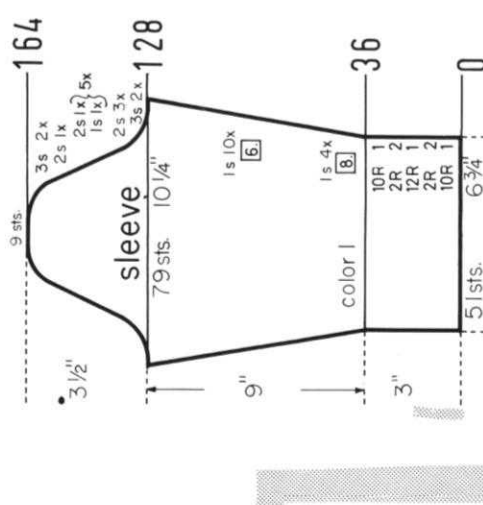
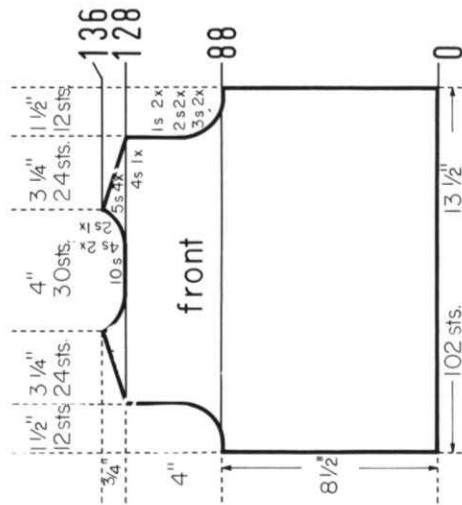
ON CAM BOX SIDE, bind off 3 sts. after Rows 178, 179, 180, 181; 2 sts. after Rows 182, 183, 184, 185; 1 st. after Rows 186, 187, 188, 189, 190, 191, 192, 193, then knit to Row 270, bind off the center 12 sts., put the needles on the left side into holding position and complete the right half first.

ROWS 19 to 178: Knit even.

ROWS 0 to 18: Knit even, then transfer the ribber sts. to the main machine, and work the Holding Position Design.

Cast on 122 sts. with blue and work K1, P1, Ribbing.

Cast on 127 sts. with blue and work 30 rows K1, P1, Ribbing, then bind off all sts. the crochet method for ribbing.



ON CAM BOX SIDE, bind off 3 sts. after Rows 128, 129, 130, 131; 2 sts. after Rows 132, 133, 134, 135, 136, 137; 1 st. after Rows 138, 139; 2 sts. after Rows 140, 141; 1 st. after Rows 142, 143; 2 sts. after Rows 144, 145; 1 st. after Rows 146, 147; 2 sts. after Rows 148, 149; 1 st. after Rows 150, 151; 2 sts. after Rows 152, 153; 1 st. after Rows 154, 155; 2 sts. after Rows 156, 157, 158, 159; 3 sts. after Rows 160, 161, 162, 163; 9 sts. after Row 164.

ON EACH SIDE, increase 1 st. after Rows 36, 44, 52, 60, 68, 74, 80, 86, 92, 98, 104, 110, 116, 122, then knit to Row 128.

ROWS 0 to 36: Knit even, then change to stockinette st. and continue working with blue.

Cast on 51 sts. with blue, work K1, P1, Ribbing and the color stripes as marked in the diagram.

ON CAM BOX SIDE, bind off 4 sts. after Rows 192, 193, 196, 197; 3 sts. after Rows 200, 201, 204, 205; 2 sts. after Rows 208, 209; 1 st. after Rows 212, 213, 216, 217, 220, 221, 224, 225, 228, 229, 232, 233, 236, 237; 2 sts. after Rows 240, 241, 244, 245; 4 sts. after Rows 248, 249, 252, 253; 13 sts. after Row 256.

ON CAM BOX SIDE, increase 1 st. after Rows 18, 19, 34, 35, 50, 51, 66, 67, 82, 83, 98, 99, 114, 115, 130, 131, 146, 147, 162, 163, 178, 179, then knit to Row 192.

ROWS 0 to 18: Knit even, then transfer the ribber sts. to the main machine and work the Holding Position Design.

Cast on 61 sts. with blue and work K1, P1, Ribbing.

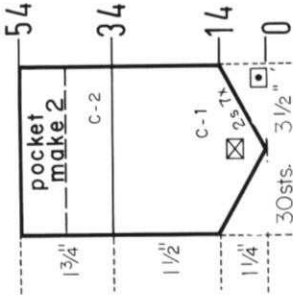




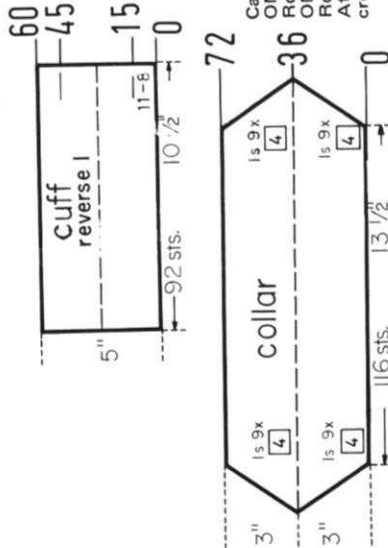
# KK 5255

**SIZE:** 34. **MATERIAL:** 14 oz. (8 balls) KNIT-KING Fortissima. **TENSION:** KNITTING 4 to 6. **GAUGE:** 17 sts. 2", 24 rows 2". **PATTERN:** Stockinette Stitch. When casting on stitches for the Facing, use a separate length of yarn. **COLLAR SHAPINGS:** INCREASES: After rows indicated, move the 2 end sts. ON EACH SIDE 1 needle outward, then place the 3rd st. from the row below onto the empty needle. DECREASES: After rows indicated, hang the 3rd st. ON EACH SIDE onto the 2nd st., then move the end sts. inward to fill the empty needle. To Form the hem, hang the cast-on sts. back on the machine behind the latches, then knit the following row with 2 tension settings higher.

**FINISHING:** Block all sections to measurements given. (Subtract the hem depth). Join front and back section at sides and shoulders. Sew sleeves together and set in. Form small pleats at the lower edge of the sleeves and baste in place. Sew 1 edge of cuffs to inside and 1 edge to outside of sleeve edges, leaving about 3/4" on each side of the cuff edges free. Sew short ends of cuffs. Turn under 10 sts. for facing on front edges and hem to wrong side. Fold collar in half and sew short ends. Sew 1 edge of collar to inside and 1 edge to outside of neckline, leaving about 1/2" on each front edge free. Turn under 3/4" on upper edge of pocket and hem to wrong side. Sew pocket in place. Finish buttonholes, sew on buttons.

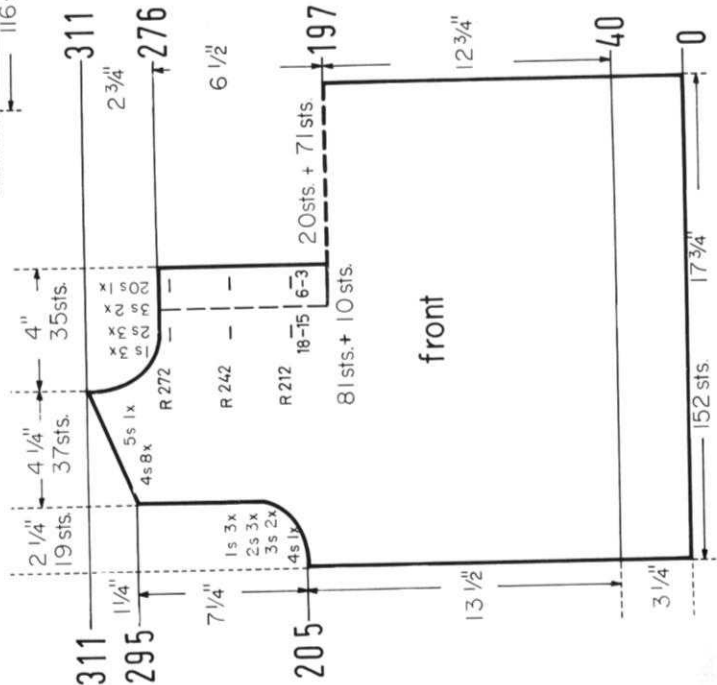


Cast on 30 sts. with beige and work the Holding Position Design without changing the colors. ON OPPOSITE SIDE of CAM BOX, put into holding position 14 needles after Rows 0, 1. ON OPPOSITE SIDE of CAM BOX, bring back into working position 2 needles after Rows 2, 3, 4, 5, 6, 7, 8, 9, 10, 11, 12, 13, 14, 15, then knit to Row 34, change to green and work 20 rows stockinette st. After Row 54 bind off all sts. the crochet method.



Cast on 92 sts. and work stockinette st. Make buttonholes after Rows 15 and 45 over the 8th-11th sts. counting from the right side. After Row 60 bind off all sts. the crochet method. Make the buttonholes on the second cuff over the 8th-11th sts. counting from the left side.

Cast on 116 sts. and work stockinette st. ON EACH SIDE, increase 1 st. after Rows 2, 6, 10, 14, 18, 22, 26, 30, 34. ON EACH SIDE, decrease 1 st. after Rows 38, 42, 46, 50, 54, 58, 62, 66, 70. After Row 72 bind off all 116 sts. the crochet method.



Move the Cam Box to the right side, turn the Row Counter back to 197. Hang the sts. from the stitch holder back on the machine, cast on 20 sts. on the left side for the Facing and complete the right half. (91 sts.). Follow the instructions from \*.

ON CAM BOX SIDE, bind off 20 sts. after Row 276 (EVEN ROWS = NECK SHAPING); 3 sts. after Rows 278, 280; 2 sts. after Rows 282, 284, 286; 1 st. after Rows 288, 290, 292. For SHOULDER, bind off 4 sts. after Rows 295, 297, 299, 301, 303, 305, 307, 309; 5 sts. after Row 311.

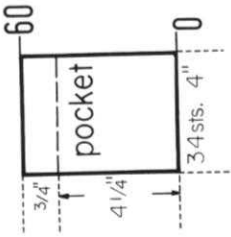
Make Buttonholes after Rows in ( ) over the 3rd-6th and 15th-18th sts. counting from the right side. ON CAM BOX SIDE, bind off 4 sts. after Row 205; 3 sts. after Rows 207, 209; 2 sts. after Rows 211, (212), 213, 215; 1 st. after Rows 217, 219, 221, (242), (272), then knit to Row 276.

\* ROWS 198 to 205: Knit even.

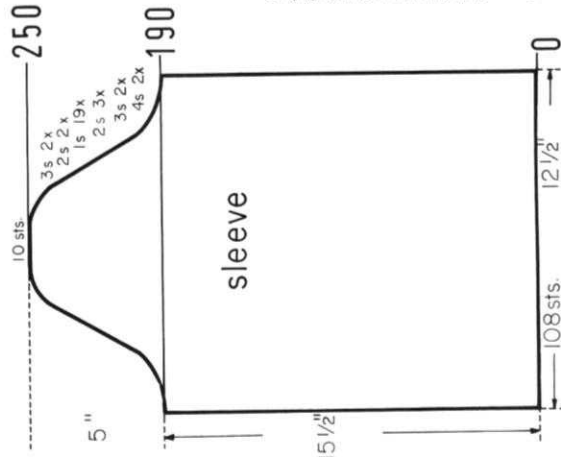
ROWS 41 to 197: Knit even, then put 71 sts. on the RIGHT side onto a stitch holder, cast on 10 sts. on the right side for the Facing and complete the left half first. (91 sts.).

ROWS 0 to 40: Knit even then form the hem.

Cast on 152 sts. and work stockinette st.



Cast on 34 sts. and work 60 rows stockinette st., then bind off all sts.

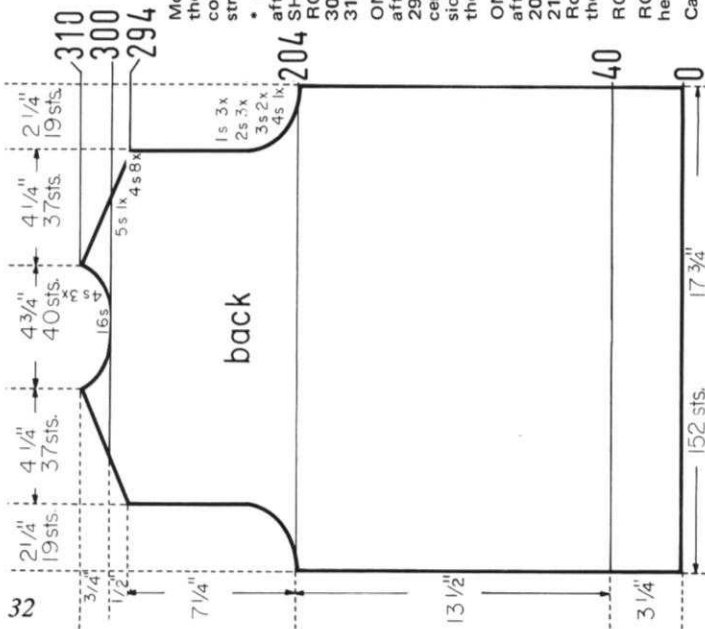


ON CAM BOX SIDE, bind off 4 sts. after Rows 190, 191, 192, 193; 3 sts. after Rows 194, 195, 196, 197; 2 sts. after Rows 198, 199, 200, 201, 202, 203. ON EACH SIDE, hang the 1st st. onto the 2nd st. after Rows 204, 206, 208, 210, 212, 214, 216, 218, 220, 222, 224, 226, 228, 230, 232, 234, 236, 238, 240. ON CAM BOX SIDE, bind off 2 sts. after Rows 242, 243, 244, 245; 3 sts. after Rows 246, 247, 248, 249; 10 sts. after Row 250.

ROWS 0 to 190: Knit even.

Cast on 108 sts. and work stockinette st.

Continued on next page



Move the Cam Box to the left side, turn the Row Counter back to 300 and complete the left half. Follow the instructions from \*.

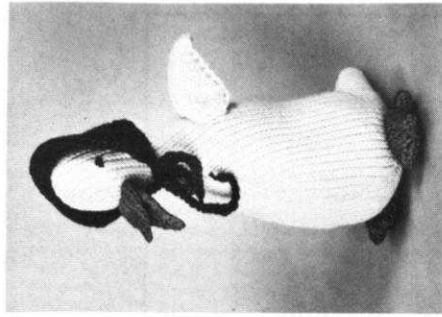
\* ON CAM BOX SIDE, bind off 4 sts. after Row 300 (EVEN ROWS = SHOULDER SHAPING), 301 (ODD ROWS = NECK SHAPING), 302, 303, 304, 305, 306, 308; 5 sts. after Row 310.

ON CAM BOX SIDE, bind off 4 sts. after Rows 294, 295, 296, 297, 298, 299, then knit to Row 300, bind off the center 16 sts., put the needles on the left side into holding position and complete the right half first.

ON CAM BOX SIDE, bind off 4 sts. after Rows 204, 205; 3 sts. after Rows 206, 207, 208, 209; 2 sts. after Rows 210, 211, 212, 213, 214, 215; 1 st. after Rows 216, 217, 218, 219, 220, 221, then knit to Row 294.

ROWS 41 to 204: Knit even.  
ROWS 0 to 40: Knit even, then form the hem.

Cast on 152 sts. and work stockinette st.



## KG 1922 DUCK

**MATERIAL:** 3 1/2 oz. (2 balls) yellow (3 balls will make 2 Ducks) and small amounts of red (for Bill and Feet) and green (for Hat) KNITTING FRIGATE.  
**TENSION:** KNITTING 8 to 10. GAUGE: 9 sts. 2", 12 rows 2". **PATTERN:** Stockinette stitch OVER EVERY OTHER NEEDLE.

**FINISHING:** With wrong sides together, pin the GUSSET onto each side of the fronts beginning with the cast on stitches of gusset pinned to the body at bottom of neck (breastbone) and continue around under the bottom of duck to beginning of tail piece, then weave the sections together. Turn to wrong side and pin edges together then back stitch around the head, neck, tail and back but leave small section open on back for stuffing. Turn to right side and stuff with Dacron filler. Shape as you go (do not use foam chips). Close opening. Embroider black eye on each side of head. With right sides together, over-cast two feet sections leaving open at top. Turn and stuff lightly then close opening and attach to body. Pull up the wing sts. held on yarn, secure end and cut off, then with right sides together over cast two sections on the top of wing (leave increase edges open). Turn to right side, fold in half and attach to shoulder on each side with open edge down. Single crochet across back of hat and make 6" chains for ties on each side. Tie hat under chin. — Sew on Bill.

**BODY:** Cast on 13 sts. with yellow over every other needle, work stockinette st. and Short Rows.

ON OPPOSITE SIDE of CAM BOX, put into holding position 4 needles after Row 0 and 3 needles after Row 1. ON OPPOSITE SIDE of CAM BOX, bring back into working position 1 needle after Rows 2, 3, 4, 5, 6, 7, 8, then knit to Row 17.

ON CAM BOX SIDE, decrease 1 st. after Rows 17, 19, 21, then knit to Row 23, decrease 1 st. ON OPPOSITE SIDE of CAM BOX and knit to Row 25. (9 sts.) DECREASE 1 st. ON OPPOSITE SIDE of CAM BOX after Row in (.). INCREASE 1 st. ON CAM BOX SIDE after Rows 25, 27, (27), 29. (11 sts.)

ON CAM BOX SIDE, increase 1 st. after Rows 30, 31, 32, 33, 35, 37, 39, 41, 43, 45, 47, 49, then knit to Row 66. (23 sts.)

ON CAM BOX SIDE, decrease 1 st. after Rows 66, 67, then knit to Row 72. (21 sts.)

ON CAM BOX SIDE, DECREASE 1 st. after Rows in (.). ON CAM BOX SIDE, INCREASE 1 st. Rows 72, (73), 74, (75), 76, (77), then knit to Row 78. (21 sts.)

INCREASE 1 st. ON CAM BOX SIDE after Rows in (.). ON OPPOSITE SIDE of CAM BOX put into holding position 2 needles after Row 78; (78), 6 needles after 80, (80), 82; (82), 3 needles after Rows 84, 86, then knit to Row 88, bring all needles back into working position, knit 1 row over all 24 sts., then bind off the crochet method.

Work the second body section with reverse shapings, casting on from right to left. (Cam Box will be on the LEFT side at Row 0).

**GUSSET:** Cast on 2 sts. with yellow over every other needle and work stockinette st. ON CAM BOX SIDE, increase 1 st. after Rows 2, 3, 9, 10, 13, 14, then knit to Row 50 (8 sts.)

ON CAM BOX SIDE, decrease 1 st. after Rows 50, 51, 60, 61, 66, 67. After Row 68 bind off the remaining 2 sts.

**HAT:** Cast on 11 sts. with green over every other needle, work stockinette st. and Short Rows. Work the Short Rows without wrapping the yarn.

Knit 2 rows. \* ON OPPOSITE SIDE of CAM BOX put into holding position 2 needles after Rows 2, 4, 6, 8. ON OPPOSITE SIDE of CAM BOX bring back into working position 2 needles after Rows 10, 12, 14, 16. After Row 18 all needles are back in working position. Turn Row Counter to 2 and repeat from \* 2 times more, then bind off.

**FEET:** Make 4.

Cast on 5 sts. with red over every other needle and work stockinette st. Knit 4 rows. ON CAM BOX SIDE, increase 1 st. after Rows 4, 5, 6, 7, 8, 9. ON CAM BOX SIDE, bind off 3 sts. after Rows 10, 11. ON CAM BOX SIDE, decrease 1 st. after Rows 12, 13, 14, 15. After Row 16 cut the yarn and pull through last st.

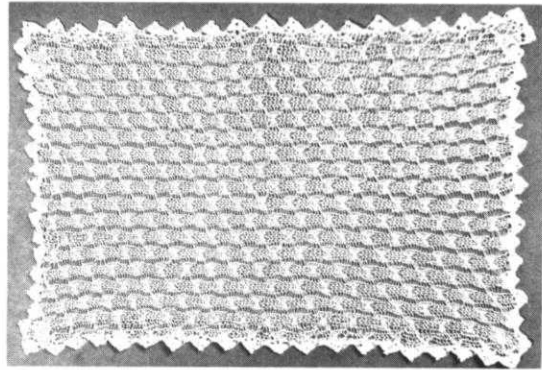
**WINGS:** Make 4.

Cast on 2 sts. with yellow over every other needle and work stockinette st. Knit 2 rows. Increase 1 st. on the right side (left side for reverse sections) by bringing 1 empty needle into holding position (be sure yarn goes under empty needle) for 1 row, the needle into working position on the next row. Do this 9 times. (11 sts.). After Row 20 take the 11 sts. off onto the end of yarn.

Work 1 more wing the same and work 2 wings with reverse shapings. For the reverse sections cast on from right to left. (Cam Box will be on the LEFT side at Row 0).

**BILL:** Make 2

Cast on 8 sts. with red over every other needle and work stockinette st. ON EACH SIDE, decrease 1 st. after Rows 3, 6, 9, then knit to Row 12, hang the remaining 2 sts. together and bind off.



## KG 1923

PLACE MAT

**MATERIAL:** 1 ball J.P. Coats Crochet Cotton No. 20. Tension 2.

**FINISHING:** Crochet a picot or shell stitch all around edges. Starch with heavy starch and pin out to size 10" x 16".

Bring into working position 75 needles, then push every 4th needle back to the out of work position. There will be 19 groups of 3 needles. Cast on 57 sts. over the 57 needles in working position. (KNITTING machines when knitting the pattern, push in the left Retractor Button after knitting each 5th row, then release button after knitting each 6th row.) Knit 2 rows \*Put the 2nd then every 6th needle into holding position. Knit 6 rows. Bring holding position needles back to working position. Put the 5th then every 6th needle into holding position and knit 6 rows. Bring holding position needles back to working position. REPEAT from \* 18 times. Bring all needles into working position and knit 2 rows. Row Counter will read 232. Bind off.





# KNITTING NEWS

March/April 1971

## OUR READERS WRITE

We have had several inquiries asking if Sleeves can be knitted into a garment using the Short Row method... The answer is yes! In this issue of KNITTING MAGAZINE, the Raglan Sleeves on the Dress DK 7892 can be knitted in with the Short Row method and we will use this dress as an example. In the instructions on page 20, we give the conventional way of knitting the sleeves separately using the full fashion method of decreasing... When you knit them this way, you must weave or sew the sleeves into the dress. For those of you that would like to try the short row method, (which can also be used for cardigans and pull-overs etc.) you must knit the back and the front sections as well as the sleeves in the following manner....

Follow the instructions as written up to the Armhole shaping on the BACK section. To shape the armholes, use the short row method remembering to ALWAYS wrap the yarn around the inside needle in holding position. When Counter reads 266, put 2 needles on the left side into holding position, knit across and wrap the yarn. On the right, put 2 needles in holding position and knit across, wrap the yarn, Repeat once more, putting 2 needles on the left side, then the right side into holding position. Now put 1 needle opposite Cam Box into holding position beginning every row (each time wrap the yarn) for a total of 45 times on each side. After Row 360, the Raglan shaping is completed and 37 sts. remain for the neck. Mark the first and last neck st. by pulling a short strand of contrast yarn through each st. Now put all the neck st. needles into holding position, bring the right side raglan needles into working position and knit 1 row, then knit 10 to 12 rows over these needles with a contrast waste yarn. (Waste yarn MUST be of the same weight as garment yarn). Remove these sts. from the machine by moving the Cam Box to the left side without yarn... Now do the same to the 49 raglan needles on the left side, then bind off the 37 neck sts. using the crochet method.

Work the front section in the same manner. Follow the written instructions and the Chart for the Neck Shaping as you continue putting the Raglan needles into holding position. After Row 364, bring all the Raglan needles on the right side into working position and knit 1 row, then put the raglan stitches onto contrast waste yarn as you did on the back section. When you have completed the right side, knit the left side.

**SLEEVE:** Bring 15 center needles for the sleeve into working position and cast on over these needles with garment yarn, then put them into holding position. Now with PURL side facing you and beginning at neck edge, hang the RIGHT raglan stitches of the back section onto 49 needles to the right of the sleeve stitches. With PURL side facing you, and beginning at neck edge, hang the LEFT raglan stitches of the front section onto 45 needles to the left of the sleeve stitches. Put all the needles into holding position. Check carefully to be sure you have all the raglan stitches on the machine, then remove the waste yarn.

Bring the first 3 sleeve needles on the right side into working position and knit 1 row to the left side (be sure to wrap yarn). Bring 1 needle (opposite Cam Box always) of the raglan into work and knit to the right side. Bring 3 more needles of the sleeve into work and knit to the left. Continue to bring 1 needle on the right into working position and 3 on the left until Counter reads 8 and your Cam Box is on the right side. Now bring the last 3 sleeve needles plus the first of the raglan needles into working position (4 sts.) and knit to the left. From here on, continue the short rows on each side, bringing 1 needle opposite Cam Box into working position each time until Counter reads 90. You should have 4 sts. left on each side. Now bring 2 needles at a time back into working position after Rows 90, 91, 92, 93. The raglan portion of the sleeve is now completed. On each side, make full fashion decreases (put the 3rd st. onto the 2nd needle and move the sts. in to fill empty needle) after Rows 94, 96, 98, 100, 102, 104, 106, 108, 110, 112, 114, then knit even to Row 132 and bind off 87 sts. using the crochet method.

To make the second Sleeve, cast on from RIGHT to LEFT. After casting on the 15 sleeve sts., your Cam Box will be on the LEFT side at Row 0, put the sleeve sts. into holding position. With PURL side facing you, hang the RIGHT raglan stitches of the front section onto 45 needles to the right of the sleeve stitches and the LEFT raglan stitches of the back section onto 49 needles to the left of the sleeve stitches. Bring the first 3 sleeve needles on the left side into work and knit to the right side. Bring 1 needle (opposite Cam Box) of the Raglan into work and knit to the left side., etc., etc.....

## PRACTICAL KNITTING HINTS

COVER SUIT DK 7942 - Jan/Feb 1971 Magazine

The Cover Suit in the January/February issue of KNITTING MAGAZINE was knitted with KNITTING Amoretta, a thick and thin yarn. When working with this type of yarn, we suggest that you knit with 2 balls and hand feed. The reason is... the distribution of thick and thin areas in this type of yarn are pretty regular and when you use only one ball, the yarn might form a distinct pattern with some large areas having too much or too little of the thick part of the yarn.

The way to use two balls of yarn is: First cast on with one ball and knit two rows by placing the yarn across the open needles (see KNITTING Instruction Manual Page 16). Pick up the second ball of yarn, knit two rows and change to the first ball. Continue to knit 2 rows with each ball of yarn and you will find that the thick and thin sections are distributed and spaced correctly.

Be sure to make your sample swatch in the same way that you will knit your garment sections. Because you will be hand feeding and everyone holds the yarn differently, you may have to change the tension number up or down.



### GARMENTS IN THIS ISSUE MADE WITH LINEN COTTON

KNITKING Linen Cotton is being used for 3 garments in this issue of KNITKING MAGAZINE. Linen Cotton is not shown in our Yarn Catalogue, but we do stock it and have enough on hand to fill orders for these special patterns. We are listing the amount of yarn used plus the cost for each. Please be sure to include shipping costs - \$1.00 up to 20 balls plus 35¢ for each additional 1 to 10 balls. California residents, please include 5% Sales Tax.

Woman's 2-piece Dress DK 7896

6 balls 3-ply Subita Dralon @ \$1.20 ea.	\$ 7.20
9 balls Linen Cotton @ \$1.35 ea.	12.15
	Total \$19.35

Man's Shirt HP 3622

10 balls Linen Cotton @ \$1.35 ea.	\$13.50
------------------------------------	---------

Girl's Dress MK 5253

3 balls 3-ply Subita Dralon @ \$1.20 ea.	\$ 3.60
5 balls Linen Cotton @ \$1.35 ea.	6.75
	Total \$10.35

### PEARL BAILEY and her KNITKING SLIPPER BOOTS

If you saw the Pearl Bailey television show on February 20th, you must have seen her put on the knitted Slipper Boots featured in the last issue of KNITKING MAGAZINE... Frank Genereux, the Engineer on the program, bought a KNITKING machine for his wife last year and is so fascinated with it, he uses it at least as much as his wife.... The very talented Pearl Bailey is always sighing (on and off stage apparently) that her feet are killing her... Her show it seems, is a very happy one and Frank made her the Slipper Boots just as a joke... but she was so thrilled with them she immediately announced her intention to wear them on the air.

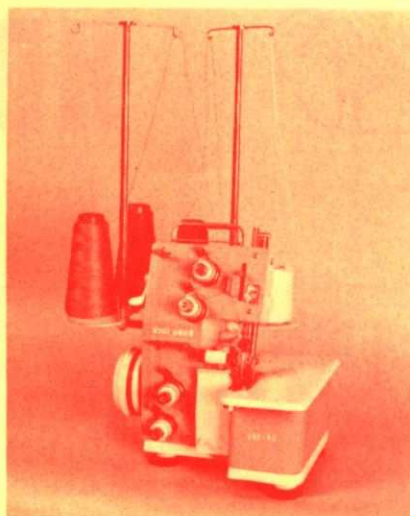
Frank frequently visits our Los Angeles Store and being an Engineer, usually has some good ideas in regard to machine knitting... He recently gave us one that we think could be of value to our readers... He purchased two small magnetic hooks (the type you use in bathrooms for robes etc.) at a hardware store and attached them to each front end of his machine.... they are perfect for hanging scissors and other tools on....

### CUT & SEW KNITTING

A new method of producing knit garments has been rapidly gaining popularity in Japan during the past year and as a result, a special type of Sewing Machine has been developed for the Knitting Machine owner.

The new method is called Cut & Sew...and that literally is what many thousands of Japanese knitters are doing... Instead of shaping sections of garments as they are knitted, they just knit yardage which is later cut and sewn together to the exact measurements garments call for.

Obviously just cutting knitted fabric can produce many ragged edges that easily unravel.. The overcoming of this problem was not easy, but it has been accomplished by one of Japan's leading Manufacturers of Industrial and Home Sewing Machines .... They have designed and manufactured an incredibly versatile and efficient machine that cuts and sews in an overlock stitch simultaneously...!! It overlocks without cutting when necessary... It also straight seams in a flexible double chain stitch and can overlock and seam at the same time using up to 4 threads... This clever machine can, of course, also be used for dress-making with other types of fabrics such as cottons



... georgettes... lawns... voiles... bonded stretch and sew fabrics... etc...

We have been approached by the Manufacturers of this ingenious Sewing Machine to see if we would be interested in distributing it throughout the U.S.... Frankly, we cannot make up our minds.... and we are going to ask you to tell us what you think... We know that many of you will be interested in the machine's possibility and will like the idea of making knits just the way you do other dresses, but we are also aware that there would be much more wastage of yarn using this method.... Only the user can determine whether the saving in time will compensate for the wastage... We have tested the machine thoroughly and have to say that it is beautifully made and that its function is excellent.

Overlocking machines are normally only sold for commercial knitting and their starting prices are around \$600.00... The Baby Lock machine as illustrated would retail in the U.S. for around \$250.00.

If you are interested in the machine, we are prepared to purchase a small quantity and introduce them at a \$50.00 savings... Just let us know as soon as possible if you would like to place an order for one so that we can speedily determine what quantity to order... It will be approximately 6 weeks before we in turn can ship to you.... We suggest that you send a \$20.00 down payment with your order and that we ship your machine to you C.O.D. of the balance.

### NEW KNITKING CAM WHEEL

We are introducing a new Cam Wheel for the AM 3 KNITKING... It will be known as Wheel No. Eleven.. AM 3 owners who purchased the new KNITKING Pattern Cards will have already seen an illustration of it. The new Wheel increases the versatility of the AM 3 tremendously as it pushes into the holding position every 4th and 6th needle (see Chart) and can be set to start on any number from 1 to 6... We will be designing some patterns for KNITKING MAGAZINE with it, featuring the new textured appearance in knits. The introductory price for one Cam is \$1.00 and we will pay the postage... California residents must add 5% Sales Tax.





# NOTES TO KNIT BY . . .

## STITCH AND ROW GAUGE

KNIT A SAMPLE SWATCH . . . before you begin to knit any garment . . . for this is the MOST IMPORTANT STEP toward the correct size and the proper fit of any garment you wish to make. You MUST use the SAME YARN for your sample swatch that you will use to knit your garment and your sample swatch must be knitted large enough and using several different tension numbers on your machine. When you have done this, then you can determine the number of stitches and the number of rows in a two-inch measure. KNITTING MAGAZINE PATTERNS give you 3 tensions to try and one of them should give you the correct stitch and row gauge if you are using the yarn we recommend or a similar weight yarn. Here is the way to make your sample swatch.

Cast on over a sufficient number of needles to produce a swatch at least 4 inches wide. (If the pattern calls for 16 stitches to 2", then  $16 \times 2 = 32$  stitches to cast on). Now knit 4 inches of rows at the first suggested tension number. (If the pattern calls for 22 rows to 2",  $22 \times 2 = 44$  rows to knit). Knit 2 rows using a contrast color, change to the next higher tension and with garment yarn knit another 4", knit 2 rows with contrast color, change to the 3rd higher tension and knit another 4" and then bind off.

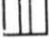


Roll the swatch into a cylinder over its length and pull on both ends, unroll it and stretch it diagonally by pulling on the four corners. Allow the swatch to rest and settle (preferably overnight) and then using a stitch gauge or a ruler, count the number of stitches over a 2" width, then the number of rows over a 2" length in EACH of the 3 tensions. Select the tension number that produces the stitches and rows called for in the pattern. If none of them are correct, you are most likely using the wrong weight of yarn.




## READING OF CHARTS


You will notice the instructions start at the bottom of the Chart and work UP. Follow the charts exactly as written and providing your sample stitch and row gauge is correct, your garment will come out the right size. Please remember that the section of garment as it is knitted on the machine, faces the same way as the Charts are in this magazine. Where two front pieces are needed, (or any other part of a garment that needs two sections) only one section is normally shown and the second section is usually made with reverse shapings. Set in sleeves are usually identical, but raglan sleeves have to be knitted with reverse shapings for the second sleeve.


## READING OF SYMBOLS

To simplify Pattern Knitting, we use Symbols in the Line Drawings and the Chart Diagrams. In the Line Drawings the symbols are shown and are to be read as you look at them while knitting a garment. For instance, if

a Purl stitch faces you, the Purl stitch Symbol  is shown; if a knit stitch faces you (as when using the Ribber) then this Symbol  is shown. The Symbol  at the top of the Line Drawing is the center of the garment section and you use this as a guide for setting up the needles.

The following Symbols    are used for Eyelet Designs in the Line Drawings and also for Full Fashion shapings on the Charts. The Line Drawings have row numbers on the right side. Missing Row numbers are always knitted straight or plain.

In Holding Position Designs  selected needles are pushed into holding position for the stated number of rows. The numbers of rows appear at the right of the Line Drawings; Example: 1-4 means knit Rows 1 to 4; 5 to 7 means knit Rows 5 to 7, etc. This same Symbol is also shown on the Charts and is used for putting needles into holding position for Short Rows. The

Symbol  on the Charts is used to put needles back into working position when knitting Short Rows.

A number in a box stands for the number of rows to be knitted between shapings. Make shapings first, then knit the necessary number of rows. If for instance it reads:

1 st. 8 x



1 st. 10 x



As you will be reading the instructions from the bottom up, here is the way you will follow them: . . . Decrease or increase (depending on the direction of the garment outline) 1 st. at the row where the shapings begin, then knit 8 rows, make the next decrease, then knit 8 rows, until you have decreased (or increased) 1 st. 10 x and you have knitted 8 rows after each decrease (or increase) (1 st. 10 x + 8 rows 10 x). Now begin the first decrease (or increase) for the shapings (which has to be made 8 x) in every 6th row. Decrease (or increase) 1 st. first, then knit 6 rows until you have decreased 1 st. 6 x and after each decrease (or increase) have knitted 6 rows (1 st. 8 x + 6 rows 8 x).

Where shapings are given without a boxed number as on most armholes, necklines, etc., make the shapings on every second row (on each side of course).

(See below for more Pattern Stitch Symbols.)

### PATTERN STITCH SYMBOLS



= knit stitch



= purl stitch



= empty needle (leave in working position)



= needle not used (in the out of work position)



= needle in the holding position



= Needles back into working position.



= 2 stitches on 1 needle - either transferred from the right side or the left side, then put the needle into holding position



= needle holding 2 stitches. Stitch has been transferred from the LEFT



= needle holding 2 stitches. Stitch has been transferred from the RIGHT



= 3 stitches on 1 needle. The 1st and 3rd stitch in a group of 3 needles has been hung on the 2nd or center needle.



= Center of Garment Section.



= Number of rows to be knitted between shapings.

The diagrams (Line Drawings) for pattern work are followed just as they are shown and are to be read as you look at them while knitting the garment.

open darts



closed darts



# Knitking makes it easy...



"YARNS BY KNITKING." No matter how you knit, by needle or automatically, you will want this wonderful catalog that shows actual samples of the world's most exciting yarns ... a brilliant array of gorgeous colors and fabulous textures ... you'll be thrilled to pieces ... handsome cable yarns and other 100% virgin wools awarded the International Wool Seal, superb Satin-Cotton and Linen-Cotton, luxurious tweeds, even a new "soft as a kitten" synthetic that can be machine washed and dried. We traveled the globe for the finest yarns and we import them from Australia, Great Britain, Germany and many other countries. We sell directly to you at big savings!  
**PRICE: \$1.00. DEDUCTIBLE FROM FIRST \$10 ORDER**  
 (CAL. RES. ADD 5¢ TAX)

## PRACTICAL HINTS

A completely new publication... A reference book written especially for the machine knitter... Complete detailed instructions on measuring, charting, knitting, assembling and finishing garments... How to do fashioning and shaping... How to make buttonholes and do decorative stitching... eyelet designs, Norwegian patterns, etc., etc. Absolutely indispensable to all owners of knitting machines.



**PRICE: \$3.35 INCL. POSTAGE**  
 (CAL. RES. ADD 17¢ TAX)



**KNITKING CHILDREN'S BOOK** ... over 50 beautiful patterns for infants and children to teens ... boys and girls ... buntings, blankets and baby outfits to cute dresses, skirts and cardigans ... a treasure chest of gift ideas!

**PRICE: \$3.35 INCL. POSTAGE**  
 (CAL. RES. ADD 17¢ TAX)

**KNITKING MAGAZINE** ... it's the only knitting machine magazine published in America ... each issue has 20 or more up to the minute knitting patterns ... something for every member of the family ... fashions created by top designers and photographed on famous models, some in full color ... and you receive a bi-monthly newsletter with your subscription ... put **KNITKING MAGAZINE** on your must reading list and you'll be a fashion expert in no time!



**YEAR'S SUBSCRIPTION. (6 ISSUES)**  
 \$6.00 IN U.S.A. \$7.00 IN CANADA