

v6 I 2

# knitking

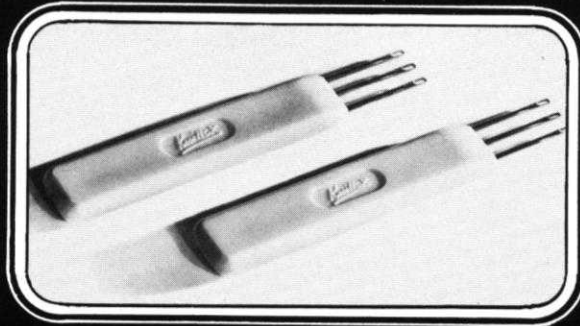
*magazine*



y6  
nov/dec '69

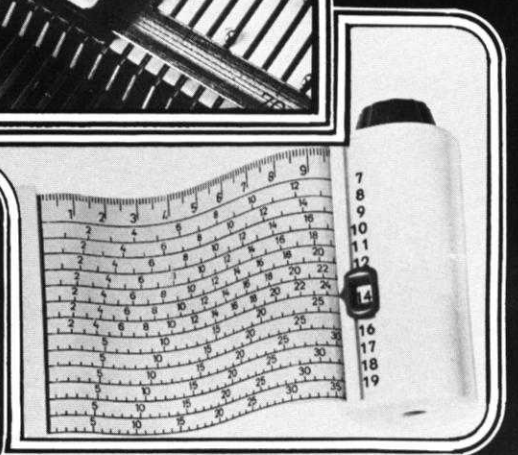
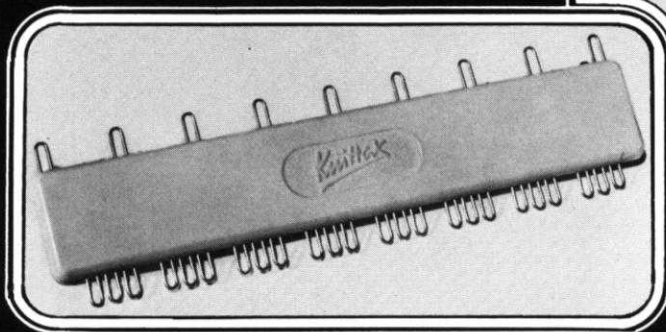
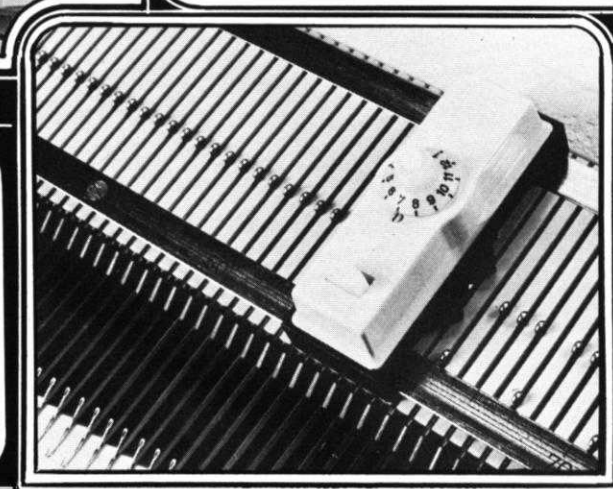
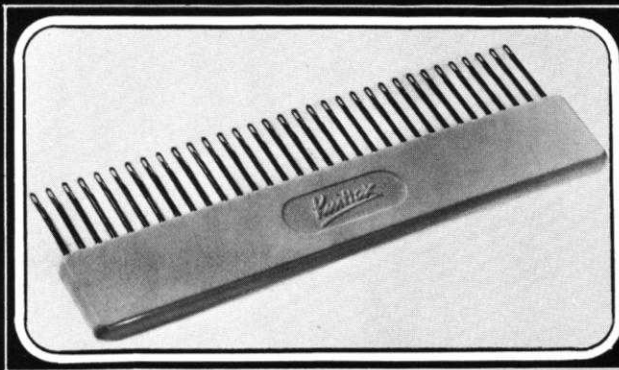
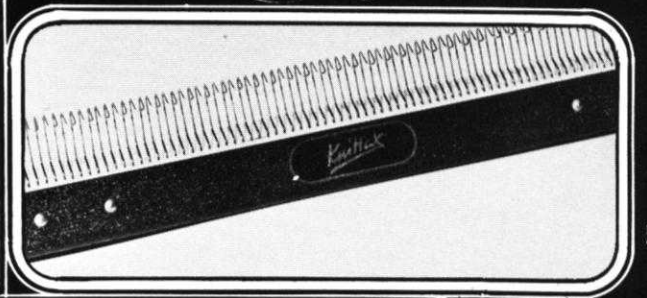
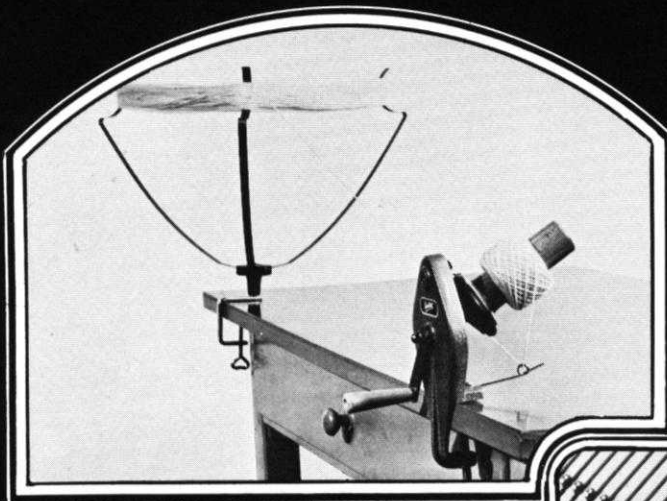
# Accessories

1. Treble Transfer-Tools. For rapid transfer of stitches and for cable stitch. \$1.50 pair plus 25c shipping.
2. Yarn Winder and Skein Holder. Heavy cast frame and nylon gears. \$15.95 plus \$1.00 shipping.
3. 33 Needle Multi-Transfer Tool. For decreasing in the middle of a row. \$3.25 plus 25c shipping.
4. Adjustable Needle Selector. For setting unevenly spaced pattern stitches. \$3.50 plus 25c shipping.



5. Reversing Bar. For easy hem turning or reversing of knitting. \$17.95 plus \$1.50 shipping.
6. Automatic Pattern Selector. For all KNITTING machines prior to Push Button. \$7.95 plus 35c shipping.
7. Converta Tape. For simple and speedy charting of custom knits. \$6.95 plus 30c shipping.

California residents add  
5% sales tax.



# knitking *magazine*

As regular readers already know, we were a month late with the last issue . . . All manner of problems arose because of our entirely new format, but we did eventually get the magazine completed and mailed to our subscribers in the U. S. and to other English speaking countries throughout the world.

We were naturally very sorry about the delay and we do apologize to everybody that was inconvenienced . . . At the same time, we want to thank the many hundreds of nice people who wrote to us saying that they had not received their magazines by the usual time and were worried in case they had gone astray . . . So many said that they look forward eagerly to each issue and would not want to miss one.

It seems that we really were successful in our endeavors to produce a knitting machine magazine with pattern instructions that can be understood by everybody from the complete beginner to the most accomplished . . . Letters are pouring in by every mail praising the new format and the simplicity of instruction . . . We thank you all for taking the time to write. Your thoughts and opinions are what helped us achieve the objective and we will continue in our efforts to satisfy the needs of every reader.

Our designers are producing some really outstanding designs for publication in 1970 . . . The January - February issue will contain an excellent assortment of seasonal garments . . . The cover features a mini-length dress in a new Jac design with bell bottom pants in one of the two colors used in the dress. There are three other very good looking dresses . . . a two-piece cardigan and skirt outfit . . . an assortment of handsome winter sweaters that introduce some new and unusual Jac designs plus three pullover and pants outfits for the youngsters.

For the March - April issue, we have some lovely spring designs in a variety of sizes including several for the larger person . . . We will continue to include in each issue, some simple to make gift items.

We suggest that subscribers in the U.S.A. and Canada read the Newsletter in the center of this issue as soon as possible . . . It tells about a truly fabulous special on a beautiful boucle 100% wool yarn . . . We have a very large quantity of this yarn in our warehouses, but the word has spread around that KNITKING YARN specials are outstanding in value . . . Don't miss this one . . . It's sensational.

LETTER  
from the  
PUBLISHER

Publisher: KNITKING CORPORATION, 1128 Crenshaw Blvd., Los Angeles, Calif. 90019, Telephone: WEbster 8-2079. Published bi-monthly. Subscriptions: USA - \$6.00 annually, single copies \$1.50; Canada - \$7.00; other parts of the world - \$10.00. The entire contents of KNITKING MAGAZINE are copyright and must not be reproduced in any shape or form without the express permission, in writing, of the publisher. COPYRIGHT © by KNITKING CORPORATION 1969.

Printed by: George Rice & Sons, Los Angeles, California.



# COVER GIRL COVER UP

DP 7729

It's the prettiest Tunic in town . . . knit it in stockinette stitch with stripes in a holding position design. Don't stop with the Tunic . . . but make it a complete outfit by knitting the beautifully fitted Slacks and high necked Pullover as well. Use KNITKING Subita 2 x 4 for the Tunic and 2 x 3 for the Slacks and Pullover.

Size 10/12. See pages 14 & 15.



DP 7721

A warm and beautiful Pullover is knitted with KNITKING Starlite Crepe (see color photograph on back cover). A holding position design with the Ribber according to chart for the body of the Pullover, the sleeves and collar in a double Fisherman's Rib.

Size 10/12. See page 16.



Holiday Happenings . . . ! Plan your holiday gifts around a selection of KNITKING KNITS. The high fashion Tunic on the cover of this issue is being worn over beautifully fitted slacks with a matching pullover. There's something you can knit for everyone in your family as well as some lucky friends.

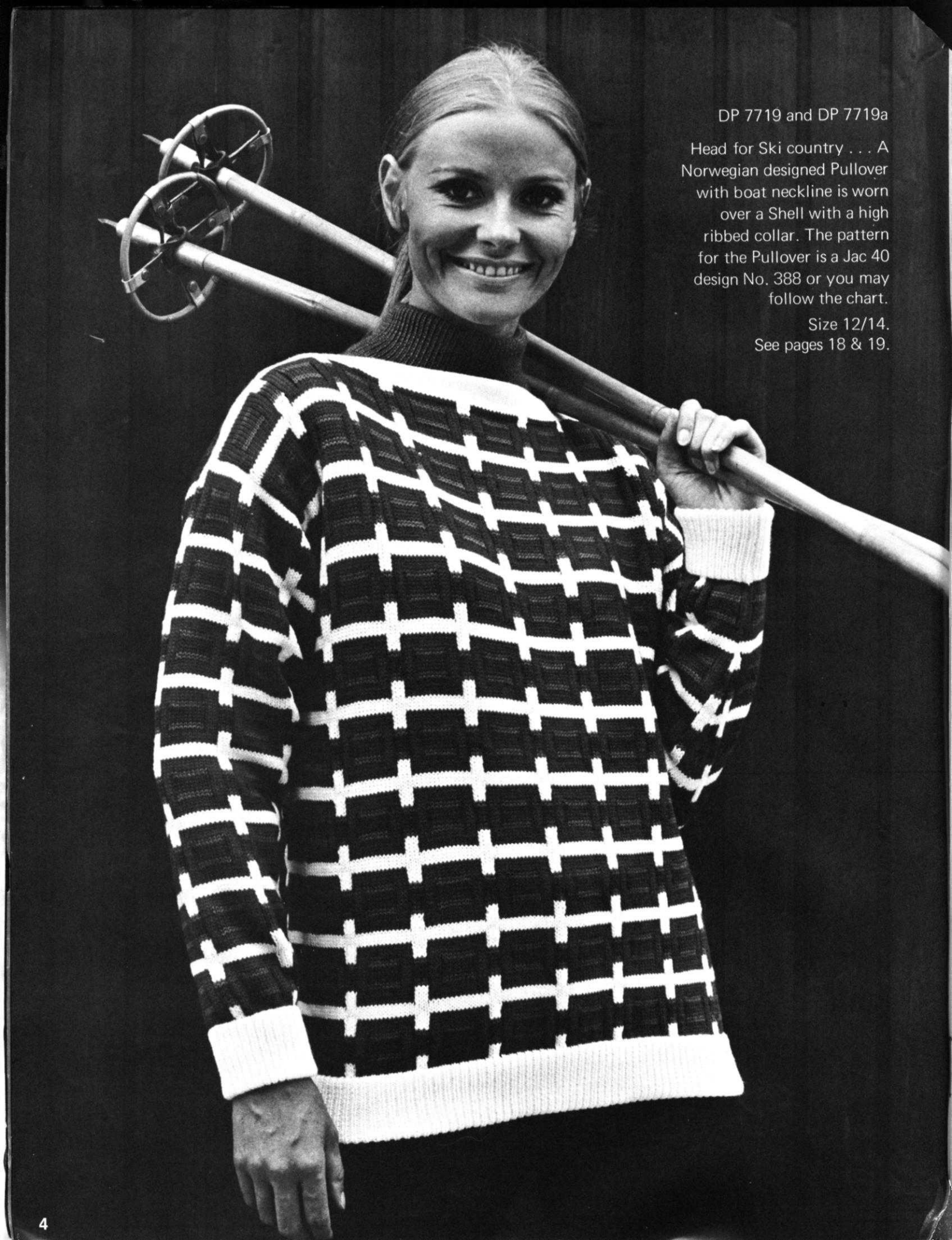
DP 7738

Knit this lovely Poncho for yourself or for a special gift. Black KNITKING Starlite Crepe is used for the main color with the Norwegian Design (that follows a chart) in yellow and turquoise.

Size Medium.  
See page 17.

WINTERSPORT & APRÈS-SKI





DP 7719 and DP 7719a

Head for Ski country . . . A Norwegian designed Pullover with boat neckline is worn over a Shell with a high ribbed collar. The pattern for the Pullover is a Jac 40 design No. 388 or you may follow the chart.

Size 12/14.  
See pages 18 & 19.

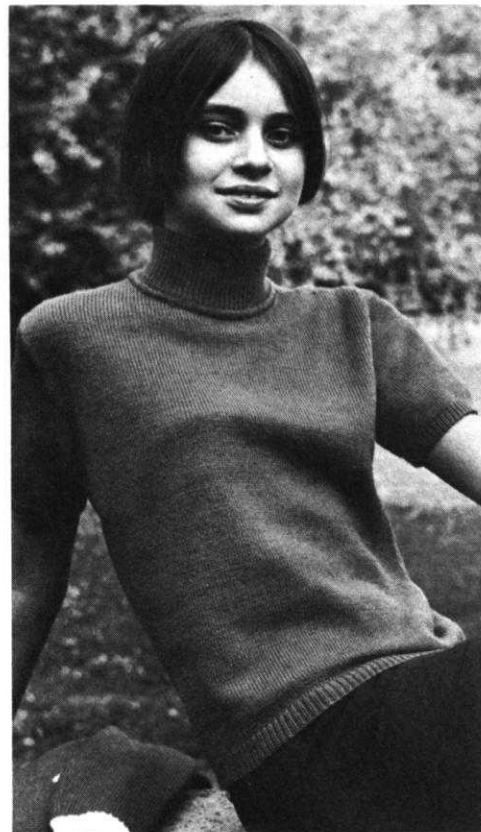
DP 7725

A very simple to make Pullover is knitted in stockinette stitch using two colors of KNITKING Nora. The border trim is purchased, then sewn on the shoulders and down the sleeves. All the bands and collar are ribbed. Size 12/14. See page 19.



MK 5070

Don't forget your teen-age girl . . . knit her this bright Jacket with large pockets. Use red KNITKING Starlite Crepe with bands of white. The turtleneck collar peeking out from the neckline belongs to Pullover MK 5071. Size 7-9. See page 20.



MK 5071

Knit a matching Pullover for your Teen-age girl to wear under the Jacket MK 5070. Stockinette stitch with bands and collar ribbed. Size 7-9. See page 22.





# JUMPER FOR JOY



DK 7781

Call it a Dress or a Jumper, whichever you prefer, but wrap it around and button it off center for the very latest fashion. Softly fitted "A" line is a favorite for comfort and flattery. The pullover under it is Pattern No. DP 7782 from our last issue.

Size 12/14. See page 22.

# TWO FOR ONE



HP 3589 and HP 3589a

A very smart looking Cardigan for a Man is knitted in stockinette stitch with Cables down the front and sleeves. Sleeve bands and lower edge are ribbed. Knit a matching Pullover to go with the Cardigan in Stockinette stitch with Cables down the front and ribbed bands.  
Size 40/42.

See pages 24 and 25.

HP 3575

Most men enjoy having at least one striped Pullover . . . so knit him this one with KNITKING Subita Dralon 3-ply. Our color choice is beige with two shades of blue and white stripes. Wash it in your machine, then toss it in the dryer . . .

Size 40/42.  
See page 26.



# WE BELONG



MK 5064

For double the warmth, an outer Pullover that is large enough to wear a sweater underneath, has a border trim over shoulders and down the sleeve. The embroidered trim and the edging around neckline and sleeves can be purchased in the trimming section of your nearest department store.

Size 10–11 (Chest 28"–29").

See page 27.

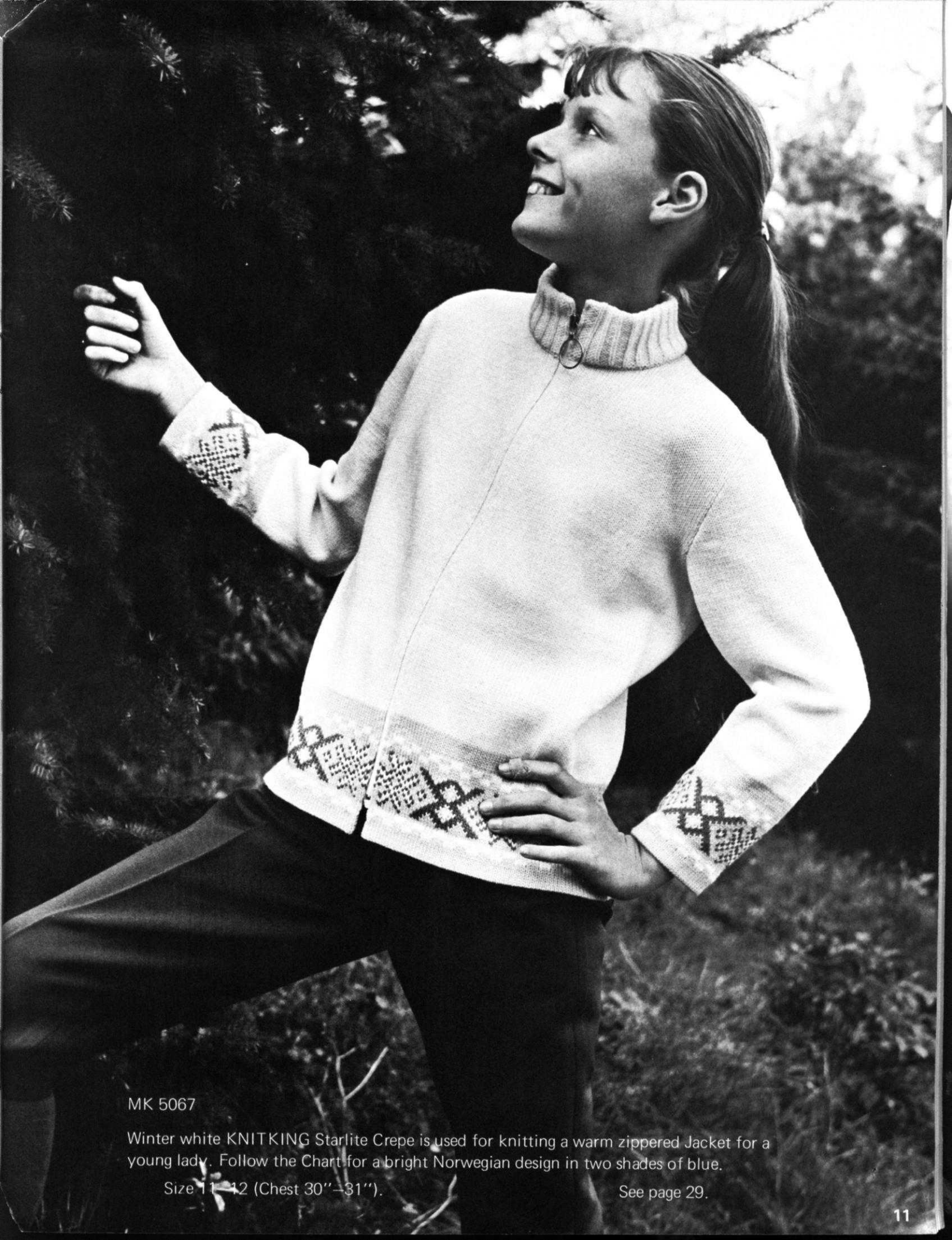
MK 5065

Especially designed for wearing under MK 5064, this Pullover is quickly knitted in stockinette stitch with ribbed bands and high collar.

Size 10–11 (Chest 28"–29").

See page 28.





MK 5067

Winter white KNITKING Starlite Crepe is used for knitting a warm zippered Jacket for a young lady. Follow the Chart for a bright Norwegian design in two shades of blue.

Size 11-12 (Chest 30"-31").

See page 29.

# COZY AND WARM

MK 5063

For Boy . . . or Girl . . . a warm Pullover with stocking type Cap has a Norwegian border design that follows a Chart. The high collar and bands are ribbed.

Size 9-10 (Chest 27"-28").  
See page 30.



KK 5069

Here's a warm zippered Pullover for a small boy that is large enough to be worn over other warm clothing. The Cap to match fits snugly and buttons under the chin. The bindings and embroidered border trim are purchased ready made.

Size 6-7. (Chest 24"-25").  
See page 31.

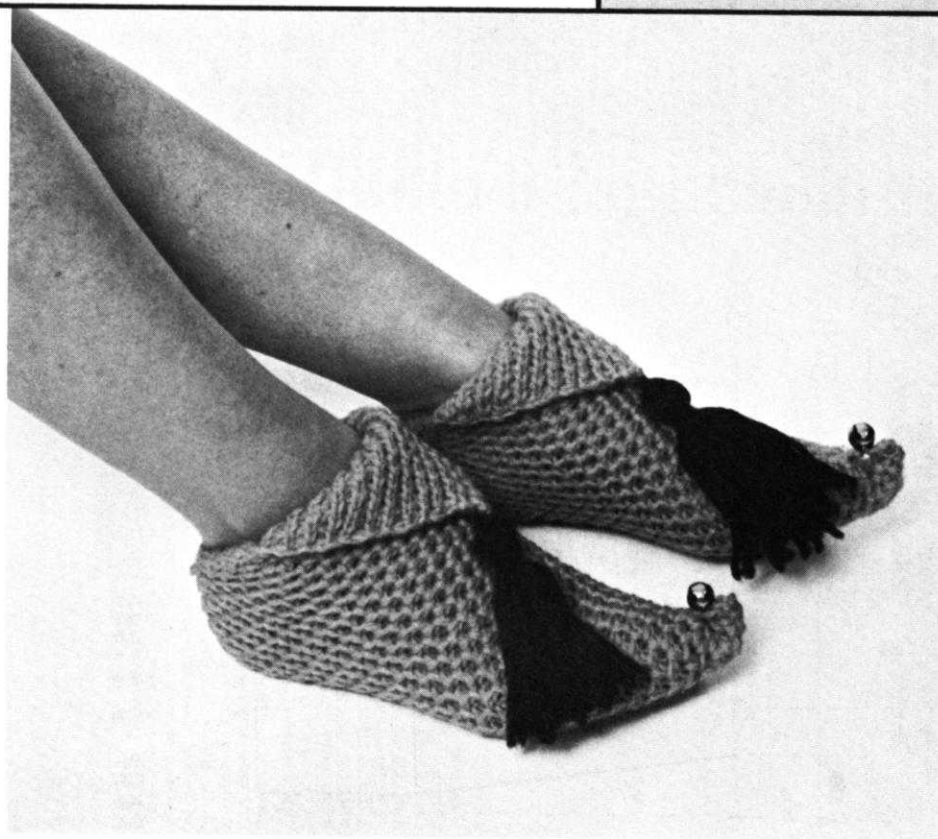


# GIFTS FOR GIVING

## KG 1901 RIPPLE AFGHAN

A truly elegant gift for everyone (or keep it for a family heirloom). You won't believe how easy it is to knit. Short Row method is used without wrapping yarn around needle in holding position so that the hole forms part of the design . . . It's BEAUTIFUL . . .

See page 32.



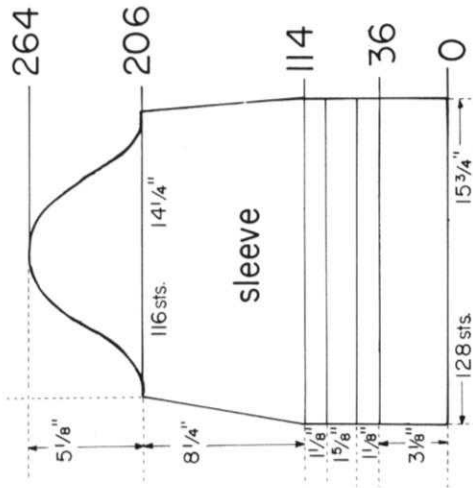
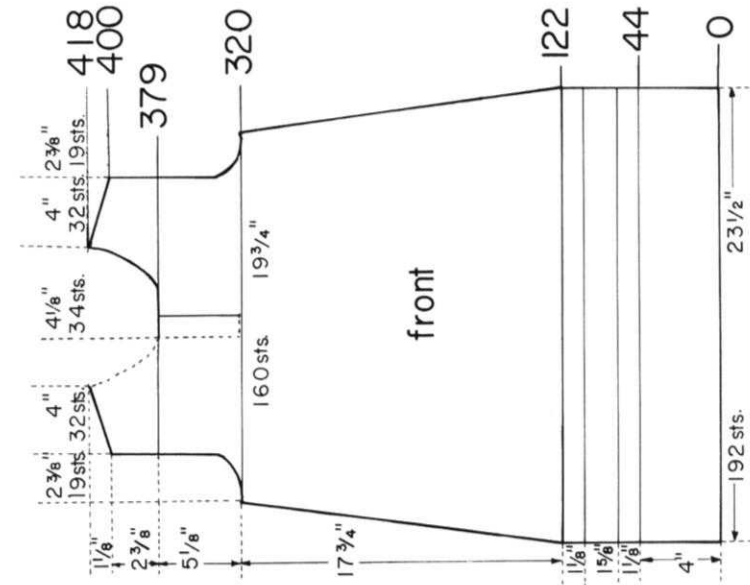
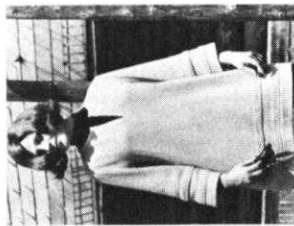
## KG 1900 PIXIE SLIPPERS

Put bells on her toes . . . Pixie Slippers are knitted in a tweed stitch over EVERY 3rd NEEDLE. When completed, sew tassels on the turn-over cuffs and bells on turned-up toes . . . Size small. Medium, large and extra large are in ( ).

See page 32.

**SIZES:** 10/12. **MATERIAL:** 26 1/2 oz. (15 balls) brick red KNITTING Subita Crepe 2 x 4. **Color No. 49.** **TENSION:** KNITTING 6 to 8. **STITCH GAUGE:** Stockinette Stitch 16 sts. 2", 22 rows 2". **PATTERN:** Stockinette Stitch and Holding Position Stripes according to chart, worn on the knit side. Make decreases for side seams and sleeve seams Full-fashion. After rows indicated, ON EACH SIDE, hang the 3rd st. onto the 2nd needle, then move the end sts. inward to fill the empty needles.

**FINISHING:** Block all sections to measurements given. Join front and back section at sides and shoulders, easing in the fullness at bustline of front section. Sew sleeves together and set in. Turn under 2" at lower edge and 1 1/2" at sleeve edges and hem to wrong side. Turn under 5 sts. on front opening edges and hem to wrong side. Sew 1 edge of neckband to inside, 1 edge to outside of neckline.



ON CAM BOX SIDE, bind off 6 sts. after Rows 206, 207; 4 sts. after Rows 208, 209; 3 sts. after Rows 210, 211, 212, 213; 2 sts. after Rows 214, 215, 216, 217, 218, 219. ON EACH SIDE, bind off 1 st. after Rows 220, 222, 224, 226, 228, 230, 232, 234, 236, 238, 240, 242, 244, 246, 248, 250, 252. ON CAM BOX SIDE, bind off 2 sts. after Rows 254, 255, 256, 257; 3 sts. after Rows 258, 259, 260, 261; 4 sts. after Rows 262, 263; 10 sts. after Row 264.

ROWS 115 to 206: Work stockinette st. and ON EACH SIDE, decrease 1 st. after Row 134, 156, 178, then knit even to Row 206.

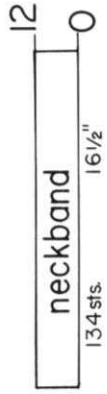
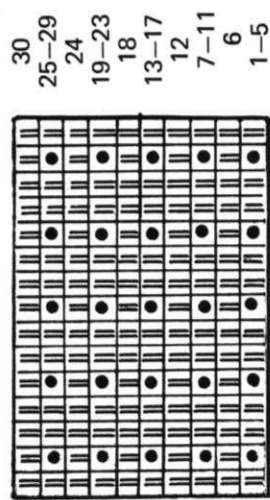
ROWS 85 to 114: Work the Holding Position Design and ON EACH SIDE, decrease 1 st. after Rows 90, 112, then knit to Row 114.

ROWS 67 to 84: Work stockinette st. and ON EACH SIDE, decrease 1 st. after Row 68, then knit even to Row 84.

ROWS 37 to 66: Work the Holding Position Design and knit even.

ROWS 0 to 36: Knit even.

Cast on 128 sts. and work stockinette st.



Cast on 134 sts. and work 12 rows stockinette st., then bind off all sts. the crochet method.

Move the Cam Box to the left side, turn the Row Counter back to 320, hang the 6 sts. from the stitch holder back on the machine and complete the left half. Follow the instructions from \*.

ON CAM BOX SIDE, bind off 12 sts. after Row 379 (ODD ROWS = NECK SHAPING); 4 sts. after Row 381; 3 sts. after Rows 383, 385; 2 sts. after Rows 387, 389, 391; 1 st. after Rows 393, 395, 397, 401; 4 sts. after Row 404 (EVEN ROWS = SHOULDER SHAPING); 1 st. after Row 405; 4 sts. after Rows 406, 408; 1 st. after Row 409 (last time for NECK SHAPING); 4 sts. after Rows 410, 412, 414, 416, 418.

\* ON CAM BOX SIDE, bind off 5 sts. after Row 320, cast on 5 sts. after Row 321 for facing. Bind off 3 sts. after Rows 322, 324; 2 sts. after Rows 326, 328; 1 st. after Rows 330, 332, 336, 340, then knit even to Row 379.

ON EACH SIDE, decrease 1 st. after Rows 124, 136, 148, 160, 172, 184, 196, 208, 220, 232, 244, 256, 268, 280, 290, 300. Now knit even to Row 320, then put 80 needles on the left side into holding position, transfer the first 6 sts. on these needles onto a stitch holder and complete the right half first.

ROWS 93 to 122: Work the Holding Position Design, then continue with stockinette st.

ROWS 75 to 92: Work stockinette st.

ROWS 45 to 74: Work the Holding Position Design.

ROWS 0 to 44: Work stockinette st.

Cast on 192 sts.

ON EACH SIDE, decrease 1 st. after Rows 124, 136, 148, 160, 172, 184, 196, 208, 220, 232, 244, 256, 268, 280, 290, 300. Now knit even to Row 320, then put 80 needles on the left side into holding position, transfer the first 6 sts. on these needles onto a stitch holder and complete the right half first.

ROWS 93 to 122: Work the Holding Position Design, then continue with stockinette st.

ROWS 75 to 92: Work stockinette st.

ROWS 45 to 74: Work the Holding Position Design.

ROWS 0 to 44: Work stockinette st.

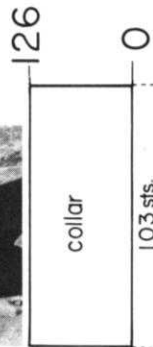
Cast on 192 sts.



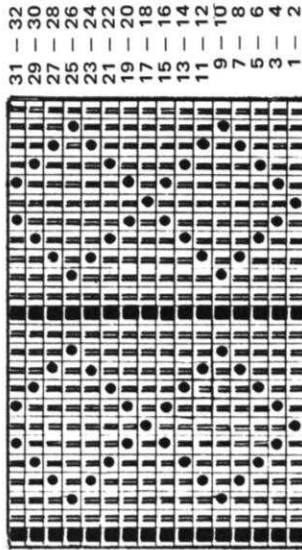


# DP 7721

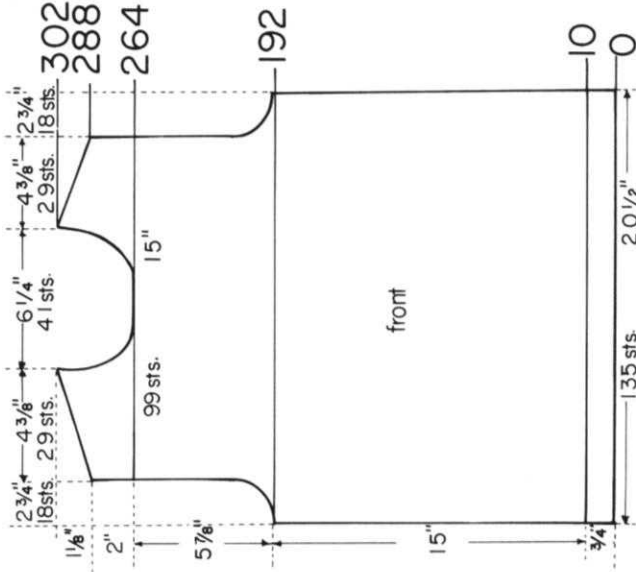
**SIZE:** 10/12. **MATERIAL:** 28 oz., Yellow Knitting Starlite Crepe, Color No. 272. **TENSION:** KNITTING 8 to 10. **STITCH GAUGE:** Holding Position Design 13 sts, 2", 24 rows 2"; Fisherman's Rib 13 sts, 2", 35 rows 2". **PATTERN:** FRONT and BACK Section: Holding Position Design with the Ribber according to chart. The Gate Cam Release Lever of the Ribber is placed at the needle heels. **SLEEVES and COLLAR:** Double Fisherman's Rib. The Gate Cam Release Lever of the Main machine and the Ribber are placed at the needle heels. The puri side is the right side of ALL sections. **EDGES:** K1, P1, Ribbing. Make increases on the sleeves as follows: After Rows indicated, hang the 1st st. from the row below ON EACH SIDE onto the next empty needle. Stay in PATTERN and remember that end sts. on each side must be on the Main machine. When putting needles into holding position, transfer the ribber sts. to the main machine first. **FINISHING:** Block all sections to measurements given. Weave front and back section together at sides. 1 1/2 sts. in on each edge. Join shoulders. Sew sleeves together and set in. Join short ends of collar. Sew collar to neckline, then fold to outside.



Cast on 103 sts. and work 126 rows with double Fisherman's Rib, then bind off all sts.



- 31 - 32
- 29 - 30
- 27 - 28
- 25 - 26
- 23 - 24
- 21 - 22
- 19 - 20
- 17 - 18
- 15 - 16
- 13 - 14
- 11 - 12
- 9 - 10
- 7 - 8
- 5 - 6
- 3 - 4
- 1 - 2



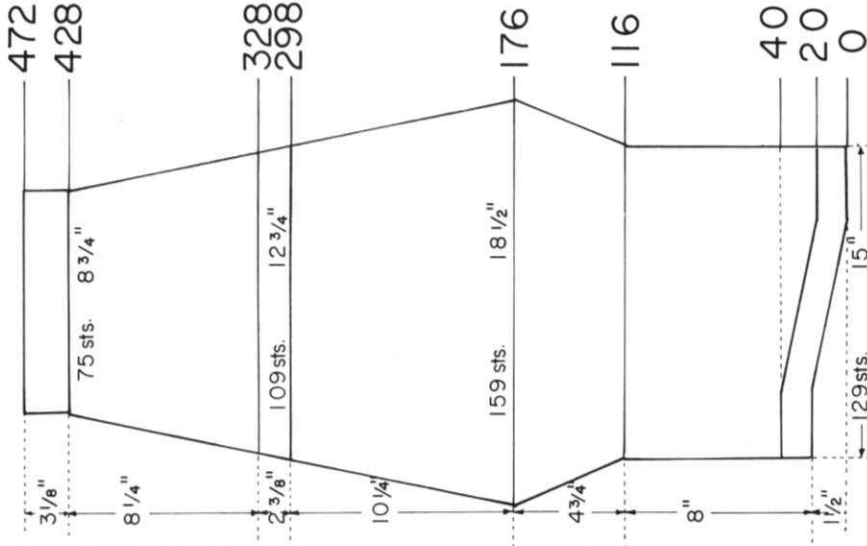
Bring the needles on the left side into working position, set up PATTERN and knit 1 row to the left side. Turn Row Counter back to 284 and complete the left half. Follow the instructions from \*.

\* ON CAM BOX SIDE, bind off 5 sts. (4 sts. for the left half) after Row 265 (ODD ROWS = NECK SHAPING); 3 sts. after Rows 267, 269; 2 sts. after Rows 271, 273; 1 st. after Rows 275, 277, 279, 283, 287; 3 sts. after Rows 288, 290 (EVEN ROWS = SHOULDER SHAPING); 1 st. after Row 291 (last time for Neck); 3 sts. after Row 292; 4 sts. after Rows 294, 296, 298, 300, 302.

ON CAM BOX SIDE, bind off 4 sts. after Rows 192, 193; 3 sts. after Rows 194, 195, 196, 197; 2 sts. after Rows 198, 199, 200, 201; 1 st. after Rows 202, 203, 204, 205, 208, 209, 212, 213. Now knit even to Row 264, then put 49 needles on the left side into holding position and complete the right half first.

ROWS 11 to 192: Knit even.

ROWS 0 to 10: Work K1, P1, Ribbing, then set up for PATTERN, having the 8th, 20th, 32nd, etc. sts. on the Ribber, place the Gate Cam Release Lever of the Ribber to the needle heels and continue working in Holding Position Design. Cast on 135 sts.



Work the second section with reverse shapings, casting on from right to left. CAM BOX will be on the LEFT side at ROW 0.

Transfer every other st. to the Ribber. Work K1, P1, Ribbing. After Row 472 bind off all sts. the crochet method for ribbing.

ON EACH SIDE decrease 1 st. after Rows 328, 334, 340, 346, 352, 358, 364, 370, 376, 382, 388, 394, 400, 406, 412, 418, 424, then knit to Row 428. Knit even to Row 328.

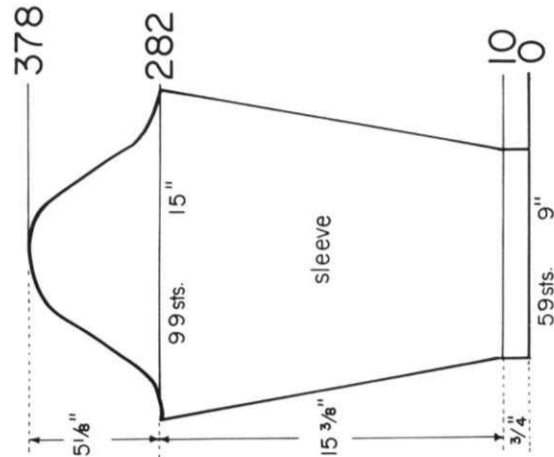
ON EACH SIDE, decrease 1 st. after Rows 176, 180, 184, 188, 192, 196, 200, 204, 208, 212, 216, 220, 226, 232, 238, 244, 250, 256, 262, 268, 274, 280, 286, 292, 298.

ON EACH SIDE, increase 1 st. after Rows 116, 120, 124, 128, 132, 136, 140, 144, 148, 152, 156, 160, 164, 168, 172, then knit to Row 176. Knit even to Row 116.

ROWS 21 to 40: Work short rows. ON OPPOSITE SIDE of CAM BOX put 109 needles into holding position after Row 20, then knit 2 rows. ON OPPOSITE SIDE of CAM BOX, bring 10 needles back into working position after Rows 22, 24, 26, 28, 30, 32, 34, 36, then 29 needles after Row 38. Knit to Row 40.

ROWS 0 to 20: Knit even to Row 19, then hang the cast-on sts. back on the machine to form the hem and knit 1 row.

Cast on 129 sts. and work stockinette st.



ON CAM BOX SIDE, bind off 4 sts. after Rows 282, 283, 286, 287; 3 sts. after Rows 290, 291, 294, 295; 2 sts. after Rows 298, 299, 302, 303, 306, 307, ON EACH SIDE decrease 1 st. (1st st. onto 2nd st.) after Rows 310, 314, 318, 322, 326, 330, 334, 338, 342, 346, 350, 354, 358. ON CAM BOX SIDE, bind off 2 sts. after Rows 362, 363, 366, 367; 3 sts. after Rows 370, 371; 4 sts. after Rows 374, 375; 11 sts. after Row 378.

ON EACH SIDE, increase 1 st. after Rows 10, 24, 38, 52, 66, 80, 94, 108, 122, 136, 150, 164, 178, 192, 206, 220, 232, 244, 256, 268, then knit even to Row 282.

ROWS 0 to 10: Work K1, P1, Ribbing, then place the Gate Cam Release Lever of the Main machine AND the Ribber to the needle heels and continue with double Fisherman's Rib. Cast on 59 sts.



# KNITTING NEWS

November/December 1969

## THE NEW FORMAT

Mrs. Elaine Pierce of Rio Vista, California writes: Love the "NEW" MAGAZINE... it's hard to improve a publication that's ALREADY THE BEST, but you've dood it... Thanks a million.

Mrs. C. L. Powers of Burnt Hills, New York writes: What a pleasant surprise today when the new KNITTING MAGAZINE arrived. The new format is just great and I hope it never changes.

Mrs. James La Croix of Clay Hill, Illinois writes: I must say your magazine staff should be commended on their fine efforts to improve the magazine. The set up for the patterns are far more explicit and they are so much easier to follow.

Mrs. Thelma Taylor of Dorchester, Massachusetts writes: Received latest KNITTING MAGAZINE this week. I feel that it is truly fabulous.

Ina Sloan of Redlands, California writes: I would like you to know how much I like the new KNITTING MAGAZINE. The new instructions are wonderful and almost fool-proof and even a beginner like myself can understand them. Thank you.

Mrs. Velma Bosworth of Seattle, Washington writes: The new format is beautiful and easy to follow.

Mrs. Eugene Cook of Oceanside, California writes: Was absolutely delighted with the new presentation of instructions and the whole new look of your magazine. The models are beautiful and the styles are gorgeous. I would like to knit up one of each.

Mickie Greene of Lynwood, Washington writes: Keep it coming... it's the most in American knitting magazines.

Mrs. Ilse Fischer of Hacienda Heights, California writes: The new KNITTING MAGAZINE is the answer to all my problems. How well each pattern is worked out and so easy to understand for a beginner like me. It is hard for me to put it in words how much I appreciate this new idea.

Dozens of letters similar to the above are coming in with every mail. We do appreciate your exciting comments and we thank everybody for taking the time to write. Requests are overwhelmingly in favor of charts giving all the figures as illustrated in our last Newsletter and we will be including them in future issues starting with the March/April 1970 edition.

Because the NEW FORMAT MAGAZINE is larger than the old one, it is necessary to cut about an 8th of an inch off the top and bottom back corners of magazines in order to fit them in your binders.... don't be afraid to snip the corners off... it will not harm your magazine.

## PRACTICAL KNITTING HINTS

### INCREASE DARTS

If you are shaping a garment from KNITTING MAGAZINE patterns, chances are you will run into the making of DARTS. We put darts, in addition to side decreases, into skirts to shape them so that they will fit smoothly over the hips and at the waistline and thus avoid the sharp decreasing that would be necessary at sides if the darts were omitted. Dresses have darts where you will decrease up to the waistline, knit a few rows even, and then increase through the bodice to give the necessary fullness at bustline. When you decrease and increase only at the sides (which is sometimes done too) there is very little shaping and the garment skims the body but does not actually fit. If you sew, you know about sewing in darts, and that you take out material at one point and put it back at another point. We knit in our darts to avoid seams so that our garments will have smooth fitting lines. Let us use for example DK 7787 in the last issue of KNITTING MAGAZINE (September/October 1969, page 14). Take a good look at the bodice of both front and back sections and you will see from the shaping that you must add stitches so that the bodice becomes larger on either side of the dart markings. You will need a 33 needle Transfer Tool to make this easy for you. Always figure the easiest way to move the stitches over for making darts. In this case, we are increasing 2 stitches for each dart and as you can see, the increases will be on either side of the 37th stitch counting from each outside edge (the one stitch shown is the 37th stitch..). So now we need 1 empty needle on each side of each 37th stitch. This is how you do it....!

Remember that the one stitch in the center of your increases is used for your guide and you can actually SEE where the next increases will go on either side of this one stitch. At one end of your knitting, bring up 2 empty needles. With your transfer tools, move over (toward the outer edge to fill the empty needles) all the stitches including the "dart" stitch...(in this example, the 37th stitch). Now move the "dart" stitch back 1 needle and you will now have 1 empty needle on each side of the "dart" stitch. With your transfer tool (using either the work hook end or the single eye transfer end, reach down to the row below and pick up the stitch from needles on each side of the "dart" stitch and hang onto the empty needles. Repeat the instructions at the other end of your knitting for the other dart. Every increase will change the number of stitches you must move over but your center dart stitch will always be the same stitch regardless of it's needle number.

### TRULY FABULOUS YARN SPECIAL

Our last special was so fantastic that we received many hundreds of repeat orders and although our suppliers fouled us up with promises of delivery that they were not able to complete, we did eventually satisfy all accepted orders but many people were disappointed because we exhausted our entire stocks well before the end of the sale period.

We have another special for KNITTING MAGAZINE subscribers that we think is even more fantastic than the last one... and this time we have made certain that all the yarn is in our warehouse before we tell you about it.

This new yarn is a simply gorgeous boucle... 100% pure wool from one of Europe's most famous mills... This is an excellent yarn for almost any type of garment... dresses, suits, pullovers, shirts, children's clothes, etc., etc., and the range of colors is simply stunning... We have the largest stock we have ever purchased for a special, but please...please...please...give three alternate colors in your choice. We always try to give you your first choice, but some colors will move faster than others and if we have to write to you to ask for alternates you may miss out altogether... All the colors are rich and luscious and you cannot make a mistake ordering any of the 14 available. They are: Snow White (Pure...) Jet Black (Grrr..) Harvest Gold (Dazzling...) Pimento Red (Sexy...) Lilac (Sweet...) Paris Blue (Innocent...) Navy (Handsome...) Fern Green (Mmmm...) Bone (Sophisticated...) Spice Brown (Rich...) Orange Sherbet (Edible...) Salmon Pink (Demure...) Violet (Exciting...) Apple Green (Wow-eee...).

You will pay from \$1.25 to a \$1.45 an ounce for this gorgeous yarn in your local department store... In our Special Sale, you will save 75%...!! Imagine a discount of 75%... silly, isn't it?... but true nevertheless... This beautiful boucle yarn is available to you for a fraction over 35¢ an ounce... the minimum quantity you can buy is 1 kilo (35 ounces). The price of 1 kilo is \$13.00... buy 2 kilos (70 ounces) and the price is \$25.00... then you pay \$12.50 for every following kilo ordered at the same time. For example, 3 kilos costs \$37.50... 4 kilos \$50.00, etc., etc.

At these prices, we cannot break packages or mix colors. The smallest quantity you can buy of any one color is 1 kilo.

At tension 5 on a KNITTING machine, it knits 8 stitches and 12 rows to the inch... you should be able to get the same stitch and row gauge on any other brand of machine.

Our designers are so excited about this yarn, they are making up some garments for publication in KNITKING MAGAZINE early next year and you certainly can use it for many garments in the back issues.

Don't forget to include the correct amount for mailing costs with your order. 70¢ for the first kilo and 50¢ for each additional kilo. California residents must include 5% Sales Tax.

This is one of those extra Special Specials that you have to be very quick on... We will be holding back a quantity for our subscribers in the East who receive their magazines two weeks after Western readers... so don't delay, get your orders in the mail immediately.



## ARE YOU UNHAPPY WITH YOUR PRESENT KNITTING MACHINE ?

DOES IT REFUSE TO KNIT FANCY DRESS YARNS?

DOES IT JAM UP WHEN YOU TRY TO KNIT LOOPED MOHAIR OR THICK AND THIN YARNS?

DOES IT DROP STITCHES ALL OVER THE PLACE?

ARE YOU CONTINUALLY HAVING TROUBLE WITH AWKWARD, CUMBERSOME WEIGHTS?

ARE YOU UNABLE TO MAKE A LARGE GARMENT WITH BULKY YARNS?

DO YOU HAVE TO SELECT PATTERN STITCHES MANUALLY?

DO YOU HAVE TO LATCH YOUR RIBBING BY HAND?

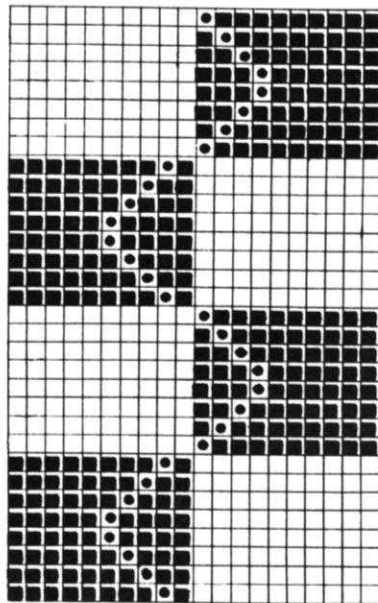
IF YOU ARE HAVING ANY OF THESE PROBLEMS YOU SHOULD TRADE UP TO A NEW FANTASTIC PUSH BUTTON KNITKING WITH COORDINATED RIBBER AND ENJOY KNITTING WITH THE WORLDS FINEST, MOST VERSATILE AND MOST AUTOMATIC KNITTER.

YOU WILL BE SURPRISED AT OUR GENEROUS TRADE-IN ALLOWANCE AND YOU CAN, IF YOU WISH, USE YOUR PRESENT MACHINE AS A DOWN-PAYMENT AND PURCHASE A COMPLETE KNITKING FOR JUST PENNIES A DAY. WRITE TODAY FOR FULL INFORMATION AND TELL US WHAT MACHINE YOU NOW OWN. THE ADDRESS IS:

**KNITKING, Dept. T-1, 1128 Crenshaw Blvd., Los Angeles, Calif. - 90019**

**SIZE:** Medium. **MATERIAL:** 22 oz. black, 7 oz. turquoise and 3 oz. yellow **KNITTING:** Starlite Crepe, Color Nos. 251, 375 and 439. **TENSION:** **KNITTING** 8 to 10. **STITCH GAUGE:** 14 sts, 2", 20 rows 2". **PATTERN:** Stockinette Stitch and Norwegian Design according to chart. In the Norwegian Design, each row in the Norwegian Design is counted as 1 row, but several movements of the Cam Box are needed to complete 1 row. The Zig Zag line is worked with duplicate stitch, embroidered after poncho is assembled. **NECKBAND:** K1, P1, Ribbing. ALL decreases are Full-fashion. Up to Row 186 decreases are made on 1 side, after Row 188 on EACH SIDE. After Rows indicated, hang the 3rd st. onto the 4th needle, then move the end sts. inward to fill the empty needle.

**FINISHING:** Weave all sections together, 1 st. in on each edge. Join short ends of neckband, then sew 1 edge of neckband to inside and 1 edge to outside of neckline. With turquoise yarn and using a duplicate stitch, embroider the Zig Zag line into the Norwegian Design border. With turquoise knot fringes into lower edge.



□ = black    ■ = turquoise    ● = yellow



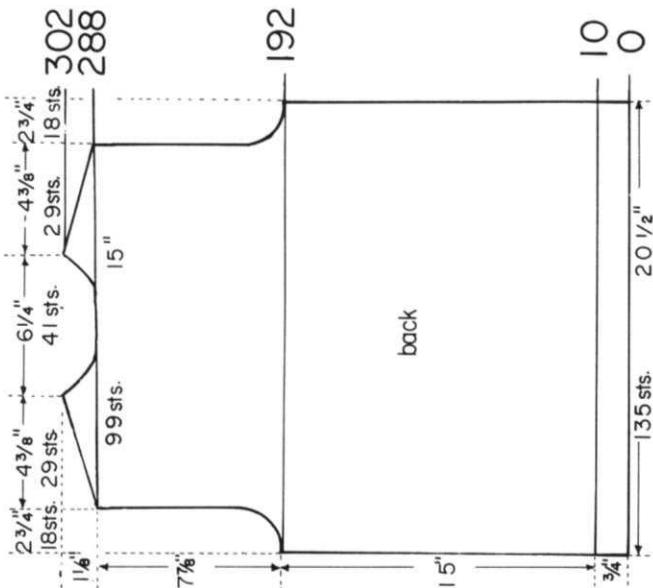
Cast on 164 sts. and work K1, P1, Ribbing, 10 rows with tension 8, 10 rows with tension 7, 10 rows with tension 8. After 30 rows bind off all sts. the crochet method for ribbing.

Bring the needles on the left side into working position, set up for PATTERN and knit 1 row to the left side. Turn Row Counter back to 288 and complete the left half. Follow the instructions from \*.

\* ON CAM BOX SIDE, bind off 3 sts. after Row 288 (EVEN ROWS = SHOULDER SHAPING); 5 sts. (4 sts. for the left half) after Row 289 (ODD ROWS = NECK SHAPING); 3 sts. after Row 290; 4 sts. after Row 291; 3 sts. after Rows 292, 293; 4 sts. after Row 294; 3 sts. after Row 295; 4 sts. after Row 296; 2 sts. after Row 297; 4 sts. after Row 298; 2 sts. after Row 299; 4 sts. after Row 300; 2 sts. after Row 301; 4 sts. after Row 302.

ON CAM BOX SIDE, bind off 4 sts. after Rows 192, 193; 3 sts. after Rows 194, 195, 196, 197; 2 sts. after Rows 198, 199, 200, 201; 1 st. after Rows 202, 203, 204, 205, 208, 209, 212, 213. Now knit even to Row 288, then put 49 needles on the left side into holding position and complete the right half first. ROWS 11 to 192: Knit even.

ROWS 0 to 10: Work K1, P1, Ribbing, then set up for PATTERN, having the 8th, 20th, 32nd, etc. sts. on the Ribber, place the Gate Cam Release Lever of the Ribber to the needle heels and continue working in Holding Position Design. Cast on 135 sts.



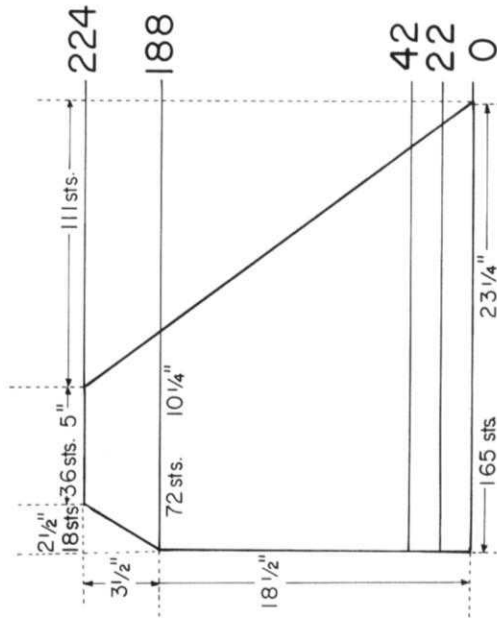
Work 1 more section the same. Work 2 sections with reverse shaping, casting on from right to left. (Cam Box will be at the LEFT side at ROW 0).

ON EACH SIDE, decrease 1 st. after Rows 188, 190, 192, 194, 196, 198, 200, 202, 204, 206, 208, 210, 212, 214, 216, 218, 220, 222. After Row 224 bind off the remaining 36 sts.

Continue to decrease 1 st. ON CAM BOX SIDE after Rows 44, 46, 48, 50, 52, 54, 56, 58, 60, 62, 64, 66, 68, 70, 72, 74, 76, 78, 80, 82, 84, 86, 88, 90, 92, 94, 96, 98, 100, 102, 104, 106, 108, 110, 112, 114, 116, 118, 120, 122, 124, 126, 128, 130, 132, 134, 136, 138, 140, 142, 144, 146, 148, 150, 152, 154, 156, 158, 160, 162, 164, 166, 168, 170, 172, 174, 176, 178, 180, 182, 184, 186.

Work the Norwegian Design after Row 22, beginning with the 2nd needle on the left side and AT THE SAME TIME, continue to decrease 1 st. ON CAM BOX SIDE after Rows 22, 24, 26, 28, 30, 32, 34, 36, 38, 40, 42. Work stockinette st. and knit to Row 44.

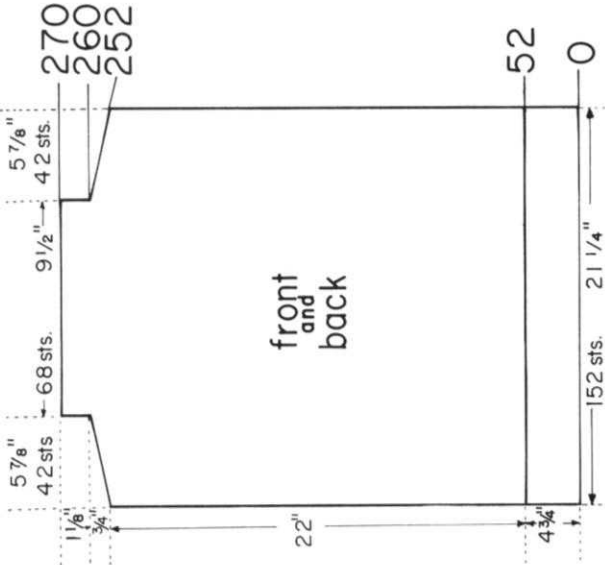
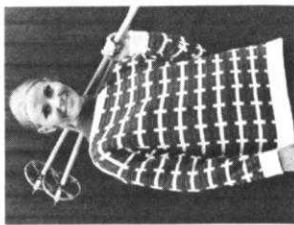
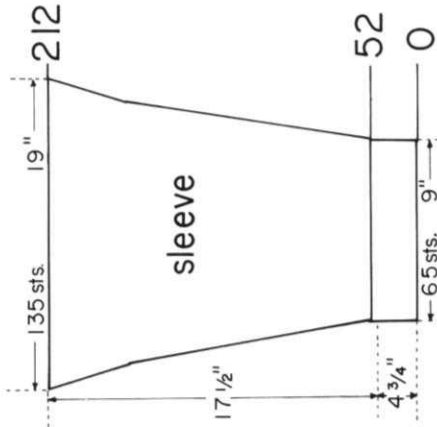
ROWS 0 to 22: ON CAM BOX SIDE, decrease 1 st. after Rows 2, 4, 6, 8, 10, 12, 14, 16, 18, 20, then knit to Row 22. Cast on 165 sts. with black and work stockinette st.



# DP 7719

**SIZE:** 12/14. **MATERIAL:** 13 oz. white, 11 oz. red, 3 oz. yellow and 3 oz. blue KNITTING Starlite Crepe, Color Nos. 1, 86, 439 and 132. **TENSION:** 8 to 10. **STITCH GAUGE:** Pattern Stitch 14 sts, 2", 18 rows 2". **PATTERN:** Stockinette Stitch and Norwegian Design according to chart, or use JAC 40 and Pattern No. 388. In the directions, each row in the Norwegian Design is counted as 1 row, but several movements of the Cam Box are needed to complete 1 row. **EDGES:** K1, P1, Ribbing. Make the increases on the sleeves as follows: After rows indicated, hang the first st. from the row below ON EACH SIDE onto the next empty needle.

**FINISHING:** Block all sections to measurements given. Join front and back section at sides, leaving on each side a 9 1/2" opening on upper portion (Armholes). Join shoulders. Turn under 10 rows on neck opening and hem to wrong side. Sew sleeves together and set in. Turn under half of ribbed edge on lower edge and sleeve edges and hem to wrong side.



**ROWS 261 to 270:** Knit even, then bind off the remaining 68 sts. the crochet method.

**ON CAM BOX SIDE,** bind off 10 sts. after Rows 252, 253, 254, 255; 11 sts. after Rows 256, 257, 258, 259, then knit to Row 260.

**ROWS 53 to 252:** Knit even, then change to white and continue with stockinette st.

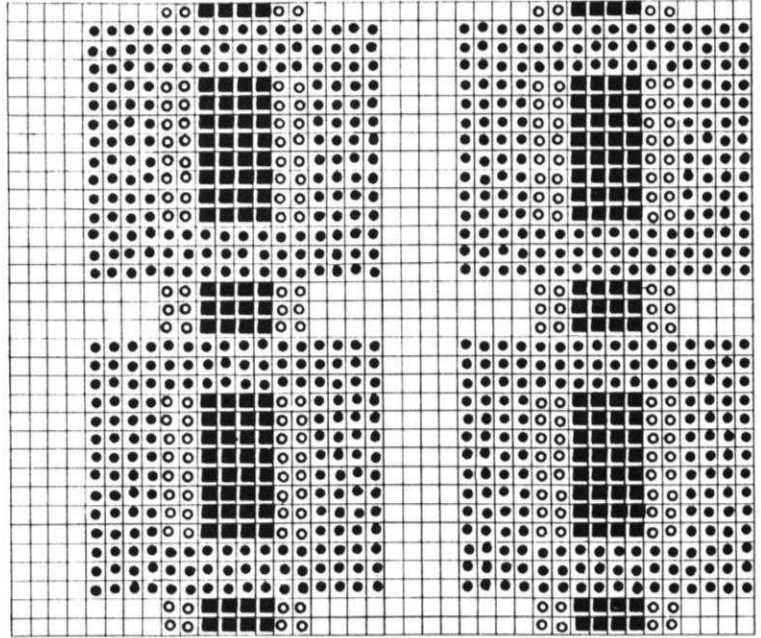
**ROWS 0 to 52:** Work K1, P1, Ribbing, then change to stockinette st. and work the Norwegian Design.

Cast on 152 sts. with white. Work the front section and the back section the same.

**ROWS 53 to 212:** ON EACH SIDE, increase 1 st. after Rows 60, 66, 72, 78, 84, 90, 96, 102, 108, 114, 120, 126, 132, 138, 144, 150, 156, 162, 168, 174, 180, 182, 184, 186, 188, 190, 192, 194, 196, 198, 200, 202, 204, 206, 208, then knit to Row 212 and bind off all 135 sts. the crochet method.

**ROWS 0 to 52:** Work K1, P1, Ribbing, then change to stockinette st. and work the Norwegian Design.

Cast on 65 sts. with white.

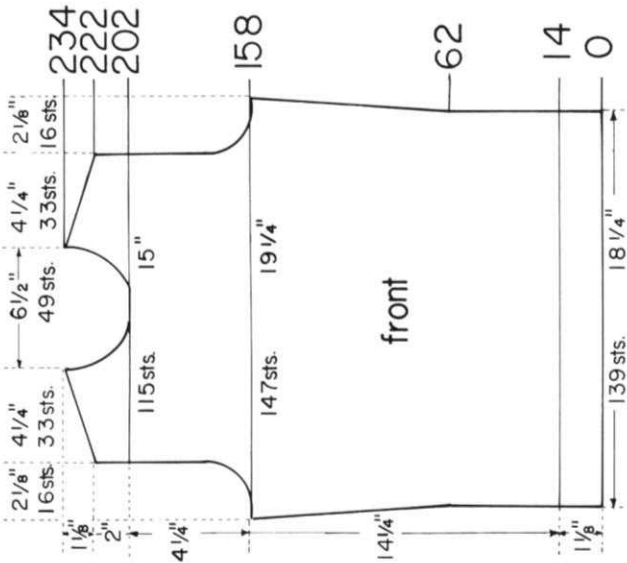


# DP 7719a

**SIZE:** 12/14. **MATERIAL:** 14 oz. red KNITTING Starlite Crepe, Color No. 86. **TENSION:** KNIT-KING 7 to 9. **STITCH GAUGE:** 15 sts, 2", 20 rows 2". **PATTERN:** Stockinette Stitch. **EDGES:** K1, P1, Ribbing. Make the increases Full-fashion. After Rows indicated, move the 2 end sts. ON EACH SIDE 1 needle outward, then place the 3rd st. from the row below onto the empty needle.

**FINISHING:** Block the sections to measurements given. Join front and back section at sides and shoulders. Turn under 1/2" around armholes and hem to wrong side. Join short ends of collar. Sew 1 edge of collar to inside and 1 edge to outside of neckline.





Move the Cam Box to the left side, turn the Row Counter back to 202 and complete the left half. Follow the instructions from \*.

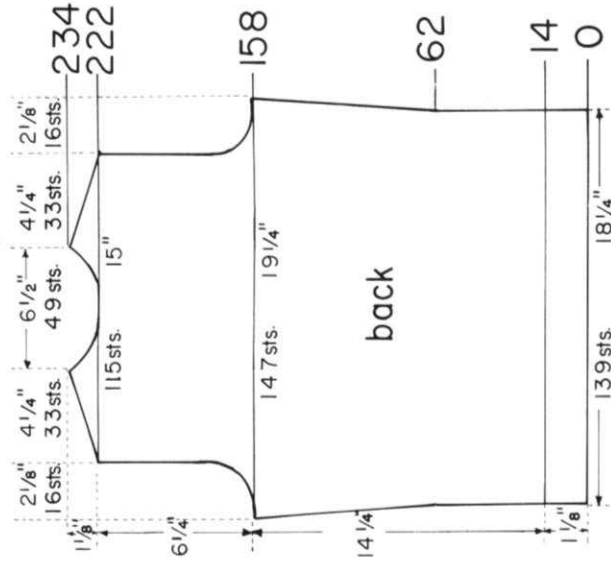
\* ON CAM BOX SIDE, bind off 7 sts. (6 sts. for the left half) after Row 203 (ODD ROWS = NECK SHAPING); 4 sts. after Row 205; 3 sts. after Rows 207, 209; 2 sts. after Rows 211, 213; 1 st. after Rows 215, 217, 221; 4 sts. after Rows 222, 224. (EVEN ROWS = SHOULDER SHAPING); 1 st. after Row 225 (last time for Neck); 5 sts. after Rows 226, 228, 230, 232, 234.

ON CAM BOX SIDE, bind off 5 sts. after Rows 158, 159; 3 sts. after Rows 160, 161; 2 sts. after Rows 162, 163, 164, 165; 1 st. after Rows 166, 167, 168, 169, 172, 173, 176, 177. Now knit even to Row 202, then put 57 needles on the left side into holding position and complete the right half first.

ROWS 15 to 158: ON EACH SIDE, increase 1 st. after Rows 62, 86, 110, 134, then knit even to Row 158.

ROWS 0 to 14: Work K1, P1, Ribbing, then change to stockinette st.

Cast on 139 sts.



Move the Cam Box to the left side, turn the Row Counter back to 222 and complete the left half. Follow the instructions from \*.

\* ON CAM BOX SIDE, bind off 4 sts. after Row 222 (EVEN ROWS = SHOULDER SHAPING); 10 sts. (9 sts. for the left half) after Row 223 (ODD ROWS = NECK SHAPING); 4 sts. after Row 224; 5 sts. after Rows 225, 226; 3 sts. after Row 227; 5 sts. after Row 228; 3 sts. after Row 229; 5 sts. after Row 230; 2 sts. after Row 231; 5 sts. after Row 232; 2 sts. after Row 233; 5 sts. after Row 234.

ON CAM BOX SIDE, bind off 5 sts. after Rows 158, 159; 3 sts. after Rows 160, 161; 2 sts. after Rows 162, 163, 164, 165; 1 st. after Rows 166, 167, 168, 169, 172, 173, 176, 177. Now knit on the left side into holding position and complete the right half first.

ROWS 15 to 158: ON EACH SIDE, increase 1 st. after Rows 62, 86, 110, 134, then knit even to Row 158.

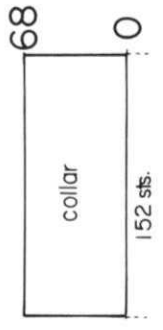
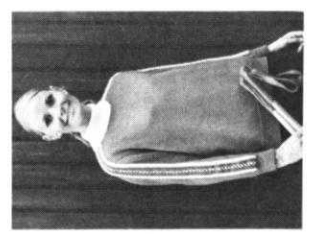
ROWS 0 to 14: Work K1, P1, Ribbing, then change to stockinette st.

Cast on 139 sts.

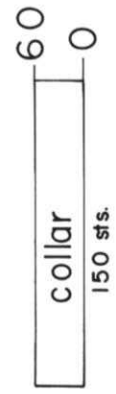
# DP 7725

SIZE: 12/14. MATERIAL: 15% oz. red and 1 3/4 oz. white KNITTING Nora, Color Nos. 4105 and 4002 and 2 yards woolen embroidered border trim. TENSION: KNITTING 6 to 8. STITCH GAUGE: 15 sts. 2", 20 rows 2". PATTERN: Stockinette Stitch, COLLAR and EDGES: K1, P1, Ribbing. Make the increases on the sleeves Full-fashion. After Rows indicated, move the 2 end sts. ON EACH SIDE 1 needle outward, then place the 3rd st. from the row below onto the empty needle.

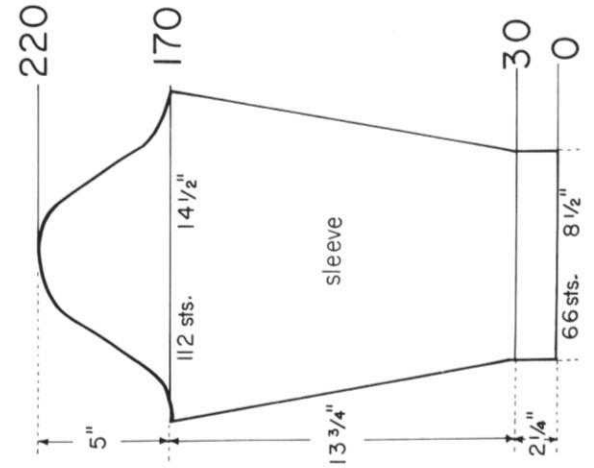
FINISHING: Block all sections to measurements given. Join front and back section at sides and shoulders, easing in the fullness at bustline of front section. Sew sleeves together and set in. Sew border trim to sleeves and shoulders as illustrated. Join short ends of collar. Sew 1 edge of collar to inside and 1 edge to outside of neckline.



Cast on 152 sts. with white and work K1, P1, Ribbing, 10 rows with tension 7; 10 rows with tension 6; 28 rows with tension 5; 10 rows with tension 6 and 10 rows with tension 7. After Row 68 bind off all sts. the crocheted method for ribbing.



Cast on 150 sts. and work K1, P1, Ribbing, 20 rows with tension 8, 20 rows with tension 7 and 20 rows with tension 8. After Row 60 bind off all sts. the crocheted method for ribbing.

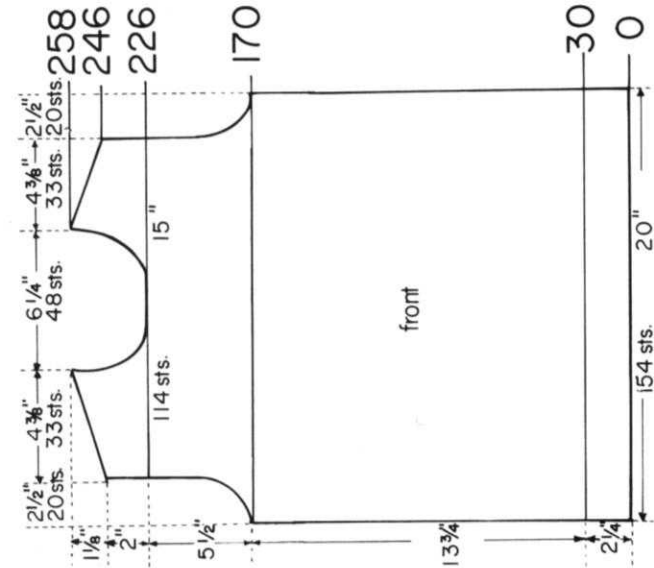


ON CAM BOX SIDE, bind off 5 sts. after Rows 170, 171; 4 sts. after Rows 172, 173; 3 sts. after Rows 174, 175, 176, 177; 2 sts. after Rows 178, 179, 180, 181, 182, 183; 1 st. after Rows 184, 185, 186, 187; 2 sts. after Rows 188, 189; 1 st. after Rows 190, 191, 192, 193; 2 sts. after Rows 194, 195; 1 st. after Rows 196, 197, 198, 199; 2 sts. after Rows 200, 201; 1 st. after Rows 202, 203, 204, 205; 2 sts. after Rows 206, 207; 1 st. after Rows 208, 209; 2 sts. after Rows 210, 211, 212, 213, 214, 215; 3 sts. after Rows 216, 217; 4 sts. after Rows 218, 219; 10 sts. after Row 220.

ROWS 31 to 170: ON EACH SIDE, increase 1 st. after Rows 36, 42, 48, 54, 60, 66, 72, 78, 84, 90, 96, 102, 108, 114, 120, 126, 132, 138, 144, 150, 154, 158, 162, then knit even to Row 170.

ROWS 0 to 30: Work K1, P1, Ribbing, then change to stockinette st.

Cast on 66 sts.

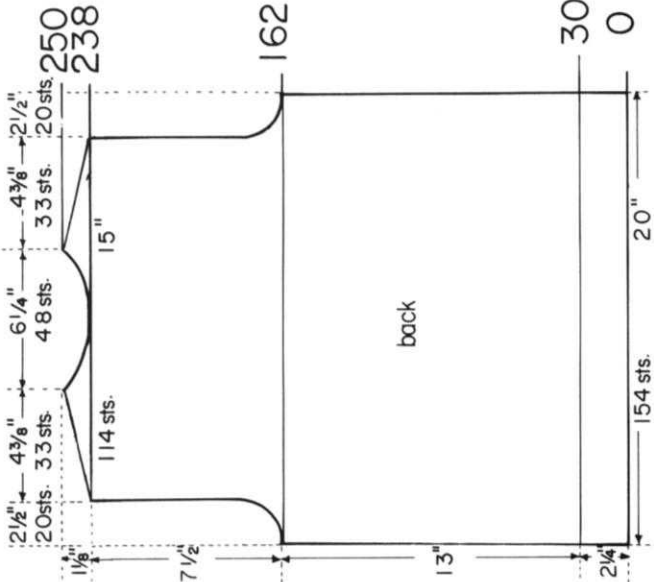


Move the Cam Box to the left side, turn the Row Counter back to 226 and complete the left half. Follow the instructions from \*.

\* ON CAM BOX SIDE, bind off 9 sts. after Row 227 (ODD ROWS = NECK SHAPING); 4 sts. after Row 229; 3 sts. after Row 231; 2 sts. after Rows 233, 235; 1 st. after Rows 237, 239, 243; 4 sts. after Row 246 (EVEN ROWS = SHOULDER SHAPING); 1 st. after Row 247 (last time for Neck); 4 sts. after Row 248; 5 sts. after Rows 250, 252, 254, 256, 258.

ON CAM BOX SIDE, bind off 4 sts. after Rows 170, 171, 172, 173; 3 sts. after Rows 174, 175, 176, 177; 2 sts. after Rows 178, 179, 180, 181; 1 st. after Rows 182, 183, 184, 185. Now knit even to Row 226, then put 57 needles on the left side into holding position and complete the right half first.

ROWS 31 to 170: Knit even.  
ROWS 0 to 30: Work K1, P1, Ribbing, then change to stockinette st.  
Cast on 154 sts.



Move the Cam Box to the left side, turn the Row Counter back to 238 and complete the left half. Follow the instructions from \*.

\* ON CAM BOX SIDE, bind off 4 sts. after Row 238 (EVEN ROWS = SHOULDER SHAPING); 8 sts. after Row 239 (ODD ROWS = NECK SHAPING); 4 sts. after Row 240; 5 sts. after Rows 241, 242; 4 sts. after Row 243; 5 sts. after Row 244; 3 sts. after Row 245; 5 sts. after Row 246; 2 sts. after Row 247; 5 sts. after Row 248; 2 sts. after Row 249; 5 sts. after Row 250.

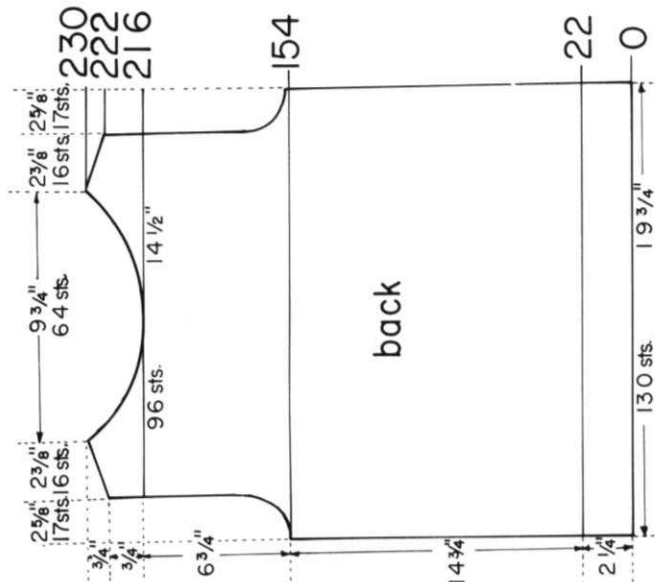
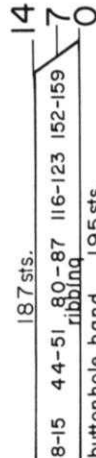
ON CAM BOX SIDE, bind off 4 sts. after Rows 162, 163, 164, 165; 3 sts. after Rows 166, 167, 168, 169; 2 sts. after Rows 170, 171, 172, 173; 1 st. after Rows 174, 175, 176, 177. Now knit even to Row 238, then put 57 needles on the left side into holding position and complete the right half first.

ROWS 31 to 162: Knit even.  
ROWS 0 to 30: Work K1, P1, Ribbing, then change to stockinette st.  
Cast on 154 sts.

# MK 5070

SIZE: 7-9. MATERIAL: 16 oz. red and 3 oz. white KNITTING Starlite Crepe, Color No. 442 and No. 1. TENSION: 8 to 10. STITCH GAUGE: 13 sts, 2", 18 rows 2". PATTERN: Stockinette Stitch, BANDS: K1, P1, Ribbing. Make the increases on the sleeves Full-fashion. After Rows indicated, move the 2 end sts. ON EACH SIDE 1 needle outward, then place the 3rd st. from the row below onto the empty needle. The decreases on Neckband, Buttonhole and Button Bands must be made Full-fashion. On sides and after rows indicated, each time, hang first the 5th, then the 4th st. onto the 3rd st., then move the end sts. inward to fill the empty needles. Bind off the sts. on all bands the crochet method for ribbing.

FINISHING: Block all sections to measurements given. Join front and back sections at sides and shoulders, easing in the fullness at bustline of front sections. Sew sleeves together and set in. Join front bands to neckband at shaped ends, leaving a small opening on the right side for a buttonhole. Sew band to jacket. Sew pockets to jacket as illustrated. Finish buttonholes and sew on buttons.



Move the Cam Box to the left side, turn the Row Counter back to 216 and complete the left half. Follow the instructions from \*.

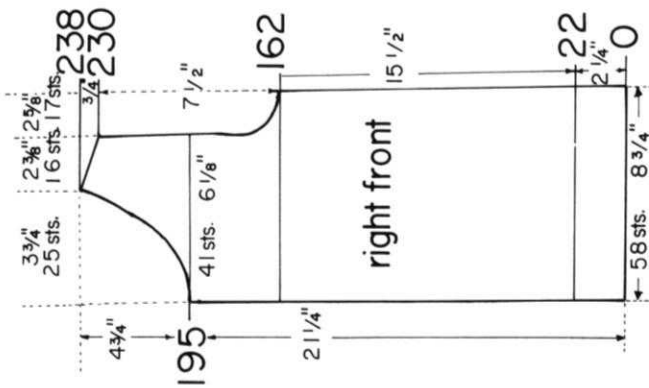
\* ON CAM BOX SIDE, bind off 10 sts. after Row 217 (ODD ROWS = NECK SHAPING); 5 sts. after Rows 219, 221; 3 sts. after Row 222 (EVEN ROWS = SHOULDER SHAPING); 4 sts. after Row 223; 3 sts. after Rows 224, 225, 226, 227, 228; 2 sts. after Row 229; 4 sts. after Row 230.

ON CAM BOX SIDE, bind off 4 sts. after Rows 154, 155; 3 sts. after Rows 156, 157, 158, 159; 2 sts. after Rows 160, 161, 162, 163; 1 st. after Rows 164, 165, 166, 167, 170, 171. Now knit even to Row 216, then put 48 needles on the left side into holding position and complete the right half first.

ROWS 23 to 154: Knit even.  
ROWS 0 to 22: Knit even, then hang the cast-on sts. back on the machine to form the hem.  
Cast on 130 sts. and work stockinette st.



ROWS 0 to 14: ON THE RIGHT SIDE, decrease 2 sts. after Rows 3, 6. After Row 7, make buttonholes over the sts. indicated in the diagram. Decrease 2 sts. on the right side after Rows 9 and 12. After Row 14 bind off all sts. Work the Button Band with reverse shaping and omit the buttonholes.  
Cast on 195 sts. with white and work K1, P1, Ribbing.



Work the left front section with reverse shapings, casting on from right to left. (Cam Box is on the LEFT side at ROW 0).

ON CAM BOX SIDE, bind off 3 sts. after Rows 230. (EVEN ROWS = SHOULDER SHAPING) 232, 234, 236; 4 sts. after Row 238.

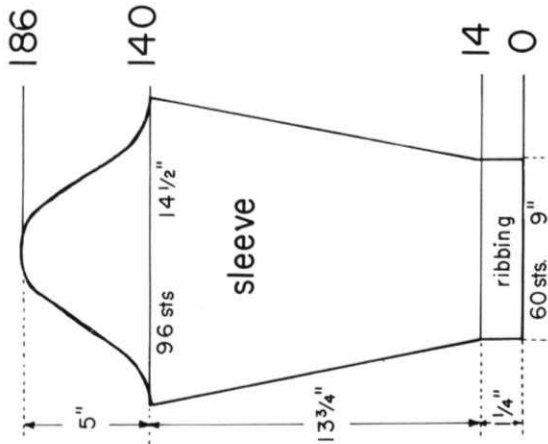
ON CAM BOX SIDE, bind off 7 sts. after Row 195 (ODD ROWS = NECK SHAPING); 4 sts. after Row 197; 3 sts. after Row 199; 2 sts. after Rows 201, 203, 205; 1 st. after Rows 207, 209, 213, 217, 221, then knit even to Row 230.

ON CAM BOX SIDE, bind off 4 sts. after Row 162; 3 sts. after Rows 164, 166; 2 sts. after Rows 168, 170; 1 st. after Rows 172, 174, 178, then knit even to Row 195.

ROWS 23 to 162: Knit even.

ROWS 0 to 22: Knit even, then hang the cast-on sts. back on the machine to form the hem.

Cast on 58 sts. and work stockinette st.

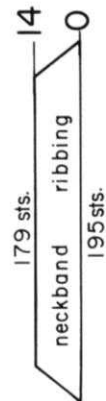


ON CAM BOX SIDE, bind off 4 sts. after Rows 140, 141; 3 sts. after Rows 142, 143, 144, 145; 2 sts. after Rows 146, 147, 148, 149, 150, 151; 1 st. after Rows 152, 153, 154, 155; 2 sts. after Rows 156, 157; 1 st. after Rows 158, 159, 160, 161; 2 sts. after Rows 162, 163; 1 st. after Rows 164, 165, 166, 167; 2 sts. after Rows 168, 169; 1 st. after Rows 170, 171, 172, 173; 2 sts. after Rows 174, 175; 1 st. after Rows 176, 177, 178, 179; 2 sts. after Rows 180, 181; 3 sts. after Rows 182, 183; 4 sts. after Rows 184, 185; 10 sts. after Row 186.

ROWS 15 to 140: ON EACH SIDE, increase 1 st. after Rows 22, 30, 38, 46, 54, 62, 68, 74, 80, 86, 92, 98, 104, 110, 116, 122, 128, 134, then knit even to Row 140.

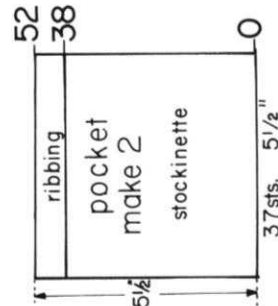
ROWS 0 to 14: Work K1, P1, Ribbing, then change to stockinette st. and work with red.

Cast on 60 sts. with white.



ROWS 0 to 14: ON EACH SIDE, decrease 2 sts. after Rows 3, 6, 9 and 12. After Row 14 bind off all sts.

Cast on 195 sts. with white and work K1, P1, Ribbing.



ROWS 39 to 52: Work K1, P1, Ribbing. After Row 52 bind off all sts.

ROWS 0 to 38: Knit even, then transfer every other st. to the Ribber and change to white.

Cast on 37 sts. with red and work Stockinette st.

**A complete fifth volume of KNITTING MAGAZINES with a flexible, transparent plastic cover and specially bound so that it will stay open at any page, is available at the special price of \$6.95 (plus 85 cents mailing costs).**

If purchased separately the magazines would cost a total of \$9.00.

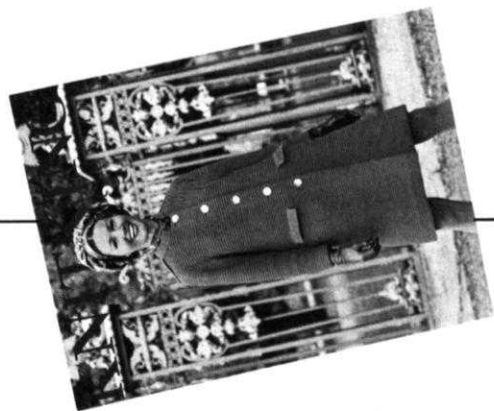
The volume contains over 120 fully illustrated complete stylish patterns for all members of the family, together with many valuable, practical knitting hints.

There is a very limited number of these volumes available and it will undoubtedly become a collectors item.

If you already have the entire set it will almost certainly be well thumbed and marked. Why not purchase a perfect mint condition volume for your bookshelf and ready reference at any time.

• • •

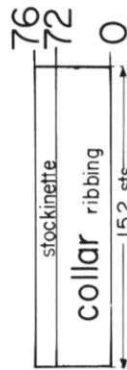
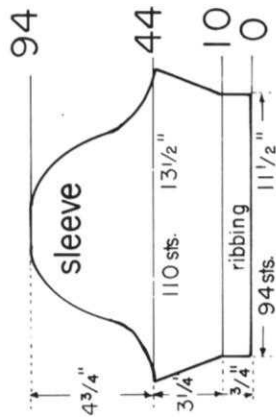
**Place your order today and avoid disappointment. Send it to KNITTING MAGAZINE, 1128 Crenshaw Boulevard, Los Angeles, California 90019.**



# MK 5071

SIZE 7-9. MATERIAL: 14 oz. (8 balls) blue KNITTING Subita Crepe 2 x 4. Color No. 2. TENSION: KNITTING 6 to 8. STITCH GAUGE: 16 sts. 2", 21 rows 2". PATTERN: Stockinette Stitch. EDGES: K1, P1, Ribbing. ALL increases are Full-fashion. After rows indicated, move the 2 end sts. on each side 1 needle outward, then place the 3rd st. from the row below onto the empty needle.

FINISHING: Block all sections to measurements given. Join front and back section at sides and shoulders, easing in the fullness at bustline of front section. Sew sleeves together and set in. Join short ends of collar, then sew cast-on edge of collar to inside and bound-off edge to outside of neckline, having the stockinette stitch rows on the right side.



On CAM BOX SIDE, bind off 4 sts. after Rows 44, 45; 3 sts. after Rows 46, 47, 48, 49, 50, 51; 2 sts. after Rows 52, 53, 54, 55, 56, 57; 1 st. after Rows 58, 59, 60, 61; 2 sts. after Rows 62, 63; 1 st. after Rows 64, 65, 66, 67; 2 sts. after Rows 68, 69; 1 st. after Rows 70, 71, 72, 73; 2 sts. after Rows 74, 75; 1 st. after Rows 76, 77, 78, 79; 2 sts. after Rows 80, 81; 1 st. after Rows 82, 83, 84, 85; 2 sts. after Rows 86, 87, 88, 89; 3 sts. after Rows 90, 91; 4 sts. after Rows 92, 93; 14 sts. after Row 94.

ROWS 11 to 44: ON EACH SIDE, increase 1 st. after Rows 12, 16, 20, 24, 28, 32, 36, 40, then knit even to Row 44.

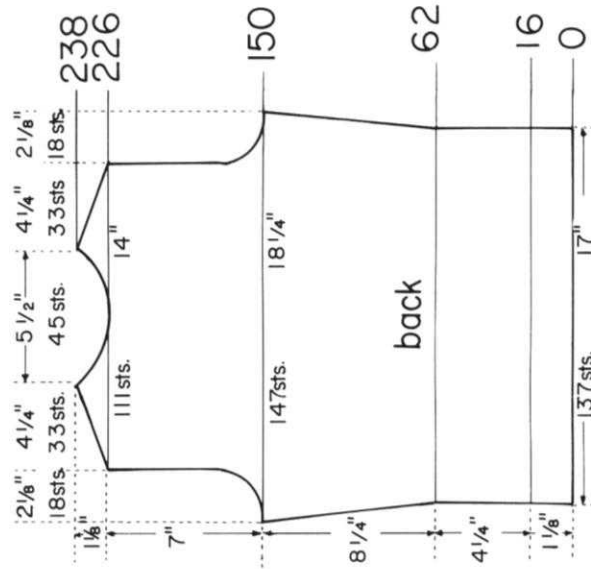
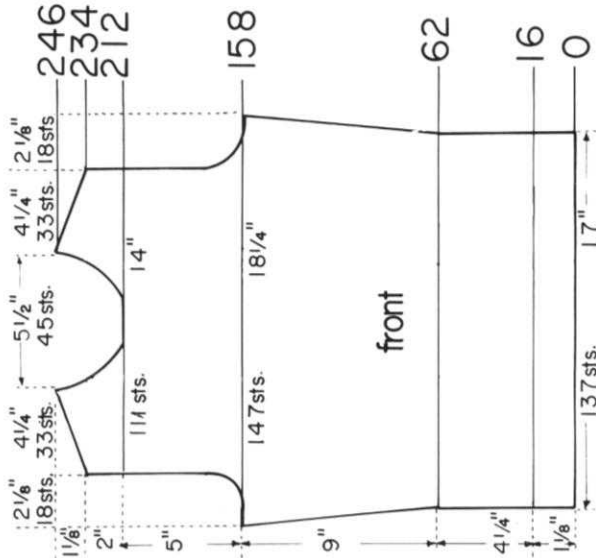
ROWS 0 to 10: Work K1, P1, Ribbing, then change to stockinette st.

Cast on 94 sts.

Cast on 152 sts. and work 72 rows K1, P1, Ribbing, then change to stockinette st. and knit 4 rows. After Row 76 bind off the crochet method.

# DK 7781

SIZE: 12/14. MATERIAL: 22%oz. (13 balls) KNITTING Subita Crepe 2 x 4. Color No. 1. Tension: KNITTING 6 to 8. STITCH GAUGE: 16 sts. 2", 22 rows 2". PATTERN: Stockinette Stitch. ALL decreases and increases of 1 st. are Full-fashion. DECREASES for Side Seams, Center Back Seam and Armholes: After rows indicated hang the 3rd st. on the appropriate sides onto the 2nd st. DECREASES for FRONT Shaping: After rows indicated always hang the 10th st. onto the 9th st. After each decrease, move the end sts. inward to fill the empty needle. INCREASES for Side Seams and Center Back Seam: After rows indicated move the 2 end sts. on the appropriate sides 1 needle outward, then place the 3rd st. from the row below onto the empty needle.



Move the Cam Box to the left side, turn the Row Counter back to 212 and complete the left half. Follow the instructions from \*.

\* ON CAM BOX SIDE, bind off 6 sts. (5 sts. for left half) after Row 213 (ODD ROWS = NECK SHAPING); 3 sts. after Rows 215, 217; 2 sts. after Rows 219, 221, 223; 1 st. after Rows 225, 227, 229, 233; 4 sts. after Rows 234, 236 (EVEN ROWS = SHOULDER SHAPING); 1 st. after Row 237 (last time for Neck); 5 sts. after Rows 238, 240, 242, 244, 246.

ON CAM BOX SIDE, bind off 4 sts. after Rows 158, 159; 3 sts. after Rows 160, 161, 162, 163; 2 sts. after Rows 164, 165, 166, 167; 1 st. after Rows 168, 169, 170, 171, 172, 173, 176, 177. Now knit even to Row 212, then put 55 needles on the left side into holding position and complete the right side first.

ROWS 17 to 158: ON EACH SIDE, increase 1 st. after Rows 62, 78, 94, 110, 126, then knit even to Row 158.

ROWS 0 to 16: Work K1, P1, Ribbing, then change to stockinette st.

Cast on 137 sts.

Move the Cam Box to the left side, turn the Row Counter back to 226 and complete the left half. Follow the instructions from \*.

\* ON CAM BOX SIDE, Bind off 4 sts. after Row 226 (EVEN ROWS = SHOULDER SHAPING); 8 sts. (7 sts. for left half) after Row 227 (ODD ROWS = NECK SHAPING); 4 sts. after Rows 228, 229; 5 sts. after Row 230; 4 sts. after Row 231; 5 sts. after Row 232; 3 sts. after Row 233; 5 sts. after Row 234; 2 sts. after Row 235; 5 sts. after Row 236; 2 sts. after Row 237; 5 sts. after Row 238.

ON CAM BOX SIDE, bind off 4 sts. after Rows 150, 151; 3 sts. after Rows 152, 153, 154, 155; 2 sts. after Rows 156, 157, 158, 159; 1 st. after Rows 160, 161, 162, 163, 164, 165, 168, 169. Now knit even to Row 226, then put 55 needles on the left side into holding position and complete the right half first.

ROWS 17 to 150: ON EACH SIDE, increase 1 st. after Rows 62, 78, 94, 110, 126, then knit even to Row 150.

ROWS 0 to 16: Work K1, P1, Ribbing, then change to stockinette st.

Cast on 137 sts.

**FINISHING:** Block all sections to measurements given. Weave back sections together, 1 st. in on each edge. Weave front and back sections together at sides, easing in the fullness at bustline of front section. Join shoulders. Turn under 18 rows on lower edge and hem to wrong side. Turn under 3 sts. around armholes and hem to wrong side. Weave open sts. of back facing together then sew facing to neckline. Turn under 7 sts. around front edges and neckline, then hem to wrong side. On wrong side, sew a waistband to the left front section. Close sections with a large snap. With tension 2, knit a cord over 3 needles for 240 rows (empty rows do count). Sew the cord to the right front section, forming 10 loops. (See Picture) Sew buttons to left front section.

Work the left front section with reverse shapings, casting on from right to left. (Cam Box will be on the LEFT SIDE at ROW 0).

Knit even to Row 486, then put the sts. on a stitch holder.

ON CAM BOX SIDE, bind off 4 sts. after Row 442 (EVEN ROWS = SHOULDER SHAPING); 1 st. after Row 443; 4 sts. after Row 444, 446; 1 st. after Row 447; 4 sts. after Rows 448, 450; 1 st. after Row 451 (last time for Front Shaping); 5 sts. after Rows 452, 454, 456. (8 sts. remain)

ON CAM BOX SIDE, bind off 4 sts. after Row 358 (EVEN ROWS = ARM-HOLE SHAPING); 1 st. after Row 359; 3 sts. after Row 360; 1 st. after Row 361; 3 sts. after Row 362; 1 st. after Row 363; 2 sts. after Row 364; 1 st. after Row 365; 2 sts. after Row 366; 1 st. after Row 367, 368, 369, 370, 371, 372, 373, 375, 379, 380, 383, 387, 388, 391, 395, 396, 399, 403, 404, 407, 411, 412, 415, 419, 420, 423, 427, 428 (last time for Armhole); 431, 435, 439, then knit to Row 442.

ON CAM BOX SIDE, decrease 1 st. after Rows 319, 321 (ODD ROWS = FRONT SHAPING); increase 1 st. after Row 322; decrease 1 st. after Rows 323, 325, 327, 329, 331, 333, 335, 337; increase 1 st. after Row 338 (last increase); decrease 1 st. after Rows 339, 341, 343, 345, 347, 349, 351, 353, 355, 357, then knit to Row 358.

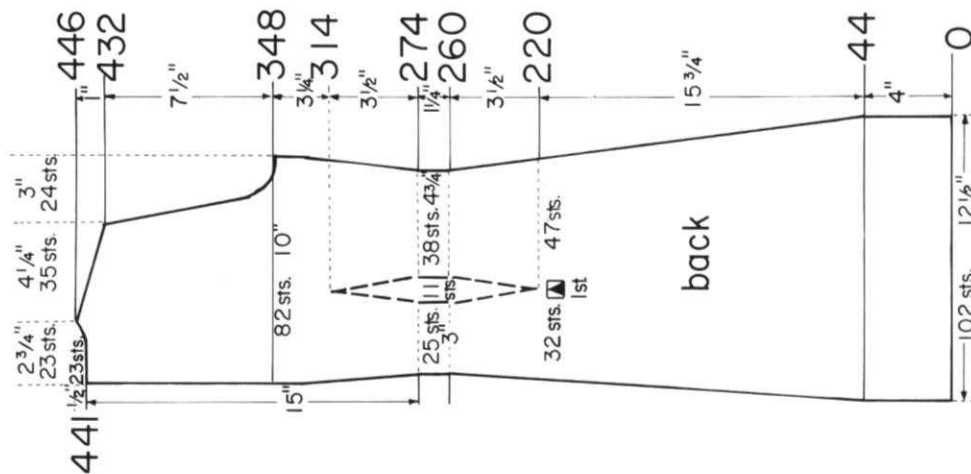
ON CAM BOX SIDE, increase 1 st. after Row 274, (2 sts. for Dart after Rows 274, 284) 290, (2 sts. for Dart after Rows 294, 304) 306, (2 sts. for Dart after Row 314, last time) then knit to Row 319.

Knit even to Row 274.  
Decrease 2 sts. for the DART after Row 220. (Begin Dart by hanging the sts. marked on the diagram together, then move the end sts. inward to fill the empty needles. The following Dart decreases and after Row 274 Dart increases lie directly above.) ON CAM BOX SIDE, decrease 1 st. after Rows 224, (2 sts. for Dart after Row 230) 231, 236, (2 sts. for Dart after Row 240) 243, 248, (2 sts. for Dart after Row 250) 258, (2 sts. for Dart after Row 260).

ON CAM BOX SIDE, decrease 1 st. after Rows 44, 56, 63, 68, 75, 80, 87, 92, 99, 104, 111, 116, 123, 128, 135, 140, 147, 152, 159, 164, 171, 176, 183, 188, 195, 200, 207, 212, 219, then knit to Row 220.

ROWS 0 to 44: Knit 2 rows (Short Rows) Bring back into working position 15 needles after Rows 2, 4; 14 needles after Rows 6, 8, then knit even to Row 27. ON CAM BOX SIDE cast on 13 sts., then knit even to Row 44.

Cast on 132 sts., then put 58 needles opposite Cam Box into holding position.



Work the right back section with reverse shapings, casting on from right to left (Cam Box will be on the LEFT SIDE at ROW 0).

ON CAM BOX SIDE, bind off 4 sts. after Rows 432, 434, 436, 438, 440 (EVEN ROWS = SHOULDER SHAPING); 17 sts. after Row 441 (ODD ROWS = NECKSHAPING); 5 sts. after Row 442; 4 sts. after Row 443; 5 sts. after Row 444; 2 sts. after Row 445; 5 sts. after Row 446.

ON CAM BOX SIDE, bind off 4 sts. after Row 348 (EVEN ROWS = ARM-HOLE SHAPING); 3 sts. after Rows 350, 352; 2 sts. after Rows 354, 356; now Full-fashion decreases, 1 st. after Rows 358, 360, 362, 370, 378, 386, 394, 402, 410, 418, then knit even to Row 432.

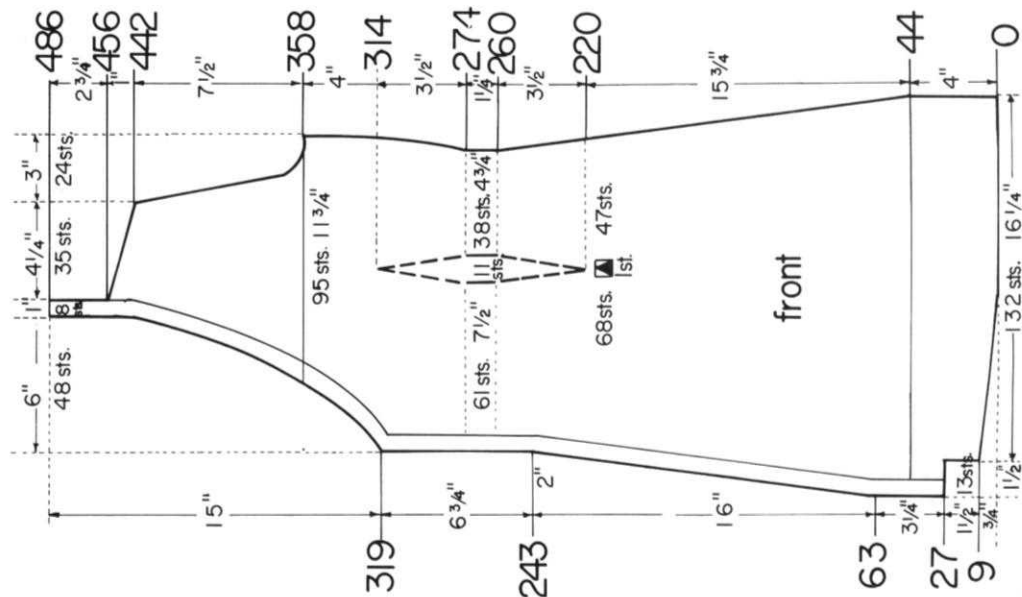
ON CAM BOX SIDE, increase 1 st. after Rows 274, (2 sts. for Dart after Row 274) 275, (2 sts. for Dart after Row 284) 290, (2 sts. for Dart after Rows 294, 304) 305, 306, (2 sts. for Dart after Row 314, last time) 322, 335, 338, then knit even to Row 348.

Knit even to Row 274.  
Decrease 2 sts. for the Dart after Row 220. (Begin Dart by hanging the sts. marked on the diagram together, then move the end sts. inward to fill the empty needles. The following Dart decreases and after Row 274 Dart increases lie directly above.) ON CAM BOX SIDE, decrease 1 st. after Rows 224, (2 sts. for Dart after Row 230) 233, 236, (2 sts. for Dart after Row 240) 248, (2 sts. for Dart after Row 250) 258, 259, (2 sts. for Dart after Row 260).

ON CAM BOX SIDE, decrease 1 st. after Rows 44, 56, 68, 73, 80, 92, 101, 104, 116, 128, 129, 140, 152, 155, 164, 176, 181, 188, 200, 207, 212, then knit to Row 220.

ROWS 0 to 44: Knit even.

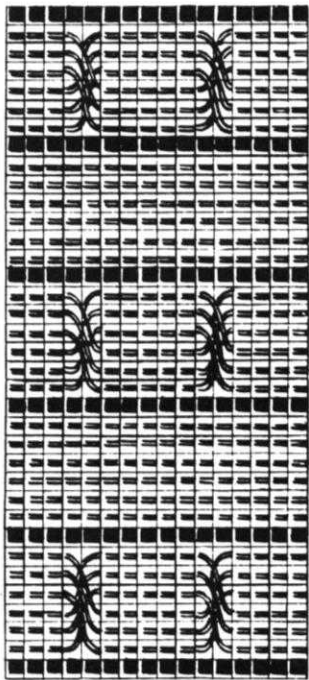
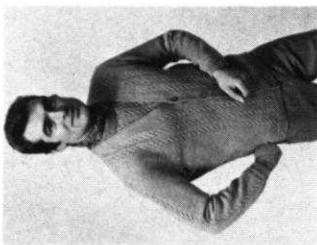
Cast on 102 sts. and work stockinette st.



# HP 3589

**SIZE:** 40/42. **MATERIAL:** 21 oz. (12 balls) gold KNITKING Subita Crepe 2 x 4, Color No. 48. **TENSION:** KNITKING 6 to 8. **STITCH GAUGE:** 15 sts, 2", 22 rows 2". **PATTERN:** Stockinette Stitch and Cable Design on the Front sections and the Sleeves. **LOWER EDGE and SLEEVE EDGES:** K1, P1, Ribbing. Make the increases on the sleeves Full-fashion. After rows indicated, move the 2 and 3rd st. from the row below onto the empty needle. **ALL DECREASES for the FRONT SHAPING (after ODD ROWS) must be made Full-fashion.** After the designated rows, always hang the 20th st. onto the 19th st., then move the end sts. inward to fill the empty needle.

**FINISHING:** Block all sections to measurements given. Join front and back sections at sides and shoulders. Sew sleeves together and set in. Weave open sts. of neckband together, then sew neckband to neckline. Turn under 9 sts. around fronts and neckline and hem to wrong side. Finish buttonholes, sew on buttons.



36 35 34 33 32 31 30 29 28 27 26 25 24 23 22 21 20 19 18 17 16 15 14 13 12 11 10 9 8 7 6 5 4 3 2 1

The Cable Design is worked over 36 sts. 1. Knit 8 rows. 2. Let the 1st, 8th, 15th, 22nd, 29th and 36th sts. slide off the needles, leave empty needles in working position. 3. Using 2 treble transfer tools, hang the 2nd, 3rd and 4th sts. onto the 5th, 6th and 7th needles, then the 5th, 6th and 7th sts. onto the 2nd, 3rd and 4th needles. Cross the 16th, 17th, 18th, 19th, 20th and 21st sts., then the 30th, 31st, 32nd, 33rd, 34th and 35th sts. in the same manner. Repeat Steps 1 to 3 throughout. After each 30-40 rows let the 1st, 8th, 15th, 22nd, 29th and 36th sts. slide off the needles and allow to run down (the first time down to the Ribbing) then latch up into knit sts. Cross the sts. the first time after 4 rows of stockinette st.

Work the right front section with reverse shapings, casting on from left to right. (Cam Box will be on the RIGHT SIDE at ROW 0). Omit the buttonholes.

**ROWS 311 to 350:** Knit even, then put the remaining 18 sts. on a stitch holder. **ON CAM BOX SIDE** bind off 3 sts. after Rows 288, 290, 292, 294 (EVEN ROWS = SHOULDER SHAPING); 1 st. after Row 295; 3 sts. after Rows 300, 302; 1 st. after Row 303 (last time for Front Shaping); 4 sts. after Rows 304, 306, 308, 310.

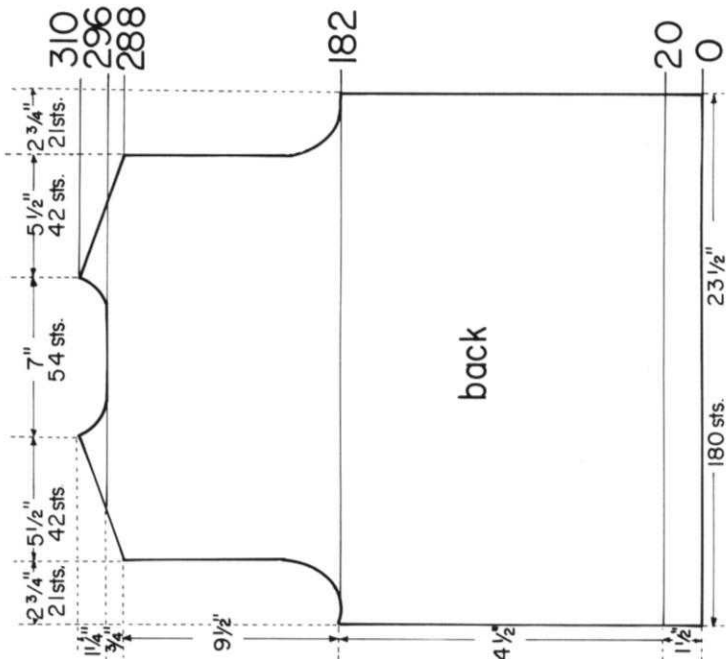
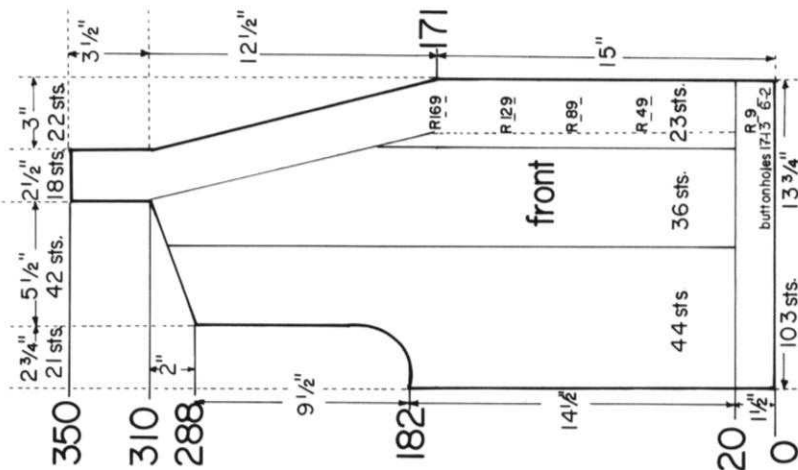
**ON CAM BOX SIDE** bind off 6 sts. after Row 182 (EVEN ROWS = ARM-HOLE SHAPING); 1 st. after Row 183; 4 sts. after Rows 184, 186; 2 sts. after Row 188; 1 st. after Row 189; 2 sts. after Row 190; 1 st. after Rows 192, 194, 195, 196. (last time for Armhole Shaping); continue to decrease for Front Shaping, 1 st. after Rows 201, 207, 213, 219, 225, 231, 237, 243, 249, 255, 261, 267, 273, 279, 287, then knit to Row 288.

**ON CAM BOX SIDE**, decrease 1 st. after Rows 171, 177 (ODD ROWS = FRONT SHAPING), then knit to Row 182.

**Row 169:** Make 2 buttonholes, then knit to Row 171. **Row 129:** Make 2 buttonholes, then knit to Row 169. **Row 89:** Make 2 buttonholes, then knit to Row 129. **Row 49:** Make 2 buttonholes, then knit to Row 89.

**ROWS 21 to 49:** Knit even. **ROWS 0 to 20:** Work K1, P1, Ribbing AND make 2 buttonholes after Row 9 over the 2nd-5th and 13th-17th sts. counting from the right side. After Row 20 change to stockinette st. and work the Cable Design over the sts. marked on the diagram. Cross the sts. the first time after Row 24, then again after every following 8th row.

From right to left, cast on 103 sts. (Cam Box will be on the LEFT SIDE at ROW 0).



Move the Cam Box to the left side, turn the Row Counter back to 296 and complete the left half. Follow the instructions from \*.

\* **ON CAM BOX SIDE**, bind off 3 sts. after Row 296 (EVEN ROWS = SHOULDER SHAPING); 7 sts. after Row 297 (ODD ROWS = NECK SHAPING); 3 sts. after Row 298; 5 sts. after Row 299; 4 sts. after Row 300; 5 sts. after Row 301; 4 sts. after Row 302; 3 sts. after Row 303; 4 sts. after Row 304; 3 sts. after Row 305; 4 sts. after Row 306; 2 sts. after Row 307; 4 sts. after Row 308; 2 sts. after Row 309; 4 sts. after Row 310.

**ON CAM BOX SIDE**, bind off 3 sts. after Rows 288, 289, 290, 291, 292, 293, 294, 295. After Row 296 put 57 needles on the left side into holding position and complete the right half first.

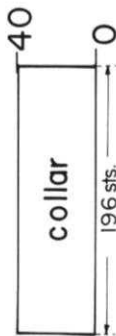
**ON CAM BOX SIDE**, bind off 6 sts. after Rows 182, 183; 4 sts. after Rows 184, 185, 186, 187; 2 sts. after Rows 188, 189, 190, 191; 1 st. after Rows 192, 193, 194, 195, 196, 197, then knit even to Row 288.

**ROWS 21 to 182:** Knit even. **ROWS 0 to 20:** Work K1, P1, Ribbing, then change to stockinette st. Cast on 180 sts.

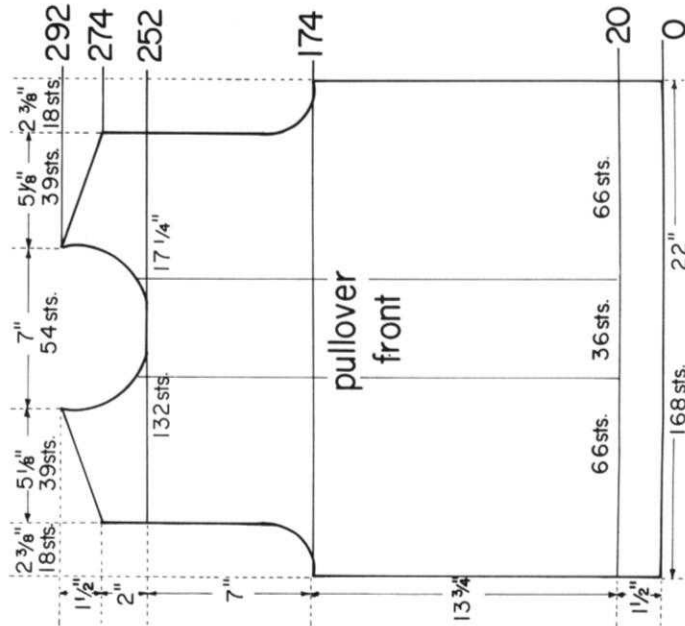
# HP 3589a

**SIZE:** 40/42. **MATERIAL:** 19 1/4 oz. (11 balls) gold KNITTING Subita Crepe 2 x 4, Color No. 48. **TENSION:** KNITTING 6 to 8. **STITCH GAUGE:** 15 sts., 2", 22 rows 2". **PATTERN:** Stockinette Stitch and a Cable Design on the Front Section. **EDGES:** K1, P1, Ribbing. Make the increases on the sleeves Full-fashion. After rows indicated, move the 2 end sts. ON EACH SIDE 1 needle outward, then place the 3rd st. from the row below onto the empty needle. For the Cable Design, follow the instructions on Line Drawings of HP 3589 (Cardigan).

**FINISHING:** Block all sections to measurements given. Join front and back sections at sides and shoulders. Sew sleeves together and set in. Join short ends of neckband. Sew 1 edge of neckband to inside and 1 edge to outside of neckline.



Cast on 196 sts. and work 40 rows K1, P1, Ribbing, then bind off the crochet method for ribbing.

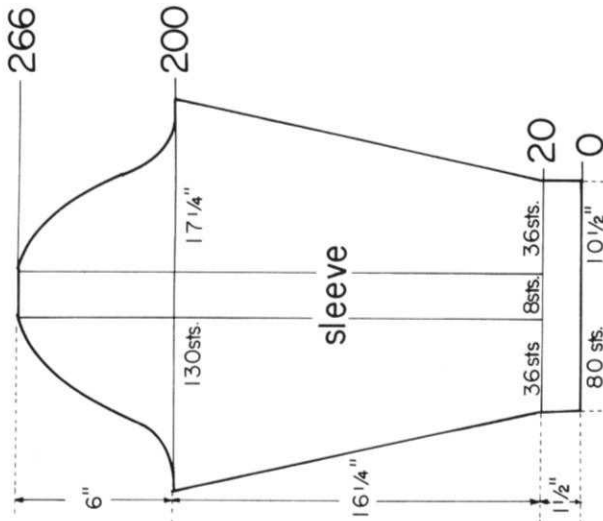


Move the Cam Box to the left side, turn the Row Counter back to 252 and complete the left half. Follow the instructions from \*.

\* ON CAM BOX SIDE, bind off 7 sts. after Row 253 (ODD ROWS = NECK SHAPING); 4 sts. after Row 255; 3 sts. after Rows 257, 259, 261; 2 sts. after Rows 263, 265; 1 st. after Rows 267, 269, 271 (last time for Neck); 3 sts. after Row 274 (EVEN ROWS = SHOULDER SHAPING); 4 sts. after Rows 276, 278, 280, 282, 284, 286, 288, 290, 292.

ON CAM BOX SIDE, bind off 5 sts. after Rows 174, 175; 3 sts. after Rows 176, 177, 178, 179; 2 sts. after Rows 180, 181, 182, 183; 1 st. after Rows 184, 185, 186, 187, 188, 189. Now knit even to Row 252, then put 66 needles on the left side into holding position and complete the right half first.

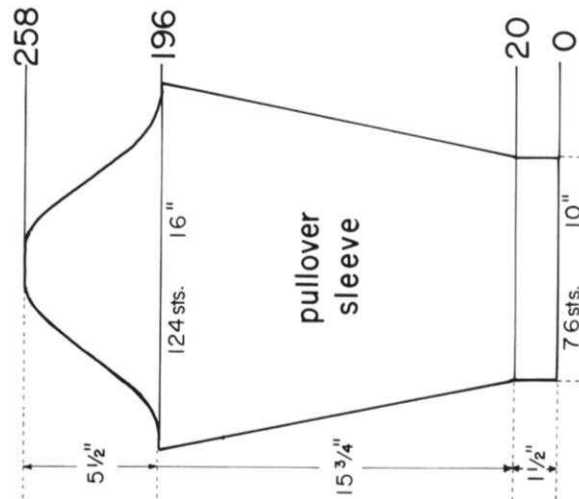
ROWS 21 to 174: Knit even and cross the cable sts. the first time after Row 24, then again after every following 8th row. ROWS 0 to 20: Work K1, P1, Ribbing, then change to stockinette st. and work the Cable Design over the center 36 sts. Cast on 168 sts.



ON CAM BOX SIDE, bind off 6 sts. after Rows 200, 201; 4 sts. after Rows 202, 203, 204, 205; 3 sts. after Rows 206, 207, 208, 209; 2 sts. after Rows 210, 211, 212, 213; ON EACH SIDE, bind off 1 st. after Rows 214, 216, 218, 220, 222, 224, 226, 228, 230, 232, 234, 236, 238, 240, 242, 244, 246, 248, 250, 252, 254, 256. ON CAM BOX SIDE, bind off 2 sts. after Rows 258, 259, 260, 261; 4 sts. after Rows 262, 263; 5 sts. after Rows 264, 265; 12 sts. after Row 266.

ON EACH SIDE, increase 1 st. after Rows 20, 26, 32, 38, 44, 50, 56, 62, 68, 74, 80, 88, 96, 104, 112, 120, 128, 136, 144, 152, 160, 168, 176, 184, 192, then knit to Row 200.

ROWS 0 to 20: Work K1, P1, Ribbing, then change to stockinette st. and work 1 Cable Stripe over the center 8 sts. Cross the sts. the first time after Row 24, then again after every following 8th row. Cast on 80 sts.



ON CAM BOX SIDE, bind off 5 sts. after Rows 196, 197; 4 sts. after Rows 198, 199; 3 sts. after Rows 200, 201, 202, 203, 204, 205; 2 sts. after Rows 206, 207, 208, 209. ON EACH SIDE, bind off 1 st. after Rows 210, 212, 214, 216, 218, 220, 222, 224, 226, 228, 230, 232, 234, 236, 238, 240, 242, 244, 246, 248. ON CAM BOX SIDE, bind off 2 sts. after Rows 250, 251; 3 sts. after Rows 252, 253; 4 sts. after Rows 254, 255, 256, 257; 14 sts. after Row 258.

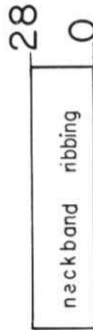
ON EACH SIDE, increase 1 st. after Rows 20, 26, 32, 38, 44, 50, 56, 64, 72, 80, 88, 96, 104, 112, 120, 128, 136, 144, 152, 160, 168, 176, 184, 192, then knit to Row 196.

ROWS 0 to 20: Work K1, P1, Ribbing, then change to stockinette st. Cast on 76 sts.

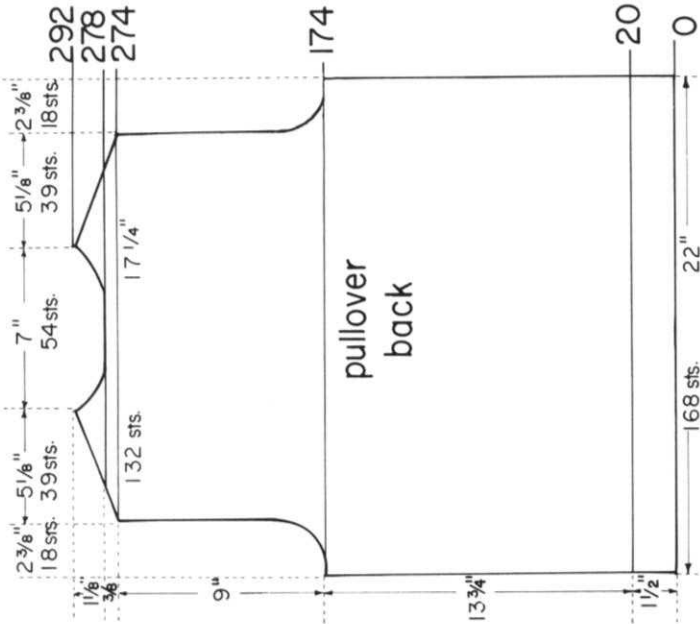
# HP 3575

**SIZE:** 40/42. **MATERIAL:** 7 oz. (4 balls) beige, 3 1/2 oz. (2 balls) light blue, 3 1/2 oz. (2 balls) white and 1 1/2 oz. (1 ball) dark blue **KNITTING** Subita and Dralon 3 ply, Color Nos. 447, 406, 401 and 416. **TENSION:** KNITTING 4 to 6. **STITCH GAUGE:** 15 sts, 2", 22 rows 2". **PATTERN:** Stockinette. **Stitch and repeated Color Stripes of 2 rows dark blue, 10 rows beige, 6 rows white, 6 rows light blue, 6 rows dark blue, 6 rows light blue, 6 rows white, 10 rows beige, 2 rows dark blue, 10 rows beige, 6 rows white, 16 rows light blue, 6 rows white and 10 rows beige. EDGES:** K1, P1, Ribbing. **Make the increases for the sleeves Full-fashion. After Rows indicated, move the 2 end sts. ON EACH SIDE 1 needle outward, then place the 3rd st. from the row below onto the empty needle.**

**FINISHING:** Block all sections to measurements given. Join front and back sections at sides and shoulders. Sew sleeves together and set in. Join short ends of neckband, then sew 1 edge of neckband to inside and 1 edge to outside of neckline.



Cast on 182 sts. with beige and work 28 rows K1, P1, Ribbing, then bind off all sts. the crochet method for Ribbing.



Move the Cam Box to the left side, turn the Row Counter back to 278 and complete the left half. Follow the instructions from \*

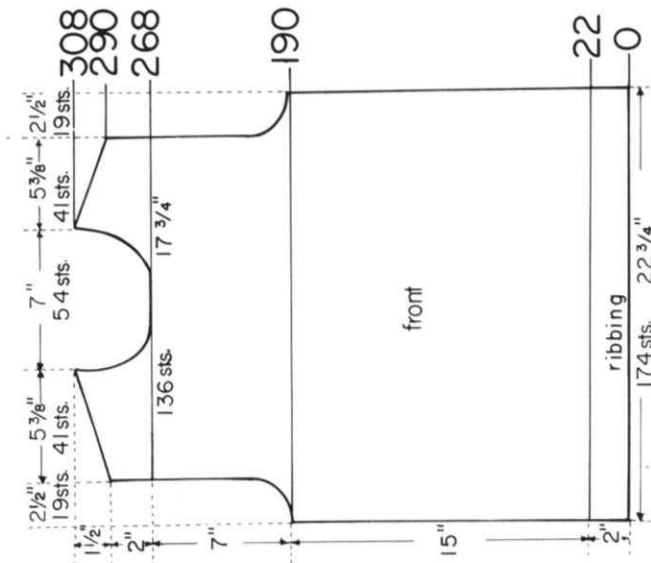
• ON CAM BOX SIDE, bind off 4 sts. after Row 278 (EVEN ROWS = SHOULDER SHAPING); 7 sts. after Row 279 (ODD ROWS = NECK SHAPING); 4 sts. after Row 280; 5 sts. after Row 281; 4 sts. after Row 282; 5 sts. after Row 283; 4 sts. after Row 284; 3 sts. after Row 285; 4 sts. after Row 286; 3 sts. after Row 287; 4 sts. after Row 288; 2 sts. after Row 289; 4 sts. after Row 290; 2 sts. after Row 291; 4 sts. after Row 292.

ON CAM BOX SIDE, bind off 3 sts. after Rows 274, 275; 4 sts. after Rows 276, 277. After Row 278 put 59 needles on the left side into holding position and complete the right half first.

ON CAM BOX SIDE, bind off 5 sts. after Rows 174, 175; 3 sts. after Rows 176, 177; 178, 179; 2 sts. after Rows 180, 181, 182, 183; 1 st. after Rows 184, 185, 186, 187, 188, 189, then knit even to Row 274.

ROWS 21 to 174: Knit even.

ROWS 0 to 20: Work K1, P1, Ribbing, then change to stockinette st. Cast on 168 sts.



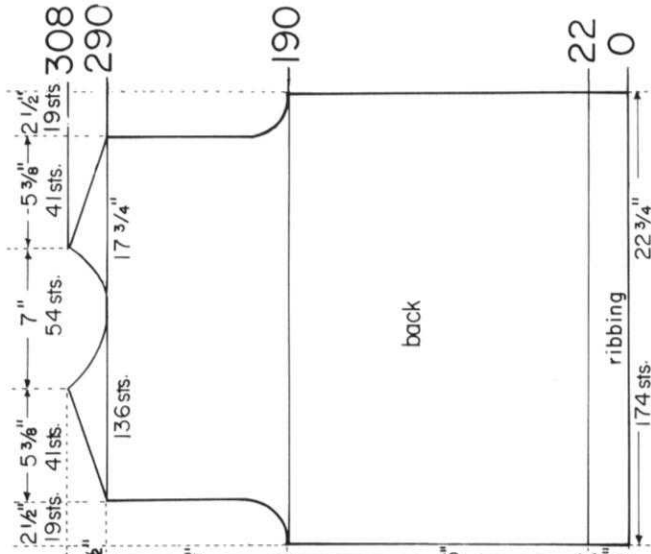
Move the Cam Box to the left side, turn the Row Counter back to 268 and complete the left half. Follow the instructions from \*

• ON CAM BOX SIDE, bind off 7 sts. after Row 269 (ODD ROWS = NECK SHAPING); 4 sts. after Row 271, 3 sts. after Rows 273, 275; 2 sts. after Rows 277, 279; 1 st. after Rows 281, 283, 285, 289; 4 sts. after Rows 290, 292 (EVEN ROWS = SHOULDER SHAPING); 1 st. after Row 293; 4 sts. after Rows 294, 296; 1 st. after Row 297 (last time for Neck Shaping); 4 sts. after Rows 298, 300, 302, 304, 306; 5 sts. after Row 308.

ON CAM BOX SIDE, bind off 5 sts. after Rows 190, 191; 3 sts. after Rows 192, 193, 194, 195; 2 sts. after Rows 196, 197, 198, 199; 1 st. after Rows 200, 201, 202, 203, 206, 207, 210, 211. Now knit even to Row 268, then put 68 needles on the left side into holding position and complete the right half first.

ROWS 23 to 190: Work the repeated Color Stripes and knit even.

ROWS 0 to 22: Work K1, P1, Ribbing, then change to stockinette st. Cast on 174 sts. with beige.



Move the Cam Box to the left side, turn the Row Counter back to 290 and complete the left half. Follow the instructions from \*

• ON CAM BOX SIDE, bind off 4 sts. after Row 290 (EVEN ROWS = SHOULDER SHAPING); 7 sts. after Row 291 (ODD ROWS = NECK SHAPING); 4 sts. after Row 292; 5 sts. after Row 293; 4 sts. after Rows 294, 295, 296; 3 sts. after Row 297; 4 sts. after Row 298; 3 sts. after Row 299; 4 sts. after Row 300; 2 sts. after Row 301; 4 sts. after Row 302; 2 sts. after Row 303; 4 sts. after Row 304; 1 st. after Row 305; 4 sts. after Row 306; 5 sts. after Row 308.

ON CAM BOX SIDE, bind off 5 sts. after Rows 190, 191; 3 sts. after Rows 192, 193, 194, 195; 2 sts. after Rows 196, 197, 198, 199; 1 st. after Rows 200, 201, 202, 203, 206, 207, 210, 211. Now knit even to Row 290, then put 68 needles on the left side into holding position and complete the right half first.

ROWS 23 to 190: Work the repeated Color Stripes and knit even.

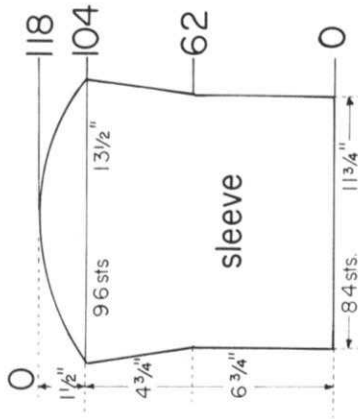
ROWS 0 to 22: Work K1, P1, Ribbing, then change to stockinette st. Cast on 174 sts. with beige.



# MK 5064

SIZE: 10-11, (Chest 28"-29"). MATERIAL: 17 oz. brown KNITTING Starlite Crepe, Color No. 367, 1 yard woolen embroidered border trim and 2 yards woolen binding, 1" wide. TENSION: KNIT-KING 8 to 10. STITCH GAUGE: 14 sts, 2", 18 rows 2". PATTERN: Stockinette Stitch. Make ALL decreases and increases Full-fashion. DECREASE: After rows indicated, hang the 3rd st. ON EACH SIDE onto the 2nd st., then move the end sts. inward to fill the empty needle. INCREASE: After rows indicated, move the 2 and 3 sts. ON EACH SIDE 1 needle outward, then place the 3rd st. from the row below onto the empty needle.

FINISHING: Block all sections to measurements given. Join front and back section at sides and shoulders. Sew sleeves together and set in. Sew border trim to sleeves and shoulders, (see picture). On right side, sew 1 edge of binding to opening edges, neckline and sleeve edges, then fold over half and hem to wrong side. Sew on buttons. Form 3 loops from a Metallic chain and attach to buttons.

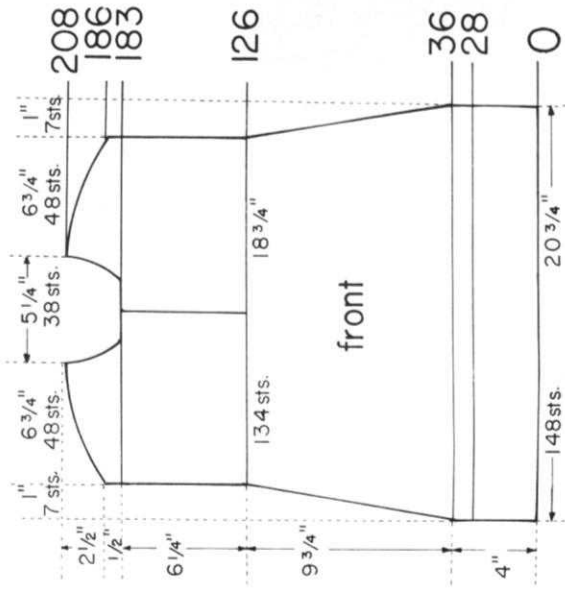


ON CAM BOX SIDE, bind off 5 sts. after Rows 104, 105, 106, 107, 108, 109, 110, 111, 112, 113; 6 sts. after Rows 114, 115, 116, 117 and 22 sts. after Row 118.

ON EACH SIDE, increase 1 st. after Rows 62, 70, 78, 84, 90, 96, then knit even to Row 104.

ROWS 0 to 62: Knit even.

Cast on 84 sts. and work stockinette st.



Move the Cam Box to the left side, turn the Row Counter back to 126 and complete the left half. Follow the instructions from \*.

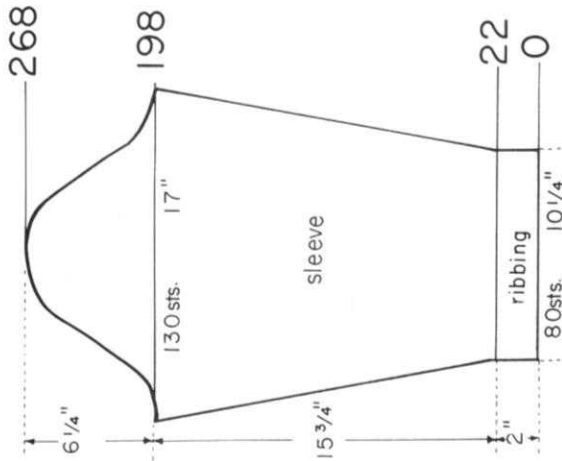
ON CAM BOX SIDE, bind off 4 sts. after Rows 183, 185 (ODD ROWS = NECK SHAPING); 2 sts. after Row 186 (EVEN ROWS = SHOULDER SHAPING); 3 sts. after Row 187; 2 sts. after Rows 188, 189, 190, 191; 3 sts. after Row 192; 2 sts. after Row 193; 3 sts. after Row 194; 1 st. after Row 195; 3 sts. after Row 196; 1 st. after Row 197 (last time for Neck Shaping); 4 sts. after Rows 198, 200; 6 sts. after Rows 202, 204, 206; 7 sts. after Row 208.

\* ROWS 127 to 183: Knit even.

ROWS 29 to 126: ON EACH SIDE, decrease 1 st. after Rows 36, 52, 68, 82, 96, 110, 124. After Row 126 put 67 needles on the left side into holding position and complete the right half first.

ROWS 0 to 28: Knit even, then hang the cast-on sts. back on the machine to form the hem.

Cast on 148 sts. and work stockinette st.



ON CAM BOX SIDE, bind off 5 sts. after Rows 198, 199; 4 sts. after Rows 200, 201; 3 sts. after Rows 202, 203, 204, 205; 2 sts. after Rows 206, 207, 208, 209, 210, 211. ON EACH SIDE, bind off 1 st. after Rows 212, 214, 216, 218, 220, 222, 224, 226, 228, 230, 232, 234, 236, 238, 240, 242, 244, 246, 248, 250, 252, 254, 256. ON CAM BOX SIDE, bind off 2 sts. after Rows 258, 259, 260, 261; 3 sts. after Rows 262, 263, 264, 265; 4 sts. after Rows 266, 267; 14 sts. after Row 268.

Work the repeated Color Stripes and ON EACH SIDE, increase 1 st. after Rows 22, 30, 38, 46, 54, 62, 70, 78, 86, 94, 102, 110, 118, 124, 130, 136, 142, 148, 154, 160, 166, 172, 178, 184, 190, then knit even to Row 198.

ROWS 0 to 22: Work K1, P1, Ribbing, then change to stockinette st.

Cast on 80 sts. with beige.

Move the Cam Box to the left side, turn the Row Counter back to 198 and complete the left half. Follow the instructions from \*.

ON CAM BOX SIDE, bind off 4 sts. after Row 198 (EVEN ROWS = SHOULDER SHAPING); 7 sts. after Row 199 (ODD ROWS = NECK SHAPING); 4 sts. after Rows 200, 201; 6 sts. after Row 202; 3 sts. after Row 203; 6 sts. after Row 204; 3 sts. after Row 205; 6 sts. after Row 206; 2 sts. after Row 207; 7 sts. after Row 208.

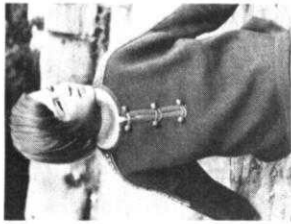
ON CAM BOX SIDE, bind off 2 sts. after Rows 186, 187, 188, 189, 190, 191; 3 sts. after Rows 192, 193, 194, 195, 196, 197. After Row 198 put 52 needles on the left side into holding position and complete the right half first.

ROWS 127 to 186: Knit even.

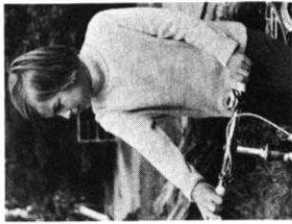
ROWS 29 to 126: ON EACH SIDE, decrease 1 st. after Rows 36, 52, 68, 82, 96, 110, 124.

ROWS 0 to 28: Knit even, then hang the cast-on sts. back on the machine to form the hem.

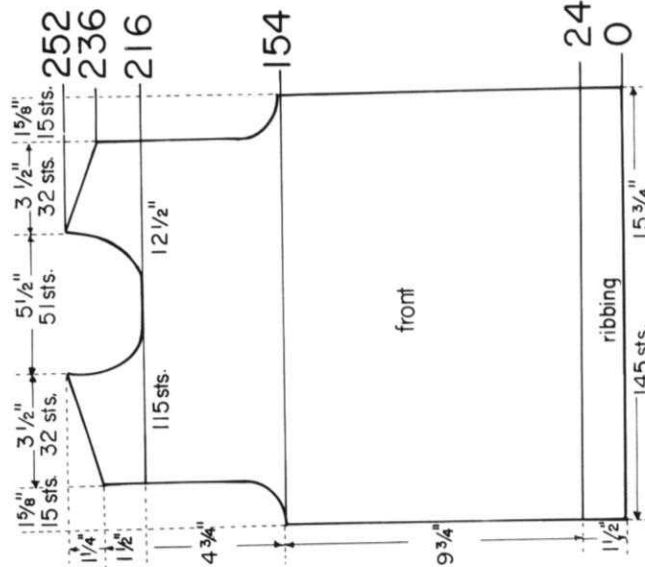
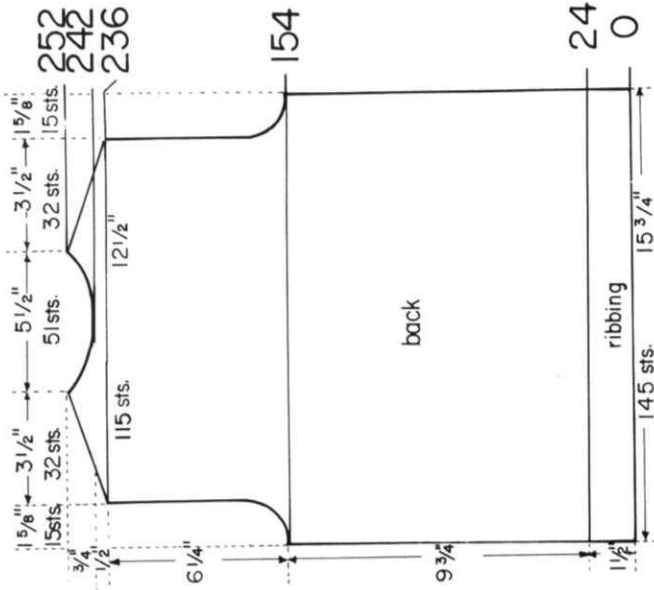
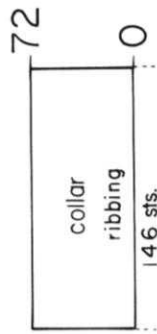
Cast on 148 sts. and work stockinette st.



**SIZE:** 10-11. (Chest 28"-29"). **MATERIAL:** 7 oz. (4 balls) beige KNOTTING Subita Dralon 2 ply, Color No. 447. **TENSION:** KNOTTING 1 to 2". **STITCH GAUGE:** 18 sts. 2" 26 rows 2". **PATTERN:** Stockinette Stitch. **EDGES:** K1, P1, Ribbing. Make all increases on sleeves Full-fashion. After rows indicated, move the 2 end sts. ON EACH SIDE 1 needle outward, then place the 3rd st. from the row below onto the empty needle. **FINISHING:** Block all sections to measurements given. Join front and back section at sides and shoulders. Sew sleeves together and set in. Join short ends of collar. Sew 1 edge of collar to inside and 1 edge to outside of neckline.



Cast on 146 sts. and work 72 rows K1, P1, Ribbing, then bind off all sts. the crochet method for ribbing.



Move the Cam Box to the left side, turn the Row Counter back to 216 and complete the left half. Follow the instructions from \*.

\* ON CAM BOX SIDE, bind off 6 sts. (5 sts. for the left half) after Row 217 (ODD ROWS = NECK SHAPING); 4 sts. after Row 219; 3 sts. after Rows 221, 223; 2 sts. after Rows 225, 227; 1 st. after Rows 229, 231, 233; 3 sts. after Row 236 (EVEN ROWS = SHOULDER SHAPING); 1 st. after Row 237; 3 sts. after Rows 238, 240; 1 st. after Row 241; 3 sts. after Row 242; 4 sts. after Row 244; 1 st. after Row 245 (last time for Neck); 4 sts. after Rows 246, 248, 250, 252.

ON CAM BOX SIDE, bind off 4 sts. after Rows 154, 155; 3 sts. after Rows 156, 157; 2 sts. after Rows 158, 159, 160, 161; 1 st. after Rows 162, 163, 164, 165, 168, 169, 172, 173. Now knit even to Row 216, then put 57 sts. on the left side into holding position and complete the right half first.

ROWS 25 to 154: Knit even.  
ROWS 0 to 24: Work K1, P1, Ribbing, then change to stockinette st.  
Cast on 145 sts.

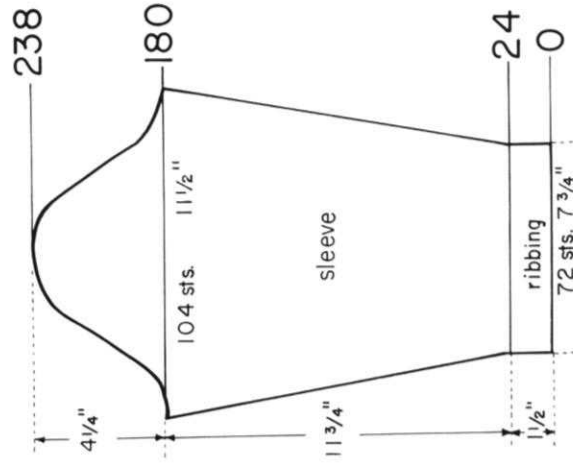
Move the Cam Box to the left side, turn the Row Counter back to 242 and complete the left half. Follow the instructions from \*.

\* ON CAM BOX SIDE, bind off 3 sts. after Row 242 (EVEN ROWS = SHOULDER SHAPING); 8 sts. (7 sts. for left half) after Row 243 (ODD ROWS = NECK SHAPING); 4 sts. after Row 244; 6 sts. after Row 245; 4 sts. after Row 246; 6 sts. after Row 247; 4 sts. after Row 248; 3 sts. after Row 249; 4 sts. after Row 250; 3 sts. after Row 251; 4 sts. after Row 252.

ON CAM BOX SIDE, bind off 3 sts. after Rows 236, 237, 238, 239, 240, 241. After Row 242 put 48 needles on the left side into holding position and complete the right half first.

ON CAM BOX SIDE, bind off 4 sts. after Rows 154, 155; 3 sts. after Rows 156, 157; 2 sts. after Rows 158, 159, 160, 161; 1 st. after Rows 162, 163, 164, 165, 168, 169, 172, 173, then knit even to Row 236.

ROWS 25 to 154: Knit even.  
ROWS 0 to 24: Work K1, P1, Ribbing, then change to stockinette st.  
Cast on 145 sts.



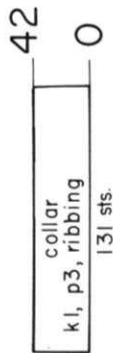
ON CAM BOX SIDE, bind off 5 sts. after Rows 180, 181; 3 sts. after Rows 182, 183, 184, 185; 2 sts. after Rows 186, 187, 188, 189. ON EACH SIDE, bind off 1 st. after Rows 190, 192, 194, 196, 198, 200, 202, 204, 206, 208, 210, 212, 214, 216, 218, 220, 222, 224, 226, 228. ON CAM BOX SIDE, bind off 2 sts. after Rows 230, 231; 3 sts. after Rows 232, 233, 234, 235; 4 sts. after Rows 236, 237; 10 sts. after Row 238.

ON EACH SIDE, increase 1 st. after Rows 24, 34, 44, 54, 64, 74, 84, 94, 104, 114, 124, 134, 144, 154, 164, 174, then knit even to Row 180.

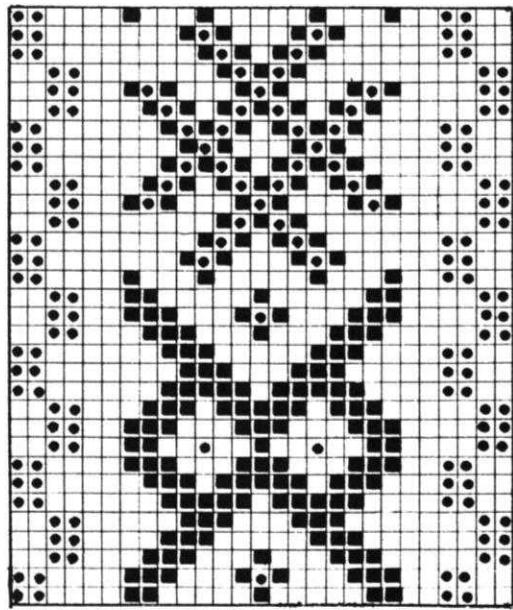
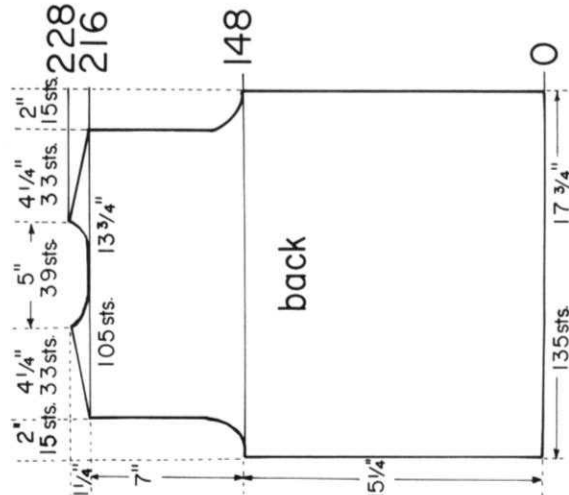
ROWS 0 to 24: Work K1, P1, Ribbing, then change to stockinette st.  
Cast on 72 sts.

SIZE: 11-12. (Chest 30"-31"). MATERIAL: 16 oz. white, 6 oz. light blue and 2 oz. medium blue KNITTING Starlite Crepe, Color Nos. 1, 322 and 132, and a 20" Jacket type Zipper. TENSION: KNITTING 7 to 9. STITCH GAUGE: 15 sts. 2", 19 rows 2". PATTERN: Stockinette Stitch and a Norwegian Design border on lower section of jacket and sleeves. Work the Design according to chart. In the directions, each row in the Norwegian Design is counted as 1 row, but several movements of the Cam Box are needed to complete 1 row. COLLAR: K1, P3, Ribbing. The increases on the sleeves are Full-fashion. After the rows indicated, move the 2 end sts. ON EACH SIDE 1 needle outward, then place the 3rd st. from the row below onto the empty needle.

FINISHING: Block all sections to measurements given. Join front and back sections at sides and shoulders. Sew sleeves together and set in. Turn under 13 rows on lower edge and sleeve edges and hem to wrong side. Turn under 3 sts. on front edges and hem to wrong side. Sew 1 edge of collar to inside and 1 edge to outside of neckline. Sew in zipper.



Cast on 131 sts. with white and work K1, P3, Ribbing (3 sts. on main machine and 1 st. on Ribber). Knit 14 rows with tension 8, 14 rows with tension 7 and 14 rows with tension 8, then bind off all sts. the crochet method.



Move the Cam Box to the left side, turn the Row Counter back to 216 and complete the left half. Follow the instructions from \*.

\* ON CAM BOX SIDE, bind off 4 sts. after Row 216 (EVEN ROWS = SHOULDER SHAPING); 8 sts. (7 sts. for the left half) after Row 217 (ODD ROWS = NECK SHAPING); 4 sts. after Row 218; 3 sts. after Row 219; 5 sts. after Row 220; 3 sts. after Row 221; 5 sts. after Row 222; 2 sts. after Row 223; 2 sts. after Row 224; 2 sts. after Row 225; 5 sts. after Row 226; 2 sts. after Row 227; 5 sts. after Row 228.

ON CAM BOX SIDE, bind off 4 sts. after Rows 148, 149; 3 sts. after Rows 150, 151; 2 sts. after Rows 152, 153, 154, 155, 156, 157; 1 st. after Rows 158, 159, 160, 161. Now knit even to Row 216, then put 52 needles on the left side into holding position and complete the right half first.

ROWS 56 to 148: Knit even. ROWS 48 to 55: Work stockinette st. with light blue, then change to white.

ROWS 21 to 47: Work the Norwegian Design, beginning with the 3rd square of the chart.

ROWS 0 to 20: Knit even. Cast on 135 sts. with light blue and work stockinette st.

Work the left front section with reverse shapings, casting on from right to left. (Cam Box is on the LEFT side at ROW 0.)

ON CAM BOX SIDE, bind off 6 sts. after Row 201 (ODD ROWS = NECK SHAPING); 4 sts. after Row 203; 3 sts. after Rows 205, 207; 2 sts. after Rows 209, 211; 1 st. after Rows 213, 215; 4 sts. after Rows 216, 218 (EVEN ROWS = SHOULDER SHAPING); 1 st. after Row 219 (last time for Neck); 5 sts. after Rows 220, 222, 224, 226, 228.

ON CAM BOX SIDE, bind off 4 sts. after Row 148; 3 sts. after Row 150; 2 sts. after Rows 152, 154, 156; 1 st. after Rows 158, 160, then knit even to Row 201.

ROWS 56 to 148: Knit even. ROWS 48 to 55: Work stockinette st. with light blue, then change to white.

ROWS 21 to 47: Work the Norwegian Design, beginning with the 10th square of the chart AND cast on 3 sts. ON CAM BOX SIDE after Row 25.

ROWS 0 to 20: Knit even. Cast on 68 sts. with light blue and work stockinette st.

□ = light blue ● = white ■ = medium blue

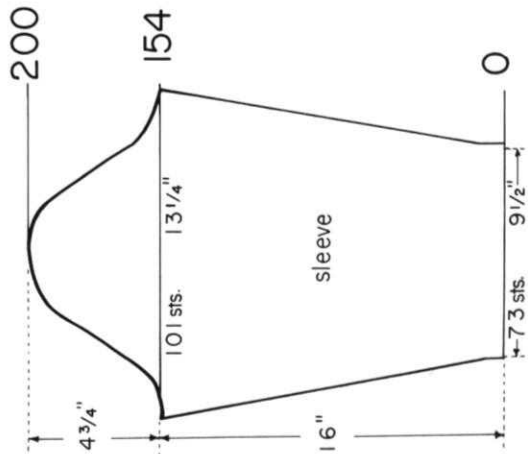
ON CAM BOX SIDE, bind off 5 sts. after Rows 154, 155; 3 sts. after Rows 156, 157, 158, 159; 2 sts. after Rows 160, 161, 162, 163, 164, 165; 1 st. after Rows 166, 167; 2 sts. after Rows 168, 169; 1 st. after Rows 170, 171; 2 sts. after Rows 172, 173; 1 st. after Rows 174, 175; 2 sts. after Rows 176, 177; 1 st. after Rows 178, 179; 2 sts. after Rows 180, 181; 1 st. after Rows 182, 183; 2 sts. after Rows 184, 185; 1 st. after Rows 186, 187; 2 sts. after Rows 188, 189; 1 st. after Rows 190, 191; 2 sts. after Rows 192, 193, 194, 195; 3 sts. after Rows 196, 197, 198, 199; 9 sts. after Row 200.

ON EACH SIDE, increase 1 st. after Rows 56, 66, 76, 86, 96, 106, 114, 122, 130, 138, 146, then knit even to Row 154.

ROWS 48 to 55: Work even with light blue, then change to white and knit 1 row.

ROWS 21 to 47: Work the Norwegian Design AND, ON EACH SIDE, increase 1 st. after Rows 26, 36, 46.

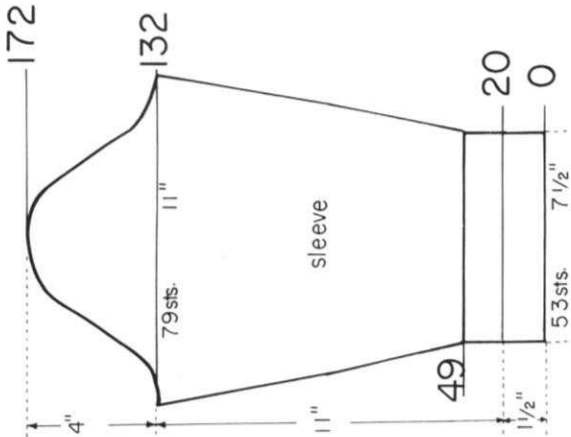
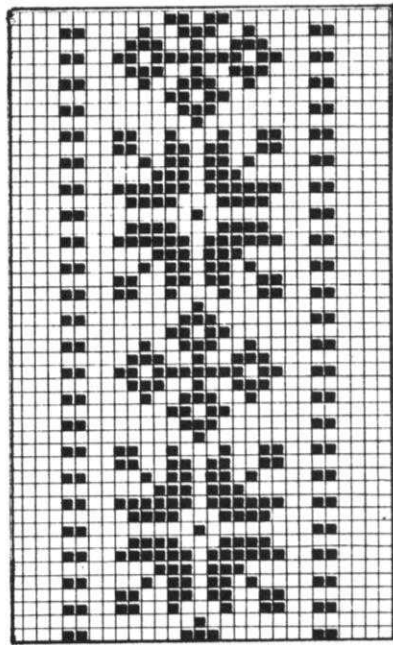
ROWS 0 to 20: Knit even. Cast on 73 sts. with light blue and work stockinette st.



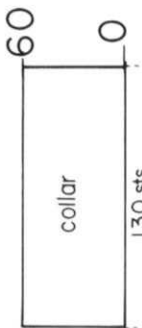
# MK 5063

**SIZE:** 9-10, (Chest 27"-28"). **MATERIAL:** 10½ oz. (6 balls) light blue, 3½ oz. (2 balls) dark blue and 1½ oz. (1 ball) white **KNITTING Nora, Color Nos. 4058, 4052, and 4002. TENSION:** KNIT-KING 6 to 8. **STITCH GAUGE:** 14 sts, 2", 20 rows 2". **PATTERN:** Stockinette st. and Norwegian Design borders. In the directions, each row in the Norwegian Design is counted as 1 row, but several movements of the Cam Box are needed to complete 1 row. **EDGES:** K1, P1, Ribbing. Make the increases on the sleeves Full-fashion. After rows indicated, move the 2 end sts. **ON EACH SIDE** 1 needle outward, then place the 3rd st. from the row below onto the empty needle.

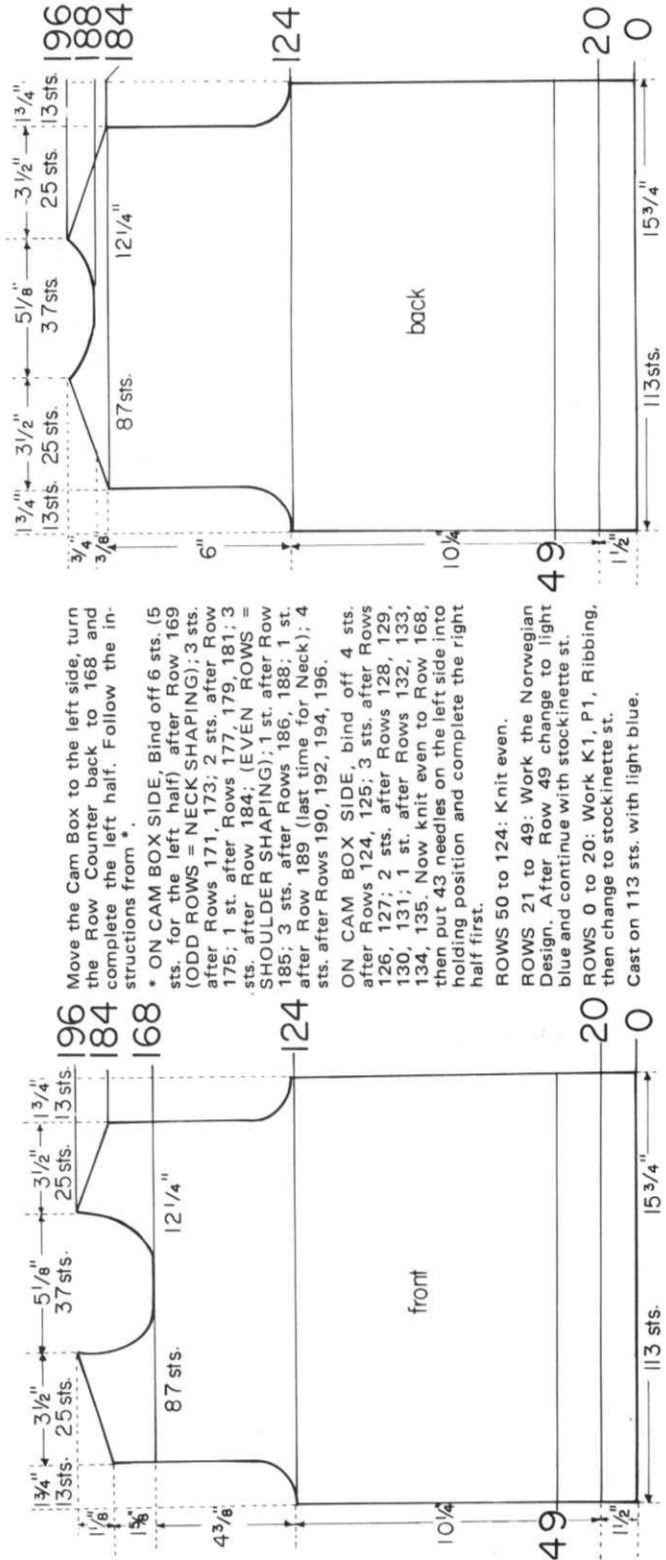
**FINISHING:** Block sections to measurements given. Join front and back section at sides and shoulders. Sew sleeves together and set in. Join short ends of collar. Sew 1 edge of collar to inside and 1 edge to outside of neckline. Join cap at center back. Sew a pom-pom at top of cap.



Cast on 130 sts. with light blue and work K1, P1, Ribbing, 10 rows with tension 7; 10 rows with tension 6; 20 rows with tension 5; 10 rows with tension 6 and 10 rows with tension 7. After Row 60 bind off all sts. the crochet method for Ribbing.



□ = dark blue ■ = white



Move the Cam Box to the left side, turn the Row Counter back to 168 and complete the left half. Follow the instructions from \*.

\* ON CAM BOX SIDE, Bind off 6 sts. (5 sts. for the left half) after Row 169 (ODD ROWS = NECK SHAPING); 3 sts. after Rows 171, 173; 2 sts. after Row 175; 1 st. after Rows 177, 179, 181; 3 sts. after Row 184; (EVEN ROWS = SHOULDER SHAPING); 1 st. after Row 185; 3 sts. after Rows 186, 188; 1 st. after Row 189 (last time for Neck); 4 sts. after Rows 190, 192, 194, 196.

ON CAM BOX SIDE, bind off 4 sts. after Rows 124, 125; 3 sts. after Rows 126, 127; 2 sts. after Rows 128, 129, 130, 131; 1 st. after Rows 132, 133, 134, 135. Now knit even to Row 168, then put 43 needles on the left side into holding position and complete the right half first.

ROWS 50 to 124: Knit even.  
ROWS 21 to 49: Work the Norwegian Design. After Row 49 change to light blue and continue with stockinette st.

ROWS 0 to 20: Work K1, P1, Ribbing, then change to stockinette st.  
Cast on 113 sts. with light blue.

ON CAM BOX SIDE, bind off 4 sts. after Rows 132, 133, 134, 135; 3 sts. after Rows 136, 137; 2 sts. after Rows 138, 139, 140, 141. ON EACH SIDE, bind off 1 st. after Rows 142, 144, 146, 148, 150, 152, 154, 156, 158, 160, 162, 164. ON CAM BOX SIDE, bind off 2 sts. after Rows 166, 167; 3 sts. after Rows 168, 169, 170, 171; 9 sts. after Row 172.

ON EACH SIDE, increase 1 st. after Rows 50, 58, 66, 74, 82, 90, 98, 106, 114, 122, then knit even to Row 132.  
ROWS 21 to 49: Work the Norwegian Design AND ON EACH SIDE, increase 1 st. after Rows 26, 34, 42. AFTER Row 49 change to light blue, continue with stockinette st. and knit 1 row.

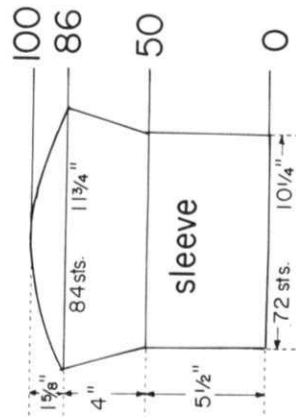
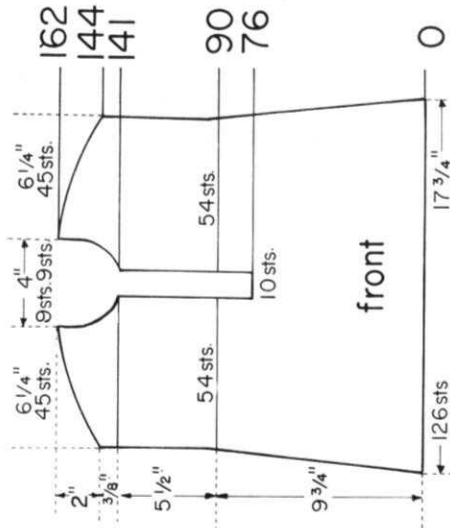
ROWS 0 to 20: Work K1, P1, Ribbing, then change to stockinette st.  
Cast on 53 sts. with light blue.

ON CAM BOX SIDE, bind off 3 sts. after Row 188 (EVEN ROWS = SHOULDER SHAPING); 7 sts. (6 sts. for the left half) after Row 189 (ODD ROWS = NECK SHAPING); 4 sts. after Row 190; 5 sts. after Row 191; 4 sts. after Rows 192, 193, 194; 3 sts. after Row 195; 4 sts. after Row 196.

ON CAM BOX SIDE, bind off 3 sts. after Rows 184, 185, 186, 187. After Row 188 put 37 needles on the left side into holding position and complete the right half first.  
ON CAM BOX SIDE, bind off 4 sts. after Rows 124, 125; 3 sts. after Rows 126, 127; 2 sts. after Rows 128, 129, 130, 131; 1 st. after Rows 132, 133, 134, 135, then knit even to Row 184.  
ROWS 50 to 124: Knit even.  
ROWS 21 to 49: Work the Norwegian Design. After Row 49 change to light blue and continue with stockinette st.  
ROWS 0 to 20: Work K1, P1, Ribbing, then change to stockinette st.  
Cast on 113 sts. with light blue.

SIZE: 6-7, (Chest 24"-25"). MATERIAL: 14 oz. red KNITTING Starlite Crepe, Color No. 86, 4 yards green woolen Binding, 1" wide, 1 yard embroidered border trim and a white zipper. TENSION: KNITTING 8 to 10. STITCH GAUGE: 14 sts., 2", 18 rows 2". PATTERN: Stockinette Stitch. Make decreases on sides Full-fashion. After Rows indicated, hang the 3rd st. ON EACH SIDE onto the 2nd st., then move the end sts. inward to fill the empty needle. Increases on Sleeves are Full-fashion. After rows indicated, move the 2 end sts. ON EACH SIDE 1 needle outward then place the 3rd st. from the row below onto the empty needle.

FINISHING: PULLOVER: Block all sections to measurements given. Join front and back section at sides and shoulders. Sew sleeves together and set in. Sew border trim to sleeve and armhole seam. Finish front opening with binding, then set in inside and 1 edge to outside of neckline. Sew binding to outside of neckband. Finish lower edge and sleeve edges with binding. CAP: Join center section to side sections, easing in the center section. Finish all edges with binding. Form a loop on end of band; sew a button to side of cap.



Move the Cam Box to the left side, turn the Row Counter back to 76 and complete the left half. Follow the instructions from \*.

ON CAM BOX SIDE, bind off 2 sts. after Rows 141, 143, (ODD ROWS = NECK SHAPING); 2 sts. after Row 144 (EVEN ROWS = SHOULDER SHAP. Row 146; 1 st. after Row 147; 2 sts. after Row 148; 1 st. after Row 149; 3 sts. after Row 150, 152; 1 st. after Row 153; 6 sts. after Rows 154, 156; 1 st. after Row 157 (last time for Neck); 7 sts. after Rows 158, 160, 162.

ROWS 91 to 141: Knit even.  
\* ROWS 77 to 90: ON CAM BOX SIDE, decrease 1 st. after Row 88. After Row 90, mark for Armhole.

After Row 76 bind off the center 10 sts., put the 55 needles on the left side into holding position and complete the right half first.

ROWS 0 to 76: ON EACH SIDE, decrease 1 st. after Rows 24, 46, 68, then knit to Row 76.

Cast on 126 sts. and work stockinette st.

ON CAM BOX SIDE, bind off 3 sts. after Rows 86, 87, 88, 89; 4 sts. after Rows 90, 91, 92, 93; 5 sts. after Rows 94, 95, 96, 97; 6 sts. after Rows 98, 99; 24 sts. after Row 100.

ON EACH SIDE, increase 1 st. after Rows 50, 56, 62, 68, 74, 80, then knit even to Row 86.

ROWS 0 to 50: Knit even.

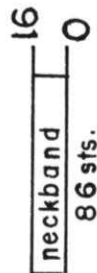
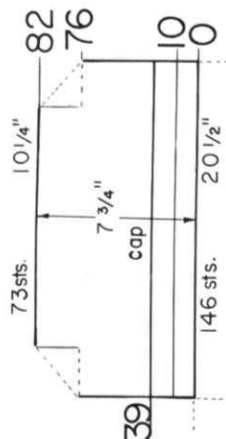
Cast on 72 sts. and work stockinette st.

ROWS 77 to 82: Knit even. Now thread all 73 sts. onto a double strand of yarn and pull together.

ROWS 40 to 76: Knit even, then knit several rows with a contrast waste yarn and 1 row without yarn to drop the stitches from machine. Now hang the cap stitches back on the machine, always hanging 2 sts. onto 1 needle. (73 sts.) Remove contrast yarn and turn Row Counter back to 76.

ROWS 11 to 39: Work the Norwegian Design. After Row 39 change to light blue and continue with stockinette st.

ROWS 0 to 10: Work K1, P1, Ribbing, then change to stockinette st.  
Cast on 146 sts. with light blue.



Cast on 86 sts. and work 16 rows stockinette st., then bind off all sts. the crochet method.

ROWS 146 to 186: Knit even, then bind off the remaining 11 sts.

ROWS 126 to 145: ON CAM BOX SIDE, bind off 1 st. after Rows 125, 127, 129, 131, 133, 135, 137, 139, 141; 28 sts. after Row 145.

ROWS 104 to 125: Knit even.

ROWS 94 to 103: ON CAM BOX SIDE, increase 2 sts. after Rows 95, 97; 1 st. after Rows 99, 101, 103.

ROW 93: Knit 1 row. After Row 93 bind off 53 sts. ON CAM BOX SIDE, then cast on 4 sts.

ROWS 55 to 92: Work Short Rows. ON OPPOSITE SIDE of CAM BOX, put 45 needles into holding position and knit 2 rows. Bring 15 needles back into working position after Rows 56, 58, 60, then knit even to Row 86. ON OPPOSITE SIDE of CAM BOX, put 14 needles into holding position after Rows 86, 88, 90. After Row 92 bring all needles back into working position.

ROW 54: Knit 1 row. (Cam Box is now on the RIGHT SIDE).

ROWS 44 to 53: ON CAM BOX SIDE, bind off 1 st. after Rows 43, 45, 47; 2 sts. after Rows 49, 51; 4 sts. after Row 53. Now cast on 53 sts. ON CAM BOX SIDE.

ROWS 22 to 43: Knit even.

ROWS 0 to 21: ON CAM BOX SIDE, increase 1 st. after Rows 3, 5, 7, 9, 11, 13, 15, 17, 19, then knit to Row 21.

Cast on 39 sts. and work stockinette st.

# KG 1901

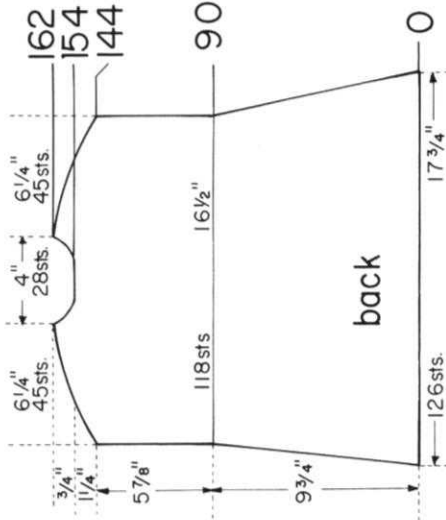
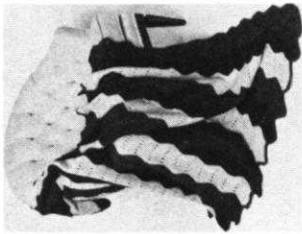
**MATERIAL:** 2 balls KNITKING Frigate for small size, 3 balls for all other sizes. **TENSION:** 9 or 10. **GAUGE:** 8 sts, 22 rows 2". **PATTERN STITCH:** TWEED STITCH OVER EVERY 3rd NEEDLE. The purl side is the right side.

**PATTERN:** \*Put 2nd, then every other needle into holding position and knit 2 rows. Return all needles to working position. Put the 1st, then every other needle into holding position and knit 2 rows. Return all needles to working position and REPEAT FROM \* for PATTERN. **IMPORTANT:** . . . When end needle is a holding position needle, be sure to wrap the yarn around it to prevent a hole. **KNITKING Machines,** set up pattern by hand one time only, then use **NEEDLE SHIFTER.** This pattern should be pulled down every 20 to 30 rows while still on the machine.

**SIZE:** Small, Medium, Large and Extra Large are in ( ).  
Cast on 33 (37-41-45) stitches over EVERY 3rd NEEDLE.

Knit in **PATTERN STITCH** to **ROW 100** (112-124-136). All needles in work. Knit 1 row by knitting each stitch by hand, making sure to leave at least 1/4" loop for each stitch then bind off the crochet method.

**FINISHING:** Pull the knitting into a square shape and pull up the cast on edge. With purl side inside, fold the square into a triangle and pin with large pins so it will hold. Thread a large needle with yarn and overcast, beginning at folded point (toe), rounding the last few stitches at end and continue up the other side for 3 or 3 1/2". Turn to right side and sew bell to tip of toe, then fold toe up about 1" and fasten. Fold over top cuff. Make tassel in a contrast color and attach to point of cuff. Make a tassel by winding yarn around 4 fingers approximately 16 times, then tie a strand of yarn through circle made. Wind yarn about 1/2" from top of tassel, pull the ends through to hide them. Cut bottom of tassel and attach.



Move the Cam Box to the left side, turn the Row Counter back to 154 and complete the left half. Follow the instructions from \*.

\* ON **CAM BOX SIDE,** bind off 6 sts. after Row 154 (**EVEN ROWS = SHOULDER SHAPING**); 6 sts. after Row 155 (**ODD ROWS = NECK SHAPING**); 6 sts. after Row 156; 3 sts. after Row 157; 7 sts. after Row 158; 3 sts. after Row 159; 7 sts. after Row 160; 2 sts. after Row 161; 7 sts. after Row 162. ON **CAM BOX SIDE,** bind off 2 sts. after Rows 144, 145, 146, 147, 148, 149; 3 sts. after Rows 150, 151, 152, 153. After Row 154 put 47 needles on the left side into holding position and complete the right half first.

**ROWS 91 to 144:** Knit even.

**ROWS 0 to 90:** ON **EACH SIDE,** decrease 1 st. after Rows 24, 46, 68, 88. After Row 90 make a mark ON **EACH SIDE** for Armhole.

Cast on 126 sts. and work stockinette st.

# KG 1900

**MATERIAL:** 3 packages (3 colors) KNITKING Frigate. **TENSION:** 10 using EVERY OTHER NEEDLE. **GAUGE:** 9 sts, 12 rows 2".

Make 6 strips of each of the 3 colors (18 strips). The Afghan is knitted in short rows but **DO NOT WRAP THE YARN** as the hole is part of the design.

Cast on 16 sts.

**ROWS 1-2:** Knit even.

**ROWS 3-16:** On the **LEFT SIDE,** put 2 needles into holding position 7 x.

**ROWS 17-29:** Put back into working position 2 needles 7 x ending with Cam Box on the **LEFT SIDE.**

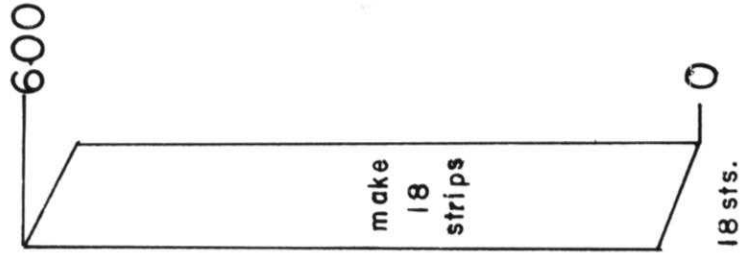
**ROWS 30-43:** On the **RIGHT SIDE,** put 2 needles into holding position 7 x.

**ROWS 44-56:** Put back into working position 2 needles 7 x ending with Cam Box on the **RIGHT SIDE.**

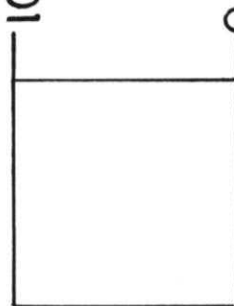
**ROWS 57-598:** REPEAT **ROWS 3 to 56.**

**ROWS 599-600:** Knit even, then bind off.

**FINISHING:** Alternating the colors, weave or sew the strips together. Work 2 rows of single crochet around all edges making sure to keep edges flat. If you wish, you may fringe the short ends.



- 136 ex. large
- 124 large
- 112 medium
- 100 small

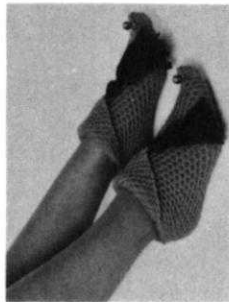


33 sts. (37-41-45)

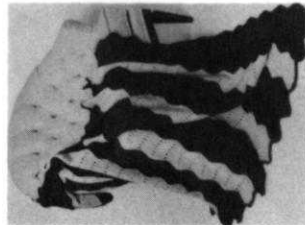
# KG 1900

## STOP PRESS CORRECTION...

The pattern numbers and pictures on this page were printed in the wrong position...they should appear as shown on this overlay sheet.



# KG 1901



# NOTES TO KNIT BY . . .

## STITCH AND ROW GAUGE

**KNIT A SAMPLE SWATCH . . .** before you begin to knit any garment . . . for this is the **MOST IMPORTANT STEP** toward the correct size and the proper fit of any garment you wish to make. You **MUST** use the **SAME YARN** for your sample swatch that you will use to knit your garment and your sample swatch must be knitted large enough and using several different tension numbers on your machine. When you have done this, then you can determine the number of stitches and the number of rows in a two-inch measure. **KNITTING MAGAZINE PATTERNS** give you 3 tensions to try and one of them should give you the correct stitch and row gauge if you are using the yarn we recommend or a similar weight yarn. Here is the way to make your sample swatch.

Cast on over a sufficient number of needles to produce a swatch at least 4 inches wide. (If the pattern calls for 16 stitches to 2", then 16 x 2 = 32 stitches to cast on). Now knit 4 inches of rows at the first suggested tension number. (If the pattern calls for 22 rows to 2", 22 x 2 = 44 rows to knit). Knit 2 rows using a contrast color, change to the next higher tension and with garment yarn knit another 4", knit 2 rows with contrast color, change to the 3rd higher tension and knit another 4" and then bind off.



Roll the swatch into a cylinder over its length and pull on both ends, unroll it and stretch it diagonally by pulling on the four corners. Allow the swatch to rest and settle (preferably overnight) and then using a stitch gauge or a ruler, count the number of stitches over a 2" width, then the number of rows over a 2" length in EACH of the 3 tensions. Select the tension number that produces the stitches and rows called for in the pattern. If none of them are correct, you are most likely using the wrong weight of yarn.




## READING OF CHARTS

You will notice the instructions start at the bottom of the Chart and work UP. Follow the charts exactly as written and providing your sample stitch and row gauge is correct, your garment will come out the right size. Please remember that the section of garment as it is knitted on the machine, faces

the same way as the Charts are in this magazine. Where two front pieces are needed, (or any other part of a garment that needs two sections) only one section is normally shown and the second section is sometimes made with reverse shaping. Set in sleeves are usually identical, but raglan sleeves have to be knitted with reverse shaping for the second sleeve.

## READING OF SYMBOLS

Symbols are used on Line Drawings of Pattern stitches to show the position of the needles and the variety of stitches used for Pattern knitting. These Symbols are drawn and are to be read as you look at them while knitting the garment. For instance: if a Purl stitch faces you, the Purl stitch Symbol  is shown; if a knit stitch faces you (as when using the ribber) then this Symbol  is shown. The Line Drawings for pattern stitches are to be read and set up on your machine from RIGHT to LEFT unless otherwise stated in the individual instructions.

In EYELET design Patterns    specified stitches are transferred to an adjacent needle and the empty needles are returned to the working position. The drawings have row numbers on the RIGHT side. Missing Row Numbers are ALWAYS knitted straight or plain.

In HOLDING POSITION DESIGNS  selected needles are pushed into holding position for the stated number of rows. The numbers of rows appear at the right of the Line Drawings. Example: 1-4 means knit rows 1 to 4; 5-7 means knit rows 5 to 7; 8-12 means knit rows 8 to 12, etc. etc. (See below for more Pattern Stitch Symbols.)

## BLOCKING and ASSEMBLING GARMENTS

Block each section of your knitting separately BEFORE assembling any garment. This not only makes putting your garment together much easier but gives it that professional look of perfection. For the correct assembly of garments and all other important information regarding machine knitting, refer to our book "Practical Knitting Hints."

### PATTERN STITCH SYMBOLS



= knit stitch



= purl stitch



= empty needle (leave in working position)



= needle not used (in the out of work position)



= needle in the holding position



= 2 stitches on 1 needle - either transferred from the right side or the left side, then put the needle into holding position



= needle holding 2 stitches. Stitch has been transferred from the LEFT



= needle holding 2 stitches. Stitch has been transferred from the RIGHT



= 3 stitches on 1 needle. The 1st and 3rd stitch in a group of 3 needles has been hung on the 2nd or center needle.

The diagrams (Line Drawings) for pattern work are followed just as they are shown and are to be read as you look at them while knitting the garment.

open darts



closed darts





YARNS  
by

# knitking



For perfect garments you need perfect yarns... All of the garments in KNITKING MAGAZINE are made with gorgeous KNITKING YARNS... and they are available to you at approximately half what you would pay for comparable yarns at your local department store... A

big beautiful KNITKING Yarn Catalogue with 300 actual samples, in an assortment of colors you will not find elsewhere, literally costs you nothing... the two dollars you pay is deducted from your first ten dollar order. Send for your catalogue today.

KNITKING • 1128 Crenshaw Blvd., Los Angeles, California 90019