

knitking

magazine

sept/oct '73



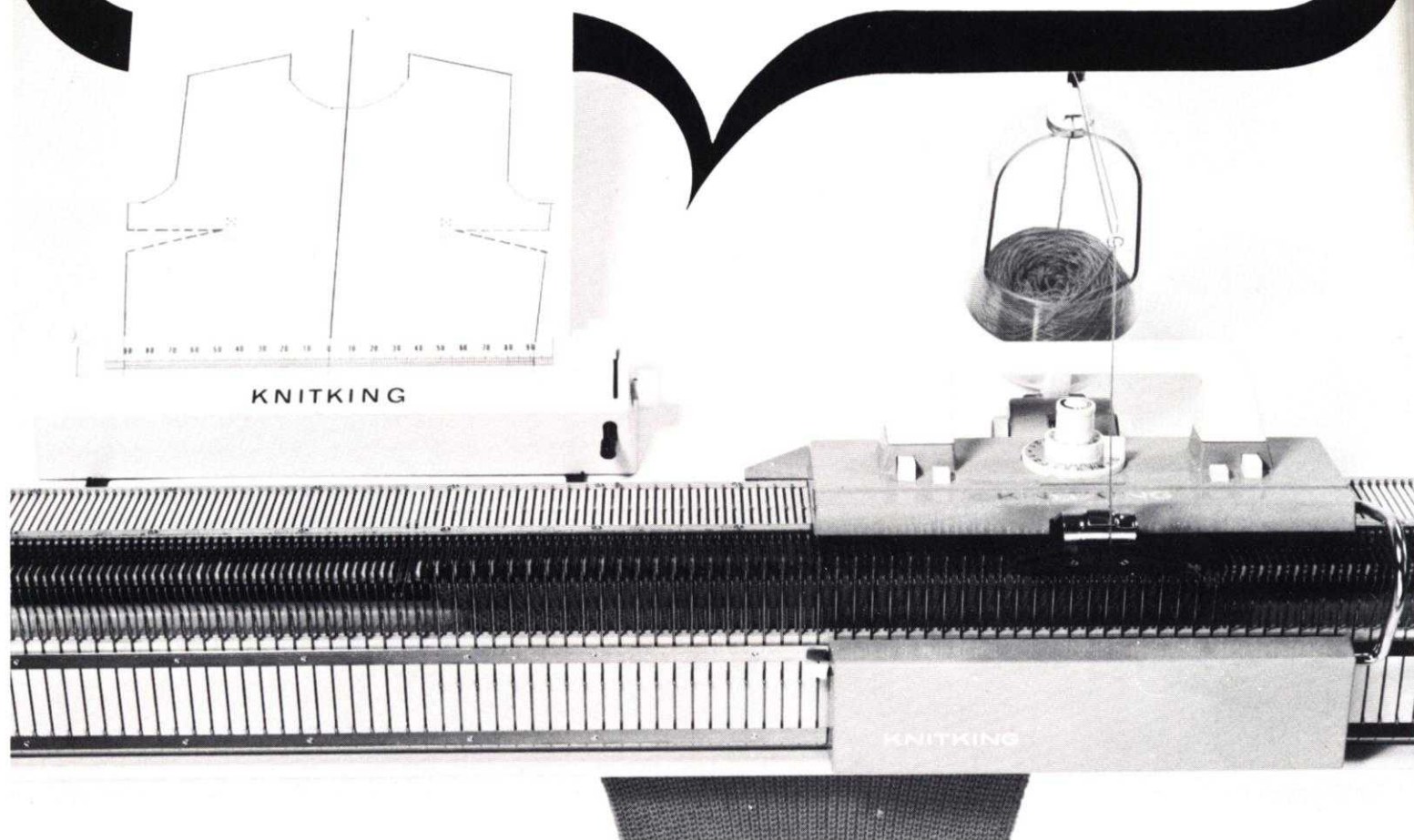
Another first from Knitking!!!

THE ~~WHIZ KING~~ PATTERN READER with complete Charting Service

- With **WHIZ KING** you know exactly what to do without reference to written instructions.
- With **WHIZ KING** you no longer have to count rows . . . Your Pattern Chart turns automatically as you knit.
- With **WHIZ KING** you can knit even the most intricate patterns easily and speedily.
- With a **WHIZ KING** Pattern Reader, even the complete newcomer to machine knitting can immediately knit garments.
- With **WHIZ KING**, Charts are available from **KNITKING MAGAZINE** Patterns in the size of your choice.

PRICE: 59.50 Complete with instructions, practice Charts and illustrations of 50 complete Patterns for the entire family. (California residents add Sales Tax)
Shipping costs \$2.50.

ORDER DIRECT FROM **KNITKING** 1128 CRENSHAW BLVD. • LOS ANGELES, CALIFORNIA 90019



knitking

magazine

INDEX	PAGE NO.
DK 8246	Woman's Dress 9
DK 8241	Woman's Dress 10
DK 8247	Woman's Skirt & Blouse 11
DK 8252	Woman's Suit 12
DK 8253	Woman's Pullover 13
DK 8245	Woman's Skirt & Pullover 14
DK 8250	Woman's Dress 14
DK 8244	Woman's Pantsuit 16
MK 5446	Girl's Pullover 17
DK 8248	Woman's Skirt & Vest 18
DP 8243	Woman's Pullover 19
HP 3690	Man's Shirt 20
DK 8249	Woman's Dress 21
HP 3706	Man's Pullover 22
KK 5444	Boy's Suit 23
DK 8200	Woman's Pullover 24
MK 5448	Girl's Dress 25
KK 5447	Boy's Suit 26
KG 1963	Hat & Scarf 27

FRONTPIECE

With our Fall issue of KNITKING MAGAZINE, we begin our 10th year of publication . . . New shapes . . . bright colors . . . the layered look . . . Norwegian Designs . . . all to make fashion headlines . . . to take you through Autumn into the cool of winter.



Knit our Cover Model Dress DK 8246. The circles of color on the bodice and sleeves are accented with small separation stripes. It's knitted in the Norwegian technique. The skirt section is softly gathered onto the bodice. Size 12 is made with Beatrice Crepe; Size 14 with Crocus Crepe.

BACK COVER

DK 8241 — Jewel colors create a jewel of a Dress and you will be using 6 gorgeous colors for this peasant style beauty. The side bodice, back sections and upper sleeves are made with a Holding Position Design . . . the skirt, front bodice and lower sleeves are in Stockinette stitch. For Sizes 10 and 12, use Allegro Dralon.

Publisher: KNITKING CORPORATION, 1128 Crenshaw Blvd., Los Angeles, Calif. 90019. Telephone: 213-938-2079. Published bi-monthly. Subscriptions: USA — \$7.00 annually, single copies \$1.50; Canada — \$8.00; other parts of the world — \$10.00. The entire contents of KNITKING MAGAZINE are copyright and must not be reproduced in any shape or form without the express permission, in writing of the publisher. COPYRIGHT © by KNITKING CORPORATION 1973.

Printed by William B. Wemyss Printing Associates, Los Angeles, Ca.

editorial

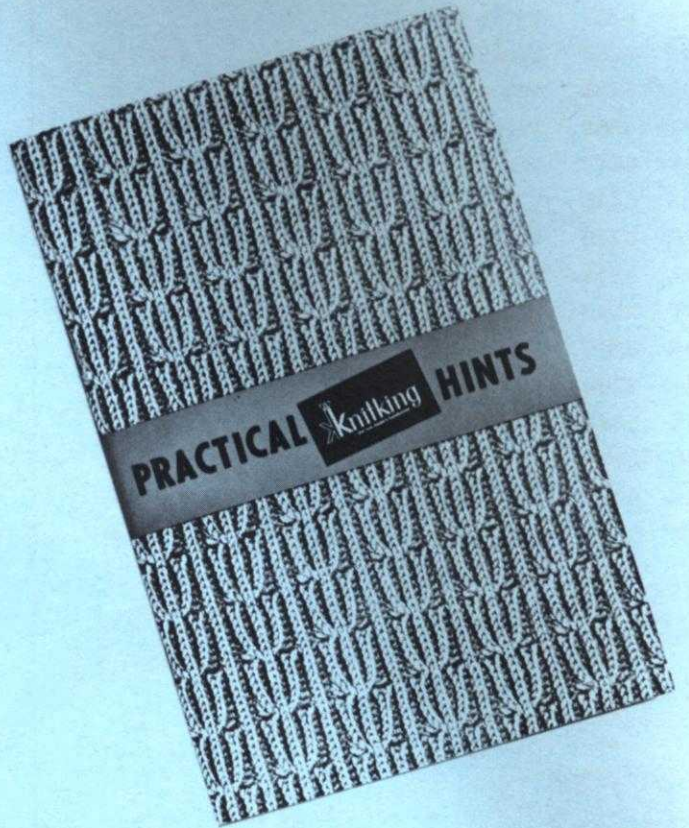
There is no doubt about it . . . the last issue of KNITKING MAGAZINE was far and away the most popular we have ever printed . . . More letters have come in praising the quality and style of the garments than we could ever find space to print . . . We thank you all for taking the time to write . . . The issue was a fitting end to our ninth year of publication and it set a standard that will be tough to improve upon . . . but at KNITKING we are unlikely to rest on our laurels . . . we will continue striving to satisfy all of our readers, and we promise some new and revolutionary ideas during KNITKING MAGAZINE'S tenth year . . .

We have mentioned it before and hope to be forgiven for referring to it again, but there are still many readers who think that KNITKING MAGAZINE is a profit making publication . . . Unfortunately, it definitely is not . . . In fact during the nine years of its publication, it has cost several hundred thousand dollars more to produce than we have received in subscriptions . . . The life blood of magazines is advertising, but we have never carried advertising for products other than KNITKING and it is the profits from KNITKING products that help maintain the magazine . . . We need every subscription we can get in order to continue to satisfy your own personal needs in KNITKING MAGAZINE . . . so please . . . do not share your magazine with your friends . . . encourage them to place their own subscription.

KNITKING MAGAZINE is published as a service to the machine knitter and the high standard we set for it is typical of the standard we set for all products we handle.

We are pleased with this issue and think that our Art Director Tony Salari did a wonderful job . . . we hope you agree . . . The November/December issue is in the process of being made up and is already looking good . . . The pictures illustrate the Christmas spirit and there are many fun things to make including 10 gift items, all illustrated in color. There are also dresses, cardigans, sweaters, skirts, pullovers, hats, scarves etc., in fact, something for everybody in the family . . . Watch for it

BOOKS by KNITTING



PRACTICAL KNITTING HINTS

We call this book the TEXT BOOK for machine knitters because it answers the many questions that occur in machine knitting, from preparing to knit, taking measurements, shaping, making buttonholes, special effects, bindings, bands and edges, etc., through finishing and blocking. It sells for

\$2.95

40 cents mailing
Calif. residents add Sales Tax

NEW VOLUME AVAILABLE NOW

A complete ninth volume of KNITTING MAGAZINES with a flexible, transparent plastic cover and specially bound so that it will stay open at any page, is available at the special price of \$7.95 (plus 95 cents mailing costs).

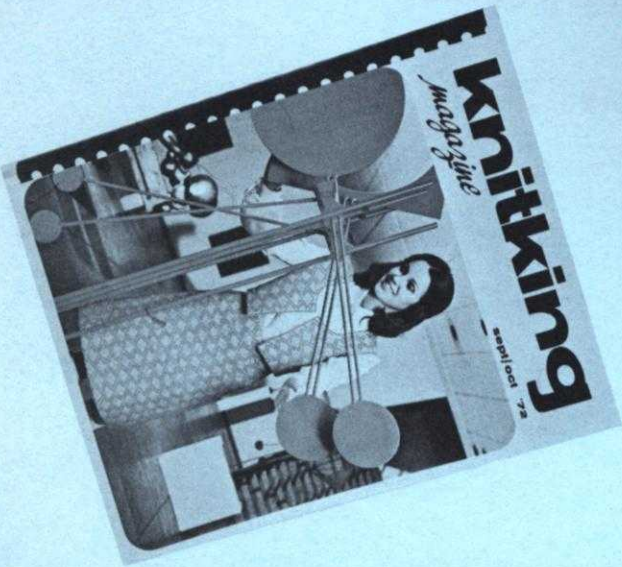
If purchased separately the magazines would cost a total of \$9.00.

The volume contains over 120 fully illustrated complete stylish patterns for all members of the family together with many valuable, practical knitting hints.

There is a very limited number of these volumes available and it will undoubtedly become a collectors item.

If you already have the entire set it will almost certainly be well thumbed and marked. Why not purchase a perfect mint condition volume for your bookshelf and ready reference at any time.

Place your order today and avoid disappointment. Send it to KNITTING MAGAZINE, 1128 Crenshaw Boulevard, Los Angeles, California 90019.

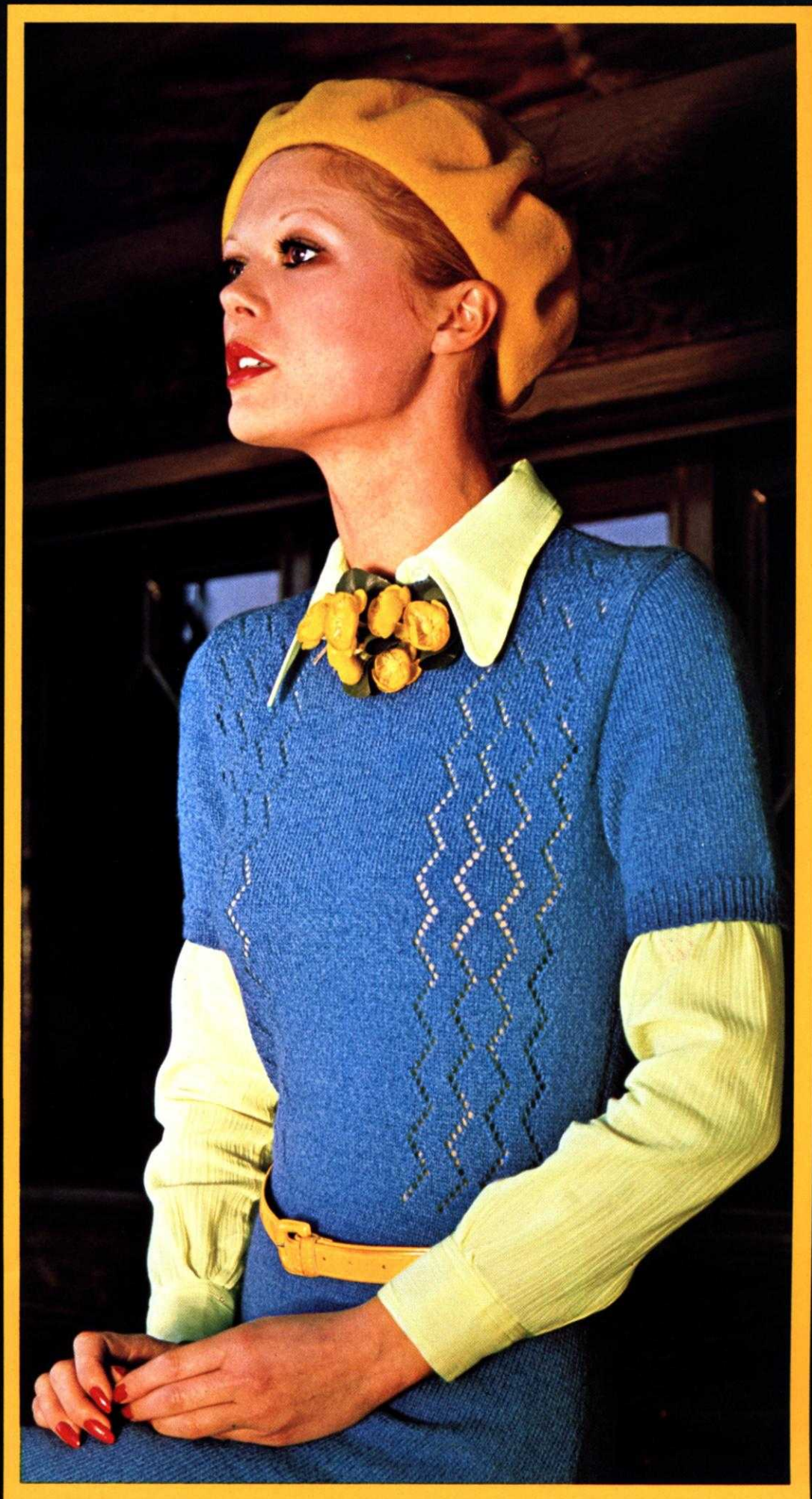


DK 8247 – Tie it all together . . . Knit a trim and attractive Skirt, Pullover and Tie with an interesting (and fun to do) Eyelet Design on the Skirt, Tie, Collar and Sleeve sections. Size 12 is knitted with Beatrice Crepe; Size 16 with Allegro Dralon; Size 18 with Dolly Dralon.



A woman with blonde hair and dark eye makeup is wearing a blue corduroy suit consisting of a jacket and a skirt. The jacket is double-breasted with dark buttons and has a small dark 'W' logo on the left chest. She is standing in a forest with large tree stumps in the background. The entire image is framed by a thick yellow border.

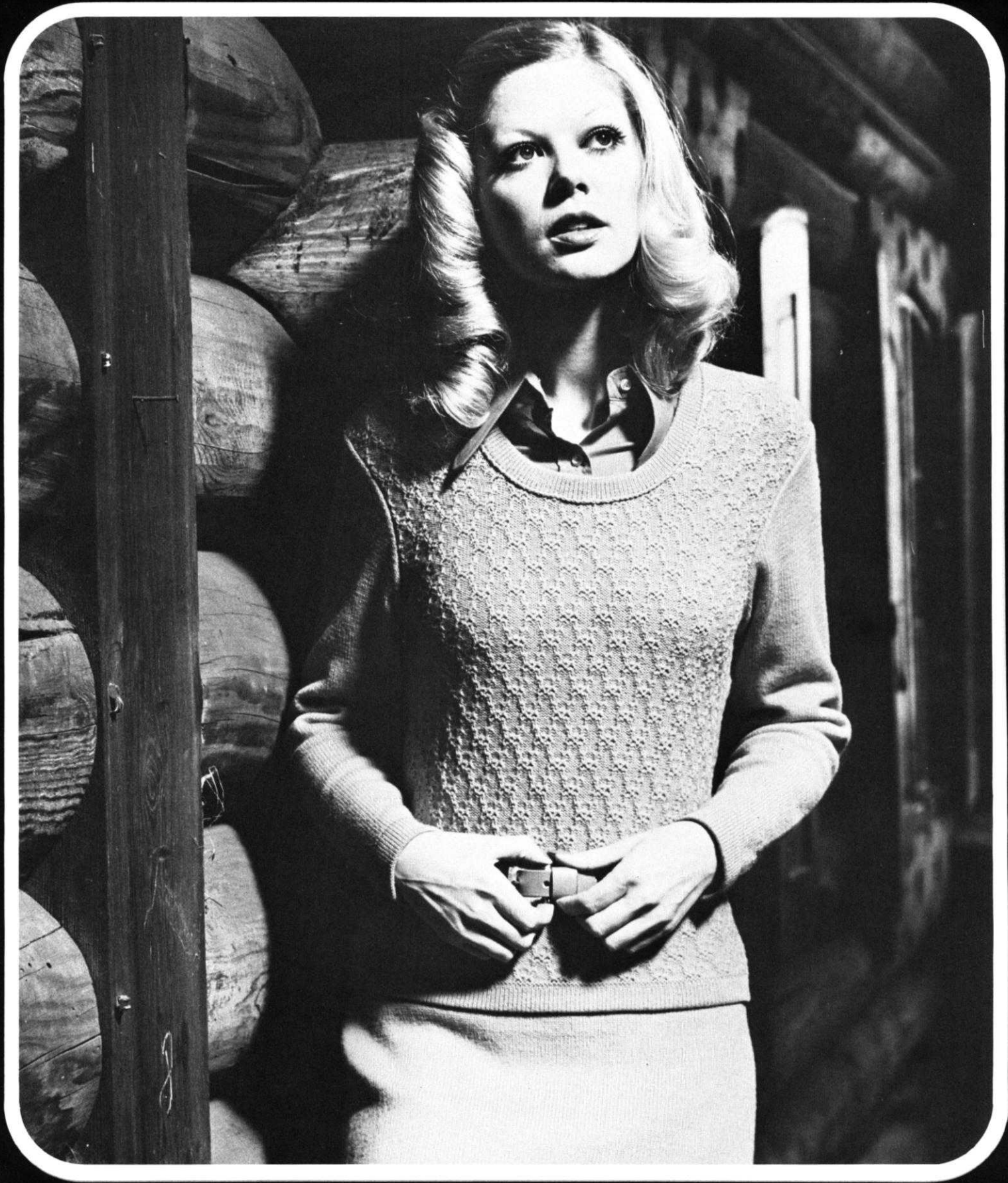
Full Figure Fashion

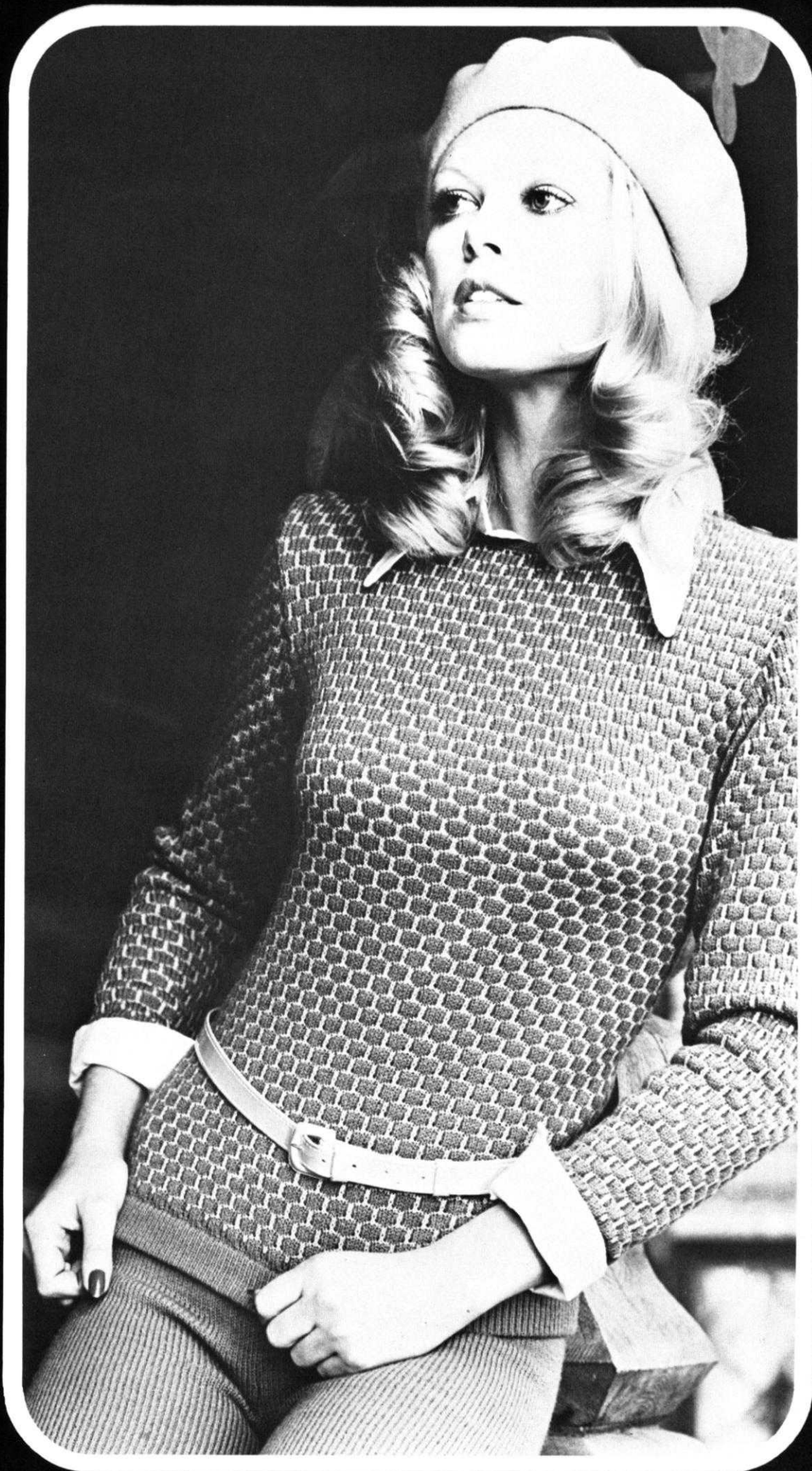


DK 8250 — Layer it or not . . . the Dress is lovely with or without the underblouse. Stockinette stitch with an Eyelet Design on the front bodice. Bands are all a 1 x 1 Rib. Size 12, Crocus Crepe; Size 14, Melodie; Size 16, Dolly Dralon Crepe.

DK 8252 and DP 8253 — A two-piece Suit — PLUS a contrasting color Pullover that peeks out at the neckline and wrists is the perfect Fall through Winter costume. Knit the Suit in Stockinette stitch with ribbed Collar, Cuffs and Pockets . . . Size 14, Crocus Crepe; Sizes 16 and 20, Melodie. The Pullover DP 8253 is knitted in Stockinette Stitch with Ribbed bands. Use Beatrice Crepe for Size 14; Regia for Size 16; Alanda for Size 20.

DK 8245 — A simple Skirt knitted in Stockinette stitch teams up with a soft feminine Pullover . . . The bodice is knitted in a Holding Position Design with sleeves and bands in Stockinette stitch. Wear it with an underblouse for the layered look . . . without a blouse for evening wear. Size 8, Subita Crepe; Size 12, Beatrice Crepe; Size 14, Crocus Crepe.





DK 8244 — Pantsuits are still important in the fashion lineup and this one is comfortable to wear and lovely to look at. The Pants are knitted in Stockinette stitch, the Pullover in a Holding Position Design using two colors. Knit Size 8 with Crocus Crepe; Size 12 with Amore.




DK 8248

— A shortie Vest that skims the waistline is knitted in a Norwegian Design using two colors. The Skirt (made in 4 sections) is lightly flared and is Stockinette stitch. Size 10, Subita Crepe; Size 12, Beatrice Crepe; Size 16, Crocus Crepe.

MK 5448

— Mohana . . . KNITKING'S lush Mohair is perfect for a little girl's warm dress. The Eyelet Design yoke is knitted with 3 colors. The sleeves are knitted from the top down instead of the usual way . . . so you learn a new technique. Size 6 and Size 8.



DP 8243

A short sleeve Pullover is worn over a long sleeved Pullover for that so popular layered look. The yarn for sizes 8 and 12 is our lovely Mohana, and 3 colors are used.

Yarn straightener

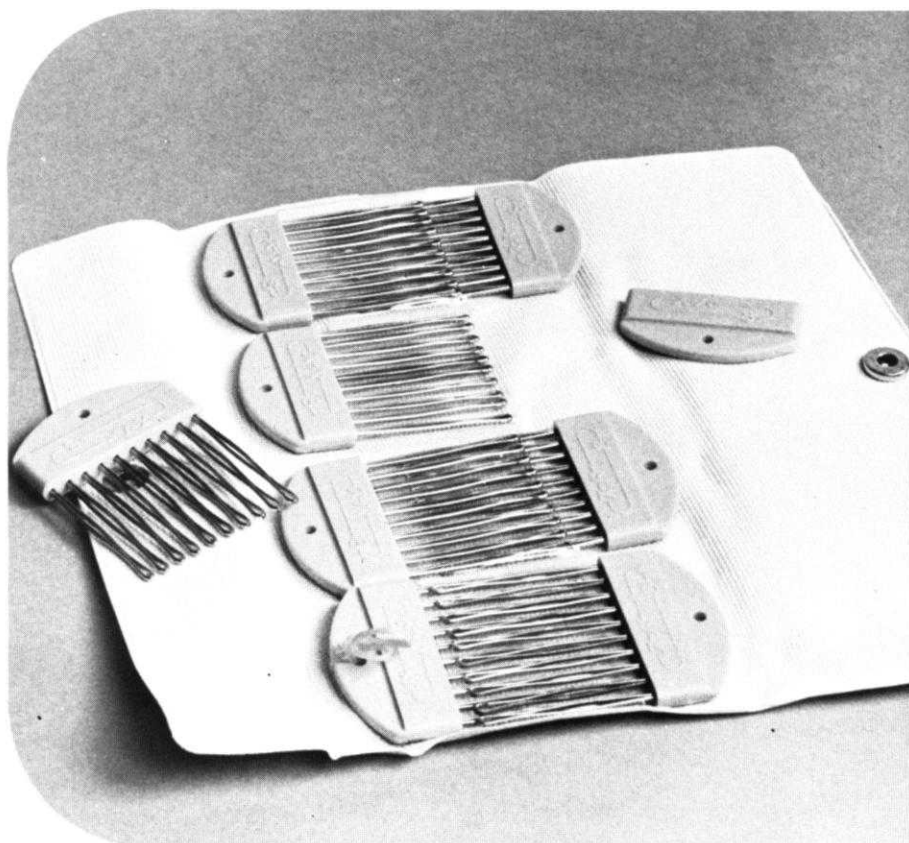
This Clever Steaming Device takes the wrinkles out of used Yarn and makes it like new again . . . The Yarn goes in one Hole, then around a Rotating Drum and out the other Hole . . . You fill the Lower Dish with water and heat it until it steams . . . It's the steam that does the straightening as you pull the Yarn through . . . You can wind by hand or directly onto your Yarn Winder.



List Price: \$5.95
(California residents add Sales Tax)
Shipping Costs: 80¢

Carousel transfer tool set

With this Ingenious Set of 8 Transfer Tools, you can remove as few or as many stitches as you wish from your Knitter . . . The 8 Separate Units of 8 Stitch Tools are easy to handle . . . Use them instead of a contrasting color yarn to remove Knitting from your Machine . . . Use them as Transfer Tools . . . for Decreasing in the middle of rows, etc. . . . Suitable for all types of machines.



List Price: \$5.95
(California residents add Sales Tax)
Shipping Costs: 50¢

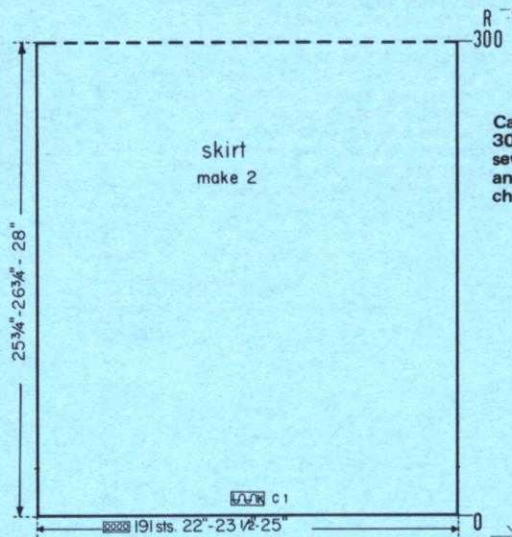
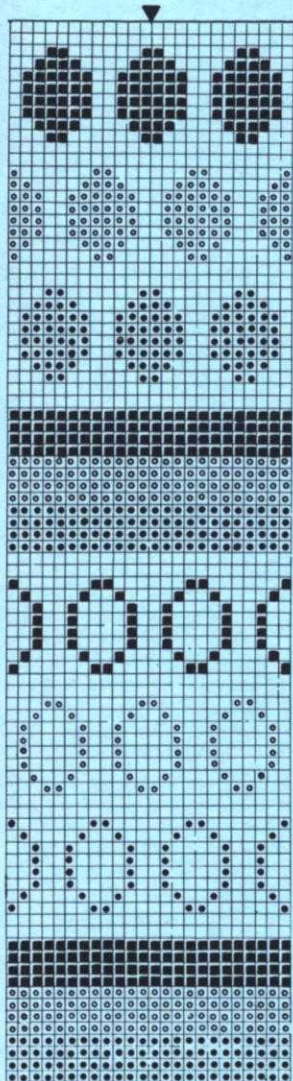
DKS246

SIZE:	8 (Bust 31"-32")	12 (Bust 33"-34")	14 (Bust 36"-37")
YARN:	Subita Crepe 2 x 3	Beatrice Crepe	Crocus Crepe
50 gr. BALLS:	8 color 1 2 color 2 1 color 3 1 color 4	9 color 1 2 color 2 1 color 3 1 color 4	12 color 1 3 color 2 1 color 3 1 color 4
TENSION:	4 to 6	5 to 7	6 to 8
GAUGE:	2" 17 sts. 23 rows	16 sts. 22 rows	15 sts. 21 rows



The instructions are the same for all sizes. PATTERN: Skirt and upper Sleeve section: Stockinette Stitch. Bodice and lower Sleeve section: Norwegian Design according to the Line Drawing. In the instructions, each row in the Norwegian Design is counted as 1 row, but several movements of the Cam Box are needed to complete 1 row. The bodice is knitted onto the skirt sections. Make the increases on the outer edges.

FINISHING: Block all sections. Join front and back section at sides and shoulders. Sew the sleeves together and set in. Turn under 2" at lower edge and 16 rows on the sleeve edges and hem to wrong side. Join the short ends of the neckband, then sew 1 edge of the band to inside and 1 edge to the outside of the neckline.



Cast on 191 sts. with color 1 and work 300 rows stockinette st., then knit several rows with contrast waste yarn and remove the knitting from the machine.

Bring the needles on the left side into working position, knit 1 row in PATTERN to the left side, turn the Row Counter back to 160 and complete the left half. Follow the instructions from*.

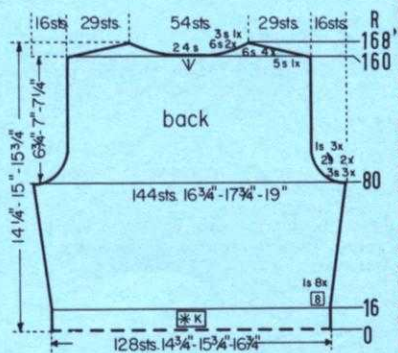
*ON CAM BOX SIDE, bind off 5 sts. after Row 160 (EVEN ROWS = SHOULDER SHAPING); 6 sts. after Rows 161 (ODD ROWS = NECK SHAPING), 162, 163, 164; 3 sts. after Row 165; 6 sts. after Rows 166, 168.

ON CAM BOX SIDE, bind off 3 sts. after Rows 80, 81, 82, 83, 84, 85; 2 sts. after Rows 86, 87, 88, 89; 1 st. after Rows 90, 91, 92, 93, 94, 95, then knit to Row 160, bind off the center 24 sts., put the needles on the left side into holding position and complete the right half first.

ON EACH SIDE, increase 1 st. after Rows 16, 24, 32, 40, 48, 56, 64, 72, then knit to Row 80.

ROWS 0 to 16: Work the Norwegian Design, knitting the first 4 rows with color 2, then follow the Line Drawing and knit even to Row 16.

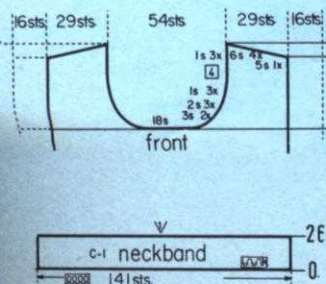
Bring 128 needles into working position and with purl side facing you, hang the skirt sts. back onto the machine, 1 st. on each of the first 2 needles and 2 sts. onto the 3rd needle. Repeat this all the way across. You now have 128 sts. for the bodice. Turn the Row counter to 0. Remove the contrast waste yarn.



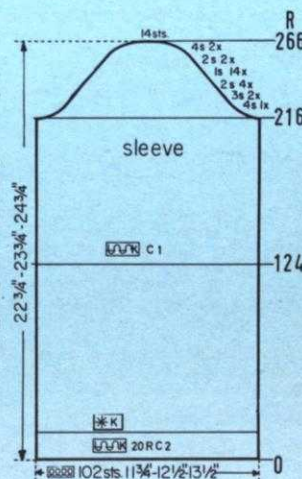
Bring the needles on the left side into working position, knit 1 row in PATTERN to the left side, turn the Row Counter back to 116 and complete the left half. Follow the instructions from*.

*ON CAM BOX SIDE, bind off 3 sts. after Rows 117, 119; 2 sts. after Rows 121, 123, 125; 1 st. after Rows 127, 129, 131, 133, 137, 141. For SHOULDER bind off 5 sts. after Row 160; 6 sts. after Rows 162, 164, 166, 168.

Work the front section the same as the back section to ROW 116, then bind off the center 18 sts., put the needles on the left side into holding position and complete the right half first.



Cast on 141 sts. with color 1 and work 26 rows stockinette st., then bind off all sts.



ON CAM BOX SIDE, bind off 4 sts. after Rows 216, 217; 3 sts. after Rows 218, 219, 220, 221; 2 sts. after Rows 222, 223, 224, 225, 226, 227, 228, 229. ON EACH SIDE, hang the 1st st. onto the 2nd st. after Rows 230, 232, 234, 236, 238, 240, 242, 244, 246, 248, 250, 252, 254, 256. ON CAM BOX SIDE, bind off 2 sts. after Rows 258, 259, 260, 261; 4 sts. after Rows 262, 263, 264, 265; 14 sts. after Row 266.

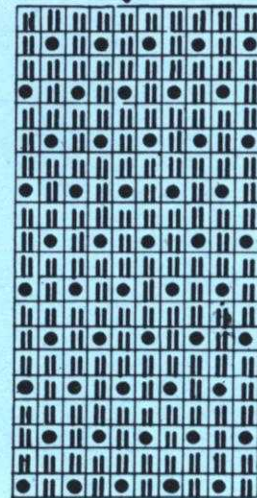
ROWS 125 to 216: Knit even. ROWS 21 to 124: Knit even, then change to color 1 and work stockinette st.

ROWS 0 to 20: Knit even, then begin the Norwegian Design.

Cast on 102 sts. with color 2 and work stockinette st.

DKS241

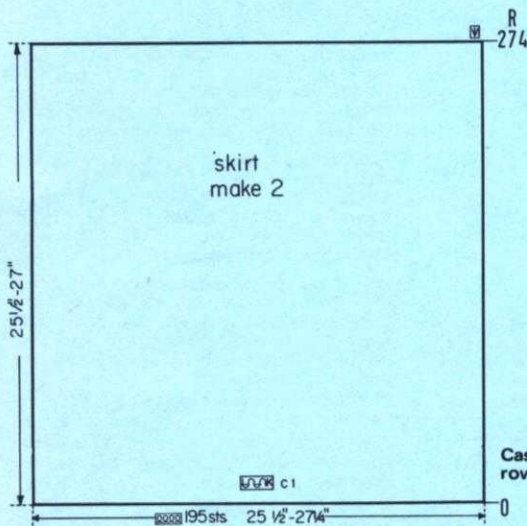
SIZE:	10 (Bust 31"-32")	12 (Bust 34"-35")
YARN:	Allegro Dralon	Allegro Dralon
50 gr. BALLS:	8 color 1 2 color 2 1 color 3 1 color 4 1 color 5 1 color 6	8 color 1 2 color 2 1 color 3 1 color 4 1 color 5 1 color 6
TENSION:	7 to 9	8 to 10
GAUGE:	2"	
Stock:	15 sts. 21 rows	14 sts. 20 rows
Pattern:	13 sts. 33 rows	12 sts. 31 rows



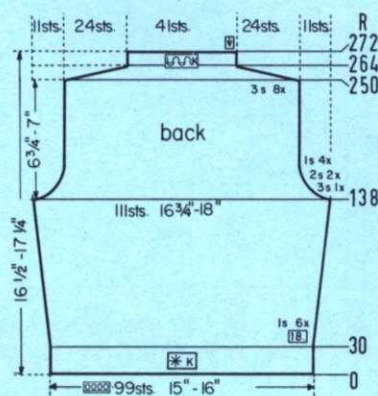
- 39-40 — Color 6
- 37-38 — Color 1
- 35-36 — Color 6
- 33-34 — Color 1
- 31-32 — Color 2
- 29-30 — Color 3
- 27-28 — Color 2
- 25-26 — Color 3
- 23-24 — Color 5
- 21-22 — Color 1
- 19-20 — Color 5
- 17-18 — Color 1
- 15-16 — Color 3
- 13-14 — Color 6
- 11-12 — Color 3
- 9-10 — Color 6
- 7- 8 — Color 4
- 5- 6 — Color 2
- 3- 4 — Color 4
- 1- 2 — Color 2

The instructions are the same for both sizes. **PATTERN:** Skirt, Lower Sleeve and Bodice Center: Stockinette Stitch. Bodice Back, Sides and Upper Sleeves: Multi-color Holding Position Design according to the Line Drawing, using Wheel No. 6. The knit side is the right side. Make the increases on the lower sleeve section full-fashion, all other shapings are made on the outer edges. The lower sleeve section is knitted from the top down.

FINISHING: Block all sections. Turn under 13 rows on the upper edge of the bodice center section and hem in place. Join the side sections to the center section. Join back and front section at sides and shoulders. Turn under the 7 rows of stockinette st. on the back neckline and hem in place. Work 2 rows of single crochet on the sides of the front neckline, then turn these rows under to wrong side and hem. Turn under 1" at the lower edge of the upper sleeve and hem, then sew the lower sleeve to the inner hem line of the upper sleeve, giving the sleeve a layered look. Sew the sleeves together and set in. Weave the skirt sections together, 1 st. in from each edge. Gather the upper skirt edge to the width of the bodice waistline, then join the sections. Work 6 loops evenly spaced on each side of the center panel. (See picture). Knit a cord with color 1 over 4 needles with tension 1 (See Practical Knitting Hint Book, page 58). Bind off after Row 1350 (the empty rows do count). Pull the cord criss-cross through the loops. Turn under 2" on lower edge and hem.



Cast on 195 sts. with color 1, knit 274 rows stockinette st., then bind off all sts.



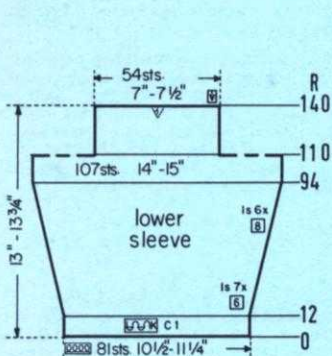
ON CAM BOX SIDE, bind off 3 sts. after Rows 250, 251, 252, 253, 254, 255, 256, 257, 258, 259, 260, 261, 262, 263, 264, 265, then change to color 1. Work stockinette st. to Row 272, then bind off all 41 sts. (Facing)

ON CAM BOX SIDE, bind off 3 sts. after Rows 138, 139; 2 sts. after Rows 140, 141, 142, 143; 1 st. after Rows 144, 145, 146, 147, 148, 149, 150, 151, then knit to Row 250.

ON EACH SIDE, increase 1 st. after Rows 30, 48, 66, 84, 102, 120, then knit to Row 138.

ROWS 0 to 30: Knit even.

Cast on 99 sts. with color 2 and work the Holding Position Design.



Bring 54 needles into working position. With the purl side facing you, hang the sleeve sts. back onto the machine, doubling up the sts. Push the sts. under the sinkers, remove the contrast waste yarn and turn the Row Counter back to 110. Knit stockinette st. to Row 140, then bind off all 54 sts.

ON EACH SIDE, increase 1 st. after Rows 12, 18, 24, 30, 36, 42, 48, 54, 62, 70, 78, 86, 94, then knit to Row 110. Knit several rows with contrast waste yarn, then remove the knitting from the machine.

ROWS 0 to 12: Knit even.

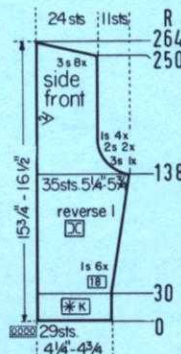
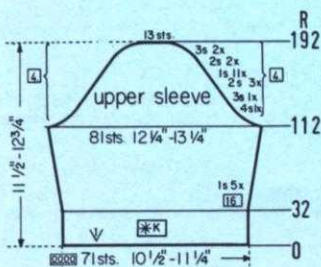
Cast on 81 sts. with color 1 and work stockinette st.

ON CAM BOX SIDE, bind off 4 sts. after Rows 112, 113; 3 sts. after Rows 116, 117; 2 sts. after Rows 120, 121, 124, 125, 128, 129. **ON EACH SIDE,** decrease 1 st. after Rows 132, 136, 140, 144, 148, 152, 156, 160, 164, 168, 172. **ON CAM BOX SIDE,** bind off 2 sts. after Rows 176, 177, 180, 181; 3 sts. after Rows 184, 185, 188, 189; 13 sts. after Row 192.

ON EACH SIDE, increase 1 st. after Rows 32, 48, 64, 80, 96, then knit to Row 112.

ROWS 0 to 32: Knit even.

Cast on 71 sts. with color 2 and work the Holding Position Design.



Work the second side section with reverse shapings. Cast on the regular way with color 2. Knit 1 row in **PATTERN** to the left side, turn the Row Counter back to 0 and follow the instructions as written. (The Cam Box will be on the **LEFT** side at even numbered rows).

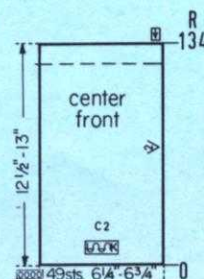
For **SHOULDER** bind off 3 sts. after Rows 250, 252, 254, 256, 258, 260, 262, 264.

ON CAM BOX SIDE, bind off 3 sts. after Row 138; 2 sts. after Rows 140, 142; 1 st. after Rows 144, 146, 148, 150, then knit to Row 250.

ON CAM BOX SIDE, increase 1 st. after Rows 30, 48, 66, 84, 102, 120, then knit to Row 138.

ROWS 0 to 30: Knit even.

Cast on 29 sts. with color 2 and work the Holding Position Design.



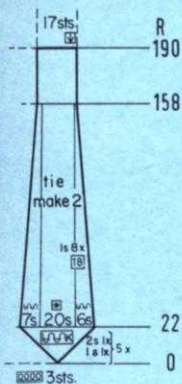
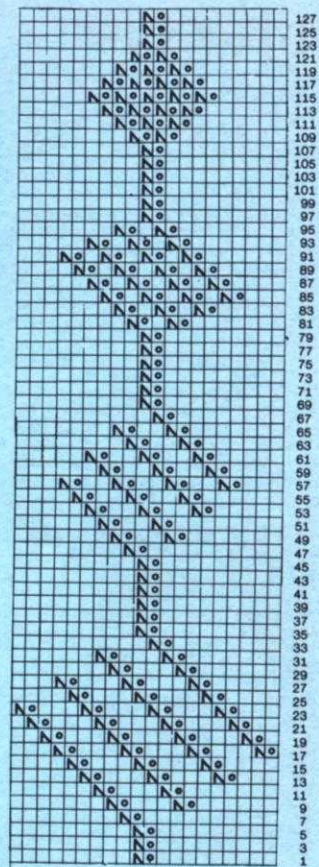
Cast on 49 sts. with color 2 and work 134 rows stockinette st., then bind off all sts.

DK8247

SIZE:	12 (Bust 34"-35")	16 (Bust 37"-38")	18 (Bust 39"-40")
YARN:	Beatrice Crepe	Allegro Dralon	Dolly Crepe Dralon
50 gr. BALLS:	15	16	18
TENSION:	5 to 7	6 to 8	8 to 10
GAUGE:	2" 16 sts. 22 rows	15 sts. 21 rows	14 sts. 20 rows

The instructions are the same for all sizes. PATTERN: Stockinette Stitch and Eyelet Design according to the Line Drawing. DECREASES: Hang the 3rd st. onto the 2nd st., then move the end sts. inward to fill the empty needle. INCREASES: Move the 2 end sts. 1 needle outward, then place the 3rd st. from the row below onto the empty needle. To form the hem, hang the cast-on sts. back onto the machine behind the latches, then knit the following row with 1 to 2 tension settings higher.

FINISHING: Block all sections. SKIRT: Weave the sections together, 1 st. in from each edge. Turn under 17 rows on lower edge and 12 rows on the upper edge and hem in place. Insert an elastic band into the upper hem. BLOUSE: Join the front and back section at sides and shoulders. Sew the sleeves together and set in. Sew 1 edge of the buttonhole band to inside and 1 edge to outside of the right front opening. Sew the button band to the left side in the same manner. Fold the collar in half and sew the open side edges together. Sew 1 edge of the collar to inside and 1 edge to outside of neckline. Finish the buttonholes, sew on buttons. With right sides together, sew the tie sections together, leaving the upper edge open. Turn to right side and close the upper edge. Tie a knot, then hold the tie in place with snaps.



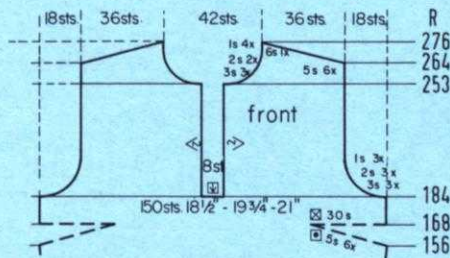
Cast on 3 sts. and work stockinette st. ON CAM BOX SIDE, cast on 1 st. after Rows 2, 3; 2 sts. after Rows 4, 5; 1 st. after Rows 6, 7; 2 sts. after Rows 8, 9; 1 st. after Rows 10, 11; 2 sts. after Rows 12, 13; 1 st. after Rows 14, 15; 2 sts. after Rows 16, 17; 1 st. after Rows 18, 19; 2 sts. after Rows 20, 21. Work the Eyelet Design after Row 22. ON EACH SIDE, decrease 1 st. after Rows 22, 40, 58, 76, 94, 112, 130, 148, then knit to Row 158. Work stockinette st. to Row 190, then bind off the remaining 17 sts. Work the second tie section the same, but omit the Eyelet Design.

Begin the Eyelet Design with ROW 45 of the Line Drawing. After Row 124 of the Line Drawing work the single Eyelet only.

Move the Cam Box to the left side, turn the Row Counter back to 184 and complete the left half. Follow the instructions from*.

ON CAM BOX SIDE, bind off 3 sts. after Rows 253, 255, 257 (ODD ROWS = NECK SHAPING); 2 sts. after Rows 259, 261; 1 st. after Row 263; 5 sts. after Row 264 (EVEN ROWS = SHOULDER SHAPING); 1 st. after Row 265; 5 sts. after Row 266; 1 st. after Row 267; 5 sts. after Row 268; 1 st. after Row 269; 5 sts. after Rows 270, 272, 274; 6 sts. after Row 276.

*ON CAM BOX SIDE, bind off 3 sts. after Rows 184, 186, 188; 2 sts. after Rows 190, 192, 194; 1 st. after Rows 196, 198, 200, then knit to Row 253.



Work the front section the same as the back section to ROW 156, then work Short Rows for the DARTS. ON OPPOSITE SIDE of CAM BOX put into holding position 5 needles after Rows 156, 157, 158, 159, 160, 161, 162, 163, 164, 165, 166, 167. ON OPPOSITE SIDE of CAM BOX bring back into working position all needles after Rows 168, 169, then knit to Row 184, bind off the center 8 sts., put the needles on the left side into holding position and complete the right half first.

Move the Cam Box to the left side, turn the Row Counter back to Row 252 and complete the left half. Follow the instructions from*.

*ON CAM BOX SIDE, bind off 5 sts. after Row 252 (EVEN ROWS = SHOULDER SHAPING); 3 sts. after Row 253 (ODD ROWS = NECK SHAPING); 5 sts. after Row 254; 3 sts. after Row 255; 5 sts. after Row 256; 3 sts. after Row 257; 5 sts. after Row 258; 3 sts. after Row 259; 5 sts. after Row 260; 3 sts. after Row 261; 5 sts. after Row 262; 6 sts. after Row 264.

ON CAM BOX SIDE, bind off 3 sts. after Rows 172, 173, 174, 175, 176, 177; 2 sts. after Rows 178, 179, 180, 181, 182, 183; 1 st. after Rows 184, 185, 186, 187, 188, 189, then knit to Row 252, bind off the center 12 sts., put the needles on the left side into holding position and complete the right half first.

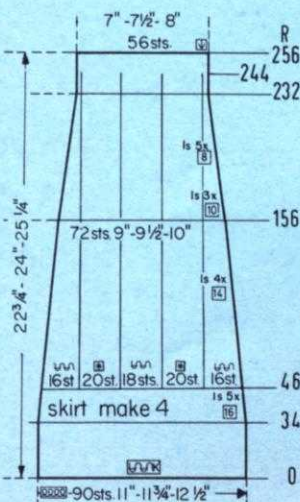
ON EACH SIDE, increase 1 st. after Rows 84, 102, 120, 138, 156, then knit to Row 172. (For the Front Section knit to ROW 156 and make the increases).

ROWS 35 to 84: Knit even.

ROWS 0 to 34: Knit even, then form the hem.

Cast on 140 sts. and work stockinette st.

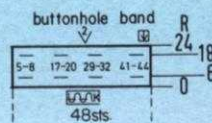
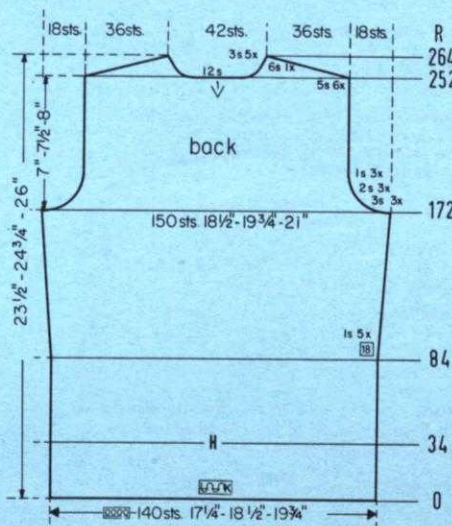
Cast on 48 sts. and work stockinette st. Make buttonholes after Rows 6 and 18 over the 5th-8th, 17th-20th, 29th-32nd and 41st-44th sts. counting from the left side. After Row 24 bind off all sts. Work the button band the same but omit the buttonholes.



ON EACH SIDE, decrease 1 st. after Rows 34, 50, 66, 82, 98, 114, 128, 142, 156, 170, 180, 190, 200, 208, 216, 224, 232. After Row 244 work stockinette st., then knit to Row 256 and bind off the remaining 56 sts. Work 3 more sections the same.

ROWS 0 to 34: Begin the Eyelet Design after Row 18, then knit to Row 34.

Cast on 90 sts., and work stockinette st.



Continued on pages 12 - 13

DKS252

SIZE:	14 (Bust 35"-36")	16 (Bust 38"-39")	20 (Bust 41"-42")
YARN:	Crocus Crepe	Melodie	Melodie
50 gr. BALLS:	19	19	21
TENSION:	6 to 8	7 to 9	8 to 10
GAUGE:	2" 16 sts. 21 rows	15 sts. 20 rows	14 sts. 19 rows

The instructions are the same for all sizes. PATTERN: Stockinette Stitch worn on the knit side. Cuffs, Pockets and Collar: Knit 1, Purl 3 Ribbing, worn on the purl side. (The Cuffs have to be turned after completion). DECREASES: Sides: Hang the 4th st. onto the 3rd st. Front Neck: Hang the 25th st. onto the 24th st. Begin the DARTS by hanging the sts. together as marked on the Diagram, the following decreases for the Darts lie directly above. Move the sts. together after ALL decreases to fill the empty needles. INCREASES: Move the 2 end sts. 1 needle outward, then place the 3rd st. from the row below onto the empty needle. To form the hem, hang the cast-on sts. back onto the machine behind the latches, then knit the following row with 1 to 2 tension settings higher.

FINISHING: Block all sections. SKIRT: Weave the sections together, 1 st. in from each edge. Turn under 16 rows on lower edge and 10 rows on upper edge and hem. Insert an elastic band into the upper hem. JACKET: Join back and front sections at sides and shoulders. Sew the sleeves together and set in. Weave the facing sts. together then sew the facing to neckline. Turn under 12 sts. around the front edges and neckline and hem in place. Turn under 10 rows on the cast-on edge of the collar, then sew the collar to neckline. Sew the pockets in place. Finish the buttonholes, sew on buttons.



Work the second front section with reverse shapings, casting on from right to left. (Cam Box will be on the LEFT side at Row 0). Omit the buttonholes.

ON NECK SIDE, decrease 1 st. after Rows in (). ON CAM BOX SIDE, bind off 3 sts. after Rows 236, (236), 238, (238), 240, (240), 242; (242), 2 sts. after Rows 244, (244), 246, (246), 248; (248), 1 st. after Rows 250, (250), 252, (252), 254; (254). The Armhole Shaping is now completed. Continue to decrease 1 st. ON NECK SIDE after Rows 256, 258, 260, 262, 264, 268, 272, 276, 280, 284, 288, 292, 296, 300, 304, 308, 312, then again after Rows in (). For SHOULDER bind off 4 sts. after Rows 316, (316), 318; 5 sts. after Rows 320, (320), 322, 324, (324), 326, 328. Knit over the remaining 12 sts. (Facing) to Row 360, then put the sts. onto a stitch holder.

Continue to make buttonholes after Row in (). ON CAM BOX SIDE, increase 1 st. after Rows 156, 166, 176, 186, (188), 196, 206, then knit to Row 207 and work Short Rows for the DART. ON OPPOSITE SIDE of CAM BOX put into holding position 6 needles after Rows 207, 209, 211, 213, 215, 217. After Row 219 bring all needles back into working position, make buttonholes after Row 224, then knit to Row 236.

ON CAM BOX SIDE, decrease 1 st. after Rows 48, 56, 64, 72, 80, (80), 86, 92, 98, 104, 110, 116, (116), 122, 128, 134, 140, (152), then knit to Row 156.

Make buttonholes after Row 44 over the 2nd-6th and 19th-23rd sts. counting from the left side, then again after Rows in (). Knit to Row 48.

ROWS 17 to 32: Knit even, then form the hem. (First 81 cast-on sts. only).

ROWS 0 to 16: Knit even, then cast on 24 sts. ON OPPOSITE SIDE of CAM BOX. (Use a separate length of yarn).

Cast on 81 sts. and work stockinette st.

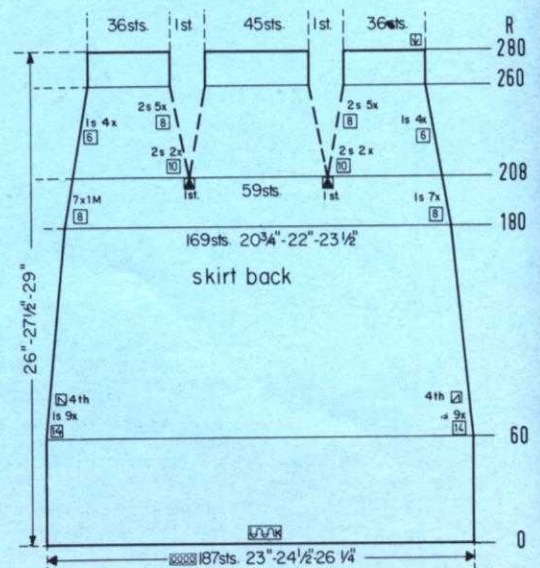
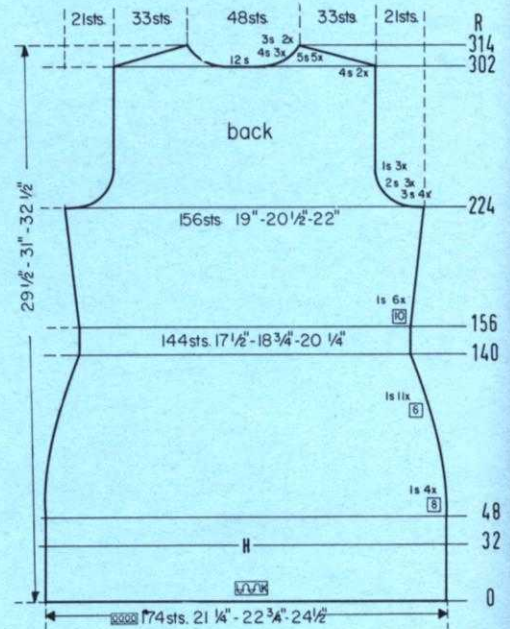
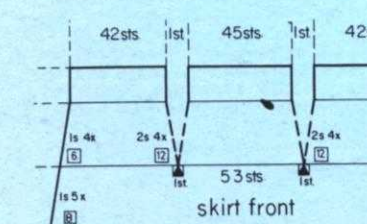
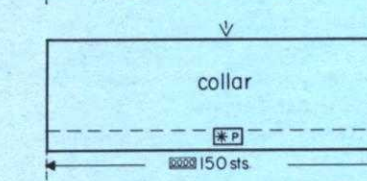
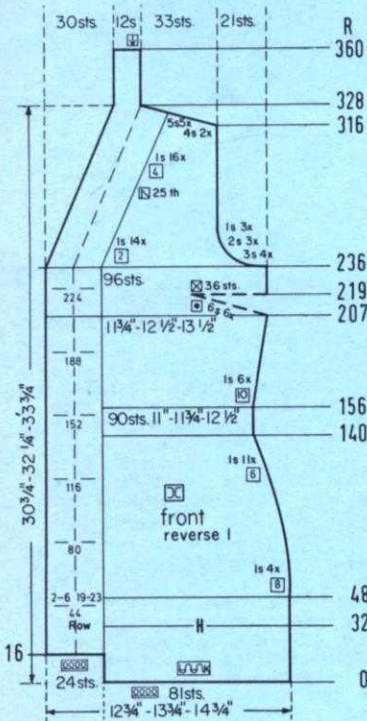
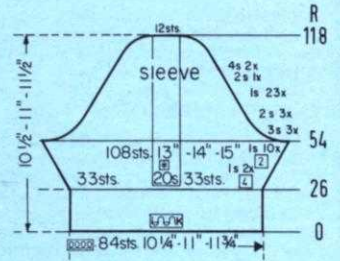
Cast on 150 sts. and work 70 rows Knit 1, Purl 3, Ribbing, the bind off all sts.

Decrease 2 sts. for EACH DART after Rows in (). ON EACH SIDE, decrease 1 st. after Rows 202, 210, 218, (224), 226, 234, (236), 242, 248, (248), 254, 260, (260), then knit to Row 280 and bind off the remaining 131 sts.

Work the front section the same as the back section to ROW 202.

DK 8247

Continued from page 11



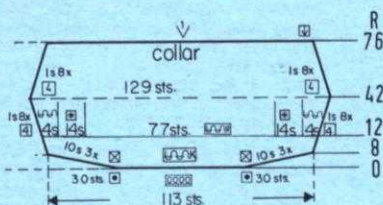
ON CAM BOX SIDE, bind off 3 sts. after Rows 54, 55, 56, 57, 58, 59; 2 sts. after Rows 60, 61, 62, 63, 64, 65. ON EACH SIDE, hang the 1st st. onto the 2nd st. after Rows 66, 68, 70, 72, 74, 76, 78, 80, 82, 84, 86, 88, 90, 92, 94, 96, 98, 100, 102, 104, 106, 108, 110. ON CAM BOX SIDE, bind off 2 sts. after Rows 112, 113; 4 sts. after Rows 114, 115, 116, 117; 12 sts. after Row 118.

ON EACH SIDE, increase 1 st. after Rows 26, 30, 34, 36, 38, 40, 42, 44, 46, 48, 50, 52, then knit to Row 54.

(Begin the Eyelet Design after ROW 28, work the Pattern from ROW 5 to ROW 70 of the Line Drawing over the center 20 sts.)

ROWS 0 to 26: Knit even, then form the hem.

Cast on 84 sts. and work stockinette st.



ON EACH SIDE, increase 1 st. after Rows 12, 16, 20, 24, 28, 32, 36, (the Eyelet Design is completed after Row 38), 40. ON EACH SIDE, decrease 1 st. after Rows 44, 48, 52, 56, 60, 64, 68, 72, then knit to Row 76 and bind off all sts.

Cast on 113 sts., work stockinette st. and Short Rows. ON OPPOSITE SIDE of CAM BOX put into holding position 30 needles after Rows 0, 1. ON OPPOSITE SIDE of CAM BOX bring back into working position 10 needles after Rows 2, 3, 4, 5, 6, 7, then knit to Row 12. (After Row 12 begin the Eyelet Design, work the Pattern from Row 45 to Row 70 of the Line Drawing over the sts. marked on the Diagram.)

Move the Cam Box to the left side, turn the Row Counter back to 302 and complete the left half. Follow the instructions from*.

*ON CAM BOX SIDE, bind off 4 sts. after Rows 302 (EVEN ROWS = SHOULDER SHAPING), 303 (ODD ROWS = NECK SHAPING), 304, 305; 5 sts. after Row 306; 4 sts. after Row 307; 5 sts. after Row 308; 3 sts. after Row 309; 5 sts. after Row 310; 3 sts. after Row 311; 5 sts. after Rows 312, 314.

ON CAM BOX SIDE, bind off 3 sts. after Rows 224, 225, 226, 227, 228, 229, 230, 231; 2 sts. after Rows 232, 233, 234, 235, 236, 237; 1 st. after Rows 238, 239, 240, 241, 242, 243, then knit to Row 302, bind off the center 12 sts., put the needles on the left side into holding position and complete the right half first.

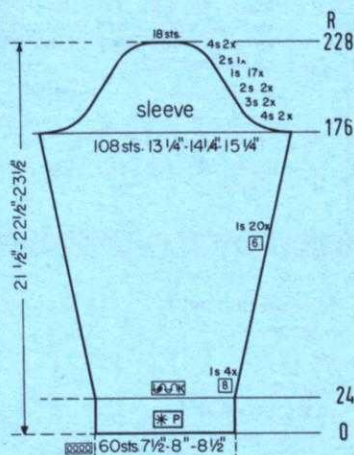
ON EACH SIDE, increase 1 st. after Rows 156, 166, 176, 186, 196, 206, then knit to Row 224.

ON EACH SIDE, decrease 1 st. after Rows 48, 56, 64, 72, 80, 86, 92, 98, 104, 110, 116, 122, 128, 134, 140, then knit to Row 156.

ROWS 33 to 48: Knit even.

ROWS 0 to 32: Knit even, then form the hem.

Cast on 174 sts. and work stockinette st.



ON CAM BOX SIDE, bind off 4 sts. after Rows 176, 177, 178, 179; 3 sts. after Rows 180, 181, 182, 183; 2 sts. after Rows 184, 185, 186, 187. ON EACH SIDE, hang the 1st st. onto the 2nd st. after Rows 188, 190, 192, 194, 196, 198, 200, 202, 204, 206, 208, 210, 212, 214, 216, 218, 220. ON CAM BOX SIDE, bind off 2 sts. after Rows 222, 223; 4 sts. after Rows 224, 225, 226, 227; 18 sts. after Row 228.

ON EACH SIDE, increase 1 st. after Rows 24, 32, 40, 48, 56, 62, 68, 74, 80, 86, 92, 98, 104, 110, 116, 122, 128, 134, 140, 146, 152, 158, 164, 170, then knit to Row 176.

ROWS 0 to 24: Knit even, then transfer the ribber sts. to the main machine, place all sts. onto a double pointed needle, turn the knitting around and with knit 3, purl 1 side facing you, hang the sts. back onto the machine. Continue with stockinette st.

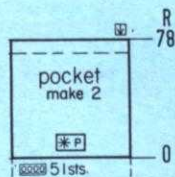
Cast on 60 sts. and work Knit 1, Purl 3, Ribbing.

DPS253

SIZE:	14 (Bust 35"-36")	16 (Bust 38"-39")	20 (Bust 41"-42")
YARN:	Beatrice Crepe	Regia	Alanda
50 gr. BALLS:	7	7	11
TENSION:	5 to 7	6 to 8	7 to 9
GAUGE:	2" 16 sts. 22 rows	15 sts. 22 rows	14 sts. 21 rows

The instructions are the same for all sizes. PATTERN: Stockinette Stitch. EDGES: K1, P1, Ribbing. INCREASES: Move the 2 end sts. 1 needle outward, then place the 3rd st. from the row below onto the empty needle.

FINISHING: Block all sections. Join front and back section at sides and shoulders. Sew the sleeves together and set in. Join the short ends of the collar, then sew 1 edge of the collar to inside and 1 edge to outside of the neckline.



Cast on 51 sts. and work 78 rows Knit 1, Purl 3, Ribbing, then bind off all sts.

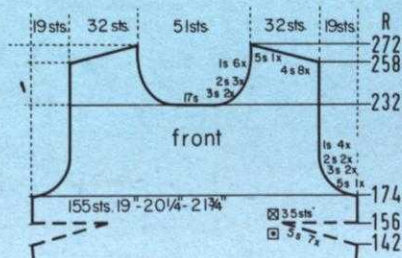


Move the Cam Box to the left side, turn the Row Counter back to 232 and complete the left half. Follow the instructions from*.

*ON CAM BOX SIDE, bind off 3 sts. after Rows 233, 235; 2 sts. after Rows 237, 239, 241; 1 st. after Rows 243, 245, 247, 249, 251, 253. For SHOULDER bind off 4 sts. after Rows 258, 260, 262, 264, 266, 268, 270, 272.

ON CAM BOX SIDE, bind off 5 sts. after Rows 174, 175; 3 sts. after Rows 176, 177, 178, 179; 2 sts. after Rows 180, 181, 182, 183; 1 st. after Rows 184, 185, 186, 187, 188, 189, 190, 191, then knit to Row 232, bind off the center 17 sts., put the needles on the left side into holding position and complete the right half first.

Work the front section the same as the back section to ROW 142, then work Short Rows for the DARTS. ON OPPOSITE SIDE of CAM BOX put into holding position 5 needles after Rows 142, 143, 144, 145, 146, 147, 148, 149, 150, 151, 152, 153, 154, 155. ON OPPOSITE SIDE of CAM BOX bring all needles back into working position after Rows 156, 157, then knit to Row 174.

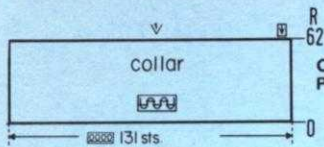


Decrease 2 sts. for EACH DART after Rows in (). ON EACH SIDE, decrease 1 st. after Rows 60, 74, 88, 102, 116, 130, 144, 158, 172, 186, 194, 202, (208), 210, 218, (218), 226, (228), 234, (236), 242, (244), 248, (252), 254, 260, (260), then knit to Row 280 and bind off the remaining 119 sts. (For the Front Section knit to ROW 202, but do not make the decreases after Row 202).

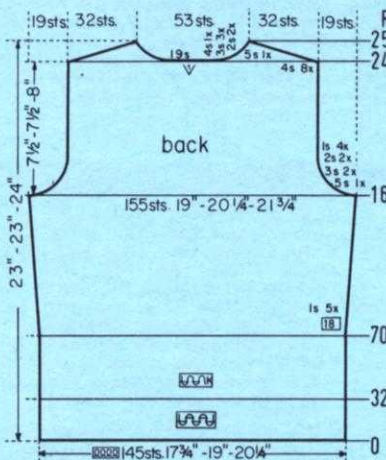
ROWS 0 to 60: Knit even.

Cast on 187 sts. and work stockinette st.

Continued on pages 14 - 15



Cast on 131 sts. and work 62 rows K1, P1, Ribbing, then bind off all sts.



Move the Cam Box to the left side, turn the Row Counter back to 244 and complete the left half. Follow the instructions from*.

*ON CAM BOX SIDE, bind off 4 sts. after Rows 244 (EVEN ROWS = SHOULDER SHAPING), 245 (ODD ROWS = NECK SHAPING), 246; 3 sts. after Row 247; 4 sts. after Row 248; 3 sts. after Row 249; 4 sts. after Row 250; 3 sts. after Row 251; 4 sts. after Row 252; 2 sts. after Row 253; 4 sts. after Row 254; 2 sts. after Row 255; 4 sts. after Rows 256, 258.

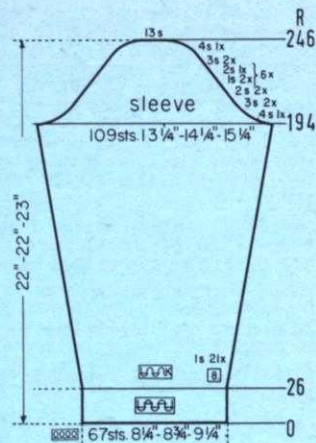
ON CAM BOX SIDE, bind off 5 sts. after Rows 160, 161; 3 sts. after Rows 162, 163, 164, 165; 2 sts. after Rows 166, 167, 168, 169; 1 st. after Rows 170, 171, 172, 173, 174, 175, 176, 177, then knit to Row 244, bind off the center 19 sts., put the needles on the left side into holding position and complete the right half first.

ON EACH SIDE, increase 1 st. after Rows 70, 88, 106, 124, 142, then knit to Row 160. (For the Front Section knit to Row 142 and make the increases after Row 142).

ROWS 33 to 70: Knit even.

ROWS 0 to 32: Knit even, then change to stockinette st.

Cast on 145 sts. and work K1, P1, Ribbing.



DK8250

SIZE:	12 (Bust 33"-34")	14 (Bust 36"-37")	16 (Bust 38"-39")
YARN:	Crocus Crepe	Melodie	Dolly Dralon
50 gr. BALLS:	13	13	13
TENSION:	6 to 8	7 to 9	8 to 10
GAUGE:	2" 16 sts. 21 rows	15 sts. 20 rows	14 sts. 20 rows

The instructions are the same for all sizes. PATTERN: Stockinette Stitch with an Eyelet Design on the Bodice of the Front Section. Follow the Line Drawing. DECREASES: Hang the 4th st. onto the 3rd st., then move the end sts. inward to fill the empty needle. INCREASES: Move the 2 end sts. 1 needle outward, then place the 3rd st. from the row below onto the empty needle. EDGES: K1, P1, Ribbing.

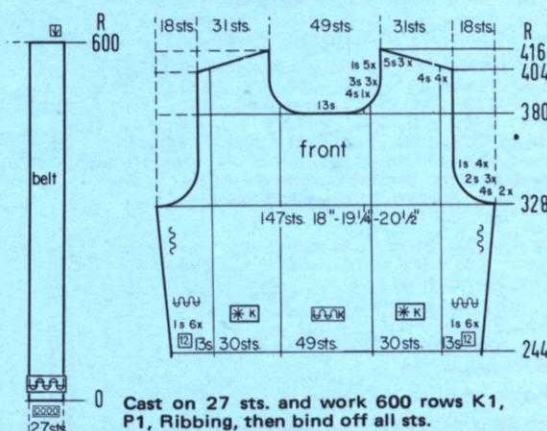
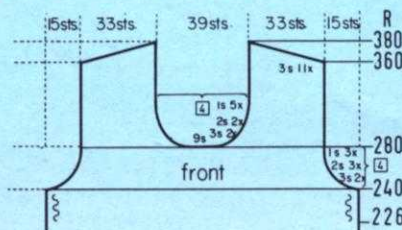
FINISHING: Block all sections. Join front and back section at sides and shoulders, easing in the fullness at the bustline of the front section. Sew the sleeves together and set in. Join the short ends of the neckband, then sew 1 edge of the band to inside and 1 edge to outside of the neckline. Turn under 16 rows on lower edge and hem.

DK8245

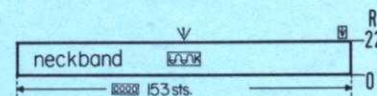
SIZE:	8 (Bust 31"-32")	12 (Bust 33"-34")	14 (Bust 36"-37")
YARN:	Subita Crepe 2 x 3	Beatrice Crepe	Crocus Crepe
50 gr. BALLS:	12	15	19
TENSION:	4 to 6	5 to 7	7 to 9
GAUGE:	2" 17 sts. 23 rows	16 sts. 22 rows	15 sts. 21 rows
Pattern:	16 sts. 35 rows	15 sts. 33 rows	14 sts. 31 rows

The instructions are the same for all sizes. PATTERN: Skirt, Sleeves and Edges: Stockinette Stitch, worn on the knit side. Front and Back Section or Pullover: Holding Position Design according to the Line Drawing. The purl side is the right side. DECREASES: Hang the 4th st. onto the 3rd st., then move the end sts. inward to fill the empty needles. INCREASES: Move the 2 end sts. 1 needle outward, then place the 3rd st. from the row below onto the empty needle. To form the hem, hang the cast-on sts. back onto the machine in FRONT of the latches, push in the right Cam Control Button and knit 2 rows without yarn. Return the Control Button, replace the yarn, turn the Row Counter back 2 rows and continue knitting.

FINISHING: Block all sections. SKIRT: Weave the sections together, 1 st. in from each edge. Turn under 16 rows on lower edge and 11 rows on upper edge and hem in place. Insert an elastic band into the upper hem. PULLOVER: Join front and back section at sides and shoulders, easing in the fullness at bustline of the front section. Sew the sleeves together and set in. Turn under 11 sts. on sleeve edges and hem in place. Join the short ends of the neckband, then sew 1 edge of the band to inside and 1 edge to the outside of the neckline.



Cast on 27 sts. and work 600 rows K1, P1, Ribbing, then bind off all sts.



Cast on 153 sts. and work 22 rows stockinette st., then bind off all sts.

Bring the needles on the left side back into working position, knit 1 row in PATTERN to the left side, turn the Row Counter back to 280 and complete the left half. Follow the instructions from*.

*ON CAM BOX SIDE, bind off 3 sts. after Rows 283, 287; 2 sts. after Rows 291, 295; 1 st. after Rows 299, 303, 307, 311, 315. For SHOULDER bind off 3 sts. after Rows 360, 362, 364, 366, 368, 370, 372, 374, 376, 378, 380.

ON CAM BOX SIDE, bind off 3 sts. after Rows 240, 241, 244, 245; 2 sts. after Rows 248, 249, 252, 253, 256, 257; 1 st. after Rows 260, 261, 264, 265, 268, 269, then knit to Row 280, bind off the center 9 sts., put the needles on the left side into holding position and complete the right half first.

ROWS 227 to 240: Knit even.

Work the front section the same as the back section to ROW 226.

ON CAM BOX SIDE, bind off 4 sts. after Rows 194, 195; 3 sts. after Rows 196, 197, 198, 199; 2 sts. after Rows 200, 201, 202, 203; 1 st. after Rows 204, 205, 206, 207; 2 sts. after Rows 208, 209; 1 st. after Rows 210, 211, 212, 213; 2 sts. after Rows 214, 215; 1 st. after Rows 216, 217, 218, 219; 2 sts. after Rows 220, 221; 1 st. after Rows 222, 223, 224, 225; 2 sts. after Rows 226, 227; 1 st. after Rows 228, 229, 230, 231; 2 sts. after Rows 232, 233; 1 st. after Rows 234, 235, 236, 237; 2 sts. after Rows 238, 239; 3 sts. after Rows 240, 241, 242, 243; 4 sts. after Rows 244, 245; 13 sts. after Row 246.

ON EACH SIDE, increase 1 st. after Rows 26, 34, 42, 50, 58, 66, 74, 82, 90, 98, 106, 114, 122, 130, 138, 146, 154, 162, 170, 178, 186, then knit to Row 194.

ROWS 0 to 26: Knit even, then change to stockinette st.

Cast on 67 sts. and work K1, P1, Ribbing.

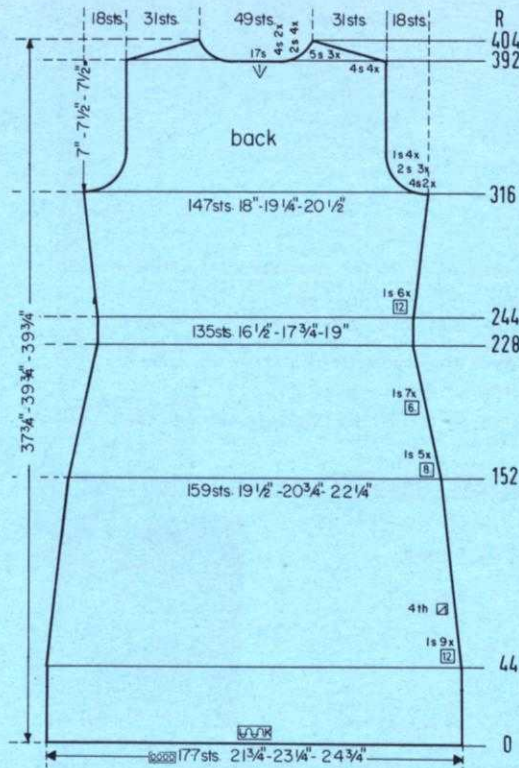
Bring the needles on the left side into holding position, knit 1 row in PATTERN to the left side, turn the Row Counter back to 380 and complete the left half. Follow the instructions from*.

*ON CAM BOX SIDE, bind off 4 sts. after Row 381; 3 sts. after Rows 383, 385, 387; 1 st. after Rows 389, 391, 393, 395, 397. For SHOULDER bind off 4 sts. after Rows 404, 406, 408, 410; 5 sts. after Rows 412, 414, 416.

ON CAM BOX SIDE, bind off 4 sts. after Rows 328, 329, 330, 331; 2 sts. after Rows 332, 333, 334, 335, 336, 337; 1 st. after Rows 338, 339, 340, 341, 342, 343, 344, 345, then knit to Row 380, bind off the center 13 sts., put the needles on the left side into holding position and complete the right half first.

ON EACH SIDE, increase 1 st. after Rows 244, 256, 268, 280, 292, 304, then knit to Row 328.

Work the front section the same as the back section to ROW 244, then MARK the PATTERN needles and work the Eyelet Design over the sts. marked on the diagram.



Move the Cam Box to the left side, turn the Row Counter back to 392 and complete the left half. Follow the instructions from*.

*ON CAM BOX SIDE, bind off 4 sts. after Rows 392 (EVEN ROWS = SHOULDER SHAPING), 393 (ODD ROWS = NECK SHAPING), 394, 395, 396; 2 sts. after Row 397; 4 sts. after Row 398; 2 sts. after Row 399; 5 sts. after Row 400; 2 sts. after Row 401; 5 sts. after Row 402; 2 sts. after Row 403; 5 sts. after Row 404.

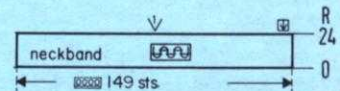
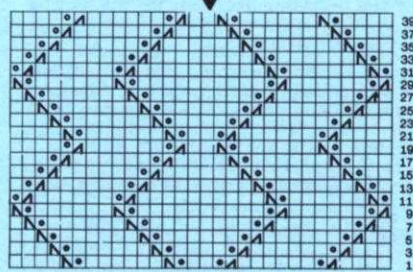
ON CAM BOX SIDE, bind off 4 sts. after Rows 316, 317, 318, 319; 2 sts. after Rows 320, 321, 322, 323, 324, 325; 1 st. after Rows 326, 327, 328, 329, 330, 331, 332, 333, then knit to Row 392, bind off the center 17 sts., put the needles on the left side into holding position and complete the right half first.

ON EACH SIDE, increase 1 st. after Rows 244, 256, 268, 280, 292, 304, then knit to Row 316.

ON EACH SIDE, decrease 1 st. after Rows 44, 56, 68, 80, 92, 104, 116, 128, 140, 152, 160, 168, 176, 184, 192, 198, 204, 210, 216, 222, 228, then knit to Row 244. (For the Front Section knit to Row 244).

ROWS 0 to 44: Knit even.

Cast on 177 sts. and work stockinette st.



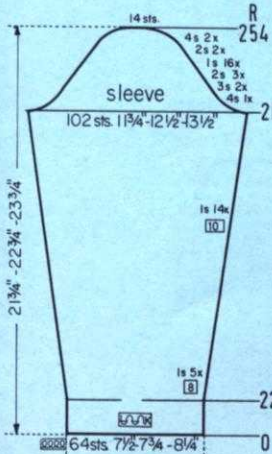
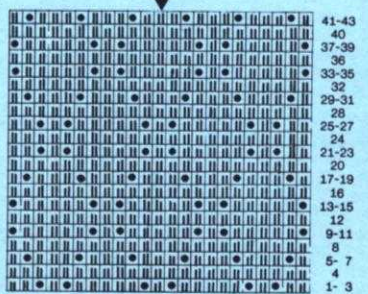
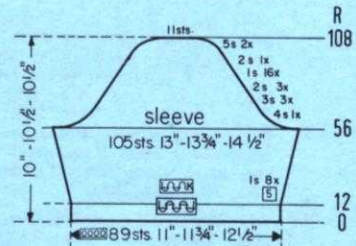
Cast on 149 sts. and work 24 rows K1, P1, Ribbing, then bind off all sts.

ON CAM BOX SIDE, bind off 4 sts. after Rows 56, 57; 3 sts. after Rows 58, 59, 60, 61, 62, 63; 2 sts. after Rows 64, 65, 66, 67, 68, 69. ON EACH SIDE, hang the 1st st. onto the 2nd st. after Rows 70, 72, 74, 76, 78, 80, 82, 84, 86, 88, 90, 92, 94, 96, 98, 100. ON CAM BOX SIDE, bind off 2 sts. after Rows 102, 103; 5 sts. after Rows 104, 105, 106, 107; 11 sts. after Row 108.

ON EACH SIDE, increase 1 st. after Rows 12, 17, 22, 27, 32, 37, 42, 47, then knit to Row 56.

ROWS 0 to 12: Knit even, then change to stockinette st.

Cast on 89 sts. and work K1, P1, Ribbing.

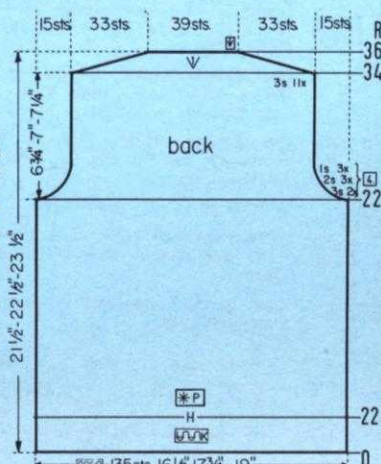


ON CAM BOX SIDE, bind off 4 sts. after Rows 202, 203; 3 sts. after Rows 204, 205, 206, 207; 2 sts. after Rows 208, 209, 210, 211, 212, 213. ON EACH SIDE, hang the 1st st. onto the 2nd st. after Rows 214, 216, 218, 220, 222, 224, 226, 228, 230, 232, 234, 236, 238, 240, 242, 244. ON CAM BOX SIDE, bind off 2 sts. after Rows 246, 247, 248, 249; 4 sts. after Rows 250, 251, 252, 253; 14 sts. after Row 254.

ON EACH SIDE, increase 1 st. after Rows 22, 30, 38, 46, 54, 62, 72, 82, 92, 102, 112, 122, 132, 142, 152, 162, 172, 182, 192, then knit to Row 202.

ROWS 0 to 22: Knit even.

Cast on 64 sts. and work stockinette st.



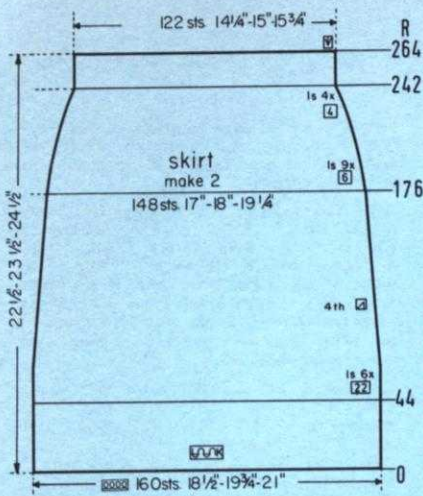
ON CAM BOX SIDE, bind off 3 sts. after Rows 346, 347, 348, 349, 350, 351, 352, 353, 354, 355, 356, 357, 358, 359, 360, 361, 362, 363, 364, 365, 366, 367, then knit to Row 368 and bind off the remaining 39 sts.

ON CAM BOX SIDE, bind off 3 sts. after Rows 226, 227, 230, 231; 2 sts. after Rows 234, 235, 238, 239, 242, 243; 1 st. after Rows 246, 247, 250, 251, 254, 255, then knit to Row 346.

ROWS 23 to 226: Knit even. (For the Front Section knit to ROW 226).

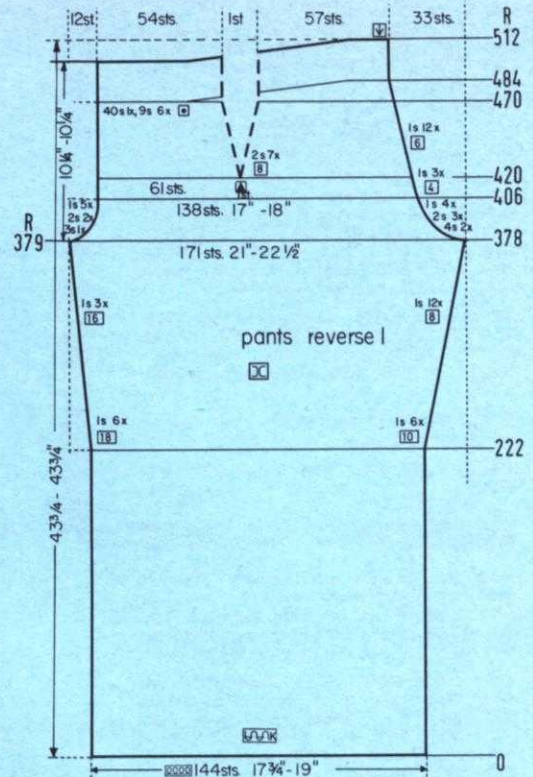
ROWS 0 to 22: Knit even, then form the hem.

Cast on 135 sts. and work stockinette st.



DK 8245
Continued from page 15

ON EACH SIDE, decrease 1 st. after Rows 44, 66, 88, 110, 132, 154, 176, 182, 188, 194, 200, 206, 212, 218, 224, 230, 234, 238, 242, then knit to Row 264 and bind off the remaining 122 sts. Work the second skirt section the same.
ROWS 0 to 44: Knit even.
Cast on 160 sts. and work stockinette st.



DK8244

SIZE:	8 (Bust 31"-32")	12 (Bust 33"-34")
YARN:	Crocus Crepe	Amore
50 gr. BALLS:		
Pants:	10 color 1	9 color 1
Pullover:	5 color 1 4 color 2	5 color 1 3 color 2
TENSION:	5 to 7	7 to 9
GAUGE:	2"	
Stock:	16 sts. 23 rows	15 sts. 23 rows
Pattern:	15 sts. 31 rows	14 sts. 31 row



The instructions are the same for both sizes. PATTERN: Pants and Edges: Stockinette Stitch. Pullover: Holding Position Design according to the Line Drawing, using Wheel No. 3. The knit side is the right side. All shapings of 1 st. are Full-fashion for the Pants and on the outer edge for the Pullover. Begin the DART by hanging the sts. together as marked on the Diagram, then move the sts. together to fill the empty needles. The following decreases for the dart lie directly above. To form the hem, hang the cast-on sts. back onto the machine behind the latches, then knit the following row with 1 to 2 tension settings higher.

FINISHING: Block all sections. PANTS: Sew the inner leg seams together. Join the sections at center back and front. Turn under 19 rows on leg edges and 12 rows on upper edge and hem in place. Insert an elastic band into the upper hem. PULLOVER: Join front and back section at sides and shoulders, leaving the left shoulder 3" open. Sew the sleeves together and set in. Work 2 rows of single crochet around the neckline and shoulder opening, working 5 buttonholes into the front shoulder while crocheting the 2nd row. Work 1 row of single crochet over the buttonhole row and 1 row of reverse single crochet around the neckline. Sew buttons in place.

Bring the needles on the left side into working position, knit 1 row in PATTERN to the left side, turn the Row Counter back to 350 and complete the left half. Follow the instructions from*.

*ON CAM BOX SIDE, bind off 2 sts. after Row 350 (EVEN ROWS = SHOULDER SHAPING); 3 sts. after Row 351 (ODD ROWS = NECK SHAPING); 2 sts. after Row 352; 3 sts. after Rows 353, 354, 355, 356; 2 sts. after Row 357; 3 sts. after Row 358; 2 sts. after Row 359; 3 sts. after Row 360; 2 sts. after Row 361; 3 sts. after Rows 362, 364, 366, 368.

ON CAM BOX SIDE, bind off 3 sts. after Rows 338, 339, 342, 343; 2 sts. after Rows 346, 347, 350, 351; 1 st. after Rows 354, 355, 358, 359, 362, 363, 366, 367, then knit to Row 350, bind off the center 13 sts., put the needles on the left side into holding position and complete the right half first. (For the Front Section knit to ROW 326).

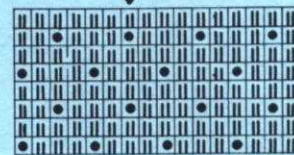
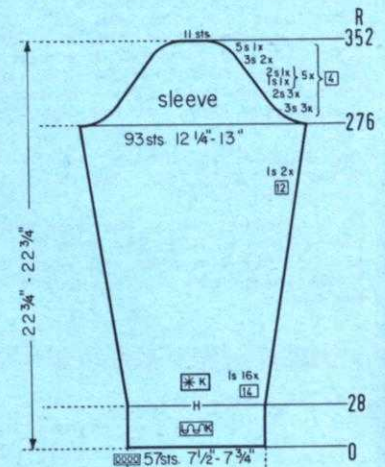
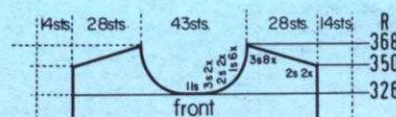
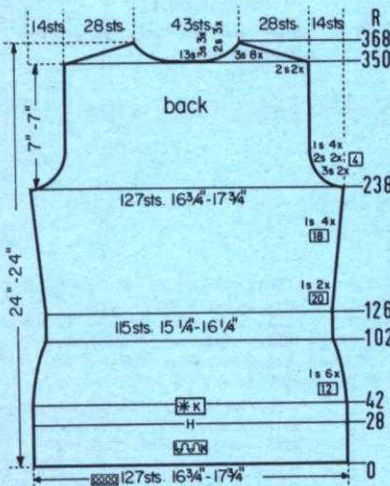
ON EACH SIDE, increase 1 st. after Rows 126, 146, 166, 184, 202, 220, then knit to Row 238.

ON EACH SIDE, decrease 1 st. after Rows 42, 54, 66, 78, 90, 102, then knit to Row 126.

ROWS 29 to 42: Knit even.

ROWS 0 to 28: Knit even, then form the hem and begin the Holding Position Design.

Cast on 127 sts. with color 1 and work stockinette st.



23-24 — Color 2
19-22 — Color 1
17-18 — Color 2
13-16 — Color 1
11-12 — Color 2
7-10 — Color 1
5- 6 — Color 2
1- 4 — Color 1

Bring the needles on the left side into working position, knit 1 row in PATTERN to the left side, turn the Row Counter back to 326 and complete the left half. Follow the instructions from*.

*ON CAM BOX SIDE, bind off 3 sts. after Rows 327, 329; 2 sts. after Rows 331, 333; 1 st. after Rows 335, 337, 339, 341, 343, 345. For SHOULDER bind off 2 sts. after Rows 350, 352; 3 sts. after Rows 354, 356, 358, 360, 362, 364, 366, 368.

Work the front section the same as the back section to ROW 326, then bind off the center 11 sts., put the needles on the left side into holding position and complete the right half first.

MK5446

Work the second section with reverse shapings, casting on from right to left. (Cam Box will be on the LEFT side at Row 0).

Decrease 2 sts. for the DART after Rows in (). ON CAM BOX SIDE, bind off 4 sts. after Row 378 (EVEN ROWS = CENTER BACK); 3 sts. after Row 379 (ODD ROWS = CENTER FRONT); 4 sts. after Row 380; 2 sts. after Rows 381, 382, 383, 384; 1 st. after Row 385; 2 sts. after Row 386; 1 st. after Rows 387, 388, 389, 390, 391, 392, 393, 394, 396, 400, 404, 408, 414, 420, (420), 426, (428), 432, (436), 438, 444, (444), 450, (452), 456, (460), 462, 468, (468). Knit to Row 470, work Short Rows and decrease 1 more st. ON CAM BOX SIDE after Row in (). ON OPPOSITE SIDE of CAM BOX put into holding position 40 needles after Row 470; 9 needles after Rows 472, 474, (474), 476, 478, 480, 482. After Row 484 bring all needles back into working position, then knit to Row 512 and bind off the remaining 112 sts.

ON OPPOSITE SIDE of CAM BOX increase 1 st. after Rows in (). ON CAM BOX SIDE, increase 1 st. after Rows 222, (222), 232, (240), 242, 252, (258), 262, 272, (276), 282, 290, (294), 298, 306, (312), 314, 322, 330, (330), 338, 346, (346), 354, 362, (362), 370, then knit to Row 378.

ROWS 0 to 222: Knit even.

Cast on 144 sts. and work stockinette st.

ON CAM BOX SIDE, bind off 3 sts. after Rows 276, 277, 280, 281, 284, 285; 2 sts. after Rows 288, 289, 292, 293, 296, 297; 1 st. after Rows 300, 301; 2 sts. after Rows 304, 305; 1 st. after Rows 308, 309; 2 sts. after Rows 312, 313; 1 st. after Rows 316, 317; 2 sts. after Rows 320, 321; 1 st. after Rows 324, 325; 2 sts. after Rows 328, 329; 1 st. after Rows 332, 333; 2 sts. after Rows 336, 337; 3 sts. after Rows 340, 341, 344, 345; 5 sts. after Rows 348, 349; 11 sts. after Row 352.

ON EACH SIDE, increase 1 st. after Rows 28, 42, 56, 70, 84, 98, 112, 126, 140, 154, 168, 182, 196, 210, 224, 238, 252, 264, then knit to Row 276.

ROWS 0 to 28: Knit even, then form the hem and begin the Holding Position Design.

Cast on 57 sts. with color 1 and work stockinette st.

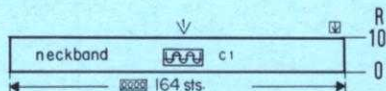
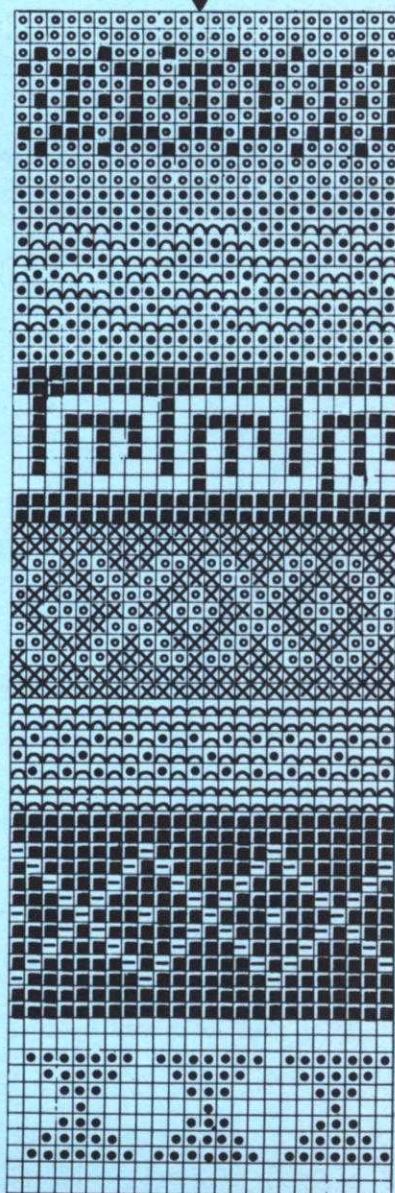
SIZE:	6 (Chest 25"-26")	8 (Chest 27"-28")	12 (Chest 29"-30")
YARN:	Allegro Dralon	Allegro Dralon	Flamingo Dralon
50 gr. BALLS:	ALL SIZES: 7 balls of yarn, each a different color of your choice.		
TENSION:	6 to 8	7 to 9	8 to 10
GAUGE:	2" 15 sts. 19 rows	14 sts. 18 rows	13 sts. 17 rows

The instructions are the same for all sizes. PATTERN: Norwegian Design according to the Line Drawing, or use JAC 40 and Pattern Nos. 31a and 72a. In the instructions, each row in the Norwegian Design is counted as 1 row, but several movements of the Cam Box are needed to complete 1 row. EDGES: K1, P1, Ribbing. Make all shapings of 1 st. on the outer edges.

FINISHING: Block the sections. Join front and back section at sides and shoulders. Join the short ends of the armhole bands and the short ends of the neckband, then sew the bands in place.



CHOOSE YOUR OWN COLORS



Cast on 164 sts. with color 1 and work 10 rows K1, P1, Ribbing, then bind off all sts.

Bring the needles on the left side into working position, knit 1 row in PATTERN to the left side, turn the Row Counter back to 140 and complete the left half. Follow the instructions from*.

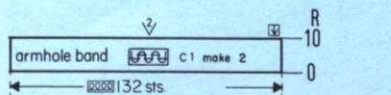
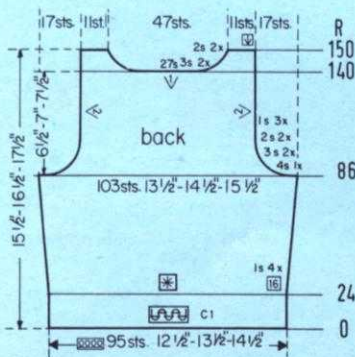
*ON CAM BOX SIDE, bind off 3 sts. after Rows 141, 143; 2 sts. after Rows 145, 147. After Row 150 bind off the 11 SHOULDER sts.

ON CAM BOX SIDE, bind off 4 sts. after Rows 86, 87; 3 sts. after Rows 88, 89, 90, 91; 2 sts. after Rows 92, 93, 94, 95; 1 st. after Rows 96, 97, 98, 99, 100, 101, then knit to Row 140, bind off the center 27 sts., put the needles on the left side into holding position and complete the right half first. (For the Front Section knit to ROW 112). You may work the left shaping at the same time by using separate balls of yarn for each side.

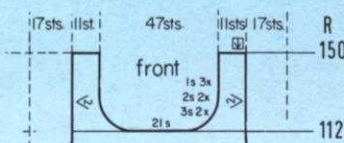
ON EACH SIDE, increase 1 st. after Rows 24, 40, 56, 72, then knit to Row 86.

ROWS 0 to 24: Knit even, then change to stockinette st. and work the Norwegian Design.

Cast on 95 sts. with color 1 and work K1, P1, Ribbing.



Cast on 132 sts. with color 1 and work 10 rows K1, P1, Ribbing, then bind off all sts.



Bring the needles on the left side into working position, knit 1 row in PATTERN to the left side, turn the Row Counter back to 112 and complete the left half. Follow the instructions from*.

*ON CAM BOX SIDE, bind off 3 sts. after Rows 113, 115; 2 sts. after Rows 117, 119; 1 st. after Rows 121, 123, 125. After Row 150 bind off the 11 SHOULDER sts.

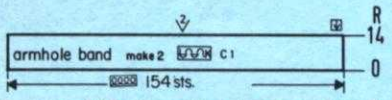
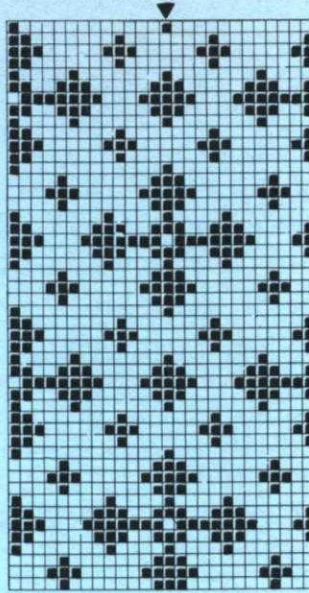
Work the front section the same as the back section to ROW 112, then bind off the center 21 sts., put the needles on the left side into holding position and complete the right half first.

DK8248

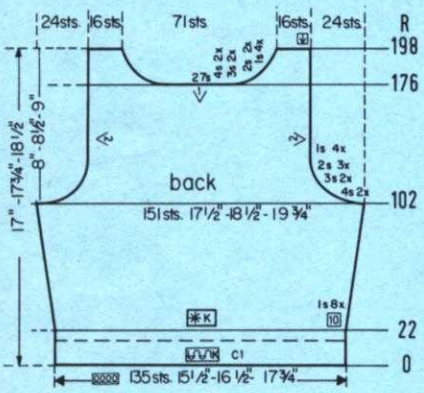
SIZE:	10 (Bust 32"-33")	12 (Bust 34"-35")	16 (Bust 37"-38")
YARN:	Subita Crepe 2 x 3	Beatrice Crepe	Crocus Crepe
50 gr. BALLS:	8 color 1 3 color 2	10 color 1 3 color 2	13 color 1 4 color 2
TENSION:	4 to 6	5 to 7	7 to 9
GAUGE:	2" 17 sts. 23 rows	16 sts. 22 rows	15 sts. 21 rows

The instructions are the same for all sizes. PATTERN: Skirt and Edges: Stockinette Stitch. Vest: Norwegian Design according to the Line Drawing, or use JAC 40 and Pattern No. 477. In the instructions each row in the Norwegian Design is counted as 1 row, but several movements of the Cam Box are needed to complete 1 row. DECREASES: Hang the 3rd st. onto the 2nd st., then move the end sts. inward to fill the empty needle. Make the increases on the vest on the outer edges.

FINISHING: Block all sections. SKIRT: Weave the sections together, 1 st. in on each edge. Turn under 2" on the lower edge and 11 rows on the upper edge and hem in place. Insert an elastic band into the upper hem. VEST: Join the back and front sections at sides and shoulders, easing in the fullness at bustline of the front sections. Turn under 8 rows on the lower edge and hem in place. Join the short ends of the armhole bands and join the neckband sections at center back. Sew 1 edge of the buttonhole band to inside and 1 edge to the outside of the right front edge. Sew the button band to the left front edge, the armhole bands to the armhole edges and the neckband to the neckline in the same manner. Finish the buttonholes, sew on buttons.



Cast on 154 sts. with color 1 and work 14 rows stockinette st., then bind off all sts.



Bring the needles on the left side into working position, knit 1 row in PATTERN to the left side, turn the Row Counter back to 176 and complete the left half. Follow the instructions from*.

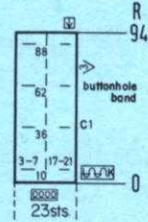
*ON CAM BOX SIDE, bind off 4 sts. after Rows 177, 179; 3 sts. after Rows 181, 183; 2 sts. after Rows 185, 187; 1 st. after Rows 189, 191, 193, 195. After Row 198 bind off the 16 SHOULDER sts.

ON CAM BOX SIDE, bind off 4 sts. after Rows 102, 103, 104, 105; 3 sts. after Rows 106, 107, 108, 109; 2 sts. after Rows 110, 111, 112, 113, 114, 115; 1 st. after Rows 116, 117, 118, 119, 120, 121, 122, 123, then knit to Row 176, bind off the center 27 sts., put the needles on the left side into holding position and complete the right half first.

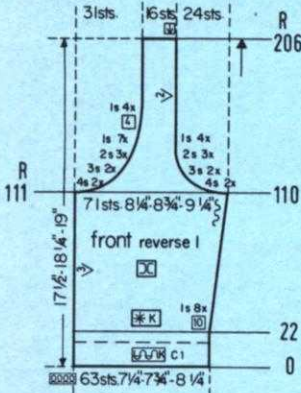
ON EACH SIDE, increase 1 st. after Rows 22, 32, 42, 52, 62, 72, 82, 92, then knit to Row 102.

ROWS 0 to 22: Knit even, then begin the Norwegian Design.

Cast on 135 sts. with color 1 and work stockinette st.



Cast on 23 sts. with color 1 and work stockinette st. Make buttonholes after Rows 10, 36, 62, 88, over the 3rd-7th and 17th-21st sts. counting from the left side. After Row 94 bind off all sts. Work the button band the same, but omit the buttonholes.



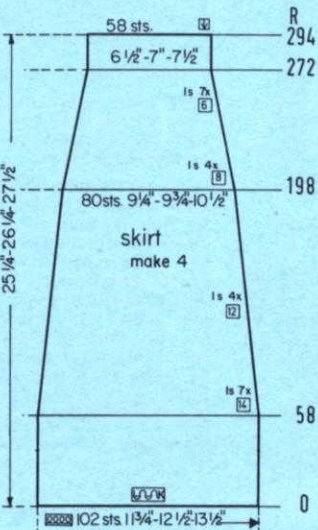
Work the second front section with reverse shapings, casting on from right to left. (Cam Box will be on the LEFT side at Row 0).

ON CAM BOX SIDE, bind off 4 sts. after Rows 110 (EVEN ROWS = ARM-HOLE SHAPING), 111 (ODD ROWS = NECK SHAPING), 112, 113; 3 sts. after Rows 114, 115, 116, 117; 2 sts. after Rows 118, 119, 120, 121, 122, 123; 1 st. after Rows 124, 125, 126, 127, 128, 129, 130, 131, 133, 135, 137, 139, 143, 147, 151. After Row 206 bind off the 16 SHOULDER sts.

ON CAM BOX SIDE, increase 1 st. after Rows 22, 32, 42, 52, 62, 72, 82, 92, then knit to Row 110.

ROWS 0 to 22: Knit even, then begin the Norwegian Design.

Cast on 63 sts. with color 1 and work stockinette st.

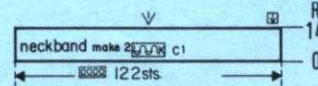


Work 3 more sections the same.

ON EACH SIDE, decrease 1 st. after Rows 58, 72, 86, 100, 114, 128, 142, 156, 168, 180, 192, 204, 212, 220, 228, 236, 242, 248, 254, 260, 266, 272, then knit to Row 294 and bind off the remaining 58 sts.

ROWS 0 to 58: Knit even.

Cast on 102 sts. with color 1 and work stockinette st.



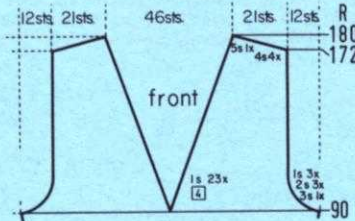
Cast on 122 sts. with color 1 and work 14 rows stockinette st., then bind off all sts.

DPS243

SIZE:	8 (Bust 31"-32")	12 (Bust 34"-35")
YARN:	Mohana	Mohana
50 gr. BALLS:	3 color 1 1 color 2 1 color 3	4 color 1 1 color 2 1 color 3
TENSION:	7 to 9	8 to 10
GAUGE:	13 sts. 19 rows	12 sts. 18 rows

The instructions are the same for both sizes. PATTERN: Stockinette Stitch, worn on the knit side. EDGES: K1, P1, Ribbing with color stripes as marked in the Diagram. INCREASES: Move the 2 end sts. 1 needle outward, then place the 3rd st. from the row below onto the empty needle.

FINISHING: Block all sections. Join front and back section at sides and shoulders. Sew the sleeves together and set in. Turn under 10 rows on sleeve edges and hem. Join the neckband sections, then sew the band to neckline.



Move the Cam Box to the left side, turn the Row Counter back to 90 and complete the left half. Follow the instructions from*.

*Decrease 1 st. ON NECK SIDE after Rows in (). ON CAM BOX SIDE, bind off 3 sts. after Row 90; (90), 2 sts. after Rows 92, 94, (94), 96; 1 st. after Rows 98, (98), 100, 102, (102). The Armhole Shaping is now completed. Continue to decrease 1 st. ON NECK SIDE after Rows 106, 110, 114, 118, 122, 126, 130, 134, 138, 142, 146, 150, 154, 158, 162, 166, 170, then again after Rows in (). For SHOULDER bind off 4 sts. after Rows 172, 174, (174), 176, 178; (178), 5 sts. after Row 180.

Work the front section the same as the back section to ROW 90, then put 56 needles on the left side into holding position and complete the right half first.

Move the Cam Box to the left side, turn the Row Counter back to 172 and complete the left half. Follow the instructions from*.

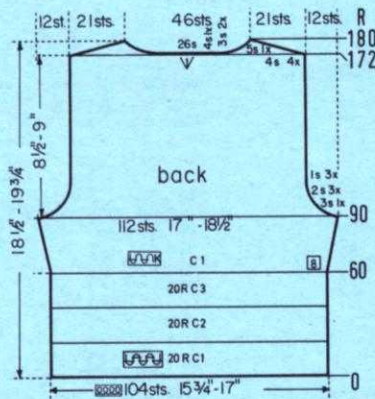
*ON CAM BOX SIDE, bind off 4 sts. after Rows 172 (EVEN ROWS = SHOULDER SHAPING), 173 (ODD ROWS = NECK SHAPING), 174; 3 sts. after Row 175; 4 sts. after Row 176; 3 sts. after Row 177; 4 sts. after Row 178; 5 sts. after Row 180.

ON CAM BOX SIDE, bind off 3 sts. after Rows 90, 91; 2 sts. after Rows 92, 93, 94, 95, 96, 97; 1 st. after Rows 98, 99, 100, 101, 102, 103, then knit to Row 172, bind off the center 26 sts., put the needles on the left side into holding position and complete the right half first.

ON EACH SIDE, increase 1 st. after Rows 60, 68, 76, 84, then knit to Row 90. (For the Front Section knit to ROW 90).

ROWS 0 to 60: Knit even, then change to stockinette st. and continue with color 1.

Cast on 104 sts. with color 1, work K1, P1, Ribbing and the color stripes as marked in the Diagram.

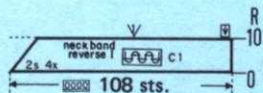


ON CAM BOX SIDE, bind off 2 sts. after Rows 62, 63, 64, 65; 3 sts. after Rows 66, 67, 68, 69, 70, 71, 72, 73, 74, 75; 4 sts. after Rows 76, 77, 78, 79, 80, 81, 82, 83, 84, 85, 86, 87; 31 sts. after Row 88.

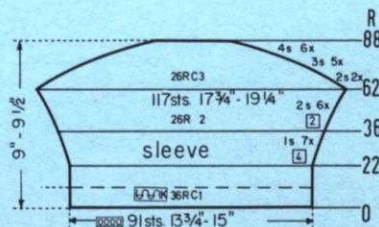
ON EACH SIDE, increase 1 st. after Rows 22, 26, 30, 34, (change color after Row 36) 38, 42, 46, 50, 52, 54, 56, 58, 60, then knit to Row 62. (Change color after Row 62).

ROWS 0 to 22: Knit even.

Cast on 91 sts. with color 1, work stockinette st. and the color stripes as marked in the Diagram.



Cast on 108 sts. with color 1 and work K1, P1, Ribbing. Decrease 2 sts. (Full-fashion, see Practical Knitting Hint in the July/August, 1973 News Letter) after Rows 2, 4, 6, 8. After Row 10 bind off all sts. Work the second neckband section with reverse shaping, casting on from right to left. (Cam Box will be on the left side at Row 0).

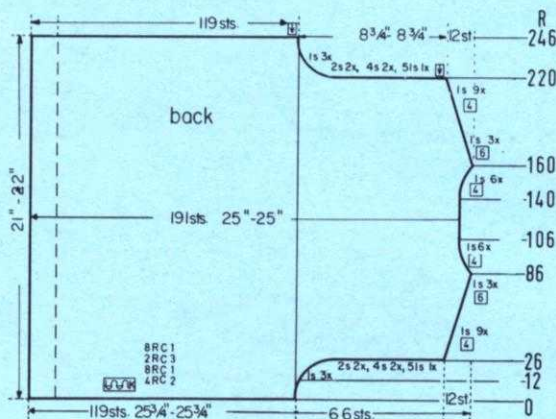


HP3690

SIZE:	40 (Chest 39"-40")	42 (Chest 41"-42")
YARN:	Amore	Regia
50 gr. BALLS:	7 color 1 3 color 2 1 color 3	6 color 1 2 color 2 1 color 3
TENSION:	7 to 9	6 to 8
GAUGE:	2" 15 sts. 23 rows	15 sts. 22 rows

The instructions are the same for both sizes. PATTERN: Stockinette stitch with repeated color stripes as marked in the Diagrams. The shirt is knitted sideways on the machine. POKETS, COLLAR and CUFFS are knitted with color 1 in the conventional way.

FINISHING: Block all sections. Join back and front sections at sides and shoulders. Sew the sleeves together and set in. Join the short ends of the cuffs, then turn under half and sew to wrong side. Separate the 2 layers of the cuff and fold up, having the hem seam line at the center of the cuff on the wrong side, then press in place. Turn under 18 rows on the front edges and 12 sts. on the lower edge and hem in place. Turn under 14 rows on the upper edges of the pockets and hem, then sew the pockets in place and sew a button to each pocket as shown in the picture. Fold the collar in half and sew the open edges together. Sew 1 edge of the collar to inside and 1 edge to the outside of neckline, leaving about 1" free on each front edge. Finish the buttonholes, sew on buttons.



ON CAM BOX SIDE, bind off 51 sts. after Row 220; 4 sts. after Rows 222, 224; 2 sts. after Rows 226, 228; 1 st. after Rows 230, 232, 234, then knit to Row 146 and bind off the remaining 119 sts.

ON CAM BOX SIDE, bind off 1 st. after Rows 166, 172, 178, 184, 188, 192, 196, 200, 204, 208, 212, 216, then knit to Row 220.

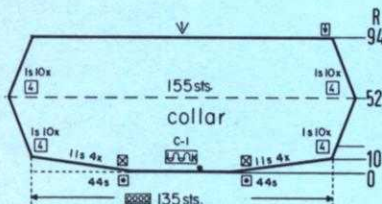
ON CAM BOX SIDE, cast on 1 st. after Rows 140, 144, 148, 152, 156, 160, then knit to Row 166.

ON CAM BOX SIDE, bind off 1 st. after Rows 86, 90, 94, 98, 102, 106, then knit to Row 140.

ON CAM BOX SIDE, cast on 1 st. after Rows 30, 34, 38, 42, 46, 50, 54, 58, 62, 66, 72, 78, then knit to Row 86.

ON CAM BOX SIDE, cast on 1 st. after Rows 12, 14, 16; 2 sts. after Rows 18, 20; 4 sts. after Rows 22, 24; 51 sts. after Row 26.

Cast on 119 sts. with color 2, work stockinette st. and the repeated color stripes as marked in the Diagram. (Start the cast-on with the 1st needle on the left side.)



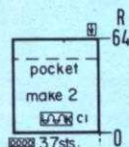
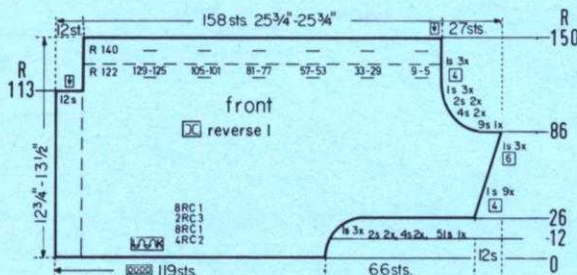
Cast on 135 sts. with color 1, work stockinette st. and short rows. ON OPPOSITE SIDE of CAM BOX put into holding position 44 needles after Rows 0, 1. ON OPPOSITE SIDE of CAM BOX bring back into working position 11 needles after Rows 2, 3, 4, 5, 6, 7, 8, 9, then knit to Row 14. ON EACH SIDE, increase 1 st. after Rows 14, 18, 22, 26, 30, 34, 38, 42, 46, 50. ON EACH SIDE, decrease 1 st. after Rows 54, 58, 62, 66, 70, 74, 78, 82, 86, 90, then knit to Row 94 and bind off all 135 sts.

Work the left front section with reverse shapings, casting on from right to left. (Cam Box will be on the LEFT side at Row 0). (Start with the 1st needle on the right side). Make buttonholes after Rows 122 and 140 over the 5th-9th, 29th-33rd, 53rd-57th, 77th-81st, 101st-105th, 125th-129th sts. counting from the left side.

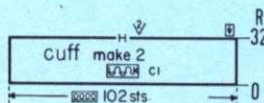
ON CAM BOX SIDE, cast on 1 st. after Rows 30, 34, 38, 42, 46, 50, 54, 58, 62, 66, 72, 78, then knit to Row 86. ON CAM BOX SIDE, bind off 9 sts. after Row 86; 4 sts. after Rows 88, 90; 2 sts. after Rows 92, 94; 1 st. after Rows 96, 98, 100, 102, 106, 110. After Row 113 bind off 12 sts. ON CAM BOX SIDE, then knit to Row 150 and bind off the remaining 158 sts.

ON CAM BOX SIDE, cast on 1 st. after Rows 12, 14, 16; 2 sts. after Rows 18, 20; 4 sts. after Rows 22, 24; 51 sts. after Row 26.

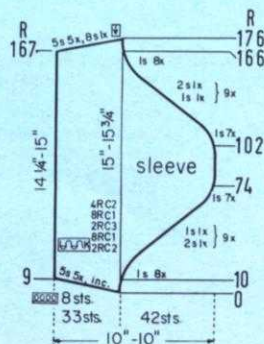
Do NOT make buttonholes in the right front section. Cast on 119 sts. with color 2, work stockinette st. and the repeated color stripes as marked in the Diagram. (Start the cast-on with the 1st needle on the left side.)



Cast on 37 sts. with color 1 and work 66 rows stockinette st., then bind off all sts.



Cast on 102 sts. with color 1 and work 32 rows stockinette st., then bind off all sts.

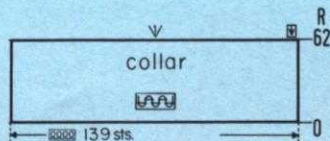
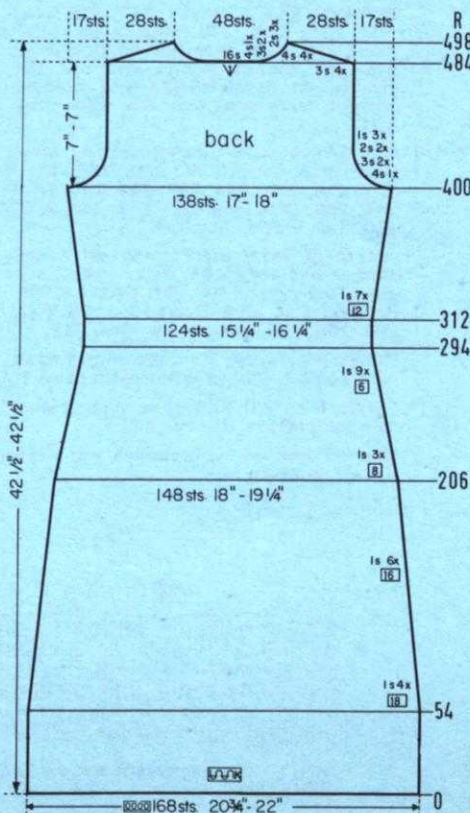
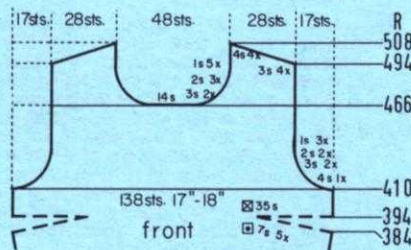
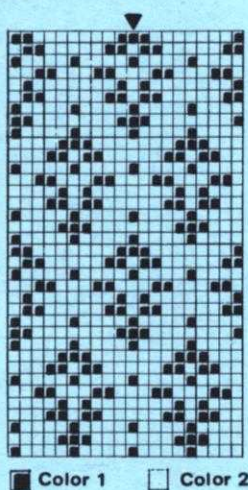


DK8249

SIZE:	10 (Bust 32"-33")	12 (Bust 34"-35")
YARN:	Crocus Crepe	Amore
50 gr. BALLS:	15 color 1 2 color 2	13 color 1 1 color 2
TENSION:	5 to 7	7 to 9
GAUGE:	2" 16 sts. 23 rows	15 sts. 23 rows

The instructions are the same for both sizes. PATTERN: Stockinette Stitch and a Norwegian Design on the upper part of the sleeves. Follow the Line Drawing, or use JAC 40 and Pattern No. 55a. In the instructions, each row in the Norwegian Design is counted as 1 row, but several movements of the Cam Box are needed to complete 1 row. DECREASES: Hang the 3rd st. onto the 2nd st., then move the end sts. inward to fill the empty needle. INCREASES: Move the 2 end sts. 1 needle outward, then place the 3rd st. from the row below onto the empty needles. Make the shapings of 1 st. on the upper part of the sleeve (Design part) on the outer edges.

FINISHING: Block all sections. Join front and back sections at sides and shoulders. Sew the sleeves together and set in. Turn under 2" at lower edge and hem to wrong side. Join the short ends of the collar, then sew 1 edge of the collar to inside and 1 edge to outside of the neckline.



ON CAM BOX SIDE bind off 5 sts. after Rows 167, 169, 171, 173, 175; 8 sts. after Row 176.

ON CAM BOX SIDE, bind off 1 st. after Rows 102, 104, 106, 108, 110, 112, 114, 116; 2 sts. after Row 118; 1 st. after Row 120; 2 sts. after Row 122; 1 st. after Row 124; 2 sts. after Row 126; 1 st. after Row 128; 2 sts. after Row 130; 1 st. after Row 132; 2 sts. after Row 134; 1 st. after Row 136; 2 sts. after Row 138; 1 st. after Row 140; 2 sts. after Row 142; 1 st. after Row 144; 2 sts. after Row 146; 1 st. after Row 148; 2 sts. after Row 150; 1 st. after Rows 152, 154, 156, 158, 160, 162, 164, 166, then knit to Row 167.

ON CAM BOX SIDE, cast on 1 st. after Rows 10, 12, 14, 16, 18, 20, 22, 24; 2 sts. after Row 26; 1 st. after Row 28; 2 sts. after Row 30; 1 st. after Row 32; 2 sts. after Row 34; 1 st. after Row 36; 2 sts. after Row 38; 1 st. after Row 40; 2 sts. after Row 42; 1 st. after Row 44; 2 sts. after Row 46; 1 st. after Row 48; 2 sts. after Row 50; 1 st. after Row 52; 2 sts. after Row 54; 1 st. after Row 56; 2 sts. after Row 58, 1 st. after Rows 60, 62, 64, 66, 68, 70, 72, 74, then knit to Row 102.

ON CAM BOX SIDE, cast on 5 sts. after Rows 1, 3, 5, 7, 9, then knit to Row 10.

Cast on 8 sts. with color 2, work stockinette st. and the repeated color stripes as marked in the Diagram.

Move the Cam Box to the left side, turn the Row Counter back to 466 and complete the left half. Follow the instructions from*.

*ON CAM BOX SIDE, bind off 3 sts. after Rows 467, 469; 2 sts. after Rows 471, 473, 475; 1 st. after Rows 477, 479, 481, 483, 485. For SHOULDER bind off 3 sts. after Rows 494, 496, 498, 500; 4 sts. after Rows 502, 504, 506, 508.

ON CAM BOX SIDE, bind off 4 sts. after Rows 410, 411; 3 sts. after Rows 412, 413, 414, 415; 2 sts. after Rows 416, 417, 418, 419, 420, 421; 1 st. after Rows 422, 423, 424, 425, 426, 427, then knit to Row 466, bind off the center 14 sts. put the needles on the left side into holding position and complete the right half first.

Work the front section the same as the back section to ROW 384, then work Short Rows for the DARTS: ON OPPOSITE SIDE of CAM BOX put into holding position 7 needles after Rows 384, 385, 386, 387, 388, 389, 390, 391, 392, 393. ON OPPOSITE SIDE of CAM BOX bring all needles back into working position after Rows 394, 395, then knit to Row 410.

Move the Cam Box to the left side, turn the Row Counter back to 484 and complete the left half. Follow the instructions from*.

*ON CAM BOX SIDE, bind off 3 sts. after Row 484 (EVEN ROWS = SHOULDER SHAPING); 4 sts. after Row 485 (ODD ROWS = NECK SHAPING); 3 sts. after Rows 486, 487, 488, 489, 490; 2 sts. after Row 491; 4 sts. after Row 492; 2 sts. after Row 493; 4 sts. after Row 494; 2 sts. after Row 495; 4 sts. after Rows 496, 498.

ON CAM BOX SIDE, bind off 4 sts. after Rows 400, 401; 3 sts. after Rows 402, 403, 404, 405; 2 sts. after Rows 406, 407, 408, 409; 1 st. after Rows 410, 411, 412, 413, 414, 415, then knit to Row 484, bind off the center 16 sts., put the needles on the left side into holding position and complete the right half first.

ON EACH SIDE, increase 1 st. after Rows 312, 324, 336, 348, 360, 372, 384, then knit to Row 400. (For the Front Section knit to ROW 384 and make the increase on each side).

ON EACH SIDE, decrease 1 st. after Rows 54, 72, 90, 108, 126, 142, 158, 174, 190, 206, 222, 230, 238, 246, 252, 258, 264, 270, 276, 282, 288, 294, then knit to Row 312.

ROWS 0 to 54: Knit even.

Cast on 168 sts. and work stockinette st.

Cast on 139 sts. and work 62 rows K1, P1, Ribbing, then bind off all sts.

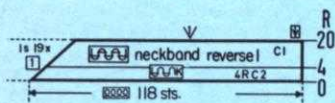
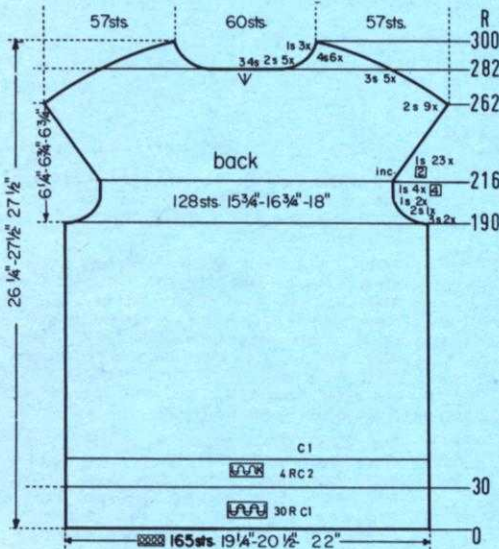
Continued on page 22 - 23

HP3706

SIZE:	36 (Chest 36"-37")	38 (Chest 38"-39")	42 (Chest 41"-42")
YARN:	Beatrice Crepe	Allegro Dralon	Alanda
50 gr. BALLS:	11 color 1 1 color 2	11 color 1 1 color 2	16 color 1 1 color 1
TENSION:	5 to 7	6 to 8	7 to 9
GAUGE:	2"		
Stock:	16 sts. 22 rows	15 sts. 21 rows	14 sts. 21 rows
Pattern:	14 sts. 36 rows	13 sts. 38 rows	12 sts. 38 rows

The instructions are the same for all sizes. **PATTERN:** Front and Back section: Stockinette Stitch with a color stripe as marked in the Diagram. Sleeves: Holding Position Design according to the Line Drawing with a color stripe knitted in stockinette st. on the upper edge. **EDGES:** K1, P1, Ribbing. Make all shapings of 1 st. on the outer edge.

FINISHING: Block the sections. Join front and back section at sides and shoulders. Sew the sleeves together and set in. Join the neckband sections, then sew the band to neckline.



Cast on 118 sts. with color 2 and work stockinette st. Decrease 1 st. on the left side (right side for the second section) after Rows 1, 2, 3, 4, but do not knit after the last decrease. Transfer every other st. to the ribber, change to color 1 and work K1, P1, Ribbing. Continue to decrease 1 st. on the left side after Rows 5, 6, 7, 8, 9, 10, 11, 12, 13, 14, 15, 16, 17, 18, 19, then knit to Row 20 and bind off all sts. Work the second section with reverse shaping, casting on from right to left. (Cam Box will be on the LEFT side at Row 0).

Move the Cam Box to the left side, turn the Row Counter back to 282 and complete the left half. Follow the instructions from*.

*ON CAM BOX SIDE, bind off 3 sts. after Row 282 (EVEN ROWS = SHOULDER SHAPING); 2 sts. after Row 283 (ODD ROWS = NECK SHAPING); 3 sts. after Row 284; 2 sts. after Row 285; 3 sts. after Row 286; 2 sts. after Row 287; 3 sts. after Row 288; 2 sts. after Row 289; 4 sts. after Row 290; 2 sts. after Row 291; 4 sts. after Row 292; 1 st. after Row 293; 4 sts. after Row 294; 1 st. after Row 295; 4 sts. after Row 296; 1 st. after Row 297; 4 sts. after Rows 298, 300.

ON CAM BOX SIDE, bind off 2 sts. after Rows 262, 263, 264, 265, 266, 267, 268, 269, 270, 271, 272, 273, 274, 275, 276, 277, 278, 279; 3 sts. after Rows 280, 281, then knit to Row 282, bind off the center 34 sts., put the needles on the left side into holding position and complete the right half first.

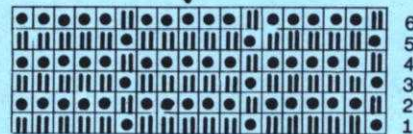
ON EACH SIDE, increase 1 st. after Rows 216, 218, 220, 222, 224, 226, 228, 230, 232, 234, 236, 238, 240, 242, 244, 246, 248, 250, 252, 254, 256, 258, 260, then knit to Row 262.

ON CAM BOX SIDE, bind off 3 sts. after Rows 190, 191, 192, 193; 2 sts. after Rows 194, 195. ON EACH SIDE, decrease 1 st. after Rows 196, 198, 200, 204, 208, 212, then knit to Row 216.

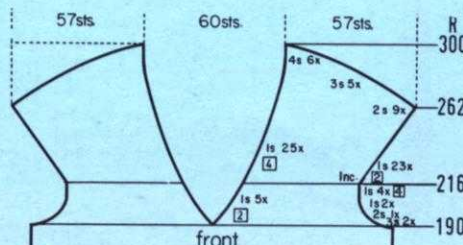
ROWS 31 to 190: Knit the next 4 rows with color 2, then continue with color 1.

ROWS 0 to 30: Knit even, then change to stockinette st. and color 2.

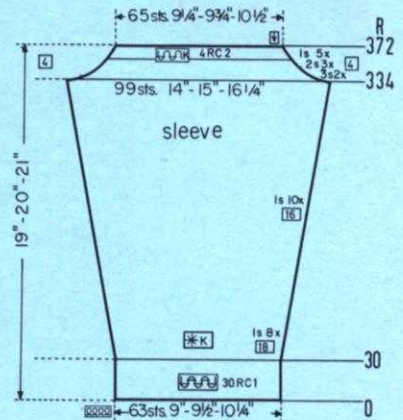
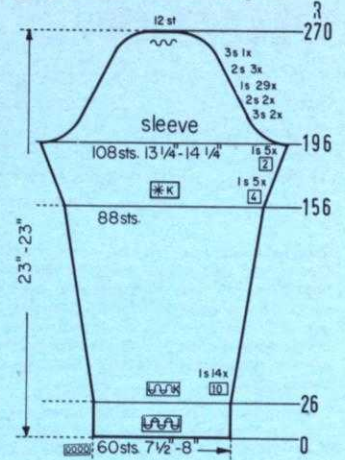
Cast on 156 sts. with color 1 and work K1, P1, Ribbing.



KNITTING owners use Needle Shifter every row.



DK 8249 Continued from page 21



Move the Cam Box to the left side, turn the Row Counter back to 190 and complete the left half. Follow the instructions from*.

Continue to decrease 1 st. ON NECK SIDE after Rows in (). ON CAM BOX SIDE, (SHOULDER) bind off 2 sts. after Rows 262, 264, (264), 266, 268, (268), 270, 272, (272), 274, 276, (276), 278; 3 sts. after Rows 280, (280), 282, 284, (284), 286, 288; (288), 4 sts. after Rows 290, 292, (292), 294, 296, (296), 298, 300.

Continue to decrease 1 st. ON NECK SIDE after Rows in (). ON CAM BOX SIDE, (ARMHOLE) increase 1 st. after Rows 216, (216), 218, 220, (220), 222, 224, (224), 226, 228, (228), 230, 232, (232), 234, 236, (236), 238, 240, (240), 242, 244, (244), 246, 248, (248), 250, 252, (252), 254, 256, (256), 258, 260, (260), then knit to Row 262.

*ON OPPOSITE SIDE OF CAM BOX (NECK SIDE), decrease 1 st. after Rows in (). ON CAM BOX SIDE, bind off 3 sts. after Rows 190, (190), 192; (192), 2 sts. after Row 194, (194), 1 st. after Rows 196, (196), 198, (198), 200, (200), 204, (204), 208, (208), 212, (212), then knit to Row 216.

Work the front section the same as the back section to ROW 190, then put 78 needles on the left side into holding position and complete the right half first.

ON CAM BOX SIDE, bind off 3 sts. after Rows 196, 197, 198, 199; 2 sts. after Rows 200, 201, 202, 203. ON EACH SIDE, decrease 1 st. after Rows 204, 206, 208, 210, 212, 214, 216, 218, 220, 222, 224, 226, 228, 230, 232, 234, 236, 238, 240, 242, 244, 246, 248, 250, 252, 254, 256, 258, 260. ON CAM BOX SIDE, bind off 2 sts. after Rows 262, 263, 264, 265, 266, 267; 3 sts. after Rows 268, 269; 12 sts. after Row 270.

ON CAM BOX SIDE, increase 1 st. after Rows 26, 36, 46, 56, 66, 76, 86, 96, 106, 116, 126, 136, 146, 156, but do not knit after the last increase. Begin the Norwegian Design. Continue to increase 1 st. ON EACH SIDE after Rows 166, 170, 174, 178, 182, 186, 188, 190, 192, 194, then knit to Row 196.

ROWS 0 to 26: Knit even, then change to stockinette st.

Cast on 60 sts. and work K1, P1, Ribbing.

KK5444

SIZE:	6 (Chest 24"-25")	8 (Chest 26"-27")	10 (Chest 28"-29")
YARN:	Crocus Crepe	Allegro Dralon	Allegro Dralon
50 gr. BALLS:	6 color 1 1 color 2	5 color 1 1 color 2	6 color 1 1 color 2
TENSION:	6 to 8	6 to 8	7 to 9
GAUGE:	2" 16 sts. 21 rows	15 sts. 21 rows	14 sts. 20 rows

The instructions are the same for all sizes. PATTERN: Stockinette Stitch with color stripes as marked in the Diagram. EDGES: K1, P1, Ribbing. Sleeve Increases: Move the 2 end sts. 1 needle outward, then place the 3rd st. from the row below onto the empty needle. Make all other shapings of 1 st. on the outer edges. The vertical color stripes are woven onto the pullover.

FINISHING: Block all sections. Join front and back section at sides and shoulders. Sew the sleeves together and set in. Weave the bands in place, covering the side seams. (See picture). Join the short ends of the neckband, then sew the band to neckline.

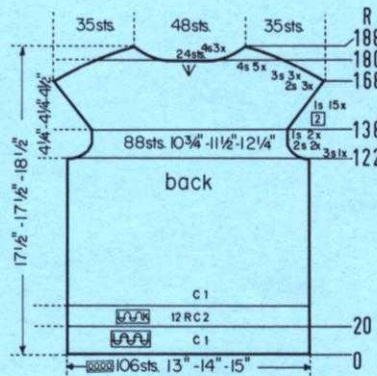


ON CAM BOX SIDE, bind off 3 sts. after Rows 334, 335, 338, 339; 2 sts. after Rows 342, 343, 346, 347, 350, 351. ON EACH SIDE, decrease 1 st. after Rows 354, 358, 362, 366, 370, but do not knit after the last decrease. Change to stockinette st. and with color 2 knit to Row 374, then bind off all 65 sts.

ON EACH SIDE, increase 1 st. after Rows 30, 48, 66, 84, 102, 120, 138, 156, 174, 190, 206, 222, 238, 254, 270, 286, 302, 318, then knit to Row 334.

ROWS 0 to 30: Knit even, then transfer the ribber sts. to the main machine and work the Holding Position Design.

Cast on 63 sts. with color 1 and work K1, P1, Ribbing.



Move the Cam Box to the left side, turn the Row Counter back to 180 and complete the left half. Follow the instructions from*.

*ON CAM BOX SIDE, bind off 4 sts. after Rows 180 (EVEN ROWS = SHOULDER SHAPING), 181 (ODD ROWS = NECK SHAPING), 182, 183, 184, 185, 186, 188.

ON CAM BOX SIDE, bind off 2 sts. after Rows 168, 169, 170, 171, 172, 173; 3 sts. after Rows 174, 175, 176, 177, 178, 179, then knit to Row 180, bind off the center 24 sts., put the needles on the left side into holding position and complete the right half first.

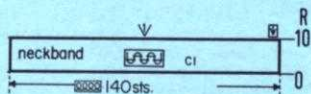
ON EACH SIDE, increase 1 st. after Rows 138, 140, 142, 144, 146, 148, 150, 152, 154, 156, 158, 160, 162, 164, 166, then knit to Row 168.

ON CAM BOX SIDE, bind off 3 sts. after Rows 122, 123; 2 sts. after Rows 124, 125, 126, 127; 1 st. after Rows 128, 129, 130, 131, then knit to Row 138. (For the Front Section knit to Row 138).

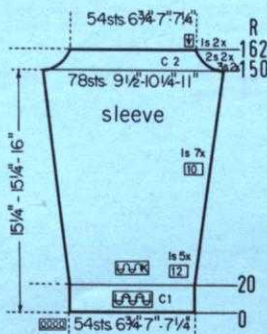
ROWS 21 to 122: Change to color 1 after Row 32, then knit even to Row 122.

ROWS 0 to 22: Knit even, then change to stockinette st. and color 2.

Cast on 106 sts. with color 1 and work K1, P1, Ribbing.



Cast on 140 sts. with color 1 and work 10 rows K1, P1, Ribbing, then bind off all sts.

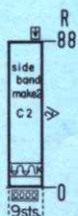


ON CAM BOX SIDE, bind off 3 sts. after Rows 150, 151, 152, 153; 2 sts. after Rows 154, 155, 156, 157; 1 st. after Rows 158, 159, 160, 161. After Row 162 bind off all sts.

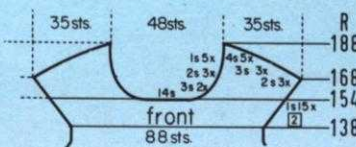
ON EACH SIDE, increase 1 st. after Rows 20, 32, 44, 56, 68, 80, 90, 100, 110, 120, 130, 140, then knit to Row 150 and change to color 2.

ROWS 0 to 20: Knit even, then change to stockinette st.

Cast on 54 sts. with color 1 and work K1, P1, Ribbing.



Cast on 9 sts. with color 2 and work 88 rows stockinette st., then bind off all sts.



Move the Cam Box to the left side, turn the Row Counter back to 154 and complete the left half. Follow the instructions from*.

ON CAM BOX SIDE, bind off 2 sts. after Row 168 (EVEN ROWS = SHOULDER SHAPING); 1 st. after Row 169 (ODD ROWS = NECK SHAPING); 2 sts. after Row 170; 1 st. after Row 171; 2 sts. after Row 172; 1 st. after Row 173; 3 sts. after Rows 174, 176, 178; 4 sts. after Rows 180, 182, 184, 186, 188.

*ON CAM BOX SIDE, continue to increase 1 st. after Row 154, then again after Rows in (). ON NECK SIDE, bind off 3 sts. after Rows 155, (156), 157; (158), 2 sts. after Rows 159, (160), 161, (162), 163; (164), 1 st. after Rows 165, (166), 167, then knit to Row 168.

ON EACH SIDE, increase 1 st. after Rows 138, 140, 142, 144, 146, 148, 150, 152, then knit to Row 154, bind off the center 14 sts., put the needles on the left side into holding position and complete the right half first.

Work the front section the same as the back section to ROW 138.

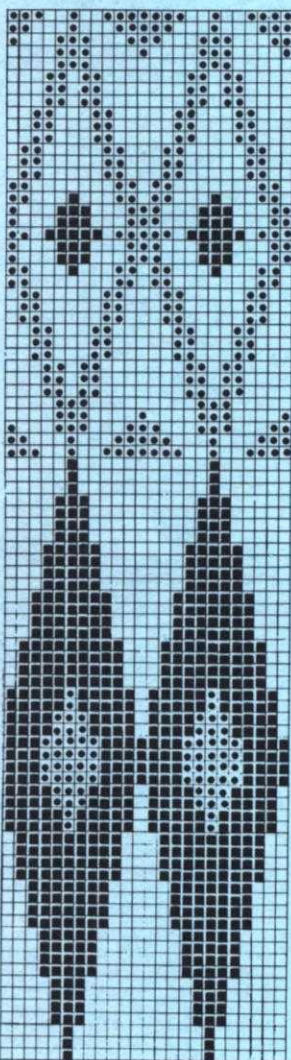
DP 8200

SIZE:	10 (Bust 32"-33")	14 (Bust 35"-36")	16 (Bust 37"-38")
YARN:	Crocus Crepe	Allegro Dralon	Allegro Dralon
50 gr. BALLS:	7 color 1 4 color 2 3 color 3	6 color 1 3 color 2 3 color 3	7 color 1 4 color 2 3 color 3
TENSION:	6 to 8	6 to 8	7 to 9
GAUGE:	2" 16 sts. 21 rows	15 sts. 21 rows	14 sts. 20 rows



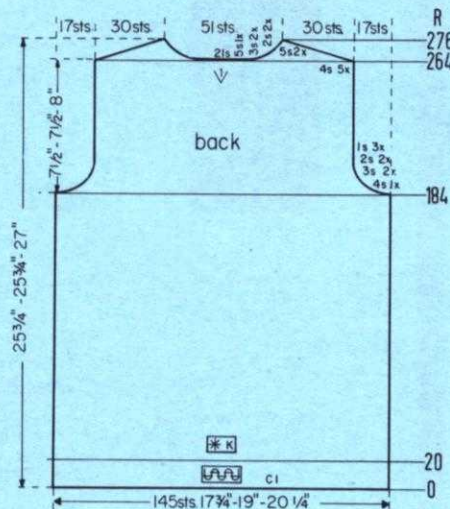
The instructions are the same for all sizes. PATTERN: Norwegian Design according to the Line Drawing, or use JAC 40 and Pattern No. 471, a 2 card pattern. In the instructions, each row in the Norwegian Design is counted as 1 row, but several movements of the Cam Box are needed to complete 1 row. EDGES: K1, P1, Ribbing. To increase, place the end st. from the row below onto the next empty needle. To decrease, hang the 1st st. onto the 2nd st.

FINISHING: Block all sections. Join front and back section at sides and shoulders. Sew the sleeves together and set in. Join the short ends of the collar, then sew 1 edge of the collar to inside and 1 edge to outside of neckline.



Jac 40

- U = Color 3
- E = Color 2
- A = Color 1



Bring the needles on the left side into working position, knit 1 row in PATTERN to the left side, turn the Row Counter back to 264 and complete the left half. Follow the instructions from*.

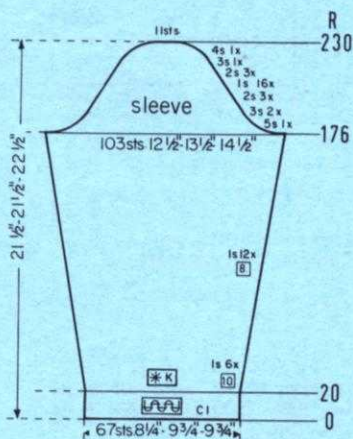
*ON CAM BOX SIDE, bind off 4 sts. after Row 264 (EVEN ROWS = SHOULDER SHAPING); 5 sts. after Row 265 (ODD ROWS = NECK SHAPING); 4 sts. after Row 266; 3 sts. after Row 267; 4 sts. after Row 268; 3 sts. after Row 269; 4 sts. after Row 270; 2 sts. after Row 271; 4 sts. after Row 272; 2 sts. after Row 273; 5 sts. after Rows 274, 276.

ON CAM BOX SIDE, bind off 4 sts. after Rows 184, 185; 3 sts. after Rows 186, 187, 188, 189; 2 sts. after Rows 190, 191, 192, 193; 1 st. after Rows 194, 195, 196, 197, 198, 199, then knit to Row 264, bind off the center 21 sts., put the needles on the left side into holding position and complete the right half first. (For the Front Section knit to ROW 238).

ROWS 21 to 184: Knit even.

ROWS 0 to 20: Knit even, then transfer the ribber sts. to the main machine and work the Norwegian Design.

Cast on 145 sts. with color 1 and work K1, P1, Ribbing.

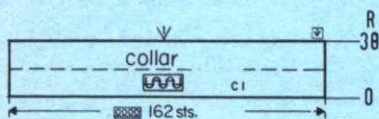


ON CAM BOX SIDE, bind off 5 sts. after Rows 176, 177; 3 sts. after Rows 178, 179, 180, 181; 2 sts. after Rows 182, 183, 184, 185, 186, 187. ON EACH SIDE, decrease 1 st. after Rows 188, 190, 192, 194, 196, 198, 200, 202, 204, 206, 208, 210, 212, 214, 216, 218. ON CAM BOX SIDE, bind off 2 sts. after Rows 220, 221, 222, 223, 224, 225; 3 sts. after Rows 226, 227; 4 sts. after Rows 228, 229; 11 sts. after Row 230.

ON EACH SIDE, increase 1 st. after Rows 20, 30, 40, 50, 60, 70, 80, 88, 96, 104, 112, 120, 128, 136, 144, 152, 160, 168, then knit to Row 176.

ROWS 0 to 20: Knit even, then transfer the ribber sts. to the main machine and work the Norwegian Design.

Cast on 67 sts. with color 1 and work K1, P1, Ribbing.

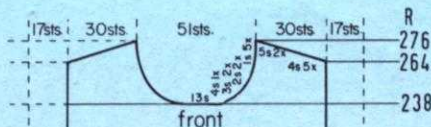


Cast on 162 sts. with color 1 and work 38 rows K1, P1, Ribbing, then bind off all sts.

Bring the needles on the left side into working position, knit 1 row in PATTERN to the left side, turn the Row Counter back to 238 and complete the left half. Follow the instructions from*.

*ON CAM BOX SIDE, bind off 4 sts. after Row 239; 3 sts. after Rows 241, 243; 2 sts. after Rows 245, 247; 1 st. after Rows 249, 251, 253, 255, 257. For SHOULDER bind off 4 sts. after Rows 264, 266, 268, 270, 272; 5 sts. after Rows 274, 276.

Work the front section the same as the back section to ROW 238, then bind off the center 13 sts., put the needles on the left side into holding position and complete the right half first.



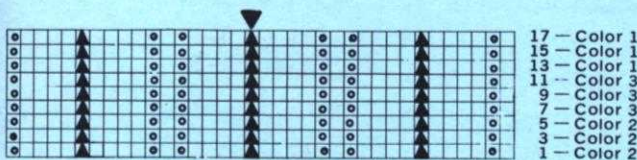
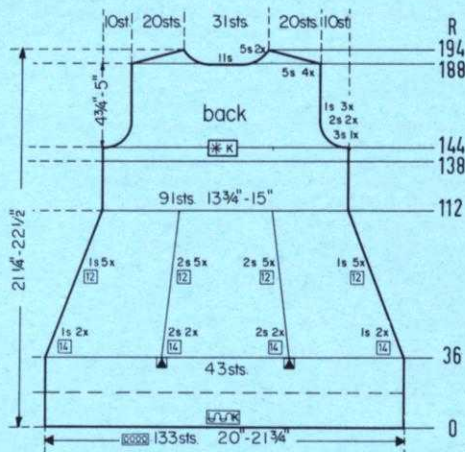
MK5448

SIZE:	6 (Chest 25"-26")	10 (Chest 28"-29")
YARN:	Mohana	Mohana
50 gr. BALLS:	5 color 1 1 color 2 1 color 3	6 color 1 1 color 2 1 color 3
TENSION:	7 to 9	8 to 10
GAUGE:	2" 13 sts. 18 rows	12 sts. 17 rows



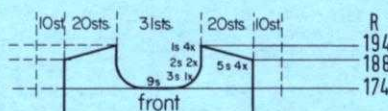
The instructions are the same for all sizes. PATTERN: Stockinette Stitch and a 3 color Eyelet Design on the Yoke. Follow the Line Drawing. The Sleeves are knitted from the Cap down. DECREASES: Hang the 3rd st. onto the 2nd st., then move the end sts. inward to fill the empty needles. Begin the Darts by hanging the sts. together as marked in the Diagram, then move the sts. together to fill the empty needles. The following decreases for the darts lie directly above.

FINISHING: Block all sections. Join front and back section at sides and shoulders, leaving about 2" open on each shoulder. Turn under a small amount around the opening and hem in place. Gather the upper edge of the sleeves, then sew the sleeves together and set in. Work 1 row of single crochet and 1 row of back-ward single crochet around the neckline. Make 3 loops and sew 3 buttons to each shoulder. Turn under 2" on the lower edge and hem.



Line Drawing

Work the Eyelet Design as follows: * Hang the 6th and 8th st. onto the 7th st., then move the 2nd-5th sts. 1 needle over to the left side and the 9th-12th sts. 1 needle over to the right side. Transfer the sts. like this all the way across. Bring the empty needles back into working position and knit 2 rows. Repeat from * for pattern and change the colors after every 6th row.



Bring the needles on the left side into working position, knit 1 row in PATTERN to the left side, turn the Row Counter back to 188 and complete the left half. Follow the instructions from*.

*ON CAM BOX SIDE, bind off 5 sts. after Rows 188 (EVEN ROWS = SHOULDER SHAPING), 189 (ODD ROWS = NECK SHAPING), 190, 191, 192, 194.

ON CAM BOX SIDE, bind off 3 sts. after Rows 144, 145; 2 sts. after Rows 146, 147, 148, 149; 1 st. after Rows 150, 151, 152, 153, 154, 155, then knit to Row 188, bind off the center 11 sts., put the needles on the left side into holding position and complete the right half first. (For the Front Section knit to ROW 174).

ROWS 139 to 144: Knit even.

Decrease 2 sts. for EACH DART and 1 st. ON EACH SIDE, after Rows 36, 50, 64, 76, 88, 100, 112, then knit to Row 138 and begin the Eyelet Design.

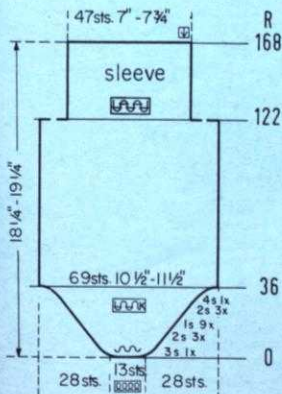
ROWS 0 to 36: Knit even.

Cast on 133 sts. with color 1 and work stockinette st.

Bring the needles on the left side into working position, knit 1 row in PATTERN to the left side, turn the Row Counter back to 174 and complete the left half. Follow the instructions from*.

*ON CAM BOX SIDE, bind off 3 sts. after Row 175; 2 sts. after Rows 177, 179; 1 st. after Rows 181, 183, 185, 187. For SHOULDER bind off 5 sts. after Rows 188, 190, 192, 194.

Work the front section the same as the back section to ROW 174, then bind off the center 9 sts., put the needles on the left side into holding position and complete the right half first.



Bring 47 needles into working position, with purl side facing you, hang 1 st. onto the first 2 needles, then begin doubling up the sts. by hanging 2 sts. onto the next needle and 1 st. onto the following needle all the way across. Push the sts. under the sinkers, remove the waste yarn. Attach the ribber and transfer every other st. to the ribber. Turn the Row Counter to 122 and work K1, P1, Ribbing to Row 168, then bind off all sts.

ON CAM BOX SIDE, cast on 3 sts. after Rows 2, 3; 2 sts. after Rows 4, 5, 6, 7, 8, 9; 1 st. after Rows 10, 11, 12, 13, 14, 15, 16, 17, 18, 19, 20, 21, 22, 23, 24, 25, 26, 27; 2 sts. after Rows 28, 29, 30, 31, 32, 33; 4 sts. after Rows 34, 35, then knit even to Row 122. Now knit several rows with contrast waste yarn, then remove the knitting from the machine.

Cast on 13 sts. with color 1 and work stockinette st.

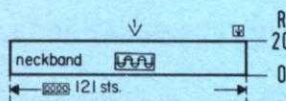
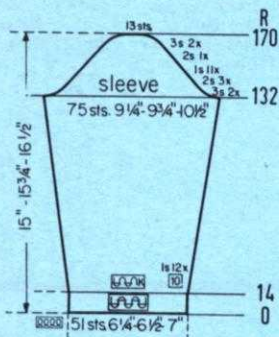
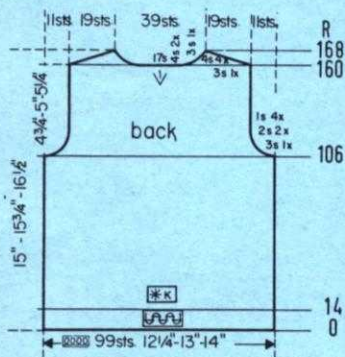
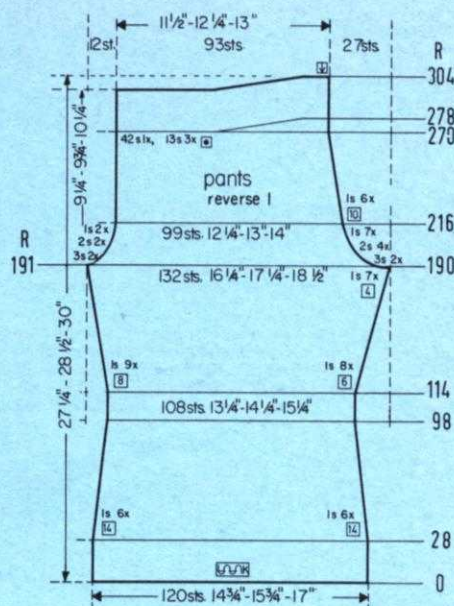
BE SURE TO NOTIFY US IMMEDIATELY OF ANY CHANGE OF ADDRESS. THE POST OFFICE WILL NOT FORWARD YOUR MAGAZINE TO YOU.

KK5447

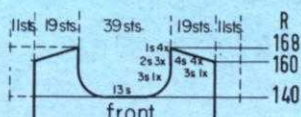
SIZE:	4 (Chest 23")	6 (Chest 24"-25")	8 (Chest 26"-27")
YARN:	Beatrice Crepe	Allegro Dralon	Allegro Dralon
50 gr. BALLS:	5 color 1 2 color 2	6 color 1 2 color 2	7 color 1 2 color 2
TENSION:	5 to 7	6 to 8	7 to 9
GAUGE:	2" 16 sts. 22 rows	15 sts. 21 rows	14 sts. 20 rows

The instructions are the same for all sizes. **PATTERN:** Pants and Sleeves: Stockinette Stitch with color 1. Front and Back Section: Norwegian Design according to the Line Drawing. In the instructions, each row in the Norwegian Design is counted as 1 row, but several movements of the Cam Box are needed to complete 1 row. **EDGES:** K1, P1, Ribbing. **DECREASES:** Hang the 3rd st. onto the 2nd st., then move the end sts. inward to fill the empty needle. **INCREASES:** Move the 2 end sts. 1 needle outward, then place the 3rd st. from the row below onto the empty needle.

FINISHING: Block all sections. **PANTS:** Sew the leg seams together. Join the sections at center back and at center front, leaving about 7 1/2" on the front open. Work 1 row of slip-stitch crochet around the opening. Turn under 14 rows on leg edges and 13 rows on upper edge and hem in place. Insert an elastic band into the upper hem and sew the band to the front edges. Sew a zipper into the opening. **PULLOVER:** Join front and back section at sides and shoulders, leaving about 1 1/4" on one shoulder free. Turn under a small amount around the opening and hem in place. Sew the sleeves together and set in. Sew 1 edge of the neckband to inside and 1 edge to outside of the neckline. Work 4 loops and sew 4 buttons on the shoulder opening.



Cast on 121 sts. with color 1 and work 20 rows K1, P1, Ribbing, then bind off all sts.



Bring the needles on the left side into working position, knit 1 row in PATTERN to the left side, turn the Row Counter back to 160 and complete the left half. Follow the instructions from*.

*ON CAM BOX SIDE, bind off 3 sts. after Row 160 (EVEN ROWS = SHOULDER SHAPING); 4 sts. after Rows 161 (ODD ROWS = NECK SHAPING), 162, 163, 164; 3 sts. after Row 165; 4 sts. after Rows 166, 168.

ON CAM BOX SIDE, bind off 3 sts. after Rows 106, 107; 2 sts. after Rows 108, 109, 110, 111; 1 st. after Rows 112, 113, 114, 115, 116, 117, 118, 119, then knit to Row 160, bind off the center 17 sts., put the needles on the left side into holding position and complete the right half first. (For the Front Section knit to ROW 140).

ROWS 15 to 106: Knit even.

ROWS 0 to 14: Knit even, then transfer the ribber sts. to the main machine and work the Norwegian Design.

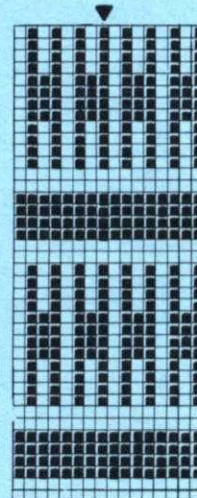
Cast on 99 sts. with color 1 and work K1, P1, Ribbing.

ON CAM BOX SIDE, bind off 3 sts. after Rows 132, 133, 134, 135; 2 sts. after Rows 136, 137, 138, 139, 140, 141. ON EACH SIDE, hang the 1st st. onto the 2nd st. after Rows 142, 144, 146, 148, 150, 152, 154, 156, 158, 160, 162. ON CAM BOX SIDE, bind off 2 sts. after Rows 164, 165; 3 sts. after Rows 166, 167, 168, 169; 13 sts. after Row 170.

ON EACH SIDE, increase 1 st. after Rows 14, 24, 34, 44, 54, 64, 74, 84, 94, 104, 114, 124, then knit to Row 132.

ROWS 0 to 14: Knit even, then change to stockinette st.

Cast on 51 sts. with color 1 and work K1, P1, Ribbing.



■ COLOR 1
□ COLOR 2

Bring the needles on the left side into working position, knit 1 row in PATTERN to the left side, turn the Row Counter back to 140 and complete the left half. Follow the instructions from*.

*ON CAM BOX SIDE, bind off 3 sts. after Row 141; 2 sts. after Rows 143, 145, 147; 1 st. after Rows 149, 151, 153, 155. For SHOULDER bind off 3 sts. after Row 160; 4 sts. after Rows 162, 164, 166, 168.

Work the front section the same as the back section to ROW 140, then bind off the center 13 sts., put the needles on the left side into holding position and complete the right half first.

Work the second section with reverse shapings, casting on from right to left. (Cam Box will be on the LEFT side at Row 0).

ON CAM BOX SIDE, bind off 3 sts. after Row 190 (EVEN ROWS = CENTER BACK), 191 (ODD ROWS = CENTER FRONT), 192, 193; 2 sts. after Rows 194, 195, 196, 197, 198; 1 st. after Row 199; 2 sts. after Row 200; 1 st. after Rows 201, 202, 204, 206, 208, 210, 212, 214, 216, 226, 236, 246, 256, 266, then knit to Row 270 and work Short Rows. ON OPPOSITE SIDE of CAM BOX put into holding position 42 needles after Row 270; 13 needles after Rows 272, 274, 276. After Row 278 bring all needles back into working position, then knit to Row 304 and bind off all 93 sts.

ON OPPOSITE SIDE of CAM BOX increase 1 st. after Rows in (). ON CAM BOX SIDE, increase 1 st. after Rows 114, (114), 120, (122), 126, (130), 132, 138, (138), 144, (146), 150, (154), 156, 162, (162), 166, 170, (170), 174, 178, (178), 182, 186, then knit to Row 190.

ON EACH SIDE, decrease 1 st. after Rows 28, 42, 56, 70, 84, 98, then knit to Row 114.

ROWS 0 to 28: Knit even.

Cast on 120 sts. and work stockinette st.

SCARF

NEEDLE SET-UP: 2 needles in working position; 2 needles in the out of work position.

Set up 13 sets of 2 needles in working position. Have the Cam Box on the right side.

TENSION 6: Put all the needles except the 2 on the right into holding position. Cast on over these 2 needles and knit 1 row to the left side. Cast on 2 more sts., knit back to the right — knit 11 rows. Cam Box on the Left side. Put 2 more needles into working position and cast on; put the last 2 needles on the right that are in work, into holding position, KNIT 8 rows.

*Cast on 2 more sts., put 2 more needles on the right into holding position, knit 8 rows. REPEAT from * across the row, always casting on 2 needles on the left and putting 2 more needles on the right into holding position (you are always working on 4 needles) until the last 4 needles — knit 10 Rows (instead of 8). Cam Box on the left side. Push the next 2 on the right into working position, knit 1 row, push the first set on the left into holding position.

*Knit 7 rows (Cam Box on the left).

Push next 2 on the right into working position, knit 1 row; push the next 2 on the left into holding position and REPEAT from * ending with 10 rows on the last 2 sets on the right. Work back to the left side in the same way.

Work back and forth until you have completed 6 rows of pattern stitch. Transfer 1 stitch of each set of 2 to the adjacent needle so that you will have every other needle in work.

Change to Tension 10, *Knit 2 rows. ON EACH SIDE change the 2 end sts. into knit stitches. REPEAT FROM * until 20 rows are completed.

Transfer the sts. back to the Pattern Set-up (2 in work, 2 out of work). Change to Tension 6 and knit 44 rows of Pattern Stitch. Transfer the needles as you did before (every other in work). Change to Tension 10 and knit 20 rows, changing the 2 end sts. on each side into knit sts. on every other row as you did before.

Transfer the sts. back to Pattern Set-up.

Change to Tension 6. Knit in pattern for 5 complete rows, then on the 6th row. bind off 2 sts. instead of putting them into holding position as you work across the row.

FRINGE: Wind yarn around a 6" Card-board and cut 1 end only. Using 3 strands of yarn, make fringe. Fold in half and knot fringe into each point and in the large hole between the points.

KG 1963

BERET AND SCARF

MATERIAL: 7 50 gr. balls KNITKING Set 70 Crepe. Scarf measures 11" x 60" without fringe. TENSION: 6.

BERET: Cast on 80 sts. over EVERY OTHER NEEDLE. Knit 20 rows, then hang hem. Knit 1 row. Transfer every other stitch to the left empty needle. NEEDLE SET UP will be: 2 needles in working position; 2 needles in the out of work position; repeated across the row.

Put all the needles into holding position EXCEPT the 2 NEAREST the Cam Box. Knit 8 rows.

Push the next set of 2 into working position. Knit 8 rows. Cam Box on the left side. Push next 2 needles on the right into working position, knit 1 row. Push the last 2 on the left into holding position — you will be working on 4 needles.

*Knit 7 rows — Cam Box on the left.

Push the next 2 needles on the right into working position, knit 1 row. Put 2 needles on the left into holding position*. REPEAT from * across the row.

Last 4 needles, knit 8 rows. Cam Box on the outside edge.

Put 2 more needles into holding position — only ones working are the 2 nearest the Cam Box. Knit 8 rows.

Push 2 needles into working position. Knit 1 row. Put 2 end needles into holding position and continue in Pattern until 5 rows are completed. Cam Box is on the right. Transfer every 2nd needle of groups of 2 to the left empty needle so that every other needle will be working. Knit 10 rows. Change to Tension 3, knit 10 rows. Leave long end and thread it into double eyed needle then take the sts. off onto yarn one at a time. Pull tight for center.

FINISHING: Weave the seam. Make Pom pom or flower and sew to top of Beret.



(Jac40 is a must)

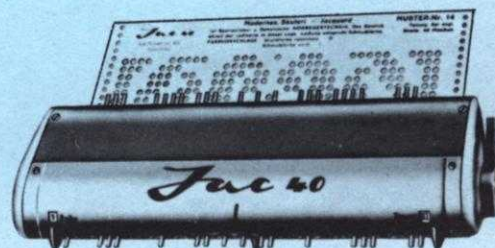
for fast easy knitting of
Jaquard and Ski-sweater
designs

Jac 40's are made for most brands of machines. When ordering be sure to specify your brand of knitter as needle spacings vary. Simple to use and an essential tool for the modern knitter, Jac 40's are \$29.50 complete with 3 cards for practicing the 3 techniques, plus complete instructions.

Order from your dealer or direct from
KNITKING

1128 Crenshaw Boulevard, Los Angeles, Calif. 90019

Shipping Cost \$1.50 — California residents add sales tax.



NEW! NEW!! NEW!!!

1. THREE COLOR YARN FEEDER

For Easy Multi-Color Knitting - Jacquard Designs, etc. Feeders are Self-Adjusting. Fits AM 3 Model KNITKING only. Price - \$22.50 plus \$1.50 Shipping costs (Calif. residents add 88 cents Sales Tax).

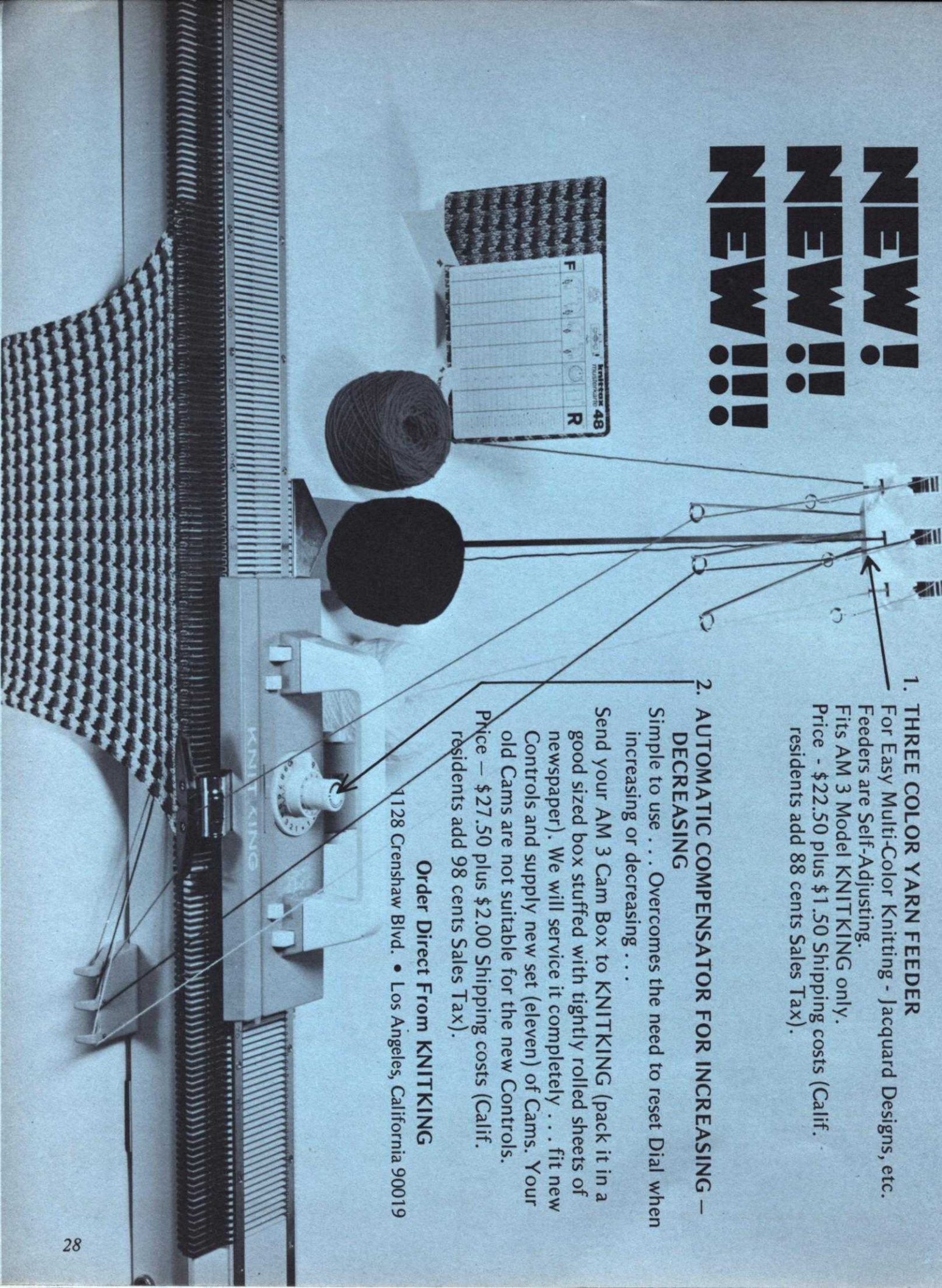
2. AUTOMATIC COMPENSATOR FOR INCREASING - DECREASING

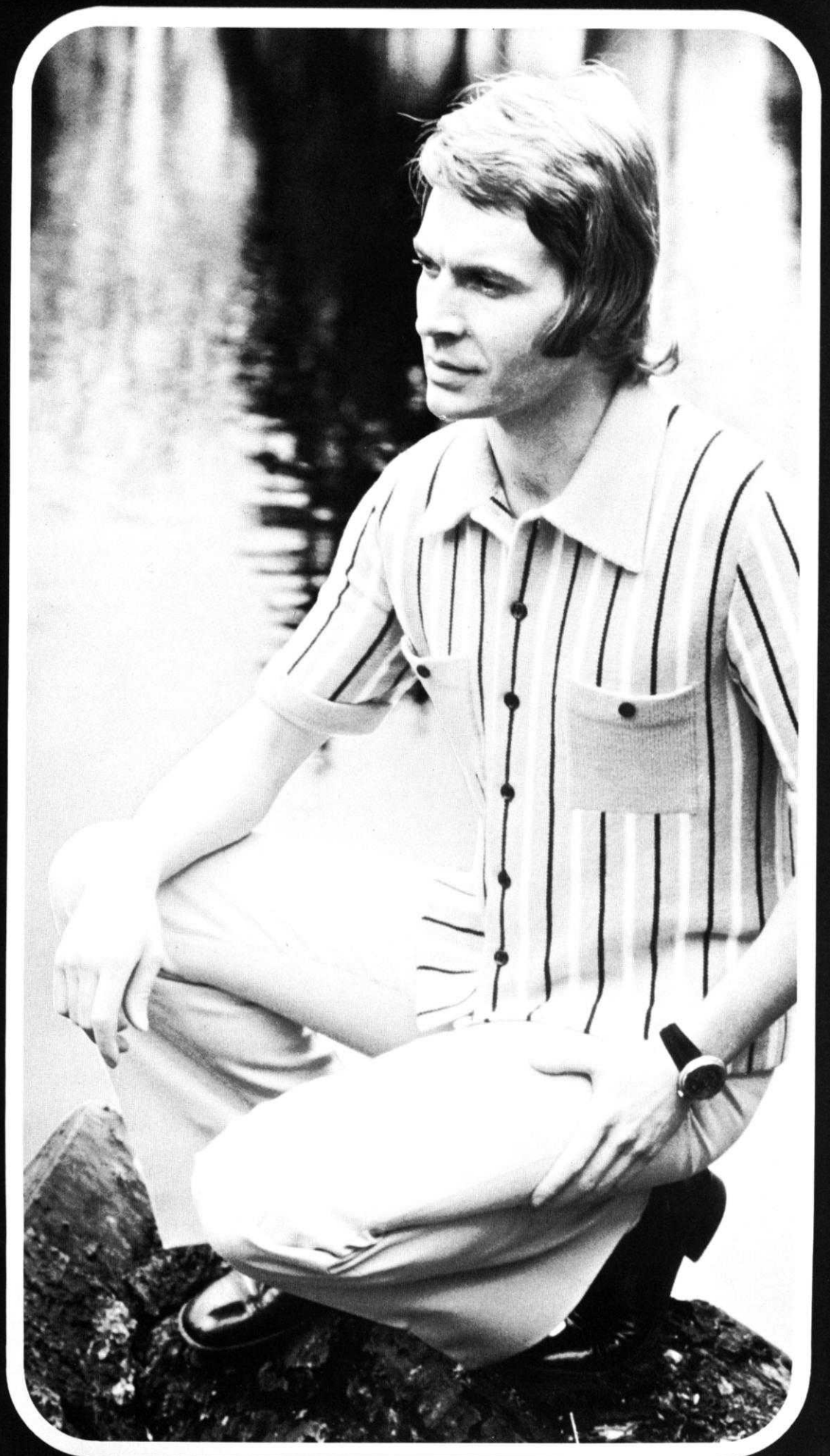
Simple to use . . . Overcomes the need to reset Dial when increasing or decreasing . . .

Send your AM 3 Cam Box to KNITKING (pack it in a good sized box stuffed with tightly rolled sheets of newspaper). We will service it completely . . . fit new Controls and supply new set (eleven) of Cams. Your old Cams are not suitable for the new Controls. Price — \$27.50 plus \$2.00 Shipping costs (Calif. residents add 98 cents Sales Tax).

Order Direct From KNITKING

1128 Crenshaw Blvd. • Los Angeles, California 90019





HP 3690 – Easy to knit vertical stripes are made by knitting side-ways on your machine. Any man will be delighted if you knit him a button down the front Shirt with stripes in three colors. Size 40 is made with Amore; Size 42 with Regia.

Warm and Wonderful

DK 8249 — Anywhere Autumn takes you, everyone will admire this lovely dress that is so easy to knit. Mostly in Stockinette stitch with a Norwegian Design on the upper portion of the sleeves. The Collar and wristbands are ribbed. Knit Size 10 with Crocus Crepe; Size 12 with Amore.





KK 5444

— A Pullover for a special boy is knitted in Stockinette Stitch with color stripes. For school or play, it's perfect . . . and you can easily keep it sparkling clean . . . it goes into your washer and dryer. Knit Size 6 with Crocus Crepe; Size 8 and 10 with Allegro Dralon.

HP 3706

— New styling for a Man's Pullover . . . the body section is Stockinette stitch . . . the sleeves a Holding Position Design . . . the bands ribbed. Use a contrast color for the small stripes that show off the shape of each section. Size 36, Beatrice Crepe; Size 38; Allegro; Size 42, Alanda.

DP 8200 — Brighten a winter scene wearing a warm Pullover knitted in a Norwegian Design. Use 3 colors of Crocus Crepe for a size 10; Allegro Dralon for Sizes 14 and 16.



KG 1963 — One of our Los Angeles teachers knitted this Hat and Scarf set in a brand new machine crochet lace Pattern Stitch that is very easy to do because there is no transferring of stitches. It is knitted with Set 70 Crepe and is quite elegant.





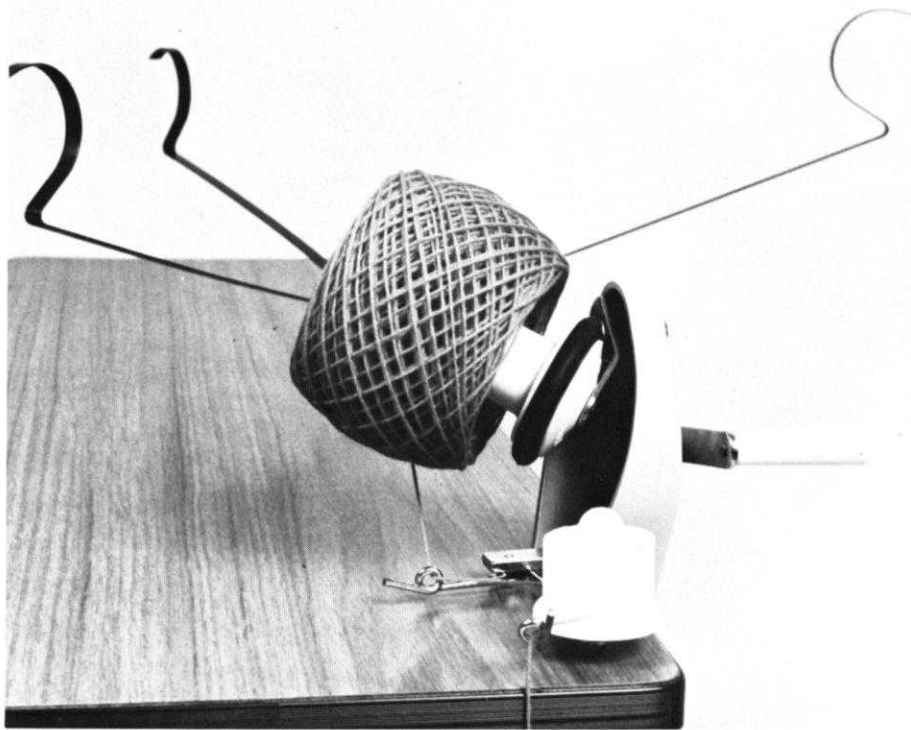
Small Fry Fashions

KK 5447 — A handsome Suit for a small boy. Knit the Pants in Stockinette stitch, the Pullover in a two-color Norwegian Design. Rib the bands. Size 4, Beatrice Crepe; Sizes 6 and 8, Allegro Dralon.

MK 5446 — Little girls love the bright Norwegian sweaters and this sleeveless Pullover will delight her. Use Ribbing for all bands. One ball each of 7 different colors will make all sizes. Use Allegro Dralon for Sizes 6 and 8; Flamingo Dralon for Size 12.



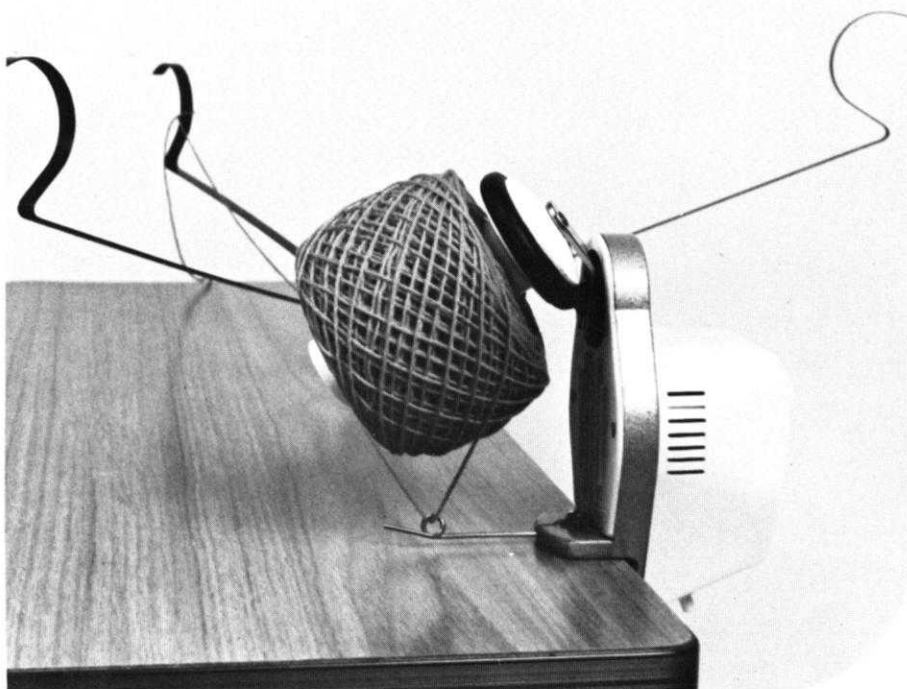
New products from KNITKING



New design Yarn Winder with 'Waxamajig' and Skein Holder. As you can see from the illustration, this clever New Winder with Nylon Helical Gears winds a perfectly symmetrical ball . . . ! If you like to wax yarn (for easier knitting) you use the 'Waxamajig'. If waxing is not necessary, you bypass it . . . The Skein Holder is self adjusting. You will not find a better Hand Winder anywhere.

Complete price: \$23.95
(California residents add Sales Tax)
Shipping charges: \$1.75

New design electric winder



Self-contained Motorized Winder (110/120 Volts) with Push Button on and off Switch . . . Special Clutch device to stop Winder if yarn bunches up or jams in the guide eye . . . Another excellent easy to use KNITKING product.

Price: Complete with Skein Holder \$44.95
(California residents add Sales Tax).
Shipping Charges: \$2.50



Knitking News

PRACTICAL KNITTING HINTS

OUR READERS WRITE

Some of our readers write to tell us problems they have in finishing their garments and we have had a few letters from readers asking for more detailed finishing instructions in KNITKING MAGAZINE.

Do you have our little book called "Practical Knitting Hints?" The small cost of \$2.95 plus 50¢ shipping will more than pay for itself by giving you answers to your finishing problems as well as an unlimited amount of important information pertaining to all phases of machine knitting.

We do not have the space for more detailed finishing instructions in KNITKING MAGAZINE. We fill up the pages with patterns for you and give general instructions for finishing at the top of each pattern. If we say "Sew side seams together" or "Sew sleeves together and set in"... we mean for you to put the seams together in the best manner possible for that particular garment and you will have to decide just exactly how you will do your seams. Our experts in our office use different methods for different garments and the method they use is the one where the seams show the least and works the best for them. There is no hard and fast rule. For instance, you may like to use Short Rows for shoulder shaping, take the stitches off onto waste yarn and then hang the back and the front shoulder stitches back onto the machine and knit 1 row, then bind them off.... or... you may prefer to bind off the shoulder stitches, and put them together by using a back stitch or a slip stitch crochet. If you own a Baby Lock sewing machine you might use the chain stitch to sew them together. Side seams and sleeve seams can be WOVEN together (we like this best because it shows the least) and is usually worked from the right side one stitch in from each edge. If you are weaving the seams on a heavy weight yarn or a boucle or a nubby yarn, you can use a finer

yarn in a similar color for the weaving. It does not have to be the exact color because when you weave the seams, the yarn will not show. If you do not like to weave seams, you can use a slip stitch crochet or a backstitch and make sure that you check from time to time to be certain you are staying in a nice straight line. Incidentally - do you remember to mark the sections of your garment when you are knitting them? This is SUCH an easy way to match up your seams... it only takes a minute to tie a small piece of contrast yarn on each side of your garment sections... Mark the hipline of a skirt or a dress... the waistline of a dress or a jacket or shell... Mark the center of your neckline when shaping the neck and mark the center of the top of cap on sleeves. These markers help you to line up the seams for blocking and for putting the seams together and for centering a collar or neckband. Of course you should mark the center of the neckband or collar as well.

You should always block each section of your knitting before attempting to put them together - with the exception of some of the newer synthetics (see page 25 and 26 of Practical Knitting Hints Book) which may only need a gentle pressing with a warm iron (not hot) after the garment is completed.

Setting in sleeves is easy if you pin them in carefully with the marker at the top of the sleeve slightly to the back of the shoulder seams. While you are pinning, ease the sleeve to fit the armhole (NEVER stretch the armhole to fit the sleeve) so that the sleeve is rounded slightly over the shoulders. After the sleeve is pinned in, you can use a back stitch to sew them in - or a slip stitch crochet is always good (it is easy to pull out if you need to). In any case, make sure you check from time to time to see that you are keeping in a straight line on the straight section of the armhole.

SALE OF USED KNITTING MACHINES

We are always amazed at the amount of interest our occasional Used Machine Sale creates among our readers... Here's another one for you... and we have some fantastic buys... Send payment with your order... If the Model you order is sold out, we will return your money... Master Charge and BankAmericard accepted.

SINGLE BED MACHINES

		Selling Price	Sale Price
Brother	500 (like new) - sold new for	\$ 89.50	\$ 30.00
	531 (good) - sold new for	99.50	30.00
	530 (very good)- sold new for	99.50	30.00
	551 with Ribber - (very good) sold for	229.00	90.00
	551 (good) - sold for	129.50	40.00
Empisal (same as Studio)	305 with Ribber - (like new) sold for	300.00	150.00
	305 (like new) - sold for	200.00	100.00
	305 (excellent)- sold for	200.00	95.00
	250 (excellent)- wide needle spacing - sold for	139.00	60.00
	100 (excellent) -164 needles - sold for	99.50	30.00
Genie	1500 with Ribber (like new) - sold for	180.00	95.00
	1500 (like new) - sold for	99.50	59.50
	1800 (like new) - sold for	129.50	79.50
	1800 with Ribber (like new) - sold for	199.00	125.00
Studio	321 Cardmatic (excellent) sells for	329.00	175.00
	303 with Ribber (very good) - sold for	379.00	150.00
	303 (good) - sold for	279.00	75.00
	301 (good) - sold for	279.00	55.00
	103 (good) - sold for	149.00	35.00
	102 (good) - sold for	139.00	30.00
Toyota	727 Punch Card Knitter (like new) - sold for	329.00	150.00

DOUBLE BED MACHINES

Orion	360 needles (excellent)- sold for	\$ 329.00	100.00
	360 (very good) - sold for	329.00	75.00
Studio	502 400 needles (excellent) - sells for	469.00	150.00
Swiftomatic	400 needles (Strigo) (like new) - sells for	399.00	125.00
	(excellent) -sells for	399.00	75.00
Turmix	400 needles (excellent) - sells for	399.00	75.00

All prices - F.O.B. Los Angeles

Halo's For Sale

In the recent May/June issue of KNITKING MAGAZINE, we offered superb HALO Yarn at half the price it sells for in Department Stores and we promised to show you some of the good looking garments workers at KNITKING designed and made for themselves in HALO... Here they are and you can have the instructions for any of them FREE with your HALO order... Boy!.. you will love this yarn!! It is absolutely gorgeous knitted up into anything that you can dream up... Beautiful for dressy Dresses... Pantsuits... evening skirts and tops... Caftans... and it washes like a dream...

A



F



Illustration A... shows Mary Tokuda who works in the Los Angeles Store ... She wears a size 7/8 and her neat modern Suit took 42 ounces of HALO... B... is of Ruth Williams who runs the Magazine Department and makes most of the gift items in the magazine... Her comfortable and good looking Caftan uses bought Braid trim and 42 ounces of HALO for size 12/14... C... Dorothy Akiyama manages the Yarn Shop and she made this clever Dress... It uses 32 ounces of HALO and is size 7/8 - 22 ounces of main color and 4 ounces of color 2... 2 ounces of color 3 and 4 ounces of color 4. You can of course, make it in two colors... D... that's Betty and Tiger Atkin... Betty designed this stylish Pantsuit and everybody wants to make it... The size is 12/14 and it takes 46 ounces... E... Mary Davis is our chief Instructor and has taught several thousand owners how to get the best from their KNITKING machines... Mary developed the clever knitted crochet type sleeves and pants bottom... She, of course, made the complete Suit and it took 41 ounces of HALO for size 12/14... F... Margaret Kenyon is an authority on and collects all types of knitting machines. She has an extra room in her home to house her amazing collection... She made this stunning two piece outfit (the dress is sleeveless) with 42 ounces - 16 ounces of light color and 24 ounces of darker color.

Remember, superb top quality HALO sells for \$1.10 an ounce... Our price is JUST HALF THAT... 55¢ an ounce... It comes on 1 1/2 pound cones and is \$13.20 per cone and you can use HALO for any KNITKING MAGAZINE garment that calls for around 16 sts. and 24 rows to 2 inches...

When stocks are gone, there will be no more... The Manufacturer found HALO too expensive to produce... This is one of the worlds truly great hand knitting yarns, so be sure to take advantage of our Sale before HALO disappears forever...!

We have HALO in the following colors... but please give alternates and remember that Sale merchandise is not returnable....

- 1-Angel White. 3-Seal Brown. 4-Jade Green. 5-Amethyst
- 6-Orange. 7-Coffee. 8-Cream. 9-Cherry
- 14-Persimmon. 16-Oriental Blue.
- 17-Smokey Gold. 18-Royale (Blue).

B



C



D



E



NOTES TO KNIT BY . . .

STITCH AND ROW GAUGE

KNIT A SAMPLE SWATCH . . . before you begin to knit any garment . . . for this is the MOST IMPORTANT STEP toward the correct size and the proper fit of any garment you wish to make. You MUST use the SAME YARN for your sample swatch that you will use to knit your garment and your sample swatch must be knitted large enough and using several different tension numbers on your machine. When you have done this, then you can determine the number of stitches and the number of rows in a two-inch measure. KNITTING MAGAZINE PATTERNS give you 3 tensions to try and one of them should give you the correct stitch and row gauge if you are using the yarn we recommend or a similar weight yarn. Here is the way to make your sample swatch.

Cast on over a sufficient number of needles to produce a swatch at least 4 inches wide. (If the pattern calls for 16 stitches to 2", then $16 \times 2 = 32$ stitches to cast on). Now knit 4 inches of rows at the first suggested tension number. (If the pattern calls for 22 rows to 2", $22 \times 2 = 44$ rows to knit). Knit 2 rows using a contrast color, change to the next higher tension and with garment yarn knit another 4", knit 2 rows with contrast color, change to the 3rd higher tension and knit another 4" and then bind off.

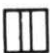


Roll the swatch into a cylinder over its length and pull on both ends, unroll it and stretch it diagonally by pulling on the four corners. Allow the swatch to rest and settle (preferably overnight) and then using a stitch gauge or a ruler, count the number of stitches over a 2" width, then the number of rows over a 2" length in EACH of the 3 tensions. Select the tension number that produces the stitches and rows called for in the pattern. If none of them are correct, you are most likely using the wrong weight of yarn.




READING OF CHARTS


You will notice the instructions start at the bottom of the Chart and work UP. Follow the charts exactly as written and providing your sample stitch and row gauge is correct, your garment will come out the right size. Please remember that the section of garment as it is knitted on the machine, faces the same way as the Charts are in this magazine. Where two front pieces are needed, (or any other part of a garment that needs two sections) only one section is normally shown and the second section is usually made with reverse shaping. Set in sleeves are usually identical, but raglan sleeves have to be knitted with reverse shaping for the second sleeve.


READING OF SYMBOLS

To simplify Pattern Knitting, we use Symbols in the Line Drawings and the Chart Diagrams. In the Line Drawings the symbols are shown and are to be read as you look at them while knitting a garment. For instance, if

a Purl stitch faces you, the Purl stitch Symbol  is shown; if a knit stitch faces you (as when using the Ribber) then this Symbol  is shown. The Symbol  at the top of the Line Drawing is the center of the garment section and you use this as a guide for setting up the needles.

The following Symbols    are used for Eyelet Designs in the Line Drawings and also for Full Fashion shaping on the Charts. The Line Drawings have row numbers on the right side. Missing Row numbers are always knitted straight or plain.

In Holding Position Designs  selected needles are pushed into holding position for the stated number of rows. The numbers of rows appear at the right of the Line Drawings; Example: 1-4 means knit Rows 1 to 4; 5 to 7 means knit Rows 5 to 7, etc. This same Symbol is also shown on the Charts and is used for putting needles into holding position for Short Rows. The

Symbol  on the Charts is used to put needles back into working position when knitting Short Rows.

A number in a box stands for the number of rows to be knitted between shapings. Make shaping first, then knit the necessary number of rows. If for instance it reads:

1 st. 8 x



1 st. 10 x





As you will be reading the instructions from the bottom up, here is the way you will follow them: . . . Decrease or increase (depending on the direction of the garment outline) 1 st. at the row where the shaping begins, then knit 8 rows, make the next decrease, then knit 8 rows, until you have decreased (or increased) 1 st. 10 x and you have knitted 8 rows after each decrease (or increase) (1 st. 10 x +8 rows 10 x). Now begin the first decrease (or increase) for the shaping (which has to be made 8 x) in every 6th row. Decrease (or increase) 1 st. first, then knit 6 rows until you have decreased 1 st. 6 x and after each decrease (or increase) have knitted 6 rows (1 st. 8 x + 6 rows 8 x).


Where shapings are given without a boxed number as on most armholes, necklines, etc., make the shapings on every second row (on each side of course).


(See below for more Pattern Stitch Symbols.)


PATTERN STITCH SYMBOLS


 = knit stitch


 = purl stitch


 = empty needle (leave in working position)


 = needle not used (in the out of work position)


 = needle in the holding position


 = Needles back into working position.


 = 2 stitches on 1 needle - either transferred from the right side or the left side, then put the needle into holding position

 = needle holding 2 stitches. Stitch has been transferred from the LEFT

 = needle holding 2 stitches. Stitch has been transferred from the RIGHT

 = 3 stitches on 1 needle. The 1st and 3rd stitch in a group of 3 needles has been hung on the 2nd or center needle.

 = Center of Garment Section.

 = Number of rows to be knitted between shapings.

The diagrams (Line Drawings) for pattern work are followed just as they are shown and are to be read as you look at them while knitting the garment.

open darts



closed darts



