

# knitking

*magazine*

jan./feb. '74



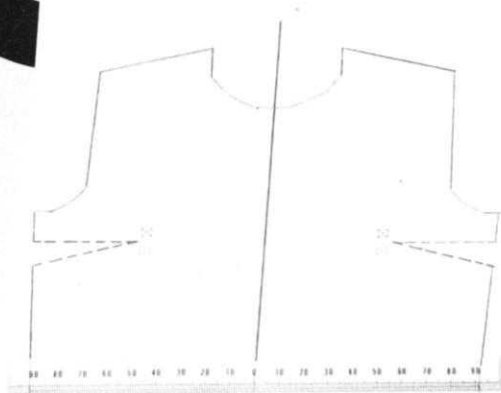
Another first from Knitking!!!

## THE ~~WHIZ KING~~ PATTERN READER with complete Charting Service

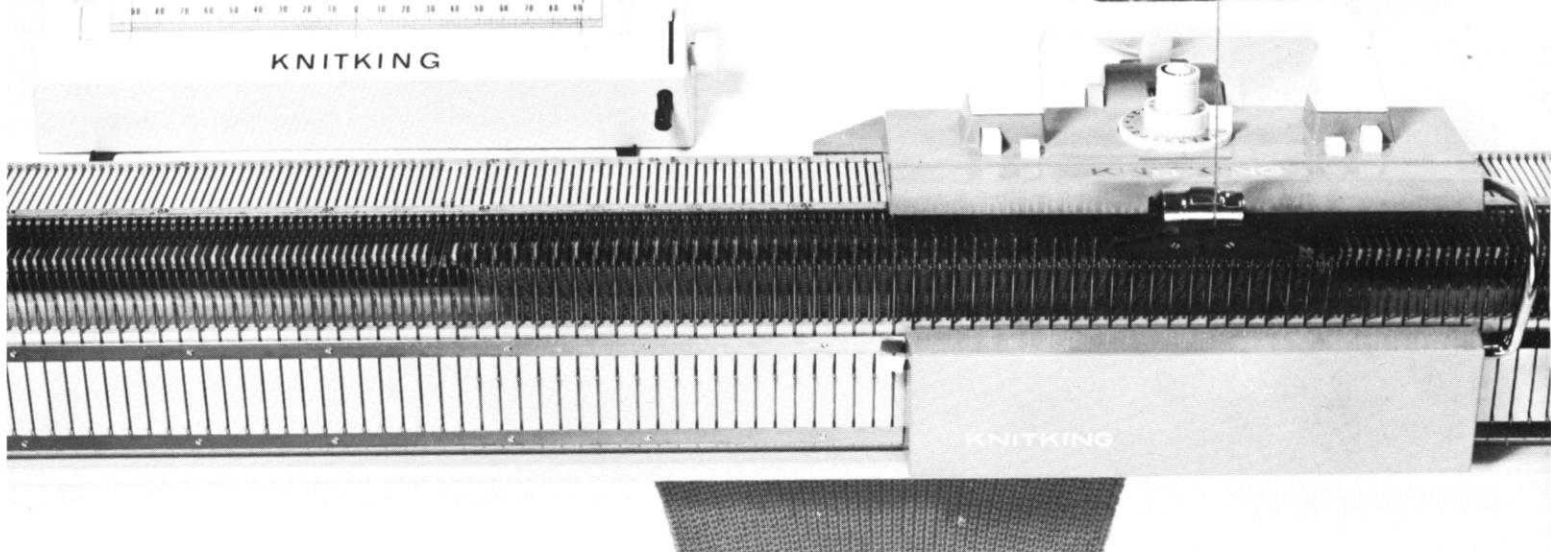
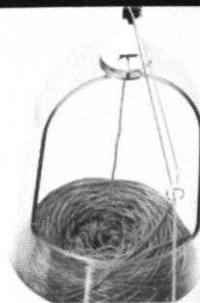
- With **WHIZ KING** you know exactly what to do without reference to written instructions.
- With **WHIZ KING** you no longer have to count rows . . . Your Pattern Chart turns automatically as you knit.
- With **WHIZ KING** you can knit even the most intricate patterns easily and speedily.
- With a **WHIZ KING** Pattern Reader, even the complete newcomer to machine knitting can immediately knit garments.
- With **WHIZ KING**, Charts are available from **KNITKING MAGAZINE** Patterns in the size of your choice.

**PRICE: 59.50** Complete with instructions, practice Charts and illustrations of 50 complete Patterns for the entire family. (California residents add Sales Tax)  
Shipping costs \$2.50.

ORDER DIRECT FROM **KNITKING** 1128 CRENSHAW BLVD. • LOS ANGELES, CALIFORNIA 90019



KNITKING



# knitking

magazine

## editorial

INDEX	PAGE NO.
DK 8257	Woman's Dress . . . . . 9
DP 8258	Woman's Pullover and Hat . . . . . 10
MK 5453	Girl's Pullover . . . . . 11
DK 8259	Woman's Pullover and Skirt . . . . . 12
DK 8261	Woman's Cardigan and Skirt . . . . . 12
HP 3708	Man's Pullover . . . . . 14
KK 5454	Boy's Sleeveless Pullover . . . . . 15
DK 8263	Woman's Dress . . . . . 16
HP 3707	Man's Pullover . . . . . 16
DP 8256	Woman's Pullover and Cardigan . . . . . 18
MK 5450	Girl's Skirt and Sleeveless Pullover . . . 20
MK 5449	Girl's Jacket and Skirt . . . . . 21
DK 8262	Woman's Cardigan, Pullover and Skirt 22
MK 5451	Girl's Pullover and Skirt . . . . . 24
KK 5452	Boy's Sleeveless Pullover . . . . . 25
DP 8260	Woman's Blouse . . . . . 26
DP 8254	Woman's Jacket and Pullover . . . . . 27
KG 1976	Patterned Slipper . . . . . 28

We wish all our readers much success in their knitting endeavors during 1974 . . . We hope that you will all resolve to make even greater use of your knitting machines and to strive for perfection in the finishing of your garments.

KNITKING has a very ambitious program for 1974 . . . Sometimes we tend to be over ambitious and as a consequence, have to extend ourselves . . . But, we believe that to be less of a fault than procrastination . . . KNITKING will always strive to provide complete service to KNITKING machine owners and in the New Year, among the many other things we are planning the following:

Commencing with the next issue, we will include several patterns, each issue, for which WHIZ KING Pattern Reader Charts will be available in an average range of three sizes . . . If you order KNITKING YARNS with which to make your garments, Pattern Charts will be provided free of charge (to owners of WHIZ KING Pattern Readers) when you order yarn. Otherwise, a small charge will be made for each set of charts . . . Pattern Reader Charts *can only* be used with the WHIZ KING Pattern Reader. There is no way you can operate them successfully in any other charting machine.

At the request of many readers, we are endeavoring to develop a way to provide charts for KNITKING MAGAZINE that show three sizes using the same yarns for each size . . . Unfortunately, to do this, we have to provide a separate chart for each size because all shapings will be different . . . This means that we either have to increase the size of the Magazine (which would mean an increase in price) or we could eliminate the printed instructions along side each chart and ask you to read Pattern Charts by symbols . . . We want you to help us make a decision by writing and telling us if you would like to see three sets of Charts for each garment and if you feel you can knit entirely from Charts with Symbols . . . Your letters will influence the way we go.

During 1974, we will also endeavor to satisfy more, the needs of subscribers who own machines other than KNITKING . . . In fact, you will find in KNITKING NEWS, this issue, some new products especially useful to owners of Japanese made machines.

The March-April issue of KNITKING MAGAZINE will feature some outstanding and colorful garments for all members of the family, so watch out for it . . .

### knitking magazine



The perfect warm-up for a bright New Year . . . Knit our Cover Model's DP 8258 and DK 8257. The Classic Pullover is made with our lovely Mohana and is worn on the Purl side of Stockinette stitch . . . Sizes 12 and 14. Instructions for the Hat are included . . . The Dress, DK 8257 is easy and quick to knit in Stockinette stitch with Ruffles for the sleeve trim a snap to make right on your machine. Sizes 8, 10 and 14.

#### BACK COVER

MK 5453 - A Norwegian designed Pullover in three colors will delight the young lady in your household . . . Just follow the Line Drawing for the design and knit Size 8 with Beatrice Crepe; Sizes 10 and 12 with Allegro Dralon.

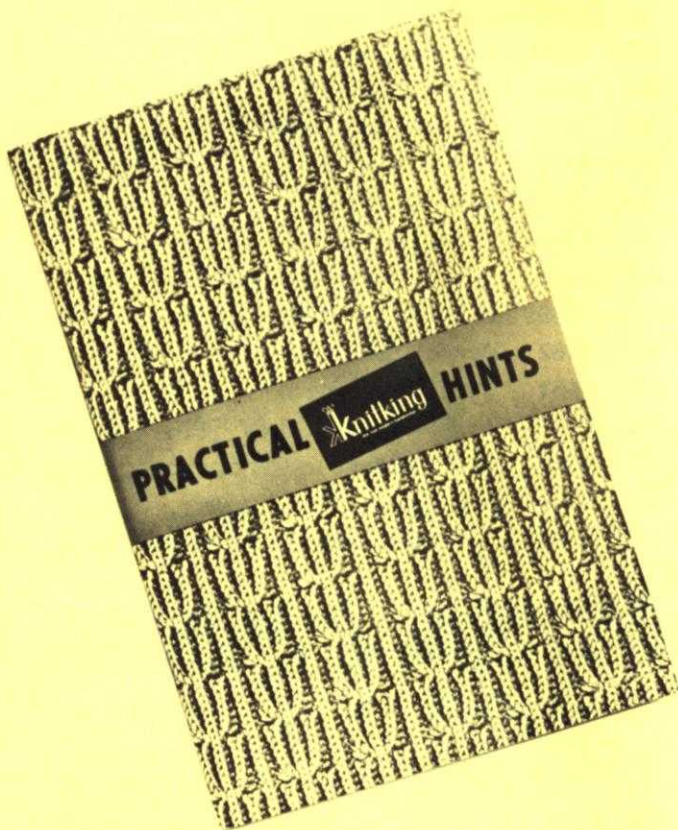
Publisher: KNITKING CORPORATION, 1128 Crenshaw Blvd., Los Angeles, Calif. 90019. Telephone: 213-938-2079. Published bi-monthly. Subscriptions: USA - \$7.00 annually, single copies \$1.50; Canada - \$8.00; other parts of the world - \$10.00. The entire contents of KNITKING MAGAZINE are copyright and must not be reproduced in any shape or form without the express permission, in writing of the publisher. COPYRIGHT © by KNITKING CORPORATION 1974.

Printed by William B. Wemyss Printing Associates, Los Angeles, CA

---

## BOOKS by KNITKING

---



### PRACTICAL KNITTING HINTS

We call this book the TEXT BOOK for machine knitters because it answers the many questions that occur in machine knitting, from preparing to knit, taking measurements, shaping, making buttonholes, special effects, bindings, bands and edges, etc., through finishing and blocking. It sells for **\$2.95**

40 cents mailing  
Calif. residents add Sales Tax



## NEW VOLUME AVAILABLE NOW

A complete ninth volume of KNITKING MAGAZINES with a flexible, transparent plastic cover and specially bound so that it will stay open at any page, is available at the special price of \$7.95 (plus 95 cents mailing costs).


If purchased separately the magazines would cost a total of \$9.00.

The volume contains over 120 fully illustrated complete stylish patterns for all members of the family together with many valuable, practical knitting hints.

There is a very limited number of these volumes available and it will undoubtedly become a collectors item.

If you already have the entire set it will almost certainly be well thumbed and marked. Why not purchase a perfect mint condition volume for your bookshelf and ready reference at any time.

Place your order today and avoid disappointment. Send it to KNITKING MAGAZINE, 1128 Crenshaw Boulevard, Los Angeles, California 90019.



**DK 8259** — It's a lovely two-piece Dress with a soft and feminine holding position Design on the Pull-over Top which is worn on the Purl side. The Skirt is Stockinette stitch worn on the knit side. Use Bearice Crepe for Sizes 10 and 12; Crocus Crepe for Size 14.



# from out of the blue

**KK 5454** — The big blow up! . . . A snappy looking sleeveless Pullover for a favorite boy has a Norwegian Design for a border. All bands are a 1 x 1 Rib. Size 3 is made with Beatrice Crepe; Sizes 6 and 8 with Allegro.

**HP 3708** — Cabled capers on the front section of a Man's Pullover meet with warm approval. The Collar and bands are ribbed. Knit Sizes 36 and 38 with Sport Prima; Size 40 with Dolly Dralon.

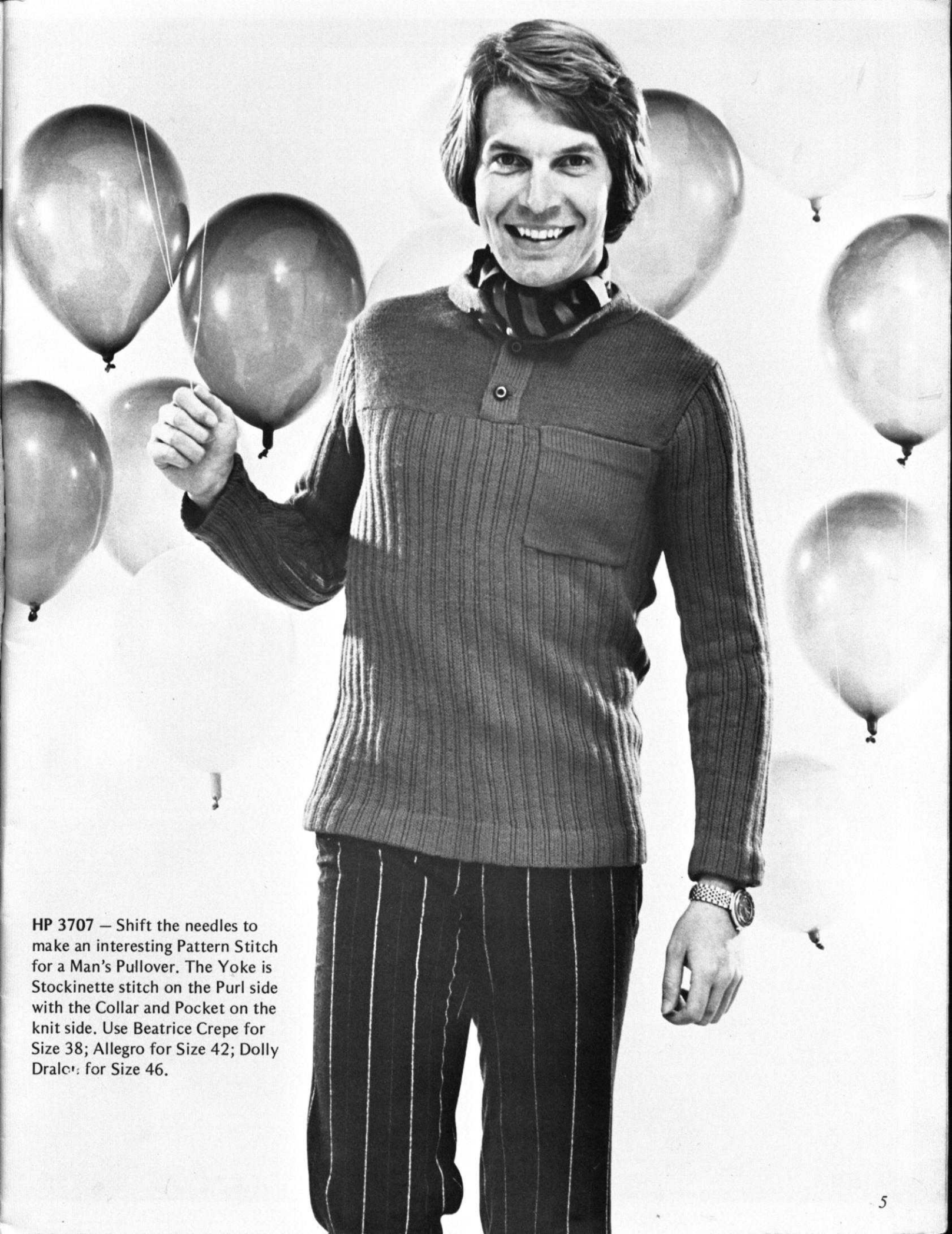
**DK 8261** — Coordinate a Skirt and Cardigan (call it a Suit) and wear it everywhere. The Skirt is Stockinette stitch and the Cardigan has a Norwegian Design using 3 colors on the front and back sections. Use JAC 40 and Pattern No. 25a or you may follow the Line Drawing. Size 12, Beatrice Crepe; Size 14, Crocus Crepe; Size 18, Dolly Dralon.





DK 8263 — Make your entrance wearing this attractive dress. You won't believe it's knitted in an easy Holding Position Design using two colors. The yoke and sleeves are in Stockinette stitch. Knit Size 14 with Crocus Crepe; Size 16 with Melodie.





**HP 3707** — Shift the needles to make an interesting Pattern Stitch for a Man's Pullover. The Yoke is Stockinette stitch on the Purl side with the Collar and Pocket on the knit side. Use Beatrice Crepe for Size 38; Allegro for Size 42; Dolly Dralor: for Size 46.



# modern and versatile

**DK 8256** — Sweater Twins . . .  
Wear the sleeveless Pullover with or without a blouse, the matching Raglan Cardigan for added warmth . . . Both are knitted with a Norwegian border design using 3 colors. The bands are ribbed. For Sizes 10 and 12, use Amore.

**MK 5450** — Knit a Girl's sleeveless Pullover in a bright Norwegian Design with color stripes. The new wide waistband is ribbed as is the neck and armbands. You will want to make the plain stockinette stitch Skirt as well. Size 4 is knitted with Beatrice Crepe; Size 6 and 8 with Allegro Dralon.



# Another first from KNITKING

Completely Self-Contained Motorized Table for KNITKING

machines (wired for 110 volts) . . . Just locate

your KNITKING on the Table, no clamps

or fixing necessary . . .

Simple to operate . . .

Foot and Fingertip controls.

Built in Safety Device stops

machine if knitting jams . . .

Can be used with Ball or

Cone Yarn.



Price:..... \$349.00

*(California residents add Sales Tax).*

*Freight charges — F.O.B. Los Angeles.*

*(Crated Table weighs approximately 150 pounds)*

Order direct from KNITKING — 1128 Crenshaw Blvd., Los Angeles, California 90019

# DK 8257

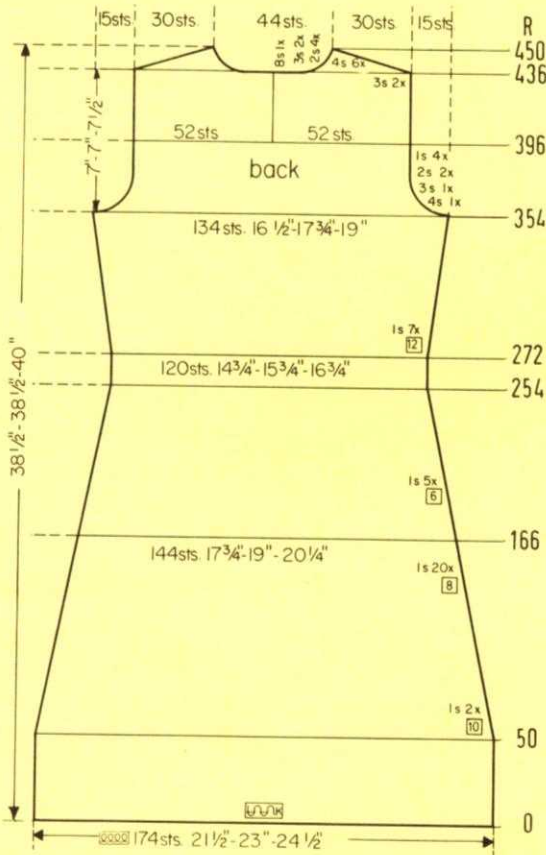


SIZE:	8 (Bust 31½")	10 (Bust 32"-34")	14 (Bust 35"-36")
YARN:	Regia	Amore	Summertime
50 gr. BALLS:	12	13	17
TENSION:	5 to 7	7 to 9	6 to 8
GAUGE:	2" 16 sts, 23 rows	15 sts, 23 rows	14 sts, 22 rows
ALL SIZES:	TRIM: Mohana - 1 ball each of 3 different colors		

The instructions are the same for all sizes. PATTERN: Stockinette Stitch. Sleeve EDGES: K1, P1, Ribbing. TRIM: Knitted Ruffles. DECREASES: Hang the 3rd st. onto the 2nd st., then move the end sts. inward to fill the empty needle. INCREASES: Move the 2 end sts. 1 needle outward, then place the 3rd st. from the row below onto the empty needle.

FINISHING: Block all sections. Join the front and back section at sides and shoulders. Sew the sleeves together and set in. Work 1 row of slip st. crochet and 1 row of backward single crochet around the neckline and opening. Work 5 loops and sew buttons to the opening. Sew the sleeve trim in place. Using 12 strands of yarn, make a twisted cord for the belt.

TRIM: Make 5 strips for each sleeve using the color sequence you prefer. Make the first one to fit the beginning of sleeve Cap, the second to fit above it, etc. (See Picture.) RUFFLE: Tension 6 to 8. Mohana. Cast on 8 sts. Knit 2 rows. \*ON OPPOSITE SIDE OF CAM BOX, put 3 needles into holding position, knit 10 rows over the 5 needles in work. ON OPPOSITE SIDE OF CAM BOX, bring the end needle back into working position, knit 2 rows over the 6 needles. Bring the 2 holding needles back into working position, knit 2 rows over all the needles. REPEAT from \* for as long as you need ending with 2 rows over all needles. Pull on edge opposite ruffle so that ruffle goes into shape.



Move the Cam Box to the left side, turn the Row Counter back to 396 and complete the left half. Follow the instructions from\*.

ON CAM BOX SIDE, bind off 3 sts. after Row 436 (EVEN ROWS = SHOULDER SHAPING); 8 sts. after Row 437 (ODD ROWS = NECK SHAPING); 3 sts. after Rows 438, 439; 4 sts. after Row 440; 3 sts. after Row 441; 4 sts. after Row 442; 2 sts. after Row 443; 4 sts. after Row 444; 2 sts. after Row 445; 4 sts. after Row 446; 2 sts. after Row 447; 4 sts. after Row 448; 2 sts. after Row 449; 4 sts. after Row 450.

\* ROWS 397 to 436: Knit even.

ON CAM BOX SIDE, bind off 4 sts. after Rows 354, 355; 3 sts. after Rows 356, 357; 2 sts. after Rows 358, 359, 360, 361; 1 st. after Rows 362, 363, 364, 365, 366, 367, 368, 369, then knit to Row 396, put 52 needles on the left side into holding position and complete the right half first. (For the Front Section knit to ROW 396, but do not divide the sts.)

ON EACH SIDE, increase 1 st. after Rows 272, 284, 296, 308, 320, 332, 344, then knit to Row 354.

ON EACH SIDE, decrease 1 st. after Rows 50, 60, 70, 78, 86, 94, 102, 110, 118, 126, 134, 142, 150, 158, 166, 174, 182, 190, 198, 206, 214, 222, 230, 236, 242, 248, 254, then knit to Row 272.

ROWS 0 to 50: Knit even.

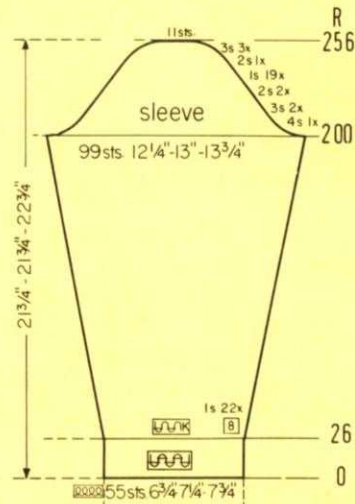
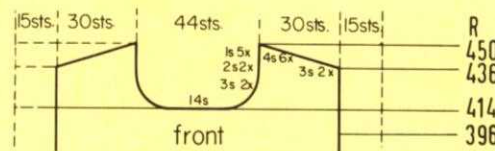
Cast on 174 sts. and work stockinette st.

Move the Cam Box to the left side, turn the Row Counter back to 414 and complete the left half. Follow the instructions from\*.

\* ON CAM BOX SIDE, bind off 3 sts. after Rows 415, 417; 2 sts. after Rows 419, 421; 1 st. after Rows 423, 425, 427, 429, 431. For Shoulder bind off 3 sts. after Rows 436, 438; 4 sts. after Rows 440, 442, 444, 446, 448, 450.

ROWS 397 to 414: Knit even, then bind off the center 14 sts., put the needles on the left side into holding position and complete the right half first.

Work the front section the same as the back section to ROW 396.



ON CAM BOX SIDE, bind off 4 sts. after Rows 200, 201; 3 sts. after Rows 202, 203, 204, 205; 2 sts. after Rows 206, 207, 208, 209. ON EACH SIDE, hang the 1st st. onto the 2nd st. after Rows 210, 212, 214, 216, 218, 220, 222, 224, 226, 228, 230, 232, 234, 236, 238, 240, 242, 244, 246. ON CAM BOX SIDE, bind off 2 sts. after Rows 248, 249; 3 sts. after Rows 250, 251, 252, 253, 254, 255; 11 sts. after Row 256.

ON EACH SIDE, increase 1 st. after Rows 26, 34, 42, 50, 58, 66, 74, 82, 90, 98, 106, 114, 122, 130, 138, 146, 154, 162, 170, 178, 186, 194, then knit to Row 200.

ROWS 0 to 26: Knit even, then change to stockinette st.

Cast on 55 sts. and work K1, P1, Ribbing.

**BE SURE TO NOTIFY US IMMEDIATELY OF ANY CHANGE OF ADDRESS. THE POST OFFICE WILL NOT FORWARD YOUR MAGAZINE TO YOU.**

# DP 8258

SIZE:	12 (Bust 33"-34")	14 (Bust 36"-37")
YARN:	Mohana	Mohana
50 gr. BALLS:	8	9
TENSION:	7 to 9	8 to 10
GAUGE:	2" 13 sts. 18 rows	12 sts. 17 rows
HAT GAUGE:	2" 13 sts. 18 rows	

The instructions are the same for both sizes. PATTERN: Stockinette Stitch, worn on the purl side. EDGES: K1, P1, Ribbing. INCREASES: Move the 2 end sts. 1 needle outward, then place the 3rd st. from the row below onto the empty needle. DECREASES: Hang the 3rd st. onto the 2nd st., then move the end sts. inward to fill the empty needle. Begin the HAT DARTS by hanging the sts. together as marked on the Diagram, then move the sts. together to fill the empty needle. The following decreases for the DARTS lie directly above.

FINISHING: Block the sections. PULLOVER: Join the front and the back section at sides and shoulders. Sew the sleeves together and set in. Join the short ends of the collar, then sew the collar to the neckline. Fold collar over to the outside. HAT: Join the section at center back. Pull the open sts. together, tie and sew in the ends.

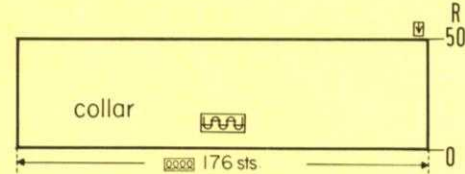
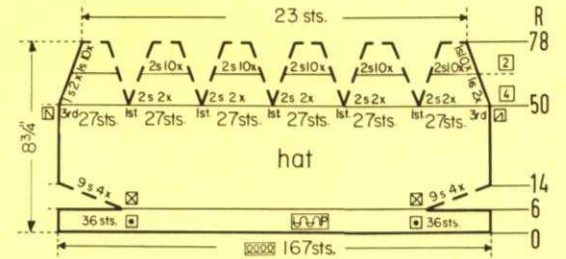
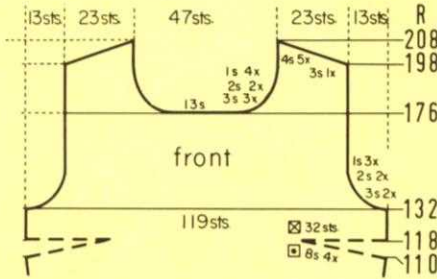
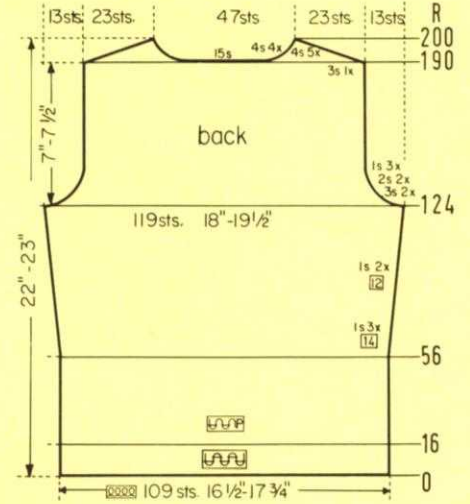


Move the Cam Box to the left side, turn the Row Counter back to 176 and complete the left half. Follow the instructions from\*.

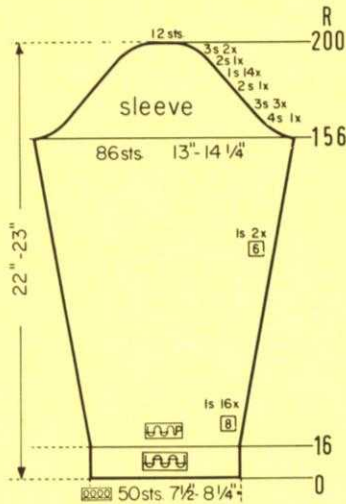
\*ON CAM BOX SIDE, bind off 3 sts. after Rows 177, 179, 181; 2 sts. after Rows 183, 185; 1 st. after Rows 187, 189, 191, 193. For SHOULDER bind off 3 sts. after Row 198; 4 sts. after Rows 200, 202, 204, 206, 208.

ON CAM BOX SIDE, bind off 3 sts. after Rows 132, 133, 134, 135; 2 sts. after Rows 136, 137, 138, 139; 1 st. after Rows 140, 141, 142, 143, 144, 145, then knit to Row 176, bind off the center 13 sts., put the needles on the left side into holding position and complete the right half first.

Work the front section the same as the back section to ROW 110, then work Short Rows for the DARTS. ON OPPOSITE SIDE of CAM BOX put into holding position 8 needles after Rows 110, 111, 112, 113, 114, 115, 116, 117. ON OPPOSITE SIDE of CAM BOX bring back into working position all needles after Row 118, 119, then knit to Row 132.



Cast on 176 sts. and work 50 rows K1, P1, Ribbing, then bind off all sts.



ON CAM BOX SIDE, bind off 4 sts. after Rows 156, 157; 3 sts. after Rows 158, 159, 160, 161, 162, 163; 2 sts. after Rows 164, 165. ON EACH SIDE, hang the 1st st. onto the 2nd st. after Rows 166, 168, 170, 172, 174, 176, 178, 180, 182, 184, 186, 188, 190, 192. ON CAM BOX SIDE, bind off 2 sts. after Rows 194, 195; 3 sts. after Rows 196, 197, 198, 199; 12 sts. after Row 200.

ON EACH SIDE, increase 1 st. after Rows 16, 24, 32, 40, 48, 56, 64, 72, 80, 88, 96, 104, 112, 120, 128, 136, 144, 150, then knit to Row 156.

ROWS 0 to 16: Knit even, then change to stockinette st.

Cast on 50 sts. and work K1, P1, Ribbing.

## knit carrying bags

Completely new design in heavy duty canvas with waterproof interior. For AM 3 Knitter and Yarn Container.

List Price: ..... \$29.50  
 For Ribber only: ..... \$15.50  
 (California residents add Sales Tax)  
 Shipping Costs: \$1.75 and \$1.00



# MK 5453

SIZE:	8 (Chest 26"-27")	10 (Chest 28"-29")	12 (Chest 30"-31")
YARN:	Beatrice Crepe	Allegro Dralon	Allegro Dralon
50 gr. BALLS:	5 color 1 1 color 2 1 color 3	5 color 1 1 color 2 1 color 3	6 color 1 1 color 2 1 color 3
TENSION:	5 to 7	6 to 8	7 to 9
GAUGE:	16 sts. 22 rows	15 sts. 21 rows	14 sts. 20 rows

The instructions are the same for all sizes. PATTERN: Norwegian Design according to the Line Drawing. In the instructions, each row in the Norwegian Design is counted as 1 row, but several movements of the Cam Box are needed to complete 1 row. SLEEVES: Stockinette Stitch. EDGES: K1, P1, Ribbing. INCREASES: Move the 2 end sts. 1 needle outward, then place the 3rd st. from the row below onto the empty needle.

FINISHING: Block all sections. Join the front and back section at sides and shoulders. Sew the sleeves together and set in. Join the short ends of the neckband, then sew 1 edge of the band to the inside and 1 edge to the outside of the neckline.

Move the Cam Box to the left side, turn the Row Counter back to 190 and complete the left half. Follow the instructions from\*.

\*ON CAM BOX SIDE, bind off 3 sts. after Row 190 (EVEN ROWS = SHOULDER SHAPING); 4 sts. after Rows 191 (ODD ROWS = NECK SHAPING), 192, 193, 194, 195, 196, 197, 198, 200.

ON CAM BOX SIDE, bind off 3 sts. after Rows 124, 125, 126, 127; 2 sts. after Rows 128, 129, 130, 131; 1 st. after Rows 132, 133, 134, 135, 136, 137, then knit to Row 190, bind off the center 15 sts., put the needles on the left side into holding position and complete the right half first.

ON EACH SIDE, increase 1 st. after Rows 56, 70, 84, 98, 110, then knit to Row 124. (For the Front Section knit to Row 110 and make the increase).

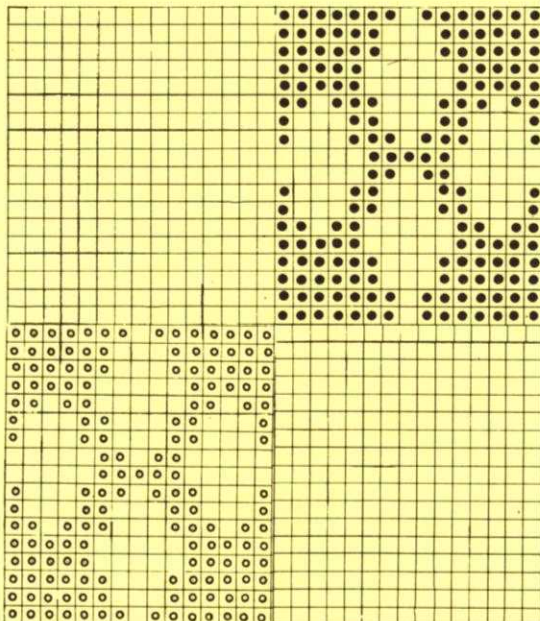
ROWS 17 to 56: Knit even.

ROWS 0 to 16: Knit even, then change to stockinette st.

Cast on 109 sts. and work K1, P1, Ribbing.

Decrease 1 st. ON EACH SIDE and 2 sts. for EACH DART after Rows 50, 54, 58, 60, 62, 64, 66, 68, 70, 72, 74, 76, then knit to Row 78. Remove the sts. from the machine by transferring the 1st, 3rd, 5th, 7th, etc. sts. onto a strand of yarn, then the 2nd, 4th, 6th, etc. sts. onto a second strand of yarn.

Cast on 167 sts. and work stockinette st. Knit to Row 6, then work Short Rows. ON OPPOSITE SIDE of CAM BOX put into holding position 36 needles after Rows 6, 7. ON OPPOSITE SIDE of CAM BOX bring back into working position 9 needles after Rows 8, 9, 10, 11, 12, 13, 14, 15, then knit to Row 50.



- COLOR 2
- COLOR 3
- COLOR 1



Bring the needles on the left side into working position, knit 1 row in PATTERN to the left side, turn the Row Counter back to 176 and complete the left half. Follow the instructions from\*.

\*ON CAM BOX SIDE, bind off 3 sts. after Rows 177, 179, 181; 2 sts. after Rows 183, 185, 187; 1 st. after Rows 189, 191, 193, 195, 197. For SHOULDER bind off 4 sts. after Rows 222, 224, 226, 228, 230.

Work the front section the same as the back section to ROW 176, then bind off the center 14 sts., put the needles on the left side into holding position and complete the right half first.

Bring the needles on the left side into working position, knit 1 row in PATTERN to the left side, turn the Row Counter back to 212 and complete the left half. Follow the instructions from\*.

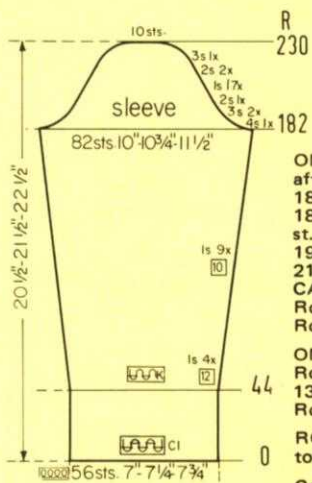
\*ON CAM BOX SIDE, bind off 3 sts. after Rows 213, 215, 217, 219, 221 (ODD ROWS = NECK SHAPING); 4 sts. after Row 222 (EVEN ROWS = SHOULDER SHAPING); 3 sts. after Row 223; 4 sts. after Rows 224, 226, 228, 230.

ON CAM BOX SIDE, bind off 3 sts. after Rows 154, 155, 156, 157; 2 sts. after Rows 158, 159, 160, 161; 1 st. after Rows 162, 163, 164, 165, then knit to Row 212, bind off the center 18 sts., put the needles on the left side into holding position and complete the right half first. (You can work both sides at the same time by using different balls of yarn for each side). (For the Front Section knit to ROW 176).

ROWS 45 to 154: Knit even.

ROWS 0 to 44: Knit even, then transfer the ribber sts. to the main machine and begin the Norwegian Design.

Cast on 118 sts. with color 1 and work K1, P1, Ribbing.

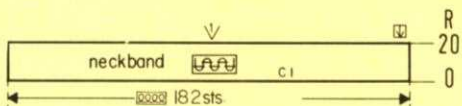
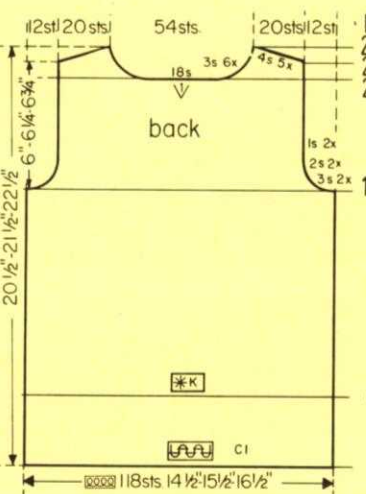
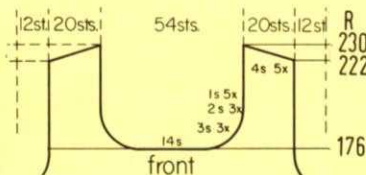


ON CAM BOX SIDE, bind off 4 sts. after Rows 182, 183; 3 sts. after Rows 184, 185, 186, 187; 2 sts. after Rows 188, 189. ON EACH SIDE, hang the 1st st. onto the 2nd st. after Rows 190, 192, 194, 196, 198, 200, 202, 204, 206, 208, 210, 212, 214, 216, 218, 220, 222. ON CAM BOX SIDE, bind off 2 sts. after Rows 224, 225, 226, 227; 3 sts. after Rows 228, 229; 10 sts. after Row 230.

ON EACH SIDE, increase 1 st. after Rows 44, 56, 68, 80, 92, 102, 112, 122, 132, 142, 152, 162, 172, then knit to Row 182.

ROWS 0 to 44: Knit even, then change to stockinette st.

Cast on 56 sts. with color 1 and work K1, P1, Ribbing.



Cast on 182 sts. with color 1 and work 20 rows K1, P1, Ribbing, then bind off all sts.

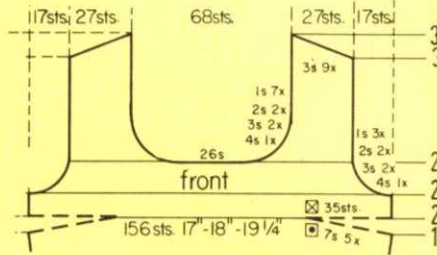
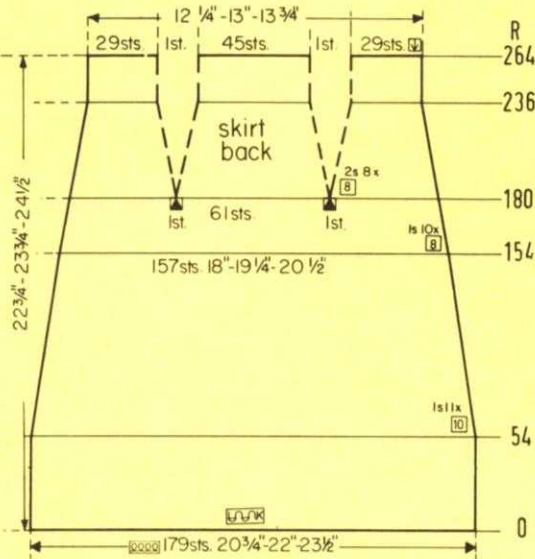
# DK 8259

SIZE:	10 (Bust 32½")	12 (Bust 34"35")	14 (Bust 36"-37")
YARN:	Beatrice Crepe	Beatrice Crepe	Crocus Crepe
50 gr. BALLS:	13	13	17
TENSION:	4 to 6	5 to 7	7 to 9
GAUGE:	2" Stk.: 17 sts. 23 rows Pattern: 18 sts. 27 rows	16 sts. 22 rows 17 sts. 26 rows	15 sts. 21 rows 16 sts. 25 rows



The instructions are the same for all sizes. PATTERN: Pullover: Holding Position Design according to the Line Drawing, using Wheel No. W1 while working Rows 1 to 8, then setting up the Pattern Stitch manually. The purl side is the right side. Skirt: Stockinette Stitch, worn on the knit side. PULLOVER: DECREASES: Hang the 1st st. onto the 2nd st. INCREASES: Place the end st. from the row below onto the next empty needle. SKIRT: DECREASES: Hang the 3rd st. onto the 2nd st., then move the end sts. inward to fill the empty needle. Begin the DARTS by hanging the sts. together as marked on the Diagrams, then move the sts. together to fill the empty needles. The following decreases for the Darts lie directly above.

FINISHING: PULLOVER: Join the front and back section at sides and shoulders. Sew the sleeves together and set in. Turn under 20 rows on the lower edge and sleeve edges and hem in place. Work 2 rows of single crochet and 1 row of backward single crochet around the neckline. SKIRT: Weave the sections together, 1 st. in from each edge. Turn under 18 rows on the lower edge and 14 rows on the upper edge and hem in place. Insert an elastic band into the upper hem.

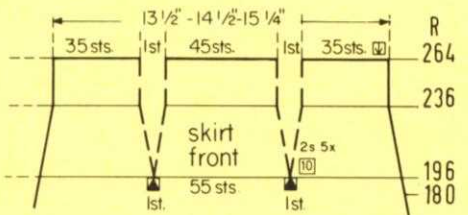


Decrease 2 sts. for EACH DART and 1 st. ON EACH SIDE after Rows 180, 188, 196, 204, 212, 220, 228, 236, then knit to Row 264 and bind off the remaining 105 sts.

ON EACH SIDE, decrease 1 st. after Rows 54, 64, 74, 84, 94, 104, 114, 124, 134, 144, 154, 164, 172, then knit to Row 180. (For the Front Section knit to ROW 180).

ROWS 0 to 54: Knit even.

Cast on 179 sts. and work stockinette st.



Decrease 2 sts. for the Darts after Rows in ( ). ON EACH SIDE, decrease 1 st. after Rows 180, 188, 196, (196), 204, (206), 212, (216), 220, (226), 228, 236, (236), then knit to Row 264 and bind off the remaining 117 sts.

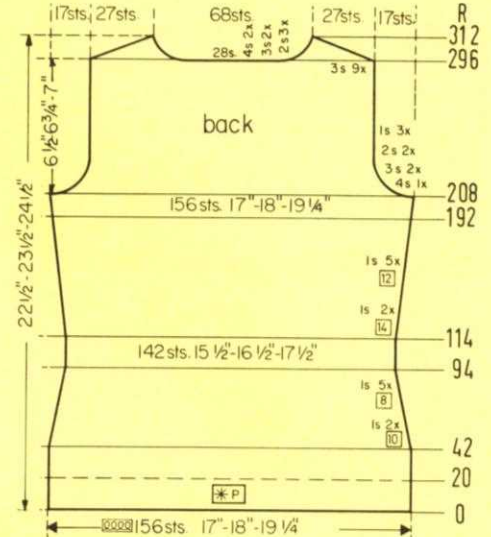
Work the front section the same as the back section to ROW 180.

Bring the needles on the left side into working position, knit 1 row in PAT-TERN to the left side, turn the Row Counter back to 238 and complete the left half. Follow the instructions from\*.

\*ON CAM BOX SIDE, bind off 4 sts. after Row 239; 3 sts. after Rows 241, 243; 2 sts. after Rows 245, 247; 1 st. after Rows 249, 251, 253, 255, 257, 259, 261. For SHOULDER bind off 3 sts. after Rows 306, 308, 310, 312, 314, 316, 318, 320, 322.

ON CAM BOX SIDE, bind off 4 sts. after Rows 218, 219; 3 sts. after Rows 220, 221, 222, 223; 2 sts. after Rows 224, 225, 226, 227; 1 st. after Rows 228, 229, 230, 231, 232, 233, then knit to Row 238, bind off the center 26 sts., put the needles on the left side into holding position and complete the right half first.

Work the front section the same as the back section to ROW 190, then work Short Rows for the DARTS. ON OPPOSITE SIDE of CAM BOX put into holding position 7 needles after Rows 190, 191, 192, 193, 194, 195, 196, 197, 198, 199. ON OPPOSITE SIDE of CAM BOX bring all needles back into working position after Rows 200, 201, then knit to Row 202. Work the Holding Position Design from Rows 13 to 54 one time only, then from Rows 7 to 54. Knit to Row 218.



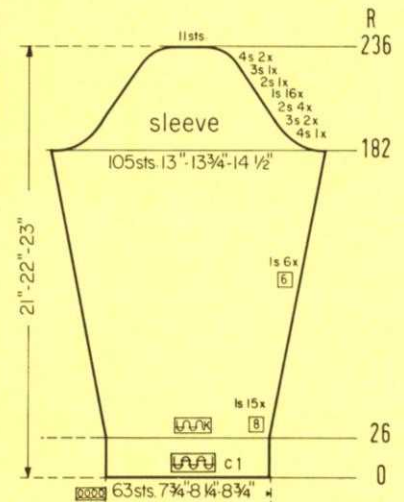
# DK 8261

SIZE:	12 (Bust 33"-34")	14 (Bust 36"-37")	18 (Bust 39"-40")
YARN:	Beatrice Crepe	Crocus Crepe	Dolly Dralon
50 gr. BALLS:	12 color 1 5 color 2 2 color 3	15 color 1 6 color 2 2 color 3	15 color 1 6 color 2 2 color 3
TENSION:	5 to 7	7 to 9	8 to 10
GAUGE:	2" Stk.: 16 sts. 22 rows Pattern: 16 sts. 19 rows	15 sts. 21 rows 15 sts. 18 rows	14 sts. 20 rows 14 sts. 17 rows

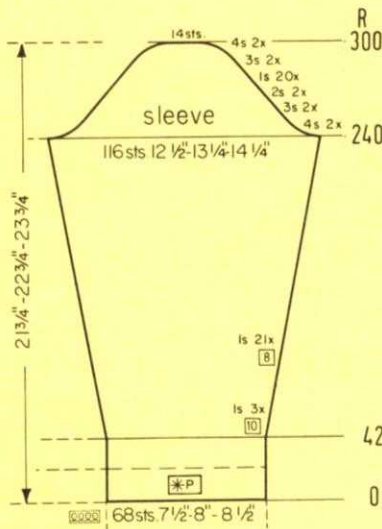
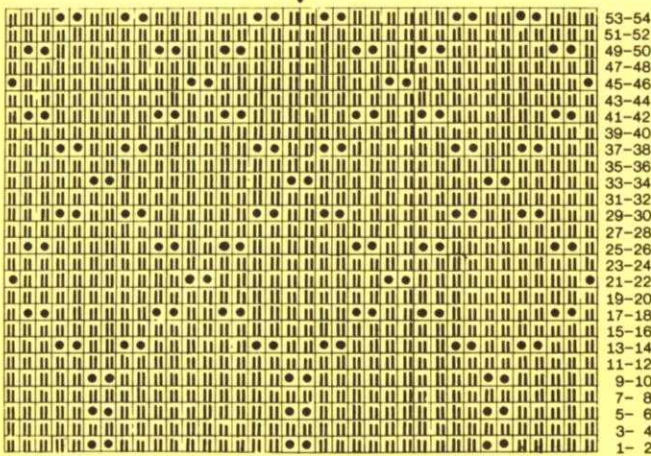


The instructions are the same for all sizes. PATTERN: Stockinette Stitch and a Norwegian Design on the Back and Front Section of the Cardigan. Follow the Line Drawing or use JAC 40 and Pattern No. 25a. In the instructions, each row in the Norwegian Design is counted as 1 row, but several movements of the Cam Box are needed to complete 1 row. INCREASES: Move the 2 end sts. 1 needle outward, then place the 3rd st. from the row below onto the empty needle. DECREASES: Hang the 3rd st. onto the 2nd st., then move the end sts. inward to fill the empty needle. Begin the Darts by hanging the sts. together as marked in the Diagram, then move the sts. together to fill the empty needles. The following decreases for the Darts lie directly above.

FINISHING: Block all sections. CARDIGAN: Join the back and front sections at sides and shoulders, easing in the fullness at the bustline of the front sections. Sew the sleeves together and set in. Turn under 14 rows on the lower edge and hem in place. Sew 1 edge of the buttonhole band to the inside and 1 edge to the outside of the right front edge. Sew the buttonband to the left front edge in the same manner. Fold the collar in half and sew the front edges. Sew 1 edge of the collar to the inside and 1 edge to the outside of the neckline, leaving 1" free on each front edge. Finish the buttonholes, sew on buttons. Make a twisted cord for the belt. (See Practical Knitting Hints Book, page 58). SKIRT: Weave the sections together at sides, 1 st. in from each edge. Turn under 17 rows on the lower edge and 11 rows on the upper edge and hem in place. Insert an elastic band into the upper hem.







ON CAM BOX SIDE, bind off 4 sts. after Rows 240, 241, 242, 243; 3 sts. after Rows 244, 245, 246, 247; 2 sts. after Rows 248, 249, 250, 251. ON EACH SIDE, decrease 1 st. after Rows 252, 254, 256, 258, 260, 262, 264, 266, 268, 270, 272, 274, 276, 278, 280, 282, 284, 286, 288, 290. ON CAM BOX SIDE, bind off 3 sts. after Rows 292, 293, 294, 295; 4 sts. after Rows 296, 297, 298, 299; 14 sts. after Row 300.

ON EACH SIDE, increase 1 st. after Rows 42, 52, 62, 72, 80, 88, 96, 104, 112, 120, 128, 136, 144, 152, 160, 168, 176, 184, 192, 200, 208, 216, 224, 232, then knit to Row 240.

ROWS 0 to 42: Knit even.

Cast on 68 sts. and work the Holding Position Design, repeating Rows 1 to 8 of the Line Drawing throughout.

Bring the needles on the left side into working position, knit 1 row in PATTERN to the left side, turn the Row Counter back to 296 and complete the left half. Follow the instructions from\*.

\*ON CAM BOX SIDE, bind off 3 sts. after Row 296 (EVEN ROWS = SHOULDER SHAPING); 4 sts. after Row 297 (ODD ROWS = NECK SHAPING); 3 sts. after Row 298; 4 sts. after Row 299; 3 sts. after Rows 300, 301, 302, 303, 304; 2 sts. after Row 305; 3 sts. after Row 306; 2 sts. after Row 307; 3 sts. after Row 308; 2 sts. after Row 309; 3 sts. after Rows 310, 312.

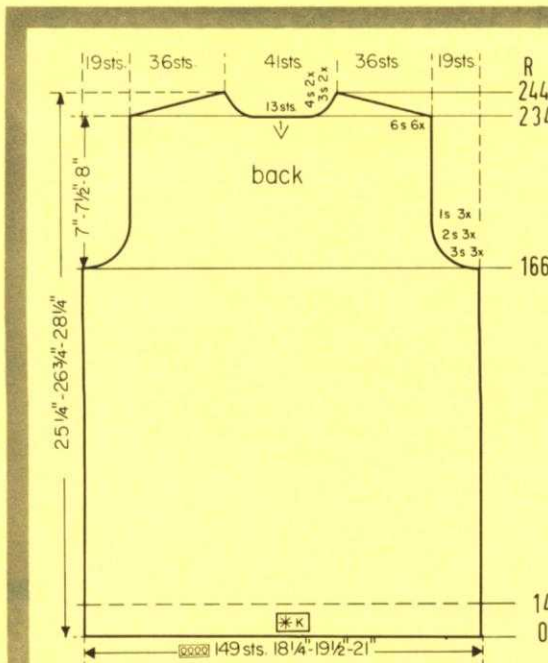
ON CAM BOX SIDE, bind off 4 sts. after Rows 208, 209; 3 sts. after Rows 210, 211, 212, 213; 2 sts. after Rows 214, 215, 216, 217; 1 st. after Rows 218, 219, 220, 221, 222, 223, then knit to Row 296, bind off the center 28 sts., put the needles on the left side into holding position and complete the right half first.

ON EACH SIDE, increase 1 st. after Rows 114, 128, 142, 154, 166, 178, 190, then knit to Row 192. Work the Holding Position Design from Rows 13 to 54 one time only, then from Rows 7 to 54. Knit to Row 208. (For the Front Section knit to Row 190).

ON EACH SIDE, decrease 1 st. after Rows 42, 52, 62, 70, 78, 86, 94, then knit to Row 114.

ROWS 0 to 42: Knit even.

Cast on 156 sts. and work the Holding Position Design, repeating rows 1 to 8 until the Armhole Shaping.



Bring the needles on the left side into working position, knit 1 row in PATTERN to the left side, turn the Row Counter back to 234 and complete the left half. Follow the instructions from\*.

\*ON CAM BOX SIDE, bind off 6 sts. after Row 234 (EVEN ROWS = SHOULDER SHAPING); 4 sts. after Row 235 (ODD ROWS = NECK SHAPING); 6 sts. after Row 236; 4 sts. after Row 237; 6 sts. after Row 238; 3 sts. after Row 239; 6 sts. after Row 240; 3 sts. after Row 241; 6 sts. after Rows 242, 244.

ON CAM BOX SIDE, bind off 3 sts. after Rows 166, 167, 168, 169, 170, 171; 2 sts. after Rows 172, 173, 174, 175, 176, 177; 1 st. after Rows 178, 179, 180, 181, 182, 183, then knit to Row 234, bind off the center 13 sts., put the needles on the left side into holding position and complete the right half first. (You can work both sides at the same time by using different balls of yarn for each side).

ROWS 0 to 166: Knit even.

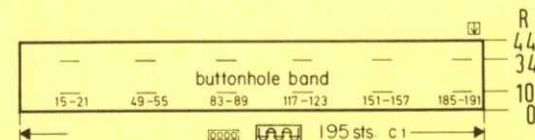
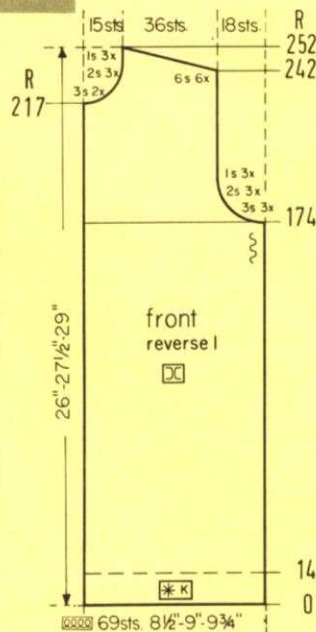
Cast on 149 sts. and work the Norwegian Design.

ON CAM BOX SIDE, bind off 4 sts. after Rows 182, 183; 3 sts. after Rows 184, 185, 186, 187; 2 sts. after Rows 188, 189, 190, 191, 192, 193, 194, 195. ON EACH SIDE, hang the 1st st. onto the 2nd st. after Rows 196, 198, 200, 202, 204, 206, 208, 210, 212, 214, 216, 218, 220, 222, 224, 226. ON CAM BOX SIDE, bind off 2 sts. after Rows 228, 229; 3 sts. after Rows 230, 231; 4 sts. after Rows 232, 233, 234, 235; 11 sts. after Row 236.

ON EACH SIDE, increase 1 st. after Rows 26, 34, 42, 50, 58, 66, 74, 82, 90, 98, 106, 114, 122, 130, 138, 146, 152, 158, 164, 170, 176, then knit to Row 182.

ROWS 0 to 26: Knit even, then change to stockinette st.

Cast on 63 sts. with color 1 and work K1, P1, Ribbing.



Cast on 195 sts. with color 1 and work K1, P1, Ribbing. Make buttonholes after Rows 10 and 34 over the 15th-21st, 49th-55th, 83rd-89th, 117th-123rd, 151st-157th, 185th-191th sts. counting from the left side. After Row 44 bind off all sts. Work the button band the same, but omit the buttonholes.

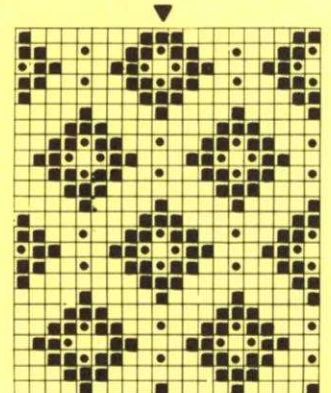
Work the second front section with reverse shapings, casting on from right to left. (The Cam Box will be on the LEFT side at Row 0).

ON CAM BOX SIDE, bind off 3 sts. after Rows 217, 219; 2 sts. after Rows 221, 223, 225; 1 st. after Rows 227, 229, 231. For SHOULDER bind off 6 sts. after Rows 242, 244, 246, 248, 250, 252.

ON CAM BOX SIDE, bind off 3 sts. after Rows 174, 176, 178; 2 sts. after Rows 180, 182, 184; 1 st. after Rows 186, 188, 190, then knit to Row 217.

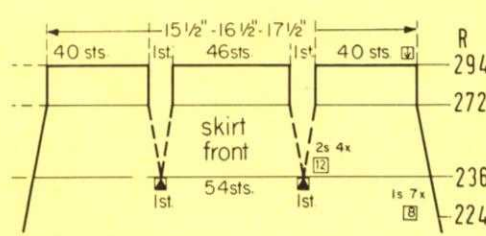
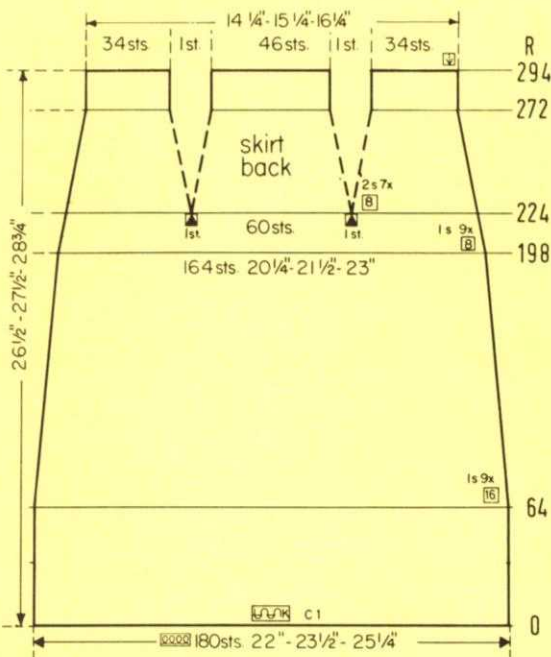
ROWS 0 to 174: Knit even.

Cast on 69 sts. and work the Norwegian Design.



■ = COLOR 3  
 ■ = COLOR 2  
 □ = COLOR 1

Continued on page 14



Decrease 2 sts. for EACH DART after Rows in ( ). ON EACH SIDE, decrease 1 st. after Rows 224, 232, (236), 240, 248, (248), 256, (260), 264, 272, (272), then knit to Row 294 and bind off the remaining 128 sts.

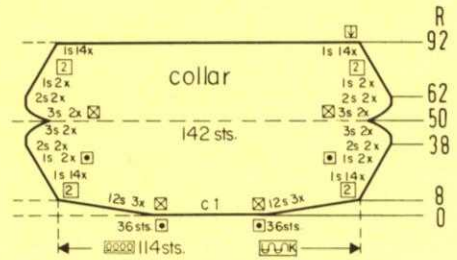
Work the front section the same as the back section to ROW 224.

Decrease 2 sts. for EACH DART and 1 st. ON EACH SIDE after Rows 224, 232, 240, 248, 256, 264, 272, then knit to Row 294 and bind off the remaining 116 sts.

ON EACH SIDE, decrease 1 st. after Rows 64, 80, 96, 112, 128, 144, 160, 176, 192, 208, 216, then knit to Row 224. (For the Front Section knit to ROW 224).

ROWS 0 to 64: Knit even.

Cast on 180 sts. with color 1 and work stockinette st.

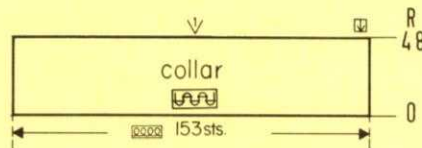
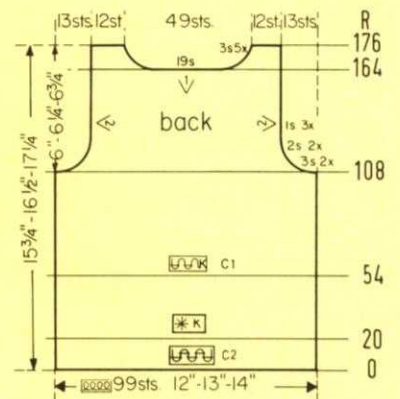


# HP 3708

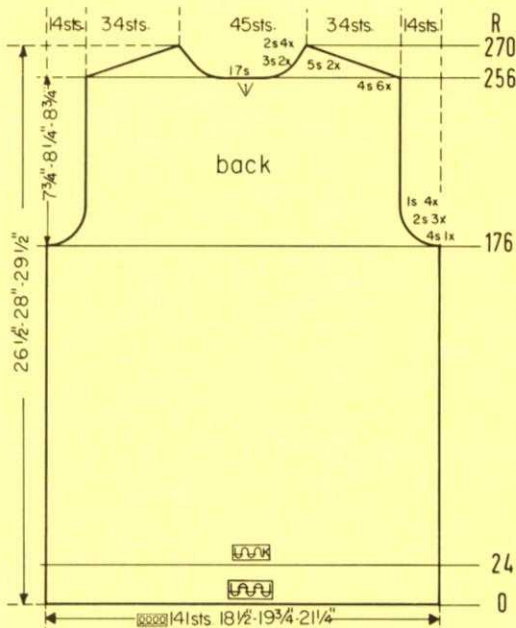
SIZE:	36 (Chest 35"-36")	38 (Chest 37"-38")	40 (Chest 40"-41")
YARN:	Sport Prima	Sport Prima	Dolly Dralon
50 gr. BALLS:	11	12	10
TENSION:	7 to 9	8 to 10	9 to 10
GAUGE:	2" 15 sts. 20 rows	14 sts. 19 rows	13 sts. 18 rows

The instructions are the same for all sizes. PATTERN: Stockinette Stitch and a Cable Design on the Front Section. Follow the Line Drawing. EDGES: K1, P1, Ribbing. INCREASES: Move the 2 end sts. 1 needle outward, then place the 3rd st. from the row below onto the empty needle.

FINISHING: Block all sections. (NOT the ribbing). Join the front and the back section at sides and shoulders. Sew the sleeves together and set in. Join the short ends of the collar, then sew 1 edge of the collar to the inside and 1 edge to the outside of the neckline.



Cast on 153 sts. and work 48 rows K1, P1, Ribbing, then bind off all sts.



Move the Cam Box to the left side, turn the Row Counter back to 256 and complete the left half. Follow the instructions from\*.

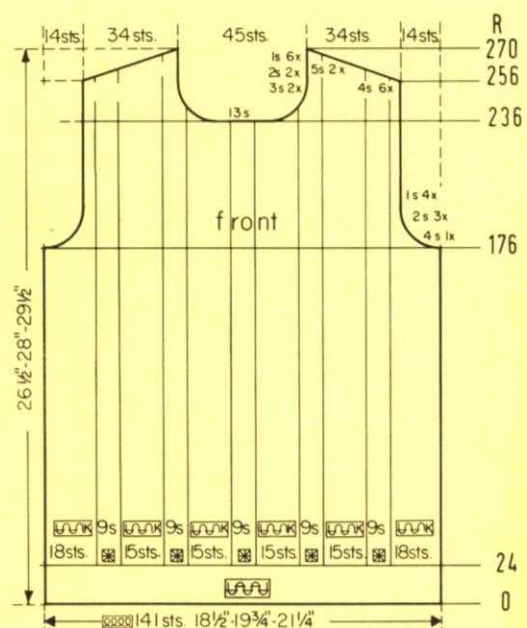
\*ON CAM BOX SIDE, bind off 4 sts. after Row 256 (EVEN ROWS = SHOULDER SHAPING); 3 sts. after Row 257 (ODD ROWS = NECK SHAPING); 4 sts. after Row 258; 3 sts. after Row 259; 4 sts. after Row 260; 2 sts. after Row 261; 4 sts. after Row 262; 2 sts. after Row 263; 4 sts. after Row 264; 2 sts. after Row 265; 4 sts. after Row 266; 2 sts. after Row 267; 5 sts. after Rows 268, 270.

ON CAM BOX SIDE, bind off 4 sts. after Rows 176, 177; 2 sts. after Rows 178, 179, 180, 181, 182, 183. 1 st. after Rows 184, 185, 186, 187, 188, 189, 190, 191, then knit to Row 256, bind off the center 17 sts., put the needles on the left side into holding position and complete the right half first.

ROWS 25 to 176: Knit even.

ROWS 0 to 24: Knit even, then change to stockinette st.

Cast on 141 sts. and work K1, P1, Ribbing.



# KK 5454

SIZE:	3 (Chest 22")	6 (Chest 23"-24")	8 (Chest 25"-26")
YARN:	Beatrice Crepe	Allegro Dralon	Allegro Dralon
50 gr. BALLS:	3 color 1 1 color 2 1 color 3	3 color 1 1 color 2 1 color 3	4 color 1 1 color 2 1 color 3
TENSION:	5 to 7	6 to 8	7 to 9
GAUGE:	2" 16 sts. 22 rows	15 sts. 21 rows	14 sts. 20 rows

The instructions are the same for all sizes. PATTERN: Stockinette Stitch and a Norwegian Design according to the Line Drawing. In the instructions, each row in the Norwegian Design is counted as 1 row, but several movements of the Cam Box are needed to complete 1 row. EDGES: K1, P1, Ribbing.

FINISHING: Block the sections. Join the front and back section at sides and shoulders. Join the short ends of the bands. Sew 1 edge of the neckband to the inside and 1 edge to the outside of the neckline. Sew the armhole bands to the armhole edges in the same manner.

Cast on 114 sts. with color 1, work stockinette st. and Short Rows. ON OPPOSITE SIDE of CAM BOX put into holding position 36 needles after Rows 0, 1. ON OPPOSITE SIDE of CAM BOX bring back into working position 12 needles after Rows 2, 3, 4, 5, 6, 7. ON EACH SIDE, increase 1 st. after Rows 10, 12, 14, 16, 18, 20, 22, 24, 26, 28, 30, 32, 34, 36. ON OPPOSITE SIDE of CAM BOX put into holding position 1 needle after Rows 38, 39, 40, 41; 2 needles after Rows 42, 43, 44, 45; 3 needles after Rows 46, 47, 48, 49. ON OPPOSITE SIDE of CAM BOX bring back into working position 3 needles after Rows 50, 51, 52, 53; 2 needles after Rows 54, 55, 56, 57; 1 needle after Rows 58, 59, 60, 61. ON EACH SIDE, decrease 1 st. after Rows 62, 64, 66, 68, 70, 72, 74, 76, 78, 80, 82, 84, 86, 88. After Row 92 bind off all sts.

Move the Cam Box to the left side, turn the Row Counter back to 164 and complete the left half. Follow the instructions from\*.

\*ON CAM BOX SIDE, bind off 3 sts. after Rows 165, 167, 169, 171, 173. After Row 176 bind off the 12 SHOULDER sts.

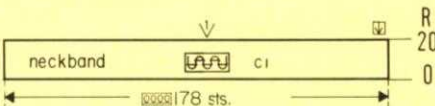
ON CAM BOX SIDE, bind off 3 sts. after Rows 108, 109, 110, 111; 2 sts. after Rows 112, 113, 114, 115; 1 st. after Rows 116, 117, 118, 119, 120, 121, then knit to Row 164, bind off the center 19 sts., put the needles on the left side into holding position and complete the right half first. (For the Front Section knit to ROW 122).

ROWS 55 to 108: Knit even.

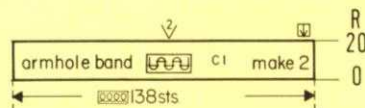
ROWS 21 to 54: Knit even, then change to color 1 and work stockinette st.

ROWS 0 to 20: Knit even, then transfer the ribber sts. to the main machine and begin the Norwegian Design.

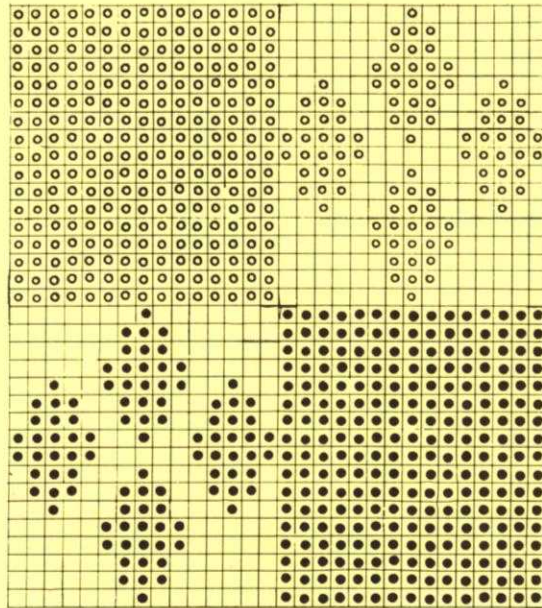
Cast on 99 sts. with color 2 and work K1, P1, Ribbing.



Cast on 178 sts. with color 1 and work 20 rows K1, P1, Ribbing, then bind off all sts.



Cast on 138 sts. with color 1 and work 20 rows K1, P1, Ribbing, then bind off all sts.



- COLOR 2
- ◻ COLOR 3
- COLOR 1

Move the Cam Box to the left side, turn the Row Counter back to 122 and complete the left half. Follow the instructions from\*.

\*ON CAM BOX SIDE, bind off 3 sts. after Rows 123, 125, 127; 2 sts. after Rows 129, 131; 1 st. after Rows 133, 135, 137, 139. After Row 176 bind off the 12 SHOULDER sts.

Work the front section the same as the back section to ROW 122, then bind off the center 15 sts., put the needles on the left side into holding position and complete the right half first.

Move the Cam Box to the left side, turn the Row Counter back to 236 and complete the left half. Follow the instructions from\*.

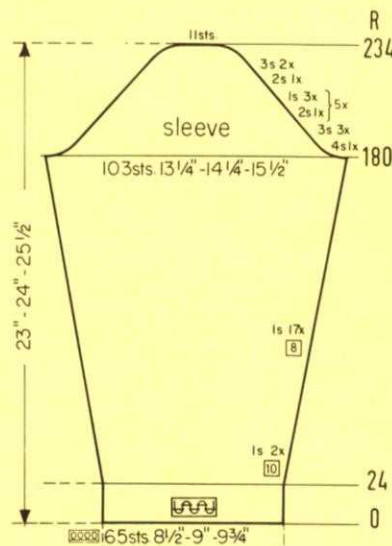
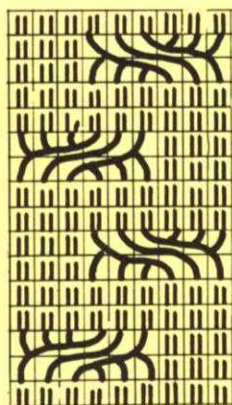
\*ON CAM BOX SIDE, bind off 3 sts. after Rows 237, 239; 2 sts. after Rows 241, 243; 1 st. after Rows 245, 247, 249, 251, 253, 255. For SHOULDER bind off 4 sts. after Rows 256, 258, 260, 262, 264, 266; 5 sts. after Rows 268, 270.

ON CAM BOX SIDE, bind off 4 sts. after Rows 176, 177; 2 sts. after Rows 178, 179, 180, 181, 182, 183; 1 st. after Rows 184, 185, 186, 187, 188, 189, 190, 191, then knit to Row 236, bind off the center 13 sts., put the needles on the left side into holding position and complete the right half first.

ROWS 25 to 176: Knit even.

ROWS 0 to 24: Knit even, then change to stockinette st. and work the Cable Design over the sts. marked on the Diagram.

Cast on 141 sts. and work K1, P1, Ribbing.



ON CAM BOX SIDE, bind off 4 sts. after Rows 180, 181; 3 sts. after Rows 182, 183, 184, 185, 186, 187; 2 sts. after Rows 188, 189; 1 st. after Rows 190, 191, 192, 193, 194, 195; 2 sts. after Rows 196, 197; 1 st. after Rows 198, 199, 200, 201, 202, 203; 2 sts. after Rows 204, 205; 1 st. after Rows 206, 207, 208, 209, 210, 211; 2 sts. after Rows 212; 213; 1 st. after Rows 214, 215, 216; 217, 218, 219; 2 sts. after Rows 220; 221; 1 st. after Rows 222, 223, 224, 225, 226, 227; 2 sts. after Rows 228, 229; 3 sts. after Rows 230, 231, 232, 233; 11 sts. after Row 234.

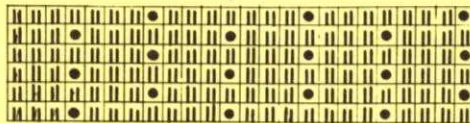
ON EACH SIDE, increase 1 st. after Rows 24, 34, 44, 52, 60, 68, 76, 84, 92, 100, 108, 116, 124, 132, 140, 148, 156, 164, 172, then knit to Row 180.

ROWS 0 to 24: Knit even, then change to stockinette st.

Cast on 65 sts. and work K1, P1, Ribbing.

# DK 8263

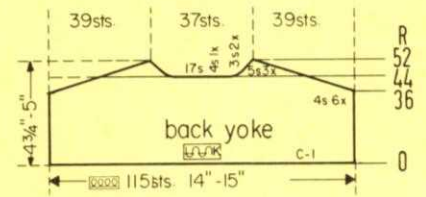
SIZE: 14 (Bust 35"-36") 16 (Bust 37"-38")  
 YARN: Crocus Crepe Melodie  
 50 gr. BALLS: 11 color 1 11 color 1  
 7 color 2 7 color 2  
 TENSION: 6 to 8 7 to 9  
 GAUGE: 2" Stk.: 16 sts. 21 rows 15 sts. 20 rows  
 Pattern: 15 sts. 29 rows 14 sts. 28 rows



21-24 COLOR 1  
 17-20 COLOR 2  
 13-16 COLOR 1  
 9-12 COLOR 2  
 5-8 COLOR 1  
 1-4 COLOR 2

The instructions are the same for both sizes. PATTERN: Holding Position Design according to the Line Drawing. SLEEVES and YOKE: Stockinette Stitch. The knit side is the right side. DECREASES: Hang the 1st st. onto the 2nd st. INCREASES: Dress: Place the end st. from the row below onto the next empty needle. Sleeves: Move the 2 end sts. 1 needle outward, then place the 3rd st. from the row below onto the empty needle.

FINISHING: Block all sections. Sew the yoke sections onto the back and front sections of the dress. Sew the Bust Darts. (Baste first for proper placement). Join the front and back section at sides and shoulders. Sew the sleeves together and set in. Turn under 22 rows on the lower edge and hem in place. Turn under 12 sts. on the buttonhole and button band and sew in place. Work 1 row of single crochet and 1 row of backward single crochet around the neckline. Finish the buttonholes, sew on buttons.

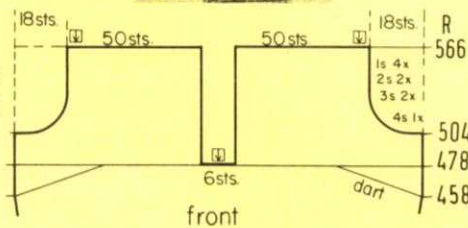
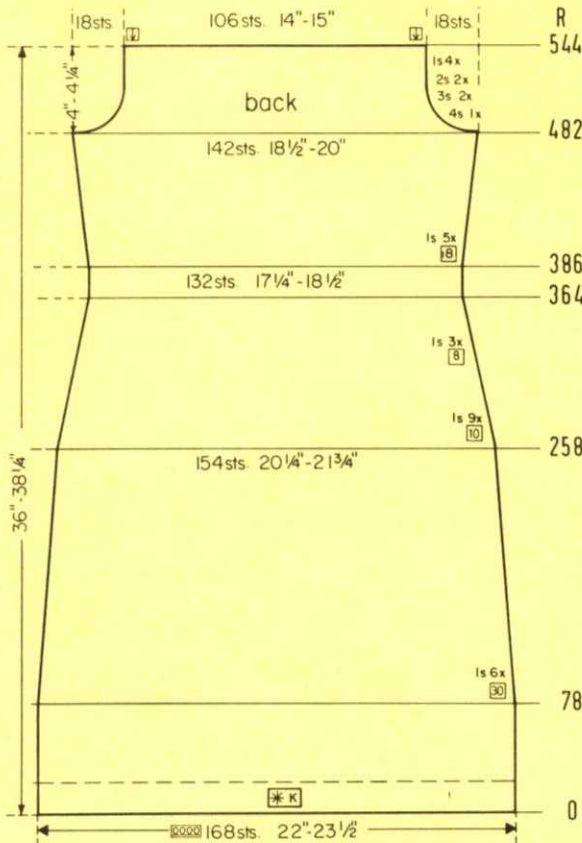


Bring the needles on the left side into working position, knit 1 row in PATTERN to the left side, turn the Row Counter back to 478 and complete the left half. Follow the instructions from\*.

ON CAM BOX SIDE, bind off 4 sts. after Row 504; 3 sts. after Rows 506, 508; 2 sts. after Rows 510, 512; 1 st. after Rows 514, 516, 518, 520, then knit to Row 566 and bind off the remaining 50 sts.

\* ROWS 479 to 504: Knit even.

Work the front section the same as the back section to ROW 458, then knit even to Row 478, bind off the center 6 sts., put the needles on the left side into holding position and complete the right half first.



ON CAM BOX SIDE, bind off 4 sts. after Rows 482, 483; 3 sts. after Rows 484, 485, 486, 487; 2 sts. after Rows 488, 489, 490, 491; 1 st. after Rows 492, 493, 494, 495, 496, 497, 498, 499, then knit to Row 544 and bind off the remaining 106 sts.

ON EACH SIDE, increase 1 st. after Rows 386, 404, 422, 440, 458, then knit to Row 482. (For the Front Section knit to ROW 458 and make the increases).

ON EACH SIDE, decrease 1 st. after Rows 78, 108, 138, 168, 198, 228, 258, 268, 278, 288, 298, 308, 318, 328, 338, 348, 356, 364, then knit to Row 386.

ROWS 0 to 78: Knit even.

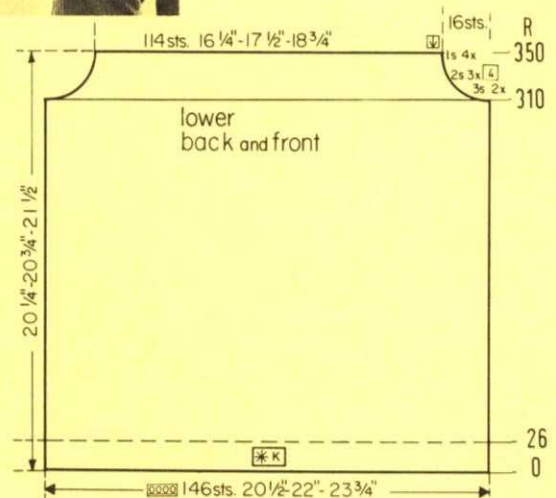
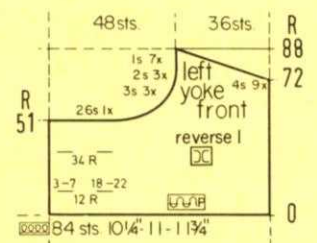
Cast on 168 sts. and work the Holding Position Design.

# HP 3707

SIZE: 38 (Chest 38"-39") 42 (Chest 41"-42") 46 (Chest 45"-46")  
 YARN: Beatrice Crepe Allegro Dralon Dolly Dralon Crepe  
 50 gr. BALLS: 9 9 11  
 TENSION: 5 to 7 6 to 8 7 to 9  
 GAUGE: 2" Stk.: 16 sts. 22 rows 15 sts. 21 rows 14 sts. 20 rows  
 Pattern: 14 sts. 34 rows 13 sts. 33 rows 12 sts. 32 rows

The instructions are the same for all sizes. PATTERN: Upper section: Stockinette Stitch worn on the purl side. Collar and Pocket: Stockinette Stitch worn on the knit side. Lower section and Sleeves: Holding position Design according to the Line Drawing, worn on the knit side, (KNITTING machine owners set up the Pattern for the first row, then use the Needle Shifter after every row). INCREASES: Place the end st. from the row below onto the next empty needle.

FINISHING: Block all sections. Join the upper sections (Purl side is the right side) to the lower sections (Knit side is the right side). Fold the buttonhole and button band portion to the outside and sew in place. Join the front and back section at sides and shoulders. Sew the sleeves together and set in. Turn under 26 rows on the lower edge and sleeve edges and hem in place. Sew 1 edge of the collar to the inside and 1 edge to the outside of the neckline. Sew the pocket in place. Finish the buttonholes, sew on buttons.

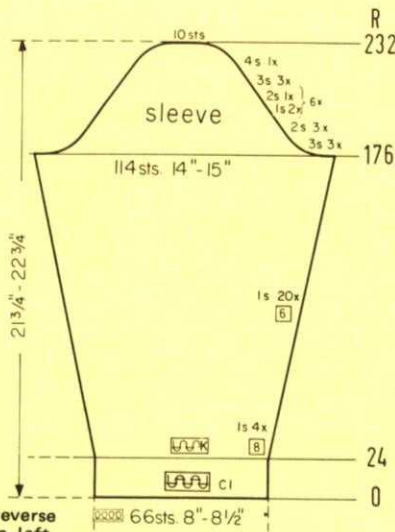


Move the Cam Box to the left side, turn the Row Counter back to 44 and complete the left half. Follow the instructions from\*.

\*ON CAM BOX SIDE, bind off 4 sts. after Rows 44 (EVEN ROWS = SHOULDER SHAPING), 45 (ODD ROWS = NECK SHAPING), 46; 3 sts. after Row 47; 5 sts. after Row 48; 3 sts. after Row 49; 5 sts. after Rows 50, 52.

Knit even to Row 36. ON CAM BOX SIDE, bind off 4 sts. after Rows 36, 37, 38, 39, 40, 41, 42, 43, then knit to Row 44, bind off the center 17 sts., put the needles on the left side into holding position and complete the right half first.

Cast on 115 sts. with color 1 and work stockinette st.



ON CAM BOX SIDE, bind off 3 sts. after Rows 176, 177, 178, 179, 180, 181; 2 sts. after Rows 182, 183, 184, 185, 186, 187; 1 st. after Rows 188, 189, 190, 191; 2 sts. after Rows 192, 193; 1 st. after Rows 194, 195, 196, 197; 2 sts. after Rows 198, 199; 1 st. after Rows 200, 201, 202, 203; 2 sts. after Rows 204, 205; 1 st. after Rows 206, 207, 208, 209; 2 sts. after Rows 210, 211; 1 st. after Rows 212, 213, 214, 215; 2 sts. after Rows 216, 217; 1 st. after Rows 218, 219, 220, 221; 2 sts. after Rows 222, 223; 3 sts. after Rows 224, 225, 226, 227, 228, 229; 4 sts. after Rows 230, 231; 10 sts. after Row 232.

ON EACH SIDE, increase 1 st. after Rows 24, 32, 40, 48, 56, 62, 68, 74, 80, 86, 92, 98, 104, 110, 116, 122, 128, 134, 140, 146, 152, 158, 164, 170, then knit to Row 176.

ROWS 0 to 24: Knit even, then change to stockinette st.

Cast on 66 sts. with color 1 and work K1, P1, Ribbing.

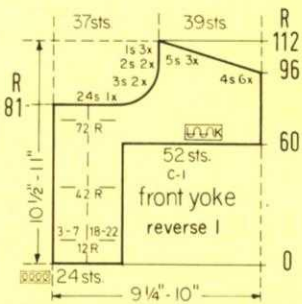
Work the second front yoke with reverse shapings, casting on from right to left. (The Cam Box will be on the LEFT side at Row 0). Omit the buttonholes.

ON CAM BOX SIDE, bind off 24 sts. after Row 81; 3 sts. after Rows 83, 85; 2 sts. after Rows 87, 89; 1 st. after Rows 91, 93, 95. For SHOULDER bind off 4 sts. after Rows 96, 98, 100, 102, 104, 106; 5 sts. after Rows 108, 110, 112.

ROWS 61 to 81: Make buttonholes after Row 72 over the same sts. as before, then knit to Row 81.

Make buttonholes after Rows 12 and 42 over the 3rd-7th and 18th-22nd sts. counting from the left side. Knit to Row 60 and cast on 52 sts. ON CAM BOX SIDE.

Cast on 24 sts. with color 1 and work stockinette st.

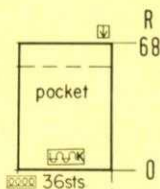


Work the right upper front section with reverse shapings, casting on from right to left. (The Cam Box will be on the LEFT side at Row 0). Omit the buttonholes.

ON CAM BOX SIDE, bind off 26 sts. after Row 51; 3 sts. after Rows 53, 55, 57; 2 sts. after Rows 59, 61, 63; 1 st. after Rows 65, 67, 69, 71; 4 sts. after Row 72 (EVEN ROWS = SHOULDER SHAPING); 1 st. after Row 73; 4 sts. after Row 74; 1 st. after Row 75; 4 sts. after Row 76; 1 st. after Row 77; 4 sts. after Rows 78, 80, 82, 84, 86, 88.

Make buttonholes after Rows 12 and 34 over the 3rd-7th and 18th-22nd sts. counting from the left side, then knit to Row 51.

Cast on 84 sts. and work stockinette st.

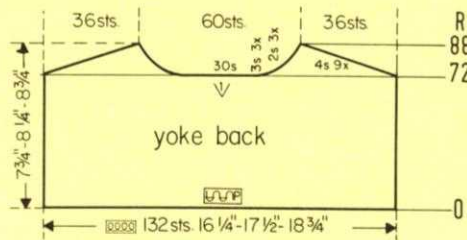


Cast on 36 sts. and work 68 rows stockinette st., then bind off all sts.

ON CAM BOX SIDE, bind off 3 sts. after Rows 310, 311, 314, 315; 2 sts. after Rows 318, 319, 322, 323, 326, 327; 1 st. after Rows 330, 331, 334, 335, 338, 339, 342, 343, then knit to Row 350 and bind off the remaining 114 sts. Work the second lower section the same.

ROWS 0 to 310: Knit even.

Cast on 146 sts. and work the Holding Position Design.

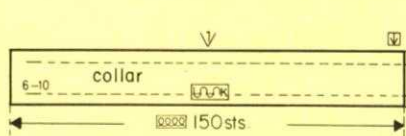


Move the Cam Box to the left side, turn the Row Counter back to 72 and complete the left half. Follow the instructions from\*.

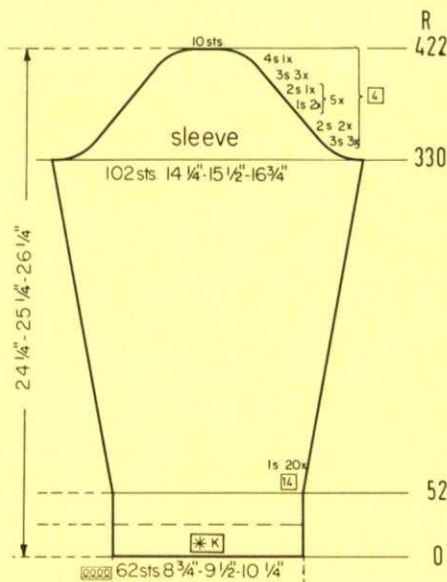
\*ON CAM BOX SIDE, bind off 4 sts. after Row 72 (EVEN ROWS = SHOULDER SHAPING); 3 sts. after Row 73 (ODD ROWS = NECK SHAPING); 4 sts. after Row 74; 3 sts. after Row 75; 4 sts. after Row 76; 3 sts. after Row 77; 4 sts. after Row 78; 2 sts. after Row 79; 4 sts. after Row 80; 2 sts. after Row 81; 4 sts. after Row 82; 2 sts. after Row 83; 4 sts. after Rows 84, 86, 88.

ROWS 0 to 72: Knit even, then bind off the center 30 sts., put the needles on the left side into holding position and complete the right half first.

Cast on 132 sts. and work stockinette st.



Cast on 150 sts. and work stockinette st. Make buttonholes after Rows 8 and 22 over the 6th-10th sts. counting from the left side. After Row 30 bind off all sts.



ON CAM BOX SIDE, bind off 3 sts. after Rows 330, 331, 334, 335, 338, 339; 2 sts. after Rows 342, 343, 346, 347; 1 st. after Rows 350, 351, 354, 355; 2 sts. after Rows 358, 359; 1 st. after Rows 362, 363, 366, 367; 2 sts. after Rows 370, 371; 1 st. after Rows 374, 375, 378, 379; 2 sts. after Rows 382, 383; 1 st. after Rows 386, 387, 390, 391; 2 sts. after Rows 294, 295; 1 st. after Rows 398, 399, 402, 403; 2 sts. after Rows 406, 407; 3 sts. after Rows 410, 411, 414, 415, 418, 419; 4 sts. after Rows 422, 423; 10 sts. after Row 426.

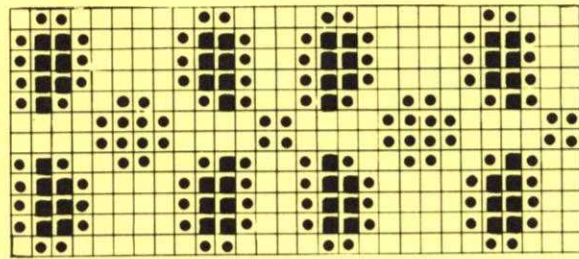
ON EACH SIDE, increase 1 st. after Rows 52, 66, 80, 94, 108, 122, 136, 150, 164, 178, 192, 206, 220, 234, 248, 262, 276, 290, 304, 318, then knit to Row 330.

ROWS 0 to 52: Knit even.

Cast on 62 sts. and work the Holding Position Design.

# DP 8256

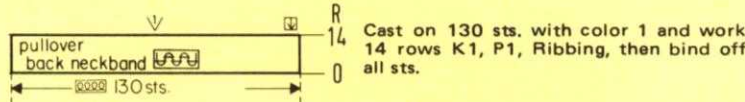
SIZE: 10 (Bust 32"-33") 12 (Bust 34"-35")  
 YARN: Amore Amore  
 50 gr. BALLS: 10 color 1 11 color 1  
 1 color 2 1 color 2  
 1 color 3 1 color 3  
 TENSION: 7 to 9 8 to 10  
 GAUGE: 2" 15 sts. 23 rows 14 sts. 22 rows



● = Color 3  
 ■ = Color 2  
 □ = Color 1

The instructions are the same for both sizes. PATTERN: Stockinette Stitch and a Norwegian Design as marked in the Diagrams. Follow the Line Drawing. In the instructions, each row in the Norwegian Design is counted as 1 row, but several movements of the Cam Box are needed to complete 1 row. INCREASES: Move the 2 end sts. 1 needle outward, then place the 3rd st. from the row below onto the empty needle. DECREASES: Hang the 3rd st. onto the 2nd st., then move the end sts. inward to fill the empty needle.

FINISHING: Block all sections. PULLOVER: Join the front and back section at sides. Join the neckband at center back, then sew the band to the neckline, leaving 6" free between the front and back section. Work 2 rows of single crochet around the armhole edges. CARDIGAN: Join the back and front sections at sides. Sew the sleeves together then sew them in place. Turn under 12 sts. on the front edges and hem to wrong side. Sew 1 edge of the neckband to the inside and 1 edge to the outside of the neckline. Finish the buttonholes, sew on buttons.



Move the Cam Box to the left side, turn the Row Counter back to 268 and complete the left half. Follow the instructions from\*.

\*ON ARMHOLE SIDE, decrease 1 st. after Rows in ( ). ON CAM BOX SIDE, (NECK SIDE) bind off 3 sts. after Rows 269, (270), 271, 273, (273). After Row 276 hang the 3 remaining sts. together and bind off.

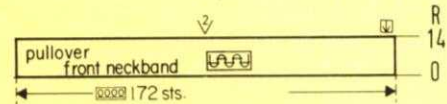
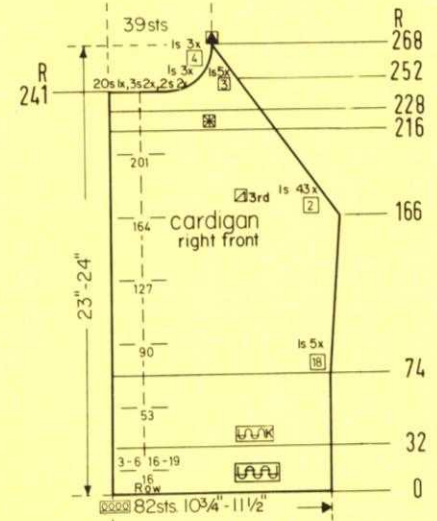
ON EACH SIDE, decrease 1 st. after Row 166, then again after every 2nd row 42 times more. AT THE SAME TIME, work the Norwegian Stripe from Row 216 to 228. After Row 252 the decreases on every 2nd row are completed. Decrease 1 st. ON EACH SIDE after Rows 252, 255, 258, 261, 264, 267, then knit to Row 268, bind off the center 12 sts., put the needles on the left side into holding position and complete the right half first.

ON EACH SIDE, increase 1 st. after Rows 74, 92, 110, 128, 146, then knit to Row 166.

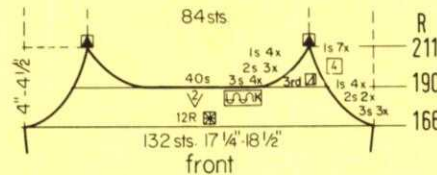
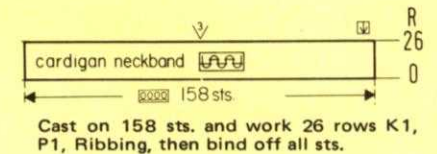
ROWS 33 to 74: Knit even.

ROWS 0 to 32: Knit even, then change to stockinette st.

Cast on 128 sts. and work K1, P1, Ribbing.



Cast on 172 sts. with color 1 and work 14 rows K1, P1, Ribbing, then bind off all sts.



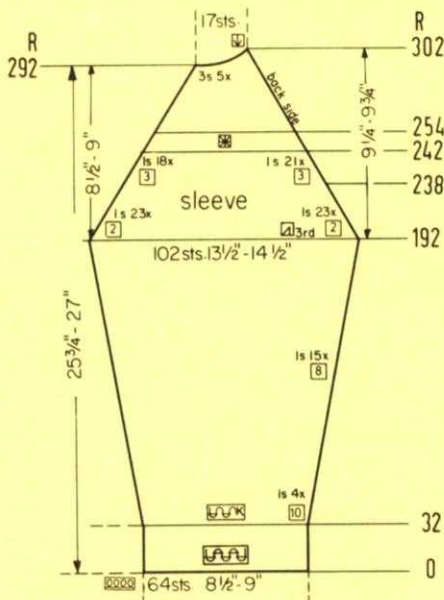
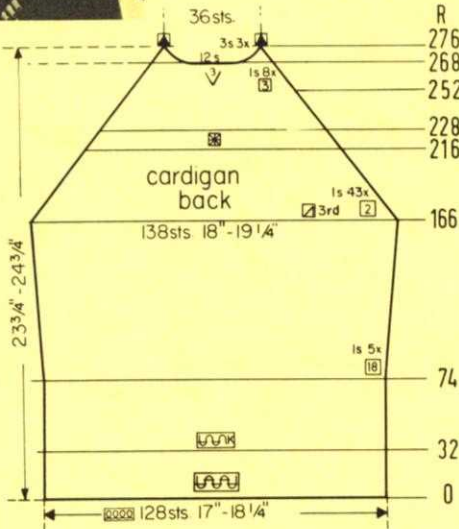
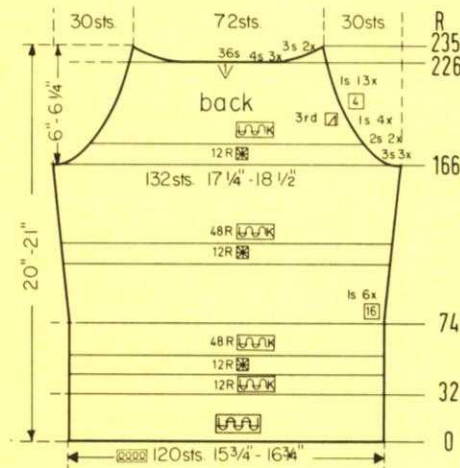
Work the second sleeve with reverse shapings, casting on from right to left. (The Cam Box will be on the LEFT side at Row 0).

ON EACH SIDE, decrease 1 st. after Row 192, then again after every 2nd row 22 times more. The decreases on every other row are completed after Row 238. Decrease 1 st. ON EACH SIDE after Row 238, then again after every following 3rd row 17 times more. AT THE SAME TIME, work the Norwegian Stripe from ROWS 242 to 254. The last decreases are after Row 289. Knit to Row 292, then work Short Rows and continue to decrease 1 st. on the BACK SIDE of the sleeve after Rows in ( ). ON OPPOSITE SIDE of CAM BOX, put into holding position 3 needles after Rows 292, (292), 294, (295), 296, 298, (298), 300. After Row 302 bring all 15 needles back into working position, then bind off the remaining 17 sts.

ON EACH SIDE, increase 1 st. after Rows 32, 42, 52, 62, 72, 80, 88, 96, 104, 112, 120, 128, 136, 144, 152, 160, 168, 176, 184, then knit to Row 192.

ROWS 0 to 32: Knit even, then change to stockinette st.

Cast on 64 sts. and work K1, P1, Ribbing.



Work the second front section with reverse shapings, casting on from right to left. (The Cam Box will be on the LEFT side at Row 0). Omit the buttonholes.

Continue to decrease 1 st. ON ARM-HOLE SIDE after Rows in ( ). ON CAM BOX SIDE (NECK SIDE), bind off 20 sts. after Row 241; (242), 3 sts. after Rows 243, (244), 245; (246), 2 sts. after Rows 247, (248), 249; (250), 1 st. after Rows 251, (252), 253, 255, (255), 257, (258), 261, (261), (264), 265. After Row 268 hang the 3 remaining sts. together and bind off.

ON CAM BOX SIDE, decrease 1 st. after Row 166, then again after every 2nd row 37 times more. AT THE SAME TIME, make buttonholes after Row 201. Work the Norwegian Stripe from Row 216 to Row 228. The last decrease is after Row 240, then knit to Row 241.

Continue to make buttonholes after Rows in ( ). ON CAM BOX SIDE, increase 1 st. after Rows 74, (90), 92, 110, (127), 128, 146, (164), then knit to Row 166.

ROWS 33 to 74: Make buttonholes after Row 53 over the same sts. as before, then knit to Row 74.

ROWS 0 to 32: Make buttonholes after Row 16 over the 3rd-6th and 16th-19th sts. counting from the left side, then knit to Row 32 and change to stockinette st.

Cast on 82 sts. and work K1, P1, Ribbing.

Move the Cam Box to the left side, turn the Row Counter back to 190 and complete the left half. Follow the instructions from\*.

\*ON ARMHOLE SIDE, continue to decrease 1 st. after Rows in ( ). ON CAM BOX SIDE, bind off 3 sts. after Rows 191, (192), 193, 195, (196), 197; 2 sts. after Rows 199, (200), 201, 203; (204), 1 st. after Rows 205, 207, (208), 209, 211.

ON CAM BOX SIDE, bind off 3 sts. after Rows 166, 167, 168, 169, 170, 171; 2 sts. after Rows 172, 173, 174, 175. ON EACH SIDE, decrease 1 st. after Rows 176, 178, 180, 182, 184, 188, then knit to Row 190, bind off the center 40 sts., put the needles on the left side into holding position and complete the right half first.

Work the front section the same as the back section to Row 166.

Move the Cam Box to the left side, turn the Row Counter back to 226 and complete the left half. Follow the instructions from\*.

\*ON ARMHOLE SIDE, continue to decrease 1 st. after Rows in ( ). ON CAM BOX SIDE, bind off 4 sts. after Rows 227, (228), 229, 231; (232), 3 sts. after Rows 233, 235.

ON CAM BOX SIDE, bind off 3 sts. after Rows 166, 167, 168, 169, 170, 171; 2 sts. after Rows 172, 173, 174, 175. ON EACH SIDE, decrease 1 st. after Rows 176, 178, 180, 182, 184, 188, 192, 196, 200, 204, 208, 212, 216, 220, 224, then knit to Row 226, bind off the center 36 sts., put the needles on the left side into holding position and complete the right half first.

ON EACH SIDE, increase 1 st. after Rows 74, 90, 106, 122, 138, 154, then knit to Row 166. (For the Front Section knit to ROW 166).

ROWS 33 to 74: Knit even.

ROWS 0 to 32: Knit even, then change to stockinette st. and work the PAT-TERN Stripes as marked in the Diagram.

Cast on 120 sts. with color 1 and work K1, P1, Ribbing.

# baby lock

**MODEL NO. 605.** Fabulous Cut, Sew and Overlock machine. Perfect for the entire Family.

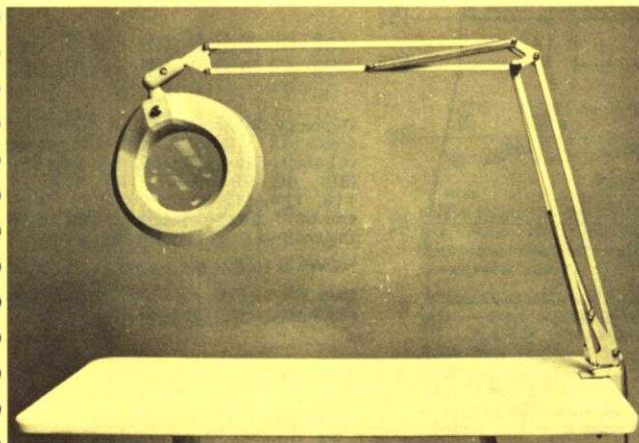
List Price ..... **\$329.00**

**MODEL NO. 405.** New Style Cut and Overlock Machine. Specially for knit materials.

List Price: ..... **\$299.00**

*(California residents add Sales Tax)*

Shipping charges: F.O.B. Los Angeles



# knitking magnifier lamp

A perfect gift item for any knitter. It has a large (5") magnifying lens and a cool fluorescent tube light. It stays in any position and is wonderful for general illumination for you to work under when joining seams, etc. Color: light grey.

List Price: ..... **\$49.50**

*(California residents add Sales Tax)*

Shipping Costs: \$3.00

Order direct from KNITKING —

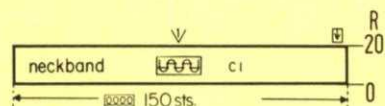
1128 Crenshaw Blvd., Los Angeles, California 90019

# MK 5450

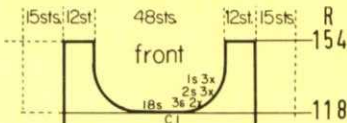
SIZE:	4 (Chest 23")	6 (Chest 24"-25")	8 (Chest 26"-27")
YARN:	Beatrice Crepe	Allegro Dralon	Allegro Dralon
50 gr. BALLS:	2 color 1 3 color 2 1 color 3	2 color 1 3 color 2 1 color 3	3 color 1 4 color 2 1 color 3
TENSION:	5 to 7	6 to 8	7 to 9
GAUGE:	2" 16 sts. 22 rows	15 sts. 21 rows	14 sts. 20 rows

The instructions are the same for all sizes. PATTERN: Stockinette Stitch with Color Stripes and a Norwegian Design on the Pullover. Follow the Line Drawing, or use JAC 40 and Pattern No. 480. In the instructions, each row in the Norwegian Design is counted as 1 row, but several movements of the Cam Box are needed to complete 1 row. EDGES: K1, P1, Ribbing. DECREASES: Hang the 4th st. onto the 3rd st., then move the end sts. inward to fill the empty needle. Begin the DARTS by hanging the sts. together as marked in the Diagram, then move the sts. together to fill the empty needles. The following decreases for the Darts lie directly above.

FINISHING: Block all sections. SKIRT: Weave the sections together at sides, 1 st. in from each edge. Turn under 18 rows on the lower edge and 13 sts. on the upper edge and hem in place. Insert an elastic band into the upper hem. PULLOVER: Join the front and back section at sides and shoulders. Join the short ends of the bands. Sew 1 edge of the neckline band to the inside and 1 edge to the outside of the neckline. Sew the armhole bands to the armholes in the same manner.



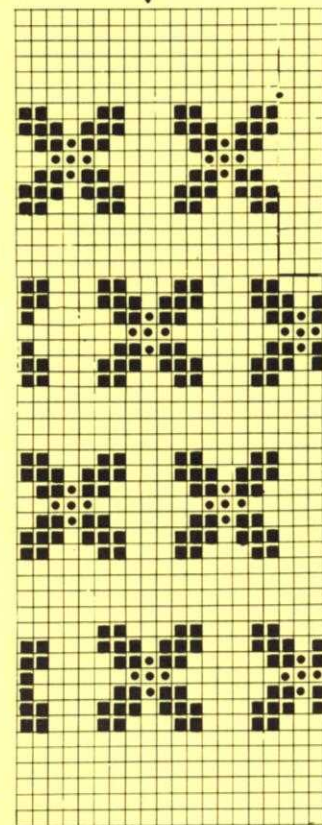
Cast on 150 sts. with color 1 and work 20 rows K1, P1, Ribbing, then bind off all sts.



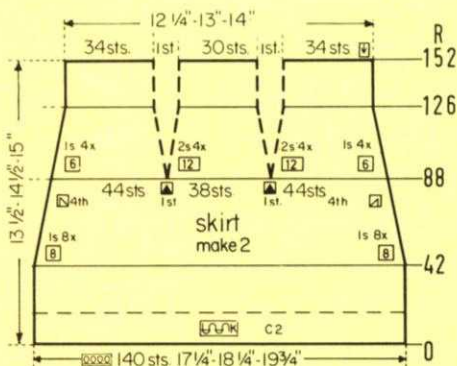
Move the Cam Box to the left side, turn the Row Counter back to 118 and complete the left half. Follow the instructions from\*.

\*ON CAM BOX SIDE, bind off 3 sts. after Rows 119, 121; 2 sts. after Rows 123, 125, 127; 1 st. after Rows 129, 131, 133. After Row 154 bind off the 12 Shoulder sts.

Work the front section the same as the back section to ROW 118, then bind off the center 18 sts., put the needles on the left side into holding position and complete the right half first.



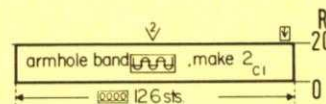
● = Color 1  
■ = Color 3  
□ = Color 2



Decrease 2 sts. for EACH DART after Rows in ( ). ON EACH SIDE, decrease 1 st. after Rows 42, 50, 58, 66, 74, 82, (88), 90, 98, (100), 106, 112, (112), 118, 124, (124), then knit to Row 152 and bind off the remaining 100 sts. Work the second skirt section the same.

ROWS 0 to 42: Knit even.

Cast on 140 sts. with color 2 and work stockinette st.



Cast on 126 sts. with color 1 and work 20 rows K1, P1, Ribbing, then bind off all sts.

Move the Cam Box to the left side, turn the Row Counter back to 138 and complete the left half. Follow the instructions from\*.

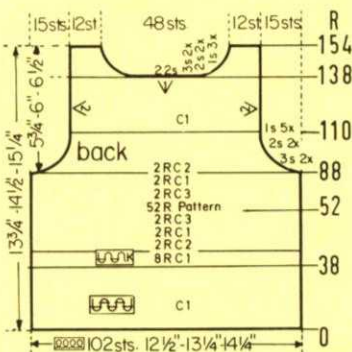
\*ON CAM BOX SIDE, bind off 3 sts. after Rows 139, 141; 2 sts. after Rows 143, 145; 1 st. after Rows 147, 149, 151. After Row 154 bind off the 12 Shoulder sts.

ON CAM BOX SIDE, bind off 3 sts. after Rows 88, 89, 90, 91; 2 sts. after Rows 92, 93, 94, 95; 1 st. after Rows 96, 97, 98, 99, 100, 101, 102, 103, 104, 105, then knit to Row 138, bind off the center 22 sts., put the needles on the left side into holding position and complete the right half first. (For the Front Section knit to ROW 118).

ROWS 39 to 88: Knit even.

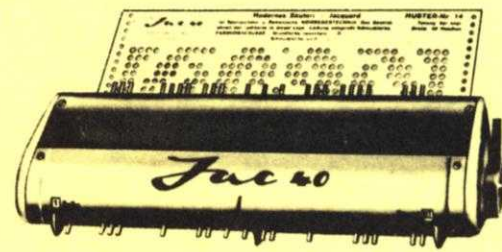
ROWS 0 to 38: Knit even, then change to stockinette st. and work the Stripes and the Norwegian Design as marked in the Diagram.

Cast on 102 sts. with color 1 and work K1, P1, Ribbing.



## Jac40 is a must

for fast easy knitting of Jaquard and Ski-sweater designs



When ordering be sure to specify your brand of knitter as needle spacings vary. Simple to use and an essential tool for the modern knitter, Jac 40's are \$29.50 complete with 3 cards for practicing the 3 techniques, plus complete instructions.



# MK 5449

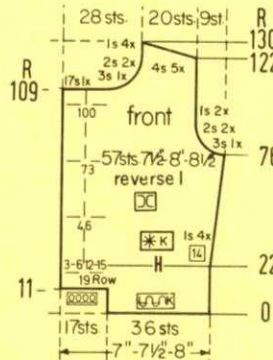
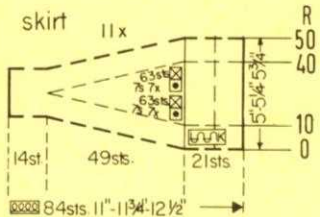
SIZE:	3 (Chest 22")	4 (Chest 23")	6 (Chest 24"-25")
YARN:	Sport Prima	Dolly Dralon	Flamingo Dralon
50 gr. BALLS:	9	8	10
TENSION:	7 to 9	8 to 10	9 to 10
GAUGE:	2" 15 sts. 20 rows	14 sts. 19 rows	13 sts. 18 rows



The instructions are the same for all sizes. **PATTERN:** Stockinette Stitch and a Cable Design on the jacket. Follow the Line Drawing. The Skirt is knitted sideways on the machine and with Short Rows. **INCREASES:** Move the 2 end sts. 1 needle outward, then place the 3rd st. from the row below onto the empty needle. To form the hem, hang the cast-on sts. back onto the machine behind the latches, then knit the following row with 1 or 2 tension settings higher.

**FINISHING:** Block all sections. **JACKET:** Join the back and the front sections at sides and shoulders. Sew the sleeves together and set in. Turn under 8 sts. on the front edges and hem to wrong side. Sew the collar in place. Finish the buttonholes, sew on buttons. **SKIRT:** Weave the open sts. together, remove the waste yarn. Turn under 10 sts. on the lower edge and 7 sts. on the upper edge and hem in place. Insert an elastic band into the upper hem.

Using contrast waste yarn, cast on 84 sts. Knit several rows, ending with the Cam Box on the right side. Turn the Row Counter back to 0 and change to the garment yarn. Work stockinette st. Knit to Row 10, then work Short Rows. **ON OPPOSITE SIDE of CAM BOX** put into holding position 63 needles after Row 10. **ON OPPOSITE SIDE of CAM BOX** bring back into working position 7 needles after Rows 12, 14, 16, 18, 20, 22, 24. **ON OPPOSITE SIDE of CAM BOX** put into holding position 7 needles after Rows 26, 28, 30, 32, 34, 36, 38. After Row 40 bring all needles back into working position, then knit over all 84 sts. to Row 50. Repeat ROWS 0 to 50 10 more times, then knit several rows with contrast waste yarn and remove the knitting from the machine.



Work the second front section with reverse shapings, casting on from right to left. (The Cam Box will be on the LEFT side at Row 0). Omit the buttonholes.

**ON CAM BOX SIDE, (NECK SIDE)** bind off 17 sts. after Row 109; 3 sts. after Row 111; 2 sts. after Rows 113, 115; 1 st. after Rows 117, 119, 121, then 1 more time after Row in ( ). For **SHOULDER**, bind off 4 sts. after Rows 122, (123), 124, 126, 128, 130.

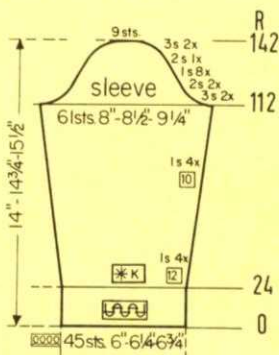
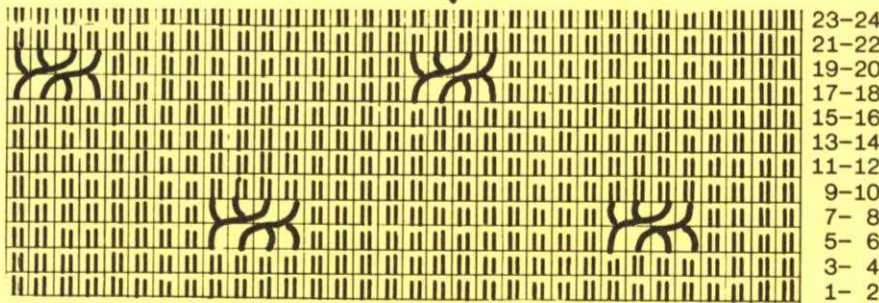
**ON CAM BOX SIDE**, bind off 3 sts. after Row 76; 2 sts. after Rows 78, 80; 1 st. after Rows 82, 84. Make buttonholes after Row 100, then knit to Row 109.

Continue to make buttonholes after Rows in ( ). **ON CAM BOX SIDE**, increase 1 st. after Rows 22, 36, (46), 50, 64, (73), then knit to Row 76.

**ROWS 12 to 22:** Make buttonholes after Row 19 over the 3rd-6th and 12th-15th sts. counting from the left side, then knit to Row 22, form the hem and begin the Cable Design.

**ROWS 0 to 11:** Knit even, then cast on 17 sts. **ON CAM BOX SIDE.**

Cast on 36 sts. and work stockinette st.

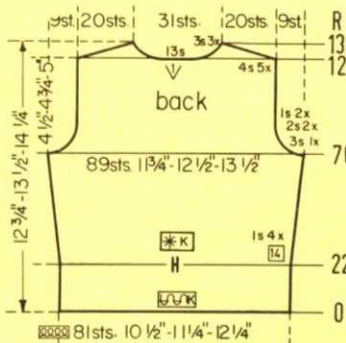


**ON CAM BOX SIDE**, bind off 3 sts. after Rows 112, 113, 114, 115; 2 sts. after Rows 116, 117, 118, 119. **ON EACH SIDE**, hang the 1st st. onto the 2nd st. after Rows 120, 122, 124, 126, 128, 130, 132, 134. **ON CAM BOX SIDE**, bind off 2 sts. after Rows 136, 137; 3 sts. after Rows 138, 139, 140, 141; 9 sts. after Row 142.

**ON EACH SIDE**, increase 1 st. after Rows 24, 36, 48, 60, 72, 82, 92, 102, then knit to Row 112.

**ROWS 0 to 24:** Knit even, then form the hem and begin the Cable Design.

Cast on 45 sts. and work stockinette st.



Move the Cam Box to the left side, turn the Row Counter back to 122 and complete the left half. Follow the instructions from\*.

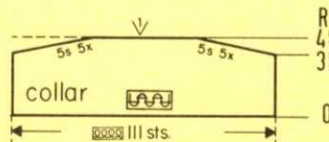
\***ON CAM BOX SIDE**, bind off 4 sts. after Row 122 (EVEN ROWS = SHOULDER SHAPING); 3 sts. after Row 123 (ODD ROWS = NECK SHAPING); 4 sts. after Row 124; 3 sts. after Row 125; 4 sts. after Row 126; 3 sts. after Row 127; 4 sts. after Rows 128, 130.

**ON CAM BOX SIDE**, bind off 3 sts. after Rows 76, 77; 2 sts. after Rows 78, 79, 80, 81; 1 st. after Rows 82, 83, 84, 85, then knit to Row 122, bind off the center 13 sts., put the needles on the left side into holding position and complete the right half first.

**ON EACH SIDE**, increase 1 st. after Rows 22, 36, 50, 64, then knit to Row 76.

**ROWS 0 to 22:** Knit even, then form the hem and begin the Cable Design.

Cast on 81 sts. and work stockinette st.



Cast on 111 sts. and work K1, P1, Ribbing. **ON OPPOSITE SIDE of CAM BOX** put into holding position 5 needles after Rows 38, 39, 40, 41, 42, 43, 44, 45, 46, 47. After Row 48 bring all needles back into working position, then bind off all sts.

# DK 8262

<b>SIZE:</b>	12 (Bust 34"-35")	14 (Bust 36"-37")	18 (Bust 39"-40")
<b>YARN:</b>	Subita Crepe 2 x 3	Beatrice Crepe	Allegro Dralon
<b>50 gr. BALLS:</b>			
<b>Cardigan &amp; Skirt:</b>	14 color 1	17 color 1	17 color 1
<b>Pullover:</b>	6 color 2	7 color 2	7 color 2
<b>TENSION:</b>	5 to 7	5 to 7	6 to 8
<b>GAUGE:</b>	2" 17 sts, 23 rows	16 sts, 22 rows	15 sts, 21 rows



The instructions are the same for all sizes. **PATTERN:** Stockinette Stitch with an Eyelet Design according to the Line Drawing. **DECREASES:** Hang the 3rd st. onto the 2nd st., then move the end sts. inward to fill the empty needle. Begin the Darts by hanging the sts. together as marked on the Diagram, then move the sts. together to fill the empty needles. The following decreases for the Darts lie directly above. **INCREASES:** Move the 2 end sts. 1 needle outward, then place the 3rd st. from the row below onto the empty needle.

**FINISHING:** Block all sections. **CARDIGAN:** Join the back and front sections at sides and shoulders. Sew the sleeves together and set in. Turn under 18 rows on the lower edge and the sleeve edges and hem in place. Join the bands at short ends, then sew 1 edge of the band to the inside and 1 edge to the outside of the front edges and around the neckline. Finish the buttonholes, sew on the buttons. **PULLOVER:** Join the front and back section at sides and shoulders. Sew the sleeves together and set in. Turn under 18 rows on the lower edge and hem in place. Sew 1 edge of the buttonhole band to the inside and 1 edge to the outside of the right front edge. Sew the buttonband, then the neck band in place in the same manner. Finish the buttonholes, sew on buttons. **SKIRT:** Weave the sections together, 1 st. in from each edge. Turn under 18 rows on the lower edge and 13 rows on the upper edge and hem in place. Insert an elastic band into the upper hem.

Move the Cam Box to the left side, turn the Row Counter back to 252 and in **PATTERN** complete the left half. Follow the instructions from\*.

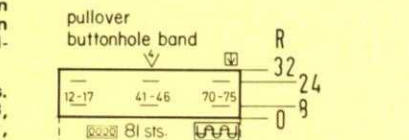
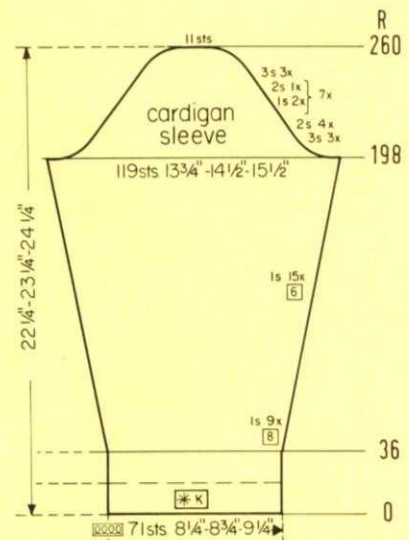
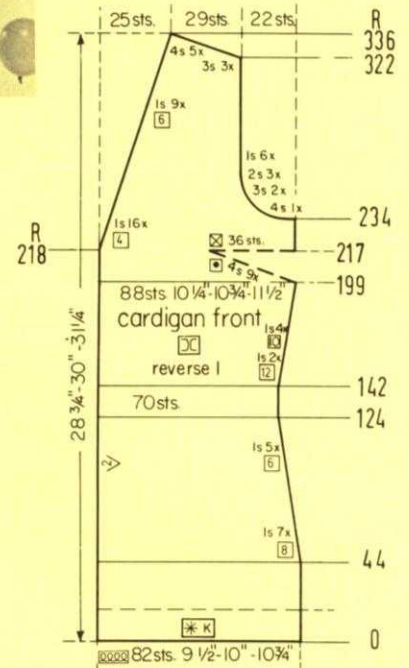
\*ON CAM BOX SIDE, bind off 4 sts. after Rows 252 (EVEN ROWS = SHOULDER SHAPING), 253 (ODD ROWS = NECK SHAPING), 254, 255, 256; 3 sts. after Row 257; 4 sts. after Row 258; 3 sts. after Row 259; 4 sts. after Row 260; 2 sts. after Row 261; 4 sts. after Row 262; 2 sts. after Row 263; 4 sts. after Rows 264, 266.

ON CAM BOX SIDE, bind off 4 sts. after Rows 168, 169; 3 sts. after Rows 170, 171, 172, 173; 2 sts. after Rows 174, 175, 176, 177; 1 st. after Rows 178, 179, 180, 181, 182, 183, 184, 185, 186, 187, then knit to Row 252, bind off the center 22 sts., put the needles on the left side into holding position and complete the right half first.

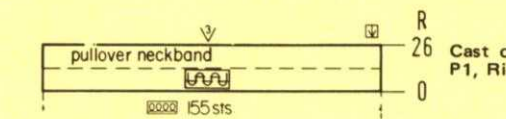
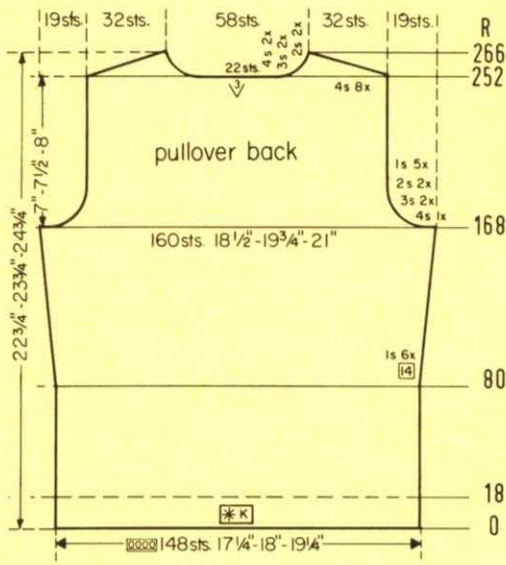
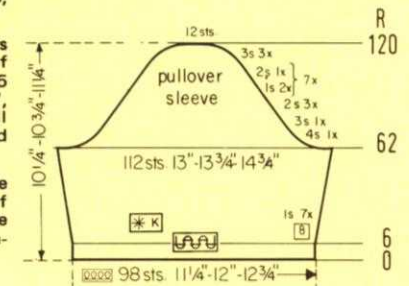
ON EACH SIDE, increase 1 st. after Rows 80, 94, 108, 122, 136, 150, then knit to Row 168. (For the Front Section knit to ROW 150 and make the increases).

ROWS 0 to 80: Knit even.

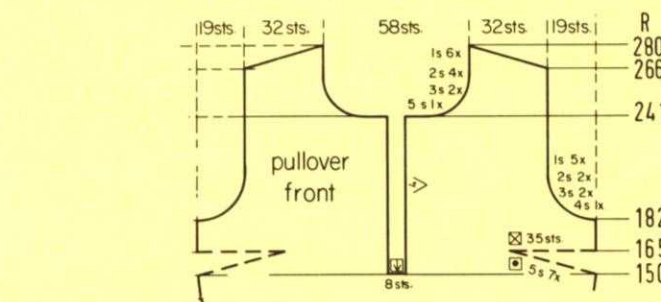
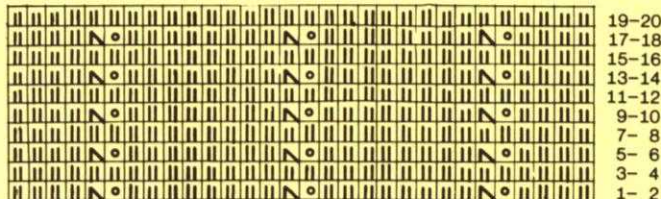
Cast on 148 sts. and work the Eyelet Design.



Cast on 81 sts. and work K1, P1, Ribbing. Make buttonholes after Rows 8 and 24 over the 12th-17th, 41st-46th, 70th-75th sts. counting from the left side. After Row 32 bind off all sts. Work the button band the same, but omit the buttonholes.



Cast on 155 sts. and work 26 rows K1, P1, Ribbing, then bind off all sts.



Move the Cam Box to the left side, turn the Row Counter back to 150 and in **PATTERN** complete the left half. Follow the instructions from\*.

ON CAM BOX SIDE, bind off 5 sts. after Row 241; 3 sts. after Rows 243, 245; 2 sts. after Rows 247, 249, 251, 253; 1 st. after Rows 255, 257, 259, 261, 263, 265. For SHOULDER bind off 4 sts. after Rows 266, 268, 270, 272, 274, 276, 278, 280.

ON CAM BOX SIDE, bind off 4 sts. after Row 182; 3 sts. after Rows 184, 186; 2 sts. after Rows 188, 190; 1 st. after Rows 192, 194, 196, 198, 200, then knit to Row 241.

\*Knit to Row 151 and work Short Rows for the DART. ON OPPOSITE SIDE of CAM BOX put into holding position 5 needles after Rows 151, 153, 155, 157, 159, 161, 163. After Row 165 bring all needles back into working position and knit to Row 182.

Work the front section the same as the back section to ROW 150, then bind off the center 8 sts., put the needles on the left side into holding position and complete the right half first.

Work the second front section with reverse shapings, casting on from right to left. (The Cam Box will be on the LEFT side at Row 0).

ON CAM BOX SIDE, bind off 4 sts. after Row 234; (234), 3 sts. after Rows 236, 238; (238), 2 sts. after Rows 240, 242, (242), 244; 1 st. after Rows 246, (246), 248, 250, (250), 252, 254, (254), 256. The Armhole Shaping is now completed. Continue to decrease 1 st. ON NECK SIDE after Rows 258, 262, 266, 270, 274, 278, 282, 288, 294, 300, 306, 312, 318, then again after Rows in ( ). For SHOULDER bind off 3 sts. after Rows 322, 324, (324), 326; 4 sts. after Rows 328, 330, (330), 332, 334, 336.

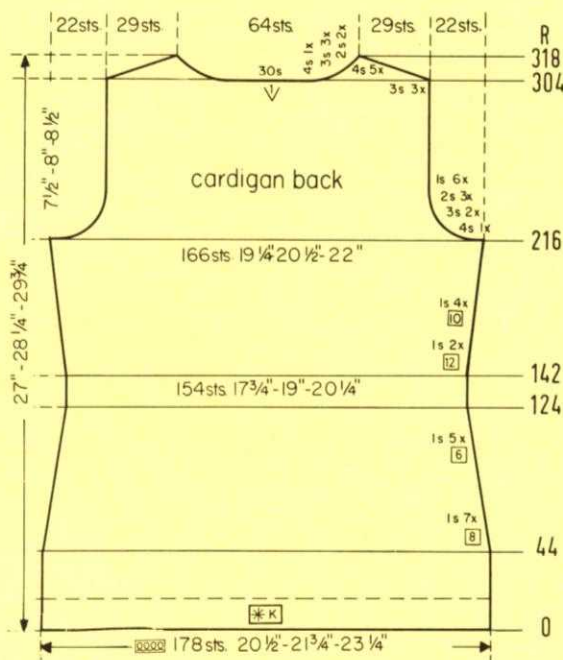
ON OPPOSITE SIDE of CAM BOX (NECK SIDE), decrease 1 st. after Rows 218, 222, 226, 230, then again after Rows in ( ). Knit to Row 234.

ON CAM BOX SIDE, increase 1 st. after Rows 142, 154, 166, 176, 186, 196, then knit to Row 199 and work Short Rows for the DART. ON OPPOSITE SIDE of CAM BOX put into holding position 4 needles after Rows 199, 201, 203, 205, 207, 209, 211, 213, 215. After Row 217 bring all needles back into working position, then knit to Row 218.

ON CAM BOX SIDE, decrease 1 st. after Rows 44, 52, 60, 68, 76, 84, 92, 100, 106, 112, 118, 124, then knit to Row 142.

ROWS 0 to 44: Knit even.

Cast on 82 sts. and work the Eyelet Design.



Move the Cam Box to the left side, turn the Row Counter back to 304 and in PATTERN complete the left half. Follow the instructions from\*.

\*ON CAM BOX SIDE, bind off 3 sts. after Row 304 (EVEN ROWS = SHOULDER SHAPING); 4 sts. after Row 305 (ODD ROWS = NECK SHAPING); 3 sts. after Rows 306, 307, 308, 309; 4 sts. after Row 310; 3 sts. after Row 311; 4 sts. after Row 312; 2 sts. after Row 313; 4 sts. after Row 314; 2 sts. after Row 315; 4 sts. after Rows 316, 318.

ON CAM BOX SIDE, bind off 4 sts. after Rows 216, 217; 3 sts. after Rows 218, 219, 220, 221; 2 sts. after Rows 222, 223, 224, 225, 226, 227; 1 st. after Rows 228, 229, 230, 231, 232, 233, 234, 235, 236, 237, 238, 239, then knit to Row 304, bind off the center 30 sts., put the needles on the left side into holding position and complete the right half first.

ON EACH SIDE, increase 1 st. after Rows 142, 154, 166, 176, 186, 196, then knit to Row 216.

ON EACH SIDE, decrease 1 st. after Rows 44, 52, 60, 68, 76, 84, 92, 100, 106, 112, 118, 124, then knit to Row 142.

ROWS 0 to 44: Knit even.

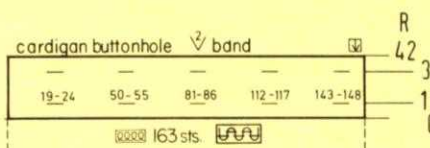
Cast on 178 sts. and work the Eyelet Design.

ON CAM BOX SIDE, bind off 3 sts. after Rows 198, 199, 200, 201, 202, 203; 2 sts. after Rows 204, 205, 206, 207, 208, 209, 210, 211; 1 st. after Rows 212, 213, 214, 215; 2 sts. after Rows 216, 217; 1 st. after Rows 218, 219, 220, 221; 2 sts. after Rows 222, 223; 1 st. after Rows 224, 225, 226, 227; 2 sts. after Rows 228, 229; 1 st. after Rows 230, 231, 232, 233; 2 sts. after Rows 234, 235; 1 st. after Rows 236, 237, 238, 239; 2 sts. after Rows 240, 241; 1 st. after Rows 242, 243, 244, 245; 2 sts. after Rows 246, 247; 1 st. after Rows 248, 249, 250, 251; 2 sts. after Rows 252, 253; 3 sts. after Rows 254, 255, 256, 257, 258, 259; 11 sts. after Row 260.

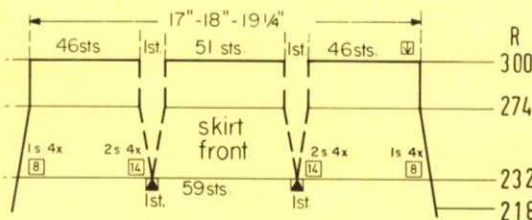
ON EACH SIDE, increase 1 st. after Rows 36, 44, 52, 60, 68, 76, 84, 92, 100, 108, 114, 120, 126, 132, 138, 144, 150, 156, 162, 168, 174, 180, 186, 192, then knit to Row 198.

ROWS 0 to 36: Knit even.

Cast on 71 sts. and work the Eyelet Design.



Cast on 163 sts. and work K1, P1, Ribbing. Make buttonholes after Rows 10 and 32 over the 19th-24th, 50th-55th, 81st-86th, 112th-117th, 143rd-148th sts. counting from the left side. After Row 42 bind off all sts. Work the button band the same, but omit the buttonholes.



Decrease 2 sts. for EACH DART after Rows in ( ). ON EACH SIDE, decrease 1 st. after Rows 220, 230, (232), 240, (246), 250, 258, (260), 266, 274, (274), then knit to Row 300 and bind off the remaining 145 sts.

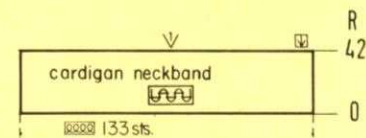
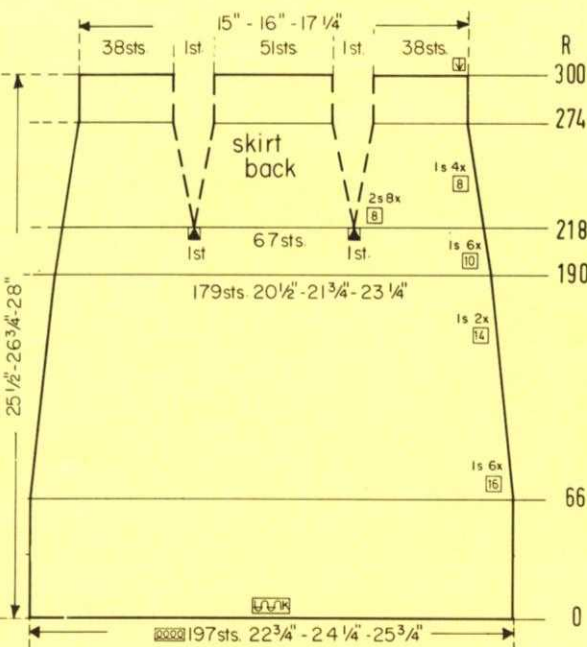
Work the front section the same as the back section to ROW 210.

ON CAM BOX SIDE, bind off 4 sts. after Rows 62, 63; 3 sts. after Rows 64, 65; 2 sts. after Rows 66, 67, 68, 69, 70, 71; 1 st. after Rows 72, 73, 74, 75; 2 sts. after Rows 76, 77; 1 st. after Rows 78, 79, 80, 81; 2 sts. after Rows 82, 83; 1 st. after Rows 84, 85, 86, 87; 2 sts. after Rows 88, 89; 1 st. after Rows 90, 91, 92, 93; 2 sts. after Rows 94, 95; 1 st. after Rows 96, 97, 98, 99; 2 sts. after Rows 100, 101; 1 st. after Rows 102, 103, 104, 105; 2 sts. after Rows 106, 107; 1 st. after Rows 108, 109, 110, 111; 2 sts. after Rows 112, 113; 3 sts. after Rows 114, 115, 116, 117, 118, 119; 12 sts. after Row 120.

ON EACH SIDE, increase 1 st. after Rows 6, 14, 22, 30, 38, 46, 54, then knit to Row 62.

ROWS 0 to 6: Knit even, then change to stockinette st. and work the Eyelet Design.

Cast on 98 sts. and work K1, P1, Ribbing.



Cast on 133 sts. and work 42 rows K1, P1, Ribbing, then bind off all sts.

Decrease 2 sts. for EACH DART after Rows in ( ). ON EACH SIDE, decrease 1 st. after Rows 66, 82, 98, 114, 130, 146, 162, 176, 190, 200, 210, (218), 220, (226), 230, (234), 240, (242), 250, (250), 258, (258), 266, (266), 274, (274), then knit to Row 300 and bind off the remaining 129 sts. (For the Front Section knit to Row 210 and make the decreases).

ROWS 0 to 66: Knit even.

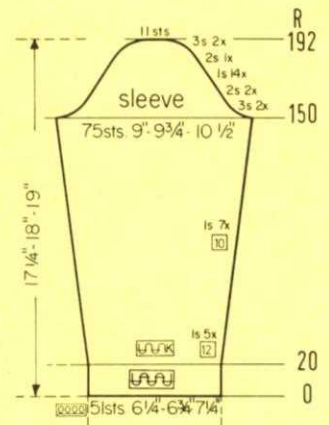
Cast on 197 sts. and work stockinette st.

# MK 5451

SIZE:	4 (Chest 23"-24")	6 (Chest 25"-26")	8 (Chest 27"-28")
YARN:	Beatrice Crepe	Allegro Dralon	Allegro Dralon
50 gr. BALLS:	6 color 1 2 color 2	6 color 1 2 color 2	7 color 1 3 color 2
TENSION:	5 to 7	6 to 8	7 to 9
GAUGE:	2" 16 sts. 22 rows	15 sts. 21 rows	14 sts. 20 rows

The instructions are the same for all sizes. PATTERN: Stockinette Stitch and Norwegian Design according to the Line Drawing. In the instructions, each row in the Norwegian Design is counted as 1 row, but several movements of the Cam Box are needed to complete 1 row. EDGES: K1, P1, Ribbing. DECREASES: Hang the 1st st. onto the 2nd st. INCREASES: Move the 2 end sts. 1 needle outward, then place the 3rd st. from the row below onto the empty needle.

FINISHING: Block all sections. PULLOVER: Join the front and back section at sides and shoulders. Sew the sleeves together and set in. Join the short ends of the neckband, then sew the band to the neckline. Fold under 8 rows on the upper edge of the pocket and hem to wrong side. Sew the pocket in place. (See picture). SKIRT: Join the sections at sides. Turn under 24 rows on the lower edge and 13 rows on the upper edge and hem in place. Insert an elastic band into the upper hem.



Move the Cam Box to the left side, turn the Row Counter back to 182 and complete the left half. Follow the instructions from\*.

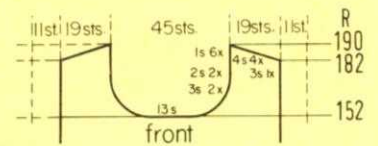
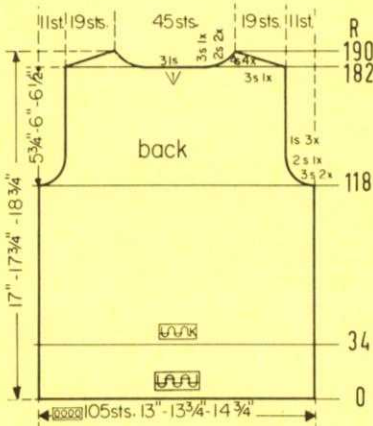
\*ON CAM BOX SIDE, bind off 3 sts. after Rows 182 (EVEN ROWS = SHOULDER SHAPING), 183 (ODD ROWS = NECK SHAPING); 4 sts. after Row 184; 2 sts. after Row 185; 4 sts. after Row 186; 2 sts. after Row 187; 4 sts. after Rows 188, 190.

ON CAM BOX SIDE, bind off 3 sts. after Rows 118, 119, 120, 121; 2 sts. after Rows 122, 123; 1 st. after Rows 124, 125, 126, 127, 128, 129, then knit to Row 182, bind off the center 31 sts., put the needles on the left side into holding position and complete the right half first. (For the Front Section knit to ROW 152).

ROWS 35 to 118: Knit even.

ROWS 0 to 34: Knit even, then change to stockinette st.

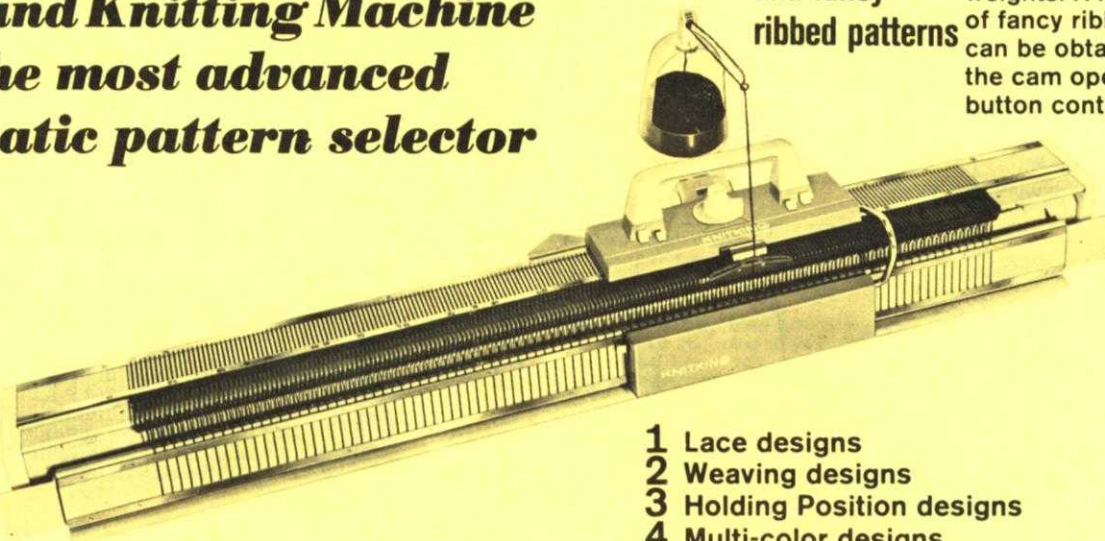
Cast on 105 sts. with color 1 and work K1, P1, Ribbing.



## The Hand Knitting Machine with the most advanced automatic pattern selector

Knit - Purl and fancy ribbed patterns

All knitted automatically without combs or weights. A multitude of fancy ribbed designs can be obtained with the cam operated push button controls.



- 1 Lace designs
- 2 Weaving designs
- 3 Holding Position designs
- 4 Multi-color designs
- 5 Raised designs
- 6 Eyelet designs
- 7 Jacquard designs

For Full Color Brochure Write to:

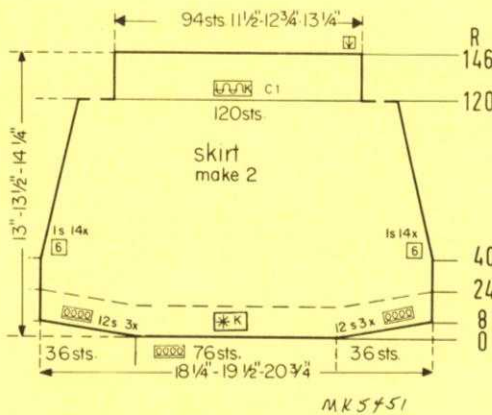
KNITKING CORPORATION, 1128 Crenshaw Blvd., Los Angeles, California 90019.

ON CAM BOX SIDE, bind off 3 sts. after Rows 150, 151, 152, 153; 2 sts. after Rows 154, 155, 156, 157. ON EACH SIDE, decrease 1 st. after Rows 158, 160, 162, 164, 166, 168, 170, 172, 174, 176, 178, 180, 182, 184. ON CAM BOX SIDE, bind off 2 sts. after Rows 186, 187; 3 sts. after Rows 188, 189, 190, 191; 11 sts. after Row 192.

ON EACH SIDE, increase 1 st. after Rows 20, 32, 44, 56, 68, 80, 90, 100, 110, 120, 130, 140, then knit to Row 150.

ROWS 0 to 20: Knit even, then change to stockinette st.

Cast on 51 sts. with color 1 and work K1, P1, Ribbing.



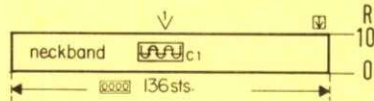
ON EACH SIDE, decrease 1 st. after Rows 40, 46, 52, 58, 64, 70, 76, 82, 88, 94, 100, 106, 112, 118, then knit to Row 119, change to color 1 and stockinette st. and knit to Row 120. Knit several rows with contrast waste yarn, then remove the knitting from the machine. (120 sts). Bring 94 needles into working position, hang the garment sts. back onto the machine, decreasing 26 sts. evenly across. Turn the Row Counter back to 120 and with color 1 work stockinette st. to Row 146, then bind off all 94 sts. Work the second section the same.

Cast on 76 sts. and work the Norwegian Design. Knit 2 rows, then cast on 12 sts. after Rows 2, 3, 4, 5, 6, 7, then knit to Row 40.

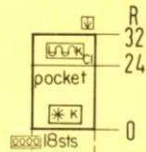
Move the Cam Box to the left side, turn the Row Counter back to 152 and complete the left half. Follow the instructions from\*.

\*ON CAM BOX SIDE, bind off 3 sts. after Rows 153, 155; 2 sts. after Rows 157, 159; 1 st. after Rows 161, 163, 165, 167, 169, 171. For SHOULDER bind off 3 sts. after Row 182; 4 sts. after Rows 184, 186, 188, 190.

Work the front section the same as the back section to ROW 152, then bind off the center 13 sts., put the needles on the left side into holding position and complete the right half first.



Cast on 136 sts. with color 1 and work 10 rows K1, P1, Ribbing, then bind off all sts.



Cast on 18 sts. and work 24 rows the Norwegian Design, then change to color 1 and work stockinette st. to Row 32 and bind off all sts.

# KK 5452

SIZE:	6 (Chest 23"-24")	8 (Chest 25"-26")	10 (Chest 27"-28")
YARN:	Beatrice Crepe	Allegro Dralon	Allegro Dralon
50 gr. BALLS:	2 color 1 2 color 2	2 color 1 2 color 2	3 color 1 2 color 2
TENSION:	5 to 7	6 to 8	7 to 9
GAUGE:	2" 16 sts. 22 rows	15 sts. 21 rows	14 sts. 20 rows



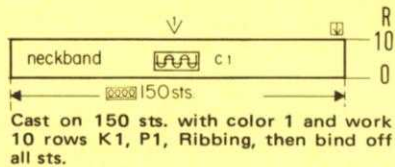
The instructions are the same for all sizes. PATTERN: Norwegian Design according to the Line Drawing. In the instructions, each row in the Norwegian Design is counted as 1 row, but several movements of the Cam Box are needed to complete 1 row. EDGES: K1, P1, Ribbing.

FINISHING: Block the sections. Join the front and back section at sides and shoulders. Join the short ends of the bands, then sew the bands in place.

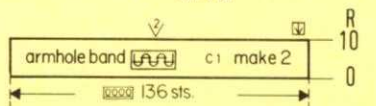
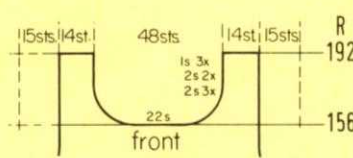
Bring the needles on the left side into working position, knit 1 row in PATTERN to the left side, turn the Row Counter back to 156 and complete the left half. Follow the instructions from\*.

\*ON CAM BOX SIDE, bind off 3 sts. after Rows 157, 159; 2 sts. after Rows 161, 163; 1 st. after Rows 165, 167, 169. After Row 192 bind off the 14 SHOULDER sts.

Work the front section the same as the back section to ROW 156, then bind off the center 22 sts., put the needles on the left side into holding position and complete the right half first.



Cast on 150 sts. with color 1 and work 10 rows K1, P1, Ribbing, then bind off all sts.



Cast on 136 sts. with color 1 and work 10 rows K1, P1, Ribbing, then bind off all sts.

Bring the needles on the left side into working position, knit 1 row in PATTERN to the left side, turn the Row Counter back to 176 and complete the left half. Follow the instructions from\*.

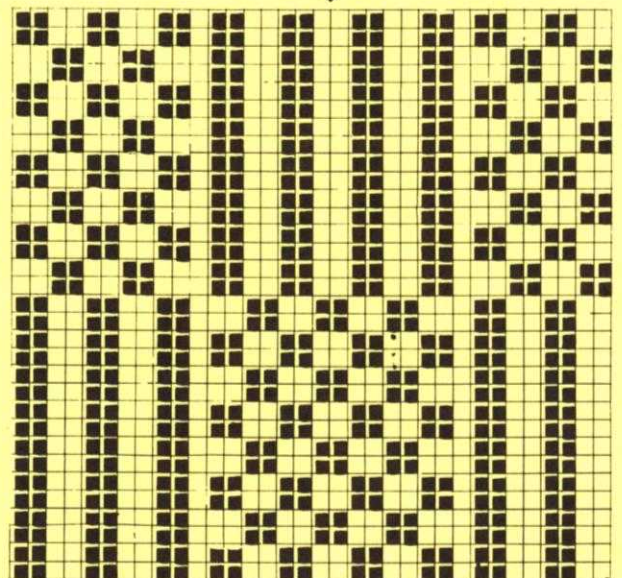
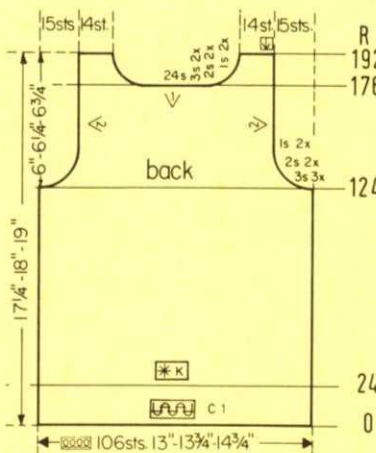
\*ON CAM BOX SIDE, bind off 3 sts. after Rows 177, 179; 2 sts. after Rows 181, 183; 1 st. after Rows 185, 187. After Row 192 bind off the 14 SHOULDER sts.

ON CAM BOX SIDE, bind off 3 sts. after Rows 124, 125, 126, 127, 128, 129; 2 sts. after Rows 130, 131, 132, 133; 1 st. after Rows 134, 135, 136, 137, then knit to Row 176, bind off the center 24 sts., put the needles on the left side into holding position and complete the right half first. (You can work both sides at the same time by using different balls of yarn for each side). (For the Front Section knit to Row 156).

ROWS 25 to 124: Knit even.

ROWS 0 to 24: Knit even, then transfer the ribber sts. to the main machine and begin the Norwegian Design.

Cast on 106 sts. with color 1 and work K1, P1, Ribbing.



□ Color 2  
■ Color 1

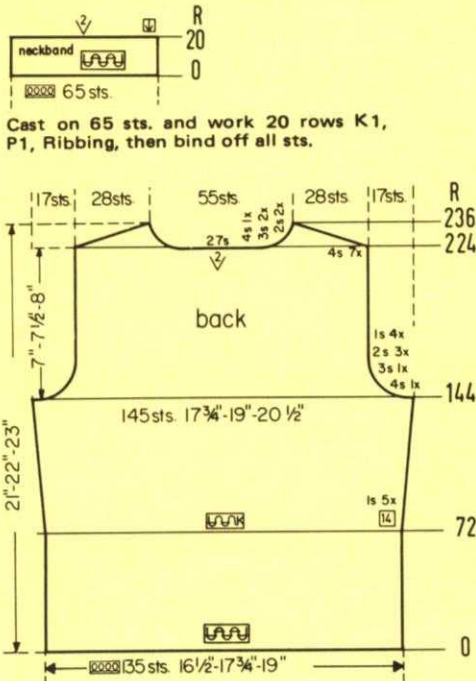
# DP 8260

SIZE:	10 (Bust 32"-33½")	14 (Bust 35"-36")	16 (Bust 38"-39")
YARN:	Beatrice Crepe	Allegro Dralon	Allegro Dralon
50 gr. BALLS:	7	6	7
TENSION:	5 to 7	6 to 8	7 to 9
GAUGE:	2" 16 sts. 22 rows	15 sts. 21 rows	14 sts. 20 rows



The instructions are the same for all sizes. PATTERN: Stockinette Stitch. EDGES: K1, P1, Ribbing. INCREASES: Move the 2 end sts. 1 needle outward, then place the 3rd st. from the row below onto the empty needle. FRONT EDGE DECREASES: Hang the 2nd st. onto the 1st st., then move the end sts. inward to fill the empty needle.

FINISHING: Block all sections. Join the back and front sections at sides and shoulders, leaving a 1" opening on the right side seam at waist line. Sew the sleeves together and set in. Join the back neckband and the front bands at short ends, then sew the band in place. Sew the tie sections to the front edges at waist line. Pull the tie through the side seam opening and tie in the back.



Cast on 65 sts. and work 20 rows K1, P1, Ribbing, then bind off all sts.

Move the Cam Box to the left side, turn the Row Counter back to 224 and complete the left half. Follow the instructions from\*.

\*ON CAM BOX SIDE, bind off 4 sts. after Rows 224 (EVEN ROWS = SHOULDER SHAPING), 225 (ODD ROWS = NECK SHAPING), 226; 3 sts. after Row 227; 4 sts. after Row 228; 3 sts. after Row 229; 4 sts. after Row 230; 2 sts. after Row 231; 4 sts. after Row 232; 2 sts. after Row 233; 4 sts. after Rows 234, 236.

ON CAM BOX SIDE, bind off 4 sts. after Rows 144, 145; 3 sts. after Rows 146, 147; 2 sts. after Rows 148, 149, 150, 151, 152, 153; 1 st. after Rows 154, 155, 156, 157, 158, 159, 160, 161, then knit to Row 224, bind off the center 27 sts., put the needles on the left side into holding position and complete the right half first.

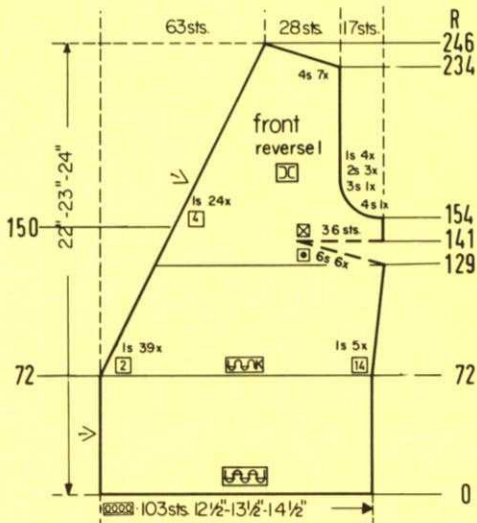
ON EACH SIDE, increase 1 st. after Rows 72, 86, 100, 114, 128, then knit to Row 144.

ROWS 0 to 72: Knit even, then change to stockinette st.

Cast on 135 sts. and work K1, P1, Ribbing.



Cast on 195 sts. and work 20 rows K1, P1, Ribbing, then bind off all sts.



Work the second front section with reverse shapings, casting on from right to left. (The Cam Box will be on the LEFT side at Row 0).

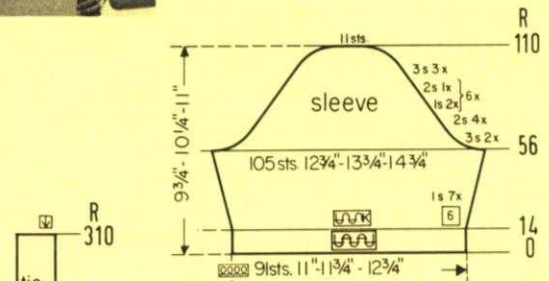
ON CAM BOX SIDE, bind off 4 sts. after Row 154; 3 sts. after Row 156; 2 sts. after Rows 158, 160, 162; 1 st. after Rows 164, 166, 168, 170. For SHOULDER bind off 4 sts. after Rows 234, 236, 238, 240, 242, 244, 246.

ON OPPOSITE SIDE OF CAM BOX, put into holding position 6 needles after Rows 129, 131, 133, 135, 137, 139. After Row 141 bring all needles back into working position and knit to Row 150. The 39 decreases on every other row on the FRONT EDGE are now completed. Decrease 1 st. ON FRONT EDGE after Row 150, then again after every following 4th row 23 times. (Last decrease os at Row 242). Knit to Row 154.

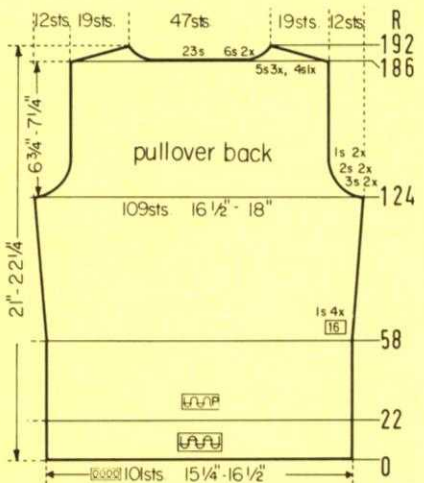
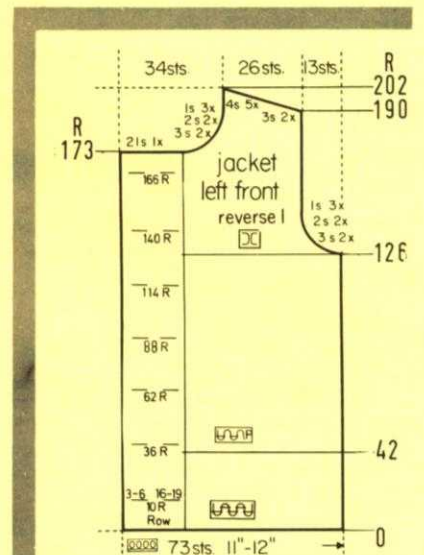
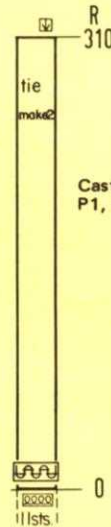
ON FRONT EDGE, decrease 1 st. after Row 72, then again after every 2nd row 38 times more. AT THE SAME TIME, increase 1 st. on SIDE EDGE after Rows 72, 86, 100, 114, 128, then knit to Row 129 and work Short Rows for the DART.

ROWS 0 to 72: Knit even, then change to stockinette st.

Cast on 103 sts. and work K1, P1, Ribbing.



Cast on 11 sts. and work 310 rows K1, P1, Ribbing, then bind off all sts.



# DP 8254

SIZE:	8 (Bust 31½")	12 (Bust 33"-34")
YARN:	Mohana	Mohana
50 gr. BALLS:		
Jacket:	7	8
Pullover:	5	6
TENSION:	7 to 9	8 to 10
GAUGE:	2" 13 sts. 18 rows	12 sts. 17 rows



ON CAM BOX SIDE, bind off 3 sts. after Rows 56, 57, 58, 59; 2 sts. after Rows 60, 61, 62, 63, 64, 65, 66, 67; 1 st. after Rows 58, 59, 70, 71; 2 sts. after Rows 72, 73; 1 st. after Rows 74, 75, 76, 77; 2 sts. after Rows 78, 79; 1 st. after Rows 80, 81, 82, 83; 2 sts. after Rows 84, 85; 1 st. after Rows 86, 87, 88, 89; 2 sts. after Rows 90, 91; 1 st. after Rows 92, 93, 94, 95; 2 sts. after Rows 96, 97; 1 st. after Rows 98, 99, 100, 101; 2 sts. after Rows 102, 103; 3 sts. after Rows 104, 105, 106, 107, 108, 109; 11 sts. after Row 110.

ON EACH SIDE, increase 1 st. after Rows 14, 20, 26, 32, 38, 44, 50, then knit to Row 56.

ROWS 0 to 14: Knit even, then change to stockinette st.

Cast on 91 sts. and work K1, P1, Ribbing.

The instructions are the same for both sizes. PATTERN: Stockinette Stitch, worn on the purl side. EDGES: K1, P1, Ribbing. INCREASES: Move the 2 end sts. 1 needle outward, then place the 3rd st. from the row below onto the empty needle.

FINISHING: Block all sections. JACKET: Join the back and front sections at sides and shoulders. Sew the sleeves together and set in. Turn under 10 sts. on the front edges and hem in place. Fold the collar in half and sew the front edges. Sew 1 edge of the collar to the inside and 1 edge to the outside of the neckline. Turn under 10 rows on the upper edges of the pockets and hem to wrong side. Sew the pockets in place. (See picture). Finish the buttonholes, sew on buttons. PULLOVER: Join the front and back section at sides and shoulders. Sew the sleeves together and set in. Work 1 row of single crochet and 1 row of backward single crochet around the neckline.

Work the right front section with reverse shapings, casting on from right to left. (The Cam Box will be on the LEFT side at Row 0). Make buttonholes after Rows 10, 36, 62, 88, 114, 140, 166, over the 3rd-6th and 16th-19th sts. counting from the right side.

ON CAM BOX SIDE, bind off 21 sts. after Row 173; 3 sts. after Rows 175, 177; 2 sts. after Rows 179, 181; 1 st. after Rows 183, 185, 187. For SHOULDER bind off 3 sts. after Rows 190, 192; 4 sts. after Rows 194, 196, 198, 200, 202.

ON CAM BOX SIDE, bind off 3 sts. after Rows 126, 128; 2 sts. after Rows 130, 132; 1 st. after Rows 134, 136, 138, then knit to Row 173.

ROWS 43 to 126: Knit even.

ROWS 0 to 42: Knit even, then change to stockinette st.

Do NOT make buttonholes in this section. Cast on 73 sts. and work K1, P1, Ribbing.

Move the Cam Box to the left side, turn the Row Counter back to 186 and complete the left half. Follow the instructions from\*.

\*ON CAM BOX SIDE, bind off 4 sts. after Row 186 (EVEN ROWS = SHOULDER SHAPING); 6 sts. after Row 187 (ODD ROWS = NECK SHAPING); 5 sts. after Row 188; 6 sts. after Row 189; 5 sts. after Rows 190, 192.

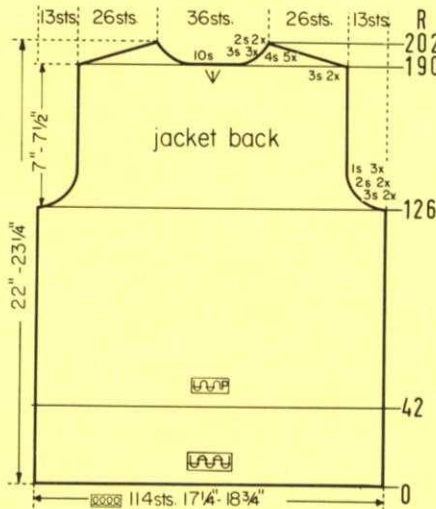
ON CAM BOX SIDE, bind off 3 sts. after Rows 124, 125, 126, 127; 2 sts. after Rows 128, 129, 130, 131; 1 st. after Rows 132, 133, 134, 135, then knit to Row 186, bind off the center 23 sts., put the needles on the left side into holding position and complete the right half first. (For the Front Section knit to Row 160).

ON EACH SIDE, increase 1 st. after Rows 58, 74, 90, 106, then knit to Row 124.

ROWS 23 to 58: Knit even.

ROWS 0 to 22: Knit even, then change to stockinette st.

Cast on 101 sts. and work K1, P1, Ribbing.



Move the Cam Box to the left side, turn the Row Counter back to 190 and complete the left half. Follow the instructions from\*.

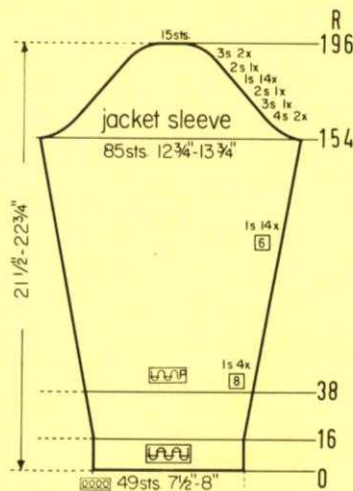
\*ON CAM BOX SIDE, bind off 3 sts. after Rows 190 (EVEN ROWS = SHOULDER SHAPING), 191 (ODD ROWS = NECK SHAPING), 192, 193; 4 sts. after Row 194; 3 sts. after Row 195; 4 sts. after Row 196; 2 sts. after Row 197; 4 sts. after Row 198; 2 sts. after Row 199; 4 sts. after Rows 200, 202.

ON CAM BOX SIDE, bind off 3 sts. after Rows 126, 127, 128, 129; 2 sts. after Rows 130, 131, 132, 133; 1 st. after Rows 134, 135, 136, 137, 138, 139, then knit to Row 190, bind off the center 10 sts., put the needles on the left side into holding position and complete the right half first.

ROWS 43 to 126: Knit even.

ROWS 0 to 42: Knit even, then change to stockinette st.

Cast on 114 sts. and work K1, P1, Ribbing.



ON CAM BOX SIDE, bind off 4 sts. after Rows 154, 155, 156, 157; 3 sts. after Rows 158, 159; 2 sts. after Rows 160, 161. ON EACH SIDE, hang the 1st st. onto the 2nd st. after Rows 162, 164, 166, 168, 170, 172, 174, 176, 178, 180, 182, 184, 186, 188. ON CAM BOX SIDE, bind off 2 sts. after Rows 190, 191; 3 sts. after Rows 192, 193, 194, 195; 15 sts. after Row 196.

ON EACH SIDE, increase 1 st. after Rows 38, 46, 54, 62, 70, 76, 82, 88, 94, 100, 106, 112, 118, 124, 130, 136, 142, 148, then knit to Row 154.

ROWS 0 to 38: Knit even, then change to stockinette st.

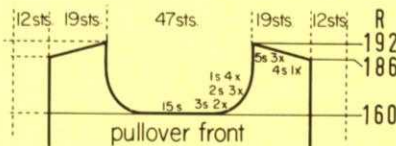
Cast on 49 sts. and work K1, P1, Ribbing.

ON EACH SIDE, increase 1 st. after Rows 58, 74, 90, 106, then knit to Row 124.

ROWS 23 to 58: Knit even.

ROWS 0 to 22: Knit even, then change to stockinette st.

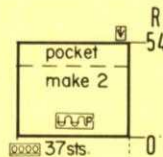
Cast on 101 sts. and work K1, P1, Ribbing.



Move the Cam Box to the left side, turn the Row Counter back to 160 and complete the left half. Follow the instructions from\*.

\*ON CAM BOX SIDE, bind off 3 sts. after Rows 161, 163; 2 sts. after Rows 165, 167, 169; 1 st. after Rows 171, 173, 175, 177. For SHOULDER bind off 4 sts. after Row 186; 5 sts. after Rows 188, 190, 192.

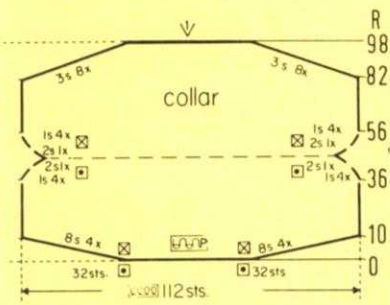
Work the front section the same as the back section to Row 160, then bind off the center 15 sts., put the needles on the left side into holding position and complete the right half first.



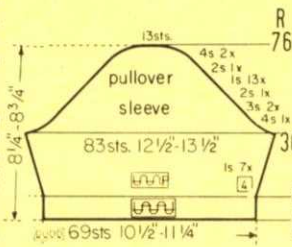
Cast on 37 sts. and work 54 rows stockinette st., then bind off all sts.

Continued on page 28

Continued from page 27



Cast on 112 sts., work stockinette st. and Short Rows. ON OPPOSITE SIDE of CAM BOX put into holding position 32 needles after Rows 0, 1. ON OPPOSITE SIDE of CAM BOX bring back into working position 8 needles after Rows 2, 3, 4, 5, 6, 7, 8, 9, then knit to Row 36. ON OPPOSITE SIDE of CAM BOX put into holding position 1 needle after Rows 36, 37, 38, 39, 40, 41, 42, 43; 2 needles after Rows 44, 45. ON OPPOSITE SIDE of CAM BOX bring back into working position 2 needles after Rows 46, 47; 1 needle after Rows 48, 49, 50, 51, 52, 53, 54, 55, then knit to Row 82. ON OPPOSITE SIDE of CAM BOX put into holding position 3 needles after Rows 82, 83, 84, 85, 86, 87, 88, 89, 90, 91, 92, 93, 94, 95, 96, 97. After Row 98 bring all needles back into working position, then bind off all sts.



ON CAM BOX SIDE, bind off 4 sts. after Rows 36, 37; 3 sts. after Rows 38, 39, 40, 41; 2 sts. after Rows 42, 43. ON EACH SIDE, hang the 1st st. onto the 2nd st. after Rows 44, 46, 48, 50, 52, 54, 56, 58, 60, 62, 64, 66, 68. ON CAM BOX SIDE, bind off 2 sts. after Rows 70, 71; 4 sts. after Rows 72, 73, 74, 75; 13 sts. after Row 76.

ON EACH SIDE, increase 1 st. after Rows 8, 12, 16, 20, 24, 28, 32, then knit to Row 36.

ROWS 0 to 8: Knit even, then change to stockinette st.

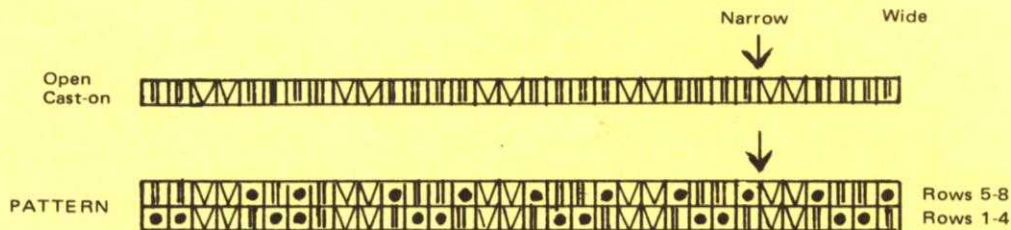
Cast on 69 sts. and work K1, P1, Ribbing.

# KG 1976

ONE SEAM PATTERNED SLIPPER

Material: 2 balls KNITKING Flamingo Dralon will make 1 pair. Wax Yarn when winding into a ball.

SIZE: Small, Medium, Large. There are two widths for the slippers given. The narrow width is like a ballet slipper, the wider width is for those who like the slipper to come up higher on the foot. TENSION: 7. KNITKING MACHINE OWNERS USE Needle Shifter every 4 rows. The Purl side is the right side.



DO NOT WRAP THE NEEDLES WHEN WORKING PATTERN DESIGN.

Set up the needles as shown in the Line Drawing — having 18 sts. in working position for the ballet type — 22 sts. in working position for the wider width.

Use open cast-on with waste yarn. Knit several rows, ending with Cam Box on the LEFT SIDE. Change to Main Yarn and knit 1 row to the right side. Turn Counter to 0.

Knit in Pattern to:

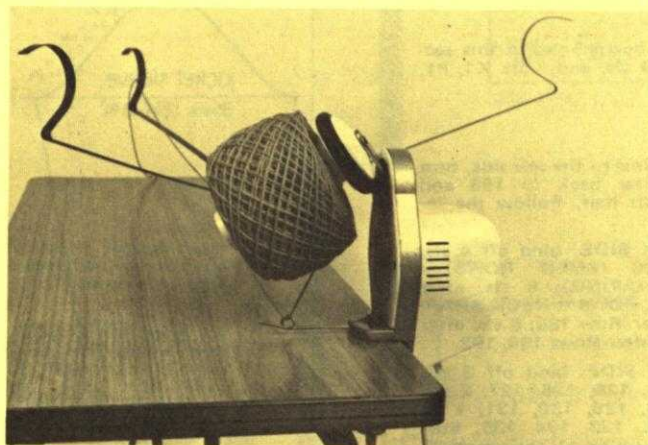
- Row 316 for small size
- Row 364 for medium size
- Row 412 for large size. (extra large - add 48 rows).

Bring all the needles into working position and knit 1 row. Hang the first row of main yarn onto the needles in front of the latches, then knit these stitches through the ones in back of the latches. Bring 1 of the empty needles in each section (of those out of work) into working position and with Tension 10, knit 1 row, then bind off all stitches using the crochet method, dropping the yarn held on the original empty needles .. (this was only to make binding off easier and to keep the bind-off elastic). Remove the waste yarn.

CORD: make 2. TENSION 3. Cast on 3 stitches. Set your machine for knitting a cord. KNITKING MACHINE OWNERS, push back the right Cam Control Button and leave it there. (The empty rows do count).

Knit 300 rows for small  
Knit 330 rows for medium  
Knit 350 rows for large and extra large.

FINISHING: Fold slipper in half and beginning at bind off end, and with right sides together, over-cast the two bottom edges together. Run cord through openings at top so that you can tie it in front. Put bells on ends (or beads) of ties.



## New design electric winder

Self-contained Motorized Winder (110/120 Volts) with Push Button on and off Switch ... Special Clutch device to stop Winder if yarn bunches up or jams in the guide eye ... Another excellent easy to use KNITKING product.

Price: Complete with Skein Holder **\$44.95**

(California residents add Sales Tax).

Shipping Charges: \$2.50





KG 1976 — Save fuel and keep your feet nice and warm with these quickie knit slippers. Made with a holding position design in two widths and as many sizes as you wish. Use machine wash and dry Flamingo Dralon.

## **ARE YOU UNHAPPY WITH YOUR PRESENT KNITTING MACHINE ?**

**DOES IT REFUSE TO KNIT FANCY DRESS YARNS?**

**DOES IT JAM UP WHEN YOU TRY TO KNIT LOOPED MOHAIR OR THICK AND THIN YARNS?**

**DOES IT DROP STITCHES ALL OVER THE PLACE?**

**ARE YOU CONTINUALLY HAVING TROUBLE WITH AWKWARD, CUMBERSOME WEIGHTS?**

**ARE YOU UNABLE TO MAKE A LARGE GARMENT WITH BULKY YARNS?**

**DO YOU HAVE TO SELECT PATTERN STITCHES MANUALLY?**

**DO YOU HAVE TO LATCH YOUR RIBBING BY HAND?**

**IF YOU ARE HAVING ANY OF THESE PROBLEMS YOU SHOULD TRADE UP TO A NEW FANTASTIC PUSH BUTTON KNITTING WITH COORDINATED RIBBER AND ENJOY KNITTING WITH THE WORLDS FINEST, MOST VERSATILE AND MOST AUTOMATIC KNITTER.**

**YOU WILL BE SURPRISED AT OUR GENEROUS TRADE-IN ALLOWANCE AND YOU CAN, IF YOU WISH, USE YOUR PRESENT MACHINE AS A DOWN-PAYMENT AND PURCHASE A COMPLETE KNITTING FOR JUST PENNIES A DAY. WRITE TODAY FOR FULL INFORMATION AND TELL US WHAT MACHINE YOU NOW OWN. THE ADDRESS IS:**

**KNITTING, Dept. T-1, 1128 Crenshaw Blvd., Los Angeles, Calif. - 90019**

for fun  
and  
games



**DK 8262** — A three piece Suit takes you everywhere . . . Nice for now — to wear under a coat . . . then when Spring arrives (will it ever?) without one. The Skirt is Stockinette stitch, the Pullover and Cardigan have an Eyelet Design. Ribbing is used for the button and buttonhole bands. For Size 12, use Subita Crepe; Size 14, Beatrice Crepe; Size 18, Allegro Dralon.

**MK 5449** — For your little love . . . a love of a Suit designed just for her. The full Skirt is knitted using Short Rows and the cozy Jacket has a tiny cable for accent. Rib the Collar and sleeve bands. Size 3 is made with Sport Prima; Size 4 with Dolly Dralon; Size 6 with Flamingo Dralon . . . all machine wash and dry.



for  
brother  
and  
sister

KK 5452 and MK 5451 — Charming look alike's for brother and sister . . . KK 5452 is for him . . . A Norwegian designed sleeveless Pull-over is bright and colorful. The bands are a 1 x 1 Rib. It comes in size 6 knitted with Beatrice Crepe; Sizes 8 and 10 with Allegro Dralon. MK 5451 is for her . . . A long sleeved Pullover in Stockinette stitch with the bright Norwegian design for the Skirt. Size 4 is made with Beatrice Crepe; Sizes 6 and 8 with Allegro Dralon.









## favorite knit styles

DP 8260 — The cross over Blouse continues its popularity as does the wide ribbing at waistline. It is equally attractive worn over a Dress or a Pullover — with Slacks or a Skirt. Knit Size 10 with Beatrice Crepe; Sizes 14 and 16 with Allegro Dralon.

DP 8254 — Blend colors or match them for this warm Pullover and Jacket . . . Knit them both in Stockinette stitch using our soft and luxurious Mohana Yarn. The Purl side is the right side and all bands are ribbed. Sizes 8 and 12.

# knit kits for new year

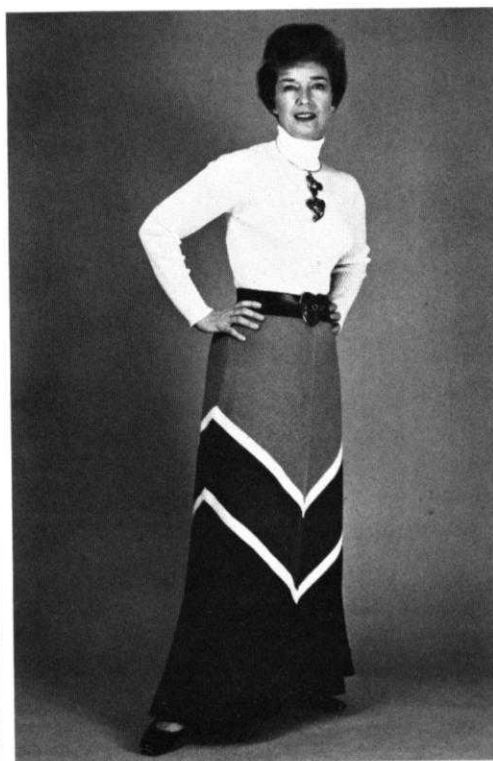
AT ECONOMY PRICES



This good looking 76 inch diameter Table Cover (in Cotton Flake) was made on a MEMORY KING but it can be duplicated on any machine with a variation in the lacy stitch! When you order the Kit, be sure to tell us the brand of machine you own. The Kit complete with instructions is available at the very special low price of \$8.00 plus \$1.35 Shipping.



1) Margaret Kenyon is wearing a raglan sleeve Shawl Collar (very fashionable) wrap over Sweater she designed and made in Allegro Dralon. The Kit complete with Instructions and JAC 40 Punch Card sells for \$16.00 plus Shipping \$1.00. Available for Sizes 10 to 16.



2) The handsome Evening Skirt Betty Atkin wearing is made with Alanda Yarn. The Kit sells for \$20.00 plus \$1.35 Shipping and is made in sizes 12 to 16.



3) Margaret also made this warm long Mohair Jacket with trim in Crocus Crepe. We showed it at the Los Angeles County Fair and several men wanted to buy it for their own use. The low price of the Kit is \$22.00 plus \$1.50 Shipping. Suitable for Sizes 10 to 16.





# KnitKING News

## OUR READERS WRITE

"I hate the finishing of my knitted garments.... putting Sleeves into armholes, sewing on neckbands and armbands etc., all seem too tedious to me. I wish you could give me some easy methods for all this....."

"OK... but remember... there are many experts in machine knitting and finishing and the chances are, some will use one method and some will use another. Each expert will tell you her method is best.... or that she uses different methods for different garments. We all know that each section must be CHARTED and Instructions made up. KNITKING MAGAZINE caters to every machine knitter including the beginner in machine knitting and we give you explicit instructions row by row as well as Charts to go by. The Instructions along side of each Chart takes you stitch by stitch and row by row through the knitting of that particular section. If you are a beginner, the best way for you is to follow the written instructions. If you are an advanced knitter, then you should learn to use the Charts completely (without the printed instructions). It is important however, that you read the paragraphs at the beginning of each pattern. The first paragraph gives you knitting information, the second the finishing instructions.

When you are knitting a garment, you CAN hang the armholes back onto the machine and knit the sleeves from the TOP down. You CAN hang armholes and necklines onto the machine and knit the bands right onto the garment providing you have enough needles on your machine for the width you need. The magic words are "SHORT ROWS". You must use Short Rows in place of bind-offs providing they can be made on every other row... and of course there are exceptions even then... A Raglan Sleeve where decreases are made by hanging the 3rd stitch onto the 2nd needle and moving the stitches in to fill the empty needle is one exception... for this type of decrease gives a decorative edge along the raglan slant which you would not have if you used the short row method. Right now we are only concerned with knitting a set in sleeve into a garment where the shaping for the Cap is made on every other row.

To make it easy for you, we will use an example where a sleeve has been charted from the top down to the wrist...It is in our KNITKING MAGAZINE for November/December 1973 - Volume 10 Number 2. The Pattern is DP 8321 on page 14. The sleeve instructions are on page 16 with the Chart for the sleeves on page 17. In the sleeve instructions, we do tell you that you can knit the sleeve using Short Rows, but now we will show you how to hang the armhole stitches back onto the machine and knit the sleeve right into the garment. If you do not know how to make Short Rows, please look in your own Instruction Book or KNITKING'S Practical Knitting Hints Book, page 17.

Knit the back section to the armhole shaping, then shape the armhole using the Short Row method and when you have all the armhole stitches in holding position, take them off onto contrast waste yarn. Do not knit an extra row over the

armhole stitches with your main yarn... instead, knit a few rows using waste yarn by placing the yarn across the 21 armhole stitches (after bringing them from holding position to working position) and pull the yarn through each stitch using your fingers on the butt of the needle to bring the needles back (away from you), then forward again... Repeat this procedure until you have knitted at least 4 rows, then drop these stitches from the machine (to be picked up later when you knit the sleeve)... OR another way is... Put all the knitting into holding position except the armhole stitches, then with contrast waste yarn knit the armhole stitches in the regular manner, and then drop them from the machine, push the empty needles to the out of work position, bring the rest of the knitting back into working position and BE SURE TO TURN YOUR ROW COUNTER BACK to the correct Row Number.

Complete the back section as in the instructions (of course you can use the Short Row method for shaping the neck and the shoulders too). Work the front section in the same way, shaping the armholes with the short row method and take the stitches off onto contrast waste yarn as you did for the back.

Block the front and back sections, then sew or slip stitch the shoulders together, or...if you used short rows to shape the shoulder, you can hang the shoulder stitches back onto the machine and bind them off.

Now you are ready to hang the armhole back onto the machine and work the sleeve. If you look at the pattern, you will see that at Row 56 you need 111 stitches. This is the widest part of the sleeve and is the number of stitches you need to pick up around the armhole before beginning to knit. Bring 111 sts. into working position and with wrong side of garment facing you, hang the center of armhole (at shoulder) onto the 0 needle. Working one side at a time, hang the sts. that are held on contrast waste yarn onto the needles at each end being sure to pick up the DOUBLED stitches (where you wrapped the yarn when working short rows). Continue to pick up stitches along the armhole edge spacing them evenly on each side... pick up the knot stitch on the row edge of the armhole wherever possible, and then if needed, a cross thread here and there - or if need be - skip a row on the armhole edge. If you need to pick up extra rows for stitches, try to place the extra stitches close to where the shoulder would begin to round out. When you have picked up the 111 stitches, put all but the very center 15 sts. into holding position. Set your Row Counter at 0. Knit across the 15 sts. (and be sure to wrap the yarn around the inside needle in holding position after knitting each row while working short rows). Knit back to the right side. On opposite side of Cam Box, bring 3 needles back into working position, before knitting the next 6 rows. Now continue working from Chart, using the Short Rows, bringing the specified number of stitches back into working position until all the needles are in work. At Row 56, you should have all the 111 needles back in working position. Knit even to Row 66. ON EACH SIDE, decrease 1 st. after Row 66 (always use the full

fashion method wherever you can as it makes it easier for you to put the garment together). Now REPEAT the decreases of 1 st. ON EACH SIDE, every 6 rows 23 x more, but at the same time when Counter reads 144, begin the Eyelet Design over the center 23 stitches. A good way to mark the stitches to be used for the design, is to place a bit of contrast waste yarn on each side of the 23 sts. to be used for the design or you can mark the needle bed of your machine with a colored china marking pencil or crayon. Continue the shaping of the sleeve and making the Eyelet Design as given in the Pattern. After Row 204, stop the design and knit even to Row 236 then then bind off all sts. Now you have knitted the sleeve into the armhole... to do the second sleeve should be a snap.

#### PRACTICAL KNITTING HINT

In this issue of KNITTING MAGAZINE, there are 3 garments which call for a trim using a Reverse Single Crochet stitch. Perhaps some of you do not know just how to do this stitch which is sometimes called "Crab Stitch" or "Backwards Crochet Stitch". Here is the way it is done.

Most of the time, you will need 1 row of single crochet around the edges first. Now instead of going around or across from RIGHT TO LEFT, you will work from LEFT TO RIGHT... \*Insert hook in stitch directly to the right, yarn over hook, pull loop through, yarn over hook and work off the 2 loops on hook. REPEAT from \*. Sometimes this stitch is used in combination with other crochet stitches and sometimes you will skip a stitch in between in order to keep the work flat. Practice a bit first so that you do not make the stitches too tight.....

#### DOUBLE RUFFLE TRIM

If you are knitting the Cover Model DK 8257 in this issue, you might like to try this alternate trim for the Sleeves.

Yarn: Mohana. Tension 6 to 8.

Cast on 10 sts., Knit 2 rows. Cam Box on the right side.

\*ON OPPOSITE SIDE OF CAM BOX, put 6 needles into holding position, knit 10 rows over the 4 needles in work.

ON OPPOSITE SIDE OF CAM BOX, bring 4 needles back into working position, knit 2 rows over the 8 needles in work.

Bring the center 2 needles back into working position, knit 1 row over all the needles.

REPEAT from \* for Pattern for as long as you need ending with 2 rows over all needles, then bind off. Pull downward in center so that the ruffles form on each side.

#### TAKE A CHANCE SALE

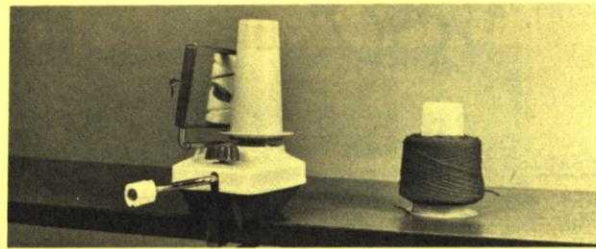
JAC 40 Cards - 5 Metric spacing... less than 1/2 price! - Very Special clearance Sale while they last... These cards are no longer being made for the following double bed machines...so order and stock up now.

Duomatic... Singer... Swiftomatic... Orion... Swiss Magic. Regular Price 15 for \$11.25. While they last...15 for \$5.00!! plus \$1.25 shipping. (Sorry, but we have to choose the numbers). They are all different and all very lovely patterns. If you want more than 1 package of 15, please order all at one time to avoid duplications.

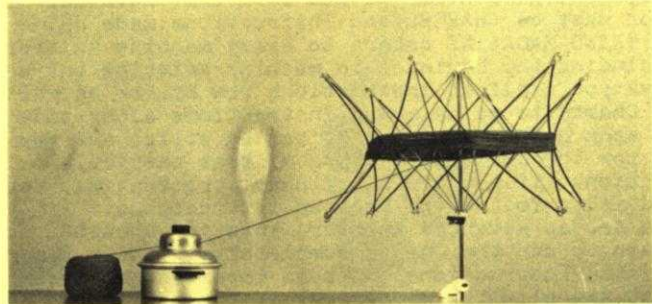
#### JAC STRAP

If you have a JAC 40, you need a Strap. It is so easy to use and saves time. It clips on the JAC and hangs comfortably around your neck... Very SPECIAL PRICE: \$2.00 plus 24¢ Shipping.

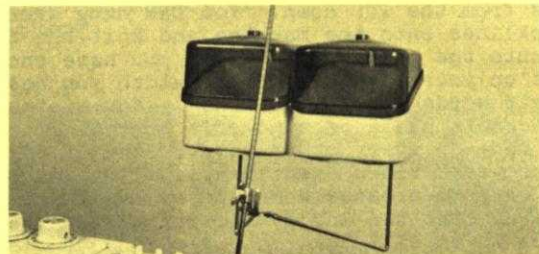
#### NEW PRODUCTS FOR KNITTERS



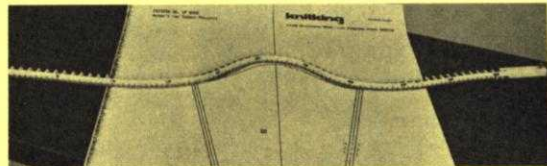
A new type Yarn Winder that winds onto plastic cones that stand on your knitting table... Two cones are supplied with each Winder... Ideal for Japanese machines... You can also slide the balls off the cones and pull yarn from the center of ball. Special Price \$10.95 (Calif. residents add Sales Tax), plus \$1.50 Shipping.



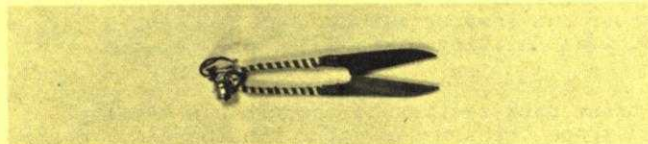
An expanding Skein Holder... can be used with a Yarn Winder or, as seen in the picture... to re-wind used yarn after it goes through the Yarn Straightener... Special Price \$5.75 (Calif. residents add Sales Tax), plus \$1.25 Shipping.



Especially for users of Japanese machines... Twin Yarn Containers that lock onto the Yarn Feeder arm of your machine... Special Price \$7.95 (Calif. residents add Sales Tax), plus \$1.50 Shipping.



Flexible Ruler... the perfect tool for drawing curves on Pattern Reader Charts... bends into any shape and stays there... Special Price \$2.75 (Calif. residents add Sales Tax), plus 80¢ Shipping.



Handy thread and yarn Clippers... You will wonder how you ever did without this useful Tool.. Special Price \$1.00 (Calif. residents add Sales Tax), plus 25¢ Shipping.

# NOTES TO KNIT BY . . .

## STITCH AND ROW GAUGE

**KNIT A SAMPLE SWATCH . . .** before you begin to knit any garment . . . for this is the **MOST IMPORTANT STEP** toward the correct size and the proper fit of any garment you wish to make. You **MUST** use the **SAME YARN** for your sample swatch that you will use to knit your garment and your sample swatch must be knitted large enough and using several different tension numbers on your machine. When you have done this, then you can determine the number of stitches and the number of rows in a two-inch measure. **KNITTING MAGAZINE PATTERNS** give you 3 tensions to try and one of them should give you the correct stitch and row gauge if you are using the yarn we recommend or a similar weight yarn. Here is the way to make your sample swatch.

Cast on over a sufficient number of needles to produce a swatch at least 4 inches wide. (If the pattern calls for 16 stitches to 2", then 16 x 2 = 32 stitches to cast on). Now knit 4 inches of rows at the first suggested tension number. (If the pattern calls for 22 rows to 2", 22 x 2 = 44 rows to knit). Knit 2 rows using a contrast color, change to the next higher tension and with garment yarn knit another 4", knit 2 rows with contrast color, change to the 3rd higher tension and knit another 4" and then bind off.




Roll the swatch into a cylinder over its length and pull on both ends, unroll it and stretch it diagonally by pulling on the four corners. Allow the swatch to rest and settle (preferably overnight) and then using a stitch gauge or a ruler, count the number of stitches over a 2" width, then the number of rows over a 2" length in **EACH** of the 3 tensions. Select the tension number that produces the stitches and rows called for in the pattern. If none of them are correct, you are most likely using the wrong weight of yarn.




## READING OF CHARTS


You will notice the instructions start at the bottom of the Chart and work UP. Follow the charts exactly as written and providing your sample stitch and row gauge is correct, your garment will come out the right size. Please remember that the section of garment as it is knitted on the machine, faces the same way as the Charts are in this magazine. Where two front pieces are needed, (or any other part of a garment that needs two sections) only one section is normally shown and the second section is usually made with reverse shaping. Set in sleeves are usually identical, but raglan sleeves have to be knitted with reverse shaping for the second sleeve.


## READING OF SYMBOLS

To simplify Pattern Knitting, we use Symbols in the Line Drawings and the Chart Diagrams. In the Line Drawings the symbols are shown and are to be read as you look at them while knitting a garment. For instance, if

a Purl stitch faces you, the Purl stitch Symbol  is shown; if a knit stitch faces you (as when using the Ribber) then this Symbol  is shown. The Symbol  at the top of the Line Drawing is the center of the garment section and you use this as a guide for setting up the needles.

The following Symbols    are used for Eyelet Designs in the Line Drawings and also for Full Fashion shaping on the Charts. The Line Drawings have row numbers on the right side. Missing Row numbers are always knitted straight or plain.

In Holding Position Designs  selected needles are pushed into holding position for the stated number of rows. The numbers of rows appear at the right of the Line Drawings; Example: 1-4 means knit Rows 1 to 4; 5 to 7 means knit Rows 5 to 7, etc. This same Symbol is also shown on the Charts and is used for putting needles into holding position for Short Rows. The

Symbol  on the Charts is used to put needles back into working position when knitting Short Rows.

A number in a box stands for the number of rows to be knitted between shapings. Make shaping first, then knit the necessary number of rows. If for instance it reads:

1 st. 8 x



1 st. 10 x

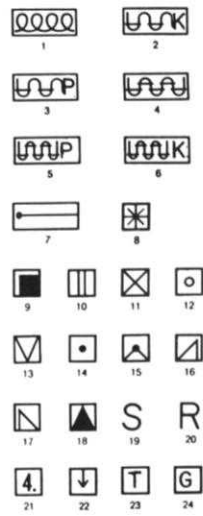


As you will be reading the instructions from the bottom up, here is the way you will follow them: . . . Decrease or increase (depending on the direction of the garment outline) 1 st. at the row where the shaping begins, then knit 8 rows, make the next decrease, then knit 8 rows, until you have decreased (or increased) 1 st. 10 x and you have knitted 8 rows after each decrease (or increase) (1 st. 10 x + 8 rows 10 x). Now begin the first decrease (or increase) for the shaping (which has to be made 8 x) in every 6th row. Decrease (or increase) 1 st. first, then knit 6 rows until you have decreased 1 st. 6 x and after each decrease (or increase) have knitted 6 rows (1 st. 8 x + 6 rows 8 x).

Where shapings are given without a boxed number as on most armholes, necklines, etc., make the shapings on every second row (on each side of course).

(See below for more Pattern Stitch Symbols.)

### KNITTING PATTERN SYMBOLS



1. Cast on
2. Stockinette stitch - worn on the Knit side
3. Stockinette stitch - worn on the Purl side
4. Knit 1, Purl 1, Ribbing
5. Ribbing Pattern - worn on the Purl side
6. Ribbing Pattern - worn on the Knit side
7. Put on a stitch holder
8. Pattern Stitch
9. Knit Stitch
10. Purl Stitch
11. Needles back into working position
12. Empty needle (leave in working position)
13. Needle not used (in the out of work position)
14. Needle in holding position
15. Two stitches on 1 needle - either transferred from the right side or the left side, then put into holding position
16. Needle holding 2 stitches. Stitch has been transferred from the LEFT
17. Needle holding 2 stitches. Stitch has been transferred from the RIGHT
18. 3 stitches on 1 needle. The 1st and 3rd stitch in a group of 3 needles has been hung on the 2nd or center needle
19. Stitch
20. Row
21. Number of rows to be knitted between shapings
22. Bind off
23. Tension

24. Gauge
25. Reverse one section
26. On every other needle
27. & 28. Open Dart
29. & 30. Closed Dart
31. Short Row increase or decrease, for instance on flared skirt knitted sideways
32. Pattern stitch - worn on the Knit side
33. Pattern stitch - worn on the Purl side
34. Center of garment section
35. Work 1 (2 etc.) rows single crochet around edges
36. Turn to the wrong side and hem
37. Ease
38. Match numbers on sections for assembling
39. Hem
40. Fold line
41. Color number (example - C1 = Color 1)

The Roman numeral numbers shown on each garment section are as follows:

- I = Front
- II = Back
- III = Sleeve
- IV = Skirt Front
- V = Skirt Back
- VI = Collar
- VII = Pocket
- VIII = Band
- IX = Belt
- X = Cuff

