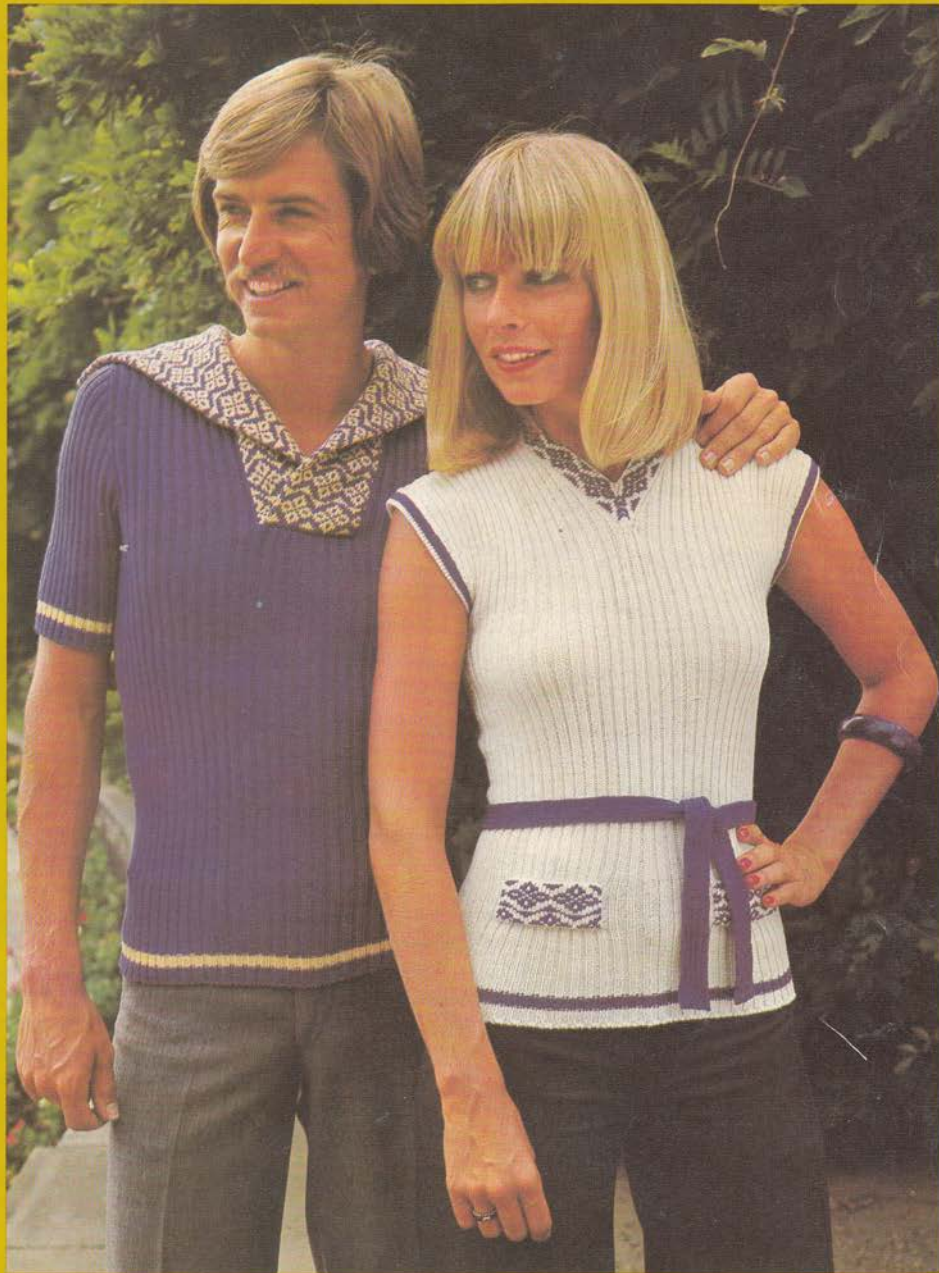


TOYOTA

DECIMAL	£sd
68p	
WEAVERS	

Your fashion
factory



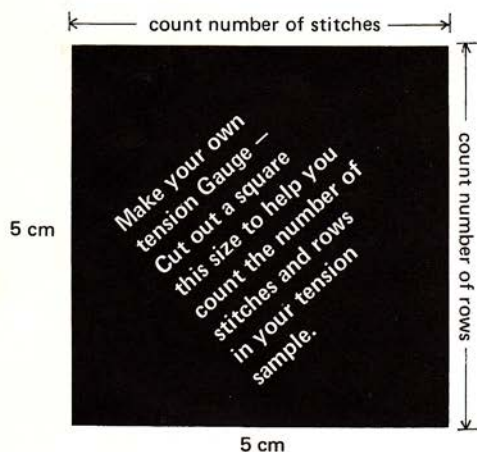
BOOK NO. 112 FAMILY KNITS

TOYOTA Knitting Machine

How to use THIS tension sample GAUGE

With your main yarn and in the pattern required, knit sample using the tension recommended for your machine and for the thickness of the wool being used.

Holding GAUGING SQUARE on to knitted sample, count the number of stitches and rows within the 5 cm square cutout.



To INCREASE the number of stitches and rows, use a TIGHTER TENSION.

To DECREASE the number of stitches and rows, use a LOOSER TENSION.

DO NOT FORGET!

Give knitted sample time to pull back into shape before counting stitches and rows.

A special message from Helga Guyot, Toyota's own Fashion Consultant:—

The tension mentioned in each pattern is to be used as a guide only and may have to be varied from one machine to another and definitely if other types of wool are to be used.

The tension you set actually changes the size of the garment. That is why I suggest that you always knit at least one tension sample. The method of doing this is as follows: Use the wool that you have selected and the tension that I have recommended for that particular pattern, knit 40 stitches and 40 rows, remove the sample from the machine and allow it to settle for a few hours so that the wool resumes its original shape. The next step is to measure the number of stitches and rows in a 5 cm square. Providing you have the same number of stitches and rows as I have listed in my pattern, then your garment will finish up the correct size. On the other hand, if you have more stitches and more rows than I have indicated, then the tension should be loosened, otherwise your garment will be too small. If you have too few stitches and rows within the square, your tension should be tightened, otherwise your garment will finish up too large. In both these cases, I would suggest that you alter the tension accordingly and knit a further sample. As soon as your sample ends up with the same number of stitches and rows as I have indicated in my pattern, then you know that the tension you have used for that sample should be the tension you use for the body of the garment. For rib bands, use tensions as set out in the pattern.

I suggest that you make the tension sampling easy for yourself by copying the gauge illustrated on this page.

ABBREVIATIONS:

Decr.	= Decrease	NSB	= Needle selector button
Incr.	= Increase	Tens.	= Tension
Req.	= Required	C.C.	= Contrast
R/C	= Row counter	Pos.	= Position
M.C.	= Main colour	cm	= Centimetre
2 C.C.	= Second contrast	Rem.	= Remaining
Beg.	= Begin	Approx.	= Approximately
Alt.	= Alternate	Cont.	= Continue
Trans.	= Transfer	Foll.	= Following
Sts.	= Stitches	gr.	= Grams
1 C.C.	= First contrast	Opp.	= Opposite
Knit	= Move carriage across bed	Rep.	= Repeat
3 C.C.	= Third contrast		

Pattern No. 1
LADY'S SKINNYRIB TOP

(Illus. Front Cover)

MEASUREMENTS:

To fit 80 (85, 90, 95, 100) cm bust
Under arm length:
45 cm (all sizes) or as req.

MATERIALS:

PATONS Azalea 3 ply
9 (10, 11, 12, 13) 25 g balls main colour (m)
2 25 g balls (all sizes) contrast colour (c).

TENSION:

3.0 = 16 sts and 22 rows to 5 cm over rib
slightly stretched.

PATTERN:

For body : 2 x 2 rib
For neck band and pocket flaps : FAIR ISLE pattern
with punch card No. 116 "Punch Card Pattern
Supplement".

BACK:

With m cast on 130 (138, 146, 154, 162) sts in 2 x 2
rib. Work cast on, then cont in 2 x 2 rib. Tens 3.0 k
6 rows. With c k 6 rows. With m k to row 196 or as
for under arm length req. Mark row on each end.

Shape sleeves: R/c on 0, inc 1 st at each end next and
every foll 4th row 12 times altogether. K to row
80 (84, 88, 92, 96).

Shape shoulders: Cast off 10 sts at the beg of the
next 8 rows, then cast off 10 (12, 14, 16, 18) sts at
the beg of the foll 2 rows. Take rem sts off with
waste knitting.

FRONT:

Cast on sts and k as back to start of sleeve shaping.
Mark row on each end.

Shape sleeves and V neck: Press in both buttons 1
on main and set partial knitting levers on ribber
carriage. Transfer the two centre sts to right and
left adjacent needles. Bring all needles on opp side
or carriage to E pos on both beds and work on first
side of neck only. *R/c on 0, inc 1 st at armhole
edge, k 4 rows. Dec 1 st at neck edge next and every
foll 4th row AT SAME TIME inc 1 st at armhole
edge next and every foll 4th row to row 48 on r/c.
Cont with shaping on neck edge only until 50 (52,
54, 56, 58) sts rem. K to row 80 (84, 88, 92, 96).

Shape shoulder: Cast off 10 sts at armhole edge next
and every foll alt row 4 times, then cast off rem sts.*

Second side of neck: Release both buttons 1 on main
and partial knitting levers on ribber carriage. K to
correspond first side as from * to *.

NECKBAND:

First join both shoulders. With wrong side facing, on

main bed only, make new sts on side of neck and
pick up sts from waste to centre back. R/c on 0, tens
4.0, with m k 2 rows in st st. Insert punch card and
cont in FAIR ISLE pattern. Dec 1 st at front neck
edge next and each foll row to row 16 on r/c. Cont
with m only, in st st k 2 rows. Inc 1 st at front neck
edge and each foll row to row 34 on r/c and cast
off.

Work other side of neck to correspond.

POCKET FLAPS: (Optional)

K twice. With waste yarn cast on 30 sts, k some rows
with waste, then use ravelling cord for 1 row. With
m, tens 4.0 k 2 rows. Insert punch card and cont in
FAIR ISLE Pattern. R/c on 0, k to row 20. With m
only, in st st k to row 44. Pick up loops of first row
in m onto corresponding needles, k 1 row and cast
off. Pull ravelling cord and remove waste knitting.

SLEEVE EDGING:

Make sts along sleeve edge from marker to marker on
main bed only. Tens 3.0, with c k 6 rows. With m k
2 rows. Tens 8.0 k 1 row (turning row). Tens 3.0 k
8 rows and cast off.

BELT:

Using c, cast on 18 sts in 2 x 2 rib. Tens 1.0 k belt in
2 x 2 rib for required length and cast off.

TO MAKE UP:

Join front and back neck band seams, turn plain half
of neck band to inside and fasten. Sew up side seams
and sleeve edgings. Turn edgings to inside from
turning row and fasten. Sew on pocket flaps. Finish
off belt. Press only neck band and sleeve edgings very
lightly.

Pattern No. 2
MEN'S SKINNYRIB JUMPER

(Illus. Front Cover)

MEASUREMENTS:

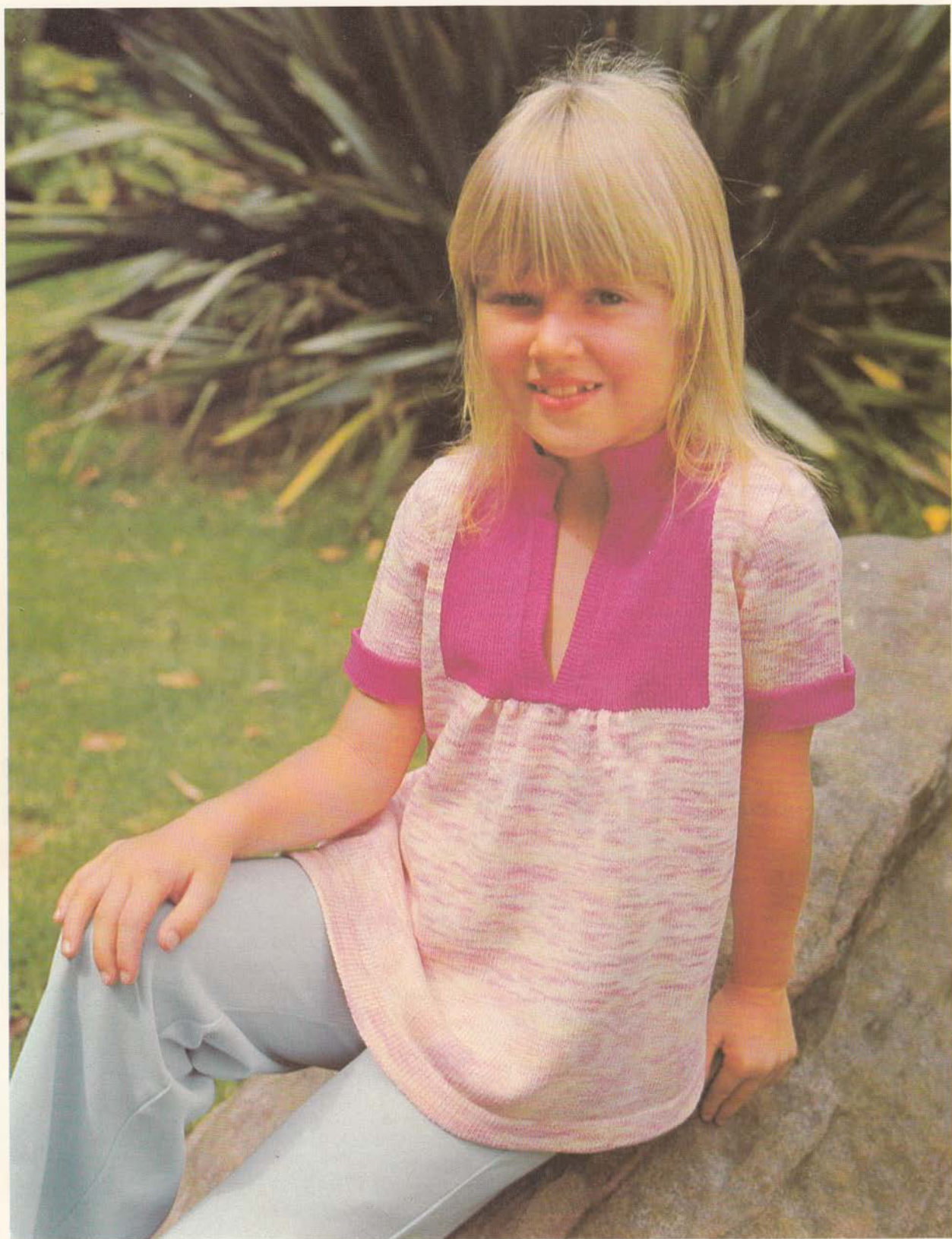
To fit 85 (90, 95, 100, 105) cm chest
Length centre back:
64 (65, 66, 67, 68) cm or as req
Length of sleeve seam:
11 cm (all sizes) or as req.

MATERIALS:

PATONS Azalea 3 ply
12 (13, 14, 15, 16) 25 g balls main colour
(m)
3 (3, 4, 4, 4) 25 g balls contrast colour (c).

TENSION:

3.0 = 16 sts and 22 rows to 5 cm over rib
slightly stretched.



PATTERN:

For body : 2 x 2 rib

For collar : FAIR ISLE pattern with punch card No. 116 "Punch Card Pattern Supplement".

BACK:

With m cast on 138 (146, 154, 162, 170) sts in 2 x 2 rib. Tens 3.0 k 1 row. R/c on 0, k 6 rows. With c k 6 rows. With m k to row 190 or as for length req. **

Shape armhole: R/c on 0, cast off 7 (8, 9, 10, 11) sts at the beg of the next 2 rows, then dec 1 st at each end next and every foll alt row 6 (7, 8, 9, 10) times. K straight to row 82 (86, 90, 94, 98).

Shape shoulders: Cast off 10 sts at the beg of the next 6 rows, then cast off 4 (6, 6, 7, 7) sts at the beg of the foll 2 rows. Cast off rem sts.

FRONT:

Cast on sts and k as back to **.

Divide for neck and shape armhole: R/c on 0, with extra thread in main yarn cast off the 28 centre sts. Bring the 55 (59, 63, 67, 71) sts on opp side of carriage to E pos on both beds, press in both buttons 1 on main and set partial knitting levers on ribber carriage. Work on side of neck closest to carriage only. * Cast off 7 (8, 9, 10, 11) sts at armhole edge, k 2 rows. Dec 1 st at armhole edge next and every foll alt row 6 (7, 8, 9, 10) times. K straight to row 64 (68, 68, 72, 74).

Shape neck: Dec 1 st at neck edge next and every foll alt row until 34 (34, 36, 36, 38) sts rem. K to row 82 (86, 90, 94, 98).

Shape shoulder: Cast off 10 sts at shoulder edge next and every foll alt row 3 times, then cast off rem sts. *

Second side of neck: Release both buttons 1 on main and partial knitting levers on ribber carriage. R/c on 0, work second side of neck to correspond first side as from * to *.

SLEEVES:

With m, cast on 97 (101, 105, 109, 113) sts in 2 x 2 rib. R/c on 0, tens 3.0 k 6 rows. Inc 1 st at each end, with c k 6 rows. Cont with m only. Inc 1 st at each end next and every foll 6th row to 111 (115, 119, 123, 127) sts. K 6 rows after last inc.

Shape top: R/c on 0, cast off 7 sts at the beg of the next 2 rows, then dec 1 st at each end next and every foll alt row to row 10. Dec 1 st at each end next and every foll 4th row to row 18. Dec 1 st at each end next and every foll alt row again to row 50 (54, 58, 62, 66). Dec 1 st at each end next and each foll row to row 60 (64, 68, 72, 76) and cast off.

COLLAR & FRONT FACINGS:

K twice. With wind-on method in m, cast on 60 sts (on main bed only). Tens 4.1 k 2 rows. Cont in FAIR

ISLE pattern. R/c on 0, k to row 64 (68, 68, 72, 74). Inc 1 st at each end next and every foll alt row to row 90 (94, 98, 102, 106). With wind-on method cast on 21 (23, 25, 27, 29) sts at the beg of the next 2 rows. R/c on 0, k 8 rows. Inc 1 st at each end next and every foll 8th row to row 64 and cast off loosely.

TO MAKE UP:

Join both shoulders. Fold each collar part double from centre and sew up back centre seams of upper collar and under facing, then graft or finely stitch cast-off edges of collar together. Sew edge of collar and front facing to neck edge and sew lower side edge of facing to cast off sts on front, doubling left front facing over right. Fasten inside edge of collar and facing. Set top of sleeves into armholes, sew up side and sleeve seams. Press seams, collar and front facings only.

Pattern No. 3 GIRL'S SMOCK

(Illus. Page 4)

MEASUREMENTS:

To fit 60 (65, 70, 75, 80) cm chest

Length centre back:

48 (50, 52, 56, 60) cm or as req

Length of sleeve seams (hem turned up):

5½ (6, 7, 8, 8½) cm or as req.

MATERIALS:

PATONS Azalea 3 ply

6 (7, 8, 9, 10) 25 g balls main colour (m)

2 (2, 3, 3, 3) 25 g balls contrast colour (c).

TENSION:

4.0 = 17½ sts and 24 rows to 5 cm over st st.

BACK:

With waste yarn cast on 114 (122, 130, 140, 148) sts, k some rows with waste, then use ravelling cord for 1 row. *With m, tens 4.0 k 1 row. Tens 3.0 k 14 rows. Tens 8.0 k 1 row. Tens 3.0 k 14 rows. Tens 4.0 k 1 row and close hem. Pull ravelling cord.* R/c on 0, tens 4.0 k to row 150 (154, 158, 172, 186) or as for length req.

Shape armhole: R/c on 0, cast off 6 (6, 7, 7, 8) sts at the beg of the next 2 rows, then dec 1 st at each end next and every foll alt row 6 (7, 7, 8, 8) times. K without shaping to row 58 (66, 70, 74, 80).

Shape shoulders: Cast off 7 sts at the beg of the next 6 rows, then cast off 4 (6, 8, 9, 11) sts at the beg of the foll 2 rows. Take rem sts off with waste knitting.

FRONT:

With waste yarn cast on 154 (162, 170, 180, 188) sts, k some rows with waste, then use ravelling cord for 1 row. With m k hem as on back from * to *.

R/c on 0, tens 4.0 k to row 130 (134, 138, 152, 166), (20 rows shorter than back). With extra thread in m cast off the 12 centre sts.

First side of front: Bring all needles on opp side of carriage to E pos, press in both buttons 1. Bring 26 (28, 29, 30, 31) needles from side edge closest to carriage also to E pos, take all rem sts in B pos off with waste knitting. Push the 26 (28, 29, 30, 31) needles back to C pos. Work on those sts only. **Make one extra st at inside edge, with m k 20 rows.

Shape armhole: R/c on 0, cast off 6 (6, 7, 7, 8) sts at armhole edge, k 2 rows. Dec 1 st at armhole edge next and every foll alt row until 15 sts rem. K to row 58 (66, 70, 74, 80).

Shape shoulder: Cast off 7 sts at armhole edge, k 2 rows, then cast off rem sts.

First side of yoke: Starting from centre edge next to cast off sts, bring sts from waste back onto needles, 3 sts onto first 10 needles, then 1 st onto each needle to end. Make 1 extra st at side edge. R/c on 0, with c k to row 52 (60, 64, 66, 70).

Shape neck: Mark row on neck edge, dec 1 st at neck edge next and each foll row 6 times, k 1 row after last dec. Dec 1 st at neck edge next and every foll alt row until 12 (14, 16, 17, 19) sts rem. K to row 78 (86, 90, 94, 100);

Shape shoulder: Cast off 7 sts at side edge, k 2 rows, then cast off rem sts. **

Second side of front and yoke: Leave 26 (28, 29, 30, 31) needles on side furthest from carriage in E pos. (Buttons 1 are depressed). Bring all rem centre sts down to C pos and take those sts off with waste knitting. Release buttons 1. Cont as for first side from ** to **.

NECKBAND:

First sew yoke into front, then join both shoulder seams. With wrong side facing, make sts along neck edge from marker and pick up sts from waste on back reducing the amount by placing 2 sts onto every third needle. Make sts along other side of front to marker. (Approx 78 (82, 86, 90, 94) sts) Tens 4.0 k 8 rows. Tens 3.2 k 8 rows. Tens 3.0 k 8 rows. Tens 3.2 k 8 rows. Tens 4.0 k 8 rows and cast off.

FRONT FACINGS:

First turn half of neck band to inside and fasten. With wrong side facing make sts on one side of neck from lower end to edge of neck band. Tens 4.0 k 1 row. Tens 3.0 k 8 rows. Tens 9.0 k 1 row (turning row). Tens 3.0 k 8 rows. Tens 4.0 k 1 row and cast off.

SLEEVES:

With waste yarn cast on 77 (83, 89, 95, 103) sts, k some rows with waste, then use ravelling cord for 1 row. Using c, k hem as on back from * to *. R/c on 0,

with m, tens 4.0 k to row 26 (30, 34, 38, 40) or as for length req.

Shape top: R/c on 0, cast off 5 (5, 6, 6, 7) sts at the beg of the next 2 rows, then dec 1 st at each end next and every foll 4th row to row 18. Dec 1 st at each end next and every foll alt row to row 32 (40, 42, 46, 52). Dec 1 st at each end next and each foll row to row 42 (50, 52, 56, 62) and cast off.

TO MAKE UP:

Turn front facing to inside from turning row and fasten. Sew ends of facings onto cast off sts on front, butting in centre. Set top of sleeves into armholes, then sew up side and sleeve seams. Press lightly.

Pattern No. 4

GIRL'S HONEYCOMB TOP

(Illus. Page 9)

MEASUREMENTS:

To fit 60 (65, 70, 75, 80) cm chest
Length centre back:
39 (42, 46, 49, 53) cm or as req.

MATERIALS:

PATONS Azalea 3 ply
5 (5, 6, 7, 8) 25 g balls main colour (m)
1 (1, 1, 2, 2) 25 g balls contrast colour (c).

TENSION:

5.0 = 15 sts and 32 rows to 5 cm over pattern.

PATTERN:

Tuck pattern with punch card No. 2 "Punch Card Pattern Supplement"

: * Press both buttons 2, pull lever, k 3 rows. Release button 2 closest to knitting, k 1 row.* Rep from * to *.

BACK:

With m, cast on 95 (101, 109, 117, 125) sts in 1 x 1 rib. Tens 0.0, r/c on 0, k in rib to row 20. With c k 4 rows, with m k 2 rows, with c k 4 rows, with m k 2 rows. Transfer sts to main bed, tens 5.0, in st st k 2 rows. Cont in pattern, r/c on 0, k to row 104 (120, 136, 152, 168) or as for length req.

Shape armholes: R/c on 0, mark row on each end. Dec 1 st at each end next and every foll 4th row 11 (12, 13, 14, 15) times. K without shaping to row 92 (96, 104, 108, 116).

Shape shoulders: Cast off 5 (5, 5, 6, 6) sts at the beg of the next 6 rows, then cast off 5 (5, 7, 4, 6) sts at the beg of the foll 2 rows. Take rem sts off with waste knitting.

FRONT:

With m, cast on and k as back to row 44 (48, 52, 56, 60) over start of armhole shaping.

Shape neck: Bring 29 (30, 32, 34, 36) sts from each end to E pos, press both buttons 1. Take off all centre stitches with waste knitting. Bring needles on left side of neck to C pos and take those sts off with waste knitting also. Move carriage to right, release both buttons 1. *R/c on 44 (48, 52, 56, 60), cont in right pattern continuity. Dec 1 st at neck edge next and every foll alt row until 20 (20, 22, 22, 24) sts rem. K to row 92 (96, 104, 108, 112).

Shape shoulder: Cast off 5 (5, 5, 6, 6) sts at armhole edge next and every foll alt row 3 times, then cast off rem sts.*

Second side of neck: Bring sts from left side of neck onto needles. K to correspond first side from * to *.

NECK BAND:

First join right shoulder seam. With wrong side facing, (NOTE: purl side is used as right side), make sts on sides of neck and pick up sts from waste on back and centre front. With m, tens 4.1 k 1 row. Tens 3.0 k 1 row. With c k 4 rows, with m k 4 rows. Tens 9.0 k 1 row (turning row). Tens 3.0 k 10 rows and cast off loosely.

SLEEVES:

First join left shoulder and neck band. With wrong side facing, make sts evenly along armhole edge, (1 st in every 2 rows knitted). With m, tens 4.1, in st st k 2 rows. Bring 35 needles on opp side of carriage to E pos, press in both buttons 1, k 1 row, lay yarn under first inner needle in E pos. Bring 35 needles on other side to E pos, k 1 row, lay yarn under first inner needle in E pos. *Push 5 needles on opp side of carriage down to C pos, k 1 row, lay yarn under first inner needle in E pos.* Rep from * to * (and from side to side) until all needles are back in B pos. With c k 4 rows. With m k 2 rows. With c k 4 rows. With m k 4 rows. Tens 9.0 k 1 row (turning row). Tens 4.1 k 17 rows ending on right. Press in both buttons 1. *Bring 5 needles on opp side of carriage to E pos, k 1 row, lay yarn under first inner needle.* Rep from * to * (and from side to side) until 35 needles are in E pos on each end. Push all needles on opp side of carriage down to C pos and k 1 row. Release both buttons 1 and k 1 row. Cast off loosely.

COLLAR: (Optional)

With wind on method cast on 96 (100, 104, 108, 112) sts using m. Tens 3.0 k 10 rows. Tens 3.2 k 10 rows. Tens 4.1 k 10 rows. Tens 5.0 K 10 rows. Tens 9.0 k 1 row (turning row). Tens 5.0 k 5 rows. With c k 4 rows. With m k 2 rows. With c k 4 rows. Cont with m, k 16 rows. Tens 4.1 k 10 rows. Tens 3.2 k

10 rows and cast off loosely.

TO MAKE UP:

Turn neck band to inside from turning row and fasten. Sew up side and sleeve seams. Turn sleeves to inside from turning row and fasten to armhole edge. Press only seams very lightly if necessary.

To add collar: Double collar on turning row and sew up side seams. Sew collar, catching top and under facing to inside of neck band.

Press collar lightly.

Pattern No. 5 LADY'S TWINSET

(Illus. Page 9)

MEASUREMENTS:

To fit 80 (85, 90, 95) cm
Centre back length of jacket:
58 (59, 60, 61) cm or as req
Side length of top:
31 cm (all sizes) or as req.

MATERIALS:

PATONS Azalea 3 ply
Jacket: 11 (12, 13, 14) 25 g balls
Top: 5 (6, 6, 7) 25 g balls
Buttons for jacket.

TENSION:

4.1 = 16 sts and 22 rows to 5 cm over st st.

PATTERN:

Tuck Lace pattern over 4 sts and 16 rows
: Set NSB 1, 5 and 9. Press in right button 2 and use light weights.

* Pull lever, move LC from left to right, loosen tens to 10.0, k 1 row. Tens 4.1 k 1 row. Pull lever, press in left button 2, k 4 rows, release left button 2, k 10 rows.* Rep from * to *.

JACKET

BACK:

With waste yarn cast on 139 (147, 155, 163) sts, k some rows with waste yarn, then use ravelling cord for 1 row. With main yarn, tens 3.0 k 20 rows. Tens 8.0 k 1 row, tens 3.0 k 20 rows and close hem. Tens 4.1 k 2 rows, pull ravelling cord. R/c on 0, k in pattern to row 86, then k in st st to row 190 or as for length req.

Shape armholes: R/c on 0, cast off 8 (8, 9, 10) sts at the beg of the next 2 rows, then dec 1 st at each end next and every foll alt row 8 (10, 10, 11) times. K straight to row 80 (84, 88, 92).

Shape shoulders: Cast off 8 (8, 9, 9) sts at the beg of the next 6 rows, then cast off 8 (9, 8, 9) sts at the beg of the foll 2 rows. Cast off rem sts.

RIGHT FRONT:

With waste yarn cast on 67 (71, 75, 79) sts, k some rows with waste yarn, then use ravelling cord for 1 row. With main yarn k hem as on back. Close hem, tens 4.1 k 2 rows and pull ravelling cord. R/c on 0, k in pattern to row 86, then k in st st to row 190 or as for length req.

Shape armhole and V neck: R/c on 0, dec 1 st at neck edge (left) next and every foll 3rd row, AT SAME TIME cast off 8 (8, 9, 10) sts at armhole edge (right), k 2 rows. Dec 1 st at armhole edge next and every foll alt row 8 (10, 10, 11) times. Shape neck only until 32 (33, 35, 36) sts rem. K straight to row 80 (84, 88, 92).

Shape shoulder: Cast off 8 (8, 9, 9) sts at shoulder edge (right) next and every foll alt row 3 times, then cast off rem sts.

LEFT FRONT:

Cast on sts and k as right front, reversing all shapings.

SLEEVES:

With waste yarn cast on 89 (93, 95, 99) sts, k some rows with waste yarn, then use ravelling cord for 1 row. Tens 3.0 k 16 rows, tens 8.0 k 1 row, tens 3.0 k 16 rows and close hem. Tens 4.1 k 2 rows, pull ravelling cord. R/c on 0, cont in pattern. Inc 1 st at each end next and every foll 8th row 6 times. K 4 rows after last inc.

Shape top: (in pattern). Cast off 6 (6, 6, 7) sts at the beg of the next 2 rows, dec 1 st at each end next and every foll alt row to row 10, then dec 1 st at each end next and every foll 4th row to row 18. Dec 1 st at each end next and every foll alt row again to row 52 (56, 58, 62). K in st st, dec 1 st at each end next and each foll row 10 more times and cast off.

FRONT BAND:

In close rib (using all needles) cast on 29 sts (15 on main and 14 on ribber bed). Tens 0.2 k 8 rows. Work buttonhole over centre sts next and every foll 40th row 6 times altogether, then k straight for req length and cast off. (If length of jacket is altered, inc or dec amount of rows between buttonholes).

TO MAKE UP:

Join both shoulder seams. Set top of sleeves into armholes, then sew up side and sleeve seams. Sew front band into place. Press lightly and sew on buttons.

TOP**BACK:**

With waste yarn cast on 94 (102, 110, 118) sts, k some rows with waste yarn, then use ravelling cord for 1 row. With main yarn, tens 3.0 k 20 rows. Tens 8.0 k 1 row, tens 3.0 k 20 rows and close hem. Tens 4.1 k 2 rows, pull ravelling cord. R/c on 0, cont in pattern. K to row 16. Inc 1 st at each end next and

every foll 16th row 6 times.** K straight to row 136 or as for length req. In st st, tens 3.0 k 20 rows, tens 8.0 k 1 row (turning row), tens 3.0 k 20 rows and cast off.

FRONT:

Cast on sts and k as back to **. K straight to row 152, (16 rows longer than back.) in st st, tens 3.0 k 20 rows, tens 8.0 k 1 row, tens 3.0 k 20 rows and cast off.

SHOULDER STRAPS:

K twice. Cast on 27 sts in 1 x 1 rib, then bring all needles between sts to B pos (14 needles on main and 13 needles on ribber bed in B pos). Set machine for circular knitting, tens 3.0 k for req length (approx 33 cm). Transfer sts from ribber bed onto sts on main bed and cast off.

TO MAKE UP:

Starting on hem, sew up side seams, holding in the extra length of front in last two pattern on back. Turn cast-off edge to inside from turning row and fasten. Sew on straps. Press only lightly if necessary.

Pattern No. 6 MEN'S JAC SHIRT

(Illus. Back Cover)

MEASUREMENTS:

To fit 85 (90, 95, 100) cm chest
Length centre back:
61 (64, 67, 70) cm or as req
Length of sleeve seams:
10 cm (all sizes) or as req.

MATERIALS:

PATONS Azalea 3 ply
15 (16, 17, 18) 25 g balls
Buttons for front

TENSION:

4.1 = 15 sts and 22 rows to 5 cm over pattern.

PATTERN:

Lace pattern with punch card No. 501 "Punch Card Pattern Supplement".

BACK:

With waste yarn cast on 121 (129, 135, 143) sts, k some rows with waste yarn, then use ravelling cord for 1 row. With main yarn, tens 3.0 k 40 rows and close hem. Tens 4.1 k 2 rows, pull ravelling cord. R/c on 0. Cont in pattern, k to row 12. Inc 1 st at each end next and every foll 12th row to 137 (145, 151, 159) sts, then k straight to row 164 (172, 180, 188) or as for length req.



Shape armhole: R/c on 0, cast off 6 sts at the beg of the next 2 rows, then cast off 5 (6, 7, 8) sts at the beg of the foll 2 rows. Dec 1 st at each end next and every foll alt row 6 (7, 8, 9) times. K to row 92 (96, 100, 104).

Shape shoulders: Cast off 8 sts at beg of the next 6 rows, then cast off 6 (8, 8, 10) sts at beg of the foll 2 rows. Take rem sts off with waste knitting.

RIGHT FRONT:

With waste yarn cast on 71 (75, 79, 83) sts, k some rows with waste, then use ravelling cord for 1 row. With main yarn, k hem as on back. Close hem, k 1 row. With waste knitting take off the first 18 sts from left end, then k 1 row and pull ravelling cord. R/c on 0, cont in pattern, k to row 12. Inc 1 st at right end next and every foll 12th row to 79 (83, 87, 91) sts. K to row 164 (172, 180, 188) or altered length as on back.

Shape armhole and neck: R/c on 0, dec 1 st at neck edge (left) next and every foll 6th row. AT SAME TIME cast off 6 sts at right end, k 2 rows. Cast off 5 (6, 7, 8) sts at right end, k 2 rows. Dec 1 st at right end next and every foll alt row 6 (7, 8, 9) times. Cont to dec at neck edge only until 30 (32, 32, 34) sts rem. K to row 92 (96, 100, 104).

Shape shoulder: Cast off 8 sts at shoulder edge (right) next and every foll alt row 3 times, then cast off rem sts.

LEFT FRONT:

Cast on sts and k same as right front, reversing all shapings.

LEFT FRONT FACING:

With wrong side facing, pick up the 18 sts from waste knitting of left front. Cast on 18 more sts on RIGHT side of sts using wind-on method. Tens 4.0 k 12 rows. Adjust rows here if length of shirt is altered. *Work two buttonholes, on the 8th to the 11th stitch counting from each end. K 38 (40, 42, 44) rows.* Rep from * to * 3 more times. Work buttonholes once more, k 2 rows. Inc 1 st at each end next and every foll 4th row to 66 (68, 70, 72) sts. K 6 rows after last inc and cast off.

RIGHT FRONT FACING:

Pick up the 18 sts from waste of right front and using wind-on method cast on 18 more sts on LEFT side. R/c on 0, tens 4.0 k to row 166 (174, 182, 190). Adjust rows here for altered length of shirt. Inc 1 st at each end next and every foll 4th row to 66 (68, 70, 72) sts. K 6 rows after last inc and cast off.

SLEEVES:

With waste yarn cast on 87 (91, 95, 99) sts, k some rows with waste yarn, then use ravelling cord for 1 row. With main yarn, tens 3.0 k 30 rows and close hem. Tens 4.1 k 2 rows and pull ravelling cord. Cont

in pattern, r/c on 0, inc 1 st at each end next and every foll 4th row to row 32. Alter length here if req.

Shape top: R/c on 0, cast off 4 sts at beg of the next 4 rows, then dec 1 st at each end next and every foll alt row to row 12. Dec 1 st at each end next and every foll 4th row to row 44 (48, 52, 56). Dec 1 st at each end next and every foll alt row again to row 66 (70, 74, 78). Dec 2 sts at each end next and every foll alt row to row 76 (80, 84, 88) and cast off.

COLLAR

First join both shoulders. Sew facing to front edge, ending approx 10 cm below shoulder seam. Fold half of facing to inside and with fine back stitch or weaving method sew cast-off stitches of facing together. Fasten inside edge of facing, matching buttonholes on left front. With wrong side facing, make sts along rem neck edge, 3 sts in every 4 rows knitted on front. Pick up all stitches from waste on back and make sts on side of other front. R/c on 0, tens 4.0 k 2 rows. Inc 1 st at each end next and every foll 4th row to row 62. Mark row on each end, k 4 more rows without shaping. Tens 5.0, dec 1 st at each end next and every foll 4th row to row 126 and cast off.

TO MAKE UP:

Fold collar to inside from marker and sew up side seams. Slipstitch cast-off edge of collar to inside. Join approx 8 cm of collar sides to front facings. Set top of sleeves into armhole, then sew up side and sleeve seams. Press lightly and sew on buttons.

Pattern No. 7

BOY'S TUCK STITCH CREW NECK JUMPER

(Illus. Back Cover)

MEASUREMENTS:

To fit 60 (65, 70, 75, 80) cm chest
Length centre back:
39 (45, 49, 52, 56) or as req
Length of sleeve seam
8 (8, 10, 10, 10) cm or as req.

MATERIALS:

PATONS Azalea 3 ply
5 (5, 6, 7, 8) 25 g balls main colour (m)
Small amount of two contrast colours
(1st c, 2nd c).

TENSION:

5.0 = 15 sts and 26 rows to 5 cm over pattern.

PATTERN:

Tuck pattern with punch card No. 401, page 4 of "Punch Card Pattern Supplement".

BACK:

With m, cast on 95 (101, 109, 117, 125) sts in 1 x 1 rib. R/c on 0, tens 0.0, k to row 24. Transfer sts to main bed. Tens 5.0 k 2 rows in st st. R/c on 0, cont in pattern to row 102 (126, 138, 150, 162) or as for length req, in units of 12 rows only.

Shape armholes: R/c on 0, cast off 6 (6, 7, 7, 8) sts at the beg of the next 2 rows, then dec 1 st at each end next and every foll alt row 6 (7, 7, 8, 8) times. K to row 68 (74, 80, 86, 92). K 2 more rows in st st.

Shape shoulders: Cont in st st, cast off 5 sts at the beg of the next 6 rows, then cast off 4 (6, 7, 10, 12) sts at the beg of the foll 2 rows. Take rem sts off with waste knitting.

FRONT:

With m cast on sts and k as back to row 6 over start of armhole shaping. Complete armhole shaping as on back, AT SAME TIME * k 2 rows with 1st c, 1 row with m, 2 rows with 2nd c, 1 row with m. * Rep from * to * once. K next 12 rows with m, then rep from * to * twice. Cont with m only. K to row 46 (50, 56, 62, 68).

Shape neck: Bring 29 (30, 32, 34, 36) needles from each end up to E pos, press in both buttons 1 and take centre sts off with waste knitting. Mark needles used for side of neck furthest from carriage, then take those sts off with waste knitting. Note number of punch card. Move carriage to side edge of first side of neck. Release both buttons 1. *Cont in pattern, r/c on 46 (50, 56, 62, 68). Dec 1 st at neck edge next and every foll alt row until 19 (21, 23, 25, 27) sts rem. K to row 68 (74, 80, 86, 92). K 2 more rows in st st.

Shape shoulder: Cont in st st, cast off 5 sts at shoulder edge next and every foll alt row 3 times, then cast off rem sts.*

Second side of neck: Bring sts for second side of neck onto marked needles. Punch card to noted number. In right pattern continuity work second side of neck to correspond first from * to *.

SLEEVES:

With m, cast on 63 (65, 69, 71, 75) sts in 1 x 1 rib. Tens 0.0 k 14 rows in rib. Transfer sts to main bed. Tens 5.0 k 2 rows in st st. Cont in pattern, r/c on 0, inc 1 st at each end next and every foll 3rd row to 77 (81, 85, 89, 93) sts. K to row 24 (24, 30, 30, 30) or as for length req.

Shape top: R/c on 0, cast off 5 (5, 6, 6, 7) sts at the beg of the next 2 rows, then dec 1 st at each end next and every foll 3rd row to row 42 (48, 54, 54, 60). Dec 2 sts at each end next and every foll 3rd row to row 60 (66, 66, 72, 72) and cast off.

NECK BAND:

First join right shoulder. With wrong side facing pick up sts from waste on back, make sts on sides of neck on front and pick up sts from centre front. With m, tens 4.0 k 1 row. Arrange sts for 1 x 1 rib. Tens 1.0 k 24 rows in rib and take off with waste knitting.

TO MAKE UP:

Join left shoulder and neck band seam. Turn half of neck band to inside and, catching all loops from waste, slipstitch loosely over seam. Set top of sleeves into armholes, then sew up side and sleeve seams. Press seams only if necessary.

World Copyright by Toyota Knitting Machines of Australia
Designed by Helga Guyot
Produced and Printed by ART-VUE Printing Pty. Limited

