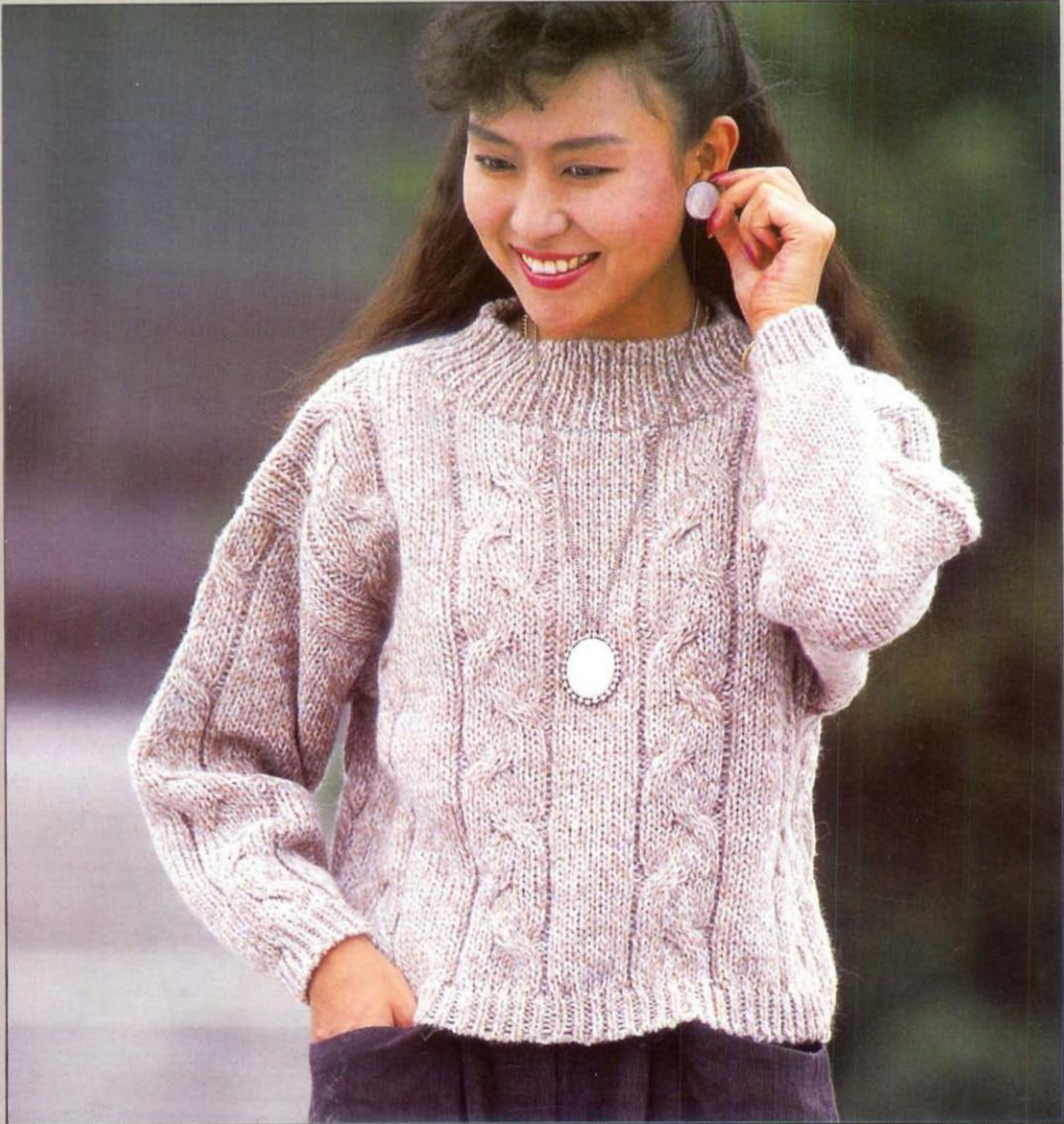


Zippy
90

KNITMASTER

**KNIT &
LEARN** Vol. 2

Patterns for all Chunky Machines.



014

SWEATER WITH CABLES

Sizes:
To fit 81-86(91-96) cms/32-34
(36-38) inch bust.

Materials:
Shetland Chunky Yarn
Col 1 (Random Dyed) - 470(520) grms

Tension:
16 sts and 21 rows to 10 cms. TD at
approx. 6.

Pattern Note:
For cable pattern follow chart.

BACK
Push 43 Ns at left and right of centre 0
to B pos. 86 Ns altog. Using waste yarn
cast on as for knit 1 purl 1 rib. RC 000.
TD at 5. Using col 1, knit 8 rows. Drop
the 3rd and ev foll alt st and pick up as
for ribbing. RC 000. TD at 6. Continue in
pattern, knit 40(44) rows. Mark both
ends with waste yarn. Knit to Row
86(90).

Shape Back Neck
Shape as shown on diagram to Row
92(96). Cast off rem 20 sts. Knit left part
as for right part.

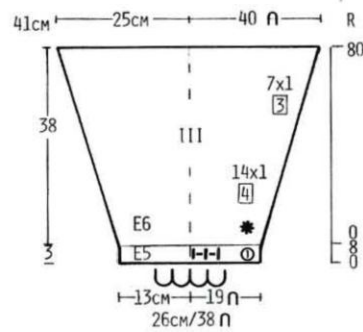
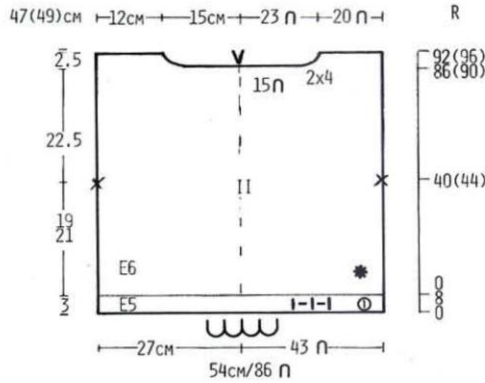
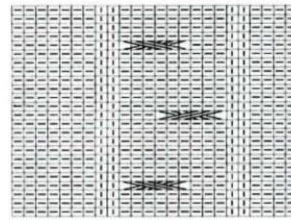
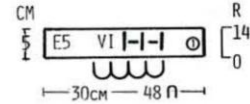
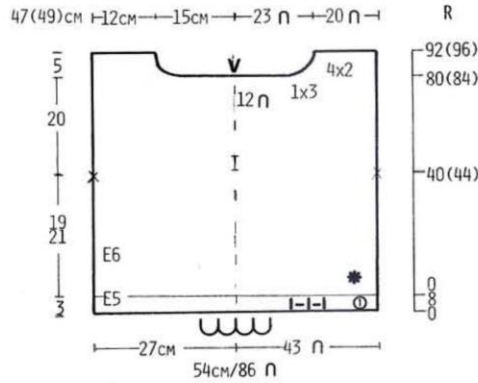
FRONT
Knit as for Back to Row 80(84).
Shape Neck
Shape as shown on diagram to Row
92(96). Cast off rem 20 sts. Knit left part
as for right part.

SLEEVES
Push 19 Ns at left and right of centre 0

to B pos. 38 Ns altog. Using waste yarn
cast on as for knit 1 purl 1 rib. RC 000.
TD at 5. Using col 1, knit 8 rows. Drop
the 3rd and ev foll alt st and pick up as
for ribbing. RC 000. TD at 6. Continue in
pattern and inc as shown on diagram.
80 sts. Knit to Row 80. Mark centre with
waste yarn. Cast off.

NECKBAND (2 pieces)
Push 48 Ns to B pos. Using waste yarn
cast on as for knit 1 purl 1 rib. RC 000.
TD at 5. Using col 1, knit 14 rows. Drop
the 3rd and ev foll alt st and pick up as
for ribbing. With wrong side of back
facing, pick up neck edge and place
onto Ns. Knit 1 row. Cast off. Rept for
Front.

TO MAKE UP
Pin out to size and steam carefully. Join
shoulder and neckband seams. Set in
sleeves between marked points. Join
side and sleeve seams.



Zippy 90 KNIT & LEARN

This collection of completely original designs and patterns heralds the introduction of Zippy 90, the latest addition to the Knitmaster family of Chunky Knitting machines.

Each of these unique chunky designs will not only be a delight to wear, but will also teach you a new technique or introduce you to a new idea which can be used time and time again.

Contents

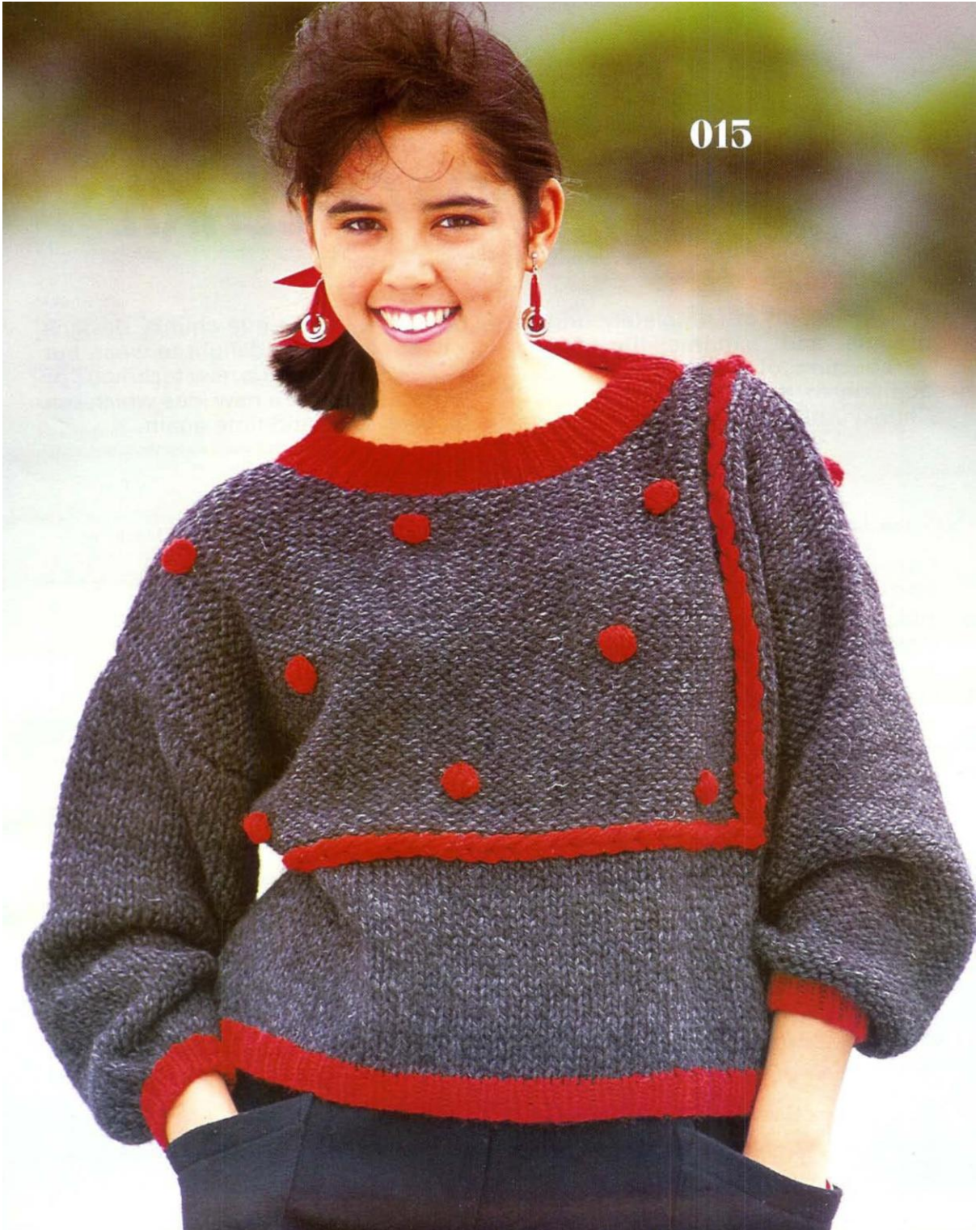
The designs in this Zippy 90 pattern book are suitable for use with all 9mm Chunky Machines.

014 Sweater with Cables (Front Cover)	2
015 Sweater with Red Trims and Bobbles	6
016 Mohair Lace Cardigan	7
017 Man's Sweater with Diagonal Stripes	10
018 Pink Sweater with Flowers	11
019 White Sweater with Pink & Blue Bobbles	14
020 Man's Red Cardigan	15
How to work from a diagram pattern	16
Knitting symbols	17
Symbols for the diagrams	17
Abbreviations	17
Techniques	18
Choosing your yarns	19
More patterns	19
021 Polo Neck Sweater with Decorative Buttons	22
022 Dolman Sleeve Sweater with Flowers	23
023 Man's Crew Neck Sweater	26
024 Peach Sweater with Cables	27
025 Man's Sweater with Two Coloured Cable	30
026 Yellow Sweater with Bobbles	31

Although every reasonable care has been taken to ensure that the instructions and designs in this pattern book are correct, Modern Knitting Ltd. cannot accept responsibility for any errors which may have occurred in spite of such precautions. All rights reserved. Reproduction in whole or part without written permission is strictly prohibited.

A Modern Knitting Publication ©1986.
 Modern Knitting is a Registered Trademark.
 Modern Knitting Limited, P O Box 175, Kingston-upon-Thames,
 Surrey KT2 6HA

015





016

015

SWEATER WITH RED TRIMS AND BOBBLES

Size:
One size to fit 86-96 cms/34-38 inch bust.

Materials:
Textured Chunky Yarn
Col 1 (Charcoal Grey) - 470 grms
Col 2 (Red) - 80 grms

Tension:
11 sts and 16 rows to 10 cms. TD at approx. 9.

Pattern Note:
Stockinet.

BACK
Push 30 Ns at left and right of centre 0 to B pos. 60 Ns altog. Using waste yarn cast on as for knit 1 purl 1 rib. RC 000. TD at 8. Using col 1, knit 7 rows. Drop the 3rd and ev foll alt st and pick up as for ribbing. Using waste yarn knit several rows and release from machine. Push 30 Ns at left and 6 Ns at right of centre 0 to B pos. Starting from the left edge, pick up 36 sts from below waste yarn and place onto Ns in B pos. RC 000. TD at 9. Using col 1, inc right edge as

shown on diagram. Mark left edge when RC shows 32. 48 sts. Knit to Row 72. Mark the 15th st at both sides of centre 0 with waste yarn. Cast off. Push 24 Ns to B pos. With plain side facing, pick up 24 sts from below waste yarn and place onto Ns in B pos. Dec right edge as shown on diagram. Mark left edge with waste yarn when RC show 32. 12 sts. Knit to Row 72. Cast off. Join seam.

FRONT
Push 30 Ns at left and right of centre 0 to B pos. 60 Ns altog. Using waste yarn cast on as for knit 1 purl 1 rib. RC 000. TD at 8. Using col 1, knit 7 rows. Drop the 3rd and ev foll alt st and pick up as for ribbing. RC 000. TD at 9. Knit 24 rows. Using waste yarn knit several rows and release from machine. Push 12 Ns to B pos. Pick up 12 sts from left edge and place onto Ns in B pos. Reset RC to 24. Knit to Row 32. Mark left edge with waste yarn. Knit to Row 72. Cast off. Push 30 Ns at left and 18 Ns at right of centre 0 to B pos. 48 Ns altog. With plain side facing, pick up sts from below waste yarn and place onto Ns in B pos. Reset RC to 24. Knit to Row 32. Mark left edge with waste yarn. Knit to Row 62. Shape Neck
Shape as shown on diagram to Row 72. Cast off rem 3 sts. Knit left part as for right part. Cast off rem 15 sts. Join seam.

SLEEVES

Push 28 Ns at left and right of centre 0 to D pos. 56 Ns altog. Using col 1, cast on by hand. Push Ns to C pos. RC 000. TD at 9. Shape as shown on diagram. 36 sts. Knit to Row 60. Cast off with waste yarn.

CUFFS

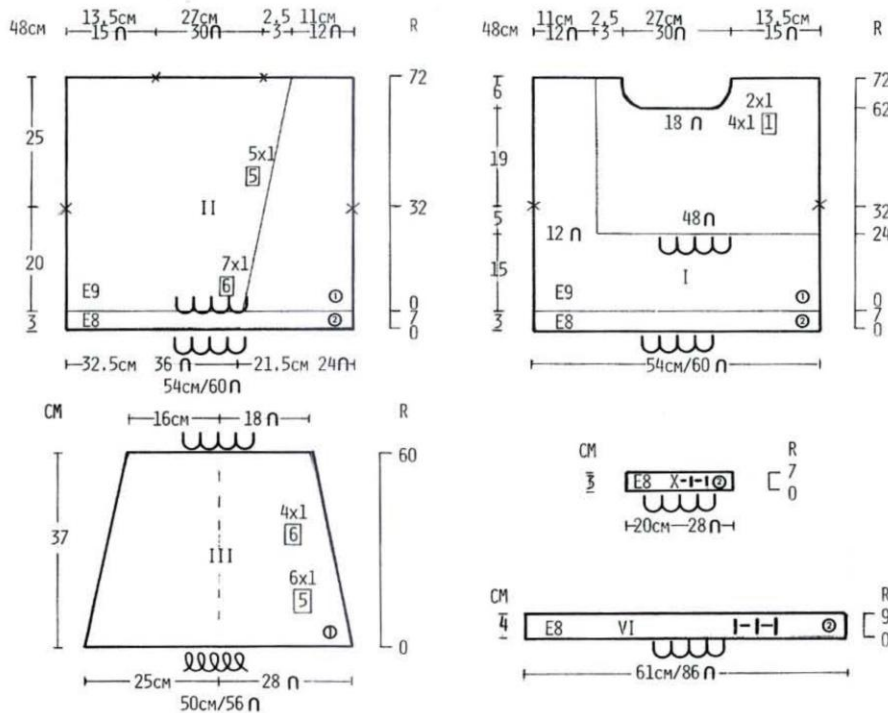
Push 28 Ns to B pos. Using waste yarn cast on as for knit 1 purl 1 rib. RC 000. TD at 8. Using col 1, knit 7 rows. Drop the 3rd and ev foll alt st and pick up as for ribbing. With purl side of sleeve facing, pick up sts from below waste yarn and place onto Ns gathering evenly. Knit 1 row. Cast off. Repeat for second sleeve but pick up with plain side facing.

NECKBAND

Join one shoulder seam. Push 86 Ns to B pos. Using waste yarn cast on as for knit 1 purl 1 rib. RC 000. TD at 8. Using col 1, knit 9 rows. Drop the 3rd and ev foll alt st and pick up as for ribbing. With wrong side facing, pick up neckedge and place onto Ns. Knit 1 row. Cast off.

TO MAKE UP

Pin out to size and steam carefully. Join rem shoulder and neckband seam. Set in sleeves between marked points. Join side and sleeve seams. Embroider a chain stitch over seams. Crochet bobbles and sew into pos as shown.



016

MOHAIR LACE CARDIGAN

Sizes:
To fit 86-91(96-101) cms/34-36
(38-40) inch bust.

Materials:
Mohair
Col 1 (Purple) - 140(190) grms
Col 2 (Green) - 110(160) grms
Col 3 (Orange) - 50 grms
6 buttons

Tension:
13.5 sts and 16.5 rows to 10 cms. TD at
Approx. 5.

Pattern Note:
Lace Pattern - Follow Chart. Knit 8 rows
col 1, 8 rows col 2, Repeat throughout.

BACK
Push 34(37) Ns at left and right of centre
0 to D pos. 68(74) Ns altog. Using col 1,
cast on by hand. Push Ns to C pos. RC
000. TD at 5. Work lace pattern over
centre 21 sts. Knit to Row 44(48). Mark
both ends with waste yarn. Knit to Row
80(88). Mark the 14th st at both sides of
centre 0 with waste yarn. Cast off.

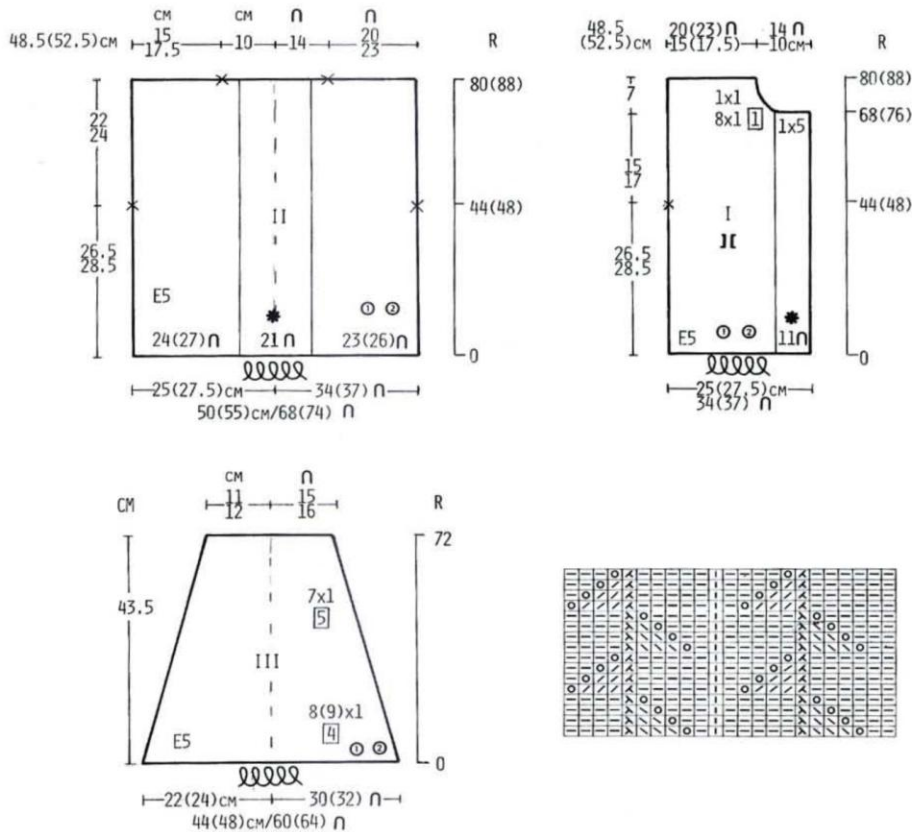
LEFT FRONT
Push 34(37) Ns at left of centre 0 to D
pos. Using col 1, cast on by hand. Push
Ns to C pos. RC 000. TD at 5. Work lace
pattern over 11 Ns at right edge. Knit to
Row 44(48). Mark left edge with waste
yarn. Knit to Row 68(76).
Shape Neck
Shape as shown on diagram to Row
80(88). Cast off rem 20(23) sts. Knit right
front as for left front but in reverse.

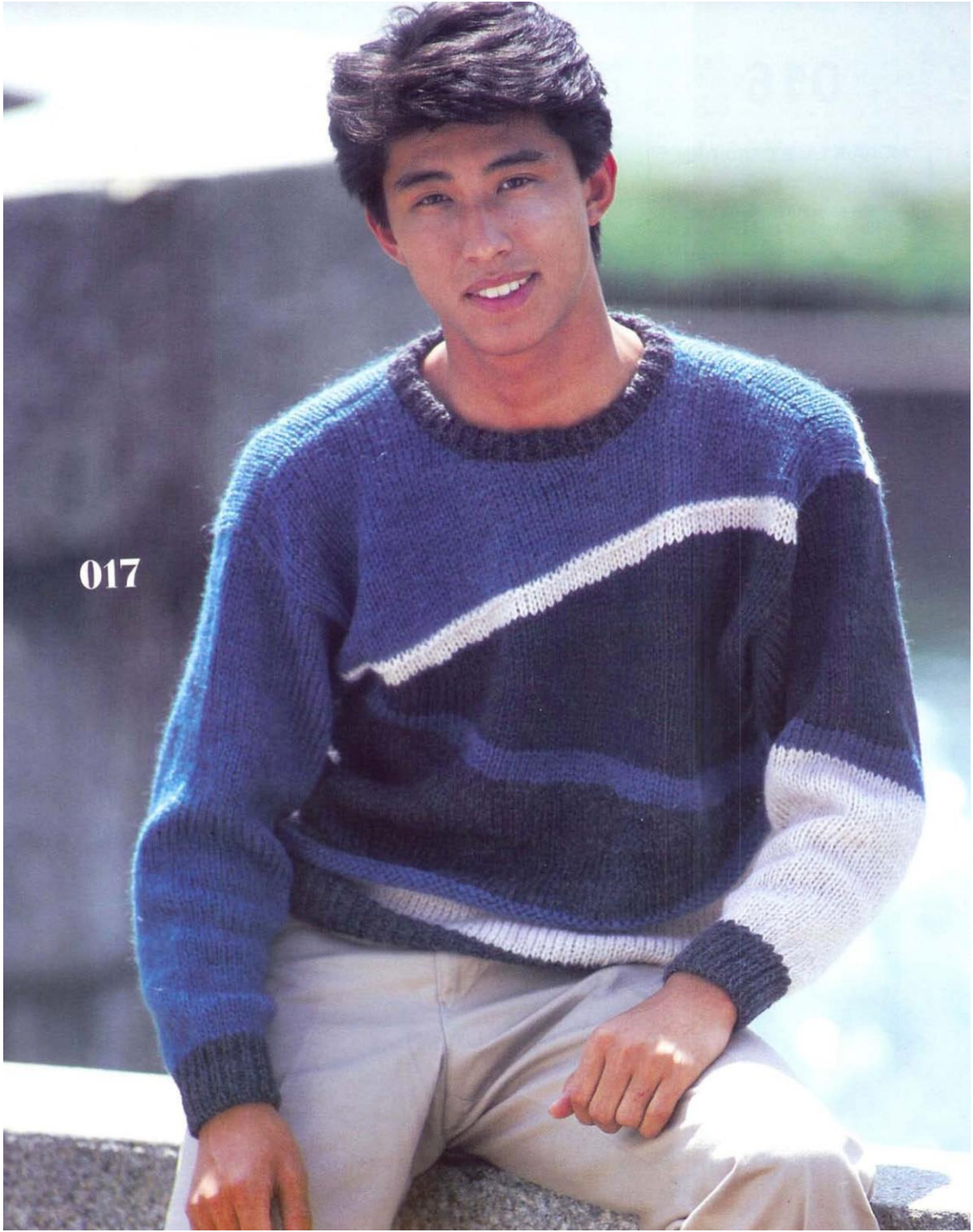
SLEEVES
Push 30(32) Ns at left and right of centre
0 to D pos. 60 (64) Ns altog. Using col 1,

cast on by hand. Push Ns to C pos. RC
000. TD at 5. Continue in stockinet
stripes and shape as shown on dia-
gram. 30(32) sts. Knit to Row 72. Cast
off.

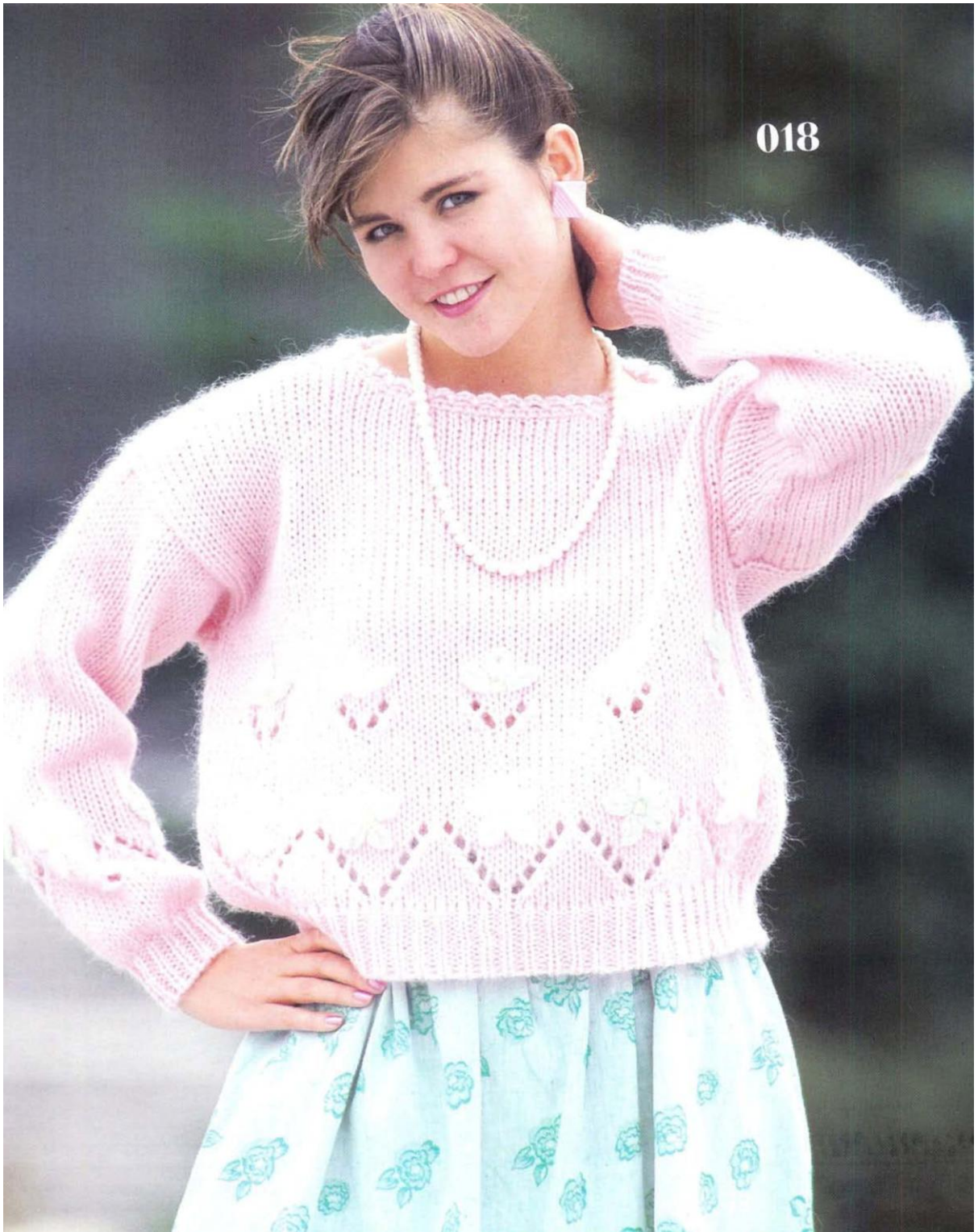
CORDS
Push 3 Ns to D pos. Using col 3, cast on
by hand. Push Ns to C pos. Knit until
approximately 97(105) cms long. Cast
off.

TO MAKE UP
Pin out to size and steam carefully. Join
shoulder seams. Set in sleeves between
marked points. Join side and sleeve
seams. Using col 3 work 2 rows of
double crochet around neckedge.
Lower edge and cuff. Work 3 rows of
double crochet along front edges,
making 6 buttonholes in the third row.
Sew on buttons to correspond. Thread
cords through sts as shown.





018



017

MAN'S SWEATER WITH DIAGONAL STRIPES

Size:
One size to fit 91-101 cms/36-40 inch chest

Materials:

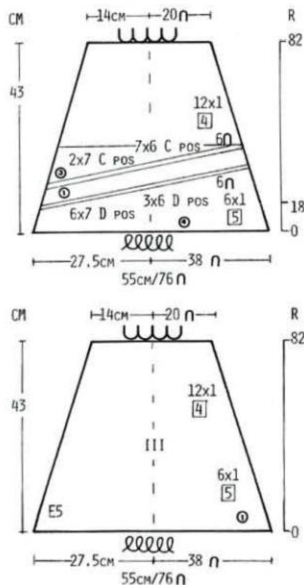
Shetland Chunky
Col 1 (Blue) - 160 grms
Col 2 (Grey) - 120 grms
Col 3 (Beige) - 90 grms
Col 4 (Green) - 70 grms

Tension:
14 sts and 19 rows to 10 cms. TD at approx. 5.

Pattern Note:
Stockinet with partial knitting.

BACK

Push 38 Ns at left and right of centre 0 to B pos. 76 Ns altog. Using waste yarn cast on as for knit 1 purl 1 rib ending with carr at right. RC 000. TD at 4. Using col 2, knit 17 rows. Drop the 3rd and ev foll alt st and pick up as for ribbing. RC 000. TD at 5. Using col 3, knit 1 row. Always taking yarn round first inside N in D pos, push Ns shown on diagram to D pos. Push Ns from D pos to C pos. Knit 1 row. Using col 1, knit 5 rows. Drop ev st 4 rows down and pick up as for ribbing (garter stitch). using col 2,



knit 1 row. Reset RC to 8. Push all Ns to D pos. Push Ns shown on diagram from D pos to C pos. Push rem 4 Ns from D pos to C pos. Push Ns shown on diagram to D pos. Push Ns from D pos to C pos, knit 1 row. Using col 1, knit 1 row. RC 60. Mark left edge with waste yarn. Knit 4 rows. Using col 4, knit 1 row. Reset RC to 49. Push all Ns to D pos. Push Ns shown on diagram from D pos to C pos, AT THE SAME TIME when RC shows 60 mark right edge with waste yarn. Push rem 8 Ns to C pos. Push Ns shown on diagram to D pos. Push Ns from D pos to C pos, knit 1 row. Using col 3, knit 5 rows. Drop ev st 1 row down as pick up as for ribbing (garter stitch). Using col 1, knit 1 row. Reset RC to 72. Push all Ns to D pos. Push Ns shown on diagram from D pos to C pos. Push rem 5 Ns from D pos to C pos. Knit to Row 113. Mark the 12th st at each side of centre 0 with waste yarn. Cast off.

FRONT

Knit as for Back to Row 98 but in reverse.
Shape Neck
Shape as shown on diagram to Row 113. Cast off rem 26 sts. Knit left part as for right part.

LEFT SLEEVE

Push 38 Ns at left and right of centre 0 with D pos. 76 Ns altog. Using col 4, cast on by hand. Push Ns to C pos. RC 000. TD at 5. Dec as shown on diagram, when RC shows 18, always taking yarn round first inside N in D pos, push Ns shown on diagram to D pos. Push Ns

from D pos to C pos. Knit 1 row. Using col 1, knit 5 rows. Using col 3, knit 1 row. Reset RC to 25. Push all Ns to D pos. Push Ns shown on diagram from D pos to C pos. Push rem 6 Ns from D pos to C pos. Continue to dec to Row 82. 40 sts. Cast off with waste yarn.

RIGHT SLEEVE

Push 38 Ns at left and right of centre 0 to B pos. 76 Ns altog. Using col 1, cast on by hand. Push Ns to C pos. RC 000. TD at 5. Dec as shown on diagram. 40 sts. Knit to Row 82. Cast off with yarn.

CUFFS

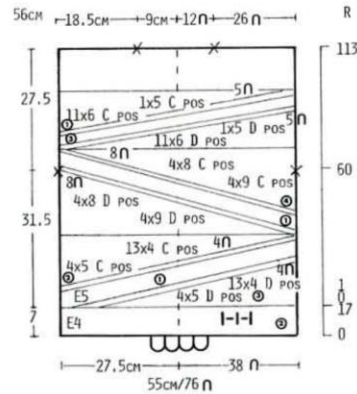
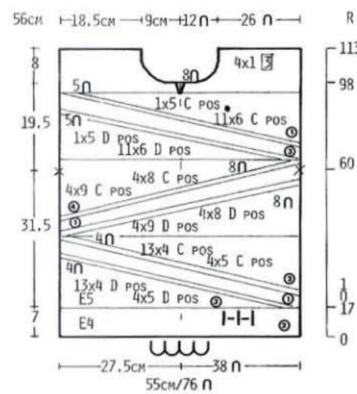
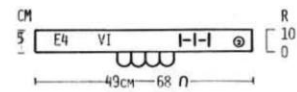
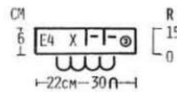
Push 30 Ns to B pos. Using waste yarn cast on as for knit 1 purl 1 rib. RC 000. TD at 4. Using col 2, knit 15 rows. Drop the 3rd and ev foll alt st and pick up as for ribbing. With wrong side facing, pick up sts from below waste yarn and place onto Ns gathering evenly. Knit 1 row. Cast off.

NECKBAND

Join one shoulder seam. Push 68 Ns to B pos. Using waste yarn cast on as for knit 1 purl 1 rib. RC 000. TD at 4. Using col 2, knit 10 rows. Drop the 3rd and ev foll alt st and pick up as for ribbing. With wrong side facing, pick up neck edge and place onto Ns. Knit 1 row. Cast off.

TO MAKE UP

Pin out to side and steam carefully. Join rem shoulder and neckband seam. Set in sleeves between marked points. Join side and sleeve seams. Fold neckband in half and catch down on the inside.



018

PINK SWEATER WITH FLOWERS

Sizes:
To fit 81-91(96-101) cms/32-36
(38-40) inch bust

Materials:
Brushed Chunky
Col 1 (Pink) - 320(370) grms
Col 2 (White) - 10 grms
Col 3 (Yellow) - 10 grms
Col 4 (Light Green) - 10 grms

Tension:
13 sts and 17.5 rows to 10 cms. TD at
approx. 6.

Pattern Note:
Lace Pattern - Follow Chart.

BACK
Push 33(36) Ns at left and right of centre
0 to B pos. 66(72) Ns altog. Using waste
yarn cast on as for knit 1 purl 1 rib. RC
000. TD at 5. Using col 1, knit 12 rows.
Drop the 3rd and ev foll alt st and pick
up as for ribbing. RC 000. TD at 6.
Continue in lace pattern, knit 27 rows.
Continue in stockinet, knit to Row 38.
Mark both ends with waste yarn. Knit to
Row 78(82). Mark the 14th st at each
side of centre 0 with waste yarn. Cast
off.

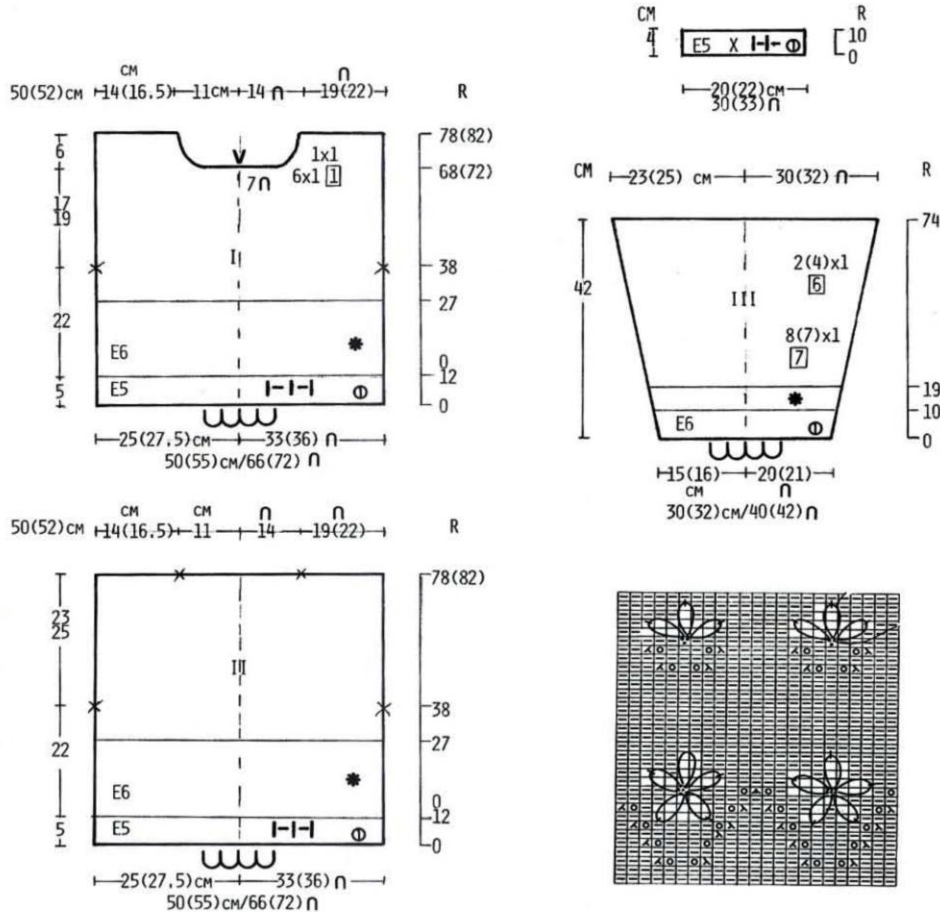
FRONT
Knit as for Back to Row 68(72).
Shape Neck
Shape as shown on diagram to Row
78(82). Cast off rem 19(22) sts. Knit left
part as for right part.

SLEEVES
Push 20(21) Ns at left and right of centre
0 to B pos. 40(42) Ns altog. Using waste
yarn cast on. RC 000. TD at 6. Inc as

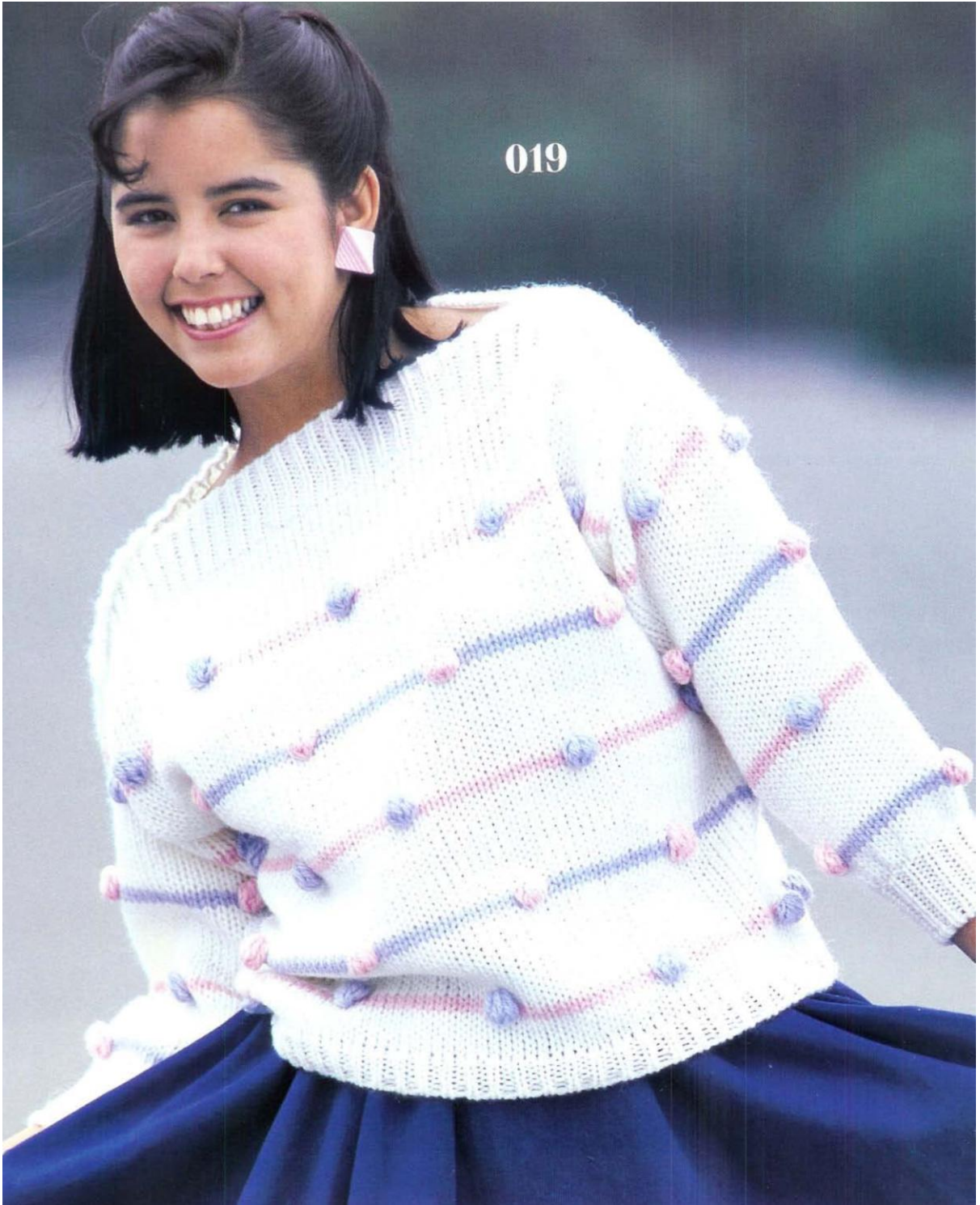
shown on diagram, AT THE SAME TIME
when RC shows 10 work 9 rows of lace
pattern. 60(64) sts. Knit to Row 74. Cast
off.

CUFFS
Push 30(33) Ns to B pos. Using waste
yarn cast on as for knit 1 purl 1 rib. RC
000. TD at 5. Using col 1, knit 10 rows.
Drop the 3rd and ev foll alt st and pick
up as for ribbing. With wrong side of
sleeve facing, pick up sts from below
waste yarn and place onto Ns gathering
evenly. Knit 1 row. Cast off.

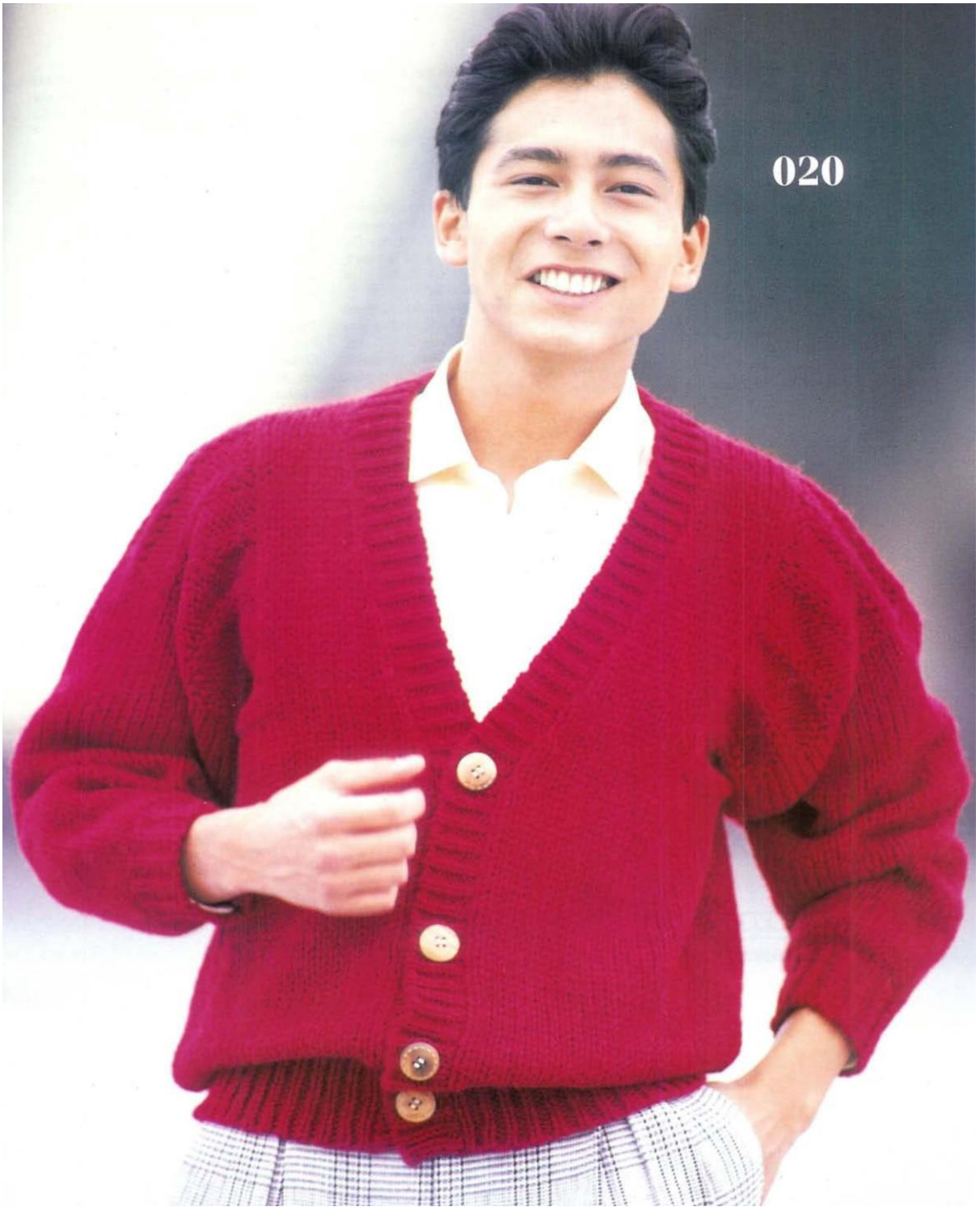
TO MAKE UP
Pin out to size and steam carefully. Join
shoulder seams. Set in sleeves between
marked points. Join side and sleeve
seams. Crochet edging around neck.
Embroider french knots and daisy stitch
as shown on picture.



019



020



019

WHITE SWEATER WITH PINK & BLUE BOBBLES

Sizes:
To fit 86-96 (101-106) cms/34-38 (40-42) inch bust.

Materials:
Chunky Yarn
Col 1 (White) - 400(450) grms
Col 2 (Blue) - 40(90) grms
Col 3 (Pink) - 40(90) grms

Tension:
14 sts and 21 rows to 10 cms. TD at approx. 5.

Pattern Note:
Back & Front
Knit 6 rows col 1. *Knit 2 rows col 3, knit

14 rows col 1, knit 2 rows col 2, knit 14 rows col 1*. Repeat from *to* throughout.

Sleeves
Knit 7 rows col 1. Rept from *to* throughout.

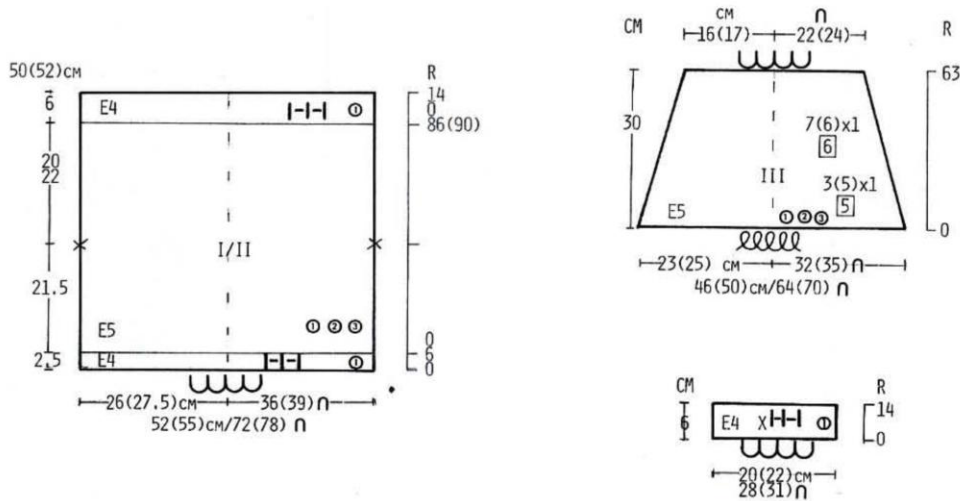
BACK & FRONT ALIKE
Push 36(39) Ns at left and right of centre 0 to B pos. 72(78) Ns altog. Using waste yarn cast on as for knit 1 purl 1 rib. RC 000. TD at 4. Using col 1, knit 6 rows. Drop the 3rd and ev foll alt st and pick up as for ribbing. RC 000. TD at 5. Continue in stripes given in pattern note, knit to Row 45. Mark both ends with waste yarn. Knit to Row 86(90). RC 000. TD at 4. Using col 1, knit 14 rows. Drop the 3rd and ev foll alt st and pick up as for ribbing. Cast off.

SLEEVES
Push 32(35) Ns at left and right of centre 0 to D pos. 64(70) Ns altog. Using col 1, cast on by hand. Push Ns to C pos. RC

000. TD at 5. Continue in stripe pattern given in pattern note and dec as shown on diagram. 44(48) sts. Knit to Row 63. Cast off with waste yarn.

CUFFS
Push 28(31) Ns to B pos. Using waste yarn cast on as for knit 1 purl 1 rib. RC 000. TD at 4. Using col 1, knit 14 rows. Drop the 3rd and ev foll alt st and pick up as for ribbing. With wrong side of sleeve facing, pick up sts from below waste yarn and place onto Ns gathering evenly. Knit 1 row. Cast off.

TO MAKE UP
Pin out to size and steam carefully. Overlap back neck rib over front neck rib at shoulder edge. Set in sleeves between marked points. Join side and sleeve seams. Crochet bobbles and sew into pos as shown on picture.



020

MAN'S RED CARDIGAN

Sizes:
To fit 96-101 (106-112) cms/38-40
(42-44) inch chest.

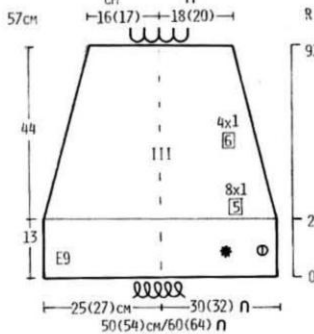
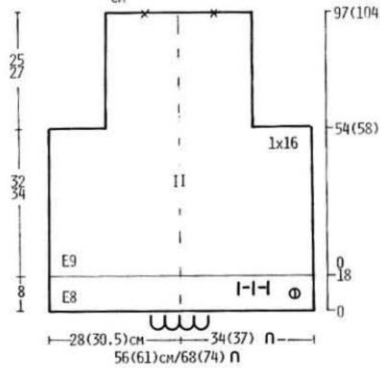
Materials:
Full Chunky Yarn
Col 1 (Red) - 730(800) grms
4 buttons

Tension:
12 sts and 17 rows to 10 cms. TD at
approx. 9.

Pattern Note:
For tuck stitch section see chart.

BACK
Push 34(37) Ns at left and right of centre 0 to B pos. 68(74) Ns altog. Using waste yarn cast on as for knit 1 purl 1 rib. RC 000. TD at 8. Using col 1, knit 18 rows. Drop the 3rd and ev foll alt st and pick up as for ribbing. RC 000. TD at 9. Knit to Row 54(58).
Shape Armholes
Shape as shown on diagram. 36(42) sts.

65(69)cm $\leftarrow 13\text{cm} \leftarrow \frac{7}{9.5} + 8\text{cm} + 10\text{cm} + \frac{8}{11}\text{cm} \leftarrow 16\text{cm} \leftarrow$ R



Knit to Row 97(104). Mark the 10th st at both sides of centre 0 with waste yarn. Cast off.

RIGHT FRONT

Push 31(34) Ns at right of centre 0 to B pos. Using waste yarn cast on as for knit 1 purl 1 rib. RC 000. TD at 8. Using col 1, knit 18 rows. Drop the 3rd and ev foll alt st and pick up as for ribbing. RC 000. TD at 9. Knit to Row 46(50).
Shape Front Edge
Shape as shown on diagram, AT THE SAME TIME when RC shows 54(58).
Shape Armhole
Shape as shown on diagram. Knit to Row 97(104). Cast off rem 8(11) sts.

LEFT FRONT

Knit as for Right Front but in reverse.

SLEEVES

Push 30(32) Ns at left and right of centre 0 to D pos. 60(64) Ns altog. Using col 1, cast on by hand. Push Ns to C pos. RC 000. TD at 9. Continue in tuck stitch pattern, knit 22 rows. Continue in stockinet and dec as shown on diagram. 36(40) sts. Knit to Row 97. Cast off with waste yarn.

CUFFS

Push 28(30) Ns to B pos. Using waste yarn cast on as for knit 1 purl 1 rib. RC 000. TD at 8. Using col 1, knit 14 rows.

Drop the 3rd and ev foll alt st and pick up as for ribbing. With wrong side of sleeve facing, pick up sts from below waste yarn and place onto Ns gathering evenly. Knit 1 row. Cast off.

BACK NECKBAND

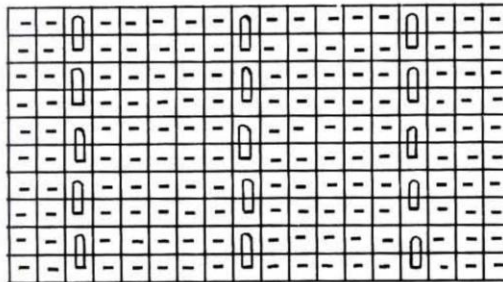
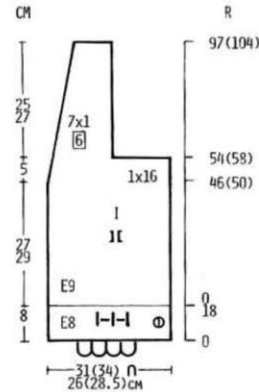
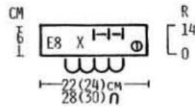
Push 20 Ns to B pos. Using waste yarn cast on as for knit 1 purl 1 rib. RC 000. TD at 8. Using col 1, knit 9 rows. Drop the 3rd and ev foll alt st and pick up as for ribbing. With wrong side facing, pick up sts from back neck and place onto Ns. Knit 1 row. Cast off.

BUTTONHOLE BAND

Push 85(90) Ns to B pos. Using waste yarn cast on as for knit 1 purl 1 rib. RC000 TD at 8. Using Col 1 knit 5 rows. Drop the 3rd and ev foll alt st and pick up as for ribbing. Make 4 evenly spaced buttonholes. Knit 4 Rows. Drop the 3rd and ev foll alt st and pick up as for ribbing. With wrong side facing pick up left front and place onto Ns. Knit 1 row. Cast off. Knit buttonbands in the same way omitting buttonholes.

TO MAKE UP

Pin out to size and steam carefully. Join shoulder and band seams. Set in sleeves. Join side and sleeve seams. Finish buttonholes and sew on buttons to correspond.



How to work from a diagram pattern

The pattern instructions in this book are in the form of a diagram pattern. We know from our research that most machine knitters prefer to follow a diagram pattern, but for those of you who are not familiar with this type of pattern, a step by step guide is given below. Study the symbols on page 17 carefully then work through the diagram following the written explanation. You'll find it quite straightforward.

Starting at the lower edge, your first instruction is $\underbrace{\quad\quad\quad}_{60n}$

This tells you to cast on with waste yarn 60 stitches.

Knit a few rows with waste yarn.

0 at the bottom right hand corner tells you to set your Row Counter to 000.

E8 tells you to set your Tension Dial at 8 and, using main yarn, knit to Row 5.

--||--|| tells you to reform the stitches to make a knit 2, purl 2 rib.

E9 is your main tension, so set your Tension Dial to 9 and continue knitting until your next instruction which is on Row 35.

The diagram pattern shows you that you are now at the stage for shaping the armholes. Although the instructions are shown on one side of the diagram only, they should be worked on both sides, since the diagram shows there is the same armhole shape on the left side. If you find it easier to begin with, pencil in the same instructions on the left side to remind you that you have only been given the instructions for one armhole.

2×1 $\boxed{1}$ tells you to decrease 1 stitch on every row, twice.

Therefore, decrease 1 stitch on both sides (you are repeating the shaping instructions for the left armhole) knit 1 row.

Decrease 1 stitch on both sides, knit 1 row.

You have decreased 2 stitches on each side, leaving you with 56 stitches.

1×1 tells you to decrease 1 stitch once.

Therefore, decrease 1 stitch on the right side, knit 1 row to the left.

Decrease 1 stitch on the left side (you are now repeating the instruction for the left armhole). Knit 1 row.

You have decreased 1 stitch on each side, leaving you with 54 stitches.

1×1 $\boxed{3}$ tells you to decrease 1 stitch once on the 3rd row.

Therefore, knit 2 rows. Decrease 1 stitch on both sides. Knit 1 row (the 3rd row).

You have decreased 1 stitch on each side, leaving you with 52 stitches.

Your next instruction is not until Row 68 therefore knit to row 68 without shaping.

The diagram pattern shows you that you are now at the stage for shaping the neck.

The symbol V tells you to divide the work in half and knit each side separately.

Therefore, either push the needles at left into holding position, or knit them onto waste yarn and remove from the machine. Now knit the right side as follows:-

Knit 1 row to take you to the left (neckedge).

$5n$ tells you that 5 stitches form the base of the neckedge.

Therefore, cast off 5 stitches at the beginning of the next row. Knit 1 row. (2 rows knitted).

1×2 tells you to cast off 2 stitches once.

Therefore, cast off 2 stitches at the beginning of the next row. Knit 1 row. (2 rows knitted).

2×1 $\boxed{1}$ tells you to cast off 1 stitch twice on every row.

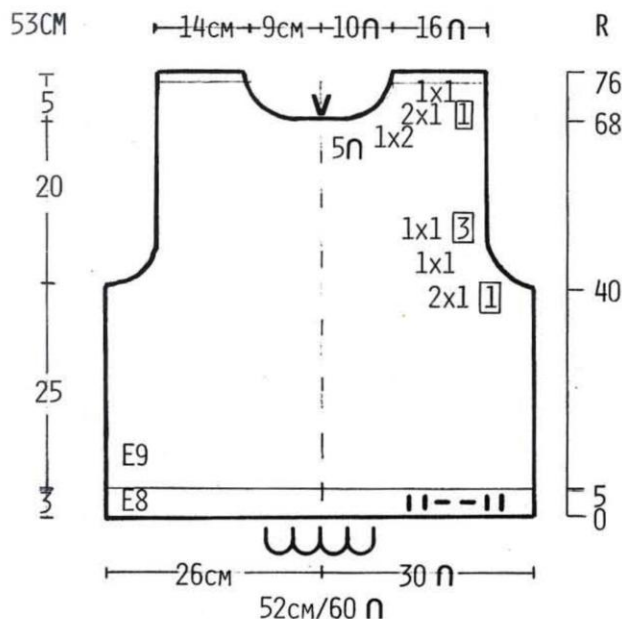
Therefore, cast off 1 stitch at neckedge. Knit 1 row. Cast off 1 stitch at neckedge. Knit 1 row.

1×1 tells you to cast off 1 stitch once.






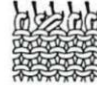




Therefore, cast off 1 stitch. Knit 1 row.

The Row Counter now reads 76. Therefore cast off the remaining 16 stitches.





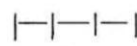


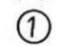

Turn the Row Counter back to 68 and knit the left half in the same way.



KNITTING SYMBOLS

Symbols	How to make the stitches	Symbols	How to make the stitches
—	This signifies a normal stocking stitch which is produced by the machine when knitting stockinet. 	↗	Transfer the two adjacent stitches onto the needle. 
	Reform the stitch from the front of knitting with a Tappet Tool. 	×	Cross the stitches with the right stitch over the left stitch. 
○	Transfer the stitch to the adjacent needle. 	×	Cross the stitches with the left stitch over the right stitch. 
λ	Transfer the stitch to the left and place together with the existing stitch. 	∩	Unravel the stitch and place it with the crossing bar above. 
∧	Transfer the stitch to the right and place together with the existing stitch. 	V	Unravel the stitch and place it omitting the crossing bar above. 

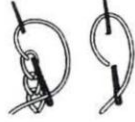
Symbols for the diagrams

	Closed edge cast-on	*	Work in pattern given in pattern note
	Cast-on using waste yarn	R	Row
	Gather evenly	E	Tension
	Loose row	V	Divide work in half and knit each side separately
	Knit 1 purl 1 rib][Reverse 1 section
	Stitches	∧	Repeat
	Larger sizes	Number of rows between shapings. For example: 3 × 1 4 means decrease 1 stitch every 4th row 3 times. All decreases or increasings without a number shown in a box means on every 2nd row.	
	Colour	I	= Front
	Turn up a hem	II	= Back
		III	= Sleeve
		VI	= Collar
		X	= Cuff

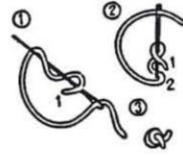
Abbreviations		Carr	— Carriage	Inc	— Increase	Rem	— Remaining
Alt	— Alternate	Cm(s)	— Centimetre(s)	N	— Needle	RC	— Row Counter
Approx.	— Approximately	Col	— Colour	Ns	— Needles	St	— Stitch
Beg	— Beginning	Dec	— Decrease	Patt	— Pattern	Sts	— Stitches
		Ev	— Every	Pos	— Position	TD	— Tension Dial
		Foll	— Following	Rept	— Repeat	Tog	— Together

TECHNIQUES

Chain Stitch



French Knot



Stem/Satin Stitch



Running Stitch



Leaves

These are separate motifs which are appliquéd afterwards. Chain stitch 30 stitches, looping the last chain into the first. Cut a long end and thread through a needle. Loosely oversew across the "leaf", catching one loop of each chain as you go. Form the leaf shape by increasing the size of the stitches towards the centre and decreasing the size again towards the point. Once at the other end, chain stitch back down the centre of the leaf catching two cross-threads at a time.



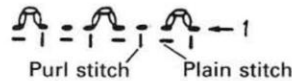
Broken chain

Make a single chain stitch then pass the needle through the ground from A to B.



Crochet Rib Trim

Pick up the first loop at the rib edge, crochet 3 chain stitches and pick up the next loop at the rib edge. Pick up next alt. loop of rib and knit 1 chain. Repeat all the way along the edge of the rib.



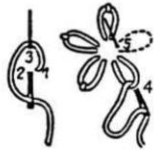
Petals

Chain 26 stitches and follow method as above.

Bobbles

Pick up one loop of a stitch from the knitting and chain stitch 4 stitches using a crochet hook. Knit the chain back into the knitting 3 stitches above the first loop. Knit another 4 chain stitches and knit back into the first loop of the knitting. Leave a long end thread a needle. Oversew with satin stitch from top to bottom of bobble 5 times.

Daisy Stitch



CHOOSING YOUR YARNS

Freedom of choice

In this Zippy 90 pattern book you will find, not a brand name for the yarn used, but an approximation of the yarn type. This, we hope, will give you much more freedom to use the designs and patterns freely and creatively.

If you are using our pattern you must, of course, achieve the same stitches and rows stated in the pattern. However, if you choose to make your own pattern using the measurements given on the diagram, you will have complete freedom and control over the designs.

Yarn amounts

Where an approximate yarn type is given, the yarn amounts will be approximate too. As you probably know, yarns vary in weight - wool is much heavier than acrylic, therefore, it takes more yarn to knit a garment in wool than it takes to knit the same garment in acrylic yarn. This is the major difference to watch out for, but there will always be

variations from yarn type to yarn type. You will be able to estimate your yarn amounts fairly accurately if you keep a knitting notebook.

Keeping a Knitting Notebook

Keeping notes on everything you knit is an invaluable source of reference. It won't take much of your time but you'll be amazed at how much time and effort it will save you later. The kind of information you will find useful is as follows:-

1. Description of garment
2. Description of yarn
3. Details of stitch pattern
4. Tension Dial setting
5. Stitches and rows to 10cms
6. Yarn amount

Your own system will evolve as you start using your notes, but the list above will give you a good starting point. This invaluable information will not only help when estimating yarn amounts, but will also make choosing yarns a simpler task.

MORE PATTERNS

Now that you and your Zippy 90 are learning to knit more and more lovely designs together, the time is drawing ever closer when you will need more patterns, more ideas and more sources of inspiration.

On page 29 you will find an illustration of another of the pattern books in this series which will, of course, give you more patterns, techniques and ideas to add to your collection. However, as well as the Zippy 90 series of pattern books there is also another very valuable source of patterns, ideas, information and knitting news. This comes in the form of Modern Knitting - the monthly magazine for Knitmaster knitters. Each month Modern Knitting provides a new selection of designs and patterns for all Knitmaster machines including Zippy 90, as well as articles and features which will teach you how to make the very most of your machine.

The Zippy 90 series of pattern books and

Modern Knitting are both available from your Zippy 90 stockist, or alternatively you can have Modern Knitting sent to you direct. If you would like to have Modern Knitting sent to you every month, complete the coupon on this page and send it to the address shown.

MODERN KNITTING SUBSCRIPTION FORM

I enclose a cheque/postal order to the value of £10/£20, made payable to Modern Knitting Ltd, as payment for 6/12 issues of Modern Knitting.

I would like to receive the magazine from

- | | | |
|--------------------------------|---------------------------------|------------------------------------|
| <input type="checkbox"/> Jan | <input type="checkbox"/> May | <input type="checkbox"/> September |
| <input type="checkbox"/> Feb | <input type="checkbox"/> June | <input type="checkbox"/> October |
| <input type="checkbox"/> March | <input type="checkbox"/> July | <input type="checkbox"/> November |
| <input type="checkbox"/> April | <input type="checkbox"/> August | <input type="checkbox"/> December |

Name.....

Address.....

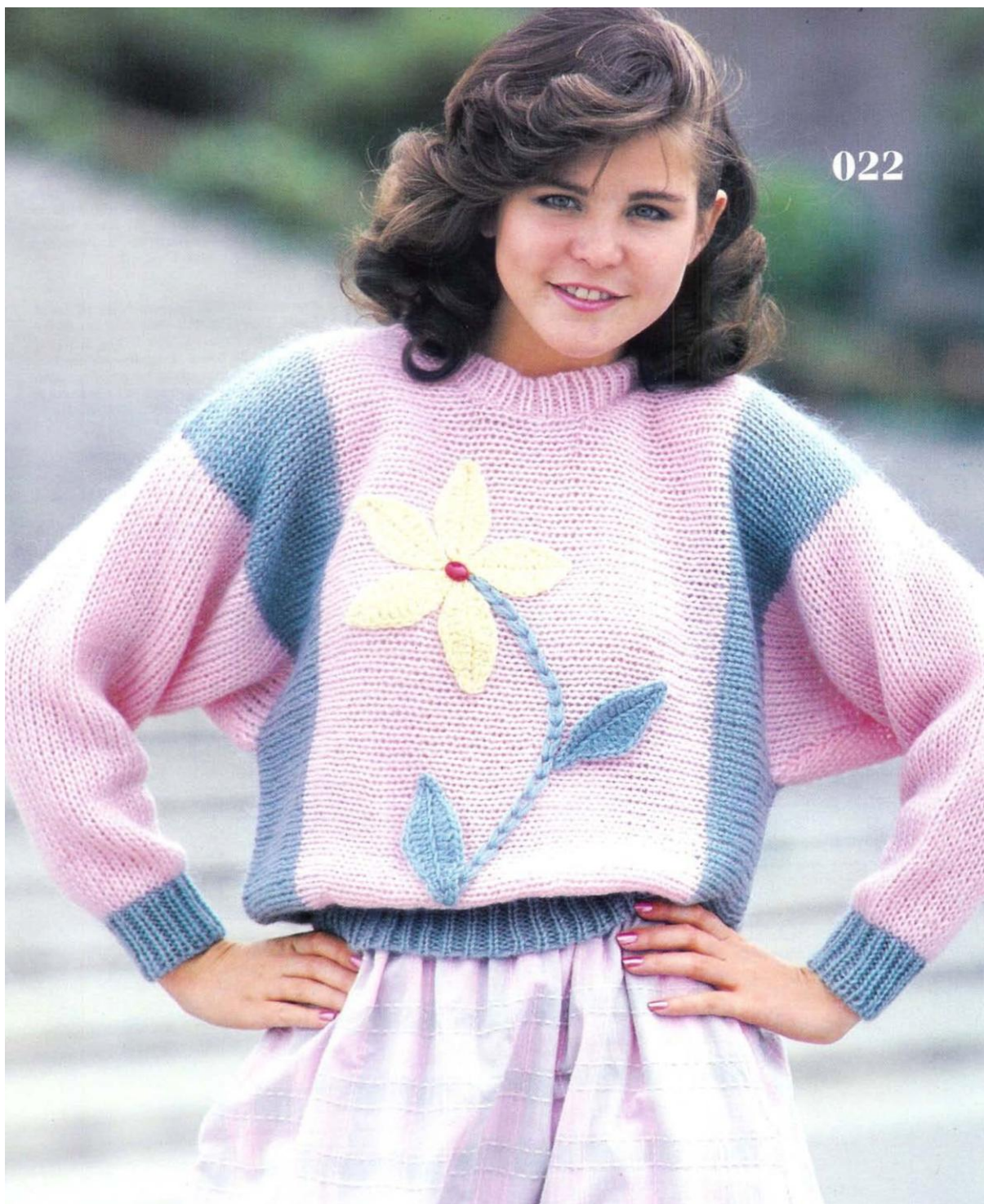
(block capitals)

Please send this form together with your remittance to:
Modern Knitting Ltd., P.O. Box 175,
Kingston-upon-Thames, Surrey, KT2 6HA.

021



022



021

POLO NECK SWEATER WITH DECORATIVE BUTTONS

Sizes:
To fit 86-96(101-106) cms/34-38
(40-42) inch bust.

Materials:
Chunky Bouclé
Col 1 (Random Dyed) - 350(400) grms
Col 2 (Navy Blue) - 70(120) grms
7 buttons

Tension:
12.5 sts and 17 rows to 10 cms. TD at
approx. 7.

Pattern Note:
Stockinet.

BACK
Push 34(37) Ns at left and right of
centre 0 to B pos. 68(74) Ns altog. Using

waste yarn cast on. RC 000. TD at 7.
Using col 1, knit 17(21) rows. Mark both
ends with waste yarn. Knit to Row
65(69). Mark the 9th st at both sides of
centre 0 with waste yarn. Cast off.

FRONT
Knit as for Back to Row 52(56).
Shape Neck
Shape as shown on diagram to Row
65(69). Cast off rem 25(28) sts. Knit left
part as for right part.

WELTS
Push 60(64) Ns to B pos. Using waste
yarn cast on as for knit 1 purl 1 rib. RC
000. TD at 6. Using col 2, knit 22 rows.
Drop the 3rd and ev foll alt st and pick
up as for ribbing. With wrong side of
Back facing, pick up sts from below
waste yarn and place onto Ns gathering
evenly. Knit 1 row. Cast off. Rept for
Front.

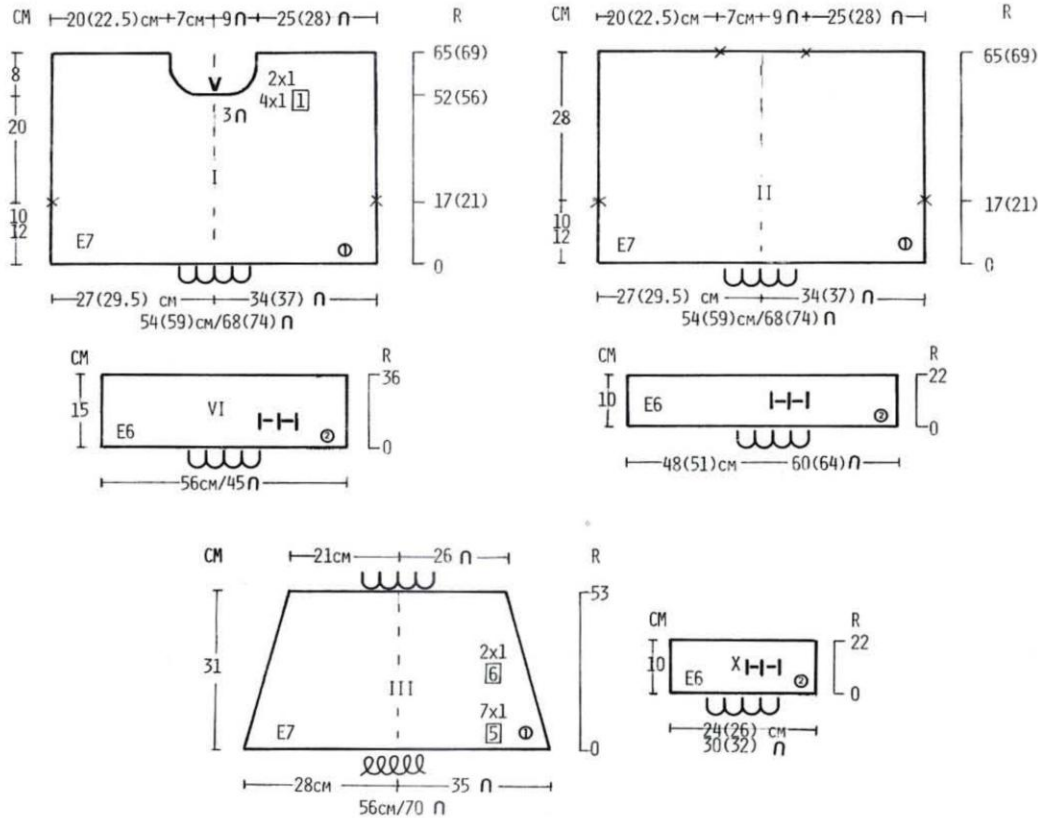
SLEEVE
Push 35 Ns at left and right of centre 0
to D pos. 70 Ns altog. Using col 1, cast
on by hand. Push Ns to C pos. RC 000.
TD at 7. Dec as shown on diagram. 52

sts. Knit to Row 53. Cast off with waste
yarn.

CUFFS
Push 30(32) Ns to B pos. Using waste
yarn cast on as for knit 1 purl 1 rib. RC
000. TD at 6. Using col 2, knit 22 rows.
Drop the 3rd and ev foll alt st and pick
up as for ribbing. With wrong side of
sleeve facing, pick up sts from below
waste yarn and place onto Ns gathering
evenly. Knit 1 row. Cast off.

COLLAR
Join one shoulder seam. Push 56 Ns to
B pos. Using waste yarn cast on as for
knit 1 purl 1 rib. RC 000. TD at 6. Using
col 2, knit 36 rows. Drop the 3rd and ev
foll alt st and pick up as for ribbing. With
wrong side facing, pick up neck edge
and place onto Ns. Knit 1 row. Cast off.

TO MAKE UP
Pin out to size and steam carefully. Join
rem shoulder and collar seam. Set in
sleeves between marked points. Join
side and sleeve seams. Fold collar in
half to the outside. Sew on buttons to
decorate front.



022

DOLMAN SLEEVE SWEATER WITH FLOWERS

Sizes:
To fit 86-91(96-101) cms/32-36
(38-40) inch bust.

Materials:
Brushed Chunky
Col 1 (Pink) - 160(220) grms
Col 2 (Light Green) - 110(160) grms
Col 3 (Yellow) - 25 grms
1 button

Tension:
11.5 sts and 19 rows to 10 cms. TD at
approx. 7.

Pattern Note:
Stockinet.

BACK
Push 35 Ns at left and 17 Ns at right of
centre 0 to B pos. 52 Ns altog. Using
waste yarn, cast on ending with carr at

right(left). Mark centre 0 with waste
yarn. RC 000. TD at 7. Using col 2, knit
17 rows. Using col 1, knit to Row 29(34).
Mark left edge with waste yarn. Knit to
Row 63(68). Mark left edge with waste
yarn. Knit to Row 75(85). Using col 2,
knit to Row 92(102). Mark centre 0 with
waste yarn. Cast off with waste yarn.

FRONT
Knit as for Back to Row 29(34) but in
reverse.
Shape Neck
Shape as shown on diagram. Knit to
Row 50(55). Shape as shown on diagram.
Knit to Row 75(85). Using col 2,
knit to Row 92(102). Mark centre 0 with
waste yarn. Cast off with waste yarn.

NECKBAND
Join right shoulder seam. Push 66 Ns to
B pos. Using waste yarn cast on as for
knit 1 purl 1 rib. RC 000. TD at 6. Using
col 1, knit 7 rows. Drop the 3rd and ev
foll alt st and pick up as for ribbing. With
wrong side facing, pick up neckline
and place onto Ns. Knit 1 row. Cast off.

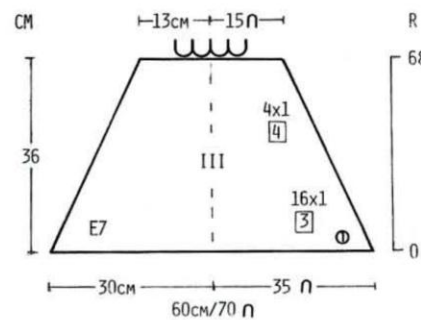
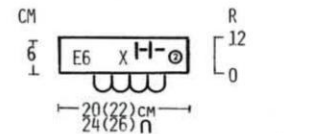
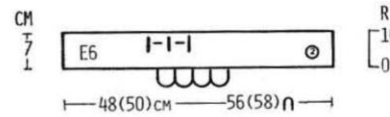
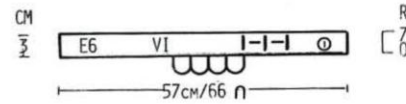
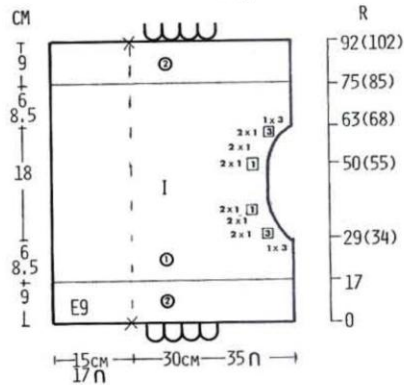
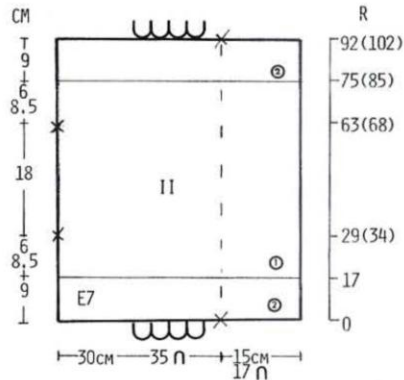
SLEEVES
Join left shoulder and neckband seam.
Push 35 Ns at left and right of centre 0
to B pos. 70 Ns altog. With wrong side

facing, pick up sts between marked
points and place onto Ns. RC 000. TD at
7. Using col 1, dec as shown on dia-
gram. 30 sts. Knit to Row 68. Cast off
with waste yarn.

CUFFS
Push 24(26) Ns to B pos. Using waste
yarn cast on as for knit 1 purl 1 rib. RC
000. TD at 6. Using col 2, knit 12 rows.
Drop the 3rd and ev foll alt st and pick
up as for ribbing. With wrong side of
sleeve facing, pick up sts from below
waste yarn and place onto Ns gathering
evenly. Knit 1 row. Cast off.

WELTS
Push 56(58) Ns to B pos. Using waste
yarn cast on as for knit 1 purl 1 rib. RC
000. TD at 6. Using col 2, knit 16 rows.
Drop the 3rd and ev foll alt st and pick
up as for ribbing. With wrong side
facing, pick up sts along lower edge and
place onto Ns. Knit 1 row. Cast off.

TO MAKE UP
Pin out to size and steam carefully. Join
side and sleeve seams. Crochet flower
and leaves and sew into pos. Embroider
stem in chain stitch. Sew button to
centre of flower.





023

024



023

MAN'S CREW NECK SWEATER

Sizes:
To fit 96-101(106-111) cms/38-40
(42-44) inch chest.

Materials:
Chunky Slub Yarn
Col 1 (Charcoal Grey) - 600(650) grms

Tension:
12 sts and 17 rows to 10 cms. TD at
approx. 9.

Pattern Note:
Stockinet with garter stitch. Work garter
stitch over sts shown on diagram by
dropping ev st 1 row down and pick up
as for ribbing on the following rows:-
6,12,18,24,30,36,42,48,54,60,66,72,78,
84,90.

BACK
Push 34(37) Ns at left and right of centre
0 to B pos. 68(74) Ns altog. Using waste
yarn cast on as for knit 1 purl 1 rib. RC
000. TD at 8. Using col 1, knit 18 rows.
Drop the 3rd and ev foll alt st and pick
up as for ribbing. RC 000. TD at 9.
Continue in pattern, knit to Row 52.
Mark both ends with waste yarn. Knit to
Row 95(99). Mark the 11th st at both
sides of centre 0 with waste yarn. Cast
off.

FRONT
Knit as for back to Row 79(83).
Shape Neck
Shape as shown on diagram to Row
95(99). Cast off rem 23(26) sts. Knit left
part as for right part.

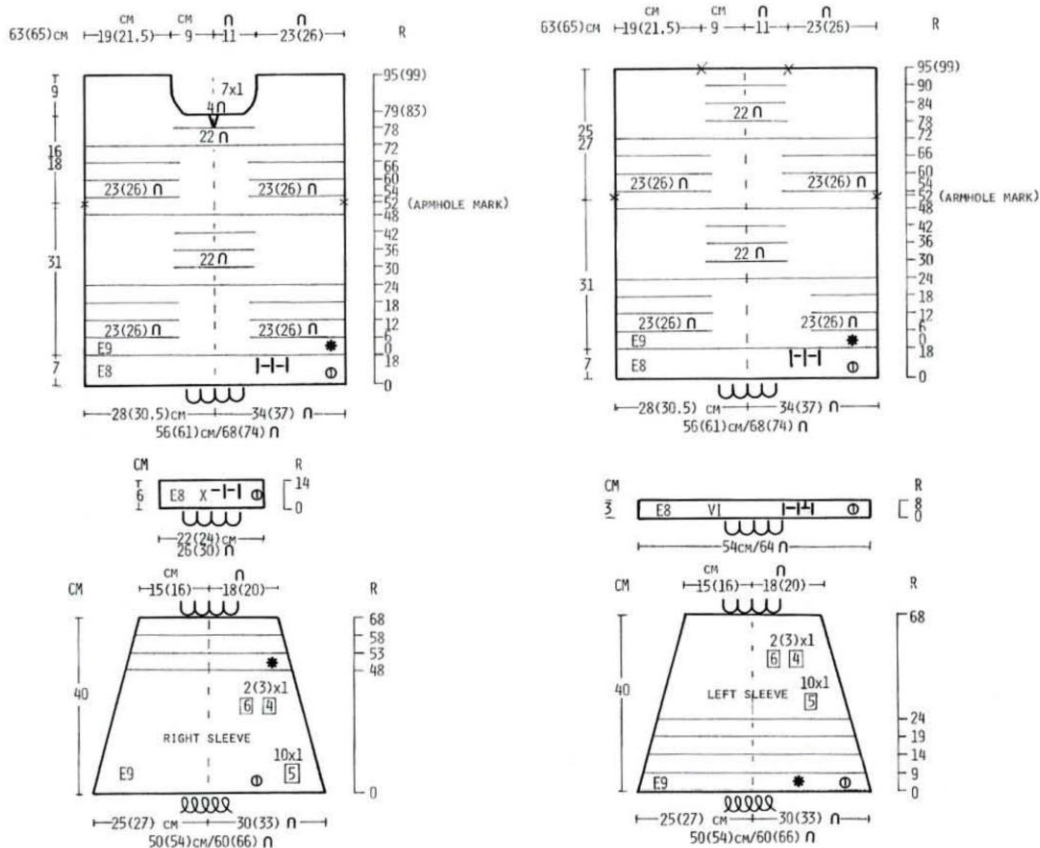
LEFT SLEEVE
Push 30(33) Ns at left and right of centre
0 to D pos. 60(66) Ns altog. Using col 1,
cast on by hand. Push Ns to C pos. RC
000. TD at 9. Continue in pattern and
dec as shown on diagram. 36(40) sts.
Knit to Row 68. Cast off with waste yarn.

Knit right sleeve as for left sleeve noting
alteration in pattern.

CUFFS
Push 26(30) Ns to B pos. Using waste
yarn cast on as for knit 1 purl 1 rib. RC
000. TD at 8. Using col 1, knit 14 rows.
Drop the 3rd and ev foll alt st and pick
up as for ribbing. With wrong side of
sleeve facing, pick up sts from below
waste yarn and place onto Ns gathering
evenly. Knit 1 row. Cast off.

NECKBAND
Join right shoulder seam. Push 64 Ns to
B pos. Using waste yarn cast on as for
knit 1 purl 1 rib. RC 000. TD at 8. Using
col 1, knit 8 rows. Drop the 3rd and ev
foll alt st and pick up as for ribbing. With
wrong side facing, pick up neckedge
and place onto Ns. Knit 1 row. Cast off.

TO MAKE UP
Pin out to size and steam carefully. Join
left shoulder and neckband seam. Set in
sleeves between marked points. Join
side and sleeve seams. Embroider stem
stitch as shown in photograph.



024

PEACH SWEATER WITH CABLES

Sizes:
To fit 81-91(96-101) cms/32-36
(38-40) inch bust.

Materials:
Brushed Chunky
Col 1 (Peach) - 570(620) grms

Tension:
14 sts and 19 rows to 10 cms. TD at
approx. 7.

Pattern Note:
Stockinet with cable panel - Follow
Chart.

BACK
Push 37(40) Ns at left and right of centre

0 to B pos. 74(80) Ns altog. Using waste
yarn cast on as for knit 1 purl 1 rib. RC
000. TD at 6. Using col 1, knit 16 rows.
Drop the 3rd and ev foll alt st and pick
up as for ribbing. RC 000. TD at 7.
Continue in stockinet. Knit to Row 44.
Mark both ends with waste yarn. Knit to
Row 92. Mark the 14th st at both sides
of centre 0 with waste yarn. Cast off.

FRONT
Push 37(40) Ns at left and right of centre
0 to B pos. 74(80) Ns altog. Using waste
yarn cast on as for knit 1 purl 1 rib. RC
000. TD at 6. Using col 1, knit 16 rows.
Drop the 3rd and ev foll alt st and pick
up as for ribbing. RC 000. TD at 7.
Continue in cable pattern over 17 Ns,
knit to Row 44. Mark both ends with
waste yarn. Knit to Row 79.
Shape Neck
Shape as shown on diagram to Row 92.
Cast off rem 23(26) sts. Knit left part as
for right part.

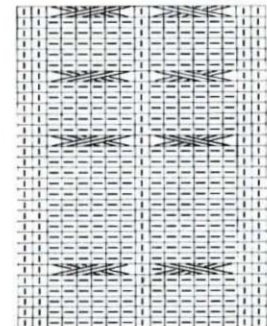
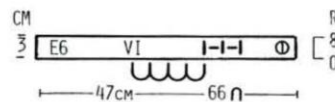
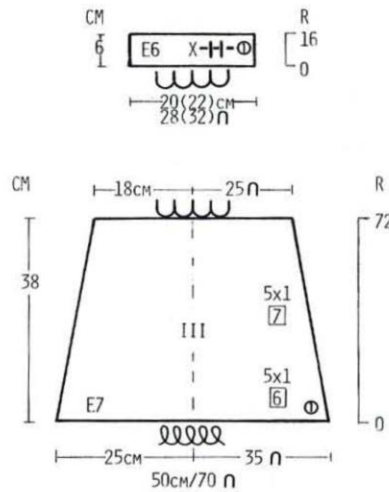
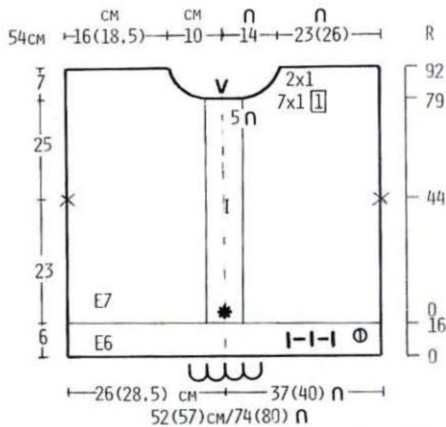
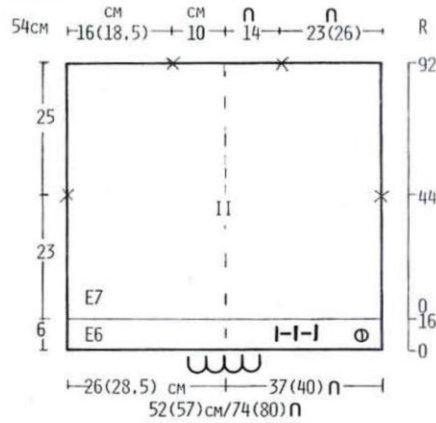
SLEEVES
Push 35 Ns at left and right of centre 0
to D pos. 70 Ns altog. Using Col 1, cast
on by hand. Push Ns to C pos. RC 000.

TD at 7. Continue in stockinet and dec
as shown on diagram. 50 sts. Knit to
Row 72. Cast off with waste yarn.

CUFFS
Push 28(32) Ns to B pos. Using waste
yarn cast on as for knit 1 purl 1 rib. RC
000. TD at 6. Using col 1, knit 16 rows.
Drop the 3rd and ev foll alt st and pick
up as for ribbing. With wrong side of
sleeve facing, pick up sts below waste
yarn and place onto Ns gathering
evenly. Knit 1 row. Cast off.

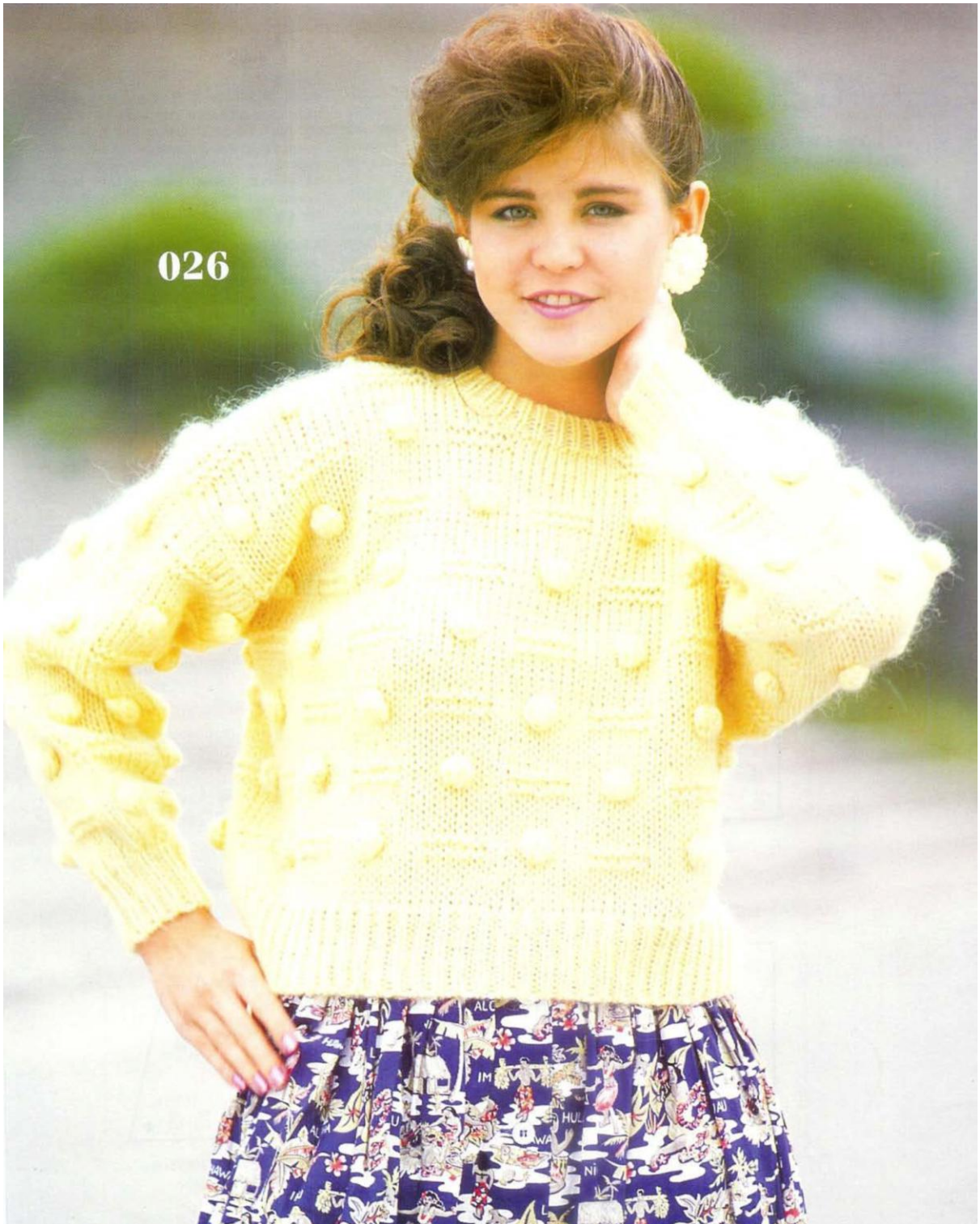
NECKBAND
Join one shoulder seam. Push 66 Ns to
B pos. Using waste yarn cast on as for
knit 1 purl 1 rib. RC 000. TD at 6. Using
col 1, knit 8 rows. Drop the 3rd and ev
foll alt st and pick up as for ribbing. With
wrong side facing, pick up neck edge
and place onto Ns. Knit 1 row. Cast off.

TO MAKE UP
Pin out to size and steam carefully. Join
rem shoulder and neckband seam. Set
in sleeves between marked points. Join
side and sleeve seams. Embroider in
satin stitch as shown.





026



025

MAN'S SWEATER WITH TWO COLOURED CABLE

Sizes:
To fit 91-96(101-106) cms/36-38
(40-42) inch chest.

Materials:
Textured Chunky
Col 1 (Grey) - 670(720) grms
Col 2 (Maroon) - 80 grms

Tension:
11.5 sts and 17 rows to 10 cms. TD at approx. 9.

Pattern Note:
Stockinet with cables - follow chart.

BACK
Push 31(35) Ns at left and right of centre 0 to B pos. 62(70) Ns altog. Using waste yarn cast on as for knit 1 purl 1 rib. RC 000. TD at 8. Using col 1, knit 16 rows. Drop the 3rd and ev foll alt st and pick

up as for ribbing. RC 000. TD at 9. Continue in pattern, knit to Row 58. Mark both ends with waste yarn. Knit to Row 100. Mark the 11th st at both sides of centre 0 with waste yarn. Cast off.

FRONT
Knit as for Back to Row 49. Shape Neck
Shape as shown on diagram to Row 100, marking armhole edge on row 58. Cast off rem 20(24) sts. Knit left part as for right part noting alteration in pattern.

SLEEVES
Push 29 Ns at left and right of centre 0 to D pos. 58 Ns altog. Using col 1, cast on by hand. Push Ns to C pos. RC 000. TD at 9. Continue in pattern and dec as shown on diagram. 36 sts. Knit to Row 72. Cast off with waste yarn.

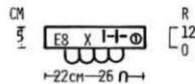
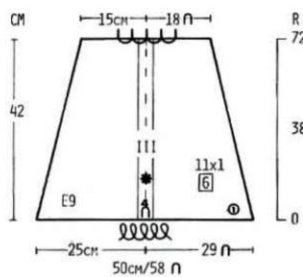
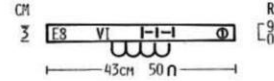
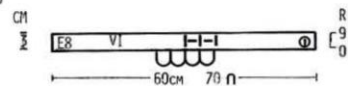
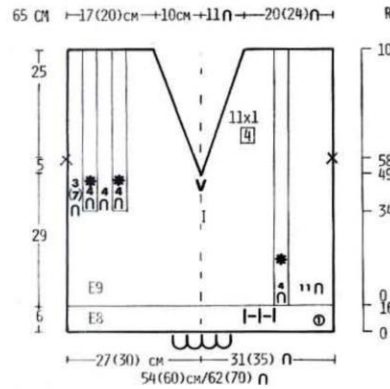
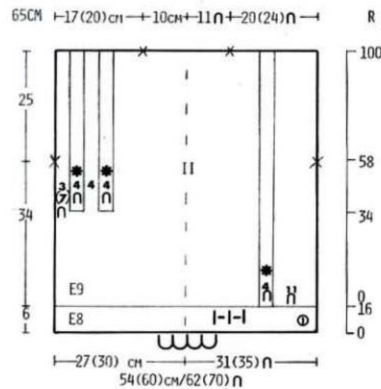
CUFFS
Push 26 Ns to B pos. Using waste yarn cast on as for knit 1 purl 1 rib. RC 000. TD at 8. Using col 1, knit 12 rows. Drop the 3rd and ev foll alt st and pick up as for ribbing. With wrong side of sleeve facing, pick up sts from below waste

yarn and place onto Ns gathering evenly. Knit 1 row. Cast off.

RIGHT FRONT AND BACK NECKBAND
Join right shoulder seam. Push 70 Ns to B pos. *Using waste yarn cast on as for knit 1 purl 1 rib. RC 000. TD at 8. Using col 1, knit 9 rows. Drop the 3rd and ev foll alt st and pick up as for ribbing*. With wrong side of right front and back neck facing, pick up neckedge and place onto Ns. Knit 1 row. Cast off.

LEFT FRONT NECKBAND
Push 50 Ns to B pos. Knit as for Right Front and Back Neckband from *to*. With wrong side of left front neck facing, pick up neck edge and place onto Ns. Knit 1 row. Cast off.

TO MAKE UP
Pin out to size and steam carefully. Join left shoulder and neckband seams, mitring centre front. Set in sleeves between marked points. Join side and sleeve seams. Using col 2, knit cords over 3 Ns to required lengths and thread through cables. Using col 2, embroider running stitch as shown in photograph.



026

YELLOW SWEATER WITH BOBBLES

Sizes:
To fit 81-91(96-106) cms/32-36
(38-42) inch bust.

Materials:
Brushed Chunky
Col 1 (Yellow) - 400(450) grms

Tension:
13 sts and 18 rows to 10 cms. TD at
approx. 6.

Pattern Note:
Stockinet with Garter Stitch - Follow
Chart.

BACK

Push 34(38) Ns at left and right of centre
0 to B pos. 68(76) Ns altog. Using waste
yarn cast on as for knit 1 purl 1 rib. RC
000. TD at 5. Using col 1, knit 14 rows.
Drop the 3rd and ev foll alt st and pick
up as for ribbing. RC 000. TD at 6.
Continue in pattern, knit to Row 34(38).
Mark both ends with waste yarn. Knit to
Row 76(84). Mark the 13th st at both
sides of centre 0 with waste yarn. Cast
off.

FRONT

Knit as for Back to Row 64(72).
Shape Neck
Shape as shown on diagram to Row
76(84). Cast off rem 21(25) sts. Knit right
part as for left part.

SLEEVES

Push 30(33) Ns at left and right of centre
0 to D pos. 60(66) Ns altog. Using col 1,
cast on by hand. Push Ns to C pos. RC
000. TD at 6. Continue in pattern and
dec as shown on diagram. 40(42) sts.
Knit to Row 68. Cast off with waste yarn.

CUFFS

Push 26(28) Ns to B pos. Using waste
yarn cast on as for knit 1 purl 1 rib.
RC 000. TD at 5. Using col 1, knit 14
rows. Drop the 3rd and ev foll alt st and
pick up as for ribbing. With wrong side
of sleeve facing, pick up sts below
waste yarn and place onto Ns gathering
evenly. Knit 1 row. Cast off.

NECKBAND

Join right shoulder seam. Push 66 Ns to
B pos. Using waste yarn cast on as for
knit 1 purl 1 rib. RC 000. TD at 5. Using
col 1, knit 8 rows. Drop the 3rd and ev
foll alt st and pick up as for ribbing. With
wrong side facing, pick up neck edge
and place onto Ns. Knit 1 row. Cast off.

TO MAKE UP

Pin out to size and steam carefully. Join
left shoulder and neckband seams. Set
in sleeves between marked points. Join
side and sleeve seams. Crochet bobbles
and sew into pos as shown.

