

**Zippy  
you**

**KNITMASTER**

**KNIT &  
LEARN** Vol. 1

*Patterns for all Chunky Machines.*



# 001

## STRIPED SWEATER WITH CIRCLES

Size:  
One size to fit 86-101cms/34-40 inch bust.

Materials:  
Chunky Yarn  
Col 1 (Red) - 200 grms  
Col 2 (White) - 110 grms  
Col 3 (Blue) - 60 grms

Tension:  
16 sts and 22 rows to 10 cms. TD at approx 4.

Pattern Note:  
Stockinet Stripe Pattern  
Back & Front - 34 rows col 1, 16 rows col 2, 16 rows col 3, 16 rows col 1, 16 rows col 2.

Sleeves - 16 rows col 1, 16 rows col 2, 16 rows col 3, 16 rows col 1.

**BACK**  
Push 43 Ns at left and right of centre 0 to B pos. 86 Ns altog. Using waste yarn, cast on. Push Ns to D pos. Using col 1, cast on by hand. Push Ns to C pos. RC 000. TD at 4. Knit 12 rows Garter Stitch. RC 000. Continue in stripes given in Pattern Note, knit 40 rows. Mark both ends with waste yarn. Knit to Row 58. Mark the 19th st at both sides of centre 0 with waste yarn. Cast off.

**FRONT**  
Knit as for Back to Row 90. Shape Neck

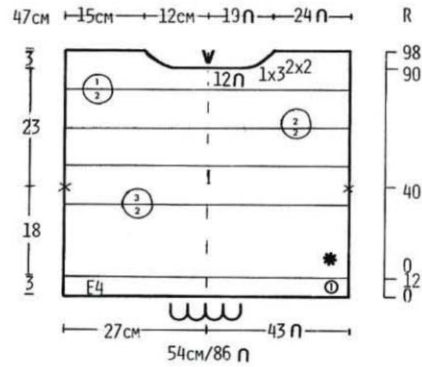
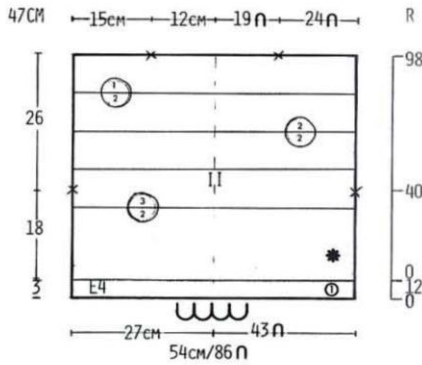
Shape as shown on diagram to Row 98. Cast off rem 24 sts. Knit left part as for right part.

**SLEEVES**  
Push 42 Ns at left and right of centre 0 to D pos. 84 Ns altog. Using col 1, cast on by hand. Push Ns to C pos. RC 000.

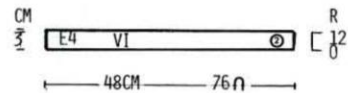
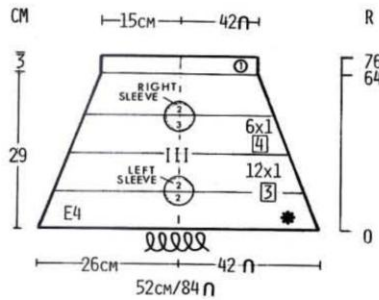
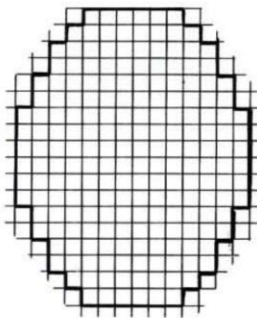
TD at 4. Continue in stripes given in pattern note and shape as shown on diagram. 48 sts. Knit to Row 64. Continue in col 1, knit 12 rows Garter Stitch. Cast off.

**COLLAR**  
Join one shoulder seam. Push 76 Ns to B pos. With wrong side facing, pick up neck edge and place onto Ns in B pos. RC 000. TD at 4. Using col 2, knit 12 rows Garter Stitch. Cast off.

**TO MAKE UP**  
Pin out to size and steam carefully. Join rem shoulder and neckband seam. Set in sleeves between marked points. Join side and sleeve seams. Work swiss darning following chart and cols given on diagram.



### SWISS DARNING



# Zippy 90 KNIT & LEARN

This collection of completely original designs and patterns heralds the introduction of Zippy 90, the latest addition to the Knitmaster family of Chunky Knitting machines.

Each of these unique chunky designs will not only be a delight to wear, but will also teach you a new technique or introduce you to a new idea which can be used time and time again.

## Contents

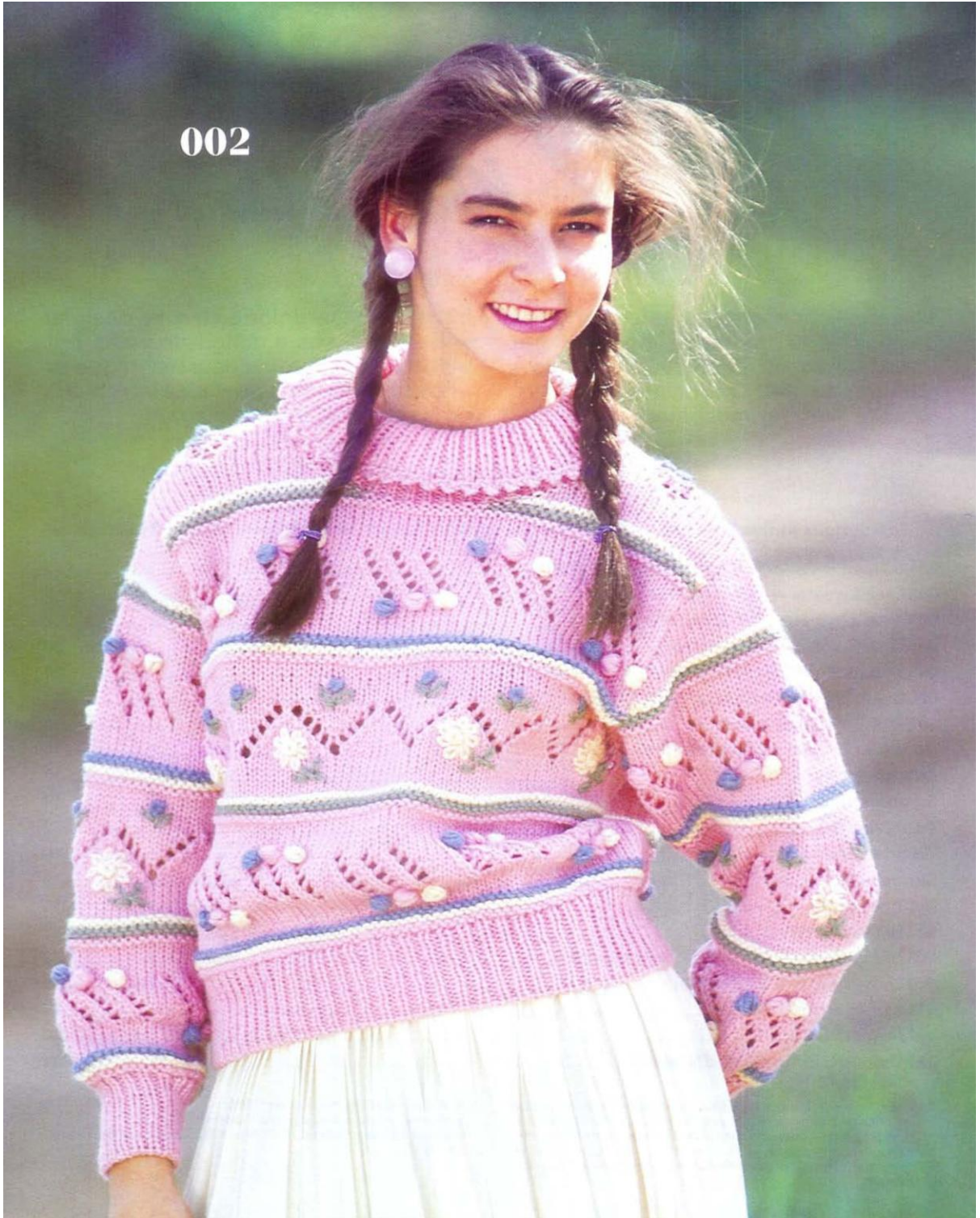
The designs in this Zippy 90 pattern book are suitable for use with all 9mm Chunky Machines.

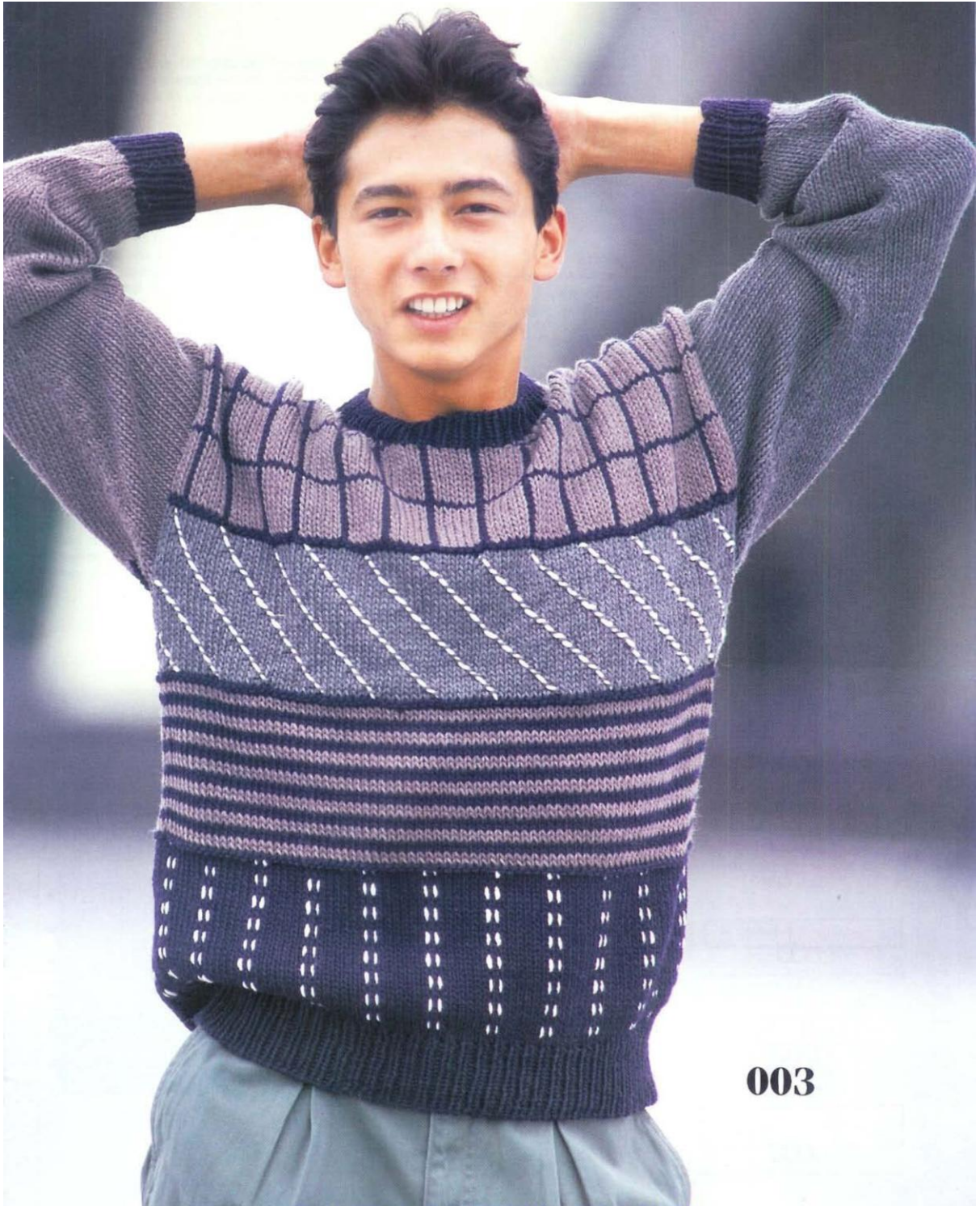
<b>001</b> Striped Sweater with Circles (Front Cover) .....	2
<b>002</b> Lace Sweater with Bobbles .....	6
<b>003</b> Man's Sweater with Checks and Stripes.....	7
<b>004</b> Grey Sweater with Diamonds .....	10
<b>005</b> Blue Dolman Sleeve Sweater.....	11
<b>006</b> Man's Sweater with Appliquéd Shapes .....	14
<b>007</b> Pink Cowl Neck Sweater .....	15
How to work from a diagram pattern.....	16
Knitting symbols .....	17
Symbols for the diagrams .....	17
Abbreviations.....	17
Techniques.....	18
Choosing your yarns.....	19
More patterns.....	19
<b>008</b> Beige Sweater.....	22
<b>009</b> Man's Sweater with Garter Stitch Stripes .....	23
<b>010</b> Lady's Red & Grey Sweater .....	26
<b>011</b> Lady's Striped Sweater .....	27
<b>012</b> Striped Cardigan .....	30
<b>013</b> Striped & Embroidered Sweater.....	31

Although every reasonable care has been taken to ensure that the instructions and designs in this pattern book are correct, Modern Knitting Ltd. cannot accept responsibility for any errors which may have occurred in spite of such precautions. All rights reserved. Reproduction in whole or part without written permission is strictly prohibited.

A Modern Knitting Publication ©1986.  
 Modern Knitting is a Registered Trademark.  
 Modern Knitting Limited, P O Box 175, Kingston-upon-Thames,  
 Surrey KT2 6HA

002





**003**

# 002

## LACE SWEATER WITH BOBBLES

Size:  
One size to fit 81-96cms/32-38  
inch bust.

Materials:  
Chunky Yarn  
Col 1 (Pink) - 360 grms  
Col 2 (Cream) - 50 grms  
Col 3 (Blue) - 30 grms  
Col 4 (Green) - 20 grms

Tension:  
16 sts and 25 rows to 10 cms. TD at  
approx 3

Pattern Note:  
See chart - \*Knit 2 rows col 1, 2 rows col  
2, and 2 rows col 3 in Garter Stitch. Knit  
7 rows stockinet in col 1. Knit 9 rows  
lace pattern. Knit 8 rows stockinet in  
col 1. Knit 2 rows col 1, 2 rows col 4 and  
2 rows col 2 in Garter Stitch. Knit 6 rows  
stockinet col 1. Knit 9 rows lace pattern.  
Knit 9 rows stockinet col 1\*. Rept from  
\*to\* throughout.

**BACK**  
Push 41 Ns at left and right of centre 0  
to B pos. 82 Ns altog. Using waste yarn  
cast on. RC 000. TD at 3. Continue in  
pattern given in pattern note, knit 58  
rows.

**Shape Armholes**  
Shape as shown on diagram. 64 sts.  
Knit to Row 116. Mark the 14th st at  
both sides of centre 0 with waste yarn.  
Cast off.

**FRONT**  
Knit as for Back to Row 98.  
Shape Neck  
Shape as shown on diagram to Row  
116. Cast off rem 18 sts. Knit left part as  
for right part.

**WELTS**  
Push 76 Ns to B pos. Using waste yarn  
cast on as for knit 1 purl 1 rib. RC 000.  
TD at 2. Using col 1, knit 20 rows. Drop  
the 3rd and ev foll alt st and pick up as  
for ribbing. With wrong side of Back  
facing, pick up sts from below waste  
yarn and place onto Ns gathering  
evenly. TD at 10, knit 1 row. Cast off.  
Rept for Front.

**SLEEVES**  
Push 24 Ns at left and right of centre 0  
to B pos. 48 Ns altog. Using waste yarn,

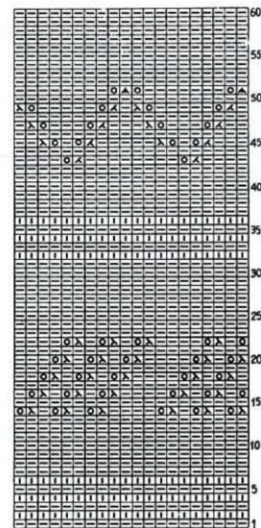
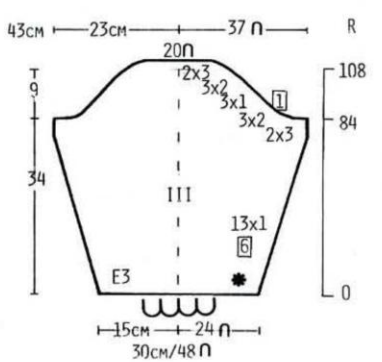
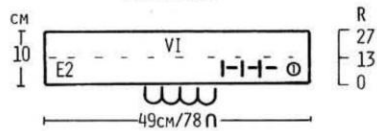
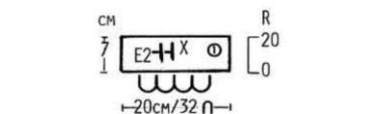
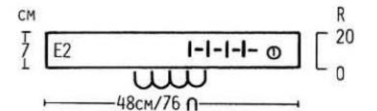
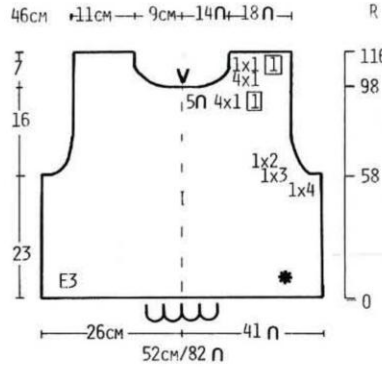
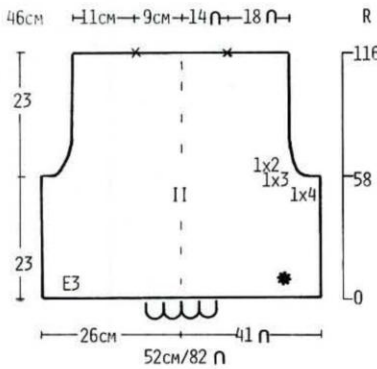
cast on. RC 000. TD at 3. Continue in  
pattern given in pattern note and inc as  
shown on diagram. 74 sts. Knit to Row  
84.

**Shape Top**  
Shape as shown on diagram to Row  
108. Cast off rem 20 sts.

**CUFFS**  
Push 32 Ns to B pos. Using waster yarn  
cast on as for knit 1 purl 1 rib. RC 000.  
TD at 2. Using col 1, knit 20 rows. Drop  
the 3rd and ev foll alt st and pick up as  
for ribbing. With wrong side of sleeve  
facing, pick up sts from below waste  
yarn and place onto Ns gathering  
evenly. TD at 10, knit 1 row. Cast off.

**COLLAR**  
Push 78 Ns to B pos. Using waste yarn  
cast on as for knit 1 purl 1 rib. RC 000.  
TD at 2. Using col 1, knit 13 rows. TD at  
4, knit 1 row. TD at 2, knit 13 rows. Drop  
the 3rd and ev foll alt st and pick up as  
for ribbing. Cast off.

**TO MAKE UP**  
Pin out to size and steam carefully. Join  
shoulder and collar seams. Sew collar  
into pos. Set in sleeves. Join side and  
sleeve seams. Fold collar in half onto  
the outside. Crochet edging around  
collar and embroider flowers and  
bobbles as shown on picture.



# 003

## MAN'S SWEATER WITH CHECKS AND STRIPES

**Size:**  
One size to fit 91-101cms/36-40 inch chest

**Materials:**  
Chunky Yarn  
Col 1 (Navy Blue) - 250 grms  
Col 2 (Dusty Pink) - 220 grms  
Col 3 (Grey) - 120 grms  
Col 4 (White) - 10 grms

**Tension:**  
16 sts and 22 rows to 10 cms. TD at approx 3.

**Pattern Note:**  
Follow Chart - Knit 30 rows col 1. Knit 2 rows col 1 in Garter Stitch. \*Knit 2 rows col 2, 2 rows col 1\*. Rept from \*to\* 5 more times. Knit 2 rows col 2. Knit 2 rows col 1 in Garter Stitch. Knit 26 rows

col 3. Knit 2 rows col 1 in Garter Stitch. Knit 42 rows col 2.

**BACK**  
Push 43 Ns at left and right of centre 0 to B pos. 86 Ns altog. Using waste yarn cast on as for knit 1 purl 1 rib. RC 000. TD at 2. Using col 1, knit 16 rows. Drop the 3rd and ev foll alt st and pick up as for ribbing. RC 000. TD at 3. Continue in pattern given in pattern note, knit 75 rows. Mark both ends with waste yarn. Knit to Row 130. Mark the 16th st at each side of centre 0 with waste yarn. Cast off.

**FRONT**  
Knit as for Back to Row 110. Shape Neck  
Shape as shown on diagram to Row 130. Cast off rem 27 sts. Knit left part as for right part.

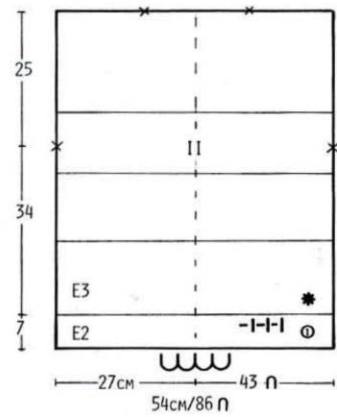
**SLEEVES**  
Push 40 Ns at left and right of centre 0 to B pos. 80 Ns altog. Using col 2 (col 3 for second sleeve), cast on by hand. RC 000. TD at 3. Shape as shown on diagram. 44 sts. Knit to Row 100. Cast off with waste yarn.

**CUFFS**  
Push 34 Ns to B pos. Using waste yarn cast on as for knit 1 purl 1 rib. RC 000. TD at 2. Using col 1, knit 12 rows. Drop the 3rd and ev foll alt st and pick up as for ribbing. With wrong side of sleeve facing, pick up sts from below waste yarn and place onto Ns gathering evenly. TD at 10, knit 1 row. Cast off.

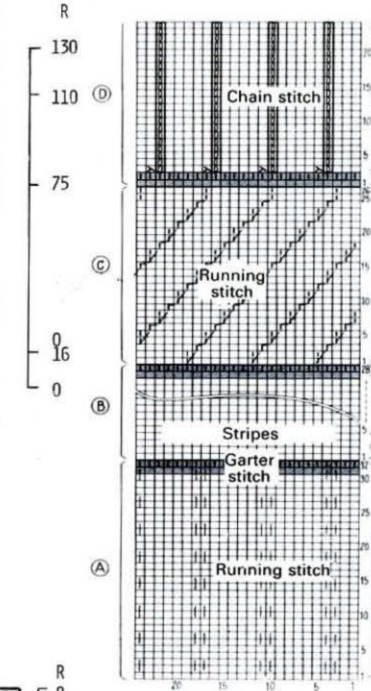
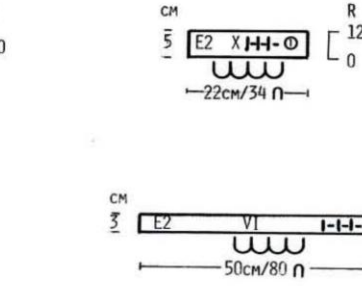
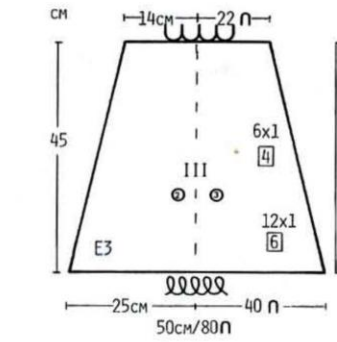
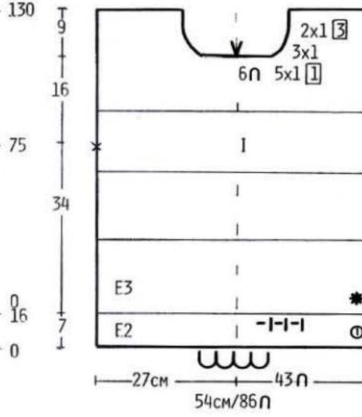
**NECKBAND**  
Join one shoulder seam. Push 80 Ns to B pos. Using waste yarn cast on as for knit 1 purl 1 rib. RC 000. TD at 2. Using col 1, knit 8 rows. Drop the 3rd and ev foll alt st and pick up as for ribbing. With wrong side facing, pick up neck edge and place onto Ns in B pos. TD at 10, knit 1 row. Cast off.

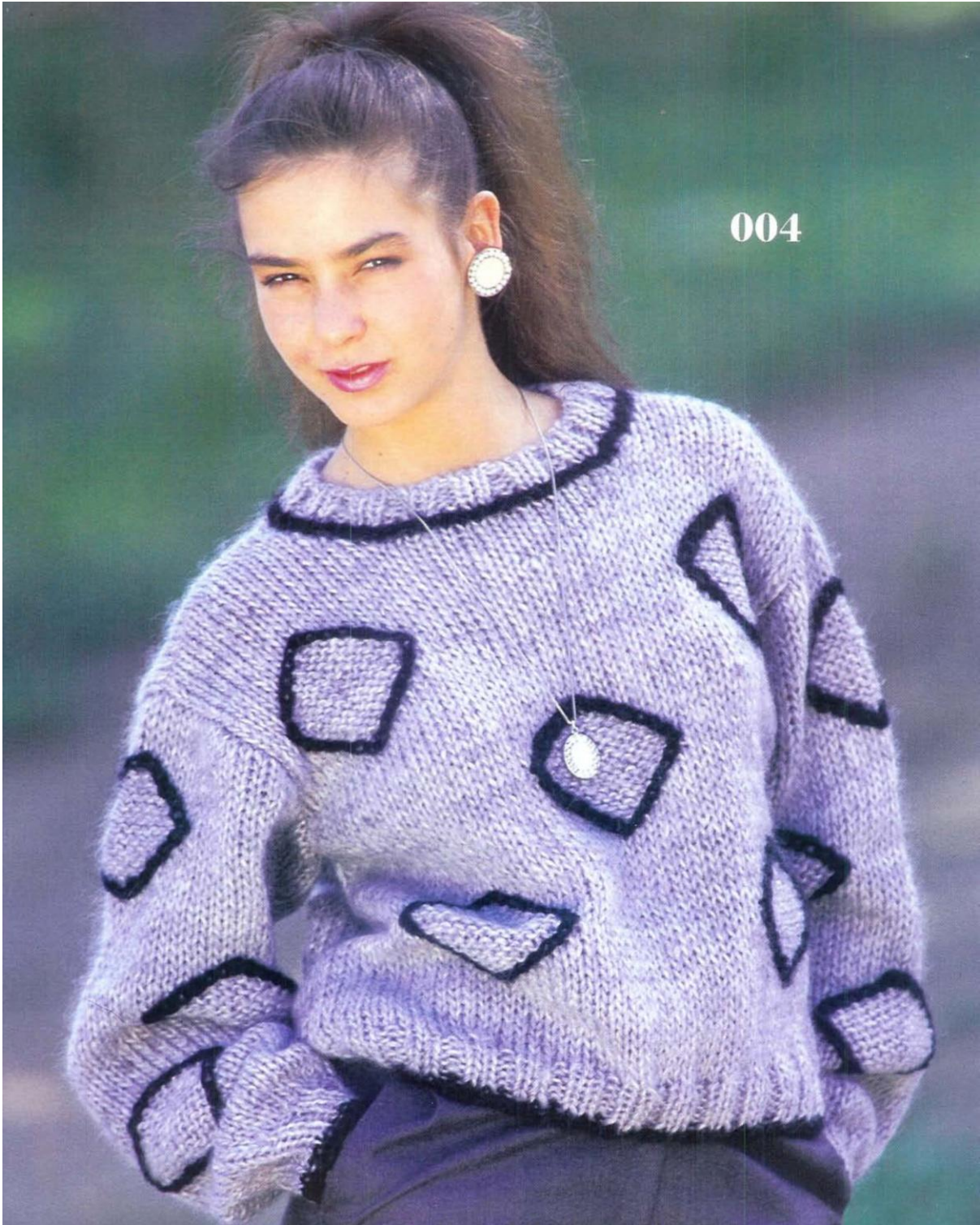
**TO MAKE UP**  
Pin out to size and steam carefully. Join rem shoulder and neckband seam. Set in sleeves between marked points. Join side and sleeve seams. Embroider running stitch and chain stitch as shown on diagram and picture.

66CM → 17CM → 10CM → 16N → 27 N →



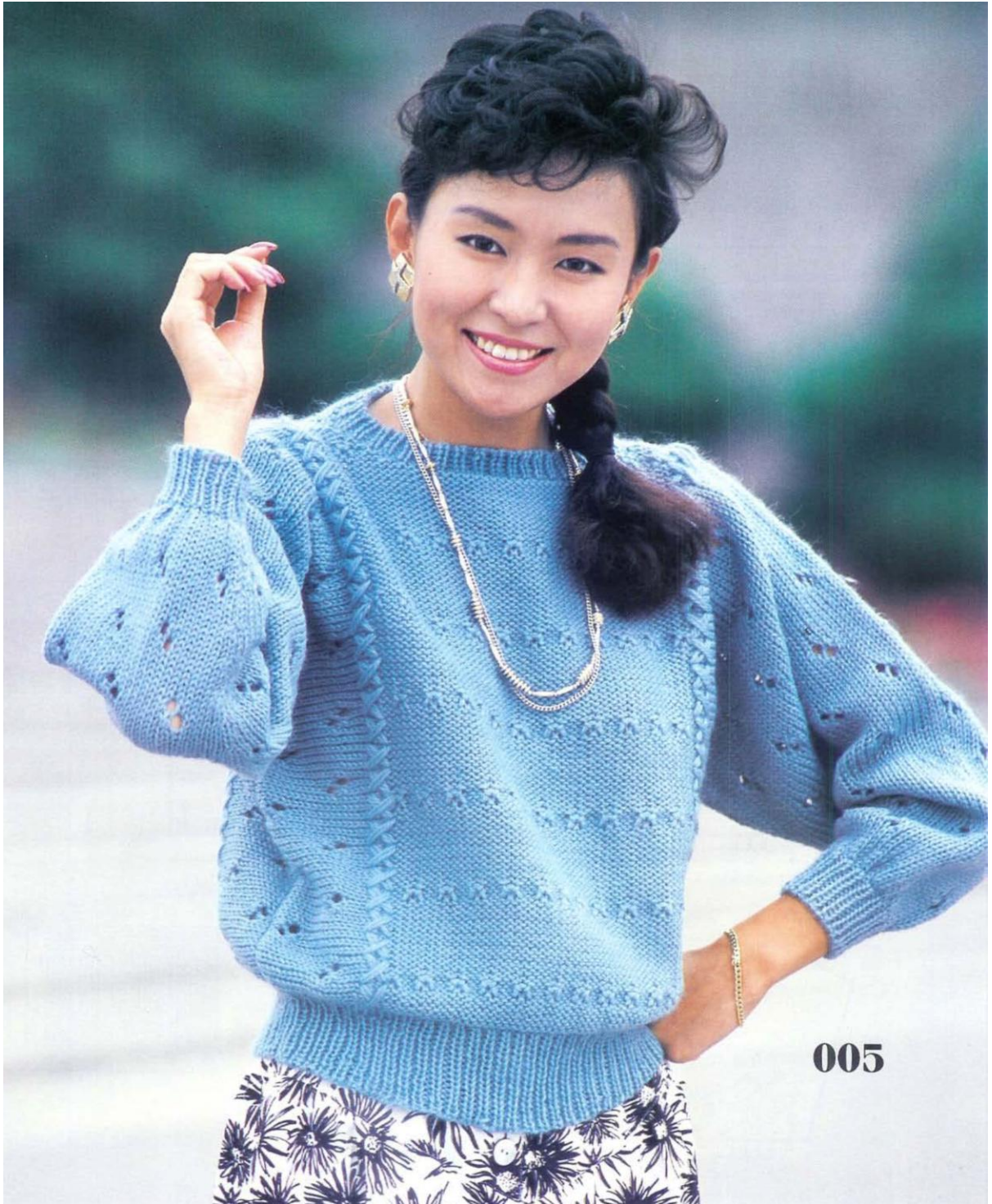
R 66CM → 17CM → 10CM → 16N → 27 N →





004





005

# 004

## GREY SWEATER WITH DIAMONDS

Sizes:  
To fit 81-96 (101-106)cms/32-38  
(40-42) inch bust.

Materials: Brushed Chunky  
Col 1 (Grey) - 550(600) grms  
Col 2 (Black) - 50 grms

Tension:  
11.5 sts and 14 rows to 10 cms. TD at  
approx. 9.

Pattern Note:  
Following chart work diamonds as  
shown on diagram.

BACK  
Push 30(33) Ns at left and right of centre  
0 to B pos. 60(66) Ns altog. Using waste

yarn cast on as for knit 2 purl 2 rib. RC  
000. TD at 8. Using col 1, knit 5 rows.  
Drop the 3rd and 4th and ev foll 3rd and  
4th st and pick up as for ribbing. RC 000.  
TD at 9. Continue in pattern, knit to Row  
35(38).

Shape Armholes  
Shape as shown on diagram. 52(58)sts.  
Knit to Row 70(76). Mark the 10th st at  
each side of centre 0 with waste yarn.  
Cast off.

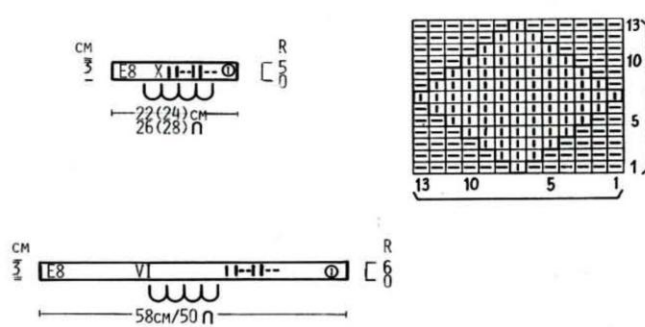
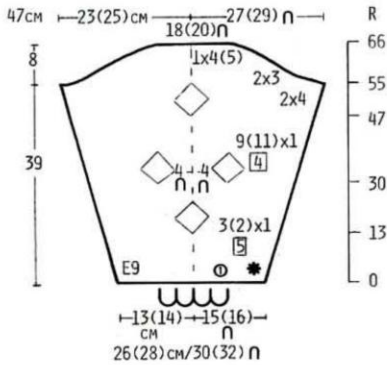
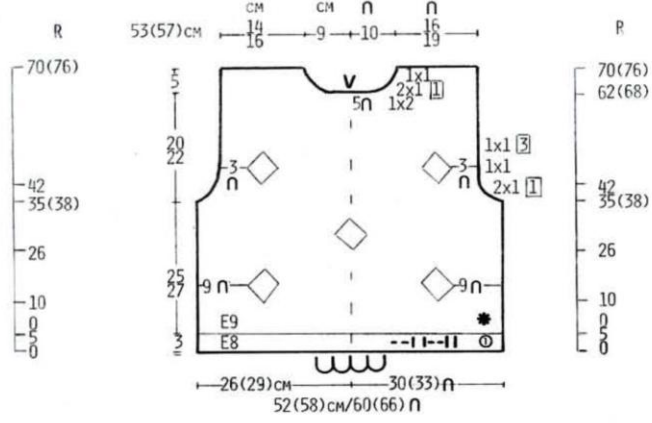
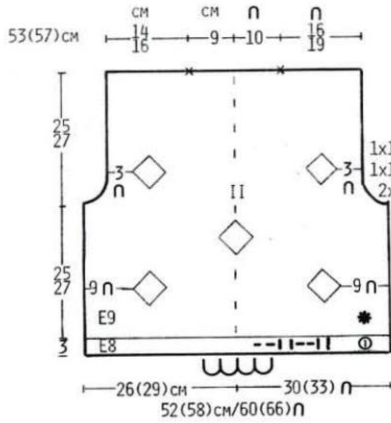
FRONT  
Knit as for Back to Row 62(68).  
Shape Neck  
Shape as shown on diagram to Row  
70(76). Cast off rem 16(19) sts. Knit left  
part as for right part.

SLEEVES  
Push 15(16) Ns at left and right of centre  
0 to B pos. 30(32) Ns altog. Using waste  
yarn cast on. RC 000. TD at 9. Using col  
1, continue in pattern and inc as shown  
on diagram. 54(58) sts. Knit to row 55.  
Shape Top  
Shape as shown on diagram to Row 66.  
Cast off rem 18(20) sts.

CUFFS  
Push 26(28) Ns to B pos. Using waste  
yarn cast on as for knit 2 purl 2 rib. RC  
000. TD at 8. Using col 1, knit 5 rows.  
Drop the 3rd and 4th and ev foll 3rd and  
4th st and pick up as for ribbing. With  
wrong side of sleeve facing, pick up sts  
from below waste yarn and place onto  
Ns gathering evenly. TD at 10, knit 1  
row. Cast off.

NECKBAND  
Join one shoulder seam. Push 50 Ns to  
B pos. Using waste yarn cast on as for  
knit 2 purl 2 rib. RC 000. TD at 8. Using  
col 1, knit 6 rows. Drop the 3rd and 4th  
and ev foll 3rd and 4th st and pick up as  
for ribbing. With wrong side facing, pick  
up neck edge and place onto Ns. TD at  
10, knit 1 row. Cast off.

TO MAKE UP  
Pin out to size and steam carefully. Join  
rem shoulder and neckband seam. Set  
in sleeves. Join side and sleeve seams.  
Using col 2 embroider a chain stitch  
around all diamonds.



# 005

## BLUE DOLMAN SLEEVE SWEATER

Sizes:  
To fit 81-91 (96-101)cms/32-36  
(38-40) inch bust.

Materials:  
Brushed Chunky  
Col 1 (Blue) - 400(450) grms

Tension:  
Tuck Stitch - 15.5 sts and 22 rows to 10 cms. TD at approx. 3.  
Lace Pattern - 16.5 sts and 21 rows to 10 cms. TD at approx. 3.

Pattern Note:  
Back & Front Panels - Follow chart for tuck stitch pattern.  
Side/Sleeve Panels - Follow chart for lace pattern.

BACK PANEL  
Push 24(27) Ns at left and right of centre

0 to B pos. 48(54) Ns altog. Using waste yarn cast on. RC 000. TD at 3. Using col 1, continue in pattern. Knit 100(104) rows. Mark the 18th st at each side of centre 0 with waste yarn. Cast off.

FRONT PANEL  
Knit as for Back to Row 92(96).  
Shape Neck  
Shape as shown on diagram to Row 100(104). Cast off rem 6(9) sts. Knit left part as for right part.

SIDE/SLEEVE PANELS (knit 4 - 2 in reverse)  
Push 33(36)Ns at left and 41 Ns at right of centre 0 to B pos. 74(77) Ns altog. Using col 1, cast on by hand. RC 000. TD at 3. Continue in pattern, knit 21 rows. Shape as shown on diagram. 25 sts. Knit to Row 106.  
Cast off with waste yarn.

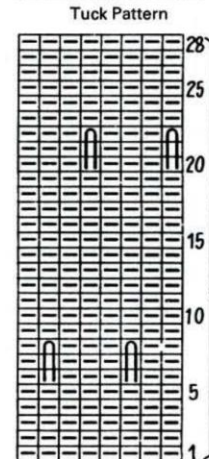
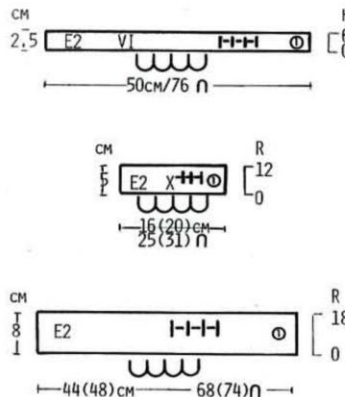
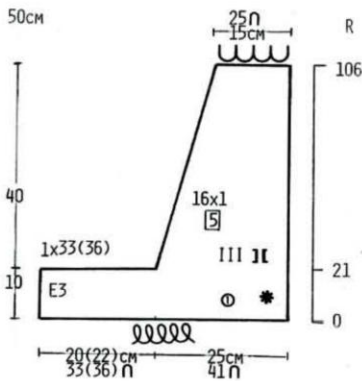
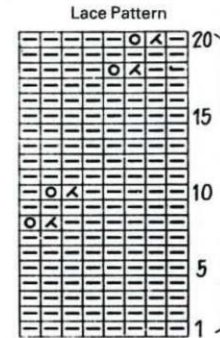
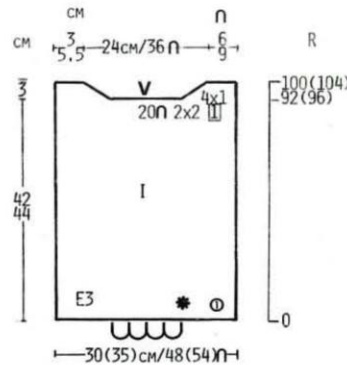
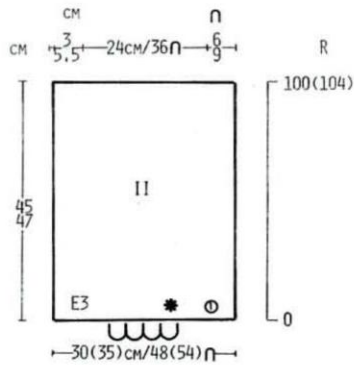
WELTS  
Join side/sleeve panels to back. Push 68(74) Ns to B pos. Using waste yarn cast on as for knit 1 purl 1 rib. RC 000. TD at 2. Using col 1, knit 18 rows. Drop the 3rd and ev foll alt st and pick up as for ribbing. With wrong side of back facing, pick up lower edge and place

onto Ns. TD at 10, knit 1 row. Cast off. Rept for front.

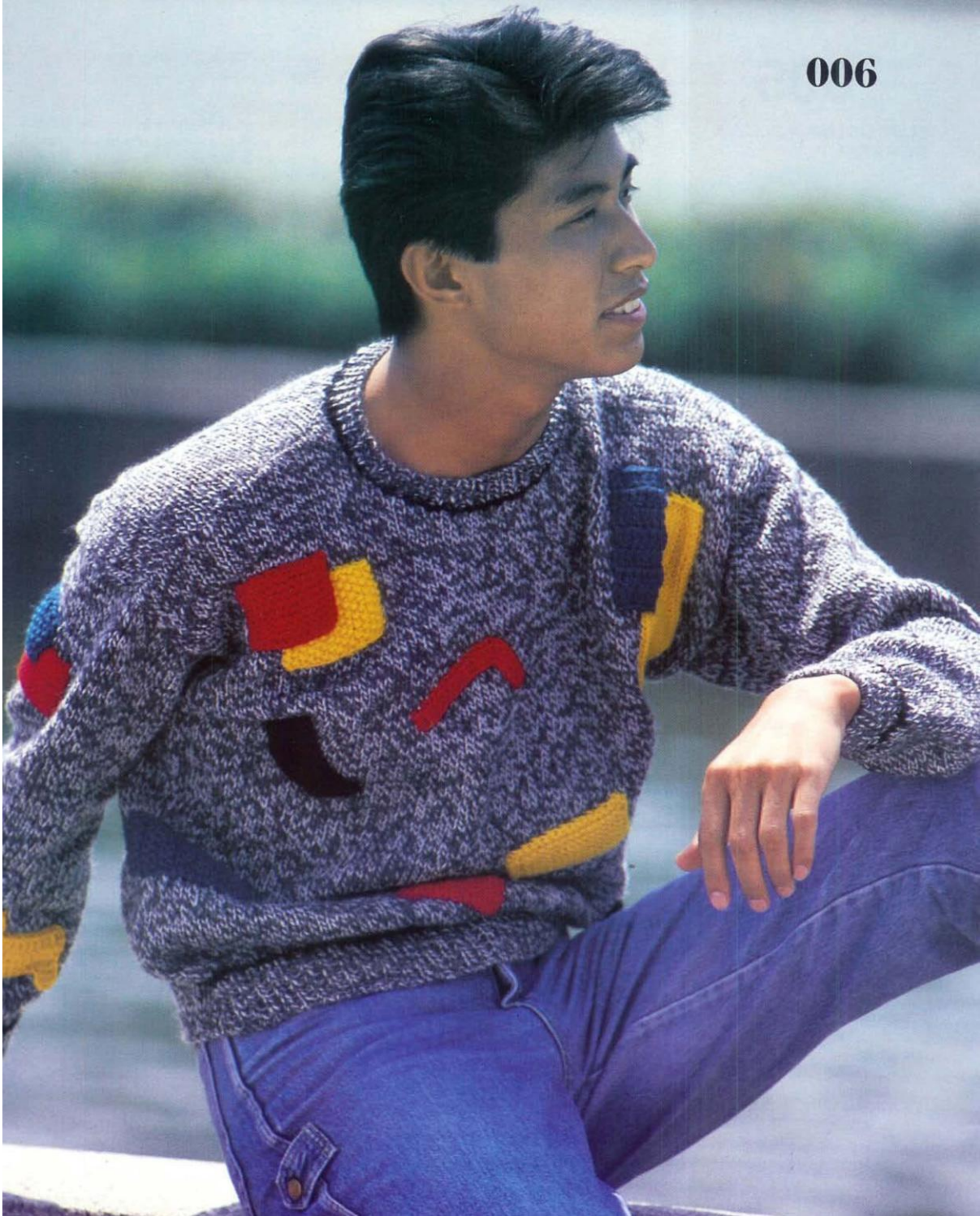
NECKBAND  
Join one shoulder/overarm seam. Push 76 Ns to B pos. Using waste yarn cast on as for knit 1 purl 1 rib. RC 000. TD at 2. Using col 1, knit 6 rows. Drop the 3rd and ev foll alt st and pick up as for ribbing. With wrong side facing, pick up neck edge and place onto Ns. TD at 10, knit 1 row. Cast off.

CUFFS  
Join rem. shoulder forearm seam. Push 25 (31) Ns to B pos. Using waste yarn cast on as for knit 1 purl 1 rib. RC 000 TD at 2, using col1, knit 12 rows. Drop 3rd and every following alt stitch and pick up as for ribbing with wrong side of sleeve facing, pick up stitches from below waste yarn and place onto Ns gathering evenly. TD at 10, knit 1 row. Cast off.

TO MAKE UP  
Pin out to size and steam carefully. Join neckband seam. Join side/underarm seams. Embroider cross stitch over back and front seams.



006





007

# 006

## MAN'S SWEATER WITH APPLIQUED SHAPES

Sizes:  
To fit 96-101 (106)cms/38-40(42)  
inch chest.

Materials:  
Chunky Yarn  
Col 1 (Grey) - 650(700) grms  
Small amount in each of cols: yellow,  
red, blue & black

Tension:  
15.5 sts and 21 rows to 10 cms. TD at  
approx. 4.

Pattern Note:  
Stockinet

**BACK**  
Push 42(45) Ns at left and right of centre  
0 to B pos. 84(90) Ns altog. Using waste  
yarn cast on. RC 000. TD at 4. Using col  
1, knit 70 rows. Mark both ends with  
waste yarn. Knit to Row 122(126). Mark  
the 14th st at both sides of centre 0 with  
waste yarn. Cast off.

**FRONT**  
Knit as for Back to Row 102(106).  
Shape Neck  
Shape as shown on diagram to Row  
122(126). Cast off rem 28(31) sts. Knit  
left part as for right part.

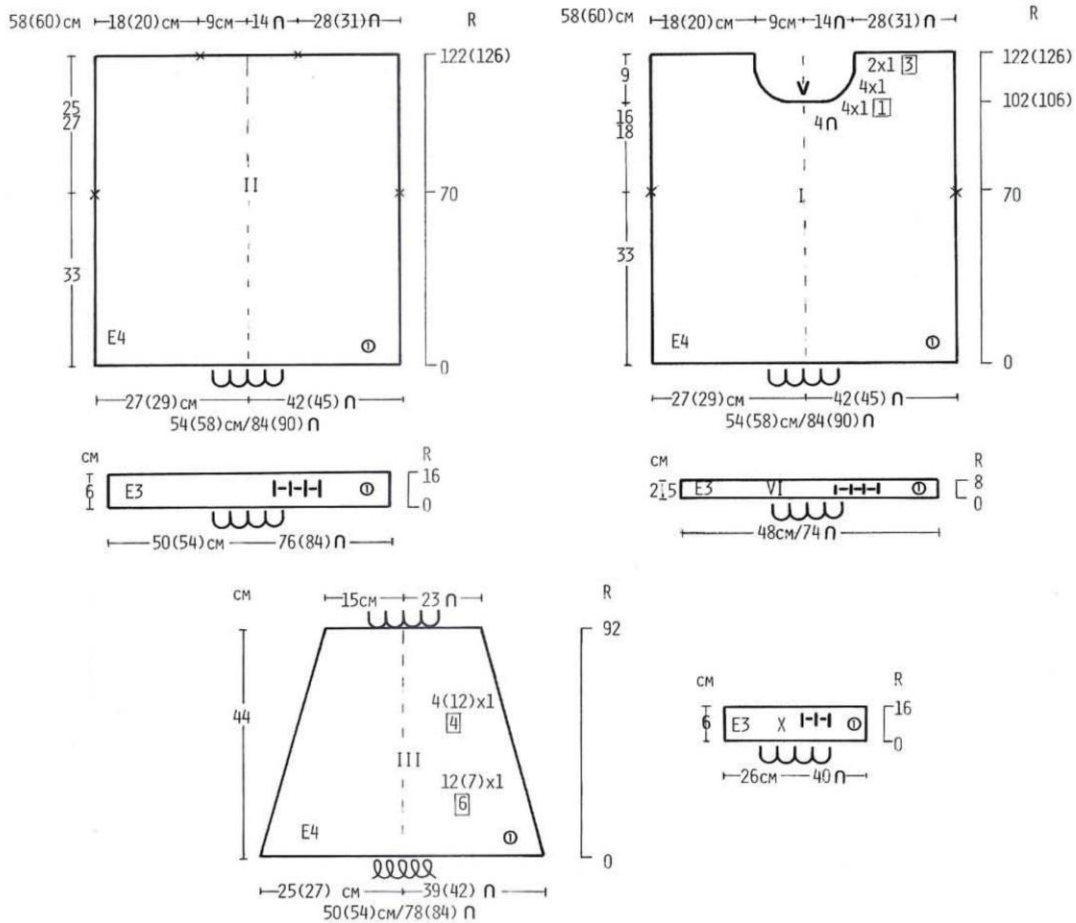
**SLEEVES**  
Push 39(42) Ns at left and right of centre  
0 to B pos. 78(84) Ns altog. Using col 1,  
cast on by hand. RC 000. TD at 4. Shape  
as shown on diagram. 46 sts. Knit to  
Row 92. Cast off with waste yarn.

**CUFFS**  
Push 40 Ns to B pos. Using waste yarn

cast on as for knit 1 purl 1 rib. RC 000.  
TD at 3. Using col 1, knit 16 rows. Drop  
the 3rd and ev foll alt st and pick up as  
for ribbing. With wrong side of sleeve  
facing, pick up sts from below waste  
yarn and place onto Ns gathering evenly.  
TD at 10, knit 1 row. Cast off.

**NECKBAND**  
Join one shoulder seam. Push 48 Ns to  
B pos. Using waste yarn cast on as for  
knit 1 purl 1 rib. RC 000. TD at 3. Using  
col 1, knit 8 rows. Drop the 3rd and ev  
foll alt st and pick up as for ribbing. With  
wrong side facing, pick up sts around  
neck edge and place onto Ns. TD at 10,  
knit 1 row. Cast off.

**TO MAKE UP**  
Pin out to size and steam carefully. Join  
rem shoulder and neckband seam. Set  
in sleeves between marked points. Join  
side and sleeve seams. Crochet shapes  
in contrast cols and sew into pos.



# 007

## PINK COWL NECK SWEATER

Sizes:  
To fit 81-91(96-101) (106) cms/32-36(38-40) (42) inch bust.

Materials:  
Brushed Chunky  
Col 1 (Pink) - 390(440) (490) grms

Tension:  
15 sts and 18 rows to 10 cms. TD at approx. 5.

Pattern Note:  
Cable patterns follow charts.

BACK  
Push 38(42) (44) Ns at left and right of

centre 0 to B pos. 76(84) (88) Ns altog. Using waste yarn cast on ending with carr at left. RC 000. TD at 5. using col 1, knit to Row 45(47) (49). Mark both ends with waste yarn. Knit to Row 95(97) (99). Mark the 18th st at both sides of centre 0. Cast off.

FRONT  
Push 38(42) (44) Ns at left and right of centre 0 to B pos. 76(84) (88) Ns altog. Using waste yarn cast on ending with carr at left. RC 000. TD at 5. Using col 1, continue in cable pattern A over centre 22 Ns. Knit to Row 45(47) (49). Mark both ends with waste yarn. Knit to Row 87(89) (91).  
Shape Neck  
Shape as shown on diagram to Row 95(97) (99). Cast off rem 20(24) (26) sts. Knit left part as for right part.

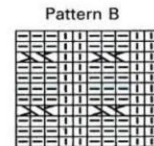
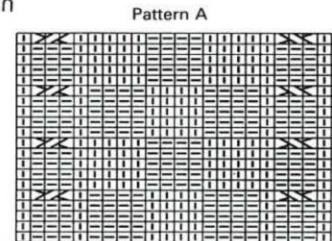
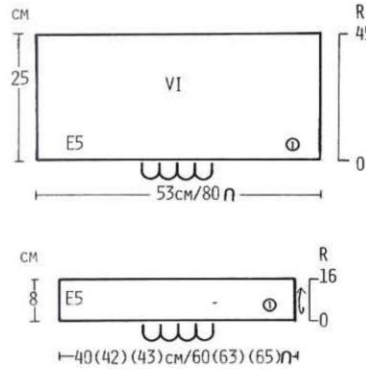
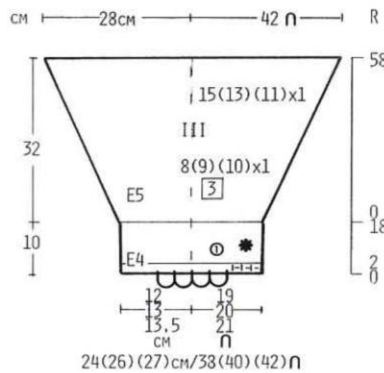
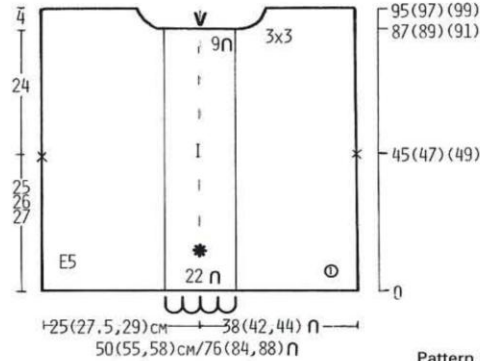
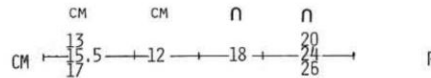
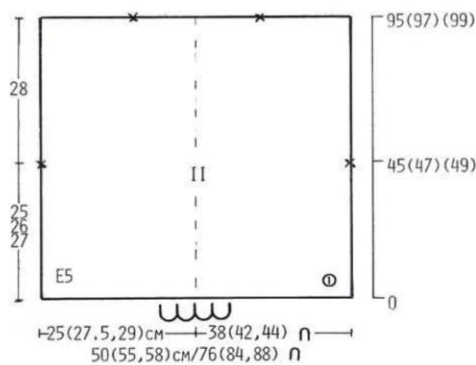
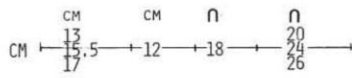
SLEEVES  
Push 19(20) (21) Ns at left and right of centre 0 to B pos. 38(40) (42) Ns altog. Using waste yarn cast on as for knit 1

purl 1 rib. RC 000. TD at 4. Using col 1, knit 2 rows. Drop the 3rd and ev foll alt st and pick up as for ribbing. Continue in cable pattern B, knit 16 rows. RC 000. TD at 5. Continue in stockinet and inc as shown on diagram to Row 58. 84 sts. Cast off.

WELT  
Push 60(63) (65) Ns to B pos. Using waste yarn cast on. RC 000. TD at 5. Using col 1, knit 16 rows. Turn up a hem. With wrong side facing, pick up lower edge and place onto Ns gathering evenly. Knit 1 row. Cast off.

COLLAR  
Push 80 Ns to B pos. Using waste yarn cast on. RC 000. TD at 5. Using col 1, knit to Row 45. Cast off.

TO MAKE UP  
Pin out to size and steam carefully. Join shoulder seams. Set in sleeves between marked points. Join side and sleeve seams. Join collar seam. Backstitch collar into pos and fold to the right side.



# How to work from a diagram pattern

The pattern instructions in this book are in the form of a diagram pattern. We know from our research that most machine knitters prefer to follow a diagram pattern, but for those of you who are not familiar with this type of pattern, a step by step guide is given below. Study the symbols on page 17 carefully then work through the diagram following the written explanation. You'll find it quite straightforward.

Starting at the lower edge, your first instruction is  $\underbrace{\quad\quad\quad}_{60n}$

This tells you to cast on with waste yarn 60 stitches.

Knit a few rows with waste yarn.

0 at the bottom right hand corner tells you to set your Row Counter to 000.

E8 tells you to set your Tension Dial at 8 and, using main yarn, knit to Row 5.

--ll--ll tells you to reform the stitches to make a knit 2, purl 2 rib.

E9 is your main tension, so set your Tension Dial to 9 and continue knitting until your next instruction which is on Row 35.

The diagram pattern shows you that you are now at the stage for shaping the armholes. Although the instructions are shown on one side of the diagram only, they should be worked on both sides, since the diagram shows there is the same armhole shape on the left side. If you find it easier to begin with, pencil in the same instructions on the left side to remind you that you have only been given the instructions for one armhole.

$2 \times 1 \begin{array}{|c|} \hline 1 \\ \hline \end{array}$  tells you to decrease 1 stitch on every row, twice.

Therefore, decrease 1 stitch on both sides (you are repeating the shaping instructions for the left armhole) knit 1 row.

Decrease 1 stitch on both sides, knit 1 row.

You have decreased 2 stitches on each side, leaving you with 56 stitches.

$1 \times 1$  tells you to decrease 1 stitch once.

Therefore, decrease 1 stitch on the right side, knit 1 row to the left.

Decrease 1 stitch on the left side (you are now repeating the instruction for the left armhole). Knit 1 row.

You have decreased 1 stitch on each side, leaving you with 54 stitches.

$1 \times 1 \begin{array}{|c|} \hline 3 \\ \hline \end{array}$  tells you to decrease 1 stitch once on the 3rd row.

Therefore, knit 2 rows. Decrease 1 stitch on both sides. Knit 1 row (the 3rd row).

You have decreased 1 stitch on each side, leaving you with 52 stitches.

Your next instruction is not until Row 68 therefore knit to row 68 without shaping.

The diagram pattern shows you that you are now at the stage for shaping the neck.

The symbol V tells you to divide the work in half and knit each side separately.

Therefore, either push the needles at left into holding position, or knit them onto waste yarn and remove from the machine. Now knit the right side as follows:-

Knit 1 row to take you to the left (neckedge).

$5n$  tells you that 5 stitches form the base of the neckedge.

Therefore, cast off 5 stitches at the beginning of the next row. Knit 1 row. (2 rows knitted).

$1 \times 2$  tells you to cast off 2 stitches once.

Therefore, cast off 2 stitches at the beginning of the next row. Knit 1 row. (2 rows knitted).

$2 \times 1 \begin{array}{|c|} \hline 1 \\ \hline \end{array}$  tells you to cast off 1 stitch twice on every row.

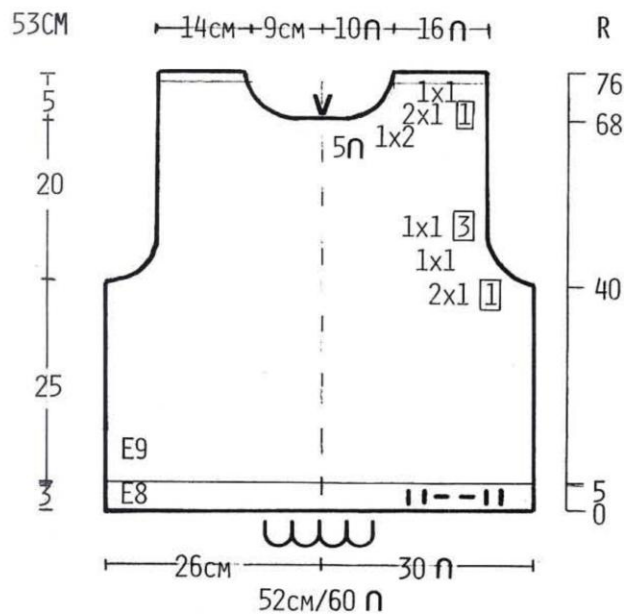
Therefore, cast off 1 stitch at neckedge. Knit 1 row. Cast off 1 stitch at neckedge. Knit 1 row.

$1 \times 1$  tells you to cast off 1 stitch once.

Therefore, cast off 1 stitch. Knit 1 row.











The Row Counter now reads 76. Therefore cast off the remaining 16 stitches.

Turn the Row Counter back to 68 and knit the left half in the same way.








# KNITTING SYMBOLS

Symbols	How to make the stitches	Symbols	How to make the stitches
—	This signifies a normal stocking stitch which is produced by the machine when knitting stockinet. 	↑	Transfer the two adjacent stitches onto the needle. 
	Reform the stitch from the front of knitting with a Tappet Tool. 	×	Cross the stitches with the right stitch over the left stitch. 
○	Transfer the stitch to the adjacent needle. 	×	Cross the stitches with the left stitch over the right stitch. 
λ	Transfer the stitch to the left and place together with the existing stitch. 	∩	Unravel the stitch and place it with the crossing bar above. 
∧	Transfer the stitch to the right and place together with the existing stitch. 	∨	Unravel the stitch and place it omitting the crossing bar above. 

## Symbols for the diagrams

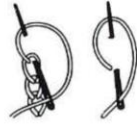
	Closed edge cast-on
	Cast-on using waste yarn
	Gather evenly
---	Loose row
— — —	Knit 1 purl 1 rib
∩	Stitches
( )	Larger sizes
①	Colour
↶	Turn up a hem

✳	Work in pattern given in pattern note
R	Row
E	Tension
∨	Divide work in half and knit each side separately
][	Reverse 1 section
∧	Repeat
Number of rows between shapings. For example: 3 × 1 <span style="border: 1px solid black; padding: 2px;">4</span> means decrease 1 stitch every 4th row 3 times. All decreases or increasings without a number shown in a box means on every 2nd row.	
I	= Front
II	= Back
III	= Sleeve
VI	= Collar
X	= Cuff

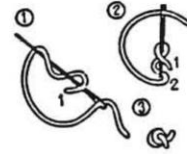
Abbreviations		Carr	— Carriage	Inc	— Increase	Rem	— Remaining
Alt	— Alternate	Cm(s)	— Centimetre(s)	N	— Needle	RC	— Row Counter
Approx.	— Approximately	Col	— Colour	Ns	— Needles	St	— Stitch
Beg	— Beginning	Dec	— Decrease	Patt	— Pattern	Sts	— Stitches
		Ev	— Every	Pos	— Position	TD	— Tension Dial
		Foll	— Following	Rept	— Repeat	Tog	— Together

# TECHNIQUES

## Chain Stitch



## French Knot



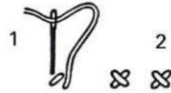
## Stem/Satin Stitch



## Running Stitch



## Cross Stitch

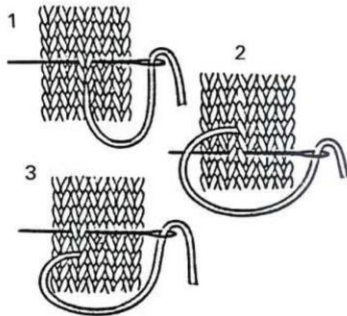


## Broken chain

Make a single chain stitch then pass the needle through the knitting from A to B.

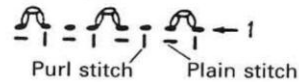


## Swiss Darning

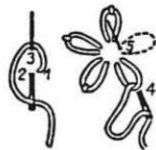


## Crochet Rib Trim

Pick up the first loop at the rib edge, crochet 3 chain stitches and pick up the next loop at the rib edge. Pick up next alt. loop of rib and knit 1 chain. Repeat all the way along the edge of the rib.



## Daisy Stitch



## Bobbles

Pick up one loop of a stitch from the knitting and chain stitch 4 stitches using a crochet hook. Knit the chain back into the knitting 3 stitches above the first loop. Knit another 4 chain stitches and knit back into the first loop of the knitting. Leave a long end and thread a needle. Oversew with satin stitch from top to bottom of bobble 5 times.



# CHOOSING YOUR YARNS

## Freedom of choice

In this Zippy 90 pattern book you will find, not a brand name for the yarn used, but an approximation of the yarn type. This, we hope, will give you much more freedom to use the designs and patterns freely and creatively.

If you are using our pattern you must, of course, achieve the same stitches and rows stated in the pattern. However, if you choose to make your own pattern using the measurements given on the diagram, you will have complete freedom and control over the designs.

## Yarn amounts

Where an approximate yarn type is given, the yarn amounts will be approximate too. As you probably know, yarns vary in weight - wool is much heavier than acrylic, therefore, it takes more yarn to knit a garment in wool than it takes to knit the same garment in acrylic yarn. This is the major difference to watch out for, but there will always be

variations from yarn type to yarn type. You will be able to estimate your yarn amounts fairly accurately if you keep a knitting notebook.

## Keeping a Knitting Notebook

Keeping notes on everything you knit is an invaluable source of reference. It won't take much of your time but you'll be amazed at how much time and effort it will save you later. The kind of information you will find useful is as follows:-

1. Description of garment
2. Description of yarn
3. Details of stitch pattern
4. Tension Dial setting
5. Stitches and rows to 10cms
6. Yarn amount

Your own system will evolve as you start using your notes, but the list above will give you a good starting point. This invaluable information will not only help when estimating yarn amounts, but will also make choosing yarns a simpler task.

# MORE PATTERNS

Now that you and your Zippy 90 are learning to knit more and more lovely designs together, the time is drawing ever closer when you will need more patterns, more ideas and more sources of inspiration.

On page 29 you will find an illustration of another of the pattern books in this series which will, of course, give you more patterns, techniques and ideas to add to your collection. However, as well as the Zippy 90 series of pattern books there is also another very valuable source of patterns, ideas, information and knitting news. This comes in the form of Modern Knitting - the monthly magazine for Knitmaster knitters. Each month Modern Knitting provides a new selection of designs and patterns for all Knitmaster machines including Zippy 90, as well as articles and features which will teach you how to make the very most of your machine.

The Zippy 90 series of pattern books and

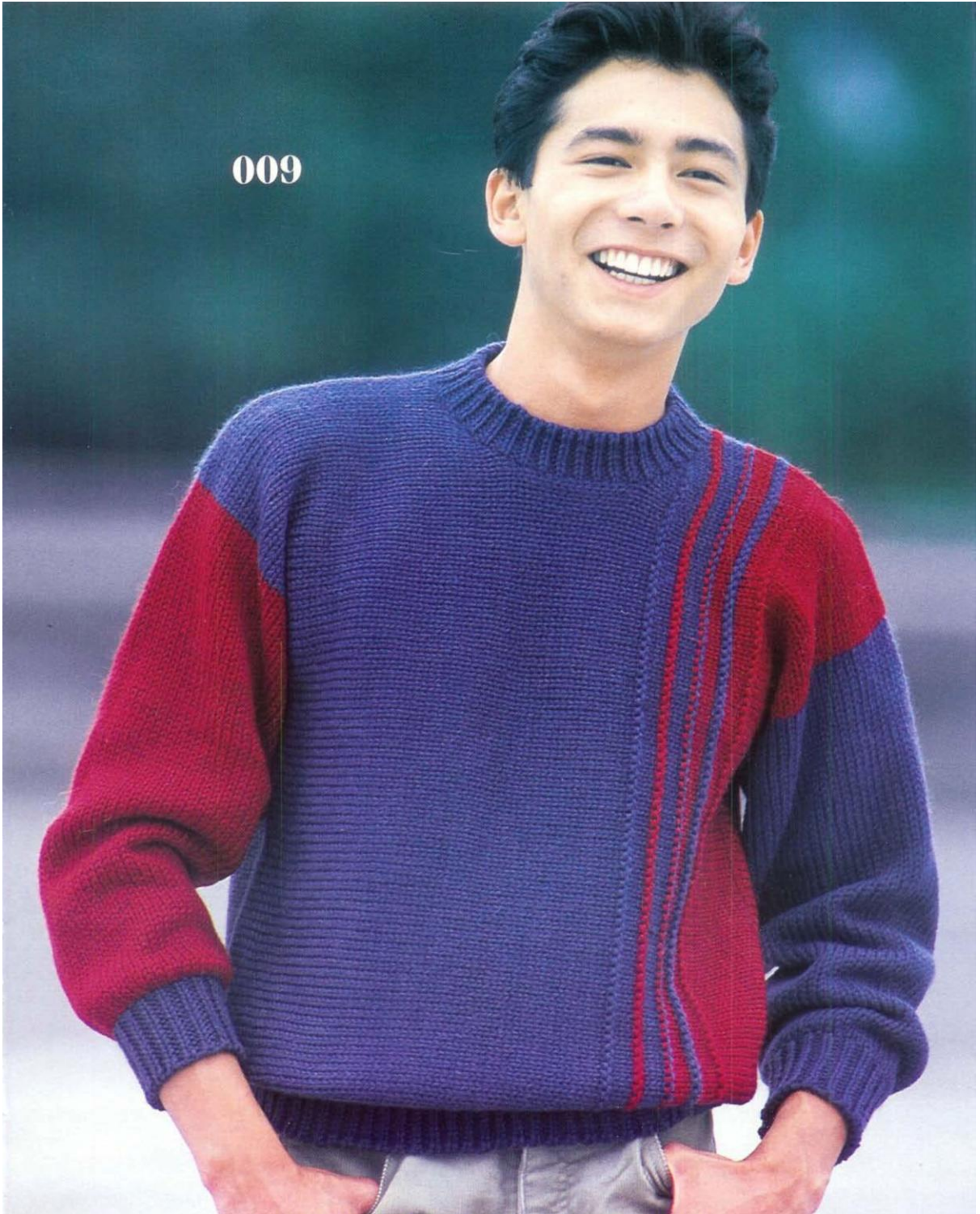
Modern Knitting are both available from your Zippy 90 stockist, or alternatively you can have Modern Knitting sent to you direct. If you would like to have Modern Knitting sent to you every month, complete the coupon on this page and send it to the address shown.

MODERN KNITTING SUBSCRIPTION FORM		
I enclose a cheque/postal order to the value of £10/£20, made payable to Modern Knitting Ltd, as payment for 6/12 issues of Modern Knitting.		
I would like to receive the magazine from		
<input type="checkbox"/> Jan	<input type="checkbox"/> May	<input type="checkbox"/> September
<input type="checkbox"/> Feb	<input type="checkbox"/> June	<input type="checkbox"/> October
<input type="checkbox"/> March	<input type="checkbox"/> July	<input type="checkbox"/> November
<input type="checkbox"/> April	<input type="checkbox"/> August	<input type="checkbox"/> December
Name.....		
Address.....		
.....		
(block capitals)		
Please send this form together with your remittance to:		
Modern Knitting Ltd., P.O. Box 175, Kingston-upon-Thames, Surrey. KT2 6HA.		



008

009



# 008

## BEIGE SWEATER

Size:  
To fit 81-91 cms/32-36 inch bust.

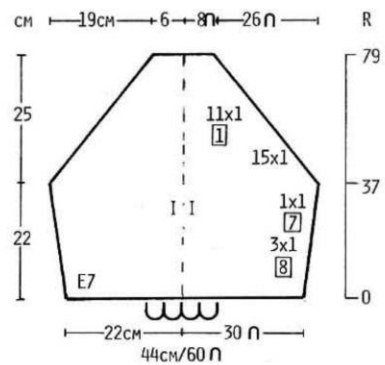
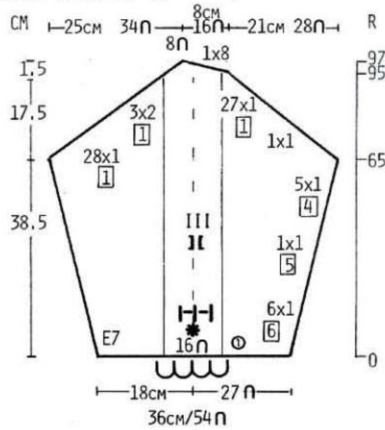
Materials:  
Chunky Yarn  
Col 1 (Beige) - 600 grms

Tension:  
13.5 sts and 17 rows to 10 cms. TD at approx. 7.

Pattern Note:  
Stockinet and knit 1 purl 1 rib.

Note:  
Use a three pronged transfer tool for raglan shaping.

BACK  
Push 30 Ns at left and right of centre 0 to B pos. 60 Ns altog. Using waste yarn



cast on. RC 000. TD at 7. Using col 1, inc as shown on diagram to Row 37. 68 sts. Shape Raglan Armholes  
Dec as shown on diagram to Row 79. 16 sts. Cast off with waste yarn.

FRONT  
Push 33 Ns at left and right of centre 0 to B pos. 66 Ns altog. Using waste yarn cast on. RC 000. TD at 7. Using col 1, continue in knit 1 purl 1 rib over centre 20 Ns and inc as shown on diagram to Row 37. 74 sts. Shape Raglan Armholes  
Dec as shown on diagram to Row 73. 26 sts. Cast off with waste yarn.

SLEEVES  
Push 27 Ns at left and right of centre 0 to B pos. 54 Ns altog. Using waste yarn cast on. RC 000. TD at 7. Using col 1, continue in knit 1 purl 1 rib over centre 16 Ns and inc as shown on diagram to Row 65. 78 sts. Shape Raglan Top  
Dec as shown on diagram to Row 97. Cast off rem 8 sts. Knit second sleeve in reverse.

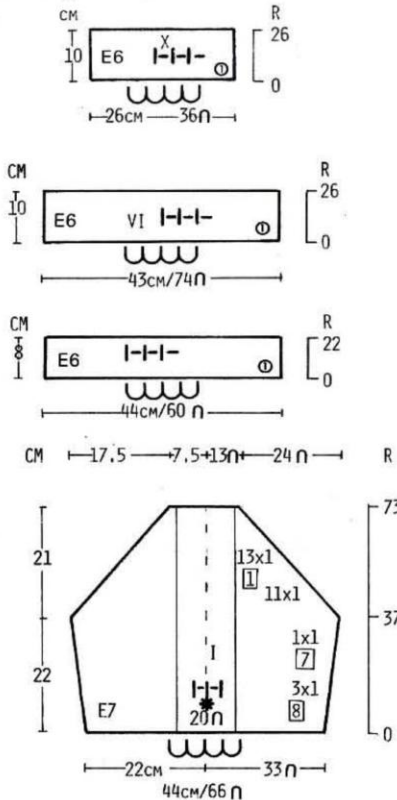
WELTS  
Push 60 Ns to B pos. Using waste yarn

cast on as for knit 1 purl 1 rib. RC 000. TD at 6. Using col 1, knit 22 rows. Drop the 3rd and ev foll alt st and pick up as for ribbing. With wrong side facing, pick up lower edge and place onto Ns. Knit 1 row. Cast off.

CUFFS  
Push 36 Ns to B pos. Using waste yarn cast on as for knit 1 purl 1 rib. RC 000. TD at 6. Using col 1, knit 26 rows. Drop the 3rd and ev foll alt st and pick up as for ribbing. With wrong side facing, pick up lower edge of sleeve and place onto Ns. Knit 1 row. Cast off.

NECKBAND  
Join 3 raglan seams. Push 74 Ns to B pos. Using waste yarn cast on as for knit 1 purl 1 rib. RC 000. TD at 6. Using col 1, knit 26 rows. Drop the 3rd and ev foll alt st and pick up as for ribbing. With wrong side facing, pick up neckedge and place on to Ns. Knit 1 row. Cast off.

TO MAKE UP  
Pin out to size and steam carefully. Join raglan and neckband seams. Join side and sleeve seams. Fold neckband in half to inside and catch down.



# 009

## MAN'S SWEATER WITH GARTER STITCH STRIPES

Sizes:  
To fit 96-101(107-112) cms/38-40  
(42-44) inch chest.

Materials:  
Chunky Yarn  
Col 1 (Blue) - 380(430) grms  
Col 2 (Red) - 200(250) grms

Tension:  
15 sts and 21 rows to 10 cms. TD at  
approx. 4.

Pattern Note:  
Knit 24(29) rows col 2. Drop ev st 1 row  
down and pick up as for ribbing (garter  
stitch). Knit 3 rows col 2. Knit 2 rows col  
1. Drop ev st 1 row down and pick up as  
for ribbing. Knit 4 rows col 2. Knit 1 row  
col 1. Drop ev st 1 row down and pick up  
as for ribbing. Knit 3 rows col 1. Knit 2  
rows col 2. Drop ev st 1 row down and  
pick up as for ribbing. Knit 5 rows col 1.  
Drop ev st 1 row down and pick up as  
for ribbing. Continue in stockinet col 1.

**BACK**  
Using waste yarn, cast on 85(89) sts  
ending with carr at right(left). Counting  
from right edge, mark st 38(41) with  
waste yarn. RC 000. TD at 4. Continue in  
pattern. Knit to Row 74(79). Mark right  
edge with waste yarn. Knit to Row  
114(124). Counting from right edge,  
mark st 38(41) with waste yarn. Cast off  
with waste yarn.

**FRONT**  
Knit as for Back to Row 40(45) but in  
reverse.  
Shape Neck  
Dec as shown on diagram. Knit to Row  
63(68). Inc as shown on diagram. Knit to  
Row 114(124). Counting from left edge,  
mark st 38(41) with waste yarn. Cast off  
with waste yarn.

**NECKBAND**  
Join right shoulder seam. Push 70 Ns to  
B pos. Using waste yarn cast on as for  
knit 1 purl 1 rib. RC 000. TD at 3. Using  
col 1, knit 8 rows. Drop the 3rd and ev  
foll alt st and pick up as for ribbing. With  
wrong side facing, pick up neck edge  
and place onto Ns. Knit 1 row. Cast off.

**RIGHT SLEEVE**  
Push 38(41) Ns at left and right of centre  
0 to B pos. 76(82) Ns altog. With wrong  
side facing, pick up sts between marked

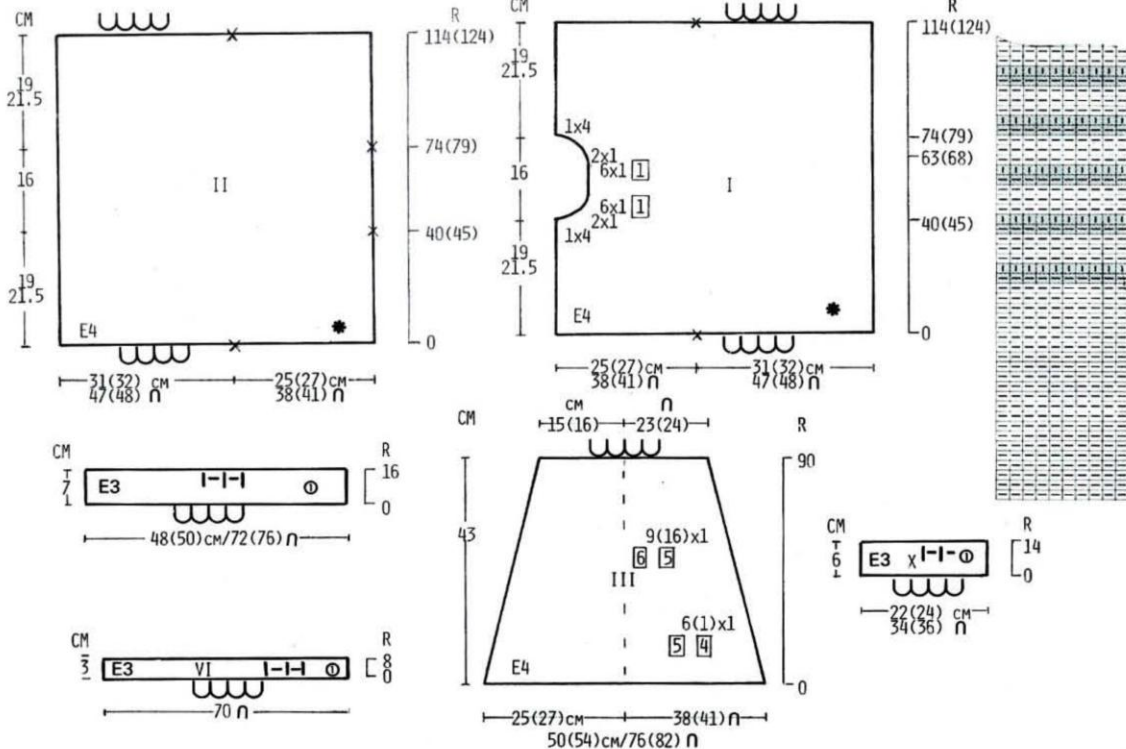
points and place onto Ns. RC 000. TD at  
4. Using col 2. Dec as shown on diagram.  
46(48) sts. Knit to Row 90. Cast  
off with waste yarn.

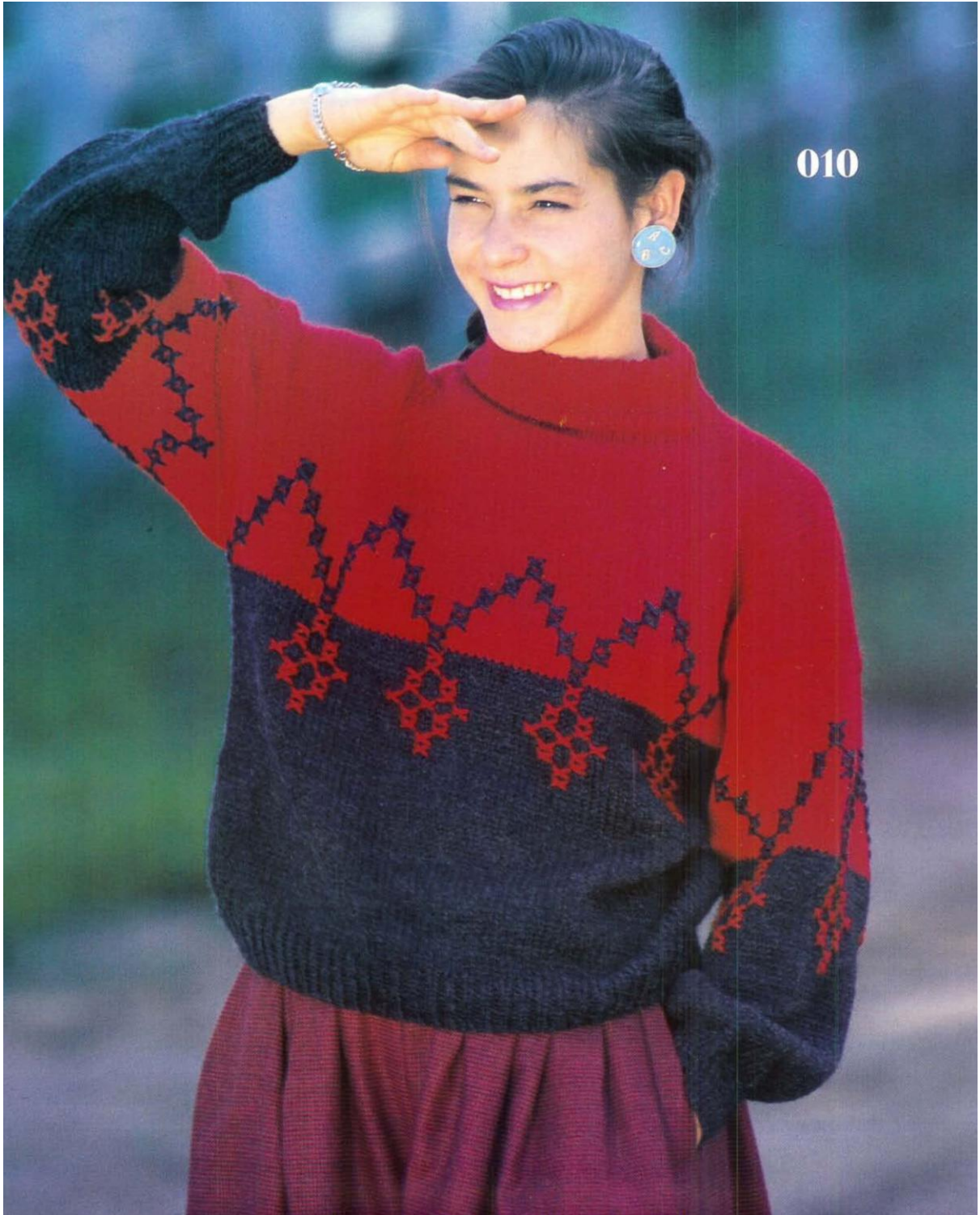
**LEFT SLEEVE**  
Join left shoulder and neckband seam.  
Knit as for Right Sleeve using col 1  
instead of col 2.

**CUFFS**  
Push 34(36) Ns to B pos. Using waste  
yarn cast on as for knit 1 purl 1 rib. RC  
000. TD at 3. Using col 1, knit 14 rows.  
Drop the 3rd and ev foll alt st and pick  
up as for ribbing. With wrong side  
facing, pick up lower edge of sleeve and  
place onto Ns gathering evenly. Knit 1  
row. Cast off.

**WELTS**  
Push 72(76) Ns to B pos. Using waste  
yarn cast on as for knit 1 purl 1 rib. RC  
000. TD at 3. Using col 1, knit 16 rows.  
Drop the 3rd and ev foll alt st and pick  
up as for ribbing. With wrong side  
facing, pick up lower edge and place  
onto Ns. Knit 1 row. Cast off.

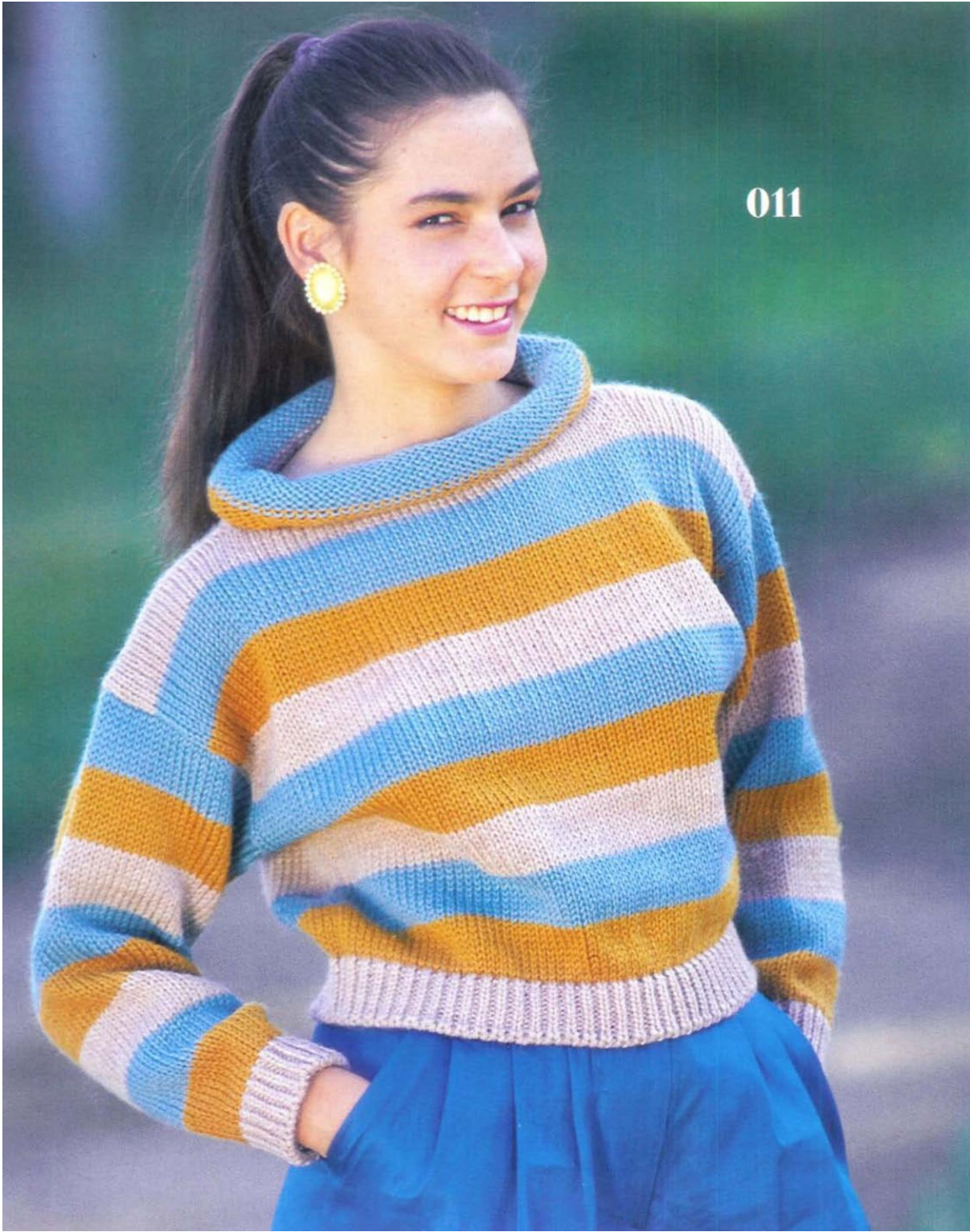
**TO MAKE UP**  
Pin out to size and steam carefully. Join  
side and sleeve seams. Give final light  
steam.





010





# 010

## LADY'S RED & GREY SWEATER

Sizes:  
To fit 81-91(96-101) cms/32-36(38-40) inch bust.

Materials:  
Chunky Yarn  
Col 1 (Charcoal Grey) - 250(300) grms  
Col 2 (Red) - 240(290) grms

Tension:  
16 sts and 22.5 rows to 10 cms. TD at approx. 3.

Pattern Note:  
Stockinet

**BACK & FRONT**  
Push 42(45) Ns at left and right of centre 0 to B pos. 84(90) Ns altog. Using waste yarn cast on as for knit 1 purl 1 rib. RC 000. TD at 2. Using col 1, knit 12 rows. Drop the 3rd and ev foll alt st and pick up as for ribbing. With wrong side facing, pick up lower edge of sleeve and place onto Ns gathering evenly. Knit 1 row. Cast off.

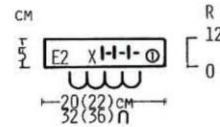
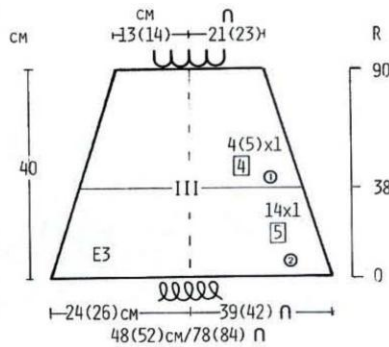
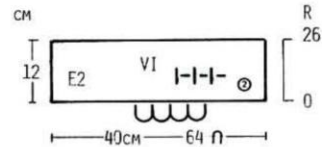
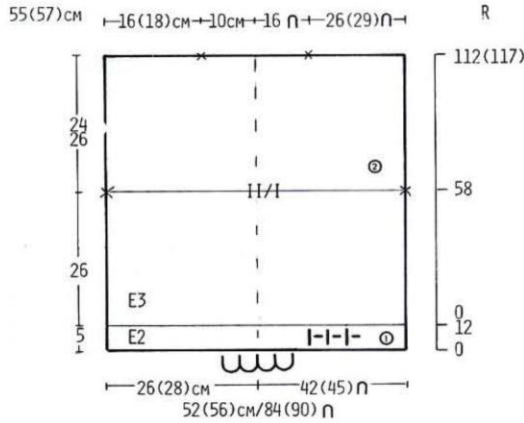
**SLEEVES**  
Push 39(42) Ns at left and right of centre 0 to D pos 78(84) Ns altog. Using col 2, cast on by hand. Push Ns from D pos to C pos. RC 000. TD at 3. Dec as shown on diagram, when RC shows 38, change to Col 1. 42(46) sts. Knit to Row 90. Cast off with waste yarn.

**CUFFS**  
Push 32(36) Ns to B pos. Using waste yarn cast on as for knit 1 purl 1 rib. RC

00. TD at 2. Using col 1, knit 12 rows. Drop the 3rd and ev foll alt st and pick up as for ribbing. With wrong side facing, pick up lower edge of sleeve and place onto Ns gathering evenly. Knit 1 row. Cast off.

**COLLAR**  
Join one shoulder seam. Push 64 Ns to B pos. Using waste yarn cast on as for knit 1 purl 1 rib. RC 000. TD at 2. Using col 2, knit 26 rows. Drop the 3rd and ev foll alt st and pick up as for ribbing. With wrong side facing, pick up sts around neckedge and place onto Ns. Knit 1 row. Cast off.

**TO MAKE UP**  
Pin out to size and steam carefully. Join rem shoulder and collar seam. Set in sleeves between marked points. Join side and sleeve seams. Fold collar to the outside. Embroider cross stitch as shown on picture.



# 011

## LADY'S STRIPED SWEATER

Sizes:  
To fit 81-91 (96-101)cms/32-36 (38-40) inch bust.

Materials:  
Chunky Yarn  
Col 1 (Beige) - 200(250) grms  
Col 2 (Light Blue) - 120(170) grms  
Col 3 (Yellow Ochre) - 120(170) grms

Tension:  
16 sts and 22 rows to 10 cms. TD at approx. 3.

Pattern Note:  
Stockinet Stripes  
Back, Front & Collar - Knit 10 rows col 3,

10 rows col 2 and 10 rows col 1.  
Sleeves - Knit 10 rows col 2, 10 rows col 3 and 10 rows col 1.

**BACK**  
Push 40(44) Ns at left and right of centre 0 to B pos. 80(88) Ns altog. Using waste yarn cast on as for knit 1 purl 1 rib. RC 000. TD at 2. Using col 1, knit 10 rows. Drop the 3rd and ev foll alt st and pick up as for ribbing. RC 000. TD at 3. Continue in stockinet stripes, knit to Row 34(38). mark both ends with waste yarn. Knit to Row 89(97). Mark the 21st st at both sides of centre 0 with waste yarn. Cast off.

**FRONT**  
Knit as for Back to Row 82(90).  
Shape Neck  
Shape as shown on diagram to Row 89(97). Cast off rem 19(23) sts. Knit left part as for right part.

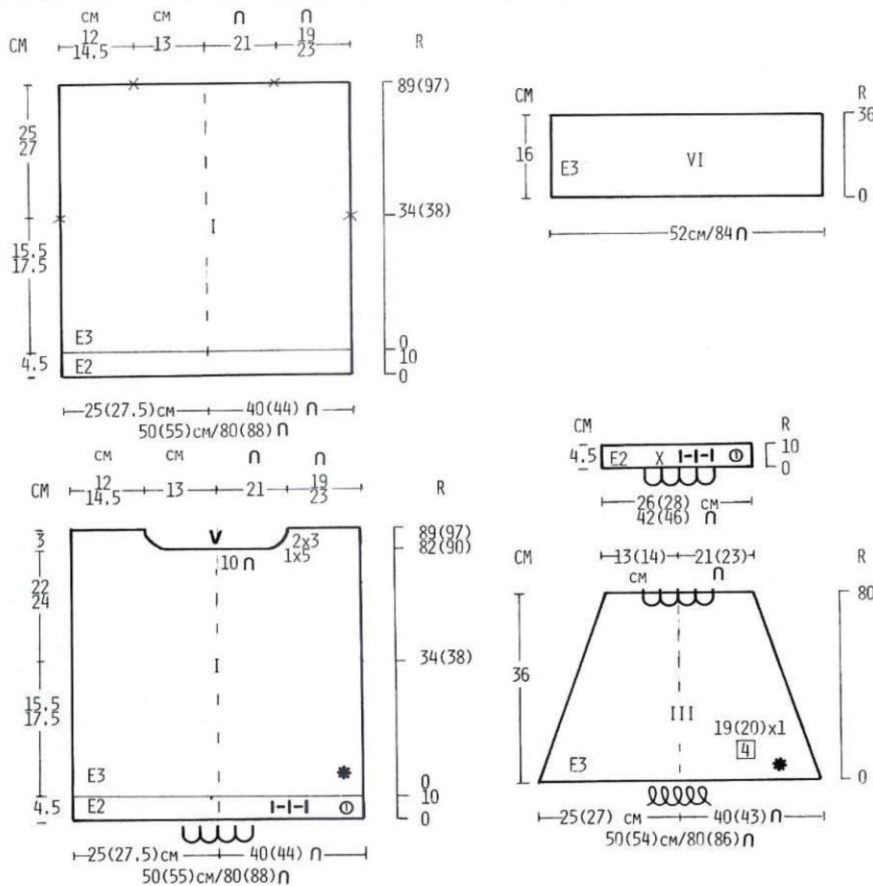
**SLEEVES**  
Push 40(43) Ns at left and right of centre 0 to D pos. 80(86) Ns altog. Using col 2,

cast on by hand. Push Ns from D pos to C pos. RC 000. TD at 3. Continue in stockinet stripes and dec as shown on diagram to Row 80. 42(46) sts. Cast off with waste yarn.

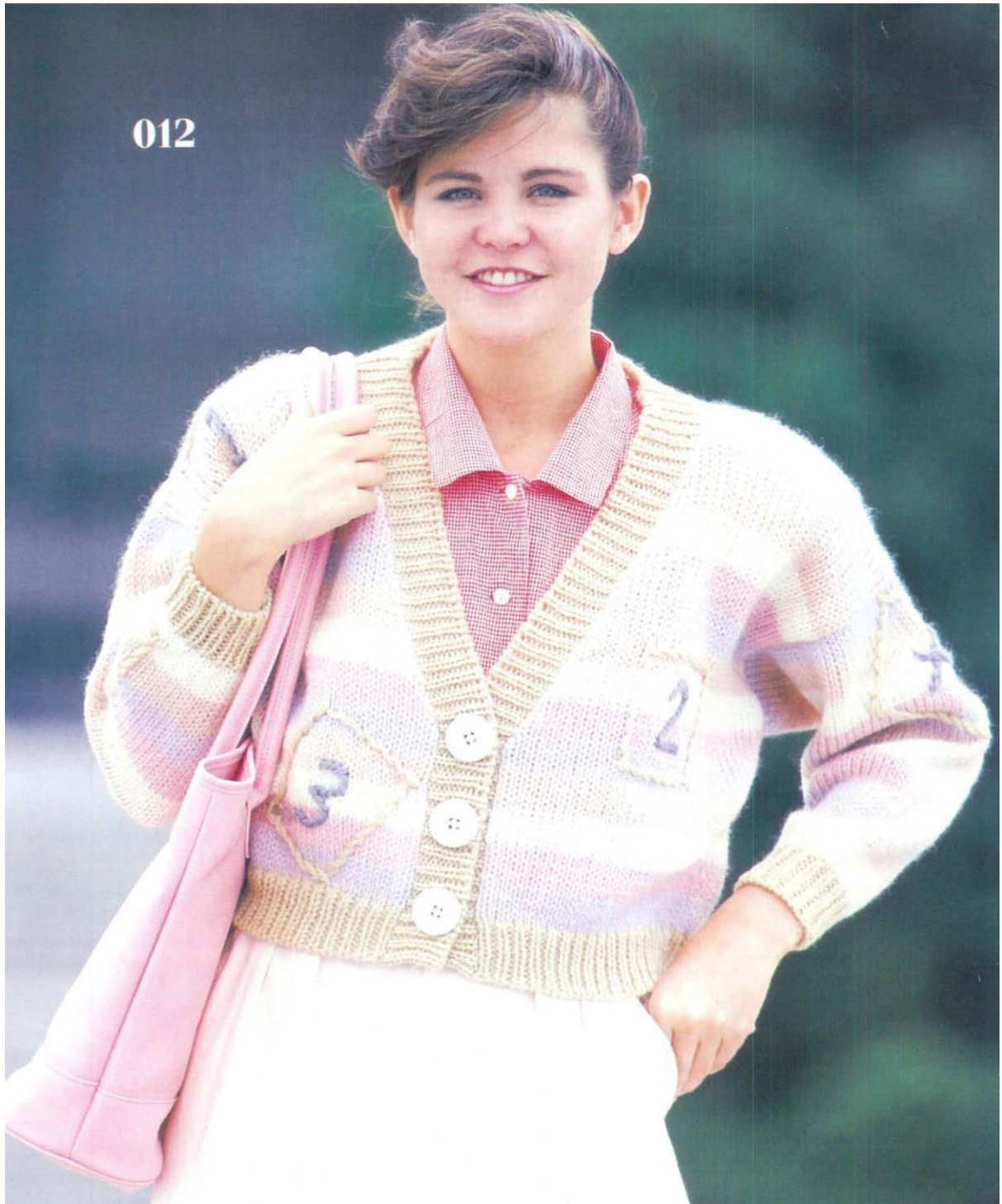
**CUFFS**  
Push 42(46) Ns to B pos. Using waste yarn cast on as for knit 1 purl 1 rib. RC 000. TD at 2. Using col 1, knit 10 rows. Drop the 3rd and ev foll alt st and pick up as for ribbing. With wrong side facing, pick up lower edge of sleeve and place onto Ns. Knit 1 row. Cast off.

**COLLAR**  
Join one shoulder seam. Push 84 Ns to B pos. With right side facing, pick up sts around neck edge and place onto Ns in B pos. RC 000. TD at 3. Continue in stockinet stripes to Row 36. Cast off.

**TO MAKE UP**  
Pin out to size and steam carefully. Join rem shoulder and collar seam. Set in sleeves between marked points. Join side and sleeve seams. Fold collar in half to the inside and catch down.



012



013



# 012

## STRIPED CARDIGAN

Sizes:  
To fit 81-91cms/32-36 inch bust.

### Materials:

Chunky Yarn  
Col 1 (Beige) - 120 grms  
Col 2 (Light Blue) - 100 grms  
Col 3 (Salmon Pink) - 80 grms  
Col 4 (Pink) - 80 grms  
Col 5 (White) - 80 grms  
Col 6 (Grey) - 10 grms  
3 buttons

### Tension:

16 sts and 20 rows to 10 cms. TD at approx. 4.

### Pattern Note:

Stockinet Stripes  
Back & Front - Knit 6 rows col 2, 6 rows col 4, 6 rows col 5 and 6 rows col 3.  
Sleeves - Knit 6 rows col 2, 6 rows col 3, 6 rows col 5, 6 rows col 4.

### BACK

Push 43 Ns at left and right of centre 0 to B pos. 86 Ns altog. Using waste yarn cast on as for knit 1 purl 1 rib. RC 000.

TD at 3. Using col 1, knit 10 rows. Drop the 3rd and ev foll st and pick up as for ribbing. RC 000. TD at 4. Continue in stockinet stripes, knit to Row 36. Mark both ends with waste yarn. Knit to Row 86. Mark the 16th st each side of centre 0 with waste yarn. Cast off.

### RIGHT FRONT

Push 40 Ns to B pos. Using waste yarn cast on as for knit 1 purl 1 rib. RC 000. TD at 3. Using col 1, knit 10 rows. Drop the 3rd and ev foll alt st and pick up as for ribbing. RC 000. TD at 4. Continue in stockinet stripes, knit to Row 26. Shape Front Edge  
Shape as shown on diagram, AT THE SAME TIME when RC shows 36 mark right edge with waste yarn. Knit to Row 86. Cast off rem 27 sts.

### LEFT FRONT

Knit as for Right Front but in reverse.

### SLEEVES

Push 41 Ns at left and right of centre 0 to D pos. 82 Ns altog. Using col 2, cast on by hand. Push Ns from D pos to C pos. RC 000. TD at 4. Continue in stockinet stripes and dec as shown on diagram. 40 sts. Knit to Row 66. Cast off with waste yarn.

### CUFFS

Push 32 Ns to B pos. Using waste yarn cast on as for knit 1 purl 1 rib. RC 000. TD at 3. Using col 1, knit 10 rows. Drop the 3rd and ev foll alt st and pick up as for ribbing. With wrong side facing, pick

up lower edge of sleeve and place onto Ns gathering evenly. Knit 1 row. Cast off.

### BACK NECKBAND

Push 34 Ns to B pos. Using waste yarn cast on as for knit 1 purl 1 rib. RC 000. TD at 3. Using col 1, knit 10 rows. Drop the 3rd and ev foll alt st and pick up as for ribbing. With wrong side facing, pick up neck edge and place onto Ns. Knit 1 row. Cast off.

### BUTTONHOLE BAND

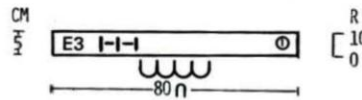
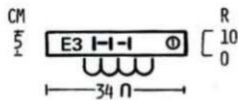
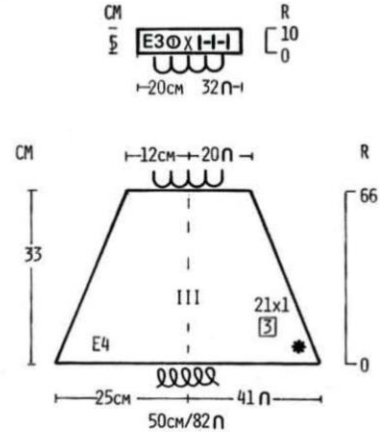
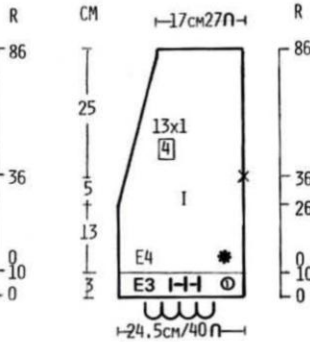
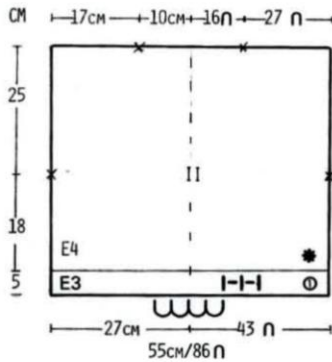
Push 80 Ns to B pos. Using waste yarn cast on as for knit 1 purl 1 rib. RC 000. TD at 3. Using col 1, knit 5 rows. Drop the 3rd and ev foll alt st and pick up as for ribbing. Counting from the left edge make a buttonhole over Ns 9 and 10, 19 and 20 and 29 and 30. With wrong side facing, pick up right front edge and place onto Ns. Knit 1 row. Cast off.

### BUTTONBAND

Knit as for buttonhole band omitting buttonholes. With wrong side facing, pick up left front edge and place onto Ns. Knit 1 row. Cast off.

### TO MAKE UP

Pin out to size and steam carefully. Join shoulder and band seams. Set in sleeves between marked points. Join side and sleeve seams. Finish buttonholes and sew on buttons to correspond. Embroider numbers as shown on picture.



# 013

## STRIPED & EMBROIDERED SWEATER

Sizes:  
To fit 81-86 (91-96) cms/32-34  
(36-38) inch bust.

### Materials:

Chunky Mohair Yarn

Col 1 (White) - 250(300) grms  
Col 2 (Blue) - 80(130) grms  
Col 3 (Grey) - 60(110) grms

### Tensions:

13.5 sts and 18 rows to 10 cms. TD at approx. 5.

### Pattern Note:

Stockinet Stripes - Knit 9 rows col 2, 9 rows col 3 and 9 rows col 1.

### BACK

Push 24 Ns at right of centre 0 to D pos. Using col 3, cast on by hand. Push Ns to C pos. RC 000. TD at 5, knit 5(9) rows. Knit 4(0) rows col 1. Push Ns to D pos. Push 34 Ns at left of centre 0 to B pos. Using waste yarn cast on ending with

carr at left. Push Ns from D pos to C pos. RC 009. Using col 1, knit 5(9) rows. Continue in stockinet stripes, knit to Row 27(31). Mark left edge with waste yarn. Knit to Row 64(68). Mark left edge with waste yarn. Knit to Row 82(90). Push 34 Ns at left to D pos. Knit to Row 91(99). Cast off. Push Ns at left to C pos. Cast off with waste yarn.

### FRONT

Knit as for Back to Row 27(31) but in reverse.

### Shape Neck

Dec as shown on diagram. Knit to Row 54(58). Inc as shown on diagram. Knit to Row 82(90). Push 34 Ns at right to D pos. Knit to Row 91(99). Cast off. Push Ns at right to C pos. Cast off with waste yarn.

### COLLAR

Join right shoulder seams. Push 74 Ns to B pos. Using waste yarn cast on as for knit 1 purl 1 rib. RC 000. TD at 4. Using col 1, knit 26 rows. Drop the 3rd and ev foll alt st and pick up as for ribbing. With wrong side facing, pick up sts around neckedge and place onto Ns. Knit 1 row. Cast off.

### SLEEVES

Join left shoulder and collar seam. Push

34 Ns at left and right of centre 0 to B pos. 68 Ns altog. With wrong side facing, pick up armhole edge and place onto Ns. RC 000. TD at 5. Using col 1, knit 10 rows. Dec as shown on diagram. 42 sts. Knit to Row 76. Cast off with waste yarn.

### CUFFS

Push 24(26) Ns to B pos. Using waste yarn cast on as for knit 1 purl 1 rib. RC 000. TD at 4. Using col 1, knit 8 rows. Drop the 3rd and ev foll alt st and pick up as for ribbing. With wrong side facing, pick up sts from lower edge of sleeve and place onto Ns gathering evenly. Knit 1 row. Cast off.

### WELTS

Push 60(62) Ns to B pos. Using waste yarn cast on as for knit 1 purl 1 rib. RC 000. TD at 4. Using col 1, knit 14 rows. Drop the 3rd and ev foll alt st and pick up as for ribbing. With wrong side facing, pick up sts from lower edge and place onto Ns. Knit 1 row. Cast off.

### TO MAKE UP

Pin out to size and steam carefully. Join top of sleeve seam to armhole edges. Join side and sleeve seams. Embroider with running st as shown.

