

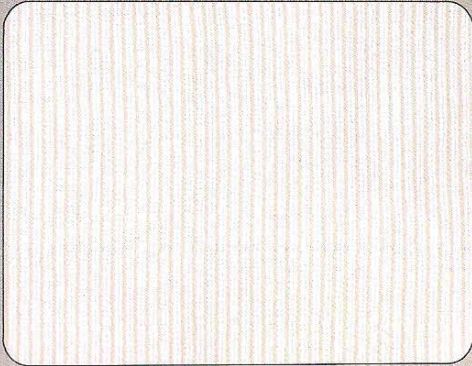
# KNITTING PATTERN



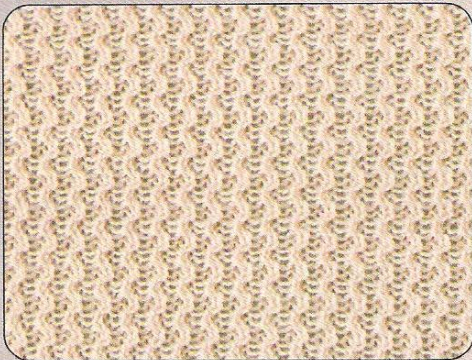
# ひとつの模様を个性的に演出

ALTERATION OF PATTERN

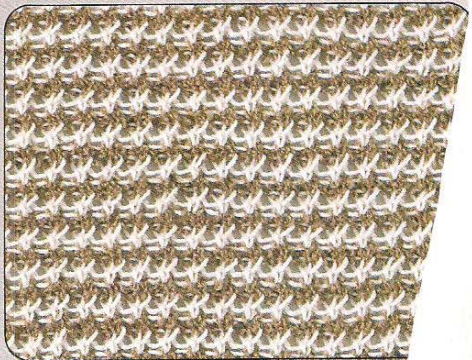
作品の模様 PATTERN USED FOR  
A SAMPLE GARMENT



編地の変化 EFFECTIVE USE  
OF STITCH



素材の変化 EFFECTIVE USE  
OF MATERIALS





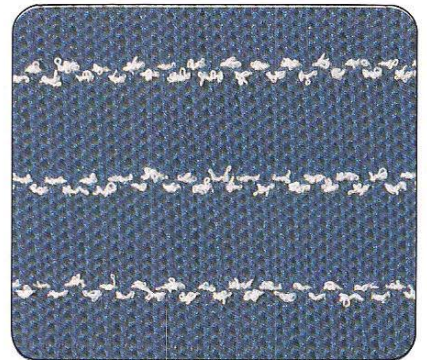
作品の模様 PATTERN USED FOR A SAMPLE GARMENT



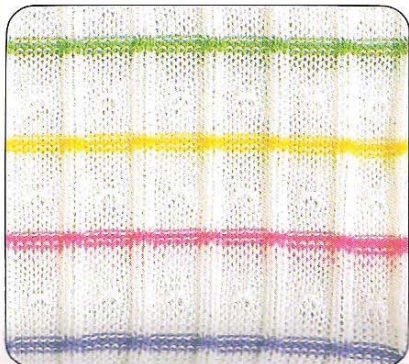
配色の変化 EFFECTIVE USE OF COLOURS



素材の変化 EFFECTIVE USE OF MATERIALS



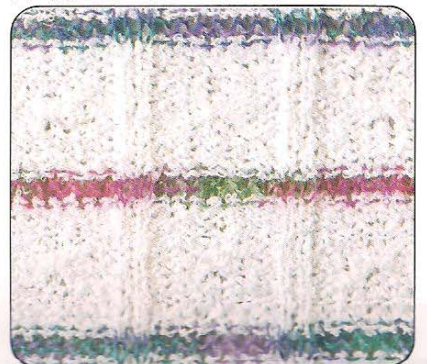
作品の模様 PATTERN USED FOR A SAMPLE GARMENT



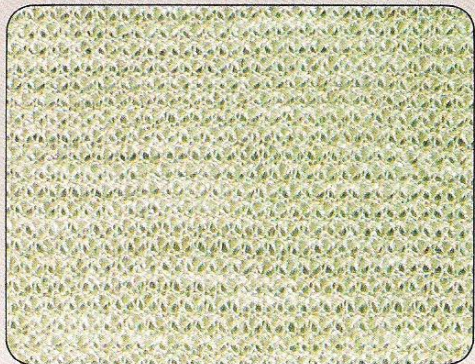
配色の変化 EFFECTIVE USE OF COLOURS



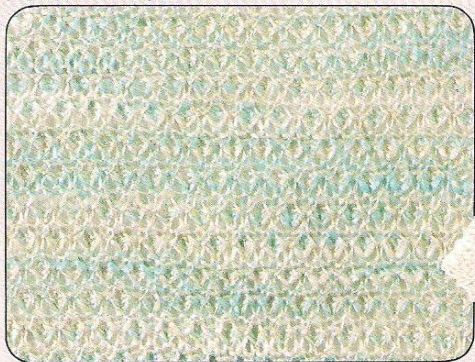
素材の変化 EFFECTIVE USE OF MATERIALS



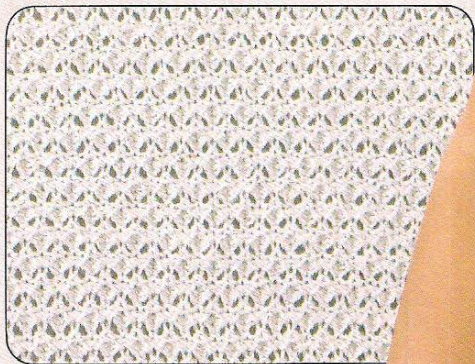
作品の模様 PATTERN USED FOR  
A SAMPLE GARMENT



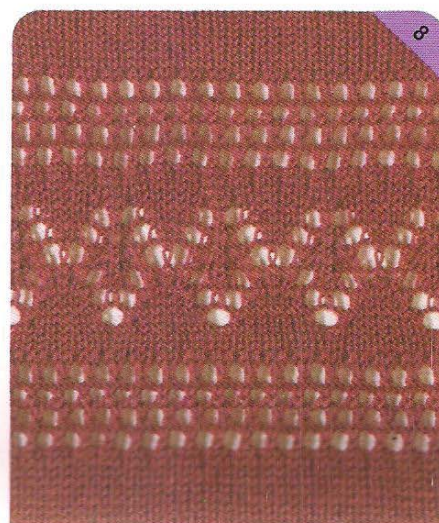
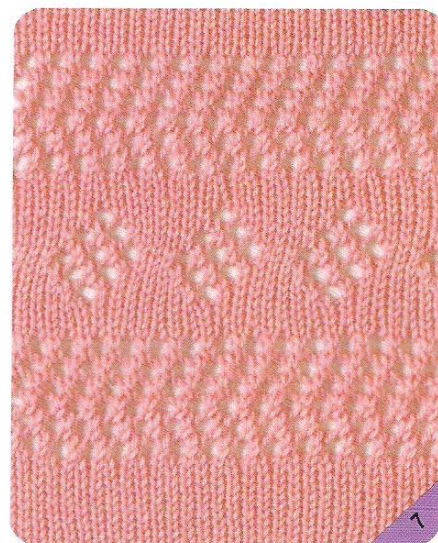
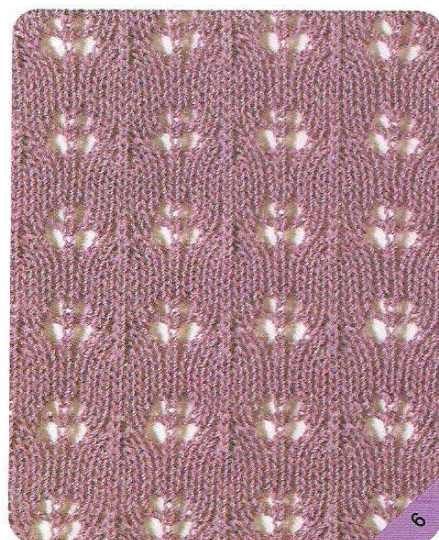
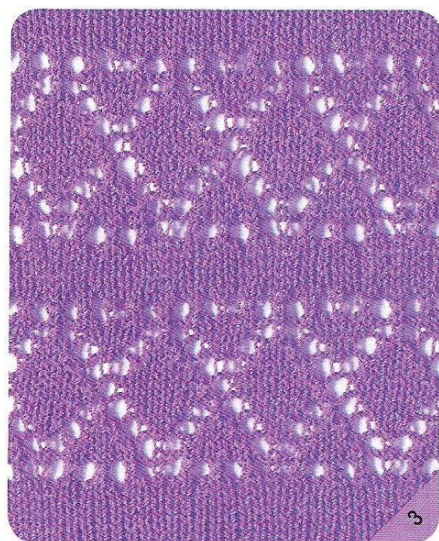
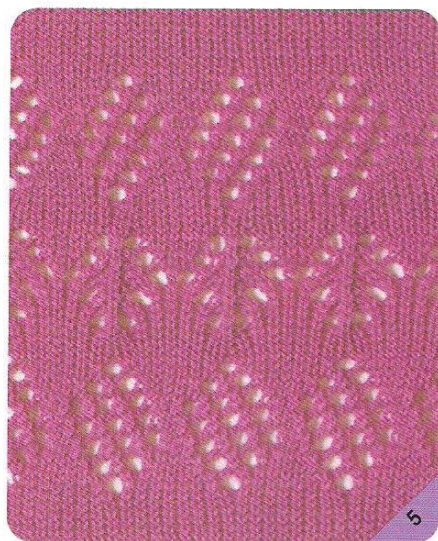
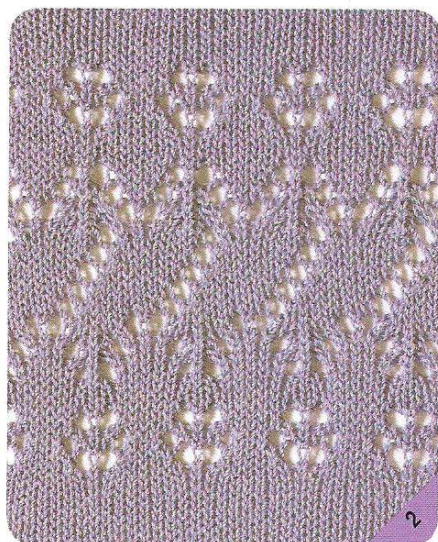
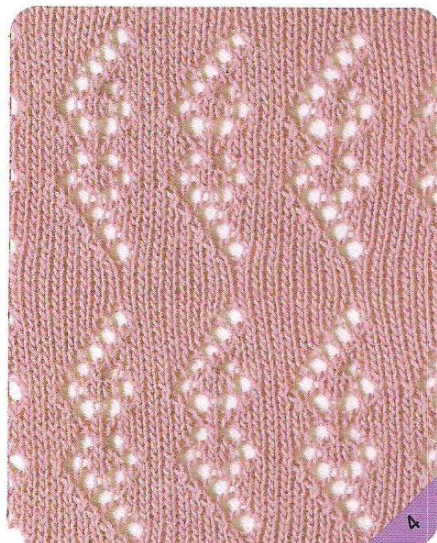
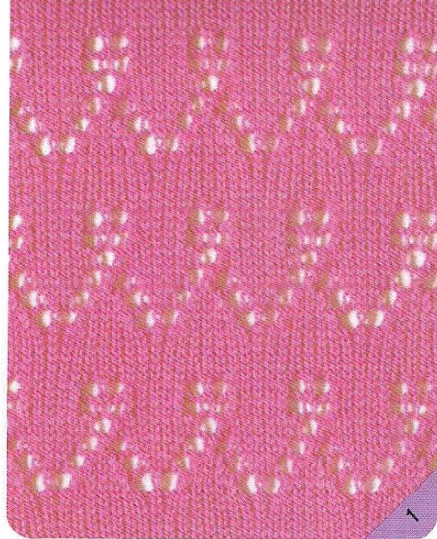
配色の変化 EFFECTIVE USE  
OF COLOURS



素材の変化 EFFECTIVE USE  
OF MATERIALS



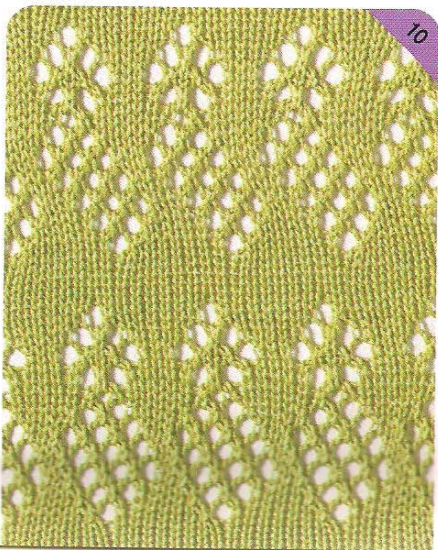
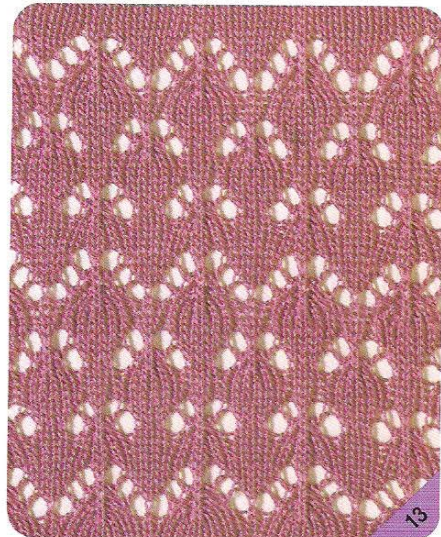
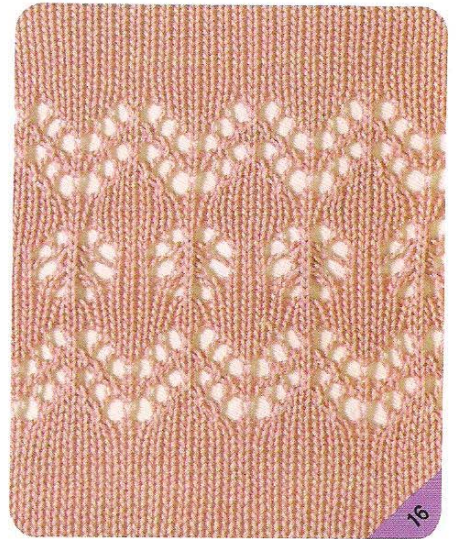
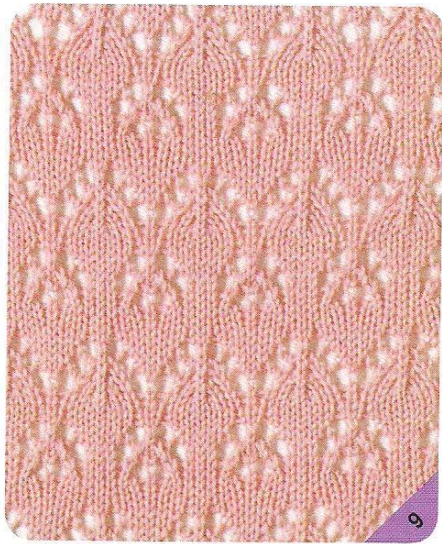
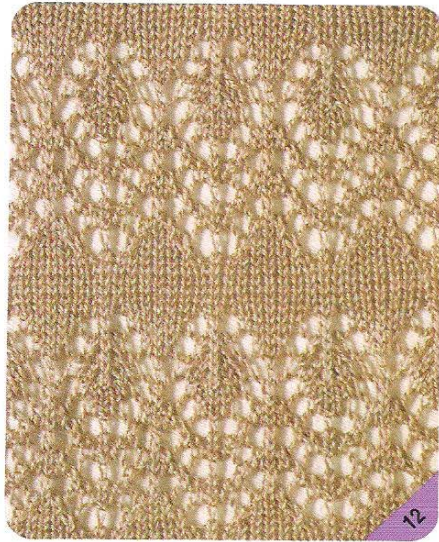
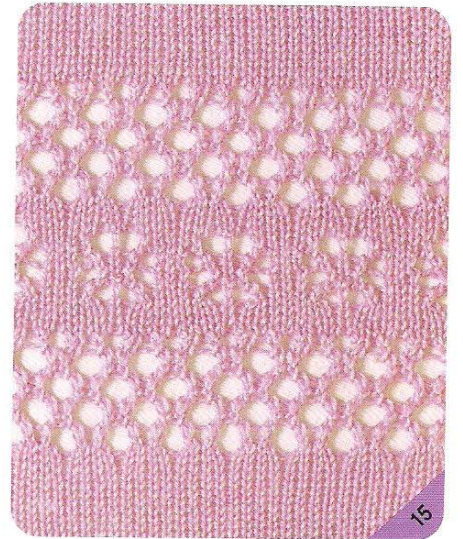
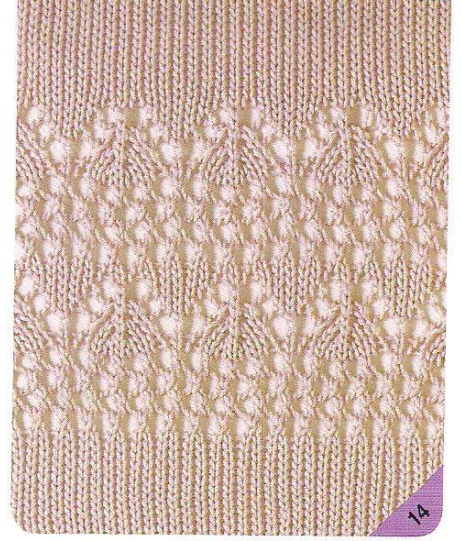
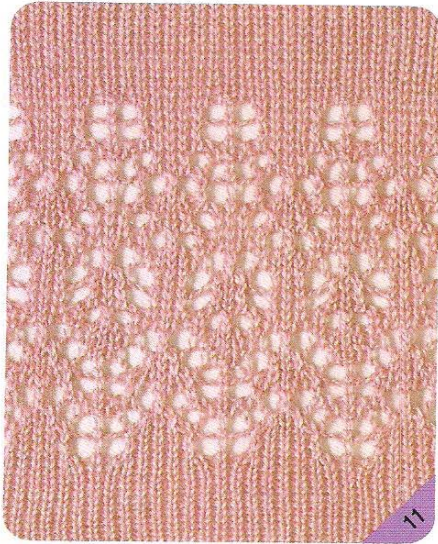
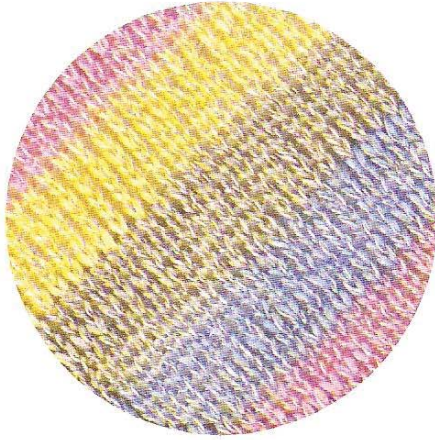
# レース模様



# Lace Patterns

配色例

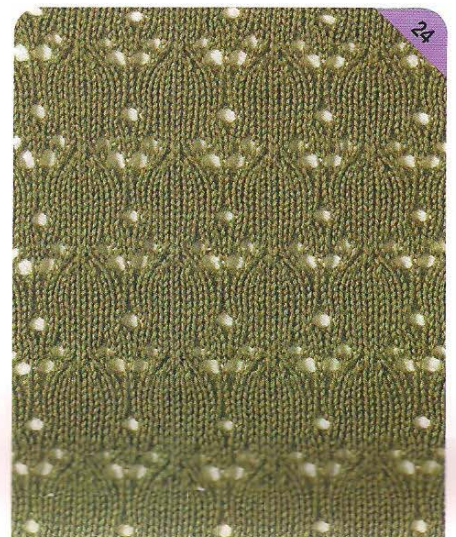
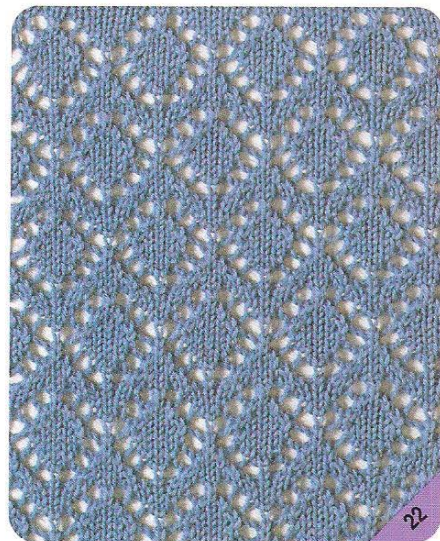
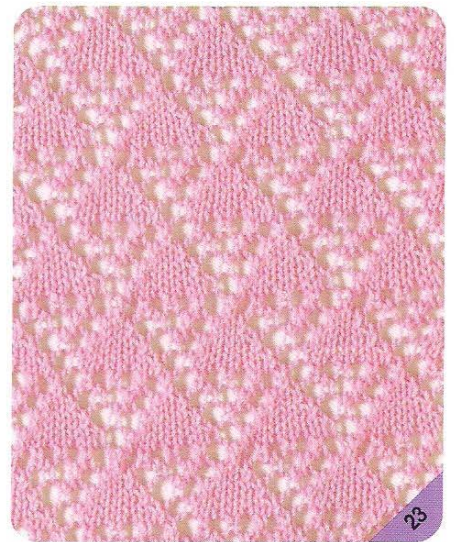
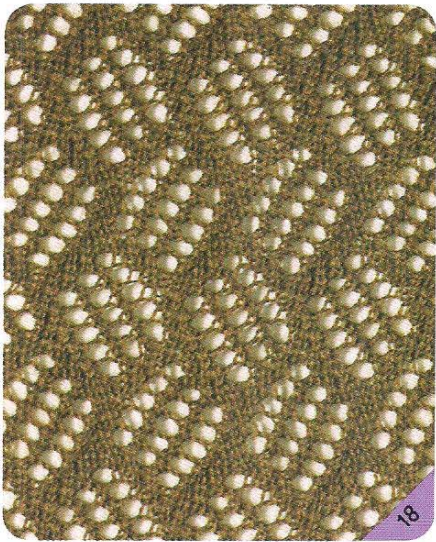
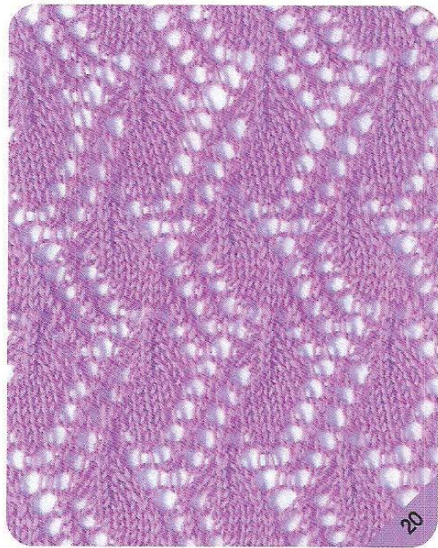
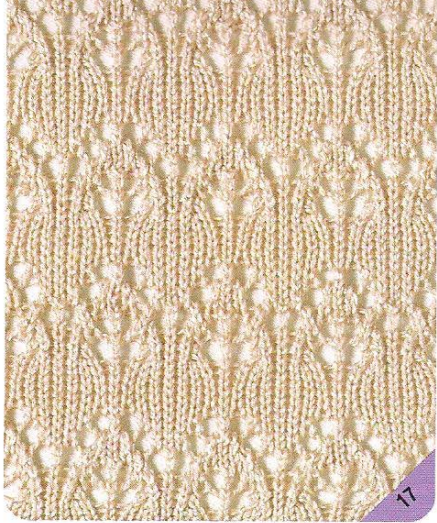
EXAMPLE OF COLOUR COMBINATION

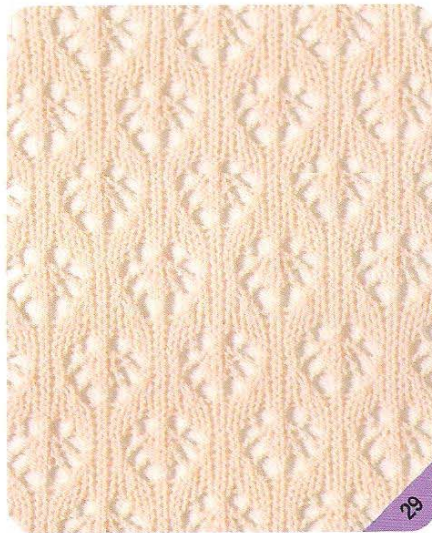
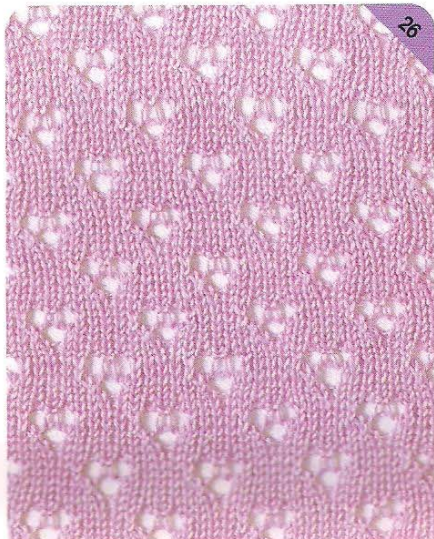
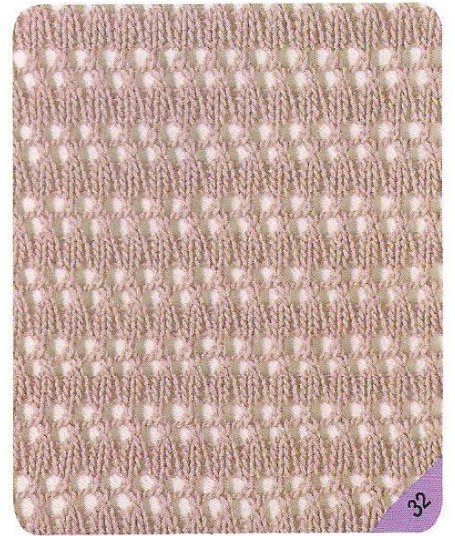
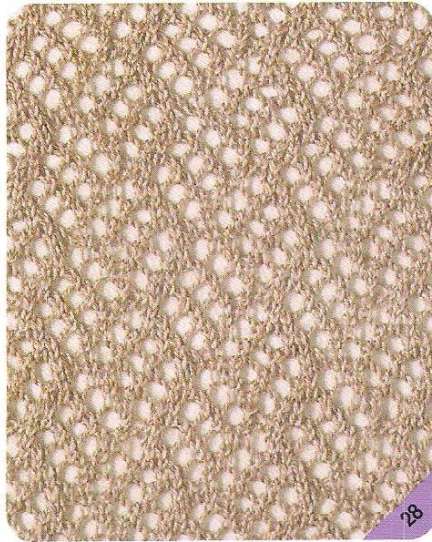
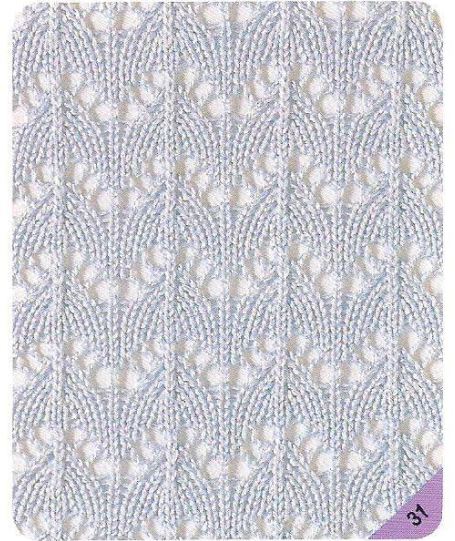
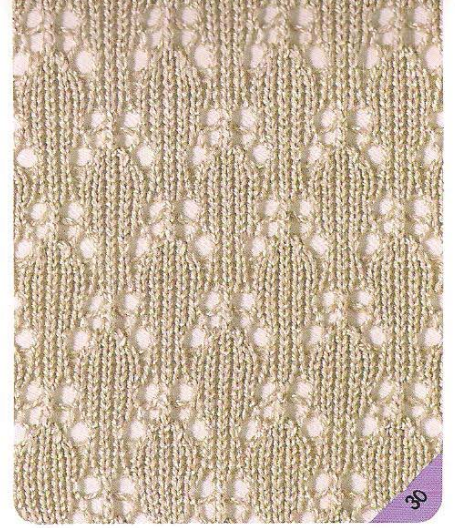
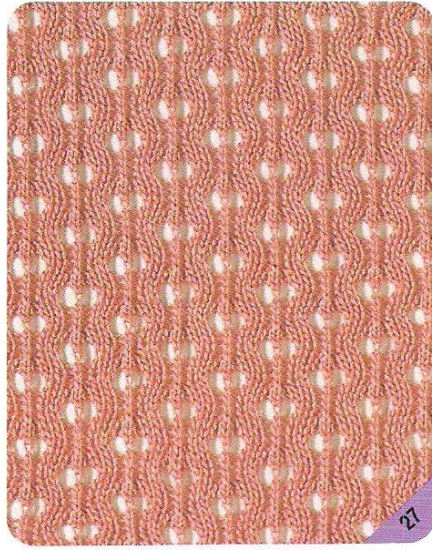
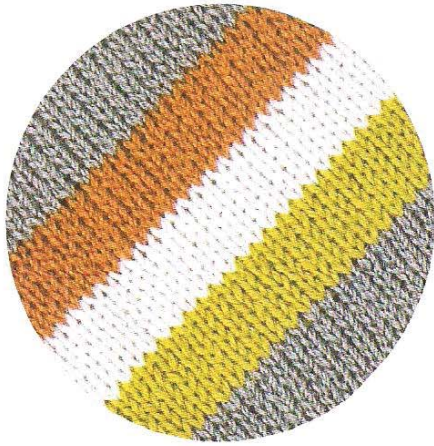


















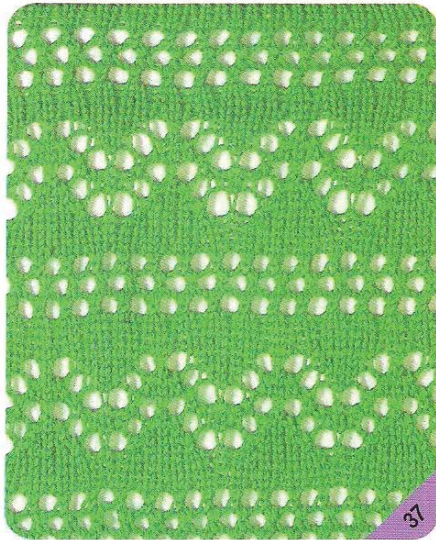
33



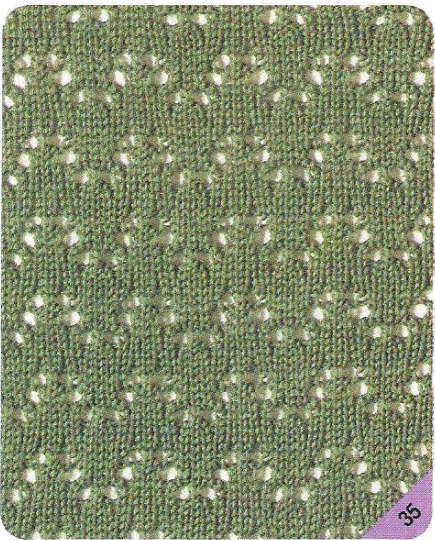
36



34



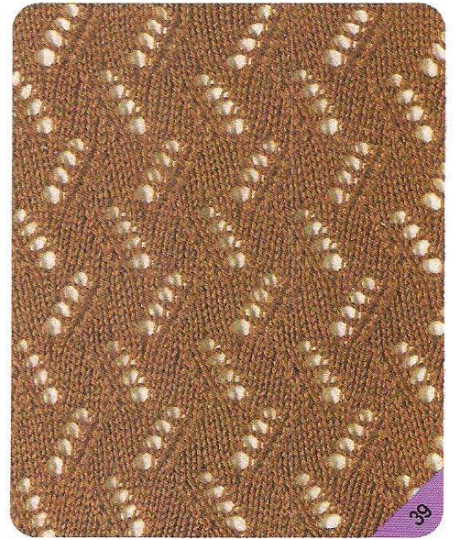
37



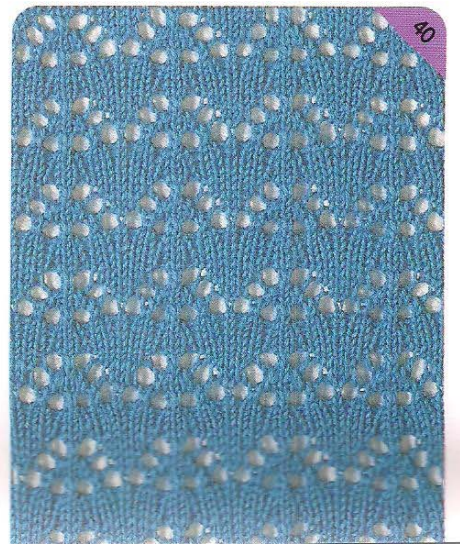
35



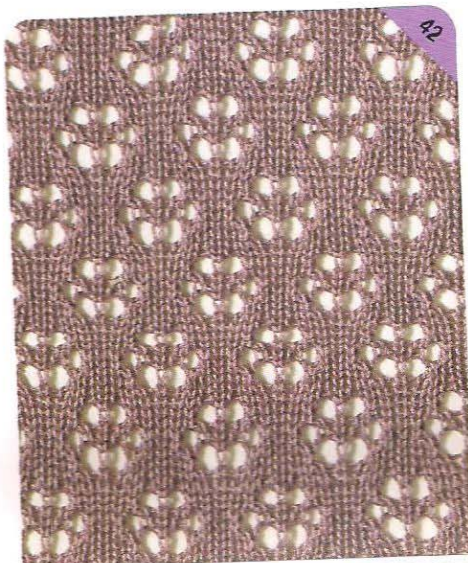
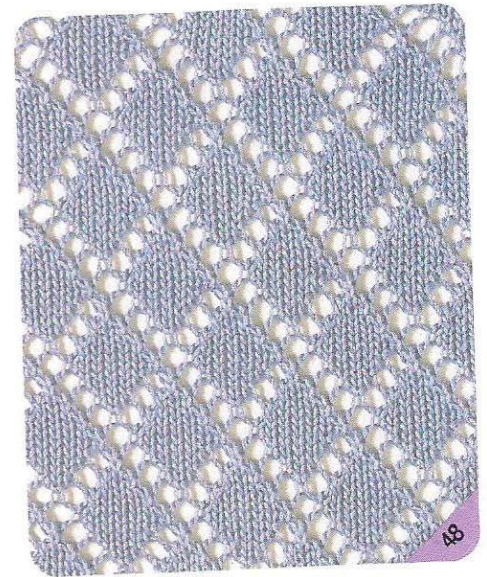
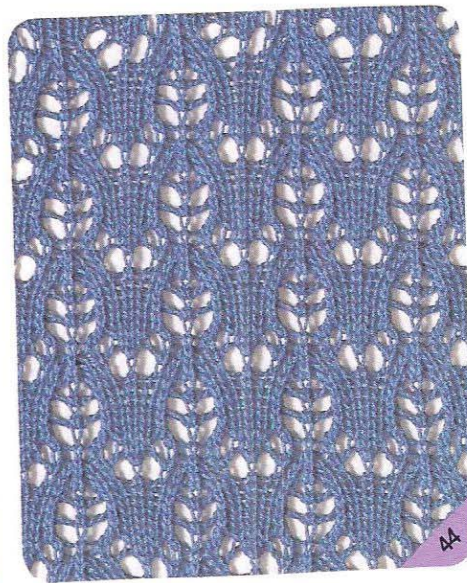
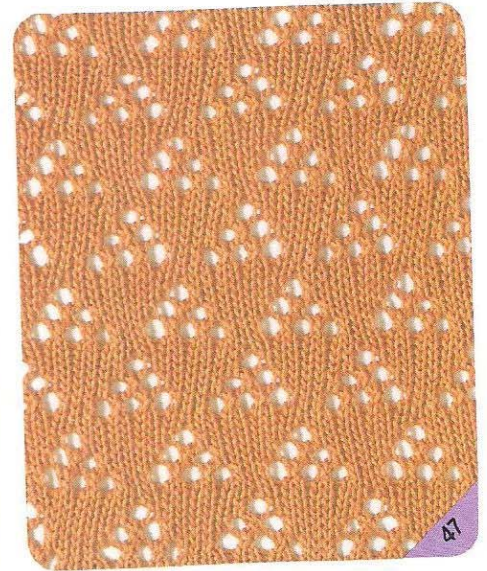
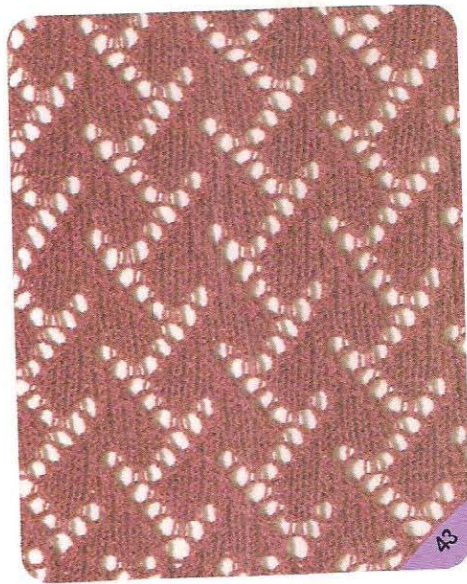
38



39



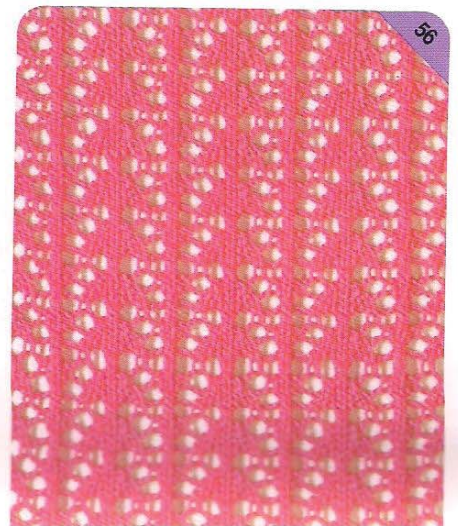
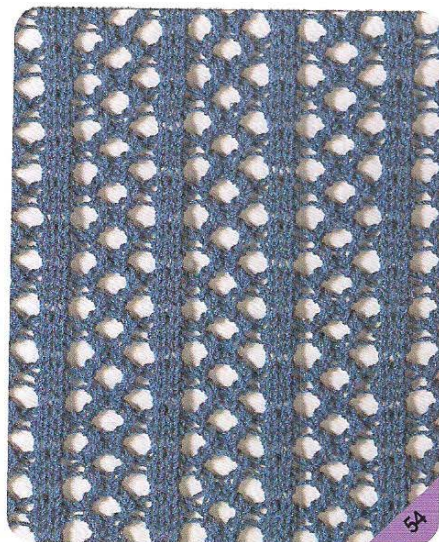
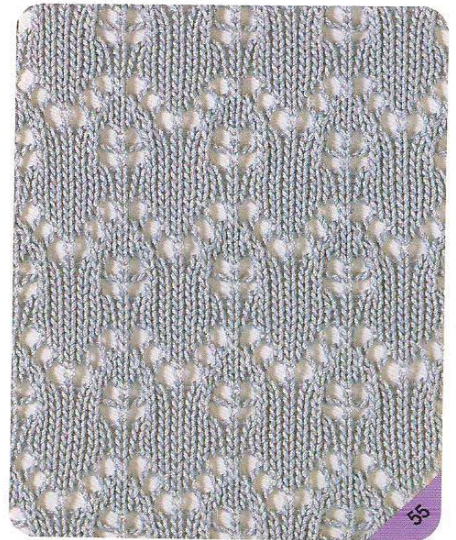
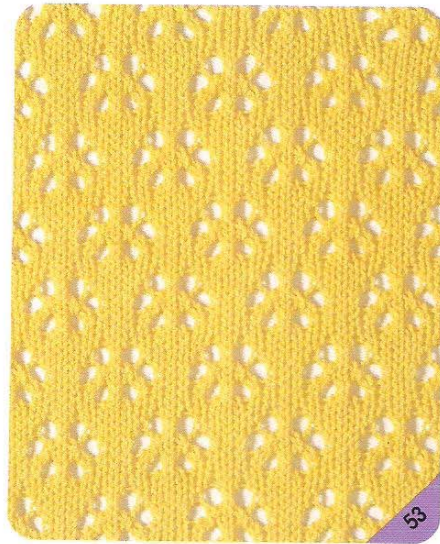
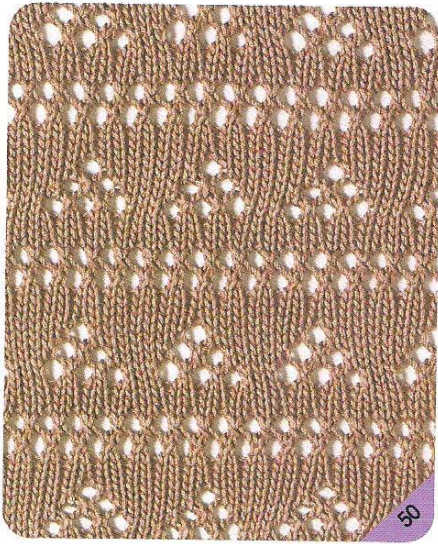
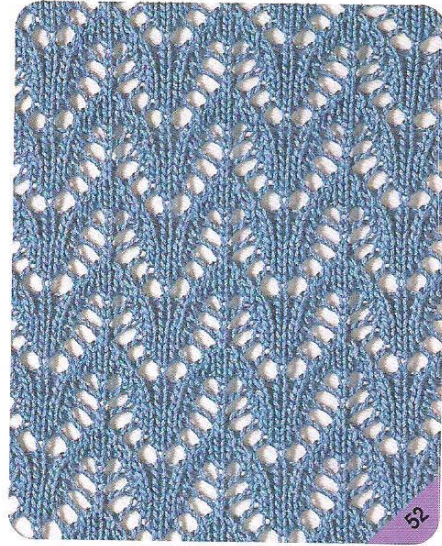
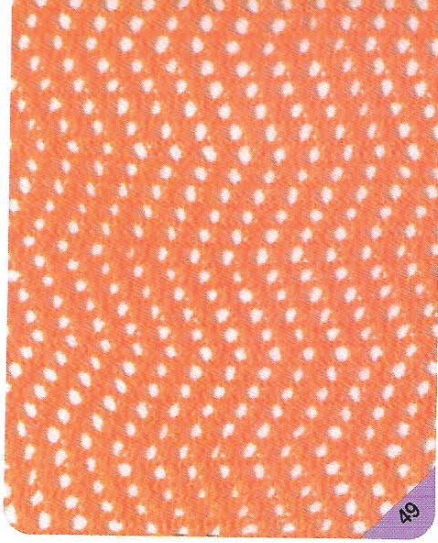
40

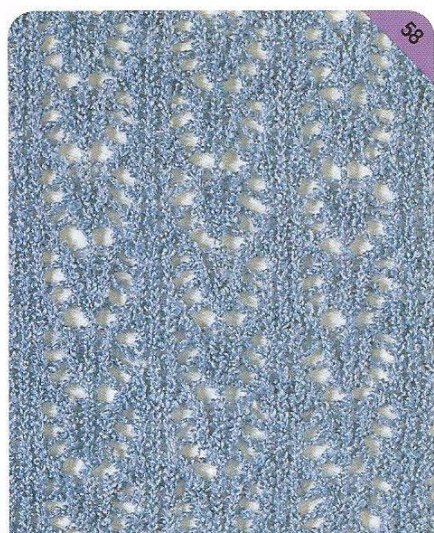
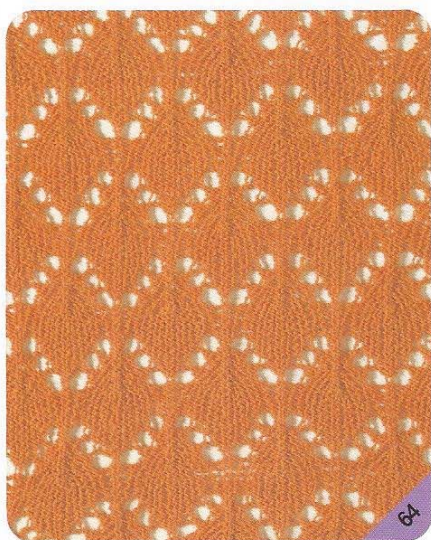
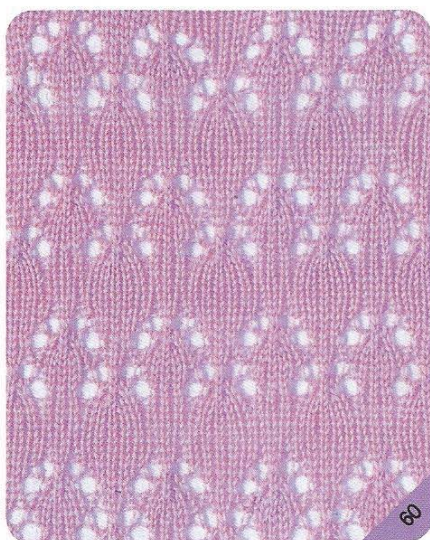
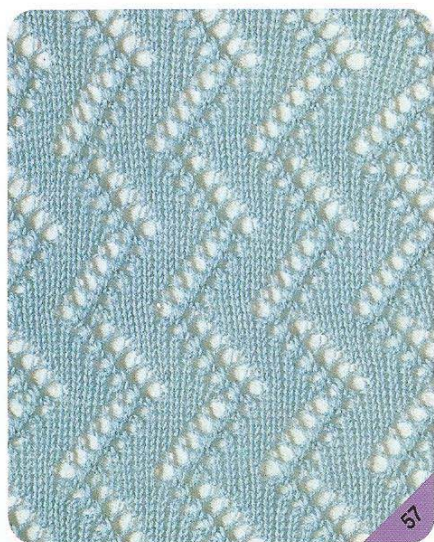








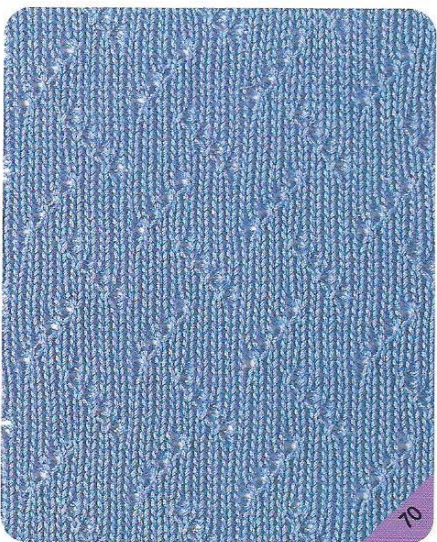
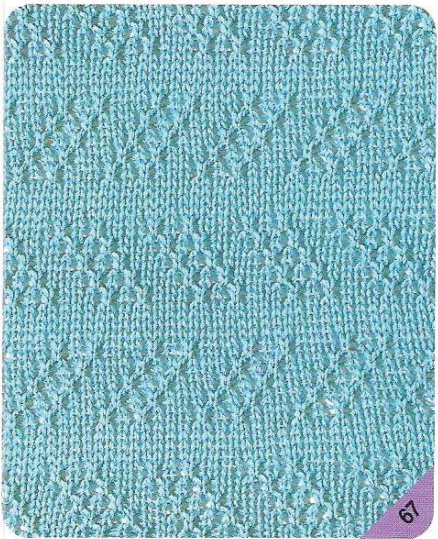
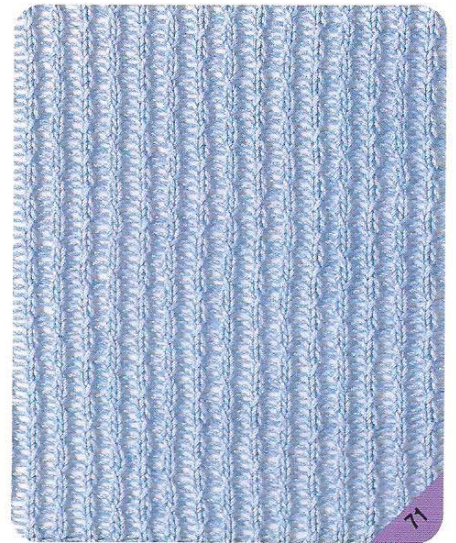
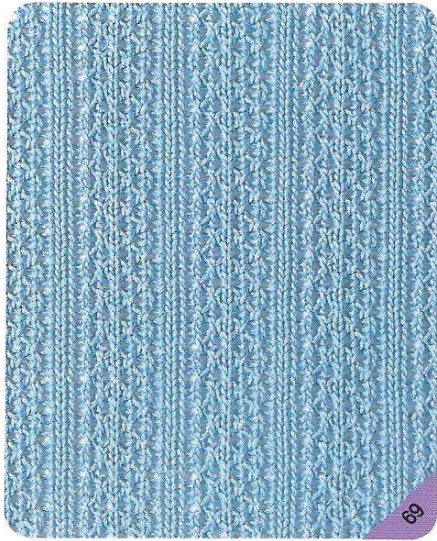
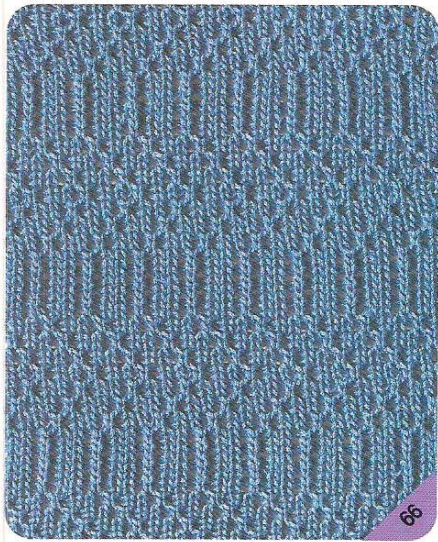
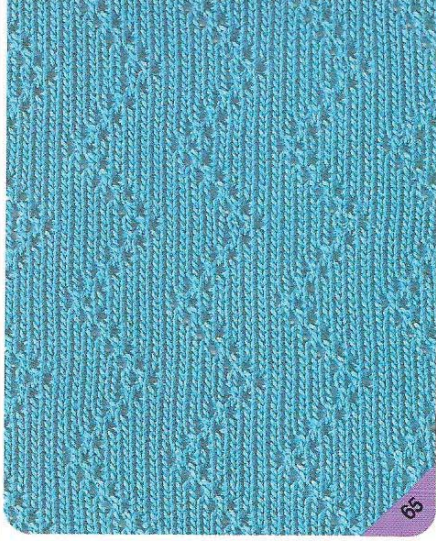


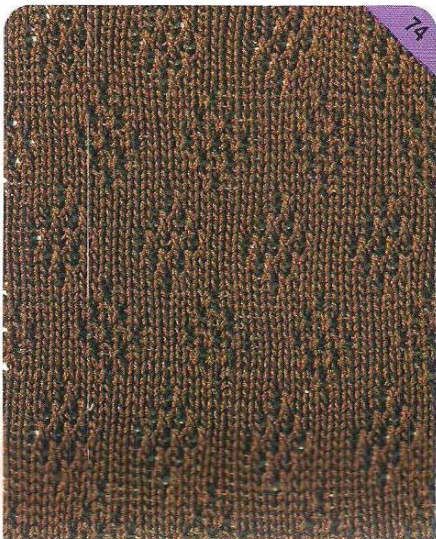
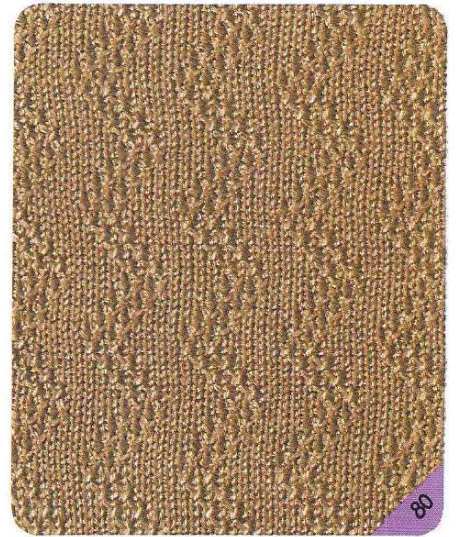
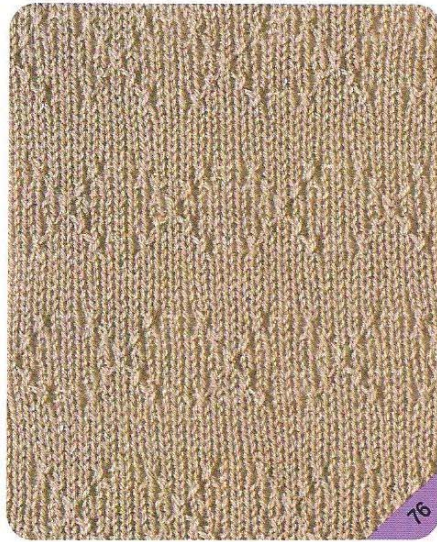
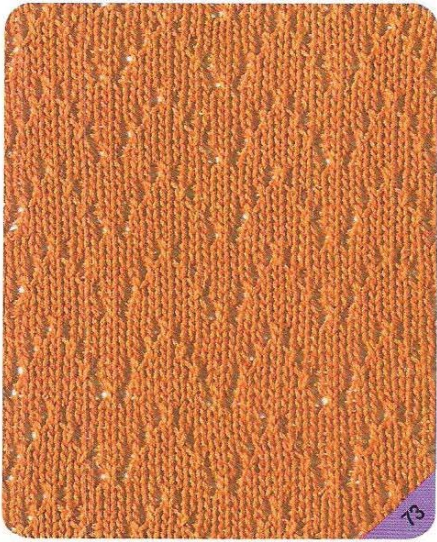
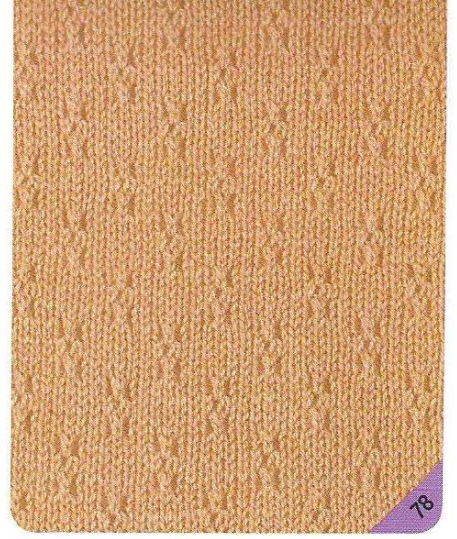
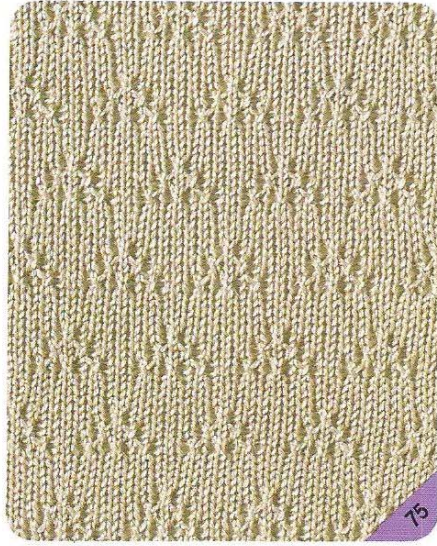




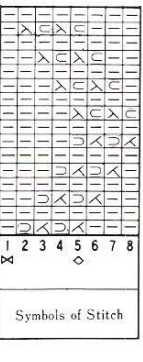
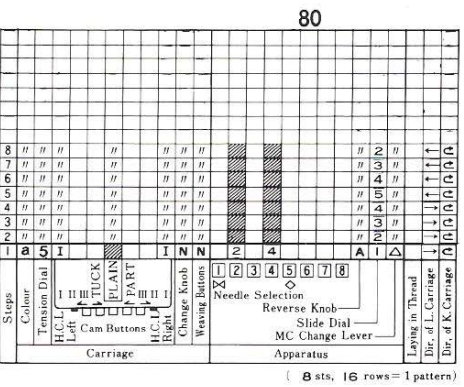
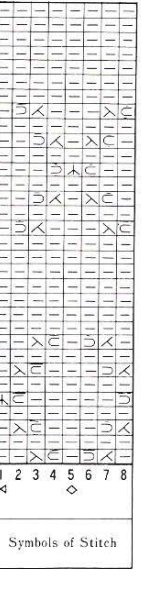
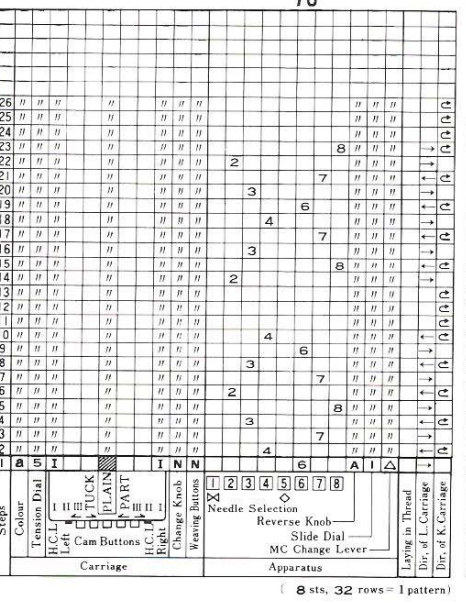
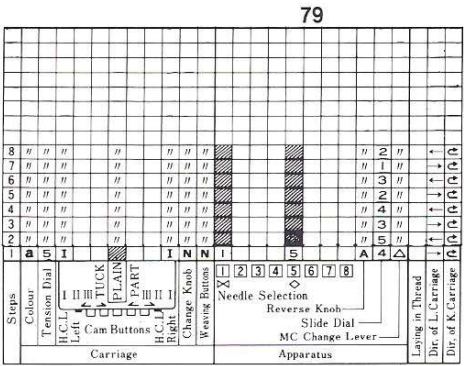
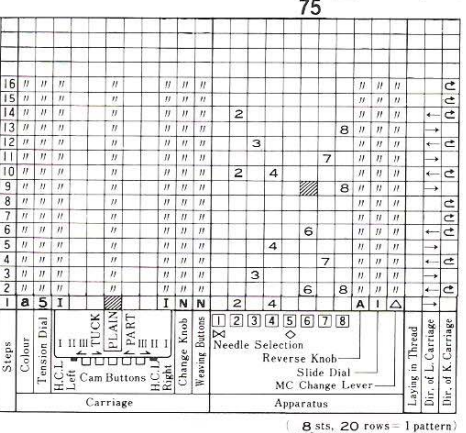
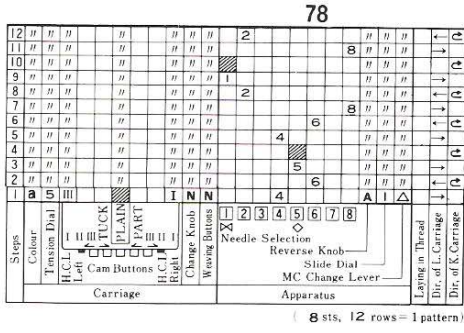
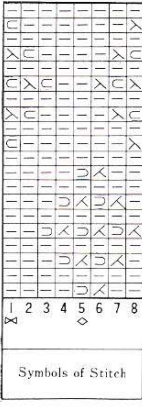
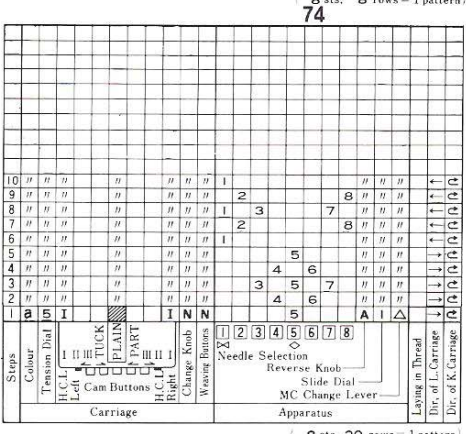
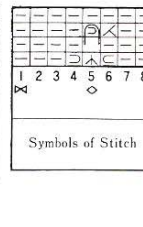
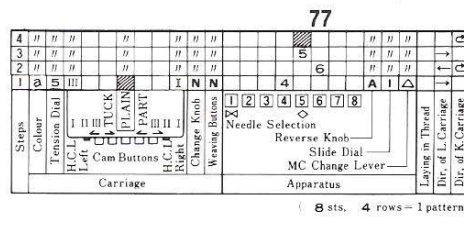
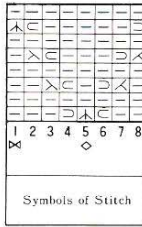
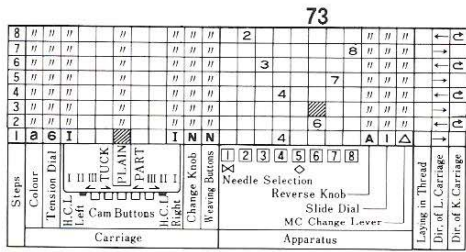


# タックレース模様



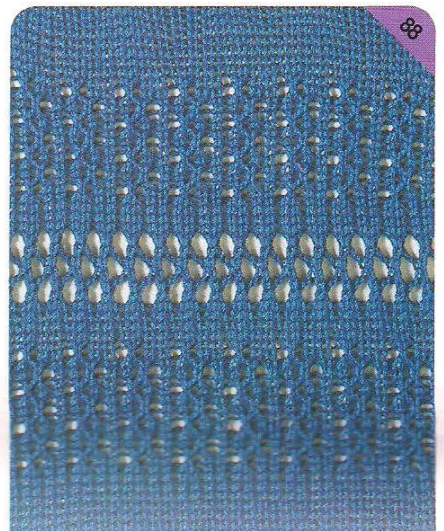
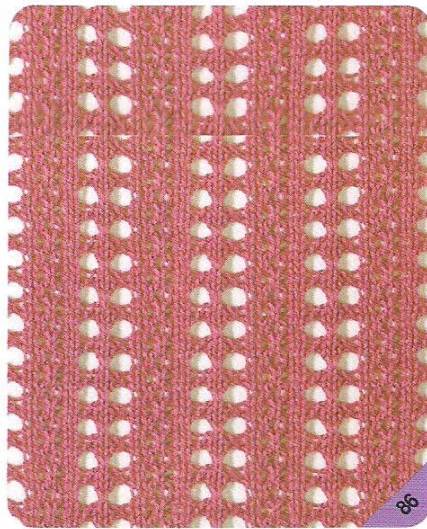
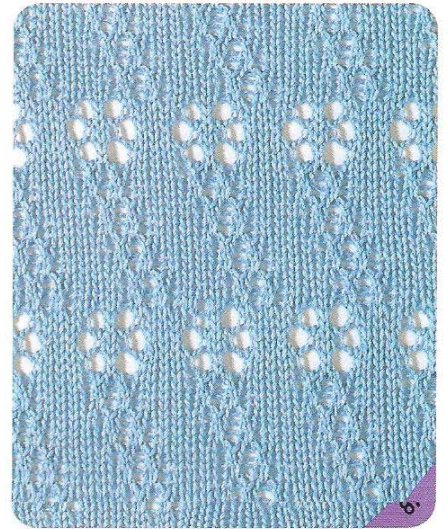
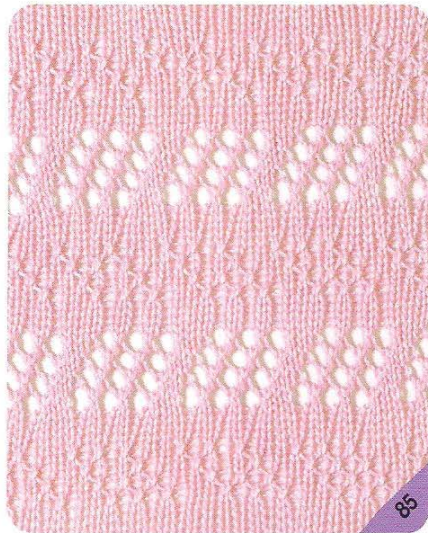
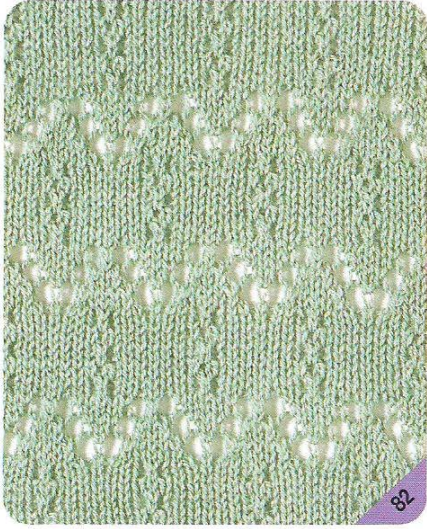
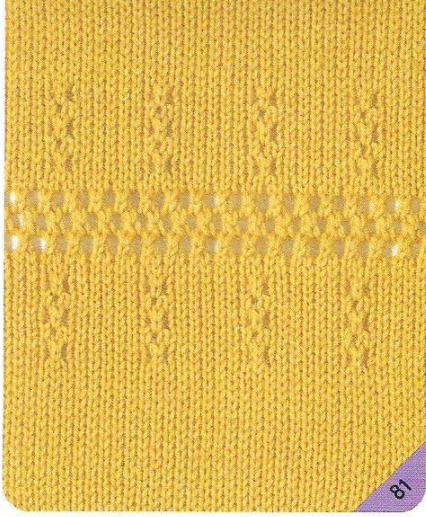




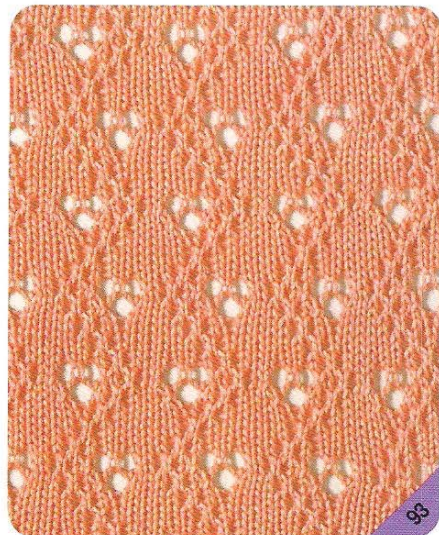
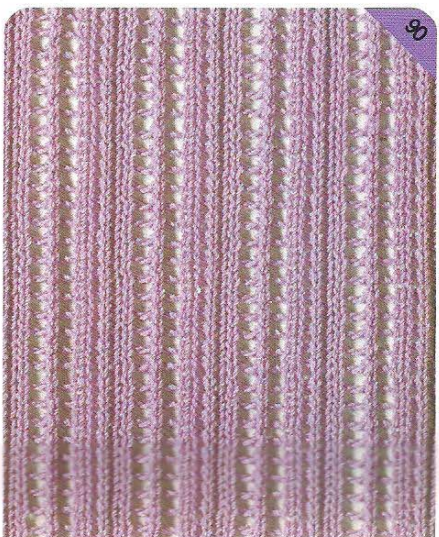
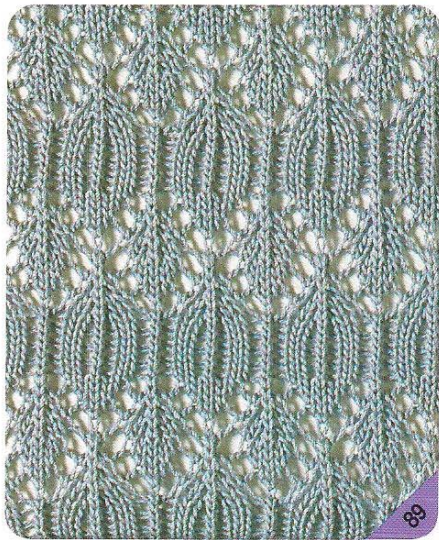
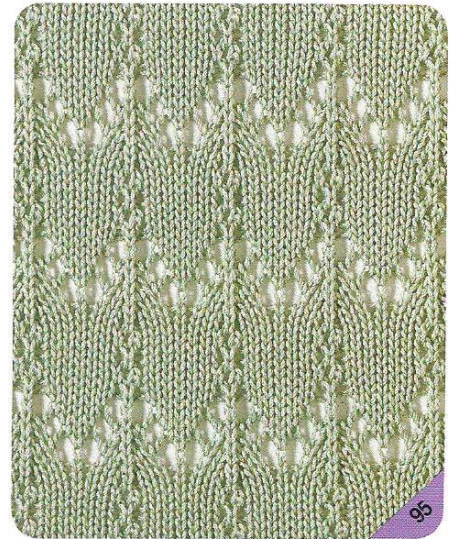
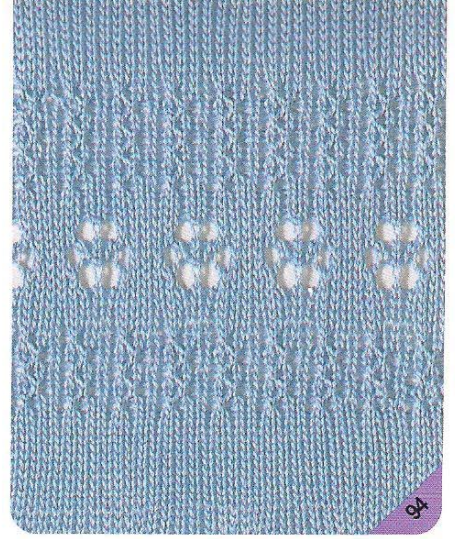
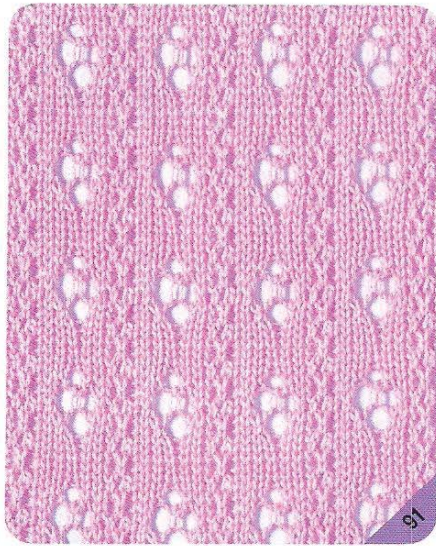
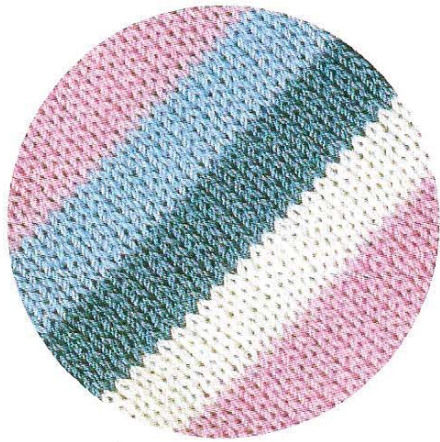




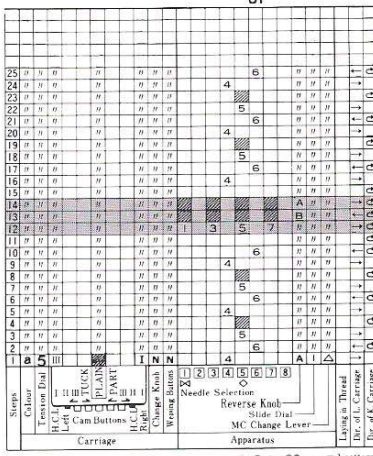
# レース&タックレース模様



*Lace & Fine-Lace Patterns (mixed)*



81

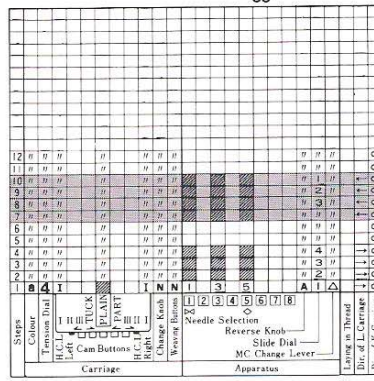


8 sts. 30 rows = 1 pattern



Symbols of Stitch

85

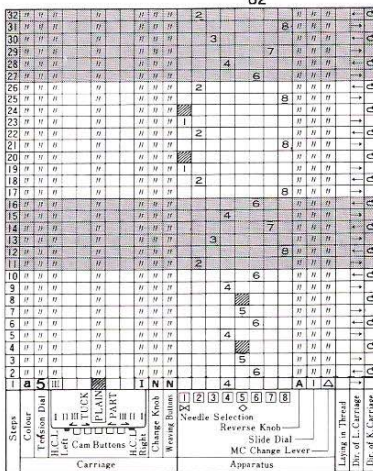


8 sts. 24 rows = 1 pattern



Symbols of Stitch

82

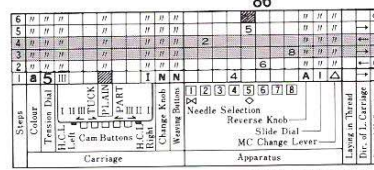


8 sts. 32 rows = 1 pattern

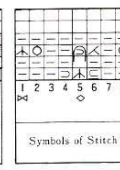


Symbols of Stitch

86

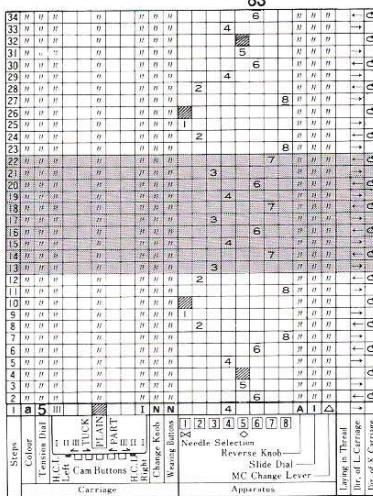


8 sts. 4 rows = 1 pattern

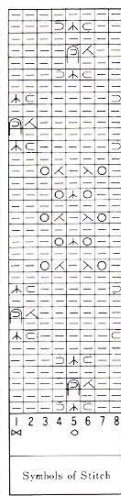


Symbols of Stitch

83

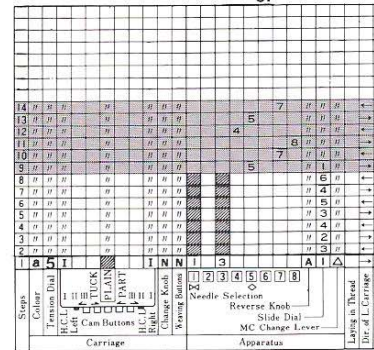


8 sts. 34 rows = 1 pattern



Symbols of Stitch

87

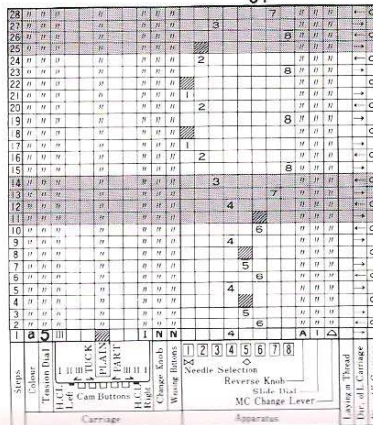


8 sts. 22 rows = 1 pattern



Symbols of Stitch

84

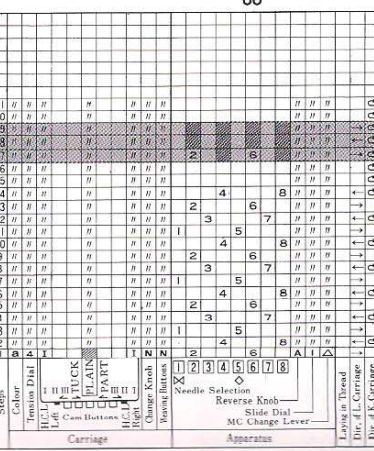


8 sts. 28 rows = 1 pattern



Symbols of Stitch

88



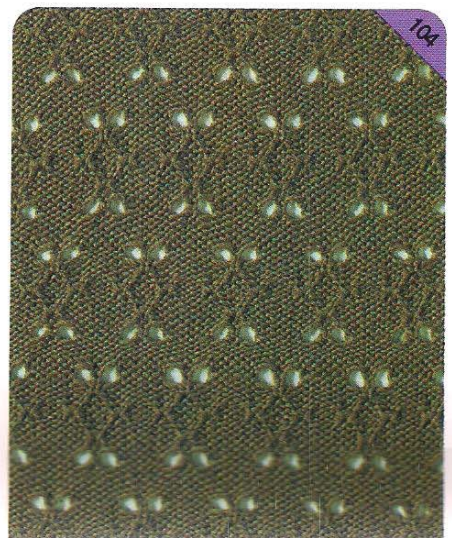
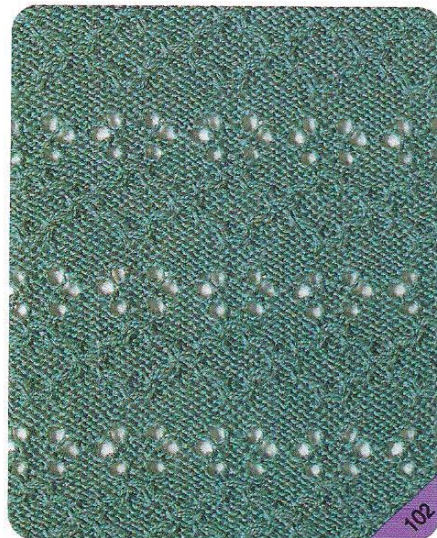
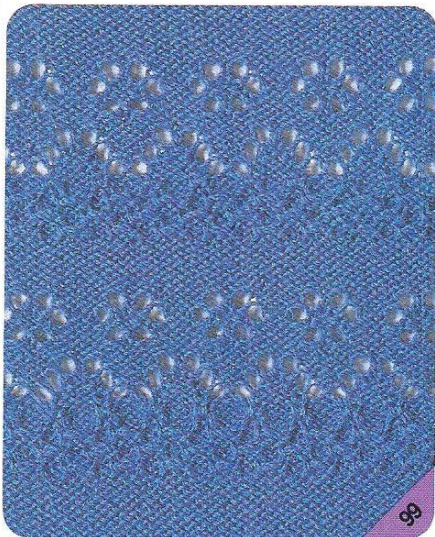
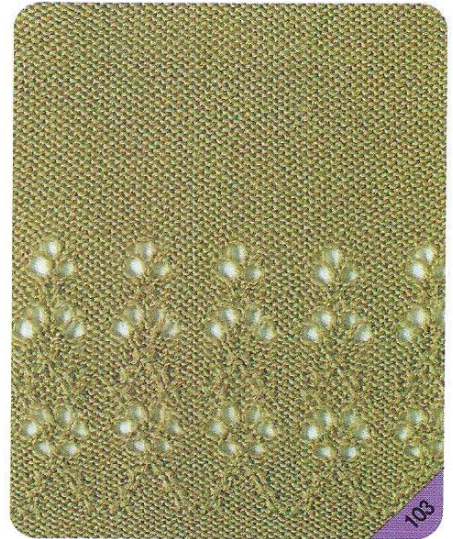
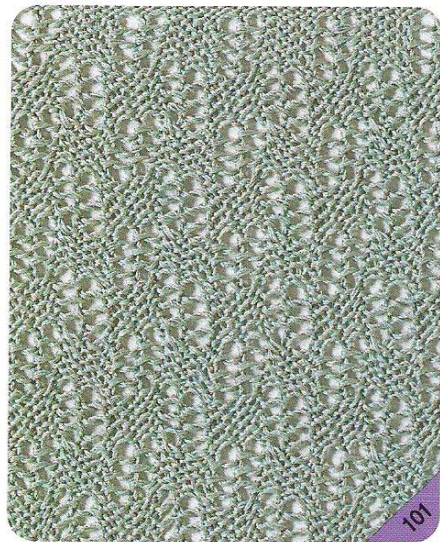
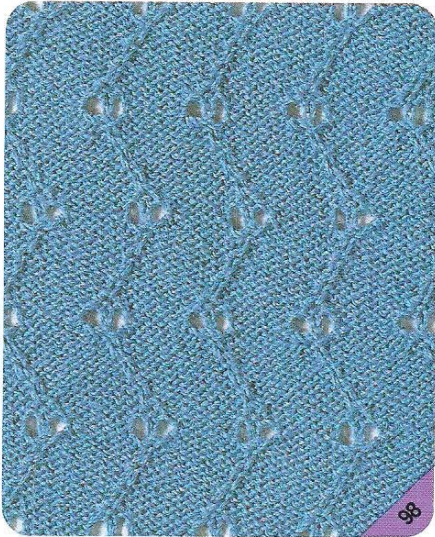
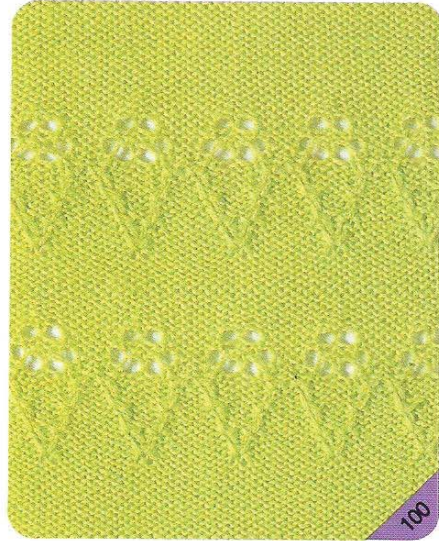
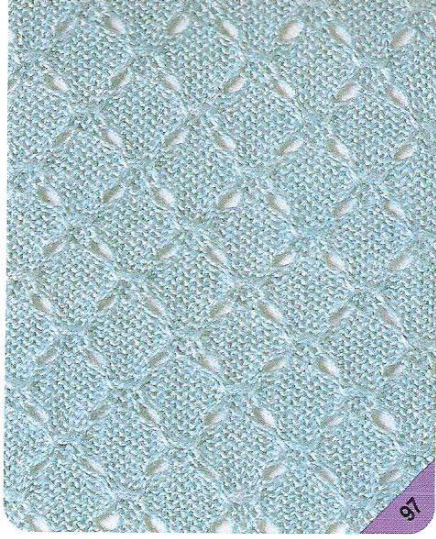
4 sts. 28 rows = 1 pattern



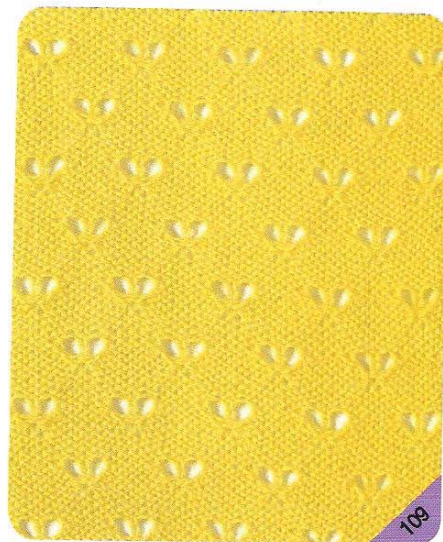
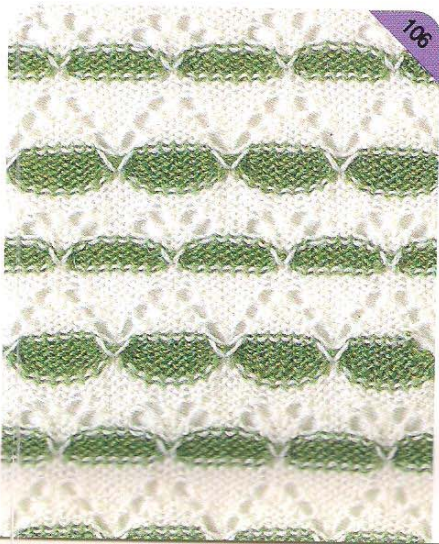
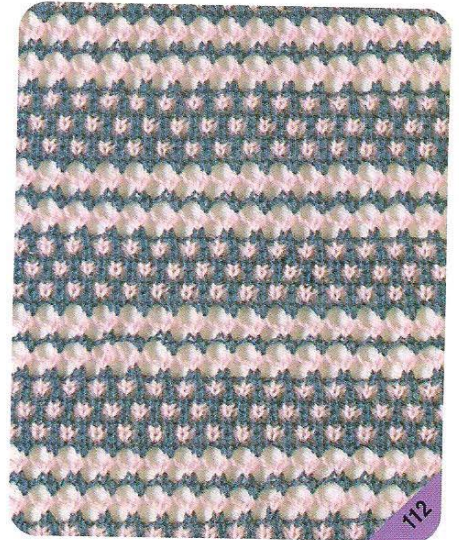
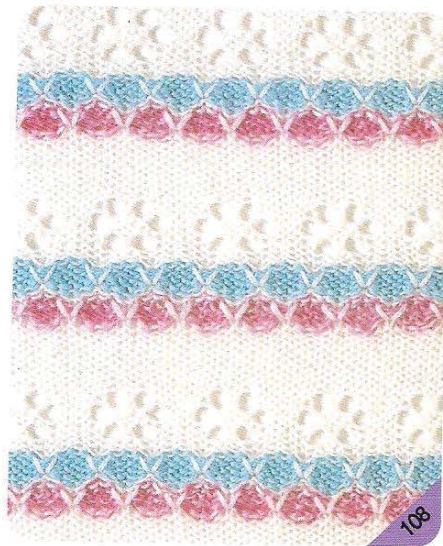
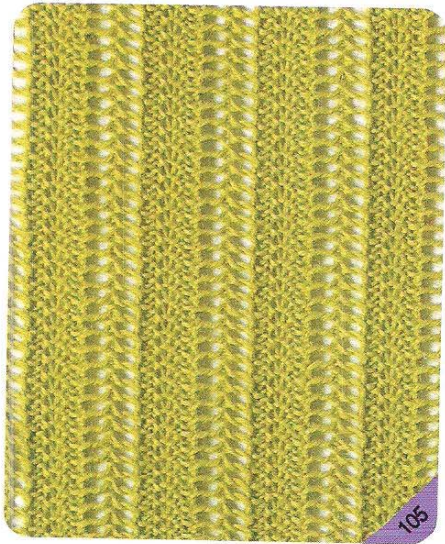
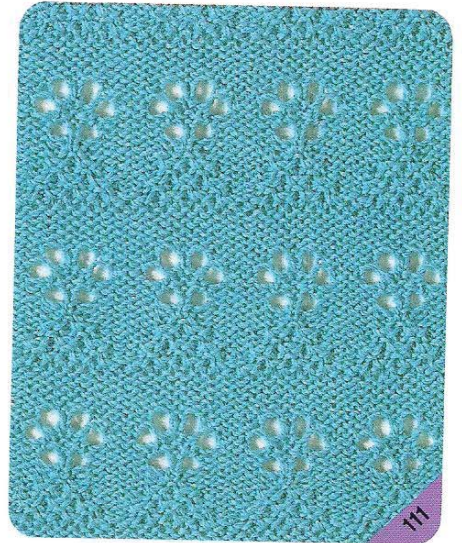
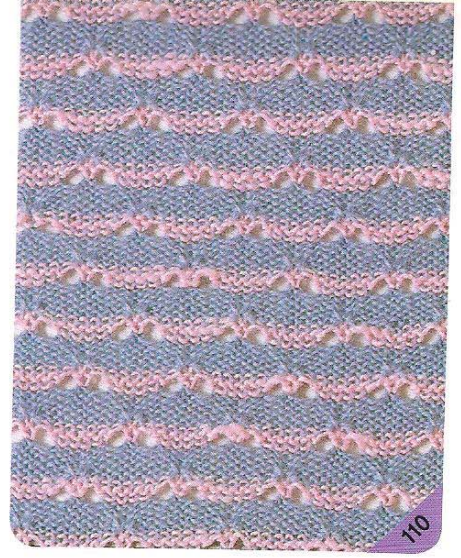
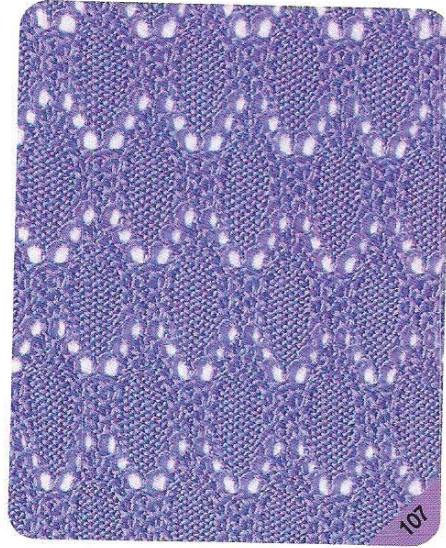
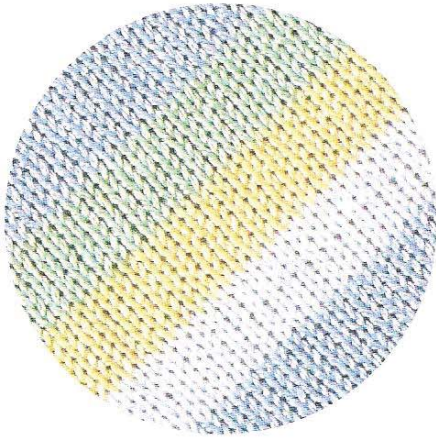
Symbols of Stitch



# 引上げレース模様



*Tuck & Lace Patterns*

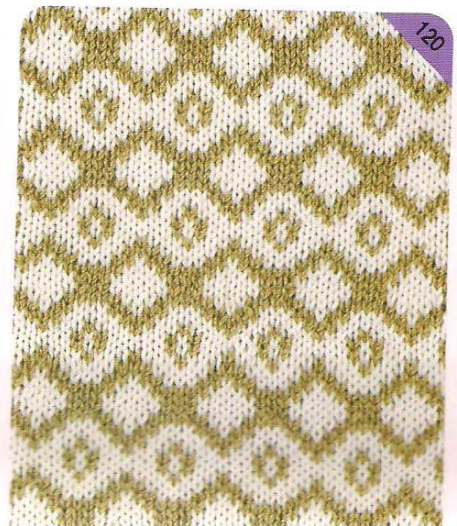
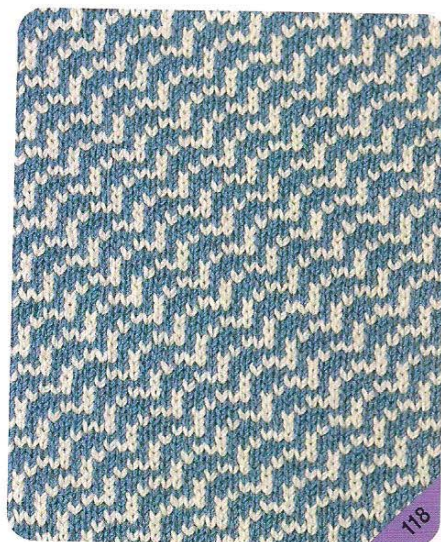
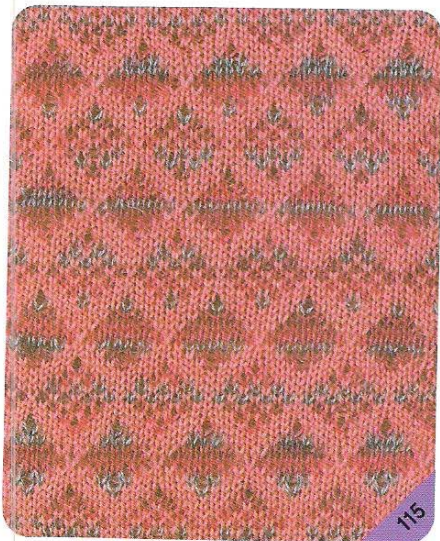
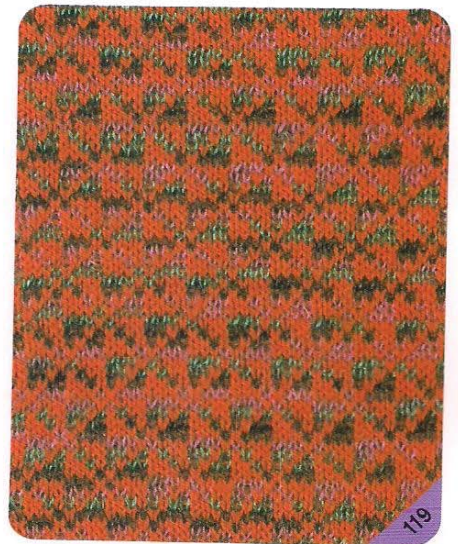
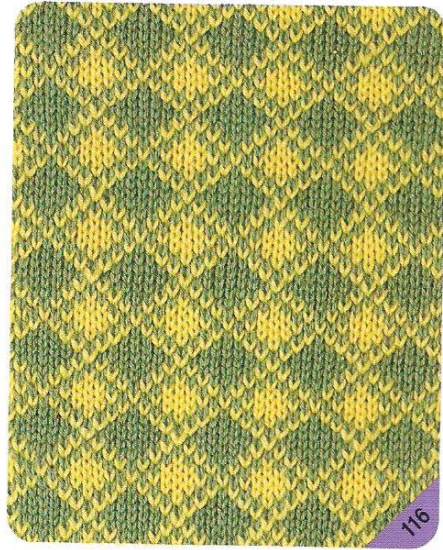




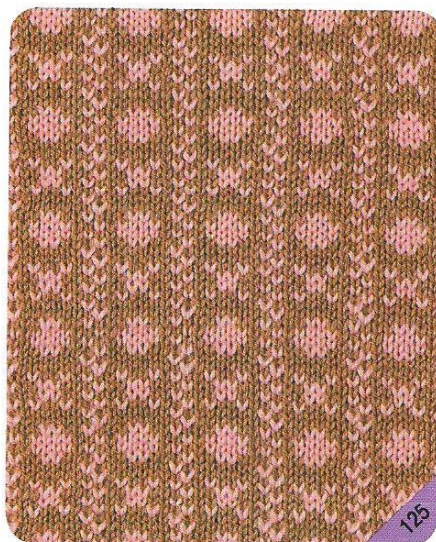
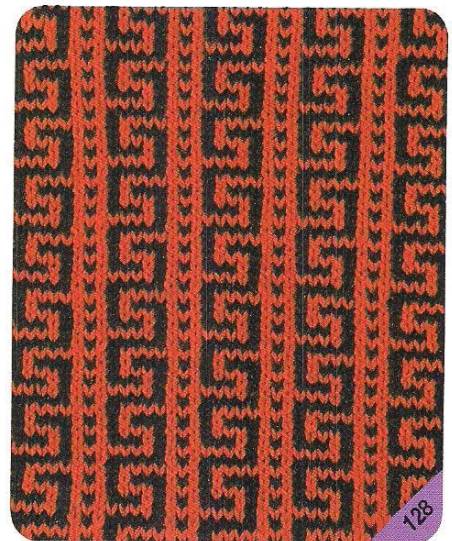
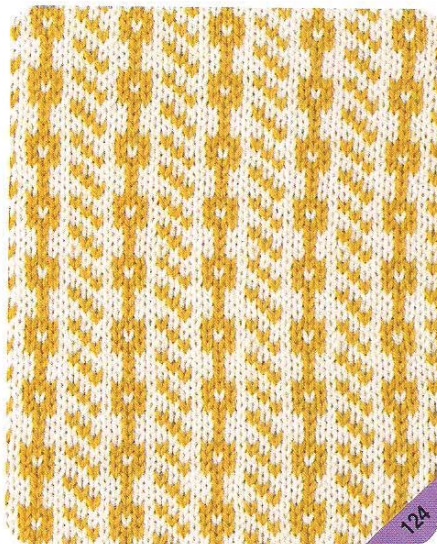
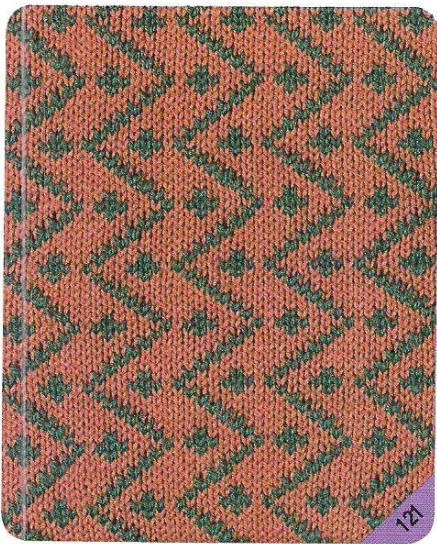
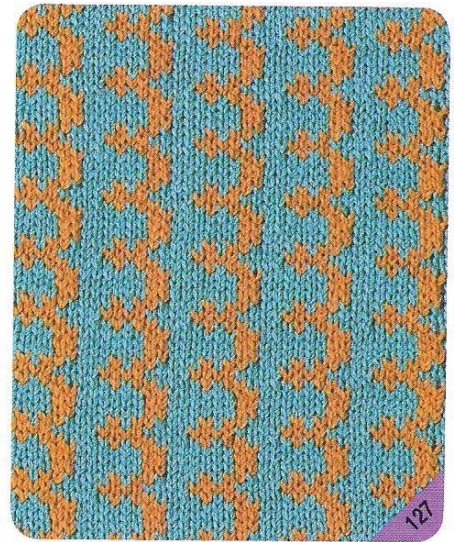




# 同時編込み模様

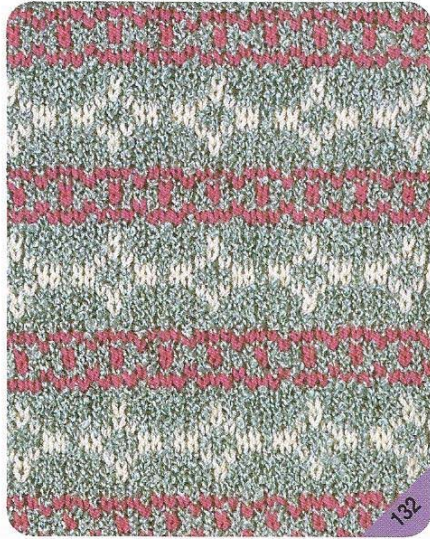


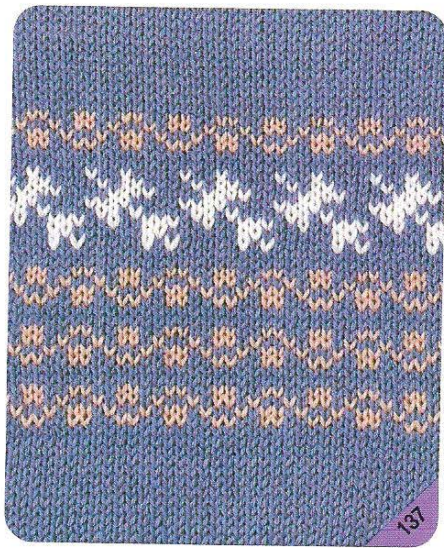
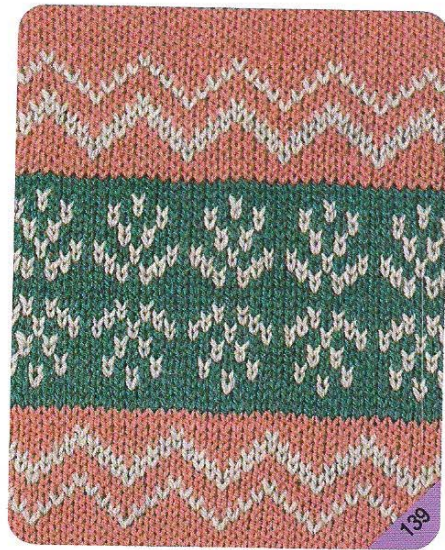
*Fair Isle Patterns*











129

8 sts, 20 rows = 1 pattern

133

8 sts, 18 rows = 1 pattern

130

8 sts, 32 rows = 1 pattern

134

8 sts, 32 rows = 1 pattern

131

8 sts, 20 rows = 1 pattern

135

8 sts, 28 rows = 1 pattern

132

8 sts, 18 rows = 1 pattern

136

8 sts, 24 rows = 1 pattern

**137**

8 sts. 32 rows - 1 pattern

**138**

8 sts. 30 rows - 1 pattern

**139**

8 sts. 40 rows - 1 pattern

**140**

8 sts. 36 rows - 1 pattern

**141**

8 sts. 38 rows - 1 pattern

**142**

8 sts. 25 rows - 1 pattern

**143**

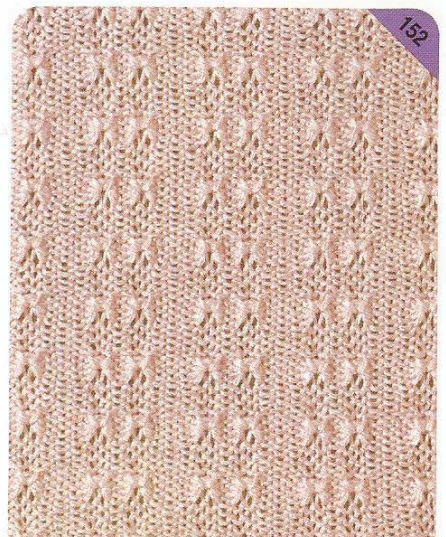
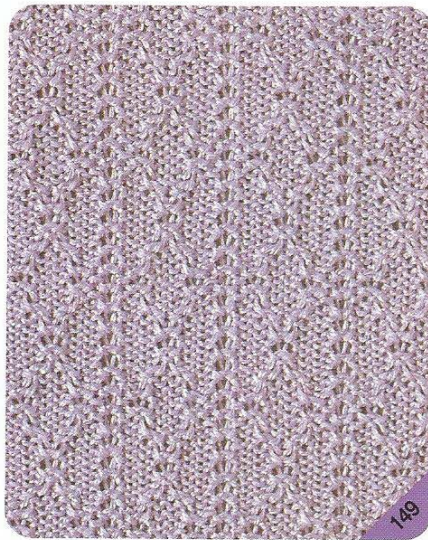
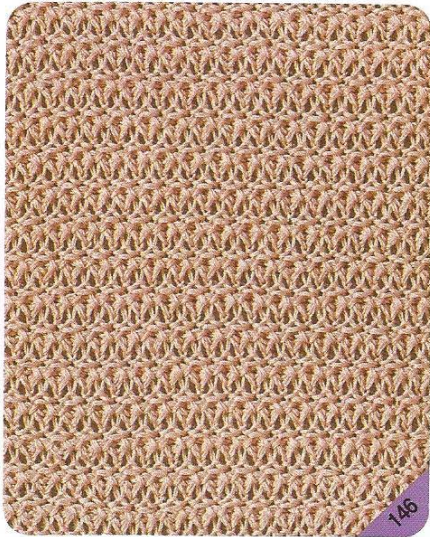
4 sts. 30 rows - 1 pattern

**144**

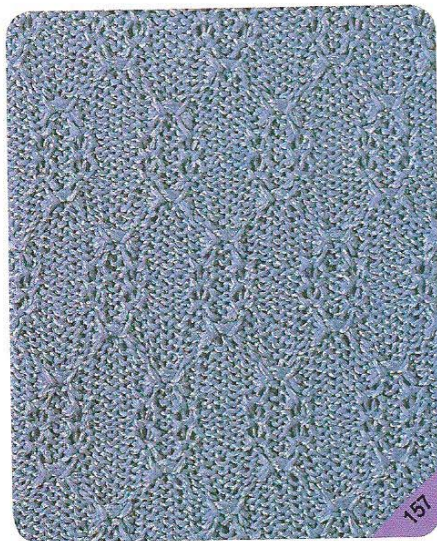
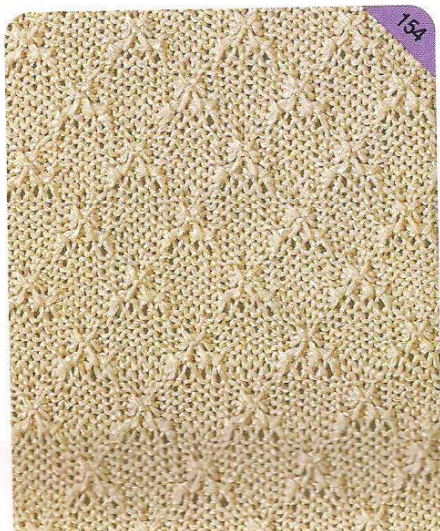
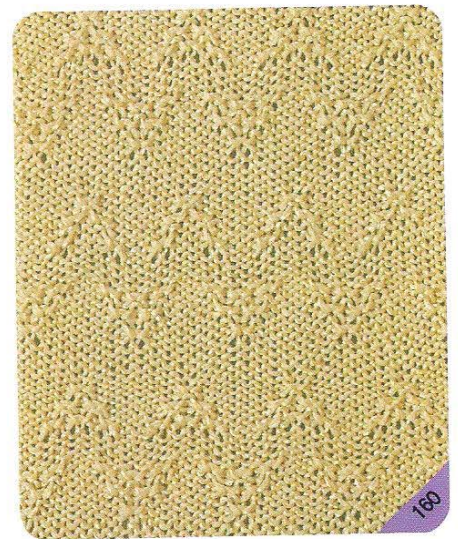
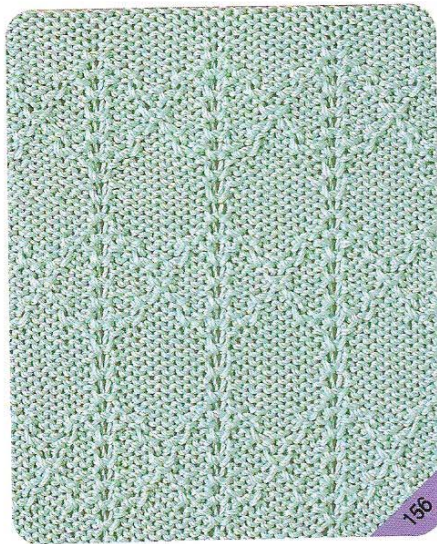
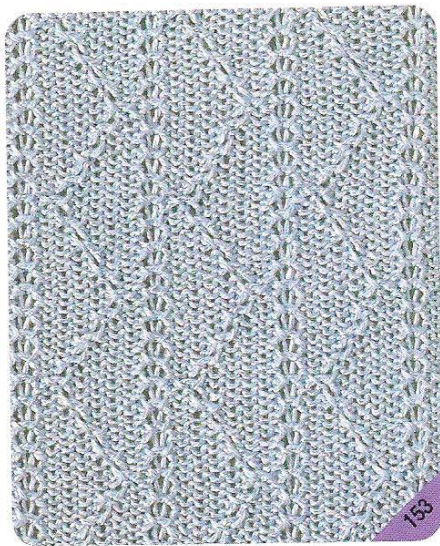
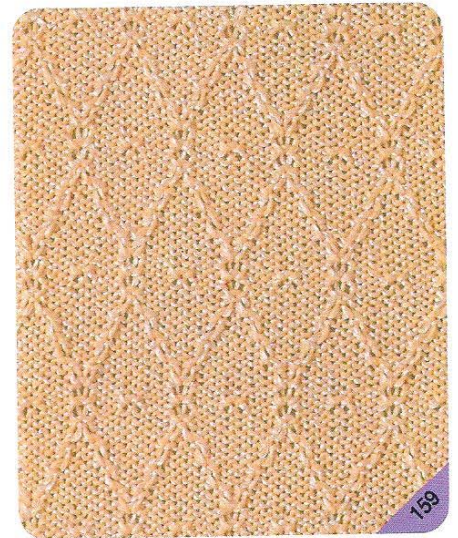
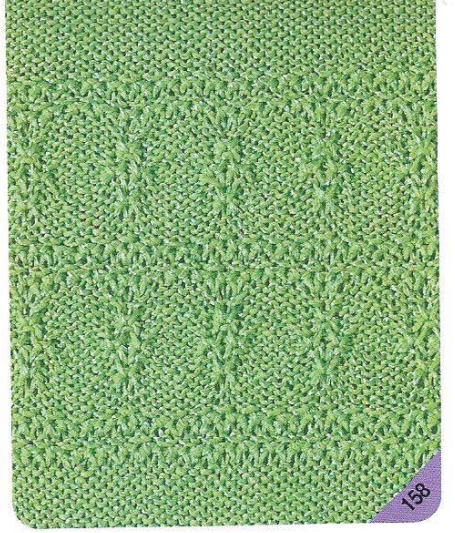
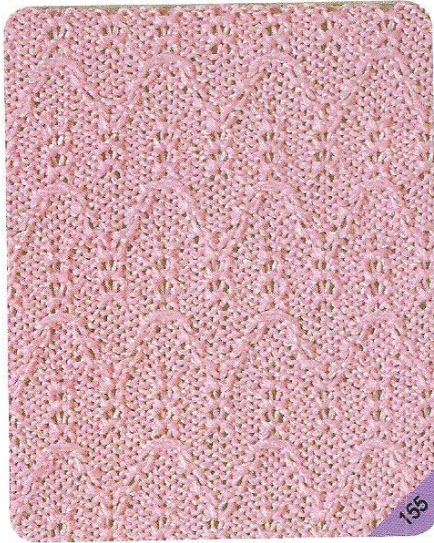
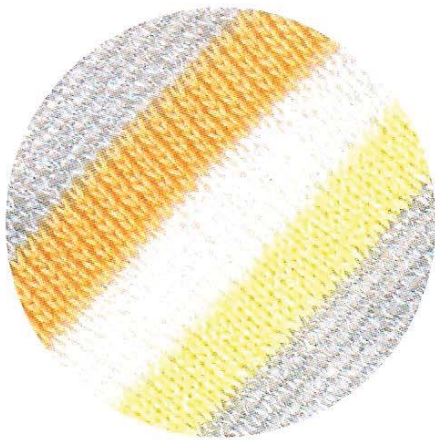
8 sts. 34 rows - 1 pattern



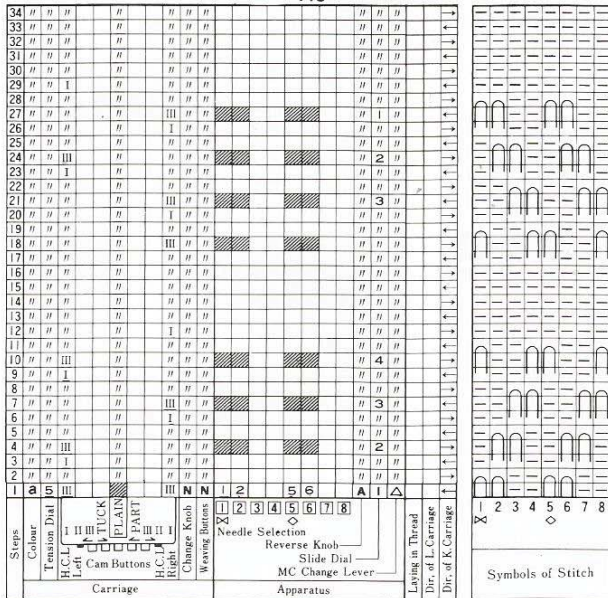
# 引上げ模様



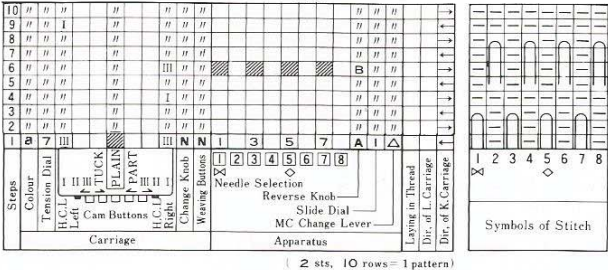
*Pull-Up Stitch Patterns*



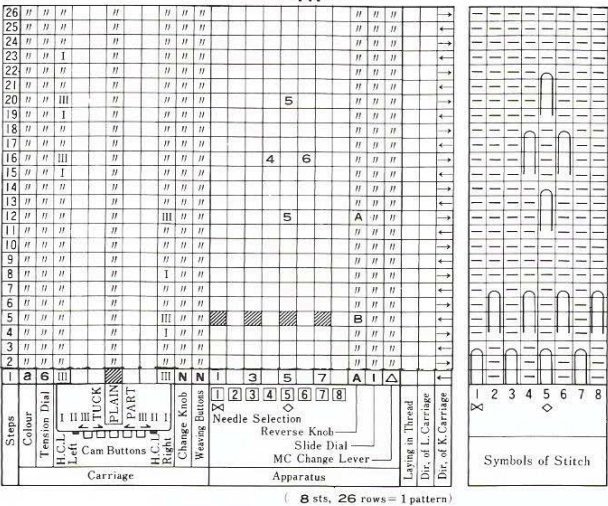
145



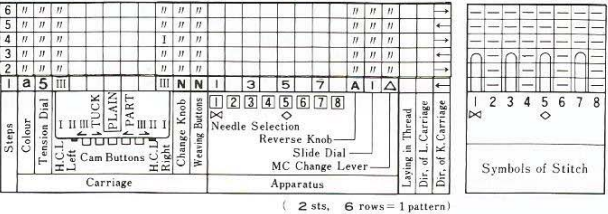
146



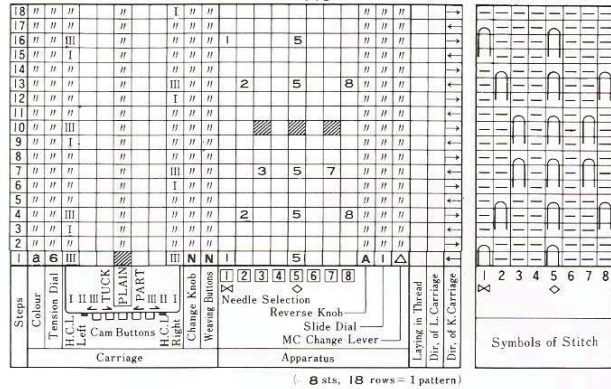
147



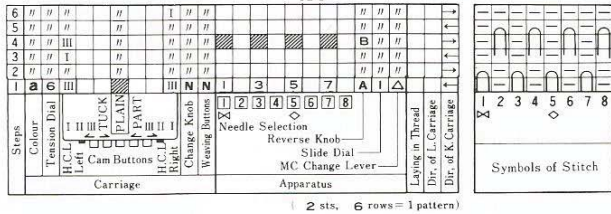
148



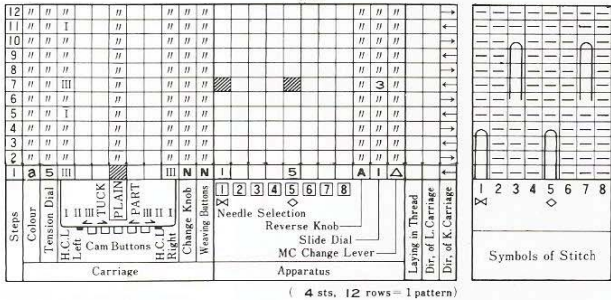
149



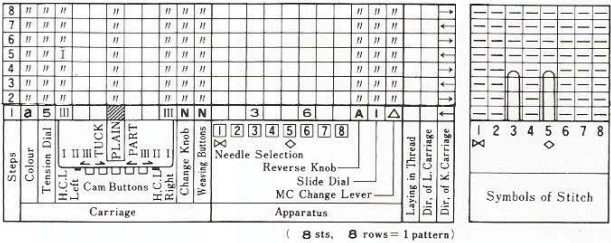
150



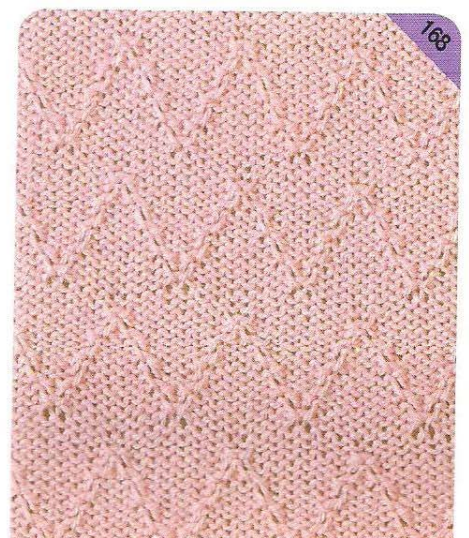
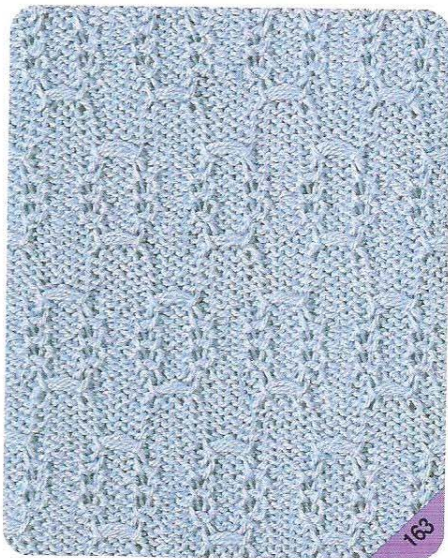
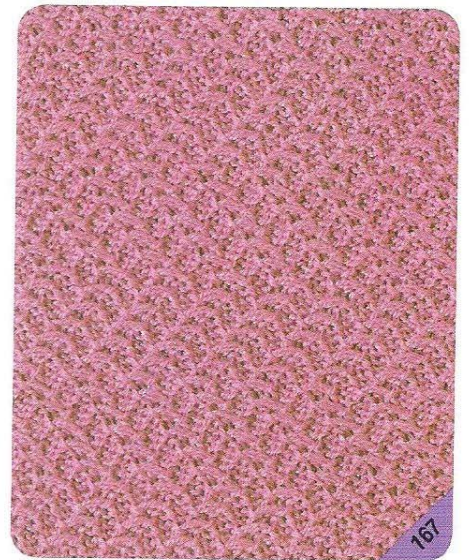
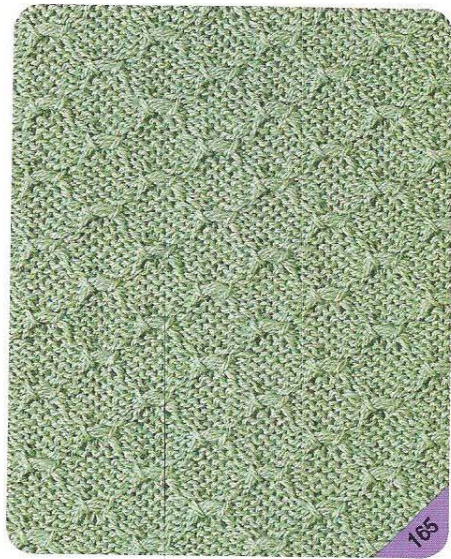
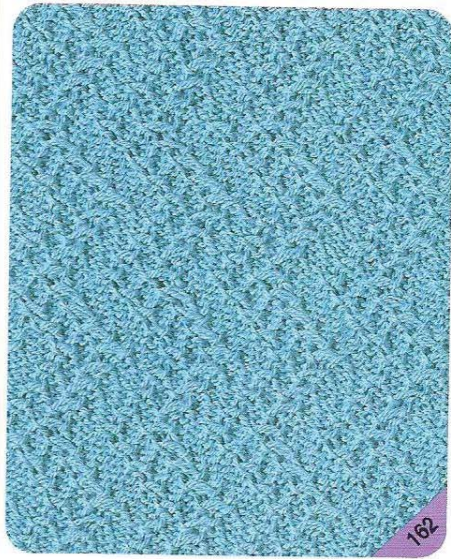
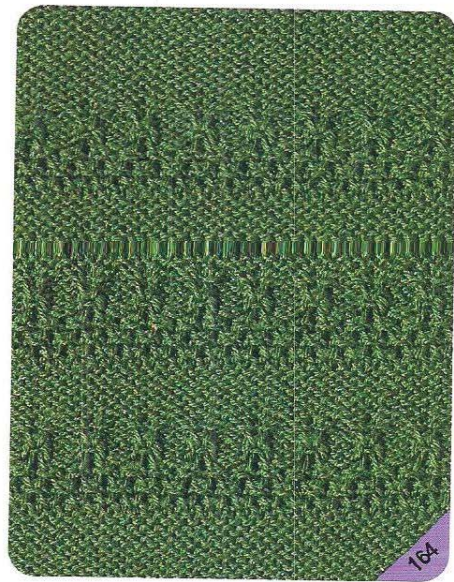
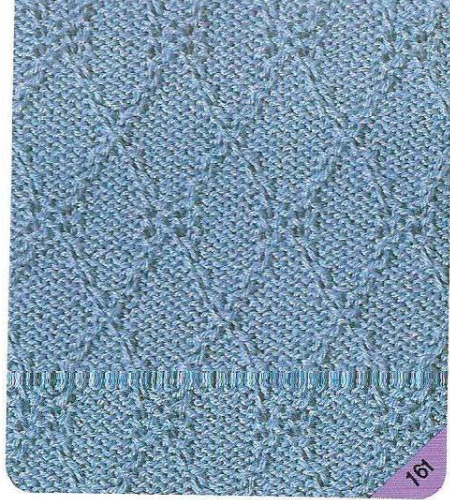
151

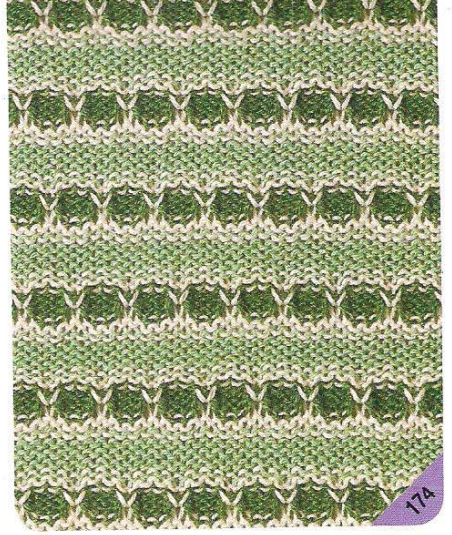


152

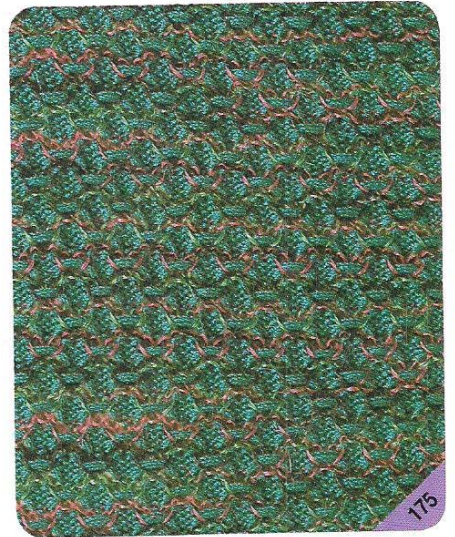








174



175



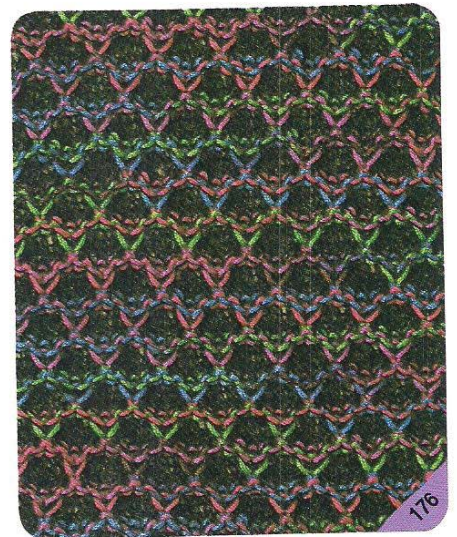
169



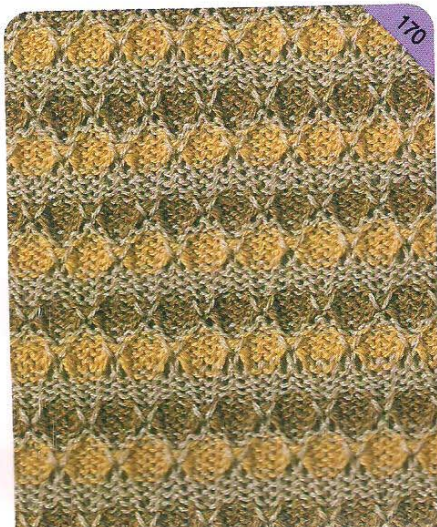
172



173



176



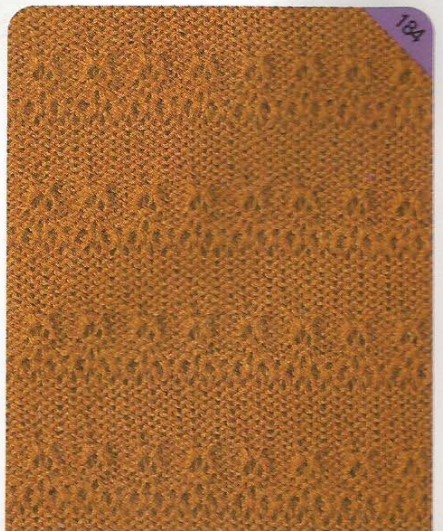
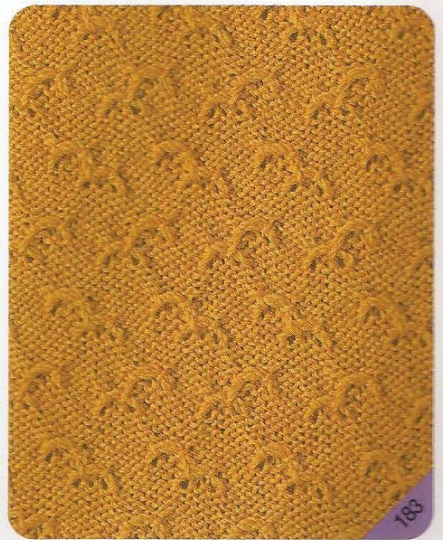
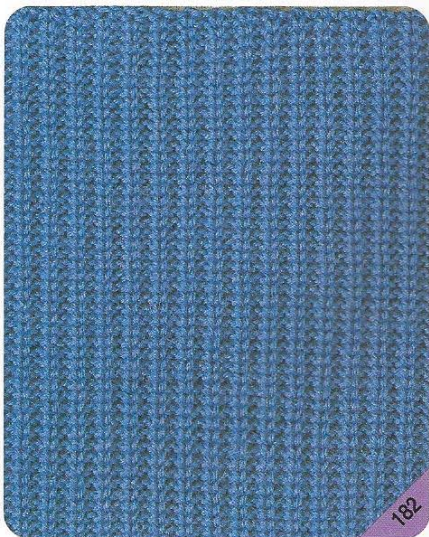
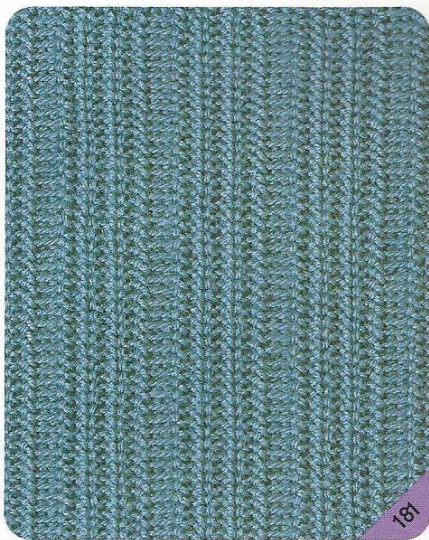
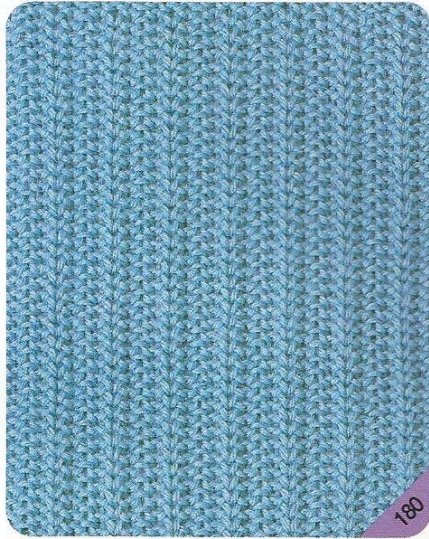
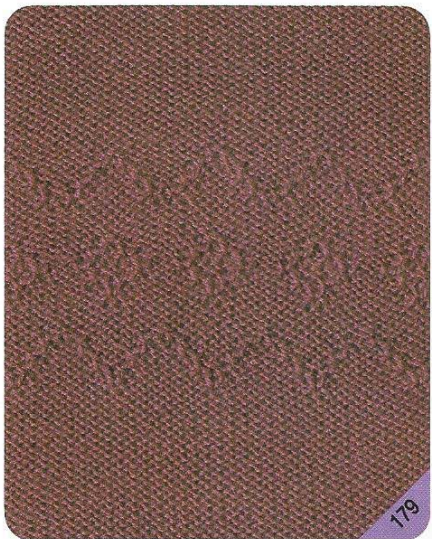
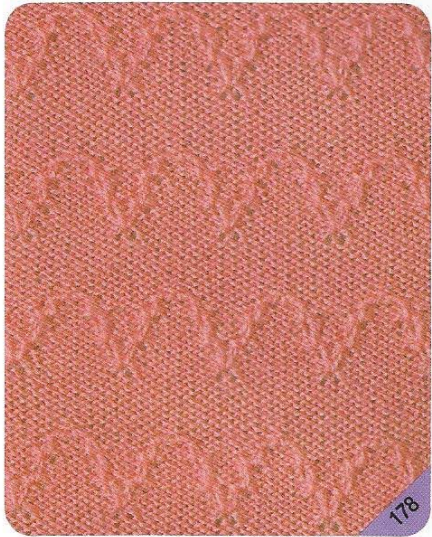
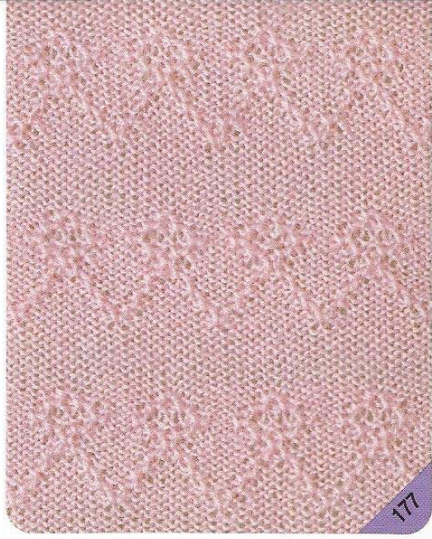
170



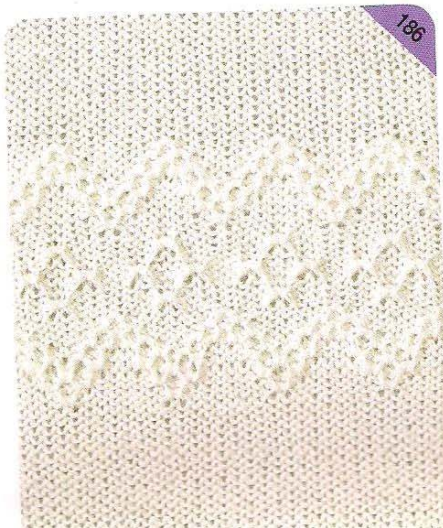
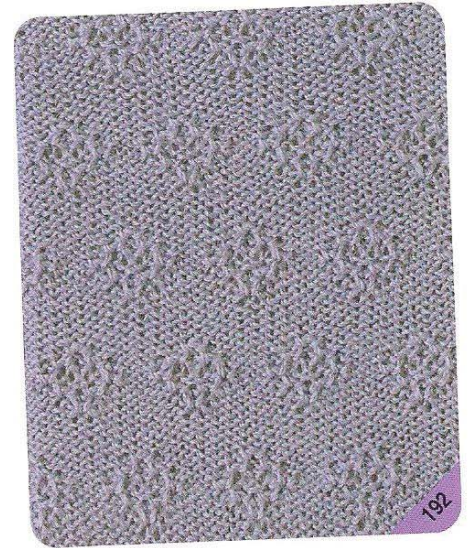
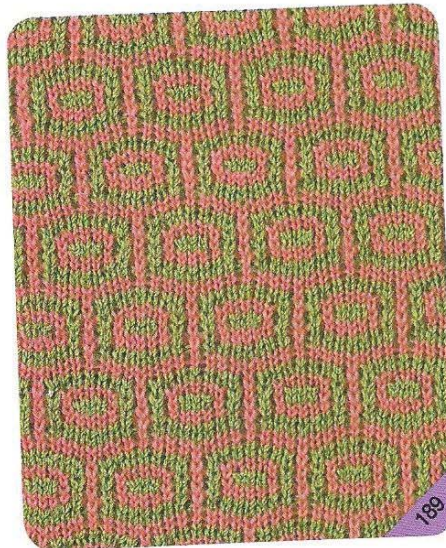
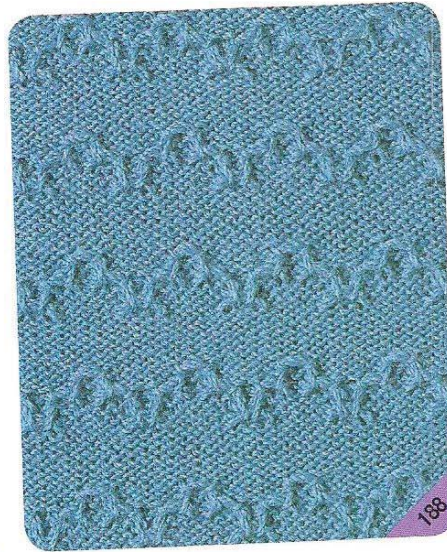
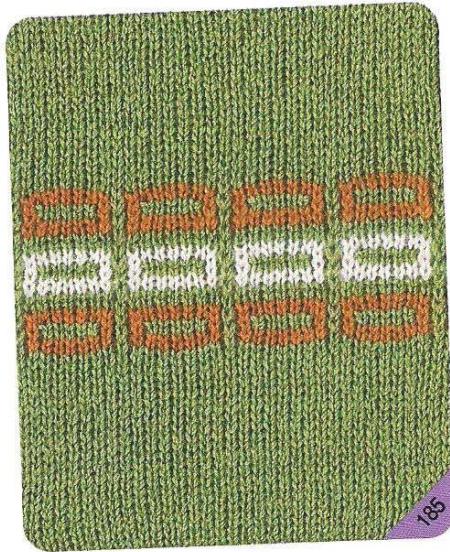
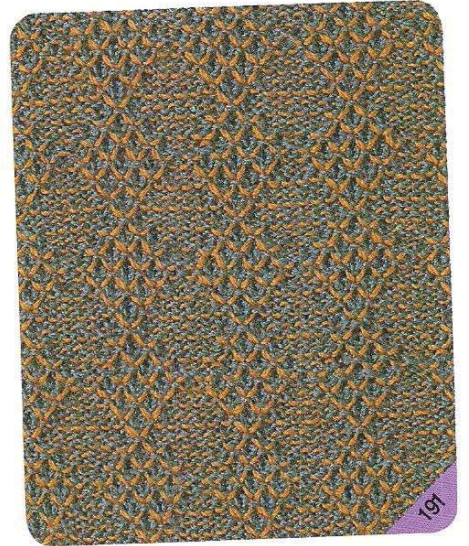
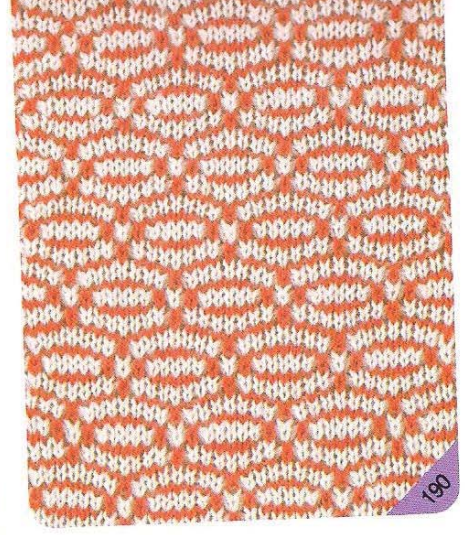
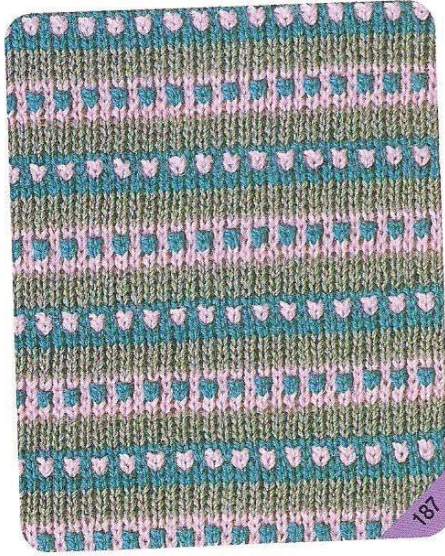




# タック模様



*Tuck Stitch Patterns*





**185**

Steps  
Colour  
Tension Dial  
H.C.L. Left  
H.C.L. Right  
Change Knob  
Waving Buttons  
Needle Selection  
Reverse Knob  
Slide Dial  
MC Change Lever  
Apparatus  
Laying in Thread  
Dir. of L. Carriage  
Dir. of K. Carriage

Carriage

Apparatus

( 8 sts, 24 rows = 1 pattern )

Symbols of Stitch

**189**

Steps  
Colour  
Tension Dial  
H.C.L. Left  
H.C.L. Right  
Change Knob  
Waving Buttons  
Needle Selection  
Reverse Knob  
Slide Dial  
MC Change Lever  
Apparatus  
Laying in Thread  
Dir. of L. Carriage  
Dir. of K. Carriage

Carriage

Apparatus

( 8 sts, 24 rows = 1 pattern )

Symbols of Stitch

**186**

Steps  
Colour  
Tension Dial  
H.C.L. Left  
H.C.L. Right  
Change Knob  
Waving Buttons  
Needle Selection  
Reverse Knob  
Slide Dial  
MC Change Lever  
Apparatus  
Laying in Thread  
Dir. of L. Carriage  
Dir. of K. Carriage

Carriage

Apparatus

( 4 sts, 40 rows = 1 pattern )

Symbols of Stitch

**190**

Steps  
Colour  
Tension Dial  
H.C.L. Left  
H.C.L. Right  
Change Knob  
Waving Buttons  
Needle Selection  
Reverse Knob  
Slide Dial  
MC Change Lever  
Apparatus  
Laying in Thread  
Dir. of L. Carriage  
Dir. of K. Carriage

Carriage

Apparatus

( 8 sts, 18 rows = 1 pattern )

Symbols of Stitch

← ← ← For No.190 push ◀PART▶ buttons and move K carriage.

**187**

Steps  
Colour  
Tension Dial  
H.C.L. Left  
H.C.L. Right  
Change Knob  
Waving Buttons  
Needle Selection  
Reverse Knob  
Slide Dial  
MC Change Lever  
Apparatus  
Laying in Thread  
Dir. of L. Carriage  
Dir. of K. Carriage

Carriage

Apparatus

( 2 sts, 20 rows = 1 pattern )

Symbols of Stitch

**191**

Steps  
Colour  
Tension Dial  
H.C.L. Left  
H.C.L. Right  
Change Knob  
Waving Buttons  
Needle Selection  
Reverse Knob  
Slide Dial  
MC Change Lever  
Apparatus  
Laying in Thread  
Dir. of L. Carriage  
Dir. of K. Carriage

Carriage

Apparatus

( 8 sts, 18 rows = 1 pattern )

Symbols of Stitch

← ← ← For No.191 push ◀PART▶ buttons and move K carriage.

**188**

Steps  
Colour  
Tension Dial  
H.C.L. Left  
H.C.L. Right  
Change Knob  
Waving Buttons  
Needle Selection  
Reverse Knob  
Slide Dial  
MC Change Lever  
Apparatus  
Laying in Thread  
Dir. of L. Carriage  
Dir. of K. Carriage

Carriage

Apparatus

( 8 sts, 16 rows = 1 pattern )

Symbols of Stitch

**192**

Steps  
Colour  
Tension Dial  
H.C.L. Left  
H.C.L. Right  
Change Knob  
Waving Buttons  
Needle Selection  
Reverse Knob  
Slide Dial  
MC Change Lever  
Apparatus  
Laying in Thread  
Dir. of L. Carriage  
Dir. of K. Carriage

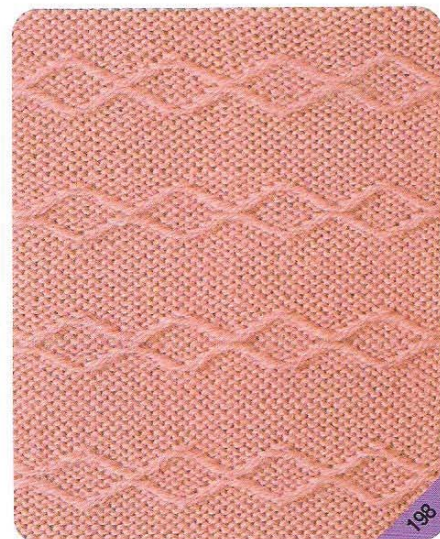
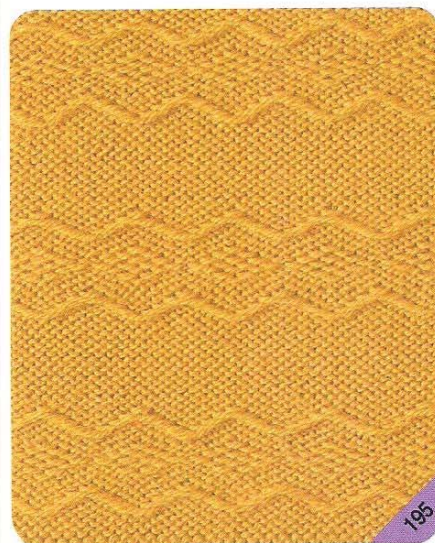
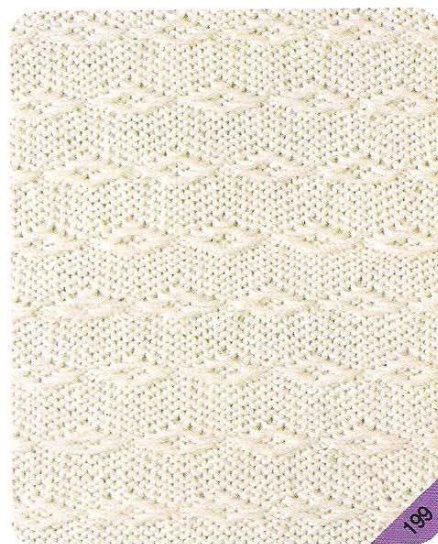
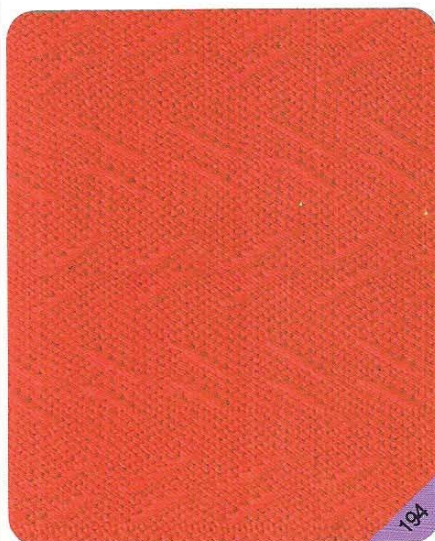
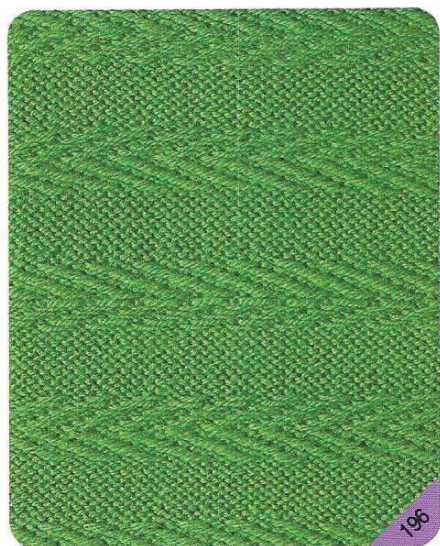
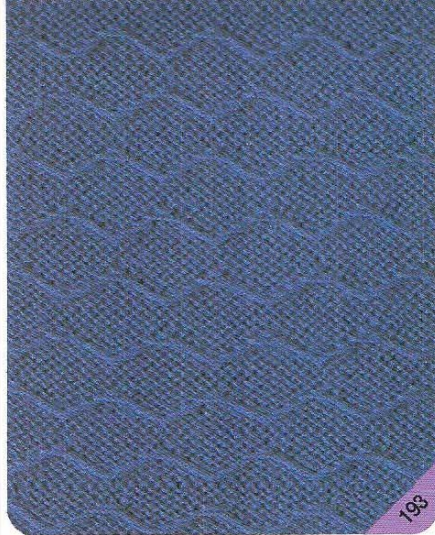
Carriage

Apparatus

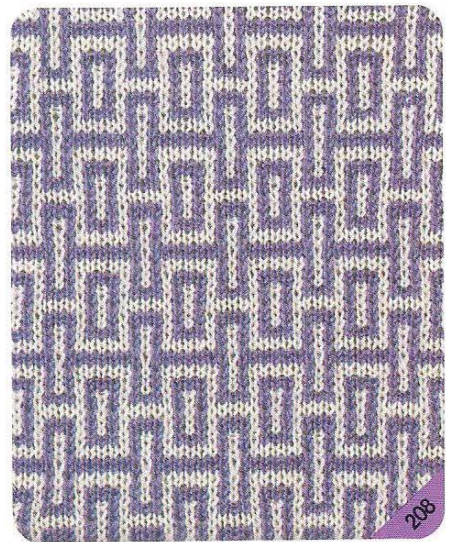
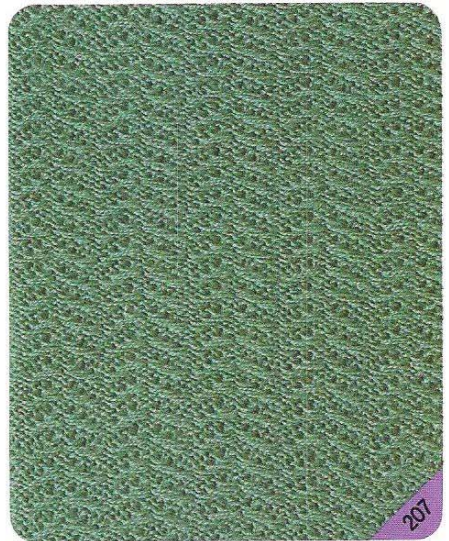
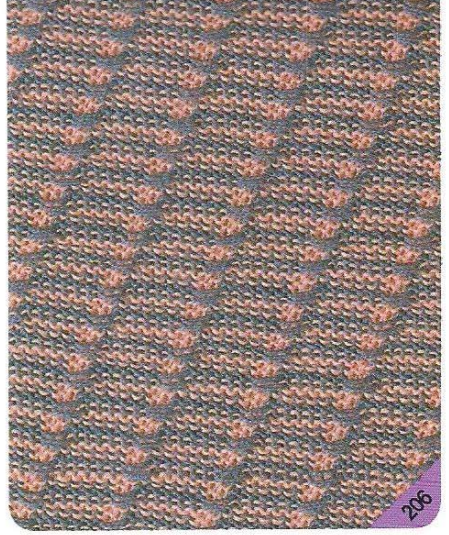
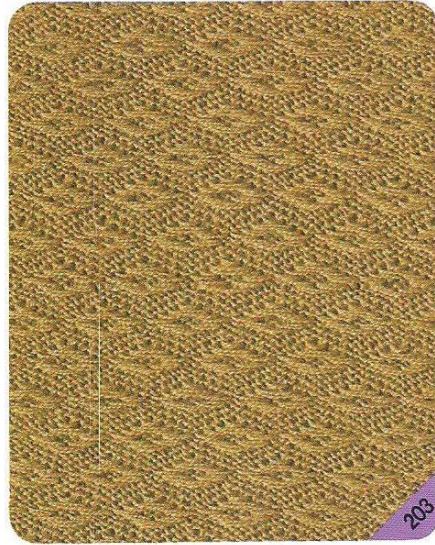
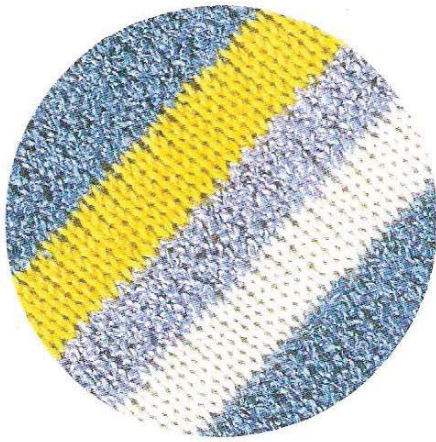
( 8 sts, 28 rows = 1 pattern )

Symbols of Stitch

# すべり目模様



*Skip Stitch Patterns*



206

203

201

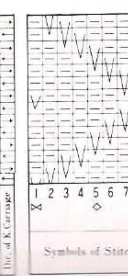
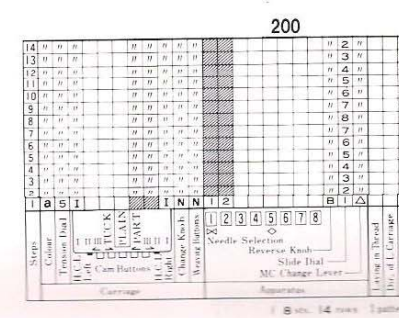
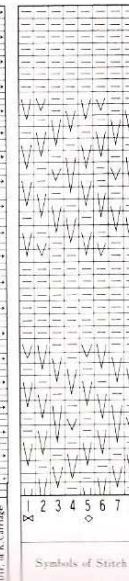
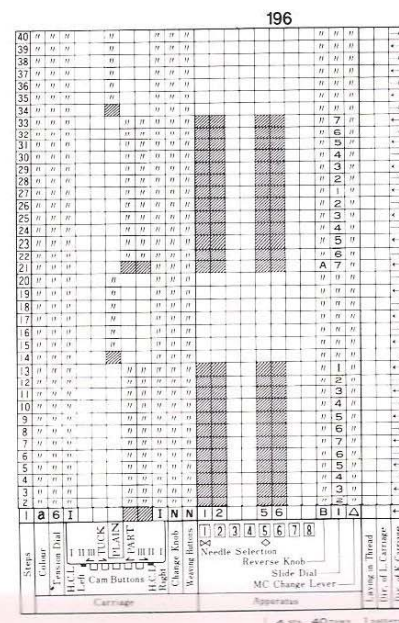
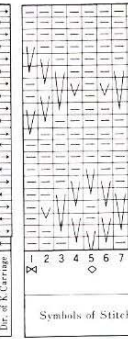
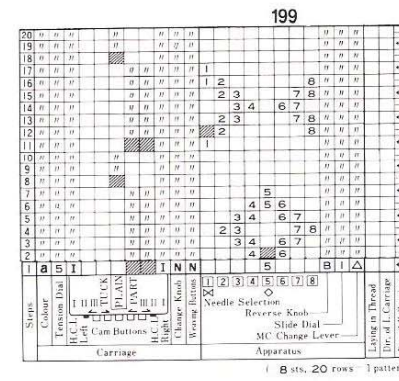
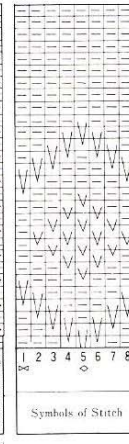
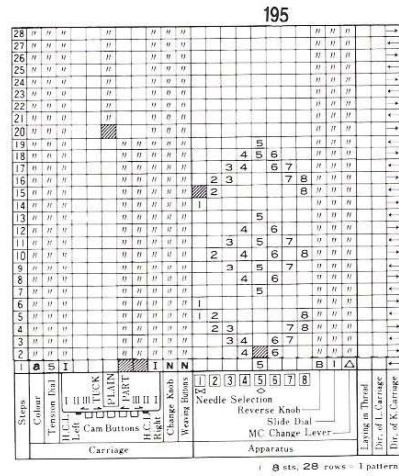
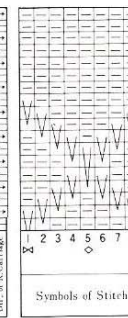
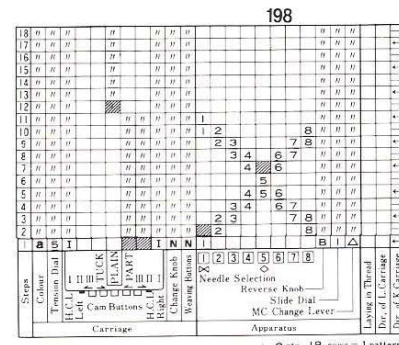
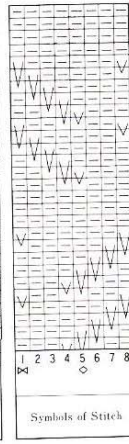
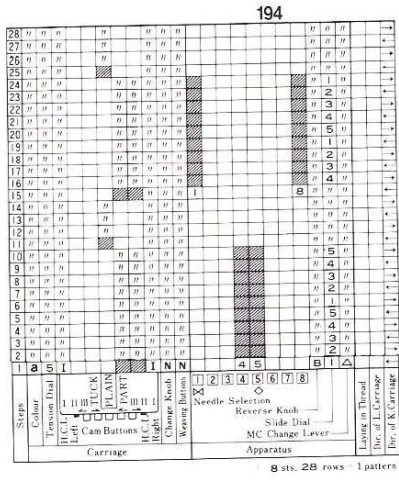
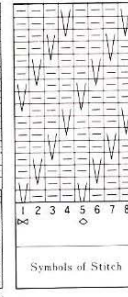
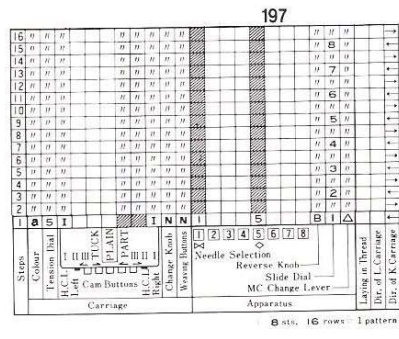
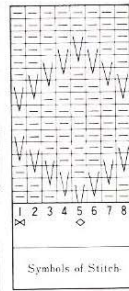
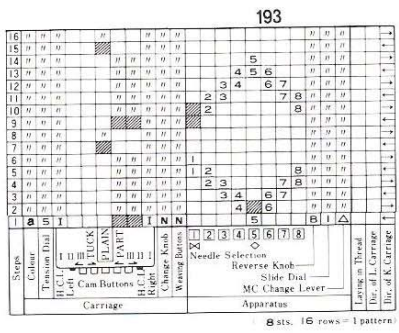
204

208

207

202

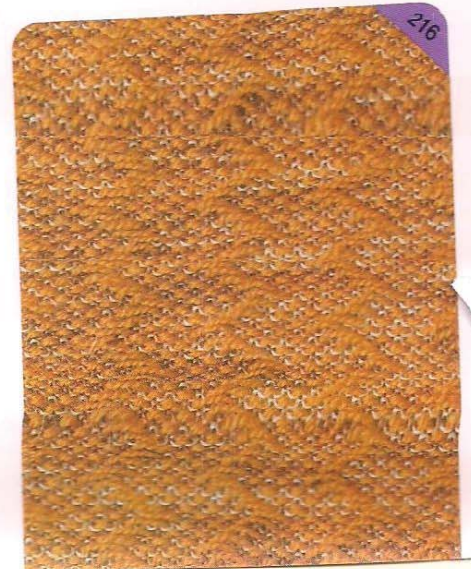
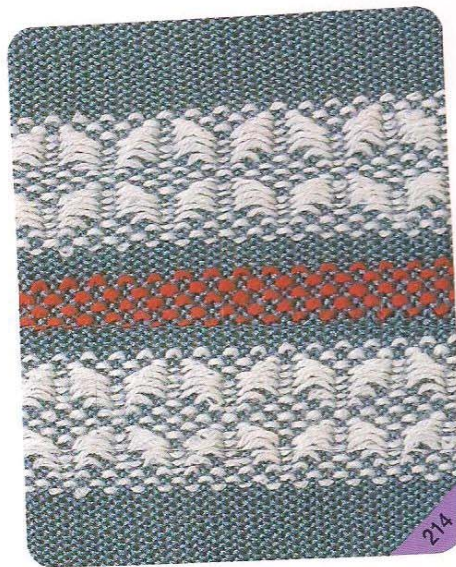
205

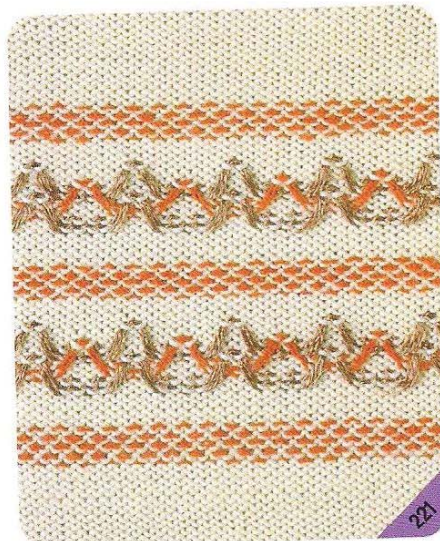
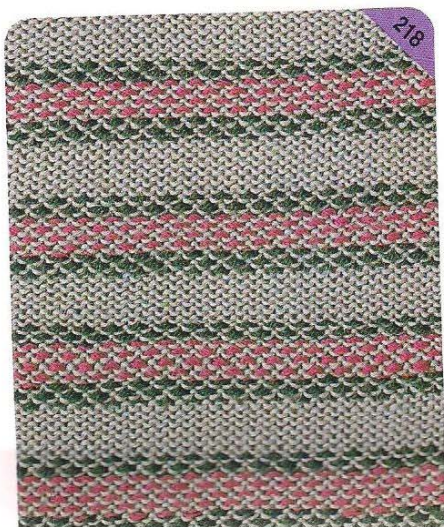
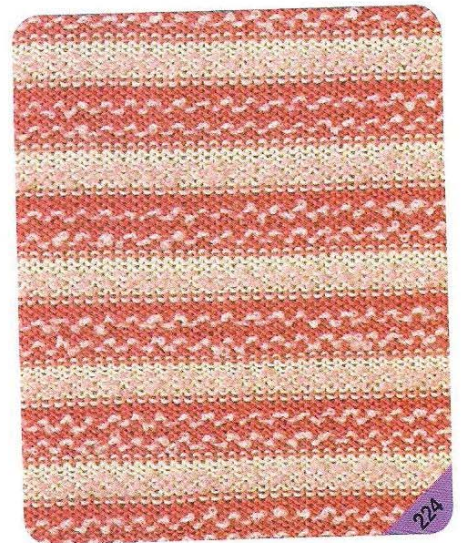
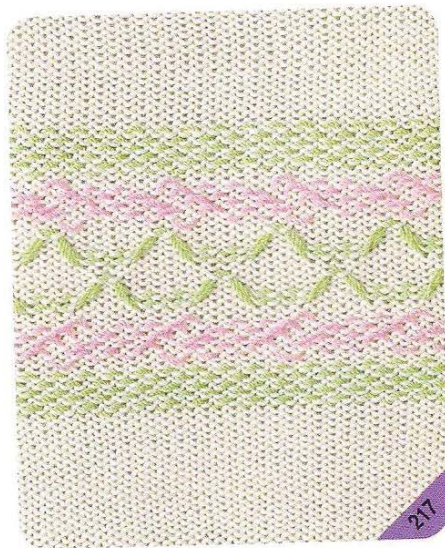
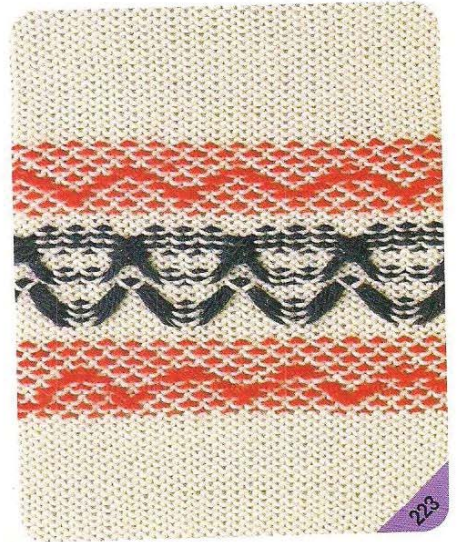
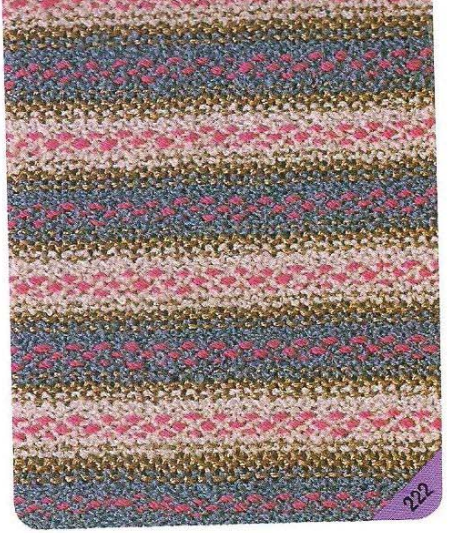
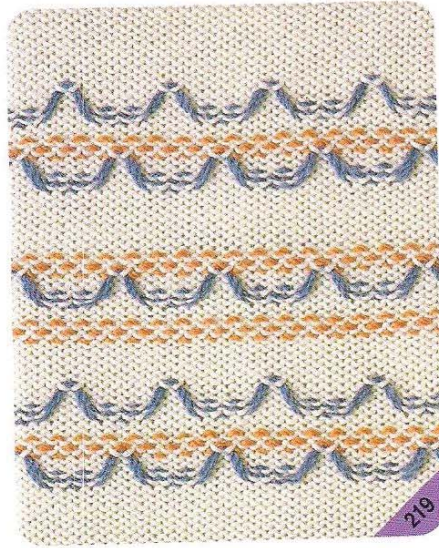






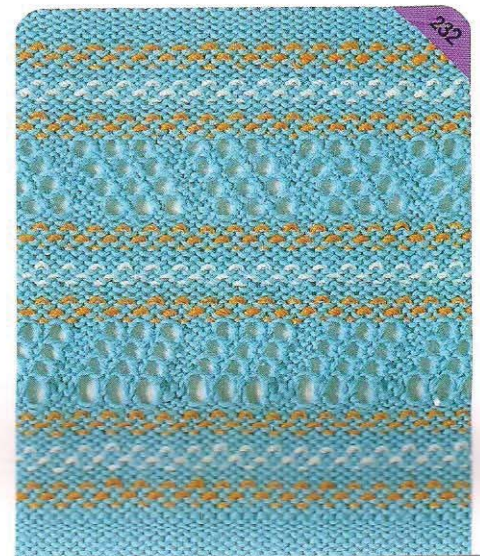
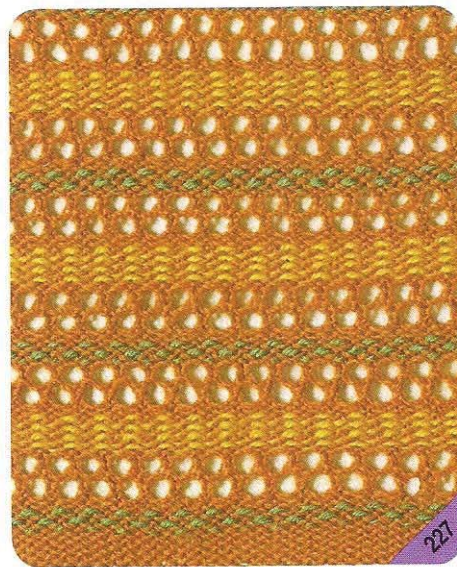
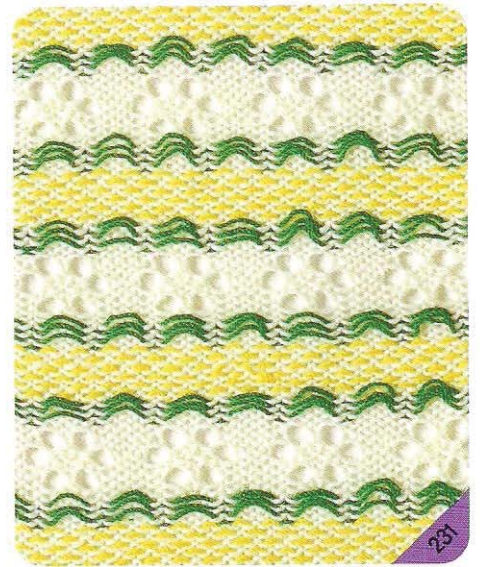
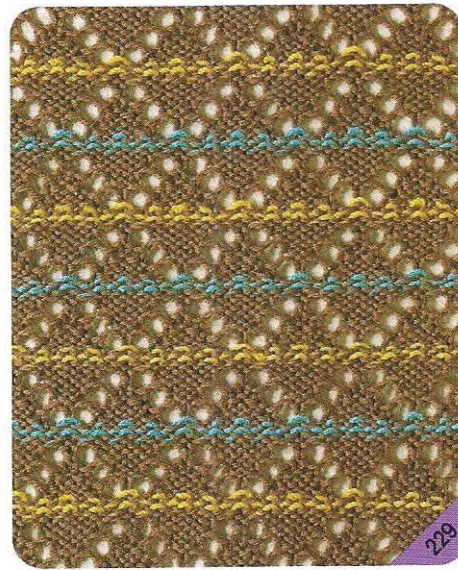
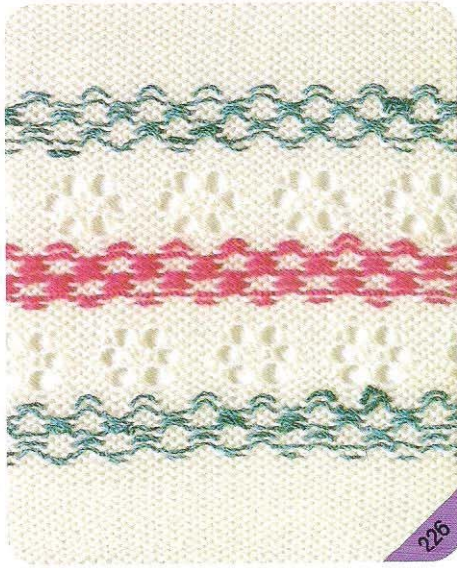
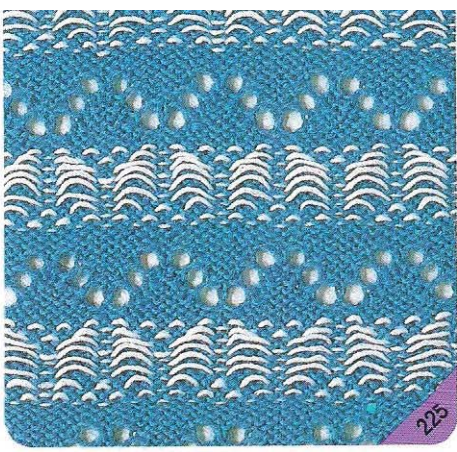
# スレッド模様



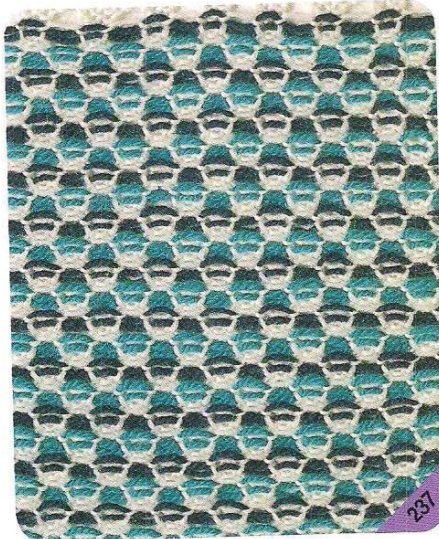
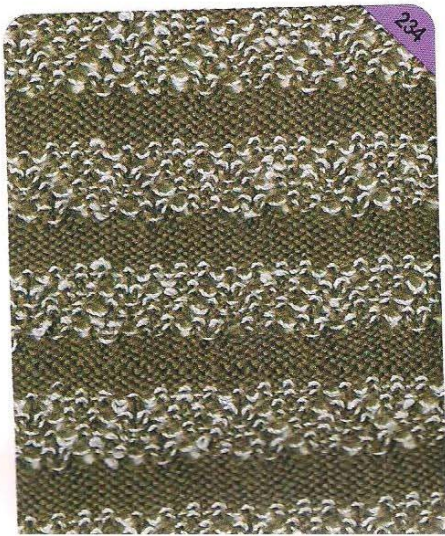
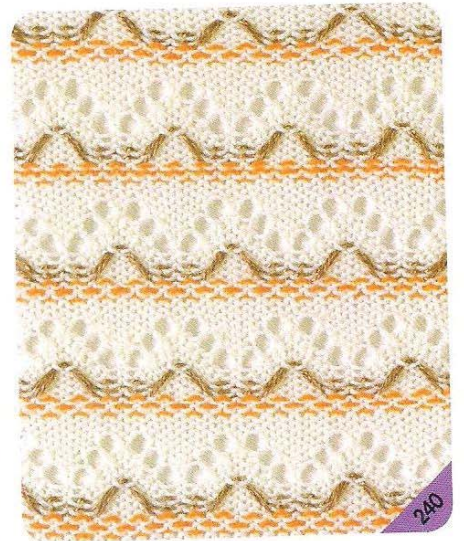
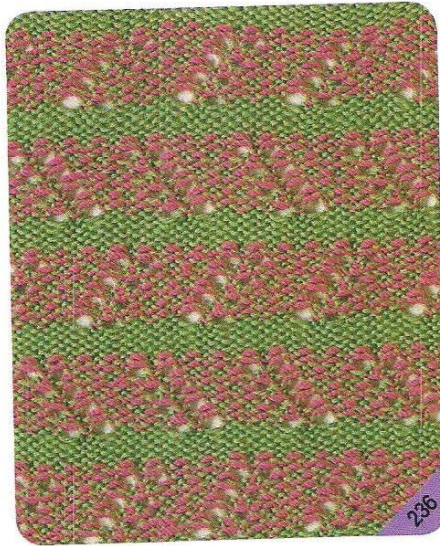
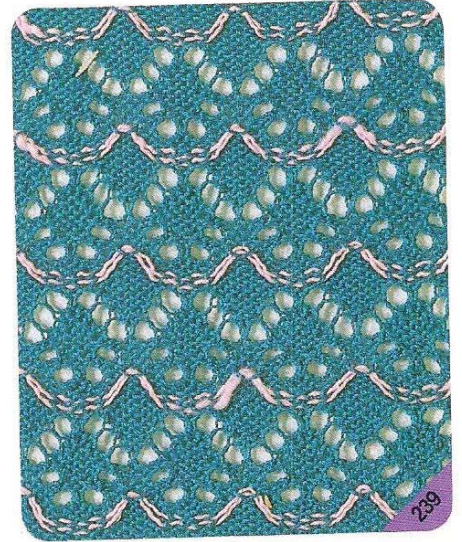
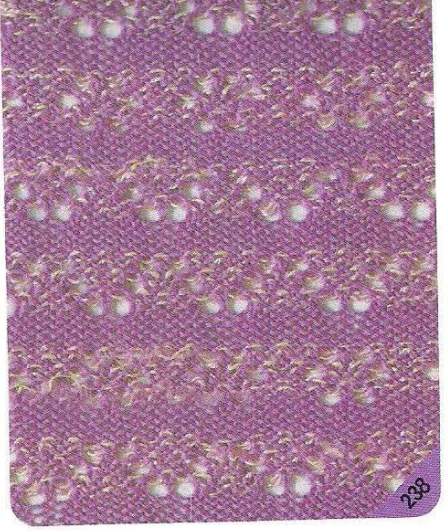








*Woven-Lace Patterns*

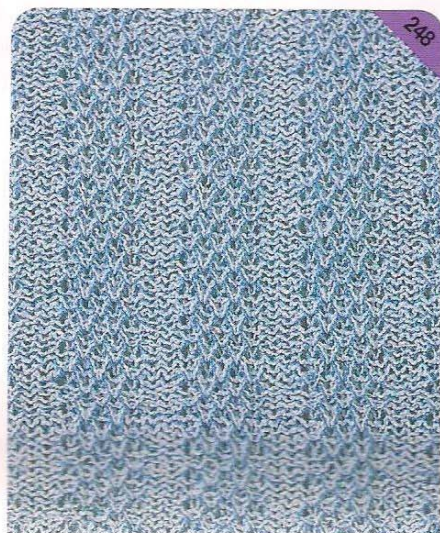
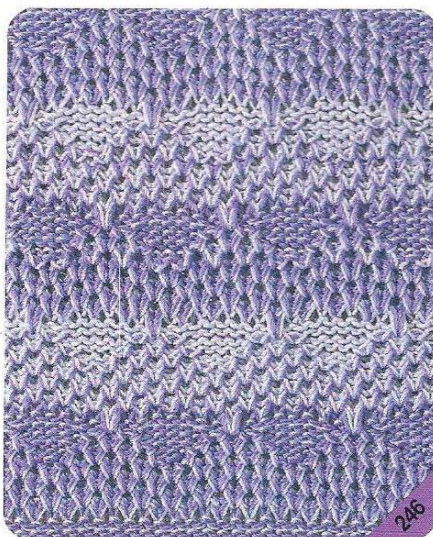
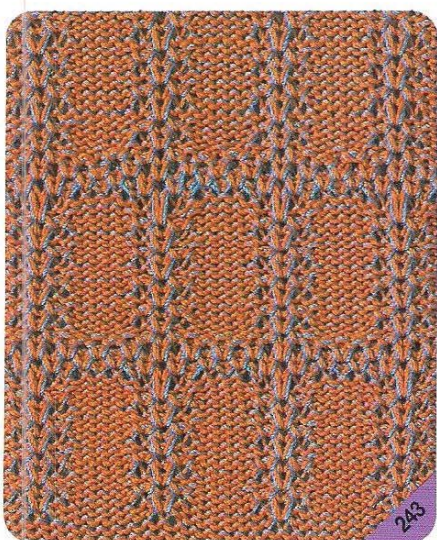
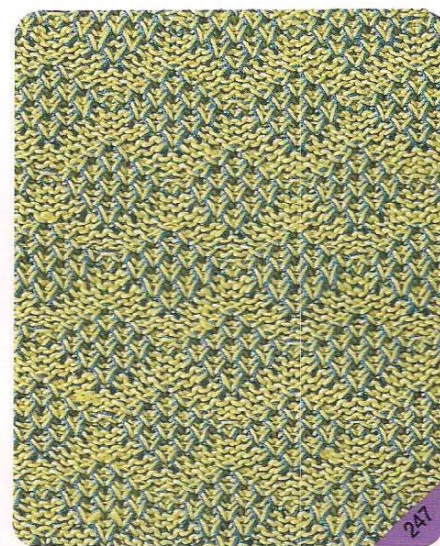
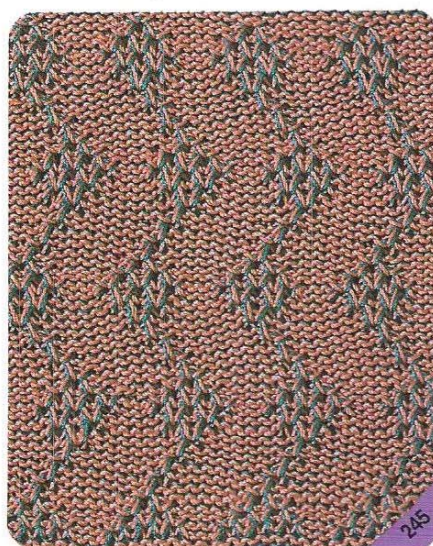
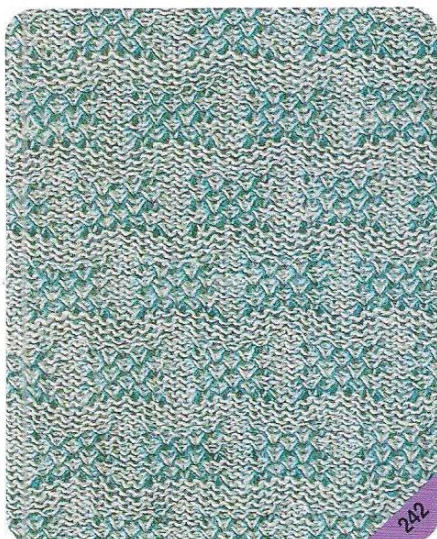
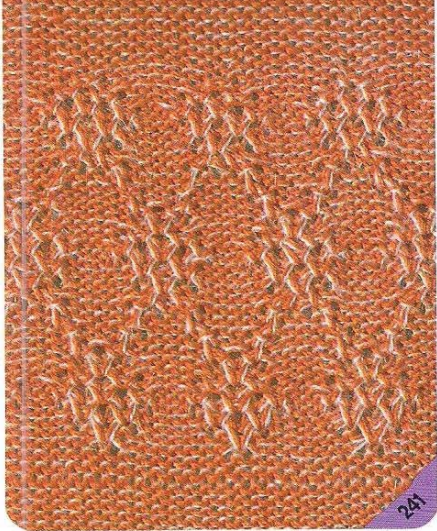








# 添之糸模様











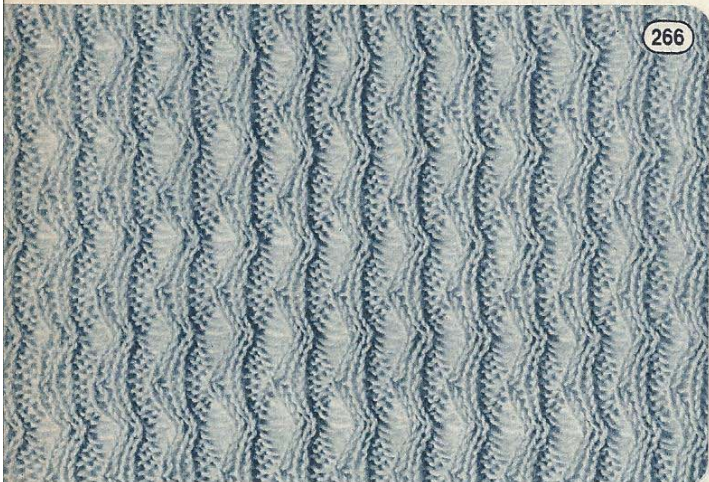


265

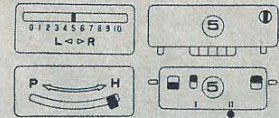
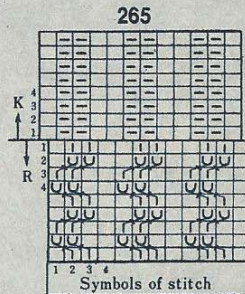


## Symbols of Ribbing Stitch

Symbols	Description
—	Plain stitch for Knitter
—	Plain stitch for Ribber
U	Tucking stitch for Knitter
U	Tucking stitch for Ribber
X	Stopping to knit for Ribber
—	Changing the racking position one pitch



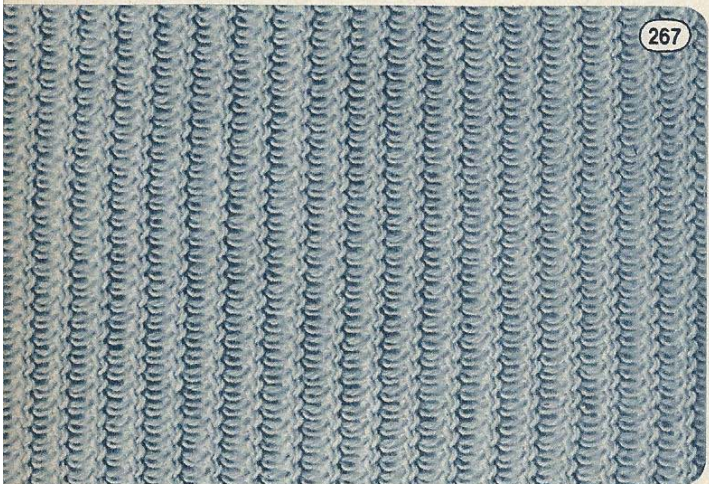
266



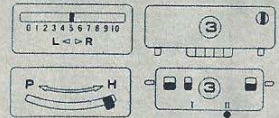
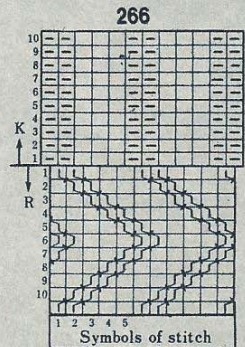
KH

KR

Step	1	2	3	4
1 Racking Position	5	5	6	6
2 Direction of K carriage	←	→	←	→



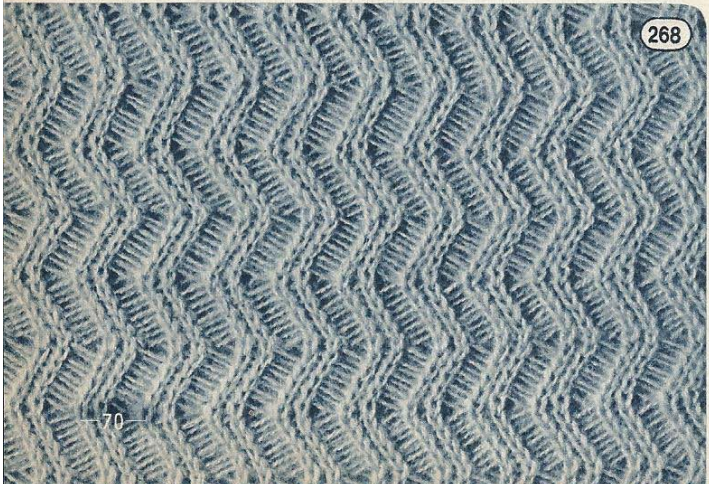
267



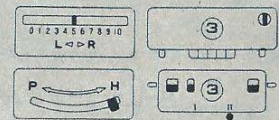
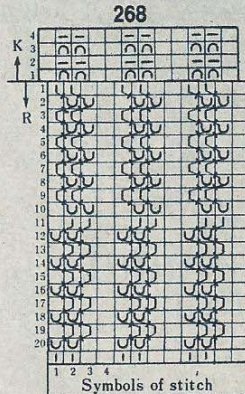
KH

KR

Step	1	2	3	4	5	6	7	8	9	10
1 Racking Position	5	4	3	2	1	0	2	3	4	
2 Direction of K carriage	←	→	←	→	←	→	←	→	←	→



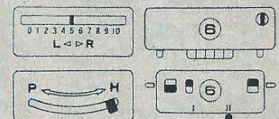
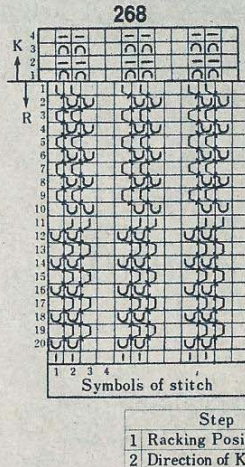
268



KH

KR

Step	1	2
1 Racking Position	5	3
2 Direction of K carriage	←	→



KH

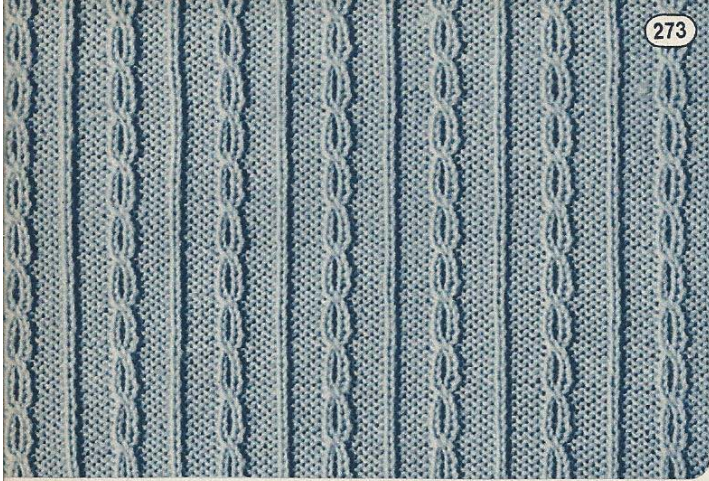
KR

Step	1	2	3	4	5	6	7	8	9	10	11	12	13	14	15	16	17	18	19	20
1 Racking Position	5	4	5	4	5	4	5	4	5	4	5	4	5	4	5	4	5	4	5	4
2 Direction of K carriage	←	→	←	→	←	→	←	→	←	→	←	→	←	→	←	→	←	→	←	→



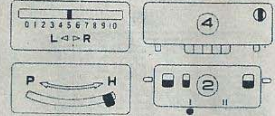
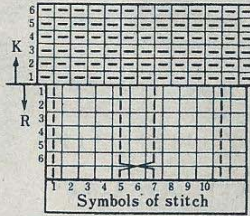


273



# Cable pattern by KR

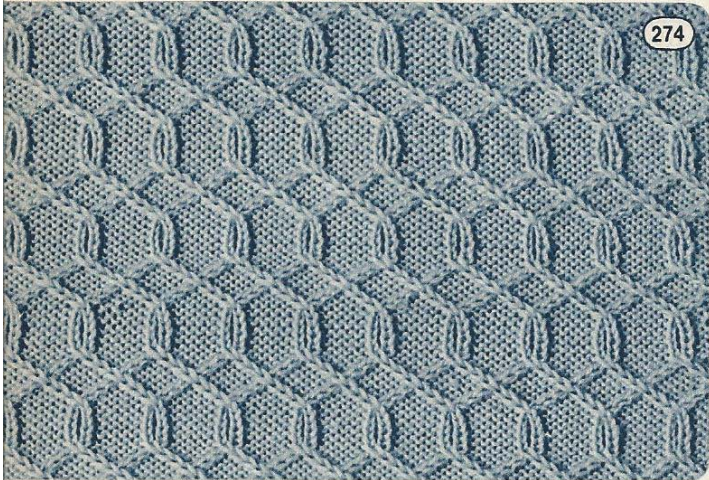
273



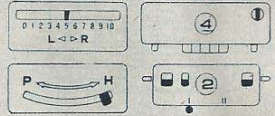
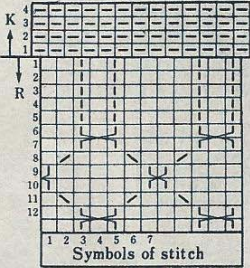
KH

KR

274



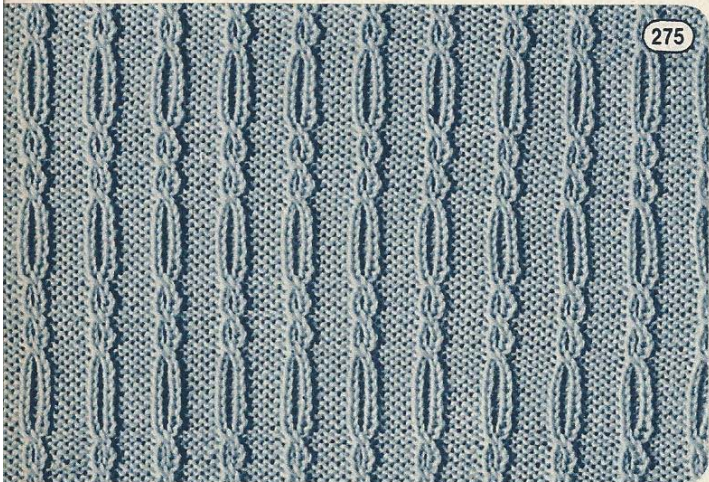
274



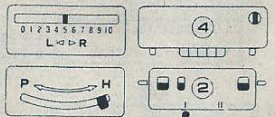
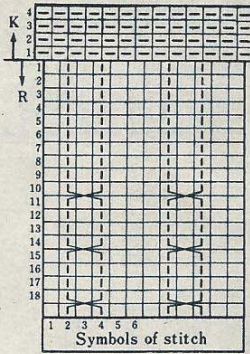
KH

KR

275



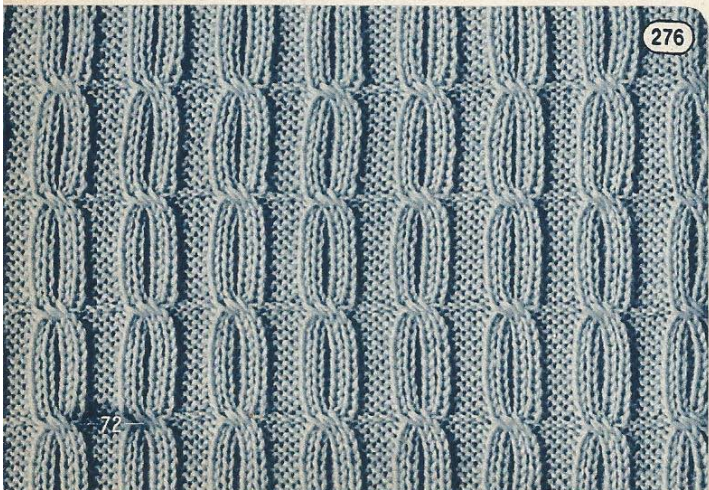
275



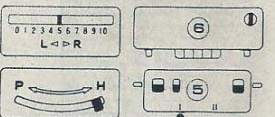
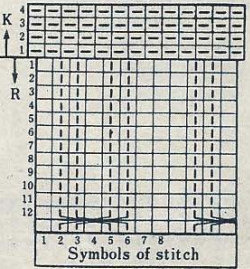
KH

KR

276



276



KH

KR