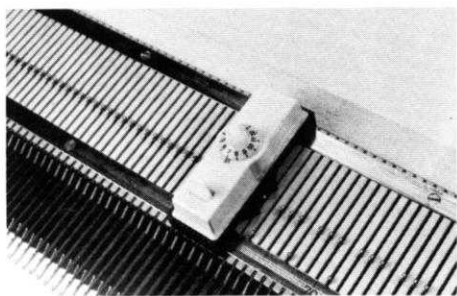


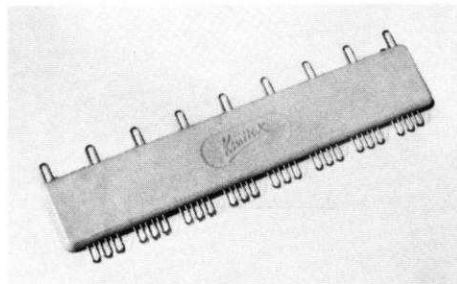
KNITTING

MAGAZINE

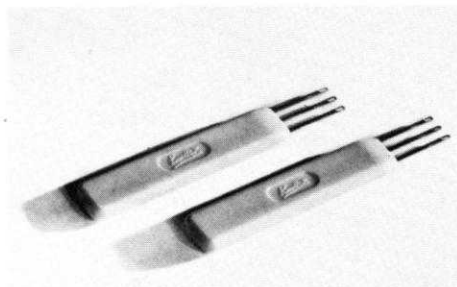




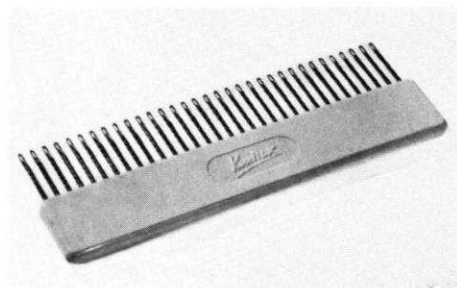
Automatic Needle Selector fits all model Knitkings



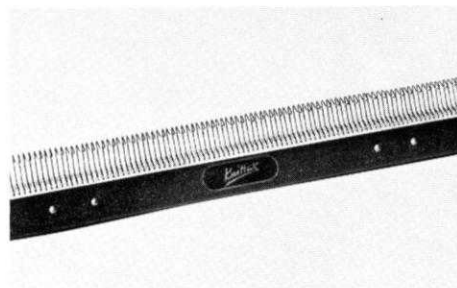
Adjustable Selector



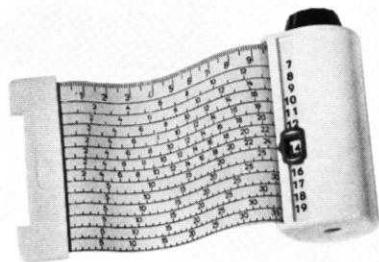
Treble Transfer Tools



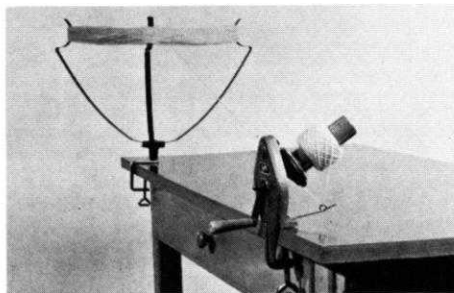
Multi-transfer Tool



Reversing Bar



Converta Tape



Yarn Winder



ACCESSORIES



The perfect tool for automatic selection of Jaquard and ski-sweater designs. Over 125 patterns available.



Jaco 40

KNITKING

MAGAZINE

Vol. 1 No. 1

Sept.-Oct. 1964

INDEX

Contents	Pattern No.	Page No.
Two Piece Dress	DK 7160	17
Dress with Bolero	DK 7162	18
Evening Bag	DV 7169	19
Cocktail Dress	DK 7163	20
Cocktail Dress with Jacket	DK 7161	20
Man's Pullover	HP 3348	22
Man's Pullover	HP 3349	22
Woman's Pullover	DP 7164	23
Woman's Blouse	DP 7166	24
Woman's Blouse	DP 7165	24
Two Piece Dress	DK 7168	25
Woman's Pullover	DP 7167	26
Man's Jacket Sweater	HP 3345	27
Man's Vest	HP 3346	28
Man's Pullover Shirt	HP 3344	28
Child's Pullover	MK 4644	29
Girl's Pullover	MK 4648	29
Boy's Pullover	KK 4646	30
Girl's Pullover	MK 4647	30
Boy's Jacket Sweater	KK 4645	31
Practical Hints		31



OUR COVER PICTURE

As the introduction of KNITKING MAGAZINE is a festive occasion, we are featuring some festive fashions. Our Jade green wool cover garment is a two piece dress made in one of the KNITKING Cable Yarns, the gold embroidery trim is in 'Accent' by Pauline Denham. Complete knitting instructions are on page 17.

Publisher: Henry J. Atkin, 1128 Crenshaw Blvd., Los Angeles, Calif. 90019, Telephone: WEbster 8-2079. Published bi-monthly. Subscriptions: USA—\$6.00 annually, single copies \$1.50; Canada—\$7.00; other parts of the world—\$10.00. The entire contents of KNITKING MAGAZINE are copyright and must not be reproduced in any shape or form without the express permission, in writing, of the publisher.

Printed by: George Rice & Sons, Los Angeles, Calif.



Letter from the Publisher

It is not possible to measure the joy, pride and satisfaction that we have in introducing to the American knitting machine owner this beautiful pattern magazine published exclusively for them.

We have been aware of the need for such a magazine almost since the introduction of our first KNITKING machine to the American market. Since that time many other brands have been introduced, some very good, others not so good, and a few very poor.

Our knitting machine designers have always stayed well ahead of the competition as is shown by the fact that we have won five international gold medal awards for excellence, a claim that no other knitting machine manufacturer can make.

The name KNITKING is synonymous with quality and service. We are an international organization with outlets throughout the world. We already publish knitting magazines in several other languages and in countries where heretofore the demand and enthusiasm for beautiful custom made knits has exceeded that of North America.

The trend, however, is changing and the American sales of knit goods is leaping ahead day by day. One has only to study the clothing advertisements in newspapers and magazines to realize that knit garments are now recognized as the best in high styling, comfort and utility.

Unfortunately, as in the rest of the world custom knits, original in design and made to fit individuals rather than the masses are extremely expensive. Consequently, housewives and very frequently husbands, again as in the rest of the world, have discovered that the KNITKING way is the way to overcome the expense problem and still possess a wardrobe of beautiful, high-styled dresses, coats, sweaters, etc., in anything from fine cottons, silks, linens, metallics, synthetics and wools, to heavy, bulky ski-sweater yarns.

The ever increasing sales of knitting machines in America have quite naturally resulted in an increased demand for patterns. KNITKING has always had an excellent selection of patterns available, and additionally we have for several years distributed a magazine put out by our English colleagues.

The need for a knitting machine pattern magazine printed and published exclusively for the American market is also something that every knitting machine owner, irrespective of brand name, is fully aware of and we planned several years ago to publish a knitting machine magazine only when our design staff was fully competent to satisfy the demand for top quality, high style garments on a continuing basis and only when we could prepare a magazine comparable in quality to our fabulous KNITKING automatic knitters.

We know that we have the finest knitting machines available and we now believe that we have the finest pattern magazine in its field. We think you will agree that there is nothing to compare with KNITKING MAGAZINE.

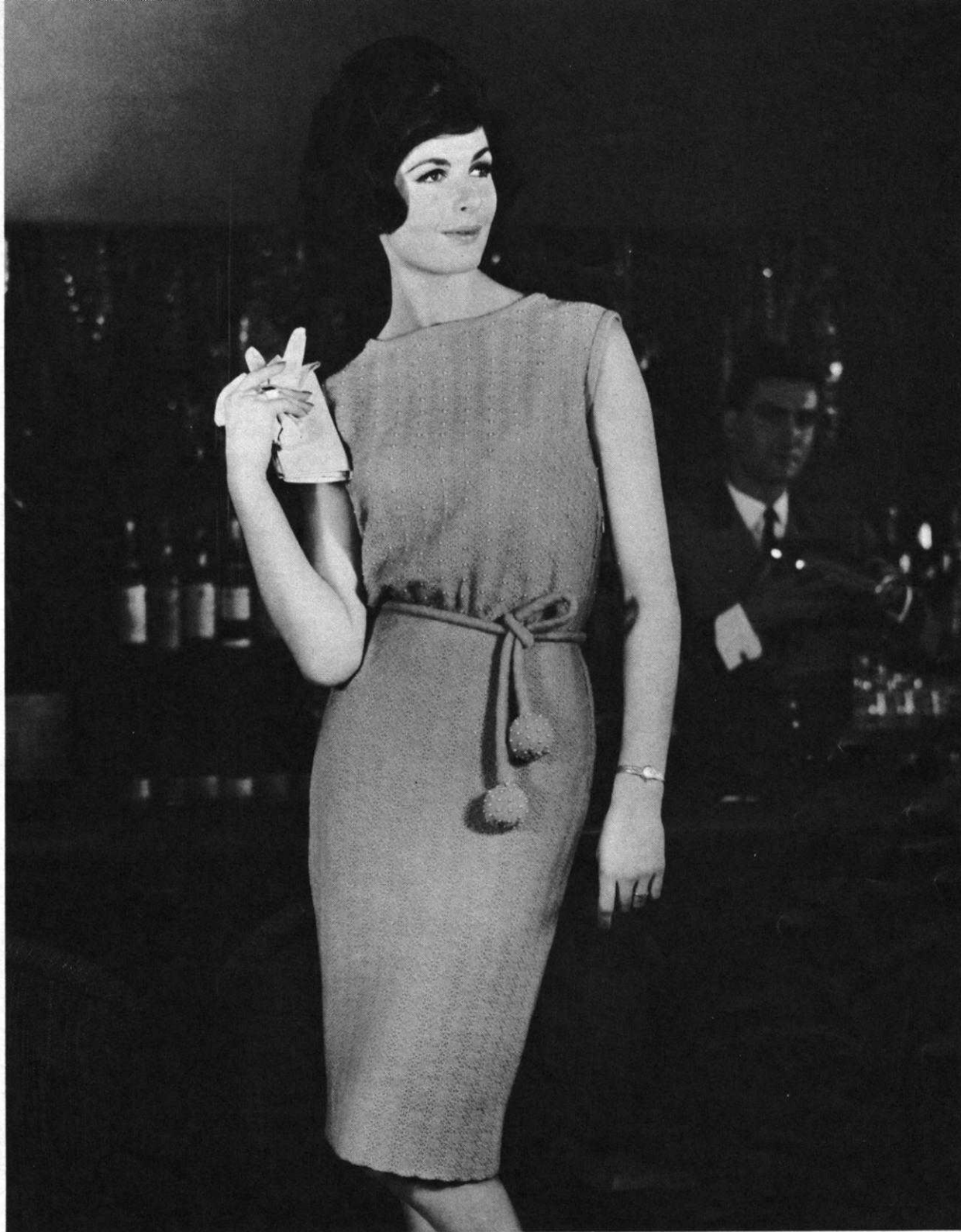
It is our desire and aim to satisfy our readers. We ask you to write to us with your comments. If there is something you do not fully understand in the methods of presenting the instructions, we will be happy to explain them to you. If you have any suggestions for improving KNITKING MAGAZINE, tell us about them so that everybody can benefit.

Please remember to always, and we repeat always, make a sample swatch in the yarn of your choice in order to obtain the recommended number of rows and stitches to the inch. It is possible that some machines will not produce the exact number of rows and stitches. If this is the case, you will need to adjust

(Continued on Page 32)



FESTIVELY
ELEGANT

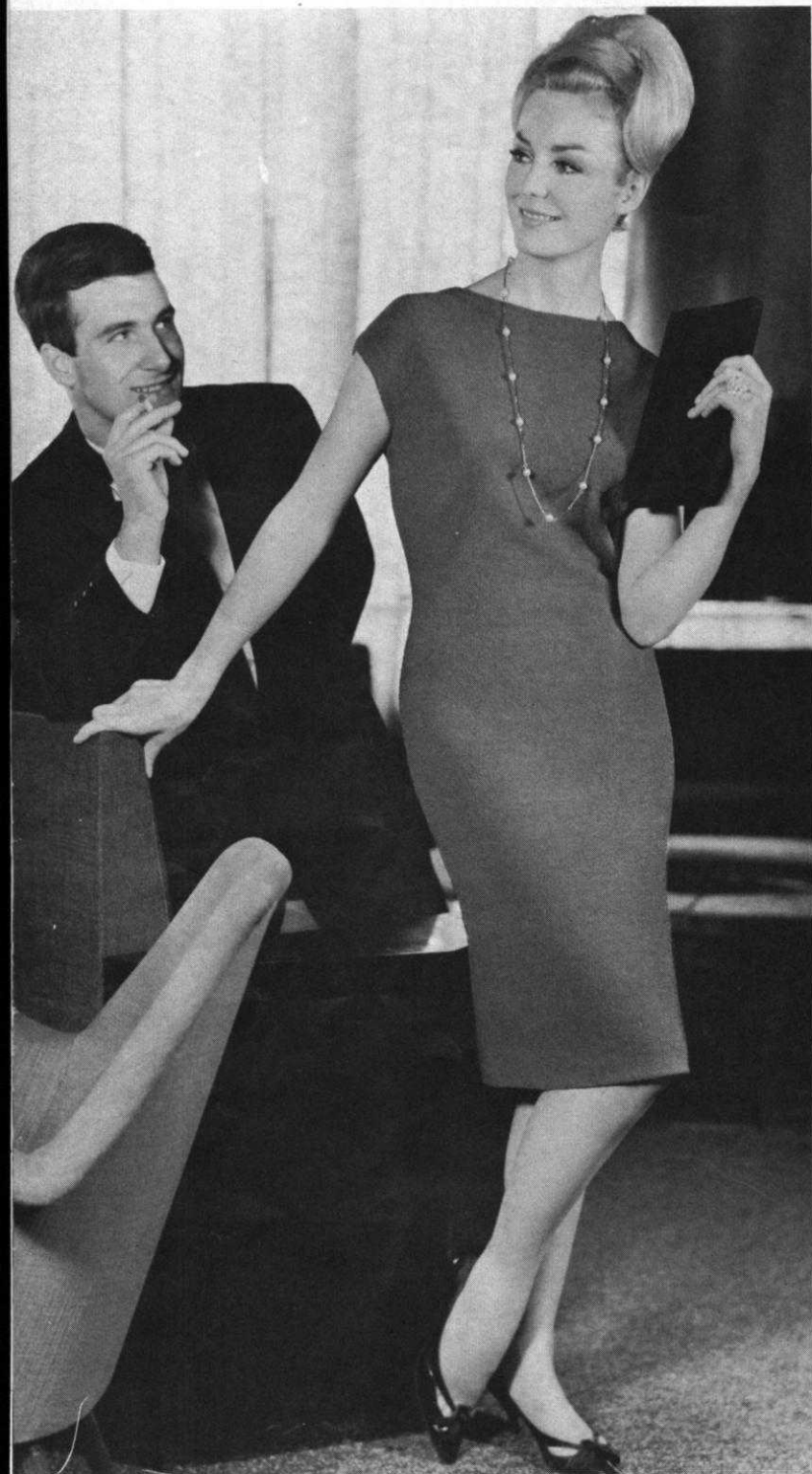


◀ DK 7162/DK 7169

This dress (DK 7162) is made of fine black Boucle wool. It can also be made in a light-weight sports yarn or 3 ply. The attractive top and little evening bag are worked in lacy H. P. design with Pauline Denham's gold embroidery trim 'Accent'.

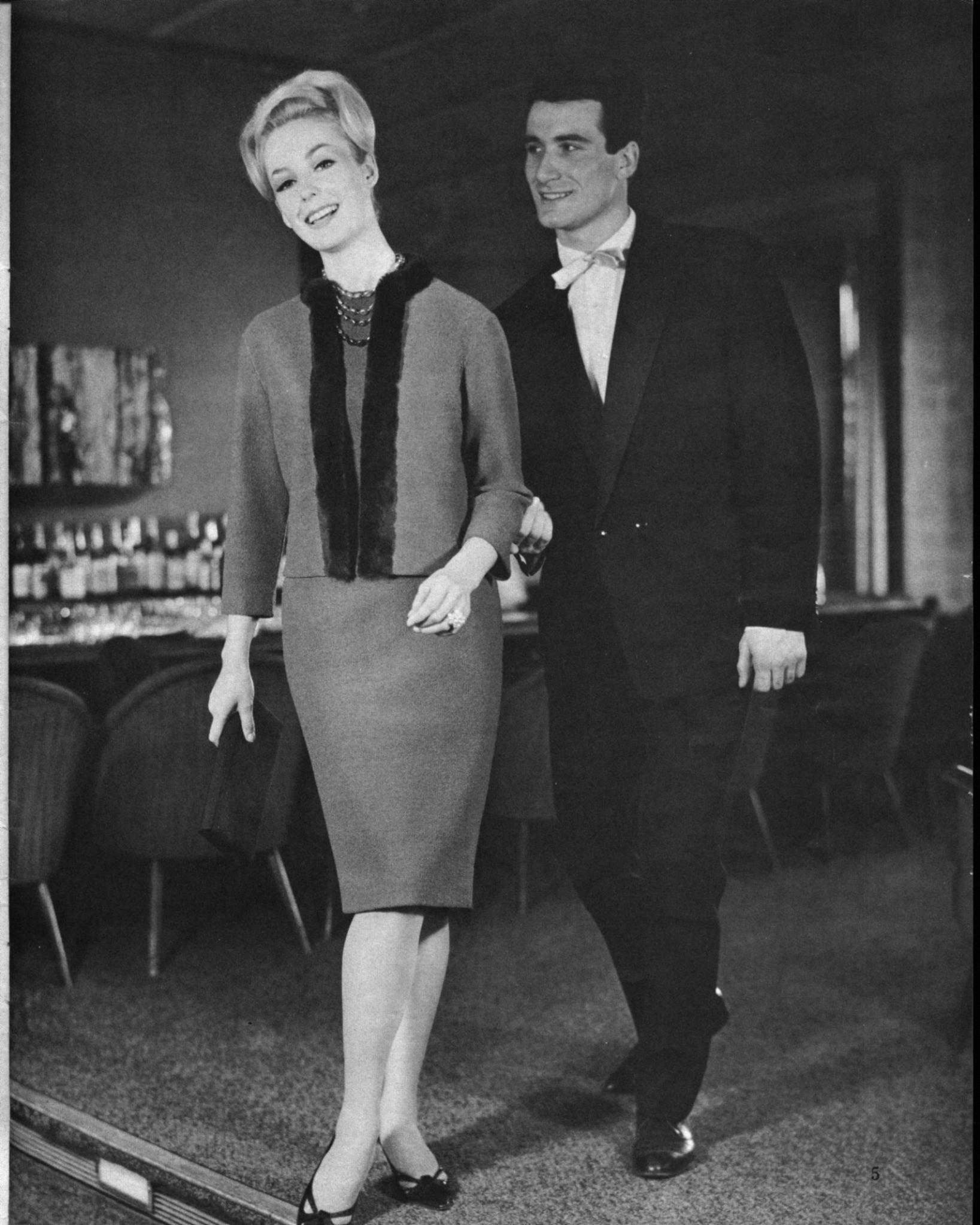
DK 7163

The blouson top of our turquoise cocktail dress, (DK 7163) is accented with small sequins of the same delicate turquoise shade. The dress is worked in H.P. pattern using the Jac 40 pattern selector. The yarn is Pauline Denham's Sierra.

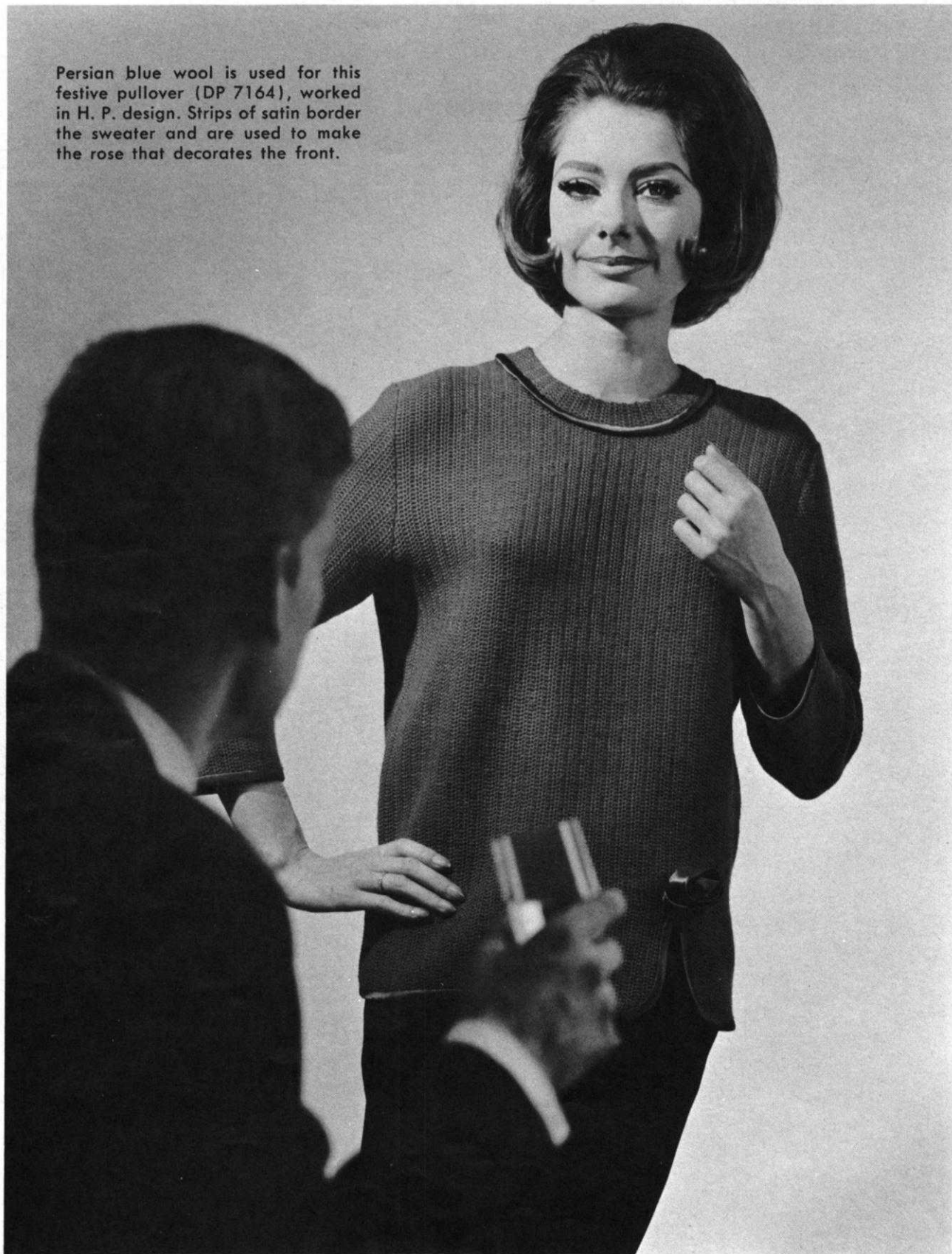


DK 7161 ▶

The cocktail dress (DK 7161), and the fur trimmed jacket are worked in straight purl (on the wrong side) using 33 ounces of fine olive-green boucle wool. The cross-straps add interest to the low cut back of the figure molding gown.



Persian blue wool is used for this festive pullover (DP 7164), worked in H. P. design. Strips of satin border the sweater and are used to make the rose that decorates the front.



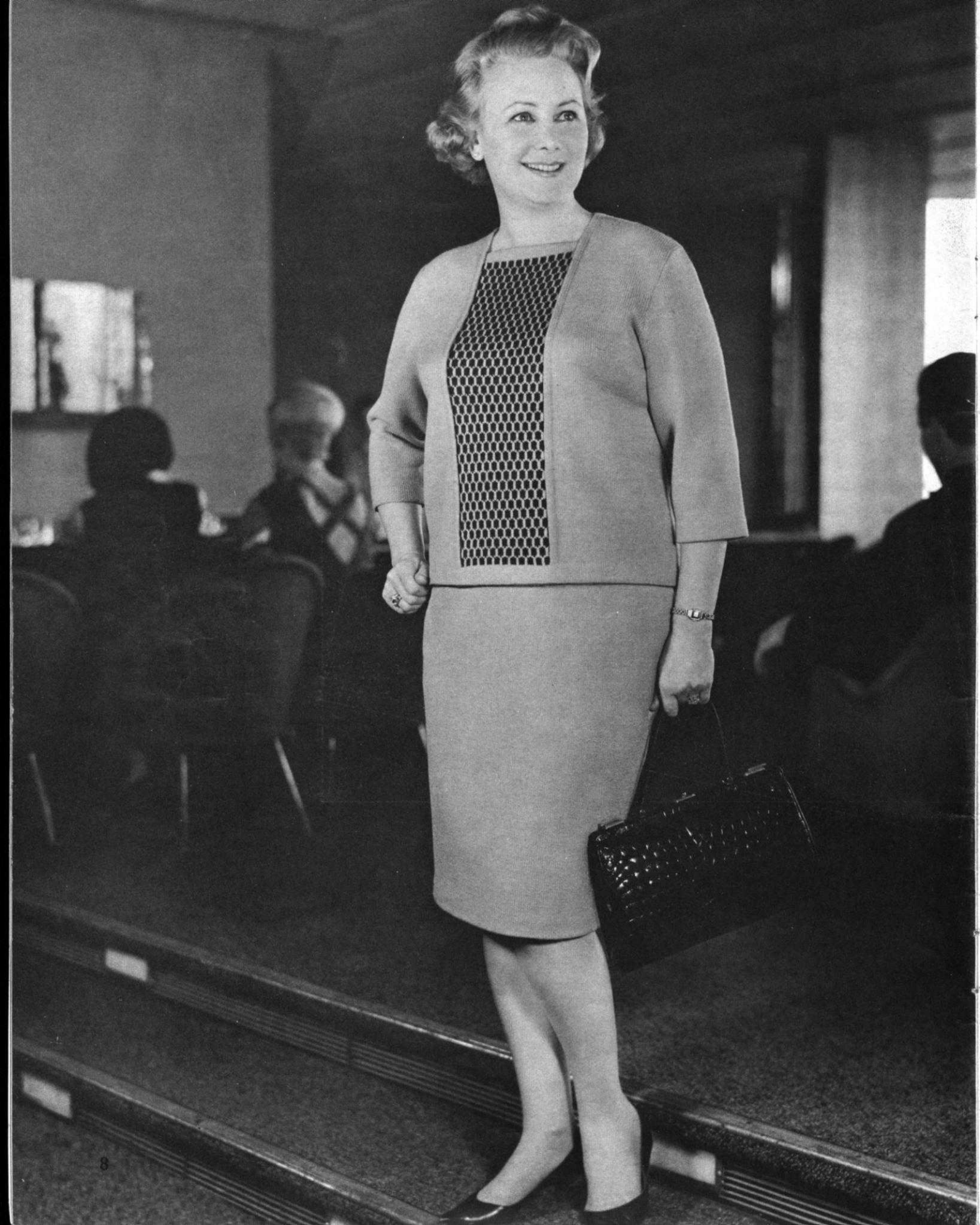
This blouse, (DP 7166), made from light blue, Pauline Denham 'Sierra' and 'Accent' gold embroidery floss is done in H. P. design. The shawl collar and edgings are worked in straight knitting.

DP 7166



DP 7165

For festive hours, we choose this blouse, (DP 7165), in caramel colored wool. The insets are worked laterally from 110 yards gold embroidery floss.





◀ DK 7168

DP 7167

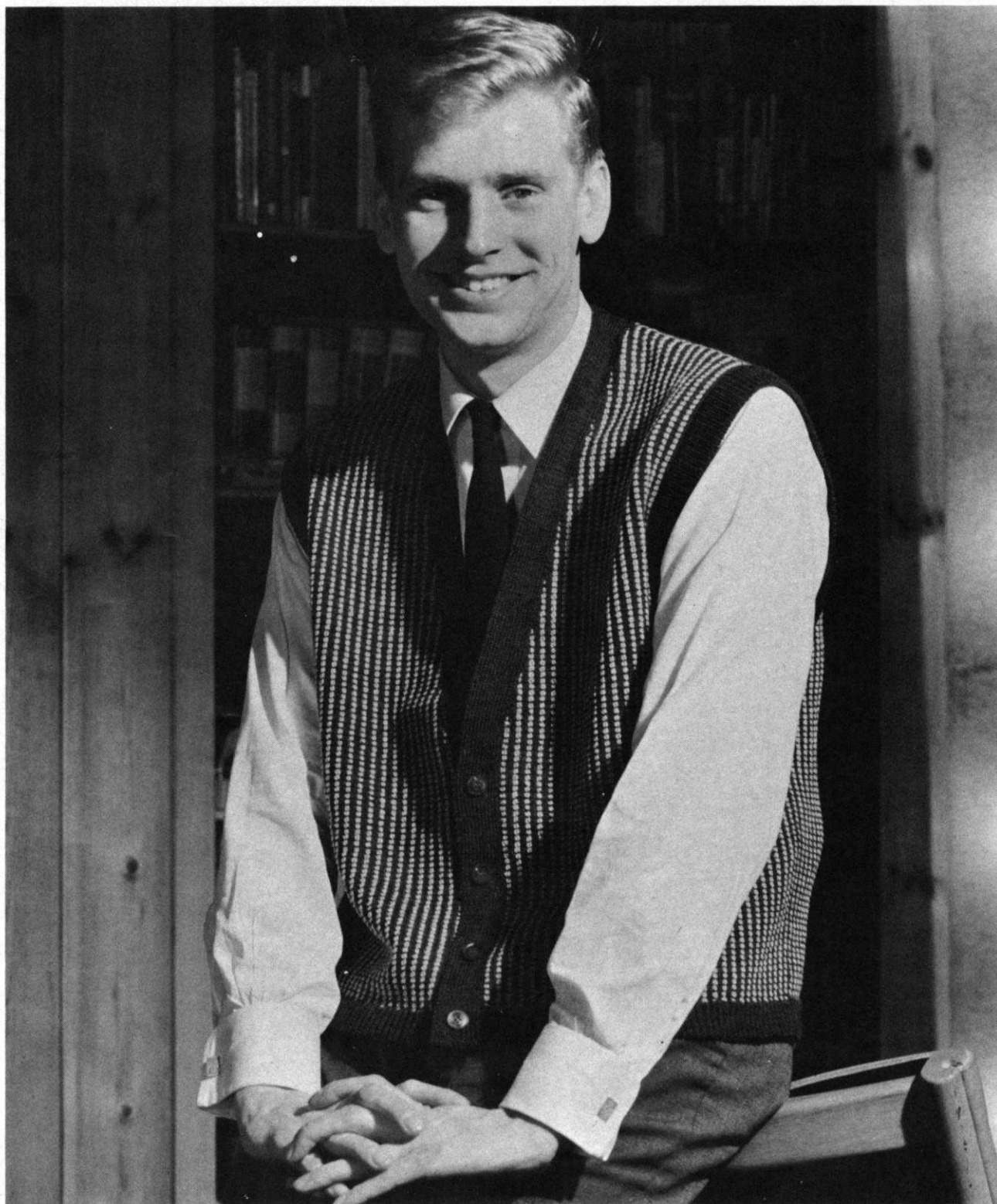
Two-piece dress, (DK 7168), is made from 32 oz. ginger-yellow cable wool. The inset in the top of the dress, worked in Norwegian design with blue and yellow, has a flattering, slimming effect on heavier figures.

For the heavier figure, we have selected this cherry-red pullover, (DP 7167). The directions for sizes 38/40 and 42/44 are on page 36.

AT HOME FASHIONS FOR HIM

(HP 3346), the sleeve-less vest, is worked in H. P. design with brown and light beige.

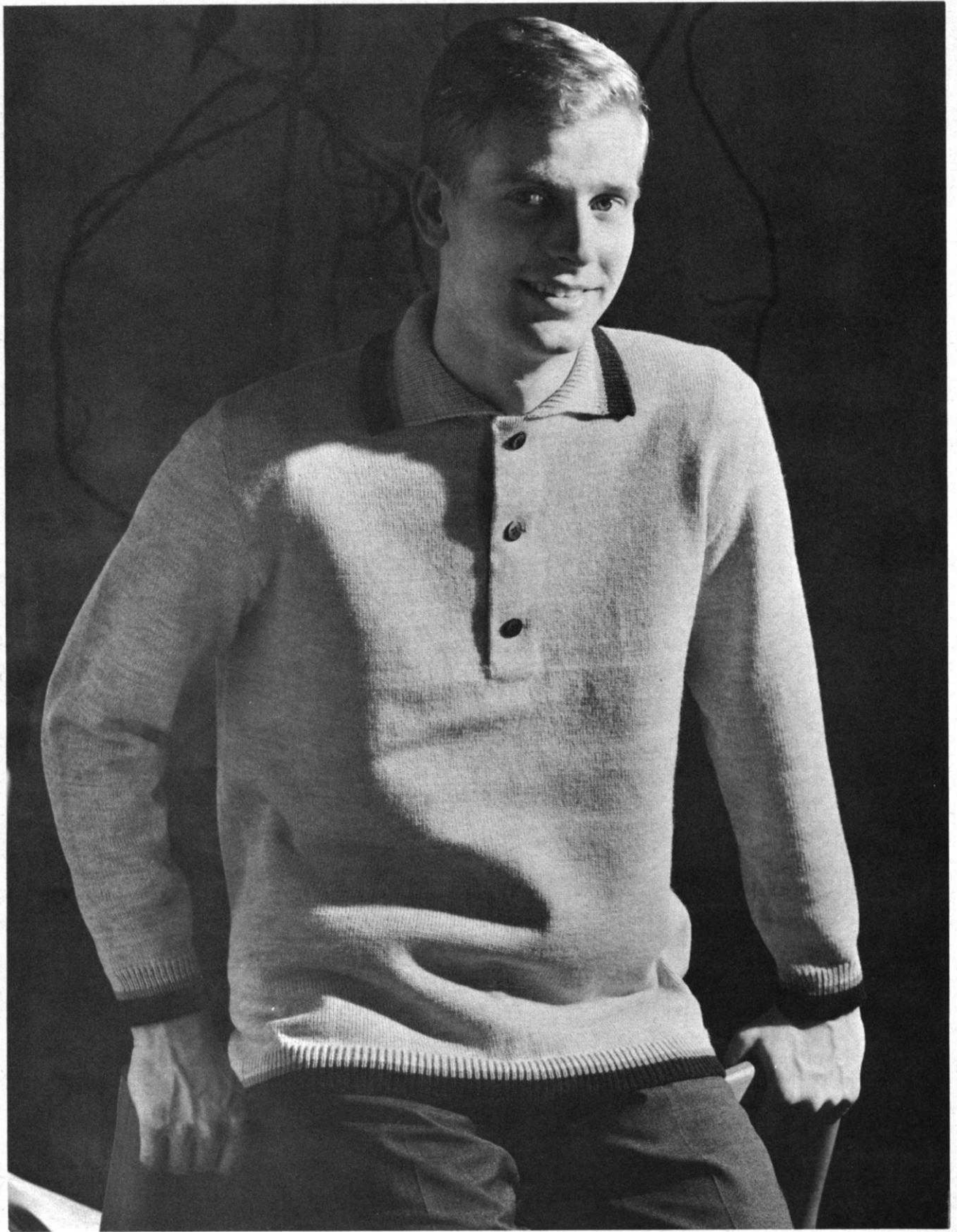
HP 3346





HP 3345

Our Jacket Sweater, (HP 3345), is made in H. P. design out of heavy green-black-and-grey blended yarn. The collar, pockets, front and bottom edges are trimmed with black wool.

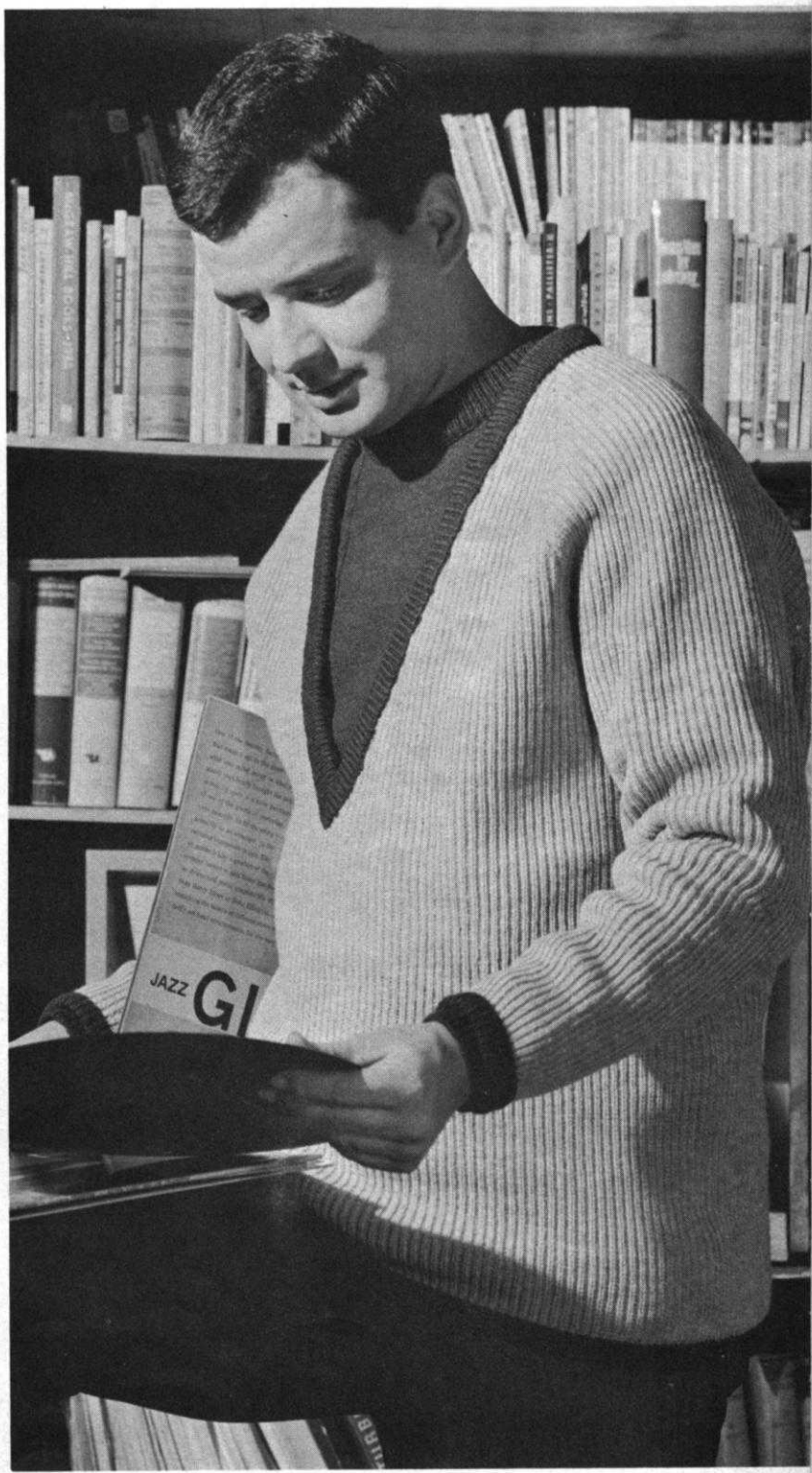
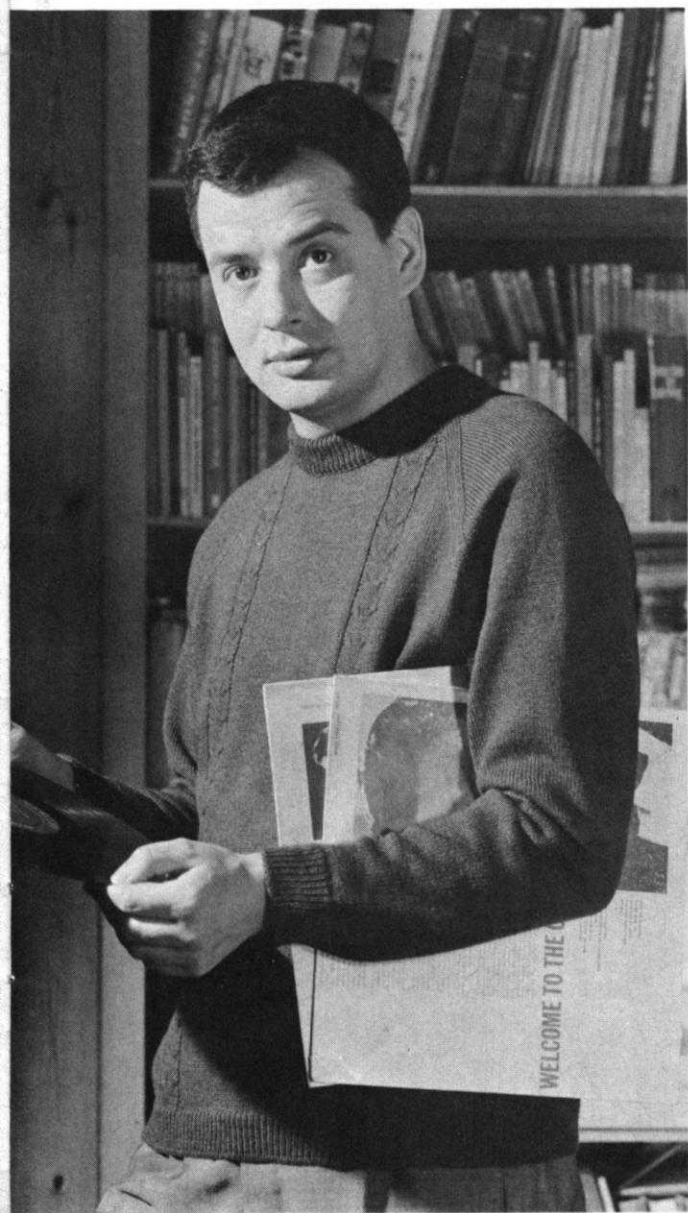


◀ HP 3344

Straight knitting (on right side) is used for this light grey pullover shirt, (HP 3344), made in 3-ply sports yarn. The ribbing has charcoal grey and beige stripes.

A blue and green Shetland wool was used to knit this pullover, (HP 3348), with raglan sleeves and two vertical cable stripes. It makes a nice set when teamed with the V necked pullover, (HP 3349), shown at the right.

HP 3348/49





CHILDREN'S
FASHIONS

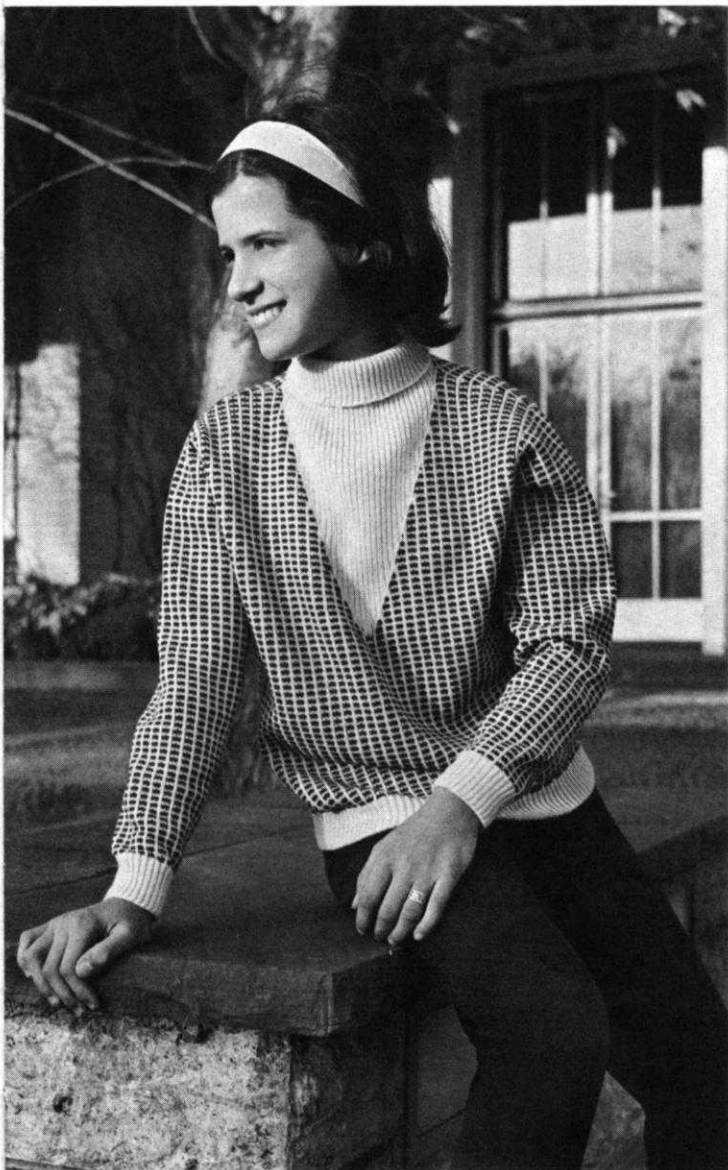
◀ MK 4644

Four different colored yarns are used in the H. P. design stripes of this pullover, (MK 4644). (Size: 3-4 years).



MK 4648

For young ladies of 7 to 8 we feature this pullover, (MK 4648), in a stylish H. P. design. The colors are brick red and sand beige.



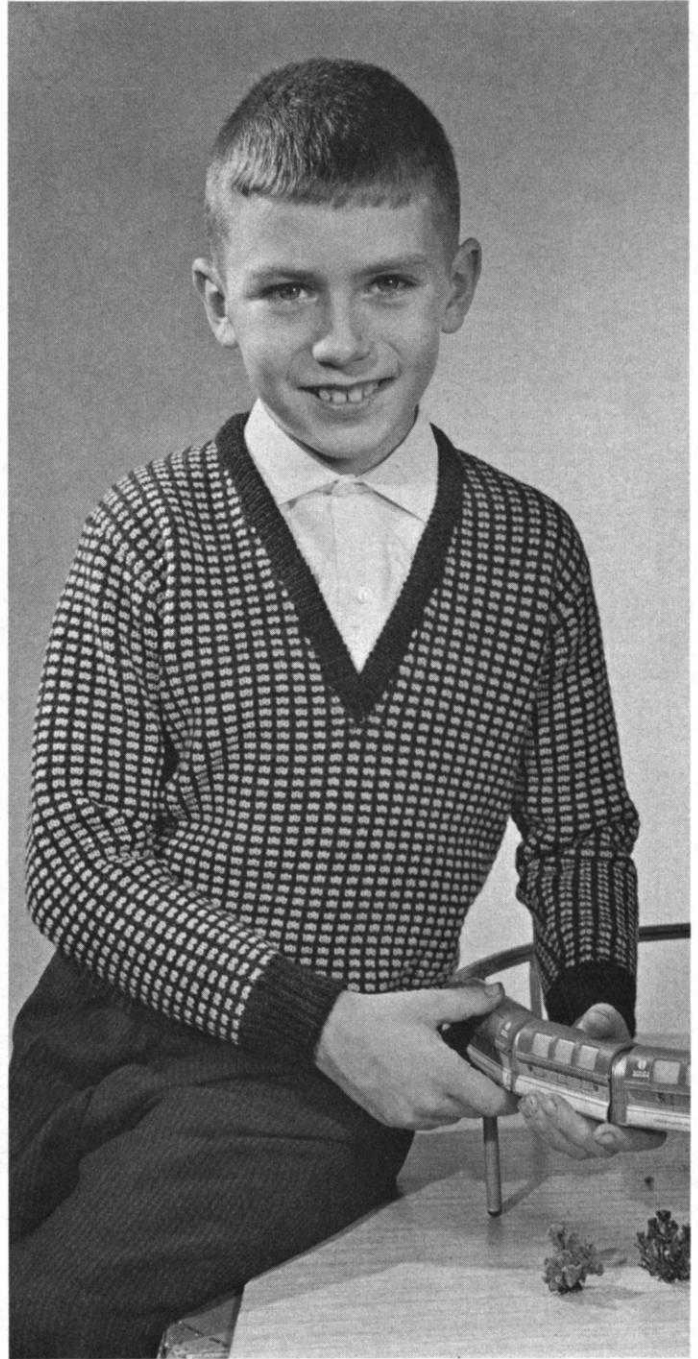
MK 4647

Girl's sweater, (MK 4647), is made with Pauline Denham's 'Sierra' in H. P. design. The same design is also used for the boys pullover, (KK 4646), shown on page 16.

This practical school jacket, (KK 4645), is made in H. P. design using 4 different colors in Shetland wool.



KK 4645



KK 4646

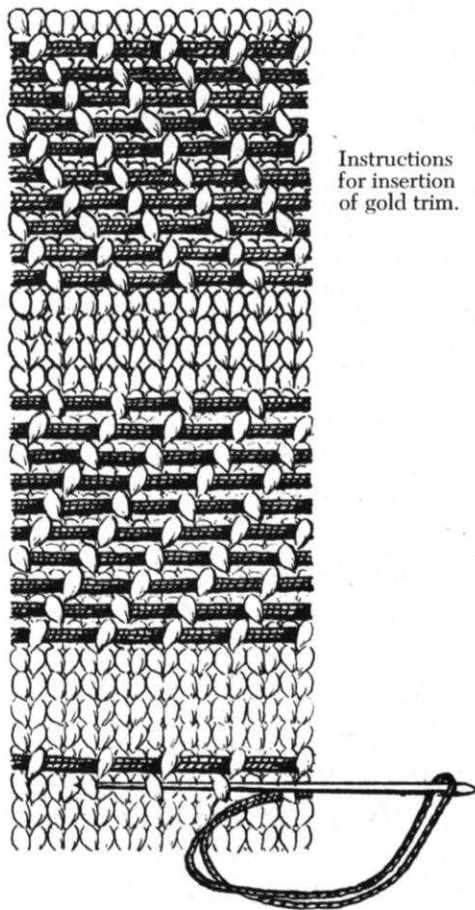
KNITTING INSTRUCTIONS

TWO PIECE DRESS, No. DK 7160



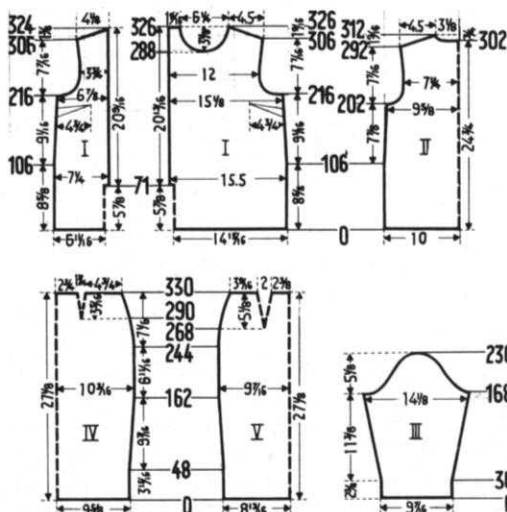
SIZE: 38/40. Sample garment made on Knitking. **MATERIAL:** (For skirt) 16 oz. jade green cable wool, (For top) 24 oz. jade green cable wool, 164 yards gold embroidery floss, 4/5 yards taffeta, 56" wide. **SETTING:** 4 on Knitking. Other machines to be set to produce gauge. **GAUGE:** 17 stitches 2" - 24 rows 2". **PATTERN:** Straight knitting (right side). The ornamental stitching is worked on the finished garment according to the diagram, with gold thread. **SKIRT BACK:** (Figure V). Cast on 153 stitches. Rows 1-162:

Increase 1 stitch on both sides after the 48th row and then every 28th row 4 times (163 stitches). Rows 163-244: Work straight. Rows 245-330: Decrease 1 stitch on both sides after the 244th row and then every 10th row 2 times, every 8th row 3 times, every 6th row 5 times, and every 4th row 2 times. At the same time, for the darts, decrease 2 stitches each after the 268th row, and every 8th row 4 times, and every 6th row 4 times. For this, on both sides, put the 48th and 50th stitches on the 49th needle and hang the stitches together. The next decrease should lie exactly above this. Bind off 101 stitches. **SKIRT FRONT** (Figure IV). Cast on 167 stitches. Rows 1-162: Increase 1 stitch on both sides after the 48th row and every 28th row 4 times (177



Instructions for insertion of gold trim.

stitches). Rows 163-244: Work straight. Rows 245-330: Decrease 1 stitch on both sides after the 244th row, and then every 10th row 2 times, every 8th row 3 times, every 6th row 5 times, and every 4th row 2 times. At the same time, for the darts, decrease 2 stitches each after the 290th row, and every 8th row 4 times. For this, on both sides, put the 52nd and 54th stitches



on the 53rd needle, and hang the stitches together. The next decrease should lie directly above this. Bind off 131 stitches. **TOP BACK** (Figure II). Cast on 173 stitches. Rows 1-202: Decrease 1 stitch on both sides after the 106th row and every 32nd row 2 times (167 stitches). Rows 203-228: For the armhole shaping, bind off 4 stitches on both sides, and then on both sides of every 2nd row decrease 3 stitches 2 times, 2 stitches 2 times, 1 stitch 4 times. Then decrease 1 stitch on both sides of every 4th row 2 times. (127 stitches). Rows 229-292: Increase 1 stitch on both sides after the 250th row and then in every 14th row 2 times (133 stitches). Rows 293-312: For the shoulder shaping on both sides of every 2nd row, bind off 3 stitches 5 times, and 4 stitches 6 times. At the same time, for the neck opening, after the 302nd row, bind off the 17 center stitches, and on both sides of this in every 2nd row bind off 7 stitches once, 5 stitches once, 4 stitches once, and 3 stitches once. **TOP FRONT** (Figure I). Cast on 186 stitches. Rows 1-70: Work straight. Put 57 needles from the left side in hold position, and work the right half first. Rows 71-216: On the left side, after the 71st row cast on 5 stitches. To do this, put 5 stitches from the left side on a helping (double pointed) needle. On the right side, decrease 1 stitch after the 106th row and then on every 32nd row 2 times. (131 stitches). Rows 217-242: For the armhole shaping, bind off 6 stitches. Then in every 2nd row decrease 5 stitches once, 4 stitches once, 3 stitches once, 2 stitches 2 times, and 1 stitch 3 times, then decrease 1 stitch every 4th row 2 times. (104 sts.). Rows 243-288: On the right side, increase 1 stitch after the 264th row and again after the 278th row. Rows 289-326: For the neck opening, counting from the right edge, bind off the 59th to the 72nd stitches, and in every 2nd row on both sides of this opening, decrease 4 stitches once, 3 stitches once, 2 stitches 4 times, 1 stitch twice, and then decrease 1 stitch in every 4th row 2 times, and every 6th row once. At the same time, increase 1 stitch after the 292nd row on the armhole side. Then, for the shoulder shaping, in every 2nd row after the 306th row bind off 3 stitches 5 times, and 4 stitches 6 times. After the 326th row, bind off the remaining 14 stitches. Now put the cam box on the left side, and turn the row counter back to 70. Put all needles back in working position, putting the 5 stitches from the helping needle back on the machine. Row 71-216: On the right side, after the 71st row, cast on 5 stitches. On the left side decrease 1 stitch after the 106th row, and in every 32nd row 2 times. (59 stitches). Rows 217-242: For the armhole shaping bind off 6 stitches. Then in every 2nd row decrease 5 stitches once, 4 stitches once, 3 stitches once, 2 stitches 2 times, and 1 stitch 3 times. Then decrease 1 stitch in every 4th row 2 times. (32 stitches). Rows 243-306: On the left side, increase 1 stitch after the 264th row and again in every 14th row 2 times. (35 stitches). Rows 307-324: For the shoulder shaping, bind off in every 2nd row 3 stitches 5

times and 4 stitches 5 times. **SLEEVE** (Figure III). Cast on 81 stitches. Rows 1-168: Increase 1 stitch on both sides after the 30th row, and again every 8th row 6 times, and every 6th row 14 times. (123 stitches). Rows 169-184: For the under arm shaping, in every second row on the back side of the sleeve, bind off 4 stitches 2 times, 3 stitches 2 times, 2 stitches 3 times, and one stitch once. On the front side of the sleeve, bind off 6 stitches once, 5 stitches once, 4 stitches once, 3 stitches 2 times, and 2 stitches 3 times. Rows 185-224: Decrease 1 stitch on both sides of every 2nd row 20 times. Rows 225-230: On both sides of every 2nd row bind off 2 stitches once, 3 stitches once, 5 stitches once, and then bind off the remaining 15 stitches. Make another sleeve with opposite shapings. **FINISHING:** (Skirt). Join front and back sections of skirt, leaving an 8" opening on left side for zipper. Make a narrow hem around opening. Make a 1½" hem around bottom edge of skirt. Sew an elastic band to top of skirt. Sew in zipper, hooks, and eyes. Line with taffeta. **TOP:** on the right front section, make a hem 5 stitches wide at the front edge. Join the left front section to the right, sewing it 5 stitches under the right section. Sew in darts at bust line according to diagram. Make a hem 14 rows wide at bottom of front, back, and sleeves. Now work the ornamental stripes with a double gold thread. For these stripes, start sewing under ½ a stitch, and sew across 1½ stitches. The first strip is started in the 5th row, and covers 10 rows. The thread is moved ½ stitch to the left every row. There are 4 plain rows between the 1st and 2nd stripes. For the 2nd stripe, the thread is moved ½ stitch to the right for every row. Work 4 stripes on both the front and back sections. The stripes on the front section will be 20" long. The stripes on the back section will be 18" long. Work 2 stripes on each sleeve. Join the front and back sections at the side and shoulder seams, leaving an opening 5½" long at the bottom of the left side. Make a narrow hem around this opening, and set in zipper. Join sleeve edges and sew sleeves to garment. Sew bias facing to neck edge. Knit a 4" by 4" strip, and from this strip make 8 buttons. Sew on buttons.

DRESS AND BOLERO, No. DK 7162



SIZE: 36/38 - 40/42. **MATERIAL:** (For size 36/38) 20 oz. black boucle wool or Knitting Cable Twist. (For size 40/42) 22 oz. black boucle wool. (For size 36/38) 361 yards gold embroidery floss. (For size 40/42) 416 yards gold embroidery floss. 4/5 yard taffeta, 56" wide. **SETTING:** 3 - for straight purl (wrong side) on Knitting. 4 - for pattern on Knitting. Other machines adjust to obtain correct gauge. **GAUGE:** 16 stitches - 2" wide, 28 rows - 2" long, straight purl (wrong side). 12 stitches - 2" wide,

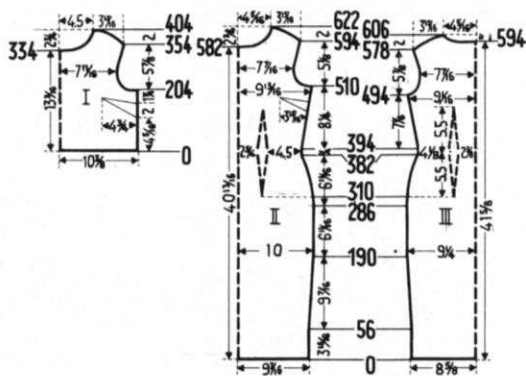
50 rows - 2" long, pattern stitch. The n.w.p. stitches in the design are counted in the gauge and in the diagram. **PATTERN:** (Dress) Straight purl (wrong side). (Bolero) H.P. design on the wrong side, according to diagram. **THE DIRECTIONS THAT FOLLOW ARE FOR**



17-20
11-16
7-10
1-6

SIZE 36/38. DRESS BACK (Figure III) Cast on 141 stitches with black. Work in straight purl (wrong side) with setting 3. Rows 1-190: Increase 1 stitch on both sides after the 56th row, then in every 34th row 2 times, and in every 32nd row 2 times. (151 stitches). Rows 191-286: Work straight. Rows 287-382: Decrease 1 stitch on both sides after the 286th row, then every 14th row 2 times, every 10th row 3 times, every 6th row 4 times, and every 4th row 3 times. At the same time, for the darts, decrease 2 stitches each after the 310th row and then in every 18th row 4 times. For this, on both sides, put the 48th and 50th stitches on the 49th needle, and hang the stitches together. The next decrease should lie directly above this. (105 stitches). Rows 383-394: Work straight. Rows 395-494: Increase 1 stitch on both sides after the 394th row, then every 8th row 5 times and every 10th row 5 times. At the same time, for the darts, increase 2 stitches each after the 394th row, and in every 18th

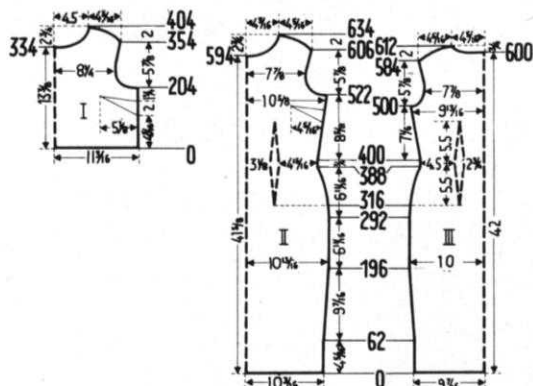
row 4 times. The increases should lie directly above the decreases. (147 stitches). Rows 495-524: For the armhole shaping, bind off 3 stitches on both sides, and then on both sides in every second row, decrease 2 stitches 2 times, 1 stitch 2 times, then decrease 1 stitch in every 4th row 2 times, and every 6th row 2 times. (121 stitches). Rows 525-578: Increase 1 stitch on both sides after the 536th row and in every 6th row 6 times. (135 stitches) Rows 579-606: For the shoulder shaping on both sides bind off 1 stitch after the 578th row, and again after the 582nd row. Then in every 2nd row bind off 1 stitch once, 2 stitches 4 times, and 3 stitches 7 times. At the same time, for the neck opening, after the 594th row, bind off the 25 center stitches, and on both sides of this, in every 2nd row, bind off 7 stitches once, 5 stitches once, 4 stitches twice, and 3 stitches once. **DRESS FRONT** (Figure II). Cast on 153 stitches. Rows 1-190: Increase 1 stitch on both sides after the 56th row, then in every 34th row 2 times, and in every 32nd row 2 times. (163 stitches). Rows 191-286: Work straight. Rows 287-382: Decrease 1 stitch on both sides after the 286th row, then in every 14th row 2 times, every 10th row 3 times, every 6th row 4 times, and every 4th row 3 times. At the same time, for the darts, decrease 2 stitches each after the 310th row and then every 18th row 4 times. For this place the 51st and 53rd stitches on both sides on the 52nd needle, and hang the stitches together. The next decrease lies directly above this. (117 stitches). Rows 383-394: Work straight. Rows 395-510: Increase 1 stitch on both sides after the 394th row and in every 10th row 10 times. At the same time, for the darts, increase 2 stitches each after the 394th row and in every 18th row 4 times. The increases lie directly above the decreases. (159 stitches). Rows 511-538: For the armhole shaping, bind off 4 stitches on both sides. Then in every 2nd row, decrease 3 stitches 2 times, 2 stitches 2 times, 1 stitch 2 times, and then decrease 1 stitch every 4th row 2 times and 1 stitch every 6th row once. (121 stitches). Rows 539-582: Increase 1 stitch on both sides after the 552nd row and then in every 6th row 4 times. Rows 583-622: For the neck hole shaping, bind off the 19 center stitches, and then, on both sides of this in every 2nd row, decrease 5 stitches once, 4 stitches once, 3 stitches 2 times, 2 stitches 2 times, and 1 stitch 4 times. Then decrease 1 stitch every 4th row 2 times and 1 stitch every 6th row once. At the same time, for the armhole shaping, increase 1 stitch on both sides after the 582nd row and again after the 588th



row. For the shoulder shaping, on both sides, bind off 1 stitch after the 594th row, and again after the 598th row. Then in every second row, bind off 1 stitch once, 2 stitches 4 times, and 3 stitches 7 times. **COLLAR:** The collar is worked diagonally. Cast on 51 stitches. Work 246 rows straight purling (wrong side), decreasing 1 stitch every 2nd row on the left side, and increasing 1 stitch every 2nd row on the right side. To finish, put the stitches on a helping (double pointed) needle. **FACING FOR ARMHOLE OPENINGS:** Cast on 11 stitches. Work 140 rows straight purling (wrong side), decreasing 1 stitch on the left side every second row, and increasing 1 stitch on the right side every 2nd row. To finish, put the stitches on a helping needle. Work another strip identical to this. **BOLERO:** (Figure I) Cast on 127 stitches with gold thread, and put needles 3, 5, 8, 10, etc. out of operation. Work in h.p. design with setting 4, and in the beginning work the h.p. in the 10th row instead of the 6th row. Rows 1-204: Work straight. Rows 205-254: For the armhole shaping, bind off 3 stitches on both sides.

Then in every 4th row, decrease 3 stitches once, 2 stitches 2 times, 1 stitch 2 times, and then decrease 1 stitch in every 6th row 2 times and in every 8th row 2 times. (95 stitches). Rows 255-334: Increase 1 stitch on both sides after the 274th row and then in every 16th row 3 times. Rows 335-404: For the neck opening, bind off the 15 center stitches, and on both sides of this in every 4th row, decrease 5 stitches once, 4 stitches once, 3 stitches once, 2 stitches once, and 1 stitch 2 times, and then in every 6th row decrease 1 stitch 2 times and in every 8th row decrease 1 stitch 3 times. At the same time, for the armhole shaping, increase 1 stitch after the 338th row, and for the shoulder shaping, on both sides, bind off 1 stitch after the 354th row and again after the 360th row. Then in every 4th row bind off 1 stitch 4 times, 2 stitches 3 times, and 3 stitches 4 times. **FINISHING:** On the front section of the dress, sew in darts at bust line according to diagram. Join front and back sections at side and shoulder seams, leaving an 1 1/4" opening at the waist on the left side. Make a narrow hem around this opening and set in zipper. Make a 1 1/2" hem around the bottom of the skirt. Line the back skirt section with taffeta. **BOLERO:** Sew in darts at bust line, and sew bolero to front of dress. **COLLAR:** Separate the cast on stitches, and weave these stitches and the stitches on the helping needle together. Sew the collar to the neck opening of the dress, and roll it down around the dress top. Face the arm holes with the diagonal strips.

SIZE 42/44. DRESS BACK (Figure III). Cast on 154 stitches with black. Work in straight purling (wrong side) with setting 3. Rows 1-196: Increase 1 stitch on both sides after the 62nd row, then in every 34th row 2 times, and in every 32nd row 2 times (164 stitches). Rows 197-292: Work straight. Rows 293-388: Decrease 1 stitch on both sides after the 292nd row, then every 14th row 2 times, every 10th row 3 times, every 6th row 4 times, and every 4th row 3 times. At the same time, for the darts, decrease 2 stitches each after the 316th row and



then in every 18th row 4 times. For this, on both sides, put the 51st and 53rd stitches on the 52nd needle, and hang the stitches together. The next decrease should lie exactly above this. (118 stitches). Rows 389-400: Work straight. Rows 401-500: Increase 1 stitch on both sides after the 400th row, then every 8th row 5 times and every 10th row 5 times. At the same time, for the darts, increase 2 stitches each after the 400th row, and in every 18th row 4 times. The increases should lie directly above the decreases. (160 stitches). Rows 500-532: For the armhole shaping, bind off 3 stitches on both sides, and then on both sides in every 2nd row, decrease 3 stitches once, 2 stitches 2 times, 1 stitch 2 times, and then decrease 1 stitch in every 4th row 2 times, and in every 6th row 2 times. (128 stitches). Rows 533-584: Increase 1 stitch on both sides after the 542nd row, and in every 6th row 6 times. (142 stitches). Rows 585-612: For the shoulder shaping, on both sides bind off 1 stitch after the 584th row, and again after the 588th row. Then in every 2nd row bind off 1 stitch once, 2 stitches 4 times, 3 stitches 3 times, 4 stitches 4 times. At the same time, for the neck opening, after the 600th row, bind off the 24 center stitches, and on both sides of this in every 2nd row, bind off 7 stitches once, 5 stitches once, 4 stitches twice, and 3 stitches once. **DRESS FRONT (Figure II)** Cast on 166 stitches. Rows 1-196: Increase 1 stitch on both sides after the 62nd row, then in every 34th row 2 times, and in every 32nd row 2 times. (176 stitches). Rows 197-292: Work straight. Rows 293-388:

Decrease 1 stitch on both sides after the 292nd row, then in every 14th row 2 times, every 10th row 3 times, every 6th row 4 times, and every 4th row 3 times. At the same time, for the darts, decrease 2 stitches each after the 316th row, and then every 18th row 4 times. For this, place the 54th and 56th stitches on both sides on the 55th needle, and hang the stitches together. The next decrease lies directly above this. (130 stitches). Rows 389-400: Work straight. Rows 401-522: Increase 1 stitch on both sides after the 400th row, and in every 10th row 10 times. At the same time, for the darts, increase 2 stitches each after the 400th row, and in every 18th row 4 times. The increases lie directly above the decreases. (172 stitches). Rows 523-556: For the armhole shaping, bind off 4 stitches on both sides. Then in every 2nd row decrease 4 stitches once, 3 stitches once, 2 stitches 3 times, 1 stitch once, and then decrease 1 stitch every 4th row 2 times and 1 stitch every 6th row 2 times. (128 stitches). Rows 557-594: Increase 1 stitch on both sides after the 564th row, and then in every 6th row 4 times. Rows 595-634: For the neck hole shaping, bind off the 18 center stitches, and then on both sides of this on every 2nd row decrease 5 stitches once, 4 stitches once, 3 stitches 2 times, 2 stitches 2 times, and 1 stitch 4 times. Then decrease 1 stitch every 4th row 2 times and 1 stitch every 6th row once. At the same time, for the armhole shaping, increase 1 stitch on both sides after the 594th row and again after the 600th row. For the shoulder shaping, on both sides bind off 1 stitch after the 606th row, and again after the 610th row. Then in every 2nd row bind off 1 stitch once, 2 stitches 4 times, 3 stitches 3 times, and 4 stitches 4 times. **COLLAR AND ARM-HOLE FACING:** Follow directions for size 36/38. **BOLERO:** (Figure I). Cast on 137 stitches with gold thread, and put needles 3, 5, 8, 10, etc. out of operation. With setting 4, work in H.P. design, and in the beginning work the H.P. in the 10th row instead of the 6th row. Rows 1-204: Work straight. Rows 205-258: For the armhole shaping, bind off 4 stitches on both sides. Then in every 4th row decrease 3 stitches once, 2 stitches twice, 1 stitch 3 times, and then decrease 1 stitch in every 6th row 2 times and then in every 8th row 2 times. (101 stitches). Rows 259-334: Increase 1 stitch on both sides after the 274th row, and then every 20th row 2 times. Rows 335-404: For the neck opening, bind off the 15 center stitches, and then on both sides, every 4th row decrease 5 stitches once, 4 stitches once, 3 stitches once, 2 stitches once, and 1 stitch 2 times, and now decrease 1 stitch every 6th row 2 times, and every 8th row 3 times. At the same time, for the armhole shaping, on both sides after the 334th row, increase 1 stitch and for the shoulder shaping on both sides bind off 1 stitch after the 354th row, and again after the 360th row. Then in every 4th row bind off 1 stitch 3 times, 2 stitches 3 times, and 3 stitches 5 times. **FINISHING:** Follow directions for size 36/38.

EVENING BAG, No. DV 7169

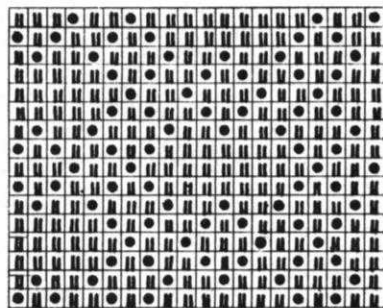
SIZE: 9 1/2" by 6". **MATERIAL:** 1 1/4 oz. black boucle wool - For example: Knitting Cable Twist, 164 yards gold embroidery floss - For example: Pauline Denham accent, 2 corset bones 8" long, 9" fleece lining to block finished bag on. **SETTING:** 3 - for straight purl (wrong side), 4 - for design. **GAUGE:** 16 stitches - 2" wide, 28 rows - 2" long, straight purl (wrong side), 12 stitches - 2" wide, 50 rows - 2" long, pattern. The N.W.P. stitches in the design are counted in the gauge and in the diagram. **PATTERN:** Straight purl (wrong side) and H.P. Pattern on the wrong side, according to the diagram for DK 7162. With black cast on 76 stitches. Work 188 rows straight purling (wrong side) with setting 3. Then bind off all stitches. Cast on 62 stitches with gold, putting needles 3, 5, 8, 10, etc. out of operation. Work 176 rows in H.P. Pattern. Then bind off all stitches. Now make another piece exactly like this. **FINISHING:** ① On the top edges of the black piece, make a 3/8" hem (see sketch). Block this section on the fleece lining, but do not block the hemmed edges. ② Now fold this in half and sew the side edges together, leaving a small opening at the top for the corset bones. Line with taffeta. Bore a small hole through both ends of each corset bone. Push the corset bones through the top edges and set together at the sides. (Sew through the bored holes). Sew the sides of the gold covering together, pull over the black bag, and attach.

COCKTAIL DRESS, No. DK 7163

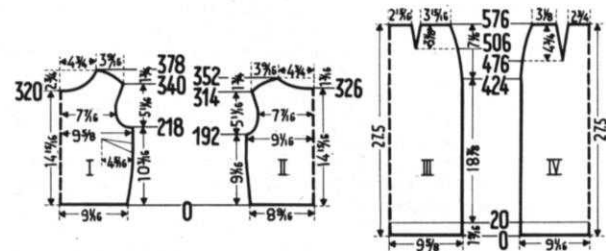


SIZE: 38. **MATERIAL:** 22 oz. turquoise wool. For example: Knitting Cable Twist, 600 turquoise sequins. **SETTING:** 5 on Knitting. Other machines adjust to obtain correct gauge. **GAUGE:** 17 stitches - 2" wide, 42 rows - 2" long, in design, 17 stitches - 2" wide, 25 rows - 2" long, in straight purling (wrong side). **PATTERN:** H.P. Pattern on wrong side, according to diagram, using pattern tool Jac 40, pattern No. 64. Edging: Straight purling (wrong side). **SKIRT BACK** (Figure IV). Cast on 157 stitches. Rows 1-20: Straight purl (wrong side). Continue on in H.P. design. Rows 21-576: Decrease 1 stitch on both sides after the 424th row, and then every 16th row 2 times, every 12th row 4 times, every 10th row 4 times, and every 8th row 3 times. At the same time, for the darts, on both sides after the 476th row, put the 45th stitch on the 46th needle, and continue work in 3 sections. Decrease 1 stitch on both sides of the divisions after the 490th row and then every 14th row 5 times. Bind off the 28 side stitches and the 47 center stitches. **SKIRT FRONT** (Figure III). Cast on 167 stitches. Rows 1-20: Straight purl (wrong side). Continue working in H.P. design. Rows 21-576: Decrease 1 stitch on both sides after the 424th row and then in every

16th row 2 times, every 12th row 4 times, every 10th row 4 times, and every 8th row 3 times. At the same time, for the darts, on both sides after the 506th row put the 47th stitch on the 48th needle, and continue work in 3 sections. Decrease 1 stitch on both sides of the division after the 520th row, and then every 14th row 3 times. Bind off the 35 side stitches, and the 51 center stitches. **TOP BACK** (Figure II). Cast on 147 stitches. Work in H.P. design. Rows 1-192: Increase 1 stitch on both sides after the 30th row and then in every 24th row 4 times (157 stitches). Rows 193-226: For the armhole shaping, on both sides bind off 3 stitches, then in every 4th row, decrease 3 stitches once, 2 stitches twice, 1 stitch twice, and then decrease 1 stitch in every 6th row 2 times. (129 stitches). Rows 227-314: Increase 1 stitch on both sides after the 252nd row, and then every 10th row 5 times. (141 stitches). Rows 315-352: For the shoulder shaping, on both sides bind off 1 stitch after the 314th row and again in every 4th row 2 times, and every 2nd row 3 times. Then bind off 2 stitches in every 2nd row 12 times. At the same time, for the neck opening, after the 326th row, bind off the 33 center stitches, and then in every 2nd row, on both sides of this, decrease 4 stitches 2 times, 3 stitches 2 times, 2 stitches 3 times, and 1 stitch 4 times. **TOP FRONT** (Figure I) Cast on 157 stitches. Rows 1-218: Increase 1 stitch on both sides after the 30th row and then every 24th row 4 times. (167 stitches). Rows 219-252: For the armhole shaping, bind off 5 stitches on both sides. Then in every 4th row decrease 4 stitches once, 3 stitches once, 2 stitches 2 times, and 1 stitch once. Then decrease 1 stitch on both sides of every 6th row 2 times. (129 stitches). Rows 253-320: Increase 1 stitch on both sides after the 278th row, and then in every 10th row 4 times. Rows 321-378: For the neck opening, bind off the 17 center stitches. Then in every 2nd row on both sides of this, decrease 4 stitches 2 times, 3 stitches 2 times, 2 stitches 4 times, and 1 stitch 5 times. Then in every 4th row, decrease 1 stitch 4 times, and in every 6th row decrease 1 stitch once.



At the same time, for the armhole shaping, on both sides increase 1 stitch after the 328th row, and for the shoulder shaping, on both sides, bind off 1 stitch after the 340th row, and then again in every 4th row 2 times. Then in every 2nd row bind off 1 stitch 3 times and 2 stitches 12 times. **NECK EDGING:** Cast on 190 stitches. Work 12 rows straight purl (wrong side) and then bind off all stitches. **SLEEVE EDGING:** Cast on 120 stitches 2 times. Work 12 rows straight purl (wrong side). Bind off all sts. **BELT:** Cast on 14 stitches and work 600 rows straight purl (wrong side). Bind off all stitches. **POMPONS:** Cast on 50 stitches 2 times. Work 34 rows straight purl (wrong side). Pull the stitches together with a thread.



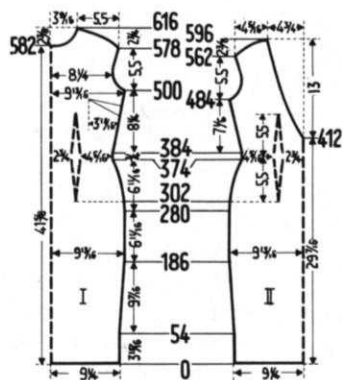
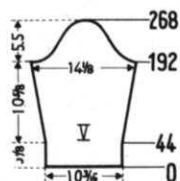
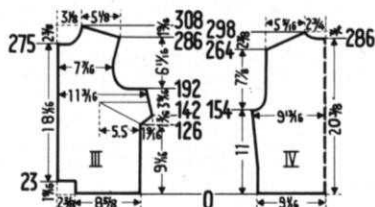
FINISHING: Sew up the darts in the skirt sections and join the front and back, leaving a 7" opening on the left side for the zipper. Make a narrow hem around this opening. Make a 1 1/2" hem around the skirt bottom. Sew in darts at bustline in top front section. Sew a sequin in each small loop of front and back top sections. Join these two sections at side and shoulder seams, leaving a 4 1/2" opening on left side for zipper. Make a narrow hem around this opening. Gather the bottom edge of the top so that it fits the skirt section, and sew the top and skirt together. Sew a strip of elastic to the wrong side of the garment at the waist. Sew in zipper. Sew ends of neck edgings together, so that it forms a circle. Fold this edging over the neckline of the dress and attach. Do the same with the sleeve edgings. Sew belt around a twisted woolen cord. Sew the pompons together, and stuff with cotton. Separate the cast on stitches, and pull them together with a thread. Decorate the skirt with taffeta.

COCKTAIL DRESS WITH JACKET, No. DK 7161



SIZE: 36/38. **MATERIAL:** Dress - 19 oz. olive green Boucle wool or Knitting Cable Twist. Jacket - 14 oz. olive green Boucle wool 60 inches brown fur border, 1 1/2" wide, 4/5 yard taffeta, 56" wide. **SETTING:** 3 on Knitting. Other machines must be adjusted to obtain correct gauge. **GAUGE:** 32 stitches - 4" wide, 54 rows - 4" long. **PATTERN:** Straight purl (wrong side). **DRESS BACK** (Figure II). Cast on 154 stitches. Rows 1-186: Increase 1 stitch on both sides after the 54th row and then in the 34th row once, and then every 32nd row 3 times (164 stitches). Rows 187-280: Work straight. Rows 281-374: Decrease 1 stitch on both sides after the 280th row, then every 12th row 3 times, every 8th row 5 times, and every 4th row 4 times. At the same time, for the darts, decrease 2 stitches each after the 302nd row and then in every 18th row 4 times. For this, on both sides, put the 51st and 53rd stitches on the 52nd needle, and hang the stitches together. The next decrease should lie directly above this. (118 stitches). Rows 375-384: Work straight. Rows 385-412: Increase 1 stitch on both sides after the 384th row and then in every 8th row 3 times. At the same time, for the darts, increase 2 stitches each after the 384th row and the 402nd row. The increases should lie directly above the decreases. Now divide the work in the middle, and continue working in 2 sections. Rows 413-484: On the outside edges, increase 1 stitch after the 416th row, then in every 8th row 6 times and in every 6th row 2 times. At the same time, for the V-shaped back opening, decrease 1 stitch on both sides of the division after the 414th row, and then in every 2nd row 7 times, and in every 4th row 13 times AND for the darts,

increase 2 stitches each after the 420th row and then in every 18th row 2 times. Rows 485-504: For the armhole shaping, on both sides, bind off 3 stitches. Then in every 2nd row, decrease 3 stitches once, 2 stitches 2 times, 1 stitch once, and then decrease 1 stitch both sides in every 4th row once and in every 6th row once. At the same time, for the neck opening, on both sides decrease 1 stitch after the 486th row, and then in every 6th row 2 times. Rows 505-596: For the neck opening, decrease 1 stitch both sides after the 504th row and then in every 6th row 14 times. At the same time, at the arm hole openings, increase 1 stitch after the 524th row and then in every 6th row 5 times, and for the shoulder shaping on both sides, bind off 1 stitch after the 562nd row and again after the 566th rows. Then in every 2nd row bind off 1 stitch 4 times, 2 stitches 5 times, 3 stitches 5 times, and 5 stitches once. **FRONT** (Figure I) Cast on 154 stitches. Rows 1-186: Increase 1 stitch on both sides after the 54th row, then in the 34th row once, and in every 32nd row 3 times (164 stitches). Rows 187-280: Work straight. Rows 281-374: Decrease 1 stitch on both sides after the 280th row, and then every 12th row 3 times, every 8th row 5 times, and every 4th row 4 times. At the same time, for the darts, decrease 2 stitches each after the 302nd row and then in every 18th row 4 times. To do this, on both sides, put the 51st and 53rd stitches on the 52nd needle, and hang the stitches together. The following decreases should lie directly above this. (118 stitches). Rows 375-384: Work straight. Rows 385-500: Increase 1 stitch on both sides after the 384th row and in every 8th row 12 times. At the same time, for the darts, increase 1 stitch each side of dart after the 384th row, and then in every 18th row 4 times. The increases should lie directly above the decreases. (164 stitches). Rows 501-520: For the armhole shaping, on both sides, bind



off 3 stitches. Then in every 2nd row, decrease 3 stitches once, 2 stitches 2 times, 1 stitch once. Now decrease 1 stitch both sides in the 4th row once and in the 6th row once. (138 stitches). Rows 521-578: Increase 1 stitch on both sides after the 540th row, and then in every 6th row 5 times. (150 stitches). Rows 579-616: For the shoulder shaping, bind off 1 stitch on both sides after the 578th row and again after the

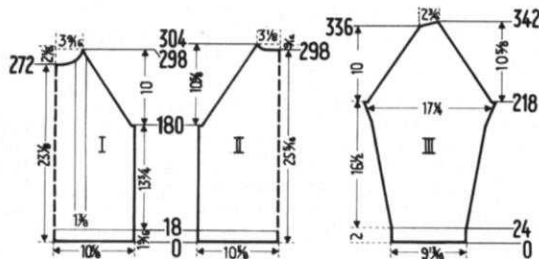
582nd row. Then in every second row, bind off 1 stitch 4 times, 2 stitches 5 times, 3 stitches 5 times, and 5 stitches 3 times. At the same time, for the neck opening, bind off the 12 center stitches after the 582nd row, and then on both sides of this on every 2nd row decrease 4 stitches once, 3 stitches 2 times, 2 stitches 3 times, and 1 stitch 5 times. Then decrease 1 stitch in every 4th row 2 times. **STRAPS:** Cast on 20 stitches 2 times. Work 170 rows straight purl (wrong side). Then bind off all stitches. **FACINGS:** For V-shaped back opening: Cast on 96 stitches. Work 12 rows straight purl (wrong side) increasing 1 stitch on the right side of every second row 5 times. Bind off all stitches. Make another of these with opposite shapings. For front neck opening: Cast on 76 stitches. Work 12 rows straight purl (wrong side) - 6 rows with setting 3 and 6 rows with setting 4. Bind off all stitches. For armholes: Cast on 106 stitches 2 times. Work 12 rows straight purl (wrong side) - 6 rows with setting 3 and 6 rows with setting 4. Bind off all stitches. **JACKET BACK** (Figure IV). Cast on 150 stitches. Rows 1-154: Increase 1 stitch both sides after the 54th row and then in every 14th row 6 times (164 stitches.) Rows 155-176 For the armhole shaping, on both sides, bind off 3 stitches, and then in every 2nd row, decrease 3 stitches once, 2 stitches 2 times and 1 stitch 3 times. Then decrease 1 stitch both sides every 4th row 2 times (134 stitches). Rows 177-264: Work straight. Rows 265-298: For the shoulder shaping on both sides bind off every 2nd row 2 stitches 10 times and 3 stitches 8 times. At the same time, for the neck opening, bind off the 18 center stitches after the 286th row, and then on both sides of this in every 2nd row bind off 4 stitches once, 3 stitches 2 times, and 2 stitches 2 times. **FRONT** (Figure III) Cast on 73 stitches. Rows 1-23 Work straight. Now on the left side, cast on 20 stitches. Rows 24-126: Work straight. Rows 127-142: On the right side, increase 1 stitch after the 126th row, and then in every 2nd row increase 1 stitch 2 times and 2 stitches 5 times. Rows 143:192: On the right side decrease 1 stitch after the 144th row, and then in every 4th row 11 times. (94 stitches). Rows 193-222: For the armhole shaping, bind off 10 stitches. Then in every 2nd row decrease 5 stitches once, 3 stitches 2 times, 2 stitches 2 times, and 1 stitch 3 times. Now decrease 1 stitch in every 4th row 3 times. (63 stitches). Rows 223-275: Increase 1 stitch on the right side after the 238th row, and then in every 8th row 4 times. Rows 276-308: For the neck opening, bind off 16 stitches. Then in every 2nd row decrease 3 stitches once, 2 stitches 2 times, and 1 stitch once. Now decrease 1 stitch in the 4th row once and in the 6th row once. At the same time, on the armhole side, increase 1 stitch after the 278th row, and for the shoulder shaping, after the 286th row bind off in every second row 3 stitches 5 times and 4 stitches 7 times. Work another front section with opposite shaping. **SLEEVE** (Figure V) Cast on 86 stitches. Rows 1-192: Increase 1 stitch both sides after the 44th row, then in every 10th row 6 times, and in every 8th row 10 times (120 stitches). Rows 193-208: For the under arm shaping, in every second row on the back side of the sleeve, bind off 4 stitches once, 3 stitches 2 times, 2 stitches 3 times, and 1 stitch 2 times, and on the front side of the sleeve bind off 6 stitches once, 4 stitches once, 3 stitches 2 times, and 2 stitches 4 times. Rows 209-258: Decrease 1 stitch on both sides in every second row 3 times and in the 4th row once. Repeat these 4 decreases 4 times. Rows 259-268: On both sides of every 2nd row bind off 1 stitch 2 times, 2 stitches once, 3 stitches once, and 5 stitches once. Then bind off the remaining 14 stitches. Make another sleeve with opposite shapings. **FACING FOR NECK OPENING:** Cast on 102 stitches. Work 12 rows straight purl (wrong side), 6 rows with setting 3 and 6 rows with setting 4. Bind off all stitches. **FINISHING:** Dress: On front section, sew in darts at bust line. Join front and back at side and shoulders, leaving 1 1/4" on each side of the front shoulder sections (next to the neck) free for the straps. Leave an 11 1/2" opening on the left side for the zipper. Make a narrow hem around this opening, and set in zipper. Make a 1 1/2" hem around the bottom of the skirt. Sew facings to armhole and neck openings. Fold straps together lengthwise and seam. Sew straps to dress. Line back of skirt with taffeta. Jacket: Sew darts at bustline in front sections. Join fronts to back at side and shoulder seams. Sew sleeve edges together, and then sew sleeves to jacket. Make a 1 1/2" hem around the bottom of the jacket and the bottom of the sleeves. Make a 1 1/4" hem at jacket fronts. Face neck opening. Sew fur strip to front edges and around neckline.

MAN'S PULLOVER SWEATER, No. HP 3348



SIZE: 42/44 **MATERIAL:** 20 oz. blue and green blend Shetland wool or Pauline Denham 'Sierra'. **SETTING:** 5. **GAUGE:** 17 stitches - 2" wide, 23 rows - 2" long, Straight knitting (right side) and K 1, P 1 ribbing, 20 stitches - 2" wide, 23 rows - 2" long, Design stripe (cable). **PATTERN:** Straight knitting (right side) and cable stripe. **CABLE STRIPE:** One cable stripe is 14 stitches wide and is worked as follows: 2 purl stitches, 4 cable stitches, 2 knit stitches, 4 cable stitches, 2 purl stitches. **Procedure:**

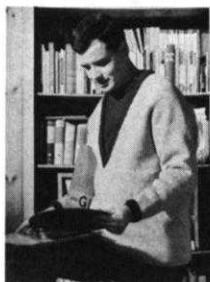
1) Work 12 rows. 2) Let the 1st, 2nd, 13th and 14th stitches of the cable stripe fall from the needles. The empty needles remain in working position. 3) With 2 double needles cable covers (transfer tools) cross the cable stitches in such a way that at first, the 5th and 6th stitches are hung on the 3rd and 4th needles, the 3rd and 4th stitches are hung on the 5th and 6th needles, the 9th and 10th stitches are hung on the 11th and 12th needles, the 11th and 12th stitches are hung on the 9th and 10th needles. Keep repeating these 3 steps. After 30 or 40 rows, drop the 1st, 2nd, 13th, and 14th stitches. Take hold of these stitches with the stitch-catching-needle (latch tool) and attach to the knit stitches. Thereafter, always take hold of two 3-stranded stitches. **BORDER:** K 1, P 1 ribbing. **BACK** (Figure II) Cast on 183 stitches. Rows 1-18: K 1, P 1 ribbing. Continue on with straight knitting (right side). Rows 19-180: Work straight. Rows 181-182: On both sides bind off 3 stitches. Rows 183-304: For the raglan shaping, decrease 1 stitch on both sides after the 182nd row, and then in every 2nd row 60 times. To do this, always put the 5th stitch on the 4th needle, and hang the border stitches back. At the same time, for the neck opening, after the 298th row bind off the



27 center stitches, and on both sides of this in every 2nd row bind off 6 stitches once, 5 stitches once, and 3 stitches once. **FRONT:** (Figure I) Cast on 187 stitches. Rows 1-18: K 1, P 1 ribbing. Continue on in straight knitting, working the cable stripes over the 59th to 70th needles on both sides. Rows 19-180: Work straight. Rows 181-182: Bind off 3 stitches on both sides. Rows 183-298: For the raglan shaping, decrease 1 stitch on both sides after the 182nd row, and then in every 2nd row 57 times. At the same time, for the neck opening, after the 272nd row, bind off the 17 center stitches, and on both sides of this in every 2nd row, decrease 5 stitches once, 4 stitches once, 3 stitches once, 2 stitches 2 times, 1 stitch 4 times, and then decrease 1 stitch in the 4th row. To finish, on both sides hang the remaining 3 stitches together. **SLEEVE** (Figure III) Cast on 85 stitches. Rows 1-24: K 1, P 1 ribbing. Continue on in straight knitting (right side). Rows 25-218: Increase 1 stitch on both sides after the 32nd row and then in every 8th row 9 times, every 6th row 11 times, and every 4th row 11 times. (149 stitches). Rows 219-220: Bind off 3 stitches on both sides. Rows 221-336: For raglan shaping, decrease 1 stitch on both sides after the 220th row, and then in every 2nd row 57 times. Rows 337-342: On the left side, one after another, put 6 needles in hold position 3 times. At the same time, on the right side, decrease 1 stitch after the

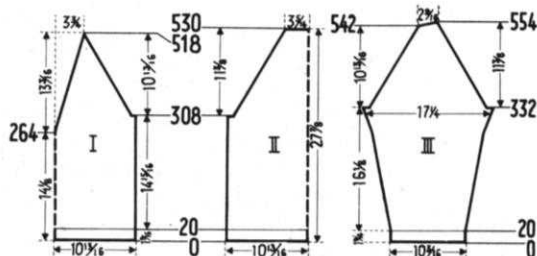
336th row and then in every 2nd row 2 times. To finish, bind off the remaining 24 stitches. Make another sleeve, with opposite shapings. **NECK EDGING:** Cast on 173 stitches. Work 32 rows of K 1, P 1 ribbing: 8 of these rows with setting 7, 16 with setting 6, and 8 with setting 7. To finish, bind off all stitches. **FINISHING:** Join front and back at side seams. Sew sleeves together, and sew sleeves to sweater. Join ends of neck edging, fold around neck opening of sweater and attach.

MAN'S PULLOVER SWEATER, No. HP 3349



SIZE: 42/44. Sample garment made on Knitting. **MATERIAL:** 30 oz. grey-blended Shetland wool, 4 oz. blue-green-blended Shetland wool. Knitting Sierra. **SETTING:** 8 - Fisherman Rib, 7-ribbing of K 1, P 1, On Knitting. Other machines to be set to obtain correct gauge. **GAUGE:** 33 stitches - 4" wide, 76 rows - 4" long, Fisherman Rib, 33 stitches - 4" wide, 48 rows - 4" long, ribbing. **PATTERN:** Pattern on right side. Edging: K 1, P 1 ribbing. **BACK** (Figure II) Cast on 183 stitches

Rows 1-20: With setting 7, work K 1, P 1 ribbing. Set lever for Fisherman Rib and grey, with setting 8. Rows 21-308 Work straight. Rows 309-530: For the raglan shaping, bind off 7 stitches on both sides. Then in every 4th row, decrease 2 stitches once and 1 stitch 54 times. To finish, bind off 57 stitches. **FRONT** (Figure I). The front is worked the same as the back up to the 518th row but at the same time for neck opening: After the 264th row, put the center stitch on the neighboring needle, and work in two sections. Decrease 1 then in every 8th row 17 times, and every 10th row 10 times. To finish, on both sides, hang the remaining 3 stitches together. **SLEEVE** (Figure III) Cast on 85 stitches with blue-green. Rows 1-20: With setting 7, work K 1, P 1 ribbing. Continue on in Fishermen Rib and grey, with setting 8. Rows 21-332: Increase 1 stitch on both sides after the 20th row, then every 14th row 18 times, every 6th row 6 times, and every 4th row 5 times (145 stitches). Rows 333-542: For raglan shaping, bind off 7 stitches on both sides. Then in every 4th row, decrease 2 stitches once, and 1 stitch 51 times. Rows 543-554: On the left side, every other row, put 3 needles in hold position 6 times.



At the same time, on the right side, decrease 1 stitch after the 544th row and then in every 4th row 2 times. To finish, bind off 22 stitches. Make another sleeve with opposite shapings. **EDGING FOR NECKLINE:** Cast on 191 stitches with blue-green. Work 22 rows of K 1, P 1 ribbing with setting 7. To form the point where the left and right halves meet decrease 2 stitches after the 2nd row and then in every 2nd row 4 times. Then increase 2 stitches after the 12th row and in every 2nd row 4 times. Bind off all stitches. Work the other half of edging with opposite shapings. **FINISHING:** Join front and back at side seams. Sew sleeve edges together, and then sew sleeves to sweater body. Fold edging at sweater and sleeve bottoms in half toward the inside, and hem. Join sections of neck edging at the back, fold around sweater neckline, and attach.

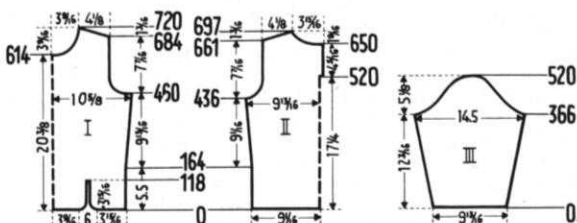
WOMAN'S PULLOVER SWEATER, No. DP 7164



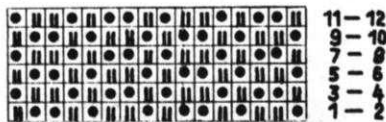
SIZES: 38/40 and 42/44. Sample garment made on Knitking. **MATERIAL:** Size 38/40, 20 oz. Persian blue wool Knitking Cable Twist or Pauline Denham "Sierra". Size 42/44, 24 oz. For the bias strip - 19 1/2" blue satin, 35 1/2" wide. **SETTING:** 4 on Knitking. Other machines adjust to obtain correct gauge. **GAUGE:** 17 stitches - 2" wide, 59 rows - 2" long. **PATTERN:** H. P. design on wrong side, following diagram. **THE DIRECTIONS THAT FOLLOW ARE FOR SIZE 38/40.**

BACK (Figure II) Cast on 156 stitches.

Rows 1-436: Increase 1 stitch on both sides after the 164th row and then in every 38th row 6 times. (170 stitches). Rows 437-494: For the armhole shaping, on both sides bind off 4 stitches, then in every 4th row decrease 3 stitches once, 2 stitches 2 times, and 1 stitch 5 times; then decrease 1 stitch in every 8th row 3 times. (132 stitches). Rows 495-519: Work straight. Now, on the right side, put 66 needles in hold position and work the left half first. Rows 520-650: For the facing at back opening, after the 520th row cast on 3 stitches. To do this, put 3 needles from the right side on a helping needle. Rows 651-697: For neck opening bind off 10 stitches. Then in every 4th row, decrease 4 stitches once, 3 stitches 3 times, 2 stitches 3 times, and 1 stitch 4 times. At the same time, after the 661st row, for the shoulder shaping, in every second row bind off 1 stitch 2 times and 2 stitches 17 times. Now put the cam box back on the right side, and turn the row counter back to 519. Put all needles back in working position, taking the 3 stitches from the helping needle and putting them back in place. Now work the right half. **FRONT (Figure I)**. Cast on 115 stitches. Cast on the stitches from right to left and begin with the 70th needle, counting from the right side. Work in H.P. design, putting needles 1, 4, 6, 7, 9, etc. (counting from



right side) in hold position. Rows 1-118: On the right side, after the 1st row, increase 3 stitches. Then in every 6th row increase 2 stitches 2 times, 1 stitch once, and then in the 10th row increase 1 stitch once. Now work straight. Put all needles in hold position. For the 2nd part cast on 35 stitches. There must be 11 free needles between those in hold position and those with the newly cast on stitches. Work in H.P. design, putting needles 3, 5, 6, 8, etc. (counting from right side) in hold position. Rows 1-118: On the left side after the 1st row increase 3 stitches. Then in every 6th row increase 2 stitches 2 times, 1 stitch once, and then in the 10th row increase 1 stitch once. After the 117th row increase 2 stitches, and after the 118th row continue working on all the needles. Rows 119-460: Increase 1 stitch on both sides after the 164th row and then in every 40th row 6 times. (184 stitches). Rows 461-518: For arm hole shaping, on both sides bind off 7 stitches. Then in every 4th row decrease 3 stitches 2 times, 2 stitches 3 times, 1 stitch 3 times, and then in every 6th row decrease 1 stitch 4 times. (132 stitches). Rows 519-614: Work straight. Rows 615-720: For the neck opening, bind off the 18 center stitches, and on both sides of this, in every 4th row, decrease 3 stitches 2 times, 2 stitches 2 times, 1 stitch 3 times, and now decrease 1 stitch in every 6th row 4 times, and then in every 10th row 4 times.

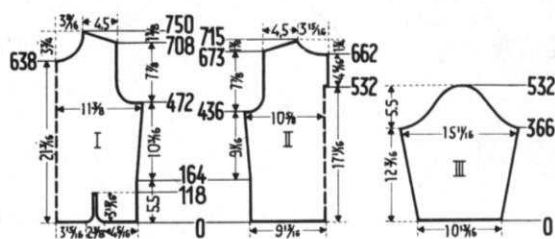


At the same time, for the shoulder shaping, on both sides in every 2nd row, bind off 1

stitch 2 times and 2 stitches 17 times after the 684th row.

SLEEVE (Figure III). Cast on 84 stitches. Rows 1-366: On both sides increase 1 stitch after the 16th row and then in every 16th row 20 times. (126 stitches). Rows 367-390: For the under arm shaping, in every 4th row on the back side of the sleeve bind off 4 stitches once, 3 stitches once, 2 stitches 3 times, and 1 stitch once, and on the front side bind off 7 stitches once, 3 stitches 2 times, and 2 stitches 3 times. Rows 391-506: On both sides in every 4th row decrease 1 stitch 2 9 times. Rows 507-520: On both sides in every 4th row bind off 2 stitches 2 times, 3 stitches once, 4 stitches once. Bind off the remaining 13 stitches. Work another sleeve with opposite shapings. **NECK EDGINGS:** Cast on 94 stitches. Rows 1-36. In H.P. design, working 18 rows with setting 5 and 18 rows with setting 4, on both sides decrease 1 stitch after the 6th row and in every 8th row 3 times. Rows 37-46: Work straight purl (wrong side) with setting 5. Then bind off all stitches. For the back edging (one side) cast on 34 stitches and work the same as the front, however, only decrease on one side. Work the other back edging the same, only with opposite shapings. **FINISHING:** Join the front and back at side seams, overlapping 1 1/2 stitches on both sections, and slightly gathering the front section at the bust line. Join shoulder seams. Sew sleeve edges together, and join to sweater. Sew sections of neck edging together and sew one edge of this to the wrong side of the sweater neckline. Cut a bias strip 1 1/2" wide from the satin and sew this to the outer edge of the neck edging, fold neck edging down around sweater top and sew. Set in zipper. Sew a satin bias strip to the bottom of the sleeves and the bottom of the sweater. Now make another bias strip 4" wide. Fold it in half and sew the edges together (lengthwise). Make a rose out of this strip, and sew it to the top of the slit in the front of the sweater.

SIZE: 42/44. Cast on 172 stitches. Rows 1-436: Increase 1 stitch on both sides after the 164th row and then in every 44th row 5 times (184 stitches). Rows 437-498: For the armhole shaping, on both sides bind off 4 stitches, then in every 4th row decrease 3 stitches 2 times, 2 stitches 2 times, and 1 stitch 5 times. Then decrease 1 stitch in every 8th row 3 times (140 stitches). Rows 499-531: Work straight. Now, on the right side, put 70 needles in hold position and work the left half first. Rows 532-662: For the facing at back opening, after the 532nd row cast on 3 stitches. To do this, put 3 needles from the right side on a helping needle. Rows 663-715: For neck opening, bind off 10



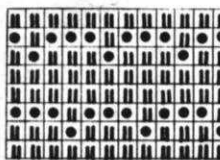
stitches. Then in every 4th row decrease 4 stitches once, 3 stitches 3 times, 2 stitches 3 times, and 1 stitch 4 times. At the same time, bind off 1 stitch after the 673rd row for the shoulder shaping, and then in every second row bind off 1 stitch 3 times and 2 stitches 18 times. Now put the cam box on the right side, and turn the row counter back to 531. Put all needles back in working position, taking the 3 stitches from the helping needle and putting them back in place. Now work the right half. **FRONT (Figure I)** Cast on 127 stitches. Cast on the stitches from right to left and begin with the 65th needle, counting from the right side. Work in H.P. design, putting the 1st, 3rd, 4th, 6th, 9th, etc. needles (counting from right side) in hold position. Rows 1-118: On the right side, after the 1st row, increase 3 stitches. Then in every 6th row increase 2 stitches 2 times, 1 stitch once, and then in the 10th row increase 1 stitch once. Now work straight. Put all needles in hold position. For the second part, cast on 37 stitches (4 1/2"). There must be 11 free needles between those in hold position and those with the newly cast on stitches. Work in H.P. design, putting needles 2, 4, 5, 7, 10, etc. (counting from the right side) in hold position. Rows 1-118: On the left side, after the 1st row, increase 3 stitches. Then in every 6th row increase 2 stitches 2 times, 1 stitch once,

and then in the 10th row increase 1 stitch once. After the 117th row increase 2 stitches, and after the 118th row continue working on all needles. Rows 119-472: Increase 1 stitch on both sides after the 164th row and then in every 46th row 5 times (196 stitches). Rows 473-534: For arm hole shaping, on both sides bind off 7 stitches, then in every 4th row decrease 4 stitches once, 3 stitches 2 times, 2 stitches 2 times, 1 stitch 4 times, and then in every 8th row decrease 1 stitch 3 times (140 stitches). Rows 535-638: Work straight. Rows 639-750: For the neck opening, bind off the 18 center stitches, and on both sides of this, in every 4th row, decrease 3 stitches 2 times, 2 stitches 2 times, 1 stitch 3 times, and now decrease 1 stitch in every 6th row 4 times and then in every 10th row 4 times. At the same time, for the shoulder shaping, after the 708th row on both sides of every second row bind off 1 stitch 4 times and 2 stitches 18 times. **SLEEVE** (Figure III) Cast on 94 stitches. Rows 1-366: On both sides increase 1 stitch after the 16th row and then in every 16th row 20 times (136 stitches). Rows 367-390: For the under arm shaping in every 4th row on the back side of the sleeve bind off 4 stitches once, 3 stitches once, 2 stitches 3 times, and 1 stitch once, and on the front side bind off 7 stitches once, 4 stitches once, 3 stitches 2 times, and 2 stitches 2 times. Rows 391-516: On both sides in every 4th row decrease 1 stitch 32 times. Rows 517-532: On both sides in every 4th row bind off 2 stitches 2 times, 3 stitches once, 4 stitches once. Bind off the remaining 15 stitches. Work another sleeve with opposite shapings. **NECK EDGING:** Cast on 98 stitches. Rows 1-36: In H.P., working 18 rows with setting 5 and 18 rows with setting 4, and on both sides decrease 1 stitch after the 6th row and in every 8th row 3 times. Rows 37-46: Work straight purl (wrong side) with setting 5. Then bind off all stitches. For the back edging (one section) cast on 36 stitches (4") and work the same as the front however only decrease on one side. Work the other back edging the same, only with opposite shapings. **FINISHING:** See directions for size 38/40.

WOMAN'S BLOUSE, No. DP 7166

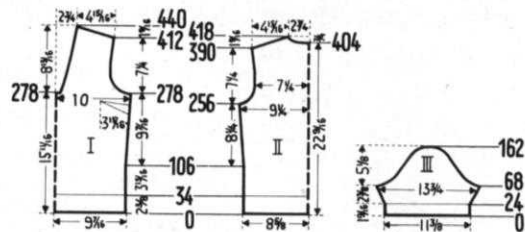


SIZE: 38/40. Sample garment made on Knitkting. **MATERIAL:** 13 oz. light blue wool. Sports yarn or 3 ply, 1 oz. gold thread. **SETTING:** 3 on Knitkting. Other machines adjusted to obtain correct gauge. **GAUGE:** 16 stitches - 2" wide, 36 rows - 2" long, in design. 16 stitches - 2" wide, 29 rows - 2" long, in straight knitting (right side). **PATTERN:** H.P. design on right side according to diagram, with needle changer (automatic needle selector) and disk III (wheel III) and needle shifter. Edging and collar: Straight knitting (right side). **BACK** (Figure II). Cast on 141 stitches. Rows 1-33: Straight knitting (right side). Now for the edging, hang hem. Row 34: With setting 5 work the stitches together.



Continue on in H.P. design. Rows 35-256: Increase 1 stitch on both sides after the 106th row and then in every 30th row 4 times. (151 stitches). Rows 257-288: For the armhole

shaping, on both sides bind off 3 stitches. Then in every 2nd row decrease 3 stitches once, 2 stitches 2 times, 1 stitch 2 times, and then in every 4th row decrease 1 stitch 2 times, and then in every 6th row decrease 1 stitch 2 times. (119 stitches). Rows 289-390: Increase 1 stitch on both sides after the 330th row and then in every 20th row 2 times. (125 stitches). Rows 391-418: For the shoulder shaping, on both sides of every 2nd row bind off 2 stitches 5 times and 3 stitches 10 times. At the same time, for the neck opening, after the 404th row bind off the 19 center stitches, and on both sides of this in every 2nd row decrease 4 stitches once, 3 stitches once, 2 stitches 2 times, and 1 stitch 2 times. **FRONT** (Figure I). Cast on 153 stitches. Rows 1-33 Straight knitting (right side). Now for the edging, put the cast on stitches back on the machine. Row 34: With setting 5, work the stitches together. Continue



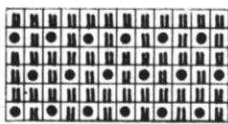
on in H.P. design. Rows 35-278: Increase 1 stitch on both sides after the 106th row and then in every 30th row 4 times (163 stitches). Now bind off the 9 center stitches and continue working in 2 sections. Rows 279-308: For the armhole shaping, on both sides bind off 6 stitches. Then in every 2nd row decrease 3 stitches 2 times, 2 stitches 2 times, 1 stitch 3 times, and then decrease 1 stitch in every 4th row 2 times and then in the 6th row once. At the same time, for the neck opening, decrease 1 stitch on both sides of the division after the 286th row and then in every 8th row 2 times. Rows 309-440: For the neck opening, decrease 1 stitch on both sides after the 310th row, then in every 8th row 10 times and in every 10th row 4 times. At the same time, on the armhole edges, increase 1 stitch after the 352nd row and then in every 20th row 2 times. For the shoulder shaping, after the 412th row on both sides of every 2nd row bind off 2 stitches 5 times, and 3 stitches 10 times. **SLEEVE** (Figure III) Cast on 93 stitches. Rows 1-23: Straight knitting (right side.) Now for the edging, put the cast on stitches back on the machine. Row 24: With setting 5 work the stitches together. Continue on in H.P. design. Rows 25-68: Increase 1 stitch on both sides after the 28th row, and in every 4th row 9 times. (113 stitches). Rows 69-82: For the under arm shaping, in every second row on the back of the sleeve, bind off 3 stitches 2 times, 2 stitches 4 times, and 1 stitch once; and on the front of the sleeve, bind off 6 stitches once, 4 stitches once, 3 stitches once, 2 stitches 3 times, and 1 stitch once. Rows 83-154: On both sides decrease 1 stitch in the 2nd row once, and in the 4th row once. Repeat these 2 decreases 11 times. Rows 155-162: On both sides in every second row bind off 2 stitches 2 times, 3 stitches 2 times, and then bind off the remaining 10 stitches. Work another sleeve with opposite shapings. **COLLAR:** Cast on 3 stitches, beginning on the left side of the machine with the 27th needle. Rows 1-27: On the left side increase 2 stitches after the 1st row, and then in every 2nd row 12 times. At the same time, on the right side increase 1 stitch after the 2nd row and then in every second row 12 times. (42 stitches). Rows 28-361: Decrease 1 stitch on the left side after the 27th row and then in every 2nd row. At the same time, on the right side, increase 1 stitch after the 28th row and then in every 2nd row. Rows 362-387: On the left side decrease 1 stitch after the 361st row and then in every 2nd row 12 times. At the same time, on the right side decrease 2 stitches after the 362nd row and then in every 2nd row 12 times. Bind off the remaining 3 stitches. **FINISHING:** Sew in darts at bust line on the front section. Join front and back at side and shoulder seams. Sew sleeve edges together and sew sleeves to sweater. Sew narrow edges of collar-tie so that they form a point. Sew collar to neck opening.

WOMAN'S BLOUSE, No. DP 7165

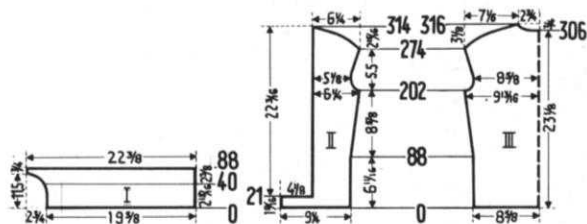


SIZES: 36/38 and 40/42. Sample garment made on Knitkting. **MATERIAL:** Size 36/38, 10 oz. Size 40/42, 12 oz., caramel-colored wool. Light weight 3-ply or Baby yarn. Both sizes - 110 yards gold embroidery floss. **SETTING:** 3 on Knitkting, other machines adjust to obtain correct gauge. **GAUGE:** 19 stitches - 2" wide, 26 rows - 2" long, in straight knitting (right side), 16 stitches - 2" wide, 40 rows - 2" long, in design for inset, 16 stitches - 2" wide, 27 rows - 2" wide, in straight knitting for inset. **PATTERN:** Straight

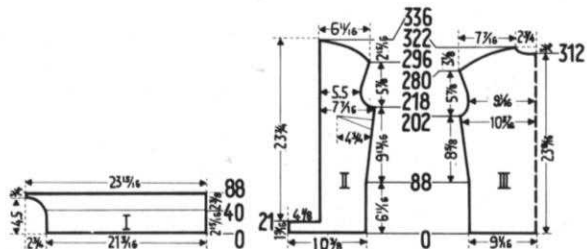
knitting (right side) and design stripe according to diagram. **THE DIRECTIONS THAT FOLLOW ARE FOR SIZE 36/38. BACK** (Figure III) Cast on 168 stitches. Work in straight knitting (right side). Rows 1-202: Increase 1 stitch on both sides



after the 88th row and then in every 10th row 10 times. (190 stitches). Rows 203-218: For armhole shaping, on both sides bind off 3 stitches. Then in every 2nd row decrease 2 stitches 2 times, 1 stitch 3 times, and then decrease 1 stitch in the 4th row once. (168 stitches). Rows 219-274: Increase 1 stitch on both sides after the 230th row and then in every 4th row 10 times (190 stitches). Rows 275-316: For the shoulder shaping, on both sides in every 2nd row bind off 1 stitch 5 times, 2 stitches 5 times, 3 stitches 3 times, 4 stitches 3 times, 5 stitches 5 times, and 7 stitches once. At the same time, for the neck opening, after the 306th row bind off the 16 center stitches, and on both sides of this, in every 2nd row, bind off 7 stitches once, 5 stitches once, 4 stitches once, and 3 stitches once. **FRONT** (Figure II) Cast on 90 stitches. Rows 1-21: Straight knitting (right side). Now, on the left side, bind off 40 stitches. Rows 22-202: On the right side, increase 1 stitch after the 88th row and then in every 10th row 10 times (61 stitches). Rows 203-218: For the armhole shaping, bind off 3 stitches. Then in every second row decrease 2 stitches 2 times, 1 stitch



3 times, and then decrease 1 stitch in the 4th row once. (50 stitches). Rows 219-274: On the right side increase 1 stitch after the 230th row and then in every 4th row 10 times. (61 stitches). Rows 275-314: For the shoulder shaping, in every second row, bind off 1 stitch 5 times, 2 stitches 5 times, 3 stitches 3 times, 4 stitches 3 times, and 5 stitches 5 times. Work another front section with opposite shapings. **INSET** (Figure I). Cast on 160 stitches. Rows 1-32: Straight knitting (right side) with setting 4: after the 6th and 24th rows, counting from the right side, work the buttonholes over needles 25-28, 52-55, 79-82, 106-109, and 133-136. Row 32 hang hem. Row 33: With setting 6, work the stitches together. Rows 34-88: For the neck shaping, increase 1 stitch after the 33rd row, then in the 8th row once, in the 6th row once, in every 4th row 3 times, in the 2nd row once, then in every 2nd row increase 2 stitches 2 times, 3 stitches 2 times, and 6 stitches once. At the same time, after the 40th row, work the design stripe with setting 3x3. At the end, work 2 rows straight knitting. Bind off 183 stitches. Work another inset with opposite shapings, minus buttonholes. **NECK EDGING:** Cast on 152 stitches. Work 18 rows straight knitting with setting 3. Then bind off all stitches. **SLEEVE EDGING:** Cast on 120 stitches 2 times. Work 18 rows straight knitting with setting 3. Then bind off all stitches. **FINISHING:** Join front and back sections at side and shoulder seams. Sew insets to the front sections, leaving a piece on the under seam of the right section open for the buttonholes. Make a hem 3/4" wide around bottom. Sew



neck edging to top of blouse, and leave open a part for the buttonhole on the right section. Join side edges of sleeve edgings, fold around armhole openings of blouse and attach. Finish the buttonholes, and sew on buttons. **SIZE** 40/42. **BACK** (Figure III) Cast on 174 stitches. Work in straight knit-

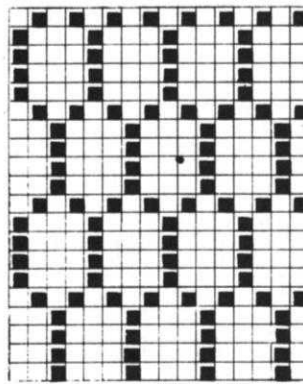
ting. Rows 1-202 Increase 1 stitch on both sides after the 88th row and then in every 10th row 10 times. (196 stitches). Rows 203-218: For armhole shaping, on both sides bind off 3 stitches. Then in every 2nd row decrease 2 stitches 2 times, 1 stitch 3 times, and then decrease 1 stitch in the 4th row once. (174 stitches). Rows 219-280: Increase 1 stitch on both sides after the 236th row and then in every 4th row 10 times. (196 stitches). Rows 281-322: For the shoulder shaping on both sides in every second row bind off 1 stitch 4 times, 2 stitches 5 times, 3 stitches 3 times, 4 stitches 4 times, 5 stitches 5 times, and 7 stitches once. At the same time, for the neck opening, after the 312th row, bind off the 16 center stitches, and on both sides of this in every 2nd row, bind off 7 stitches once, 5 stitches once, 4 stitches once, and 3 stitches once. **FRONT** (Figure II) Cast on 100 stitches. Rows 1-21: Work straight. Now on the left side bind off 40 stitches. Rows 22-218. On the right side increase 1 stitch after the 88th row and then in every 10th row 11 times. (72 stitches). Rows 219-232: For the armhole shaping, bind off 7 stitches, then in every 2nd row, decrease 4 stitches once, 3 stitches once, 2 stitches once, one stitch once; then decrease 1 stitch in the 4th row once. (54 stitches). Rows 233-296: On the right side increase 1 stitch after the 252nd row, and then in every 4th row 10 times (65 stitches). Rows 297-336: For the shoulder shaping in every second row, bind off 1 stitch 4 times, 2 stitches 5 times, 3 stitches 3 times, 4 stitches 3 times, and 5 stitches 6 times. Work another front section with opposite shapings. **INSET** (Figure I) Cast on 172 stitches. Rows 1-32: Straight knitting with setting 4: after the 6th and 24th rows, counting from the right side, work buttonholes over needles 27-30, 56-59, 85-88, 114-117, and 143-146. Row 32 hang hem. Row 33: With setting 6, work the stitches together. Rows 34-88: For the neck shaping, increase 1 stitch after the 33rd row, then in the 8th row once, in the 6th row once, in every 4th row 3 times, in the 2nd row once. Then in every 2nd row increase 2 stitches 2 times, 3 stitches 2 times, and 6 stitches once. At the same time, after the 40th row work the design stripe with setting 3, 3 times: At the end, work 2 rows straight knitting. (Bind off 195 stitches). Work another inset with opposite shapings, minus buttonholes. For **NECK EDGING**, **SLEEVE EDGING**, and **FINISHING** follow directions for size 38.

WOMAN'S TWO PIECE DRESS, No. DK 7168



SIZE: 42/44. Skirt to fit 42" hips. Sample garment made on Knitting. **MATERIAL:** Skirt - 16 oz. ginger yellow cable wool. Top - 16 oz. ginger yellow cable wool, 1 1/2" oz. cornflower blue cable wool. For example: 5th Ave., Pauline Denham "Sierra" or Knitting Cable Twist. **SETTING:** 5 - straight knitting (right side), 4 - Norwegian design, on Knitting. Other machines adjusted to obtain correct gauge. **GAUGE:** 17 stitches - 2" wide, 22 rows - 2" long, in straight knitting, 17 stitches - 2" wide, 19 rows - 2"

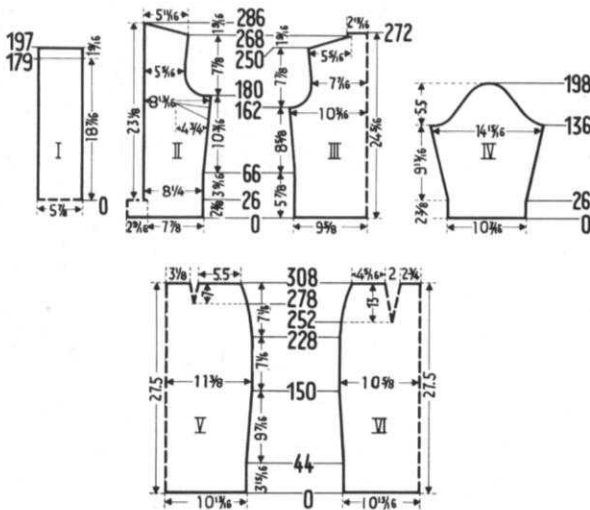
long, in Norwegian design. **PATTERN:** Straight knitting (right side). Inset: Norwegian design according to diagram. Every row with the Norwegian design is counted singly in the



description, although for one row several workings are required. **SKIRT BACK** (Figure VI) Cast on 174 stitches with yellow. Knit straight with setting 5. Rows 1-150: Increase 1 stitch on both sides after the 44th row and then in every 26th row 4 times (184 stitches). Rows 151-228: Work straight. Rows 229-308: Decrease 1 stitch on both sides after the 228th row and then in every 10th row 2 times, in every 8th row 2 times, in every 6th row 4 times, and in every 4th row 4 times. At the same time, for the darts, decrease 2 stitches each after the 252nd row and

again in every 6th row 8 times. For this, on both sides put the 55th and 57th stitches on the 56th needle and hang the stitches together. The next decrease lies exactly above this. To finish, bind off 122 stitches. **SKIRT FRONT** (Figure V) Cast on 186 stitches. Rows 1-150: Increase 1 stitch on both sides after the 44th row and in every 26th row 4 times (196 stitches). Rows 151-228: Work straight. Rows 229-308: Decrease 1 stitch on both sides after the 228 row and then in every 10th row 2 times, in every 8th row 2 times, in every 6th row 4 times, and in every 4th row 4 times. At the same time, for the darts, decrease 2 stitches each after the 278th row and then in every 6th row 4 times. For this, on both sides put the 58th and 60th stitches on the 59th needle, and hang the stitches together. The next decrease lies directly above this. To finish, bind off 150 stitches. **TOP BACK** (Figure III) Cast on 167 stitches with yellow. Work in straight knitting with setting 5. Rows 1-162: Increase 1 stitch on both sides after the 66th row and then in every 10th row 4 times (177 stitches). Rows 163-188: For the armhole shaping, on both sides bind off 5 stitches. Then in every 2nd row decrease 4 stitches once, 3 stitches once, 2 stitches 3 times, and 1

(129 stitches) Rows 137-150: For the underarm shaping, in every 2nd row on the back of the sleeve bind off 5 stitches once, 4 stitches once, 3 stitches once, 2 stitches 3 times, and 1 stitch once, and on the front of the sleeve, bind off 7 stitches once, 5 stitches once, 4 stitches once, 3 stitches once, and 2 stitches 3 times. Rows 151-190: On both sides in every 2nd row decrease 1 stitch 3 times and 2 stitches once. Repeat these 4 decreases 4 times. Rows 191-198: On both sides in every 2nd row bind off 2 stitches 2 times, 3 stitches once, 5 stitches once, and the remaining 11 stitches. Work another sleeve with opposite shapings. **FINISHING:** Skirt: Join skirt sections at sides, leaving an 8" opening at top of left side for zipper. Make a narrow hem around this opening. Put a 1½" hem around bottom of skirt. Sew an elastic band to top of skirt, set in zipper, add hooks and eyes. Line the skirt with taffeta. Top: On front section, sew in darts at bust line. Join front and back sections at side and shoulder seams. On the sides of the front section make a hem 3 stitches wide; on the back section make a hem 4 rows wide. At the upper edge of the middle section make a hem 10 rows wide. Join middle section to sweater on the wrong side. Make a hem around the bottoms for the sleeves and the sweater 1½" wide.

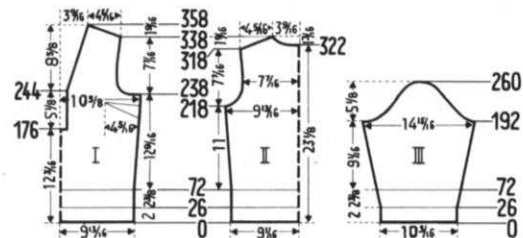


WOMAN'S PULLOVER, No. DP 7167



SIZES: 38/40 and 42/44. **MATERIAL:** Size: 38/40 - 16 oz. cherry red cable wool. For example: Knitting Cable Twist or Pauline Denham 50/50. Size 42/44 - 20 oz. **SETTING:** 4. **GAUGE:** 17 stitches - 2" wide, 26 rows - 2" long, in straight knitting (right side), 17 stitches - 2" wide, 37 rows - 2" long, in design stripe. **PATTERN:** Straight knitting and tucking. *Procedure for tucking:* 1. Work 1 row with setting 8. 2. Work 3 rows with setting 3, and before the 3rd row pull the outer control knob up. 3. With the latch eyelet tool put all stitches worked with setting 8 back on the needles. 4. Put needles in working position, and press down outer control knob. 5. Work 10 rows with setting

stitch 3 times, and now in every 4th row decrease 1 stitch 2 times (131 stitches). Rows 189-250: Increase 1 stitch on both sides after the 208th row and then in every 14th row 2 times (137 stitches). Rows 251-268: For the shoulder shaping, on both sides in every 2nd row bind off 5 stitches 8 times and 6 stitches once. Rows 269-272: On both sides after the 268th row cast on 3 stitches. To finish, bind off 51 stitches. **FRONT** (Figure II) Cast on 181 stitches with yellow. Rows 1-26: Straight knitting with setting 5. Now on the left side put 113 stitches on a helping (double pointed) needle and work the right section first, continuing on with straight knitting. Rows 27-180: On the left side, after the 27th row, cast on 3 stitches. On the right side increase 1 stitch after the 66th row and then in every 10th row 4 times. (76 stitches). Rows 181-206: For the armhole shaping, bind off 7 stitches. Then in every 2nd row, decrease 5 stitches once, 4 stitches once, 3 stitches once, 2 stitches 3 times, 1 stitch 4 times, and now decrease 1 stitch in the 4th row once. (46 stitches). Rows 207-268: On the right side increase 1 stitch after the 226th row and in every 14th row 2 times. (49 stitches). Rows 269-286: For the shoulder shaping, in every 2nd row bind off 5 stitches 8 times and 9 stitches once. Now put the cam box on the left side and turn the row counter back to 26. Take 68 stitches from the left side of the helping needle and put them back on the machine. Work the left side with opposite shapings. **CENTER SECTION** (Figure I) Put the remaining 45 stitches from the helping needle on the machine, and cast on 3 stitches on both sides. Work 179 rows in Norwegian design with setting 4 and 18 rows straight knitting with setting 5. Now bind off all stitches. **SLEEVE** (Figure IV). Cast on 89 stitches with yellow. Straight knitting with setting 5. Rows 1-136: Increase 1 stitch on both sides after the 26th row and then in every 4th row 5 times and in every 6th row 14 times.



3. DIRECTIONS THAT FOLLOW ARE FOR SIZE 38/40. **BACK** (Figure II) Cast on 156 stitches. Rows 1-26: Straight knitting. Hang hem. Rows 27: Work the stitches together with setting 8. Rows 28-72 Work 4 rows of tucking. (The 27th row is already counted in the tucking). Continue working in straight knitting. Rows 73-218: Increase 1 stitch on both sides after the 74th row and in every 20th row 6 times. (170 stitches). Rows 219-246: For the armhole shaping bind off 4 stitches on both sides; then in every 2nd row decrease 3 stitches 2 times, 2 stitches 2 times, 1 stitch 3 times, and now decrease 1 stitch in every 4th row 3 times (130 stitches). Rows 247-318: Increase 1 stitch on both sides after the 282nd row and then in every 12th row 2 times. (136 stitches) Rows 319-338: For the shoulder shaping, on both sides in every 2nd row bind off 3 stitches 7 times and 4 stitches 4 times. At the same time, for the neck opening, after the 322nd row, bind off the 26 center stitches, and on both sides of this in every second row decrease 5 stitches once, 4 stitches once, 3 stitches once, 2 stitches 2 times, and 1 stitch 2 times. **FRONT** (Figure I) Cast on 170 stitches. Rows 1-26: Straight knitting. Hang hem. Row 27: Work the stitches together with setting 8. Rows 28-72: Work 4 rows of tucking. Continue working in straight knitting. Rows 73-176: Increase 1 stitch on both sides after the 74th row, and then in every 20th row 5 times. Now bind off the 14 stitches in the center of the work, and continue working

on 2 sections. Rows 177-238: Increase 1 stitch on the side edges after the 194th row. Rows 239-264: For the armhole shaping, on both sides bind off 8 stitches. Then in every 2nd row decrease 4 stitches once, 3 stitches 2 times, 2 stitches 2 times, 1 stitch 3 times, and now in every 4th row decrease 1 stitch 2 times. At the same time, for the neck opening, decrease 1 stitch on both sides of the division after the 244th row, and then in every 4th row 4 times. Rows 265-358: For the neck opening, decrease 1 stitch on both sides after the 264th row and then in every 4th row 12 times, and in every 6th row 6 times. At the same time, at the arm hole edges increase 1 stitch after the 302nd row and again in every 12th row 2 times, and after the 338th row, for the shoulder shaping, on both sides of every 2nd row bind off 3 stitches 7 times, and 4 stitches 4 times. **SLEEVE** (Figure III). Cast on 88 stitches. Rows 1-26: Straight knitting. Hang hem. Row 27: Work the stitches together with setting 8. Rows 28-72: Work 4 rows of tucking, increasing 1 stitch on both sides after the 36th row, and then in every 14th row 2 times. Continue on in straight knitting. Rows 73-192: Increase 1 stitch on both sides after the 74th row and then in every 8th row 5 times and every 6th row 12 times. (130 stitches). Rows 193-208: For the under arm shaping, in every second row on the back side of the sleeve bind off 4 stitches once, 3 stitches 3 times, 2 stitches 3 times, and 1 stitch once, and on the front side bind off 7 stitches once, 4 stitches 2 times, 3 stitches 3 times, and 2 stitches 2 times. Rows 209-254: On both sides, in every second row, decrease 1 stitch 23 times. Rows 255-260: On both sides in every second row bind off 2 stitches once, 3 stitches once, 4 stitches once, and then bind off the remaining 18 stitches. Work another sleeve with opposite shapings. **BACK NECK EDGING**: Cast on 63 stitches and work 52 rows straight knitting, decreasing 1 stitch on both sides after the 4th row and then in every 2nd row 9 times and increasing 1 stitch on both sides after the 30th row and then in every second row 9 times. To finish, bind off all stitches. **FRONT NECK EDGING**: Cast on 119 stitches. Work 52 rows straight knitting, increasing 2 stitches after the 4th row and then in every 4th row 4 times for the corner shaping. The first increases lie between the 43rd-44th and 44th-45th stitches, counting from the left side. The next increases lie directly above these. Decrease 2 stitches after the 32nd row and then in every 4th row 4 times. These decreases lie directly above the increases. Bind off all stitches. Work another strip just like this, counting from the right side for the increases and decreases, and making buttonholes after the 12th and 40th rows over the 12th-16th and 33rd-37th needles. **FINISHING**: Sew in darts at bust line of front section. Join front and back at side and shoulder seams. Sew sleeve edges together and set in. Join sections of neck edging, fold the edging around neck opening of sweater and attach. Finish buttonholes and sew on buttons. **DIRECTIONS FOR SIZE 42/44**. **BACK** (Figure II) Cast on 174 stitches. Rows 1-26: Straight knitting. Hang hem. Row 27: Work the stitches together with setting 8. Rows 28-72: Work 4 rows of tucking (The 27th row is already counted in the tucking). Continue working in straight knitting. Rows 73-228: Increase 1 stitch on both sides after the 74th row and in every 22nd row 6 times. (188 stitches). Rows 229-258: For the armhole shaping, bind off 5 stitches on both sides, then in every 2nd row decrease 4 stitches once, 3 stitches 2 times, 2 stitches 2 times, 1 stitch 3 times, and now decrease 1 stitch in every 4th row 3 times. (138 stitches). Rows 259-332: Increase 1 stitch on both sides after the 290th row and then in every 14th row 2 times (144 stitches). Rows 333-352: For the shoulder shaping, on both sides in every 2nd row, bind off 3 stitches 3 times and 4 stitches 8 times. At the same time, for the neck opening, after the 336th row, bind off the 26 center stitches, and on both sides of this in every second row decrease 5 stitches once, 4 stitches once,

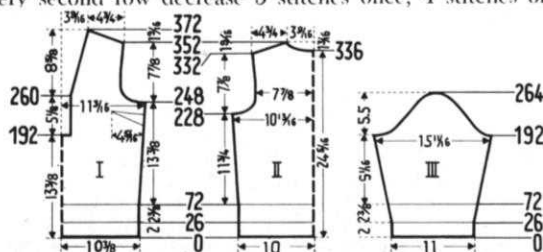
3 stitches once, 2 stitches 2 times, and 1 stitch 2 times. **FRONT** (Figure I) Cast on 180 stitches. Rows 1-26: Straight knitting. Hang hem. Row 27: Work the stitches together with setting 8. Rows 28-72: Work 4 rows of tucking. Continue working in straight knitting. Rows 73-192: Increase 1 stitch on both sides after the 74th row and then in every 22nd row 5 times. Now bind off the 14 stitches in the center of the work, and continue working on 2 sections. Rows 193-248: Increase 1 stitch on the side edges after the 206th row. Rows 249-278: For the armhole shaping, on both sides bind off 8 stitches. Then in every 2nd row decrease 4 stitches once, 3 stitches 2 times, 2 stitches 2 times, 1 stitch 3 times, and now in every 4th row decrease 1 stitch 3 times. At the same time, for the neck opening, decrease 1 stitch on both sides of the division after the 260th row, and then in every 4th row 4 times. Rows 279-372: For the neck opening, decrease 1 stitch on both sides after the 280th row and then in every 4th row 12 times and in every 6th row 6 times. At the same time, at the arm hole edges increase 1 stitch after the 310th row and again in every 14th row 2 times and after the 352nd row, for the shoulder shaping, on both sides of every 2nd row bind off 3 stitches 3 times, and 4 stitches 8 times. **SLEEVE** (Figure III). Cast on 94 stitches. Rows 1-26: Straight knitting. Row 27: Work the stitches together with setting 8. Rows 28-72: Work 4 rows of tucking, increasing 1 stitch on both sides after the 36th row, and then in every 14th row 2 times. Continue on in straight knitting. Rows 73-192: Increase 1 stitch on both sides after the 74th row and then in every 8th row 5 times and every 6th row 12 times. (136 stitches). Rows 193-208: For the under arm shaping, in every second row on the back side of the sleeve, bind off 5 stitches once, 4 stitches once, 3 stitches 2 times, 2 stitches 3 times, and 1 stitch once, and on the front side of the sleeve bind off 7 stitches once, 4 stitches once, 3 stitches 3 times, and 2 stitches 3 times. Rows 209-258: On both sides in every 2nd row decrease 1 stitch 25 times. Rows 259-264: On both sides in every 2nd row bind off 2 stitches once, 3 stitches once, 5 stitches once, and then bind off the remaining 18 stitches. Work another sleeve with opposite shapings. For **BACK NECK EDGING**, **FRONT NECK EDGING**, and **FINISHING**, follow directions for size 38/40.

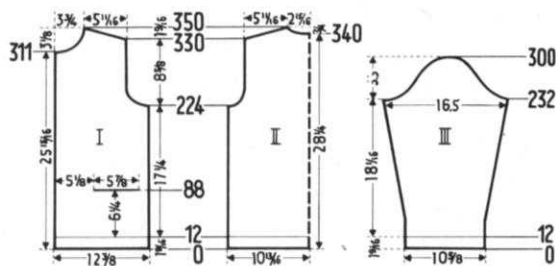
MAN'S JACKET SWEATER, No. HP 3345



SIZE: 44/46. To be worked on Knitting. **MATERIAL**: 39 oz. green-black-grey blended heavy wool, for example: 4-ply worsted. 3 yards black wool for edgings - 1½" wide. **SETTING**: 10 - for design, 9- for straight knitting (right side). **GAUGE**: 11 stitches - 4" wide, 48 rows - 4" long, in design. 11 stitches - 4" wide, 30 rows - 4" long, in straight knitting. The left-out stitches are not counted in the gauge and the diagram. **PATTERN**: 1 needle in working position, 2 needles out of operation. H.P. design on right side according to diagram.

Edging: Straight knitting. **BACK** (Figure II). Cast on 61 stitches over every 3rd needle. Rows 1-12: Straight knitting with setting 9. Continue on in H.P. design with setting 10. Rows 13-224: Work straight. Rows 225-246: For the armhole shaping, on both sides bind off 2 stitches. Then decrease 1 stitch on both sides in every 4th row 2 times and in every 6th row 2 times. (49 stitches). Rows 247-330: Work straight. Rows 331-350: For the shoulder shaping, on both sides in every 2nd row bind off 1 stitch 6 times and 2 stitches 5 times. At the same time, for the neck opening, after the 340th row bind off the 5 center stitches and on both sides of this in every 2nd row decrease 2 stitches 2 times and 1 stitch 2 times. **FRONT** (Figure I). Cast on 35 stitches over every 3rd needle. Rows 1-12: Straight knitting with setting 9. Continue on with H.P. design and setting 10. Rows 13-88: Work straight. Now, for the pocket, bind off the 5th-21st stitches, counting from the right side, and put the rest of the needles in hold position. For the pocket lining, cast on 17 stitches and work 36 rows straight knitting. Now return the row counter to 88 and continue working in pattern. Rows 89-224: Work straight. Rows 225-246: For the armhole shap-





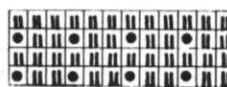
ing, bind off 3 stitches. Then in every 4th row decrease 2 stitches once, 1 stitch once, and then decrease 1 stitch in every 6th row 2 times (27 stitches). Rows 247-311: Work straight. Rows 312-350: For neck opening, bind off 3 stitches. Then in every 4th row decrease 2 stitches 2 times, 1 stitch 2 times, and then decrease 1 stitch in every 6th row 2 times. At the same time, for the shoulder shaping, after the 330th row, in every 2nd row bind off 1 stitch 6 times and 2 stitches 5 times. Work another front section with opposite shapings, making buttonholes after the 5th, 21st, 67th, 113th, 159th, 205th, 251st, and 297th rows over the 4th-6th needles. **SLEEVE** (Figure III). Cast on 30 stitches over every 3rd needle. Rows 1-12: Work straight with setting 9. Continue on in H.P. design with setting 10. Rows 13-232: Increase 1 stitch on both sides after the 36th row and then in every 24th row 7 times. (46 stitches). Rows 233-250: For the underarm shaping, in every 4th row on the back of the sleeve, bind off 2 stitches 3 times and 1 stitch once, and on the front, bind off 3 stitches once, and 2 stitches 3 times. Rows 251-290: Decrease 1 stitch on both sides after the 250th row and then in every 6th row 6 times. Rows 291-300: On both sides bind off 1 stitch after the 290th row, then bind off 2 stitches in every 4th row 2 times, then bind off the remaining 6 stitches. Work another sleeve with opposite shapings. **COLLAR**: Cast on 48 stitches over every 3rd needle. Work in design with setting 10. Rows 1-52: Work straight. Rows 53-60: On both sides, one after another, put 6 needles in hold position once, and 4 needles in hold position 3 times. Rows 61-62: On the left side, put all needles in working position and work one row. On the right side, put all needles in working position and work one row. Bind off all stitches. **FINISHING**: Join front and back at side and shoulder seams. Sew sleeve edges together and sew sleeves to sweater. Sew collar to neck opening. Sew pocket linings to wrong side of sweater. Make a 1 1/2" hem at sweater and sleeves bottoms. Sew black trim to front, collar, and pocket edges. Finish buttonholes, sew on buttons.

MAN'S VEST, No. HP 3346



SIZE: 42/44. To be worked on Knitting. **MATERIAL**: 11 oz. brown blended wool, 5 oz. light beige wool. For example: Cable Twist, Pauline Denham 50/50, Spinnerin MONA. **SETTING**: 5-in design, 4-in ribbing of K 1, P 1. **GAUGE**: 17 stitches - 2" wide, 43 rows - 2" long, in design. 17 stitches - 2" wide, 29 rows - 2" long, in K 1, P 1 ribbing. **PATTERN**: H.P. design on right side according to diagram. Edging: K 1, P 1 ribbing. **BACK** (Figure II) Cast on 191 stitches with brown. Rows 1-34: With setting

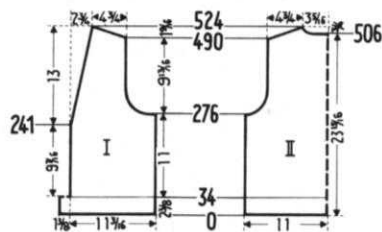
4 work ribbing of K 1, P 1. Continue on in H.P. design with setting 5. Rows 35-276: Work straight. Rows 277-328: For the armhole shaping, on both sides, bind off 4 stitches, then in every 2nd row decrease



4 stitches once, 3 stitches once, 2 stitches 2 times, and 1 stitch 3 times, and now decrease 1 stitch

in every 4th row 3 times and in every 6th row 4 times (141 stitches). Rows 329-490: Work straight. Rows 491-524: For the shoulder shaping, on both sides of every 2nd row bind off 2 stitches 13 times and 3 stitches 5 times. At the same time, for the neck opening, after the 506th row, bind off the 19 center stitches, and then on both sides of this, in every 2nd

row decrease 4 stitches 2 times, 3 stitches 2 times, 2 stitches 2 times, and 1 stitch 2 times. **FRONT** (Figure I) Cast on 119 stitches with brown. Rows 1-34: With setting 4, work ribbing



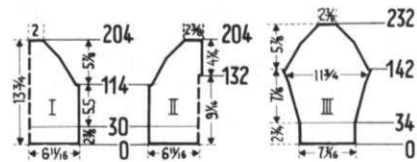
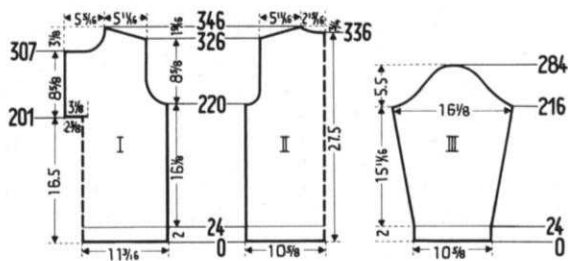
of K 1, P 1. Now, on the left side put 23 stitches on a helping needle. Continue on in H.P. design with setting 5. Rows 35-241: Work straight. Rows 242-276: For the front neckline shaping, decrease 1 stitch after the 241st row and then in every 10th row 3 times. Rows 277-328: For the armhole shaping, bind off 6 stitches. Then in every 2nd row decrease 4 stitches 2 times, 3 stitches once, 2 stitches 2 times, 1 stitch 3 times, and then decrease 1 stitch in every 4th row 4 times, and in every 6th row 3 times. At the same time, for the neckline shaping, decrease 1 stitch after the 283rd row, and then in every 12th row 3 times. Rows 329-524: For the neckline shaping, decrease 1 stitch after the 331st row, and then in every 12th row 15 times. At the same time, after the 490th row for the shoulder shaping, in every second row bind off 2 stitches 13 times and 3 stitches 5 times. Work another front section with the opposite shaping, making buttonholes after the 6th and 27th rows, over the 12th-20th needles. **Front edging** (button side). Put the 23 stitches from the helping needles back onto the machine, and turn the row counter back to 34. Rows 35-364: K 1, P 1 ribbing. Bind off all stitches. Make the front edging for the buttonhole side exactly the same, working buttonholes after the 62nd, 96th, and 130th rows, over the 12th-20th needles. **Armhole edging**: Cast on 121 stitches once and 113 stitches once with brown. Work 34 rows of K 1, P 1 ribbing. Then bind off all stitches. Make 2 more strips exactly like these. **FINISHING**: Join front and back sections at side seams. Join shoulder seams. Sew 2 front edgings together and sew to sweater front. Join sections of armhole edgings, fold around armhole openings, and sew. Fold bottom edging in half toward under side and hem. Finish buttonholes, sew on buttons.

MAN'S PULLOVER, No. HP 3344



SIZE: 42/44. To be worked on Knitting. **MATERIAL**: 20 oz. light grey tweed wool, 2 oz. charcoal, 1 oz. beige. For example: Pauline Denham 50/50, Spinnerin MONA. **SETTING**: 5. **GAUGE**: 17 stitches - 2" wide, 24 rows - 2" long. **PATTERN**: Straight Knitting (right side). Edging and collar: K 1, P 1 ribbing. **BACK** (Figure II) Cast on 185 stitches with charcoal. Rows 1-24: K 1, P 1 ribbing, making 10 rows with charcoal, 4 rows with beige and 10 rows with light grey. Continue on in straight

knitting with light grey. Rows 25-220: Work straight. Rows 221-244: For the armhole shaping, on both sides bind off 4 stitches. Then in every 2nd row decrease 4 stitches once, 3 stitches once, 2 stitches once, 1 stitch twice, and then decrease 1 stitch in every 4th row 3 times. (149 stitches). Rows 245-326: Work straight. Rows 327-346: For the shoulder shaping on both sides, in every 2nd row, bind off 4 stitches 6 times and 5 stitches 5 times. At the same time, for the neck opening, after the 336th row bind off the 17 center stitches, and on both sides of this, in every 2nd row bind off 6 stitches once, 5 stitches once, and 3 stitches 2 times. **FRONT** (Figure I). Cast on 195 stitches with charcoal. Rows 1-24: K 1, P 1 ribbing, making 10 rows with charcoal, 4 rows with beige and 10 rows with light grey. Continue on in straight knitting with light grey. Rows 25-200: Work straight. Now on the left side put 103 stitches on a helping needle, and work the right section



first. Rows 201-220: On the left side, after the 201st row, cast on 27 stitches. Rows 221-244: For the armhole shaping, bind off 6 stitches. Then in every 2nd row decrease 5 stitches once, 4 stitches once, 3 stitches once, 2 stitches once, 1 stitch once, and then decrease 1 stitch in every 4th row 3 times. Rows 245-307: Work straight. Rows 308-346: For the neck opening, bind off 27 stitches. Then in every 2nd row decrease 4 stitches once, 3 stitches once, 2 stitches 2 times, 1 stitch 5 times, and then decrease 1 stitch in every 4th row 3 times. At the same time, after the 326th row, for the shoulder shaping, in every 2nd row bind off 4 stitches 6 times and 5 stitches 5 times. Now put the cam box on the left side, and turn the row counter back to 200. Put the stitches from the helping needle back onto the machine, and work the left half, however on the right side cast on 16 stitches instead of 27 and make buttonholes after the 222nd, 260th, and 298th rows, over the 3rd-7th, and 21st-25th needles. **SLEEVE** (Figure III). Cast on 91 stitches with charcoal. Rows 1-24: Ribbing of K 1, P 1, making 10 rows of charcoal, 4 rows of beige and 10 rows of light grey. Rows 25-216: Increase 1 stitch on both sides after the 24th row and then in every 8th row 23 times. (139 stitches). Rows 217-226: For the underarm shaping in every second row on the back side of the sleeve bind off 4 stitches 2 times, 3 stitches once, 2 stitches once, and 1 stitch once, and on the front side, bind off 6 stitches once, 5 stitches once, 4 stitches once, 3 stitches once, and 2 stitches once. Rows 227-280: In every 2nd row on both sides, decrease 1 stitch 2 times and 2 stitches once. Repeat these 3 decreases 8 times. Rows 281-284: In every 2nd row on both sides bind off 3 stitches once, 5 stitches once, and then bind off the remaining 17 stitches. Work another sleeve with opposite shapings. **COLLAR**: Cast on 195 stitches with charcoal. Work 54 rows of K 1, P 1 ribbing: 10 rows charcoal, 4 rows beige, and continuing with light grey, doing 30 rows with setting 6 and 24 rows with setting 5. **FINISHING**: Join front and back sections at side and shoulder seams. Sew sleeve edges together, and sew sleeves to sweater. At neck opening, make a hem 16 stitches wide, and fasten the bottom edge on the wrong side. Sew on collar. Finish buttonholes, sew on buttons.

CHILD'S PULLOVER SWEATER, No. MK 4644



SIZE: 3-4 years. **MATERIAL**: 3 1/2" oz. light blue sport wool. 2 1/4" oz. light grey. 1 1/4" oz. dark blue, 1 1/4" oz. red. **SETTING**: 7 - for design. 5 - for edging. **GAUGE**: 14 stitches - 2" wide, 30 rows - 2" long, in design, 14 stitches - 2" wide, 24 rows - 2" long, in K 1, P 1 ribbing. **PATTERN**: H.P. design on right side according to diagram. Edging: K 1, K 1 ribbing. **BACK** (Figure II). Cast on 95 stitches with light blue. Rows 1-30: With setting 5, ribbing of K 1, P 1. Continue on in H.P. design with setting 7. Rows 31-114:

Work straight. Rows 115-131: For the shoulder shaping, on

23-24	NAVY BLUE
21-22	LIGHT BLUE
19-20	LIGHT BLUE
17-18	RED
15-16	GRAY
13-14	GRAY
11-12	NAVY BLUE
9-10	LIGHT BLUE
7-8	LIGHT BLUE
5-6	RED
3-4	GRAY
1-2	GRAY

both sides, bind off 3 stitches. Then decrease 1 stitch every 4th row 4 times. Now put the center stitch on the neighboring needle, put 40 needles on the right side in hold position, and work the left half first. Rows 132-204: For the facing at the back neck opening, cast on 3 stitches after the 132nd row. For this, put 3 stitches from the right side onto a helping needle. For the raglan shaping, decrease 1 stitch after the 135th row, and then in every 4th row 9 times, and in every 2nd row 16 times. Bind off 17 stitches. Now put the cambox on the right side, and turn the row counter back to 131. Put all the needles in working position, return the stitches from the helping needle back on the machine and work the right half. **FRONT** (Figure I) Cast on 95 stitches with light blue. Rows 1-30: With setting 5, work K 1, P 1 ribbings. Continue on in H.P. design with setting 7. Rows 31-114: Work straight. Rows 115-204: For the raglan shaping, on both sides bind off 3 stitches, then decrease 1 stitch in every 4th row 14 times, and in every 2nd row 16 times. Bind off 29 stitches. **SLEEVES** (Figure III). Cast on 53 stitches with light blue. Rows 1-34: Ribbing of K 1, P 1 with setting 5. Change to setting 7, and continue on in H.P. design. Rows 35-142: Increase 1 stitch on both sides after the 42nd row, then in every 8th row 10 times and in every 4th row 4 times. (83 stitches). Rows 143-232: For the raglan shaping, on both sides bind off 3 stitches, then decrease 1 stitch in every 4th row 14 times, and in every 2nd row 16 times. Bind off 17 stitches. Make 2 sleeves just alike. **COLLAR**: Cast on 97 stitches with light blue. Work 24 rows of K 1, P 1 ribbing with setting 5. Bind off all stitches. **FINISHING**: Join front and back at side seams. Fold the bottom edging in half toward under side, and hem. Sew sleeve edges together, and sew sleeves to sweater body. Make a hem 3 stitches wide around back neck opening. Fold collar around neck opening and attach. Sew in zipper.

GIRL'S PULLOVER, No. MK 4648

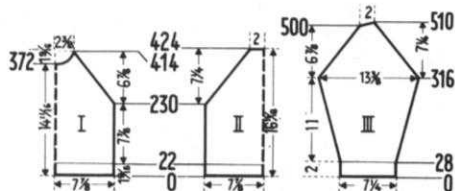


SIZE: 7-8 years. **MATERIAL**: 6 oz. brick red wool, 7 oz. sand beige. For example: Pauline Denham 50/50, Spinnerin MONA. **SETTING**: 6 - for design. 4 - for K 1, P 1 ribbing. **GAUGE**: 16 stitches - 2" wide, 52 rows - 2" long in design. 16 stitches - 2" wide, 28 rows - 2" long, in K 1, P 1 ribbing. **PATTERN**: H.P. design on the right side according to diagram. Edging: K 1, P 1 ribbing. **BACK** (Figure II) Cast on 129 stitches with red. Rows 1-22: K 1, P 1 ribbing with setting 4. Continue on with setting 6 in H.P. design. Rows 23-230: Work straight. Rows 231-424: For the raglan shaping, on both sides, decrease 1 stitch after the 230th row and in every 4th row 47 times. Bind off 33 stitches. **FRONT** (Figure I).

39-40	SAND
37-38	RED
35-36	RED
33-34	SAND
31-32	SAND
29-30	RED
27-28	RED
25-26	SAND
23-24	SAND
21-22	RED
19-20	RED
17-18	SAND
15-16	RED
13-14	SAND
11-12	RED
9-10	SAND
7-8	RED
5-6	SAND
3-4	RED
1-2	SAND

The front is worked the same as the back up to the 414th row, however, for the neck opening, after the 372nd row bind off the 9 center stitches, and on both sides of this in every 4th row decrease 3 stitches once, 2 stitches once, 1 stitch 3 times, and then in every 6th row decrease 1 stitch 3 times. To finish, on both sides, hang the remaining 3 stitches together. **SLEEVE** (Figure III). Cast on 59 stitches with red. Rows

1-28: K 1, P 1 ribbing with setting 4. Continue on in H.P. design with setting 6. Rows 29-316: Increase 1 stitch on both sides after the 42nd row and then in every 14th row 12 times, and in every 8th row 12 times (109 stitches). Rows 317-500: For the raglan shaping, decrease 1 stitch on both sides after the 316th row and then in every 4th row 45 times. Rows 501-510: On the left side, one after another, put 2 needles in hold position 3 times and 3 needles in hold position 2 times. At the same time, on the right side, decrease 1 stitch after the 500th row and again after the 504th row. To finish, bind off the remaining 15 stitches. Work another sleeve with opposite shapings. **COLLAR:** Cast on 163 stitches with red. Work 36 rows K 1, P 1 ribbing - 10 rows with setting 5, 16 rows with setting 4, and 10 rows with setting 5. Then bind off all stitches. **FINISHING:** Join front and back at side seams. Sew sides of sleeves together and sew sleeves to sweater body. Join collar ends to form a circle, fold around neck opening and fasten.

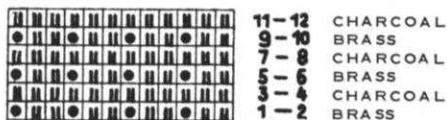


BOY'S PULLOVER, No. KK 4646

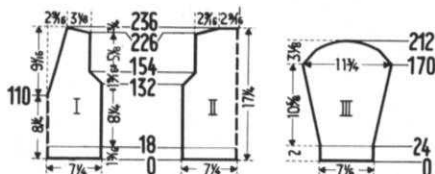


SIZES: 6-7 years old, 8-9 years old. to be worked on Knitkng. **MATERIAL:** (Size 6-7), 6 1/2 oz. charcoal, 3 1/2 oz. brass. (Size 8-9), 7 1/2 oz. charcoal, 4 1/2 oz. brass. For example: Reynolds "CLASSIQUE". **SETTING:** 8 - for design, 7 for K 1, P 1 ribbing. **GAUGE:** 14 stitches - 2" wide, 27 rows - 2" long, in design, 14 stitches - 2" wide, 23 rows - 2" long, in K 1, P 1 ribbing. **PATTERN:** H.P. design on right side, according to diagram. Edging: K 1, P 1 ribbing. **THE DIRECTIONS THAT FOLLOW**

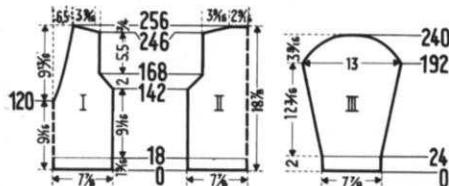
ARE FOR SIZE 6-7. BACK (Figure II). Cast on 103 stitches with charcoal. Rows 1-18: K 1, P 1 ribbing with setting 7. Now increase 1 stitch on one side and continue on in H.P. design with setting 8. Rows 19-132: Work straight. Rows 133-154: For the armhole shaping, decrease 1 stitch on both sides in every second row 11 times (82 stitches). Rows



155-226: Work straight. Rows 227-236: For the shoulder shaping on both sides of every 2nd row, bind off 4 stitches 2 times, 5 stitches 3 times, and then bind off the remaining 36 stitches. **FRONT (Figure I).** The front is worked the same as the back, however, for the neck shaping, after the 110th row, divide the section in half, and decrease 1 stitch on both sides of the division after the 112th row and again after the 114th row. Then decrease 1 stitch in every 6th row 8 times and in every 8th row 8 times. **SLEEVE (Figure III).** Cast on 51 stitches with charcoal. Rows 1-24: K 1, P 1 ribbing with setting 7. Continue on in H.P. design with setting 8. Rows 25-170: Increase 1 stitch on both sides after the 32nd row, and then in every 8th row 16 times. (85 stitches). Rows 171-212:



For the underarm shaping, on both sides of every 2nd row, bind off 1 stitch 12 times, 2 stitches 5 times, 3 stitches 3 times, 4 stitches once, and then bind off the remaining 15 stitches. Work another sleeve exactly like this. **NECK EDGING:** Cast on 113 stitches with charcoal. Work 16 rows K 1, P 1 ribbing with setting 7, decreasing 2 stitches on the left side after the 1st row, and then in every 2nd row 3 times, and increasing 2 stitches after the 9th row and then in every 2nd row 3 times. To finish, bind off all stitches. Work the other half of neck edging with opposite shapings. **FINISHING:** Join front and back at side seams. Sew shoulder seams. Join sleeve edges and sew sleeves to sweater body. Sew neck edgings together, fold neck edging around neck opening and sew. **SIZE 8-9. BACK (Figure II).** Cast on 111 stitches with charcoal. Rows 1-18: K 1 P 1 ribbing with setting 7. Now increase 1 stitch on one side and continue on in H.P. design with setting 8, putting the 1st needle and every 3rd needle thereafter in hold position. Rows 19-142: Work straight. Rows 143-168: For the armhole shaping decrease 1 stitch on both sides in every 2nd row 13 times. (86 stitches). Rows 169-246: Work straight. Rows 247-256: For the shoulder shaping on both sides of every 2nd row bind off 5 stitches 5 times, and then bind off the remaining 36 stitches. **FRONT (Figure I).** The front is worked the same as the back. However, for the neck hole shaping, after the 120th row, divide the section in half, and decrease 1 stitch on both sides of the division after the 124th row, and again after the 128th row. Then decrease 1 stitch in every 6th row 5 times, and then in every 8th row 11 times. **SLEEVE (Figure III).** Cast on 57 stitches with charcoal. Rows 1-24: K 1, P 1



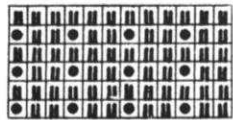
ribbing with setting 7. Continue on with H.P. design in setting 8. Rows 25-192: Increase 1 stitch on both sides after the 34th row and then in every 10th row 12 times and in every 8th row 3 times, and in every 6th row 3 times (93 stitches). Rows 193-240: For the under arm shaping, on both sides of every 2nd row, bind off 1 stitch 14 times, 2 stitches 6 times, 3 stitches 4 times, and then bind off the remaining 17 stitches. Work another sleeve exactly like this. **NECK EDGING:** Cast on 121 stitches with charcoal. Work 16 rows K 1, P 1 ribbing with setting 7, decreasing 2 stitches on the left side after the 1st row and then in every 2nd row 3 times, and increasing 2 stitches after the 9th row and then in every 2nd row 3 times. To finish, bind off all stitches. Work the other half of neck edging with opposite shapings. **FINISHING:** Follow directions for size 6-7.

GIRL'S PULLOVER, No. MK 4647



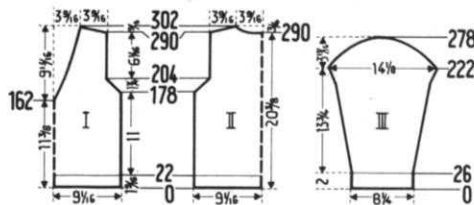
SIZE: 12-13 years. To be worked on Knitkng. **MATERIAL:** 8 oz. yellow Pauline Denham 50/50, 4 oz. blue. **SETTING:** 7. **GAUGE:** 14 stitches - 2" wide, 28 rows - 2" long, in design. 14 stitches - 2" wide, 26 rows - 2" long, in edging. **PATTERN:** H.P. design on the right side according to diagram. Edging and inset: K 1, P 1 ribbing. **BACK (Figure II).** Cast on 127 stitches with yellow. Rows 1-22: K 1, P 1 ribbing. Increase 1 stitch on one side and continue on in H.P. design. Rows 23-178: Work straight.

Rows 179-204: For the armhole shaping, on both sides, decrease 1 stitch in every 2nd row 13 times. Rows 205-290: Work straight. Rows 291-302: For the shoulder shaping, on both sides of every 2nd row bind off 3 stitches 2 times and 4 stitches 5 times. At the same time, for the neck opening, after the 290th row, bind off the 16 center stitches, and on both sides of this in every 2nd row bind off 5 stitches once, 4 stitches



11-12 BLUE
9-10 YELLOW
7-8 BLUE
5-6 YELLOW
3-4 BLUE
1-2 YELLOW

once, 3 stitches 2 times, and 2 stitches once. **FRONT** (Figure I). The front is worked the same as the back; however, for the neck opening, after the 162nd row divide the work in the middle, and continue on in 2 sections. On both sides of the division, decrease 1 stitch on both sides of the division after the 166th row and then in every 4th row 4 times and in every 6th row 19 times. For this, put the 3rd stitch on the 2nd needle, and move sts to fill empty needle. **SLEEVE** (Figure III). Cast on 59 stitches with yellow. Rows 1-26: K 1, P 1 ribbing. Continue on in H.P. design. Rows 27-222: Increase 1 stitch on both sides after the 36th row, then every 10th row 15 times and every 6th row 5 times. (101 stitches). Rows 223-278: For the underarm shaping, in every 2nd row on both sides bind off 1 stitch 20 times, 2 stitches 4 times, 3 stitches 4 times, and, then bind off the remaining 21 stitches. Work another sleeve with same shaping. **INSET WITH COLLAR**: Cast on 7 stitches, with yellow. Work K 1, P 1 ribbing. Rows 1-132: Increase 1 stitch on both sides after the 4th row and then in every 4th row 26 times, and in every 6th row 3 times. Rows 133-134: On both sides cast on 30 stitches. Rows 135-176: Work straight; working rows 145-164 with setting 6. **FINISHING**: Join front and back sections at side seams. Join shoulder seams. Sew sleeve edges together and sew sleeves to sweater body. At front neck edging make a hem 1 stitch wide. Join collar edges so that collar is round. Sew inset and collar to neck opening.

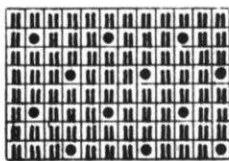


BOY'S JACKET SWEATER, No. KK 4645



SIZE: 10-11 years. **MATERIAL**: 9 oz. dark red shetland wool, 5 1/2 oz. charcoal, 2-2/3 oz. light grey, 2-2/3 oz. olive green, for example: Pauline Denham 50/50 or Spinnerin "MONA"
SETTING: 8-for design, 7-for edging.
GAUGE: 13 stitches - 2" wide, 30 rows - 2" long, in design. 13 stitches - 2" wide, 23 rows - 2" long, in edging.
PATTERN: H.P. design on right side, according to diagram. Edging and collar: K 1, P 1, ribbing. Front button and button-hole strips: straight knitting (right side). **BACK** (Figure

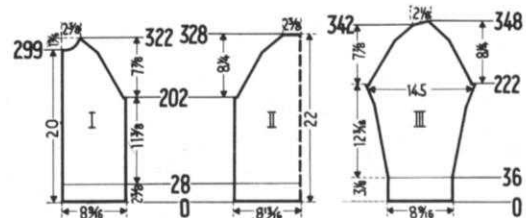
1). Cast on 117 stitches with dark red. Rows 1-28: K 1, P 1 ribbing with setting 7. Continue on with H.P. design and setting



23-24 OLIVE
19-22 RED
17-18 GREY
13-16 CHARCOAL
11-12 OLIVE
7-10 RED
5-6 GRAY
1-4 CHARCOAL

8. Rows 29-202: Work straight. Rows 203-328: For raglan shaping, bind off 3 stitches on both sides, then decrease 1 stitch in every 4th row 22 times, and then in every 2nd row 18 times. To finish, bind off 31 stitches. **FRONT** (Figure I). Cast on 57 stitches with dark red. Rows 1-28: Ribbing of K 1, P 1 with setting 7. Continue on in H.P. design with setting 8. Rows 29-202: Work straight. Rows 203-322: For the raglan shaping, bind off 3 stitches, then decrease 1 stitch in every 4th row 22

times, then in every 2nd row 15 times. At the same time, for the neck opening, after the 299th row bind off 4 stitches, then in every 2nd row decrease 2 stitches 2 times, 1 stitch 4 times, and then in every 4th row decrease 1 stitch 2 times. To finish, hang the remaining 3 stitches together. Work another front section with opposite shapings. **SLEEVE** (Figure III). Cast on 57 stitches with dark red. Rows 1-36: K 1, P 1 ribbing with setting 7. Continue on with H.P. design in setting 8. Rows 37-222: Increase 1 stitch on both sides after the 42nd row, then in every 12th row 6 times, in every 10th row 6 times, and in every 6th row 7 times. (97 stitches). Rows 223-342: For the raglan shaping, bind off 3 stitches on both sides, then decrease 1 stitch in every 4th row 22 times, and in every 2nd row 15 times. Rows 343-348: On the left side, one after another, put 4 needles in hold position 3 times. At the same time, on the right side, decrease 1 stitch after the 342nd row and then in every 2nd row 2 times. To finish, bind off 14 stitches. Work another sleeve with opposite shaping. **COLLAR**: Cast on 131 stitches with dark red. Work 50 rows of K 1, P 1 ribbing - 30 rows with setting 8, and 20 rows with setting 7. To finish, bind off all stitches. **FRONT STRIP**: Cast on 125 stitches with dark red. Work 30 rows straight knitting - right side - with setting 7. Then bind off all the stitches. Work another strip just like this, making buttonholes after the 7th and 22nd rows over he 4th-8th, 23rd-27th,



42nd-46th, 61st-65th, 80th-84th, 99th-103rd, and 118th-122nd needles. **FINISHING**: Join front and back sections at side seams. Sew sleeve edges together, and sew sleeves to sweater. Fold edging at sleeve and sweater bottoms in half toward under side and hem. Fold the front strips around sweater fronts, and sew. Sew collar to neck opening. Finish buttonholes and sew on buttons.

PRACTICAL HINTS

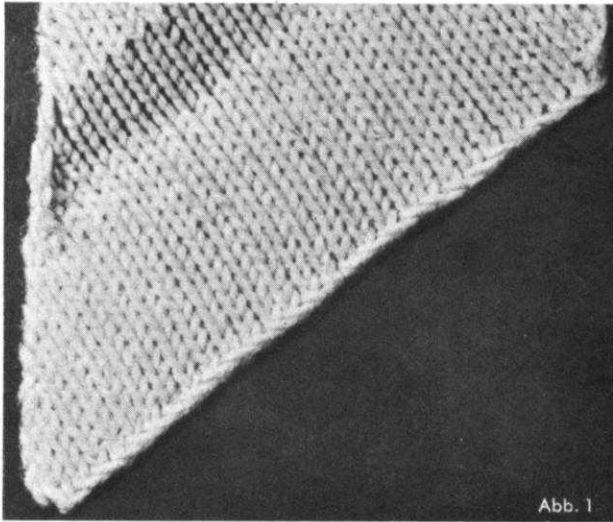
DIAGONAL COLLARS AND FACINGS

Shawl collars, turtle-neck collars, insets, and facing strips fit the neckline especially well when they are worked diagonally. In addition, by knitting 2 or more colors, it is possible to obtain a very pretty effect with consecutive diagonal stripes. For shawl collars (such as the one used on the woman's blouse, DP 7166, the ends can be finished in 3 different ways: Example I shows a diagonal edge; Example II shows a straight edge. Example III shows a pointed edge. The directions of these three different edges are as follows:

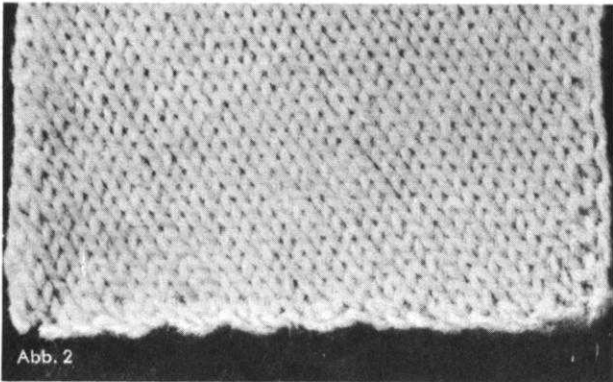
EXAMPLE I: Comply with the desired collar width, casting on from 30 to 50 stitches on the left side of the machine. Work 1 row, so that the cam box is on the left side. Then, consecutively, in every 2nd row, on the left side decrease 1 stitch and on the right side increase 1 stitch. Repeat for the entire length of the collar. Bind off all stitches at the same time.

EXAMPLE II: Cast on 3 stitches so that there are from 20 to 30 needles free on the left side of the machine. Work one row. Then in every 2nd row increase 2 stitches on the left side and 1 stitch on the right side until you have the number of stitches required for the width of the collar. Then consecutively, in every 2nd row on the left side increase 1 stitch, and on the right side increase 1 stitch, until the collar reaches the desired length. For the final step, decrease 1 stitch on the left side and 2 stitches on the right side until 3 stitches remain. Bind off these 3 stitches. This type of edge is especially good for fringed collars, as fringes are easily applied.

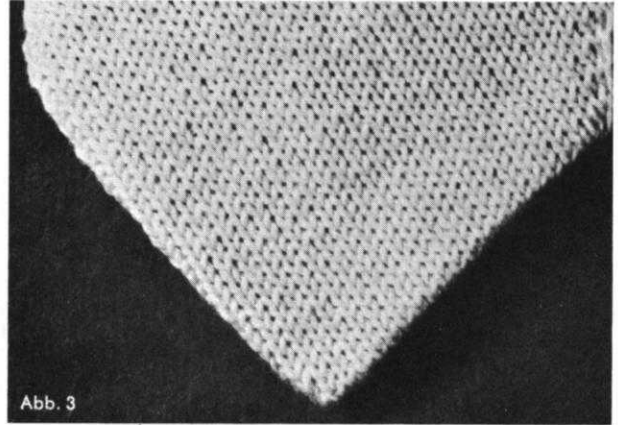
EXAMPLE III: This is worked exactly the same as Example 2. However, upon completion, join the 2 corners at each end and sew up the wrong side.



For a diagonal turtle neck collar, with no beginning or end, such as DK 7162) work as for Example I, *leaving the beginning cast on stitches open*. (OR you may disconnect closed cast on stitches). Do not bind off to finish, but put the open stitches



from the machine onto a helping needle and weave these and the open cast on stitches together. Thus, you have a round, seamless collar. If the garment has a button or zipper opening, the collar will be seamed. Therefore it is necessary that the



ends of the collar are straight - as in Example II. For diagonal insets or facings, apply the same rules as for turtle neck collars; choosing a straight or a diagonal edge to meet the requirements of each garment.

(Continued from Page 1)

the pattern to your machine as it would be impossible to prepare the instructions for every available brand of knitting machine.

We will endeavor to knit garments with yarns that are readily available throughout North America, but if you cannot obtain the suggested yarns in your area, please tell us the brands you can get and we will suggest substitutes.

We hope that you will tell your friends about KNITKING MAGAZINE, but that you will not loan them your copies.

You could lose the copies and your friends. Instead, write their names and addresses on the invitation card in this issue, and we will write direct to them enclosing a subscription card. You might even like to place a subscription on their behalf as a gift.

Our second issue is in production and we feel sure that you will like the lovely selection of jackets and sweaters knitted in a variety of fancy stitches and with full fashioned styling included in its pages. Plus some of the cutest children's garments you ever did see.

WANTED.....

SALESPEOPLE AND KNITKING OWNERS TO SELL AND TEACH KNITKING KNITTING. IF YOU CAN DO EITHER OR BOTH WRITE TO KNITKING, 1128 CRENSHAW BLVD., LOS ANGELES, CALIF. 90019, FOR FULL INFORMATION.

YOU'LL JUST LOVE

KNITKING®

Push-Button

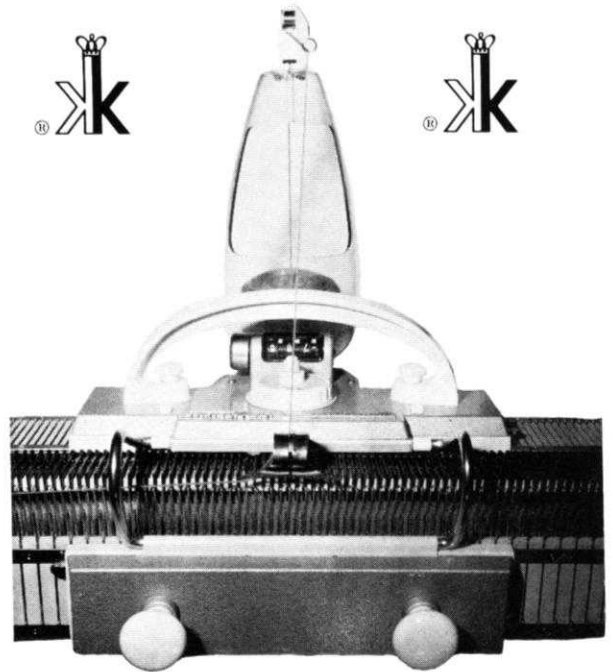
Dial-A-Stitch

*the modern handknitter
with the new Coordinated Ribber*

✂ Easiest, by far, to learn to use efficiently ✂ Does more jobs, takes less time, requires less space ✂ Needs no weights, clamps, or combs in its operation ✂ Will not drop stitches (it has spring-latch needles) ✂ Automatically creates Jacquard, Fair Isle and Argyle patterns ✂ Takes all kinds of yarns (even mohair, looped or plain; straw, ribbon, angora, synthetics, cotton, wool, etc.) ✂ Arrives complete with Home Study Course, instruction books, tools ✂ Designs and patterns for the whole family come to you monthly in Knitking's magazines ✂ Does a multitude of fancy ribs for you ✂ Floating row-counter can be pre-set and signals when knitting is complete ✂ Dial-A-Stitch gives you a choice of stitches (multicolor, if you wish) with the push of a button ✂ New Coordinated Ribber and self-adjusting yarn-feeder knits and purls at the same time, with one movement of the slide ✂ With the new fully automatic push-button **KNITKING**, you can knit sweaters, socks, coats, dresses, rugs ✂ It's so easy to knit a dress and wear it, all in a single day

Write to Knitking for more information

1128 Crenshaw Boulevard, Los Angeles 19, Calif.,



EXPLANATION OF TERMS AND DIAGRAMS USED WITH PATTERNS

Before you begin a garment, we advise you to read through the following remarks. This will make it easier for you to follow the diagrams.

It is especially important that you measure by the gauge which precedes each pattern, because the suggested knitting yarns may not always give the desired measurements. Should you vary from the given measurements, make the necessary adjustments by altering the machine setting.

Increases and decreases in the middle of a garment are presented in the following manner:

Increasing and decreasing stitches: For example, for waist shaping:



open dart



closed dart



= One-sided increase of rows: For example, for diagonally worked darts, etc.

Certain H.P. and eyelet designs are sketched in the knitting patterns. The pattern should be read as the work comes toward you from the machine: that is, if you have purl stitches before you, it will say purl stitches in the pattern. If you have knit stitches before you, it will say knit stitches in the pattern.

On the sides of the pattern are the row numbers. Missing row numbers indicate that the rows are to be worked evenly. In eyelet design the empty needles are in working position; in H.P. design, the same needles are in hold position.

SYMBOLS

- = knit stitch
- ▣ = purl stitch
- = empty needle (still in working position)
- ☐ = needle out of operation
- ◻ = needle in hold position
- ◻ = stitch put on neighboring needle. Needle in hold position
- ◻ = stitch put on neighboring needle - to the right
- ◻ = stitch put on neighboring needle - to the left
- ◻ = 3 stitches hung together

Available in many wood finishes



KNITTING DESK . . .

A knitting machine cabinet that automatically lifts your machine into the knitting position just by pulling a lever. The cabinet converts in seconds into a handsome desk suitable for any decor or any room in your house. Beautifully made in a variety of woods by craftsmen in West Germany.



Order from your local dealer or direct from **KNITKING**, 1128 Crenshaw Blvd., Los Angeles, California 90019