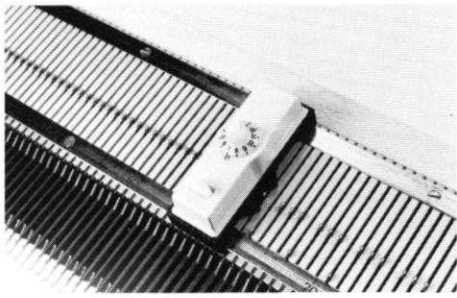


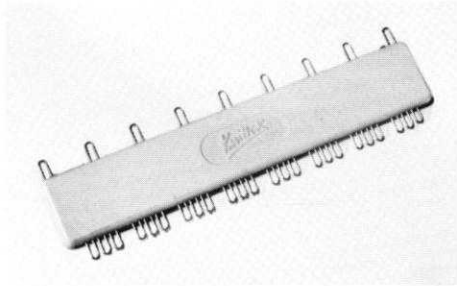
KNITTING

MAGAZINE

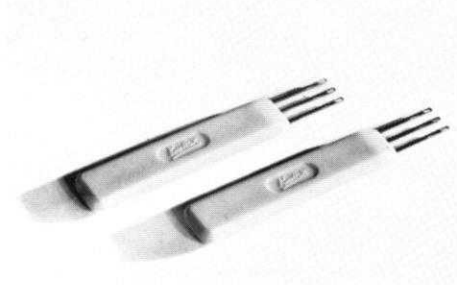




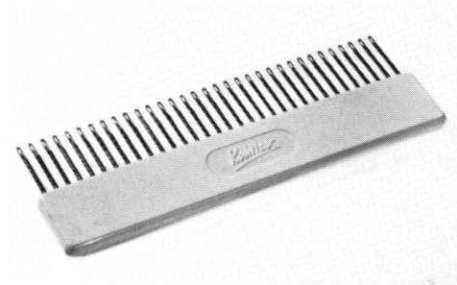
Automatic Needle Selector fits all model Knitings



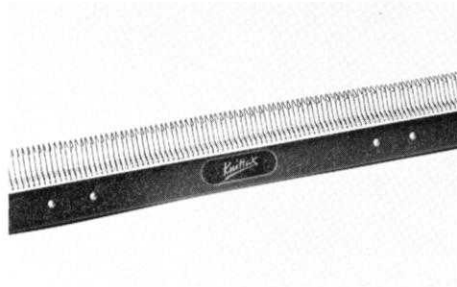
Adjustable Selector



Treble Transfer Tools



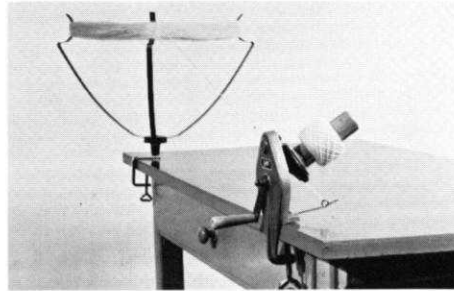
Multi-transfer Tool



Reversing Bar



Converta Tape



Yarn Winder



ACCESSORIES



The perfect tool for automatic selection of Jaquard and ski-sweater designs. Over 125 patterns available.



Jac 40

KNITKING

MAGAZINE



Letter from the Publisher

Vol. I No. 2

Nov.-Dec. 1964

INDEX

Contents	Pattern No.	Page No.
Woman's Jacket Sweater	DP 7172	18
Woman's Pullover	DP 7174	18
Woman's Pullover	DP 7170	19
Woman's Pullover	DP 7171	20
Woman's Pullover	DP 7175	21
Woman's Pullover	DP 7176	21
Teen-Age Pullover	DP 7178	22
Man's Jacket Sweater	HP 3351	22
Man's Pullover	HP 3347	23
Man's Jacket Sweater	HP 3350	24
Boy's Pullover Shirt	KK 4650	26
Boy's Pullover	KK 4654	26
Child's Coat	KK 4649	27
Child's Coat	SK 5077	27
Girl's Jacket Sweater	MK 4638	28
Boy's Jacket Sweater	KK 4655	29
Girl's Jacket Sweater	MK 4653	29
Woman's Jacket Sweater	DP 7177	29
Child's Pullover	KK 4652	30
Practical Knitting Hints		31

Thank you for the many hundreds of letters complimenting and thanking KNITKING for introducing KNITKING MAGAZINE.

We thank you for your glowing comments regarding the patterns in the first issue, and we extend special thanks to those of you who made suggestions for improving the pattern presentation.

You will notice in this issue that instead of giving the finished sizes of the garments in inches, we have shown them in more widely recognized dress sizes such as 8 to 10, 12 to 14, etc., but we would caution you once more to always make a sample swatch in order to obtain the correct number of rows and stitches to the inch.

We are also using a slightly different and more readable type face in this issue, the rows are now shown in heavy type in order to allow for speedier reference and we have adopted the symbol X in place of the word "times." For example, instead of the pattern reading "increase 1 stitch every fourth row 9 times," it will read, "increase 1 stitch every fourth row 9 x."

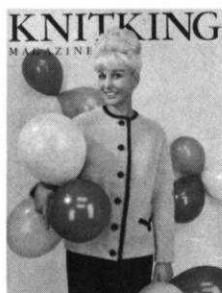
We received letters from some Canadian readers stating that the suggested yarns for the patterns in our first issue were not available in Canada. Our Canadian readers can help us, and themselves, by telling of any widely advertised good quality yarns that they use. We in turn will suggest them for any suitable patterns.

We will only recommend good quality yarns for KNITKING patterns, as it really is a waste of time and money knitting with cheap, poor quality materials that will stretch and shrink with a change in the weather. It should be possible to wash garments made of good quality yarn many many times, and still have them retain their colors and shape. Some cheap yarns shrink and lose their color on the first washing.

It takes just about the same length of time to knit a dress with good quality yarn as it does to knit it with poor quality. Poor yarns will never look good no matter how good a knitter you are, so we suggest that you always buy the best, it is cheapest in the long run.

We were very surprised at the contents of a letter from a knitter in California, who said that she had never heard of Spinnerin, Reynolds and Pauline Denham yarns and would we make patterns for the yarns she knew. Unfortunately, she failed to name them.

(Continued on page 31)



OUR COVER PICTURE

DP 7172

This excellent design in a woman's jacket is knitted of 22 oz. of iridescent blue yarn and is set off with a strip of black silk to add to its beauty.

Publisher: Henry J. Atkin, 1128 Crenshaw Blvd., Los Angeles, Calif. 90019, Telephone: WEbster 8-2079. Published bi-monthly. Subscriptions: USA—\$6.00 annually, single copies \$1.50; Canada—\$7.00; other parts of the world—\$10.00. The entire contents of KNITKING MAGAZINE are copyright and must not be reproduced in any shape or form without the express permission, in writing, of the publisher.

Printed by: George Rice & Sons, Los Angeles, Calif.



STYLISH

DP 7174

Full fashioned raglan sleeves and a tie belt pulled through a casing knitted in eyelet design are features of this dressy pullover.

DP 7170

This unusual design in a woman's pullover is set off with a border in Norwegian pattern stitch in yellow with the main color in blue.





STYLISH

DP 7171

This very stylish raglan sleeve pullover is made of 18 oz. of light red yarn. The front section is knitted in a lovely eyelet design with the sleeves and back knitted in plain stockinette.

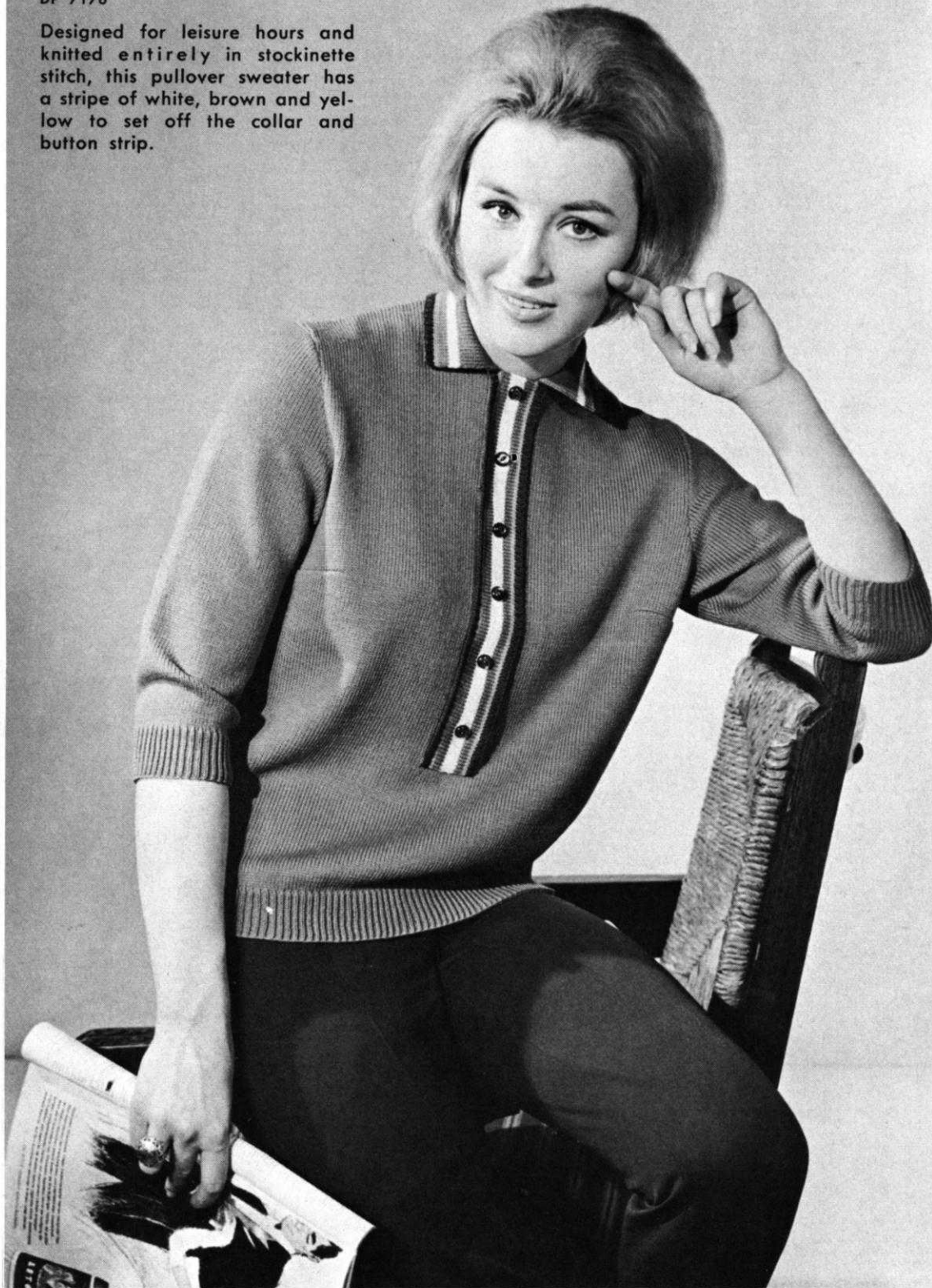
DP 7175

Complete directions for making the vertical stripe in eyelet can be found in the Practical Knitting Hints on Page 31. This smart light weight pullover is designed for any occasion.



DP 7176

Designed for leisure hours and knitted entirely in stockinette stitch, this pullover sweater has a stripe of white, brown and yellow to set off the collar and button strip.





SPORTY

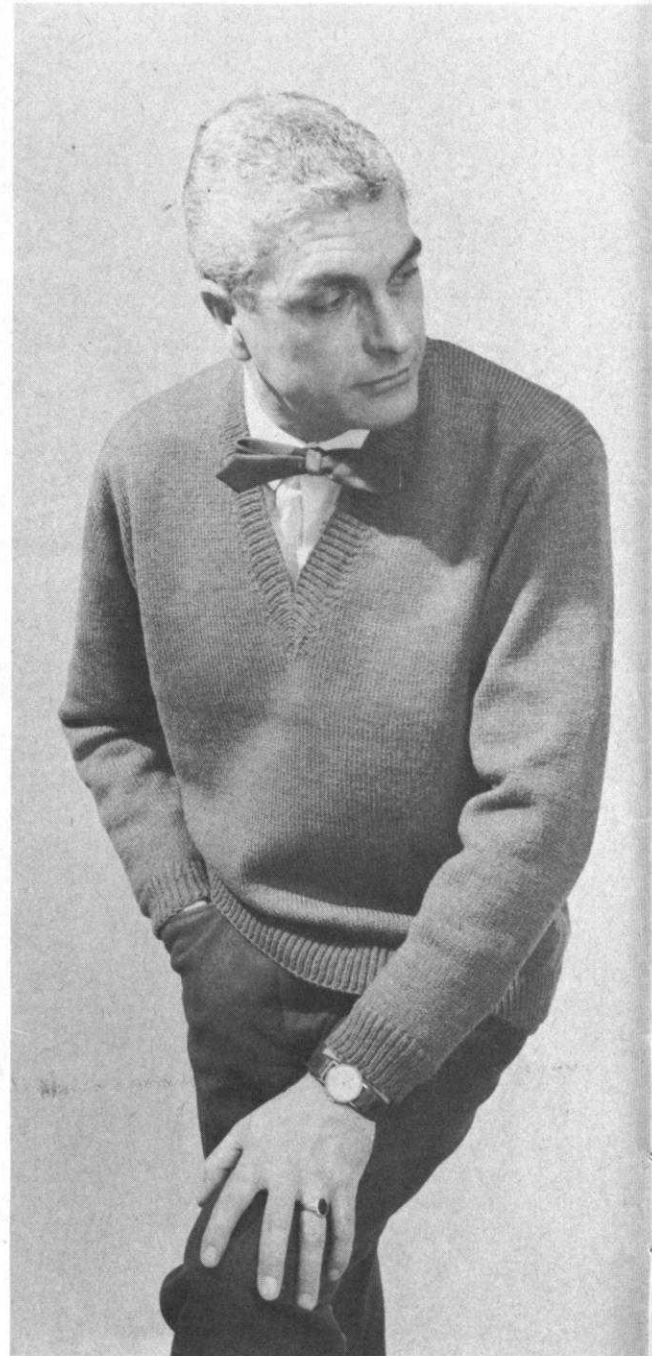
DP 7178

Wide and handsome cable stripes are the dominant features of this good looking pullover. The addition of two colors in the ribbing adds to the versatility of this sweater for any sporty occasion.

CASUAL

HP 3351

The front sections of this good looking jacket sweater are knitted in hold position. Directions for the fancy stitch can be found in this month's Practical Knitting Hints.

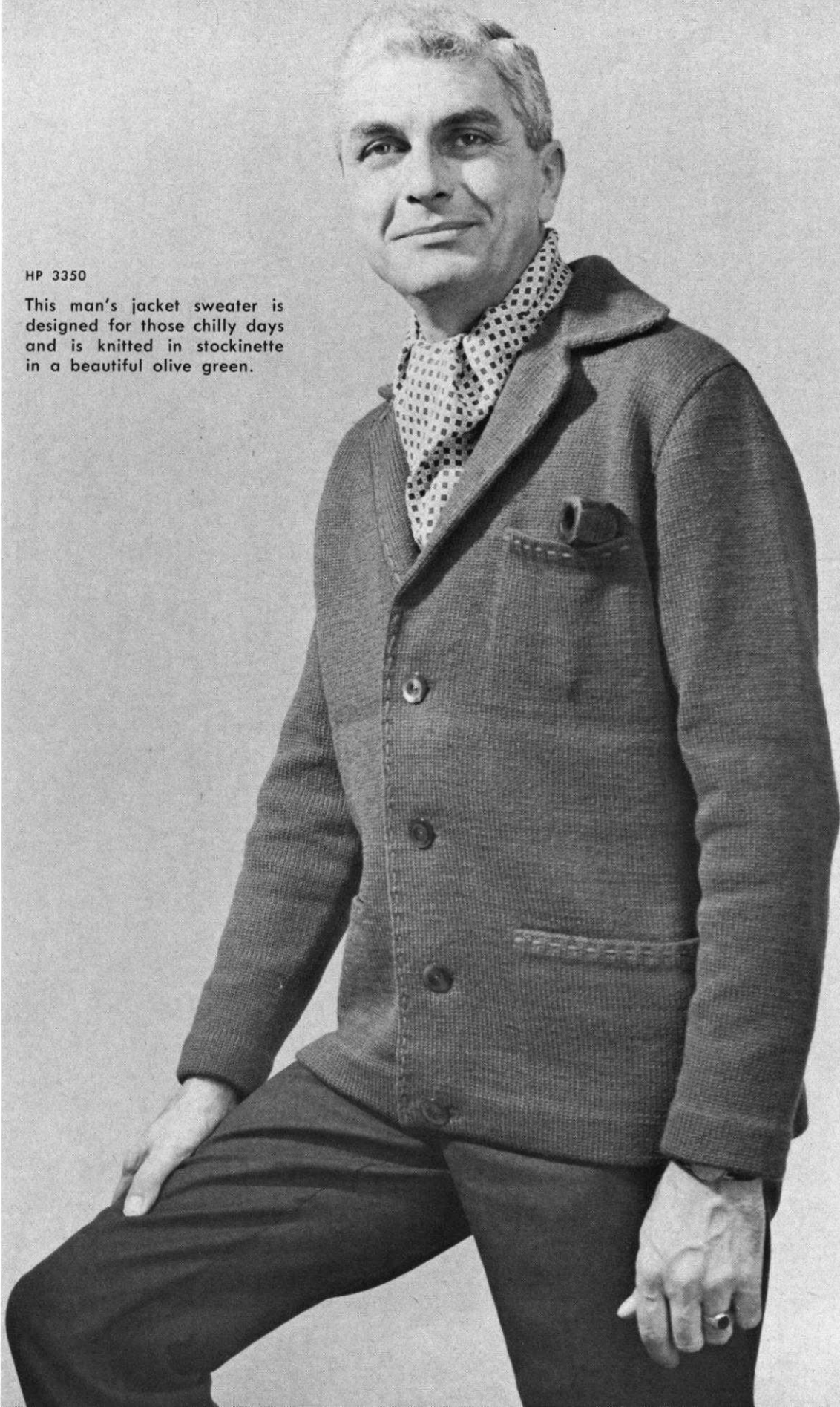


HP 3347

A classic pullover knitted in green. This is an excellent addition to any man's wardrobe.

HP 3350

This man's jacket sweater is designed for those chilly days and is knitted in stockinette in a beautiful olive green.



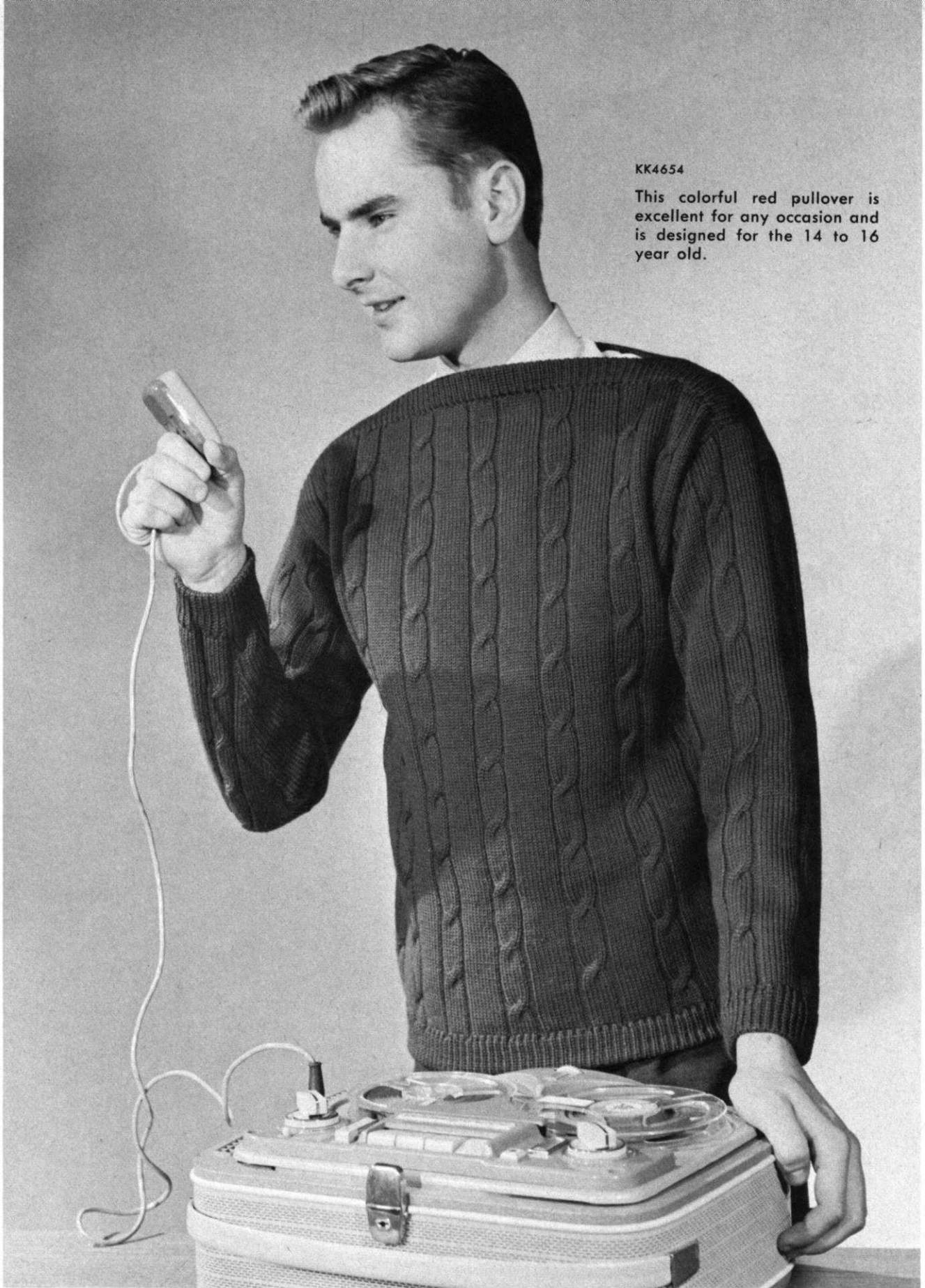
KK 4650

Designed for young men from 12 to 14, this warm pullover shirt features stripes of grey and yellow.



KK4654

This colorful red pullover is excellent for any occasion and is designed for the 14 to 16 year old.





2 TO 7 YEARS OLD

← KK 4649

By reversing the buttons and button-holes, this good looking coat can be used for boys or girls. It is knitted in two colors and by using the hold position of the needles.

SK 5077 →

Black and white tweed with mohair are featured in this child's coat. The collar and pockets are knitted in green wool.





MK 4638

Colorful geranium red yarn is used for this girl's jacket sweater with both front sections knitted in a hold position making this sweater an excellent part of any little girl's wardrobe.

DP 7177

A hold position design is featured in these matching mother and daughter sweaters. The mother's sweater is brown and yellow and the child's sweater is red and white.





← KK 4655

For those first years, we have added this boy's jacket sweater in a classic design easily knitted in stockinette. Directions for size 3 to 4 can be found on page 29.

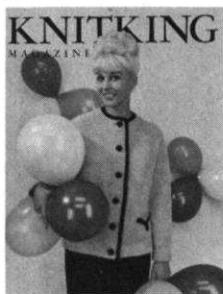
KK 4652 →

This child's sweater is easily knitted and features stripes of Norwegian design in 4 colors.



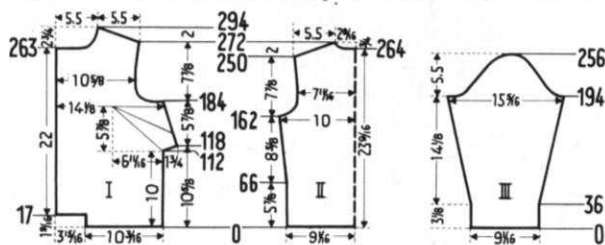
KNITTING INSTRUCTIONS

WOMAN'S JACKET, No. DP 7172



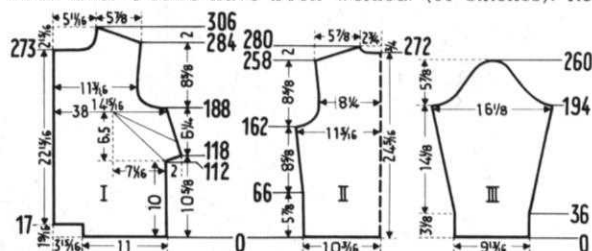
SIZES: 8/10 - 14/16. **MATERIALS:** 8/10 22 oz., 14/16 26 oz. Iridescent blue. 2¼ yds. Black Silk Edging. **SUGGESTION:** Shetland wool. **TENSION:** Knit 6. **GAUGE:** 16 sts. 2", 22 Rows 2". **PATTERN:** Stockinette. **DIRECTIONS:** Size 8/10. **BACK:** Cast on 147 Sts. (Figure II). Rows 1-162: Work even in stockinette to row 66, then increase 1 stitch both sides. Repeat every 12 rows 7 x. (163 stitches). Rows 163-184: Armhole shaping. Bind off 5 stitches on both sides then every other row, decrease 4 stitches 1 x, 3 stitches 1 x, 2 stitches 2 x, 1 stitch 3 x, then every 4th row decrease 1 stitch 2 x (125 stitches). Rows 185-250: Work to row 208, then increase 1 stitch both sides. Increase 1 stitch both sides every 14th row 2 x. (131 Stitches).

4 stitches 1 x, 3 stitches 1 x, 2 stitches 1 x, 1 stitch 3 x, then every 4th row decrease 1 stitch 2 x (125 stitches). Rows 185-250: Work to row 208, then increase 1 stitch both sides. Increase 1 stitch both sides every 14th row 2 x. (131 Stitches).



Rows 251-272: Shoulder shaping: On both sides every other row bind off 3 stitches 3 x, then 4 stitches 9 x. At the same time start neck opening after 264th row. Bind off center 15 stitches, then on each side of neck opening every other row bind off 6 stitches 1 x, 4 stitches 1 x, 3 stitches 1 x. **FRONT:** (Figure I). Cast on 83 stitches. Rows 1-17: Work even. Cast on 32 stitches on left side. Rows 18-112: Work even, making buttonholes after the 29th row and 73rd row over the 2nd-9th, 24th-31st needles counting from the left side. Rows 113-118: On the right side, increase 5 stitches every other row 3 x. Row 118 make a buttonhole. Rows 119-184: Armhole shaping. Bind off 7 stitches. Then every other row, decrease 6 stitches 1 x, 4 stitches 1 x, 3 stitches 1 x, 2 stitches 2 x, and 1 stitch 4 x. Work 4 rows, then decrease 1 stitch. At the same time make a buttonhole on row 206. (86 stitches). Rows 209-263: At right side increase 1 stitch after row 230, then every 14th row 2 x. At the same time make a buttonhole after the 249th row. Rows 264-294: Neck opening. Bind off 32 stitches. Then every other row decrease 3 stitches 1 x, 2 stitches 2 x, 1 stitch 2 x, then every 4th row decrease 1 stitch 3 x. At the same time after row 272, start shoulder shaping. Every other row bind off 3 stitches 3 x and 4 stitches 9 x. Make other front section reversing shapings, minus buttonholes. **SLEEVE** (Figure III). Cast on 74 stitches. Rows 1-194: After row 36, increase 1 stitch each side, then every 6th row 25 x. (126 stitches). Rows 195-208: Underarm shaping. Back side every other row bind off 5 stitches 1 x, 4 stitches 1 x, 3 stitches 2 x, 2 stitches 2 x and 1 stitch 1 x. Front side, bind off 7 stitches 1 x, 6 stitches 1 x, 5 stitches 1 x, 4 stitches 1 x, 3 stitches 1 x, and 2 stitches 2 x. Rows 209-250: Both sides every other row decrease 1 stitch 21 x. Rows 251-256: Both sides every other row bind off 2 stitches 1 x, 3 stitches 1 x, 4 stitches 1 x, then bind off remaining 17 stitches. Make another sleeve reversing shapings. **FACING FROM NECK OPENING:** Cast on 101 stitches. Work 16 rows as follows: 4 rows tension 9, 4 tension 8, 4 tension 7, 4 tension 6. To finish, bind off all stitches. **FINISHING:** Brush each piece with wire brush. Sew in darts at bustline of front section. Join front and back at side and shoulder seams. Make a 1-9/16 hem at bottom of jacket and sleeves, and a 2" hem at front edges. Sew sleeves together and sew into jacket. Sew facing to neck opening. Finish buttonholes and sew on buttons. Sew black border to front an dneck edges, and on the false pocket on the left side of the jacket, as shown in illustration.

DIRECTIONS FOR SIZE 14/16. BACK (Figure II). Cast on 167 stitches. Rows 1-162: After 66th row increase 1 stitch at both sides. Continue every 12th row 7 x. (183 stitches). Rows 163-188: Armhole shaping: Bind off 5 stitches both sides. Then every other row decrease 4 stitches 1 x, 3 stitches 2 x, 2 stitches 2 x, 1 stitch 3 x, then every 4th row decrease 1 stitch 2 x. (135 stitches). Rows 189-258: After row 216 increase 1 stitch both sides, then every 14th row 2 x (141 stitches). Rows 259-280: Shoulder shaping. Both sides every other row bind off 4 stitches 12 x. At same time for neck opening after row 272 bind off the 17 center stitches, then both sides every other row bind off 8 stitches 1 x, 4 stitches 1 x and 2 stitches 1 x. **FRONT:** (Figure I). Cast on 90 stitches. Rows 1-17: Work even. On left side cast on 32 stitches. Rows 18-112: Work even making buttonholes after row 29 and 75 over 2nd and 9th, 24th and 31st needles, counting from the left side. Rows 113-118: On right side every other row increase 6 stitches 1 x, and 5 stitches 2 x. Rows 119-188: Make buttonholes after the 121st and 167th row. At same time on the right side decrease 1 stitch after row 122, then every 4th row 15 x. (122 stitches). Rows 189-212: Armhole shaping, bind off 8 stitches. Then every other row decrease 5 stitches 1 x, 4 stitches 1 x, 3 stitches 2 x, 2 stitches 2 x and 1 stitch 3 x. Then decrease 1 stitch after 4 rows have been worked. (91 stitches). Rows



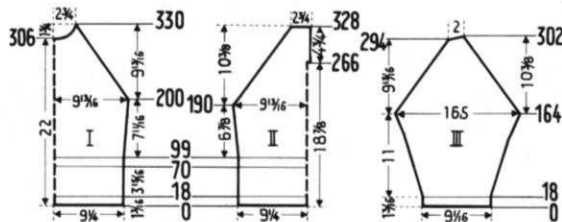
213-273: After rows 213 and 259 make buttonholes. At the same time on the right side increase 1 stitch after row 242 and in every 14th row 2 x. Rows 274-306: Neck opening bind off 32 stitches. Then every other row decrease 3 stitches 1 x, 2 stitches 2 x, 1 stitch 4 x, then every 4th row decrease 1 stitch 3 x. At same time after row 284 for shoulder shaping, every other row bind off 4 stitches 12 times. Make another front section reversing shapings, minus buttonholes. **SLEEVE:** (Figure III). Cast on 80 stitches. Rows 1-194: At both sides after row 36 increase 1 stitch and then every 6th row 25 x. (132 stitches). Rows 195-210: Underarm shaping back side every other row bind off 5 stitches 1 x, 4 stitches 1 x, 3 stitches 2 x, 2 stitches 3 x, 1 stitch 1 x. On front side bind off 8 stitches 1 x, 5 stitches 1 x, 4 stitches 1 x, 3 stitches 2 x and 2 stitches 3 x. Rows 211-254: On both sides every other row decrease 1 stitch 22 x. Rows 255-260: On both sides every other row bind off 2 stitches 1 x, 3 stitches 1 x, 4 stitches 1 x, bind off remaining 19 stitches. Make another sleeve reversing shapings. **FACING FOR NECK OPENING:** Cast on 107 stitches. Work 16 rows as follows: 4 rows tension 9, 4 rows tension 8, 4 rows tension 7, and 4 rows tension 6. To finish, bind off all stitches. **FINISHING:** (Follow directions for size 8/10).

WOMAN'S PULLOVER SWEATER, No. DP 7174



SIZE: 10/12. **MATERIAL:** 15 oz. light blue yarn. Baby yarn or light weight 3 ply. **TENSION:** Knit 3. **GAUGE:** Stockinette: 18 stitches - 2", 26 rows - 2", K 1, P 1; 18 stitches - 2", 29 rows - 2". **PATTERN:** Stockinette and design stripe at waist line. Ribbing of K 1, P 1. **BACK:** (Figure II). Cast on 169 stitches. Rows 1-18: K 1, P 1. Rows 19-70: Work even in stockinette. Row 71: Work row with tension on 7. Rows 72-75: Change tension to 3. To make tuck: Place row worked on tension

7 onto needles. (2 sts. on ea. needle). Row 76: Change tension to 5 and work row. Rows 77-80: Change tension to 3 and work even. Rows 77-80: Change tension to 3 and work even. Rows 81-88: Work in eyelet design according to chart. Rows 89-92: Stockinette stitch. Now work several rows with a contrast yarn, then remove stitches from machine. For belt casing put row back on machine that was knitted on tension 5 and work 15 rows on tension 2. Now work several rows of contrast color and remove from machine. Put the stitches from the first section back on the machine then put the 2nd section back on the machine and turn the row counter back to 92. Row 93: Work one row with tension on 5. Row 94: Work one row with tension on 7. Rows 75-98: Change tension to 3. Make the tuck by putting the stitches worked on tension 7 back on the



needles. (2 stitches on each needle.) Row 99: Work one row with tension on 5. Rows 100-190: Change tension to 3. After row 102 increase 1 stitch on both sides, then every 18th row 4 x. (179 stitches). Rows 191-192: Bind off 2 stitches on each side. Rows 193-265: Raglan shaping. On both sides decrease 3 stitches after row 196 and every 6th row 11 x. As follows: Place 3rd, 4th and 5th stitches on the 6th, 7th and 8th needles, then move in the 2 edge stitches. At right side place 51 needles in hold position and work left half first. Rows: 266-328: Back neck facing. Cast on 3 stitches after row 266, as follows: Put 3 stitches from the right section on a stitch holder. For raglan shaping, decrease 3 stitches after row 268, then every 6th row 9 x. To finish, bind off 25 stitches. Now place cam box on right side and turn to row counter back to 265. Bring all needles back into working position, put the stitches from stitch holder back on machine and work the right half. **FRONT:** (Figure I). Cast on 169 stitches. Rows 1-18: K1, P1. Rows 19-70: Work even in stockinette. Rows 71-99: Work same as back except after row 78, divide the work between the 49-50th stitches and 56-57th stitches, counting from the left side. For 12 rows work in 3 sections. Rows 100-200: Increase 1 stitch on both sides after row 102 and every 20th row 4 x. (179 stitches). Rows 201-202: Bind off 2 stitches on each side. Rows 203-330: For raglan shaping; After row 206, decrease 3 stitches on each side and then every 6th row 20 x, as follows: Place 3rd, 4th, and 5th stitches on the 6th, 7th and 8th needles and move the 2 edge stitches over to fill in the empty needles. At the same time for neck opening after row 306, bind off center 13 stitches, then each side every other row decrease 3 stitches 2 x, 2 stitches 2 x, 1 stitch 2 x, then every 4th row decrease 1 stitch 2 x. To finish, hang remaining 4 stitches on both sides together. **SLEEVE:** (Figure III). Cast on 83 stitches. Rows 1-18: K1, P1. Rows 19-164: Continue in stockinette. After row 24 increase 1 stitch each side and again every 6th row 14 x. Then every row 7 x and every 2nd row 12 x. (151 stitches). Rows 165-166: Bind off 2 stitches each side. Rows 167-294: Raglan shaping. After row 170 decrease 3 stitches each side then every 6th row 20 x, as follows: Place 3rd, 4th, and 5th stitches on the 6th, 7th and 8th needles, then move two edge stitches to fill in empty needles. Rows 295-302: On left side, one after another, place 3 needles in hold position 2 x, then 4 needles in hold position 2 x. At same time on right side, after row 296 decrease 3 stitches. Finish by binding of 18 stitches. Make another sleeve reversing shapings. **NECK EDGING:** Cast on 155 stitches and work 24 rows in K1, P1. 6 rows with tension 4, 12 rows with tension 3, and 6 rows with tension 4. Bind off all stitches. **BELT:** Cast on 13 stitches. Work 550 rows, K1, P1. Bind off. **FINISHING:** Join front and back sections at sides. Sew sleeve edges together and join to sweater with slip stitch, overlapping 1 stitch. Make a hem 3 stitches wide around back

neck opening, fold neck edging around neck opening and attach. Sew in zipper. Pull belt through casing.

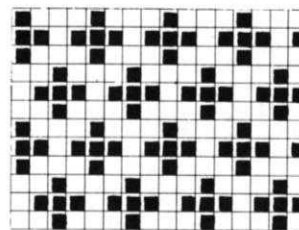
WOMAN'S PULLOVER, No. DP 7170



SIZE: 12/14. **MATERIAL:** 18 oz. duck blue, 2 oz. ginger yellow. **TENSION:** 5 stockinette Knitting, 4 Norwegian pattern stitch. **GAUGE:** Stockinette: 17 stitches-2", 23 rows-2", Pattern: 17 stitches-2", 19 rows 2".

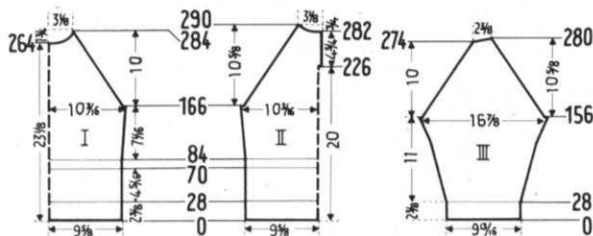
PATTERN: Stockinette and pattern stitch according to chart. Every row of Norwegian pattern is counted singly on the chart although it takes several rows to complete one row. Belt: K1, P1. **BACK:** (Figure II). Cast on 167 stitches with blue. Rows 1-27: Stockinette on tension 5. To form

hem pick up first row of stitches and put back on machine. Two stitches on each needle. Row 28: Knit all stitches together on tension 6. Rows 29-70: Work in Norwegian pattern on tension 4, however, work row 70 on tension 6. Work several rows with a contrast yarn and remove work from machine. For belt casing, put stitches worked on tension 6 from the purl side back on machine. Work 14 rows plain, then several rows with contrast. Remove from machine. Now place the stitches from the first section back on the machine and re-



move the contrast yarn. Then place the stitches from the 2nd section back on the machine, remove contrast yarn the 2nd section back on the machine, remove contrast yarn and turn row counter back 84. Row 85: Knit stitches together on tension 6. Continue in stockinette on tension 5. Rows 86-166: After row 86 increase 1 stitch each side then every 16th row 4 x. (177 stitches). Rows 167-168: Bind off 4 stitches each side. Rows 169-225: For raglan shaping; after row 168 decrease 1 stitch each side and then every other row 28 x, in the following manner: place 4th stitch in the 3rd needle and move edge stitches over to fill in empty needles. On right side put 56 needles in hold position and work left first. Rows 226-290: For back neck opening, cast on 3 stitches after row 226, as follows: place 3 stitches on right side on a stitch holder. For raglan shaping, after row 227 decrease 1 stitch then every other row 31 x. At the same time for neck opening after row 282 bind off 9 stitches, then every other row bind off 7 stitches 1 x, 4 stitches 1 x, and 3 stitches 2 x. Move cam box to right side and turn row counter back to 227. Put all needles back in working position, put stitches back held by stitch holder and work right position, put stitches back held by stitch holder and work right half. **FRONT:** (Figure I). Cast on 167 stitches with blue. Rows 1-27: Stockinette with tension 5. Now put cast on stitches back on machine and put behind the latches. Row 28: Knit stitches together on tension 6. Rows 29-70: Work in Norwegian pattern on tension 4. However, work row 70 on tension 6. Continue on in stockinette on tension 5. Rows 71-72: Work even. Now make 2 slits as follows: put 120 needles on the left side in holding. Rows 73-82: Work even on 47 needles, then put these needles in holding position. Bring the 48th-57th needles in working position and knit 10 rows. Then put these needles in holding. Now put the remaining 113 needles in working position and work 10 rows. Continue knitting over all needles. Work several rows of contrast color and remove. all needles. Rows 83-84: Work even. Work several rows of contrast color and remove. Put the stitches back on the machine that were knitted on tension 6. Work 14 rows even, then work several rows with contrast yarn and remove from machine. Place stitches from 1st section back on the machine and remove contrast color. Then put the stitches from the second section back on the machine and remove contrast color, then turn row counter back to 84. Row 85: Knit stitches

together with tension on 6. Rows **86-166**: After row 86 increase 1 stitch each side, then every 16th row 4 x. (177 stitches). Rows **167-168**: Bind off 4 stitches on each side. Rows **169-284**: Raglan shaping, after row 168 decrease 1 stitch each side then every other row 57 x, in the following manner; put 4th stitch on 3rd needle and move end stitches over. At the same time for neck opening after row 264 bind off the 13 center stitches, then on each side every other row decrease 4 stitches 1 x, 3 stitches 2 x, 2 stitches 2 x and 1 stitch 3 x. To finish, hang the remaining 3 stitches on each



side together. **SLEEVE**: (Figure III). Cast on 85 stitches with blue. Continue in stockinette on tension 5. Rows **1-27**: Work even. To form hem put cast on row back on the machine and put stitches behind the latches. Row **28**: Work one row on tension 6. Rows **29-156**: After row 30 increase 1 stitch each side, then every 6th row 8 x, every 4th row 16 x, and every other row 6 x. (146 Stitches). Rows **157-158**: Bind off 4 stitches on each side. Rows **159-274**: Raglan shaping, after row 158 decrease 1 stitch each side then every other row 57 x, in same manner as followed before. Rows **275-280**: On left side, one after another, place 5 needles in hold position 3 x. At the same time on right side decrease 1 stitch after row 274 then every other row 2 x. To finish bind off 20 stitches. Work another sleeve reversing shapings. **NECK EDGE**: Cast on 129 stitches with blue. Work 30 rows even as follows: 5 rows on tension 6, 5 rows on tension 5, 10 rows on tension 4, 5 rows with tension 5, and 5 rows with tension 6. Bind off. **BELT**: Cast on 11 stitches. Work 450 rows of K1, P1 with tension 5. Bind off. **FINISHING**: Join front and back at sides with slip stitch overlapping 1½ stitches. Sew sleeve edges together and join to sweater with slip stitch overlapping 1 stitch. Make a hem 3 stitches wide at back neck opening. Fold neck edging around neck opening and attach. Set in zipper. Insert belt.

WOMAN'S PULLOVER, No. DP 7171



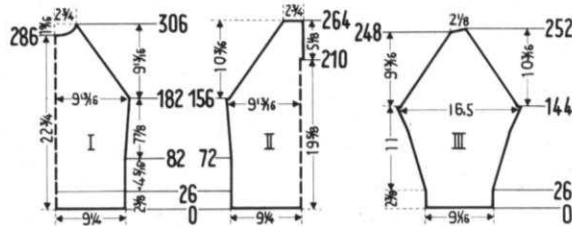
SIZES: 10/12, 14/16. **MATERIAL**: 18 oz. light red yarn, 36/38; 19 oz. light red yarn, 40/42. **SUGGESTION**: Pauline Denham Sierra. **TENSION**: Knit 6 - stockinette, 8 pattern stitch. **GAUGE**: Stockinette: 15 stitches - 2", 21 rows - 2". Pattern, 15 stitches - 2", 25 rows - 2". **PATTERN**: Back and front sleeves: stockinette. Front: Eyelet design as follows: hand the 3rd, 7th, and 11th, etc., stitches are hung on the neighboring needle, and the empty needles are in hold position. Work 2 rows.

Continue following the chart. **SIZE**: 10/12. **BACK**: (Figure II). Cast on 142 stitches. Work in stockinette on tension 5. Rows **1-25**: Work even and form hem by putting cast on stitches back on the machine behind latches. Row **26**: Knit stitches together on tension 8. Rows **27-156**: Increase 1 stitch each side after row 72 then every 20th row 3 x. (150 stitches). Rows **157-158**: Bind off 4 stitches on

each side. Rows **159-209**: Raglan shaping, decrease 1 stitch each side after row 159 then every other row 25 x, in the following manner; place 4th stitch on 3rd needle and move edge stitches in. On right side put 45 needles in hold position and work left half first. Rows **210-264**: Back neck opening

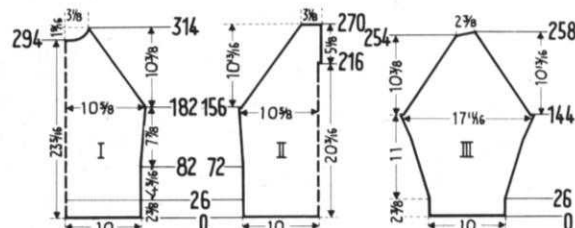


facing, after row 210 cast on 3 stitches, by putting 3 stitches from right side on a stitch holder. Raglan shaping: After row 210 decrease 1 stitch and again every other row 26 x. To finish bind off 21 stitches. Now move cam back on the right side and turn row counter back to 209. Put all needles in working position and also the stitches from the stitch holder back on machine. Work right half. **FRONT**: (Figure I). Cast on 142 stitches. Rows **1-25**: stockinette on tension 6. Form hem as for back. Row 26: Knit stitches together on tension 8. Continue on in pattern stitch on tension 8. Rows **27-182**:



After row 82 increase 1 stitch each side then every 24th row 3 x. (150 stitches). Rows **183-306**: Raglan shaping, decrease 1 stitch on each side and again in every 3rd row 16 x, then every other row 37 x, in same manner as back. At the same time for neck opening, on row 287 bind off the center 12 stitches. Then on each side every other row decrease 3 stitches 2 x, 2 stitches 1 x, 1 stitch 3 x, then every 4th row decrease 1 stitch 1 x. To finish hand the 3 stitches on both sides together. **SLEEVE**: (Figure III). Cast on 68 stitches. Work stockinette on tension 6. Rows **1-25**: Work even. Form hem as for front and back. Row **26**: Work together on tension 8. Rows **27-144**: increase 1 stitch each side after row 26, then every 6th row 6 x, every 4 row 17 x, every 2nd row 5 x. (126 stitches). Rows **145-146**: Bind off 3 stitches each side. Rows **147-284**: Raglan shaping, after 146th row decrease 1 stitch each side every other row 50 x, in same manner as before. Rows **249-252**: On left side one after another put 5 needles in hold position x. On right side after 248th row decrease 1 stitch and again after row 250. To finish, bind off 16 stitches. Work another sleeve reversing shapings. **NECK EDGING**: Cast on 98 stitches. Work 14 rows even as follows 4 rows tension 6, 6 rows tension 5, and 4 rows tension 6. Bind off. **FINISHING**: Join front and back at side seams. Sew sleeves together and attach sleeves to sweater with slip stitch, overlapping 1 stitch. Make a hem 3 stitches wide at back neck opening. Fold neck edging around neck opening and attach. Set in zipper.

SIZE: 14/16. **BACK**: (Figure II). Cast on 154 stitches. Work stockinette on tension 6. Rows **1-25**: Work even. Form hem as for size 36/38. Row **26**: Knit stitches together on tension 8. Rows **27-156**: Increase 1 stitch each side after row 72 and again every 20th row 3 x. (162 stitches). Rows **157-158**: Bind



off 4 stitches each side. Rows **159-215**: Raglan shaping, after row 158 decrease 1 stitch each side then every other row 28 x, in same manner as size 38/40. On right side put 48 needles in hold position and work the left half first. Rows **216-270**: Back neck opening facing; after row 216 cast on 3 stitches. To do this, put 3 stitches from right side on stitch holder. Raglan shaping, after row 216, decrease 1 stitch then every other row 26 x. Finish by binding off 24 stitches. Now put cam box on right side and turn row counter back to 215. Put all needles in working position, putting the stitches from stitch holder back on machine. Work right half. **FRONT**: (Figure I). Cast on 154 stitches. Rows **1-25**: stockinette on tension 6. Form hem as for size 36/38. Row 26: Knit stitches together on tension 8. Continue in pattern stitch on tension 8.

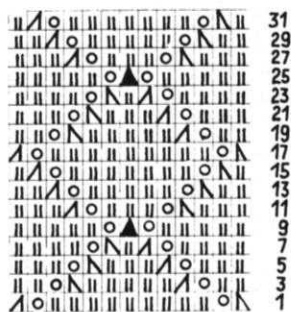
Rows 27-182: After row 82 increase 1 stitch each side then every 24th row 3 x. (162 stitches). Rows 183-314: Raglan shaping, after row 182 decrease 1 stitch each side and again every 3rd row 18 x, also every other row 38 x, in same manner as 36/38. For neck opening after row 294, bind off center 14 stitches. Then on each side every row decrease 4 stitches 1 x, 3 stitches 1 x, 2 stitches 2 x, 1 stitch 2 x, then every 4th row decrease one stitch 1 x. To finish, hang the 3 stitches remaining on both sides together. **SLEEVE:** (Figure III). Cast on 76 stitches. Work stockinette in tension 6. Rows 1-25: Work even. Form hem as for 10/12. Rows 26: Knit stitches together on tension 8. Rows 27-144: After 26th row increase 1 stitch each side and again every 6th row 6 x, then every 4th row 17 x, every other row 5 x. (134 stitches). Rows 145-146: Bind off 3 stitches on each side. Rows 147-254: Raglan shaping, after 146th row decrease 1 stitch on each side and every other row 53 x, in same manner as 40/42. Rows 255-258: On left side, one after another, put 6 needles in hold position 2 x. On right side decrease 1 stitch after row 254 and again after row 256. To finish, bind off 18 stitches. Make another sleeve reversing shapings. **NECK EDGING:** Cast on 108 stitches. Work 14 rows in stockinette as follows; 4 rows tension 6, 6 rows tension 5, and 4 rows tension 6. Bind off. **FINISHING:** Follow directions for 12/14.

WOMAN'S PULLOVER SWEATER, No. DP 7175



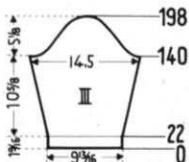
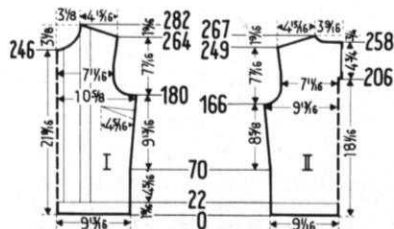
Size: 12/14. **MATERIAL:** 12 oz. light blue yarn. **SUGGESTION:** Reynolds Classique. **TENSION:** 7 on Knitting. **GAUGE:** Stockinette: 15 stitches - 2", 22 rows - 2", K1, P1, 15 stitches - 2", 27 rows 2". **PATTERN:** Stockinette. Stripes worked in eyelet as per chart. Ribbing: K1, P1. **NOTE:** Special hints for working the design may be found in the practical knitting hints on page—. **BACK:** (Figure II). Cast on 137 stitches. Rows 1-22: K1, P1. Now on one side increase 1 stitch and continue in

stockinette. Rows 23-166: After row 70 increase 1 stitch each side and again every 16th row 5 x. (150 stitches). Rows 167-188: For armhole, bind off 4 stitches each side. Then every other row decrease 3 stitches



1 x, 2 stitches 2 x, 1 stitch 3 x, then every 4th row decrease 1 stitch 2 x. (118 stitches). Rows 189-205: Work even. On right side put 59 stitches in hold position and work left half first. Rows 206-249: For back neck facing, after row 206 cast on 3 stitches. To do this put 3 stitches from the right side on a stitch holder. On left side after row 210 increase 1 stitch, then in every 12th row 2 x. Rows 250-267: Shoulder shaping. Every other

row bind off 3 stitches 2 x, and 4 stitches 8 x. At the same time for neck opening, bind off 16 stitches after row 258. Then every other row bind off 5 stitches 1 x, 4 stitches 1 x, and 2 stitches 1 x. Now put cam box on right side and turn the row counter back to 205. Put all needles back in working position, return the stitches from the stitch holder to the machine and work right half. **FRONT:** (Figure I). Cast on 149 stitches. Rows 1-22: K1, P1. Continue in straight knit,



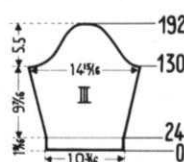
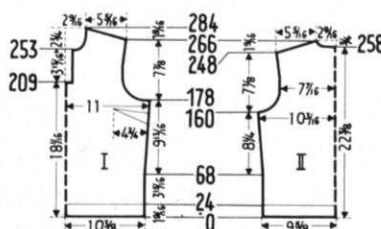
working the vertical stripes over the 39th-69-81- and 99th to 111th needles. Rows 23-180: After row 70 increase 1 stitch each side and again every 16th row 5 x. (161 stitches). Rows 181-202: For armhole on each side bind off 6 stitches. Then every other row decrease 4 stitches 1 x, 3 stitches 2 x, 2 stitches 1 x, 1 stitch 2 x, then every 4th row decrease 1 stitch 2 x. (117 stitches). Rows 203-246: After row 226 increase 1 stitch each side and again after row 238. Rows 247-282: For neck opening, bind off 15 center stitches and on each side every other row decrease 3 stitches 2 x, 2 stitches 2 x, 1 stitch 3 x then every 4th row decrease 1 stitch 3 x. At same time, on armhole side increase 1 stitch after row 250, and after row 264. Shoulder shaping; on each side every other row bind off 3 stitches 2 x, and 4 stitches 8 x. **SLEEVE:** (Figure III). Cast on 75 stitches. Rows 1-22: K1, P1. Continue in stockinette. Rows 23-140: After row 30 increase 1 stitch, each side, then every 6th row 17 x. (111 stitches). Rows 141-154: Underarm shaping; on back side of sleeve every other row bind off 4 stitches 1 x, 3 stitches 2 x, 2 stitches 3 x and 1 stitch 1 x. On front side bind off 6 stitches 1 x, 4 stitches 2 x, 3 stitches 1 x and 2 stitches 3 x. Rows 155-192: Decrease 1 stitch each side every other row 19 x. Rows 193-198: On each side every other row bind off 2 stitches 1 x, 3 stitches 1 x, 4 stitches 1 x. Bind off remaining 15 stitches. Make another sleeve reversing shapings. **COLLAR:** Cast on 3 stitches. Rows 1-21: On left side increase 2 stitches after first row, then every other row. At the same time, on right side increase 1 stitch after the second row then every other row. Rows 22-155: On left side decrease 1 stitch after row 21, then every other row. At same time, on right increase 1 stitch after row 22, then every other row. Rows 156-175: On left decrease 1 stitch after row 155, then in every other row. At the same time, on right decrease 2 stitches after row 156 then every other row. Bind off remaining 3 stitches. **FINISHING:** Sew in darts at bustline of front section. Join front and back sections at side and shoulder seams. Sew sleeve edges together and attach to sweater. Make a hem 3 stitches wide around back neck opening. Sew on collar. Set in zipper.

WOMAN'S PULLOVER, No. DP 7176



SIZE: 14/16. **MATERIAL:** 15 oz. deer brown yarn. 1 oz. white, 1 oz. dark brown, 1 oz. mustard yellow. **SUGGESTION:** Shetland wool or 3 ply. **TENSION:** Knitting 6. **GAUGE:** Stockinette: 16 stitches 2", 22 rows 2", K1, P1, 16 stitches 2", 30 rows 2". **PATTERN:** Stockinette. Ribbing: K1, P1. **BACK:** (Figure II). Cast on 157 stitches. Rows 1-24: K1, P1, ribbing. Continue in Stockinette. Rows 25-160: After row 68 increase 1 stitch on each side, then every 18th row 4 x. (167 stitches). Rows

161-188: Armhole shaping: On each side bind off 5 stitches. Then, every other row decrease 4 stitches 1 x, 3 stitches 1 x, 2 stitches 3 x, 1 stitch 2 x, then every 4th row decrease 1 stitch 3 x. (121 stitches). Rows 189-248: After row 210 increase 1 stitch each side then every 12th row 2 x. (127 stitches). Rows 249-266: Shoulder shaping; each side every other row bind off 4 stitches 7 x, 5 stitches 3 x. At same time, for neck opening, after row 258 bind off the 10 center stitches, then each side of this every other row bind off 5 stitches 1 x, 3 stitches 2 x. **FRONT:** (Figure I). Cast on 169 stitches. Rows 1-24: K1, P1. Continue in stockinette. Rows 25-178: After row 68 increase 1 stitch each side then every 18th row 4 x. (179 stitches). Rows 179-208: Armhole shaping: bind off 6 stitches each side, then every other row decrease 5 stitches 1 x, 4



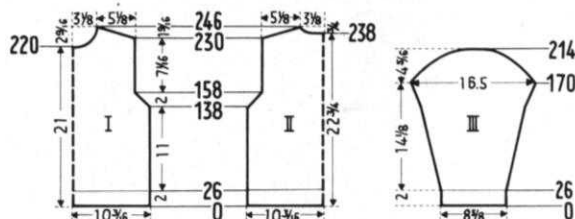
stitches 1 x, 3 stitches 1 x, 2 stitches 3 x, 1 stitch 2 x, then every 4th row decrease 1 stitch 3 x. (121 stitches). On left side, put 67 needles in hold position and work right half first. Rows 209-253: On armhole edge, after row 228 increase 1 stitch then every 12th row 2 x. Rows 254-284: Neck opening, bind off 3 stitches. Then every other row decrease 2 stitches 2 x, 1 stitch 4 x, now every 4th row decrease 1 stitch 3 x. At same time after row 266 for shoulder shaping, every other row bind off 4 stitches 7 x, and 5 stitches 3 x. Now put sam box on left side, turn now counter back to 208 and put needles in working position. Rows 209-253: Cast on 6 stitches after row 209. At armhole edge increase 1 stitch after row 288 then every 12th row 2 x. Rows 254-284: Neck opening, bind off 22 stitches. Then every other row decrease 2 stitches 2 x, 1 stitch 4 x, then every 4th row decrease 1 stitch 3 x, at the same time for shoulder after row 266 every other row bind off 4 stitches 7 x, 5 stitches 3 x. **SLEEVE:** (Figure III). Cast on 83 stitches. Rows 1-24: K1, P1. Continue in stockinette. Rows 25-130: After row 24 increase 1 stitch each side, then every 6th row 12 x, every 4th row 7 x. (123 stitches). Rows 131-146: Underarm shaping, every other row on back side of sleeve, bind off 5 stitches 1 x, 4 stitches 1 x, 3 stitches 2 x, 2 stitches 2 x, 1 stitch 2 x, and on front side of sleeve bind off 6 stitches 1 x, 5 stitches 1 x, 4 stitches 1 x, 3 stitches 2 x and 2 stitches 3 x. Rows 147-186: Each side of every other row decrease 1 stitch 20 x. Rows 187-182: Each side every other row bind off 2 stitches 1 x, 3 stitches 1 x, 5 stitches 1 x, then bind off remaining 15 stitches. Make another sleeve reversing shapings. **COLLAR:** Cast on 105 stitches with dark brown. Tension on 7. Rows 1-4: K1, P1. continue in stockinette. Rows 5-6: (Mustard Yellow). Cast on 6 stitches each side. Rows 7-26: 4 rows deer brown, 4 rows white, then continue with deer brown as follows: rows 9-16 tension 6, rows 17-24 tension 5 and continue with tension 4. Rows 27-32: Each side, one after another, put 16 needles in hold position 1 x and 12 needles in hold 2 x. Rows 33-34: On left side put all the needles in working position and work 1 row. On right put all needles in working and work 1 row. To finish, bind off all stitches. **FRONT STRIP:** Cast on 113 stitches with dark brown. Rows 1-4: K1, P1, on tension 7. Rows 5-23: Stockinette with tension 6. 2 rows mustard, 4 rows deer brown, 6 rows white, 4 rows deer brown, 2 rows mustard and 1 row dark brown. Rows 24-26: K1, P1, with dark brown on tension 7. Bind off. **FINISHING:** Sew in darts at bust line of front section. Join front and back at side and shoulder seams. Sew sleeve edges together and sew sleeves to sweater. On left side of front neck opening make hem 3 stitches wide. Attach front strip to sweater in such a way that the strip covers this hem. Sew the strip to the sweater, but do not sew down the section that covers the hemmed edge. This side of the strip is closed with snaps or hooks & eyes. Make a hem 6 stitches wide around the outer edges of the collar.

TEENAGER PULLOVER SWEATER, No. DP 7178



SIZE: 10/12. **SUGGESTION:** Bernat Sport. **MATERIAL:** 18 oz. light blue yarn, 1 oz. white, 1 oz. dark blue. **TENSION:** Knitting 8. **GAUGE:** Cable: 13 stitches 2", 20 rows 2" long, K1, P1. 13 stitches 2". 26 rows 2". **PATTERN:** Stockinette with cable, as follows: 1. Work 10 rows. 2. On each side let the 23rd, 24th, 35th, 36th, 49th, 50th stitches drop from the needles. The empty needles remain in working. 3. With 2 double transfer tools cross the stitches in the following manner: 27th and 28th stitches on 25th and 26th needles. 25th and 26th stitches on the 27th and 28th needles. 31st and 32nd stitches on the 33rd and 34th needles. 33rd and 34th stitches on the 31st and 32nd needles. The 51st - 60th, 77th - 86th, and 103rd - 112th stitches are crossed in the same manner. Keep repeating steps 1-3. After some 50-60 rows let the 2 stitches on both sides of the cables drop, and latch up with ribbing tool. Ribbing 6, K1, P1. **BACK:** (Figure II). Cast on 135 stitches with dark blue. Rows 1-26: K1, P1: 6 rows dark blue, 4 rows white, and 16 rows light blue. Now, on one side increase 1 stitch

and continue with cable stitch in light blue. Begin the cable after row 32. Rows 27-138: Stockinette. Rows 139-158: Armhole shaping, each side every other row, decrease 2



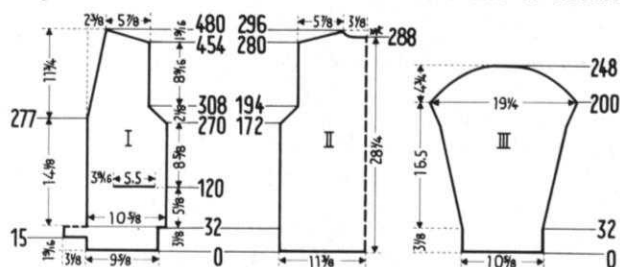
stitches 3 x, and 1 stitch 7 x. (110 stitches). Rows 159-230: work even. Rows 231-246: Shoulder shaping, each side every other row bind off 3 stitches 2 x, then 4 stitches 7 x. At same time for neck opening after row 238 bind off center 18 stitches and on both sides of this every other row bind off 5 stitches 1 x, 4 stitches 1 x, and 3 stitches 1 x. **FRONT:** (Figure I). Cast front same as back. However, for neck opening, after row 220 bind off the center 12 stitches and on each side of this every other row decrease 4 stitches 1 x, 3 stitches 1 x, 2 stitches 2 x, 1 stitch 2 x, then every 4th row decrease 1 stitch 2 x. **SLEEVE:** (Figure III). Cast on 57 stitches with dark blue. Rows 1-26: K1, P1, as follows; 6 rows dark blue, 4 rows white, and 16 rows light blue. On one side increase 1 stitch and continue with light blue, working cables over the 10th-23rd and 36th-49th needles, crossing stitches for first time after row 32. Rows 27-170: increase 1 stitch each side after row 32, then every 6th row 1 x, and every 4th row 9 x. (110 stitches). Rows 171-214: underarm shaping, each side every other row bind off 2 stitches 3 x, 1 stitch 7 x, 2 stitches 7 x, 3 stitches 3 x, 4 stitches 2 x, then remaining 22 stitches. Make another sleeve exactly the same. **NECK EDGING:** Cast on 151 stitches with dark blue. Work 16 rows of K1, P1; 6 rows dark blue with tension 8, 4 rows white and 6 rows light blue with tension 9. Bind off. **FINISHING:** Join front and back at side and shoulder seams. Sew sleeve edges together and attach sleeves to sweater. Sew end of neck together to form a circle and sew edging to neck of sweater.

MAN'S JACKET SWEATER, No. HP 3351

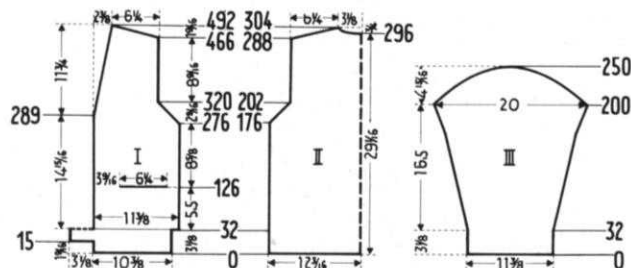


SIZES: 40/42 and 44/46. **SUGGESTION:** Shetland Wool. **MATERIAL:** 48/50. 25 oz. brown tweed, 4 oz. ginger yellow; 52/54, 28 oz. brown tweed, 5 oz. ginger yellow. **TENSION:** Knitting 7 stockinette, 8 pattern stitch. **GAUGE:** Stockinette: 14 stitches 2", 20 rows 2", pattern stitch 13 stitches 2", 34 rows 2". **PATTERN:** Back, sleeves, edgings: Stockinette. Front: Hold position on knit side according to chart. 40/42. **BACK:** (Figure II). Cast on 163 stitches with brown. Work in stockinette on tension 7. Rows 1-31: Work even. Form hem by placing cast on stitches back on machine behind latches. Row 32: Work stitches together on tension 8. Rows 33-172: Work even. Rows 173-194: Armhole shaping, bind off 2 stitches each side. Then every other row decrease 1 stitch 0 x and 2 stitches 1 x. Repeat these last 2 decreases 4 x. (129 stitches). Rows 195-280: Work even. Rows 281-296: Shoulder shaping, each side every other row bind off 4 stitches 3 x, and 5 stitches 6 x. At same time for neck opening, after row 288 bind off the 15 center stitches, and on both sides of this every other row bind off 6 stitches 1 x, 5 stitches 1 x and 4 stitches 1 x. **FRONT:** (Figure I). Cast on 69 stitches with brown. Rows 1-15: Stockinette with tension 7. On left side cast on 23 stitches. Rows 16-31: Work even. Form hem as before. Row 32: Knit stitches together on tension 8. On the left side put 23 stitches on a stitch holder and cast on one

more stitch. Continue on with hold position and tension 8 over these 70 stitches. Rows 33-120: Work even. Now make the pocket. Put 23 needles on the left side and 10 needles



on the right side in hold position. With remaining needles in working position work 16 rows straight stockinette with brown on tension 7. Bind off. For pocket lining, cast on (in same place) 37 stitches and work 52 rows stockinette. Now turn the row counter back to 120, put all needles in working position and continue in pattern stitch with tension 8. Rows 121-270: Work even. Rows 271-308: Armhole, decrease 1 stitch 1 x. Then every other row decrease 1 stitch 2 x, and every 4th row decrease 1 stitch 1 x. Repeat these last 3 decreases 3 x. Then decrease 1 stitch every other row 2 x. At the same time, for front shaping, decrease 1 stitch after row 277 and every 12th row 2 x. Rows 309-480: For front shaping decrease 1 stitch after row 313, then every 12th row 8 x, and every 14th row 4 x. At same time after row 454 for shoulder shaping every other row bind off 2 stitches 3 x and 3 stitches 11 x. Work another front section with opposite shapings making buttonholes after row 23 over the 3-7 and 17-21 needles. For the design, before the 1st row put the 2nd needle from the right in hold position, and before the 3rd row put the 3rd needle from the right in hold. **SLEEVE:** (Figure III). Cast on 76 stitches with brown. Work stockinette with tension 7. Rows 1-31: Work even. Form hem as before. Row 32: Knit stitches together on tension 8. Row 33-200: After row 32 increase 1 stitch on each side then every 6th row 22 x and every 4th row 8 x. (138 stitches). Rows 201-248: For underarm shaping, every other row decrease 2 stitches 1 x and 1 stitch 1 x. Repeat these 2 decreases 4 x. Then bind off 2 stitches 6 x, 3 stitches 5 x, 4 stitches 4 x and the remaining 26 stitches. Make another sleeve the same. **FRONT STRIP:** Put the 23 stitches of the machine and work 288 rows even with tension 7. Then put the stitches on a stitch holder. Make the buttonhole strip exactly like this making buttonholes after the 66th, 109th and 152nd rows. **FINISHING:** Join front and back at side and shoulder seams. Sew sleeve edges together and sew sleeve to sweater. Sew the 2 front strips together, fold the strips around the front edge and neck opening of the sweater and attach. Fold the pocket edging in half and hem. Sew the edges of the edging to the sweater. Sew the pocket lining to the inside of the sweater. Finish buttonholes and sew on buttons. **SIZE:** 44/46. **BACK** (Figure II). Cast on 175 stitches with brown. Work in stockinette on tension 7. Rows 1-31:



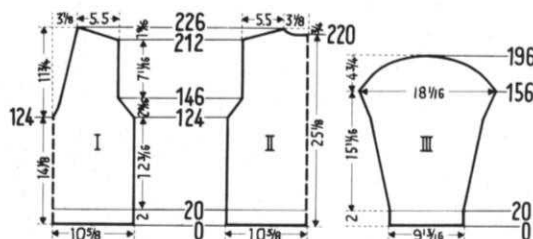
Work even. Form hem as for size 52/54. Row 32: Work the stitches together on tension 8. Rows 33-176: Work even. Rows 177-202: Armhole shaping, bind off 2 stitches each side. Then every other row decrease 1 stitch 1 x and 2 stitches 1 x. Repeat these last 2 decreases 5 x. (135 stitches). Rows 203-288: Work even. Rows 289-304: For shoulder shapings, each side every other row bind off 5 stitches 9 x, at the same time for neck opening, after row 296 bind off the center 15 stitches

and on each side of this every other row bind off 6 stitches 1 x, 5 stitches 1 x and 4 stitches 1 x. **FRONT** (Figure I). Cast on 75 stitches with brown. Rows 1-15: Stockinette on tension 7. On the left side cast on 23 stitches. Rows 16-31: Work even. Form hem as for 40/42. Row 32: Knit stitches together on tension 8. On the left side put 23 stitches on a stitch holder and cast on one more stitch. Continue with hold position and tension 8 over these 76 stitches. Rows 33-126: Work even. Now make the pocket. (follow instruction for pocket on size 40/42). For pocket lining cast on in this same place 43 stitches and work 56 rows stockinette. Now turn the row counter back to 126, put all the needles in working position and continue in the design on tension 8. Rows 127-276: Work even. Rows 277-320: For armhole, decrease 2 stitches after row 276. Then in every other row decrease 1 stitch 2 x and in the 4th row decrease 1 stitch 1 x. Repeat these last 3 decreases 4 x. Then decrease 1 stitch after the 2nd row 1 x. At the same time for front shaping decrease 1 stitch after row 289 then every 12th row 2 x. Rows 321-492: For front shaping decrease 1 stitch after row 325, then every 12th row 8 x and every 14th row 4 x. At the same time after row 466 for shoulder bind off 3 stitches 14 x every other row. Make another front section with reverse shapings, making buttonholes after row 23 over the 3-7 and 17-21 needles. For the design, before the 1st row put the 2nd needle from the right in hold position, and before the 3rd row put the 3rd needle from the right in hold. **SLEEVE:** (Figure III). Cast on 81 stitches with brown. Stockinette on tension 7. Rows 1-31: Work even, then form hem. Row 32: knit stitches together on tension 8. Rows 33-200: After row 32 increase 1 stitch each side, then every 6th row 22 x, and in every 4th row 8 x. (138 stitches). Rows 201-250: For underarm shaping, every other row decrease 2 stitches 1 x, and 1 stitch 1 x. Repeat these 2 decreases 5 x. Then bind off 2 stitches 5 x, 3 stitches 4 x, 4 stitches 4 x and the remaining 31 stitches. Make another sleeve the same. **FRONT STRIP:** Put the 23 stitches of the first front section on the machine and work 300 rows stockinette on tension 7. Then put the stitches on a stitch holder. Make the buttonhole strip exactly like this, making buttonholes after the 69th, 115th and 161st rows. **FINISHING:** Follow directions for size 40/42.

MAN'S PULLOVER, No. HP 3347

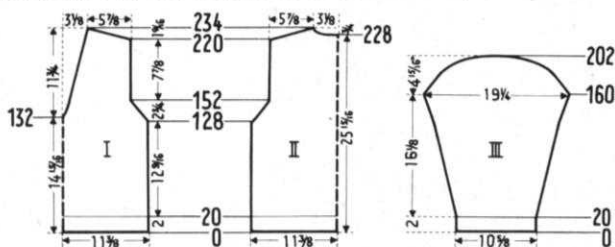


SIZE: 38/39, 40/42 and 44/46. **MATERIAL:** 38-39, 19 oz. green yarn. 40/42, 21 oz., 44/46, 23 oz. **SUGGESTION:** Sport wool. **TENSION:** 10 stockinette, 9 K1, P1. **Knitting GAUGE:** Stockinette: 12 stitches 2", 17 rows 2". K1, P1. 12 stitches 2", 20 rows 2". **PATTERN:** Stockinette, K1, P1 ribbing. **SIZE:** 38/39. **BACK:** (Figure II). Cast on 129 stitches. Rows 1-20: K1, P1 on tension 9. Continue in stockinette, tension 10. Rows 21-124: Work even. Rows 125-146: Armhole shaping, bind off 2 stitches each

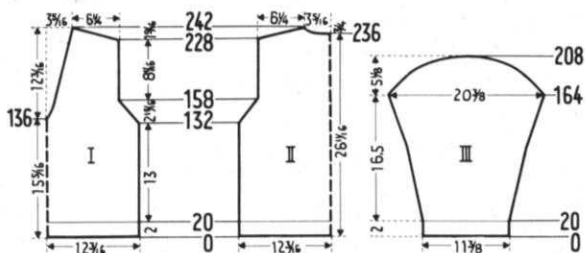


side. Then decrease 1 stitch every other row 10 x. (105 stitches). Rows 147-212: Work even. Rows 213-226: Shoulder shaping, each side every other row bind off 4 stitches 7 x and 5 stitches 1 x. At same time for neck opening after row 220 bind off the 19 center stitches, then both sides of this every other row bind off 6 stitches 1 x and 4 stitches 1 x. **FRONT** (Figure I). Work front same as back except for neck opening. After row 124 hand the middle stitch on the adja-

cent needle and continue on, working in 2 sections. After row 128 decrease 1 stitch each side of the division and every 4th row 8 x and every 6th row 10 x. **SLEEVE** (Figure III): Cast on 61 stitches. Rows 1-20: K1, P1 with tension 9. Continue with stockinette on tension 10. Rows 21-156: Increase 1 stitch each side after row 26, then every 6th row 15 x and every 4th row 9 x. (111 stitches). Rows 157-196: Underarm shaping each side every other row bind off 1 stitch 11 x, 2 stitches 3 x, 3 stitches 2 x, 4 stitches 2 x, 6 stitches 2 x then the remaining 25 stitches. Make another sleeve exactly the same. **NECK ENDING**: Cast on 109 stitches. Work 14 rows K1, P1. On these rows, to form the corner, decrease 2 stitches after the 2nd row and again every other row 5 x. Make another strip of edging with reverse shaping. **FINISHING**: Join front and back at side and shoulder seams. Sew sleeve edges together and sew sleeves to sweater. Sew strips of neck edging together and sew to sweater. **SIZE**: 40/42. **BACK** (Figure II). Cast on 139 stitches. Rows 1-20: K1, P1 ribbing on tension 9. Continue in stockinette on tension 10. Rows 21-128: Work even. Rows 129-152: Armhole shaping, each side bind off 2 stitches. Then every other row decrease 2 stitches 1 x, and 1 stitch 10 x. (111 stitches). Rows 153-220:



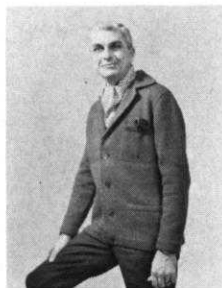
Work even. Rows 221-234: Shoulder shaping, each side every other row bind off 4 stitches 4 x and 5 stitches 4 x. At same time for neck opening, after row 228 bind off the center 19 stitches and on both sides of this every other row bind off 6 stitches and 4 stitches 1 x. **FRONT** (Figure I). The front is worked same as back, with this exception. The neck opening, after row 132 hang the middle stitch on the adjacent needle and continue on, working in 2 sections. After row 136 decrease 1 stitch each side of the division every 4th row 8 x, and every 6th row 10 x. **SLEEVE** (Figure III). Cast on 65 stitches. Rows 1-20: K1, P1 on tension 9. Continue in stockinette on tension 10. Rows 21-160: After row 26 increase 1 stitch on each side, then every 6th row 15 x and every 4th row 10 x. (117 stitches). Rows 161-202: Underarm shaping each side every other row bind off 1 stitch 12 x, 2 stitches 3 x, 3 stitches 2 x, 4 stitches 2 x, 6 stitches 2 x then remaining 29 stitches. Make another sleeve exactly the same. **NECK EDGING AND FINISHING** (follow directions for size 38/39). **SIZE**: 44/46. **BACK** (Figure II). Cast on 149 stitches. Rows 1-20: K1, P1 ribbing on tension 9. Continue in stockinette on tension 10. Rows 21-132: Work even. Rows 133-158: Armhole shaping, each side bind off 2 stitches. Then every



other row decrease 2 stitches 1 x and 1 stitch 11 x (119 stitches). Rows 159-228: Work even. Rows 229-242: Shoulder shaping, each side every other row bind off 4 stitches 1 x, and 5 stitches 7 x. At same time for neck opening after row 236, bind off the center 21 stitches, and on both sides of this in every other row bind off 6 stitches 1 x and 4 stitches 1 x. **FRONT** (Figure I). Work front same as the back with the exception of the neck opening. After 136 hang the middle stitch on the adjacent needle and continue on, working in 2 sections. After row 140 decrease 1 stitch each side of the

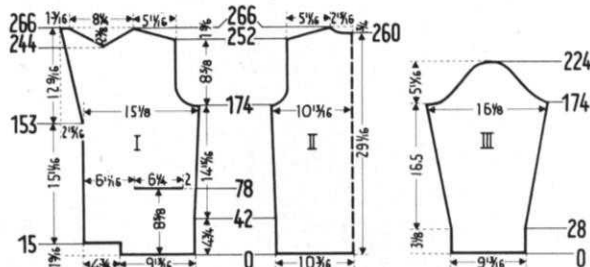
division and every 4th row 9 x and every 6th row 10 x. **SLEEVE** (Figure III). Cast on 69 stitches. Rows 1-20: K1, P1 ribbing on tension 9. Work on in stockinette on tension 10. Rows 21-164: After row 26 increase 1 stitch each side, then in every 6th row 13 x and every 4th row 14 x. (125 stitches). Rows 165-208: Underarm shaping, on each side every other row bind off 1 stitch 12 x, 2 stitches 2 x, 3 stitches 2 x, 4 stitches 3 x, 5 stitches 2 x, 6 stitches 1 x, then remaining 25 stitches. Make another sleeve exactly the same. **NECK EDGING**: Cast on 119 stitches. Work 14 rows K1, P1 ribbing on tension 9. On these rows to form corner, decrease 2 stitches after the 2nd row and again every other row 5 x. To finish, bind off all stitches. Make another strip of edging with reverse shaping. **FINISHING**: Follow instructions for size 38/39.

MAN'S JACKET SWEATER, No. HP 3350



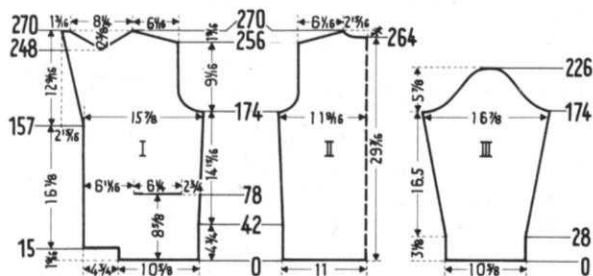
SIZE: 38/39 - 40/42 - 44/46. **MATERIAL**: 38/39 - 30 oz. olive wool 40/42 - 33 oz. 44/46 - 36 oz. Suggestion: 4 ply wool, Pauline Denham Sequoia. **TENSION**: 10 KNITTING. **GAUGE**: 25 stitches 4", 35 rows 4". **PATTERN**: Stockinette. **BACK** (Figure II). Cast on 130 stitches. Rows 1-174: After row 42 increase 1 stitch each side and again in every 32nd row 3 x (138 stitches). Rows 175-194: Armhole shaping, each side bind off 4 stitches. Then every other row decrease 3 stitches 1 x, 2 stitches 2 x,

1 stitch 1 x, then every 4th row decrease 1 stitch 1 x, then every 6th row decrease 1 stitch 1 x. Rows 195-252: Work even. Rows 253-266: Shoulder shaping, on each side every other row bind off 4 stitches 4 x and 5 stitches 4 x. At same time for neck opening after row 260 bind off the 18



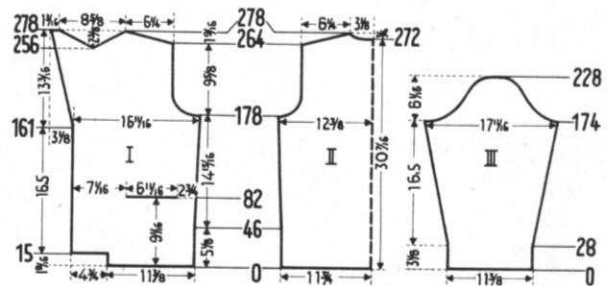
center stitches and on both sides of this every other row bind off 6 stitches 1 x and 4 stitches 1 x. **FRONT** (Figure I). Cast on 62 stitches. Rows 1-78: On left side after row 15 cast on 30 stitches. On right side after 42nd row increase 1 stitch and again after row 74. Now working bottom pocket as follows: Put 42 needles on left and 12 needles on right in hold position. Work 6 rows on the needles that remain in working position. Bind off these stitches. For pocket lining, cast on 40 stitches over these same needles and work 48 rows. Turn row counter back to 78 and continue working over all needles. Rows 79-174: After row 106 increase 1 stitch on right side and again after row 138. At same time increase 1 stitch on left after row 153 then every 6th row 3 x. Rows 175-244: Armhole shaping, bind off 5 stitches. Then every other row decrease 4 stitches 1 x, 3 stitches 1 x, 2 stitches 2 x, 1 stitch 1 x and now in the 4th row decrease 1 stitch 1 x, then in the 6th row decrease 1 stitch 1 x. At the same time, on left increase 1 stitch after row 177 then every 6th row 11 x. Rows 245-266: For neck opening, counting from right side, divide work between the 62 and 63rd stitches and on both sides of this division every other row decrease 3 stitches 4 x, and 2 stitches 7 x. At same time on left increase 1 stitch after row 249 and again in every 6th row 2 x. ON right after row 252 for shoulder shaping, every other row bind off 4 stitches 4 x, 5 stitches 4 x, then the remaining 8 stitches. Work another front section with reverse shapings, making buttonholes after the 21st, 62nd, 103rd and 144th rows over the 3 - 8 and 23 - 28 needles. Make the top

pocket after the 188th row, in the following manner, put 11 needles on the left, and 44 needles on the right in hold position. Work 6 rows on the needles in working position, then bind off these stitches. For pocket lining, cast on 30 stitches over these same needles and work 42 rows. Turn the row counter back to 188 and continue work on all needles. **SLEEVE** (Figure III). Cast on 62 stitches. Rows 1-174: After row 28 increase 1 stitch each side and again in every 8th row 13 x, then every 6th row 6 x. (102 stitches). Rows 175-184: Underarm shaping, every other row on back side of sleeve bind off 4 stitches 1 x, 3 stitches 2 x, and 2 stitches 1 x. Rows 185-220: Each side every other row decrease 1 stitch 2 x, and 2 stitches 1 x. Repeat these 3 decreases 5 x. Rows 221-224: Each side every other row bind off 3 stitches 1 x, 4 stitches 1 x, then the remaining 9 stitches. Make another sleeve with reverse shapings. **COLLAR**: Cast on 98 stitches. Rows 1-16: On left side put 36 needles in hold position. Work 1 row. On right side put 36 needles in hold position. Work 1 row. Now on both sides one after another, put back in working position: 18 needles 1 x, and 3 needles 6 x. Rows 17-64: Work even. Rows 65-76: Each side one after another, put 3 needles in hold position 6 x. Rows 77-78: On left side put all the needles in working position. Work one row. On right side put all needles in working position. Work 1 row. To finish, bind off all stitches. **FINISHING**: Join front and back at side and shoulder seams. Sew sleeve edges together, and join sleeves to sweater. Make a hem 1-9/16" wide at the bottom of the sweater and the bottom of the sleeves, and a hem 2 3/8 wide at the front edges of the sweater. Fold the collar in half and sew the 2 ends together. Place the neck opening of the sweater between the open edges of the collar, leaving 1-9/16 on both front edges free to extend beyond the collar. Sew collar to sweater. Make a hem 6 rows wide in the pocket edging, and sew the pocket lining to the wrong side of the sweater. Finish buttonholes and sew on buttons. Using the illustration as a guide, make decorative stitches with a heavier olive colored yarn. Sew each decorative stitch over 2 sweater stitches and under 1 1/2 sweater stitches, over 4 rows and under 2 rows. **SIZE**: 40/42. **BACK** (Figure II). Cast on 140 stitches. Rows 1-174: Increase 1 stitch each side after row 42 and again every 32nd row 3 x. (148 stitches). Rows 175-196: Armhole shaping, each side bind off 4 stitches. Then in every other row decrease 3 stitches 1 x, 2 stitches 2 x, 1 stitch 3 x, then every 4th row decrease 1 stitch 2 x. Rows 197-256: Work even. Rows 257-270: Shoulder shaping, on each side every other row bind off 4 stitches 1 x and 5 stitches 7 x. At same time for neck opening after row 264 bind off the center 18 stitches and on both sides of this every other row bind off 6 stitches 1 x and 4 stitches 1 x. **FRONT** (Figure I). Cast on 67 stitches. Rows 1-78: On left side after row 15 cast on 30 stitches. On right side increase 1 stitch after row 42 and again after row 74. Now work bottom pocket as follows: Put 42 needles on the left and 17 needles on right in hold position. Work 6 rows on needles remaining in working position. Then bind off these stitches. For pocket lining, cast on 40 stitches over these same needles and work 48 rows. Turn row counter back to 78 and continue work on all needles. Rows 79-174: At right side after row 106 increase 1 stitch and again after row 138. At same time on left, after row 157 increase 1 stitch, then every 6th row 2 x. Rows



175-248: Armhole shaping, bind off 6 stitches. Then every other row decrease 4 stitches 1 x, 3 stitches 1 x, 2 stitches 2 x, 1 stitch 2 x, then every 4th row decrease 1 stitch 2 x. At same time, on left increase 1 stitch after row 175 then every 6th row 12 x. Rows 249-270: Neck opening, counting

from right side, divide the work between the 62nd and 63rd stitches and on both sides of the division every other row decrease 3 stitches 4 x, and 2 stitches 7 x. At same time on left side increase 1 stitch after row 253 and again every 6th row 2 x. On right after row 256 for shoulder shaping, every other row bind off 4 stitches 1 x, 5 stitches 7 x, then the remaining 8 stitches. Work another front section with opposite shapings, making buttonholes after the 21st, 63rd, 105th, and 147th rows, over the 3 - 8 and 23 - 28 needles. Make the top pocket after the 188th row as follows: Put 14 needles on left side and 44 needles on right side in hold position. Work 6 rows on the needles in working position, then bind off these stitches. For pocket lining, cast on 30 stitches over these same needles and work 42 rows. Turn row counter back to 188 and continue working on all needles. **SLEEVES** (Figure III). Cast on 67 stitches. Rows 1-174: After row 28 increase 1 stitch each side, and again every 8th row 13 x and in every 6th row 6 x. (107 stitches). Rows 175-184: Underarm shaping, every other row on back side of the sleeve bind off 4 stitches 1 x, 3 stitches 2 x, 2 stitches 1 x, and 1 stitch 1 x, and on front side of sleeve bind off 6 stitches 1 x, 4 stitches 1 x, 3 stitches 2 x, and 2 stitches 1 x. Rows 185-220: Each side every other row decrease 1 stitch 2 x, and 2 stitches 1 x. Repeat these 3 decreases 5 x. Rows 221-226: Each side every other row bind off 2 stitches 1 x, 3 stitches 1 x, 4 stitches 1 x, then the remaining 10 stitches. Make another sleeve with reverse shapings. **COLLAR AND FINISHING**: Follow directions for size 38/39. **SIZE**: 44/46. **BACK** (Figure II). Cast on 150 stitches. Rows 1-178: Increase 1 stitch



each side after row 46 and again every 32nd row 3 x. (158 stitches.) Rows 179-200: Armhole shaping, each side bind off 5 stitches. Then every other row decrease 3 stitches 2 x, stitches 2 x, 1 stitch 2 x, then every 4th row decrease 1 stitch 2 x. Rows 201-264: Work even. Rows 265-278: Shoulder shaping, each side every other row bind off 8 stitches 5 x. At same time, for neck opening, after row 272 bind off the center 20 stitches, and on both sides of this every other row bind off 6 stitches 1 x, and 4 stitches 1 x. **FRONT** (Figure I). Cast on 7 stitches. Rows 1-82: left side, after row 15 cast on 30 stitches. On right after row 46 increase 1 stitch and again after row 78. Now work bottom pocket in the following manner: Put 45 needles on left side and 17 needles on right in hold position. Knit 6 rows on needles remaining in working position. Bind off these stitches. Pocket lining: cast on 42 stitches over same needles and work 52 rows. Then turn row counter back to 82 and continue working on all needles. Rows 83-178: After row 110 increase 1 stitch on right side and again after row 142. At same time, increase 1 stitch on left after row 161 then every 6th row 2 x. Rows 179-256: Armhole shaping, bind off 7 stitches. Then every other row decrease 4 stitches 1 x, 3 stitches 2 x, 2 stitches 1 x, 1 stitch 2 x, then every 4th row decrease 1 stitch 2 x. At same time on left increase 1 stitch after row 178, then every 6th row 12 x. Rows 257-278: For neck opening, counting from right, divide work between the 62 and 63rd stitches, and on each side of this division every other row decrease 3 stitches 5 x and 2 stitches 6 x. At same time on left side increase 1 stitch after row 257 and again every 6th row 3 x. On right side, after row 264, for shoulder shaping, every other row bind off 5 stitches 8 x and then remaining 8 stitches. Make another front section reversing shapings, making buttonholes after the 21st, 64th, 107th, and 150th rows over the 3 - 8, and 23 - 28 needles. Make the top pocket after row 192 in the following manner: Put 12 needles on left side and 46 needles on right in hold position. Work 6 rows on needles in working position, then

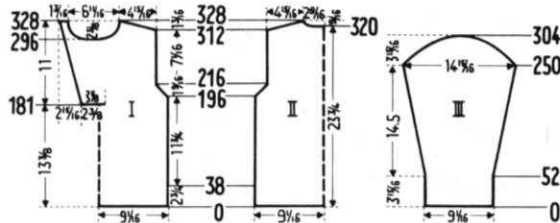
bind off these stitches. For pocket lining cast on 32 stitches over these same needles and work 46 rows. Turn the row counter back to 192 and continue working on all needles. **SLEEVE** (Figure III) Cast on 72 stitches. Rows 1-174: After row 28 increase 1 stitch each side and again every 8th row 13 x, an every 6th row 6 x. (112 stitches). Rows 175-186: Underarm shaping: every other row on back side of sleeve bind off 4 stitches 1 x, 3 stitches 2 x, 2 stitches 2 x, and 1 stitch 1 x, and on front side of the sleeve bind off 7 stitches 1 x, 4 stitches 1 x, 3 stitches 2 x, and 2 stitches 2 x. Rows 187-222: Each side every other row decrease 1 stitch 2 x and 2 stitches 1 x, repeat these 3 decreases 5 x. Rows 223-228: Each side every other row bind off 2 stitches 1 x, 3 stitches 1 x, 4 stitches 1 x and the remaining 10 stitches. Make another sleeve reversing shapings. **COLLAR**. Cast on 103 stitches. Rows 1-16: On left side put 36 needles in hold position. Work 1 row. On right side put 36 needles in hold position, work 1 row. Now on both sides, one after another, put back in working position 18 needles 1 x, and 3 needles 6 x. Rows 17-64: Work even. Rows 65-76: Each side, one after another, put 3 needles in hold position 6 x. Rows 77-78: On left side put all needles in working position. Work 1 row. On right side put all needles in working position. Work 1 row. To finish bind off all stitches. **FINISHING**: Follow directions for size 38/39.

BOY'S PULLOVER SHIRT, No. KK 4650



SIZE: 13-14 years. **MATERIAL**: 9 oz. light grey tweed yarn, 2 oz. dark grey tweed, 2 oz. charcoal, 3 oz. dark yellow. Suggestion: Bernat Glen Gary English Tweed and Sportsyarn. **TENSION**: KNITTING 5. **GAUGE**: 25 stitches 4", 53 rows 4". **PATTERN**: Stripes in stockinette, 10 rows yellow, 4 rows charcoal, 8 rows dark grey, 18 rows light grey. **BACK** (Figure II). Cast on 114 stitches with light grey. Rows 1-37: Stockinette. Make hem. Row 38: Knit stitches together on tension 6. Continue in

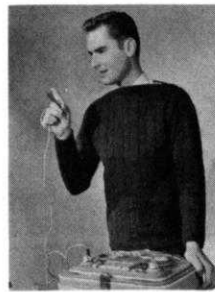
stripe pattern. Rows 39-196: Work even. Rows 197-216: Arm-row 10 x. (94 stitches). Rows 217-312: Work even. Rows hole shaping, decrease 1 stitch each side of every other 313-328: Shoulder shaping, each side of every other row bind off 3 stitches 5 x, and 4 stitches 4 x. For neck opening, after row 320 bind off the center 12 stitches, and on both sides of this every other row bind off 4 stitches 1 x and 3 stitches 2 x. **FRONT** (Figure I). Cast on 114 stitches with light grey. Rows 1-37: Work even, form hem. Row 38: knit stitches together on tension 6. Continue with stripe pattern. Rows 39-180: Work even. Now on left side put 62 stitches on a stitch holder and work the right half first. Rows 181-196: On left side after row 181 cast on 20 stitches, and after row 189 increase 1 stitch. Rows 197-216: For armhole shaping, decrease 1 stitch every other row 10 x. At same time on left increase 1 stitch after row 197 and again every 8th row 2 x.



Rows 217-296: On left side increase 1 stitch after row 221 and again every 8th row 9 x. Rows 297-328: For neck opening, bind off the 44th to 61st stitches, counting from the right side and on both sides of this every other row decrease 3 stitches 1 x, 2 stitches 1 x, 1 stitch 3 x, then decrease 1 stitch every 4th row 4 x. At same time, on left increase 1 stitch after row 301 and again every 8th row 3 x, and after row 312 for shoulder shaping every other row bind off 3 stitches 5 x, 4 stitches 4 x and then the remaining 7 stitches. Now place

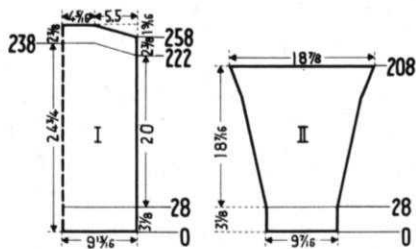
cam box on left side and turn the row counter back to 180. Put the stitches from the stitch holder back on the machine and work the left half; however on the right instead of casting on 20 stitches, cast on only 10, and make buttonholes after rows 188, 228 and 268 over the 4th - 7th and 16th - 19th needles. **SLEEVES** (Figure III). Cast on 57 stitches with light grey. Rows 1-51: Work even; 26 rows light grey, 8 rows dark grey, and 17 rows light grey. Now form the hem. Row 52: work stitches together on tension 6. Continue in stripe pattern. Rows 53-250: After row 52 increase 1 stitch each side and again in every 12th row 5 x, and every 10th row 13 x. (95 stitches). Rows 251-304: For underarm shaping, each side every other row bind off 1 stitch 15 x, 2 stitches 12 x, then remaining 17 stitches. Make another sleeve exactly the same. **COLLAR**: Cast on 93 stitches with light grey. Rows 1-90: Work even. Rows 91-98: on each side, one after another, put 10 needles in hold position 1 x and 8 needles in hold position 3 x. Rows 99-100: On left side put all needles in working position and work 1 row. On right side put all the needles in working position and work 1 row. Finish by binding off all stitches. **FINISHING**: Join front and back at side and shoulder seams. Sew sleeve edges together, and sew sleeves to sweater. At the front edges make a hem 10 stitches wide. Fold the collar in half and sew the 2 ends together. Place the neck opening of the sweater between the open edges of the collar and sew the collar to the sweater. Finish buttonholes. Sew on buttons.

BOY'S PULLOVER, No. KK 4654



SIZE: 14-15 years. **MATERIAL**: 33 oz. bordeaux-red yarn. Suggestion: Sport Wool. **TENSION**: KNITTING 10 Cable 7 ribbing. **GAUGE**: Cable: 14 stitches 2" 19 rows 2", Ribbing 7 stitches 2", 17 rows 2". **PATTERN**: Straight stockinette and cable stripe over every needle. Steps for making cable: 1. Knit 10 rows. 2. Each side let the 28th, 29th, 36th, 37th, 66th, and 67th stitches drop from the needles. The empty needles remain in working position. 3. With 2 triple needles transfer tools cross the

stitches in the following manner: 30th, 31st, and 32nd stitches transfer to 33th, 34th and 35th needles. 33th, 34th, and 35th stitches are transferred to 30th, 31st, and 32nd needles, the 68th, 69th, and 70th stitches are transferred to 71st, 72nd, and 73rd needles, the 71st, 72nd, and 73th stitches are transferred to 68th, 69th, and 70th needles, the 106th, 107th, and 108th stitches are transferred to the 109th, 110th, and 111th needles, 109th, 110th, and 111th stitches are transferred to the 106th, 107th, and 108th needles. 4. Work 10 rows. 5. On each side let the 9th, 10th, 17th, 18th, 47th, 48th, 55th, and 56th stitches drop from the needles. The empty needles remain in working position. 6. The 11th, 12th, and 13th stitches are crossed with the 14th, 15th, the 16th stitches, the 49th, 50th, and 51st stitches are crossed with 52nd, 53rd, and 54th stitches, the 87th, 88th and 89th stitches are crossed with the 90th, 91st, and 92nd stitches, the 125th, 126th, and 127th stitches are crossed with the 128th, 129th, and 130th stitches. Keep repeating these 6 steps throughout the entire sweater. After 50 or 60 rows drop the 2 stitches on both sides of the cables, and latch up with latch tool. Edging: stockinette over every other needles. **BACK** (Figure I). Cast on 70 stitches over every other needles. Rows 1-26: stockinette on tension 7. Now bring empty needles into working position and continue on over 140 needles. Row 27: stockinette. Form hem. Row 28: Work stitches together with tension 9. Continue with cable stripe and tension 10. Rows 29-222: Work even. Rows 223-236: On each side, one after another, put 5 needles in hold position 3 x and 6 needles in hold position 4 x. Rows 237-238: On left side put all needles in working position and work 1 row. On right side put all needles in working position and work 1 row. Now hang every 2nd stitch on the neighboring needle and continue on with stockinette on tension 7. Rows 239-258: Work even. Bind off. **THE FRONT IS WORKED THE SAME AS THE BACK**. **SLEEVE** (Figure II). Cast on 34 stitches over every other needle. Rows 1-26: Stockinette on tension 7.

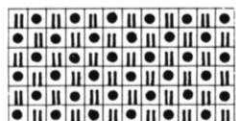


Now bring empty needles into working position and continue working on 67 needles. Row 27: Work even. Form hem. Row 28: Work stitches together on tension 9. Now make the cables with tension 10, at first crossing the 23rd - 28th and 61st - 66th stitches, then the 4th - 9th and 42nd to 47th stitches. Rows 29-208: After row 32 increase 1 stitch each side, then every 6th row 21 x and every 4th row 11 x. Bind off 133 stitches. Make another sleeve the same. **FINISHING:** Fold the upper edging in half, toward the wrong side, and hem. Put the shoulder slopes together and sew together about 4" from outer edges. Sew the sides of the sweater together, about 13" from the bottom. Sew sleeve edges together, and sew sleeves to sweater.

CHILD'S COAT, No. KK 4649

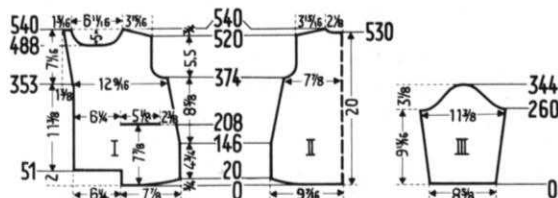


SIZE: 3-4 Years. **MATERIAL:** 13 oz. steel blue yarn, 11 oz. egg shell white. Suggestion: 3 ply sport wool. **TENSION:** KNITTING 8 pattern stitch 4 stockinette. **GAUGE:** 27 stitches 4" 104 rows 4", **PATTERN STITCH:** 34 stitches 4", 48 rows 4", **STOCKINETTE.** **PATTERN:** Hold position on purl side according to chart. With needle changer or automatic at the beginning of the design, the needles with wheel VI in hold position; then use the needle shifter. Collar, sleeve edging and pocket edging: stockinette. **BACK** (Figure II). Cast on 129 stitches with blue. Rows 1-20: On left side put 39 needles in hold position. Work 1 row. On right side put 39 needles in hold position. Work 1 row. Now on both sides, one after another, put 6 needles back in working position 2x, 4 needles 3 x and 3 needles 3 x. Rows 21-374: After



11-12 EGGSHELL
9-10 BLUE
7-8 EGGSHELL
5-6 BLUE
3-4 EGGSHELL
1-2 BLUE

row 146 decrease 1 stitch each side and again every 20th row 10 x. (107 stitches). Rows 375-416: Armhole shaping, each side bind off 3 stitches. Then every 4th row decrease 2 stitches 2 x, and 1 stitch 2 x. Now every 8th row decrease 1 stitch 3 x. (83 stitches). Rows 417-520: Work even. Rows 521-540: For shoulder shaping, each side every other row bind off 2 stitches 6 x and 3 stitches 5 x. At same time for neck opening, after row 530 bind off the center 11 stitches



and on both sides of this every other row bind off 3 stitches 1 x, and 2 stitches 3 x. **FRONT** (Figure I). Cast on 55 stitches with blue. Row 1: Knit over all needles. Rows 2-20: on right put 39 needles in hold position and work 2 rows. Now one after another, put 6 needles in working position 3 x, 4 needles 3 x, and 3 needles 3 x. Rows 21-54: Work even. Now on left side cast on 43 stitches. Rows 52-208: On right side after row 146 decrease 1 stitch and again every 20th row

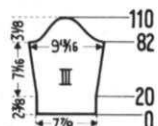
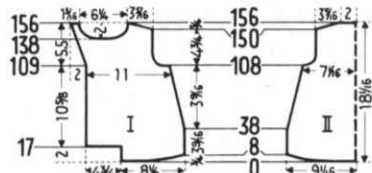
3 x. At same time work buttonholes after row 164 over the 8 - 14 and 30 - 36 needles counting from the left. Now make the pocket as follows, counting from the right bind off the 17th - 51st stitches and put the needles on both sides of this in hold position. For pocket lining cast on (over the 17th - 51st needles) 35 stitches and work 104 rows in pattern stitch. Now turn the row counter back to 208 and work on all needles. Rows 209-353: After row 226 decrease 1 stitch on right and again every 20th row 6 x. At same time, make buttonholes after the 258th and 352nd row. (87 stitches.) Rows 354-374: on left side after the 353rd row increase 1 stitch and again after the 371st row. Rows 375-416: For armhole shaping, bind off 4 stitches. Then every 4th row decrease 3 stitches 1 x, 2 stitches 1 x, 1 stitch 3 x, and now every 6th row decrease 1 stitch 2 x then every 8th row decrease 1 stitch 1 x. At same time on left side increase 1 stitch after row 389 and again after row 407. Rows 417-488: after row 425 increase 1 stitch on left side then every 18th row 3 x. Rows 489-540: For neck opening, bind off the 43rd - 59th stitches counting from the right, and on each side of this every 4th row decrease 4 stitches 1 x, 3 stitches 1 x, 2 stitches 2 x, 1 stitch 1 x, then every 6th row decrease 1 stitch on left after row 497 and again after row 515. After row 520, for shoulder shaping every other row bind off 2 stitches 6 x, 3 stitches 5 x and the remaining 8 stitches. Make another front section reversing shapings, minus the buttonholes. **SLEEVE** (Figure III). Cast on 59 stitches with blue. Rows 1-260: After row 24 increase 1 stitch each side and again every 24th row 9 x (79 stitches). Rows 261-280: For underarm shaping, every 4th row on back side of sleeve bind off 3 stitches 2 x, and 2 stitches 3 x, and on front side bind off 4 stitches 1 x, 3 stitches 2 x, and 2 stitches 2 x. Rows 281-334: Every 4th row decrease 1 stitch each side 14 x. Rows 335-344: Each side every other row bind off 1 stitch 3 x, 2 stitches 1 x, 3 stitches 1 x and the remaining 9 stitches. Make another sleeve with reverse shapings. **COLLAR:** Cast on 112 stitches with blue. Stockinette on tension 4. Rows 1-14: On left put 38 needles in hold position. Work 1 row. On right side put 38 needles in hold position. Work 1 row, now on both sides one after another, put 13 needles back in working position 1 x, 7 needles 2 x, 5 needles 1 x, and 3 needles 2 x. Rows 15-68: Work even. Rows 69-80: On each side, one after another, put 3 needles back in hold position 2 x, 5 needles 1 x, 7 needles 2 x, and 13 needles 1 x. Rows 81-82: On left side put all needles in working position. Work 1 row. On right put all needles in working position. Work 1 row. To finish, bind off. **SLEEVE EDGING:** Cast on 75 stitches 2 x with blue. Work 22 rows even. Then bind off. **POCKET EDGING:** Cast on 45 stitches 2 x with blue. Work 22 rows straight. Bind off. **FINISHING:** Join front and back at side and shoulder seams. Sew sleeve edges together and sew sleeves to sweater. At the front edging make a hem 3 1/8 wide, and at the bottom edge make a hem 2" wide. Sew pocket lining to wrong side of coat. Sew pocket and sleeve edgings in place. Fold the collar in half and sew 2 ends together. Place the neck opening of the coat between the open edges of the collar and sew the collar to the coat. Finish buttonholes and sew on buttons.

CHILD'S COAT, No. SK 5077



SIZE: 2 years. **MATERIAL:** 16 oz. black and white blended wool with light weight mohair. 1 oz. green yarn. **TENSION:** KNITTING 10. **GAUGE:** 12 stitches 2", 17 rows 2". Stockinette. 12 stitches 2", 31 rows 2". Hold position. **PATTERN:** Stockinette. Collar and pocket flap: Hold position on purl side. **BACK** (Figure II). Cast on 111 stitches. Stockinette. Rows 1-8: On left side put 30 needles in hold position. Work 1 row. On right side put 30 needles in hold position. Work 1 row. On both sides one after another, put 10 needles in working position 3 x. Rows 9-108: After row 38 decrease 1 stitch each side and again every 6th row 11 x (87 stitches). Rows 109-124:

For armhole shaping bind off 3 stitches on each side. Then every other row decrease 2 stitches 2 x, 1 stitch 3 x, then every 4th row decrease 1 stitch 1 x (65 stitches). Rows 125-150: Work even. Rows 151-156: For shoulder shaping, each side every other row bind off 6 stitches 1 x, 7 stitches 2 x then the remaining 25 stitches. **FRONT** (Figure I). Cast on 51 stitches. Row 1: Work over all stitches. Rows 2-8: on right side put 30 needles in hold position. Work 2 rows. Now one after another, put 10 needles in working position 3x. Rows 9-17: Work even. Now on left side cast on 29 stitches. Rows 18-108: On right side after row 38 decrease 1 stitch and again in every 6th row 11 x. At same time, make buttonholes after the 49th, 76th and 103rd rows over the 3 - 8 and 22 - 27 needles counting from the left. (68 stitches). Rows 109-124: For armhole shaping bind off 4 stitches. Then every other row decrease 3 stitches 1 x, 2 stitches 2 x, 1 stitch 2 x then every 4th row decrease 1 stitch. At same time on left side increase 1 stitch and after the 109th row, and again



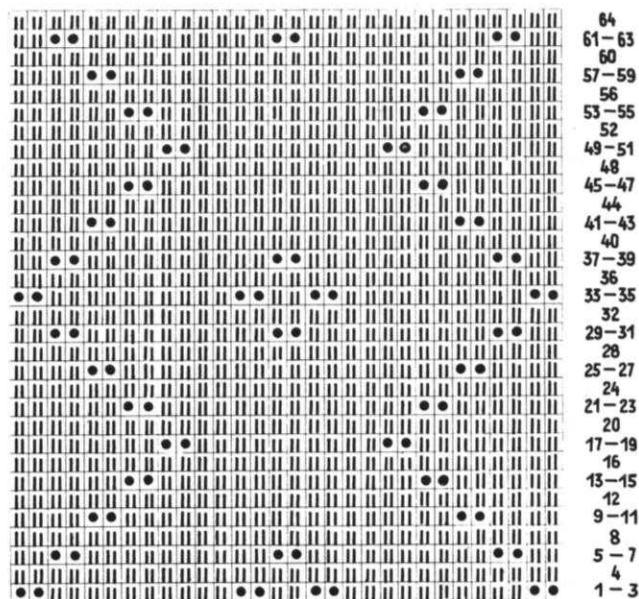
every 4th row 3 x. Rows 125-138: On left side increase 1 stitch after row 125 and then every 4th row 3 x. At same time work a buttonhole after the 130th row. Rows 139-156: For neck opening, bind off the 31st - 49th stitches, counting from the right side, and on both sides of this every other row decrease 3 stitches 1 x, 2 stitches 2 x, 1 stitch 2 x, then again in 4th row decrease 1 stitch 1 x. At same time on left after row 141 increase 1 stitch and again every 4th row 3 x. After row 150 for should shaping every other row bind off 6 stitches 1 x, 7 stitches 2 x then on left bind off 7 stitches. Make another front section with opposite shapings, minus buttonholes. **SLEEVE** (Figure III). Cast on 48 stitches. Rows 1-82: After row 20 increase 1 stitch each side and again every 10th row 5 x. (60 stitches). Rows 83-90: For underarm shaping, every other row on back side of the sleeve bind off 3 stitches 2 x, and 2 stitches 2 x and on the front side of sleeve bind off 5 stitches 1 x, 3 stitches 2 x and 2 stitches 1 x. Rows 91-106: On each side every other row decrease 1 stitch 3 x and 2 stitches 1 x. Rows 91-106: On each side every other row decrease 1 stitch 3 x and 2 stitches 1 x. Rows 91-106: On each side every other row decrease 1 stitch 3 x and 2 stitches 1 x repeat these 4 decrease once more. Rows 107-110: Each side every other row bind off 2 stitches 1 x, 3 stitches 1 x and the remaining 7 stitches. Make another sleeve reversing shapings. **POCKET**: Cast on 23 stitches with black and white. Rows 1-28: Stockinette. Rows 29-44: Hold position on purl side with green. Bind off. Make another pocket same. **COLLAR**: Cast on 67 stitches with green. Work 50 rows in hold position pattern. Bind off. **FINISHING**: Join front and back at side and shoulder seams. Sew sleeve edges together and sew sleeves to coat. Make a hem $2\frac{3}{8}$ wide at front edges, 2" wide at bottom of coat, 1-3/16 wide at sleeve edges. Turn pocket flaps down right side of pocket and stitch down. Sew pockets to coat. Sew collar to neck opening. Finish buttonholes and sew on buttons.

GIRL'S JACKET SWEATER, No. MK 4638

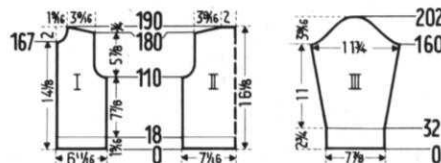


SIZE: 6-7 years. **MATERIAL**: 11 oz. geranium red yarn sport weight. **TENSION**: KNITTING 7. **GAUGE**: 14 stitches 2", 23 rows 2". **PATTERN**: Stockinette with stripes formed according to chart. The stripes on the sweater fronts are worked over 30 needles. 1. Put the 1, 2, 13, 14, 17, 18, 29, and 30 needles in hold. Work 3 rows. 2. With the double transfer tool take these stitches from the machine drop the held threads behind the stitches and put the stitches back on the machine. 3. Put all

needles in working position and work 1 row. Repeat these 3 steps throughout putting into hold the needles designated



on the chart. **RIBBING**: K1, P1. **BACK** (Figure II). Cast on 101 stitches. Rows 1-18: K1, P1. Continue in stockinette. Rows 19-110: Work even. Rows 111-122: Armhole shaping, each side bind off 3 stitches. Then every other row decrease 2 stitches 3 x and 1 stitch 2 x. Rows 123-180: Work even. Rows 181-190: Shoulder shaping, every other row each side bind off 5 stitches 5 x, then the remaining 29 stitches. **FRONT** (Figure I). **CAST ON** 47 stitches. Rows 1-18: K1, P1. Continue in stockinette making stripe over the 5th to 34th needles counting from left. Rows 19-110: Work even. Rows 111-122: For armhole shaping bind off 3 stitches. Then every other



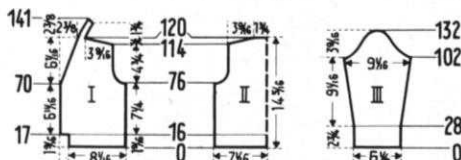
row decrease 2 stitches 3 x and 1 stitch 2 x. Rows 123-167: Work even. Rows 169-190: For neck opening, bind off 3 stitches. Then every other row decrease 2 stitches 2 x, 1 stitch 2 x and again in every 4th row decrease 1 stitch 2 x. At same time after row 180 for should shaping bind off 5 stitches 5 x every other row. Make 2 front sections with opposite shapings. **SLEEVE** (Figure III). Cast on 55 stitches. Rows 1-32: K1, P1. Continue in stockinette. Rows 33-160: After row 40 increase 1 stitch each side then every 10th row 4 x, and every 8th row 9 x. (83 stitches). Rows 161-168: For underarm shaping each side every other row bind off 3 stitches 1 x, and 2 stitches 3 x. Rows 169-196: Each side every other row decrease 1 stitch 1 x and 2 stitches 1 x. Repeat 2 decreases 6 x. Rows 197-202: each side every other row bind off 2 stitches 2 x, 3 stitches 1 x and the remaining 9 stitches. Make another sleeve exactly same. **FRONT EDGING**: Cast on 101 stitches. Work 30 rows stockinette and bind off. Make the other strip of edging just like this, working buttonholes after the 7th and 22nd rows over the 3-7, 25-29, 47-51, 69-73, and 91-95 needles, counting from the right. **COLLAR**: Cast on 125 stitches work 40 rows K1, P1. Bind off. **FINISHING**: Join front and back at side and shoulder seams. Sew sleeve edges together and sew sleeves to sweater. Fold edging around sweater fronts and attach. Sew collar to neck opening. Finish buttonholes and sew on buttons.

BOY'S JACKET SWEATER, No. KK 4655



SIZE: 3-4 years. **MATERIAL:** 8 oz. blue and green tweed yarn. **SUGGESTION:** Shetland sport. **TENSION:** KNITTING 8. **GAUGE:** Stockinette: 13 stitches 2", 16 rows 2", K1, P1: 13 stitches 2", 20 rows 2". **PATTERN:** Stockinette, K1, P1 ribbing. **BACK:** (Figure II). Cast on 93 stitches. Rows 1-16: K1, P1. Continue on with stockinette. Rows 17-76: Work even. Rows 77-90: Armhole shaping, each side bind off 3 stitches. Then every other row decrease 2 stitches 3 x, and 1 stitch 3 x. Rows 91-114: Work even.

Rows 115-120: Shoulder shaping, each side every other row bind off 7 stitches 1 x, 8 stitches 2 x then the remaining 23 stitches. **FRONT:** (Figure I). Cast on 53 stitches. Rows 1-16: K1, P1. Continue in stockinette. Rows 17-70: on left side after row 17 cast on 8 stitches. Rows 71-76: for front shaping, after row 70 decrease 1 stitch then every other row 2 x, as follows:



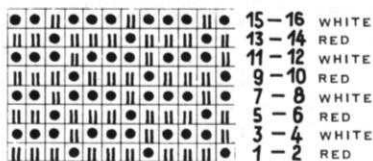
put the 9th stitch (counting from the right) on the 10th needle and fill in the empty needle. Rows 77-90: Armhole shaping bind off 3 stitches then every other row decrease 2 stitches 3 x and 1 stitch 3 x. At the same time for front shaping, decrease 1 stitch after row 76 and again every 3rd row 4 x. Rows 91-120: For front shaping, after row 91 decrease 1 stitch and again every 3rd row 7 x. At the same time for shoulder shaping after row 114 bind off 7 stitches 1 x and 8 stitches 2 x. Rows 121-123: Work even. Rows 124-129: On right put 5 needles in hold position. Work 2 rows. Put all needles in working position and work 4 rows. Rows 130-141: Repeat rows 124-129 two times, putting 2 needles in hold position 1 x, and 5 needles in hold position 1 x. Bind off all stitches. Make another front section reversing shaping, making buttonholes after the 7th row over the 5 - 8 needles and after the 25th, 43rd and 61st rows over the 2 - 5 and 14 - 17 needles. **SLEEVE:** (Figure III). Cast on 41 stitches. Rows 1-28: K1, P1. Continue on with stockinette. Rows 29-102: After row 28 increase 1 stitch each side and again every 6th row 4 x and every 8th row 5 x. (61 stitches). Rows 103-132: For underarm shaping, each side every other row bind off 3 stitches 2 x, 2 stitches 4 x, 1 stitch 6 x, 2 stitches 2 x, 3 stitches 1 x and the remaining 7 stitches. Make another sleeve exactly the same. **FINISHING:** Join front and back at side and shoulder seams. Sew sleeve edges together and sew sleeve to sweater. Sew the 2 strips of neck edging together at center back and sew to sweater. Then make a hem 8 stitches wide around neck and front edging. Finish buttonholes and sew on buttons.

GIRL'S JACKET SWEATER, No. MK 4653

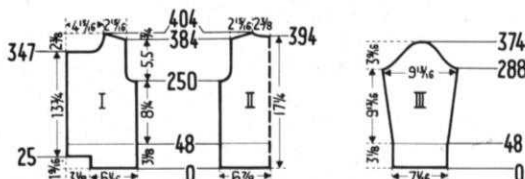


SIZE: 5-6 years. **MATERIAL:** 10 oz. red yarn, 5 oz. white yarn. **SUGGESTION:** Pauline Denham Sierra. **TENSION:** KNITTING 4. **GAUGE:** Pattern stitch: 17 stitches 2", 48 rows 2". K1, P1: 17 stitches 2", 30 rows 2". **PATTERN:** Hold position on knit side according to chart. Use needle shifter or automatic Wheel III. Ribbing: K1, P1. **BACK:** (Figure II). Cast on 117 stitches with red. Rows 1-48: K1, P1. Now increase 1 stitch on 1 side and continue on in hold position. Rows 49-250: Work even. Rows 251-284:

For armhole shaping, each side bind off 3 stitches. Then every 4th row decrease 3 stitches 1 x, 2 stitches 1 x, 1 stitch 3 x, and now every 6th row decrease 1 stitch 2 x. (92



stitches). Rows 285-384: Work even. Rows 385-404: For shoulder shaping, each side every other row bind off 2 stitches 7 x, and 3 stitches 4 x. At same time for neck opening, after row 394 bind off center 14 stitches, and on both sides of this every other row bind off 4 stitches 2 x, 3 stitches 1 x and 2 stitches 1 x. **FRONT:** (Figure I). Cast on 53 stitches with red. Rows 1-48: K1, P1 ribbing. After row 5 on left side cast on 28 stitches and after row 35 make buttonholes over the 3 - 7 and 22 - 26 needles, counting from left edge. Now



on right side increase 1 stitch and continue working in hold position. Rows 49-250: Work even, making buttonholes after the 95th, 161st and 227th rows. Rows 251-284: For armhole shaping bind off 3 stitches. Then every 4th row decrease 3 stitches 1 x, 2 stitches 1 x, 1 stitch 3 x, then every 6th row decrease 1 stitch 2 x. (69 stitches). Rows 285-347: Work even, making a buttonhole after row 293. Rows 348-404: For neck opening, bind off 28 stitches. Then every 4th row decrease 1 stitch 4 x. At same time after row 384 for shoulder shaping, every other row bind off 2 stitches 7 x and 3 stitches 4 x. Make another front section with opposite shapings, minus buttonholes. **SLEEVE:** (Figure III). Cast on 61 stitches with red. Rows 1-48: K1, P1, ribbing. Now on 1 side increase 1 stitch and continue on in hold position. Rows 49-288: After row 68, increase 1 stitch each side and again every 20th row 2 x, and every 18th row 9 x. (86 stitches). Rows 289-304: For underarm shaping, each side every 4th row bind off 4 stitches 1 x, 3 stitches 1 x and 2 stitches 2 x. Rows 305-362: Decrease 1 stitch after row 304 on each side, then every other row 1 x, and the 4th row 1 x. Repeat these last 2 decreases 8 x. Rows 363-374: On each side every 4th row bind off 2 stitches 1 x, 3 stitches 2 x and the remaining 10 stitches. Make another sleeve reversing shaping. **NECK EDGING:** Cast on 155 stitches with red. Work 36 rows K1, P1, 10 rows with tension 5, 16 rows with tension 4, and 10 rows with tension 5 making buttonholes after the 9th and 27th rows over the 10 - 14 needles, counting from the left. To finish, bind off. **FINISHING:** Join front and back at side seams in slip stitch, overlapping 1 stitch on both sides. Sew shoulder seams. Sew sleeves together and sew to sweater. Fold the edges of the sweater bottom, front edging, and sleeve edging around neck opening of sweater and attach. Finish buttonholes and sew on buttons.

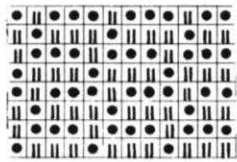
WOMAN'S JACKET SWEATER, No. DP 7177



SIZE: 12/14. **MATERIAL:** 12 oz. tobacco brown yarn 3 ply, 7 oz. yellow. **SUGGESTION:** Pauline Denham Sierra. **TENSION:** KNITTING 4. **GAUGE:** Pattern stitch: 17 stitches 2", 48 rows 2", K1, P1 Ribbing: 17 stitches 2", 30 rows 2". **PATTERN:** Hold position on knit side according to chart. Use needle selector or automatic wheel III. Ribbing: K1, P1. **BACK:** (Figure II). Cast on 161 stitches with brown. Rows 1-48: K1, P1 ribbing. Now on one side increase 1 stitch and continue in hold position. Rows 49-384: After row 96 increase 1 stitch each side and again every 48th row 5 x. (174 stitches). Rows 385-434: For armhole shaping, bind off 4 stitches each side, then

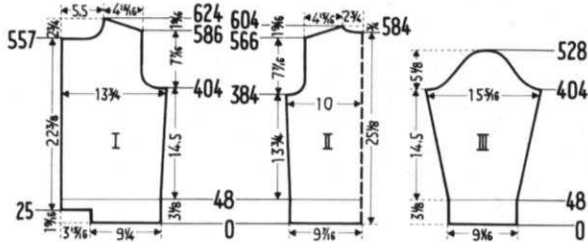
on right side increase 1 stitch and continue working in hold position. Rows 49-250: Work even, making buttonholes after the 95th, 161st and 227th rows. Rows 251-284: For armhole shaping bind off 3 stitches. Then every 4th row decrease 3 stitches 1 x, 2 stitches 1 x, 1 stitch 3 x, then every 6th row decrease 1 stitch 2 x. (69 stitches). Rows 285-347: Work even, making a buttonhole after row 293. Rows 348-404: For neck opening, bind off 28 stitches. Then every 4th row decrease 1 stitch 4 x. At same time after row 384 for shoulder shaping, every other row bind off 2 stitches 7 x and 3 stitches 4 x. Make another front section with opposite shapings, minus buttonholes. **SLEEVE:** (Figure III). Cast on 61 stitches with red. Rows 1-48: K1, P1, ribbing. Now on 1 side increase 1 stitch and continue on in hold position. Rows 49-288: After row 68, increase 1 stitch each side and again every 20th row 2 x, and every 18th row 9 x. (86 stitches). Rows 289-304: For underarm shaping, each side every 4th row bind off 4 stitches 1 x, 3 stitches 1 x and 2 stitches 2 x. Rows 305-362: Decrease 1 stitch after row 304 on each side, then every other row 1 x, and the 4th row 1 x. Repeat these last 2 decreases 8 x. Rows 363-374: On each side every 4th row bind off 2 stitches 1 x, 3 stitches 2 x and the remaining 10 stitches. Make another sleeve reversing shaping. **NECK EDGING:** Cast on 155 stitches with red. Work 36 rows K1, P1, 10 rows with tension 5, 16 rows with tension 4, and 10 rows with tension 5 making buttonholes after the 9th and 27th rows over the 10 - 14 needles, counting from the left. To finish, bind off. **FINISHING:** Join front and back at side seams in slip stitch, overlapping 1 stitch on both sides. Sew shoulder seams. Sew sleeves together and sew to sweater. Fold the edges of the sweater bottom, front edging, and sleeve edging around neck opening of sweater and attach. Finish buttonholes and sew on buttons.

every 4th row decrease 4 stitches 1 x, 3 stitches 1 x, 2 stitches 2 x, 1 stitch 2 x and then every 6th row decrease 1 stitch



- 15 - 16 YELLOW
- 13 - 14 BROWN
- 11 - 12 YELLOW
- 9 - 10 BROWN
- 7 - 8 YELLOW
- 5 - 6 BROWN
- 3 - 4 YELLOW
- 1 - 2 BROWN

4 x. (132 stitches.) Rows 435-566: Work even. Rows 567-604: For shoulder shaping on each side every other row bind off 2 stitches 18 x, and 3 stitches 2 x. At same time for neck



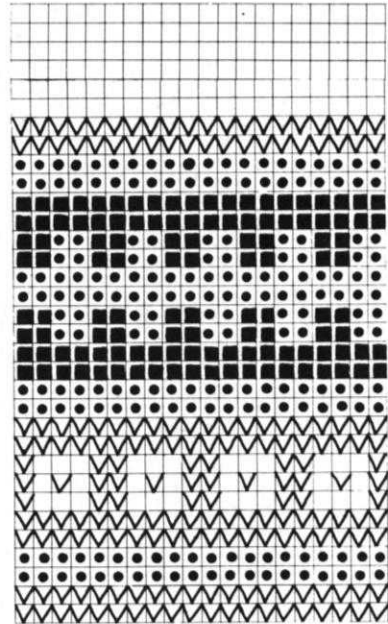
opening after row 584 bind off the center 18 stitches and on both sides of this every 4th row bind off 6 stitches 1 x, 4 stitches 1 x, 3 stitches 1 x and 2 stitches 1 x. **FRONT:** (Figure I). Cast on 79 stitches with brown. Rows 1-48: K1, P1 ribbing. On left side cast on 34 stitches after row 25 and make buttonholes after row 36 over the 4 - 10 and 25 - 31 needles, counting from the left. Continue in hold position. Rows 49-404: On right side increase 1 stitch after row 96 and again every 48th row 5 x, and make buttonholes after the 125, 214, 303, and 392 rows. (119 stitches.) Rows 405-454: For armhole shaping: bind off 8 stitches. Then every 4th row decrease 5 stitches 1 x, 4 stitches 1 x, 3 stitches 1 x, 2 stitches 2 x, 1 stitch 1 x, then decrease 1 stitch every 6th row 4 x. (90 stitches). Rows 455-557: Work even, making buttonholes after row 481. Rows 558-624: For neck opening bind off 34 stitches. Then every 4th row decrease 3 stitches 2 x, 2 stitches 2 x, 1 stitch 2 x, now every 6th row decrease 1 stitch 4 x. At same time after row 586 for shoulder shaping every other row bind off 2 stitches 18 x and 3 stitches 2 x. Make another front section reversing shapings minus buttonholes. **SLEEVE:** (Figure III). Cast on 79 stitches with brown. Rows 1-48: K1, P1, ribbing. Continue in hold position pattern. Rows 49-404: After row 62 increase 1 stitch on each side and again every 14th row 14 x, and every 12th row 12 x. (133 stitches). Rows 405-436: For underarm shaping every 4th row on back side of sleeve bind off 4 stitches 2 x, 3 stitches 2 x, 2 stitches 2 x and 1 stitch 2 x and on front side of sleeve bind off 7 stitches 1 x, 5 stitches 1 x, 4 stitches 1 x, 3 stitches 2 x and 2 stitches 3 x. Rows 437-516: On each side every 4th row decrease 1 stitch 3 x and 2 stitches 1 x and repeat these 4 decreases 4 x. Rows 517-528: On each side every 4th row bind off 2 stitches 1 x, 4 stitches 1 x, 6 stitches 1 x and the remaining 11 stitches. Make another sleeve reversing shapening. **NECK EDGING:** Cast on 179 stitches with brown. Work 36 rows K1, P1 ribbing: 10 rows with tension 5, 16 rows with tension 4, and 10 rows with tension 5, making buttonholes after the 9th and 27th rows over the 9- 15th needles, counting from left. To finish, bind off. **FINISHING:** Join front and back at side and shoulder seams, making sufficient gathers in the front section at the bust line so that it fits the back section. Sew sleeve edges together, and sew sleeves to sweater. Fold edging at the sweater bottom, sweater front, and sleeve bottoms in half under and hem. Fold neck edging around neck opening and attach. Finish buttonholes and sew on buttons.

CHILD'S PULLOVER, No. KK 4652



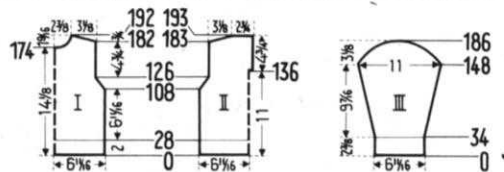
SIZE: 4-5 years. **MATERIAL:** 3 oz. blue, 2 oz. red, 2 oz. yellow, 2 oz light grey. **SUGGESTION:** Shetland wool. **TENSION:** KNITTING 3. **GAUGE:** Pattern stitch: 32 stitches 4", 47 rows 4", K1, P1, Ribbing: 32 stitches 4" 56 rows 4". **PATTERN:** Norwegian pattern stitch according to chart. Every row with norwegian pattern stitch is counted singly in the description, however, it takes several rows to do one color row. Ribbing: K1, P1. **BACK:** (Figure II). Cast on 109 stitches with blue. Rows

1-28: K1, P1 ribbing. Now on 1 side increase 1 stitch and



- BLUE
- ▽ YELLOW
- GRAY
- RED

continue with pattern stitch. Rows 29-108: Work even. Rows 109-126: For armhole shaping, each side every other row decrease 2 stitches 1 x and 1 stitch 8 x. Rows 127-135: Work even. Now on right side put 45 needles in hold position and



work left half first. Rows 136-183: For back neck opening facing, after row 136 cast on 3 stitches, in the following manner: put 3 stitches from the right section on a stitch holder. Rows 184-193: For shoulder shaping, every other row bind off 4 stitches 5 x, 5 stitches 1 x, then the remaining 23 stitches. Now put cam box on right side and turn row counter back to 135. Put all needles in working position, place the stitches from the stitch holder back onto the machine and work right half. **FRONT:** (Figure I). The front is worked same as back without neck opening slit. For neck opening after row 174 bind off center 12 stitches and on both sides of this every other row decreases 5 stitches 1 x, 4 stitches 1 x, 2 stitches 1 x, 1 stitch 2 x, then in the 4th row decrease 1 stitch 1 x. **SLEEVE:** (Figure III). Cast on 55 stitches with blue. Rows 1-34: K1, P1, ribbing. Continue in pattern. Rows 35-148: Increase 1 stitch each side after row 40 and again every 6th row 16 x. (89 stitches). Rows 149-186: For underarm shaping, each side every other row bind off 1 stitch 10 x, 2 stitches 3 x, 3 stitches 3 x, 4 stitches 3 x and the remaining 15 stitches. Make another sleeve the same.

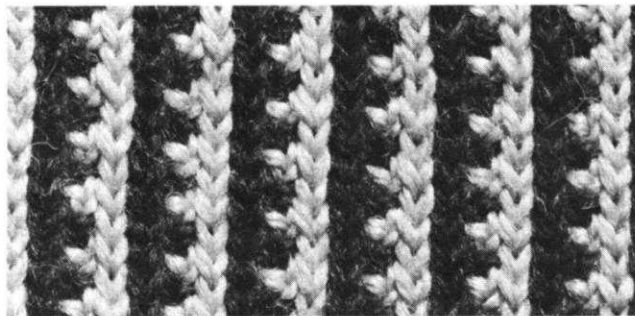
**IF YOU ARE NOT USING THE
SUBSCRIPTION CARD IN THIS ISSUE . . .
PLEASE PASS IT ON TO A KNITTING FRIEND.**

NECK EDGING: Cast on 113 stitches with blue. Work 28 rows K1, P1 then bind off. **FINISHING:** Join front and back at side and shoulder seams. Sew sleeve edges together and

sew sleeves to sweater. Make a hem 3 stitches wide around back neck opening. Fold neck edging around neck opening and attach. Sew in zipper.

PRACTICAL HINTS

HOLD POSITION FOR HP 3351: Man's Jacket Sweater. The man's jacket sweater using holding position and 2 colors, has because of its horizontal stripe a very stretch quality, so that it will fit both heavier or smaller figures. Moreover, with this pattern, using an average yarn, you have so many stitches that you can make this sweater for a heavier person on the small machine.



EYELET DESIGN FOR DP 7175: The eyelet design of this sweater varies slightly from the customary eyelet design, so that the outer or inner edge stitches have a more sculptured appearance. It is done in the following manner: 1st row transfer the first stitch to the 2nd needle, then both stitches are returned to the 1st needle so that the needle designated



by a circle in the chart is without a stitch but in working position. In row 3, the 4th stitch is transferred to the 3rd needle, then both stitches together are transferred back to the 4th needle. Row 5: the 5th stitch is transferred to the 4th needle, then both stitches are returned to the 5th needle. Row 7: transfer 6th stitch to 5th needle, then return both stitches to 6th needle. On left side of the design, the stitches are transferred in the opposite direction. Row 9: transfer 7th stitch from the machine on to transfer tool, then place the 6th and 8th stitches on the 7th needle, then replace 7th stitch. Continue in this manner following the directions and chart. The undesignated rows, (2, 4, 6, etc.) are worked plain.

LETTER FROM THE PUBLISHER

(Continued from page 1)

If you are unable to obtain the nationally advertised yarns we recommend, please tell us the brand names of yarns available to you, so that we can obtain samples and use whenever possible.

Some readers with knitting machines old fashioned in design, have complained that some of our patterns cannot be knitted on their machines. This is of course true, but improvements in the versatility of top brand knitting machines over the past few years, make it possible to knit fancy designs and stitches that were considered impossible in the early days of hand knitting machines.

We must first and foremost cater to owners of modern hand knitting machines, but it will be possible to knit many of our patterns on old type machines. If however, your taste leans toward the garments with intricate pattern stitches such as jacquards or ski sweater patterns in many colors or if you like the beautiful fancy ribbed stitches seen in many stylish modern sweaters, you should trade up to a modern versatile knitting machine.

TYPES OF KNITTING MACHINES

As leaders in the knitting machine industry with over a million happy users the world over, KNITKING winners of five gold medals for excellence and with an engineering development department second to none, we keep continually ahead of competition and have full knowledge of the advantages and disadvantages of different types and brands of knitting machines. We have been selling our machines in America for over ten years, and are pioneers in the American knitting machine industry, but in the past few years many knitting machines new to the American market have been imported, some of them are good and some are poor. Frequently the buyer does not discover how good or how bad her machine is until she tries to operate it.

Unfortunately, many women interested in knitting machines know nothing of knitting and are confused by the claims (many of them distorted) of knitting machine distributors and importers. We receive hundreds of letters from people with queries regarding various types of machines, and many more from unhappy people who have purchased different brands of machines only to find that they will not do what was expected of them, or that they are so complicated to use, sometimes they are not worth the trouble of setting up and getting started.

To clarify the situation we will detail some of the important points in regard to the three types of machines available. These three types are as follows:

1. The single bed knitter.
2. The single bed knitter with ribbing attachment.
3. The double bed knitter.

The single bed machine is generally the easiest to operate, especially the late models having automatic yarn feeders and automatic pattern selectors.

It is easier to change colors and put in fancy stitches on a single bed knitter than on a double bed machine, in fact the problem of changing color on many double bed machines is so great that most users cannot even be bothered with doing it and consequently the majority of patterns for double bed machines are in solid color designs.

It is easier to transfer stitches on single bed machines and is also easier to cast off on the machine instead of removing the knitting automatically and finishing by hand.

Most manufacturers of modern single bed machines have eliminated cast on combs and weights from their knitters, thereby simplifying the starting of the knitting. There are nevertheless some machines still on the market that need such accessories.

(Continued on page 32)

LETTER FROM THE PUBLISHER

(Continued from page 31)

A disadvantage of the single bed machine is that it will not do ribbed stitches automatically. If ribbing is needed it either has to be knitted by hand and placed on the machine, or the knit stitches made automatically on the machine and the purl stitches latched up by hand with a latch tool.

Both methods of ribbing are slow and tedious. They are unnecessary on flat bed machines that have ribbing attachments.

With the addition of a ribbing attachment, the versatility of a flat bed machine is increased beyond measure, especially if the pattern selector on the machine can still be used with the ribber in position.

Fancy ribbed stitches made on a double bed machine are usually made by varying the spacings on the needles on each bed, but the modern hand knitter with a ribber will also automatically put certain needles into hold (or forward) position, thereby making it possible to knit many more beautiful and desirable fancy ribbed stitches.

The most misunderstood machine is the double bed knitter, and the fault usually lies in the misrepresentation on the part of salesmen or the failure of advertising literature to tell the whole truth. The same accusation can also be leveled at some organizations selling other types of machines, but not to the same degree. This fact is substantiated by the greater percentage of double bed machines traded in.

The main advantage of double bed machines is that they knit tubular knitting, that is knitting without seams. But what most newcomers to knitting machines do not understand is that they only knit tubular stockinette stitch. It is not possible to knit tubular ribbing and it is not possible to knit jacquards or fancy designs in tubular knitting on double bed machines. Some manufacturers of double bed machines have eliminated weights from their knitters, but the majority of the machines still use them. Weights have never received wide public acceptance in America and weighted machines are generally more difficult and cumbersome to use than machines without weights.

There is a place for all types of machines, as obviously what is acceptable to one person may be unsatisfactory to another. We therefore always suggest to potential knitting machine customers that they decide what type, size and style of garments they will need a knitting machine for, then they should shop carefully for a machine that will satisfy their needs. We also suggest

that they investigate the availability of service after sale, as large numbers of machines are sold with no complete instruction books, no suitable patterns, and no possibility of obtaining service for the machine should it need repair or spare parts. Two other related but misunderstood facts in regard to knitting machines are, one, the needle spacings and two, their ability to knit different types of yarns.

The number of needles on the machine does not necessarily determine the size garment it will make. The machine can have 200 needles with a 30 inch needle bed. If so it will knit up to 30 inches wide, when every needle is used. Another machine can have 200 needles on a 40 inch needle bed and it will knit up to 40 inches wide. Obviously, the closer together needles are, the more you are restricted in the size yarn you can knit, and if you intend to make bulky knits you should investigate very carefully before investing in a knitting machine, especially if you are interested in a double bed knitter.

The number and spacing of the needles on double bed machines is very important if you intend knitting tubular with yarns of four ply worsted or heavier.

It is necessary to knit such yarns on every second needle instead of every needle. If the machine only has 180 needles or less on each bed, you will only (with heavy yarns) be able to use 90 of them, or a total of 180 stitches around the tube. This means that it will not be possible to knit a tubular skirt or dress for a person larger than 36 inches in the hips.

It is true that some double bed machines are designed to allow the operator to knit up one bed and down the other thereby knitting a width of two beds. You are however still restricted to stockinette stitch and it is sometimes impossible and always difficult to prevent a line from showing where the knitting switches from one bed to the other.

We have covered the basic facts in regard to the different types of machines, but if our readers need more information they should write to us at KNITTING MAGAZINE, 1128 Crenshaw Blvd., Los Angeles, California 90019.

The next issue of KNITTING MAGAZINE will reach you during the first week in January. The cover features a handsome cape with a skirt and hat to match and the contents includes some lovely sweaters plus a two piece suit and a dressy sheath for the ladies, and several handsome sweaters and pullovers for the men and boys.

WANTED

**SALESPEOPLE AND KNITTING OWNERS TO SELL AND
TEACH KNITTING. IF YOU CAN DO EITHER
OR BOTH WRITE TO KNITTING, 1128 CRENSHAW BLVD.,
LOS ANGELES, CALIF. 90019, FOR FULL INFORMATION.**

YOU'LL JUST LOVE

KNITKING®

Push-Button

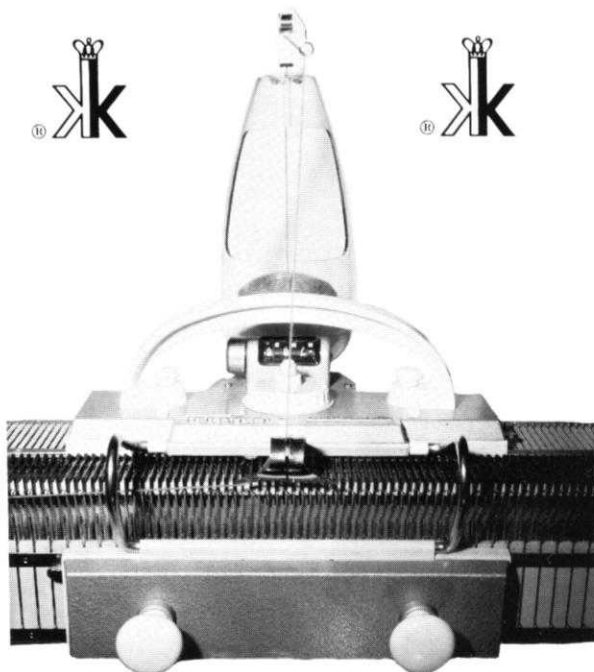
Dial-A-Stitch

*the modern handknitter
with the new Coordinated Ribber*

✂ Easiest, by far, to learn to use efficiently ✂ Does more jobs, takes less time, requires less space ✂ Needs no weights, clamps, or combs in its operation ✂ Will not drop stitches (it has spring-latch needles) ✂ Automatically creates Jacquard, Fair Isle and Argyle patterns ✂ Takes all kinds of yarns (even mohair, looped or plain; straw, ribbon, angora, synthetics, cotton, wool, etc.) ✂ Arrives complete with Home Study Course, instruction books, tools ✂ Designs and patterns for the whole family come to you monthly in Knitking's magazines ✂ Does a multitude of fancy ribs for you ✂ Floating row-counter can be pre-set and signals when knitting is complete ✂ Dial-A-Stitch gives you a choice of stitches (multicolor, if you wish) with the push of a button ✂ New Coordinated Ribber and self-adjusting yarn-feeder knits and purls at the same time, with one movement of the slide ✂ With the new fully automatic push-button **KNITKING**, you can knit sweaters, socks, coats, dresses, rugs ✂ It's so easy to knit a dress and wear it, all in a single day

Write to Knitking for more information

1128 Crenshaw Boulevard, Los Angeles 19, Calif.,



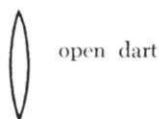
EXPLANATION OF TERMS AND DIAGRAMS USED WITH PATTERNS

Before you begin a garment, we advise you to read through the following remarks. This will make it easier for you to follow the diagrams.

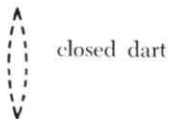
It is especially important that you measure by the gauge which precedes each pattern, because the suggested knitting yarns may not always give the desired measurements. Should you vary from the given measurements, make the necessary adjustments by altering the machine setting.

Increases and decreases in the middle of a garment are presented in the following manner:

Increasing and decreasing stitches: For example, for waist shaping:



open dart



closed dart



= One-sided increase of rows: For example, for diagonally worked darts, etc.

Certain H.P. and eyelet designs are sketched in the knitting patterns. The pattern should be read as the work comes toward you from the machine: that is, if you have purl stitches before you, it will say purl stitches in the pattern. If you have knit stitches before you, it will say knit stitches in the pattern.

On the sides of the pattern are the row numbers. Missing row numbers indicate that the rows are to be worked evenly. In eyelet design the empty needles are in working position; in H.P. design, the same needles are in hold position.

SYMBOLS

- = knit stitch
- ▣ = purl stitch
- = empty needle (still in working position)
- ⊠ = needle out of operation
- ◻ = needle in hold position
- ⊞ = stitch put on neighboring needle. Needle in *hold* position
- ⊞ = stitch put on neighboring needle — to the right
- ⊞ = stitch put on neighboring needle — to the left
- ⊞ = 3 stitches hung together

Available in many wood finishes



KNITTING DESK . . .

A knitting machine cabinet that automatically lifts your machine into the knitting position just by pulling a lever. The cabinet converts in seconds into a handsome desk suitable for any decor or any room in your house. Beautifully made in a variety of woods by craftsmen in West Germany.



Order from your local dealer or direct from **KNITKING**, 1128 Crenshaw Blvd., Los Angeles, California 90019