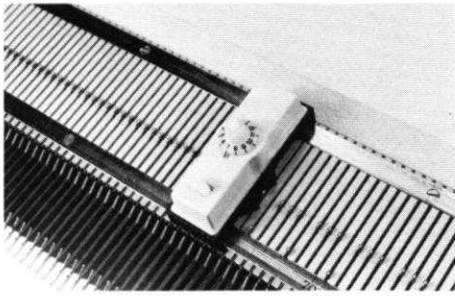


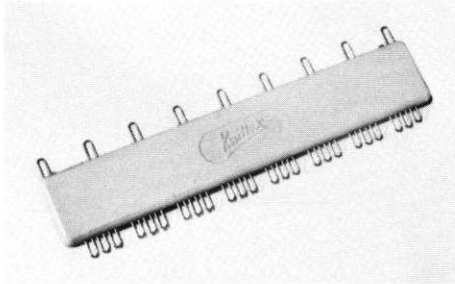
KNITTING

MAGAZINE

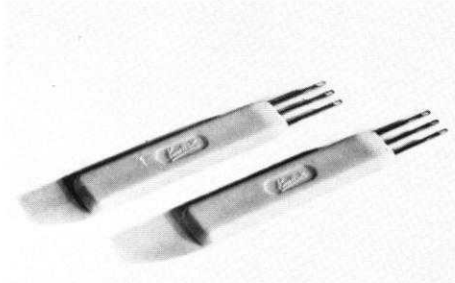




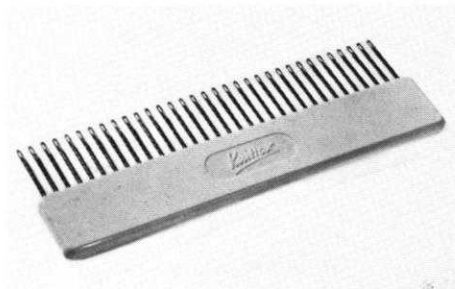
Automatic Needle Selector fits all model Knitkings



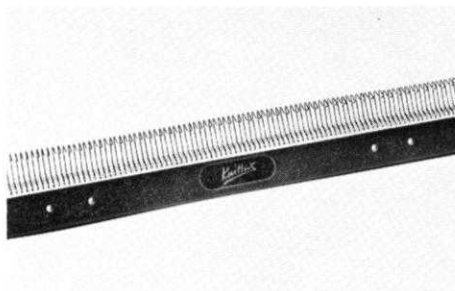
Adjustable Selector



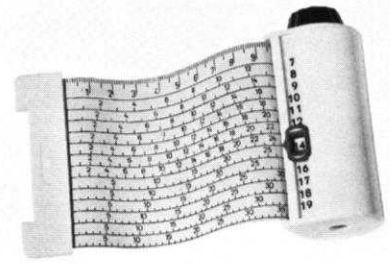
Treble Transfer Tools



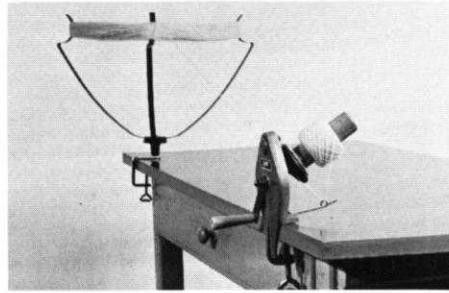
Multi-transfer Tool



Reversing Bar



Converta Tape



Yarn Winder



ACCESSORIES



The perfect tool for automatic selection of Jaquard and ski-sweater designs. Over 125 patterns available.



Jac 40

KNITKING

MAGAZINE



Letter from the Publisher

Vol. 1 No. 4

March-April 1965

INDEX

| Contents | Pattern No. | Page No. |
|------------------------------------|-------------------|----------|
| Woman's Box Jacket | DP 7252 | 16 |
| Woman's Pullover | DP 7255 | 16 |
| Man's Shirt | HP 3382 | 17 |
| Woman's Overblouse | DP 7258 | 18 |
| Woman's Blouse | DP 7253 | 18 |
| Woman's Jacket | DP 7257 | 19 |
| Woman's Jacket | DP 7254 | 20 |
| Man's Jacket Sweater | HP 3383 | 21 |
| Woman's Jacket | DP 7256 | 21 |
| Man's Jacket Sweater | HP 3381 | 23 |
| Man's Pullover | HP 3376 | 24 |
| Woman's Two Piece Dress | DK 7245 | 24 |
| Girl's Cardigan | MK 4664 | 25 |
| Boy's Pullover | KK 4681 | 26 |
| Boy's Jacket Sweater | KK 4694 | 26 |
| Woman's Jacket Sweater | DP 7182 | 27 |
| Girl's Jacket Sweater | MK 4657 | 28 |
| Boy's Jacket | KK 4702 | 28 |
| Girl's Pullover | MK 4700 | 29 |
| Woman's Sports-Pullover | DP 7260 | 30 |
| Practical Knitting Hints | | 32 |

It gives us great pleasure to see and to hear about the wonderful garments made from the patterns in KNITKING MAGAZINE. Almost everyday somebody comes into the Los Angeles center wearing a beautiful dress, suit or sweater made on a KNITKING machine and, additionally, we receive many letters from readers saying how pleased they are with the excellence of design of KNITKING garments and complimenting us on the accuracy of the printed instructions.

We do, however, still hear from people whose garments have turned out longer or shorter, or wider or narrower than the pattern calls for. The tendency, quite naturally, is to blame the pattern but our investigations always show that either thicker or thinner yarn than that recommended is used, or the operator failed to make a sample piece in order to determine that the correct number of rows and stitches per inch could be obtained.

It is essential that the sample piece be made because, until you are able to obtain the correct number of stitches to the inch and the number of rows to the inch, you will never produce the right size garment.

Sometimes a customer will say she used the yarn and the tension suggested, but still the finished product was the wrong size. Again, we say that no matter what yarn or tension we suggest, you must make a sample piece because you can get a small variation in stitch size in different colors or dye lots of the same yarn and there can be variations in the tension control of machines due to wear, etc.

Start correctly by being sure you are using the right tension, and your finished garment will always be the right size. We gave detailed instructions on how to be certain of your stitch gauge on page 32 of the January-February KNITKING MAGAZINE.

Finishing of Garments

If there is a criticism of the garments we have seen made up it is in regard to finishing. Some people do a good job of knitting the pieces and then get impatient to see the finished garment. They rush the assembly so much that seams turn out uneven and cannot be corrected by blocking. Wrinkles show here and there where stitches have been pulled too tightly together in assembling, and frequently the final procedure, the steaming of the garment, is rushed and the product looks unfinished.



OUR COVER PICTURE

DP 7252

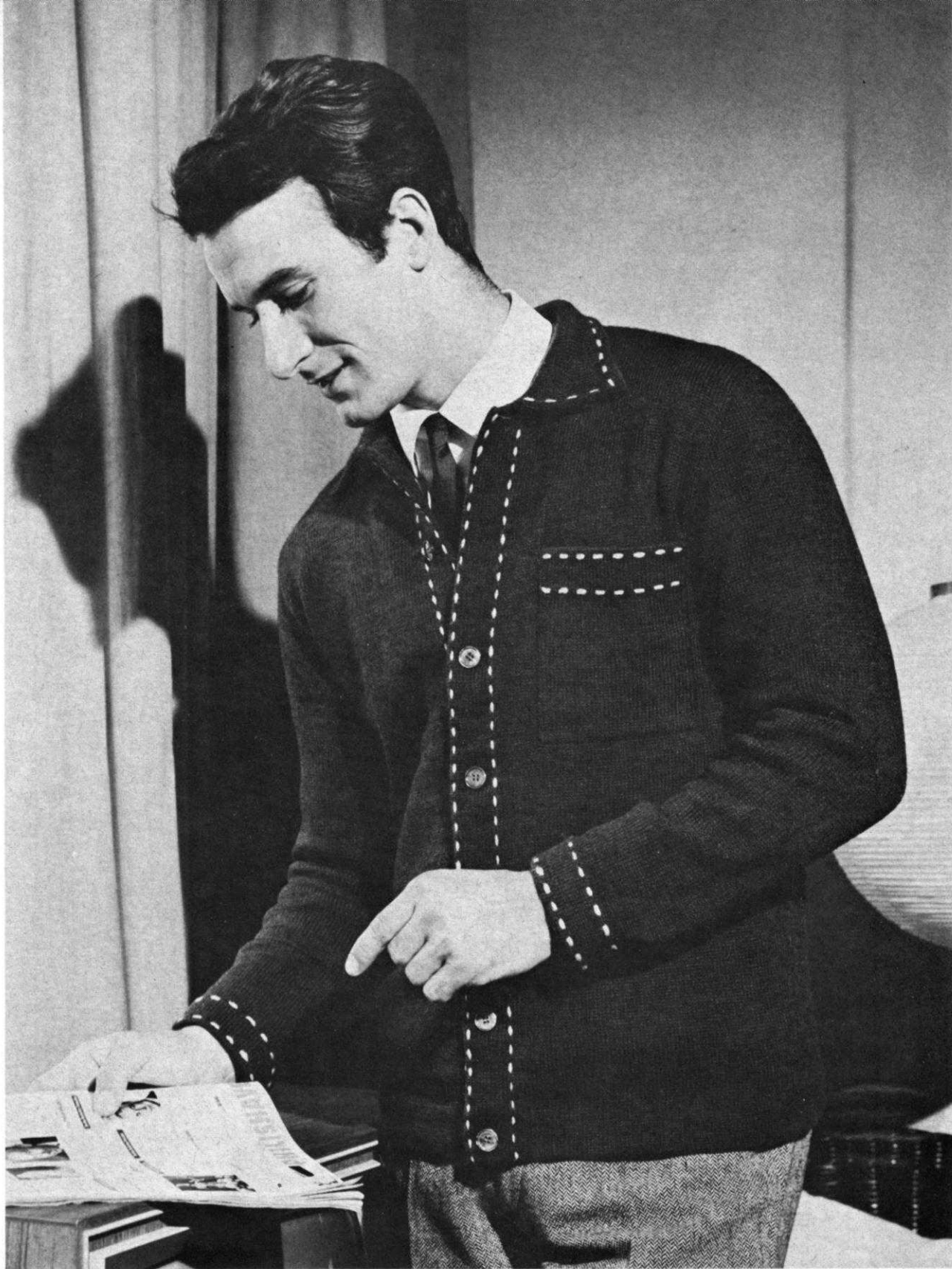
With our cover garment, a box jacket in light red, we are introducing a series of practical leisure garments. See the pages of this issue for a number of new ideas, and future issues for many more.

Publisher: Henry J. Atkin, 1128 Crenshaw Blvd., Los Angeles, Calif. 90019. Telephone: WEBster 8-2079. Published bi-monthly. Subscriptions: USA—\$6.00 annually, single copies \$1.50; Canada—\$7.00; other parts of the world—\$10.00. The entire contents of KNITKING MAGAZINE are copyright and must not be reproduced in any shape or form without the express permission, in writing, of the publisher.

Printed by: George Rice & Sons, Los Angeles, Calif.

(Continued on page 31)





←DP 7255

Our casual red pullover with a stylish vertical stripe pattern, is made on the KNITKING Automatic with coordinated ribber.

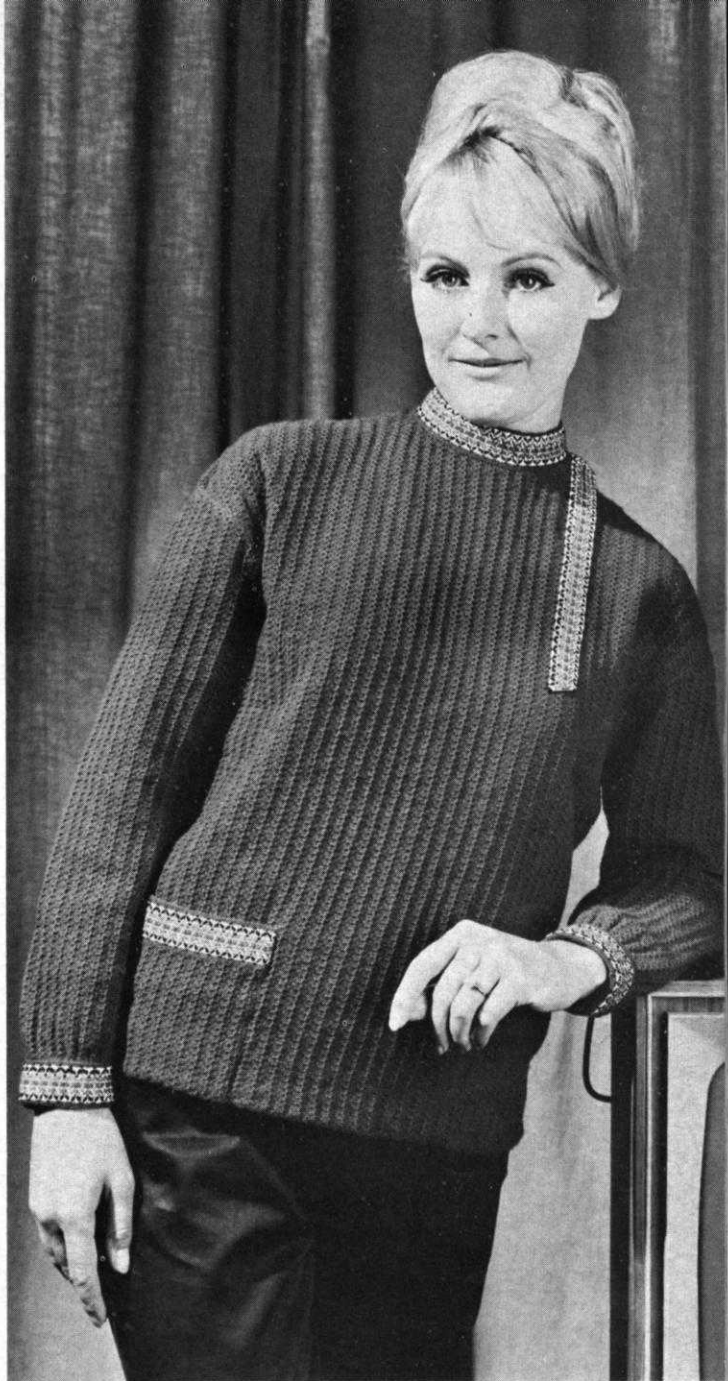
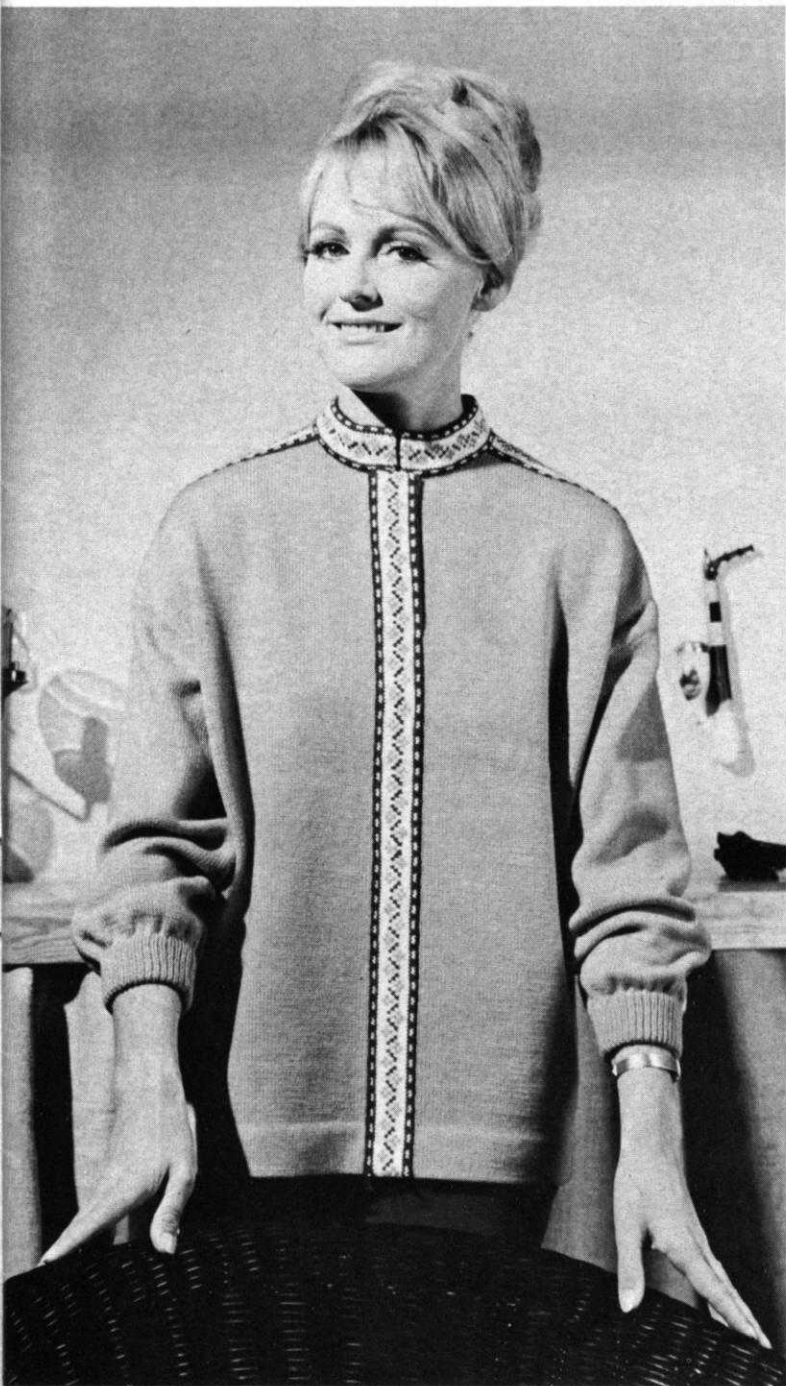
HP 3382

For a quiet evening at home, we offer this blue and green tweed casual shirt.



← DP 7258

This comfortable lilac color pullover is worked in stockinette stitch. The edging and raglan seams are accented with a stripe of Norwegian pattern stitch in rose and white.

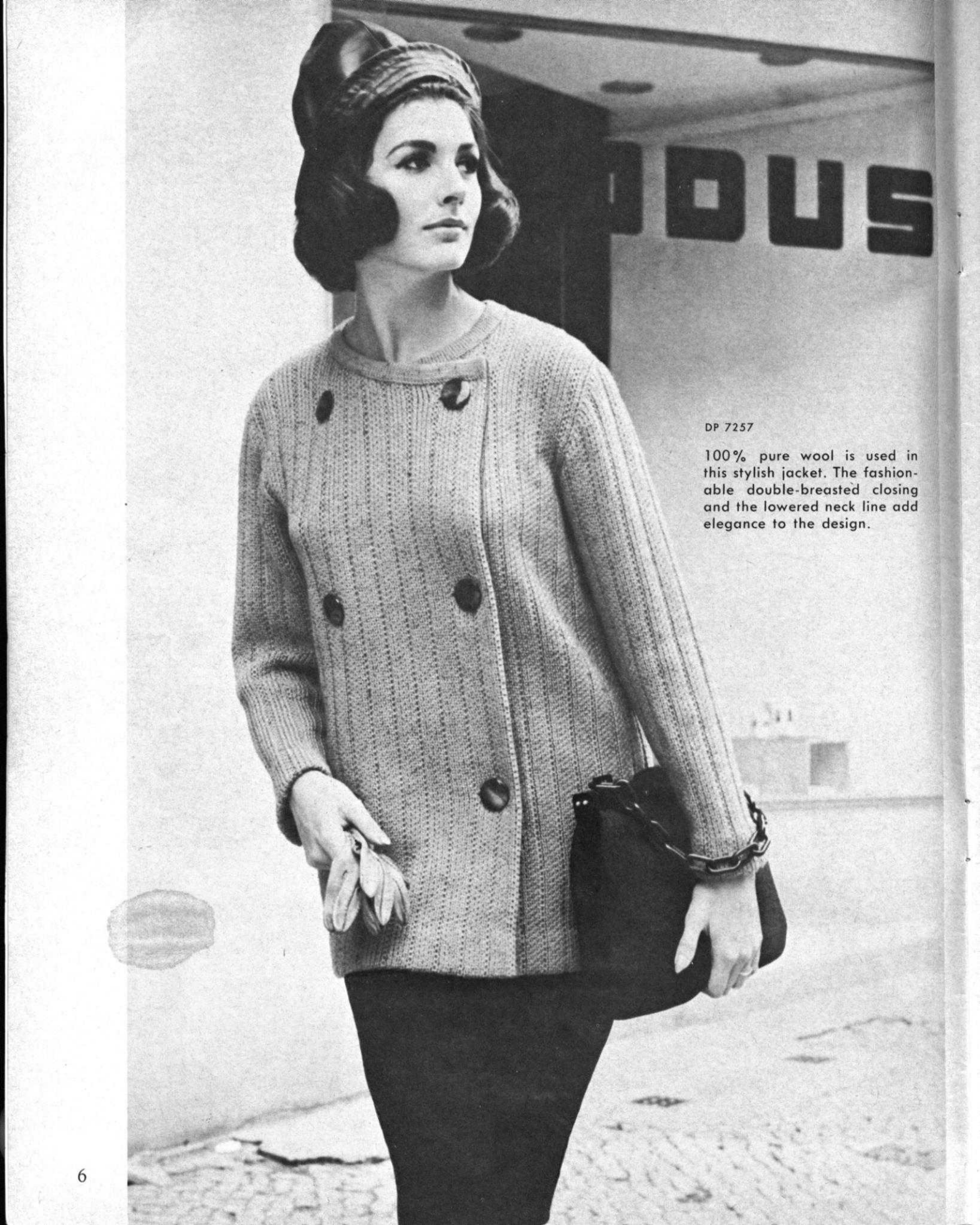


DP 7253

Our casual pullover in a ribbed hold position design is made with green yarn. It is trimmed with a green, white, and red border.

← DP 7252

Our cover garment.



DP 7257

100% pure wool is used in this stylish jacket. The fashionable double-breasted closing and the lowered neck line add elegance to the design.



DP 7254

Perfect for a sunny spring afternoon is this grey and red tweed jacket. The edges are bound in red.

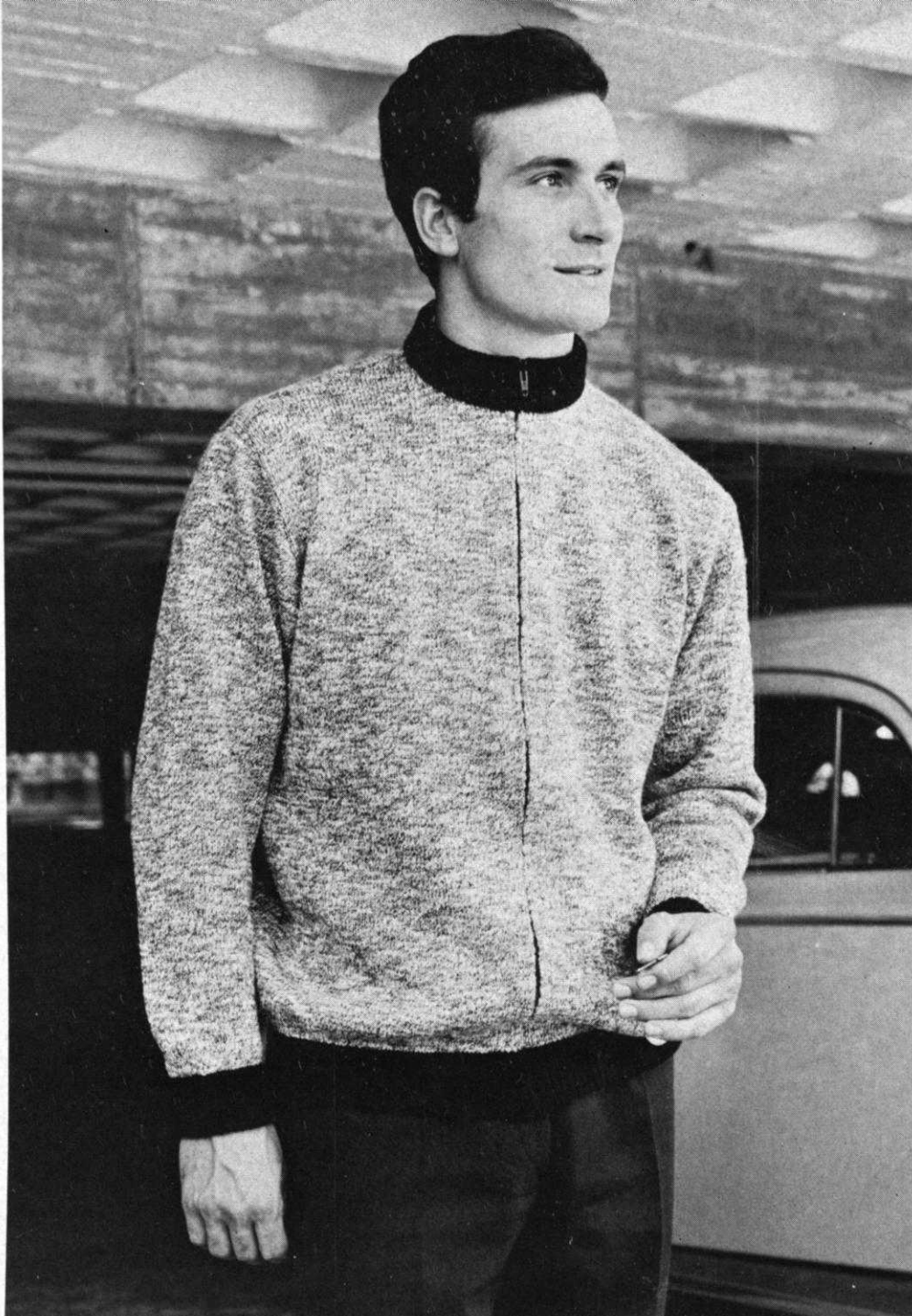
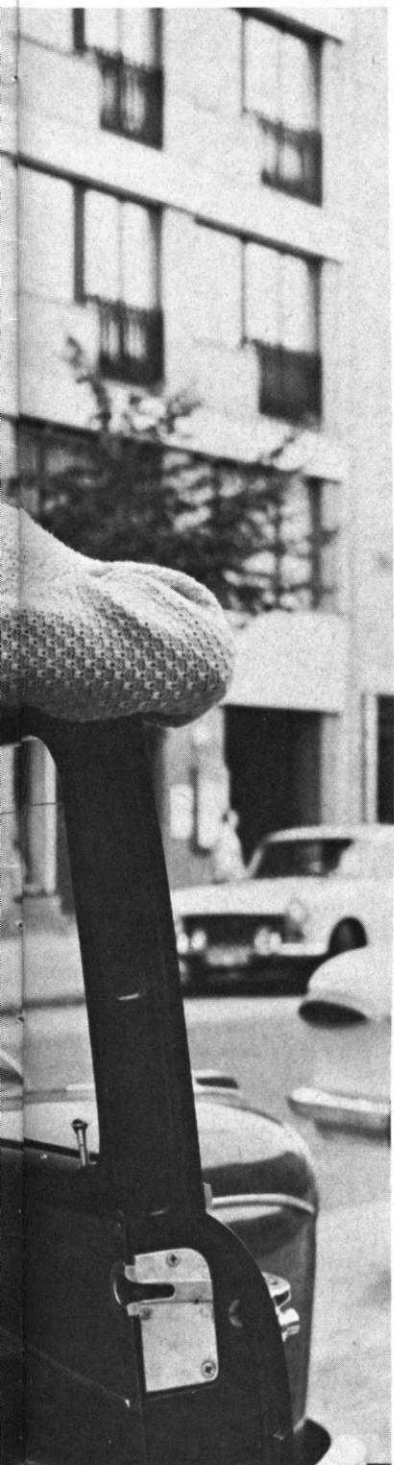
HP 3383

Smart and comfortable is this man's jacket sweater knitted in a hold position design on the purl side, using a mixture of colors.



DP 7256

This sporty jacket, for size 14/16, is made from mandarin orange yarn.



HP 3381

Fashioned after those worn by lumberjacks, this black and white tweed jacket, has double ribbing knitted in black.



HP 3376

This very smart pullover in classic form, is made from blue and charcoal tweed yarn.

FOR THE OFFICE

DK 7245

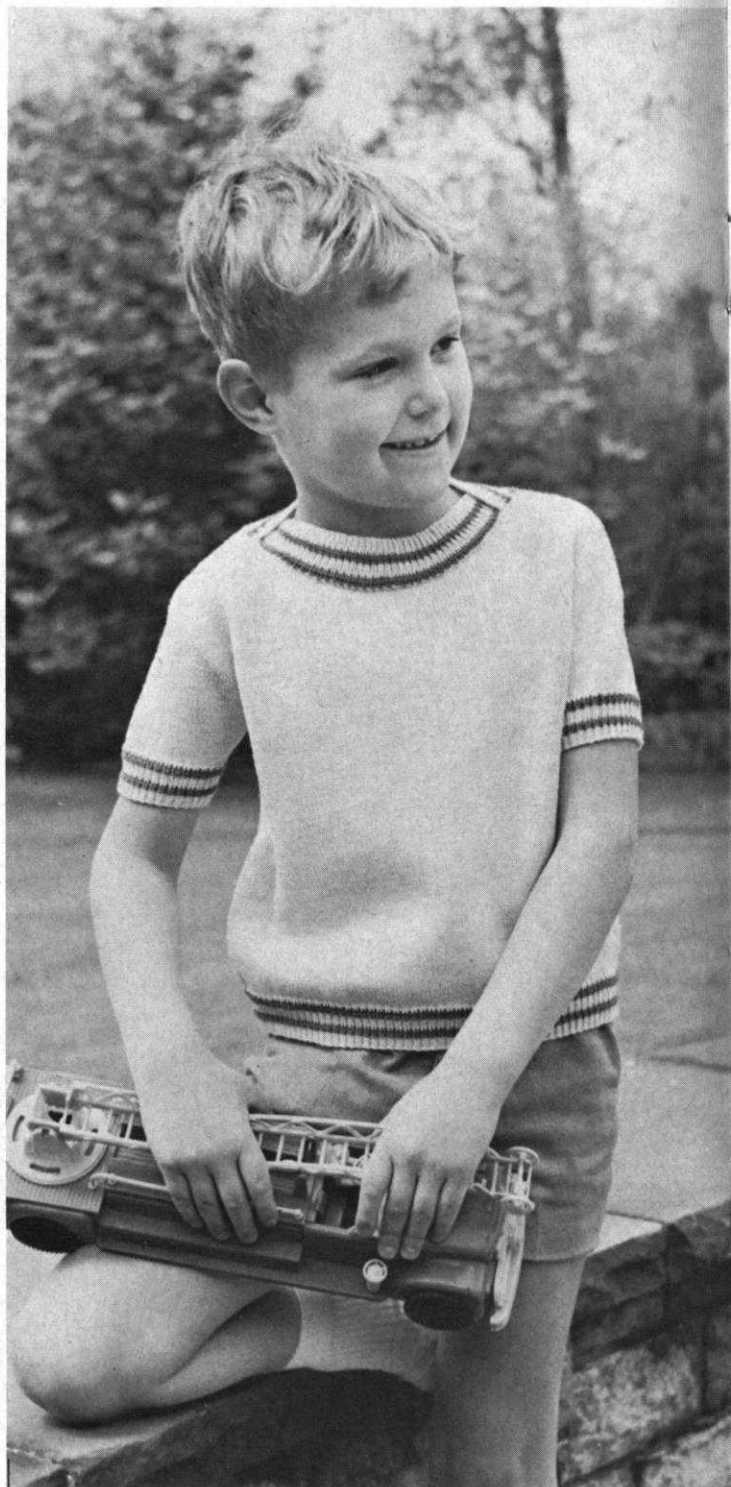
This two piece dress, is made in stockinette stitch on knit side using egg shell white yarn. The red edging at the neckline, knitted in stockinette stitch on the purl side, sets off this simple to make yet very stylish outfit.





MK 4664

Our white cardigan for little girls, is knitted in a hold position design with 12 oz. of yarn.



KK 4681

Stockinette stitch on the knit side is used for this boy's pullover. In egg shell white, the edgings are ribbing with red and green stripes.

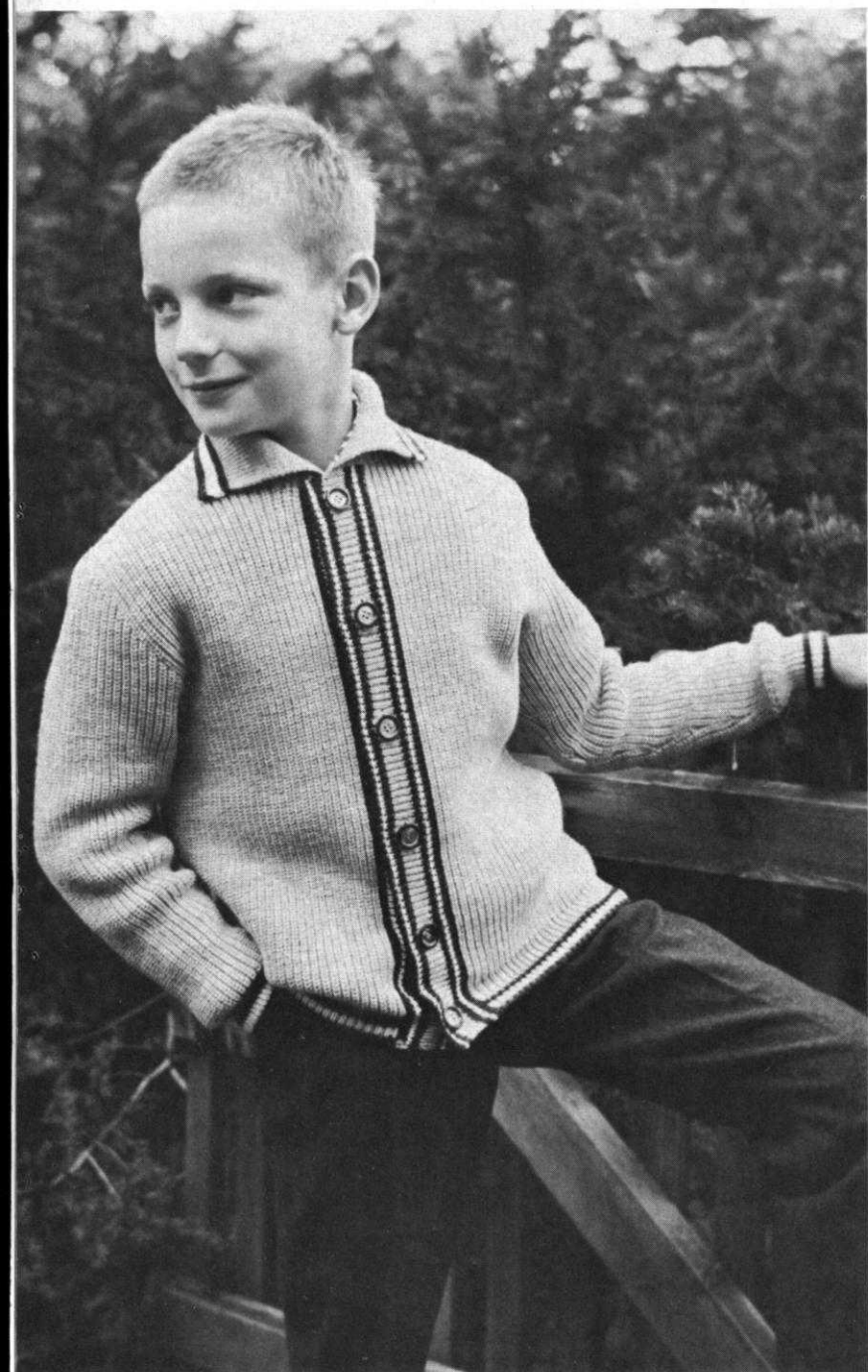
KK 4694

This warm and hard wearing jacket sweater for boys, is made from deep honey-colored yarn.



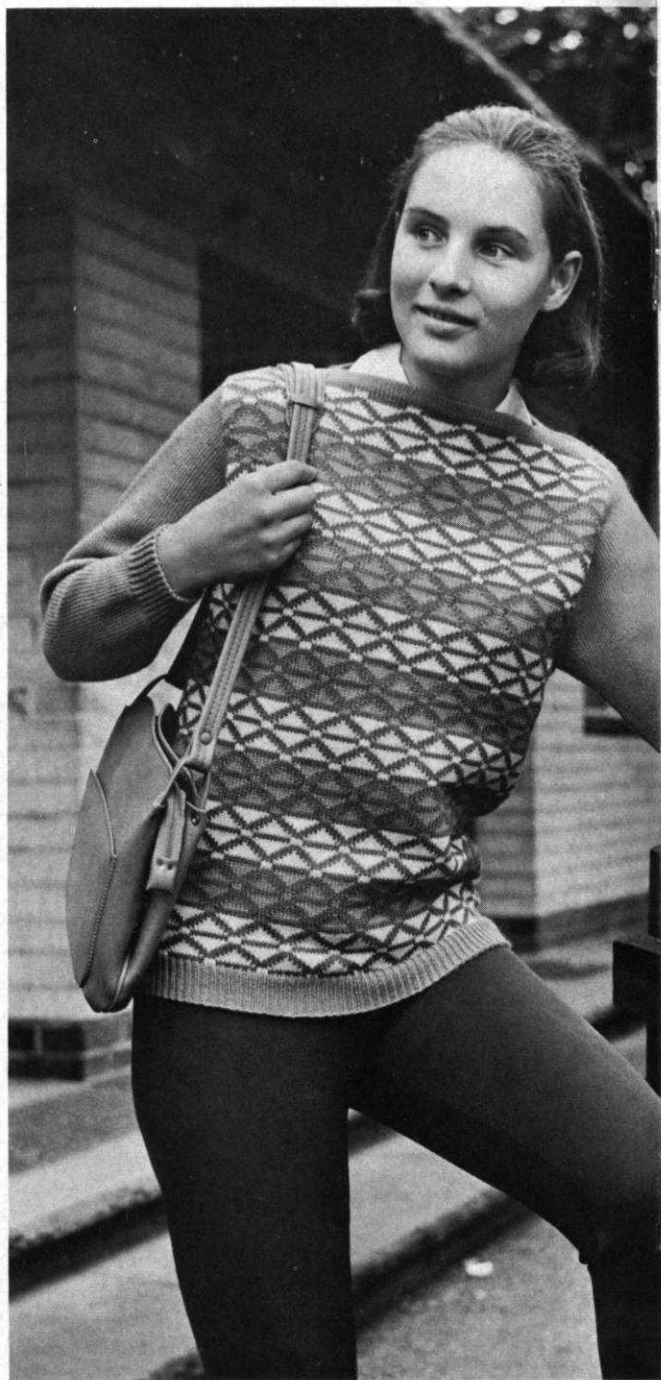
DP 7182

An embroidered design and a snap-on collar are the interesting features of our woman's jacket sweater. The girl's sweater, has the same pattern with a high neck line.



KK 4702

This boy's jacket, in rib design on the purl side, uses 17 oz. of yarn. Narrow white and wine-red stripes are worked in the edging. Directions are for the 9-10 year old size.



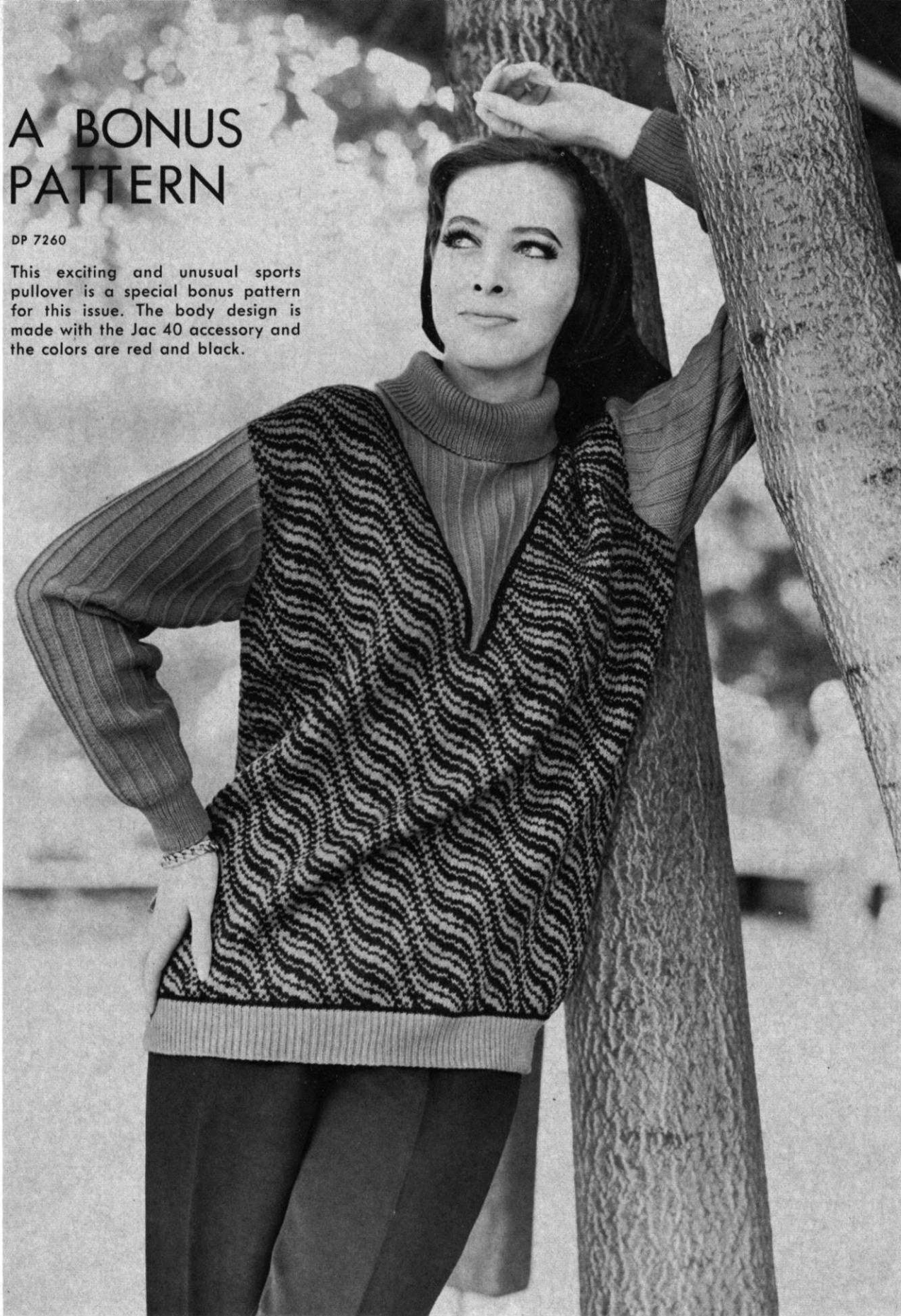
MK 4700

The front and back of the girl's pullover, are worked in Norwegian pattern stitch. The sleeves are in solid color stockinette stitch.

A BONUS PATTERN

DP 7260

This exciting and unusual sports pullover is a special bonus pattern for this issue. The body design is made with the Jac 40 accessory and the colors are red and black.



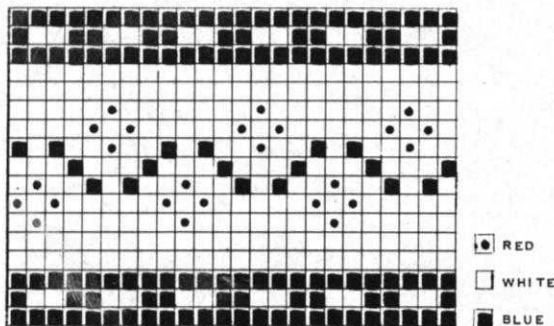
Knitting Instructions

WOMAN'S BOX JACKET, No. DP 7252



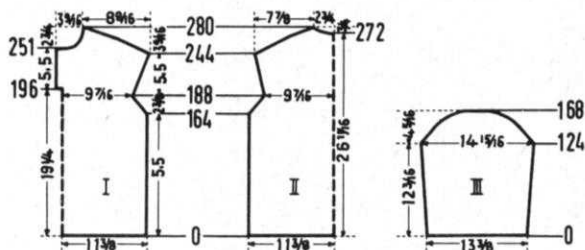
SIZE: 12/14. **MATERIAL:** 17 oz. bright red, 1½ oz. white, and 1½ oz. blue tweed. **SUGGESTION:** Spinnerin Ny-laine Fingering, or 2 ply yarn. **TENSION:** (KNITTING) 7 or 8 Stockinette, 5 or 6 Pattern stitch and sleeve stripe. **GAUGE:** 16 sts. 2", 20 rows, 2". **PATTERN:** Stockinette st. knit side. Ribbing K 1, P 1. Border: Norwegian pattern according to chart. Every row of Norwegian pattern is counted singly in the chart, although it takes several motions of cam box to complete one row.

BACK: (Figure II). Cast on 186 sts. Work in stockinette on tension 7 (8). Rows 1-164: Work even. Rows 165-188: Armhole Shaping. On both sides of every other row decrease 2 sts. 1 x and 1 st. 2 x. Repeat these 3 decreases 3 x. (154 sts.) Rows 189-244: Increase 1 st. on both sides after the 190th row and again every 6th row 8 x. (172 sts.). Rows 245-280: Shoulder Shaping. On both sides of every other row bind off 2 sts. 5 x, 3 sts. 5 x, 4 sts. 6 x, and 5 sts. 3 x. At the same time, for the neck shaping, after the 272nd row bind off the 18 center sts., and on both sides of this every other row bind off 6 sts. 1 x, 4 sts. 1 x, and 3 sts. 1 x.



FRONT: (Figure I). Cast on 186 sts. Rows 1-164: Work even. Rows 165-188: Armhole Shaping. On both sides of every other row dec. 2 sts. 1 x, and 1 st. 2 x. Repeat these 3 dec. 3 x. (154 sts.). Rows 189-196: Inc. 1 st. on both sides after the 190th row and again after the 194th row. On the left side, put 72 needles in hold position, and continue work on the right section. Rows 197-244: On the right side, increase 1 st. after the 198th row and again every 4th row 11 x. Rows 245-280: Shoulder Shaping. Every other row bind off 2 sts. 5 x, 3 sts. 5 x, 4 sts. 3 x, 5 sts. 4 x, and 6 sts. 2 x. At the same time, for the neck shaping, after the 251st row bind off 14 sts. Then every other row decrease 3 sts. 2 x, 2 sts. 2 x, 1 st. 3 x, and then every 4th row dec. 1 st. 2 x. Now turn the row counter back to 196. On the right side cast on 14 sts. for the closing strip, and work the left half.

SLEEVE: (Figure III). (Make 2). Cast on 108 sts. Rows 1-124: Inc. 1 st. on both sides after the 16th row and again every



16th row 6 x. (122 sts.). Rows 125-168: For the underarm shaping, on both sides of every other row decrease 2 sts. 1 x and 1 st. 2 x. Repeat these 3 decreases 3 x, then bind off 2 sts. 2 x, 3 sts. 4 x, 4 sts. 4 x, and the remaining 26 sts. For the cuff of sleeve, pick up the cast on sts. and hang them back on the machine so that the 6th needle and every 3rd needle after that has 2 sts. on it (83 sts.). Work 40 rows, K 1, P 1, ribbing and bind off all sts.

STRIPS: With blue, for the front strip cast on 189 sts., for the sleeve strips cast on 197 sts. (make 2). Work 17 rows in pattern and bind off all sts. For the neck strip cast on 121 sts. with blue. Work 17 rows in pattern, then work 5 rows in stockinette with blue, and 12 rows with red. Bind off all sts.

FINISHING: Join front and back at side and shoulder seams. Sew sleeve edges together and sew sleeves to sweater. Make a hem 1-9/16" wide at sweater bottom, and fold ribbing at sleeve bottoms in half toward inside and hem. Work a row of single crochet around the sides of the closing strip. Sew decorative stripes in place as pictured. Fold neck edging in half around sweater neckline and attach. Fasten with hooks and eyes.

WOMAN'S PULLOVER, No. DP 7255



SIZES: 10/12 and 14/16. **MATERIAL:** 10/12, 18 oz. light red. 14/16, 19½ oz. light red. **SUGGESTION:** Pauline Denham-Sierra; Spinnerin Fingering; Diamond-Bouton D'or Mouchete. **TENSION:** (KNITTING) 10. **GAUGE:** 14 sts. 2", 23 rows 2". **PATTERN:** Hold position on purl side with PAM according to chart; the release lever of the PAM placed at the needle heels. Edging and Collar: K 1, P 1. Ribbing.

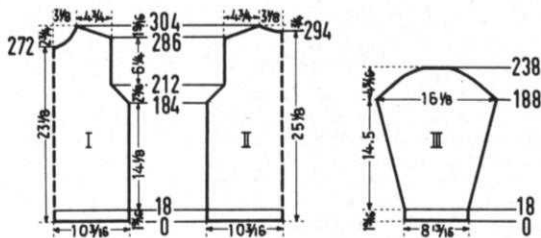
SIZE: 10/12. **BACK:** (Figure II). Cast on 143 sts. Rows 1-18: K 1, P 1, ribbing. Put the 2, 3, 4, 6, etc. sts. from the PAM onto the main Knitter, place the release lever of the PAM to the needle heels, inc. 1 st. on both sides and continue in Hold Position. Rows 19-184: Work even. Rows 185-212: Armhole Shaping. Bind off 2 sts. on both sides. Then every



other row dec. 2 sts. 1 x, and 1 st. 12 x. (113 sts.). Rows 213-286: Work even. Rows 287-304: Shoulder Shaping. On both sides of every other row bind off 3 sts. 6 x, and 4 sts. 4 x. At the same time, for the neck shaping, after the 294th row bind off the 17 center sts. and on both sides of this, every other row bind off 5 sts. 1 x, 4 sts. 1 x, 3 sts. 1 x, and 2 sts. 1 x.

FRONT: (Figure I). The front is worked the same as the back. However, for the neck shaping, after the 272nd row bind off the 15 center sts., and on both sides of this, every other row decrease 4 sts. 1 x, 3 sts. 1 x, 2 sts. 1 x, 1 st. 3 x, and then every 4th row dec. 1 st. 3 x.

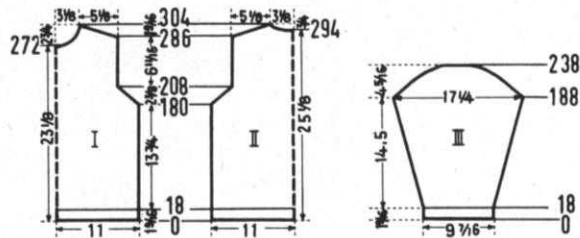
SLEEVE: (Figure III). (Make 2). Cast on 63 sts. Rows 1-18: K 1, P 1, ribbing. Now, put the 1, 2, 4, 6, 7, 8, etc. sts. from the PAM on to the main Knitter, put the release lever of the PAM at the needle heels, and continue on in pattern st. Rows 19-188: Inc. 1 st. on both sides after the 26th row and again every 8th row, 3 x, and every 6th row 22 x. (115 sts.). Rows 189-238: Underarm Shaping. Bind off 2 sts. on both sides. Then every other row bind off 1 st. 13 x, 2 sts. 4 x, 3 sts. 5 x, 4 sts. 2 x, and the remaining 23 sts.



COLLAR: Cast on 163 sts. Work 60 rows, K 1, P 1, ribbing, 20 rows with Tension 10, 20 rows, with Tension 9, and 20 rows with Tension 8. Bind off all sts.

FINISHING: Join front and back at side seams in slip st., overlapping $\frac{1}{2}$ st. from each side. Sew shoulder seams. Sew sleeve edges together and sew sleeves to sweater. For the tie belt, cut 48 strips of yarn, each 2 yards long. Braid these strips, putting 16 strips of yarn in each strand to be braided. Tie the ends securely, and let the ends hang loosely, like a tassel.

SIZE: 14/16. **BACK:** (Figure II). Cast on 155 sts. Rows 1-18: K 1, P 1, ribbing. Now the 2, 3, 4, 6, etc. sts. from the PAM hang on to the main knitter, place the release lever of the PAM at the needle heels increase 1 st. on both sides and continue in hold position. Rows 19-180: Work even. Rows 181-208: Armhole Shaping. On both sides of every other row decrease 2 sts. 1 x and 1 st. 2 x, and repeat these 3 decreases 3 x. Then dec. 2 sts. 1 x and 1 st. 1 x. (119 sts.). Rows 209-286: Work even. Rows 287-304: Shoulder Shaping. On both sides of every other row bind off 3 sts. 3 x and 4



sts. 7 x. At the same time, for the neck shaping, after the 294th row bind off the 17 center sts. and on both sides of this, every other row bind off 5 sts. 1 x, 4 sts. 1 x, 3 sts. 1 x, and 2 sts. 1 x.

FRONT: (Figure I). The front is worked the same as the back. However, for the neck shaping, after the 272nd row bind off the 15 center sts., and on both sides of this every other row dec. 4 sts. 1 x, 3 sts. 1 x, 2 sts. 1 x, 1 st. 3 x, and every 4th row decrease 1 st. 3 x.

SLEEVE: (Figure III). (Make 2). Cast on 67 sts. Rows 1-18: K 1, P 1, ribbing. Now put the 2, 4, 5, 6, etc. sts. from the PAM on to the main knitter, put the release lever of the PAM at the needle heels, and continue on in pattern st. Rows 19-188: Inc. 1 st. on both sides after the 22nd row and again every 6th row 27 x. (123 sts.). Rows 189-238: Underarm Shaping. On both sides of every other row decrease 2 sts. 1 x, and 1 st. 2 x. Repeat these 3 decreases 4 x. Then bind off 2 sts. 4 x, 3 sts. 4 x, 4 sts. 2 x, and the remaining 27 sts. Make another sleeve the same. **COLLAR AND FINISHING:** Follow directions for size 12/14.

MAN'S SHIRT, No. HP 3382



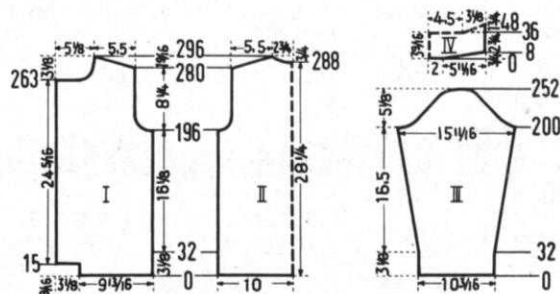
SIZE: 38/40. **MATERIAL:** 20 1/2 oz. blue-green tweed. **SUGGESTION:** Brunswick-Pomfret; Diamond-Silvetta; Spinnerin-Ambralon. **TENSION:** (KNITTING) 7 or 8. **GAUGE:** 16 sts. 2". 20 rows, 2". **PATTERN:** Stockinette st. Knit side.

BACK: (Figure II). Cast on 163 sts. Rows 1-31: Work even. For the hem, put the cast on sts. back on the machine. Row 32: Work the sts. together with Tension 9 (10). Rows 33-196: Work even. Rows 197-216: Armhole Shaping. Bind off 4 sts. on

both sides, then every other row dec. 3 sts. 1 x, 2 sts. 1 x, 1 st. 3x, and every 4th row decrease 1 st. 2 x. (135 sts.) Rows 217-280: Work even. Rows 281-296: Shoulder Shaping. On both sides of every other row bind off 5 sts. 9 x. At the same time, for the neck shaping, after the 288th row bind off the 19 center sts. and on both sides of this every other row bind off 6 sts. 1 x, 4 sts. 1 x, and 3 sts. 1 x.

FRONT: (Figure I). Cast on 80 sts. Rows 1-31: On the left side, cast on 25 sts. after the 15th row. For the hem, put the 80 cast on sts. back on the machine. Row 32: Work the sts. together with Tension 9 (10). Rows 33-196: Work even. Rows 197-216: Armhole Shaping, bind off 6 sts. Then every other row decrease 4 sts. 1 x, 3 sts. 1 x, 2 sts. 1 x, and 1 st. 2 x, and every 4th row decrease 1 st. 2 x. (86 sts.). Rows 217-263: Work even. Rows 264-296: For the neck shaping, bind off 25 sts. Then every other row decrease 3 sts. 2 x, 2 sts. 2 x, 1 st. 4 x, and every 4th row dec. 1 st. 2 x. At the same time, after the 280th row, for the shoulder shaping, every other row bind off 5 sts. 9 x. Make another front section with reverse shapings, making buttonholes after the 24, 63, 102, 141, 180, 219 and 258 rows over the 3-7 and 19-23 needles.

SLEEVE: (Figure III). Cast on 83 sts. Rows 1-31: Work even. For the hem, put the cast on sts. back on the machine. Rows



32: Work the sts. together with setting 9 (10). Rows 33-200: Increase 1 st. on both sides after the 32nd row, again every 8th row 14 x, and every 6th row 8 x. (129 sts.). Rows 201-214: Underarm Shaping. Every other row on the back side of the sleeve bind off 4 sts. 1 x, 3 sts. 2 x, 2 sts. 4 x, and on the front side of the sleeve bind off 6 sts. 1 x, 4 sts. 2 x, 3 sts. 2 x, and 2 sts. 2 x. Rows 215-246: On both sides of every other row decrease 1 st. 1 x and 2 sts. 1 x, and repeat these 2 dec. 6 x. Rows 247-252: On both sides of every other row bind off 3 sts. 1 x, 4 sts. 1 x, 5 sts. 1 x, and the remaining 15 sts. Make another sleeve with reverse shapings.

COLLAR: (Figure IV). Cast on 125 sts. Rows 1-8: On the left side, put 45 needles in hold position. Work 1 row. On the right side put 45 needles in hold position. Work 1 row. Now on both sides, bring 15 needles back into working position 3 x. Rows 9-36: Work even. Rows 37-48: On the left side, one after another, put 100 needles in hold position 1 x, 6 needles in hold position 2 x, 4 needles in hold position 2 x, and 3 needles in hold position 1 x. Rows 49-58: One after another, put back into working position: 2 needles 1 x, 3 needles 1 x, 4 needles 1 x, and 5 needles 2 x break yarn. Put all the needles in hold position, put the cam box and the yarn on the left side, and turn the row counter back to 36. Rows 37-48: On the left side, put 25 needles in working position. Work 2 rows. Now, one after another, put into hold position: 6 needles 2 x, 4 needles 2 x, and 3 needles 1 x. Rows 49-58: One after an-

other bring back into working position: 2 needles 1 x, 3 needles 1 x, 4 needles 1 x, and 5 needles 2 x. Rows 59-84: Work even over all the needles. Bind off all sts.

POCKET: Cast on 42 sts. Work 72 rows even. Bind off all sts.

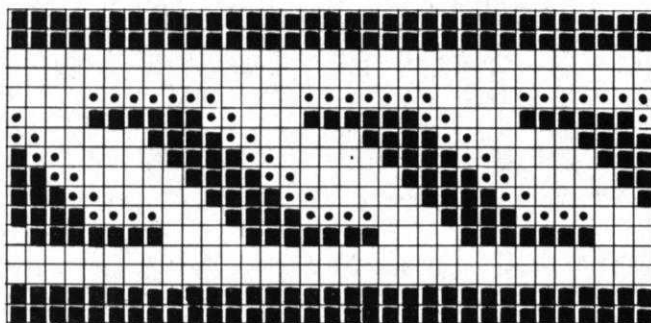
FINISHING: Join front and back at side and shoulder seams. Sew sleeve edges together and sew sleeves to sweater. Make a hem 1-9/16" wide at sweater fronts. Fold collar in half and sew side edges. Place open end of collar around sweater neckline and attach. Make a hem 1-9/16" wide at upper edge of pocket. Finish buttonholes, and sew on buttons. With doubled light grey thread, make decorative stitching according to picture, sewing on top of 2 1/2 sts. and under 2 1/2 sts., over 3 rows and under 3 rows. Sew on pockets.

WOMAN'S OVERBLOUSE, No. DP 7258



SIZE: 12/14. **MATERIAL:** 17 oz. lilac, 2 oz. rose, 1 1/2 oz. white. Spinnerin, Mona; Diamond-Elegance D'Aoust, KNITTING, Starlite Crepe. **TENSION:** (KNITTING) 8 or 9. **GAUGE:** 14 sts., 2". 20 rows, 2". **PATTERN:** Stockinette st. on knit side with Norwegian pattern st. border according to chart. Every row with Norwegian pattern st. is counted singly in the description, however, it takes several movements of Cam to complete 1 color row.

BACK: (Figure II). Cast on 162 sts. Rows 1-36: Make 20 rows stockinette st. and 16 rows Norwegian pattern st. For the hem, put the cast on sts. back on the machine. Row 37: Work the sts. together with Tension 10. Continue in stockinette st. Rows 38-156: Work even. Rows 157-276: Raglan shaping. Decrease 1 st. on both sides after the 156th row, again in every 4th row, 7 x, and every other row 45 x. To do this, put the 2nd st. on the 3rd needle and move the edge sts. over to fill the empty needle. Bind off 56 sts.

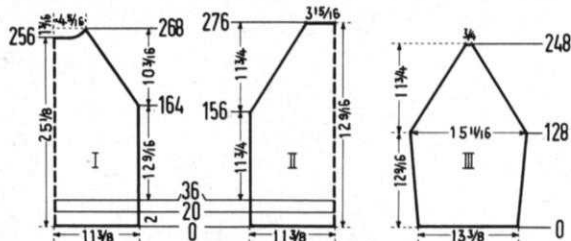


FRONT: (Figure I). Cast on 163 sts. Rows 1-36: 20 rows stockinette st. and 16 rows Norwegian pattern st., beginning with the 6th square of the chart. For the hem, put the cast on sts. back on machine. Row 37: Work the sts. together with Tension 10. Continue on with stockinette st. Rows 38-164: Work even. Rows 165-268: Raglan Shaping. Decrease 1 st. on both sides after the 164th row, again in every 4th row 3 x, and in every other row 45 x. To do this, put the 2nd st. on the 3rd needle, and move the edge st. over to fill the empty needle. At the same time, for the neck shaping, after the 256th row, bind off the 33 center sts., and on both sides of this every other row, decrease 5 sts. 1 x, 3 sts. 1 x, 2 sts. 2 x, and 1 st. 1 x. Then hang the 3 remaining sts. on both sides together.

SLEEVE: (Figure III). (Make 2). Cast on 96 sts. Rows 1-128: Increase 1 st. on both sides after the 14th row and again every 14th row 7 x. (112 sts.). Row 129-248: Raglan Shaping. Decrease 1 st. on both sides after the 128th row, again

every 4th row 7 x, and every other row 45 x. To do this, put the 2nd st. on the 3rd needle and move the edge st. over to fill the empty needle. Bind off the remaining 6 sts.

BACK SLEEVE TRIM: Cast on 101 sts. with rose. Work 16 rows Norwegian pattern st., decrease 2 sts. on the left side after the first row and again every other row 3 x, and increase 2 sts. after the 9th row and again every other row 3 x. Bind off all sts. Make another strip the same.



FRONT SLEEVE TRIM: Cast on 90 sts. with rose. Work 16 rows in Norwegian pattern st. For the slant at the bottom, on the left side decrease 2 sts. after the 1st row, and again every other row 3 x, and increase 2 sts. after the 9th row and again every other row 3 x. At the same time, for the slant at the top, on the right side increase 1 st. after the 2nd row, and then every other row increase 1 st. 2 x, and 2 sts. 4 x. Bind off all sts. For the 2nd strip, cast on 101 sts. with rose. Work 16 rows in Norwegian pattern st., decrease 2 sts. on the left side after the 1st row and again every other row 3 x, and increase 2 sts. after the 9th row and again every other row 3 x. At the same time, on the right side, decrease 2 sts. after the 2nd row and then every other row decrease 2 sts. 3 x, and 1 st. 3 x. Bind off all sts.

NECK EDGING: Cast on 145 sts. with rose. Work 16 rows in Norwegian pattern st., 2 rows stockinette st. with rose, and 14 rows stockinette st. with lilac. Bind off all sts.

WRIST BANDS: (Make 2). Cast on 62 sts. with lilac. Work 20 rows stockinette st. and 16 rows Norwegian pattern st. Bind off all sts.

FINISHING: Join front and back at side seams, easing in fullness at bustline of front section. Sew sleeve edges together, and, with decorative trim, sew sleeves to front and back of sweater. Gather the neckline so that it measures 20-3/8". Sew ends of neck edging so that the edging is circular, fold it around sweater neckline and attach. Gather sleeve edges, so that they measure 8-5/8". Fold sleeve bands around sleeve edge, with one edge extending 3/4" beyond sleeve. Fasten sleeve band with button and loop.

WOMAN'S BLOUSE, No. DP 7253

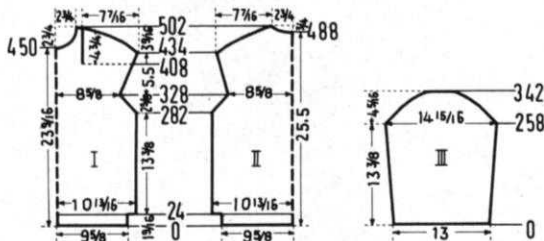


SIZE: 10/12. **MATERIAL:** 10 1/2 oz. green; 60" red, green, and white border, 1" wide. **SUGGESTION:** Fine soft 2 ply yarn. Diamond-Laine Ecosaise. **TENSION:** (KNITTING) 3 or 4. Pattern stitch. 2 or 3, Stockinette stitch. **GAUGE:** 17 sts., 2", 38 rows, 2" Pattern st.; 19 sts., 2", 30 rows, 2", Stockinette st. **PATTERN:** Hold position on purl side according to chart, with needle selector or Automatic Wheel III. Edging: Stockinette stitch on purl side.

BACK: (Figure II). Cast on 186 sts. Rows 1-24: Stockinette st. on purl side with Tension 2 (3). Continue on in hold position design with Tension 3 (4) over 186 sts. Rows 25-282: Work even. Rows 283-328: Armhole Shaping. On both sides decrease 1 st. every other row 7-8 13 x and in every 4th row 5 x. 5-6 (150 sts.) Rows 329-434: Increase 1 st. on both sides after the 3-4 1 st. on both sides after the 1-2 332nd row and again every 8th row 12 x. (176 sts.). Rows 435-502: Shoulder Shaping. On both sides of every 4th row bind off 1 st. 2 x,

2 sts. 3 x, 3 sts. 4 x, 4 sts. 5 x, and 6 sts. 4 x. At the same time, for the neck shaping, after the 488th row bind off the 18 center sts. and on both sides of this every other row bind off 5 sts. 1 x, 3 sts. 2 x, and 2 sts. 2 x.

FRONT: (Figure I). Cast on 186 sts. Rows 1-24: Stockinette st. on purl side with Tension 2 (3). Continue on in hold position design with Tension 3 (4) over 186 sts. Rows 25-282: Work even. Rows 283-328: Armhole Shaping. On both sides decrease 1 st. in every other row 13 x, and every 4th row 5 x. (150 sts.) Rows 329-408: Increase 1 st. on both sides after the 332nd row, again every 6th row 11 x, and every 4th row 2 x. Now, on the left side, put 119 needles in hold position, and work the right section first. Rows 409-434: On the right side increase 1 st. after the 410th row and again every 4th row 5 x. Rows 435-498: Shoulder Shaping. Every 4th row bind off 2 sts. 4 x, 3 sts. 4 x, 5 sts. 3 x, and 6 sts. 3 x. Now turn the row counter back to 408 and put all the needles in working position. Rows 409-435: On the left side, increase 1 st. after the 111th row and again every 4th row 5 x. Rows 436-503: Shoulder Shaping. Every other



row bind off 2 sts. 4 x, 3 sts. 4 x, 4 sts. 3 x, 5 sts. 3 x, and 6 sts. 4 x. At the same time, for the neck shaping, after the 450th row, bind off the 25-36 sts., counting from the right edge, and on both sides of this, every 4th row decrease 4 sts. 1 x, 3 sts. 2 x, 2 sts. 2 x, 1 st. 2 x, and then every 6th row decrease 1 st. 2 x. Then bind off the 6 remaining sts. on the right side.

SLEEVE: (Figure III). (Make 2). Cast on 112 sts. Work in hold position design with Tension 3 (4). Rows 1-258: Increase 1 st. on both sides after the 26th row and again every 26th row 8 x. (130 sts.) Rows 259-342: Underarm Shaping. Decrease 1 st. on both sides of every other row 13 x, then every 4th row bind off 1 st. 5 x, 2 sts. 2 x, 3 sts. 2 x, 4 sts. 2 x, 5 sts. 3 x, and the remaining 28 sts.

POCKET: Cast on 48 sts. Row 1-90: Hold position design with Tension 3 (4). Rows 91-126: Stockinette st. on purl side with Tension 2 (3). Bind off all sts.

NECK BAND: Cast on 141 sts. Work 36 rows stockinette st. on purl side with Tension 2 (3). Bind off all sts.

SLEEVE BAND: Cast on 87 sts. (make 2). Work 36 rows stockinette st. on purl side with Tension 2 (3). Bind off all sts.

FINISHING: Join front and back at side and shoulder seams. Sew sleeve edges together and sew sleeves to sweater. Gather the bottom edge of the sleeve until it measures 8-5/8". Fold sleeve band around sleeve bottom so that at one end the band extends 1-3/16" beyond the sleeve. Make a hem 1-9/16" wide at bottom of sweater. Fold the top edging of the pocket in half toward the wrong side and hem. Sew on pocket. Sew zipper in opening. Fold neck edging around neckline and attach, overlapping 1-3/16". Sew button and loop to neck and collar bands. Sew on border trimming as pictured.

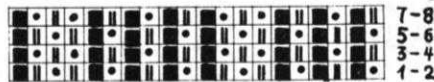
PLEASE NOTE THAT WE DO NOT SEND TOOLS AND YARNS OUT ON A C.O.D. BASIS. YOU MUST SEND PAYMENT INCLUDING MAILING COSTS WITH EACH ORDER.

WOMAN'S JACKET, No. DP 7257



SIZE: 12/14. (Purl side is right side).
MATERIAL: 40 1/2 oz. blue. **SUGGESTION:** Brunswick-Fairhaven; Spinnerin-Ambralon, Prelude. **TENSION:** (KNITTING) 10. **GAUGE:** 20 sts., 2", 32 rows, 2" Pattern st.; 20 sts., 2" 20 rows, 2", Edging. **PATTERN:** Hold position on Knitter, with PAM, according to chart. Set up design — knit two rows and reverse the needles on the Knitter. KNITTING owners may use NEEDLE SHIFTER.
EDGING: 7 sts. of K 1, P 1, followed by 3 P. sts.

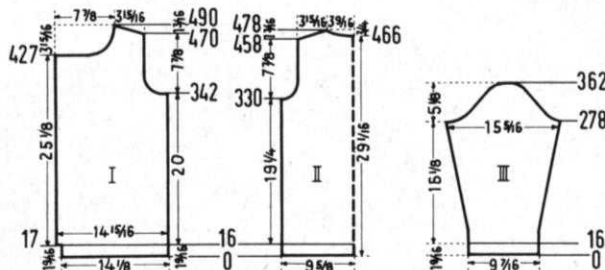
BACK: (Figure II). Cast on 195 sts., at first cast on over 6 needles K 1, P 1, and from then on alternate 3 needles—purl and 7 needles, K 1, P 1. Rows 1-16: Work even. Continue in Hold Position. Rows 17-330: Work even. Rows 331-362:



Armhole Shaping. Bind off 4 sts. on both sides, then every other row dec. 3 sts. 1 x, 2 sts. 4 x, 1 st. 4 x, and every 4th row decrease 1 st. 3 x. (151 sts.) Rows 363-458: Work even. Rows 459-478: Shoulder Shaping. On both sides of every other row bind off 3 sts. 4 x, and 4 sts. 7 x. At the same time, for the neck shaping, after the 466th row bind off the 21 center sts., and on both sides of this every other row bind off 8 sts. 1 x, 6 sts. 1 x, 4 sts. 2 x, and 3 sts. 1 x.

FRONT: (Figure I). Cast on 143 sts.: At first cast on over 4 needles, K 1, P 1, and from then on alternate 3 needles purl and 7 needles K 1, P 1. Rows 1-16: Work even. Continue on in hold position. Rows 17-342: On the left side cast on 8 sts. after the 17th row. Then work even. Rows 343-374: For the armhole shaping, bind off 8 sts. Then every other row decrease 4 sts. 1 x, 3 sts. 3 x, 2 sts. 3 x, 1 st. 2 x, and every 4th row dec. 1 st. 3 x. (119 sts.) Rows 375-427: Work even. Rows 428-490: Neck shaping, bind off 40 sts. Then every other row decrease 6 sts. 1 x, 4 sts. 1 x, 3 sts. 3 x, 2 sts. 5 x, 1 st. 5 x, and every 4th row decrease 1 st. 3 x, and every 6th row decrease 1 st. 2 x. At the same time, after the 470th row for the shoulder shaping, every other row bind off 3 sts. 4 x, and 4 sts. 7 x. Make another front section with reverse shaping, making buttonholes after the 141st, 277th, and 413th row over the 14-24 and 74-84 needles.

SLEEVE: (Figure III). Cast on 95 sts.: At first cast on over 6 needles K 1, P 1, and from then on alternate 3 purl sts. with 7 needles K 1, P 1. Rows 1-16: Work even. Continue on in hold position. Rows 17-278: Increase 1 st. on both sides after the 42nd row and again every 8th row 25 x, and every 6th row 5 x. (157 sts.) Rows 279-296: Underarm Shaping. Every other row on the back side of the sleeve bind off 4 sts. 2 x, 3 sts. 3 x, 2 sts. 3 x, and 1 st. 1 x, and on the front side bind off 7 sts. 1 x, 5 sts. 1 x, 4 sts. 1 x, 3 sts. 3 x, and 2 sts. 3 x. Rows 297-354: On both sides of every other row decrease 1 st. 1 x, 2 sts. 1 x, 1 st. 1 x, 2 sts. 1 x, and 1 st. 25 x. Rows 355-362: On both sides of every other row bind off 2 sts. 1 x, 3 sts. 2 x, 4 sts. 1 x, and the remaining 16 sts. Make another sleeve with reverse shapings.



NECK EDGING: Cast on 197 sts. Work 18 rows stockinette st. and bind off all sts.

FINISHING: Join front and back at side and shoulder seams, easing in fullness at bustline of front section. Sew sleeve edges together and sew sleeves to sweater. Make a hem 1-9/16" wide at sweater and sleeve bottoms. Make a hem 4 sts. wide at front edges of sweater. Fold neck edging around sweater neckline and attach. Finish buttonholes and sew on buttons.

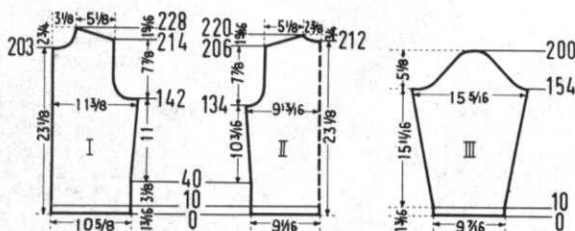
WOMAN'S JACKET, No. DP 7254



SIZES: 12/14 and 18/20. **MATERIAL:** 18 oz. grey and red tweed, 2 oz. red. **SUGGESTION:** Spinnerin-Mona; KNITKING Starlite Crepe; Diamond-Silvetta. **TENSION:** (KNITKING) 9 or 10. **GAUGE:** 13 sts., 2"; 18 rows, 2". **PATTERN:** Stockinette St. on knit side; **SIZE:** 12/14.

BACK: (Figure II). Cast on 120 sts. with red. Rows 1-10: Work even. Continue on with tweed. Rows 11-134: Increase 1 st. on both sides after the 40th row and again every 18th row 4 x. (130 sts.) Rows 135-154:

Armhole Shaping. Bind off 4 sts. on both sides. Then every other row decrease 3 sts. 1 x, 2 sts. 2 x, 1 st. 2 x, and then every 4th row decrease 1 st. 2 x. (100 sts.) Rows 155-206:



Work even. Rows 207-220: Shoulder Shaping. On both sides of every other row bind off 4 sts. 6 x, and 5 sts. 2 x. At the same time, for the neck shaping, after the 212th row bind off the 14 center sts., and on both sides of this every other row bind off 4 sts. 1 x, 3 sts. 1 x, and 2 sts. 1 x.

FRONT: (Figure I). Cast on 71 sts. with red. Row 1-10: Work even. Continue on with tweed. Rows 11-142: Make buttonholes after the 13, 43, 73, 103, and 133 rows over the 6-10 needles. At the same time, increase 1 st. on the right side after the 40th row and again every 18th row 4 x. (76 sts.) Rows 143-162: Armhole Shaping. Bind off 6 sts. Then in every other row decrease 4 sts. 1 x, 3 sts. 1 x, 2 sts. 2 x, 1 st. 3 x, and then decrease 1 st. on the 4th row 1 x. (55 sts.) Rows 163-203: Work even, making buttonholes after the 163 and 193 rows. Rows 204-228: For the neck shaping, bind off 6 sts. Then every other row dec. 4 sts. 1 x, 3 sts. 1 x, 2 sts. 2 x, 1 st. 2 x, and every 4th row decrease 1 st. 2 x. At the same time, after the 214th row, for the shoulder shaping on every other row bind off 4 sts. 6 x and 5 sts. 2 x. Make another front section with reverse shapings, minus buttonholes.

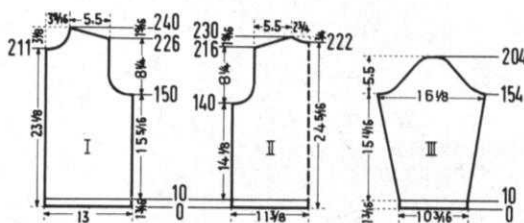
SLEEVE: (Figure III). Cast on 62 sts. with red. Rows 1-10: Work even. Continue on with tweed. Rows 11-154: Increase 1 st. on both sides after the 18th row and again every 8th row 8 x and every 6th row 11 x. (102 sts.) Rows 155-166: For the underarm shaping, on every other row on the back side of the sleeve bind off 4 sts. 1 x, 3 sts. 2 x, 2 sts. 2 x, 1 st. 1 x, and on the front side bind off 6 sts. 1 x, 4 sts. 2 x, 3 sts. 1 x, and 2 sts. 2 x. Rows 167-194: On both sides of every other row dec. 1 st. 1 x and 2 sts. 1 x. Repeat these 2 decreases 6 x. Rows 195-200: On both sides of every other row bind off 2 sts. 1 x, 3 sts. 2 x, and the remaining 8 sts. Make another sleeve with reverse shapings.

FRONT EDGING: (Make 2). Cast on 133 sts. with red. Work 10 rows stockinette st. Bind off all sts.

NECK EDGING: Cast on 97 sts. with red. Work 10 rows stockinette st. Bind off all sts.

FINISHING: Join front and back at side and shoulder seams, easing in fullness at bustline of front section. Sew sleeve edges together, and sew sleeves to sweater. Fold sweater and sleeve bottoms in half toward inside and hem. Bind the front edges and neckline with the strips of edging so that 9/16" of the front and neckline are bound. Finish buttonholes and sew on buttons.

SIZE: 18/20. **BACK:** (Figure II). Cast on 151 sts. with red. Rows 1-10: Work even. Continue on with tweed. Rows 11-140: Work even. Rows 141-166: Armhole Shaping. Bind off 4 sts. on both sides. Then in every other row dec. 3 sts. 2 x, 2 sts. 3 x, 1 st. 3 x, and every 4th row dec. 1 st. 2 x. (109 sts.) Rows 167-216: Work even. Rows 217-230: Shoulder Shaping. On both sides of every other row bind off 4 sts. 4 x, and 5 sts. 4 x. At the same time, for the neck shaping, after the 222nd row bind off the 17 center sts., and on both sides of this on every other row bind off 5 sts. 1 x, 3 sts. 1 x, and 2 sts. 1 x.



FRONT: (Figure I). Cast on 86 sts. with red. Rows 1-10: Work even. Continue on with tweed. Rows 11-150: Work even. Make buttonholes after the 14, 45, 76, 107, and 138 rows over the 6-10 needles, counting from left edge. Rows 151-176: Armhole Shaping. Bind off 6 sts. Then every other row decrease 4 sts. 1 x, 3 sts. 2 x, 2 sts. 3 x, 1 st. 2 x, and every 4th row dec. 1 st. 2 x. At the same time, make a buttonhole after the 169th row. (60 sts.) Rows 177-211: Work even, making a buttonhole after the 200th row. Rows 212-240: For the neck shaping, bind off 6 sts. Then every other row decrease 4 sts. 1 x, 3 sts. 2 x, 2 sts. 2 x, 1 st. 2 x, and every 4th row dec 1 st. 2 x. At the same time, after the 226th row, for the shoulder shaping, on every other row bind off 4 sts. 4 x, and 5 sts. 4 x. Make another front section with reverse shapings, minus buttonholes.

SLEEVE: Figure III). Cast on 67 sts. with red. Rows 1-10: Work even. Continue on with tweed. Rows 11-154: Increase 1 st. on both sides after the 18th row and again in every 8th row 8 x and in every 6th row 11 x. (107 sts.) Rows 155-166: Underarm Shaping. On every other row on back side of the sleeve, bind off 4 sts. 1 x, 3 sts. 2 x, 2 sts. 2 x, 1 st. 1 x, and on the front side bind off 6 sts. 1 x, 4 sts. 2 x, 3 sts. 1 x, and 2 sts. 2 x. Rows 167-198: On both sides of every other row decrease 1 st. 1 x, and 2 sts. 1 x. Repeat these two decreases 7 x. Rows 199-204: On both sides of every other row bind off 2 sts. 1 x, 3 sts. 2 x, and the remaining 7 sts. Make another sleeve with reverse shapings.

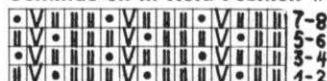
FRONT EDGING: (Make 2). Cast on 141 sts. with red. Work 10 rows stockinette st. Bind off all sts. **NECK EDGING:** Cast on 110 sts. with red. Work 10 rows stockinette st. Bind off all sts. **FINISHING:** Follow directions for size 14/16.

IF YOU ARE NOT USING THE
SUBSCRIPTION CARD IN THIS ISSUE . . .
PLEASE PASS IT ON TO A KNITKING FRIEND.

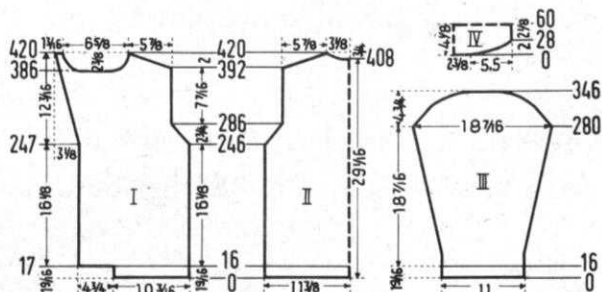
MAN'S JACKET SWEATER, No. HP 3383



SIZE: 42/44. **MATERIAL:** 34 oz. grey-yellow-white tweed. **SUGGESTION:** Light weight Sports yarn, or Fingering. **TENSION:** (KNITTING) 7 or 8 Pattern st. 6 or 7 Stockinette st. on purl side. **GAUGE:** 17 sts., 2", 28 rows, 2", Pattern st.; 17 sts., 2", 20 rows, 2", Stockinette st. on purl side. The Non-working needles are counted in the gauge and the directions. **PATTERN:** Hold Position on purl side according to chart. Edging: Stockinette st. on purl side.

BACK: (Figure II). Cast on 197 sts., Put the 4th and then every 5th needle out of operation. Rows 1-16: Stockinette st. on purl side with tension 6 (7). Continue on in Hold Position with Tension 7 (8). Rows 17-246:  Work even. Rows 247-286: 7-8 Underarm Shaping. Decrease 1 st. on both sides of every other row 20 x. (157 sts.) Rows 287-392: Work even. Rows 393-420: Shoulder Shaping. On both sides of every other row bind off 3 sts. 9 x and 4 sts. 6 x. At the same time, for the neck shaping, after the 408th row bind off the 17 center sts., and on both sides of this, every other row bind off 6 sts. 1 x, 5 sts. 1 x, 3 sts. 2 x, and 2 sts. 1 x.

FRONT: (Figure I). Cast on 88 sts. Put the 4th and then every 5th needle out of operation. Rows 1-16: Stockinette st. on purl side with Tension 6 (7). Continue on with Hold Position and Tension 7 (8). Rows 17-246: On the left side, cast on 41 sts. after the 17th row. Make buttonholes after the



27, 98, 169, and 240 rows over the 5-11 and 29-35 needles, counting from the left edge. Rows 247-286: Armhole Shaping. Decrease 1 st. in every other row 20 x. At the same time, increase 1 st. on the left side after the 247th row and again every 6th row 6 x. Rows 287-386: Increase 1 st. on the left side after the 289th row and again in every 6th row 15 x. Rows 387-420: Neck Shaping. Counting from the right edge, bind off the 69-109 sts., and on both sides of this, every other row decrease 4 sts. 1 x, 3 sts. 1 x, 2 sts. 2 x, 1 st. 3 x, and then every 4th row decrease 1 st. 3 x. At the same time, increase 1 st. on the left side after the 387th row and again every 8th row 3 x, and on the right side after the 392nd row for the shoulder shaping, in every other row bind off 3 sts. 9 x, 4 sts. 6 x, and the remaining 10 sts. Make another front section with reverse shapings, minus buttonholes.

SLEEVE: (Figure III). (Make 2). Cast on 94 sts. Put every 5th needle out of operation. Rows 1-16: Stockinette st. on purl side with Tension 6 (7). Continue on in hold position with Tension 7 (8). Rows 17-280: Increase 1 st. on both sides after the 40th row and again every 8th row 20 x and then every 6th row 12 x. (160 sts.) Rows 281-346: Underarm Shaping. On both sides of every other row bind off 1 st. 20 x, 2 sts. 5 x, 3 sts. 4 x, 5 sts. 2 x, 6 sts. 2 x, and the remaining 32 sts.

COLLAR: (Figure IV). Cast on 137 sts. Put the 4th and then every 5th needle out of operation. Continue on in hold position with Tension 7 (8). Rows 1-28: On the left side,

put 48 needles in hold position. Work 1 row. On the right side put 48 needles in hold position. Work 1 Row. Now on both sides, one after another, put 7 needles in working position 1 x, 6 needles 1 x, 5 needles 2 x, 4 needles 2 x, 3 needles 3 x, and 2 needles 4 x. Rows 29-92: Work even. Rows 93-118: On both sides, one after another, put 2 needles in hold position 4 x, 3 needles 3 x, 4 needles 2 x, 5 needles 2 x, 6 needles 1 x, and 7 needles 1 x. Rows 119-120: On the left side, put all the needles in working position. Work 1 row. On the right side put all the needles in working position. Work 1 row. Then bind off all sts.

POCKET: Cast on 47 sts. Put the 4th and then every 5th needle out of operation. Rows 1-80: Work in hold position with Tension 7 (8). Rows 81-88: Stockinette st. on purl side with Tension 6 (7). Bind off all sts.

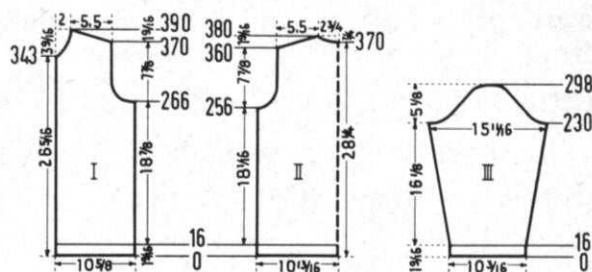
FINISHING: Join front and back at side and shoulder seams. Sew sleeve edges together, and sew sleeves to sweater. Make a hem 1-9/16" wide at sweater and sleeve bottoms. Make a hem 2-3/8" wide at sweater fronts. Fold collar in half and sew sides together. Place open ends of collar around sweater neckline and attach. Make a hem in the upper edge of the pocket, and sew pocket to sweater. Finish buttonholes and sew on buttons.

WOMAN'S JACKET, No. DP 7256



SIZE: 14/16. **MATERIAL:** 27 1/2 oz. Mandarin orange. **TENSION:** KNITTING). 8 or 9. **SUGGESTION:** Diamond-Silvetta. KNITTING Starlite Crepe, Spinnerin-Mona or Shetland wool. **GAUGE:** 13 sts. 2", 26 rows 2", Pattern St.; 13 sts. 2", 19 rows 2". Stockinette st. on knit side. **PATTERN:** Hold position on purl side. With 4, 8, 12, etc. needles in hold position, work 2 rows. 2) Put the gate cam release lever at the needle heels. Work one row. 3) Put the needles in hold position into working position. Put the release lever to the needle heads. Work 1 row. 4) Put the 2, 6, 10, etc. needles in hold position and repeat steps 1-3. Keep repeating steps 1-4. With needle selector or Automatic Wheel III. Edging: Stockinette st. on knit side. See page 32.

BACK: (Figure II). Cast on 143 sts. Rows 1-16: Stockinette st. Continue on in hold position design. Rows 17-256: Work even. Rows 257-280: Armhole Shaping. Bind off 4 sts. on both sides. Then every other row dec. 3 sts. 1 x, 2 sts. 2 x, 1 st. 4 x, and then dec. 1 st. every 4th row 2 x. (109 sts.) Rows 281-360: Work even. Rows 361-380: Shoulder Shaping. On both sides of every other row bind off 3 sts. 8 x, and 4 sts. 3 x. At the same time, for the neck shaping, after the



370th row bind off the 13 center sts., and on both sides of this every other row bind off 5 sts. 1 x, 3 sts. 1 x, and 2 sts. 2 x.

FRONT: (Figure I). Cast on 71 sts. Rows 1-16: Stockinette st. on knit side. Continue in hold position design. Rows 17-266: Work even. Rows 267-290: Armhole Shaping. Bind off 5 sts. Then every other row dec. 4 sts. 1 x, 3 sts. 1 x, 2 sts. 2 x, 1 st. 3 x, and then every 4th row dec. 1 st. 2 x. (50 sts.) Rows 291-343: Work even. Rows 344-390: Neck Shaping. Bind off 3 sts. Then in every other row dec. 2 sts.

The World famous German Stitchbooks have been translated into English and are now available to the American Knitting Machine owner. The majority of these beautiful fancy stitches do not require tedious stitch transferring but are stitches made through the automatic selection of needles.

THE 4 STITCHBOOKS

STITCHBOOK NO. 1. Illustrates and gives complete instructions for knitting 59 beautiful fancy stitches that can be easily made on most modern knitting machines.

STITCHBOOK NO. 2. Does the same for 50 lovely rib pattern designs all knitted automatically on the Ribber. They can be made on most good brand name machines with ribbers.

STITCHBOOK NO. 3. Illustrates and explains 49 new pattern stitches, many in multi-colors, all automatically made with the push-button KNITKING or with the automatic selector on other models.

STITCHBOOK NO. 4. Is completely new and written especially for the latest coordinated KNITKING ribber. 55 outstanding and beautiful stitches are fully explained. Many of them are not possible on other brands of machines. We only recommend it to people who own the latest model KNITKING and Coordinated Ribber.

STITCHBOOKS are \$3.50 each, plus 20 cents mailing costs or any 3 for \$10.00 plus 35 cents mailing costs, or the set of 4 for \$12.00 plus 40 cents mailing costs. California residents add 4% tax.

**Order from your local dealer - or direct from KNITKING
1128 Crenshaw Blvd., Los Angeles, Calif. 90019**

1 x, 1 st. 4 x, and then every 4th row dec. 1 st. 2 x and every 6th row dec. 1 st. 3 x. At the same time, after the 370th row, for the shoulder shaping, on every other row bind off 3 sts. 8 x and 4 sts. 3 x. Make another front section with reverse shapings.

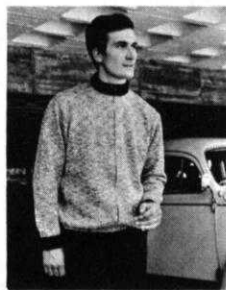
SLEEVE: (Figure III). Cast on 67 sts. Rows 1-16: Stockinette st. on knit side. Continue on in pattern st. Rows 17-230: Increase 1 st. on both sides after the 28th row, every 12th row 6 x, and every 10th row 12 x. (105 sts.) Rows 231-246: Underarm Shaping. On every other row on the back side of the sleeve bind off 4 sts. 1 x, 3 sts. 1 x, 2 sts. 4 x, 1 st. 2 x, and on the front bind off 5 sts. 1 x, 4 sts. 1 x, 3 sts. 1 x, and 2 sts. 5 x. Rows 247-286: On both sides, decrease 1 st. every other row 3 x, and in the 4th row 1 x. Repeat these 4 decreases 3 x. Rows 287-298: On both sides of every other row bind off 1 st. 2 x, 2 sts. 2 x, 3 sts. 2 x, and the remaining 10 sts. Make another sleeve with reverse shapings.

COLLAR: Cast on 103 sts. Rows 1-16: Stockinette st. on Knit side. Continue in pattern st. Rows 17-72: Work even. Then bind off all sts.

FRONT EDGING: Cast on 197 sts. Work 30 rows stockinette st. and bind off all sts. Make another front edging just like this, making buttonholes after the 7th and 22nd row over the 35-41, 68-74, 101-107, 134-140, and 167-173 needles counting from the right edge. If the jacket is made on a Knit M2, it will be necessary to make the edging in 2 sections, casting on 164 sts. 1 x, and 33 sts. 1 x.

FINISHING: Join front and back at side seams in slip st., overlapping $1\frac{1}{2}$ sts. from each section and easing in fullness at bust line of front section. Sew shoulder seams. Sew sleeve edges together and sew sleeves to sweater. Fold bottom dges of sweater and sleeves in half toward inside and hem. Fold the outer edge of the collar toward under side and hem. Sew on collar. Fold edging around sweater fronts and collar and attach. Finish buttonholes and sew on buttons. Attach a cord made of 2 strips of yarn, with 10 threads in each strip.

MAN'S JACKET SWEATER, No. HP 3381



SIZES: 40/42 and 36/38. **MATERIAL:** 19 oz. black-and-white tweed, $5\frac{3}{4}$ oz. black. **SUGGESTION:** (KNITTING) Starlite Crepe, Diamond - Silvetta, Spinnerin-Mona. **TENSION:** (KNITTING) 10. **GAUGE:** 13 sts., 2", 18 rows, 2", Stockinette st. on knit side; 13 sts., 2", 24 rows, 2". K 1, P 1 ribbing.

PATTERN: Stockinette st. on Knit side. Edging: K 1, P 1, ribbing. **SIZE:** 40/42.

BACK: (Figure II). Cast on 151 sts. with black. Rows 1-48: K 1, P 1, ribbing with black. Continue on in stockinette st. with tweed. Rows 49-182: Work even. Rows 183-204:

Armhole Shaping. Decrease 1 st. on both sides. Then every other row decrease 2 sts. 1 x, and 1 st. 1 x. Repeat these last 2 decreases 4 x. Rows 205-276: Work even. Rows 277-290: For the shoulder shaping, on both sides of every other row bind off 4 sts. 1 x and 5 sts. 7 x. At the same time, for the neck shaping, after the 282nd row bind off the 17 center sts., and on both sides of this on every other row bind off 5 sts. 1 x, 4 sts. 1 x, and 3 sts. 1 x.

FRONT: (Figure I). Cast on 77 sts. with black. Rows 1-48: K 1, P 1, ribbing. Continue in stockinette st. with tweed. Rows 49-182: On the left side cast on 4 sts. after the 49th row. Then work even. Rows 183-204: For the armhole shaping decrease 1 st. Then every other row decrease 2 sts. 1 x, and 1 st. 1 x. Repeat these 2 decreases 4 x. Rows 205-257: Work even. Rows 258-290: Neck Shaping. Bind off 9 sts. Then every other row dec. 5 sts. 1 x, 3 sts. 1 x, 2 sts. 2 x, 1 st. 2 x, and every 4th row decrease 1 st. 3 x. At the

DO YOU HAVE A...

REVERSING BAR?

- With it you can turn a hem in one movement instead of lifting stitches one at a time.
- You can reverse your knitting, so that the knit side faces you, easily and speedily.
- Available for all KNITTING machines with 197 needles. Order from your dealer or direct from

KNITTING

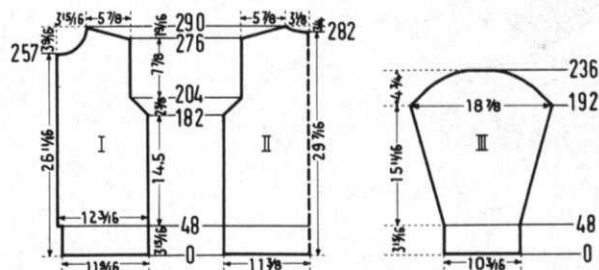
1128 Crenshaw Blvd., Los Angeles, Calif. 90019

Price \$16.95 (California residents add 4% tax)

Plus \$1.50 shipping cost.

same time, after the 276th row for the shoulder shaping, on every other row bind off 4 sts. 1 x, and 5 sts. 7 x. Make another front section with reverse shapings.

SLEEVE: (Figure III). (Make 2). Cast on 69 sts. with black. Rows 1-48: K 1, P 1, ribbing. Stockinette st. with tweed, for next row. Rows 49-192: Increase 1 st. on both sides after the 54th row, again every 6th row 13 x and every 4th row 14 x. (125 sts.) Rows 193-236: Underarm Shaping. Decrease 1 st. on both sides. Then every other row decrease 2 sts. 1 x and 1 st. 1 x. Repeat these 2 decreases 4 x. Then bind off 2 sts. 4 x, 3 sts. 3 x, 4 sts. 4 x, and the remaining 27 sts.

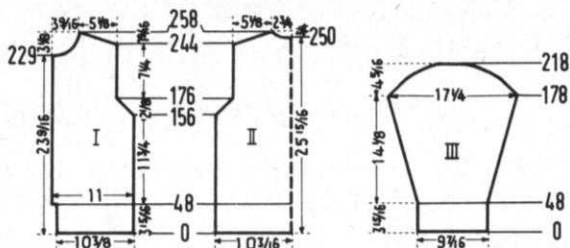


NECK EDGING: Cast on 163 sts. with black. Work 38 rows K 1, P 1, ribbing. Bind off all sts.

FINISHING: Join front and back at side and shoulder seams. Sew sleeve edges together and sew sleeves to sweater. Make a hem 4 sts. wide at sweater fronts. Fold edging at sweater and sleeve bottoms in half toward inside and hem. Fold neck edging around sweater neckline and attach. Sew in a separable zipper.

SIZE: 38/40. **BACK:** (Figure II). Cast on 135 sts. with black. Rows 1-48: K 1, P 1, ribbing with black. Continue on in stockinette st. with tweed. Rows 49-156: Work even. Rows 157-176: Armhole Shaping. On both sides of every other row decrease 2 sts. 1 x, and 1 st. 1 x. Repeat these 2 decreases 4 x. (105 sts.) Rows 177-244: Work even. Rows 245-258: Shoulder Shaping. On both sides of every other row bind off 4 sts. 6 x, and 5 sts. 2 x. At the same time, for the neck shaping, after the 250th row bind off the 17 center sts., and on both sides of this, on every other row bind off 5 sts. 1 x, 3 sts. 1 x, and 2 sts. 1 x.

FRONT: (Figure I). Cast on 69 sts. with black. Rows 1-48: K 1, P 1, ribbing. Continue in stockinette st. with tweed. Rows 49-156: On the left side cast on 4 sts. after the 49th row. Then work even. Rows 157-176: Armhole Shaping. On every other row decrease 2 sts. 1 x, and 1 st. 1 x. Repeat



these 2 decreases 4 x. (58 sts.) Rows 177-229: Work even. Rows 230-258: Neck Shaping. Bind off 8 sts. Then on every other row decrease 4 sts. 1 x, 3 sts. 1 x, 2 sts. 2 x, 1 st. 2 x, and every 4th row decrease 1 st. 3 x. At the same time, after the 244th row, for the shoulder shaping, on every other row bind off 4 sts. 6 x and 5 sts. 2 x. Make another front section with reverse shapings.

SLEEVE: (Figure III). (Make 2). Cast on 63 sts. with black. Rows 1-48: K 1, P 1, ribbing. Continue in stockinette st. with tweed. Rows 49-178: Increase 1 st. on both sides after the 54th row, every 6th row 10 x and every 4th row 15 x. (115 sts.) Rows 179-218: Underarm Shaping. On both sides of every other row decrease 2 sts. 1 x and 1 st. 1 x. Repeat these 2 decreases 4 x. Then bind off 2 sts. 4 x, 3 sts. 3 x, 4 sts. 3 x, and the remaining 27 sts.

NECK EDGING: Cast on 143 sts. with black. Work 38 rows K 1, P 1, ribbing. Bind off all sts. **FINISHING:** Follow directions for size 42/44.

MAN'S PULLOVER, No. HP 3376

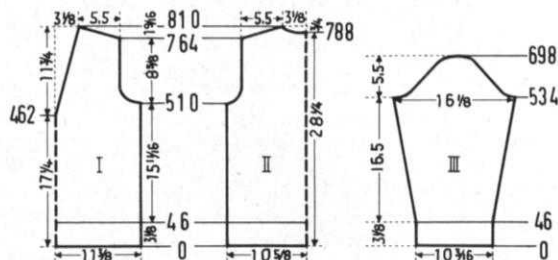


SIZE: 42/44. **MATERIAL:** 12-1/3 oz. blue-charcoal-tweed. **SUGGESTION:** Fine 2 ply yarn or Brunswick-Fairhaven. **TENSION:** (KNITTING) 4 or 5, Pattern st. 2 or 3, K 1, P 1, ribbing. **GAUGE:** 15 sts., 2", 58 rows, 2", Pattern st. 15 sts., 2", 28 rows, 2", K 1, P 1, ribbing. **PATTERN:** Hold Position on purl side according to chart. With needle selector or Dial-a-stitch—wheel VI and needle shifter. (For machines other than KNIT-KING—put needles in hold position, K 2 rows then reverse position of needles.) **RIBBING:** K 1, P 1. **BACK:** (Figure II). Cast on 163 sts. Rows 1-46: K 1, P 1, ribbing with tension 1 (2). Continue on in hold position with tension 4 (5). Rows

47-510: Work even. Rows 511-566: For the armhole shaping, bind off 3 sts. on both sides; then every 4th row decrease 2 sts. 2 x, 1 st. 3 x, and every 6th row decrease 1 st. 3 x, and every 8th row decrease 1 st. 2 x. (133 sts.) Rows 567-764: Work even. Rows 765-810: Shoulder Shaping. On both sides of every other row bind off 1 st. 6 x and 2 sts. 18 x. At the same time, for the neck shaping, after the 788th row bind off the 15 center sts. and on both sides of this every other row decrease 4 sts. 1 x, 3 sts. 1 x, 2 sts. 3 x, and 1 st. 4 x.

FRONT: (Figure I). Cast on 175 sts. Rows 1-46: K 1, P 1, ribbing with tension 1 (2). Continue in hold position design with tension 4 (5). Rows 47-462: Work even. Now put the middle st. on a neighboring needle and continue work in 2 sections. Rows 463-510: Decrease 1 st. on both sides of the division after the 472nd row and again every 14th row 2 x. Rows 511-564: Armhole Shaping. Bind off 6 sts. on both sides, then in every 4th row decrease 3 sts. 1 x, 2 sts. 2 x, 1 st. 4 x, and then in every 6th row decrease 1 st. 4 x. At the same time, for the neck shaping, decrease 1 st. on both sides after the 514th row and again every 14th row 3 x. Rows 565-810: For the neck shaping, decrease 1 st. on both sides after the 570th row, and again every 14th row 16 x. At the same time, for the shoulder shaping, after the 764th row, on both sides of every other row bind off 1 st. 6 x and 2 sts. 18 x.

SLEEVE: (Figure III). Cast on 79 sts. Rows 1-46: K 1, P 1, ribbing with tension 1 (2). Continue in hold position design with tension 4 (5). Rows 47-534: Increase 1 st. on both sides after the 68th row and again in every 22nd row 12 x, and in every 20th row 9 x. (123 sts.) Rows 535-554: For the underarm shaping, on every 4th row on the back side of the sleeve, bind off 3 sts. 2 x, 2 sts. 2 x, 1 st. 1 x, and on the front side, bind off 5 sts. 1 x, 3 sts. 2 x, and 2 sts. 2 x. Rows 555-686: Decrease 1 st. on both sides after the 554th row and again every 4th row 32 x. Rows 687-698: On both sides of every 4th row bind off 2 sts. 1 x, 3 sts. 1 x, 4 sts. 1 x, and the remaining 13 sts. Make another sleeve with reverse shapings.



NECK EDGING: Cast on 135 sts. Work 38 rows in K 1, P 1, ribbing with Tension 1 (2), decreasing 2 sts. after the 2nd row, and again in every other row 8 x, and increasing 2 sts. after the 20th row and again in every other row 8 x. Bind off all sts. Make another strip of edging with reverse shapings.

FINISHING: Join front and back at side and shoulder seams. Sew sleeve edges together and sew sleeves to sweater. Fold sleeve and sweater bottoms in half toward inside and hem. Sew 2 strips of neck edging together, fold around sweater neckline and attach.

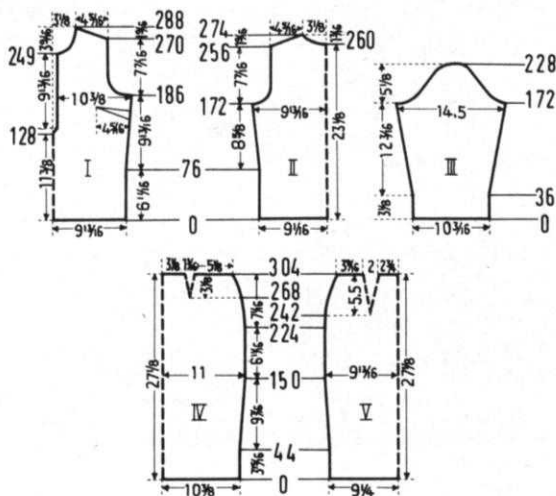
WOMAN'S TWO PIECE DRESS, No. DK 7245



SIZE: 14/16. **MATERIAL:** Skirt: 11 1/2 oz. egg shell white. Top: 13 1/2 oz. egg shell white and 1 oz. red. 7/9 yard taffeta, 55" wide. **SUGGESTION:** Spinnerin - Fingering; Diamond-Pastel D'Aoust; Pauline Denham - Sierra. **TENSION:** 5 or 6. **GAUGE:** 33 sts., 3-15/16", 44 rows, 3-15/16". **PATTERN:** Stockinette st. on knit side. Neck Edging: Stockinette stitch on purl side.

SKIRT BACK: (Figure V). Cast on 155 sts. Rows 1-150: Increase 1 st. on both sides after the 44th row and again in every 26th row 4 x. (165 sts.) Rows 151-224: Work even. Rows 225-304: Decrease 1 st. on both sides after the 224th row, again every 10th row 2 x, every 8th row 2 x, every 6th row 4 x, and every 4th row 4 x. At the same time, for the darts, decrease 2 sts. each side after the 242nd row and again every 8th row 7 x. To do this, on both sides, put the 51st and 53rd sts. on the 52nd needle, and hang the sts. together. The next decrease lies directly above this. Bind off 107 sts.

FRONT: (Figure IV). Cast on 175 sts. Rows 1-150: Increase 1 st. on both sides after the 44th row and again every 26th row 4 x. (185 sts.) Rows 151-224: Work even. Rows 225-304: Decrease 1 st. on both sides after the 224th row, again every 10th row 2 x, in every 8th row 2 x, in every 6th row 4 x, and in every 4th row 4 x. At the same time, for the darts, decrease 2 sts. each side after the 268th row, again every 6th row 2 x, and every 8th row 2 x. To do this, on both sides put the 54th and 56th sts. on the 55th needle and hang the sts. together. The next decrease lies directly above this. To finish, bind off 139 sts. **TOP BACK:** (Figure II). Cast on 151 sts. Rows 1-172: Increase 1 st. on both sides after the



76th row and again in every 14th row 6 x. (165 sts.) Rows 173-196: For the armhole shaping, bind off 4 sts. on both sides. Then every other row decrease 3 sts. 2 x, 2 sts. 3 x, 1 st. 2 x, and then every 4th row decrease 1 st. 2 x. (125 sts.) Rows 197-256: Work even. Rows 257-274: For the shoulder shaping, on both sides of every other row bind off 3 sts. 4 x and 4 sts. 6 x. At the same time, for the neck shaping, after the 260th row bind off the 17 center sts., and on both sides of this, on every other row bind off 4 sts. 2 x, 3 sts. 2 x, and 2 sts. 2 x.

FRONT: (Figure I). Cast on 165 sts. Rows 1-128: Increase 1 st. on both sides after the 76th row and again every 14th row 3 x. Now put the middle st. on a neighboring needle, and work on in 2 sections. Rows 129-186: Decrease 1 st. on both sides of the division after the 130th row and again every other row 3 x. At the same time, on the side edge, increase 1 st. after the 132nd row and again in every 14th row 2 x. Rows 187-210: Armhole Shaping. Bind off 7 sts. on both sides, and then on every other row decrease 5 sts. 1 x, 4 sts. 1 x, 3 sts. 1 x, 2 sts. 2 x, 1 st. 2 x, and then every 4th row decrease 1 st. 2 x. Rows 211-249: Work even. Rows 250-288: Neck Shaping. Bind off 5 sts. on both sides. Then every other row decrease 4 sts. 1 x, 3 sts. 1 x, 2 sts. 2 x, 1 st. 3 x, and then on every 4th row decrease 1 st. 3 x. At the same time, after the 270th row, for the shoulder shaping, on both sides of every other row bind off 3 sts. 4 x and 4 sts. 6 x.

SLEEVE: (Figure III). Cast on 86 sts. Rows 1-172: Increase 1 st. on both sides after the 36th row and again in every 8th row 13 x and in every 6th row 4 x. (122 sts.) Rows 173-184: For the underarm shaping, in every other row on the back side of the sleeve bind off 4 sts. 2 x, 3 sts. 2 x, and 2 sts. 2 x, and on the front side of the sleeve bind off 7 sts. 1 x, 5 sts. 1 x, 4 sts. 1 x, 3 sts. 2 x, and 2 sts. 1 x. Rows 185-220: On both sides of every other row decrease 2 sts. 1 x, and 1 st. 2 x. Repeat these 3 decreases 5 x. Rows 221-228: On both sides of every other row bind off 2 sts. 2 x, 3 sts. 1 x, 4 sts. 1 x, and the remaining 10 sts. Make another sleeve with reverse shapings.

NECK EDGING: Cast on 3 sts. with red. Row 1-10: Increase 1 st. on both sides of every other row 5 x. Rows 11-118: Work even. Rows 119-124: On both sides, one after another, put 2 needles in hold position 1 x, 1 needle in hold position 1 x, and 2 needles in hold position 1 x. Rows 125-130: One after another, bring the same needles back into working position. Rows 131-328: Work even. Rows 329-330: Work the same as rows 119-130. Rows 331-436: Work even. Rows 437-446: Decrease 1 st. on both sides of every other row 5 x, and bind off the remaining 3 sts.

FINISHING: (Skirt). Join the 2 skirt sections at side seams, leaving an opening on the left side for the zipper. Make a hem 1-9/16" wide at bottom of skirt. Sew a strip of elastic to top of skirt, set in zipper, sew on hooks and eyes. Line the skirt with taffeta. (Top) Sew darts at bust line of front

section according to chart. Join front and back at side and shoulder seams. Sew sleeve edges together and sew sleeves to sweater. Make a hem 1-9/16" wide at sleeve and sweater bottoms. Fold neck edging around front and neckline of sweater and attach. Sew the front edgings together, about 3-15/16" from bottom.

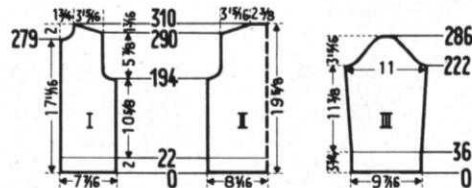
GIRL'S CARDIGAN, No. MK 4664



SIZE: 8/9 years. **MATERIAL:** 12 oz. white. **SUGGESTION:** Spinnerin-Pompadour or Cribspun or Ambralon. **TENSION:** (KNITTING) 8-Pattern st. 7-Stockinette st. and K 1, P 1, ribbing. **GAUGE:** 14 sts. - 2", 32 rows - 2" Pattern st. 14 sts. - 2", 22 rows - 2" Stockinette st. 14 sts. - 2", 26 rows - 2" K. 1, P. 1 ribbing.

PATTERN: Hold position on purl side. 1). The 4, 8, 12, 16 etc. needles are in hold position. Work 4 rows. 2). Pull up the right Cam Knob. Work 1 row. 3). Put the needles in hold position into working position, press in Cam Knob and work 1 row. 4). Put the 2, 6, 10, 14 etc. needles in hold position. Work 4 rows. 5). Pull up the right Cam Knob. Work 1 row. 6). Put the needles in hold position into working position,

press in the Cam Knob and work 1 row. Keep repeating steps 1 through 6. With needle selector or Dial-a-stitch Wheel III. Edging and Collar: Stockinette St. Knit side. Sleeve Ribbing: K, 1, P, 1.



press in the Cam Knob and work 1 row. Keep repeating steps 1 through 6. With needle selector or Dial-a-stitch Wheel III. Edging and Collar: Stockinette St. Knit side. Sleeve Ribbing: K, 1, P, 1.

BACK: (Figure II). Cast on 115 sts. Rows 1-22: Stockinette st. with Tension 7. For the hem, put the cast on sts. back on the machine. Continue on in hold position with Tension 8. Rows 23-194: Work even. Rows 195-220: Armhole Shaping. Bind off 3 sts. on both sides. Then on every 4th row decrease 3 sts. 1 x, 2 sts. 2 x, and 1 st. 3 x. (89 sts.) Rows 221-290: Work even. Rows 291-310: Shoulder Shaping. On both sides of every other row bind off 2 sts. 2 x, 3 sts. 8 x, and the remaining 33 sts.

FRONT: (Figure I). Cast on 53 sts. Rows 1-22: Stockinette st. with Tension 7. For the hem, put the cast on sts. back on the machine. Continue in hold position with Tension 8. Rows 23-194: Work even. Rows 195-220: Armhole Shaping. Bind off 3 sts. Then every 4th row decrease 3 sts. 1 x, 2 sts. 2 x, and 1 st. 3 x. (40 sts.) Rows 221-279: Work even. Rows 280-310: Neck Shaping. Bind off 4 sts. Then every 4th row decrease 3 sts. 1 x, 2 sts. 1 x, 1 st. 2 x, and then on the 6th row decrease 1 st. 1 x. At the same time, after the 290th row, for the shoulder shaping, in every other row bind off 2 sts. 2 x, and 3 sts. 8 x. Make another front section with reverse shapings.

SLEEVE: (Figure III). (Make 2). Cast on 67 sts. Rows 1-36: K. 1, P. 1 Ribbing with Tension 7. Continue on in hold position with Tension 8. Rows 37-222: Increase 1 st. on both sides after the 36th row and again every 32nd row 5 x. (79 sts.) Rows 223-238: Underarm Shaping. On both sides of every 4th row bind off 4 sts. 1 x, 3 sts. 2 x, and 2 sts. 1 x. Rows 239-278: On both sides of every 4th row decrease 1 st. 1 x and 2 sts. 1 x, and repeat these 2 decreases 4 x. Rows 279-286: On both sides of every 4th row bind off 3 sts. 1 x, 4 sts. 1 x, and the remaining 11 sts.

COLLAR: Cast on 87 sts. Work in stockinette st. Rows 1-36: 12 rows with Tension 6, 12 rows with Tension 7, and 12 rows with Tension 8; on both sides, after the 18th and 22nd row, one after another, put 1 needle in hold position 1 x, then 1

needle 2 x, 2 needles 2 x, and 3 needles 2 x. Rows 37-72: 12 rows with Tension 8, 12 rows with Tension 7, and 12 rows with Tension 6; on both sides after the 36th row, one after another, put 3 needles in working position 2 x, 2 needles 2 x, 1 needle 3 x, and then after the 40th row put 1 needle in working position 1 x. Rows 73-78: On both sides, 1 after another, put 9 needles in hold position 3 x. Rows 79-80: On the left side, put all needles in working position, work 1 row. On the right side, put all needles in working position. Work 1 row. Bind off all sts.

EDGING: Cast on 25 sts. Work 176 rows stockinette st. with Tension 7. Then bind off all sts. Make another strip of edging just like this, making buttonholes after the 6, 33, 60, 87, 114, 141 and 168 rows over the 3 - 7 and 19 - 23 needles.

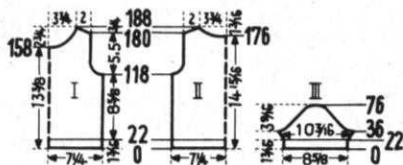
FINISHING: Join front and back at side seams in slip st., overlapping 1½ sts. from each side. Sew shoulder seams. Sew sleeve edges together and sew sleeves to sweater. Fold edging around sweater fronts and attach. Fold collar in half and sew sides together. Place open ends of collar around sweater neck and attach. Finish buttonholes and sew on buttons.

BOY'S PULLOVER, No. KK 4681



SIZES: 6/7 years and 8/9 years. **MATERIAL:** 6-7 years: 6½ oz. eggshell white; 8-9 years: 8½ oz. eggshell white. A little red and green yarn. **SUGGESTION:** Spinnerin-Ambalon or Nylaine Fingering. **TENSION:** (KNITTING) 6 - Stockinette st. 5 K 1, P 1, ribbing. **GAUGE:** Stockinette st.; 17 sts. 2" and 22 rows 2". Edging: 17 sts. 2" and 36 rows 2". **PATTERN:** Stockinette st. Knit side. Edging: K 1, P 1, ribbing with rib design on knit side. **SIZE:** 6-7 years.

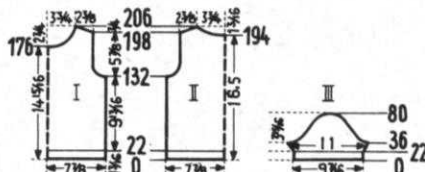
BACK: (Figure II). Cast on 125 sts. with eggshell. Rows 1-22: 6 rows, K 1, P 1, ribbing, 4 rows rib design with red, 6 rows K 1, P 1, ribbing, 4 rows rib design with green, 2 rows K 1, P 1, ribbing. After the 5th and 15th row place the Gate Cam release lever of



the PAM at the needle heels, and after the 9th and 19th row put it at the needle heads. Continue on with stockinette st. Rows 23-118: Work even. Rows 119-134: Armhole Shaping. Bind off 3 sts. on both sides, then every other row decrease 3 sts. 1 x, 2 sts. 2 x, 1 st. 2 x, and then on the 4th row decrease 1st. 1 x (99 sts.) Rows 135-176: Work even. Rows 177-188: Neck Shaping. Bind off the 21 center sts., and on both sides of this on every other row bind off 6 sts. 2 x, 4 sts. 2 x, and 2 sts. 1 x. At the same time, after the 180th row, for the shoulder shaping, on both sides of every other row bind off 3 sts. 3 x and 4 sts. 2 x.

FRONT: (Figure I). The front is worked the same as the back; however, for the neck shaping, after the 158th row bind off the 17 center sts., and on both sides of this, on every other row decrease 5 sts. 1 x, 4 sts. 1 x, 3 sts. 2 x, 2 sts. 2 x, 1 st. 3 x, and then on every 4th row decrease 1 st. 2 x.

SLEEVE: (Figure III). Cast on 75 sts. with eggshell. Rows 1-22: Follow directions for sweater back. Continue on in stockinette st. Rows 23-36: Increase 1 st. on both sides after the 22nd row and again every other row 6 x. (89 sts.) Rows 37-44: Underarm Shaping. On both sides of every other row bind off 4 sts. 1 x, 3 sts. 2 x, and 2 sts. 1 x. Rows 45-72: On both sides of every other row decrease 1 st. 1 x and 2 sts. 1 x. Repeat these 2 decreases 6 x. Rows 73-76: On both



sides of every other row bind off 3 sts. 1 x, 4 sts. 1 x, and the remaining 9 sts. Make another sleeve the same.

NECK EDGING: With eggshell, cast on 101 sts. for the front section and 87 sts. for the back. Work 6 rows, K 1, P 1, ribbing, 4 rows rib design with red. 6 rows, K 1, P 1 ribbing, 4 rows rib design with green, and 2 rows K 1, P 1, ribbing. Bind off all sts.

FINISHING: Join front and back at side and shoulder seams. Sew sleeve edges together, and sew sleeves to sweater. Sew the neck edging sections together, so that the back section overlaps the front, and sew the side edges to the neck opening.

SIZE: 8-9 years.

BACK: (Figure II). Cast on 135 sts. with eggshell. Rows 1-22: 6 rows, K 1, P 1, ribbing; 4 rows rib design with red; 6 rows K 1, P 1, ribbing; 4 rows rib design with green; 2 rows K 1, P 1, ribbing. After the 5th and 15 row, place the gate cam release lever of the PAM to the needle heels, and after the 9th and 19th row, put it to the needle heads. Continue with stockinette st. Rows 23-132: Work even. Rows 133-150: Armhole Shaping. Bind off 4 sts. on both sides; then on every other row decrease 3 sts. 1 x, 2 sts. 2 x, 1 st. 3 x, and then on the 4th row decrease 1 st. 1 x. (105 sts.) Rows 151-194: Work even. Rows 195-206: Neck Shaping. Bind off the 21 center sts., and on both sides of this, on every other row bind off 6 sts. 2 x, 4 sts. 2 x, and 2 sts. 1 x. At the same time, after the 198th row, for the shoulder shaping, on both sides of every other row bind off 4 sts. 5 x.

FRONT: (Figure I). The front is worked the same as the back; however, for the neck shaping, after the 176th row bind off the 17 center sts., and on both sides of this, on every other row decrease 5 sts. 1 x, 4 sts. 1 x, 3 sts. 2 x, 2 sts. 2 x, 1 st. 3 x, and then every 4th row decrease 1 st. 2 x.

SLEEVE: (Figure III). (Make 2). Cast on 81 sts. with eggshell. Rows 1-22: Follow directions for sweater back. Continue on in stockinette st. Rows 23-36: Increase 1 st. on both sides after the 22nd row and again every other row 6 x. (95 sts.) Rows 37-44: Underarm Shaping. On both sides of every other row bind off 4 sts. 1 x, 3 sts. 2 x, and 2 sts. 1 x. Rows 45-76: On both sides of every other row decrease 1 st. 1 x, and 2 sts. 1 x. Repeat these 2 decreases 7 x. Rows 77-80: On both sides of every other row bind off 3 sts. 1 x, 4 sts. 1 x, and the remaining 9 sts. **NECK EDGING AND FINISHING:** Follow directions for 6-7 year size.

BOY'S JACKET SWEATER, No. KK 4694



SIZE: 12-13 years. **MATERIAL:** 21¼ oz. deep Honey. **SUGGESTION:** KNITTING, Speediknit; or 4 ply knitting worsted. **TENSION:** 9 or 10, Pattern st.; 8 or 9, Stockinette st. on knit side. **GAUGE:** Pattern st. 8 sts., 2", 26 rows, 2". Stockinette: 8 sts., 2", 18 rows, 2". The non-working position sts. are not counted in the gauge and the directions.

PATTERN: Hold position on purl side over every other needle. Put the Gate Cam release lever to the needle heels. 1) Put the 2, 4, 6, 8, etc. needles from working position into hold position. Work 1 row. 2) Put the needles in hold position back into working position. Work 1 row. 3) Put the 1, 3, 5, 7, 9, 11, etc. needles into hold position. Work 1 row. 4) Put the needles from

THE JAC 40 IS A MUST

for fast easy knitting of
Jaquard and Ski-sweater
designs



Patterns are selected—row by row—through a pre-stamped card that is fed into the Jac. There are over 140 cards available and illustrations of them are included with each Jac.

Jac 40's are made for most brands of machines (with the exception of Japanese machines). When ordering be sure to specify your brand of knitter as needle spacings vary. Simple to use and an essential tool for the modern knitter, Jac 40's are \$24.95 complete with 3 cards for practicing the 3 techniques, plus complete instructions.

Order from your dealer or direct from

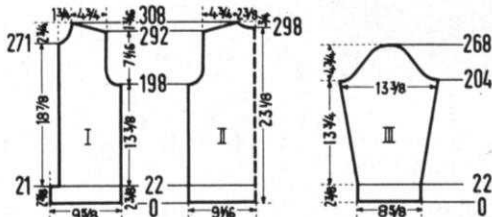
KNITTING

1128 Crenshaw Boulevard, Los Angeles, Calif. 90019

Shipping Cost \$1.50. California residents add 4% sales tax.

hold position into working position. Work 1 row. Repeat steps 1-4 throughout. With Needle Selector or Dial-A-Stitch Wheel IV for KNITTING machine). Edging: Stockinette st. on knit side.

BACK: (Figure II). Cast on 73 sts. over every other needle. Rows 1-22: Stockinette st. on knit side with Tension 8 (9). Continue on in hold position with tension 9 (10). Rows 23-198: Work even. Rows 199-220: Armhole Shaping. Bind off 3 sts. on both sides. Then every 4th row decrease 2 sts. 1 x, 1 st. 1 x, and decrease 1 st. every 6th row 2 x. (57 sts.) Rows 221-292: Work even. Rows 293-308: Shoulder



Shaping. On both sides of every other row bind off 2 sts. 8 x, and 3 sts. 1 x. At the same time, for the neck shaping, after the 298th row bind off the 5 center sts., and on both sides of this, in every other row decrease 3 sts. 1 x, 2 sts. 1 x, and 1 st. 2 x.

FRONT: (Figure I). Cast on 39 sts. over every other needle. Rows 1-22: Stockinette st. with Tension 8 (9) making buttonholes after the 5th and 15th row over the 4-6 needles counting from the left edge. Bind off 5 sts. on the left side after the 21st row. Continue on in pattern st. with Tension 9 (10). Rows 23-198: Work even. Rows 199-220: Underarm Shaping. Bind off 3 sts. Then every 4th row decrease 2 sts. 1 x, 1 st. 1 x, and every 6th row decrease 1 st. 2 x. (26 sts.) Rows 221-271: Work even. Rows 272-308: Neck Shaping. Bind off 2 sts. Then every 4th row decrease 2 sts. 1 x, 1 st. 1 x, and every 8th row decrease 1 st. 2 x. At the same time, after the 292nd row for the shoulder shaping, on every other row bind

off 2 sts. 8 x and 3 sts. 1 x. Make another front section with reverse shapings, minus buttonholes.

SLEEVE: (Figure III). (Make 2). Cast on 35 sts. over every other needle. Rows 1-22: Stockinette st. with Tension 8 (9). Continue on in hold position with Tension 9 (10). Rows 23-204: Increase 1 st. on both sides after the 22nd row and again every 18th row 9 x. (55 sts.) Rows 205-268: Underarm Shaping. On both sides of every 4th row bind off 3 sts. 1 x, 2 sts. 3 x, 1 st. 9 x, 2 sts. 2 x, 3 sts. 1 x, and the remaining 5 sts.

FRONT CLOSING STRIPS: Cast on 77 sts. Work 22 rows Stockinette st. and bind off all sts. Make another front strip just like this, making buttonholes after the 5th and 17th row over the 3-5, 19-21, 35-37, 51-53, and 67-69 needles, counted from the right edge.

NECK EDGING: Cast on 62 sts. Work in stockinette st. Rows 1-8: On both sides, one after another, put 1 needle in hold position 2 x, and 2 needles 1 x. Rows 9-14: On both sides, one after another, put 1 needle in working position 1 x, 2 needles 1 x, and 1 needle 1 x. Bind off all sts.

FINISHING: Join front and back at side and shoulder seams. Sew sleeve edges together and sew sleeves to sweater. Make a hem 1-3/16" wide at sleeve and sweater bottoms. Fold front closing strips around sweater fronts and attach. Fold neck edging around sweater neckline and attach. Finish buttonholes, sew on buttons.

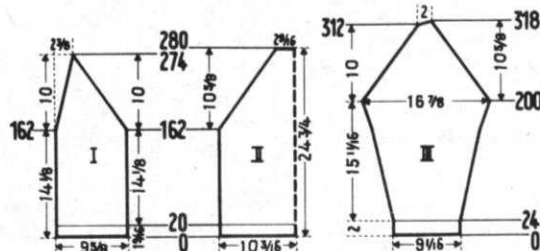
WOMAN'S JACKET SWEATER, No. DP 7182



SIZE: 14/16. **MATERIAL:** 20 1/2 oz. geranium red. **SUGGESTION:** Spinnerin-Ambralon, Nylaine Fingering; Pauline Denham, Sierra. **TENSION:** 7 or 8, Stockinette st. on knit side. 6 or 7, Edging. **GAUGE:** Stockinette st., 15 sts., 2", 22 rows, 2". K 1, P 1, ribbing, 15 sts., 2"; 24 rows, 2". **PATTERN:** Stockinette st. on knit side. Edging and Collar: K 1, P 1, ribbing. The ornamental stripe will be worked according to the chart for MK 4657 after the sweater is finished.

BACK: (Figure II). Cast on 155 sts. Rows 1-20: K 1, P 1, ribbing with tension 6 (7). Continue on with stockinette st. and Tension 7 (8). Rows 21-162: Work even. Rows 163-280: For the raglan shaping, bind off 2 sts. on both sides. Then every 4th row decrease 2 sts. 28 x. To do this, put the 3rd and 4th sts. on the 5th and 6th needles, and move the 2 edge sts. over to fill the empty needles. Bind off the remaining 39 sts.

FRONT: (Figure I). Cast on 73 sts. Rows 1-20: K 1, P 1, ribbing with tension 6 (7). Continue on in Stockinette st. with Tension 7 (8). Rows 21-162: Work even. Rows 163-214: For the raglan shaping, bind off 2 sts., then, every 4th row decrease 2 sts. 13 x. To do this, put the 3rd and 4th sts. on the 5th and 6th needles and move the 2 edge sts. over to fill the empty needles. At the same time, for the neck shaping, decrease 1 st. after the 162nd row and again



every 4th row 13 x. To do this, put the 28th st. on the 27th needle, counting from the left edge, and move the edge sts. over. Rows 215-274: For the raglan shaping, decrease 2 sts. after the 218th row and again in every 4th row 13 x.

Then hang the 3 remaining sts. together. Make another front section with reverse shapings.

SLEEVE: (Figure III). Cast on 69 sts. Rows 1-24: K 1, P 1, ribbing with Tension 6 (7). Continue on with Tension 7 (8) and stockinette st. Rows 25-200: Increase 1 st. on both sides after the 30th row and again in every 8th row 5 x, in every 6th row 15 x, and in every 4th row 9 x. (129 sts.) Rows 201-312: For the raglan shaping, bind off 2 sts. on both sides, then every 4th row decrease 2 sts. 27 x. To do this, put the 3rd and 4th sts. on the 5th and 6th needles, and move the 2 edge sts. over to fill the empty needles. Rows 313-318: On the left side, one after another, put 4 needles in hold position 3 x. On the right side decrease 2 sts. after the 312th row. Then bind off 15 sts. Make another sleeve with reverse shapings.

FRONT CLOSING STRIPS: Cast on 164 sts. Work 34 rows stockinette st. with Tension 7 (8). Bind off all sts. Make another strip just like this, making buttonholes after the 8th and 25th rows over the 5-9, 25-29, 45-49, 65-69, 85-89 needles.

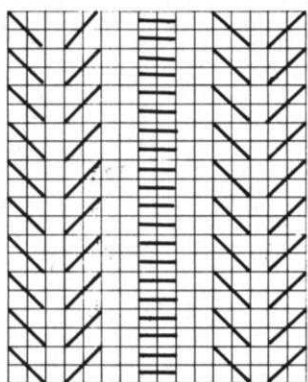
BACK STRIP: Cast on 39 sts. Work 34 rows stockinette st.: 10 rows with Tension 7 (8), 14 rows with Tension 6 (7), and 10 rows with Tension 7 (8). Then bind off all sts.

COLLAR: Cast on 135 sts. Rows 1-50: K 1, P 1, ribbing: 30 rows with Tension 7 (8) and 20 rows with Tension 6 (7). Rows 51-60: Stockinette st. with Tension 5 (6). Bind off all sts.

FINISHING: On the front section, work the ornamental stripes over the 11-26 sts. Each little square in the chart represents 1 st. across and 1 row up. The stripes are done in geranium red. Join front and back at side seams. Sew sleeve edges together and sew sleeves to sweater in slip st., overlapping 1 st. from each section. Sew the front and back strips together, fold around sweater edges and attach. Fold the outer edge of the collar in half and hem. Sew snap fasteners to collar and neck of sweater and attach collar to sweater with snaps. Finish buttonholes and sew on buttons.

GIRL'S JACKET SWEATER, No. MK 4657

SIZE: 2-3 years. **MATERIAL:** 8 oz. geranium red. **SUGGESTION:** Spinnerin, Ambralon or Fingering, Pauline Denham, Sierra. **TENSION:** 7 or 8, Stockinette st., knit side, 6 or 7 Edging. **GAUGE:** 15 sts. 2"; 22 rows 2": Stockinette. 15 sts. 2"; 24 rows 2": Ribbing. **PATTERN:** Stockinette st. on knit side K 1, P 1, ribbing. The ornamental stripe will be worked according to the chart after sweater is finished. **BACK:**



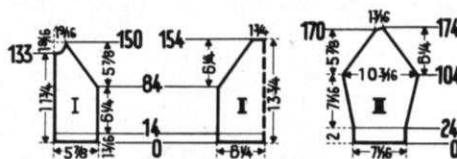
(Figure II). Cast on 97 sts. Rows 1-14: K 1, P 1, ribbing with Tension 6 (7). Continue in stockinette st. with Tension 7 (8). Rows 15-84: Work even. Rows 85-154: For the raglan shaping, decrease 1 st. on both sides after the 84th row and again every other row 34 x. To do this, put the 3rd st. on the 2nd needle, and move the edge sts. over to fill the empty needle. Then bind off 27 stitches.

FRONT: (Figure I). Cast on 45 sts. Rows 1-14: K 1, P 1,

ribbing with Tension 6 (7). Continue in stockinette st. with Tension 7 (8). Rows 15-84: Work even. Rows 85-150: For the raglan shaping, decrease 1 st. after the 84th row and again in every other row 32 x. To do this, put the 3rd st. on the 2nd needle, and move the edge sts. over. At the same time, for the neck shaping, bind off 3 sts. after the 133rd row. Then every other row decrease 2 sts. 1 x, 1 st. 2 x, and every 4th row decrease 1 st. 2 x. Hang the remaining 3 sts. together. Make another front section with reverse shapings.

SLEEVE: ((Figure III). Cast on 53 sts. Rows 1-24: K 1, P 1, ribbing with Tension 6 (7). Continue on with stockinette

st. and Tension 7 (8). Rows 25-104: Increase 1 st. on both sides after the 30th row and again every 6th row 11 x. (77 sts.) Rows 105-170: For the raglan shaping, decrease 1 st. on both sides after the 104th row and every other row 32 x. To do this, put the 3rd st. on the 2nd needle, and move the 2 edge sts. over to fill the empty needles. Rows 171-174:



On the left side, one after another, put 3 needles in hold position 2 x. At the same time, on the right side decrease 1 st. after the 170th and 172nd row. Bind off 9 sts. Make another sleeve with reverse shapings.

BUTTON CLOSING STRIP: Cast on 90 sts. Work 28 rows stockinette st. with Tension 7 (8). Then bind off all sts. Make another strip just like this, making buttonholes after the 7th and 20th row over the 5-8, 25-28, 45-48, 65-68, and 85-88 needles.

COLLAR: Cast on 121 sts. Work 40 rows K 1, P 1, Ribbing, 24 rows with Tension 7 (8) and 16 rows with Tension 6 (7). Bind off all sts.

FINISHING: On the front section, work the ornamental stripes over the 10-25 sts. Each little square in the chart represents 1 st. across and 1 row up. The stripes are worked in geranium red. Join front and back at side seams. Sew sleeve edges together and sew sleeves to sweater in slip st., overlapping 1 st. from each section. Fold front strips around sweater fronts and attach. Sew on collar. Finish buttonholes and sew on buttons.

BOY'S JACKET, No. KK 4702

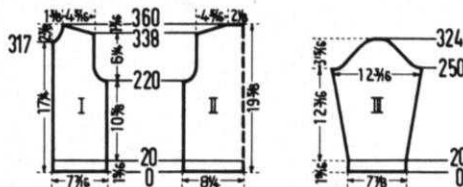


SIZE: 9-10 years. **MATERIALS:** 15 oz. grey tweed; 1 oz. white; 1 1/2 oz. wine red. **SUGGESTION:** Pauline Denham Sierra; Diamond - pastel D'Aoust.

TENSION: (KNITTING). 8 or 9, rib design; 7 or 8, K 1, P 1, ribbing.

GAUGE: Rib design: 17 sts., 2", 37 rows, 2". Ribbing: 17 sts., 2", 25 rows 2". **PATTERN:** Rib design on purl side. Edging and Collar: K 1, P 1, ribbing. **BACK:** (Figure II). Cast on 143 sts. with red. Rows 1-20: K 1, P 1, ribbing with Tension 7 (8): 3 rows red, 4 rows white, 3 rows

red, and 10 rows grey. Continue in rib design with Tension 8 (9). Rows 21-220: Work even. Rows 221-250: Armhole Shaping. On both sides bind off 4 sts., then in every 4th row decrease 3 sts. 1 x, 2 sts. 3 x, and 1 st. 3 x. (111 sts.) Rows 251-338: Work even. Rows 339-360: Shoulder Shaping.



On both sides of every other row bind off 3 sts. 7 x, 4 sts. 4 x, and the remaining 37 sts.

FRONT: (Figure I). Cast on 65 sts. with red. Rows 1-20: K 1, P 1, ribbing with Tension 7 (8): 3 rows red, 4 rows white, 3 rows red, and 10 rows grey. Continue in rib design with Tension 8 (9). Rows 21-220: Work even. Rows 221-250: Armhole Shaping. Bind off 4 sts.; then every 4th row decrease

3 sts. 1 x, 2 sts. 3 x, and 1 st. 3 x. (49 sts.) Rows 251-317: Work even. Rows 318-360: Neck shaping. Bind off 3 sts., then every 4th row decrease 2 sts. 2 x, 1 st. 2 x, and every 6th row decrease 1 st. 3 x. At the same time, after the 338th row, for the shoulder shaping, on every other row bind off 3 sts. 7 x and 4 sts. 4 x. Make another front section with reverse shapings.

SLEEVE: (Figure III). (Make 2). Cast on 69 sts. with red. Rows 1-20: K 1, P 1, ribbing with Tension 7 (8): 3 rows red, 4 rows white, 3 rows red, and 10 rows grey. Continue in rib design with tension 8 (9). Rows 21-250: Increase 1 st. on both sides after the 32nd row and again every 12th row 17 x. (105 sts.) Rows 251-324: Underarm Shaping. On both sides of every 4th row bind off 4 sts. 1 x, 3 sts. 3 x, 2 sts. 12 x, 3 sts. 2 x, 4 sts. 1 x, and the remaining 11 sts.

FRONT STRIP: Cast on 159 sts. with red. Work 22 rows, K 1, P 1, ribbing with Tension 7 (8): 2 rows red, 2 rows white, 3 rows red, 8 rows grey, 3 rows red, 2 rows white, and 2 rows red. Bind off all sts. Make another front strip just like this, making buttonholes after the 11th row over the 8-14, 36-42, 64-70, 92-98, 120-126, and 148-154 needles.

COLLAR: Cast on 163 sts. with red. Work 46 rows K 1, P 1, ribbing: 3 rows red, 4 rows white, 3 rows red, 36 rows grey: 16 rows with Tension 7, 16 rows with Tension 6, and 14 rows with Tension 5.

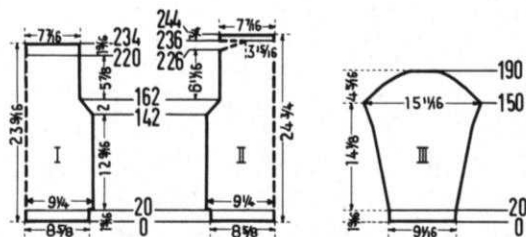
FINISHING: Join front and back at side and shoulder seams. Sew sleeve edges together and sew sleeves to sweater. Sew front strips and collar. Finish buttonholes and sew on buttons.

GIRL'S PULLOVER, No. MK 4700



SIZES: 13-14 years and 11-12 years. **MATERIAL:** (13-14 years). 9½ oz. brass, 5½ oz. peacock blue, 3½ oz. light yellow. (11-12 years). 8¼ oz. brass, 5 oz. peacock blue, 3½ oz. light yellow. **SUGGESTION:** KNITTING - Starlite Crepe; Spinnerin, Mona. **TENSION:** (KNITTING) 7 or 8 Pattern st. 8 or 9 Stockinette st. and K 1, P 1 ribbing. **GAUGE:** Pattern st. 13 sts., 2", 19 rows, 2". Stockinette st. 14 sts., 2", 18 rows, 2". K 1, P 1, Ribbing: 14 sts., 2", 24 rows, 2".

PATTERN: Front and Back: Norwegian pattern st. according to chart, using Pattern Tool Jac 40, Pattern No. 50a. Every row with Norwegian Pattern st. is counted singly in the description, however, it takes several movements of cam to do 1 color row. Sleeves: Stockinette St. - Knit side. Ribbing: K 1, P 1. **THE DIRECTIONS THAT FOLLOW ARE FOR THE 13-14 YEAR SIZE.**

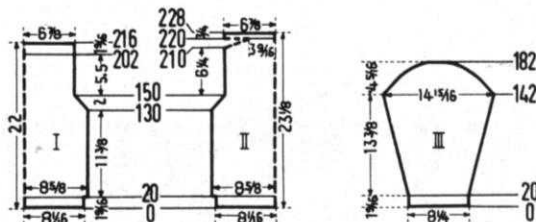


BACK: (Figure II). Cast on 123 sts. with brass. Rows 1-20: K 1, P 1, ribbing with Tension 8 (9). Continue on in Norwegian pattern st. over 123 needles with Tension 7 (8). Rows 21-142: Work even. Rows 143-162: Armhole Shaping. On both sides of every other row decrease 2 sts. 2 x, and 1 st. 8 x. (99 sts.) Rows 163-226: Work even. Rows 227-236: For the shoulder shaping, on both sides, one after another, put 4 needles in hold position 2 x, and 5 needles in hold position 3 x. Now bring all needles into working position. Work on in stockinette st. with brass at Tension 8 (9). Rows 237-244: Work even, then bind off all sts.

FRONT: (Figure I). The front is worked the same as the back until the 220th row. Rows 221-234: Work even in stockinette st. with brass and Tension 8 (9). Then bind off all sts.

SLEEVE: (Figure III). (Make 2). Cast on 65 sts. with brass. Rows 1-20: K 1, P 1, ribbing with Tension 8 (9). Continue on in stockinette st. Rows 21-150: Increase 1 st. on both sides after the 20th row, again every 6th row 17 x, and every 4th row 6 x. (113 sts.) Rows 151-190: Underarm Shaping. On both sides of every other row decrease 1 st. 1 x and 2 sts. 1 x. Repeat these 2 decreases 4 x. Then bind off 2 sts. 3 x, 3 sts. 4 x, 4 sts. 3 x, and the remaining 23 sts.

FINISHING: Join front and back at side seams with slip st., overlapping 1½ sts. on both sides. Make a hem 8 sts. wide at the top of the sweater. Join the shoulder seams, 3-9/16" on each side, in slip st. Sew sleeve edges together, and sew sleeves to sweater.

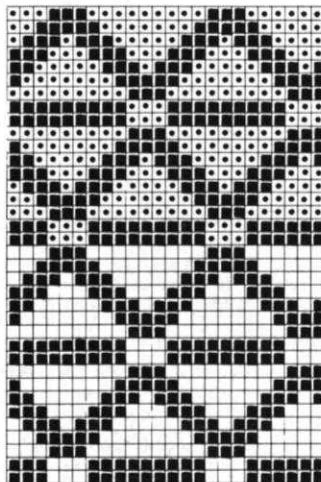


SIZE: 11-12 years. **BACK:** (Figure II). Cast on 115 sts. with brass. Rows 1-20: K 1, P 1, Ribbing with Tension 8 (9). Continue on in Norwegian Pattern St. over 115 sts. with Tension 7 (8) beginning with the 5th square of the chart. Rows 21-130: Work even. Rows 131-150: Armhole Shaping. On both sides of every other row decrease 2 sts. 2 x and 1 st. 8 x. (91 sts.) Rows 151-210: Work even. Rows 211-220: For the shoulder shaping, on both sides, one after another, put 4 needles in hold position 3 x and 5 needles in hold position 2 x. Now bring all needles into working position. Work on with brass in stockinette st. and Tension 8 (9). Rows 221-228: Work even, then bind off all sts.

FRONT: (Figure I). The front is worked the same as the back until the 202nd row. Rows 203-216: Work even in stockinette st. with brass and Tension 8 (9). Then bind off all sts.

SLEEVE: (Figure III). (Make 2). Cast on 59 sts. with brass. Rows 1-20: K 1, P 1, ribbing with Tension 8 (9). Continue on in stockinette st. Rows 21-142: Increase 1 st. on both sides after the 20th row, again on every 6th row 13 x and every 4th row 10 x. (107 sts.) Rows 143-182: Underarm Shaping. On both sides of every other row decrease 1 st. 1 x and 2 sts. 1 x. Repeat these 2 decreases 4 x. Then bind off 2 sts. 5 x, 3 sts. 3 x, 4 sts. 2 x, and the remaining 23 sts.

FINISHING: Follow directions for size 13-14.



□ GOLD
■ BLUE
■ BRASS

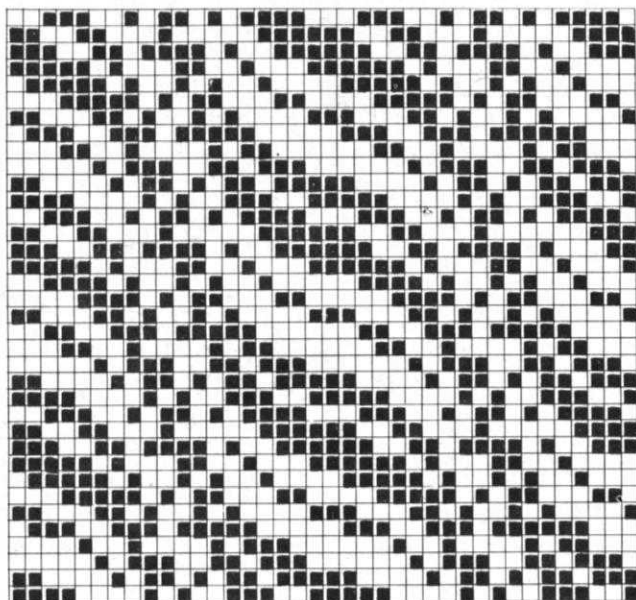
WOMAN'S SPORTS-PULLOVER, No. DP 7260



SIZE: 10/12 and 14/16. **MATERIAL:** Pauline Denham Sierra, 14 oz. Red, 7 oz. Black (size 10/12). 16 oz. Red, 8 oz. Black (size 14/16). **TENSION:** (KNITTING) 7 or 8 Norwegian Pattern stitch, 8 or 9 for both ribbings of K 1, P 1 and K 1, P 5. **GAUGE:** 14 sts. 2", 19 rows 2" for Norwegian Pattern stitch. 17 sts. 2", 20 rows 2" for ribbing. **PATTERN:** Front and back, Norwegian Pattern according to chart, using the Jac 40 and Jac Pattern No. 3. Every row of Norwegian pattern is counted singly in the chart, although it takes several motions of the Cam box to complete one row. Insert and sleeve: Ribbing K 1, P 5. Borders and Collar: Ribbing K 1, P 1. **SIZE:** 10/12.

though it takes several motions of the Cam box to complete one row. Insert and sleeve: Ribbing K 1, P 5. Borders and Collar: Ribbing K 1, P 1. **SIZE:** 10/12.

BACK (Figure II). Cast on 141 sts. with red yarn. Rows 1-20: K 1, P 1 with tension 8 (9). Rows 21-22: Stockinette stitch with black yarn. Continue to work in the Norwegian pattern with

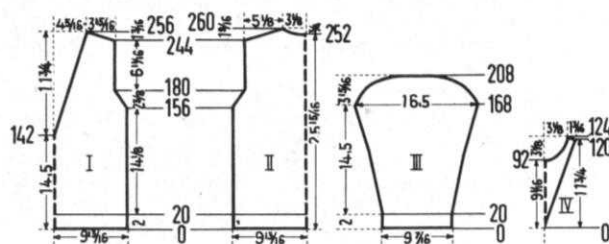


□ RED ■ BLACK

tension 7 (8). Rows 23-156: Work even. Rows 157-180: Armhole shaping. On both sides of every other row, decrease 1 st 12 x. (117 sts). Rows 181-244: Work even. Rows 245-261: SHOULDER SHAPING. On both sides of every other row, bind off 4 sts. 9 x. At the same time, for the neck shaping, after the 252nd row, bind off the 21 center sts. and on both sides of this, every other row, bind off 5 sts. 1 x, 4 sts. 1 x and 3 sts. 1 x.

FRONT (Figure 1): Cast on 141 sts. with red yarn. Rows 1-20: K 1, P 1 with tension 8 (9). Rows 21-22: Work in stockinette stitch with black yarn. Continue working the Norwegian pattern with tension 7 (8). Rows 23-142: Work even. Hang the center stitch on a neighboring needle, continue working separately towards the shoulder and knit the 3 border stitches of the Neck edge with black yarn. Rows 143-156: NECK SHAPING. On both sides, for the neck shaping, after the 145th row, decrease 1 st. and then decrease 1 st. every 3rd row 3 x. To do this, put the 4th st. on the 3rd needle and move the stitches over to fill empty needle. Rows 157-180: ARMHOLE SHAPING. On both sides of every other row, decrease 1 st. 12 x. At the same time, for the neck shaping, on both sides, decrease 1 st. after the 157th row, then decrease 1 st. every 3rd row 7 x. Rows 181-256: NECK SHAPING: After the 182nd row, on both sides, decrease 1 st. and then

every 4th row, decrease 1 st. 17 x. SHOULDER SHAPING: At the same time, after the 244th row, on both sides every other row, bind off 4 sts. 7 x.



SLEEVE (Figure III): (make 2). Cast on 83 sts. with red yarn. Rows 1-20: Ribbing K 1, P 1 with tension 8 (9). Hang the 1st, 2nd, 4th, 5th, 7th, and 8th st. etc. of the PAM onto the empty needles of the main machine and continue to work in ribbing of K 1 P 5. Rows 21-168: On both sides, after the 20th row, increase 1 stitch, then every 6th row, increase 1 stitch 14 x, then every 4th row, increase 1 st 15 x. (143 sts). Rows 169-208: For the underarm shaping, on both sides of every other row, decrease 2 sts. 1 x and 1 st. 2 x. Repeat these 2 decreases 3 x. On both sides every other row, bind off 3 sts. 2 x, 4 sts. 2 x, 5 sts. 2 x, 6 sts. 2 x and then the remaining 39 stitches.

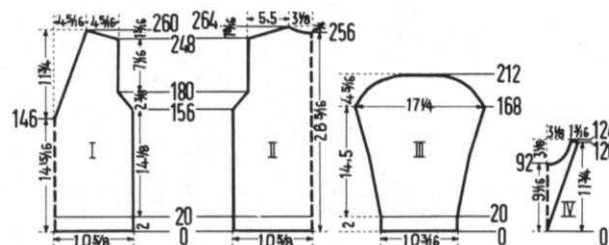
INSERT (Figure IV) (PATTERN K 1, P 5): Cast on 3 sts. with red yarn. Knit in ribbing with tension 8 (9) with the center stitch on the main knitter. Rows 1-120: On both sides, after the 2nd row, increase 1 stitch, then increase 1 st. on the 4th row 1 x and 1 st. in the 2nd row 1 x. Repeat the last two increases 10 x. Then increase 1 st. every 4th row 11 x. **NECK SHAPING:** At the same time after the 92nd row, bind off 11 sts. in the center and on both sides of this, on every other row, decrease 5 sts. 1 x, 4 sts. 1 x, 3 sts. 2 x, 2 sts. 1 x, 1 st. 1 x; then every 4th row decrease 1 st. 4 x. Rows 121-124: SHOULDER SHAPING: On both sides of every other row bind off 3 sts. 2 x and 4 sts. 1 x.

COLLAR: Cast on 195 sts. with red yarn. K 1, P 1, for 62 rows, 10 rows with tension 9 (10), 20 rows with tension 8 (9), and 32 rows with tension 7 (8). Bind off.

FINISHING: Join front and back at side and shoulder seams. Sew sleeve edges together. Sew insert in the neck opening. Sew the collar edges together and fold in half, sew to neck of sweater.

SIZE: 14/16

BACK (Figure II): Cast on 151 sts. with red yarn. Rows 1-20: K 1, P 1 with tension 8 (9). Rows 21-22: Stockinette stitch with



black yarn. Continue to work in the Norwegian pattern with tension 7 (8). Rows 23-156: Work even. Rows 157-180: Armhole shaping: On both sides of every other row, decrease 2 sts. 2 x and 1 st. 10 x. (123 sts.). Rows 181-248: Work even. Rows 249-264: SHOULDER SHAPING. On both sides of every other row, bind off 4 sts. 6 x and 5 sts. 3 x. At the same time, for the neck shaping, after the 256th row, bind off the center 21 sts. and on both sides of this, every other row, bind off 5 sts. 1 x, 4 sts. 1 x and 3 sts. 1 x.

FRONT: (Figure I): Cast on 151 sts. with red yarn. Rows 1-20: K 1, P 1 with tension 8 (9). Rows 21-22: Work in stockinette stitch with black yarn. Continue working in Norwegian pattern with tension 7 (8). Rows 23-146: Work even. Hang the center stitch on a neighboring needle, continue working separately towards the shoulder and knit the 3 border stitches of the neck edge with black yarn. Rows 147-156: NECK SHAPING. On both sides of the neck, after the 149th row, decrease 1 st. then decrease 1 st. every 3rd row 2 x. To do this, put the 4th st. on the 3rd needle and move the stitches over to fill empty needle. Rows 157-180: ARMHOLE SHAPING: On both sides of every other row, decrease 2 sts. 2 x and 1 st. 10 x. At the same time, for the neck shaping, on both sides after the 158th row, decrease 1 st., then decrease 1 st. every 3rd row 7 x. Rows 181-260: NECK SHAPING. After the 182nd row, on both sides, decrease 1 st., then every 4th row, decrease 1 st. 18 x. At the same time, for the shoulder shaping,

after the 248th row, on both sides every other row, bind off 4 sts. 4 x and 5 sts. 3 x.

SLEEVE: (Figure III): (make 2). Cast on 89 sts. with red yarn. Rows 1-20: Ribbing K 1, P 1 with tension 8 (9). Hang the 1st, 3rd, 4th, 6th, 7th, and 9th sts. etc. of the ribber on to the empty needles of the main knitter and continue to work in ribbing of K 1, P 5. Rows 21-168: On both sides, after the 20th row, increase 1 st. Then every 6th row, increase 1 st. 12 x; every 4th row increase 1 st. 18 x. (151 sts.). Rows 169-212: UNDERARM SHAPING: on both sides of every other row, decrease 2 sts. 1 x and 1 st. 1 x. Repeat these 2 decreases 4 x. On both sides, every other row, bind off 2 sts. 3 x, 3 sts. 3 x, 4 sts. 3 x, 5 sts. 3 x, then bind off the remaining 37 sts.

INSERT, COLLAR and FINISHING: Follow instructions for size 10/12.

LETTER FROM THE EDITOR (Continued from page 1)

A garment is as good as the finishing work. The machine if it is clean and working correctly will always do good knitting. We judge the quality of the operator by the way she finishes the job. If she is meticulous and painstaking, her garments will always look beautiful and expensive and they will fit.

Accessories

We market additional accessories in order to make knitting even easier and speedier for our KNITKING owners, but we have to advise owners of other brands of machines that KNITKING Accessories made to fit on the needles, that is, accessories such as the Multi-transfer Tool, Adjustable Needle Selector, Automatic Selector and Reversing Bar, are not suitable for other brands of machines.

The Yarn Winder with Skein Holder, the Magnifying Lamp, Single Transfer Tools and Converta Tape are suitable for any brand of machine and we have Jac 40's to fit most standard brands of knitters with the exception of Japanese made machines. You must specify the brand of machine you own when ordering a Jac 40.

For decreasing in the middle of a row or transferring as many as 33 stitches at a time, the Multi-transfer Tool is a valuable time saver, and if you own any model KNITKING prior to the present push button model, the Automatic Needle Selector will select patterns for you over the entire width of the needle bed just as fast as your hand can slide it across the machine.

There is no better Yarn Winder made than the KNITKING winder (illustrated with Skein Holder on the inside front cover) and no matter how good your balls of yarn look when you buy them,

(Continued on page 32)

ARE YOU UNHAPPY WITH YOUR PRESENT KNITTING MACHINE ?

DOES IT REFUSE TO KNIT FANCY DRESS YARNS?

DOES IT JAM UP WHEN YOU TRY TO KNIT LOOPED MOHAIR OR THICK AND THIN YARNS?

DOES IT DROP STITCHES ALL OVER THE PLACE?

ARE YOU CONTINUALLY HAVING TROUBLE WITH AWKWARD, CUMBERSOME WEIGHTS?

ARE YOU UNABLE TO MAKE A LARGE GARMENT WITH BULKY YARNS?

DO YOU HAVE TO SELECT PATTERN STITCHES MANUALLY?

DO YOU HAVE TO LATCH YOUR RIBBING BY HAND?

IF YOU ARE HAVING ANY OF THESE PROBLEMS YOU SHOULD TRADE UP TO A NEW FANTASTIC PUSH BUTTON KNITTING WITH COORDINATED RIBBER AND ENJOY KNITTING WITH THE WORLDS FINEST, MOST VERSATILE AND MOST AUTOMATIC KNITTER.

YOU WILL BE SURPRISED AT OUR GENEROUS TRADE-IN ALLOWANCE AND YOU CAN, IF YOU WISH, USE YOUR PRESENT MACHINE AS A DOWN-PAYMENT AND PURCHASE A COMPLETE KNITTING FOR JUST PENNIES A DAY. WRITE TODAY FOR FULL INFORMATION AND TELL US WHAT MACHINE YOU NOW OWN. THE ADDRESS IS:

KNITKING, Dept. T-1, 1128 Crenshaw Blvd., Los Angeles, Calif. - 90019

PRACTICAL HINTS

THIN YARNS USED DOUBLE

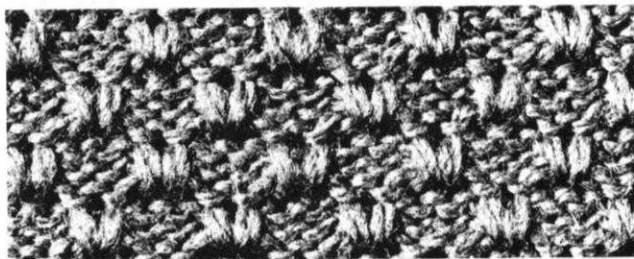
You may sometimes want to use the finer or two-ply yarns doubled. Do not wind two strands of yarn together into one ball, because of the different tensions of the two strands, the yarn will twist and become difficult to use and one strand will at times be behind the other one causing your knitting to be uneven with loose strands here and there. Instead, wind your yarn in the usual way on your KNITTING YARN WINDER and take one strand from the center and the other strand from the outside of your ball of yarn. Hold the two strands of yarn together, give the ends a slight twist, and cast on the number of stitches needed for your garment in the usual way. Put the yarn into the feed finger and yarn holder and proceed with your knitting. Some soft fine two-ply yarns are excellent used in this manner when you are knitting a hold position design using your KNITTING DIAL-A-STITCH or the Automatic Needle Selector.

If your knitting machine is one with a limited number of needles, yarn doubled in this way will give you greater width than if you were using the yarn singly.

PATTERN STITCH, DP 7256 (Page 21)

The Pattern stitch used for the Woman's Jacket Sweater DP 7256, is especially suited for the fluffier spun yarns such as Shetland wool, the soft orlons and baby yarns. The Pattern stitch is worked with the Dial-A-Stitch or Automatic Needle Selector with Wheel III. Those who have the Dial-A-Stitch, may in the 3rd row of the design (Cam box on the right side)

press in the right Retractor Knob. (As you knit from the right side to the left, the needles will return from hold position into working position.) Release the right Retractor Knob, and continue with your design.



HINTS FOR PATTERN STITCH, DP 7257 (Page 19)

The Woman's Jacket Sweater, DP 7257 is made on the KNITTING Automatic with the Coordinated Ribber. It has a Pattern Stitch arrangement of alternating 7 needles of Knit 1, Purl 1, and 3 Purl stitches together. You will set up your pattern by alternating 7 stitches on the Knitter and the Ribber, then 3 stitches side by side on the main Knitter. It is rather difficult to cast on in the normal way for this particular pattern stitch, therefore, we recommend the following: Cast on the stated number of needles as you would for Knit 1, Purl 1 ribbing — then using your transfer needle, put the 8th and then every 9th stitch (from the total number of stitches counted) from the Ribber on to the Knitter. Continue on, following Pattern directions.

LETTER FROM THE EDITOR (Continued from Page 31)

they should always be rewound so that the yarn pulls smoothly and evenly from the center of the ball.

You must eliminate knots from every ball, as nothing looks worse than the bulge of a knot in the middle of an otherwise perfect piece of knitting. Whenever a knot appears, you should break the yarn at the knot and start a new ball. Always allow more than enough yarn at the end of each ball to complete a row and always start a new ball at the beginning of a row.

The KNITTING Reversing Bar is indispensable to knitters who like to reverse their knitting in order to make a hem, or prefer to turn a hem and attach the first row of stitches in one movement instead of lifting them and putting them on one at a time. It operates over a few, or over all of the needles on the machine.

The Converta Tape is a very ingenious measure, suitable for both hand and machine knitting. If you study the illustration on the inside front cover of this magazine, you will see that the tape pulls out from a revolving drum and the tape has rows of figures. These figures continue from 19 to 32 on the opposite side of the drum.

The tape is designed to simplify the converting of hand knits to machine knits and to make it possible to chart garments for any size person. The small rectangular opening at the end of the tape is the stitch gauge. You place it over your sample piece of knitting and count the stitches between the two points. If you count 14 stitches, the sliding window is located over the 14 (as in the illustration). You measure, with the tape, the person for whom the completed garment is intended, then you

look opposite the pointer on the front of the window and the number you see is the number of stitches you need.

The same procedure is used for rows. Again, you place the stitch gauge at the end of the tape over the sample piece, and you count the rows between the two points. Again, you place the window over the number obtained and again you measure the person for whom the garment is intended. Your tape then tells you exactly how many rows you need.

The Jac 40 is a fabulous accessory that it makes it possible for any knitter to produce Jacquard designs and ski sweater patterns, previously and tediously only attempted by the most advanced and enthusiastic knitters.

Designs, single and multi-color, are selected automatically and row by row, by means of a pre-stamped punch card that resembles somewhat the roll from a player piano. The cards are plastic and can be used repeatedly. There is a selection of approximately 150 punched cards and illustrations of them are included with every Jac 40, together with complete and detailed operating instructions.

A sweater made with a Jac 40 was illustrated on page 7 of the January-February issue of KNITTING MAGAZINE. Two more appear on pages 14 and 15 of this issue and another one will appear in the next issue. We will be using more of them in future issues.

Our next issue introduces some lovely garments knitted in cotton, some beautiful summery clothes in light weight yarns, a handsome linen shirt for the man in your life, some good looking garments for your good looking youngsters, plus a luxurious car rug.

WANTED

SALESPeOPLE AND KNITTING OWNERS TO SELL AND TEACH KNITTING KNITTING. IF YOU CAN DO EITHER OR BOTH WRITE TO KNITTING, 1128 CRENSHAW BLVD., LOS ANGELES, CALIF. 90019, FOR FULL INFORMATION.

YOU'LL JUST LOVE . . .

KNITKING®

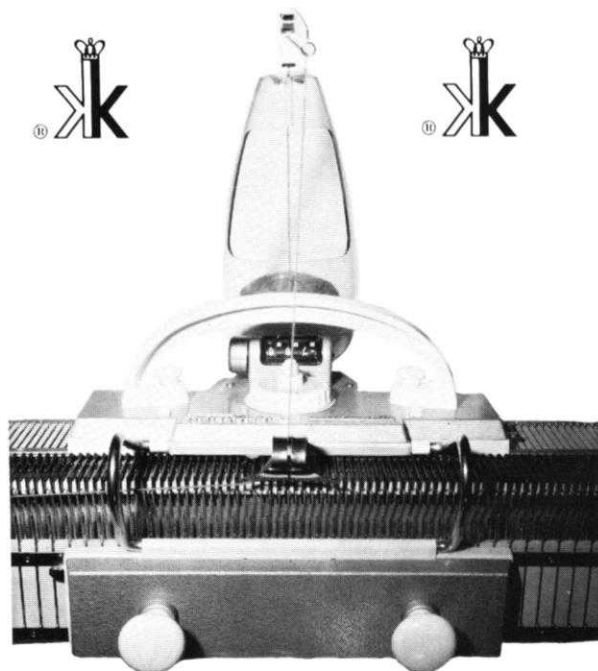
**Push-Button
Dial-A-Stitch**

**the modern handknitter
with the new Coordinated Ribber**

✂ Easiest, by far, to learn to use efficiently ✂ Does more jobs, takes less time, requires less space ✂ Needs no weights, clamps, or combs in its operation ✂ Will not drop stitches (it has spring-latch needles) ✂ Automatically creates Jacquard, Fair Isle and Argyle patterns ✂ Takes all kinds of yarns (even mohair, looped or plain; straw, ribbon, angora, synthetics, cotton, wool, etc.) ✂ Arrives complete with Home Study Course, instruction books, tools ✂ Designs and patterns for the whole family come to you monthly in Knitking's magazines ✂ Does a multitude of fancy ribs for you ✂ Floating row-counter can be pre-set and signals when knitting is complete ✂ Dial-A-Stitch gives you a choice of stitches (multicolor, if you wish) with the push of a button ✂ New Coordinated Ribber and self-adjusting yarn-feeder knits and purls at the same time, with one movement of the slide ✂ With the new fully automatic push-button *KNITKING*, you can knit sweaters, socks, coats, dresses, rugs ✂ It's so easy to knit a dress and wear it, all in a single day

Write to Knitking for more information

1128 Crenshaw Boulevard, Los Angeles 19, Calif.,



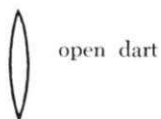
EXPLANATION OF TERMS AND DIAGRAMS USED WITH PATTERNS

Before you begin a garment, we advise you to read through the following remarks. This will make it easier for you to follow the diagrams.

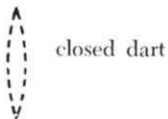
It is especially important that you measure by the gauge which precedes each pattern, because the suggested knitting yarns may not always give the desired measurements. Should you vary from the given measurements, make the necessary adjustments by altering the machine setting.

Increases and decreases in the middle of a garment are presented in the following manner:

Increasing and decreasing stitches: For example, for waist shaping:



open dart



closed dart



= One-sided increase of rows: For example, for diagonally worked darts, etc.

Certain H.P. and eyelet designs are sketched in the knitting patterns. The pattern should be read as the work comes toward you from the machine: that is, if you have purl stitches before you, it will say purl stitches in the pattern. If you have knit stitches before you, it will say knit stitches in the pattern.

On the sides of the pattern are the row numbers. Missing row numbers indicate that the rows are to be worked evenly. In eyelet design the empty needles are in working position; in H.P. design, the same needles are in hold position.

SYMBOLS

- = knit stitch
- ▣ = purl stitch
- = empty needle (still in working position)
- ⊠ = needle out of operation
- ⊡ = needle in hold position
- ⊞ = stitch put on neighboring needle. Needle in *hold* position
- ⊟ = stitch put on neighboring needle — to the right
- ⊠ = stitch put on neighboring needle — to the left
- ⊞ = 3 stitches hung together

Available in many wood finishes



KNITTING DESK . . .

A knitting machine cabinet that automatically lifts your machine into the knitting position just by pulling a lever. The cabinet converts in seconds into a handsome desk suitable for any decor or any room in your house. Beautifully made in a variety of woods by craftsmen in West Germany.



Order from your local dealer or direct from KNITKING, 1128 Crenshaw Blvd., Los Angeles, California 90019