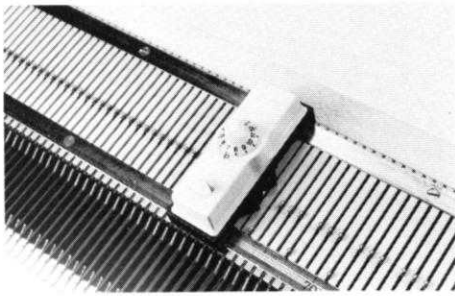


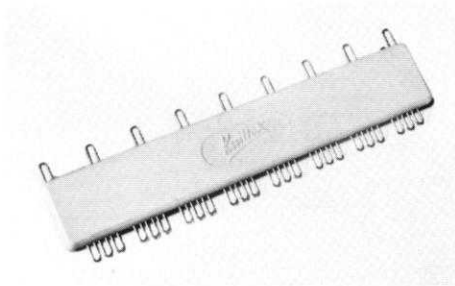
KNITTING

MAGAZINE

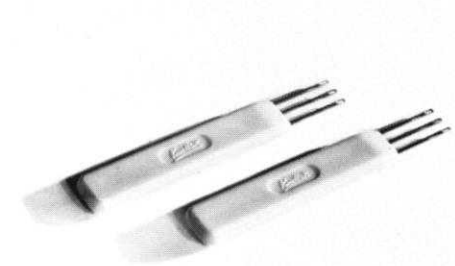




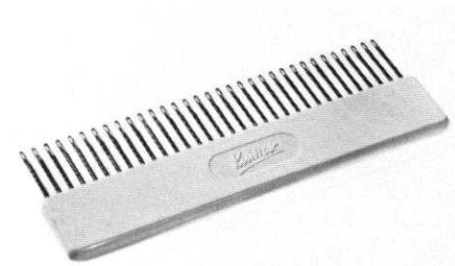
Automatic Needle Selector fits all model Knitkings



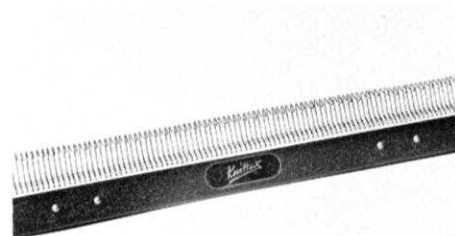
Adjustable Selector



Treble Transfer Tools



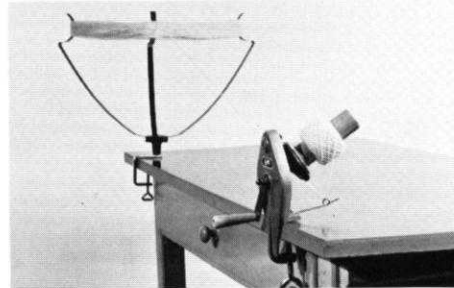
Multi-transfer Tool



Reversing Bar



Converta Tape



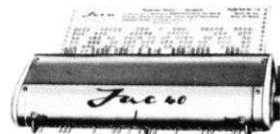
Yarn Winder



ACCESSORIES



The perfect tool for automatic selection of Jaquard and ski-sweater designs. Over 125 patterns available.



Jac 40

KNITKING

MAGAZINE



Letter from the Publisher

Vol. 1 No. 5

May-June 1965

INDEX

Contents	Pattern No.	Page No.
Woman's Cotton Blouse	DP 7199	18
Woman's Pullover	DP 7205	18
Man's Shirt	HP 3361	19
Woman's Blouse	DP 7201	20
Woman's Cotton Pullover	DP 7200	21
Man's Linen-Cotton Shirt	HP 3362	22
Woman's Dress	DK 7206	23
Man's Linen-Cotton Shirt	HP 3360	24
Woman's Cotton Pullover	DP 7198	25
Woman's Pullover	DP 7202	25
Woman's Cardigan	DP 7207	26
Woman's Cotton Pullover	DP 7209	26
Woman's Jacket	DP 7230	28
Woman's Pullover	DP 7203	29
Woman's Pullover	DP 7213	29
Man's Pullover	HP 3367	30
Afghan	RS 6031	30
Girl's Dress 1½ to 2 years	SK 5079	30
Girl's Suit	MK 4684	31
Girl's Pullover	MK 4670	31
Practical Knitting Hints		32



OUR COVER PICTURE

Our cover garment is made in a light and airy design from the new and beautiful KNITKING SATIN-COTTON. On page 12 you will find a full length picture of the blouse. Instructions for knitting it are on page 18.

Regular readers will know that it is our policy to recommend yarns that are obtainable in most major cities in the U.S.A. They will also know that we make many of the garments with yarns which we import ourselves. California KNITKING owners already know that we have our own imported yarns available in the Los Angeles center and many of them drive long distances to buy from us.

Although we searched the world over for top quality yarns, it was not with the intention of making them available nationally, but rather to find the quality and range needed to qualify for use in producing the high style, beautifully finished garments needed for KNITKING Magazine.

It now seems that we are being pushed into yarn distribution on a national basis by the increasing demands of our readers and KNITKING customers. Consequently, we intend to gradually make our range available.

It is an accepted fact that the finest wool in the world is produced in Australia so we went to the best spinners in that country and asked for their best yarns. The quality and beauty of them is second to none and we have imported large quantities for our own use and for resale in Los Angeles. These beautiful yarns will soon be available nationally.

We went to West Germany for their gorgeous, fine quality yarns plus the entirely new Satin-Cotton and the handsome Cotton-Linen mixture used in some of the garments in this issue and made available for the first time.

The English woman learns about quality yarns at a very early age. Consequently, the standard there is among the best in the world. From England we obtained lovely tweed yarns and mixtures unobtainable elsewhere. These too will be available soon.

The yarn business is much more complex than it would seem on the surface. With many types of yarns available in many hundreds of different colors and different dye lots, it is extremely difficult to judge what will be popular and it is possible to have substantial sums of money tied up in stocks of slow moving yarns. We therefore intend to introduce our range in a gradual way in order to determine just what types and weights and colors our customers like best. We will then, and only then, produce a comprehensive sample card for general distribution so please do not expect sample cards until their availability is announced in the pages of this magazine. Meanwhile, we will be happy to refer to specific colors in stock and to send a small sample of KNITKING yarns recommended for garments in KNITKING MAGAZINE. But, we must emphasize that we are not yet ready to send out sample cards. If you wish to purchase the KNITKING yarns recommended for patterns, place your order speedily in order not to be disappointed and be sure to include full payment plus postage with the order.

Because we know of no substitute for the Satin-Cotton and the Linen-Cotton shown in patterns 7199, 7200, 7209, 7198, 3362 and 3360 of this issue, we are introducing it first. We have good stocks in Los Angeles but we expect the demand to be heavy and it takes six weeks to replenish it from Europe so please read our ad on page 20 and place your order as speedily as possible.

Publisher: Henry J. Atkin, 1128 Crenshaw Blvd., Los Angeles, Calif. 90019, Telephone: WEbster 8-2079. Published bi-monthly. Subscriptions: USA—\$6.00 annually, single copies \$1.50; Canada—\$7.00; other parts of the world—\$10.00. The entire contents of KNITKING MAGAZINE are copyright and must not be reproduced in any shape or form without the express permission, in writing, of the publisher.

Printed by: George Rice & Sons, Los Angeles, Calif.

DP 7205

Our rose colored summer pull-over is knitted with a light weight yarn using a holding position design. Bias strips of satin in the same rose shade are used to bind the sleeves, neckline and bottom of the garment.

LIGHT AIRY
and
SUMMERY





HP 3361

This handsome cardigan styled casual sport shirt is made from white sport yarn in a holding position design. It is especially flattering to heavy set men.

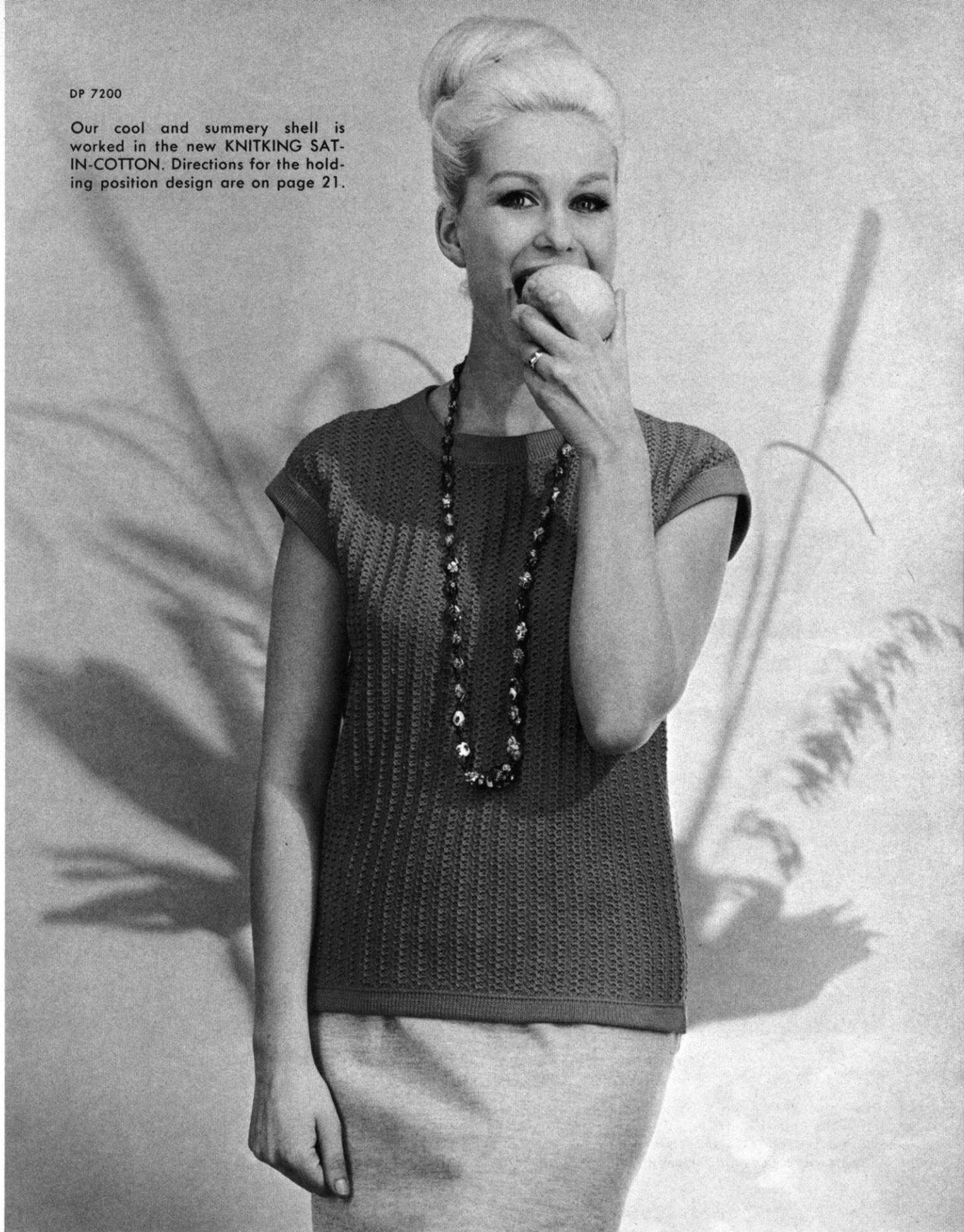
DP 7201

The striking lacy design on our good looking yellow blouse especially designed for the larger woman, was made with the push button KNIT-KING and Coordinated Ribber. Directions for sizes 14/16 and 18/20.



DP 7200

Our cool and summery shell is worked in the new KNITTING SATIN-COTTON. Directions for the holding position design are on page 21.

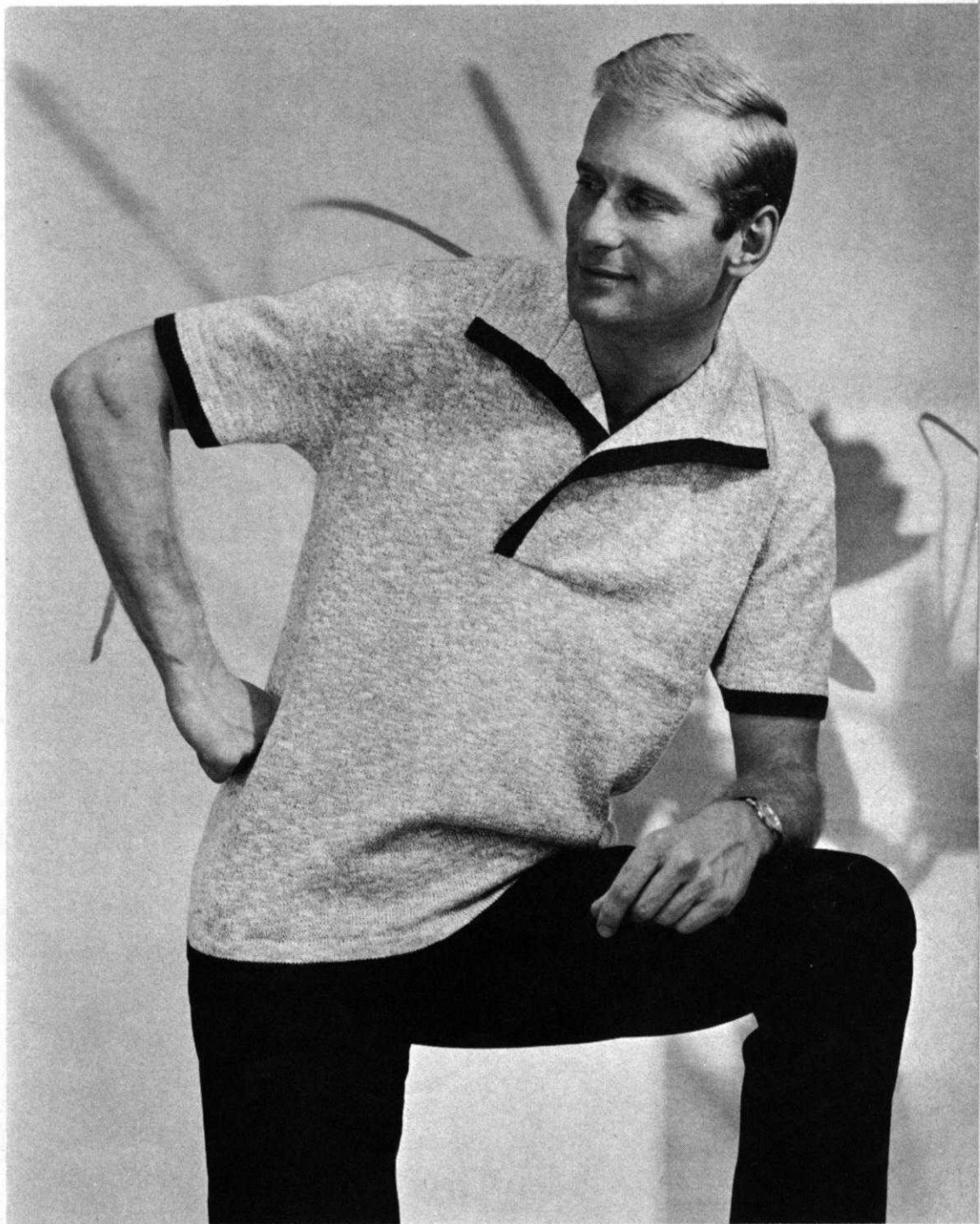




HP 3362

This cool and stylish shirt is made with the new KNITKING natural colored LINEN-COTTON. The collar may be worn open or buttoned.





DK 7206

Our Attractive Summer dress is made with a brass colored wool in stockinette stitch. Only the accented yoke and neat collar are worked in a holding position.

HP 3360

Another shirt made with our handsome natural color LINEN-COTTON. The trim is made with SATIN-COTTON in a striking dark blue.

DP 7198

A beautiful shade of green KNITKING SATIN-COTTON was used to make this cool lacy pullover in an intricate holding position design, knitted easily and automatically on the push button KNITKING with Coordinated Ribber.

DP 7202

An attractive eyelet design is featured on this cool and comfortable pullover designed for the 14 to 16 size figure.



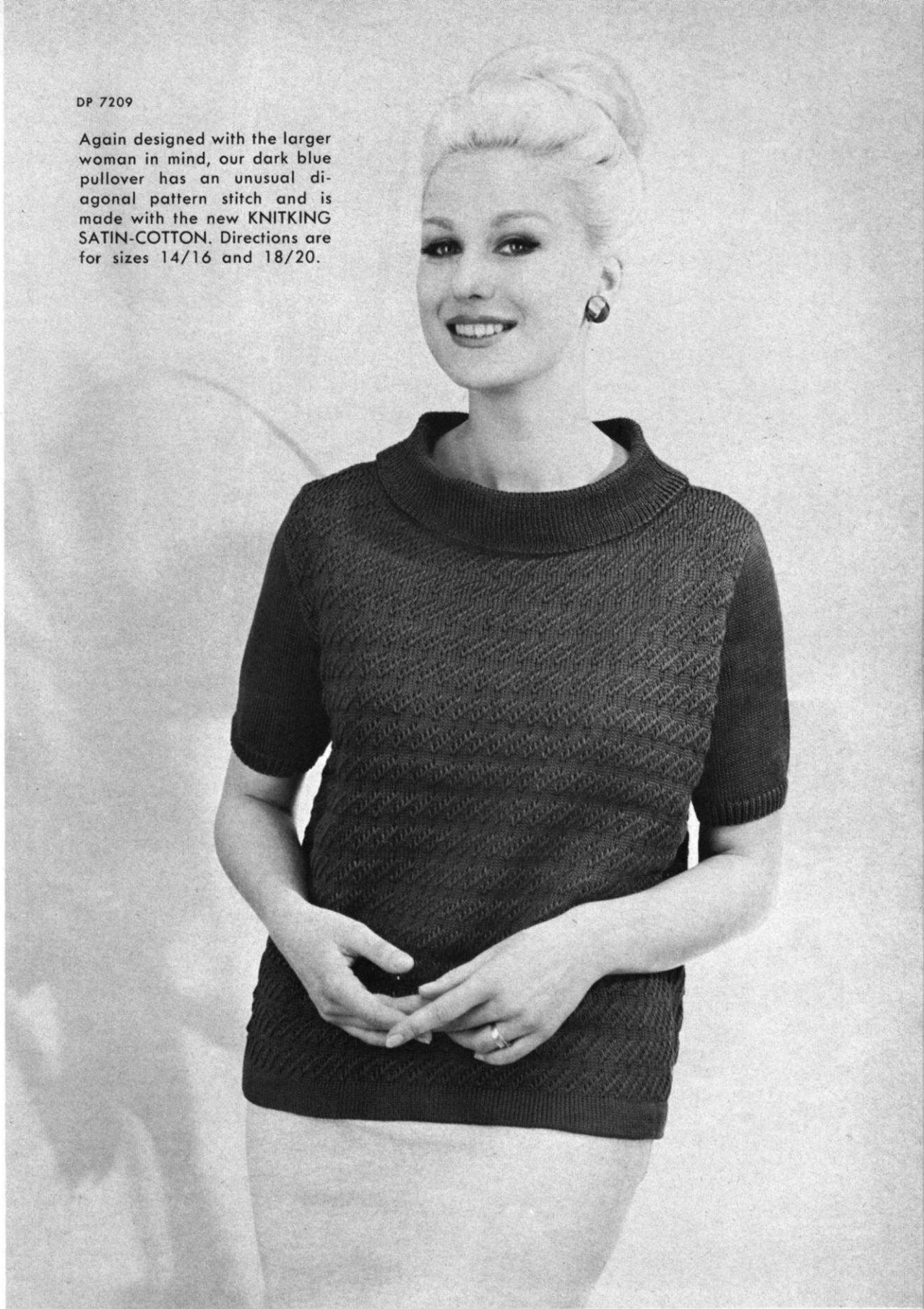
DP 7207

Becoming, is the word for our cap sleeve cardigan knitted in stockinette stitch with a light green and white mixture boucle yarn. A white wool braid is used for trimming.



DP 7209

Again designed with the larger woman in mind, our dark blue pullover has an unusual diagonal pattern stitch and is made with the new KNITKING SATIN-COTTON. Directions are for sizes 14/16 and 18/20.



DP 7230

Designed in response to requests for a jacket sweater flattering to the fuller figure, this smart garment has a Norwegian pattern stitch that creates a slimming effect. Directions are for sizes 16/18 and 20/22.



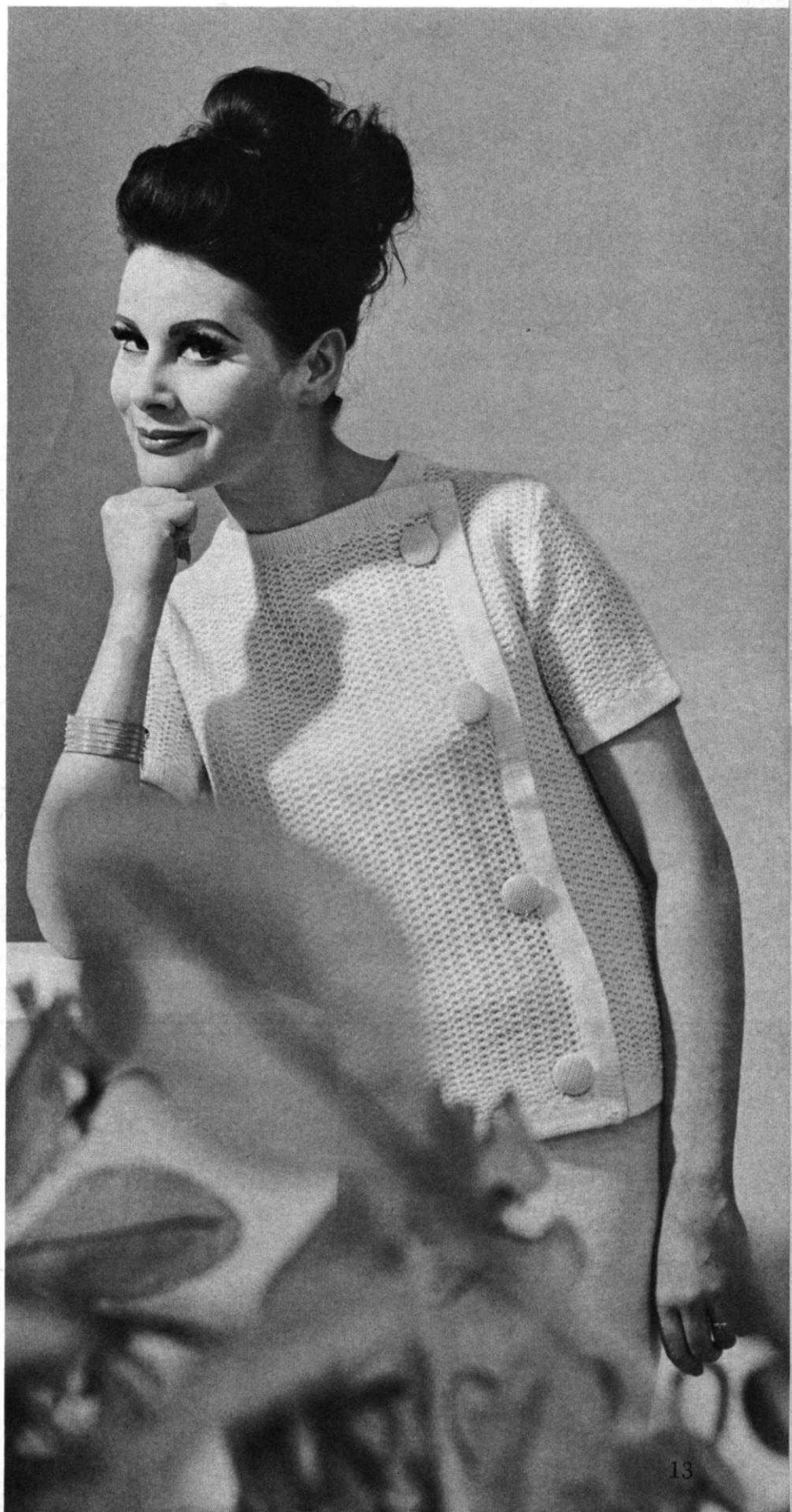
DP 7199

OUR COVER PICTURE

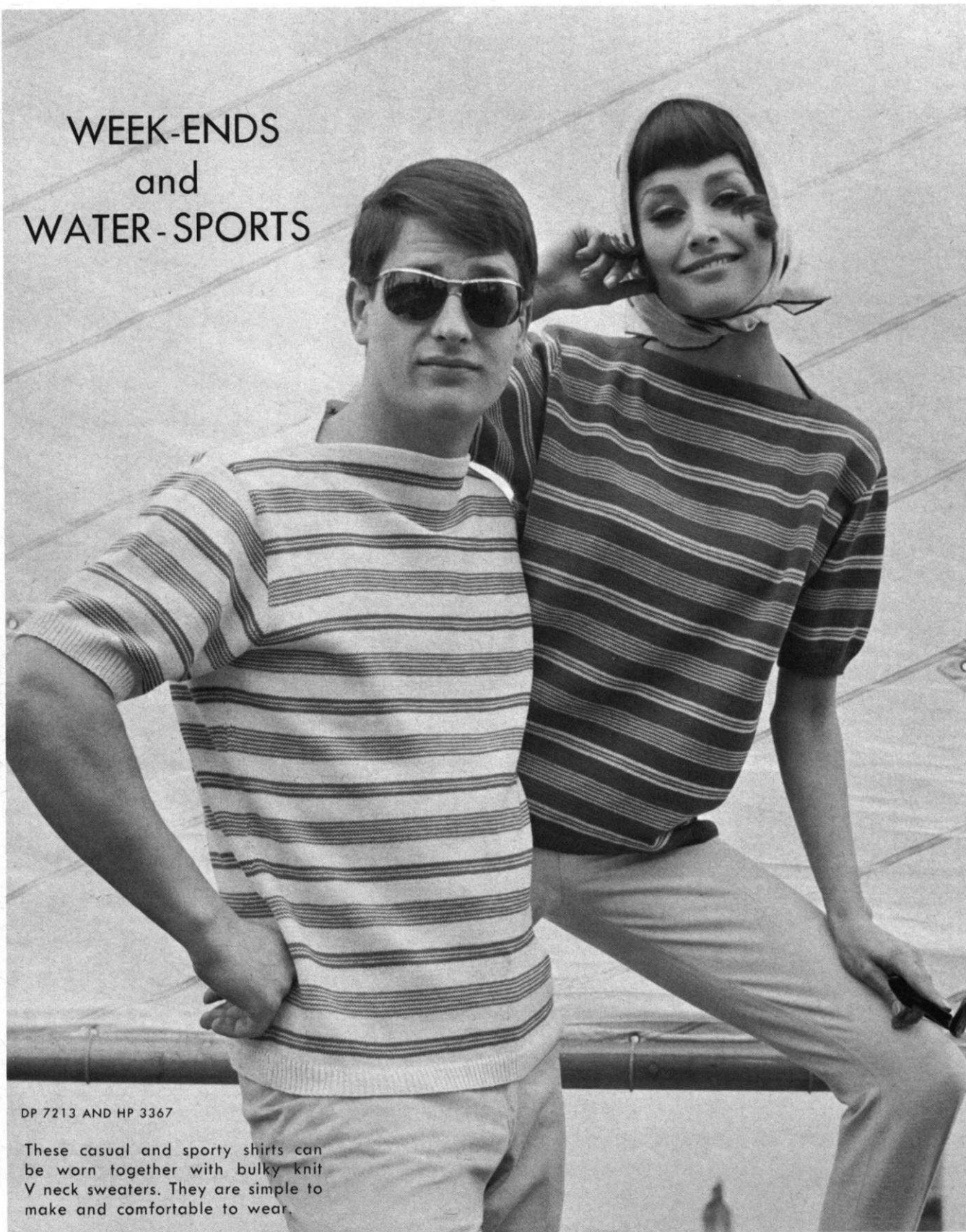


DP 7203

Our unusual pullover with wrap over styling is knitted with a holding position design in rose colored wool. The decorative edgings are worked in stockinette stitch.



WEEK-ENDS
and
WATER-SPORTS



DP 7213 AND HP 3367

These casual and sporty shirts can be worn together with bulky knit V neck sweaters. They are simple to make and comfortable to wear.



RS 6031

You asked for an afghan so here's a beauty knitted in a holding position design from black, red and green tweed wool. Narrow red stripes divide the afghan into large squares.

SK 5079

For the 1½ to 2 year old, we have this pretty little dress made from baby wool with an interesting eyelet design on the skirt and yoke.





MK 4684

A holding position design made up on the purl side is used for the jacket of this good looking suit for young girls. The skirt has 6 gores and is made in stockinette stitch.



MK 4670

A cute and sassy summer shell knitted in bright red yarn in KNITTING SATIN-COTTON and using a holding position design. The white edgings increase its attractiveness.

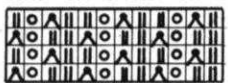
KNITTING INSTRUCTIONS

WOMAN'S COTTON BLOUSE, No. DP 7199



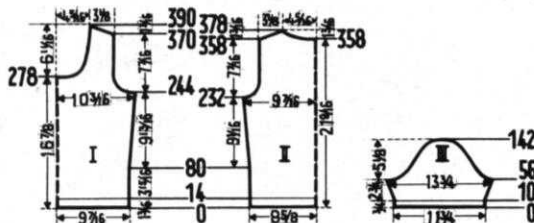
SIZE: 10/12. **MATERIAL:** 14 oz. red cotton. **FOR EXAMPLE:** KNITTING Satin Cotton. See our advertisement page 20. **TENSION:** KNITTING 6-Pattern st. 5 - K 1, P 1, ribbing. **GAUGE:** 14 sts. - 2", 33 rows - 2", Pattern stitch; 14 sts. - 2", 23 rows - 2", K 1, P 1, ribbing. **PATTERN:** Eyelet design on purl side, according to chart. Ribbing: K 1, P 1. **BACK:** (Figure II) Cast on 123 sts. Rows 1-14: K 1, P 1, ribbing with Tension 5. Continue in eyelet design with Tension 6. Rows 15-232: Inc. 1

st. on both sides after the 80th row and again every 24th row 5 x. (135 sts.). Rows 233-264: **Armhole Shaping:** Bind off 3 sts. on both sides, and then every other row



bind off 2 sts. 2 x, 1 st. 3 x, and every 4th row dec. 1 st. 2 x, and every 6th row dec. 1 st. 2 x. (107 sts.). Rows 265-358:

Work even. Rows 359-378: **Shoulder Shaping:** On both sides of every other row bind off 2 sts. 10 x and 3 sts. 1 x. At the same time, for the neck shaping, after the 358th row bind off the 17 center sts., and on both sides of this, every



other row, dec. 5 sts. 1 x, 4 sts. 1 x, 3 sts. 2 x, 2 sts. 2 x, and 1 st. 3 x.

FRONT: (Figure I) Cast on 135 sts. Rows 1-14: K 1, P 1, ribbing with Tension 5. Continue in eyelet design with Tension 6. Rows 15-244: Inc. 1 st. on both sides after the 80th row and again every 24th row 5 x. (147 sts.). Rows 245-278: **Armhole Shaping:** Bind off 4 sts. on both sides; then every other row bind off 3 sts. 2 x, 2 sts. 2 x, 1 st. 2 x, and then every 4th row dec. 1 st. 2 x and every 6th row dec. 1 st. 2 x. (107 sts.). Rows 279-340: **Neck Shaping:** Bind off the 31 center sts., and on both sides of this, on every other row bind off 2 sts. 2 x, 1 st. 2 x, and then every 4th row dec. 1 st. 3 x, every 6th row dec. 1 st. 4 x, and every 8th row dec. 1 st. 2 x. Rows 341-370: Work even. Rows 371-390: **Shoulder Shaping:** On both sides of every other row bind off 2 sts. 10 x. and 3 sts. 1 x

SLEEVE: (Figure III) Cast on 85 sts. Rows 1-10: K 1, P 1 ribbing with Tension 5. Continue in eyelet design with Tension 6. Rows 11-56: Inc. 1 st. on both sides after the 16th row and again every 6th row 5 x. (97 sts.). Rows 57-76: **Underarm Shaping:** On every other row on the back side of the sleeve, dec. 3 sts. 1 x, 2 sts. 4 x, 1 st. 3 x, and at the same time, on the front side dec. 4 sts. 2 x, 3 sts. 1 x, 2 sts. 4 x, and 1 st. 1 x. Rows 77-134: Bind off 2 sts. on both sides after the 76th row, then every 4th row dec. 1 st. 1 x, bind off 2 sts. 1 x, and decrease 1 st. 12 x. Rows 135-142: On both sides of every other row bind off 1 st. 1 x, 2 sts. 1 x, 3 sts. 1 x, 4 sts. 1 x, and the remaining 9 sts. Make another sleeve with reverse shapings.

NECK EDGING: Cast on 155 sts. for the front section and 79 sts. for the back section. Work 12 rows K 1, P 1, ribbing with Tension 5. Bind off all sts.

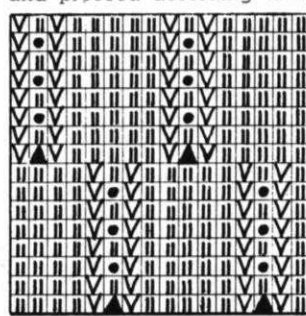
FINISHING: Join front and back at side and shoulder seams. Sew sleeve edges together and sew sleeves to sweater. Sew neck edging together and sew to sweater.

WOMAN'S PULLOVER, No. DP 7205



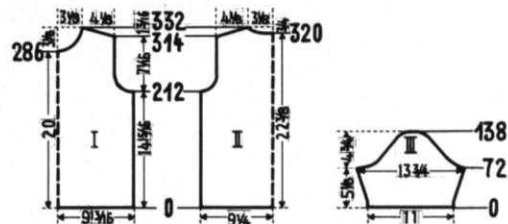
SIZE: 12/14. **MATERIAL:** 13 oz. rose wool. **FOR EXAMPLE:** KNITTING Subita or Pauline Denham Sierra. 20" rose colored silk-satin material, 36" wide. **TENSION:** KNITTING 7. **GAUGE:** 15 sts. - 2", 28 rows - 2". **PATTERN:** Holding position on knit side according to chart. To do this before the 1st row, put the 2nd and 4th sts. on the 3rd needle, and put the 2nd and 4th needles out of work, and put the 3rd needle in holding position. Repeat this operation over the 10th-

12th and 18th-20th needles. After the 16th row, put the needles that are out of work back into working position and proceed according to the chart. Edging: Stockinette st.



BACK: (Figure II) Cast on 141 sts. Rows 1-6: Stockinette st. Continue in holding position design. Rows 7-212: Work even. Rows 213-242: **Armhole Shaping:** Bind off 3 sts. on both sides. Then every 4th row bind off 3 sts. 1 x, 2 sts. 3 x, and 1 st. 3 x. (111 sts.). Rows 243-314: Work

even. Rows 315-332: **Shoulder Shaping:** On both sides of every other row bind off 3 sts. 9 x and 4 sts. 1 x. At the same time, for the neck shaping, after the 320th row bind off the 19 center sts., and on both sides of this, every other row, bind off 5 sts. 1 x, 3 sts. 2 x, and 2 sts. 2 x.



FRONT: (Figure I) Cast on 151 sts. Rows 1-6: Stockinette st. Continue in holding position design, at first putting the 7th and 9th sts. on the 8th needle, the 15th and 17th sts. on the 16th needle, etc. Rows 7-212: Work even. Rows 213-242: **Armhole Shaping.** Bind off 6 sts. on both sides. Then, every 4th row bind off 4 sts. 1 x, 3 sts. 1 x, 2 sts. 2 x, and 1 st. 3 x. (111 sts.). Rows 243-286: Work even. Rows 287-332: **Neck Shaping:** Bind off the 11 center sts., and on both sides of this, every other row, bind off 4 sts. 1 x, 3 sts. 1 x, 2 sts. 2 x, 1 st. 3 x, and then every 4th row dec. 1 st. 3 x, and every 6th row dec. 1 st. 2 x. At the same time, after the 314th row, for the Shoulder Shaping, on both sides of every other row bind off 3 sts. 9 x and 4 sts. 1 x.

SLEEVE: (Figure III) Cast on 85 sts. Rows 1-6: Stockinette st. Continue in holding position design, at first putting the 2nd and 4th sts. on the 3rd needle, the 10th and 12th sts. on the 11th needle, etc. Rows 7-72: Inc. 1 st. on both sides after the 12th row, and again every 6th row 9 x. (105 sts.). Rows 73-92: **Underarm Shaping:** Every 4th row on the back side of the sleeve, bind off 4 sts. 2 x and 3 sts. 3 x, and at the same time, on the front, bind off 6 sts. 1 x, 5 sts. 1 x, 4 sts. 1 x, and 3 sts. 2 x. Rows 93-128: On both sides of every 4th row bind off 2 sts. 9 x. Rows 129-138: On both

sides of every 4th row bind off 3 sts. 2 x, 4 sts. 1 x, and the remaining 11 sts. Make another sleeve with reverse shapings.

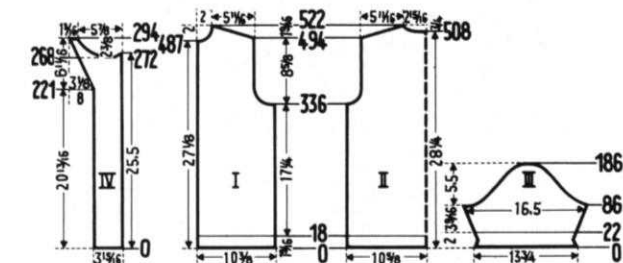
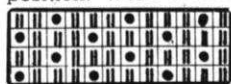
FINISHING: Join front and back at side seams in slip stitch, overlapping 1 st. from each section. Sew shoulder seams. Sew sleeve edges together and sew sleeves to sweater. Cut bias strips 1-9/16" wide from the satin and bind the neckline of the blouse and sleeve bottoms, and sweater bottom.

MAN'S SHIRT, No. HP 3361



SIZES: 42/44, 46/48. **MATERIAL:** (42/44) 19½ oz., (46/48) 22¼ oz. white wool. **FOR EXAMPLE:** Sports yarn or Spinnerin Ambralon. **TENSION:** KNITTING 6 - Pattern st. 5 - Inset and collar. **GAUGE:** 11 sts. - 2", 36 rows - 2", Pattern st.; 11 sts. - 2", 22 rows - 2", Edging; 17 sts. - 2", 21 rows - 2", Closing strip and collar. **PATTERN:** Holding position design on purl side according to chart. Place the Gate Cam release lever toward the needle heels. 1). Following chart, put the

designated needles into holding position. Work 1 row. 2). Put the needles from holding position into working position. Work 1 row. Keep repeating steps 1 and 2. (Use Automatic Needle Selector or Dial-A-Stitch and wheel III). This pattern has to be pulled and stretched in all directions, so it is recommended that after every 100 rows, while the garment is still on the machine, you pull and stretch it in all directions.



SIZE 42/44.

BACK: (Figure II) Cast on 119 sts. Rows 1-18: Stockinette st. with Tension 7. Now put the Gate Cam release lever toward the needle heels and continue in holding position with Tension 6. Rows 19-336: Work even. Rows 337-370: **Armhole Shaping.** Bind off 3 sts. on both sides; then every 4th row bind off 2 sts. 2 x, 1 st. 2 x, and in every 8th row dec. 1 st. 2 x. (97 sts.). Rows 371-494: Work even. Rows 495-522: **Shoulder Shaping:** On both sides of every other row bind off 2 sts. 13 x and 3 sts. 2 x. **At the same time,** for the neck shaping, after the 508th row, bind off the 13 center sts., and on both sides of this, every other row bind off 3 sts. 1 x, 2 sts. 2 x, and 1 st. 3 x.

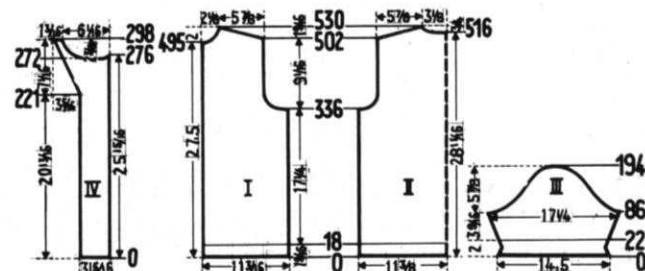
FRONT: (Figure I) Cast on 58 sts. Rows 1-18: Stockinette st. on knit side with Tension 7. Now put the Gate Cam release lever toward the needle heels, and continue in holding position with Tension 6. Rows 19-336: Work even. Rows 337-370: **Armhole Shaping:** Bind off 5 sts. Then every 4th row bind off 3 sts. 1 x, 2 sts. 2 x, 1 st. 1 x, and then every 8th row decrease 1 st. 2 x. (43 sts.). Rows 371-487: Work even. Rows 488-522: **Neck Shaping:** Bind off 3 sts. Then every 4th row, bind off 2 sts. 2 x, 1 st. 2 x, and every 6th row decrease 1 st. 2 x. **At the same time,** after the 494th row, for the **Shoulder Shaping,** on every other row, bind off 2 sts. 13 x and 3 sts. 2 x. Make another front section with reverse shapings.

SLEEVE: (Figure III) Cast on 77 sts. Rows 1-22: Stockinette stitch with Tension 7, decreasing 1 st. on both sides after the 4th and 8th rows, and increasing 1 st. on both sides after the 14th and 18th rows. Now place the Gate Cam release lever toward the needle heels, and continue in holding position design with Tension 6. Rows 23-86: Inc. 1 st. on both sides after the 22nd row and again every 8th row 7 x. (93 sts.). Rows 87-110: **Underarm Shaping:** Every 4th row on the back side of the sleeve, bind off 3 sts. 2 x and 2 sts. 4 x, and **at the same time** on the front side, bind off 4 sts. 2 x, 3 sts. 2 x, and 2 sts. 2 x. Rows 111-170: On both sides of every 4th row, bind off 1 st. 1 x, 2 sts. 1 x, and 1 st. 13 x. Rows 171-186: On both sides of every 4th row, bind off 2 sts. 2 x, 3 sts. 2 x, and the remaining 9 sts. Make another sleeve with reverse shapings.

FRONT CLOSING STRIPS: (Figure IV) Cast on 34 sts. Work in stockinette st. with Tension 5. Rows 1-268: On the left side, inc. 1 st. after the 221st row and again every 4th row 9 x and every other row 5 x. Rows 269-294: **Neck Shaping:** Counting from the right edge, bind off the 10th-26th sts., and on both sides of this, every other row, bind off 5 sts. 1 x and 4 sts. 1 x. Then for the neck shaping, decrease 3 sts. 2 x, 2 sts. 4 x, and 1 st. 2 x. **At the same time,** inc. 1 st. on the left side after the 269th row, and again every other row 11 x. Bind off the remaining 10 sts. Make another strip, with reverse shapings, making buttonholes after the 8th, 46th, 84th, 122nd, 160th and 198th rows over the 3rd-8th and 27th-32nd needles.

COLLAR: Cast on 143 sts. Rows 1-22: On the left side, put 46 needles in holding position. Work 1 row. On the right side put 46 needles in holding position. Work 1 row. Now, on both sides, one after another, put back into working position: 8 needles 2 x, 6 needles 2 x, 4 needles 2 x, 3 needles 2 x, and 2 needles 2 x. Rows 23-68: Work even. Rows 69-88: On both sides, one after another put into holding position: 2 needles 2 x, 3 needles 2 x, 4 needles 2 x, 6 needles 2 x, and 8 needles 2 x. Rows 89-90: On the left side put all needles in working position. Work 1 row. On the right side put all needles in working position. Work 1 row. Bind off all sts.

FINISHING: Join front and back at side, and shoulder seams. Sew sleeve edges together and sew sleeves to sweater. Make a hem 1-9/16" wide at bottom of sweater. Fold 1" of sleeve bottom toward outside and attach. Fold front closing strips around sweater fronts and attach. Fold the collar in half and sew side seams together. Place open end of collar around sweater neckline, and attach. Finish buttonholes and sew on buttons.



SIZE: 46/48. BACK: (Figure II). Cast on 127 sts. Rows 1-18: Stockinette st. with Tension 7. Now put the Gate Cam release lever toward the needle heels and continue in holding position design with Tension 6. Rows 19-336: Work even. Rows 337-374: **Armhole Shaping:** Bind off 3 sts. on both sides; then in every 4th row bind off 2 sts. 3 x, 1 st. 2 x, and then every 8th row decrease 1 st. 2 x. (101 sts.). Rows 375-502: Work even. Rows 503-530: **Shoulder Shaping:** On both sides of every other row bind off 2 sts. 12 x and 3 sts. 3 x. **At the same time,** for the **Neck Shaping,** after the 516th row, bind off the 13 center sts. and on both sides of this, every other row, bind off 3 sts. 1 x, 2 sts. 3 x, and 1 st. 2 x.

FRONT: (Figure I). Cast on 63 sts. Rows 1-18: Stockinette st. with Tension 7. Now put the Gate Cam release lever toward the needle heels, and continue in holding position design with Tension 6. Rows 19-336: Work even. Rows 337-374: **Armhole Shaping:** Bind off 5 sts. Then every 4th row bind off 4 sts. 1 x, 3 sts. 1 x, 2 sts. 1 x, 1 st. 2 x, and then every 8th row dec. 1 st. 2 x. (45 sts.). Rows 375-495: Work even. Rows 496-530: **Neck Shaping:** Bind off 3 sts. Then every 4th row bind off 2 sts. 2 x, 1 st. 4 x, and on the 6th row dec. 1 st. 1 x. **At the same time,** after the 502nd row, for the **Shoulder Shaping,** on every other row, bind off 2 sts. 12 x and 3 sts. 3 x. Make another front section with reverse shapings.

SLEEVE: (Figure III) Cast on 81 sts. Rows 1-22: Stockinette st. with Tension 7, decreasing 1 st. on both sides after the 4th and 8th rows, and increasing 1 st. on both sides after the 14th and 18th rows. Now place the gate cam release lever toward the needle heels, and continue in holding position with Tension 6. Rows 23-86: Increase 1 st. on both sides after the 22nd row, and again in every 8th row 7 x. (97 sts.). Rows 87-110: **Underarm Shaping.** On every 4th row on the **back side** of the sleeve, bind off 3 sts. 2 x and 2 sts. 4 x, and at the same time on the **front side,** bind off 5 sts. 1 x, 4 sts. 1 x, 3 sts. 2 x, and 2 sts. 2 x. Rows 111-178: On both sides of every 4th row dec. 1 st. 17 x. Rows 179-194: On both sides of every 4th row, bind off 2 sts. 2 x, 3 sts. 2 x, and the remaining 10 sts. Make another sleeve with reverse shapings.

FRONT CLOSING STRIPS: (Figure IV) Cast on 34 sts. Work in stockinette st. with Tension 5. Rows 1-272: On the left side, inc. 1 st. after the 221st row and again every 4th row 9 x and every other row 7 x. Rows 273-298: **Neck Shaping.** Counting from the right edge, bind off the 10th-26th sts., and on both sides of this, every other row, bind off 5 sts. 1 x and 4 sts. 1 x. Then, for the **Neck Shaping,** bind off 3 sts. 3 x, 2 sts. 3 x, and 1 st. 3 x. **At the same time,** increase 1 st. on the left side after the 273th row, and again every other row 11 x. Bind off the remaining 10 sts. Make another strip with reverse shapings, making buttonholes after the 8th, 46th, 84th, 122nd, 160th, and 198th rows over the 3rd-8th and 27th-32nd needles. **COLLAR:** Cast on 150 sts. Rows 1-22: On the left side, put 46 needles in holding position. Work 1 row. On the right side put 46 needles in holding position. Work 1 row. Now, on both sides, one after another, put back into working position: 8 needles 2 x, 6 needles 2 x, 4 needles 2 x, 3 needles 2 x, and 2 needles 2 x. Rows 23-68: Work even. Rows 69-88: On both sides, one after another, put into holding position: 2 needles 2 x, 3 needles 2 x, 4 needles 2 x, 6 needles 2 x, and 8 needles 2 x. Rows 89-90: On the left side, put all needles in working position. Work 1 row. On the right side put all needles in working position. Work 1 row. Bind off all sts.

FINISHING: Follow directions for size 42/44.

KNITTING YARNS

The beautiful SATIN-COTTON used to knit Patterns 7119, 7200, 7209 and 7198 and the LINEN-COTTON used for Pattern 3362 and 3360 are only obtainable from KNITKING. All balls are 50 grams (1 3/4 oz.). The SATIN-COTTON is \$1.10 a ball, and the LINEN-COTTON (natural color only) \$1.30. Quantities are limited so please place your order early.

For color range and mailing costs, see the Newsletter included with this issue.

KNITKING

1128 Crenshaw Blvd., Los Angeles, Calif. 90019

WOMAN'S BLOUSE, No. DP 7201



SIZES: 14/16 and 18/20. **MATERIAL:** 14/16 12 oz. yellow wool, 18/20 13 1/2 oz. **FOR EXAMPLE:** Diamond Pastel D'Aoust or Baby yarn
TENSION: KNITKING 4 - Pattern stitch, 2 - Stockinette st. **GAUGE:** 35 sts. - 4", 86 rows - 4", Pattern st.; 35 sts. - 4", 68 rows - 4", Stockinette st.. The non-working-position sts. are counted in the gauge and the directions. **PATTERN:** Hold position design on purl side according to chart. Both cam boxes are at the left, and the gate cam release lever of main

machine is placed toward the needle heels. Edging: Stockinette stitch.

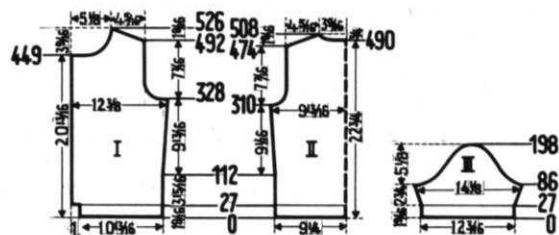
SIZE 14/16.



11-42
7-10
5-6
1-4

BACK: (Figure II) Cast on 163 sts. Rows 1-27: Stockinette st. with Tension 2; after the

26th row put the gate cam release lever of main machine toward the needle heels. Now put the 4th, 8th, 12th, 16th, etc. sts. on the neighboring needle to the left, and put the 2nd, 6th, 10th, 14th, etc. sts. on the Ribber. With empty needles out of operation, continue in holding position with Tension 4. Rows 28-310: Inc. 1 st. on both sides after the 112th row and again in every 40th row 4 x. (173 sts.). Rows 311-354: **Armhole Shaping.** Bind off 4 sts. on both sides. Then every 6th row bind off 3 sts. 2 x, 2 sts. 2 x, and 1 st. 3 x. (139 sts.). Rows 355-474: Work even. Rows 475-508: **Shoulder Shaping,** on both sides of every other row bind off 2 sts. 16 x and 3 sts. 2 x. **At the same time,** for the **Neck Shaping,** after the 490th row bind off the 23 center sts., and on both sides of this, on every 4th row bind off 7 sts. 1 x, 6 sts. 1 x, 4 sts. 1 x, and 3 sts. 1 x.



FRONT: (Figure I) Cast on 96 sts. Rows 1-27: Stockinette st. on knit side with Tension 2. After the 26th row, put the gate cam release lever of the main machine toward the needle heels. Now, on the left side, cast on 9 sts. Then, counting from the right edge, put the 2nd, 6th, 10th, 14th, etc. sts. on the neighboring needle to the left, and put the 4th, 8th, 12th, 16th, etc. sts. on the ribber. Put the empty needles out of operation, and continue in holding position design with Tension 4. Rows 28-328: Inc. 1 st. on the right side after the 112th row, and again every 40th row 4 x. (110 sts.). Rows 329-372: **Armhole Shaping.** Bind off 7 sts. Then every 6th row bind off 6 sts. 1 x, 4 sts. 1 x, 3 sts. 2 x, 2 sts. 1 x, and 1 st. 2 x. (83 sts.). Rows 373-449: Work even. Rows 450-526: **Neck Shaping.** Bind off 19 sts. **Then on every 6th row** bind off 7 sts. 1 x, 5 sts. 1 x, 3 sts. 1 x, 2 sts. 3 x, and 1 st. 5 x. **At the same time,** after the 492nd row, for the **Shoulder Shaping,** on both sides of every other row, bind off 2 sts. 16 x and 3 sts. 2 x. Make another front section with reverse shapings, making buttonholes after the 6th and 7th and 21st and 22nd rows over the 7th and 8th needles.

SLEEVE: (Figure III) Cast on 109 sts. Rows 1-27: Stockinette st. with Tension 2. After the 26th row put the gate cam release lever of the main machine toward the needle heels. Now put the 5th, 9th, 13th, 17th, etc. sts. on the neighboring needle and put the 3rd, 7th, 11th, 15th, etc. sts. on the ribber.

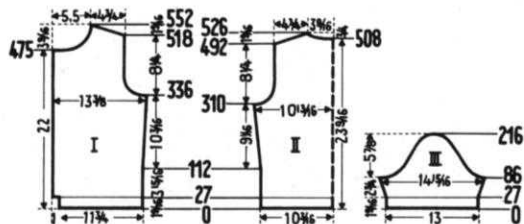
With the empty needles out of work, continue in holding position design with Tension 4. Rows 28-86: Inc. 1 st. on both sides after the 32nd row and again in every 6th row 8 x. (127 sts.). Rows 87-114: **Underarm Shaping.** On every 4th row on the **back side** of the sleeve, bind off 4 sts. 2 x, 3 sts. 2 x, 2 sts. 2 x, 1 st. 1 x, and on the **front**, bind off 7 sts. 1 x, 6 sts. 1 x, 4 sts. 1 x, 3 sts. 1 x, and 2 sts. 3 x. Rows 115-186: On both sides of every 4th row bind off 1 st. 2 x and 2 sts. 1 x, and repeat these 3 decreases 5 x. Rows 187-198: On both sides of every 4th row bind off 3 sts. 1 x, 4 sts. 2 x, and the remaining 12 sts. Make another sleeve with reverse shapings.

NECK EDGING: Cast on 172 sts. Work 27 rows in stockinette st. with Tension 2, making buttonholes after the 6th and 7th, and 21st and 22nd rows, over the 7th and 8th needles, counting from the left edge. Bind off all sts.

FINISHING: Join front and back at side and shoulder seams, easing in the fullness at bustline of front section. Sew sleeve edges together and sew sleeves to sweater. Fold sweater and sleeve bottoms in half toward outside. Make a hem 9 sts. wide at front edges. Fold neck edging around sweater neckline and attach. Finish the buttonholes at the top and bottom, and make 5 more small buttonholes, $3\frac{1}{8}$ " apart.

SIZE: 18/20.

BACK: (Figure II) Cast on 183 sts. Rows 1-27: Stockinette st. with Tension 2; after the 26th row put the gate cam release lever of the main machine toward the needle heels. Now hang the 2nd, 6th, 10th, 14th, etc. sts. on the neighboring needle to the left and put the 4th, 8th, 12th, 16th, etc. sts. on the ribber. With empty needles out of operation, continue



in holding position design with Tension 4. Rows 28-310: Inc. 1 st. on both sides after the 12th row and again every 40th row 4 x. (193 sts.). Rows 311-360: **Armhole Shaping.** Bind off 5 sts. on both sides. Then every 6th row bind off 4 sts. 1 x, 3 sts. 2 x, 2 sts. 3 x, and 1 st. 2 x. (147 sts.). Rows 361-492: Work even. Rows 493-526: **Shoulder Shaping.** On both sides of every other row bind off 2 sts. 12 x and 3 sts. 6 x. **At the same time**, for the **Neck Shaping**, after the 508th row bind off the 23 center sts., and on both sides of this, on every 4th row bind off 7 sts. 1 x, 6 sts. 1 x, 4 sts. 1 x, and 3 sts. 1 x.

FRONT: (Figure I) Cast on 106 sts. Rows 1-27: Stockinette st. with Tension 2. After the 26th row, put the gate cam release lever of the main machine toward the needle heels. Now, on the left side cast on 9 sts. Then, counting from the right edge, put the 4th, 8th, 12th, 16th, etc. sts. on the neighboring needle to the left and put the 2nd, 6th, 10th, 14th, etc. sts. on the ribber. Put the empty needles out of operation, and continue in holding position design with Tension 4. Rows 28-336: Inc. 1 st. on the right side after the 12th row and again every 40th row 4 x. (120 sts.). Rows 337-386: **Armhole Shaping.** Bind off 7 sts. Then every 6th row bind off 6 sts. 1 x, 4 sts. 1 x, 3 sts. 2 x. 2 sts. 2 x, and 1 st. 2 x. (91 sts.). Rows 387-475: Work even. Rows 476-522: **Neck Shaping.** Bind off 20 sts. Then every 6th row bind off 7 sts. 1 x, 5 sts. 1 x, 4 sts. 1 x, 3 sts. 1 x, 2 sts. 3 x, and 1 st. 4 x. **At the same time**, after the 518th row, for the **Shoulder Shaping**, on both sides of every other row, bind off 2 sts. 12 x and 3 sts. 6 x. Make another front section with reverse shapings, making buttonholes after the 6th and 7th and 21st and 22nd rows over the 7th and 8th needles.

SLEEVE (Figure III) Cast on 115 sts. Rows 1-27: Stockinette st. with Tension 2. After the 26th row put the gate cam release lever of the main machine toward the needle heels. Now put the 4th, 8th, 12th, 16th, etc. sts. on the neighboring needle and put the 2nd, 6th, 10th, 14th, etc. sts. on the ribber. With the empty needles out of operation, continue in holding position with Tension 4. Rows 28-86: Inc. 1 st. on both sides after the 32nd row and again every 6th row 8 x. (133 sts.). Rows 87-114: **Underarm Shaping.** On every 4th row on the **back side** of the sleeve, bind off 5 sts. 1 x, 4 sts. 1 x, 3 sts. 3 x, 2 sts. 2 x, and at the same time **on the front side** bind off 7 sts. 1 x, 6 sts. 1 x, 4 sts. 1 x, 3 sts. 2 x, and 2 sts. 2 x. Rows 115-202: On both sides of every 4th row dec. 1 st. 22 x. Rows 203-216: On both sides of every 4th row bind off 2 sts. 1 x, 3 sts. 1 x, 4 sts. 2 x, and the remaining 14 sts. Make another sleeve with reverse shapings.

NECK EDGING: Cast on 179 sts. Work 27 rows in stockinette st. with Tension 2, making buttonholes after the 6th and 7th, and 21st and 22nd rows, over the 7th and 8th needles, counting from the left edge. Bind off all sts.

FINISHING: Follow directions for size 14/16.

WOMAN'S PULLOVER, No. DP 7200



SIZES: 10 and 14. **MATERIAL:** (10)

13 oz. red cotton, (14) 15 oz. red cotton. **FOR EXAMPLE:** KnitKING Satin Cotton. See advertisement page 20.

TENSION: KNITKING 6. **GAUGE:** 31 sts. - 4", 60 rows - 4", Pattern stitch; 31 st. - 4", 44 rows - 4", Stockinette stitch. The non-working-position needles are counted in the gauge and in the directions. **PATTERN:** Holding position design on purl side according to chart. Edging: Stockinette st.

SIZE 10.

BACK: (Figure II) Cast on 137 sts. Rows 1-22: Stockinette st. Now put the 3rd, 8th, 13th, etc. sts. on a neighboring needle,

put the empty needles out of operation and continue in holding position design. Rows 23-214: Inc. 1 st. on both sides after the 82nd row and again every 14th row 8 x. (155 sts.). Rows 215-246: **Armhole Shaping.** Bind off 3 sts. on both sides. Then every 4th row bind off 2 sts. 2 x, 1 st. 2 x, and in the 6th row dec. 1 st. 1 x, and on the 8th row dec. 1 st. 1 x. (133 sts.). Rows 247-320: Inc. 1 st. on both sides after the 268th row, again every 6th row 5 x, and every 4th row 4 x. (153 sts.). Rows 321-352:



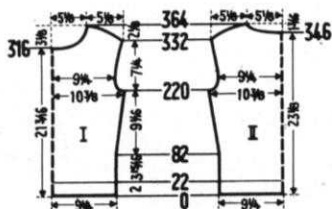
Shoulder Shaping. On both sides of every 4th row, bind off 1 st. 1 x, 2 sts. 1 x, 3 sts. 1 x, 4 sts. 1 x, 5 sts. 2 x, and 6 sts. 3 x. **At the same time**, for the **Neck Shaping**, after the 334th row, bind off the 35 center sts., and on both sides of this, on every 4th row, bind off 8 sts. 1 x, 6 sts. 1 x, and 4 sts. 1 x, and 3 sts. 1 x.

FRONT: (Figure I) The front is worked the same as the back; however, after the 334th row for the **Neck Shaping**, bind off the 25 center sts., and on both sides of this, on every 4th row bind off 5 sts. 2 x, 3 sts. 2 x, 2 sts. 3 x, and 1 st. 4 x.

NECK EDGING: Cast on 99 sts. for the front section and 80 sts. for the back section; work 24 rows stockinette st.: 4 rows with Tension 6, 4 rows with Tension 5, 8 rows with Tension 4, 4 rows with Tension 5, and 4 rows with Tension 6. Bind off all sts.

SLEEVE EDGING: (Make two) Cast on 125 sts. Work 24 rows stockinette st.: 4 rows with Tension 6, 4 rows with Tension 5, 8 rows with Tension 4, 4 rows with Tension 5, and 4 rows with Tension 6. **At the same time**, dec. 1 st. on both sides after the 2nd row and again every other row 4 x. Inc. 1 st. after the 14th row and again every other row 4 x. Bind off all sts.

FINISHING: Joint front and back at side and shoulder seams. Fold bottom edge in half toward outside and sew. Sew neck edging together, fold around sweater neckline and attach. Sew ends of sleeve edgings together so that they are circular, fold around sweater sleeves and attach.



SIZE: 14.

BACK: (Figure II) Cast on 145 sts. Rows 1-22: Stockinette st. Now put the 3rd, 8th, 13th, etc. sts. on a neighboring needle, put the empty needles out of operation and continue in holding position design. Rows 23-220: Inc. 1 st. on both sides after the 82nd row and again every 16th row 8 x. (163 sts.) Rows 221-252: **Armhole Shaping.** Bind off 3 sts. on both sides. Then every 4th row bind off 2 sts. 2 x, 1 st. 2 x, and then in the 6th row dec. 1 st. 1 x and in the 8th row dec. 1 st. 1 x. (141 sts.) Rows 253-332: Inc. 1 st. on both sides after the 280th row, again every 6th row 5 x, and in every 4th row 4 x. (161 sts.) Rows 333-364: **Shoulder Shaping,** on both sides of every 4th row, bind off 1 st. 1 x, 2 sts. 1 x, 3 sts. 1 x, 4 sts. 1 x, 5 sts. 2 x, 6 sts. 2 x, and 8 sts. 1 x. **At the same time,** for the **Neck Shaping,** after the 346th row, bind off the 39 center sts., and on both sides of this, in every 4th row, bind off 8 sts. 1 x, 6 sts. 1 x, 4 sts. 1 x, and 3 sts. 1 x.

FRONT: (Figure I) The front is worked the same as the back; however, for the **Neck Shaping,** after the 316th row, bind off the 29 center sts., and on both sides of this, every 4th row bind off 5 sts. 2 x, 3 sts. 2 x, 2 sts. 3 x, and 1 st. 4 x.

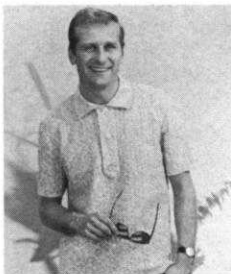
NECK EDGING: Cast on 105 sts. for the front section and 86 sts. for the back section. Work 24 rows stockinette st.: 4 rows with Tension 6, 4 rows with Tension 5, 8 rows with Tension 4, 4 rows with Tension 5, and 4 rows with Tension 6. Bind off all sts.

SLEEVE EDGING: (Make two) Cast on 131 sts. Work 24 rows stockinette st.: 4 rows with Tension 6, 4 rows with Tension 5, 8 rows with Tension 4, 4 rows with Tension 5, and 4 rows with Tension 6. **At the same time**, dec. 1 st. on both sides after the 2nd row and then in every other row 4 x. Inc. 1 st. after the 14th row and again every other row 4 x. Bind off all sts.

FINISHING: Follow directions for size 10.

**IF YOU ARE NOT USING THE
SUBSCRIPTION ENVELOPE IN THIS ISSUE . . .
PLEASE PASS IT ON TO A KNITTING FRIEND.**

MAN'S PULLOVER SHIRT, No. HP 3362

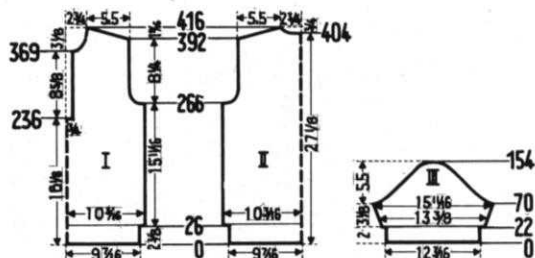


SIZE: 38/40. **MATERIAL:** 17 oz. natural cotton with linen mixture effect. **FOR EXAMPLE:** Knitting cotton linen mixture. See advertisement page 20. **TENSION:** 6 - Pattern stitch; 5 - Stockinette stitch. **GAUGE:** 31 sts. - 4", 60 rows - 4", Pattern Stitch; 34 sts. - 4"; 44 rows - 4". Stockinette st. **PATTERN:** Holding position design on purl side according to chart. With automatic needle selector or Dial-A-Stitch and wheel III. Edging and Collar: Stockinette st.

BACK: (Figure II) Cast on 162 sts. Rows 1-25: Stockinette st. with Tension 5. For the hem, put the cast on sts. back on the machine. Row 26: Work the sts. together with Tension 7.

●●●●●●●●●●	7-8
●●●●●●●●●●	5-6
●●●●●●●●●●	3-4
●●●●●●●●●●	1-2

 Continue in holding position design with Tension 6 over 162 st. Rows 27-266: Work even. Rows 267-296: **Armhole Shaping.** Bind off 4 sts. on both sides. Then every 4th row bind off 3 sts. 1 x, 2 sts. 3 x, and 1 st. 3 x. (130 sts.) Rows 297-392: Work even. Rows 393-416: **Shoulder Shaping,** on both sides of every other row bind off 3 sts. 9 x and 4 sts. 4 x. **At the same time,** for the **Neck Shaping,** after the 404th row bind off the 16 center sts., and on both sides of this every other row bind off 4 sts. 1 x, 3 sts. 2 x, and 2 sts. 2 x.



FRONT: (Figure I) Cast on 162 sts. Rows 1-25: Stockinette st. with Tension 5. For the hem, put the cast on sts. back on the machine. Row 26: Work the sts. together with Tension 7. Continue in hold position design with Tension 6 over 162 sts. Rows 27-236: Work even. Then, in the center, bind off 12 sts. and continue work in 2 sections. Rows 237-266: Work even. Rows 267-296: **Armhole Shaping.** Bind off 4 sts. on both sides. Then every 4th row bind off 3 sts. 1 x, 2 sts. 3 x, and 1 st. 3 x. Rows 297-369: Work even. Rows 370-416: **Neck Shaping.** Bind off 4 sts. on both sides of the division, then every 4th row bind off 3 sts. 1 x, 2 sts. 2 x, 1 st. 3 x, and in every 6th row dec. 1 st. 2 x. **At the same time,** after the 392nd row, for the **Shoulder Shaping,** on both sides of every other row, bind off 3 sts. 9 x and 4 sts. 4 x.

SLEEVE: (Figure III) (Make two) Cast on 106 sts. Rows 1-21: Stockinette st. with Tension 5. For the hem, put the cast on sts. back on the machine. Row 22: Work the sts. together with Tension 7. Continue in holding position design with Tension 6 over 106 sts. Rows 23-70: Inc. 1 st. on both sides after the 22nd row, again every 4th row 3 x and every 6th row 5 x. (124 sts.) Rows 71-154: **Underarm Shaping.** Bind off 5 sts. on both sides. Then every 4th row, bind off 4 sts. 2 x, 3 sts. 2 x, 2 sts. 13 x, 3 sts. 2 x, 4 sts. 1 x, and the remaining 14 sts.

COLLAR: Cast on 132 sts. Work in stockinette st. with Tension 5. Rows 1-10: On the left side, put 50 needles in holding position. Work 1 row. On the right side put 50 needles in holding position. Work 1 row. Now, on both sides, one after another, put back into working position: 14 needles 2 x and 11 needles 2 x. Rows 11-84: Work even. Rows 85-92: On both sides, one after another, put into holding position: 11 needles

2 x and 14 needles 2 x. Rows **93-94**: On the left side, put all the needles into working position. Work 1 row. On the right side put all the needles in working position. Work 1 row. Bind off all sts.

INSET FOR BUTTONS: Cast on 34 sts. Work 96 rows stockinette st. with Tension 5. Bind off all sts.

INSET FOR BUTTONHOLES: Cast on 3 sts. Rows **1-16**: On both sides of every other row inc. 1 st. 7 x. Put these needles in holding position. Now make another identical strip that will be connected to the original, and continue working over all the needles. Rows **17-112**: Work straight, making buttonholes after the 23rd, 63rd, and 103rd rows over the 4th-8th and 27th-31st needles. Bind off all sts.

FINISHING: Joint front and back at side and shoulder seams. Sew sleeve edges together and sew sleeves to shirt. Fold button and buttonhole strips around front opening and attach. Fold collar in half and sew sides together. Place open end of collar around shirt neckline and attach. Finish buttonholes and sew on buttons.

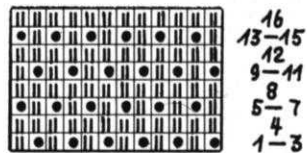
WOMAN'S DRESS, No. DK 7206



SIZES: 12/14 and 16/18. **MATERIAL**: (12/14) 18½ oz. brass wool, (16/18) 22 oz. **FOR EXAMPLE**: KNITTING Subita or Laine Ecosaise by Diamond. **TENSION**: KNITTING 5 - Stockinette st; 6 - Pattern stitch. **GAUGE**: 18 sts. 2", 25 rows - 2", Stockinette stitch; 15 sts. - 2", 54 rows - 2", Pattern stitch. **PATTERN**: Stockinette stitch. Shoulder yoke and neck edging: Holding position design on purl side according to chart. With Automatic needle selector or Dial-A-Stitch and Wheel VI.

SIZE: 12/14.

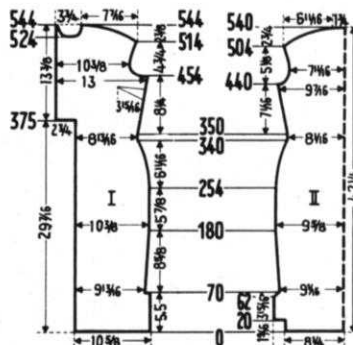
BACK: (Figure II) Cast on 152 sts. Work in stockinette st. with Tension 5. Rows **1-62**: Cast on 15 sts. on both sides after the 20th row. Rows **63-70**: Bind off 2 sts. on both sides after



the 62nd row and again every other row 3 x. (166 sts.) Rows **71-180**: Increase 1 st. on both sides after the 74th row and again every 26th row 4 x. (176 sts.) Rows **181-254**: Work even. Rows **255-340**: Decrease 1 st. on both sides after the 254th row, again on the 10th row 1 x, and every 8th row 4 x, every 6th row 5 x, and every 4th row 3 x. (148 sts.) Rows **341-350**: Work even. Rows **351-440**: Inc. 1 st. on both sides after the 350th row, and every 8th row 9 x, and every 6th row 2 x. (172 sts.) Rows **441-460**: **Armhole Shaping**. Bind off 4 sts. on both sides. Then every other row bind off 3 sts. 2 x, 2 sts. 1 x, 1 st. 2 x, and then dec. 1 st. every 4th row 2 x. (140 sts.) Rows **461-504**: Inc. 1 st. on both sides after the 470th row, and every 6th row 3 x and every 4th row 3 x. (154 sts.) Rows **505-540**: **Shoulder Shaping**. On both sides of every other row bind off 2 sts. 5 x, 3 sts. 7 x, 5 sts. 6 x, and the remaining 32 sts.

FRONT: (Figure I) Cast on 98 sts. Rows **1-70**: Work even. On the right side bind off 7 sts. (91 sts.) Rows **71-180**: Inc. 1 st. on the right side after the 74th row, and again every 26th row 4 x. (96 sts.) Rows **181-254**: Work even. Rows **255-340**: Dec. 1 st. on the right side after the 254th row, and on the 10th row 1 x, and every 8th row 4 x, every 6th row 5 x, and every 4th row 3 x. (82 sts.) Rows **341-350**: Work even. Rows **351-375**: On the right side inc. 1 st. after the 350th row and again every 8th row 3 x. Now, on the left side dec. 1 st. and cast on 25 sts. Rows **376-454**: On the right side, inc. 1 st. after the 382nd row and again every 8th row 7 x. **At the same time**, on the left side, make buttonholes

after the 384th, 406th, 428th, and 450th rows over the 6th-10th and 25th-29th needles. (118 sts.) Rows **455-476**: **Armhole Shaping**. Bind off 6 sts. Then every other row bind off 4 sts. 1 x, 3 sts. 2 x, 2 sts. 2 x, 1 st. 1 x, and then dec. 1 st. every 4th row 2 x. **At the same time**, make a buttonhole



after the 472nd row. (95 sts.) Rows **477-514**: Inc. 1 st. on the right side after the 484th row, again on the 6th row 1 x, and every 4th row 5 x. **At the same time**, make a buttonhole after the 494th row. (102 sts.) Rows **515-544**: **Shoulder Shaping**. Every other row bind off 3 sts. 4 x, 4 sts. 4 x, and 5 sts. 8 x. **At the same time**, make a buttonhole after the 516th row. After the 524th row, for the **Neck Shaping**, bind off the 12th-26th sts. counting from the left edge, and on both sides of this, every other row, bind off. 2 sts. 2 x, 1 st. 2 x, and then every 4th row dec. 1 st. 2 x. Bind off the remaining 3 sts. Make another front section with reverse shapings, minus buttonholes.

SHOULDER YOKE: Cast on 57 sts. Continue in holding position design with Tension 6. Rows **1-68**: Bind off 2 sts. on the right side after the 4th row, and then dec. 1 st. on the 4th row 1 x, the 8th row 1 x, and every 10th row 2 x. Bind off all sts. Make another yoke with reverse shapings.

NECK BAND: Cast on 99 sts. Rows **1-12**: Stockinette st.: 6 rows with Tension 7 and 6 rows with Tension 6. Rows **13-52**: Work in holding position design: 20 rows with Tension 5 and 20 rows with Tension 6. Bind off all sts.

BELT: Cast on 20 sts. Work 600 rows stockinette st. with Tension 5. Bind off all sts.

FACING FOR ARMHOLES: (Make 2) Cast on 128 sts. Work 9 rows stockinette st.: 3 rows with Tension 5, 3 rows with Tension 6, and 3 rows with Tension 7. Bind off all sts.

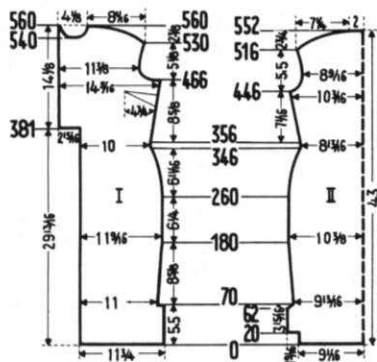
FINISHING: Sew in darts at bustline of front section. Join front sections in slip st., overlapping 1 st. from each section. Make a hem 17 sts. wide at the 2 front closing strips, and sew the bottom edges of the 2 strips together. Join front and back at side seams. Make a narrow hem around the upper and lower decorative tabs at skirt bottom, and sew tabs down in place. Make a hem 1-9/16" wide at skirt bottom. Gather the shoulders of the dress until they measure 6-11/16". Then sew the shoulder yoke in place between the front and back sections. Fold neck edging around dress neckline and attach. Sew facings to armhole openings. Double the belt, lengthwise. Sew on buttons, finish buttonholes.

SIZE: 16/18

BACK: (Figure II) Cast on 166 sts. Work in Stockinette st. with Tension 5. Rows **1-62**: Cast on 15 sts. on both sides after the 20th row. Rows **63-70**: Bind off 2 sts. on both sides after the 62nd row and again every other row 3 x. (180 sts.) Rows **71-180**: Inc. 1 st. on both sides after the 74th row and again every 26th row 4 x. (190 sts.) Rows **181-260**: Work even. Rows **261-346**: Decrease 1 st. on both sides after the 260th row, again on the 10th R. 1x, every 8th row 4 x, every 6th row 5 x and every 4th row 3 x. (162 sts.) Rows **347-356**: Work even. Rows **357-446**: Inc. 1 st. on both sides after the 356th row, again every 8th row 5 x, and every 6th row 7 x. (188 sts.) Rows **447-466**: **Armhole Shaping**: bind off 4 sts. on

both sides. Then every other row bind off 3 sts. 2x, 2 sts. 1x, 1 st. 2 x, and then dec. 1 st. every 4th row 2 x. (156 sts.) Rows 467-516: Inc. 1 st. on both sides after the 480th row, again every 6th row 3 x and every 4th row 3 x. (170 sts.) Rows 517-552: **Shoulder Shaping:** on both sides of every other row bind off 2 sts. 4 x, 3 sts. 5 x, 4 sts. 3 x, 5 sts. 4 x, 6 sts. 2 x, and the remaining 36 sts.

FRONT: (Figure I) Cast on 109 sts. Rows 1-70: Work even. Now on the right side bind off 7 sts. (102 sts.) Rows 71-180: Inc. 1 st. on the right side after the 74th row, and again every 26th row 4 x. (107 sts.) Rows 181-260: Work even. Rows 261-346: Decrease 1 st. on the right side after the 260th row, again on the 10th row 1 x, every 8th row 4 x, every 6th row 5 x, and every 4th row 3 x. (93 sts.) Rows 347-356: Work even. Rows 357-381: On the right side inc. 1 st. after the 356th row and again every 8th row 3 x. Now, on the left side dec. 1 st. and cast on 27 sts. Rows 382-466: On the right side, inc. 1 st. after the 388th row and again every 8th row 8 x. **At the same time,** on the left side, make buttonholes after the 390th, 414th, 438th, and 462nd rows over the 6th-10th and 27th-31st needles. (132 sts.) Rows 467-488: **Armhole Shaping:** bind off 8 sts. Then every other row bind off 5 sts. 1 x, 4 sts. 1 x, 3 sts. 1 x, 2 sts. 2 x, 1 st. 1 x, and then dec. 1 st. every 4th row 2 x. **At the same time,** make a buttonhole after the 486th row. (105 sts.) Rows 489-530: Inc. 1 st. on the right side after the 498th row, again on the 6th row 1 x, and every 4th row 5 x. **At the same time,** make a buttonhole after the 510th row (112 sts.) Rows 531-560: For the shoulder shaping, on every other row bind off 3 sts. 3 x, 4 sts. 4 x, 5 sts. 5 x,



and 6 sts. 4 x. **At the same time,** make a buttonhole after the 534th row; and after the 540th row, for the **Neck Shaping:** bind off the 13th-29th sts. counting from the left edge, and on both sides of this every other row, bind off 3 sts. 1 x, 2 sts. 1 x, 1 st. 2 x, and then every 4th row decrease 1 st. 2 x. Bind off the remaining 3 sts. Make another front section with reverse shaping, minus buttonholes.

SHOULDER YOKE: Cast on 62 sts. Continue in holding position design with Tension 6. Rows 1-68: Bind off 2 sts. on the right side after the 4th row, and then decrease 1 st. on the 4th row 1 x, the 8th row 1 x, and every 10th row 2 x. Bind off all sts. Make another yoke with reverse shapings.

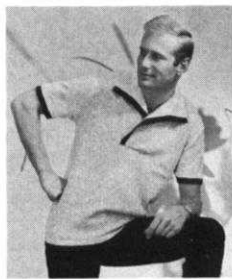
NECK BAND: Cast on 105 sts. Rows 1-12: Stockinette st.: 6 rows with Tension 7; and 6 rows with Tension 6. Rows 13-52: Work in holding position design: 20 rows with Tension 5 and 20 rows with Tension 6. Bind off all sts.

BELT: Cast on 20 sts. Work 630 rows stockinette st. with Tension 5. Bind off all sts.

FACING FOR ARMHOLES: (Make 2) Cast on 135 sts. Work 9 rows stockinette st.: 3 rows with Tension 5, 3 with Tension 6, and 3 with Tension 7. Bind off all sts.

FINISHING: Follow directions for size 12/14.

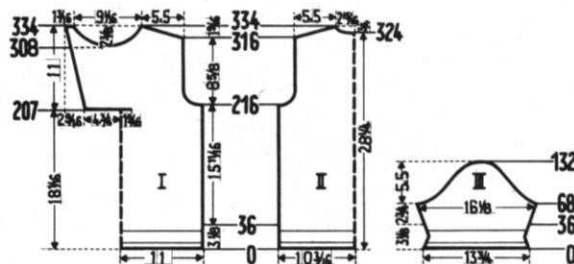
MAN'S PULLOVER SHIRT, No. HP 3360



SIZE: 40/42. **MATERIAL:** 14 oz. natural-colored cotton with white linen effect. 1 3/4 oz. dark blue cotton. **FOR EXAMPLE:** KNITTING Cotton with linen finish. **TENSION:** KNITTING 4. **GAUGE:** 35 sts. - 4", 45 rows - 4". **PATTERN:** Stockinette st. **BACK:** (Figure II) Cast on 183 sts. with natural. Rows 1-35: Work even: Rows 9-26 are worked with blue. For the hem, put the cast on sts. back on the machine. Row 36: Work the sts. together with Tension 6. Rows 37-216: Work even. Rows 217-240: **Armhole**

Shaping: bind off 4 sts. on both sides; then every other row bind off 3 sts. 1 x, 2 sts. 2 x, 1 st. 2 x, and then every 4th row decrease 1 st. 3 x. (151 sts.) Rows 241-316: Work even Rows 317-334: **Shoulder Shaping:** on both sides of every other row, bind off 4 sts. 1 x, and 5 sts. 9 x. **At the same time,** for the **Neck Shaping:** after the 324th row bind off the 17 center sts., and on both sides of this, every other row, bind off 7 sts. 1 x, 5 sts. 1 x, and 3 sts. 2 x.

FRONT: (Figure I) Cast on 196 sts. with natural. Rows 1-35: Work even: Rows 9-26 are worked with blue. For the hem, put the cast on sts. back on the machine. Row 36: Work the sts. together with Tension 6. Rows 37-206: Work even. Now, on the left side, put 112 sts. on a double pointed needle. (Or drop it off machine with 8 or 10 rows of a contrast color.) Rows 207-216: On the left side, after the 207th row, cast on 56 sts., then increase 1 st. after the 211th and the 215th rows. Rows 217-242: **Armhole Shaping:** bind off 7 sts.; then every other row bind off 4 sts. 1 x, 3 sts. 1 x, 2 sts. 2 x, 1 st. 2 x, and then every 4th row decrease 1 st. 3 x. **At the same time,** on the left side increase 1 st. after the 219th row and every 4th row 5 x. Rows 243-308: On the left side, inc. 1 st. after the 245th row and every 6th row 10 x. Rows 309-334: **Neck Shaping:** Counting from the right edge, bind off the 82nd-97th sts., and on both sides of this, every other row bind off 7 sts. 1 x, 4 sts. 2 x, 3 sts. 3 x, 2 sts. 2 x, and 1 st. 4x. **At the same time,** on the left side inc. 1 st. after the 311th row and again in every 6th row 3 x. After the 316th row, for the **Shoulder Shaping:** on every other row, bind off 4 sts. 1 x, 5 sts. 9 x, and the remaining 11 sts. Now, put the cam box on the left side, and turn the row counter back to 206. Put the sts. from the double pointed needle (or contrast color) back onto the machine, on the right side cast on 28 sts., and work the left section, reversing shapings.



SLEEVE: (Figure III) Cast on 123 sts. with natural. Rows 1-35: decrease 1 st. on both sides after the 4th row, and again every 4th row 3 x. Inc. 1 st. after the 20th row and again every 4th row 3 x: work the 9th-26th rows with blue. For the hem, put the cast on sts. back on the machine. Row 36: Work the sts. together with Tension 6. Rows 37-68: Inc. 1 st. on both sides after the 36th row, again every 4th row 5 x, and every other row 4 x. (143 sts.) Rows 69-82: **Underarm Shaping:** in every other row on the **back side** of the sleeve, bind off 5 sts. 1 x, 4 sts. 1 x, 3 sts. 2 x, 2 sts. 2 x, 1 st. 1 x, and **At the same time,** on the **front side** bind off 7 sts. 1 x, 5 sts. 1 x, 4 sts. 1 x, 3 sts. 2 x, and 2 sts. 2 x. Rows 83-124: On both sides of every other row, bind off 2 sts. 1 x and 1 st. 2 x, and repeat these 3 decreases 6 x. Rows 125-132: On both

sides of every other row bind off 2 sts. 1 x, 3 sts. 1 x, 4 sts. 1 x, 5 sts. 1 x, and the remaining 13 sts. Make another sleeve with reverse shapings.

COLLAR: Cast on 147 sts. with natural. Rows 1-10: On the left side put 38 needles in holding position. Work 1 row. On the right side put 38 needles in holding position. Work 1 row. On both sides, one after another, put back in working position: 12 needles 2 x, and 7 needles 2 x. Rows 11-82: Work even. Rows 83-90: On both sides, one after another, put in holding position: 7 needles 2 x and 12 needles 2 x. Rows 91-92: On the left side, put all needles in working position. Work 1 row. On the right side, put all the needles in working position. Work 1 row. Bind off all sts.

FRONT DECORATIVE STRIPS: (Make 2) With blue, cast on 15 sts. Work 130 rows even. Bind off all sts.

FINISHING: Join front and back at side and shoulder seams. Sew sleeve edges together and sew sleeves to shirt. Make a hem 3/8" wide at front opening. Fold collar in half and sew side edges together. Place open end of collar around shirt neckline and attach. Sew blue decorative strips to front opening and collar edges.

WOMAN'S PULLOVER, No. DP 7198



SIZE 12/14. MATERIAL: 14 oz. green cotton. **EXAMPLE:** KNITTING Satin Cotton. See advertisement Page 20. **TENSION:** KNITTING 5. **GAUGE:** 19 sts. - 2" 28 rows - 2" Pattern st. 19 sts. - 2" - 24 rows - 2" Stockinette st. The non-working-position sts. are counted in the gauge and the directions. **PATTERN:** Holding position design on purl side with ribber according to chart. Ribbing: K. 1, P. 1.

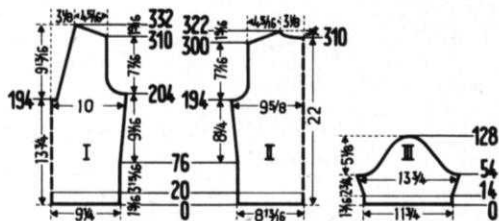
BACK: (Figure II) Cast on 169 sts. Rows 1-20: K. 1, P. 1 ribbing. Now hang the 2nd st. on the 1st needle, the 8th and 10th sts. on the 9th needle, the 16th and 18th sts. on the 17th needle, etc. Put the empty needles out of work and continue in holding position. Rows 21-194: Inc. 1 st. on both sides after the 76th row and again every 14th row 7 x. (185 sts.) Rows 195-

228: **Armhole Shaping:** bind off 5 sts. on both sides; then, every 4th row, bind off 3 sts. 2 x, 2 sts. 3 x, and 1 st. 3 x. Rows 229-300: Work even. Rows 301-322: **Shoulder Shaping:** on both sides of every other row bind off 3 sts. 6 x and 4 sts. 6 x. **At the same time,** for the **Neck Shaping:** after the 310th row bind off the 27 center sts. and on both sides of this, in every other row bind off 5 sts. 1 x, 4 sts. 1 x, 3 sts. 2 x, and 2 sts. 1 x.



9-12 both sides after the 76th row and again every 14th row 7 x. (185 sts.) Rows 195-

228: **Armhole Shaping:** bind off 5 sts. on both sides; then, every 4th row, bind off 3 sts. 2 x, 2 sts. 3 x, and 1 st. 3 x. Rows 229-300: Work even. Rows 301-322: **Shoulder Shaping:** on both sides of every other row bind off 3 sts. 6 x and 4 sts. 6 x. **At the same time,** for the **Neck Shaping:** after the 310th row bind off the 27 center sts. and on both sides of this, in every other row bind off 5 sts. 1 x, 4 sts. 1 x, 3 sts. 2 x, and 2 sts. 1 x.



FRONT: (Figure I) Cast on 177 sts. Rows 1-20: K. 1, P. 1 ribbing. Now put the 4th and 6th sts. on the 5th needle, the 12th and 14th sts. on the 13th needle, etc. Put the empty needles out of work, and continue in holding position pattern. Rows 21-194: Inc. 1 st. on both sides after the 76th row and again every 14th row 7 x. (193 sts.) Now bind off the 13 center sts., and work on in 2 sections. Rows 195-204: Decrease 1 st. on both sides of the division after the 200th row. Rows 205-238: **Armhole Shaping,** bind off 7 sts.; then every 4th row bind off 4 sts. 1 x, 3 sts. 2 x, 2 sts. 2 x, and 1 st. 3 x. **At the same time,** for the **Neck Shaping:** decrease 1 st. on both sides after the 204th row, again every 4th

row 5 x and every 6th row 2 x. Rows 239-332: **Neck Shaping:** Decrease 1 st. on both sides after the 242nd row, and again every 6th row 14 x. **At the same time,** after the 310th row, for the **Shoulder Shaping:** on both sides of every other row bind off 3 sts. 6 x and 4 sts. 6 x.

SLEEVE: (Figure III) Cast on 115 sts. Rows 1-14: K. 1, P. 1 ribbing. Now put the 6th and 8th sts. on the 7th needle, the 14th and 16th sts. on the 15th needle, etc. Put the empty needles out of work, and continue in holding position pattern. Rows 15-54: Inc. 1 st. on both sides after the 16th row and again every 4th row 8 x. (133 sts.) Rows 55-78: **Underarm Shaping:** in every 4th row on the back side of the sleeve bind off 6 sts. 1 x, 5 sts. 1 x, 4 sts. 1 x, 3 sts. 3 x, and **At the same time,** on the front side bind off 8 sts. 1 x, 6 sts. 1 x, 4 sts. 2 x, and 3 sts. 2 x. Rows 79-114: On both sides of every 4th row bind off 2 sts. 9 x. Rows 115-128: On both sides of every 4th row bind off 3 sts. 2 x, 4 sts. 1 x, 5 sts. 1 x, and the remaining 15 sts. Make another sleeve with reverse shapings.

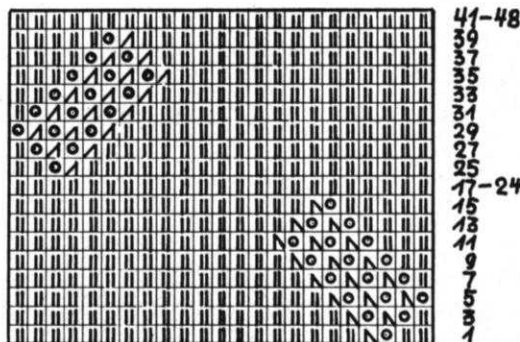
NECK EDGING: (Make 2) Cast on 129 sts. Work 18 rows K. 1, P. 1 ribbing. Bind off all stitches.

FINISHING: Join front and back at side and shoulder seams, easing in the fullness at butline of front section. Sew sleeve edges together and sew sleeves to sweater. Sew edging strips together at center back, overlap the front ends and sew together. Sew neck edging to sweater.

WOMAN'S PULLOVER, No. DP 7202

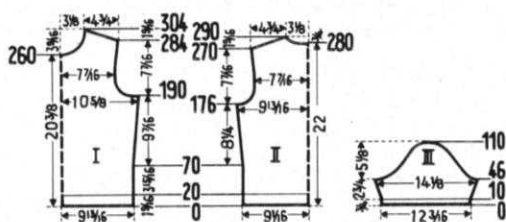


SIZE: 14/16. **MATERIAL:** 11 3/4 oz. white wool. Pauline Denham Sierra or Spinnerin Nylaine Fingering. **TENSION:** KNITTING 5. **GAUGE:** 17 sts. - 2". 25 rows - 2". **PATTERN:** Stockinette st. with eyelet design according to chart. Edging and collar: K. 1, P. 1 ribbing. **BACK:** (Figure II) Cast on 155 sts. Rows 1-20: K. 1, P. 1 ribbing. Transfer sts. to main machine. Inc. 1 st. on one side and continue, in stockinette. Rows 21-70: Work the first design stripe after the 30th row. To do this, at first put the 17th, 47th, 77th, 107th, and 137th sts. on the neighboring needle to the left. After the 54th row, at first put the 35th, 65th, 95th, and 125th sts. on the neighboring needle to the right.



Rows 71-176: Inc. 1 st. on both sides after the 70th row and again every 14th row 6 x. (170 sts.) Rows 177-200: **Armhole Shaping:** bind off 6 sts. on both sides, then every other row, bind off 4 sts. 1 x, 3 sts. 1 x, 2 sts. 1 x, 1 st. 2 x, and then every 4th row decrease 1 st. 3 x. (130 sts.) Rows 201-270: Inc. 1 st. on both sides after the 234th row and again every 12th row 2 x. (136 sts.) Rows 271-290: **Shoulder Shaping:** on both sides of every other row bind off 3 sts. 3 x, and 4 sts. 8 x. **At the same time,** for the **Neck Shaping:** after the 280th row bind off the 18 center sts., and on both sides of this, every other row bind off 6 sts. 1 x, 5 sts. 1 x, 4 sts. 1 x, and 3 sts. 1 x.

FRONT: (Figure I) Cast on 169 sts. Rows 1-20: K. 1, P. 1 ribbing. Transfer sts. to main machine. Inc. 1 st. on one side



and continue in stockinette. Rows 21-70: Work the first design stripe after the 30th row. To do this, at first put the 24th, 54th, 84th, 114th, and 144th sts. on the neighboring needle to the left. After the 54th row, at first put the 12th, 42nd, 72nd, 102nd, 132nd, and 162nd sts. on the neighboring needle to the right. Rows 71-190: Inc. 1 st. on both sides after the 70th row and again every 14th row 6 x. (184 sts.) Rows 191-214: **Armhole Shaping:** bind off 7 sts. on both sides; then every other row bind off 6 sts. 1 x, 4 sts. 1 x, 3 sts. 1 x, 2 sts. 1 x, 1 st. 3 x, and then every 4th decrease 1 st. 2 x. (130 sts.) Rows 215-260: Inc. 1 st. on both sides after the 248th row. Rows 261-304: **Neck Shaping,** bind off the 8 center sts., and on both sides of this, every other row, bind off 4 sts. 1 x, 3 sts. 2 x, 2 sts. 3 x, 1 st. 3 x, and then in every 4th row dec. 1 st. 4 x. **At the same time, for the Armhole Shaping:** Inc. 1 st. after the 260th and 272nd rows. After the 284th row, for the **Shoulder Shaping:** on both sides of every other row bind off 3 sts. 3 x, and 4 sts. 8 x.

SLEEVE: (Figure III) Cast on 105 sts. Rows 1-10: K. 1, P. 1 ribbing. Transfer sts. to main machine. Continue in stockinette. Rows 11-46: Inc. 1 st. on both sides after the 10th row and again every 4th row 8 x. Work the first design stripe after the 20th row. To do this, at first put the 9th, 39th, 69th, and 99th sts. on the neighboring needle to the right. After the 44th row, at first put the 27th, 57th, 87th, and 117th sts. on the neighboring needle to the left. (123 sts.) Rows 47-60: **Underarm Shaping:** on every other row on the **back side** of the sleeve, bind off 5 sts. 1 x, 4 sts. 1 x, 3 sts. 1 x, 2 sts. 2 x, and 1 st. 2 x, and **At the same time, on the front side,** bind off 7 sts. 1 x, 5 sts. 1 x, 4 sts. 1 x, 3 sts. 1 x, and 2 sts. 3 x. Rows 61-104: On both sides of every other row decrease 1 st. 22 x. Rows 105-110: On both sides of every other row bind off 2 sts. 1 x, 3 sts. 1 x, 5 sts. 1 x, and the remaining 16 sts. Make another sleeve with reverse shapings.

COLLAR: Cast on 131 sts. Work in K. 1, P. 1 ribbing. Transfer sts. to main machine. Rows 1-50 Work even. Rows 51-58: On the left side, one after another, put 22 needles in holding position 4 x. Rows 59-60: Put all the needles in working position. Work 2 rows. Bind off all sts. Make the 2nd half of collar with reverse shapings.

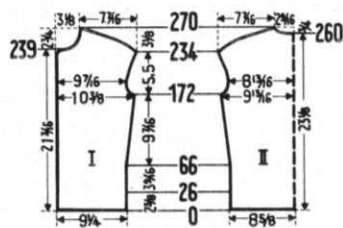
FINISHING: Joint front and back at side and shoulder seams, easing in the fullness at bustline of front sections. Sew sleeve edges together and sew sleeves to sweater. Sew collar together at center back, overlap $\frac{3}{4}$ " in front and sew together. Sew collar to sweater neckline.

WOMAN'S CARDIGAN, No. DP 7207



SIZE 12/14. MATERIAL: 9 oz. light green-white tweed wool. 3 yards white cotton braid. Diamond Cloverboucle or Pauline Denham Nubette. **TENSION:** KNITTING 6. **GAUGE:** 14 sts. - 2". 22 rows - 2". **PATTERN:** Stockinette st. **BACK:** (Figure II) Cast on 124 sts. Rows 1-25: Work with Tension 5. For the hem, put the cast on sts. back on the machine. Row 26: Work the sts. together with Tension 7. Continue with Tension 6. Rows 27-172: Inc. 1 st. on both sides after the 66th row and again every 12th row 7 x. (140 sts.) Rows 173-184: **Armhole Shaping:** bind off 2 sts. on both sides; then every other row bind off 2 sts. 1 x, 1 st. 2 x, and then in the 4th

row decrease 1 st. 1 x. (126 sts.) Rows 185-234: Inc. 1 st. on both sides after the 194th row and again every 6th row 3 x and every 4th row 4 x. (142 sts.) Rows 235-268: **Shoulder Shaping:** on both sides of every other row bind off 1 st. 3 x, 2 sts. 4 x, 3 sts. 6 x, and 4



sts. 6 x. **At the same time, for the Neck Shaping:** after the 260th row, bind off the 14 center sts., and on both sides of this, every other row bind off 4 sts. 1 x, 3 sts. 1 x, and 2 sts. 2 x.

FRONT: (Figure I) Cast on 66 sts. Rows 1-25: Work with Tension 5, making buttonholes after the 3rd and 21st rows over the 4th-6th needles, counting from the left edge. For the hem, put the cast on sts. back on the machine. Row 26: Work the sts. together with Tension 7. Continue with Tension 6. Rows 27-172: Make buttonholes after the 63rd, 105th, and 147th rows. **At the same time,** inc. 1 st. on the right side after the 66th row and again every 12th row 7 x. (74 sts.) Rows 173-184: **Armhole Shaping,** bind off 2 sts.; then every other row bind off 2 sts. 1 x, 1 st. 2 x, and on the 4th row decrease 1 st. 1 x. (67 sts.) Rows 185-234: Make buttonholes after the 189th and 231st rows. **At the same time,** inc. 1 st. on the **right side** after the 194th row and again every 6th row 3 x, every 4th row 4 x, and on the **left side,** decrease 1 st. after the 233rd row. Rows 235-270: **Shoulder Shaping.** Every other row bind off 1 st. 3 x, 2 sts. 4 x, 3 sts. 6 x, and 4 sts. 6 x. **At the same time,** on the left side decrease 1 st. after the 235th row and bind off 2 sts. after the 237th row, for the **Neck Shaping,** bind off 6 sts. after the 239th row, then every other row bind off 3 sts. 1 x, 2 sts. 2 x, 1 st. 3 x, and then decrease 1 st. every 4th row 2 x. Make another front section with reverse shapings, minus buttonholes.

POCKETS: Cast on 35 sts. Work 38 rows stockinette st. Bind off all sts.

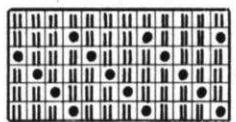
FINISHING: Joint front and back at side and shoulder seams. Attach white braid to front, neck, sleeve, and pocket edges. Sew on pockets. Finish buttonholes and sew on buttons.

WOMAN'S PULLOVER, No. DP 7209



SIZES: 14/16 and 18/20. **MATERIAL:** (14/16) 15 oz. dark blue. KNITTING Satin Cotton. (18/20) 17 oz. **TENSION:** KNITTING 6. **GAUGE:** Pattern st.; 14 sts. - 2". 25 rows - 2"; Bottom edging, 14 sts. - 2", 23 rows - 2"; Sleeve; 17 sts. - 2", 22 rows - 2". **PATTERN:** Holding position design on knit side according to chart. Put the gate cam release lever toward the needle heels. 1.) Put into holding position the needles designated in the chart. Work 1 row. 2.) Put the needles from

holding position into working position. Work 1 row. Repeat steps 1 and 2 four times. 3.) Put the gate cam release lever toward needle heads. Work 4 rows stockinette. Repeat steps

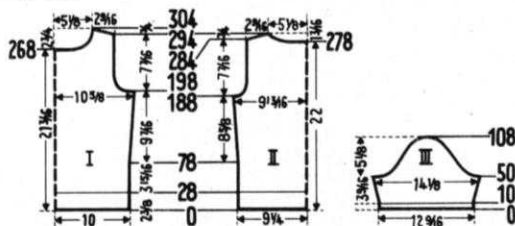


1, 2, and 3 throughout. With Automatic Needle Selector or Dial-A-Stitch and Wheel III. This pattern must be pulled and stretched in all directions. Therefore, after every 100 rows have been worked, while the garment is still on the machine, pull and stretch the garment in every direction. Bottom edging and sleeves: Stockinette. Collar and sleeve edging: K. 1, P. 1 ribbing.

SIZE 14/16

BACK: (Figure II) Cast on 132 sts. Rows 1-27: Work in stockinette st. with Tension 7. For the hem, put the cast on sts. back on the machine. Row 28: Work the sts. together with Tension 9. Put the gate cam release lever toward the needle heels and continue in pattern st. with Tension 6. Rows 29-188:

Inc. 1 st. on both sides after the 78th row and again in every 26th row 3 x. (140 sts.) Rows 189-212: **Armhole Shaping:** bind off 3 sts. on both sides; then every other row bind off 3 sts. 1 x, 2 sts. 2 x, 1 st. 2 x, and then every 4th row decrease 1 st. 3 x. (110 sts.) Rows 213-278: Work even. Rows 279-294: **Neck Shaping:** bind off the 28 center sts., and on both sides of this, every other row, bind off 5 sts. 1 x, 4 sts. 2 x, 3 sts. 2 x, and 2 sts. 2 x. **At the same time,** after the 284th row, for the **Shoulder Shaping:** on both sides of every other row bind off 3 sts. 6 x.



FRONT: (Figure I) Cast on 144 sts. Rows 1-27: Work in stockinette st. with Tension 7. For the hem, put the cast on sts. back on the machine. Row 28: Work the sts. together with Tension 9. Put the gate cam release lever toward the needle heels, and continue in pattern st. with Tension 6. Rows 29-198: Inc. 1 st. on both sides after the 78th row and again every 26th row 3 x. (152 sts.) Rows 199-224: **Armhole Shaping:** bind off 5 sts. on both sides, then in every other row bind off 4 sts. 1 x, 3 sts. 1 x, 2 sts. 2 x, 1 st. 2 x, and then every 4th row dec. 1 st. 3 x. (110 sts.) Rows 225-268: Work even. Rows 269-304: **Neck Shaping:** bind off the 28 center sts., and on both sides of this every other row bind off 4 sts. 2 x, 3 sts., 2 x, 2 sts. 2 x, 1 st. 2 x, and then every 4th row dec. 1 st. 3 x. **At the same time,** after the 294th row, for the **Shoulder Shaping:** on both sides of every other row bind off 3 sts. 6 x.

SLEEVE: (Figure III) Cast on 109 sts. Work with Tension 6. Rows 1-10: K. 1, P. 1 ribbing. Transfer ribber sts. to main machine. Continue in stockinette. Rows 11-50: Inc. 1 st. on both sides after the 10th row and again every 6th row 6 x. (123 sts.) Rows 51-66: **Underarm Shaping:** Every other row, on the back side of the sleeve, bind off 5 sts. 1 x, 4 sts. 1 x, 3 sts. 1 x, 2 sts. 5 x, and **At the same time on the front side** bind off 7 sts. 1 x, 5 sts. 1 x, 4 sts. 1 x, 3 sts. 2 x, and 2 sts. 3 x. Rows 67-102: On both sides of every other row, bind off 1 st. 1 x, 2 sts. 1 x, and 1 st. 16 x. Rows 103-108: On both sides of every other row, bind off 2 sts. 1 x, 3 sts. 1 x, 5 sts. 1 x, and the remaining 15 sts. Make another sleeve with reverse shapings.

COLLAR: Cast on 151 sts. for the front half, and 139 sts. for the back half. Work 42 rows K. 1, P. 1 ribbing: 10 rows with Tension 6, 10 rows with Tension 7, 11 rows with Tension 8, and 11 rows with Tension 9. Bind off all sts.

FINISHING: Join front and back at side and shoulder seams, easing in the fullness at the bustline of the front section. Sew sleeve edges together and sew sleeves to sweater. Sew collar sections together, and sew collar to sweater, folding over toward outside.

SIZE: 18/20

BACK: (Figure II) Cast on 149 sts. Rows 1-27: Work in stockinette st. with Tension 7. For the hem, put the cast on sts. back on the machine. Row 28: Work the sts. together with Tension 9. Put the gate cam release lever toward the needle heels and continue in pattern st. with Tension 6. Rows 29-188: Inc. 1 st. on both sides after the 78th row and again in every 26th row 3 x. (157 sts.) Rows 189-216: **Armhole Shaping:** bind off 4 sts. on both sides; then every other row bind off 3 sts. 2 x, 2 sts. 2 x, 1 st. 3 x, and then every 4th row dec. 1 st. 3 x. (117 sts.) Rows 217-288: Work even. Rows 289-304: **Neck Shaping:** Bind off the 29 center sts., and on both sides of this every other row, bind off 5 sts. 1 x, 4 sts. 2 x, 3 sts. 2 x, and 2 sts. 2 x. **At the same time,** after the 294th row, for the **Shoulder Shaping:** on both sides of every other row bind off 3 sts. 3 x, and 4 sts. 3 x.

DO YOU HAVE A...

REVERSING BAR?

- With it you can turn a hem in one movement instead of lifting stitches one at a time.
- You can reverse your knitting, so that the knit side faces you, easily and speedily.
- Available for all KNITTING machines with 197 needles. Order from your dealer or direct from

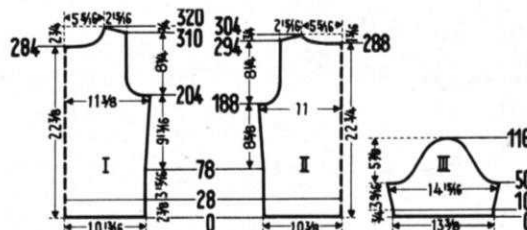
KNITTING

1128 Crenshaw Blvd., Los Angeles, Calif. 90019

Price \$16.95 (California residents add 4% tax)

Plus \$1.50 shipping cost.

FRONT: (Figure I) Cast on 155 sts. Rows 1-27: Work in stockinette st. with Tension 7. For the hem, put the cast on sts. back on the machine. Row 28: work the sts. together with Tension 9. Put the gate cam release lever toward the needle heels and continue in pattern st. with Tension 6. Rows 29-204: Inc. 1 st. on both sides after the 78th row and again every



26th row 3 x. (163 sts.) Rows 205-232: **Armhole Shaping:** bind off 6 sts. on both sides, then every other row bind off 4 sts. 1 x, 3 sts. 1 x, 2 sts. 2 x, 1 st. 3 x, and then every 4th row decrease 1 st. 3 x. (117 sts.) Rows 233-284: Work even. Rows 285-320: **Neck Shaping:** bind off the 29 center sts., and on both sides of this every other row bind off 4 sts. 2 x, 3 sts. 2 x, 2 sts. 2 x, 1 st. 2 x, and then every 4th row dec. 1 st. 3 x. **At the same time,** after the 310th row, for the **Shoulder Shaping:** on both sides of every other row bind off 3 sts. 3 x, and 4 sts. 3 x.

SLEEVE: (Figure III) Cast on 116 sts. Work with Tension 6. Rows 1-10: K. 1, P. 1 ribbing. Transfer ribber sts. to main machine. Continue in stockinette. Rows 11-50: Inc. 1 st. on both sides after the 10th row and again every 6th row 6 x. (130 sts.) Rows 51-66: **Underarm Shaping:** Every other row, on the back side of the sleeve, bind off 4 sts. 1 x, 3 sts. 3 x, 2 sts. 4 x, and **At the same time, on the front side** bind off 6 sts. 1 x, 5 sts. 1 x, 4 sts. 1 x, 3 sts. 2 x, and 2 sts. 3 x. Rows 67-108: On both sides of every other row, bind off 1 st. 1 x, 2 sts. 1 x, and 1 st. 20 x. Rows 109-116: On both sides of every other row, bind off 2 sts. 1 x, 3 sts. 1 x, 5 sts. 1 x, and the remaining 16 sts. Make another sleeve with reverse shapings.

COLLAR: Cast on 157 sts. for the front half, and 145 sts. for the back half. Work 42 rows K. 1, P. 1 ribbing: 10 rows with Tension 6, 10 with Tension 7, 11 with Tension 8, and 11 with Tension 9. Bind off all sts.

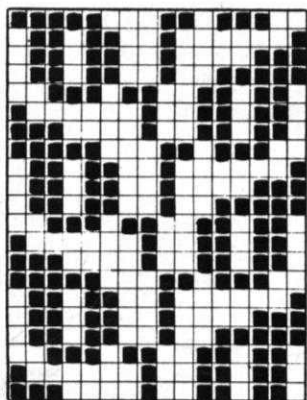
FINISHING: Follow directions for size 14/16.

WOMAN'S JACKET, No. DP 7230



SIZES: 16/18 and 20/22. **MATERIAL:** (16/18) 24½ oz. white wool, (20/22) 26 oz. white, (Both) 2 oz. jade green. **FOR EXAMPLE:** KNITTING Starlight Crepe or Spinnerin Mona or Reynolds Classique. **TENSION:** KNITTING 8-9. **GAUGE:** 29 sts. - 4", 36 rows - 4" Stockinette st. 30 sts. - 4", 34 rows - 4" Norwegian pattern st. **PATTERN:** Stockinette st. on knit side. Border: Norwegian pattern st. according to chart, using Jac 40 and Jac pattern 26. Every row with the Norwegian design is counted singly in the directions, however, for 1 row several movements of cam box are required.

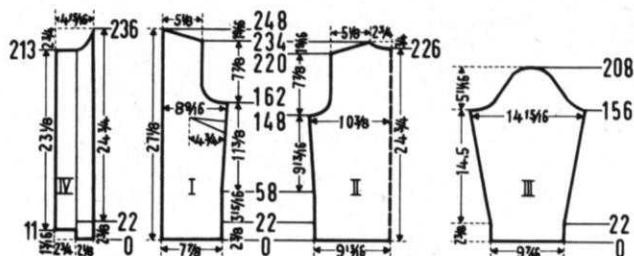
SIZE 16/18. BACK: (Figure II) Cast on 145 sts. Work in stockinette st. Rows 1-21: Work even. For the hem, put the cast on sts. back on the machine. Row 22: Work the sts. together with Tension 10. Rows 23-148: Inc. 1 st. on both sides after the 58th row and again every 18th row 4 x. (155 sts.) Rows 149-168: **Armhole Shaping:** Bind off 4 sts. on both sides. Then every other row bind off 4 sts. 1 x, 3 sts. 1 x, 2 sts. 2 x, 1 st. 3 x, and then on the 4th row dec. 1 st. 1 x. (117 sts.) Rows 169-220: Work even. Rows 221-234: **Shoulder Shaping:** on both sides of every other row bind off 4 sts. 2 x and 5 sts. 6 x. **At the same time,** after the 226th row, for the **Neck Shaping,** bind off the 15 center sts., and on both sides of this, every other row, bind off 6 sts. 1 x, 4 sts. 1 x, and 3 sts. 1 x.



FRONT: (Figure I) Cast on 58 sts. Rows 1-21: Work even. For the hem, put the cast on sts. back on the machine. Row 22: Work the sts. together with Tension 10. Rows 23-162: On the right side, increase 1 st. after the 58th row and again every 18th row 4 x. (63 sts.) Rows 163-182: **Armhole Shaping:** bind off 7 sts. Then every other row bind off 5 sts. 1 x, 3 sts. 2 x, 2 sts. 2 x, 1 st. 2 x, and then in the 4th row dec. 1 st. 1 x. (38 sts.) Rows 183-234: Work even. Rows 235-248: **Shoulder Shaping,** every other row, bind off 4 sts. 2 x, and 5 sts. 6 x. Make another front section with reverse shapings.

SLEEVE: (Figure III) Cast on 70 sts. Rows 1-21: Work even. For the hem, put the cast on sts. back on the machine. Row 22: Work the sts. together with Tension 10. Rows 23-156: Increase 1 st. on both sides after the 26th row, again every 8th row 5 x, and every 6th row 14 x. (110 sts.) Rows 157-170: **Underarm Shaping:** Every other row on the back side of the sleeve bind off 4 sts. 2 x, 3 sts. 2 x, 2 sts. 2 x, 1 st. 1 x, and **At the same time, on the front side** bind off 7 sts. 1 x, 5 sts. 1 x, 3 sts. 3 x, and 2 sts. 2 x. Rows 171-200: On both sides of every other row dec. 1 st. 15 x. Rows 201-208: On both sides of every other row bind off 2 sts. 2 x, 3 sts. 1 x, 4 sts. 1 x, and the remaining 14 sts. Make another sleeve with reverse shapings.

BORDER AND BUTTONHOLE STRIPS (Figure IV) Cast on 17 sts. Rows 1-11: Work even. Now, on the left side cast on 21 sts. Rows 12-21: Work even. For the hem, put the 17 cast on sts. back on the machine. Row 22: Work the sts. together with Tension 10, and at the same time, over the 2nd-6th and 16th-20th needles, counting from the left edge, **make buttonholes** (see below). Now, over the 2nd-17th needles, counting from the right edge, work the Norwegian pattern st., and over the remaining needles work in stockinette st. with white. Rows 23-213: Work straight, making buttonholes after the 53rd, 85th, 117th, 149th, and 181st. rows. Rows 214-236: **Neck Shaping:** bind off 21 sts. Then in every other row bind off 3 sts.



2 x, 2 sts. 2 x, 1 st. 4 x, and then in the 4th row decrease 1 st. 1 x. Hang the remaining 2 sts. together and bind off. Make another strip with reverse shaping, minus buttonholes.

BUTTONHOLES for the above facing strip are made by following buttonhole instructions in the instruction book which comes with your machine or another way is: — take a piece of contrast yarn or doubled sewing thread and knit the stitches over needles specified, by hand, just the one time. Now continue knitting with your garment yarn. After the piece is completed, steam it well and when it is thoroughly dry, remove the contrast yarn or thread, fold the facing strip in half, matching the doubled buttonholes, and whip or buttonhole stitch these stitches together.

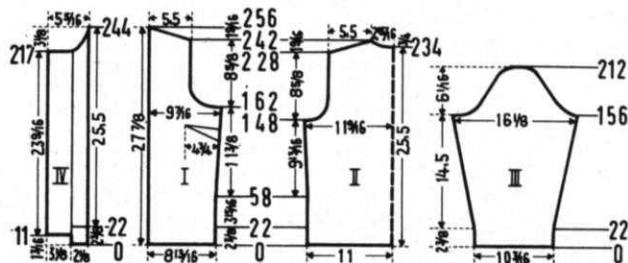
NECK EDGING: Cast on 107 sts. Work 22 rows stockinette st.: 6 rows with Tension 8 (9), 10 rows with Tension 7 (8), and 6 rows with Tension 8 (9). Bind off all sts.

FINISHING: Join the front strips to the front sections of the sweater in slip st., overlapping 1 st. from each section. Sew in darts at bustline as illustrated. Join front and back at side and shoulder seams. Sew sleeve edges together and sew sleeves to sweater. Make a 1⅜" hem at front edges. Fold neck edging around sweater neckline and attach, leaving an opening for the buttonhole on the right side. Finish buttonholes. Sew on buttons.

SIZE: 20/22

BACK: (Figure II) Cast on 162 sts. Work in stockinette st. Rows 1-21: Work even. For the hem, put the cast on sts. back on the machine. Row 22: Work the sts. together with Tension 10. Rows 23-148: Inc. 1 st. on both sides after the 58th row and again every 18th row 4 x. (172 sts.) Rows 149-172: **Armhole Shaping:** bind off 4 sts. on both sides. Then every other row bind off 4 sts. 1 x, 3 sts. 2 x, 2 sts. 2 x, 1 st. 4 x, and then on the 4th row decrease 1 st. 1 x, (126 sts.) Rows 173-228: Work even. Rows 229-242: **Shoulder Shaping:** on both sides of every other row bind off 5 sts. 7 x and 6 sts. 1 x. **At the same time,** after the 234th row, for the **Neck Shaping,** bind off the 16 center sts., and on both sides of this, every other row, bind off 7 sts. 1 x, 4 sts. 1 x, and 3 sts. 1 x.

FRONT: (Figure I) Cast on 65 sts. Rows 1-21: Work even. For the hem, put the cast on sts. back on the machine. Row 22: Work the sts. together with Tension 10. Rows 23-162: On the right side, increase 1 st. after the 58th row and again every 18th row 4 x. (70 sts.) Rows 163-186: **Armhole Shaping:** bind off 7 sts. Then in every other row bind off 5 sts. 1 x, 4 sts. 1 x, 3 sts. 1 x, 2 sts. 3 x, 1 st. 3 x, and then on the 4th row decrease 1 st. 1 x. (41 sts.) Rows 187-242: Work even. Rows 243-256: **Shoulder Shaping:** Every other row bind off 5 sts. 7 x and 6 sts. 1 x. Make another front section with reverse shapings.



SLEEVE (Figure III) Cast on 75 sts. Rows 1-21: Work even. For the hem, put the cast on sts. back on the machine. Row

22: Work the sts. together with Tension 10. Rows **23-156:** Inc. 1 st. on both sides after the 24th row, and again every 6th row 21 x. (119 sts.) Rows **157-170:** **Underarm Shaping:** Every other row on the back side of the sleeve, bind off 5 sts. 1 x, 4 sts. 1 x, 3 sts. 2 x, 2 sts. 3 x, and **At the same time, on the front side** bind off 7 sts. 1 x, 5 sts. 1 x, 4 sts. 1 x, 3 sts. 3 x, and 2 sts. 1 x. Rows **171-204:** On both sides of every other row decrease 1 st. 17 x. Rows **205-212:** On both sides of every other row bind off 2 sts. 2 x, 3 sts. 1 x, 4 sts. 1 x, and the remaining 15 sts. Make another sleeve with reverse shapings.

BORDER AND BUTTONHOLE STRIPS (Figure IV) Cast on 17 sts. Rows **1-11:** Work even. Now on the left side cast on 24 sts. Rows **12-21:** Work even. For the hem, put the 17 cast on sts. back on the machine. Row **22:** Work the sts. together with Tension 10, and at the same time, over the 2nd-6th and 16th-20th needles, counting from the left edge, make buttonholes. See Size 16-18. Now, over the 2nd-17th needles, counting from the right edge, work the Norwegian pattern st., and over the remaining needles work in stockinette st. with white. Rows **23-217:** Work straight, making buttonholes after the 54th, 87th, 120th, 153rd, and 186th rows. Rows **218-244:** **Neck Shaping:** bind off 22 sts. Then in every other row bind off 3 sts. 2 x, 2 sts. 3 x, 1 st. 3 x, and then in every 4th row decrease 1 st. 2 x. Hang the remaining 2 sts. together and bind off. Make another strip with reverse shapings, minus buttonholes.

NECK EDGING: Cast on 113 sts. Work 22 rows stockinette st.: 6 rows with Tension 8 (9), 10 rows with Tension 7 (8), and 6 rows with Tension 8 (9). Bind off all sts.

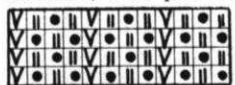
FINISHING: Follow directions for size 16/18.

WOMAN'S PULLOVER, No. DP 7203



SIZE: (12/14). **MATERIAL:** 10½ oz. rose wool. **FOR EXAMPLE:** KNITKING Starlight Crepe; Spinnerin Mona. **TENSION:** KNITKING 10. **GAUGE:** Pattern stitch; 14 sts. 2", 28 rows - 2"; Stockinette stitch; 14 sts. - 2", 22 rows - 2". The non-working-position sts. are counted in the gauge and the directions. **PATTERN:** Holding position on purl side according to to chart. Set first row by hand at the beginning of the design, the corresponding needles in holding position, then use the needle shifter. Edging: Stockinette stitch.

BACK: (Figure II) Cast on 143 sts. Rows **1-22:** Work in stockinette st. For the hem, put the cast on sts. back on the machine, then put the sts. from the 4th, 8th, 12th, 16th, etc.



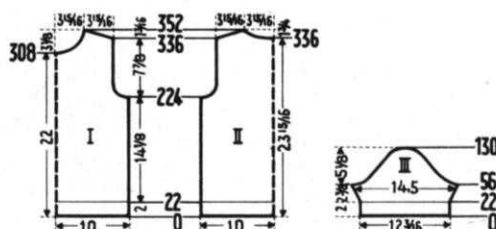
7-8 needles on the neighboring
5-6 needle to the left. Put the
3-4 empty needles out of operation
1-2 and continue in holding

position design. Rows **23-224:** Work even. Rows **225-252:** **Armhole Shaping:** bind off 3 sts. on both sides; then every other row bind off 2 sts. 3 x, 1 st. 4 x, and then every 4th row decrease 1 st. 3 x. (111 sts.) Rows **253-336:** Work even. Rows **337-352:** **Shoulder Shaping:** on both sides of every other row bind off 3 sts. 8 x and 4 sts. 1 x. **At the same time, for the Neck Shaping,** after the 336th row, bind off the 13 center sts., and on both sides of this, every other row bind off 4 sts. 2 x, 3 sts. 3 x, and 2 sts. 2 x.

FRONT: (Figure I) Cast on 101 sts.; begin on the left side with No. 71 needle. Rows **1-22:** Work in stockinette st.: on the right side inc. 1 st. every other row. 5 x and then dec. 1 st. every other row 5 x. For the hem, put the cast on sts. back on the machine, and put the needles in holding position. On the right side cast on next to last needle in H. P. 42 sts. Work 22 rows in stockinette st. For the hem, put the cast on sts. back on the machine. Put the needles from holding position into working position, put the sts. on the 4th, 8th, 12th, 16th, etc. needles on the neighboring needle to the left. Put the empty needles out of work and continue in holding position design, working the same as

the back; however, for the **Neck Shaping,** after the 308th row, bind off the 13 center sts., and on both sides of this, every other row bind off 4 sts. 1 x, 3 sts. 1 x, 2 sts. 3 x, 1 st. 4 x, and then every 4th row decrease 1 st. 4 x.

SLEEVE: (Figure III) (Make 2) Cast on 87 sts. Rows **1-22:** Work in stockinette st. For the hem, put the cast on sts. back on the machine, put the sts. from the 4th, 8th, 12th, 16th, etc. needles on the neighboring needle to the left, put the empty needles out of operation, and continue in holding position design. Rows **23-56:** Inc. 1 st. on both sides after the 22nd row and again every 4th row 7 x. (103 sts.) Rows **57-80:**



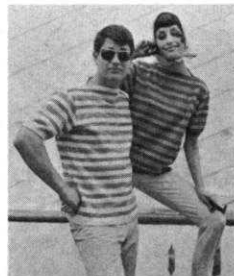
Underarm Shaping: on both sides of every other row bind off 3 sts. 2 x, 2 sts. 5 x, and 1 st. 5 x. Rows **81-122:** On both sides, decrease 1 st. on the 4th row 1 x, 1 st. on the 2nd row 1 x. Repeat these 2 decreases 6 x. Rows **123-130:** On both sides of every other row, bind off 2 sts. 2 x, 3 sts. 1 x, 4 sts. 1 x, and the remaining 11 sts.

NECK EDGING: Cast on 143 sts. Work 22 rows stockinette st.: 6 rows with Tension 10, 10 rows with Tension 9, and 6 rows with Tension 10. **At the same time,** to form the point, inc. 1 st. in every other row 5 x, and then decrease 1 st. in every other row 5 x. Bind off all sts.

FRONT DECORATIVE STRIP: Cast on 143 sts. Work 22 rows stockinette st., on both sides inc. 1 st. every other row 5 x, and then decrease 1 st. every other row 5 x.

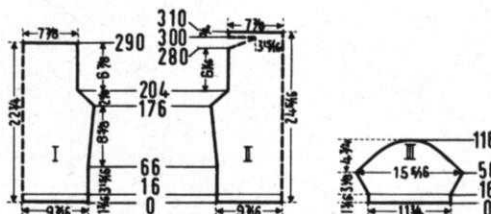
FINISHING: Join front and back at side and shoulder seams. Sew sleeve edges together and sew sleeves to sweater. Sew front decorative strip to the pointed corners of the bottom edging and the neck edging. Sew the decorative strip and the neck edging to the sweater. Work a strip 5⅞" x 5⅞" in stockinette st., and make 4 buttons out of this. Sew buttons to sweater.

WOMAN'S PULLOVER, No. DP 7213



SIZE: 12/14. **MATERIAL:** 8¼ oz. royal blue wool. 2½ oz. white. **FOR EXAMPLE:** KNITKING Subita or Diamond Pastel D'Aaust. **TENSION:** KNITKING 4. **GAUGE:** 18 sts. - 2", 25 rows - 2". **PATTERN:** Stockinette. Stripe Pattern: See Page 32. 11 rows blue, 2 rows white, 1 row blue, 1 row white, 1 row blue, 2 rows white, 11 rows blue, 1 row white, 1 row blue, then repeat the last 2 rows 4 x, 1 row white. (The empty rows are not counted in the gauge and the directions.) Ribbing: K. 1, P. 1.

BACK: (Figure II) Cast on 173 sts. with blue. Rows **1-16:** K. 1, P. 1 ribbing. Transfer ribber sts. to main machine.



Continue in stripe pattern, working only 6 rows of blue at the beginning. Rows **17-176:** Inc. 1 st. on both sides after the 66th row and again every 16th row 6 x. (187 sts.) Rows

177-204: Armhole Shaping: on both sides of every other row, bind off 2 sts. 1 x and 1 st. 1 x. Repeat these 2 decreases 6 x. (145 sts.) Rows **205-280:** Work even, continuing with blue after the 269th row. Rows **281-298:** On both sides, one after another, put 4 needles in holding position 9 x. Rows **299-300:** On the left side, bring all needles into working position. Work 1 row. On the right side bring all needles into working position. Work 1 row. Rows **301-310:** Work even, then bind off all sts.

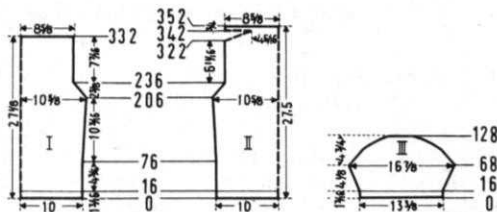
FRONT: (Figure I) The front is worked the same as the back until the 280th row. Rows **281-290:** Work even. Bind off all sts.

SLEEVE: (Figure III) (Make 2) Cast on 109 sts. with blue. Rows **1-16:** K. 1, P. 1 ribbing. Transfer ribber sts. to main machine. Continue in stripe pattern. Rows **17-56:** Inc. 1 st. on both sides after the 18th row, again every 4th row 2 x and every other row 13 x. (141 sts.) Rows **57-116: Underarm Shaping:** on both sides of every other row bind off 2 sts. 1 x and 1 st. 1 x, and repeat these 2 decreases 6 x. Then bind off 2 sts. 9 x, 3 sts. 5 x, 4 sts. 1 x, 6 sts. 1 x, and the remaining 13 sts.

FINISHING: Join front and back at side seams. Make a hem 10 rows wide at top of pullover. Sew shoulder seams together 3-15/16" on each side. Sew sleeve edges together and sew sleeves to sweater.

MAN'S PULLOVER, No. HP 3367

SIZE: 40/42. **MATERIAL:** 11¼ oz. white wool. 2½ oz. blue. **FOR EXAMPLE:** KNITTING Subita or Diamond Pastel D'Acoust. **TENSION:** KNITTING 4. **GAUGE:** 18 sts. - 2", 25 rows - 2". **PATTERN:** Stockinette st. on knit side. Stripe Pattern: 11 rows white, 2 rows blue, 1 row white, 1 row blue, 1 row white, 2 rows blue, 11 rows white, 1 row blue, 1 row white. Repeat the last 2 rows 4 x, 1 row blue. See Page (The empty rows are not counted in the gauge and the description). **Ribbing:** K. 1, P. 1. **BACK:** (Figure II) Cast on 185 sts. with white. Rows **1-16:** K. 1, P. 1 ribbing. Transfer ribber sts. to main machine. Continue in stripe pattern, working only 6 rows of white at the beginning. Rows **17-206:** Inc. 1 st. on both sides after the 76th row and again every 26th row 4 x. (195 sts.) Rows **207-236: Armhole Shaping:** on both sides



of every other row bind off 2 sts. 3 x and 1 st. 12 x. (159 sts.) Rows **237-322:** Work even, continuing on with white after the 309th row. Rows **323-342:** On both sides, one after another, put 4 needles in holding position 10 x. Rows **343-344:** Put all the needles on the left side in working position. Work 1 row. Put all the needles on the right side in working position. Work 1 row. Rows **345-352:** Work even. Bind off all sts.

FRONT: (Figure I) The front is worked the same as the back until the 322nd row. Rows **323-332:** Work even. Bind off all sts.

SLEEVE: (Figure III) (Make 2) Cast on 123 sts. with white. Rows **1-16:** K. 1, P. 1, Ribbing. Transfer ribber sts. to main machine. Continue in stripe pattern, working only 6 rows of white at the beginning, and then working the second blue/white stripes. Rows **17-68:** Inc. 1 st. on both sides after the 20th row, again every 4th row 7 x, then every other row 8 x. (155 sts.) Rows **69-128: Underarm Shaping:** on both sides of every other row bind off 2 sts. 3 x, 1 st. 12 x, 2 sts. 6 x, 3 sts. 5 x, 4 sts. 4 x, and the remaining 33 sts.

FINISHING: Join front and back at side seams. Make a hem 10 rows wide at top of pullover. Sew shoulder seams together, 4-5/16" on each side. Sew sleeve edges together, and sew sleeves to sweater.

AFGHAN, No. RS 6031



SIZE: 47 1/8" x 62-13/16". **MATERIAL:** 3 3/4 oz. black-red-green-tweed wool or Mohair 2-4/5 oz. red. **FOR EXAMPLE:** 4 ply worsted or Mohair **TENSION:** KNITTING - 10. **GAUGE:** 9 sts. - 2", 25 Rows - 2". The non-working position stitches are not counted in the gauge and the directions. **PATTERN:** Holding position design on knit side, over every other needle. Put the Gate Cam release lever at the needle heels. 1). Of the needles in working position, put the 2nd, 4th, 6th, etc. needles in holding

position. Work 1 Row. 2). Put the needles in holding position into working position. Work 1 row. 3). Put the 1st, 3rd, 5th, etc. needles in holding position. Work 1 Row. 4). Put the needles in holding position into working position. Work 1 Row. Repeat steps 1 through 4. With Automatic Needle Selector or Dial-A-Stitch and Wheel IV. Cast on 71 sts. over every other needle. Work 792 Rows in holding position design, working 192 Rows with tweed, 8 Rows with red. Bind off all sts. Make 2 more strips just like this.

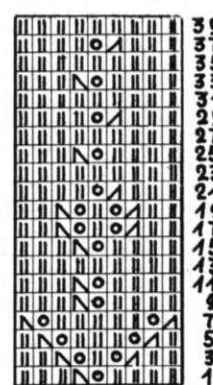
FINISHING: Join the 3 sections together with a doubled red yarn. Brush the right side of the afghan with a wire brush. Attach fringes made from tweed yarn at the ends.

CHILD'S DRESS, No. SK 5079



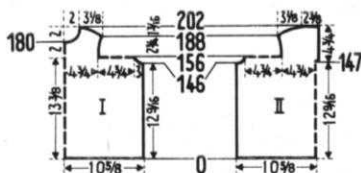
SIZE: 1½-2 years. **MATERIAL:** 10 oz. Baby wool or Coats and Clarks Pompadour. **TENSION:** KNITTING 5. **GAUGE:** 17 sts. - 2", 23 rows - 2". **PATTERN:** Stockinette st. with eyelet design according to chart. **BACK:** (Figure II) Cast on 185 sts. Rows **1-38:** Work in stockinette st. Now begin the eyelet design. To do this, at first, put the 9th, 23rd, 37th, etc. sts. on the neighboring needle to the left. Then continue, following the chart, and repeat the 25th-40th rows up to the yoke. Rows **39-146:** Work even. Now

put the middle st. on the neighboring needle, put the 92 needles on the left side in holding position, and work the right half first. Rows **147-156:** Bind off 4 sts. for the **Armhole Shaping**, then every other row bind off 3 sts. 1 x, 2 sts. 1 x, and 1 st. 2 x. At the same time, for the facing, cast on 3 sts. after the 147th row. To do this, put 2 sts. from the left section on a double pointed needle (or contrast yarn). Now dec. 40 sts. To do this, knit a few rows using a contrast yarn and then remove knitting from machine by pushing cam box across with no yarn. Now hang the knitting back on to machine putting 2 stitches on one needle, decreasing to make 44 stitches. Reset Row Counter to 156. (44 sts.) Rows **157-188:** After the 158th row, put the 14th and 28th sts. on the neighboring needle to the left, and work the design st. for 22 rows.



At the same time, on the right side inc. 1 st. after the 164th row and again every 6th row 3 x. Rows **189-202: Shoulder Shaping.** On every other row, bind off 2 sts. 2 x, 3 sts. 1 x, 4 sts. 1 x, 5 sts. 1 x, 6 sts. 2 x, and the remaining 20 sts. Now put the cam box on the left side, turn the row counter back to 146, put all needles in working position, put the sts. from the double pointed needle (or contrast yarn) back on the machine, and work the left section reversing shaping.

FRONT: (Figure I) The front is worked the same as the back until the 146th row. Rows **147-156:** For the **Armhole Shaping.** Bind off 4 sts. on both sides; then in every other row bind



off 3 sts. 1 x, 2 sts. 1 x, and 1 st. 2 x. Now dec. 81 sts. To do this, put every other st. on the neighboring needle, and move the sts. over to fill the empty needles. (82 sts.) Or remove from machine with contrast and double up stitches on 82 needles. Rows 157-202: On both sides, after the 158th row, put the 14th and 28th sts. on the neighboring needle to the left, and work the pattern st. for 22 rows. **At the same time**, for the **Armhole Shaping**, inc. 1 st. after the 164th row and again every 6th row 3 x, and after the 180th row, for the **Neck Shaping**, bind off the 10 center sts., and on both sides of this, every other row, bind off 3 sts. 2 x, 2 sts. 1 x, 1 st. 2 x, and then every 4th row dec. 1 st. 2 x. For the **Shoulder Shaping**, after the 188th row, on both sides of every other row bind off 2 sts. 2 x, 3 sts. 1 x, 4 sts. 1 x, 5 sts. 1 x, and 6 sts. 2 x.

NECK EDGING: Cast on 81 sts. Work 10 rows stockinette st. Bind off all sts. **Armhole Edging.** (Make 2). Cast on 73 sts. Work 10 rows stockinette st. Bind off all sts.

FINISHING: Join front and back at side seams in slip stitch, overlapping 1 1/2 sts. from each section. Sew shoulder seams. Make a hem 1 1/2" wide at bottom of skirt. Make a hem 3 sts. wide around back opening. Fold neck edging around neck opening and attach. Sew in zipper. Sew ends of arm hole edges together, so that they are circular, and sew to armhole openings.

GIRL'S SUIT, No. MK 4684



SIZE: 9 - 10 years. **MATERIAL:** Skirt: 15 1/2 oz. green wool, Jacket: 14 1/2 oz. green. **FOR EXAMPLE:** Pauline Denham Sierra or Spinnerin Ambralon. **TENSION:** KNITTING 6, or 7 - Stockinette st., 9 or 10 - Pattern st. **GAUGE:** 16 sts. - 2", 22 rows - 2"; Stockinette. 13 sts. - 2", 40 rows - 2"; Pattern st. **PATTERN:** Skirt: Stockinette st. on knit side. Jacket: Holding position design on purl side according to chart. Using Automatic Needle Selector or Dial-A-Stitch and Wheel No. 6. Edging:

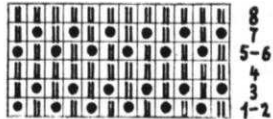
Purl side. **SKIRT:** (Figure IV) Cast on 86 sts. Work in stockinette st. with Tension 6 (7) Rows 1-218: Decrease 1 st. on both sides after the 110th row, again in every 8th row 5 x,

and in every 6th row 10 x. To do this, put the 3rd st. on the 2nd needle, and move the edge sts. over to fill the empty needles. (54 sts.) Now, at first put the 2nd st., and then every 3rd st. onto the neighboring needle, move all stitches over to fill empty needles—or you may take off on contrast yarn

and replace the stitches, decreasing as desired. Rows 219-220: Work even. Bind off 36 sts. Now make 5 more skirt sections just like this.

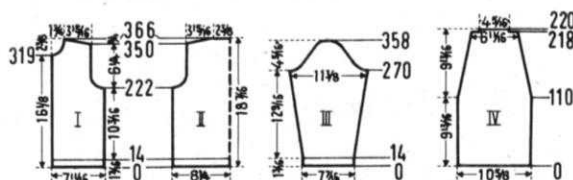
WAIST BAND: Cast on 103 sts. for the front and 96 sts. for the back. Work 20 rows stockinette st. with Tension 4. Bind off all sts.

JACKET: BACK: (Figure II) Cast on 109 sts. Rows 1-14: Work straight with Tension 7 (8). Continue in pattern st. with Tension 9 (10). Rows 15-222: Work even. Rows 223-254: **Armhole Shaping:** bind off 3 sts. on both sides, then every other row bind off 2 sts. 2 x, 1 st. 2 x; then dec. 1 st. on the 4th row 1 x, and 1 st. every 6th row 3 x. (83 sts.) Rows 255-350: Work even. Rows 351-366: **Shoulder Shaping:** on both sides of every other row bind off 3 sts. 6 x, 4 sts. 2 x, and the remaining 31 sts.



FRONT: (Figure I) Cast on 51 sts. Rows 1-14: Work straight with Tension 7 (8). Continue in pattern st. with Tension 9 (10). Rows 15-222: Work even. Rows 223-254: **Armhole Shaping.** Bind off 3 sts. Then on every other row bind off 2 sts. 2 x, 1 st. 2 x, and then on the 4th row dec. 1 st. 1 x, and every 6th row dec. 1 st. 3 x. (38 sts.) Rows 255-319: Work even. Rows 320-366: **Neck Shaping.** Bind off 2 sts. Then in every other row bind off 2 sts. 1 x, 1 st. 2 x, and then on every 4th row dec. 1 st. 2 x, and every 6th row dec. 1 st. 4 x. **At the same time**, after the 350th row, for the **Shoulder Shaping**, on every other row bind off 3 sts. 6 x and 4 sts. 2 x. Make another front with reverse shapings.

SLEEVE: (Figure III). Cast on 49 sts. Rows 1-14: Work straight with Tension 7 (8). Continue in pattern st. with Tension 9 (10). Rows 15-270: Inc. 1 st. on both sides after the 14th row and again every 20th row 12 x. (75 sts.) Rows 271-358: **Underarm Shaping:** On both sides of every 4th row bind off 4 sts. 1 x, 3 sts. 1 x, 2 sts. 3 x, 1 st. 14 x, 2 sts. 2 x, 3 sts. 1 x, and the remaining 7 sts. Make another sleeve just like this.



FRONT EDGING WITH NECK EDGING: Cast on 9 sts. Work straight with Tension 7 (8). Rows 1-166: Work even. Rows 167-178: To shape the corner, work shortened rows. To do this, on both sides, one after another, put 1 needle in hold position 3 x, and then, one after another, bring these same needles back into working position. Rows 179-280: Work even. Rows 281-292: For the second corner, repeat rows 167-178. Rows 293-458: Work even. Bind off all sts.

FINISHING: Join all the skirt sections with slip st., overlapping 1 st. Leave an opening between 2 of the sections for the zipper. Make a hem 1-9/16" wide at skirt bottom. Sew an elastic band at the top of the skirt, letting it extend 3/4" above the skirt top. Sew the waistband sections together, fold around skirt top and elastic band, and attach. Sew in zipper, and hooks and eyes.

JACKET: Join front and back at side and shoulder seams. Sew sleeve edges together, and sew sleeves to jacket. Fold the bottom edging of the sleeve in half toward inside and attach. Sew on buttons. Make yarn loops or chains for fasteners. Sew hook and eye to jacket neck.

GIRL'S PULLOVER, No. MK 4670



SIZES: 4-5 years and 7-8 years. **MATERIAL:** Size 4-5 - 6 1/2 oz. red KNITTING Satin cotton. Size 7-8 - 8 oz. red cotton. 1 oz. white cotton for trim. **TENSION:** KNITTING 6 - Pattern st., 5 - Stockinette. **GAUGE:** 17 sts. - 2", 28 rows - 2", Pattern stitch; 17 sts. - 2", 24 rows - 2", Stockinette stitch. The non-working position needles are counted in the gauge and the directions. **PATTERN:** Holding position design on purl side according to chart. **Edging:** Stockinette stitch.

SIZE 4-5 years.

BACK: (Figure II). Cast on 109 sts. with red. Rows 1-24: Stockinette st. with Tension 5, work the 11th-14th rows with



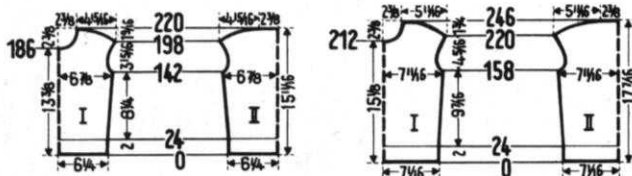
7-8 white. Now put the 6th, 5-6 8th, 14th, 16th, etc. sts. 3-4 on the neighboring 4-2 needle, put the empty

needles out of operation, and continue in holding position design with Tension 6.

Rows 25-142: Inc. 1 st. on both sides after the 30th row and again every 22nd row 4 x. (119 sts.). Rows 143-156: **Armhole Shaping**, bind off 2 sts. on both sides. Then in every 4th row dec. 1 st. 3 x. Rows 157-198: Inc. 1 st. on both sides after the 166th row and again every 4th row 7 x. (125 sts.). Rows 199-220: **Shoulder Shaping**, on both sides of every other row bind off 2 sts. 3 x, 3 sts. 2 x, 4 sts. 3 x, 6 sts. 3 x, and the remaining 41 sts.

FRONT: (Figure I). The front is worked the same as the back. However, for the **Neck Shaping**, after the 186th row, bind off the 11 center sts., and on both sides of this, on every other row bind off 3 sts. 2 x, 2 sts. 2 x, 1 st. 2 x, and then every 4th row dec. 1 st. 2 x, and in the 6th row dec. 1 st. 1 x.

NECK EDGING: With red, cast on 64 sts. 1 x and 42 sts. 1 x. Work 16 rows stockinette st. with Tension 5, working the 7th-10th rows with white. Bind off all sts.



ARMHOLE EDGING: (Make 2). Cast on 82 sts. with red. Work 16 rows stockinette st. with Tension 5, dec. 1 st. on both sides after the 2nd row and again every other row 2 x, and inc. 1 st. after the 10th row and again every other row 2 x. Work the 7th-10th rows with white. Bind off all sts.

FINISHING: Join front and back at side seams. Sew shoulders together, $2\frac{3}{4}$ " on each side and make a narrow hem around

the front edging, and overcast the back edging to make it stronger. Fold neck edging around neckline of sweater and attach. On both sides of the front section fasten 3 loops, and on the back section, sew 3 buttons on each side. Fold bottom edge of sweater in half toward outside and attach. Sew ends of armhole edgings together so that they are circular, and sew to sweater.

SIZE: 7-8 years

BACK: Figure II. Cast on 123 sts. with red. Rows 1-24: Stockinette st. with Tension 5; work the 11th-14th rows with white. Now put the 5th, 7th, 13th, 15th, 21st, 23rd, etc. sts. on the neighboring needle, put the empty needles out of operation, and continue in holding position design with Tension 6. Rows 25-158: Inc. 1 st. on both sides after the 28th row and again every 26th row 4 x. (133 sts.). Rows 159-172: **Armhole Shaping**, bind off 2 sts. on both sides. Then every 4th row dec. 1 st. 3 x. Rows 173-220: Inc. 1 st. on both sides after the 186th row and again every 4th row 7 x. (139 sts.). Rows 221-246: **Shoulder Shaping**, on both sides of every other row, bind off 2 sts. 3 x, 3 sts. 3 x, 4 sts. 3 x, 5 sts. 2 x, 6 sts. 2 x, and the remaining 41 sts.

FRONT: (Figure I) The front is worked the same as the back. However, for the **Neck Shaping**, after the 212th row, bind off the 11 center sts., and on both sides of this, every other row bind off 3 sts. 2 x, 2 sts. 2 x, 1 st. 2 x, and then every 4th row dec. 1 st. 2 x, and on the 6th row dec. 1 st. 1 x.

ARMHOLE EDGING: (Make 2). Cast on 89 sts. with red. Work 16 rows stockinette st. with Tension 5, dec. 1 st. on both sides after the 2nd row and again every other row 2 x, and inc. 1 st. after the 10th row and again every other row 2 x. Work the 7th-10th rows with white. Bind off all sts.

NECK EDGING AND FINISHING: Follow directions for size 4-5.

PRACTICAL KNITTING HINTS

IMPORTANT THINGS TO REMEMBER WHEN KNITTING WITH COTTON

Knitted garments made from cotton yarns make a delightful addition to your summer wardrobe. Women's garments knitted of one type of cotton yarn have a silky appearance which is so popular today. Sport clothes and men's sport shirts as well, can be knitted of other yarns that have the appearance of linen, and are much in demand.

Most of these yarns can be washed in hot water, an excellent advantage especially for children's garments. However, bear in mind that cotton will shrink and there are several things to consider when knitting cotton garments.

First, cotton should be knitted on a higher tension than you would knit wool of same weight. The stitches may appear to be almost too loose, and your knitted piece may look too large, but after you wash or steam your garment, if you have followed our rule for always making a sample swatch, your completed knit will be the correct size.

If you are knitting a Pattern stitch in a holding position design, you must wash your sample swatch (do not steam it as this will spoil your pattern), pin it out carefully and allow it to dry (never hang it up). After your swatch is completely dry, then (and only then) count your stitches and rows to get the correct gauge.

BINDING OFF FROM THE RIBBER

Sometimes it is necessary to complete your knitting by binding off ribbed stitches. One way to do this, is to knit your last row of ribbing several tensions larger, transfer the ribber stitches to the main machine, release the stitches from under the sinkers and bind off in the usual manner.

TO KNIT SINGLE ROWS OF ONE COLOR

PATTERN NO. DP 7213 AND HP 3367

- Row 1. Cam box on right side, right control knob up. Knit to left side with 1st color. Take Cam back to right side without yarn.
- Row 2. Press down right control knob. Knit to left side with 2nd color.
- Row 3. Left control knob up. Knit to right side with 1st color. Take Cam back to left side without yarn.
- Row 4. Press down left control knob. Knit to right side with 2nd color. REPEAT ROWS 1 through 4.

WANTED

SALESPeOPLE AND KNITTING OWNERS TO SELL AND TEACH KNITTING KNITTING. IF YOU CAN DO EITHER OR BOTH WRITE TO KNITTING, 1128 CRENSHAW BLVD., LOS ANGELES, CALIF. 90019, FOR FULL INFORMATION.

YOU'LL JUST LOVE . . .

KNITKING®

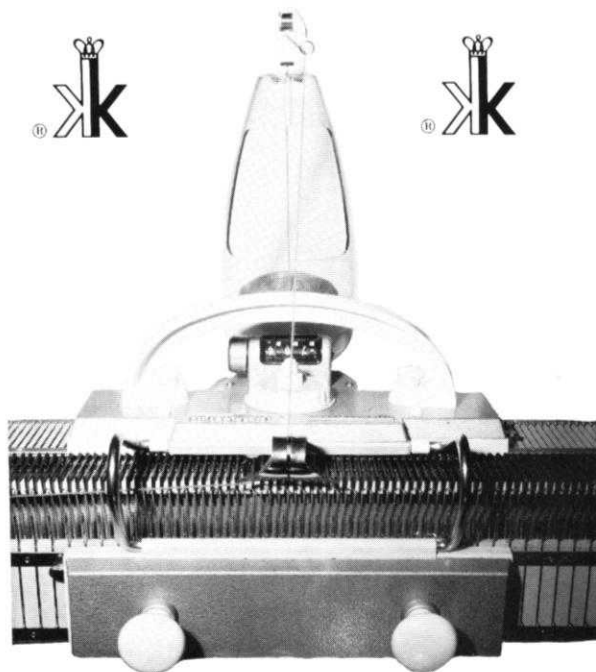
**Push-Button
Dial-A-Stitch**

**the modern handknitter
with the new Coordinated Ribber**

✂ Easiest, by far, to learn to use efficiently ✂ Does more jobs, takes less time, requires less space ✂ Needs no weights, clamps, or combs in its operation ✂ Will not drop stitches (it has spring-latch needles) ✂ Automatically creates Jacquard, Fair Isle and Argyle patterns ✂ Takes all kinds of yarns (even mohair, looped or plain; straw, ribbon, angora, synthetics, cotton, wool, etc.) ✂ Arrives complete with Home Study Course, instruction books, tools ✂ Designs and patterns for the whole family come to you monthly in Knitking's magazines ✂ Does a multitude of fancy ribs for you ✂ Floating row-counter can be pre-set and signals when knitting is complete ✂ Dial-A-Stitch gives you a choice of stitches (multicolor, if you wish) with the push of a button ✂ New Coordinated Ribber and self-adjusting yarn-feeder knits and purls at the same time, with one movement of the slide ✂ With the new fully automatic push-button *KNITKING*, you can knit sweaters, socks, coats, dresses, rugs ✂ It's so easy to knit a dress and wear it, all in a single day

Write to Knitking for more information

1128 Crenshaw Boulevard, Los Angeles 19, Calif.,



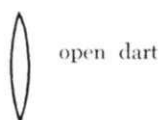
EXPLANATION OF TERMS AND DIAGRAMS USED WITH PATTERNS

Before you begin a garment, we advise you to read through the following remarks. This will make it easier for you to follow the diagrams.

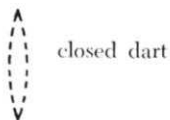
It is especially important that you measure by the gauge which precedes each pattern, because the suggested knitting yarns may not always give the desired measurements. Should you vary from the given measurements, make the necessary adjustments by altering the machine setting.

Increases and decreases in the middle of a garment are presented in the following manner:

Increasing and decreasing stitches: For example, for waist shaping:



open dart



closed dart



= One-sided increase of rows: For example, for diagonally worked darts, etc.

Certain H.P. and eyelet designs are sketched in the knitting patterns. The pattern should be read as the work comes toward you from the machine: that is, if you have purl stitches before you, it will say purl stitches in the pattern. If you have knit stitches before you, it will say knit stitches in the pattern.

On the sides of the pattern are the row numbers. Missing row numbers indicate that the rows are to be worked evenly. In eyelet design the empty needles are in working position; in H.P. design, the same needles are in hold position.

SYMBOLS

- = knit stitch
- ▣ = purl stitch
- = empty needle (still in working position)
- ⊠ = needle out of operation
- ◻ = needle in hold position
- ⊞ = stitch put on neighboring needle. Needle in hold position
- ⊞ = stitch put on neighboring needle - to the right
- ⊞ = stitch put on neighboring needle - to the left
- ⊞ = 3 stitches hung together

Available in many wood finishes



KNITTING DESK . . .

A knitting machine cabinet that automatically lifts your machine into the knitting position just by pulling a lever. The cabinet converts in seconds into a handsome desk suitable for any decor or any room in your house. Beautifully made in a variety of woods by craftsmen in West Germany.



Order from your local dealer or direct from **KNITKING**, 1128 Crenshaw Blvd., Los Angeles, California 90019