

# KNITTING

MAGAZINE



# KNITKING YARN



**NOW: KNITKING IS ABLE TO OFFER COMPLETE SERVICE TO THE MACHINE**

**KNITTER WITH THE IDEAL**



**TRIO.**

**KNITKING KNITTING MACHINES** — The finest and most versatile automatic knitters available anywhere in the world — KNITKING is the world's most honored machine with five gold medals for excellence. KNITKING Push-Button knitters produce a range of patterns and knit a variety of yarns unequalled by other machines.

**1**

**KNITKING YARNS** — We searched the world over for the finest yarns obtainable: Beautiful wools from Australia in a range of colors that will dazzle you. The finest quality yarns from West Germany including a new synthetic, soft as a feather pillow, yet able to withstand all the punishment your washing machine can give it, plus superb Satin-Cotton and Linen-Cotton. Excellent Shetlands, Bri-nylon and wools from world famous English mills.

**2**

**KNITKING MAGAZINE** — Without a doubt the finest Knitting machine magazine in the English language published anywhere in the world. Twenty original patterns in each issue and for all members of the family. Stylish designs photographed on world famous models. High fashion garments, handsome sweaters, sports outfits, baby clothes, plus accessories and knitting machine hints. All available to you in KNITKING MAGAZINE.

**3**

**For yarn catalogue, send \$2.00 (you deduct it from your first order of \$10.00 or more) to:**

**KNITKING YARNS • 1128 CRENSHAW BOULEVARD, LOS ANGELES, CALIF. 90019**

# KNITKING

## MAGAZINE



## Letter from the Publisher

Vol. 2, No. 4

Mar.-Apr. 1966

### INDEX

Contents	Pattern No.	Page No.
Woman's Pullover .....	DP 7324 .....	18
Woman's Cardigan .....	DP 7325 .....	18
Woman's Jacket Sweater .....	DP 7328 .....	19
Woman's Pullover .....	DP 7329 .....	20
Man's Jacket Sweater .....	HP 3418 .....	22
Man's Pullover .....	HP 3419 .....	23
Beach Jacket .....	DV 7332 .....	24
Woman's Pullover .....	DP 7322 .....	25
Beach Jacket .....	DV 7326 .....	26
Woman's Pullover .....	DP 7333 .....	26
Woman's Pullover .....	DP 7327 .....	27
Man's Pullover .....	HP 3416 .....	28
Man's Pullover Shirt .....	HP 3417 .....	28
Girl's Beach Jacket .....	MK 4744 .....	29
Boy's Pullover Shirt .....	KK 4746 .....	29
Girl's Pullover .....	MK 4747 .....	30
Girl's Pullover .....	MK 4748 .....	30
Practical Knitting Hints .....		32



#### OUR COVER MODEL

DP 7324

DP 7325

A grand preview of summer fashions planned for leisure and fun. Our cover model wears a striped pullover knitted in stockinette stitch and a beautiful cardigan knitted in a holding position design using the ribber.

Publisher: Henry J. Atkin, 1128 Crenshaw Blvd., Los Angeles, Calif. 90019, Telephone: WEbster 8-2079. Published bi-monthly. Subscriptions: USA—\$6.00 annually, single copies \$1.50; Canada—\$7.00; other parts of the world—\$10.00. The entire contents of KNITKING MAGAZINE are copyright and must not be reproduced in any shape or form without the express permission, in writing, of the publisher.

Printed by: George Rice & Sons, Los Angeles, Calif.

Regular readers will notice an innovation on the inside back cover of this issue under the heading "NOTES TO KNIT BY".

This feature will appear regularly in KNITKING MAGAZINE and is part of our continuing effort to make KNITKING patterns easily understood by all readers. We ask you to refer to the "Notes" anytime that you do not fully understand a pattern and we especially refer you to the section on obtaining a correct stitch and row gauge.

#### BOUND VOLUMES OF KNITKING MAGAZINE

Our stocks of back issues of KNITKING MAGAZINE are very low and before the publication of the next issue, we expect to run completely out of the bound volumes. If you have been considering purchasing the volume as advertised on page 21 of this issue, please place your order immediately and avoid disappointment.

#### KNITKING PATTERNS FOR THE LARGER WOMAN

We still receive an occasional request to include patterns for larger women, when in fact large size garments are regularly featured in KNITKING MAGAZINE.

Readers are frequently misled by the photographs which invariably show a slim model wearing the smaller size of the different sizes given for the patterns. If you are looking for larger size garments, be sure to check the instructions for each pattern. The following is a list of patterns for size 16 and larger that have been published to date.

VOL. 1, No. 1: DK 7168, DP 7167. VOL. 1, No. 2: DP 7172, DP 7176. VOL. 1, No. 3: DP 7197, DP 7194, DK 7195. VOL. 1, No. 4: DP 7255, DP 7254, DP 7256, DK 7245. VOL. 1, No. 5: DP 7201, DP 7206, DP 7272, DP 7209, DP 7230. VOL. 1, No. 6: DK 7279, DK 7286, DP 7280, DP 7283, DK 7281, DP 7282.

VOL. 2, No. 1: DK 7203, DP 7304, DP 7299, DK 7298, DP 7300, DP 7202. VOL. 2, No. 2: DP 7274, DP 7272, DP 7270, DP 7277, DP 7276. VOL. 2, No. 3: DK 7330, DP 7331, DP 7336, DP 7321, DK 7338.

Any of these issues can be obtained for one dollar per copy from KNITKING.

#### PATTERNS FOR MAY/JUNE KNITKING MAGAZINE

We have a wonderful assortment of patterns coming up in the next issue. It includes a lovely Linen-Cotton dress, a Satin-Cotton suit, some Satin-Cotton sweaters, a charming pullover with a new JAC 40 Norwegian pattern border, plus a special selection of garments for the larger woman.

A handsome Linen-Cotton shirt, plus a sports sweater and three good looking cardigans are included for the men. A raglan shirt with matching raglan cardigan for your seven year old boy, and a very pretty pattern stitch pullover for your pre-teen daughter.

#### BABY CLOTHES

In response to the many requests for baby garments, we are preparing some real beauties for the July August issue.



Nicely Nautical! For her! For him! Beautiful outfits, beautifully tailored. Knit the woman's jacket in white with navy trim, and the pullover in navy. Reverse the color for the man's jacket and pullover. (See pages 19 to 23).

← DP 7328  
← DP 7329

HP 3418  
HP 3419

# WEEKENDS AND WATERSPORTS





DP 7324

DP 7325 →

Step into high fashion in this lovely striped pullover with its softly rolled collar. Quick to knit, a joy to wear — Then Top it with the lovely cardigan jacket DP 7325 knitted in a beautiful ribbed pattern design. (See page 18).









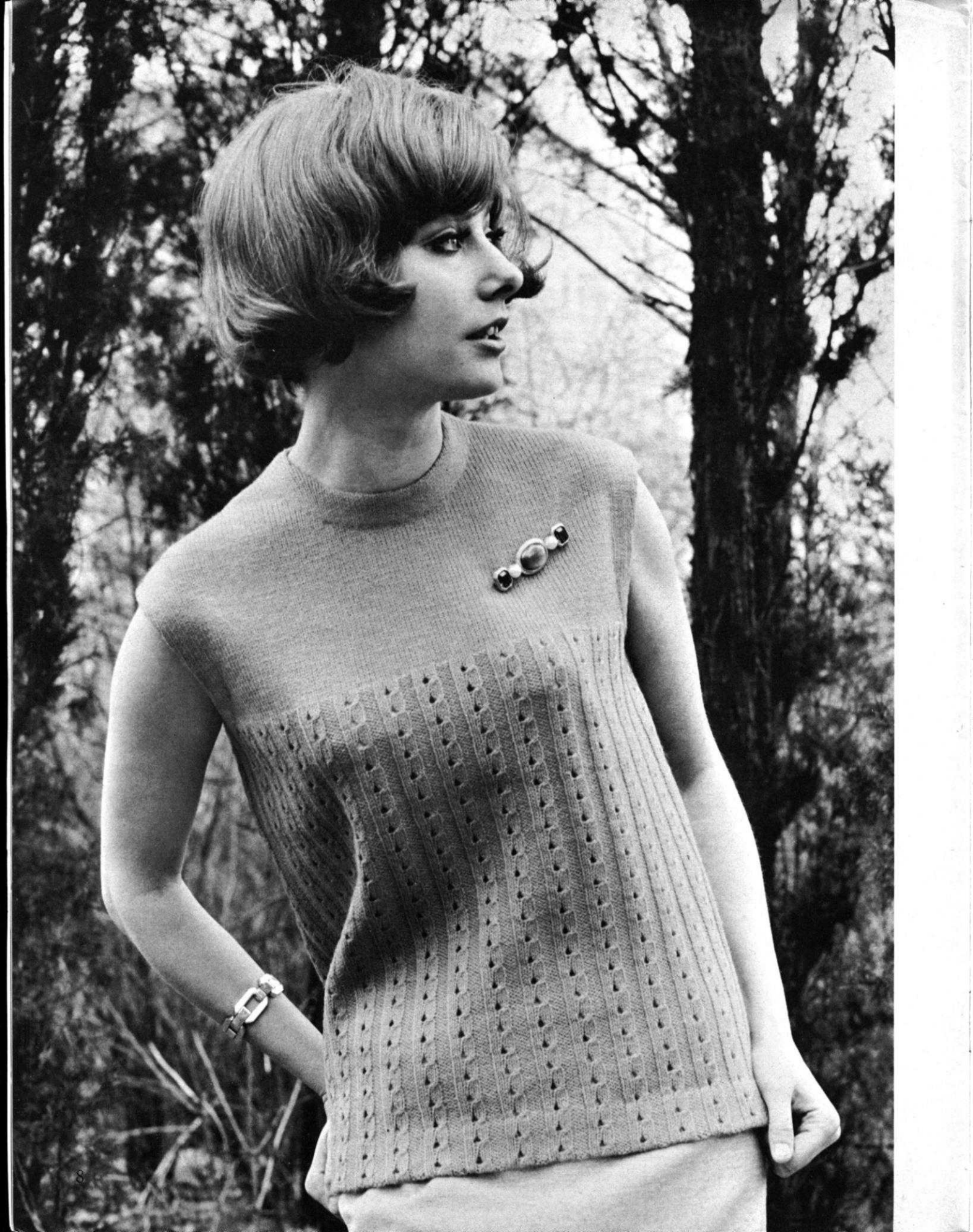
DV 7332



Pool side or sea side! A most flattering jacket in a vertical stripe pattern. The main section is knitted in one piece and begins with one front edge and ends with the other. You will enjoy knitting it, and love wearing it. (See page 24).

DV 7326

You asked for it. A quickly knitted beach cover up. We have knitted the model in blue, and trimmed the pockets and openings with red and white bias edging. (See page 26).



DP 7322

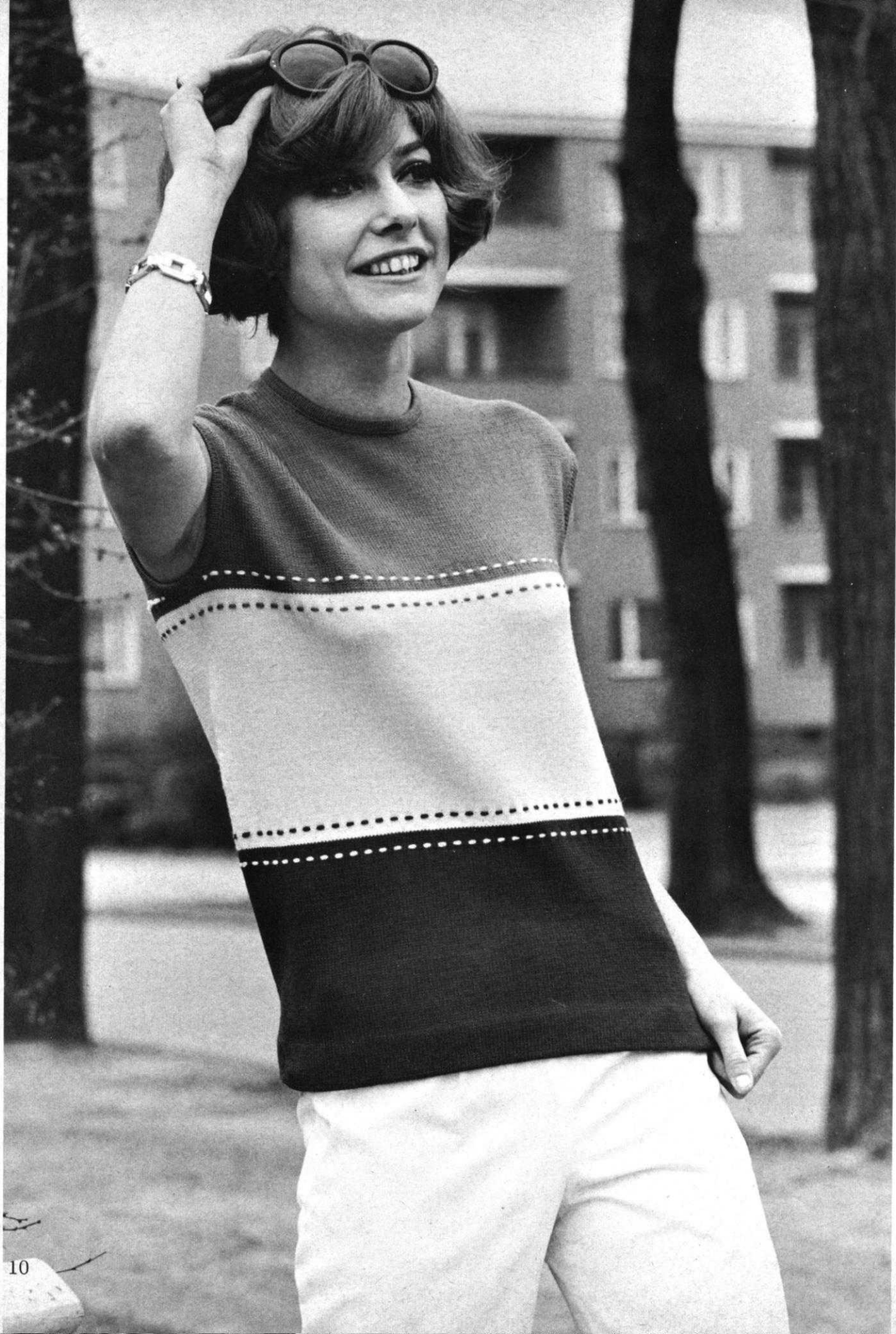


Chic and charming is our lovely summer pullover knitted in an interesting combined eyelet and cable design. The yoke is knitted in simple stockinette stitch. (See page 25).

DP 7333

A delicate trace of lace in our beautifully designed cap sleeved cardigan. Our model is knitted in a rose color. A very simple holding position pattern. (See page 26).





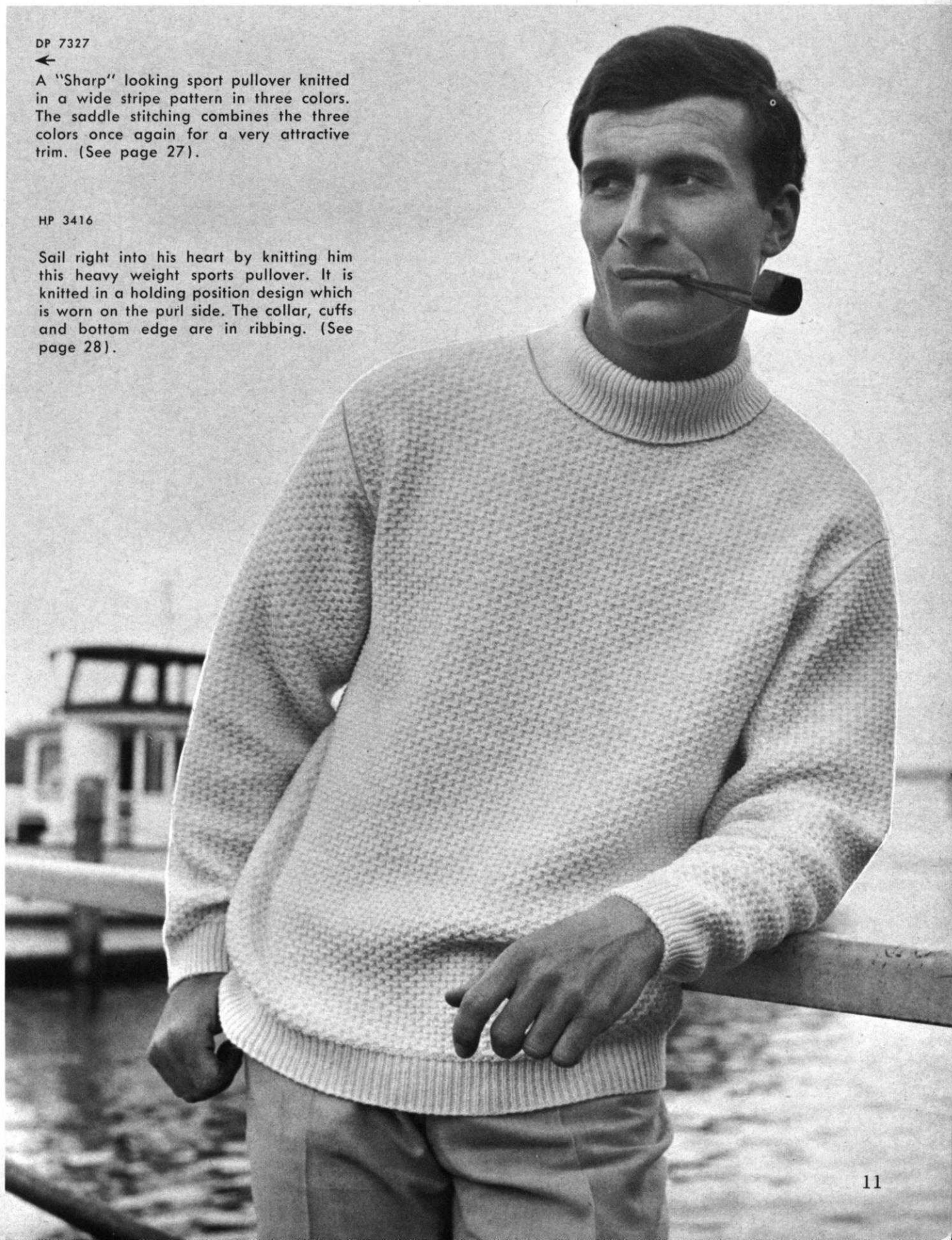
DP 7327



A "Sharp" looking sport pullover knitted in a wide stripe pattern in three colors. The saddle stitching combines the three colors once again for a very attractive trim. (See page 27).

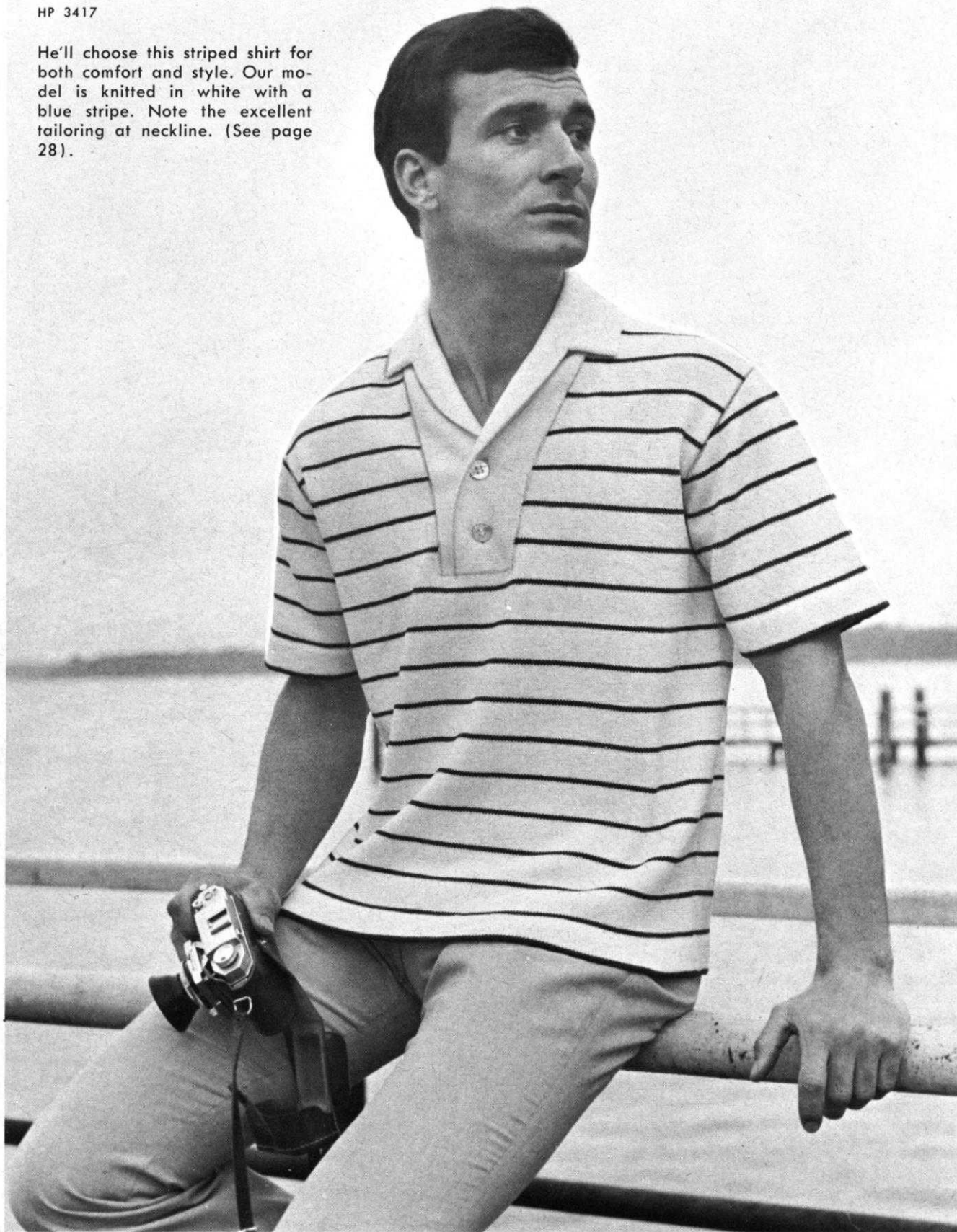
HP 3416

Sail right into his heart by knitting him this heavy weight sports pullover. It is knitted in a holding position design which is worn on the purl side. The collar, cuffs and bottom edge are in ribbing. (See page 28).



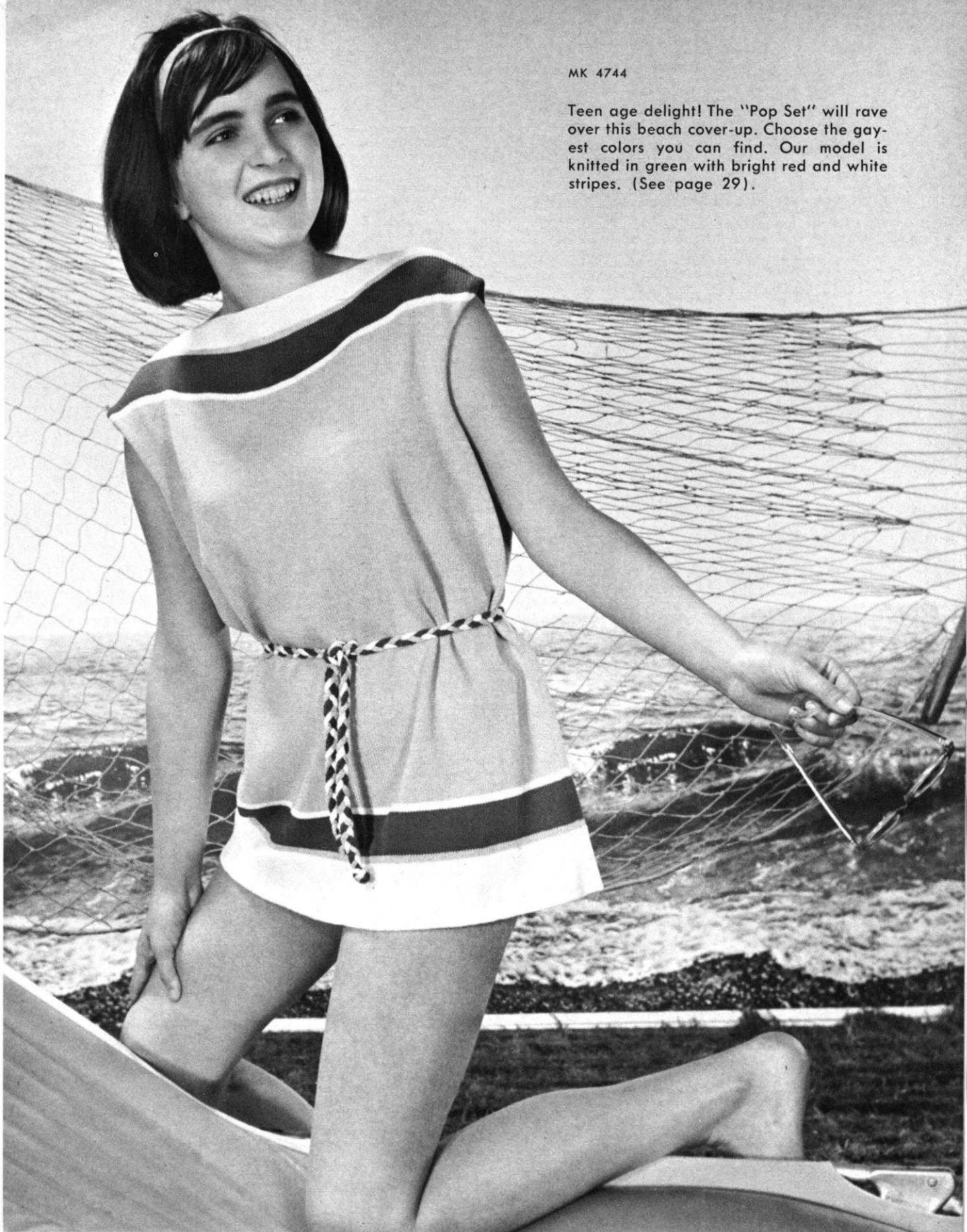
HP 3417

He'll choose this striped shirt for both comfort and style. Our model is knitted in white with a blue stripe. Note the excellent tailoring at neckline. (See page 28).



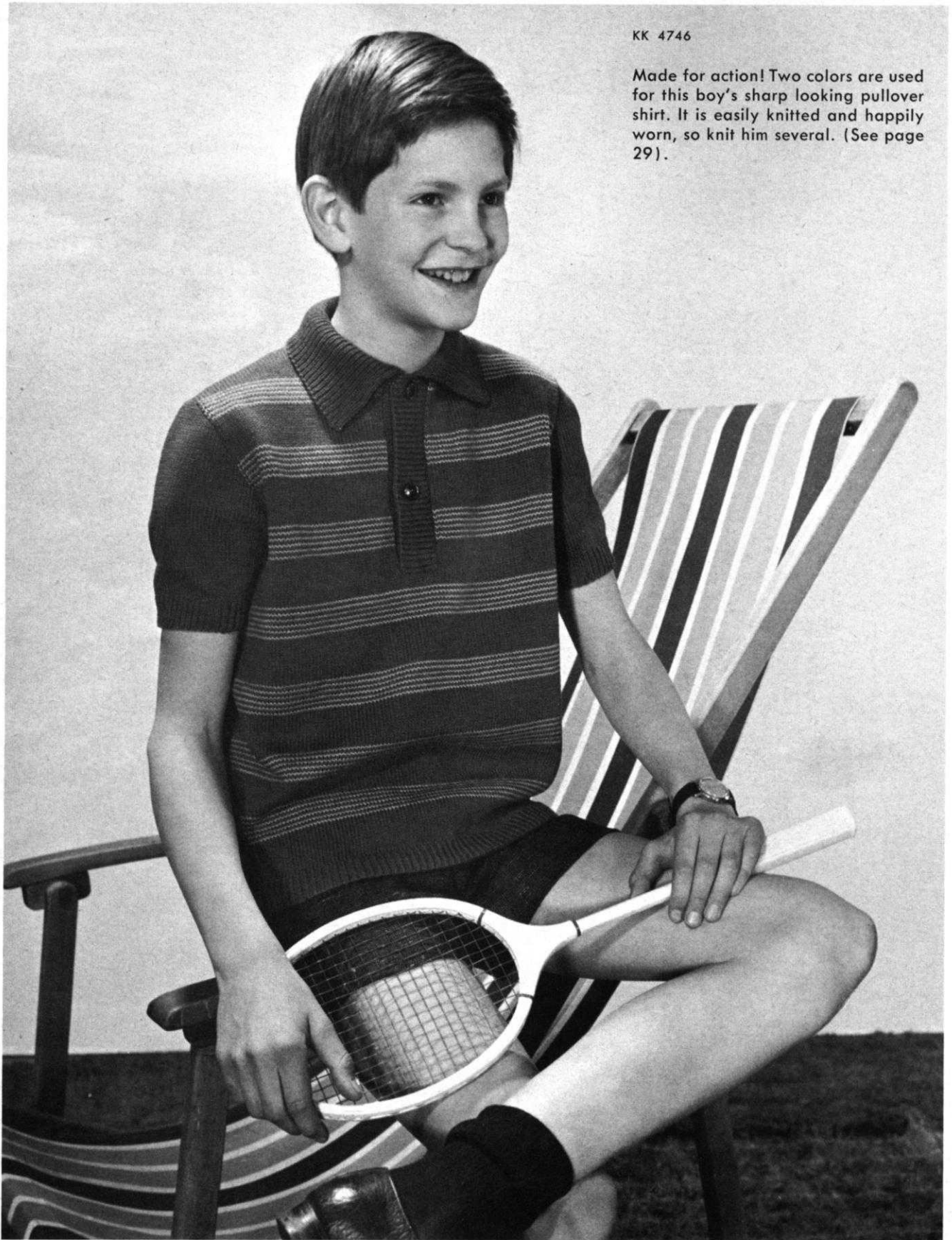
MK 4744

Teen age delight! The "Pop Set" will rave over this beach cover-up. Choose the gayest colors you can find. Our model is knitted in green with bright red and white stripes. (See page 29).



KK 4746

Made for action! Two colors are used for this boy's sharp looking pullover shirt. It is easily knitted and happily worn, so knit him several. (See page 29).





MK 4748

The 9 to 10 year old girl will appreciate this special pullover knitted in two colors.

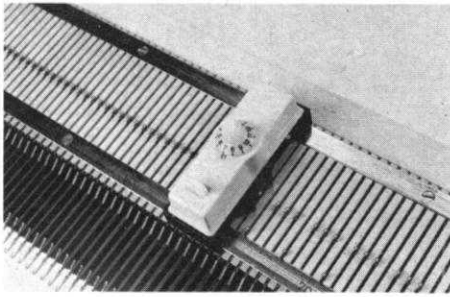
Follow each step for the pattern design and learn some new tricks. You will be surprised at the beautiful pattern, to be worn on the purl side. (See page 30).



MK 4747

A delightful sweater for little girls. Our model is knitted in a turquoise color with an unusual stripe pattern in red and white. Follow the chart for the holding position design. (See page 30).



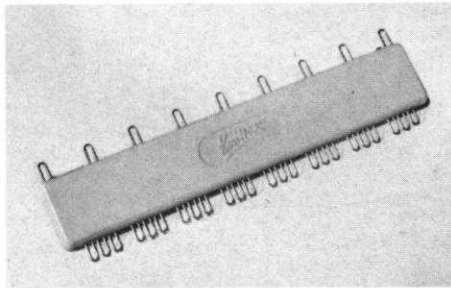


Automatic Needle Selector fits all model Knitkings prior to the pushbutton

\$6.95  
Shipping 20¢

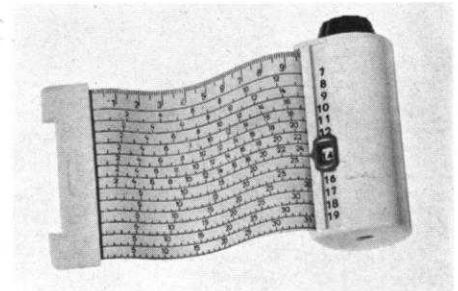


# ACCESSORIES



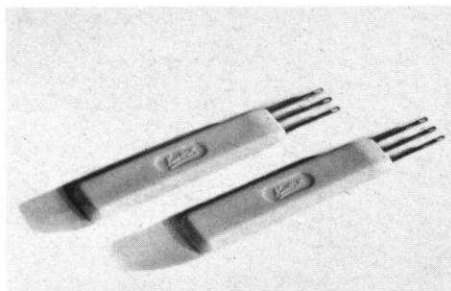
Adjustable Selector

\$2.95  
Shipping 12¢



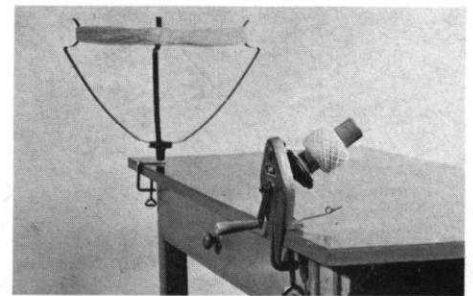
\$5.95  
Shipping 15¢

Converta Tape



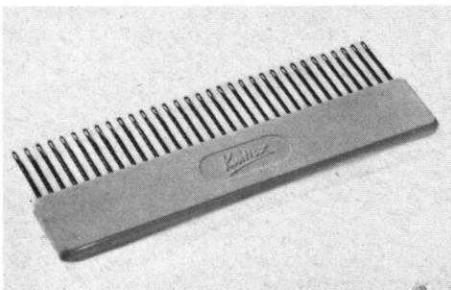
Treble Transfer Tools

\$1.50  
Shipping 10¢



\$14.95  
Shipping \$1.00

Yarn Winder with Skein Holder

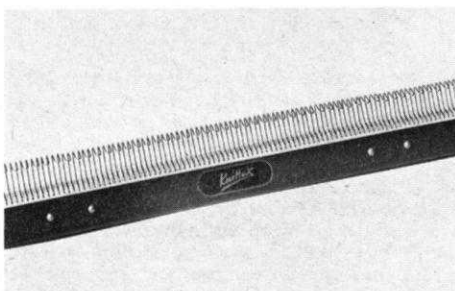


Multi-transfer Tool

\$2.75  
Shipping 12¢



\$24.95  
Shipping \$1.00



Reversing Bar

\$16.95  
Shipping \$1.50



The perfect tool for automatic selection of Jacquard and ski-sweater designs. Over 125 patterns available.

# KNITTING INSTRUCTIONS

## OUR COVER MODEL

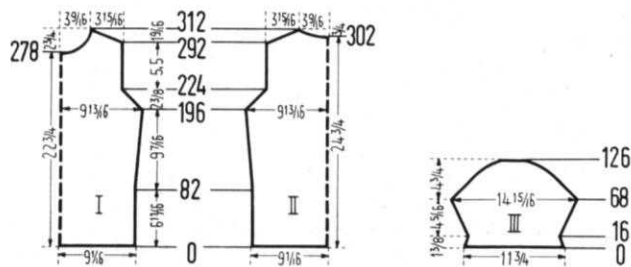
### WOMAN'S PULLOVER, No. DP 7324



**SIZE:** 12/14. **MATERIAL:** 7 oz. white, 7 oz. jade green. **FOR EXAMPLE:** KNITTING, Subita 2 x 3. **TENSION:** KNITTING 4 or 5. **GAUGE:** 18 sts. 2", 24 rows 2". **PATTERN:** Stockinette Stitch, alternating 8 rows white and 8 rows jade green. Collar K1, P1 ribbing.

**BACK:** (Figure II). Cast on 166 sts. with green. Rows 1-82: Knit 8 rows green, 8 rows white, 16 rows green. Continue in stripe pattern. Rows 83-196: Increase 1 st. at the beginning of row 83 and 84 and again on each side, every 16th row 6 x. (180 sts.) Rows 197-224: **Armhole Shaping.** Bind off 2 sts. beginning of next 2

rows, then on every other row on each side bind off 2 sts. 1 x and decrease 1 st. 1 x. Repeat these 2 decreases 5 x and then on each side bind off 2 sts. 1 x (136 sts.). Rows 255-292: Work even. Rows 293-312: **Shoulder and Neck Shaping.** On each side of shoulder bind off 3 sts. 8 x and 4 sts. 3 x. (36 sts. for each shoulder). At the same time, at the beginning of row 303 bind off the 22 center sts. with a separate yarn, put needles on the left into holding position, and complete right side first. When cam box is on neck side bind off 7 sts. 1 x, 6 sts. 1 x and 4 sts. 2 x. Put needles on the left into working position and row counter back to 302 and complete left side.



**FRONT:** (Figure I). The front is worked the same as the back; however, for the **neck shaping**, at beginning of row 279 bind off the 16 center sts. with a separate yarn, put needles on left into holding position and complete the right side first. When cam box is on neck side, bind off 4 sts. 1 x, 3 sts. 2 x, 2 sts. 3 x and decrease 1 st. 8 x. Put needles on the left into working position. Row counter to 278 and complete the left side.

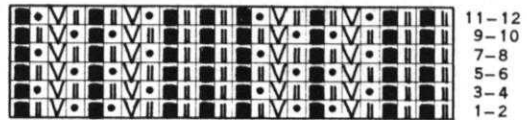
**SLEEVE:** (Figure III). Make two. Cast on 107 sts. with green. Rows 1-68: Knit 8 rows green and 16 rows white. Then continue in stripe pattern, decreasing 1 st. on each side at row 5, and again every 4th row 2 x, and increasing 1 st. at beginning of row 21 and 22 and again on each side every 4th row 6 x and every other row 11 x. (137 sts.). Rows 69-126: **Underarm Shaping.** On each side of every other row decrease 1 st. 1 x and bind off 2 sts. 1 x. Repeat these 2 decreases 6 x, then bind off 2 sts. 9 x, 3 sts. 6 x, and the remaining 23 sts.

**COLLAR:** Cast on 195 sts. with green. Work 70 rows K1, P1 ribbing, alternating 10 rows green and 10 rows white, and working 40 rows with Tension 6, and 30 rows with Tension 5. Bind off all sts.

**FINISHING:** Join front and back at side and shoulder seams. Sew sleeve edges together and sew sleeves to sweater. Make a hem 2" wide at sweater bottom and 1 1/2" wide at sleeve bottoms. Sew ends of collar together, so that collar forms a circle, sew collar to sweater neckline, and fold toward outside.

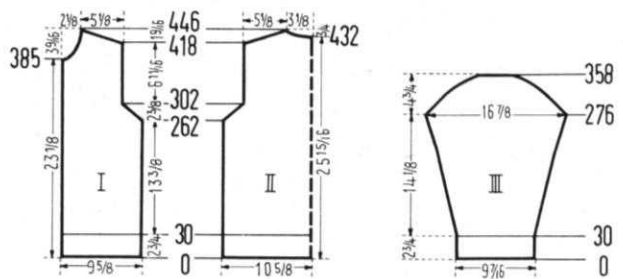
### WOMAN'S CARDIGAN, No. DP 7325

**SIZE:** 12/14. **MATERIAL:** 24 oz. white. **FOR EXAMPLE:** KNITTING, Subita 2 x 4. **TENSION:** KNITTING 8 or 9. **GAUGE:** Pattern St. 18 sts. 2", 34 rows 2"; K1, P1 Ribbing 18 sts. 2",



22 rows 2". **PATTERN:** Holding Position Design on purl side according to chart; the gate cam release lever of Ribber is at the needle heels. Edging: K1, P1 Ribbing.

**BACK:** (Figure II). Cast on 195 sts. Rows 1-30: K1, P1 Ribbing. Now hang the 3rd, 5th, 9th, 11th, 15th, 17th, 21th, and 23rd etc. sts. of the Ribber on the left needle of the main machine, put the gate cam release lever of the Ribber at the needle heels, and continue in Pattern Stitch. Rows 31-262: Work even. Rows 263-302: **Armhole Shaping.** Bind off 2 sts. beginning of next 4 rows; then on every other row on each side decrease 1 st. 18 x. (151 sts.). Rows 303-418: Work even. Rows 419-446: **Shoulder and Neck Shaping.** On each side of every other row bind off 3 sts. 13 x and 4 sts. 2 x. At the same time, at beginning of Row 433 bind off the 17 center sts. with a separate ball of yarn, transfer ribber sts. on the left to main



machine. Put all sts. on the left into holding position and knit the right half. When cam box is on neck side bind off 6 sts. 1 x, 4 sts. 1 x, 3 sts. 2 x, and 2 sts. 2 x. Transfer the proper ribber sts. back to ribber, put row counter back to 432 and complete the left side.

**FRONT:** (Figure I). Cast on 89 sts. Rows 1-30: K1, P1 Ribbing. Now hang the 3rd, 5th, 9th, 11th, 15th, 17th, 21st, and 23rd sts. of the Ribber on the left needle of the main machine, put the gate cam release lever of the Ribber at the needle heels and continue in pattern stitch. Rows 31-262: Work even. Rows 263-302: **Armhole Shaping:** Bind off 2 sts., then on every other row bind off 2 sts. 1 x and decrease 1 st. 18 x. (67 sts.). Rows 303-385: Work even. Rows 386-446: **Neck and Shoulder Shaping.** Bind off 3 sts. for the neck shaping; then on every other row bind off 3 sts. 1 x, 2 sts. 2 x, decrease 1 st. 3 x; then decrease 1 st. every 4th row 3 x, every 6th row 2 x, and every 8th row 2 x. At the same time, at Row 419, for the shoulder shaping, when cam box is on shoulder side bind off 3 sts. 13 x, and 4 sts. 2 x. Make another front section with reverse shapings.

**SLEEVE:** (Figure III). Make two. Cast on 87 sts. Rows 1-30: K1, P1 Ribbing. Now hang the 3rd, 5th, 9th, 11th, and 15th sts. of the Ribber on the left needle of the main machine, put the gate cam release lever of the ribber at the needle heels and continue in pattern stitch. Rows 31-276: Increase 1 st. at beginning of Row 41 and 42 again on each side every 10th row 11 x, every 8th row 8 x, and every 4th row 14 x. (155 sts.). Rows 277-358: **Underarm Shaping.** On each side of every other row decrease 1 st. 19 x; then bind off 2 sts. 1 x and decrease 1 st. 1 x, and alternate these last 2 decreases 5 x. Then bind off 2 sts. 9 x, 3 sts. 3 x, and the remaining 33 sts.

**NECK EDGING:** Cast on 153 sts. Work 28 rows K1, P1 ribbing and bind off all sts.

**BUTTON EDGING:** Cast on 195 sts. Work 34 rows K1, P1 ribbing and bind off all sts. Make the buttonhole edging the same, making buttonholes at Rows 9 and 25 over the 5th-11th, 41st-47th, 77-83rd, 113th-119th, 149th-155th, and 185th-191st needles.

**FINISHING:** Join front and back sections at side and shoulder seams. Sew sleeve edges together and sew sleeves to sweater. Fold the bottom edging in half inward inside and hem. Fold neck edging around sweater neckline and attach. Fold button and buttonhole edging around front sweater edges and attach. Finish buttonholes and sew on buttons.

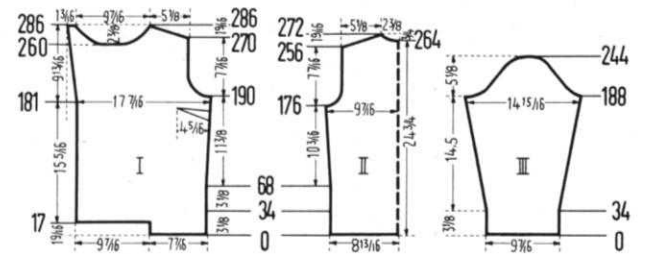
### WOMAN'S JACKET SWEATER, No. DP 7328



**SIZES:** 10/12 and 14/16. **MATERIAL:** 10/12 22 oz., 14/16 24 oz., white; both sizes — a small amount of blue. **FOR EXAMPLE:** KNITKING, Subita 2x4. Diamond, Elegance D'Aoust. Spinnerin, Ambralon. **TENSION:** KNITKING 7 or 8. **GAUGE:** 15 sts. 2", 21 rows 2". **PATTERN:** Stockinette.

**SIZE: 10/12. BACK:** (Figure II). Cast on 134 sts. Rows 1-33: Work even. To make the hem, put the cast on sts. back on the machine. Row 34: Work the sts. together with Tension 8 (9). Rows 35-176: Increase 1 st. at beginning of Row 69 and 70 and again on each side every 20th row 4 x. (144 sts.) Rows 177-198: **Armhole Shaping.** Bind off 3 sts. beginning of next 2 rows, then on each side on every other row bind off 3 sts. 1 x, 2 sts. 2 x, decrease 1 st. 3 x; and, on every 4th row decrease 1 st. 2 x. (114 sts.) Rows 199-256: Work even. Rows 257-272: **Shoulder and Neck Shaping.** On each side of every other row bind off 4 sts. 6 x and 5 sts. 3 x. (39 sts. for each shoulder). At the same time, at Row 265 bind off the 14 center

beginning of Row 69 and 70 and again on each side every 20th row 4 x. (144 sts.) Rows 177-198: **Armhole Shaping.** Bind off 3 sts. beginning of next 2 rows, then on each side on every other row bind off 3 sts. 1 x, 2 sts. 2 x, decrease 1 st. 3 x; and, on every 4th row decrease 1 st. 2 x. (114 sts.) Rows 199-256: Work even. Rows 257-272: **Shoulder and Neck Shaping.** On each side of every other row bind off 4 sts. 6 x and 5 sts. 3 x. (39 sts. for each shoulder). At the same time, at Row 265 bind off the 14 center



sts. with a separate ball of yarn, put needles on the left into holding position and complete right side first. When cam box is on neck side, bind off 5 sts. 1 x and 3 sts. 2 x. Put needles on the left into work position. Put row counter back to 264 and complete the left side.

**FRONT:** (Figure I). Cast on 57 sts. Rows 1-33: On the left side at Row 18 cast on 72 sts. To make the hem, put the 57 cast on sts. back on the machine, and at the same time, make buttonholes over the 3rd-8th, 25th-30th, 43rd-48th, and 65th-70 needles, counting from the left edge. Row 34: Work the sts. together with Tension 8 (9). Rows 35-190: Increase 1 st. on the right side at Row 69 and again every 20th row 4 x. At the same time, make buttonholes at Rows 88 and 142, and increase 1 st. on the left side at Row 182. Rows 191-212: **Armhole Shaping.** Bind off 5 sts.; then on every other row bind off 4 sts. 1 x, 3 sts. 2 x, 2 sts. 2 x, decrease 1 st. 3 x, and on the 4th row decrease 1 st. 1 x. At the same time, on the left side, increase 1 st. at Rows 194 and 206. Rows 213-260: On the left side, increase 1 st. at Row 218 and again every 12th row 3 x. Rows 261-286: **Neck and Shoulder Shaping.** With a separate ball of yarn and counting from the right edge, bind off the 64th thru 87th sts. Put the needles on the left into holding position and knit the right side first. Every other row, when cam box is on the neck side, bind off 5 sts. 1 x, 4 sts. 1 x, 3 sts. 2 x, 2 sts. 2 x, and decrease

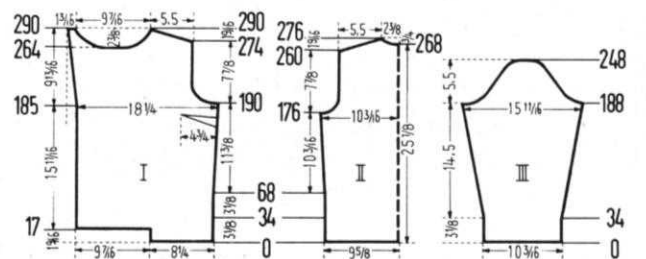
1 st. 5 x. At the same time, at row 271, for the shoulder shaping, when cam box is at the armhole side, bind off 4 sts. 6 x, 5 sts. 3 x, and the remaining 9 sts. Set counter back to 260, push the needles on the left back into working position and start with cam box at the neck edge. Every other row (when the cam box is on the neck side) bind off 5 sts. 1 x, 4 sts. 1 x, 3 sts. 2 x, 2 sts. 2 x and decrease 1 st. 5 x. At the same time: On the left side increase 1 st. at Rows 266 and 278. Make another front section with reverse shapings, minus buttonholes.

**SLEEVE:** (Figure III). Cast on 72 sts. Rows 1-33: Knit 12 rows white, 8 rows blue, and 13 rows white. To make the hem, put the cast on sts. back on the machine. Row 34: Work the sts. together with Tension 8 (9). Rows 35-188: Increase 1 st. at beginning of Row 35 and 36 and again on each side every 8th row 14 x and every 6th row 6 x, working the 35th-38th rows with blue. (114 sts.) Rows 189-202: **Underarm Shaping.** On every other row on the back side of the sleeve bind off 4 sts. 1 x, 3 sts. 1 x, 2 sts. 2 x, decrease 1 st. 2 x, and bind off 2 sts. 1 x; and on the front side bind off 5 sts. 1 x, 4 sts. 1 x, 3 sts. 3 x, and 2 sts. 2 x. Rows 203-238: On each side of every other row decrease 1 st. 2 x and bind off 2 sts. 1 x, and repeat these 3 decreases 5 x. Rows 239-244: At the beginning of every row bind off 2 sts. 2 x, 3 sts. 2 x, 4 sts. 2 x, and the remaining 11 sts. Make another sleeve with reverse shapings.

**COLLAR:** See notes to knit by on back page. Cast on 101 sts. Rows 1-20: On the left side put 37 needles in holding position and work 1 row. On the right side put 37 needles in holding position and work 1 row. Now, on each side, one after another, bring into working position: 5 needles 3 x, 4 needles 3 x, 3 needles 2 x, and 2 needles 2 x. Rows 21-62: Work even, working the 39th-46th and 53rd-56th rows with blue. Rows 63-90: On each side, one after another, put 1 needle in holding position 3 x, 2 needles 3 x, 3 needles 4 x, and 4 needles 4 x. Rows 91-92: On the left side bring all needles into working position and work 1 row. On the right side bring all needles into working position and work 1 row. Bind off all sts.

**FINISHING:** Sew darts in front section as illustrated. Join front and back at side and shoulder seams. Sew sleeve edges together and sew sleeve to sweater. At the front edges of the sweater make a hem 3/4" wide. Fold collar in half lengthwise and sew the edges together. Place the open end of the collar around the sweater neckline, allowing 1/2" of the jacket front to extend beyond the collar on each side, and attach. Finish buttonholes and sew on buttons.

**SIZE: 14/16. BACK:** (Figure II). Cast on 146 sts. Rows 1-33: Work even. To make the hem, put the cast on sts. back on the machine. Row 34: Work the sts. together with Tension 8 (9). Rows 35-176: Increase 1 st. at beginning of Row 69 and 70 and again on each side every 20th row 4 x. (156 sts.) Rows 177-200: **Armhole Shaping.** At the beginning of next 2 rows bind off 4 sts.; then on every other row, on each side bind off 3 sts. 1 x, 2 sts. 3 x, decrease 1 st. 3 x, and on every 4th row decrease 1 st. 2 x. (120 sts.) Rows 201-260: Work even. Rows 261-276: **Shoulder and Neck Shaping.** On each side of every other row bind off 4 sts. 3 x and 5 sts. 6 x. At the same time, at beginning of Row 269 bind off the 14 center sts. with a separate ball of yarn, put needles on the left into holding position and knit the right side first. When cam box is on neck side bind off 5 sts. 1 x and 3 sts. 2 x. Put needles on the left into working position, put row counter back to 268 and complete the left side.



The World famous German Stitchbooks have been translated into English and are now available to the American Knitting Machine owner. The majority of these beautiful fancy stitches do not require tedious stitch transferring but are stitches made through the automatic selection of needles.

## THE 4 STITCHBOOKS

**STITCHBOOK NO. 1.** Illustrates and gives complete instructions for knitting 59 beautiful fancy stitches that can be easily made on most modern knitting machines.

**STITCHBOOK NO. 2.** Does the same for 50 lovely rib pattern designs all knitted automatically on the Ribber. They can be made on most good brand name machines with ribbers.

**STITCHBOOK NO. 3.** Illustrates and explains 49 new pattern stitches, many in multicolors, all automatically made with the push-button KNITKING or with the automatic selector on other models.

**STITCHBOOK NO. 4** Is completely new and written especially for the latest coordinated KNITKING ribber. 55 outstanding and beautiful stitches are fully explained. Many of them are not possible on other brands of machines. We only recommend it to people who own the latest model KNITKING and Coordinated Ribber.

STITCHBOOKS are \$3.50 each, plus 20 cents mailing costs or any 3 for \$10.00 plus 35 cents mailing costs, or the set of 4 for \$12.00 plus 40 cents mailing costs. California residents add 4% tax.

**Order from your local dealer  
or direct from KNITKING  
1128 Crenshaw Blvd., Los Angeles,  
Calif. 90019**

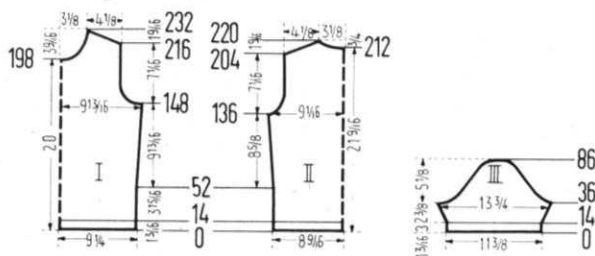
**FRONT:** (Figure I). Cast on 63 sts. Rows 1-33: **On the left side**, at beginning of row 18 cast on 72 sts. To make the hem, put the 63 cast on sts. back on the machine. **At the same time**, make buttonholes over the 3rd-8th, 25th-30th, 43rd-48th, and 65th-70th needles, counting **from the left edge**. Row 34: Work the sts. together with Tension 8 (9). Rows 35-190: **On the right side**, increase 1 st. at beginning of Row 69 and again every 20th row 4 x. **At the same time**, make buttonholes at Rows 89 and 144; and increase 1 st. **on the left side** at Row 186. Rows 191-214: **Armhole Shaping**. Bind off 6 sts.; then on every other row bind off 4 sts. 1 x, 3 sts. 2 x, 2 sts. 3 x, decrease 1-st. 3 x, then on the 4th row decrease 1 st. 1 x. **At the same time, on the left side** increase 1 st. at rows 198 and 210. Rows 215-264: **On the left side** increase 1 st. at Row 222 and again every 12th row 3 x. Rows 265-290: **Neck and Shoulder Shaping**. With a separate ball of yarn and courting **from the right edge**, bind off the 67th thru 90th sts. Put the needles on the left into holding position and knit the right side first. Every other row, (when the cam box is on the **neck side**), bind off 5 sts. 1 x, 4 sts. 1 x, 3 sts. 2 x, 2 sts. 2 x, and decrease 1 st. 5 x. **At the same time:** At beginning of row 275, for the **shoulder shaping**, when cam box is at the **armhole side**, bind off 4 sts. 3 x, 5 sts. 6 x, and the remaining 9 sts. Set counter back to 264, push the needles on the left back into working position and start with cam box at the **neck edge**. Every other row (when the cam box is on the **neck side**) bind off 5 sts. 1 x, 4 sts. 1 x, 3 sts. 2 x, 2 sts. 2 x, and decrease 1 st. 5 x. **At the same time:** **On the left side** increase 1 st. at Rows 270 and 282. Make another front section with reverse shapings, minus buttonholes.

**SLEEVE:** (Figure III). Cast on 78 sts. Rows 1-33: Work even. 12 rows white, 8 rows blue, and 13 rows white. To make the hem, put the cast on sts. back on the machine. Row 34: Work the sts. together with Tension 8 (9). Rows 35-188: Increase 1 st. at beginning of row 35 and 36 and again **on each side** every 8th row 14 x and every 6th row 6 x, working the 35th-38th rows with blue. (120 sts.) Rows 189-200: **Underarm Shaping**. On every other row on the **back side** of the sleeve bind off 4 sts. 1 x, 3 sts. 1 x, 2 sts. 2 x, decrease 1 st. 2 x; and on the **front side** bind off 6 sts. 1 x, 4 sts. 1 x, 3 sts. 2 x, and 2 sts. 2 x. Rows 201-242: On each side of every other row bind off 2 sts. 1 x and decrease 1 st. 2 x. Repeat these 3 decreases 6 x. Rows 243-248: At the beginning of **every** row bind off 2 sts. 2 x, 3 sts. 2 x, 4 sts. 2 x, and the remaining 13 sts. Make another sleeve with reverse shapings.

**COLLAR AND FINISHING:** Follow directions for Size 10/12.

### WOMAN'S PULLOVER, No. DP 7329

**SIZES:** 10/12 and 14/16. **MATERIAL:** 10/12 13 oz., 14/16 14 oz. dark blue. **FOR EXAMPLE:** KNITKING Subita 2 x 4, Bearbrand, Casa Laine. **TENSION:** KNITKING 8 or 9. **GAUGE:** Stockinette 14 sts. 2", 19 rows 2"; K1, P1 Ribbing. 14 sts. 2", 23 rows 2". **PATTERN:** Stockinette. **EDGING:** K1, P1 Ribbing.

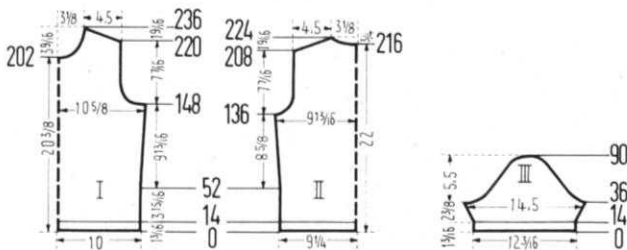


off the **19 center sts.** with a separate yarn, put needles on the left into holding position and complete right side first. When cam box is on the **neck side** bind off 6 sts. 1 x, 4 sts. 1 x, and 3 sts. 1 x. Put row counter back to 212, put all needles in holding position back to work position and complete the left side.

**FRONT:** (Figure I). Cast on 131 sts. Rows 1-14: K1, P1 Ribbing. Transfer ribber sts. to main machine and continue in Stockinette. Rows 15-148: Increase 1 st. at beginning of Row 53 and 54 and again **on each side**, every 22nd row 3 x. (139 sts.) Rows 149-168: **Armhole Shaping.** Bind off 4 sts. beginning of next two rows, then on every other row **on each side** bind off 3 sts. 2 x, 2 sts. 2 x, decrease 1 st. 3 x, and then on the 4th row decrease 1 st. 1 x (103 sts.). Rows 169-198: Work even. Rows 199-232: **Neck and Shoulder Shaping:** Bind off the 13 center sts. with a separate yarn, put needles on the left into holding position and complete the right side first. When cam box is on **neck side**, bind off 4 sts. 1 x, 3 sts. 1 x, 2 sts. 2 x, decrease 1 st. 2 x; then on every 4th row decrease 1 st. 3 x. **At the same time**, at row 217, for the shoulder shaping, when cam box is on **arm side**, bind off 3 sts. 7 x and 4 sts. 2 x. Put needles in holding position into work position, put row counter back to 198 and complete the left side.

**SLEEVE:** (Figure III). Cast on 81 sts. Rows 1-14: K1, P1 ribbing. Transfer ribber stitches to main machine and continue in stockinette. Rows 15-36: Increase 1 st. at beginning of Row 17 and 18 and again **on each side** every other row 8 x. (99 sts.). Rows 37-48: **Underarm Shaping.** On every other row on the **back side** of the sleeve bind off 3 sts. 2 x, 2 sts. 3 x, and decrease 1 st. 1 x, and on the **front side** bind off 5 sts. 1 x, 4 sts. 1 x, 3 sts. 2 x, and 2 sts. 2 x. Rows 49-80: **On each side** of every other row decrease 1 st. 3 x and bind off 2 sts. 1 x. Repeat these 4 decreases 3 x. Rows 81-86: At the beginning of **every** row bind off 2 sts. 2 x, 3 sts. 2 x, 4 sts. 2 x, and the remaining 9 sts. Make another sleeve with reverse shapings.

**COLLAR:** Cast on 147 sts. Work 46 rows K1, P1 Ribbing and bind off all sts. (Transfer the ribber sts. to main machine and then bind off.).



**FINISHING:** Join front and back at side and shoulder seams, easing in the fullness at the bustline of the front section. Sew sleeve edges together and sew sleeves to sweater. Sew collar ends together so that collar is circular, sew collar to sweater neckline, and fold toward outside.

**SIZE:** 14/16. **BACK:** (Figure II). Cast on 131 sts. Rows 1-14: K1, P1, Ribbing. Transfer ribber sts. to main machine and continue in stockinette. Rows 15-136: Increase 1 st. at beginning of row 53 and 54 and again **on each side** every 22nd row 3 x. (139 sts.). Rows 137-156: **Armhole Shaping:** Bind off 4 sts. beginning next two rows then on every other row **on each side** bind off 3 sts. 1 x, 2 sts. 2 x, decrease 1 st. 2 x; then on every 4th row decrease 1 st. 2 x. (109 sts.). Rows 157-208: Work even. Rows 209-224: **Shoulder and Neck Shaping.** On **each side** of every other row bind off 3 sts. 4 x and 4 sts. 5 x. **At the same time**, at the beginning of row 217 bind off the 19 center sts. with a separate yarn, put needles on the left into holding position and knit the right side first. When cam box is on **neck side**, bind off 6 sts. 1 x, 4 sts. 1 x, and 3 sts. 1 x. Put needles on the left into working position, put row counter back to 216 and complete the left side.

**A complete first volume of KNITTING MAGAZINES with a flexible, transparent plastic cover and specially bound so that it will stay open at any page is available at the special price of \$6.95 postage paid anywhere in North America.**



If purchased separately the magazines would cost a total of \$9.00.

The volume contains over 120 fully illustrated complete stylish patterns for all members of the family, together with many valuable, practical knitting hints.

There is a very limited number of these volumes available and it will undoubtedly become a collectors item.

If you already have the entire set it will almost certainly be well thumbed and marked. Why not purchase a perfect mint condition volume for your bookshelf and ready reference at any time.

**Place your order today and avoid disappointment. Send it to KNITTING MAGAZINE, 1128 Crenshaw Boulevard, Los Angeles, California 90019.**

**FRONT:** (Figure I). Cast on 143 sts. Rows 1-14: K1, P1 ribbing. Transfer ribber sts. to main machine and continue in stockinette. Rows 15-148: Increase 1 st. at beginning of row 53 and 54 and again on each side every 22nd row 3 x. (151 sts.). Rows 149-170: **Armhole Shaping.** Bind off 5 st. beginning of next two rows, then on every other row on each side bind off 3 sts. 2 x, 2 sts. 3 x, decrease 1 st. 3 x and on the 4th row decrease 1 st. 1 x. (109 sts.). Rows 171-202: Work even. Rows 203-236: **Neck and Shoulder Shaping:** Bind off the 13 center sts. with a separate yarn, put needles on the left into holding position and knit the right side first. When cam box is on the neck side bind off 4 sts. 1 x, 3 sts. 1 x, 2 sts. 2 x, decrease 1 st. 2 x, then on every 4th row decrease 1 st. 3 x. **At the same time,** at Row 221, for the shoulder shaping, when cam box is on arm side, bind off 3 sts. 4 x and 4 sts. 5 x. Put needles on the left into work position, put row counter back to 202 and complete the left side.

**SLEEVE:** (Figure III). Cast on 87 sts. Rows 1-14: K1, P1 ribbing. Transfer ribber sts. to main machine and continue in Stockinette. Rows 15-36: Increase 1 st. at beginning of rows 19 and 20 and again on each side every other row 7 x. (103 sts.). Rows 37-48: **Underarm Shaping.** On every other row on the back side of the sleeve bind off 3 sts. 2 x and 2 sts. 4 x and on the front side bind off 5 sts. 1 x, 4 sts. 1 x, 3 sts. 2 x, and 2 sts. 2 x. Rows 49-80: **On each side of every other row decrease 1 st. 3 x and bind off 2 sts. 1 x.** Repeat these 4 decreases 3 x. Rows 81-90: At the beginning of every row decrease 1 st. 4 x, bind off 2 sts. 2 x, 3 sts. 2 x, 4 sts. 2 x and the remaining 8 sts. Make another sleeve with reverse shapings.

**COLLAR:** Cast on 147 sts. Work 46 rows K1, P1 ribbing and bind off all sts. (Transfer the ribber sts. to main machine and then bind off.)

**FINISHING:** Follow directions for size 10/12.

### MAN'S JACKET SWEATER, No. HP 3418

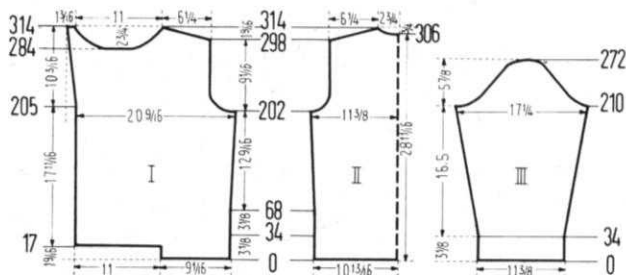
**SIZES:** 42-44 and 46/48. **MATERIAL:** 42-44 26 oz., 46/48 28 oz. blue; both sizes — a small amount of white. **FOR EXAMPLE:** KNITTING, Subita 2x4, Diamond, Elegance D'Acoust, Spinnerin, Ambralon. **TENSION:** KNITTING 7 or 8. **GAUGE:** 15 sts. 2", 21 rows 2". **PATTERN:** Stockinette.

**SIZE: 42-44. BACK:** (Figure II). Cast on 152 sts. Rows 1-33: Work even. To make the hem put the cast on sts. back on the machine. Row 34: Work the sts. together with Tension 8 (9). Rows 35-202: Increase 1 st. at beginning of Row 69 and 70 and again on each side every 26th row 4 x. (162 sts.). Rows 203-222: **Armhole Shaping.** Bind off 4 sts. beginning of next two rows; then on every other row on each side bind off 3 sts. 1 x, 2 sts. 2 x, decrease 1 st. 2 x; then on every 4th row decrease 1 st. 2 x. (132 sts.). Rows 223-294: Work even. Rows 295-310: **Shoulder and Neck Shaping.** On each side of every other row bind off 5 sts. 9 x. (45 sts for each shoulder). **At the same time,** at Row 303 bind off the 16 center sts. with a separate yarn, put needles on the left into holding position and knit the right side first. When cam box is on neck side bind off 6 sts. 1 x, 4 sts. 1 x, and 3 sts. 1 x. Put needles on the left into work position, put row counter back to 302 and complete the left side.

**FRONT:** (Figure I). Cast on 62 sts. Rows 1-33: on the left side cast on 84 sts. at beginning of Row 18. To make the hem, put the first 62 cast on sts. back on the machine. Row 34: Work the sts. together with Tension 8 (9). Rows 35-202: On the

right side increase 1 st. at beginning of Row 69 and again every 26th row 4 x. **At the same time,** on the left side increase 1 st. at Row 202. Rows 203-222: **Armhole Shaping.** Bind off 6 sts. then on every other row bind off 5 sts. 1 x, 3 sts. 1 x, 2 sts. 2 x, decrease 1 st. 3 x, then on the 4th row decrease 1 st. 1 x. **At the same time,** on the left side increase 1 st. at Row 214. Rows 223-280: On the left side increase 1 st. at Row 226 and again every 12th row 4 x. Rows 281-310: **Neck and Shoulder Shaping.** With a separate ball of yarn and counting from the right edge, bind off the 73rd thru the 102nd sts. Put the needles on the left into holding position and knit the right side first. Every other row, (when cam box is on the neck side, bind off 6 sts. 1 x, 5 sts. 1 x, 4 sts. 1 x, 3 sts. 2 x, 2 sts. 1 x, decrease 1 st. 2 x, then on every 4th row decrease 1 st. 2 x. **At the same time:** At row 295, for the shoulder shaping, when cam box is at the armhole side, bind off 5 sts. 9 x, and the remaining 9 sts. Set counter back to 280, push the needles on the left back into working position and start with cam box at the neck edge. Every other row (when the cam box is on the neck side), bind off 6 sts. 1 x, 5 sts. 1 x, 4 sts. 1 x, 3 sts. 2 x, 2 sts. 1 x, decrease 1 st. 2 x, then on every 4th row decrease 1 st. 2 x. **At the same time:** On the left side increase 1 st. at rows 286 and 298. Make another front section with reverse shapings, making buttonholes at Rows 34, 95, and 156, over the 3rd-8th, 31st-36th, 49th-54th, and 77th-82nd needles.

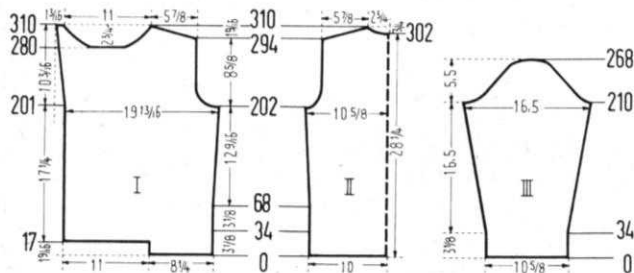
**SLEEVE:** (Figure III). Cast on 81 sts. Rows 1-33: Work even, working the 27th-30th rows with white. To make the hem, put the cast on sts. back on the machine. Row 34: Work the sts. together with Tension 8 (9). Rows 35-210: Increase 1 st. at beginning of Row 35 and 36 and again on each side every 8th row 19 x and every 6th row 3 x, working the 43th-46th rows with white. (127 sts.) Rows 211-224: **Underarm Shaping.** On every other row on the back side of the sleeve bind off 4 sts. 1 x, 3 sts. 1 x, 2 sts. 3 x, decrease 1 st. 1 x, and bind off 2 sts. 1 x; and on the front side bind off 6 sts. 1 x, 4 sts. 1 x, 3 sts. 2 x, and 2 sts. 3 x. Rows 225-260: **On each side of every other row decrease 1 st. 1 x and bind off 2 sts. 1 x.** Repeat these 2 decreases 8 x. Rows 261-268: At the beginning of every row bind off 2 sts. 2 x, 3 sts. 4 x, 4 sts. 2 x, and the remaining 11 sts. Make another sleeve with reverse shapings.



**COLLAR:** See Notes to Knit By on Inside Back Cover (Short Rows) Cast on 123 sts. Rows 1-24: On the left side put 43 needles in holding position and work 1 row. On the right side put 43 needles in holding position and work 1 row. Now on each side, one after another put 6 needles in working position 2 x, 5 needles 2 x, 4 needles 2 x, and 3 needles 3 x, and 2 needles 2 x. Rows 25-66: Work even, working the 41st-48th and 55th-58th rows with white. Rows 67-92: **On each side** one after another, put 2 needles in holding position 3 x, 3 needles 3 x, 4 needles 4 x, 5 needles 2 x, and 6 needles 1 x. Rows 93-94: On the left side bring all needles into working position and work 1 row. On the right side bring all needles into working position and work 1 row. Bind off all sts.

**FINISHING:** Join front and back sections at side and shoulder seams. Sew sleeve edges together and sew sleeves to sweater. Make a hem 5/2" wide at jacket fronts. Fold the collar in half lengthwise and sew collar ends together. Place open end of collar around jacket neckline, allowing 2" of jacket fronts to extend beyond the collar on each side. Sew collar in place. Finish buttonholes and sew on buttons.

**SIZE: 46/48. BACK:** (Figure II). Cast on 164 sts. Rows 1-33: Work even. To make the hem, put the cast on sts. back on





the machine. Row 34: Work the sts. together with Tension 8 (9). Rows 35-202: Increase 1 st. at beginning of Row 69 and 70 and again on each side every 26th row 4 x. (174 sts.) Rows 203-224: **Armhole Shaping.** Bind off 4 sts. beginning of next two rows; then on every other row on each side bind off 3 sts. 2 x, 2 sts. 2 x, decrease 1 st. 2 x; then on every 4th row decrease 1 st. 2 x. (138 sts.). Rows 225-298: Work even. Rows 299-314: **Shoulder and Neck Shaping.** On each shoulder side of every other row bind off 5 sts. 6 x and 6 sts. 3 x. At the same time, at Row 307 bind off the 16 center sts. with a separate yarn, put the needles on the left into holding position and knit the right side first. When cam box is on neck side bind off 6 sts. 1 x, 4 sts. 1 x, and 3 sts. 1 x. Put needles on the left into work position, put row counter back to 306 and complete the left side.

**FRONT:** (Figure I). Cast on 69 sts. Rows 1-33: On the left side, cast on 84 sts. at beginning of Row 18. To make the hem, put the first 69 cast on sts. back on the machine. Row 34: Work the sts. together with Tension 8 (9). Rows 35-202: Increase 1 st. on the right side at Row 69 and again every 26th row 4 x. (158 sts.) Rows 203-224: **Armhole Shaping.** Bind off 6 sts.; then on every other row bind off 5 sts. 1 x, 4 sts. 1 x, 3 sts. 1 x, 2 sts. 2 x, decrease 1 st. 3 x; then on the 4th row decrease 1 st. 1 x. At the same time, on the left side increase 1 st. at Rows 206 and 218. Rows 225-284: Increase 1 st. on the left side at Row 230 and again every 12th row 4 x. Rows 285-314: **Neck and Shoulder Shaping.** With a separate ball of yarn and counting from the right edge, bind off the 76th thru the 105th sts. Put the needles on the left into holding position and knit the right side first. Every other row (when the cam box is on the neck side), bind off 6 sts. 1 x, 5 sts. 1 x, 4 sts. 1 x, 3 sts. 2 x, 2 sts. 1 x, decrease 1 st. 2 x; then on every 4th row decrease 1 st. 2 x. At the same time: At row 299, for the shoulder shaping, when the cam box is at the armhole side, bind off 5 sts. 6 x, 6 sts. 3 x, and the remaining 9 sts. Set counter back to 284. Push the needles on the left back into working position and starting with the cam box at neck edge, every other row, (when cam box is at neck edge) bind off 6 sts. 1 x, 5 sts. 1 x, 4 sts. 1 x, 3 sts. 2 x, 2 sts. 1 x, decrease 1 st. 2 x; then on every 4th row decrease 1 st. 2 x. At the same time: Increase 1 st. on the left side at Rows 290 and 302. Make another front section with reverse shaping, making buttonholes at Rows 34, 96, and 158 over the 3rd-8th, 31st-36th, 49th-54th, and 77th-82nd needles.

**SLEEVE:** (Figure III). Cast on 87 sts. Rows 1-33: Work even, working the 27th-30th rows with white. To make the hem, put the cast on sts. back on the machine. Row 34: Work the sts. together with Tension 8 (9). Rows 35-210: Increase 1 st. at beginning of Row 35 and 36 and again on each side every 8th row 19 x and every 6th row 3 x, working the 43rd-46th rows with white. (133 sts.) Rows 211-224: **Underarm Shaping.** On every other row on the back side of the sleeve bind off 4 sts. 1 x, 3 sts. 1 x, 2 sts. 3 x, decrease 1 st. 1 x, bind off 2 sts. 1 x; on the front side bind off 6 sts. 1 x, 4 sts. 1 x, 3 sts. 2 x, and 2 sts. 3 x. Rows 225-264: On each side of every other row decrease 1 st. 1 x and bind off 2 sts. 1 x. Repeat these 2 decreases 9 x. Rows 265-272: At the beginning of every row bind off 2 sts. 2 x, 3 sts. 4 x, 4 sts. 2 x, and the remaining 11 sts. Make another sleeve with reverse shapings.

**COLLAR AND FINISHING:** Follow directions for Size 42/44.

### CANADIAN READERS

Please note that KNITKING dealers based in the U.S.A. are unable to sell machines and accessories to residents of Canada. They are also unable to sell parts and service. Would all Canadian readers please contact any of the following appointed KNITKING dealers.

Knittax Handknitting Machines  
Sales and Service Reg'd  
H. Cieslewicz  
3059 Estelle, Fabreville, P.Q.

Winnipeg Knitting Machines Ltd.  
202 Confederation Building  
457 Main St., Winnipeg 2, Manitoba

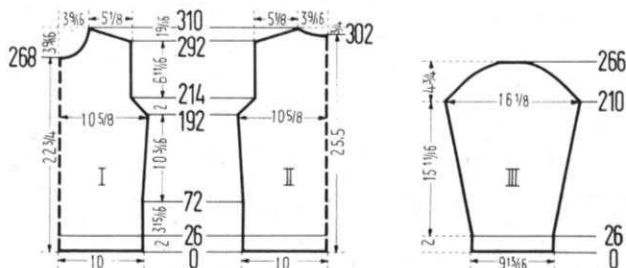
Easy Knit of Canada Ltd.  
272, Yonge Street  
Toronto 1, Ontario

Knit-King Agency  
Hand Knitting Machines  
Mrs. M. Gross  
5316 - 90th Ave., Edmonton, Alberta

### MAN'S PULLOVER, No. HP 3419

**SIZES:** 42/44 and 46/48. **MATERIAL:** 42/44 18 oz., 46/48 20 oz. white. **FOR EXAMPLE:** KNITKING, Subita 2 x 3, Red Heart Nylon wool sport, Bearbrand Deluxe Sock and Sport. **TENSION:** KNITKING 5 or 6. **GAUGE:** Stockinette 16 sts. 2", 23 rows 2"; K1, P1 Ribbing 16 sts. 2", 26 rows 2". **PATTERN:** Stockinette. Edging and Collar: K1, P1, Ribbing.

**SIZE: 42/44. BACK:** (Figure II). Cast on 163 sts. Rows 1-26: Work in K1, P1, Ribbing. Transfer ribber sts. to main machine and continue in stockinette. Rows 27-192: Increase 1 st. at the beginning of row 73 and 74 and again on each side every 24th row 4 x. (173 sts.) Rows 193-214: **Armhole Shaping.** Decrease 1 st. on each side; then on every other row on each side bind off 2 sts. 1 x, and decrease 1 st. 1 x, then repeat these last 2 decreases 4 x. (141 sts.) Rows 215-292: Work even. Rows 293-310: **Shoulder and neck shaping.** On each side of every other row bind off 4 sts. 8 x and 5 sts. 2 x. At the same time, at beginning of row 303 bind off the 25 center sts. with a separate yarn, put needles on the left into holding position and knit the right side first. When cam box is on neck side, bind off 7 sts. 1 x, 5 sts. 1 x, and 4 sts. 1 x. Put row counter back to 302, needles in holding position into working position and complete the left side.



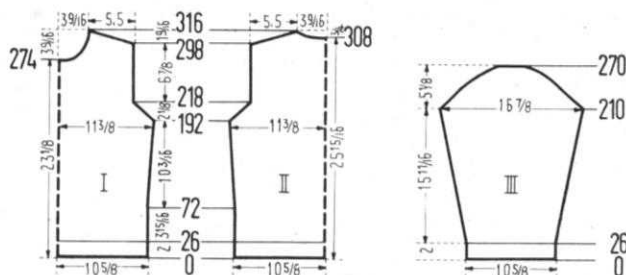
**FRONT:** (Figure I). The front is worked the same as the back: however, for the neck shaping, at beginning of Row 269 bind off the 15 center sts. with a separate yarn, put needles on the left into holding position and knit the right side first. When cam box is on neck side bind off 4 sts. 1 x, 3 sts. 2 x, 2 sts. 3 x, decrease 1 st. 2 x; then on every 4th row decrease 1 st. 2 x and on the 6th row decrease 1 st. 1 x. Put needles in holding position back to work position, put row counter back to 268 and complete the left side.

**SLEEVE:** (Figure III). Make two. Cast on 81 sts. Rows 1-26: Work in K1, P1 ribbing. Transfer ribber sts. to main machine and continue in stockinette. Rows 27-210: Increase 1 st. at beginning of row 35 and 36 and again on each side every 8th row 13 x and every 6th row 11 x. (131 sts.) Rows 211-266: **Underarm Shaping:** Decrease 1 st. on each side; then on every other row on each side, bind off 2 sts. 1 x and decrease 1 st. 1 x. Repeat these last 2 decreases 6 x, then at beginning of every row bind off 2 sts. 16 x, 3 sts. 10 x and the remaining 25 sts.

**COLLAR:** Cast on 171 sts. Work 60 rows K1, P1 ribbing: 20 rows with Tension 6, 20 rows with Tension 5, and 20 rows with Tension 6. Bind off all sts. (Transfer ribber sts. to main machine and then bind off.)

**FINISHING:** Join front and back at side and shoulder seams. Sew sleeve edges together and sew sleeves to sweater. Sew ends of collar together so that collar is circular, and sew collar to sweater, folding toward outside.

**SIZE: 46/48. BACK:** (Figure II). Cast on 177 sts. Rows 1-26: Work in K1, P1 ribbing. Continue in stockinette. Rows 27-192: Increase 1 st. at beginning of row 73 and 74 and again on each side every 24th row 4 x. (187 sts.) Rows 193-218: **Armhole Shaping.** Bind off 2 sts. beginning next two rows then on every other row on each side decrease 1 st. 1 x and bind off 2 sts. 1 x. Repeat these last 2 decreases 5 x. (147 sts.) Rows 219-298: Work even. Rows 299-316: **Shoulder and Neck Shaping.** On each side of every other row bind off



4 sts. 5 x and 5 sts. 5 x (45 sts. each shoulder). At the same time at the beginning of row 309 bind off the 25 center sts. with a separate yarn, put needles on the left into holding position and knit the right side first. When cam box is on neck side, bind off 7 sts. 1 x, 5 sts. 1 x, and 4 sts. 1 x. Put row counter back to 308, put needles in holding position into work position and complete the left side.

**FRONT:** (Figure I). The front is worked the same as the back; however, for the neck shaping, at beginning of row 275 bind off the 15 center sts. with a separate yarn, put needles on the left into holding position and knit the right side first. When cam box is on neck side, bind off 4 sts. 1 x, 3 sts. 2 x, 2 sts. 3 x, decrease 1 st. 2 x, then decrease 1 st. on every 4th row 2 x, and on the 6th row 1 x. Put needles on the left into work position, put row counter back to 274 and complete the left side.

**SLEEVE:** (Figure III). Make two. Cast on 87 sts. Rows 1-26: Work in K1, P1, ribbing. Transfer ribber sts. to main machine and continue in stockinette. Rows 27-210: Increase 1 st. at beginning of row 35 and 36 and again on each side every 8th row 13 x and every 6th row 11 x. (137 sts.). Rows 211-270: **Underarm Shaping:** Bind off 2 sts. beginning of next two rows, then on every other row on each side decrease 1 st. 1 x and bind off 2 sts. 1 x. Repeat these last 2 decreases 7 x. At beginning of every row bind off 2 sts. 16 x, 3 sts. 10 x and the remaining 23 sts.

**COLLAR:** Cast on 171 sts. Work 60 rows K1, P1 Ribbing; 20 Rows with Tension 6, 20 rows with Tension 5, and 20 rows with Tension 6. Bind off all sts. (Transfer ribber sts. to main machine and then bind off.)

**FINISHING:** Follow directions for Size 42/44.

## DO YOU HAVE A...

### REVERSING BAR?

- With it you can turn a hem in one movement instead of lifting stitches one at a time.
- You can reverse your knitting, so that the knit side faces you, easily and speedily.
- Available for all KNITKING machines with 197 needles. Order from your dealer or direct from

### KNITKING

1128 Crenshaw Blvd., Los Angeles, Calif. 90019

Price \$16.95 (California residents add 4% tax)

Plus \$1.50 shipping cost.

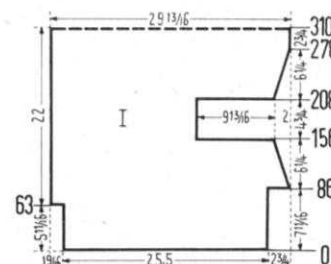
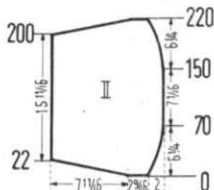
## BEACH JACKET, No. DV 7332



**SIZE:** 14/16. **MATERIAL:** 14 oz. rose, 10 oz. blue. **FOR EXAMPLE:** Diamond, Clover Boucle, Bucilla, Glacé. **TENSION:** KNITKING 7 or 8. **GAUGE:** 13 sts. 2", 22 rows 2". **PATTERN:** Stockinette 12 rows blue and 20 rows rose. The beach jacket is worked sideways, beginning at the front edge. Be sure to study chart shown.

**FRONT AND BACK:** (Figure I). Cast on 169 sts. with rose. Rows 1-32: Work even. Continue in stripe pattern. Rows 33-63: Work even. On the left side cast on 10 sts. Rows 64-86:

Work even. Then cast 18 sts. on the right side. (197 sts.). Rows 87-156: **Shoulder and Armhole Shaping.** Decrease 1 st. for the shoulder shaping at Row 93 and again every 6th



row 6 x, and every 4th row 6 x. For the armhole shaping, bind off 65 sts. Rows 157-208: Work even. Cast on 65 sts. Rows 209-278: **Shoulder Shaping.** Increase 1 st. at Row 213 and again every 4th row 6 x and every 6th row 6 x. Rows 279-310: Work even. The second half, beginning with Row 311, is worked in reverse. Rows 311-342: Work even. Rows 343-412: **Shoulder and Armhole Shaping.** Decrease 1 st. at Row 348 and again every 6th row 6 x and every 4th row 6 x. Then bind off 65 sts. for the armhole shaping. Rows 413-464: Work even. Then cast on 65 sts. Rows 465-534: **Shoulder Shaping.** Increase 1 st. at Row 469 and again

every 4th row 6 x and every 6th row 6 x. Then, on the right side, bind off 18 sts. Rows 535-557: Work even, and then on the left side bind off 10 sts. Rows 558-620: Work even, working in rose from Row 589. Bind off all sts.

**SLEEVE:** (Figure II). Make two. See notes to knit by on inside back cover (short rows). Cast on 67 sts. with rose. In the beginning work 8 rows rose, and then continue in stripe pattern. Rows 1-22: On the left side put 50 needles in holding position and work 2 rows. Now, one after another, bring 5 needles back into working position 10 x. At the same time, on the right side increase 1 st. at Row 5 and again every 4th row 4 x. Rows 23-70: Increase 1 st. on the right side at Row 27 and again every 6th row 7 x. (80 sts.). Rows 71-150: Work even. Rows 151-220: Decrease 1 st. on the right side at Row 151, again every 6th row 8 x and every 4th row 4 x. At the same time, on the left side at Row 201, one after another, put 5 needles in holding position 10 x. Bind off all sts.

**CUFFS:** (Make 2) With blue, cast on 99 sts. Work 72 rows stockinette; 8 rows blue, 20 rows rose, 16 rows blue, 20 rows rose and 8 rows blue. Bind off all sts.

**POCKET:** Cast on 52 sts. with blue. Work 88 rows Stockinette; 12 rows blue, 20 rows rose, 12 rows blue, 20 rows rose, and 24 rows blue. Bind off all sts.

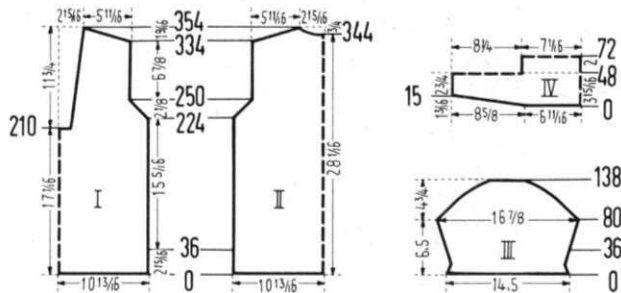
**NECK EDGING:** Cast on 31 sts. with blue for the front section. Work 16 rows Stockinette, decreasing 1 st. at Row 3 and again every other row 2 x, and increasing 1 st. at Row 11 and again every other row 2 x. Bind off all sts. Make the second front section of neck edging with reserve shapings. For the back section cast on 73 sts. Work 16 rows Stockinette, decreasing 1 st. on each side at Row 3 and again every other row 2 x, and increasing 1 st. each side at row 11 and again every other row 2 x. Bind off all sts.











separate yarn, put needles on the left into holding position and knit the right side first. When cam box is on **neck side** bind off 6 sts. 1 x, 5 sts. 1 x, 4 sts. 1 x, and 3 sts. 1 x. Put needles on the left into working position, put row counter back to 344 and complete the left side.

**FRONT:** (Figure I). The front is worked the same as the back; however, for the **neck shaping**, at beginning of Row 211 bind off the 25 center sts. with a separate yarn. Put the needles on the left into holding position and knit the right side. Decrease 1 st. on **neck side** at Row 217 and again every 10th row 13 x. Put row counter back to 210, all needles on left into working position and complete the left side.

**SLEEVE:** (Figure III). Make two. Cast on 133 sts. with white. Rows 1-35: Work 15 rows white, 4 rows blue, and 16 rows white: decreasing 1 st. on **each side** at Row 5 and again every 4th row 3 x and increasing 1 st. at Row 21 and again every 4th row 3 x. To make the hem, put the cast on sts. back on the machine. Row 36: With blue, work the sts. together with Tension 6 (7). Rows 37-80: Work 1 row blue and then continue in stripe pattern, increasing 1 st. at beginning of Row 37 and 38 and again on **each side** every 4th row 10 x. (155 sts.). Rows 81-138: **Underarm Shaping. On each side** of every other row bind off 2 sts. 1 x and decrease 1 st. 1 x, and repeat these 2 decreases 6 x; then at beginning of **every** row bind off 2 sts. 12 x, 3 sts. 8 x, 4 sts. 6 x, and the remaining 35 sts.

**INSET WITH COLLAR:** (Figure IV). From right to left cast on 140 sts. Row 1: Work over all needles. Rows 2-15: See Notes to Knit By on inside back cover (short rows). On the **left side** put 79 needles in holding position and work 2 rows. Now, one after another, put 13 needles in working position 5 x and 14 needles in working position 1 x. Rows 16-48: Work even. Rows 49-96: On the **left side** put 75 needles in holding position and work even on 65 needles for the collar. Rows 97-130: Bring the 75 needles back into working position, and work even all needles. Rows 131-142: On the left side, one after another, put 14 needles in holding position 1 x and 13 needles in holding position 5 x. Rows 143-144: Bring all needles into working position and work 2 rows. Bind off all sts. Work the second section with reverse shapings, making buttonholes at the 33rd and 113th rows over the 10th-14th and 31st-35th needles, counting from the right edge.

**FINISHING:** Join front and back sections at side and shoulder seams. Sew sleeve edges together and sew sleeves to sweater. Join collar sections at center back and fold collar in half lengthwise. Sew side edges of collar. Fold inset and collar around front and neckline edges and attach. Finish buttonholes and sew on buttons.

### CAUTION . . .

Do not use the subscription envelope in this issue for anything other than subscriptions . . . if you do, your correspondence can get lost in our subscription department which is not equipped to handle other types of mail.

## BEACH ROBE, No. MK 4744



**SIZE:** 14-15 years. **MATERIAL:** 10 oz. light green, 4 oz. white, and 1 oz. red.

**FOR EXAMPLE:** Unger, Crisp Crepe, Diamond, Laine Ecossaise. **TENSION:** KNITTING 2 or 3. **GAUGE:** 19 sts. 2", 26 rows 2". **PATTERN:** Stockinette.

**BACK:** Cast on 197 sts. with white. Rows 1-64: Work even. To make the hem, put the cast on sts. back on the machine. Rows 65-286: Work even: 4 rows green, 22 rows red, and 4 rows white. Continue with green. Rows 287-308: **Armhole Shaping.**

Bind off 4 sts. beginning of next two rows, then on every other row on **each side** bind off 3 sts. 1 x, 2 sts. 3 x, decrease 1 st. 2 x; then on every 4th row decrease 1 st. 2 x.

(163 sts.). Rows 309-316: Work even. Rows 317-332: See Notes to Knit By on inside back cover (short rows). On the left side, one after another, put 98 needles in holding position 1 x, 10 needles 1 x, 9 needles 2 x, 8 needles 2 x, and 7 needles 2 x. Put the remaining 7 needles in holding position. Break yarn and put the cam box on the left side, and turn the row counter back to 316. Rows 317-332: On the left side bring 65 needles into working position and work 2 rows. Now, one after another, put 10 needles in holding position 1 x,

9 needles 2 x, 8 needles 2 x and 7 needles 2 x. Put the remaining needles in holding position and break yarn. Now put the cam box on the right side, all needles in working position and continue work over all needles. Rows 333-358: Increase 1 st. at beginning of Row 335 and 336 and again on **each side** every 6th row 3 x, working Rows 337-340 in white and continuing with red. (171 sts.) Rows 359-384: **Shoulder Shaping. On each side** of every other row decrease 1 st. 2 x, bind off 2 sts. 3 x, 3 sts. 4 x, 4 sts. 2 x, and 5 sts. 2 x, working the 363rd-366th rows with green, and continuing with white. Rows 385-400: Work even. Bind off 95 sts.

**FRONT:** The front is worked the same as the back.

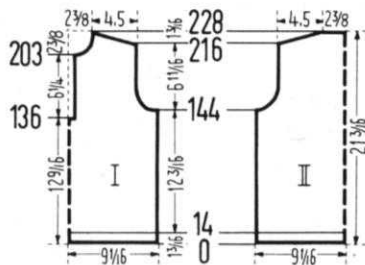
**FINISHING:** Join front and back sections at side and shoulder seams. Make a 1 1/4" hem at neck edge, and a 1/2" hem at sleeve edges. To make the braided belt, work a round cord over 5 needles — one red cord, one white, and one green. Braid the finished cords.

## BOY'S PULLOVER SHIRT, No. KK 4746



**SIZE:** 11/12 years. **MATERIAL:** 10 oz. blue and 2 oz. brass. **FOR EXAMPLE:** KNITTING Subita 2 x 4, Pauline Denham Sierra, Bear Brand Evermatch Sport and Sweater. **TENSION:** KNITTING 6 or 7. **GAUGE:** Stockinette 15 sts. 2", 21 rows 2". K1, P1 ribbing 15 sts. 2", 24 rows 2". **PATTERN:** Stockinette Stitch: 16 rows blue, followed by 6 rows of 1 row brass and 1 row blue. \*Edging and Collar: K1, P1 Ribbing.

**BACK:** (Figure II). Cast on 137 sts. with blue. Rows 1-14: K1, P1 Ribbing. Transfer ribber sts. to main machine. Continue in stripe pattern. Rows 15-144: Work even. Rows 145-158: **Armhole Shaping.** Bind off 4 sts. beginning of next 2 rows, then on every other row on **each side**, bind off 3 sts. 2 x, 2 sts. 2 x, and decrease 1 st. 2 x. (105 sts.). Rows 159-216: Work even. Rows 217-228: **Shoulder Shaping. On each side** of every other row bind off 5 sts. 2 x, 6 sts. 4 x, and the remaining 37 sts.



**FRONT:** (Figure I). Cast on 137 sts. with blue. Rows 1-14: K1, P1 ribbing. Transfer ribber sts. to main machine. Continue in stripe pattern. Rows 15-136: Work even. Now bind off the 9 center sts. with a separate yarn and put needles on the left into holding position and continue work in two sections. Rows 137-144: Work even. Rows 145-156: **Armhole Shaping.** Bind off 5 sts. on **arm side**, and then when cam box is on **arm side**, bind off 4 sts. 1 x, 3 sts. 1 x, 2 sts. 1 x, and decrease 1 st. 2 x. Rows 157-203: Work even. Rows 204-228: **Neck and Shoulder Shaping.** When cam box is on **neck side** bind off 4 sts., then bind off 3 sts. 1 x, 2 sts. 1 x, decrease 1 st. 3 x and on every 4th row decrease 1 st. 2 x. **At the same time**, at Row 217, for the **shoulder shaping**, when cam box is on **shoulder side**, bind off 5 sts. 2 x, and 6 sts. 4 x. Put needles on the left into working position, put row counter back to 136 and complete the left side.

**SLEEVE:** (Figure III). Make two. Cast on 83 sts. with blue. Rows 1-14: K1, P1, ribbing. Transfer ribber sts. to main machine and continue in Stockinette. Rows 15-40: Increase 1 st. at beginning of Row 15 and 16 and again **on each side** every 4th row 3 x and every other row 5 x. (101 sts.). Rows 41-50: **Underarm Shaping.** At the beginning of every row bind off 5 sts. 2 x, 4 sts. 2 x, 3 sts. 2 x and 2 sts. 4 x. Rows 51-82: **On each side** of every other row decrease 1 st. 3 x and bind off 2 sts. 1 x. Repeat these 4 decreases 3 x. Rows 83-90: **On each side** of every other row decrease 1 st. 1 x, bind off 2 sts. 1 x, 3 sts. 1 x, 4 sts. 1 x, and the remaining 9 sts.

**COLLAR:** Cast on 137 sts. Work 40 rows K1, P1 Ribbing and bind off all sts.

**BUTTON STRIP:** Cast on 69 sts. Work 16 rows K1, P1 Ribbing and bind off all sts. Make the buttonhole strip the same, making buttonholes at Row 8 over the 3rd-7th and 39th-43rd needles.

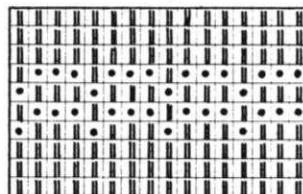
**FINISHING:** Join front and back sections at side and shoulder seams. Sew sleeve edges together and sew sleeves to sweater. Sew button and buttonhole strips and collar to sweater. Finish buttonholes and sew on buttons.

## GIRL'S PULLOVER, No. MK 4747

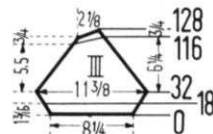
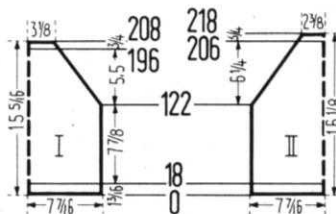


**SIZE:** 6-7 years. **MATERIAL:** 6 oz. turquoise, 2 oz. white, and 2 oz. red. **FOR EXAMPLE:** KNITTING, Mutella, Red Heart, Super Fingering, Fleishers, Evermatch. **TENSION:** KNITTING 7 or 8. **GAUGE:** Stockinette St. 15 sts. 2", 26 rows 2". K1, P1 Ribbing 15 sts. 2", 29 rows 2". **PATTERN:** Stockinette Stitch and Holding Position Design Stripe according to chart. Edging: K1, P1, Ribbing.

**BACK:** (Figure II). Cast on 113 sts. with turquoise. Rows 1-18: K1, P1 Ribbing. Transfer ribber sts. to main machine and continue in stripe pattern. Rows 19-122: Work even. Rows 123-206: **Raglan Shaping.** Decrease 1 st. **on each side** at row 123 and again every 4th row 10 x and every other row 21 x. Rows 207-218: Transfer every other st. to ribber and work in K1, P1 Ribbing, decreasing 1 st. **on each side** at Row 207 and again on every other row 5 x. Bind off 37 sts.



**FRONT:** (Figure I). Cast on 113 sts. with turquoise. Rows 1-18: K1, P1 Ribbing. Transfer ribber sts. to main machine and continue in Stripe Pattern. Rows 19-122: Work even. Rows 123-196: **Raglan Shaping.** Decrease 1 st. **on each side** at Row 123 and again every 4th row 10 x and then on every other row 16 x. Rows 197-208: Transfer every other st. to ribber and work in K1, P1 Ribbing, decreasing 1 st. **on each side** at Row 197 and again every other row 5 x. Bind off 47 sts.



**SLEEVE:** (Figure III). Cast on 63 sts. with turquoise. Rows 1-18: Work in K1, P1 Ribbing, increasing 1 st. at beginning of Row 5 and 6 and again **on each side** every 4th row 2 x and every other row 2 x. Transfer ribber sts. to main machine and continue in Stripe Pattern. Rows 19-32: Increase 1 st. at beginning of Row 19 and again **on each side** every other row 6 x. (87 sts.). **Increase** 1 st. at beginning of Row 19 and again **on each side** every other row 6 x. (87 sts.). Rows 33-106: **Raglan Shaping.** Decrease 1 st. **on each side** at Row 33 and again **on each side** every 4th row 10 x and every other row 16 x. Rows 107-116: **On the left side**, one after another, put 4 needles in holding position 5 x. See Notes to Knit By on inside back cover (short rows). **At the same time**, on the **right side** decrease 1 st. at Row 107 and again every other row 4 x. Rows 117-128: Transfer every other st. to ribber. Work in K1, P1 ribbing over all the needles, decreasing 1 st. **on each side** at Row 117 and again every other row 5 x. Bind off 16 sts. Make the other sleeve with reverse shapings.

**FINISHING:** Join front and back sections at side seams. Sew sleeve edges together, and sew sleeves to sweater, leaving a 4" opening between the back and the right sleeve for the zipper. Make a narrow hem around this opening and sew in zipper.

## GIRL'S PULLOVER, No. MK 4748



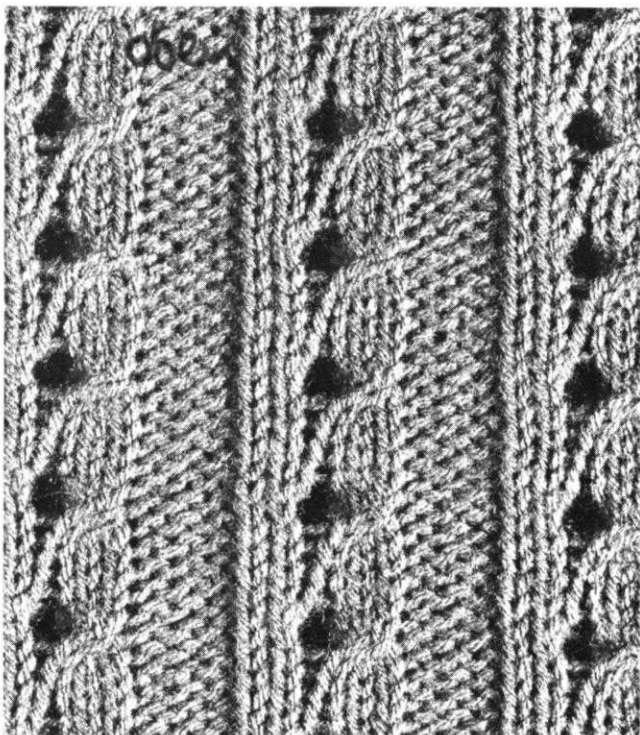
**SIZE:** 9/10 years. **MATERIAL:** 7 oz. red, 2 oz. white. **FOR EXAMPLE:** KNITTING, Mutella, Bearbrand, Deluxe Sock and Sport. Red Heart, Nylon and wool. **TENSION:** KNITTING 5 or 6. **GAUGE:** Pattern Stitch, 16 sts. 2", 39 rows 2"; K1, P1 Ribbing 16 sts. 2", 28 rows 2", Stockinette Stitch 17 sts. 2", 24 rows 2". **PATTERN:** Holding Position design worn on purl side. Step 1 - The 4th, 8th, 12th, 16th, etc. needles are in holding position. Work 5 rows with red, pulling up the outer control knob on the right before the 5th row. Step 2 - (Dial-a-Stitch machines push in left Retractor Knob). Remove yarn from cam box, put cam box on the right side, and press down outer control knob. (release Retractor Knob). Step 3 - Bring all needles into working position and work 1 row with white. Step 4 - Put the 2nd, 6th, 10th, 14th, etc. needles in holding position. Work 5 rows with red, pulling up the outer control knob on the left before the 5th row. Step 5 - (Dial-a-Stitch machines push in right retractor knob). Remove yarn from the cam box, put





# PRACTICAL KNITTING HINTS

THIS IS HOW THE PATTERN STITCH  
FOR DP 7322 SHOULD LOOK



## EASY BIND OFF

A neat and simple way of binding off is: For the bind off row set your tension at least 3 or more tensions higher and knit 1 row. Release the stitches from under the sinkers. (Machines other than KNITKING put the stitches behind the latches). Take your latch tool and beginning at end opposite your yarn, put the tool into first stitch, let it slide behind the latch and take the next stitch off and pull it through the stitch on latch. Continue in this way until all stitches are bound off. Break end of yarn and pull through last stitch. When you are using every other needle, the same method can be used by knitting one row, 1 stitch at a time, pull each stitch back leaving a loop at least  $\frac{1}{4}$  inch for each stitch. Practice on a sample first and you will soon find the proper length of loop needed for any type of yarn.

## THE "ACCENTED DECREASE" FOR RAGLAN SHAPING

The "accented decrease" is used for garments worked in Stockinette Stitch that have raglan shaping. It is called this because the decrease for raglan shaping is not done in the usual manner by moving the last stitch to the next to the last needle. Instead, the decrease takes place further into the garment. For example, the 3rd stitch may be placed on the 4th needle, and the edge stitches moved over to fill the empty needles.

On especially fashionable garments a very beautiful effect is produced if, instead of decreasing 1 st. every other row you decrease 2 stitches every 4th row or 3 stitches every 6th row. The shaping remains the same, but the appearance changes.

If, in decreasing, only 1 stitch is to be moved on each side it can be done without any difficulty. However, if 2 or 3 sts. on each side are to be transferred (for example, if the 3rd, 4th, and 5th stitches are to be hung on the 6th, 7th, and 8th needles) it is best to take the edge stitches off the machine with a double or triple transfer tool at the same time, so that the transfer may be done more easily. Then the decreased stitches are hung on the proper needles, and the edge stitches are hung on the empty needles. With this method you may quickly and easily decrease and transfer several stitches at a time without unnecessarily weakening the edge stitches and producing an unsymmetrical seam.

## A HINT TO HELP YOU FOLLOW THE PATTERNS

KNITKING MAGAZINE instructions are not difficult to follow or to adapt to your own needs. You will find them even easier if you take time and a piece of paper and draw a rough sketch of the section you are about to knit.

Don't be fussy, we do mean a rough sketch. After you have drawn an outline of the garment section, mark the important rows where you will begin to do your shaping and follow the rows for increasing and decreasing, listing them one above the other and marking on both sides of your sketch, first the right side, then the left.

Mark the neck bind off row and the following decreases with row numbers, one right above the other. Do the same thing for each shoulder shaping.

All this will take not more than five minutes of your time for each section of your garment and you will be so thrilled with the simplicity that it will more than compensate for the little extra time spent.

Our patterns are finished beautifully and the detailed shapings are so important for that expensive and exciting look we think all our readers desire in their knits.

# WANTED.....

**SALESPEOPLE AND KNITKING OWNERS TO SELL AND  
TEACH KNITKING KNITTING. IF YOU CAN DO EITHER  
OR BOTH WRITE TO KNITKING, 1128 CRENSHAW BLVD.,  
LOS ANGELES, CALIF. 90019, FOR FULL INFORMATION.**

# NOTES TO KNIT BY . . .

## STITCH AND ROW GAUGE

The stitch and row gauge is the number of stitches and the number of rows you get to the inch with the yarn recommended for any particular garment. To arrive at the correct number of stitches and rows, you must prepare a sample swatch as follows: Cast on the number of stitches that will give you a finished width of at least 4 inches. Using the suggested stitch tension in your pattern, knit a length of at least 4 inches. Knit 2 rows of a contrast yarn. Set your tension one number higher and knit another 4 inches. Knit 2 rows of contrast color. Set your tension 1 number lower than the suggested one and knit a further 4 inches. Now bind off.

For years people have been told to steam their sample swatch and for years we have been getting reports from people telling us that although the sample swatch was correct, the finished garment was too small or too large. Others have complained that even when they used the suggested yarns they had to use a much larger or smaller tension to make a swatch and then the finished garment came out the wrong size anyway.

Obviously it is possible for two people to pin an identical swatch and steam it and get a totally different result. One will stretch the sample before pinning it, and the other will squeeze it in. We have discovered a way that produces the same result with everybody, and we recommend that you get into the habit of always using it.

After knitting the sample and removing it from the machine, roll it into a cylinder over its length, then pull on both ends. Unroll the cylinder and stretch the sample diagonally by pulling on the four corners. Now let it rest — give it an opportunity to resettle for at least a few hours, preferably over night. After you and your swatch have rested, lay your stitch gauge on it and count the number of stitches in your 2 inch marking. Do the same for the number of rows. If you did not get the correct gauge in your first section of knitting, try the section either 1 tension higher or lower as the case may be. If you cannot get the correct gauge, then you are using the wrong type of yarn for the garment.

## NON-WORKING POSITION

The needles are in the non-working position when they are as far back on the needle bed as they will go.

## HOLDING POSITION

The Holding Position is as far forward on the needle bed as your needles will go. The Holding Position is used for producing pattern designs, fancy stitches and the knitting of short rows.

## SHORT ROWS

Short rows are used for shaping of all kinds such as toes and heels of socks, collars, darts and sometimes in the shaping of shoulders, borders and full skirts. To knit short rows you push the needles forward into the holding position as specified in the pattern instructions, usually working from the outside in, which in effect narrows the width of the knitting as you proceed. Before knitting each row, you **must** place the yarn between the first and second inside needles that are in the holding position.

## INCREASING, DECREASING, BINDING OFF

See the Instruction Manual for your own machine.

## INCREASING AND DECREASING WHEN USING THE RIBBER

When increasing, increase on the main knitter first, knit one row and then transfer the necessary stitches from the knitter to the ribber and continue.

When decreasing or binding off, you must transfer the ribber stitches to the main machine before decreasing or binding off.

## ADJUSTING SKIRT LENGTHS, ETC., TO SUIT YOUR OWN SIZE

If you are shorter or taller than average, you will need to adjust certain of the garment lengths. You do this by reducing or increasing the number of rows called for in the pattern.

The reduction in the rows is usually made at the bottom of a skirt or dress. The procedure is very simple. If for example you need a skirt length 2 inches shorter than the one shown in our pattern, and the yarn called for produces 9 rows to the inch, you will need to reduce the number of rows by 18. Many of our patterns are shaped to curve in a small amount toward the bottom and the bottoms frequently have a turned hem. In such cases, the reduction or increase in the number of rows required should be made immediately after the turned hem. If you are long waisted or short waisted you may have to make an adjustment at the waistline.

## READING OF KNITTING PATTERNS AND SYMBOLS

Certain holding position and eyelet designs are sketched in the knitting patterns. The pattern should be read as the work comes toward you from the machine, that is, if you have purl stitches before you, it will say purl stitches in the pattern. If you have knit stitches before you it will say knit stitches in the pattern. On the sides of the pattern are the row numbers. Missing row numbers indicate that the rows are to be worked evenly. In eyelet design patterns, specified stitches are transferred to another needle and the empty needles are returned to the knitting position each time. In holding position designs, selected needles are pushed into the holding position for the stated number of rows.

## MISSING ROW NUMBERS

When there are row numbers missing in the instructions as for instance when you have completed the designated increases or decreases on a section of garment, continue straight knitting until you reach the next given row number.


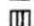



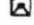

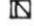

**Control Knobs** (Under the slide handle — one on each side on KNITKING and certain other machines.)

1. When BOTH Control Knobs are UP, knit one row going from right to left. The needles knit and move back just beyond the front of the needle bed and the yarn hangs on the front of the needles. The slide will now move freely in either direction with the needles remaining in a "SAFE POSITION." When you wish to resume knitting, press down BOTH Control Knobs. The first movement of the slide is made without yarn and will bring the needles into working position, you then continue knitting.

2. **Right Control Knob UP.** Knit from right to left. The row knits, moves the needles back and the yarn is held in front of the latches. Knit from left to right, the yarn goes under the needles without knitting as the needles move into the working position. This is the operation used for making round cords (with 3 or 4 needles only) and also for knitting single rows of one color.

3. **Left Control Knob UP.** The same as above but moving from left to right.

## SYMBOLS

-  = knit stitch
-  = purl stitch
-  = empty needle (still in working position)
-  = needle out of operation
-  = needle in hold position
-  = stitch put on neighboring needle. Needle in hold position
-  = stitch put on neighboring needle — to the right
-  = stitch put on neighboring needle — to the left
-  = 3 stitches hung together



open dart



closed dart

*Available in many wood finishes*



## **KNITTING DESK . . .**

A knitting machine cabinet that automatically lifts your machine into the knitting position just by pulling a lever. The cabinet converts in seconds into a handsome desk suitable for any decor or any room in your house. Beautifully made in a variety of woods by craftsmen in West Germany.



Order from your local dealer or direct from **KNITKING**, 1128 Crenshaw Blvd., Los Angeles, California 90019