

# KNITTING

MAGAZINE





Yarns

64

# Knitking

*The Finest From Around the World . . .*

HANDSOME Cable yarns from Australia, Great Britain and Germany . . . GORGEOUS Mohairs from Australia . . . BEAUTIFUL Satin-Cotton and Linen-Cotton from Germany . . . plus a NEW, new synthetic, soft and light in weight . . . doesn't pill up . . . yet can be thrown into your washing machine without fear of shrinking or stretching . . . LOVELY Tweed mixtures from England . . . EASY to knit and a JOY to behold.

*We import our own yarns and they are sold DIRECT to YOU at BIG SAVINGS!*

*The BEAUTIFUL PATTERNS in KNITTING MAGAZINE are made with KNITTING YARNS!*

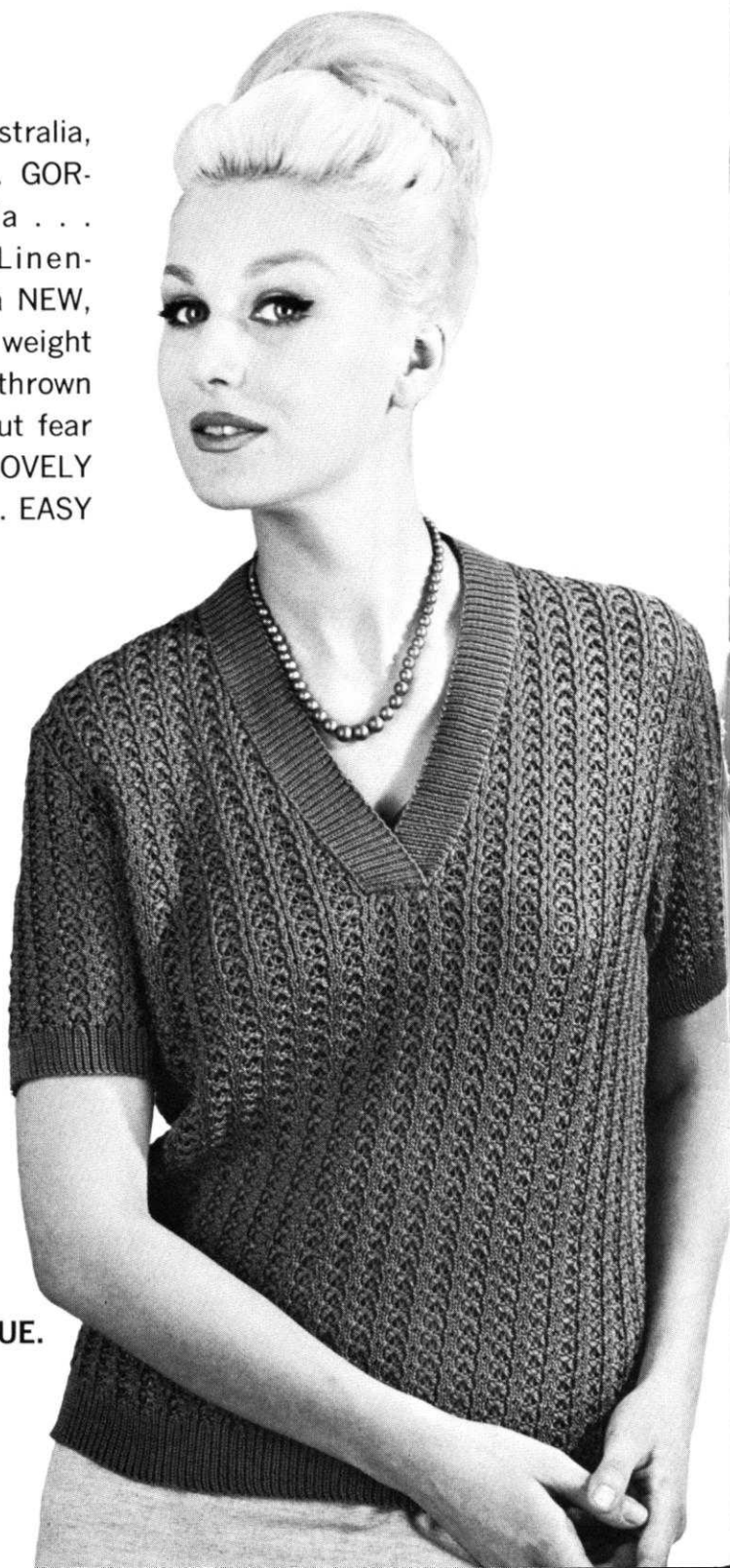
Send \$2.00 for LARGE COMPLETE YARN CATALOGUE.

(Refunded on your first \$10.00 order) to:

KNITTING YARNS, Dept. 19

1128 Crenshaw Blvd.

Los Angeles, California 90019



# KNITKING

MAGAZINE



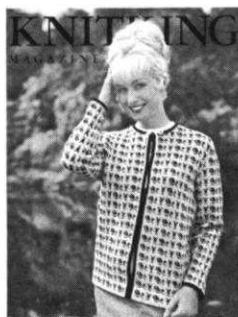
## Letter from the Publisher

Vol. 2 No. 6

July-August 1966

### INDEX

Contents	Pattern No.	Page No.
Woman's Jacket (Cover) . . . . .	DP 7234 . . . . .	16
Woman's Jacket . . . . .	DK 7360 . . . . .	16
Woman's Cardigan . . . . .	DP 7365 . . . . .	17
Woman's Dress . . . . .	DK 7362 . . . . .	18
Woman's Two Piece Suit . . . . .	DK 7361 . . . . .	20
Woman's Cape . . . . .	DV 7297 . . . . .	22
Woman's Pullover . . . . .	DP 7366 . . . . .	22
Woman's Sweater Blouse . . . . .	DP 7364 . . . . .	23
Woman's Cardigan . . . . .	DP 7346 . . . . .	24
Man's Cardigan . . . . .	HP 3432 . . . . .	24
Man's Pullover . . . . .	HP 3433 . . . . .	25
Man's Pullover . . . . .	HP 3431 . . . . .	26
Boy's Pullover . . . . .	KK 4768 . . . . .	26
Boy's Suit . . . . .	KK 4767 . . . . .	27
Boy or Girl Pullover . . . . .	KK 4769 . . . . .	27
Baby Ensemble . . . . .	SK 5086 . . . . .	28
Baby Sweater . . . . .	SK 5087 . . . . .	29
Baby Creepers . . . . .	SK 5085 . . . . .	30
Infant Booties . . . . .	SK 5089 . . . . .	30
	SK 5088 . . . . .	31
	SK 5090 . . . . .	31



DP 7234

#### OUR COVER MODEL

One of the loveliest of lovely JAC 40 Patterns No. 89a is knitted into a jacket with flattering lines. Our model is knitted in a pale grey and the rose design is red and green. Size 10/12. (Directions on page 16).

We thank the many hundreds of readers who took the time to write to us and praise the quality of our May-June issue. Its popular appeal far exceeded that of any other single issue and our new Beginner's Section was acknowledged as the most desired feature introduced to date.

We also thank all the subscribers who returned the completed questionnaires that go out with renewal notices. Your own answers to the 10 questions, when analyzed, together with those of other subscribers, provides us with information that is used to assess the needs of all readers, and help determine the contents of future issues of KNITKING MAGAZINE.

It is obvious from questionnaires already received, there is a great need for more Practical Knitting Hints. In fact, it is a need that could not be easily satisfied in several editions of KNITKING MAGAZINE, even if they were devoted exclusively to knitting hints. Because of this, we are preparing a special book called 'Practical Knitting Hints.' It will have over 100 pages that will answer the 1001 questions you have about such things as taking measurements, charting, knitting short rows, putting in buttonholes, full-fashioned shaping, finishing of garments, decorative stitches, cords and pom-poms, knitting with metallics and fancy yarns, ways of binding off, basic patterns, etc., etc.

It will be several months in preparation and printing but it will be offered to KNITKING MAGAZINE subscribers in advance of general distribution.

We are also planning and preparing books on novelty and gift items, a family knitting book and a variety of special pattern books. All in order to satisfy the needs of our subscribers and machine knitters generally.

KNITKING leads the world in knitting machines, knitting machine accessories, knitting machine pattern books and knitting yarns. Subscribers to KNITKING MAGAZINE get advance publicity regarding all new books and products, plus an opportunity to purchase them at the discount prices. It pays to subscribe to KNITKING MAGAZINE.

Our next issue (September-October) marks the beginning of our third year of publication. It will have a beautiful three-color, modern high-style dress on the cover plus three additional dresses inside, a classic cardigan set, a very handsome linen shirt, a pattern-stitch cardigan plus two knitted handbags for women, three really good looking cardigans and one pullover for men, a two-piece dress and another raglan-sleeve dress for the 3-to 4-year old girl. For the 8-to 10-year old girl, we have a raglan-sleeve classic pullover with a striped design.

All in all, it will be a beautiful issue and a fitting introduction to our third volume.

Publisher: Henry J. Atkin, 1128 Crenshaw Blvd., Los Angeles, Calif. 90019, Telephone: WEbster 8-2079. Published bi-monthly. Subscriptions: USA—\$6.00 annually, single copies \$1.50; Canada—\$7.00; other parts of the world—\$10.00. The entire contents of KNITKING MAGAZINE are copyright and must not be reproduced in any shape or form without the express permission, in writing, of the publisher.

Printed by: George Rice & Sons, Los Angeles, Calif.

← DK 7360

Navy and white wool is our choice for this attractive checked jacket. Whip up the skirt of DK 7361 and have a complete suit you will be proud to own. The check design follows a chart and is very simple to knit. Size 12/14. (Directions on page 16).



DP 7365 →

Picture Pretty! The front sections of this lovely cardigan combines using both knitter and ribber. When completed, you will use a smock stitch over the purled section. A lesson in smocking is given in Practical Knitting Hints on page 32. Size 14/16. (Directions on page 17).



FOR THOSE  
COOL  
EVENINGS



DK 7362

**TRAVELERS DELIGHT!**

Smart slim lines for this one piece dress with a button front closing. Our model is knitted in light blue yarn, the edges are accented with a black and white border. Size 12/14 and 16/18.  
(Directions on page 167.)



# Beginners Section



DK 7361

The kind of two piece dress we all love to wear. Knit it the color most becoming to you and accent the top with complementary stripes. The skirt may be worn with DK 7360 jacket as well. Size 12/14 and 16/18. (Directions on page 20).





DV 7297

The graceful shaping of this cape is flattering to everyone. Our model has a simple fringe for the bottom trim. Make several and use as gifts. Finish and decorate each one a bit differently. For instance, crochet a trim in double crochet with shell edge, or embroider large flowers on each front. Use your imagination and have fun . . . Size 10/12, 14/16, 18/20. (Directions on page 22).





DP 7366

Vacationing? Then this ideal sport pullover for your vacation wardrobe will fill your need for warmth and comfort. Ribbing is used for the collar, bottom of sweater and sleeve cuffs. The cable stitch along the raglan is an easy one, for it is knitted on the very edge of the raglan shaping for front and back as well as sleeves. The result—excellent! Size 12/14 and 16/18. (Directions on page 22).

DP 7364 —▶

Dare to be different in this high styled sweater blouse. Choose an interesting combination of colors to set off the epaulet styled shoulders and repeat the color for facing on neck, front closing and cuffs. Size 12/14. (Directions on page 23).







DP 7346

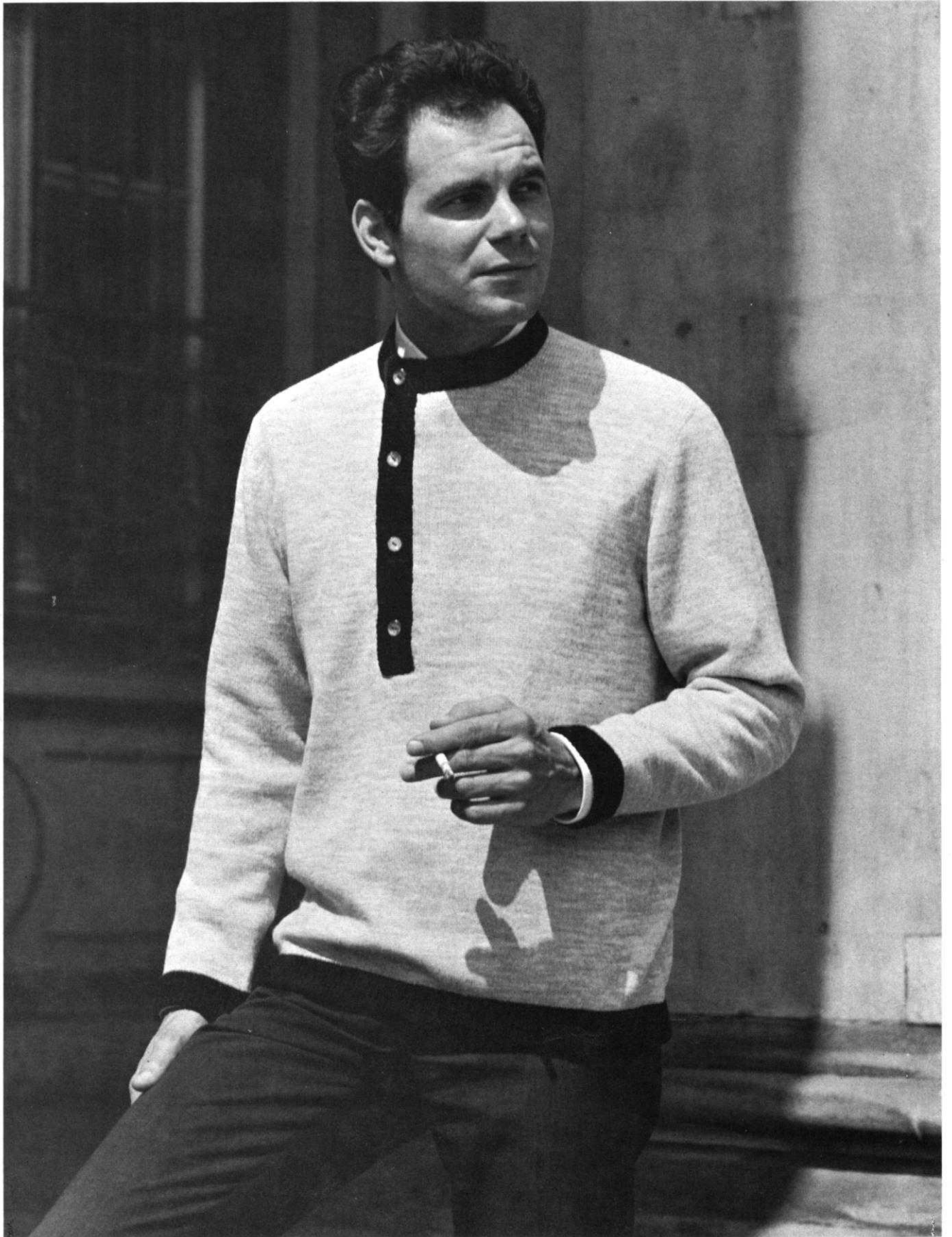
Two colors in a heavy weight yarn and knitted over EVERY 3rd NEEDLE has been used to make up this woman's cardigan. You will rave over one of the most beautiful pattern stitches available. Knit a sample swatch and see for yourself. We guarantee you will plan on knitting the same cardigan into a coat by adding the extra length needed. Size 16/18. (Directions on page 24).

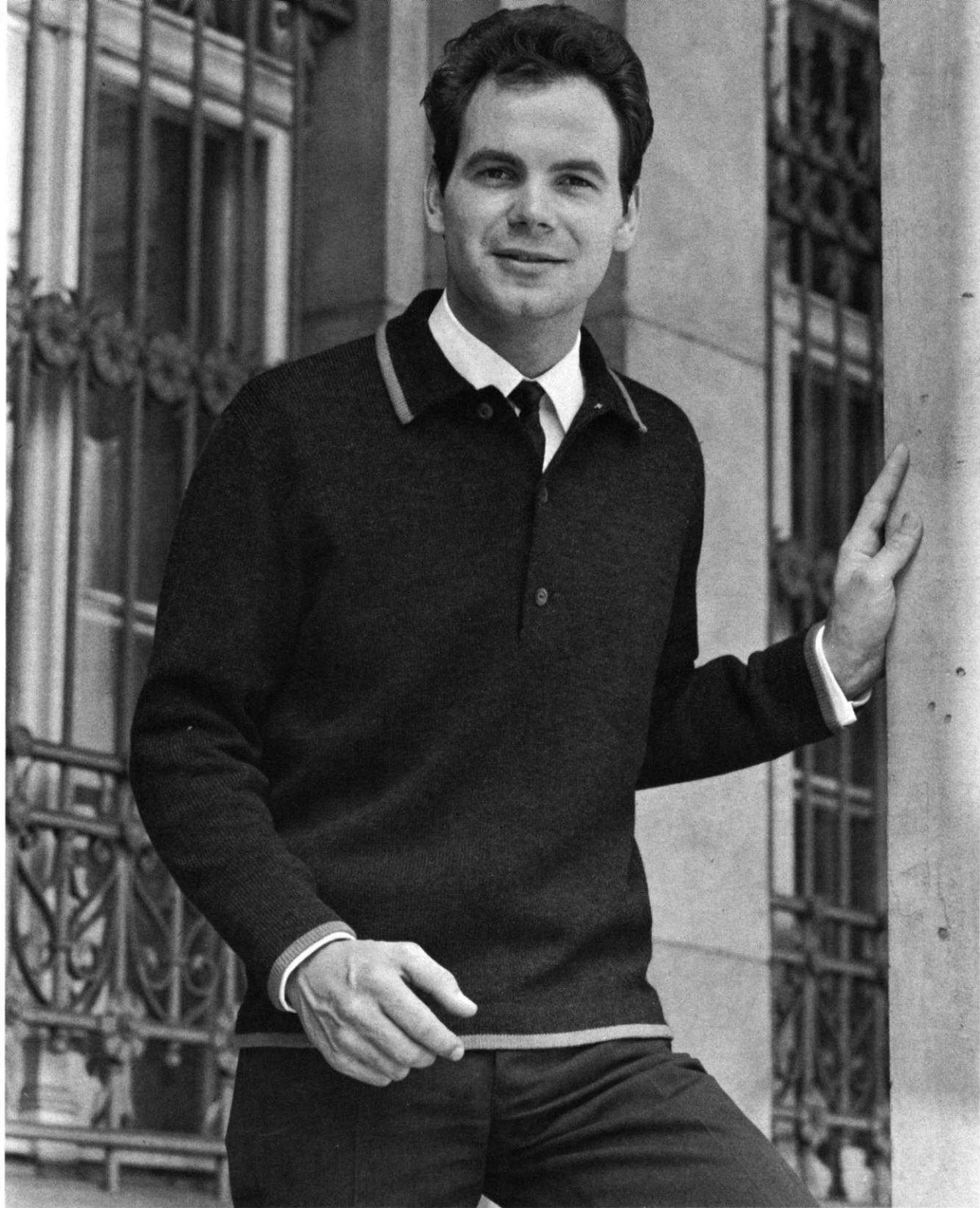
HP 3432 —▶

Sport minded men will really go for this cardigan with a small Norwegian pattern stitch used only on the front sections. Our model is knitted in black and yellow yarn. Size 44/46. (Directions on page 24).









← HP 3433

Styled for the man who likes a change from the usual pullover. A side button closing and rounded high neckline makes the difference and adds a touch of glamour. Size 40/42. (Directions on page 25).

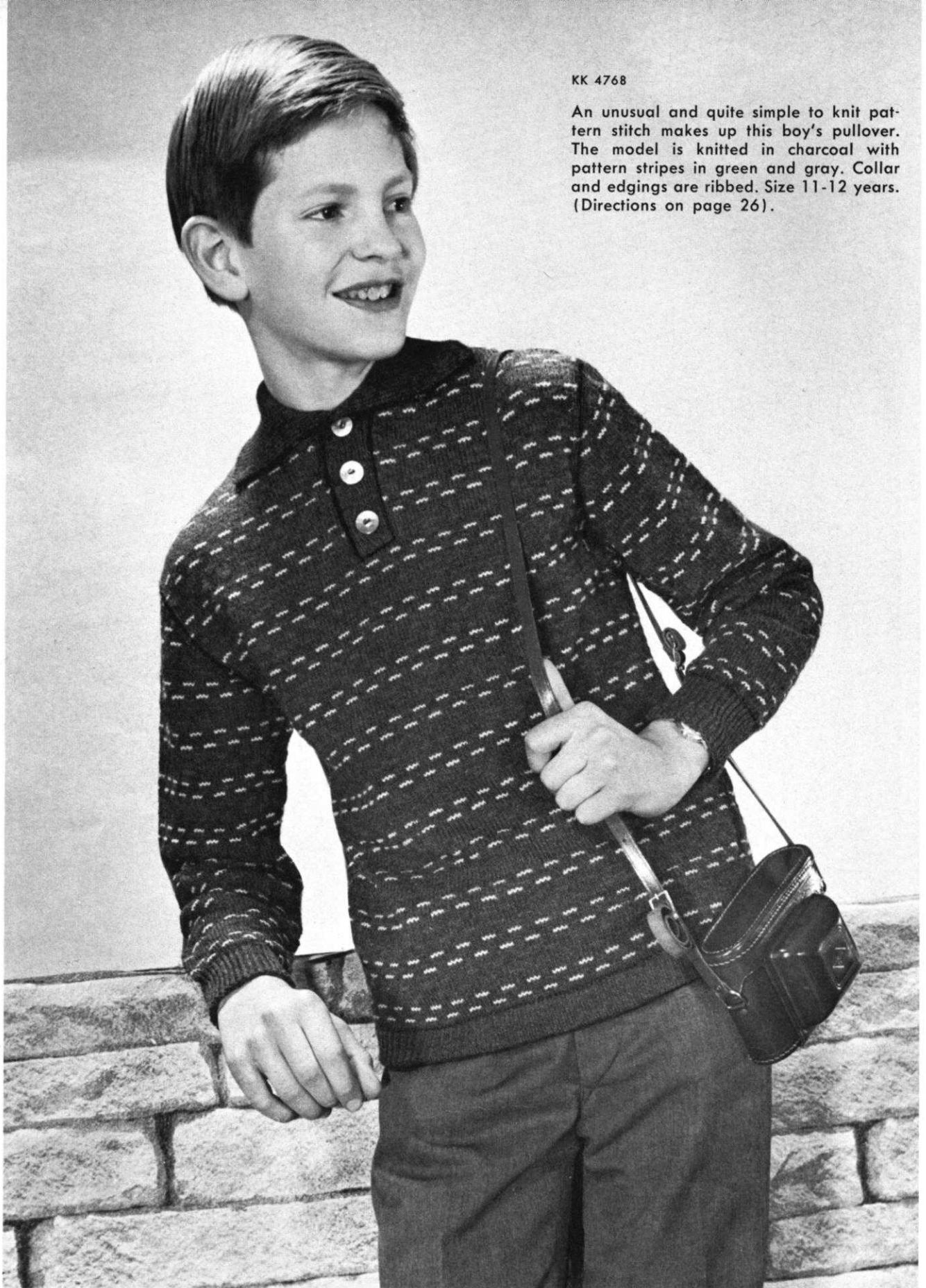
HP 3431

Great! will be his comment as he pulls on this classically styled pullover. Quickly knitted in stockinette stitch for size 40/42. Our model is made up in black with borders in beige. (Directions on page 26).



KK 4768

An unusual and quite simple to knit pattern stitch makes up this boy's pullover. The model is knitted in charcoal with pattern stripes in green and gray. Collar and edgings are ribbed. Size 11-12 years. (Directions on page 26).



KK 4767 —▶

What the well dressed young man will wear and wear. A smartly styled two piece suit for the 4 to 5 year old. Our model is knitted in a blue tweed yarn, the edgings are in a deep blue. (Directions on page 27).

KK 4769

For the two to three year old—boy or girl—knit this striped pullover. When completed, you will embroider as directed to complete the attractive design. (Directions on page 27).





FOR THE LITTLE PEOPLE



← SK 5085

When baby begins to creep around, these well fitting creepers will be most welcome. Easy to knit . . . cute as can be . . . toasty warm. Size 6 months to 1 year. (Directions on page 30).

SK 5086 →

A dream of a baby ensemble! We are proud to present this 4 piece set . . . sweater . . . hat . . . booties . . . mittens . . . all knitted in one of the loveliest of Norwegian designs. A JAC 40 pattern No. 104. Size 3 to 6 months. (Directions on page 28).

SK 5087

Keep your darling cozy in this lovely sweater. The Norwegian design used for the yoke is knitted from a simple to follow chart. Size 3 to 6 months. (Directions on page 29).

SK 5089 SK 5088 SK 5090

Tiny toe warmers! Not one . . . not two . . . but three entirely different styles of infant booties . . . each pair prettier than the next . . . and knitted in a jiffy too. Why not knit all three pair as a gift for that new Mother-to-be . . . or put them in your Church Bazaar and watch how fast they are sold. (Directions on page 30).



SK 5087



SK 5089 SK 5088 SK 5090





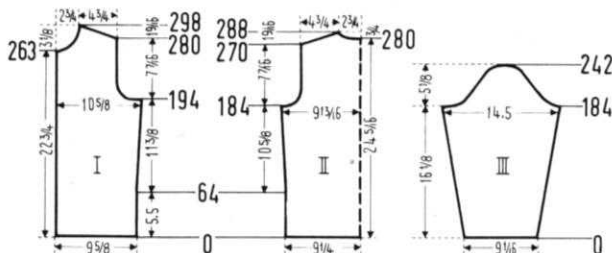
# KNITTING INSTRUCTIONS

## OUR COVER MODEL JACKET, No. DP 7234



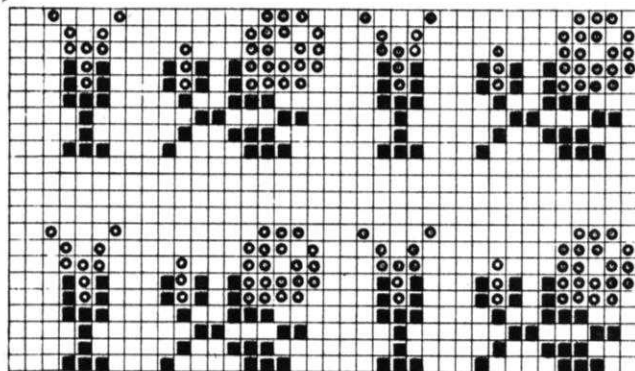
**SIZE:** 10/12. **MATERIAL:** 14 oz. grey, 4 oz. green, 3 oz. red. **FOR EXAMPLE:** KNITTING, Subita 2x4, Starlite Crepe. Spinnerin, Ambralon. 2 2/3 yards red wool braid. **TENSION:** KNITTING 5 or 6. **GAUGE:** 32 sts. 4", 45 rows 4". **PATTERN:** Norwegian Pattern Stitch according to Chart, using JAC 40 Pattern No. 89a. Every row with the Norwegian Pattern Stitch is counted singly in the directions; however, for each row several motions of the cam box are required.

**BACK:** (Figure II). Cast on 151 sts. with grey. Rows 1-64: Work even, beginning the Norwegian Pattern stitch at Row 23. Rows 65-184: Increase 1 st. at beginning of Row 65 and 66 and again on each side every 24th row 4 x. (161 sts.). Rows



185-208: **Armhole Shaping.** Bind off 4 sts. beginning of next 2 rows; then on every other row, on each side, bind off 3 sts. 2 x, 2 sts. 2 x, decrease 1 st. 3 x; then decrease 1 st. every 4th row 2 x. (123 sts.). Rows 209-270: Work even. Rows 271-288: **Shoulder and Neck Shaping.** On each shoulder side, on every other row bind off 3 sts. 1 x and 4 sts. 9 x. (39 sts. for each shoulder). **AT THE SAME TIME,** at Row 281 bind off the 19 center sts., with a new ball of yarn and then work both sides of neck opening using two balls of yarn for each color. At each neck edge bind off 6 sts. 1 x, 4 sts. 1 x, and 3 sts. 1 x.

**FRONT:** (Figure I). Cast on 82 sts. with grey. Rows 1-64: Work even, beginning the Norwegian Pattern Stitch at Row 23. Rows 65-194: On the right side, increase 1 st. at Row 65 and again every 24th row 4 x. (87 sts.). Rows 195-218: **Armhole Shaping.** Bind off 6 sts.; then on every other row bind off 5 sts. 1 x, 4 sts. 1 x, 3 sts. 1 x, 2 sts. 1 x, decrease 1 st. 3 x, and then on every 4th row decrease 1 st. 2 x. (62 sts.). Rows 219-263: Work even. Rows 264-298: **Neck and Shoulder**



DP 7234

- GREEN
- RED
- GREY

**Shaping.** For the neck shaping, bind off 4 sts., then on every other row bind off 4 sts. 1 x, 3 sts. 1 x, 2 sts. 3 x, decrease 1 st. 3 x; then on every 4th row decrease 1 st. 3 x. **AT THE SAME TIME,** at Row 281 shape shoulder, on every other row bind off 3 sts. 1 x and 4 sts. 9 x. (39 shoulder sts.) Make the second front section with reverse shapings.

**SLEEVE:** (Figure III). Cast on 74 sts. with grey. Rows 1-184: Increase 1 st. at beginning of Row 9 and 10 and again on each side every 8th row 21 x. **AT THE SAME TIME,** at Row 9, begin the Norwegian Pattern Stitch. (118 sts.). Rows 185-200: **Underarm Shaping.** On every other row, on the back side of the sleeve, bind off 4 sts. 2 x, 3 sts. 2 x, 2 sts. 3 x, decrease 1 st. 1 x, and on the front side bind off 6 sts. 1 x, 5 sts. 1 x, 4 sts. 1 x, 3 sts. 2 x, and 2 sts. 3 x. Rows 201-234: On each side of every other row decrease 1 st. 17 x. Rows 235-242: On each side of every other row bind off 2 sts. 1 x, 3 sts. 2 x, 4 sts. 1 x, and the remaining 12 sts. Make another sleeve with reverse shapings.

**FINISHING:** Join front and back sections at side and shoulder seams, easing in the fullness at bustline of front section. Sew sleeve edges together and sew sleeves to sweater. At the bottom of sweater make a hem 18 rows wide. Bind front, neck, and sleeve edges with red braid. Sew hook and eye fasteners to jacket fronts.

## WOMAN'S SUIT, No. DK 7360



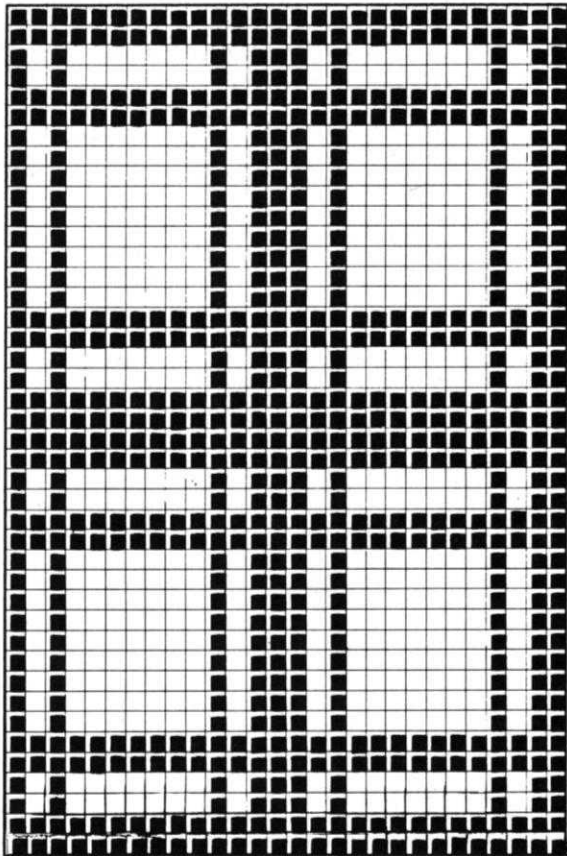
**SIZE:** 12/14. **MATERIAL:** 12 oz. white and 8 oz. navy blue for top, 13 oz. for skirt 7361. **FOR EXAMPLE:** KNITTING Subita 2x4, Starlite Crepe. Bearbrand Ever match Sport and Sweater. **TENSION:** KNITTING Pattern Stitch 7 or 8, Stockinette Stitch 6 or 7. **GAUGE:** Pattern Stitch 15 sts. 2", 19 rows 2", Stockinette 15 sts. 2", 22 rows 2". **PATTERN:** Norwegian Pattern Stitch according to Chart. Edging and Collar: Stockinette. Every row with the Norwegian Pattern Stitch is counted singly in the directions;

however, for each row several motions of the cam box are required.

**SKIRT:** Follow directions for DK 7361.

**JACKET BACK:** (Figure II). Cast on 139 sts. with white. Rows 1-36: Work in Stockinette with Tension 6 (7). To make the hem, put the cast on sts. back on the machine. Continue work with Tension 7 (8). Row 37: Work the sts. together with blue. Knit 8 or 10 rows using a contrast yarn and remove work from machine. Hang the stitches back onto the machine as follows: Put 155 needles into working position and put the 10th, 18th, 26th, 34th, 42nd, 50th, etc. needles into holding position. Pick up the first 9 stitches from your contrast yarn and increase one stitch by hanging a stitch taken from the row below on your 9th needle and hanging it on to the 10th needle which will now go back into working position. Hang 7 more stitches from the contrast yarn and pick up a stitch from the row below again and hang it on to the 18th needle. Continue in this manner until 155 needles are all in work. You have increased 16 stitches evenly distributed. Continue in Pattern Stitch over 155 sts. (The blue row is counted as part of the pattern). Rows 38-158: Work even. Rows 159-178: **Armhole Shaping.** Bind off 4 sts. beginning of next 2 rows, then on each side of every other row bind off 3 sts. 2 x, 2 sts. 3 x, decrease 1 st. 2 x, and then decrease 1 st. on the 4th row 1 x. (117 sts.). Rows 179-234: Work even. Rows 235-250: **Shoulder and Neck Shaping.** On each shoulder side of every other row bind off 4 sts. 9 x. (36 sts. for each shoulder). **AT THE SAME TIME,** at Row 243 bind off the 17 center sts. with a new ball of yarn and then work both sides of neck opening using two balls of yarn for each color. At each neck edge bind off 6 sts. 1 x and 4 sts. 2 x.

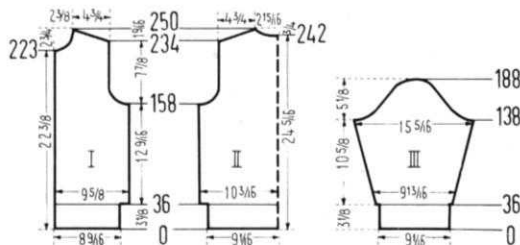
**FRONT:** (Figure I). Cast on 64 sts. with white. Rows 1-36: Work in Stockinette with Tension 6 (7). To make the hem,



■ BLUE □ WHITE

put the cast on sts. back on the machine. Continue on with Tension 7 (8). Row 37: Work the sts. together with blue. Remove on contrast yarn as before and increase 9 sts., evenly distributed over the entire width of the garment. The increases lie between the 8th and 9th, 15th and 16th, 22nd and 23rd, 29th and 30th, etc. sts. Continue in Pattern Stitch over 73 sts. Rows 38-158: Work even. Rows 159-178: **Armhole Shaping.** Bind off 4 sts.; then on every other row bind off 3 sts. 2 x, 2 sts. 3 x, decrease 1 st. 2 x; then decrease 1 st. on the 4th row 1 x. (54 sts.). Rows 179-223: Work even. Rows 224-250: **Neck and Shoulder Shaping.** At neck edge bind off 4 sts. and then on every other row bind off 3 sts. 1 x, 2 sts. 3 x, decrease 1 st. 3 x; then decrease 1 st. on every 4th row 2 x. **AT THE SAME TIME,** at Row 235, for the **shoulder shaping,** when cam box is on **shoulder side** bind off 4 sts. 9 x. Make another front section with reverse shapings.

**SLEEVE:** (Figure III). Make two. Cast on 69 sts. with white. Rows 1-36: Work in Stockinette with Tension 6 (7). To make the hem, put the cast on sts. back on the machine. Continue on with Tension 7 (8). Row 37: Work the sts. together with blue. Remove on contrast yarn as before and increase 6 sts. over the entire width of the sleeve. The increases lie between the 10th and 11th, 20th and 21st, 30th and 31st, etc., sts. Continue in Pattern Stitch over 75 sts. Rows 38-138: Increase 1 st. at beginning of Row 41 and 42 and again on each side every 4th row 14 x and every 6th row 6 x.



(117 sts.). Rows 139-152: **Underarm Shaping.** On each side of every other row bind off 5 sts. 1 x, 4 sts. 1 x, 3 sts. 3 x, and 2 sts. 2 x. Rows 153-182: **On each side** of every other row decrease 1 st. 2 x and bind off 2 sts. 1 x. Repeat these 3 decreases 4 x. Rows 183-188: **On each side** of every other row bind off 3 sts. 2 x, 4 sts. 1 x, and the remaining 13 sts.

**COLLAR:** See Notes to Knit By on inside back cover (short rows). Cast on 117 sts. with white. Work with Tension 5 at first. Rows 1-14: **On the left side** put 42 needles in holding position and work 1 row. On the **right side** put 42 needles in holding position and work 1 row. Now, **on each side,** one after another, bring 10 needles back into working position 1 x, 8 needles 2 x, 6 needles 2 x, and 4 needles 1 x. Rows 15-76: Work even; at Row 25 work 10 rows with Tension 6, 22 Rows with Tension 7, 10 rows with Tension 6, and continue with Tension 5. Rows 77-82: **On each side,** one after another, put 14 needles in holding position 3 x. Rows 83-84: **On the left side** bring all the needles into working position and work 1 row. On the **right side** bring all the needles into working position and work 1 row. Bind off all sts.

**BUTTON AND BUTTONHOLE STRIPS:** Cast on 24 sts. with white. Work in Stockinette St. for 226 rows with Tension 6 (7) and bind off all sts. Make the Buttonhole. Strip the same; however, to make the vertical buttonholes, at rows 7, 49, 91, 133, 175 and 217 divide the work between the 7th-8th and 18th-19th needles, and work in three sections for 8 rows. Remember to return your row counter to correct Row each time you complete section of vertical buttonhole.

**FINISHING:** Join front and back sections at side seams in slip stitch, overlapping 1/2 st. from each section. Sew shoulder seams. Sew sleeve edges together and sew sleeves to sweater. Join button and buttonhole strips to front section in slip stitch overlapping 1 st. from each section; then fold the button and buttonhole strips and hem on the wrong side. Fold collar in half lengthwise and sew the front edges. Place open edge of collar around jacket neckline and attach. Finish buttonholes and sew on button.

## WOMAN'S CARDIGAN, No. DP 7365

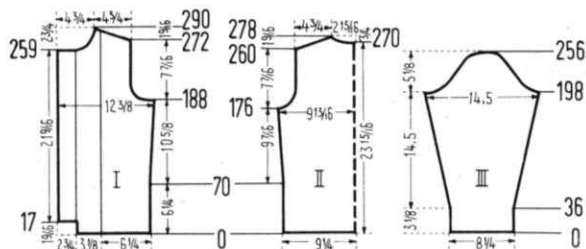


**SIZE:** 14/16. **MATERIAL:** 14 oz. light blue. **FOR EXAMPLE:** KNITTING Mutella. Bearbrand Evermatch Sport and Sweater. Spinnerin Nylaine Fingering. **TENSION:** KNITTING 6 or 7. **GAUGE:** Stockinette 16 sts. 2", 22 rows 2". Pattern Stripe 20 sts. 2", 22 rows 2". **PATTERN:** Stockinette. Pattern Stripe: Alternate 2 purl sts., 1 knit st. to do this, work throughout over 2 needles on the **RIBBER** and 1 needle on the main machine. The non-working-position needles on the main machine are not counted in the gauge or in the directions.

**BACK:** (Figure II). Cast on 151 sts. Rows 1-176: Increase 1 st. at beginning of Row 71 and 72 and again on each side every 20th row 4 x. (161 sts.). Rows 177-198: **Armhole Shaping.** Bind off 4 sts. beginning next 2 Rows; then on every other row on each side bind off 3 sts. 2 x, 2 sts. 2 x, decrease 1 st. 2 x; then on every 4th row decrease 1 st. 2 x. (125 sts.). Rows 199-260: Work even. Rows 261-278: **Shoulder and Neck Shaping.** On each shoulder side bind off 3 sts. 2 x and 4 sts. 8 x. (38 sts. for each shoulder). **AT THE SAME TIME,** at Row 271 bind off the 21 center sts. with a separate yarn, put needles on the left into holding position and complete the right side first. When cam box is on **neck side** bind off 7 sts. 1 x, 4 sts. 1 x, and 3 sts. 1 x. Put needles on the left into working position, row counter back to 270 and complete the left side.

**FRONT:** (Figure I). Cast on 83 sts. - 32 sts. for the Pattern Stripe and 51 sts. Stockinette. Rows 1-17: Work even. Then on the left side cast on 19 sts., and work these sts. in Stockinette. Rows 18-188: On the **right side** increase 1 st. at Row 71 and again every 20th row 4 x. **AT THE SAME TIME,** make





**BUTTONHOLES** at Rows 25, 63, 101, 139, and 177, over the 3rd-6th and 14th-17th needles. (107 sts.) Rows **189-212: Armhole Shaping.** Bind off 6 sts.; then on every other row bind off 4 sts. 1 x, 3 sts. 2 x, 2 sts. 2 x, decrease 1 st. 2 x and then on every 4th row decrease 1 st. 2 x. (83 sts.) Rows **213-259: Work even, making BUTTONHOLE** at Rows 215 and 253. Rows **260-290: Neck and Shoulder Shaping.** On neck side, bind off 19 sts.; then on every other row bind off 4 sts. 2 x, 3 sts. 2 x, 2 sts. 3 x, decrease 1 st. 2 x; then on every 4th row decrease 1 st. 2 x. **AT THE SAME TIME,** at Row 273, for the **Shoulder Shaping,** on every other row bind off 4 sts. 10 x. Make another front section with reverse shapings, minus buttonholes.

**SLEEVE:** (Figure III). Cast on 67 sts. Rows **1-198:** Increase 1 st. at beginning of Row 37 and 38 and again on each side every 6th row 23 x and every 8th row 2 x. (119 sts.) Rows **199-212: Underarm Shaping.** On every other row on the back side of the sleeve bind off 4 sts. 1 x, 3 sts. 2 x, 2 sts. 3 x, decrease 1 st. 1 x; and on the front side of the sleeve bind off 6 sts. 1 x, 4 sts. 2 x, 3 sts. 2 x, and 2 sts. 2 x. Rows **213-248:** Decrease 1 st. on each side of every other row 1 x, bind off 2 sts. 1 x, decrease 1 st. 1 x, bind off 2 sts. 1 x, and decrease 1 st. 14 x. Rows **249-256: On each side** of every other row bind off 2 sts. 1 x, 3 sts. 2 x, 4 sts. 1 x, and the remaining 14 sts. Make another sleeve with reverse shapings.

**COLLAR: See Notes to Knit By** on inside back cover (Short rows). Cast on 112 sts. At the beginning work with Tension 5. Rows **1-14:** On the left side put 40 needles in holding position and work 1 row. On the right side put 40 needles in holding position and work 1 row. Now, on each side, one after another, put 10 needles in working position 1 x, 7 needles 2 x, 6 needles 2 x, and 4 needles 1 x. Rows **15-76:** Work even: At Row 25 work 10 rows with Tension 6, 22 rows with Tension 7, 10 rows with Tension 8, and continue with Tension 5. Rows **77-84:** On each side, one after another, put 13 needles in holding position 2 x and 14 needles in holding position 1 x. Rows **85-86:** On the left side bring all needles into working position and work 1 row. On the right side bring all needles into working position and work 1 row. Bind off all sts.

**FINISHING:** Smock the front sections, as explained in "Practical Knitting Hints", Page 32. Join front and back sections at side and shoulder seams, easing in the fullness at bust-line of front sections. Sew sleeve edges together and sew sleeves to sweater. Make a 1/2" hem at sweater and sleeve bottoms, and 1 1/4" hem at front edges. Fold collar in half lengthwise and sew front edges. Place open end of collar around sweater neckline, leaving the button and buttonhole edgings free, and attach. Finish buttonholes and sew on buttons.

### CHANGE OF ADDRESS . . .

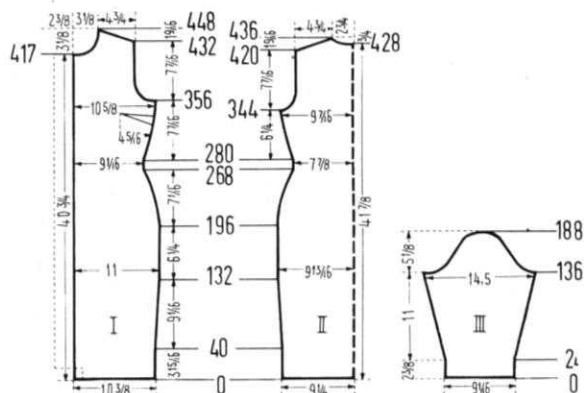
If you change your address be sure to notify us immediately. The Post Office will not forward your magazine from your old address and it will not be returned to us.

## WOMAN'S DRESS, No. DK 7362



**SIZES:** 12/14 and 16/18. **MATERIAL:** 12/14 - 23 oz.; 16/18 - 27 oz. light blue. Both Sizes - 1 oz. white and 2 oz. black. **FOR EXAMPLE:** KNITTING Subita 2x4. Bearbrand, Casa Laine. Spinnerin Ambralon. **TENSION:** KNITTING 8 or 9. **GAUGE:** 15 sts. 2", 20 rows 2". **PATTERN:** Stockinette Stitch.

**SIZE: 12/14. BACK:** (Figure II). Cast on 141 sts. Rows **1-132:** Increase 1 st. at beginning of Row 41 and 42 and again on each side every 30th row 3 x. (149 sts.) Rows **133-196:** Work even. Rows **197-268:** Decrease 1 st. on each side at Row 197 and again every 6th row 7 x and every 4th row 7 x. (119 sts.) Rows **269-280:** Work even. Rows **281-344:** Increase 1 st. at beginning of Row 281 and 282 and again on each side every 4th row 4 x and every 6th row 7 x. (143 sts.) Rows **345-364: Armhole Shaping.** Bind off 4 sts. beginning next 2 rows; then on every other row, on each side, bind off 3 sts.



1 x, 2 sts. 2 x, decrease 1 st. 2 x, and then on every 4th row decrease 1 st. 2 x. (113 sts.) Rows **365-420:** Work even. Rows **421-436: Shoulder and Neck Shaping.** On each shoulder side, on every other row bind off 4 sts. 9 x. (36 sts. for each shoulder). **AT THE SAME TIME,** at beginning of Row 429, bind off the 15 center sts., with a separate yarn, put needles on the left into holding position and complete the right side first. When cam box is on neck side, bind off 6 sts. 1 x, 4 sts. 1 x, and 3 sts. 1 x. Put needles on the left into work position, row counter back to 428 and complete the left side.

**FRONT:** (Figure I). Cast on 80 sts. Rows **1-132:** On the left side make **BUTTONHOLES** at Rows 34, 76, and 118, over the 4th-7th needles. **AT THE SAME TIME,** on the right side, increase 1 st. at beginning of Row 41 and again every 30th row 3 x. (84 sts.) Rows **133-196:** Work even, making a **BUTTONHOLE** at Row 160. Rows **197-268:** On the right side decrease 1 st. at Row 197 and again every 6th row 7 x and every 4th row 7 x. **AT THE SAME TIME,** make **BUTTONHOLES** at Rows 202 and 244. (69 sts.) Rows **269-280:** Work even. Rows **281-356:** On the right side, increase 1 st. at beginning of Row 281 and again every 6th row 11 x. **AT THE SAME TIME:** make **BUTTONHOLES** at Rows 286 and 328. (81 sts.) Rows **357-374: Armhole Shaping.** Bind off 6 sts.; then on every other row bind off 4 sts. 2 x, 2 sts. 2 x, decrease 1 st. 2 x; then decrease 1 st. on the 4th row 1 x. **AT THE SAME TIME,** make a **BUTTONHOLE** at Row 370 (60 sts.). Rows **375-417:** Work even, making a **BUTTONHOLE** at Row 412. Rows **418-448: Neck and Shoulder Shaping.** On neck side, bind off 8 sts., then on every other row bind off 3 sts. 2 x, 2 sts. 3 x, decrease 1 st. 2 x; then on every 4th row decrease 1 st. 2 x. **AT THE SAME TIME, Shape Shoulder** at Row 433, and on every other row bind off 4 sts. 9 x. The second front section is worked with reverse shapings; however, at the beginning cast on 70 sts., and at beginning of Row 17, on the right side

cast on 27 sts. For the **neck shaping**, at row 417 bind off 25 sts. (instead of 8 sts.) and follow instructions to complete the left front.

**SLEEVE:** (Figure III). Cast on 69 sts. Rows 1-136: Increase 1 st. at beginning of Row 25 and 26 and again on **each side** every 4th row 7 x and every 6th row 13 x. (111 sts.). Rows 137-148: **Underarm Shaping**. On every other row on the **back side** of the sleeve bind off 5 sts. 1 x, 4 sts. 1 x, 3 sts. 2 x, 2 sts. 2 x, and on the **front side** bind off 7 sts. 1 x, 5 sts. 1 x, 3 sts. 1 x, and 2 sts. 1 x. Rows 149-180: Decrease 1 st. on **each side** of every other row 16 x. Rows 181-188: **On each side** of every other row bind off 2 sts. 2 x, 3 sts. 1 x, 4 sts. 1 x, and the remaining 13 sts. Make another sleeve with reverse shapings.

**FRONT EDGING:** The front edging is worked in two sections with Tension 7 (8). Cast on 134 sts. with white. Rows 1-2: Stockinette. Rows 3-10: Work with black: 2 rows Stockinette, 4 rows Holding Position (to do this, starting at the right, put every 4th needle in holding position) and 2 rows Stockinette. Rows 11-12: Work in Stockinette with white, and bind off all sts. Cast on 134 sts. for the second section. To shape the point, on the **left side** increase 1 st. at Rows 3 and 5, and decrease 1 st. at Rows 9 and 11. For the Holding Position Stripe, at first put the 3rd needle and then every 4th needle in holding position.

**NECK EDGING:** Cast on 111 sts. To shape the point, on the **right side** increase 1 st. at Rows 3 and 5 and decrease 1 st. at Rows 9 and 11. For the Holding position Stripe, at first put the 6th needle, and then every 4th needle in holding position. Bind off all sts.

**BELT:** Make 2. With white, cast on 101 sts. Work with Tension 7 (8). Rows 1-2: Stockinette. Rows 3-10: Work with black: 2 rows Stockinette, 4 rows Holding Position (To do this, put the 3rd needle and then every 4th needle in holding position) and 2 rows Stockinette. Rows 11-12: Work in Stockinette with white. Repeat Rows 1-12 1 x and bind off all sts.

**FINISHING:** Sew darts in front section as illustrated. Join front and back sections at side and shoulder seams. Sew sleeve edges together and sew sleeves to dress. Make a 1½" hem at bottom and left front edge of dress. Make a 1¼" hem at bottom of sleeves. Join sections of front edging in slip st., overlapping ½ st. from each section. Join front edging to neck edging, fold around right front edge and neck edge of dress and attach. Finish buttonholes and sew on buttons. Join the two belt sections together in slip st., overlapping ½ st. from each section. Fold belt in half lengthwise and sew edge. Thread an elastic band through the belt, and sew on hook and eye.

**SIZE:** 16/18. **BACK:** (Figure II). Cast on 156 sts. Rows 1-132: Increase 1 st. at beginning of Row 41 and 42 and again on **each side** every 30th row 3 x. (164 sts.). Rows 133-196: Work even. Rows 197-272: Decrease 1 st. on **each side** at Row 197 and again every 8th row 2 x, every 6th row 5 x, and every 4th row 7 x. (134 sts.). Rows 273-284: Work even. Rows 285-352: Increase 1 st. at beginning of Row 285 and again on **each side** every 4th row 2 x and every 6th row 9 x. (158 sts.). Rows 353-374: **Armhole Shaping**. Bind

off 5 sts. beginning next 2 rows; then on every other row on **each side** bind off 4 sts. 1 x, 3 sts. 1 x, 2 sts. 1 x, decrease 1 st. 3 x; then decrease 1 st. on every 4th row 2 x. (120 sts.). Rows 375-432: Work even. Rows 433-448: **Shoulder and Neck Shaping**. On **each shoulder side**, on every other row bind off 4 sts. 7 x and 5 sts. 2 x. (38 sts. each shoulder). **AT THE SAME TIME**, at beginning of Row 441 bind off the 16 center sts. with a separate yarn, put needles on the left into holding position and complete the right side first. When cam box is on neck side bind off 6 sts. 1 x, 5 sts. 1 x, and 3 sts. 1 x. Put needles on the left into work position, row counter back to 440 and complete the left side.

**FRONT:** (Figure I). Cast on 90 sts. Rows 1-132: On the **left side**, make **BUTTONHOLES** at Rows 33, 77 and 121 over the 4th-7th needles. **AT THE SAME TIME**, on the **right side**, increase 1 st. at beginning of Row 41 and again every 30th row 3 x. (94 sts.). Rows 133-196: Work even, making a **BUTTONHOLE** at Row 165. Rows 197-272: On the **right side**, decrease 1 st. at Row 197 and again every 8th row 2 x, every 6th row 5 x, and every 4th row 7 x. **AT THE SAME TIME**, make **BUTTONHOLES** at Rows 209 and 253. (79 sts.). Rows 273-284: Work even. Rows 285-368: On the **right side** increase 1 st. at beginning of Row 285 and again every 6th row 11 x. **AT THE SAME TIME**, make **BUTTONHOLES** at Rows 297 and 341. (91 sts.). Rows 369-392: **Armhole Shaping**. Bind off 8 sts.; then on every other row bind off 5 sts: 1 x, 4 sts. 1 x, 3 sts. 1 x, 2 sts. 2 x, decrease 1 st. 2 x; then decrease 1 st. every 4th row 2 x. **AT THE SAME TIME**, make a **BUTTONHOLE** at Row 385. (63 sts.). Rows 393-433: Work even, making a **BUTTONHOLE** at Row 429. Rows 434-464: **Neck and Shoulder Shaping**. At **Neck edge**, bind off 9 sts.; then on every other row bind off 3 sts. 2 x, 2 sts. 3 x, decrease 1 st. 2 x; then on every 4th row decrease 1 st. 2 x. **AT THE SAME TIME**, at beginning of Row 449, for the **shoulder shaping**, on every other row bind off 4 sts. 7 x and 5 sts. 2 x. (38 sts. shoulder). The second front section is worked with reverse shapings minus buttonholes. However, at the beginning cast on 81 sts.; and at Row 17 on the **right side** cast on 27 sts. For the **neck shaping**, at beginning of row 435 bind off 27 sts. (instead of 9 sts.) and then follow instructions to complete the left front.

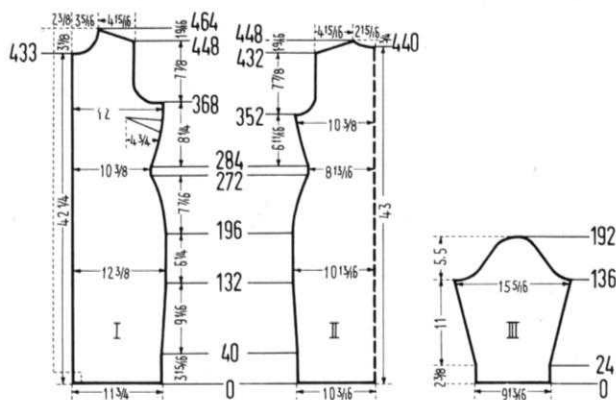
**SLEEVE:** (Figure III). Cast on 75 sts. Rows 1-136: Increase 1 st. beginning of Row 25 and 26 and again on **each side** every 4th row 7 x and every 6th row 13 x. (117 sts.). Rows 137-148: **Underarm Shaping**. On every other row on the **back side** of the sleeve bind off 5 sts. 1 x, 4 sts. 1 x, 3 sts. 2 x, 2 sts. 2 x; on the **front side** bind off 7 sts. 1 x, 5 sts. 1 x, 4 sts. 2 x, 3 sts. 1 x, and 2 sts. 1 x. Rows 149-184: Decrease 1 st. on **each side** of every other row 18 x. Rows 185-192: **On each side** of every other row bind off 2 sts. 1 x, 3 sts. 2 x, 4 sts. 1 x, and the remaining 13 sts. Make another sleeve with reverse shapings.

**FRONT EDGING:** The front edging is worked in two sections with Tension 7 (8). Cast on 142 sts. with white. Rows 1-2: Stockinette. Rows 3-10: Work with black: 2 rows Stockinette, 4 rows Holding Position (to do this, starting at the right, put every 4th needle in holding position) and 2 rows Stockinette. Rows 11-12: Work in Stockinette with white, and bind off all sts. Cast on 138 sts. for the second section. To shape the point, on the **left side** increase 1 st. at Rows 3 and 5, and decrease 1 st. at Rows 9 and 11. For the Holding Position Stripe, at first put the 3rd needle and then every 4th needle in holding position.

**NECK EDGING:** Cast on 117 sts. To shape the point, on the **right side** increase 1 st. at Rows 3 and 5 and decrease 1 st. at Rows 9 and 11. For the Holding position Stripe, at first put the 6th needle, and then every 4th needle in holding position. Bind off all sts.

**BELT:** Make 2. With white, cast on 117 sts. Work with Tension 7 (8). Rows 1-2: Stockinette. Rows 3-10: Work with black. 2 rows Stockinette, 4 rows Holding Position (To do this, put the 3rd needle and then every 4th needle in holding position) and 2 rows Stockinette. Rows 11-12: Work in Stockinette with white. Repeat Rows 1-12 1 x and bind off all sts.

**FINISHING:** Follow Directions for Size 12/14.



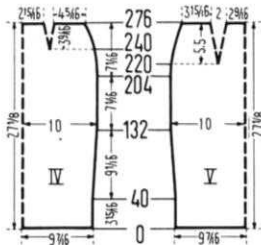
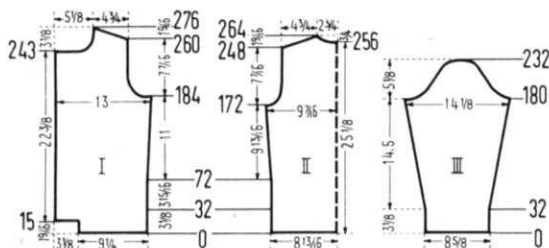


# BEGINNERS SECTION ...

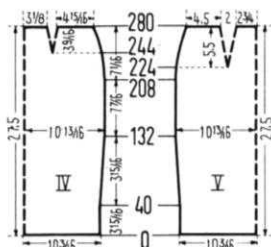
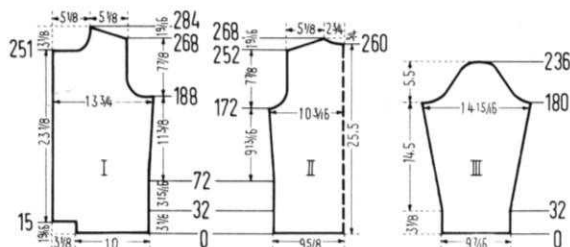
## WOMAN'S TWO PIECE DRESS, No. DK 7361 —



Sizes 12/14 and 16/18



SIZE  
12/14



SIZE  
16/18

**MATERIAL:** KNITKING Subita 2x4. Bearbrand Deluxe Sock and Sport Spinnerin Ambralon.  $\frac{3}{4}$  yard tafetta 55" wide.

**TENSION:** KNITKING 8 or 9. **GAUGE:** 15 sts. 2", 20 rows 2".

**PATTERN:** Stockinette

Blocked measurements for Size	12/14	Size 16/18
Bust	41"	44 $\frac{1}{2}$ "
Back Shoulder to Sh.	14 $\frac{1}{2}$ "	15 $\frac{1}{4}$ "
Sleeve Length	21 $\frac{1}{8}$ "	21 $\frac{1}{2}$ "
Hip	39 $\frac{1}{2}$ "	41"
Waist	27 $\frac{1}{4}$ "	30"
Completed Skirt length	25 $\frac{1}{2}$ "	26"

**MATERIAL:** KNITKING Subita 2x4

Skirt - Blue	13 oz.	14 oz.
Jacket - Blue	18 oz.	22 oz.
Small amount of White for each size.		

**SKIRT BACK:** (Figure V)

Cast on with blue stitches 145 156  
Both sizes increase 1 stitch when counter reads 40, 41, 70, 71, 100, 101, 130, 131

Knit till counter reads	204	208
Decrease 1 stitch on each side when counter reads AND AT THE SAME TIME MAKE DARTS on each side on rows listed in dart column only.	204	208

Dec. Row	Dart Row	Dec. Row	Dart Row
204	220	208	224
212	228	216	232
220	236	224	238
228	244	232	246
234	252	238	254
240	260	244	262
246	268	250	270
252	276	256	278
256	284	260	286
260	292	264	294
264	300	268	302
268	308	272	310
272	316	276	318

TO MAKE THE DARTS, put the 46th & 48th stitches on each side on the needle and move the stitches over to fill the empty needles.

Bind off remaining stitches 99 122

**SKIRT FRONT** (Figure IV)

Work same as the back except for the darts which will be made at rows

240	244
248	252
256	260
264	268
43rd & 45th	47th & 49th
44th	48th

by putting the stitches on the needle and move the stitches over to fill the empty needles.

**JACKET BACK** (Figure II)

Cast on with Blue. Knit with tension 7 (8) stitches

Knit 20 rows Blue  
4 rows white  
2 rows Blue  
2 rows White  
4 rows Blue

Make hem by putting each cast on stitch back on the machine. Change to tension 8 (9).

12/14	16/18
136	148

Both Sizes increase 1 st. when counter reads 72, 73, 96, 97, 120, 121, 144, 145	12/14	16/18
Number of stitches	144	156
Knit to row	172	172

**ARMHOLE SHAPING:** Bind off when counter reads

172, 173 (4 sts.)	172, 173 (4 sts.)
174, 175 (3 sts.)	174, 175, (3 sts.)
176, 177 (2 sts.)	176, 177 (3 sts.)
178, 179 (2 sts.)	178, 179 (2 sts.)

Work even till counter reads

248	252
-----	-----

**SHOULDER AND NECK SHAPING**

On each shoulder side (every other row) bind off

4 sts. 9x	4 sts. 6x 5 sts. 3x
-----------	------------------------

**AT THE SAME TIME**

when counter reads

256	260
-----	-----

Bind off the center

18	18
----	----

stitches with a separate yarn, put needles on the left into holding position and complete the right side first.

Bind off on neck side when counter reads

257 (5 sts.)	261 (5 sts.)
259 (4 sts.)	263 (4 sts.)
261 (3 sts.)	265 (3 sts.)

Put needles on the left into working position, row counter back to and complete the left side

256	260
-----	-----

**JACKET FRONT** (Figure I)

12/14	16/18	
Cast on with Blue stitches	71	77
Knit with tension 7 (8)		
Knit 20 rows Blue		
4 rows White		
2 rows Blue		
2 rows White		
4 rows Blue		

**BUT AT THE SAME TIME**

on the **left side** when counter reads

16	16
----	----

cast on

24	24
----	----

stitches with a separate yarn and when counter reads make buttonholes over the 3rd to 7th and 18th to 22 needles counting from the **left side**.

When counter reads

32	32
----	----

put the

71	77
----	----

cast on stitches back on the machine and continue with Tension 8 (9)

	Inc.	Button H.	Inc.	Button H.
On the <b>right side</b> increase 1 stitch when counter reads and make buttonholes on the left on rows listed in buttonhole column.	72	63	72	64
	86		86	
	110	101	110	103
	134		134	
		139		142
		177		181
Number of stitches	99		105	
Knit to row	184		188	

**ARMHOLE SHAPING:** Bind off

8 stitches, then on every other row at arm edge bind off

4 sts. 1x	5 sts. 1x
3 sts. 2x	3 sts. 2x
2 sts. 1x	2 sts. 1x
1 st. 2x	1 st. 2x
1 st. 2x	1 st. 2x

Then every 4th row decrease

243	251
-----	-----

Work even till counter reads

**NECK AND SHOULDER SHAPING**

At neck edge bind off

24 sts.	24 sts.
---------	---------

On every other row bind off neck side

3 sts. 2x	3 sts. 2x
2 sts. 2x	2 sts. 2x
1 st. 3x	1 st. 3x
1 st. 2x	1 st. 2x

On every 4th row decrease

1 st. 2x	1 st. 2x
----------	----------

**AT THE SAME TIME SHAPE**

**SHOULDER**

when counter reads

260	268
-----	-----

On every other row bind off

4 sts. 9x	4 sts. 6x 5 sts. 3x
-----------	------------------------

Make another front with REVERSE shaping minus buttonholes.

**SLEEVE:** (Figure III)

12/14	16/18	
Cast on with Blue stitches	66	72

Knit with tension 7 (8)

Knit 20 rows Blue

4 rows White
2 rows Blue
2 rows White
4 rows Blue

Put each cast on stitch back on the machine and continue with tension 8 (9). **Both sizes**

increase 1 stitch

when counter reads

32,33 — 38,39
44,45 — 50,51
56,57 — 62,63
68,69 — 74,75
80,81 — 86,87
92,93 — 100,101
108,109 — 116,117
124,125 — 132,133
140,141 — 148,149
156,157 — 164,165
172,173

Knit to row

180	180
-----	-----

Number of stitches

108	114
-----	-----

**UNDERARM SHAPING: Both**

sizes. On every other row and noting the column for right and (back side) left side bind off

Right	Left
4 sts. 2x	8 sts. 1x
3 sts. 1x	5 sts. 1x
2 sts. 3x	3 sts. 2x
	2 sts. 2x

Decrease 1 stitch on each side of every other row

16x	18x
-----	-----

On each side of every other row bind off (both sizes)

2 sts. 1x
3 sts. 1x
4 sts. 2x

Bind off remaining stitches

10	12
----	----

Make another sleeve with reverse shaping, changing the front side of sleeve to the **right** and back side of sleeve to the **left**.

**NECK EDGING** (both sizes). Cast on 120 stitches with White. Work 20 rows stockinette 3 rows white, 2 rows blue, 2 rows white and 13 rows blue and changing the tension as follows: 4 rows tension 8, 4 rows tension 7, 4 rows tension 6, 4 rows tension 7, 4 rows tension 8. **AT THE SAME TIME** make **BUTTONHOLES** at rows 6 and 15, over the 6th to 10th needles, counting from the left edge. Bind off all stitches.

**POCKETS:** (make 2). Cast on 39 stitches with Blue. Knit 36 rows blue, 4 rows white, 2 rows blue, 2 rows white, 16 rows blue. Bind off all stitches.

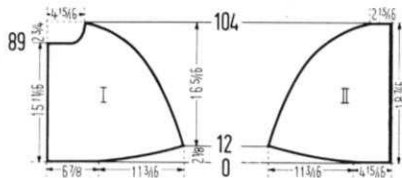
**FINISHING: SKIRT:** Join front and back sections at side seams, leaving an 8" opening at top of left side for zipper. Make a narrow hem around opening. Make a 1½" hem at bottom of skirt. Sew an elastic band to the top of the skirt, and sew zipper in placket. Sew on hooks and eyes, and line skirt with tafetta.

**JACKET.** Join front and back sections at side and shoulder seams, easing in the fullness at bustline of front section. Sew sleeve edges together and sew sleeves to jacket. Make



a hem 1½" wide at jacket fronts. Fold neck edging around neck opening and attach. Make a hem 12 rows wide at the top of the pockets and sew pockets to jacket. Finish buttonholes and sew on buttons.

## WOMAN'S CAPE, No. DV 7297



**MATERIAL:** KNITKING Mohair, or Spinnerin Mohair Boucle.

**TENSION:** KNITKING 10 OVER EVERY OTHER NEEDLE.

**GAUGE:** 9 sts. 11 rows to 2 inches.

SIZE:	10/12	14/16	18/20
Be sure to read Notes to Knit By on inside back cover (short rows).			
Amount:	Olive 10 oz.	10 oz.	11 oz.
	Charcoal 2 oz.	2 oz.	3 oz.

BACK: (Made in two pieces)	10/12	14/16	18/20
Cast on stitches	70	72	76

**ALL SIZES:** Knit 1 row.  
On the RIGHT side put 34 needles into holding position.  
Knit 2 rows.  
On the RIGHT side, one after another bring back into working position  
7 needles 4 x  
6 needles 1 x  
Decrease 1 stitch on RIGHT side when counter reads 16, 20, 24, 28, 32, 36, 40, 44, 48, 52, 56, 60.  
Decrease 1 stitch on RIGHT side EVERY OTHER ROW 14 x.

When counter reads 90 SHAPE SHOULDER on RIGHT side.  
On EVERY OTHER row,  
bind off

	4 sts. 2 x	4 sts. 2 x	3 sts. 1 x
	5 sts. 4 x	5 sts. 4 x	4 sts. 2 x
			5 sts. 4 x

At Row 104 104 106  
Bind off remaining sts. 16 18 19  
Make another back section with reverse shaping casting on from the right to left side and the shaping will be on the left side.

### FRONT

	10/12	14/16	18/20
Cast on stitches	78	80	84

**ALL SIZES:** Knit 1 row  
On the RIGHT side put 34 needles into holding position.  
Knit 2 rows.  
On the RIGHT side, one after another bring back into working position  
7 needles 4 x  
6 needles 1 x  
Decrease 1 stitch on RIGHT side when counter reads 16, 20, 24, 28, 32, 36, 40, 44, 48, 52, 56, 60, 64. Decrease 1 stitch on RIGHT side EVERY OTHER ROW 10 X.

When counter reads 86, decrease 1 stitch on RIGHT side and make buttonholes over needles 4, 5, 6, 7, and 16, 17, 18, 19 counting from the LEFT edge. (Make buttonholes by knitting them by hand with crochet thread or light weight yarn which will be pulled out when you finish your buttonholes later). Continue knitting as usual).

Decrease 1 stitch on RIGHT side when counter reads 88 and 90.

10/12 14/16 18/20  
**SHAPE SHOULDER and NECK:** When counter reads 91, bind off 22 neck stitches, then on EVERY OTHER ROW on NECK side, bind off  
1 st. 2 x 1 st. 4 x 1 st. 5 x  
**AT THE SAME TIME** when counter reads 92 shape shoulder on EVERY OTHER row by binding off

	4 sts. 2 x	4 sts. 2 x	3 sts. 1 x
	5 sts. 4 x	5 sts. 4 x	4 sts. 2 x
			5 sts. 4 x

Make another Front section with reverse shaping casting on from right to left.

**BUTTON STRAP:** Cast on 14 stitches and knit 16 rows. Bind off.

**FINISHING:** The chart shown is for a size 14/16, the 10/12 is just a bit smaller and the 18/20 larger. It is important that you block the pieces of your cape before putting it together. An easy way to do this is to place your back pieces on top of each other, right sides together. Use basting thread and baste the pieces together with large stitches close to the edges. Leave the stitches quite loose so they will give. Do the same thing with your two fronts. Now pin the section on to your blocking cloth shaping them as you pin and checking with the chart shown. After they are pinned securely, steam them with a hot iron over a wet towel. Be careful not to allow the iron to rest on the towel. Allow the sections to dry thoroughly. Join the back sections down the center by weaving them together, or you may crochet them together with a slip stitch. Join the front and back sections at side seams being careful not to stretch them out of shape. Make a hem 11 stitches wide at front edges. Finish buttonholes. Crochet 2 rows slip stitch around neckline. Make fringe by cutting lengths of charcoal yarn 9 inches long. Using 2 or 3 strands, attach to bottom of cape by folding the strands in half and pulling the loop through from the right side to the wrong side and pulling the strands through the loop. Smooth the fringe out or gently steam if they are crinkled. Trim fringe evenly. Fold the button strap in half lengthwise and weave the edges. Sew a button to each end of strap and button to cape.

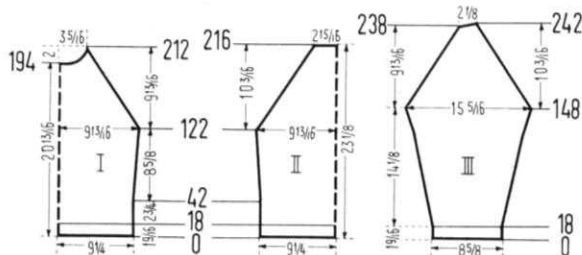
## WOMAN'S PULLOVER, No. DP 7366



**SIZES:** 12/14 and 16/18. **MATERIAL:** 12/14 12 oz., 16/18 14 oz. blue tweed.

**FOR EXAMPLE:** KNITKING, Regal, Unger, Les Coraux. **TENSION:** KNITKING 7 or 8. **GAUGE:** Stockinette 14 sts. 2", 18 rows 2"; K.1, P.1 Ribbing 14 sts. 2", 22 rows 2". **PATTERN:** Stockinette and cable stripe on the raglan seam. Cable Stripe: (1). Work 6 rows. (2). With 2 double transfer tools, on each side cross the sts. so that the 4th and 5th sts. are on the 2nd and 3rd needles, and the 2nd and 3rd sts. are on the 4th and

5th needles. Repeat steps 1 and 2 throughout. After 20 or 30 rows, on each side drop the 6th st. and latch up as knit sts. Edging and Collar: K.1, P.1 Ribbing.



**SIZE:** 12/14. **BACK:** (Figure II). Cast on 131 sts. Rows 1-18: K.1, P.1 Ribbing. Transfer ribber sts. to main machine. Rows 19-122: Increase 1 st. at beginning of Row 43 and 44 and again on each side every 20th row 3 x (139 sts.). Rows 123-216: **Raglan Shaping:** Bind off 2 sts. beginning of next

2 rows; then on every other row on each side decrease 1 st. 46 x. To do this, put the 7th st. on the 8th needle and move the edge sts. over to fill the empty needles. **AT THE SAME TIME**, work the **CABLE STRIPE**, crossing the sts. for the first time at Row 127. Bind off 43 sts.

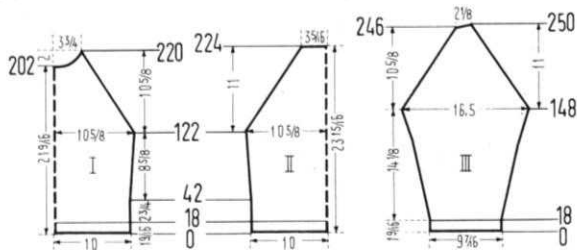
**FRONT:** (Figure I) The front is worked the same as the back to Row 212; however, for the neck shaping, at beginning of Row 195 bind off the 17 center sts. with a separate yarn, put needles on the left into holding position and complete the right side first. When cam box is on neck side, bind off 3 sts. 2 x, 2 sts. 2 x, decrease 1 sts. 2 x; then on the 4th row decrease 1 st. 1 x. On each side hang the 3 remaining sts. together by moving the 2 outside sts. onto the center needle and binding off. Put needles on the left into working position, row counter back to 194 and complete the left side.

**SLEEVE:** (Figure III). Cast on 61 sts. Rows 1-18: K1, P1 Ribbing. Transfer ribber sts. to main machine and continue in Stockinette. Rows 19-148: Increase 1 st. at beginning of Row 19 and 20 and again on each side every 6th row 16 x and every 4th row 7 x (109 sts.). Rows 149-238: Raglan Shaping. Bind off 2 sts. beginning of next 2 rows; then on every other row on each side decrease 1 st. 44 x. To do this, put the 7th st. on the 8th needle and move the edge sts. over to fill the empty needles. **AT THE SAME TIME**, work the **CABLE STRIPE**, crossing the sts. for the first time at Row 153. Rows 239-242: On the left side, one after another, put 5 needles in holding position 2 x. **AT THE SAME TIME**, on the right side decrease 1 st. on every other row 2 x. Bind off 15 sts. Make another sleeve with reverse shapings.

**COLLAR:** Cast on 155 sts. Work 48 rows K.1, P.1 Ribbing and bind off all sts.

**FINISHING:** Join front and back sections at side seams. Sew sleeve edges together and join to front and back sweater sections in slip st., overlapping 1 st. from each section. Sew ends of collar together so that collar is circular. Sew collar to sweater, and fold out.

**SIZE: 16/18. BACK:** (Figure II). Cast on 143 sts. Rows 1-18: K.1, P.1 Ribbing. Transfer rib sts. to main machine and continue in Stockinette. Rows 19-122: Increase 1 st. at beginning of Row 43 and 44 and again on each side every 20th row 3 x. (151 sts.). Rows 123-224: Raglan Shaping. Bind off 2 sts. beginning next 2 rows; then on every other row on each side decrease 1 st. 50 x. To do this, put the 7th st. on the 8th needle, and move the edge sts. over to fill the empty needles. **AT THE SAME TIME**, work the **CABLE STRIPE**, crossing the sts. for the first time at Row 127. Bind off 47 sts.



**FRONT:** (Figure I). The front is worked the same as the back to Row 220; however, for the neck shaping, at beginning of Row 203 bind off the 17 center sts. with a separate yarn, put needles on the left into holding position and complete the right side first. When cam box is on neck side bind off 4 sts. 1 x, 3 sts. 1 x, 2 sts. 2 x, and decrease 1 st. 4 x. On each side hang the 3 remaining sts. together by moving the 2 outside sts. onto the center needle and binding off. Put needles on the left into working position, row counter back to 202 and complete the left side.

**SLEEVE:** (Figure III). Cast on 67 sts. Rows 1-18: K.1, P.1 Ribbing. Transfer rib sts. to main machine and continue in Stockinette. Rows 19-148: Increase 1 st. at beginning of Row 19 and 20 and again on each side every 6th row 14 x and every 4th row 10 x (117 sts.). Rows 149-246: Raglan

**Shaping.** Bind off 2 sts. beginning next 2 rows, then on every other row on each side decrease 1 st. 48 x. To do this, put the 7th st. on the 8th needle and move the edge sts. over to fill the empty needles. **AT THE SAME TIME**, work the **CABLE STRIPE**, crossing the sts. for the first time at Row 153. Rows 247-250: On the left side, one after another, put 5 needles in holding position 2 x. **AT THE SAME TIME**, on the right side decrease 1 st. every other row 2 x. Bind off 15 sts. Make another sleeve with reverse shapings.

**COLLAR:** Cast on 163 sts. Work 48 rows K.1, P.1 Ribbing and bind off all sts.

**FINISHING:** Follow Directions for Size 12/14.

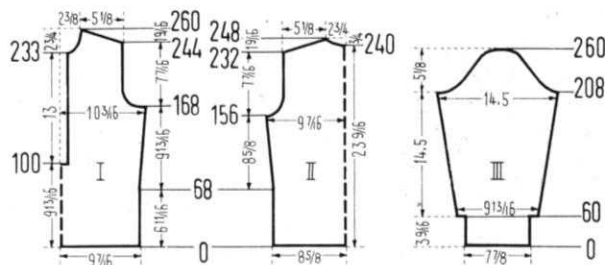
## WOMAN'S BLOUSE, No. DP 7364



**SIZE 12/14. MATERIAL:** 10 oz. violet. **FOR EXAMPLE:** Bucilla Glacé, 2 oz. blue and black tweed. **FOR EXAMPLE:** KNITTING Fine Dralon. **TENSION:** KNITTING Stockinette 6 or 7; K.1, P.1 Ribbing 2 or 3. **GAUGE:** Stockinette 15 sts. 2", 20 rows 2". K.1, P.1 Ribbing 19 sts. 2", 34 rows 2". **PATTERN:** Stockinette Stitch worn on Purl Side. Edging: K.1, P.1 Ribbing.

**BACK:** (Figure II) Cast on 132 sts. with violet. Work in Stockinette. with Tension 6 (7). Rows 1-156: Increase

1 st. at beginning of Row 69 and 70 and again on each side every 14th row 5 x. (144 sts.). Rows 157-176: Armhole Shaping. Bind off 4 sts. beginning of next 2 rows, then on every other row on each side bind off 3 sts. 1 x, 2 sts. 2 x, decrease 1 st. 2 x; then on every 4th row decrease 1 st. 2 x. (114 sts.).



Rows 177-232: Work even. Rows 233-248: Shoulder and Neck Shaping. On each shoulder side on every other row bind off 4 sts. 6 x and 5 sts. 3 x. **AT THE SAME TIME**, at beginning of Row 241 bind off the 14 center sts. with a separate yarn, put needles on the left into holding position and complete the right side first. When cam box is on neck side bind off 4 sts. 2 x and 3 sts. 1 x. Put row counter back to 240, all needles in working position and complete the left side.

**FRONT:** (Figure I). Cast on 144 sts. Rows 1-100: Increase 1 st. beginning of Row 69 and 70 and again on each side every 14th row 2 x. Now bind off the 10 center sts. with a separate yarn and continue work in two sections. Rows 101-168: Increase 1 st. at beginning of Row 111 and again every 14th row 2 x. Rows 169-190: Armhole Shaping. Bind off 6 sts.; then on every other row bind off 4 sts. 1 x, 3 sts. 1 x, 2 sts. 2 x, decrease 1 st. 2 x and then on every 4th row decrease 1 st. 2 x. Rows 191-233: Work even. Rows 234-260: Neck and Shoulder Shaping. On neck side, bind off 4 sts.; then on every other row on neck side bind off 3 sts. 1 x, 2 sts. 1 x, decrease 1 st. 2 x; then on every 4th row decrease 1 st. 2 x. **AT THE SAME TIME**, at Row 245, for the shoulder shaping, on every other row bind off 4 sts. 6 x and 5 sts. 3 x. Put needles on the left into working position, row counter back to 100 and complete the left side.

**SLEEVE:** (Figure III). Cast on 75 sts. with blue. Rows 1-60: K.1, P.1 Ribbing with Tension 2 (3). Now put the sts. from the RIBBER onto the empty needles of the main machine, and, to make the hem, put the cast on sts. back on the machine. Continue on with Tension 6 (7). Row 61: With



violet, work the sts. together. Reverse your knitting (use a reversing bar or take the knitting off on contrast yarn and reverse.) Continue in Stockinette St., over 75 sts. Rows 62-208: Increase 1 st. at beginning of Row 63 and 64 and again on each side every 8th row 17 x. (111 sts.). Rows 209-222: **Underarm Shaping.** On every other row on the back side of the sleeve bind off 4 sts. 1 x, 3 sts. 2 x, 2 sts. 2 x, decrease 1 st. 2 x; and on the front side bind off 6 sts. 1 x, 5 sts. 1 x, 3 sts. 2 x, 2 sts. 2 x, and decrease 1 st. 1 x. Rows 223-252: **On each side** of every other row bind off 2 sts. 1 x and decrease 1 st. 2 x. Repeat these 3 decreases 4 x. Rows 253-260: **On each side** of every other row bind off 2 sts. 2 x, 3 sts. 1 x, 4 sts. 1 x, and the remaining 11 sts. Make another sleeve with reserve shapings.

**BUTTON AND BUTTONHOLE STRIPS:** Cast on 125 sts. with blue. Work 54 rows K.1, P.1 Ribbing with Tension 2 (3) and bind off all sts. Make the buttonhole strip the same, with buttonholes at Rows 15 and 41 over the 27th-33rd, 63rd-69th, and 99th-105th needles, counting from the right edge.

**NECK EDGING:** Cast on 151 sts. with blue. Work 40 rows K.1, P.1 Ribbing with Tension 2 (3), making buttonholes on the left side at Rows 10 and 31 over the 11th-17th needles. Bind off all sts.

**SHOULDERS:** (Make 2). With blue, cast on 59 sts. Work 26 rows K.1, P.1 Ribbing with Tension 2 (3) and bind off all sts.

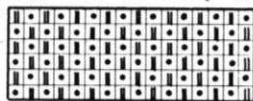
**FINISHING:** Join front and back section at side and shoulder seams, easing in the fullness at bustline of front section. Sew sleeve edges together and sew sleeves to sweater. Make a 1/4" hem at bottom of sweater. Fold button and buttonhole strips around sweater fronts and attach. Sew shoulder trim in place. Fold neck edging around neck opening and attach. Finish buttonholes and sew on buttons.

## WOMAN'S CARDIGAN, No. DP 7346



**SIZE:** 16/18. **MATERIALS:** 20 oz. brown tweed and 16 oz. egg-shell. **FOR EXAMPLE:** KnitKING Frigate or 4 ply knitting worsted. **TENSION:** KNITKING 10. **GAUGE:** Pattern Stitch 6 sts. 2", 24 rows 2"; Stockinette Stitch 6 sts. 2", 12 rows 2". The non-working position needles are not counted in the Gauge or in the Directions: **PATTERN:** 1 needle in working position, 2 needles out of operation. Holding Position Design on Purl Side, according to Chart. Bottom Edging: Stockinette.

**BACK:** (Figure II). Cast on 65 sts. over every 3rd needle, with brown tweed. Rows 1-12: Stockinette. Continue in Holding Position Design. Rows 13-190: Work even. Rows 191-214: **Armhole Shaping.** Bind off 3 sts. on each side; then on every 4th row bind off 2 sts. 1 x,

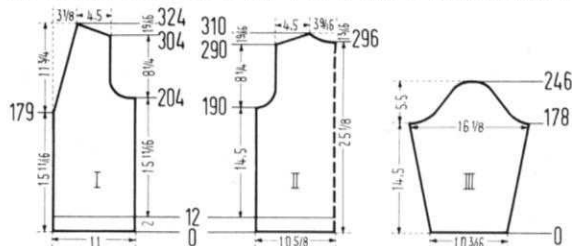


decrease 1 st. 1 x; then decrease 1 st. on the 6th row 1 x and on the 8th row 1 x. (49 sts.). Rows 215-290: Work even. Rows 291-310: **Shoulder and Neck Shaping.** On each shoulder side, on every other row decrease 1 st. 8 x and bind off 2 sts. 3 x. (14 sts. for each shoulder). **AT THE SAME TIME,** at beginning of Row 297 bind off the 9 center sts. with a separate yarn, put needles on the left into holding position and complete the right side first. When cam box is on neck side, on every 4th row bind off 3 sts. 1 x, 2 sts. 1 x, and decrease 1 st. 1 x. Put needles on the left into working position, row counter back to 296 and complete the left side.

**FRONT:** (Figure I). With brown tweed, cast on 34 sts. over every 3rd needle. Rows 1-12: Stockinette. Continue in Holding Position Design. Rows 13-179: Work even. Rows 180-324: **Front, Armhole, and Shoulder Shaping.** For the front shaping, decrease 1 st. at Row 180 and again every 14th row 9 x. **AT THE SAME TIME,** for the armhole shaping, bind off 4 sts. at Row 205; then on every 4th row bind off 2 sts. 2 x,

decrease 1 st. 1 x; then on the 8th row decrease 1 st. 1 x; and at Row 305, for the **shoulder shaping,** on every other row decrease 1 st. 8 x and bind off 2 sts. 3 x. Make another front section with reverse shapings.

**SLEEVE:** (Figure III). Cast on 31 sts., over every 3rd needle, with brown tweed. Work in Holding Position Design. Rows 1-178: Increase 1 st. at beginning of Rows 17 and 18 and again on each side every 18th row 8 x. (49 sts.). Rows 179-190: **Underarm Shaping.** On every 4th row, on the back side of the sleeve bind off 3 sts. 1 x, 2 sts. 1 x, decrease 1 st.



1 x; and on the front side bind off 4 sts. 1 x, 3 sts. 1 x, and 2 sts. 1 x. Rows 191-238: Decrease 1 st. on each side at Row 191 and again every 6th row 7 x. Rows 239-246: At beginning of Row 239 and 240 bind off 2 sts., then on every 4th row on each side bind off 4 sts. 1 x, and the remaining 6 sts. Make another sleeve with reverse shapings.

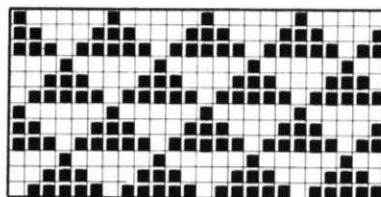
**FINISHING:** Join front and back sections at side and shoulder seams, easing in the fullness at bustline of front section. Sew sleeve edges together and sew sleeves to sweater. Make a 2" hem at bottom of sweater. At front, neck, and sleeve edges, crochet back and forth, as follows: Row 1: Slip Stitch. Row 2: Single Crochet, passing needle through the front loop of the sts. in the previous row. Row 3: Slip Stitch, passing needle through both loops of the sts. in the previous row, and on the right front section, make buttonholes. The first buttonhole is worked 1/2" from the bottom of the sweater, and the remaining 4 buttonholes are approximately 3 1/2" apart. To make a buttonhole, chain 5 sts. and skip 5 sts. Repeat rows 2 and 3, without buttonholes. Sew on buttons.

## MAN'S CARDIGAN, No. HP 3432



**SIZE:** 44/46. **MATERIAL:** 17 oz. black and 7 oz. yellow. **FOR EXAMPLE:** KNITKING Regal. Red Heart Nylon wool sport. **TENSION:** KNITKING Pattern Stitch 8 or 9, Stockinette Stitch and K.1, P.1 Ribbing 9 or 10. **GAUGE:** Pattern Stitch 15 sts. 2", 18 rows 2"; Stockinette Stitch 15 sts. 2", 20 rows 2"; K.1, P.1 Ribbing 15 sts. 2", 22 rows 2". **PATTERN:** Front: Norwegian Pattern Stitch according to Chart. Every row with the Norwegian Pattern Stitch is counted singly in the directions; however, for

each row several motions of the cam box are required. Back, Sleeves, and Button-Buttonhole Strips: Stockinette. Bottom Edging: K.1, P.1 Ribbing.

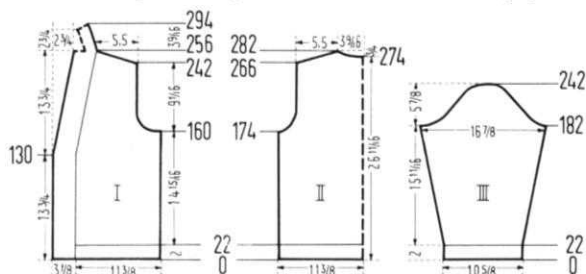


■ BLACK  
□ YELLOW

**BACK:** (Figure II). Cast on 175 sts. Work with Tension 9 (10). Rows 1-22: K.1, P.1 Ribbing. Transfer rib sts. to main machine and continue in stockinette. Rows 23-174: Work even. Rows 175-196: **Armhole Shaping.** Bind off 5 sts. beginning next 2 rows then on every other row on each side bind off 3 sts. 1 x, 2 sts. 3 x, decrease 1 st. 2 x, then on every 4th row decrease 1 st. 2 x. (139 sts.). Rows 197-266: Work even. Rows 267-282: **Shoulder and Neck Shaping.** On each shoulder side,

on every other row, bind off 4 sts. 3 x, and 5 sts. 6 x. (42 sts. for each shoulder). **AT THE SAME TIME**, at beginning of Row 275, bind off the 23 center sts. with a separate yarn, and continue working both sides at the same time using 2 balls of yarn for each color. When cam box is on **each neck side**, bind off 7 sts. 1 x, 6 sts. 1 x and 3 sts. 1 x.

**FRONT:** (Figure I). Cast on 111 sts. with black. Rows 1-22: For the front button strip, on the **left side** work 24 sts. in Stockinette. Over the remaining 87 sts.; work K.1, P.1 Ribbing with Tension 9 (10). Continue in Norwegian Pattern Stitch, with Tension 8 (9), working the front button strip in Stockinette. To do this, when you are working a row in yellow, put the 24 needles of the front edging into holding position, and when you are working a row in black, work over all the needles. Rows 23-130: Work even. Rows 131-256: **Front, Armhole, and Shoulder Shaping.** For the **front shaping**, decrease 1 st. at Row 131 and again every 6th row 20x. To do this, put the 25th st. on the 24th needle, and move the edge sts. over to fill the empty needle. **AT THE SAME TIME**, for the **armhole shaping**, bind off 6 sts. at beginning of Row 161; then on every other row bind off 5 sts. 1 x, 4 sts. 1 x, 3 sts. 1 x, 2 sts. 1 x, decrease 1 st. 2 x; then on every 4th row decrease 1 st. 2 x. At beginning of Row 243, for the **Shoulder Shaping**, on every other row bind off 5 sts. 6 x and 6 sts. 2 x. Over the remaining 24 sts. work the back section of the button strip. Rows 257-260: Work even. Rows 261-270: On the **left side** put 20 needles in holding position and work 2 rows. Bring all needles into working position and work 1 row. On the **right side** put 20 needles in holding position



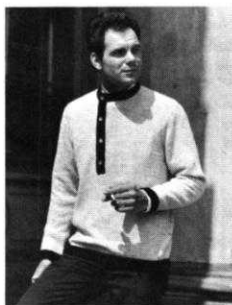
and work 2 rows. Bring all needles into working position and work 5 rows. Rows 271-294: Repeat Rows 261-270 2 x; however, put 16 needles into holding position 1 x, and put 20 needles into holding position 1 x, and then work 4 rows Stockinette. Put all sts. on a double pointed needle or contrast yarn. Make another front section with reverse shapings, making **BUTTONHOLES** at rows 11, 49, 87, and 125, over the 3rd-7th and 18th-22nd needles.

**SLEEVE:** (Figure III). Cast on 81 sts. Work with Tension 9 (10). Rows 1-22: K.1, P.1 Ribbing. Continue in Stockinette. Rows 23-182: Increase 1 st. at beginning of Row 29 and 30 and again on **each side** every 6th row 19 x and every 8th row 4 x. (129 sts.). Rows 183-194: **Underarm Shaping.** On every other row, on the **back side** of the sleeve bind off 5 sts. 1 x, 3 sts. 2 x, 2 sts. 3 x; and on the **front side** bind off 6 sts. 1 x, 5 sts. 1 x, 4 sts. 1 x, 3 sts. 1 x, and 2 sts. 2 x. Rows 195-234: On **each side** of every other row decrease 1 st. 3 x and bind off 2 sts. 1 x. Repeat these 4 decreases 4 x. Rows 235-242: On **each side** of every other row bind off 2 sts. 1 x, 3 sts. 2 x, 4 sts. 1 x, and the remaining 16 sts. Make another sleeve with reverse shapings.

**FINISHING:** Join front and back sections at side and shoulder seams. Sew sleeve edges together and sew sleeves to sweater. Weave button and buttonhole strips together at center back, and sew to sweater. Make a hem 12 sts. wide at button, buttonhole, and neck strips. Finish buttonholes and sew on buttons.

**BE SURE TO USE YOUR ZIP CODE  
IN ALL CORRESPONDENCE.**

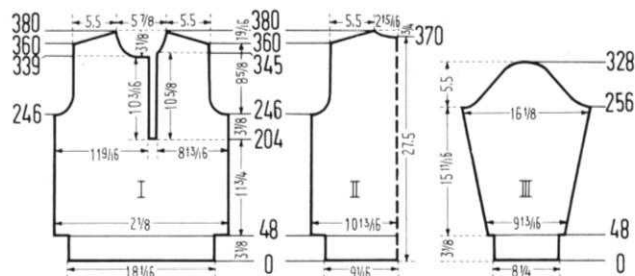
## MAN'S PULLOVER SHIRT, No. HP 3433



**SIZE:** 40/42. **MATERIAL:** 8 oz. light grey tweed, 2 oz. red tweed. **FOR EXAMPLE:** KNITTING Fine Dralon. Diamond Laine Eccosaise. Fleishers Evermatch, Columbia Minerva Fingering **TENSION:** KNITTING 2 or 3. **GAUGE:** Stockinette 18 sts. 2", 26 rows 2"; K.1, P.1 Ribbing 21 sts. 2", 30 rows 2". **PATTERN:** Stockinette. Edging: K.1, P.1 Ribbing. **BACK:** (Figure II). Cast on 195 sts. with red tweed. Rows 1-48: K.1, P.1 Ribbing. Then put the sts. from the RIBBER onto the empty needles of the main machine, and, to make

the hem, put the cast on sts. back on the machine. Rows 49-246: Increase 1 st. beginning next 2 rows and continue with Stockinette St. in grey over 197 sts. Rows 247-272: **Armhole Shaping.** Bind off 5 sts. beginning next 2 rows; then on every other row on **each side** bind off 4 sts. 1 x, 3 sts. 1 x, 2 sts. 2 x, decrease 1 st. 2 x; then on every 4th row decrease 1 st. 3 x. (155 sts.) Rows 273-360: Work even. Rows 361-380: **Shoulder and Neck Shaping.** On **each shoulder side**, on every other row bind off 4 sts. 5 x and 5 sts. 6 x. (50 sts. for each shoulder). **AT THE SAME TIME**, at beginning of Row 371 bind off the 25 center sts. with a separate yarn, put needles on the left into holding position and complete the right side first. When cam box is on **neck side** bind off 5 sts. 1 x, 4 sts. 1 x, and 3 sts. 2 x. Put needles on the left into work position, row counter back to 370 and complete the left side.

**FRONT:** (Figure I). The front is worked the same as the back to Row 204. On the **left side** put 106 needles in holding position and work the right section first. Rows 205-246: On the **left side** at beginning of Row 206 bind off 10 sts. for the opening. Rows 247-272: **Armhole Shaping.** Bind off 5 sts.; then on every other row bind off 4 sts. 1 x, 3 sts. 1 x, 2 sts. 2 x, decrease 1 st. 2 x; then on every 4th row decrease 1 st. 3 x. (60 sts.). Rows



273-345: Work even. Rows 346-380: **Neck and Shoulder Shaping.** On the **neck edge** bind off 2 sts.; then on every other row bind off 2 sts. 1 x, decrease 1 st. 2 x; then decrease 1 st. on every 4th row 2 x and on every 6th row 2 x. **AT THE SAME TIME**, at Row 361, for the **shoulder shaping**, on every other row bind off 4 sts. 5 x and 5 sts. 6 x. Now put the cam box on the **left side** and turn the row counter back to 204. Bring all the needles into working position and work the left section. Rows 205-246: Work even. Rows 247-272: **Armhole Shaping.** Bind off 5 sts.; then on every other row bind off 4 sts. 1 x, 3 sts. 1 x, 2 sts. 2 x, decrease 1 st. 2 x; then on every 4th row decrease 1 st. 3 x. (85 sts.). Rows 273-339: Work even. Rows 340-380: **Neck and Shoulder Shaping.** On the **neck edge** bind off 20 sts.; then on every other row bind off 3 sts. 1 x, 2 sts. 3 x, decrease 1 st. 2 x; then decrease 1 st. on every 4th row 2 x and on every 6th row 2 x. **AT THE SAME TIME**, at Row 361 for the **shoulder shaping**, on every other row bind off 4 sts. 5 x and 5 sts. 6 x.

**SLEEVE:** (Figure III). Make two. Cast on 89 sts. with red tweed. Rows 1-48: K.1, P.1 Ribbing. Then put the sts. from the RIBBER onto the empty needles of the main machine, and, to make the hem, put the cast on sts. back on the machine. Continue in stockinette with light grey, over 89 sts. Rows 49-256: Increase 1 st. at beginning of Row 57 and



58 and again **on each side** every 8th row 13 x and every 6th row 15 x. (147 sts.) Rows **257-270: Underarm Shaping.** **On each side** of every other row bind off 5 sts. 1 x, 4 sts. 1 x, 3 sts. 2 x, and 2 sts. 3 x. Rows **271-318: On each side** of every other row decrease 1 st. 3 x and bind off 2 sts. 1 x. Repeat these 4 decreases 5 x. Rows **319-328: On each side** of every other row bind off 2 sts. 2 x, 3 sts. 1 x, 4 sts. 1 x, 5 sts. 1 x, and the remaining 13 sts.

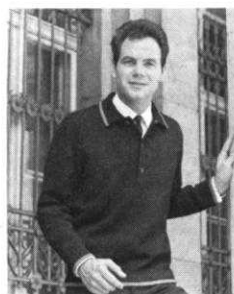
**BUTTON STRIP:** Cast on 113 sts. with red. Work 40 rows K.1, P.1 Ribbing and bind off all sts.

**BUTTONHOLE STRIP.** Cast on 109 sts. with red. Work 40 rows K.1, P.1 Ribbing, making **BUTTONHOLES** at Rows 10 and 31, over the 17th-22nd, 49th-54th, and 81st-86th needles, counting from the right edge. Bind off all sts.

**NECK EDGING:** Cast on 181 sts. with red. Work 40 rows K.1, P.1 Ribbing, making **BUTTONHOLES** at Rows 10 and 31, over the 10th-15th needles. Bind off all sts.

**FINISHING:** Join front and back sections at side and shoulder seams. Sew sleeve edges together and sew sleeves to sweater. Fold button and button hole strips around front edgings and attach. Fold neck edging around neckline and attach. Finish buttonholes and sew on buttons.

### MAN'S PULLOVER SHIRT, No. HP 3431



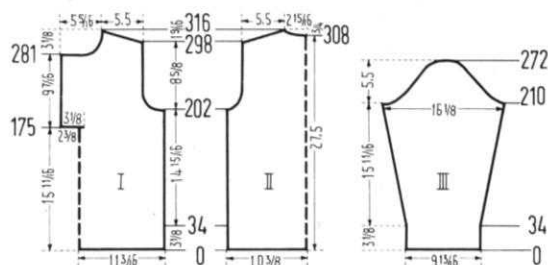
**SIZE:** 40/42. **MATERIAL:** 16 oz. black and 1 oz. Beige. **FOR EXAMPLE:** KNITKING Subita 2x3. Columbia Minerva Sports yarn. **TENSION:** KNITKING 5 or 6. **GAUGE:** 17 sts. 2", 22 rows 2". **PATTERN:** Stockinette.

**BACK:** (Figure II). Cast on 180 sts. Rows **1-34:** Work 12 rows black, 10 rows beige, and 12 rows black. To make the hem, put the cast on sts. back on the machine, and continue with black. Rows **35-202:** Work even. Rows **203-224:** Armhole Shaping. Bind

off 4 sts.; then on every other row bind off 3 sts. 2 x, 2 sts. 1 x, decrease 1 st. 3 x, and then on every 4th row decrease 1 st. 2 x. (146 sts.) Rows **225-298:** Work even. Rows **299-316: Shoulder and Neck Shaping.** **On each shoulder side** of every other row bind off 4 sts. 2 x and 5 sts. 8 x. **AT THE SAME TIME,** for the **neck shaping,** at beginning of Row 309 bind off the 20 center sts. with a separate yarn, put needles on the left into holding position and complete the right side first. When cam box is on neck side bind off 6 sts. 1 x, 5 sts. 1 x, and 4 sts. 1 x.

**FRONT:** (Figure I). Cast on 194 sts. Rows **1-34:** Work 12 rows black, 10 rows beige and 12 rows black. To make the hem, put the cast on sts. back on the machine, and continue with black. Rows **35-174:** Work even. Then, on the **left side** put 104 sts. on a double pointed needle or contrast yarn and work the right section first. Rows **175-202:** On the **left side,** at beginning of Row 176, cast on 28 sts. Rows **203-224: Armhole Shaping.** Bind off 6 sts., then on every other row bind off 5 sts. 1 x, 4 sts. 1 x, 3 sts. 1 x, 2 sts. 1 x, decrease 1 st. 2 x, and then on every 4th row decrease 1 st. 2 x. Rows **225-281:** Work even. Rows **282-316: Neck and Shoulder Shaping.** On the **neck side,** bind off 28 sts.; then on every other row bind off 4 sts. 1 x, 3 sts. 2 x, 2 sts. 1 x, decrease 1 st. 2 x; then on every 4th row decrease 1 st. 4 x. **AT THE SAME TIME,** at beginning of Row 299, for the **Shoulder Shaping,** on every other row bind off 4 sts. 2 x, and 5 sts. 8 x. Now put the cam box on the **left side** and turn the row counter back to 174. Put the sts. from the double pointed needle back on the machine and work the left section; however, on the right side cast on 14 sts. instead of 28 sts., and make buttonholes at Rows 197, 236, and 275 over the 4th-8th and 21st-25th needles.

**SLEEVE:** (Figure III). Cast on 85 sts. Rows **1-34:** Work 12 rows black, 10 rows beige, and 12 rows black. To make the hem, put the cast on sts. back on the machine and continue with black. Rows **35-210:** Increase 1 st. at beginning of Row



37 and 38 and again **on each side** every 8th row 6 x and every 6th row 20 x. (139 sts.) Rows **211-226: Underarm Shaping.** On every other row on the **back side** of the sleeve bind off 4 sts. 1 x, 3 sts. 2 x, 2 sts. 3 x, decrease 1 st. 2 x, and on the **front side** bind off 6 sts. 1 x, 5 sts. 1 x, 4 sts. 1 x, 3 sts. 1 x, 2 sts. 3 x and decrease 1 st. 1 x. Rows **227-262: On each side** of every other row bind off 2 sts. 1 x and decrease 1 st. 2 x. Repeat these 3 decreases 5 x. Rows **263-272: On each side** of every other row bind off 2 sts. 2 x, 3 sts. 1 x, 4 sts. 2 x, and the remaining 18 sts. Make another sleeve with reverse shapings.

**COLLAR:** See Notes To Knit By on inside back cover (short rows). Cast on 143 sts. In the beginning, work 20 rows with Tension 4. Rows **1-18:** On the **left side** put 53 needles in holding position and work 1 row. On the **right side** put 53 needles in holding position and work 1 row. Now, **on each side,** one after another, put 9 needles in working position 2 x, 7 needles 2 x, 6 needles 2 x, 5 needles 1 x and 4 needles 1 x. Rows **19-88:** Work even: 20 rows with Tension 5, 20 rows with Tension 6, 20 rows with Tension 5, continuing with Tension 4, working Rows **49-58** with beige. Rows **89-98: On each side,** one after another, put 8 needles in holding position 1 x, 10 needles 1 x, 11 needles 1 x, and 12 needles 2 x. Rows **99-100:** On the **left side** bring all needles into working position and work 1 row. On the **right side** bring all needles into working position and work 1 row. Bind off all sts.

**FINISHING:** Join front and back sections at side and shoulder seams. Sew sleeve edges together and sew sleeves to sweater. Make a hem 14 sts. wide at front edges. Fold collar in half lengthwise and sew front edges. Place open end of collar around sweater neckline and attach. Finish buttonholes and sew on buttons.

### BOY'S PULLOVER SHIRT, No. KK 4768

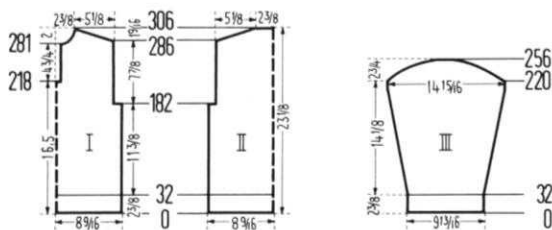


**SIZE:** 11-12 years. **MATERIAL:** 13 oz. charcoal, 2 oz. green, 2 oz. silver grey. **FOR EXAMPLE:** KNITKING Subita 2x4, Diamond Pastel D'August. **TENSION:** KNITKING 5 or 6. **GAUGE:** 15 sts. 2", 26 rows 2". **PATTERN:** Stockinette Stitch with Pattern Stripe. (1). Work 5 rows with charcoal. (2). Put the 4th, 5th, 6th, 10th, 11th, 12th, 16th, 17th, 18th, etc. needles in holding position and pull up the outer control knob. Work 1 row with grey and then slide the cam box, without the yarn, to the other side. (3). Put the needles in holding position back into working position. (4). Work 5 rows charcoal. (5). Put the 1st, 2nd, 3rd, 7th, 8th, 9th, 13th, 14th, 15th, etc. needles in holding position and pull up the outer control knob. Work 1 row with grey and then slide the cam box, without the yarn, to the other side. (6) Put the needles in holding position back into working position. Repeat Steps 1-6 throughout, alternating 2 green pattern stripes with 2 grey pattern stripes. The empty rows are not counted in the gauge or in the directions. Edging and Collar: K.1, P.1 Ribbing.

**BACK:** (Figure II). Cast on 129 sts. with charcoal. Rows **1-32:** K.1, P.1 Ribbing. Work on in Stockinette with pattern stripes. Rows **33-182:** Work even. Rows **183-184:** Bind off 8 sts.

beginning next 2 rows. Rows **185-286:** Work even. Rows **287-306:** **Shoulder Shaping.** On each shoulder side on every other row bind off 3 sts. 1 x, 4 sts. 9 x, and the remaining 35 sts.

**FRONT:** (Figure I). The front is worked the same as the back; however, at Row 219 bind off the 9 center sts., and continue work in two sections using 2 balls of yarn for each color. At Row 282, for the **neck shaping, on each side** of the division bind off 3 sts.; then on every other row bind off 2 sts. 3 x, decrease 1 st. 3 x; then decrease 1 st. on the 4th row 1 x.

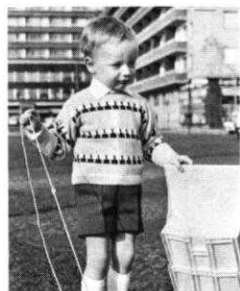


**SLEEVE:** (Figure III). Make two. Cast on 75 sts. with charcoal. Rows **1-32:** K.1, P.1 Ribbing. Continue in Stockinette with Pattern Stripe. Rows **33-220:** Increase 1 st. at beginning of Row 43 and 44 and again **on each side** every 10th row 9 x and every 8th row 9 x. (113 sts.). Rows **221-256:** **Underarm Shaping.** On each side of every other row bind off 2 sts. 9 x, 3 sts. 6 x, 4 sts. 3 x, and the remaining 17 sts.

**COLLAR:** Cast on 143 sts. with charcoal. Work in K.1, P.1 Ribbing. Rows **1-48:** Work even: 16 rows with Tension 7, 16 46 center Rib sts. to the main machine and bind off 93 sts. with a separate yarn. Transfer the ribber needles on the left to main machine and then put all left side needles into holding position. Continue work on the buttonhole strip. Rows **49-106:** Work even; on the left edge making **BUTTONHOLES** at Rows 58, 78, and 98, over the 9th-14th needles. Bind off all sts. Transfer the proper rib sts. on left piece back to ribber, row counter back to row 48 and complete left section minus buttonholes.

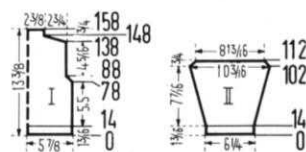
**FINISHING:** Join front and back sections at side and shoulder seams. Sew sleeve edges together and sew sleeves to sweater. Fold bottom edging in half toward inside, and hem. Sew collar in place and sew button and buttonhole strips to front opening, so that 17 sts. are concealed under the sweater fronts. Finish buttonholes and sew on buttons.

### CHILD'S PULLOVER, No. KK 4769



**SIZE:** 2-3 years. **MATERIAL:** 5 oz. turquoise, 1 oz. yellow, 1 oz. charcoal. **FOR EXAMPLE:** KNITTING Subita 2x4, Fleishers Evermatch, Red Heart Super Fingering. **TENSION:** KNITTING 5 or 6. **GAUGE:** 14 sts. 2", 23 rows 2". **PATTERN:** Stockinette: 24 rows turquoise, 6 rows charcoal, and 6 rows yellow. The long, narrow sts. are sewn on the finished garment. Edging: K.1, P.1 Ribbing. **BACK:** (Figure I). Cast on 85 sts. with turquoise. Rows **1-14:** K.1, P.1 ribbing. Continue in stripe pattern.

Rows **15-78:** Work even, working only 16 rows turquoise at first. Rows **79-88:** **Armhole Shaping.** Decrease 1 st. **on each side** of every other row 5 x. (73 sts.). Rows **89-138:** Work even. Rows **139-148:** **Shoulder Shaping.** On each side of every other row bind off 4 sts. 5 x. Rows **149-158:** Work even; then bind off the remaining 33 sts. The front is worked the same as the back.



**SLEEVE:** (Figure II). Make two. Cast on 45 sts. with turquoise. Rows **1-14:** K.1, P.1 Ribbing. Continue in stripe pattern. Rows **15-102:** Increase 1 st. at beginning of Row 19 and 20 and again **on each side** every 6th row 13 x. (73 sts.). Rows **103-112:** **On each side** of every other row decrease 1 st. 5 x; then bind off the remaining 63 sts.

**FINISHING:** Sew decorative stitching on front, back and sleeve sections. Working with turquoise on the charcoal stripe, sew the decorative sts. on every 6th stitch of charcoal. Each stitch is 6 rows long. Use charcoal yarn on the yellow stripes, placing the sts. between the turquoise sts. on the previous row. Join front and back sections at side seams. Sew right shoulder seam and 3/4" of the left shoulder seam, leaving the remainder of the left shoulder seam open. Make a narrow hem around this opening. Sew sleeve edges together and sew sleeves to sweater. Make a 3/4" hem around sweater neckline. Sew in zipper.

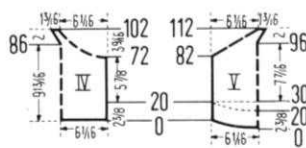
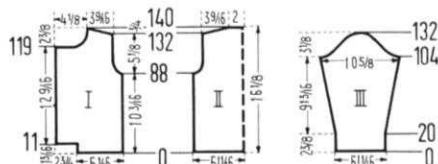
### BOY'S SUIT, No. KK 4767



**SIZE:** 4-5 years. **MATERIAL:** Shorts: 6 oz. Jacket 11 oz. blue and a small amount of dark blue. **FOR EXAMPLE:** KNITTING Starlite Crepe. Spinnerin Mona. Diamond Silvetta. **TENSION:** KNITTING 10. **GAUGE:** 12 sts. 2", 17 rows 2". **PATTERN:** Stockinette.

**SHORTS BACK:** (Figure V). Cast on 75 sts. Rows **1-20:** Work even. To make the hem, put the cast on sts. back on the machine. Rows **21-30:** **On the left side** put 25 needles in holding position and work 1 row.

See Notes to Knit By on inside back cover (short rows). On the right side put 25 needles in holding position and work 1 row. Then on **each side** put 8 needles in working position



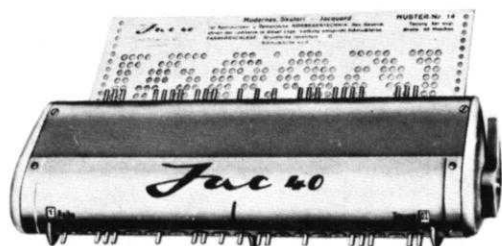
1 x, 7 needles 1 x, and 5 needles 2 x. Rows **31-82:** Work even. Rows **83-96:** **On each side**, one after another, put 2 needles in holding position 7 x. Rows **97-112:** To shape the crotch increase 2 sts. at the center of the work at Row 97 and again every other row 6 x. To do this, **on each side** move 37 sts. over 1 st. (toward the outside), pickup a st. from the previous row and hang it on the empty needle on each side of the center st. **AT THE SAME TIME**, on the leg edge **on each side** put 2 needles in holding position 1 x and 3 needles 7 x. Put the 15 center sts. on a double pointed needle or contrast yarn, and on each side bring the needles into working position and continue working both sides at the same time, using two balls of yarn. For the **leg edging**, work 6 rows blue tweed, 8 rows dark blue, and 6 rows blue tweed. Bind off all sts.

**SHORTS FRONT:** (Figure IV). Cast on 75 sts. Rows **1-20:** Work even. To make the hem, put the cast on sts. back on the machine. Rows **21-72:** Work even. Rows **73-102:** **On each side**, one after another, put 6 needles in holding position 1 x, 5 needles 1 x, 4 needles 1 x, 3 needles 3 x, 2 needles 4 x,



## THE JAC 40 IS A MUST

for fast easy knitting of  
Jaquard and Ski-sweater  
designs



Patterns are selected—row by row—through a pre-stamped card that is fed into the Jac.

There are over 140 cards available and illustrations of them are included with each Jac.

Jac 40's are made for most brands of machines (with the exception of Japanese machines). When ordering be sure to specify your brand of knitter as needle spacings vary. Simple to use and an essential tool for the modern knitter, Jac 40's are \$24.95 complete with 3 cards for practicing the 3 techniques, plus complete instructions.

Order from your dealer or direct from

### KNITTING

1128 Crenshaw Boulevard, Los Angeles, Calif. 90019

Shipping Cost \$1.50. California residents add 4% sales tax.

and 1 needle 5 x. **AT THE SAME TIME**, at Row 87 shape the crotch, following directions for back section. Put the 15 center sts. on a double pointed needle or contrast yarn and bring the needles on each side into working position. Make leg edgings, following directions for back section.

**JACKET BACK:** (Figure II). Cast on 82 sts. Rows 1-88: Work even. Rows 89-98: **Armhole Shaping**. On each side of every other row bind off 2 sts. 2 x and decrease 1 st. 3 x. (68 sts.). Rows 99-132: Work even. Rows 133-140: **Shoulder Shaping**. On each side of every other row bind off 5 sts. 2 x, 6 sts. 2 x, and the remaining 24 sts.

**JACKET FRONT:** (Figure I). Cast on 37 sts. Rows 1-11: Work even. Then on the left side cast on 17 sts. Rows 12-88: Work even. Rows 89-98: **Armhole Shaping**. On every other row bind off 2 sts. 2 x and decrease 1 st. 3 x. (47 sts.) Rows 99-119: Work even. Rows 120-140: **Neck and Shoulder Shaping**. On the neck side, bind off 17 sts.; then on every other row bind off 3 sts. 1 x, 2 sts. 1 x, decrease 1 st. 1 x, and on every 4th row decrease 1 st. 2 x. **AT THE SAME TIME**, at Row 133, for the shoulder shaping, on every other row bind off 5 sts. 2 x and 6 sts. 2 x. Make another front section with reverse shapings, making **BUTTONHOLES** at Rows 17, 41, 65, 89, and 113, over the 2nd-4th and 14th-16th needles.

**SLEEVE:** (Figure III). Make two. Cast on 41 sts. Rows 1-104: Increase 1 st. at beginning of Row 21 and 22 and again on each side every 8th row 6 x and every 6th row 5 x. (65 sts.). Rows 105-112: **Underarm Shaping**. On each side of every other row bind off 4 sts. 1 x, 3 sts. 1 x and 2 sts. 2 x. Rows 113-128: On each side of every other row decrease 1 st. 1 x and bind off 2 sts. 1 x. Repeat these decreases 3 x. Rows 129-132: On each side of every other row bind off 3 sts. 2 x, and the remaining 7 sts.

**COLLAR:** Cast on 101 sts. with dark blue. Rows 1-8: Work even. Then, on each side bind off 18 sts. (using an extra piece of yarn on the left side). Continue with blue tweed, increasing 1 st. on each side. Rows 9-28: Work even. Bind off all sts.

**POCKETS:** Make 2. Cast on 25 sts. Work 20 rows with blue tweed and 8 rows with dark blue and bind off all sts.

**FINISHING:** Shorts. Join the two shorts sections at side seams. Weave the two crotch sections together. Fold the leg edging in half toward inside and hem. Pull an elastic band through the top edge.

**JACKET:** Join front and back sections at side and shoulder seams. Sew sleeve edges together and sew sleeves to sweater. Make a 1 1/4" hem at jacket and sleeve bottoms, and a 1 1/2" hem at jacket fronts. Sew the side edges of the collar together, then fold the outer edging in half toward inside and hem. Sew collar to jacket. Fold the top edging of the pockets in half toward inside and hem. Sew pockets to jacket. Finish buttonholes and sew on buttons.

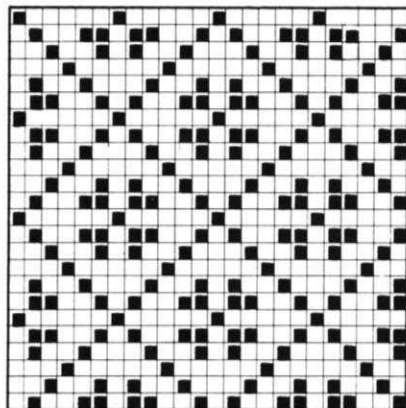
### BABY ENSEMBLE, No. SK 5086



**SIZE:** 3-6 months. **MATERIAL:** 7 oz. white, 3 oz. light blue. **FOR EXAMPLE:** KNITTING Baby yarn. Bear-brand Baby Fair. Spinnerin Nylaine Fingering. **TENSION:** KNITTING 5 or 6. **GAUGE:** 17 sts. 2", 20 rows 2". **PATTERN:** Norwegian Pattern Stitch according to chart, using JAC 40, Pattern No. 104. Every row with the Norwegian Pattern Stitch is counted singly in the directions; however, for each row several motions of the cam box are required. Edging: Stockinette St. and K.1, P.1 Ribbing. Yoke: K.1, P.3 Ribbing.

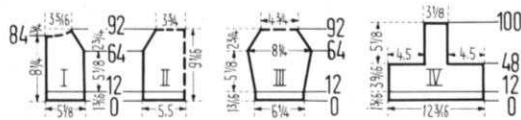
**SWEATER BACK:** (Figure II). Cast on 95 sts. with white. Rows 1-12: Stockinette. Transfer rib sts. to main machine and continue in Norwegian Pattern St. Rows 13-64: Work even. Rows 65-92: **Raglan Shaping**. On each side of every other row bind off 2 sts. 1 x and decrease 1 st. 13 x. Work the last row with white. Then put 65 sts. on a double pointed needle or contrast yarn.

**SWEATER FRONT:** (Figure I). Cast on 44 sts. with white. Rows 1-12: Stockinette. Transfer rib sts. to main machine and continue in Norwegian Pattern St. Rows 13-64: Work even. Rows 65-92: **Raglan and Neck Shaping**. On the right side, on every other row, bind off 2 sts. 1 x and decrease 1 st. 13 x. **AT THE SAME TIME**, for the neck shaping, on the left side at Row 85, one after another, put 13 needles in holding position 1 x, 5 needles 1 x, and 4 needles 2 x. Then work 1 row over all the needles with white, and put 29 sts. on a double pointed needle or contrast yarn. Make another front section with reverse shapings.



☐ WHITE

■ BLUE



**SWEATER SLEEVE:** (Figure III). Make two. Cast on 55 sts. with white. Rows 1-12: K.1, P.1 Ribbing. Transfer rib sts. to main machine and continue in Norwegian Pattern St. Rows 13-64: Increase 1 st. at beginning of Row 17 and 18, and again on each side every 6th row 7 x. (71 sts.). Rows 65-92: **Raglan Shaping.** On each side of every other row bind off 2 sts. 1 x and decrease 1 st. 13 x. Work the last row with white, and then put 41 sts. on a double pointed needle or contrast yarn. Join the sleeves to the back and front sections. Now put the sts. from the double pointed needles onto the machine, so that there are 2 sts. on each needle and the right side of the work is facing you. Transfer the 2nd, 3rd and 4th stitch and every 2nd, 3rd and 4th following to ribber. Over the 99 sts., work 18 rows K.1, P.3 Ribbing, then transfer each center rib stitch to main machine and knit 4 rows K.1, P.1 Ribbing. To make the eyelet row through which the tie cord is to be pulled work 1 row in eyelet pattern stitch. To do this, put every 4th st. on the neighboring needle. The empty needles remain in working position. Work 4 rows K.1, P.1 Ribbing and bind off all sts.

**FRONT EDGING:** Cast on 14 sts. with white. Work 92 rows Stockinette and bind off all sts. Make the second strip of edging the same, making vertical **BUTTONHOLES** at rows 58, 73, and 88 by dividing the work between the 4th and 5th. needles on each side, and working in 3 sections for 6 rows. Be sure to return row counter to correct row after knitting each buttonhole section.

**BONNET:** (Figure IV). Cast on 105 sts. with white. Rows 1-12: K.1, P.1 Ribbing. Continue in Norwegian Pattern Stitch. Rows 13-48: Work even. Then bind off 39 sts. on each side. Rows 49-100: Work even and bind off the remaining 27 sts.

**BOOTIES:** Make two. Cast on 51 sts. with white. Rows 1-33: K.1, P.1 Ribbing. Now put the sts. from the RIBBER onto the empty needles of the main machine, and make the hem by putting the cast on sts. back on the machine. Row 34: Work the sts. together in Stockinette. Then, on each side, put 13 sts. on a double pointed needle or contrast yarn. Rows 35-60: Work in Norwegian Pattern Stitch, working Row 60 in white. Continue in Stockinette. Rows 61-72: To shape the toe, on each side, one after another, put 1 needle in holding position 3 x and 2 needles in holding position 3 x. Rows 73-84: One after another, bring these same needles back into working position. Rows 85-110: Work even. Rows 111-122: To shape the heel, on each side, one after another put 1 needle in holding position 3 x and 2 needles in holding position 3 x. Rows 123-134: One after another, bring these same needles back into working position. Put all sts. on a double pointed needle or contrast yarn.

**MITTENS:** Make two. Cast on 65 sts. with white. Rows 1-21: K.1, P.1 Ribbing. Then decrease 21 sts. evenly distributed across the row. To do this, put every 3rd st. on the neighboring needle and move the sts. over to fill the empty needles. Continue work over 44 sts. Row 22: Stockinette. Rows 23-48: Work in Norwegian Pattern St., working the 48th row with white. Then on the left side put 22 sts. on a double pointed needle or contrast yarn. Rows 49-58: To shape the tip, on each side, one after another put 1 needle in holding position 3 x and 2 needles 2 x. Rows 59-68: Bring these same needles, one after another, back into working position. Put all sts. on a double pointed needle or contrast yarn.

**FINISHING: SWEATER:** Join front and back sections at side seams in slip st., overlapping 1 st. from each section. Sew sleeve edges together. At the bottom, make a hem 1 1/4" wide. Fold front edging around sweater fronts and attach. Finish buttonholes and sew on buttons. Pull a twisted woolen cord through the eyelet row and sew pom poms to the ends of the cord.

**BONNET:** Join the front and back sections of the bonnet. With white, crochet a row of slip stitch around the bottom edge, gathering the edge slightly. Then work 1 single crochet in the 1st slip stitch, chain 2, work 1 single crochet in the 4th st., chain 2, work 1 single crochet in the 6th st., etc. to the end of the row. Pull a twisted woolen cord through the bottom edging.

**BOOTIES:** Sew the back seam of the K.1, P.1 Ribbed band. Weave the heel sts. and the ribbed sts. together. Sew the sides of the bootie together. Fasten a twisted cord to the back seam, and tie in front.

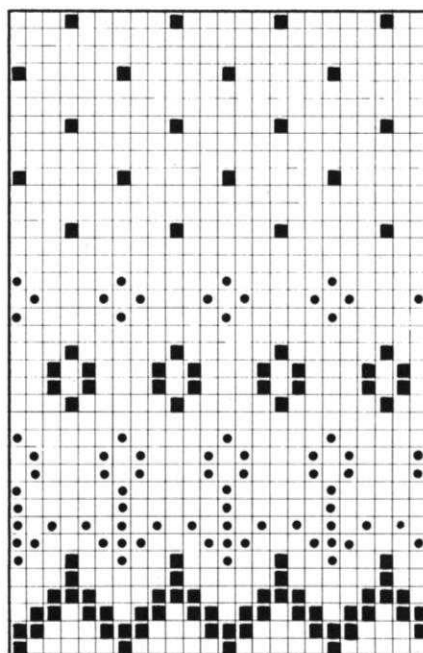
**MITTENS:** Weave the sts. on the double pointed needles or contrast yarn together. Sew the side seams. Fasten a twisted cord to each mitten, and tie.

## BABY SWEATER, No. SK 5087



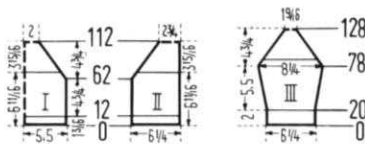
**SIZE:** 3-6 months. **MATERIALS:** 5 oz. yellow and small amounts of red and blue. **FOR EXAMPLE:** KNITTING Subita 2x4. Spinnerin Ambralon. Fleishers Evermatch. **TENSION:** KNITTING 6 or 7. **GAUGE:** 15 sts. 2", 21 rows 2". **PATTERN:** Stockinette Stitch with Norwegian Pattern Stitch according to chart. Every row with the Norwegian Pattern stitch is counted singly in the directions; however, for each row several motions of the cam box are required. Edging: K.1, P.1 Ribbing.

**BACK:** (Figure II). Cast on 47 sts. with yellow. Rows 1-12: K.1, P.1 Ribbing. Transfer rib sts. to main machine and continue in Stockinette. Rows 13-62: Work even. Rows 63-112: **Raglan Shaping.** On the left side, on every other row, decrease 2 sts. 1 x and 1 st. 24 x. To do this, at first put the 3rd and 4th sts. on the 2nd needle and move the edge sts. over to fill the empty needle; and after that always put the 3rd st. on the 2nd needle and move the edge sts. over to fill the empty needles. **AT THE SAME TIME,** begin the Norwegian Pattern Stitch at Row 71. At beginning of Row 113, on the right side bind off 6 sts. and put the remaining 15 sts. on a double pointed needle or contrast yarn. Make the second back section with reverse shapings.





**SLEEVE:** (Figure III). Make two. Cast on 47 sts. with yellow. Rows 1-20: K.1, P.1 Ribbing. Continue in Stockinette. Rows 21-78: Increase 1 st. at beginning of Row 23 and 24 and again on each side every 8th row 4 x and every 6th row 3 x.



(63 sts.). Rows 79-128 Raglan Shaping. On each side of every other row decrease 1 st. 25x. To do this, put the 3rd st. on the 2nd needle and move the edge sts. over to fill the empty needles. AT THE SAME TIME, begin the Norwegian Pattern Stitch at Row 87. Put the remaining 13 sts. on a double pointed needle or contrast yarn.

**FRONT:** (Figure I). Cast on 83 sts. with yellow. Rows 1-12: K.1, P.1 Ribbing. Continue in Stockinette. Rows 13-62: Work even. Rows 63-112: Raglan Shaping. On each side of every other row decrease 2 sts. 1 x and 1 st. 24 x, following directions given for back decreases, and, at Row 71 begin the Norwegian Pattern Stitch. At Row 113, on each side, put the 1st st. on the 2nd needle; then put the sleeves and the back section in place on the needles on each side of the front section, doubling the outside sts. on each section as was done on the front section (put the 1st st. on the 2nd needle). Transfer every other stitch to ribber. Over 79 sts. work 10 rows K.1, P.1 Ribbing and then put the sts. on a double pointed needle or contrast yarn.

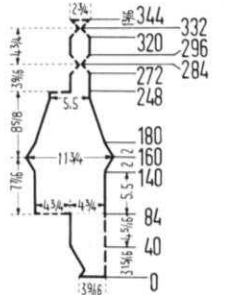
**FINISHING:** Join front and back sections at side seams. Sew sleeve edges together, and sew sleeves to back and front sections in slip st., overlapping 1 st. from each section. Make a 3/4" hem at back edgings. Weave the neck edging in place on wrong side of garment. Sew on 3 loops and 3 buttons.

**BABY CREEPERS, No. SK 5085**



**SIZE:** 6-12 months. **MATERIAL:** 6 oz. light blue. **FOR EXAMPLE:** KNIT-KIN Regal. Spinnerin Ambralon. **TENSION:** KNITTING 7 or 8. **GAUGE:** 15 sts. 2", 20 rows 2". **PATTERN:** Stockinette. The creepers are worked in two sections, beginning at the top edge.

Cast on 54 sts. Rows 1-20: Decrease 1 st. on each side at Row 3 and again every other row 3 x; then increase 1 st. at beginning of Row 13 and 14 and again on each side every other row 3 x. To make the hem, put the cast on sts. back on the machine. Rows 21-40: Increase 1 st. at beginning of Rows 21 and 22 and again on each side of every other row 8 x. (72 sts.). Rows 41-80: Work even. Make a row of eyelets for the tie-belt. To do this put every 4th st. on the neighboring needle. The empty needles remain in working position. Rows 81-84: Work even. Now, on the left side put 36 sts. on a double pointed needle or contrast yarn, and put the remaining needles in holding position. Now make another section just like this. To do this, on the right side cast on 54 sts. and between the first section and the newly cast on sts. leave 9 free needles. AT THE SAME TIME, at Rows 4 and 15 on each side over the 5th-7th needles make BUT-



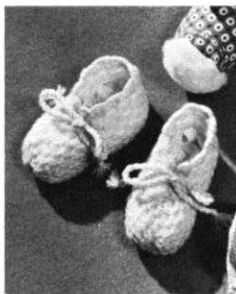
**TONHOLES.** At Row 85, on the right side put 36 sts. on a double pointed needle or contrast yarn and continue work over 72 needles. Rows 85-140: Work even. Rows 141-160: Increase 1 st. at beginning of Rows 141 and 142 and again

on each side every other row 8 x. (90 sts.). Rows 161-180: Decrease 1 st. on each side at Row 161 and again every other row 8 x. Rows 181-238: Decrease 1 st. on each side at Row 181 and again every 4th row 14x. (42 sts.). Rows 239-242: Work even. Now work an eyelet row for the ankle ties. To do this, put every 3rd st. on the neighboring needle. The empty needles remain in working position. Rows 243-248: Work even. Then on the left side put 21 sts. on a double pointed needle or contrast yarn. Rows 249-272: Work even. Rows 273-284: To shape the toe, on each side, one after another, put 1 needle in holding position 4 x and 2 needles in holding position 2 x. Rows 285-296: One after another, bring these same needles back into working position. Rows 297-320: Work even. Rows 321-332: To shape the heel, on each side, one after another, put 1 needle in holding position 4 x and 2 needles in holding position 2 x. Rows 333-344: These same needles, one after another, bring back into working position. Put all the sts. on a double pointed needle or contrast yarn. Then put the remaining sts. of the first and second top sections back on the machine, and work the second section, from Row 85 on, with reverse shapings.

**STRAPS:** Make 2. Cast on 18 sts. Work 60 rows even and bind off all sts.

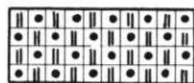
**FINISHING:** Weave the heel sts. and the sts. at the bottom of the leg together. Sew the sides of the foot section together. Sew the leg seam. Join the two creeper sections at front and back seams. Sew side seams on top section. Fold straps together lengthwise and sew side seams. Sew straps to back of creepers. Finish buttonholes and sew on buttons. Make a round cord over 3 needles and pull through each of the eyelet rows. See Notes to Knit By on inside back cover (control knobs).

**BABY BOOTIES, No. SK 5089**



**SIZE:** 3-6 months. **MATERIAL:** 2 oz. pink. **FOR EXAMPLE:** Any 3 ply Baby yarn in color of your choice. **TENSION:** KNITTING: 8 or 9. **GAUGE:** 9 sts. 2", 56 rows 2". The non-working-position sts. are not counted in the gauge or in the directions. **PATTERN:** Every other needle is out of operation. Holding Position Design on purl side according to chart.

Using automatic cast on method, cast on 26 sts. over every other needle. (See "Practical Knitting Hints" on Page 32). Rows 1-2: Stockinette. Rows 3-116: Work in Holding Position Design; then work 1 row over all the needles and put the sts. onto a double pointed needle or contrast yarn. Make another section just like this.



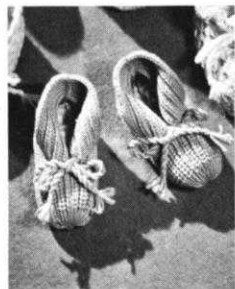
19-24  
13-18  
7-12  
1-6

**FINISHING:** Pull the cast on yarn through the cast on sts. and pull the sts. tightly together. In slip st. sew the top seam of the slipper from the toe half way back the total length of the slipper. Sew the back seam in slip stitch. On the upper edge of the slipper crochet back and forth as follows: Row 1: Slip Stitch Row 2: 1 single crochet in the 1st slip st. of the previous row, chain 2, 1 single crochet in the 4th slip st. of the previous row, chain 2, 1 single crochet in the 7th slip st. of the previous row, etc. Row 3: 5 single crochet in the 2nd single crochet of the previous row, 1 slip st. in the 3rd single crochet of the previous row, 5 single crochet in the 4th single crochet of the previous row, 1 slip st. in the 5th single crochet of the previous row, etc. Pull a twisted woolen cord through the eyelet row and tie in front.

**DID YOU SEE THE KNITTING YARN AD ON THE INSIDE FRONT COVER?**

**PLEASE NOTE THAT WE DO NOT SEND TOOLS AND YARNS OUT ON A C.O.D. BASIS. YOU MUST SEND PAYMENT INCLUDING MAILING COSTS WITH EACH ORDER.**

**BABY BOOTIES, No. SK 5088**



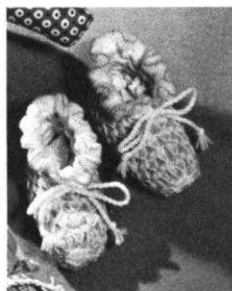
**SIZE:** 3-6 months. **MATERIAL:** 2 oz. blue. **FOR EXAMPLE:** Any 3 ply baby yarn in color of your choice. **TENSION:** KNITTING 7 or 8. **GAUGE:** 17 sts. 2", 40 rows 2". **PATTERN:** Fisherman's Rib on purl side.

Using Automatic Cast on method, cast on 45 sts. (See "Practical Knitting Hints" on Page 32). Rows 1-6: K.1, P.1 Ribbing. Now set the Gate Cam release lever toward the needle heels and continue in Fisherman's Rib. Rows 7-30: Work even. Then, on each side, cast on 10 sts. Rows 31-78:

Work even. Now put the sts. from the RIBBER and then the sts. from the main machine onto a double pointed needle or contrast yarn. Make the second bootie the same.

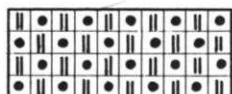
**FINISHING:** Pull the cast on yarn through the cast on sts. and pull the sts. tightly together. Sew the top seam from the toe to the 10 cast on sts. in slip st. Sew the back seam in slip stitch, joining the outer and inner knit sts. together. Fasten the front points down on each side. Sew a twisted woolen cord to the back seam, pull through the front points, and tie.

**BABY BOOTIES, SK 5090**



**SIZE:** 3-6 months. **MATERIAL:** 1 oz. blue 1 oz. white. **FOR EXAMPLE:** Any 3-ply baby yarn in color of your choice. **TENSION:** KNITTING 7 or 8. **GAUGE:** 9 sts. 2", 56 rows 2". The non-working-position sts. are not counted in the gauge or in the directions. **PATTERN:** Every other needle is out of operation. Holding Position Design on purl side according to chart.

Using Automatic cast on method, cast on 25 sts. over every other needle with white. (See "Practical Knitting Hints" on Page 32). Rows 1-2: Stockinette. Rows 3-116: Work in Holding Position Design, then work 1 row over all needles and put the sts. on a double pointed needle or contrast yarn. Make the second bootie the same.



19-24  
13-18  
7-12  
1-6

**FINISHING:** For the back seam, weave the sts. on the double pointed needles together. Then crochet around the upper edge, 2" on each

side of the back seam. Using white yarn, crochet back and forth as follows: Row 1: Slip Stitch. Row 2: 1 Single crochet in the first slip stitch of the previous row, chain 2, 1 single crochet in the 3rd slip stitch of the previous row, chain 2, 1 single crochet in the 5th slip stitch of the previous row, etc. Row 3: Thread a tapestry needle with the white yarn and make the loops. To do this make two loops in every stitch of the previous row. You can make uniform loops by wrapping the yarn around a pencil. Then work a row of chain stitch, with blue, fastening a loop between each chain. Pull the cast on yarn through the cast on sts. and pull the sts. tightly together. Sew the top seam in slip stitch. Pull a twisted woolen cord through the eyelet row and tie in front.

**ARE YOU UNHAPPY WITH YOUR PRESENT KNITTING MACHINE ?**

**DOES IT REFUSE TO KNIT FANCY DRESS YARNS?**

**DOES IT JAM UP WHEN YOU TRY TO KNIT LOOPED MOHAIR OR THICK AND THIN YARNS?**

**DOES IT DROP STITCHES ALL OVER THE PLACE?**

**ARE YOU CONTINUALLY HAVING TROUBLE WITH AWKWARD, CUMBERSOME WEIGHTS?**

**ARE YOU UNABLE TO MAKE A LARGE GARMENT WITH BULKY YARNS?**

**DO YOU HAVE TO SELECT PATTERN STITCHES MANUALLY?**

**DO YOU HAVE TO LATCH YOUR RIBBING BY HAND?**

**IF YOU ARE HAVING ANY OF THESE PROBLEMS YOU SHOULD TRADE UP TO A NEW FANTASTIC PUSH BUTTON KNITTING WITH COORDINATED RIBBER AND ENJOY KNITTING WITH THE WORLDS FINEST, MOST VERSATILE AND MOST AUTOMATIC KNITTER.**

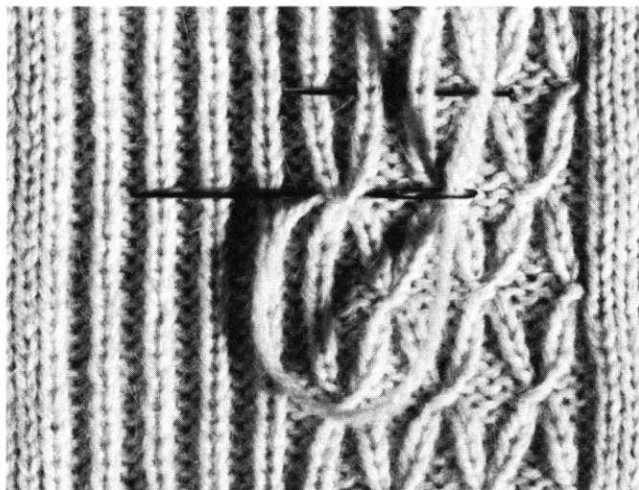
**YOU WILL BE SURPRISED AT OUR GENEROUS TRADE-IN ALLOWANCE AND YOU CAN, IF YOU WISH, USE YOUR PRESENT MACHINE AS A DOWN-PAYMENT AND PURCHASE A COMPLETE KNITTING FOR JUST PENNIES A DAY. WRITE TODAY FOR FULL INFORMATION AND TELL US WHAT MACHINE YOU NOW OWN. THE ADDRESS IS:**

**KNITTING, Dept. T-1, 1128 Crenshaw Blvd., Los Angeles, Calif. - 90019**

# PRACTICAL KNITTING HINTS

## DIRECTIONS FOR PATTERN No. DP 7365

The pattern down the front of the Woman's Blouse DP 7365 is made with smock stitching. Begin at the right hand side, 6 rows from the bottom edge. Connect two knit stitches by sewing two overcast stitches. Six rows above this, the two stitches to be joined are in the ribbing to the right. (See upper needle in photograph). Six rows above this, two stitches on the left are connected (lower needle in photograph). Repeat this procedure working to the 6th row from the top. Now begin at the bottom again and continue until the smocked panel is completed.



## AUTOMATIC CAST ON

Automatic Cast on (used on baby booties SK 5089, 5088, 5090). When using the main machine, bring **every other needle** (of the required number of stitches needed for pattern) into the working position, latches open. Slide the cam box with yarn to the other side of the machine. Bring the needles that are out of operation into working position, latches open and knit another row. The cam box is now on the original side and the cast on is completed. Continue with pattern.

The cast on may be started from either side of the machine, right or left as you prefer. If you begin your work at the right side of machine, be certain the cam box is on correct side (right side) to begin your pattern stitch.

When knitting is completed, the cast on yarn is lightly strung through the cast on stitches or it may also be pulled tightly so that gathers are formed as in the pattern for baby booties.

For special patterns or when you are working with heavier yarn using **EVERY OTHER NEEDLE**, the basic cast on is the same except that you will knit the first row over every 4th needle and bring the alternate needles into the working position for the second row. This is the cast on used for the baby booties SK 5089 and SK 5090.

For baby booties, SK 5088, the ribber is used and the following method is used for an automatic cast on. 1) With cam box of the knitter on the **LEFT** and cam box of the ribber on the **RIGHT**. Put every other needle of the main machine into working position. Also insert stripper on right side.

2) With yarn in wool feed and feed finger, knit 1 row with knitter from **LEFT** to **RIGHT**. 3) Bring up the ribber needles as high as they will go (make sure the 1st and last needle in working position is a knitter needle).

Check to see that latches are open. 4) Connect coordinated ribber to main machine. Place plastic stripper on left side and rib.

For machines other than those with coordinated ribber, the procedure is slightly different. 1) With both cam boxes on the left, bring into knitting position every other needle on main machine and every other needle on ribber. The first and last needle in work must be a knitter needle. Make certain that all latches are open. 2) Knit one row with **MAIN KNITTER** and follow with cam box of ribber. 3) Rib in the usual manner, using the **RIBBER** cam box **FIRST** and followed by the main knitter. Other brands of machines also have automatic cast on with ribber. Study your manual for correct method.

## DARTS

There is nothing worse than an incorrectly placed bust dart. When the darts are sewn in **after** the garment is knitted, you have the advantage of being able to raise or lower the dart so that the placement is in the exact position to flatter **YOUR** individual figure. Always pin the dart and baste it, as the pattern shows. Hold the garment up to you and check where the darts are. You can compare it with a dress you own that fits well. If the dart is too low, do not change the side edge, place a pin in the spot where the dart should end (tip of bust) and pull out your basting thread. Now gently slant the dart from the side edge up to the place where the pin is and baste it again. Be sure to take up the same amount allowed for the original dart. If the dart is too high, you may find that you must lower the side edge as well — just a small amount in order to get the correct slant to your dart.

## SHORT ROW METHOD FOR BUST DARTS

You may also use the short row method for knitting bust darts. **KNITTING MAGAZINE** patterns usually show the width and height of the darts in the diagrams. Generally, the dart — according to figure and size, begins about 1½" to 2½" below the armhole shaping and extends to the tip of the breast. The exact number of inches (or rows) can be determined by subtracting the length of the back section (from the bottom to the armhole shaping) — from the length of the front section (from the bottom to armhole shaping). For the average size, this difference will be between ¾" and 2".

**For Example:** If you are making such a dart in a pullover, take a width of 36 stitches (4¾") and a height of 12 rows (1¼"). Divide the 36 stitches for 6 decreases (12 rows). Now working with short rows on every other row, (and always putting the needles opposite cam box into the holding position) put 6 needles into holding position. Knit 1 row. Be sure to put the yarn between the 1st and 2nd inside needle in the holding position. Put 6 needles opposite cam box into holding position again and knit 1 row. Continue knitting short rows with 6 more needles put into the holding position until all 36 needles **on each side** are in hold (a total of 12 rows). Now put all 36 needles opposite cam box into working position and knit 1 row. Put all 36 needles on the other side into working position and knit 1 row. The darts are now completed. Return your row counter to the row where you started the bust dart and continue with your knitting.

# WANTED

SALESPeople AND KNITKING OWNERS TO SELL AND TEACH KNITKING KNITTING. IF YOU CAN DO EITHER OR BOTH WRITE TO KNITKING, 1128 CRENSHAW BLVD., LOS ANGELES, CALIF. 90019, FOR FULL INFORMATION.





# KNITKING NEWS

July-August 1966

Visitors from all parts of the U. S. A. have been stopping off to see us at our Los Angeles headquarters. In one day recently, we had knitters in from New Jersey, Massachusetts, Utah, Washington and Canada..... It is always a pleasure to meet you and see the beautiful garments that you make on your knitting machines and we note with special pleasure the pride of accomplishment you have in a job well done..... Compliments on the way you look are always good for one's feeling of well being and whenever you wear a nicely made, finished knitted garment, you are sure to receive many compliments..... Customers tell us that they are sometimes stopped on the street by total strangers and questioned about their knit clothes.

One thing is sure, if you wear a well designed knit dress or suit, that is made to fit your own figure, you will certainly stand out from the crowd. Whether a person is thin or fat, short or tall, nothing looks better on them than a good knit garment.

## STORAGE FOR YOUR KNITTING TOOLS

Every Wednesday seems to have developed into a KNITKING Club day at our Los Angeles store..... The place gets so crowded that we frequently have to find extra chairs and tables.

A good idea is usually worth copying and we have noticed that many of our regular Wednesday customers bring their tools and accessories in fishing tackle boxes..... With its many divisions in the top tray and large lower compartment, a tackle box is ideal for keeping all your knitting machine accessories in one place..... Sears Roebuck have excellent tackle boxes at very reasonable prices and you can select one to suit your own needs.

## LETTERS FROM READERS

Question 10 on the Questionnaire that goes out with every subscription renewal notice asks: "What would you like to see added to KNITKING MAGAZINE?" and we have received a large number of answers that say "A section for letters from readers with questions and answers".....

Space in the main body of the magazine is limited to patterns and we would have to take out a pattern to make room for such a section..... Rather than do that, we will endeavor to insert at least one very common question in each edition of KNITKING NEWS.....

Here are two questions from Mrs. Henry G. Rowe, Baltimore, Maryland..

### 1. How are buttonholes made?

There are various ways of making buttonholes and your own instruction book will give this information. However, one way to make buttonholes

over



is: If your buttonhole will consist of say - 6 needles (or stitches) take an odd length of contrast yarn and lay it over the 6 needles. Knit these needles by hand by pulling the needle back toward the back of the needle bed and then forward again so that the stitch goes behind the latch and put each needle back into working position. Now just continue to knit over all the needles with the yarn you are using for knitting of garment. After the garment is completed, you may finish off the buttonholes using a crochet hook and a slip stitch, making sure you go into each stitch held on the contrast yarn. If the yarn is a heavy weight, split it to use for the crochet. In the case of a double buttonhole, the stitches must be woven together. When buttonholes are completed, you will then pull out the contrast yarn.

2. What is meant by "putting 4 needles in hold position one after another?"

The holding position on most machines is with the needles as far forward as they will go. If you are knitting short rows....that is....putting 4 needles in holding position one after another....you will place 1 needle opposite cam box into holding position and knit 1 row across to it and put the yarn behind it. Put 1 needle on the other side in holding position and knit across to it and put the yarn behind this needle..... Now one after another, and working first one side opposite cam box and then the other side, place 1 needle each time into the holding position and each time put the yarn between the 1st and 2nd inside needle in the holding position. When 4 needles on each side are in the holding position, you will be told to put them back again....so....one at a time and always working from opposite side of cam box, put 1 needle back. Each time you must place the yarn between the 1st and 2nd inside needle in the holding position (this prevents you from making a hole).

Sometimes in knitting short rows you will have instructions that tell you to put 4 needles at a time in holding position and return them 4 at a time..... or you might be told to put....say....36 needles on each side into holding position and then back 4 at a time. At other times if making a bust dart on a half section of dress or half section of collar, the short rows will be worked only on one side, and in this case you will knit across to the needles in holding position and then back again before placing the next group of needles into the holding position. The procedure is always the same.... needles going into the holding position opposite cam box and knit the row.... put the yarn between the 1st and 2nd inside needle in holding position following your pattern instructions and then return them following your pattern instructions.

SPECIAL TRADE-IN OFFER

As a result of our recent knitting machine trade-in offer (made only to KNITKING MAGAZINE subscribers) sales of KNITKING machines in the month of May set a new all-time record..... Also, as a result of the offer, our warehouse is stacked to the ceiling with hundreds of traded in machines.



If you would like a second machine, or if you have a friend that would like to buy a used machine in new condition at a fraction of its original price, we have all brands available. We will only sell the machines that are in excellent condition so you can depend on getting a good buy.

The following prices are f. o. b. Los Angeles and machines will be sold on a first come, first served basis. Be sure to send payment with your order as we are not able to finance any of these buys. California residents must add 4% sales tax.

Art, 200-needle push-button, brand new 1966 model	\$ 85.00
Brother Knit, latest model No. 551, push-button	47.50
Duomatic double-bed 1966 model, like new, complete	150.00
Genie, 200 needle machine, like new	49.50
Genie, 200 needle machine with ribber	89.50
KNITKING, model K-7, 197 needles, like new with ribber	150.00
KNITKING, model K-4, 164 needles, like new with ribber	85.00
Orion, 220-needle single bed, like new	45.00
Orion, double-bed, latest model, like new	85.00
Prazisa, current model	25.00
Prazisa, current model with ribber	40.00
Speed-o-Knit with automatic lock	55.00
Speed-o-Knit Ribber	25.00
Studio 301, latest model	57.50
Studio 105, latest model	45.00
Studio 103, like new	27.50
Swiftomatic double-bed, latest model, like new	75.00
Swiss Magic double-bed, latest model, like new	75.00

#### KNITKING MAGAZINE SPECIALS FOR JULY-AUGUST

KNITKING YARNS: We carry substantial stocks of all of the over 400 colors in our extensive range of yarns, but every time that we put certain of them on special, we rapidly run out of stock of the more popular colors. . . . . Although we bring our shipments in by air freight, it still takes several weeks to replenish stocks so please, if you take advantage of the yarn specials, be sure to place your order early.

We sold out of practically all the colors in the Satin-Cotton range as a result of the special in our last issue. . . . . but because so many people were disappointed, we have re-stocked large quantities of all colors and are extending the 20% discount through August for Satin-Cotton and Linen-Cotton. . . . . Don't forget to include mailing costs.

Subita cable yarn is becoming one of our best sellers and since we have several garments made with it in this issue of KNITKING MAGAZINE, it will be available at a 10% discount for the months of July and August.



You will notice that we are introducing a very fine Dralon into the KNITKING yarn range. We have several beautiful lightweight garments made of it planned for future issues..... Such a fine yarn is not suitable for hand knitting as a garment would take an excessive amount of time to make.. . . .but on your knitting machine, you can knit just as fast with a fine yarn as you can with a bulky yarn. If you would like to receive samples of the 29 colors available, please send 10¢ for a sample card. Dralon is a wonderful man-made fiber, extremely soft and light in weight, yet it will stand a tremendous amount of abuse.....you can throw it in your washing machine with hot water without fear of any shrinking or stretching. The color range is excellent and it includes several tweedy mixtures.

#### MAGNIFYING FLASH LAMPS

Another accessory not normally sold by us has become very popular with our Los Angeles customers. It is a magnifying flash lamp that is absolutely perfect for taking your stitch gauge. A one-inch ruled square fits over your sample swatch and an illuminated lens magnifies it seven times. We have purchased a small quantity of them for re-sale and they are available for \$2.25 postage paid anywhere in the U.S.A. California residents add 4% sales tax.

#### KNIT TO FIT

Ida Riley Duncan's 300-page book "Knit to Fit" is a complete and comprehensive guide to hand and machine knitting. Every machine knitter should have a copy for ready reference purposes. The publisher has informed us that its price has been increased by \$1.00 to \$5.95. We have some in stock at the old price of \$4.95 plus 30¢ shipping costs. Save a dollar while you can and order now. California residents add 20¢ sales tax.

#### KNITKING REVERSING BAR

Our reversing bar is suitable for KNITKING machines only. With it you can turn a hem or reverse your knitting in one movement and replace all your stitches at one time instead of one at a time. The list price is \$16.95 - Special price \$13.95 plus \$1.50 shipping costs. California residents add 56¢ sales tax.

\* \* \* \* \*

# NOTES TO KNIT BY . . .

## STITCH AND ROW GAUGE

The stitch and row gauge is the number of stitches and the number of rows you get to the inch with the yarn recommended for any particular garment. To arrive at the correct number of stitches and rows, you must prepare a sample swatch as follows: Cast on the number of stitches that will give you a finished width of at least 4 inches. Using the suggested stitch tension in your pattern, knit a length of at least 4 inches. Knit 2 rows of a contrast yarn. Set your tension one number higher and knit another 4 inches. Knit 2 rows of contrast color. Set your tension 1 number lower than the suggested one and knit a further 4 inches. Now bind off.

For years people have been told to steam their sample swatch and for years we have been getting reports from people telling us that although the sample swatch was correct, the finished garment was too small or too large. Others have complained that even when they used the suggested yarns they had to use a much larger or smaller tension to make a swatch and then the finished garment came out the wrong size anyway.

Obviously it is possible for two people to pin an identical swatch and steam it and get a totally different result. One will stretch the sample before pinning it, and the other will squeeze it in. We have discovered a way that produces the same result with everybody, and we recommend that you get into the habit of always using it.

After knitting the sample and removing it from the machine, roll it into a cylinder over its length, then pull on both ends. Unroll the cylinder and stretch the sample diagonally by pulling on the four corners. Now let it rest — give it an opportunity to resettle for at least a few hours, preferably over night. After you and your swatch have rested, lay your stitch gauge on it and count the number of stitches in your 2 inch marking. Do the same for the number of rows. If you did not get the correct gauge in your first section of knitting, try the section either 1 tension higher or lower as the case may be. If you cannot get the correct gauge, then you are using the wrong type of yarn for the garment.

## NON-WORKING POSITION

The needles are in the non-working position when they are as far back on the needle bed as they will go.

## HOLDING POSITION

The Holding Position is as far forward on the needle bed as your needles will go. The Holding Position is used for producing pattern designs, fancy stitches and the knitting of short rows.

## SHORT ROWS

Short rows are used for shaping of all kinds such as toes and heels of socks, collars, darts and sometimes in the shaping of shoulders, borders and full skirts. To knit short rows you push the needles forward into the holding position as specified in the pattern instructions, usually working from the outside in, which in effect narrows the width of the knitting as you proceed. Before knitting each row, you **must** place the yarn between the first and second inside needles that are in the holding position.

## INCREASING, DECREASING, BINDING OFF

See the Instruction Manual for your own machine.

## INCREASING AND DECREASING WHEN USING THE RIBBER

When increasing, increase on the main knitter first, knit one row and then transfer the necessary stitches from the knitter to the ribber and continue.

When decreasing or binding off, you must transfer the ribber stitches to the main machine before decreasing or binding off.

## ADJUSTING SKIRT LENGTHS, ETC., TO SUIT YOUR OWN SIZE

If you are shorter or taller than average, you will need to adjust certain of the garment lengths. You do this by reducing or increasing the number of rows called for in the pattern.

The reduction in the rows is usually made at the bottom of a skirt or dress. The procedure is very simple. If for example you need a skirt length 2 inches shorter than the one shown in our pattern, and the yarn called for produces 9 rows to the inch, you will need to reduce the number of rows by 18. Many of our patterns are shaped to curve in a small amount toward the bottom and the bottoms frequently have a turned hem. In such cases, the reduction or increase in the number of rows required should be made immediately after the turned hem. If you are long waisted or short waisted you may have to make an adjustment at the waistline.

## READING OF KNITTING PATTERNS AND SYMBOLS

Certain holding position and eyelet designs are sketched in the knitting patterns. The pattern should be read as the work comes toward you from the machine, that is, if you have purl stitches before you, it will say purl stitches in the pattern. If you have knit stitches before you it will say knit stitches in the pattern. On the sides of the pattern are the row numbers. Missing row numbers indicate that the rows are to be worked evenly. In eyelet design patterns, specified stitches are transferred to another needle and the empty needles are returned to the knitting position each time. In holding position designs, selected needles are pushed into the holding position for the stated number of rows.

## MISSING ROW NUMBERS

When there are row numbers missing in the instructions as for instance when you have completed the designated increases or decreases on a section of garment, continue straight knitting until you reach the next given row number.

**Control Knobs** (Under the slide handle — one on each side on KNITKING and certain other machines.)

1. When BOTH Control Knobs are UP, knit one row going from right to left. The needles knit and move back just beyond the front of the needle bed and the yarn hangs on the front of the needles. The slide will now move freely in either direction with the needles remaining in a "SAFE POSITION." When you wish to resume knitting, press down BOTH Control Knobs. The first movement of the slide is made without yarn and will bring the needles into working position, you then continue knitting.

2. **Right Control Knob UP.** Knit from right to left. The row knits, moves the needles back and the yarn is held in front of the latches. Knit from left to right, the yarn goes under the needles without knitting as the needles move into the working position. This is the operation used for making round cords (with 3 or 4 needles only) and also for knitting single rows of one color.

3. **Left Control Knob UP.** The same as above but moving from left to right.

## SYMBOLS

- = knit stitch
- ▣ = purl stitch
- = empty needle (still in working position)
- ⊗ = needle out of operation
- ⊙ = needle in hold position
- ⊠ = stitch put on neighboring needle. Needle in hold position
- ⊡ = stitch put on neighboring needle — to the right
- ⊢ = stitch put on neighboring needle — to the left
- ⊣ = 3 stitches hung together



open dart



closed dart



*Available in many wood finishes*



## **KNITTING DESK . . .**

A knitting machine cabinet that automatically lifts your machine into the knitting position just by pulling a lever. The cabinet converts in seconds into a handsome desk suitable for any decor or any room in your house. Beautifully made in a variety of woods by craftsmen in West Germany.



Order from your local dealer or direct from **KNITKING**, 1128 Crenshaw Blvd., Los Angeles, California 90019