

KNITTING

MAGAZINE



YARNS

by

Knitking

The Finest From Around the World . . .

If you want your garments to look as good as those in KNITKING MAGAZINE and keep their appearance through dozens of washes, you must knit them with gorgeous KNITKING yarns. KNITKING yarns are the finest quality obtainable anywhere and the prices cannot be beaten. Try them once and you will always use them.

Your orders will be filled the same day they arrive. Be sure to state your color preferences and alternates.



Pattern Numbers	YARN		Price Including Shipping
DP 7437	Subita 2 x 4		\$14.90
DV 7438	Subita 2 x 4		\$10.10
DK 7440	Fine Dralon	Both Sizes	\$14.90
DP 7439	Fine Dralon		\$12.50
DP 7441	Frigate & Regal	Size 12/14 Size 16/18	\$12.23 \$13.81
HP 3464	Frigate & Regal		\$15.30
DP 7444	Subita 2 x 4		\$10.10
DP 7442	Subita 2 x 3		\$ 8.90
DP 7443	Subita 2 x 4		\$10.10
DK 7445	Starlite Crepe	Dress Jacket	\$17.06 \$19.13
DP 7446	Subita 2 x 3	Size 12/14 Size 14/16	\$13.70 \$16.10
DK 7447	Subita 2 x 3	Size 10/12 Size 14/16	\$12.50 \$13.70
HP 3462	Mutella		\$13.94
HP 3463	Regal	Size 40/42 Size 44/46	\$ 9.95 \$11.30
MK 4907	Mutella		\$ 6.26
KK 4910	Subita 2 x 4		\$14.90
MK 4906	Mutella		\$ 6.26
MK 4908	Regal		\$ 7.70
KK 4909	Subita 2 x 3	Size 4-5 Size 6-7	\$ 6.50 \$ 7.70

California Residents please add 4% Sales Tax.

Send \$2.00 for **LARGE COMPLETE YARN CATALOGUE.**
 (Refunded on your first \$10.00 order) to:
KNITKING YARNS, Dept. 19
1128 Crenshaw Blvd.
Los Angeles, California 90019

KNITKING

MAGAZINE



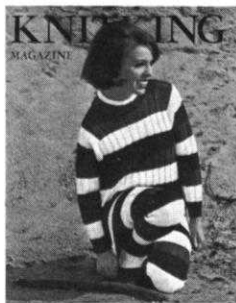
Letter from the Publisher

Vol. 3, No. 6

July/August 1967

INDEX

Contents	Pattern No.	Page No.
Woman's Pullover	DP 7437	18
Woman's Stockings	DV 7438	18
Beach Dress	DK 7440	19
Woman's Beach Jacket	DP 7439	20
Woman's Pullover	DP 7441	20
Man's Pullover	HP 3464	21
Woman's Pullover	DP 7444	21
Woman's Pullover	DP 7442	22
Woman's Pullover	DP 7443	22
Woman's Dress and Jacket	DK 7445	23
Woman's Pullover	DP 7446	24
Woman's Dress	DK 7447	25
Man's Shirt Jacket	HP 3462	27
Man's Pullover	HP 3463	27
Girl's Pullover	MK 4907	28
Boy's Pullover	KK 4910	29
Girl's Dress	MK 4906	29
Girl's Jacket	MK 4908	30
Child's Pullover	KK 4909	31
Practical Knitting Hints		32



OUR COVER MODEL DP 7437
 Bold colors, bold stripes, and stockings to match! If you are young at heart, treat yourself to this red, white and blue striped pullover; if you are young at heart and daring, wear matching stockings with it. See page 18.

Publisher: Henry J. Atkin, 1128 Crenshaw Blvd., Los Angeles, Calif. 90019, Telephone: WEBster 8-2079. Published bi-monthly. Subscriptions: USA—\$6.00 annually, single copies \$1.50; Canada—\$7.00; other parts of the world—\$10.00. The entire contents of KNITKING MAGAZINE are copyright and must not be reproduced in any shape or form without the express permission in writing, of the publisher. COPYRIGHT © by KNITKING 1967.

Printed by: George Rice & Sons, Los Angeles, California.

WHEN you study and use the patterns in this issue, you will discover that the method of presenting them is completely new and that although the printed instructions take up the same amount of space as previously, they are arranged in a manner that makes them easy to read and easier to follow. In fact, every pattern is written so that most beginners with an understanding of the function of the machine they own can go ahead and knit it. We will, nevertheless, continue to prepare at least two very simple patterns for complete beginners in each issue.

We have adopted certain basic and simple procedures in the preparation of patterns and in order for you to fully understand and read them correctly, it is important that you study the special instructions in the "Practical Knitting Hints" column on page 32. Once you understand one pattern, you will be able to understand them all, so select the one that you like most in this issue, make it and then write and tell us how easy it was. If you experienced any problem at all please let us know. The contents of KNITKING MAGAZINE and the many improvements we have made in the printed instructions since the first issue are largely due to the cooperation and comments of our readers. We like to hear from you and since this issue marks the most radical departure in knitting machine pattern instructions ever, we would appreciate receiving your comments.

Regular readers will notice that we have also discovered and adopted a new printing type face. It is bolder and easier to read and yet still allows us to include a minimum of twenty complete patterns in each issue.

Another innovation appearing for the first time in this issue and at the request of many users of beautiful KNITKING YARNS appears on the inside front cover. Garments in KNITKING MAGAZINE are made with KNITKING YARNS and many readers, having become accustomed to the superb quality and low price, use them exclusively, so, in order to make it easier for readers to determine exactly how much it costs to produce any garments of their choice in the finest quality yarns obtainable, we are quoting the cost of KNITKING YARNS for each individual garment and including the mailing costs. All you need to do is state the color you need, the number of the pattern and send the amount quoted. Orders are usually shipped out the same day they are received.

The next issue (September-October) marks the beginning of our fourth year of publication and we thank our many thousands of loyal charter subscribers for staying with us and through their constructive comments helping us to continually improve KNITKING MAGAZINE and strive toward the ultimate goal of 100% reader satisfaction.

Our next issue contains an excellent assortment of handsome modern style garments for all members of the family including three dresses, two two-piece outfits and, as a result of your requests, a stylish full length top coat knitted in a very attractive pattern stitch.



BEGINNERS PATTERNS

DK 7440 →

Picnic Time! A double strand of Fine Dralon is used for knitting this easy care — turquoise and white dress. Wear it over your bathing suit and be ready for lunch on shore. Size 10/12 and 14/16. See page 19.

← DP 7439

After Your Swim—Be charming and cozy in an easy to knit white Beach Jacket. It is knitted with a double strand of Fine Dralon and trimmed with a 1" wide edging of red and white. A jacket type zipper will help keep out any cool breeze. Size 10 to 14. See page 20.





← DP 7441 AND HP 3464

Matching Pullovers! Hers knitted in blue, trimmed with white. His knitted in white trimmed with blue. The body of pullover is in a pattern stitch knitted over every other needle with a heavy weight yarn, while the K1, P1 ribbing for collar, cuffs and bottom edge is a lighter weight yarn over every needle. Hers, Size 12/14 and 16/18. His, Size 42/44. See page 20.

DP 7444 →

Vertical stripes of green are knitted separately then woven onto the front of this lovely white shell. The soft collar is knitted on the bias for a flattering neckline. Knit several— with and without the stripes. Size 10/12. See page 21.





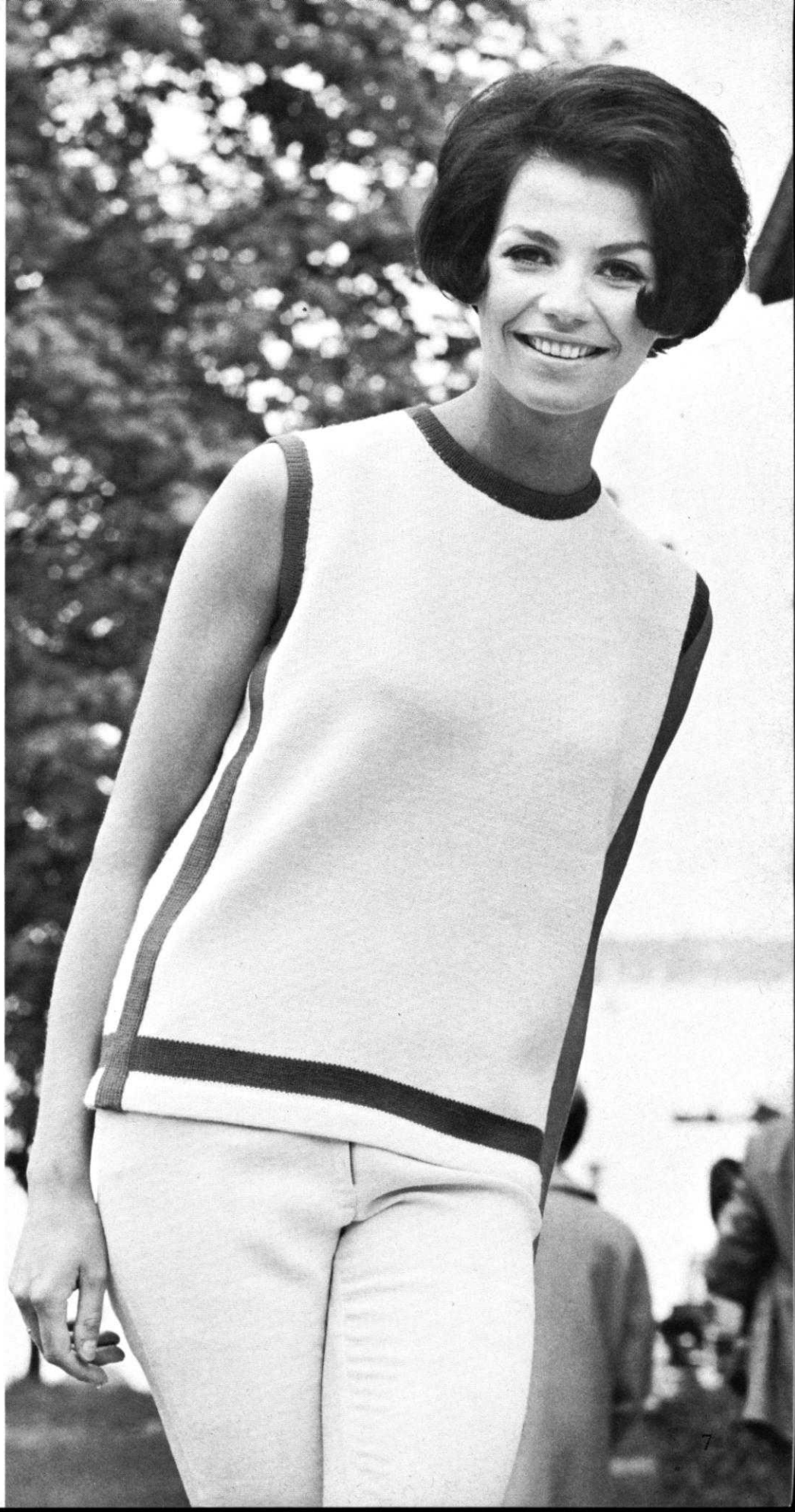
CHIC and SPORTY

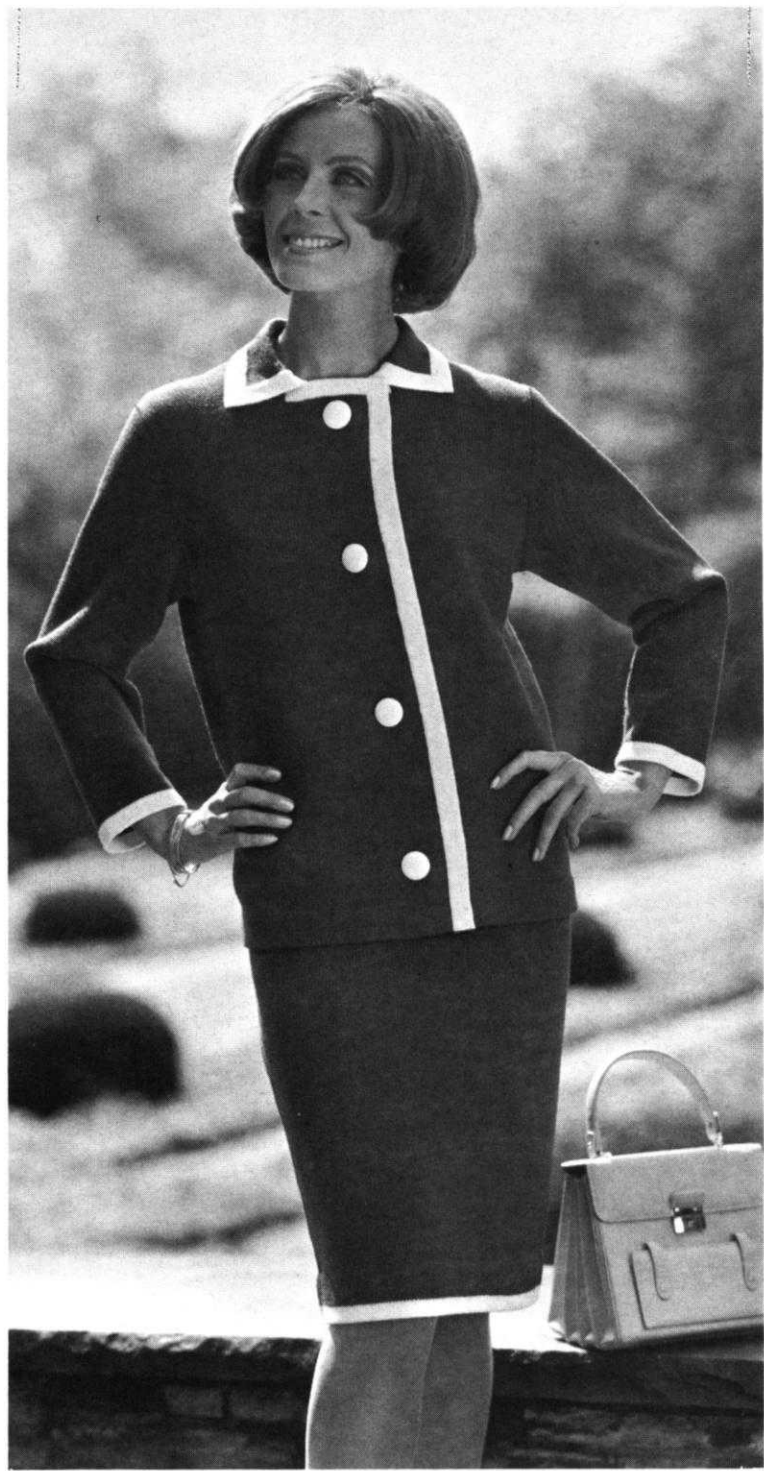
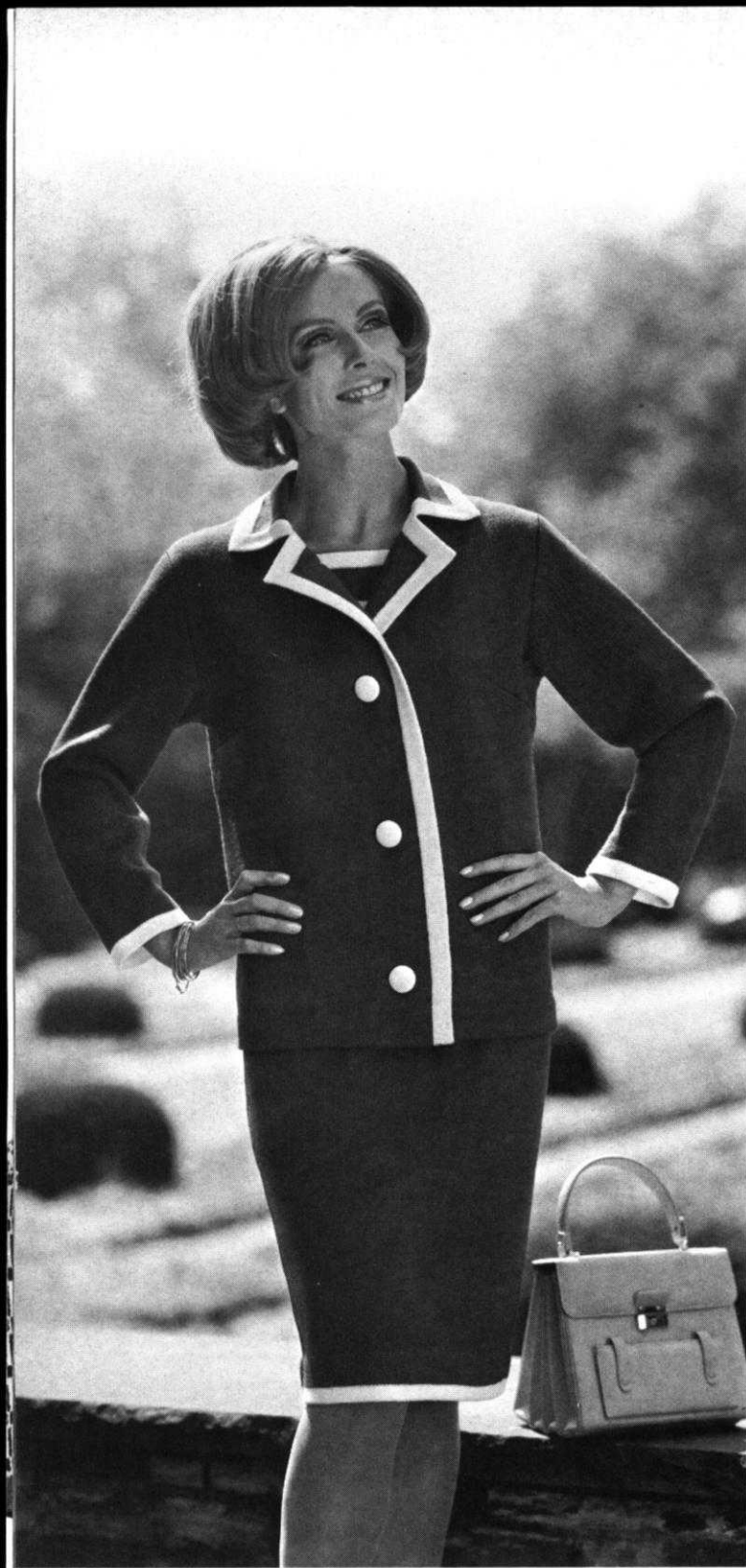
← DP 7442

A strikingly smart striped design is knitted right into this long line pullover. It is sleeveless for summer comfort. Our model was knitted in beige Subita 2 x 3 and the stripes are blue. Size 10/12. See page 22.

DP 7443 →

So Easy! Stockinette stitch is quickly knitted into a sleeveless shell. We chose white for the basic color and used brilliant red for the stripes—a fashion highlight of our time. Size 10/12. See page 22.





DK 7445

Travel at home or abroad in this marvelous ensemble . . . The sleeveless dress is softly shaped at waistline, the young neckline accented with contrasting stripes . . . Top it with the very smart jacket . . . beautifully tailored and accented with the contrast color and matched with large buttons. We chose red Starlite Crepe for our model and trimmed it with white. Size 12/14. See page 23.





← DP 7446

Should rain clouds hide the summer sun, you will be happy to wear this cheery bright yellow pullover striped with brown. The pattern is an easy holding position design, the neckline, wrists and bottom edge are knitted in K1, P1 ribbing. Size 12/14 and 16/18. See page 24.

DK 7447 →

The "Little Nothing" dress we all love to wear in the summer time — and this one in 3 colors will surely be a favorite. Follow the chart for the exquisite holding position design or use your JAC 40 and Pattern No. 337. Size 10/12 and 14/16. See page 25.





HUSKY

HP 3462 →

Combine the tailoring of a shirt, the comfort of a sweater and end up with an excellent jacket made for a man with good taste. A holding position design is used for the body of jacket, the sleeves, collar and facings are simple stockinette. Size 44-46. See page 27.

← HP 3463

Boating? . . . Let him paddle around in this handsome pull-over knitted in a holding position design and using the ribber. Knit it for him and show just how much of an expert you are. Size 40/42 and 44/46. See page 27.



HANDSOME

← MK 4907

The Winner! A Norwegian design border that follows a chart is used for this young girl's sport pullover. We chose white yarn with the border design in blue and white. The neckline and sleeve edgings are K1, P1 ribbing. Size 11-12 years. See page 28.

KK 4910 →

Exceptionally handsome is this young boy's pullover in 3 colors and knitted in a Norwegian design. The raglan sleeves are always popular with the "In" crowd. Follow the chart or use JAC 40 and Pattern No. 21a. Size 12-13 years. See page 29.





← MK 4906

Blue and white yarn is used for knitting an attractive dress for a small girl. It buttons down the front, the collar is K1, P1, ribbing, the sleeves in stockinette with ribbing at the bottom. A lovely holding position design follows a chart. Size 5-6 years. See page 29.

MK 4908 →

Best In Design! A jacket she'll adore for its up-to-the-minute look. It is knitted in simple stockinette stitch with double breasted buttoning. Can be worn with Pullover MK 4907. Size 11-12 years. See page 30.

KK 4909

High Flying! A child's two colored pullover knitted in a holding position design, with K1, P1 ribbing at neckline, sleeves and bottom edging. For Boy or Girl. Size 4-5 and 6-7 years. See page 31.





KNITTING INSTRUCTIONS

OUR COVER MODEL WOMAN'S PULLOVER, DP 7437



SIZE: 10/12. **MATERIAL:** 7 oz. red, 7 oz. white and 7 oz. blue. **KNITTING SUBITA** 2 x 4 or **Spinnerin Ambralon**.

TENSION: KNITTING: Pattern Stitch 7-9. K1, P1, Ribbing 6-8.

GAUGE: Pattern: 19 sts. 2", 21 rows 2". K1, P1, Ribbing: 19 sts. 2", 25 rows 2". **PATTERN:** K1, P1, plus purl stitches according to chart and repeated color stripes. **EDGES:** K1, P1, Ribbing.

BACK: (Figure II). Cast on 183 sts. with red.

ROWS 1-20: K1, P1, Ribbing with Tension 6 (7-8). After row 20 increase 1 st. on each side and transfer sts. from ribber to main machine according to chart, then continue with tension 7 (8-9).



ROWS 21-28: Work even. Now begin pattern stripes of 30 rows white, 30 rows blue and 30 rows red.

ROWS 29-178: Work even.

ROWS 179-284: For the **Raglan** shaping, decrease 1 st. on each side then on every 3rd row, on each side, decrease 1 st. 2 x and 2 sts. 32 x. To do this, for the first 3 decreases, put the 3rd st. onto the 2nd needle and move the sts. over to fill the empty needle. For the following decreases, always put the 3rd and 4th st. onto the 2nd needle, then move the sts. over to fill empty needles. After Row 284, bind off remaining 49 sts.

FRONT: (Figure I). The front is worked the same as back up to row 276, however, for the **Neck Shaping**, after row 260, bind off the center 17 sts. (See Notes to Knit By inside back cover) then on neck side, on every other row, bind off 5 sts. 1 x, 4 sts. 1 x, 3 sts. 1 x, 2 sts. 2 x, 1 st. 1 x. After last row, hang the 3 remaining sts. together (2 outside sts. onto center st.) and bind off.

SLEEVE: (Figure III). Cast on 83 sts. with red.

ROWS 1-20: K1, P1 ribbing with Tension 6(7-8). After row 20, transfer sts. from ribber to main machine, moving first the 3rd and 4th st. from ribber on to main machine to set up proper pattern. Continue with Tension 7 (8-9).

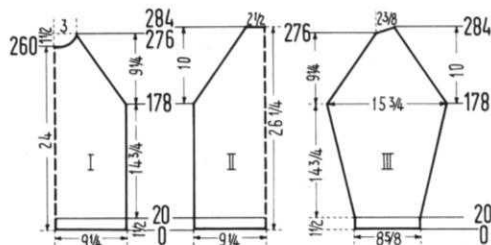
ROWS 21-178: Increase 1 st. on each side after row 22 and again on every 6th row 7 x, then on every 4th row 27 x and starting the color stripes after row 28. (153 sts.)

ROWS 179-276: For the **Raglan Shaping**, decrease 1 st. on each side then on every 3rd row, on each side, decrease 1 st. 2 x and 2 sts. 30 x, following same procedure as on back.

ROWS 277-284: On the **left side**, put 4 needles at a time into holding position 2 x and 5 needles 2 x. **At the same time**, on the **right side**, decrease 2 sts. after Row 277 and 280. After Row 284, bind off 23 sts. Make second sleeve with reverse shaping.

COLLAR: Cast on 163 sts. with red, Tension 7 (8-9).

ROWS 1-6: K1, P1 Ribbing. After Row 6, transfer sts. from ribber to main machine, moving first the 3rd and 4th st. from ribber to set up pattern.



ROWS 7-22: Work even.

ROWS 23-44: Continue with white and Tension 6.

ROWS 45-66: Continue with blue and Tension 5. After Row 66, bind off all sts.

FINISHING: Weave front and back section at sides, 1½ stitches in from each edge. Sew sleeve edges together and weave to front and back section 1 st. in from each edge. Sew short ends of collar together and attach to pullover, then fold over to outside.

WOMAN'S STOCKINGS, DV 7438

SIZE: 9½. **MATERIAL:** 7 oz. red, 3½ oz. white and 3½ oz. blue, **KNITTING Subita** 2 x 4 or **Spinnerin Ambralon**.

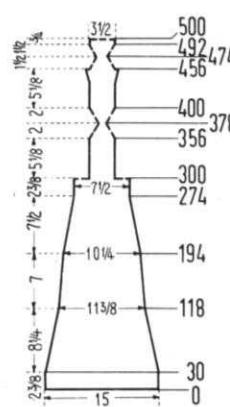
TENSION: KNITTING: Pattern Stitch 7-9 K1, P1, Ribbing 6-8. **GAUGE:** Pattern 19 sts. 2", 21 rows 2". K1, P1, Ribbing 19 sts. 2", 25 rows 2". **PATTERN:** K1, P1, plus purl sts. according to chart and repeated color stripes.



EDGES: K1, P1, Ribbing. **TOE'S, SOLES AND HEELS:** Stockinette st.

Cast on 145 sts. with red.

ROWS 1-30: K1, P1, Ribbing with Tension 6 (7-8). After row 30, transfer sts. from ribber onto main machine according to chart and continue with Tension 7 (8-9). Now begin pattern stripe of 30 rows white, 30 rows blue and 30 rows red.



ROWS 31-118: Decrease 1 st. on each side after Row 34 and again on every 4th row 7 x, then every 6th row 9 x. (111 sts.)

ROWS 119-194: Decrease 1 st. on each side after Row 122 and again on every 14th row 5 x. (99 sts.)

ROWS 195-274: Decrease 1 st. on each side after Row 200 and again on every 6th row 12 x. (73 sts.)

ROWS 275-300: Work even, then on each side put 19 sts. on a stitch holder or contrast yarn.

ROWS 301-356: For the **INSTEP** section, work even, then transfer all the stitches from Ribber on to corresponding needles on main machine and turn the knitting (use reversing bar or contrast yarn) and continue with stockinette stitch and red yarn.

ROWS 357-378: For the **TOE**, knit **short rows**. (See Notes to Knit By inside back cover.) On each side put 1 needle at a time into holding position 10 x and 2 needles 1 x.

ROWS 379-400: Bring these same needles in reversed order back into working position.

ROWS 401-456: Increase 1 st. on each side after row 440 and again on every 4th row 3 x.

ROWS 457-474: For the **HEEL**, on each side put 5 needles at a time into holding position 1 x, 1 needle 6 x and 2 needles 2 x.

ROWS 475-492: On each side bring 2 needles at a time back into working position 2 x and 1 needle 7 x.

ROWS 493-500: On the **LEFT** side, transfer the 4th st. onto the 5th needle. Move the sts. over to fill empty needle and knit 1 row. On the **RIGHT** side, transfer the 4th st. to the 5th needle and move the sts. over as before and knit 1 row. Repeat decreases on each side, 3 x, each time putting 1 st. onto the same needle (3rd to 4th, 2nd to 3rd and 1st to 2nd). After Row 500, put all sts. on a stitch holder or contrast yarn. Knit second stocking.

FINISHING: Close seams of stockings. Weave upper and lower section of heel. Sew the sole and instep sections.

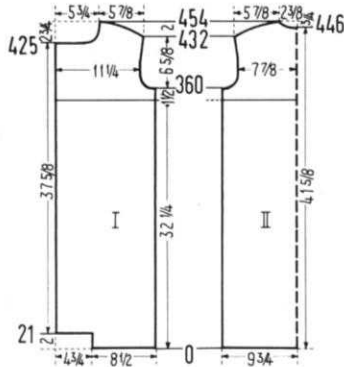
BEGINNERS PATTERNS . . .

BEACH DRESS, DK 7440



SIZES: 10/12 and 14/16. **MATERIAL:** 12¼ oz. (14 oz.) Turquoise, and 5¼ oz. White KNITKING Fine Dralon or Diamond Laine Ecosaise. **TENSION:** KNITKING 7 or 8. **USE DOUBLE STRAND OF YARN. GAUGE:** 15 sts. 2", 21 rows 2". **PATTERN:** Stockinette Stitch. **SIZE:** 10/12. **BACK:** (Figure II). With double strand of Turquoise, cast on 150 sts. **ROWS 1-360:** Work even, changing to white yarn after Row 344. **ROWS 361-376:** ARMHOLE SHAPING: Bind off 5 sts. beginning next

2 rows, 3 sts. beginning next 2 rows, 2 sts. beginning next 4 rows, 1 st. beginning next 4 rows and 1 st. at each end of the next 4th row. (120 sts.).



ROWS 377-432: On each side, increase 1 st. after Row 402 and again every 10th row 2 x. (126 sts.)

ROWS 433-454: SHOULDER SHAPING: Bind off 3 sts. beginning next 6 rows, and 4 sts. beginning next 2 rows. AFTER ROW 446 bind off the center 14 sts. for NECK (See Notes to Knit By on inside back cover). Bind off 4 sts. at shoulder and again every other row 7 x and AT THE SAME TIME Shape Neck every other row by binding off 5 sts. 1 x and 3 sts. 2 x.

FRONT: (Figure I). Cast on 65 sts. with Turquoise.

ROWS 1-21: Work even, then cast on 36 sts. on left side.

ROWS 22-360: Work even, making buttonholes after Rows 177, 236, 295 and 354 over the 2nd to 10th and 27th to 35th needles and changing to white yarn after row 344.

ROWS 361-376: ARMHOLE SHAPING: Bind off 5 sts., then on every other row, bind off 3 sts. 1 x, 2 sts. 2 x, 1 st. 2 x and 1 st. on following 4th row. (86 sts.).

ROWS 377-425: On ARM SIDE increase 1 st. after Row 402 and again on every 10th row 2 x. At the same time, after Row 413, make buttonholes.

ROWS 426-454: Bind off 36 sts. for Neck, then on every other row on Neck side, bind off 2 sts. 2 x, 1 st. 2 x, 1 st. on next 4th row and 1 st. on following 6th row. AT THE SAME TIME Shape Shoulder after ROW 432 and again on every other row by binding off 3 sts. 3 x, and 4 sts. 9 x. Make a second front section with reverse shaping and omitting buttonholes.

NECK BAND: Cast on 90 sts. with White. Work stockinette stitch, 5 rows tension 7, 12 rows tension 6, and 5 rows tension 7. (22 rows). Bind off all sts. Crochet method.

POCKET: Cast on 57 sts. with White.

ROWS 1-43: Work even, then put the cast on sts. back onto machine to form hem. (Be sure to place the sts. behind the latches.)

ROWS 44-68: Work even with Turquoise yarn.

ROWS 69-88: Work even with white yarn. Bind off all sts.

FINISHING: Join front and back at sides and shoulders. Turn under 18 sts. on front edges and 2" on lower edges and hem to inside. Leaving 9 sts. at each front edge of dress free, pin the cast on edge of neckband (with right side against wrong side of dress) to neckline and overcast

or whip stitch in place. Fold band to right side of dress and back stitch through the chain-like bound off edge of band and through garment. Turn under 3 sts. at armhole edge and hem. Sew pocket to dress as illustrated. Knit 2 swatches, one with turquoise, 2" x 4", the other with white. 2" x 6" using tension 5. Have 5 buttons covered, 2 turquoise and 3 white. Finish buttonholes and sew on buttons.

SIZE 14/16. BACK: (Figure II). With double strand of Turquoise, cast on 164 sts.

ROWS 1-360: Work even, changing to white yarn after Row 344.

ROWS 361-380: ARMHOLE SHAPING: Bind off 5 sts. beginning next 2 rows, 3 sts. beginning next 2 rows, 2 sts. beginning next 4 rows, 1 st. beginning next 4 rows and 1 st. at each end of next 4th row and following 4th row (132 sts.).

ROWS 381-436: On each side, increase 1 st. after Row 406 and again every 10th row 2 x (138 sts.).

ROWS 437-458: SHOULDER SHAPING: Bind off 3 sts. beginning next 6 rows, 4 sts. beginning next 8 rows. After Row 450 bind off the center 16 sts. for Neck, (See Notes to Knit By on inside back cover). Continue to shape shoulder on every other row by binding off 4 sts. 2 x, 5 sts. 3 x and AT THE SAME TIME, Shape Neck on every other row by binding off 6 sts. 1 x, 4 sts. 1 x and 3 sts. 1 x.

FRONT: (Figure I). Cast on 75 sts. with Turquoise.

ROWS 1-21: Work even, then cast on 36 sts. on LEFT side.

ROWS 22-343: Work even, making buttonholes on the left side after Rows 177, 239, and 301 over the 2nd to 10th and 27th to 35th needles.

ROWS 344-355: For BUST DART, knit short rows (see Notes to Knit By). On Right side, put 36 needles in holding position and knit 2 rows. Bring back into working position 8 needles 1 x and 7 needles 4 x.

ROWS 356-372: Work even, changing to White yarn after Row 356 and AT THE SAME TIME, after Row 363, make buttonholes.

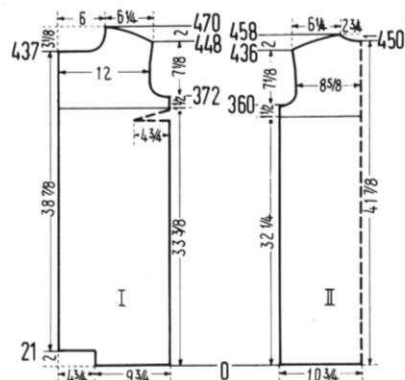
ROWS 373-392: ARMHOLE SHAPING: Bind off 7 sts. then on every other row, bind off 4 sts. 1 x, 2 sts. 2 x, 1 st. 2 x and 1 st. on next 4th row and following 4th row. (92 sts.).

ROWS 393-437: On Right side, increase 1 st. after Rows 418 and 428. AT THE SAME TIME, after Row 425 make buttonhole.

ROWS 438-470: Bind off 36 sts. for NECK, then on every other row, on NECK side, bind off 3 sts. 1 x, 2 sts. 2 x, 1 st. 2 x then on every 4th row, bind off 1 st. 2 x, and AT THE SAME TIME, after row 438, increase 1 st. on Right side, and SHAPE SHOULDER after Row 448, then every other row by binding off 3 sts. 3 x, 4 sts. 6 x and 5 sts. 3 x. Make second front section with reverse shaping, omitting buttonholes.

NECK BAND: Cast on 96 sts. with white yarn. Knit stockinette stitch, 5 rows tension 7, 12 rows tension 6 and 5 rows tension 7, (22 rows). Bind off all stitches crochet method.

POCKET AND FINISHING: Follow directions for SIZE 10/12.



WOMAN'S BEACH JACKET, DP 7439



SIZE 12/16. MATERIAL: 17½ oz. KNITTING Fine Dralon, or Diamond Laine Ecosaise. 4 yds. 1" wide edging and a 20" Jacket type zipper. **TENSION KNITTING:** 5 or 6. USE DOUBLE STRAND OF YARN. **GAUGE:** 14 sts. 2", 25 rows 2". **PATTERN:** Stockinette stitch worn on purl side.

BACK: (Figure II). Cast on 157 sts. with double strand of yarn.

ROWS 1-354: Work even.

ROWS 355-384: SHOULDER SHAPING: Bind off 3 sts. beginning next

10 rows, 4 sts. beginning next 16 rows, 6 sts. beginning next 4 rows.

ROWS 385-404: Work even, then bind off remaining 39 sts. **FRONT:** (Figure I). Cast on 67 sts.

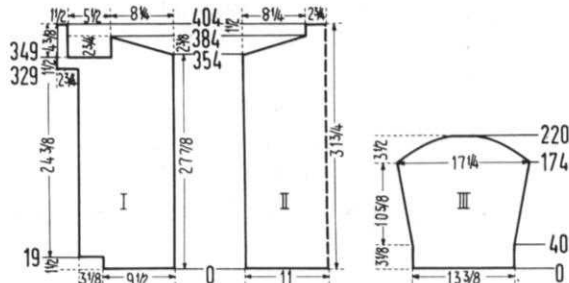
ROWS 1-19: Work even, then cast on 22 sts. on left side.

ROWS 20-329: Work even, then cast on 19 sts. on left side.

ROWS 330-349: Work even, then SHAPE NECK by counting from the left edge and binding off the 12th - 50th sts. with a separate yarn. Put all needles on the right into holding position and work over the 11 sts. on left side to row 404, then bind off these 11 sts. Bring needles on the right side into working position, turn row counter back to 349 and work over the 59 sts. on the right side.

ROWS 350-354: Work even.

ROWS 355-384: SHAPE SHOULDER: Bind off 3 sts. at



Shoulder then every other row at Shoulder side, bind off 3 sts. 8 x, 4 sts. 5 x, 6 sts. 2 x. Make second front with reverse shaping.

SLEEVE: (Figure III). Make 2. Cast on 95 sts.

ROWS 1-174: Increase 1 st. on each side after Row 40, and again every 14th row 3 x, every 10th row 4 x, every 8th row 4 x, and every 6th row 2 x. (123 sts.)

ROWS 175-220: Bind off 1 st. beginning next 16 rows, 2 sts. beginning next 12 rows, 3 sts. beginning next 12 rows, 4 sts. beginning next 6 rows. Bind off remaining 23 sts.

FINISHING: Join front and back sections leaving 10" open at top for sleeves. Join shoulder seams. Sew sleeve edges together and sew into jacket. Turn under 1¾" at front edges and hem. With right sides together overcast or whip stitch neck facing to neckline, turn over to inside and hem. Turn under 1¾" on lower edge and sleeve edges and hem. Sew on trim as illustrated and sew in zipper.

WOMAN'S PULLOVER, DP 7441

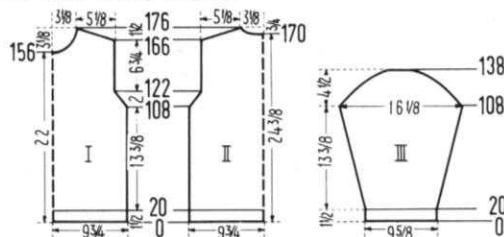


SIZE: 12/14 and 16/18. **MATERIAL:** 21 oz. blue (24½ oz.). KNITTING Frigate or Knitting Worsted weight yarn. 4 oz. blue and 1 oz. white KNITTING Regal or Spinnerin Orlon Prelude. **TENSION:** KNITTING Pattern Stitch 10 using EVERY OTHER NEEDLE. K1, P1, Ribbing, 8 (9) using EVERY NEEDLE. **GAUGE:** 9 sts. 2", 13 rows 2" for Pattern stitch. K1, P1, Ribbing 18 sts. 2", 24 rows 2". The omitted stitches in the pattern are NOT counted in the directions or gauge.

PATTERN: Stockinette Stitch over EVERY OTHER NEEDLE with Cable Stripes. The Cable Stripes are worked in the Following way: 1. Knit 6 rows. 2. Drop sts. 2, 13, 24, 35, 46, 57, 68, 79, and 89, leaving the empty needles in working position. 3. On each side, cross the 3rd and 4th sts. by putting the 3rd st. on the 4th needle, then the 4th st. on the 3rd needle. On each side, cross the 14th and 15th st., the 25th and 26th, 36th and 37th st. in the same manner. Now on each side, cross the 10th and 11th st. by putting the 11th st. on the 10th needle and the 10th st. on the 11th needle. On each side, cross the 21st and 22nd, 32nd and 33rd, 43rd and 44th st. in the same way. Repeat steps 1-3 throughout. After about 30-40 rows drop the 2nd, 12th, and 13th, 23rd, 24th, 34th and 35th etc. sts. in succession and with latch tool, latch up into knit stitches.

EDGES: K1, P1, Ribbing over Every Needle.

SIZE: 12/14: **BACK:** (Figure II). With blue Regal, cast on 179 sts. over every needle.



ROWS 1-20: K1, P1, Ribbing with Tension 8 (9), working 16 rows blue and 4 rows white, then transfer the ribber sts. to main machine and put the 2nd, 4th, 6th, 8th, etc. sts. on to the left neighboring needle and continue with pattern st. working over 90 sts. with Frigate and Tension 10.

ROWS 21-108: Work even.

ROWS 109-122: ARMHOLE SHAPING: Bind off 1 st. beginning next 14 rows. (76 sts.)

ROWS 123-166: Work even.

ROWS 167-176: SHOULDER SHAPING: Bind off 4 sts. beginning next 4 rows. After ROW 170 bind off the center 10 sts. for neck (See Notes to Knit By on inside back cover). Bind off 4 sts. at shoulder and again every other row 3 x and AT THE SAME TIME Shape Neck on every other row by binding off 5 sts. 1 x and 4 sts. 1 x.

FRONT: (Figure I). Work the front the same as back to ROW 156, bind off the center 10 sts. for NECK and on every other row on Neck Side, bind off 3 sts. 1 x, 2 sts. 1 x, 1 st. 2 x, 1 st. on next 4th row and following 4th row and AT THE SAME TIME Shape Shoulder as on back at Rows 167-176.

SLEEVE: (Figure III). Make 2. With Regal yarn, cast on 87 sts. over every needle.

ROWS 1-20: K1, P1, Ribbing with Tension 8 (9) working 16 rows blue and 4 rows white, then transfer the ribber sts. to main machine, and put the 2nd, 4th, 6th, 8th, etc. sts. onto the left neighboring needle and continue with pattern stitch working over 44 sts. with Frigate yarn and Tension 10.

ROWS 21-108: Increase 1 st. on each side after Row 20 and again every 6th row 14 x. (74 sts.)

ROWS 109-138: CAP SHAPING: Bind off 1 st. beginning next 14 rows, 2 sts. beginning next 8 rows, 3 sts. beginning next 4 rows, 4 sts. beginning next 4 rows, then bind off remaining 16 sts.

COLLAR: Cast on 141 sts. with white Regal yarn. Work K1, P1, Ribbing, 4 rows white and 36 rows blue. 10 rows with Tension 8 (9), 20 rows Tension 7 (8) and 10 rows with Tension 8 (9). Bind off all sts.

FINISHING: Join front and back section at side and shoulder seams. Sew sleeves together and sew sleeves into pullover. Sew Short edges of collar together and sew to neckline. Fold collar over to outside.

SIZE 16/18: BACK: (Figure II). Cast on 195 sts. with blue Regal yarn over every needle.

ROWS 1-20: K1, P1, Ribbing with Tension 8 (9) working 16 rows blue and 4 rows white, then transfer the ribber sts.

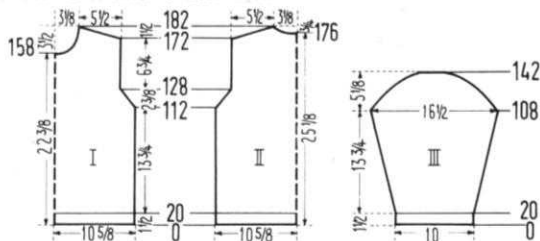
to main machine, and put the 2nd, 4th, 6th, 8th etc. sts. onto the left neighboring needle and continue with pattern stitch, working over 98 sts. with Frigate and Tension 10 and first crossing the 3rd and 4th, 7th and 8th, 14th and 15th, 18th and 19th, etc. sts.

ROWS 21-112: Work even.

ROWS 113-128: ARMHOLE SHAPING: Bind off 2 sts. beginning next 2 rows, 1 st. beginning next 14 rows. (80 sts.).

ROWS 129-172: Work even.

ROWS 173-182: SHOULDER SHAPING: Bind off 4 sts. beginning next 4 rows. After Row 176 bind off the center 10 sts. for NECK (See Notes to Knit By on inside back cover), bind off 4 sts. at shoulder and again every other row 1 x followed by 5 sts. every other row 2 x. AT THE SAME TIME Shape Neck on every other row by binding off 5 sts. 1 x and 4 sts. 1 x.



FRONT: (Figure I). Work the Front the same as Back to Row 158. Bind off the center 10 sts. for Neck and on every other row on NECK SIDE bind off 3 sts. 1 x, 1 st. 2 x and 1 st. on the 4th row and the following 4th row, and AT THE SAME TIME Shape Shoulder every other row as on back at Rows 173-182.

SLEEVE: (Figure III). Make 2. With Regal, cast on 91 sts. over every needle.

ROWS 1-20: K1, P1, Ribbing with Tension 8 (9), working 16 rows blue and 4 rows white, then transfer the ribber sts. to main machine, and put the 2nd, 4th, 6th, 8th, etc. sts. onto the neighboring needle and continue with pattern stitch working over 46 sts. with Frigate yarn and Tension 10.

ROWS 21-108: Increase 1 st. on each side after Row 20 and again on every 6th row 14 x. (76 sts.).

ROWS 109-142: CAP SHAPING: Bind off 1 st. beginning next 18 rows, 2 sts. beginning next 8 rows, 3 sts. beginning next 4 rows, 4 sts. beginning next 4 rows. Bind off remaining 14 sts.

COLLAR: Cast on 149 sts. with white Regal yarn. Work K1, P1, ribbing, 4 rows white and 36 rows blue and working 10 rows with Tension 8 (9), and 20 rows with Tension 7 (8) and 10 rows with Tension 8 (9). Bind off all sts.

FINISHING: Follow directions for Size 12/14.

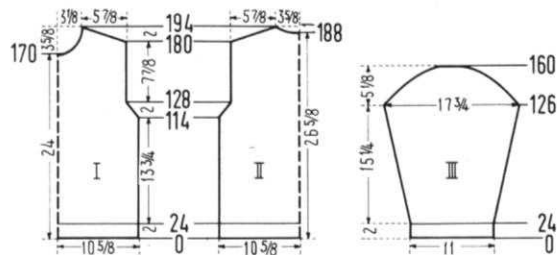
MAN'S PULLOVER, HP 3464

SIZE 42/44: MATERIAL: 26 1/2 oz. white KNITKING Frigate or Knitting Worsted weight yarn, and 3 1/2 oz. white, 1 3/4 oz. blue KNITKING Regal or Spinnerin Orlon Prelude.

TENSION: KNITKING: Pattern Stitch 10, K1, P1, Ribbing 8 (9).

GAUGE: Pattern Stitch 9 sts. 2", 13 rows 2" OVER EVERY OTHER NEEDLE. K1, P1, Ribbing 18 sts. 2", 24 rows 2". The omitted sts. in the pattern are not counted in the gauge and directions.

PATTERN: Stockinette Stitch with Cable Stitch stripes, worked OVER EVERY OTHER NEEDLE. 1. Knit 6 rows, 2. Drop sts. 6, 17, 28, 39, 50, 61, 72, 83 and 94. Leave the empty needles in working position. 3. On each side, cross the 3rd and 4th st. by putting the 4th st. onto the 3rd needle, then the 3rd st. onto the 4th needle. On each side, cross the 14th and 15th, 25th and 26th, 36th and 37th, 47th and 48th sts. in the same manner. Now on each side, cross the 7th and 8th st. by putting the 7th st. onto the 8th needle, then the 8th st. onto the 7th needle. On each side, cross the 18th and 19th, 29th and 30th, 40th and 41st st. in the same manner. Repeat Steps 1-3 throughout. After about 30-40 rows, drop the 5th and 6th, 16th and 17th, 27th and 28th, etc. stitches in succession and with latch tool, latch the stitches up as knit stitches. **EDGES:** K1, P1, Ribbing over every needle.



BACK: (Figure II). With Regal, cast on 195 sts. over every needle.

ROWS 1-24: K1, P1, Ribbing with tension 8 (9), working 20 rows white and 4 rows blue, then transfer the ribber sts. to main machine and put the 2nd, 4th, 6th, 8th, etc. sts. onto the left neighboring needle and continue with pattern stitch, working over 98 sts. with Frigate and Tension 10.

ROWS 25-114: Work even.

ROWS 115-128: ARMHOLE SHAPING: Bind off 2 sts. beginning next 2 rows, 1 st. beginning next 12 rows (82 sts.).

ROWS 129-180: Work even.

ROWS 181-194: SHOULDER SHAPING: Bind off 3 sts. beginning next 8 rows. After Row 188, bind off the center 10 sts. for NECK (See Notes to Knit By on inside back cover). Continue to shape shoulder on every other row by binding off 3 sts. 1 x and 4 sts. 3 x and AT THE SAME TIME shape Neck on every other row by binding off 5 sts. 1 x and 4 sts. 1 x.

FRONT: (Figure I). The front is worked the same as back to Row 170. Bind off the center 10 sts. for neck and on every other row on NECK SIDE bind off 3 sts. 1 x, 2 sts. 1 x, 1 st. 2 x, 1 st. on the 4th row and the following 4th row, and AT THE SAME TIME SHAPE SHOULDER every other row as on back at Rows 181-194.

SLEEVE: (Figure III). Make 2. With Regal, cast on 99 sts. over every needle.

ROWS 1-24: K1, P1, Ribbing with Tension 8 (9), working 20 rows white and 4 rows blue, then transfer the ribber sts. to main machine, and put the 2nd, 4th, 6th, 8th, etc. sts. onto the left neighboring needle and continue with Pattern

Stitch working over 50 sts. with Frigate and Tension 10.

ROWS 25-126: Increase 1 st. on each side after Row 28 and again every 6th row 15 x. (82 sts.).

ROWS 127-160: CAP SHAPING: Bind off 1 st. beginning next 16 rows, 2 sts. beginning next 8 rows, 3 sts. beginning next 6 rows, 4 sts. beginning next 4 rows. Bind off remaining 16 sts.

COLLAR: With blue Regal, cast on 149 sts. Work K1, P1, Ribbing, 4 rows blue and 40 rows white and knitting 10 rows with Tension 8 (9), 24 rows tension 7 (8) and 10 rows with tension 8(9). Bind off all sts.

FINISHING: Join front and back section at side and shoulder seams. Sew sleeves together and sew into pullover. Sew short ends of collar together and sew to neckline. Fold collar over to the outside.

WOMAN'S PULLOVER, DP 7444



SIZE: 10/12. **MATERIAL:** 10 1/2 oz. white and 2 oz. green KNITKING Subita 2 x 4 or Diamond Elegance D'Aoust or Coats & Clark Super Fingering. **TENSION:** KNITKING 7 or 8. **GAUGE:** 15 sts. 2", 21 rows 2".

PATTERN: Stockinette stitch.

BACK: (Figure II). Cast on 132 sts. **ROWS 1-26:** Work even, then put the cast on sts. back on machine to form a hem. (Be sure to put the sts. behind the needle latches.)

ROWS 27-172: Increase 1 st. on each side after row 72 and again every 20th row 4 x. (142 sts.).

ROWS 173-188: ARMHOLE SHAPING: Bind off 4 sts. beginning next 2 rows, 3 sts. beginning next 4 rows, 2 sts. beginning next 4 rows, 1 st. beginning next 6 rows. (108 sts.).

ROWS 189-240: Increase 1 st. on each side after row 210 and again every 10th row 2 x. (114 sts.).



ROWS 241-256: SHAPE SHOULDER: Bind off 2 sts. beginning next 4 rows, 3 sts. beginning next 4 rows. At Row 248, bind off the 18 center sts. for NECK (See Notes to Knit By on inside back cover). Bind off 4 sts. at shoulder edge and continue to shape shoulder every other row by binding off 4 sts. 1 x and 5 sts. 3 x, and AT THE SAME TIME shape Neck every other row by binding off 6 sts. 1 x, 5 sts. 1 x, 4 sts. 1 x.

FRONT: (Figure I). The front is worked the same as back up to row 172.

ROWS 173-180: Work even.

ROWS 181-196: ARMHOLE SHAPING: Bind off 4 sts. beginning next 2 rows, 3 sts. beginning next 4 rows, 2 sts. beginning next 4 rows, 1 st. beginning next 6 rows. (108 sts.).

ROWS 197-234: Increase 1 st. on each side after Row 218 and Row 228.

ROWS 235-264: NECK SHAPING: Bind off the center 18 sts. as you did on back, then on neck side on every other row, bind off 4 sts. 1 x, 3 sts. 1 x, 2 sts. 2 x, 1 st. 2 x and decrease 1 st. on every 4th row 2 x. AT THE SAME TIME, after Row 238, increase 1 st. on ARM SIDE. After Row 248 SHAPE SHOULDER on every other row, by binding off 2 sts. 2 x, 3 sts. 2 x, 4 sts. 2 x, and 5 sts. 3 x.

COLLAR: The collar is knitted on the bias. Cast on 122 sts.

ROWS 1-2: On the left side, put 87 needles in holding position and knit 2 rows.

ROWS 3-176: Decrease 1 st. on right side and on left side bring 1 needle into working position, knit 2 rows. Repeat these last 2 rows until all needles on the left side are in working position. (35 sts.). Put these 35 sts. on a stitch holder or contrast yarn.

VERTICAL STRIPE: Cast on 12 sts. with green.

ROWS 1-248: Work even.

ROWS 249-252: On the left side put 4 needles at a time into holding position 2 x (short rows), then bind off all sts. Make a second stripe with reverse shaping.

ARMHOLE FACING: Make 2. Cast on 107 sts. with white. Knit in stockinette st., 3 rows with Tension 6 and 3 rows Tension 7 and increase 1 st. on each side after row 3 and 5. Bind off all sts.

FINISHING: Weave the stripes (26 sts. counting from lower side edge) to front section, 1 st. in from each edge of stripe. Join front and back sections at sides and shoulders easing in fullness at bustline of front section. Sew facings to armhole right sides together, turn to inside and hem. On collar, unravel the first 35 cast on sts. and weave to sts. on stitch holder. Sew collar to Neckline and fold over to the outside.

WOMAN'S PULLOVER, DP 7442



SIZE: 10/12. **MATERIAL:** 8¾ oz. beige and 3½ oz. blue KNITTING Subita 2 x 3 or Bearbrand Evermatch or Redheart Super Fingering. **TENSION:** KNITTING 4 or 5. **GAUGE:** 17 sts. 2", 25 rows 2". **PATTERN:** Stockinette stitch with transposed stripes to be hand fed.

BACK: (Figure II). Cast on 150 sts. with beige.

ROWS 1-40: Work even, then hang the cast on sts. onto machine to form hem and put the sts. behind the latches.

ROWS 41-80: Work even.

ROWS 81-154: Begin the striped color pattern as follows: Each stripe is worked with 3 separate balls of yarn. First

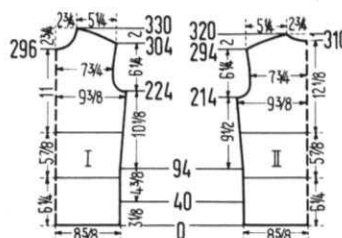
work over 55 needles with blue, 40 needles with beige and 55 needles with blue. The yarn must be crossed where you change color across the needle bed to prevent a hole. Transpose the colors working with blue where beige was used before and working with beige where blue was used after knitting the following rows: 2, 4, 6, 8, 10, 14, 10, 8, 6, 4, 2 and AT THE SAME TIME increase 1 st. on each side after ROW 94 and again on every 18th row 3 x.

ROWS 155-214: Continue with beige. Increase 1 st. on each side after Row 166 and again on every 18th row 2 x. (164 sts.).

ROWS 215-234: ARMHOLE SHAPING: Bind off 4 sts. beginning next 2 rows, 3 sts. beginning next 2 rows, 2 sts. beginning next 4 rows, 1 st. beginning next 4 rows, and 1 st. at each end of the 4th row and following 4th row. (134 sts.).

ROWS 235-294: Increase 1 st. on each side after Row 264 and again on every 10th row 2 x. (140 sts.).

ROWS 295-320: SHOULDER SHAPING: Bind off 2 sts. beginning next 8 rows, 3 sts. beginning next 8 rows. After Row 310 bind off the center 16 sts. for Neck. (See Notes to Knit By on inside back cover). Bind off 4 sts. at shoulder edge and continue to shape shoulder every other row by binding off 4 sts. 3 x, and 5 sts. 2 x. AT THE SAME TIME, Shape Neck every other row by binding off 6 sts. 1 x, 4 sts. 1 x, 3 sts. 2 x.



FRONT: (Figure I). The front is worked the same as back to row 214.

ROWS 215-224: Work even.

ROWS 225-244: ARMHOLE SHAPING: Bind off 4 sts. beginning next 2 rows, 3 sts. beginning next 2 rows, 2 sts. beginning next 4 rows, 1 st. beginning next 4 rows, and 1 st. at each end of the 4th row and following 4th row. (134 sts.).

ROWS 245-296: Increase 1 st. on each side after Row 274 and again on every 10th row 2 x. (140 sts.).

ROWS 297-330: NECK SHAPING: Bind off the center 16 sts. as you did for back, then on NECK SIDE on every other row, bind off 3 sts. 2 x, 2 sts. 2 x, 1 st. 3 x, and on every 4th row, bind off 1 st. 3 x, and AT THE SAME TIME Shape Shoulder on every other row after row 304 by binding off 2 sts. 4 x, 3 sts. 4 x, 4 sts. 4 x and 5 sts. 2 x.

NECK FACING: Cast on 140 sts. with beige. Work 5 rows Tension 4 and 5 rows Tension 5. (10 Rows) Bind off all sts.

FINISHING: Join front and back sections at side and shoulder seams, easing in fullness at the bustline of front section. Sew short ends of facing together, and with right sides together sew to neckline. Turn to inside and hem. Turn under 4 sts. at armhole and hem.

WOMAN'S PULLOVER, DP 7443



SIZE: 10/12. **MATERIAL:** 9 oz. white and 3 oz. red KNITTING Subita 2 x 4 or Diamond Elegance D'Aoust or Coats & Clark Super Fingering. **TENSION:** KNITTING 7 or 8. **GAUGE:** 15 sts. 2", 21 rows 2". **PATTERN:** Stockinette Stitch.

BACK: (Figure II). Cast on 132 sts. with white.

ROWS 1-22: Work even then put the cast on sts. back on machine to form hem. (Put the sts. behind the latches.)

ROWS 23-168: Work the 23rd to 34th rows with red yarn, then increase 1 st. on each side after Row 72 and again on every 20th row 4 x. (142 sts.).

WOMAN'S DRESS and JACKET, DK 7445



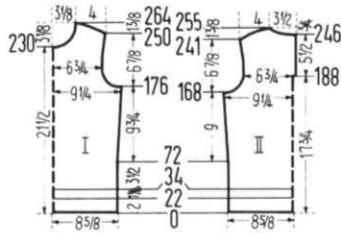
SIZE: 12/14. **MATERIAL:** DRESS: 20 oz. red and 4 oz. white. **JACKET:** 24 oz. red and 3 oz. white **KNITTING** Starlite Crepe or Spinnerin Mona. **TENSION:** KNITTING 8 or 9. **GAUGE:** 15 sts. 2", 20 rows 2". **PATTERN:** Stockinette Stitch. **DRESS BACK:** (Figure II). Cast on 142 sts. with white. **ROWS 1-28:** Work even, then continue with red. **ROWS 29-118:** Increase 1 st. on each side after Row 44 and again every 24th row 3 x. (150 sts.).

ROWS 119-184: Work even.

ROWS 185-256: Decrease 1 st. on each side and again every 8th row 3 x, on every 6th row 5 x, and on every 4th row 4 x. **AT THE SAME TIME**, after Row 206, for the darts, decrease 2 sts. on each side and again on every 16th row 3 x, by putting the 46th and 48th sts. on each side on to the 47th needle, then move the sts. over to fill the empty needle. The next decreases lie directly above. (108 sts.).

ROWS 257-268: Work even.

ROWS 269-336: Increase 1 st. on each side and again on every 6th row 6 x, then on every 8th row 3 x. **AT THE SAME TIME**, after row 268, for the DARTS, increase 2 sts. on each side and again on every 16th row 3 x. The increases



ROWS 169-187: ARMHOLE SHAPING: Bind off 5 sts. beginning next 2 rows, 4 sts. beginning next 2 rows, 3 sts. beginning next 2 rows, 2 sts. beginning next 4 rows, 1 st. beginning next 6 rows and 1 st. at each end of the following 4th row. (102 sts.). Now put 51 needles on the right side into holding position and complete the left half first.

ROWS 188-241: For NECK OPENING FACING, after row 188, on the right side, cast on 3 sts. To do so, put 3 sts. from right half on a stitch holder. On ARM SIDE, increase 1 st. after row 211 and again on every 10th row 2 x.

ROWS 242-255: SHOULDER SHAPING: On every other row, bind off 2 sts. 2 x, 3 sts. 2 x, and 5 sts. 4 x. **AT THE SAME TIME**, after Row 246, SHAPE NECK by binding off 15 sts., then on every other row, bind off 5 sts. 1 x, 4 sts. 1 x, and 3 sts. 1 x. Put the Cam Box on the right side, turn row counter to 187, put all needles into working position, hang sts. from the stitch holder back onto machine and complete the right half with reverse shaping.

FRONT: (Figure I). The front is worked the same as back up to Row 168.

ROWS 169-176: Work even.

ROWS 177-196: ARMHOLE SHAPING: Bind off 5 sts beginning next 2 rows, 4 sts. beginning next 2 rows, 3 sts. beginning next 2 rows, 2 sts. beginning next 4 rows, 1 st. beginning next 6 rows and 1 st. at each end of the following 4th row (102 sts.).

ROWS 197-230: Increase 1 st. on each side after row 220.

ROWS 231-264: NECK SHAPING: Bind off the center 16 sts. (See Notes to Knit By, inside back cover), then on neck side on every other row, bind off 4 sts. 1 x, 3 sts. 1 x, 2 sts. 2 x, 1 st. 2 x, then on every 4th row bind off 1 st. 2 x and on the following 6th row 1 st. 1 x. **AT THE SAME TIME**, on Arm Side increase 1 st. after Row 230 and 240. SHAPE SHOULDER after row 250 and on every other row by binding off 2 sts. 2 x, 3 sts. 2 x, and 5 sts. 4 x.

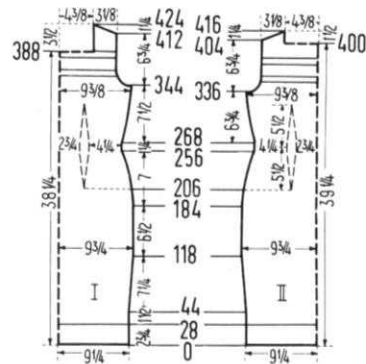
SIDE STRIP: Cast on 10 sts. with red. Work 164 rows even. **ROWS 165-172:** On right side, and on every other row, bind off 3 sts. 2 x, and 2 sts. 2 x. Make a second strip with reverse shaping.

NECK BAND: Cast on 101 sts. with red. Knit 4 rows with tension 7, 8 rows with tension 6 and 4 rows tension 7 (16 rows), then bind off all sts. crochet method.

ARM BANDS: Make 2. Cast on 111 sts. with red. Knit 4 rows tension 7, 8 rows tension 6 and 4 rows tension 7, (16 rows) and **AFTER ROWS 2 and 6**, decrease 1 st. on each side, and **AFTER ROWS 10 and 14**, increase 1 st. on each side. Bind off all sts.

FINISHING: Join front and back at sides and shoulders easing in fullness at bustline of front section. Beginning at the 4th st. from the side seam, weave strip to front section 1 st. in from each edge of strip. Sew short ends of Arm Bands together. With right side of band against wrong side of garment overcast on edge of band to armhole. Fold in half and sew to right side. Make a hem 3 sts. deep around back opening and sew to inside. Sew on Neck Band in same way as Arm Band. Sew in zipper.

PLEASE NOTE THAT WE DO NOT SEND TOOLS AND YARNS OUT ON A C.O.D. BASIS. YOU MUST SEND PAYMENT INCLUDING MAILING COSTS WITH EACH ORDER.



lie directly above the decreases. (Make the increases by moving the sts. on each side of decreases outward 2 needles and picking up sts. from row below to hang on empty needles. Use a multiple transfer tool). (144 sts.).

ROWS 337-352: ARMHOLE SHAPING: Bind off 5 sts. beginning next 2 rows, 3 sts. beginning next 2 rows, 2 sts. beginning next 4 rows, 1 st. beginning next 4 rows and 1 st. at each end of the following 4th row, and after Row 348, knit 8 rows with white. (114 sts.).

ROWS 353-400: After Row 372, knit 8 rows with white, then on each side put 24 needles into holding position and work 8 rows over the center 66 needles, then bind off these sts. Put the Cam Box on the right side, turn row counter to 400, put needles back in working position and work right side first.

ROWS 401-404: Work even.

ROWS 405-416: SHOULDER SHAPING: On every other row, bind off 3 sts. 4 x and 4 sts 3 x. Put Cam Box on the left side, row counter to 400 and complete the left side.

FRONT: (Figure I). The front is worked the same as back up to Row 336.

ROWS 337-344: Work even.

ROWS 345-360: ARMHOLE SHAPING: Bind off 5 sts. beginning next 2 rows, 3 sts. beginning next 2 rows, 2 sts. beginning next 4 rows, 1 st. beginning next 4 rows and 1 st. at each end of the following 4th row and after Row 356 knit 8 rows with white. (114 sts.).

ROWS 361-388: Work even but after Row 380, knit 8 rows with white. Now on each side, put 24 needles into holding position and work 8 rows with white over the center 66 needles, then bind off these sts. Move the Cam Box to the right, row counter to 388. Put needles on the right side into working position and complete this side first.

ROWS 389-412: Work even.

ROWS 413-424: SHOULDER SHAPING: On every other row, bind off 3 sts. 4 x and 4 sts. 3 x. Put the Cam box on the left. Row Counter to 388 and finish left side.

SIDE NECK EDGING: Make 2. Cast on 16 sts. with white. Knit 50 rows even, then bind off all sts.

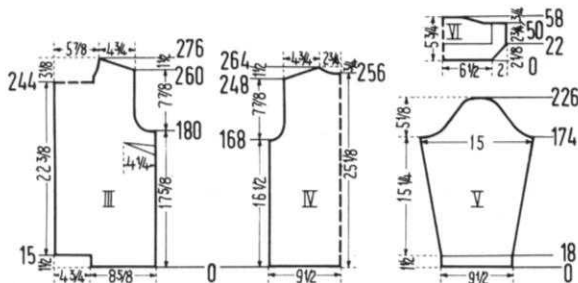
JACKET BACK: (Figure IV). Cast on 144 sts. with red.

ROWS 1-168: Work even.

ROWS 169-188: ARMHOLE SHAPING: Bind off 4 sts. beginning next 2 rows, 3 sts. beginning next 2 rows, 2 sts. beginning next 4 rows, 1 st. beginning next 4 rows and 1 st. at each end of the next 4th row and following 4th row. (114 sts.).

ROWS 189-248: Work even.

ROWS 249-264: SHOULDER SHAPING: On each side, on every other row bind off 4 sts. 9 x. AT THE SAME TIME, after Row 256, SHAPE NECK by binding off the center 16 sts. (See Notes to Knit By, inside back cover) on neck side on every other row, bind off 6 sts. 1 x, 4 sts. 1 x and 3 sts. 1 x.



FRONT: (Figure III). Cast on 66 sts. with red.

ROWS 1-15: Work even, then cast on 36 sts. on the left side.

ROWS 16-180: Work even but make buttonholes after Rows 46, 108, and 170 over the 3-10 and 27-34th needles counting from the left side.

ROWS 181-200: ARMHOLE SHAPING. Bind off 6 sts. then on every other row, bind off 4 sts. 1 x, 3 sts. 1 x, 2 sts. 2 x, 1 st. 3 x and bind off 1 st. on the 4th row 1 x. (81 sts.).

ROWS 201-244: Work even, but make buttonholes after row 232. Now put 40 needles on the left side into holding position.

ROWS 245-253: Work even.

ROWS 254-276: NECK SHAPING. Bind off 1 st. on Neck Side and again on every 4th row 3 x, and on the following 6th row 1 x. AT THE SAME TIME, Shape Shoulder after Row 260 by binding off 4 sts. on every other row 9 x. On right side, bring 22 needles into working position and work 18 rows even with white, then put all sts. on a stitch holder or contrast yarn. Put last worked 22 sts. on a separate holder. Make second front section with reverse shaping.

SLEEVE: (Figure V). Cast on 72 sts. with white.

ROWS 1-18: Work even, then put the cast on sts. back onto machine to form hem. (Put the sts. behind the latches). Continue with red.

ROWS 19-174: Increase 1 st. on each side after row 24 and again every 6th row 9 x and every 8th row 11 x. (114 sts.).

ROWS 175-186: CAP SHAPING: On the Back Side (right) of sleeve, on every other row, bind off 4 sts. 1 x, 3 sts. 2 x, 2 sts. 2 x and 1 st. 1 x and on the Front Side (left) on every other row, bind off 6 sts. 1 x, 5 sts. 1 x, 3 sts. 2 x and 2 sts. 2 x.

ROWS 187-222: Bind off 1 st. beginning next 4 rows, 2 sts. beginning next 2 rows. REPEAT these bind offs 5 x.

ROWS 223-226: Bind off 3 sts. beginning next 2 rows, 4 sts. beginning next 2 rows. Bind off remaining 16 sts. Make second sleeve with reverse shaping.

COLLAR: (Figure VI). Cast on 100 sts. with white.

ROWS 1-22: Knit 2 rows, then increase 1 st. beginning next 2 rows and 2 sts. beginning following 2 rows. REPEAT these bind offs 4 x, then on each side put 15 sts. on a stitch holder and increase 1 st. at each end by picking stitches up from row below

On each side put 15 sts. on a stitch holder or contrast yarn and increase 1 st. on each side.

ROWS 23-50: Change to red and work even.

ROWS 51-56: On each side, put 26 needles at a time into holding position 1 x, 8 needles 1 x, and 7 needles 1 x.

ROWS 57-58: On the left side, bring all needles back into working position, knit 1 row. On the right side, bring all needles back into working position, knit 1 row, then bind off all sts. Hang the stitches from the stitch holder (work one side at a time) back on the machine, increase 1 st. on the inside edge and knit 28 rows with white, (this is the side edging of collar) then bind off all sts. Repeat for other side.

FRONT EDGING: Make 2. Cast on 16 sts. with white. Knit 238 rows even, then put sts. on stitch holder or contrast yarn.

FINISHING: Dress: Join front and back sections at sides and shoulders, easing in fullness at bustline of front section. Turn under 2" at lower edge and hem to inside. Turn under and hem 8 rows on front and back neck edge. Fold side neck edging in half and weave to side neckline. Turn under and hem 3 sts. at armholes.

JACKET: Make darts at bustline of front sections as illustrated in the diagram. Join front and back sections at sides and shoulders. Sew sleeves together and sew to jacket. Turn 16 rows under at lower edge, and 18 sts. under at front edges and hem. On upper edge weave the sts. held on stitch holder or contrast yarn. Sew side neck edging to side neckline. Weave the front edging to fold line of jacket from 1 st. in on edging, fold in half and weave to other side. Weave the open sts. of front edging together. Weave the side collar edging to collar, 1 st. in on each section. Fold collar edging in half and sew to inside. Sew collar to jacket so that the collar side edging and the upper front edging meet. Finish buttonholes and sew on buttons.

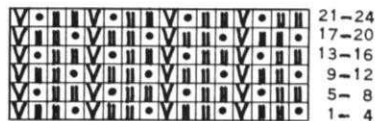
WOMAN'S PULLOVER, DP 7446



SIZE 12/14 and 16/18. MATERIAL: 15 3/4 oz. (17 1/2 oz.) yellow and 3 1/2 oz. (5 1/4 oz.) brown KNITTING Subita 2 x 3, or Bearbrand Deluxe Sock and Sport or Columbia Minerva Fingering. **TENSION:** KNITTING 4-6. **GAUGE:** Pattern Stitch 18 sts. 2", 45 rows 2". K1, P1, Ribbing 18 sts. 2", 26 rows 2". The omitted sts. of pattern are counted as sts. in the gauge and directions. **PATTERN:** Holding position design according to chart and worn on purl side. **EDGES:** K1, P1, Ribbing.

SIZE: 12/14. BACK: (Figure II). Cast on 167 sts. with brown.

ROWS 1-26: K1, P1, Ribbing then transfer the ribber sts. to the empty needles on main machine, and put the 4th, 8th, 12th, etc. onto the neighboring needle. Put the



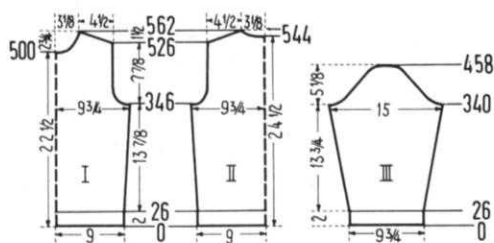
empty needles out of working position and continue in holding position design.

ROWS 27-346: Work 8 rows brown, 16 rows yellow, 24 rows brown, 24 rows yellow, 16 rows brown, then continue with yellow. AT THE SAME TIME, increase 1 st. on each side after Row 66 and again on every 40th row 6 x (181 sts.).

ROWS 347-388: ARMHOLE SHAPING: Bind off 5 sts. on each side, then on every following 4th row on each side, bind off 4 sts. 1 x, 3 sts. 1 x, 2 sts. 1 x, 1 st. 2 x and 1 st. on the next 8th and following 8th row (141 sts.).

ROWS 389-526: Work even.

ROWS 527-562: SHAPE SHOULDER. On each side of every other row, bind off 2 sts. 15 x and 3 sts. 4 x and AT THE SAME TIME, after Row 544 Shape Neck by binding off the center 15 sts. (See Notes to Knit By, inside back cover), then on every other row on Neck Side, bind off 5 sts. 1 x, 4 sts. 1 x, 3 sts. 2 x, 2 sts. 2 x, and 1 st. 2 x.



FRONT: (Figure I). The front is worked the same as back, however, for **Neck Shaping**, after Row 500, bind off the center 13 sts. (as you did on back), and then on **Neck Side** on every 4th row, bind off 4 sts. 1 x, 3 sts. 2 x, 2 sts. 3 x, 1 st. 4 x and decrease 1 st. every 6th row 2 x.

SLEEVE: (Figure III). Make 2. Cast on 97 sts. with brown. **ROWS 1-26:** K1, P1, Ribbing, then transfer the ribber sts. to main machine, and put the 4th, 8th, 12th, etc. sts. onto the neighboring needle, put empty needles out of working position and continue in holding position design.

ROWS 27-340: Work 8 rows brown, 16 rows yellow, 24 rows brown, 24 rows yellow and 16 rows brown, then continue with yellow, and **AT THE SAME TIME**, increase 1 st. on each side after Row 36 and again on every 14th row 14 x, then every 12th row 8 x. (137 sts.).

ROWS 341-372: **CAP SHAPING:** Bind off 4 sts. on each side, then on every following 4th row on each side, bind off 4 sts. 1 x, 3 sts. 2 x and 2 sts. 4 x.

ROWS 373-444: Bind off 1 st. on each side, then on the following 4th row bind off 2 sts. on each side. Continue binding off every 4th row until you have repeated both bind offs 8 x.

ROWS 445-458: Bind off 2 sts. on each side then on every following 4th row, on each side, bind off 3 sts. 2 x, 4 sts. 1 x, then bind off remaining 15 sts.

NECK BAND: Cast on 165 sts. with yellow. Work in K1, P1, Ribbing, 5 rows Tension 6, 5 rows Tension 5, 8 rows Tension 4, 5 rows Tension 5 and 5 rows Tension 6 (28 rows). Bind off all sts.

FINISHING: Join front and back sections at sides and shoulders. Sew sleeves together and sew into pullover. Fold 1/2 of Ribbing under at bottom of pullover and sleeves and sew to inside. Sew short ends of neck band together and sew cast on edge to neckline. Fold over and sew to outside.

SIZE: 16/18. BACK: (Figure II). Cast on 183 sts. with brown.

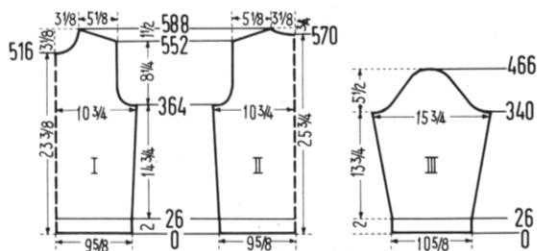
ROWS 1-26: K1, P1, Ribbing, then transfer the ribber sts. to main machine and put the 4th, 8th, 12th, etc. sts. on to the neighboring needle and put empty needles out of working position, then continue in holding position design.

ROWS 27-364: Work 8 rows brown, 16 rows yellow, 24 rows brown, and 24 rows yellow and 16 rows brown then continue with yellow. **AT THE SAME TIME**, after Row 66, increase 1 st. on each side and again on every 40th row 6 x. (197 sts.).

ROWS 365-406: **ARMHOLE SHAPING.** Bind off 5 sts. on each side, then on every 4th row on each side, bind off 4 sts. 1 x, 3 sts. 2 x, 2 sts. 2 x, 1 st. 2 x and bind off 1 st. on every 6th row 2 x. (151 sts.).

ROWS 407-552: Work even.

ROWS 553-588: **SHOULDER SHAPING:** On each side and on every other row, bind off 2 sts. 10 x, and 3 sts. 9 x. **AT THE SAME TIME**, after row 570, **Shape Neck** by binding off the center 15 sts. (See Notes to Knit By, inside back



cover), then on every other row, on **Neck Side**, bind off 5 sts. 1 x, 4 sts. 1 x, 3 sts. 2 x, 2 sts. 2 x and 1 st. 2 x. **FRONT:** (Figure I). The front is worked the same as back, however, for **NECK SHAPING**, after Row 516, bind off the center 13 sts. (as you did on back) and then on **Neck Side** after Row 519 and on every 4th row, bind off 4 sts. 1 x, 3 sts. 2 x, 2 sts. 3 x, 1 st. 4 x, then bind off 1 st. on every 6th row 2 x.

SLEEVE: (Figure III). Make 2. Cast on 97 sts. with brown. **ROWS 1-26:** K1, P1, Ribbing then transfer the ribber sts. to main machine and put the 3rd, 7th, 11th, 15th, etc. sts. onto the neighboring needle, put empty needles in the out of working position and continue in holding position design.

ROWS 27-340: Work 8 rows brown, 16 rows yellow, 24 rows brown, 24 rows yellow and 16 rows brown, then continue with yellow. **AT THE SAME TIME**, increase 1 st. on each side after Row 36 and again on every 14th row 14 x, every 12th row 8 x. (143 sts.).

ROWS 341-372: **CAP SHAPING:** Bind off 4 sts. on each side then on every following 4th row on each side, bind off 4 sts. 1 x, 3 sts. 2 x, 2 sts. 4x.

ROWS 373-452: Bind off 1 st. on each side, then on the following 4th row bind off 2 sts. on each side. Continue binding off every 4th row until you have repeated both bind offs 9 x.

ROWS 453-466: Bind off 2 sts. on each side, then on every following 4th row on each side, bind off 3 sts. 2 x, 4 sts. 1 x. Bind off remaining 15 sts.

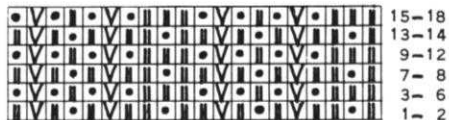
NECK BAND AND FINISHING: Follow directions for Size 12/14.

WOMAN'S DRESS, DK 7447



SIZE 10/12 and 14/16. MATERIAL: 14 oz. (15 3/4 oz.) yellow, 1 3/4 oz. green and 1 3/4 oz. red **KNITTING** Subita 2 x 3, or Bearbrand Deluxe Sock and Sport, or Columbia Minerva Fingering. **TENSION:** **KNITTING** 7 or 8. **GAUGE:** 16 sts. 2", 42 rows 2". The omitted sts. are counted as sts. in the gauge and directions. **PATTERN:** Holding position design according to chart and worn on purl side, or use JAC 40 and Pattern No. 327. **EDGING:** Stockinette stitch.

SIZE 10/12. BACK: (Figure II). Cast on 153 sts. with yellow, leaving the 5th, 9th, 15th, 19th, 25th, 29th, etc. needles in the non-working position. Work in holding position design.



ROWS 1-378: Work even.

ROWS 379-530: Decrease 1 st. on each side and again on every 20th row 2 x, every 16th row 2 x, every 12th row 2 x, every 10th row 3 x and on every 8th row 3 x. (127 sts.).

ROWS 531-556: Work even.

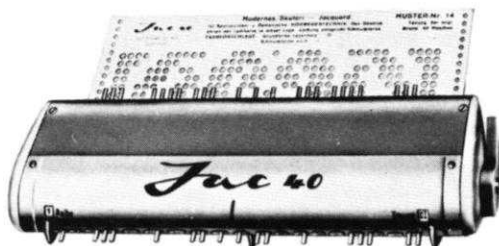
ROWS 557-698: Increase 1 st. on each side and again on every 12th row 11 x and start the color stripes after row 570 by working 24 rows green, 12 rows red, and 30 rows yellow. Repeat the color stripes. (151 sts.).

ROWS 699-736: **ARMHOLE SHAPING:** On each side, bind off 4 sts. then on every following 4th row on each side, bind off 3 sts. 2 x, 2 sts. 2 x, 1 st. 2 x and on every following 6th row, bind off 1 st. 2 x. (115 sts.).

ROWS 737-824: Work even, continuing with yellow after Row 804.

THE JAC 40 IS A MUST

for fast easy knitting of
Jaquard and Ski-sweater
designs



Patterns are selected—row by row—through a pre-stamped card that is fed into the Jac.
There are over 140 cards available and illustrations of them are included with each Jac.

Jac 40's are made for most brands of machines (with the exception of Japanese machines). When ordering be sure to specify your brand of knitter as needle spacings vary. Simple to use and an essential tool for the modern knitter, Jac 40's are \$24.95 complete with 3 cards for practicing the 3 techniques, plus complete instructions.

Order from your dealer or direct from

KNITTING

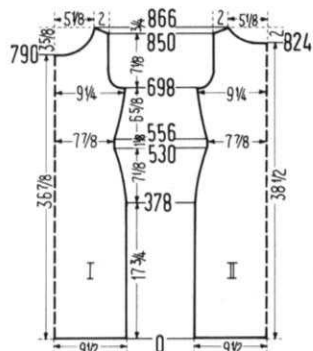
1128 Crenshaw Boulevard, Los Angeles, Calif. 90019

Shipping Cost \$1.50. California residents add 4% sales tax.

ROWS 825-866: NECK SHAPING. Bind off the center 33 sts. (See Notes to Knit By, inside back cover), then on every other row on **Neck Side** bind off 5 sts. 1 x, 4 sts. 1 x, 3 sts. 1 x, 2 sts. 3 x, 1 st. 4 x and 1 st. on the 4th row, then every 6th row 1 st. 2 x. **AT THE SAME TIME, Shape Shoulder** after Row 850 and on every other row by binding off 1 st. 2 x and 2 sts. 7 x.

FRONT: (Figure I). The front is worked the same as back, however for the **Neck Shaping**, after Row 790, bind off the center 29 sts. (as you did on back), then on **Neck Side** on every other row, bind off 4 sts. 1 x, 3 sts. 2 x, 2 sts. 3 x, 1 st. 4 x, then 1 st. on every 4th row 4 x and every following 8th row 3 x.

NECK BAND: The Band is made in 2 sections. Cast on 104 sts. for one section and 88 sts. for the other. With yellow, knit stockinette st., 4 rows with Tension 5, 6 rows with Tension 4 and 4 rows with Tension 5 (14 rows). Bind off all sts. using the crochet method.



ARM BANDS: Make 2. Cast on 128 sts. with yellow. Knit stockinette stitch, 4 rows Tension 5, 6 rows Tension 4, and 4 rows Tension 5 (14 rows) and decreasing 1 st. on each side after rows 2 and 6, and increasing 1 st. on each side after rows 8 and 12. Bind off all sts. using Crochet method.

FINISHING: Weave the front and back sections together $1\frac{1}{2}$ sts. in from each edge. Sew shoulder seams. Turn under 2" for hem of dress. Sew short ends of neckband together, then sew cast on edge to neckline, fold over and sew to outside. Sew armbands to dress in same way as neckband.

SIZE: 14/16. BACK: (Figure II). Cast on 173 sts. with yellow, leaving the 5th, 9th, 15th, 19th, 25th, 29th, etc. sts. in the non-working position. Work in holding position design.

ROWS 1-386: Work even.

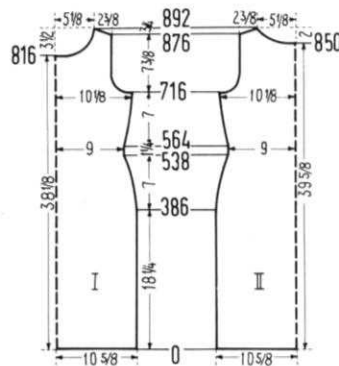
ROWS 387-538: Decrease 1 st. on each side and again on every 20th row 2 x, every 16th row 2 x, every 12th row 2 x, every 10th row 3 x and every 8th row 3 x. (147 sts.)

ROWS 539-564: Work even.

ROWS 565-716: Increase 1 st. on each side, and again every 14th row 9 x, starting the color stripes after Row 596, and knitting 24 rows green, 12 rows red and 30 rows yellow and then repeat stripes. (167 sts.)

ROWS 717-762: ARMHOLE SHAPING: Bind off 5 sts. on each side, then on every following 4th row on each side, bind off 4 sts. 1 x, 3 sts. 1 x, 2 sts. 3 x, 1 st. 3 x and every following 6th row 1 st. 2 x. (121 sts.)

ROWS 763-850: Work even continuing with yellow after row 830.



ROWS 851-892: NECK SHAPING: Bind off the center 33 sts. (See Notes to Knit By, inside back cover), then on every other row on **Neck Side** bind off 5 sts. 1 x, 4 sts. 1 x, 3 sts. 1 x, 2 sts. 3 x, 1 st. 4 x and 1 st. on the 4th row 1 x and every following 6th row 2 x. **AT THE SAME TIME Shape Shoulder** after row 876 and on every other row by binding off 2 sts. 8 x and 3 sts. 1 x.

FRONT: (Figure I). The front is worked the same as back, however for the **Neck Shaping**, after Row 816, bind off the center 29 sts. (as you did on back) then on every other row on **Neck Side**, bind off 4 sts. 1 x, 3 sts. 2 x, 2 sts. 3 x and 1 st. 4 x, then 1 st. on every 4th row 4 x and every following 8th row 3 x.

ARM BANDS: Make 2. Cast on 140 sts. with yellow and follow directions for Size 10/12.

NECK EDGING AND FINISHING: Follow directions for Size 10/12.

CHANGE OF ADDRESS . . .

If you change your address be sure to notify us immediately. The Post Office will not forward your magazine from your old address and it will not be returned to us.

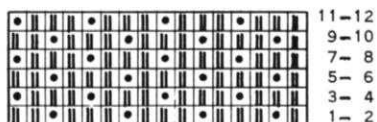
MAN'S SHIRT JACKET, HP 3462



SIZE: 44/46. **MATERIAL:** 22³/₄ oz. bronze KNITKING Mutella or Fleishers Evermatch, or Pauline Denham Sierra. **TENSION:** KNITKING Pattern Stitch 6 or 7, Stockinette 4 or 5. **GAUGE:** Pattern 15 sts. 2", 33 rows 2". Stockinette 18 sts. 2", 24 rows 2". **PATTERN:** Holding position design according to chart and worn on purl side. Use Needle Selector or Automatic and Wheel 3. Sleeves, Collar, Pockets and Front Bands, Stockinette.

BACK: (Figure II). Cast on 163 sts. Work pattern stitch with Tension 6 (7).

ROWS 1-310: Work even.
ROWS 311-344: ARMHOLE SHAPING. Bind off 3 sts. on each side (beginning each row) and on every 4th row, on each side bind off 3 sts. 1 x, 2 sts. 2 x, 1 st. 2 x, and decrease 1 st. every 6th row 2 x. (135 sts.).
ROWS 345-462: Work even.



ROWS 463-488: SHOULDER SHAPING: On each side on every other row, bind off 3 sts. 11 x, and 4 sts. 3 x. AT THE SAME TIME Shape Neck after Row 474 by binding off the center 13 sts. (See Notes to Knit By, inside back cover), then on every other row, on Neck Side, bind off 4 sts. 1 x, 3 sts. 2 x, and 2 sts. 3 x.

FRONT: (Figure I). Cast on 87 sts.

ROWS 1-310: Work even.
ROWS 311-344: ARMHOLE SHAPING. Bind off 7 sts., then on every 4th row, bind off 5 sts. 1 x, 4 sts. 1 x, 3 sts. 1 x, 2 sts. 2 x and 1 st. 3 x. (61 sts.).

ROWS 345-443: Work even.
ROWS 444-488: NECK SHAPING: Bind off 3 sts., then on every 4th row, bind off 3 sts. 1 x, 2 sts. 3 x, 1 st. 2 x and decrease 1 st. every 6th row 2 x. AT THE SAME TIME, Shape Shoulder after Row 462 and on every other row, by binding off 3 sts. 11 x and 4 sts. 3 x. Make second front section with reverse shaping.

SLEEVE: (Figure III). Cast on 123 sts. Work Stockinette stitch with Tension 4 (5).

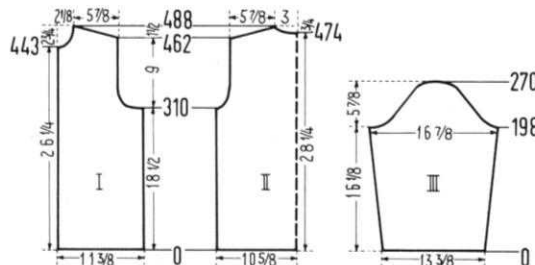
ROWS 1-198: Increase 1 st. on each side after Row 20, and again every 12th row 4 x, every 10th row 11 x. (155 sts.).

ROWS 199-212: CAP SHAPING: On the Back Side (right) of sleeve bind off 4 sts. then on every other row, bind off 3 sts. 2 x, 2 sts. 4 x. AT THE SAME TIME on the Front Side (left) bind off 7 sts. then on every other row bind off 4 sts. 2 x, 3 sts. 2 x, and 2 sts. 2 x.

ROWS 213-260: Bind off 1 st. beginning next 4 rows, and 2 sts. beginning next 2 rows. REPEAT these bind offs 7 x.

ROWS 261-270: Bind off 2 sts. beginning next 2 rows, 3 sts. beginning next 4 rows, 4 sts. beginning next 2 rows, and 5 sts. beginning next 2 rows. Bind off remaining 14 sts. Make second sleeve with reverse shaping.

SLEEVE CUFFS: Cast on 97 sts. Work 68 rows stockinette stitch, making buttonholes after Rows 16 and 51 over



the 7th-12th needles. Make second cuff and reverse the side for buttonhole.

POCKET: Make 2. Cast on 54 sts.
ROWS 1-28: Work even, then put the cast on stitches back on machine to form hem. (Put the stitches behind the latches.)
ROWS 29-82: Work even, then bind off all sts.
FRONT BUTTON BAND: Cast on 31 sts. Work 290 rows even, then bind off all sts. **BUTTONHOLE BAND:** Work the same as button band, but make buttonholes after Rows 10, 58, 106, 154, 202 and 250 over the 3rd-8th and 24th-29th needles.

COLLAR: Cast on 147 sts.
ROWS 1-20: On the left side, put 50 needles in holding position (See Short Rows, inside back cover), knit 1 row. On right side put 50 needles in holding position and knit 1 row. On each side, bring into working position 10 needles at a time 2 x, 6 needles 3 x and 3 needles 4 x.

ROWS 21-80: Work even but knit Rows 41-60 with Tension 5 (6).

ROWS 81-94: On each side, put 4 needles at a time into holding position 3 x, 7 needles 2 x and 10 needles 2 x.

ROWS 95-96: On the left side, bring all needles back into working position, knit 1 row. On the right side, bring all needles back into working position, knit 1 row then bind off all sts.

FINISHING: Join front and back sections at sides and shoulders. Sew sleeves together and sew into jacket. Make hem at lower edge a scant 1 5/8". Sew one side of button and buttonhole band to front edges, then fold in half and sew to outside. Fold collar in half and sew short open ends together. Sew one long edge of collar to neck opening leaving a scant 3/4" at front edge of jacket free then sew other side to cover seam. Sew on pockets. Make small pleats on lower edge of sleeves. Sew cuffs on sleeves in same way as collar, leaving 3/8" free on each side of cuff and 1 1/4" free on sleeve edge. Finish buttonholes and sew on buttons.

MAN'S PULLOVER, HP 3463



SIZE: 40/42 and 44/46. **MATERIAL:** 21 oz. (24 oz.) KNITKING Regal or Spinnerin Ambralon or Columbia Minerva Shetland. **TENSION:** KNITKING 6-8. **GAUGE:** Pattern, 15 sts. 2", 33 rows 2". K1, P1, Ribbing 15 sts. 2", 26 rows 2". The omitted stitches in the pattern are counted as sts. in the gauge and directions. **PATTERN:** Holding position design according to chart and using the Ribber, The Gate Cam release lever of ribber is at the needle heels. Worn on Purl side. **EDGES:** K1, P1, Ribbing.

SIZE 40/42. BACK: (Figure II). Cast on 163 sts.
ROWS 1-26: K1, P1, Ribbing. Now put the 3rd, 7th, 11th, 15th, etc. sts. from the ribber onto the left neighboring

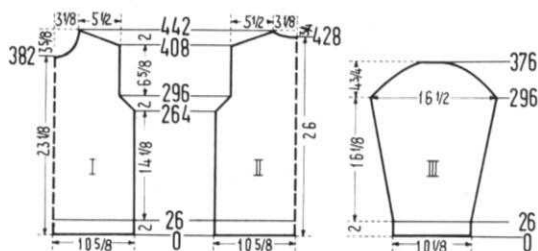


needle, of main machine and put the empty needles in the non-working position. Put the Gate Cam release lever on the ribber to the needle heels and work in holding position design according to chart.

ROWS 27-264: Work even.
ROWS 265-296: ARMHOLE SHAPING: On each side on every other row, bind off 1 st. 16 x. (131 sts.).

ROWS 297-408: Work even.

ROWS 409-442: SHOULDER SHAPING: On each side, on every other row, bind off 2 sts. 12 x and 3 sts. 6 x. AT THE SAME TIME, Shape Neck after row 428 by binding off the center 15 sts. (See Notes to Knit By, inside back cover), then on every other row on Neck Side, bind off 4 sts. 1 x, 3 sts. 2 x, and 2 sts. 3 x.



FRONT: (Figure I). The front is worked the same as back, however, for the **NECK SHAPING**, after Row 382, bind off the center 13 sts. (as you did on back) and then on every 4th row, on **Neck Side**, bind off 4 sts. 1 x, 3 sts. 1 x, 2 sts. 2 x, 1 st. 3 x and decrease 1 st. every 6th row 3 x.

SLEEVE: (Figure III). Make 2. Cast on 79 sts.

ROWS 1-26: K1, P1, Ribbing, then put the 2nd, 6th, 10th, 14th, etc. sts. from the ribber onto the left neighboring needle of main machine and put the empty needles in the non-working position. Put the Gate Cam release lever of ribber to the needle heels and work in holding position design.

ROWS 27-296: Increase 1 st. on each side after Row 36 and again on every 12th row 9 x and every 10th row 14 x. (127 sts.).

ROWS 297-376: CAP SHAPING: Bind off 1 st. on each side then make bind offs at each side every 4th row, 2 sts. 1 x, 1 st. 1 x, 2 sts. 1 x, 1 st. 1 x, 2 sts. 1 x, 1 st. 1 x, 2 sts. 1 x, 2 sts. 4 x, 3 sts. 3 x, 4 sts. 3 x and 5 sts. 2 x, then bind off remaining 25 sts.

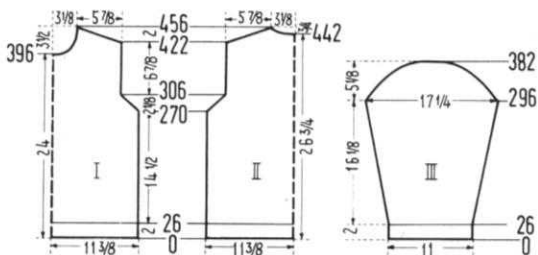
NECK BAND: Cast on 145 sts. Work 52 rows K1, P1, ribbing, then 5 rows stockinette stitch and bind off all sts.

FINISHING: Weave front and back sections 1 1/2 sts. in from each edge. Sew shoulder seams. Sew sleeves together and set into pullover. Join short sides of neck band together and sew cast on edge to neckline so that the stockinette stitch edging will go to the right side. Fold the band in half and hem to outside.

SIZE: 44/46. **BACK:** (Figure II). Cast on 175 sts.

ROWS 1-26: K1, P1, Ribbing, then put the 2nd, 6th, 10th, 14th, etc. sts. from the ribber onto the left neighboring needle of main machine and put empty needles in the non-working position. Put the Gate Cam release lever of ribber to the needle heels and work in holding position design.

ROWS 27-270: Work even.



ROWS 271-306: ARMHOLE SHAPING. On each side on every other row, bind off 1 st. 18 x. (139 sts.).

ROWS 307-422: Work even.

ROWS 423-456: SHOULDER SHAPING. On each side of every other row, bind off 2 sts. 9 x and 3 sts. 9 x. AT THE SAME TIME **Shape Neck** after Row 442 by binding off the center 15 sts. (See Notes to Knit By, inside back cover), then on **Neck Side** on every other row, bind off 5 sts. 1 x, 3 sts. 2 x, and 2 sts. 3 x.

FRONT: (Figure I) The front is worked the same as back, however, for the **NECK SHAPING**, after Row 396, bind off the center 15 sts. (as you did on back), then on every 4th row, on **Neck Side** bind off 4 sts. 1 x, 3 sts. 1 x, 2 sts. 2 x, 1 st. 3 x, then decrease 1 st. on every 6th row 3 x.

SLEEVES: (Figure III). Make 2. Cast on 83 sts.

ROWS 1-26: K1, P1, Ribbing, then put the 3rd, 7th, 11th, 15th, etc. sts. from the ribber onto the left neighboring needle of main machine and put empty needles in the non-working position. Put the Gate Cam release lever of ribber to the needle heels and work in holding position design.

ROWS 27-296: Increase 1 st. on each side after Row 36 and again on every 12th row 9 x and every 10th row 14 x. (131 sts.).

ROWS 297-382: CAP SHAPING: Bind off 1 st. on each side then make bind offs at each side every 4th row, 2 sts. 1 x, 1 st. 1 x, 2 sts. 1 x, 1 st. 1 x, 2 sts. 1 x, 1 st. 1 x, 2 sts. 1 x, 2 sts. 5 x, 3 sts. 3 x, 4 sts. 2 x and 5 sts. 2 x, then bind off remaining 25 sts.

FINISHING: Follow directions for Size 40/42.

GIRLS PULLOVER, MK 4907

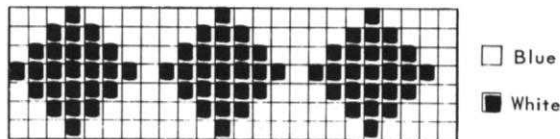


SIZE: 11-12 years. **MATERIAL:** 7 oz. white and 3 1/2 oz. blue KNITTING Mutella or Spinnerin Nylaine Fingering or Coats & Clark Nylon Wool Sport. **TENSION:** KNITTING 4-6.

GAUGE: 17 sts. 2", 23 rows 2". K1, P1, Ribbing 17 sts. 2", 27 rows 2". **PATTERN:** Stockinette stitch with stripes and Norwegian Design according to chart. Each row of the Norwegian Design is counted as 1 row but several movements of the Cam Box are needed to complete the 1 row. **NECK BAND** and **SLEEVE EDGING:** K1, P1, Ribbing.

BACK: (Figure II). Cast on 143 sts. with blue.

ROWS 1-28: Work even, then hang the cast on sts. back onto machine behind the latches to form hem.



ROWS 29-156: Knit 8 rows blue, 2 rows white, 2 rows blue, 2 rows white, 2 rows blue, then 7 rows in Norwegian Design, 2 rows blue, 2 rows white, 2 rows blue, 2 rows white and 9 rows blue, then continue with white.

ROWS 157-174: ARMHOLE SHAPING: Bind off 4 sts. beginning next 2 rows, 3 sts. beginning next 2 rows, 2 sts. beginning next 4 rows, 1 st. beginning next 6 rows, and 1 st. on each side of the following 4th row.

ROWS 175-212: Work even, then put the center st. on the neighboring needle. Put the needles on the left in holding position and complete the right side first.

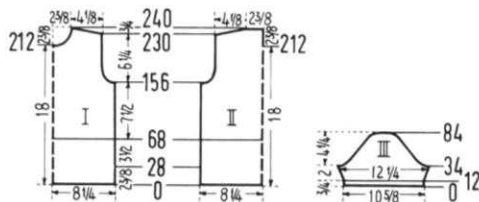
ROWS 213-230: Work even.

ROWS 231-240: SHOULDER SHAPING. On every other row, bind off 7 sts. 4 x, and 8 sts. 1 x, then bind off remaining 20 sts. Put the Cam Box on the left side Row Counter to 212 and complete the left section.

FRONT: (Figure I). The front is worked the same as back up to row 212.

ROWS 213-240: NECK SHAPING. Bind off the center 13 sts. (See Notes to Knit By, inside back cover), then on **Neck Side** on every other row, bind off 4 sts. 1 x, 3 sts. 1 x, 2 sts. 1 x, 1 st. 2 x then decrease 1 st. 3 x on every 4th row. AT THE SAME, **Shape Shoulder** on every other row after row 230 by binding off 6 sts. 6 x. Put Cam Box on the left row counter to 212 and complete the left side.

SLEEVE: (Figure III). Make 2. Cast on 91 sts. with blue.



ROWS 1-12: K1, P1, Ribbing, 2 rows blue, 10 rows white. Continue stockinette stitch with white.

ROWS 13-34: Increase 1 st. on each side after Row 14 and again on every 4th row 2 x, then every other row 4 x. (105 sts.).

ROWS 35-46: CAP SHAPING: Bind off 4 sts. beginning next 2 rows, 3 sts. beginning next 4 rows, 2 sts. beginning next 6 rows.

ROWS 47-76: Bind off 1 st. beginning next 4 rows, 2 sts. beginning next 2 rows. REPEAT these bind offs 4 x.

ROWS 77-84: Bind off 1 st. beginning next 2 rows, 2 sts. beginning next 2 rows, 3 sts. beginning next 2 rows, 4 sts. beginning next 2 rows, then bind off remaining 13 sts.

NECK BAND: Cast on 119 sts. with white. Work K1, P1, Ribbing. With white yarn, knit 4 rows tension 6 and 4 rows tension 5. With blue, knit 6 rows tension 4. With white, knit 4 rows tension 5 and 4 rows tension 6. (22 rows). Bind off all sts.

FINISHING: Join front and back sections at sides and shoulders. Sew sleeves together and sew into pullover. Sew cast on edge of neckband to neckline, fold to outside and back stitch in place. Single crochet around back opening. Make 4 loops and sew on buttons.

BOY'S PULLOVER, KK 4910



SIZE: 12-13 years. **MATERIAL:** 14 oz. white, 3 oz. blue and 2 oz. red KNITTING Subita 2 x 4, or Bear-brand Evermatch Sport and Sweater or Spinnerin Nylaine Fingering. **TENSION:** KNITTING 6-8. **GAUGE:** Stockinette and Pattern Stitch 16 sts. 2", 21 rows 2". K1, P1, Ribbing 16 sts. 2", 24 rows 2". **PATTERN:** Stockinette and Stripes with Norwegian Design according to chart or use JAC 40 and Pattern No. 21a. In the directions each row in the Norwegian Design is counted

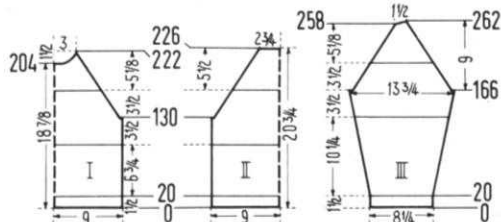
as 1 row, but more than one movement of Cam Box is necessary to complete 1 row.

BACK: (Figure II). Cast on 147 sts. with white.

ROWS 1-20: K1, P1, Ribbing. Transfer the ribber sts. to main machine and continue in Stockinette stitch.

ROWS 21-130: Work even and after row 92 start Norwegian Design pattern stripe.

ROWS 131-226: RAGLAN SHAPING: Bind off 4 sts. beginning next 2 rows, then with Cam Box at right, decrease 1 st. on each side by putting the 3rd st. onto the 2nd needle and move the sts. in to fill empty needle. Repeat



decrease 46 x after every 2nd row and always with Cam Box at right. After Row 140 repeat Norwegian Design from Row 1-27 1 x. After Row 167, continue with white yarn in stockinette stitch. Bind off remaining 45 sts.

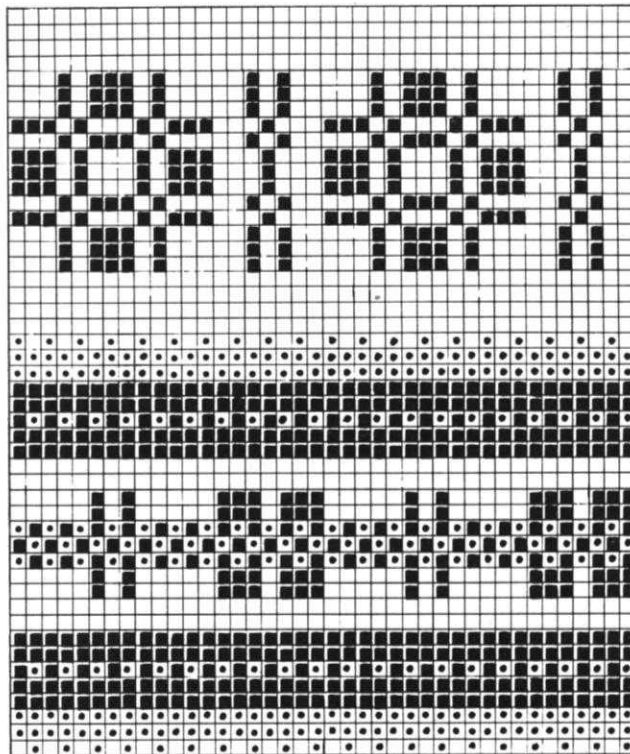
FRONT: (Figure I). The front is worked the same as back up to Row 222, however, for NECK SHAPING, after Row 204, bind off the center 17 sts. (See Notes to Knit By, inside back cover), then on every other row, on Neck Side, bind off 3 sts. 1 x, 2 sts. 3 x, and 1 st. 4 x, then hang the 2 outside needles onto center st. and bind off.

SLEEVE: (Figure III). Cast on 67 sts.

ROWS 1-20: K1, P1, Ribbing. Continue with stockinette.

ROWS 21-166: Increase 1 st. on each side after Row 26 and again every 6th row 22 x and start the Norwegian Pattern stripe after Row 128 (113 sts.).

ROWS 167-258: RAGLAN SHAPING: Bind off 4 sts. beginning next 2 rows, then with Cam Box on the right, de-



□ white ◻ red ◻ blue
(A) (E) (U) Jac 40

crease 1 st. each side 45 x the same way as on back. After Row 176, repeat Norwegian Design from Row 1-27, 1 x. After Row 203, continue with stockinette stitch and white yarn.

ROWS 259-262: On left side, put 4 needles at a time into holding position 2 x and AT THE SAME TIME, on right side, on every other row, decrease 1 st. 2 x. Bind off remaining 13 sts. Make second sleeve with reverse shaping.

NECK BAND: Cast on 163 sts. Work 24 rows K1, P1, Ribbing knitting 6 rows with Tension 6, 12 rows with Tension 5, and 6 rows with Tension 6. Bind off all sts.

FINISHING: Join front and back at sides. Sew sleeve edges and weave the sleeves to front and back sections 1 st. in on each section. Sew short ends of neckband together. Sew cast on edge of band to neckline, fold to outside and backstitch in place.

GIRL'S DRESS, MK 4906



SIZE: 5-6 years. **MATERIAL:** 7 oz. blue and 3 1/2 oz. white KNITTING Mutella or Fleishers Evermatch or Pauline Denham Sierra. **TENSION:** KNITTING 5-7. **GAUGE:** Pattern Stitch 15 sts. 2", 31 rows 2". Stockinette Stitch 15 sts. 2", 22 rows 2". **PATTERN:** Holding Position Design according to chart. Worn on knit side. Sleeves, stockinette stitch. Collar, Belt and Sleeve edges K1, P1, Ribbing.

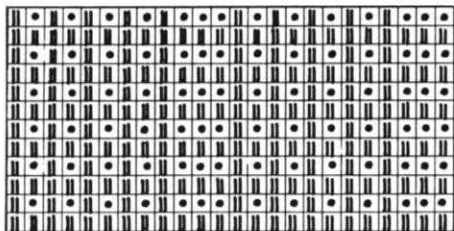
BACK: (Figure II). Cast on 159 sts. with blue. Work in holding position design.

ROWS 1-242: Decrease 1 st. on each side after row 56 and again every 8th row 23 x. (111 sts.).

ROWS 243-286: Work even.

ROWS 287-306: ARMHOLE SHAPING: Bind off 3 sts. on each side (beginning each row) then on every other row on each side, bind off 2 sts. 3 x, 1 st. 2 x and on every 4th row decrease 1 st. 2 x. (85 sts.).

ROWS 307-360: Work even.



27-28 WHITE
25-26 BLUE
23-24 WHITE
21-22 BLUE
19-20 WHITE
17-18 BLUE
15-16 WHITE
13-14 BLUE
11-12 WHITE
9-10 BLUE
7-8 WHITE
1-6 BLUE

ROWS 361-372: SHOULDER SHAPING: Bind off 4 sts. beginning next 6 rows and 5 sts. beginning next 6 rows, then bind off remaining 31 sts.

FRONT: (Figure I). Cast on 159 sts. with blue.

ROWS 1-228: Decrease 1 st. on each side after row 56 and again every 8th row 21 x. Now put 52 needles on left side into holding position and complete the right half first.

ROWS 229-286: After Row 229, cast on 12 sts. on left side. (Put 12 sts. from left half on stitch holder, then cast on). After row 232 and 240, decrease 1 st. on right side and AT THE SAME TIME, make buttonholes after row 240 and 268 over the 4th-7th and 17th-20th needles counting from the left.

ROWS 287-306: ARMHOLE SHAPING: Bind off 3 sts. then on every other row, bind off 2 sts. 3 x, 1 st. 2 x and decrease 1 st. every 4th row 2 x. AT THE SAME TIME after row 296 make buttonholes.

ROWS 307-341: Work even, but make buttonholes after row 324.

ROWS 342-372: NECK SHAPING. Bind off 21 sts. then on every other row, bind off 3 sts. 1 x, 2 sts. 2 x, 1 st. 3 x then on every 4th row, decrease 1 st. 2 x. AT THE SAME TIME, after Row 360 Shape Shoulder by binding off on every other row, 3 sts. 1 x, and 4 sts. 6 x. Put the Cam Box on the left side, put the sts. from stitch holder back on machine, turn row counter to 228 and complete the left half omitting the buttonholes and after Row 229, cast on 23 sts. instead of 12 sts. on the right side.

SLEEVE: (Figure III). Make 2. Cast on 67 sts. with blue.

ROWS 1-8: K1, P1, Ribbing, transfer the ribber sts. to main machine and continue with stockinette stitch.

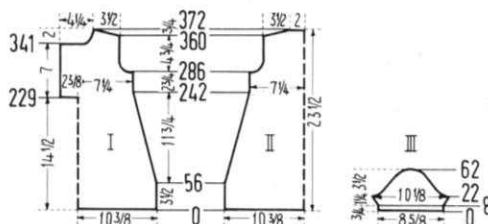
ROWS 9-22: Increase 1 st. on each side after Row 10 and again on every other row 5 x. (79 sts.).

ROWS 23-62: CAP SHAPING: Bind off 3 sts. beginning next 4 rows, 2 sts. beginning next 6 rows, 1 st. beginning next 2 rows, 2 sts. beginning next 2 rows, 1 st. beginning next 2 rows, 2 sts. beginning next 2 rows, 3 sts. beginning next 2 rows and 4 sts. beginning next 2 rows, then bind off remaining 9 sts.

COLLAR: Cast on 151 sts. with blue. Work 30 rows K1, P1, Ribbing then bind off all sts.

BELT: Cast on 17 sts. with blue. Work 300 rows K1, P1, Ribbing then bind off all sts.

FINISHING: Weave the front and back together 1½ sts. in from each section. Join shoulder seams. Sew sleeves together and sew into dress. Make a 2" hem at bottom of dress. Turn under 12 sts. for front facing and hem. Sew collar to neckline leaving approximately 1" free at front edge. Finish buttonholes and sew on buttons. On the inside of waistline, sew an elastic band. Sew a buckle on belt.



GIRL'S JACKET, MK 4908



SIZE: 11-12 years. **MATERIAL:** 16 oz. blue KNITKING Regal or Brunswick Fairhaven or Spinnerin Ambralon. **TENSION:** KNITKING 7 or 8. **GAUGE:** 15 sts. 2", 19 rows 2". **PATTERN:** Stockinette Stitch.

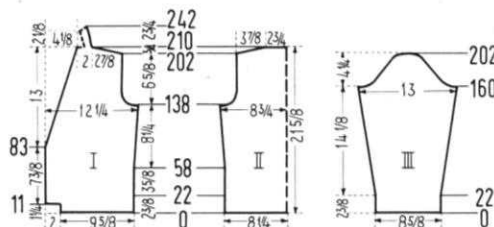
BACK: (Figure II). Cast on 127 sts. **ROWS 1-22:** Work even, then put the cast on sts. back onto machine and behind the latches to form hem.

ROWS 23-138: Increase 1 st. on each side after Row 58 and again on every 20th row 3 x. (135 sts.).

ROWS 139-158: ARMHOLE SHAPING: Bind off 5 sts. beginning next 2 rows, 3 sts. beginning next 2 rows, 2 sts. beginning next 4 rows, 1 st. beginning next 4 rows, then 1 st. at each end of the next 4th and following 4th row. (103 sts.).

ROWS 159-202: Work even.

ROWS 203-210: SHOULDER SHAPING: Bind off 7 sts. beginning next 4 rows and 8 sts. beginning next 4 rows. Bind off remaining 43 sts.



FRONT: (Figure I). Cast on 74 sts.

ROWS 1-22: On left side after Row 11 cast on 15 sts. After Row 22, put the 74 cast on sts. back onto the machine and behind the latches to form hem.

ROWS 23-83: Make buttonholes after Rows 23, 49, and 75 over the 17-21 and 34-38 needles counting from the left side. AT THE SAME TIME, increase 1 st. on the right side after Rows 58 and 78.

ROWS 84-138: FRONT EDGE SHAPING: Decrease 1 st. after Row 83 and again every 4th row 13 x by putting the 17th st. onto the 16th needle, then move sts. over to fill empty needle. AT THE SAME TIME, increase 1 st. on the right side after Rows 98 and 118.

ROWS 139-210: ARMHOLE SHAPING: Bind off 5 sts., then on every other row, bind off 3 sts. 1 x, 2 sts. 2 x, 1 st. 2 x, 1 st. on every 4th row 2 x. AT THE SAME TIME continue the front shaping as before by decreasing 1 st. after Row 139 and again on every 4th row 17 x. Shape Shoulder after Row 202 and on every other row by binding off 7 sts. 2 x and 8 sts. 2 x. Now work over remaining 15 sts. for back facing.

ROWS 211-212: Work even.

ROWS 213-222: On left side, put 11 needles in holding position, knit 2 rows, put all needles in working position, knit 1 row. On right side put 11 needles in holding position, knit 2 rows, put all needles in working position, knit 5 rows.

ROWS 223-242: REPEAT Rows 213-222 2 x, but put 9 needles 1 x in holding position and 11 needles the other time. Then put all sts. on a stitch holder.

Make the other front section with reverse shaping but omit buttonholes.

SLEEVE: (Figure III). Make 2. Cast on 65 sts.

ROWS 1-22: Work even, then put the cast on sts. back on machine and behind the latches to form hem.

ROWS 23-160: After Row 24, increase 1 st. on each side and again on every 8th row 16 x. (99 sts.).

ROWS 161-172: CAP SHAPING: Bind off 5 sts. beginning next 2 rows, 4 sts. beginning next 2 rows, 3 sts. beginning next 2 rows, and 2 sts. beginning next 6 rows.

ROWS 173-196: Bind off 2 sts. beginning next 2 rows, 1 st. beginning next 4 rows. REPEAT these bind offs 3 x.

ROWS 197-202: Bind off 2 sts. beginning next 2 rows, 3 sts. beginning next 2 rows, 4 sts. beginning next 2 rows, then

BE SURE TO USE YOUR ZIP CODE
IN ALL CORRESPONDENCE.

bind off remaining 13 sts.

FINISHING: Join front and back sections at sides and shoulders. Sew sleeves together and sew into jacket. Weave the open sts. of back facing and sew to neckline. Turn 1" of front and neck edge to inside and hem. Finish buttonholes and sew on buttons.

CHILD'S PULLOVER, KK 4909

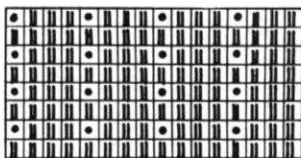


SIZES: 4-5 and 6-7 years. **MATERIAL:** 5 1/4 oz. (7 oz.) white. Both sizes 1 3/4 oz. blue and 1 3/4 oz. red, KNITKING Subita 2 x 3, or Bearbrand Deluxe Sock and Sport or Coats & Clark Super Fingering. **TENSION:** KNITKING 4-6. **GAUGE:** 17 sts. 2", 28 rows 2". **PATTERN:** Holding Position Design according to chart. Worn on Knit side. Use Needle Selector or Automatic and Wheel 3. **EDGES:** K1, P1, ribbing. **SIZE:** 4-5 years. **BACK:** (Figure II). Cast on 113 sts. with white.

ROWS 1-16: K1, P1, Ribbing.

ROWS 17-128: Transfer the ribber sts. to main machine and work even in holding position design.

ROWS 129-146: ARMHOLE SHAPING: Bind off 3 sts. begin-



37-40 BLUE
31-36 WHITE
27-30 RED
21-26 WHITE
17-20 BLUE
11-16 WHITE
7-10 RED
1-6 WHITE

ning next 2 rows, 2 sts. beginning next 2 rows, 1 st. beginning next 6 rows and 1 st. at each end of the 4th row and following 4th row (93 sts.).

ROWS 147-202: Work even.

ROWS 203-212: SHOULDER SHAPING: Bind off 5 sts. beginning next 8 rows, 6 sts. beginning next 2 rows, then bind off remaining 41 sts.

FRONT: (Figure I). The front is worked the same as back but for the Neck Shaping, after Row 178, bind off the center 11 sts. (See Notes to Knit By, inside back cover) and on every other row on Neck Side bind off 3 sts. 2 x, 2 sts. 2 x, 1 st. 2 x and decrease 1 st. on every 4th row 3 x.

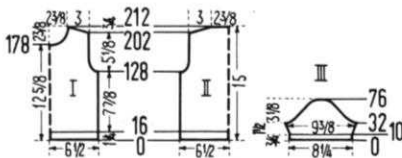
SLEEVE: (Figure III). Make 2. Cast on 71 sts. with white. **ROWS 1-10:** K1, P1, Ribbing, then transfer the ribber sts. to main machine and continue in pattern.

ROWS 11-32: Increase 1 st. on each side after Row 12 and again on every 4th row 4 x. (81 sts.).

ROWS 33-76: CAP SHAPING: Bind off 4 sts. beginning next 2 rows, 3 sts. beginning next 2 rows, 2 sts. beginning next 4 rows, 1 st. beginning next 30 rows, 2 sts. beginning next 2 rows, 3 sts. beginning next 2 rows, 4 sts. beginning next 2 rows, then bind off remaining 11 sts.

NECK BAND: Make 2. For one, cast on 69 sts. and for the other cast on 41 sts. Work K1, P1, ribbing — 4 rows tension 6, 4 rows tension 5, 6 rows tension 4, 4 rows tension 5 and 4 rows tension 6, (22 rows), then bind off all sts.

FINISHING: Join front and back sections at sides. Beginning at arm edge sew 1" for shoulder seams, then make small hem on remaining shoulder openings. Sew sleeves together and sew into armhole. Sew cast on edge of long neckband to front neckline and short band to back. Turn each band to outside and backstitch in place. Make 3 loops on one edge of each shoulder and sew buttons on other edge. **SIZE:** 6-7 years. **BACK:** (Figure II). Cast on 123 sts. with white.



COLLECTING FILE

**KNITKING
MAGAZINE**

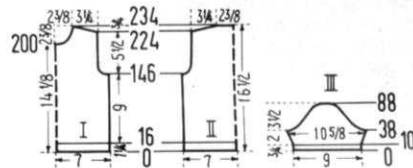
A Binder to preserve your copies of KNITKING Magazine.
Holds 12 issues available for ready reference.
Price \$2.50 each. Mailing cost 50 cents.
(California residents add 10 cents sales tax)

Available only from . . .
KNITKING MAGAZINE
1128 Crenshaw Blvd., Los Angeles, Calif. 90019

ROWS 1-16: K1, P1, Ribbing, then transfer ribber sts. to main machine and continue with Pattern st.

ROWS 17-146: Work even.

ROWS 147-166: ARMHOLE SHAPING: Bind off 3 sts. begin-



ning next 2 rows, 2 sts. beginning next 4 rows, 1 st. beginning next 6 rows, and 1 st. at each end of the next 4th row and following 4th row.

ROWS 167-224: Work even.

ROWS 225-234: SHOULDER SHAPING: Bind off 5 sts. beginning next 2 rows, 6 sts. beginning next 8 rows, then bind off the remaining 41 sts.

FRONT: (Figure I). The front is worked the same as back, but for the Neck Shaping, after Row 200, bind off the center 11 sts. (See Notes to Knit By, inside back cover), then on every other row on Neck Side bind off 3 sts. 2 x, 2 sts. 2 x, 1 st. 2 x and decrease 1 st. every 4th row 3 x.

SLEEVE: (Figure III). Make 2. Cast on 79 sts. with white. **ROWS 1-10:** K1, P1, Ribbing, then transfer ribber sts. to main machine and continue in Pattern st.

ROWS 11-38: Increase 1 st. on each side after Row 12 and again every 4th row 5 x. (91 sts.).

ROWS 39-88: CAP SHAPING: Bind off 4 sts. beginning next 2 rows, 3 sts. beginning next 2 rows, 2 sts. beginning next 6 rows, 1 st. beginning next 34 rows, 2 sts. beginning next 2 rows, 3 sts. beginning next 2 rows, 5 sts. beginning next 2 rows, then bind off remaining 11 sts.

NECK BAND AND FINISHING: Follow directions for Size 4-5 years.

PRACTICAL KNITTING HINTS

HOW TO READ KNITTING PATTERNS

You will see that in the new method of presenting KNITTING patterns, we separate each paragraph according to row numbers and that row numbers mark the beginning of paragraphs.

It is important to remember the following points when using KNITTING patterns.

The first number represents the first row that you will knit and the second number, the last row. For example, 201-292 means that you have just completed row 200 and are about to knit row 201. The paragraph will contain instructions for 92 rows of knitting and if any sets of fancy stitches or pattern designs are completed before row 292, you will continue straight knitting until your counter reads 292.

Specific instructions will always be given regarding increasing, decreasing or binding off for various shapings of armholes, shoulders, necks, etc., and these shapings will always start with the first row number given in the paragraph. For example, rows 293-312, bind off 4 stitches beginning next 4 rows means that bind off 4 stitches **before** you knit row 293 and again before beginning the next three rows.

Unless otherwise stated, all knitting starts and ends with the cam box on the right of your knitter and as casting on is done from left to right, the cast on row is not counted in the instructions. You set your counter at "0" **after** casting on and with the cam box at the right.

Where bind offs occur on every row, instructions will specify, i.e., bind off 5 stitches beginning next 4 rows, etc., but where bind offs occur at wider intervals such as every 4th or every 6th row, instructions may read: Bind off 2 stitches at each end of the next 4th row and every following 4th row 6 x. This means that you bind off 2 stitches before you knit the 4th row and 2 more stitches when you finish the 4th row.

It is also necessary that you know why some patterns give three tensions (for example 6-8 means 6 or 7 or 8) instead of two as in previous issues. KNITTING MAGAZINE patterns are made on the latest model KNITTING machines and the first tension number (6) represents the tension actually used. It is essential, however, that before starting any garment, you make a sample swatch in order to be sure of obtaining the number of stitches and the number of rows per inch specified in the instructions. We want you to make the sample piece at the three tensions given (6-7-8) and select the one that corresponds with the stitches and rows per inch required.

It is also important that you study the charts accompanying each pattern. Each chart is simple to read and an understanding of them will certainly simplify the knitting of garments. Turn to any chart in this magazine and you will see

that two type faces are used. The lighter, smaller type is always used for dimensions in inches or fractions of an inch and the heavier, bolder type represents the row numbers at various parts of the garment.

If you are not quite certain of the written instructions, check them against the charts and you will plainly see where ribbing ends or where armhole shaping begins, etc.

Backs and fronts of garments are shown in halves. Where a dotted line is shown at the side of the chart, it means that one-half of that part of the garment is shown and that the other half corresponds to it exactly.

As cardigans and some other garments need to have the fronts knitted in two pieces, no dotted line will appear in the charts for them and the instructions will tell you to make the second front with reverse shapings.

The position of pockets, bust darts, waist darts, etc., can be clearly seen in the charts and you can always see just how your knitted pieces should look when completed.

CAST ON FOR SECTIONS WITH REVERSE SHAPINGS

Normally we cast on stitches (behind the latches) working from the left to right side of machine and at the beginning of your first row the Cam Box is at the right side. When making sections which call for reverse shapings, there is a way that you may still cast on from left to right by having your Cam Box on the LEFT SIDE at the beginning of the first row. When you use this method you will be able to follow the directions exactly as stated in the pattern and will not have to knit 1 extra row to get to the side on which you will do your shaping or casting on of extra stitches. All you need to do is change the NAME of the sides — the right side shaping will now be done on the left side or vice versa.

This is the way it is done . . . Have the Cam Box on the LEFT SIDE, bring the necessary number of needles into working position. Place the ball of yarn in the container and pull the loose end of the yarn (center pull strand) until you have a length of yarn approximately 5 times the width of the needles you will be using. Now cast on from left to right (behind the latches) with the long strand of yarn. Secure the end of yarn to the right cast on eyelet. Now you are ready to knit from left to right and your row numbers will always correspond with the instructions given for the first section.

If you are knitting a pattern stitch where the Gate Cam Release Lever is put at the needle heels, you cannot use this method of casting on for the reversed section. When you start your shaping you will have to knit an extra row in order to do your shaping on the opposite side. When you knit this extra row, you may turn your row counter 1 row back to make it easy for you to follow the instructions.

WANTED

SALESPeople AND KNITTING OWNERS TO SELL AND TEACH KNITTING. IF YOU CAN DO EITHER OR BOTH WRITE TO KNITTING, 1128 CRENSHAW BLVD., LOS ANGELES, CALIF. 90019, FOR FULL INFORMATION.



KNITKING NEWS

July-August 1967

KNITKING FASHION BLOCK

We apologize to readers who were kept waiting for several days for their Fashion Blocks. The demand exceeded the supply for the first few weeks, but we are now well stocked and able to fill orders the day they arrive.

This remarkable accessory is creating a large amount of interest throughout the world of knitting and is being purchased by professional knit blockers as well as machine and hand knitters. Our advertising in McCall's Needlework & Crafts this month is expected to rapidly reduce our stocks, so if you have not yet ordered the Fashion Block, place your order early....You will be glad you made the small investment the first time you use it.

We did not have any space available in this issue of KNITKING MAGAZINE to carry an advertisement for the Fashion Block, but a full page ad appeared in the May-June issue. The Fashion Block consists of three complete full size blocking cloths (42" x 36") made from heavy duty sanforized drill cloth printed with permanent ink and charted so that all you have to do is pin your garment to the exact size you need and block it. Stainless steel T-Pins and easy to follow instructions are included. The low price is \$14.95 (plus 4% tax for California residents) and \$1.00 shipping costs to anywhere in America.

HANDY HINTS

Regular readers of KNITKING MAGAZINE are likely to ignore Notes to Knit By on the inside back cover of this issue, thinking that they are the same as in previous issues...they have been re-written and include additional notes on Neck Shaping....it is also important that all readers study the special Practical Knitting Hints in this issue. They will make it even easier for you to follow the new and simplified KNITKING pattern instructions.

READY REFERENCE FOR PATTERNS

Dorothy Read of Los Angeles is a KNITKING owner and regular visitor to our Los Angeles Center. She has been a subscriber to KNITKING MAGAZINE since the first edition and keeps all her copies in excellent condition in the special Collecting Files available through KNITKING MAGAZINE. She recently showed us how she has prepared index sheets and pasted them on the inside front and inside back of the Collecting Files. We feel that the idea is well worth passing on to all our readers....

Mrs. Read, first separated garments into four categories; Women, Men, Girls and Boys and then separated each of these categories into types of garments. For example: dresses, suits, cardigans, pullovers, ski-sweaters, etc., then under each heading, the sizes, the issues in which they appeared (in date order) and their page numbers....After roughly preparing the layout with pen and paper,

she typed it neatly in double columns....You can vary the idea to suit your own needs and will soon discover that the time saved through having immediate reference to any pattern more than compensates for the time spent in preparing the index.

Each Collection File holds 12 copies of KNITKING MAGAZINE and they are available from the Los Angeles address only, for \$2.50 (California residents 10¢ tax) plus 50¢ mailing costs.

SKIRTS WITHOUT ZIPPERS

Mrs. John Dubois of Pittsburgh writes us...."I do not like to put zippers in my skirts....is there a way that I may finish the tops of skirts without using a zipper?"

Yes, there is a very simple way to finish the tops of skirts which will look well and go over your hips easily. When you have completed the directions through the last row of a skirt section, knit an added 1/2" to 3/4" in stockinette stitch, and 6 rows before the completion of this added amount, increase 1 st. beginning of next 4 rows. Bind off the stitches VERY loosely using the crochet method. Do the same with the second section of your skirt. After you have woven or sewn the side seams, form a hem by turning the extra rows you have knitted (1/2" to 3/4") to the wrong side and very loosely attach the bound off edge to the inside of your skirt using a strand of the garment yarn. Be sure to leave a small section open for inserting an elastic band cut 1" smaller than your actual waist measurement. After you have inserted the elastic, overlap the ends approximately 1/2" and sew firmly together, then sew up the opening. Now your skirt will fit beautifully and pull up over your hips as well.

KNITKING SPECIALS FOR JULY-AUGUST

In our November-December 1966 KNITKING NEWS we advertised some excellent English yarns on special. These yarns had been shipped to us in error....our suppliers had released them to us at a very low price rather than pay the cost of shipping them all the way back to England....we passed the savings on to our readers and the demand was so great that we were sold completely out within two weeks of the magazine going on the market.

Hundreds more orders came in than we were able to fill and we had a large number of requests for repeat orders. We got in touch with our suppliers and asked if it would be possible to obtain a larger quantity at the same price, but were told, no....They did, however, promise to give us the first opportunity to buy surplus stocks at the end of their financial year. An offer came through recently and we purchased the entire quantity in every color available.

The yarn is an excellent combination of 55% wool and 45% Sarille and there are two weights available. A three-ply fingering yarn (which means that you will get 8 to 9 stitches to the inch) and a two-ply Shetland type yarn (which makes 9 to 10 stitches to the inch) that can be used for any patterns calling for Fine Dralon. Both yarns have the feel of top quality wools and the Sarille, a new synthetic, gives a slight gloss, plus tremendous hard wearing qualities....you can use them for any type of garment; dresses, sweaters, socks, childrens clothes, etc., etc...

Some of the yarn is in one ounce balls, some in five ounce skeins....the minimum quantity available at the special price of 28¢ an ounce (yarn of this quality normally sells at 65¢ to 75¢ an ounce) in ounce balls is one pound at \$4.48. The minimum quantity available at 28¢ an ounce in five ounce skeins is 15 ounces at \$4.20....or better still, if you purchase a minimum of five pounds (80 ounces) in one ounce balls, the price will be reduced to 25¢ an ounce for a total of \$20.00 (enough to make 5 dresses) or in the five ounce skeins, 75 ounces for a total of \$18.75. The shipping costs are 50¢ for any quantity up to two pounds and 25¢ for each additional one pound. California residents must add 4% Sales Tax.... The minimum quantity available at 25¢ an ounce is 75 ounces, but you can purchase some in one pound packets and some in five ounce skeins, always remembering that you cannot purchase less than one pound of any color in one ounce balls, or 15 ounces of any color in five ounce skeins.

We will hold back 50% of our stocks in order to give readers in Eastern states an opportunity to receive their magazines and place their orders... and please....give at least two alternate color choices. We will run out of some colors very rapidly and if we have to write back to you for an alternate color, we could be sold out by the time we receive your reply.

The colors available in five ounce skeins in the Shetland type are: Moss Green, Pearl Grey, Plum, Blaze Red, Green Pasture, Royal Blue and Chestnut Brown. There is one three-ply fingering yarn in five ounce skeins. It is a blue-green mixture.

The colors available in one pound packages (all in 3-ply fingering) 16 one ounce balls to a package, are: Watermelon, Autumn Brown mixture, Purple Heather mixture, Sage Green mixture, Sable Brown and Indigo Blue mixture.

**ARE YOU UNHAPPY WITH
YOUR PRESENT KNITTING MACHINE ?**

DOES IT REFUSE TO KNIT FANCY DRESS YARNS?

DOES IT JAM UP WHEN YOU TRY TO KNIT LOOPED MOHAIR OR THICK AND THIN YARNS?

DOES IT DROP STITCHES ALL OVER THE PLACE?

ARE YOU CONTINUALLY HAVING TROUBLE WITH AWKWARD, CUMBERSOME WEIGHTS?

ARE YOU UNABLE TO MAKE A LARGE GARMENT WITH BULKY YARNS?

DO YOU HAVE TO SELECT PATTERN STITCHES MANUALLY?

DO YOU HAVE TO LATCH YOUR RIBBING BY HAND?

IF YOU ARE HAVING ANY OF THESE PROBLEMS YOU SHOULD TRADE UP TO A NEW FANTASTIC PUSH BUTTON KNITTING WITH COORDINATED RIBBER AND ENJOY KNITTING WITH THE WORLDS FINEST, MOST VERSATILE AND MOST AUTOMATIC KNITTER.

YOU WILL BE SURPRISED AT OUR GENEROUS TRADE-IN ALLOWANCE AND YOU CAN, IF YOU WISH, USE YOUR PRESENT MACHINE AS A DOWN-PAYMENT AND PURCHASE A COMPLETE KNITTING FOR JUST PENNIES A DAY. WRITE TODAY FOR FULL INFORMATION AND TELL US WHAT MACHINE YOU NOW OWN. THE ADDRESS IS:

KNITKING, Dept. T-1, 1128 Crenshaw Blvd., Los Angeles, Calif. - 90019

NOTES TO KNIT BY . . .

STITCH AND ROW GAUGE

Every KNITKING pattern calls for a specific number of stitches and rows for 2 inches and in order to obtain the correct size finished garment, you must be sure to knit at the correct tension. This means that before starting a garment, you must knit a sample swatch with the yarn you intend using for the garment.

Cast on over a sufficient number of needles to produce a swatch 4 inches wide. (If the pattern calls for 16 stitches to 2", 16 x 2 = 32 stitches) then knit 4 inches of rows at the first suggested tension (if the pattern calls for 22 rows to 2", 22 x 2 = 44 rows) knit 2 rows with a contrast color, change to the next higher tension, knit another 4", knit 2 rows with contrast color, change to a third higher tension and knit another 4", then bind off.

Roll the swatch into a cylinder over its length and pull on both ends. Unroll it and stretch it diagonally by pulling on the four corners. Allow the swatch to rest and settle (preferably overnight) then using a stitch gauge or ruler, count the number of stitches and rows over a 2" length in each of your 3 tensions. Select the tension that produces the stitches and rows called for in the pattern. If none of them are correct, you are most likely using the wrong weight of yarn.

HOLDING POSITION

The needles are as far forward on the needle bed as they will go.

NON-WORKING POSITION

The needles are as far back on the needle bed as they will go.

BINDING OFF

See Instruction Manual for your own machine.

CROCHET BIND OFF

Use this method for binding off neck and armbands, edgings, facings or collars. Knit a bind off row using 5 tensions higher than tension used for section and then with latch needle tool, and working from the opposite side of the yarn end, pull the second stitch through the first stitch, the 3rd through 2nd, the 4th through 3rd, etc. . . . When you reach the end of row, pull the loose end of yarn through the last stitch. If you are unable to turn the tension up 5 numbers because you already are working with a large tension, lay the yarn over the needles by hand and knit this one row by pulling each needle back and forward again completing a stitch. Leave approximately 1/4" loop for each stitch (depending on type of yarn used) then bind off crochet method.

SHORT ROWS

Used for shaping of all kinds. Push the specified number of needles opposite the Cam Box into holding position and knit across to them. Now you must place the yarn OVER and UNDER the first inside needle that is in the holding position. Place the specified needles opposite Cam Box into holding position (other side) and knit across to these needles, and again place the yarn OVER and UNDER the first inside needle in the holding position. Repeat as many times as your pattern states. When you return these needles to the working position, the same procedure is used — bring the needles into work opposite the Cam Box, knit across to them, place the yarn OVER and UNDER the first inside needle in holding position and repeat for other side. Continue in this manner until all the needles are back in the working position.

INCREASING, DECREASING

See the Instruction Manual for your own machine.

INCREASING AND DECREASING WHEN USING RIBBER

When increasing, increase on the main knitter first, knit one row and then transfer the necessary stitches from the knitter to the ribber and continue.

When decreasing or binding off, you must transfer the ribber stitches to the main machine before decreasing or binding off.

CONTROL KNOBS (Under the slide handle — one on each side on KNITKING and certain other machines.)

1. When BOTH Control Knobs are UP, (or IN on the latest KNITKING) knit one row going from right to left. The needles knit and move back just beyond the front of the needle bed and the yarn hangs on the front of the needles. The slide will now move freely in either direction

with the needles remaining in a "SAFE POSITION". When you wish to resume knitting, press down (**Out on the latest KNITKING**) BOTH Control Knobs. The first movement of the slide is made without yarn and will bring the needles into working position, you then continue knitting.

2. RIGHT CONTROL KNOB UP (IN on latest KNITKING). Knit from right to left. The row knits, moves the needles back and the yarn is held in front of the latches. Knit from left to right, the yarn goes under the needles without knitting as the needles move into the working position. This is the operation used for making round cords (with 3 or 4 needles only) and also for knitting single rows of one color.

3. LEFT CONTROL KNOB UP (IN for latest KNITKING). The same as above but moving from left to right.

NECK SHAPING

When the directions state to bind off the center stitches for NECK, one correct way is as follows: With a new ball of yarn, bind off the given number of stitches working from right to left. Leave this ball of yarn hanging to one side (to be picked up later) and put all the needles on the left side into holding position and complete the right side first as directed. When you have completed the right side, pick up the yarn that you used for the neck bind off, put it in the wool feeder, bring all the needles into working position and knit 1 row to the left side. Turn row counter back to the number on which you started your neck shaping and complete the left half with reverse shaping, making the same number of decreases and on the same row numbers as on the right half.

You may also use the SHORT ROW method for shaping your neck and shoulders provided the decreasing is made on every other row. When the shaping is completed, knit 1 row over all the neck stitches (or shoulder stitches) with tension set at least 5 numbers higher, and then bind off all stitches using the **crochet method**.

If you are hand feeding a Norwegian design, bind off the center neck stitches with a new ball of yarn, then work both sides of neck shaping at the same time, using two balls of yarn for each color.










MISSING ROW NUMBERS

When there are row numbers missing in the instructions as for instance when you have completed the designated increases or decreases on a section of garment, continue knitting until you reach the next given row number.

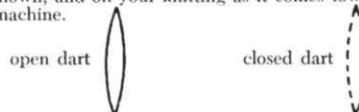
READING OF SYMBOLS

Certain holding position and eyelet designs are sketched in the knitting patterns. The Chart with symbols is read as the work comes toward you from the machine. Where purl stitches are facing you, the purl symbol will be shown and where knit stitches are facing you, the knit symbol will be shown. On the sides of the chart are the row numbers, i.e. 1-8 indicates the first and last row number. In eyelet design patterns, specified stitches are transferred to another needle and the empty needles are returned to the knitting position each time. In holding position designs, selected needles are pushed into the holding position for the stated number of rows.

PATTERN STITCH SYMBOLS

-  = knit stitch
-  = purl stitch
-  = empty needle (leave in working position)
-  = needle not used (in the out of work position)
-  = needle in holding position
-  = 2 stitches on 1 needle — either transferred from the right side or the left side, then put the needle into holding position
-  = needle holding 2 sts. Stitch has been transferred from the LEFT
-  = needle holding 2 sts. Stitch has been transferred from the RIGHT
-  = 3 stitches on 1 needle. The 1st and 3rd stitch in a group of 3 needles has been hung on the 2nd or center needle.

The diagrams for pattern work are followed just as they are shown, and on your knitting as it comes towards you on the machine.



Available in many wood finishes



KNITTING DESK . . .

A knitting machine cabinet that automatically lifts your machine into the knitting position just by pulling a lever. The cabinet converts in seconds into a handsome desk suitable for any decor or any room in your house. Beautifully made in a variety of woods by craftsmen in West Germany.



Order from your local dealer or direct from **KNITKING**, 1128 Crenshaw Blvd., Los Angeles, California 90019