

KNITTING

MAGAZINE



Yarns

64

Knitking

The Finest From Around the World . . .

HANDSOME Cable yarns from Australia, Great Britain and Germany . . . GORGEOUS Mohairs from Australia . . . BEAUTIFUL Satin-Cotton and Linen-Cotton from Germany . . . plus a NEW, new synthetic, soft and light in weight . . . doesn't pill up . . . yet can be thrown into your washing machine without fear of shrinking or stretching . . . LOVELY Tweed mixtures from England . . . EASY to knit and a JOY to behold.

We import our own yarns and they are sold DIRECT to YOU at BIG SAVINGS!

The BEAUTIFUL PATTERNS in KNITTING MAGAZINE are made with KNITTING YARNS!

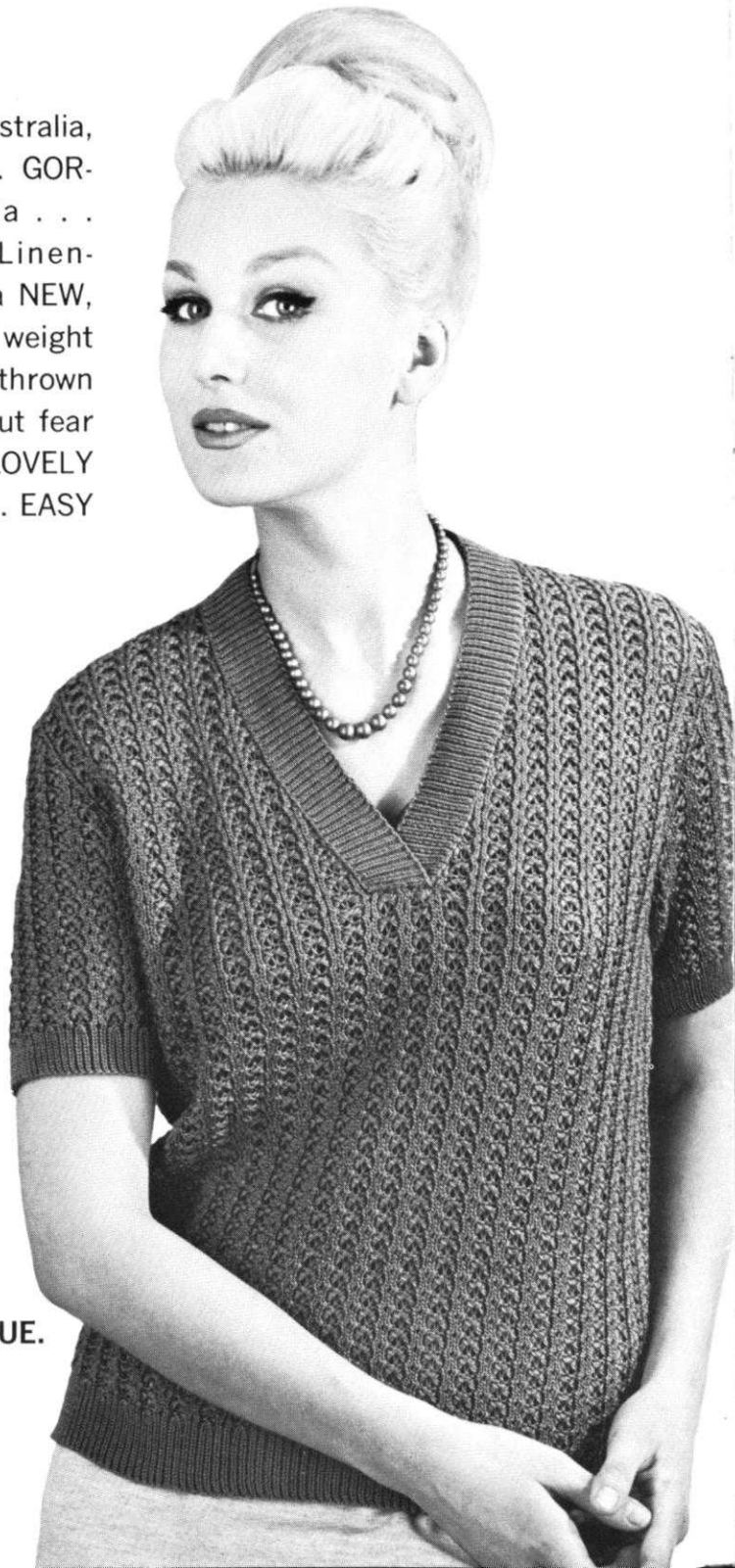
Send \$2.00 for LARGE COMPLETE YARN CATALOGUE.

(Refunded on your first \$10.00 order) to:

KNITTING YARNS, Dept. 19

1128 Crenshaw Blvd.

Los Angeles, California 90019



KNITKING

MAGAZINE



Letter from the Publisher

Vol. 3, No. 1

Sept.-Oct. 1966

INDEX

Contents	Pattern No.	Page No.
Woman's Dress	DK 7428	18
Woman's Dress	DK 7427	19
Woman's Dress	DK 7432	20
Woman's Dress	DK 7431	20
Woman's Pullover	DP 7433	21
Woman's Cardigan	DP 7436	22
Woman's Cardigan	DP 7430	22
Woman's Pullover	DP 7429	23
Hand Bag	DV 7434	24
Hand Bag	DV 7435	24
Man's Jacket	HP 3460	25
Man's Jacket	HP 3461	25
Man's Pullover Shirt	HP 3415	26
Man's Jacket	HP 3459	27
Girl's Dress	MK 4901	28
Girl's Pullover	MK 4902	28
Girl's Dress	MK 4900	29
Boy's Jacket	KK 4905	30
Boy's Cardigan	KK 4904	30
Boy's Pullover	KK 4903	30
Practical Knitting Hints		32



OUR COVER MODEL

DK 7428

The gayest of gay colors for the short knee length modern dresses are important features for several fashions in this issue. Quick to catch the eye! Quick to knit! Quick . . . run to your machine! Our cover model for size 12/14. (See Page 18).

Publisher: Henry J. Atkin, 1128 Crenshaw Blvd., Los Angeles, Calif. 90019, Telephone: WEbster 8-2079. Published bi-monthly. Subscriptions: USA—\$6.00 annually, single copies \$1.50; Canada—\$7.00; other parts of the world—\$10.00. The entire contents of KNITKING MAGAZINE are copyright and must not be reproduced in any shape or form without the express permission, in writing, of the publisher.

Printed by: George Rice & Sons, Los Angeles, Calif.

It is safe to assume that every subscriber to KNITKING MAGAZINE owns a knitting machine of one kind or another and we note from correspondence we receive that many have purchased in haste and are repenting at leisure.

We are aware that a good number of readers have purchased machines through the mail from unethical companies who buy obsolete model machines for a few dollars each and offer them as late models at a mark up in price of 600% to 700% . . . There are other companies who solicit the help of customers with promises of great profit for them if they sell their brand of knitting machine . . . and it must be admitted that a 300% profit certainly appeals to anybody who feels that they could successfully sell knitting machines. Unfortunately they are not aware that their so-called wholesale or dealer price is over 100% above the importers cost. They soon discover that their buying public is not as gullible as expected and that it is no longer easy to sell machines with such an obvious high mark up. Usually they end up by selling at a little over their cost and withdraw from the knitting machine business . . .

Service after sale should be the most important maxim of every knitting machine distributor, but although a substantial number of importers have become involved in the distribution of knitting machines over the past 15 years, very few have been interested in anything but immediate and substantial profits with not the slightest consideration for the buyer after the closing of the sale . . . The situation became so serious, a few years ago that a nation-wide investigation by Federal officers and Postal inspectors resulted in the trial and conviction, with heavy penalties and jail sentences, of many people involved in the knitting machine scandal.

As a direct result of the many devious methods of selling knitting machines there are thousands of owners in America who have never learned how to use their over-priced machines or how to read the very poorly translated instruction manuals . . . which brings us to the real reason for this letter.

California was one of the states that the sharpies selected to set up shop and as a result, there were large numbers of machine owners who needed help and were unable to get it from the suppliers of their machines either because the suppliers were out of business or because despite promises of instruction, it was not available or it was discovered that the teacher knew even less than the pupil. Some outlets have the gall to ridiculously over-price their machines and then charge \$5.00 for each lesson taken.

The KNITKING company—which is busy enough catering to the needs of its own customers, receives hundreds of calls from people owning other brands of machines—has helped find a way to alleviate the problem by encouraging the teaching of all brands of knitting machines in adult education classes in schools in Southern California.

Applications for positions as knitting machine teachers made by several KNITKING customers were endorsed by this company and their classes are so successful that in many cases there are waiting lists of applicants. One very popular teacher alone has as many as 14 classes a week spread over several different schools. Others find that requests for their services grow as more schools add knitting machine instruction to their curriculum.

(Continued on Page 32)



DK 7428

Wake up your wardrobe and "play it cool" in our distinctive, delightful, modern (Mod) sheath dress. A new dimension in your knitting — for a new dimension in your life . . . Size 12/14. (See Page 18).

DK 7427 →

Whether you are a beginner or an old hand at knitting you will not be able to resist this attractive easy to knit sheath dress. Our model is knitted in light blue and the trim can either be purchased in a department store or you can make your own by following the Practical Knitting Hint on Page 32. (See Page 19).

**BEGINNERS
PATTERN**





DK 7432

Carefree and colorful . . . again the modern sheath dress. Our model is white splashed with a wide green band at hemline and a vertical stripe in black. Easy to make . . . attractive knit. (See Page 20).



DK 7431

HERE WE GO AGAIN!

Perhaps this version of the Modern Look is for you . . . Our model is knitted in red, white and black, of KNITKING Subita 2x4 yarn. The side vertical stripe in black breaks the horizontal lines for a slimming effect. Size 10/12. (See Page 20).



DP 7433

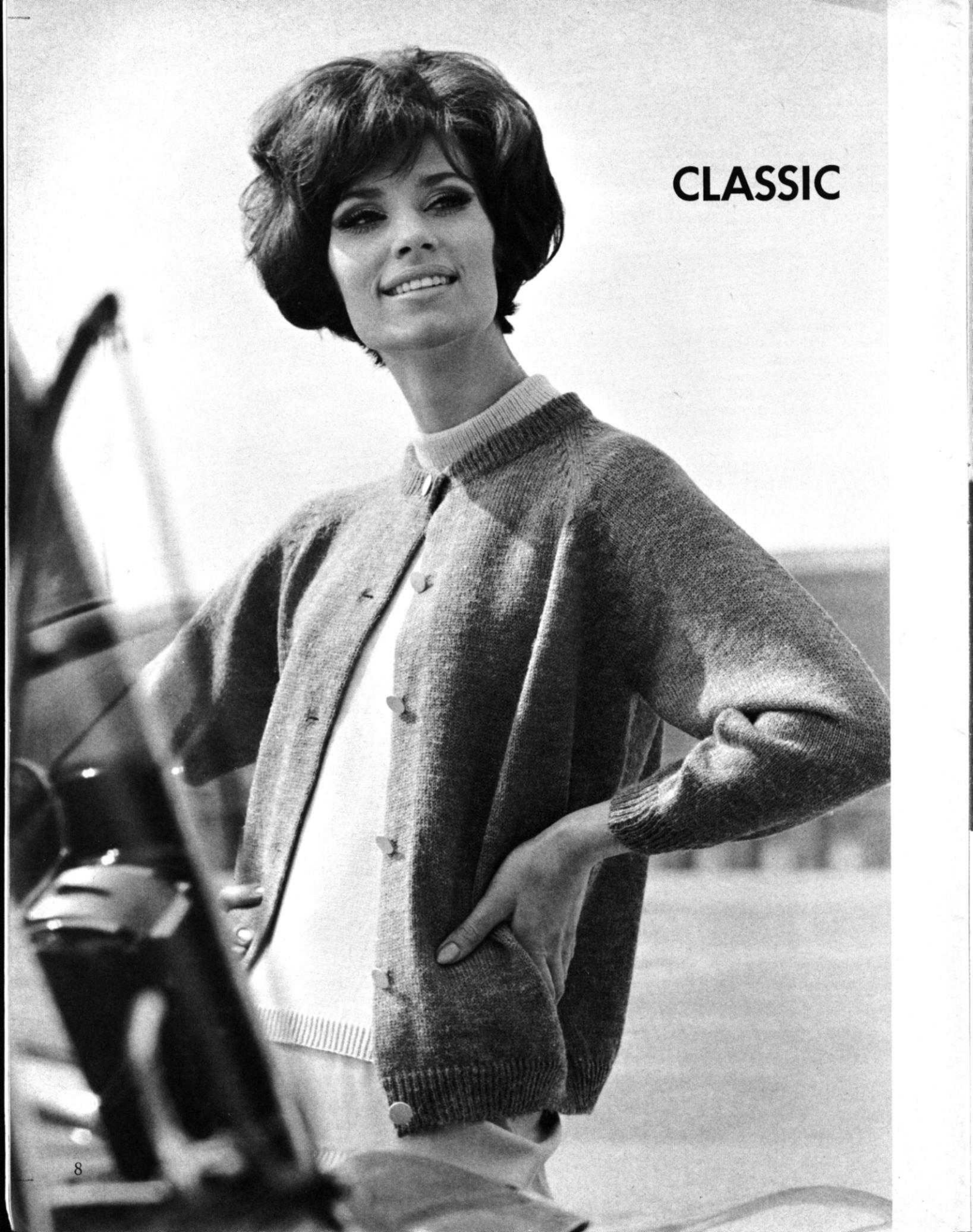
Basic and beautiful! A KNITKING Linen-Cotton pullover in a very simple to knit continuous holding position design. We used bright green Satin-Cotton for the stockinette trim on neckline, sleeves and bottom edge. Size 14/16. (See Page 21).

DP 7436

An unusual cardigan made with the new and remarkable KNITKING'S fine dralon yarn, the most outstanding synthetic ever tested by us. The colors of the body are black and white, the collar and borders are in red. (See Page 22).



CLASSIC





DV 7434 and DV 7435

Satin-Cotton . . . Linen-Cotton . . . an absolute perfect medium for these delightful and beautifully made handbags. Knitted in an easy holding position design and lined in taffeta. (We tell you how), you certainly will want to knit both of them, then repeat them many times for gifts. (See Page 24).

DP 7429

A lovely sleeveless pullover to wear as is, or under a suit. The soft rolled collar is ribbed and special instructions are given for attaching it in our Practical Knitting Hints on page 32. Size 8/10 and 12/14. (See Page 23).

← DP 7430

"The Classic" . . . An ever useful cardigan and a welcome addition to your wardrobe. The accented decreases for the raglan shaping make a very pleasant change from the usual shaping and additionally it is so easy to knit. Size 14/16 and 18/20. (See Page 22).





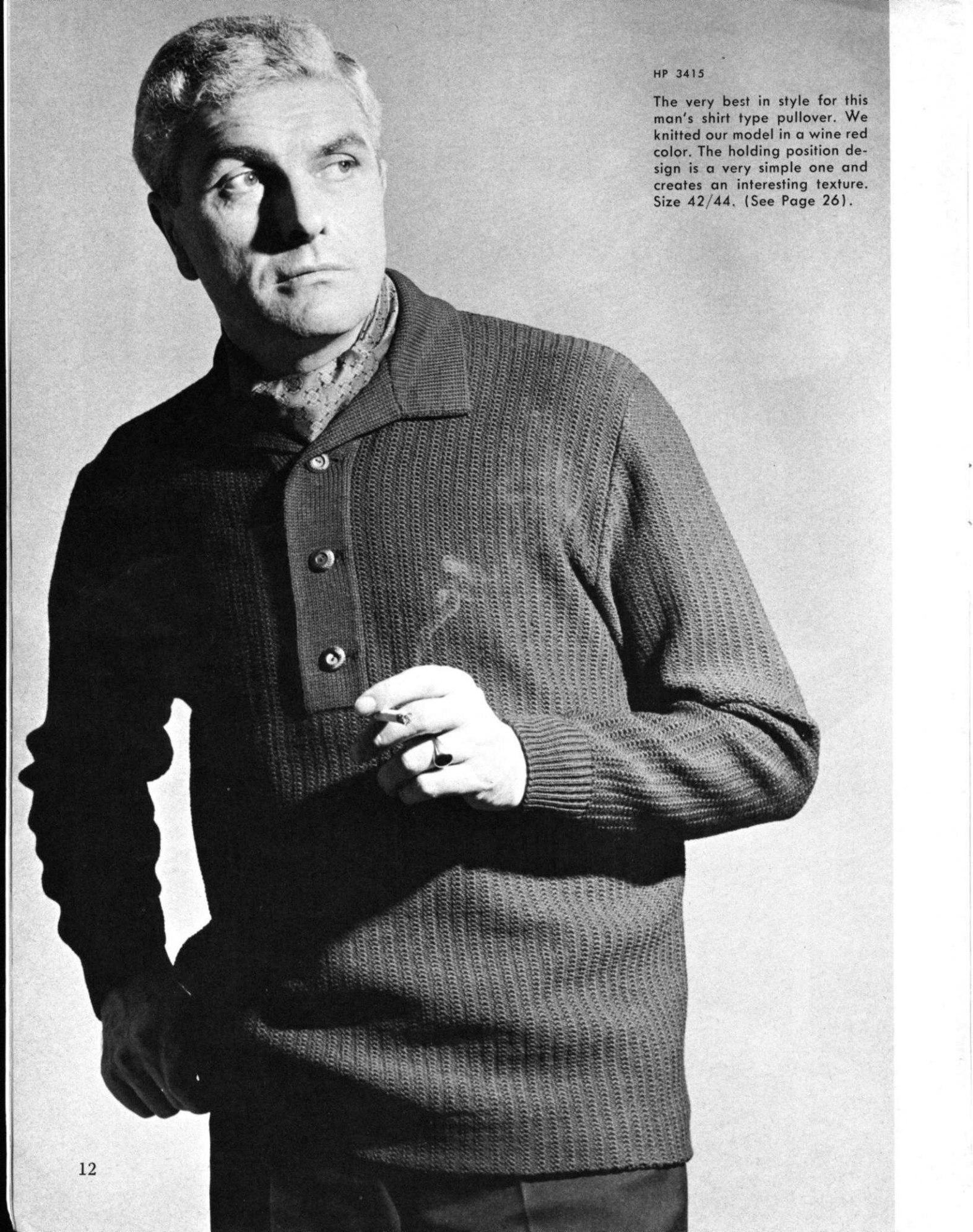
HP 3460

Unrivalled excellence in this man's two-toned jacket. We chose bottle green and a mustard color for our model. The holding position design is simple to knit, and the set in pockets add to your man's convenience and comfort. Size 42/44. (See Page 25).

HP 3461

Happiness is a new and smart looking jacket for that man in your life. He's sure to be pleased with this very special one with a Norwegian pattern design which follows a chart (or you may use Jac 40 and pattern design No. 10) on the collar and pockets. We knitted our model in blue, the design in beige. Size 42/44. (See Page 25).





HP 3415

The very best in style for this man's shirt type pullover. We knitted our model in a wine red color. The holding position design is a very simple one and creates an interesting texture. Size 42/44. (See Page 26).

HP 3459

Continental . . . is the styling for this travel-right man's cardigan. Cable stripes down the front. Accented decreasing at raglan edges and ribbing at neckline, sleeves and bottom are the "plus" assets. Size 42/44. (See Page 27).





MK 4901

Knit your cutie pie this darling dress with its raglan sleeves and pattern design which follows a chart. Our model wears hers knitted in white, with red and blue for the pattern design . . . An easy to care for, lovely to look at knit for the 3 to 4 year old (See Page 28).

MK 4902

Sports happy young ladies all go for the striped pull-overs so popular today . . . This one has—made for the action—raglan sleeves and we chose red and white for its stripes. Size 8 to 9 year old. (See Page 28).

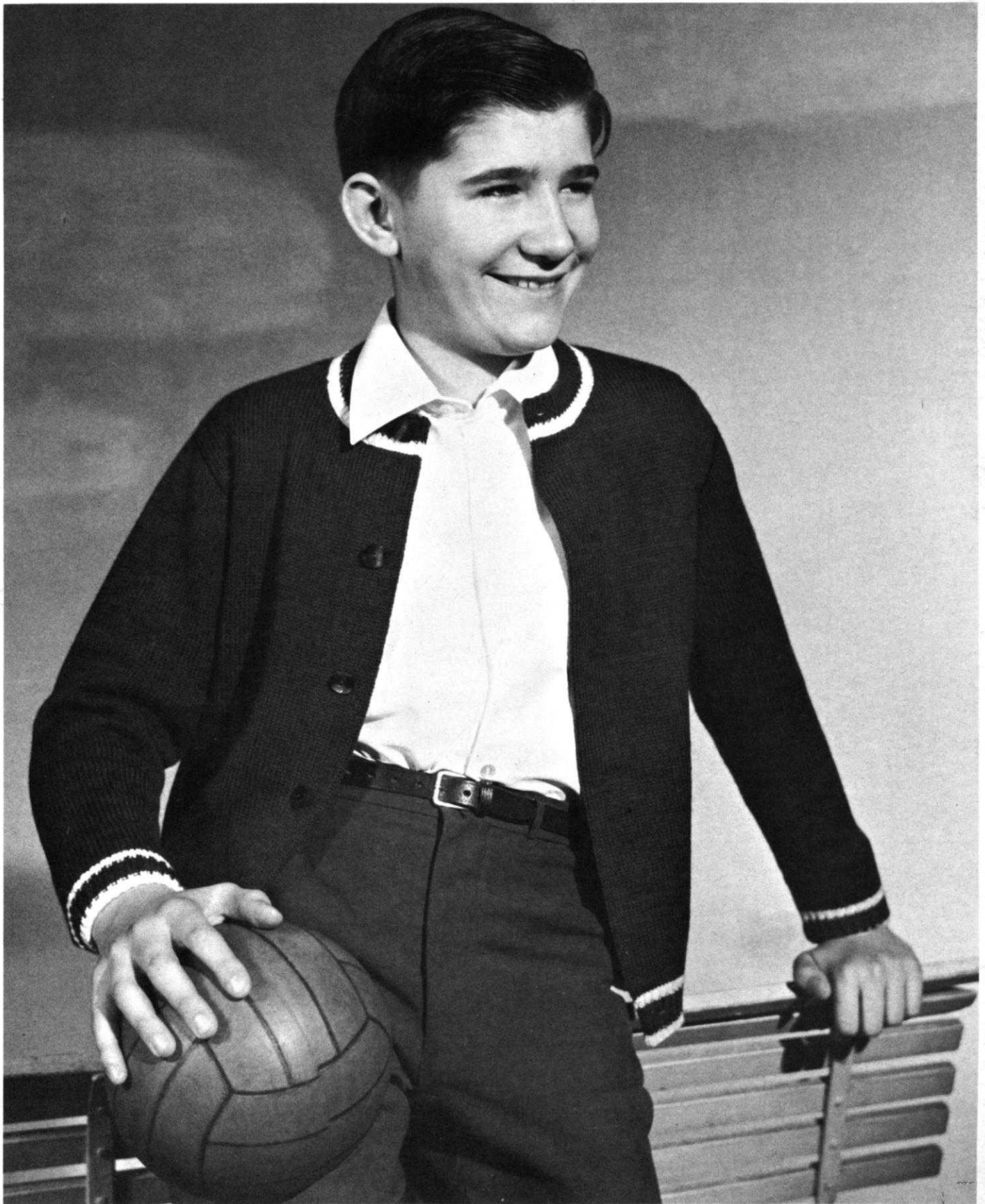


BEGINNERS PATTERN

MK 4900

One of the sweetest outfits for a little girl . . . a two piece dress in a simple to knit design . . . so many possibilities for changing it around for a different look as well. Knit one as illustrated, then make another without the design and decorate it with embroidered flowers at neckline and hem of skirt. Size 3 to 4 and 5 to 6. (See Page 29).







← KK 4905

A boy's world of sports can never have too many cardigans. This one, for the 13 to 14 year old boy is an example of what he likes and will wear anytime . . . anyplace. The cardigan is knitted in stockinette stitch with ribbed stripes at bottom, cuffs and neckline. (See Page 30).



KK 4904

FOR SPECIAL OCCASIONS!

Knit this young man's jacket in Fisherman's Rib. We used a grey yarn for our model and trimmed it with green braid. For the 6 to 7 year old. (See Page 30).

KK 4903

Does he need a pullover in a hurry? . . . Then knit him this V necked one in less time than you might think. Be sure to let him choose the color he likes best . . . For the 8 to 9 year old. (See Page 30).

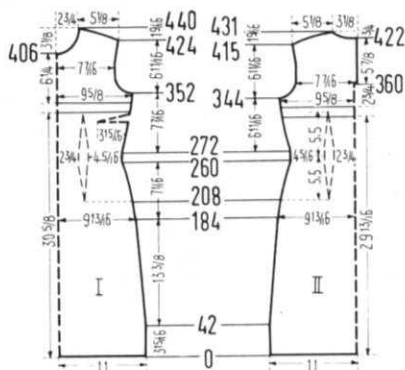
KNITTING INSTRUCTIONS

OUR COVER MODEL WOMAN'S DRESS, No. DK 7428



SIZE: 12/14. **MATERIAL:** 14 oz. white, 4 oz. red, and 2 oz. black. **FOR EXAMPLE:** KNITKING Subita 2x4, Red Heart, Nylon Wool Sport, Bear-brand Deluxe Sock and Sport. **TENSION:** KNITKING 7 or 8. **GAUGE:** 16 sts. 2", 21 rows 2". **PATTERN:** Stockinette Stitch.

BACK (Figure II): Cast on 180 sts. with white. Rows 1-260: Decrease 1 st. on each side at beginning of Row 43 and again every 14th row 10 x, every 10th row 2 x, every 8th row 3 x, every 6th row 3 x, every 4th row 3 x, and on the 2nd row 1 x. **AT THE SAME TIME**, for the **DARTS**, decrease 2 sts. on each side at beginning of Row 209 and again on each side every 13th row 4 x.



To do this, on each side, put the 50th and 52nd sts. on the 51st needle, and move the sts. over to fill the empty needles. The next decrease lies directly above this. (114 sts.) Rows 261-272: Work even. Rows 273-344: Increase 1 st. at beginning of Row 273 and 274 and again on each side every 6th row 11 x. **AT THE SAME TIME**, for the **DARTS**, increase 2 sts. on each side at beginning of Row 273 and again every 13th row 4 x. The increases lie above the decreases. At row 319 work 12 rows with black, then continue with red. (158 sts.) Rows 345-359: **Armhole Shaping**. Bind off 5 sts. beginning next 2 rows; then on every other row on each side bind off 3 sts. 2 x, 2 sts. 2 x, decrease 1 st. 3 x. (122 sts.) Now, on the right side put 61 needles in holding position and work the left section. Rows 360-415: To make the facing for the back opening on the right side cast on 3 sts. at beginning of Row 361. To do this, put 3 sts. from the right section onto a double pointed needle, or contrast yarn. At the armhole edge increase 1 st. at beginning of Row 384 and again every 8th row 3 x. Rows 416-431: **Shoulder Shaping and Neck Shaping**. For the shoulder shaping, on every other row bind off 3 sts. 2 x, 4 sts. 2 x, 5 sts. 2 x, and 6 sts. 3 x. **AT THE SAME TIME**, at beginning of Row 423 bind off 13 sts. for the neck shaping, and then on every other row bind off 6 sts. 1 x, 4 sts. 1 x, and 3 sts. 1 x. Now put the Cam Box on the right side and turn the row counter back to 359. Bring all needles into working position, put the sts. from the double pointed needle back on the machine, and work the right section.

FRONT: (Figure I). The front is worked the same as the back to Row 314. Rows 315-324: To make the bustline darts, on the left side put 32 needles in holding position and work 1 row. On the right side put 32 needles in holding position and work 1 row. Then on each side, one after another, bring 8 needles back into working position 4 x. **AT THE SAME TIME**, at Row 325, for the top of the waistline darts, increase 2 sts. on each side. Rows 325-352: At Row 327 work 12 rows with Black, and then continue with red; increase 1 st. at beginning of Row 328 and 329 and again on each side every 6th row 3 x. (158 sts.) Rows 353-368: **Armhole Shaping**. Bind off 5 sts. beginning next 2 rows, then on every other row on each side bind off 3 sts. 2 x, 2 sts. 2 x, and decrease 1 st. 3 x. (122 sts.) Rows 369-406: Increase 1 st. at beginning of rows 392, 393 and 400 and 401. Rows 407-440: **Neck, armhole, and shoulder shaping**. For the neck shaping, bind off the 14 center sts. with a separate yarn, put needles on the left into holding position and complete the right side first and when cam box is on neck side bind off 4 sts. 1 x, 3 sts. 1 x, 2 sts. 2 x, decrease 1 st. 2 x, then decrease 1 st. every 4th row 2 x and on the 6th row 1 x. **AT THE SAME TIME**, on the armhole edge, increase 1 st. at beginning of Rows 409 and 417; and at beginning of Row 425, for the shoulder shaping, on every other row bind off 3 sts. 2 x, 4 sts. 2 x, 5 sts. 2 x, and 6 sts. 3 x. Put cam box on the left side, all needles in work, row counter back to 406 and complete the left section. **FRONT STRIP:** Cast on 12 sts. with black. Work 390 rows stockinette, and bind off all sts.

NECK STRIP: Cast on 112 sts. with black. Knit 4 rows with Tension 7, 4 rows with Tension 6, and 4 rows with Tension 7. Bind off all sts.

ARMHOLE STRIPS: (Make 2). Cast on 112 sts. with black. Knit 4 rows with Tension 7, 4 rows with Tension 6 and 4 rows with Tension 7; decrease 1 st. on each side at Rows 3 and 5, and increase 1 st. on each side at Rows 9 and 11. Bind off all sts.

FINISHING: Join front and back sections at side and shoulder seams. Make a 1½" hem at the bottom of the dress. Sew the front strip to the center of the dress as illustrated, in slip stitch, overlapping one st. on the strip. Make a hem 3 sts. wide around the opening. Fold neck strip around dress neckline, and attach. Sew in zipper. Sew the ends of each armhole strip together, so that the strips are circular, fold the strips around the armholes of the dress, and attach.

DO YOU HAVE A...

REVERSING BAR?

- With it you can turn a hem in one movement instead of lifting stitches one at a time.
- You can reverse your knitting, so that the knit side faces you, easily and speedily.
- Available for all KNITKING machines with 197 needles. Order from your dealer or direct from

KNITKING

1128 Crenshaw Blvd., Los Angeles, Calif. 90019

Price \$16.95 (California residents add 4% tax)

Plus \$1.50 shipping cost.

BEGINNERS PATTERN...

WOMAN'S DRESS, No. DK 7427



MATERIAL: KNITKING Subita 2 x 4 - Blue. Bearbrand Deluxe Sock and Sport, Evermatch. Size 10/12, 18 oz. Size 14/16, 22 oz. Edging: Both Sizes 3 1/3 yds. 1" wide braid trim. **TENSION:** KNITKING 7 or 8. **GAUGE:** 16 sts. 2", 21 rows 2". **PATTERN:** Stockinette Stitch. **BLOCKED MEASUREMENTS:** Size 10/12: Bust 36", Waist 30 1/2", Hip 38". Size 14/16: Bust 40", Waist 33 1/2", Hip 42".

BACK: (Figure II)
Cast on Stitches
Decrease 1 stitch on each side when counter reads and again on each side every

Stitches in work
Knit even till counter reads
Increase 1 stitch when counter reads and again on each side every
Knit till counter reads
Stitches in work

ARMHOLE SHAPING:
Bind off beginning next 2 rows.
On EVERY OTHER ROW on each side
Bind off

then decrease
Stitches in work
When counter reads
On the right side put into holding position and continue on left side only.
For facing, cast on by removing 3 center sts. from the right section on to double pointed needle and cast on over these needles with a new ball of yarn.
At ARM EDGE increase 1 stitch when counter reads and again every

SHOULDER SHAPING:
On every other row on shoulder side Bind off

BUT AT THE SAME TIME SHAPE NECK when counter reads
Bind off for neck, then on every other row on neck side bind off

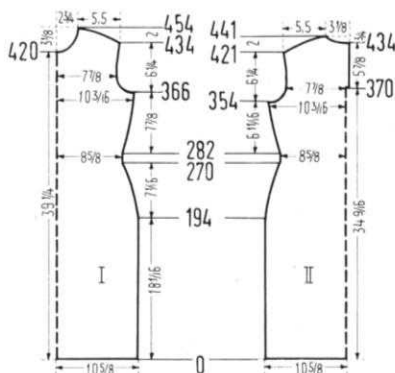
Put Cam Box on the right side, Row counter back to bring all needles into work, put stitches from double pointed needle back on the machine and complete the RIGHT section.

SIZE
10/12 14/16

10/12 14/16

Cast on	156	174
Decrease 1 stitch on each side when counter reads and again on each side every	202	194
	8th row 2 x	6th row 7 x
	6th row 5 x	4th row 8 x
	4th row 6 x	
Stitches in work	128	142
Knit even till counter reads	286	282
Increase 1 stitch when counter reads and again on each side every	286, 287	282, 283
Knit till counter reads	358	354
Stitches in work	150	166
Bind off beginning next 2 rows. On EVERY OTHER ROW on each side Bind off	4 sts.	5 sts.
	3 sts. 2 x	3 sts. 2 x
	2 sts. 1 x	2 sts. 3 x
	1 st. 2 x	1 st. 2 x
then decrease	122	128
Stitches in work	370	370
When counter reads		
On the right side put into holding position and continue on left side only.	61 needles	64 needles
For facing, cast on by removing 3 center sts. from the right section on to double pointed needle and cast on over these needles with a new ball of yarn.	3 sts.	3 sts.
At ARM EDGE increase 1 stitch when counter reads and again every	393	393
	10th row 2 x	10th row 2 x
On every other row on shoulder side Bind off	3 sts. 3 x	3 sts. 3 x
	4 sts. 4 x	4 sts. 4 x
	5 sts. 4 x	5 sts. 4 x
Bind off for neck, then on every other row on neck side bind off	434	434
	10 sts.	12 sts.
	6 sts. 1 x	6 sts. 1 x
	4 sts. 1 x	4 sts. 1 x
	2 sts. 1 x	3 sts. 1 x
Put Cam Box on the right side, Row counter back to bring all needles into work, put stitches from double pointed needle back on the machine and complete the RIGHT section.	368	368

SIZE
10/12



FRONT: (Figure I). Work front the same as back till counter reads:
Knit even till counter reads

SHAPE ARMHOLE: Bind off beginning next 2 rows, then on each side on every other row bind off

Increase 1 stitch when counter reads

When counter reads
Increase 1 stitch at arm edge and Bind off center neck with a separate yarn. Put needles on the left into holding position and continue on right side only. When Cam box is on Neck side (every other row) Bind off as listed in column and AT THE SAME TIME shape shoulder as listed . . .

SIZE 10/12
NECK SHOULDER
4 sts. 1 x Row 430 then
3 sts. 1 x every other row
2 sts. 1 x 3 sts. 3 x
1 st. 2 x 4 sts. 4 x
2 sts. 1 x

BOTH SIZES: At Neck Edge decrease 1 stitch every 4th row 2 x.
Put all needles in working position, row counter back to 420 and complete the LEFT side . . .

FINISHING: Join front and back sections at side and shoulder seams, easing in the fullness at the bustline of the front section. Make a hem 2" wide at the bottom of the dress. Make a hem 3 sts. wide at back opening. Sew the edging to the neckline and sew in zipper. Make a narrow hem on the outside of each armhole and sew edging to the armhole. You will need 1 3/4 yards of edging for the belt.

SIZE
14/16

Knit even till counter reads	358	354
	366	366
Bind off beginning next 2 rows, then on each side on every other row bind off	4 sts.	5 sts.
	3 sts. 2 x	3 sts. 2 x
	2 sts. 1 x	2 sts. 3 x
	1 st. 2 x	1 st. 2 x
Increase 1 stitch when counter reads	400, 401	404, 405
	410, 411	414, 415
	420	424
When counter reads		
Increase 1 stitch at arm edge and Bind off center neck with a separate yarn. Put needles on the left into holding position and continue on right side only. When Cam box is on Neck side (every other row) Bind off as listed in column and AT THE SAME TIME shape shoulder as listed . . .	12 sts.	12 sts.

SIZE 14/16
NECK SHOULDER
4 sts. 1 x Row 434 then
3 sts. 1 x every other row
2 sts. 2 x 3 sts. 3 x
1 st. 3 x 4 sts. 4 x
5 sts. 4 x

WOMAN'S DRESS, No. DK 7432

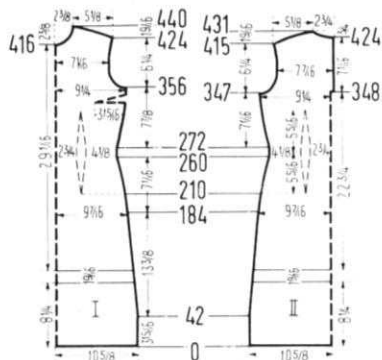


SIZE: 10/12. **MATERIAL:** 13 oz. white, 6 oz. green, and 2 oz. black. **FOR EXAMPLE:** KNITKING Mutella or Subita 2x3. Bearbrand Deluxe Sock and Sport. **TENSION:** KNITKING 6 or 7. **GAUGE:** 16 sts. 2", 21 rows 2". **PATTERN:** Stockinette.

BACK: (Figure II). Cast on 173 sts. with green. Rows 1-88: Decrease 1 st. on each side at beginning of Row 43 and again every 16th row 2 x. Rows 89-104: Work with black, decreasing 1 st. on each side at beginning of Row 91. Continue with

white. Rows 105-260: Decrease 1 st. on each side at beginning of Row 107 and again every 16th row 4 x, on the 14th row 1 x, every 10th row 2 x, every 8th row 3 x, every 6th row 3 x, and every 4th row 3 x. **AT THE SAME TIME,** for the **DARTS,** decrease 2 sts. on each side at beginning of Row 211 and again every 12th row 4 x. To do this, on each side put the 46th and 48th sts. on the 47th needle, and move the sts. over to fill the empty needles. The next decrease lies directly above this. (111 sts.) Rows 261-272: Work even. Rows 273-347: Increase 1 st. at beginning of Row 273 and 274 and again on each side every 6th row 6 x and every 8th row 3 x. **AT THE SAME TIME,** for the **DARTS,** increase 2 sts. on each side at beginning of Row 273 and again every 12th row 4 x. To increase 2 sts. for the darts, on each side, move the sts. outward and pick up 2 sts. from row below and hang them on the empty needles. The increases lie directly above the decreases. (151 sts.) Now, on the right side, put 75 needles in holding position and work the left section. Rows 348-365: **Armhole Shaping.** Bind off 5 sts.; then on every other row bind off 3 sts. 2 x, 2 sts. 2 x, decrease 1 st. 2 x; then decrease 1 st. on the 4th row 1 x. **AT THE SAME TIME,** to make the facing for the back opening, at beginning of Row 349, on the right side cast on 3 sts. To do this, put 3 sts. from the right section on a double pointed needle or contrast yarn. (61 sts.) Rows 366-415: At the **armhole edge,** increase 1 st. at Row 395 and again on every 8th row 2 x. (64 sts.) Rows 416-431: **Shoulder and Neck Shaping.** On every other row, on shoulder side, bind off 3 sts. 2 x, 4 sts. 2 x, 5 sts. 2 x, and 6 sts. 3 x. **AT THE SAME TIME,** at neck edge, bind off 10 sts. at beginning of Row 425; then on every other row bind off 6 sts. 1 x, 4 sts. 1 x, and 2 sts. 1 x. Now put the cam box on the right side and turn the row counter back to 347. Bring all the needles into working position, put the sts. from the double pointed needle or contrast yarn back on the machine, and work the right section.

FRONT: (Figure I). The front is worked the same as the back to Row 334. Rows 335-344: Make the bustline darts by knitting short rows. See Notes to Knit By on inside back cover. To do this, on the left side put 32 needles in holding position and work 1 row. On the right side put 32 needles in holding position and work 1 row. Now, on each side, one after another, put 8 needles in working position 4 x. Rows 345-356: Work even. Rows 357-374: **Armhole Shaping.** Bind off 5 sts. beginning of next 2 rows; then on every other row



on each side bind off 3 sts. 2 x, 2 sts. 2 x, decrease 1 st. 2 x; then decrease 1 st. on the 4th row 1 x. (115 sts.) Rows 375-416: Increase 1 st. at beginning of Rows 403 and 404 and 411 and 412. Rows 417-440: **Neck, Armhole, and Shoulder Shaping.** Bind off the 11 center sts. for neck with a separate yarn, put needles on the left into holding position and complete the right side first. On every other row on neck side bind off 4 sts. 1 x, 3 sts. 1 x, 2 sts. 1 x, decrease 1 st. 2 x; then decrease 1 st. on every 4th row 2 x. **AT THE SAME TIME,** at the armhole edge, increase 1 st. at beginning of Row 417, and at beginning of Row 425. At shoulder side on every other row bind off 3 sts. 2 x, 4 sts. 2 x, 5 sts. 2 x, and 6 sts. 3 x. Put all needles on the left into working position, row counter back to 416 and complete the left section.

FRONT STRIP: Cast on 14 sts. with black. Work 314 rows even. Then, for the neckline facing, cast on 45 sts. on each side with white. (Use another ball on the left side.) Work 6 rows even, 3 rows with Tension 6 and 3 rows with Tension 7. Bind off all sts.

FACING. (Make 2). For the armhole facings, cast on 107 sts. with white. Knit 3 rows with Tension 6 and 3 rows with Tension 7, and increase 1 st. on each side at Rows 4 and 6. (Move the edge sts. outward, pick up st. from row below and hang on empty needle.) Bind off all sts.

FINISHING: Sew the front strip to the center of the dress, as illustrated, in slip stitch, overlapping 1 st. on the strip. Join the front and back sections at side and shoulder seams. Make a 1 1/2" hem at the bottom of the dress, and a hem 3 sts. wide around the back opening. Sew the facings to the neck and arm openings. Sew in zipper.

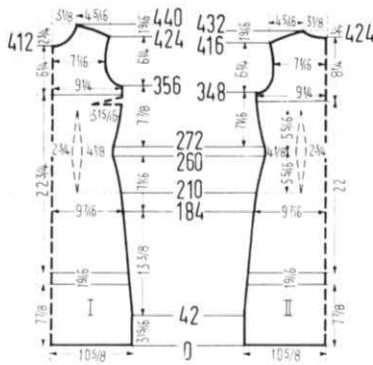
WOMAN'S DRESS, No. DK 7431



SIZE: 10/12. **MATERIAL:** 11 oz. red, 7 oz. white, and 2 oz. black. **FOR EXAMPLE:** KNITKING Subita 2x4. Satin Cotton Spinnerin Ambralon. **TENSION:** KNITKING 6 or 7. **GAUGE:** 16 sts. 2", 21 rows 2". **PATTERN:** Stockinette.

BACK: (Figure II). Cast on 173 sts. with white. Rows 1-84: Decrease 1 st. on each side at beginning of Row 43 and again every 16th row 2 x. Rows 85-100: Work with black, decreasing 1 st. on each side at beginning of Row 91. Continue with

red. Rows 101-260: Decrease 1 st. on each side at beginning of Row 107 and again every 16th row 4 x, on the 14th row 1 x, every 10th row 2 x, every 8th row 3 x, every 6th row 3 x, and every 4th row 3 x. **AT THE SAME TIME,** for the **DARTS,** decrease 2 sts. on each side at Row 211 and again every 12th row 4 x. To do this, on each side put the 46th and 48th sts. on the 47th needle, and move the sts. over to fill the empty needles. The next decrease lies directly above this. (111 sts.) Rows 261-272: Work even. Rows 273-336: Increase 1 st. at beginning of Row 273 and 274 and again on each side every 6th row 6 x and every 8th row 3 x. **AT THE SAME TIME,** for the **DARTS,** increase 2 sts. on each side at Row 273, and again every 12th row 4 x. To increase for darts move the stitches on each side outward and pick up 2 sts. from row below and hang them on the empty needles. The increases lie directly above the decreases. (151 sts.) Continue with white. Rows 337-348: Work even. Rows 349-366: **Armhole Shaping.** Bind off 5 sts. beginning of next 2 rows; then on every other row on each side bind off 3 sts. 2 x, 2 sts. 2 x, decrease 1 st. 2 x; then decrease 1 st. on the 4th row 1 x. (115 sts.) Rows 367-416: Increase 1 st. at beginning of Row 395 and 396 and again on each side every 8th row 2 x. (121 sts.) Rows 417-432: **Shoulder and Neck Shaping.** For the shoulder shaping, on each side of every other row bind off 3 sts. 3 x, 4 sts. 4 x, and 5 sts. 2 x. **AT THE SAME TIME,** for neck shaping, at beginning of Row 425 bind off the 21 center sts. with a separate yarn, put needles on the left into holding position and complete the right side first. **At neck edge,** on every other row bind off 6 sts. 1 x, 5 sts. 1 x, and 4 sts. 1 x.



FRONT: (Figure I). The front is worked the same as the back to Row 334. Rows 335-344: Make the bustline darts by knitting with short rows. Read Notes to Knit By on inside back cover (Short rows). To do this, on the left side put 32 needles in holding position and work 1 row. On the right side put 32 needles in holding position and work 1 row. Now, on each side, one after another, bring 8 needles back into working position 4 x. Continue with white. Rows 345-356: Work even. Rows 357-374: **Armhole Shaping.** Bind off 5 sts. beginning of next 2 rows; then on every other row, on each side, bind off 3 sts. 2 x, 2 sts. 2 x, decrease 1 st. 2 x; then decrease 1 st. on the 4th row 1 x. (115 sts.) Rows 375-412: Increase 1 st. at beginning of Rows 403 and 404 and 411 and 412. Rows 413-440: **Neck, Armhole, and Shoulder Shaping.** Bind off the 15 center sts. for neck with a separate yarn, put needles on the left into holding position and knit the right side first. On every other row, on neck edge bind off 3 sts. 2 x, 2 sts. 4 x, decrease 1 st. 3 x; then on the 4th row decrease 1 st. 1 x. **AT THE SAME TIME,** on the armhole edge increase 1 st. at beginning of Row 419, and at beginning of Row 425, for the shoulder shaping, on every other row bind off 3 sts. 3 x, 4 sts. 4 x, and 5 sts. 2 x. Put all needles into working position, row counter back to 412 and complete the left side.

FRONT STRIP: Cast on 14 sts. with black. Work 422 rows stockinette and bind off all the sts.

FACING FOR THE NECK OPENING: Cast on 117 sts. with white. Knit 3 rows with Tension 6 and 3 rows with Tension 7. Bind off all sts.

ARMHOLE FACING: Make 2. Cast on 107 sts. with white. Knit 3 rows with Tension 6 and 3 rows with Tension 7, and increase 1 st. on each side at Rows 4 and 6. Bind off all sts.

FINISHING: Join front and back sections at side and shoulder seams. Sew facings to neck and arm openings. Make a hem 1 1/2" wide at the dress bottom. Weave the strip to the front of the dress as illustrated, overlapping 1 st. on the strip.

WOMAN'S PULLOVER, No. DP 7433



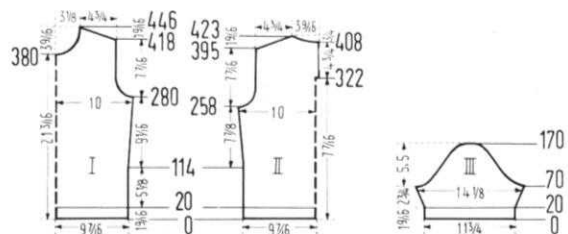
SIZE: 14/16. **MATERIAL:** 13 oz. natural-colored cotton yarn with linen effect. **FOR EXAMPLE:** KNITKING Linen-Cotton. 2 ounces green. **FOR EXAMPLE:** KNITKING Satin-Cotton. **TENSION:** KNITKING Pattern Stitch 4 or 5; Stockinette 5 or 6. **GAUGE:** Pattern Stitch 16 sts. 2", 36 rows 2"; Stockinette Stitch 16 rows 2", 25 rows 2". **PATTERN:** Holding Position Design on purl side according to chart. With Needle Selector or Automatic Wheel III. Edging: Stockinette.

BACK: (Figure II). Cast on 153 sts. with green. Rows 1-20: Work in Stockinette with Tension 5 (6). Continue in Holding Position Design with cotton yarn and Tension 4 (5). Rows 21-258: Increase 1 st. at beginning of Row 115 and 116 and

again on each side every 28th row 4 x. (163 sts.). Rows 259-294: **Armhole Shaping.** Bind off 4 sts. beginning next 2 rows; then on every 4th row on each side bind off 4 sts. 1 x, 3 sts. 1 x, 2 sts. 1 x, decrease 1 st. 4 x; then decrease 1 st. on the 6th row 1 x. (127 sts.). Rows 295-321: Work even. Now on the right side put 63 needles in holding position and work the left section. Rows 322-395: To make the facing for the back opening, at beginning of Row 323, on the right

••••••••••••••••••••	7 - 8
••••••••••••••••••••	5 - 6
••••••••••••••••••••	3 - 4
••••••••••••••••••••	1 - 2

side, cast on 3 sts. To do this, put 3 sts. from the right section on a double pointed needle or contrast yarn. Rows 396-423: **Shoulder and Neck Shaping.** At shoulder edge, on every other row bind off 2 sts. 7 x and 3 sts. 8 x. **AT THE SAME TIME,** for the neck shaping, bind off 10 sts. at beginning of Row 409, then on every other row bind off 4 sts. 3 x, 3 sts. 1 x, and 2 sts. 2 x. Now turn the row counter back to 321, bring all needles into working position, put the sts. from the double pointed needle back on the machine and work the right section.



FRONT: (Figure I). The front is worked the same as the back to Row 258. Rows 259-280: Work even. Rows 281-316: **Armhole Shaping.** Bind off 4 sts. beginning next 2 rows; then on every 4th row on each side bind off 4 sts. 1 x, 3 sts. 1 x, 2 sts. 1 x, decrease 1 st. 4 x, and then on the 6th row decrease 1 st. 1 x. (127 sts.) Rows 317-380: Work even. Rows 381-446: **Neck and Shoulder Shaping.** Bind off the 15 center sts. for neck with a separate yarn, put needles on the left into holding position and complete the right side first. At neck edge, on every 4th row bind off 4 sts. 1 x, 3 sts. 2 x, 2 sts. 1 x, decrease 1 st. 2 x; then decrease 1 st. on every 6th row 2 x and on every 8th row 2 x. **AT THE SAME TIME,** at beginning of Row 419, for the shoulder shaping, on every other row bind off 2 sts. 7 x and 3 sts. 8 x. Put all needles into working position, row counter back to 380 and complete the left side.

SLEEVE: (Figure III). Make two. Cast on 97 sts. with green. Rows 1-20: Work in Stockinette with Tension 5 (6). Continue in Holding Position Design with cotton yarn and Tension 4 (5). Rows 21-70: Increase 1 st. at beginning of Row 21 and 22 and again on each side every 6th row 6 x and every 4th row 2 x. (115 sts.) Rows 71-90: **Underarm Shaping.** Bind off 5 sts. beginning of next 2 rows, then on every 4th row on each side bind off 4 sts. 1 x, 3 sts. 2 x, and 2 sts. 1 x. Rows 91-150: On each side of every 4th row decrease 1 st. 2 x and bind off 2 sts. 1 x. Repeat these 3 decreases 4 x. Rows 151-170: On each side of every 4th row decrease 1 st. 1 x, bind off 2 sts. 2 x, 3 sts. 1 x, 4 sts. 1 x, and the remaining 17 sts.

NECK EDGING: Cast on 131 sts. with green. Knit 5 rows with Tension 5, 10 rows with Tension 4, and 5 rows with Tension 5. Bind off all sts.

FINISHING: Join front and back sections at side and shoulder seams, easing in the fullness at the bustline of the front section. Sew sleeve edges together and sew sleeves to sweater. Fold the edgings at the bottom of the sleeves and the bottom of the sweater in half toward inside and hem. Make a hem 3 sts. wide around back opening. Fold neck edging around neckline and attach. Sew in zipper.

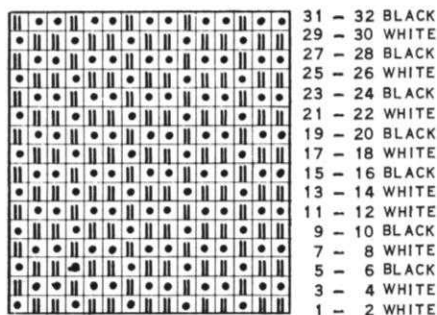
WOMAN'S CARDIGAN, No. DP 7436



SIZE: 14/16. **MATERIAL:** 3½ oz white, 3½ oz. black, and 2 oz. red. **FOR EXAMPLE:** KNITKING Fine Dralon. Diamond Laine Ecosaise, Fine 2-ply yarn. **TENSION:** KNITKING Pattern Stitch 3 or 4, Stockinette 2 or 3. **GAUGE:** Pattern Stitch 18 sts. 2", 52 rows 2". Stockinette Stitch 18 sts. 2", 28 rows 2". **PATTERN:** Holding Position Design on knit side according to chart. With Needle Selector or Automatic. At the beginning put the needles of the design into holding position by hand. Then use the

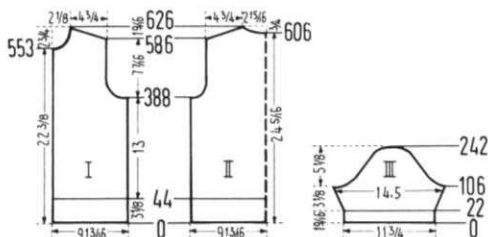
Needle Shifter. Edging and Collar: Stockinette.

BACK: (Figure II). Cast on 179 sts. with red. Rows 1-44: Work in Stockinette with Tension 2 (3). To make the hem, put the cast on sts. back on the machine, and continue in Holding Position Design with Tension 3 (4). Rows 45-388: Work even. Rows 389-440: **Armhole Shaping.** Bind off 4 sts. beginning of next 2 rows; then on every 4th row on **each side** bind off 3 sts. 1 x, 2 sts. 3 x, decrease 1 st. 4 x; then decrease 1 st. on every 6th row 3 x. (139 sts.) Rows 441-586: Work even. Rows 587-626: **Shoulder and Neck Shaping.** Shape Shoulder. On **each side** of every other row bind off 2 sts. 20 x and 3 sts. 1 x. **AT THE SAME TIME,** for the **neck shaping,** at beginning of Row 607 bind off the 13 center sts. with a separate yarn and continue working both sides at the same time using 2 balls of yarn for each color. On **each side** of neck, on every other row bind off 4 sts. 1 x, 3 sts. 3 x, 2 sts. 2 x and decrease 1 st. 3 x.



FRONT: (Figure I). Cast on 90 sts. with red. Rows 1-44: Work in Stockinette with Tension 2 (3). Now, to make the hem, put the cast on sts. back on the machine, and continue in Holding Position Design with Tension 3 (4). Rows 45-388: Work even. Rows 389-440: **Armhole Shaping.** Bind off 6 sts.; then on every 4th row bind off 4 sts. 1 x, 3 sts. 2 x, 2 sts. 2 x, decrease 1 st. 3 x; then decrease 1 st. every 6th row 3 x. (64 sts.) Rows 441-553: Work even. Rows 554-626: **Neck and Shoulder Shaping.** Bind off 3 sts. for the neck shaping; then on every 4th row bind off 3 sts. 1 x, 2 sts. 3 x, decrease 1 st. 5 x; then decrease 1 st. on every 6th row 4 x. **AT THE SAME TIME,** at beginning of Row 587, for the **shoulder shaping,** on every other row bind off 2 sts. 20 x and 3 sts. 1 x. Make another front section with reverse shapings.

SLEEVE: (Figure III). Cast on 107 sts. with red. Rows 1-22: Work in Stockinette with Tension 2 (3). To make the hem, put the cast on sts. back on the machine and continue in Holding Position Design with Tension 3 (4). Rows 23-106:



Increase 1 st. at beginning of Row 29 and 30 and again on **each side** every 6th row 12 x. (133 sts.) Rows 107-138: **Underarm Shaping.** On every 4th row on the **back side** of the sleeve bind off 4 sts. 1 x, 3 sts. 3 x, 2 sts. 4 x; and on the **front side** bind off 6 sts. 1 x, 4 sts. 2 x, 3 sts. 2 x and 2 sts. 3 x. Rows 139-226: **On each side** of every 4th row decrease 1 st. 22 x. Rows 227-242: **On each side** of every 4th row bind off 2 sts. 1 x, 3 sts. 1 x, 4 sts. 1 x, 5 sts. 1 x, and the remaining 14 sts. Make another sleeve with reserve shapings.

COLLAR: See Notes to Knit By on inside back cover (short rows). Cast on 140 sts. with red. Work in stockinette with Tension 2 (3). Rows 1-18: On the left side put 50 needles in holding position and work 1 row. On the right side put 50 needles in holding position and work 1 row. Now, on **each side,** one after another put 10 needles in working position 1 x, 7 needles 2 x, 6 needles 2 x, 5 needles 2 x, and 4 needles 1 x. Rows 19-94: Work even. Rows 95-104: **On each side,** one after another, put 14 needles in holding position 1 x, 10 needles 2 x, and 8 needles 2 x. Rows 105-106: On the left side put all needles in working position and work 1 row. On the right side put all needles in working position and work 1 row. Bind off all sts.

BUTTON AND BUTTONHOLE STRIPS. Cast on 192 sts. with red. Work 44 rows Stockinette with Tension 2 (3) and bind off all sts. Make the buttonhole strip the same, making buttonholes at Rows 11 and 34 over the 6th-12th, 41st-47th, 76th-82nd, 111th-117th, 146th-152nd, and 181st-187th needles.

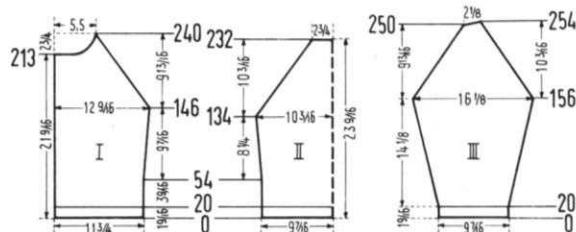
FINISHING: Join front and back sections at side seams in slip stitch, overlapping 1 st. on each section. Sew shoulder seams. Sew sleeve edges together and sew sleeves to sweater. Fold button and buttonhole strips around front edges and attach. Fold collar in half lengthwise and sew the side edges. Place the open edge of the collar around sweater neckline and attach. Finish buttonholes and sew on buttons.

WOMAN'S CARDIGAN, No. DP 7430



SIZES: 14/16 and 18/20. **MATERIAL:** Size 14/16 - 16 oz. red. Size 18/20 - 20 oz. red. **FOR EXAMPLE:** KNITKING Mutella, Columbia Minerva Shetland, Unger Musette. **TENSION:** KNITKING 7 or 8. **GAUGE:** Stockinette 15 sts. 2", 19 rows 2"; K.1., P.1 Ribbing 15 sts. 2", 25 rows 2". **PATTERN:** Stockinette Stitch. Edging: K.1, P.1 Ribbing.

SIZE: 14/16. **BACK:** (Figure II). Cast on 143 sts. Rows 1-20: Work in K.1, P.1 Ribbing. Continue in Stockinette. Rows 21-134: Increase 1 st. at beginning of Row 55 and 56 and again on **each side** every 14th row 5 x. (155 sts.) Rows 135-232: **Raglan Shaping.** Decrease 3 sts. on **each side** at Row 135 and again every



5th row 18 x. To do this, always put the 4th, 5th, and 6th sts. on the 7th, 8th, and 9th needles, and move the 3 edge sts. over, to fill the empty needles. Bind off 41 sts.

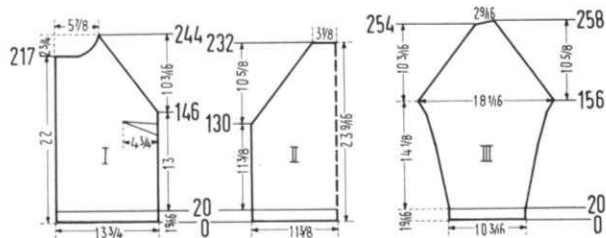
FRONT: (Figure I). Cast on 89 sts. Rows 1-20: Work in K.1, P.1 Ribbing, making **buttonholes** on the left at Row 11 over the 3rd-7th and 17th-21st needles. Continue in Stockinette Stitch. Rows 21-146: Make buttonholes at Rows 54, 96, and 138. **AT THE SAME TIME,** on the right side increase 1 st. at

beginning of Row 55 and again every 14th row 5 x. (95 sts.). Rows 147-240: Raglan Shaping. Decrease 3 sts. at beginning of Row 147 and again every 5th row 17 x, using same method as for back. **AT THE SAME TIME**, make **BUTTONHOLES** at Row 180, and for the **neck shaping**, bind off 23 sts. at Row 213, and then on every other row bind off 3 sts. 1 x, 2 sts. 2 x, decrease 1 st. 7 x; then decrease 1 st. on the 4th row 1 x. Then hang the 3 remaining sts. together by putting the 2 outside sts. on the center needle and binding off. Make another front section with reverse shapings, minus buttonholes.

SLEEVE: (Figure III). Cast on 73 sts. Rows 1-20: Work in K.1, P.1 Ribbing. Transfer Ribber sts. to main machine. Continue in Stockinette Stitch. Rows 21-156: Increase 1 st. at beginning of Row 25 and 26 and again **on each side** every 6th row 15 x and on every 4th row 9 x. (123 sts.) Rows 157-250: Raglan Shaping. **On each side** decrease 2 sts. **each side** at Rows 157 and 162. To do this, put the 4th and 5th sts. on the 6th and 7th needles; then **on each side** decrease 3 sts. at Row 167 and again every 5th row 15 x, using same method as for back, and on the **right side** decrease 3 sts. at Row 245. Rows 251-254: On the **left side**, one after another, put 5 needles in holding position 2 x. Bind off 16 sts. Make another sleeve with reverse shapings.

NECK EDGING: Cast on 163 sts. Work 26 rows K.1, P.1 Ribbing: 6 rows with Tension 7, 14 rows with Tension 6, and 6 rows with Tension 7, making **BUTTONHOLES** at Rows 7 and 20, over the 6th-10th needles. Bind off all sts.

FINISHING: Join front and back sections at side seams, easing in the fullness at the bustline of the front section. Sew sleeve edges together, and sew sleeves to front and back sections in slip stitch, overlapping 1 st. from each section. At the front edges make a hem 11 sts. wide. Fold neck edging around sweater neckline and attach. Finish buttonholes and sew on buttons.



SIZE: 18/20. **BACK:** (Figure II). Cast on 173 sts. Rows 1-20: Work in K.1, P.1 Ribbing. Transfer ribber sts. to main machine. Continue in Stockinette. Rows 21-130: Work even. Rows 131-232: Raglan Shaping. Decrease 3 sts. **on each side** at Row 131 and again every 5th row 14 x and every 4th row 6 x. To do this, always put the 4th, 5th, and 6th sts. on the 7th, 8th, and 9th needles and move the 3 edge sts. over to fill the empty needles. Bind off 47 sts.

FRONT: (Figure I). Cast on 105 sts. Rows 1-20: Work in K.1, P.1 Ribbing, making **BUTTONHOLES** at Row 11 over the 3rd-7th and 17th-21st needles. Transfer the ribber sts. to main machine. Continue in Stockinette. Rows 21-146: Work even, making **BUTTONHOLES** at Rows 54, 97, and 140. Rows 147-244: Raglan Shaping. Decrease 3 sts. at Row 147 and again every 5th row 14 x and every 4th row 5 x, following same method as for back. **AT THE SAME TIME**, make **BUTTONHOLES** at Row 183, and for the **Neck shaping**, bind off 23 sts. at Row 217 and on every other row on **neck side** bind off 3 sts. 2 x, 2 sts. 3 x, and decrease 1 st. 7 x. Hang the 3 remaining sts. together, by putting the 2 outside sts. on the center needle and binding off. Make another front section with reverse shapings, minus buttonholes.

SLEEVE: (Figure III). Cast on 79 sts. Rows 1-20: Work in K.1, P.1 Ribbing. Transfer Ribber sts. to Main machine. Continue in Stockinette. Rows 21-156: Increase 1 st. at beginning of Row 25 and 26 and again **on each side** every 6th row 13 x, every 4th row 9 x, and every other row 7 x. (139 sts.) Rows 157-254: Raglan Shaping. Decrease 2 sts. on each side at

Rows 157 and 162. To do this, put the 4th and 5th sts. on the 6th and 7th needles; then decrease 3 sts. **on each side** at Row 167 and again every 5th row 12 x and every 4th row 5 x, using same method as for back; then on the **right side** decrease 3 sts. at Row 251. Rows 255-258: On the **left side**, one after another, put 6 needles in holding position 2 x. Bind off 20 sts. Make another sleeve with reverse shapings.

NECK EDGING: Cast on 183 sts. Work 26 rows K.1, P.1 Ribbing: 6 rows with Tension 7, 14 rows with Tension 6, and 6 rows with Tension 7; making **BUTTONHOLES** at Rows 7 and 20 over the 6th-10th needles. Bind off all sts.

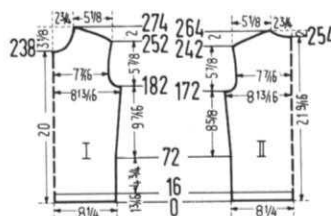
FINISHING: Follow directions for Size 14/16, however, on the front section sew in darts as illustrated.

WOMAN'S PULLOVER No. DP 7429



SIZES: 8/10 and 12/14. **MATERIAL:** Size 8/10 - 7 oz. rose; Size 12/14 - 9 oz. rose. **FOR EXAMPLE:** KNITTING Subita 2x3, Spinnerin Nylane Fingering, Bearbrand Deluxe Sock and Sport. **TENSION:** KNITTING 5 or 6. **GAUGE:** Stockinette Stitch 18 sts. 2", 23 rows 2"; K.1, P.1 Ribbing 18 sts. 2", 27 rows 2". **PATTERN:** Stockinette Stitch. Edging and Collar: K.1, P.1 Ribbing.

SIZE: 8/10. **BACK:** (Figure II). Cast on 151 sts. Rows 1-16: K.1, P.1 Ribbing. Transfer ribber sts. to main machine. Increase 1 st. on one side, and continue in Stockinette. Rows 17-172: Increase 1 st. at beginning of Row 73 and 74 and again **on each side** every 16th row 5 x. (164 sts.) Rows 173-190: Armhole Shaping. Bind off 4 sts. beginning next 2 rows; then on every other row **on each side** bind off 3 sts. 1 x, 2 sts. 1 x, decrease 1 st. 4 x; then decrease 1 st. on the 4th row 1 x. (136 sts.) Rows 191-242: Increase 1 st. at beginning of Row 211 and 212 and again **on each side** every 8th row 3 x. (144 sts.) Rows 243-264: Shoulder and Neck Shaping. **On each shoulder side** of every other row bind off 3 sts. 4 x, 4 sts. 5 x, and 5 sts. 3 x. **AT THE SAME TIME**, for the **neck shaping**, at beginning of Row 255 bind off the 14 center sts. with a separate yarn, put needles on the left into holding position and knit the right side first. When cam box is on neck side bind off 6 sts. 1 x, 5 sts. 1 x, 4 sts. 1 x and 3 sts. 1 x. Put all needles into working position, row counter back to 254 and complete the left side.

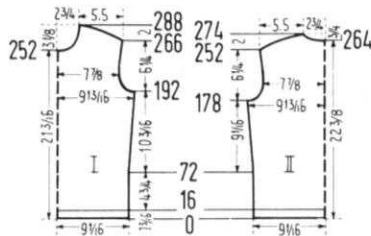


FRONT: (Figure I). The front is worked the same as the back to Row 172. Rows 173-182: Work even. Rows 183-200: Armhole Shaping. Bind off 4 sts. beginning of next 2 rows; then on every other row **on each side** bind off 3 sts. 1 x, 2 sts. 1 x, decrease 1 st. 4 x; then decrease 1 st. on the 4th row 1 x. (136 sts.) Rows 201-238: Increase 1 st. at beginning of Row 221 and 222 and again **on each side** every 8th row 2 x. Rows 239-274: Neck, Armhole, and Shoulder Shaping. Bind off the 14 center sts. for neck with a separate yarn, put needles on the left into holding position and knit the right side first. When cam box is on **neck side** bind off 5 sts. 1 x, 3 sts. 2 x, 2 sts. 1 x, decrease 1 st. 2 x; then decrease 1 st. every 4th row 3 x. **AT THE SAME TIME**, at the armhole edges increase 1 st. at beginning of Row 245; and at beginning of Row 253, for the **shoulder shaping**, on every other row bind off 3 sts. 4 x, 4 sts. 5 x, and 5 sts. 3 x. Put

all needles into working position, row counter back to 238 and complete the left side.

COLLAR: Cast on 163 sts. Work 38 rows K.1, P.1 Ribbing: 14 rows with Tension 6, 12 rows with Tension 5, and 12 rows with Tension 6. Transfer ribber sts. to main machine, then work 4 rows stockinette with Tension 4. Work 1 row with Tension 10 and bind off by using your latch tool and beginning with end opposite the yarn, pull the second stitch through the first stitch, the third through the second, etc., etc.

FINISHING: Join front and back sections at side and shoulder seams, easing in the fullness at bustline of front section. See Practical Knitting Hints on page 32 for attaching collar. Sew ends of collar together so that collar is circular, fold collar around sweater neckline so that the stockinette stitched section is on the outside, and attach. Make a 1/2" hem around armhole openings.



SIZE: 12/14. BACK: (Figure II). Cast on 165 sts. Rows 1-16: K.1, P.1 Ribbing. Transfer ribber sts. to main machine. Now increase 1 st. on one side and continue in stockinette stitch. Rows 17-178: Increase 1 st. at beginning of row 73 and 74 and again on each side every 14th row 6 x. (180 sts.) Rows 179-200: **Armhole Shaping.** Bind off 4 sts. beginning next 2 Rows; then on every other row on each side bind off 3 sts. 1 x, 2 sts. 3 x, decrease 1 st. 4 x; then decrease 1 st. on the 4th row 1 x. (144 sts.) Rows 201-252: Increase 1 st. at beginning of Row 221 and 222 and again on each side every 8th row 3 x. (152 sts.) Rows 253-274: **Shoulder and Neck Shaping.** On each shoulder side of every other row bind off 3 sts. 3 x, 4 sts. 3 x, and 5 sts. 6 x. **AT THE SAME TIME,** for the neck shaping, at beginning of Row 265 bind off the 14 center sts., with a separate yarn. Put needles on the left into holding position and complete the right side first. At Neck edge on every other row bind off 6 sts. 1 x, 5 sts. 1 x, 4 sts. 1 x, and 3 sts. 1 x. Put all needles into working position, Row Counter back to 264 and complete the left side.

FRONT: (Figure I) The front is worked the same as the back to Row 178. Rows 179-192: Work even. Rows 193-214: **Armhole Shaping.** Bind off 4 sts. beginning next 2 rows; then on every other row on each side bind off 3 sts. 1 x, 2 sts. 3 x, decrease 1 st. 4 x; then decrease 1 st. on the 4th row 1 x. (144 sts.) Rows 215-252: Increase 1 st. at beginning of Row 235 and 236 and again on each side every 8th row 2 x. Rows 253-288: **Neck, Armhole, and Shoulder Shaping.** Bind off the 14 center neck sts. with a separate yarn, put needles on the left into holding position, and complete the right side first. At neck edge on every other row bind off 5 sts. 1 x, 3 sts. 2 x, 2 sts. 1 x, decrease 1 st. 2 x; then decrease 1 st. every 4th row 3 x. **AT THE SAME TIME,** at the armhole edge increase 1 st. at beginning of Row 259; and at beginning of Row 267, for the shoulder shaping, on every other row bind off 3 sts. 3 x, 4 sts. 3 x, and 5 sts. 6 x. Put all needles into working position, row counter back to 252 and complete the left side.

COLLAR AND FINISHING: Follow directions for Size 8/10.

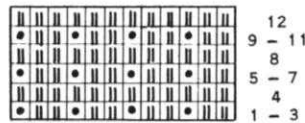
BE SURE TO USE YOUR ZIP CODE
IN ALL CORRESPONDENCE.

HAND BAG, No. DV 7434



SIZE: 10 1/4" x 15 3/4". **MATERIAL:** 4 oz. natural colored cotton yarn with linen effect. **FOR EXAMPLE:** KNITTING Linen-Cotton 11 3/4" red tafetta, 35 1/4" wide, one pair of purse handles. **TENSION:** KNITTING Pattern Stitch 6 or 7; Stockinette Stitch 4 or 5. **GAUGE:** Pattern Stitch 14 sts. 2", 36 rows 2"; Stockinette Stitch 14 sts. 2", 22 rows 2". **PATTERN:** Holding Position Design on purl side according to chart. Edging: Stockinette Stitch.

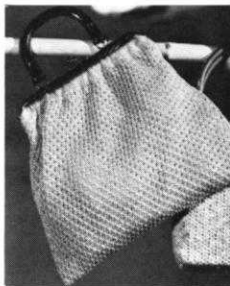
Cast on 113 sts. (use a reversing bar if you have one). Rows 1-18: Work in Stockinette with Tension 4 (5). To make the hem, put the cast on sts. back on the machine so that they hang in the needle latches. Pull up the right cam knob and work 2 rows without yarn. Push in the cam knob. Turn the row counter back to 18 and continue in Holding Position Design with



Tension 6 (7). Rows 19-164: Work even. Rows 165-166: Bind off 12 sts. beginning next 2 rows. Rows 167-192: Work even, and bind off all the stitches. Make another section, identical to this.

FINISHING: Join the two sections at side seams in slip stitch; overlapping 1 st. from each section, and leaving a 3/4" opening on each side at the top. Sew the bottom seam and corners together. Using the handbag as a pattern, cut a lining from tafetta allowing 5/8" for seams and at least 1" above the bottom of the hem at top of bag. Cut an interlining from pella or staflex but do not allow any above hem. Place the interlining against the wrong side of each lining piece and then sew the two sections together on the sides, leaving an opening approximately 3/4" at top. Sew across the bottom as well. Trim the seams of the interlining and turn to right side. Now carefully pin your lining inside the bag, folding over the allowance at top and side openings. Invisibly hem the lining into the bag. If you do not care to interline your handbag, you may also use a piece of stiff heavy cardboard, then line the bag with tafetta.

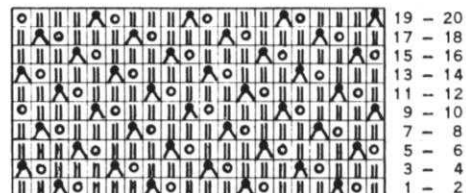
HAND BAG, No. DV 7435



SIZE: 11 3/4" x 13 1/2". **MATERIAL:** 4 oz. Eggshell colored cotton yarn. **FOR EXAMPLE:** KNITTING Satin Cotton. 11 3/4" tafetta, 35 1/4" wide; one pair of purse handles. **TENSION:** KNITTING 7 or 8. **GAUGE:** Pattern Stitch 12 sts. 2", 28 rows 2"; Stockinette Stitch 12 sts. 2", 20 rows 2". **PATTERN:** Eyelet Design on knit side according to chart. Edging: Stockinette.

Cast on 82 sts. Rows 1-15: Stockinette. To make the hem put the cast on sts. back on the machine. Row 16: Work the sts. together. Continue in Pattern Stitch. Rows 17-294: Work even. Rows 295-310: Stockinette Stitch. Now, to make the hem, put the sts. on the first row worked in stockinette stitch back on the machine, and bind off the sts. together.

FINISHING: See instructions for Hand Bag DV 7434.



MAN'S JACKET, No. HP 3460

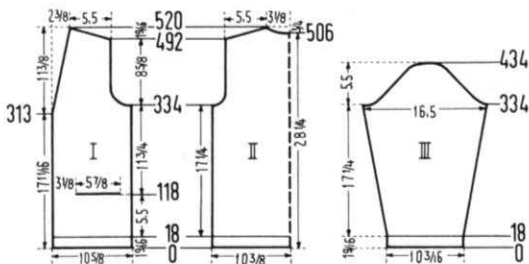


SIZE: 42/44. **MATERIAL:** 18 oz. Bottle green and 13 oz. mustard. **FOR EXAMPLE:** KNITTING Regal. Bearbrand Evermatch Sport and Sweater, Red Heart Nylon and wool. **TENSION:** KNITTING 7 or 8. **GAUGE:** Pattern Stitch 15 sts. 2", 36 rows 2"; Stockinette Stitch 15 sts. 2", 21 rows 2". **PATTERN:** Holding Position Design on knit side according to chart. The empty rows in the Pattern Stitch are not counted in the gauge or in the directions. Edging: Stockinette Stitch.

BACK: (Figure II). Cast on 158 sts. with bottle green. Rows 1-18: Work in Stockinette Stitch. Continue in Holding Position Design. Rows 19-334: Work even. Rows 335-368: **Armhole**

	16 - 18 BOTTLE GREEN
	13 - 15 MUSTARD
	10 - 12 BOTTLE GREEN
	7 - 9 MUSTARD
	4 - 6 BOTTLE GREEN
	1 - 3 MUSTARD

Shaping. Bind off 3 sts. beginning next 2 rows, then on every 4th row on each side bind off 2 sts. 3 x, decrease 1 st. 2 x, and then decrease 1 st. every 6th row 2 x. (132 sts.) Rows 369-492: Work even. Rows 493-520: **Shoulder and Neck Shaping.** On each shoulder side of every other row bind off 2 sts. 3 x and 3 sts. 12 x. **AT THE SAME TIME,** at Row 507, for the **neck shaping,** bind off the 18 center sts. with a separate yarn, put needles on the left into holding position and knit the right side first. At **neck edge** on every other row bind off 4 sts. 1 x, 3 sts. 1 x and 2 sts. 4 x. Put all needles into working position, row counter back to 506 and complete the left side.



FRONT: (Figure I). Cast on 81 sts. with bottle green. Rows 1-18: Work in Stockinette Stitch. Continue in Holding Position Design. Rows 19-118: Work even. Now, work the pocket. To do this, on the **left side** put 23 needles into holding position, and on the **right side** put 12 needles into holding position. Work 18 rows Stockinette with Bottle green over the needles in working position and then bind off these sts. For the pocket lining, cast on 46 sts. over these same needles and work 100 rows in holding position design. Now turn the row counter back to 118 and continue on in holding position design over all the needles. Rows 119-313: Work even. Rows 314-520: **Front, Armhole, and Shoulder Shaping.**

For the **front shaping,** decrease 1 st. on left at Row 314 and again every 10th row 7 x and every 12th row 10 x. **AT THE SAME TIME,** for the **armhole shaping,** bind off 6 sts. at beginning of Row 335, then on every 4th row bind off 4 sts. 1 x, 3 sts. 1 x, 2 sts. 2 x, decrease 1 st. 2 x; then decrease 1 st. every 6th row 2 x. At beginning of Row 493, for the **shoulder shaping,** on every other row bind off 2 sts. 3 x and 3 sts. 12 x. Make another front section with reverse shapings.

SLEEVE: (Figure III). Cast on 78 sts. with Bottle green. Rows 1-18: Work in Stockinette Stitch. To make the hem, put the

cast on sts. back on the machine and continue in Holding Position Design. Rows 19-334: Increase 1 st. at beginning of Row 19 and 20 and again on each side every 12th row 11 x and every 14th row 12 x. (126 sts.) Rows 335-358: **Underarm Shaping.** On every 4th row on the **back** side of the sleeve bind off 4 sts. 1 x, 3 sts. 2 x, 2 sts. 2 x, decrease 1 st. 1 x; on the **front** side bind off 6 sts. 1 x, 5 sts. 1 x, 3 sts. 2 x, and 2 sts. 2 x. Rows 359-418: **On each side** of every 4th row decrease 1 st. 1 x and bind off 2 sts. 2 x; repeat these 3 decreases 4 x. Rows 419-434: **On each side** of every 4th row bind off 2 sts. 1 x, 3 sts. 1 x, 4 sts. 2 x, and the remaining 14 sts. Make another sleeve with reverse shapings.

COLLAR: Cast on 120 sts. with Bottle green. Work 98 rows Stockinette, and bind off all sts.

BUTTON AND BUTTONHOLE STRIPS: Cast on 164 sts. with Bottle green. Work 36 rows Stockinette, and bind off all sts. Make the buttonhole strip the same, with buttonholes at Rows 9 and 27, over the 8th-12th, 41st-45th, 74th-78th, and 107th-111th needles.

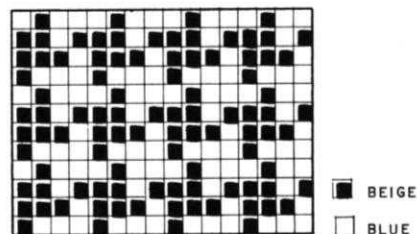
FINISHING: Join front and back sections at side seams in slip stitch, overlapping 1 st. from each section. Sew shoulder seams. Sew sleeve edges together and sew sleeves to sweater. Make a hem 1 1/2" wide at the bottom of the sweater. Fold the top pocket edging in half toward inside and hem; then sew the sides of the edging to the sweater. Sew the pocket lining to the wrong side of the sweater. Fold the collar in half, and sew the side edges from the fold to a point 3" from the fold. Sew the button and buttonhole strips to the collar and then fold around front and neckline of sweater and attach. Finish buttonholes and sew on buttons.

MAN'S JACKET, No. HP 3461



SIZE: 42/44. **MATERIAL:** 23 oz. blue and 2 oz. beige. **FOR EXAMPLE:** KNITTING Mutella or Subita 2x3, Bearbrand Deluxe Sock and Sport, Red Heart Super Fingering. **TENSION:** KNITTING 6 or 7. **GAUGE:** 17 sts. 2", 21 rows 2". **PATTERN:** Stockinette. Collar and Pocket Edging: Norwegian Pattern Stitch according to chart. (Using Jac 40, Pattern No. 10) Each row with the Norwegian Pattern Stitch is counted singly in the directions; however, for 1 row several movements of the cam box are required.

BACK: (Figure II). Cast on 190 sts. Rows 1-34: Work even. To make the hem, put the cast on sts. back on the machine. Rows 35-198: Work even. Rows 199-220: **Armhole Shaping.** Bind off 4 sts. beginning next 2 rows; then on every other row on each side bind off 3 sts. 2 x, 2 sts. 1 x, decrease 1 st. 3 x; then decrease 1 st. on every 4th row 2 x. (156 sts.) Rows 221-294: Work even. Rows 295-310: **Shoulder and Neck**



Shaping. On each shoulder side of every other row bind off 5 sts. 3 x and 6 sts. 6 x. **AT THE SAME TIME,** for the **neck shaping,** at beginning of Row 303 bind off the 20 center sts. with a separate yarn, put needles on the left into holding position and knit the right side first. At neck edge on every other row bind off 7 sts. 1 x, 6 sts. 1 x, and 4 sts. 1 x. Put all needles into working position, row counter back to 302 and complete the left side.

THE JAC 40 IS A MUST

for fast easy knitting of
Jaquard and Ski-sweater
designs



Patterns are selected—row by row—through a pre-stamped card that is fed into the Jac.

There are over 140 cards available and illustrations of them are included with each Jac.

Jac 40's are made for most brands of machines (with the exception of Japanese machines). When ordering be sure to specify your brand of knitter as needle spacings vary. Simple to use and an essential tool for the modern knitter, Jac 40's are \$24.95 complete with 3 cards for practicing the 3 techniques, plus complete instructions.

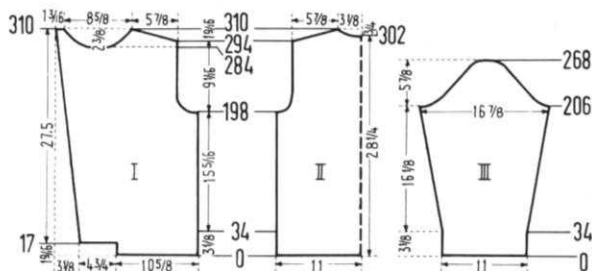
Order from your dealer or direct from

KNITTING

1128 Crenshaw Boulevard, Los Angeles, Calif. 90019

Shipping Cost \$1.50. California residents add 4% sales tax.

FRONT: (Figure I). Cast on 92 sts. Rows 1-34: On the left side cast on 41 sts. at Row 17, and increase 1 st. at Row 27. To make the hem, put the 92 cast on sts. back on the machine. Rows 35-198: On the left side increase 1 st. at Row 39 and again every 12th row 5 x and every 10th row 9 x. Rows 199-220: **Armhole Shaping.** Bind off 6 sts., then on every other row bind off 5 sts. 1 x, 3 sts. 1 x, 2 sts. 3 x, decrease 1 st. 3 x; then decrease 1 st. on the 4th row 1 x. **AT THE SAME TIME,** on the left side increase 1 st. at Row 199 and again every 10th row 2 x. Rows 221-284: On the left side increase 1 st. at Row 229 and again every 10th row 5 x. Rows 285-310: **Neck and Shoulder Shaping.** For the neck shaping bind off the 79th-99th sts. counting from the right edge with a separate yarn. Put needles on the right side in holding position and complete the left side first. *And at neck edge, on every other row bind off 4 sts. 2 x, 3 sts. 2 x, 2 sts. 5 x, and decrease 1 st. 3 x.* **AT THE SAME TIME,** on the left side increase 1 st. at Rows 289 and 299. Bind off at Row 310. Put row counter back to 284, all needles in work and complete the right section following the directions for neck shaping * to *. And **AT THE SAME TIME,** at beginning of Row 295, for the shoulder shaping, on every other row bind off 5 sts. 3 x, 6 sts. 6 x, and the remaining 10 sts.



Make another front section with reverse shapings, making **BUTTONHOLES** at Row 26 over the 4th-10th and 32nd-38th needles. The next buttonholes lie directly above, at Rows 72, 118, 164 and 210.

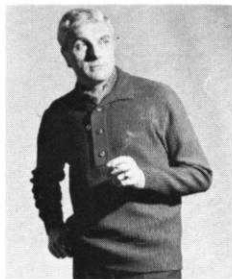
SLEEVE: (Figure III). Cast on 95 sts. Rows 1-34: Work even. To make the hem, put the cast on sts. back on the machine. Rows 35-206: Increase 1 st. at beginning of Row 39 and again on each side every 8th row 7 x and every 6th row 17 x. (145 sts.) Rows 207-220: **Underarm Shaping.** On every other row on the back side of the sleeve bind off 4 sts. 2 x, 3 sts. 1 x, 2 sts. 3 x, decrease 1 st. 1 x; and on the front side bind off 6 sts. 1 x, 4 sts. 2 x, 3 sts. 3 x, and 2 sts. 1 x. Rows 221-260: On each side of every other row bind off 2 sts. 1 x and decrease 1 st. 1 x, and repeat these 2 decreases 9 x. Rows 261-268: On each side bind off 2 sts. 1 x, 3 sts. 2 x, 4 sts. 1 x, and the remaining 18 sts. Make another sleeve with reverse shapings.

COLLAR: Cast on 134 sts. with blue. Work in Norwegian Pattern Stitch. Rows 1-20: (See Notes to Knit By on inside back cover Short Rows). On the left side put 47 needles in holding position and work 1 row. On the right side put 47 needles in holding position and work 1 row. Now, on each side, one after another put 7 needles in working position 1 x, 6 needles 3 x, 5 needles 2 x and 4 needles 3 x. Rows 21-40: Work even. (End of Pattern st.) Change to blue and from Row 41-60 work even. Rows 61-74: On each side, one after another, put 8 needles in holding position 2 x, 7 needles 2 x, 6 needles 2 x, and 5 needles 1 x. Rows 75-76: On the left side bring all needles into working position and work 1 row. On the right side bring all needles into working position and work 1 row. Bind off all sts.

POCKETS: Make 2. Cast on 50 sts. with blue. Rows 1-68: Stockinette. Rows 69-80: Norwegian Pattern Stitch. Rows 81-84: Stockinette. Bind off all sts.

FINISHING: Join front and back sections at side and shoulder seams. Sew sleeve edges together and sew sleeves to sweater. Fold the front edging under and hem. Fold collar in half and sew the side edges, place the open edge of the collar around the sweater neckline, leaving 1/4" on the front sections uncovered, and attach. Fold 1/2" at the top of the pocket under, to the wrong side and hem. Then fold the pattern edge out and sew the pockets to the sweater. Finish buttonholes and sew on buttons.

MAN'S PULLOVER SHIRT, No. HP 3415

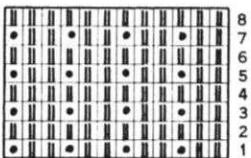


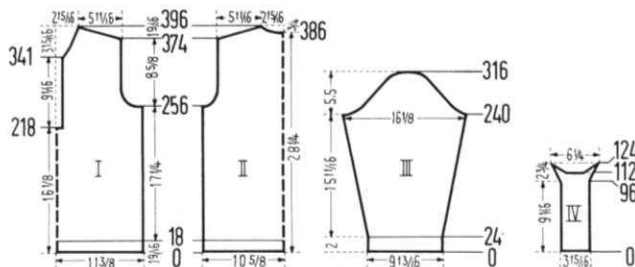
SIZE: 42/44. **MATERIAL:** 20 ounces wine red. **FOR EXAMPLE:** KNITTING Mutella, Subita 2x3, Bearbrand Deluxe Sock and Sport. Sport weight yarn. **TENSION:** KNITTING Pattern Stitch 6 or 7; Stockinette Stitch and K.1, P.1 Ribbing 5 or 6. **GAUGE:** Pattern Stitch 15 sts. 2", 27 rows 2"; K.1, P.1 Ribbing 15 sts. 2", 23 rows 2"; Stockinette Stitch 16 sts. 2", 21 rows 2". **PATTERN:** Holding Position Design on purl side according to chart. Bottom Edging: Stockinette on purl side; Sleeve Edging:

K.1, P.1 Ribbing; Inset and Collar: Stockinette on knit side.

BACK: (Figure II). Cast on 161 sts. Rows 1-18: Work in stockinette with Tension 5 (6). Continue in Holding Position Design with Tension 6 (7). Rows

19-256: Work even. Rows 257-282: **Armhole Shaping.** Bind off 3 sts. beginning next 2 rows; then on every other row on each side bind off 2 sts. 3 x, decrease 1 st. 3 x; then on every 4th row decrease 1 st. 3 x. Rows 283-374: Work even. Rows 375-396: **Shoulder and Neck Shaping.** Be sure to read Practical Knitting Hints on page 32. On each shoulder side of every other row





bind off 3 sts. 5 x and 4 sts. 7 x. **AT THE SAME TIME**, at beginning of Row 387 bind off the 17 center sts., for neck with a separate yarn, put needles on the **left** into holding position and knit the **right** side first. At **neck edge** on every other row bind off 6 sts. 1 x, 3 sts. 2 x, and 2 sts. 1 x. Put all needles in work, row counter back to 386 and complete the left side.

FRONT: (Figure I). Cast on 173 sts. Rows 1-18: Work in Stockinette Stitch with Tension 5 (6). Continue in Holding Position Design with Tension 6 (7). Rows 19-218: Work even. Now bind off the 13 center sts. with a separate yarn. Be sure to read Practical Knitting Hints on page 32. Rows 219-256: Work even. Rows 257-282: **Armhole Shaping**. Bind off 5 sts. at arm edge; then on every other row bind off 4 sts. 1 x, 3 sts. 1 x, 2 sts. 2 x, decrease 1 st. 2 x; then decrease 1 st. every 4th row 3 x. Rows 283-341: Work even. Rows 342-396: **Neck and Shoulder Shaping**. For the neck shaping, decrease 1 st. at **neck edge** at Row 342, again every other row 6 x and every 4th row 9 x. **AT THE SAME TIME**, **Shape Shoulder** at beginning of Row 375, on every other row bind off 3 sts. 5 x and 4 sts. 7 x. Put needles on the left into working position, row counter back to 218 and complete the left side.

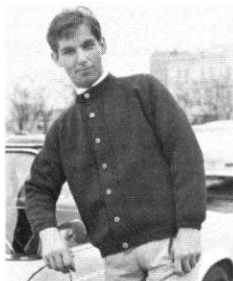
SLEEVE: (Figure III). Cast on 75 sts. Rows 1-24: Work in K.1, P.1 Ribbing with Tension 5 (6). Transfer rib sts. to main machine. Continue in Holding Position Design with Tension 6 (7). Rows 25-240: Increase 1 st. at beginning of Row 33 and 34 and again on **each side** every 8th row 16 x and every 10th row 7 x. (123 sts.) Rows 241-252: **Underarm Shaping**. On every other row on the **back side** of the sleeve bind off 3 sts. 2 x, 2 sts. 3 x, decrease 1 st. 1 x; on the front side bind off 5 sts. 1 x, 4 sts. 1 x, 3 sts. 2 x, and 2 sts. 2 x. Rows 253-308: Decrease 1 st. on **each side** of every other row 28 x. Rows 309-316: On **each side** of every other row bind off 2 sts. 1 x, 3 sts. 2 x, 4 sts. 1 x, and the remaining 11 sts. Make another sleeve with reverse shapings.

INSET: (Figure IV) Cast on 32 sts. Work in Stockinette Stitch with Tension 5 (6). Rows 1-96: Work even; making buttonholes at Rows 17, 49, and 81, over the 4th-9th and 24th-29th needles. Rows 97-124: Increase 1 st. at beginning of Row 97 and 98, then on **each side** increase 1 st. on the 4th row 1 x and on the 2nd row 1 x and repeat these last 2 increases 3 x. **AT THE SAME TIME**, at beginning of Row 113 bind off the 14 center sts. with a separate yarn and complete the right side first. At **neck edge**, on every other row bind off 4 sts. 2 x, 3 sts. 2 x, and 2 sts. 2 x. Bring all needles into working position, row counter back to 112 and complete the left side. Make the other inset section the same, only omit the buttonholes.

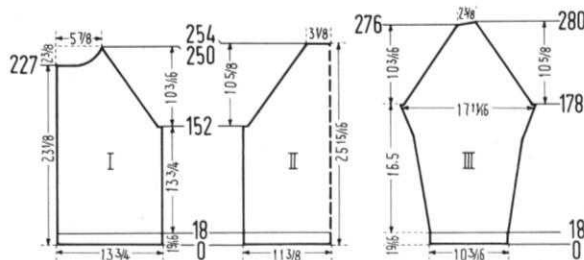
COLLAR: See Notes to Knit By on inside back cover (Short Rows). Cast on 128 sts. Rows 1-22: On the left side put 42 needles in holding position and work 1 row. On the right side put 42 needles in holding position and work 1 row. Now, on **each side**, one after another, put 6 needles in working position 1 x, 5 needles 3 x, 4 needles 3 x and 3 needles 3 x. Rows 23-62: Work even. Rows 63-82: On **each side**, one after another put 3 needles in holding position 3 x, 4 needles 3 x, 5 needles 3 x and 6 needles 1 x. Rows 83-84: On the left side put all needles in working position and work 1 row. On the right side put all the needles in working position and work 1 row. Bind off all sts.

FINISHING: Join front and back sections at side seams in slip stitch, overlapping 1 st. from each section. Sew shoulder seams. Sew sleeve edges together and sew sleeves to sweater. At the bottom edge, make a hem 1 1/2" wide. Fold the inset around the bottom and side edges of the neckline and attach. Fold the collar in half and sew the side edges. Place the open edge of the collar around the sweater neckline and attach. Finish buttonholes and sew on buttons.

MAN'S JACKET, No. HP 3459



SIZE: 42/44. **MATERIAL:** 22 oz. wine red. **FOR EXAMPLE:** KNITTING Regal. Diamond Elegance D'Aoust. **TENSION:** KNITTING 7 or 8. **GAUGE:** Stockinette Stitch 15 sts. 2", 19 rows 2"; K.1, P.1 Ribbing 15 sts. 2", 23 rows 2". **PATTERN:** Stockinette with cable stripes. One cable is worked over 8 sts. as follows: 2 purl sts., 4 crossed sts., 2 purl sts. (1). Work 10 rows. (2). With 2 double transfer tools, cross the sts. so that at first the 5th and 6th sts. are on the 3rd and 4th needles and the 3rd and 4th sts. are on the 5th and 6th needles. Repeat steps 1 and 2 throughout. After 20 or 30 rows drop the 1st and 2nd, and 7th and 8th sts. and latch up as knit sts. with the latch tool. Edging: K.1, P.1 Ribbing.



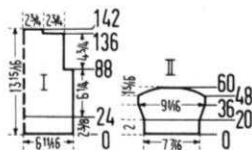
BACK: (Figure II). Cast on 173 sts. Rows 1-18: Work in K.1, P.1 Ribbing. Transfer ribber sts. to main machine. Continue in Stockinette Stitch. Rows 19-152: Work even. Rows 153-254: **Raglan Shaping**. Bind off 5 sts. beginning next 2 rows, then on every 5th row on **each side** decrease 3 sts. 19 x. To do this, put the 3rd, 4th, and 5th sts. on the 6th, 7th, and 8th needles and move the 2 edge sts. over to fill the empty needles. Bind off 49 sts.

FRONT: (Figure I). Cast on 105 sts. Rows 1-18: Work in K.1, P.1 Ribbing. Transfer ribber sts. to main machine. Continue in Stockinette Stitch, making a cable stripe over the 26th-33rd sts., counting from the left edge. Rows 19-152: Work even. Rows 153-250: **Raglan and Neck Shaping**. Bind off 5 sts. for the raglan shaping, and then decrease 3 sts. every 5th row 18 x, using same method as for back. **AT THE SAME TIME**, for the **neck shaping**, at beginning of Row 228 bind off 22 sts., then on every other row bind off 4 sts. 2 x, 3 sts. 2 x, 2 sts. 2 x, and decrease 1 st. 3 x. Hang the 3 remaining sts. together by putting the 2 outside sts. on the center needle and binding off. Make the second front section with reverse shapings, making buttonholes at Rows 9, 47, 85, 123, 161, and 199, over the 3rd-6th and 17th-20th needles.

SLEEVE: (Figure III). Cast on 79 sts. Rows 1-18: Work in K.1, P.1 Ribbing. Continue in Stockinette. Rows 19-178: Increase 1 st. at beginning of Row 25 and 26 and again every 6th row 19 x and every 4th row 8 x. (135 sts.) Rows 179-276: **Raglan Shaping**. Bind off 3 sts. beginning next 2 rows; then decrease 3 sts. on **each side** every 5th row 18 x, using same method as for back, and on the **right side** decrease 3 sts. at Row 274. Rows 277-280: On the **left side**, one after another, put 6 needles in holding position 2 x. Bind off 18 sts. Make another sleeve with reverse shapings.

BEGINNERS PATTERN...

GIRLS DRESS No. MK 4900



SIZE
3/4

SIZE:

MATERIAL: KNITKING Subita
2x4 or Spinnerin Orlon Prelude

TENSION: KNITKING 7 or 8

GAUGE: 13 sts. 2", 20 rows 2"

PATTERN: Stockinette
Blocked measurements:

	3-4 Years	5-6 Years
Skirt Length	13 3/4"	15 1/2"
Waist	21"	22"
Top Width	26"	28"
from sh. to bottom-Length	12 1/2"	13 1/2"

SKIRT (make 2 alike)

Cast on with blue 164 sts. 176 sts.
With tension 6 or 7
knit till counter reads 24 24
Change to tension 7 (8)
Hang hem by putting each cast on
stitch back on the machine.
Rows 25-48: Work the two
pattern stripes as follows:
*Knit 4 rows white
Put the 2nd, 3rd, 4th, 8th, 9th,
10th, etc., needles in holding
position and Knit 2 rows with
blue. Return all needles to
working position. Knit 4 rows
white*.
Knit 4 rows blue.
Repeat from * to * one time
more. Continue in stockinette
with blue. Knit even till
counter reads 140 156
Knit a few rows using a contrast
yarn and remove work from
machine. Bring into working
position 82 needles 88 needles
Now hang the stitches back on
the machine with two stitches on
one needle decreasing to 82 sts. 88 sts.
Remove contrast yarn and knit 24 rows even. Bind off all
stitches. Make another section the same.

PULLOVER

BACK (Figure I).
Cast on with blue 89 sts. 99 sts.
Use tension 6 (7)
and knit till counter reads 24 24
Hang hem by putting each cast
on stitch back on machine and
continue with tension 7 (8)
Rows 25-34: Knit only 1 pattern
stripe as on the skirt following
instructions from * to * once.
Continue in stockinette with blue
Knit till counter reads 88 94

PLEASE NOTE THAT WE DO NOT SEND TOOLS
AND YARNS OUT ON A C.O.D. BASIS. YOU MUST
SEND PAYMENT INCLUDING MAILING COSTS
WITH EACH ORDER.

ARMHOLE SHAPING: Bind off 8 sts. 8 sts.
beginning next 2 rows.
Decrease 1 st. on each side
every other row — 2 x
Knit till counter reads 136 142

SHOULDER SHAPING: Bind off 18 sts. 19 sts.
beginning next 2 rows
Work even over remaining 37 sts. 41 sts.
till counter reads 142 148
Bind off all stitches. Make a

FRONT SECTION exactly as back.

SLEEVE: (Make 2)

Cast on with blue 49 sts. 55 sts.
Knit with tension 6 (7) 20 rows 20 rows

Hang hem by putting each cast
on stitch back on machine.
Change to tension 7 (8).
Work only 1 complete pattern
stripe following instructions from
* to * once. **At the same time**
increase 1 stitch at beginning of
Row 21 and 22 and again on
each side every 4th row 2 x.
Continue with blue.

Increase 1 stitch when
counter reads 32, 33 32, 33
36, 37 36, 37
Knit till counter reads 48 52

UNDERARM SHAPING:

On every other row on each
side, bind off 2 sts. 2 x 2 sts. 3 x
3 sts 2 x 3 sts. 2 x
5 sts. 2 x 5 sts. 2 x
At row 60 66
Bind off remaining 19 sts. 21 sts.

FINISHING: (Skirt) — Join the two skirt sections in slip stitch
or weaving stitch overlapping 1 st. from each section. Fold
the skirt band in half, toward the inside, insert an elastic
band and sew down the skirt band.

PULLOVER: Join front and back sections at side seams in
slip stitch or weave the sides together overlapping 1 st.
from each section. Sew 1 1/2" of each shoulder seam (from
sleeve edge) and make a narrow hem around the opening
on each side. Sew a button on one side of the opening and
a loop on the other side. Make a 1/2" hem around the neck-
line. Sew sleeve edges together and sew sleeves to pullover.

CANADIAN READERS

Please note that KNITKING dealers based in the U.S.A. are
unable to sell machines and accessories to residents of
Canada. They are also unable to sell parts and service. Would
all Canadian readers please contact any of the following
appointed KNITKING dealers.

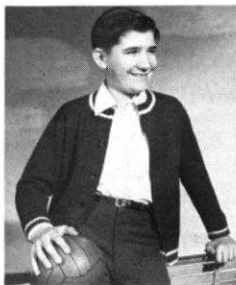
**Knittax Handknitting Machines
Sales and Service Reg'd**
H. Cieslewicz
3059 Estelle, Fabreville, P.Q.

Easy Knit of Canada Ltd.
272, Yonge Street
Toronto 1, Ontario

Winnipeg Knitting Machines Ltd.
202 Confederation Building
457 Main St., Winnipeg 2, Manitoba

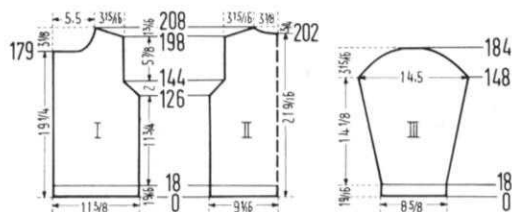
**Knit-King Agency
Hand Knitting Machines**
Mrs. M. Gross
5316 - 90th Ave., Edmonton, Alberta

BOY'S JACKET, No. KK 4905



SIZE: 13/14 years. **MATERIAL:** 16 oz. blue-charcoal-tweed and 2 oz. White. **FOR EXAMPLE:** KNITKING Regal. Columbia Minerva Sports yarn. Spinning Ambralon. **TENSION:** KNITKING 8 or 9. **GAUGE:** Stockinette Stitch 14 sts. 2", 18 rows 2"; K.1, P.1 Ribbing 14 sts. 2", 22 rows 2". **PATTERN:** Stockinette Stitch; Edging: K.1, P.1 Ribbing.

BACK: (Figure II). Cast on 129 sts. with white. Rows 1-18: Work in K.1, P.1 Ribbing: 4 rows white, 10 rows blue, and 4 rows white. Continue in Stockinette Stitch. Rows 19-126: Work even. Rows 127-144: **Armhole Shaping.** Bind off 2 sts. beginning next two rows, then on each side, on every other row decrease 1 st. 1 x and bind off 2 sts. 1 x and repeat these last 2 decreases 3 x. (101 sts.) Rows 145-198: Work even. Rows 199-208: **Shoulder and Neck Shaping.** On each shoulder side of every



other row bind off 4 sts. 2 x and 5 sts. 4 x. **AT THE SAME TIME,** for the neck shaping, at Row 203 bind off the 19 center sts. with a separate yarn. Put the needles on the left into holding position and knit the right side first. On neck side, on every other row bind off 8 sts. 1 x and 5 sts. 1 x.

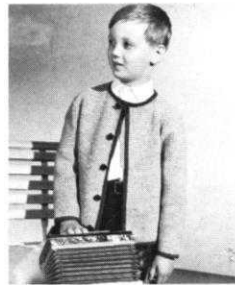
FRONT: (Figure I). Cast on 81 sts. with white. Rows 1-18: Work in K.1, P.1 Ribbing: 4 rows white, 10 rows blue, and 4 rows white. Continue in Stockinette Stitch. Rows 19-126: Work even. Rows 127-144: **Armhole Shaping.** Bind off 2 sts.; then on every other row decrease 1 st. 1 x and bind off 2 sts. 1 x; repeat these last 2 decreases 3 x. (67 sts.) Rows 145-179: Work even. Rows 180-208: **Neck and Shoulder Shaping.** For the neck shaping bind off 24 sts.; then on every other row bind off 4 sts. 1 x, 3 sts. 1 x, 2 sts. 2 x, decrease 1 st. 2 x; then decrease 1 st. every 4th row 2 x. **AT THE SAME TIME,** at Row 199, for the shoulder shaping, on every other row bind off 4 sts. 2 x and 5 sts. 4 x. The second front section is worked with reverse shapings, making buttonholes at Rows 9, 47, 81, 115, and 149, over the 2nd-6th and 17th-21st needles.

SLEEVE: (Figure III). Make two. Cast on 61 sts. with white. Rows 1-18: Work in K.1, P.1 Ribbing: 4 rows white, 10 rows blue, and 4 rows white. Continue in Stockinette. Rows 19-148: Increase 1 st. at beginning of Row 23 and 24 and again every 6th row 20 x. (103 sts.) Rows 149-184: **Underarm Shaping.** Bind off 2 sts. beginning of next two rows, then on each side on every other row decrease 1 st. 1 x and bind off 2 sts. 1 x, and repeat these last 2 decreases 4 x. Then bind off 2 sts. 1 x, 3 sts. 3 x, 4 sts. 3 x, and the remaining 23 sts.

NECK EDGING: Cast on 157 sts. with blue. Work 12 rows K.1, P.1 Ribbing: 8 rows blue and 4 rows white, and make buttonholes at Row 6 over the 6th-10th needles. Bind off all sts.

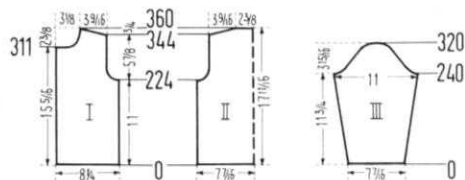
FINISHING: Join front and back sections at side and shoulder seams. Sew sleeve edges together and sew sleeves to jacket. Make a hem 11 sts. wide. Sew neck edging to jacket, finish buttonholes and sew on buttons.

BOY'S CARDIGAN, No. KK 4904



SIZE: 6-7 years. **MATERIAL:** 16 oz. light grey. **FOR EXAMPLE:** KNITKING Suxita 2x3. Brunswick Fairhaven Bearbrand Evermatch. 2 3/4 yards green cotton braid. **TENSION:** KNITKING 6 or 7. **GAUGE:** 20 sts. 2", 40 rows 2". **PATTERN:** Fisherman's Rib on purl side.

BACK: (Figure II). Cast on 151 sts. Rows 1-224: Work even. Rows 225-256: **Armhole Shaping.** Bind off 5 sts. beginning next two rows, then, on each side, on every 4th row bind off 4 sts. 1 x, 3 sts. 1 x, decrease 1 st. 2 x; then decrease 1 st. on every 6th row 2 x. (119 sts.) Rows 257-344: Work even. Rows 345-360: **Shoulder Shaping.** On each shoulder side of every other row bind off 4 sts. 4 x, 5 sts. 4 x, and the remaining 47 sts.

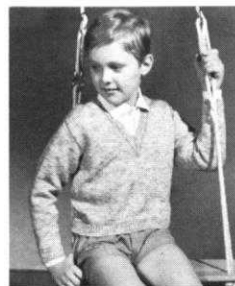


FRONT: (Figure I). Cast on 83 sts. Rows 1-224: Work even, making buttonholes at Rows 13, 85, and 157 over the 9th-15th needles. Rows 225-256: **Armhole Shaping.** Bind off 5 sts.; then on every 4th row bind off 4 sts. 1 x, 3 sts. 1 x, decrease 1 st. 2 x; then decrease 1 st. on every 6th row 2 x. **AT THE SAME TIME,** make a **BUTTONHOLE** at Row 289. (67 sts.). Rows 257-311: Work even, making a **BUTTONHOLE** at Row 301. Rows 312-360: **Neck and Shoulder Shaping.** For the neck shaping, bind off 16 sts.; then on every 4th row bind off 4 sts. 1 x, 3 sts. 2 x, 2 sts. 1 x, decrease 1 st. 2 x; then decrease 1 st. on the 8th row 1 x. **AT THE SAME TIME,** at Row 345, for the shoulder shaping, on every other row bind off 4 sts. 9 x. Make another front section with reverse shapings, minus buttonholes.

SLEEVE: (Figure III). Make two. Cast on 75 sts. Rows 1-240: Increase 1 st. at beginning of Row 15 and 16, and again, on each side of every 12th row 17 x. (111 sts.). Rows 241-260: **Underarm Shaping.** Bind off 5 sts. beginning of next two rows; then on every 4th row on each side bind off 4 sts. 1 x, 3 sts. 1 x, and 2 sts. 2 x. Rows 261-320: **On each side** of every 4th row decrease 1 st. 1 x and bind off 2 sts. 2 x, and repeat these 3 decreases 3 x; then bind off 3 sts. 1 x, 4 sts. 1 x, 5 sts. 1 x and the remaining 15 sts.

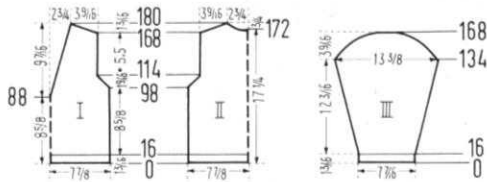
FINISHING: Join front and back sections at side and shoulder seams. Sew sleeve edges together and sew sleeves to sweater. Sew cotton braid to jacket edgings as illustrated. Finish buttonholes and sew on buttons.

BOY'S PULLOVER, No. KK 4903



SIZES: 8-9 years and 10-11 years. **MATERIAL:** Size 8-9, 10 oz. beige; Size 10-11, 12 oz. beige. **FOR EXAMPLE:** KNITKING Regal Spinning Ambralon. Columbia Minerva Sports. **TENSION:** KNITKING 7 or 8. **GAUGE:** Stockinette Stitch 15 sts. 2", 19 rows 2"; K.1, P.1 Ribbing 15 sts. 2", 25 rows 2". **PATTERN:** Stockinette Stitch. Edging: K.1, P.1 Ribbing.

SIZE: 8-9 years. **BACK:** (Figure II). Cast on 119 sts. Rows 1-16: Work in K.1, P.1 Ribbing. Transfer ribber continue in Stockinette. Rows 17-98: Work even. Rows 99-114: **Armhole Shaping.** On each side



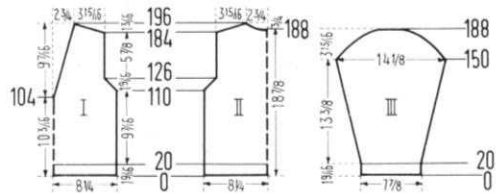
of every other row bind off 2 sts. 1 x, and decrease 1 st. 1 x, and repeat these 2 decreases 3 x. (95 sts.) Rows 115-168: Work even. Rows 169-180: **Shoulder Shaping and Neck Shaping.** On each shoulder side of every other row bind off 3 sts. 1 x and 4 sts. 6 x. **AT THE SAME TIME,** for the neck shaping, at Row 173 bind off the 11 center sts. with a separate yarn. put the needles on the left into Holding Position and knit the right side first. At neck edge, on every other row bind off 6 sts. 1 x, 5 sts. 1 x, and 4 sts. 1 x.

FRONT: (Figure I). The front is worked the same as the back; however, for the neck shaping, at Row 89 put the center st. on the neighboring needle and continue work in two sections. Put the needles on the left into holding position and knit the right side first. Decrease 1 st. on neck side of the division at Row 93 and again every 4th row 14 x and every 5th row 5 x. To do this, always put the 3rd st. on the 4th needle and move the 2 edge sts. over to fill the empty needle. Turn row counter back to 89 and complete the left side.

SLEEVE: (Figure III). Make two. Cast on 57 sts. Rows 1-16: Work in K.1, P.1 Ribbing. Transfer Rib stitches to knitter and continue in Stockinette Stitch. Rows 17-134: Increase 1 st. at beginning of Row 23 and 24 and again every 6th row 11 x and every 4th row 10 x. (101 sts.) Rows 135-168: **Underarm Shaping.** On each side of every other row bind off 2 sts. 1 x and decrease 1 st. 1 x; and repeat these 2 decreases 3 x; then bind off 2 sts. 3 x, 3 sts. 3 x, 4 sts. 3 x, and the remaining 23 sts.

NECK EDGING: In two pieces. Cast on 105 sts. Work 12 rows K.1, P.1 Ribbing; to shape the point, bind off 3 sts. at Row 3 and again every other row 4 x. Bind off all sts. Make the second section with reverse shapings.

FINISHING: Join front and back sections at side and shoulder seams. Sew sleeve edges together and sew sleeves to sweater. Sew bands of neck edging together and sew to sweater neckline.



SIZE: 10-11. BACK: (Figure II). Cast on 125 sts. Rows 1-20: Work in K.1, P.1 Ribbing. Transfer Rib stitches to knitter and continue in Stockinette Stitch. Rows 21-110: Work even. Rows 111-126: **Armhole Shaping.** On each side of every other row bind off 2 sts. 1 x and decrease 1 st. 1 x, and repeat these 2 decreases 3 x. (101 sts.) Rows 127-184: Work even. Rows 185-196: **Shoulder and Neck Shaping.** On each shoulder side of every other row bind off 4 sts. 5 x and 5 sts. 2 x. **AT THE SAME TIME,** for the neck shaping, at Row 189 bind off the 11 center sts. with a separate yarn. Put the needles on the left into holding position and knit the right side first. On neck side, on every other row bind off 6 sts. 1 x, 5 sts. 1 x, and 4 sts. 1 x.

FRONT: (Figure I). The front is worked the same as the back, however, for the neck shaping, at Row 105, hang the center st. on the neighboring needle, and continue work in two sections. Put the needles on the left into holding position and knit the right side first. Decrease 1 st. on neck side of the division at Row 109 and again every 4th row 14 x and every 5th row 5 x. To do this, always put the 3rd st. on the 4th needle and move the 2 edge sts. over to fill the empty needle. Turn row counter back to 105 and complete the left side.

SLEEVE: (Figure III). Make two. Cast on 61 sts. Rows 1-20: Work in K.1, P.1 Ribbing. Transfer Rib stitches to Knitter and continue in Stockinette Stitch. Rows 21-150: Increase 1 st. at beginning of Row 27 and 28 and again every 6th row 13 x and every 4th row 10 x. (109 sts.) Rows 151-188: **Underarm Shaping.** On each side of every other row bind off 2 sts. 1 x and decrease 1 st. 1 x, and repeat these 2 decreases 3 x; then bind off 2 sts. 5 x, 3 sts. 3 x, 4 sts. 3 x, and the remaining 23 sts.

NECK EDGING: Same as size 8-9.

FINISHING: Follow directions for Size 8-9.



A complete second volume of **KNITKING MAGAZINES** with a flexible, transparent plastic cover and specially bound so that it will stay open at any page is available at the special price of \$6.95 postage paid anywhere in North America.

If purchased separately the magazines would cost a total of \$9.00.

The volume contains over 120 fully illustrated complete stylish patterns for all members of the family, together with many valuable, practical knitting hints.

There is a very limited number of these volumes available and it will undoubtedly become a collectors item.

If you already have the entire set it will almost certainly be well thumbed and marked. Why not purchase a perfect mint condition volume for your bookshelf and ready reference at any time.

* * *

Place your order today and avoid disappointment. Send it to **KNITKING MAGAZINE, 1128 Crenshaw Boulevard, Los Angeles, California 90019.**

PRACTICAL KNITTING HINTS

HOW TO ATTACH FACINGS TO KNITTED GARMENTS

It seems that everyone asks how to attach facings to their knits . . . Here is the best way we have found and it will give a beautiful professional look to any knit.

When you are binding off your facing (one that is made separately) always use the crochet method for bind off: After you have knitted the required number of rows as directed in your pattern, turn your tension dial up at least 2 or 3 numbers and knit one row. Begin at the opposite end of your machine from where your yarn hangs and with a latch tool, take the first stitch off by going through the center of the stitch on machine. Take the second stitch off on tool in the same way and as you do so, the first stitch will slide behind the latch. Now pull the second stitch through the first stitch. Continue in this manner, one stitch at a time being pulled through the stitch on the latch tool. It will be easier to do if the needles are put in the holding position. On KNITTING machines the knitting must be released from below the sinkers.

Pin the BOUND OFF EDGE (which you will see is very even) on the RIGHT SIDE of your garment. Pin it carefully, so that seams will go under the arm, or back of neck opening, or shoulder seam, wherever you happen to be working at the time. Pin it so that it goes over about 1/4" and watch to see that it will cover any increases or decreases on edges. Be sure to weave or slip St. Crochet underarm seam facings etc. Thread a tapestry needle with yarn used for your facing. If heavy yarn has been used, split it so it is not bulky . . . or you may use a lighter weight yarn of same color. Beginning at underarm or back opening or shoulder seam, back stitch the facing in place from the RIGHT side. Back stitching is simply going under two stitches and back one.

Go right through the center of each edge stitch on your facing — this is the crochet bind off stitch . . . keep it flat and neat and do not pull too tight—but just enough to make it look neat. When you have completed the right side, fold the facing in half and carefully whip the cast on edge to the wrong side of your garment using the back stitch, (which will show on the wrong side) as your guide and just barely covering it. Be careful not to go through to the other side, it is only necessary to catch it down as though you were making an invisible hem on a dress . . .

LETTER FROM THE PUBLISHER . . .

(Continued from Page 1)

We know that a good number of our readers have the ability to give knitting machine instructions and that many others are in need of it . . . If you have the ability or know somebody that does, we urge that you get together with other knitting machine owners in your area and approach the local education authorities. The pay is good and the occupation interesting and rewarding.

And . . . when you are in the market for a new knitting machine, be sure to heed the warning of the Better Business Bureau and "Investigate before you invest."

BRAID TRIM for Woman's Dress No. DK 7427

If you are not able to obtain a suitable trim for this good looking dress, we suggest that you make your own in the following manner using a contrasting color to that used in your dress . . . Set up needles as follows:—2 needles in work, 1 needle out of work, 2 needles in work, 2 needles out of work, 2 needles in work, 1 needle out of work. 2 needles in work. Cast on over these 8 needles. *Put the 3rd and 6th needle (not counting non working needles) into holding position. Knit 6 rows. Put needles back into working position, knit 2 rows.* Repeat from * to * for as long as necessary for each trim around armholes, neckline and for belt. Take each piece off on contrast yarn so that you may rip rows back if necessary. Give a good pull downwards to form scalloped edges. Take 4 or 6 strands of the dress yarn and weave through middle cross threads — under 4 and over 4. Pin each trim around openings. Weave seams at underarms, ripping out rows if necessary, then sew to garment. Bind off belt edge with a slip stitch crochet.

MANS' PULLOVER, No. HP 3515

If you are knitting a pattern and one side must be put in the holding position while you complete the other side, you cannot use your retractor knob — so instead of using the holding position, you can place the needles in the out of work position. To do this, use a contrast yarn of similar weight to that used for your garment. Place the contrast yarn over the needles you wish to hold until later, and with your right hand, beginning at one end, knit each stitch one at a time by pulling the needle all the way back to the back needle rail . . . Now the stitch is really only HALF knitted and remains in the needle latch with a double running yarn over the needle bed toward the front of the machine where the knitting hangs. After all needles you wish to hold have been knitted in this way, you may continue with your pattern knitting on the remaining needles in work position and you may use your retractor knob. When you have completed your pattern knitting on the one side and bound off the stitches, return to the needles being held on contrast yarn and carefully hold and guide the knitting as you push the needles forward into working position, but be sure to keep the stitches in the latches and not allow them to slide behind. Now with an up and down motion, pull out the contrast yarn, put the stitches behind the latches and under the sinkers, return your row counter to the correct row and complete this side.

INCREASING A STITCH AT EACH END ON SAME ROW

It is possible to increase one stitch at each end of a row by picking up a stitch at each end from the row below and hanging them on to the new empty outside needles. Such increases should not be on succeeding rows as the edges would become too tight, but you will find it a very satisfactory method of increasing when the increases occur at approximately every 4th row . . . Or, for a full fashion increase you may move from 3 to 6 stitches over one needle to the outside, and pick up a stitch from below the empty needle and hang it on to this empty needle.

WANTED
**SALESPEOPLE AND KNITTING OWNERS TO SELL AND
TEACH KNITTING. IF YOU CAN DO EITHER
OR BOTH WRITE TO KNITTING, 1128 CRENSHAW BLVD.,
LOS ANGELES, CALIF. 90019, FOR FULL INFORMATION.**



KNITKING NEWS

September-October 1966

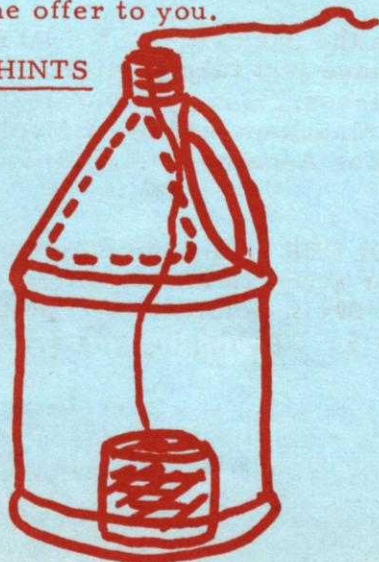
We get many letters from readers asking why we do not state the actual ply of the various yarns recommended for KNITKING patterns and we have to say that because of the wide variations in structure, especially of imported yarns, such statements are not possible..... Many super quality yarns have more and fine plys in their makeup. For example, Subita 2 x 3 is actually a six ply yarn, but is lighter in weight than many three ply yarns. Subita 2 x 4 is an eight ply yarn much lighter in weight than four ply worsted..... There are other eight ply yarns available that are comparable in weight to four ply worsted..... Most Shetland type yarns are two ply.....they are sometimes lighter and sometimes heavier than three ply yarns. Some jumbo yarns are only two ply and yet are several times heavier than two ply Dralon..... We are preparing a yarn chart showing most nationally obtainable yarns and the rows and stitches that can be obtained with them. An announcement regarding these charts will be made in a forthcoming issue of KNITKING MAGAZINE..... Almost all KNITKING MAGAZINE patterns are made up in KNITKING YARNS, but we suggest alternate yarns of other brands. Unfortunately, some readers are still not able to obtain comparable yarns in their areas because their local yarn store is not familiar with the exclusive brands sold by us.

There are two solutions to the problem. 1. Order a KNITKING YARN CATALOGUE and buy your yarns direct from KNITKING. 2. Order a YARN CATALOGUE and when you need yarn, take the catalogue to your local store and ask them to match the weights used in the garment you wish to make.

SPECIAL SUMMER SALE

All KNITKING MAGAZINE subscribers were sent notice of a SPECIAL SUMMER SALE and one of the outstanding offers was a DOUBLE TRADE-IN on any knitting machine..... Requests for full information have been pouring in, but several readers have failed to furnish us with their names and addresses. So.....if you have written and not received a reply, it may be because you failed to send your name and address. Please write again so that we can extend the offer to you.

HANDY HINTS



Another handy hint provided by one of our Los Angeles customers is illustrated here: It is a one gallon plastic bleach jug with a section cut out (cut out section is shown by dotted line). You can easily see how useful the jug is for holding your balls of yarn and keeping them from rolling around on the floor. We use one to keep pull skeins under control while re-winding into center pull balls. The neck of the bottle keeps the skein well under control.

Mrs Margaret Warren of Long Island, N. Y. asks us..... "How do you make a twisted cord such as recommended for the baby booties in the July-August issue of KNITTING MAGAZINE?"

Use 2 or 3 strands of yarn and cut them at least 3 times the length you will need. Look in your husbands tool box and find a small hand drill..... if you cannot find one - buy one..... they are quite inexpensive. Smooth the strands of yarn with your hand and tie a knot in one end, then push this end in the drill chuck (the part that usually holds a bit)..... Now tighten the chuck so that the yarn is held tightly. Tie the other ends on a doorknob. Walk across the room with your drill until the strands of yarn are held taut. Begin to wind your drill and you will be twisting the yarns..... keep turning until you see that when you slacken up on the yarn, it twists. Now remove cord from drill - hold it so it does not unwind and fold it in half so that the two halves will twist upon each other. A good way to do is to hang the handles of a pair of scissors over the cord and allow them to slide toward the middle. Remove the cord from the doorknob making sure that it cannot twist out..... hold the two ends together and allow them to twist until they stop turning..... If the cord is a long one, get someone to help you until you fold it in half and then let it twist. Practice on small ones first and you will soon get the feel of just how to handle them. After the cord is twisted, tie a knot in each end, trim the ends so that you have a tassel. You can make belts this way as well, using as many strands as you like in order to get the weight of cord you need. When making bootie cords, you can cut your yarn long enough to make two at the same time....just tie two knots in center of cord, allowing enough so that when you cut between them there will be sufficient yarn for two tassels.

SPECIALS FOR SEPTEMBER-OCTOBER

The beautiful KNITTING DESKS illustrated on the back cover of KNITTING MAGAZINE normally sell for \$149.50. We have just taken delivery of a warehouse full of them and they are in all finishes.....natural Walnut, natural Teak, natural Pearwood (blends with Mahogany and most Maples) and natural Oak. Special price \$119.50 fob Los Angeles..... California residents add 4% Sales Tax.

The KNITTING YARN WINDER and SKEIN HOLDER is undoubtedly the finest made. The body of the winder is cast iron for strength and rigidity. The gears are helical and made from Nylon. The Skein Holder is self adjusting. List price \$14.95, Special price \$12.50 plus \$1.00 shipping costs..... California residents add 4% Sales Tax.

NOTES TO KNIT BY . . .

STITCH AND ROW GAUGE

The stitch and row gauge is the number of stitches and the number of rows you get to the inch with the yarn recommended for any particular garment. To arrive at the correct number of stitches and rows, you must prepare a sample swatch as follows: Cast on the number of stitches that will give you a finished width of at least 4 inches. Using the suggested stitch tension in your pattern, knit a length of at least 4 inches. Knit 2 rows of a contrast yarn. Set your tension one number higher and knit another 4 inches. Knit 2 rows of contrast color. Set your tension 1 number lower than the suggested one and knit a further 4 inches. Now bind off.

For years people have been told to steam their sample swatch and for years we have been getting reports from people telling us that although the sample swatch was correct, the finished garment was too small or too large. Others have complained that even when they used the suggested yarns they had to use a much larger or smaller tension to make a swatch and then the finished garment came out the wrong size anyway.

Obviously it is possible for two people to pin an identical swatch and steam it and get a totally different result. One will stretch the sample before pinning it, and the other will squeeze it in. We have discovered a way that produces the same result with everybody, and we recommend that you get into the habit of always using it.

After knitting the sample and removing it from the machine, roll it into a cylinder over its length, then pull on both ends. Unroll the cylinder and stretch the sample diagonally by pulling on the four corners. Now let it rest — give it an opportunity to resettle for at least a few hours, preferably over night. After you and your swatch have rested, lay your stitch gauge on it and count the number of stitches in your 2 inch marking. Do the same for the number of rows. If you did not get the correct gauge in your first section of knitting, try the section either 1 tension higher or lower as the case may be. If you cannot get the correct gauge, then you are using the wrong type of yarn for the garment.

NON-WORKING POSITION

The needles are in the non-working position when they are as far back on the needle bed as they will go.

HOLDING POSITION

The Holding Position is as far forward on the needle bed as your needles will go. The Holding Position is used for producing pattern designs, fancy stitches and the knitting of short rows.

SHORT ROWS

Short rows are used for shaping of all kinds such as toes and heels of socks, collars, darts and sometimes in the shaping of shoulders, borders and full skirts. To knit short rows you push the needles forward into the holding position as specified in the pattern instructions, usually working from the outside in, which in effect narrows the width of the knitting as you proceed. Before knitting each row, you **must** place the yarn between the first and second inside needles that are in the holding position.

INCREASING, DECREASING, BINDING OFF

See the Instruction Manual for your own machine.

INCREASING AND DECREASING WHEN USING THE RIBBER

When increasing, increase on the main knitter first, knit one row and then transfer the necessary stitches from the knitter to the ribber and continue.

When decreasing or binding off, you must transfer the ribber stitches to the main machine before decreasing or binding off.

ADJUSTING SKIRT LENGTHS, ETC., TO SUIT YOUR OWN SIZE

If you are shorter or taller than average, you will need to adjust certain of the garment lengths. You do this by reducing or increasing the number of rows called for in the pattern.

The reduction in the rows is usually made at the bottom of a skirt or dress. The procedure is very simple. If for example you need a skirt length 2 inches shorter than the one shown in our pattern, and the yarn called for produces 9 rows to the inch, you will need to reduce the number of rows by 18. Many of our patterns are shaped to curve in a small amount toward the bottom and the bottoms frequently have a turned hem. In such cases, the reduction or increase in the number of rows required should be made immediately after the turned hem. If you are long waisted or short waisted you may have to make an adjustment at the waistline.

READING OF KNITTING PATTERNS AND SYMBOLS

Certain holding position and eyelet designs are sketched in the knitting patterns. The pattern should be read as the work comes toward you from the machine, that is, if you have purl stitches before you, it will say purl stitches in the pattern. If you have knit stitches before you it will say knit stitches in the pattern. On the sides of the pattern are the row numbers. Missing row numbers indicate that the rows are to be worked evenly. In eyelet design patterns, specified stitches are transferred to another needle and the empty needles are returned to the knitting position each time. In holding position designs, selected needles are pushed into the holding position for the stated number of rows.

MISSING ROW NUMBERS

When there are row numbers missing in the instructions as for instance when you have completed the designated increases or decreases on a section of garment, continue straight knitting until you reach the next given row number.

Control Knobs (Under the slide handle — one on each side on KNITKING and certain other machines.)

1. When BOTH Control Knobs are UP, knit one row going from right to left. The needles knit and move back just beyond the front of the needle bed and the yarn hangs on the front of the needles. The slide will now move freely in either direction with the needles remaining in a "SAFE POSITION." When you wish to resume knitting, press down BOTH Control Knobs. The first movement of the slide is made without yarn and will bring the needles into working position, you then continue knitting.

2. **Right Control Knob UP.** Knit from right to left. The row knits, moves the needles back and the yarn is held in front of the latches. Knit from left to right, the yarn goes under the needles without knitting as the needles move into the working position. This is the operation used for making round cords (with 3 or 4 needles only) and also for knitting single rows of one color.

3. **Left Control Knob UP.** The same as above but moving from left to right.

SYMBOLS

- = knit stitch
- ▣ = purl stitch
- = empty needle (still in working position)
- ⊗ = needle out of operation
- ◻ = needle in hold position
- ⊠ = stitch put on neighboring needle. Needle in *hold* position
- ⊡ = stitch put on neighboring needle — to the right
- ⊢ = stitch put on neighboring needle — to the left
- ⊣ = 3 stitches hung together



open dart



closed dart

Available in many wood finishes



KNITTING DESK . . .

A knitting machine cabinet that automatically lifts your machine into the knitting position just by pulling a lever. The cabinet converts in seconds into a handsome desk suitable for any decor or any room in your house. Beautifully made in a variety of woods by craftsmen in West Germany.



Order from your local dealer or direct from KNITKING, 1128 Crenshaw Blvd., Los Angeles, California 90019