

KNITTING

MAGAZINE



YARNS

64

Knitking

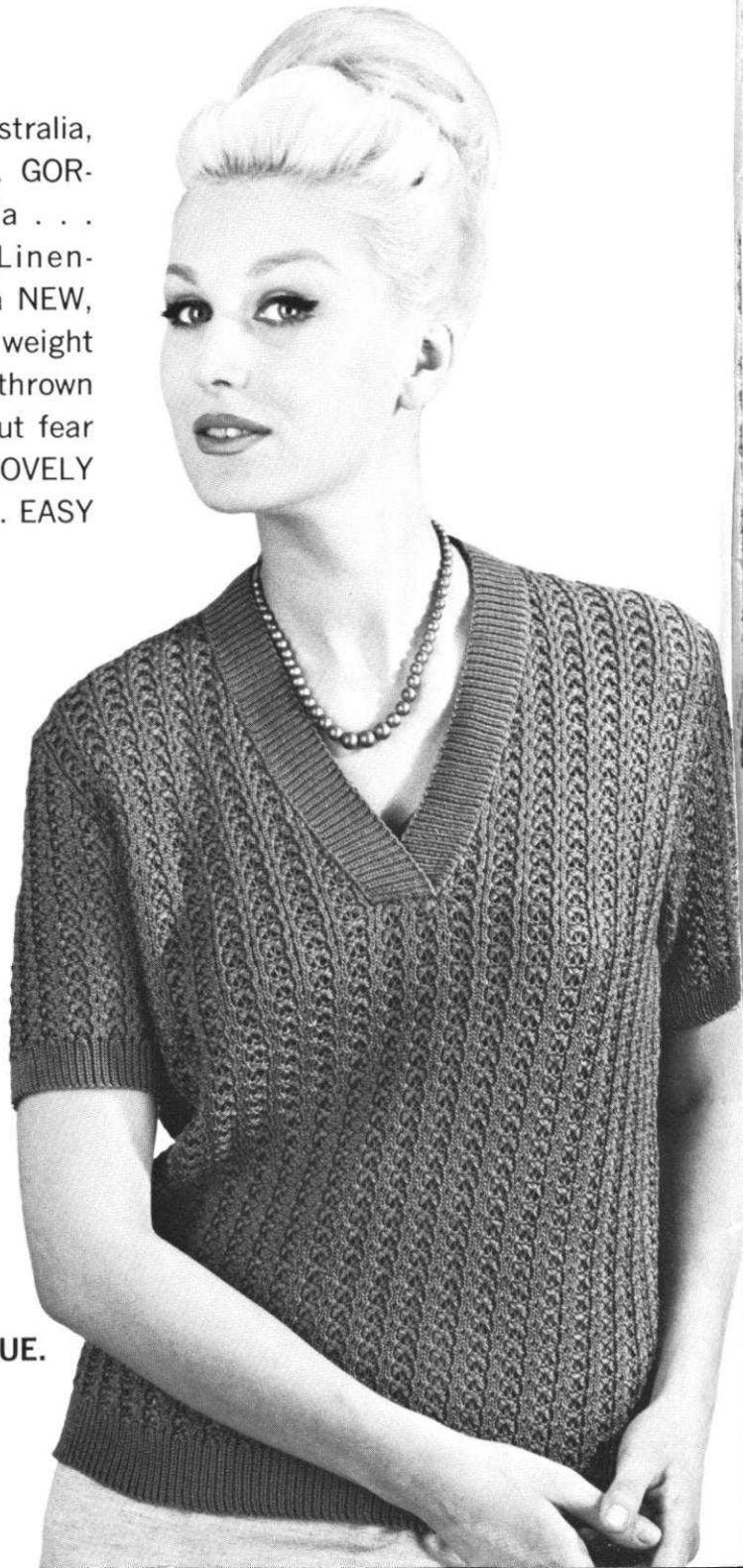
The Finest From Around the World . . .

HANDSOME Cable yarns from Australia, Great Britain and Germany . . . GORGEOUS Mohairs from Australia . . . BEAUTIFUL Satin-Cotton and Linen-Cotton from Germany . . . plus a NEW, new synthetic, soft and light in weight . . . doesn't pill up . . . yet can be thrown into your washing machine without fear of shrinking or stretching . . . LOVELY Tweed mixtures from England . . . EASY to knit and a JOY to behold.

We import our own yarns and they are sold DIRECT to YOU at BIG SAVINGS!

The BEAUTIFUL PATTERNS in KNITTING MAGAZINE are made with KNITTING YARNS!

Send \$2.00 for LARGE COMPLETE YARN CATALOGUE.
(Refunded on your first \$10.00 order) to:
KNITTING YARNS, Dept. 19
1128 Crenshaw Blvd.
Los Angeles, California 90019



KNITKING

MAGAZINE



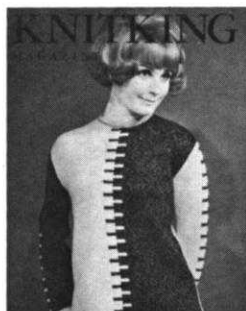
Letter from the Publisher

Vol. 3, No. 2

Nov.-Dec., 1966

INDEX

Contents	Pattern No.	Page No.
Woman's Pullover	DP 7376	15
Woman's Pullover	DP 7380	16
Woman's Pullover	DP 7378	17
Man's Pullover	HP 3440	18
Woman's Pullover	DP 7377	19
Man's Pullover	HP 3439	20
Woman's Pullover	DP 7382	21
Man's Pullover	HP 3441	22
Woman's Pullover	DP 7383	23
Woman's Pullover	DP 7381	24
Woman's Pullover	DP 7379	25
Pillow Cover	RS 6038	26
Inlaid Rug	RS 6037	26
Rug	RS 6036	26
Pillow Covers	RS 6039 - RS 6040	27
Pillow Cover	RS 6041	27
Boy's Pullover	KK 4778	27
Girl's Pullover	MK 4775	28
Girl's Pullover	MK 4776	29
Boy's Pullover	KK 4777	29
Practical Knitting Hints		32



OUR COVER MODEL

No. DP 7376

Get off to a running start on a whole Winter Wonderland of knits . . . something for everyone. Begin with our ultra modern Cover Model. It is quickly knitted with a bulky weight yarn over every other needle and we chose black and white with a red trim. A "Beginners Section" pattern for size 12/14 and 16. (See page 15).

Publisher: Henry J. Atkin, 1128 Crenshaw Blvd., Los Angeles, Calif. 90019, Telephone: WEbster 8-2079. Published bi-monthly. Subscriptions: USA—\$6.00 annually, single copies \$1.50; Canada—\$7.00; other parts of the world—\$10.00. The entire contents of KNITKING MAGAZINE are copyright and must not be reproduced in any shape or form without the express permission, in writing, of the publisher.

Printed by: George Rice & Sons, Los Angeles, Calif.

We - my wife and I - have just returned from a period of several weeks working at the California State Fair in Sacramento and the Los Angeles County Fair in Pomona.

It becomes increasingly more difficult to get away from our headquarters in Los Angeles, but these two fairs do give us an opportunity to meet again, the friends we have made over the years and to discuss with them their knitting needs and desires.

The California fairs with their complete lack of air conditioning and coming as they do at what always seems to be the hottest time of the year, are certainly not the most comfortable fairs to work, but the discomforts are more than compensated for by the satisfaction we get from seeing Knitkings owners dressed in good looking garments that they made on their Knitkings . . . no matter how crowded the aisles are with people, the woman in a Knitkings dress stands out from the crowd. She looks and feels well dressed . . . She knows she looks good and the knowledge does something for her well being, so that in addition to looking good, she looks proud and happy. Knitkings customers are indeed happy people.

We talk with old and new customers about what they would like to see most in Knitkings Magazine and we find out about their likes and dislikes.

If somebody shows a special interest in our beautiful display of Knitkings Magazine cover garments, our loyal customers are prepared to answer questions and frequently will endeavor to close a sale . . . It is not possible to write to everybody that came to the fairs especially to visit with us and others who made trips to see the Knitkings exhibits at many other fairs around the country, but we take this opportunity to thank you all most sincerely and we look forward to many more visits from you.

We have a very exciting issue planned for the start of the new year. It includes a stunning cocktail outfit consisting of a form fitting dress with a beautiful jacket knitted in gold metallic thread and Fine Dralon. Three other garments also are accented with gold metallics. The issue will have three dresses and two suits, several pullovers and a gorgeous stole. Some handsome sweaters for men - two are made with the ribber - plus delightful winter clothes for the younger folk.

... once again: SMART WINTER STYLES



DP 7380

A dancing snowflake in duplicate stitch across the front of a lovely warm pullover . . . Our model is knitted in a heavy weight yarn over every other needle. We chose Red and Blue for the colors. The ribbing on bottom, cuffs and neckline are in matching colors of a lighter weight yarn. Sizes 10/12 and 14/16. (See page 16).

DP 7378 — HERS . . .
HP 3440 — HIS . . .

TOGETHERNESS!

Knit these handsome pullovers for yourself and your best man and be the envy of your social set. A Norwegian JAC 40 design No. 43a (a two card pattern). We knitted our models in different color schemes, but you can match them if you like. His . . . Size: 40/42 and 44/46. Hers . . . Size: 10/12 and 14/16. (See page 17).





DP 7377

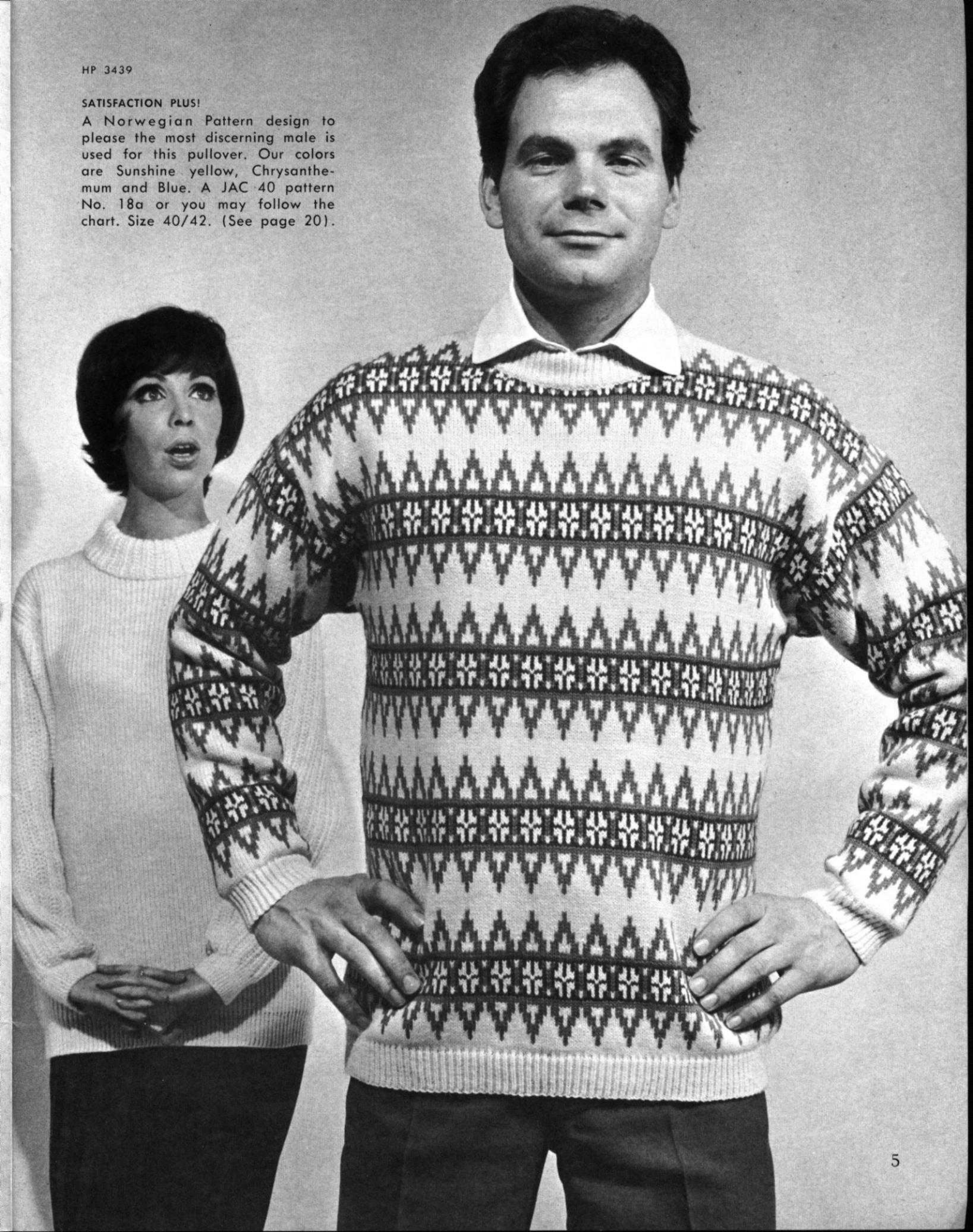
BOLD AND BEAUTIFUL!

Our choice of color for this lovely pullover is a rose shade for the background, with design, collar and edgings in a deep maroon . . . A JAC 40 pattern No. 40a. . . . can also be knitted by following the chart shown. Size 12/14 and 16/18. (See page 19).

HP 3439

SATISFACTION PLUS!

A Norwegian Pattern design to please the most discerning male is used for this pullover. Our colors are Sunshine yellow, Chrysanthemum and Blue. A JAC 40 pattern No. 18a or you may follow the chart. Size 40/42. (See page 20).





DP 7382

Another smartly styled woman's pullover in a heavy weight yarn knitted over every other needle. The edgings are ribbed in a contrast color using a finer yarn and the attractive front sections have a simple eyelet design which gives the effect of a bias knit. Each front and back is knitted in two sections for easy handling of design . . . you'll love it. Size 12/14 and 16/18. (See page 21).

DP 7383

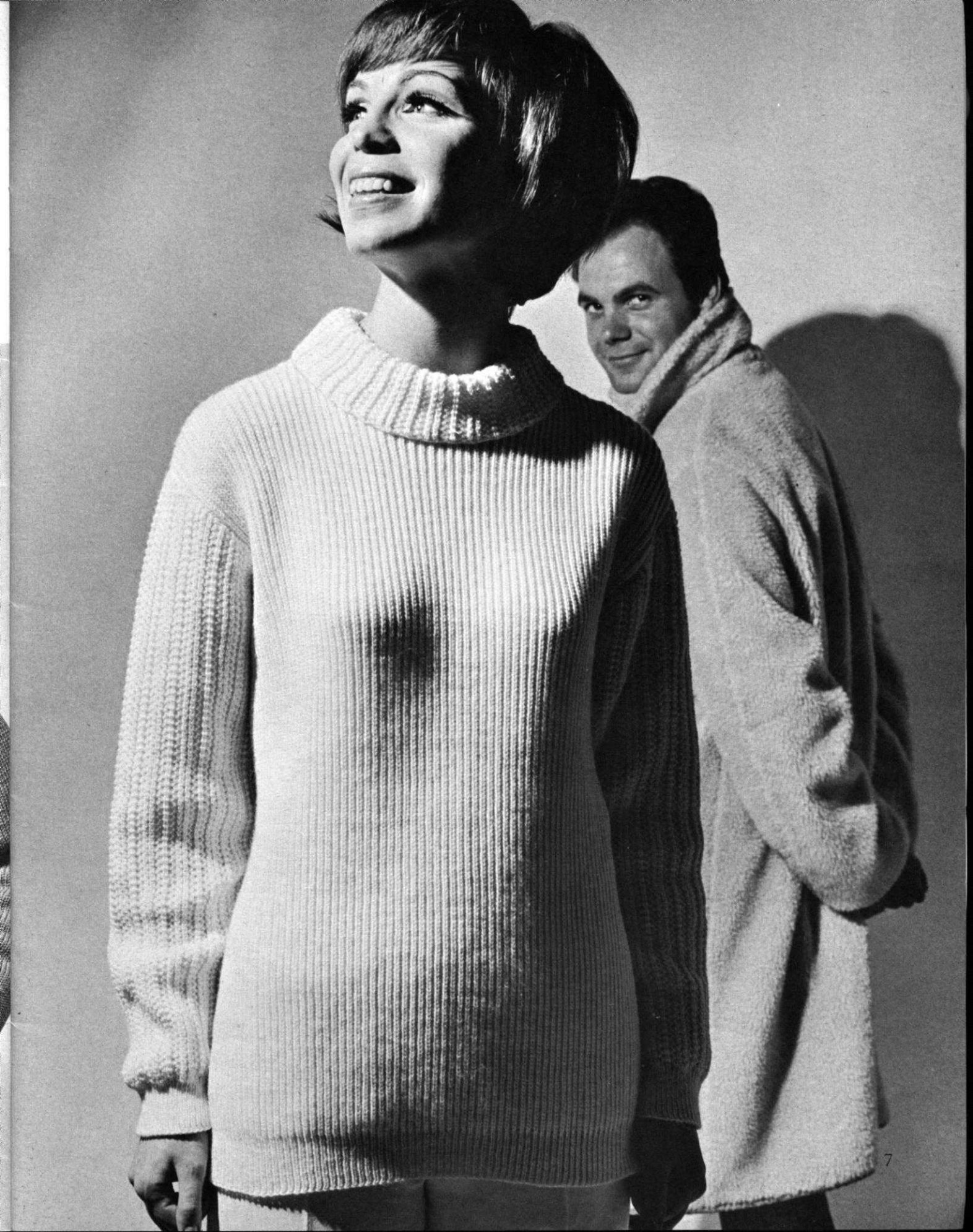
"POOR BOY" MADE GLAMOROUS . . .

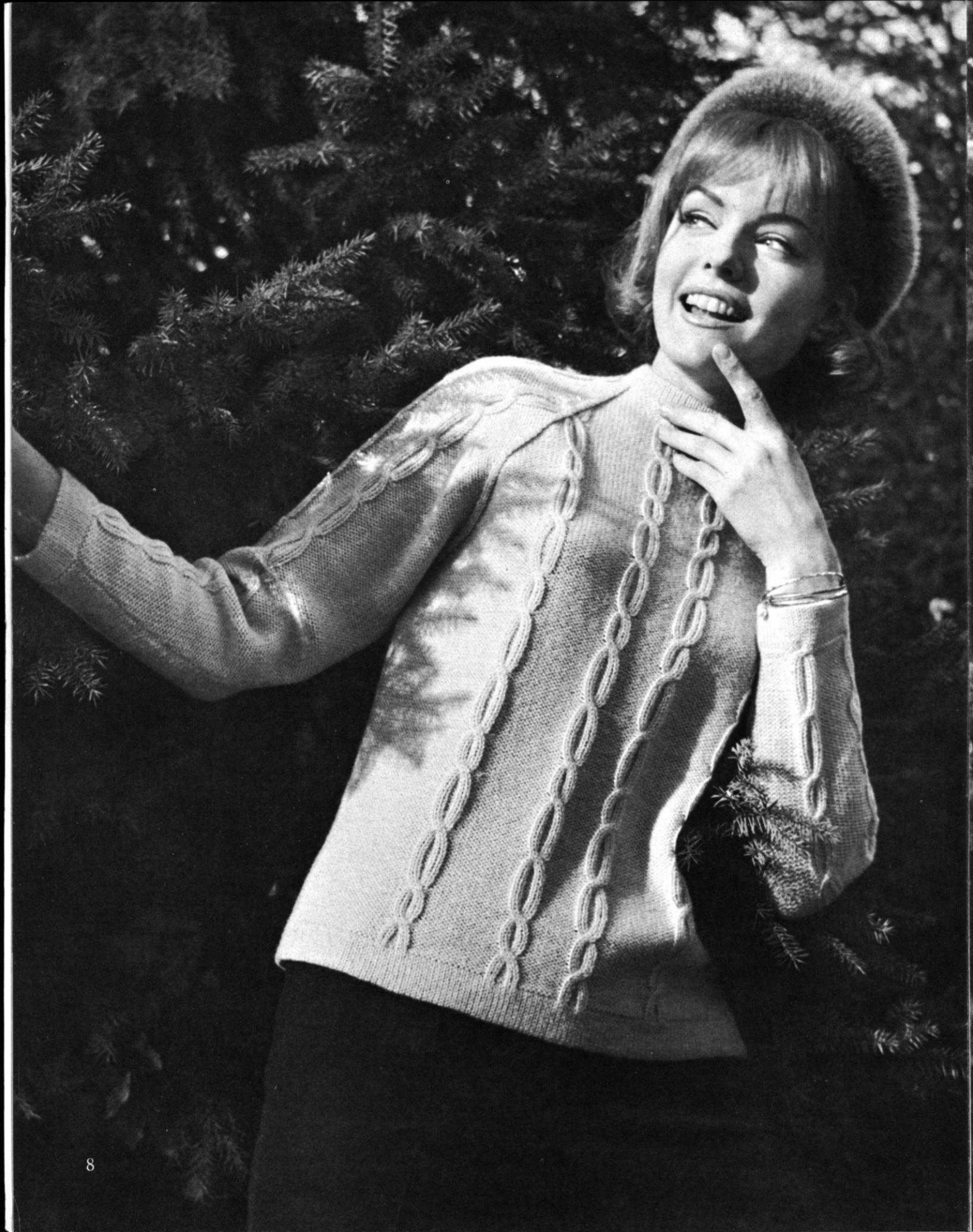
Although the basic part of this woman's pullover is the "Poor Boy" type in a fisherman's rib, the sleeves and collar are knitted in a lovely holding position design which makes it charmingly feminine. Size 10/12 and 16/18. (See page 23).



HP 3441

Find time to program this man's raglan pullover. Knitted on every other needle using heavy weight yarn, the diagonal stripe down the front is made simple by knitting it in two sections. The back is in two sections as well, but without the added stripe. Size 42/44 and 46/48. (See page 22).





DP 7381 CABLED CAPERS!

Our very new pullover is worn on the purl side. The cables are knitted on the front and back section and repeated on the sleeves. The weaving together of the accented sleeve sections is shown in our Practical Knitting Hints on page 32. Size 14/16. (See page 24).

DP 7379 INDESCRIBABLE!

Take to the out of doors in this lush pullover . . . color it cherry and pink for real excitement. The inset is knitted right along with the patterned front . . . we tell you how in Practical Knitting Hints on page 32. A JAC 40 design No. 56a. Size 14/16. (See page 25).





PILLOW COVER — RS 6038

A HOMESPUN LOOK . . .

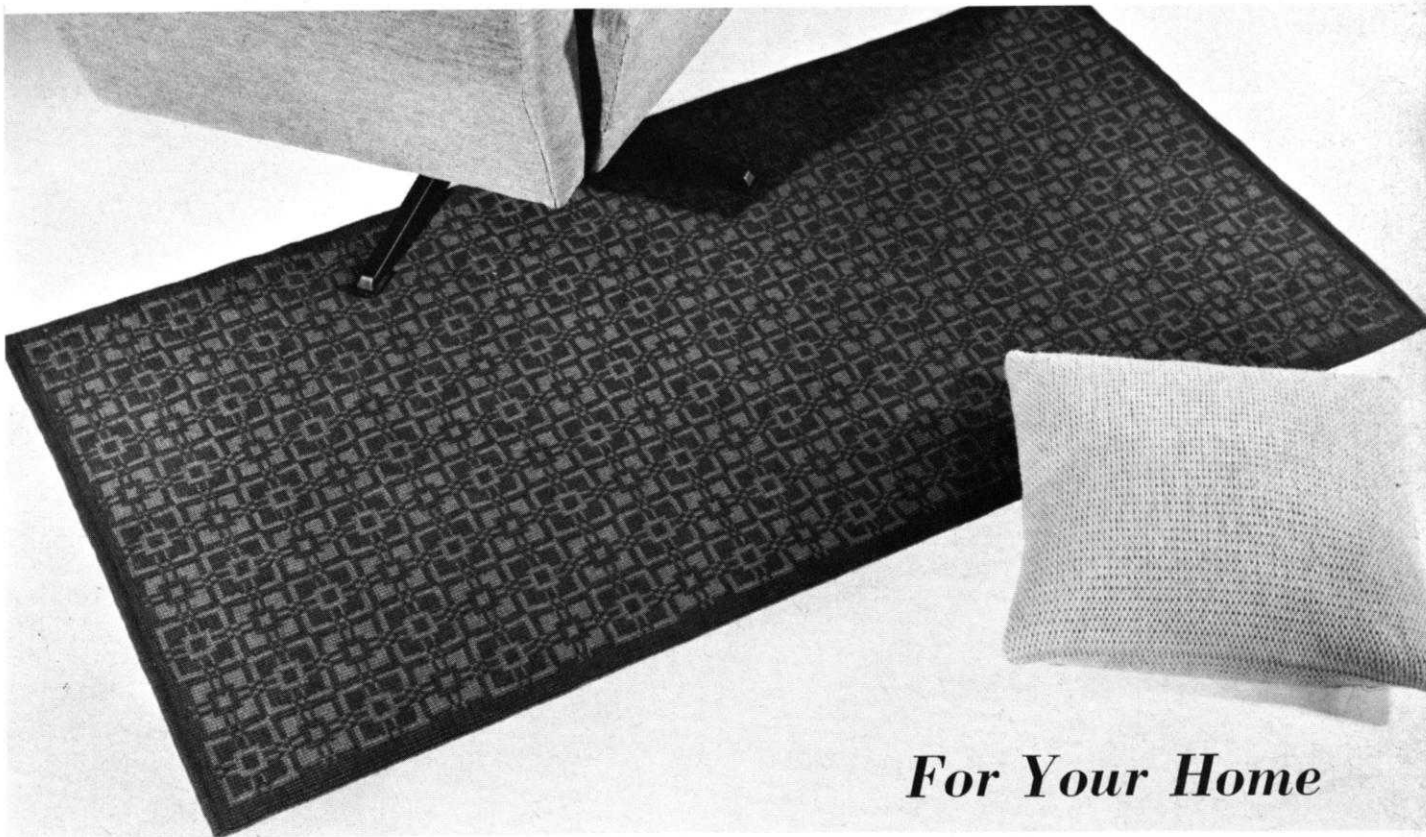
A quickie knit . . . and a lesson to boot. The heavy yarn is woven under and over selected needles behind the latches . . . while you knit with the lighter weight yarn . . . presto! . . . a lovely pillow cover. (See page 26).

RS 6037 RUG — SIZE 26 1/4" X 47 1/4"

Fantastic prices are paid for decorator area rugs . . . How about knitting one yourself? The same procedure as used for pillow cover RS 6038 - the knitting is with a lighter weight yarn and weaving with a heavier nubby wool. (See page 26).



BEGINNERS PATTERNS...



For Your Home

RS 6039 AND RS 6040

MORE PILLOW TALK . . .

Take your pick - one - two - three . . . all beautiful covers . . . all quickly knitted and quick to please . . . (Hint - trim some with fringe, or tassel at corners - or even a fancy knitted braid.) (See page 27).

RS 6036 RUG — SIZE 27 $\frac{1}{4}$ " X 54 $\frac{1}{4}$ "

A lovely area rug will add "zing" to any home decor . . . and this one—in a rich shade of deep wine for its background, plus jade green for its design—is a treasure. A JAC 40 design No. 49a. (See page 26).

For The Children

KK 4778

BOY'S PULLOVER . . .

FOR THE "IN" CROWD . . .

The boys are searching for good looking turtle neck pullovers . . . and this one will be his favorite . . . Better hide it from his sister . . . or to keep peace in the family, knit her one just like it. A holding position design and using the ribber. Size 11-12 and 13-14 years. (See page 27).

MK 4775

GIRL'S PULLOVER . . .

She'll skate around in style in this Fisherman rib pullover with raglan sleeves and turtle neck. Note the very new fancy ribbed border at bottom. A lovely sweater for a lovely girl. Size 8-9 and 10-11 years. (See page 28).





MK 4776

Delight a small girl with this lovely Norwegian pullover in two colors. Our model is knitted in red and beige. The JAC 40 pattern is No. 27. For the 6 to 7 year old. (See page 29).



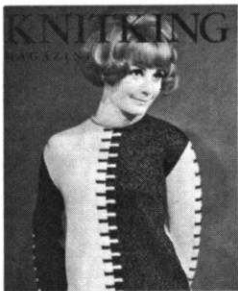
KK 4777

The north winds may blow . . . and all boys love snow . . . Keep him warm and happy in this brightly colored Norwegian design pullover with its raglan sleeves and turtle neck. It is knitted in 4 colors and the JAC pattern used is No. 108a. Size 7-8 and 4-5 years. (See page 29).

KNITTING INSTRUCTIONS

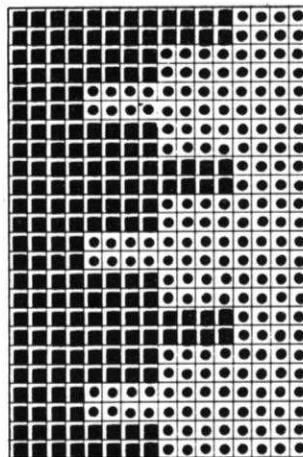
BEGINNERS PATTERN

COVER MODEL, No. DP 7376



SIZE: 12/14 and 16. **MATERIAL:** Size 12/14, 13 oz. black and 13 oz. white. Size 16: 14 oz. black, 14 oz. white. Both sizes 4 oz. red. **FOR EXAMPLE:** KNITTING FRIGATE or 4 ply knitting worsted. **TENSION:** KNITTING 10 OVER EVERY OTHER NEEDLE. **HAND FEED** — Do not count needles in the out of work position in the gauge or directions. **GAUGE:** 9 sts. 2", 12 rows 2". **PATTERN:** Stockinette st. OVER EVERY OTHER NEEDLE. Use two balls of yarn, one white, one black. The pattern stripe

will be worked in the center of each section according to chart. Be sure to twist the yarns when changing color. Finished bust measurement size 12/14 39" to 40", size 16 41" to 42".



■ BLACK
● WHITE

BACK: (Figure II)

With Red, cast on Stitches
Knit 16 rows with tension 9
Change to tension 10 and counting from the RIGHT edge, work with white yarn over first

12/14	16
84	90
42 needles	45 needles
42 needles	45 needles

with black yarn over next and using chart as guide, work in pattern design being sure to always twist the yarns when changing color to avoid a hole. Increase 1 stitch when counter reads 38 and 39 and again ON EACH SIDE every 18th row 3 x. Number of stitches

92	98
----	----

SHAPE ARMHOLES when counter reads
Bind off
beginning of next 2 rows.
On every other row ON EACH SIDE bind off

112	112
3 sts.	3 sts.
3 sts. 1 x	3 sts. 1 x
2 sts. 1 x	2 sts. 1 x
1 st. 2 x	1 st. 3 x

ON EACH SIDE on 4th row decrease

1 st. 1 x	1 st. 1 x
70	74
125	129
35 needles	37 needles

Number of stitches
When counter reads
Put on the RIGHT side into holding position and continue on left side. When counter reads
Cast on 2 stitches for facing by removing 2 stitches from the right section on to a double pointed needle or contrast yarn.

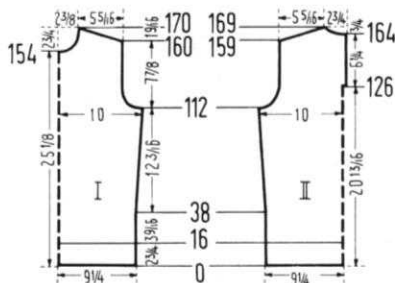
126	130
-----	-----

SHAPE SHOULDER and NECK on EVERY OTHER ROW as listed in proper column.

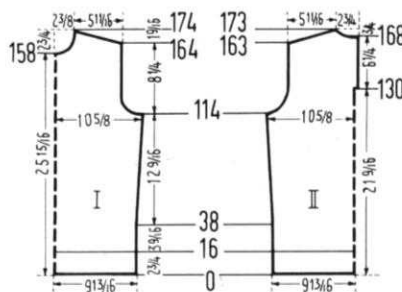
	Sh.	Neck	Sh.	Neck.
Counter reads	Row 159		Row 163	
Bind off	4 sts. 6 x		4 sts. 4 x	
		Row 164	5 sts. 2 x	
		8 sts. 1 x		Row 168
		5 sts. 1 x		8 sts. 1 x
				5 sts. 1 x

Put Cam box on the right side, put stitches from the double pointed needle or contrast yarn back on machine and bring all needles into working position.

Put row counter back to and complete the right side.	125	129
--	-----	-----



SIZE 12/14



SIZE 16

FRONT: (Figure I)

Knit the front the same as the back without the opening until counter reads

154	158
6 sts.	6 sts.

Bind off the center with a new ball of yarn, put all needles on the right side into holding position and continue on the left.

When Cam box is on NECK SIDE (every other row) BOTH SIZES bind off 3 sts 1 x
2 sts. 1 x

decrease 1 st. on the 4th row 1 x

AT THE SAME TIME shape shoulder as on the back

when counter reads	159	163
	4 sts. 6 x	4 sts. 4 x
		5 sts. 2 x

Put Cam box on the right side row counter back to and complete the right side

154	158
-----	-----

SLEEVE: (Figure III) Make 2.

Cast on with Red Stitches 42 44
 Knit 16 rows with tension 9
 Change to tension 10 and follow chart for pattern counting from the right edge begin with first and white yarn. 21 needles 22 needles
 The next 21 needles 22 needles
 with black yarn.
 Increase 1 stitch when counter reads 25 and 26 and again ON EACH SIDE every

6th row 4 x	6th row 13 x
4th row 8 x	
Number of stitches	68 72
When counter reads	110 110
on EVERY OTHER ROW ON EACH SIDE bind off	
4 sts. 1 x	4 sts. 1 x
3 sts. 2 x	3 sts. 2 x
2 sts. 2 x	2 sts. 3 x
1 st. 8 x	1 st. 8 x
2 sts. 2 x	2 sts. 2 x
3 sts. 1 x	3 sts. 1 x
Bind off when counter reads remaining	142 144
	10 sts. 10 sts.

NECK EDGING: Both sizes. Cast on 60 sts. with red. Knit 8 rows stockinette with tension 9 bind off all stitches LOOSELY.

FINISHING: Slip stitch crochet the shoulder seams. Pin sleeves into armhole and slip stitch crochet. Weave the front and back sections together and weave the sleeve seams. Make a hem 2" wide at sweater and sleeve bottoms. Fold over the 2 sts. on back opening and catch in place. Pin neck edging around neckline, the bound off stitches on the outside. Split a length of yarn and thread through tapestry needle. Back stitch through the center of each bound off stitch. Fold neck edging to the inside and catch in place. Sew in zipper.

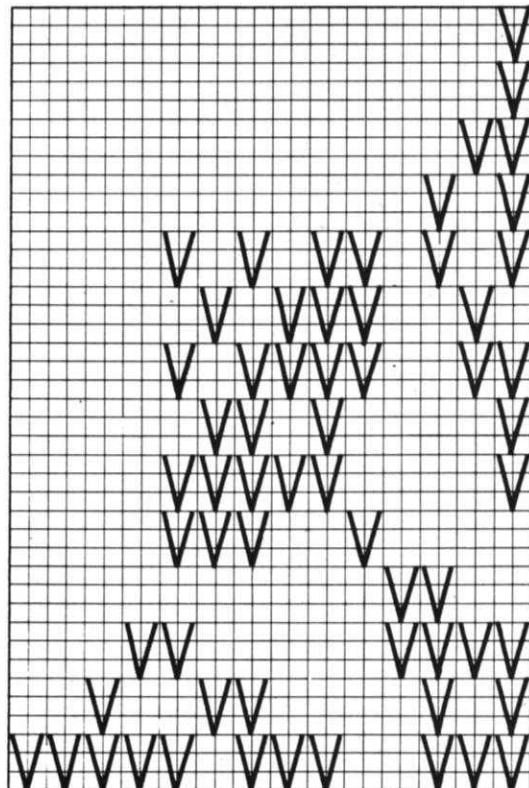
HINT: When binding off the neck edging, in order to have a neat and smooth bound off edge knit 1 row by hand in the following manner. Lay the yarn across the needles and knit 1 stitch at a time pulling the yarn back at least 1/4 inch. After you have knitted each stitch, begin opposite the yarn end and bind off using your latch tool, by pulling the second stitch through the 1st stitch, the 3rd through the second, etc. It is a good idea to practice on a sample first, using yarn which will be used for the knitting of garment. If you do this, you will be able to see just how far you need to pull back the stitch so that when you bind off using the crochet method the edge is not too tight and looks well.

WOMAN'S PULLOVER, No. DP 7380

SIZES: 10/12 and 14/16. **MATERIAL:** size 10/12, 12 oz. cherry and 12 oz. light blue; Size 14/16, 14 oz. cherry and 14 oz. light blue. **FOR EXAMPLE:** KNITTING Frigate or 4 ply KNITTING worsted Columbia Minerva Calipso. Both sizes: 4 oz. Matching Red and 2 oz. Matching light blue. **FOR EXAMPLE:** KNITTING Regal or Sports yarn **TENSION:** KNITTING Stockinette Stitch 10. **Hand Feed** Stockinette St. K.1, P.1 Ribbing 9 or 10. **GAUGE:** Stockinette Stitch 9 sts. 2", 13 rows 2"; K.1, P.1 Ribbing 18

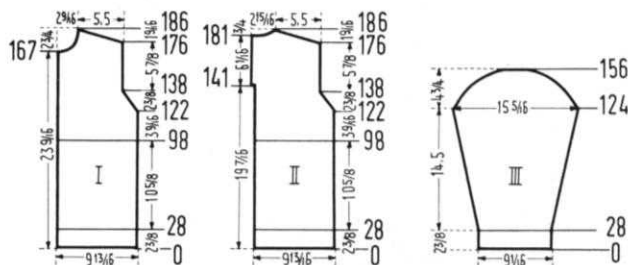
sts. 2", 23 rows 2". The non-working-position sts. in the stockinette sections are not counted in the gauge and in the directions. **PATTERN:** Stockinette Stitch over every other needle. Edging: K.1, P.1 Ribbing over every other needle on main machine and every needle on ribber using the lighter weight yarn. The snow-flake design is made in duplicate stitch on the completed garment, according to chart. Both the back and front are worked in two sections.

SIZE: 10/12. BACK: (Figure II). Cast on 89 sts. with red. Regal yarn. Rows 1-28: Work in K.1, P.1 Ribbing with Tension 9



(10). Now put the sts. from the Ribber onto the nearest needles of the main machine, and, to make the hem, put every other st. of the cast on sts. back on the machine and work over 45 sts. with light blue Frigate yarn, continuing in Stockinette stitch with Tension 10. Rows 29-122: Work even: from row 99 on work with red Frigate yarn. Rows 123-138: **Armhole Shaping.** On the right side on every other row decrease 1 st. 8 x. (37 sts.). Rows 139-176: To make the facing for the back opening slit, cast on 2 sts. at beginning of Row 142. Rows 177-186: **Shoulder and Neck Shaping.** On the shoulder side of every other row bind off 4 sts. 5 x and 5 sts. 1 x. AT THE SAME TIME, for the neck shaping, bind off 7 sts. at beginning of Row 182, then on every other row bind off 4 sts. 1 x and 3 sts. 1 x. Make the second back section with reverse shapings, and after the edging is worked, work with red first, and then with blue.

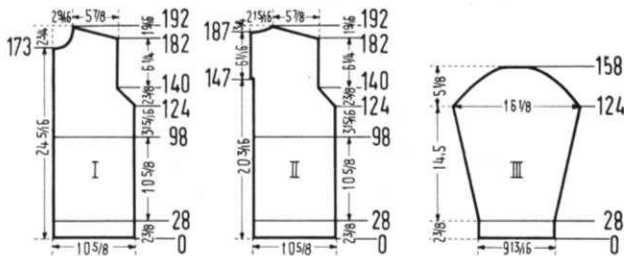
FRONT: (Figure I). The front is worked the same as the back, without the opening slit, and for the neck shaping, bind off 4 sts. at beginning of Row 168; then on every other row bind off 3 sts. 1 x, 2 sts. 1 x, decrease 1 st. 2 x; then decrease 1 st. on the 4th row 1x. After the edging, the first section will have red at the bottom and blue at the top; the second section will have blue at the bottom and red at the top.



SLEEVE: (Figure III). Make two — one red, and one blue. Cast on 83 sts. with red Regal yarn. Rows 1-28: Work in K.1, P.1 Ribbing with Tension 9 (10). Now put the sts. from the Ribber onto the nearest needles of the main machine; and, to make the hem, put every other st. of the cast on sts. back on the machine and work over 42 sts. with red Frigate yarn, continuing in Stockinette Stitch with Tension 10. Rows 29-124: Increase 1 st. at beginning of Row 35 and 36 and again on each side every 8th row 3 x and every 6th row 10 x. (70 sts.) Rows 125-156: **Underarm Shaping.** On each side of every other row decrease 1 st. 8 x, bind off 2 sts. 4 x, 3 sts. 3 x, 4 sts. 1 x, and the remaining 12 sts

NECK EDGING: Cast on 143 sts. with red Regal yarn. Work 26 rows K.1, P.1 ribbing with Tension 9 (10) and bind off all sts.

FINISHING: Weave the two front sections together, overlapping 1 st. from each section. Embroider the snow flake on the front section, following the diagram, working with blue yarn on the red squares, and with red yarn on the blue squares. The pattern will be worked diagonally, proceeding from top to bottom. Use a 3-ply strand of Regal yarn and make each duplicate st. over 3 knit sts. vertically and 2 knit sts. horizontally. Weave the 2 back sections together up to the opening, overlapping 1 st. from each section. Make a hem 3 sts. wide around the opening. Join front and back sections at side and shoulder seams. Sew the sleeve edges together and sew sleeves to sweater. Fold neck edging around sweater neckline and attach. Sew in zipper.



SIZE: 14/16. BACK: (Figure II). Cast on 97 sts. with red Regal yarn. Rows 1-28: Work in K.1, P.1 Ribbing with Tension 9 (10). Now put the sts. from the ribber onto the nearest needles of the main machine, and to make the hem, put every other st. of the cast on sts. back on the machine and work over 49 sts. with light blue Frigate yarn, continuing in Stockinette Stitch with Tension 10. Rows 29-124: Work even; from Row 99 on work with red Frigate yarn. Rows 125-140: **Armhole Shaping.** On the right side on every other row bind off 2 sts. 2 x and decrease 1 st. 6 x. (39 sts.) Rows 141-182: To make the facing for the back opening slit, cast on 2 sts. at beginning of Row 148. Rows 183-192: **Shoulder and Neck Shaping.** On the shoulder side, on every other row bind off 4 sts. 3 x and 5 sts. 3 x. **AT THE SAME TIME,** for the neck shaping, bind off 7 sts. at beginning of Row 188, then on every other row bind off 4 sts. 1 x, and 3 sts. 1 x. Make the second back section with reverse shapings, and after the edging is worked, work first with red and then with blue.

FRONT: (Figure I). The front is worked the same as the back, without the opening slit; and for the neck shaping, bind off 4 sts. at beginning of Row 174; then on every other row bind off 3 sts. 1 x, 2 sts. 1 x, decrease 1 st. 2 x; then decrease 1 st. on the 4th row 1 x. After the edging, the first section worked will have red at the bottom and blue at the top; the second will have blue at the bottom and red at the top.

SLEEVE: (Figure III). Make two — one red, and one blue. Cast on 89 sts. with red Regal yarn. Rows 1-28: Work K.1, P.1 Ribbing with Tension 9 (10). Now put the sts. from the Ribber onto the nearest needles of the main machine, and, to make the hem, put every other st. of the cast on sts. back on the machine and work over 45 sts. with red Frigate yarn, continuing in Stockinette Stitch with Tension

10. Rows 29-124: Increase 1 st. at beginning of Row 35 and 36 and again on each side every 8th row 3 x and every 6th row 10 x. (73 sts.) Rows 125-158: **Underarm Shaping.** On each side of every other row decrease 1 st. 9 x, bind off 2 sts. 4 x, 3 sts. 3 x, 4 sts. 1 x, and the remaining 13 sts.

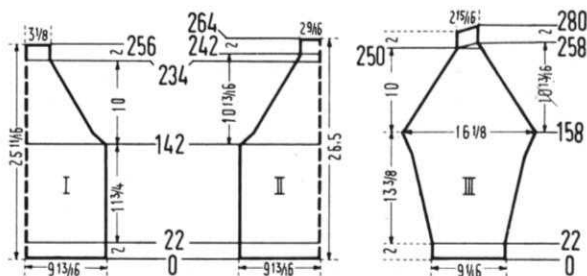
NECK EDGING and FINISHING: Follow directions for Size 10/12.

WOMAN'S PULLOVER, No. DP 7378



SIZES: 10/12 and 14/16. **MATERIAL:** Size 10/12: 15 oz. steel blue, 3 oz. yellow, and 2 oz. cherry red. Size 14/16: 16 oz. steel blue, 3 oz. yellow, and 3 oz. cherry red. **FOR EXAMPLE:** KNITTING Mutella or Regal. Spinnerin, Ambralon. Bearbrand Casa Laine. **TENSION:** KNITTING 7 or 8. **GAUGE:** Stockinette Stitch 15 sts. 2", 20 rows 2"; Norwegian Pattern Stitch 15 sts. 2", 18 rows 2"; K.1, P.1 Ribbing 15 sts. 2", 22 rows 2". **PATTERN:** Stockinette Stitch with borders in Norwegian Pattern Stitch according to chart. (Using Jac 40, Pattern No. 43a, — a two card pattern.) Each row with the Norwegian pattern stitch is counted singly in the directions; however, for 1 row several movements of the Cam box are required. Edging: K.1, P.1 Ribbing.

SIZE: 10/12. BACK: (Figure II). Cast on 151 sts. with blue. Rows 1-22: Work in K.1, P.1 Ribbing. Transfer rib sts. to main machine. Continue in Stockinette Stitch. Rows 23-142: Work even. Rows 143-234: Work the Norwegian Border, and for the raglan shaping, on each side of every other row bind off 2 sts. 6 x and decrease 1 st. 40 x. Rows 235-242: Work on in Stockinette Stitch with blue, and on each side of every other row decrease 1 st. 4 x. (39 sts.) Rows 243-264: Work in K.1, P.1 Ribbing. Bind off all sts.

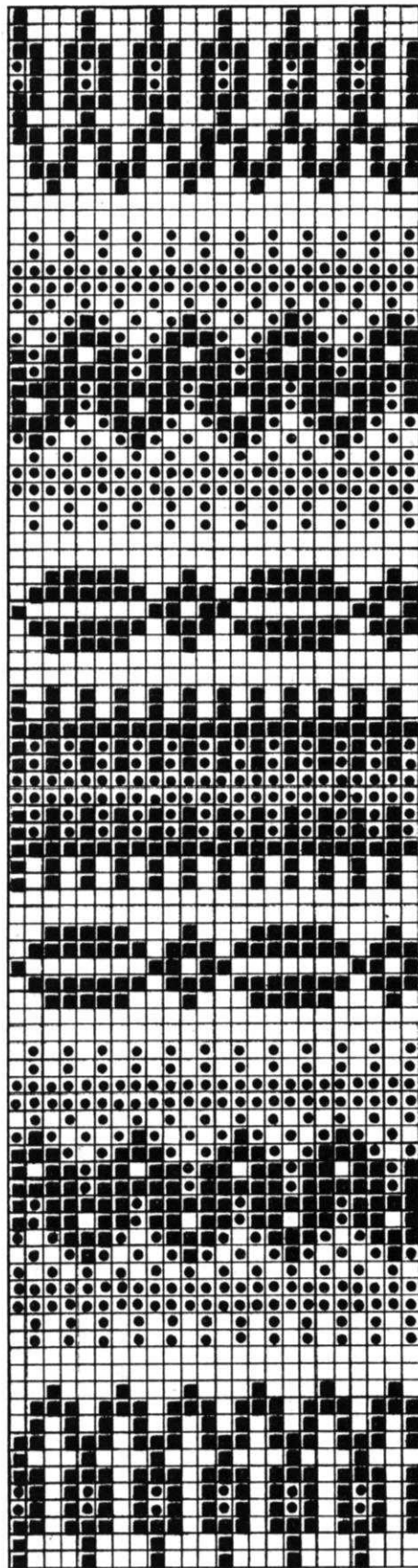


FRONT: (Figure I). The front is worked the same as the back to Row 234. Then work to Row 256 over 47 sts. in K.1, P.1 Ribbing and bind off all sts.

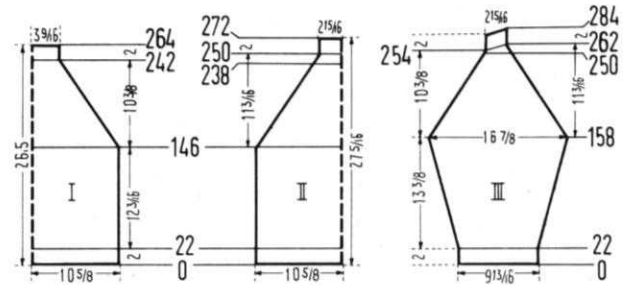
SLEEVE: (Figure III). Cast on 69 sts. with blue. Rows 1-22: Work in K.1, P.1 Ribbing. Transfer rib sts. to main machine. Continue in Stockinette Stitch. Rows 23-158: Increase 1 st. at beginning of row 25 and 26 and again on each side every 6th row 16 x, every 4th row 7 x, and every other row 3 x. (123 sts.) Rows 159-250: Work the Norwegian border, and for the raglan shaping, on each side of every other row bind off 2 sts. 2 x and decrease 1 st. 44 x. Rows 251-258: Work in Stockinette Stitch with blue, and on the left side, one after another, put 4 needles in holding position 2 x and 5 needles in holding position 2 x; and on the right side decrease 1 st. at Row 251 and again on every other row 3 x. (23 sts.) Rows 259-280: Bring all needles into working position and work in K.1, P.1 Ribbing. Bind off all sts. Make another sleeve with reverse shapings.

FINISHING: Join front and back sections at side seams. Sew sleeve edges together and sew to sweater. Fold neck edging in half toward inside and hem.

SIZE: 14/16. BACK: (Figure II). Cast on 161 sts. with blue. Rows 1-22: Work in K.1, P.1 Ribbing. Transfer rib sts. to main machine. Continue in Stockinette Stitch. Rows 23-146: Work



JAC 40
 ● RED (E)
 ■ YELLOW (U)
 □ BLUE (A)



even. Rows 147-238: Work the Norwegian border, and for the raglan shaping, on each side of every other row bind off 2 sts. 6 x and decrease 1 st. 40 x. Rows 239-250: Work on in Stockinette Stitch with blue, and on each side of every other row decrease 1 st. 6 x. (45 sts.) Rows 251-272: Work in K.1, P.1 Ribbing. Bind off all sts.

FRONT: (Figure I). The front is worked the same as the back to Row 242. Then work to row 264 over 53 sts. in K.1, P.1 Ribbing. Bind off all sts.

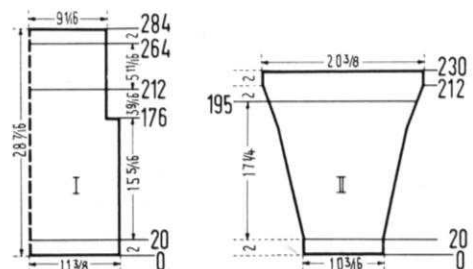
SLEEVE: (Figure III). Cast on 75 sts. with blue. Rows: 1-22: Work in K.1, P.1 Ribbing. Transfer rib sts. to main machine. Continue in Stockinette Stitch. Rows 23-158: Increase 1 st. at beginning of Row 25 and 26 and again on each side every 6th row 16 x, every 4th row 7 x, and every other row 3 x. (129 sts.) Rows 159-250: Work the Norwegian border, and for the raglan shaping, on each side of every other row bind off 2 sts. 3 x and decrease 1 st. 43 x. Rows 251-254: Work in Stockinette St. with blue, and on each side of every other row decrease 1 st. 2 x. Rows 255-262: On the left side, one after another, put 4 needles in holding position 2 x and 5 needles in holding position 2 x; and on the right side decrease 1 st. at Row 255 and again every other row 3 x. (23 sts.) Rows 263-284: Bring all needles into working position and work in K.1, P.1 Ribbing. Bind off all sts. Make another sleeve with reverse shapings.

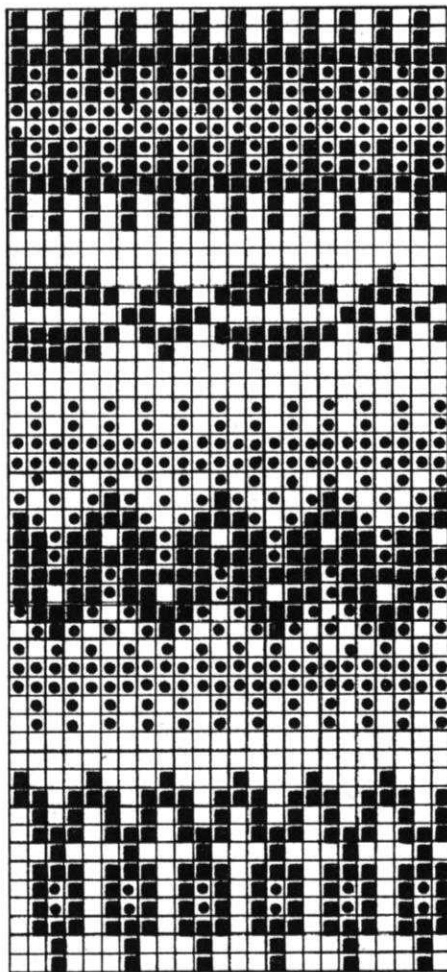
FINISHING: Follow directions for Size 10/12.

MAN'S PULLOVER, No. HP 3440

SIZES: 40/42 and 44/46. **MATERIAL:** Size 40/42: 20 oz. brown, 2 oz. cognac, and 2 oz. yellow; Size 44/46: 22 oz. brown, 3 oz. cognac, and 3 oz. yellow. **FOR EXAMPLE:** KNITKING Mutella or Regal, Spinnerin Ambralon, Bearbrand Casa Laine. **TENSION:** KNITKING 7 or 8. **GAUGE:** Stockinette Stitch and K.1, P.1 Ribbing 15 sts. 2", 20 rows 2"; Pattern Stitch 15 sts. 2", 18 rows 2". **PATTERN:** Stockinette Stitch with borders in Norwegian Pattern Stitch according to chart. Using JAC 40 and Pattern No. 43a. (A two Card Pattern). Each row with the Norwegian Pattern Stitch is counted singly in the directions; however, for one row several movements of the Cam Box are required. Edging: K.1, P.1 Ribbing.

SIZE: 40/42. BACK: (Figure I). Cast on 163 sts. with brown. Rows 1-20: Work in K.1, P.1 Ribbing. Transfer rib sts. to Main machine. Continue in Stockinette Stitch. Rows 21-176: Work even. Rows 177-178: Bind off 12 sts. beginning of each row. Rows 179-212: Work even. Rows 213-264: Work the Norwegian border. Rows 265-284: Work in Stockinette Stitch with brown and bind off all sts. The front is worked the same as the back.



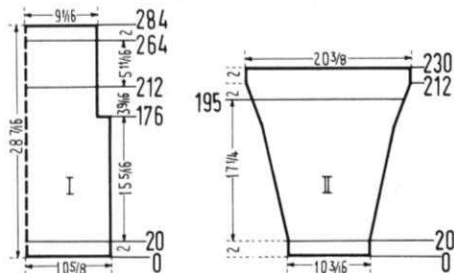


JAC 40
 ● COGNAC (E)
 ■ YELLOW (U)
 □ BROWN (A)

SLEEVE: (Figure II). Make two. Cast on 77 sts. with brown. Rows 1-20: Work in K.1, P.1 Ribbing. Transfer rib sts. to main machine. Continue in Stockinette Stitch. Rows 21-212: Increase 1 st. at beginning of Row 25 and 26 and again on each side every 6th row 23 x, every 4th row 9 x, and every other row 6 x; and at beginning of Row 196 begin the Norwegian border. (155 sts.) Rows 213-230: Work even, working the last 4 rows in Stockinette Stitch with brown. Bind off all sts.

FINISHING: Join front and back sections at side seams. Make a 1" hem at the upper edges. Join shoulder seams (4 1/4" on each side) in weaving stitch. Sew sleeve edges together and sew sleeves to sweater.

SIZE: 44/46. **BACK:** (Figure I). Cast on 175 sts. with brown. Rows 1-20: Work in K.1, P.1 Ribbing. Transfer rib sts. to main machine. Continue in Stockinette Stitch. Rows 21-176: Work even. Rows 177-178: Bind off 12 sts. beginning of each row. (151 sts.) Rows 179-212: Work even. Rows 213-264: Work the



Norwegian border. Rows 265-284: Work in Stockinette Stitch with brown, and bind off all sts. The front is worked the same as the back.

SLEEVE: (Figure II). Make two. Cast on 77 sts. with brown. Rows 1-20: Work in K.1, P.1 Ribbing. Transfer rib sts. to main machine. Continue in Stockinette Stitch. Rows 21-212: Increase 1 st. beginning of Row 25 and 26 and again on each side every 6th row 23 x, every 4th row 9 x, and every other row 6 x, beginning the Norwegian border at Row 196. (155 sts.) Rows 213-230: Work even, working the last 4 rows in Stockinette Stitch with brown. Bind off all sts.

FINISHING: Follow directions for Size 44/46.

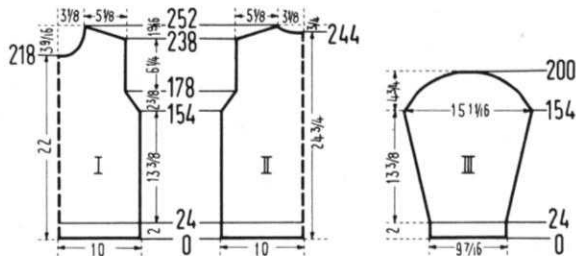
WOMAN'S PULLOVER, No. DP 7377



SIZES: 12/14 and 16/18. **MATERIAL:** Size 12/14: 13 oz. Garnet and 11 oz. Bouquet; Size 16/18: 14 oz. Garnet and 12 oz. Bouquet **FOR EXAMPLE:** KNITTING Regal, Spinnerin Ambralon. **TENSION:** KNITTING Pattern Stitch 7 or 8; K.1, P.1 Ribbing 9 or 10. **GAUGE:** Pattern Stitch 15 sts. 2", 19 rows 2"; Edging 15 sts. 2", 24 rows 2". **PATTERN:** Norwegian Pattern Stitch according to chart or use JAC 40 and Pattern #40a. Each row with the Norwegian Pattern Stitch is counted singly in the directions;

however, for one row several movements of the Cam Box are required. Edging and Collar: K.1, P.1 Ribbing.

SIZE: 12/14. **BACK:** (Figure II). Cast on 153 sts. with Garnet. Rows 1-24: Work in K.1, P.1 Ribbing with Tension 9 (10). Transfer rib sts. to main machine. On the left side increase 1 st. and continue in Norwegian Pattern Stitch with Tension 7 (8). Rows 25-154: Work even. Rows 155-178. **Armhole Shaping.** On each side of every other row bind off 2 sts. 2 x and decrease 1 st. 10 x. (126 sts.) Rows 179-238: Work even. Rows 239-252: **Shoulder and Neck Shaping.** On each shoulder

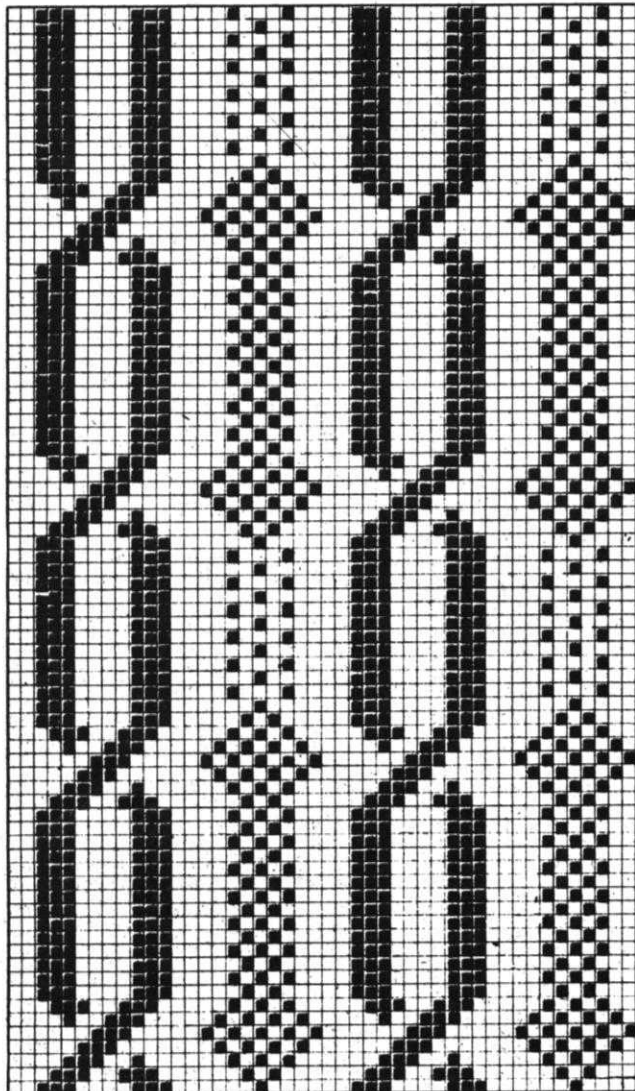


side of every other row bind off 4 sts. 1 x and 5 sts. 7 x. **AT THE SAME TIME,** for the neck shaping, at beginning of Row 245 bind off the 16 center sts. with a new ball of yarn and continue working both sides at the same time using two balls of yarn for each color. **On each side of neck,** on every other row bind off 6 sts. 1 x and 5 sts. 2 x.

FRONT: (Figure I). The front is worked the same as the back; however, for the neck shaping, at beginning of Row 219 bind off the 10 center sts., and on each side of neck on every other row bind off 4 sts. 2 x, 3 sts. 1 x, 2 sts. 1 x, decrease 1 st. 2 x; then decrease 1 st. on every 4th row 4 x.

SLEEVE: (Figure III). Make two. Cast on 71 sts with Garnet. Rows 1-24: Work in K.1, P.1 Ribbing with Tension 9 (10). Transfer rib sts. to the main machine. On the left side increase 1 st. and continue in Norwegian Pattern Stitch with Tension 7 (8), beginning with the 8th square of the chart. Rows 25-154: Increase 1 st. at beginning of Row 31 and 32 and again on each side every 6th row 14 x and every 4th row 9 x. (120 sts.) Rows 155-200: **Underarm Shaping.** On each side of every other row decrease 1 st. 10 x, bind off 2 sts. 6 x, 3 sts. 3 x, 4 sts. 2 x, 5 sts. 2 x, and the remaining 22 sts.

COLLAR: Cast on 81 sts. with Garnet. Work 60 rows K.1, P.1 Ribbing with Tension 9 (10) decreasing 2 sts. on each

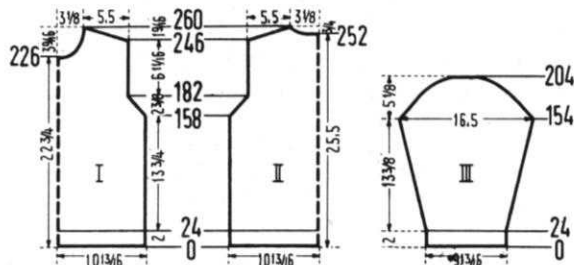


□ BOUQUET ■ GARNET

side at Row 5 and again every 4th row 8 x; to do this, always put the 7th st. and then the 6th sts. on the 5th needle (the stitch that is lifted off will pass behind the Ribber needle) and move the edge sts. over to fill the empty needles. Bind off all sts. Make 3 sections more just like this.

FINISHING: Join front and back sections at side seams, overlapping 1 st. from each section. Sew shoulder seams. Sew sleeve edges together and sew sleeves to sweater. Weave collar sections together, overlapping 1½ sts. from each section. Sew collar to sweater and fold to outside.

SIZE 16/18. BACK: (Figure II). Cast on 163 sts. with Garnet. Rows 1-24: Work in K.1, P.1 Ribbing with Tension 9 (10). Transfer rib sts. to main machine. On the **left side** increase 1 st. and work over 164 sts. in Norwegian Pattern Stitch with Tension 7 (8). Rows 25-158: Work even. Rows 159-182: **Armhole Shaping.** On **each side** of every other row bind off 2 sts. 1 x and decrease 1 st. 2 x. Repeat these 3 decreases 3 x. (132 sts.) Rows 183-246: Work even. Rows 247-260: **Shoulder and Neck Shaping.** On **each shoulder side** of every other row bind off 5 sts. 6 x and 6 sts. 2 x. **AT THE SAME TIME,** for the **neck Shaping,** at Row 253 bind off the 16 center sts. with a new ball of yarn and continue working both sides at the same time using two balls of yarn for each color. On **each side of neck** on every other row bind off 6 sts. 1 x and 5 sts. 2 x.

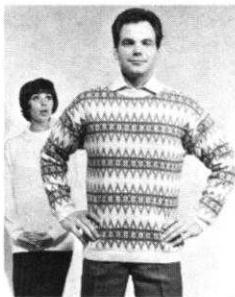


FRONT: (Figure I). The front is worked the same as the back; however, for the **neck shaping,** at Row 227 bind off the 10 center sts., and on **each side of neck** on every other row bind off 4 sts. 2 x, 3 sts. 1 x, 2 sts. 1 x; decrease 1 st. 2 x; then on every 4th row decrease 1 st. 4 x.

SLEEVE: (Figure III). Make two. Cast on 75 sts. with Garnet. Rows 1-24: Work in K.1, P.1 Ribbing with Tension 9 (10). Transfer rib sts. to main machine. On the left side increase 1 st., and work on in Norwegian Pattern Stitch with Tension 7 (8). Rows 25-154: Increase 1 st. at beginning of Row 29 and 30 and again on **each side** every 6th row 13 x and every 4th row 11 x. (126 sts.) Rows 155-204: **Underarm Shaping.** On **each side** of every other row bind off 2 sts. 1 x and decrease 1 st. 2 x. Repeat these 2 decreases 3 x; then bind off 2 sts. 7 x, 3 sts. 3 x, 4 sts. 2 x, 5 sts. 1 x, and the remaining 22 sts.

COLLAR and FINISHING: Follow directions for Size 12/14.

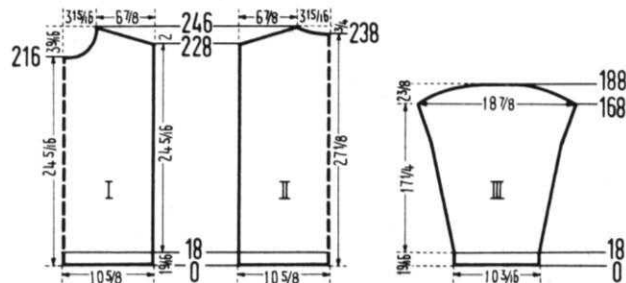
MAN'S PULLOVER, No. HP 3439

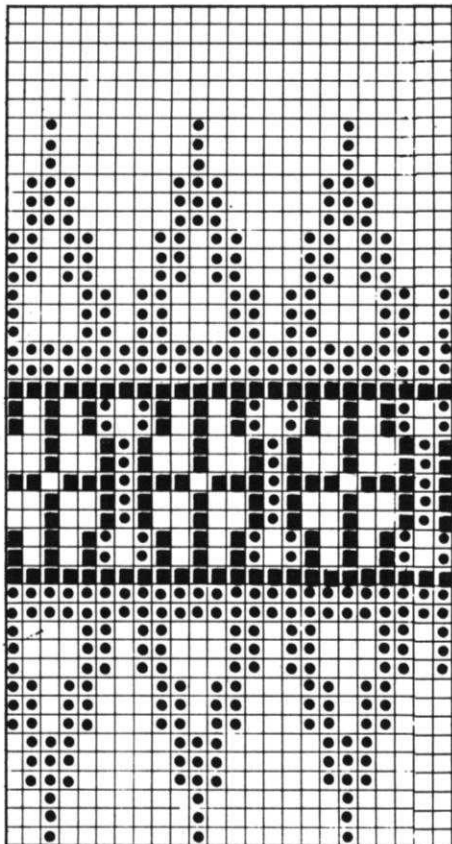


SIZE: 40/42. **MATERIAL:** 13 oz. Sunshine 11 oz. Chrysanthemum, and 8 oz. H-30 blue. **FOR EXAMPLE:** KNITTING Regal. **TENSION:** KNITTING 8 or 9. **GAUGE:** Pattern Stitch 14 sts. 2", 17 rows 2"; K.1, P.1 Ribbing 14 sts. 2", 22 rows 2". **PATTERN:** Norwegian Pattern Stitch according to chart. (Using JAC 40, Pattern No. 18a.) Each row with the Norwegian Pattern Stitch is counted singly in the directions; however, for one row several movements of the Cam Box are required. Edging: K.1, P.1 ribbing.

BACK: (Figure II). Cast on 155 sts. with Sunshine. Rows 1-18: Work in K.1, P.1 Ribbing. Transfer rib sts. to main machine. Rows 19-22: Stockinette Stitch. Continue in Norwegian Pattern Stitch. Rows 23-228: Work even. Rows 229-246: **Shoulder and Neck Shaping.** On **each shoulder side** of every other row bind off 4 sts. 1 x and 5 sts. 9 x. **AT THE SAME TIME,** for the **neck shaping,** at Row 239 bind off the 19 center sts., with a new ball of yarn and work both sides at the same time using two balls of yarn for each color. On **each side of neck** on every other row bind off 8 sts. 1 x, 6 sts. 1 x, and 5 sts. 1 x.

FRONT: (Figure I). The front is worked the same as the back; however, for the **neck shaping,** at Row 217 bind off the 15 center sts., and on **each side of neck** on every other row bind off 5 sts. 1 x, 3 sts. 2 x, 2 sts. 3 x, decrease 1 st. 2 x; then on every 4th row decrease 1 st. 2 x.





JAC 40
 ■ BLUE (U)
 ● CHRYSAN-
 THEMUM (E)
 □ YELLOW (A)

SLEEVE: (Figure III). Make two. Cast on 73 sts. with Sunshine. Rows 1-18: Work in K.1, P.1 Ribbing. Transfer rib sts. to main machine. Rows 19-22: Stockinette Stitch. Continue in Norwegian Pattern Stitch. Rows 23-168: Increase 1 st. at beginning of Row 25 and 26 and again on each side every 6th row 10 x and every 4th row 20 x. (135 sts.) Rows 169-188: **Underarm Shaping.** On each side of every other row bind off 3 sts. 2 x, 4 sts. 2 x, 5 sts. 2 x, 6 sts. 2 x, 8 sts. 2 x, and the remaining 31 sts.

NECK EDGING: Cast on 141 sts. with Sunshine. Work 28 rows K.1, P.1 Ribbing and bind off all sts.

FINISHING: Weave front and back sections at side seams, overlapping 1½ sts. from each section, and leaving 9¾" on the top at each side open for the sleeves. Sew shoulder seams. Weave sleeve edges together and sew sleeves to sweater. Sew ends of neck edging together so that the edging is circular, fold the edging around the sweater neckline and attach.

WOMAN'S PULLOVER, No. DP 7382





SIZES: 12/14 and 16/18. **MATERIAL:** Size 12/14, 24 oz. white. Size 16/18, 28 oz. white. **FOR EXAMPLE:** KNITKING Frigate. Both sizes: For ribbing 3½ oz. olive green. Used double. **FOR EXAMPLE:** KNITKING Fine Dralon. **TENSION:** KNITKING Stockinette Stitch, 10; K.1, P.1 Ribbing with doubled yarn, 7 or 8. **GAUGE:** Stockinette Stitch 9 sts. 2", 13 rows 2"; K.1, P.1 Ribbing 18 sts. 2", 24 rows 2". The non-working-position sts. in Stockinette Stitch are not counted in the gauge or in the directions. **PATTERN:** Stockinette Stitch over every other needle. Diagonal stripes are worked on the front and back

sections. Edging: K.1, P.1 Ribbing. The back and front sections will each be worked in two sections.

THE JAC 40 IS A MUST

for fast easy knitting of
Jaquard and Ski-sweater
designs

Patterns are selected—row by row—through a pre-stamped card that is fed into the Jac. There are over 140 cards available and illustrations of them are included with each Jac. Jac 40's are made for most brands of machines (with the exception of Japanese machines). When ordering be sure to specify your brand of knitter as needle spacings vary. Simple to use and an essential tool for the modern knitter, Jac 40's are \$24.95 complete with 3 cards for practicing the 3 techniques, plus complete instructions.

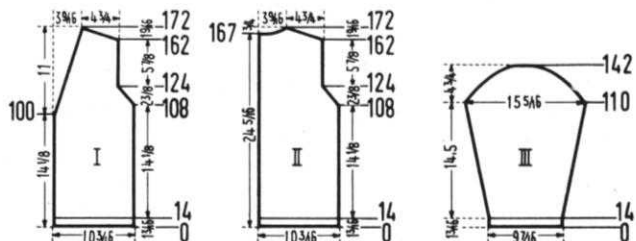
Order from your dealer or direct from

KNITKING

1128 Crenshaw Boulevard, Los Angeles, Calif. 90019
 Shipping Cost \$1.00 California residents add 4% sales tax.

sections. Edging: K.1, P.1 Ribbing. The back and front sections will each be worked in two sections.

SIZE: 12/14. **BACK:** (Figure II). Using every other needle on main machine and every needle on ribber cast on 93 sts. with doubled olive green yarn. Rows 1-14: Work in K.1, P.1 Ribbing with Tension 7 (8). Now put the sts. from the Ribber onto the machine needle to its right and continue over 47 stitches with white in Stockinette Stitch with Tension 10, **AT THE SAME TIME**, on the left side work the diagonal stripe to the neck opening. To do this, work 4 rows; then put the 3rd st. on the 2nd needle and move the 4th-9th sts. one needle to the left. The empty needles remain in working position. Repeat this procedure throughout. Rows 15-108. Work even. Rows 109-124: **Armhole Shaping.** Bind off 2 sts.; then on every other row decrease 1 st. 7 x. (38 sts.) Rows 125-162: Work even. Rows 163-172: **Shoulder and Neck Shaping.** On the shoulder side, on every other row bind off 3 sts. 2 x and 4 sts. 4 x. **AT THE SAME TIME**, for the neck shaping, bind off 8 sts. at beginning of Row 168; then on every other row bind off 5 sts. 1 x and 3 sts. 1 x. Make the second section with reverse shapings.



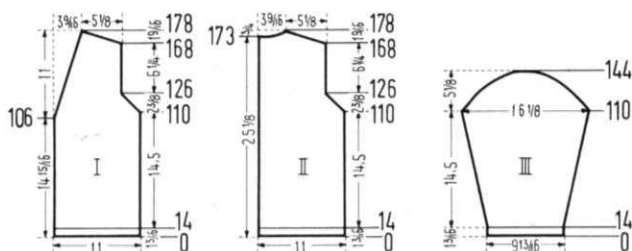
FRONT: (Figure I). The front is worked the same as the back; however, for the **neck shaping**, decrease 1 st. at beginning of Row 101 and again every 4th row 12 x and every 6th row 3 x. To do this, always put the 12th st. on the 11th needle and move the edge sts. over to fill the empty needle. The diagonal stripe will be worked up to the shoulder shaping.

SLEEVE: (Figure III). Make two. Using every other needle on main machine and every needle on ribber. Cast on 85 sts. with doubled olive green yarn. Rows 1-14: Work in K.1, P.1 Ribbing with Tension 7 (8). Now put the sts. from the Ribber onto the machine needle to its right. Continue over 43 stitches with white in Stockinette Stitch with Tension 10. Rows 15-110: Increase 1 stitch at beginning of Row 23 and 24 and again on **each side** every 8th row 2 x and every 6th row 11 x. (71 sts.). Rows 111-142: **Underarm Shaping.** On **each side** of every other row decrease 1 st. 8 x, bind off 2 sts. 4 x, 3 sts. 2 x, 4 sts. 2 x, and the remaining 11 sts.

NECK EDGING: Cast on 109 sts. with doubled olive green yarn. Work 14 rows K.1, P.1 Ribbing with Tension 7 (8), and to shape the point, bind off 2 sts. at beginning of Row 3 and again every other row 5 x. Then bind off the remaining sts. Make the second section with reverse shapings.

FINISHING: Weave the two front sections and the two back sections up to the neck opening, overlapping 1 st. from each section. Join front and back sections at side and shoulder seams. Weave sleeve edges together and sew sleeves to sweater. Weave sections of neck edging together and sew to sweater.

SIZE: 16/18. BACK: (Figure II). Using every other needle on main machine and every needle on ribber cast on 101 sts. with doubled olive green yarn. Rows 1-14: Work in K.1, P.1 Ribbing with Tension 7 (8). Then put the sts. from the Ribber onto the machine needle to its right and continue over 51 stitches with white in Stockinette Stitch with Tension 10. **AT THE SAME TIME**, on the **left side**, work the diagonal stripe up to the neck opening. To do this, work 4 rows. Then hang the 3rd st. on the 2nd needle, and the 4th-9th sts. one needle to the left. The empty needles remain in working position. Repeat this procedure throughout. Rows 15-110: Work even. Rows 111-126: **Armhole Shaping.** Bind off 2 sts.; then on every other row decrease 1 st. 2 x and bind off 2 sts. 1 x and repeat these last 3 decreases 1 x; then decrease 1 st. 1 x. (40 sts.). Rows 127-168: Work even. Rows 169-178: **Shoulder and Neck Shaping.** For the **shoulder shaping**, on every other row bind off 4 sts. 6 x. **AT THE SAME TIME**, for the **neck shaping**, bind off 8 sts. at beginning of Row 174 and then on every other row bind



off 5 sts. 1 x and 3 sts. 1 x. Make the second section with reverse shapings.

FRONT: (Figure I). The front is worked the same as the back; however, for the **neck shaping**, decrease 1 st. at beginning of Row 107 and again every 4th row 12 x and every 6th row 3 x. To do this, always put the 12th st. on the 11th needle and move the edge sts. over to fill the empty needle. The diagonal stripe will be worked to the shoulder shaping.

SLEEVE: (Figure III). Make two. Using every other needle on main machine and every needle on ribber cast on 89 sts. with doubled olive green yarn. Rows 1-14: Work in K.1, P.1 Ribbing with Tension 7 (8). Now put the sts. from the Ribber onto the machine needle to its right and continue over 45 stitches with white in Stockinette Stitch

with Tension 10. Rows 15-110: Increase 1 st. at beginning of Row 23 and 24 and again on **each side** every 6th row 14 x. (75 sts.). Rows 111-144: **Underarm Shaping.** On **each side** of every other row bind off 2 sts. 1 x and decrease 1 st. 2 x. Repeat these 3 decreases 2 x; then bind off 2 sts. 4 x, 3 sts. 4 x, and the remaining 11 sts.

NECK EDGING and FINISHING: Follow directions for Size 12/14.

MAN'S PULLOVER, No. HP 3441

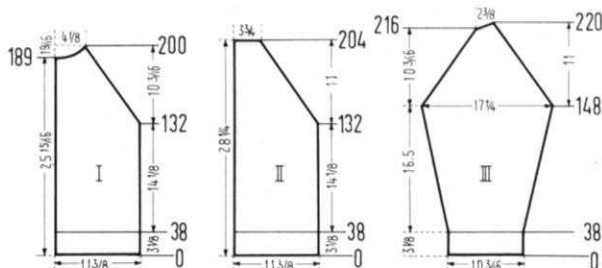


SIZES: 42/44 and 46/48. **MATERIAL:** Size 42/44, 27 oz. light brown; Size 46/48, 30 oz. light brown. **FOR EXAMPLE:** KNITTING Frigate Diamond Regatta. Laines Du Pinguin Promenade. Size 42/44, 4 oz. brown; Size 46/48, 5 oz. brown. **FOR EXAMPLE:** KNITTING Subita 2x4. Bear-brand Ever match Sport and Sweater. **TENSION:** KNITTING Stockinette Stitch 10 K.1, P.1 Ribbing 7 or 8. **GAUGE:** Stockinette Stitch 9 sts. 2", 13 rows 2"; K.1, P.1 Ribbing 18 sts. 2", 24 rows 2". The non-working-

position sts. in Stockinette stitch are not counted in the gauge or in the directions. **PATTERN:** Stockinette Stitch over every other needle. Diagonal stripes are worked on the front sections. Edging: K.1, P.1 Ribbing. Both the **back** and **front** are worked in **two sections**.

SIZE: 42/44. BACK: (Figure II). Using every other needle on main machine and every needle on ribber cast on 103 sts. with brown. Rows 1-38: Work in K.1, P.1 Ribbing with Tension 7 (8). Now put the sts. from the Ribber onto the Machine needle to its right, and to make the hem, put every other stitch of the cast on stitches back on the machine and continue over 52 sts. with light brown in Stockinette Stitch with Tension 10. Rows 39-132: Work even. Rows 133-204: **Raglan Shaping.** Decrease 1 st. at beginning of Row 133 and again every other row 34 x. To do this, always put the 4th st. on the 3rd needle and move the edge sts. over to fill the empty needle. Bind off 17 sts. Make the second section with reverse shapings.

FRONT: (Figure I). Using every other needle on main knitter and every needle on ribber cast on 103 sts. with brown. Rows 1-38: Work in K.1, P.1 Ribbing with Tension 7 (8). Now



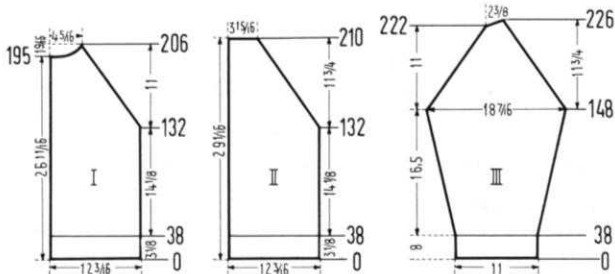
put the sts. from the Ribber onto the machine needle to its right, and, to make the hem, put every other st. of the cast on sts. back on the machine and continue over 52 sts. with light brown in Stockinette Stitch with Tension 10. **AT THE SAME TIME**, make the diagonal stripe on the left side up to the neck opening. To do this, work 4 rows; then put the 11th st. on the 12th needle and the 3rd-10th sts. on the needle to the right. Now hang the diagonal yarn from the last row on to the empty needle and behind the latch. Repeat this procedure throughout. Rows 39-132: Work even. Rows 133-200: **Raglan Shaping and Neck Shaping.** Decrease 1 st. at beginning of Row 133 and again every other row 32 x, following same procedure as for back. **AT THE SAME TIME**, for the **neck shaping**, bind off 5 sts at beginning of Row 190; then on every other row bind off 4 sts. 2 x and

3 sts. 2 x. Make the second section with reverse shapings.

SLEEVE: (Figure III). Using every other needle on main machine and every needle on ribber cast on 93 sts. with brown. Rows 1-38: Work in K.1, P.1 Ribbing with Tension 7 (8). Now put the sts. from the Ribber onto the Machine needle to its right, and to make the hem, put every other st. of the cast on sts. back on the machine and continue over 47 sts. with light brown in Stockinette Stitch with Tension 10. Rows 39-148: Increase 1 st. at beginning of Rows 41 and 42 and again on each side every 8th row 6 x and every 6th row 9 x. (79 sts.) Rows 149-216: **Raglan Shaping.** Decrease 1 st. on each side at beginning of Row 149 and again every other row 32 x, using same procedure as for back. Rows 217-220: On the left side, one after another put 4 needles in holding position 2 x. **AT THE SAME TIME,** on the right side decrease 1 st. 2 x. Bind off 11 sts. Make another sleeve with reverse shapings.

NECK EDGING: Cast on 73 sts. for the back section, 99 sts. for the front section. Work 30 rows K.1, P.1 Ribbing with Tension 7 (8). Bind off all sts.

FINISHING: Weave the two front sections and the two back sections together, overlapping 1 st. from each section. Join the front and back sections at side seams. Weave sleeve edges together and sew sleeves to front and back sections in slip st., overlapping 1 st. from each section. Sew ends of neck edging together so that edging is circular, fold edging around neck opening and attach.



SIZE: 46/48. BACK: (Figure II). Using every other needle on main machine and every needle on ribber cast on 111 sts. with brown. Rows 1-38: Work in K.1, P.1 Ribbing with Tension 7 (8). Now put the sts. from the Ribber onto the Machine needle to its right and, to make the hem, put every other st. of the cast on sts. back on the machine and continue over 56 sts. with light brown, in Stockinette Stitch with Tension 10. Rows 39-132: Work even. Rows 133-210: **Raglan Shaping.** Decrease 1 st. at beginning of Row 133 and again every other row 37 x. To do this, always put the 4th st. on the 3rd needle and move the edge sts. over to fill the empty needle. Bind off 18 sts. Make another section with reverse shapings.

FRONT: (Figure I). Using every other needle on main machine and every needle on ribber cast on 111 sts. with brown. Rows 1-38: Work in K.1, P.1 Ribbing with Tension 7 (8). Now put the sts. from the Ribber onto the machine needle to its right, and, to make the hem, put every other st. of the cast on sts. back on the machine and continue over 56 sts. with light brown, in Stockinette Stitch with Tension 10. **AT THE SAME TIME,** on the left side work the diagonal stripe to the neck opening. To do this, work 4 rows; then put the 11th st. on the 12th needle and the 3rd-10th sts. on the needle to the right. Now hang the diagonal yarn from the last row onto the empty needle and behind the latch. Repeat this procedure throughout. Rows 39-132: Work even. Rows 133-206: **Raglan Shaping and Neck Shaping.** For the raglan shaping, decrease 1 st. at beginning of Row 133 and again every other row 35 x, using same procedure as for back. **AT THE SAME TIME,** for the neck shaping, bind off 6 sts. at beginning of Row 196; then on every other row bind off 4 sts. 2 x and 3 sts. 2 x. Make the second section with reverse shapings.

SLEEVE: (Figure III). Using every other needle on main machine and every needle on ribber cast on 101 sts. with brown. Rows 1-38: Work in K.1, P.1 Ribbing with Tension 7 (8). Now put the sts. from the Ribber onto the Machine needle to its right and, to make the hem, put every other st. of the cast on sts. back on the machine and continue over 51 sts. with light brown in Stockinette Stitch with Tension 10. Rows 39-148: Increase 1 st. at beginning of Row 41 and again every 8th row 3 x and every 6th row 13 x. (85 sts.) Rows 149-222: **Raglan Shaping.** Decrease 1 st. on each side at beginning of Row 149 and again every other row 35 x, using same procedure as for back. Rows 223-226: On the left side, one after another, put 4 needles in holding position 2 x. **AT THE SAME TIME,** on the right side decrease 1 st. 2 x. Bind off 11 sts. Make another sleeve with reverse shapings.

NECK EDGING: Cast on 79 sts. for the back section, 105 sts. for the front section with brown. Work 30 rows K.1, P.1 Ribbing with Tension 7 (8) and bind off all sts.

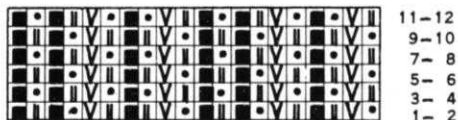
FINISHING: Follow directions for Size 42/44.

WOMAN'S PULLOVER, No. DP 7383



SIZES: 10/12 and 16/18. **MATERIAL:** Size 10/12, 27 oz. yellow, Size 16/18, 30 oz. yellow. **FOR EXAMPLE:** KNIT-KING 2 x 4. Bearbrand Casa Laine. Spinnerin Ambralon. **TENSION:** KNIT-KING Fisherman's Rib and Pattern Stitch, 8 or 9; K.1, P.1 Ribbing, 7 or 8. **GAUGE:** Fisherman's Rib 16 sts. 2" 34 rows 2"; K.1, P.1 Ribbing 16 sts. 2", 24 rows 2"; Pattern Stitch 20 sts. 2", 35 rows 2". The non-working-position sts. are counted in the gauge and in the directions. **PATTERN:** Fisherman's Rib on knit side; Sleeves and

Collar: Holding Position design on purl side according to chart, at the beginning put the needles of the design into holding position by hand. Then use the needle shifter. Edging: K.1, P.1 Ribbing.



SIZE 10/12. BACK: (Figure II). Cast on 161 sts. Rows 1-20: Work in K.1, P.1 Ribbing with Tension 7 (8). Then put the gate cam release lever of the main machine at the needle heels and continue in Fisherman's Rib with Tension 8 (9). Rows 21-258: Work even. Rows 259-298: **Armhole Shaping.** Bind off 2 sts. beginning next 2 rows; then on every 4th row on each side bind off 2 sts. 1 x and decrease 1 st. 1 x. Repeat these last 2 decreases 3 x and then bind off 2 sts. 1 x. (129 sts.) Rows 299-400: Work even. Rows 401-428: **Shoulder and Neck Shaping.** On each shoulder side of every other row bind off 2 sts. 6 x and 3 sts. 9 x. **AT THE SAME TIME,** for the neck shaping, at row 415 transfer the proper rib stitches and bind off the 15 center sts. with a separate piece of yarn. On the left transfer rib stitches to knitter and

CHANGE OF ADDRESS . . .

If you change your address be sure to notify us immediately. The Post Office will not forward your magazine from your old address and it will not be returned to us.

Now put the Cam Box on the right side and turn the row counter back to 169. Bring all the needles into working position, put the sts. from the double pointed needle back on the machine and work the right section.

FRONT: (Figure I). The front is worked the same as the back to Row 206; however, omit the back opening, and for the **neck shaping**, at Row 199 put the 12 center needles in holding position and work each side separately. And on **neck side** put 4 needles in holding position 1 x, 3 needles 1 x, and 2 needles 1 x. Put all these needles into holding position and complete the other side. Put row counter back to 206. Rows 207-220: Bring all needles into working position and work even over 34 sts.; then bind off all sts.

SLEEVE: (Figure III). Cast on 56 sts. Rows 1-20: Work even. To make the hem, put the cast on sts. back on the machine, and work in Stockinette Stitch with cable stripes. The cable is worked over the 10th-15th, 26th-31st, and 42nd-47th needles. The sts. will be crossed for the first time at Row 23, and again every 16 rows 2 x. Rows 21-146: Increase 1 st. beginning of Row 25 and 26 and again on **each side** every 6th row 16 x and every 4th row 5 x. (100 sts.) Rows 147-232: **Raglan Shaping.** Decrease 1 st. on **each side** at row 147 and again every other row 42 x, using same procedure as for back. Rows 233-236: On the **left side**, one after another, put 4 needles in holding position 2 x. **AT THE SAME TIME**, on the **right side** decrease 1 st. 2 x. Rows 237-250: Bring all needles into working position and work even over 12 sts.; then bind off all sts. Make another sleeve with reverse shapings.

FINISHING: Weave front and back sections at side seams. Sew sleeve edges together and sew sleeves to front and back sections in slip stitch, overlapping 1 st. from each section. (See "Practical Knitting Hints on page 32). Make a hem 3 sts. wide at back neck opening. Fold the neck edging in half toward the outside and attach. Sew in zipper.

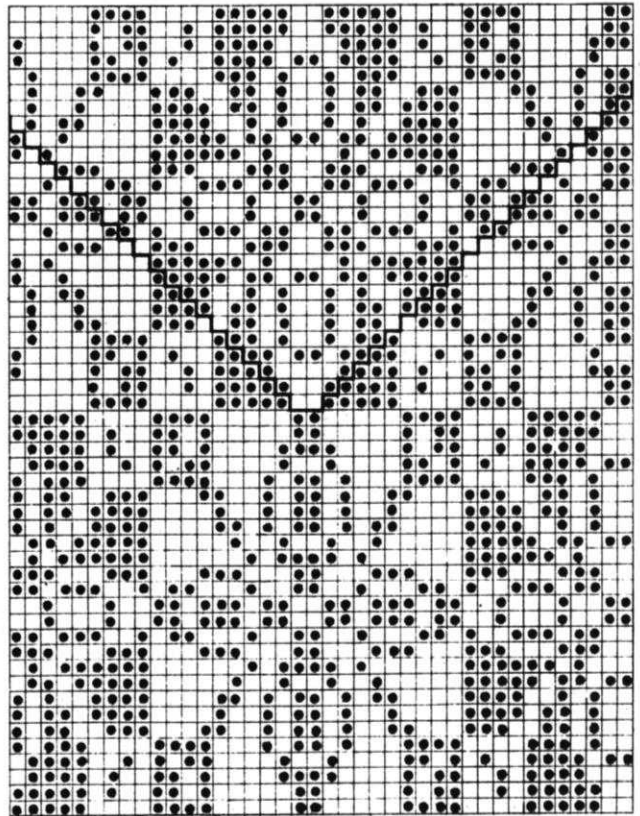
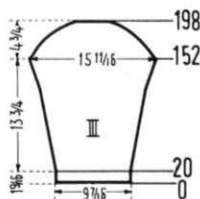
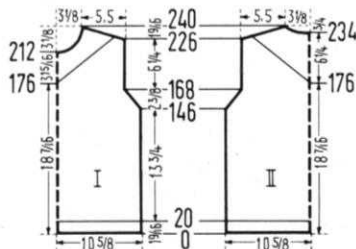
WOMAN'S PULLOVER, No. DP 7379



SIZE: 14/16. **MATERIAL:** 18 oz. cherry and 6 oz. Rose. **FOR EXAMPLE:** KNITTING Mutella. Columbia Minerva Nylon and Wool Zephyr Fingering. Fleishers Evermatch. **TENSION:** KNITTING Pattern Stitch 6 or 7; Stockinette Stitch and K.1, P.1 Ribbing 8 or 9. **GAUGE:** Pattern Stitch 15 sts. 2", 18 rows 2"; Stockinette Stitch 15 sts. 2", 19 rows 2"; K.1, P.1 Ribbing 15 sts. 2", 25 rows 2". **PATTERN:** Norwegian Pattern Stitch according to chart. (Using JAC 40, Pattern 56a.) Each row with the Norwegian Pattern Stitch is counted singly in the directions;

however, for 1 row several movements of the Cam Box are required. Sleeve and Inset: Stockinette Stitch. Edging: K.1, P.1 Ribbing. Be sure to read Practical Knitting Hints on page 32 before knitting this pullover.

BACK: (Figure II). Cast on 161 sts. with cherry. Rows 1-20: Work in K.1, P.1 Ribbing with Tension 8 (9). Transfer rib sts. to main machine and increase 1 st. on 1 side and work in Norwegian Pattern Stitch with Tension 6 (7). Rows 21-146: Work even. Rows 147-168. **Armhole Shaping.** Bind off 2 sts. beginning next 2 rows; then on every other row on **each side decrease** 1 st. 2 x and bind off 2 sts. 1 x. Repeat these 3 decreases 2 x, and then decrease 1 st. 1 x. (132 sts.) Rows 169-176: Work even. Now begin the inset in one color. To



□ CHERRY ● ROSE

do this, at first omit the design on the 2 center sts., and then on **each side** of these 2 sts., on every row omit the design on 1 st. The heavy line of the chart shows the design division on each side of the point. Rows 177-226: Work even. Rows 227-240: **Shoulder and Neck Shaping.** On **each shoulder side** of every other row bind off 5 sts. 6 x and 6 sts. 2 x. **AT THE SAME TIME**, for the **neck shaping**, at beginning of Row 235 bind off the 20 center sts. with a new ball of yarn and knit both sides at the same time. On **each side of neck**, on every other row bind off 8 sts. 1 x and 6 sts. 1 x.

FRONT: (Figure I). The front is worked the same as the back; however, for the **neck shaping**, at Row 213 bind off the 10 center sts. with a new ball of yarn and knit both sides at the same time. On each side of neck on every other row bind off 5 sts. 1 x, 4 sts. 1 x, 3 sts. 1 x, 2 sts. 1 x, decrease 1 st. 2 x; then on every 4th row decrease 1 st. 3 x.

SLEEVE: (Figure III). Make two. Cast on 71 sts. with cherry. Work with Tension 8 (9). Rows 1-20: Work in K.1, P.1 Ribbing. Transfer rib stitches to main machine and increase 1 st. on 1 side and continue in Stockinette Stitch. Rows 21-152: Increase 1 st. at beginning of Row 27 and 28 and again on **each side** every 6th row 15 x and every 4th row 8 x. (120 sts.) Rows 153-198: **Underarm Shaping.** On **each side** of every other row bind off 2 sts. 1 x and decrease 1 st. 2 x. Repeat these 3 decreases 3 x; then on **each side** bind off 2 sts. 4 x, 3 sts. 4 x, 4 sts. 3 x, and the remaining 24 sts.

NECK EDGING: Cast on 163 sts. with cherry. Work 34 rows K.1, P.1 Ribbing with Tension 8 (9) and bind off all sts.

FINISHING: Weave front and back sections at side seams, overlapping 1 st. on each section. (See Practical Knitting Hints on page 32). Sew the shoulder seams. Weave the sleeve edges together and sew sleeves to sweater. Weave the ends of the neck edging together so that the edging is circular. Then fold the edging around the sweater neckline and attach.

PILLOW COVER No. RS 6038



SIZE: 17 $\frac{3}{4}$ " x 22 $\frac{3}{4}$ ". **MATERIAL:** 8 oz. white sports weight yarn such as KNITKING Regal or Bearbrand Casa Laine, plus 4 oz. natural and 3 oz. rose brown thick and thin yarn such as Bernat Scandia, or Unger Escapade or Spinnerin Orlon Tempo. **TENSION:** KNITKING 8 or 9. **GAUGE:** 12 sts. 2", 21 rows 2". **PATTERN:** Stockinette stitch with woven thick and thin yarn. 1. The 1st, 5th, 9th, 13th etc. needles are placed in holding position. Put the contrast yarn **over** the needles in holding position

and **under** the needles in working position. 2. Put the needles in holding position into working position and knit 2 rows with white. 3. Put the 3rd, 7th, 11th, 15th, etc. needles into holding position. Put the contrast yarn **over** the needles in holding position and **under** the needles in working position. 4. Put the needles in holding position into working position and knit 2 rows with white. Repeat steps 1 to 4 throughout. Cast on 108 sts. with white. Knit 2 rows stockinette, then work in pattern rows until counter reads 490 rows. (1 Pattern row is 2 knitted rows.) Knit 19 pattern rows with natural, 6 pattern rows with brown, 6 pattern rows with natural, 10 pattern rows with brown, 10 pattern rows with natural, 20 pattern rows with brown, 10 pattern rows with natural, 10 pattern rows with brown, 6 pattern rows with natural, 6 pattern rows with brown, 19 pattern rows with natural. This completes the front section. Continue knitting the back section by repeating the same instructions for front. Bind off all stitches.

FINISHING: The pillow cover should be lightly stretched, steamed, and folded in half. Sew one of the side seams, and the end seam. Pull the cover over a pillow and sew the final seam.

INLAID RUG, No. RS 6037



SIZE: 26 $\frac{1}{4}$ " x 47". **MATERIAL:** 20 oz. beige tweed. **FOR EXAMPLE:** KNITKING Regal. Spinnerin Orlon Prelude. Columbia Minerva Sports yarn. 6 oz. rose brown and 5 oz. natural thick and thin yarn. **FOR EXAMPLE:** Bernat Scandia. Spinnerin Home-spun. **TENSION:** KNITKING 8 or 9. **GAUGE:** 12 sts. 2", 21 Rows 2". **PATTERN:** Stockinette Stitch on purl side with inlaid contrast yarn (1). The 1st, 5th, 9th, 13th, etc. needles are in holding position. Put the contrast yarn over the needles in holding position and under the needles in

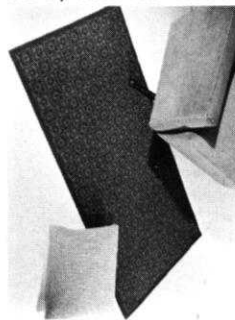
working position. (2). Put the needles in holding position into working position and work 2 rows with beige tweed. (3). Put the 3rd, 7th, 11th, 15th, etc. needles in holding position and put the contrast yarn over the needles in holding position and under the needles in working position. (4). Bring the needles from holding position into working position and work two rows with beige tweed. Repeat Steps 1-4 throughout.

PLEASE NOTE THAT WE DO NOT SEND TOOLS AND YARNS OUT ON A C.O.D. BASIS. YOU MUST SEND PAYMENT INCLUDING MAILING COSTS WITH EACH ORDER.

Cast on 161 sts. with beige tweed. Rows 1-2: Work in Stockinette Stitch. Continue in inlaid pattern. Rows 3-34: Work with rose brown, at first laying the yarn from right to left. Rows 35-70: Put the rose brown over the 1st-5th, the natural over the 6th-36th, and the second rose brown from left to right over the 1st-5th needles in holding position. For the succeeding pattern, at first put the natural from left to right over the 5th-36th, the rose brown on the right over the 36th-40th, and the rose brown on the left over the 5th-1st needles in holding position. Rows 71-102: Put the rose brown over the 1st-11th, begin a new ball of natural and put it over the 12th-30th, and put the second rose brown from left to right over the 1st-11th needles in holding position. For the succeeding pattern, at first put the natural from left to right over the 11th-30th, the rose brown on the right over the 30th-40th, and the rose brown on the left over the 11th-1st needles in holding position. Rows 103-442: Repeat Rows 35-102 5 x. Rows 443-478: Follow directions for Rows 35-70. Rows 479-510: Follow directions for Rows 3-34. Bind off all sts.

FINISHING: Lightly stretch and steam the rug. Line it with Burlap.

RUG, No. RS 6036

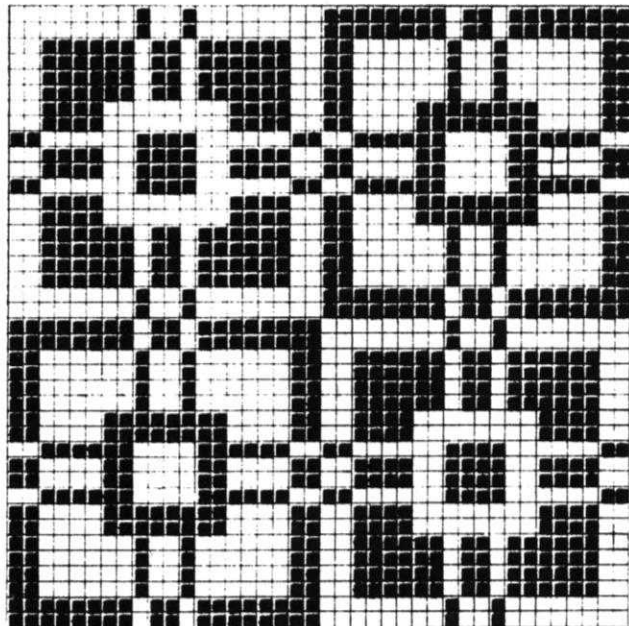


SIZE: 27 $\frac{1}{2}$ " x 54 $\frac{1}{4}$ ". **MATERIAL:** 27 oz. wine red and 23 oz. jade green. **FOR EXAMPLE:** KNITKING Regal. **TENSION:** KNITKING 9. **GAUGE:** 14 sts. 2", 16 rows 2". **PATTERN:** Norwegian Pattern Stitch according to chart. (Using JAC 40, Pattern No. 49a.) Each row with the Norwegian Pattern Stitch is counted singly in the directions; however, for 1 row several movements of the Cam Box are required.

Cast on 196 sts. with wine red. Rows 1-10: Work in stockinette st. Rows 11-430: Work in Norwegian Pattern

Stitch, working 8 needles **on each side** in wine red. Rows 431-440: Work in Stockinette Stitch with wine red and bind off all sts.

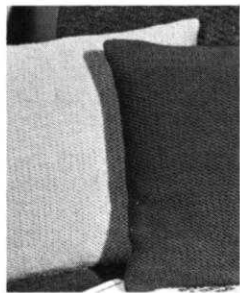
FINISHING: The rug should be lightly stretched and steamed. Make a hem 3 rows wide at the top and bottom edges, and a hem 2 rows wide at the side edges. Line the rug with burlap.



□ RED ■ BLUE

BEGINNERS PATTERNS

PILLOW COVER, No. RS 6039 and RS 6040



SIZE: 15 $\frac{3}{4}$ " x 15 $\frac{3}{4}$ ". **MATERIAL:** 10 oz. mustard. **FOR EXAMPLE:** KNITKING Dralon. Any 4 ply knitting worsted. **TENSION:** KNITKING 10. **GAUGE:** 11 sts. 2", 20 rows 2". The non-working position needles are not counted in the gauge or directions. **PATTERN:** Webbed pattern stitch **OVER EVERY OTHER NEEDLE.** The purl side is the right side. Cast on 89 sts. **OVER EVERY OTHER NEEDLE.** (Dial-a-stitch machines - Pull up the right control knob and push down right retractor button . . .

leave in this position for pattern stitch.)

1. Put the 2nd, 4th, 6th, 8th needles from working position into holding position and knit 1 row.

2. Put the needles from holding position back into working position and knit 1 row.

Repeat steps 1 and 2 until counter reads 320 rows. Bind off all stitches.

FINISHING: Pull the cover and stretch it into shape, then steam it gently using a wet cloth and hot iron. Do not allow the iron to rest on cloth. Allow to dry thoroughly. Fold cover in half and sew the two sides using a back stitch, or you

may slip stitch crochet the sides together. Sew or crochet 1" on each side of the open end and then sew in zipper. Pull the cover over a pillow.

PILLOW COVER RS 6040 is knitted in the same way with blue KNITKING Dralon yarn or 4 ply knitting worsted.

PILLOW COVER, No. RS 6041

SIZE 15 $\frac{3}{4}$ " x 15 $\frac{3}{4}$ ". **MATERIAL:** 7 oz. mustard and 4 oz. blue. **FOR EXAMPLE:** KNITKING Dralon. Any 4 ply knitting worsted. **TENSION:** KNITKING 9 or 10. **GAUGE:** 9 sts. 2", 22 rows 2". The non working position needles are not counted in the gauge or directions. **PATTERN:** Holding position design used on the purl side **OVER EVERY OTHER NEEDLE.** Cast on 71 sts. **OVER EVERY OTHER NEEDLE.** (Dial-a-stitch Machines - Put the gate cam release lever toward the needle heels and right retractor button pushed in).

1. Put the 2nd, 4th, 6th and 8th etc. needles in working position into the holding position. Knit 1 row with mustard.

2. Put the needles in holding position into working position and knit 1 row with mustard.

3. Repeat steps 1 and 2 once more.

4. Put the 1st., 3rd, 5th, 7th., etc. needles from working position into holding position. Knit 1 row with blue.

5. Put the needles in holding position into working position. Knit 1 row with blue.

6. Repeat steps 1 to 5 until counter reads 354 rows. Bind off all stitches.

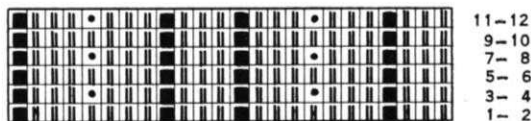
FINISHING: Follow instructions for Pillow Covers RS 6039 and RS 6040.

BOY'S PULLOVER, No. KK 4778



SIZES: 11-12 and 13-14 years. **MATERIAL:** Size 11-12, 14 oz. light grey. Size 13-14, 16 oz. light grey. **FOR EXAMPLE:** KNITKING Mutella, Columbia Minerva, Zephyr Fingering, Bearbrand Deluxe, Sock and Sport. **TENSION:** KNITKING 5 or 6. **GAUGE:** Pattern Stitch 18 sts. 2", 28 rows 2"; K.1, P.1 Ribbing 18 sts. 2", 25 rows 2". **PATTERN:** Holding Position Design on purl side according to chart, the gate cam release lever of the Ribber is at the needle heels. Edging and Collar: K.1, P.1 Ribbing.

SIZE 11-12. BACK: (Figure II). Cast on 159 sts. Rows 1-20: Work in K.1, P.1 Ribbing. Now put the 1st, 3rd, 4th, 5th, 7th, 9th, 10th, 11th, etc. sts. from the Ribber onto the needles of



the main machine, put the gate cam release lever of the Ribber at the needle heels and work on in pattern stitch. Rows 21-166: Work even. Rows 167-194: **Armhole Shaping.** On each side of every other row bind off 2 sts. 2 x and decrease 1 st. 12 x. (127 sts.) Rows 195-278: Work even. Rows 279-294: **Shoulder and Neck Shaping.** On each shoulder side of every other row bind off 4 sts. 9 x. **AT THE SAME TIME,** for the neck shaping, at beginning of Row 283 bind off the 23 center sts., transfer the rib sts. to main machine first, then bind off with a separate yarn. Transfer all rib sts. on the left side to main machine, put all needles on the left side into holding position and complete the right side first. When cam box is on neck side (every other row) bind off 6 sts. 1 x, 4 sts. 1 x, 3 sts. 1 x, 2 sts. 1 x, and decrease 1 st. 1 x. Transfer the proper rib sts. on the left side back

to ribber. All needles in work, row counter back to 282 and complete the left side.

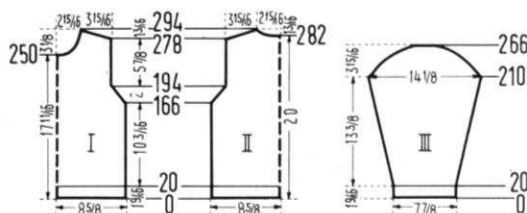
FRONT: (Figure I). The front is worked the same as the back; however, for the neck shaping, at Row 251 bind off the 13 center sts. (Transfer sts. as you did before and complete the right side) and on neck side on every other row bind off 4 sts. 1 x, 3 sts. 2 x, 2 sts. 2 x, decrease 1 st. 2 x; then decrease 1 st. every 4th row 3 x and every 6th row 2 x. Transfer the proper rib sts., row counter back to 250 and complete the left side.

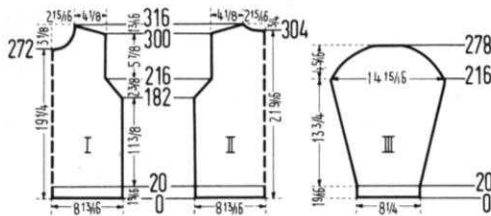
SLEEVE: (Figure III). Make two. Cast on 71 sts. Rows 1-20: Work in K.1, P.1 Ribbing. Now put the 1st, 3rd, 5th, 6th, 7th, 9th, etc. sts. from the Ribber on the needles of the main machine, put the gate cam release lever of the Ribber at the needle heels and work in pattern stitch. Rows 21-210: Increase 1 st. beginning of Row 29 and 30 and again on each side every 8th row 4 x and every 6th row 24 x. (129 sts.) Rows 211-266: **Underarm Shaping.** On each side of every other row decrease 1 st. 14 x, bind off 2 sts. 6 x, 3 sts. 5 x, 4 sts. 2 x, 5 sts. 1 x, and the remaining 21 sts.

COLLAR: Cast on 165 sts. Work 46 rows K.1, P.1 Ribbing and bind off all sts.

FINISHING: Weave front and back sections at side seams overlapping 1 $\frac{1}{2}$ sts. from each section. Sew shoulder seams. Weave sleeve edges together and sew sleeves to sweater. Weave ends of collar together so that collar is circular, sew the collar to the neck opening, and fold out.

SIZE: 13-14. BACK: (Figure II). Cast on 171 sts. Rows 1-20: Work in K.1, P.1 Ribbing. Now put the 1st, 3rd, 4th, 5th, 7th, 9th, 10th, 11th, etc. sts. from the Ribber onto the needles of





the main machine, put the gate cam release lever of the Ribber at the needle heels, and continue in pattern stitch. Rows 21-182: Work even. Rows 183-216: **Armhole Shaping.** On each side of every other row bind off 2 sts. 3 x and decrease 1 st. 14 x. (131 sts.) Rows 217-300: Work even. Rows 301-316: **Shoulder and Neck Shaping.** On each shoulder side of every other row bind off 4 sts. 7 x and 5 sts. 2 x. **AT THE SAME TIME,** for the neck shaping, at beginning of Row 305 bind off the 23 center sts., transfer the rib sts. first to main machine then bind off with a separate yarn. Transfer all rib sts. on the left side to main machine, put all needles on the left into holding position and complete the right side first. When Cam Box is on neck side (every other row) bind off 6 sts. 1 x, 4 sts. 1 x, 3 sts. 1 x, 2 sts. 1 x, and decrease 1 st. 1 x. Transfer the proper rib sts. to ribber, all needles in work, row counter back to 304 and complete the left side.

FRONT: (Figure I). The front is worked the same as the back; however, for the neck shaping, at beginning of Row 273 bind off the 13 center sts., transfer the rib stitches as you did before and complete the right side first. On neck side on every other row bind off 4 sts. 1 x, 3 sts. 2 x, 2 sts. 2 x, decrease 1 st. 2 x; then decrease 1 st. every 4th row 3 x and every 6th row 2 x. Transfer the proper rib sts. on the left back to ribber, row counter to 272 and complete the left side.

SLEEVE: (Figure III). Make two. Cast on 75 sts. Rows 1-20: Work in K.1, P.1 Ribbing. Now put the 1st, 2nd, 4th, 7th, 8th, etc. sts. from the Ribber onto the needles of the main machine, put the gate cam release lever of the Ribber at the needle heels, and continue in pattern stitch. Rows 21-216: Increase 1 st. beginning of Row 29 and 30 and again on each side of every 6th row 30 x. (137 sts.) Rows 217-278: **Underarm Shaping.** On each side of every other row decrease 1 st. 17 x, bind off 2 sts. 6 x, 3 sts. 5 x, 4 sts. 2 x, 5 sts. 1 x, and the remaining 23 sts.

COLLAR AND FINISHING: Follow directions for Size 11-12.

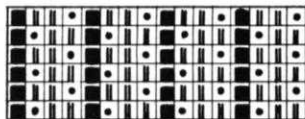
GIRL'S PULLOVER, No. MK 4775



SIZES: 8-9 and 10-11 years. **MATERIAL:** Both Sizes - 16 oz. green. **FOR EXAMPLE:** KNITTING Mutella. Fleishers Evermatch, Bearbrand, Evermatch. **TENSION:** KNITTING Fisherman's Rib 8 or 9; Pattern Stitch and K.1, P.1 Ribbing 7 or 8. **GAUGE:** Fisherman's Rib and Pattern Stitch 16 sts. 2", 32 rows 2"; K.1, P.1 Ribbing 16 sts. 2", 24 rows 2". **PATTERN:** Fisherman's Rib on purl side; the gate cam release lever of the Ribber is at the needle heels. Bottom Edging: Holding Position Design on

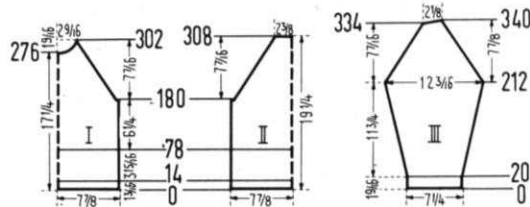
purl side according to chart. Sleeve edging and Collar: K.1, P.1 Ribbing.

SIZE: 8-9 years. **BACK:** (Figure II). Cast on 127 sts. Rows 1-14: Work in K.1, P.1 Ribbing with Tension 7 (8). Now put the 1st, 3rd, 5th, etc. sts. from the Ribber onto the empty needles of the main machine and work on in Holding Position Design. Rows 15-78: Work in Pattern stitch.



11-12
9-10
7-8
5-6
3-4
1-2

Now transfer the same needles of the main machine and hang the sts. back on the Ribber, put the gate cam release lever of the Ribber at the needle heels and work on in Fisherman's Rib with Tension 8 (9). Rows 79-180: Work even. Rows 181-308: **Raglan Shaping.** Bind off 4 sts. beginning next 2 rows; then on every 6th row on each side decrease 2 sts. 20 x. To do this, always put the 7th st. and then the 6th st. on the 5th needle, and move the 5 edge sts. over to fill the empty needles. Bind off 39 sts.

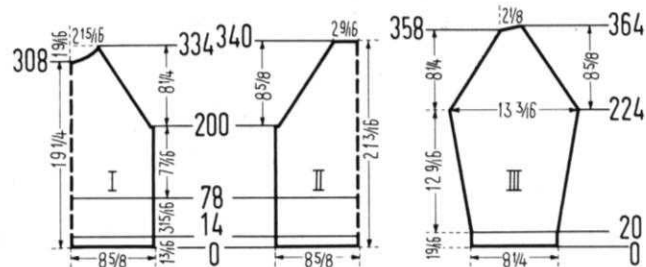


FRONT: (Figure I). The front is worked the same as the back to Row 302; however, for the neck shaping, at beginning of Row 277 bind off the 13 center sts., with a separate yarn. (Transfer the rib sts. to main machine first, then bind off). Transfer all rib sts. on left side to main machine and put all-left side needles into holding position and complete the right side first, and on neck side of every 4th row bind off 4 sts. 1 x, 3 sts. 1 x, 2 sts. 1 x, and decrease 1 st. 3 x. Then on each side hang the remaining sts. together by putting the 2 outside sts. on the center needle and binding off. Transfer the proper rib sts. on the left back to ribber, all needles in work, row counter back to 276 and complete the left side.

SLEEVE: (Figure III). Cast on 59 sts. Rows 1-20: Work in K.1, P.1 Ribbing with Tension 7 (8). Now put the gate cam release lever of the Ribber at the needle heels and work on in Fisherman's Rib with Tension 8 (9). Rows 21-212: Increase 1 st. at beginning of Row 21 and 22 and again on each side every 10th row 14 x and every 8th row 5 x. (99 sts.) Rows 213-334: **Raglan Shaping.** Using same procedure as for back decrease 2 sts. on each side at beginning of Row 213 and again every 6th row 19 x, and on the right side decrease 2 sts. at Row 233. Rows 335-340: On the left side, one after another put 4 needles in holding position 3 x. Transfer the proper rib sts. to main machine before putting needles in the Holding Position. Bind off 17 sts. Make another sleeve with reverse shapings.

COLLAR: Cast on 123 sts. Work 42 rows K.1, P.1 Ribbing: 8 rows with Tension 9, 8 rows with Tension 8, 10 rows with Tension 7, 8 rows with Tension 8, and 8 rows with Tension 9. Bind off all sts.

FINISHING: Weave front and back sections at side seams. Weave sleeve edges together and sew sleeves to front and back sections in slip stitch, overlapping 1/2 st. from each section. At the bottom edging make a hem 1 1/4" wide. Weave the ends of the neck edging together so that the edging is circular, and sew the edging to the sweater. Fold the neck edging to the outside.



SIZE: 10-11. **BACK:** (Figure II). Cast on 139 sts. Rows 1-14: Work in K.1, P.1 Ribbing with Tension 7 (8). Now put the 1st, 3rd, 5th, etc. sts. from the Ribber onto the empty needles of the main machine and work on in Holding Position Design. Rows 15-78: Work Even. Now transfer the same needles of the main machine and hang the sts. back on the Ribber,

put the gate cam release lever of the Ribber at the needle heels and work on in Fisherman's Rib with Tension 8 (9). Rows 79-200: Work even. Rows 201-340: **Raglan Shaping.** Bind off 4 sts. on each side; then on every 6th row decrease 2 sts. 22 x. To do this, always put the 7th st., and then the 6th st. on the 5th needle, and move the 5 edge sts. over to fill the empty needle. Bind off 43 sts.

FRONT: (Figure I). The front is worked the same as the back to Row 334; however, for the **neck shaping**, at beginning of Row 309 bind off the 15 center sts., transfer the rib sts. to main machine first then bind off with a separate yarn. Transfer all rib sts. on the **left side** to main machine and put all needles on the left into holding position and complete the right side first. **On neck side** on every 4th row bind off 4 sts. 1 x, 3 sts. 1 x, 2 sts. 2 x, decrease 1 st. 2 x. Then hang the 3 remaining sts. **on each side** together, by putting the 2 outside sts. on the center needle and binding off. Transfer the proper rib sts. back to ribber, all needles in work, row counter back to 308 and complete the left side.

SLEEVE: (Figure III). Cast on 67 sts. Rows 1-20: Work in K.1, P.1 Ribbing with Tension 7 (8). Now put the gate cam release lever at the needle heels and work on in Fisherman's Rib with Tension 8 (9). Rows 21-224: Increase 1 st. at beginning of Row 21 and 22 and again **on each side** every 10th row 19x. (107 sts.) Rows 225-358: **Raglan Shaping.** Decrease 2 sts. **on each side** at Row 225 and again every 6th row 21 x, and then decrease 2 sts. on the **right side** at Row 357. Follow the same procedure as for back decreases. Rows 359-364: **On the left side**, one after another, put 4 needles in holding position 3 x. (Transfer the rib sts. to main machine first **before** putting needles in holding position). Bind off 17 sts. Make another sleeve with reverse shapings.

COLLAR: Cast on 133 sts. Work 42 rows K.1, P.1 Ribbing: 8 rows with Tension 9, 8 rows with Tension 8, 10 rows with Tension 7, 8 rows with Tension 8, and 8 rows with Tension 9. Bind off all sts.

FINISHING: Follow directions for 8-9 year size.

GIRL'S PULLOVER, No. MK 4776

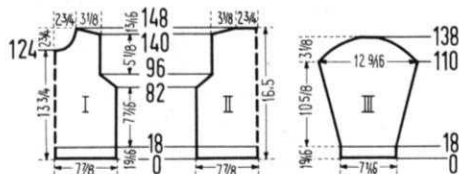


SIZE: 6-7 years. **MATERIAL:** 8 oz. red and 9 oz. beige. **FOR EXAMPLE:** KNITKING Regal. Spinnerin Ambralon, Bearbrand Casa Laine. **TENSION:** KNITKING 8 or 9. **GAUGE:** Pattern Stitch 14 sts. 2", 17 rows 2"; K.1, P.1 Ribbing 14 sts. 2", 22 rows 2". **PATTERN:** Norwegian Pattern Stitch according to chart. (Using JAC 40, Pattern No. 27) Every row with the Norwegian Pattern Stitch is counted singly in the directions; however, for one row several movements of the cam box are required.

Note: See Practical Knitting Hints Vol. 2 No. 2 Nov/Dec. 1965. Edging: K.1, P.1 Ribbing.

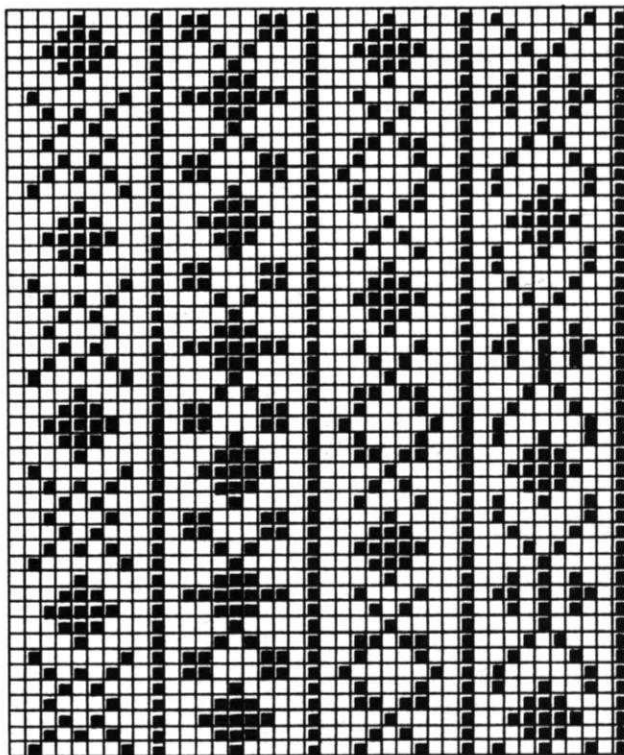
BACK: (Figure II). Cast on 111 sts. with beige. Rows 1-18: Work in K.1, P.1 Ribbing, working the 17th and 18th rows with red. Continue in Norwegian Pattern Stitch. Rows 19-82: Work even. Rows 83-96: **Armhole Shaping.** Bind off 2 sts. **on each side** of every other row 7 x. (83 sts.). Rows 97-140: Work even. Rows 141-148: **Shoulder Shaping.** **On each side** of every other row bind off 5 sts. 2 x, 6 sts. 2 x, and the remaining 39 sts.

FRONT: (Figure I). The front is worked the same as the back; however, for the **neck shaping**, at Row 125 bind off the 13 center sts. with a new ball of yarn and continue



knitting both sides at the same time using 2 balls of yarn for each color. **On each side of neck**, on every other row bind off 4 sts. 1 x, 3 sts. 1 x, 2 sts. 1 x, decrease 1 st. 2 x; then decrease 1 st. on every 4th row 2 x.

SLEEVE: (Figure III). Make two. Cast on 51 sts. with beige. Rows 1-18: Work in K.1, P.1 Ribbing, working the 17th and 18th rows with red. Continue in Norwegian Pattern Stitch.



Rows 19-110: Increase 1 st. at beginning of Rows 25 and 26 and again **on each side** every 6th row 5 x and every 4th row 13 x. (89 sts.). Rows 111-138: **Underarm Shaping.** **On each side** of every other row bind off 2 sts. 8 x, 3 sts. 4 x, 4 sts. 2 x, and the remaining 17 sts.

NECK EDGING: Cast on 121 sts. with red. Work 2 rows red and 34 rows beige: 6 rows with Tension 10, 6 rows with Tension 9, 12 rows with Tension 8, 6 rows with Tension 9, and 6 rows with Tension 10. Bind off all sts.

FINISHING: Weave the front and back sections at side seams overlapping 1/2 st. from each section. Sew shoulder seams. Weave sleeve edges together and sew sleeves to sweater. Sew ends of neck edging so that edging is circular. Fold the edging around the neck opening and attach.

BOY'S PULLOVER, No. KK 4777



SIZES: 7-8 and 4-5 years. **MATERIAL:** **Size 7-8:** 6 oz. blue, 3 oz. red, 3 oz. white, 3 oz. mustard. **Size 4-5:** 5 oz. blue, 3 oz. red, 3 oz. white, 2 oz. mustard. **FOR EXAMPLE:** KNITKING Mutella, Spinnerin Ambralon, Bearbrand Sock and Sport. **TENSION:** KNITKING 6 or 7. **GAUGE:** Pattern Stitch 16 sts. 2", 20 rows 2"; K.1, P.1 Ribbing 16 sts. 2", 22 rows 2". **PATTERN:** Norwegian Pattern Stitch according to chart, using JAC 40, Pattern No. 108a. Every row with the Norwegian Pattern Stitch is

DO YOU HAVE A...

REVERSING BAR?

- With it you can turn a hem in one movement instead of lifting stitches one at a time.
- You can reverse your knitting, so that the knit side faces you, easily and speedily.
- Available for all KNITKING machines with 197 needles. Order from your dealer or direct from

KNITKING

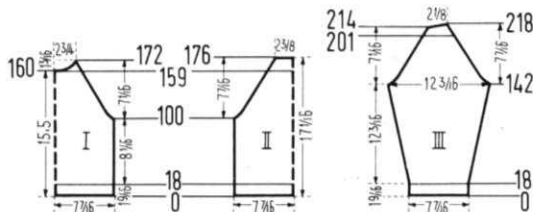
1128 Crenshaw Blvd., Los Angeles, Calif. 90019

Price \$16.95 (California residents add 4% tax)

Plus \$1.50 shipping cost.

counted singly in the directions; however, for one row several movements of the cam box are required. Edging: K.1, P.1 Ribbing.

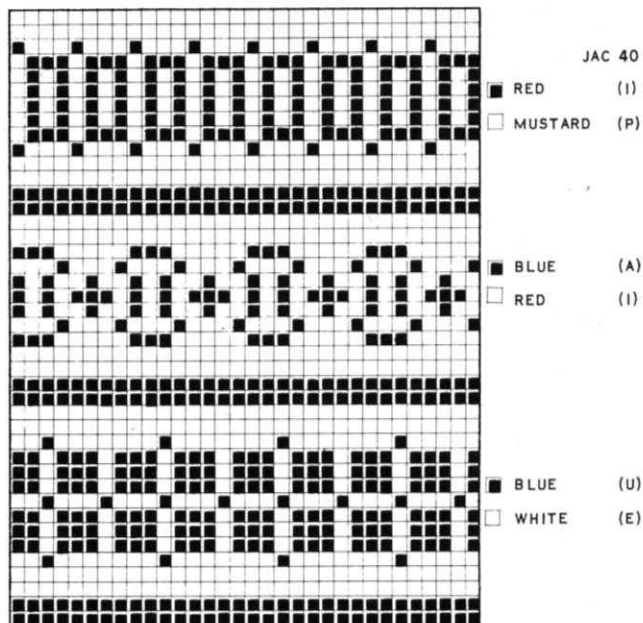
SIZE 7-8: BACK: (Figure II). Cast on 123 sts. with blue. Rows 1-18: Work in K.1, P.1 Ribbing. Transfer rib sts. to main machine. Continue in Norwegian Pattern Stitch. Rows 19-100: Work even. Rows 101-176: **Raglan Shaping.** On each side of every other row bind off 2 sts. 4 x and decrease 1 st. 34 x, and at Row 160 work on in Stockinette Stitch with blue. Bind off 39 sts.



FRONT: (Figure I). The front is worked the same as the back to Row 172; however, for the **neck shaping**, at beginning of Row 161 bind off the 11 center sts. with a new ball of blue and knit both sides at same time. On each side of neck, on every other row bind off 4 sts. 1 x, 3 sts. 2 x, 2 sts. 1 x, and decrease 1 st. 1 x. On each side hang the 3 remaining sts. together by putting the 2 outside sts. on the center needle and binding off.

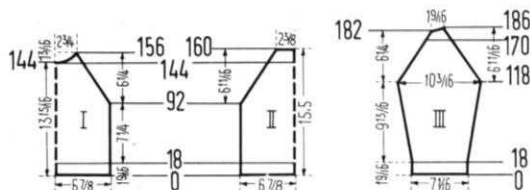
SLEEVE: (Figure III). Cast on 61 sts. with blue. Rows 1-18: Work in K.1, P.1 Ribbing. Continue in Norwegian Pattern Stitch. Rows 19-142: Increase 1 st. at beginning of Row 19 and 20 and again on each side every 8th row 5 x and every 6th row 13 x. (99 sts.) Rows 143-214: **Raglan Shaping.** On each side of every other row bind off 2 sts. 4 x and decrease 1 st. 32 x, and at beginning of Row 201 work on in Stockinette Stitch with blue. Rows 215-218: On the left side one after another, put 6 needles in holding position 2 x. AT THE SAME TIME, on the right side decrease 1 st. on every other row 2 x. Bind off 17 sts. Make another sleeve with reverse shapings.

NECK EDGING: Cast on 129 sts. with blue. Work K.1, P.1 Ribbing: 12 rows with Tension 7, 12 rows with Tension 6, and 12 rows with Tension 7. Bind off all sts.



FINISHING: Weave the front and back sections at side seams, overlapping $1\frac{1}{2}$ sts. from each section. Weave sleeve edges together and sew sleeves to sweater. Sew ends of neck edging together so that edging is circular. Fold the neck edging around the sweater neckline and attach.

SIZE: 4-5 years. BACK: (Figure II). Cast on 111 sts. with blue. Rows 1-18: Work in K.1, P.1 Ribbing. Transfer rib sts. to main machine. Continue in Norwegian Pattern Stitch. Rows 19-92: Work even. Rows 93-160: **Raglan Shaping.** On each side of every other row bind off 2 sts. 2 x and decrease 1 st. 32 x, and at Row 145 work on in Stockinette Stitch with blue. Bind off 39 sts.

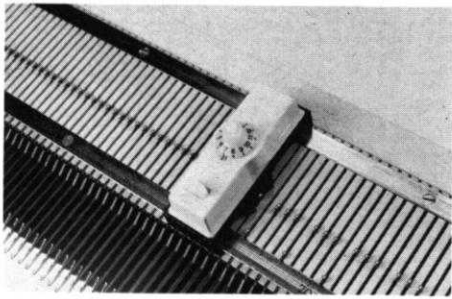


FRONT: (Figure I). The front is worked the same as the back to Row 156; however, for the **neck shaping**, at Row 145, bind off the 11 center sts. with a new ball of blue and knit both sides at same time. On each side of neck on every other row bind off 4 sts. 1 x, 3 sts. 2 x, 2 sts. 1 x, and decrease 1 st. 1 x. On each side hang the 3 remaining sts. together by putting the 2 outside sts. on the center needle and binding off.

SLEEVE: (Figure III). Cast on 57 sts. with blue. Rows 1-18: Work in K.1, P.1 Ribbing. Continue in Norwegian Pattern Stitch, at first working 1 row only in stockinette stitch, and then beginning with the 18th row of the chart. Rows 19-118: Increase 1 st. at beginning of Row 19 and 20 and again on each side every 8th row 10 x and every 6th row 2 x. (83 sts.) Rows 119-182: **Raglan Shaping.** On each side of every other row bind off 2 sts. 2 x and decrease 1 st. 30 x, and at Row 171 work on in Stockinette Stitch with blue. Rows 183-186: On the left side, one after another, put 4 needles in holding position 2 x. AT THE SAME TIME, on the right side decrease 1 st. on every other row 2 x. Bind off 13 sts. Make another sleeve with reverse shapings.

NECK EDGING: Cast on 117 sts. with blue. Work K.1, P.1 Ribbing: 12 rows with Tension 7, 12 rows with Tension 6, and 12 rows with Tension 7. Bind off all sts.

FINISHING: Follow directions for size 7-8.

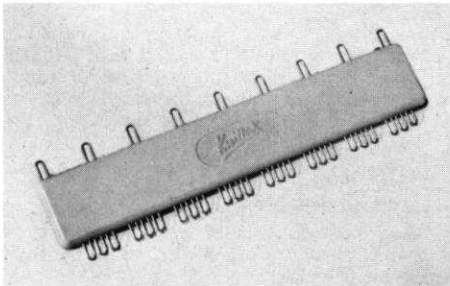


Automatic Needle Selector fits all model Knitkings prior to the pushbutton

\$6.95
Shipping 20¢

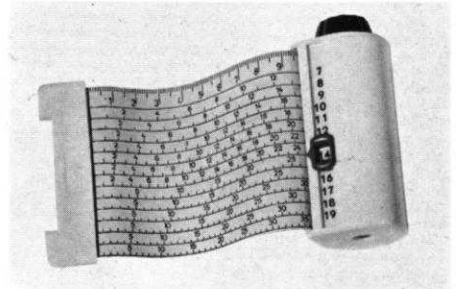


ACCESSORIES



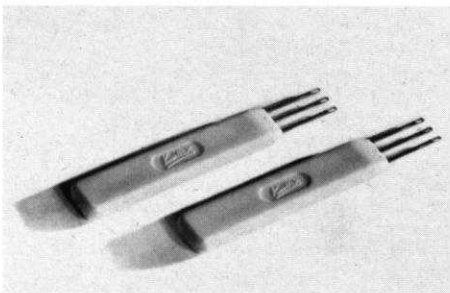
Adjustable Selector

\$2.95
Shipping 12¢



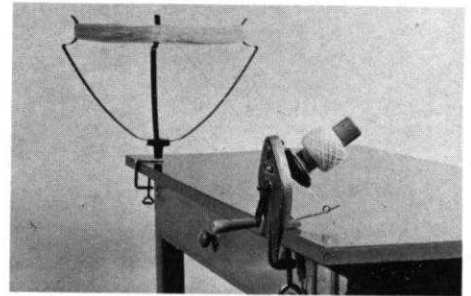
\$5.95
Shipping 15¢

Converta Tape



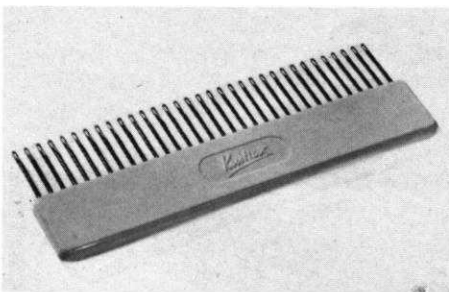
Treble Transfer Tools

\$1.50
Shipping 10¢



\$14.95
Shipping \$1.00

Yarn Winder with Skein Holder

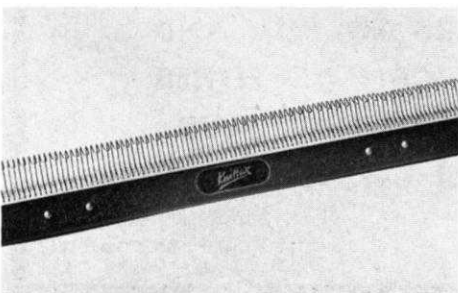


Multi-transfer Tool

\$2.75
Shipping 12¢



\$24.95
Shipping \$1.00



Reversing Bar

\$16.95
Shipping \$1.50

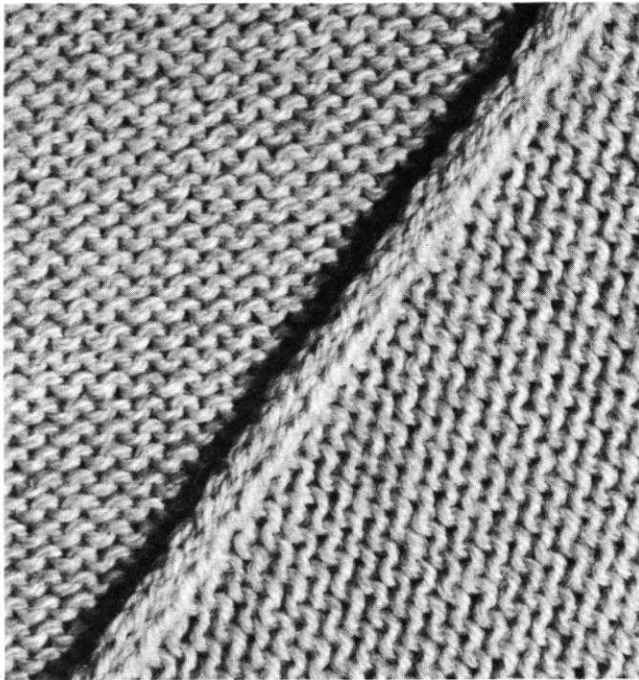


The perfect tool for automatic selection of Jacquard and ski-sweater designs. Over 125 patterns available.

PRACTICAL KNITTING HINTS

RAGLAN SEAM FOR DP 7381

In order to make an accented seam on a pullover which is to be worn with the purl side out, the seam is woven on the knit side of the garment, so that the 2 overlapped sts., in this case, will be turned to the outside, and a decorative stripe is made on the purl side of the garment. The illustration shows an enlargement of this type of raglan seam.



AN INSET WORKED IN ONE COLOR ON A GARMENT WORKED IN NORWEGIAN PATTERN STITCH WITH TWO COLORS (DP 7379).

The front and back sections of the Norwegian Pullover, DP 7379, are worked with an inset in Stockinette Stitch Knitted in a single color.

To do this, at first put all the needles for the rose colored Norwegian Pattern Stitch into holding position, and work all the other needles (including the needles of the inset) with cherry. You will have to have two balls of rose colored yarn. With the first ball, you will knit the needles of the rose pattern before the inset, and with the second ball, you will knit the needles of the pattern stitch that come after the inset. In this way, you can work the inset without stretching the rose colored yarn across the back of the inset to work the pattern stitch on each side.

The knitting procedure will be no different from the usual Norwegian technique which is explained in the Instruction Manual.

In order to obtain faultless diagonal shaping on the single-colored inset it is always best to mark the needles in question with a colored pencil on the rear lower rail. You should bear in mind — as the directions also state — that the stitch count of the inset will change on every row.

BULKY KNITS WITH 164 NEEDLES

KNITKING owners and others who have a small machine will not always have enough width on their machines to make garments with heavier yarns, as these yarns are worked on every other needle.

In order to obtain the necessary width when using heavier yarns you can divide the front and back sections of a pullover into two sections which can later be joined together at the center seams. This seam will usually be woven so that it will not be noticeable.

In addition, the seam (especially on the front sections) can be completely invisible if it fits in with the pattern. For example, in this magazine we have Women's Pullovers, DP 7380 and DP 7382, and the Man's Pullover, HP 3441. These last two pullovers have, because of the longitudinal stripe, a stretchy quality which is very beneficial for heavier figures. A center seam would not be noticeable on either the front or back sections of these two pullovers. In this way, you can make garments with heavy yarns on the smaller machine.

If the heavier yarn is not suitable for the knit/purl edging, you can make the edging with a thinner yarn, either of the same shade or an accented contrasting color, working over every needle with the regular Knit 1, Purl 1, Ribbing, as is done in the two pullovers mentioned.

WANTED

SALESPEOPLE AND KNITKING OWNERS TO SELL AND TEACH KNITTING. IF YOU CAN DO EITHER OR BOTH WRITE TO KNITKING, 1128 CRENSHAW BLVD., LOS ANGELES, CALIF. 90019, FOR FULL INFORMATION.



KNITTING NEWS

November-December 1966

BACK ISSUES OF KNITTING MAGAZINE

We receive many requests for back issues of KNITTING MAGAZINE and as a result, stocks of many of the issues are very low, and some we are completely out of. The January-February 1965 issue is no longer available and the bound edition of the first Volume is sold out. We do still have some copies of Volume One, numbers 1, 2, 4, 5 and 6 on hand.... The May-June 1966 edition is completely sold out of single copies, but we still have some bound editions of Volume Two, (the May-June issue is included in it) for \$6.95 complete.... Single copies of Volume Two, numbers 1, 2, 3, 4 and 6 are available, but stocks are low. Single copies of all back issues are obtainable for \$1.50 per copy or \$6.00 for any selection of six copies, postpaid anywhere in the U.S.A.

HANDY HINTS

Mrs. Dorothy Cheetham of Los Angeles, California asks:
"How do you make buttonholes when using the ribber?"

Lay a length of contrasting yarn over 3 ribber needles and 4 knitter needles (or 2 ribber and 3 knitter, or 1 ribber and 2 knitter needles, depending on the size of buttonhole required). The end needle on each side must always be a knitter needle. Knit these knitter and ribber needles by hand. Pull both ends of yarn firmly and to prevent them from catching in the ribber Cam Box, either cut them short about 1 inch from the needles or insert the Latch Needle Tool up behind the ribber, catch the ends in the hook and pull them down between the knitter and ribber. Be sure all stitches are behind the latches and that all latches are open, then continue knitting in the usual way. When garment is completed, thread a length of yarn through the open stitches as you carefully pull out the knitted contrast yarn.

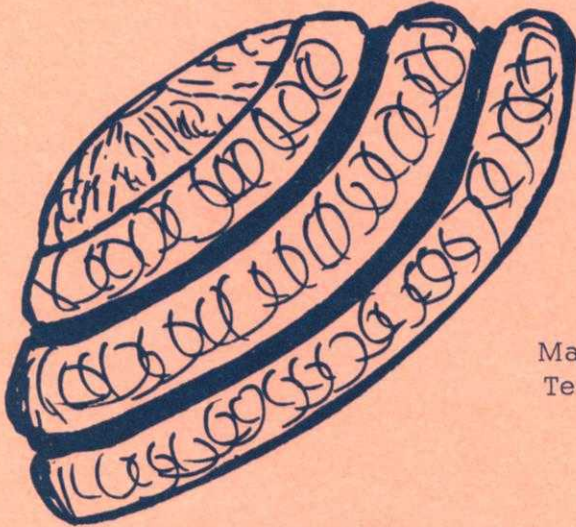
Finish off with buttonhole stitch, or neatly chain-stitch the loops around the hole, using a tapestry needle (or crochet hook) and yarn with which garment was knitted. If yarn is heavy weight, split it before using it to finish the buttonholes.

BUTTONHOLE FORMULA

Here is an excellent formula for the spacing of buttonholes. Sometimes you want to change the length of a given pattern and alter the buttonhole spacings.

Write down the number of rows needed from the bottom of your garment to the top. Let us say it is 200 rows, and your row gauge is 10 rows to the inch. Decide where you wish to have the first buttonhole at the bottom of your garment and the buttonhole at the top of your garment. If the bottom button is to be 1 inch from the bottom and the top button 1/2 inch from the top, add the rows (which will be 10 rows at bottom and 5 rows at top) together. A total of 15 rows. Subtract the 15 rows from your total number of rows (200) which will now be 185 rows left. Divide this by 1 less than the number of buttons you wish. Let us say you want 5 buttons. Divide the 185 (rows) by 4 (spaces) which will give you 46 and 1 left over (rows between each buttonhole). Add the 1 to your bottom so that you will now make your first buttonhole ON row 11, the next one ON row 57, the next ON row 104, the next ON row 150 and the last one ON row 196. Now knit to row 200....Easy?

over



HAT PATTERN

Mary Davis, one of our Los Angeles teachers, recently knitted a hat for herself in a mohair to match her dress. Everybody that has seen it has wanted one. It only takes two ounces of KNITKING Mohair and 30 minutes of time. You can if you wish - change color when you reverse the knitting.

Material: 2 oz. KNITKING MOHAIR
Tension: 10 using EVERY 3rd NEEDLE.

Cast on 60 stitches over EVERY 3rd NEEDLE. Knit 20 rows. Take off on contrast yarn and reverse knitting.

Knit 8 rows. Reverse as before (take off on contrast yarn each time).

Knit 10 rows. Reverse - Knit 8 rows. Reverse and decrease 4 sts. as you hang stitches back on machine. Knit 5 rows.

Remove on contrast yarn but do not reverse.

SHAPE TOP: Put back on knitter *2 sts. on 1 needle, 1 st. on next needle, 2 sts. on 1 needle, 1 st. on next 3 needles. REPEAT from * across ending with 1 st. on last 3 needles. Knit 6 rows. Remove on contrast.

*Hang 3 sts. on 1 needle, 1 st. on next 3 needles and repeat from * across. Knit 6 rows.

*Skip the first stitch, drop the next 3 stitches one at a time 12 rows down and latch up into a knit stitch. Repeat from * across ending with 3 knit sts.

Take off on contrast yarn and put back on machine, decreasing to 10 sts.

Knit 1 row. Take off on a tapestry needle with yarn doubled.

FINISHING: Pull up each cast on stitch evenly (not too tight). Pull up top and secure yarn. Weave seam from top to bottom matching rows carefully.

Fluff and shape hat. Leave plain or make flowers out of scraps of different colored mohair and trim top section.

SPECIALS FOR NOVEMBER-DECEMBER

We are celebrating the first anniversary of the opening of our beautiful Los Angeles Yarn Center and the National distribution of our exclusive KNITKING YARNS by offering an extra special discount on our best sellers. Sales of KNITKING YARNS have increased rapidly month by month over the past year and it seems that once catalogue owners receive their first order and are able to judge for themselves the superior qualities of our yarns, they continue to send in orders..... But there is a good number of readers who have purchased catalogs and have not yet bought from us..... To these people, we say...Take advantage of the special sale prices and send us a trial order. You actually will be paying less for top quality yarn than you would pay for inferior yarns in your local department store.... To our regular customers, we say...Order everything you will need to make Christmas gifts and holiday clothes for your family and get the orders in fast. We have substantial stocks of all colors on special, but the more popular ones are likely to go very fast. Be sure to list alternate colors and include shipping costs.

A big 20% discount is offered to KNITKING readers on the following yarns. Mutella Sportswool, Subita Cable yarn, Sonika Dralon, and Fine-Dralon. (California residents add 4% sales tax.)

Our English yarn suppliers made an error and included some yarns not part of our regular stocks in their last shipment to us. Their mistake is going to be your gain, for rather than ship them all the way back to England, we are offering them to you at a fraction of what their normal selling price would be. Yarns of this quality would sell for between 65¢ and 75¢ an ounce. They are in five ounce skeins. The minimum quantity to any customer will be 15 ounces at 28¢ an ounce for a total cost of \$4.20 plus postage.....Or better still, if you purchase a minimum of 75 ounces, the price will be reduced to 25¢ an ounce or a total cost for 75 ounces of \$18.75 plus postage (California residents add 4% sales tax).

It is three-ply fingering yarn (which means that you will get 8 to 9 stitches per inch) of 55% wool and 45% Sarille and is available in four very fashionable mixtures suitable for practically any type of garment - dresses, sweaters, socks, childrens clothes, etc., etc..... It has the feel of top quality wool and the Sarille - a new synthetic - gives it a slight gloss plus tremendous hard wearing qualities.

The colors are, a plum mixture, a medium blue and green mixture, a burnt orange and green mixture and an olive-purple and maroon mixture.....They are all gorgeous and supplies are limited, so take advantage of this excellent opportunity and stock up now.

cont'd.

CHRISTMAS GIFT ITEMS

This is the time of the year when husbands, children and friends are shopping for a gift that will please you, so why not drop a hint.....

Gift Item Number One

A beautiful KNITKING DESK in the wood of your choice. Natural Walnut, Natural Teak, Natural Oak or Natural African Pear. Normal price \$149.50, Special November-December price \$119.50 fob Los Angeles. California residents add 4% sales tax.

Gift Item Number Two

The JAC 40. The perfect tool for speedily producing Jacquard designs and the handsome ski sweaters in this issue. We have them for most brands of machines with the exception of all Japanese made machines. List price \$24.95, Special \$19.95 plus \$1.00 shipping costs. JAC 40 punch cards normally 65¢ each, Special price 12 for \$5.00 plus \$1.00 shipping costs. California residents add 4% sales tax.

Gift Item Number Three

KNITKING REVERSING BAR (Suitable for only KNITKING machines with 197 needles). Turns a hem or reverses your knitting in one movement. Normal price, \$16.95, Special \$13.95 plus \$1.50 shipping costs. California residents add 4% sales tax.

Gift Item Number Four

KNITKING YARN WINDER. Without a doubt the finest hand winder made. It has a cast iron body, nylon helical gears and comes complete with a self-adjusting skein holder. List price \$14.95, Special \$12.50 plus \$1.00 shipping costs. California residents add 4% sales tax.

Gift Item Number Five

33 NEEDLE MULTIPLE TRANSFER TOOL. Perfect for decreasing in the middle of the row, suitable only for KNITKING machines. List price \$2.75, Special price \$2.25 plus 12¢ shipping costs. California residents add 4% sales tax.

The Staff of KNITKING and KNITKING MAGAZINE take this opportunity to wish all our readers a VERY MERRY CHRISTMAS and a PROSPEROUS NEW YEAR.....

NOTES TO KNIT BY . . .

STITCH AND ROW GAUGE

The stitch and row gauge is the number of stitches and the number of rows you get to the inch with the yarn recommended for any particular garment. To arrive at the correct number of stitches and rows, you must prepare a sample swatch as follows: Cast on the number of stitches that will give you a finished width of at least 4 inches. Using the suggested stitch tension in your pattern, knit a length of at least 4 inches. Knit 2 rows of a contrast yarn. Set your tension one number higher and knit another 4 inches. Knit 2 rows of contrast color. Set your tension 1 number lower than the suggested one and knit a further 4 inches. Now bind off.

For years people have been told to steam their sample swatch and for years we have been getting reports from people telling us that although the sample swatch was correct, the finished garment was too small or too large. Others have complained that even when they used the suggested yarns they had to use a much larger or smaller tension to make a swatch and then the finished garment came out the wrong size anyway.

Obviously it is possible for two people to pin an identical swatch and steam it and get a totally different result. One will stretch the sample before pinning it, and the other will squeeze it in. We have discovered a way that produces the same result with everybody, and we recommend that you get into the habit of always using it.

After knitting the sample and removing it from the machine, roll it into a cylinder over its length, then pull on both ends. Unroll the cylinder and stretch the sample diagonally by pulling on the four corners. Now let it rest — give it an opportunity to resettle for at least a few hours, preferably over night. After you and your swatch have rested, lay your stitch gauge on it and count the number of stitches in your 2 inch marking. Do the same for the number of rows. If you did not get the correct gauge in your first section of knitting, try the section either 1 tension higher or lower as the case may be. If you cannot get the correct gauge, then you are using the wrong type of yarn for the garment.

NON-WORKING POSITION

The needles are in the non-working position when they are as far back on the needle bed as they will go.

HOLDING POSITION

The Holding Position is as far forward on the needle bed as your needles will go. The Holding Position is used for producing pattern designs, fancy stitches and the knitting of short rows.

SHORT ROWS

Short rows are used for shaping of all kinds such as toes and heels of socks, collars, darts and sometimes in the shaping of shoulders, borders and full skirts. To knit short rows you push the needles forward into the holding position as specified in the pattern instructions, usually working from the outside in, which in effect narrows the width of the knitting as you proceed. Before knitting each row, you **must** place the yarn between the first and second inside needles that are in the holding position.

INCREASING, DECREASING, BINDING OFF

See the Instruction Manual for your own machine.

INCREASING AND DECREASING WHEN USING THE RIBBER

When increasing, increase on the main knitter first, knit one row and then transfer the necessary stitches from the knitter to the ribber and continue.

When decreasing or binding off, you must transfer the ribber stitches to the main machine before decreasing or binding off.

ADJUSTING SKIRT LENGTHS, ETC., TO SUIT YOUR OWN SIZE

If you are shorter or taller than average, you will need to adjust certain of the garment lengths. You do this by reducing or increasing the number of rows called for in the pattern.

The reduction in the rows is usually made at the bottom of a skirt or dress. The procedure is very simple. If for example you need a skirt length 2 inches shorter than the one shown in our pattern, and the yarn called for produces 9 rows to the inch, you will need to reduce the number of rows by 18. Many of our patterns are shaped to curve in a small amount toward the bottom and the bottoms frequently have a turned hem. In such cases, the reduction or increase in the number of rows required should be made immediately after the turned hem. If you are long waisted or short waisted you may have to make an adjustment at the waistline.

READING OF KNITTING PATTERNS AND SYMBOLS

Certain holding position and eyelet designs are sketched in the knitting patterns. The pattern should be read as the work comes toward you from the machine, that is, if you have purl stitches before you, it will say purl stitches in the pattern. If you have knit stitches before you it will say knit stitches in the pattern. On the sides of the pattern are the row numbers. Missing row numbers indicate that the rows are to be worked evenly. In eyelet design patterns, specified stitches are transferred to another needle and the empty needles are returned to the knitting position each time. In holding position designs, selected needles are pushed into the holding position for the stated number of rows.

MISSING ROW NUMBERS

When there are row numbers missing in the instructions as for instance when you have completed the designated increases or decreases on a section of garment, continue straight knitting until you reach the next given row number.










Control Knobs (Under the slide handle — one on each side on KNITKING and certain other machines.)

1. When BOTH Control Knobs are UP, knit one row going from right to left. The needles knit and move back just beyond the front of the needle bed and the yarn hangs on the front of the needles. The slide will now move freely in either direction with the needles remaining in a "SAFE POSITION." When you wish to resume knitting, press down BOTH Control Knobs. The first movement of the slide is made without yarn and will bring the needles into working position, you then continue knitting.

2. **Right Control Knob UP.** Knit from right to left. The row knits, moves the needles back and the yarn is held in front of the latches. Knit from left to right, the yarn goes under the needles without knitting as the needles move into the working position. This is the operation used for making round cords (with 3 or 4 needles only) and also for knitting single rows of one color.

3. **Left Control Knob UP.** The same as above but moving from left to right.

SYMBOLS

-  = knit stitch
-  = purl stitch
-  = empty needle (still in working position)
-  = needle out of operation
-  = needle in hold position
-  = stitch put on neighboring needle. Needle in hold position
-  = stitch put on neighboring needle — to the right
-  = stitch put on neighboring needle — to the left
-  = 3 stitches hung together



open dart



closed dart

Available in many wood finishes



KNITTING DESK . . .

A knitting machine cabinet that automatically lifts your machine into the knitting position just by pulling a lever. The cabinet converts in seconds into a handsome desk suitable for any decor or any room in your house. Beautifully made in a variety of woods by craftsmen in West Germany.



Order from your local dealer or direct from **KNITKING**, 1128 Crenshaw Blvd., Los Angeles, California 90019