

KNITTING

MAGAZINE



YARNS

by

Knitking

The Finest From Around the World . . .

HANDSOME Cable yarns from Australia, Great Britain and Germany . . . GORGEOUS Mohairs from Australia . . . BEAUTIFUL Satin-Cotton and Linen-Cotton from Germany . . . plus a NEW, new synthetic, soft and light in weight . . . doesn't pill up . . . yet can be thrown into your washing machine without fear of shrinking or stretching . . . LOVELY Tweed mixtures from England . . . EASY to knit and a JOY to behold.

We import our own yarns and they are sold DIRECT to YOU at BIG SAVINGS!

The BEAUTIFUL PATTERNS in KNITKING MAGAZINE are made with KNITKING YARNS!

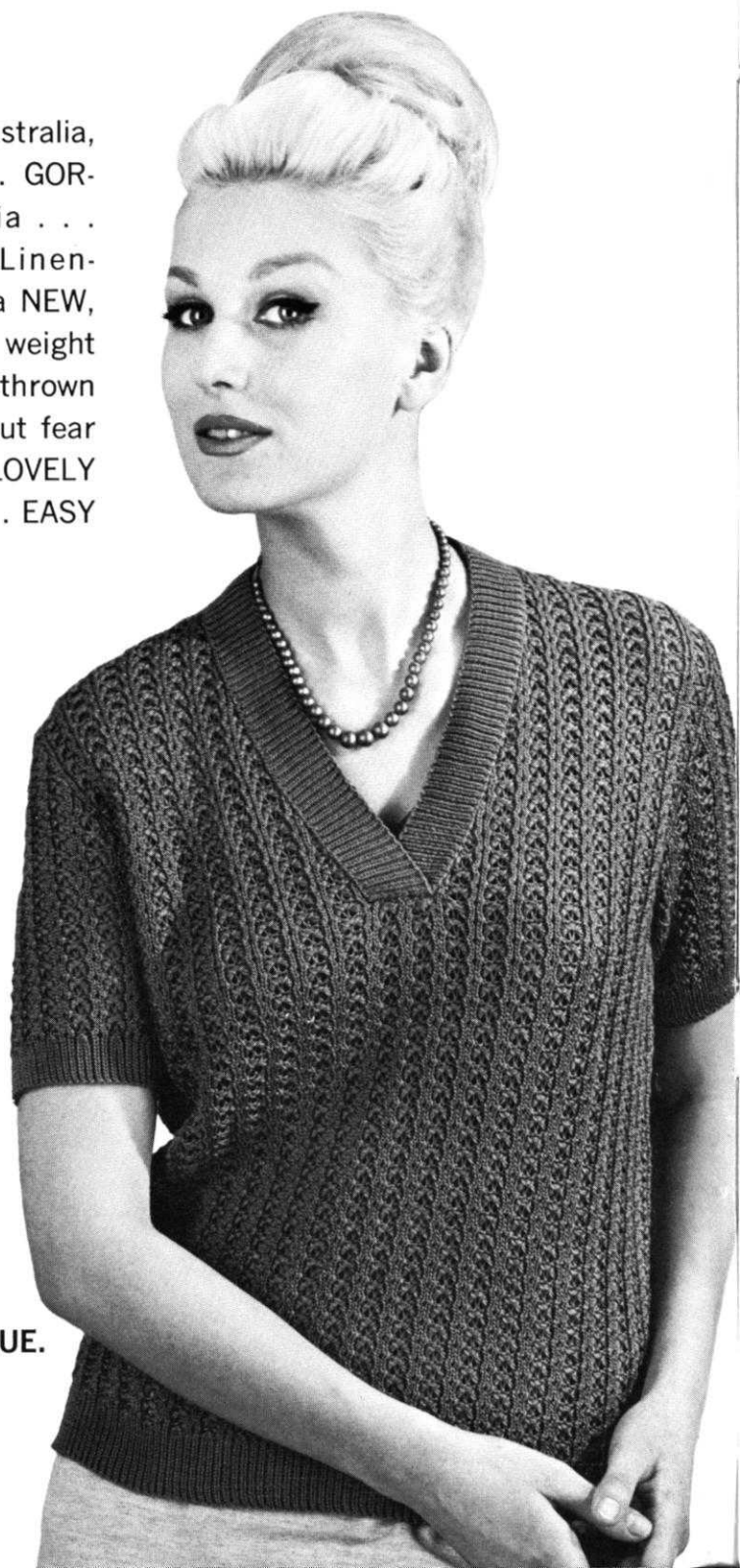
Send \$2.00 for LARGE COMPLETE YARN CATALOGUE.

(Refunded on your first \$10.00 order) to:

KNITKING YARNS, Dept. 19

1128 Crenshaw Blvd.

Los Angeles, California 90019



KNITKING

MAGAZINE



Letter from the Publisher

Vol. 3, No. 5

May/June 1967

INDEX

Contents	Pattern No.	Page No.
Woman's Jacket	DP 7452	15
Woman's Dress	DK 7416	15
Woman's Pullover	DP 7401	17
Woman's Blouse	DP 7414	18
Woman's Blouse	DP 7417	19
Woman's Pullover	DP 7411	20
Woman's Pullover	DP 7413	21
Woman's Pullover	DP 7412	21
Woman's Pullover	DP 7456	23
Woman's Stockings	DV 7457	24
Man's Pullover	HP 3455	24
Man's Pullover	HP 3456	25
Man's Pullover	HP 3454	25
Woman's Pullover	DP 7415	26
Girl's Dress and Jacket	MK 4796	27
Boy's Suit	KK 4791	28
Boy's Pullover	KK 4792	29
Bell Skirt and Pullover	MK 4794	29
Girl's Dress	MK 4793	30
Practical Knitting Hints		32

If you are a regular subscriber to KNITKING MAGAZINE, you will have received a short questionnaire with your renewal notice. We want to thank everybody who has taken the time to answer the ten questions.

It is gratifying to note that the majority of readers like the magazine just the way it is, but a study and analysis of the many thousands of returned questionnaires shows a repetition of many requests and suggestions. Based upon these and other general correspondence regarding KNITKING MAGAZINE, we prepare garments for future issues and endeavor to continually simplify written instructions so that every reader no matter how inexperienced can readily understand them.

We introduced the very detailed and simplified beginners patterns in the May-June 1966 issue of KNITKING MAGAZINE and, since that time, we have received many requests to print all patterns in the same manner. Unfortunately, because such detailed instructions take almost twice the amount of space as standard instructions, to produce all patterns in the same style would mean the number of patterns would be drastically reduced. This obviously would be strenuously objected to by the vast majority of readers who like KNITKING MAGAZINE just the way it is.

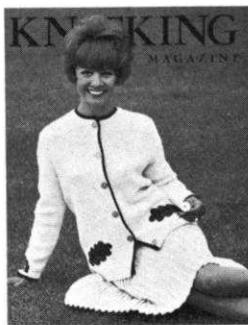
We have therefore, been endeavoring to develop a method of producing and printing patterns that would still permit the inclusion of 20 patterns in each issue and in a manner that can be easily understood by 100% of our readers. We believe we have succeeded, and commencing with our next issue (July-August) you will be able to judge for yourself.

We will tell you more about it in the next issue which will contain some very beautiful clothes including a very handsome two-color, two piece outfit (a dress and jacket), a cool lacy sleeveless summer dress and some really stylish sportswear, with special emphasis on the striking, modern three color, ribber cover outfit consisting of a raglan sleeved, roll neck pullover with stockings to match. Also featured is an unusually good looking beach wrap, a full length sleeveless coat-dress that buttons down the front, an absolutely beautiful pair of 'his' and 'hers' cable stitch sweaters and some sports clothes for the youngsters that will make them the envy of all their friends.

NEW KNITKING FASHION BLOCK

We are very proud to introduce on page 31 of this issue another first for KNITKING — Our new FASHION BLOCK which will soon prove to be an indispensable accessory for every knitter.

KNITKING is the first to introduce a product calculated to take all the worry and guess work out of knit blocking. With this fabulous new process you can always be sure of perfect fit and finish and you will wear your lovely KNITKING garments with added pride.



DP 7452 OUR COVER MODEL

Hooray for Beginners and our Cover Model Jacket! Stockinette stitch knitted over every other needle in a heavy weight yarn turns into a lovely cover up for cool Spring and Summer days. The oak leaf trim is cut from felt and the bands around neckline and edges as well as sleeves can be bought in any department store . . . or if you prefer you may knit the trim yourself using a lighter weight yarn. Size 14/16. See page 15.

Publisher: Henry J. Atkin, 1128 Crenshaw Blvd., Los Angeles, Calif. 90019, Telephone: WEbster 8-2079. Published bi-monthly. Subscriptions: USA—\$6.00 annually, single copies \$1.50; Canada—\$7.00; other parts of the world—\$10.00. The entire contents of KNITKING MAGAZINE are copyright and must not be reproduced in any shape or form without the express permission in writing, of the publisher. COPYRIGHT © by KNITKING 1967.

Printed by: George Rice & Sons, Los Angeles, California.

Beginners Pattern



DP 7452

Smart Simplicity! Take this jacket along on any weekend trip. It is knitted over every other needle in a heavy weight yarn. The trim is a bright braid bought in a department store. The leaves are felt applique, then embroidered. We tell you how . . . See page 15.

FASHIONABLE A-LINE

DK 7416

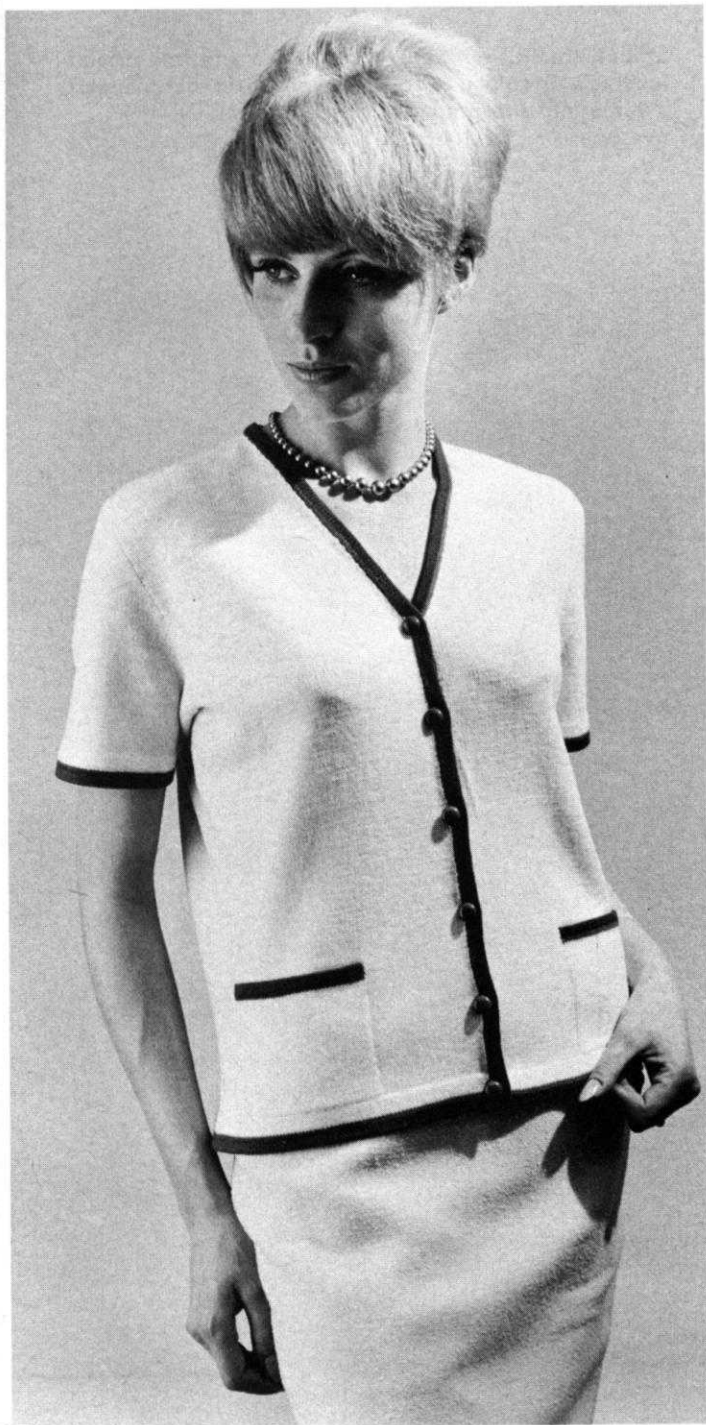
A-Line for action! We guarantee you will receive many compliments when wearing this softly shaped dress. It is knitted in stockinette stitch in a green yarn and we trimmed it with white. Size 14/16 and 18/20. See Page 15.





← DP 7401

Exquisite Lace! Still tops in fashion for any season — and our lovely pullover is knitted in a lacy stitch of distinction. You may follow the simple chart or use the JAC 40 and special pattern card No. 326. Want a dress? Then add the extra length at bottom. Size 12/14 and 16/18. See page 17.



DP 7417

Picot Pretty! A very new trim which, knitted right along with each section, turns up into a hem with a picot edge. Blue is our choice of color for the blouse and we trimmed it with white. Size 12/14. See page 19.

DP 7414

Tailored for town or travel is this button-down-the-front blouse. We knitted our model in white and trimmed it with a red and blue edging. Order enough yarn for a skirt and have a chic costume. Size 12/14 and 16/18. See page 18.

DP 7411 →

In the Spotlight — RED! Show off your skill and knit this charming pullover. The eyelet design is on the front only, the rest is knitted in stockinette stitch . . . The completed garment . . . a beauty. Size 14/16. See page 20.

BEGINNERS PATTERN

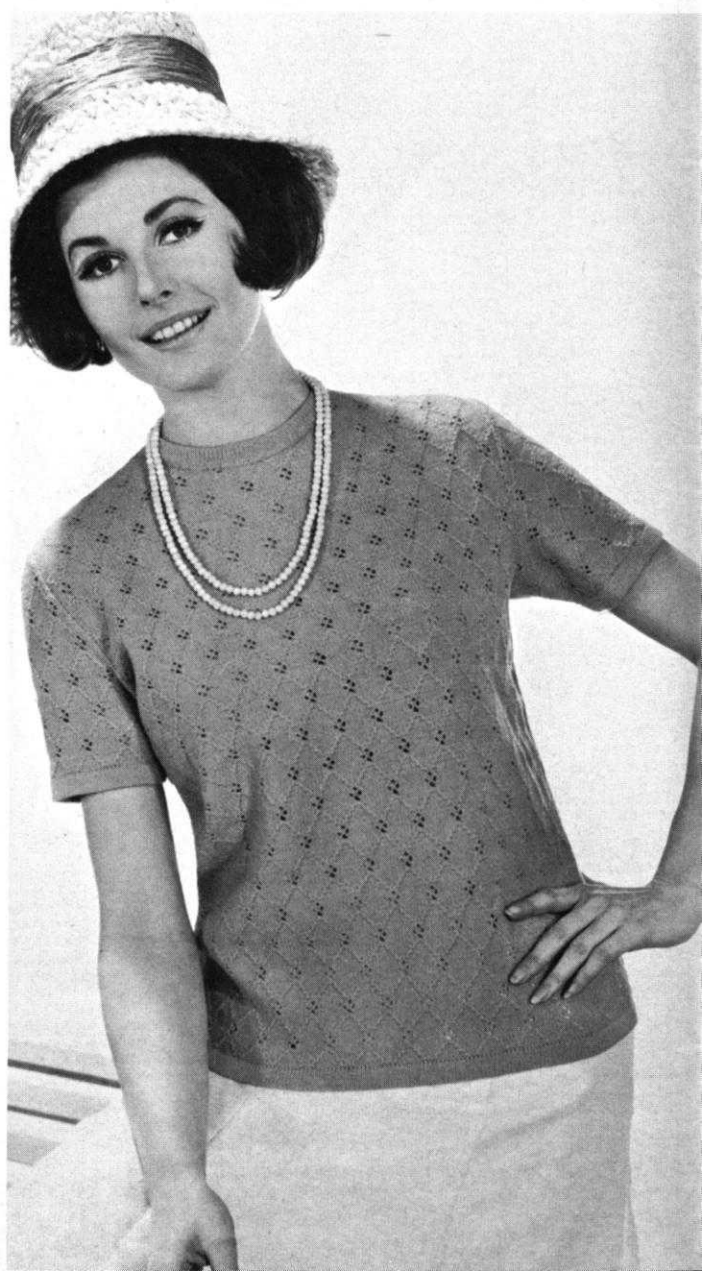
← DP 7413

Stripes are still definitely "IN" — so knit this striped lovely in 3 colors. Add extra length to bottom and it turns into the popular "skinny" dress — mini . . . average . . . or long . . . the choice is yours. Size 10/12. See page 21.



DP 7412

Be Lovely . . . Be Cool . . . Be Chic . . . ! We colored it vibrant Pink — but your favorite color will be equally charming and eye catching. The pullover is knitted in a combined holding position and eyelet design. Size 12/14 and 16/18. See page 21.







DP 7456

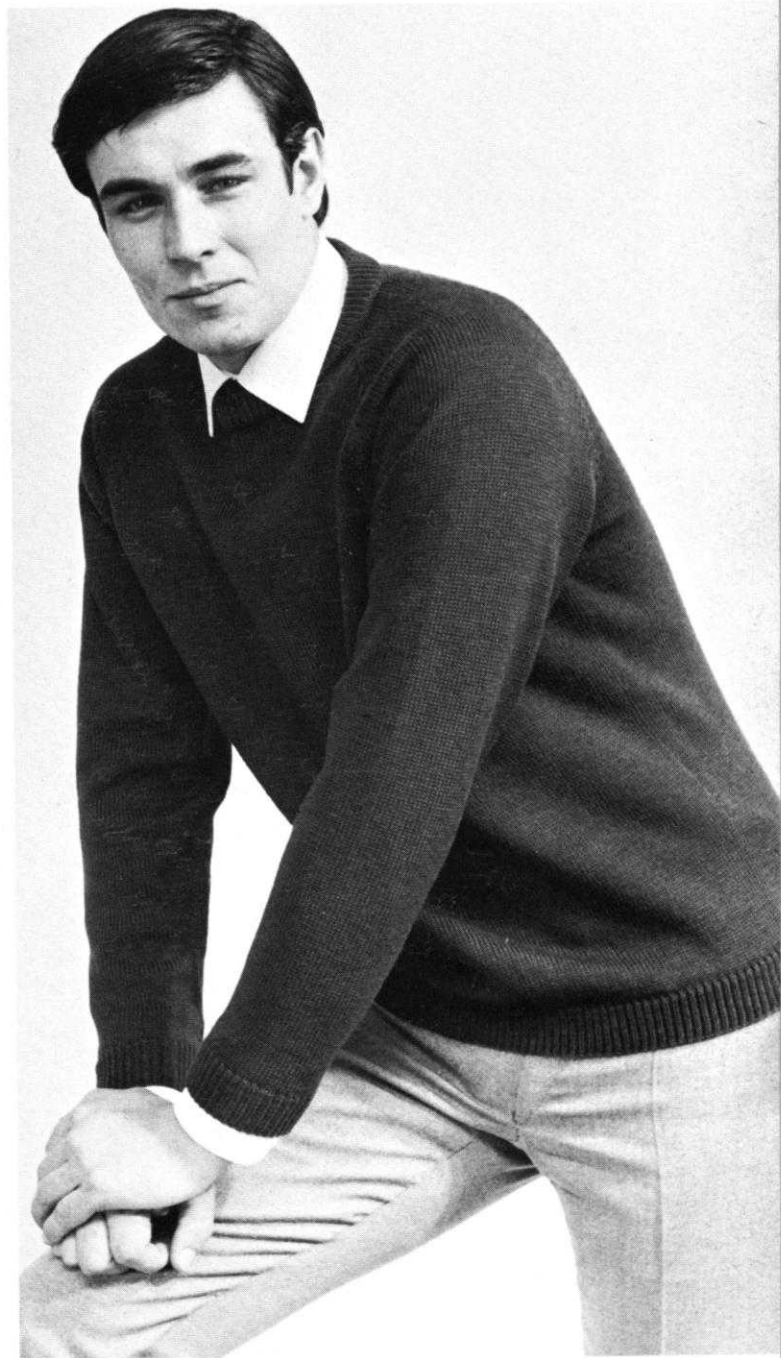
DP 7457

Fashions Darling! For the young in years (or in heart). Because of many requests, we give you this pullover with stockings to match. The very easy to knit holding position design follows a chart. A 1 x 1 rib is used for edgings of pullover and tops of stockings. Size 10/12. See page 23.



HP 3456

A high rolled collar in a 1 x 1 rib sets the mood for this mans pull-over. The sleeves and bottom edge of sweater are also in a 1 x 1 rib. Size 40/42. See page 25.



HP 3455

Add this smart but simple to knit pullover to any mans wardrobe and he'll enjoy its classic lines and wearing it will make many occasions happy. It is knitted in stockinette stitch with a 1 x 1 rib at neckline, bottom and sleeve edges. Size 40/42 and 46/48. See page 24.

HIS

HP 3454

For the man in your life — a pullover with life . . . the difference is in the very smart Norwegian pattern border used for trim . . . He'll really go for this one, so practice up on your 2 color knitting . . . it's fun . . . Size 40/42. See page 25.



AND
HERS

DP 7415

Repeat performance for your own pullover also in the Norwegian border . . . He'll love sharing it with you in this feminine version. Consider knitting a skirt with the border at the bottom and have a two piece dress . . . Size 14/16 and 18/20. See page 26.





MK 4796

Small Talk! She'll bubble with delight when you dress her in this darling outfit. The skirt of dress is knitted vertically, then gathered at waistline and attached to bodice top. Note the neat full fashion shaping at armholes. A touch of angora at neckline, sleeves and in the pom-poms gives a final zip . . . Make sure you top the dress with its matching jacket . . . Beautiful! Size 3 to 4 years. See page 27.



KK 4791

KK 4792

Styled for a "Swinging" young man. The pants are tailored to perfection. The cables down the front of the jacket and the full fashion raglan sleeves give the garment a custom look. Don't stop here — but do knit the little pullover in our Fine Dralon yarn and complete a handsome suit. Size 3 to 4. See page 29.



MK 4794

Happiness is a small girl in a beautiful new outfit. Knit this skirt and pullover and share her joy. The skirt is knitted vertically using the "Short Row" method. (See Notes to Knit By on inside back cover). The pullover has full fashioned raglan shaping and a 1 x 1 rib at neckline, bottom and edge of sleeves. Size 3 to 4 years. See page 29.



MK 4793

For the Pigtail Set! A lovely dress. Very simple to knit in stockinette stitch. The border trim is woven under and over the selected needles placed in holding position. We show you the way it looks in our Practical Knitting Hints on page 32. Size 7 to 8 years and 9 to 10 years. See page 30.

KNITTING INSTRUCTIONS

BEGINNERS PATTERN

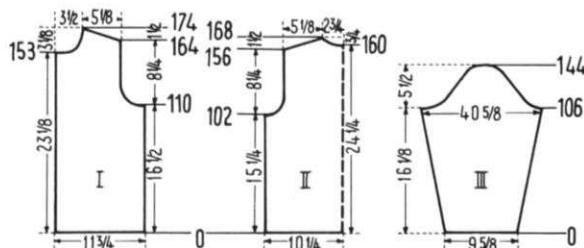
WOMAN'S JACKET, No. DP 7452



SIZE: 14/16. **MATERIAL:** 28 oz. white. **FOR EXAMPLE:** KNITKING Frigate. Spinnerin Knitting Worsted. 2¾ yds. red cotton braid 1¼" wide. ¼ yd. green felt. **TENSION:** KNITKING 10 over **EVERY OTHER NEEDLE.** Finished Measurements: At Bustline buttoned 41" to 42". Length from back of neck to bottom 23". Width of sleeve at underarm 15½". **GAUGE:** 9 sts. 2", 13 rows 2". **PATTERN:** Stockinette stitch, worn on purl side. **BACK:** (Figure II). Cast on 93 sts. **OVER EVERY OTHER NEEDLE.** Knit

10 rows with Tension 8. Change to Tension 10 and knit even till counter reads 102.

ARMHOLE SHAPING: Bind off 3 sts. beginning of next 4 rows. Bind off 2 sts. when counter reads, 108, 109, then decrease 1 st. **ON EACH SIDE** when counter reads 110, 112, 116 (71 sts.). Work even till counter reads 156.



SHOULDER SHAPING: Bind off 3 sts. beginning next 4 rows. When counter reads 160, bind off the center 11 sts. with a separate yarn. Put all needles on the left side into holding position and complete the right side first. Continue to shape neck and shoulder as listed in correct column.

NECK SHOULDER

Bind off when counter reads 161 (4 sts.) 160, 162, 164 (3 sts.)
163 (3 sts.) 166, 168 (4 sts.)

Put Cam Box on the left side, bring all needles into work. Put row counter back to 160 and complete the left side.

FRONT: (Figure I). Cast on 54 sts. over **EVERY OTHER NEEDLE.** Knit 4 rows tension 8. Make a buttonhole over the 5th to 8th needles counting from the left edge by using a piece of contrast yarn and knitting each stitch by hand, then knit 6 more rows. Change to tension 10 and knit even, making buttonholes over the 5th to 8th needles as you did before when counter reads 18, 44, 70, 96. Knit till counter reads 110.

ARMHOLE: SHAPING: Bind off 5 sts., then **on every other row** bind off 3 sts. 1 x, 2 sts. 2 x, decrease 1 st. 3 x. Make a buttonhole when counter reads 122. Work even till counter reads 148 then make buttonhole. Knit even till counter reads 153.

NECK SHAPING: Bind off 7 sts. for neck, then **on every other row on neck side**, bind off 3 sts. 1 x, 2 sts. 1 x, and decrease 1 st. 2 x. Complete the bind off for shoulder and neck as listed in column.

NECK SHOULDER

Bind off or decrease when counter reads 159, 161, 165, 169 (1 st.) 164, 166, 168, 170, 172 (3 sts.)
172, 174 (4 sts.)

Make a second front section with reverse shaping omitting buttonholes.

SLEEVE: (Figure III). Cast on 44 sts. over **EVERY OTHER NEEDLE.** Tension 10. Increase 1 st. **ON EACH SIDE** when counter reads 8, 16, 24, 32, 40, 48, 56, 64, 70, 76, 82, 88, 94, 100. (72 sts.). Knit even till counter reads 106.

UNDERARM SHAPING: On **every other row** bind off or decrease as listed in column for **BACK** side and **FRONT** side of sleeve. (Tie a contrast yarn to front sleeve edge for a marker.)

FRONT SIDE	BACK SIDE
5 sts. 1 x	4 sts. 1 x
3 sts. 1 x	2 sts. 3 x
2 sts. 3 x	decrease 1 st. 1 x

When counter reads 116, on every other row **ON EACH SIDE** decrease 1 st. 11 x. When counter reads 138, on every other row **ON EACH SIDE**, bind off 2 sts. 1 x and 3 sts. 2 x. When counter reads 144, bind off remaining 9 sts. Make another sleeve with reverse shaping, changing the right to **FRONT SIDE** and the left to **BACK SIDE**.

FINISHING: Join the shoulder seams and pin sleeves into armhole being sure to have the front side of sleeve to the front of jacket and back of sleeve to back of jacket. Split a length of yarn (or use matching yarn in a lighter weight) and sew in sleeve with a back stitch. Join side seams and underarm sleeve seams by weaving from the right side (or you may sew it using a back stitch). Make a 1½" hem at bottom of jacket. Sew the red braid to front, neck and sleeve edges of jacket. Finish buttonholes by running a length of jacket yarn (split into a fine thread-like piece) through the stitches held on contrast yarn. Carefully remove the contrast and use either the split yarn or fine yarn to slip stitch crochet around the buttonhole or thread a tapestry needle and use a chain stitch. Sew on buttons. Cut Oak leaf appliques from the green felt. Cut two 2¾" x 6" leaves and two 1½" x 3¼" leaves. Sew the larger leaves to the front of jacket at pocket level. Use green silk thread for this and tiny hidden stitches. With light weight red yarn, embroider the leaf veins in outline or stem stitch.

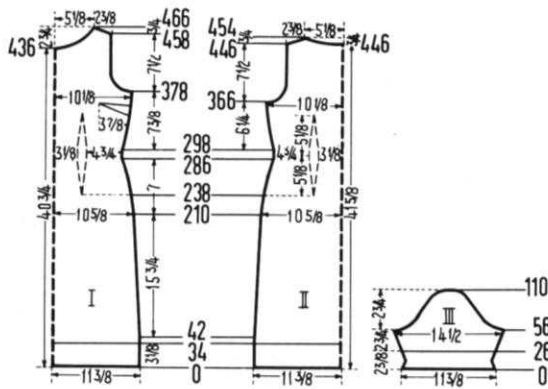
WOMAN'S DRESS, No. DK 7416



SIZES: 14/16 and 18/20. **MATERIAL:** (Size 14/16) 21 oz. green and 3½ oz. white. (Size 18/20) 24½ oz. green and 7 oz. white. **FOR EXAMPLE:** KNITKING Subita 2 x 4. Coats and Clark Nylon and wool sport. Spinnerin Ambralon. **TENSION:** KNITKING 7 or 8. **GAUGE:** 16 sts. 2", 21 rows 2". **PATTERN:** Stockinette St.

SIZE: 14/16. **BACK:** (Figure II). Cast on 186 sts. with white. Rows 1-34: Work even. To make the hem, put the cast on sts. back on the machine, and continue with green. Rows 35-

286: Decrease 1 st. **on each side** after Row 42 and again every 28th row 6 x, every 8th row 4 x, every 6th row 5 x, and every 4th row 3 x. **AT THE SAME TIME**, for the **DARTS**, decrease 2 sts. on each side after Row 238 and again every 12th row 4 x. To do this, **on each side** put the 51st and 53rd sts. on the 52nd needle and move the sts. over to fill the empty needles. The next decrease lies directly above this. (128 sts.) Rows 287-298: Work even. Rows 299-366: Increase 1 st. **on each side** after Row 298 and again every 6th row 3 x and every 8th row 5 x. **AT THE SAME TIME**, for the **DARTS**, increase 2 sts. on each side after Row 298 and again every 12th row 4 x. The increases lie directly above the decreases. (166 sts.) Rows 367-390: **Armhole Shaping.** Bind off 5 sts. beginning next 2 rows; then **on each side** of every other row bind off 4 sts. 1 x, 3 sts. 1 x, 2 sts. 3 x, decrease 1 st. 2 x; then decrease 1 st. every 4th row 2 x (122 sts.). Rows 391-446: Work even. Rows 447-454: **Shoulder and Neck Shaping.** On each shoulder side of every other row bind off 3 sts. 1 x and 4 sts. 4 x. **AT THE SAME TIME**, for the neck shaping, after Row 446 bind off the 32 center sts. with a separate yarn, put needles on the left into holding position and complete the right side first. When cam box is on neck side (every other row) bind off 12 sts. 1 x, 8 sts. 1 x,



and 6 sts. 1 x. Bring all needles into work, Row Counter back to 446 and complete the left side.

FRONT: (Figure I). The front is worked the same as the back to Row 366. Rows 367-378: Work even. Rows 379-402: **Armhole Shaping.** Bind off 5 sts. beginning next 2 rows; then on each side of every other row bind off 4 sts. 1 x, 3 sts. 1 x, 2 sts. 3 x, decrease 1 st. 2 x; then decrease 1 st. on every 4th row 2 x. (122 sts.). Rows 403-436: Work even. Rows 437-466: **Neck and Shoulder Shaping.** For the neck shaping, bind off the 18 center sts. with a separate yarn, put needles on the left into holding position and complete the right side first. When Cam box is on neck side (every other row) bind off 7 sts. 1 x, 5 sts. 1 x, 4 sts. 1 x, 3 sts. 2 x, 2 sts. 3 x, and decrease 1 st. 5 x. **AT THE SAME TIME,** after Row 458, for the shoulder shaping, on each side of every other row bind off 3 sts. 1 x and 4 sts. 4 x. Bring all needles into work, row counter back to 436 and complete the left side.

SLEEVE: (Figure III). Make two. Cast on 100 sts. with white. Rows 1-26: Decrease 1 st. on each side after Rows 4 and 8, and increase 1 st. on each side after Rows 18 and 22. To make the hem put the cast on sts. back on the machine and continue with green. Rows 27-56: Increase 1 st. on each side after Row 26 and again every 4th row 5 x and every other row 3 x. (118 sts.). Rows 57-68: **Underarm Shaping.** On each side of every other row bind off 6 sts. 1 x, 4 sts. 1 x, 3 sts. 2 x and 2 sts. 2 x. Rows 69-100: *On each side of every other row decrease 1 st. 3 x and bind off 2 sts. 1 x.* Repeat from * to * 3 x. Rows 101-110: On each side of every other row decrease 1 st. 2 x, bind off 2 sts. 1 x, 3 sts. 1 x, 4 sts. 1 x and then bind off the remaining 16 sts.

NECK EDGING: Cast on 157 sts. with white. Stockinette Stitch: 5 rows with Tension 7, 5 rows with Tension 6, 6 rows with Tension 5, 5 rows with Tension 6, and 5 rows with Tension 7. Bind off all sts.

POCKET EDGING: (Make 2). Cast on 50 sts. with white. Work 34 rows Stockinette Stitch with Tension 7. Bind off all sts.

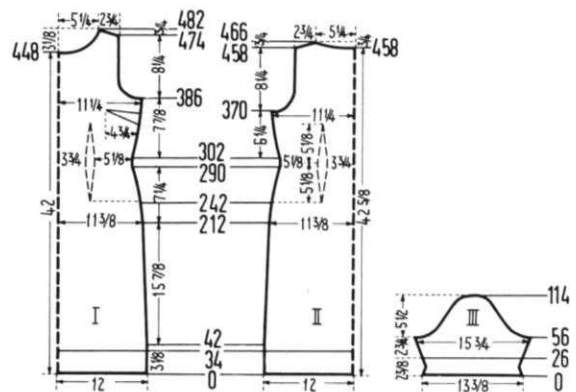
FINISHING: Sew the darts in the front section as illustrated. Join the front and back sections at side and shoulder seams. Join sleeve edges and sew sleeves to dress. Sew the ends of the neck edging together so that the edging is circular; fold the neck edging around the dress neckline and attach. Fold the pocket edging in half and sew the edges together; then sew the edgings to the dress as illustrated.

SIZE: 18/20. BACK. (Figure II). Cast on 195 sts. with white. Rows 1-34: Work even. To make the hem, put the cast on sts. back on the machine and continue with green. Rows 35-290: Decrease 1 st. on each side after Row 42 and again every 34th row 5 x, every 10th row 2 x, every 8th row 4 x, and every 6th row 4 x. **AT THE SAME TIME,** for the **DARTS,**

PLEASE NOTE THAT WE DO NOT SEND TOOLS AND YARNS OUT ON A C.O.D. BASIS. YOU MUST SEND PAYMENT INCLUDING MAILING COSTS WITH EACH ORDER.

decrease 2 sts. on each side after Row 242 and again every 12th row 4 x. To do this, on each side put the 53rd and 55th sts. on the 54th needle, then move the sts. together to fill the empty needles. The next decrease lies directly above this. (143 sts.). Rows 291-302: Work even. Rows 303-370: Increase 1 st. on each side after Row 302 and again every 6th row 3 x and every 8th row 5 x. **AT THE SAME TIME,** for the **DARTS,** increase 2 sts. on each side after Row 302 and again every 12th row 4 x. The increases lie directly above the decreases. (181 sts.). Rows 371-396: **Armhole Shaping.** Bind off 6 sts. beginning next 2 rows, then on each side of every other row bind off 4 sts. 1 x, 3 sts. 2 x, 2 sts. 2 x, decrease 1 st. 3 x, and then decrease 1 st. on every 4th row 2 x. (131 sts.). Rows 397-458: Work even. Rows 459-466: **Shoulder and Neck Shaping.** On each shoulder side of every other row bind off 4 sts. 3 x and 5 sts. 2 x. **AT THE SAME TIME,** for the neck shaping, after Row 458 bind off the 35 center sts. with a separate yarn, put needles on the left into holding position and complete the right side first. When Cam box is on neck side (every other row) bind off 12 sts. 1 x, 8 sts. 1 x, and 6 sts. 1 x. Bring all needles into work, row counter back to 458 and complete the left side.

FRONT: (Figure I). The front is worked the same as the back to Row 370. Rows 371-386: Work even. Rows 387-412: **Armhole Shaping.** Bind off 6 sts. beginning next 2 rows; then



on each side of every other row bind off 4 sts. 1 x, 3 sts. 2 x, 2 sts. 2 x, decrease 1 st. 3 x; then decrease 1 st. on every 4th row 2 x. (131 sts.). Rows 413-448: Work even. Rows 449-482: **Neck and Shoulder Shaping.** For the neck shaping, bind off the 17 center sts. with a separate yarn, put all needles on the left into holding position and complete the right side first. When Cam box is on neck side (every other row) bind off 7 sts. 1 x, 5 sts. 1 x, 4 sts. 1 x, 3 sts. 2 x, 2 sts. 4 x, and decrease 1 st. 5 x. **AT THE SAME TIME,** after Row 474, for the shoulder shaping, on each side of every other row bind off 4 sts. 3 x and 5 sts. 2 x. Bring all needles into work, row counter back to 482 and complete the left side.

SLEEVE: (Figure III). Make two. Cast on 109 sts. with white. Rows 1-26: Decrease 1 st. on each side after Rows 4 and 8 and increase 1 st. on each side after Rows 18 and 22. To make the hem, put the cast on sts. back on the machine and continue with green. Rows 27-56: Increase 1 st. on each side after Row 26 and again every 4th row 5 x and every other row 3 x. (127 sts.). Rows 57-68: **Underarm Shaping.** On each side of every other row bind off 6 sts. 1 x, 4 sts. 1 x, 3 sts. 2 x and 2 sts. 2 x. Rows 69-108: *On each side of every other row decrease 1 st. 3 x and bind off 2 sts. 1 x.* Repeat from * to * 4 x. Rows 109-114: On each side of every other row bind off 3 sts. 1 x, 4 sts. 1 x, 5 sts. 1 x, and the remaining 13 sts.

NECK EDGING: Cast on 167 sts. with white. Stockinette Stitch: 5 rows with Tension 7, 5 rows with Tension 6, 6 rows with Tension 5, 5 rows with Tension 6, and 5 rows with Tension 7. Then bind off all sts.

POCKET EDGING: (Make 2). Cast on 50 sts. with white. Work 34 rows Stockinette Stitch with Tension 7 and bind off all sts.

FINISHING: Follow directions for size 14/16.

WOMAN'S PULLOVER, No. DP 7401



SIZE: 12/14 and 16/18. **MATERIAL:** 12/14 17 oz. 16/18 19 oz. pale yellow. **FOR EXAMPLE:** KNITTING Regal. Bearbrand Deluxe sock and sport. Spinnerin Ambralon.

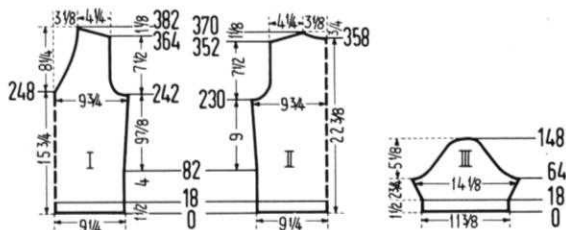
TENSION: KNITTING Pattern Stitch 7 or 8. Stockinette Stitch 5 or 6. **GAUGE:** Pattern Stitch 16 sts. 2", 32 rows 2"; Stockinette Stitch 16 sts. 2", 23 rows 2". The non-working-position sts. in the pattern stitch are counted in the gauge and in the

directions. **PATTERN:** Holding Position Design on purl side according to chart or use JAC 40, special card #326. The red lines shown on special card are needles which will be



placed in the out of work position for Knitting the pattern and these out of work needles must line up with the red lines at all times. Edging and Collar: Stockinette Stitch.

SIZE: 12/14. **BACK:** (Figure II). Cast on 149 sts. over every needle. Rows 1-18: Work in Stockinette Stitch with Tension 5 (6). Now put the 4th and 6th sts. on the 5th needle, the 11th and 13th sts. on the 12th needle, etc. The empty needles are put out of operation. Continue in Holding Position Design with Tension 7 (8). Rows 19-230: Increase 1 st. on each side after Row 82 and again every 30th row 4 x. (159 sts.) Rows 231-266: **Armhole Shaping.** Bind off 4 sts. beginning next 2 rows. then on each side of every 4th row bind off 4 sts. 1 x, 3 sts. 1 x, 2 sts. 2 x, decrease 1 st. 3 x; then decrease 1 st. on the 6th row 1 x. (121 sts.). Rows 267-352: Work even. Rows 353-370: **Shoulder and Neck Shaping.** On each shoulder side of every other row bind off 3 sts. 5 x and 4 sts. 5 x. **AT THE SAME TIME,** for the neck shaping, after Row 358 bind off the 15 center sts. Put the needles on the left into holding position. (Be sure to note the number of next pattern row either on JAC Pattern Card or chart) and complete the right side first. When cam box is on neck side (every other row) bind off 5 sts. 1 x, 4 sts. 1 x and 3 sts. 3 x. Put all needles into work row counter back to 358. Return JAC Pattern to correct row and complete the left side.



FRONT: (Figure I). Cast on 149 sts. over every needle. Rows 1-18: Work in Stockinette Stitch with Tension 5 (6). Now put the 4th and 6th sts. on the 5th needle, the 11th and 13th sts. on the 12th needle, etc. Put the empty needles out of operation. Continue in Holding Position Design with Tension 7 (8). Rows 19-242: Increase 1 st. on each side after Row 82 and again every 30th row 4 x. (159 sts.) Rows 243-248: **Armhole Shaping.** Bind off 4 sts. beginning next 2 rows. Knit 2 rows. Bind off 4 sts. beginning next 2 rows. Now bind off the 3 center sts. with a separate yarn, put needles on the left into holding position — Note number of next pattern row and complete the right side first. Rows 249-382: **Armhole, Neck, and Shoulder Shaping.** For the armhole shaping, bind off 3 sts. after Row 250; then on Arm side of every 4th row bind off 2 sts. 2 x, decrease 1 st. 3 x, then decrease 1 st. on the 6th row 1 x. **AT THE SAME TIME,** for the neck shaping, decrease 1 st. on Neck side after Row 252 and again every 4th row 11 x, every 6th row 9 x, and

every 8th row 3 x. After Row 364, for the shoulder shaping, on Shoulder side of every other row bind off 3 sts. 5 x and 4 sts. 5 x. Bring all needles into work, set Jac Pattern to proper row, row counter back to 248 and complete the left side.

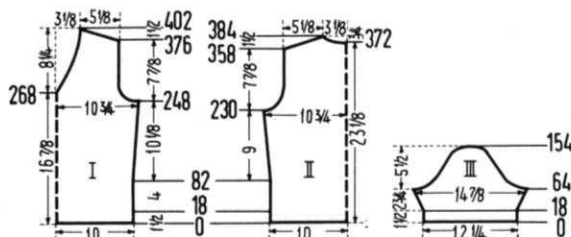
SLEEVE: (Figure III). Make two. Cast on 93 sts. over every needle. Rows 1-18: Work in Stockinette Stitch with Tension 5 (6). Now put the 4th and 6th sts. on the 5th needle, the 11th and 13th sts. on the 12th needle, etc. Put the empty needles out of operation and continue in Holding Position Design with Tension 7 (8). Rows 19-64: Increase 1 st. on each side after Row 20 and again every 4th row 10 x. (115 sts.). Rows 65-148: **Underarm Shaping.** On each side of every 4th row bind off 5 sts. 1 x, 4 sts. 2 x, 3 sts. 2 x, and 2 sts. 2 x; *then decrease 1 st. 1 x and bind off 2 sts. 2 x* and repeat from * to * 3 x; then bind off 3 sts. 1 x, 4 sts. 1 x, and the remaining 15 sts.

COLLAR: Cast on 177 sts. Work in Stockinette Stitch with Tension 5 (6). Rows 1-32: To make the point, increase 1 st. after Row 1 and again every other row 6 x; and decrease 1 st. after Row 19 and again every other row 6 x. When this is done bind off the first 97 sts. and take off on contrast yarn. The second section is worked with reverse shapings. If you are making the Pullover on a small machine you will have to work the collar in 3 sections. To do this, cast on 148 sts. for 2 pieces and make the points on these 2 sections. Then cast on 51 sts. for 3rd section and work 32 rows even.

FINISHING: Weave the front and back sections at side seams in back stitch, overlapping 1 st. from each section. Sew the shoulder seams. Sew the sleeve edges together and sew sleeves to sweater. Fold the bottom edging and the sleeve edging in half toward the outside, and hem. At the front collar edges unravel 80 of the cast on sts. and weave these sts. and the sts. on the contrast yarn together. Join the two collar sections together, fold around the pullover neckline and attach, leaving about 1 1/4" at the center front unattached.

SIZE: 16/18. **BACK:** (Figure II). Cast on 163 sts. over every needle. Rows 1-18: Work in Stockinette Stitch with Tension 5 (6). Now put the 4th and 6th sts. on the 5th needle, the 11th and 13th sts. on the 12th needles, etc. Put the empty needles out of operation and continue in Holding Position Design with Tension 7 (8). Rows 19-230: Increase 1 st. on each side after Row 82 and again every 20th row 6 x. (177 sts.). Rows 231-266: **Armhole Shaping.** Bind off 5 sts. beginning next 2 rows; then on each side of every 4th row bind off 4 sts. 1 x, 3 sts. 2 x, 2 sts. 2 x, decrease 1 st. 2 x; then decrease 1 st. on the 6th row 1 x. (133 sts.). Rows 267-358: Work even. Rows 359-384: **Shoulder and Neck Shaping.** On each shoulder side of every other row bind off 2 sts. 1 x and 3 sts. 13 x. **AT THE SAME TIME,** for the neck shaping, after Row 372 bind off the 15 center sts. with a separate yarn, put needles on the left into holding position. Make note of next row number on your Jac Pattern and complete the right side first. When Cam box is on neck side (every other row) bind off 5 sts. 1 x, 4 sts. 1 x, and 3 sts. 3 x. Bring all needles into work, set Jac Pattern to correct row. Put row counter back to 372 and complete the left side.

FRONT: (Figure I). Cast on 163 sts. over every needle. Rows 1-18: Work in Stockinette Stitch with Tension 5 (6). Now put the 4th and 6th sts. on the 5th needle, the 11th and 13th sts. on the 12th needle, etc. Put the empty needles

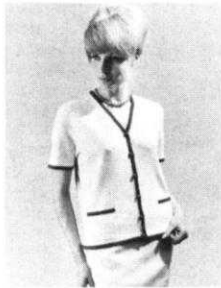


out of operation and continue in Holding Position Design with Tension 7 (8). Rows 19-248: Increase 1 st. on each side after Row 82 and again every 20th row 6 x. (177 sts.). Rows 249-268: **Armhole Shaping.** Bind off 5 sts. beginning next 2 rows, then on each side of every 4th row bind off 4 sts. 1 x, 3 sts. 2 x and 2 sts. 1 x. Now bind off the 3 center sts. with a separate yarn. Make note of next JAC Pattern row. Put needles on the left into holding position and complete the right side first. Rows 269-402: **Armhole, Neck, and Shoulder Shaping.** For the armhole shaping, bind off 2 sts. beginning next 2 rows; then on each side of every 4th row decrease 1 st. 2 x; then decrease 1 st. on the 6th row 1 x. **AT THE SAME TIME,** for the neck shaping, decrease 1 st. on neck side after Row 272, again every 4th row 11 x, every 6th row 9 x, and every 8th row 3 x; and after Row 376, for the shoulder shaping, on each side of every other row bind off 2 sts. 1 x and 3 sts. 13 x. Bring all needles into work, set Jac Pattern to correct row. Put row counter back to 268 and complete the left side.

SLEEVE: (Figure III). Make two. Cast on 100 sts. over every needle. Rows 1-18: Work in Stockinette Stitch with Tension 5 (6). Now put the 4th and 6th sts. on the 5th needle, the 11th and 13th sts. on the 12th needle, etc. Put the empty needles out of operation and continue in Holding Position Design with Tension 7 (8). Rows 19-64: Increase 1 st. on each side after Row 20 and again every 4th row 10 x. (122 sts.). Rows 65-154: **Underarm Shaping.** On each side of every 4th row bind off 5 sts. 1 x, 4 sts. 2 x, 3 sts. 2 x, and 2 sts. 2 x; *then on each side decrease 1 st. 1 x and bind off 2 sts. 2 x*. Repeat from * to * 3 x; then decrease 1 st. 1 x, 2 sts. 1 x, 3 sts. 1 x, 4 sts. 1 x, and bind off the remaining 16 sts.

COLLAR AND FINISHING: Follow directions for Size 12/14.

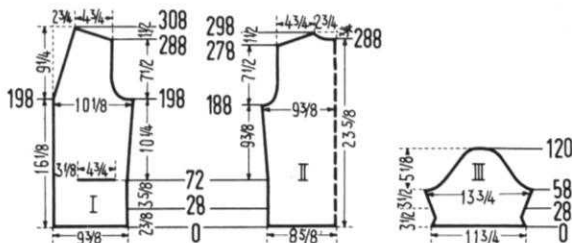
WOMAN'S BLOUSE, No. DP 7414



SIZES: 12/14 and 16/18. **MATERIAL:** Size 12/14 - 11 oz. white, 1 oz. red, and 1 oz. blue. Size 16/18 - 13 oz. white, 1 oz. red, and 1 oz. blue. **FOR EXAMPLE:** KNITKING Subita 2 x 3. Bearbrand Deluxe sock and sport. **TENSION:** KNITKING 4 or 5. **GAUGE:** 18 sts. 2", 24 rows 2". **PATTERN:** Stockinette Stitch.

SIZE: 12/14. BACK: (Figure II). Cast on 159 sts. with white. Rows 1-28: Work 8 rows white, 2 rows red, 8 rows blue, 2 rows red, and 8 rows white. To make the hem, put the

cast on sts. back on the machine and continue with white. Rows 29-188: Increase 1 st. on each side after Row 72 and again every 16th row 6 x. (173 sts.). Rows 189-212: **Armhole Shaping.** Bind off 4 sts. beginning next 2 rows; then on each



side of every other row bind off 3 sts. 1 x, 2 sts. 3 x, decrease 1 st. 3 x; then decrease 1 st. on every 4th row 2 x. (137 sts.). Rows 213-278: Work even. Rows 279-298: **Shoulder Shaping and Neck Shaping.** On each shoulder side of every other row bind off 3 sts. 1 x and 4 sts. 10 x. **AT THE SAME TIME,** for the neck shaping, after row 288 bind off the 21 center sts. with a separate yarn, put needles on the left into holding position and complete the right side first. When cam box is on neck side (every other row) bind off 6 sts. 1 x, 4 sts. 1 x, 3 sts. 1 x, and 2 sts. 1 x. Bring all needles into work, put the row counter back to 288 and complete the left side.

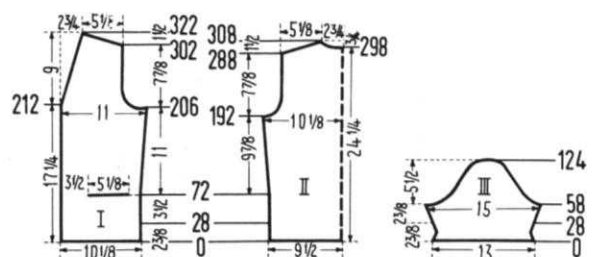
FRONT: (Figure I). Cast on 87 sts. with white. Rows 1-28: Work 8 rows white, 2 rows red, 8 rows blue, 2 rows red, and 8 rows white. To make the hem, put the cast on sts. back on the machine, and continue with white. Rows 29-72: Work even. Now make the pocket. To do this, on the left side put 29 needles in holding position and on the right side put 15 needles in holding position. Over the needles in working position work 2 rows red, 8 rows blue, and 2 rows red; then bind off these sts. For the pocket lining, over these same needles cast on 43 sts. and work 44 rows even. Then turn the row counter back to 72 and work on over all needles. Rows 73-198: Increase 1 st. on the right side after Row 72 and again every 16th row 6 x. (94 sts.). Rows 199-224: **Armhole and Front Shaping.** For the armhole shaping, bind off 6 sts.; then on every other row bind off 4 sts. 1 x, 3 sts. 2 x, 2 sts. 3 x, decrease 1 st. 2 x; then decrease 1 st. on every 4th row 2 x. **AT THE SAME TIME,** for the front shaping, decrease 1 st. after Row 198 and again every 4th row 6 x. To do this, put the 2nd st. on the 3rd needle and move the edge sts. over to fill the empty needle. Rows 225-308: **Front and Shoulder Shaping.** Fold the front shaping, decrease 1 st. after Row 226 and again every 4th row 17 x. **AT THE SAME TIME,** after Row 288, for the shoulder shaping, on every other row bind off 3 sts. 1 x and 4 sts. 10 x. Make the second front section with reverse shapings.

SLEEVE: (Figure III). Cast on 108 sts. with white. Rows 1-28: Work 8 rows white, 2 rows red, 8 rows blue, 2 rows red, and 8 rows white; decreasing 1 st. on each side after Rows 4, 8 and 12 and increasing 1 st. on each side after Rows 16, 20, and 24. To make the hem, put the cast on sts. back on the machine and continue with white. Rows 29-58: Increase 1 st. on each side after Row 28 and again every 4th row 4 x and every other row 4 x. (126 sts.). Rows 59-76: **Underarm Shaping.** On every other row on the back side of the sleeve bind off 4 sts. 1 x, 3 sts. 2 x, 2 sts. 4 x, decrease 1 st. 1 x, bind off 2 sts. 1 x; and on the front side bind off 6 sts. 1 x, 5 sts. 1 x, 4 sts. 1 x, 3 sts. 2 x, 2 sts. 2 x, decrease 1 st. 1 x and bind off 2 sts. 1 x. Rows 77-112: On each side of every other row decrease 1 st. 18 x. Rows 113-120: On each side of every other row bind off 2 sts. 1 x, 3 sts. 1 x, 4 sts. 1 x, 5 sts. 1 x, and the remaining 13 sts. Make another sleeve with reverse shapings.

EDGING: Cast on 197 sts. (Make 2) and 54 sts. (Make 1) with red. Work 2 rows red, 8 rows blue, and 2 rows red. Then bind off all sts.

FINISHING: Join the front and back sections at side and shoulder seams, easing in the fullness at the bustline of the front section. Sew sleeve edges together and sew sleeves to blouse. Fold the pocket edging in half toward the inside, hem, and fasten the sides of the edging to the blouse. Sew the pocket lining to the wrong side of the blouse. Sew the strips of edging together, fold the edging around the fronts and neck of the blouse and attach, making buttonholes on the right front up to the front shaping. Make 6 buttonholes in this manner: Sew up 1/2" from the bottom of the blouse and make the first buttonhole by leaving 1/2" of the edging unattached. The buttonholes are 2 1/4" apart, and each buttonhole is 1/2" long. Sew on buttons.

SIZE: 16/18. BACK: (Figure II). Cast on 173 sts. with white. Rows 1-28: Work 8 rows white, 2 rows red, 8 rows blue, 2 rows red, and 8 rows white. To make the hem, put the cast on sts. back on the machine and continue with white. Rows 29-192: Increase 1 st. on each side after Row 72 and again every 18th row 6 x. (187 sts.). Rows 193-218: **Armhole Shaping.** Bind off 4 sts. beginning next 2 rows, then on each side of every other row bind off 3 sts. 2 x, 2 sts.



3 x, decrease 1 st. 3 x; then decrease 1 st. every 4th row 2 x. (145 sts.) Rows 219-288: Work even. Rows 289-308: **Shoulder and Neck Shaping.** On each shoulder side of every other row bind off 4 sts. 8 x and 5 sts. 3 x. **AT THE SAME TIME,** for the neck shaping, after Row 298 bind off the 21 center sts. with a separate yarn. Put needles on the left into holding position and complete the right side first. When cam box is on neck side (every other row) bind off 6 sts. 1 x, 4 sts. 1 x, 3 sts. 1 x, and 2 sts. 1 x. Bring all needles into work. Put row counter back to 298 and complete the left side.

FRONT: (Figure I). Cast on 94 sts. with white. Rows 1-28: Work 8 rows white, 2 rows red, 8 rows blue, 2 rows red, and 8 rows white. To make the hem, put the cast on sts. back on the machine and continue with white. Rows 29-72: Work even. Now make the pocket. To do this, on the left side put 32 needles in holding position and on the right side put 15 needles in holding position. Over the needles in working position work 2 rows red, 8 rows blue, and 2 rows red. Then bind off all sts. For the pocket lining, cast on 47 sts. over these same needles and work 44 rows even. Then continue on over all the needles. Rows 73-206: On the **right side** increase 1 st. after Row 72 and again every 18th row 6 x. (101 sts.). Rows 207-234: **Armhole Shaping and Front Shaping.** For the armhole shaping bind off 8 sts. and then on every other row bind off 4 sts. 1 x, 3 sts. 2 x, 2 sts. 3 x, decrease 1 st. 3 x; then decrease 1 st. on every 4th row 2 x. **AT THE SAME TIME,** for the **front shaping,** decrease 1 st. after Row 212 and again every 4th row 5 x. To do this, put the 2nd st. on the 3rd needle and move the edge sts. over to fill the empty needle. Rows 235-322: **Front Shaping and Shoulder Shaping.** For the front shaping, decrease 1 st. after Row 236 and again every 4th row 18 x. **AT THE SAME TIME,** after Row 302, for the **shoulder shaping,** on every other row bind off 4 sts. 8 x and 5 sts. 3 x. Make the second front section with reverse shapings.

SLEEVE: (Figure III). Cast on 119 sts. with white. Rows 1-28: Work 8 rows white, 2 rows red, 8 rows blue, 2 rows red and 8 rows white; decreasing 1 st. **on each side** after Rows 4, 8, and 12 and increasing 1 st. **on each side** after Rows 16, 20, and 24. To make the hem, put the cast on sts. back on the machine and continue with white. Rows 29-58: Increase 1 st. **on each side** after Row 28 and again every 4th row 4 x and every other row 4 x. (137 sts.). Rows 59-72: **Underarm Shaping.** On every other row on the **back side** of the sleeve bind off 5 sts. 1 x, 4 sts. 1 x, 3 sts. 2 x, 2 sts. 3 x; on the **front side** bind off 8 sts. 1 x, 6 sts. 1 x, 4 sts. 1 x, 3 sts. 2 x and 2 sts. 2 x. Rows 73-114: **On each side** of every other row decrease 1 st. 21 x. Rows 115-124: **On each side** of every other row bind off 2 sts. 2 x, 3 sts. 1 x, 4 sts. 1 x, 5 sts. 1 x, and the remaining 14 sts. Make another sleeve with reverse shapings.

EDGINGS: Cast on 136 sts. (Make 2) and 197 sts. (Make 1), with red. Work 2 rows red, 8 rows blue, and 2 rows red. Bind off all sts.

FINISHING: Follow directions for size 12/14.

WOMAN'S BLOUSE, No. DP 7417



SIZE: 12/14. **MATERIAL:** 16 oz. blue and 2 oz. white. **FOR EXAMPLE:** KNITKING Starlite Crepe. Spinnerin Mona. **TENSION:** KNITKING 7 or 8. **GAUGE:** 15 sts. 2", 20 rows 2". **PATTERN:** Stockinette Stitch.

BACK: (Figure II). Cast on 66 sts. **over every other needle** with blue. Rows 1-12: With Tension 4, work 8 rows blue and 4 rows white. Now bring those needles that are between the needles in working position from the out of work position into working position and continue over 131

needles with Tension 7 (8). Rows 13-28: Work 6 rows white and 10 rows blue. To make the hem, put the cast on sts. back

DO YOU HAVE A...

REVERSING BAR?

- With it you can turn a hem in one movement instead of lifting stitches one at a time.
- You can reverse your knitting, so that the knit side faces you, easily and speedily.
- Available for all KNITKING machines with 197 needles. Order from your dealer or direct from

KNITKING

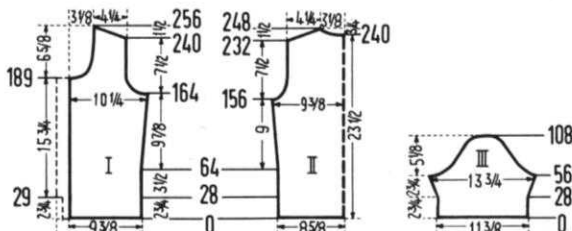
1128 Crenshaw Blvd., Los Angeles, Calif. 90019

Price \$16.95 (California residents add 4% tax)

Plus \$1.50 shipping cost.

on the machine and continue with blue. Rows 29-156: Increase 1 st. **on each side** after Row 64 and again every 16th row 5 x. (143 sts.). Rows 157-176: **Armhole Shaping.** Bind off 4 sts. beginning next 2 rows, then **on each side** of every other row bind off 3 sts. 1 x, 2 sts. 2 x, decrease 1 st. 2 x; then decrease 1 st. on every 4th row 2 x. (113 sts.). Rows 177-232: Work even. Rows 233-248: **Shoulder and Neck Shaping.** On each shoulder side of every other row bind off 3 sts. 3 x and 4 sts. 6 x. **AT THE SAME TIME,** for the neck shaping, after Row 240 bind off the 21 center sts. with a separate yarn, put the needles on the left into holding position and complete the right side first. When cam box is on neck side (every other row) bind off 6 sts. 1 x, 4 sts. 1 x, and 3 sts. 1 x. Bring all needles into work. Put row counter back to 240 and complete the left side.

FRONT: (Figure I). Cast on 36 sts. over every other needle with blue. Rows 1-12: Work 8 rows blue and 4 rows white with Tension 4. Now bring the empty needles between the needles in working position from the out of work position into working position and work on over 71 needles with Tension 7 (8). Rows 13-28: Work 6 rows white and 10 rows blue. Then make the hem by putting the cast on sts. back on the machine. Continue with blue. Rows 29-164: On the **right side** increase 1 st. after Row 64 and again every 16th row 5 x. (77 sts.). Rows 165-184: **Armhole Shaping.** Bind off 5 sts.; then on every other row bind off 4 sts. 1 x, 3 sts. 1 x, 2 sts. 2 x, decrease 1 st. 3 x; then decrease 1 st. on the 4th row 1 x. (57 sts.). Rows 185-189: Work even. Rows 190-256: **Neck and Shoulder Shaping.** For the neck shaping



bind off 6 sts.; then on every other row bind off 4 sts. 1 x, 3 sts. 1 x, 2 sts. 2 x, decrease 1 st. 2 x; then decrease 1 st. every 4th row 2 x and every 6th row 3 x. **AT THE SAME TIME**, after Row 240, for the **shoulder shaping**, on every other row bind off 3 sts. 3 x and 4 sts. 6 x. Make the second front section with reverse shapings; however, cast on 39 sts. instead of 36 sts. (over every other needle) and after Row 29, increase 6 sts. on the front edge. For the neck shaping, after Row 189 bind off 18 sts. instead of 6 sts.

SLEEVE: (Figure III). Cast on 46 sts. on every other needle with blue. Rows 1-12: With Tension 4 work 8 rows blue and 4 rows white. Now bring the empty needles between the needles in working position from the out of work position into working position and work on over 91 needles with Tension 7 (8). Rows 13-28: Work 6 rows white and 10 rows blue. Now make the hem by putting the cast on sts. back on the machine. Work on with blue. Rows 29-56: Increase 1 st. on each side after Row 28 and again every 4th row 6 x. (105 sts.). Rows 57-70: **Underarm Shaping.** On every other row on the **back side** of the sleeve bind off 4 sts. 1 x, 3 sts. 2 x, 2 sts. 3 x, decrease 1 st. 1 x; and on the **front side** bind off 6 sts. 1 x, 5 sts. 1 x, 3 sts. 2 x, and 2 sts. 3 x. Rows 71-100: **On each side** of every other row decrease 1 st. 15 x. Rows 101-108: **On each side** of every other row bind off 2 sts. 1 x, 3 sts. 2 x, 4 sts. 1 x, and the remaining 11 sts. Make another sleeve with reverse shapings.

NECK EDGING: Cast on 82 sts. over every other needle with white. Rows 1-8: Work with Tension 4. Now bring the empty needles between the needles in working position from the out of work position into working position and work on over 163 needles. Rows 9-14: Work with Tension 6. Rows 15-16: Work with blue and Tension 7. Then bind off all sts.

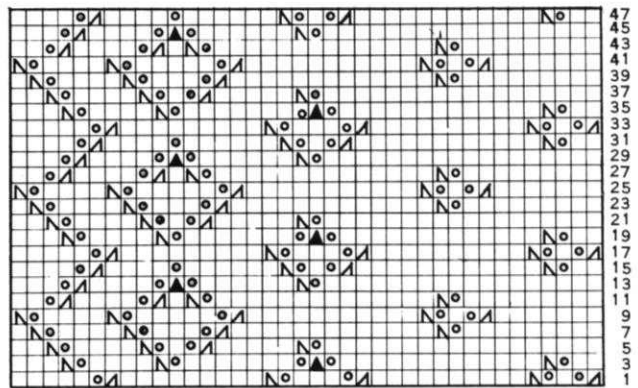
FINISHING: Join the front and back sections at side and shoulder seams, easing in the fullness at the bustline of the front section. Join sleeve edges and set in sleeves. Make a hem 6 sts. wide at the left front edge. Fold neck edging around blouse neckline and attach. Work a round cord over 5 sts. with Tension 2, till counter reads 368. (See Notes To Knit By on inside back cover — right Control Knob.) Weave the cord to the right front section, between the first and second sts., making 7 buttonholes. The first buttonhole is $\frac{1}{2}$ " from the bottom edge and each buttonhole is made by leaving $\frac{1}{2}$ " of the cord unattached from the front edge. The buttonholes are $\frac{2}{2}$ " apart. Sew on buttons.

WOMAN'S PULLOVER, No. DP 7411



SIZE: 14/16. **MATERIAL:** 12 oz. red. **FOR EXAMPLE:** KNITKING Sonika Dralon. Columbia Minerva feather weight Knitting Worsted. Spinnerin Ambralon. **TENSION:** KNITKING 7 or 8. **GAUGE:** 14 sts. 2", 20 rows 2". **PATTERN:** Stockinette Stitch with Eyelet Pattern design according to chart. Be sure to Read Notes To Knit By on the inside back cover (symbols) before knitting this pattern. **BACK:** (Figure II). Cast on 128 sts. Rows 1-24: Work even. To make the hem, put the cast on sts. back on the

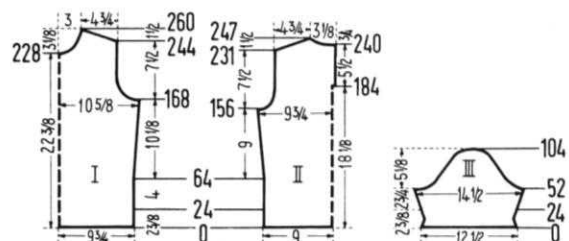
machine. Rows 25-156: Increase 1 st. on each side after Row 64 and again every 16th row 5 x. (140 sts.). Rows 157-176: **Armhole Shaping.** Bind off 4 sts. beginning next 2 rows; then on each side of every other row bind off 3 sts. 1 x, 2 sts. 2 x, decrease 1 st. 2 x; then decrease 1 st. on every 4th row 2 x. (110 sts.). Rows 177-183: Work even. Then on the right side put 55 needles in holding position and work the left section first. Rows 184-231: To make the facing for the back opening slit cast on 3 sts. on the right side. To do this, put 3 sts. from the right section on a double pointed needle. Rows 232-247: **Shoulder and Neck Shaping.** For the shoulder shaping, on every other row bind off 3 sts. 2 x and



4 sts. 7 x. **AT THE SAME TIME**, for the **neck shaping** bind off 11 sts. after Row 240; then on every other row bind off 6 sts. 1 x, 4 sts. 1 x, and 3 sts. 1 x. Now put the cam box on the right side and turn the Row Counter back to 183. Bring all needles into working position, put the sts. from the double pointed needle back on the machine, and work the right section.

FRONT: (Figure I). Cast on 140 sts. Rows 1-24: Work even. To make the hem, put the cast on sts. back on the machine. Rows 25-26: Work even. Now begin the eyelet pattern stitch. To do this, on each side put the 34th st. on the 33rd needle; the 36th st. on the 37th needle; the 49th st. on the 48th needle; the 53rd st. on the 54th needle; and the 65th st. on the 64th needle. The empty needles remain in working position. Rows 27-168: Increase 1 st. on each side after Row 64 and again every 16th row 5 x. (152 sts.). Rows 169-188: **Armhole Shaping.** Bind off 6 sts. beginning next 2 rows then on each side of every other row bind off 4 sts. 1 x, 3 sts. 1 x, 2 sts. 2 x, decrease 1 st. 3 x; then decrease 1 st. on the 4th row 1 x. (110 sts.). Rows 189-228: Work even. Rows 229-260: **Neck and Shoulder Shaping.** For the neck shaping, bind off the 12 center sts., with a separate yarn, put needles on the left into holding position and complete the right side first. When cam box is on neck side (every other row) bind off 3 sts. 2 x, 2 sts. 2 x, decrease 1 st. 3 x; then decrease 1 st. on every 4th row 2 x. **AT THE SAME TIME**, after Row 244, for the **shoulder shaping**, when cam box is on shoulder side (every other row) bind off 3 sts. 2 x and 4 sts. 7 x. Bring all needles into work. Put row counter back to 228 and complete the left side.

SLEEVE: (Figure III). Cast on 90 sts. Rows 1-24: Decrease 1 st. on each side after Row 2 and again every 4th row 2 x and increase 1 st. on each side after Row 14 and again every 4th row 2 x. To make the hem, put the cast on sts. back on the machine. Rows 25-52: Increase 1 st. on each side after Row 26 and again every 4th row 5 x and on the 2nd row 1 x. (104 sts.). Rows 53-66: **Underarm Shaping.** On every other row on the **back side** of the sleeve bind off 4 sts. 1 x, 3 sts. 2 x, 2 sts. 3 x, and decrease 1 st. 1 x; and on the **front side** of the sleeve bind off 6 sts. 1 x, 5 sts. 1 x, 3 sts. 2 x, and 2 sts. 3 x. Rows 67-96: **On each side** of every other row decrease 1 st. 15 x. Rows 97-104: **On each side** of every other row bind off 2 sts. 1 x, 3 sts. 2 x, 4 sts. 1 x and the remaining 10 sts. Make the second sleeve with reverse shapings.



NECK EDGING: Cast on 98 sts. Stockinette Stitch: 4 rows with Tension 7, 4 rows with Tension 6, and 4 rows with Tension 7. Bind off all sts.

FINISHING: Join the front and back sections at side and shoulder seams, easing in the fullness at the bustline of the front section. Sew sleeve edges together and sew sleeves to pullover. Make a hem 3 sts. wide around the back opening. Fold neck edging around the sweater neckline and attach. Sew in zipper.

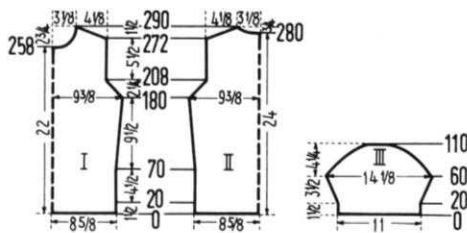
BEGINNERS PATTERN

WOMAN'S PULLOVER, No. 7413



SIZE: 10/12. **MATERIAL:** 5 oz. Blue, 4 oz. Turquoise and 3 oz. Yellow. **FOR EXAMPLE:** KNITKING Mutella. Spinnerin Nylaine Fingering. Bearbrand Deluxe Sock and Sport. **TENSION:** KNITKING 4 or 5. **GAUGE:** 17 sts. 2" 23 rows 2". **PATTERN:** Stockinette stitch, 10 rows blue, 20 rows yellow, 10 rows blue, and 20 rows turquoise. Finished Measurements: At Bustline 37½". Width of sleeve at Underarm 13⅞". Length from back of neck to bottom, 24".

BACK: (Figure II). Cast on 150 sts. with blue yarn. Knit till counter reads 20. Make a hem by hanging each cast on stitch back on the machine and be sure to place the stitches behind the latches. The pattern is a



repeat of 10 rows Blue, 20 rows Yellow, 10 rows Blue, 20 rows Turquoise. After hanging your hem, you will have your 10 rows of Blue, so change to Yellow yarn and continue stripe pattern.

Increase 1 st. **ON EACH SIDE** when counter reads 70, 86, 102, 118, 134, 150, 166. (164 sts. on machine). When counter reads 180 **SHAPE ARMHOLE:** *At beginning of next 2 rows bind off 2 sts. At beginning of next 4 rows decrease 1 st.* Repeat these 6 rows from * to * 3 times more. Bind off 2 sts. beginning next 2 rows. Decrease 1 st. beginning next 2 rows. Counter will read 208. Knit even in stripe pattern until counter reads 272.

SHAPE SHOULDER: Bind off 3 sts. beginning next 8 rows. Counter reads 280. With a separate yarn, bind off the center 26 sts. for neck, put all needles on the left side into holding position and complete the right side first. Continue to shape shoulder and neck when Cam Box is on shoulder or neck side (every other row) as listed in column.

	NECK SIDE	SHOULDER SIDE
Bind off when counter reads	281 (5 sts.)	280, 282, 284,
	283 (4 sts.)	286, 288, 290 (4 sts.)
	285 (3 sts.)	
	287 (2 sts.)	

Put row counter back to 280. Bring all needles into working position and complete the left side.

FRONT: (Figure I). Follow instructions for **BACK** up to Row 258. Now bind off the center 14 sts. for **NECK** using a separate yarn. Put needles on the left into holding position and complete the right side first.

Bind off on NECK SIDE when counter reads	259 (5 sts.)
	261 (4 sts.)
	263 (3 sts.)
	265 (2 sts.)

Decrease 1 st. on **NECK SIDE** when counter reads 267, 269, 271. Continue to decrease on **NECK SIDE** and bind off on **SHOULDER SIDE** as listed in column.

NECK SIDE	SHOULDER SIDE
275, 279, 283 (1 st.)	272, 274, 276, 278 (3 sts.)
	280, 282, 284, 286, 288, 290 (4 sts.)

Put the row counter back to 258. Bring all needles into working position and complete the left side.

SLEEVES: (Figure III). Make 2. Cast on 95 sts. with Blue. Knit even till counter reads 20. Make a hem as you did on front and back and continue in stripe pattern. Increase 1 st. **ON EACH SIDE** when counter reads 22, 26, 30, 34, then increase 1 st. **on each side** when counter reads 36 and at beginning of **EVERY ROW** 19 x more (123 sts.). Knit even till counter reads 60.

UNDERARM SHAPING: *Bind off 2 sts. beginning next 2 rows. Decrease 1 st. beginning next 4 rows*. Repeat these 6 rows from * to * 4 times more. Counter reads 90. Bind off 2 sts. beginning next 10 rows. Bind off 3 sts. beginning next 6 rows. Bind off 4 sts. beginning next 2 rows. Bind off 5 sts. beginning next 2 rows. Counter reads 110. Bind off remaining 27 sts.

COLLAR: Made in two sections. Cast on 110 sts. for 1 section and 85 sts. for the other. Work in K 1, P 1, ribbing. 10 rows tension 4 with Blue. 10 rows tension 4 with turquoise. 20 rows tension 3 with turquoise. 20 rows tension 4 with turquoise. Transfer the ribber sts. to main machine then bind off all sts.

FINISHING: Join shoulder seams with a back stitch. Set in sleeves. Weave the sides and sleeve seams matching stripes carefully. Sew the ends of collar together and sew the collar to sweater. Fold collar to the outside as illustrated.

WOMAN'S PULLOVER, No. DP 7412



SIZES: 12/14 and 16/18. **MATERIAL:** (Size 12/14) 11 oz. orange. (Size 16/18) 13 oz. Pink. **FOR EXAMPLE:** KNITKING Subita 2 x 3. Bearbrand Deluxe sock and sport. Coats and Clarks Super Fingering. **TENSION:** KNITKING Pattern Stitch 5 or 6; Stockinette Stitch 4 or 5. **GAUGE:** Pattern Stitch 17 sts. 2", 29 rows 2"; Stockinette Stitch 17 sts. 2", 24 rows 2". **PATTERN:** Diamond Pattern in Holding Position and Eyelet Design according to chart. Worn on pul side. Use JAC 40, Special card 325. Edging Stockinette Stitch.

SIZE: 12/14. **BACK:** (Figure II). Cast on 149 sts.; it is best to use the reversing bar with Tension 6. Rows 1-20: Work in Stockinette Stitch with Tension 4 (5). Then, to make the hem, put the cast on sts. back on the machine so that the sts. hang in front of the needle latches. Push right retractor button in toward back of machine. (Machines prior to KNITKING AM 3, pull up the right cam knob and work 2 rows without yarn. Then push retractor button toward front of machine (other models, push cam knob down). Turn the row counter back to 20. Now put the 4th, 6th, 14th, 16th, 24th, 26th, etc. needles into holding position and continue in Pattern Stitch with Tension 5 (6).

Rows 21-216: Increase 1 st. **on each side** after Row 84 and again every 18th row 6 x. (163 sts.). Rows 217-246: **Armhole Shaping.** Bind off 4 sts. **on each side;** then on every 4th row **on each side** bind off 3 sts. 2 x, 2 sts. 2 x, and decrease 1 st. 3 x. (129 sts.). Rows 247-269: Work even. Now on the **right side** put 65 needles in holding position and work the left section. Rows 270-327: To make the facing

THE JAC 40 IS A MUST

for fast easy knitting of
Jaquard and Ski-sweater
designs



Patterns are selected—row by row—through a pre-stamped card that is fed into the Jac.
There are over 140 cards available and illustrations of them are included with each Jac.

Jac 40's are made for most brands of machines (with the exception of Japanese machines). When ordering be sure to specify your brand of knitter as needle spacings vary. Simple to use and an essential tool for the modern knitter, Jac 40's are \$24.95 complete with 3 cards for practicing the 3 techniques, plus complete instructions.

Order from your dealer or direct from

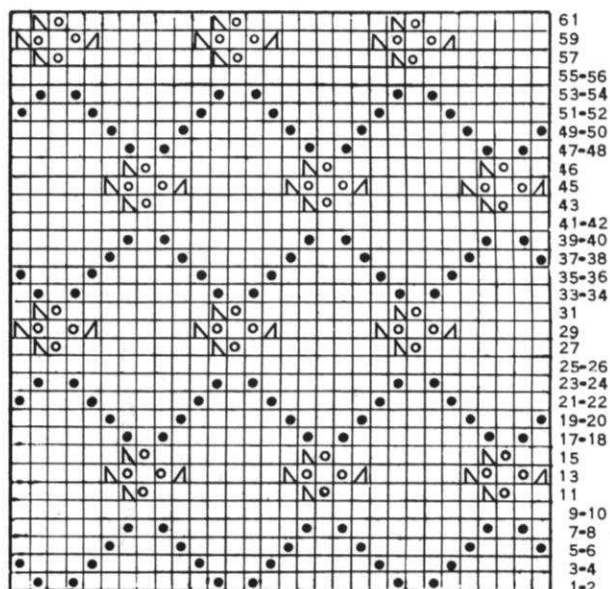
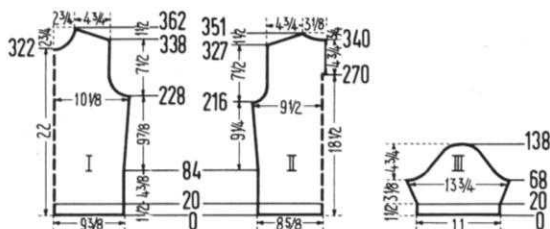
KNITTING

1128 Crenshaw Boulevard, Los Angeles, Calif. 90019

Shipping Cost \$1.50. California residents add 4% sales tax.

for the back opening slit, after Row 270 cast on 3 sts. on the right side. To do this put 3 sts. from the right section on a double pointed needle. Rows 328-351: **Shoulder Shaping and Neck Shaping.** On shoulder side of every other row bind off 3 sts. 12 x and 4 sts. 1 x. **AT THE SAME TIME**, for the neck shaping, bind off 10 sts. after Row 340; then on every other row bind off 5 sts. 2 x, 4 sts. 1 x, and 3 sts. 1 x. Now turn the row counter back to 269. Bring all needles into working position, put the sts. from the double pointed needle back on the machine, and work the right section.

FRONT: (Figure I). Cast on 163 sts. Rows 1-20: Work in Stockinette Stitch with Tension 4 (5). Now make the hem as you did for the back. Continue on in Pattern Stitch with Tension 5 (6), at first putting the 6th, 8th, 16th, 18th, 26th, 28th, etc. needles into holding position. Rows 21-228: Increase 1 st. on each side after Row 84 and again every 18th row 6 x. (177 sts.). Rows 229-262: **Armhole Shaping.** Bind off 6 sts. beginning next 2 rows, then on each side of every 4th row bind off 4 sts. 2 x. 3 sts. 1 x, 2 sts. 2 x and decrease 1 st. 3 x. (129 sts.). Rows 263-322: **Work even.** Rows 323-362: **Neck and Shoulder Shaping.** For the neck shaping, bind off the 13 center sts. with a separate yarn.



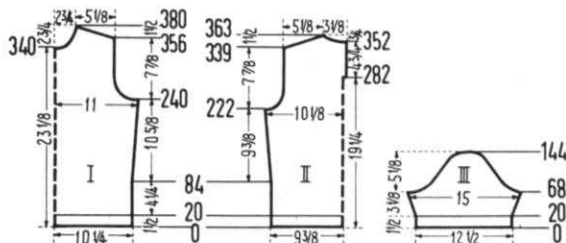
Put the needles on the left into holding position and complete the right side first. When cam box is on neck side on every 4th row bind off 5 sts. 1 x, 3 sts. 2 x, 2 sts. 2 x and decrease 1 st. 3 x. **AT THE SAME TIME**, after Row 338, for the shoulder shaping, on shoulder side of every other row bind off 3 sts. 12 x and 4 sts. 1 x. Bring all needles into work, put row counter back to 322 and complete the left side.

SLEEVE: (Figure III). Cast on 95 sts. Rows 1-20: Work in Stockinette Stitch with Tension 4 (5). Now make the hem as you did for the back. Continue in Pattern Stitch with Tension 5 (6), at first putting the 7th, 9th, 17th, 19th, etc. needles in holding position. Rows 21-68: Increase 1 st. on each side after Row 20 and again every 4th row 11 x. (119 sts.). Rows 69-88: **Underarm Shaping.** On every 4th row on the back side of the sleeve bind off 5 sts. 1 x, 4 sts. 1 x, 3 sts. 2 x, and 2 sts. 1 x and on the front side bind off 8 sts. 1 x, 6 sts. 1 x, 4 sts. 1 x, and 3 sts. 2 x. Rows 89-128: **On each side of every 4th row bind off 2 sts. 10 x.** Rows 129-138: **On each side of every 4th row bind off 3 sts. 1 x, 4 sts. 1 x, 5 sts. 1 x, and the remaining 14 sts.** Make another sleeve with reverse shapings.

NECK EDGING: Cast on 113 sts. Stockinette Stitch: 6 rows with Tension 4, 8 rows with Tension 3, and 6 rows with Tension 4. Bind off all sts.

FINISHING: Join the front and back sections at side and shoulder seams, easing in the fullness at the bustline of the front section. Join sleeve edges and set in sleeves. Make a hem 3 sts. wide around the back opening slit. Sew in zipper. Fold the neck edging around the sweater neckline and attach.

SIZE: 16/18. BACK: (Figure II). Cast on 163 sts.; it is best to use the reversing bar with Tension 6. Rows 1-20: Work in Stockinette Stitch with Tension 4 (5). Then, to make the hem, put the cast on sts. back on the machine so that the sts. hang in the front of the needle latches. Pull up



the right cam knob and work 2 rows without yarn. Then push the cam knob down and turn the row counter back to 20. Now put the 1st, 3rd, 11th, 13th, 21st, 23rd, etc. needles into holding position and continue in Pattern Stitch with Tension 5 (6). Rows **21-222**: Increase 1 st. on each side after Row 84 and again every 20th row 6 x. (177 sts.). Rows **223-256**: **Armhole Shaping**. Bind off 4 sts. beginning next 2 rows, then on each side of every 4th row bind off 3 sts. 3 x, 2 sts. 2 x, and decrease 1 st. 3 x. (137 sts.). Rows **257-281**: Work even. Now, on the right side put 69 needles in holding position and work the left section. Rows **282-339**: To make the facing for the back opening slit, after Row 282 cast on 3 sts. on the right side. To do this, put 3 sts. from the right section on a double pointed needle. Rows **340-363**: **Shoulder Shaping and Neck Shaping**. On shoulder side of every other row bind off 3 sts. 8 x and 4 sts. 5 x. **AT THE SAME TIME**, for the neck shaping, after Row 352 bind off 10 sts.; then on every other row bind off 5 sts. 2 x, 4 sts. 1 x, and 3 sts. 1 x. Turn the row counter back to 282. Bring all needles into working position, put the sts. from the double pointed needle back on the machine and complete the right section.

FRONT: (Figure I). Cast on 177 sts. Rows **1-20**: Work in Stockinette Stitch with Tension 4 (5). Now hang the hem as you did for the back. Continue in Pattern Stitch, at the beginning put the 3rd, 5th, 13th, 15th, 23rd, 25th, etc. needles in holding position. Rows **21-240**: Increase 1 st. on each side after Row 84 and again every 20th row 6 x. (191 sts.). Rows **241-274**: **Armhole Shaping**. Bind off 6 sts. beginning next 2 rows, then on each side of every 4th row

bind off 5 sts. 1 x, 4 sts. 1 x, 3 sts. 2 x, 2 sts. 2 x, and decrease 1 st. 2 x. (137 sts.). Rows **275-340**: Work even. Rows **341-380**: **Neck and Shoulder Shaping**. For the neck shaping, bind off the 13 center sts. with a separate yarn, put needles on the left into holding position and complete the right side first. When cam box is on neck side on every 4th row bind off 5 sts. 1 x, 3 sts. 2 x, 2 sts. 2 x, and decrease 1 st. 3 x. **AT THE SAME TIME**, after Row 356, for the shoulder shaping, on shoulder side of every other row bind off 3 sts. 8 x and 4 sts. 5 x. Bring all needles into work. Put row counter back to 380 and complete the left side.

SLEEVE: (Figure III). Cast on 109 sts. Rows **1-20**: Work in Stockinette Stitch with Tension 4 (5). Now make the hem as you did for the back. Continue in Pattern Stitch with Tension 5 (6), at the beginning putting the 4th, 6th, 14th, 16th, etc. needles in holding position. Rows **21-68**: Increase 1 st. on each side after Row 24 and again every 4th row 9 x. (129 sts.). Rows **69-88**: **Underarm Shaping**. On every 4th row on the back side of the sleeve bind off 5 sts. 1 x, 4 sts. 1 x, 3 sts. 3 x; and on the front side bind off 8 sts. 1 x, 6 sts. 1 x, 5 sts. 1 x, 4 sts. 1 x, and 3 sts. 1 x. Rows **89-132**: On each side of every 4th row bind off 2 sts. 11 x. Rows **133-144**: On each side of every 4th row bind off 3 sts. 1 x, 4 sts. 1 x, 6 sts. 1 x, and the remaining 15 sts. Make another sleeve with reverse shapings.

NECK EDGING: Cast on 113 sts. Stockinette Stitch: 6 rows with Tension 4, 8 rows with Tension 3, and 6 rows with Tension 4. Bind off all sts.

FINISHING: Follow directions for Size 12/14.

WOMAN'S PULLOVER, No. DP 7456

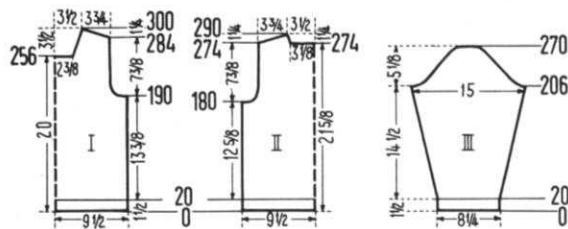


SIZE: 10/12. **MATERIAL**: 16 oz. blue. **FOR EXAMPLE**: KNITKING Subita 2 x 3. Columbia Minerva Fingering. **TENSION**: KNITKING 6 or 7. **GAUGE**: 16 sts. 2", 25 rows 2". **PATTERN**: Holding Position Design according to chart. Worn on purl side. Edging: K. 1, P. 1, Ribbing.

BACK: (Figure II). Cast on 153 sts. Rows **1-20**: K. 1, P. 1, Ribbing. Transfer the ribber sts. to main machine. Continue in Holding Position Design. Rows **21-180**: Work even. Rows **181-206**: **Armhole Shaping**. Bind off 5

sts. beginning next 2 rows, then on each side of every 4th row bind off 3 sts. 2 x, 2 sts. 2 x, and decrease 1 st. 2 x. (119 sts.). Rows **207-274**: Work even. Rows **275-290**: Shoulder and Neck Shaping. On each shoulder side of every other row bind off 3 sts. 5 x and 4 sts. 4 x. **AT THE SAME TIME**, for the neck shaping, after Row 274 bind off the 51 center sts. with a separate yarn, put needles on the left into holding position and complete the right side first. When cam box is on neck side decrease 1 st. after Row 278 and again every 4th row 2 x. Bring all needles into work. Put row counter back to 274 and complete the left side.

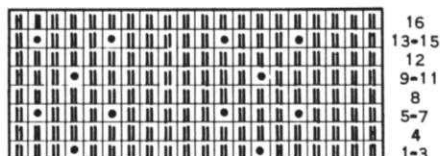
FRONT: (Figure I). Cast on 153 sts. Rows **1-20**: Work in K. 1, P. 1, Ribbing. Transfer the rib sts. to main machine. Continue in Holding Position Design. Rows **21-190**: Work even. Rows **191-216**: **Armhole Shaping**. Bind off 5 sts. beginning next 2 rows, then on each side of every 4th row bind off 3 sts. 2 x, 2 sts. 2 x, and decrease 1 st. 2 x. (119 sts.). Rows **217-256**: Work even. Rows **257-300**: **Neck and Shoulder Shaping**. For the neck shaping bind off the 39 center sts. with a separate yarn, put needles on the left side



into holding position and complete the right side first, when cam box is on neck side decrease 1 st. after Row 260 and again every 4th row 8 x. **AT THE SAME TIME**, after Row 284, for the shoulder shaping, when cam box is on shoulder side, (every other row) bind off 3 sts. 5 x and 4 sts. 4 x. Bring all needles into work. Put row counter back to 256 and complete the left side.

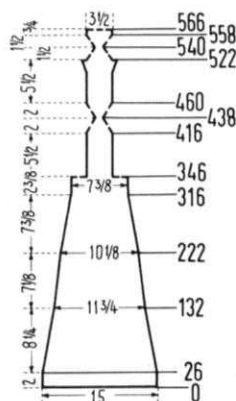
SLEEVE: (Figure III). Make two. Cast on 67 sts. Rows **1-20**: Work in K. 1, P. 1, Ribbing: Transfer the rib sts. to main machine. Continue in Holding Position Design. Rows **21-206**: Increase 1 st. on each side after Row 28 and again every 8th row 5 x and every 6th row 21 x. (121 sts.). Rows **207-220**: **Underarm Shaping**. On each side of every other row bind off 4 sts. 1 x, 3 sts. 2 x, and 2 sts. 4 x. Rows **221-260**: *On each side of every other row decrease 1 st. 3 x and bind off 2 sts. 1 x*. Repeat from * to * 4 x. Rows **261-270**: On each side of every other row bind off 2 sts. 2 x, 3 sts. 2 x, 4 sts. 1 x, and the remaining 7 sts.

NECK EDGING: Note: Be sure to transfer ribber sts. to main machine before doing any decreasing. You must also increase on main machine first then transfer proper st. or sts. to ribber. **Front section**. (Make 3 pieces). Cast on 59 sts. Rows **1-20**: Work in K. 1, P. 1, Ribbing, decreasing 2 sts. on each side after Row 2 and again every 4th row 4 x. To do this, put the 5th st. and then the 6th st. on the 7th needle and move the edge sts. over to fill the empty needles. Rows **21-42**: Increase 1 st. on each side after Row 22 and again every other row 9 x. Bind off all sts. The other sections are made the same; however, for the back section cast on 79 sts.



WOMAN'S STOCKINGS, No. DV 7457

SIZES: 10. **MATERIAL:** 9 oz. blue. **FOR EXAMPLE:** KNITTING Subita 2 x 3. **TENSION:** KNITTING Pattern Stitch 6 or 7. Stockinette Stitch 4 or 5. **GAUGE:** Pattern Stitch 16 sts. 2", 25 rows 2"; Stockinette Stitch 17 sts. 2", 22 rows 2". **PATTERN:** Holding Position Design on purl side according to chart DP 7456. Toe, Sole, and Heel: Stockinette Stitch. Edging: K. 1, P. 1, Ribbing. Note: Before Knitting this pattern be sure to read Notes To Knit By — on inside back cover — short rows. Make two identical stockings. Cast on 121 sts. Work with



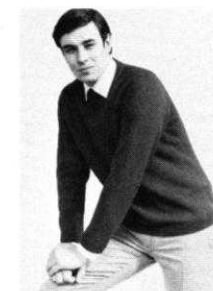
to put row counter back to 346. Rows 347-416: Foot. Work even. Knit several rows of contrast yarn and remove from machine.

Turn the Knitting over and replace the sts. on to machine, increasing 3 sts. spaced evenly across the Knitting by picking up a st. from the row below. Continue in Stockinette Stitch with Tension 4 (5). Rows 417-438: Toe. On each side, put 1 needle in holding position 10 x and 2 needles in holding position 1 x. Rows 439-460: In the same order bring these same needles back into working position. Rows 461-522: Increase 1 st. on each side after Row 506 and again every 4th row 3 x. Rows 523-540: Heel. On each side, put 5 needles at a time in holding position 1 x, 1 needle in holding position 6 x, and 2 needles in holding position 2 x. Rows 541-558: On each side, bring 2 needles at a time into working position 2 x and 1 needle into working position 7 x. Rows 559-566: On the left side put the 4th st. on the 5th needle, (move the sts. over to fill empty needles) and work 1 row. On the right side put the 4th st. on the 5th needle (move the sts. over as before) and work one row. Now, on each side, put 1 st. on the same needle 3 x, always moving the edge sts. over to fill the empty needle. When finished, knit several rows of contrast yarn and remove from machine.

FINISHING: Weave the back seam of the stocking. Weave the sts. held on contrast yarn and remove contrast. Sew the side seams of the foot section.

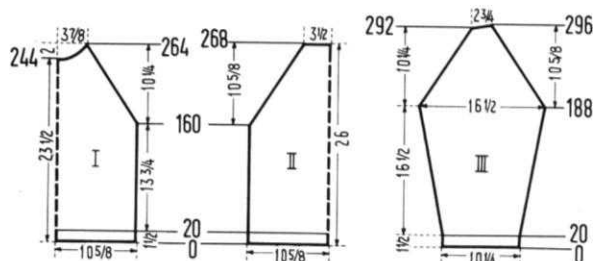
WE HAVE SOME FABULOUS "SPECIALS" FOR SUBSCRIBERS IN THE U.S.A. IN THE KNITTING NEWSLETTER AT THE BACK OF THIS ISSUE . . . BE SURE TO TAKE ADVANTAGE OF THEM.

MAN'S PULLOVER, No. HP 3455



SIZES: 40/42 and 46/48. **MATERIAL:** (Size 40/42) 24 oz. blue. (Size 46/48) 27 oz. blue. **FOR EXAMPLE:** KNITTING Regal. Columbia Minerva Shetland. **TENSION:** KNITTING 7 or 8. **GAUGE:** Stockinette Stitch 15 sts. 2", 20 rows 2"; K. 1, P. 1, Ribbing 15 sts. 2", 24 rows 2". **PATTERN:** Stockinette Stitch. Edging: K. 1, P. 1, Ribbing.

SIZE: 40/42. **BACK:** (Figure II). Cast on 163 sts. Rows 1-20: Work in K. 1, P. 1, Ribbing. Transfer ribber sts. to main machine. Continue in Stockinette st. Rows 21-160: Work even. Rows 161-268: Raglan Shaping. On each side of every 4th row decrease 2 sts. 27 x. To do this, put the 3rd and 4th sts. on the 5th and 6th needles and move the edge sts. over to fill the empty needles. Bind off 55 sts.



FRONT: (Figure I). The front is worked the same as the back to Row 264; however, for the neck shaping, after Row 244 bind off the 15 center sts. with a separate yarn. Put all needles on the left into holding position and complete the right side first. When cam box is on neck side (every other row) bind off 4 sts. 2 x, 3 sts. 1 x, 2 sts. 2 x, and decrease 1 st. 4 x. Then hang the 3 remaining sts. together by putting the 2 outside sts. on the center needle and binding off. Bring all needles into working position. Put row counter back to 244 and complete the left side.

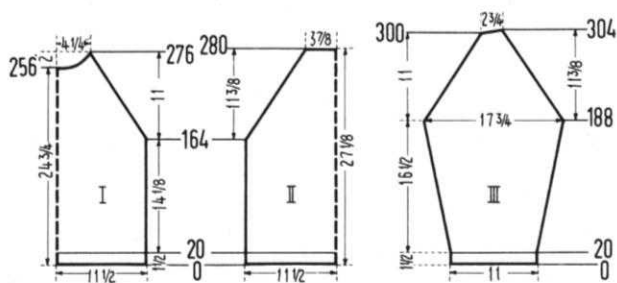
SLEEVE: (Figure III). Cast on 77 sts. Rows 1-20: Work in K. 1, P. 1, Ribbing. Transfer the ribber sts. to main machine. Continue in Stockinette Stitch. Rows 21-188: Increase 1 st. on each side after Row 20 and again every 8th row 6 x and every 6th row 18 x. (127 sts.). Rows 189-292: Raglan Shaping. On each side of every 4th row decrease 2 sts. 26 x. To do this, put the 3rd and 4th sts. on the 5th and 6th needles, and move the edge sts. over to fill the empty needles. Rows 293-296: On the left side, put 7 needles in holding position 2 x. AT THE SAME TIME, on the right side decrease 2 sts. after Row 292. Bind off 21 sts. Make another sleeve with reverse shapings.

NECK EDGING: Cast on 163 sts. Work K. 1, P. 1, Ribbing: 8 rows with Tension 8, 8 rows with Tension 7, and 8 rows with Tension 8. Then bind off all sts.

FINISHING: Join the front and back sections at side seams. Sew sleeve edges together, and weave sleeves to front and back sections 1 st. in on each section. Sew the ends of the neck edging together so that the edging is circular, fold the edging around the sweater neckline, and attach.

SIZE: 46/48. **BACK:** (Figure II). Cast on 177 sts. Rows 1-20: Work in K. 1, P. 1, Ribbing. Transfer the ribber sts. to main machine. Continue in Stockinette Stitch. Rows 21-164: Work even. Rows 165-280: Raglan Shaping. On each side of every 4th row decrease 2 sts. 29 x. To do this, put the 3rd and 4th sts. on the 5th and 6th needles and move the edge sts. over to fill the empty needles. Bind off 61 sts.

FRONT: (Figure I). The front is worked the same as the back to Row 276; however, for the neck shaping, after Row 256 bind off the 15 center sts. with a separate yarn. Put needles on the left into holding position and complete the



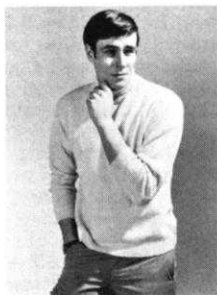
right side first. When cam box is on neck side (every other row) bind off 4 sts. 2 x, 3 sts. 2 x, 2 sts. 3 x, and decrease 1 st. 2 x. **On each side** hang the 3 remaining sts. together by putting the 2 outside sts. on the center needle, and binding off. Bring all needles into working position. Put row counter back to 256 and complete the left side.

SLEEVE: (Figure III). Cast on 83 sts. Rows 1-20: Work in K. 1, P. 1, Ribbing. Transfer ribber sts. to main machine. Continue in Stockinette stitch. Rows 21-188: Increase 1 st. **on each side** after Row 26 and again every 6th row 25 x. (135 sts.). Rows 189-300: **Raglan Shaping. On each side** of every 4th row decrease 2 sts. 28 x. To do this, put the 3rd and 4th sts. on the 5th and 6th needles and move the edge sts. over to fill the empty needles. Rows 301-304: **On the left side**, put 7 needles in holding position 2 x. **AT THE SAME TIME**, on the right side decrease 2 sts. after Row 300. Bind off 21 sts. Make another sleeve with reverse shapings.

NECK EDGING: Cast on 175 sts. Work K. 1, P. 1, Ribbing: 8 rows with Tension 8, 8 rows with Tension 7, and 8 rows with Tension 8. Bind off all sts.

FINISHING: Follow directions for size 40/42.

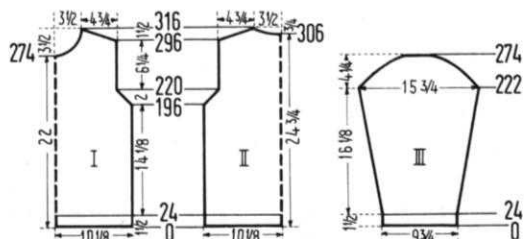
MAN'S PULLOVER, No. HP 3456



SIZE: 40/42. **MATERIAL:** 10 1/2 oz. light blue. **FOR EXAMPLE:** KNITKING Fine Dralon. Fine 2 ply yarn. **TENSION:** KNITKING Stockinette St. 3 or 4; K. 1, P. 1, Ribbing 1 or 2. **GAUGE:** Stockinette Stitch 19 sts. 2", 24 rows 2"; K. 1, P. 1, Ribbing 19 sts. 2", 30 rows 2". **PATTERN:** Stockinette Stitch; Edging and Collar: K. 1, P. 1, Ribbing.

BACK: (Figure II). Cast on 195 sts. Rows 1-24: Work in K. 1, P. 1, Ribbing with Tension 1 (2). Transfer ribber sts. to main machine. Now in-

crease 1 st. on each side and continue in Stockinette Stitch with Tension 3 (4). Rows 25-196: Work even. Rows 197-220: **Armhole Shaping.** *On each side of every other row decrease 1 st. 1 x and bind off 2 sts. 1 x*. Repeat from * to * 5 x. (161 sts.). Rows 221-296: Work even. Rows 297-316: **Shoulder and Neck Shaping.** On each shoulder side of every other row bind off 4 sts. 9 x and 5 sts. 2 x. **AT THE SAME TIME**, for the neck shaping, after Row 306 bind off the 19 center sts. with a separate yarn. Put needles on the left into holding position and complete the right side first. When Cam box is on neck side (every other row) bind off 8 sts.



1 x, 7 sts. 1 x, 6 sts. 1 x, and 4 sts. 1 x. Bring all needles into working position. Put row counter back to 306 and complete the left side.

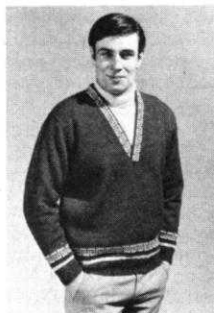
FRONT: (Figure I). The front is worked the same as the back; however, for the neck shaping after Row 274 bind off the 15 center sts. with a separate yarn. Put needles on left into holding position and complete the right side first. When cam box is on neck side (every other row) bind off 5 sts. 1 x, 4 sts. 2 x, 3 sts. 1 x, 2 sts. 2 x decrease 1 st. 4 x; then decrease 1 st. on every 4th row 3 x. Bring all needles into working Position. Put row counter back to 274 and complete the left side.

SLEEVE: (Figure III). Make two. Cast on 95 sts. Rows 1-24: Work in K. 1, P. 1, Ribbing with Tension 1 (2). Transfer ribber sts. to main machine. Continue in Stockinette Stitch with Tension 3 (4). Rows 25-222: Increase 1 st. **on each side** after row 30 and again every 8th row 9 x and every 6th row 18 x. (151 sts.). Rows 223-274: **Underarm Shaping.** *On each side of every other row decrease 1 st. 1 x and bind off 2 sts. 1 x*. Repeat from * to * 5 x; then bind off 2 sts. 5 x, 3 sts. 4 x, 4 sts. 5 x, and the remaining 31 sts.

COLLAR: Cast on 195 sts. Work 66 rows K. 1, P. 1, Ribbing and bind off all sts.

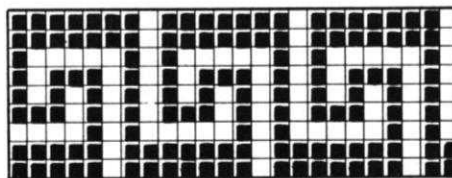
FINISHING: Join the front and back sections at side and shoulder seams. Join sleeve edges and set in sleeves. Sew the ends of the collar together so that the collar is circular, sew the collar to the sweater, and fold the collar to the outside.

MAN'S PULLOVER, No. HP 3454



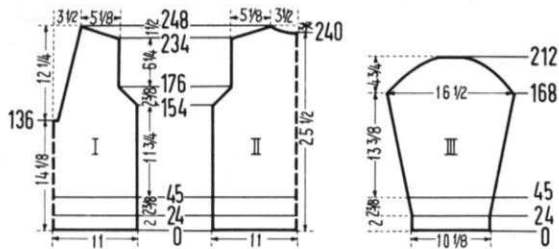
SIZE: 40/42. **MATERIAL:** 24 oz. charcoal, 4 oz. light blue. **FOR EXAMPLE:** KNITKING Starlite Crepe. Spinnerin Mona. Brunswick Fairhaven. **TENSION:** KNITKING 8 or 9. **GAUGE:** Stockinette Stitch 14 sts. 2", 18 rows 2"; K. 1, P. 1, Ribbing 14 sts. 2", 24 rows 2". **PATTERN:** Stockinette Stitch and Norwegian Pattern Stitch according to chart. Every row with the Norwegian Pattern Stitch is counted singly in the directions; however, for each row several motions of the cam box are required. Edging: K. 1, P. 1, Ribbing.

BACK: (Figure II). Cast on 157 sts. Rows 1-24: Work in K. 1, P. 1, Ribbing. Transfer ribber sts. to main machine. Rows 25-154: Work even: 2 rows Stockinette Stitch with



charcoal, 4 rows with blue, 6 rows with charcoal, and 9 rows Norwegian Pattern Stitch; then continue in Stockinette Stitch with charcoal. Rows 155-176: **Armhole Shaping.** Bind off 2 sts. beginning next 2 rows; then **on each side** of every other row decrease 1 st. 1 x and bind off 2 sts. 1 x; then repeat these last 2 decreases 4 x. (123 sts.). Rows 177-234: Work even. Rows 235-248: **Shoulder Shaping and Neck Shaping.** On each shoulder side of every other row bind off 4 sts. 4 x and 5 sts. 4 x. **AT THE SAME TIME**, for the neck shaping, after Row 240 bind off the 21 center sts., with a separate yarn, put needles on the left into holding position and complete the right side first. When cam box is on neck side (every other row) bind off 6 sts. 1 x, 5 sts. 1 x, and 4 sts. 1 x. Bring all needles into working position. Put row counter back to 240 and complete the left side.

FRONT: (Figure I). The front is worked the same as the back; however, for the neck shaping, after Row 136 bind off the 9 center sts., and continue working in two sections



as you did on back. Then, on neck side decrease 1 st. after Row 140 and again every 5th row 20 x. To do this, put the 4th st. on the 3rd needle, and move the edge sts. over to fill the empty needle. Bring all needles into working position. Put row counter back to 136 and complete the left section.

SLEEVE: (Figure III). Make two. Cast on 73 sts. with charcoal. Rows 1-24: Work in K. 1, P. 1, Ribbing. Transfer ribber sts. to main machine. Rows 25-168: Work the pattern stripe, as for the back; then continue in Stockinette Stitch, increasing 1 st. on each side after Row 30 and again every 6th row 21 x. (117 sts.). Rows 169-212: **Underarm Shaping.** *On each side of every other row bind off 2 sts. 1 x and decrease 1 st. 1 x*. Repeat from * to * 4 x; then bind off 2 sts. 6 x, 3 sts. 4 x, 4 sts. 2 x, and the remaining 23 sts.

NECK EDGING: (Make 2). Cast on 106 sts. with charcoal. Work 2 rows charcoal, 9 rows Norwegian Pattern Stitch, and 15 rows charcoal. Bind off all sts.

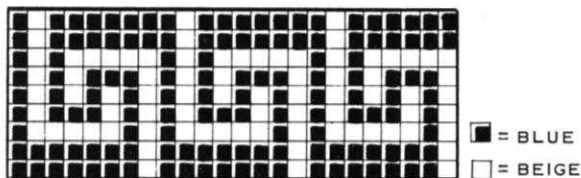
FINISHING: Join the front and back sections at side and shoulder seams. Sew the sleeve edges together and sew the sleeves to the sweater. Join the 2 sections of neck edging at the center back, 1 st. in on each section. Fold the neck edging around the sweater neckline and attach.

WOMAN'S PULLOVER, No. DP 7415



SIZES: 14/16 and 18/20. **MATERIAL:** (Sizes 14/16) 14 oz. beige and 3 1/2 oz. light blue. (Size 18/20) 17 oz. beige and 3 1/2 oz. blue. **FOR EXAMPLE: KNITTING** Subita 2 x 4. Spinnarin Ambralon. Coats and Clark Nylon and Wool Sport. **TENSION:** KNITTING 7 or 8. **GAUGE:** 15 sts. 2", 21 rows 2". **PATTERN:** Stockinette Stitch and Norwegian Pattern Stitch according to chart. Every row with the Norwegian Pattern Stitch is counted singly in the directions; however, for each row several motions of the cam box are required.

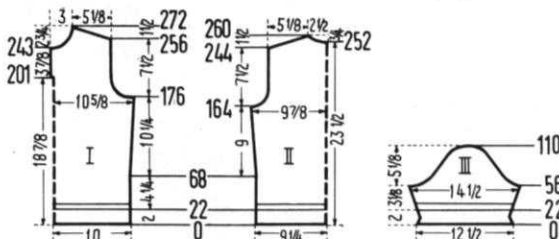
SIZE: 14/16. BACK: (Figure II). Cast on 140 sts. with beige. Rows 1-22: Work in Stockinette Stitch: 6 rows beige, 10 rows blue, and 6 rows beige. Rows 23-31: Work the Nor-



wegian Pattern Stitch. Continue in Stockinette Stitch with beige. Rows 32-164: Increase 1 st. on each side after Row 68 and again every 18th row 4 x. (150 sts.). Rows 165-188: **Armhole Shaping.** Bind off 3 sts. beginning next 2 rows; then on each side of every other row bind off 3 sts. 1 x, 2 sts. 3 x, decrease 1 st. 3 x; then decrease 1 st. on every 4th row 2 x. (116 sts.). Rows 189-244: Work even. Rows 245-260: **Shoulder and Neck Shaping.** On each shoulder side of every other row bind off 4 sts. 6 x and 5 sts. 3 x. **AT THE SAME TIME,** for the neck shaping, after Row 252 bind off the 18 center sts., with a separate yarn, put needles on the left

into holding position and complete the right side first. When cam box is on neck side (every other row) bind off 5 sts. 1 x, 3 sts. 1 x, and 2 sts. 1 x. Bring all needles into working position. Put row counter back to 252 and complete the left side.

FRONT: (Figure I). Cast on 152 sts. with beige. Rows 1-22: Work in Stockinette Stitch: 6 rows beige, 10 rows blue, and 6 rows beige. Rows 23-31: Work the Norwegian Pattern Stitch beginning with the 3rd square of the chart. Continue in Stockinette Stitch with beige. Rows 32-176: Increase 1 st. on each side after Row 68 and again every 18th row 4 x. (162 sts.). Rows 177-200: **Armhole Shaping.** Bind off 6 sts. beginning next 2 rows. Then, on each side of every other row bind off 4 sts. 1 x, 3 sts. 2 x, 2 sts. 1 x, decrease 1 st. 3 x; then decrease 1 st. on every 4th row 2 x. (116 sts.). Now on the left side put 58 needles in holding position and

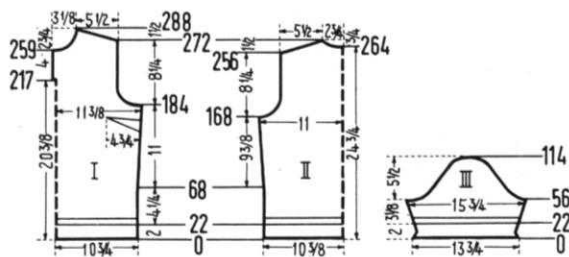


work the right section. Rows 201-243: To make the facing for the back opening slit, cast on 3 sts. after Row 201. To do this, put 3 sts. from the left section on a double pointed needle. Rows 244-272: **Neck and Shoulder Shaping.** For the neck shaping, bind off 9 sts.; then on every other row bind off 4 sts. 1 x, 3 sts. 1 x, 2 sts. 1 x, decrease 1 st. 1 x; then decrease 1 st. every 4th row 2 x and on the 6th row 1 x. **AT THE SAME TIME,** after Row 256, for the shoulder shaping, on every other row bind off 4 sts. 6 x and 5 sts. 3 x. Now put the cam box on the left side and turn the row counter back to 200. Bring all needles into working position, put the sts. from the double pointed needle back on the machine and work the left section.

SLEEVE: (Figure III). Cast on 95 sts. with beige. Rows 1-22: Work in Stockinette Stitch: 6 rows beige, 10 rows blue, and 6 rows beige: decreasing 1 st. on each side after Rows 4 and 8 and increasing 1 st. on each side after Rows 14 and 18. Rows 23-31: Work the Norwegian Pattern Stitch, increasing 1 st. on each side after Row 22 and again every 4th row 2 x. Continue in Stockinette Stitch. Rows 32-56: Increase 1 st. on each side after Row 34 and again every 4th 4 x. (111 sts.). Rows 57-72: **Underarm Shaping.** On every other row, on the back side of the sleeve, bind off 4 sts. 1 x, 3 sts. 2 x, 2 sts. 4 x, decrease 1 st. 1 x; and on the front side of the sleeve bind off 7 sts. 1 x, 4 sts. 1 x, 3 sts. 2 x, and 2 sts. 4 x. Rows 73-102: On each side of every other row decrease 1 st. 15 x. Rows 103-110: On each side of every other row bind off 2 sts. 2 x, 3 sts. 1 x, 5 sts. 1 x, and the remaining 13 sts. Make another sleeve with reverse shapings.

COLLAR: Cast on 115 sts. with beige. Work with Tension 6. Rows 1-41: Work even, working with Tension 7 after Row 12, and working the 28th-37th rows with blue. Rows 42-50: Work the Norwegian Pattern Stitch. Rows 51-64: Work in Stockinette Stitch with beige, working with Tension 6 after Row 52. Rows 65-76: On each side put 7 needles at a time in holding position 3 x and 6 needles in holding position 3 x. Rows 77-78: On the left side bring all needles into working position and work 1 row. On the right side bring all needles into working position and work 1 row. Bind off all sts.

FINISHING: Join the front and back sections at side and shoulder seams, easing in the fullness at the bustline of the front section. Sew sleeve edges together and sew sleeves to sweater. Fold the collar in half lengthwise and sew the two side edges together. Place the open edge of the collar around the sweater neckline and attach. Make a hem 11 rows wide at the bottom of the sweater and at the bottom of the sleeve. Fold over the 3 sts. at neck opening. Sew a loop to one side of the neck opening and a button to the other.



SIZE: 18/20. **BACK:** (Figure II). Cast on 158 sts. with beige. Rows 1-22: Work in Stockinette Stitch: 6 rows beige, 10 rows blue, and 6 rows beige. Rows 23-31: Work the Norwegian Pattern Stitch. Continue in Stockinette Stitch with beige. Rows 32-168: Increase 1 st. on each side after Row 68 and again every 20th row 4 x. (168 sts.). Rows 169-194: **Armhole Shaping.** Bind off 4 sts. beginning next 2 rows, then on each side of every other row bind off 3 sts. 2 x, 2 sts. 3 x, decrease 1 st. 3 x; then decrease 1 st. on every 4th row 2 x. (126 sts.). Rows 195-256: Work even. Rows 257-272: **Shoulder and Neck Shaping.** On each shoulder side of every other row bind off 4 sts. 3 x and 5 sts. 6 x. **AT THE SAME TIME,** for the neck shaping, after Row 264 bind off the 22 center sts., with a separate yarn. Put needles on the left into holding position and complete the right side first. When cam box is on neck side (every other row) bind off 5 sts. 1 x, 3 sts. 1 x and 2 sts. 1 x. Bring all needles into work. Put row counter back to 264 and complete the left side.

FRONT: (Figure I). Cast on 164 sts. with beige. Rows 1-22: Work in Stockinette Stitch: 6 rows beige, 10 rows blue, and 6 rows beige. Rows 23-31: Work the Norwegian Pattern Stitch. Continue in Stockinette Stitch with beige. Rows 32-184: Increase 1 st. on each side after Row 68 and again every 20th row 4 x. (174 sts.). Rows 185-210: **Armhole Shaping.** Bind off 6 sts. beginning next 2 rows, then on each side

of every other row bind off 4 sts. 1 x, 3 sts. 1 x, 2 sts. 3 x, decrease 1 st. 3 x; then decrease 1 st. on every 4th row 2 x. (126 sts.). Rows 211-216: Work even. Now, on the left side put 63 needles in holding position and work the right section. Rows 217-259: To make the facing for the opening slit, cast on 3 sts. after Row 217. To do this, put 3 sts. from the left section on a double pointed needle. Rows 260-288: Neck and Shoulder Shaping. For the neck shaping, bind off 11 sts.; then on every other row bind off 4 sts. 1 x, 3 sts. 1 x, 2 sts. 1 x, decrease 1 st. 1 x; then decrease 1 st. on every 4th row 2 x and on the 6th row 1 x. **AT THE SAME TIME,** after Row 272, for the shoulder shaping, on every other row bind off 4 sts. 3 x and 5 sts. 6 x. Now put the cam box on the left side and turn the row counter back to 216. Bring all needles into working position, put the sts. from the double pointed needle back on the machine, and work the left section.

SLEEVE: (Figure III). Cast on 104 sts. with beige. Rows 1-22: Work in Stockinette Stitch: 6 rows beige, 10 rows blue, and 6 rows beige, decreasing 1 st. on each side after Rows 4 and 8 and increasing 1 st. on each side after rows 14 and 18. Rows 23-31: Work the Norwegian Pattern Stitch, increasing 1 st. on each side after Row 22 and again every 4th row 2 x. Continue in Stockinette Stitch with beige. Rows 32-56: Increase 1 st. on each side after Row 34 and again every 4th row 4 x. (120 sts.). Rows 57-72: **Underarm Shaping.** On every other row on the back side of the sleeve bind off 4 sts. 2 x, 3 sts. 2 x, 2 sts. 4 x; and on the front side of the sleeve bind off 7 sts. 1 x, 4 sts. 1 x, 3 sts. 2 x, and 2 sts. 4 x. Rows 73-106: On each side of every other row decrease 1 st. 17 x. Rows 107-114: On each side of every other row bind off 2 sts. 1 x, 3 sts. 2 x, 5 sts. 1 x, and the remaining 13 sts. Make another sleeve with reverse shapings.

COLLAR: Cast on 121 sts. with beige. Work with Tension 6. Rows 1-41: Work even, working with Tension 7 after Row 12, and working the 28th-37th rows with blue. Rows 42-50: Work the Norwegian Pattern Stitch. Rows 51-64: Work in Stockinette Stitch with beige, working with Tension 6 after Row 52. Rows 65-76: On each side, put 7 needles at a time in holding position 6 x. Rows 77-78: On the left side, bring

all the needles into working position and work 1 row. On the right side bring all needles into working position and work 1 row. Bind off all sts.

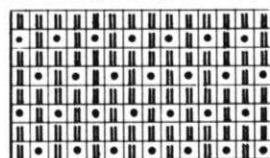
FINISHING: Follow directions for Size 14/16, sewing darts in the front section as illustrated.

GIRL'S DRESS AND JACKET, No. MK 4796



SIZE: 3-4 years. **MATERIAL:** Dress 9 oz. rose; Jacket 6 oz. rose; **FOR EXAMPLE:** KNITTING Mutella, Bear-brand Lullabye, Baby Fair. Spinnerin Nylaine Fingering. A small amount of white angora. **TENSION:** KNITTING 4 or 5. **GAUGE:** Stockinette Stitch and K. 1, P. 1, Ribbing 17 sts. 2", 26 rows 2"; Pattern Stitch 17 sts. 2"; 42 rows 2". **PATTERN:** Stockinette Stitch with Holding Position Design Stripes according to chart. Worn on the knit side. Edging and Collar: K. 1, P. 1, Ribbing.

DRESS: SKIRT. The skirt is worked vertically in one piece. Cast on 109 sts. with a contrasting yarn. Knit several rows then change to garment yarn and put counter at 0. Work 659

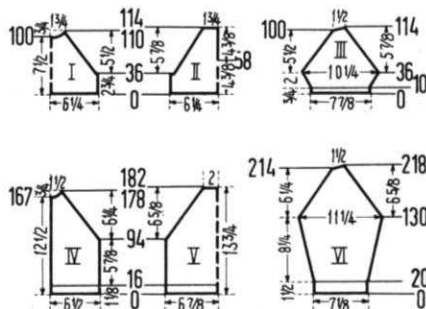


rows, alternating 28 rows Stockinette Stitch and 16 rows Pattern Stitch. Knit several rows of contrast yarn. and remove from machine.

BACK: (Figure II). Cast on 108 sts. Work in Stockinette Stitch. Rows 1-36: Work even. Rows 37-38: Bind off 4 sts. beginning of each row. Rows 39-58: Raglan Shaping. Decrease 5 sts. on each side after Rows 44 and 54. To do this, put the 2nd, 3rd, 4th, 5th, and 6th sts. on the 7th, 8th, 9th, 10th, and 11th needles and move the edge sts. over to fill the empty needles. Now divide the work in the center and continue in two separate sections. Put needles on the left into holding position. Rows 59-114: Decrease 5 sts. on arm side in same manner as before after Row 64 and again every 10th row 4 x. Then bind off the 15 sts.

FRONT: (Figure I). Cast on 108 sts. Work in Stockinette Stitch. Rows 1-36: Work even. Rows 37-38: Bind off 4 sts. beginning of each row. Rows 39-110: Raglan Shaping and Neck Shaping. For the raglan shaping, decrease 5 sts. on each side after Row 44 and again every 10th row 6 x, following same procedure as for back. **AT THE SAME TIME,** after Row 100 bind off the 8 center sts. with a separate yarn. Put needles on the left into holding position and complete the right side first. When cam box is on neck side (every other row) bind off 3 sts. 1 x, 2 sts. 2 x, and decrease 1 st. 1 x. Then, hang the 3 remaining sts. together by putting the 2 outside sts. on the center needle and binding off. Bring all needles into working position. Put row counter back to 100 and complete the left side.

SLEEVE: (Figure III). Cast on 69 sts. with white. Work in K. 1, P. 1, Ribbing: 2 rows white and 8 rows rose. Transfer the ribber sts. to main machine. Continue in Stockinette Stitch. Rows 11-36: Increase 1 st. on each side



after Row 12 and again on each side every other row 9 x. (89 sts.). Rows 37-38: Bind off 3 sts. on each side. Rows 39-110: **Raglan Shaping.** Decrease 5 sts. on each side after Row 44 and again every 10th row 6 x, following same procedure as for back. Rows 111-114: On the left side, put 4 needles in holding position 2 x. Bind off 13 sts. Make another sleeve with reverse shapings.

NECK EDGING: Cast on 109 sts. with white. Rows 1-26: Work in K. 1, P. 1, Ribbing: 2 rows white and 24 rows rose. Bind off all sts.

JACKET: BACK. (Figure V). Cast on 119 sts. Rows 1-16: Work in K. 1, P. 1, Ribbing. Transfer ribber sts. to main machine. Continue in Stockinette Stitch. Rows 17-94: Work even. Rows 95-96: Bind off 2 sts. beginning of each row. Rows 97-182: **Raglan Shaping.** Decrease 5 sts. on each side after the 102nd row and again every 10th row 7 x. To do this, put the 2nd, 3rd, 4th, 5th, and 6th sts. on the 7th, 8th, 9th, 10th, and 11th needles and move the edge sts. over to fill the empty needles. Bind off 35 sts.

FRONT: (Figure IV). Cast on 57 sts. Rows 1-16: Work in K. 1, P. 1, Ribbing. Transfer ribber sts. to main machine. Continue in Stockinette Stitch. Rows 17-94: Work even. Rows 95-96: Bind off 3 sts. on the right side. Rows 97-178: **Raglan and Neck Shaping.** For the raglan shaping, decrease 5 sts. after Row 102 and again every 10th row 7 x, following same procedure as for back. **AT THE SAME TIME,** for the neck shaping, bind off 3 sts. after Row 167; then on every other row bind off 3 sts. 1 x, 2 sts. 2 x, and decrease 1 st. 1 x. Then hang the 3 remaining sts. together by putting the 2 outside sts. on the center needle and binding off. Make the second front section with reverse shapings.

SLEEVE: (Figure VI). Cast on 61 sts. Rows 1-20: Work in K. 1, P. 1, Ribbing. Transfer ribber sts. to main machine. Continue in Stockinette Stitch. Rows 21-130: Increase 1 st. on each side after Row 20 and again every 6th row 17 x. (97 sts.). Rows 131-132: Bind off 2 sts. beginning of each row. Rows 133-214: **Raglan Shaping.** Decrease 5 sts. on each side after Row 138 and again every 10th row 7 x, following same procedure as for back. Rows 215-218: On the left side, put 4 needles in holding position 2 x. Bind off 13 sts. Make another sleeve with reverse shapings.

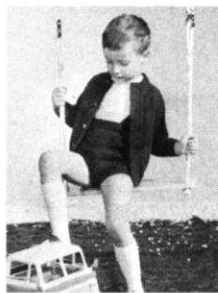
NECK EDGING: Cast on 109 sts. Work 22 rows K. 1, P. 1, Ribbing and bind off all sts.

FRONT: EDGING: Cast on 133 sts. Work 8 rows K. 1, P. 1, Ribbing and bind off all sts. Make the second strip of edging the same, making buttonholes after Row 4 over the 6th-9th, 26th-29th, 46th-49th, 66th-69th, 86th-89th, 106th-109th, and 126th-129th needles.

FINISHING: DRESS. Weave the front and back sections at side seams. Weave sleeve edges together and weave the sleeves to the dress 1 st. in on each section. Weave together the skirt stitches held on contrast yarn. Now gather the upper edge of the skirt and join the skirt to the top of the dress. Make a hem $2\frac{1}{2}$ " wide at the bottom of the skirt. Fold the neck edging around the neckline of the dress and attach. Sew loops to one side of the back opening, and sew buttons to the other side. Then sew 7 loops around the waistline of the dress, make a braided cord out of rose and white yarn, and pull this cord through the loops. Sew rose and white pom poms to each end of cord.

JACKET: Sew the front and back sections at side seams. Join sleeve edges and weave sleeves to jacket 1 st. in on each section. Fold the neck edging around the jacket neckline and attach. Fold the front edgings around the jacket fronts and attach. Finish buttonholes and sew on buttons.

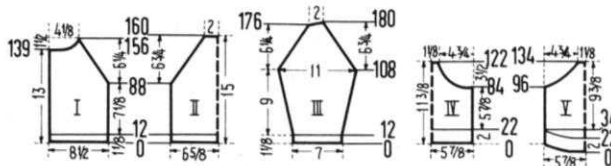
BOY'S SUIT, No. KK 4791



SIZE: 3-4 years. **MATERIAL:** 15 oz. blue. **FOR EXAMPLE:** KNITKING Regal. Spinnerin Ambralon. Columbia Minerva Shetland. **TENSION:** KNITKING 6 or 7. **GAUGE:** 15 sts. 2", 21 rows 2". **PATTERN:** Stockinette Stitch with Cable Stripe on the Jacket and the Shorts. Edging K. 1, P. 1, Ribbing.

SHORTS: FRONT. (Figure IV). Cast on 90 sts. Rows 1-21: Work even. To make the hem, put the cast on sts. back on the machine. Row 22:

Work the sts. together with Tension 7 (8). Rows 23-84: Work even, working the cable stripe. To do this, on each side cross the sts. after Row 26 and again every 8th row. The sts. are crossed so that at first the 12th and 13th sts. are on the 14th and 15th needles and then the 14th and 15th sts. are on the 12th and 13th needles. When this is finished, drop the 11th and 16th sts. to the hem, and latch up as knit sts. Rows 85-122: Leg edging. Bind off 8 sts. beginning next 2 rows, then on each side of every other row bind off 4 sts. 2 x, 3 sts. 3 x, 2 sts. 3 x, decrease 1 st. 3 x; then decrease 1 st. on every 4th row 2 x. Knit several rows over 18 sts. with a contrast yarn and remove from machine.



BACK: (Figure V). Cast on 90 sts. Rows 1-21: Work even. To make the hem, put the cast on sts. back on the machine. Row 22: Work the sts. together with Tension 7 (8). Rows 23-34: **Back Shaping.** Work short rows. See Notes to Knit By on inside back cover. To do this, on the left side put 27 needles in holding position and work 1 row. On the right side put 27 needles in holding position and work 1 row. Now, on each side, bring 6 needles at a time back into working position 2 x, and 5 needles into working position 3 x. Rows 35-96: Work even. Rows 97-134: Leg Edging. Bind off 3 sts. beginning next 2 rows, then on each side of every other row bind off 3 sts. 2 x, 2 sts. 12 x, and decrease 1 st. 3 x. Knit several rows over the 18 sts. with a contrast yarn and remove from machine.

SUSPENSERS: Cast on 15 sts. (Make 2). Work 176 rows K. 1, P. 1, Ribbing and bind off all sts.

LEG EDGING: Cast on 111 sts. (Make 2). Work 12 rows K. 1, P. 1, Ribbing and bind off all sts.

JACKET: BACK. (Figure II). Cast on 103 sts. Rows 1-12: Work in K. 1, P. 1, Ribbing. Transfer ribber sts. to main machine. Continue in Stockinette Stitch. Rows 13-88: Work even. Rows 89-160: **Raglan Shaping.** Decrease 2 sts. on each side after Row 88 and again every 4th row 17 x. To do this, put the 3rd and 4th sts. on the 5th and 6th needles and move the edge sts. over to fill the empty needles. Bind off 31 sts.

FRONT: (Figure I). Cast on 65 sts. Rows 1-12: Work in K. 1, P. 1, Ribbing. Transfer ribber sts. to main machine. Continue in Stockinette Stitch, making the cable over the 20th-30th needles, counting from the left edge, and crossing the sts. for the first time after Row 16. Latch up the 19th and 24th sts. as knit sts. Rows 13-88: Work even. Rows 89-156: **Raglan and Neck Shaping.** For the raglan shaping decrease 2 sts. after Row 88 and again every 4th row 16 x following same procedure as for back. **AT THE SAME TIME,** for the Neck Shaping, after Row 139 bind off 17 sts. and then on every other row bind off 3 sts. 1 x, 2 sts. 2 x, and decrease 1 st. 4 x. Then hang the 3 remaining sts. together

by putting the 2 outside sts. on the center needle and binding off. Make the second front section with reverse shapings, making buttonholes after Rows 6, 40, 74, and 108, over the 2nd-5th and 14th-17th needles.

SLEEVE: (Figure III). Cast on 55 sts. Rows 1-12: Work in K. 1, P. 1, Ribbing; Transfer ribber sts. to main machine. Continue in Stockinette Stitch. Rows 13-108: Increase 1 st. on each side after Row 14 and again every 6th row 14 x. (85 sts.). Rows 109-176: **Raglan Shaping.** Decrease 2 sts. on each side after Row 108 and again every 4th row 16 x, following same procedure as for back. Rows 177-180: On the left side, put 5 needles in holding position 2 x. **AT THE SAME TIME,** decrease 2 sts. on the right side after Row 176. Bind off 15 sts. Make another sleeve with reverse shapings.

NECK EDGING: Cast on 129 sts. Work 22 rows K. 1, P. 1, Ribbing, making buttonholes after Rows 4 and 18, over the 6th-9th needles. Bind off all sts.

FINISHING: SHORTS. Weave the two short sections at the side seams and the crotch sts. held on contrast yarn—then remove contrast yarn. Sew the ends of the leg edging together so that the edging is circular, and sew the edging to the shorts. Pull an elastic band through the waist band. Sew on the suspenders, crossing them in the back.

JACKET: Join the front and back sections at side seams. Sew sleeve edges together and weave sleeves to the front and back sections, 1 st. in on each section. Make a hem 1/4" wide at the front edges. Fold the neck edging around the jacket neckline and attach. Finish buttonholes and sew on buttons.

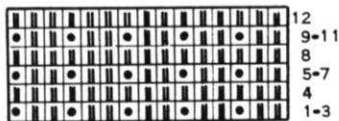
BOY'S PULLOVER, No. KK 4792



SIZE: 3-4 years. **MATERIAL:** 3 1/2 oz. yellow. **FOR EXAMPLE:** KNITKING Fine Dralon. Any fine 2 ply yarn. **TENSION:** KNITKING Pattern Stitch 3 or 4; K. 1, P. 1, Ribbing 1 or 2. **GAUGE:** Pattern Stitch 16 sts. 2", 45 rows 2"; K. 1, P. 1, Ribbing 16 sts. 2", 30 rows 2". **PATTERN:** Holding Position Design according to chart. Worn on purl side. Edging: K. 1, P. 1, Ribbing.

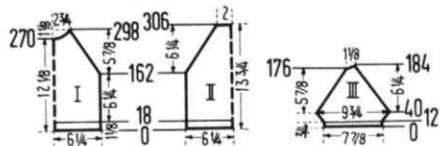
BACK: (Figure II). Cast on 103 sts. Rows 1-18: Work in K. 1, P. 1, Ribbing with Tension 1 (2). Transfer

ribber sts. to main machine. Then increase 1 st. on one side and continue in Holding Position Design with Tension 3 (4). Rows 19-162: Work even. Rows 163-306: **Raglan Shaping.** Decrease 1 st. on each side of every 4th row 36 x. Bind off 32 sts.



FRONT: (Figure I). The front is worked the same as the back to Row 298; however, for the neck shaping, after Row 270, bind off the 10 center sts. with a separate yarn. Put needles on the left into holding position and complete the right side first. When Cam box is on neck side (every other row) bind off 2 sts. 2 x, decrease 1 st. 3 x, then decrease 1 st. on every 4th row 3 x. Hang the 3 remaining sts. together by putting the 2 outside sts. on the center needle and binding off. Bring all needles into working position. Put row counter back to 270 and complete the left side.

SLEEVE: (Figure III). Cast on 65 sts. Rows 1-12: Work in K. 1, P. 1, Ribbing with Tension 1 (2). Transfer ribber sts. to main machine. Continue in Holding Position Design with Tension 3 (4). Rows 13-40: Increase 1 st. on each side after Row 12 and again every 4th row 6 x. (79 sts.). Rows 41-176: **Raglan Shaping.** On each side of every 4th row



decrease 1 st. 34 x. Rows 177-184: On the left side, put 1 needle in holding position 1 x and 2 needles in holding position 3 x. **AT THE SAME TIME,** on the right side decrease 1 st. after Rows 176 and 180. Bind off 9 sts. Make another sleeve with reverse shapings.

NECK EDGING: Cast on 63 sts. 1 x and 33 sts. 1 x. Work 24 rows K. 1, P. 1, Ribbing with Tension 1 (2) and bind off all sts.

FINISHING: Join the front and back sections at side seams, 1 st. in on each section. Join sleeve edges and join sleeves to front and back sections, leaving 2" on each of the back seams open for the placket. Make a narrow hem around these openings. Fold the neck edging around the sweater neckline and attach. Sew 3 loops to one side of each opening, and sew 3 buttons to the other side.

BELL SKIRT AND PULLOVER, No. MK 4794



SIZE: 3-4 years. **MATERIAL:** 7 oz. green and 6 oz. white. **FOR EXAMPLE:** KNITKING Subita 2 x 3 Coats and Clarks Redheart Nylon. Bearbrand Nylon & Wool. **TENSION:** KNITKING 4 or 5. **GAUGE:** 18 sts. 2", 25 rows 2". **PATTERN:** Stockinette Stitch. **EDGING:** K. 1, P. 1, Ribbing. **SKIRT:** (Figure IV). The skirt is worked vertically in one piece. The bell shape is obtained by working **SHORT ROWS** and you must be sure to **always** place the yarn between the first and second inside

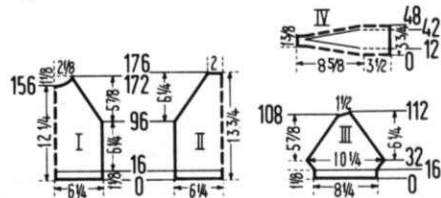
needles that are in the holding position.

Cast on 112 sts. with waste yarn (contrast color to be pulled out later). Knit 8 to 10 rows. Turn your counter to 0 and change to white garment yarn. *Rows 1-6: Knit even with white yarn. Rows 7-12: Knit even with green yarn. Rows 13-28: Continue with green yarn and knit short rows as follows: On the LEFT SIDE put 10 needles at a time in holding position 8 x. Rows 29-44: In the same manner, bring 10 needles back into working position 8 x. Rows 45-50: Knit even.* This completes 1 gore. Repeat from * to * 20 times more. When completed, knit 8 to 10 rows of waste yarn and remove from machine.

WAIST BAND: Make 2. Cast on 100 sts. with green. Work 24 rows Stockinette Stitch and bind off all sts.

PULLOVER: BACK. (Figure II). Cast on 115 sts. with green. Rows 1-16: Work in K. 1, P. 1, Ribbing: 4 rows green, 8 rows white, and 4 rows green. Transfer ribber sts. to main machine. Continue in Stockinette Stitch with white. Rows 17-96: Work even. Rows 97-176: **Raglan Shaping.** Decrease 2 sts. on each side after Row 96 and again every 4th row 19 x. To do this, put the 2nd and 3rd sts. on the 4th and 5th needles and move the edge sts. over to fill the empty needles. Bind off 35 sts.

FRONT: (Figure I). The front is worked the same as the back to Row 172; however, for the neck shaping, after Row 156 bind off the 11 center sts. with a separate yarn. Put all needles on the left into holding position and complete the right side first. When cam box is on neck side



(every other row) bind off 3 sts. 2 x, 2 sts. 1 x, decrease 1 st. 2 x; then decrease 1 st. on the 4th row 1 x. Then hang the 3 remaining sts. together by putting the 2 outside sts. on the center needle and binding off. Bring all needles into working position. Put row counter back to 156 and complete the left side.

SLEEVE: (Figure III). Cast on 75 sts. with green. Rows 1-16: Work in K. 1, P. 1, Ribbing; 4 rows green, 8 rows white, and 4 rows green. Transfer the ribber sts. to main machine. Continue in Stockinette Stitch with white. Rows 17-32: Increase 1 st. on each side after Row 16 and again every other row 4 x; then increase 2 sts. 2 x. (93 sts.). Rows 33-108: **Raglan Shaping.** On each side decrease 2 sts. after Row 32 and again every 4th row 18 x. To do this, put the 2nd and 3rd sts. on the 4th and 5th needles and move the edge sts. over to fill the empty needles. Rows 109-112: On the left side, put 5 needles in holding position 2 x. **AT THE SAME TIME,** on the right side decrease 2 sts. after Row 108. Bind off 15 sts. Make another sleeve with reverse shapings.

NECK EDGING: Cast on 81 sts. (Make 1) and 37 sts. (Make 1) with green. Work 16 rows K. 1, P. 1, Ribbing; 4 rows green, 8 rows white, and 4 rows green, 5 rows with tension 3, 5 rows with Tension 4, and 6 rows with Tension 5. Bind off all sts.

FINISHING SKIRT: Weave the skirt sts. held on contrast yarn and remove contrast. Make a hem 2" wide at the bottom of the skirt. Sew an elastic band to the top of the skirt. Sew the two waist band sections together, fold the waist band around the elastic band and the skirt top, and attach.

PULLOVER: Join the front and back sections at side seams. Weave the sleeve edges and the sleeves to the front and back sections 1 st. in on each section, and leaving a section of each back seam open for the placket. Make a narrow hem around these openings. Sew on neck edging, loops, and buttons.

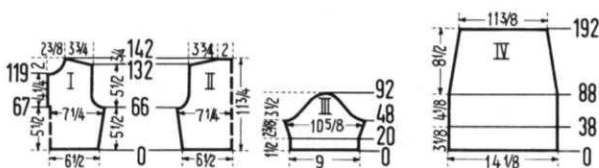
GIRL'S DRESS, No. MK 4793



SIZES: 7-8 years and 9-10 years. **MATERIAL:** Size 7-8 - 14 oz. white; Size 9-10 - 16 oz. white. **FOR EXAMPLE:** KNITTING Mutelia. Bearbrand Deluxe Sock and Sport. Both sizes - small amounts of a heavier yarn in red and green, for the stripes. **TENSION:** KNITTING 4 or 5. **GAUGE:** 18 sts. 2"; 24 rows 2". **PATTERN:** Stockinette Stitch with inlaid stripes in red and green. Worn on purl side. (1). Put the 1st, 2nd, 5th, 6th, 9th, 10th, etc. needles in holding position. From right to left, put the doubled

red yarn over the needles in holding position and under the needles in working position. (2). Put the needles in holding position back into working position; then put the 3rd, 4th, 7th, 8th, 11th, 12th, etc. needles into holding position. From left to right, put the doubled red yarn over the needles in holding position and under the needles in working position. (3). Put the needles in holding position back into working position and work 10 rows with white. See Practical Knitting Hints on page 32.

SIZE: 7-8 years. **SKIRT:** (Figure IV). Make 4 identical gores. Cast on 130 sts. with white. Rows 1-38: Stockinette Stitch. Rows 39-88: Work the inlaid stripes: 1 red, 1 green, 1 red, 1 green and 1 red. Rows 89-192: Decrease 1 st. on each side



after Row 90 and again every 7th row 12 x. To do this, put the 3rd st. on the 4th needle and move the edge sts. over to fill the empty needle. Bind off 104 sts.

TOP: BACK. (Figure II). Cast on 120 sts. Rows 1-66: Increase 1 st. on each side after Row 8 and again every 8th row 6 x. (134 sts.). Rows 67-86: **Armhole Shaping.** Bind off 4 sts. beginning next 2 rows; then on each side of every other row bind off 3 sts. 1 x, 2 sts. 2 x, decrease 1 st. 2 x; then decrease 1 st. every 4th row 2 x. (104 sts.). Rows 87-132: Work even. Rows 133-142: **Shoulder Shaping.** On each side of every other row bind off 6 sts. 1 x, 7 sts. 4 x, and then bind off the remaining 36 sts.

FRONT: (Figure I). Cast on 120 sts. Rows 1-66: Increase 1 st. on each side after Row 8 and again every 8th row 6 x. (134 sts.). Now, on the left side put 67 needles in holding position and work the right section. Rows 67-86: **Armhole Shaping and Facing** for the front opening. For the armhole shaping, bind off 4 sts.; then on every other row bind off 3 sts. 1 x, 2 sts. 2 x, decrease 1 st. 2 x; then decrease 1 st. on every 4th row 2 x. **AT THE SAME TIME,** for the facing, on the left side cast on 3 sts. after Row 67. To do this, put 3 sts. from the left section on a double pointed needle. Rows 87-119: Work even. Rows 120-142: **Neck and Shoulder Shaping.** For the neck shaping, bind off 8 sts.; then on every other row bind off 3 sts. 2 x, 2 sts. 2 x, decrease 1 st. 2 x; then decrease 1 st. on the 4th row 1 x. **AT THE SAME TIME,** after Row 132, for the shoulder shaping, on every other row bind off 5 sts. 2 x and 6 sts. 4 x. Now put the cam box on the left side and turn the row counter back to 66. Bring all the needles into working position, put the sts. from the double pointed needle back on the machine, and work the left section.

SLEEVE: (Figure III). Make two. Cast on 82 sts. Rows 1-19: Work even. To make the hem, put the cast on sts. back on the machine. Row 20: Work the sts. together. Rows 21-48: Work 1 red, 1 green, and 1 red inlaid stripe; however, instead of 10 rows of white between the stripes work only 6 rows of white, and on each side increase 1 st. after Row 20 and again every 4th row 5 x and every other row 2 x. (98 sts.). Rows 49-58: **Underarm Shaping.** On each side of every other row bind off 4 sts. 1 x, 3 sts. 2 x, and 2 sts. 2 x. Rows 59-86: *On each side of every other row decrease 1 st. 1 x and bind off 2 sts. 1 x*. Repeat from * to * 6 x. Rows 87-92: On each side of every other row bind off 2 sts. 1 x, 3 sts. 1 x, 4 sts. 1 x, and the remaining 10 sts.

COLLAR: Cast on 140 sts. Rows 1-15: Work even. Now make a red inlaid stripe. Rows 16-20: Work even. Then on each side bind off 32 sts. (Use an extra piece of yarn on the left side). Rows 21-32: Increase 3 sts. on each side after Row 20; then on each side of every other row increase 2 sts. 2 x, 1 st. 1 x; then increase 1 st. on the 4th row 1 x. (94 sts.). Rows 33-44: Work even, and bind off all sts.

FINISHING: Weave all the skirt gores 1 st. in on each section. Make a 2" hem at the bottom of the skirt. Gather the skirt at the waist band. Join the front and back sections at side and shoulder seams. Join sleeve edges and sew sleeves to dress. Make a hem 3 sts. wide around the front opening. Now sew the outer side edges of the collar together, fold in half and hem. Sew the collar to the neck opening of the dress. Join the top of the dress to the skirt. Sew a loop to one side of the front opening, and a button to the other side.

SIZE: 9-10 years. **SKIRT:** (Figure IV). Make four identical gores. Cast on 140 sts. with white. Rows 1-38: Stockinette Stitch. Rows 39-88: Work inlaid stripes: 1 red, 1 green, 1 red, 1 green, and 1 red. Rows 89-216: Decrease 1 st. on each side after Row 90 and again every 9th row 12 x. To do this, put the 3rd st. on the 4th needle and move the edge sts. over to fill the empty needles. Bind off 114 sts.

TOP: BACK: (Figure II). Cast on 130 sts. Rows 1-80: Increase 1 st. on each side after Row 10 and again every 10th row 6 x. (144 sts.). Rows 81-102: **Armhole Shaping.** Bind off 4 sts. beginning next 2 rows, then on each side of every other row bind off 3 sts. 1 x, 2 sts. 2 x, decrease 1 st.

Continued on Page 32

INTRODUCING KNITKING FASHION BLOCK

Makes All Other Blocking Cloths Obsolete

No longer necessary to pay high prices for knit blocking and still be dissatisfied with results.

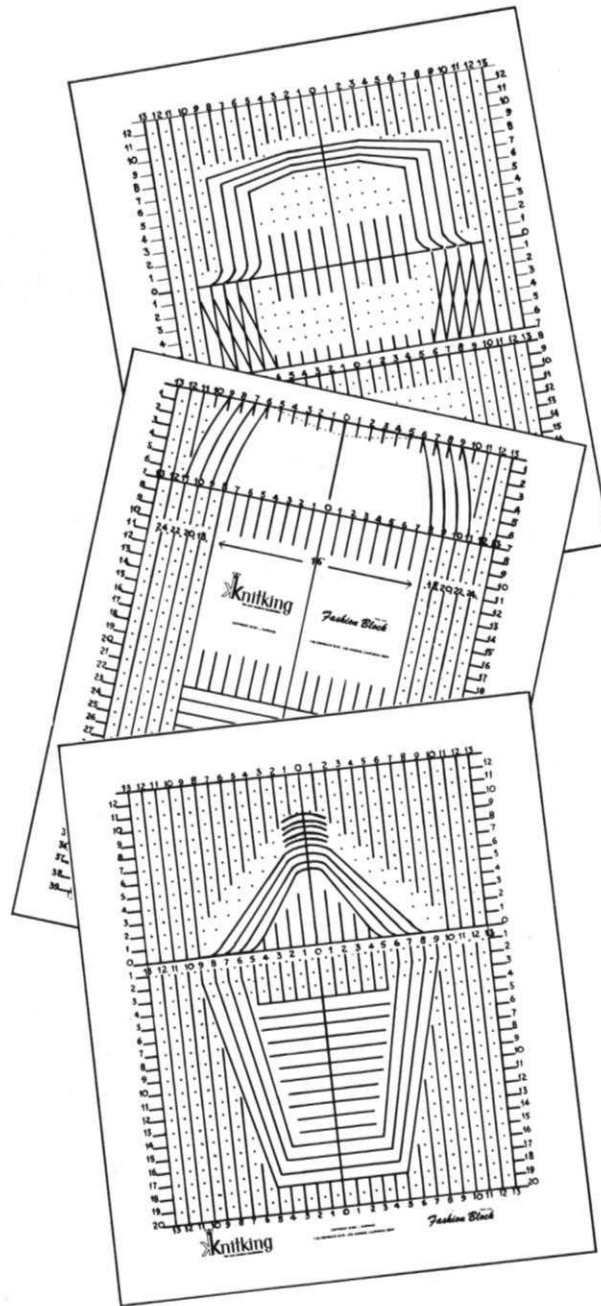
No matter what size you are, whether you are short waisted or long waisted, big in the hips or big in the bust, long in the arms or short in the arms, the FASHION BLOCK will allow you to easily and speedily block any garment or any part of a garment to the exact size you need.

With KNITKING FASHION BLOCK you can be sure of always looking your best in your valuable knit garments.

A complete FASHION BLOCK consists of three separate sections. Each one fully sanforized, printed with permanent ink and made of heavy duty drill cloth.

One section is for the blocking of pullovers, shells, cardigans, shirts, jackets, etc., for men, women and children. It accommodates any type of armhole shaping, regular, square, raglan or what you will. Another section is for skirts or pants in any size or length. Sections one and two will combine to provide blocking for any shape or size in dresses and coats. The third section is for sleeves, short or long in any shape, square, raglan, set-in, etc.

Be one of the first to own the fantastic KNITKING FASHION BLOCK. Send your order in today.



Fast

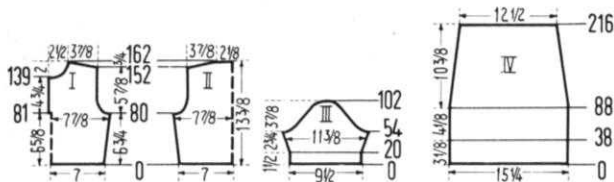
Accurate

Versatile

The full set complete with T-Pins and instruction booklet is \$14.95 (California residents add 4% sales tax) plus \$1.00 shipping costs to anywhere in North America.

Obtainable only from KNITKING

1128 Crenshaw Blvd., Los Angeles, California 90019



3 x; then decrease 1 st. on every 4th row 2 x. (112 sts.). Rows 103-152: Work even. Rows 153-162: **Shoulder Shaping.** On each side of every other row bind off 7 sts. 4 x, 8 sts. 1 x, and the remaining 40 sts.

FRONT: (Figure I). Cast on 130 sts. Rows 1-80: Increase 1 st. on each side after Row 10 and again every 10th row 6 x. (144 sts.). Now, on the left side, put 72 needles in holding position and work the right section. Rows 81-102: **Armhole Shaping and Facing** for the Front Opening. For the armhole shaping, bind off 4 sts.; then on every other row bind off 3 sts. 1 x, 2 sts. 2 x, decrease 1 st. 3 x; then decrease 1 st. on every 4th row 2 x. **AT THE SAME TIME,** for the facing for the front opening, on the left side after Row 81 cast on 3 sts. To do this, put 3 sts. from the left section on a double pointed needle. Rows 103-139: Work even. Rows 140-162: **Neck and shoulder shaping.** For the neck shaping, bind off 8 sts.; then on every other row bind off 4 sts. 1 x, 3 sts. 1 x, 2 sts. 2 x, decrease 1 st. 3 x; then decrease 1 st. on the 4th row 1 x. **AT THE SAME TIME,** after Row 152, for the shoulder shaping, on every other row bind off 6 sts. 6 x. Now put the cam box on the left side and turn the row counter back to 80. Bring all the needles into working position, put the sts. from the double pointed needle back on the machine and work the left section.

SLEEVE: (Figure III). Make two. Cast on 86 sts. Rows 1-19: Work even. To make the hem, put the cast on sts. back on the machine. Row 20: Work the sts. together. Rows 21-54: Work 1 red, 1 green, and 1 red inlaid stripe; however, instead of 10 rows of white between the stripes work only 6 rows of white, and on each side increase 1 st. after Row 20 and again every 4th row 7 x and on the 2nd row 1 x. (104 sts.). Rows 55-66: **Underarm Shaping.** On each side of every other row bind off 4 sts. 1 x, 3 sts. 2 x, and 2 sts. 3 x. Rows 67-94: *On each side of every other row decrease 1 st. 1 x and bind off 2 sts. 1 x*. Repeat from * to * 6 x. Rows 95-102: **On each side** of every other row bind off 2 sts. 2 x, 3 sts. 2 x, and the remaining 10 sts.

COLLAR: Cast on 148 sts. Rows 1-15: Work even. Now work 1 red inlaid stripe. Rows 16-20: Work even. Then bind off 32 sts. on each side. (On the left side use an extra piece of yarn.). Rows 21-32: Increase 3 sts. on each side after Row 20; then on each side of every other row increase 2 sts. 2 x, 1 st. 1 x; then increase 1 st. on the 4th row 1 x. (102 sts.). Rows 33-44: Work even, and bind off all sts.

FINISHING: Follow directions for 7-8 year size.

CANADIAN READERS

Please note that KNITKING dealers based in the U.S.A. are unable to sell machines and accessories to residents of Canada. They are also unable to sell parts and service. Would all Canadian readers please contact any of the following appointed KNITKING dealers.

Knittax Handknitting Machines
Sales and Service Reg'd
H. Cieslewicz
3059 Estelle, Fabreville, P.Q.

Easy Knit of Canada Ltd.
272 Yonge Street
Toronto 1, Ontario

Winnipeg Knitting Machines Ltd.
202 Confederation Building
457 Main St., Winnipeg 2, Manitoba

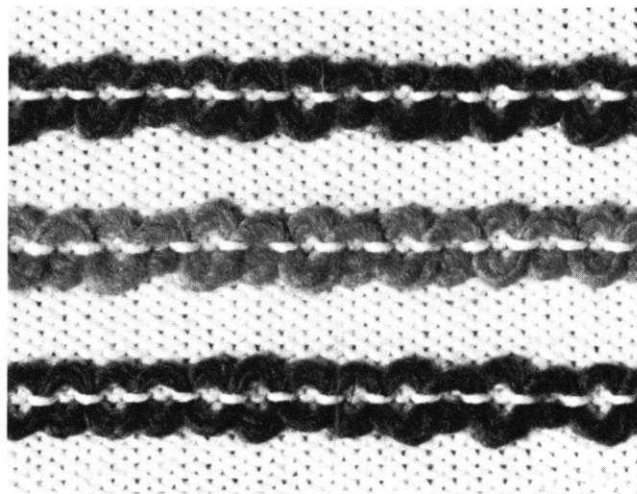
Knit-King Agency
Hand Knitting Machines
Mrs. M. Gross
5316 - 90th Ave., Edmonton, Alberta

Key Hamilton Enterprises
5724 - 110th Street, Edmonton, Alberta, Canada

PRACTICAL KNITTING HINTS

INLAID PATTERN FOR MK 4793

There are many uses for the lovely inlaid pattern in this child's dress. Use up your scraps of yarn, particularly the more loosely-spun type which may be used double. Use the pattern to make decorator pillow covers or as a trim for sweaters and dresses. Experiment a bit . . . leave more or less distance between the rows for a different effect.



ATTACHING COLLARS AS IN DP 7413 AND HP 3456

Weave or sew the short ends of collar together. With seam at center back or shoulder edge, pin the wrong side of collar to the right side of garment neckline. Overcast or whip stitch loosely around neckline. Lift collar up, fold over to the right side as illustrated.

ATTACHING NECK BANDS AS IN DP 7412

Weave or sew the short ends of band together. With seam at center back or shoulder edge, pin the cast on edge of band, right side against wrong side of neckline and overcast or whip stitch around neckline. Fold band to the right side and pin to neckline, covering the whipped edge. With a split strand of yarn, back stitch through the chain-like bind off edge of band and through garment.

This same method for attaching a doubled neck band can be used for sleeve and armhole bands as well when they must be knitted and attached separately.



KNITTING NEWS

May-June 1967

ANSWERS TO READERS LETTERS

We have had letters from several subscribers, asking "Is there another way to work Necklines and Shoulder shaping?". The answer is a definite yes..... We tell you to bind off the center neck stitches and then bind off or decrease for the rest of the shaping because if we went into detail it would take up too much space. However, there is a way that you may shape necklines and shoulders that will give you a smooth and finished look to your bind off edge.

The pattern might say - Bind off the center 10 sts. for neck with a separate yarn, put needles on the left into holding position and complete the right side first. When Cam Box (Slide or Carriage) is on neck side (every other row) bind off 5 sts. 1 x, 4 sts. 1 x, and 3 sts. 1 x.

The more experienced knitter will do it this way.....First, put the 10 center sts. into holding position, tie a piece of colored yarn or thread to the first needle on left that is in holding position. (The marker is to help you when you return to work the left side) knit across from right to left and be sure to place the yarn behind the first inside needle (it goes over and under) in the holding position, then knit back to the right side. Now put 5 sts. on the left side into holding position and knit across and back. (Always when knitting short rows, remember to place the yarn behind (over and under) the first inside needle in the holding position) Put 4 sts. in holding position, knit across and back. Put 3 sts. in holding position, knit across and back. You will be working your shoulder bind off at the SAME TIME and you may do it in the same way by placing the specified shoulder stitches into holding position on the right side. You will then be working short rows on both sides. Remember, the holding position for the neck is used only when you must take stitches off on every other row, and if the pattern says to decrease on neck side on every 4th row (or more) do not use the holding position for this, but decrease in the regular way by hanging the end stitch on the 2nd needle.

When you have completed your shoulder and neck shaping, put all the shoulder sts. into working position and knit 1 row 5 tensions higher and bind off the shoulder sts. using the crochet method which is using your latch tool and pulling the 2nd st. through the 1st st., the 3rd through 2nd, etc... (If you have never done this, practice it, you will soon develop speed).

After the shoulder sts. have been bound off, move your Cam Box (Slide or Carriage) to the left side of machine, turn your row counter back to the correct row where you began the neck shaping, attach yarn, put all needles to the left of the original 32 sts. for neck into working position (your little colored thread saves counting or checking) and repeat the shaping for the left side as you did on the right. When the shoulder sts. have been bound off on this side, put all the neck sts. back into working position and knit 1 row 5 tensions higher and then bind off all sts. using the crochet method.

One thing to remember is . . . if you are already knitting your garment with a high tension and are unable to turn your tension up, then you must knit the bind off row by hand, loosely, and then bind off.

When you are knitting a pattern stitch, this method does not always apply, and in this case, it will be best to shape your shoulder and neck by binding off as stated in your pattern.

KNITKING FASHION BLOCK

We really must emphasize the value of the entirely new and practically indispensable set of blocking cloths we have designed and are marketing under the registered Trade Name "FASHION BLOCK." (See advertisement page 31 of this issue).

FASHION BLOCK is a very skillfully designed set of blocking cloths prepared to allow for the blocking of any style, shape or size garment. It is difficult to understand how knitters have continued for years to block their garments using hit and run methods that could never be guaranteed to be entirely satisfactory. The fact that KNITKING is the Company to produce this exciting and essential accessory is another indication that our design staff is on the ball and ready to cater to your every knitting need. Everyone who knits needs FASHION BLOCK . . . so be among the first and send your order in early.

NEW JAC 40 PATTERN CARDS

We have illustrations available for 43 new JAC 40 Punch Cards. If you have a JAC 40 and would like to add these illustrations to your set, just send us 10¢ to cover the mailing costs and we will be happy to send them to you. We have good stocks of the Punch Cards including the new range.

OUTSTANDING SPECIALS for MAY-JUNE

We have some really exciting specials for May-June. To take advantage of them you must get your order in the mail before the end of June.

Whenever we put gorgeous KNITKING YARNS on sale, regular users know that anything comparable to them would normally sell for around three times our sale price. This is because KNITKING YARNS always sell at wholesale prices and any additional discounts reduce our prices to below wholesale.

Regular customers also know that in order to be certain of obtaining the more popular colors, they must get their orders in early. So if you want to be sure of obtaining the yarn in the color of your choice, place your order right away.

We are adopting as a regular procedure the holding back of 50% of stocks in short supply in order to insure that readers in the Eastern United States will not be penalized because of the time it takes for the Post Office to get their KNITKING MAGAZINES to them.

KNITKING MOHAIR

Everybody who has the KNITKING YARN CATALOGUE will be aware of the superb quality and unbeatable color range of KNITKING MOHAIR. If you do not have a catalogue send 25¢ and we will send you samples of the Mohair range.

Our normal wholesale price is 89¢ an ounce, and we are reducing this price by 20¢ to 69¢ an ounce (minimum quantity 1 lb., \$11.04) the lowest price at which we have ever sold it, and to add to this outstanding offer, we will include (if you ask for it) instructions for knitting a handsome Mohair ladies raglan sleeved cardigan in sizes 8, 10-12, 14-16, 18-20, and Extra Large. Size 8 takes 16 oz. Mohair, Size 10-12 takes 17 oz., 14-16 takes 18 oz., 18-20 takes 19 oz., and Extra Large takes 20 oz.

Mohair is knitted on every second needle on your machine so you can use it for any pattern that calls for 4, 4 1/2, 5 or 5 1/2 stitches to the inch. When knitted on the machine, most of the fuzz appears on the purl side, but you can easily transfer it to the knit side by brushing it with a stiff brush.

Be sure to give two alternate colors and include 50¢ shipping for up to two pounds, plus 25¢ for each additional pound. California residents add 4% Sales Tax.

KNITKING REGAL 4-ply

KNITKING REGAL 4-ply is a fine quality 80% wool, 20% nylon yarn slightly heavier than sports yarn. It knits 6 1/2, 7, 7 1/2 stitches to the inch and is an ideal all purpose yarn suitable for practically any type garment. If you do not have a KNITKING YARN CATALOGUE, you can obtain Regal samples by sending 25¢ to us. Available in 1 lb. packages for \$5.60 a lb. (35¢ an ounce.)

Give two alternate colors and include 50¢ for up to 2 lbs., plus 25¢ for each additional pound. California residents add 4% Sales Tax.

KNITKING DESKS

Handsome KNITKING DESKS (illustrated on the back cover of this issue) normally sell for \$149.50, but you can get one during the months of May and June at a \$30.00 saving. All finishes are available, natural walnut, natural teak, natural oak and natural pear wood (blends well with maple or mahogany). Price \$119.50 f.o.b. Los Angeles. California residents add 4% Sales Tax.

PUSH BUTTON KNITKING WITH COORDINATED RIBBER

The 1966 model Push-Button KNITKING with Coordinated Ribber (illustrated together with a Desk on the back cover of this issue) sold until the middle of January 1967 for \$399.00. We have rebuilt all of our demonstrator machines with complete new parts and we are making them available with Coordinated Ribbers and new machine guarantee for half their original price...\$199.00 freight paid anywhere in the U.S.A. This is a fabulous offer, so if you would like to take advantage of it, place your order early. You can send a small down payment if you do not have the full amount available and we will hold a machine for you.

USED MACHINES of OTHER BRANDS

Our warehouse is overloaded with traded in machines, so if you would like a second knitter at a ridiculous low price, just name the brand and we will quote the price for a like new complete knitter....Examples: Strigo Swiftomatic double bed, current model...Our price \$75.00.... Orion, double bed, current model, \$75.00... Duomatic double bed, current model, \$150.00.... Speed-O-Knit single bed, current model, \$55.00. Most brands of Japanese single bed machines \$30.00 each etc. etc., All prices are f.o.b. Los Angeles.

DOUBLE TRADE-IN OFFER

If you would like to trade up to a fantastic new Push Button KNITTING with COORDINATED RIBBER, we have a double trade-in for the months of May and June. This means that for any machine normally worth \$50.00 in trade, you would get \$100.00 and machines with a \$75.00 trade in value, would receive \$150.00 etc. etc. Drop us a line and tell us your brand. We can arrange complete financing for up to 24 months and you can use your present knitter as a down payment.

TIVOLI and PARISIENNE YARNS

We sold completely out of these yarns well before the end of the March-April 'Special' and we are getting many repeat orders. Sorry we cannot fill them or any new orders for this excellent buy.

NOTES TO KNIT BY . . .

STITCH AND ROW GAUGE

The stitch and row gauge is the number of stitches and the number of rows you get to the inch with the yarn recommended for any particular garment. To arrive at the correct number of stitches and rows, you must prepare a sample swatch as follows: Cast on the number of stitches that will give you a finished width of at least 4 inches. Using the suggested stitch tension in your pattern, knit a length of at least 4 inches. Knit 2 rows of a contrast yarn. Set your tension one number higher and knit another 4 inches. Knit 2 rows of contrast color. Set your tension 1 number lower than the suggested one and knit a further 4 inches. Now bind off.

For years people have been told to steam their sample swatch and for years we have been getting reports from people telling us that although the sample swatch was correct, the finished garment was too small or too large. Others have complained that even when they used the suggested yarns they had to use a much larger or smaller tension to make a swatch and then the finished garment came out the wrong size anyway.

Obviously it is possible for two people to pin an identical swatch and steam it and get a totally different result. One will stretch the sample before pinning it, and the other will squeeze it in. We have discovered a way that produces the same result with everybody, and we recommend that you get into the habit of always using it.

After knitting the sample and removing it from the machine, roll it into a cylinder over its length, then pull on both ends. Unroll the cylinder and stretch the sample diagonally by pulling on the four corners. Now let it rest — give it an opportunity to resettle for at least a few hours, preferably over night. After you and your swatch have rested, lay your stitch gauge on it and count the number of stitches in your 2 inch marking. Do the same for the number of rows. If you did not get the correct gauge in your first section of knitting, try the section either 1 tension higher or lower as the case may be. If you cannot get the correct gauge, then you are using the wrong type of yarn for the garment.

NON-WORKING POSITION

The needles are in the non-working position when they are as far back on the needle bed as they will go.

HOLDING POSITION

The Holding Position is as far forward on the needle bed as your needles will go. The Holding Position is used for producing pattern designs, fancy stitches and the knitting of short rows.

SHORT ROWS

Short rows are used for shaping of all kinds such as toes and heels of socks, collars, darts and sometimes in the shaping of shoulders, borders and full skirts. To knit short rows you push the needles forward into the holding position as specified in the pattern instructions, usually working from the outside in, which in effect narrows the width of the knitting as you proceed. Before knitting each row, you **must** place the yarn between the first and second inside needles that are in the holding position.

INCREASING, DECREASING, BINDING OFF

See the Instruction Manual for your own machine.

INCREASING AND DECREASING WHEN USING THE RIBBER

When increasing, increase on the main knitter first, knit one row and then transfer the necessary stitches from the knitter to the ribber and continue.

When decreasing or binding off, you must transfer the ribber stitches to the main machine before decreasing or binding off.

ADJUSTING SKIRT LENGTHS, ETC., TO SUIT YOUR OWN SIZE

If you are shorter or taller than average, you will need to adjust certain of the garment lengths. You do this by reducing or increasing the number of rows called for in the pattern.

The reduction in the rows is usually made at the bottom of a skirt or dress. The procedure is very simple. If for example you need a skirt length 2 inches shorter than the one shown in our pattern, and the yarn called for produces 9 rows to the inch, you will need to reduce the number of rows by 18. Many of our patterns are shaped to curve in a small amount toward the bottom and the bottoms frequently have a turned hem. In such cases, the reduction or increase in the number of rows required should be made immediately after the turned hem. If you are long waisted or short waisted you may have to make an adjustment at the waistline.

READING OF KNITTING PATTERNS AND SYMBOLS

Certain holding position and eyelet designs are sketched in the knitting patterns. The pattern should be read as the work comes toward you from the machine, that is, if you have purl stitches before you, it will say purl stitches in the pattern. If you have knit stitches before you it will say knit stitches in the pattern. On the sides of the pattern are the row numbers. Missing row numbers indicate that the rows are to be worked evenly. In eyelet design patterns, specified stitches are transferred to another needle and the empty needles are returned to the knitting position each time. In holding position designs, selected needles are pushed into the holding position for the stated number of rows.

MISSING ROW NUMBERS

When there are row numbers missing in the instructions as for instance when you have completed the designated increases or decreases on a section of garment, continue straight knitting until you reach the next given row number.








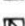

Control Knobs (Under the slide handle — one on each side on KNITKING and certain other machines.)

1. When BOTH Control Knobs are UP, knit one row going from right to left. The needles knit and move back just beyond the front of the needle bed and the yarn hangs on the front of the needles. The slide will now move freely in either direction with the needles remaining in a "SAFE POSITION." When you wish to resume knitting, press down BOTH Control Knobs. The first movement of the slide is made without yarn and will bring the needles into working position, you then continue knitting.

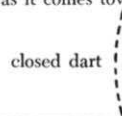
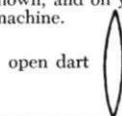
2. **Right Control Knob UP.** Knit from right to left. The row knits, moves the needles back and the yarn is held in front of the latches. Knit from left to right, the yarn goes under the needles without knitting as the needles move into the working position. This is the operation used for making round cords (with 3 or 4 needles only) and also for knitting single rows of one color.

3. **Left Control Knob UP.** The same as above but moving from left to right.

PATTERN STITCH SYMBOLS

-  = knit stitch
-  = purl stitch
-  = empty needle (leave in working position)
-  = needle not used (in the out of work position)
-  = needle in holding position
-  = 2 stitches on 1 needle — either transferred from the right side or the left side, then put the needle into holding position
-  = needle holding 2 sts. Stitch has been transferred from the LEFT
-  = needle holding 2 sts. Stitch has been transferred from the RIGHT
-  = 3 stitches on 1 needle. The 1st and 3rd stitch in a group of 3 needles has been hung on the 2nd or center needle.

The diagrams for pattern work are followed just as they are shown, and on your knitting as it comes towards you on the machine.



Available in many wood finishes



KNITTING DESK . . .

A knitting machine cabinet that automatically lifts your machine into the knitting position just by pulling a lever. The cabinet converts in seconds into a handsome desk suitable for any decor or any room in your house. Beautifully made in a variety of woods by craftsmen in West Germany.



Order from your local dealer or direct from **KNITKING**, 1128 Crenshaw Blvd., Los Angeles, California 90019