

# KNITTING

MAGAZINE





YARNS

by

# Knitking

*The Finest From Around the World . . .*

If you want your garments to look as good as those in KNITKING MAGAZINE and keep their appearance through dozens of washes, you must knit them with gorgeous KNITKING yarns. KNITKING yarns are the finest quality obtainable anywhere and the prices cannot be beaten. Try them once and you will always use them.

Your orders will be filled the same day they arrive. Be sure to state your color preferences and alternates.



Pattern Numbers	YARN		Price Including Shipping
DK 7515	Subita 2 x 4		\$18.50
DK 7519	Mutella	Size 10/12	\$12.02
		Size 14/16	\$12.02
DP 7520	Sonika Dralon	Size 10/12	\$12.30
		Size 14/16	\$12.50
DP 7522	Subita 2 x 4	Size 10/12	\$12.50
		Size 14/16	\$14.90
DK 7521	Starlite Crepe	Size 10/12	\$21.89
		Size 14/16	\$24.90
DK 7523	Subita 2 x 3		\$17.30
DK 7518	Subita 2 x 4	Size 10/12	\$17.30
		Size 14/16	\$19.70
DK 7505	Sonika Dralon		\$20.90
DP 7517	Subita 2 x 3		\$10.10
HP 3497	Regal		\$13.55
HP 3498	Starlite Crepe		\$18.44
HP 3496	Fine Dralon		\$10.10
HP 3499	Sonika Dralon		\$14.90
MK 4951	Subita 2 x 4		\$ 7.70
MK 4948	Sonika Dralon		\$ 7.70
KK 4950	Sonika Dralon		\$ 8.90
KK 4949	Sonika Dralon	Size 13/14	\$12.50
		Size 10/12	\$11.30
MK 4952	Subita 2 x 4		\$17.30

California Residents please add 5% Sales Tax.

Send \$2.00 for LARGE COMPLETE YARN CATALOGUE.

(Refunded on your first \$10.00 order) to:

KNITKING YARNS, Dept. 19

1128 Crenshaw Blvd.

Los Angeles, California 90019

# KNITKING

MAGAZINE

Vol. 4, No. 1

September/October, 1967

## INDEX

Contents	Pattern	Page No.
Woman's Two-piece Dress	DK 7515	17
Woman's Dress	DK 7519	18
Woman's Jacket	DP 7520	19
Woman's Pullover	DP 7522	20
Woman's Two-piece Dress	DK 7521	21
Woman's Dress	DK 7523	22
Woman's Dress	DK 7518	24
Woman's Coat	DK 7505	25
Woman's Pullover	DP 7517	26
Man's Jacket	HP 3497	26
Man's Pullover	HP 3498	27
Man's Shirt	HP 3496	28
Man's Jacket	HP 3499	28
Girl's Pullover	MK 4951	29
Child's Coat	MK 4948	29
Boy's Pullover	KK 4950	30
Boy's Jacket	KK 4949	31
Girl's Jacket	MK 4952	32
Practical Knitting Hints		32



### ANNIVERSARY ISSUE DK 7515

Knits! Knits! Knits! As we proudly swing into our 4th year of publication, our beautiful two-piece Cover Model dress sets the pace. The front of the jacket is knitted in a holding position design, the rest in stockinette stitch.

Publisher: Henry J. Atkin, 1128 Crenshaw Blvd., Los Angeles, Calif. 90019, Telephone: WEbster 8-2079. Published bi-monthly. Subscriptions: USA—\$6.00 annually, single copies \$1.50; Canada—\$7.00; other parts of the world—\$10.00. The entire contents of KNITKING MAGAZINE are copyright and must not be reproduced in any shape or form without the express permission in writing, of the publisher. COPYRIGHT © by KNITKING 1967.

Printed by: George Rice & Sons, Los Angeles, California.

## Letter from the Publisher

Here we are starting our fourth year of publication and even more excited than when we introduced the very first issue. Everybody at KNITKING is thrilled to bits about the letters of praise that poured in regarding the new method of pattern presentation introduced for the first time in our July-August issue.

If this issue of KNITKING MAGAZINE was the very first you ever saw, you would find it difficult to believe the tremendous amount of work that has gone into developing a method of presentation easily understood by all of our readers. You could never appreciate the hundreds of hours spent analyzing, testing, discussing and rejecting a multitude of methods of presentation before the current system was arrived at. We will, of course, continue in our endeavors to improve KNITKING MAGAZINE and to supply modern stylish patterns plus the Practical Knitting Hints that are needed so much by most knitters.

When we first discussed the possibility of publishing KNITKING MAGAZINE, we decided that only a top quality publication could bear the KNITKING name. KNITKING machines were already recognized as the world's finest and any low budget, low quality publication could only damage the KNITKING name. Especially if the publication failed as several low budget, poor quality, knitting machine publications put out by other companies, have failed.

We launched KNITKING MAGAZINE in the full knowledge that it would need financial support for several years, but that to insure its ultimate success, it had to be well done from the very first issue and that it would need continuing modification in order to satisfy the discriminating needs of the American knitting machine owner.

It seems that we are coming along fine. It still costs more than a dollar to prepare and print each single copy of KNITKING MAGAZINE, but our subscription list grows with each issue and as we enter our fourth year, it is 260% longer than it was when we entered our second year. If we continue at the same growth rate, KNITKING MAGAZINE should be self-supporting by the time we start our fifth year.

In order to publish a maximum number of patterns in each issue, we maintain a minimum amount of advertising. It is, however, the sales of KNITKING products, machines, accessories and yarn that finance the publication of KNITKING MAGAZINE, so we thank our increasing number of readers for their support in the purchasing of KNITKING products and we assure them that we will continue to offer only the finest quality merchandise at the lowest possible prices.

As publisher of KNITKING MAGAZINE, I also take the opportunity to thank my loyal and conscientious co-workers who in addition to their efforts during office hours, take problems home with them to work out in their own time and on their own machines and who will occasionally turn up at the office on weekends to discuss particularly tough knitting problems. I am fortunate, indeed, to have the support of willing workers who treat each individual problem as their own and every KNITKING MAGAZINE subscriber as a good friend whose every question must be answered satisfactorily.

Our November-December issue is going to be a beauty, devoted, as is usual in the last issue of each calendar year, to a variety of handsome, original Winter pullovers designed for all members of the family. We think you will agree that the cover is one of the most beautiful we have ever produced.





FOR FALL  
1967:  
KNITS ARE  
TRUMPS

**DK 7519**

Definitely basic and a dress for all seasons. The simple lines, raglan sleeves (knit them long if you wish) and high ribbed collar make this dress a favorite. Our model is knitted in green and we give you the equivalent of four sizes . . . 10/12 and 14/16. See page 18.

**DP 7520**

The Holding Position Design for this lovely jacket is especially beautiful worn on the purl side. Wear it over the dress on opposite page and feel elegant. Size 10/12 and 14/16. See page 19.



FOR FALL  
1967:  
KNITS ARE  
TRUMPS



**DP 7522**

Coordinate two colors and knit this exceptionally smart pullover with a saddle shoulder made by a new type full-fashioning. It is beautifully designed and quite easy to knit. Size 10/12 and 14/16. See page 20.

**DK 7521**

Time for a fashion change . . . and you'll love this two-color double buttoned top teamed with a skirt knitted in the darker shade. Knit another skirt to wear with DP 7522 shown on opposite page or . . . knit 1 skirt to wear with either top. Size 10/12 and 14/16. See page 21.





FOR FALL  
1967:  
KNITS ARE  
TRUMPS



**DK 7523**

Trim and Terrific! Wear this lovely dress everywhere . . . anytime . . . Our Model is knitted in Red with a White trim. The pattern design follows a chart or you may use your JAC 40 and Pattern No. 29. Size 12/14. See page 22.

**DK 7518**

Tired of knitting plain dresses? . . . then this lovely patterned dress will more than fill your need for something different. We chose pale blue yarn for our model, the tiny buttons on bodice and the chain belt are silver. Size 10/12 and 14/16. See page 24.







DP 7517

An easy to knit and most flattering pullover to wear over a skirt or pants. The band at bottom and edge of sleeves as well as the softly rounded collar are knitted in a contrasting color. Size 12/14. See page 26.

DK 7515

Choose KNITKING Subita 2 x 4 to knit this dazzling two piece dress. The diagonal pattern stitch, on the front only, is a holding position design and very flattering. Size 12/14. See page 17.





**STYLISH**  
★  
**FESTIVE**  
★  
**ELEGANT**



DK 7505

Just what you have been asking for . . . an exclusively designed Coat knitted in a holding position design. KNITKING Sonika Dralon gives the pattern (which is worn on the purl side) a depth and beauty that is almost 3 dimensional . . . Don't pass it up . . . Size 12/14. See page 25.

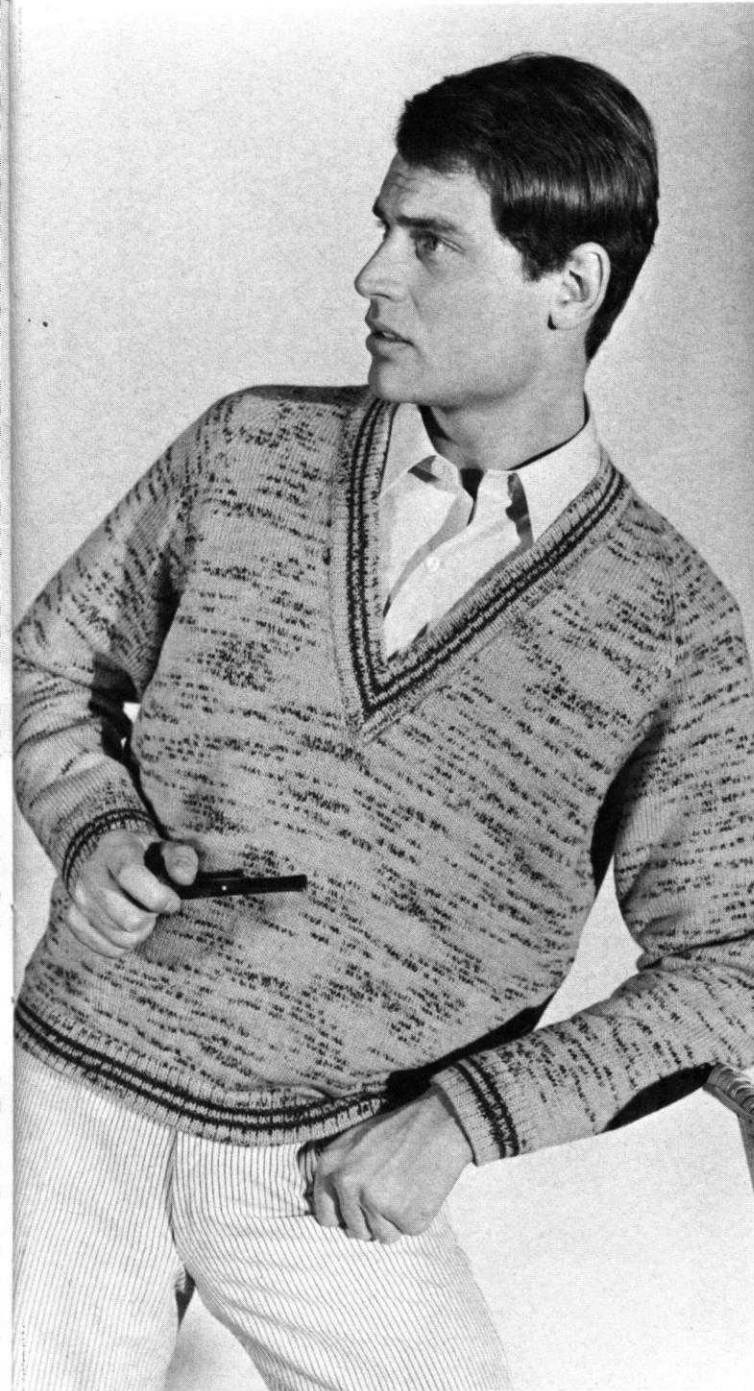
FOR THE MEN





HP 3497

All Sportsmen really go for a good looking and hard wearing jacket and this one is knitted with a blending of two colors. Take note of the different band at bottom of jacket, the well fitting neckband and cuffs knitted in a dark shade. Size 40/42. See page 26.



HP 3496

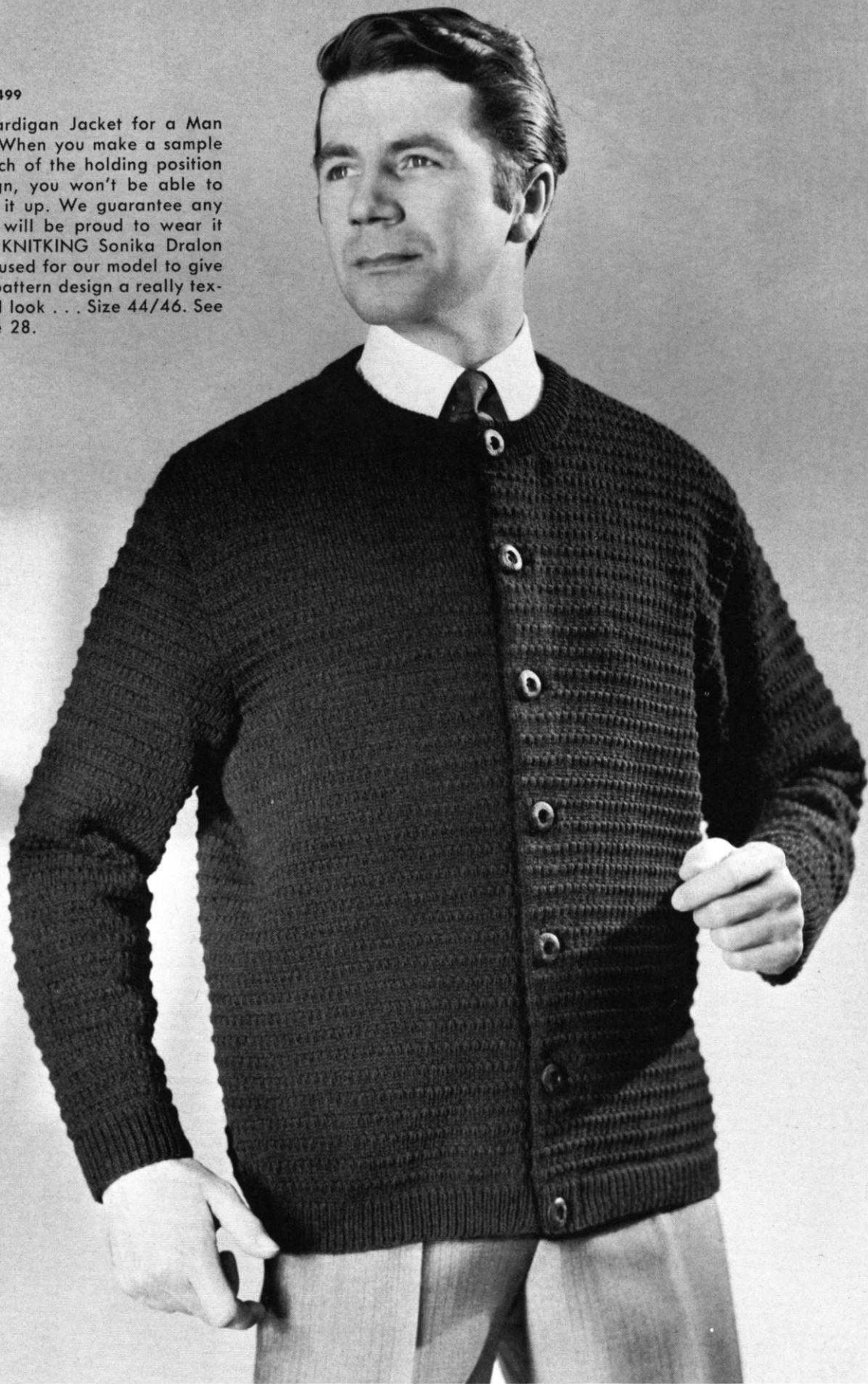
Comfortable . . . light as air . . . machine washable KNITKING Fine Dralon is used to knit this sports shirt and if you have tried to buy a similar good looking knit in the stores, you no doubt were surprised at the high prices. If you knit your man one, he'll place an order for more . . . Size 42/44. See page 28.

HP 3498

Some men prefer a V-necked pull-over and your man will certainly enjoy this classic . . . The bands are striped for accent and you could knit a second one without the stripes. Size 44/46. See page 27.

HP 3499

A Cardigan Jacket for a Man . . . When you make a sample swatch of the holding position design, you won't be able to pass it up. We guarantee any man will be proud to wear it and KNITKING Sonika Dralon was used for our model to give the pattern design a really textured look . . . Size 44/46. See page 28.





# FOR THE CHILDREN



MK 4951

Strictly Feminine . . . A lovely pullover to wear over a skirt. The cable design is not difficult to make and worth the extra bit of time it takes. Size 8 to 9 years. See page 29.

MK 4948

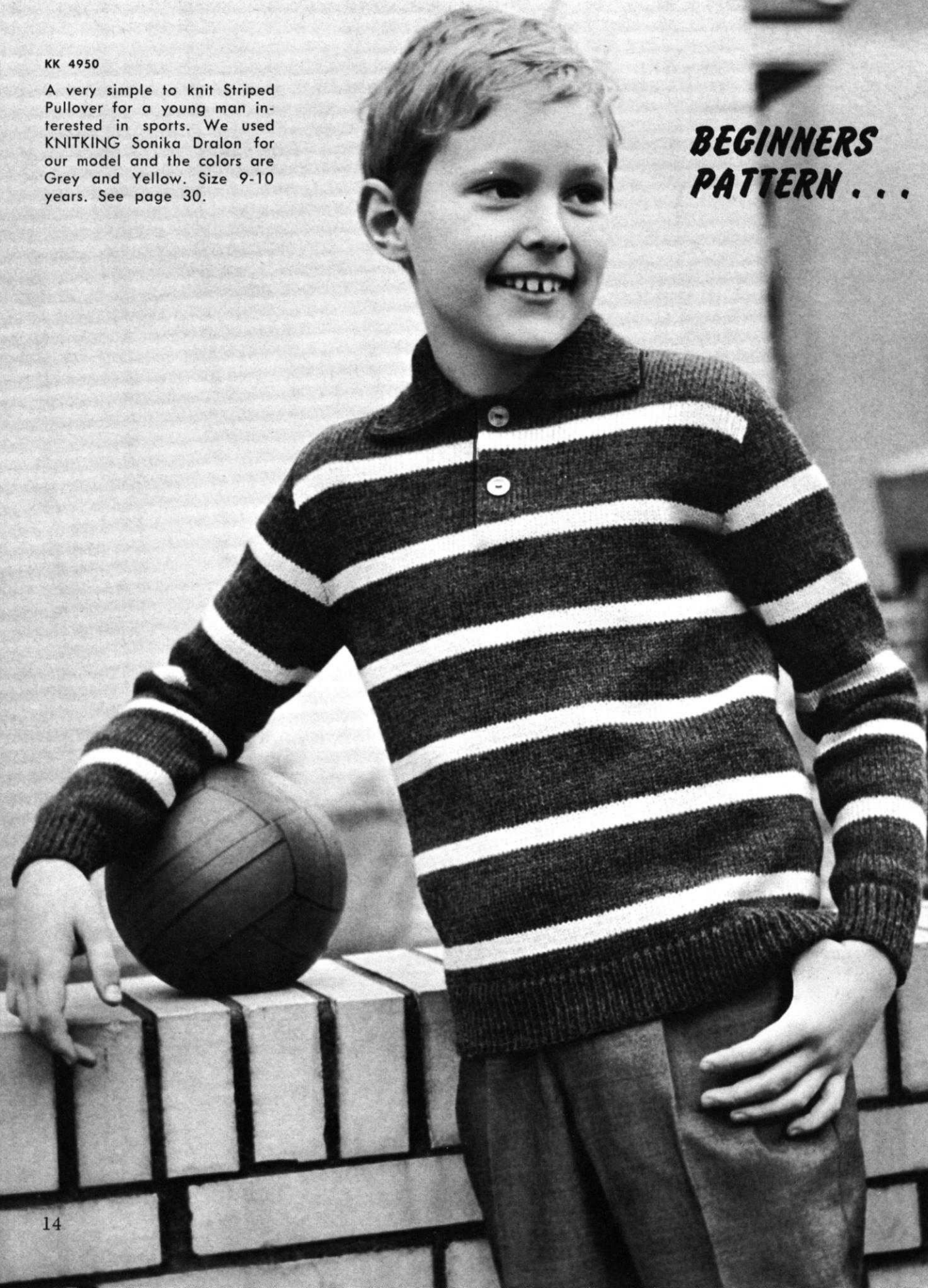
Here's your chance to learn something new . . . A Weaving Design is used for this adorable little Girl's Coat. The double breasted buttoning is very much in fashion and adds extra warmth as well. Size 2 years. See page 29.



KK 4950

A very simple to knit Striped Pullover for a young man interested in sports. We used KNITKING Sonika Dralon for our model and the colors are Grey and Yellow. Size 9-10 years. See page 30.

**BEGINNERS  
PATTERN . . .**





MK 4952

Fishermen's Rib worn on the purl side is used for this smart looking Girl's Jacket. We chose Red and White KNITKING Subita 2 x 4 for our model, but let your girl select her own colors. Size 10-11 years. See page 32.

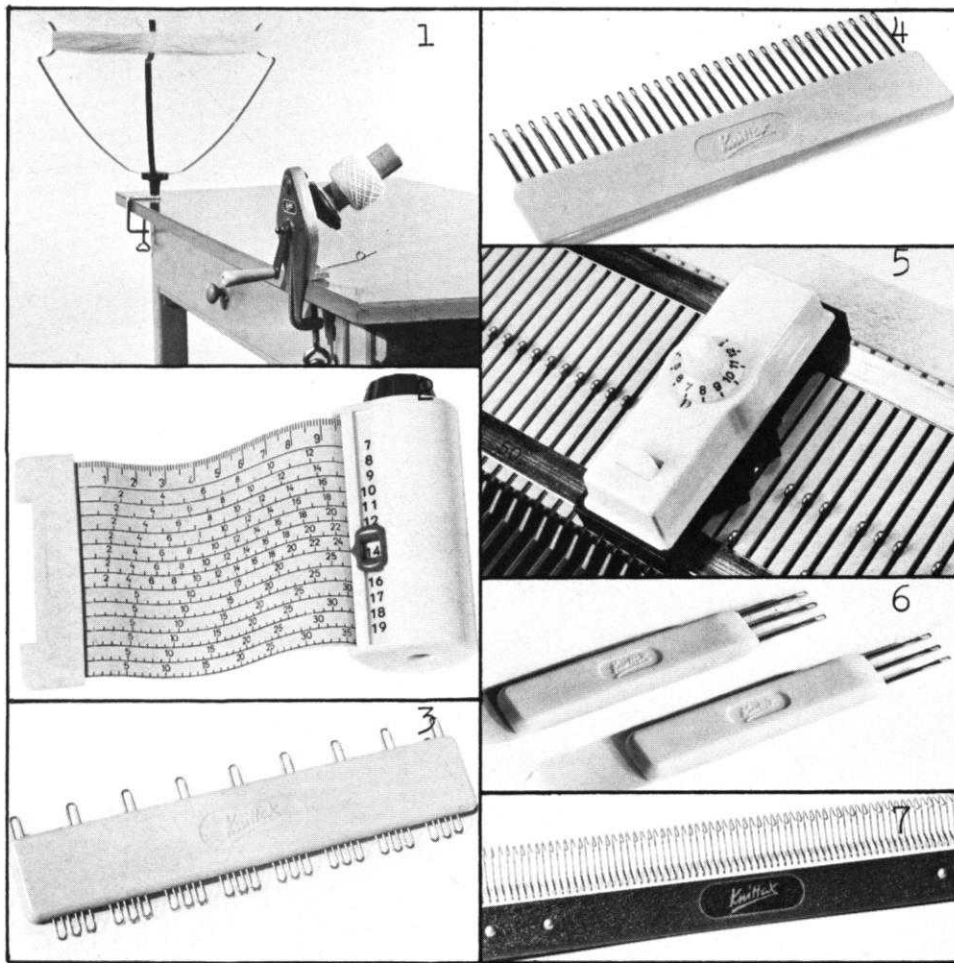
KK 4949

Follow the chart for the Norwegian Design on this young man's Cardigan Jacket or if you own the fabulous JAC 40, use Pattern No. 339. Size 13-14 and 10-11 years. See page 31.



# Knitking

## ACCESSORIES



1. Yarn Winder and Skein Holder. Heavy cast frame and nylon gears. \$14.95 plus \$1.00 shipping.
2. Converta Tape. For simple and speedy charting of custom knits. \$5.95 plus 15c shipping.
3. Adjustable Needle Selector. For setting unevenly spaced pattern stitches. \$2.95 plus 12c shipping.
4. 33 Needle Multi-transfer Tool. For decreasing in the middle of a row. \$2.75 plus 12c shipping.
5. Automatic Pattern Selector. For all KNITKING machines prior to the push-button. \$6.95 plus 20c shipping.
6. Treble Transfer Tools. For rapid transfer of stitches and for cable stitch. \$1.50 pair plus 10c shipping.
7. Reversing Bar. For easy hem turning or reversing of knitting. \$16.95 plus \$1.50 shipping.

California residents add  
5% sales tax.



**KNITKING**  
1128 Crenshaw Boulevard  
Los Angeles, California 90019

## ARE YOU UNHAPPY WITH YOUR PRESENT KNITTING MACHINE ?

DOES IT REFUSE TO KNIT FANCY DRESS YARNS?

DOES IT JAM UP WHEN YOU TRY TO KNIT LOOPED MOHAIR OR THICK AND THIN YARNS?

DOES IT DROP STITCHES ALL OVER THE PLACE?

ARE YOU CONTINUALLY HAVING TROUBLE WITH AWKWARD, CUMBERSOME WEIGHTS?

ARE YOU UNABLE TO MAKE A LARGE GARMENT WITH BULKY YARNS?

DO YOU HAVE TO SELECT PATTERN STITCHES MANUALLY?

DO YOU HAVE TO LATCH YOUR RIBBING BY HAND?

IF YOU ARE HAVING ANY OF THESE PROBLEMS YOU SHOULD TRADE UP TO A NEW FANTASTIC PUSH BUTTON KNITKING WITH COORDINATED RIBBER AND ENJOY KNITTING WITH THE WORLDS FINEST, MOST VERSATILE AND MOST AUTOMATIC KNITTER.

YOU WILL BE SURPRISED AT OUR GENEROUS TRADE-IN ALLOWANCE AND YOU CAN, IF YOU WISH, USE YOUR PRESENT MACHINE AS A DOWN-PAYMENT AND PURCHASE A COMPLETE KNITKING FOR JUST PENNIES A DAY. WRITE TODAY FOR FULL INFORMATION AND TELL US WHAT MACHINE YOU NOW OWN. THE ADDRESS IS:

**KNITKING, Dept. T-1, 1128 Crenshaw Blvd., Los Angeles, Calif. - 90019**



# KNITTING INSTRUCTIONS

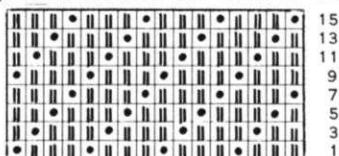
## COVER MODEL, DK 7515

### WOMAN'S TWO PIECE DRESS



**SIZE:** 12/14. **MATERIAL:** 26¼ oz. green KNITKING Subita 2 x 4 or Coats & Clark Redheart Nylon & Wool Sport or Bearbrand Evermatch. 1½ yds. Taffeta 45" wide to line skirt. **TENSION:** KNITKING 6 to 8. **GAUGE:** Stockinette Stitch 16 sts. 2", 21 rows 2". Pattern Stitch 13 sts. 2", 29 rows 2". **PATTERN:** Stockinette and Holding Position Design according to chart. Put the Gate Cam Release Lever at the needle heels. 1. Following the chart, put the designated needles in holding

position and knit 1 row. 2. Put the needles in holding position back into working position and knit 1 row. REPEAT Steps 1 and 2 throughout. KNITKING Dial-a-Stitch machines use Wheel 3. Push in the right retractor button to retract needles automatically. After each 100 rows, this pattern must be pulled and stretched in all directions while still on machine. The pattern sections are worn on the purl side.



**SKIRT: BACK** (Figure VI). Cast on 150 sts. Work in stockinette stitch.

**ROWS 1-134:** Increase 1 st. on each side after Row 44 and again every following 22nd row 4 x. (160 sts.).

**ROWS 135-210:** Work even.

**ROWS 211-286:** Decrease 1 st. on each side and again every following 12th row 3 x, every 8th row 2 x, every 6th row 2 x, and every 4th row 2 x. AT THE SAME TIME, after ROW 230, for the darts, decrease 2 sts. on each side and again every following 7th row 7 x. To do this, on each side for the first decrease, put the 48th and 50th sts. on the 49th needle, then move the outside sts. over to fill the empty needles. The next decreases lie directly above. After ROW 286, bind off the remaining 108 sts.

**SKIRT FRONT:** (Figure V). Work the front the same as back with exception of the darts. For the DARTS, after ROW 252, decrease 2 sts. on each side and again on every 7th row 4 x. To do this, on each side, for the first decrease put the 46th and 48th sts. on the 47th needle, then move the outside sts. over to fill the empty needles. The next decreases lie directly above. After ROW 286 bind off the remaining 120 sts.

**JACKET: BACK** (Figure II). Cast on 150 sts. and work in stockinette stitch.

**ROWS 1-34:** Work even. To form the hem, put the cast on sts. back on the machine in front of the latches, then push the right Cam control button towards the back, (machines prior to AM 3 pull the control knob up) and knit 2 rows without yarn. Now push the control button forwards (or push down) and turn row counter back to 34.

**ROWS: 35-172:** Work even

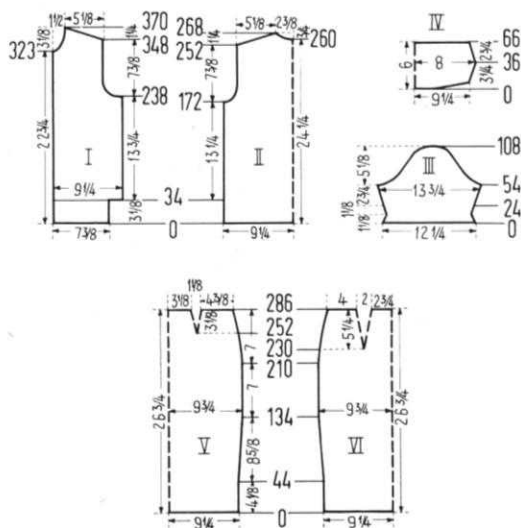
**ROWS 173-192:** ARMHOLE SHAPING: Bind off 4 sts. beginning next 2 rows, 3 sts. beginning next 2 rows, 2 sts. beginning next 2 rows, 1 st. beginning next 6 rows and 1 st. at each end of the next 4th row and following 4th row. (122 sts.).

**ROWS 193-252:** Work even.

**ROWS 253-268:** SHOULDER SHAPING: Bind off 4 sts. beginning next 6 rows and 5 sts. beginning next 2 rows. After ROW 260, bind off the center 16 sts. for NECK (See Notes to Knit By on Inside back cover). Bind off 5 sts. at shoulder and again every other row 4 x and AT THE SAME TIME Shape Neck on every other row by binding off 4 sts. 2 x and 3 sts. 1 x.

**FRONT:** (Figure I). Cast on 61 sts.

**ROWS 1-34:** Work even, then make hem as you did on the



back, then put the Gate Cam Release Lever at the needle heels and continue with holding position design. (61 sts.).

**ROWS 35-238:** Work even.

**ROWS 239-268:** ARMHOLE SHAPING: On the right side, bind off 4 sts. then on every other row bind off 3 sts. 1 x, 2 sts. 2 x, 1 st. 2 x, and on the next 4th and every following 4th row, 1 st. 3 x, and the next 6th row 1 st. 1 x. (44 sts.).

**ROWS 269-323:** Work even.

**ROWS 324-370:** NECK SHAPING: On the left side bind off 3 sts., then on every other row bind off 1 st. 2 x, on every 4th row 1 st. 3 x, every 8th row 1 st. 2 x. AT THE SAME TIME after ROW 348, Shape Shoulder on every other row by binding off 2 sts. 2 x and 3 sts. 10 x. Make second front section with reverse shaping and be sure to reverse the diagonal pattern stitch.

**SLEEVE:** (Figure III). Cast on 98 sts. Work stockinette stitch.

**ROWS 1-24:** Decrease 1 st. on each side after ROWS 4 and 8, then increase 1 st. on each side after ROWS 16 and 20. After ROW 24, put the cast on sts. back on the machine behind the latches to form the hem.

**ROWS 25-54:** Increase 1 st. on each side and again every following 4th row 6 x (112 sts.).

**ROWS 55-68:** CAP SHAPING: On the back side (right) of sleeve and on every other row, bind off 4 sts. 1 x, 3 sts. 2 x, 2 sts. 4 x, and on the front side (left) and on every other row, bind off 6 sts. 1 x, 4 sts. 2 x, 3 sts. 1 x and 2 sts. 3 x.

**ROWS 69-108:** Bind off 1 st. beginning next 32 rows, 2 sts. beginning next 4 rows, 3 sts. beginning next 2 rows, 4 sts. beginning next 2 rows, then bind off remaining 17 sts.

Make second sleeve with REVERSE shaping.

**COLLAR:** (Figure IV) Cast on 118 sts. Work stockinette stitch.

**ROWS 1-8:** On the left side put 38 needles in holding position, knit 1 row. On the right side, put 38 needles in holding position, knit 1 row. Now alternately, on each side, bring 12 needles 2 x and 14 needles 1 x back into working position. (See notes to Knit By on inside back cover — Short Rows).

**ROWS 9-36:** Increase 1 st. on each side after ROW 12, then again every following 4th row 5 x. The increases are made between the 3rd and 4th st. by moving the 3 end sts. 1 needle outward, then with the work hook place the cross bar of stitch from the previous row on the empty needle. (130 sts.).

**ROWS 37-66:** Decrease 1 st. on each side after ROW 42, and again every 4th row 5 x by putting the 4th st. on the 5th needle, then move the 3 end sts. over to fill the empty needle. After ROW 66 bind off all sts.

**BUTTON BAND:** Cast on 26 sts. Work 220 rows stockinette stitch, then bind off all sts. The **BUTTONHOLE BAND** is worked the same, but make buttonholes after ROWS 7, 36, 65, 94, 123, 152, 181 and 210 over the 4th-7th and 20th-23rd needles.

**FINISHING: SKIRT:** Join the front and back at sides, leaving an 8" opening on the left side for the zipper. Make a narrow hem around this opening. Turn under 3 rows on upper edge and baste to wrong side, then sew an elastic band against the basting line on inside. Turn under 2" on lower edge and hem to wrong side. Sew in zipper, hooks and eyes. Line the skirt with taffeta.

**JACKET:** Join front and back sections at sides and shoulder, easing in the fullness at bustline of front sections. Sew sleeves together and set in, matching front and back shaping. Sew or weave button and buttonhole bands to front edges, then turn under half and hem to inside. Fold collar in half and weave shaped edges together. Sew collar to neckline, leaving  $\frac{3}{4}$ " at both front edges unattached. (The cast on section is the top of the collar). Finish buttonholes and sew on buttons.

### WOMAN'S DRESS, DK 7519



**SIZE** 10/12 and 14/16. **MATERIAL:** 21 oz. green KNITTING Mutella, or Bearbrand Deluxe Sock and Sport or Columbia Minerva Nantuk Finger-ing.

**TENSION: KNITTING** 5 to 7. **GAUGE:** 16 sts. 2", 22 rows 2".

**PATTERN:** Stockinette Stitch. **COLLAR and SLEEVE EDGES:** K1, P1, Ribbing.

**SIZE: 10/12. BACK:** (Figure II). Cast on 154 sts.

**ROWS 1-272:** Decrease 1 st. on each side after ROW 198 and again on

the 10th row 1 x, on every 8th row 2 x, on every 6th row 5 x and on every 4th row 4 x. (128 sts.).

**ROWS 273-286:** Work even.

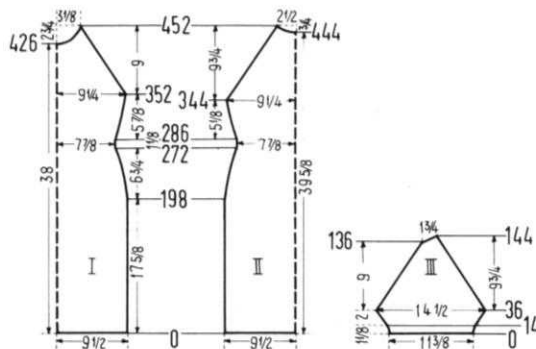
**ROWS 287-344:** Increase 1 st. on each side, and again on every 4th row 4 x and every 6th row 6 x. (150 sts.).

**ROWS 345-452: RAGLAN SHAPING:** Always with Cam Box on the right, decrease 1 st. at each end and again on every other row 49 x by always putting the 4th and 5th st. on the 6th and 7th needle, then the 3rd st. on the 5th needle, the 1st. and 2nd st. on the 2nd and 3rd needle and bring the empty needle into working position. After ROW 444, **SHAPE NECK** by binding off the center 10 sts. (See notes to Knit By on inside back cover). Continue to **SHAPE RAGLAN** as before 4 x more and **AT THE SAME TIME Shape Neck** on every other row by binding off 5 sts. 1 x and 4 sts. 2 x. After ROW 452 hang last 3 sts. together (put outside sts. on center needle) then bind off.

**FRONT:** (Figure I). Work the front the same as back up to ROW 344.

**ROWS 345-352:** Work even.

**ROWS 353-452: RAGLAN SHAPING:** Decrease 1 st. at each end and again every other row 36 x as you did on the back. After ROW 426 **SHAPE NECK** by binding off the center 10 sts. (as you did before). Continue to **SHAPE RAGLAN**



as before, 13 x more (except for the last raglan decrease put 2 sts. on 1 needle) and **AT THE SAME TIME Shape Neck** on every other row by binding off 3 sts. 2 x, 2 sts. 2 x, 1 st. 4 x and 1 st. on the next 4th row then 2 sts. on the following 4th row. After ROW 452 hang last 3 sts. together and bind off.

**SLEEVE:** (Figure III). Cast on 92 sts.

**ROWS 1-14:** K1, P1, ribbing, increasing 1 st. at each end after ROWS 4, 8, and 12. After ROW 14 transfer the ribber sts. to main machine and continue with stockinette st.

**ROWS 15-36:** Increase 1 st. at beginning of next 20 rows. (118 sts.).

**ROWS 37-136: RAGLAN SHAPING:** Decrease 1 st. at each end and again on every other row 49 x in same way as on back.

**ROWS 137-144:** On the left side and on every other row, put 2 needles 1 x and 3 needles 3 x into holding position (See Notes to Knit By on inside back cover — Short Rows)

**AT THE SAME TIME** on the right side continue to decrease 1 st. 4 x as you did before. After ROW 144 bring all needles into working position and bind off the remaining 14 sts. Make second sleeve with reverse shaping.

**NECK BAND:** Cast on 163 sts. Work K1, P1 ribbing, 10 rows Tension 6, 10 rows Tension 5, 10 rows Tension 4, 10 rows Tension 5, 10 Rows Tension 6. (50 rows). Transfer ribber sts. to main machine and knit 4 rows stockinette stitch with Tension 6. After ROW 54, bind off all sts.

**FINISHING:** Join front and back at sides, easing in the

fullness at the bustline of front section. Sew sleeves together and weave to front and back sections, 1 stitch in on each edge. Sew short ends of Neckband together. Sew cast-on edge to inside and bound-off edge to outside of neckline with the stockinette stitch on the right side.

**SIZE: 14/16. BACK:** (Figure II). Cast on 169 sts.

**ROWS 1-276:** Decrease 1 st. on each side after ROW 198, and again on every 10th row 2 x, every 6th row 6 x and every 4th row 5 x. (141 sts.).

**ROWS 277-290:** Work even.

**ROWS 291-348:** Increase 1 st. on each side, and again every 4th row 10 x and every 6th row 2 x. (167 sts.).

**ROWS 349-462: RAGLAN SHAPING:** Bind off 3 sts. beginning next 2 rows, then always with the Cam Box on the Right Side decrease 1 st. at each end every other row 52 x by always putting the 4th and 5th st. on each side on the 6th and 7th needle, then the 3rd st. on the 5th needle, the 1st and 2nd st. on the 2nd and 3rd needle and bring the empty needle into working position. After ROW 454 **SHAPE NECK** by binding off the center 13 sts. (See Notes to Knit By on inside back cover). Continue to **Shape Raglan** as before 4 x more and **AT THE SAME TIME Shape Neck** every other row by binding off 6 sts. 1 x, 5 sts. 1 x and 4 sts. 1 x. After ROW 462 hang the last 3 sts. together (put outside sts. on center needle) then bind off.

**FRONT:** (Figure I). Knit the Front the same as Back up to ROW 348.

**ROWS 349-360:** Work even.

**ROWS 361-466: RAGLAN SHAPING:** Bind off 3 sts. beginning next 2 rows then decrease 1 st. at each end and again on every other row 38 x the same way as on back. After ROW 440 **SHAPE NECK** by binding off the center 13 sts. as you did before. Continue to **Shape Raglan** on every other row 13 x more as you did before except for the last Raglan decrease put 2 sts. on 1 needle and **AT THE SAME**





Continue to **Shape Shoulder** on every other row 7 x more and **AT THE SAME TIME Shape Neck** on every other row by binding off 5 sts. 1 x, 3 sts. 1 x and 2 sts. 3 x.

**FRONT:** (Figure I). Cast on 87 sts. leaving the 2nd, 4th, 8th, 10th, etc. needles in the non-working position.

**ROWS 1-12:** Work stockinette stitch. Now continue with holding position design.

**ROWS 13-232:** Work even.

**ROWS 233-262:** **ARMHOLE SHAPING:** On the **right side** bind off 5 sts. then on every other row bind off 3 sts. 2 x, 2 sts. 3 x, 1 st. 3 x and on every following 4th row 1 st. 3 x. (64 sts.).

**ROWS 263-325:** Work even.

**ROWS 326-378:** **NECK SHAPING:** On **Neck side**, bind off 5 sts. then on every other row, bind off 4 sts. 1 x, 3 sts. 1 x, 2 sts. 3 x, 1 st. 3 x, then bind off 1 st. on every following 4th row 3 x and every 6th row 2 x. **AT THE SAME TIME**, after ROW 354, **Shape Shoulder** every other row by binding off 2 sts. 1 x and 3 sts. 12 x. Make second front section with reverse shapening.

**SLEEVE:** (Figure III). Make 2. Cast on 77 sts., leaving the 2nd, 4th, 8th, 10th, etc. needles in the non-working position.

**ROWS 1-12:** Work stockinette stitch. Now continue with holding position design.

**ROWS 13-250:** Increase 1 st. at **each end** after ROW 30 and again on every 8th row 20 x, then every 10th row 5 x. (129 sts.).

**ROWS 251-332:** **CAP SHAPING:** Bind off 4 sts. beginning next 2 rows, 3 sts. beginning next 4 rows, 2 sts. beginning next 8 rows, 1 st. beginning next 60 rows, 2 sts. beginning next 4 rows, 3 sts. beginning next 2 rows, 4 sts. beginning next 2 rows, then bind off remaining 11 sts.

**FINISHING:** Follow directions for SIZE 10/12.

## WOMAN'S PULLOVER, DP 7522



**SIZE:** 10/12 and 14/16. **MATERIAL:** 10½ oz. white (12¼ oz.) and 5¼ oz. red KNITTING Subita 2 x 4 or Diamond Pastel D'Aoust or Bearbrand Deluxe Sock and Sport. **TENSION KNITTING** 6 to 8. **GAUGE:** 16 sts. 2", 22 rows 2". **PATTERN:** Stockinette Stitch.

**SIZE 10/12. BACK:** (Figure II). Cast on 140 sts. with white.

**ROWS 1-36:** Work even. Now put the cast on sts. back on the machine behind the latches to form the hem. (Always knit the row following

1 tension higher).

**ROWS 37-154:** Increase 1 st. **on each side** after ROW 66 and again every following 18th row 4 x. (150 sts.).

**ROWS 155-176:** **ARMHOLE SHAPING:** **On each side** and on every following 3rd row decrease 2 sts. 8 x, by always putting the 3rd and 4th sts. on the 5th and 6th needles, then move the two outside sts. over to fill the empty needles. (118 sts.).

**ROWS 177-211:** Work even. Now put 59 needles on the right side in holding position and complete the left half first

**ROWS 212-220:** After ROW 212 cast on 3 sts. on the right side for opening facing. To do this, put 3 sts. from the right half on a stitch holder.

**ROWS 221-264:** **SHOULDER SHAPING:** After ROW 220, on **shoulder side**, then on every following 3rd row decrease 2 sts. 5 x and 3 sts. 10 x. For the first 5 decreases put the 3rd and 4th sts. on the 5th and 6th needles and

for the following decreases put the 3rd, 4th and 5th sts. on the 6th, 7th and 8th needle and always move the outside sts. over to fill the empty needles.

After ROW 264, bind off the remaining 22 sts. Now move the Cam Box to the right side and turn the Row Counter back to 211, bring all needles back into working position, put the 3 sts. from stitch holder back on the machine and finish the right half to correspond. (Do not forget to cast on 3 sts. for facing.).

**FRONT:** (Figure I). The front is worked like the back up to ROW 154.

**ROWS 155-162:** Work even.

**ROWS 163-184:** **ARMHOLE SHAPING.** **On each side** and on every following 3rd row, decrease 2 sts. 8 x as you did on the back. (118 sts.).

**ROWS 185-228:** Work even.

**ROWS 229-264:** **SHOULDER SHAPING.** **On each side** and on every following 3rd row decrease 2 sts. 4 x as you did before. After ROW 238, bind off the center 14 sts. for **Neck**. (See Notes to Knit By on inside back cover). Continue to **Shape Shoulder** every 3rd row as before by decreasing 2 sts. 1 x and 3 sts. 8 x and **AT THE SAME TIME Shape Neck** on every other row by binding off 4 sts. 1 x, 3 sts. 1 x, 2 sts. 4 x, 1 st. 2 x and on the following 4th row, 1 st. 1 x.

**SLEEVE:** (Figure III). Cast on 97 sts. with red.

**ROWS 1-26:** **On each side** Decrease 1 st. after ROWS 4 and 8 and increase 1 st. **on each side** after ROWS 18 and 22. After ROW 26, put the cast on sts. back on the machine behind the latches to form the hem.

**ROWS 27-58:** Increase 1 st. **on each side**, then increase 1 st. **on each side** every following 4th row 4 x and every other row 6 x. (119 sts.).

**ROWS 59-108:** **CAP SHAPING:** **On each side** and again on every following 3rd row decrease 2 sts. 17 x by always putting the 3rd and 4th st. on the 5th and 6th needle and move the 2 outside sts. over to fill the empty needles. (51 sts.).

**ROWS 109-166:** **On each side**, after ROW 110 decrease 2 sts. as you did before, then on every following 4th row **on each side** decrease 1 st. 13 x by putting the 3rd st. on the 4th needle and move the 2 outside sts. over to fill the empty needles.

**ROWS 167-174:** **On the left side** on every other row put 3 needles 1 x and 4 needles 3 x into holding position. (See Short Rows on inside back cover), **AT THE SAME TIME**, on the **right side** on every 4th row decrease 1 st. 2 x as you did before. After ROW 174 bring all needles into working position and bind off all 19 sts. Make second sleeve with reverse shapening.

**NECKBAND:** Cast on 120 sts. with red. Work stockinette stitch, 4 rows with Tension 6, 10 rows with Tension 5 and 4 rows with Tension 6. After 18 rows bind off all sts.

**FINISHING:** Join front and back at sides, easing in fullness at the bustline of front section. Sew sleeves together, then weave to front and back sections, 1 st. in from each side, easing the sleeve slightly at beginning of shoulder. Turn under facings on back opening and hem to wrong side. Sew cast on edge of Neckband to inside and bound off edge to outside of neckline, then sew in zipper.

**SIZE 14/16. BACK:** (Figure II). Cast on 156 sts. with white.

**ROWS 1-36:** Work even. Now put the cast on sts. back on the machine behind the latches to form hem. (Always knit the row following 1 tension higher).

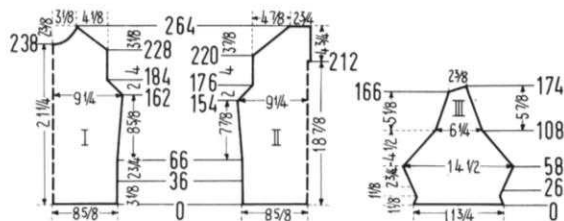
**ROWS 37-154:** Increase 1 st. **on each side** after row 66 and again on every following 18th row 4 x. (166 sts.).

**ROWS 155-182:** **ARMHOLE SHAPING:** **On each side** and on every following 3rd row, decrease 2 sts. 10 x by always putting the 3rd and 4th sts. on the 5th and 6th needle then move the 2 outside sts. over to fill the empty needles. (126 sts.).

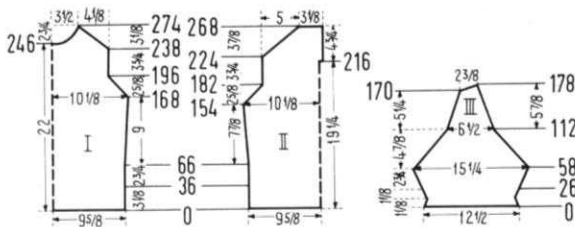
**ROWS 183-215:** Work even. Now put 63 needles on the right side in holding position and finish the left half first.

**ROWS 216-224:** After ROW 216, cast on 3 sts. on the right side for back opening facing. To do this put 3 sts. from the right half on a stitch holder.

**ROWS 225-268:** **SHOULDER SHAPING.** After row 224, on **shoulder side** and every following 3rd row, decrease 2 sts.







5 x and 3 sts. 10 x. For the first 5 decreases put the 3rd and 4th st. on the 5th and 6th needle, and for the following decreases put the 3rd, 4th and 5th sts. on the 6th, 7th, and 8th needles and always move the outside sts. over to fill the empty needles. After ROW 268 bind off the remaining 26 sts. Now move the Cam Box to the right side, and turn Row Counter back to 215. Bring all needles into working position, put the 3 sts. from stitch holder back on the machine and finish the right side to correspond. (Do not forget to cast on 3 sts. for facing.)

**FRONT:** (Figure I). The front is worked like the back up to ROW 154.

**ROWS 155-168:** Work even.

**ROWS 169-196:** ARMHOLE SHAPING. On each side and every following 3rd row decrease 2 sts. 10 x as you did on the back. (126 sts.)

**ROWS 197-238:** Work even.

**ROWS 239-274:** SHOULDER SHAPING: On each side and every following 3rd row decrease 2 sts. 3 x as you did on the back. After ROW 246 SHAPE NECK by binding off the center 16 sts. (See Notes to Knit By on inside back cover).

Continue to **Shape Shoulder** every 3rd row as before by decreasing 2 sts. 2 x and 3 sts. 8 x and AT THE SAME TIME **Shape Neck** on every other row by binding off 4 sts. 1 x, 3 sts. 2 x, 2 sts. 4 x, 1 st. 2 x and on the following 4th row 1 st. 1 x.

**SLEEVE:** (Figure III). Cast on 103 sts. with red.

**ROWS 1-26:** Decrease 1 st. on each side after ROWS 4 and 8, then increase 1 st. on each side after ROWS 18 and 22. After ROW 26, put the cast on sts. back on the machine behind the latches to form the hem.

**ROWS 27-58:** Increase 1 st. on each side, then increase 1 st. on each side every following 4th row 4 x and on every other row 6 x. (125 sts.)

**ROWS 239-274:** SHOULDER SHAPING: On each side and following 3rd row, decrease 2 sts. 18 x by always putting the 3rd and 4th st. on the 5th and 6th needle and always move the 2 outside sts. over to fill the empty needles. (53 sts.)

**ROWS 113-170:** On each side, decrease 2 sts. as you did before then every following 4th row decrease 1 st. on each side 14 x by putting the 3rd st. on the 4th needle and move the 2 outside sts. over to fill the empty needles.

**ROWS 171-178:** On the left side and on every other row, put 3 needles 1 x and 4 needles 3 x into holding position. (See Short Rows on inside back cover) AT THE SAME TIME, on the right side on every 4th row, decrease 1 st. 2 x as you did before. After ROW 178 bring all needles into working position and bind off all 19 sts. Make second sleeve with reverse shaping.

**NECKBAND:** Cast on 132 sts. with red. Work stockinette stitch, 4 rows with Tension 6, 10 rows with Tension 5 and 4 rows Tension 6. After 18 rows bind off all sts.

**FINISHING:** Follow directions for SIZE 10/12.

## TWO PIECE DRESS, DK 7521



**SIZE:** 10/12 and 14/16. **MATERIAL:** SKIRT 14 oz. (16 oz.) red. BLOUSE 16 oz. (18 oz.) white and 1 oz. red **KNITTING** Starlite Crepe or Spinnerin Mona. 1 1/2 to 2 yds. 45" Taffeta.

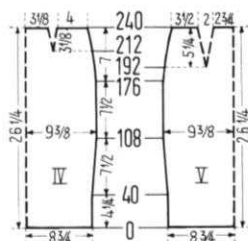
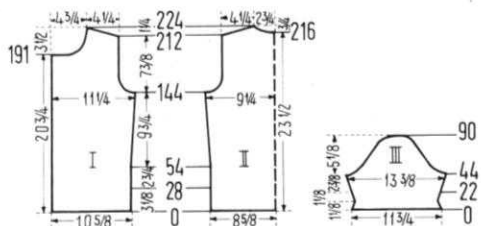
**TENSION:** KNITTING 8 to 10. **GAUGE:** 14 sts. 2", 18 rows 2". **PATTERN:** Stockinette Stitch.

**SIZE:** 10/12. **SKIRT BACK:** (Figure V). Cast on 126 sts. with red.

**ROWS 1-108:** Increase 1 st. on each side after ROW 40 and again every following 22nd row 3 x. (134 sts.)

**ROWS 109-176:** Work even.

**ROWS 177-240:** Decrease 1 st. on each side and again every following 10th row 2 x, every 8th row 3 x and every 6th row 2 x and AT THE SAME TIME after ROW 192 for the DARTS decrease 2 sts. on each side and again every following 7th row 6 x, by putting the 38th and 40th st.



on each side on the 39th needle, then move the outside sts. over to fill the empty needles. The next decreases lie directly above. After ROW 240 bind off the remaining 90 sts.

**SKIRT FRONT:** (Figure IV). The front is worked the same as back with the exception of the DARTS. For the DARTS, after ROW 212 decrease 2 sts. on each side and again every following 7th row 3 x by putting the 36th and 38th sts. on each side on the 37th needle, then move the outside sts. over to fill the empty needles. The next decreases lie directly above. After ROW 240 bind off the remaining 102 sts.

**BLOUSE:** BACK (Figure II). Cast on 123 sts. with white. **ROWS 1-28:** Work even. Now put the cast on sts. back on the machine behind the latches to form hem. (Always knit the row following 1 tension higher).

**ROWS 29-144:** Increase 1 st. on each side after ROW 54 and again every following 22nd row 3 x (131 sts.)

**ROWS 145-164:** ARMHOLE SHAPING: Bind off 4 sts. beginning next 2 rows, 3 sts. beginning next 2 rows, 2 sts. beginning next 4 rows, 1 st. beginning next 4 rows, then bind off 1 st. on each end of the next 4th and following 4th row. (101 sts.)

**ROWS 165-212:** Work even.

**ROWS 213-224:** SHOULDER SHAPING: Bind off 4 sts. beginning next 4 rows. After ROW 216, SHAPE NECK by binding off the center 17 sts. (See Notes to Knit By on inside back cover). Bind off 4 sts. at shoulder and continue to **Shape Shoulder** every other row by binding off 4 sts. 1 x and 5 sts. 3 x and AT THE SAME TIME **Shape Neck** on every other row by binding off 5 sts. 1 x, 4 sts. 1 x and 2 sts. 1 x.

**FRONT:** (Figure I). Cast on 75 sts.

**ROWS 1-28:** Work even but make **BUTTONHOLES** after ROWS 6 and 20 over the 5th-8th and 23rd-26th needle counting from the LEFT side. After ROW 28, put the cast on sts. back on the machine behind the latches to form hem.

**ROWS 29-144:** Make **BUTTONHOLES** after ROWS 53, 86 and 119 over the same needles as before and AT THE SAME TIME, increase 1 st. on the Right side after ROW 54 and again every following 22nd row 3 x. (79 sts.)

**ROWS 145-164:** ARMHOLE SHAPING: Bind off 4 sts. on arm side then every other row bind off 3 sts. 1 x, 2 sts. 2 x and 1 st. 2 x and every following 4th row 1 st. 2 x. AT THE SAME TIME, after ROW 152, make **BUTTONHOLES**.

**ROWS 165-191:** Work even, making **BUTTONHOLES** after ROW 185.

**ROWS 192-224: NECK SHAPING:** Bind off 18 sts. at neck edge then at neck edge on every other row, bind off 3 sts. 2 x, 2 sts. 2 x and 1 st. 3 x, then every following 4th row 1 st. 2 x. **AT THE SAME TIME Shape Shoulder** after ROW 212 and on every other row by binding off 4 sts. 4 x and 5 sts. 3 x. Make second front section with reverse shaping and omit buttonholes.

**SLEEVE:** (Figure III). Make 2. Cast on 85 sts.

**ROWS 1-22:** Decrease 1 st. **each side** after ROWS 4 and 8, then increase 1 st. **each side** after ROWS 14 and 18. After ROW 22 put the cast on sts. back on the machine behind the latches to form hem.

**ROWS 23-44:** Increase 1 st. **on each side** and again every following 4th row 4 x. (95 sts.).

**ROWS 45-54: CAP SHAPING.** Bind off 4 sts. beginning next 2 rows, 3 sts. beginning next 4 rows and 2 sts. beginning next 4 rows.

**ROWS 55-90:** Bind off 1 st. beginning next 4 rows and 2 sts. beginning next 2 rows and REPEAT these bind offs 4 x, then bind off 2 sts. beginning next 2 rows, 3 sts. beginning next 4 rows and bind off the remaining 11 sts. **BINDING:** Make 3. Cast on 135 sts. with red. Work 10 rows stockinette stitch, then bind off all sts.

**FINISHING: SKIRT:** Join front and back at sides, leaving and 8" opening on the left side. Make a narrow hem around this opening. Turn under 3 rows on upper edge and baste to wrong side, then sew an elastic band against the basting line on inside. Turn under 2" at lower edge and hem to wrong side. Sew in zipper, hooks and eyes. Line the skirt with taffeta.

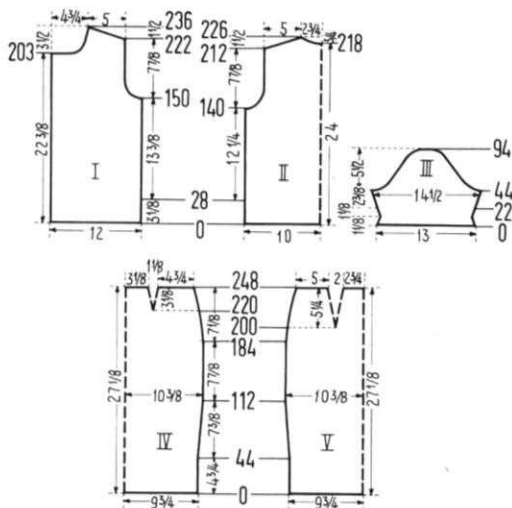
**BLOUSE:** Join front and back sections at sides and shoulders. Sew sleeves together and set in. Sew binding to front and neck edges. Finish buttonholes and sew on buttons.

**SIZE: 14/16. SKIRT BACK:** (Figure V). Cast on 140 sts. with red.

**ROWS 1-112:** Increase 1 st. **on each side** after ROW 44 and again every following 22nd row 3 x. (148 sts.).

**ROWS 113-184:** Work even

**ROWS 185-248:** Decrease 1 st. **on each side** and again every following 10th row 2 x, every 8th row 2 x every 6th row 2 x, every 4th row 3 x but **AT THE SAME TIME**, after ROW 200 for the DARTS, decrease 2 sts. on each side then



again every following 7th row 6 x by putting the 44th and 46th st. **on each side** on the 45th needle, then move the outside sts. over to fill the empty needles. The next decreases lie directly above. After ROW 248 bind off remaining 100 sts.

**SKIRT FRONT:** (Figure IV). The front is worked the same as back with exception of the DARTS. For the DARTS, after ROW 220, decrease 2 sts. **on each side** and again every following 7th row 3 x by putting the 43rd and 45th st. **on each side** onto the 44th needle, then move the outside sts. over to fill the empty needles. The next decreases lie directly above. After ROW 248, bind off remaining 112 sts

**BLOUSE: BACK.** (Figure II). Cast on 143 sts. with white. **ROWS 1-28:** Work even. Now put the cast on sts. back on the machine behind the latches to form hem. (Always knit the following row 1 tension higher).

**ROWS 29-140:** Work even.

**ROWS 141-160:** **ARMHOLE SHAPING:** Bind off 4 sts. beginning next 2 rows, 3 sts. beginning next 2 rows, 2 sts. beginning next 6 rows, 1 st. beginning next 6 rows, then bind off 1 st. at each end of the following 4th row. (109).

**ROWS 161-212:** Work even.

**ROWS 213-226:** **SHOULDER SHAPING.** Bind off 4 sts. beginning next 6 rows. After ROW 218, **SHAPE NECK** by binding off the center 17 sts. (See Notes to Knit By on inside back cover). Bind off 4 sts. at **shoulder edge** and continue to **Shape Shoulder** every other row by binding off 4 sts. 1 x and 5 sts. 3 x and **AT THE SAME TIME Shape Neck** every other row by binding off 5 sts. 1 x, 4 sts. 1 x and 2 sts. 1 x.

**FRONT:** (Figure I). Cast on 85 sts.

**ROWS 1-28:** Work even but make **BUTTONHOLES** after ROWS 6 and 20 over the 5th-8th and 23rd-26th needles counting from the left side. After ROW 28, put the cast on sts. back on the machine behind the latches to form hem.

**ROWS 29-150:** Work even but making **BUTTONHOLES** after ROWS 55, 90, and 125 over the same needles as before.

**ROWS 151-170:** **ARMHOLE SHAPING.** Bind off 4 sts. at **arm side** then every other row at **arm side** bind off 3 sts. 1 x, 2 sts. 3 x, 1 st. 3 x and on the following 4th row 1 st. 1 x, and **AT THE SAME TIME** make **BUTTONHOLES** after ROW 160.

**ROWS 171-203:** Work even but make **BUTTONHOLES** after ROW 195.

**ROWS 204-236:** **NECK SHAPING.** Bind off 18 sts. at **Neck Edge** then every other row at **Neck edge** bind off 3 sts. 2 x, 2 sts. 2 x, 1 st. 3 x and every following 4th row 1 st. 2 x, but **AT THE SAME TIME Shape Shoulder** after ROW 222 and every other row by binding off 4 sts. 5 x and 5 sts. 3 x.

Make second front section with reverse shaping but omit buttonholes.

**SLEEVE:** (Figure III). Make 2. Cast on 93 sts.

**ROWS 1-22:** Decrease 1 st. **on each side** after ROWS 4 and 8 then increase 1 st. **on each side** after ROWS 14-18. After ROW 22 put the cast on sts. back on the machine behind the latches to form hem.

**ROWS 23-44:** Increase 1 st. **on each side** and again every following 4th row 4 x. (103 sts.).

**ROWS 45-56:** **CAP SHAPING.** Bind off 4 sts. beginning next 2 rows, 3 sts. beginning next 4 rows and 2 sts. beginning next 6 rows.

**ROWS 57-94:** Bind off 1 st. beginning next 4 rows and 2 sts. beginning next 2 rows and REPEAT these bind offs 3 x, then bind off 2 sts. beginning next 4 rows, 3 sts. beginning next 4 rows, then bind off remaining 11 sts.

**BINDING:** Make two for front edges: Cast on 145 sts. with red. For neckline, cast on 135 sts. with red. Work 10 rows stockinette stitch, then bind off all sts.

**FINISHING:** Follow directions for **SIZE 10/12**, but ease in the fullness at the bustline of front sections.

## WOMAN'S DRESS, DK 7523



**SIZE:** 12/14. **MATERIAL:** 21 oz. red and 3 1/2 oz. white KNITKING Subita 2 x 3 or Fleishers Evermatch or Bearbrand Sock and Sport. **TENSION:** KNITKING 4 to 6. **GAUGE:** Pattern Stitch 16 sts. 2", 36 rows 2". Stockinette Stitch 16 sts. 2", 25 rows 2". **PATTERN:** Holding Position Design according to chart or use JAC 40 and Pattern #59. Use Purl side for right side. Collar and Edges stockinette stitch. **BACK:** (Figure II). Cast on 163 sts. with white.





**ROW 64:** Bring all needles into working position, knit 1 row, then bind off all sts. Make second lapel with reverse shaping.

**FINISHING:** Join front and back at sides and shoulders, easing in the fullness at bustline of front section. Sew sleeves together and set in. Fold lower edge and sleeve edges in half to right side and sew in place. Turn under 10 rows on front neckline and hem to wrong side. Fold collar in half lengthwise and sew front edges. Fold lapels in half and close  $1\frac{1}{4}$ " on upper edge starting from the fold line. Join the remaining upper open edge of lapel to the diagonal shaped edge on collar. (Cast on edge). Sew collar to dress, then tack lapels to dress as illustrated.

### WOMAN'S DRESS, DK 7518



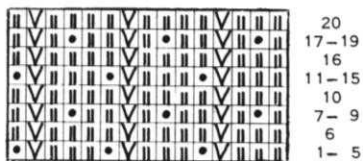
**SIZE:** 10/12 and 14/16. **MATERIAL:** 24½ oz. (28 oz.) light blue KNITTING SUBITA 2 x 4, or Bearbrand Deluxe Sock and Sport or Columbia Minerva Fingering. **TENSION:** KNITTING 6 to 8.

**GAUGE:** Pattern Stitch 16 sts. 2", 34 rows 2". Stockinette Stitch 16 sts. 2", 22 Rows 2". The omitted sts. in the pattern are counted in the gauge and directions as sts. **PATTERN:** Holding Position Design according to chart. Worn on knit side. **HEMS:** Stockinette Stitch.

**SIZE:** 10/12. Cast on 152 sts.

leaving the 4th, 9th, 14th, 19th, etc. needles in the non-working position.

**ROWS 1-18:** Work stockinette stitch. After ROW 18 continue with holding position design.



**ROWS 19-434:** Decrease 1 st. on each side after ROW 318 and again every following 16th row 2 x, every 12th row 2 x, every 10th row 2 x, every 8th row 2 x and every 6th row 3 x. (128 sts.).

**ROWS 435-454:** Work even.

**ROWS 455-556:** Increase 1 st. on each side and again every following 8th row 5 x and every 10th row 5 x. (150 sts.).

**ROWS 557-590:** **ARMHOLE SHAPING:** Bind off 5 sts. on each side then make bind offs at each side every following 4th row, 3 sts. 2 x, 2 sts. 2 x, 1 st. 2 x and the following 8th row, 1 st. 1 x. (114 sts.).

**ROWS 591-678:** Work even.

**ROWS 679-704:** **SHOULDER SHAPING.** Bind off 2 sts. beginning next 8 rows, 3 sts. beginning next 4 rows. After ROW 690 Bind off the center 12 sts. for NECK (See Notes to Knit By on inside back cover). Bind off 3 sts. at shoulder and again every other row 7 x more and AT THE SAME TIME Shape Neck every 4th row by binding off 5 sts. 1 x and 4 sts. 2 x.

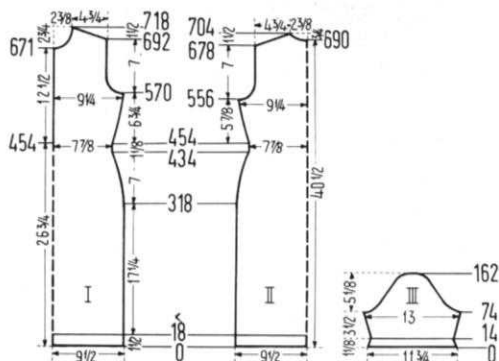
**FRONT:** (Figure I). The front is worked the same as back up to ROW 454. After ROW 454 divide the work (64 sts. on each side) and work each side separately. Put the needles on the left side into holding position and complete the right half first.

**ROWS 455-570:** Increase 1 st. on the right side, then again every following 8th row 5 x and every 10th row 5 x.

**ROWS 571-604:** **ARMHOLE SHAPING:** Bind off 5 sts. on the right side, then every following 4th row on arm side bind off 3 sts. 2 x, 2 sts. 2 x, 1 st. 2 x and on the following 8th row 1 st. 1 x.

**ROWS 605-671:** Work even.

**ROWS 672-718:** **NECK SHAPING.** Bind off 6 sts. at neck edge then on every following 4th row at neck edge bind off



4 sts. 1 x, 3 sts. 1 x, 2 sts. 1 x, 1 st. 3 x and on the following 8th row 1 st. 1 x. and AT THE SAME TIME SHAPE SHOULDER after ROW 692 and on every other row by binding off 2 sts. 4 x and 3 sts. 10 x.

**SLEEVE:** (Figure III). Make 2. Cast on 96 sts. leaving the 6th, 11th, 16th, 21st, etc. needles in the non-working position.

**ROWS 1-14:** Work in stockinette stitch and decrease 1 st. on each side after ROWS 4, 8, and 12. After ROW 14, continue with the holding position design.

**ROWS 15-74:** Increase 1 st. on each side after ROW 18 and again every following 8th row 2 x, then every 6th row 5 x. (106 sts.).

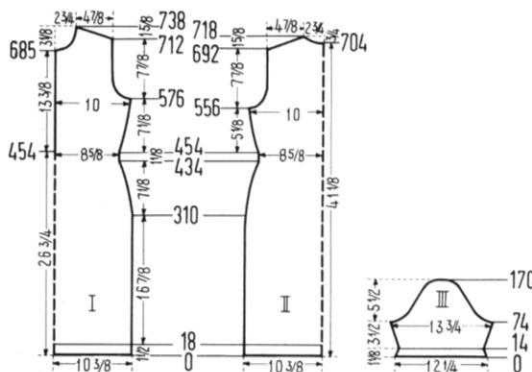
**ROWS 75-94:** **CAP SHAPING:** Bind off 5 sts. on each side, then make bind offs at each side every following 4th row, 4 sts. 1 x, 3 sts. 2 x, and 2 sts. 1 x.

**ROWS 95-162:** Bind off 1 st. each side every following 4th row, 1 st. 1 x, 2 sts. 1 x, 1 st. 2 x, 2 sts. 1 x, 1 st. 2 x, 2 sts. 1 x, 1 st. 2 x, 2 sts. 1 x, 1 st. 2 x, 2 sts. 1 x, 3 sts. 2 x, 4 sts. 1 x, then the remaining 14 sts.

**FINISHING:** Weave front to back at sides, 1 st. in on each section, easing in the fullness on bustline of front section. Join shoulders, Sew sleeves together and set in. Turn under stockinette stitch edge on dress and sleeve and hem to wrong side. Crochet around front opening and neckline as follows: ROW 1. Beginning at lower left front opening, work a single crochet around edges. Chain 1, turn. ROW 2. 1 half double crochet in 1st st., 3 double crochet in next st., 1 half double crochet in next st., 1 single crochet in next 4 sts., 1 half double crochet in next st., 3 double crochet in next st., 1 half double crochet in next st., 1 single crochet in next st., Chain 3, skip 3 sts., (Button-hole 1 single crochet in next st. REPEAT for pattern up to top at neck edge for right front. Continue around neck edge and left front as follows: 1 half double crochet in 1st st., 3 double crochet in next st., 1 half double crochet in next st., 1 single crochet in next 4 sts. then REPEAT for pattern. Sew on buttons.

**SIZE: 14/16 BACK:** (Figure II). Cast on 170 sts., leaving the 3rd, 8th, 13th, 18th, etc. needles in the non-working position.

**ROWS 1-18:** Work stockinette stitch. After ROW 18 continue with holding position design.





**ROWS 19-434:** Decrease 1 st. on each side after ROW 310 and again every following 12th row 3 x, every 10th row 3 x, every 8th row 4 x and every 6th row 4 x. (140 sts.).

**ROWS 435-454:** Work even.

**ROWS 455-556:** Increase 1 st. on each side and again every following 8th row 5 x and every 10th row 5 x. (162 sts.).

**ROWS 557-590:** ARMHOLE SHAPING: Bind off 5 sts. on each side then make bind offs on each side every following 4th row, 4 sts. 1 x, 3 sts. 1 x, 2 sts. 2 x, 1 st. 2 x and on the following 8th row 1 st. 1 x. (124 sts.).

**ROWS 591-692:** Work even.

**ROWS 693-718:** SHOULDER SHAPING: Bind off 2 sts. beginning next 4 rows and 3 sts. beginning next 8 rows. After ROW 704 bind off the center 14 sts. for NECK (See Notes to Knit By on inside back cover). Bind off 3 sts at shoulder edge and again every other row 7 x more and AT THE SAME TIME Shape Neck on every 4th row by binding off 6 sts. 1 x, 5 sts. 1 x and 4 sts. 1 x.

**FRONT:** (Figure I). The front is worked the same as back up to ROW 454. After ROW 454 divide the work in half and knit each side separately, (put the needles on the left side in holding position).

**ROWS 455-576:** Increase 1 st. on the right side and again every following 8th row 5 x and every 10th row 5 x.

**ROWS 577-610:** ARMHOLE SHAPING: Bind off 5 sts. on the right side, then every following 4th row on arm side bind off 4 sts. 1 x, 3 sts. 1 x, 2 sts. 2 x, 1 st. 2 x and on the following 8th row 1 st. 1 x.

**ROWS 611-685:** Work even.

**ROWS 686-738:** NECK SHAPING: Bind off 6 sts. at neck edge then on every following 4th row at neck edge, bind off 4 sts. 1 x, 3 sts. 1 x, 2 sts. 2 x, 1 st. 3 x and on the next 6th row and following 6th row 1 st. 1 x and AT THE SAME TIME, after ROW 712 and on every other row SHAPE SHOULDER by binding off 2 sts. 2 x and 3 sts. 12 x.

**SLEEVE:** (Figure III). Make 2. Cast on 100 sts., leaving the 3rd, 8th, 13th, 18th, etc. needles in the non-working position.

**ROWS 1-14:** Work stockinette stitch and decrease 1 st. on each side after ROWS 4, 8, and 12. After ROW 14, continue with holding position design.

**ROWS 15-74:** Increase 1 st. on each side after ROW 18 and again every following 6th row 8 x. (112 sts.).

**ROWS 75-94:** CAP SHAPING: Bind off 5 sts. on each side then make bind offs on each side every following 4th row, 4 sts. 1 x, 3 sts. 2 x and 2 sts. 1 x.

**ROWS 95-170:** Bind off 1 st. on each side, then make bind offs at each side every following 4th row, 1 st. 1 x, 2 sts. 1 x, 1 st. 2 x, 2 sts. 1 x, 1 st. 2 x, 2 sts. 1 x, 1 st. 2 x, 2 sts. 2 x, 3 sts. 2 x, 4 sts. 1 x and the remaining 14 sts.

**FINISHING:** Follow directions for SIZE 10/12.

## WOMAN'S COAT, DK 7505



**SIZE:** 12/14. **MATERIAL:** 29<sup>3</sup>/<sub>4</sub> oz. KNITTING Sonika Dralon, or Spinnerin Ambralon or Bearbrand Casa Laine. **TENSION:** KNITTING 9 or 10. **GAUGE:** 13 sts. 2", 28 rows 2". **PATTERN STITCH:** Holding position design according to chart. Worn on the purl side.

**BACK:** (Figure II). Cast on 152 sts. and work the holding position design.

**ROWS 1-140:** Work even.

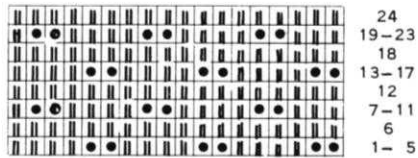
**ROWS 141-470:** Decrease 1 st. on each side and again on every follow-

ing 40th row 7 x. (136 sts.).

**ROWS 471-500:** ARMHOLE SHAPING: Bind off 4 sts. on each side then make bind offs on each side every following 4th row, 3 sts. 2 x, 2 sts. 1 x and 1 st. 4 x. (104 sts.).

**ROWS 501-588:** Increase 1 st. on each side after ROW 538 and again every following 16th row 2 x. (110 sts.).

**ROWS 589-604:** SHOULDER AND NECK SHAPING. Bind off the center 18 sts. for NECK (See Notes to Knit By on inside back cover). Bind off 3 sts. at shoulder edge and continue to shape shoulder every other row by binding off



3 sts. 6 x and 4 sts. 2 x, and AT THE SAME TIME Shape Neck on every other row by binding off 4 sts. 2 x, 3 sts. 1 x, 2 sts. 2 x and 1 st. 2 x.

**FRONT:** (Figure I). Cast on 91 sts. and work in holding position design.

**ROWS 1-23:** Work even, then cast on 11 sts. on the LEFT side.

**ROWS 24-140:** Work even.

**ROWS 141-482:** Decrease 1 st. on the RIGHT side and again every following 40th row 7 x. (94 sts.).

**ROWS 483-512:** ARMHOLE SHAPING: Bind off 4 sts. on the Right side, then make bind offs at arm side every 4th row, 3 sts. 2 x, 2 sts. 1 x and 1 st. 4 x. (78 sts.).

**ROWS 513-565:** Increase 1 st. on arm side after ROW 550.

**ROWS 566-616:** NECK SHAPING: Bind off 33 sts. on the left side. Increase 1 st. on the arm side after ROW 566,

and on Neck Side on every other row bind off 4 sts. 1 x, 3 sts. 1 x, 2 sts. 2 x, 1 st. 3 x. After ROW 582, increase 1 st. at arm side and continue to SHAPE NECK every 4th row by binding off 1 st. 2 x and every following 6th row 1 st. 2 x and on the next 8th row 1 st. 1 x., AT THE SAME TIME, after ROW 600 SHAPE SHOULDER; bind off 3 sts. then on every other row at shoulder side, bind off 3 sts. 6 x and 4 sts. 2 x. Make second front with reverse shaping.

**SLEEVE:** (Figure III). Make 2. Cast on 78 sts. and work stockinette stitch.

**ROWS 1-12:** Work even, then start the holding position design.

**ROWS 13-174:** Increase 1 st. on each side after ROW 30 and again every following 14th row 6 x, and every 12th row 4 x, (100 sts.).

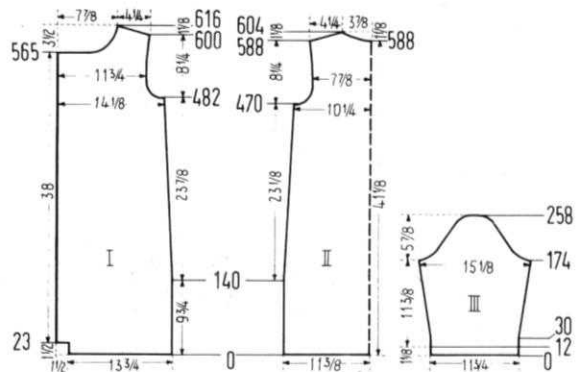
**ROWS 175-194:** CAP SHAPING: Bind off 4 sts. on each side then make bind offs on each side every following 4th row; 4 sts. 1 x, 3 sts. 1 x and 2 sts. 2 x.

**ROWS 195-250:** On each side and on every following 4th row, bind off 1 st. 1 x, and 2 sts. 1 x, then REPEAT these bind offs 6 x.

**ROWS 251-258:** On each side and on every following 4th row bind off 3 sts. 1 x, 5 sts. 1 x and then the remaining 12 sts.

**COLLAR:** Cast on 170 sts. and work 54 rows holding position design, then bind off all sts.

**FINISHING:** Join front and back sections at sides and shoulders, easing in the fullness at bustline of front sections. Sew sleeves together and set in. Turn under <sup>3</sup>/<sub>4</sub>" on front edges and the plain knitted rows on sleeves and hem to wrong side. Turn under 2" on lower edge and hem to wrong side. Fold Collar in half lengthwise and close short edges, then sew collar with the cast on edge to inside and bound off edge to outside of neckline, with collar edges even with front edges of the coat. Crochet 3 loops on the right front section, (see picture) and sew on buttons.



## WOMAN'S PULLOVER, DP 7517



**SIZE 12/14:** MATERIAL: 12¼ oz. yellow and 1¾ oz. blue KNITTING Subita 2 x 3 or Spinnerin Nylaine Fingering or Coats and Clark Nylon and Wool. TENSION: KNITTING: 4 to 6. GAUGE: 17 sts. 2", 23 rows 2". PATTERN: Stockinette stitch.

**BACK:** (Figure II). Cast on 160 sts. with yellow.

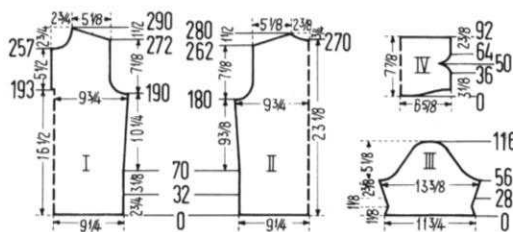
**ROWS 1-32:** Work even, knitting 12 rows with yellow, 8 rows with blue and 12 rows with yellow. After ROW 32, put the cast on sts. back on the machine behind the latches to

form the hem. (Always knit the row following with 1 tension higher).

**ROWS 33-180:** Increase 1 st. on each side after ROW 70, and again every following 22nd row 4 x. (170 sts.).

**ROWS 181-204:** ARMHOLE SHAPING: Bind off 4 sts. beginning next 4 rows, 3 sts. beginning next 2 rows, 2 sts. beginning next 4 rows, 1 st. beginning next 6 rows, then make bind offs on each side every following 4th row, 1 st. 2 x. (130 sts.).

**ROWS 205-262:** Work even.



**ROWS 263-280:** SHOULDER SHAPING: Bind off 4 sts. beginning next 8 rows. After ROW 270, bind off the center 10 sts. for NECK (See Notes to Knit By on inside back cover). Bind off 4 sts. at shoulder edge and continue to shape shoulder every other row by binding off 4 sts. 1 x and 5 sts. 4 x, and AT THE SAME TIME Shape Neck on every other row by binding off 5 sts. 1 x, 4 sts. 2 x and 3 sts. 1 x.

**FRONT:** (Figure I). The front is worked like the back up to ROW 180.

**ROWS 181-190:** Work even.

**ROWS 191-192:** ARMHOLE SHAPING: Bind off 4 sts. beginning next 2 rows. Now put 81 needles on the left side into holding position and complete the right half first.

**ROWS 193-214:** Bind off 4 sts. at Armhole. After ROW 193, cast on 3 sts. on the left side for facing. To do this put 3 sts. from the left half on a stitch holder. Continue to shape armhole every other row by binding off 3 sts. 1 x, 2 sts. 2 x, 1 st. 3 x then bind off 1 st. on the next 4th row and following 4th row.

**ROWS 215-257:** Work even.

**ROWS 258-290:** NECK SHAPING: Bind off 8 sts., then on every other row on neck side bind off 4 sts. 1 x, 3 sts. 1 x, 2 sts. 2 x, 1 st. 3 x. After ROW 272, bind off 4 sts. at shoulder side and continue to SHAPE SHOULDER every other row by binding off 4 sts. 5 x and 5 sts. 4 x and AT THE SAME TIME, after ROWS 275 and 279 bind off 1 st. at neck side. Now move the Cam Box to the left side, turn row counter back to 192, put all needles into working position, put the 3 sts. from the stitch holder back on the machine and complete the left half to correspond. (Do not forget to cast on 3 sts. for facing).

**SLEEVE:** (Figure III). Make 2. Cast on 102 sts. with yellow.

**ROWS 1-28:** Work 10 rows with yellow, 8 rows with blue and 10 rows with yellow and decrease 1 st. on each side after ROWS 4, 8 and 12, then increase 1 st. on each side after ROWS 16, 20, and 24. After ROW 28, put the cast on sts. back on the machine behind the latches to form the hem.

**ROWS 29-56:** Increase 1 st. on each side and again every following 4th row 6 x. (116 sts.).

**ROWS 57-116:** CAP SHAPING: Bind off 4 sts. beginning next 4 rows, 3 sts. beginning next 4 rows, 2 sts. beginning next 6 rows and 1 st. beginning next 38 rows, 2 sts. beginning next 2 rows, 3 sts. beginning next 2 rows, 4 sts. beginning next 4 rows and the remaining 12 sts.

**COLLAR:** (Figure IV). Cast on 116 sts. with blue. (See Short Rows on inside back cover).

**ROWS 1-8:** On the left side put 44 needles into holding position, knit 1 row. On the right side put 44 needles in holding position, knit 1 row. Now alternately on each side bring 18 needles 1 x, 14 needles 1 x and 12 needles 1 x back into working position.

**ROWS 9-36:** Work even.

**ROWS 37-50:** FRONT SHAPING: Alternately on each side, put 1 needle 3 x, 2 needles 2 x and 3 needles 2 x in holding position.

**ROWS 51-64:** Alternately on each side bring 3 needles 2 x, 2 needles 2 x and 1 needle 3 x back into working position.

**ROWS 65-92:** Work even, then bind off all sts.

**FINISHING:** Join front and back at sides and shoulders, easing in the fullness at bustline of front section. Sew sleeves together and set in. Fold the facing at front opening to wrong side and hem.

Fold collar in half lengthwise and sew rounded shapings. Sew collar (with cast on edge to inside and bound off edge to outside) to neckline. Sew 3 loops to right side and 3 buttons to left side of opening.

## MAN'S JACKET, HP 3497



**SIZE:** 40/42. MATERIAL: 24 oz. gray and 5 oz. black KNITTING Regal or Bearbrand Casa Laine or Spinnerin Ambralon.

TENSION: KNITTING Stockinette Stitch 8 to 10, K1, P1 Ribbing 6 to 8.

GAUGE: Stockinette Stitch, 14 sts. 2", 18 rows 2". K1, P1 Ribbing 14 sts. 2", 21 rows 2".

PATTERN: Stockinette Stitch. EDGES and NECKBAND K1, P1, Ribbing.

BACK: (Figure II). Cast on 157 sts. with black.

**ROWS 1-46:** K1, P1, ribbing with Tension 6 to 8. After ROW 46, transfer ribber sts. to main machine and continue in stockinette stitch with gray and Tension 8 to 10.

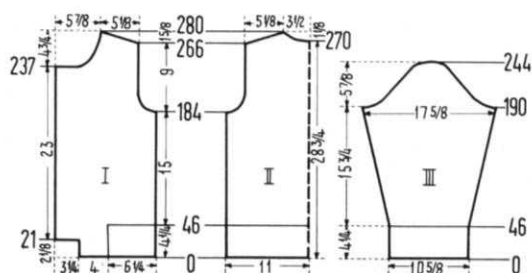
**ROWS 47-184:** Work even.

**ROWS 185-202:** ARMHOLE SHAPING: Bind off 5 sts. beginning next 2 rows, 3 sts. beginning next 4 rows, 2 sts. beginning next 2 rows, 1 st. beginning next 6 rows, and 1 st. at each end of the following 4th row. (123 sts.).

**ROWS 203-266:** Work even.

**ROWS 267-280:** SHOULDER SHAPING: Bind off 4 sts. beginning next 4 rows. After ROW 270 bind off the center 23 sts. for NECK, (See Notes to Knit By on inside back cover). Continue to shape shoulder on every other row by binding off 4 sts. 2 x and 5 sts. 4 x and AT THE SAME TIME Shape Neck on every other row by binding off 5 sts. 1 x, 4 sts. 1 x, 3 sts. 1 x and 2 sts. 1 x.

**FRONT:** (Figure I). Cast on 45 sts. with black, starting on the right side of the center needle on machine.





**ROWS 1-46:** K1, P1, ribbing. After ROW 46 transfer the ribber sts. to main machine, remove the ribber and put the 45 needles (with the stitches) in holding position. On the left of these needles cast on 28 sts. (from left to right) with gray. Turn row counter to 0 and work stockinette stitch. (Tension 8 to 10).

**ROWS 1-21:** Work even. Now cast on 22 sts. on the left side.  
**ROWS 22-40:** Work even, then break yarn, move the cam box all the way to the right, turn row counter to 46, put all needles in working position and work over all needles with gray.

**ROWS 47-184:** Work even.

**ROWS 185-202:** ARMHOLE SHAPING: Bind off 5 sts. on the right side then on every other row bind off 3 sts. 2 x, 2 sts. 1 x, 1 st. 3 x and on the following 4th row 1 st. 1 x. (78 sts.).

**ROWS 203-237:** Work even.

**ROWS 238-280:** NECK SHAPING: Bind off 23 sts. on the left side, then on every other row on neck side bind off 4 sts. 2 x, 2 sts. 2 x, 1 st. 3 x, then bind off 1 st. on the next 4th row and following 4th row, and 1 st. on the next 6th row and following 6th row, and AT THE SAME TIME, SHAPE SHOULDER after ROW 266 and on every other row by binding off 4 sts. 4 x, and 5 sts. 4 x.

Make second front section with reverse shaping and work buttonholes after ROWS 30, 70, 104, 138, 172 and 206 over the 3rd-7th and 17th-21st needles counting from the right.

**SLEEVE:** (Figure III). Make two. Cast on 76 sts. with black. (Tension 6 to 8).

**ROWS 1-46:** K1, P1 ribbing. After ROW 46 transfer the ribber sts. to main machine and continue in stockinette stitch and gray. (Tension 8 to 10).

**ROWS 47-190:** Increase 1 st. on each side and again every following 6th row 19 x, and every following 4th row 5 x. (126 sts.).

**ROWS 191-202:** CAP SHAPING: Bind off 5 sts. beginning next 2 rows, 4 sts. beginning next 2 rows, 3 sts. beginning next 4 rows and 2 sts. beginning next 4 rows.

**ROWS 203-244:** Bind off 1 st. beginning next 2 rows and 2 sts. beginning next 2 rows and REPEAT these bind offs 8 x, then bind off 2 sts. beginning next 2 rows, 3 sts. beginning next 2 rows, 4 sts. beginning next 2 rows and the remaining 16 sts.

**NECKBAND:** Cast on 163 sts. with black.

**ROWS 1-32:** K1, P1, ribbing, 8 rows with Tension 7, 16 rows with Tension 6 and 8 rows Tension 7, but AT THE SAME TIME work buttonholes after ROWS 7 and 25 over the 8th-12th needles counting from the left. After ROW 32, bind off all sts.

**FINISHING:** Sew the open part on the lower front sections together. Join fronts and back at sides and shoulder. Sew sleeves together and set in. Turn lower edge and sleeve edges in half, the front edges  $1\frac{3}{4}$ " to wrong side and hem. Sew cast on edge of Neckband to inside and bound off edge to outside of Neckline. Finish buttonholes, sew on buttons.

## MAN'S PULLOVER, HP 3498

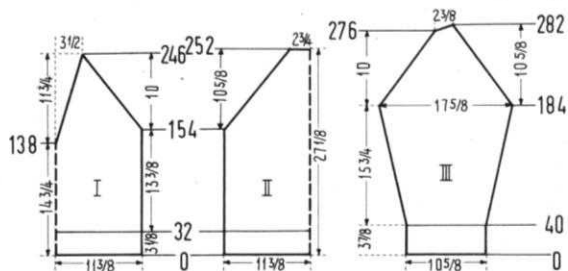


**SIZE:** 44/46. **MATERIAL:** 25 oz. light gray and 1 oz. dark gray KNIT-KING Starlite Crepe or Spinerin Mona. **TENSION:** KNITKING Stockinette Stitch 9 or 10. Edges and Neckband 6 to 8. **GAUGE:** Stockinette st. 13 sts. 2", 18 rows 2". Edges and Neckband 13 sts. 2", 20 rows 2". The omitted stitches on the edges and neckband are counted as stitches in the gauge and directions.

**PATTERN:** Stockinette stitch; the edges and neckband are worked

with every 3rd needle in the non-working position.  
**BACK:** (Figure II). Cast on 151 sts. with light gray, leaving every 3rd needle in the non-working position. (Tension 6 to 8).

**ROWS 1-32:** Work even, 21 rows light, 2 rows dark, 2 rows



light, 2 rows dark and 5 rows light gray. After ROW 32, bring the needles from the non-working position into working position and then to form the hem, put the cast on sts. back on the machine and put the cross bars from the first row on the empty needles and behind the latches. Continue with light gray and work stockinette stitch. Change tension to 9 or 10.

**ROWS 33-154:** Work even.

**ROWS 155-252:** RAGLAN SHAPING: On each side, then on every following 4th row decrease 3 sts. 7 x and 2 sts. 18 x. For the first 7 decreases, on each side put the 3rd, 4th, 5th stitches on the 6th, 7th, 8th needles and for the following decreases, put the 3rd and 4th sts. on the 5th and 6th needle. Always move the end sts. over to fill the empty needles. (Use a pair of treble and a pair of double transfer tools for decreasing this way). After ROW 252, bind off remaining 37 sts.

**FRONT:** (Figure I). The front is worked like the back up to ROW 246 with the exception of the NECK SHAPING. After ROW 138, put the center st. on the neighboring needle, put the needles on the left side into holding position and finish the right half first. Decrease 1 st. on NECK SIDE after ROW 142 and again every 4th row 4 x and every 6th row 14 x. After ROW 246, put the remaining 3 sts. together and bind off. Move the Cam Box to the left side, row counter back to 138 and complete the left half.

**SLEEVE:** (Figure III). Cast on 71 sts. with light gray leaving every 3rd needle in the non-working position. (Tension 6 to 8).

**ROWS 1-40:** Work 27 rows light, 2 rows dark, 2 rows light, 2 rows dark and 7 rows light gray. After ROW 40 bring the needles from the non-working position into working position, then form hem as on back. Change Tension to 9 or 10 and continue with light gray in stockinette st.

**ROWS 41-184:** Increase 1 st. on each side after ROW 44 and again on every following 6th row 22 x. (117 sts.).

**ROWS 185-276:** RAGLAN SHAPING: On each side and again every following 4th row, decrease 3 sts. 3 x and 2 sts. 20 x in the same manner as on the back.

**ROWS 277-282:** On the left side and on every other row, put 4 needles 3 x into holding position (short rows). AT THE SAME TIME, on the right side decrease 2 sts. after ROW 276 and ROW 280. After ROW 282 put all needles in working position and bind off all 15 sts. Make second sleeve with reverse shaping.

**NECKBAND:** Cast on 123 sts. with light gray, leaving every 3rd needle in the non-working position. Work with Tension 6 to 8.

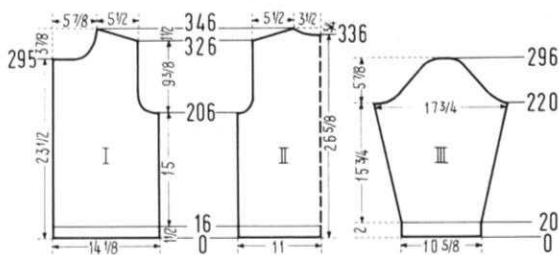
**ROWS 1-32:** Bind off 2 sts. on the right side after ROW 2 and again every other row 6 x, then increase 2 sts. on the right side after ROW 18 and again every other row 6 x, and at THE SAME TIME knit the 22nd and 23rd then the 27th and 28th row with dark gray. After ROW 32, bind off all sts. Work second half of neckband with reversed shaping.

**FINISHING:** Join front and back at sides, sew sleeves together, then weave sleeve to front and back sections 1 st. in from each side. Join short ends of neckband to form V, then sew to neckline.

BE SURE TO USE YOUR ZIP CODE  
IN ALL CORRESPONDENCE.







**ROWS 21-206:** Work even.

**ROWS 207-232:** ARMHOLE SHAPING: Bind off 5 sts., then on every other row bind off 4 sts. 1 x, 3 sts. 1 x, 2 sts. 1 x, 1 st. 3 x and on every following 4th row 1 st. 3 x. (81 sts.)

**ROWS 233-295:** Work even.

**ROWS 296-346:** NECK SHAPING: Bind off 22 sts. at left for Neck, then on every other row bind off 4 sts. 1 x, 3 sts. 1 x, 2 sts. 3 x, 1 st. 2 x and every following 4th row bind off 1 st. 3 x and every following 8th row 1 st. 2 x, and AT THE SAME TIME after ROW 326 SHAPE SHOULDER by binding off 3 sts., then every other row bind off 3 sts. 4 x and 4 sts. 6 x. Make second front section with reverse shaping and work buttonholes after ROWS 8, 58, 106, 154, 202, and 250 over the 3rd-7th and 16th-20th needles counting from the right side.

**SLEEVE:** (Figure III). Using Ribber, cast on 75 sts.

**ROWS 1-20:** K1, P1, Ribbing. After ROW 20 transfer ribber sts. to main machine and continue with stockinette st.

**ROWS 21-24:** Work even. Now start the holding position design.

**ROWS 25-220:** Increase 1 st. on each side and again on every following 8th row 19 x and every following 6th row 6 x. (127 sts.)

**ROWS 221-236:** CAP SHAPING: On the back side (right) of sleeve and on every other row, bind off 3 sts. 3 x, 2 sts. 3 x and 1 st. 2 x, and on the front side (left) and on every other row bind off 4 sts. 2 x, 3 sts. 2 x and 2 sts. 4 x.

**ROWS 237-288:** Bind off 1 st. beginning next 52 rows.

**ROWS 289-296:** Bind off 2 sts. beginning next 2 rows, 3 sts. beginning next 2 rows, 3 sts. beginning next 2 rows and 4 sts. beginning next 4 rows then bind off remaining 10 sts. Make second sleeve with REVERSE shaping.

**NECKBAND:** Using Ribber, cast on 149 sts. Work 24 rows K1, P1, ribbing and make buttonholes after ROWS 5 and 19 over the 6th-10th needles. Counting from the left side. AFTER row 24, bind off all sts.

**FINISHING:** Join fronts and back at sides and shoulders. Sew sleeves together and set in. Turn front edges 11 sts. wide to wrong side and hem. Sew cast on edge of neckband to inside and bound off edge to outside of neckline. Finish buttonholes and sew on buttons.

## GIRLS PULLOVER, MK 4951



**SIZE:** 8 to 9 years. **MATERIAL:** 8 3/4 oz. yellow KNITKING Subita 2 x 4, or Spinnerin Nylaine Fingering or Coats & Clark Redheart Nylon and Wool Sport. **TENSION:** KNITKING 6 to 8. **GAUGE:** Stockinette stitch 16 sts. 2", 21 rows 2"; K1, P1, Ribbing 16 sts. 2", 24 rows 2". **PATTERN:** Stockinette stitch with cable design on the front section and on the sleeves. Each cable is made over 8 sts. and is divided as follows: 2 purl stitches, 4 cable stitches, 2 purl stitches. STEP 1,

Knit 8 rows. STEP 2. Drop the 23rd, 28th, 40th, 45th, 58th, 63rd, 76th, 81st, 94th and the 99th stitch from the needles. Leave empty needles in working position. STEP 3. With 2 double transfer tools, cross the 24th and 25th sts. with the 26th and 27th sts., the 41st and 42nd with the 43rd and 44th sts., the 59th and 60th sts. with the 61st and 62nd sts., the 77th and 78th sts. with the 79th

and 80th sts., then the 95th and 96th sts. with the 97th and 98th sts. There are 5 cable stripes. REPEAT STEPS 1 to 3. Finish the 2 outside stripes (1 on each side) after ROW 46, the next outside stripes after ROW 70 and the center stripe after ROW 94. To finish each stripe, drop the 2 sts. on either side of the 4 cable stitches down to the ribbed edge and then latch these sts. up as knit stitches.

**COLLAR and EDGES:** K1, P1, Ribbing.

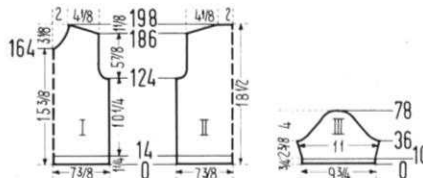
**BACK:** (Figure II). Cast on 122 sts.

**ROWS 1-14:** K1, P1, Ribbing. Now transfer the ribber sts. to main machine and continue with stockinette stitch.

**ROWS 15-124:** Work even.

**ROWS 125-142:** ARMHOLE SHAPING: Bind off 3 sts. beginning next 2 rows, 2 sts. beginning next 4 rows, 1 st. beginning next 4 rows and 1 st. at each end of the next 4th row and following 4th row. (100 sts.)

**ROWS 143-186:** Work even.



**ROWS 187-198:** SHOULDER SHAPING: Bind off 5 sts. beginning next 4 rows and 6 sts. beginning next 8 rows, then bind off the remaining 32 sts.

**FRONT:** (Figure I). The front is worked the same as back with the exception of the Cable Pattern and the Neck Shaping. After ROW 18, cross the sts. the first time, then repeat STEPS 1 to 3. After ROW 164 SHAPE NECK by binding off the center 8 sts. (See Notes to Knit By on inside back cover) then on Neck Side and on every other row bind off 2 sts. 3 x, 1 st. 2 x and every following 4th row 1 st. 4 x.

**SLEEVE:** (Figure III). Make 2. Cast on 80 sts.

**ROWS 1-10:** K1, P1, ribbing. Now transfer the ribber sts. to main machine then continue with stockinette stitch and work cable stripes over the 19th-26th, 37th-44th and 55th-62nd needles (3 cable stripes). Cross the stitches the first time after ROW 14.

**ROWS 11-36:** Increase 1 st. on each side after ROW 14 and again every following 4th row 4 x. (90 sts.)

**ROWS 37-44:** CAP SHAPING: Bind off 4 sts. beginning next 2 rows, 3 sts. beginning next 4 rows, 2 sts. beginning next 2 rows and after ROW 42 finish the 2 outside cable stripes.

**ROWS 45-78:** Bind off 1 st. beginning next 4 rows and 2 sts. beginning next 2 rows and REPEAT these bind offs 4 x, then bind off 3 sts. beginning next 2 rows, 4 sts. beginning next 2 rows and the remaining 12 sts. and AT THE SAME TIME, after ROW 58 finish the center cable stripe.

**COLLAR:** Cast on 135 sts. and work K1, P1, ribbing, 17 rows with Tension 5 and 17 rows with Tension 6 (34 rows) then bind off all sts.

**FINISHING:** Join front and back at sides and shoulders. Sew sleeves together and set in. Sew cast on edge of collar to neckline as illustrated.

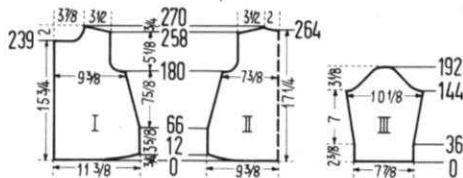
## CHILD'S COAT, MK 4948



**SIZE:** 2 years. **MATERIAL:** 10 1/2 oz. Red KNITKING Sonika Dralon or Spinnerin Ambralon or Bearbrand Casa Laine. **TENSION:** KNITKING 9 or 10. **GAUGE:** 15 sts. 2", 30 rows 2".

**PATTERN:** Weaving Stitch. Worn on purl side. Push right Cam Control Button towards back (machines prior to AM 3 pull up right Cam Control Knob.). STEP 1. Put the 1st, 3rd, 5th, 7th, etc. needles in holding position and knit 1 row. STEP 2. Bring the needles in holding

position back to working position and knit 1 row. REPEAT STEPS 1 and 2 throughout. KNITKING Dial-a-Stitch or Auto-



matic machines use Wheel #6. Push in the right retractor button to retract the needles automatically. (When knitting Short Rows, or the Buttonhole rows, release the retractor button and put needles for the pattern into holding and working position manually).

**BACK:** (Figure II). Cast on 144 sts. and work pattern manually.

**ROWS 1-12:** Work Short Rows (See Notes to Knit By on inside back cover). On the LEFT side, put 36 needles into holding position, knit 1 row. On the RIGHT side, put 36 needles in holding position and knit 1 row. Now alternately on each side bring 8 needles 3 x and 6 needles 2 x back into working position. Now work the pattern automatically.

**ROWS 13-180:** Decrease 1 st. on each side after ROW 66 and again every following 8th row 11 x and every following 6th row 3 x. (114 sts.).

**ROWS 181-204:** ARMHOLE SHAPING: Bind off 3 sts. beginning next 4 rows, 2 sts. beginning next 4 rows, 1 st. beginning next 4 rows then bind off 1 st. on each side every following 4th row 3 x. (84 sts.).

**ROWS 205-258:** Work even.

**ROWS 259-270:** SHOULDER SHAPING: Bind off 3 sts. beginning next 2 rows and 4 sts. beginning next 4 rows. After ROW 264, bind off the center 12 sts. for NECK (See Notes to Knit By on inside back cover). Bind off 4 sts. at shoulder edge and again every other row 3 times more and AT THE SAME TIME Shape Neck on every other row by binding off 5 sts. 1 x and 4 sts. 1 x.

**FRONT:** (Figure I). Cast on 87 sts.

**ROW 1:** Work stockinette stitch. Now start the holding position design and work short rows.

**ROWS 2-12:** On the right side put 36 needles in holding position, knit 2 rows. Bring 8 needles back into working position and every other row bring 8 needles 2 x more and 6 needles 2 x back into working position.

**ROWS 13-180:** Decrease 1 st. on the right side after ROW 66 and again every following 8th row 11 x and every following 6th row 3 x. (72 sts.).

**ROWS 181-204:** ARMHOLE SHAPING: On the right side bind off 3 sts. then on every other row bind off 3 sts. 1 x, 2 sts. 2 x, 1 st. 2 x and every following 4th row 1 st. 3 x. (57 sts.).

**ROWS 205-239:** Work even.

**ROWS 240-270:** NECK SHAPING: Bind off 22 sts. on the left side then on every other row bind off 2 sts. 2 x, 1 st. 2 x and on the following 4th row 1 st. 1 x and following 6th row 1 st. 1 x. AT THE SAME TIME after ROW 258 SHAPE SHOULDER by binding off 3 sts. then every other row bind off 4 sts. 6 x.

Make second front section with reverse shaping and work buttonholes after ROWS 119 and 120, 155 and 156, 191 and 192, 227 and 228 over the 4th-7th and 28th-31st needles counting from the right SIDE. The buttonholes are worked over 2 rows. Lay a contrast yarn over the designated needles, then knit these sts. off by hand and put the needles in holding position, work 1 row (in pattern). Now bring the buttonhole needles into working position and again with contrast yarn knit the sts. off by hand and put the needles in holding position, then work 1 row (in pattern). Now continue working in pattern as before.

**SLEEVES:** (Figure III). Make 2. Cast on 60 sts. and work the holding position design.

**ROWS 1-144:** Increase 1 st. on each side after ROW 36 and again on every following 12th row 8 x. (78 sts.).

**ROWS 145-192:** CAP SHAPING: Bind off 4 sts. beginning next 2 rows, 3 sts. beginning next 2 rows, 2 sts. beginning next 4 rows, 1 st. beginning next 36 rows, 2 sts. beginning next 2 rows, 3 sts. beginning next 2 rows and the remaining 10 sts.

**FINISHING:** Join front and back at sides and shoulders. Sew sleeves together and set in. Turn under lower edge

of coat 1 3/4" and sleeve edges 1 1/4" and hem to wrong side. Work 1 row of single crochet around front edges and neckline. On the inside, face front edges with a narrow bias strip. Finish buttonholes, sew on buttons. Make, or buy a Linen or Cotton Collar and baste to inside on neckline.

## BEGINNERS PATTERN

### BOY'S PULLOVER, KK 4950



**SIZE:** 9 to 10 years. **MATERIAL:** 8 3/4 oz. dark grey, 1 3/4 oz. yellow and 1 3/4 oz. light blue **KNITTING** Sonika Dralon, or Spinnerin Ambra-lon or Bearbrand Casa Laine. **TEN-SION:** **KNITTING** 8 to 10. **GAUGE:** Stockinette Stitch 13 sts. 2", 19 rows 2". K1, P1, Ribbing 13 sts. 2", 24 rows 2". **PATTERN:** Stockinette Stitch with repeated color stripes of 6 rows blue, 20 rows grey, 6 rows yellow and 20 rows grey. **COLLAR and EDGES:** K1, P1, Ribbing. **BACK:** (Figure II). Cast on 102 sts.

with grey.

**ROWS 1-20:** K1, P1, Ribbing. Now transfer the Ribber sts. to main machine and continue with stockinette stitch.

**ROWS 21-26:** Work even.

**ROWS 27-122:** Begin the repeated color stripes. Work even.

**ROWS 123-136:** ARMHOLE SHAPING: Bind off 3 sts. beginning next 2 rows, 2 sts. beginning next 2 rows, 1 st. beginning next 6 rows and 1 st. at each end of the following 4th row. (84 sts.).

**ROWS 137-182:** Work even.

**ROWS 183-194:** SHOULDER SHAPING: Bind off 4 sts. beginning next 2 rows, 5 sts. beginning next 10 rows then bind off remaining 26 sts.

**FRONT:** (Figure I). The front is worked the same as back up to ROW 122.

**ROWS 123-128:** ARMHOLE SHAPING: Bind off 3 sts. beginning next 2 rows, 2 sts. beginning next 2 rows and 1 st. beginning next 2 rows. After ROW 128, put 49 sts. on the left side on a stitch holder or contrast yarn and complete the right side first.

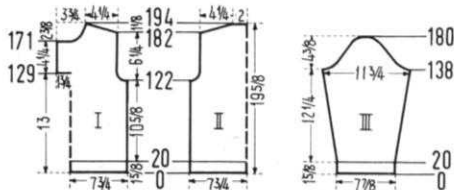
**ROWS 129-171:** Continue Armhole Shaping by decreasing 1 st. after ROWS 128, 130 and 134 and AT THE SAME TIME, after ROW 129, (on the left side) cast on 16 sts. for facing.

**ROWS 172-194:** NECK SHAPING: Bind off 16 sts. at left edge then every other row on Neck Side bind off 3 sts. 1 x, 2 sts. 1 x, 1 st. 2 x, then bind off 1 st. on the next 4th row and following 4th row. AT THE SAME TIME after ROW 182 SHAPE SHOULDER by binding off 4 sts., then every other row bind off 4 sts. 5 x and 5 sts. 1 x. Now move the Cam Box to the left side, turn row counter back to 128, put the stitches from stitch holder back on the machine and complete the left half to correspond, but for facing on front opening, cast on 8 sts. instead of 16 and counting from the right, make buttonholes after ROWS 145 and 166 over the 2nd-5th and 12th-15th needles.

**SLEEVE:** (Figure III). Make 2. Cast on 52 sts. with grey.

**ROWS 1-20:** K1, P1, Ribbing. Now transfer the ribber sts. to main machine and continue with stockinette stitch.

**ROWS 21-42:** Increase 1 st. on each side then again every following 10th row 2 x. After Row 42 start the repeated color stripes.





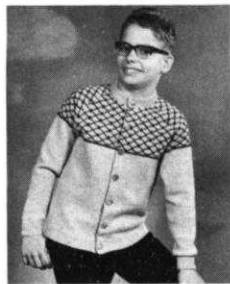
**ROWS 43-138:** Increase 1 st. on each side after ROW 50, and again every following 10th row 4 x and every following 8th row 5 x. (78 sts.).

**ROWS 139-180:** CAP SHAPING: Bind off 3 sts. beginning next 4 rows, 2 sts. beginning next 6 rows, 1 st. beginning next 24 rows, 2 sts. beginning next 4 rows, 3 sts. beginning next 2 rows, 4 sts. beginning next 2 rows then bind off remaining 8 sts.

**COLLAR:** Cast on 137 sts. with grey. Work 34 rows K1, P1, Ribbing then bind off all stitches.

**FINISHING:** Join front and back at sides and shoulders. Sew sleeves together and set in. Turn under front facings 8 sts. wide to wrong side, matching buttonholes and hem. Sew on collar (cast on edge to neckline) leaving  $\frac{3}{4}$ " on neckline unattached. (See picture). Finish buttonholes.

### BOY'S JACKET, KK 4949



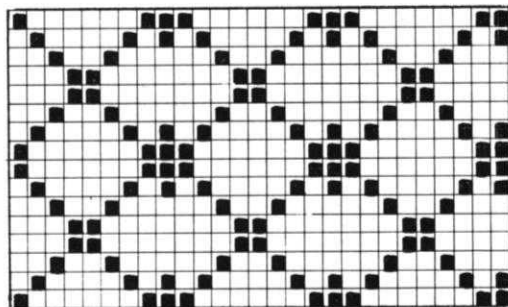
**SIZE:** 13-14 and 10-11 years. **MATERIAL:**  $15\frac{3}{4}$  oz. (14 oz.). Beige and  $1\frac{3}{4}$  oz. Green KNITKING Sonika Dralon, or Spinnerin Ambralon or Bearbrand Casa Laine. **TENSION:** KNITKING 8 to 10. **GAUGE:** Stockinette stitch 13 sts. 2", 19 rows 2". Pattern Stitch 13 sts. 2", 18 rows 2". K1, P1, Ribbing 13 sts. 2", 24 rows 2". **PATTERN:** Stockinette stitch with YOKE in Norwegian design according to chart or use JAC 40 and Pattern No. 339. **EDGES:** K1, P1, Ribbing. Each row with the

Norwegian design is counted as 1 row in the directions, although more than 1 movement of the Cam Box (or slide) is necessary to complete 1 row. (watch row counter). **SIZE:** 13-14 years. **BACK:** (Figure II). Cast on 120 sts. with beige.

**ROWS 1-20:** K1, P1, Ribbing. Now transfer the ribber sts. to main machine and continue with stockinette stitch.

**ROWS 21-130:** Work even.

**ROWS 131-214:** Work 2 rows with green, then start the Norwegian design, and AT THE SAME TIME after ROW



130, SHAPE RAGLAN. Decrease 1 st. on each side then on every other row on each side decrease 1 st. 41 x. After ROW 214, bind off the remaining 36 sts.

**FRONT:** (Figure I). Cast on 72 sts. with beige.

**ROWS 1-20:** K1, P1, Ribbing. Then transfer the ribber sts. to main machine and continue with stockinette stitch.

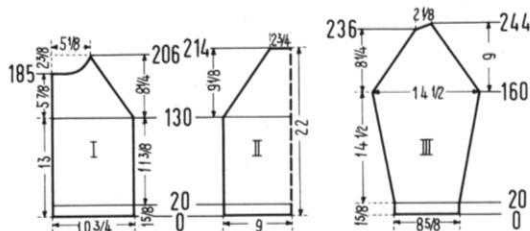
**ROWS 21-130:** Work even.

**ROWS 131-206:** Work 2 rows with green, then start the Norwegian design, and AT THE SAME TIME, after ROW 130 SHAPE RAGLAN. Decrease 1 st. on the right side, then every other row decrease 1 st. 37 x, and after ROW 185 SHAPE NECK by binding off 16 sts. on the left side then every row on Neck Side bind off 3 sts. 2 x, 2 sts. 2 x, and 1 st. 5 x. After ROW 206 hang the remaining 3 sts. together (put 2 outside sts. on center needle) then bind off. Make second front section with reverse shaping and work buttonholes after ROWS 10, 40, 70, 100, 130, and 160 over the 2nd-5th and 12th-15th needles counting from the right side.

**SLEEVE:** (Figure III). Cast on 57 sts. with beige.

**ROWS 1-20:** K1, P1, Ribbing. Then transfer the ribber sts. to main machine and continue with stockinette stitch.

**ROWS 21-160:** Increase 1 st. on each side then again every



following 8th row 13 x and every following 6th row 5 x. (95 sts.).

**ROWS 161-236:** Work 2 rows with green, then start the Norwegian design and AT THE SAME TIME after ROW 160, SHAPE RAGLAN. Decrease 1 st. on each side then every other row on each side decrease 1 st. 37 x.

**ROWS 237-244:** On the left side then every other row, put 3 needles 4 x into holding position (See Notes to Knit By on inside back cover — Short Rows) and AT THE SAME TIME on the right side decrease 1 st. every other row 4 x. After ROW 244 put all needles in working position and bind off all 15 sts. Make second sleeve with reverse shaping.

**NECKBAND:** Cast on 139 sts. Work 24 rows K1, P1, Ribbing and make buttonholes after ROWS 6 and 18 over the 5th-8th needles counting from the left side. After ROW 24 bind off all sts.

**FINISHING:** Join front and back sections at sides. Sew sleeves together and join to front and back sections. Turn under front edges  $1\frac{1}{4}$ " and hem to wrong side, matching buttonholes. Sew cast on edge of neckband to inside and bound off edge to outside of neckline. Finish buttonholes and sew on buttons.

**SIZE:** 10-11 years. **BACK:** (Figure II). Cast on 109 sts. with beige.

**ROWS 1-20:** K1, P1, Ribbing, then transfer the ribber sts. to main machine and continue with stockinette stitch.

**ROWS 21-122:** Work even.

**ROWS 123-200:** Work 2 rows with green, then start the Norwegian design, and AT THE SAME TIME after ROW 122, SHAPE RAGLAN. Decrease 1 st. on each side, then on every other row on each side decrease 1 st. 38 x. After ROW 200 bind off the remaining 31 sts.

**FRONT:** (Figure I). Cast on 66 sts. with beige.

**ROWS 1-20:** K1, P1, Ribbing then transfer the ribber sts. to main machine and continue with stockinette stitch.

**ROWS 21-122:** Work even.

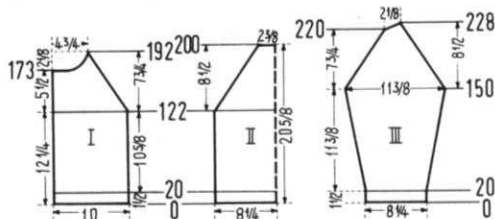
**ROWS 123-192:** Work 2 rows with green, then start the Norwegian design. AT THE SAME TIME, after ROW 122 SHAPE RAGLAN. Decrease 1 st. on the right side, then on every other row decrease 1 st. 34 x and after ROW 173 SHAPE NECK by binding off 16 sts. on the left side then on every other row on neck side bind off 3 sts. 1 x, 2 sts. 2 x and 1 st. 5 x. After row 192 hang the remaining 3 sts. together and bind off. Make the second front section with reverse shaping and work buttonholes after ROWS 10, 40, 68, 96, 124, and 152 over the 2nd-5th and 12th-15th needles. Counting from the right side.

**SLEEVE:** (Figure III). Cast on 55 sts. with beige.

**ROWS 1-20:** K1, P1, Ribbing then transfer the ribber sts. to main machine and continue with stockinette stitch.

**ROWS 21-150:** Increase 1 st. on each side and again every following 8th row 14 x and every following 6th row 2 x. (89 sts.)

**ROWS 151-220:** Work 2 rows with green, then start the Norwegian design. AT THE SAME TIME, after ROW 150 SHAPE RAGLAN. Decrease 1 st. on each side and again every other row 34 x.



**ROWS 221-228:** On the left side and on every other row, put 3 needles 4 x into holding position (See Notes to Knit By on inside back cover — Short Rows). AT THE SAME TIME, on the right side on every other row decrease 1 st. 4 x. After ROW 228, put all needles into working position and bind off all 15 sts. Make second sleeve with reverse shaping.

**NECK BAND:** Cast on 125 sts. with beige. Work 24 rows K1, P1, Ribbing and make buttonholes after ROWS 6 and 18 over the 5th-8th needles counting from the left side. After ROW 24 bind off all sts

**FINISHING:** Follow Directions for SIZE 13-14 years.

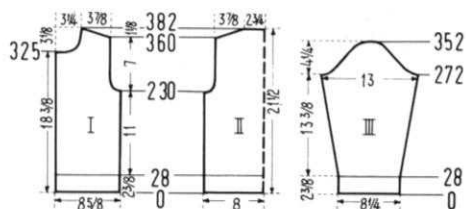
## GIRL'S JACKET, MK 4952



**SIZE:** 10-11 years. **MATERIAL:** 10 1/2 oz. Green, 8 3/4 oz. White and 1 3/4 oz. Red KNITKING Subita 2 x 4 or Spinnerin Nylaine Fingering or Coats & Clark Redheart Nylon and Wool Sport. **TENSION:** KNITKING 5 to 7. **GAUGE:** Fisherman's Rib 17 sts. 2" 36 rows 2". K1, P1, Ribbing 17 sts. 2", 23 rows 2". **PATTERN:** Fisherman's Rib with the Gate Cam Release Lever of the main machine at the needle heels.

**STEP 1.** Work 20 rows with white. **STEP 2.** put the 1st, 3rd, 5th, 7th,

9th, etc. needles of the main machine into holding position, work 4 rows with red, then put the needles from holding position into working position. **STEP 3.** Work 20 rows with white. **STEP 4.** Work 20 rows with green. **STEP 5.** put the 1st, 3rd, 5th, 7th, 9th, etc. needles of the main machine into holding position and work 4 rows with red, then put



the needles from holding position into working position. **STEP 6.** Work 20 rows with green. REPEAT STEPS 1 to 6 throughout. KNITKING Dial-a-Stitch Machines use special Wheel #4. **EDGES:** K1, P1, Ribbing.

**BACK:** (Figure II). Using Ribber, cast on 139 sts. with green.

**ROWS 1-28:** K1, P1, Ribbing. After ROW 28, place the Gate Cam Release Lever of the main machine at the needle heels and work Fisherman's Rib.

**ROWS 29-230:** Work even.

**ROWS 231-260:** ARMHOLE SHAPING: Bind off 3 sts. beginning next 2 rows, then make bind offs on each side every following 4th row, 3 sts. 1 x, 2 sts. 1 x, 1 st. 2 x and every following 6th row, 1 st. 2 x. (115 sts.).

**ROWS 261-360:** Work even.

**ROWS 361-382:** SHOULDER SHAPING: Bind off 3 sts. beginning next 20 rows and 4 sts. beginning next 2 rows. After ROW 382 bind off the remaining 47 sts.

**FRONT:** (Figure I). Using Ribber cast on 75 sts. with green.

**ROWS 1-28:** K1, P1, Ribbing, working buttonholes after ROWS 6 and 22 over the 5th-9th needles counting from the left edge. After ROW 28, place the Gate Cam Release Lever of the main machine at the needle heels and work Fisherman's Rib.

**ROWS 28-230:** Work even and make buttonholes after ROWS 67, 111, 155, 199 over the same needles as before.

**ROWS 231-260:** ARMHOLE SHAPING: Bind off 3 sts. beginning next 2 rows then make bind offs on each side every following 4th row, 3 sts. 1 x, 2 sts. 1 x, 1 st. 2 x and every following 6th row, 1 st. 2 x and AT THE SAME TIME work a buttonhole after ROW 243. (63 sts.).

**ROWS 261-325:** Work even and work a buttonhole after ROW 287.

**ROWS 326-382:** NECK SHAPING: Bind off 12 sts. for Neck, then make bind offs on neck side every following 4th row, 3 sts. 3 x, 2 sts. 2 x, 1 st. 2 x and on every following 8th row 1 st. 2 x and AT THE SAME TIME after ROW 360 SHAPE SHOULDER by binding off 2 sts. then on every other row bind off 2 sts. 1 x and 3 sts. 10 x. Make second front section with reverse shaping and omit buttonholes.

**SLEEVE:** (Figure III). Make 2. Using Ribber, cast on 71 sts. with green.

**ROWS 1-28:** K1, P1, Ribbing. After ROW 28, place the Gate Cam Release Lever of the main machine at the needle heels and work Fisherman's Rib. Work 18 rows green before starting the repeated stripe pattern.

**ROWS 29-272:** Increase 1 st. on each side and again every following 12th row 11 x and every following 10th row 9 x. (113 sts.).

**ROWS 273-352:** CAP SHAPING: Bind off 4 sts. beginning next 2 rows, then make bind offs on each side every following 4th row, 4 sts. 1 x, 3 sts. 1 x, 2 sts. 14 x, 3 sts. 1 x, 4 sts. 2 x and the remaining 13 sts.

**NECKBAND:** Using Ribber, cast on 141 sts. with green. Work 20 rows K1, P1, Ribbing and make buttonholes after ROWS 6 and 16 over the 5th-9th needles counting from the RIGHT SIDE. After ROW 20 bind off all sts.

**FINISHING:** Join fronts and back at sides and shoulders. Sew sleeves together and set in. Turn lower and sleeve edge in half to wrong side and hem. Sew cast on edge of neckband to inside and bound off edge to outside of neckline. Finish buttonholes and sew on buttons. With green, work 2 rows of single crochet around front edges.

## PRACTICAL KNITTING HINTS

**CAST-ON, BIND-OFF and INCREASING** for Patterns with needles in the out of work position.

For the Woman's Jacket DP 7520 in this issue, the pattern says: Cast on 159 sts. leaving the 4th, 6th, 10th, 12th, etc. needles in the non-working position. Read the instructions at the very beginning of the pattern (before the cast-on) and you will notice that it tells you to COUNT the needles in the non-working position as stitches throughout. You must be sure to remember this when increasing or binding off. One good way to make your cast-on is to first bring 159 needles on your machine into the working position, then counting from the left end of your machine, push back into the out of work position, the 4th, 6th, 10th, 12th, etc. needles across the needle bed. Now cast on over the remaining needles in the working position.

When you bind off stitches for the armhole, neck and shoulder shaping, remember to count each empty needle as a stitch as you do your bind offs and make a chain stitch in each needle space so as to avoid a bind off that is pulled too tightly. If you are using the crochet method for binding off, crochet an extra chain stitch in each space — or if using the regular bind off, make an extra bind off stitch.

When you are increasing a stitch, as you will do on the sleeves, and the next increase would be a needle to be left in the out of work position (in following your pattern design) bring this needle into working position until you make the next 2 increases, then transfer the stitch to the 2nd needle from the end and put the empty needle out of work. It is always a good idea to have at least 2 end needles working at all times to make it easier for putting the garment together. When decreasing at each end, move the end stitch to the empty needle (in your pattern) and bring this needle into work until you make the next decrease.

The Woman's Dress DK 7518 in this issue is another example where you may use the same methods.

In the Man's pullover HP 3498, every 3rd needle will be in the non-working position for the edgings and neckband ONLY, and again you may use this simple method of casting on — put 151 needles into work, push every 3rd needle to the non-working position, then cast on.





# KNITTING NEWS

September-October 1967

## HANDY HINTS

One of the most common questions raised by machine knitters is in regard to obtaining neat cast-on rows... An automatic cast-on edge is seldom satisfactory. The best edge is the one that corresponds to a hand knit cast-on and which is made by wrapping the yarn around the needles counter-clockwise and from left to right... It is not possible to judge accurately with all types of yarn exactly how tight or loose the wrap around should be, so some adjustment of the cast-on edge is frequently necessary.

There are also occasions when a cast-on edge (as in DK 7521 in this issue) is sewn to the outside of the garment. Obviously the cast-on edge must be neat in order to insure a good appearance in the finished garment. The following knitting hint will help you to always obtain a perfect cast-on row.

Make a sample swatch, casting on the stitches in the normal way and then when completed, bind them off using the crochet method. Now hold the cast-on edge (knit side facing you) at the extreme right end about 2 rows below the top. The loose end of yarn is at the left. With the work hook in your right hand, insert the hook from the purl side (back to front) into the first cast-on stitch and pull upwards. This will form a loop. Lay this loop over the back of your forefinger and put your middle finger over the loop to hold it in place. Now insert the hook in the second stitch, release the middle finger and at the same time pull up the loop, hold it with your finger and go into the next stitch and continue along the row, each time holding the loop with your finger... You will notice that the loop becomes longer and longer and your cast-on edge becomes neat and even. If at your first try, you did not pull up enough on each stitch, you can go back and put more tension on the loop. Do not pull up too tightly, and with practice, you will soon get the feel of how much you need to pull on each stitch. When you reach the last stitch, pull on the loose end of yarn and you have a strand of yarn remaining that is long enough to sew with.

## HORIZONTAL BUTTONHOLES when knitting a Pattern Stitch

To insure neat buttonholes when knitting a garment in Pattern Stitch with needles in holding position, it is advisable to knit 1 row in stockinette stitch over your buttonhole needles BEFORE the actual buttonhole row and 1 row in stockinette stitch over your buttonhole needles AFTER the buttonhole row. This means that you will push the designated needles to be used for your buttonhole back into working position (the rest of the needles are of course left in pattern) and knit this row. The next row will be the buttonhole row and you will knit the buttonhole stitches by laying a length of contrast yarn over the buttonhole needles and knit each stitch by hand, then put all the buttonhole needles into holding position while you knit the row over the rest of the needles set in pattern stitch... Set your pattern for the next row and push all the buttonhole needles back into working position again for the third row. You will have a strand of yarn across the buttonhole - but you will catch this underneath when you are finishing your buttonhole.



If the buttonholes are to be made over 2 rows as in our Pattern MK 4948 in this issue, the buttonhole needles will be knitted off by hand using a contrast yarn for the TWO middle rows and each time the needles must be put into holding position. The buttonhole needles on the row BEFORE and the row AFTER must be in stockinette stitch and on these rows, put the needles into working position (the rest of the needles are set in pattern stitch).

CORRECTION to Pattern No. DK 7445 on page 24, July-August 1967 Issue.

This pattern seems to be one of the most popular from the last issue and several readers have written pointing out an obvious typographical error. . . . so get a pen and make the following corrections to the COLLAR instructions at the bottom of page 24. . . cross out the last two lines at the bottom of the page, they should not be there. . . Then in the paragraph reading ROWS 1-22 where it says REPEAT these bind offs 4 x, cross out the words bind offs and substitute the word increases.

EXHIBITION OF KNITTING GARMENTS

California readers will have an opportunity to see a gorgeous display of KNITTING MAGAZINE garments in the Merchandise Mart at the California State Fair in Sacramento starting August 30th and running through September 10th. The display will be transferred to the Los Angeles County Fair (in the Home Building) from September 15th through October 1st. If you can get to either of them, stop and say hello. . . . and if you haven't already seen the fantastic new KNITTING, be sure to ask for a demonstration.

SPECIALS FOR SEPTEMBER-OCTOBER

We have something really outstanding in a yarn special for this issue. . . . A 100% pure wool 4-ply fingering yarn. . . . A top of the line yarn from England's most famous mills. This yarn is not 4-ply worsted weight. It should be knitted on every needle at Tension 9. It knits 7 stitches to the inch. . . . you can knit it at Tensions from 7 to 10. If you like Fisherman's Rib, this yarn knits the best looking Fisherman's Rib we ever saw. You can use it for any type garment. . . . sweaters, dresses, skirts, suits etc., etc. It's a gorgeous yarn of superb quality and when it is sold there will be no more. The price is only 1/3 of what you would expect to pay for anything comparable in your local yarn store. We purchased the entire stocks available from our English suppliers, but we know from past experience that it will sell very fast and that some colors will go quicker than others, so please. . . . be sure to give at least two alternate choices and get your order in as fast as you can. Use Airmail if you live outside California. . . . We will continue our practice of holding back a quantity so that Eastern readers can get in on it. It comes in 1 1/2 lbs. to a box and in order to obtain it at the rock bottom price of 30 cents per ounce, you will need to order 2 boxes (3 lbs.). You can have a different color for each of the boxes, but only one color to a box. The price for 3 lbs. of this excellent yarn is \$14.40 plus \$1.00 shipping costs. (California residents add 5% Sales Tax). The colors available are: Leaf Green, Light Avocado, Heather, Dark Heather, Beige Mixture, Medium Grey Mixture, and Gold.



### YARN WINDER

One way to insure even knitting is to wind your yarn into center pull balls. Pulling from the outside of a normally wound ball can cause a variation in the stitch size as the ball gets lighter in weight. A center pull ball is also much more satisfactory for Japanese type machines where the yarn is not carried in a container.

The KNITKING winder is easily the best and most reliable winder available. It has a heavy cast iron frame and nylon helical gears and comes complete with a self-adjusting skein holder. List price \$14.95....Special price \$12.50 plus \$1.00 shipping costs. California residents add 5% Sales Tax.

### REVERSING BAR

For KNITKING machines with 197 needles only. The Reversing Bar is the perfect tool for reversing an entire row of knitting in one movement or turning a hem easily and speedily. List price \$16.95....Special price \$13.95 plus \$1.50 shipping costs. California residents add 5% Sales Tax.

### BACK ISSUES of KNITKING MAGAZINE

There is a continuous demand for back issues of KNITKING MAGAZINE resulting in a complete sell out of many of the issues. If you are a new subscriber and would like to obtain some of the few copies we have left, the price is \$1.50 for a single copy postage paid, or \$6.00 for any 6 copies postage paid. We have available now.... Volume 1, No's. 1, 2, 4, 5 and 6.... Volume 2, No's. 1, 2, 3 and 4.... Volume 3, No's. 3 and 6.

We also have a very limited number of complete third Volume (bound).... All previous volumes are sold out. \$6.95 complete and postage paid.



**A complete third volume of KNITKING MAGAZINES with a flexible, transparent plastic cover and specially bound so that it will stay open at any page is available at the special price of \$6.95 postage paid anywhere in North America.**

If purchased separately the magazines would cost a total of \$9.00.

The volume contains over 120 fully illustrated complete stylish patterns for all members of the family, together with many valuable, practical knitting hints.

There is a very limited number of these volumes available and it will undoubtedly become a collectors item.

If you already have the entire set it will almost certainly be well thumbed and marked. Why not purchase a perfect mint condition volume for your bookshelf and ready reference at any time.

**Place your order today and avoid disappointment. Send it to KNITKING MAGAZINE, 1128 Crenshaw Boulevard, Los Angeles, California 90019.**



# INTRODUCING . . . . KNITKING FASHION BLOCK

**Makes All Other Blocking Cloths Obsolete**

No longer necessary to pay high prices for knit blocking and still be dissatisfied with results.

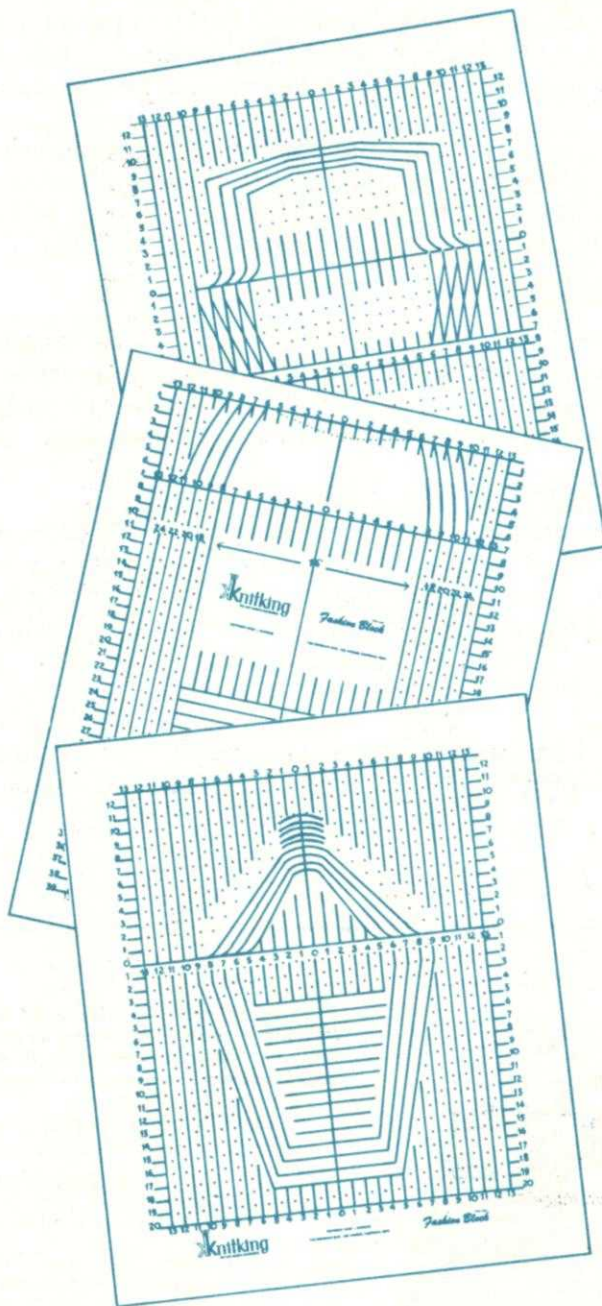
No matter what size you are, whether you are short waisted or long waisted, big in the hips or big in the bust, long in the arms or short in the arms, the FASHION BLOCK will allow you to easily and speedily block any garment or any part of a garment to the exact size you need.

With KNITKING FASHION BLOCK you can be sure of always looking your best in your valuable knit garments.

A complete FASHION BLOCK consists of three separate sections. Each one fully sanforized, printed with permanent ink and made of heavy duty drill cloth.

One section is for the blocking of pullovers, shells, cardigans, shirts, jackets, etc., for men, women and children. It accommodates any type of armhole shaping, regular, square, raglan or what you will. Another section is for skirts or pants in any size or length. Sections one and two will combine to provide blocking for any shape or size in dresses and coats. The third section is for sleeves, short or long in any shape, square, raglan, set-in, etc.

Be one of the first to own the fantastic KNITKING FASHION BLOCK. Send your order in today.



*Fast*

*Accurate*

*Versatile*

The full set complete with T-Pins and instruction booklet is \$14.95 (California residents add 4% sales tax) plus \$1.00 shipping costs to anywhere in North America.

Obtainable only from KNITKING  
1128 Crenshaw Blvd., Los Angeles, California 90019



# NOTES TO KNIT BY . . .

## STITCH AND ROW GAUGE

Every KNITTING pattern calls for a specific number of stitches and rows for 2 inches and in order to obtain the correct size finished garment, you must be sure to knit at the correct tension. This means that before starting a garment, you must knit a sample swatch with the yarn you intend using for the garment.

Cast on over a sufficient number of needles to produce a swatch 4 inches wide. (If the pattern calls for 16 stitches to 2", 16 x 2 = 32 stitches) then knit 4 inches of rows at the first suggested tension (if the pattern calls for 22 rows to 2", 22 x 2 = 44 rows) knit 2 rows with a contrast color, change to the next higher tension, knit another 4", knit 2 rows with contrast color, change to a third higher tension and knit another 4", then bind off.

Roll the swatch into a cylinder over its length and pull on both ends. Unroll it and stretch it diagonally by pulling on the four corners. Allow the swatch to rest and settle (preferably overnight) then using a stitch gauge or ruler, count the number of stitches and rows over a 2" length in each of your 3 tensions. Select the tension that produces the stitches and rows called for in the pattern. If none of them are correct, you are most likely using the wrong weight of yarn.

## HOLDING POSITION

The needles are as far forward on the needle bed as they will go.

## NON-WORKING POSITION

The needles are as far back on the needle bed as they will go.

## BINDING OFF

See Instruction Manual for your own machine.

## CROCHET BIND OFF

Use this method for binding off neck and armbands, edgings, facings or collars. Knit a bind off row using 5 tensions higher than tension used for section and then with latch needle tool, and working from the opposite side of the yarn end, pull the second stitch through the first stitch, the 3rd through 2nd, the 4th through 3rd, etc. . . . When you reach the end of row, pull the loose end of yarn through the last stitch. If you are unable to turn the tension up 5 numbers because you already are working with a large tension, lay the yarn over the needles by hand and knit this one row by pulling each needle back and forward again completing a stitch. Leave approximately 1/4" loop for each stitch (depending on type of yarn used) then bind off crochet method.

## SHORT ROWS

Used for shaping of all kinds. Push the specified number of needles opposite the Cam Box into holding position and knit across to them. Now you must place the yarn OVER and UNDER the first inside needle that is in the holding position. Place the specified needles opposite Cam Box into holding position (other side) and knit across to these needles, and again place the yarn OVER and UNDER the first inside needle in the holding position. Repeat as many times as your pattern states. When you return these needles to the working position, the same procedure is used — bring the needles into work opposite the Cam Box, knit across to them, place the yarn OVER and UNDER the first inside needle in holding position and repeat for other side. Continue in this manner until all the needles are back in the working position.

## INCREASING, DECREASING

See the Instruction Manual for your own machine.

## INCREASING AND DECREASING WHEN USING RIBBER

When increasing, increase on the main knitter first, knit one row and then transfer the necessary stitches from the knitter to the ribber and continue.

When decreasing or binding off, you must transfer the ribber stitches to the main machine before decreasing or binding off.

## CONTROL KNOBS (Under the slide handle — one on each side on KNITKING and certain other machines.)

1. When BOTH Control Knobs are UP, (or IN on the latest KNITKING) knit one row going from right to left. The needles knit and move back just beyond the front of the needle bed and the yarn hangs on the front of the needles. The slide will now move freely in either direction

with the needles remaining in a "SAFE POSITION". When you wish to resume knitting, press down (Out on the latest KNITKING) BOTH Control Knobs. The first movement of the slide is made without yarn and will bring the needles into working position, you then continue knitting.

2. RIGHT CONTROL KNOB UP (IN on latest KNITKING). Knit from right to left. The row knits, moves the needles back and the yarn is held in front of the latches. Knit from left to right, the yarn goes under the needles without knitting as the needles move into the working position. This is the operation used for making round cords (with 3 or 4 needles only) and also for knitting single rows of one color.

3. LEFT CONTROL KNOB UP (IN for latest KNITKING). The same as above but moving from left to right.

## NECK SHAPING

When the directions state to bind off the center stitches for NECK, one correct way is as follows: With a new ball of yarn, bind off the given number of stitches working from right to left. Leave this ball of yarn hanging to one side (to be picked up later) and put all the needles on the left side into holding position and complete the right side first as directed. When you have completed the right side, pick up the yarn that you used for the neck bind off, put it in the wool feeder, bring all the needles into working position and knit 1 row to the left side. Turn row counter back to the number on which you started your neck shaping and complete the left half with reverse shaping, making the same number of decreases and on the same row numbers as on the right half.

You may also use the SHORT ROW method for shaping your neck and shoulders provided the decreasing is made on every other row. When the shaping is completed, knit 1 row over all the neck stitches (or shoulder stitches) with tension set at least 5 numbers higher, and then bind off all stitches using the crochet method.

If you are hand feeding a Norwegian design, bind off the center neck stitches with a new ball of yarn, then work both sides of neck shaping at the same time, using two balls of yarn for each color.









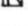
## MISSING ROW NUMBERS

When there are row numbers missing in the instructions as for instance when you have completed the designated increases or decreases on a section of garment, continue knitting until you reach the next given row number.

## READING OF SYMBOLS

Certain holding position and eyelet designs are sketched in the knitting patterns. The Chart with symbols is read as the work comes toward you from the machine. Where purl stitches are facing you, the purl symbol will be shown and where knit stitches are facing you, the knit symbol will be shown. On the sides of the chart are the row numbers, i.e. 1-8 indicates the first and last row number. In eyelet design patterns, specified stitches are transferred to another needle and the empty needles are returned to the knitting position each time. In holding position designs, selected needles are pushed into the holding position for the stated number of rows.

### PATTERN STITCH SYMBOLS

-  = knit stitch
-  = purl stitch
-  = empty needle (leave in working position)
-  = needle not used (in the out of work position)
-  = needle in holding position
-  = 2 stitches on 1 needle — either transferred from the right side or the left side, then put the needle into holding position
-  = needle holding 2 sts. Stitch has been transferred from the LEFT
-  = needle holding 2 sts. Stitch has been transferred from the RIGHT
-  = 3 stitches on 1 needle. The 1st and 3rd stitch in a group of 3 needles has been hung on the 2nd or center needle.

The diagrams for pattern work are followed just as they are shown, and on your knitting as it comes towards you on the machine.

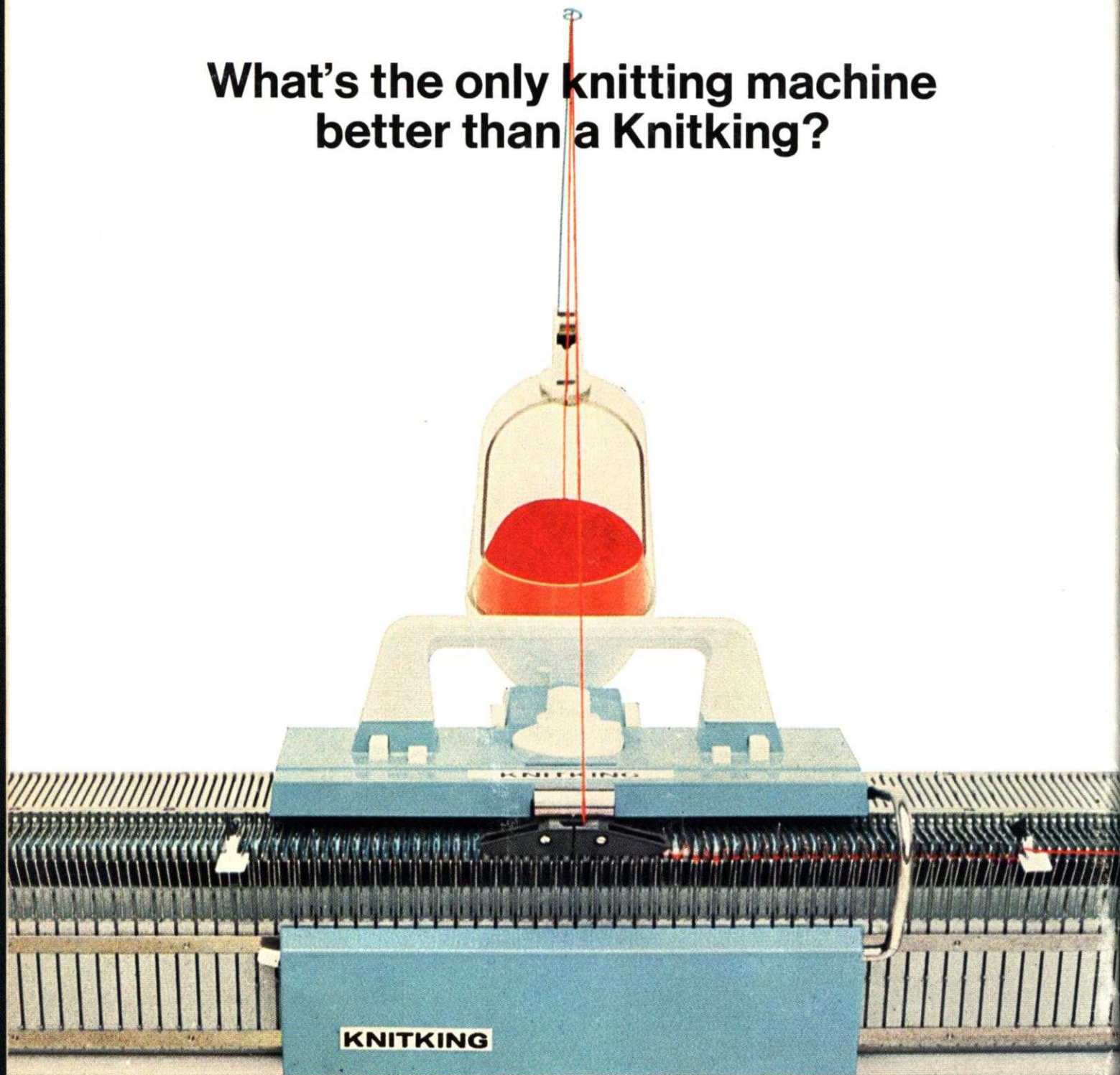
open dart



closed dart



**What's the only knitting machine  
better than a Knitking?**



**The new  Knitking!**

For color brochure and complete details on this magnificent new KNITKING write to:  
KNITKING • 1128 Crenshaw Blvd., Los Angeles, California 90019