

KNITTING

MAGAZINE



Yarns
by

Knitking

The Finest From Around the World . . .

If you want your garments to look as good as those in KNITKING MAGAZINE and keep their appearance through dozens of washes, you must knit them with gorgeous KNITKING yarns. KNITKING yarns are the finest quality obtainable anywhere and the prices cannot be beaten. Try them once and you will always use them.

Your orders will be filled the same day they arrive. Be sure to state your color preferences and alternates.



Pattern Numbers	YARN		Price Including Shipping
DP 7476	Frigate	Size 10/12	\$13.93
		Size 14/16	\$15.51
DP 7485	Subita 2 x 4		\$16.10
DP 7477	Subita 2 x 4	Size 10/12	\$17.30
		Size 14/16	\$22.10
DP 7478	Frigate and	12/14	\$11.59
	Subita 2 x 4	Size 16/18	\$13.17
HP 3482	Subita 2 x 4		\$22.10
DP 7479	Mutella		\$12.02
DP 7480	Sonika Dralon		\$13.70
HP 3483	Frigate and Regal		\$14.15
DP 7482	Subita 2 x 4 and 2 x 3		\$13.70
HP 3480	Starlite Crepe	Size 40/42	\$17.06
		Size 44/46	\$18.44
DP 7481	Sonika Dralon		\$19.70
HP 3481	Sonika Dralon		\$18.50
DP 7484	Starlite Crepe	Size 12/14	\$14.30
		Size 16/18	\$15.68
MK 4931	Starlite Crepe and		\$13.94
	Subita 2 x 3		
KK 4929	Starlite Crepe		\$12.92
MK 4928	Frigate and		\$10.01
	Subita 2 x 3		
KK 4930	Subita 2 x 4		\$10.10
KK 4927	Sonika Dralon		\$14.90
DV 7496	Frigate		\$ 2.08

California Residents please add 5% Sales Tax.

Send \$2.00 for **LARGE COMPLETE YARN CATALOGUE.**
(Refunded on your first \$10.00 order) to:

KNITKING YARNS, Dept. 19
1128 Crenshaw Blvd.
Los Angeles, California 90019

KNITKING

MAGAZINE

Vol. 4, No. 2

November/December, 1967

INDEX

Contents	Pattern No.	Page No.
Woman's Pullover	DP 7476	16
Woman's Pullover and Hat	DP 7485	17
Woman's Pullover	DP 7477	17
Woman's Pullover	DP 7478	18
Man's Pullover	HP 3482	20
Woman's Pullover	DP 7479	20
Woman's Pullover	DP 7480	21
Man's Pullover	HP 3483	22
Woman's Pullover	DP 7482	22
Man's Pullover	HP 3480	23
Woman's Jacket	DP 7481	24
Man's Pullover	HP 3481	25
Woman's Pullover	DP 7484	25
Girl's Jacket	MK 4931	26
Child's Pullover	KK 4929	27
Girl's Pullover	MK 4928	27
Boy's Pullover	KK 4930	29
Boy's Jacket	KK 4927	29
Woman's Cap	DV 7496	29
Necktie	HV 3477	30
Necktie	HV 3479	30
Necktie	HV 3478	30
Necktie	HV 3476	30
Practical Knitting Hints		32



COVER MODEL DP 7476

Get set for action! Fly down a ski slope in our Cover Model Pullover. It is knitted over every other needle with KNITKING Frigate yarn. Norwegian Design, easy to follow, or you may use the JAC 40 and Special Pattern No. 340. SIZE 10/12 and 14/16. See page 16.

Publisher: Henry J. Atkin, 1128 Crenshaw Blvd., Los Angeles, Calif. 90019, Telephone: WEbster 8-2079. Published bi-monthly. Subscriptions: USA—\$6.00 annually, single copies \$1.50; Canada—\$7.00; other parts of the world—\$10.00. The entire contents of KNITKING MAGAZINE are copyright and must not be reproduced in any shape or form without the express permission in writing, of the publisher. COPYRIGHT © by KNITKING 1967.

Printed by: George Rice & Sons, Los Angeles, California.

Letter from the Publisher

MY wife and I enjoyed meeting a lot of old friends and making new friends at the recent California State Fair in Sacramento and at the Los Angeles County Fair in Pomona. Although it was very difficult to afford such lengthy periods away from the office, the knowledge we gained from conversations with old and new customers made it well worth the effort. We were able to ask for personal opinions regarding the patterns and information in KNITKING MAGAZINE and many of the comments we received will help us decide on material for inclusion in future issues.

The beauty of the KNITKING display at these two very large fairs was remarked upon by all who saw it. We were awarded a trophy at the California State Fair, where, of the 350 commercial exhibitors entered in the Beautiful Booth contest, only the Pacific Gas and Electric Company (with a total of eight display spaces, compared with KNITKING's three) was awarded more points for their display.

We took a substantial number of other brands of knitting machines in on trade at the fairs. Many of them are in new condition due to the lack of assistance provided by the original seller and the fact that many buyers were unable to even get started.

There is an increasing market for knitting machines in the U.S.A. and it is a pity that it has to be infiltrated by "get rich quick" artists who import machines at relatively low prices and then mark them up 500% to 600%. After taking the customers money, the seller invariably does his best to forget the customer who is expected to learn how to operate, what is very often a complicated piece of equipment, entirely from a badly translated instruction manual . . . No consideration is given to the customers pattern needs, in fact, despite the many brands of knitting machines marketed in America, KNITKING MAGAZINE is the only source of original knitting machine patterns in the U.S.A.

There are some completely unethical dealers making a gross profit of 75% on the sale of their machines who have the unmitigated gall to charge their customers an additional \$5.00 per lesson.

Great advances have been made in knitting machine design over the past ten years and yet there are machines being offered today in national magazines and referred to as new in design when, in fact, their design has not been altered or improved in over ten years. These are machines that need manual selection for all pattern stitches and machines that refuse to function at all with anything except smooth light weight yarns.

Referring to these things in KNITKING MAGAZINE may be like preaching to the converted, but most KNITKING owners are proud to show their knitted garments off to friends and neighbors who, in turn, may want to buy a knitting machine. We think you will be doing your friends a big favor by suggesting that they shop very carefully.

The January-February 1968 issue of KNITKING MAGAZINE is being designed specifically with the larger person in mind and it includes dresses, sweaters and twin sets for women plus some handsome sweaters for big men and some very good looking knits for the children.

I join with the staff at KNITKING in wishing our customers and friends a very happy Christmas and a peaceful, prosperous 1968.



HANDSOME KNITS FOR THE SPORT MINDED

← DP 7485

Pert and Pretty! An eyelet and holding position design is used for this delightful Pullover with a Beret to match. The bands are a 1 x 1 rib in a contrast color. Be brave — add extra rows at the bottom for an eye catching Mini dress. SIZE 14/16. See page 17.

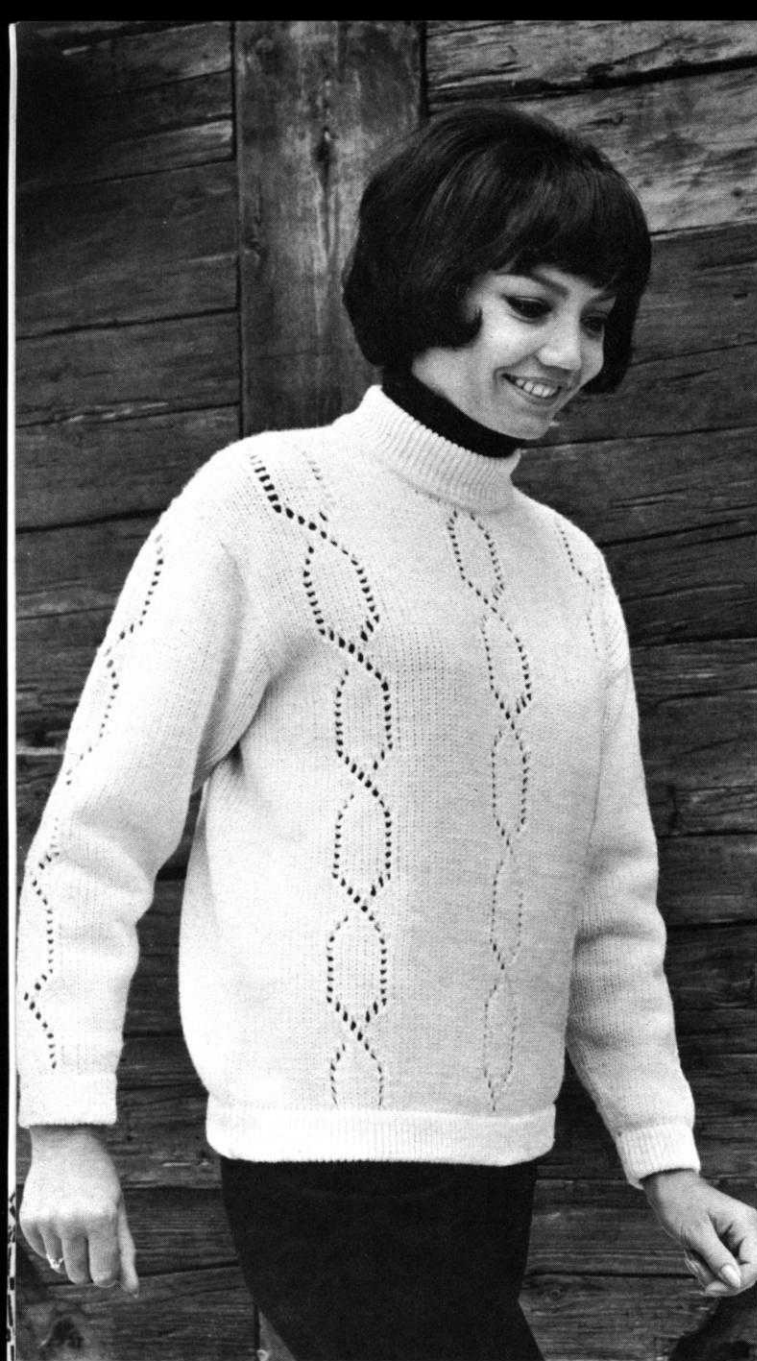
DP 7477 →

Go where the fun is — in this bright two-colored Pullover knitted in a Norwegian Design. Just follow the chart, or use JAC 40 and Pattern No. 342. Knit the bands in a 1 x 1 rib with the darker shade of yarn. SIZE 10/12 and 14/16. See page 17.



DP 7479 →

Around the Lodge, or on the Ski slope, you'll be warm and smartly dressed in this bright turquoise Pullover. The ribber is used as well as a holding position design on main machine. The sleeves are knitted in Fisherman's rib, the collar and bands in 1 x 1 ribbing. SIZE 14/16. See page 20.

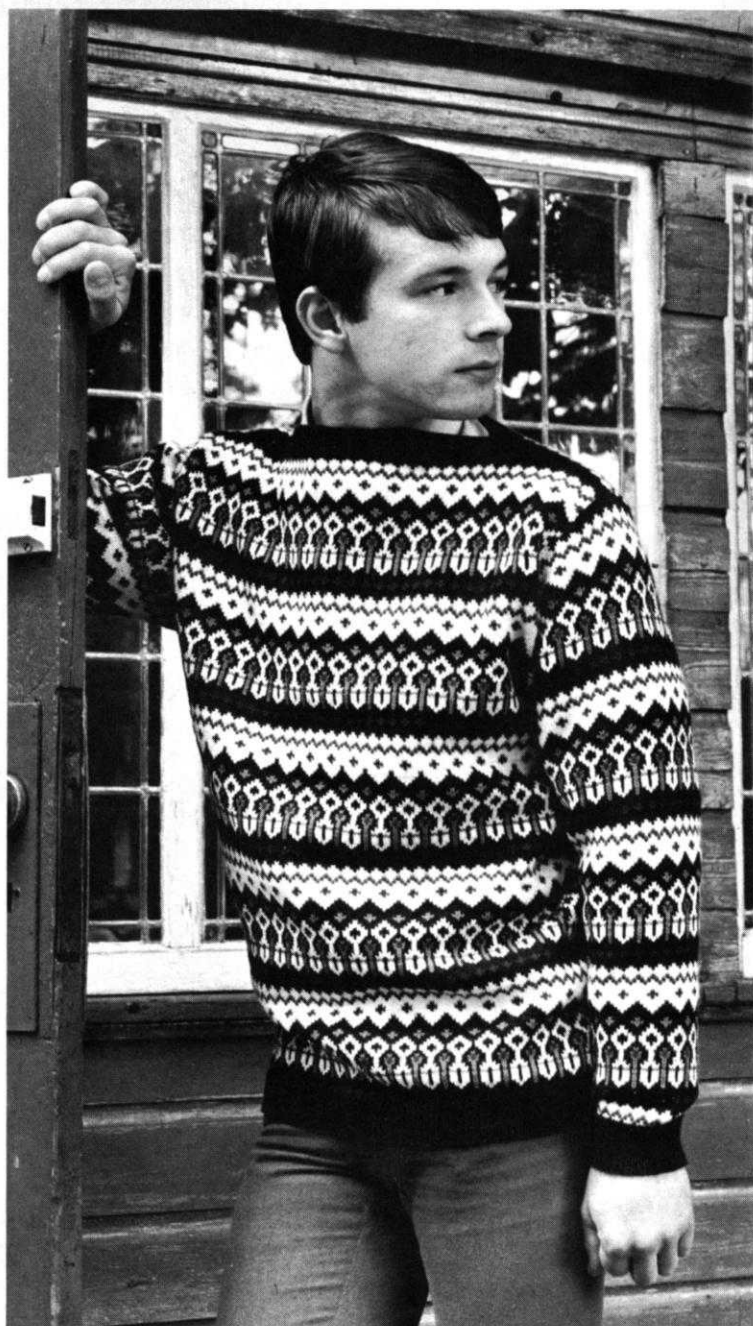


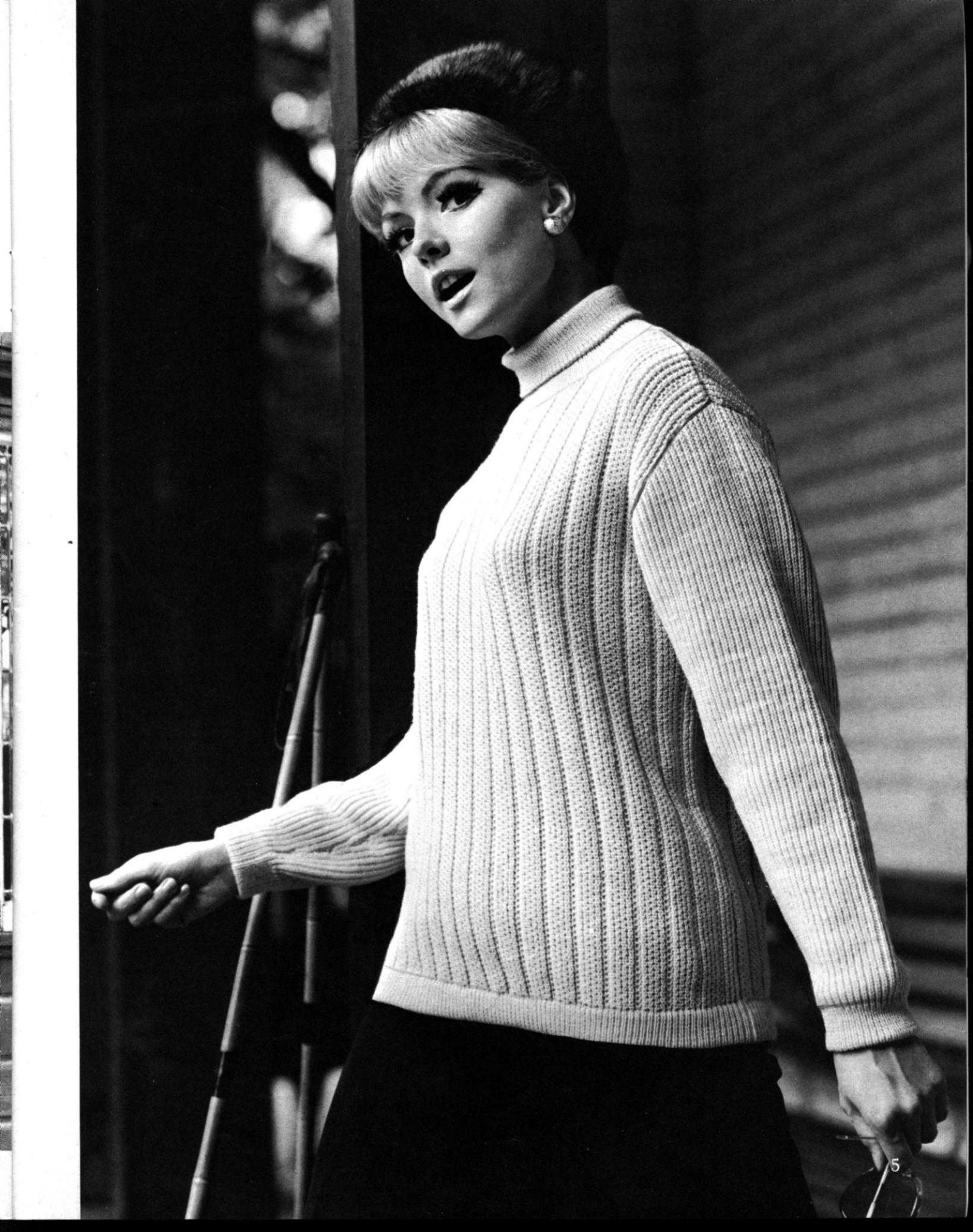
DP 7478

An exclusive, artistic (and not difficult) eyelet design for a stark white Pullover. Use KNITKING Frigate knitted over every other needle for the body of garment — use Subita 2 x 4 for the snug 1 x 1 ribbing. SIZE 12/14 and 16/18. See page 18.

HP 3482 →

Four color knitting — a chance to really show your skill with the Norwegian design used for this smart Pullover. Follow the chart or use JAC 40 and Pattern No. 28a (two card pattern). Knit one for him and one for her as well and watch eyes sparkle. SIZE 40/42. See page 20.

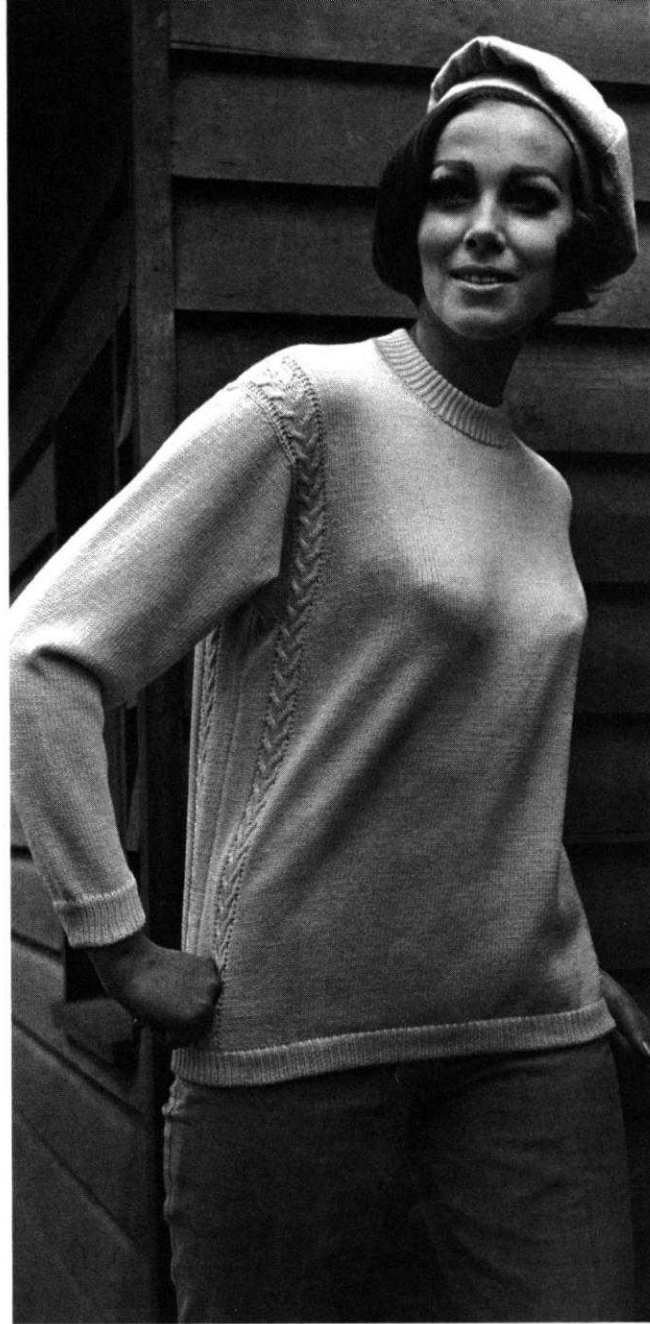






← DP 7480

Machine washable KNITKING Sonika Dralon is made for this Pullover, and the lovely holding position design gives body and depth to a beautiful pattern stitch. The bands are a 1 x 1 rib. SIZE 12/14. See page 21.

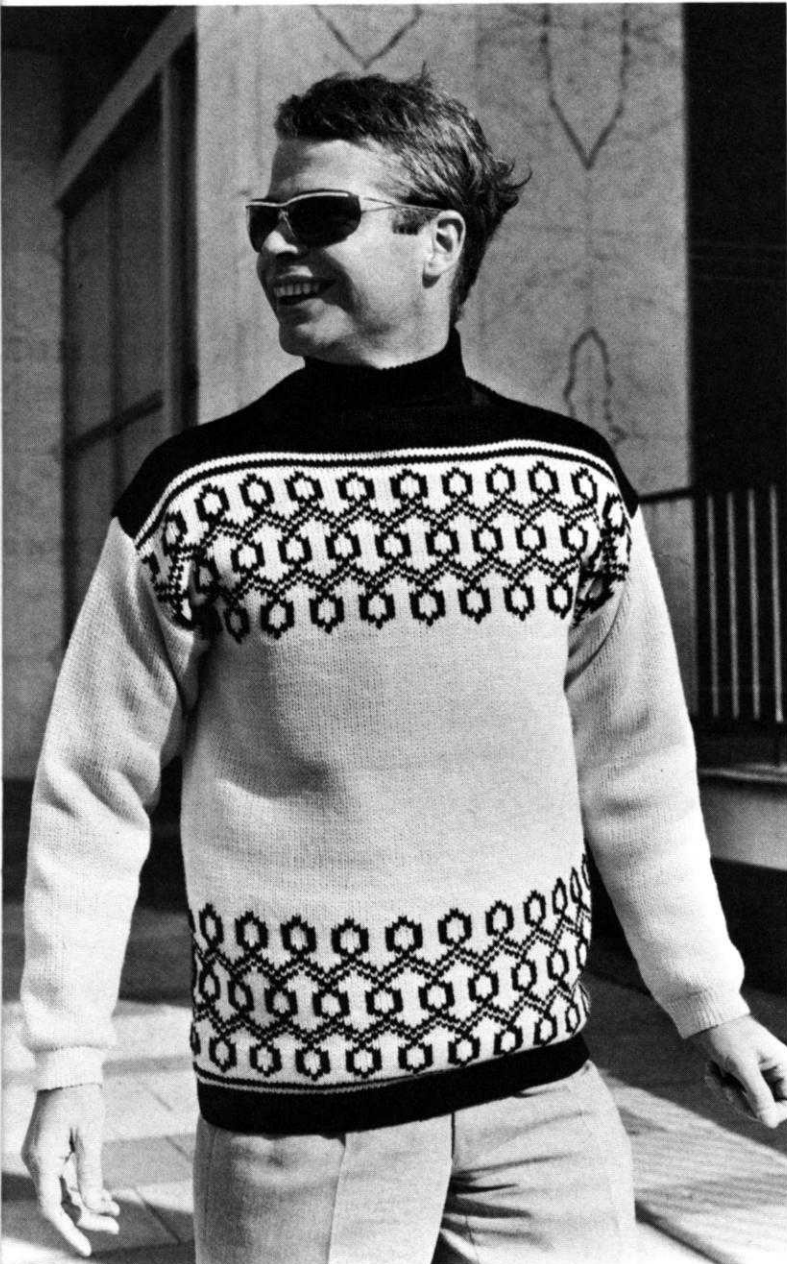


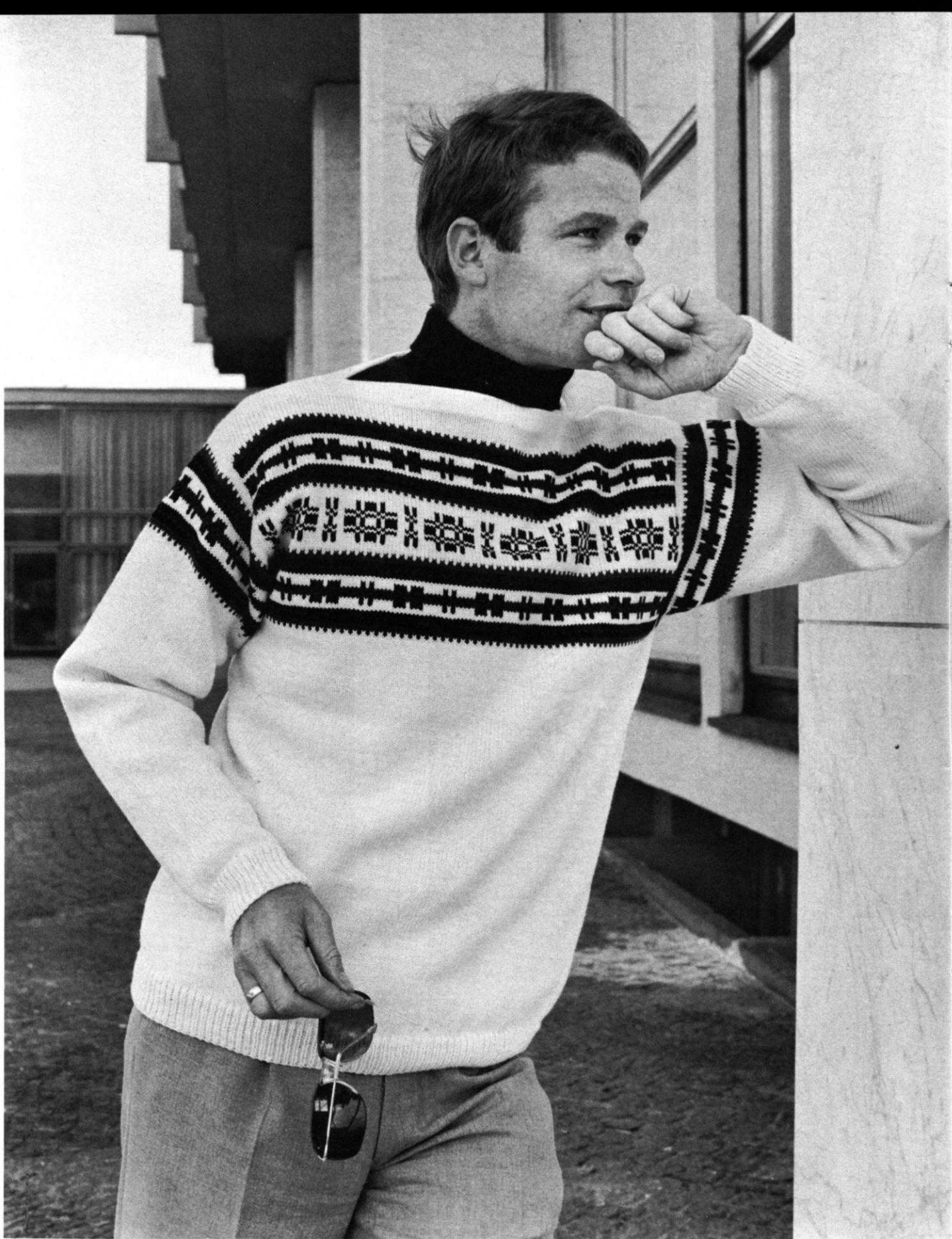
DP 7482

High Fashion! Break the monotony of the usual cable stitch and knit this Pullover with cables running down the sides and over the shoulder. A 1 x 1 rib is used for the bands. SIZE 12/14. See page 22.

← HP 3483

Masculine good looks show in this Norwegian design Pullover. Use two weights of yarn in two of his favorite colors — the lighter weight yarn makes up the bands in a 1 x 1 rib. Follow the chart or use JAC 40 and Pattern No. 87a. SIZE 40/42. See page 22.





HANDSOME KNITS FOR THE SPORT MINDED

← HP 3480

Choose this Norwegian design Pullover for your man — he'll appreciate it. We knitted our model in white, the design is in black and red. Follow the chart, or use JAC 40 and Pattern No. 21a. SIZE 40/42 and 44/46. See page 23.

DP 7481 →

Sumptuous! Zip into this lovely Jacket and be warm and comfortable. Two colors are used for the Norwegian design and you may follow the chart or use JAC 40 and Pattern No. 22. The 1 x 1 ribbed neckband is doubled to give the neckline a soft rounded effect. The cuffs are ribbed as well. SIZE 12/14. See page 24.





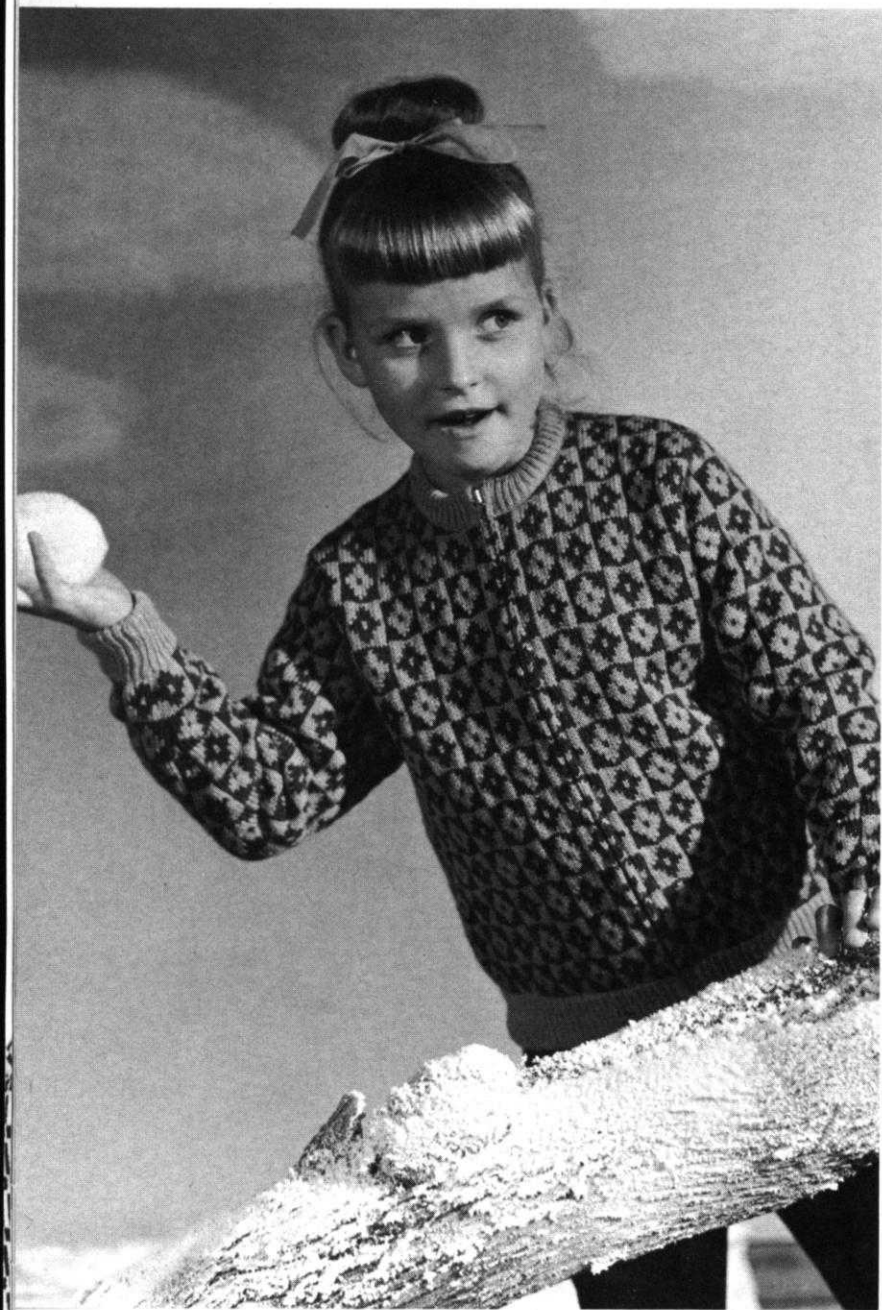
HP 3481

DP 7484 →

Every Sportsman wants a Pullover in a Fisherman's rib. He will nod with approval when you show him this one. We chose beige for our model and striped it with red and green. SIZE 42/44. See page 25.

Knitted sideways on the machine, this boat necked Pullover is lovely as well as very different. The large and interesting Norwegian design is knitted on the front section only. We chose KNITKING Starlite Crepe in a pale blue — the design is white. Follow the Chart or use JAC 40 and Pattern No. 27a. SIZE 12/14 and 16/18. See page 25.



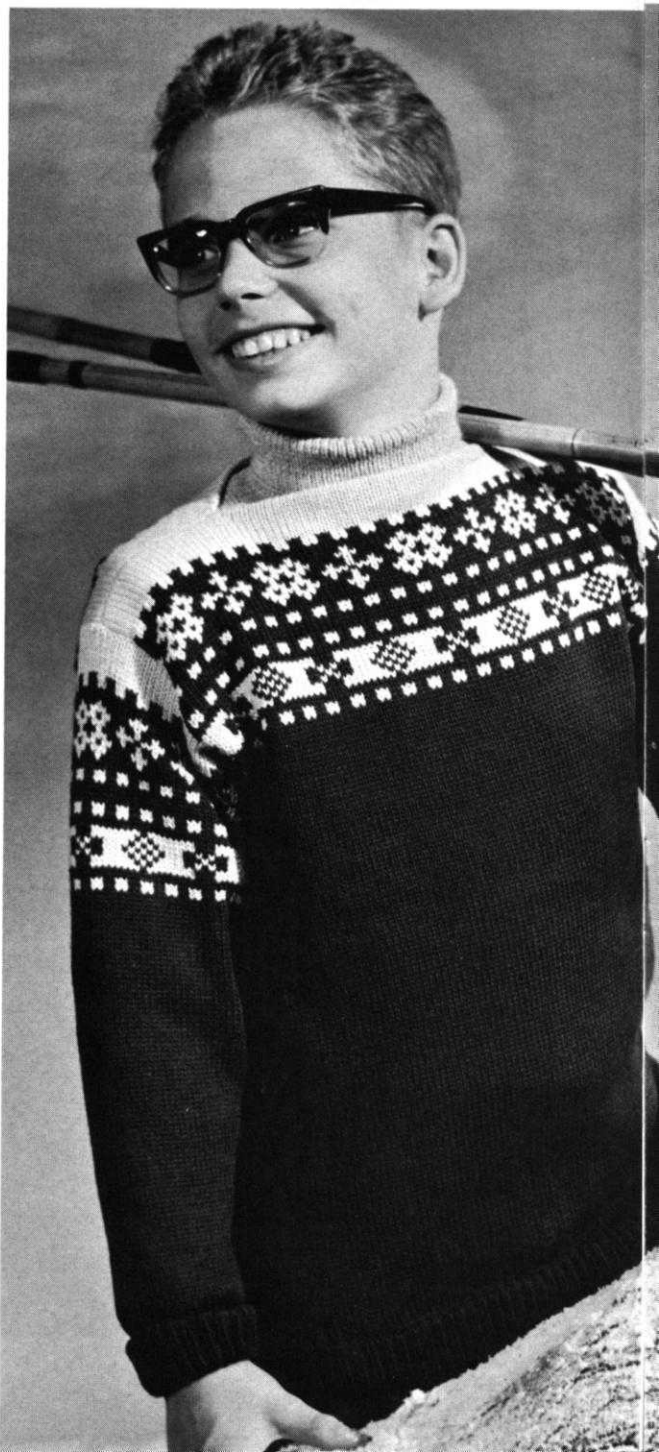


MK 4931

Knit this attractive Jacket for your child before the first flurry of snow and she'll be warm and happy. Two colors are used and the Norwegian design follows a chart, or use JAC 40 and Pattern No. 53a. A zipper down the front and ribbed bands help to keep the wind out. SIZE 9 to 10 years. See page 26.

MK 4929 →

For a boy or girl! A boat necked Pullover with a border in a Norwegian design will bring smiles to any youngster. We combined brown and beige for our Model, and KNIT-KING Starlite Crepe is the yarn. Follow the Chart, or use JAC 40 and Pattern No. 106. SIZE 13 to 14 years. See page 27.



MK 4928 →

Chain stitch embroidery and a gay tassel trims a pretty pull-over for a young lady. The body of garment and inset is knitted over every other needle with a heavy weight yarn while the bands are a regular 1 x 1 rib using a lighter weight yarn. SIZE 10 to 11 years. See page 27.



← KK 4930

Simple stockinette stitch with bands of ribbing for a classic turtle necked Pullover. A young man wears our model, but girls go for them too — so be sure to knit one for her. SIZE 13 to 14 years. See page 29.



KK 4927 →

Stripe the sleeves of this boy's Jacket knitted in a Fisherman's rib. It zips up the front for ease in closing and we guarantee he will keep warm. SIZE 10 to 11 years. See page 29.

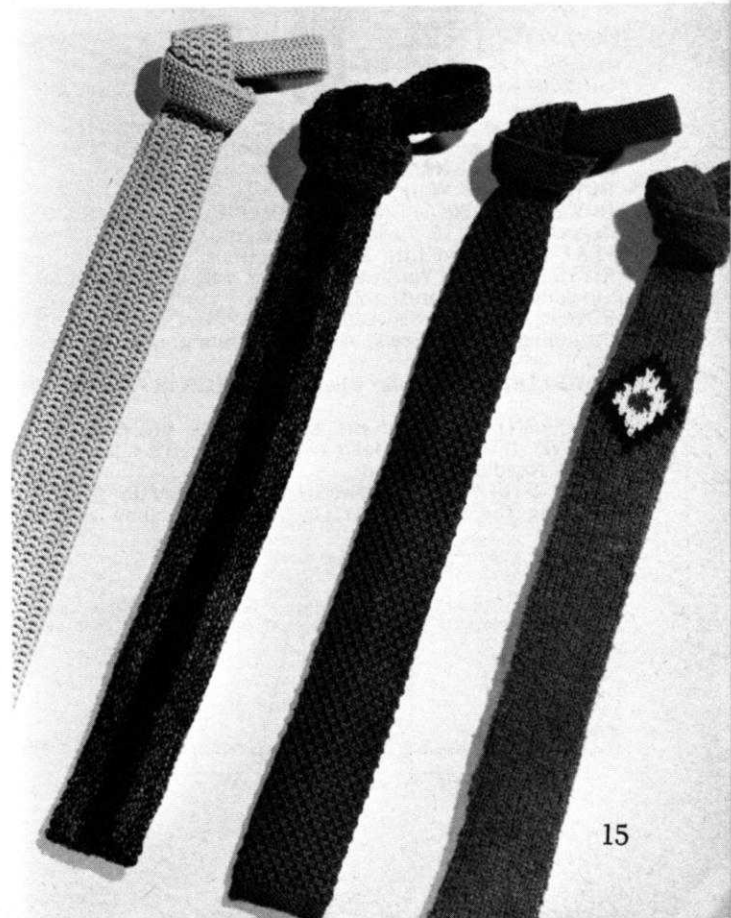
BONUS PATTERNS FOR GIFT GIVING

← DV 7496

Cute and comfortable is this easy to make winter sport hat for girls of any age. See page 29.

HV 3447 / 3479 / 3478 / 3476 →

Make at least one of these good looking ties for each of the men in your life. See page 30.



KNITTING INSTRUCTIONS

OUR COVER MODEL

WOMAN'S PULLOVER, DP 7476



SIZE: 10/12 and 14/16. **MATERIAL:** 15 $\frac{3}{4}$ oz. (17 $\frac{1}{2}$ oz.) Gold and 14 oz. (15 $\frac{3}{4}$ oz.) White KNITKING Frigate.

TENSION: KNITKING: 10.

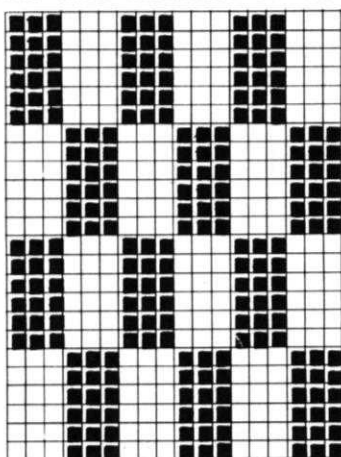
GAUGE: 9 sts. 2", 12 rows 2". The omitted stitches are **Not** counted in the directions or gauge.

PATTERN: Norwegian Design over every other needle according to chart, or use JAC 40 and Pattern 340. In the directions each row in the Norwegian Design is counted as 1 row, but several movements of

the Cam Box are needed to complete 1 row. **EDGES:** Stockinette stitch.

SIZE: 10/12. **BACK:** (Figure I). Cast on 91 sts. over every other Needle with gold.

ROWS 1-16: Work Stockinette St. with Tension 8. After



■ GOLD
□ WHITE

ROW 16 hang the cast on sts. back onto machine behind the latches to form hem, then continue with Tension 10 and start the Norwegian Design.

ROWS 17-108: Work even.

ROWS 109-120: ARMHOLE SHAPING: Bind off 2 sts. beginning next 2 rows, 1 st. beginning next 2 rows. REPEAT these bind offs 2 x. (73 sts.)

ROWS 121-158: Work even. After row 158 continue with Stockinette St. and gold.

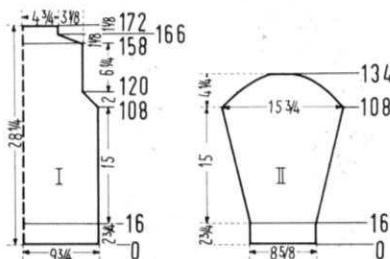
ROWS 159-166: SHOULDER SHAPING: Bind off 3 sts. beginning next 2 rows, 4 sts. beginning next 6 rows. (43 sts.)

ROWS 167-172: Work even. After ROW 172 bind off all sts.

The FRONT is worked the same as the BACK.

SLEEVE: (Figure II). Make two. Cast on 39 sts. over every Other Needle with gold.

ROWS 1-16: Work Stockinette st. with Tension 8. After row 16 hang the cast on sts. back onto machine behind the



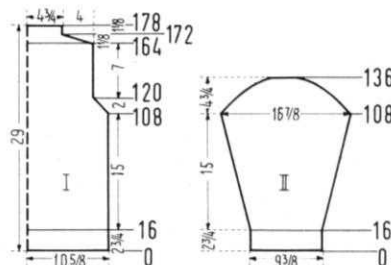
latches to form hem, then continue with tension 10 and start the Norwegian Design, beginning with the 3rd square of the chart.

ROWS 17-108: Increase 1 st. on each side after ROW 20 and again every 6th row 10 x, then every 4th row 6 x. (73 sts.)

ROWS 109-120: CAP SHAPING: Bind off 2 sts. beginning next 2 rows, 1 st. beginning next 2 rows. REPEAT these bind offs 2 x.

ROWS 121-134: Bind off 2 sts. beginning next 6 rows, 3 sts. beginning next 4 rows, 4 sts. beginning next 2 rows, 5 sts. beginning next 2 rows, then bind off the remaining 13 sts.

FINISHING: Weave front and back sections at sides, 1 stitch in from each edge. Turn under 6 rows on Neck edge and hem to wrong side. Join shoulder in a 3 $\frac{1}{2}$ inch long seam. Sew sleeves together and set in.



SIZE: 14/16. **BACK:** (Figure I). Cast on 97 sts. over every Other Needle with gold.

ROWS 1-16: Work Stockinette St. with Tension 8. After row 16 hang the cast on sts. back onto machine behind the latches to form hem, then continue with Tension 10 and start the Norwegian Design.

ROWS 17-108: Work even.

ROWS 109-120: ARMHOLE SHAPING: Bind off 2 sts. beginning next 2 rows, 1 st. beginning next 2 rows. REPEAT these bind offs 2 x. (73 sts.)

ROWS 121-164: Work even. After row 164 continue with Stockinette St. and gold.

ROWS 165-172: SHOULDER SHAPING: Bind off 4 sts. beginning next 4 rows, 5 sts. beginning next 4 rows. (43 sts.)

ROWS 173-178: Work even. After row 178 bind off all sts. The FRONT is worked the same as the BACK.

SLEEVE: (Figure II). Make two. Cast on 43 sts. over every Other Needle with gold.

ROWS 1-16: Work Stockinette st. with Tension 8. After row 16 hang the cast on sts. back onto machine behind the latches to form hem, then continue with Tension 10 and start the Norwegian Design.

ROWS 17-108: Increase 1 st. on each side after row 22 and again on every 6th row 7 x, then on every 4th row 9 x. (77 sts.)

ROWS 109-120: CAP SHAPING: Bind off 2 sts. beginning next 2 rows, 1 st. beginning next 2 rows. REPEAT these bind offs 2 x.

ROWS 121-136: Bind off 2 sts. beginning next 8 rows, 3 sts. beginning next 4 rows, 4 sts. beginning next 2 rows, 5 sts. beginning next 2 rows, then bind off the remaining 13 sts.

FINISHING: Follow instructions for SIZE 10/12

**THE JAC 40
IS A MUST!!**



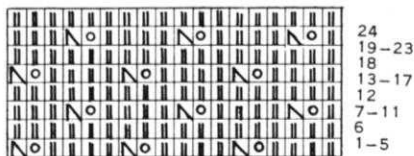
WOMAN'S PULLOVER, DP 7485



SIZE: 14/16. **MATERIAL:** 17½ oz. White 2 x 4 and 5¼ oz. red. 2 x 3. KNITTING Subita. **TENSION:** KNITTING: Pattern 8 to 10. K1, P1, Ribbing 5 to 7. **GAUGE:** 13 sts. 2", 25 rows 2". **PATTERN:** Eyelet and holding position Design according to Chart. Worn on purl side. After transferring the designated stitches onto the neighboring needles, put the empty needles into holding position and always knit 5 rows. **EDGES:** K1, P1, Ribbing. **BACK:** (Figure II). Cast on 137 sts.

with red.

ROWS 1-40: K1, P1, Ribbing. After row 40 transfer the ribber sts. onto main machine and continue with white.



ROWS 41-42: Work Stockinette stitch. Now start the holding position design.

ROWS 43-224: Work even.

ROWS 225-250: ARMHOLE SHAPING: Bind off 4 sts. beginning next 2 rows, 3 sts. beginning next 2 rows, 2 sts. beginning next 4 rows, 1 st. beginning next 6 rows, then at each end of every following 4th row bind off 1 st. 3 x. (103 sts.).

ROWS 251-334: Work even.

ROWS 335-350: NECK and SHOULDER SHAPING: Both shapings are started at the same row. Bind off the center 15 sts. (See Notes to Knit By, inside back cover). Bind off 2 sts. on Shoulder side and continue to shape shoulder on every other row by binding off 2 sts. 3 x and 3 sts. 5 x. AT THE SAME TIME shape Neck on every other row by binding off 5 sts. 1 x, 4 sts. 1 x, 3 sts. 2 x and 2 sts. 3 x.

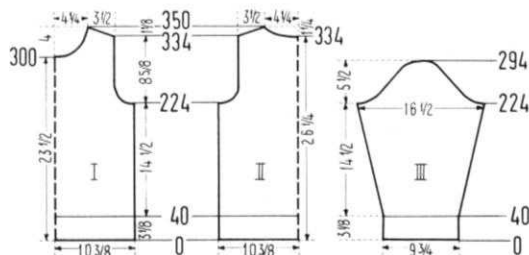
FRONT: (Figure II). Work the front the same as the back to ROW 300, then bind off the center 13 sts. for NECK and on every other row on NECK SIDE, bind off 3 sts. 2 x, 2 sts. 4 x, 1 st. 3 x, then on every 4th row bind off 1 st. 3 x and on every 6th row 1 st. 2 x. AT THE SAME TIME shape SHOULDER as on back at ROWS 335-350.

SLEEVE: (Figure III). Make two. Cast on 65 sts. with red. **ROWS 1-40:** K1, P1, Ribbing. After row 40 transfer the ribber sts. onto main machine and continue with white. **ROWS 41-42:** Work stockinette stitch. Now continue in holding position design.

ROWS 43-224: Increase 1 st. on each side after ROW 44 and again on every 8th row 21 x. (109 sts.).

ROWS 225-294: CAP SHAPING: Bind off 4 sts. beginning next 2 rows, 3 sts. beginning next 4 rows, 2 sts. beginning next 6 rows, 1 st. beginning next 52 rows, 2 sts. beginning next 2 rows, 3 sts. beginning next 4 rows. After row 294 bind off remaining 9 sts.

COLLAR: Made in 2 separate sections. With red cast on 137 sts. for the front and 95 sts. for the back. Work K1, P1, Ribbing, 44 rows with Tension 5, 8 rows with Tension 6 and 8 rows with Tension 7. (60 rows). Now put the sts. from the ribber onto contrast yarn or a long stitch holder.



Remove ribber. Bring the corresponding empty needles on main machine into working position and work 4 rows Stockinette stitch, then bind off using the crochet method. Now turn work and hang the stitches from the contrast yarn (or stitch holder) onto machine, leaving 1 needle between each stitch free. Now bring the empty needles into working position and work 4 rows with Tension 4 in Stockinette stitch, then bind off using the crochet method.

CAP: Cast on 163 sts. with red.

ROWS 1-40: K1, P1, Ribbing. After row 40 transfer the ribber sts. onto main machine and continue with white.

ROWS 41-42: Work Stockinette stitch, then continue in holding position design, putting first the 4th, 10th, 16th, etc. stitch onto the neighboring needle.

ROWS 43-102: Work even. Now decrease 14 sts. evenly spaced over the whole width by putting the 3rd and 4th st. onto the 5th needle, the 15th and 16th st. onto the 17th needle, the 27th and 28th st. onto the 29th needle, etc. then hang the stitches together so that there is an empty needle next to each decrease for the eyelet design. (See Practical Hints).

ROWS 103-108: Work even. Now decrease 13 sts. evenly spaced over the whole width by putting the 6th, 17th, 28th, 39th, etc. stitch onto the neighboring needle, then hang the stitches together.

ROWS 109-112: Work Stockinette Stitch. Now turn work and continue with red.

ROWS 113: Work Stockinette Stitch.

ROWS 114-125: K1, P1, Ribbing, 4 rows tension 7, 4 rows tension 6 and 4 rows tension 5. After row 125 take off the sts. by threading a yarn first through the ribber sts. then a separate yarn through the remaining sts. then pull sts. tight.

FINISHING: PULLOVER: Join front and back at sides and shoulders. Sew sleeves together and set in. Fold lower and sleeve edges in half and hem to right side. Join front and back sections of collar. Sew 1 bound off edge to inside, the other bound off edge to outside of neckline. **CAP:** Close seam. Fold lower edge in half and hem to right side.

Make a pompon and sew to top of cap

WOMAN'S PULLOVER, DP 7477



SIZE: 10/12 and 14/16. **MATERIAL:** 14 oz. (15¾ oz.) red and 10½ oz. (12¼ oz.) white KNITTING Subita 2 x 4.

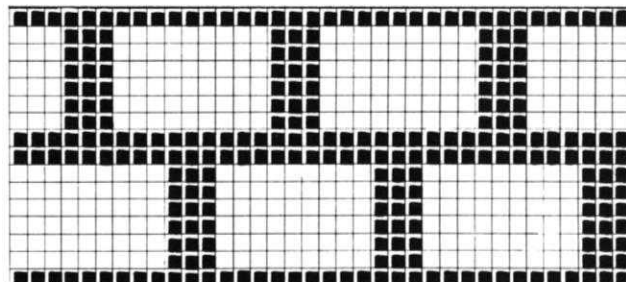
TENSION: KNITTING: 6 to 8. **GAUGE:** Pattern, 15 sts. 2", 21 rows 2". K1, P1, Ribbing, 15 sts. 2", 24 rows 2".

PATTERN: Norwegian Design according to chart, or use JAC 40 and Pattern No. 342. In the directions each row in the Norwegian Design is counted as 1 row, but several movements of the Cam Box are

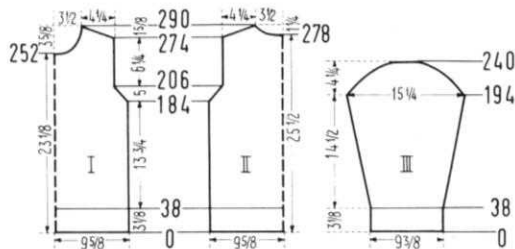
needed to complete 1 row. **EDGES and COLLAR:** K1, P1, Ribbing.

SIZE: 10/12. **BACK:** (Figure II). Cast on 147 sts. with red.

ROWS 1-38: K1, P1, Ribbing. After row 38 transfer the



□ WHITE ■ RED



ribber sts. onto main machine, then hang the cast on sts. back onto machine behind the latches to form hem and start the Norwegian Design.

ROWS 39-184: Work even.

ROWS 185-206: ARMHOLE SHAPING: Bind off 2 sts. beginning next 6 rows and 1 st. beginning next 16 rows. (119 sts.).

ROWS 207-274: Work even.

ROWS 275-290: SHOULDER SHAPING: Bind off 3 sts. beginning next 4 rows. After Row 278, bind off the center 19 sts. for NECK, (See Notes to Knit By inside back cover). Bind off 3 sts. at shoulder edge and continue to shape shoulder every other row by binding off 4 sts. 6 x. AT THE SAME TIME shape Neck every other row by binding off 5 sts. 1 x, 4 sts. 1 x, 3 sts. 2 x and 2 sts. 1 x.

FRONT: (Figure II). Work the front the same as the back to ROW 252, then bind off the center 13 sts. for NECK and on every other row on Neck Side bind off 4 sts. 2 x, 3 sts. 1 x, 2 sts. 2 x, 1 st. 2 x, on every following 4th row bind off 1 st. 3 x. AT THE SAME TIME shape SHOULDERS as on back at ROWS 275-290.

SLEEVE: (Figure III). Make two. Cast on 73 sts. with red. **ROWS 1-38:** K1, P1, Ribbing. After row 38 transfer the ribber sts. onto main machine, then hang the cast on sts. back onto machine behind the latches to form hem and start the Norwegian Design.

ROWS 39-194: Increase 1 st. on each side after ROW 46 and again every 8th row 7 x, then every 6th row 14 x. (117 sts.).

ROWS 195-240: CAP SHAPING: Bind off 1 st. beginning next 22 rows, 2 sts. beginning next 12 rows, 3 sts. beginning next 6 rows, 4 sts. beginning next 6 rows and at ROW 240 bind off the remaining 29 sts.

COLLAR: Cast on 143 sts. with red. Work K1, P1, Ribbing, 16 rows tension 8, 16 rows tension 7 and 16 rows tension 8. (48 rows). Bind off all sts.

FINISHING: Weave front and back sections at sides, 1 1/2 sts. in from each edge. Join shoulders. Sew sleeve together and set in. Sew short ends of collar together and sew to neckline. Fold collar to outside.

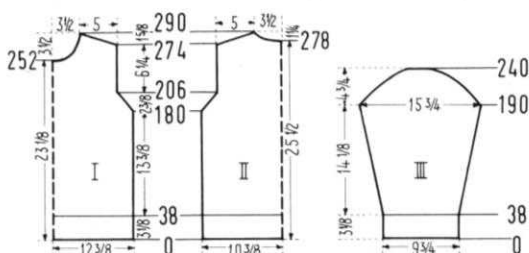
SIZE: 14/16. BACK: (Figure II). Cast on 159 sts. with red. **ROWS 1-38:** K1, P1, Ribbing. After ROW 38 transfer the ribber sts. onto main machine, then hang the cast on sts. back onto machine behind the latches to form hem and start the Norwegian Design.

ROWS 39-180: Work even.

ROWS 181-206: ARMHOLE SHAPING: Bind off 2 sts. beginning next 4 rows, 1 st. beginning next 22 rows. (129 sts.).

ROWS 207-274: Work even.

ROWS 275-290: SHOULDER SHAPING: Bind off 4 sts. beginning next 4 rows. After ROW 278, bind off the center 19 sts. for NECK, (See Notes to Knit By, inside back cover). Bind off 4 sts. at shoulder edge and continue to shape shoulder every other row by binding off 4 sts. 4 x and 5 sts. 2 x. AT THE SAME TIME shape NECK every other row



by binding off 5 sts. 1 x, 4 sts. 1 x, 3 sts. 2 x and 2 sts. 1 x.

FRONT: (Figure I). Work the front the same as the back to ROW 252, then bind off the center 13 sts. for NECK and on every other row on Neck Side bind off 4 sts. 2 x, 3 sts. 1 x, 2 sts. 2 x, 1 st. 2 x, then on every 4th row bind off 1 st. 3 x. AT THE SAME TIME shape SHOULDER as on back at ROWS 275-290.

SLEEVE: (Figure III). Make two. Cast on 75 sts. with red. **ROWS 1-38:** K1, P1, Ribbing. After row 38 transfer the ribber sts. onto main machine, then hang the cast on sts. back onto machine behind the latches to form hem and start the Norwegian Design.

ROWS 39-190: Increase 1 st. on each side after Row 46 and again every 8th row 5 x, then every 6th row 16 x. (119 sts.).

ROWS 191-240: CAP SHAPING: Bind off 1 st. beginning next 22 rows, 2 sts. beginning next 18 rows, 3 sts. beginning next 6 rows, 4 sts. beginning next 4 rows and at row 240 bind off the remaining 29 sts.

COLLAR and FINISHING: Follow directions for Size 10/12.

WOMAN'S PULLOVER, DP 7478



SIZE: 12/14 and 16/18. **MATERIAL:** 19 1/4 oz. (22 3/4 oz.) white KNIT-KING Frigate and 3 1/2 oz. white KNITTING Subita 2 x 4.

TENSION: Stockinette Stitch 10. K1, P1, Ribbing 6 to 8.

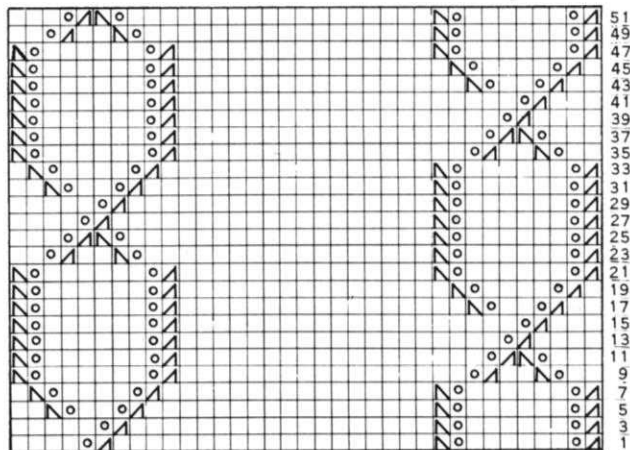
GAUGE: Stockinette Stitch 9 sts. 2", 13 rows 2". K1, P1, Ribbing 18 sts. 2", 22 rows 2". The omitted sts. when knitting Stockinette Stitch are **Not** counted in the directions or gauge.

PATTERN: Every second needle is in the non-working position. Stockinette Stitch with Eyelet design stripes according to chart.

EDGES: K1, P1, Ribbing over every other needle on main machine and every needle on ribber.

SIZE: 12/14. BACK: (Figure II). Cast on 183 sts. with Subita.

ROWS 1-36: K1, P1, Ribbing. After row 36 transfer the



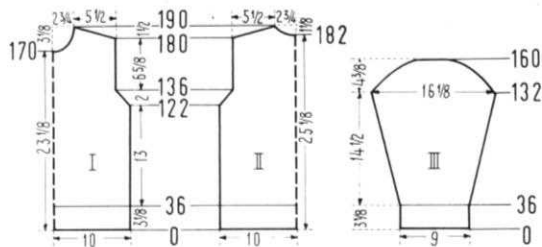
ribber sts. onto the neighboring needle on main machine, then hang every other cast on stitch back onto machine (on occupied needle) behind the latches to form hem and continue working over every other needle with Frigate. (92 sts.).

ROWS 37-122: Work even.

ROWS 123-136: ARMHOLE SHAPING: Bind off 2 sts. beginning next 2 rows, 1 st. beginning next 12 rows. (76 sts.).

ROWS 137-180: Work even.

ROWS 181-190: SHOULDER SHAPING: Bind off 4 sts. beginning next 2 rows. After Row 182, bind off the center 8 sts. for NECK, (See Notes to Knit By, inside back cover). Bind off 4 sts. at shoulder edge and continue to shape shoulder on every other row by binding off 4 sts. 3 x and 5 sts. 1 x.



AT THE SAME TIME, shape NECK every other row by binding off 4 sts. 1 x, 3 sts. 1 x and 2 sts. 1 x.

FRONT: (Figure I). Cast on 183 sts. with Subita.

ROWS 1-36: K1, P1, Ribbing. After Row 36 transfer the ribber sts. onto the neighboring needle on main machine, then hang every other cast on stitch back onto machine (on occupied needle) behind the latches to form hem and continue working over every other needle with Frigate. (92 sts.).

ROWS 37-122: Work even and start eyelet design stripes after Row 38, putting first the 18th, 47th, and 68th st. onto the right and the 25th and 75th st. onto the left neighboring needle.

ROWS 123-136: ARMHOLE SHAPING: Bind off 2 sts. beginning next 2 rows 1 st. beginning next 12 rows. (76 sts.).

ROWS 137-170: Work even.

ROWS 171-190: NECK SHAPING: Bind off the center 6 sts. as you did on back, then on Neck Side on every other row bind off 3 sts. 1 x, 2 sts. 2 x, 1 st. 2 x and 1 st. on the following 4th row 1 x. AT THE SAME, SHAPE SHOULDER after ROW 180 and on every other row by binding off 4 sts. 5 x and 5 sts. 1 x.

SLEEVES: (Figure III). Cast on 83 sts. with Subita.

ROWS 1-36: K1, P1, Ribbing. After row 36 transfer the ribber sts. onto the neighboring needle on main machine, then hang every other cast on stitch back onto machine (on occupied needle) behind the latches to form hem and continue working over every other needle with Frigate. (42 sts.).

ROWS 37-132: Increase 1 st. on each side and again on every 6th row 15 x. AT THE SAME TIME, after Row 38, start eyelet design stripe, putting first the 22nd st. onto the right neighboring needle. (74 sts.).

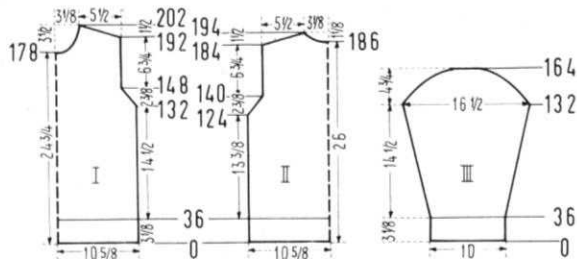
ROWS 133-160: CAP SHAPING: Bind off 1 st. beginning next 14 rows, 2 sts. beginning next 4 rows, 3 sts. beginning next 4 rows, 4 sts. beginning next 4 rows, 5 sts. beginning next 2 rows. After row 160 bind off the remaining 14 sts. Work last 2 rows without eyelet design.

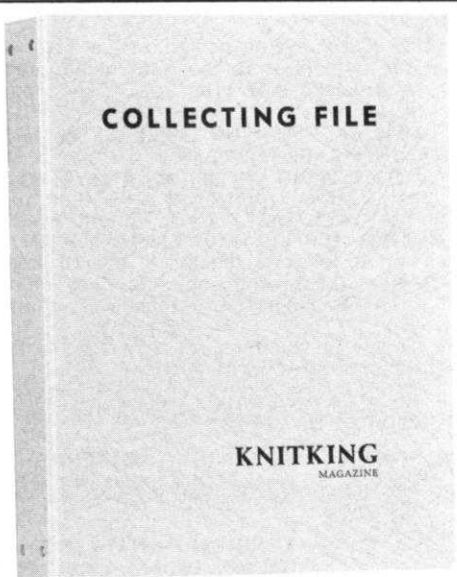
COLLAR: Cast on 139 sts. with Subita, K1, P1, Ribbing, 10 rows tension 9, 24 rows tension 8, 10 rows tension 9. (44 rows). Now transfer the ribber sts. onto main machine and knit 3 rows Stockinette with tension 7, then bind off crochet method.

FINISHING: Join front and back at sides and shoulder. Sew sleeves together and set in. Sew short ends of collar, then sew cast on edge to inside and bound off edge to out side of neckline, having Stockinette rows on right side of garment.

SIZE 16/18: BACK: (Figure II). Cast on 195 sts. with Subita.

ROWS 1-36: K1, P1, Ribbing. After row 36 transfer the ribber sts. onto the neighboring needle on main machine, then hang every other cast on stitch back onto machine (on occupied needle) behind the latches to form hem and continue working over every other needle with Frigate. (98 sts.).





COLLECTING FILE

KNITTING
MAGAZINE

A Binder to preserve your copies of **KNITTING Magazine**.
Holds 12 issues available for ready reference.
Price \$2.50 each. Mailing cost 50 cents.
(California residents add 13 cents sales tax)

Available only from . . .
KNITTING MAGAZINE
1128 Crenshaw Blvd., Los Angeles, Calif. 90019

ROWS 37-124: Work even.

ROWS 125-140: ARMHOLE SHAPING: Bind off 2 sts. beginning next 4 rows, 1 st. beginning next 12 rows. (78 sts.).

ROWS 141-184: Work even.

ROWS 185-194: SHOULDER SHAPING: Bind off 4 sts. beginning next 2 rows. After ROW 186, bind off the center 10 sts. for NECK. (See Notes to Knit By, inside back cover). Bind off 4 sts. at shoulder edge and continue to shape shoulder every other row by binding off 4 sts. 3 x and 5 sts. 1 x. AT THE SAME TIME, shape NECK every other row by binding off 4 sts. 1 x, 3 sts. 1 x and 2 sts. 1 x.

FRONT: (Figure I). Cast on 195 sts. with Subita.

ROWS 1-36: K1, P1, Ribbing. After row 36 transfer the ribber sts. onto the neighboring needle on main machine, then hang every other cast on stitch back onto machine (on occupied needle) behind the latches to form hem and continue working over every other needle with Frigate. (98 sts.).

ROWS 37-132: Work even and start eyelet design stripes after Row 38, putting first the 20th, 50th and 72nd stitch onto the right and the 27th and 79th stitch onto the left neighboring needle.

ROWS 133-148: ARMHOLE SHAPING: Bind off 2 sts. beginning next 4 rows, 1 st. beginning next 12 rows. (78 sts.).

ROWS 149-178: Work even.

ROWS 179-202: NECK SHAPING: Bind off the center 6 sts. as you did on back, then on Neck Side on every other row bind off 3 sts. 1 x, 2 sts. 2 x, 1 st. 2 x and on every following 4th row bind off 1 st. 2 x.

AT THE SAME TIME, SHAPE SHOULDER after ROW 192 and on every other row by binding off 4 sts. 5 x and 5 sts. 1 x.

SLEEVE: (Figure III). Make two. Cast on 91 sts. with Subita.

ROWS 1-36: K1, P1, Ribbing. After row 36 transfer the ribber sts. onto the neighboring needle on main machine, then hang every other cast on stitch back onto machine (on occupied needle) behind the latches to form hem

and continue working over every other needle with Frigate. (46 sts.).

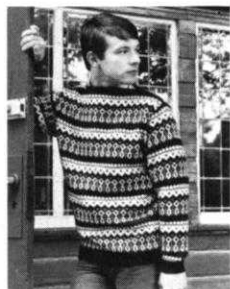
ROWS 37-132: Start eyelet design stripe after ROW 38, putting first the 24th st. onto the right neighboring needle. Increase 1 st. on each side after row 42 and again every 6th row 14 x. (76 sts.).

ROWS 133-164: CAP SHAPING: Bind off 1 st. beginning next 18 rows, 2 sts. beginning next 6 rows, 3 sts. beginning next 2 rows, 4 sts. beginning next 4 rows, 5 sts. beginning next 2 rows. After ROW 164 bind off the remaining 14 sts. Work last 2 rows without eyelet design.

COLLAR: Cast on 159 sts. with Subita. K1, P1, Ribbing, 10 rows tension 9, 24 rows tension 8 and 10 rows tension 9. (44 rows). Now transfer the ribber sts. onto main machine and knit 3 rows Stockinette with tension 7, then bind off crochet method.

FINISHING: Follow instructions for Size 12/14, but easing in fullness at bustline of front section.

MAN'S PULLOVER, HP 3482



SIZE: 40/42. **MATERIAL:** 12¼ oz. black, 10½ oz. yellow, 3½ oz. gold and 3½ oz. red KNITKING Subita 2 x 4.

TENSION: KNITKING: 6 to 8.

GAUGE: Pattern Stitch 16 sts. 2", 20 rows 2". K1, P1, Ribbing 16 sts. 2", 24 rows 2".

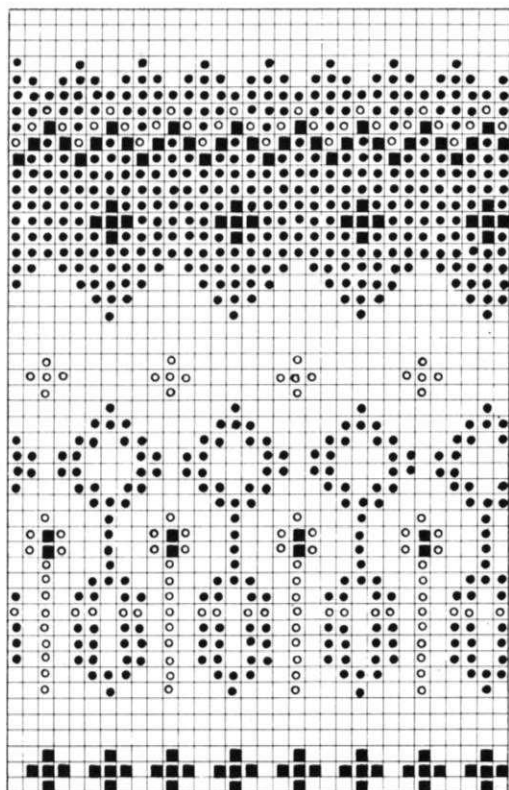
PATTERN: Norwegian Design according to chart, or use JAC 40 and Pattern No. 28a (2 card Design). In the directions each row in the Norwegian Design is counted as 1 row, but several movements of the

Cam Box are needed to complete 1 row. **EDGES:** K1, P1, Ribbing.

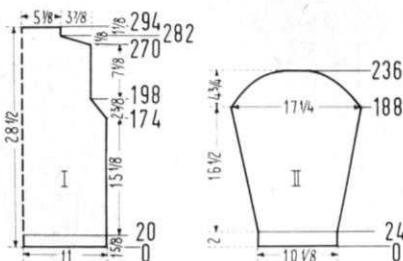
BACK: (Figure I). Cast on 179 sts. with black.

ROWS 1-20: K1, P1, Ribbing. After row 20 transfer the ribber sts. onto main machine and start the Norwegian Design.

ROWS 21-174: Work even.



○ GOLD
● YELLOW
■ RED
□ BLACK



ROWS 175-198: ARMHOLE SHAPING: Bind off 2 sts. beginning next 2 rows, 1 st. beginning next 4 rows. Repeat these bind offs 3 x. (147 sts.).

ROWS 199-270: Work even. After row 270 continue with black and work Stockinette st.

ROWS 271-282: SHOULDER SHAPING: Bind off 5 sts. beginning next 8 rows, 6 sts. beginning next 4 rows. (83 stitches).

ROWS 283-294: Work even. After row 294 bind off all sts. The FRONT is worked the same as BACK.

SLEEVE: (Figure II). (Make 2). Cast on 83 sts. with black. **ROWS 1-24:** K1, P1, Ribbing. After row 24 transfer the ribber sts. onto main machine and start the Norwegian Design.

ROWS 25-188: Increase 1 st. on each side after Row 30 and again every 6th row 19 x, then every 4th row 9 x. (141 sts.).

ROWS 189-212: CAP SHAPING: Bind off 2 sts. beginning next 2 rows, 1 st. beginning next 4 rows. Repeat these bind offs 3 x. (109 sts.).

ROWS 213-236: Bind off 2 sts. beginning next 6 rows, 3 sts. beginning next 8 rows, 4 sts. beginning next 8 rows, 5 sts. beginning next 2 rows. After row 236 bind off remaining 31 sts.

FINISHING: Weave front and back sections at sides, 1½ stitches in from each edge. Turn under 12 rows on Neck edge and hem to wrong side. Join shoulder in a 4½ inch long seam. Sew sleeves together and set in.

WOMAN'S PULLOVER, DP 7479



SIZE: 14/16. **MATERIAL:** 21 oz. turquoise KNITKING Mutella.

TENSION: KNITKING: Pattern Stitch and Fisherman's Rib: 7 to 9, K1, P1, Ribbing: 3 to 5.

GAUGE: Pattern Stitch: 19 sts. 2", 39 rows 2". Fisherman's Rib: 17 sts. 2", 36 rows 2". K1, P1, Ribbing: 19 sts. 2", 33 rows 2".

PATTERN: Holding Position Design with ribber according to chart. Worn on purl side. At beginning, set up Pattern with Needle Selector or Automatic, then use the Needle shifter.

SLEEVES: Fisherman's Rib worn on right side.

EDGES and COLLAR: K1, P1, Ribbing.

BACK: (Figure II). Cast on 197 sts., beginning and ending with 2 sts. on main machine.

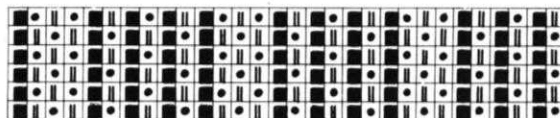
ROWS 1-40: K1, P1, Ribbing. After row 40 transfer the 4th, 9th, 14th, 19th, 24th, etc. sts. from the ribber onto corresponding needles on main machine and start the holding position design.

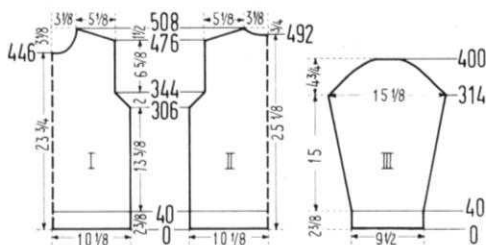
ROWS 41-306: Work even.

ROWS 307-344: ARMHOLE SHAPING: Bind off 1 st. beginning next 38 rows. (159 sts.).

ROWS 345-476: Work even.

ROWS 477-508: SHOULDER and NECK SHAPING: Bind off 2 sts. beginning next 4 rows, 3 sts. beginning next 12 rows. After ROW 492 bind off the center 15 sts. for NECK,





(See Notes to Knit By, inside back cover). Bind off 3 sts. at shoulder edge and continue to **shape shoulder** every other row by binding off 3 sts. 8 x. **AT THE SAME TIME, shape Neck** every other row by binding off 5 sts. 1 x, 4 sts. 2 x, 3 sts. 2 x and 2 sts. 2 x.

FRONT: (Figure I). Work the front the same as the back to ROW 446, then bind off the center 13 sts. for **NECK** and on every 4th row on **Neck Side** bind off 5 sts. 1 x, 4 sts. 2 x, 3 sts. 1 x, 2 sts. 2 x, 1 st. 2 x, and on every following 6th row bind off 1 st. 2 x. **AT THE SAME TIME** shape **SHOULDER** as on back at ROWS 477-508.

SLEEVE: (Figure III). Make two. Cast on 83 sts.

ROWS 1-40: K1, P1, Ribbing. After row 40 move the Gate Cam Release Lever of main machine to the needle heels and work Fisherman's Rib.

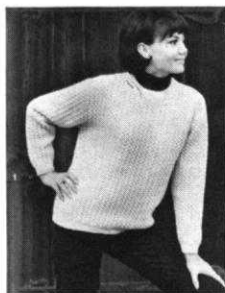
ROWS 41-314: Increase 1 st. on **each side** after ROW 52 and again every 12 row 4 x, then every 10 row 20 x. (133 sts.).

ROWS 315-400: **CAP SHAPING:** Bind off 2 sts. on **each side**, then on every following 4th row on **each side**, bind off 2 sts. 15 x, 3 sts. 3 x, 4 sts. 3 x and after row 400 bind off the remaining 27 sts.

COLLAR: Cast on 181 sts. K1, P1, Ribbing, 20 rows tension 4, 25 rows tension 3 and 25 rows tension 4. (70 Rows). Bind off all sts.

FINISHING: Join front and back sections at sides and shoulders. Sew sleeves together and set in. Turn under half of lower and sleeve edges and hem to wrong side. Sew short ends of collar together and sew to neckline. Fold to outside.

WOMAN'S PULLOVER, DP 7480



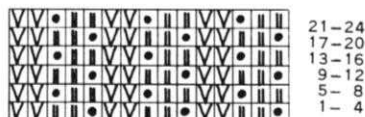
SIZE: 12/14. **MATERIAL:** 19 1/4 oz. light blue KNITTING Sonika Dralon. **TENSION:** 10 **GAUGE:** Pattern Stitch: 16 sts. 2", 31 rows 2". K1, P1, Ribbing: 16 sts. 2", 22 rows 2". The omitted stitches are counted as stitches in the gauge and directions. **PATTERN:** Holding Position Design according to chart. Worn on purl side.

EDGES: K1, P1, Ribbing.

BACK: (Figure II). Cast on 163 sts.

ROWS 1-14: K1, P1, Ribbing. After row 14 transfer the ribber sts. onto

main machine, then put the 4th, 9th, 14th, etc. st. onto the right and the 5th, 10th, 15th, etc. st. onto the left neighboring needle, put the empty needles into the non-



working position and start the holding position design.

ROWS 15-206: Work even.

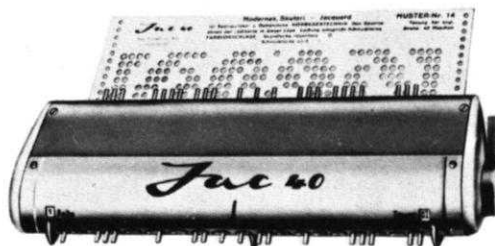
ROWS 207-236: **ARMHOLE SHAPING:** Bind off 1 st. beginning next 30 rows. (133 sts.).

ROWS 237-342: Work even.

ROWS 343-366: **SHOULDER SHAPING:** Bind off 2 sts. beginning next 2 rows, 3 sts. beginning next 10 rows. After ROW 354, bind off the center 19 sts. for **NECK**,

THE JAC 40 IS A MUST

for fast easy knitting of
Jaquard and Ski-sweater
designs



Patterns are selected—row by row—through a pre-stamped card that is fed into the Jac.

There are over 140 cards available and illustrations of them are included with each Jac.

Jac 40's are made for most brands of machines (with the exception of Japanese machines). When ordering be sure to specify your brand of knitter as needle spacings vary. Simple to use and an essential tool for the modern knitter, Jac 40's are \$24.95 complete with 3 cards for practicing the 3 techniques, plus complete instructions.

Order from your dealer or direct from

KNITTING

1128 Crenshaw Boulevard, Los Angeles, Calif. 90019

Shipping Cost \$1.50—California residents add 5% sales tax.

(See Notes to Knit By, inside back cover). Bind off 3 sts. at shoulder edge and continue to **shape shoulder** every other row by binding off 3 sts. 6 x. **AT THE SAME TIME shape Neck** every other row by binding off 5 sts. 2 x, 4 sts. 1 x, 3 sts. 1 x and 2 sts. 1 x.

FRONT: (Figure I) Work the front the same as the back to ROW 316, then bind off the center 17 sts. for **NECK** and on every 4th row on **Neck Side** bind off 4 sts. 2 x, 3 sts. 2 x, 2 sts. 1 x, 1 st. 2 x, and on every following 6th row bind off 1 st. 2 x. **AT THE SAME TIME** shape **SHOULDER** as on back at ROWS 342-366.

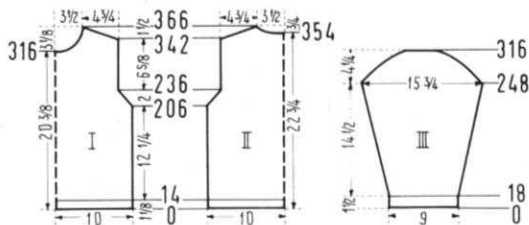
SLEEVE: (Figure III). Make two. Cast on 73 sts.

ROWS 1-18: K1, P1, Ribbing. After row 18 transfer the ribber sts. onto main machine, then put the 5th, 10th, 15th, etc. st. onto the right and the 6th, 11th, 16th, etc. st. onto the left neighboring needle, put the empty needles into the non-working position and start the holding position design.

ROWS 19-248: Increase 1 st. on **each side** after ROW 22 and again every 8th row 27 x. (129 sts.).

ROWS 249-278: **CAP SHAPING:** Bind off 1 st. on **each side**, then on every following 4th row on **each side** bind off 1 st. 7 x.

ROWS 279-316: Bind off 1 st. beginning next 12 rows, 2 sts. beginning next 14 rows, 3 sts. beginning next 6

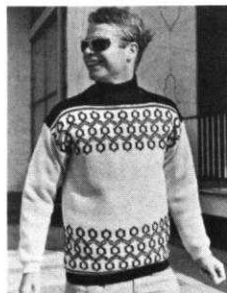


rows, 4 sts. beginning next 6 rows and after row 316 bind off the remaining 31 sts.

NECKBAND: Cast on 163 sts. K1, P1, Ribbing, 5 rows tension 10, 10 rows tension 9 and 5 rows tension 10. (20 rows). Bind off all sts.

FINISHING: Join front and back sections at sides and shoulders. Sew sleeves together and set in. Sew short ends of Neckband together and sew cast on edge to inside, bound off edge to outside of neckline.

MAN'S PULLOVER, HP 3483



SIZE: 40/42. **MATERIAL:** 15 $\frac{3}{4}$ oz. yellow and 10 $\frac{1}{2}$ oz. black KNITKING Frigate and 2 oz. black and 2 oz. yellow KNITKING Regal.

TENSION: Stockinette Stitch and Pattern 10, K1, P1, ribbing 7 to 9. **GAUGE:** Stockinette Stitch and Pattern: 9 sts. 2", 12 rows 2". K1, P1, Ribbing: 18 sts. 2", 23 rows 2". The omitted sts. when knitting Stockinette Stitch and Pattern are **Not** counted in the directions or gauge.

PATTERN: Stockinette Stitch and Norwegian Design over every other needle according to chart, or use JAC 40 and Pattern No. 87a. In the directions each row in the Norwegian Design is counted as 1 row, but several movements of the Cam Box are needed to complete 1 row. **EDGES:** K1, P1, Ribbing over every other needle on main machine and every needle on ribber with black Regal.

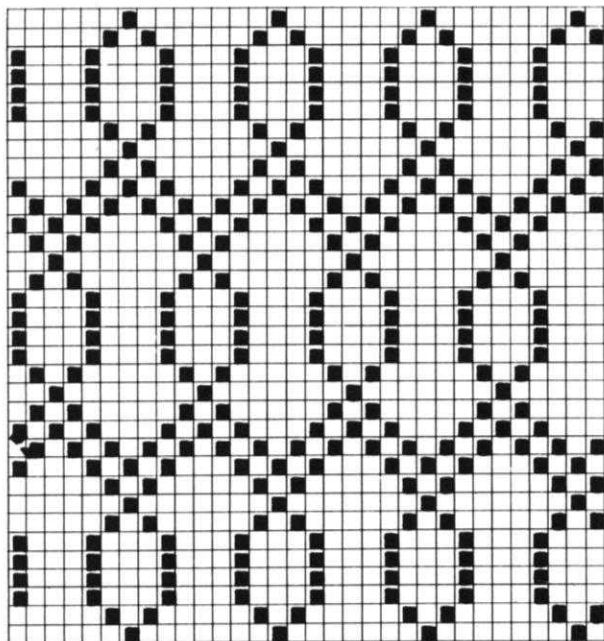
BACK: (Figure I). Cast on 195 sts. over every needle with black Regal.

ROWS 1-18: K1, P1, Ribbing. After row 18 transfer the ribber sts. onto main machine. On the right side, move the first stitch 1 needle outward, then put every second stitch onto the neighboring needle and continue working over every other needle with Frigate. (99 sts.).

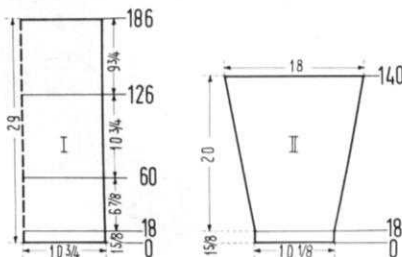
ROWS 19-60: Work even, 2 rows black, 2 rows yellow, 2 rows black, 2 rows yellow and 34 rows the Norwegian Design.

ROWS 61-126: Work even with yellow.

ROWS 127-186: Work 34 rows the Norwegian Design, 2 rows yellow, 2 rows black, 2 rows yellow and 20 rows black. After row 186 bind off all sts. The **FRONT** is worked the same as **BACK**.



□ YELLOW ■ BLACK



SLEEVE: (Figure II). Make two. Cast on 93 sts. with yellow Regal.

ROWS 1-18: K1, P1, Ribbing. After row 18 transfer the ribber sts. onto the neighboring needle on main machine (occupied needle) and continue working over every other needle with yellow Frigate. (47 sts.).

ROWS 19-140: Increase 1 st. on each side after ROW 24 and again every 8th row 8 x, every 6th row 6 x, then every 4th row 3 x. (83 sts.). After row 140 bind off all sts.

FINISHING: Turn under 7 rows on upper front and back sections and hem to wrong side. Join shoulders in a 6 $\frac{1}{2}$ inch long seam, weaving the sts. together. (or sew). Weave front to back section, 1 $\frac{1}{2}$ stitch in from each edge leaving 9 inches of upper side edges open for sleeves. Sew sleeves together and set in.

WOMAN'S PULLOVER, DP 7482



SIZE: 12/14. **MATERIAL:** 17 $\frac{1}{2}$ oz. yellow KNITKING Subita 2 x 4 and 1 $\frac{3}{4}$ oz. yellow KNITKING Subita 2 x 3.

TENSION: Stockinette Stitch 7 to 9, K1, P1, Ribbing 3 to 5. **GAUGE:** Stockinette Stitch: 15 sts. 2", 22 rows 2". K1, P1, Ribbing: 15 sts. 2", 33 rows 2".

PATTERN: Stockinette Stitch and Cable Stitch Design. The Cable is worked over the 12th-21th needle on each side. 1. Knit 4 rows. 2. With 2 double transfer tools, on

each side, cross the 13th and 14th with the 15th and 16th. st. by first hanging the 15th and 16th st. onto the 13th and 14th needle, then the 13th and 14th st. onto the 15th and 16th needle. 3. Knit 4 Rows.

4. On each side, cross the 17th and 18th with the 19th and 20th st. by first hanging the 17th and 18th st. onto the 19th and 20th needle, then the 19th and 20th st. onto the 17th and 18th needle. Repeat Steps 1 to 4 throughout. After about 50-60 rows drop the 12th and 21st st. and latch up into knit stitches by going into lower stitch with latch tool, bringing it up behind

the first cross bar and always pulling the second cross bar through latch tool.

EDGES: K1, P1, Ribbing.

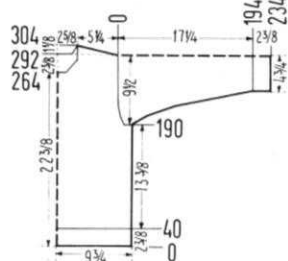
BACK: Cast on 151 sts. with Subita 2 x 3.

ROWS 1-40: K1, P1, Ribbing. After row 40 transfer the ribber sts. onto main machine, hang the cast on sts. back onto machine behind the latches to form hem and continue in Stockinette Stitch with Subita 2 x 4, working the Cable Design over the 12th-21th needle on each side.

ROWS 41-190: Work even. After row 190 put 9 sts. on each side onto a stitch holder.

ROWS 191-224: Decrease 1 st. on each side after Row 194 and again every 4th row 3 x, then every following 8th row 2 x by putting the 15th st. onto the 14th needle and moving the sts. in to fill the empty needle. (Cam Box is always on right side when decreasing.) (121 sts.).

ROWS 225-292: Work even.



ROWS 293-304: SHOULDER SHAPING and NECK SHAPING: Bind off the center 31 sts. for NECK, (See Notes to Knit By, inside back cover). On **shoulder side** bind off 5 sts. and continue to shape shoulder every other row by binding off 6 sts. 6 x. AT THE SAME TIME, after Row 294 (Cam Box on right side) decrease 1 st. on Neck Side by putting the 3rd st. onto the 4th needle then moving the 2 outside sts. over to fill the empty needle. Continue to shape Neck every other row by decreasing 1 st. 3 x in the same manner. Work the FRONT the same as the back to ROW 264, then bind off the center 19 sts. for NECK. After row 266 decrease 1 st. on neck side and continue to decrease 1 st. on neck side every row 4 x, every other row 3 x and every 4th row 2 x by always putting the 3rd st. onto the 4th needle and moving the outside sts. over to fill empty needle. AT THE SAME TIME shape SHOULDER as on back at ROWS 293-304.

The SLEEVES are knitted in. Join front and back sections at shoulders. Now pick up 125 sts. around armhole, then on **each side** put the 9 sts. from the stitch holders onto machine. Turn Row Counter to 0 and work Stockinette Stitch.

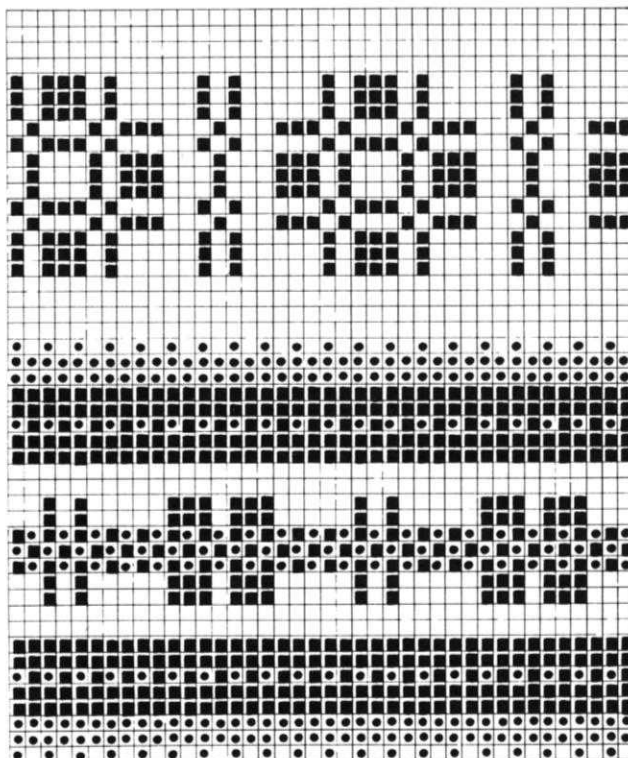
ROWS 1-10: Work short rows. (See Notes to Knit By, inside back cover). On the **left side** put 48 needles into holding position, knit 1 row. On the **right side** put 48 needles into holding position, knit 1 row. Now alternately on **each side**, bring 12 needles 4 x back into working position.

ROWS 11-194: After Row 12, decrease 1 st. beginning next 22 rows, after row 36 decrease 1 st. **each side** and again every following 4th row 9 x, after row 80 decrease 1 st. **each side** and again every following 8th row 14 x. Always make decreases by putting the 10th st. on **each side** onto the 9th needle, then move the outside sts. in to fill the empty needle (71 sts.).

ROWS 195-234: Transfer every other st. onto ribber. K1, P1, Ribbing with Subita 2 x 3. After row 234 bind off all sts. Work second sleeve the same.

NECKBAND: Cast on 123 sts. with Subita 2 x 3. K1, P1, Ribbing, 6 rows tension 4, 6 rows tension 3, 16 rows tension 2, 6 rows tension 3 and 6 rows tension 4. (40 rows). Bind off all sts.

FINISHING: Weave side and sleeve seams together, 1 stitch in from each edge. Turn sleeve edges under in half and hem to wrong side. Sew short ends of neckband together and sew cast on edge to inside, bound off edge to outside of neckline.



□ WHITE ■ BLACK ■ RED

**THE JAC 40
IS A MUST!!**



MAN'S PULLOVER, HP 3480



SIZE: 40/42 and 44/46. **MATERIAL:** 16 oz. (18 oz.) white, 4 oz. black and 4 oz. red KNITKING Starlite Crepe.

TENSION: KNITKING: 8 to 10. **GAUGE:** Pattern and Stockinette Stitch: 14 sts. 2", 19 rows 2". K1, P1, Ribbing: 14 sts. 2", 22 rows 2".

PATTERN: Stockinette Stitch with Norwegian Design according to chart, or use JAC 40 and Pattern No. 21a. In the directions each row in the Norwegian Design is counted

as 1 row, but several movements of the Cam Box are needed to complete 1 row. **EDGES:** K1, P1, Ribbing.

SIZE: 40/42. BACK: (Figure I). Cast on 155 sts. with white.

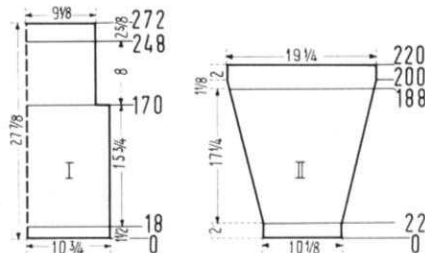
ROWS 1-18: K1, P1, Ribbing. After row 18 transfer the ribber sts. onto main machine and continue with Stockinette stitch.

ROWS 19-170: Work even

ROWS 171-172: Bind off 13 sts. beginning next 2 rows. (129 sts.).

ROWS 173-272: Work even, but AT THE SAME TIME after row 172, start the Norwegian Design and after Row 220 repeat the pattern from ROW 1-27. After ROW 247 continue with white and Stockinette st.

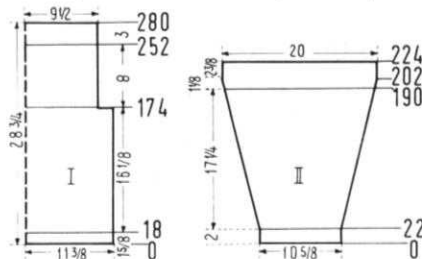
After ROW 272 bind off all sts.



The FRONT is worked the same as BACK.

SLEEVE: (Figure II). Make two. Cast on 73 sts. with white. **ROWS 1-22:** K1, P1, Ribbing. After row 22 transfer the ribber sts. onto main machine and continue with Stockinette stitch.

ROWS 23-200: Increase 1 st. on **each side** after ROW 26 and again every 6th row 24 x, then every 4th row 7 x, and starting the Norwegian Design after ROW 188 beginning with the 19th square of the chart. (137 sts.).



ROWS 201-220: Work even and after ROW 215 continue with white and Stockinette st. After ROW 220 bind off all sts. **FINISHING:** Join front and back sections at sides. Turn under 10 rows on upper edges. Join shoulders in a 5 inch long seam, weaving the sts. together. (Or Sew). Sew sleeves together and set in.

SIZE: 44/46. **BACK:** (Figure I). Cast on 163 sts. with white. **ROWS 1-18:** K1, P1, Ribbing. After row 18 transfer the ribber sts. onto main machine and continue with Stockinette st.

ROWS 19-174: Work even.

ROWS 175-176: Bind off 14 sts. beginning next 2 rows. (135 sts.).

ROWS 177-280: Work even, AT THE SAME TIME, after Row 176, start the Norwegian Design, beginning with the 18th square of the chart and after Row 224 repeat the pattern from ROW 1-27. After ROW 251 continue with white and Stockinette st. After row 280 bind off all sts. The FRONT is worked the same as BACK.

SLEEVE: (Figure II). Make two. Cast on 75 sts. with white. **ROWS 1-22:** K1, P1, Ribbing. After row 22 transfer the ribber sts. onto main machine and continue with Stockinette st.

ROWS 23-202: Increase 1 st. on each side after ROW 28 and again every 6th row 20 x, then every 4th row 13 x, and starting the Norwegian Design after Row 190 beginning with the 16th square of the chart. (143 sts.).

ROWS 203-224: Work even and after ROW 217 continue with white and Stockinette st. After row 224 bind off all sts.

FINISHING: Follow instructions for SIZE 40/42.

WOMAN'S JACKET, DP 7481



SIZE: 12/14. **MATERIAL:** 17½ oz. red, 10½ oz. Charcoal KNITKING Sonika Dralon and a 25 inch Jacket Type Zipper.

TENSION: KNITKING 8 to 10.

GAUGE: Pattern and Stockinette Stitch: 14 sts. 2", 17 rows 2". K1, P1, Ribbing: 14 sts. 2", 21 rows 2".

PATTERN: Norwegian Design according to chart, or use JAC 40 and Pattern No. 22. In the directions each row in the Norwegian Design is counted as 1 row, but several movements of the Cam Box are

needed to complete 1 row.

EDGES: Stockinette Stitch and K1, P1, Ribbing.

BACK: (Figure I). Cast on 159 sts. with red.

ROWS 1-14: Stockinette Stitch. After row 14 hang the cast on stitches back onto machine behind the latches to form hem and start the Norwegian Design.

ROWS 15-150: Work even.

ROWS 151-168: ARMHOLE SHAPING: Bind off 2 sts. beginning next 18 rows. (123 sts.).

ROWS 169-228: Work even.

ROWS 229-244: SHOULDER SHAPING: Bind off 4 sts. beginning next 10 rows. After ROW 238, bind off the center 23 sts. for NECK. (See Notes to Knit By, inside back cover). Bind off 4 sts. at shoulder edge and continue to shape shoulder every other row by binding off 5 sts. 3 x. AT THE SAME TIME, shape Neck every other row by binding off 7 sts. 1 x and 4 sts. 1 x.

FRONT: (Figure I). Cast on 74 sts. with red.

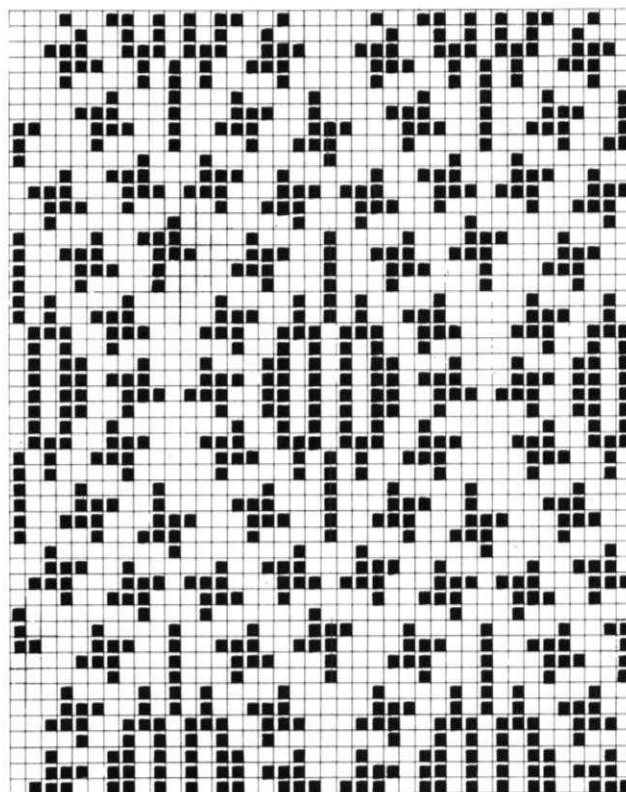
ROWS 1-14: Work Stockinette Stitch and after ROW 7, cast on 11 sts. on the left side. After row 14 hang the 74 cast on sts. back onto machine behind the latches to form hem and start the Norwegian Design, working over the 11 needles on the left side with red in Stockinette Stitch until Neck shaping.

ROWS 15-150: Work even

ROWS 151-168: ARMHOLE SHAPING: Bind off 2 sts. and again every other row 8 x. (67 sts.).

ROWS 169-213: Work even.

ROWS 214-244: NECK SHAPING: Bind off 11 sts. on left side, then on every other row on neck side bind off 4 sts. 1 x, 3 sts. 2 x, 2 sts. 1 x, 1 st. 2 x, then on every



following 4th row bind off 1 st. 3 x.

AT THE SAME TIME, SHAPE SHOULDER after ROW 228 and again on every other row by binding off 4 sts. 6 x and 5 sts. 3 x. Make second front section with reverse shapings

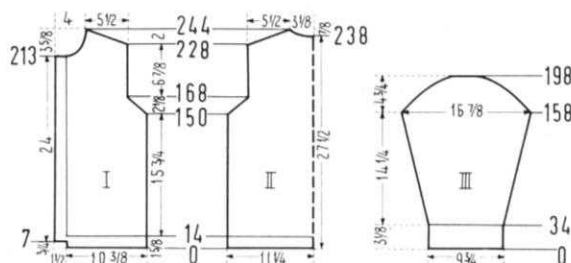
SLEEVE: (Figure III). Make two. Cast on 71 sts. with red. **ROWS 1-34:** K1, P1, Ribbing. After row 34 transfer the ribber sts. onto main machine, hang the cast on sts. back onto machine behind the latches to form hem and start the Norwegian Design, beginning with the 13th row of the chart.

ROWS 35-158: Increase 1 st. on each side after row 34 and again every 6th row 10 x, then every 4th row 14 x. (121 sts.).

ROWS 159-198: CAP SHAPING: Bind off 2 sts. beginning next 28 rows, 3 sts. beginning next 8 rows, 4 sts. beginning next 4 rows and after row 198 bind off remaining 25 sts.

COLLAR: Cast on 155 sts. with red. K1, P1, Ribbing 34 rows, then bind off all sts.

FINISHING: Weave front sections to back at sides, 1½ sts. in from each edge. Join shoulders. Sew sleeves together and set in. Turn under half of front edge and hem to wrong side. Sew collar to neckline, one edge to inside and one edge to outside. Sew in zipper.



MAN'S PULLOVER, HP 3481



SIZE: 42/44. **MATERIAL:** 22³/₄ oz. beige, 1³/₄ oz. red and 1³/₄ oz. green KNITKING Sonika Dralon.

TENSION: KNITKING 8 to 10. **GAUGE:** Fisherman's Rib 15 sts. 2", 32 rows 2". K1, P1, Ribbing: 15 sts. 2", 22 rows 2".

PATTERN: Fisherman Rib worn on knit side. **EDGES:** K1, P1, Ribbing. **BACK:** (Figure II). Cast on 171 sts. **ROWS 1-18:** K1, P1, Ribbing. After row 18 move the Gate Cam Release Lever of the main machine to the needle heels and continue

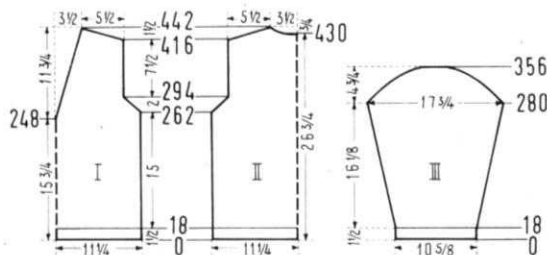
with Fisherman's Rib.

ROWS 19-262: Work even.

ROWS 263-294: **ARMHOLE SHAPING:** Bind off 1 st. beginning next 32 rows. (139 sts.).

ROWS 295-416: Work even.

ROWS 417-442: **SHOULDER SHAPING:** Bind off 3 sts. begin-



ning next 14 rows. After ROW 430, bind off the center 19 sts. for NECK. (See Notes to Knit By, inside back cover). Bind off 3 sts. at **shoulder edge** and continue to **shape shoulder** every other row by binding off 3 sts. 5 x and 4 sts. 1 x. **AT THE SAME TIME shape NECK** every other row by binding off 5 sts. 1 x, 4 sts. 1 x, 3 sts. 2 x and 2 sts. 1 x.

FRONT: (Figure I). Work the front the same as the back to ROW 248, then put the center st. onto the neighboring needle, put the needles on left side of center into holding position and complete the right half first.

ROWS 249-442: **NECK SHAPING:** Decrease 1 st. on the left side after ROW 254 and again every 6th row 15 x, then every 8th row 10 x. **AT THE SAME TIME,** after ROW 262 **SHAPE ARMHOLE** on every other row by binding off 1 st. 16 x. After ROW 416 **SHAPE SHOULDER** on every other row by binding off 3 sts. 13 x and 4 sts. 1 x. Now bring needles on the left side back into working position, move the Cam Box to the left side, turn Row Counter to 248 and complete the left side to correspond.

SLEEVE: (Figure III). Make two. Cast on 81 sts.

ROWS 1-18: K1, P1, Ribbing. After row 18 move the Gate Cam Release Lever of the main machine to the needle heels and continue with Fisherman's Rib.

ROWS 19-280: Increase 1 st. on **each side** after Row 28 and again every 10th row 18 x, then every 8th row 8 x, working rows 217-232 with green and rows 253-268 with red. (135 sts.).

ROWS 281-322: **CAP SHAPING:** Bind off 1 st. beginning next 42 rows.

ROWS 323-356: Bind off 1 st. beginning next 2 rows, 2 sts. beginning next 2 rows. Repeat these bind offs 4 x, then bind off 2 sts. beginning next 8 rows, 3 sts. beginning next 6 rows and after row 356 bind off remaining 29 sts.

NECKBAND: Cast on 108 sts. with beige. Work 40 rows K1, P1, Ribbing, 2 rows beige, 6 rows red and 6 rows green, then continue with beige. **AT THE SAME TIME,** after ROW 2, for pointed shaping, bind off 2 sts. and again on every other row 8 x. After ROW 22 increase 2 sts. and again on every other row 8 x. After ROW 40 bind off all sts. Make second collar section with reverse shaping, casting on from right to left.

FINISHING: Join front and back section at sides and shoulder. Sew sleeves together and set in. Sew collar sections together and sew to neckline, bound off edge to inside and cast on edge to outside.

WOMAN'S PULLOVER, DP 7484



SIZE: 12/14 and 16/18. **MATERIAL:** 18 oz. (20 oz.) light blue and 2 oz. white KNITKING Starlite Crepe.

TENSION: KNITKING 8 to 10. **GAUGE:** 14 sts. 2", 19 rows 2"

PATTERN: Stockinette Stitch with a Norwegian Design according to chart, or use JAC 40 and Pattern No. 27a. In the directions each row in the Norwegian Design is counted as 1 row, but several movements of the Cam Box are needed to complete 1 row. **SLEEVE EDGES:** K1, P1, Ribbing. The Pullover is knitted side-

ways and begins at the side edge. (See diagram).

SIZE: 12/14. **BACK:** (Figure II). Beginning at extreme left of machine, cast on 129 sts. with blue.

ROWS 1-22: Work even. After row 22 cast on 67 sts. on the right side for ARMHOLE. (196 sts.).

ROWS 23-174: Work even. After row 174 bind off 67 sts. on the right side for opposite ARMHOLE. (129 sts.).

ROWS 175-196: Work even. After ROW 196 bind off all sts.

**THE JAC 40
IS A MUST!!**

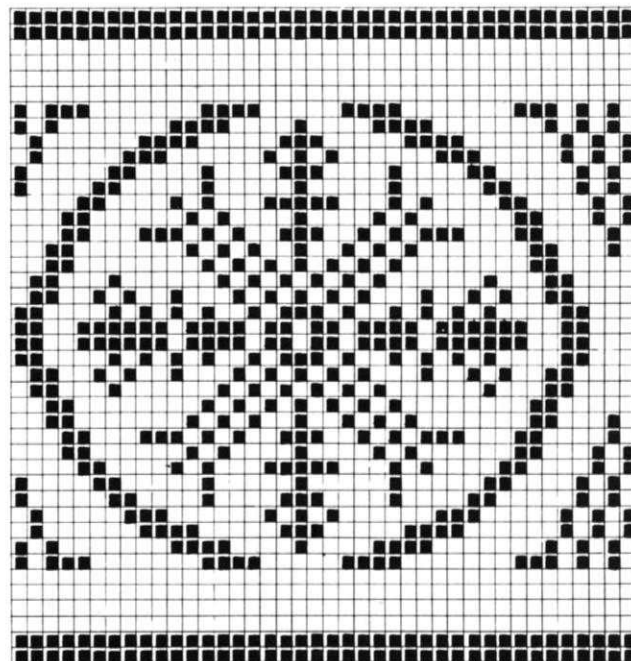


FRONT: (Figure I). Beginning at extreme left of machine, cast on 129 sts. with blue.

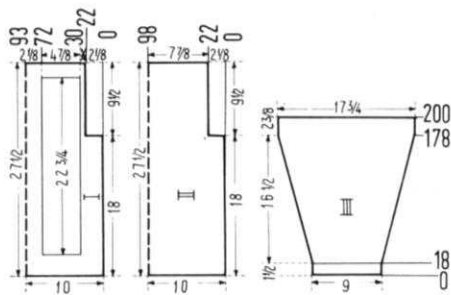
ROWS 1-22: Work even. After row 22 cast on 67 sts. on the right side for ARMHOLE. (196 sts.).

ROWS 23-30: Work even.

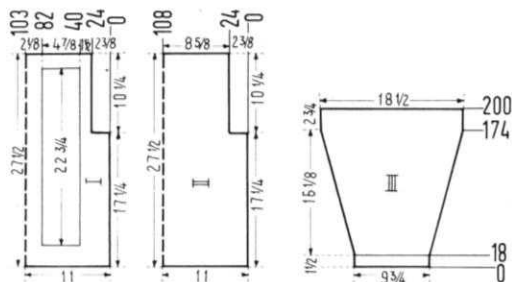
ROWS 31-72: Work the Norwegian Design over the 15th-177th sts., counting from the right.



□ BLUE ■ WHITE

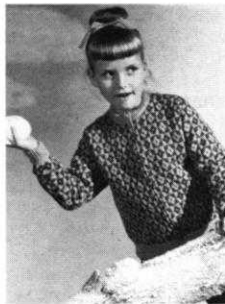


ROWS 73-114: Work even.
ROWS 115-156: Work the Norwegian Design as you did before.
ROWS 157-164: Work even. After row 164 bind off 67 sts. on the right side for ARMHOLE.
ROWS 165-186: Work even. After row 186 bind off all sts.
SLEEVE: (Figure III). Make two. Cast on 65 sts. with blue.
ROWS 1-18: K1, P1, Ribbing. After row 18 transfer the ribber sts. onto main machine and continue with Stockinette st.
ROWS 19-178: Increase 1 st. on each side after ROW 24 and again every 6th row 16 x, then every 4th row 14 x. (127 sts.).
ROWS 179-200: Work even. After ROW 200 bind off all sts.
FINISHING: Join front and back sections at sides. Turn under 7 sts. on upper edge and hem to wrong side. Join shoulders in an 3 1/2 inch long seam, weaving the rows together. (or sew). Sew sleeves together and set in. Turn under 9 sts. on lower edge and hem to wrong side.
SIZE: 16/18. The Pullover is knitted sideways and begins at the side edge. (See diagram).
BACK: (Figure II). Beginning at extreme left of machine, cast on 123 sts. with blue.
ROWS 1-24: Work even. After row 24 cast on 73 sts. on the right side for ARMHOLE. (196 sts.).
ROWS 25-192: Work even. After row 192 bind off 73 sts. on the right side for opposite ARMHOLE.
ROWS 193-216: Work even. After row 216 bind off all sts.
FRONT: (Figure I). Beginning at extreme left of machine, cast on 123 sts. with blue.
ROWS 1-24: Work even. After row 24 cast on 73 sts. on the right side for ARMHOLE.
ROWS 25-40: Work even.



ROWS 41-82: Work the Norwegian Design over the 15th-17th sts. counting. from the right.
ROWS 83-124: Work even.
ROWS 125-166: Work the Norwegian Design as you did before.
ROWS 167-182: Work even. After row 182 bind off 73 sts. on the right side for ARMHOLE.
ROWS 183-206: Work even. After row 206 bind off all sts.
SLEEVE: (Figure III). Make two. Cast on 69 sts. with blue.
ROWS 1-18: K1, P1, Ribbing. After row 18 transfer the ribber sts. onto main machine and continue with Stockinette st.
ROWS 19-174: Increase 1 st. on each side after ROW 24 and again every 6th row 14 x, then every 4th row 16 x. (131 sts.).
ROWS 175-200: Work even. After row 200 bind off all sts.
FINISHING: Follow instructions for SIZE 12/14.

GIRL'S JACKET, MK 4931



SIZE: 9-10 years. **MATERIAL:** 8 oz. beige and 8 oz. blue KNITTING Starlite Crepe and 3 1/2 oz. beige KNITTING Subita 2 x 3. And a 17" Jacket Type Zipper.

TENSION: KNITTING Pattern 7 to 9, K1, P1, Ribbing: 4 to 6.

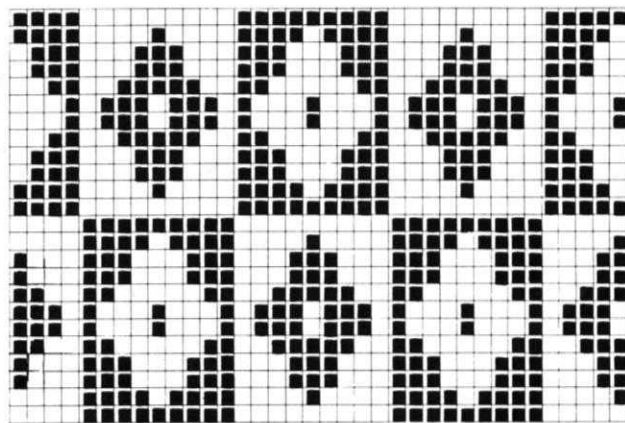
GAUGE: Pattern 15 sts. 2", 19 rows 2". K1, P1, Ribbing 15 sts. 2", 26 rows 2".

PATTERN: Norwegian Design according to chart, or use JAC 40 and Pattern No. 53a. In the directions each row in the Norwegian Design is counted as 1 row, but

several movements of the Cam Box are needed to complete 1 row. **EDGES:** K1, P1, Ribbing.

BACK: (Figure II). Cast on 127 sts. with Subita 2 x 3.

ROWS 1-42: K1, P1, Ribbing. After row 42 transfer the ribber sts. onto main machine, put the cast on sts. back onto machine behind the latches to form hem, then con-



tinue with Starlite Crepe and start the Norwegian Design.
ROWS 43-132: Work even.

ROWS 133-146: ARMHOLE SHAPING: Bind off 2 sts. beginning next 12 rows and 1 st. beginning next 2 rows. (101 sts.).

ROWS 147-204: Work even.

ROWS 205-216: SHOULDER SHAPING: Bind off 5 sts. beginning next 12 rows. After ROW 216 bind off remaining 41 sts.

FRONT: (Figure I). Cast on 63 sts. with Subita 2 x 3.

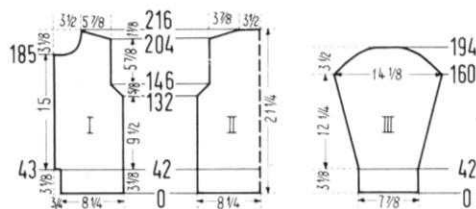
ROWS 1-42: K1, P1, Ribbing. After ROW 42 transfer the ribber sts. onto main machine, put the cast on sts. back onto machine behind the latches to form hem, then continue with Starlite Crepe and start the Norwegian Design.

ROWS 43-132: After ROW 43 cast on 6 sts. on the left side, and for front edge work over the first 5 needles on the left in plain Stockinette st. with beige, and work even.

ROWS 133-146: ARMHOLE SHAPING: Bind off 2 sts. and on every other row bind off 2 sts. 5 x and 1 st. 1 x. (56 sts.)

ROWS 147-185: Work even.

ROWS 186-216: NECK SHAPING: Bind off 11 sts. then on every other row on neck edge bind off 4 sts. 1 x, 3 sts.



1 x, 2 sts. 1 x and on every following 4th row bind off 1 st. 3 x. AT THE SAME TIME, after ROW 204 SHAPE SHOULDER by binding off 4 sts. then on every other row on shoulder side bind off 4 sts. 4 x and 5 sts. 2 x. Make second front section with reverse shapings.

SLEEVES: (Figure III). Cast on 61 sts. with Subita 2 x 3. **ROWS 1-42:** K1, P1, Ribbing. After row 42 transfer the ribber sts. onto main machine, put the cast on sts. back onto machine behind the latches to form hem, then continue with Starlite Crepe and start the Norwegian Design. **ROWS 43-160:** Increase 1 st. on each side after ROW 46 and again every 6th row 8 x, then every 4th row 15 x. (109 sts.).

ROWS 161-194: CAP SHAPING: Bind off 1 st. beginning next 2 rows, 2 sts. beginning next 20 rows, 3 sts. beginning next 8 rows, 4 sts. beginning next 4 rows. After row 194 bind off remaining 27 sts.

NECK BAND: Cast on 117 sts. with Subita 2 x 3, K1, P1, Ribbing 5 rows tension 6, 12 rows tension 5 and 5 rows tension 6. (22 rows). Bind off all sts.

FINISHING: Join front and back sections at sides and shoulders. Sew sleeves together and set in. Turn under $5\frac{1}{2}$ sts. of front edge and hem to wrong side. Sew cast on edge of neck band to inside and bound off edge to outside of neckline. Sew in zipper.

CHILD'S PULLOVER, KK 4929



SIZE: 13-14 years. **MATERIAL:** 14 oz. brown and 4 oz. beige KNITKING Starlite Crepe.

TENSION: KNITKING 8 to 10. **GAUGE:** Pattern and Stockinette Stitch: 13 sts. 2", 17 rows 2", K1, P1, Ribbing: 13 sts. 2", 25 rows 2".

PATTERN: Stockinette Stitch and Norwegian Design according to chart, or use JAC 40 and Pattern No. 106. In the directions each row in the Norwegian Design is counted as 1 row, but several movements

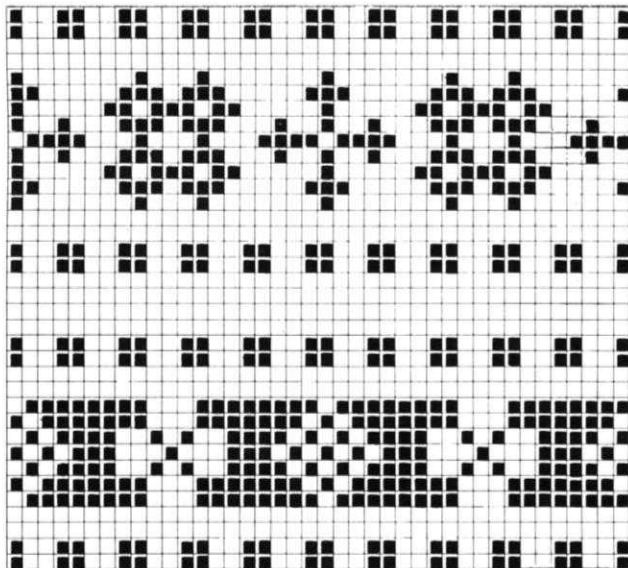
of the Cam Box are needed to complete 1 row. **EDGES:** K1, P1, Ribbing.

BACK: (Figure I). Cast on 121 sts. with brown.

ROWS 1-20: K1, P1, Ribbing. After row 20 transfer the ribber sts. onto main machine and continue with Stockinette st.

ROWS 21-128: Work even.

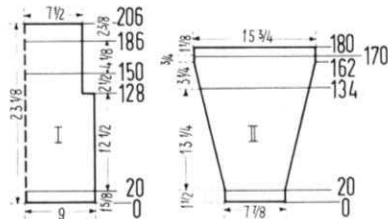
ROWS 129-130: Bind off 11 sts. beginning next 2 rows. (99 sts.).



□ BROWN ■ BEIGE

THE JAC 40

IS A MUST!!



ROWS 131-150: Work even.

ROWS 151-186: Work the Norwegian Design.

ROWS 187-206: Work Stockinette st. with beige. After ROW 206 bind off all sts.

The FRONT is worked the same as BACK.

SLEEVE: (Figure II). Make two. Cast on 53 sts. with brown. **ROWS 1-20:** K1, P1, Ribbing. After ROW 20 transfer the ribber sts. onto main machine and continue with Stockinette st.

ROWS 21-162: Increase 1 st. on each side after ROW 20 and again every 6th row 20 x, then every 4th row 5 x, starting the Norwegian Design after ROW 134. (105 sts.).

ROWS 163-180: Work even and continue with beige and Stockinette st. after ROW 170. After ROW 180 bind off all sts.

FINISHING: Join Front and Back section at sides. Turn under 10 rows on upper edges and hem to wrong side. Join shoulders in a $3\frac{1}{2}$ inch long seam. Sew sleeves together and set in.

GIRL'S PULLOVER, MK 4928



SIZE: 10-11 years. **MATERIAL:** 14 oz. red and $1\frac{3}{4}$ oz. white KNITKING Frigate and $1\frac{3}{4}$ oz. red and $1\frac{3}{4}$ oz. white KNITKING Subita 2 x 3

TENSION: KNITKING 10. **GAUGE:** Stockinette Stitch 19 sts. 4", 26 rows 4". K1, P1, Ribbing: 38 sts. 4", 46 rows 4". The omitted stitches are Not counted in the directions or gauge.

PATTERN: Stockinette Stitch over every other needle. **EDGES:** K1, P1, Ribbing over every other needle on main machine and every needle on ribber.

BACK: (Figure II). Cast on 155 sts. with red Regal.

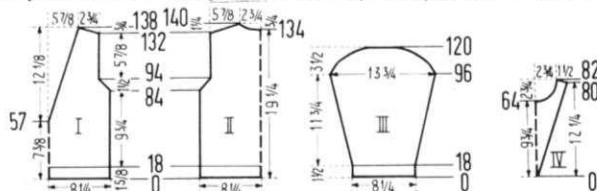
ROWS 1-18: K1, P1, Ribbing. After ROW 18 transfer the ribber sts. onto the neighboring needle on main machine (occupied needle) and continue working in Stockinette St. over every other needle with red Frigate. (78 sts.).

ROWS 19-84: Work even.

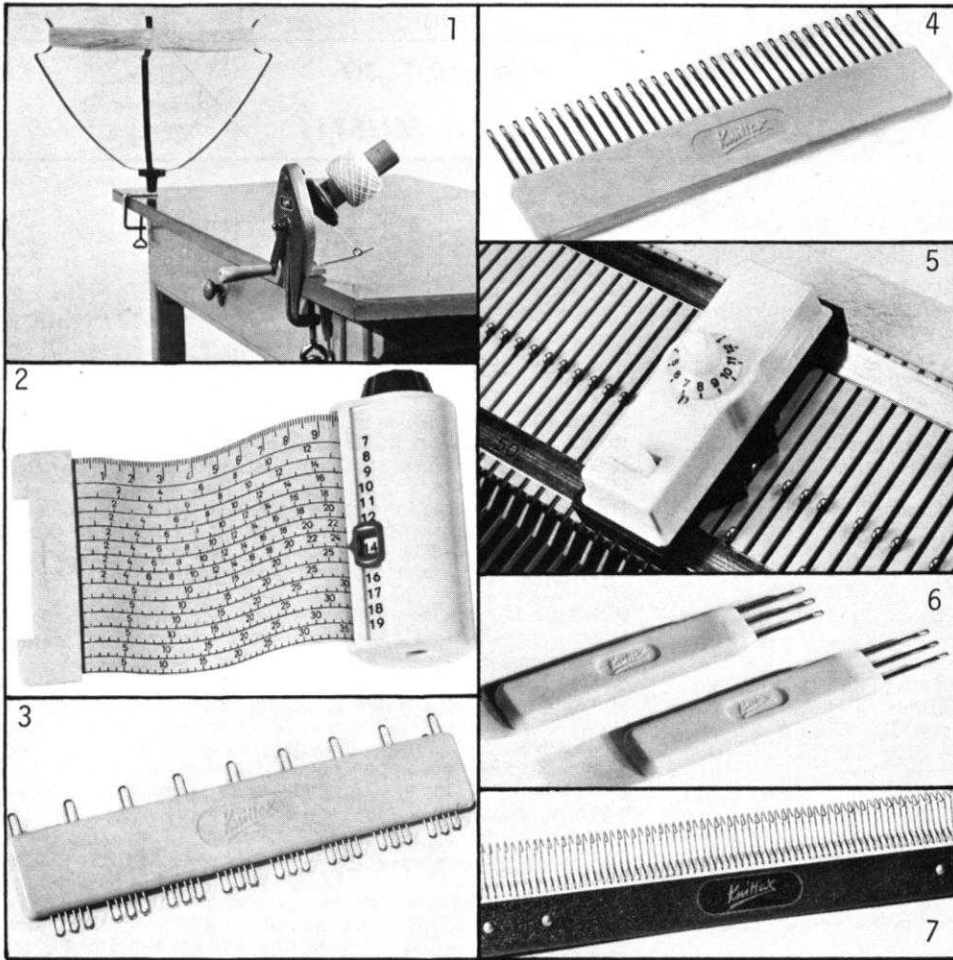
ROWS 85-94: ARMHOLE SHAPING: Bind off 2 sts. beginning next 4 rows and 1 st. beginning next 6 rows. (64 sts.).

ROWS 95-132: Work even

ROWS 133-140: SHOULDER SHAPING: Bind off 3 sts. beginning next 2 rows. After ROW 134 bind off the center 12 sts. for NECK. (See Notes to Knit By, inside back cover). Bind off 4 sts. at shoulder edge and continue to shape shoulder every other row by binding off 4 sts. 3 x.



KnitKing ACCESSORIES



1. Yarn Winder and Skein Holder. Heavy cast frame and nylon gears. \$14.95 plus \$1.00 shipping.
2. Converta Tape. For simple and speedy charting of custom knits. \$5.95 plus 15c shipping.
3. Adjustable Needle Selector. For setting unevenly spaced pattern stitches. \$2.95 plus 12c shipping.
4. 33 Needle Multi-transfer Tool. For decreasing in the middle of a row. \$2.75 plus 12c shipping.
5. Automatic Pattern Selector. For all KNITKING machines prior to the push-button. \$6.95 plus 20c shipping.
6. Treble Transfer Tools. For rapid transfer of stitches and for cable stitch. \$1.50 pair plus 10c shipping.
7. Reversing Bar. For easy hem turning or reversing of knitting. \$16.95 plus \$1.50 shipping.

California residents add
5% sales tax.



KNITKING
1128 Crenshaw Boulevard
Los Angeles, California 90019

AT THE SAME TIME shape NECK every other row by binding off 4 sts. 1 x and 3 sts. 1 x.

FRONT: (Figure I). Cast on 155 sts. with red Regal.

ROWS 1-18: K1, P1, Ribbing. After ROW 18 transfer the ribber sts. onto the neighboring needle on main machine (occupied needle) and continue working Stockinette St. over every other needle with red Frigate. (78 sts.).

ROWS 19-56: Work even. After ROW 56 put 39 needles on the left side into holding position and finish the right half first.

ROWS 57-138: After ROW 57 cast on 1 st. on the left side for FRONT SHAPING. (Put first st. on needle in holding position on a stitch holder). Decrease 1 st. on the left side after ROW 60 and again every 4th row 18 x. by always putting the 4th st. onto the 3rd needle and moving the outside sts. in to fill the empty needle. AT THE SAME TIME, after ROW 84 SHAPE ARMHOLE by binding off 2 sts., then on every other row bind off 2 sts. 1 x and 1 st. 3 x. After ROW 132 SHAPE SHOULDER by binding off 3 sts., then on every other row bind off 3 sts. 1 x and 4 sts. 2 x. Now move the Cam Box to the left side, turn the Row Counter to 56, bring all needles from holding into working position, put st. from stitch holder back onto machine and finish the left half following instruction from ROW 57-138 reversing the sides.

SLEEVE: (Figure III). Make two. Cast on 79 sts. with red Regal.

ROWS 1-18: K1, P1, Ribbing. After ROW 18 transfer the ribber sts. onto the neighboring needle on main machine (occupied needle) and continue working Stockinette Stitch over every other needle with red Frigate. (40 sts.).

ROWS 19-96: Increase 1 st. on each side after ROW 20 and again every 6th row 12 x. (66 sts.).

ROWS 97-120: CAP SHAPING: Bind off 1 st. beginning next 10 rows, 2 sts. beginning next 6 rows, 3 sts. beginning next 4 rows, 4 sts. beginning next 4 rows and after row 120 bind off remaining 16 sts.

INSERT: (Figure IV). Cast on 3 sts. over every other needle with white Frigate.

ROWS 1-80: Increase 1 st. on each side after ROW 4 and again every 4th row 18 x. The first increase is between the 1st and 2nd needle, the following 18 increases are between the 2nd and 3rd needle. (On each side move the outside sts. over, then with work hook lift st. from previous row onto empty needle.) After ROW 64 bind off the center 9 sts. for Neck as you did on back, then on every other row on neck side bind off 3 sts. 1 x, 2 sts. 1 x, 1 st. 3 x and on the following 4th row 1 st. 1 x.

ROWS 81-82: SHOULDER SHAPING: Bind off 3 sts. after ROW 80 and 4 sts. after ROW 82.

COLLAR: Cast on 163 sts. with white Regal. K1, P1, Ribbing, 10 rows tension 10, 10 rows tension 9 and 18 rows tension 10. (38 rows). Bind off all sts.

FINISHING: Weave insert to front, 1 st. in from each edge. Embroider 2 rows of Chain st. onto front. (See picture). The embroidery is 3 sts. from either side of the seam and 1 stitch reaches over 2 rows. Join front and back sections at sides and shoulders. Sew sleeves together and set in. Sew short ends of collar together, sew bound off edge of collar to neckline, fold over to outside. Make a tassel and sew to front.

BOY'S PULLOVER, KK 4930



SIZE: 13-14 years. **MATERIAL:** 14 oz. beige KNITKING Subita 2 x 4. **TENSION:** KNITKING Stockinette Stitch: 6 to 8. K1, P1, Ribbing: 5 to 7.

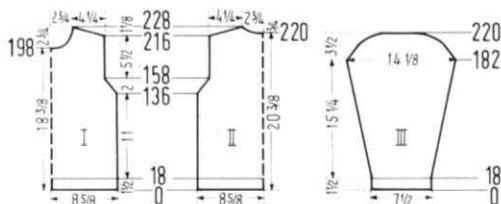
GAUGE: 16 sts. 2", 21 rows 2". **PATTERN:** Stockinette Stitch. **EDGES:** K1, P1, Ribbing.

BACK: (Figure II). Cast on 141 sts. **ROWS 1-18:** K1, P1, Ribbing. After ROW 18 transfer the ribber sts. onto main machine and continue with Stockinette st.

ROWS 19-136: Work even.

ROWS 137-158: Bind off 2 sts. beginning next 4 rows, 1 st. beginning next 18 rows. (115 sts.).

ROWS 159-216: Work even.



ROWS 217-228: SHOULDER SHAPING: Bind off 5 sts. beginning next 4 rows. After ROW 220, bind off the center 13 sts. for NECK. (See Notes to Knit By, inside back cover). Bind off 5 sts. at **shoulder edge** and continue to **shape shoulder** on every other row by binding off 5 sts. 4 x. AT THE SAME TIME, **shape neck** every other row by binding off 6 sts. 1 x and 5 sts. 2 x.

FRONT: (Figure I). Work the front the same as the back to ROW 198, then bind off the center 13 sts. for NECK and on every other row on NECK SIDE, bind off 4 sts. 1 x, 3 sts. 1 x, 2 sts. 2 x, 1 st. 3 x, then on every following 4th row bind off 1 st. 2 x. AT THE SAME TIME, shape SHOULDER as on back at ROWS 217-228.

SLEEVE: (Figure III). Make two. Cast on 61 sts.

ROWS 1-18: K1, P1, Ribbing. After ROW 18 transfer the ribber sts. onto main machine and continue with Stockinette stitch.

ROWS 19-182: Increase 1 st. on each side after ROW 18 and again every 6th row 26 x. (115 sts.).

ROWS 183-220: CAP SHAPING: Bind off 1 st. beginning next 20 rows, 2 sts. beginning next 4 rows, 3 sts. beginning next 4 rows, 4 sts. beginning next 4 rows, 5 sts. beginning next 4 rows and 6 sts. beginning next 2 rows. After ROW 220 bind off remaining 27 sts.

COLLAR: Cast on 155 sts. K1, P1, Ribbing, 20 rows tension 6, 20 rows tension 5 and 10 rows tension 6. (50 rows). Bind off all sts.

FINISHING: Join front and back section at sides and shoulder. Sew sleeves together and set in. Sew short ends of collar together and sew bound off edge to neckline, then fold over to outside.

BOY'S JACKET, KK 4927

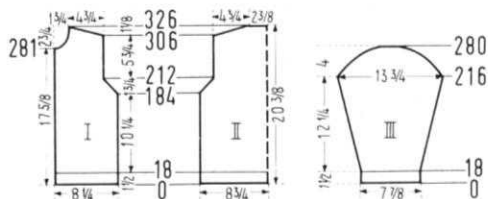


SIZE: 10-11 years. **MATERIAL:** 17 1/2 oz. charcoal, 1 3/4 oz. green, 1 3/4 oz. red KNITKING Sonika Dralon.

TENSION: KNITKING 8 to 10. **GAUGE:** Fisherman's Rib 16 sts. 2", 32 rows 2". K1, P1, Ribbing: 16 sts. 2", 22 rows 2".

PATTERN: Fisherman's Rib worn on purl side. The Gate Cam Release Lever of main machine is at the needle heels. **EDGES:** K1, P1, Ribbing.

BACK: (Figure II). Cast on 143 sts. with main color.



ROWS 1-18: K1, P1, Ribbing. After ROW 18 move the Gate Cam Release Lever of the main machine to the needle heels and continue with Fisherman's Rib.

ROWS 19-184: Work even.

ROWS 185-212: ARMHOLE SHAPING: Bind off 1 st. beginning next 28 rows. (115 sts.).

ROWS 213-306: Work even.

ROWS 307-326: SHOULDER SHAPING: Bind off 3 sts. beginning next 4 rows and 4 sts. beginning next 16 rows. After ROW 326 bind off remaining 39 sts.

FRONT: (Figure I). Cast on 67 sts. with main color.

ROWS 1-18: K1, P1, Ribbing. After ROW 18 move the Gate Cam Release Lever of the main machine to the needle heels and continue with Fisherman's Rib.

ROWS 19-184: Work even

ROWS 185-212: ARMHOLE SHAPING: Bind off 1 st. on the right side and again every other row 13 x. (53 sts.).

ROWS 213-281: Work even.

ROWS 282-326: NECK SHAPING: Bind off 3 sts. on the left side, then on every following 4th row on neck side bind off 3 sts. 1 x, 2 sts. 2 x, 1 st. 4 x and 1 st. on the following 8th row. AT THE SAME TIME, after ROW 306 and on every other row SHAPE SHOULDER by binding off 3 sts. 6 x and 4 sts. 5 x. Make second front section with reverse shaping. **SLEEVE:** (Figure III). Make two. Cast on 63 sts. with main color.

ROWS 1-18: K1, P1, Ribbing. After ROW 18 move the Gate Cam Release Lever of the main machine to the needle heels and continue with Fisherman's Rib.

ROWS 19-216: Increase 1 st. on each side after ROW 24 and again every 8th row 23 x, working ROWS 159-172 with green and ROWS 191-204 with red. (111 sts.)

ROWS 217-280: CAP SHAPING: Bind off 1 st. beginning next 48 rows, 2 sts. beginning next 10 rows, 3 sts. beginning next 4 rows, 4 sts. beginning next 2 rows and after ROW 280 bind off remaining 23 sts.

Front Edging: Make two. Cast on 106 sts. with red. Work Stockinette st., 4 rows red and 10 rows green. (14 rows). Bind off all sts.

COLLAR: Cast on 125 sts. with green. Work 40 rows K1, P1, Ribbing, then bind off all sts.

FINISHING: Join front and back sections at sides and shoulder. Sew sleeves together and set in. Sew bound off edge of front edging to inside and cast on edge to outside of front edges. Sew collar to neckline, cast on edge to inside, bound off edge to outside. Sew in zipper.

WOMAN'S CAP, DV 7496



MATERIAL: 3 1/2 oz. white KNITKING Frigate. **TENSION:** KNITKING 10.

GAUGE: 8 sts. 2", 13 rows 2". The omitted stitches are NOT counted in the directions or gauge. **PATTERN:** Stockinette stitch (worn on the purl side) with pattern stripes according to the needle positions on the chart. The stitches marked with a dot are to be latched up to make the pattern stripe. After each 20 to 30 rows, drop the appropriate stitch and latch up into knit stitches, always picking up 2 cross bars.

Using the O needle as your center, bring 195 needles into working position. Following the chart and using the O needle as the center stitch to be latched up later (has



a dot underneath) set up pattern on both sides as shown, then place all the pattern needles into holding position. On both sides, counting from the ends, push the 11th, 12th and 13th needles from the holding position into working position and with 2 balls of yarn cast on over these 3 needles on both sides from left to right (ear flaps). Hand feed both sides at the same time. When increasing, push nearest pattern needle into working position, then cast on.

ROWS 1-10: Work 2 rows even, then increase 1 st. on each flap same side as Cam Box beginning next 8 rows. (11 sts. each flap).

ROWS 11-32: Work even, then on each side counting from the ends, drop the 2nd, 6th, and 10th st. and latch up two cross bars at a time. Bring all pattern needles into work. On each end cast on over the 6 needles (on the left end with a separate yarn) then cast on over the center pattern needles and work over all needles (79 sts.).

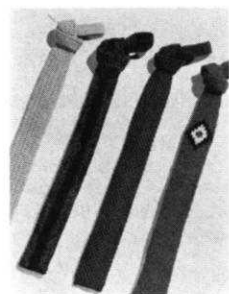
ROWS 33-64: Work even, then drop and latch up the 4th, 8th, 12th, etc. sts. After ROW 64 decrease 18 sts. evenly: counting from the right, put the 2nd st. onto the 3rd needle, the 6th st. onto the 7th needle, the 10th st. onto the 11th needle, etc. then move the stitches over to fill the empty needles. (See Practical Hints). There will be 2 purl stitches between each pattern stripe.

ROWS 65-72: Work even, then put all sts. onto a length of yarn.

FINISHING: Weave the back seam together. Pull the sts. on the length of yarn together and tie securely. Work 2 rows of single crochet around cap and make a loop on the lower right side. Sew a Button to the lower left side.

NECKTIES

HV 3477



MATERIAL: 1 3/4 oz. gold KNITKING Satin Cotton.

TENSION: KNITKING 6 to 8. **GAUGE:** Pattern stitch 15 sts. 2", 37 rows 2". Stockinette stitch 15 sts. 2", 18 rows 2".

PATTERN: Holding position design according to chart. Worn on the purl side. AM 3 or Automatic use Wheel 6.

Cast on 25 sts.

ROWS 1-250: Work even in holding position design.

ROWS 251-352: Decrease 1 st. on each side, then again on every 20th row 5 x. After ROW 352 continue with stockinette stitch.

ROWS 353-610: Work even, then bind off all sts.

FINISHING: Close back seam with overcast stitches.

HV 3479

MATERIAL: 1 3/4 oz. green and a remnant of black KNITKING Subita 2 x 4. **TENSION:** 6 to 8. **GAUGE:** 15 sts. 2", 22 rows 2".

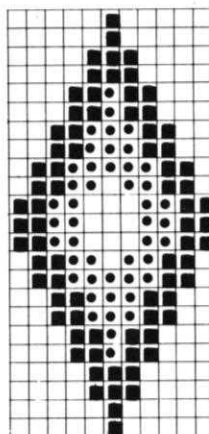
PATTERN: Stockinette stitch. Worn on the purl side. The Tie is knitted sideways and made in two sections.

FRONT: SECTION: Cast on 141 sts. with green.

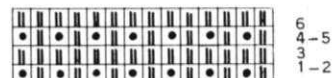
CANADIAN READERS

Please note that KNITKING dealers based in the U.S.A. are unable to sell machines and accessories to residents of Canada. They are also unable to sell parts and service. Would all Canadian readers please contact the following appointed KNITKING dealer.

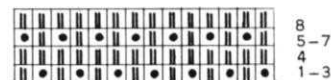
Easy Knit of Canada Ltd.
272 Yonge Street
Toronto 1, Ontario



● WHITE
■ BLACK
□ RED



HV 3477



HV 3478

ROWS 1-4: Work even.

ROWS 5-12: Work short rows. (See Notes to Knit By, inside back cover). On the left side, put 9 needles into holding position 4 x. After ROW 12 bring all needles back into working position.

ROWS 13-28: Work even and knit ROWS 17-24 with black.

ROWS 29-40: Work short rows. On the left side put 36 needles into holding position, knit 2 rows. Now bring 9 needles 4 x back into working position. Knit 4 rows over all needles, then bind off all stitches.

BACK SECTION: Cast on 197 sts. with green. Work 20 rows even, then bind off all sts.

FINISHING: Join front and back section (short edges), then close long back seam.

HV 3478

MATERIAL: 1 3/4 oz. blue KNITKING Fine Dralon.

TENSION: 5 to 7. **GAUGE:** Pattern stitch 15 sts. 2", 56 rows 2". Stockinette stitch with double yarn 15 sts. 2", 20 rows 2".

PATTERN: Holding position design according to chart using a single strand of yarn and double strand for Stockinette St. Worn on purl side. AM 3 or Automatic use Wheel 6. Cast on 25 sts.

ROWS 1-380: Work even in holding position design.

ROWS 381-532: Decrease 1 st. on each side, then again on every 30th row 5 x. After ROW 532 continue with stockinette stitch and 2 strands of yarn.

ROWS 533-816: Work even, then bind off all sts.

FINISHING: Close back seam with overcast stitches.

HV 3476

MATERIAL: 1 3/4 oz. red, and remnants of white and black Pauline Denham Nomotta Friska or any yarn which will give the stitch and row gauge. **TENSION:** KNITKING 6 to 8. **GAUGE:** 14 sts. 2", 21 rows 2". **PATTERN:** Stockinette stitch and a Norwegian Design according to chart. In the directions each row in the Norwegian Design is counted as 1 row, but more than one movement of the Cam Box is necessary to complete 1 row. Cast on 25 sts. with red.

ROWS 1-142: Work even and after ROW 118 work the Norwegian Design over the center 11 stitches.

ROWS 143-204: Decrease 1 st. on each side, then again on every 12th row 5 x.

ROWS 205-500: Work even, then bind off all sts.

FINISHING: Close back seam with overcast stitches.

PLEASE NOTE THAT WE DO NOT SEND TOOLS AND YARNS OUT ON A C.O.D. BASIS. YOU MUST SEND PAYMENT INCLUDING MAILING COSTS WITH EACH ORDER.

ARE YOU UNHAPPY WITH YOUR PRESENT KNITTING MACHINE ?

DOES IT REFUSE TO KNIT FANCY DRESS YARNS?

DOES IT JAM UP WHEN YOU TRY TO KNIT LOOPED MOHAIR OR THICK AND THIN YARNS?

DOES IT DROP STITCHES ALL OVER THE PLACE?

ARE YOU CONTINUALLY HAVING TROUBLE WITH AWKWARD, CUMBERSOME WEIGHTS?

ARE YOU UNABLE TO MAKE A LARGE GARMENT WITH BULKY YARNS?

DO YOU HAVE TO SELECT PATTERN STITCHES MANUALLY?

DO YOU HAVE TO LATCH YOUR RIBBING BY HAND?

IF YOU ARE HAVING ANY OF THESE PROBLEMS YOU SHOULD TRADE UP TO A NEW FANTASTIC PUSH BUTTON KNITTING WITH COORDINATED RIBBER AND ENJOY KNITTING WITH THE WORLDS FINEST, MOST VERSATILE AND MOST AUTOMATIC KNITTER.

YOU WILL BE SURPRISED AT OUR GENEROUS TRADE-IN ALLOWANCE AND YOU CAN, IF YOU WISH, USE YOUR PRESENT MACHINE AS A DOWN-PAYMENT AND PURCHASE A COMPLETE KNITTING FOR JUST PENNIES A DAY. WRITE TODAY FOR FULL INFORMATION AND TELL US WHAT MACHINE YOU NOW OWN. THE ADDRESS IS:

KNITTING, Dept. T-1, 1128 Crenshaw Blvd., Los Angeles, Calif. - 90019



A complete third volume of KNITTING MAGAZINES with a flexible, transparent plastic cover and specially bound so that it will stay open at any page is available at the special price of \$6.95 postage paid anywhere in North America.

If purchased separately the magazines would cost a total of \$9.00.

The volume contains over 120 fully illustrated complete stylish patterns for all members of the family, together with many valuable, practical knitting hints.

There is a very limited number of these volumes available and it will undoubtedly become a collectors item.

If you already have the entire set it will almost certainly be well thumbed and marked. Why not purchase a perfect mint condition volume for your bookshelf and ready reference at any time.

* * *

Place your order today and avoid disappointment. Send it to KNITTING MAGAZINE, 1128 Crenshaw Boulevard, Los Angeles, California 90019.

PRACTICAL KNITTING HINTS

SLEEVES KNITTED IN FROM THE TOP DOWN

Woman's Pullover DP 7482 in this issue, will have the sleeves knitted in from the top down. As directed in the pattern, join the shoulder seams first, then hang the armhole onto the machine in the following way. Using O as you center needle, bring 125 needles into working position. With purl side of armhole facing you, hang one stitch at shoulder seam onto the O needle, then hang the end stitch on each side onto each end needle, then on **each side**, hang the 9 stitches held on stitch holder onto 9 more needles. Now fill the empty needles on either side of O by evenly picking up 62 stitches on each side of armhole. To prevent holes across your first row of knitting, be sure to pick up the knot stitch and not the big stitch. Use a single transfer tool and pick up the whole knot stitch and hang it onto the needle. You may now continue to follow the directions in pattern.

You can if you like, pick the armhole stitches up onto a knitting needle first and then transfer the stitches to the machine. This is a very neat way of doing it particularly if your edge stitches are not even. Pick them up from the **right** side of garment and put the knitting needle through 1 st. in from the edge and with your garment yarn, go around the needle as though to knit and pull the stitch through and leave it on the knitting needle. Make sure the stitches are even in length and fairly snug on the knitting needle. After you have picked up the 125 needed armhole stitches, transfer them to the machine, purl side facing you, hang the 9 stitches held on stitch holder onto machine and continue with pattern.

DECREASING MANY STITCHES WITHIN ONE ROW

When you must decrease many stitches within a row and move the stitches over to fill the empty needles such as in the Cap Pattern DV 7496 in this issue, the directions state: AFTER ROW 64, counting from the right side, hang the 2nd st. onto the 3rd needle, the 6th st. onto the 7th needle, the 10th st. onto the 11th needle, etc. When you have completed this, take a contrast yarn and knit 6 to 8 rows, then remove work from machine. Now hang the stitches back onto the machine in pattern. Be careful to see that you pick up each **DOUBLED** stitch. There will be 2 purl stitches between each pattern stripe. Remove the contrast yarn and continue as directed. You may use this method for any pattern in **KNITTING MAGAZINE** where there is more than 4 or 6 stitches to be decreased within one row.

HOW TO INSURE NEAT SEAMS

To obtain smooth seams on your finished garment you must have an even edge on your knitted garment sections. Unless there are specific instructions on how to increase or decrease by 1 stitch you should use the full fashioned method. For example, when increasing if the directions read: Increase 1 st. on each side and again every following 6th row 10 x, do not cast on a new stitch, but on each side move the 2 end sts. 1 needle outward, then with your work hook place the 3rd st. (be sure to pick up the stitch,

not the yarn between the stitches) from the previous row on the empty needle. Make all following increases in the same manner.

When working a Norwegian design, move only 1 end st. outward and pick up the 2nd st. from the previous row. When decreasing by 1 st. do not bind off or hang the last stitch on to the neighboring needle, but put the 3rd st. on the 2nd needle, then move the 2 end sts. (1 stitch is double) toward the inside to fill the empty needle. (Not recommended for sleeve caps). At first it will take a little more time but you make up for that when you put your garment together, because these type of edges are easy to weave together and the finished garment is much neater.

HOW TO AVOID HOLES WHEN USING THE JAC 40

Sometimes, when using the Jac 40, a color will finish in the middle of a row instead of at the end and unless that color is anchored in some way, a hole will show in your finished garment. This is the way you should anchor the yarn and avoid holes:

First set up your pattern for the next row, then take up the loose end of yarn, lay it over the nearest needle in knitting position (the needle must hold a stitch in a contrast color) and place it behind the needle latch. You have now secured the end and no hole will show.

DO YOU HAVE A...

REVERSING BAR?

- With it you can turn a hem in one movement instead of lifting stitches one at a time.
- You can reverse your knitting, so that the knit side faces you, easily and speedily.
- Available for all **KNITTING** machines with 197 needles. Order from your dealer or direct from

KNITTING

1128 Crenshaw Blvd., Los Angeles, Calif. 90019

Price \$16.95 (California residents add 5% tax)

Plus \$1.50 shipping cost.



KNITKING NEWS

November-December 1967

INTERCHANGEABLE YARN CHART

With an occasional exception, all patterns in KNITKING MAGAZINE are made with beautiful KNITKING YARNS and if you want to produce garments exactly like those in the magazine, the best thing to do is to buy KNITKING YARNS, but we know that many readers are impatient to get started when they see a pattern they want to make and they rush out to their local yarn store to find a substitute yarn for the one recommended.

We have in the past, suggested alternate brands of yarn, but space limitations have never allowed us to print all alternatives and consequently, some customers complained that we didn't name yarns that they could obtain locally. So in order to succeed in our endeavor to keep all readers happy, it became necessary to compile an Interchangeable Yarn Chart.

This turned out to be a much bigger project than was anticipated, as we first had to obtain samples of yarns put out by reputable yarn companies throughout America, then knit them up at a variety of tensions, check the stitches and rows obtainable at all tensions and from the results compile charts.

We also measured each ball and skein to check the yardage for inclusion in the charts along with the fibre content of each individual type of yarn.

We are happy to say that the charts (which are in book form) are now ready. They are easy to understand and suitable for any machine knitter irrespective of machine she has.

The price is \$1.00 plus 10¢ mailings costs and California residents must add 5¢ sales tax.

KNITKING CHILDRENS BOOK

To satisfy what seems to be an ever increasing need for childrens patterns, we are supplementing those published regularly in KNITKING MAGAZINE by publishing a special book of 50 new and original patterns for children from birth to 10 years of age.

The new KNITKING CHILDRENS BOOK is undoubtedly the most ambitious book of knitting machine patterns ever published. It is a big 10 1/2" x 8 1/4" in size with a full color cover and all garments photographed on live models. There are cute baby outfits, buntings, blankets, dresses, rompers, stockings, pants, suits, etc. Two piece outfits with a variety of skirts, sweaters, pull-overs, stockings and dresses for girls and some really handsome pullovers, cardigans and bulky sweaters, etc., for boys.



All in all, the completely new KNITTING CHILDRENS BOOK offers a variety of childrens patterns sufficient to satisfy even the most prolific machine knitter.

The finished books will not come off the press until early in December, but we know that many of you will want copies of the first printing as soon as they are available so we are taking orders in advance rather than wait to make the announcement in the January-February 1968 KNITTING MAGAZINE.

It is impossible to forecast just how quickly we will run out of the first printing so avoid disappointment by getting your order in as soon as possible.

The price of this big beautiful 50 pattern KNITTING CHILDRENS BOOK is \$2.95 plus 30¢ mailing costs. California residents must add 15¢ sales tax.

SPECIALS FOR NOVEMBER-DECEMBER

Sale of Regal and Frigate Yarns

Because of the increasing demand for KNITTING YARNS, the KNITTING premises in Los Angeles are being expanded again to accomodate the substantial stocks that we need to carry at all times.

In January of 1968, we intend adding some new yarns to our already beautiful range, but we need space to move merchandise around and have selected some of the most popular colors from the Regal and Frigate range to offer as specials.

Every owner of a KNITTING YARN CATALOGUE is aware of the excellent quality of the English yarns, Regal and Frigate. Regal is 80% wool and 20% nylon which makes it suitable for practically any type of garment. At tension 8 on your KNITTING, Regal knits 7 stitches and 9 rows to the inch.

We have several hundred pounds of the following Regal colors to offer at these exceptional special sale prices (please note that other Regal colors are not included in the special).

The colors available in Regal are: No. 263, a light heather mixture, splendid for Autumn or Spring garments, No. 163 Pasture (the best seller in Regal) is a very beautiful light grey, light blue, light green and red mixture. No. 500 is a handsome blending of blue, green and yellow. No. 222 is a medium brown and blue mixture that has consistently proved the best seller for mens and boys cardigans and sweaters.

The price, a ridiculously low 30¢ an ounce, \$4.80 a pound (yarn of this quality would sell in your local yarn store for around 75¢ an ounce). We can only sell at this price if we do not have to open the one pound packages and if you buy a minimum of three pounds. The low low price of three pounds is \$14.40 plus 75¢ shipping costs. (California residents add 72¢ sales tax).

Get your orders off fast and always suggest alternate colors. The faster we receive orders, the more assurance there is that you will receive the colors of your choice.

Frigate yarn is, in our opinion, the finest bulky yarn available on the American market. It is 95% virgin wool and 5% nylon. It is a crepe cable twisted yarn, absolutely perfect for bulky sweaters and coats, etc. You knit it on every other needle and at tension 10 it knits 4 1/2 stitches and 6 rows to the inch. Garments knitted with Frigate have a neatness of stitch not obtainable with worsted yarns and additionally, because of the special cable twist given to the six plies, you never experience problems with pilling even with many many washings.

Frigate is available at the special sale price in the following colors and again, they are colors that are among the best sellers. No. 1413 is a striking Toreador Red (could also be called Hot Orange) splendid for anybody not afraid of color. It knits up and looks gorgeous in a full length top coat in a sweater style. No. 855 is Forest Green, a handsome dark color that wears and wears without showing every speck of dirt. Good also for top coats for women or bulky sweaters for men, women and children.

No. 852 is a beautiful light blue, a color that looks good on practically everybody and is suitable for any type of garment, skirts, dresses, sweaters, etc. No. 860 is a rich olive green that you will discover is acceptable to any member of your family.

Again, the price is a low low 30¢ an ounce in 50 gram (1 3/4 ounce balls) with 10 balls (17 1/2 ounces to a package) minimum quantity is 3 packages, at \$5.25 a package is \$15.75 plus \$1.00 shipping costs. (California residents add 78¢ sales tax). Don't forget to give alternate colors.

We will be holding some yarn back to allow sufficient time for readers in the East to get their orders in.

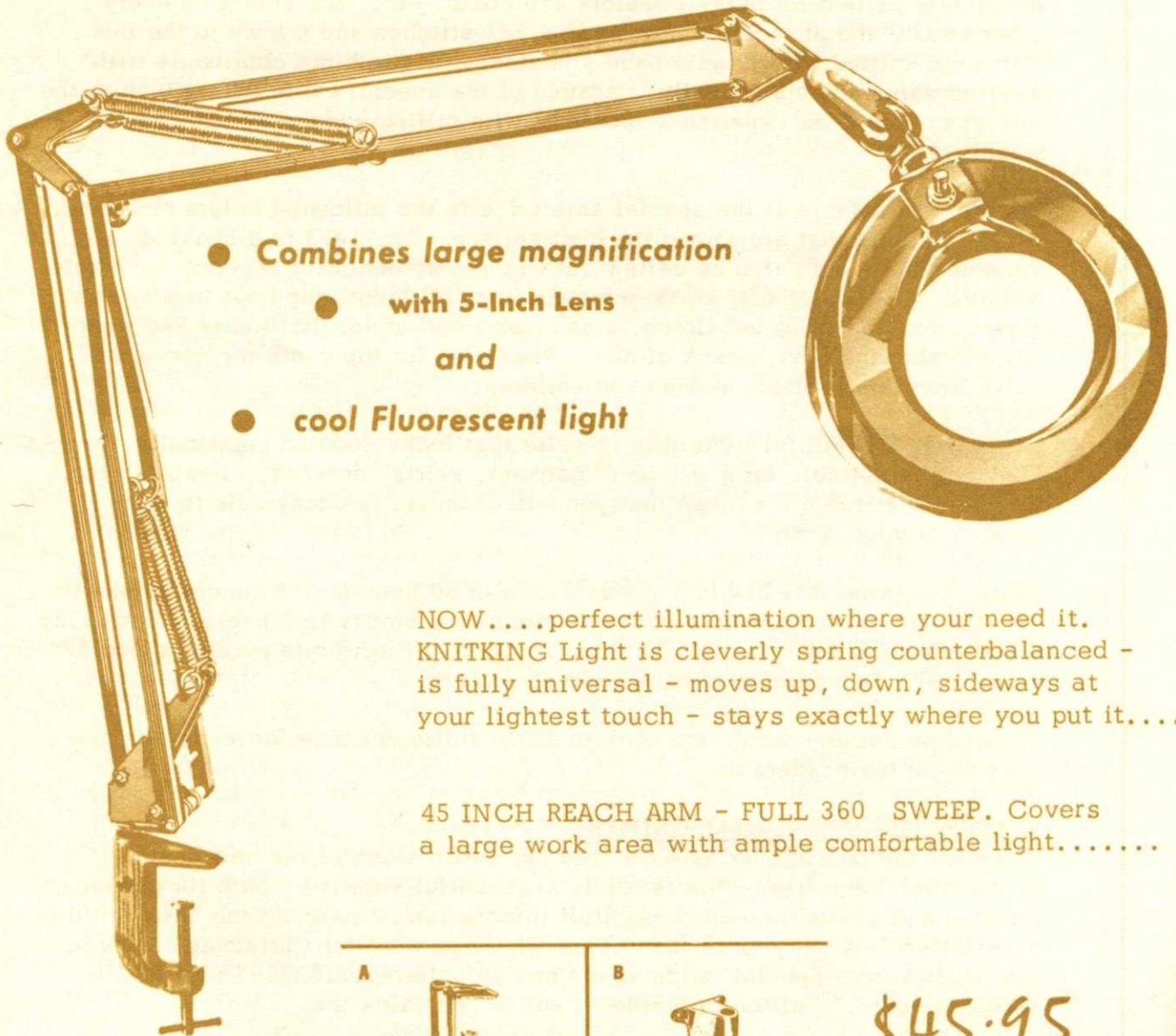
KNITTING ILLUMINATED MAGNIFIER

When we had our Summer Sale we sold our entire stock of the new design Illuminated Magnifier. This is really a wonderful accessory both for use when knitting and assembling garments (full information is given on the back of this Newsletter). When your husband asks what you want for Christmas, show him the illustration. 'Special' price saves him 10 dollars...\$39.95 plus \$1.50 shipping costs. California residents add \$1.80 sales tax.

Lets you easily check your knitting gauge.
 Illuminates your work without heat.....
 Helps prevent eye strain.....
 Makes it easy to assemble garments.....



ILLUMINATED MAGNIFIER
... for precision viewing!



- **Combines large magnification**
 - with 5-Inch Lens
 - and
- **cool Fluorescent light**

NOW....perfect illumination where your need it.
 KNITKING Light is cleverly spring counterbalanced -
 is fully universal - moves up, down, sideways at
 your lightest touch - stays exactly where you put it....

45 INCH REACH ARM - FULL 360 SWEEP. Covers
 a large work area with ample comfortable light.....

Specify A or B fitting.

<p>A</p>	<p>B</p>
<p>Clamps to level surface edge of table or desk...</p>	<p>Screws to vertical surface, wall, cabinet or partition.</p>

\$45.95
 COMPLETE

NOTES TO KNIT BY . . .

STITCH AND ROW GAUGE

Every KNITTING pattern calls for a specific number of stitches and rows for 2 inches and in order to obtain the correct size finished garment, you must be sure to knit at the correct tension. This means that before starting a garment, you must knit a sample swatch with the yarn you intend using for the garment.

Cast on over a sufficient number of needles to produce a swatch 4 inches wide. (If the pattern calls for 16 stitches to 2", 16 x 2 = 32 stitches) then knit 4 inches of rows at the first suggested tension (if the pattern calls for 22 rows to 2", 22 x 2 = 44 rows) knit 2 rows with a contrast color, change to the next higher tension, knit another 4", knit 2 rows with contrast color, change to a third higher tension and knit another 4", then bind off.

Roll the swatch into a cylinder over its length and pull on both ends. Unroll it and stretch it diagonally by pulling on the four corners. Allow the swatch to rest and settle (preferably overnight) then using a stitch gauge or ruler, count the number of stitches and rows over a 2" length in each of your 3 tensions. Select the tension that produces the stitches and rows called for in the pattern. If none of them are correct, you are most likely using the wrong weight of yarn.

HOLDING POSITION

The needles are as far forward on the needle bed as they will go.

NON-WORKING POSITION

The needles are as far back on the needle bed as they will go.

BINDING OFF

See Instruction Manual for your own machine.

CROCHET BIND OFF

Use this method for binding off neck and armbands, edgings, facings or collars. Knit a bind off row using 5 tensions higher than tension used for section and then with latch needle tool, and working from the opposite side of the yarn end, pull the second stitch through the first stitch, the 3rd through 2nd, the 4th through 3rd, etc. When you reach the end of row, pull the loose end of yarn through the last stitch. If you are unable to turn the tension up 5 numbers because you already are working with a large tension, lay the yarn over the needles by hand and knit this one row by pulling each needle back and forward again completing a stitch. Leave approximately 1/4" loop for each stitch (depending on type of yarn used) then bind off crochet method.

SHORT ROWS

Used for shaping of all kinds. Push the specified number of needles opposite the Cam Box into holding position and knit across to them. Now you must place the yarn OVER and UNDER the first inside needle that is in the holding position. Place the specified needles opposite Cam Box into holding position (other side) and knit across to these needles, and again place the yarn OVER and UNDER the first inside needle in the holding position. Repeat as many times as your pattern states. When you return these needles to the working position, the same procedure is used — bring the needles into work opposite the Cam Box, knit across to them, place the yarn OVER and UNDER the first inside needle in holding position and repeat for other side. Continue in this manner until all the needles are back in the working position.

INCREASING, DECREASING

See the Instruction Manual for your own machine.

INCREASING AND DECREASING WHEN USING RIBBER

When increasing, increase on the main knitter first, knit one row and then transfer the necessary stitches from the knitter to the ribber and continue.

When decreasing or binding off, you must transfer the ribber stitches to the main machine before decreasing or binding off.

CONTROL KNOBS (Under the slide handle — one on each side on KNITKING and certain other machines.)

1. When BOTH Control Knobs are UP, (or IN on the latest KNITKING) knit one row going from right to left. The needles knit and move back just beyond the front of the needle bed and the yarn hangs on the front of the needles. The slide will now move freely in either direction

with the needles remaining in a "SAFE POSITION". When you wish to resume knitting, press down (Out on the latest KNITKING) BOTH Control Knobs. The first movement of the slide is made without yarn and will bring the needles into working position, you then continue knitting.

2. **RIGHT CONTROL KNOB UP** (IN on latest KNITKING). Knit from right to left. The row knits, moves the needles back and the yarn is held in front of the latches. Knit from left to right, the yarn goes under the needles without knitting as the needles move into the working position. This is the operation used for making round cords (with 3 or 4 needles only) and also for knitting single rows of one color.

3. **LEFT CONTROL KNOB UP** (IN for latest KNITKING). The same as above but moving from left to right.

NECK SHAPING

When the directions state to bind off the center stitches for NECK, one correct way is as follows: With a new ball of yarn, bind off the given number of stitches working from right to left. Leave this ball of yarn hanging to one side (to be picked up later) and put all the needles on the left side into holding position and complete the right side first as directed. When you have completed the right side, pick up the yarn that you used for the neck bind off, put it in the wool feeder, bring all the needles into working position and knit 1 row to the left side. Turn row counter back to the number on which you started your neck shaping and complete the left half with reverse shaping, making the same number of decreases and on the same row numbers as on the right half.

You may also use the SHORT ROW method for shaping your neck and shoulders provided the decreasing is made on every other row. When the shaping is completed, knit 1 row over all the neck stitches (or shoulder stitches) with tension set at least 5 numbers higher, and then bind off all stitches using the **crochet method**.

If you are hand feeding a Norwegian design, bind off the center neck stitches with a new ball of yarn, then work both sides of neck shaping at the same time, using two balls of yarn for each color.







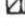
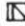

MISSING ROW NUMBERS

When there are row numbers missing in the instructions as for instance when you have completed the designated increases or decreases on a section of garment, continue knitting until you reach the next given row number.

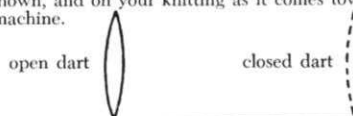
READING OF SYMBOLS

Certain holding position and eyelet designs are sketched in the knitting patterns. The Chart with symbols is read as the work comes toward you from the machine. Where purl stitches are facing you, the purl symbol will be shown and where knit stitches are facing you, the knit symbol will be shown. On the sides of the chart are the row numbers, i.e. 1-8 indicates the first and last row number. In eyelet design patterns, specified stitches are transferred to another needle and the empty needles are returned to the knitting position each time. In holding position designs, selected needles are pushed into the holding position for the stated number of rows.

PATTERN STITCH SYMBOLS

-  = knit stitch
-  = purl stitch
-  = empty needle (leave in working position)
-  = needle not used (in the out of work position)
-  = needle in holding position
-  = 2 stitches on 1 needle — either transferred from the right side or the left side, then put the needle into holding position
-  = needle holding 2 sts. Stitch has been transferred from the LEFT
-  = needle holding 2 sts. Stitch has been transferred from the RIGHT
-  = 3 stitches on 1 needle. The 1st and 3rd stitch in a group of 3 needles has been hung on the 2nd or center needle.

The diagrams for pattern work are followed just as they are shown, and on your knitting as it comes towards you on the machine.



Available in many wood finishes



KNITTING DESK . . .

A knitting machine cabinet that automatically lifts your machine into the knitting position just by pulling a lever. The cabinet converts in seconds into a handsome desk suitable for any decor or any room in your house. Beautifully made in a variety of woods by craftsmen in West Germany.



Order from your local dealer or direct from **KNITKING**, 1128 Crenshaw Blvd., Los Angeles, California 90019