

# KNITTING

MAGAZINE



Yarns  
by

# Knitking

*The Finest From Around the World . . .*

If you want your garments to look as good as those in KNITKING MAGAZINE and keep their appearance through dozens of washes, you must knit them with gorgeous KNITKING yarns. KNITKING yarns are the finest quality obtainable anywhere and the prices cannot be beaten. Try them once and you will always use them.

Your orders will be filled the same day they arrive. Be sure to state your color preferences and alternates.



Pattern Numbers	YARN	Price Including Shipping
DP 7492	Nanga Parbat	\$17.30
DK 7508	Subita 2 x 4	Size 12/14 \$20.90 Size 16/18 \$23.30
DK 7511	Subita 2 x 3	Size 14/16 \$14.90 Size 20/22 \$17.30
DK 7510	Subita 2 x 4	\$19.70
HP 3492	Subita 2 x 4	\$14.90
DP 7507	Subita 2 x 4	Size 14/16 \$22.10 Size 18/20 \$24.75
HP 3493	Starlite Crepe	Size 42/44 \$17.75 Size 46/48 \$19.82
DP 7483	Subita 2 x 3	Size 12/14 \$11.30 Size 18/20 \$12.50
HP 3494	Starlite Crepe and Subita 2 x 4	\$20.81
DP 7506	Sonika Dralon	Size 14/16 \$ 8.90 Size 20/22 \$10.10
DK 7509	Subita 2 x 4	Size 14/16 \$22.10 Size 18/20 \$24.75
DP 7513	Starlite Crepe	Size 16/18 \$17.06 Size 22/24 \$19.13
KK 4926	Subita 2 x 4	\$10.10
KK 4945	Sonika Dralon	\$ 8.90
MK 4942	Starlite Crepe and Fine Dralon	\$10.49
MK 4934	Sonika Dralon	\$ 8.90
KV 4937	Frigate	\$ 2.87

California Residents please add 5% Sales Tax.

Send \$2.00 for **LARGE COMPLETE YARN CATALOGUE.**  
(Refunded on your first \$10.00 order) to:

**KNITKING YARNS, Dept. 19**  
**1128 Crenshaw Blvd.**  
**Los Angeles, California 90019**

# KNITKING

## MAGAZINE

Vol. 4, No. 3

January/February 1968

### INDEX

Contents	Pattern	Page No.
Woman's Jacket	DP 7492	13
Woman's Shirt Style Dress	DK 7508	13
Woman's Dress	DK 7511	15
Woman's Two Piece Dress	DK 7510	16
Man's Jacket	HP 3492	17
Twinsset	DP 7507	18
Man's Pullover	HP 3493	20
Woman's Pullover	DP 7483	21
Man's Jacket	HP 3494	23
Woman's Jacket	DP 7506	23
Woman's Jacket	DP 7506	23
Woman's Jacket	DP 7513	26
Boy's Suit	KK 4926	27
Child's Pullover	KK 4945	28
Girl's Dress	MK 4942	30
Girl's Pullover	MK 4934	30
Child's Cap	KV 4937	31



COVER MODEL DP 7492

Keyed for glamour and winter warmth! Our newest knits are fashioned with good taste and beautifully styled. Begin with our Cover Jacket — you'll be glad you did. See page 13.

Publisher: Henry J. Atkin, 1128 Crenshaw Blvd., Los Angeles, Calif. 90019, Telephone: WEBster 8-2079. Published bi-monthly. Subscriptions: USA—\$6.00 annually, single copies \$1.50; Canada—\$7.00; other parts of the world—\$10.00. The entire contents of KNITKING MAGAZINE are copyright and must not be reproduced in any shape or form without the express permission in writing, of the publisher. COPYRIGHT © by KNITKING 1968.

Printed by: George Rice & Sons, Los Angeles, California.

## Letter from the Publisher

Regular readers whose garment size can be classified as larger than average, will see from the selection of patterns in this issue that we really do take notice of readers requests and that we do our best to satisfy their individual needs.

We often hear remarks from women with full figures that knits do not look good on them . . . this is a fallacy . . . Knits can look good on anybody providing they are made to fit and the choice of yarn is sensible . . . obviously a very large person would be unwise to choose a heavy nub yarn for a dress, as the finished garment would only tend to accentuate her weight.

When we design garments in specific sizes, we make them to set standards, but very few people can be considered perfect sizes. You may be shorter or taller than the standard measurements for whatever size garment you wear. You may be smaller in the waist or bigger in the hips. You may be big in the bust and small in the hips. Therefore, in order to custom knit garments, you must make adjustments in these areas. Special instructions to assist you in altering patterns to suit your individual needs are given from time to time in the "Practical Hints" section at the back of the magazine.

The new KNITKING Childrens Book is advertised on page 29 and every reader of KNITKING MAGAZINE irrespective of whether she has children of her own should have one of these books. There are more than fifty patterns illustrated and charted with complete instructions. Many of them such as buntings, blankets and baby outfits make beautiful gift items. The investment of \$2.95 insures that you will always have readily available, an excellent selection of childrens patterns.

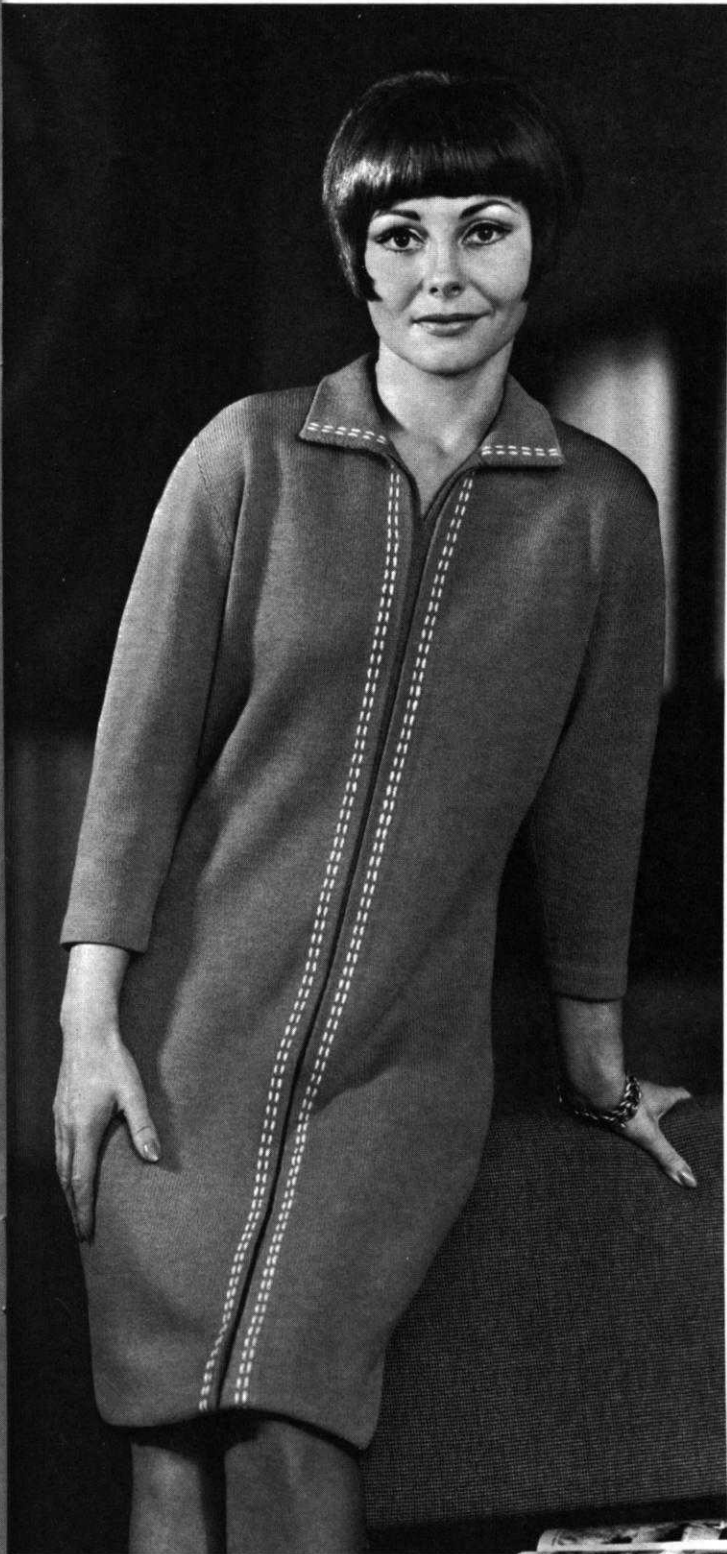
The Interchangeable Yarn Chart advertised on page 32 was also prepared in answer to reader requests and it is indispensable for use in the selection of alternate yarns suitable for the garments in KNITKING MAGAZINE.

The next issue of KNITKING MAGAZINE is going to be a very pretty one with four extremely smart dresses for the girls that have ben asking for them. Some modern design brightly colored shells with matching knee socks for the young at heart . . . A stunning zippered cardigan plus two shirts and a sweater for men and some good looking garments for boys and girls.

DP 7492

Superb! A lovely and warm Jacket is knitted in stockinette stitch, (worn on the purl side) then bordered brightly in a Grecian Key design which you may purchase in a department store. Cover the buttons with the trim, encircle the neckline with fur (bought by the yard) for ultra glamour. Size 12/14. See page 13.





DK 7511

Especially flattering to the fuller figure, this softly shaped dress knitted in stockinette stitch will be a favorite one. The pleats down the front are stitched with a contrast yarn. Size 14/16 and 20/22. See page 15.



DK 7508

Shirtwaist Classic! Belt it or not, as you prefer, a shirtwaist dress knitted in stockinette stitch has many possibilities for dressing up or down. The collar, front and cuffs on sleeves are trimmed with a contrast color. Size 12/14 and 16/18. See page 13.



DK 7510

Special Occasion! Stockinette stitch combined with an insert knitted in an eyelet design is used for this sumptuous 2 piece dress. A gold braid outlines the inset and is repeated around the neckline. You'll want two of them — one light, one dark. Size 14/16. See page 16.



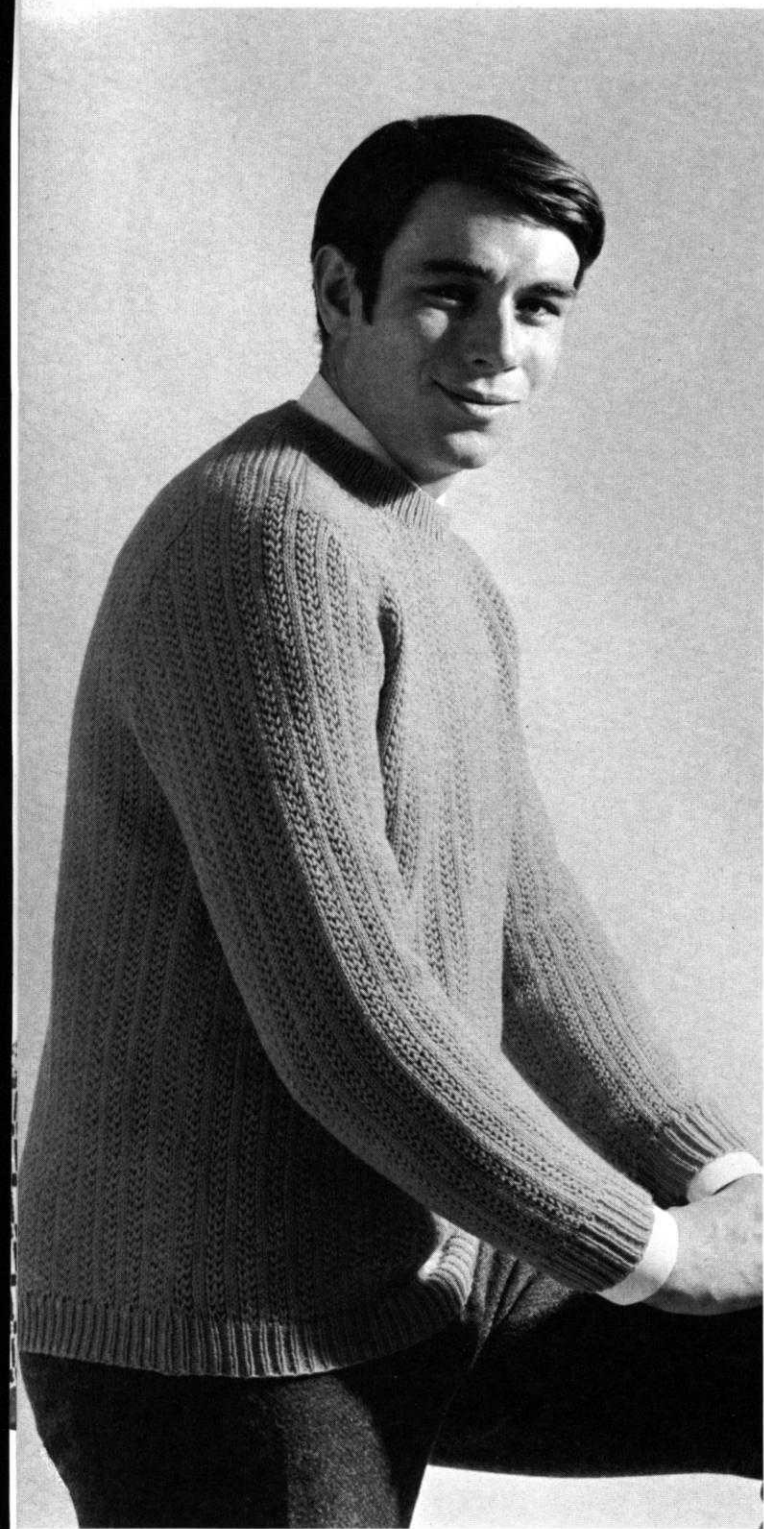
HP 3492

The most wanted cardigan! He'll bug you to knit him several of these in different colors so get busy . . . Stockinette stitch is used with a 1 x 1 rib for cuffs, bottom edge and at top of pockets. Raglan sleeves are for good looks as well as comfort. Size 44-46. See page 17.



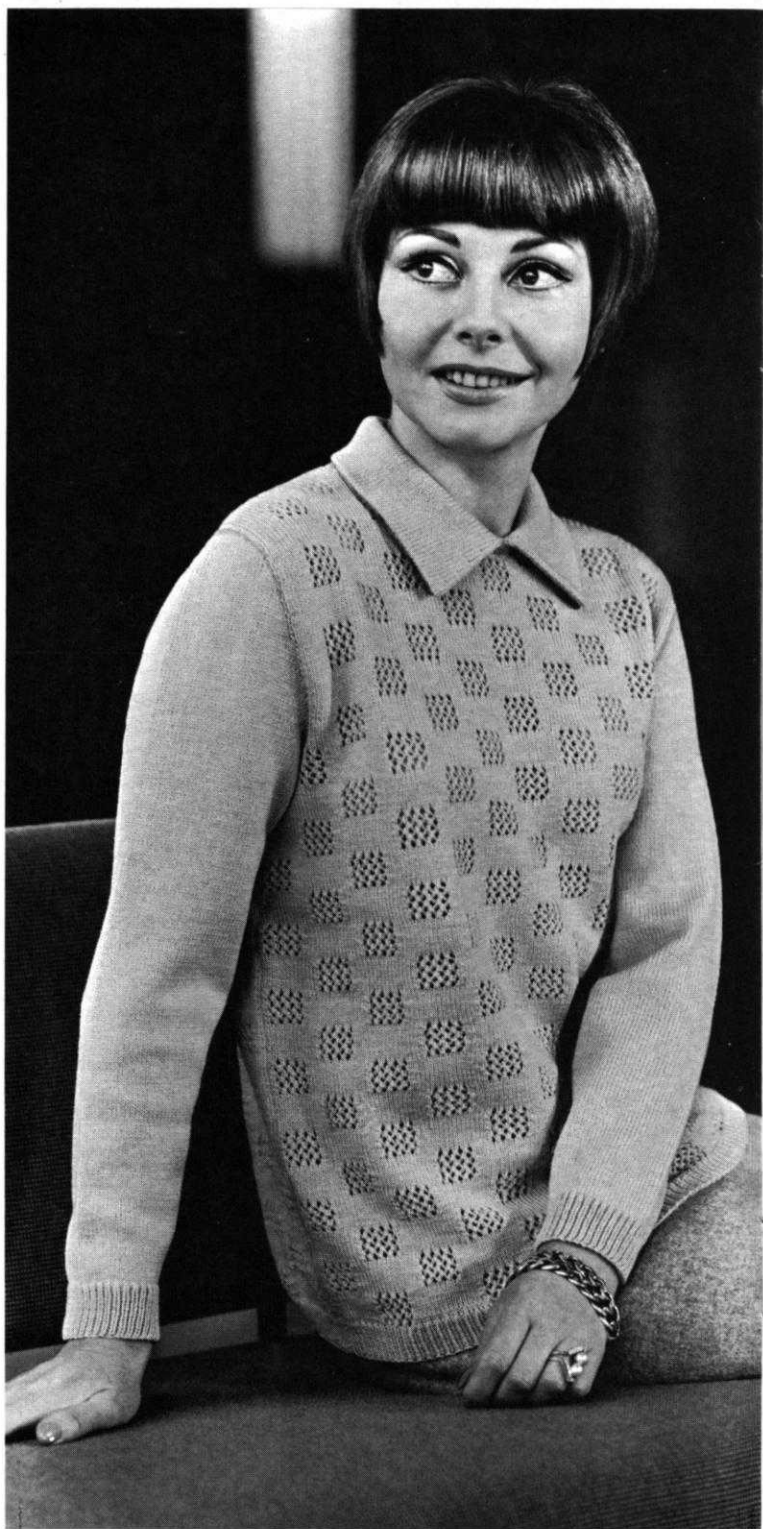
DP 7507

Double your pleasure by knitting this Twinset in two colors. The pullover has short sleeves and fine stripes in a dark color. The cardigan picks up the dark color on all the ribbed edges. Size 14/16 and 18/20. See page 18.



HP 3493

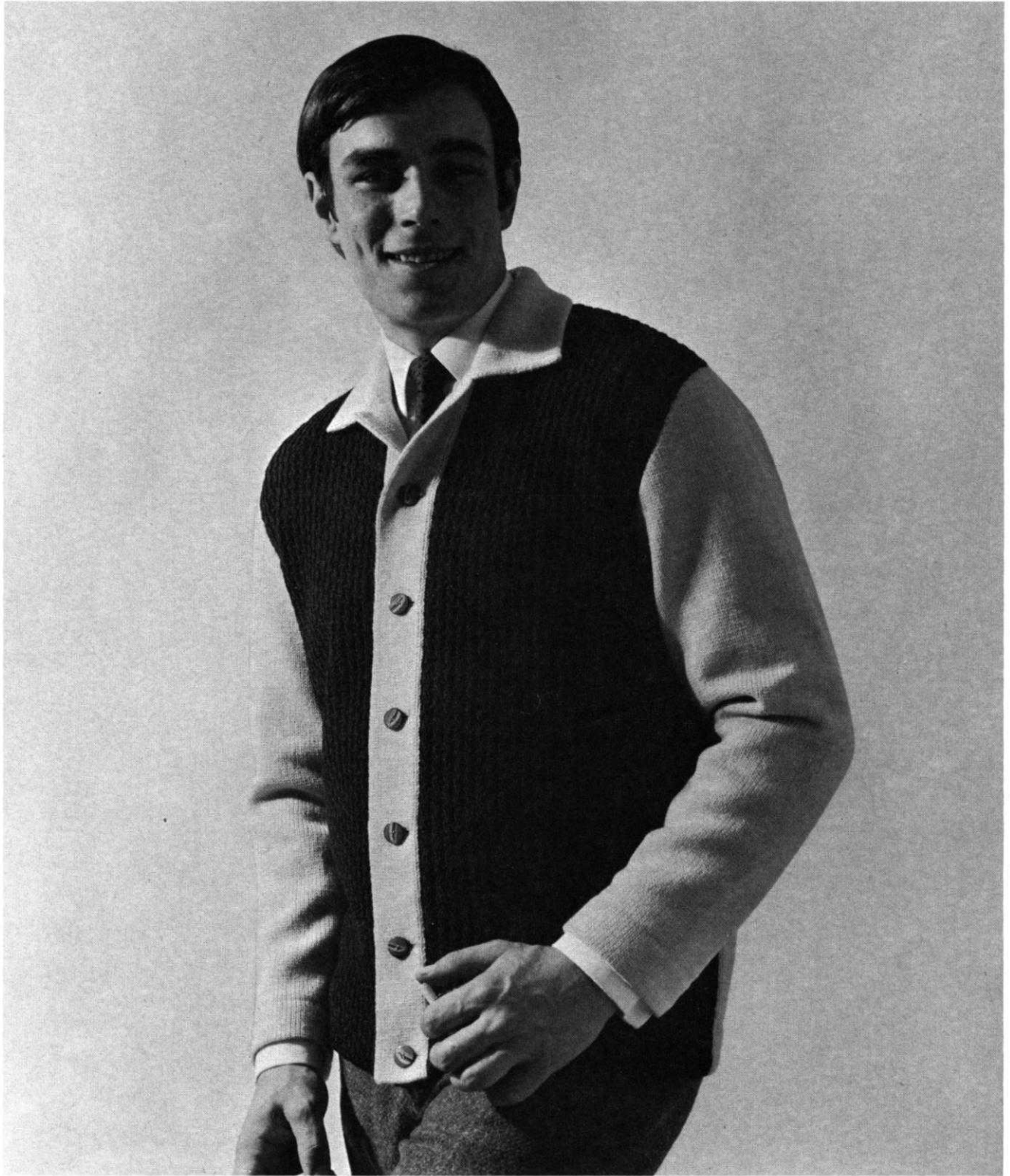
He'll be proud to wear this sharp looking pullover knitted in a holding position design, with bands in a 1 x 1 rib. Don't forget to pull down your knitting at least every 100 rows to allow the stitches to fall into the proper design formation. Size 42/44 and 46/48. See page 20.



DP 7483

Peek-a-boo squares dress up a pullover for a prize winning knit. It's an eyelet design which we admit takes a bit of time to do but well worth every minute . . . try it . . . Size 12/14 and 18/20. See page 21.





HP 3494

For any rugged male! Your he-man will really go for this warm jacket in two colors. Only the front sections are knitted in a holding position design and using the ribber . . . the rest is in stockinette stitch. Size 42/44. See page 23.

DP 7506

Give a cheer for this beautifully tailored Jacket with its flattering full fashioned down the front of neckline. The pockets are knitted right in as you make up the fronts. The cuffs and bottom edge are a 1 x 1 rib. Size 14/16 and 20/22. See page 23.





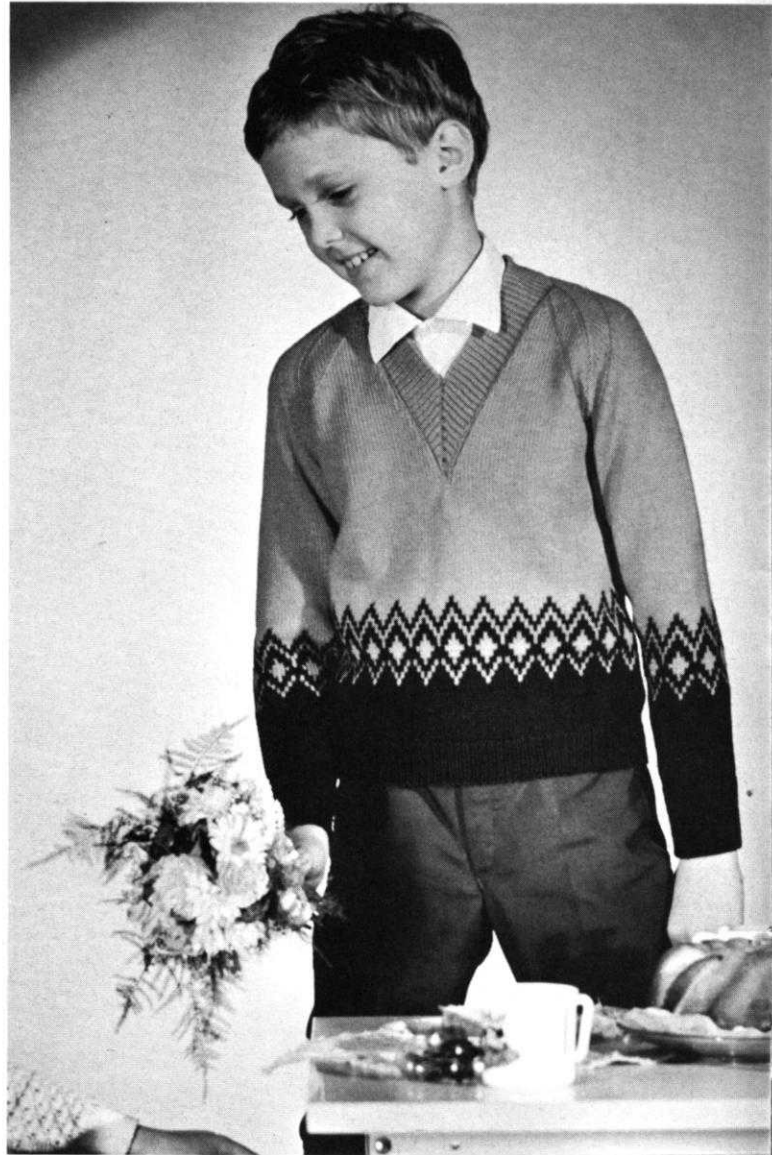
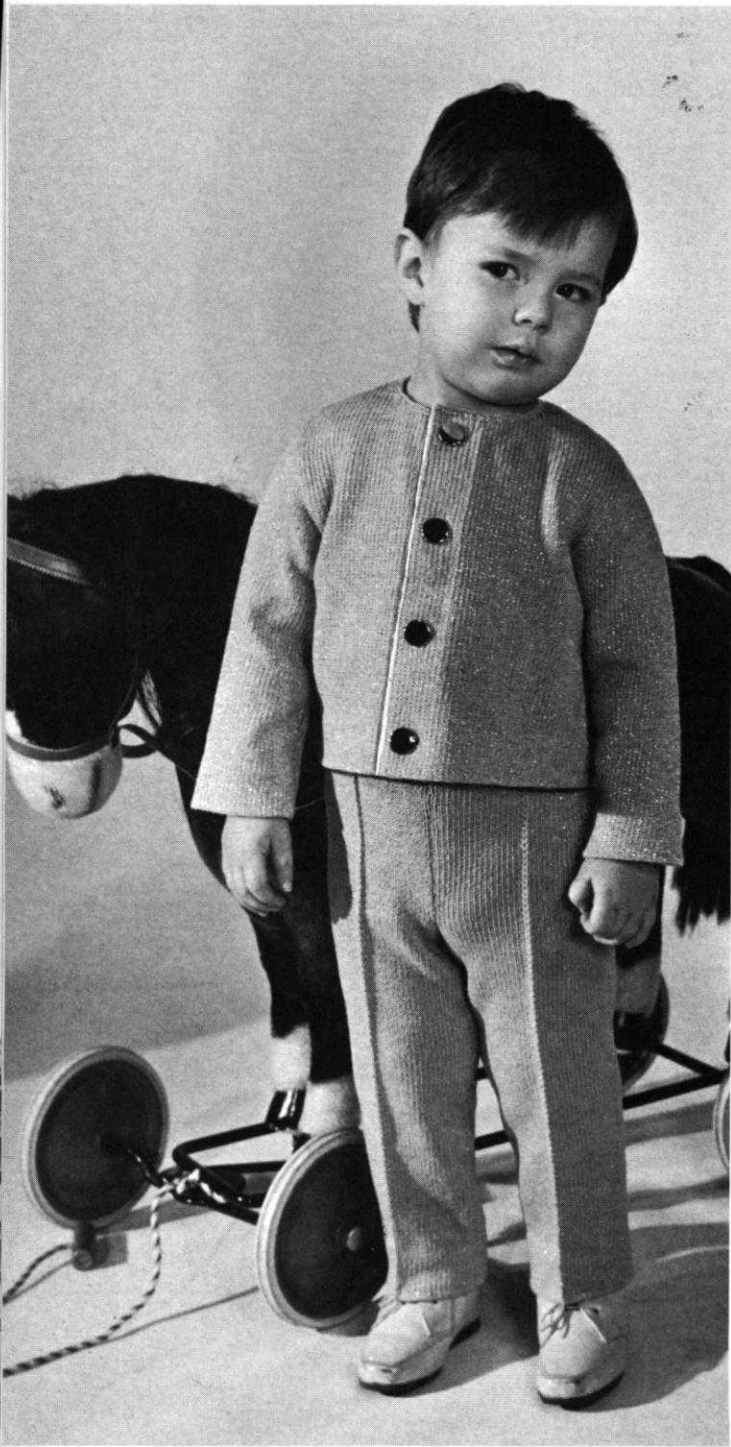
DK 7509

Success! A two piece dress . . . simple to knit in stockinette stitch. The top has fully fashioned raglan sleeves for comfort and the eyelet design adds interest as well as a slimming effect. Rib the cuffs, neckline and bottom edge. Size 14/16 and 18/20. See page 25.



DP 7513

Good taste, good design and simple knitting make this Jacket tops . . . You will want more than one and you may embroider the collar or add some jewels for a dressy model. Size 16/18 and 22/24. See page 26.



KK 4945

Boy or girl can wear this Norwegian design pullover in two colors. The bands are a 1 x 1 rib and the sleeves have an unusual raglan shaping. If you like, you may knit a second one without the design. Size 7-8 years. See page 28.

MK 4942

Capture a small girl's heart by knitting her this adorable dress. Two weights of yarn are used, the sleeves and collar in the lighter weight are ribbed. The Norwegian design follows a chart or you may use JAC 40 and Pattern No. 5. Size 4-5 years. See page 30.



KV 4937 →

Heads Up! Frigate Yarn knitted over every other needle in a pattern design makes the typical Watch Cap with a new look. Believe it or not, the perky pom-pom is crocheted and we tell you how. See page 31.

MK 4934

For the Sled Set . . . a textured Pullover in two colors knitted over every other needle in a holding position design. Special hints for knitting the pattern are in our Practical Knitting Hints on page 32. Size 8-9 years. See page 30.



# KNITTING INSTRUCTIONS

## COVER MODEL, DP 7492 WOMAN'S JACKET

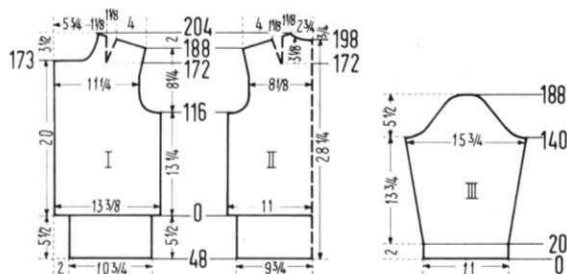


**SIZE:** 12/14. **MATERIAL:** 24½ oz. white KNITKING Nanga parbat, 3½ yards trim, 2" wide and 18" fur trimming 2" wide. **TENSION:** KNITKING 8 to 10. **GAUGE:** Stockinette stitch 12 sts. 2", 17 rows 2". K1, P1, Ribbing 12 sts. 2", 20 rows 2". **PATTERN:** Stockinette stitch worn on the purl side. **SLEEVE EDGES:** K1, P1, Ribbing. **BACK:** (Figure II). Cast on 134 sts. Work stockinette stitch.

**ROWS 1-116:** Work even.  
**ROWS 117-136:** **ARMHOLE SHAPING:** Bind off 4 sts. beginning next 4 rows, 3 sts. beginning next 2 rows, 2 sts. beginning next 2 rows, 1 st. beginning next 4 rows, and 1 st. at each end of the next 4th and following 4th row. (100 sts.)

**ROWS 137-172:** Increase 1 st. on each side after ROW 156 and again every following 6th row 2 x.

**ROWS 173-204:** **DARTS, SHOULDERS AND NECK SHAPING:** Decrease 1 st. on each side after ROW 172 and again every following 4th row 6 x. For the first decrease (Cam Box at right side) on each side put the 29th st. onto the 30th needle, then move the end stitches inwards to fill the



empty needle. The next decreases lie directly above. AT THE SAME TIME, increase 1 st. on each ARMHOLE EDGE after Rows 174 and 180, then after ROW 188 SHAPE SHOULDER by binding off 3 sts. beginning next 10 rows. After ROW 198 bind off the center 14 sts. for NECK (See Notes to Knit By, inside back cover). Bind off 4 sts. at shoulder and continue to shape shoulder on every other row by binding off 4 sts. 3 x. AT THE SAME TIME SHAPE NECK on every other row by binding off 6 sts. 1 x and 4 sts. 1 x.

Now work the lower edge of the jacket. Bring 120 needles into working position. With the knit side facing you, hang the cast on stitches back on the machine, having first the 15th, then every following 7th needle occupied with 2 sts., and ending with 1 st. on the last 14 needles. (120 sts.). Work 48 rows stockinette st., then bind off all sts.

**FRONT:** (Figure I). Cast on 85 sts.

**ROWS 1-116:** Work even.

**ROWS 117-136:** **ARMHOLE SHAPING:** On the right side, bind off 4 sts., then on every other row bind off 4 sts. 1 x, 3 sts. 1 x, 2 sts. 1 x, 1 st. 2 x and 1 st. on the next 4th and following 4th row. (68 sts.)

**ROWS 137-172:** Increase 1 st. on the right side after ROW 156 and again every following 6th row 2 x.

**ROWS 173-204:** **DARTS, NECK AND SHOULDER SHAPING:** For the Darts decrease 1 st. after ROW 172 and again every following 4th row 6 x. For the first decrease, counting from the right side, put the 29th st. onto the 30th needle, then move the end sts. inwards to fill the empty needle. The next decreases lie directly above. AT THE SAME TIME, after ROW 173, on the left side, bind off 24 sts. for NECK, then on every other row bind off 3 sts. 1 x, 2 sts. 2 x, 1 st. 2 x and 1 st. on the next 4th and following 4th

row. AT THE SAME TIME, increase 1 st. on the right side after ROWS 174 and 180, then after ROW 188 and on every other row SHAPE SHOULDER by binding off 3 sts. 5 x and 4 sts. 4 x.

Now work the lower edge of the jacket front. Bring 66 needles into working position. With the knit side facing you and leaving the first 12 cast on sts. free (facing) put the cast on sts. back on the machine having first the 10th, then every following 7th needle occupied with 2 sts. and ending with 1 st. on the last 14 needles. (66 sts.). Work 48 rows stockinette st., then bind off all sts. Make second front section with reverse shapings and work buttonholes after Rows 5, 46, 87, 128 and 169 over the 2-7 and 18-23 needles.

**SLEEVE:** (Figure III). Make two. Cast on 67 sts.

**ROWS 1-20:** K1, P1, Ribbing. After ROW 20 transfer the ribber sts., to main machine and continue with stockinette st.

**ROWS 21-140:** Increase 1 st. on each side after ROW 28, then again every following 8th row 10 x and every next following 6th row 4 x. (97 sts.)

**ROWS 141-148:** **CAP SHAPING:** Bind off 4 sts. beginning next 4 rows and 2 sts. beginning next 4 rows.

**ROWS 149-188:** Bind off 1 st. beginning next 4 rows and 2 sts. beginning next 2 rows. Repeat these bind offs 5 x, then bind off 3 sts. beginning next 2 rows, 4 sts. beginning next 2 rows and after ROW 188 bind off the remaining 11 sts.

**NECKBAND:** Cast on 84 sts. Work 24 rows stockinette stitch, then bind off all sts.

**FINISHING:** Join front and back sections at sides and shoulder. Sew sleeves together and set in. Turn under 2" at front edges and hem to wrong side. Turn over half of lower edge and hem to right side.

Sew cast on edge of neckband to inside and bound off edge to outside of neckline. Sew trim to lower jacket edge and sleeves. (See picture). Sew fur trim to neckband. Have 5 buttons made, using same trim as on the jacket. Finish buttonholes. Sew on buttons. Sew hooks and eyes on inside of lower jacket edge.

## WOMAN'S SHIRT STYLE DRESS, DK 7508



**SIZE:** 12/14 and 16/18. **MATERIAL:** 28 oz. (31½ oz.) beige and 1¾ oz. brown KNITKING Subita 2 x 4.

**TENSION:** KNITKING 6 to 8. **GAUGE:** 16 sts. 2", 21 rows 2". **PATTERN:** Stockinette stitch.

**SIZE:** 12/14. **BACK:** (Figure II) Cast on 150 sts.

**ROWS 1-130:** Increase 1 st. on each side after ROW 40, and again on every following 22nd row 4 x. (160 sts.)

**ROWS 131-198:** Work even.

**ROWS 199-274:** Decrease 1 st. on each side after ROW 198, then again on every following 8th row 4 x, on every 6th row 5 x and on every 4th row 3 x. (134 sts.)

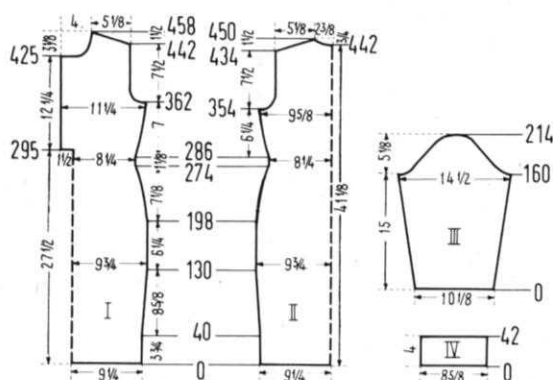
**ROWS 275-286:** Work even.

**ROWS 287-354:** Increase 1 st. on each side after ROW 286 and again on every following 6th row 10 x. (156 sts.)

**ROWS 355-376:** **ARMHOLE SHAPING:** Bind off 4 sts. beginning next 2 rows, 3 sts. beginning next 2 rows, 2 sts. beginning next 6 rows, 1 st. beginning next 4 rows, and 1 st. at each end of the next 4th and following 4th row. (122 sts.)

**ROWS 377-434:** Work even.

**ROWS 435-450:** **SHOULDER SHAPING:** Bind off 4 sts. beginning next 6 rows and 5 sts. beginning next 2 rows. After ROW 442 bind off the center 14 sts. for NECK. (See Notes to Knit By, inside back cover). Bind off 5 sts. at shoulder side and continue to shape shoulder on every



other row by binding off 5 sts. 4 x. AT THE SAME TIME Shape NECK on every other row by binding off 5 sts. 1 x, 4 sts. 1 x and 3 sts. 1 x.

**FRONT:** (Figure I). Work the front the same as the back to ROW 286.

**ROWS 287-294:** Increase 1 st. on each side after ROWS 286 and 292. After ROW 294 put 66 needles on the left side into holding position and finish the right half first.

**ROWS 295-362:** After ROW 295 cast on 10 sts. on the left side for facing. To do this put 10 sts. from the left half on a stitch holder. Increase 1 st. on the right side after ROW 298 and again every following 6th row 8 x. AT THE SAME TIME work buttonholes after ROWS 304, 327 and 350 over the 3-7 and 14-18 needles counting from the left side. **ROWS 363-384:** ARMHOLE SHAPING: Bind off 4 sts. on the right side, then on every other row bind off 3 sts. 1 x, 2 sts. 3 x, 1 st. 2 x and 1 st. on the next 4th and following 4th row. AT THE SAME TIME work buttonholes after ROW 373.

**ROWS 385-425:** Work even and make buttonholes after ROWS 396 and 419.

**ROWS 426-458:** NECK SHAPING: Bind off 20 sts. on the left side, then on every other row bind off 3 sts. 1 x, 2 sts. 2 x, 1 st. 3 x and 1 st. on the next 4th and following 4th row. AT THE SAME TIME after ROW 442 and on every other row SHAPE SHOULDER by binding off 4 sts. 3 x and 5 sts. 6 x. Now move the Cam Box to the left side, turn row counter to 294, bring all needles into working position, hang the sts. from the stitch holder back on the machine and work the left half with reverse shapings but for the facing on front opening cast on 16 sts. instead of 10 sts. on the right side and omit the buttonholes.

**SLEEVE:** (Figure III). Make two. Cast on 83 sts.

**ROWS 1-160:** Increase 1 st on each side after ROW 8, then again on every following 8th row 14 x and every following 10th row 3 x. (119 sts.)

**ROWS 161-172:** CAP SHAPING: Bind off 4 sts. beginning next 2 rows, 3 sts. beginning next 4 rows and 2 sts. beginning next 6 rows.

**ROWS 173-214:** Bind off 2 sts. beginning next 2 rows and 1 st. beginning next 4 rows. Repeat these bind offs 5 x, then bind off 2 sts. beginning next 2 rows, 4 sts. beginning next 2 rows, 6 sts. beginning next 2 rows and after ROW 214 bind off the remaining 15 sts.

**COLLAR:** Cast on 115 sts.

**ROWS 1-76:** Work even, 12 rows tension 5, 12 rows tension 6, 28 rows tension 7, 12 rows tension 6 then continue with tension 5 and work ROWS 35-42 with brown.

**ROWS 77-82:** Work short rows. (See Notes to Knit By, inside back cover). Alternately, on each side, put 11 needles 1 x, 13 needles 1 x and 15 needles 1 x into holding position.

**ROWS 83-84:** On the left side bring all needles into working position, knit 1 row. On the right side bring all needles into working position, knit 1 row, then bind off all sts.

**CUFFS:** Make two. Cast on 71 sts. Work 42 rows even, making buttonholes after ROWS 8 and 32 over the 7th-11th needles and working ROWS 18-25 with brown. AFTER ROW 42 bind off all sts.

Make buttonholes on second cuff on opposite end.

**FINISHING:** Join front and back at sides and shoulders,

easing in the fullness at bustline of front section. Sew sleeves together and set in. Turn under 2 inches at lower edge and hem to wrong side. Turn under 10 sts. on front opening and hem to wrong side. Fold collar in half length wise and sew short ends. Sew collar to neckline, cast on edge to outside and bound off edge to inside, leaving 3 sts. on neckline front free. Make small pleats on sleeve edges. Fold cuffs in half length wise and sew short ends. Sew cuffs to sleeves, leaving 1/2" on each side of the cuffs and 1" on the sleeve edges free. Make two round knitted cords. For each cord cast on 5 sts. with brown. Push the right Cam Control button back (machines prior to AM 3 pull right Control knob up).

Row counter is at 0. With tension 1 knit until row counter reads 260, then bind off. Weave cord to fold line on front edges. Finish buttonholes, sew on buttons.

**SIZE 16/18. BACK:** (Figure II). Cast on 173 sts.

**ROWS 1-142:** Increase 1 st. on each side after ROW 52 and again on every following 22nd row 4 x. (183 sts.)

**ROWS 143-210:** Work even.

**ROWS 211-286:** Decrease 1 st. on each side after ROW 210, then again on every following 8th row 4 x, on every 6th row 5 x and on every 4th row 3 x. (157 sts.)

**ROWS 287-298:** Work even.

**ROWS 299-370:** Increase 1 st. on each side after ROW 298 and again on every following 12th row 5 x (169 sts.)

**ROWS 371-392:** ARMHOLE SHAPING: Bind off 4 sts. beginning next 2 rows, 3 sts. beginning next 4 rows, 2 sts. beginning next 4 rows, 1 st. beginning next 8 rows and 1 st. at each end of the following 4th row. (131 sts.)

**ROWS 393-454:** Work even.

**ROWS 455-470:** SHOULDER SHAPING: Bind off 4 sts. beginning next 4 rows and 5 sts. beginning next 4 rows. After ROW 462 bind off the center 15 sts. for NECK. (See Notes to Knit By, inside back cover). Bind off 5 sts. at shoulder side and continue to shape shoulder on every other row by binding off 5 sts. 4 x. AT THE SAME TIME Shape NECK on every other row by binding off 6 sts. 1 x, 5 sts. 1 x and 4 sts. 1 x.

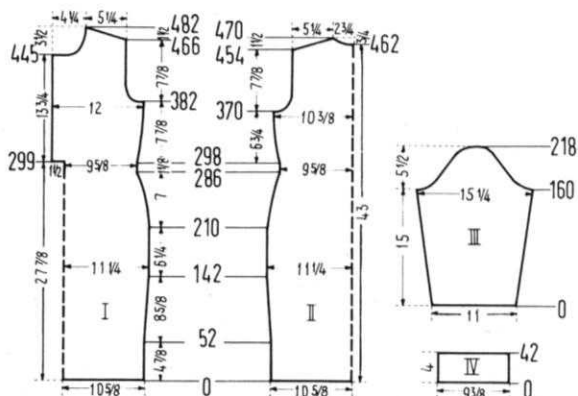
**FRONT:** (Figure I). Work the front the same as the back to ROW 298. After ROW 298 put 79 needles on the left side into holding position and finish the right half first.

**ROWS 299-382:** Increase 1 st. on the right side after ROW 298 and again on every following 12 row 5 x. AT THE SAME TIME, after ROW 299 cast on 10 sts. on the left side for facing. To do this, put 10 sts. from the left half on a stitch holder. Work buttonholes after ROWS 308, 330, 352 and 374 over the 3-7 and 14-18 needles counting from the left side.

**ROWS 383-402:** ARMHOLE SHAPING: Bind off 4 sts. on the right side, then on every other row bind off 3 sts. 2 x, 2 sts. 2 x, 1 st. 4 x and 1 st. on the next 4th row. AT THE SAME TIME work buttonholes after ROW 396.

**ROWS 403-445:** Work even and make buttonholes after ROWS 418 and 440.

**ROWS 446-482:** NECK SHAPING: Bind off 20 sts. on the left side, then on every other row bind off 3 sts. 1 x, 2 sts. 3 x, 1 st. 4 x and 1 st. on the next 4th and following 4th row. AT THE SAME TIME after ROW 466 and on every other row SHAPE SHOULDER by binding off 4 sts.





2 x and 5 sts. 7 x. Now move the Cam Box to the left side, turn row counter to 298, bring all needles into working position, hang the sts. from the stitch holder back on the machine and work the left half with reverse shaping but for the facing on front opening cast on 15 sts. instead of 10 sts. on the right side and omit the buttonholes.

**SLEEVE:** (Figure III). Make two. Cast on 89 sts.

**ROWS 1-160:** Increase 1 st. on each side after ROW 8, then again on every following 8th row 14 x and every following 10th row 3 x. (125 sts.)

**ROWS 161-174:** CAP SHAPING: Bind off 5 sts. beginning next 2 rows, 4 sts. beginning next 2 rows, and 2 sts. beginning next 8 rows.

**ROWS 175-218:** Bind off 1 st. beginning next 4 rows and 2 sts. beginning next 2 rows. Repeat these bind offs 5 x, then bind off 2 sts. beginning next 2 rows, 3 sts. beginning next 4 rows, 4 sts. beginning next 2 rows and after ROW 218 bind off the remaining 13 sts.

**COLLAR:** Cast on 128 sts.

**ROWS 1-76:** Work even, 12 rows tension 5, 12 rows tension 6, 28 rows tension 7, 12 rows tension 6, then continue with tension 5 and work ROWS 35-42 with brown.

**ROWS 77-82:** Work short rows. (See Notes to Knit By inside back cover). Alternately, on each side, put 12 needles 1 x, 14 needles 1 x and 16 needles 1 x into holding position.

**ROWS 83-84:** On the left side bring all needles into working position, knit 1 row.

On the right side bring all needles into working position, knit 1 row, then bind off all sts.

**CUFFS:** Make two. Cast on 77 sts. Work 42 rows even, making buttonholes after ROWS 8 and 32 over the 7-11 needles and working ROWS 18-25 with brown. After ROW 42 bind off all sts. Make buttonholes on second cuff on opposite end.

**FINISHING:** Follow directions for SIZE 12/14 and work 292 rows for the knitted cords.

## WOMAN'S DRESS, DK 7511



**SIZE:** 14/16 and 20/22. **MATERIAL:** 21 oz. (24½ oz.) green KNITKING Subita 2 x 3 and a small amount of white yarn for the trim. **TENSION:** KNITKING 3 to 5. **GAUGE:** 18 sts. 2", 25 rows 2". **PATTERN:** Stockinette stitch.

**SIZE: 14/16.** Back and Front section are worked in two parts.

**BACK:** (Figure II). Cast on 88 sts. **ROWS 1-140:** Increase 1 st. on the right side after ROW 48 and again on every following 18th row 5 x. (94 sts.)

**ROWS 141-234:** Work even.

**ROWS 235-320:** Decrease 1 st. on the right side after ROW 234, then again on every following 8th row 4 x, on every 6th row 6 x and on every 4th row 4 x. (79 sts.)

**ROWS 321-336:** Work even.

**ROWS 337-416:** Increase 1 st. on the right side after ROW 336, then again on every following 6th row 4 x and on every next following 8th row 6 x. (90 sts.)

**ROWS 417-442:** ARMHOLE SHAPING: Bind off 4 sts. on the right side, then on every other row bind off 3 sts. 2 x, 2 sts. 2 x, 1 st. 4 x and 1 st. on the next 4th and following 4th row (70 sts.)

**ROWS 443-516:** Work even.

**ROWS 517-536:** SHOULDER SHAPING: Bind off 4 sts. on the right side, then on every other row bind off 4 sts. 5 x and 5 sts. 5 x. AT THE SAME TIME after ROW 525 and on every other row SHAPE NECK by binding off 7 sts. 1 x, 5 sts. 1 x, 4 sts. 1 x, 3 sts. 1 x and 2 sts. 1 x. Make second half with reverse shapings.

**FRONT:** (Figure I). Cast on 83 sts.

**ROWS 1-21:** Work even. After ROW 21 cast on 27 sts. on the left side.

**ROWS 22-140:** Increase 1 st. on the right side after ROW 48 and again on every following 18th row 5 x. (116 sts.)

**ROWS 141-234:** Work even.

**ROWS 235-320:** Decrease 1 st. on the right side after ROW 234, then again on every following 8th row 4 x, on every 6th row 6 x and on every 4th row 4 x. (101 sts.)

**ROWS 321-336:** Work even.

**ROWS 337-430:** Increase 1 st on the right side after ROW 336, then again on every following 6th row 4 x and on every next following 8th row 6 x. (112 sts.)

**ROWS 431-454:** ARMHOLE SHAPING: Bind off 5 sts. on the right side, then on every other row bind off 4 sts. 1 x, 3 sts. 2 x, 2 sts. 2 x, 1 st. 2 x and 1 st. on the next 4th and following 4th row. (89 sts.)

**ROWS 455-501:** Work even.

**ROWS 502-550:** NECK SHAPING: Bind off 27 sts. on the left side, then on every other row bind off 2 sts. 3 x, 1 st. 2 x, on every next following 4th row 1 st. 2 x and on every following 6th row 1 st. 3 x. AT THE SAME TIME after ROW 530 and on every other row SHAPE SHOULDER by binding off 4 sts. 6 x and 5 sts. 5 x. Make second half with reverse shaping.

**SLEEVE:** (Figure III). Cast on 79 sts.

**ROWS 1-30:** Decrease 1 st. on each side after ROWS 4, 8 and 12, then increase 1 st. on each side after ROWS 20, 24 and 28. After ROW 30 put the cast on sts. back on the machine behind the latches to form the hem.

**ROWS 31-166:** Increase 1 st. on each side after ROW 32, then again on every following 4th row 26 x and on every next following 6th row 4 x. (141 sts.)

**ROWS 167-180:** CAP SHAPING: On the right side (back of sleeve) and on every other row bind off 5 sts. 1 x, 3 sts. 2 x and 2 sts. 4 x. On the left side (front of sleeve) and on every other row bind off 6 sts. 1 x, 5 sts. 1 x, 3 sts. 2 x and 2 sts. 3 x.

**ROWS 181-236:** Bind off 1 st. beginning next 6 rows and 2 sts. beginning next 2 rows. Repeat these bind offs 5 x, then bind off 2 sts. beginning next 2 rows, 3 sts. beginning next 2 rows, 4 sts. beginning next 4 rows and after ROW 236 bind off the remaining 13 sts. Make second sleeve with reverse shaping.

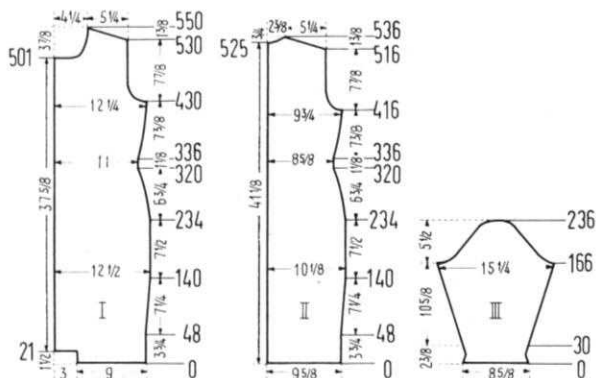
**COLLAR:** Cast on 137 sts.

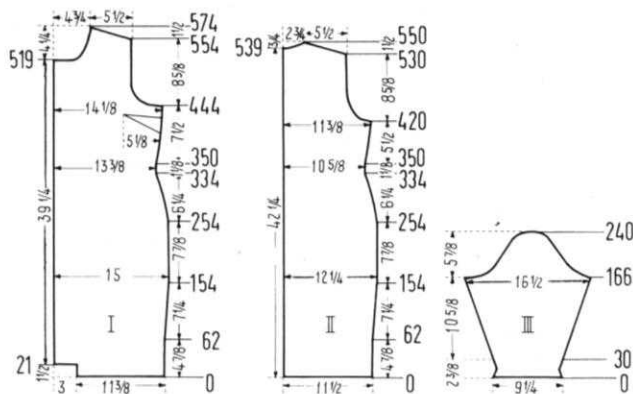
**ROWS 1-70:** Work even, 20 rows tension 3, 40 rows tension 4, then continue with tension 3.

**ROWS 71-78:** Alternately on each side put 10 needles 1 x, 12 needles 1 x 16 needles 1 x and 20 needles 1 x into holding position. (See Notes to Knit By, inside back cover — SHORT ROWS.)

**ROWS 79-80:** On the left side bring all needles into working position, knit 1 row. On the right side bring all needles into working position, knit 1 row, then bind off all sts.

**FINISHING:** Weave both front sections together 1 stitch in on each edge, leaving 3 inches on upper part free for Front opening. Make a narrow hem around Front opening and sew to wrong side. On each side of center seam make a 1 inch pleat (pleats must meet in the center). With white yarn sew down each pleat twice. Counting from each fold line make first seam between the 4th and 5th stitch and the second seam between the 6th and 7th stitch always bringing the needle over 4 rows and under 2 rows.





Weave both back sections together, 1 stitch in on each edge. Join front and back section at sides and shoulders, easing in the fullness at bust line of front section. Sew sleeves together and set in. Turn under 2 inches on lower edge and hem to wrong side. Fold collar in half lengthwise and close short edges. Sew bound off edge to inside and cast on edge to outside of neckline. Make decorative stitches on collar edges as you did on the front pleats. (See picture).

**SIZE:** 20/22. Back and Front section are worked in two parts.

**BACK:** (Figure II). Cast on 106 sts.

**ROWS 1-154:** Increase 1 st. on the right side after ROW 62 and again on every following 18th row 5 x. (112 sts.)

**ROWS 155-254:** Work even.

**ROWS 255-334:** Decrease 1 st. on the right side after ROW 254, then again on every following 8th row 3 x, on every 6th row 5 x and on every 4th row 6 x. (97 sts.)

**ROWS 335-350:** Work even.

**ROWS 351-420:** Increase 1 st. on the right side after ROW 350 and again on every following 10th row 6 x. (104 sts.)

**ROWS 421-470:** ARMHOLE SHAPING: Bind off 4 sts. on the right side, then on every other row bind off 3 sts. 3 x, 2 sts. 3 x, 1 st. 4 x, on every following 4th row 1 st. 4 x and on every following 6th row 1 st. 2 x. (75 sts.)

**ROWS 471-530:** Work even.

**ROWS 531-550:** SHOULDER SHAPING. Bind off 4 sts. on the right side, then on every other row bind off 4 sts. 4 x and 5 sts. 6 x. AT THE SAME TIME after ROW 539 and on every other row SHAPE NECK by binding off 10 sts. 1 x, 5 sts. 1 x, 4 sts. 1 x and 3 sts. 2 x. Make second half with reverse shapings.

**FRONT:** (Figure I). Cast on 104 sts.

**ROWS 1-21:** Work even. After ROW 21 cast on 27 sts. on the left side.

**ROWS 22-154:** Increase 1 st. on the right side after ROW 62 and again on every following 18th row 5 x. (137 sts.)

**ROWS 155-254:** Work even.

**ROWS 255-334:** Decrease 1 st. on the right side after ROW 254, then again on every following 8th row 3 x, on every 6th row 5 x and on every 4th row 6 x. (122 sts.)

**ROWS 335-350:** Work even.

**ROWS 351-444:** Increase 1 st. on the right side after ROW 350 and again on every following 10th row 6 x. (129 sts.)

**ROWS 445-476:** ARMHOLE SHAPING: Bind off 8 sts. on the right side, then on every other row bind off 6 sts. 1 x, 4 sts. 1 x, 3 sts. 2 x, 2 sts. 3 x, 1 st. 4 x and 1 st. on the next 4th and following 4th row. (93 sts.)

**ROWS 477-519:** Work even.

**ROWS 520-574:** NECK SHAPING: Bind off 27 sts. on the left side, then on every other row bind off 3 sts. 1 x, 2 sts. 2 x, 1 st. 4 x, on every next following 4th row 1 st. 3 x and on every following 6th row 1 st. 2 x. AT THE SAME TIME after ROW 554 and on every other row SHAPE SHOULDER by binding off 4 sts. 5 x and 5 sts. 6 x. Make second half with reverse shapings

**SLEEVE:** (Figure III). Cast on 85 sts.

**ROWS 1-30:** Decrease 1 st. on each side after ROWS 4, 8 and 12, then increase 1 st. on each side after ROWS 20, 24, and 28. After ROW 30 put the cast on sts. back on the machine behind the latches to form the hem.

**ROWS 31-166:** Increase 1 st. on each side after ROW 32,

then again on every following 4th row 32 x. (151 sts.)

**ROWS 167-186:** CAP SHAPING: On the right side (back of sleeve) and on every other row bind off 5 sts. 1 x, 4 sts. 1 x, 3 sts. 3 x, 2 sts. 5 x. On the left side (front of sleeve) and on every other row bind off 8 sts. 1 x, 6 sts. 1 x, 4 sts. 2 x, 3 sts. 2 x and 2 sts. 4 x.

**ROWS 187-240:** Bind off 1 st. beginning next 44 rows, 2 sts. beginning next 4 rows, 3 sts. beginning next 4 rows, 4 sts. beginning next 2 rows and after row 240 bind off the remaining 15 sts. Make second sleeve with reverse shaping.

**COLLAR:** Cast on 155 sts.

**ROWS 1-70:** Work even, 20 rows tension 3, 40 rows tension 4, then continue with tension 3.

**ROWS 71-78:** Alternately on each side put 12 needles 1 x, 14 needles 1 x, 18 needles 1 x and 22 needles 1 x into holding position. (See Notes to Knit By, inside back cover — SHORT ROWS).

**ROWS 79-80:** On the left side bring all needles into working position, knit 1 row. On the right side bring all needles into working position, knit 1 row, then bind off all sts. **FINISHING:** Follow directions for size 14/16 but make bust darts according to the diagram.

### WOMAN'S TWO PIECE DRESS, DK 7510



**SIZE:** 14/16. **MATERIAL:** 28 oz. dark red KNITKING Subita 2 x 4, 2 yards of half inch wide gold trim and 1 yard 45" Taffeta to line skirt. **TENSION:** KNITKING 6 to 8. **GAUGE:** Stockinette stitch 16 sts. 2", 22 rows 2". Pattern Stitch 17 sts. 2", 34 rows 2". The omitted sts. in the pattern are counted as sts. in the gauge and directions.

**PATTERN:** Stockinette stitch; Inset: Eyelet design. The 2nd, 6th, 8th, 12th, etc. needles are in the non-working position. 1. Knit 4 rows.

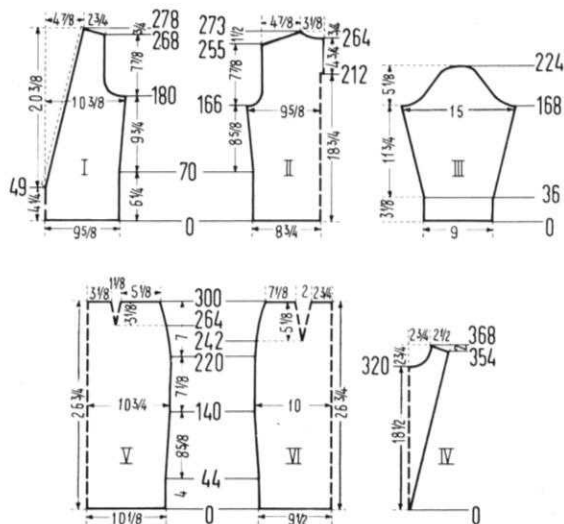
2. Insert the latch tool 4 rows below, between the 1st and 3rd needle, bring latch tool up behind the cross threads, grasp the upper cross thread and latch through and hang onto the 3rd needle. Latch up the 6th st. in the same manner and hang onto the 5th needle. Latch up the 8th and 12th sts. the same way and hang onto the 9th and 11th needle respectively. Repeat steps 1 to 2 throughout.

**SKIRT: BACK** (Figure VI): Cast on 154 sts.

**ROWS 1-140:** Increase 1 st. on each side after ROW 44, then again on every following 24th row 3 x and on the next following 22nd row 1 x. (164 sts.)

**ROWS 141-220:** Work even.

**ROWS 221-300:** Decrease 1 st. on each side after ROW 220, then again on every following 10th row 2 x, on



every 8th row 3 x, on every 6th row 3 x, and on every 4th row 3 x. AT THE SAME TIME, after ROW 242 for the DARTS decrease 2 sts. on each side and again every following 8th row 5 x and every next following 6th row 2 x. To do this, on each side, for the first decrease put the 48th and 50th sts. on the 49th needle, then move the end sts. inwards to fill the empty needles. The next decreases lie directly above. After ROW 300 bind off the remaining 108 sts.

**SKIRT FRONT:** (Figure V). Cast on 167 sts.

**ROWS 1-140:** Increase 1 st. on each side after ROW 44, then again on every following 24th row 3 x and on the next following 22nd row 1 x. (177 sts.).

**ROWS 141-220:** Work even.

**ROWS 221-300:** Decrease 1 st. on each side after ROW 220, then again on every following 10th row 2 x, on every 8th row 3 x, on every 6th row 3 x and on every 4th row 3 x. AT THE SAME TIME, after ROW 264 for the DARTS decrease 2 sts. on each side and again every following 8th row 4 x. To do this, on each side, for the first decrease put the 59th and 61st sts. on the 60th needle, then move the end sts. inwards to fill the empty needles. The next decreases lie directly above. After ROW 300 bind off the remaining 133 sts.

**BLOUSE: BACK** (Figure II): Cast on 144 sts.

**ROWS 1-166:** Increase 1 st. on each side after ROW 70 and again on every following 14th row 6 x. (158 sts.).

**ROWS 167-188:** ARMHOLE SHAPING: Bind off 4 sts. beginning next 2 rows, 3 sts. beginning next 2 rows, 2 sts. beginning next 4 rows, 1 st. beginning next 6 rows and 1 st. on each side of the next 4th and following 4th row. (126 sts.).

**ROWS 189-211:** Work even. After ROW 211 put 63 needles on the right side into holding position and complete the left half first.

**ROWS 212-255:** After ROW 212 cast on 3 sts. on the right side for facing. To do this put 3 sts. from the right half on a stitch holder.

**ROWS 256-273:** SHOULDER SHAPING: Bind off 4 sts. on the left side, then on every other row bind off 4 sts. 9 x. AT THE SAME TIME, after ROW 264 and on every other row SHAPE NECK by binding off 10 sts. 1 x, 7 sts. 1 x, 5 sts. 1 x and 4 sts. 1 x. Now move the Cam Box to the right side, turn the row counter to 211, bring all needles into working position, put the 3 sts. from the stitch holder back on the machine and complete the right half, following the directions from ROW 212-273 but reverse the sides.

**FRONT:** (Figure I). Cast on 158 sts.

**ROWS 1-48:** Work even. After ROW 48 put 79 needles on the left side into holding position and complete the right half first.

**ROWS 49-180:** FRONT SHAPING: After ROW 49 cast on 3 sts. on the left side. To do this, put 3 sts. from the left half on a stitch holder. For the front shaping decrease 1 st. on the left side after ROW 50 and again on every following 5th row 12 x and every next following 6th row 11 x by always putting the 7th st. onto the 6th needle, then moving the end sts. in to fill the empty needle. AT THE SAME TIME, increase 1 st. on the right side after ROW 70 and again every following 14th row 6 x.

**ROWS 181-202:** ARMHOLE SHAPING: Bind off 6 sts. on the right side, then on every other row bind off 4 sts. 1 x, 3 sts. 2 x, 2 sts. 1 x, 1 st. 4 x and 1 st. 1 x on the following 4th row. AT THE SAME TIME continue to shape the front by decreasing 1 st. after ROW 182 then again every following 6th row 3 x.

**ROWS 203-278:** Continue to shape the front by decreasing 1 st. after ROW 206 and again every following 6th row 11 x. AT THE SAME TIME after ROW 268 and on every other row SHAPE SHOULDER by binding off 4 sts. 5 x and 6 sts. 1 x. Now move the Cam Box to the left side, turn row counter to 48, bring all needles into working position, put the 3 sts. from the stitch holder back on the machine and complete the left half. Follow the instructions from ROW 49-278, but reverse the sides.

**SLEEVE:** (Figure III). Cast on 73 sts.

**ROWS 1-168:** Increase 1 st. on each side after ROW 36, then again every following 4th row 6 x and every next following 6th row 17 x. (121 sts.).

**ROWS 169-182:** CAP SHAPING: On the right side (back of

sleeve) and on every other row bind off 4 sts. 1 x, 3 sts. 2 x, 2 sts. 3 x and 1 st. 1 x. On the left side, (front of sleeve) and on every other row bind off 5 sts. 1 x, 4 sts. 2 x, 3 sts. 2 x and 2 sts. 2 x.

**ROWS 183-224:** Bind off 1 st. beginning next 4 rows and 2 sts. beginning next 2 rows. Repeat these bind offs 5 x, then bind off 2 sts. beginning next 2 rows, 3 sts. beginning next 2 rows, 5 sts. beginning next 2 rows and after row 224 bind off the remaining 13 sts. Make second sleeve with reverse shaping.

**INSET:** (Figure IV). Cast on 7 sts., leaving the 2nd and 6th needle in the non-working position, and work the Eyelet Design. (When increasing and decreasing be sure to count the omitted sts. in the pattern).

**ROWS 1-368:** Increase 1 st. on each side after ROW 8, then again on every following 8th row 39 x and on every following 10th row 2 x. AT THE SAME TIME, after ROW 320, bind off the center 11 sts. for NECK (See Notes to Knit By, inside back cover) then on every 4th row on neck side bind off 4 sts. 1 x, 3 sts. 2 x, 2 sts. 2 x, 1 st. 2 x and 1 st. on the next 6th and following 6th row. AT THE SAME TIME after ROW 354 and on every other row SHAPE SHOULDER by binding off 2 sts. 2 x and 3 sts. 6 x.

**COLLAR:** Cast on 115 sts. and work 6 rows tension 7, 6 rows tension 6, 12 rows tension 5, 6 rows tension 6 and 6 rows tension 7. (36 rows). Bind off all sts.

**FINISHING: SKIRT:** Join the front and back at sides, leaving an 8" opening on the left side for the zipper. Make a narrow hem around this opening.

Turn under 3 rows on upper edge and baste to wrong side, then sew an elastic band against the basting line on inside. Turn under 2" on lower edge and hem to wrong side. Sew in zipper, hooks and eyes. Line the skirt with taffeta.

**BLOUSE:** Turn under 3 sts. of front shaping and hem to wrong side. With wrong sides facing you, sew inset to blouse along seamline. Join front and back section at sides and shoulder, easing in the fullness at bustline of front section. Turn under 1½" on lower edge and sleeve edges and hem to wrong side. Turn under 3 sts. on back opening and hem to wrong side. Sew cast on edge of collar to inside and bound off edge to outside of neckline. Sew in zipper. Sew gold trim to collar and front shaping. (See picture.)

## MAN'S JACKET, HP 3492



**SIZE:** 44/46. **MATERIAL:** 21 oz. grey KNITKING Subita 2 x 4. **TENSION:** KNITKING 6 to 8. **GAUGE:** Stockinette Stitch 16 sts. 2", 21 rows 2". K1, P1, Ribbing 16 sts. 2", 25 rows 2". **PATTERN:** Stockinette Stitch.

**EDGES:** K1, P1, Ribbing.

**BACK:** (Figure II). Cast on 185 sts.

**ROWS 1-20:** K1, P1, Ribbing. After ROW 20 transfer the ribber sts. to main machine and continue with stockinette st

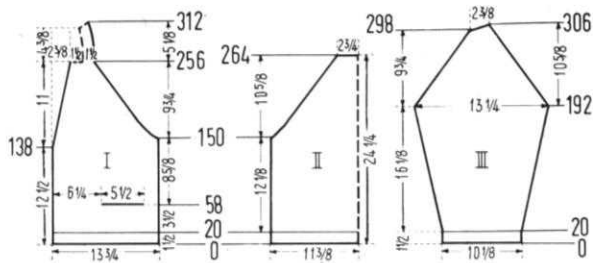
**ROWS 21-150:** Work even.

**ROWS 151-264:** RAGLAN SHAPING: Decrease 2 sts. on each side, then again on every other row 12 x and 1 st. on each side 44 x. When decreasing 2 sts. at a time, on each side hang the 4th and 5th stitches onto the 6th needle and when decreasing 1 st. at a time, on each side hang the 4th st. onto the 5th needle. Always move the 3 end sts. inward to fill the empty needles. After ROW 264 bind off the remaining 45 sts.

**FRONT:** (Figure I). Cast on 111 sts.

**ROWS 1-20:** K1, P1, Ribbing. After ROW 20 transfer the ribber sts. to main machine and continue with stockinette stitch.

**ROWS 21-58:** Work even. After ROW 58 work the pocket. On the left side put 50 needles and on the right side put 16 needles into holding position. Over the needles in working position work 8 rows K1, P1, Ribbing, then bind off these sts. Now cast on 45 sts. over these empty needles for the pocket lining and work 38 rows stockinette st., then move the Cam Box to the right side, bring all needles back into working position, turn Row Counter to 58 and



continue working over all needles.

**ROWS 59-138:** Work even.

**ROWS 139-248:** FRONT and RAGLAN SHAPING: Decrease 1 st. on the **left side** after ROW 138 and again on every following 6th row 18 x. Counting from the left side, always hang the 27th st. onto the 26th needle and move the end sts. inward to fill the empty needle. AT THE SAME TIME, after ROW 150 and on every other row, SHAPE RAGLAN on the **right side** by decreasing 2 sts. 13 x and 1 st. 36 x as you did on the back.

**ROWS 249-256:** Decrease 1 st. on every other row 4 x. Counting from the left side, always hang the 27th st. onto the 26th needle and move the end sts. inward to fill the empty needle. After ROW 256 increase 1 st. on the **right side** and continue working over 27 needles for the back facing.

**ROWS 257-272:** Work even.

**ROWS 273-282:** Work Short Rows. (See inside back cover). On the **left side** put 22 needles into holding position, knit 2 rows. Bring all needles into working position, knit 1 row. On the **right side** put 22 needles into holding position, knit 2 rows. Bring all needles into working position, knit 5 rows.

**ROWS 283-312:** Repeat rows 273-282 3 x, but the first time put 18 needles the second time 22 needles and the 3rd time 18 needles into holding position. After ROW 312 put the 27 sts. on a stitch holder.

Make second front section with reverse shapings and work buttonholes after ROWS 9, 51, 91, and 131 over the 3rd-7th and 20th-24th needles.

**SLEEVE:** (Figure III). Cast in 83 sts.

**ROWS 1-20:** K1, P1, Ribbing. After ROW 20 transfer the ribber sts. to main machine and continue with stockinette stitch.

**ROWS 21-192:** Increase 1 st. on **each side** after ROW 20 and again every following 6th row 28 x. (141 sts.)

**ROWS 193-298:** RAGLAN SHAPING: Decrease 2 sts. on **each side**, then again on every other row 5 x and 1 st. on **each side** 47 x as you did on the back.

**ROWS 299-306:** Short Rows. On the **left side** put 3 needles 1 x and 4 needles 3 x into holding position and on the **right side** decrease 1 st. on every other row 4 x more for RAGLAN SHAPING. After ROW 306 bring all needles into working position and bind off all 19 sts.

**FINISHING:** Join front and back section at sides. Sew sleeves together and weave to front and back section 1 st. in from each edge. On wrong side, sew pocket lining against jacket. Sew sides of pocket edging to jacket. Weave facing at center back and sew to neckline Turn under 13 sts. around fronts and neckline and hem to wrong side. Finish buttonholes, sew on buttons.

## CANADIAN READERS

Please note that KNITKING dealers based in the U.S.A. are unable to sell machines and accessories to residents of Canada. They are also unable to sell parts and service. Would all Canadian readers please contact the following appointed KNITKING dealer.

Easy Knit of Canada Ltd., 272 Yonge Street  
Toronto 1, Canada

## TWINSET, DP 7507



**SIZE:** 14/16 and 18/20. **MATERIAL:** 28 oz. (31½ oz.) rose and 3½ oz. black KNITKING Subita 2 x 4. **TENSION:** KNITKING 6 to 8. **GAUGE:** Stockinette stitch 15 sts. 2", 21 rows 2". K1, P1, Ribbing 15 sts. 2", 24 rows 2".

**PATTERN:** Pullover: Stockinette st., 18 rows rose and 2 rows black.

**EDGES:** K1, P1, Ribbing. **JACKET:** Stockinette stitch. **COLLAR** and **EDGES:** K1, P1, Ribbing.

**SIZE: 14/16. PULLOVER: BACK** (Figure II). Cast on 147 sts.

**ROWS 1-14:** K1, P1, Ribbing. After ROW 14 transfer the ribber sts. to main machine, increase 1 st. on the **right side** and continue with stockinette st. and the striped pattern but at first working only 6 rows of rose

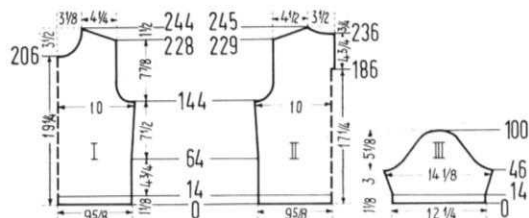
**ROWS 15-144:** Increase 1 st. on **each side** after ROW 64 and again on every following 26th row 2 x. (154 sts.)

**ROWS 145-166:** ARMHOLE SHAPING: Bind off 4 sts. beginning next 2 rows, 3 sts. beginning next 4 rows, 2 sts. beginning next 4 rows, 1 st. beginning next 8 rows and 1 st. on each side of the following 4th row. (116 sts.)

**ROWS 167-185:** Work even. Now put 58 sts. on the **right side** into holding position and complete the left half first

**ROWS 186-229:** After ROW 186 cast on 3 sts. on the **right side** for opening facing. To do this, put 3 sts. from the **right half** on a stitch holder.

**ROWS 230-245:** SHOULDER SHAPING: Bind off 3 sts. on the **left side**, then on every other row bind off 3 sts. 1 x and 4 sts. 7 x. AT THE SAME TIME after ROW 236 and on every other row SHAPE NECK by binding off 10 sts. 1 x, 6 sts. 2 x and 5 sts. 1 x. Now move the Cam Box to the right side, turn the row counter to 185, bring all needles back into working position, put the 3 sts. from the stitch holder back on the machine and finish the right half following the instructions from row 185-245 but reversing the sides.



**FRONT:** (Figure I). Work the front the same as the back to ROW 206, but omit the opening. After ROW 206 bind off the center 12 sts. for NECK (See Notes to Knit By, inside back cover). then on every other row on Neck Side bind off 4 sts. 1 x, 3 sts. 2 x, 2 sts. 1 x, 1 st. 3 x and on every following 4th row 1 st. 3 x. AT THE SAME TIME shape SHOULDER after ROW 228 and on every other row by binding off 3 sts. 2 x and 4 sts. 7 x.

**SLEEVE:** (Figure III). Make two. Cast on 93 sts.

**ROWS 1-14:** K1, P1, Ribbing. After row 14 transfer the ribber sts. to main machine and continue with stockinette stitch and the striped pattern, but at first working only 6 rows of rose.

**ROWS 15-46:** Increase 1 st. on **each side** after ROW 16 and again every following 4th row 6 x. (107 sts.)

**ROWS 47-100:** CAP SHAPING: Bind off 4 sts. beginning next 4 rows, 3 sts. beginning next 4 rows, 2 sts. beginning next 4 rows, 1 st. beginning next 34 rows, 2 sts. beginning next 2 rows, 3 sts. beginning next 2 rows, 4 sts. beginning next 4 rows and after ROW 100 bind off the remaining 11 sts.

**NECKBAND:** Cast on 131 sts. K1, P1, Ribbing for 12 rows, then bind off all sts.

**JACKET: BACK:** (Figure V). Cast on 153 sts. with black. **ROWS 1-20:** K1, P1, Ribbing, 4 rows black and 16 rows rose. After ROW 20 transfer the ribber sts. to main machine

and continue with stockinette st.

**ROWS 21-150:** Increase 1 st. on each side after ROW 66 and again on every following 28th row 2 x. (159 sts.).

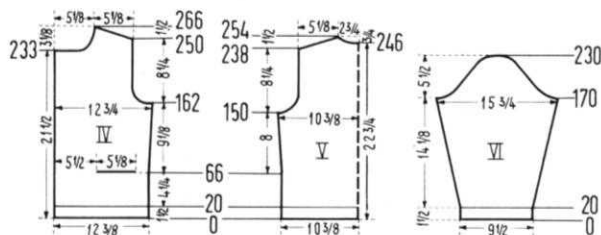
**ROWS 151-172:** ARMHOLE SHAPING: Bind off 5 sts. beginning next 2 rows, 4 sts. beginning next 2 rows, 3 sts. beginning next 2 rows, 2 sts. beginning next 2 rows, 1 st. beginning next 6 rows and 1 st. on each end of the next 4th and following 4th row. (121 sts.).

**ROWS 173-238:** Work even.

**ROWS 239-254:** SHOULDER SHAPING: Bind off 4 sts. beginning next 8 rows. After ROW 246 bind off the center 13 sts. for NECK, (See Notes to Knit By, inside back cover). Bind off 4 sts. on shoulder edge and continue to shape shoulder on every other row by binding off 4 sts. 1 x and 5 sts. 3 x. AT THE SAME TIME, shape NECK on every other row by binding off 6 sts. 1 x, 5 sts. 1 x and 4 sts. 1 x.

**FRONT:** (Figure IV). Cast on 95 sts. with black.

**ROWS 1-20:** K1, P1, Ribbing, 4 rows black and 16 rows rose and after ROW 10 work buttonholes over the 3-6 and 19-22 needles counting from the left side. After ROW 20 transfer the ribber sts. to main machine and continue with stockinette st.



**ROWS 21-66:** Work even, making buttonholes after ROW 41 over the same needles. After ROW 66 work the pocket. On the left side put 42 needles and on the right side put 14 needles into holding position. Over the 39 needles in working position work K1, P1, Ribbing, 8 rows rose and 3 rows black, then bind off these sts. Now cast on 39 sts. over these empty needles for the pocket lining and work 46 rows stockinette st., then move the Cam Box to the right side, bring all needles back into working position, turn row counter to 66 and continue working over all needles.

**ROWS 67-162:** Increase 1 st. on the right side after ROW 66 and again on every following 28th row 2 x and AT THE SAME TIME work buttonholes after ROWS 72, 103 and 134. (98 sts.).

**ROWS 163-184:** ARMHOLE SHAPING: Bind off 6 sts. on the right side, then on every other row bind off 4 sts. 1 x, 3 sts. 1 x, 2 sts. 1 x, 1 st. 3 x and on every following 4th row 1 st. 2 x. AT THE SAME TIME work buttonholes after ROW 165. (78 sts.).

**ROWS 185-233:** Work even, making buttonholes after ROWS 196 and 227.

**ROWS 234-266:** NECK SHAPING: Bind off 24 sts. on the left side, then on every other row bind off 3 sts. 2 x, 2 sts. 2 x, 1 st. 2 x and on every following 4th row 1 st. 3 x. AT THE SAME TIME, after ROW 250 and on every other row SHAPE SHOULDER by binding off 4 sts. 6 x and 5 sts. 3 x. Make second front section with reverse shapings, but omit buttonholes.

**SLEEVE:** (Figure VI). Make two. Cast on 73 sts. with black.

**ROWS 1-20:** K1, P1, Ribbing, 4 rows black and 16 rows rose. After ROW 20 transfer the ribber sts. to main machine and continue with stockinette st.

**ROWS 21-170:** Increase 1 st. on each side after ROW 24 and again on every following 6th row 23 x. (121 sts.).

**ROWS 171-230:** CAP SHAPING: Bind off 5 sts. beginning next 2 rows, 4 sts. beginning next 2 rows, 3 sts. beginning next 4 rows, 2 sts. beginning next 6 rows, 1 st. beginning next 2 rows, 2 sts. beginning next 2 rows, 1 st. beginning next 2 rows, 2 sts. beginning next 2 rows, 1 st. beginning next 30 rows, 2 sts. beginning next 2 rows, 3 sts. beginning next 2 rows, 4 sts. beginning next 4 rows and after ROW 230 bind off the remaining 11 sts.

**COLLAR:** Cast on 175 sts. with black and work K1, P1, Ribbing.

**ROWS 1-42:** Work even, 4 rows with black then continue with rose, 16 rows tension 8, 16 rows tension 7, then continue with tension 6.

**ROWS 43-48:** Alternately on each side put 30 needles 1 x and 18 needles 2 x into holding position. (See Notes to Knit By, inside back cover — SHORT ROWS).

**ROWS 49-50:** On the left side bring all needles into working position, knit 1 row. On the right side bring all needles into working position, knit 1 row, then bind off all sts.

**FINISHING: PULLOVER:** Join front and back at sides and shoulder. Sew sleeves together and set in. Turn under 3 sts. on back opening and hem to wrong side. Sew neckband to neckline. Sew in zipper.

**JACKET:** Join fronts and back at sides and shoulders, easing in the fullness at bustline of front sections. Sew sleeves together and set in. Turn under 1 1/2" at front edges, matching button holes, and hem to wrong side. On wrong side, sew pocket lining against jacket. Sew sides of pocket edging to jacket. Sew collar to neckline leaving 3/4" on each side of jacket free. Finish buttonholes, sew on buttons.

**SIZE: 18/20. PULLOVER: BACK** (Figure II). Cast on 161 sts.

**ROWS 1-14:** K1, P1, Ribbing. After ROW 14 transfer the ribber sts. to main machine, increase 1 st. on the right side and continue with stockinette st. and the striped pattern, but first working only 6 rows rose.

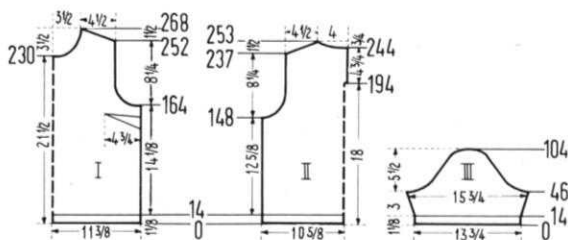
**ROWS 15-148:** Work even.

**ROWS 149-178:** ARMHOLE SHAPING: Bind off 4 sts. beginning next 2 rows, 3 sts. beginning next 2 rows, 2 sts. beginning next 6 rows, 1 st. beginning next 8 rows and 1 st. on each end of every following 4th row 3 x. (122 sts.).

**ROWS 179-193:** Work even. Now put 61 sts. on the right side into holding position, and complete the left half first.

**ROWS 194-237:** After ROW 194 cast on 3 sts. on the right side for opening facing. To do this, put 3 sts. from the right half on a stitch holder.

**ROWS 238-253:** SHOULDER SHAPING: Bind off 3 sts. on the left side, then on every other row bind off 3 sts. 1 x and



4 sts. 7 x. AT THE SAME TIME, after ROW 244 and on every other row SHAPE NECK by binding off 12 sts. 1 x, 7 sts. 1 x, 6 sts. 1 x and 5 sts. 1 x. Now move the Cam Box to the right side, turn the row counter to 193, bring all needles back into working position, put the 3 sts. from the stitch holder back on the machine and finish the right half following the instructions from ROW 194-253 but reversing the sides.

**FRONT:** (Figure I). Cast on 173 sts.

**ROWS 1-14:** K1, P1, Ribbing. After ROW 14 transfer the ribber sts. to main machine, increase 1 st. on the right side and continue with stockinette st. and the striped pattern, but first working only 6 rows rose.

**ROWS 15-164:** Work even.

**ROWS 165-188:** ARMHOLE SHAPING: Bind off 6 sts. beginning next 2 rows, 4 sts. beginning next 2 rows, 3 sts. beginning next 4 rows, 2 sts. beginning next 6 rows, 1 st. beginning next 6 rows and 1 st. on each end of the next following 4th row. (122 sts.).

**ROWS 189-230:** Work even.

**ROWS 231-268:** NECK SHAPING: Bind off the center 14 sts. (See Notes to Knit By, inside back cover) then on every other row on neck side bind off 4 sts. 1 x, 3 sts. 2 x, 2 sts. 2 x, 1 st. 3 x and on every following 4th row 1 st. 3 x. AT THE SAME TIME, shape SHOULDER after ROW 252 and on every other row by binding off 3 sts. 2 x and 4 sts. 7 x.

**SLEEVE:** (Figure III). Cast on 105 sts.

**ROWS 1-14:** K1, P1, Ribbing. After ROW 14 transfer the ribber sts. to main machine and continue with stockinette st. and the striped pattern, but first working only 6 rows rose

**ROWS 15-46:** Increase 1 st. on each side after ROW 16 and again every following 4th row 6 x. (119 sts.).

**ROWS 47-60:** CAP SHAPING: On the right side (back of sleeve) and on every other row bind off 5 sts. 1 x, 4 sts. 1 x, 3 sts. 2 x and 2 sts. 3 x. On the left side (front of sleeve) and on every other row bind off 7 sts. 1 x, 5 sts. 1 x, 4 sts. 1 x, 3 sts. 1 x and 2 sts. 3 x.

**ROWS 61-104:** Bind off 1 st. beginning next 36 rows, 2 sts. beginning next 2 rows, 3 sts. beginning next 2 rows, 4 sts. beginning next 4 rows and after row 104 bind off the remaining 11 sts. Make second sleeve with reverse shaping.

**NECKBAND:** Cast on 145 sts. K1, P1, Ribbing for 12 rows, then bind off all sts.

**JACKET BACK:** (Figure V). Cast on 169 sts. with black. **ROWS 1-20:** K1, P1, Ribbing, 4 rows black and 16 rows rose. After ROW 20 transfer the ribber sts. to main machine and continue with stockinette st.

**ROWS 21-154:** Work even.

**ROWS 155-180:** ARMHOLE SHAPING: Bind off 4 sts. beginning next 2 rows, 3 sts. beginning next 4 rows, 2 sts. beginning next 6 rows, 1 st. beginning next 6 rows and 1 st. at each end of the next 4th and following 4th row. (127 sts.).

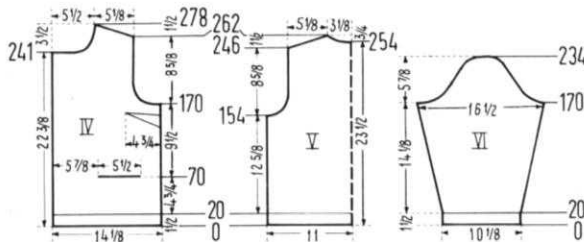
**ROWS 181-246:** Work even.

**ROWS 247-262:** SHOULDER SHAPING: Bind off 4 sts. beginning next 8 rows. After ROW 254 bind off the center 15 sts. for NECK. (See Notes to Knit By, inside back cover). Bind off 4 sts. at shoulder edge and continue to shape shoulder on every other row by binding off 4 sts. 1 x and 5 sts. 3 x. AT THE SAME TIME shape NECK on every other row by binding off 7 sts. 1 x, 6 sts. 1 x and 4 sts. 1 x.

**FRONT:** (Figure IV): Cast on 107 sts. with black.

**ROWS 1-20:** K1, P1, Ribbing, 4 rows black and 16 rows rose and after ROW 10 work buttonholes over the 3-6 and 19-22 needles counting from the left side. After ROW 20 transfer the ribber sts. to the main machine and continue with stockinette stitch.

**ROWS 21-70:** Work even, making buttonholes after ROW 42 over the same needles. After ROW 70 work the pocket. On the left side put 44 needles and on the right side put 22 needles into holding position. Over the 41 needles in working position work K1, P1, Ribbing, 8 rows rose



and 3 rows black, then bind off these sts. Now cast on 41 sts. over these empty needles for the pocket lining and work 50 rows stockinette st., then move the Cam Box to the right side, bring all needles back into working position, turn row counter to 70 and continue working over all needles.

**ROWS 71-170:** Work even and make buttonholes after ROWS 74, 106 and 138.

**ROWS 171-192:** ARMHOLE SHAPING: Bind off 8 sts. on the right side, then on every other row bind off 4 sts. 1 x, 3 sts. 2 x, 2 sts. 2 x, 1 st. 3 x and on the following 4th row 1 st. 1 x. AT THE SAME TIME work buttonholes after ROW 170. (81 sts.).

**ROWS 193-241:** Work even and make buttonholes after ROWS 202 and 234.

**ROWS 242-278:** NECK SHAPING: Bind off 24 sts. on the left side, then on every other row bind off 3 sts. 2 x, 2 sts. 3 x, 1 st. 4 x and on every following 4th row 1 st. 2 x. AT THE SAME TIME, after ROW 262 and on every

other row SHAPE SHOULDER by binding off 4 sts. 6 x and 5 sts. 3 x. Make second front section with reverse shapings but omit buttonholes.

**SLEEVE:** (Figure VI). Cast on 77 sts. with black.

**ROWS 1-20:** K1, P1, Ribbing, 4 rows black and 16 rows rose. After ROW 20 transfer the ribber sts. to main machine and continue with stockinette st.

**ROWS 21-170:** Increase 1 st. on each side after ROW 24 and again on every following 6th row 23 x (125 sts.).

**ROWS 171-182:** CAP SHAPING: On the right side (back of sleeve) and on every other row bind off 5 sts. 1 x, 4 sts. 1 x, 3 sts. 2 x, and 2 sts. 2 x. On the left side (front of sleeve) and on every other row bind off 8 sts. 1 x, 5 sts. 1 x, 4 sts. 1 x, 3 sts. 1 x and 2 sts. 2 x.

**ROWS 183-234:** Bind off 1 st. beginning next 44 rows, 2 sts. beginning next 2 rows, 3 sts. beginning next 2 rows, 4 sts. beginning next 4 rows and after row 234 bind off the remaining 12 sts. Make second sleeve with reverse shapings.

**COLLAR:** Cast on 185 sts. with black. Work K1, P1, Ribbing.

**ROWS 1-42:** Work even, 4 rows black then continue with rose, 16 rows tension 8, 16 rows tension 7, then continue with tension 6.

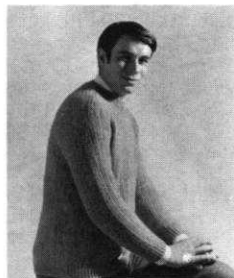
**ROWS 43-48:** Alternately on each side put 36 needles 1 x and 18 needles 2 x into holding position. (See Notes to Knit By, inside back cover — SHORT ROWS).

**ROWS 49-50:** On the left side bring all needles into working position, knit 1 row. On the right side bring all needles into working position, knit 1 row, then bind off all sts.

**FINISHING:** PULLOVER. Follow directions for Size 14/16, but make bust darts according to the diagram.

**JACKET:** Follow direction for Size 14/16, but make bust darts according to the diagram.

## MAN'S PULLOVER, HP 3493



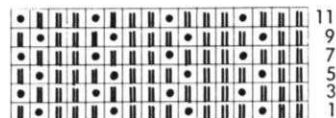
**SIZE:** 42/44 and 46/48. **MATERIAL:** 25 oz. (28 oz.) green KNITKING Starlite Crepe. **TENSION:** KNITKING 8 to 10. **GAUGE:** Pattern Stitch 10 sts. 2", 30 rows 2". K1, P1, Ribbing 10 sts. 2", 22 rows 2".

**PATTERN:** Holding Position Design according to chart. Worn on the knit side. Put the Gate Cam Release Lever at the needle heels. 1. Following the chart, put the designated needles into holding position, and knit 1 row. 2. Put the needles in holding position back into working position, knit 1 row. REPEAT Steps 1 and 2 throughout. KNITKING Dial-A-Stitch machines use Wheel 3. Push in the right retractor button to retract needles automatically. After each 100 rows, this pattern must be pulled and stretched in all directions, while still on the machine. **EDGES:** K1, P1, Ribbing.

**SIZE:** 42/44. **BACK:** (Figure II). Cast on 114 sts.

**ROWS 1-18:** K1, P1, Ribbing. After ROW 18 transfer the ribber sts. to main machine, put the Gate Cam Release Lever to the needle heels and continue with holding position design.

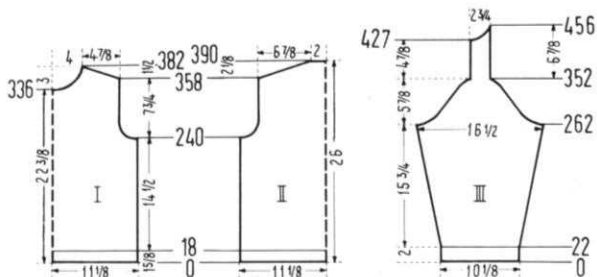
**ROWS 19-240:** Work even.



**ROWS 241-270:** ARMHOLE SHAPING: Bind off 3 sts. on each side then make bind offs on each side every following 4th row, 3 sts. 1 x, 2 sts. 1 x, 1 st. 2 x and on every following 6th row 1 st. 2 x. (90 sts.).

**ROWS 271-358:** Work even.

**ROWS 359-390:** SHOULDER SHAPING: Bind off 2 sts. beginning next 26 rows, 3 sts. beginning next 6 rows and



after ROW 390 bind off the remaining 20 sts.

**FRONT:** (Figure I). Work the front the same as the back to ROW 336.

**ROWS 337-382:** NECK SHAPING: Bind off the center 8 sts. (See Notes to Knit By, inside back cover), then on every following 4th row on Neck Side bind off 3 sts. 2 x, 2 sts. 3 x, 1 st. 3 x and on the following 6th row 1 st. 1 x. AT THE SAME TIME, after ROW 358 and on every other row SHAPE SHOULDER by binding off 1 st. 1 x and 2 sts. 12 x.

**SLEEVE:** (Figure III). Cast on 52 sts.

**ROWS 1-22:** K1, P1, Ribbing. After ROW 22 transfer the ribber sts. to main machine, put the Gate Cam Release Lever to the needle heels and continue with holding position design, putting first the 2nd, 6th, 10th, etc. needle into holding position.

**ROWS 23-262:** Increase 1 st. on each side after ROW 22, then again on every following 16th row 7 x and on every following 14th row 8 x. (84 sts.).

**ROWS 263-352:** CAP SHAPING: Bind off 4 sts. on each side, then make bind offs on each side every following 4th row, 3 sts. 2 x, 2 sts. 1 x, 1 st. 16 x, 2 sts. 2 x and 3 sts. 1 x. After ROW 352 continue working over the remaining 14 sts. for the shoulder section.

**ROWS 353-427:** Work even.

**ROWS 428-456:** NECK SHAPING: Bind off 4 sts. on the left side, then on every following 4th row bind off 2 sts. 2 x, 1 st. 3 x and on the following 6th row 1 st. 1 x. Hang remaining 2 sts. together and bind off. Make second sleeve with reverse shaping.

**NECK BAND:** Cast on 173 sts. Work 14 rows K1, P1, Ribbing, 7 rows with tension 8 and 7 rows with tension 9, then bind off all sts.

**FINISHING:** Weave front and back section at sides, 1 st. in from each edge. Sew sleeves together and set in. Join shoulder section to front and back section. Sew short ends of neckband together. Sew bound off edge of neckband to neckline.

**SIZE 46-48:** BACK: (Figure II). Cast on 122 sts.

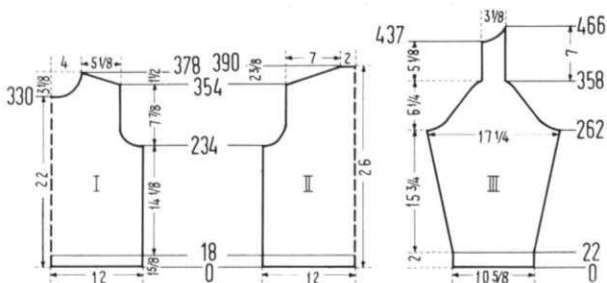
**ROWS 1-18:** K1, P1, Ribbing. After ROW 18 transfer the ribber sts. to main machine, put the Gate Cam Release Lever to the needle heels and continue with holding position design.

**ROWS 19-234:** Work even.

**ROWS 235-270:** ARMHOLE SHAPING: Bind off 3 sts. on each side, then make bind offs on each side every following 4th row, 3 sts. 1 x, 2 sts. 2 x, 1 st. 4 x and on the following 6th row 1 st. 1 x. (92 sts.).

**ROWS 271-354:** Work even.

**ROWS 355-390:** SHOULDER SHAPING: Bind off 2 sts. beginning next 36 rows and after ROW 390 bind off the remaining 20 sts.



**FRONT:** (Figure I). Work the front the same as the back to ROW 330.

**ROWS 331-378:** NECK SHAPING: Bind off the center 8 sts. (See Notes to Knit By, inside back cover) then on every following 4th row on Neck Side bind off 4 sts. 1 x, 3 sts. 1 x, 2 sts. 2 x, 1 st. 3 x and on every following 6th row 1 st. 2 x. AT THE SAME TIME, after ROW 354 and on every other row SHAPE SHOULDER by binding off 2 sts. 13 x.

**SLEEVE:** (Figure III): Cast on 54 sts.  
**ROWS 1-22:** K1, P1, Ribbing. After ROW 22 transfer the ribber sts. to main machine, put the Gate Cam Release Lever to the needle heels and continue with holding position design.

**ROWS 23-262:** Increase 1 st. on each side after ROW 22 and again on every following 14th row 16 x. (88 sts.).

**ROWS 263-358:** CAP SHAPING: Bind off 4 sts. on each side, then make binds on each side every following 4th row, 3 sts. 2 x, 2 sts. 1 x, 1 st. 17 x, 2 sts. 2 x, and 3 sts. 1 x. After ROW 358 continue working over the remaining 16 sts. for the shoulder section.

**ROWS 359-437:** Work even.

**ROWS 438-466:** NECK SHAPING: Bind off 4 sts. on the left side, then on every following 4th row bind off 3 sts. 1 x, 2 sts. 1 x, 1 st. 5 x then hang the remaining 2 sts. together and bind off.

**NECKBAND:** Cast on 179 sts. Work 14 rows K1, P1, Ribbing, 7 rows with tension 8 and 7 rows with tension 9, then bind off all sts.

**FINISHING:** Follow directions for Size 42/44.

## WOMAN'S PULLOVER, DP 7483



**SIZE:** 12/14 and 18/20. **MATERIAL:** 15 3/4 oz. (17 1/2 oz.) lime green KNITTING Subita 2 x 3. **TENSION:** KNITTING 5 to 7. **GAUGE:** Pattern Stitch 16 sts. 2", 26 rows 2". Stockinette Stitch and K1, P1, Ribbing 16 sts. 2", 24 rows 2". **PATTERN:** Eyelet Design according to chart. **SLEEVES** and **COLLAR:** Stockinette Stitch. **EDGES:** K1, P1, Ribbing.

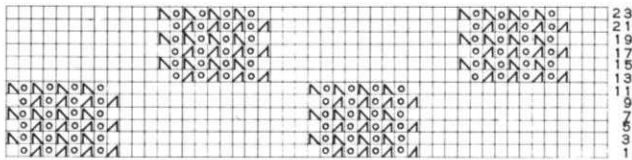
**SIZE:** 12/14. **BACK:** (Figure II). Cast on 159 sts.

**ROWS 1-14:** K1, P1, Ribbing. After ROW 14 transfer the ribber sts. to main machine and continue with stockinette st.

**ROWS 15-16:** Work even. Now start the eyelet design.

**ROWS 17-190:** Work even.

**ROWS 191-216:** ARMHOLE SHAPING: Bind off 4 sts. begin-



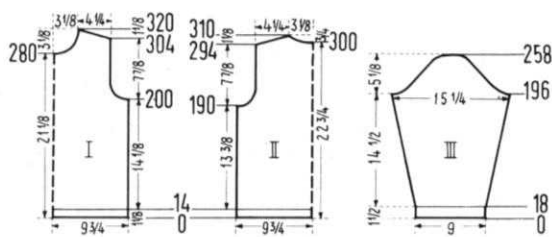
ning next 2 rows, 3 sts. beginning next 4 rows, 2 sts. beginning next 4 rows, 1 st. beginning next 4 rows and 1 st. on each end of every following 4th row 3 x. (121 sts.).

**ROWS 217-294:** Work even.

**ROWS 295-310:** SHOULDER SHAPING: Bind off 3 sts. beginning next 2 rows, 4 sts. beginning next 4 rows. After ROW 300 bind off the center 17 sts. for NECK, (See Notes to Knit By, inside back cover). Bind off 4 sts. at shoulder edge and continue to shape shoulder on every other row by binding off 4 sts. 5 x. AT THE SAME TIME shape NECK on every other row by binding off 5 sts. 2 x, 4 sts. 1 x and 3 sts. 1 x.

**FRONT:** (Figure I). Work the front the same as the back to ROW 190, but when starting the eyelet design begin with the 13th row of the chart.

**ROWS 191-200:** Work even.



**ROWS 201-226: ARMHOLE SHAPING:** Bind off 4 sts. beginning next 2 rows, 3 sts. beginning next 4 rows, 2 sts. beginning next 4 rows, 1 st. beginning next 4 rows and 1 st. on each end of every following 4th row 3 x. (121 sts.).

**ROWS 227-280:** Work even.

**ROWS 281-320: NECK SHAPING:** Bind off the center 15 sts. as you did on the back, then on NECK side on every other row bind off 4 sts. 1 x, 3 sts. 2 x, 2 sts. 1 x, 1 st. 2 x then on every following 4th row 1 st. 3 x and on the next following 6th row 1 st. 1 x. AT THE SAME TIME after ROW 304 and on every other row SHAPE SHOULDER by binding off 3 sts. 1 x and 4 sts. 8 x.

**SLEEVE:** (Figure III). Make two. Cast on 73 sts.

**ROWS 1-18:** K1, P1, Ribbing. After ROW 18 transfer the ribber sts. to main machine and continue with stockinette stitch.

**ROWS 19-196:** Increase 1 st. on each side after ROW 26, then again on every following 8th row 5 x and on every next following 6th row 20 x. (125 sts.).

**ROWS 197-258: CAP SHAPING:** Bind off 4 sts. beginning next 4 rows, 3 sts. beginning next 4 rows, 2 sts. beginning next 8 rows, 1 st. beginning next 34 rows, 2 sts. beginning next 6 rows, 3 sts. beginning next 2 rows, 4 sts. beginning next 2 rows, 5 sts. beginning next 2 rows and after row 258 bind off the remaining 11 sts.

**COLLAR:** Cast on 128 sts. and work stockinette st

**ROWS 1-10:** On the left side put 48 needles into holding position, knit 1 row. On the right side put 48 needles into holding position, knit 1 row. Now alternately on each side bring 12 needles 4 x back into working position. (See Notes to Knit By, inside back cover — SHORT ROWS).

**ROWS 11-44:** Increase 1 st. on each side after ROW 12 and again on every following 6th row 5 x. The increases are made between the 2nd and 3rd stitch by moving the 2 end sts. 1 needle outward, then with the work hook place the 3rd stitch from the previous row on the empty needle.

**ROWS 45-54:** Work even.

**ROWS 55-86:** Decrease 1 st. on each side after ROW 54 and again on every following 6th row 5 x by hanging the 3rd st. on the 2nd needle then moving the end sts. inward to fill the empty needle.

**ROWS 87-90:** Alternately on each side put 18 needles 2 x into holding position.

**ROWS 91-92:** On the left side bring all needles into working position, knit 1 row. On the right side bring all needles into working position, knit 1 row, then bind off all sts.

**FINISHING:** Weave front and back section at sides, 1 1/2 stitches in from each edge, easing in the fullness at bust-line of front section. Join shoulders. Sew sleeves together and set in. Fold collar in half and weave shaped edges together. Sew bound off edge of collar to outside and

cast on edge to inside of neckline.

**SIZE:** 18/20. **BACK:** (Figure II). Cast on 179 sts.

**ROWS 1-14:** K1, P1, Ribbing. After ROW 14 transfer the ribber sts. to main machine and continue with stockinette stitch.

**ROWS 15-16:** Work even. Now start the eyelet design beginning with the 15th square of the chart.

**ROWS 17-176:** Work even.

**ROWS 177-218: ARMHOLE SHAPING:** Bind off 4 sts. beginning next 2 rows, 3 sts. beginning next 2 rows, 2 sts. beginning next 4 rows, 1 st. beginning next 14 rows, then 1 st. on each end of the next 4th and following 4th row and 1 st. on each end of the next 6th and following 6th row. (135 sts.).

**ROWS 219-290:** Work even.

**ROWS 291-310: SHOULDER SHAPING:** Bind off 3 sts. beginning next 10 rows. After ROW 300 bind off the center 21 sts. (See Notes to Knit By, inside back cover). Bind off 4 sts. at shoulder edge and continue to shape shoulder on every other row by binding off 4 sts. 5 x. AT THE SAME TIME shape NECK on every other row by binding off 6 sts. 1 x, 5 sts. 1 x, 4 sts. 1 x and 3 sts. 1 x.

**FRONT** (Figure 1): Cast on 185 sts.

**ROWS 1-14:** K1, P1, Ribbing. After row 14 transfer the ribber sts. to main machine and continue with stockinette st.

**ROWS 15-16:** Work even. Now start the eyelet design, beginning with the 13th row and the 12th square of the chart.

**ROWS 17-196:** Work even.

**ROWS 197-222: ARMHOLE SHAPING:** Bind off 4 sts. beginning next 4 rows, 3 sts. beginning next 4 rows, 2 sts. beginning next 6 rows, 1 st. beginning next 8 rows and 1 st. on each end of the following 4th row (135 sts.).

**ROWS 223-284:** Work even.

**ROWS 285-330: NECK SHAPING:** Bind off the center 15 sts. as you did on the back, then on Neck side on every other row bind off 4 sts. 1 x, 3 sts. 2 x, 2 sts. 2 x, 1 st. 3 x, then on every following 4th row 1 st. 2 x and on every following 6th row 1 st. 2 x. AT THE SAME TIME after ROW 310 and on every other row SHAPE SHOULDER by binding off 3 sts. 5 x and 4 sts. 6 x.

**SLEEVE** (Figure III): Cast on 79 sts.

**ROWS 1-18:** K1, P1, Ribbing. After ROW 18 transfer the ribber sts. to main machine and continue with stockinette st.

**ROWS 19-196:** Increase 1 st. on each side after ROW 26 and again on every following 6th row 27 x. (135 sts.).

**ROWS 197-212: CAP SHAPING:** On the right side (back of sleeve) and on every other row bind off 4 sts. 2 x, 3 sts. 2 x, and 2 sts. 4 x. On the left side (front of sleeve) and on every other row bind off 5 sts. 1 x, 4 sts. 2 x, 3 sts. 3 x, and 2 sts. 2 x.

**ROWS 213-262:** Bind off 1 st. beginning next 38 rows, 2 sts. beginning next 4 rows, 3 sts. beginning next 4 rows, 4 sts. beginning next 2 rows, 5 sts. beginning next 2 rows and after ROW 262 bind off the remaining 11 sts. Make second sleeve with reverse shaping.

**COLLAR:** Cast on 140 sts. and work stockinette st.

**ROWS 1-10:** On the left side put 54 needles into holding position, knit 1 row. On the right side put 54 needles into holding position, knit 1 row. Now alternately on each side bring 14 needles 2 x and 13 needles 2 x back into working position. (See Notes to Knit By, inside back cover—Short Rows).

**ROWS 11-44:** Increase 1 st. on each side after ROW 12 and again on every following 6th row 5 x. The increases are made between the 2nd and 3rd stitch by moving the 2 end sts. 1 needle outward, then with the work hook place the 3rd stitch from the previous row on the empty needle.

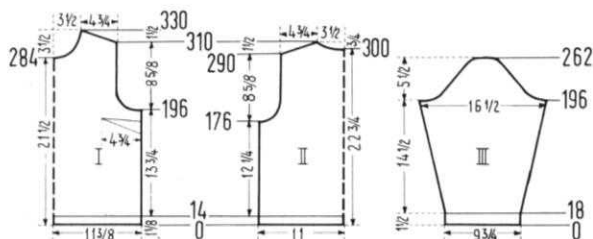
**ROWS 45-54:** Work even.

**ROWS 55-86:** Decrease 1 st. on each side after ROW 54 and again on every following 6th row 5 x by hanging the 3rd st. on the 2nd needle then moving the end sts. inward to fill the empty needle.

**ROWS 87-90:** Alternately on each side put 20 needles 2 x into holding position.

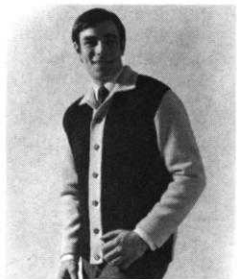
**ROWS 91-92:** On the left side bring all needles into working position, knit 1 row. On the right side bring all needles into working position, knit 1 row, then bind off all sts.

**FINISHING.** Follow directions for Size 12/14, but make bust darts according to the diagram.





## MAN'S JACKET, HP 3494



**SIZE:** 42/44. **MATERIAL:** 19 oz. beige **KNITTING** Starlite Crepe and 10 1/2 oz. brown **KNITTING** Subita 2 x 4. **TENSION:** **KNITTING** Stockinette Stitch 10. Pattern Stitch 6 to 8. **GAUGE:** Stockinette Stitch 14 sts. 2", 18 rows 2". Pattern Stitch 21 sts. 2", 28 rows 2". **PATTERN:** Stockinette Stitch worn on the knit side; Front Sections: Holding Position Design with ribber according to chart, worn on the purl side.

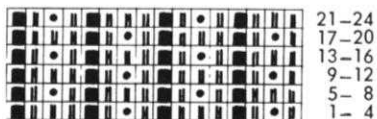
**BACK** (Figure II): Cast on 151 sts. with beige. Work stockinette st.

**ROWS 1-28:** Work even. After ROW 28 put the cast on sts. back on the machine behind the latches to form the hem.

**ROWS 29-174:** Work even.

**ROWS 175-194:** **ARMHOLE SHAPING:** Bind off 4 sts. beginning next 2 rows, 3 sts. beginning next 2 rows, 2 sts. beginning next 2 rows, 1 st. beginning next 6 rows and 1 st. on each end of the next 4th and following 4th row. (123 sts.)

**ROWS 195-260:** Work even.



**ROWS 261-274:** **SHOULDER SHAPING:** Bind off 4 sts. beginning next 2 rows and 5 sts. beginning next 2 rows. After ROW 264 bind off the center 15 sts. for **NECK** (See Notes to Knit By inside back cover). Bind off 5 sts. at **shoulder** and continue to **shape shoulder** on every other row by binding off 5 sts. 5 x. **AT THE SAME TIME** shape **NECK** on every other row by binding off 5 sts. 1 x, 4 sts. 1 x and 3 sts. 2 x. **FRONT** (Figure I): Cast on 111 sts. with brown.

**ROWS 1-14:** Knit 3, Purl 1 Ribbing with tension 5 to 7. After row 14 start the holding position design with tension 6 to 8.

**ROWS 15-260:** Work even.

**ROWS 261-290:** **ARMHOLE SHAPING:** Bind off 6 sts. on the right side, then on every other row bind off 5 sts. 1 x, 4 sts. 1 x, 3 sts. 1 x 2 sts. 3 x, 1 st. 2 x and on every following 4th row 1 st. 3 x. (82 sts.)

**ROWS 291-363:** Work even.

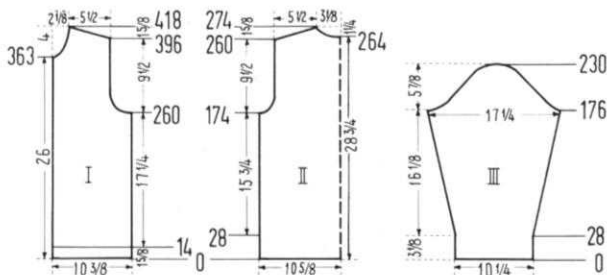
**ROWS 364-418:** **NECK SHAPING:** Bind off 4 sts. on the left side, then on every other row bind off 3 sts. 1 x, 2 sts. 3 x, 1 st. 4 x, then on every following 4th row 1 st. 3 x and on every next following 6th row 1 st. 3 x. **AT THE SAME TIME** after ROW 396 and on every other row **SHAPE SHOULDER** by binding off 4 sts. 1 x and 5 sts. 11 x. Make second front section with reverse shapings.

**SLEEVE** (Figure III): Cast on 73 sts. with beige. Work stockinette st.

**ROWS 1-28:** Work even. After ROW 28 put the cast on sts. back on the machine behind the latches to form the hem.

**ROWS 29-176:** Increase 1 st. on each side after ROW 34, then again on every following 6th row 20 x and on every next following 4th row 4 x. (123 sts.)

**ROWS 177-188:** **CAP SHAPING:** On the right side (back of sleeve) and on every other row bind off 4 sts. 1 x, 3 sts.



1 x, 2 sts. 3 x, and 1 st. 1 x. On the left side (front of sleeve) and on every other row bind off 6 sts. 1 x, 4 sts. 1 x, 3 sts. 2 x and 2 sts. 2 x.

**ROWS 189-224:** Bind off 1 st. beginning next 2 rows and 2 sts. beginning next 2 rows. Repeat these bind offs 8 x.

**ROWS 225-230:** Bind off 2 sts. beginning next 2 rows, 3 sts. beginning next 2 rows, 5 sts. beginning next 2 rows and after ROW 230 bind off the remaining 15 sts. Make second sleeve with reverse shapings.

**COLLAR:** Cast on 117 sts. with beige. Work stockinette st. **ROWS 1-12:** On the left side put 33 needles into holding position, knit 1 row. On the right side put 33 needles into holding position, knit 1 row. Now alternately on each side bring 21 needles 1 x and 3 needles 4 x back into working position. (See Notes to Knit By inside back cover—Short Rows).

**ROWS 13-62:** Work even.

**ROWS 63-78:** Alternately on each side put 2 needles 4 x, 3 needles 3 x and 16 needles 1 x into holding position.

**ROWS 79-80:** On the left side bring all needles into working position, knit 1 row. On the right side bring all needles into working position, knit 1 row, then bind off all sts.

**BUTTON BAND:** Cast on 29 sts. with beige. Work stockinette st. Work 218 rows even, then bind off all sts. The **BUTTONHOLE BAND** is worked the same, but make buttonholes after ROWS 7, 41, 75, 109, 143, 177 and 211 over the 4-9 and 22-27 needles.

**FINISHING:** Turn under 1 1/2 inches on lower front sections and hem to wrong side. Join front and back sections at sides and shoulders. Sew sleeves together and set in matching front and back. Sew or weave button and buttonhole bands to front edges. (1 edge of band to right and 1 edge of band to wrong side of front edge.) Close short ends of bands. Fold collar in half lengthwise and sew front edges together. Sew bound off edge of collar to inside and cast on edge to outside of neckline, leaving 1" at both front edges free. Finish buttonholes, sew on buttons.

## WOMAN'S JACKET, DP 7506



**SIZE:** 14/16 and 20/22. **MATERIAL:** 12 1/4 oz. (14 oz.) red **KNITTING** Sonika Dralon. **TENSION:** **KNITTING** 6 to 8. **GAUGE:** Stockinette Stitch 14 sts. 2", 20 rows 2". K1, P1, Ribbing 14 sts. 2", 25 rows 2". **PATTERN:** Stockinette Stitch. **EDGES:** K1, P1, Ribbing.

**SIZE:** 14/16. **BACK** (Figure II): Cast on 135 sts.

**ROWS 1-20:** K1, P1, Ribbing. After ROW 20 transfer the ribber sts. to main machine and continue with stockinette st.

**ROWS 21-144:** Increase 1 st. on each side after ROW 64 and again every following 20th row 3 x (143 sts.)

**ROWS 145-164:** **ARMHOLE SHAPING:** Bind off 4 sts. beginning next 2 rows, 3 sts. beginning next 2 rows, 2 sts. beginning next 2 rows, 1 st. beginning next 4 rows and 1 st. at each end of the next 4th and following 4th row (111 sts.)

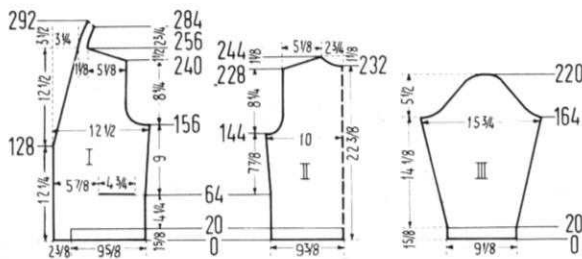
**ROWS 165-228:** Work even.

**ROWS 229-244:** **SHOULDER SHAPING:** Bind off 4 sts. beginning next 4 rows. After ROW 232 bind off the center 15 sts. for neck. (See Notes to Knit By, inside back cover). Bind off 4 sts. at **shoulder** and continue to **shape shoulder** on every other row by binding off 4 sts. 6 x. **AT THE SAME TIME** shape **NECK** on every other row by binding off 4 sts. 1 x, 3 sts. 1 x, 2 sts. 2 x and 1 st. 1 x.

**FRONT** (Figure I): Cast on 86 sts.

**ROWS 1-20:** Work K1, P1, Ribbing over 69 needles counting from the right side and work stockinette st. over the remaining 17 needles, making buttonholes after ROW 9 over the 2nd-5th and 13th-16th needles counting from the left side. After ROW 20 transfer the ribber sts. to main machine and work stockinette st. over all needles.

**ROWS 21-64:** Work even and make buttonholes after ROW 37. After ROW 64 work the pocket. On the right side put



10 and on the **left side** put 42 needles into holding position. Work 8 rows over the 34 needles in working position, then bind off these sts. Now cast on 34 sts. over these needles for the pocket lining and work 44 rows, then move the Cam Box to the **right side**, bring all needles into working position, turn row counter to 64 and work over all needles.

**ROWS 65-128:** Increase 1 st. on the **right side** after ROW 64 and again every following 20th row 3 x. **AT THE SAME TIME**, work buttonholes after ROWS 65, 93, and 121. (90 sts.)

**ROWS 129-156:** FRONT SHAPING: Decrease 1 st. on the **left side** after ROW 128 and again every following 5th row 5 x by always hanging the 22nd st. onto the 21st needle and moving the end sts. inward to fill the empty needle.

**ROWS 157-256:** ARMHOLE SHAPING: Bind off 6 sts. on the **right side**, then on every other row bind off 4 sts. 1 x, 3 sts. 1 x, 2 sts. 2 x, 1 st. 3 x and on the following 4th row 1 st. 1 x. **AT THE SAME TIME** continue to **shape** the front after ROW 158 and on every following 5th row by decreasing 1 st. 18 x as you did before and after ROW 240 and on every other row **SHAPE SHOULDER** by binding off 4 sts. 9 x. After ROW 256 continue working over the remaining 9 sts. for the back facing.

**ROWS 257-261:** Work even.

**ROWS 262-269:** (See Notes to Knit By inside back cover—Short Rows) On the **right side** put 3 needles into holding position, knit 2 rows. Bring all needles into working position, knit 6 rows.

**ROWS 270-292:** Repeat ROWS 262-269 3 times, but the first time put 6 needles, the second time put 3 needles and the last time put 6 needles into holding position and then knit only 5 rows even. After ROW 292 put the sts. on a stitch holder. Make second front section with reverse shapings and omit buttonholes.

**SLEEVE (Figure III):** Cast on 65 sts.

**ROWS 1-20:** K1, P1, Ribbing. After ROW 20 transfer the ribber sts. to main machine and continue with stockinette st.

**ROWS 21-164:** Increase 1 st. on **each side** after ROW 24 and again every following 6th row 22 x. (111 sts.)

**ROWS 165-176:** CAP SHAPING: On the **right side** (back of sleeve) and on every other row bind off 4 sts. 1 x, 3 sts. 2 x, and 2 sts. 3 x. On the **left side** (front of sleeve) and on every other row bind off 6 sts. 1 x, 5 sts. 1 x, 4 sts. 1 x, 3 sts. 1 x and 2 sts. 2 x.

**ROWS 177-220:** Bind off 1 st. beginning next 38 rows, 2 sts. beginning next 2 rows, 3 sts. beginning next 2 rows, 5 sts. beginning next 2 rows and after ROW 220 bind off the remaining 15 sts. Make second sleeve with reverse shaping.

**FINISHING:** Join front and back sections at sides and shoulders, easing in the fullness at bustline of front sections. Sew sleeves together and set in matching front and back. Weave facing at center back and sew to neckline. Fold over 9 sts. around fronts and neckline and hem to **right side**. Fold over 8 rows on pocket edge and hem to **right side**. Sew pocket lining to jacket on the **wrong side**. Finish buttonholes. Sew on buttons.

**SIZE: 20/22. BACK (Figure II):** Cast on 163 sts.

**ROWS 1-20:** K1, P1, Ribbing. After ROW 20 transfer the ribber sts. to main machine and continue with stockinette st.

**ROWS 21-144:** Work even.

**ROWS 145-184:** ARMHOLE SHAPING: Bind off 4 sts. beginning next 2 rows, 3 sts. beginning next 2 rows, 2 sts. beginning next 6 rows, 1 st. beginning next 6 rows, then on each end of every following 4th row 1 st. 3 x and on each end of every next following 6th row 1 st. 2 x. (121 sts.)

**ROWS 185-236:** Work even.

**ROWS 237-252:** SHOULDER SHAPING: Bind off 4 sts. beginning next 4 rows. After ROW 240 bind off the center 15 sts. for NECK. (See Notes to Knit By, inside back cover). Bind off 4 sts. on **shoulder** and continue to **shape shoulder** on every other row by binding off 4 sts. 4 x and 5 sts. 2 x. **AT THE SAME TIME**, shape NECK on every other row by binding off 4 sts. 2 x, 3 sts. 1 x and 2 sts. 2 x.

**FRONT (Figure I):** Cast on 102 sts.

**ROWS 1-20:** Work K1, P1, Ribbing over 85 needles counting from the **right side**, and work stockinette st. over the remaining 17 needles, making buttonholes after ROW 9 over the 2nd-5th and 13th-16th needles counting from the **left side**. After ROW 20 transfer the ribber sts. to main machine and work stockinette st. over all needles.

**ROWS 21-64:** Work even and make buttonholes after ROW 39. After ROW 64 work the pocket. On the **right side** put 16 needles and on the **left side** put 50 needles into holding position. Work 8 rows over the 36 needles in working position, then bind off these sts. Now cast on 36 sts. over these needles for the pocket lining and work 44 rows, then move the Cam Box to the **right side**, bring all needles into working position, turn row counter to 64 and work over all needles.

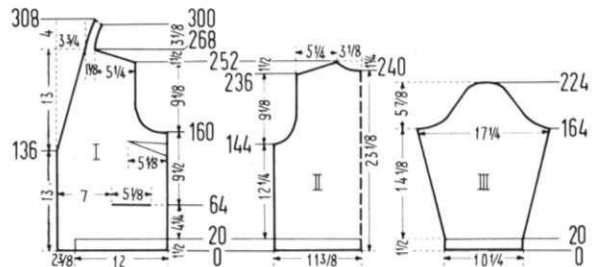
**ROWS 65-136:** Work even and make buttonholes after ROWS 69, 99 and 129.

**ROWS 137-160:** FRONT SHAPING: Decrease 1 st. on the **left side** after ROW 136 and again every following 5th row 4 x by always hanging the 22nd st. onto the 21st needle and moving the end sts. inward to fill the empty needle.

**ROWS 161-268:** ARMHOLE SHAPING: Bind off 6 sts. on the **right side**, then on every other row bind off 5 sts. 1 x, 4 sts. 1 x, 3 sts. 1 x, 2 sts. 2 x, 1 st. 4 x and on every following 4th row 1 st. 3 x. **AT THE SAME TIME** continue to **shape** the front after ROW 161 and on every following 5th row by decreasing 1 st. 21 x as you did before and after ROW 252 and on every other row **SHAPE SHOULDER** by binding off 4 sts. 7 x and 5 sts. 2 x. After ROW 268 continue working over the remaining 9 sts. for the back facing.

**ROWS 269-275:** Work even.

**ROWS 276-283:** (See Notes to Knit By inside back cover—Short Rows). On the **right side** put 3 needles into holding position, knit 2 rows. Bring all needles into working position, knit 6 rows.



tion, knit 6 rows.

**ROWS 284-308:** Repeat ROWS 276-283 3 times, but the first time put 6 needles, the second time put 3 needles and the last time put 6 needles into holding position, and then knit 7 rows instead of 6 rows even. After ROW 308 put the sts. on a stitch holder. Make second front section with reverse shapings, and omit buttonholes.

**SLEEVE (Figure III):** Cast on 73 sts.

**ROWS 1-20:** K1, P1, Ribbing. After row 20 transfer the ribber sts. to main machine and continue with stockinette st.

**ROWS 21-164:** Increase 1 st. on **each side** after ROW 24, then again on every following 6th row 17x and every following 4th row 7 x. (123 sts.)

**ROWS 165-176:** CAP SHAPING: On the **right side** (back of sleeve) and on every other row bind off 5 sts. 1 x, 4 sts. 1 x, 3 sts. 2 x, and 2 sts. 2 x. On the **left side** (front of sleeve) and on every other row bind off 7 sts. 1 x, 6 sts. 1 x, 5 sts. 1 x, 4 sts. 1 x, 3 sts. 1 x and 2 sts. 1 x.

**ROWS 177-224:** Bind off 1 st beginning next 42 rows, 2 sts. beginning next 2 rows, 3 sts. beginning next 2 rows,

5 sts. beginning next 2 rows and after ROW 224 bind off the remaining 15 sts. Make second sleeve with reverse shaping.

**FINISHING:** Follow directions for Size 14/16 but make bust darts according to the diagram.

### WOMAN'S TWO PIECE DRESS, DK 7509



**SIZE:** 14/16 and 18/20. **MATERIAL:** 29¾ oz. (33¼ oz.) pink KNITTING Subita 2 x 4. **TENSION:** KNITTING 6 to 8. **GAUGE:** Stockinette stitch 16 sts. 2", 21 rows 2". K1, P1, Ribbing 16 sts. 2", 23 rows 2".

**PATTERN:** Stockinette stitch. **PULL-OVER:** Eyelet design according to chart.

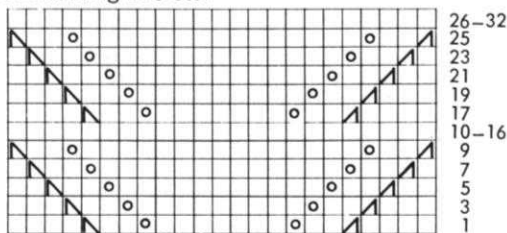
**EDGES:** K1, P1, Ribbing.

**SIZE:** 14/16. **SKIRT: BACK (Figure V):** Cast on 159 sts., and work stockinette st.

**ROWS 1-130:** Increase 1 st. on each side after ROW 48 and again every following 20th row 4 x. (169 sts.)

**ROWS 131-210:** Work even.

**ROWS 211-286:** Decrease 1 st. on each side after row 210 and again every following 10th row 2 x, every following 8th row 4 x, every following 6th row 2 x, and every following 4th row 2 x. AT THE SAME TIME, after ROW 230, for the darts, decrease 2 sts. on each side and again every following 7th row 7 x. To do this, on each side for the first decrease put the 51th and 53rd sts. on the 52nd needle, then move the end sts. inward to fill the empty needles. The next decreases lie directly above. After ROW 286 bind off the remaining 115 sts.



**SKIRT: FRONT (Figure IV):** Work the front the same as the back with exception of the DARTS. For the darts, after ROW 252, decrease 2 sts. on each side and again every following 7th row 4 x. To do this, on each side for the first decrease put the 49th and 51st sts. on the 50th needle then move the end sts. inward to fill the empty needles. The next decreases lie directly above. After ROW 286 bind off the remaining 127 sts.

**PULLOVER: BACK (Figure II):** Cast on 157 sts.

**ROWS 1-14:** K1, P1, Ribbing. After ROW 14 transfer the ribber sts. to main machine and continue with stockinette st.

**ROWS 15-136:** Increase 1 st. on each side after ROW 64 and again on every following 24th row 2 x. (163 sts.)

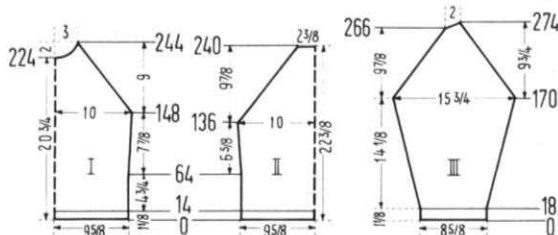
**ROWS 137-240:** RAGLAN SHAPING: After ROW 136 and on every following 3rd row decrease 1 st. on each side 7 x and 2 sts. on each side 28 x. When decreasing 1 st. at a time, on each side hang the 3rd st. onto the 4th needle and when decreasing 2 sts. at a time, on each side hang the 3rd and 4th sts. onto the 5th and 6th needles. Always move the 2 end sts. inward to fill the empty needles. After ROW 240 bind off the remaining 37 sts.

**FRONT (Figure I):** Cast on 157 sts.

**ROWS 1-14:** K1, P1, Ribbing. After ROW 14 transfer the ribber sts. to main machine, continue with stockinette st. and work the eyelet design over the center 23 needles.

**ROWS 15-148:** Increase 1 st. on each side after ROW 64 and again every following 24th row 2 x. (163 sts.)

**ROWS 149-244:** RAGLAN SHAPING: After ROW 148 and on every following 3rd row decrease 1 st. on each side 7 x and 2 sts. on each side 19 x as you did on the back. After ROW 224 bind off the center 11 sts. (See Notes to Knit By inside back cover), then on every other row on neck side bind off 3 sts. 2 x, 2 sts. 3 x and 1 st. 4 x. AT THE SAME TIME continue to shape RAGLAN after ROW 226 and on



every following 3rd row by decreasing 2 sts. 6 x more. After ROW 244 hang the remaining 3 sts. together (the 2 outside sts. onto the center st.), then bind off.

**SLEEVE (Figure III):** Cast on 70 sts.

**ROWS 1-18:** K1, P1, Ribbing. After ROW 18 transfer the ribber sts. to main machine and continue with stockinette st.

**ROWS 19-170:** Increase 1 st. on each side after ROW 24, then again every following 6th row 12 x and every following 4th row 16 x. (128 sts.)

**ROWS 171-266:** RAGLAN SHAPING: After ROW 170 and on every following 3rd row decrease 1 st. on each side 11 x and 2 sts. on each side 21 x as you did on the back.

**ROWS 267-274:** On the left side on every other row put 3 needles 4 x into holding position (See Short Rows inside back cover). AT THE SAME TIME continue to shape RAGLAN after row 266 and every following 3rd row by decreasing 2 sts. 3 x more. After ROW 274 bring all needles into working position and bind off all 16 sts. Make second sleeve with reverse shaping.

**NECKBAND:** Cast on 155 sts. Work 12 rows K1, P1, Ribbing, then bind off all sts.

**FINISHING: SKIRT:** Join the front and back at sides, leaving an 8" opening on the left side for the zipper. Make a narrow hem around this opening. Turn under 3 rows on upper edge and baste to wrong side, then sew an elastic band against the basting line on inside. Turn under 2" on lower edge and hem to wrong side. Sew in zipper, hooks and eyes. Line the skirt with taffeta.

**PULLOVER:** Join front and back at sides, easing in the fullness at the bustline of front section. Sew sleeves together and weave to front and back sections, 1 st. in on each edge. Join neckband at short ends and sew to neckline. **SIZE:** 18/20. **SKIRT: BACK (Figure V):** Cast on 193 sts.

**ROWS 1-294:** Decrease 1 st. on each side after ROW 218, then again every following 8th row 4 x, every following 6th row 4 x and every following 4th row 4 x. AT THE SAME TIME, after ROW 238, for the DARTS decrease 2 sts. on each side and again every following 7th row 7 x. To do this, on each side for the first decrease put the 60th and 62nd sts. onto the 61st needle, then move the end sts. inward to fill the empty needles. The next decreases lie directly above. After ROW 294 bind off the remaining 135 sts.

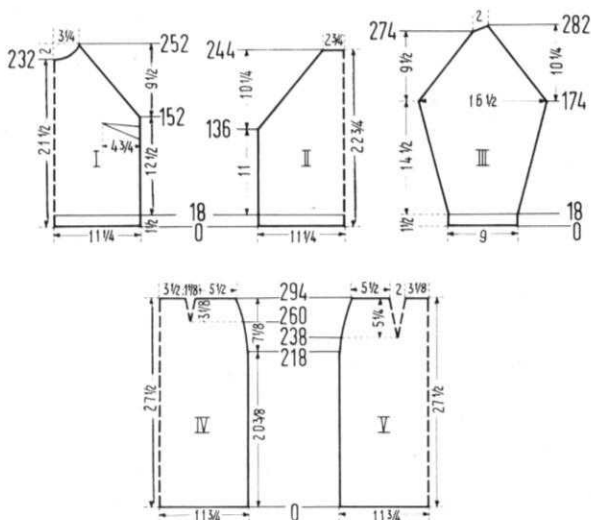
**SKIRT: FRONT (Figure IV):** Work the front the same as the back with the exception of the DARTS. For the darts, after ROW 260, decrease 2 sts. on each side and again every following 7th row 4 x. To do this, on each side for the first decrease hang the 57th and 59th sts. onto the 58th needle, then move the end sts. inward to fill the empty needles. The next decreases lie directly above. After ROW 294 bind off the remaining 147 sts.

**PULLOVER: BACK (Figure II):** Cast on 183 sts.

**ROWS 1-18:** K1, P1, Ribbing. After ROW 18 transfer the ribber sts. to main machine and continue with stockinette st.

**ROWS 19-136:** Work even.

**ROWS 137-244:** RAGLAN SHAPING: After ROW 136 and on



every following 3rd row decrease 1 st. on each side 3 x and 2 sts. on each side 33 x. When decreasing 1 st. at a time, hang the 3rd st. onto the 4th needle and when decreasing 2 sts. at a time, hang the 3rd and 4th sts. onto the 5th and 6th needles. Always move the 2 end sts. inward to fill the empty needles. After ROW 244 bind off the remaining 45 sts.

**FRONT:** (Figure I): Cast on 183 sts.

**ROWS 1-18:** K1, P1, Ribbing. After ROW 18 transfer the ribber sts. to main machine, continue with stockinette st. and work eyelet design over the center 23 needles.

**ROWS 19-152:** Work even.

**ROWS 153-252:** RAGLAN SHAPING: After row 152 and on every following 3rd row decrease 1 st. on each side 2 x and 2 sts. on each side 25 x as you did on the back. After ROW 232 bind off the center 15 sts. for NECK (See Notes to Knit By inside back cover), then on every other row on neck side bind off 4 sts. 1 x, 3 sts. 1 x, 2 sts 3 x and 1 st. 4 x. AT THE SAME TIME continue to shape RAGLAN after ROW 233 and on every following 3rd row by decreasing 2 sts. 6 x more. After ROW 252 hang the remaining 3 sts. together (the 2 outside sts. onto the center st.) then bind off.

**SLEEVE** (Figure III): Cast on 74 sts.

**ROWS 1-18:** K1, P1, Ribbing. After ROW 18 transfer the ribber sts. to main machine and continue with stockinette st.

**ROWS 19-174:** Increase 1 st. on each side after ROW 18 and again every following 6th row 17 x, then every following 4th row 12 x. (134 sts.)

**ROWS 175-274:** RAGLAN SHAPING: After ROW 174 and on every following 3rd row decrease 1 st. on each side 10 x and 2 sts. on each side 23 x, as you did on the back. After ROW 273 decrease 2 sts. on the right side.

**ROW 275-282:** On the left side, on every other row put 3 needles 4 x into holding position. (See Short Rows inside back cover). AT THE SAME TIME, decrease 2 sts. on the right side after ROWS 276 and 279. After ROW 282 bring all needles into working position and bind off all 16 sts. Make second sleeve with reverse shaping.

**NECKBAND:** Cast on 169 sts. Work 12 rows K1, P1, Ribbing then bind off all sts.

**FINISHING:** Follow directions for SIZE 14/16, but make bust darts according to the diagram.

DID YOU SEE THE  
KNITTING YARN AD  
ON THE INSIDE FRONT COVER?

## WOMAN'S JACKET, DP 7513



**SIZE:** 16/18 and 22/24. **MATERIAL:** 24 oz. (27 oz.) blue KNITTING Starlite Crepe. **TENSION:** KNITTING 8 to 10. **GAUGE:** Stockinette Stitch 14 sts. 2", 19 rows 2". K1, P1, Ribbing 14 sts. 2", 23 rows 2". **PATTERN:** Stockinette St. **EDGES:** K1, P1, Ribbing.

**SIZE: 16/18. BACK:** (Figure II): Cast on 151 sts.

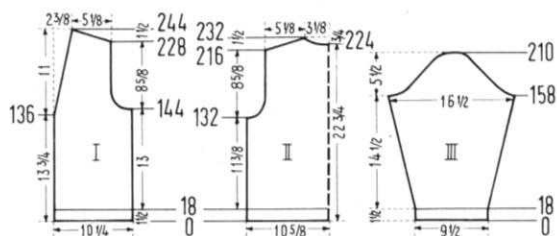
**ROWS 1-18:** K1, P1, Ribbing. After ROW 18 transfer the ribber sts. to main machine and continue with stockinette st.

**ROWS 19-132:** Work even.

**ROWS 133-154:** ARMHOLE SHAPING: Bind off 4 sts. beginning next 2 rows, 3 sts beginning next 2 rows, 2 sts. beginning next 6 rows, 1 st. beginning next 4 rows and 1 st. at each of the next 4th and following 4th row. (117 sts.)

**ROWS 155-216:** Work even.

**ROWS 217-232:** SHOULDER SHAPING: Bind off 4 sts. beginning next 8 rows. After ROW 224 bind off the center 15 sts. for NECK (See Notes to Knit By, inside back cover). Bind off 4 sts. at shoulder and continue to shape shoulder



on every other row by binding off 4 sts. 4 x. AT THE SAME TIME shape neck on every other row by binding off 6 sts. 1 x, 5 sts. 1 x and 4 sts. 1 x.

**FRONT:** (Figure I). Cast on 73 sts.

**ROWS 1-18:** K1, P1, Ribbing. After ROW 18 transfer the ribber sts. to main machine and continue with stockinette stitch.

**ROWS 19-136:** Work even.

**ROWS 137-244:** FRONT AND ARMHOLE SHAPING: Decrease 1 st. on the left side after ROW 136 and again every following 6th row 16 x by always hanging the 3rd st. onto the 4th needle and moving the 2 end sts. inward to fill the empty needle. AT THE SAME TIME, shape ARMHOLE after ROW 144 by binding off 6 sts. on the right side, then on every other row bind off 4 sts. 1 x, 3 sts. 1 x, 2 sts. 2 x, 1 st. 2 x and on the following 4th row 1 st. 1 x. After ROW 228 and on every other row SHAPE SHOULDER by binding off 4 sts. 9 x. Make second front section with reverse shapings.

**SLEEVE:** (Figure III). Cast on 67 sts.

**ROWS 1-18:** K1, P1, Ribbing. After ROW 18 transfer the ribber sts. to main machine and continue with stockinette stitch.

**ROWS 19-158:** Increase 1 st. on each side after ROW 24, then again every following 6th row 15 x and every next following 4th row 9 x. (117 sts.)

**ROWS 159-168:** CAP SHAPING: On the right side (back of sleeve) and on every other row bind off 4 sts. 2 x, 3 sts. 2 x, and 2 sts. 1 x. On the left side (front of sleeve) and on every other row bind off 6 sts. 1 x, 5 sts. 1 x, 4 sts. 1 x, 3 sts. 1 x, and 2 sts. 1 x.

**ROWS 169-210:** Bind off 1 st. beginning next 4 rows and 2 sts. beginning next 2 rows. Repeat these bind offs 5 x, then bind off 3 sts. beginning next 2 rows, 4 sts. beginning next 4 rows and after ROW 210 bind off the remaining 11 sts. Make second sleeve with reverse shaping.

**COLLAR:** Cast on 123 sts.

**ROWS 1-66:** Work even.

**ROWS 67-72:** Alternately on each side put 14 needles 1 x, 16 needles 1 x and 18 needles 1 x into holding position. (See Short Rows, inside back cover).

**ROWS 73-74:** On the left side bring all needles into working

position, knit 1 row. On the **right side** bring all needles into working position, knit 1 row, then bind off all sts.

**BUTTON BAND:** Cast on 140 sts. Work 31 rows stockinette stitch, then bind off all sts. The **BUTTONHOLE BAND** is worked the same, but make buttonholes after ROWS 8 and 22 over the 5th-8th, 25th-28th, 45th-48th, 65th-68th, and 85th-88th needles counting from the right side.

**FINISHING:** Join front and back sections at sides and shoulders, easing in the fullness at bustline of front sections. Sew sleeves together and set in, matching front and back. Fold collar in half lengthwise and sew short ends  $1\frac{3}{4}$  inch starting from the fold line. Weave button and buttonhole band to collar (the bound off edge is the top of the collar) then sew to neckline and front edges of jacket. Finish buttonholes and sew on buttons.

**SIZE:** 22/24. **BACK:** (Figure II). Cast on 163 sts.

**ROWS 1-18:** K1, P1, Ribbing. After ROW 18 transfer the ribber sts. to main machine and continue with stockinette stitch.

**ROWS 19-136:** Work even.

**ROWS 137-178:** **ARMHOLE SHAPING:** Bind off 4 sts. beginning next 2 rows, 3 sts. beginning next 4 rows, 2 sts. beginning next 2 rows, 1 st. beginning next 4 rows, then 1 st. at each end of every following 4th row 3 x and 1 st. at each end of every next following 6th row 3 x. (123 sts.).

**ROWS 179-224:** Work even.

**ROWS 225-240:** **SHOULDER SHAPING.** Bind off 4 sts. beginning next 8 rows. After ROW 232 bind off the center 15 sts. for **NECK.** (See Notes to Knit By, inside back cover). Bind off 4 sts. at shoulder and continue to shape shoulder on every other row by binding off 4 sts. 1 x and 5 sts. 3 x. **AT THE SAME TIME** shape **NECK** on every other row by binding off 6 sts. 1 x, 5 sts. 1 x and 4 sts. 1 x.

**FRONT:** (Figure I). Cast on 91 sts.

**ROWS 1-18:** K1, P1, Ribbing. After ROW 18 transfer the ribber sts. to main machine and continue with stockinette stitch.

**ROWS 19-152:** Work even.

**ROWS 153-260:** **FRONT AND ARMHOLE SHAPING.** Decrease 1 st. on the **left side** after ROW 152 and again every following 6th row 16 x by always hanging the 3rd st. onto the 4th needle and moving the 2 end sts. inward to fill the empty needle. **AT THE SAME TIME,** shape **ARMHOLE** after ROW 156 by binding off 14 sts. on the right side, then on every other row bind off 5 sts. 1 x, 4 sts. 1 x, 3 sts. 1 x, 2 sts. 2 x, 1 st. 4 x and on the 4th row 1 st. 1 x. After ROW 244 and on every other row **SHAPE SHOULDER** by binding off 4 sts. 6 x and 5 sts. 3 x. Make second front section with reverse shapings.

**SLEEVE:** (Figure III). Cast on 70 sts.

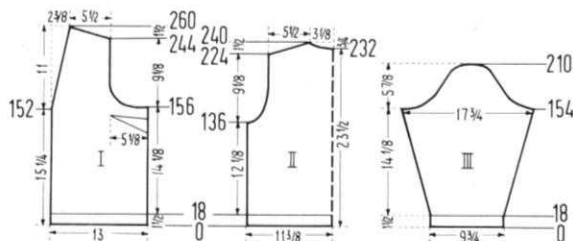
**ROWS 1-18:** K1, P1, Ribbing. After ROW 18 transfer the ribber sts. to main machine and continue with stockinette stitch.

**ROWS 19-154:** Increase 1 st. on **each side** after ROW 20, then again every following 6th row 11 x and every next following 4th row 16 x. (126 sts.).

**ROWS 155-170:** **CAP SHAPING:** On the **right side** (back of sleeve) and on every other row bind off 5 sts. 1 x, 4 sts. 2 x, 3 sts. 2 x and 2 sts. 3 x. On the **left side** (front of sleeve) and on every other row bind off 10 sts. 1 x, 6 sts. 1 x, 4 sts. 1 x, 3 sts. 1 x and 2 sts. 4 x.

**ROWS 171-210:** Bind off 1 st. beginning next 30 rows, 2 sts. beginning next 4 rows, 3 sts. beginning next 4 rows, 4 sts. beginning next 2 rows and after ROW 210 bind off the remaining 13 sts. Make second sleeve with reverse shaping.

**COLLAR:** Cast on 123 sts.



**ROWS 1-66:** Work even.

**ROWS 67-72:** Alternately on **each side** put 14 needles 1 x, 16 needles 1 x and 18 needles 1 x into holding position. (See Short Rows inside back cover).

**ROWS 73-74:** On the **left side** bring all needles into working position, knit 1 row. On the **right side** bring all needles into working position, knit 1 row, then bind off all sts.

**BUTTON BAND:** Cast on 151 sts. Work 31 row stockinette stitch, then bind off all sts. The **BUTTONHOLE BAND** is worked the same, but make buttonholes after ROWS 8 and 22 over the 5th-8th, 28th-31st, 51st-54th, 74th-77th and 98th-101st needles counting from the right side.

**FINISHING:** Follow direction for Size 16/18, but make bust darts according to the diagram.

## BOY'S SUIT, KK 4926



**SIZE:** 2-3 years. **MATERIAL:** 14 oz. green KNITTING Subita 2 x 4. **TENSION:** KNITTING 6 to 8. **GAUGE:** 16 sts. 2", 22 rows 2".

**PATTERN:** Stockinette Stitch.

**TROUSERS:** **BACK SECTION:** (Figure V). Cast on 39 sts.

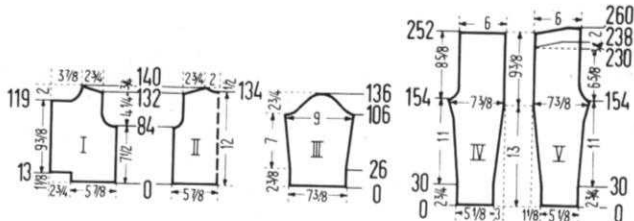
**ROWS 1-30:** Work even.

**ROWS 31-154:** Increase 1 st. on the **right side** after ROW 30, then again every following 14th row 7 x and every following 8th row 3 x. **AT THE SAME TIME,** on the **left side,** increase 1 st. after ROW 31 and again every following 14th row 8 x. (59 sts.).

**ROWS 155-174:** Bind off 4 sts. on the **right side,** then on every other row bind off 2 sts. 1 x, 1 st. 3 x, on the following 4th row 1 st. 1 x and on the following 6th row 1 st. 1 x. (48 sts.).

**ROWS 175-230:** Work even.

**ROWS 231-238:** For the back shaping work Short Rows.



(See inside back cover). On the **left side** put 8 needles 4 x into holding position, then bring all needles into working position.

**ROWS 239-260:** Work even over all needles. After ROW 260 bind off all sts. Make second back section with reverse shapings.

**FRONT SECTION:** (Figure IV) Cast on 39 sts. casting on from right to left.

**ROWS 1-30:** Work even.

**ROWS 31-154:** Increase 1 st. on the **left side** after ROW 30, then again every following 14th row 7 x and every following 8th row 3 x. **AT THE SAME TIME,** on the **right side,** increase 1 st. after ROW 31 and again every following 14th row 8 x. (59 sts.).

**ROWS 155-164:** Bind off 4 sts. on the **left side,** then on every other row bind off 3 sts. 1 x, 2 sts. 1 x and 1 st. 2 x. (48 sts.).

**ROWS 165-252:** Work even. After ROW 252 bind off all sts. Make second front section with reverse shapings.

**JACKET:** **BACK:** (Figure II). Cast on 94 sts.

**ROWS 1-84:** Work even.

**ROWS 85-100:** **ARMHOLE SHAPING:** Bind off 3 sts. beginning next 2 rows, 2 sts. beginning next 2 rows, 1 st. beginning next 4 rows and 1 st. on each end of the next 4th and following 4th row (76 sts.).

**ROWS 101-132:** Work even.

**ROWS 133-140: SHOULDER SHAPING:** Bind off 4 sts. beginning next 2 rows. After ROW 134 bind off the center 14 sts. for NECK. (See Notes to Knit By, inside back cover). Bind off 4 sts. at shoulder and continue to shape shoulder on every other row by binding off 4 sts. 1 x and 5 sts. 2 x. AT THE SAME TIME shape NECK on every other row by binding 5 sts. 1 x and 4 sts. 1 x.

**FRONT:** (Figure I). Cast on 48 sts.

**ROWS 1-13:** Work even. After ROW 13 cast on 22 sts. on the left side.

**ROWS 14-84:** Work even.

**ROWS 85-100: ARMHOLE SHAPING:** Bind off 5 sts. on the right side, then on every other row bind off 4 sts. 1 x, 2 sts. 2 x, 1 st. 2 x and on the following 4th row 1 st. 1 x. (54 sts.).

**ROWS 101-119:** Work even.

**ROWS 120-140: NECK SHAPING:** Bind off 22 sts. on the left side, then on every other row bind off 3 sts. 1 x, 2 sts. 1 x, 1 st. 3 x and on every following 4th row 1 st. 2 x. AT THE SAME TIME after ROW 132 and on every other row shape SHOULDER by binding off 4 sts. 3 x and 5 sts. 2 x. Make second front section with reverse shapings and make buttonholes after rows 24, 54, 84 and 114 over the 3rd-6th and 16th-19th needles counting from the right side.

**SLEEVE:** (Figure III). Cast on 61 sts.

**ROWS 1-106:** Increase 1 st. on each side after ROW 26 and again every following 12th row 6 x. (75 sts.).

**ROWS 107-114: CAP SHAPING.** On the right side, (back of sleeve) and on every other row bind off 4 sts. 1 x, 2 sts. 2 x and 1 st. 1 x. On the left side (front of sleeve) and on every other row bind off 5 sts. 1 x, 3 sts. 1 x and 2 sts. 2 x.

**ROWS 115-136:** Bind off 1 st. beginning next 2 rows and 2 sts. beginning next 2 rows. Repeat these bind offs 3 x, then bind off 2 sts. beginning next 2 rows, 3 sts. beginning next 2 rows and 5 sts. beginning next 2 rows. After ROW 136 bind off the remaining 10 sts. Make second sleeve with reverse shapings.

**FINISHING: TROUSERS.** Join front and back sections at sides. Sew inner seams. Sew front and back center seams. Turn under 1" on upper and 1½" on lower edges and sew to wrong side. To make a permanent crease, slip stitch crochet down through the 20th st. counting from the front center. Insert an elastic band through the upper edge.

**JACKET:** Join fronts and back at sides and shoulders. Sew sleeves together and set in, matching fronts and backs. Turn under 13 rows on lower and sleeve edges and 11 sts. on front edges and hem to wrong side. Single crochet around neckline. Finish buttonholes, sew on buttons.

## CHILD'S PULLOVER, KK 4945



**SIZE:** 7-8 years. **MATERIAL:** 8¾ oz. red and 3½ oz. blue KNITTING Sonika Dralon. **TENSION:** KNITTING 6 to 8. **GAUGE:** Stockinette Stitch 14 sts. 2", 20 rows 2". K1, P1, Ribbing 14 sts. 2", 22 rows 2". **PATTERN:** Stockinette Stitch and Norwegian Design according to chart. In the directions each row in the Norwegian Design is counted as 1 row, but several movements of the Cam Box are needed to complete 1 row.

**EDGES:** K1, P1, Ribbing.

**BACK:** (Figure II). Cast on 113 sts. with blue.

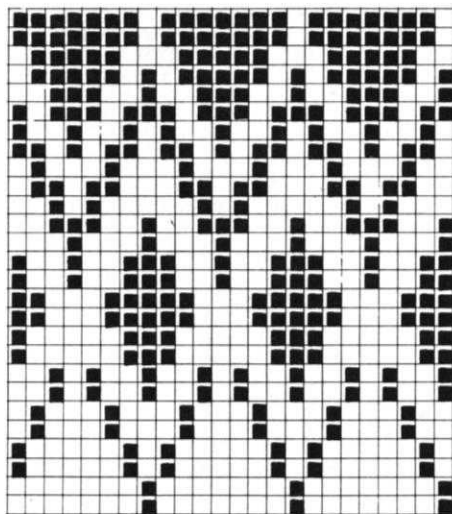
**ROWS 1-18:** K1, P1, Ribbing. After ROW 18 transfer the ribber sts. to main machine and continue with stockinette stitch.

**ROWS 19-38:** Work even.

**ROWS 39-65:** Work the Norwegian Design. After ROW 65 continue with stockinette st. and red.

**ROWS 66-110:** Work even.

**ROWS 111-186:** RAGLAN SHAPING: Decrease 1 st. on each side, then again on every other row 37 x as follows: With Cam Box at right side, always hang the 10th st. on each side onto the 11th needle and place the cross



■ RED

□ BLUE

bar of the 9th st. onto the empty needle, then hang the 3rd st. onto the 4th needle and move the 2 end sts. inward to fill the empty needle. After ROW 186 bind off the remaining 37 sts.

**FRONT:** (Figure I). Cast on 113 sts. with blue.

**ROWS 1-18:** K1, P1, Ribbing. After ROW 18 transfer the ribber sts. to main machine and continue with stockinette stitch.

**ROWS 19-38:** Work even.

**ROWS 39-65:** Work the Norwegian Design. After ROW 65 continue with stockinette st. and red.

**ROWS 66-98:** Work even, then hang the center st. onto the neighboring needle, put the needles on the left side into holding position and finish the right half first.

**ROWS 99-180:** NECK and RAGLAN SHAPING. After ROW 102 decrease 1 st. on the left side, then again on every following 4th row 12 x and on every next following 5th row 5 x by always hanging the 3rd st. onto the 4th needle and moving the 2 end sts. inward to fill the empty needle. AT THE SAME TIME, after ROW 110 and on every other row SHAPE RAGLAN on the right side by decreasing 1 st. 35 x as you did on the back. After ROW 180 hang the 3 remaining sts. together. (The 2 outside sts. onto the center needle) then bind off. Now bring the needles on the left side into working position, turn Row counter to 98 and complete the left half following the directions from ROW 99-180, changing only the name of the sides.

**SLEEVE:** (Figure III). Cast on 59 sts. with blue.

**ROWS 1-30:** K1, P1, Ribbing. After ROW 30 transfer the ribber sts. to main machine and continue with stockinette stitch.

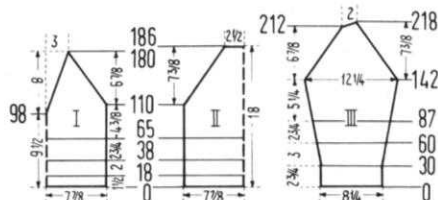
**ROWS 31-60:** Increase 1 st. on each side and again every following 8th row 3 x.

**ROWS 61-87:** Work the Norwegian Design and increase 1 st. on each side after ROW 62 and again every following 8th row 3 x. After ROW 87 continue with stockinette st. and red.

**ROWS 88-142:** Increase 1 st. on each side after ROW 94 and again every following 8th row 5 x (87 sts.).

**ROWS 143-212:** RAGLAN SHAPING: Decrease 1 st. on each side, then again on every other row 34 x as you did on the back.

**ROWS 213-218:** On the left side on every other row, put 3 needles 2 x and 4 needles 1 x into holding position. (See Short Rows inside back cover). AT THE SAME TIME continue to shape raglan on the right side on every other



# HERE IT IS!!



**\$2.95**

Calif. residents add  
15 cents Sales Tax  
Mailing costs 30 cents.

THE BIG BEAUTIFUL BOOK OF CHILDRENS PATTERNS YOU HAVE BEEN ASKING FOR . . . OVER 50 complete and lovely patterns for infants and children to teen age . . . Buntings, Blankets and Baby outfits . . . Cute Dresses, Leotites, Skirts, Suits, Pullovers, Cardigans, Stockings, Trousers, etc. . . .

The only CHILDRENS BOOK for the machine knitter published in the U.S.A. Order direct from KNITTING, 1128 Crenshaw Blvd., Los Angeles, California 90019.

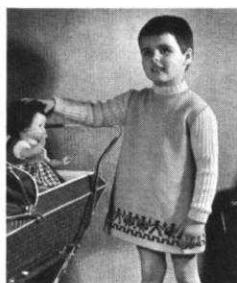
row by decreasing 1 st. 3 x more. After ROW 218 bring all needles into working position and bind off the remaining 14 sts. Make second sleeve with reverse shaping.

**NECKBAND:** Cast on 91 sts. with red. Work K1, P1, Ribbing and Short Rows for the pointed front shaping. Transfer any ribber sts. to main machine before putting them in holding position.

**ROWS 1-20:** On the left side, after ROW 2 and on every other row put 2 needles into holding position 9 x. After ROW 20 bind off 73 sts. and put the 18 sts. that are in holding position on a stitch holder. Make the second neckband section with reverse shaping. Leave the 18 sts. that are in holding position on the machine. Now hang the sts. from the stitch holder onto the sts. on the machine. Knit sts. together with tension 10, then bind off loosely.

**FINISHING:** Join front and back section at sides. Sew sleeves together and weave to front and back section  $1\frac{1}{2}$  sts. in from each edge. Join neckband at short ends and sew to neckline.

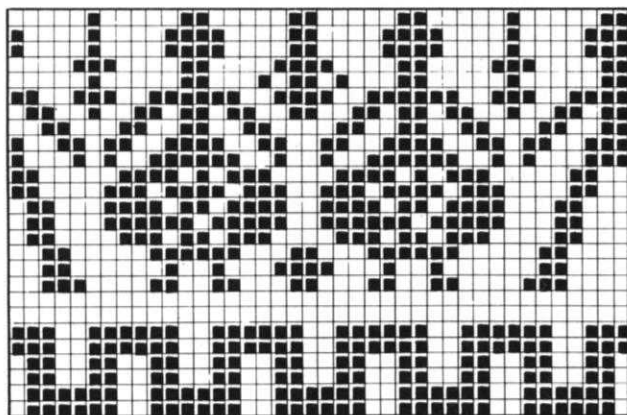
### GIRL'S DRESS MK 4942



**SIZE:** 4-5 years. **MATERIAL:** 9 oz. Gooseberry (No. 350) and 2 oz. Leprechaun (No. 342) KNITKING Starlite Crepe and  $3\frac{1}{2}$  oz. Gooseberry (No. 709) KNITKING Fine Dralon. **TENSION:** KNITKING, Starlite Crepe 8 to 10, Fine Dralon 1. **GAUGE:** Stockinette Stitch and Norwegian Design 14 sts. 2", 19 rows 2". Ribbing Pattern and K1, P1, Ribbing 18 sts. 2", 32 rows 2". **PATTERN:** Front and back section: Stockinette Stitch and Norwegian Design according to chart or use

JAC 40 and Pattern 5 from ROW 1-26. In the directions each row in the Norwegian Design is counted as 1 row, but several movements of the Cam Box are needed to complete 1 row.

**SLEEVES and COLLAR:** K1, P3, Ribbing with the Gate



□ GOOSEBERRY ■ LEPRECHAUN

Cam Release Lever of the Ribber at the needle heels. Worn on the purl side.

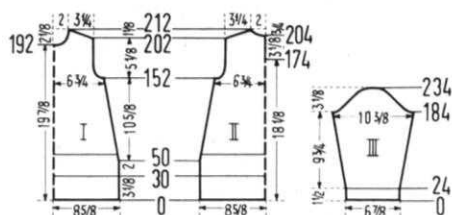
**EDGES** K1, P1, Ribbing.

**BACK:** (Figure II). Cast on 122 sts. with Gooseberry Starlite Crepe and work stockinette st.

**ROWS 1-30:** Work even.

**ROWS 31-152:** After ROW 30 work the Norwegian Design for 26 rows. AT THE SAME TIME, after ROW 50 decrease 1 st. on each side and again on every following 7th row 13 x by always hanging the 2nd st. on each side onto the 3rd needle and moving the end st. inward to fill the empty needle (94 sts.).

**ROWS 153-166:** ARMHOLE SHAPING: Bind off 3 sts. beginning next 2 rows, 2 sts. beginning next 2 rows, 1 st. beginning next 6 rows and 1 st. at each end of the following 4th row. (76 sts.).



**ROWS 167-174:** Work even. After ROW 174 put 38 needles on the left side into holding position and work the right half first.

**ROWS 175-202:** Work even.

**ROWS 203-212:** SHOULDER SHAPING: Bind off 4 sts. on the right side, then on every other row bind off 4 sts. 5 x. AT THE SAME TIME after ROW 205 and on every other row SHAPE NECK by binding off 4 sts. 2 x and 3 sts. 2 x. After ROW 212 move the Cam Box to the left side, bring all needles into working position, turn row counter to 174 and complete the left half following the instructions from ROW 175-212 but reverse the sides.

**FRONT:** (Figure I). Work the front the same as the back to ROW 192 but omit the opening. After ROW 192 bind off the center 10 sts. for NECK, (See Notes to Knit By, inside back cover), then on every other row on neckside bind off 4 sts. 1 x, 2 sts. 1 x, 1 st. 2 x and 1 st. on the following 4th row 1 x. AT THE SAME TIME shape SHOULDER as on back at ROWS 203-212.

**SLEEVE:** (Figure III). Make two. Cast on 63 sts. with Fine Dralon.

**ROWS 1-24:** K1, P1, Ribbing. After ROW 24 transfer the 1st, 3rd, 5th, 7th, etc. sts. from the ribber onto the corresponding needles on the main machine, put the Gate Cam Release Lever of the ribber at the needle heels and continue with the ribbed pattern.

**ROWS 25-184:** Increase 1 st. on each side after ROW 24 and again every 10th row 15 x. (95 sts.).

**ROWS 185-234:** CAP SHAPING: Bind off 4 sts. beginning next 2 rows, 3 sts. beginning next 2 rows, 2 sts. beginning next 4 rows, 1 st. beginning next 34 rows, 2 sts. beginning next 2 rows, 3 sts. beginning next 2 rows, 4 sts. beginning next 4 rows and after ROW 234 bind off the remaining 13 sts.

**COLLAR:** Cast on 95 sts. with Fine Dralon.

**ROWS 1-6:** K1, P1, Ribbing. After ROW 6 transfer the 1st, 3rd, 5th, 7th, etc. needle from the ribber onto the corresponding needles on the main machine, put the Gate Cam Release Lever of the ribber at the needle heels and continue with the ribbed pattern.

**ROWS 7-46:** Work even, then bind off all sts.

**FINISHING:** Weave front to back section at sides, 1 st. in from each edge. Join shoulders. Turn under 2" at lower edge and hem to wrong side. Sew sleeves together and set in. Sew bound off edge of collar to neckline. Work 1 row of single crochet around back opening, then sew in zipper. Fold collar to outside.

### GIRL'S PULLOVER, MK 4934



**SIZE:** 8-9 years. **MATERIAL:**  $8\frac{3}{4}$  oz. red and  $3\frac{1}{2}$  oz. white KNITKING Sonika Dralon.

**TENSION:** KNITKING 5 to 7. **GAUGE:** Pattern stitch 8 sts. 2", 59 rows 2". K1, P1, Ribbing 16 sts. 2", 26 rows 2". The omitted sts. and the empty Rows in the pattern are NOT counted in the gauge and directions. **PATTERN:** Holding Position Design over every other needle according to chart. (See practical Hints) Worn on the purl side. AM 3 or Automatic use special Wheel

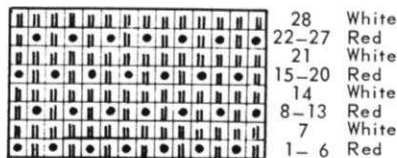
**4. EDGES and COLLAR:** K1, P1, Ribbing, using every other needle on the main machine and every needle on the ribber. **BACK:** (Figure II). Using the ribber, cast on 129 sts. with white.



**ROWS 1-22:** K1, P1, Ribbing, working 5 rows white, 12 rows red and 5 rows white. After row 22 transfer the ribber sts. onto the neighboring needle (occupied needle) of main machine and continue working over 65 sts. in holding position design.

**ROWS 23-316:** Work even.

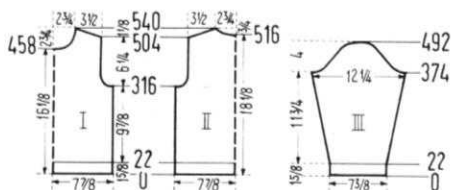
**ROWS 317-360:** ARMHOLE SHAPING: Bind off 2 sts. begin-



ning next 2 rows, then decrease 1 st. on each end of every following 6th row 3 x and 1 st. on each end of every next following 12th row 2 x. (51 sts.).

**ROWS 361-504:** Work even.

**ROWS 505-540:** SHOULDER SHAPING: Bind off 1 st. beginning next 2 rows, then bind off 1 st. on each side after ROWS 508 and 512. After ROW 516 bind off the center 7 sts. for NECK (See Notes to Knit By, inside back cover). Bind off 1 st. on shoulder side and continue to shape shoulder on every following 4th row by binding off 1 st. 2 x and 2 sts. 4 x. AT THE SAME TIME SHAPE NECK after ROW 519 and on every following 4th row by binding off 3 sts. 1 x, 2 sts. 1 x and 1 st. 3 x.



**FRONT:** (Figure I). Work the front the same as the back to ROW 458. After ROW 458 bind off the center 5 sts. for NECK as you did on the back. Then after ROW 461 and on every following 4th row on neck side bind off 2 sts. 1 x and 1 st. 2 x, on every following 8th row bind off 1 st. 2 x and on every next following 10th row bind off 1 st. 3 x. AT THE SAME TIME SHAPE SHOULDER as you did on the back from ROWS 505 to 540.

**SLEEVE:** (Figure III). Make two. Using the ribber, cast on 61 sts. with white.

**ROWS 1-22:** K1, P1, Ribbing, working 5 rows white, 12 rows red and 5 rows white. After ROW 22 transfer the ribber sts. onto the neighboring needle (occupied needle) of main machine and continue working over 31 sts. in holding position design.

**ROWS 23-374:** Increase 1 st. on each side after ROW 56, then again every following 36th row 8 x. (49 sts.).

**ROWS 375-492:** CAP SHAPING: Bind off 2 sts. on each side, then on each side on every following 4th row bind off 2 sts. 1 x and 1 st. 3 x, on each side on every following 10th row bind off 1 st. 9 x and on each side on every next following 4th row bind off 2 sts. 1 x, 3 sts. 1 x and after ROW 492 bind off the remaining 7 sts.

**COLLAR:** Using the ribber, cast on 145 sts. with red. Work 45 rows red and 5 rows white. After ROW 50 bind off all sts.

**FINISHING:** Join front and back at sides and shoulders. Sew sleeves together and set in. Join short ends of collar. Sew cast on edge of collar to inside and bound off edge to outside of neckline.

Mark the beginning of rows with a small safety pin.

**ROW 1:** Make 2 loop stitches in each chain around.

**ROW 2:** Make 1 loop stitch in first st., 2 loop stitches in next st. Repeat around.

**ROWS 3-6:** Make 1 loop stitch in every st. After ROW 6 break off yarn and fasten.

**FINISHING:** Sew the back seam together. Turn under 1 inch on lower edge and hew to wrong side. Gather the upper edge to the size of the looped section and sew both sections together.

**COLLECTING FILE**

**KNITKING**  
MAGAZINE

A Binder to preserve your copies of KNITKING Magazine.  
Holds 12 issues available for ready reference.  
**Price \$2.50 each. Mailing cost 50 cents.**  
(California residents add 13 cents sales tax)

Available only from . . .  
**KNITKING MAGAZINE**  
1128 Crenshaw Blvd., Los Angeles, Calif. 90019

**GIRL'S CAP, KV 4937**



**SIZE:** 9-10 years. **MATERIAL:** 5 1/4 oz. KNITKING Frigate. **TENSION:** KNITKING 10. (The yarn is hand fed). **GAUGE:** 10 sts. 2", 19 rows 2". The omitted sts. are not counted in the gauge and directions.

**PATTERN:** Holding position Design over every other needle. AM 3 or Automatic use special Wheel 4. 1. Put the 2nd, 4th, 6th, etc. of the needles in working position into holding position and knit 2 rows. 2. Push the right Cam Control Button towards the back, (machines

prior to AM 3 pull the right Control Knob up) and knit 1 row. 3. Bring the needles from holding position back into working position and knit 1 row, then push the right Cam Control Button forwards (Cam Control Knob down). 4. Knit 2 rows. Repeat steps 1-4 throughout. The cap is knitted sideways. Cast on 39 sts. over every other needle. Work 174 rows in pattern then bind off all sts.

The center of the cap is worked in a crochet loop stitch, using a No. 4 crochet hook and a 2" x 4" cardboard. The loops are made as follows: With crochet hook, go into first st., yarn over and pull through (like making first half of a single crochet). The hook now holds 2 sts. Holding the cardboard top flush with your work, wind the yarn around the cardboard from front to back, (down and around to top of cardboard) yarn over hook and pull through both sts. on hook. Repeat for loop pattern, allowing the loops to slide off the cardboard as necessary to make it easier to handle.

At first chain 5, then slip stitch into first chain to form a circle.

← continued

## PRACTICAL KNITTING HINTS

### MAKING KNITTING PATTERNS TO A LARGER OR SMALLER SIZE

There is a difference of 2" in circumference between each garment size (i.e. a size 14 is 2" larger than a size 12) therefore, in order to make a Pullover or Dress one Size LARGER or SMALLER, you must ADD or SUBTRACT 1 inch of stitches for each change in size to the number of cast on stitches given for BOTH front and back (with the exception of size 10 or smaller). For a Cardigan, Jacket, Coat or Dress with full opening ADD or SUBTRACT 1/2 inch of stitches to each front section for each change in size. For a size 10 or smaller, use half these amounts subtracted from a size 12.

For the width at shoulder, there is a 1/2 inch difference across both front and back for each change in Women's and 1" for each Men's size.

In order to obtain the correct width at shoulders, decrease more or less stitches at the armhole shaping by dividing the stitches evenly between armholes.

Change the length of your garments by knitting more or less rows as needed but ALWAYS REMEMBER to put your row counter to the given row number in Pattern directions (shown on charts) where you begin any important shapings.

Sleeve length should be measured from the tip of shoulder down to the wrist (with arm slightly bent) for long set in sleeve. Subtract or add the necessary number of rows before reaching the underarm.

### PERMANENT CREASE FOR BOYS SUIT KK 4926

On the LEFT front of the trouser leg at waistline mark the 20th stitch counting from the center seam, then fold down

the full length. With crochet hook and strand of yarn make a slip stitch crochet through each whole stitch down the fold line, pulling yarn firmly. On the RIGHT trouser leg, mark the 20th stitch counting from the center seam at waistline, make a fold then slip stitch crochet as you did on the left side, but this time work from the bottom of trouser leg up to the waist.

NOTE: This type of permanent crochet crease has many other uses such as for pleated skirts, pin tucks, etc. etc.

### PATTERN MK 4934

Set up pattern, or use Cam and using main color, knit 5 rows. Cam Box is at left. Now push in the LEFT Retractor Button, take main color out of Yarn Finger and fasten on right Yarn Fastener. Now push the right Cam Control Button toward the back (machines prior to AM 3 pull knob up) and knit 1 row with the contrast yarn, feeding this row by hand. Now push the right Cam Control Button forward (or knob down) and bring the Cam Box to the RIGHT side. Put main color back into Yarn Finger, set up pattern or use Cam according to chart and knit 5 rows. Now push the LEFT Cam Control Button toward the back and knit 1 row. Take main color out of Yarn Finger, push right Retractor Button in, and bring Cam Box to left side. Push the left Cam Control Button toward the front, the right Retractor Button out and knit 1 row with contrast yarn feeding this row by hand. Repeat throughout for Pattern. Do not count the rows where you went to opposite side to pick up yarn.

## INTERCHANGEABLE YARN CHART



**\$1.00**

plus 10 cents mailing  
Calif. residents add  
5 cents Sales Tax

Specially prepared to allow you to substitute Nationally distributed brand name yarns for the KNITKING YARNS used in KNITKING MAGAZINE. CHARTS are complete with ROWS and STITCHES per inch at various Tensions. Order from KNITKING, 1128 Crenshaw Blvd., Los Angeles, California 90019.



# KNITKING NEWS

January-February 1968

## TRIM FOR COVER GARMENT

The cover garment for this issue was originally trimmed with a "store bought" trim, as we considered that most readers would not want to knit it separately, but one of the experts at KNITKING decided she would like a skirt and a boat neck shell to match the cover sweater and that she would knit the trim in for the shell and the skirt and knit a separate trim to attach to the sweater.

The knitted in trim on the skirt is at the bottom and the shell has a knitted trim around the bottom plus a trim extending the full width of the shoulders at the front and back of the top.

She purchased some beautiful white mink for the collar of the cardigan and the completed garment is absolutely gorgeous. It is one of the most luxurious and expensive looking outfits we have ever seen.

In order that you can, if you wish, make the trim for the cover garment, we have prepared these special instructions, confident that if you make the effort, you will find it completely rewarding.

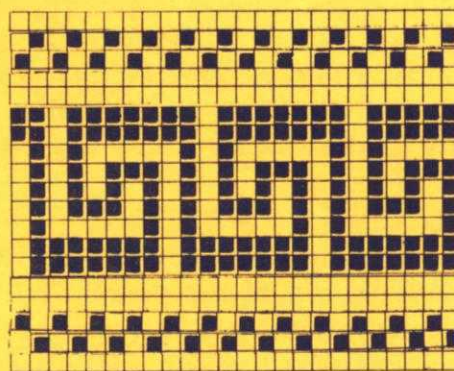
## KNITTED GRECIAN KEY TRIM

Material: 3 1/2 oz. Blue, 3 1/2 oz. Gold KNITKING Nanga Parbat.

Tension: 8-10

Gauge: 12 sts. 16 rows to 2"

Sleeve Bands (make 2) Use an open cast-on as follows: With a contrast yarn, cast on 154 sts. and knit several rows, then start the pattern with main colors according to chart. After the last pattern row, bind off all sts. by laying the yarn over all needles and knitting each stitch by hand loosely, then crochet the stitches off, being sure the loops are uniform.



□ = Gold    ■ = Blue

Now hang the stitches held on the contrast yarn back on the machine, remove contrast, knit 1 row by hand and bind off as you did before.

Lower Jacket Trim Open cast-on as before. Front (make 2) Cast on 65 sts. plus 1 st. for seam. Back (make 1) Cast on 118 sts. plus 2 sts. for seam and work the pattern bands as you did the sleeve trim. Knit 1 front first, then the back and then the other front, making sure the pattern is continuous around.

Finishing Weave lower bands at sides 1 st. in from each edge. Thread a pointed darning needle (do not use tapestry needle) with not more than 2 plys of the gold yarn and sew the bands to the Jacket going through each loop on the bound off edges with a tiny back stitch (see picture).

You may cover the buttons yourself or have them done professionally. In any case, you must knit a piece by casting on 80 sts. and knit the full pattern.

#### BACK ISSUES OF KNITKING MAGAZINE

We are sold out of all bound Volumes of KNITKING MAGAZINE and are sorry to say that no more will be available until the present Volume is complete and ready for binding in September 1968.

Back issues of KNITKING MAGAZINE are rapidly disappearing, but we do have some copies of Volume 1, No's. 1, 2, 4, 5 and 6; Volume 2, No's. 1, 2 and 3; Volume 3, No's. 3 and 6. These are available at \$1.50 a single copy or any six for \$6.00, postage paid anywhere in the U.S.A. It is not possible to reprint back issues, so if you want any of them before they are sold out, please get your order in.

#### KNITKING YARN CATALOGUE

By the time you receive this issue of KNITKING MAGAZINE, we will have run out of the current edition of the KNITKING YARN CATALOGUE . . . .so please, if you are thinking of ordering a catalogue, wait for our announcement which will appear in the next issue of KNITKING MAGAZINE.

We are adding to our already superb range of yarns, and the new color selection will be the most beautiful you ever saw. Meanwhile, our present excellent range will continue to be available.

### HANDY HINTS

Mrs. Wright of Chicago writes to say that the looped mohair she is using occasionally catches in the feed finger of her AM 2 KNITKING.

When knitting fancy yarns such as thick and thin or looped yarns that are loosely twisted such as Satin-Cotton (in fact any yarns that tend to catch in the standard finger) it is advisable (on the Model AM 2 KNITKING only) to use the feed finger that is provided for use with the COORDINATED RIBBER.

### SPECIALS FOR JANUARY-FEBRUARY

This is the time of the year when warm sweaters are most desirable and as mohair in addition to being one of the warmest of all yarns, is also one of the best looking, we are putting beautiful KNITKING MOHAIR on SPECIAL. You can substitute mohair in the knitting of practically any pattern that calls for 4 1/2 stitches to the inch. It is knitted on every other needle and although when you knit it, most of the fluffiness will appear on the purl side, it is a simple matter to transfer it to the knit side of the finished garment by brushing the knit side and thereby, controlling the fluffiness to suit your own taste.

We have all colors in stock, but some of the more popular ones will go fast, so get your order in early and be sure to give two alternates. Mohair comes in once ounce balls.....The normal low price is 89¢ an ounce. This outstanding SPECIAL reduces it by 25¢ an ounce to 64¢ an ounce (a saving of \$4.00 a pound). California residents must add 5% Sales Tax. Mailing costs are 50¢ for any amount up to two pounds, plus 25¢ for each additional pound or part of a pound.

### SATIN-COTTON

We will be featuring lovely SATIN-COTTON in several KNITKING patterns planned for forthcoming issues. SATIN-COTTON is the perfect yarn for light cool garments for Spring and Summer. It is also a perfect substitute yarn for people allergic to wool.

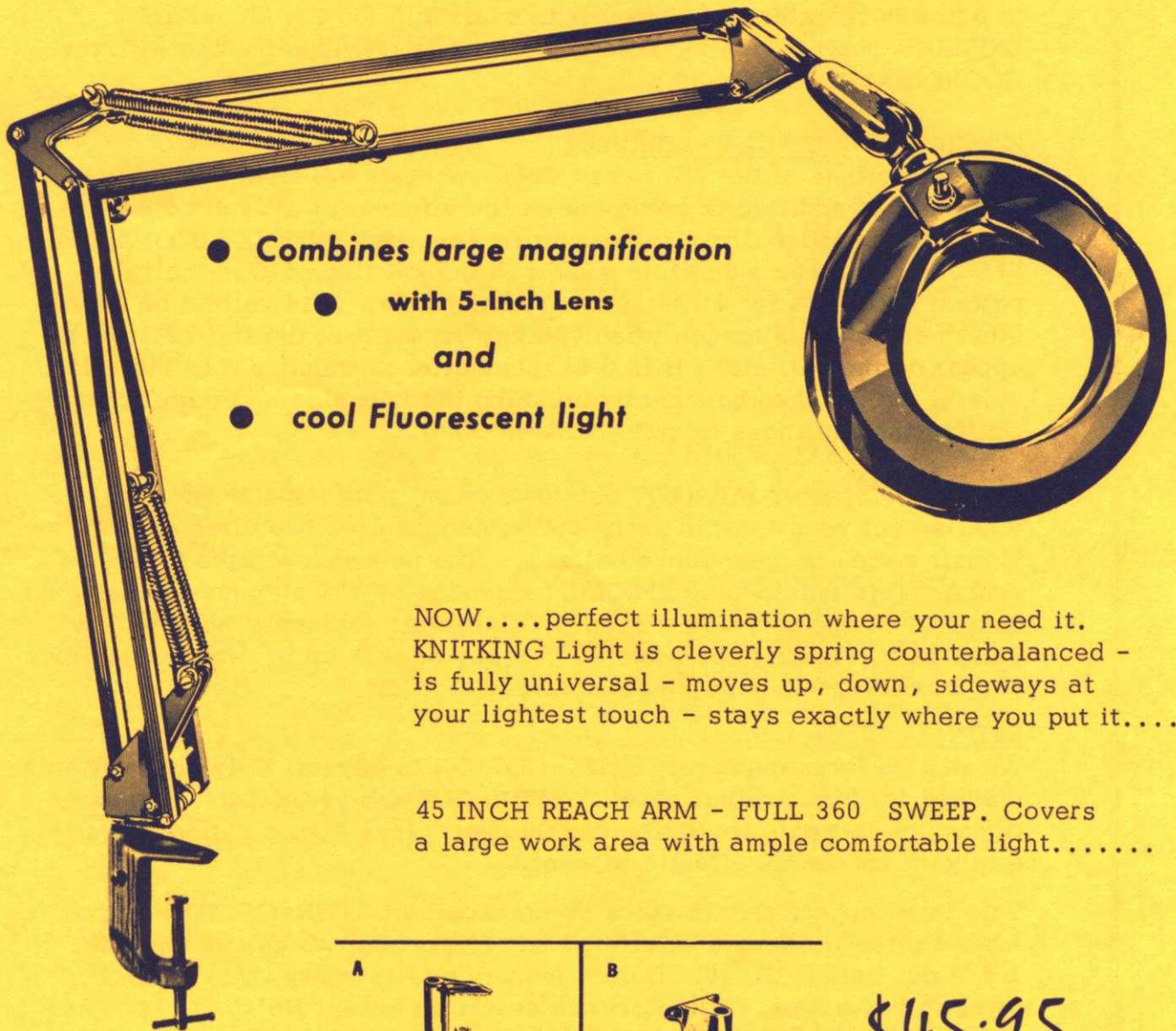
This is an opportunity to stock up on excellent SATIN-COTTON at the lowest price we have ever offered it. Our normal wholesale price for 1 3/4 oz. ball is \$1.10. During January and February, the SPECIAL price is 80¢ a ball. All colors are available except No's. 7011, 7022, 7029, 7027, 7001, 7006, 7020, 7000 and 7024 but you MUST give two alternates.

California residents be sure to include 5% Sales Tax. Mailing costs 50¢ up to two pounds, plus 25¢ each additional lb. or part of a lb.

Lets you easily check your knitting gauge.  
 Illuminates your work without heat.....  
 Helps prevent eye strain.....  
 Makes it easy to assemble garments.....



**ILLUMINATED MAGNIFIER**  
*... for precision viewing!*





- **Combines large magnification**
- **with 5-Inch Lens**
- and**
- **cool Fluorescent light**

NOW....perfect illumination where you need it.  
 KNITKING Light is cleverly spring counterbalanced -  
 is fully universal - moves up, down, sideways at  
 your lightest touch - stays exactly where you put it....

45 INCH REACH ARM - FULL 360 SWEEP. Covers  
 a large work area with ample comfortable light.....

Specify A or B fitting.

<p><b>A</b></p> 	<p><b>B</b></p> 
<p>Clamps to level surface edge of table or desk...</p>	<p>Screws to vertical surface, wall, cabinet or partition.</p>

**\$45.95**

COMPLETE

# NOTES TO KNIT BY . . .

## STITCH AND ROW GAUGE

Every KNITKING pattern calls for a specific number of stitches and rows for 2 inches and in order to obtain the correct size finished garment, you must be sure to knit at the correct tension. This means that before starting a garment, you must knit a sample swatch with the yarn you intend using for the garment.

Cast on over a sufficient number of needles to produce a swatch 4 inches wide. (If the pattern calls for 16 stitches to 2", 16 x 2 = 32 stitches) then knit 4 inches of rows at the first suggested tension (if the pattern calls for 22 rows to 2", 22 x 2 = 44 rows) knit 2 rows with a contrast color, change to the next higher tension, knit another 4", knit 2 rows with contrast color, change to a third higher tension and knit another 4", then bind off.

Roll the swatch into a cylinder over its length and pull on both ends. Unroll it and stretch it diagonally by pulling on the four corners. Allow the swatch to rest and settle (preferably overnight) then using a stitch gauge or ruler, count the number of stitches and rows over a 2" length in each of your 3 tensions. Select the tension that produces the stitches and rows called for in the pattern. If none of them are correct, you are most likely using the wrong weight of yarn.

## HOLDING POSITION

The needles are as far forward on the needle bed as they will go.

## NON-WORKING POSITION

The needles are as far back on the needle bed as they will go.

## BINDING OFF

See Instruction Manual for your own machine.

## CROCHET BIND OFF

Use this method for binding off neck and armbands, edgings, facings or collars. Knit a bind off row using 5 tensions higher than tension used for section and then with latch needle tool, and working from the opposite side of the yarn end, pull the second stitch through the first stitch, the 3rd through 2nd, the 4th through 3rd, etc. . . . When you reach the end of row, pull the loose end of yarn through the last stitch. If you are unable to turn the tension up 5 numbers because you already are working with a large tension, lay the yarn over the needles by hand and knit this one row by pulling each needle back and forward again completing a stitch. Leave approximately 1/4" loop for each stitch (depending on type of yarn used) then bind off crochet method.

## SHORT ROWS

Used for shaping of all kinds. Push the specified number of needles opposite the Cam Box into holding position and knit across to them. Now you **must** place the yarn **OVER** and **UNDER** the first inside needle that is in the holding position. Place the specified needles opposite Cam Box into holding position (other side) and knit across to these needles, and again place the yarn **OVER** and **UNDER** the first inside needle in the holding position. Repeat as many times as your pattern states. When you return these needles to the working position, the same procedure is used — bring the needles into work opposite the Cam Box, knit across to them, place the yarn **OVER** and **UNDER** the first inside needle in holding position and repeat for other side. Continue in this manner until all the needles are back in the working position.

## INCREASING, DECREASING

See the Instruction Manual for your own machine.

## INCREASING AND DECREASING WHEN USING RIBBER

When increasing, increase on the main knitter first, knit one row and then transfer the necessary stitches from the knitter to the ribber and continue.

When decreasing or binding off, you **must** transfer the ribber stitches to the main machine before decreasing or binding off.

**CONTROL KNOBS** (Under the slide handle — one on each side on KNITKING and certain other machines.)

1. When **BOTH** Control Knobs are **UP**, (or **IN** on the latest KNITKING) knit one row going from right to left. The needles knit and move back just beyond the front of the needle bed and the yarn hangs on the front of the needles. The slide will now move freely in either direction

with the needles remaining in a "SAFE POSITION". When you wish to resume knitting, press down (**Out on the latest KNITKING**) **BOTH** Control Knobs. The first movement of the slide is made without yarn and will bring the needles into working position, you then continue knitting.

2. **RIGHT CONTROL KNOB UP** (IN on latest KNITKING). Knit from right to left. The row knits, moves the needles back and the yarn is held in front of the latches. Knit from left to right, the yarn goes under the needles without knitting as the needles move into the working position. This is the operation used for making round cords (with 3 or 4 needles only) and also for knitting single rows of one color.

3. **LEFT CONTROL KNOB UP** (IN for latest KNITKING). The same as above but moving from left to right.

## NECK SHAPING

When the directions state to bind off the center stitches for **NECK**, one correct way is as follows: With a new ball of yarn, bind off the given number of stitches working from **right to left**. Leave this ball of yarn hanging to one side (to be picked up later) and put all the needles on the left side into holding position and complete the right side first as directed. When you have completed the right side, pick up the yarn that you used for the neck bind off, put it in the wool feeder, bring all the needles into working position and knit 1 row to the left side. Turn row counter back to the number on which you started your neck shaping and complete the left half with reverse shaping, making the same number of decreases and on the same row numbers as on the right half.

You may also use the **SHORT ROW** method for shaping your neck and shoulders provided the decreasing is made on **every other row**. When the shaping is completed, knit 1 row over all the neck stitches (or shoulder stitches) with tension set at least 5 numbers higher, and then bind off all stitches using the **crochet method**.

If you are hand feeding a Norwegian design, bind off the center neck stitches with a new ball of yarn, then work both sides of neck shaping at the same time, using two balls of yarn for each color.










## MISSING ROW NUMBERS

When there are row numbers missing in the instructions as for instance when you have completed the designated increases or decreases on a section of garment, continue knitting until you reach the next given row number.

## READING OF SYMBOLS

Certain holding position and eyelet designs are sketched in the knitting patterns. The Chart with symbols is read as the work comes toward you from the machine. Where purl stitches are facing you, the purl symbol will be shown and where knit stitches are facing you, the knit symbol will be shown. On the sides of the chart are the row numbers, i.e. 1-8 indicates the first and last row number. In eyelet design patterns, specified stitches are transferred to another needle and the empty needles are returned to the knitting position each time. In holding position designs, selected needles are pushed into the holding position for the stated number of rows.

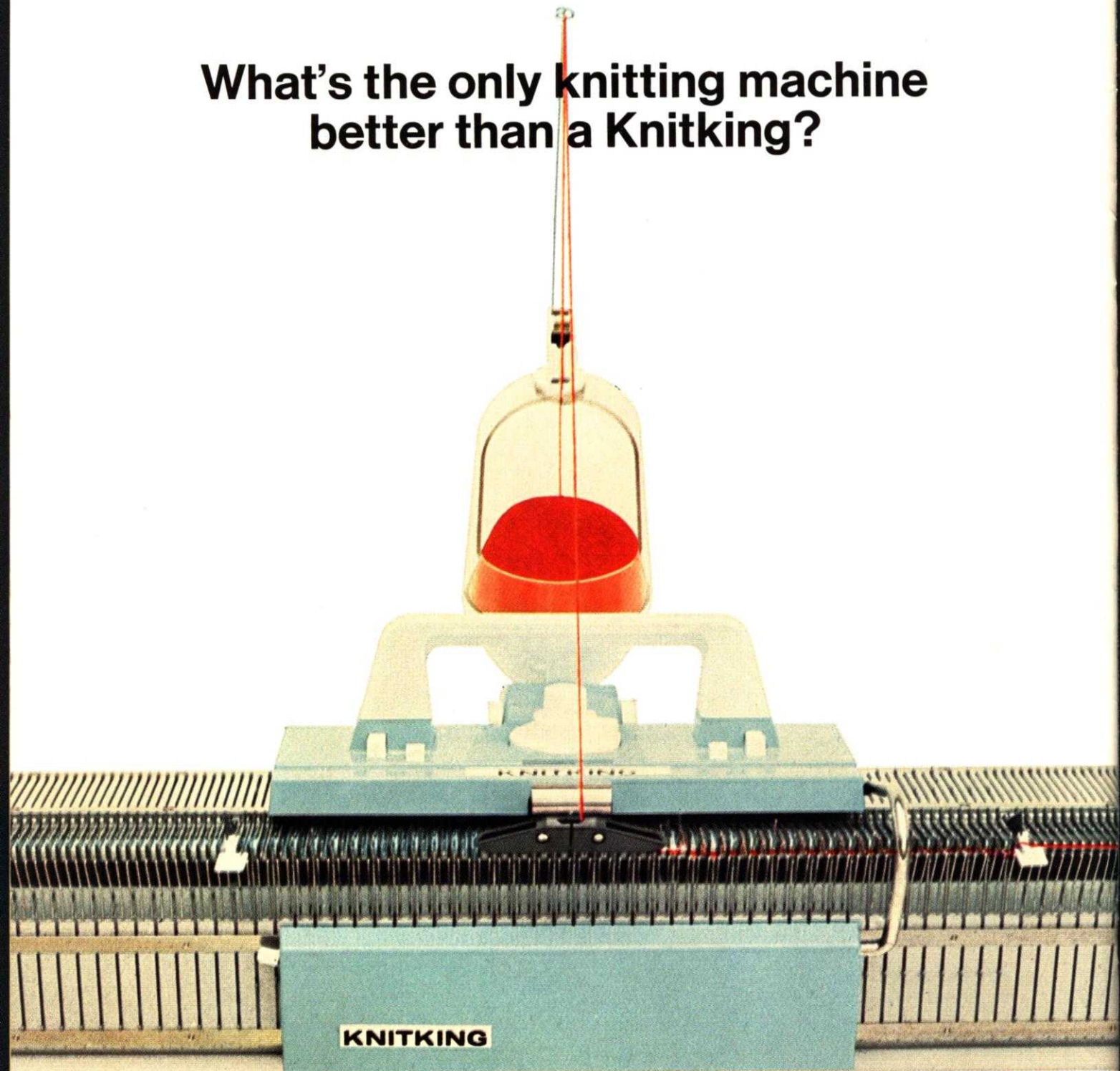
### PATTERN STITCH SYMBOLS

-  = knit stitch
-  = purl stitch
-  = empty needle (leave in working position)
-  = needle not used (in the out of work position)
-  = needle in holding position
-  = 2 stitches on 1 needle — either transferred from the right side or the left side, then put the needle into holding position
-  = needle holding 2 sts. Stitch has been transferred from the **LEFT**
-  = needle holding 2 sts. Stitch has been transferred from the **RIGHT**
-  = 3 stitches on 1 needle. The 1st and 3rd stitch in a group of 3 needles has been hung on the 2nd or center needle.

The diagrams for pattern work are followed just as they are shown, and on your knitting as it comes towards you on the machine.



**What's the only knitting machine  
better than a Knitking?**



**The new  Knitking!**

For color brochure and complete details on this magnificent new KNITKING write to:  
**KNITKING • 1128 Crenshaw Blvd., Los Angeles, California 90019**