

KNITTING

MAGAZINE



YARNS
by

Knitking

The Finest From Around the World . . .

If you want your garments to look as good as those in KNITKING MAGAZINE and keep their appearance through dozens of washes, you must knit them with gorgeous KNITKING yarns. KNITKING yarns are the finest quality obtainable anywhere and the prices cannot be beaten. Try them once and you will always use them.

Your orders will be filled the same day they arrive. Be sure to state your color preferences and alternates.



Pattern Numbers	YARN		Price Including Shipping
DK 7533	Subita 2 x 4	Size 12/14 Size 16/18	\$14.90 16.10
DK 7541	Subita 2 x 3	Size 12/14 Size 16	11.30* 12.50*
DK 7538	Linen Cotton & Subita 2 x 3	Size 14/16 Size 18/20	15.90 18.40
DP 7539	FINE Dralon	Size 12/14 Size 16	5.30 10.10
DP 7535	Subita 2 x 3		7.70
DV 7536	Subita 2 x 3		4.10*
DP 7534	Subita 2 x 4		10.10
DV 7542	Subita 2 x 3		5.30
DP 7540	Satin Cotton	Size 14/16 Size 18/20	10.40 11.50
DP 7543	FINE Satin Cotton		7.10
HP 3504	Linen Cotton		12.20
HP 3506	Starlite Crepe	Size 42/44 Size 38/40	17.75 16.37
HP 3505	FINE Dralon		7.70*
HP 3507	Subita 2 x 3	Size 42/44 Size 38/40	16.10* 14.90*
KK 4960	Mutella		6.26*
MK 4961	Subita 2 x 4		12.50
MK 4962	Subita 2 x 3		7.70
KK 4963	FINE Dralon		7.70
MK 4959	Subita 2 x 4		6.50

Items marked with a * do not include the small amounts of contrast yarns used in the pattern.

California Residents please add 5% Sales Tax.

Send \$2.00 for **LARGE COMPLETE YARN CATALOGUE.**
(Refunded on your first \$10.00 order) to:

KNITKING YARNS, Dept. 19
1128 Crenshaw Blvd.
Los Angeles, California 90019

KNITKING

MAGAZINE

Vol. 4, No. 4

March/April, 1968

INDEX

Contents	Pattern No.	Page No.
Woman's Dress	DK 7533	16
Woman's Dress	DK 7537	17
Woman's Dress	DK 7541	19
Woman's Dress	DK 7538	20
Woman's Pullover	DP 7539	21
Woman's Pullover	DP 7535	22
Woman's Stockings	DV 7536	23
Woman's Pullover	DP 7534	23
Woman's Stockings	DV 7542	24
Woman's Pullover	DP 7540	24
Woman's Blouse	DP 7543	26
Man's Pullover Shirt	HP 3504	26
Man's Jacket	HP 3506	27
Man's Shirt	HP 3505	28
Man's Pullover	HP 3507	29
Boy's Pullover	KK 4960	30
Girl's Dress	MK 4961	30
Girl's Pullover	MK 4962	31
Boy's Shirt	KK 4963	31
Girl's Pullover	MK 4959	32
Practical Knitting Hints		32

KNITKING

MAGAZINE



COVER MODEL DK 7533

Spring Tempo! Tune in to our Spring Song of the latest fashions in knitwear and you'll find the styles young and exciting. Scan the pages, then get busy and knit one or more of them for yourself or your family. A large picture of the Cover Model is shown on page 5.

Publisher: Henry J. Atkin, 1128 Crenshaw Blvd., Los Angeles, Calif. 90019, Telephone: WEBster 8-2079. Published bi-monthly. Subscriptions: USA—\$6.00 annually, single copies \$1.50; Canada—\$7.00; other parts of the world—\$10.00. The entire contents of KNITKING MAGAZINE are copyright and must not be reproduced in any shape or form without the express permission in writing, of the publisher. COPYRIGHT © by KNITKING 1968.

Printed by: George Rice & Sons, Los Angeles, California.

Letter from the Publisher

THE January-February issue of KNITKING MAGAZINE was obviously the most popular one (with readers that need the larger sizes) that we have ever published and we appreciate the hundreds of letters of thanks sent in by these readers.

A questionnaire goes out to every reader when a subscription is due for renewal and the answers to the ten questions provide us with information we need to plan future issues. For example, by far the highest percentage of our readers fall into the 12/14 category, with the second category fairly evenly divided between sizes 10 and 16.

We have received very few completed questionnaires from people who wear size 8 and were therefore, very surprised recently at the volume of mail from readers asking for size 8 garments and complaining that there was nothing for them in the January-February issue . . . Sorry girls, it really was a special issue for the larger person . . . but because you smaller girls made yourselves heard, we are preparing some really good looking garments for you starting with six in the next issue. Three very cute Mod dresses in the new bright colors, a sleeveless turtle neck Pullover that could also be knitted dress length, a very attractive long sleeve shirt knitted in fine yarn and a short beach dress in Linen-Cotton with a handsome Beach Bag to match. In the same issue, we have two other very striking sleeveless Dresses, some attractive Pullovers and Sweaters and another Beach Jacket in Size 10/12.

For the Men, we are featuring a handsome fashionable turtle neck ribbed Sweater, a stylish cable stitch Cardigan and an outstanding V-neck Pullover. The children, as usual, are well taken care of and as a point of interest, some of our readers who take very small sizes tell us that they can frequently wear garments in the teen sizes. We are still receiving requests from readers who want us to list alternate yarns in our patterns and we are sorry to say that because of the large range of alternate yarns, it is impossible to list them, but the problem is easily overcome if you purchase our Interchangeable Yarn Chart for \$1.00 plus 12c mailing costs. It will overcome all your problems in the selection of alternate yarns and has been prepared entirely as a service to our readers.

Letters in praise of the new KNITKING CHILDRENS BOOK arrive by every mail. We were aware that a book of Childrens patterns exclusively for knitting machine users was badly needed but the demand exceeded even our expectations . . . and the first printing is selling out fast.

The publication of such books is a very expensive undertaking and it takes a large number of sales before any profit is shown on the investment . . . (in fact, KNITKING MAGAZINE operated at a loss for the first 3 years of publication and is only just beginning to pay its way.) However we are pleased to announce that because of the continuing and growing support of our readers, we are preparing some more 'Special' books for publication in 1968.



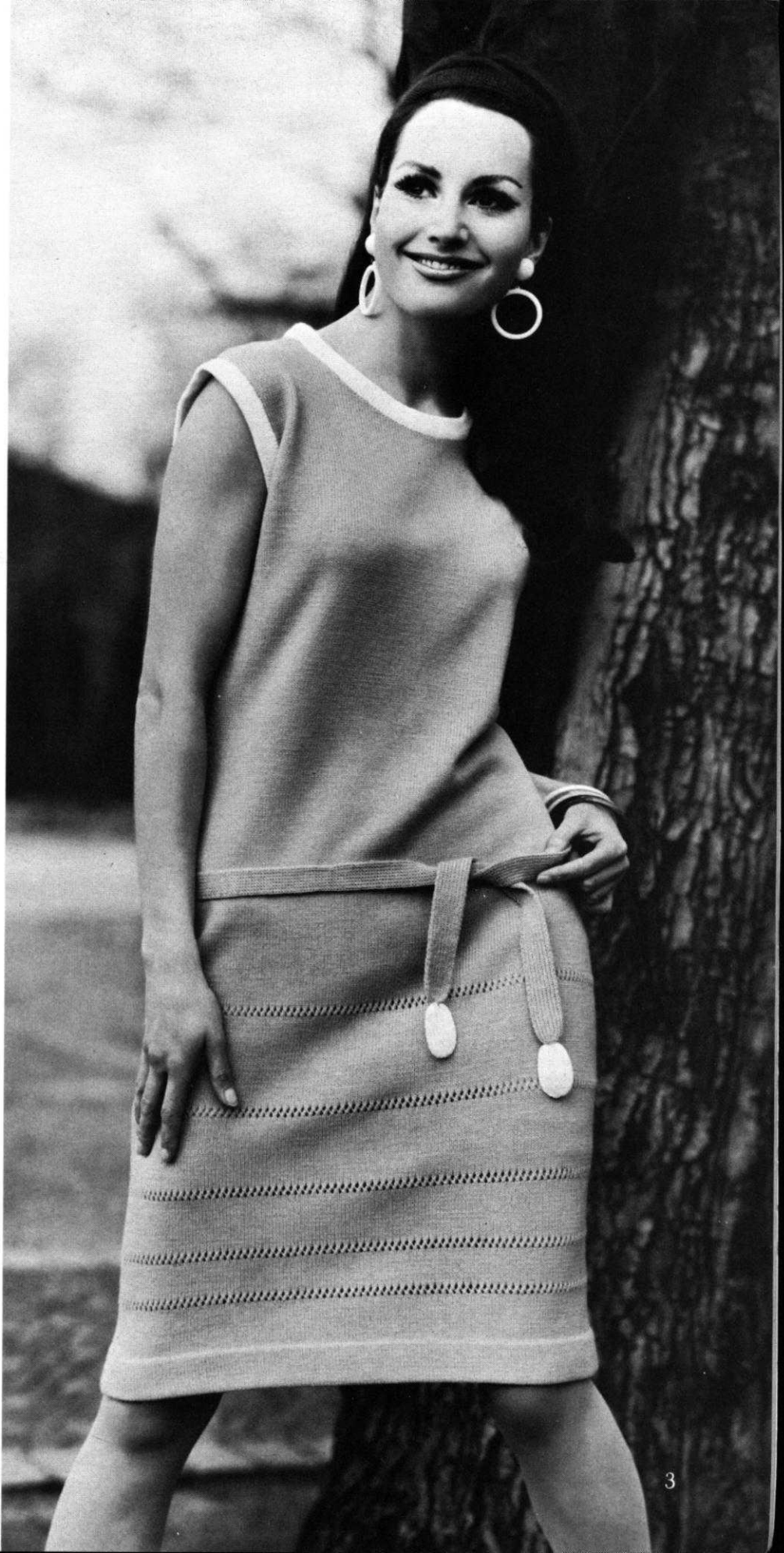
MODERN STYLES FOR SPRING

DK 7537

Textured Triumph! Use a nubby yarn for this softly shaped dress knitted in beige, coral, and white (Pauline Denham Nomotta Splendour) and worn on the purl side. The high neck has a small opening in the back that closes with a button and loop. Size 12/14 and 16. See page 17.

DK 7541 →

A simple eyelet design spaced in different widths makes an interesting trim on the bottom section of this lovely dress. Use bands of a contrast color to set off the neckline and armholes then repeat the contrast color for the tabs on belt. Size 12/14 and 16. See page 19.





MODERN STYLES FOR SPRING



DK 7538

Magic Moments! A one piece dress with the look of two pieces . . . the hip band does the trick. Linen Cotton is used for the dress, the contrasting bands are Subita 2 x 3. Size 14/16 and 18/20. See page 20.

DK 7533

Day into Night . . . a Dress for any hour. The Eyelet Design used at the bottom turns a basic Sheath Dress into one of exquisite beauty. A row of Eyelets around the Neckline adds feminine flattery. Size 12/14 and 16/18. See page 16.

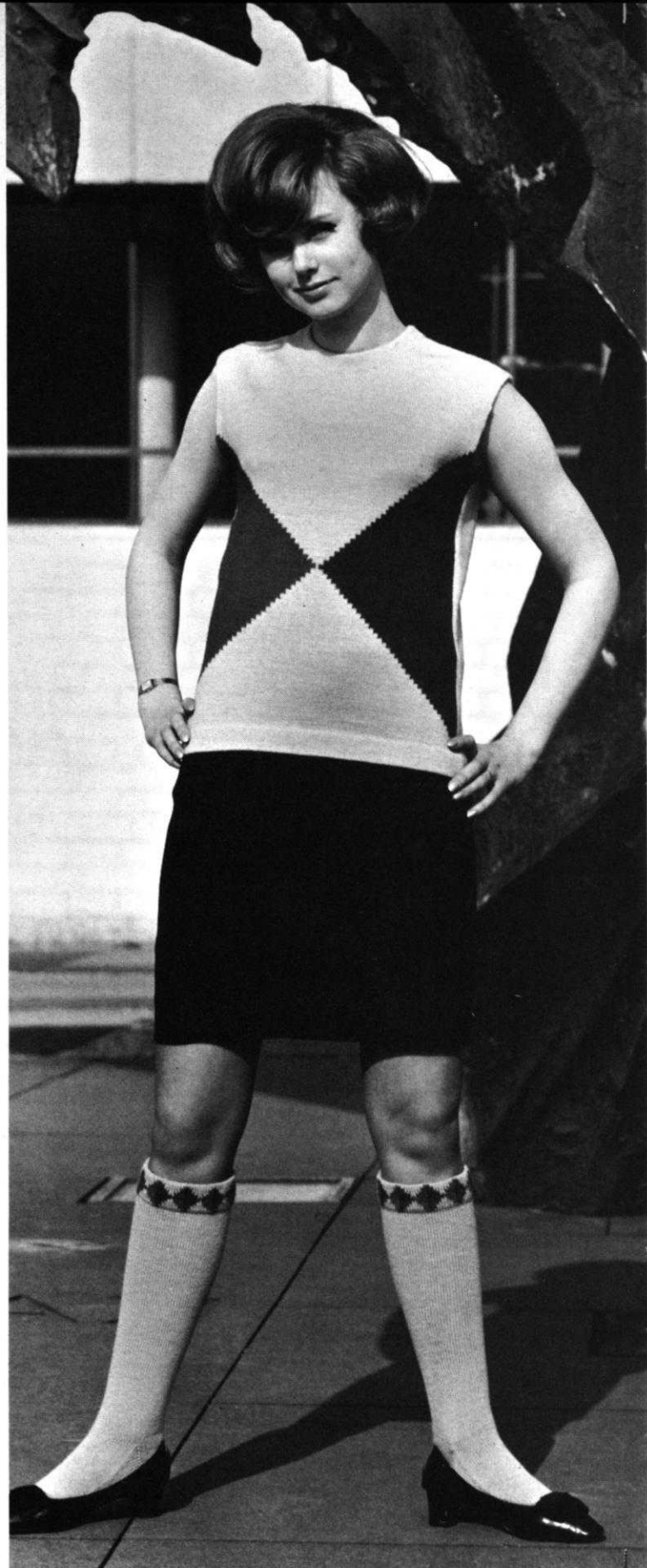
CONTRASTS IN COLOR

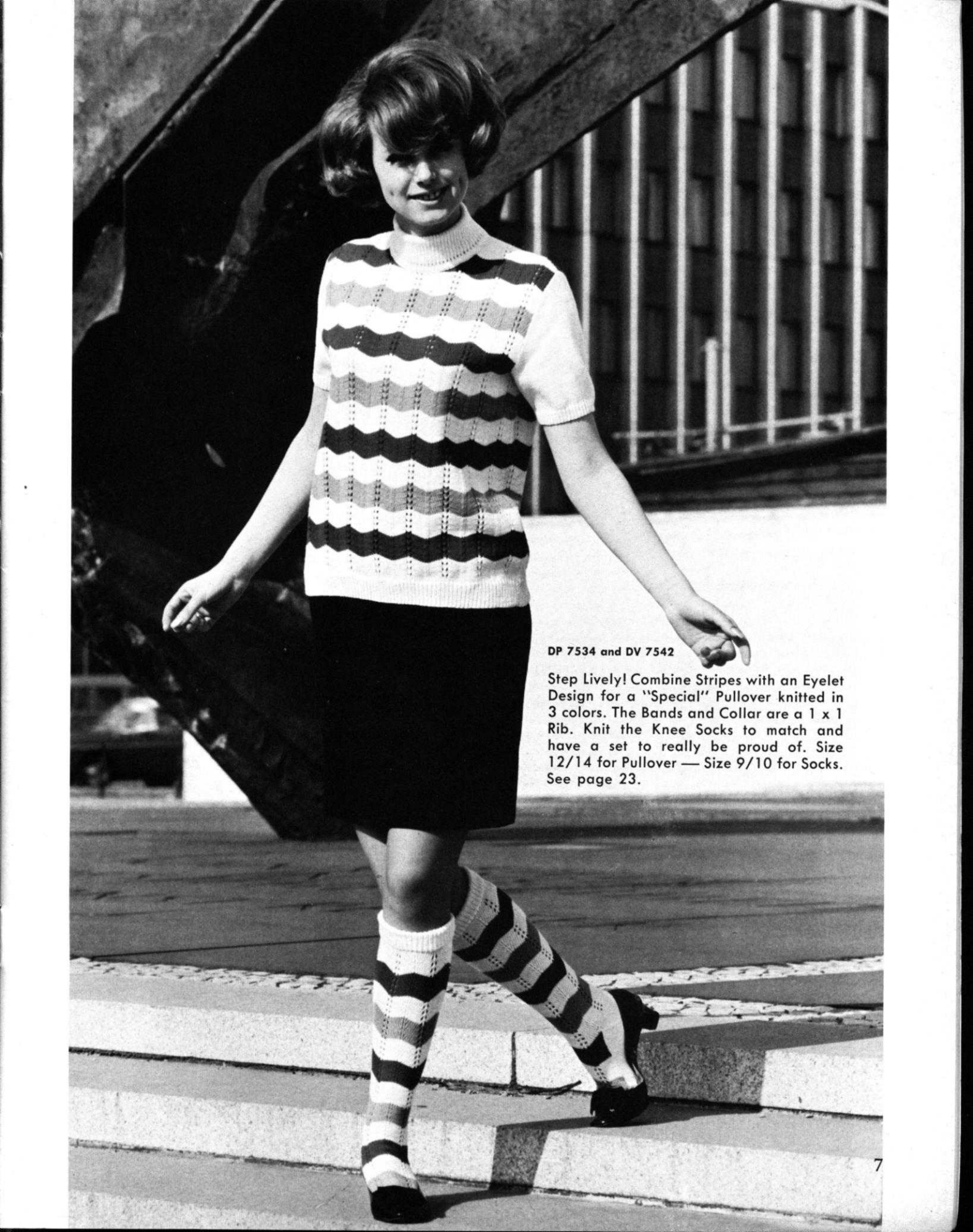
DP 7535 and DV 7536

The College Crowd adore a Harlequin Shell Top with matching Knee Socks . . . so surprise her with a set knitted in her school colors. Size 10/12 for Shell, 9/10 for Socks. See page 22.

DP 7539

Travel Trends! Pack this two-toned shell (knitted in KNITKING Fine Dralon) for your Spring vacation. The striped collar is knitted on the bias. Do knit two skirts — one in each color — and have two complete outfits. Size 12/14 and 16. See page 21.





DP 7534 and DV 7542

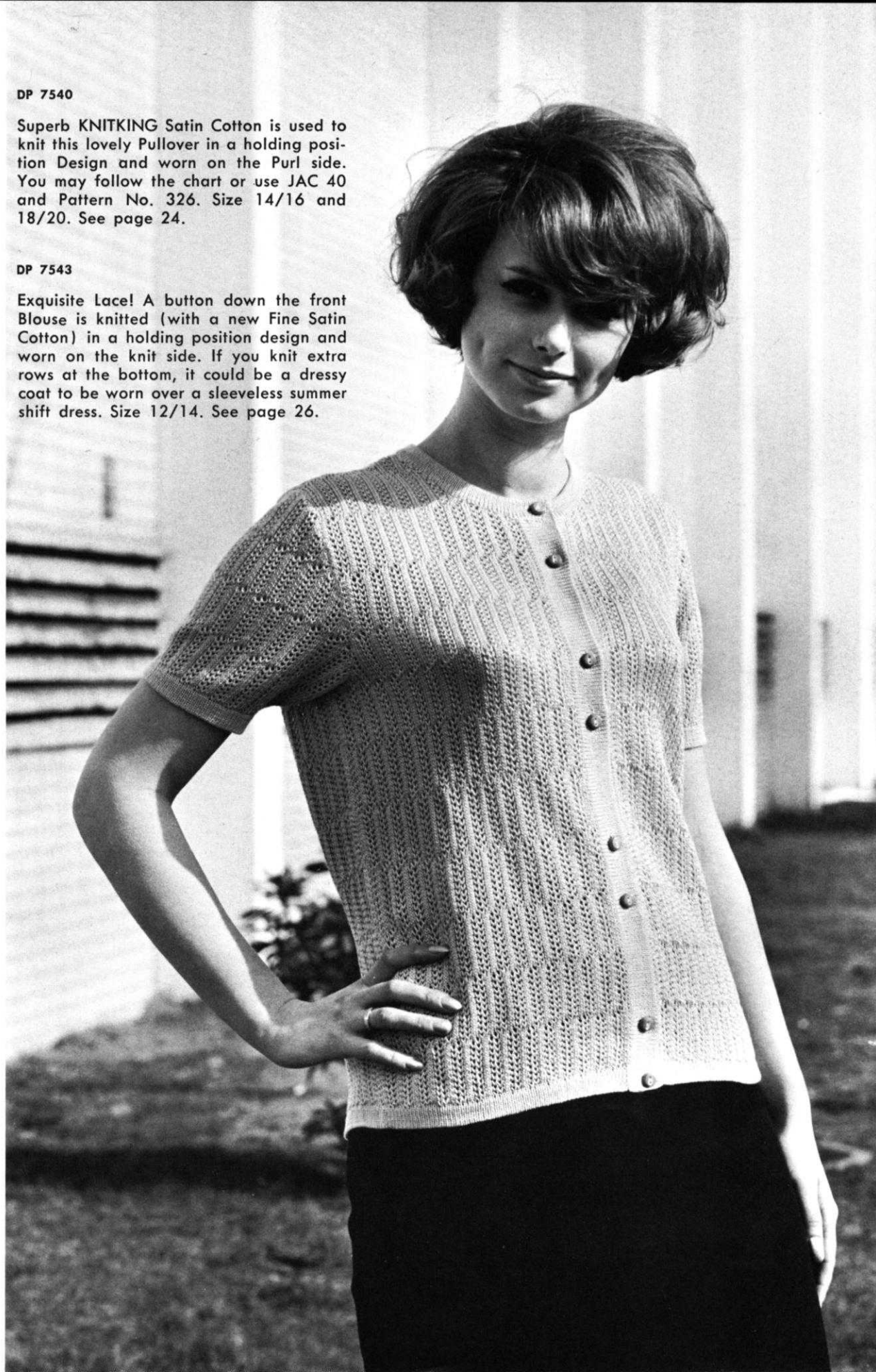
Step Lively! Combine Stripes with an Eyelet Design for a "Special" Pullover knitted in 3 colors. The Bands and Collar are a 1 x 1 Rib. Knit the Knee Socks to match and have a set to really be proud of. Size 12/14 for Pullover — Size 9/10 for Socks. See page 23.

DP 7540

Superb KNITKING Satin Cotton is used to knit this lovely Pullover in a holding position Design and worn on the Purl side. You may follow the chart or use JAC 40 and Pattern No. 326. Size 14/16 and 18/20. See page 24.

DP 7543

Exquisite Lace! A button down the front Blouse is knitted (with a new Fine Satin Cotton) in a holding position design and worn on the knit side. If you knit extra rows at the bottom, it could be a dressy coat to be worn over a sleeveless summer shift dress. Size 12/14. See page 26.



**ESPECIALLY
LIGHT
AND
COOL**



SPRING STYLES

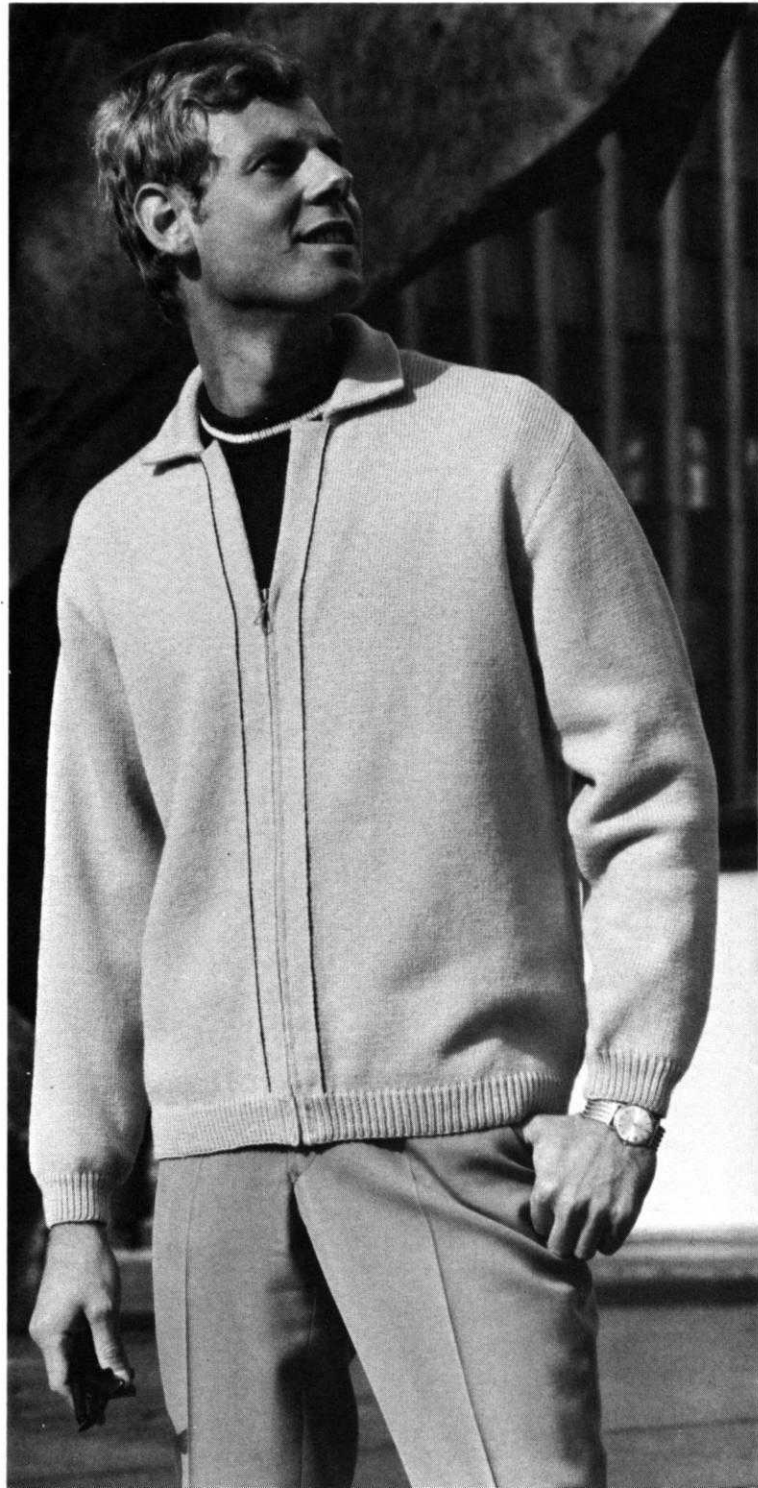


HP 3504

Expensive to buy in a store, but not to knit when you use KNITKING Linen Cotton for this Man's Sport Shirt. Most men like the pockets, but if yours does not, simply leave them out. Size 40/42. See page 26.

HP 3506

Be a Sport and zip your man into this handsome well styled Jacket knitted in hard wearing excellent Starlite Crepe. Use stockinette stitch with a 1 x 1 rib at bottom of Jacket and Sleeves. Size 42/44 and 38/40. See page 27.



FOR MEN

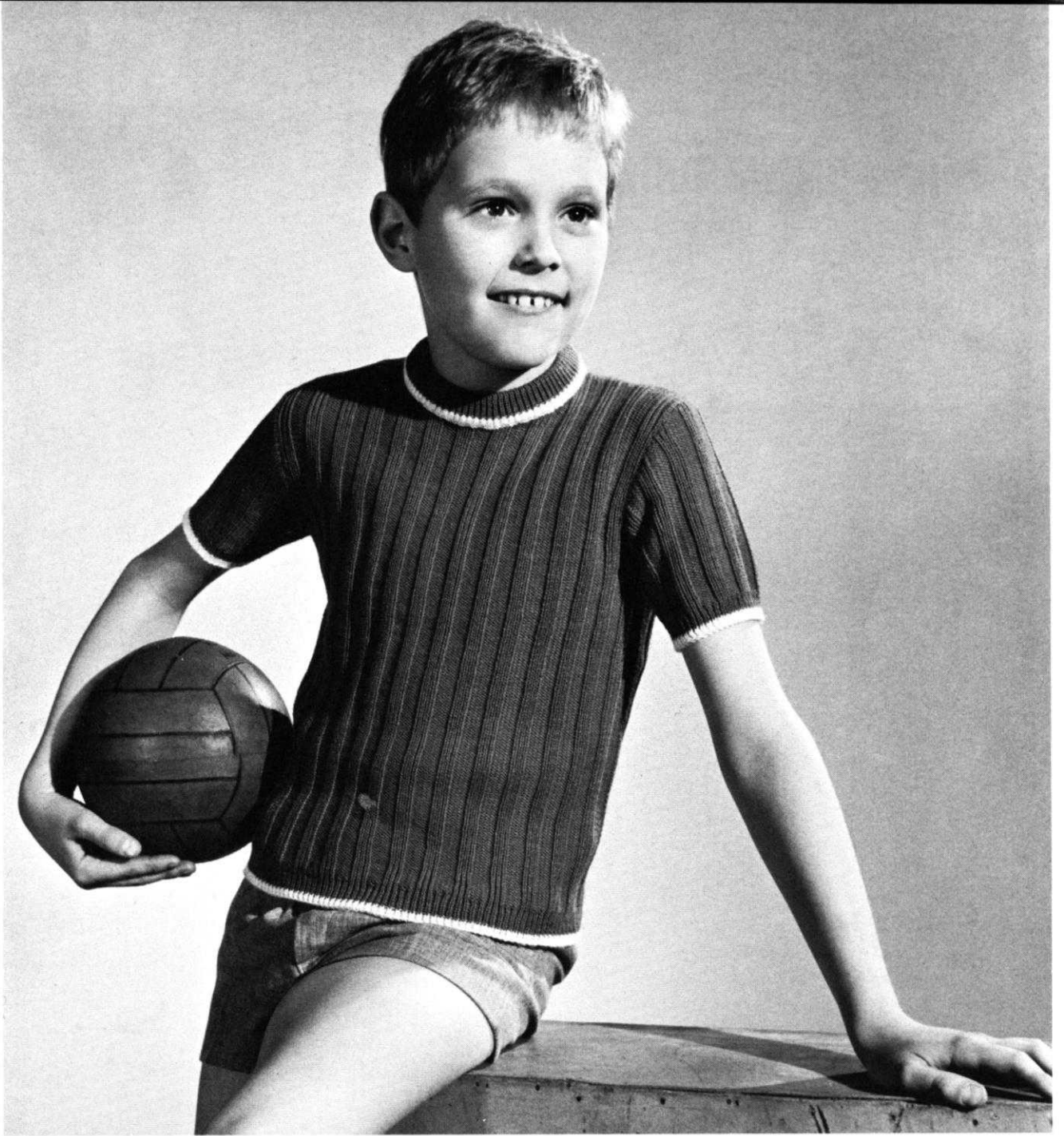


HP 3505

Any man will be pleased with this well tailored button down the front Sport Shirt knitted in stockinette stitch. The edges of Collar, Pocket, and Sleeves are in a contrasting color. Size 40/42. See page 28.

HP 3507

He'll wear this Pullover everywhere he goes. It is knitted in dark Blue KNITKING Subita 2 x 3 with a small stripe in White at Neckline and Pocket. A holding position design that is worn on the Purl side. Size 42/44 and 38/40. See page 29.



KK 4960

MK 4961 →

Triple his points for any game when he plays the field in this ribbed Pullover accented in White at the edges. Follow the Chart for the pattern stitch which is worn on the Purl side. Size 8-9 years. See page 30.

Copy Cat! A little girl version of what the teen set is wearing meets with a small girl's approval. The dress is knitted in stockinette stitch using 3 colors. Stripe it in shades she prefers and belt it low as shown. Size 8-9 years. See page 30.

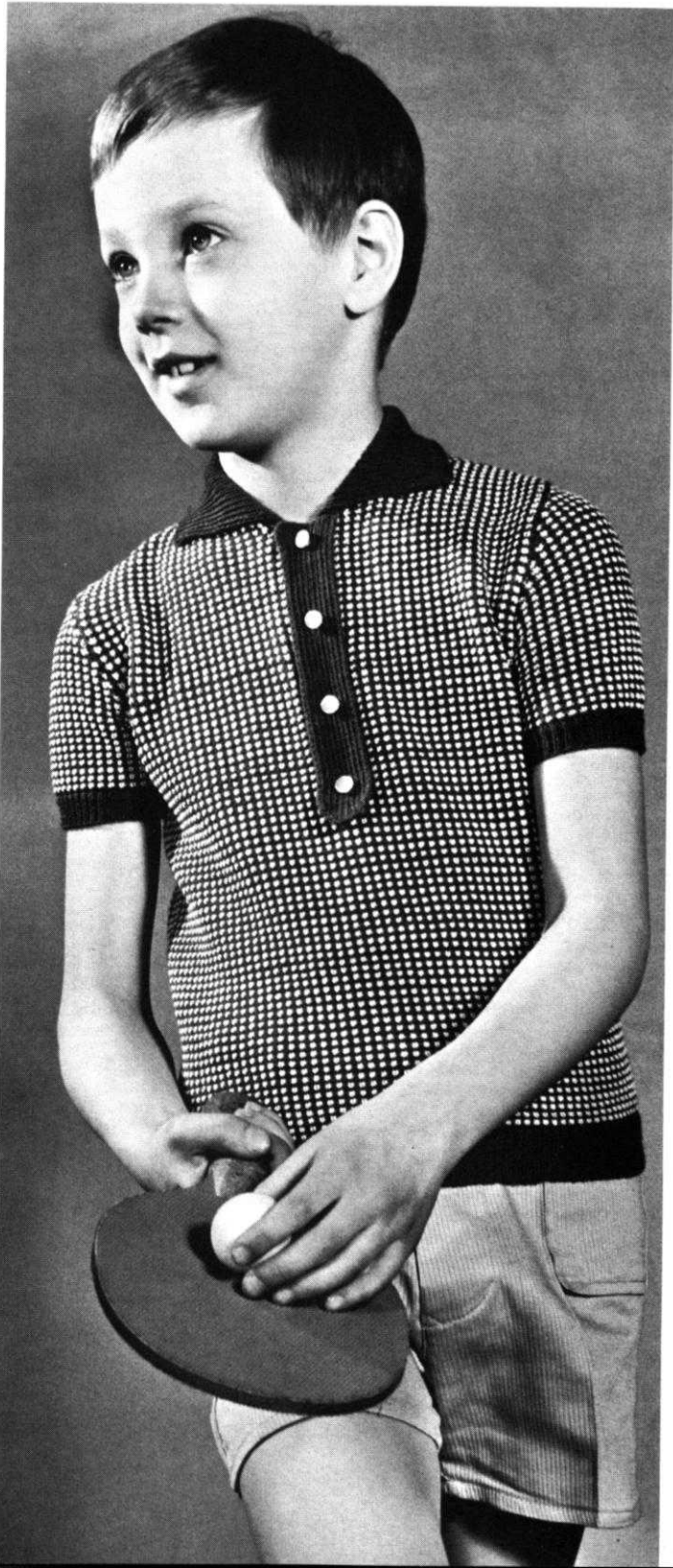
**FOR
CHILDREN**





← MK 4962

Pre-teen Favorite! A classic pullover, knitted in stripes, which can be worn for school or play. It is knitted in stockinette stitch using 3 colors. Make a second one without the stripes. Size 11-12 years. See page 31.



MK 4959

Dress up a Pullover for a young lady by knitting an Eyelet Design across the front, back and raglan Sleeves. Rib the bottom edge of the Pullover, Sleeves and the Neckband. Size 11-12 years. See page 32.

KK 4963

The Winner! A Sport Shirt for a young man is knitted with KNITKING Fine Dralon in a holding position design using two colors. Knit a 1 x 1 rib for the Collar, edge of Sleeves and bottom of Shirt. Size 6-7 years. See page 31.

KNITTING INSTRUCTIONS

OUR COVER MODEL WOMAN'S DRESS, DK 7533

KNITTING MAGAZINE



SIZE: 12/14 and 16/18. **MATERIAL:** 21 oz. (22³/₄ oz.) light blue KNIT-KING Subita 2 x 4. **TENSION:** KNIT-KING 6 to 8. **GAUGE:** 16 sts. 2", 22 rows 2".

PATTERN: Stockinette Stitch with Eyelet Design according to chart. **SIZE:** 12/14. **BACK:** (Figure II). Cast on 161 sts.

ROWS 1-36: Work even in stockinette st.

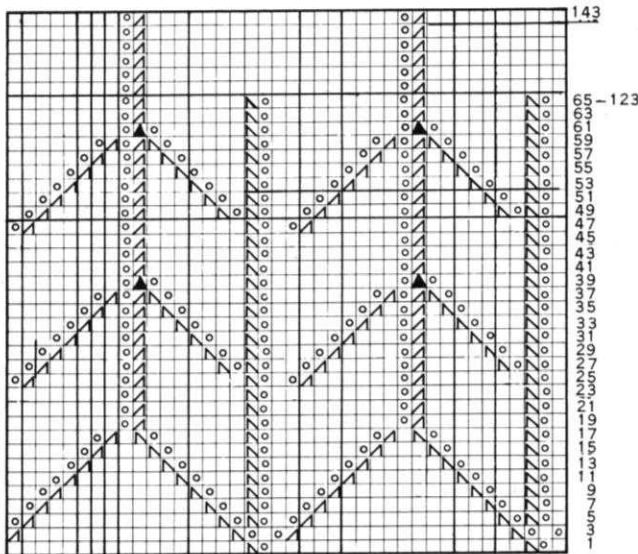
ROWS 37-179: Work the Eyelet Design, starting with the 2nd square

of the chart. (See Practical Knitting Hints). After ROW 179 continue with stockinette st.

ROWS 180-274: Decrease 1 st. on each side after ROW 194, then again every following 10th row 2 x, every following 8th row 3 x, every following 6th row 3 x and every following 4th row 4 x. (135 sts.)

ROWS 275-288: Work even.

ROWS 289-362: Increase 1 st. on each side after ROW 288, then again every following 6th row 7 x and every following 8th row 3 x. (157 sts.)



ROWS 363-384: ARMHOLE SHAPING: Bind off 5 sts. beginning next 2 rows, 3 sts. beginning next 4 rows, 2 sts. beginning next 2 rows, 1 st. beginning next 6 rows and 1 st. at each end of the next 4th and following 4th row. (121 sts.)

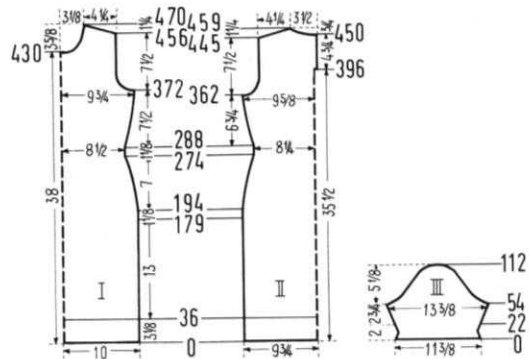
ROWS 385-395: Work even. Now put 60 needles on the right side into holding position and complete the left half first.

ROWS 396-445: After ROW 396 cast on 3 sts. on the right side for opening facing. To do this, put 3 sts. from the right half on a stitch holder.

ROWS 446-459: SHOULDER SHAPING: Bind off 4 sts. on the left side, then on every other row bind off 4 sts. 4 x and 5 sts. 3 x. AT THE SAME TIME, after ROW 450, then on every other row shape NECK by binding off 14 sts. 1 x, 5 sts. 1 x, 4 sts. 1 x and 3 sts. 2 x. Now move the Cam Box to the right side, turn Row Counter back to 395, put all needles into working position, hang the 3 sts. from the stitch holder back on the machine and complete the right half following instruction from ROWS 396-459 and reversing the sides.

FRONT: (Figure I). Cast on 163 sts.

ROWS 1-36: Work stockinette st.



ROWS 37-179: Work the Eyelet Design, starting with the 1st square of the chart. After ROW 179 continue with stockinette st.

ROWS 180-274: Decrease 1 st. on each side after ROW 194, then again every following 10th row 2 x, every following 8th row 3 x, every following 6th row 3 x and every following 4th row 4 x. (137 sts.)

ROWS 275-288: Work even.

ROWS 289-372: Increase 1 st. on each side after ROW 288, then again every following 6th row 7 x and every following 8th row 3 x. (159 sts.)

ROWS 373-394: ARMHOLE SHAPING: Bind off 5 sts. beginning next 2 rows, 4 sts. beginning next 2 rows, 3 sts. beginning next 2 rows, 2 sts. beginning next 2 rows, 1 st. beginning next 6 rows and 1 st. at each end of the next 4th and following 4th row. (121 sts.)

ROWS 395-430: Work even.

ROWS 431-470: NECK SHAPING: Bind off the center 17 sts. (See Notes to Knit By, inside back cover), then on every other row on Neck Side bind off 4 sts. 1 x, 3 sts. 1 x, 2 sts. 2 x, 1 st. 3 x, then 1 st. on the next 4th and following 4th row and 1 st. on the following 6th row. AT THE SAME TIME, after ROW 456, then on every other row SHAPE SHOULDER by binding off 4 sts. 5 x and 5 sts. 3 x.

SLEEVE: (Figure III): Make two. Cast on 93 sts.

ROWS 1-22: Decrease 1 st. on each side after ROWS 4 and 8, then increase 1 st. on each side after ROWS 14 and 18. After ROW 22 hang the cast on sts. back on the machine behind the latches to form the hem.

ROWS 23-54: Increase 1 st. on each side after ROW 22, then again every following 4th row 7 x. (109 sts.)

ROWS 55-112: CAP SHAPING: Bind off 4 sts. beginning next 4 rows, 3 sts. beginning next 4 rows, 2 sts. beginning next 4 rows, 1 st. beginning next 38 rows, 2 sts. beginning next 4 rows, 3 sts. beginning next 2 rows, 4 sts. beginning next 2 rows and after ROW 112 bind off the remaining 13 sts.

NECKBAND: Cast on 125 sts., work 6 rows tension 7, 14 rows tension 6 and 6 rows tension 7. AT THE SAME TIME, work an Eyelet row after ROW 22 by hanging the 2nd, 4th, 6th, 8th, etc. sts. onto the left neighboring needles and leaving the empty needles in working position. After ROW 26 bind off all sts.

BELT: (Optional). Cast on 15 sts. and work 540 rows K1, P1, Ribbing, then bind off all sts.

FINISHING: Join front and back section at sides and shoulders, easing in the fullness at bustline of front section. Sew sleeves together and set in.

Turn under 18 rows at lower edge and hem to wrong side. Turn under facings at back opening and hem to wrong side. Sew cast on edge of neckband to inside and bound off edge to outside of neckline. Work 2 loops on the right side and sew 2 buttons to the left side of back opening. **SIZE:** 16/18 **BACK:** (Figure II). Cast on 181 sts.

ROWS 1-36: Work stockinette st.

ROWS 37-179: Work the Eyelet Design, starting with the

2nd square of the chart. After ROW 179 continue with stockinette st.

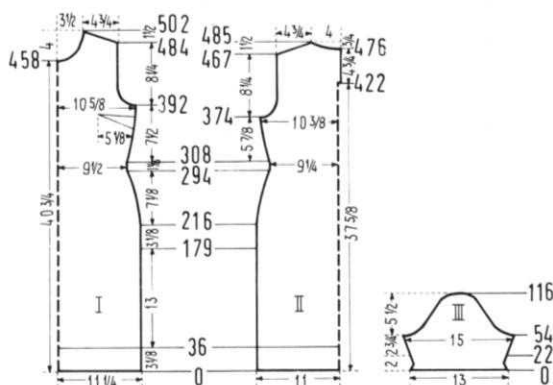
ROWS 180-294: Decrease 1 st. on each side after ROW 216, then again every following 8th row 3 x, every following 6th row 4 x and every following 4th row 7 x. (151 sts.).

ROWS 295-308: Work even.

ROWS 309-374: Increase 1 st. on each side after row 308, then again every following 6th row 7 x and every following 8th row 2 x. (171 sts.).

ROWS 375-402: ARMHOLE SHAPING: Bind off 4 sts. beginning next 2 rows, 3 sts. beginning next 2 rows, 2 sts. beginning next 4 rows, 1 st. beginning next 8 rows, then at each end of every following 4th row bind off 1 st. 3 x. (135 sts.).

ROWS 403-421: Work even. Now put 67 needles on the right side into holding position and complete the left half first.



ROWS 422-467: After ROW 422 cast on 3 sts. on the right side for the opening facing. To do this, put 3 sts. from the right half on a stitch holder.

ROWS 468-485: SHOULDER SHAPING: Bind off 3 sts. on the left side, then on every other row bind off 4 sts. 9 x. AT THE SAME TIME, after ROW 476, then on every other row SHAPE NECK by binding off 14 sts. 1 x, 6 sts. 1 x, 5 sts. 1 x, 4 sts. 1 x and 3 sts. 1 x. Now move the Cam Box to the right side, turn Row Counter back to 421, put all needles into working position, hang the 3 sts. from the stitch holder back on the machine and complete the right half, following the instructions from ROW 422-485 and reversing the sides.

FRONT: (Figure I): Cast on 183 sts.

ROWS 1-36: Work stockinette st.

ROWS 37-179: Work the Eyelet Design, starting with the 1st square of the chart. After ROW 179 continue with stockinette st.

ROWS 180-294: Decrease 1 st. on each side after ROW 216, then again every following 8th row 3 x, every following 6th row 4 x and every following 4th row 7 x. (153 sts.).

ROWS 295-308: Work even.

ROWS 309-392: Increase 1 st. on each side after ROW 308, then again every 6th row 7 x and every following 8th row 2 x. (173 sts.).

ROWS 393-416: ARMHOLE SHAPING: Bind off 5 sts. beginning next 2 rows, 3 sts. beginning next 2 rows, 2 sts. beginning next 6 rows, 1 st. beginning next 6 rows and 1 st. at each end of the next 4th and following 4th row. (135 sts.).

ROWS 417-458: Work even.

ROWS 459-502: NECK SHAPING: Bind off the center 17 sts. (See Notes to Knit By, inside back cover), then on every other row on Neck Side bind off 4 sts. 1 x, 3 sts. 2 x, 2 sts. 2 x, 1 st. 3 x, then 1 st. on the next 4th and following 4th row and 1 st. on the following 6th row. AT THE SAME TIME, after ROW 484, then on every other row SHAPE SHOULDER by binding off 3 sts. 1 x and 4 sts. 9 x. **SLEEVE:** (Figure III). Make two. Cast on 105 sts.

ROWS 1-22: Decrease 1 st. on each side after ROWS 4 and 8, then increase 1 st. on each side after ROWS 14 and 18. After ROW 22 hang the cast on sts. back on the machine behind the latches to form the hem.

ROWS 23-54: Increase 1 st. on each side after ROW 22, then again every following 4th row 7 x. (121 sts.).

ROWS 55-116: CAP SHAPING: Bind off 5 sts. beginning next 2 rows, 4 sts. beginning next 4 rows, 3 sts. beginning next 2 rows, 2 sts. beginning next 6 rows, 1 st. beginning next 40 rows, 2 sts. beginning next 2 rows, 3 sts. beginning next 4 rows, 4 sts. beginning next 2 rows and after ROW 116 bind off the remaining 13 sts.

NECKBAND: Cast on 137 sts., work 6 rows tension 7, 14 rows tension 6 and 6 rows tension 7. AT THE SAME TIME, work an Eyelet row after ROW 22 by hanging the 2nd, 4th, 6th, 8th, etc. sts. onto the left neighboring needles, and leaving the empty needles in working position. After ROW 26 bind off all sts.

BELT: (Optional). Cast on 15 sts. and work 580 rows K1, P1, Ribbing, then bind off all sts.

FINISHING: Follow directions for SIZE 12/14, but make darts in the front section according to the diagram.

WOMAN'S DRESS, DK 7537



SIZE: 12/14 and 16. **MATERIAL:** 14 oz. (16 oz.) beige, No. 1264, 3 oz. (4 oz.) coral, No. 1266 and 1 oz. (2 oz.) white, No. 1269 Pauline Denham Nomotta Splendour. **TENSION:** KNITTING 4 to 6.

GAUGE: 16 sts. 2", 29 rows 2". **PATTERN:** Stockinette stitch, worn on purl side.

SIZE: 12/14. **BACK:** (Figure II). Cast on 149 sts. with beige.

ROWS 1-156: Increase 1 st. on each side after ROW 58, then again every following 24th row 4 x. (159 sts.).

ROWS 157-254: Work even.

ROWS 255-358: Decrease 1 st. on each side after ROW 254, then again every following 12th row 2 x, every following 10th row 3 x, every following 8th row 3 x and every following 6th row 4 x. (133 sts.).

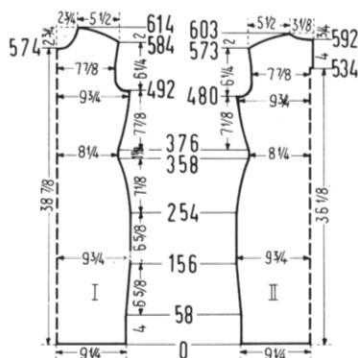
ROWS 359-376: Work even.

ROWS 377-480: Increase 1 st. on each side after ROW 376, then again every following 8th row 12 x. (159 sts.).

ROWS 481-504: ARMHOLE SHAPING: Bind off 4 sts. beginning next 2 rows, 3 sts. beginning next 2 rows, 2 sts. beginning next 4 rows, 1 st. beginning next 4 rows and 1 st. at each end of every following 4th row 3 x. (127 sts.). After row 504 continue with white.

ROWS 505-533: Work even. Now put 63 needles on the right side into holding position and complete the left half first.

ROWS 534-573: After ROW 534 cast on 3 sts. on the right side for the opening facing. To do this, put 3 sts. from the right half on a stitch holder. AT THE SAME TIME, after ROW 534, continue with coral. Increase 1 st. on the left side after ROW 537, then again every following 12th row 2 x.



ROWS 574-603: SHOULDER SHAPING: Bind off 2 sts. on the left side, then on every other row bind off 2 sts. 4 x, 3 sts. 9 x and 4 sts. 2 x. AT THE SAME TIME, after ROW 592, then on every other row SHAPE NECK by binding off 11 sts. 1 x, 4 sts. 1 x, 3 sts. 2 x and 2 sts. 2 x. Now move the Cam Box to the right side, turn the Row Counter back to 533, put all needles back into working position, hang the 3 sts. from the stitch holder back on the machine and complete the right half, following the directions from ROWS 534-603 and reversing the sides.

FRONT: (Figure I). Cast on 149 sts. with beige.

ROWS 1-156: Increase 1 st. on each side after ROW 58, then again every following 24th row 4 x. (159 sts.).

ROWS 157-254: Work even.

ROWS 255-358: Decrease 1 st. on each side after ROW 254, then again every following 12th row 2 x, every following 10th row 3 x, every following 8th row 3 x and every following 6th row 4 x. (133 sts.).

ROWS 359-376: Work even.

ROWS 377-452: Increase 1 st. on each side after ROW 376, then again every following 8th row 9 x. After ROW 452 start working the V shaped white stripe. Using 3 balls of yarn and hand feeding, work as follows:

1. Over 76 needles work with beige, over 1 needle work with white and over the remaining 76 needles work with beige. The yarn must always be crossed where you change colors to prevent holes. 2. Over 75 needles work with beige, over 3 needles work with white and over the remaining 75 needles work with beige. 3. Over 74 needles work with beige, over 5 needles work with white and over the remaining 74 needles work with beige, etc., etc. When increasing be sure to figure these sts. when changing colors.

ROWS 453-492: Increase 1 st. on each side after ROW 456, then again every following 8th row 2 x, and after ROW 482 work with coral over 1 center needle, then over 3 needles, 5 needles, etc.

ROWS 493-516: ARMHOLE SHAPING: Bind off 4 sts. beginning next 2 rows, 3 sts. beginning next 2 rows, 2 sts. beginning next 4 rows, 1 st. beginning next 4 rows and 1 st. at each end of every following 4th row 3 x. (127 sts.).

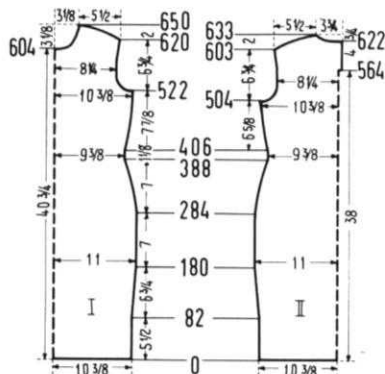
ROWS 517-574: Increase 1 st. on each side after ROW 546, then again every following 12th row 2 x. (133 sts.).

ROWS 575-614: NECK SHAPING: Bind off the center 13 sts. (See Notes to Knit By, inside back cover), then on neck side on every other row bind off 3 sts. 2 x, 2 sts. 2 x, 1 st. 2 x and 1 st. on every following 4th row 4 x. AT THE SAME TIME, after ROW 584, then on every other row SHAPE SHOULDER by binding off 2 sts. 5 x, 3 sts. 9 x and 4 sts. 2 x.

NECK FACING: Cast on 113 sts. with coral. Work stockinette st., 4 rows tension 4, 3 rows tension 5 and 3 rows tension 6. (10 rows). Bind off all sts.

ARMHOLE FACING: Make two. Cast on 106 sts. with coral. Work 10 rows, using the same tensions as on Neck Facing and increasing 1 st. on each side after rows 3 and 6. After 10 rows bind off all sts.

FINISHING: Join front and back section at sides and shoulders, easing in the fullness at bustline of front section. Turn under $1\frac{1}{2}$ " at lower edge and hem to wrong side. Turn under 3 sts. on each side of back opening and hem to wrong side. Join short ends of armhole facings.



With right sides together sew facings to neckline and armholes, then turn to wrong side and hem. Work a loop on the right side of upper back opening and sew a button to the left side.

SIZE: 16. BACK: (Figure II). Cast on 169 sts. with beige.

ROWS 1-180: Increase 1 st. on each side after ROW 82, then again every following 24th row 4 x. (179 sts.).

ROWS 181-284: Work even.

ROWS 285-388: Decrease 1 st. on each side after ROW 284, then again every following 12th row 2 x, every following 10th row 3 x, every following 8th row 3 x and every following 6th row 4 x. (153 sts.).

ROWS 389-406: Work even.

ROWS 407-504: Increase 1 st. on each side after ROW 406, then again every following 12th row 7 x. (169 sts.).

ROWS 505-530: ARMHOLE SHAPING: Bind off 4 sts. beginning next 2 rows, 3 sts. beginning next 2 rows, 2 sts. beginning next 4 rows, 1 st. beginning next 6 rows and 1 st. at each end of every following 4th row 3 x. (135 sts.).

ROWS 531-563: After ROW 534 continue with white and work even. After ROW 563 put 67 needles on the right side into holding position and complete the left half first.

ROWS 564-603: After ROW 564 cast on 3 sts. on the right side. To do this, put 3 sts. from the right half on a stitch holder. AT THE SAME TIME, after ROW 564 continue with coral. Increase 1 st. on the left side after ROW 565, then again every following 12th row 2 x.

ROWS 604-633: SHOULDER SHAPING: Bind off 2 sts. on the left side, then on every other row bind off 2 sts. 4 x, 3 sts. 9 x and 4 sts. 2 x. AT THE SAME TIME, after ROW 622, then on every other row SHAPE NECK by binding off 12 sts. 1 x, 6 sts. 1 x, 4 sts. 1 x, 3 sts. 1 x and 2 sts. 2 x. Now move the Cam Box to the right side, turn the Row Counter back to 563, put all needles back into working position, hang the 3 sts. from the stitch holder back on the machine and complete the right half, following the directions from ROWS 564-633 reversing the sides.

FRONT: (Figure I). Cast on 169 sts. with beige.

ROWS 1-180: Increase 1 st. on each side after ROW 82, then again every following 24th row 4 x. (179 sts.).

ROWS 181-284: Work even.

ROWS 285-388: Decrease 1 st. on each side after ROW 284, then again every following 12th row 2 x, every following 10th row 3 x, every following 8th row 3 x and every following 6th row 4 x. (153 sts.).

ROWS 389-406: Work even.

ROWS 407-480: Increase 1 st. on each side after ROW 406, then again every following 12th row 6 x. After ROW 480 start working the V shaped white stripe. Using 3 balls of yarn and hand feeding, work as follows: 1. Over 83 needles work with beige, over 1 needle work with white and over the remaining 83 needles work with beige. The yarn must always be crossed where you change colors to prevent holes. 2. Over 82 needles work with beige, over 3 needles work with white and over the remaining 82 needles work with beige. 3. Over 81 needles work with beige, over 5 needles work with white and over the remaining 81 needles work with beige, etc. etc.

ROWS 481-522: Increase 1 st. on each side after ROW 490. (Be sure to figure these sts. when changing colors.) After ROW 510 work with coral over 1 center needle, then over 3 needles, 5 needles, etc.

ROWS 523-548: ARMHOLE SHAPING: Bind off 4 sts. beginning next 2 rows, 3 sts. beginning next 2 rows, 2 sts. beginning next 4 rows, 1 st. beginning next 6 rows and 1 st. at each end of every following 4th row 3 x. (135 sts.).

ROWS 549-604: Increase 1 st. on each side after ROWS 582 and 594.

ROWS 605-650: NECK SHAPING: Bind off the center 13 sts. (See Notes to Knit By, inside back cover), then on neck side on every other row bind off 3 sts. 2 x, 2 sts. 3 x, 1 st. 3 x and 1 st. on every following 4th row 4 x. AT THE SAME TIME, increase 1 st. on the Armhole side after ROW 606. After ROW 620, then on every other row SHAPE SHOULDER by binding off 2 sts. 5 x, 3 sts. 9 x and 4 sts. 2 x.

NECK FACING: Cast on 125 sts. with coral. Work stockinette st., 4 rows tension 4, 3 rows tension 5 and 3 rows tension 6. (10 rows). Bind off all sts.

ARMHOLE FACING: Make two. Cast on 112 sts. with coral. Work 10 rows, using the same tension as on Neck Facing and increasing 1 st. on each side after rows 3 and 6. After 10 rows bind off all sts.

FINISHING: Follow directions for SIZE 12/14.

WOMAN'S DRESS, DK 7541



SIZE: 12/14 and 16. **MATERIAL:** 15¾ oz. (17½ oz.) pale green and a small amount of white KNITTING Subita 2 x 3. **TENSION:** 3 to 5.

GAUGE: 17 sts. 2", 23 rows 2".

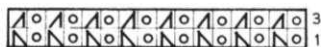
PATTERN: Stockinette Stitch and Eyelet Design according to chart. **SIZE:** 12/14. **BACK:** (Figure II). Cast on 171 sts.

ROWS 1-202: Work even and work the Eyelet Design after ROWS 46, 66, 94, 130 and 174.

ROWS 203-286: Decrease 1 st. on each side after ROW 202, then bind off all sts.

again on the following 12th row 1 x, every following 10th row 2 x, every following 8th row 4 x and every following 6th row 3 x. (149 sts.)

ROWS 287-300: Work even.



ROWS 301-386: Increase 1 st. on each side after ROW 300, then again every following 10th row 8 x. (167 sts.)

ROWS 387-406: ARMHOLE SHAPING: Bind off 5 sts. beginning next 2 rows, 3 sts. beginning next 4 rows, 2 sts. beginning next 4 rows, 1 st. beginning next 6 rows and 1 st. at each end of the following 4th row. (129 sts.)

ROWS 407-464: Increase 1 st. on each side after ROWS 432, 442, 450 and 458. (137 sts.)

ROWS 465-478: NECK and SHOULDER SHAPING: Both shapings are started at the same row. Bind off the center 19 sts. (See Notes to Knit By, inside back cover), then on every other row on neck side bind off 6 sts. 1 x, 5 sts. 2 x, 4 sts. 1 x, 3 sts. 1 x and 2 sts. 1 x. AT THE SAME TIME after ROW 464, then on every other row SHAPE SHOULDER by binding off 4 sts. 6 x and 5 sts. 2 x.

FRONT: (Figure I). Work the front the same as the back to ROW 386.

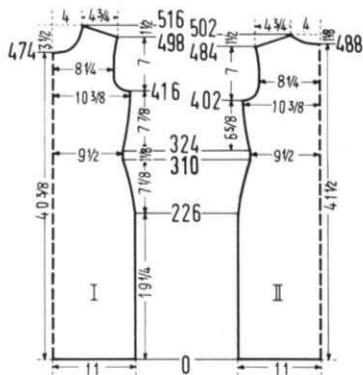
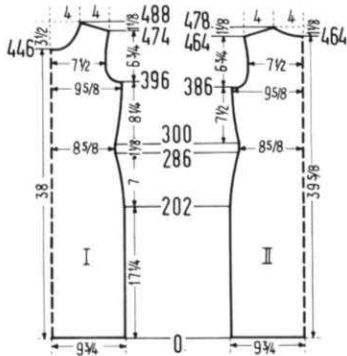
ROWS 387-396: Work even.

ROWS 397-416: ARMHOLE SHAPING: Bind off 5 sts. beginning next 2 rows, 3 sts. beginning next 4 rows, 2 sts. beginning next 4 rows, 1 st. beginning next 6 rows and 1 st. at each end of the following 4th row. (129 sts.)

ROWS 417-446: Increase 1 st. on each side after ROW 442.

ROWS 447-488: NECK SHAPING. Bind off the center 15 sts. as you did on the back, then on every other row on neck side bind off 4 sts. 2 x, 3 sts. 2 x, 2 sts. 3 x, 1 st. 4 x and 1 st. on every following 4th row 3 x. AT THE SAME TIME, increase 1 st. on the Armhole side after ROWS 452, 460, and 468. After ROW 474, then on every other row SHAPE SHOULDER by binding off 4 sts. 6 x and 5 sts. 2 x.

NECKBAND: Cast on 173 sts. with white. Work 4 rows tension 5, 4 rows tension 4, 6 rows tension 3, 4 rows tension 4 and 4 rows tension 5. (22 rows). Bind off all sts.



ARMBAND: Make two. Cast on 118 sts. with white. Work 22 rows using the same tensions as on the Neckband, then bind off all sts.

BELT: Cast on 17 sts. with white. Work K1, P1, Ribbing, 22 rows with white, 518 rows with green and 22 rows with white, then put all sts. on a length of yarn, pull tightly together, and sew securely.

FINISHING: Join front and back sections at sides and shoulders, easing in the fullness at bustline of front section. Turn under 1½" at lower edge and hem to wrong side. Join short ends of neckband, then sew cast on edge to inside and bound off edge to outside of neckline. Join short ends of armbands and sew to armholes in the same manner. Pull out the cast on row on the belt, then put the sts. on a length of yarn, pull tightly together and sew securely. Tie a length of yarn around each end of the belt. (See picture).

SIZE: 16. **BACK:** (Figure II). Cast on 191 sts.

ROWS 1-226: Work even and work the Eyelet Design after ROWS 46, 66, 94, 130 and 174.

ROWS 227-310: Decrease 1 st. on each side after ROW 226, then again every following 10th row 2 x, every following 8th row 3 x, every following 6th row 3 x and every following 4th row 5 x. (163 sts.)

ROWS 311-324: Work even.

ROWS 325-402: Increase 1 st. on each side after ROW 324, then again every following 8th row 6 x and every following 10th row 2 x. (181 sts.)

ROWS 403-422: ARMHOLE SHAPING: Bind off 5 sts. beginning next 2 rows, 3 sts. beginning next 4 rows, 2 sts. beginning next 4 rows, 1 st. beginning next 6 rows and 1 st. at each end of the following 4th row. (143 sts.)

ROWS 423-484: Increase 1 st. on each side after ROWS 452, 462, 470 and 478.

ROWS 485-502: SHOULDER SHAPING: Bind off 4 sts. beginning next 4 rows. After ROW 488 bind off the center 19 sts. for NECK, (See Notes to Knit By, inside back cover). Bind off 4 sts. at shoulder side and continue to shape shoulder on every other row by binding off 4 sts. 6 x and 5 sts. 1 x. AT THE SAME TIME shape Neck every other row by binding off 6 sts. 1 x, 5 sts. 2 x, 4 sts. 1 x, 3 sts. 1 x and 2 sts. 1 x.

FRONT: (Figure I): Work the front the same as the back to ROW 402.

ROWS 403-416: Work even.

ROWS 417-436: ARMHOLE SHAPING: Bind off 5 sts. beginning next 2 rows, 3 sts. beginning next 4 rows, 2 sts. beginning next 4 rows, 1 st. beginning next 6 rows and 1 st. at each end of the following 4th row. (143 sts.)

ROWS 437-474: Increase 1 st. on each side after ROW 466.

ROWS 475-516: NECK SHAPING: Bind off the center 15 sts. as you did on the back, then on every other row on NECK SIDE bind off 4 sts. 2 x, 3 sts. 2 x, 2 sts. 3 x, 1 st. 4 x and 1 st. on every following 4th row 3 x. AT THE SAME TIME, increase 1 st. on the Armhole side after ROWS 476, 484 and 492. After ROW 498, then on every other row SHAPE SHOULDER by binding off 4 sts. 9 x and 5 sts. 1 x.

NECKBAND: Cast on 173 sts. with white. Work 4 rows tension 5, 4 rows tension 4, 6 rows tension 3, 4 rows tension 4 and 4 rows tension 5. (22 rows). Bind off all sts.

ARMBAND: Make 2. Cast on 125 sts. with white. Work 22 rows using the same tensions as on the Neckband, then bind off all sts.

BELT: Cast on 17 sts. with white. Work K1, P1, Ribbing, 22 rows with white, 550 rows with green and 22 rows with white, then put all sts. on a length of yarn, pull tightly together and sew securely.

FINISHING: Follow directions for SIZE 12/14.

WOMAN'S DRESS, DK 7538



SIZE: 14/16 and 18/20. **MATERIAL:** 17½ oz. (19¼ oz.) KNITKING Linen Cotton and 3½ oz. (5¼ oz.) green KNITKING Subita 2 x 3.

TENSION: KNITKING 3 to 5. **GAUGE:** 35 sts. 4", 48 rows 4".

PATTERN: Stockinette Stitch, worn on the purl side. **EDGES:** Stockinette Stitch.

SIZE: 14/16. **BACK:** (Figure II). Cast on 179 sts. with green.

ROWS 1-28: Work even. After ROW 28 continue with Linen Cotton.

ROWS 29-302: Decrease 1 st. on each side after ROW 216, then again every following 8th row 4 x, every following 6th row 4 x and every following 4th row 7 x. (147 sts.).

ROWS 303-316: Work even.

ROWS 317-394: Increase 1 st. on each side after ROW 316, then again every following 4th row 4 x and every following 6th row 9 x. (175 sts.).

ROWS 395-418: **ARMHOLE SHAPING:** Bind off 4 sts. beginning next 2 rows, 3 sts. beginning next 4 rows, 2 sts. beginning next 4 rows, 1 st. beginning next 6 rows and 1 st. at each end of the next 4th and following 4th row. (137 sts.).

ROWS 419-490: Work even.

ROWS 491-504: **NECK and SHOULDER SHAPING:** Both shapings are started at the same row. Bind off the center 17 sts. (See Notes to Knit By, inside back cover), then on every other row on neck side bind off 7 sts. 1 x, 6 sts. 1 x, 5 sts. 1 x, 4 sts. 1 x, 3 sts. 1 x and 2 sts. 1 x. AT THE SAME TIME after ROW 490, then on every other row SHAPE SHOULDER by binding off 4 sts. 7 x and 5 sts. 1 x.

FRONT: (Figure I). Cast on 192 sts. with green.

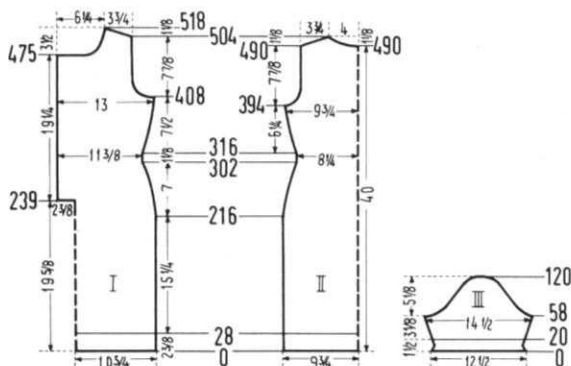
ROWS 1-28: Work even. After ROW 28 continue with Linen Cotton.

ROWS 29-238: Decrease 1 st. on each side after ROW 216, then again every following 8th row 2 x. After ROW 238 put 100 sts. on the left side on a stitch holder and complete the right half first.

ROWS 239-302: After ROW 239 cast on 28 sts. on the left side. Decrease 1 st. on the right side after ROW 240, then again on the following 8th row 1 x, every following 6th row 4 x and every following 4th row 7 x. (101 sts.).

ROWS 303-316: Work even.

ROWS 317-408: Increase 1 st. on the right side after ROW 316, then again every following 4th row 4 x and every following 6th row 9 x. (115 sts.).



ROWS 409-432: **ARMHOLE SHAPING:** Bind off 5 sts. on the right side, then on every other row bind off 4 sts. 2 x, 3 sts. 2 x, 2 sts. 1 x, 1 st. 4 x and 1 st. on the following 4th row 1 x. (89 sts.).

ROWS 433-475: Work even.

ROWS 476-518: **NECK SHAPING:** Bind off 28 sts. on the left side, then on every other row bind off 5 sts. 1 x, 4 sts. 1 x, 3 sts. 2 x, 2 sts. 3 x, 1 st. 3 x and 1 st. on every following 4th row 4 x. AT THE SAME TIME, after ROW 504, then on every other row SHAPE SHOULDER by binding off 4 sts. 7 x and 5 sts. 1 x. Now move the Cam Box to the left side, turn the Row Counter back to 238, hang the 100 sts. from the stitch holder back on the machine and complete the left half following the directions from ROWS 239-518 and reversing the sides, but after ROW 239 cast on only 14 sts. instead of 28 sts. on the right side and work buttonholes after ROWS 264, 300, 336, 372, 408 and 444 over the 2nd-8th and 21st-27th needles, counting from the right side.

SLEEVE: (Figure III). Cast on 112 sts. with green.

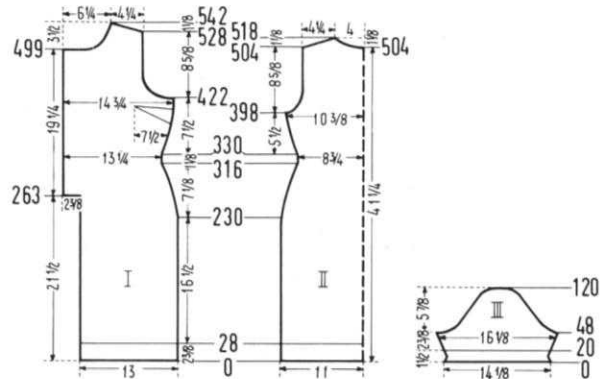
ROWS 1-20: Decrease 1 st. on each side after ROWS 4 and 8, then increase 1 st. on each side after ROWS 14 and 18. After ROW 20 continue with Linen Cotton.

ROWS 21-58: Increase 1 st. on each side after ROW 22, then again every following 4th row 8 x. (130 sts.).

ROWS 59-74: **CAP SHAPING:** On the right side (back of sleeve) and on every other row bind off 4 sts. 1 x, 3 sts. 3 x and 2 sts. 4 x. On the left side, (front of sleeve) and on every other row bind off 6 sts. 1 x, 5 sts. 1 x, 4 sts. 2 x, 3 sts. 1 x and 2 sts. 3 x.

ROWS 75-120: Bind off 1 st. beginning next 36 rows, 2 sts. beginning next 2 rows, 3 sts. beginning next 4 rows, 4 sts. beginning next 2 rows, 5 sts. beginning next 2 rows and after ROW 120 bind off the remaining 11 sts. Make second sleeve with reverse shapings.

NECKBAND: Cast on 174 sts. with green. Work 24 rows: 6 rows tension 5, 12 rows tension 4 and 6 rows tension 5. After ROWS 6 and 18 work buttonholes over the 8th-14th needles counting from the left side. After ROW 24 bind off all sts.



BELT: Make two. Cast on 152 sts. with green. Work 22 rows, then hang the cast on sts. back on the machine behind the latches and knit sts. very loosely together with tension 10, then bind off the crochet method.

FINISHING: Join front and back at sides and shoulders, easing in the fullness at bustline of the front section. Sew sleeves together and set in, matching fronts and backs. Turn under 14 sts. on each front edge, matching buttonholes and hem to wrong side. Turn over half of lower and sleeve edges and hem to right side. Sew bound off edge of neckband to inside and cast on edge to outside of neckline. Finish buttonholes and sew on buttons. Weave belt at sides, then sew to dress (See Picture), with the bound off seam at the inside center.

SIZE: 18/20. **BACK:** (Figure II): Cast on 197 sts. with green.

ROWS 1-28: Work even. After ROW 28 continue with Linen Cotton.

ROWS 29-316: Decrease 1 st. on each side after ROW 230,

then again every 6th row 4 x and every following 4th row 15 x. (157 sts.).

ROWS 317-330: Work even.

ROWS 331-398: Increase 1 st. on each side after ROW 330, then again every following 4th row 8 x and every following 6th row 5 x. (185 sts.).

ROWS 399-432: ARMHOLE SHAPING: Bind off 4 sts. beginning next 2 rows, 3 sts. beginning next 2 rows, 2 sts. beginning next 4 rows, 1 st. beginning next 8 rows then 1 st. on each end after ROWS 416, 420, 424 and 430. (147 sts.).

ROWS 433-504: Work even.

ROWS 505-518: NECK and SHOULDER SHAPING: Both shapings are started at the same row. Bind off the center 17 sts. (See Notes to Knit By, inside back cover), then on every other row on neck side bind off 7 sts. 1 x, 6 sts. 1 x, 5 sts. 1 x, 4 sts. 1 x, 3 sts. 1 x and 2 sts. 1 x. AT THE SAME TIME, after ROW 504, then on every other row SHAPE SHOULDER by binding off 4 sts. 2 x and 5 sts. 6 x.

FRONT: (Figure I). The front is worked in 2 sections. Cast on 116 sts. with green.

ROWS 1-28: Work even. After ROW 28 continue with Linen Cotton.

ROWS 29-316: Decrease 1 st. on the right side after ROW 230, then again every following 6th row 4 x, and every following 4th row 15 x. AT THE SAME TIME, after ROW 263, cast on 21 sts. on the left side. (117 sts.).

ROWS 317-330: Work even.

ROWS 331-422: Increase 1 st. on the right side after ROW 330, then again every following 4th row 8 x and every following 6th row 5 x. (131 sts.).

ROWS 423-452: ARMHOLE SHAPING: Bind off 10 sts. on the right side, then on every other row bind off 6 sts. 1 x, 4 sts. 1 x, 3 sts. 2 x, 2 sts. 3 x, 1 st. 3 x, and 1 st. on the next 4th and following 4th row (94 sts.).

ROWS 453-499: Work even.

ROWS 500-542: NECK SHAPING: Bind off 28 sts. on the left side, then on every other row bind off 5 sts. 1 x, 4 sts. 1 x, 3 sts. 2 x, 2 sts. 3 x, 1 st. 3 x and 1 st. on every following 4th row 4 x. AT THE SAME TIME, after ROW 528, then on every other row SHAPE SHOULDER by binding off 4 sts. 2 x and 5 sts. 6 x. Make second front section with reverse shapings, working buttonholes after ROWS 288, 324, 360, 396, 432, and 468 over the 2nd-8th and 21st-27th needles, counting from the right side.

SLEEVE: (Figure III). Cast on 126 sts. with green.

ROWS 1-20: Decrease 1 st. on each side after ROWS 4 and 8, then increase 1 st. on each side after ROWS 14 and 18. After ROW 20 continue with Linen Cotton.

ROWS 21-48: After ROW 22 increase 1 st. beginning next 14 rows, then 1 st. on each side after ROWS 38 and 42. (144 sts.).

ROWS 49-64: CAP SHAPING: On the right side (back of sleeve) and on every other row bind off 4 sts. 1 x, 3 sts. 3 x and 2 sts. 4 x. On the left side, (front of sleeve) and on every other row bind off 8 sts. 1 x, 6 sts. 1 x, 4 sts. 1, 3 sts. 2 x and 2 sts. 3 x.

ROWS 65-120: Bind off 1 st. beginning next 46 rows, 2 sts. beginning next 2 rows, 3 sts. beginning next 4 rows, 4 sts. beginning next 2 rows, 5 sts. beginning next 2 rows and after ROW 120 bind off the remaining 13 sts. Make second sleeve with reverse shapings.

NECKBAND: Cast on 174 sts. with green. Work 24 rows: 6 rows tension 5, 12 rows tension 4 and 6 rows tension 5 and after ROWS 6 and 18 work buttonholes over the 8th-14th needles counting from the left side.

BELT: Make two. Cast on 175 sts. with green. Work 22 rows, then hang the cast on sts. back on the machine behind the latches and knit sts. very loosely together with tension 10, then bind off the crochet method.

FINISHING: Weave the front sections (up to cast on sts.) together, 1 st. in on each edge. Turn under 14 sts. on each front edge, matching buttonholes and hem to wrong side. Sew darts according to the diagram. Join front and back at sides and shoulders. Sew sleeves together and set in, matching fronts and backs. Turn over half of lower and sleeve edges and hem to right side. Sew bound off edge of neckband to inside and cast on edge to outside of neckline. Finish buttonholes and sew on buttons. Weave belt at

sides, then sew to dress (See Picture) with the bound off seam at the inside center.

WOMAN'S PULLOVER, DP 7539



SIZE: 12/14 and 16. **MATERIAL:** 3½ oz. (4½ oz.) yellow and 3½ oz. (4½ oz.) brown KNITTING Fine Dralon. **TENSION:** KNITTING 1 to 2. **GAUGE:** 19 sts. 2", 29 rows 2". **PATTERN:** Stockinette Stitch. The front and the back are worked in two sections.

SIZE: 12/14. **BACK:** (Figure II). Cast on 89 sts. with yellow.

ROWS 1-46: Work even. After ROW 46 hang the cast on sts. back on the machine behind the latches to form the hem.

ROWS 47-238: Increase 1 st. on the right side after ROW 86, then again every following 24th row 5 x. (95 sts.).

ROWS 239-262: ARMHOLE SHAPING: Bind off 3 sts. on the right side, then on every other row bind off 3 sts. 1 x, 2 sts. 2 x, 1 st. 2 x and 1 st. on every following 4th row 3 x. (80 sts.).

ROWS 263-330: Increase 1 st. on the right side after ROWS 292, 304, 314 and 322. (84 sts.).

ROWS 331-360: SHOULDER SHAPING: Bind off 2 sts. on the right side, then on every other row bind off 2 sts. 3 x, 3 sts. 3 x and 4 sts. 9 x. AT THE SAME TIME, after ROW 349, then on every other row SHAPE NECK by binding off 12 sts. 1 x, 7 sts. 1 x, 5 sts. 1 x, 4 sts. 1 x and 3 sts. 1 x. Make second back section with reverse shapings and work with brown.

FRONT: (Figure I). Cast on on 89 sts. with brown.

ROWS 1-46: Work even. After ROW 46 hang the cast on sts. back on the machine behind the latches to form the hem.

ROWS 47-250: Increase 1 st. on the right side after ROW 86, then again every following 24th row 5 x. (95 sts.).

ROWS 251-274: ARMHOLE SHAPING: Bind off 3 sts. on the right side, then on every other row bind off 3 sts. 1 x, 2 sts. 2 x, 1 st. 2 x and 1 st. on every following 4th row 3 x. (80 sts.).

ROWS 275-331: Increase 1 st. on the right side after ROWS 304, 316 and 326.

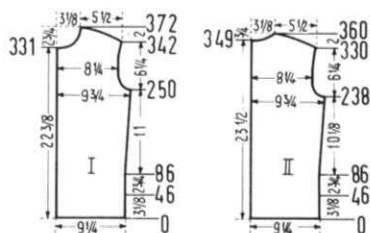
ROWS 332-372: NECK SHAPING: Bind off 9 sts. on the left side, then on every other row bind off 5 sts. 1 x, 4 sts. 1 x, 3 sts. 1 x, 2 sts. 2 x, 1 st. 2 x, then 1 st. every following 4th row 2 x and 1 st. every following 6th row 2 x. AT THE SAME TIME, increase 1 st. on the right side after ROW 334. After ROW 342, then on every other row SHAPE SHOULDER by binding off 2 sts. 4 x, 3 sts. 3 x and 4 sts. 9 x. Make second front section with reverse shapings and work with yellow.

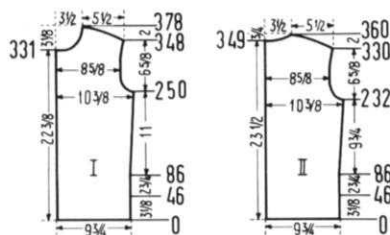
COLLAR: The collar is worked on the bias with short rows, always working 8 rows yellow and 8 rows brown. (See Short-Rows, inside back cover). Cast on 146 sts. with yellow.

ROWS 1-2: On the left side put 103 needles into holding position, knit 2 rows.

ROWS 3-207: On the right side, decrease 1 st. and on the left side bring 1 needle into working position, knit 2 rows. Repeat the last 2 rows until all needles on the left side are in working position, then put these 43 sts. on a stitch holder.

FINISHING: Weave both front sections and both back sec-





tions together, 1 st. in on each edge. Join front and back section at sides and shoulders, easing in the fullness at bustline of front section. Turn under 4 sts. around armhole edges and hem to wrong side. Pull out the cast on row of the first 43 sts. of the collar, then weave the open sts. on both short ends together with brown. Make a narrow hem on the cast on edge and hem to wrong side. Sew collar to neckline.

SIZE: 16. BACK: (Figure II). Cast on 95 sts. with yellow. **ROWS 1-46:** Work even. After ROW 46 hang the cast on sts. back on the machine behind the latches to form the hem. **ROWS 47-232:** Increase 1 st. on the right side after ROW 86, then again every following 24th row 5 x. (101 sts.).

ROWS 233-258: ARMHOLE SHAPING: Bind off 4 sts. on the right side, then on every other row bind off 3 sts. 1 x, 2 sts. 2 x, 1 st. 3 x and 1 st. on every following 4th row 3 x. (84 sts.).

ROWS 259-330: Increase 1 st. on the right side after ROWS 292, 304, 314 and 322. (88 sts.).

ROWS 331-360: SHOULDER SHAPING: Bind off 2 sts. on the right side, then on every other row bind off 2 sts. 3 x, 3 sts. 3 x and 4 sts. 9 x. AT THE SAME TIME, after ROW 349, then on every other row SHAPE NECK by binding off 14 sts. 1 x, 8 sts. 1 x, 6 sts. 1 x, 4 sts. 1 x and 3 sts. 1 x.

Make second back section with reverse shapings and work with brown.

FRONT: (Figure I). Cast on 95 sts. with brown.

ROWS 1-46: Work even. After ROW 46 hang the cast on sts. back on the machine behind the latches to form the hem. **ROWS 47-250:** Increase 1 st. on the right side after ROW 86, then again every following 24th row 5 x. (101 sts.).

ROWS 251-276: ARMHOLE SHAPING: Bind off 4 sts. on the right side, then on every other row bind off 3 sts. 1 x, 2 sts. 2 x, 1 st. 3 x and 1 st. on every following 4th row 3 x. (84 sts.).

ROWS 277-331: Increase 1 st. on the right side after ROWS 310 and 322.

ROWS 332-378: NECK SHAPING: Bind off 10 sts. on the left side, then on every other row bind off 5 sts. 1 x, 4 sts. 1 x, 3 sts. 1 x, 2 sts. 3 x, 1 st. 3 x, then 1 st. every following 4th row 2 x and 1 st. every following 6th row 2 x. AT THE SAME TIME, increase 1 st. on the right side after ROWS 332 and 340. After ROW 348, then on every other row SHAPE SHOULDER by binding off 2 sts. 4 x, 3 sts. 3 x and 4 sts. 9 x. Make second front section with reverse shapings and work with yellow.

COLLAR: The collar is worked on the bias with short rows, always working 8 rows yellow and 8 rows brown. (See Short-Rows, inside back cover). Cast on 154 sts. with yellow.

ROWS 1-2: On the left side put 111 needles into holding position, knit 2 rows.

ROWS 3-223: On the right side decrease 1 st. and on the left side bring 1 needle into working position, knit 2 rows. Repeat the last 2 rows until all needles on the left side are in working position, then put these 43 sts. on a stitch holder.

FINISHING: Follow directions for SIZE 12/14.

**KNITKINGS' INTERCHANGEABLE YARN CHART
ALLOWS YOU TO SUBSTITUTE NATIONALLY SOLD
YARNS. PRICE \$1.00 PLUS 12c POSTAGE. CALIF.
RESIDENTS 5c SALES TAX.**

WOMAN'S PULLOVER, DP 7535



SIZE: 10/12. **MATERIAL:** 7 oz. light blue, 1 3/4 oz. red and 1 3/4 oz. dark blue KNITKING Subita 2 x 3. **TENSION:** KNITKING 3 to 5. **GAUGE:** 17 sts. 2", 25 rows 2".

PATTERN: Stockinette Stitch with a red and a dark blue triangle in the front section.

BACK: (Figure II). Cast on 150 sts. with light blue.

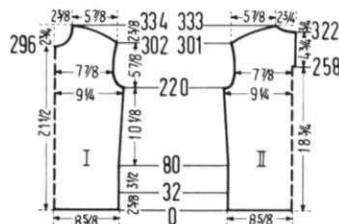
ROWS 1-32: Work even. After ROW 32 hang the cast on sts. back on the machine behind the latches to form the hem.

ROWS 33-220: Increase 1 st. on each side after ROW 80, then again every following 28th row 4 x. (160 sts.).

ROWS 221-244: ARMHOLE SHAPING: Bind off 3 sts. beginning next 2 rows, 2 sts. beginning next 4 rows, 1 st. beginning next 4 rows, then 1 st. on each end after ROWS 232, 236 and 242. (136 sts.).

ROWS 245-257: Work even, then put 68 sts. on the right side into holding position and complete the left half first.

ROWS 258-301: After ROW 258 cast on 3 sts. on the right side for the facing. To do this, put 3 sts. from the right half on a stitch holder. Increase 1 st. on the left side after ROWS 272, 282, 290 and 296.



ROWS 302-333: SHOULDER SHAPING: Bind off 2 sts. on the left side, then on every other row, bind off 2 sts. 4 x, 3 sts. 7 x and 4 sts. 5 x. AT THE SAME TIME, after ROW 322, then on every other row SHAPE NECK by binding off 8 sts. 1 x, 5 sts. 1 x, 4 sts. 1 x, 3 sts. 1 x and 2 sts. 2 x. Now move the Cam Box to the right side, turn the Row Counter back to 257, bring all needles back into working position, hang the 3 sts. from the stitch holder back on the machine and complete the right half, following the instructions from ROWS 258-333, and reversing the sides.

FRONT: (Figure I): Cast on 149 sts. with light blue.

ROWS 1-32: Work even. After ROW 32 hang the cast on sts. back on the machine behind the latches to form the hem.

ROWS 33-34: Work even. Then begin the colored triangles.

PATTERN: Using 3 balls of yarn and hand feeding, work as follows: 1. Over the first 2 needles on the right side work with dark blue, over the following 145 needles work with light blue and over the remaining 2 needles on the left side work with red. Work 2 more rows just like the last row. The yarn must always be crossed where you change colors to prevent holes. 2. Over 4 needles on the left side work with red, over 141 needles work with light blue and over the remaining 4 needles on the right side work with dark blue. Work 2 more rows just like the last row. 3. Over 6 needles work with dark blue, over 137 needles work with light blue and over the remaining 6 needles work with red. Work 2 more rows just like the last row. Repeat steps 1-3, always increasing the number of dark blue and red sts. and decreasing the number of light blue sts. until you work over only the 1 center st. with light blue.

ROWS 35-220: Increase 1 st. on each side after ROW 80, then again every following 28th row 4 x. After ROW 145 the center of the triangle pattern has been reached. The next 3 rows work over 75 needles on the left side with red, over the center 5 needles work with light blue and over the 75 needles on the right side work with dark blue, then every 3 rows increase the number of light blue and decrease the number of red and dark blue sts. (159 sts.).

ROWS 221-244: ARMHOLE SHAPING: Bind off 3 sts. beginning next 2 rows, 2 sts. beginning next 4 rows, 1 st. beginning next 4 rows, then 1 st. on **each side** after ROWS 232, 236 and 242. After ROW 241 work over all needles with light blue. (135 sts.)

ROWS 245-296: Increase 1 st. on **each side** after ROWS 272, 282 and 290.

ROWS 297-334: NECK SHAPING: Bind off the center 9 sts. (See Notes to Knit By, inside back cover), then on every other row on Neck Side bind off 4 sts. 1 x, 3 sts. 1 x, 2 sts. 2 x, 1 st. 2 x and 1 st. on every following 4th row 3 x. **AT THE SAME TIME** increase 1 st. on Armhole edge after ROW 296. After ROW 302, then on every other row **SHAPE SHOULDER** by binding off 2 sts. 5 x, 3 sts. 7 x and 4 sts. 5 x.

NECK FACING: Cast on 117 sts. with light blue. Work 12 rows stockinette st., 6 rows tension 3 and 6 rows tension 4, then bind off all sts.

FINISHING: Join front and back section at sides and shoulders. Turn under 3 sts. at back opening and hem to wrong side. Turn under 4 sts. at armhole edge and hem to wrong side. With right sides facing, sew neck facing to neckline, then turn to wrong side and hem. Sew in zipper.

WOMAN'S STOCKINGS, DV 7536

SIZE: 9-10; **MATERIAL:** 5¼ oz. light blue and small amounts of dark blue and red KNITKING Subita 2 x 3. **TENSION:** KNITKING 4 to 6. **GAUGE:** 17 sts. 2", 23 rows 2".

PATTERN: Stockinette Stitch. **UPPER EDGE:** Norwegian Design according to chart. In the directions each row in the Norwegian Design is counted as 1 row, but several movements of the Cam Box are needed to complete 1 row. Cast on 102 sts. with light blue.

ROWS 1-20: Work Stockinette st.

ROWS 21-34: Work the Norwegian Design, beginning the pattern on the second needle. After ROW 34 continue with stockinette st.

ROWS 35-36: Work even, then hang the cast on sts. back on the machine behind the latches to form the hem.

ROWS 37-142: Decrease 1 st. on **each side** after ROW 64, then again every following 6th row 9 x and every following 4th row 6 x by always hanging the 3rd st. on **each side** onto the 2nd needle and moving the end sts. inward to fill the empty needle. (70 sts.)

ROWS 143-174: Work even, then put 18 sts. on each side onto a stitch holder.

ROWS 175-234: For the **INSTEP** work even.

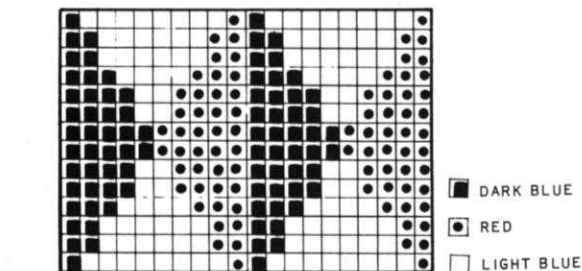
ROWS 235-258: For the **TOE** knit short rows. (See Notes to Knit By, inside back cover). Alternately on **each side**, put 1 needle 11 x and 2 needles 1 x into holding position.

ROWS 259-282: Alternately on **each side** bring 2 needles 1 x and 1 needle 11 x back into working position.

ROWS 283-342: Increase 1 st. on **each side** after ROW 322, then again every following 4th row 4 x.

ROWS 343-360: For the **HEEL** knit short rows. Alternately on **each side**, put 6 needles 1 x, 1 needle 6 x and 2 needles 2 x into holding position.

ROWS 361-378: Alternately on **each side**, bring 2 needles 2 x and 1 needle 7 x back into working position.



ROWS 379-388: (When decreasing, always move the end sts. inward to fill the empty needle, then put end needles back in holding position.)

On the left side, hang the 5th st. onto the 6th needle, knit 1 row. On the right side hang the 5th st. onto the 6th needle, knit 1 row. Now alternately on each side hang 1 st. 4 x onto that same needle. (The 4th st. onto the 5th needle, then the 3rd st. onto the 4th needle etc.). After ROW 388 put all sts. on a stitch holder. Work second stocking the same.

FINISHING: Weave the back seam together, 1 st. in on each edge. Weave the sts. on the stitch holders together for the heel. Join sole and instep at sides. Pull an elastic band through the upper edge.

WOMAN'S PULLOVER, DP 7534



SIZE: 12/14. **MATERIAL:** 8¾ oz. white, 3½ oz. red and 1¾ oz. light blue KNITKING Subita 2 x 4.

TENSION: KNITKING 6 to 8. **GAUGE:** Pattern 15 sts. 2", 22 rows 2". Stockinette Stitch 16 sts. 2", 21 rows 2".

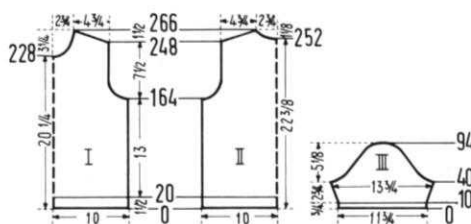
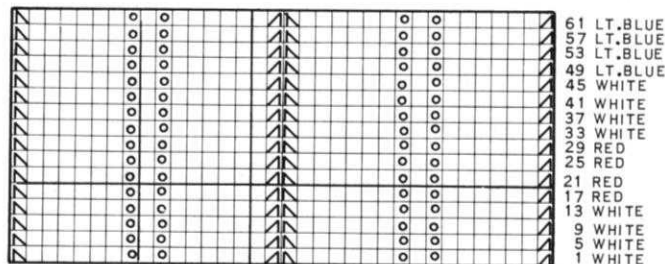
PATTERN: Eyelet Design according to chart. Transfer the appropriate sts. according to the chart (See Pattern Symbols inside Back Cover) then using 2 treble transfer tools, move 6 sts. 1 needle to the right or 1 needle to the left respectively and

bring the empty needles back into working position.

SLEEVES: Stockinette Stitch.

COLLAR and EDGES: K1, P1, Ribbing.

BACK: (Figure II). Cast on 153 sts. with white.



ROWS 1-20: K1, P1, Ribbing. After ROW 20 transfer the ribber sts. to main machine and continue with stockinette st.

ROWS 21-24: Work even, then start the Eyelet Design, and change the color after every 16 rows according to chart.

ROWS 25-164: Work even.

ROWS 165-186: ARMHOLE SHAPING: Bind off 4 sts. beginning next 4 rows, 3 sts. beginning next 2 rows, 2 sts. beginning next 4 rows, 1 st. beginning next 4 rows and 1 st. at each end of the next 4th and following 4th row. (115 sts.)

ROWS 187-248: Work even.

ROWS 249-266: SHOULDER SHAPING: Bind off 3 sts. beginning next 4 rows. After ROW 252 bind off the center 11 sts. for NECK. (See Notes to Knit By, inside back cover). Bind off 3 sts. at shoulder edge and continue to shape shoulder on every other row by binding off 3 sts. 1 x and 4 sts. 6 x. **AT THE SAME TIME**, shape NECK every other row by binding off 4 sts. 1 x, 3 sts. 2 x and 2 sts. 3 x.

FRONT: (Figure I). Work the front the same as the back to ROW 228, then bind off the center 11 sts. for NECK as you did on the back, then on every other row on Neck Side bind off 4 sts. 1 x, 3 sts. 1 x, 2 sts. 2 x, 1 st. 2 x, then 1 st. on the next 4th and following 4th row and 1 st. on the following 6th row. AT THE SAME TIME, shape SHOULDERS as on the back at ROWS 249-266.

SLEEVE: (Figure III). Make two. Cast on 96 sts. with white. **ROWS 1-10:** K1, P1, Ribbing. After ROW 10 transfer the ribber sts. to main machine and continue with stockinette stitch.

ROWS 11-40: Increase 1 st. beginning next 6 rows, then 1 st. on each side after ROWS 18, 22, 26, 30 and 34. (112 sts.).

ROWS 41-52: CAP SHAPING: Bind off 4 sts. beginning next 2 rows, 3 sts. beginning next 4 rows, and 2 sts. beginning next 6 rows.

ROWS 53-94: Bind off 1 st. beginning next 4 rows and 2 sts. beginning next 2 rows. Repeat these bind offs 5 x, then bind off 3 sts. beginning next 2 rows, 4 sts. beginning next 4 rows and after ROW 94 bind off the remaining 10 sts.

COLLAR: Cast on 139 sts. with white. Work 52 rows K1, P1, Ribbing, 14 rows with tension 6, 24 rows with tension 5, then continue with tension 6. After ROW 52 transfer the ribber sts. to the left neighboring needles on the main machine (occupied needles) then bring the empty needles on the main machine into working position and work 4 rows stockinette st., then bind off all sts. the crochet method.

FINISHING: Join front and back section at sides and shoulders. Sew sleeves together and set in. Join short ends of collar, then sew the cast on edge to inside and the bound off edge to the outside of neckline, having the stockinette rows on the right side.

WOMAN'S STOCKINGS, DV 7542

SIZE: 9-10. **MATERIAL:** 3½ oz. white, 1 oz. red and 1 oz. blue KNITKING Subita 2 x 3. **TENSION:** KNITKING 4 to 6. **GAUGE:** Pattern and Stockinette Stitch 17 sts. 2", 23 rows 2". K1, P1, Ribbing 17 sts. 2", 26 rows 2".

PATTERN: Eyelet Design according to chart DP 7534.

TOE, SOLE and HEEL: Stockinette Stitch. **UPPER EDGE:** K1, P1, Ribbing.

Cast on 104 sts. with white.

ROWS 1-32: K1, P1, Ribbing. After ROW 32 transfer the ribber sts. to main machine, then hang the cast on sts. back onto the machine behind the latches to form the hem and continue with stockinette st.

ROWS 33-36: Work even. After ROW 36 start the Eyelet Design by hanging first the 3rd st. onto the 2nd needle, then moving the 6 sts. that are to the left of these, 1 needle to the right, then hang the 17th st. onto the 18th needle and moving the 6 sts. that are to the right of these 1 needle to the left, etc. Change color after every 16 rows according to chart.

ROWS 37-142: Decrease 1 st. on each side after ROW 64, then again every following 6th row 6 x and every following 4th row 10 x. (70 sts.).

ROWS 143-174: Work even, then put 18 sts. on each side on a stitch holder.

ROWS 175-234: For the INSTEP work even. After ROW 234 continue with stockinette st. and white.

ROWS 235-256: For the TOE knit short rows: (See Notes to Knit By, inside back cover). Alternately on each side,

put 1 needle 10 x and 2 needles 1 x into holding position. **ROWS 257-278:** Alternately on each side bring 2 needles 1 x and 1 needle 10 x back into working position.

ROWS 279-338: Increase 1 st. on each side after ROW 318, then again every following 4th row 4 x.

ROWS 339-356: For the HEEL work short rows. Alternately on each side, put 6 needles 1 x, 1 needle 6 x and 2 needles 2 x into holding position.

ROWS 357-374: Alternately on each side, bring 2 needles 2 x and 1 needle 7 x back into working position.

ROWS 375-384: (When decreasing, always move the end sts. inward, then put back into holding position). On the left side, hang the 5th st. onto the 6th needle, knit 1 row. On the right side hang the 5th st. onto the 6th needle, knit 1 row. Now alternately on each side hang 1 st. 4 x onto that same needle. (The 4th st. onto the 5th needle, the 3rd st. onto the 4th needle etc.) After ROW 384 put all sts. on a stitch holder. Work second stocking the same.

FINISHING: Join back seam. Weave the sts. on the stitch holders together for the heel. Join sole and instep at sides. Pull an elastic band through the upper edge.

WOMAN'S PULLOVER, DP 7540



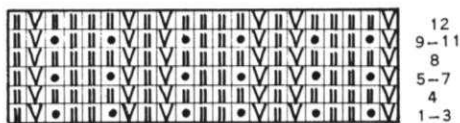
SIZE: 14/16 and 18/20. **MATERIAL:** 15¾ oz. (17½ oz.) red KNITKING Satin Cotton. **TENSION:** KNITKING 7 to 9. **GAUGE:** Pattern Stitch 14 sts. 2", 30 rows 2". Stockinette Stitch 14 sts. 2", 20 rows 2". The omitted sts. in the pattern are counted as sts. in the gauge and directions.

PATTERN: Holding Position Design according to chart, or use JAC 40 and Pattern No. 326. The Purl side is the right side.

EDGES: Stockinette Stitch.

SIZE: 14/16. **BACK:** (Figure II). Cast on 146 sts. and work stockinette st.

ROWS 1-16: Work even. To form the hem, hang the cast on sts. back on the machine in front of the latches, then push the right Cam Control button towards the back



(machines prior to AM 3 pull the Cam Control knob up) and knit 2 rows without yarn, then push the Cam Control button forwards (or push down) and turn Row Counter back to 16. Now hang the 6th and 8th sts. onto the 7th needle, the 13th and 15th sts. onto the 14th needle, the 20th and 22nd sts. onto the 21st needle etc., put the empty needles into the non-working position and continue with the holding position design.

ROWS 17-214: Work even.

ROWS 215-246: ARMHOLE SHAPING: Bind off 4 sts. on each side, then on each side of every following 4th row bind off 3 sts. 2 x, 2 sts. 2 x, 1 st. 2 x and 1 st. at each end of the following 6th row. (112 sts.).

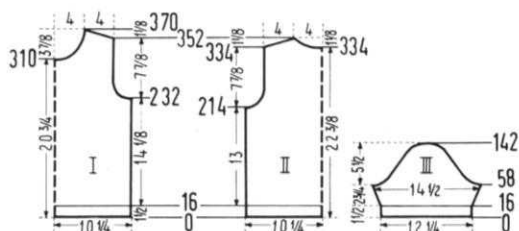
ROWS 247-334: Work even.

ROWS 335-352: NECK and SHOULDER SHAPING: Both shapings are started at the same row. Bind off the center 16 sts. (See Notes to Knit By, inside back cover). Bind off 2 sts. at Shoulder side and continue to shape shoulder on every other row by binding off 2 sts. 1 x and 3 sts. 8 x. AT THE SAME TIME, shape NECK on every other row by binding off 6 sts. 1 x, 4 sts. 1 x, 3 sts. 1 x, 2 sts. 2 x and 1 st. 3 x.

FRONT: (Figure I). Work the front the same as the back to ROW 214.

ROWS 215-232: Work even.

ROWS 233-260: ARMHOLE SHAPING: Bind off 5 sts. on each side, then on each side of every following 4th row



bind off 4 sts. 1 x, 3 sts. 1 x, 2 sts. 1 x, 1 st. 2 x and 1 st. at each end of the following 6th row. (112 sts.)

ROWS 261-310: Work even.

ROWS 311-370: NECK SHAPING: Bind off the center 14 sts. as you did on the back, then on every following 4th row on Neck Side bind off 5 sts. 1 x, 3 sts. 1 x, 2 sts. 4 x, 1 st. 2 x and 1 st. on every following 6th row 3 x. AT THE SAME TIME, after ROW 352, then on every other row SHAPE SHOULDER by binding off 2 sts. 2 x and 3 sts. 8 x.

SLEEVE: (Figure III). Make two. Cast on 87 sts. and work stockinette st.

ROWS 1-16: Work even, then form the hem as you did on the back. Now hang the 4th and 6th sts. onto the 5th needle, the 11th and 13th sts. onto the 12th needle, etc., then put the empty needles into the non-working position and continue with the holding position design.

ROWS 17-58: Increase 1 st. on each side after ROW 16, then again every following 4th row 4 x and every following 6th row 3 x. (103 sts.)

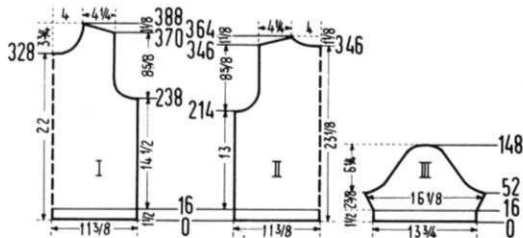
ROWS 59-82: CAP SHAPING: Bind off 4 sts. on each side, then on each side of every following 4th row bind off 4 sts. 1 x, 3 sts. 1 x and 2 sts. 3 x.

ROWS 83-142: On each side, then on every following 4th row bind off 1 st. 1 x and 2 sts. 1 x and repeat these bind offs 5 x, then on each side of every following 4th row bind off 3 sts. 1 x, 4 sts. 2 x and after row 142 bind off the remaining 11 sts.

NECKBAND: The neckband is worked in 2 sections. For the front section cast on 87 sts. Work 20 rows stockinette st., 6 rows tension 8, 8 rows tension 7 and 6 rows tension 8, decreasing 1 st. on each side after Rows 4 and 8 and increasing 1 st. on each side after ROWS 12 and 16. After 20 rows bind off all sts. For the back section cast on 63 sts. and work the same as the front section.

FINISHING: Join front and back section at sides and shoulders, easing in the fullness at bustline of front section. Sew sleeves together and set in. Join front and back section of neckband, then sew 1 edge of neckband to inside and 1 edge to outside on neckline.

SIZE: 18/20. BACK: (Figure II). Cast on 162 sts. and work stockinette st.



ROWS 1-16: Work even. To form the hem, hang the cast on sts. back on the machine in front of the latches, then push the right Cam Control button towards the back (machines prior to AM 3 pull the Cam Control knob up) and knit 2 rows without yarn, then push the Cam Control button forwards (or push down) and turn Row Counter back to 16. Now hang the 2nd st. onto the 1st needle, the 7th and 9th sts. onto the 8th needle, the 14th and 16th sts. onto the 15th needle etc., put the empty needles into the non-working position and continue with the holding position design.

ROWS 17-214: Work even.

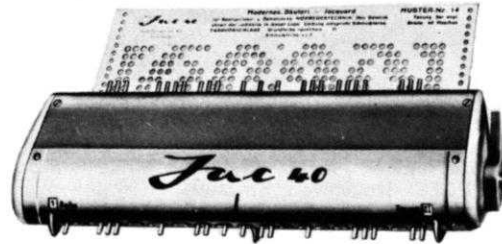
ROWS 215-256: ARMHOLE SHAPING: Bind off 5 sts. on each side, then on each side of every following 4th row bind off 4 sts. 1 x, 3 sts. 1 x, 2 sts. 3 x, 1 st. 2 x and 1 st. at each end of the next 6th and following 6th row. (118 sts.)

ROWS 257-346: Work even.

ROWS 347-364: NECK and SHOULDER SHAPING: Both shapings are started at the same row. Bind off the center 16 sts. (See Notes to Knit By, inside back cover). Bind off 3 sts. at Shoulder side and continue to shape Shoulder on every other row by binding off 3 sts. 8 x and 4 sts. 1 x. AT THE SAME TIME, shape NECK on every other row

THE JAC 40 IS A MUST

for fast easy knitting of
Jaquard and Ski-sweater
designs



Patterns are selected—row by row—through a pre-stamped card that is fed into the Jac.

There are over 140 cards available and illustrations of them are included with each Jac.

Jac 40's are made for most brands of machines (with the exception of Japanese machines). When ordering be sure to specify your brand of knitter as needle spacings vary. Simple to use and an essential tool for the modern knitter, Jac 40's are \$24.95 complete with 3 cards for practicing the 3 techniques, plus complete instructions.

Order from your dealer or direct from

KNITTING

1128 Crenshaw Boulevard, Los Angeles, Calif. 90019

Shipping Cost \$1.50—California residents add 5% sales tax.

by binding off 6 sts. 1 x, 4 sts. 1 x, 3 sts. 1 x, 2 sts. 2 x and 1 st. 3 x.

FRONT: (Figure I): Work the front the same as the back to ROW 214.

ROWS 215-238: Work even.

ROWS 239-272: ARMHOLE SHAPING: Bind off 5 sts. on each side, then on each side of every following 4th row bind off 4 sts. 1 x, 3 sts. 2 x, 2 sts. 2 x and 1 st. 3 x. (118 sts.)

ROWS 273-328: Work even.

ROWS 329-388: NECK SHAPING: Bind off the center 14 sts. as you did on the back, then on every following 4th row on Neck Side bind off 5 sts. 1 x, 3 sts. 1 x, 2 sts. 4 x, 1 st. 2 x and 1 st. on every following 6th row 3 x. AT THE SAME TIME, after ROW 370, then on every other row SHAPE SHOULDER by binding off 3 sts. 9 x and 4 sts. 1 x.

SLEEVE: (Figure III). Make two. Cast on 98 sts. and work stockinette st.

ROWS 1-16: Work even, then form the hem as you did on the back. Now hang the 6th and 8th sts. onto the 7th needle, the 13th and 15th sts. onto the 14th needle etc., then put the empty needles into the non-working position. and continue with the holding position design.

ROWS 17-52: Increase 1 st. on each side after row 16, then again every following 4th row 7 x. (114 sts.)

ROWS 53-76: CAP SHAPING: Bind off 5 sts. on each side, then on each side of every following 4th row bind off 4 sts. 2 x, 3 sts. 1 x and 2 sts. 2 x.

ROWS 77-148: On each side, then on every following 4th row bind off 1 st. 2 x and 2 sts. 1 x and repeat these bind offs 4 x, then on each side of every following 4th row bind off 3 sts. 1 x, 4 sts. 1 x, 5 sts. 1 x and after row 148 bind off the remaining 10 sts.

NECKBAND and FINISHING: Follow directions for SIZE 14/16.

WOMAN'S BLOUSE, DP 7543



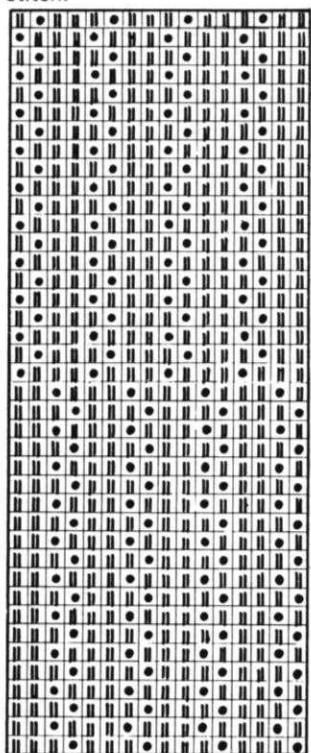
SIZE: 12/14. **MATERIAL:** 10½ oz. KNITKING Fine Satin cotton. **TENSION:** KNITKING 3 to 5. **GAUGE:** Pattern Stitch 13 sts. 2", 42 rows 2". Stockinette Stitch 15 sts. 2", 24 rows 2".

PATTERN: Holding Position Design according to chart, worn on the knit side. Put the Gate Cam Release Lever at the needle heels.

1. Following the chart, put the designated needles into holding position and knit 1 row. 2. Bring the needles from holding position back

into working position and knit 1 row. REPEAT STEPS 1 and 2 throughout. KNITKING Dial-a-Stitch machines use Wheel 3. Push in the right retractor button to retract needles automatically. After each 100 rows, this pattern must be pulled and stretched in all directions while still on the machine. **EDGES:** Stockinette Stitch.

BACK: (Figure II). Cast on 130 sts. and work stockinette stitch.



ROWS 1-20: Work even, then hang the cast on sts. back on the machine behind the latches to form the hem, then put the Gate Cam Release Lever at the needle heels and continue with the holding position design. (130 sts.)

ROWS 21-304: Work even.

ROWS 305-342: ARMHOLE SHAPING: Bind off 4 sts. on each side, then on each side of every following 4th row bind off 3 sts. 1 x, 2 sts. 2 x, 1 st. 2 x and 1 st. at each end of the next 8th and following 8th row. (100 sts.)

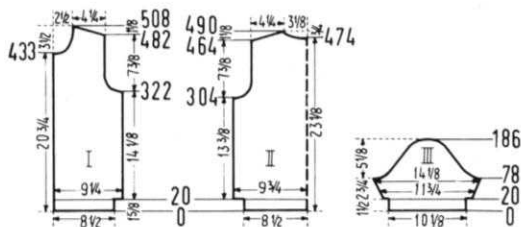
ROWS 343-464: Work even.

ROWS 465-490: SHOULDER SHAPING: Bind off 2 sts. beginning next 10 rows. After ROW 474 bind off the center 14 sts. for NECK. (See Notes to Knit By, inside back cover). Bind off 2 sts. at Shoulder edge and continue to

shape shoulder on every other row by binding off 2 sts. 7 x and 3 sts. 1 x. AT THE SAME TIME, shape NECK on every other row by binding off 4 sts. 1 x, 3 sts. 1 x, 2 sts. 2 x and 1 st. 3 x.

FRONT: (Figure I). Cast on 61 sts. and work stockinette stitch.

ROWS 1-20: Work even, then hang the cast on sts. back on the machine behind the latches to form the hem, then put



the Gate Cam Release Lever at the needle heels and continue with the holding position design. (61 sts.)

ROWS 21-322: Work even.

ROWS 323-360: ARMHOLE SHAPING: Bind off 4 sts. on the right side, then on every following 4th row bind off 3 sts. 1 x, 2 sts. 2 x, 1 st. 2 x and 1 st. on the next 8th and following 8th row. (46 sts.)

ROWS 361-433: Work even.

ROWS 434-508: NECK SHAPING: Bind off 4 sts. on the left side, then on every following 4th row bind off 3 sts. 1 x, 2 sts. 2 x, 1 st. 2 x, then 1 st. on every following 8th row 2 x and 1 st. on the next 12th and following 12th row. AT THE SAME TIME, after ROW 482, then on every other row SHAPE SHOULDER by binding off 2 sts. 13 x and 3 sts. 1 x. Make second front section with reverse shapings.

SLEEVE: (Figure III). Make two. Cast on 78 sts. and work stockinette stitch.

ROWS 1-20: Work even, then hang the cast on sts. back on the machine behind the latches to form the hem, then put the Gate Cam Release Lever at the needle heels and continue with the holding position design. (78 sts.)

ROWS 21-78: Increase 1 st. on each side after ROW 26, then again every following 6th row 7 x. (94 sts.)

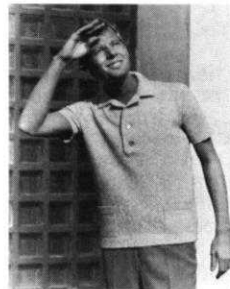
ROWS 79-186: CAP SHAPING: Bind off 4 sts. on each side, then on each side of every following 4th row bind off 3 sts. 2 x, 2 sts. 2 x, 1 st. 18 x, 2 sts. 2 x, 3 sts. 2 x and after ROW 186 bind off the remaining 10 sts.

BUTTON BAND: Cast on 153 sts. and work 30 rows stockinette st., then bind off all sts. Make the BUTTONHOLE BAND the same, but work buttonholes after ROWS 8 and 23 by hanging the 4th, 19th, 50th, 65th, 96th, 111th and 142nd sts. onto the right neighboring needles, then hang the 5th, 20th, 51st, 66th, 97th, 112th and 143rd sts. onto the left neighboring needles and with a separate yarn cast on 2 sts. over all 2 empty needles. After 30 rows bind off all sts.

NECKBAND: Cast on 132 sts. and work 20 rows stockinette stitch, 5 rows tension 5, 10 rows tension 4 and 5 rows tension 5, and work buttonholes after ROWS 5 and 15 by hanging the 6th st. onto the 5th needle and the 7th st. onto the 8th needle, then casting on 2 sts. over the 2 empty needles. After ROW 20 bind off all sts.

FINISHING: Join front and back sections at sides and shoulders, easing in the fullness at bustline of front sections. Sew sleeves together and set in. Sew on button and buttonhole bands, 1 long edge to inside and 1 long edge to outside of front edges. Sew 1 edge of neckband to inside and 1 edge to outside of neckline. Finish buttonholes, sew on buttons.

MAN'S PULLOVER SHIRT, HP 3504



SIZE: 40/42. **MATERIAL:** 15¾ oz. KNITKING Linen Cotton. **TENSION:** KNITKING 3 to 5. **GAUGE:** 35 sts. 4", 48 rows 4".

PATTERN: Stockinette Stitch.

BACK: (Figure II). Cast on 190 sts. **ROWS 1-38:** Work even, then hang the cast on sts. back on the machine behind the latches to form the hem.

ROWS 39-220: Work even.

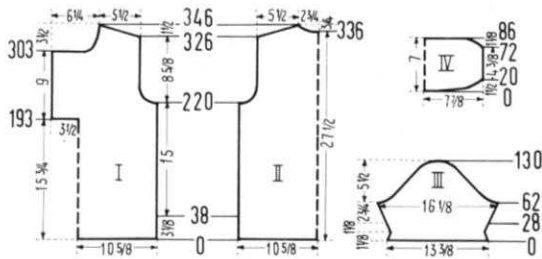
ROWS 221-244: ARMHOLE SHAPING: Bind off 5 sts. beginning next 2 rows, 4 sts. beginning next 2 rows, 3 sts. beginning next 2 rows, 2 sts. beginning next 4 rows, 1 st. beginning next 6 rows and 1 st. at each end of the next 4th and following 4th row. (148 sts.)

ROWS 245-326: Work even.

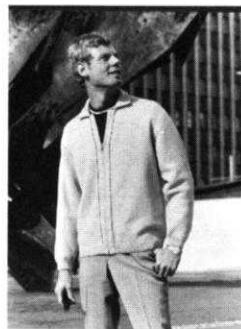
ROWS 327-346: SHOULDER SHAPING: Bind off 4 sts. beginning next 10 rows. After ROW 236 bind off the center 20 sts. (See Notes to Knit By, inside back cover). Bind off 4 sts. at Shoulder Edge and continue to shape shoulder on every other row by binding off 5 sts. 5 x. AT THE SAME TIME, Shape Neck every other row by binding off 6 sts. 1 x, 4 sts. 1 x, 3 sts. 1 x and 2 sts. 1 x.

FRONT: (Figure I). Cast on 190 sts.

ROWS 1-38: Work even, then hang the cast on sts. back on



MAN'S JACKET, HP 3506



SIZE: 42/44 and 38/40. **MATERIAL:** 25 oz. (23 oz.) light blue KNITTING Starlite Crepe and a 18" Jacket type zipper. **TENSION:** KNITTING 8 to 10. **GAUGE:** Stockinette Stitch 14 sts. 2", 18 rows 2". K1, P1, Ribbing 14 sts. 2", 24 rows 2".

PATTERN: Stockinette Stitch.

EDGES: K1, P1, Ribbing.

SIZE: 42/44.

BACK: (Figure II). Cast on 159 sts. **ROWS 1-20:** K1, P1, Ribbing. After ROW 20 transfer the ribber sts. to the main machine and continue with stockinette st.

ROWS 21-154: Work even.

ROWS 155-174: ARMHOLE SHAPING: Bind off 2 sts. beginning next 2 rows and 1 st. beginning next 2 rows. Repeat these bind offs 4 x. (129 sts.).

ROWS 175-240: Work even.

ROWS 241-258: SHOULDER SHAPING: Bind off 4 sts beginning next 10 rows. After ROW 250 bind off the center 15 sts. for NECK. (See Notes to Knit By, inside back cover. Bind off 5 sts. at Shoulder side and continue to shape Shoulder on every other row by binding off 5 sts. 4 x. AT THE SAME TIME, shape NECK every other row by binding off 6 sts. 1 x and 4 sts. 1 x and 2 sts. 1 x.

FRONT: (Figure I). Cast on 88 sts.

ROWS 1-20: K1, P1, Ribbing. After ROW 20 transfer the ribber sts. to the main machine and continue with stockinette st.

ROWS 21-154: Increase 1 st. on the left side after ROW 151.

ROWS 155-174: ARMHOLE SHAPING: After ROW 154, then on every other row, bind off 2 sts. 1 x and 1 st. 1 x. Repeat these bind offs 4 x. AT THE SAME TIME, increase 1 st. on the left side after ROWS 155, 159, 163, 167 and 171.

ROWS 175-222: Increase 1 st. on the left side after ROWS 175 and 179, then continue to increase 1 st. every following 6th row 7 x.

ROWS 223-258: NECK SHAPING. Counting from the right side, bind off the 57th-73rd sts. with a second ball of yarn, then put the sts. to the left of these into holding position and complete the right side shapings first. On every other row on NECK side, bind off 2 sts. 3 x and 1 st. 2 x, then on every following 4th row bind off 1 st. 3 x. AT THE SAME TIME, after ROW 240, then on every other row SHAPE SHOULDER by binding off 4 sts. 5 x and 5 sts. 5 x. Now bring the needles on the left side into working position, turn the Row Counter back to 222 and complete the left side. After ROW 224, then on every other row on NECK side, bind off 2 sts. 3 x and 1 st. 2 x and on every following 4th row bind off 1 st. 3 x. AT THE SAME TIME, increase 1 st. on the left side after ROW 227, then again every following 6th row 4 x then bind off 3 sts. on the left side after ROWS 255, 257 and 259. Make second front section with reverse shapings.

SLEEVE: (Figure III). Make two. Cast on 73 sts.

ROWS 1-20: K1, P1, Ribbing. After ROW 20 transfer the ribber sts. to the main machine and continue with stockinette st.

ROWS 21-168: Increase 1 st. on each side after ROW 20, then again every following 6th row 23 x. (121 sts.).

ROWS 169-212: CAP SHAPING: Bind off 2 sts. beginning next 2 rows and 1 st. beginning next 2 rows. Repeat these

the machine behind the latches to form the hem.

ROWS 39-192: Work even, then put 105 sts. on the left side on a stitch holder and complete the right half first.

ROWS 193-220: After ROW 193 cast on 41 sts. on the left side, then work even.

ROWS 221-244: ARMHOLE SHAPING: Bind off 5 sts. on the right side, then on every other row bind off 4 sts. 1 x, 3 sts. 1 x, 2 sts. 2 x, 1 st. 3 x and 1 st. on the next 4th and following 4th row.

ROWS 245-303: Work even.

ROWS 304-346: NECK SHAPING: Bind off 41 sts. on the left side, then on every other row bind off 3 sts. 1 x, 2 sts. 3 x, 1 st. 2 x, then on every following 4th row 1 st. 2 x and on every following 6th row 1 st. 2 x. AT THE SAME TIME, after ROW 326, then on every other row, SHAPE SHOULDER by binding off 4 sts. 6 x and 5 sts. 5 x. Now move the Cam Box to the left side, turn the Row Counter back to 192, hang the sts. from the stitch holder back on the machine and complete the left half, following the instructions from ROW 193-346, but reversing the sides and after ROW 193 cast on only 21 sts. on the right side instead of 41, and work buttonholes after ROWS 206, 237 and 268 over the 6th-11th and 30th-35th needles counting from the right side.

SLEEVE: (Figure III). Make two. Cast on 118 sts.

ROWS 1-28: Decrease 1 st. on each side after ROWS 4, 8 and 12, then increase 1 st. on each side after ROWS 18, 22 and 26. After ROW 28 hang the cast on sts. back on the machine behind the latches to form the hem.

ROWS 29-62: Increase 1 st. beginning next 20 rows, then 1 st. at each end after ROWS 50, 54, and 58. (144 sts.).

ROWS 63-74: CAP SHAPING: Bind off 5 sts. beginning next 2 rows, 4 sts. beginning next 2 rows, 3 sts. beginning next 4 rows and 2 sts. beginning next 4 rows.

ROWS 75-130: Bind off 1 st. beginning next 4 rows and 2 sts. beginning next 2 rows. Repeat these bind offs 7 x, then bind off 3 sts. beginning next 4 rows, 4 sts. beginning next 2 rows, 5 sts. beginning next 2 rows and after row 130 bind off the remaining 12 sts.

COLLAR: (Figure IV). Cast on 140 sts.

ROWS 1-20: Work short rows. On the left side, put 53 needles into holding position, knit 1 row. On the right side put 53 needles into holding position, knit 1 row. Now, alternately on each side, bring 17 needles 2 x, 4 needles 2 x, 3 needles 2 x, 2 needles 2 x and 1 needle 1 x back into working position.

ROWS 21-72: Work even.

ROWS 73-84: Alternately on each side, put 2 needles 2 x, 3 needles 2 x and 4 needles 2 x into holding position.

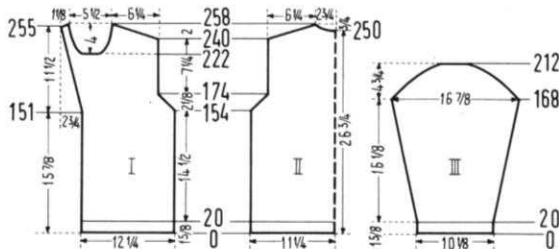
ROWS 85-86: On the left side, bring all needles into working position, knit 1 row, on the right side, bring all needles into working position, knit 1 row, then bind off all sts.

POCKET: Make two. Cast on 45 sts.

ROWS 1-28: Work even, then hang the cast on sts. back on the machine behind the latches to form the hem.

ROWS 29-72: Work even, then bind off all sts.

FINISHING: Join front and back section at sides and shoulders. Turn under 21 sts. at each side of front opening matching buttonholes, then hem to wrong side. Fold collar in half lengthwise and sew short ends. Sew bound off edge of collar to outside and cast on edge to inside of neckline, leaving 1 1/4" at both front edges unattached. Finish button holes, sew on buttons. Sew on pockets as illustrated.



BE SURE TO USE YOUR ZIP CODE
IN ALL CORRESPONDENCE.

bind off 4 x, then bind off 2 sts. beginning next 12 rows, 3 sts. beginning next 8 rows, 4 sts. beginning next 4 rows and after ROW 212 bind off the remaining 27 sts.

COLLAR: Cast on 95 sts. and work stockinette st.

ROWS 1-10: Work short rows. On the left side put 36 needles into holding position, knit 1 row. On the right side put 36 needles into holding position, knit 1 row. Now alternately on each side bring 10 needles 2 x and 8 needles 2 x back into working position.

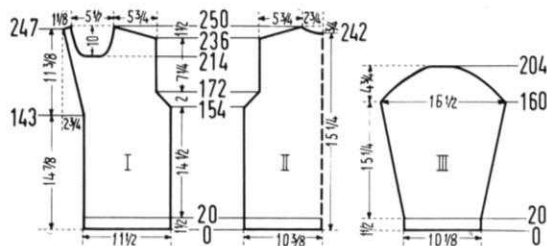
ROWS 11-68: Work even, then bind off all sts.

FINISHING: Join front and back sections at sides and shoulders. Sew sleeves together and set in. Turn under 8 sts. beginning at lower front edges and make the facing match at neckline, then hem to wrong side. With dark blue yarn, embroider 1 row of Chain st. between the 8th and 9th sts. on each front section. Fold collar in half lengthwise and sew short ends. Sew bound off edge to outside and cast on edge to inside of neckline, leaving both front edges up to the embroidery unattached. Sew in zipper.

SIZE: 38/40. **BACK:** (Figure II). Cast on 149 sts.

ROWS 1-20: K1, P1, Ribbing. After ROW 20 transfer the ribber sts. to the main machine and continue with stockinette st.

ROWS 21-154: Work even.



ROWS 155-172: ARMHOLE SHAPING: Bind off 2 sts. beginning next 2 rows. Now bind off 1 st. beginning next 2 rows and 2 sts. beginning next 2 rows, then repeat these 2 bind offs 3 x. (121 sts.)

ROWS 173-236: Work even.

ROWS 237-250: SHOULDER SHAPING. Bind off 5 sts. beginning next 6 rows. After ROW 242 bind off the center 15 sts. for NECK. (See Notes to Knit By, inside back cover.) Bind off 5 sts. on Shoulder edge and continue to shape shoulder on every other row by binding off 5 sts. 3 x and 6 sts. 1 x. AT THE SAME TIME, shape NECK every other row by binding off 6 sts. 1 x, 4 sts. 1 x and 2 sts. 1 x.

FRONT: (Figure I). Cast on 83 sts.

ROWS 1-20: K1, P1, Ribbing. After ROW 20 transfer the ribber sts. to the main machine and continue with stockinette st.

ROWS 21-154: Increase 1 st. on the left side after ROWS 143, 147 and 151.

ROWS 155-172: ARMHOLE SHAPING. Bind off 2 sts. on the right side. Now on every other row on the right side bind off 1 st. 1 x and 2 sts. 1 x, then repeat these 2 bind offs 3 x. AT THE SAME TIME, increase 1 st. on the left side after ROWS 155, 159, 163, 167 and 171.

ROWS 173-214: Increase 1 st. on the left side after ROW 177, then again every following 6th row 6 x.

ROWS 215-250: NECK SHAPING: Counting from the right side, bind off the 53rd-69th sts. with a second ball of yarn, then put the sts. to the left of these into holding position and complete the right side shapings first. On every other row on NECK side, bind off 2 sts. 3 x and 1 st. 2 x, then on every following 4th row bind off 1 st. 3 x. AT THE SAME TIME, after ROW 236, then on every other row SHAPE SHOULDER by binding off 5 sts. 7 x and 6 sts. 1 x. Now bring the needles on the left side into working position, turn the Row Counter back to 214 and complete the left side. After ROW 216, then on every other row on NECK side bind off 2 sts. 3 x and 1 st. 2 x and on every following 4th row bind off 1 st. 3 x. AT THE SAME TIME, increase 1 st. on the left side after ROW 219, then again every following 6th row 4 x, then bind off 3 sts. on the left side after ROWS 247, 249 and 251.

Make second front section with reverse shapings.

SLEEVE: (Figure III). Make two. Cast on 73 sts.

ROWS 1-20: K1, P1, Ribbing. After ROW 20 transfer the ribber sts. to the main machine and continue with stockinette st.

ROWS 21-160: Increase 1 st. on each side after ROW 20, then again every following 6th row 21 x. (117 sts.)

ROWS 161-204: CAP SHAPING: Bind off 2 sts. beginning next 2 rows and 1 st. beginning next 2 rows. Repeat these bind offs 4 x, then bind off 2 sts. beginning next 12 rows, 3 sts. beginning next 8 rows, 4 sts. beginning next 4 rows and after ROW 204 bind off the remaining 23 sts.

COLLAR: Cast on 95 sts. and work stockinette st.

ROWS 1-10: Work short rows. On the left side put 36 needles into holding position, knit 1 row. On the right side put 36 needles into holding position, knit 1 row. Now alternately on each side bring 10 needles 2 x and 8 needles 2 x back into working position.

ROWS 11-68: Work even, then bind off all sts.

FINISHING: Follow directions for SIZE 42/44.

MAN'S SHIRT, HP 3505



SIZE: 40/42. **MATERIAL:** 10 1/2 oz. blue and a small amount of beige (1 oz.) KNITKING Fine Dralon. **TENSION:** KNITKING 1 to 3. **GAUGE:** 19 sts. 2", 26 rows 2". **PATTERN:** Stockinette Stitch.

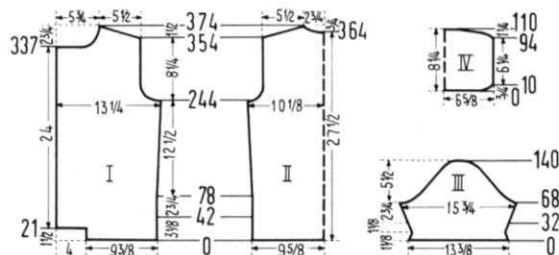
BACK: (Figure II). Cast on 187 sts. with blue.

ROWS 1-42: Work even, then hang the cast on sts. back on the machine behind the latches to form the hem.

ROWS 43-244: Increase 1 st. on each side after ROW 78, then again every following 32nd row 4 x. (197 sts.)

ROWS 245-270: ARMHOLE SHAPING: Bind off 4 sts. beginning next 2 rows, 3 sts. beginning next 4 rows, 2 sts. beginning next 4 rows, 1 st. beginning next 4 rows and 1 st. at each end after ROWS 260, 264, and 268. (159 sts.)

ROWS 271-354: Work even.



ROWS 355-374: SHOULDER SHAPING: Bind off 4 sts. beginning next 4 rows, and 5 sts. beginning next 6 rows. After ROW 364 bind off the center 17 sts. for NECK. (See Notes to Knit By, inside back cover). Bind off 5 sts. at Shoulder edge and continue to shape shoulder on every other row by binding off 5 sts. 5 x. AT THE SAME TIME, Shape Neck every other row by binding off 6 sts. 1 x, 5 sts. 1 x, 4 sts. 1 x and 3 sts. 1 x.

FRONT: (Figure I). Cast on 92 sts. with blue.

ROWS 1-42: After ROW 21, cast on 38 sts. on the left side, then work even. After ROW 42 hang the first 92 cast on sts. back on the machine behind the latches to form the hem.

ROWS 43-244: Increase 1 st. on the right side after ROW 78, then again every following 32nd row 4 x. (135 sts.)

ROWS 245-270: ARMHOLE SHAPING. Bind off 6 sts. on the right side, then on every other row bind off 5 sts. 1 x, 4 sts. 1 x, 3 sts. 1 x, 2 sts. 2 x, 1 st. 3 x and 1 st. on the next 4th and following 4th row. (108 sts.)

ROWS 271-337: Work even.

ROWS 338-374: NECK SHAPING. Bind off 38 sts. on the left side, then on every other row bind off 3 sts. 2 x, 2 sts. 2 x, 1 st. 4 x and 1 st. on every following 4th row

3 x. AT THE SAME TIME, after ROW 354, then on every other row SHAPE SHOULDER by binding off 4 sts. 2 x and 5 sts. 9 x.

Work the second front section with reverse shapings and make buttonholes after ROWS 32, 89, 146, 203 and 260 over the 4th-11th and 28th-35th needles.

SLEEVE: (Figure III). Cast on 128 sts. with blue.

ROWS 1-32: Decrease 1 st. on each side after ROWS 4, 8 and 12, then increase 1 st. on each side after ROWS 20, 24 and 28 and working ROWS 7-26 with beige. After ROW 32 hang the cast on sts. back on the machine behind the latches to form the hem.

ROWS 33-68: Increase 1 st. beginning next 16 rows, then 1 st. at each end after ROWS 50, 54, 58 and 62. (152 sts.).

ROWS 69-86: CAP SHAPING: On the right side, (back of sleeve) and on every other row bind off 3 sts. 3 x and 2 sts. 6 x. On the left side, (front of sleeve) and on every other row bind off 5 sts. 1 x, 4 sts. 2 x, 3 sts. 2 x and 2 sts. 4 x.

ROWS 87-140: Bind off 1 st. beginning next 4 rows and 2 sts. beginning next 2 rows. Repeat these bind offs 7 x, then bind off 3 sts. beginning next 2 rows, 4 sts. beginning next 2 rows, 5 sts. beginning next 2 rows and after ROW 140 bind off the remaining 16 sts. Make second sleeve with reverse shapings.

COLLAR: (Figure IV). Cast on 129 sts. with blue.

ROWS 1-10: Work short rows On the left side, put 15 needles into holding position, knit 1 row. On the right side, put 15 needles into holding position, knit 1 row. Now alternately on each side, bring 5 needles 2 x 3 needles 1 x and 2 needles 1 x back into working position.

ROWS 11-94: Work even and work Rows 43-62 with beige.

ROWS 95-108: Alternately on each side, put 2 needles 1 x, 3 needles 1 x, 5 needles 2 x and 10 needles 3 x into holding position.

ROWS 109-110: On the left side, bring all needles into working position, knit 1 row. On the right side, bring all needles into working position, knit 1 row, then bind off all sts.

POCKET: Cast on 46 sts. with blue

ROWS 1-32: Work even and work Rows 7-26 with beige. After ROW 32 hang the cast on sts. back on the machine behind the latches to form the hem.

ROWS 33-68: Work even, then bind off all sts.

FINISHING: Join front and back section at sides and shoulders. Sew sleeves together and set in, matching fronts and backs. Turn under 2" at front edges and hem to wrong side. Fold collar in half lengthwise and sew short ends. Sew cast on edge of collar to outside and bound off edge to inside of neckline, leaving 1 1/4" at both front edges unattached. Finish buttonholes, sew on buttons. Sew on pocket as illustrated.

MAN'S PULLOVER, HP 3507



SIZE: 42/44 and 38/40. **MATERIAL:** 22 3/4 oz. (21 oz.) dark blue and a small amount of white KNITTING Subita 2 x 3. **TENSION:** KNITTING 6 to 8.

GAUGE: Pattern Stitch 14 sts. 2", 48 rows 2". Stockinette Stitch 14 sts. 2", 26 rows 2".

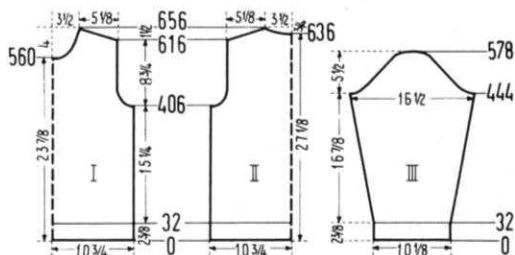
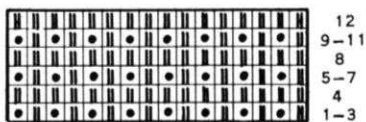
PATTERN: Holding Position Design according to chart, worn on the purl side. **LOWER EDGES and POCKET:** Stockinette Stitch. **NECKBAND and POCKET EDGE:** K1, P1, Ribbing. **SIZE:** 42/44. **BACK:** (Figure II). Cast

on 155 sts. and work stockinette st.

ROWS 1-32: Work even. To form the hem, hang the cast on sts. back on the machine in front of the latches, then push the right Cam Control button towards the back, (machines prior to AM 3 pull the control knob up) and knit 2 rows without yarn. Now push the Cam Control button forwards, (or push down) turn Row Counter back to 32 and continue with the Holding Position Design.

ROWS 33-406: Work even.

ROWS 407-452: ARMHOLE SHAPING. Bind off 4 sts. on



each side, then on each side of every following 4th row bind off 3 sts. 1 x, 2 sts. 2 x, 1 st. 2 x and on each side of every following 8th row bind off 1 st. 3 x. (123 sts.).

ROWS 453-616: Work even.

ROWS 617-656: SHOULDER SHAPING: Bind off 3 sts. on each side, then on each side of every following 4th row bind off 3 sts. 4 x. After ROW 636 bind off the center 13 sts. for NECK. (See Notes to Knit By, inside back cover). Bind off 3 sts. at Shoulder Edge and continue to shape shoulder on every following 4th row by binding off 3 sts. 2 x and 4 sts. 3 x. AT THE SAME TIME, after ROW 639, then on every following 4th row, Shape Neck by binding off 6 sts. 1 x, 5 sts. 1 x and 4 sts. 2 x.

FRONT: (Figure I). Work the front the same as the back to ROW 560, then bind off the center 15 sts. for NECK as you did on the back. After ROW 563, then on every following 4th row on Neck Side bind off 3 sts. 2 x, 2 sts. 2 x, 1 st. 3 x and 1 st. after ROWS 595, 603, 611, 621 and 631. AT THE SAME TIME, shape SHOULDERS as on the back at ROWS 617-656.

SLEEVE: (Figure III). Make two. Cast on 73 sts. and work stockinette st.

ROWS 1-32: Work even, then form the hem as you did on the back and continue with the Holding Position Design.

ROWS 33-444: Increase 1 st. on each side after ROW 40, then again every following 18th row 21 x. (117 sts.).

ROWS 445-578: CAP SHAPING: Bind off 3 sts. on each side, then on each side of every following 4th row bind off 3 sts. 2 x, 2 sts. 4 x, 1 st. 22 x, 2 sts. 2 x, 3 sts. 2 x, 4 sts. 1 x and after ROW 578 bind off the remaining 11 sts.

POCKET: Cast on 51 sts. with dark blue.

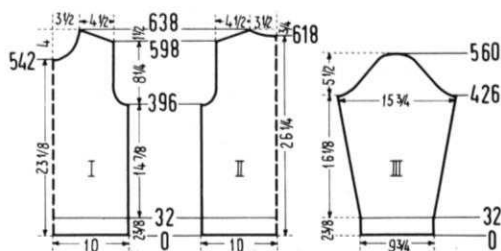
ROWS 1-16: K1, P1, Ribbing and work ROWS 7-10 with white. After ROW 16 transfer the ribber sts. to main machine and continue with stockinette st.

ROWS 17-60: Work even, then bind off all sts.

NECKBAND: Cast on 185 sts. with dark blue. Work 36 rows K1, P1, Ribbing, 12 rows tension 5, 12 rows tension 4 and 12 rows tension 5. AT THE SAME TIME, work ROWS 7-10 and 27-30 with white.

FINISHING: Join front and back section at sides and shoulders. Sew sleeves together and set in. Join short ends of neckband, then sew cast on edge to inside and bound off edge to outside of neckline. Sew on pocket.

SIZE: 38/40. **BACK:** (Figure II). Cast on 143 sts. and work stockinette stitch.



ROWS 1-32: Work even. To form the hem, hang the cast on sts. back on the machine in front of the latches, then push the right Cam Control button towards the back, (machines prior to AM 3 pull the control knob up) and knit 2 rows without yarn. Now push the Cam Control button forwards (or push down) then turn Row Counter back to 32 and continue with the Holding Position Design.

ROWS 33-396: Work even.

ROWS 397-434: **ARMHOLE SHAPING:** Bind off 3 sts. on each side, then on each side of every following 4th row bind off 3 sts. 1 x, 2 sts. 2 x, 1 st. 2 x and on each side of every following 8th row bind off 1 st. 2 x. (115 sts.).

ROWS 435-598: Work even.

ROWS 599-638: **SHOULDER SHAPING.** Bind off 2 sts. on each side, then on each side of every following 4th row bind off 3 sts. 4 x. After ROW 618 bind off the center 13 sts. for NECK. (See Notes to Knit By, inside back cover). Bind off 3 sts. at Shoulder Edge and continue to shape shoulder on every following 4th row by binding off 3 sts. 5 x. **AT THE SAME TIME,** after ROW 621, then on every following 4th row Shape Neck by binding off 6 sts. 1 x, 5 sts. 1 x and 4 sts. 2 x.

FRONT: (Figure I). Work the front the same as the back to ROW 542, then bind off the center 15 sts. for NECK, as you did on the back. After ROW 545, then on every following 4th row on Neck Side, bind off 3 sts. 2 x, 2 sts. 2 x, 1 st. 3 x and 1 st. after ROWS 577, 585, 593, 603 and 613. **AT THE SAME TIME,** shape SHOULDERS as on the back at ROWS 599-638.

SLEEVE: (Figure III). Make two. Cast on 71 sts. and work stockinette st.

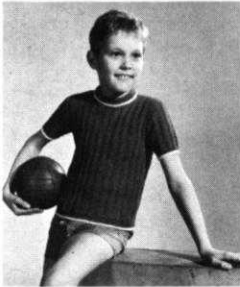
ROWS 1-32: Work even, then form the hem as you did on the back and continue with the Holding Position Design.

ROWS 33-426: Increase 1 st. on each side after ROW 40, then again every following 18th row 20 x. (113 sts.).

ROWS 427-560: **CAP SHAPING:** Bind off 3 sts. on each side, then on each side of every following 4th row bind off 3 sts. 1 x, 2 sts. 5 x, 1 st. 22 x, 2 sts. 2 x, 3 sts. 2 x, 4 sts. 1 x and after ROW 560 bind off the remaining 9 sts.

POCKET, NECKBAND and FINISHING: Follow the directions for SIZE 42/44.

BOY'S PULLOVER, KK 4960



SIZE: 8-9 years. **MATERIAL:** 8¾ oz. red and a small amount of white KNITTING Mutella. **TENSION:** KNITTING 3 to 5. **GAUGE:** 20 sts. 2", 23 rows 2".

PATTERN: K1, P1, 3 x, plus purl stitches according to chart. **EDGES:** K1, P1, Ribbing. The purl side is the right side.

BACK: (Figure II). Cast on 151 sts. with white.

ROWS 1-14: K1, P1, Ribbing, working 4 rows of white, then continue with red.

After ROW 14 transfer sts. from the ribber to the main machine according to the chart and work the Pattern Ribbing.



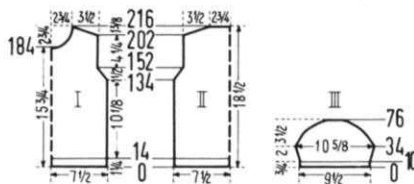
ROWS 15-134: Work even.

ROWS 135-152: **ARMHOLE SHAPING:** Bind off 2 sts. beginning next 2 rows and 1 st. beginning next 4 rows. Repeat these bind offs 2 x. (127 sts.).

ROWS 153-202: Work even.

ROWS 203-216: **SHOULDER SHAPING:** Bind off 5 sts. beginning next 12 rows, 6 sts. beginning next 2 rows and after ROW 216 bind off the remaining 55 sts.

FRONT: Work the front the same as the back to ROW 184, then bind off the center 13 sts. for NECK. (See Notes to Knit By, inside back cover) then on Neck Side on every other row bind off 5 sts. 1 x, 4 sts. 1 x, 3 sts. 1 x, 2 sts. 2 x, 1 st. 3 x and 1 st. on the next 4th and following 4th row. **AT THE SAME TIME** shape SHOULDERS as on back



at ROWS 203-216.

SLEEVE: (Figure III). Make two. Cast on 97 sts. with white.

ROWS 1-10: K1, P1, Ribbing, working 4 rows of white, then continue with red.

After ROW 10 transfer the 4th, 5th, 9th, 10th, etc. Ribber sts. to main machine and continue with Pattern Ribbing.

ROWS 11-34: Increase 1 st. on each side after ROW 10, then again every following 4th row 5 x. (109 sts.).

ROWS 35-76: **CAP SHAPING.** Bind off 2 sts. beginning next 2 rows and 1 st. beginning next 4 rows. Repeat these bind offs 2 x, then bind off 2 sts. beginning next 12 rows, 3 sts. beginning next 10 rows, 4 sts. beginning next 2 rows and after row 76 bind off the remaining 23 sts.

NECKBAND: Cast on 157 sts. with white. Work K1, P1, ribbing, 4 rows with white and 24 rows with red. After 28 rows bind off all sts.

FINISHING: Join front and back at sides and shoulders. Sew sleeves together and set in. Join short ends of neckband, then sew bound off edge to inside and cast on edge to outside of neckline.

GIRL'S DRESS, MK 4961



SIZE: 8-9 years. **MATERIAL:** 10½ oz. red, 3½ oz. blue and 3½ oz. white KNITTING Subita 2 x 4. **TENSION:** KNITTING 6 to 8. **GAUGE:** 15 sts. 2", 22 rows 2".

PATTERN: Stockinette Stitch. Repeated Color Stripes: 6 rows red, 6 rows blue and 6 rows white.

BACK: (Figure II). Cast on 132 sts. with red.

ROWS 1-156: Work the repeated color stripes, decreasing 1 st. on each side after ROW 46, then again every following 14th row 6 x and

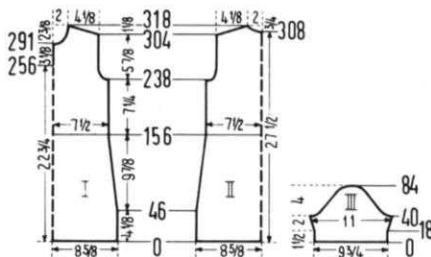
every following 12th row 2 x by always hanging the 3rd st. on each side onto the 2nd needle, then moving the end sts. inward to fill the empty needle. (114 sts.). After ROW 156 continue with red.

ROWS 157-238: Work even.

ROWS 239-256: **ARMHOLE SHAPING:** Bind off 3 sts. beginning next 2 rows, 2 sts. beginning next 4 rows, 1 st. beginning next 4 rows and 1 st. at each end of the next 4th and following 4th row. (92 sts.).

ROWS 257-304: Work even.

ROWS 305-318: **SHOULDER SHAPING:** Bind off 3 sts. beginning next 2 rows, and 4 sts. beginning next 2 rows. After ROW 308 bind off the center 10 sts. for NECK. (See Notes to Knit By, inside back cover). Bind off 4 sts. on Shoulder Edge and continue to shape shoulder on every other row by binding off 4 sts. 5 x. **AT THE SAME TIME,** shape NECK on every other row by binding off 3 sts. 2 x and 2 sts. 2 x. **FRONT:** (Figure I). Work the front the same as the back



to ROW 256, then for the front opening divide the sts. in the center, put the sts. on the left side into holding position and complete the right half first. After ROW 291 bind off 4 sts. on the left side for NECK, then on every other row bind off 3 sts. 1 x, 2 sts. 2 x, 1 st. 2 x and 1 st. on the next 4th and following 4th row. AT THE SAME TIME, shape SHOULDER as on the back at ROWS 305 to 318. Now move the Cam Box to the left side, turn the Row Counter back to 256, bring all needles back into working position and complete the left half, following instructions from ROWS 257-318 and reversing the sides.

SLEEVE: (Figure III). Make two. Cast on 74 sts. with red. **ROWS 1-18:** Work even, then hang the cast on sts. back on the machine behind the latches to form the hem.

ROWS 19-40: Increase 1 st. on each side, after ROW 18, then again every following 4th row 4 x. (84 sts.).

ROWS 41-84: CAP SHAPING: Bind off 4 sts. beginning next 2 rows, 3 sts. beginning next 2 rows, 2 sts. beginning next 6 rows, 1 st. beginning next 26 rows, 2 sts. beginning next 4 rows, 3 sts. beginning next 2 rows, 4 sts. beginning next 2 rows and after ROW 84 bind off the remaining 10 sts.

COLLAR: Cast on 42 sts. with red. Work 132 rows in repeated color stripe pattern, then put all sts. on a stitch holder.

BUTTON BAND: Cast on 16 sts. with white. Work 126 rows in repeated color stripe pattern, first working 6 rows white, after 126 rows bind off all sts.

BELT: Cast on 13 sts. with red. Work 290 row K1, P1, Ribbing, then bind off all sts.

FINISHING: Join front and back section at sides and shoulders. Sew sleeves together and set in. Turn under 2" at lower edge and hem to wrong side. Work 1 row single crochet around front opening. Pull out the cast on row of collar, then fold collar in half lengthwise, and weave the sts. of the first row, then the sts. of the last row together. Sew 1 long edge of collar to inside and 1 long edge to outside of neckline. Join long edges of button band then sew band and buttons to front. Sew hooks and eyes to neck opening. Sew a buckle to the belt. Work 4 loops around hipline, then pull belt through loops. (See picture).

GIRL'S PULLOVER, MK 4962



SIZE: 11-12 years. **MATERIAL:** 7 oz. white, 1 3/4 oz. red and 1 3/4 oz. green KNITTING Subita 2 x 3. **TENSION:** KNITTING 3 to 5. **GAUGE:** 17 sts. 2", 25 rows 2". **PATTERN:** Stockinette Stitch with repeated color stripes of 26 rows white, 4 rows green, 6 rows white, 10 rows red, 6 rows white and 4 rows green. **EDGES:** K1, P1, Ribbing. **BACK:** (Figure II). Cast on 143 sts. with white.

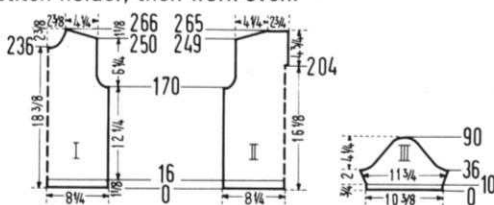
ROWS 1-16: K1, P1, Ribbing. After ROW 16 transfer the ribber sts. to

main machine, continue with stockinette st. and begin pattern stripes, but at first work only 12 rows of white. **ROWS 17-170:** Work even.

ROWS 171-186: ARMHOLE SHAPING: Bind off 4 sts. beginning next 2 rows, 3 sts. beginning next 2 rows, 2 sts. beginning next 4 rows, 1 st. beginning next 4 rows and 1 st. at each end of the following 4th row. (115 sts.).

ROWS 187-203: Work even. After ROW 203 put 58 needles on the right side into holding position and complete the left half first.

ROWS 204-249: After ROW 204 cast on 4 sts. on the right side for facing. To do this, put 4 sts. from the right half on a stitch holder, then work even.



ROWS 250-265: SHOULDER SHAPING: Bind off 4 sts. on the left side, then on every other row bind off 4 sts. 2 x, 5 sts. 5 x, and after ROW 265 the remaining 24 sts. Now move the Cam Box to the right side, turn the Row Counter back to 203, bring all needles back into working position, hang the 4 sts. from the stitch holder back on the machine and complete the right half, following the instructions from ROW 204-265, and reversing the sides.

FRONT: (Figure I). Work the front the same as the back to ROW 236, but without the opening and after ROW 236 bind off the center 13 sts. for NECK, (See Notes to Knit By, inside back cover) then on Neck Side on every other row bind off 4 sts. 1 x, 3 sts. 1 x, 2 sts. 1 x, 1 x, 2 x and 1 st. on every following 4th row 3 x. AT THE SAME TIME, shape SHOULDER after ROW 250, then on every other row, by binding off 4 sts. 3 x and 5 sts. 5 x.

SLEEVE: (Figure III). Make two. Cast on 90 sts. with white. **ROWS 1-10:** K1, P1, Ribbing. After ROW 10 transfer the ribber sts. to main machine and continue with stockinette st. with white throughout.

ROWS 11-36: Increase 1 st. on each side after ROW 10, then again every following 4th row 5 x. (102 sts.).

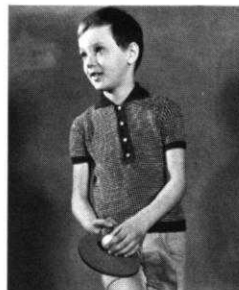
ROWS 37-46: CAP SHAPING: Bind off 4 sts. beginning next 2 rows, 3 sts. beginning next 2 rows and 2 sts. beginning next 6 rows.

ROWS 47-90: Bind off 2 sts. beginning next 2 rows and 1 st. beginning next 4 rows. Repeat these bind offs 5 x, then bind off 2 sts. beginning next 4 rows, 3 sts. beginning next 4 rows and after ROW 90 bind off the remaining 8 sts.

NECKBAND: Cast on 111 sts. with white. Work 22 rows K1, P1, Ribbing, 6 rows tension 4, 10 rows tension 3 and 6 rows tension 4. After 22 rows bind off all sts.

FINISHING: Join front and back at sides and shoulders. Sew sleeves together and set in. Turn under 4 sts. on each side at back opening and hem to wrong side. Sew cast on edge of neckband to inside and bound off edge to outside of neckline. Sew in zipper.

BOY'S SHIRT, KK 4963



SIZE: 6-7 years. **MATERIAL:** 5 1/4 oz. red and 3 1/2 oz. white KNITTING Fine Dralon. **TENSION:** KNITTING 1-3. **GAUGE:** Pattern Stitch 17 sts. 2", 44 rows 2". K1, P1, Ribbing 17 sts. 2", 29 rows 2".

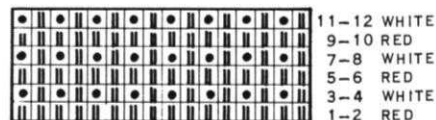
PATTERN: Holding Position Design according to chart, worn on the knit side.

EDGES and COLLAR: K1, P1, Ribbing.

BACK: (Figure II). Cast on 123 sts. with red.

ROWS 1-18: K1, P1, Ribbing. After ROW 18 transfer the ribber sts. to main machine and continue in Holding Position Design.

ROWS 19-220: Work even.



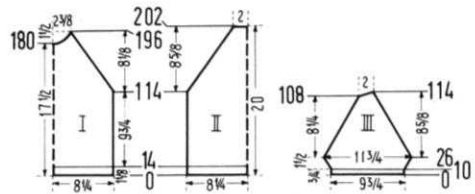
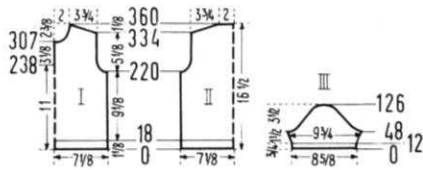
ROWS 221-248: ARMHOLE SHAPING: Bind off 3 sts. beginning next 2 rows, then at each end of every following 4th row bind off 2 sts. 3 x, 1 st. 2 x and 1 st. at each end of the following 6th row (99 sts.).

ROWS 249-334: Work even.

ROWS 335-360: SHOULDER SHAPING: Bind off 2 sts. beginning next 14 rows, 3 sts. beginning next 12 rows and after ROW 360 bind off the remaining 35 sts.

FRONT: (Figure I): Work the front the same as the back to ROW 238, then for the opening, hang the center st. on to the right neighboring needle, put the needles on the left side into holding position and complete the right half first.

ROWS 239-307: Work even.



ROWS 308-360: NECK SHAPING: Bind off 3 sts. on the left side, then on every following 4th row bind off 3 sts. 1 x, 2 sts. 3 x, 1 st. 2 x and on every following 6th row bind off 1 st. 3 x. **AT THE SAME TIME**, after ROW 334, then on every other row **SHAPE SHOULDER** by binding off 2 sts. 10 x and 3 sts. 4 x. Now bring all needles on the left side into working position according to pattern, turn Row Counter back to 238, and complete the left half following the instructions from ROW 239-360, reversing the sides, starting the Neck Shaping after ROW 308 and the Shoulder Shaping after ROW 335.

SLEEVE: (Figure III). Make two. Cast on 75 sts. with red. **ROWS 1-12:** K1, P1, Ribbing. After ROW 12 transfer the ribber sts. to main machine and continue in Holding Position Design.

ROWS 13-48: Increase 1 st. on each side after ROW 18, then again every following 6th row 4 x. (85 sts.)

ROWS 49-68: CAP SHAPING: Bind off 4 sts. on each side, then make bind offs on each side every following 4th row, 3 sts. 2 x, 2 sts. 1 x and 1 st. 1 x.

ROWS 69-126: On each side, then on every following 4th row bind off 2 sts. 1 x and 1 st. 2 x. and repeat these bind offs 3 x, then on each side of every following 4th row bind off 2 sts. 1 x, 3 sts. 1 x, 4 sts. 1 x and after ROW 126 bind off the remaining 9 sts.

COLLAR: Cast on 123 sts. with red. Work 40 rows K1, P1, Ribbing, then bind off all sts.

BUTTON BAND: Cast on 19 sts. with red. Work K1, P1, Ribbing.

ROW 1: Work over all needles. Now work short rows for the pointed shaping. (See Notes to Knit By, inside back cover). On each side put 6 needles into holding position.

ROW 2: With a separate yarn work over the center 7 needles.

ROWS 3-8: Alternately on each side, bring 2 needles 3 x back into working position.

ROWS 9-92: Work even, then bind off all sts.

FINISHING: Join front and back section at sides and shoulders. Sew sleeves together and set in. Work 1 row of single crochet around front opening. Sew collar to neckline. Sew snap fasteners to opening edges. Sew buttons to button band and tack to pullover. (See picture).

and 4th st. on each side onto the 2nd needle. After ROW 118, then on every other row decrease 1 st. on each side 42 x by always hanging the 3rd st. on each side onto the 2nd needle. Always move the end sts. inward to fill the empty needle. **AT THE SAME TIME**, work the Eyelet Design over ROWS 123-150. After ROW 202 bind off the remaining 31 sts.

FRONT: (Figure I). Work the front the same as the back to ROW 196, but **AT THE SAME TIME**, for the **NECK SHAPING**, after ROW 180, bind off the center 9 sts. (See Notes to Knit By, inside back cover), then on every other row on Neck Side bind off 3 sts. 1 x, 2 sts. 3 x, 1 st. 2 x and after ROW 196 hang the remaining 3 sts. together (2 outside sts. onto center st.) then bind off.

SLEEVE: (Figure III). Cast on 75 sts.

ROWS 1-10: K1, P1, Ribbing. After ROW 10 transfer the ribber sts. to main machine and continue with stockinette stitch.

ROWS 11-26: Increase 1 st. beginning next 16 rows. (91 sts.)

ROWS 27-108: RAGLAN SHAPING: Decrease 1 st. on each side after ROW 26, then again every following 4th row 5 x and every other row 30 x by always hanging the 3rd st. on each side onto the 2nd needle, then moving the end sts. inward to fill the empty needle. **AT THE SAME TIME**, work the Eyelet Design over ROWS 35-62.

ROWS 109-114: On the left side on every other row put 4 needles 3 x into holding position and **on the right side** on every other row decrease 1 st. 3 x more. After row 114 bring all needles into working position and bind off the remaining 16 sts. Work second sleeve with reverse shaping.

NECKBAND: Cast on 121 sts. Work 18 rows K1, P1, Ribbing, then bind off all sts.

FINISHING: Join front and back section at sides. Sew sleeves together and weave to front and back section, 1 st. in on each edge, leaving a 4" opening on the upper left back seam for the zipper. Make a narrow hem around this opening. Sew cast on edge of neckband to inside and bound off edge to outside of neckline, sew in zipper.

GIRL'S PULLOVER, MK 4959



SIZE: 11-12 years. **MATERIAL:** 8 3/4 oz. light blue KNITKING Subita 2 x 4. **TENSION:** KNITKING 7 to 9. **GAUGE:** Stockinette Stitch 15 sts. 2", 20 rows 2". K1, P1, Ribbing 15 sts. 2", 23 rows 2".

PATTERN: Stockinette Stitch and Eyelet Design according to chart.

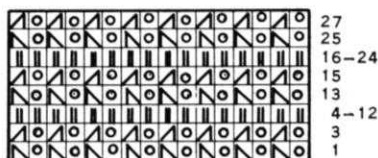
EDGES: K1, P1, Ribbing.

BACK: (Figure II). Cast on 123 sts.

ROWS 1-14: K1, P1, Ribbing. After ROW 14 transfer the ribber sts. to main machine and continue with stockinette st.

ROWS 15-114: Work even.

ROWS 115-202: RAGLAN SHAPING: Decrease 2 sts. on each side after ROWS 114 and 116 by hanging the 3rd



PRACTICAL KNITTING HINTS

EYELET DESIGN FOR DRESS, DK 7533

The eyelet design begins after you have knitted 36 rows in stockinette stitch, so set your row counter back to "0" after the 36 rows and you will find it easy to follow the chart. When you have completed the eyelet designs, the row counter should read 143, set it forward 36 rows to 179.

Work the eyelet design from the center needle out (it's a good idea to put needles that hold stitches to be transferred into the holding position before transferring them) and note that some stitches are transferred to their left needle and some to their right.

Note that the dress front is 2 stitches wider than the back and it will have eyelets one stitch in from each side. You cannot easily make this dress larger or smaller as the pattern is designed to match at the seams. If however you decide to go ahead and make a larger or smaller size, remember that the pattern stitch design is 20 stitches wide and that if you want it to match at the side seams, you must add or subtract 20 stitches for the front and 20 stitches for the back.



KNITTING NEWS

March-April 1968

HANDY HINTS

Mrs. Gardner of Chicago writes "Your Satin-Cotton is the most beautiful cotton I have ever seen, but I cannot seem to get the correct stitch gauge at the tension suggested by you. I don't want to finish the garment and discover that it will not fit me. Please tell me if I am doing something wrong?."

You are not doing anything wrong Mrs. Gardner, it is just that Cotton has to be used a little differently to other yarns. To help you overcome your problems, we are printing an excerpt from "Practical Knitting Hints" in the May-June 1965 issue of KNITTING MAGAZINE. We are sure that if you follow it, cotton garments will come out the correct size.

IMPORTANT THINGS to REMEMBER when Knitting with COTTON
Knitted garments made from cotton yarns make a delightful addition to your summer wardrobe. Women's garments knitted in KNITTING Satin-Cotton have the silky appearance which is so popular today. Sport clothes and men's sport shirts as well, can be knitted of KNITTING Linen-Cotton and other yarns that have the appearance of linen.

Most of these yarns can be washed in hot water, an excellent advantage especially for children's garments. However, bear in mind that cotton will shrink and there are several things to consider when knitting cotton garments.

First, cotton should be knitted on a higher tension than you would knit wool of the same weight. The stitches may appear to be almost too loose, and your knitted piece may look too large, but after you wash or steam your garment (if you have followed our rule for always making a sample swatch) your completed knit will be the correct size.

If you are knitting a pattern stitch in a holding position design, you must wash your sample swatch (do not steam it as this will spoil your pattern), pin it out carefully and allow it to dry (never hang it up). After your swatch is completely dry, then (and only then) count your stitches and rows to get the correct gauge.

(over)

* * * * *

There are some good looking cotton knits in this issue. We will be featuring several more during the summer months. People that are allergic to wools can substitute Satin-Cotton for wools like Subita 2 x 3 that produce the same stitch gauge. Incidentally, Satin-Cotton and Linen-Cotton are especially beautiful when knitted in a pattern stitch.

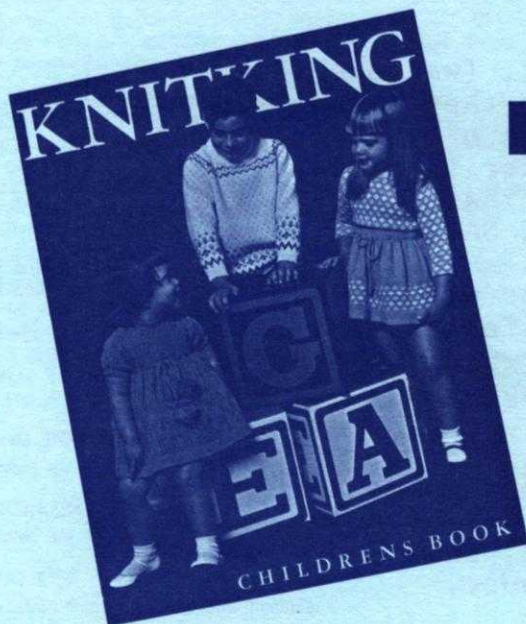
KNITKING EXPANSION SALE

The growth of the KNITKING organization is quite remarkable and we feel that it can largely be attributed to the fact that we care about our customers. We only offer top quality merchandise at the lowest possible prices. We believe, and hundreds of letters each week confirm our belief, that the KNITKING range of yarns is the finest obtainable in the U.S.A. We re-invest profits from sales into the publication of KNITKING MAGAZINE and special books such as the Childrens Book, the Interchangeable Yarn Chart, Stitchbooks, etc...publications that in themselves do not make any profit until many thousands of copies have been sold. Several more books are scheduled for publication during 1968... We are substantially increasing our range of yarns and adding many gorgeous new colors... The completely new KNITKING YARN CATALOGUE will be available before the next issue of KNITKING MAGAZINE and again will be sold at \$2.00 which can be deducted from the first \$10.00 order at list prices.

Yarn catalogues cost us much more than \$2.00 each to produce, but we know that purchasers will be unable to resist our prices for top quality yarns and that once they use KNITKING YARN, they will not be satisfied with others.

We are expanding our head office and warehouse premises again...this is the third time in four years. A brand new building with additional offices, warehouse and a new shipping department is being erected to enable us to better serve the needs of our continually growing list of customers from all over the U.S.A.

We are not able to appoint new dealers and distributors as fast as we would like, but this is not because of a lack of applicants...in fact, quite the reverse is the case. Many hundreds of businesses and individuals have applied for dealerships. We do not however, make appointments lightly, or because the applicant is able to purchase two machines. We cannot afford to jeopardize the good reputation of KNITKING by the appointment of high pressure, get rich quick



HERE IT IS!!

\$2.95

Calif. residents add
15 cents Sales Tax
Mailing costs 30 cents.

THE BIG BEAUTIFUL BOOK OF CHILDRENS PATTERNS YOU HAVE BEEN ASKING FOR . . . OVER 50 complete and lovely patterns for infants and children to teen age . . . Buntings, Blankets and Baby outfits . . . Cute Dresses, Leotites, Skirts, Suits, Pullovers, Cardigans, Stockings, Trousers, etc. . . .

The only CHILDRENS BOOK for the machine knitter published in the U.S.A. Order direct from KNITKING, 1128 Crenshaw Blvd., Los Angeles, California 90019.

organizations that are concerned only with moving machines and other products as speedily as possible with little or no concern for the instruction of, or service to the customer.

A Franchise Sales Program is being developed that will endeavor to open a complete KNITKING store in every major city in the U.S....each store to handle all KNITKING products and modeled along the lines of the KNITKING store in Los Angeles which we believe has the most beautiful Yarn Store in the U.S.A.

Because we only sell the finest in imported merchandise, and because it sometimes takes up to eight weeks to obtain delivery from our various suppliers, it is necessary that we at all times carry large stocks of all merchandise.

When our new building is completed, (we hope that it will be sometime in April or early May) there will be a major upheaval as we move merchandise and office equipment from one building to another, so in order to relieve the pressure as much as possible prior to that date, we are arranging for the biggest KNITKING SALE ever.

Literature with special order forms will be mailed to all magazine subscribers within a few days of this magazine mailing, so if you do not receive the Special Sale letter within seven days of the magazine, drop us a line and we will mail you out another.

Everything we sell, except magazines and other publications, will be on sale and at the lowest prices ever.... so please get your orders off fast, save yourself some money and help us empty our warehouse.

INTERCHANGEABLE YARN CHART



\$1.00

plus 10 cents mailing
Calif. residents add
5 cents Sales Tax

Specially prepared to allow you to substitute Nationally distributed brand name yarns for the KNITKING YARNS used in KNITKING MAGAZINE. CHARTS are complete with ROWS and STITCHES per inch at various Tensions. Order from KNITKING, 1128 Crenshaw Blvd., Los Angeles, California 90019.

NOTES TO KNIT BY . . .

STITCH AND ROW GAUGE

Every KNITKING pattern calls for a specific number of stitches and rows for 2 inches and in order to obtain the correct size finished garment, you must be sure to knit at the correct tension. This means that before starting a garment, you must knit a sample swatch with the yarn you intend using for the garment.

Cast on over a sufficient number of needles to produce a swatch 4 inches wide. (If the pattern calls for 16 stitches to 2", 16 x 2 = 32 stitches) then knit 4 inches of rows at the first suggested tension (if the pattern calls for 22 rows to 2", 22 x 2 = 44 rows) knit 2 rows with a contrast color, change to the next higher tension, knit another 4", knit 2 rows with contrast color, change to a third higher tension and knit another 4", then bind off.

Roll the swatch into a cylinder over its length and pull on both ends. Unroll it and stretch it diagonally by pulling on the four corners. Allow the swatch to rest and settle (preferably overnight) then using a stitch gauge or ruler, count the number of stitches and rows over a 2" length in each of your 3 tensions. Select the tension that produces the stitches and rows called for in the pattern. If none of them are correct, you are most likely using the wrong weight of yarn.

HOLDING POSITION

The needles are as far forward on the needle bed as they will go.

NON-WORKING POSITION

The needles are as far back on the needle bed as they will go.

BINDING OFF

See Instruction Manual for your own machine.

CROCHET BIND OFF

Use this method for binding off neck and armbands, edgings, facings or collars. Knit a bind off row using 5 tensions higher than tension used for section and then with latch needle tool, and working from the opposite side of the yarn end, pull the second stitch through the first stitch, the 3rd through 2nd, the 4th through 3rd, etc. . . . When you reach the end of row, pull the loose end of yarn through the last stitch. If you are unable to turn the tension up 5 numbers because you already are working with a large tension, lay the yarn over the needles by hand and knit this one row by pulling each needle back and forward again completing a stitch. Leave approximately 1/4" loop for each stitch (depending on type of yarn used) then bind off crochet method.

SHORT ROWS

Used for shaping of all kinds. Push the specified number of needles opposite the Cam Box into holding position and knit across to them. Now you **must** place the yarn **OVER** and **UNDER** the first inside needle that is in the holding position. Place the specified needles opposite Cam Box into holding position (other side) and knit across to these needles, and again place the yarn **OVER** and **UNDER** the first inside needle in the holding position. Repeat as many times as your pattern states. When you return these needles to the working position, the same procedure is used — bring the needles into work opposite the Cam Box, knit across to them, place the yarn **OVER** and **UNDER** the first inside needle in holding position and repeat for other side. Continue in this manner until all the needles are back in the working position.

INCREASING, DECREASING

See the Instruction Manual for your own machine.

INCREASING AND DECREASING WHEN USING RIBBER

When increasing, increase on the main knitter first, knit one row and then transfer the necessary stitches from the knitter to the ribber and continue.

When decreasing or binding off, you **must** transfer the ribber stitches to the main machine before decreasing or binding off.

CONTROL KNOBS (Under the slide handle — one on each side on KNITKING and certain other machines.)

1. When **BOTH** Control Knobs are **UP**, (or **IN** on the latest **KNITKING**) knit one row going from right to left. The needles knit and move back just beyond the front of the needle bed and the yarn hangs on the front of the needles. The slide will now move freely in either direction

with the needles remaining in a "SAFE POSITION". When you wish to resume knitting, press down (**Out on the latest KNITKING**) **BOTH** Control Knobs. The first movement of the slide is made without yarn and will bring the needles into working position, you then continue knitting.

2. **RIGHT CONTROL KNOB UP (IN on latest KNITKING)**. Knit from right to left. The row knits, moves the needles back and the yarn is held in front of the latches. Knit from left to right, the yarn goes under the needles without knitting as the needles move into the working position. This is the operation used for making round cords (with 3 or 4 needles only) and also for knitting single rows of one color.

3. **LEFT CONTROL KNOB UP (IN for latest KNITKING)**. The same as above but moving from left to right.

NECK SHAPING

When the directions state to bind off the center stitches for **NECK**, one correct way is as follows: With a new ball of yarn, bind off the given number of stitches working from **right to left**. Leave this ball of yarn hanging to one side (to be picked up later) and put all the needles on the left side into holding position and complete the right side first as directed. When you have completed the right side, pick up the yarn that you used for the neck bind off, put it in the wool feeder, bring all the needles into working position and knit 1 row to the left side. Turn row counter back to the number on which you started your neck shaping and complete the left half with reverse shaping, making the same number of decreases and on the same row numbers as on the right half.

You may also use the **SHORT ROW** method for shaping your neck and shoulders provided the decreasing is made on **every other row**. When the shaping is completed, knit 1 row over all the neck stitches (or shoulder stitches) with tension set at least 5 numbers higher, and then bind off all stitches using the **crochet method**.

If you are hand feeding a Norwegian design, bind off the center neck stitches with a new ball of yarn, then work both sides of neck shaping at the same time, using two balls of yarn for each color.

MISSING ROW NUMBERS

When there are row numbers missing in the instructions as for instance when you have completed the designated increases or decreases on a section of garment, continue knitting until you reach the next given row number.

READING OF SYMBOLS

Certain holding position and eyelet designs are sketched in the knitting patterns. The Chart with symbols is read as the work comes toward you from the machine. Where purl stitches are facing you, the purl symbol will be shown and where knit stitches are facing you, the knit symbol will be shown. On the sides of the chart are the row numbers, i.e. 1-8 indicates the first and last row number. In eyelet design patterns, specified stitches are transferred to another needle and the empty needles are returned to the knitting position each time. In holding position designs, selected needles are pushed into the holding position for the stated number of rows.

PATTERN STITCH SYMBOLS

- = knit stitch
- ▣ = purl stitch
- = empty needle (leave in working position)
- ⊖ = needle not used (in the out of work position)
- ⊙ = needle in holding position
- ⊞ = 2 stitches on 1 needle — either transferred from the right side or the left side, then put the needle into holding position
- ⊞ = needle holding 2 sts. Stitch has been transferred from the **LEFT**
- ⊞ = needle holding 2 sts. Stitch has been transferred from the **RIGHT**
- ⊞ = 3 stitches on 1 needle. The 1st and 3rd stitch in a group of 3 needles has been hung on the 2nd or center needle.

The diagrams for pattern work are followed just as they are shown, and on your knitting as it comes towards you on the machine.

open dart



closed dart



Available in many wood finishes



KNITTING DESK . . .

A knitting machine cabinet that automatically lifts your machine into the knitting position just by pulling a lever. The cabinet converts in seconds into a handsome desk suitable for any decor or any room in your house. Beautifully made in a variety of woods by craftsmen in West Germany.



Order from your local dealer or direct from KNITKING, 1128 Crenshaw Blvd., Los Angeles, California 90019