

# KNITTING

MAGAZINE





YARNS  
by

# Knitking

*The Finest From Around the World . . .*

If you want your garments to look as good as those in KNITKING MAGAZINE and keep their appearance through dozens of washes, you must knit them with gorgeous KNITKING yarns. KNITKING yarns are the finest quality obtainable anywhere and the prices cannot be beaten. Try them once and you will always use them.

Your orders will be filled the same day they arrive. Be sure to state your color preferences and alternates.



Pattern Numbers	YARN		Price Including Shipping
Cover			
DK 7558	Subita 2 x 3		\$11.50
DP 7562	Subita 2 x 4		\$ 7.90
DP 7561	Subita 2 x 4	Size 12/14 Size 16	\$10.30 \$11.50
DK 7560	Subita 2 x 3		\$12.70*
DP 7569	Fine Dralon	Shirt only	\$ 6.70
DK 7556	Subita 2 x 4		\$17.50
DK 7559	Subita 2 x 4		\$13.90
DK 7557	Subita 2 x 3		\$10.30*
DP 7563	Medium Dralon (3 ply)		\$12.70
DP 7564	Linen Cotton	Size 8/10 Size 12/14	\$ 9.80 \$11.10
		BAG: plus 70c if ordered separate	\$ 3.90
HP 3513	Starlite Crepe	Size 40/42 Size 44/46	\$17.95 \$20.02
DP 7565	Starlite Crepe	Size 12/14 Size 16/18	\$14.50 \$15.88
DP 7566	Subita 2x 3	both Sizes	\$19.90
HP 3511	Nora	Size 42/44 Size 38/40	\$23.75 \$21.10
MK 4970	Fine Dralon		\$ 4.30
MK 4968	Subita 2 x 4		\$ 7.90
MK 4969	Medium Dralon (3 ply)		\$ 9.10
KK 4971	Starlite Crepe		\$10.36
KK 4972	Linen Cotton		\$ 9.80

Items marked with a \* do not include the small amounts of contrast yarns used in the pattern.

California Residents please add 5% Sales Tax.

Send \$2.00 for LARGE COMPLETE YARN CATALOGUE.  
(Refunded on your first \$10.00 order) to:

**KNITKING YARNS, Dept. 19**  
**1128 Crenshaw Blvd.**  
**Los Angeles, California 90019**

# KNITKING

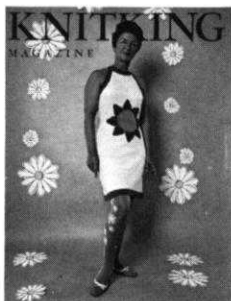
## MAGAZINE

Vol. 4, No. 5

May/June, 1968

### INDEX

Contents	Pattern No.	Page No.
Woman's Dress	DK 7558	16
Woman's Pullover	DP 7562	16
Woman's Pullover	DP 7561	17
Woman's Dress	DK 7560	18
Woman's Blouse	DP 7569	19
Woman's Skirt	DK 7568	19
Woman's Dress	DK 7556	20
Woman's Dress	DK 7559	21
Woman's Dress	DK 7557	22
Beach Jacket	DP 7563	22
Man's Pullover	HP 3512	23
Beach Cover-Up and Bag	DP 7564	24
Man's Cardigan	HP 3513	25
Woman's Sweater	DP 7565	26
Woman's Pullover	DP 7566	27
Man's Pullover	HP 3511	28
Girl's Pullover	MK 4970	29
Girl's Blouse	MK 4968	29
Girl's Dress	MK 4969	30
Boy's Pullover	KK 4971	30
Boy's Shirt	KK 4972	31



COVER MODEL DK 7558  
CALL FOR SUMMER

Fill your summer wardrobe with the prettiest knits we could dream up . . . designed in the KNITKING tradition of good taste . . . better than ever techniques and the very latest in style.

Publisher: KNITKING CORPORATION, 1128 Crenshaw Blvd., Los Angeles, Calif. 90019, Telephone: WEbster 8-2079. Published bi-monthly. Subscriptions: USA—\$6.00 annually, single copies \$1.50; Canada—\$7.00; other parts of the world—\$10.00. The entire contents of KNITKING MAGAZINE are copyright and must not be reproduced in any shape or form without the express permission in writing, of the publisher. COPYRIGHT © by KNITKING CORPORATION 1968.

Printed by: George Rice & Sons, Los Angeles, California.

## Letter from the Publisher

DESPITE the fact that all issues of KNITKING MAGAZINE leave our premises before the publication date, we receive many complaints, especially from readers in the East, regarding the late arrival of their magazines . . . It is a fact that some readers wait four weeks and more for delivery. It is unbelievable that in this, an age where it is possible to land a vehicle on the moon and launch satellites into outer space, it takes a month and more to get a magazine across the country.

We, at KNITKING, struggle to get magazines out on time and then have to turn them over to the un-tender mercies of the Postal Service who unfortunately seem to consider all bulk mail as "junk mail", and ignore it as much as possible hoping it will reach its destination without their assistance.

### KNITKING YARN CATALOGUES

We are responsible to a large extent for the delay in not getting the new KNITKING yarn catalogues to customers by the middle of March as originally promised and we apologize profusely to the unhappy customers who have written to us thinking that they have been ignored.

The catalogues are being made up in Europe and were originally ordered in the middle of 1967. We designed a very original type catalogue that folds out to be hung on the wall. It includes full information regarding the beautiful new range of KNITKING yarns plus a complete yarn chart showing tensions and stitches and rows to the inch, etc. . . . it contains actual samples of all yarns in all colors. It is the colors that created a printing delay which in turn has created a big drop in our yarn sales through our customers not having samples of the new range.

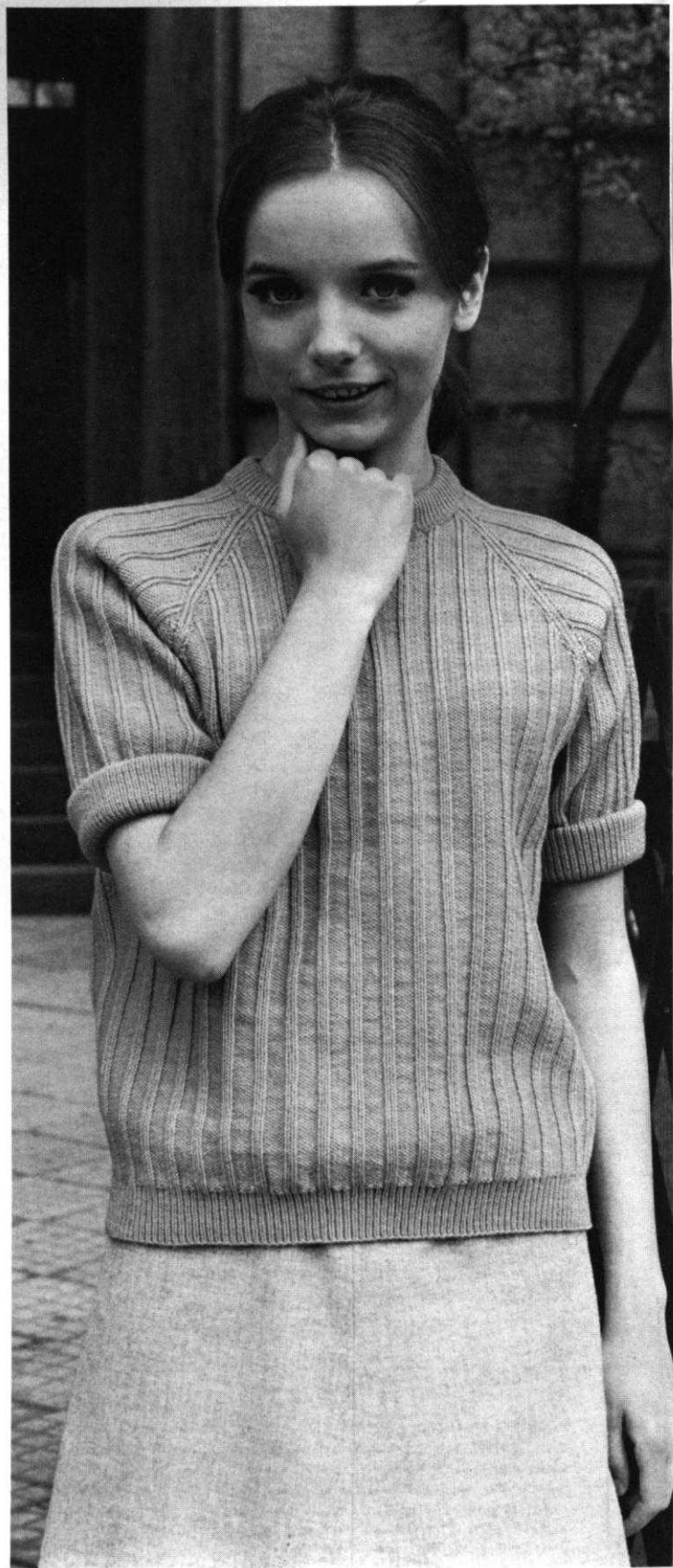
We were informed at the end of February, of the new colors that were approved by the International Wool Council for 1968-69. We could have continued with the preparation of the KNITKING yarn catalogue as planned, but we decided that only the most up to date merchandise should be made available to our loyal KNITKING customers, so we held up production in order to enable our yarn manufacturers to prepare samples of all the new colors for inclusion in the catalogue. The extra preparation means that the catalogues are costing us much more to produce and even though we have lost business as a result of the delay, we know that when customers receive their new catalogues, they will agree that the delay was well worth while.

The production cost of each KNITKING yarn catalogue is close to \$4.00, despite which, we intend to keep the price to \$2.00 (deductible from the first \$10.00 order) so if you have not yet placed an order for one of the big beautiful and all new KNITKING yarn catalogues, get your order off immediately. We expect to satisfy all outstanding orders during the first two weeks in May and to avoid further delays, they will all be sent First Class.

### NEXT ISSUE OF KNITKING MAGAZINE

We have some really outstanding garments planned for the next issue, they include a handsome full length coat that zips up from bottom to top, a modern two piece dress with a new style flaired skirt . . . a fashionable two piece suit with a double breasted jacket and "A" line skirt . . . the cover outfit is also a two piece suit with matching knee stockings, it has a mini skirt "A" line shape . . . some good looking pullovers with new and interesting necklines are also included for the women . . . there is a pair of his and hers coordinated sweaters in bulky yarn . . . a really handsome twin set for men plus a two pocket shirt and a classic style bulky cardigan. As usual, the children are well catered for with a total of nine garments the youngsters will rave about.







*... Once again  
Summer Knits*

**DP 7562**

The Summer Scene! We striped a smart sleeveless pullover in two colors and knit it in a ribbed design. Add extra length to bottom edge for an eye catching Skimmer Dress you'll wear all summer long. Size 8/10. See page 16.

**DP 7561**

A wide rib design with raglan shaping is an interesting change for a simple pullover. The turn back cuffs on the short sleeves as well as on neckline and bottom edge are a 1 x 1 rib. Size 12/14 and 16. See page 17.

**DK 7560**

Sporty . . . and Glamorous. Stark white yarn for this dress is knitted in stockinette stitch with vertical cables, then trimmed with red and blue ribbing at neckline and arm edges . . . and we've matched a Man's Cardigan (HP 3513) in the very same colors with Cables so that you may travel together in style. Size 12/14. See page 18.







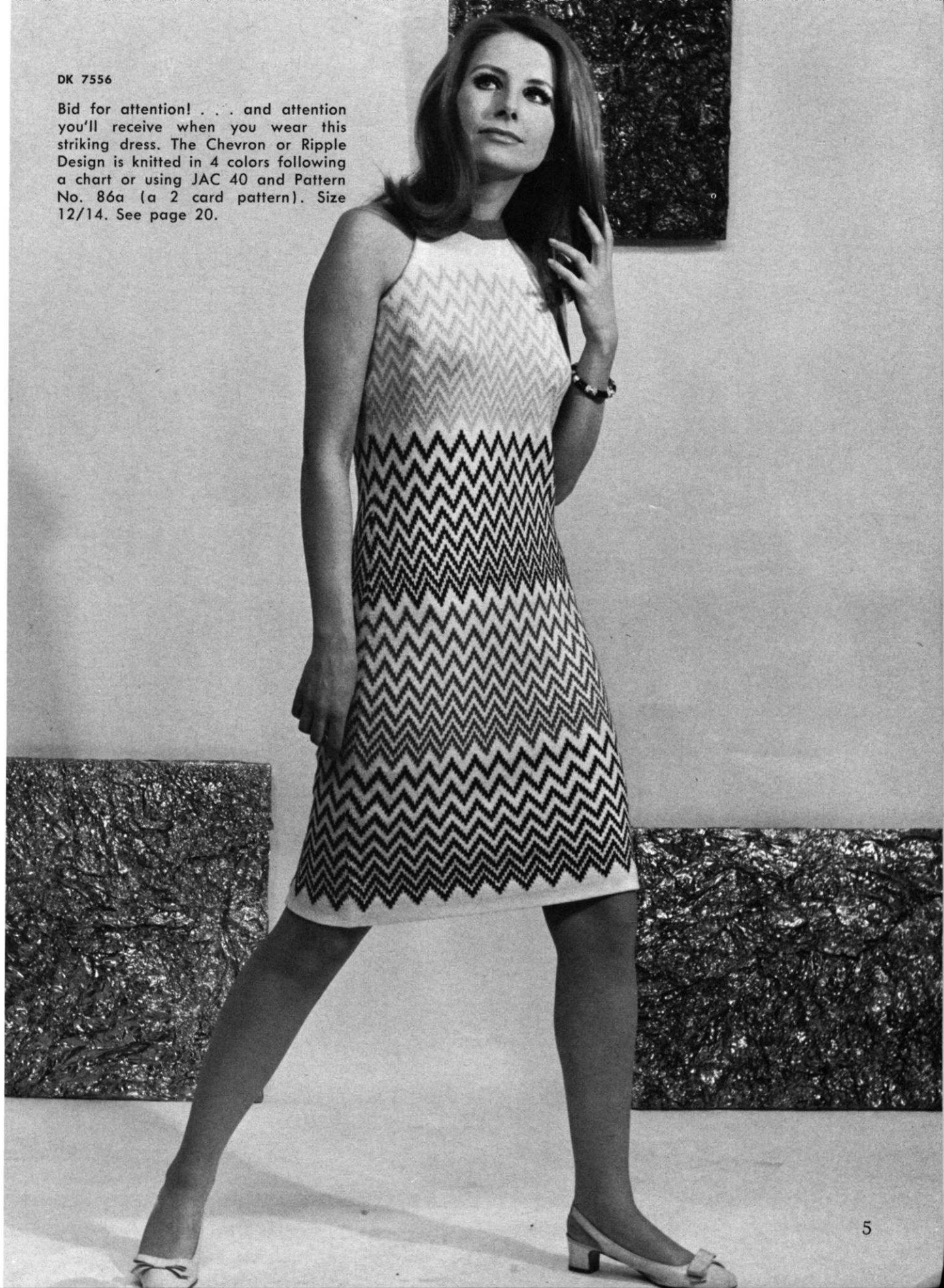
DK 7568  
DP 7569

Shirtwaists are back . . . and you certainly will want several of these to tuck into the textured skirt (knitted with Pauline Denham Nomotta Splendour) shown. Use KNITTING FINE Dralon for the shirt . . . light in weight and kitten soft . . . with lush colors to choose from. Size 8/10. See page 19.



DK 7556

Bid for attention! . . . and attention you'll receive when you wear this striking dress. The Chevron or Ripple Design is knitted in 4 colors following a chart or using JAC 40 and Pattern No. 86a (a 2 card pattern). Size 12/14. See page 20.







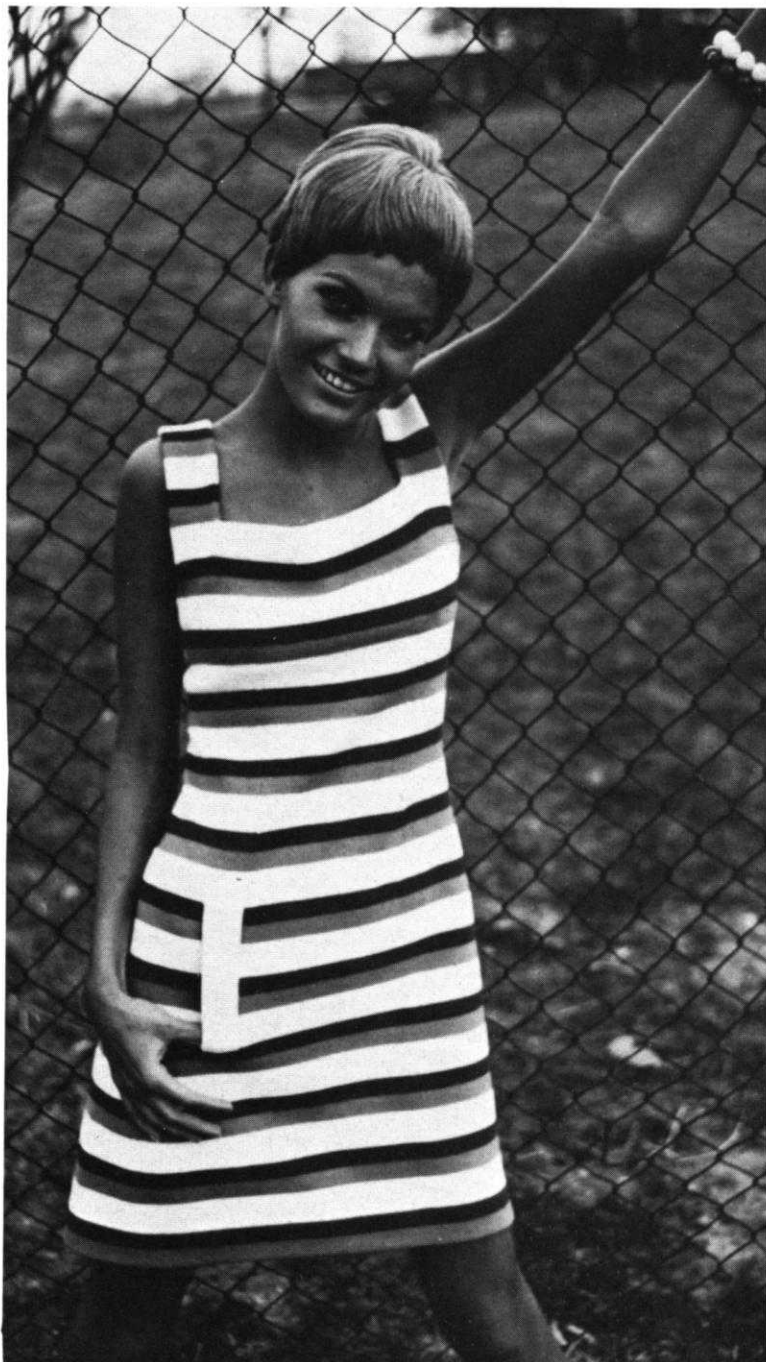


DK 7558

Summer Mood! Catch the sun (and your man) in this right up to the minute dress. We knitted our model in White with an Orange trim. The wild Sunburst flower is crochet . . . with a Yellow center and Orange petals. We tell you how . . . Size 8/10. See page 16.

DK 7557

Summers Darling! Knit it today and wear it tomorrow . . . a slip of a dress to wear anytime, anyplace. We knitted the model in yellow, trimmed it with orange plus a bit of red embroidery. Size 8/10. See page 22.



DK 7559

Call for more and more stripes . . . Choose 3 colors and knit this softly shaped dress in a jiffy. Simple stockinette stitch is used and the square neckline is cool and flattering to most everyone. Size 10/12. See page 21.



DP 7563

Almost too pretty for a beach jacket, this Cover-up could also be worn as micro-mini dress. Knit it in stockinette stitch with a Norwegian design border that follows a chart or use JAC 40 and Pattern No. 27a. Size 10/12. See page 22.

DP 7564

Off to the Beach . . . and a Linen Cotton Cover-up worn over your bathing suit will make you presentable for lunch at the Clubhouse. An added bonus is the large bag to match. Buy the trim by the yard for the bands of color. Size 8/10 and 12/14. See page 24.

HP 3512

He'll enjoy wearing this good looking textured pull-over with a V Neckline. Use Pauline Denham Nomotta Splendour trimmed with KNITKING Subita 2 x 3 in a contrast color. Size 42/44. See page 23.









HP 3513

Look alike! Match the colors and Cables for this Man's Cardigan to the dress shown on page 3 then have a ball wearing them on your summer travels. Size 40/42 and 44/46. See page 25.



DP 7565

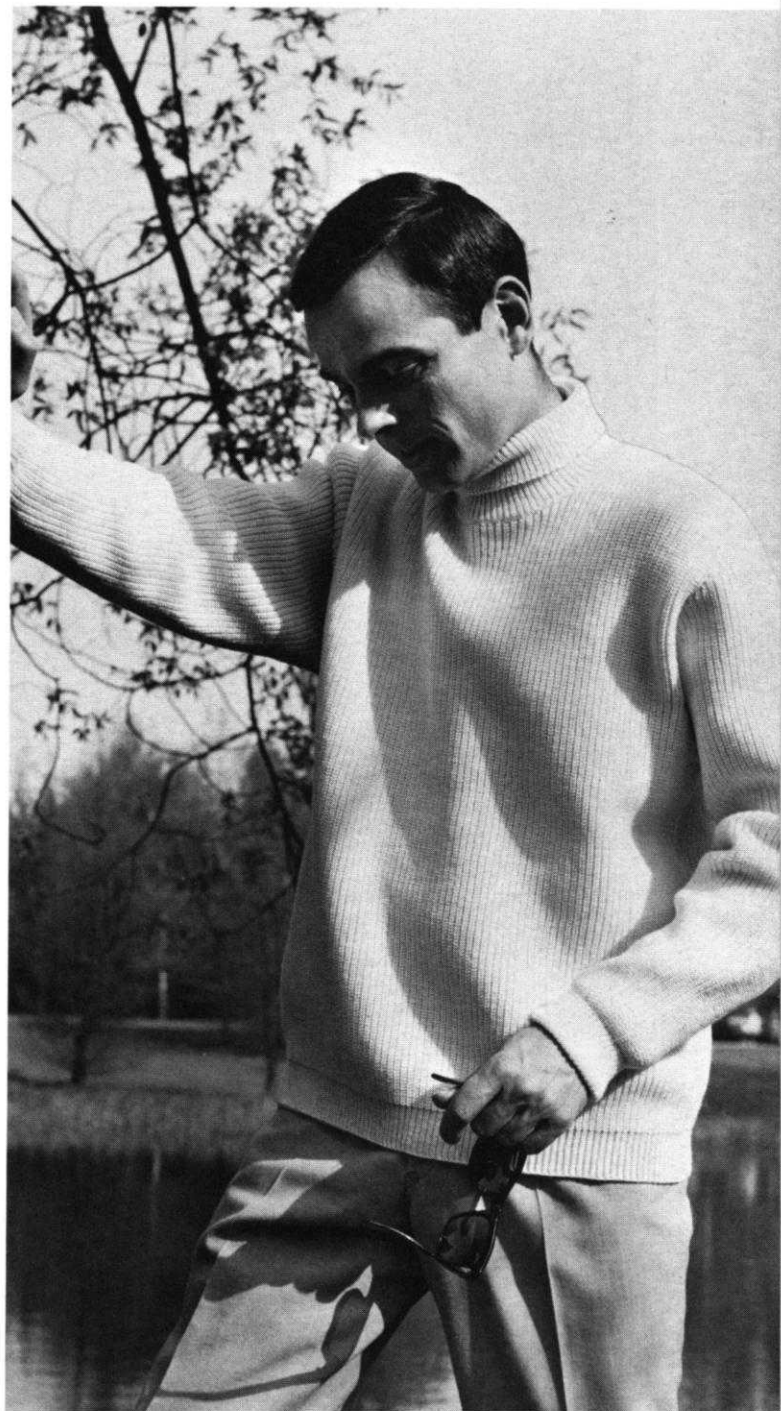
Pamper yourself and knit this lovely feminine Cardigan with an easy eyelet design . . . perfect to wear for day or evening. Try some elegant jewel buttons down the front for after dark glamour. Size 12/14 and 16/18. See page 26.





DP 7566

Set the Scene for fun and comfort in this Fisherman's Rib Pullover striped in two colors. The boat neckline is flattering and always popular. Size 8/10 and 12/14. See page 27.



HP 3511

Command Performance! A Fisherman's Rib Pullover with its high rolled turtle neck is what every man wants . . . so plan on knitting several and make him happy. Size 42/44 and 38/40. See page 28.



MK 4970

LOVE! Her game is best when she wears this pretty Pullover knitted in a Holding Position Design. KNIT-KING FINE dralon takes the prize for being light as air, soft as down and easy to care for. Size 12-13 years. See page 29.

MK 4968

The Teen Scene! She'll love wearing this strictly feminine Blouse. It is knitted in stockinette stitch with a delicate Eyelet Design and buttoned down the front. Choose one of the soft pastel colors she prefers. Size 13-14 years. See page 29.







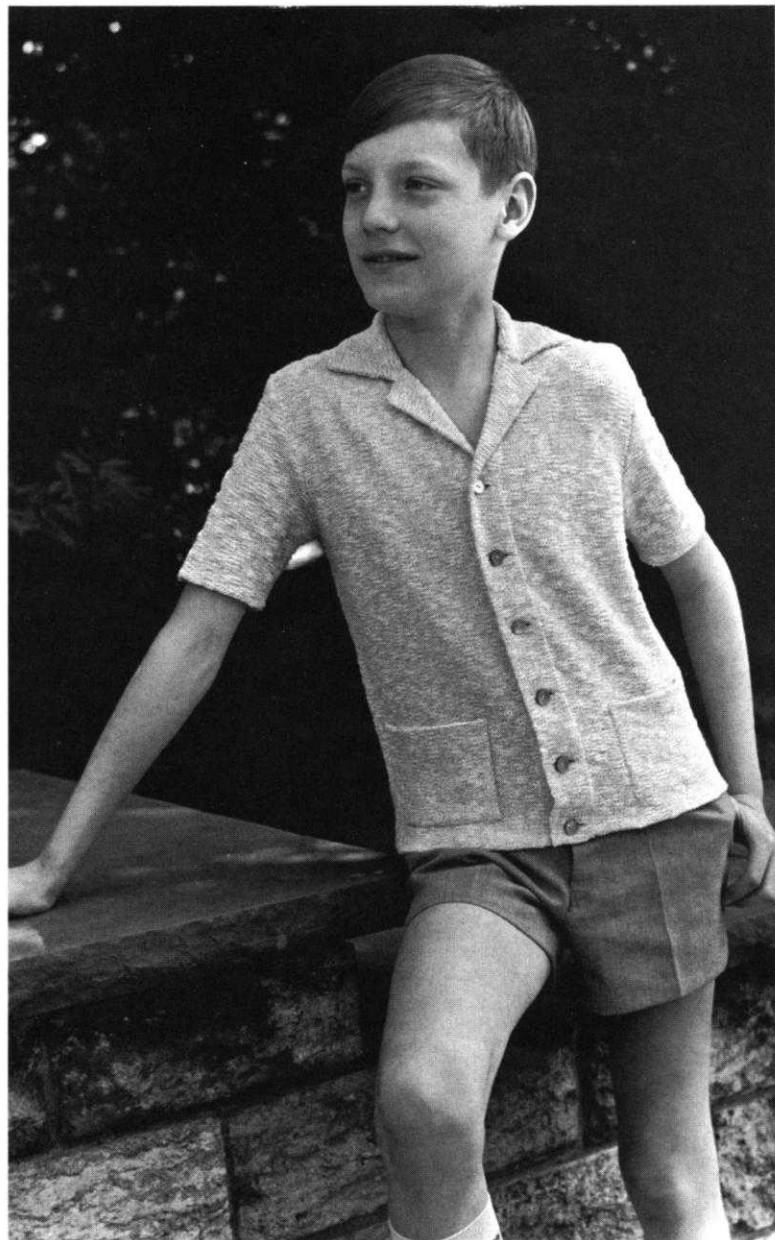
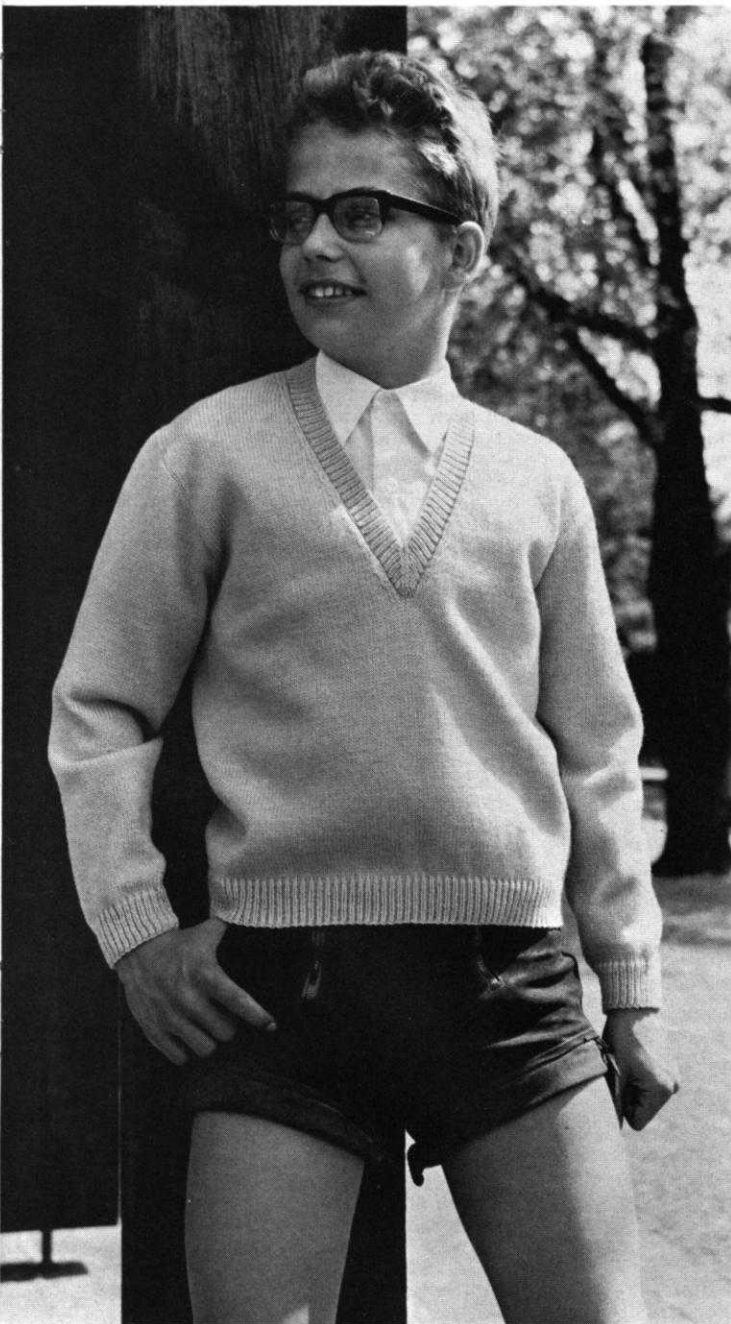


MK 4969

Dressed for Action! Just in time for Summer Fun . . . a pretty dress is knitted in stockinette stitch using two colors. When completed, embroider the design at the yoke. Size 10-11 years. See page 30.

KK 4971

Please a young man and knit him this sharp looking Pullover with a V-Neckline. The bands are a 1 x 1 rib. Size 12-13 years. See page 30.

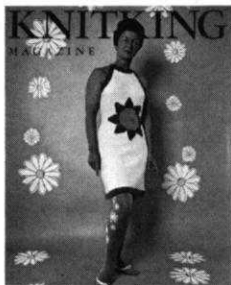


KK 4972

Linen Cotton worn on the Purl side is knitted into a manly looking Sport Shirt for a young boy. He'll enjoy the cool comfort as well as the grown up styling copied from his Dad. Size 10-11 years. See page 31.

# KNITTING INSTRUCTIONS

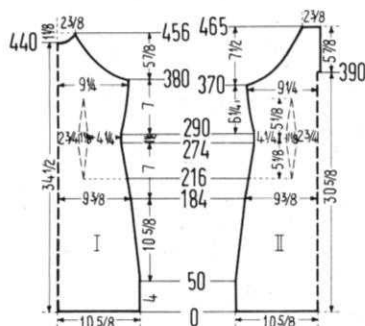
## OUR COVER MODEL SUMMER DRESS, DK 7558



**SIZE:** 8/10. **MATERIAL:** 10½ oz. white, 3½ oz. orange and 1¾ oz. yellow KNITKING Subita 2 x 3. **TENSION:** KNITKING 3 to 5. **GAUGE:** 18 sts. 2", 25 rows 2". **PATTERN:** Stockinette Stitch. **EDGES:** Stockinette Stitch, worn on the purl side. **BACK:** (Figure II). Cast on 194 sts. with orange.

**ROWS 1-40:** Work even. After row 40 continue with white.

**ROWS 41-274:** Decrease 1 st. on each side after ROW 50, then again every following 14th row 7 x, every following 12th row 3 x and every following 8th row 11 x. AT THE SAME TIME, after ROW 216 for the DARTS, decrease 2 sts. on each side, then again every following 14th row 4 x. To do this, for the first decrease hang the 52nd and 54th sts. on each side onto the 53rd needle, then move the end sts. inward to fill the empty needles. The next decreases lie directly above. (130 sts.)



**ROWS 275-290:** Work even.

**ROWS 291-370:** Increase 1 st. on each side after ROW 290, then again every following 8th row 9 x. AT THE SAME TIME, after ROW 290 for the DARTS, increase 2 sts. on each side, then again every following 14th row 4 x. The increases lie directly above the decreases. (170 sts.)

**ROWS 371-389:** ARMHOLE SHAPING: Bind off 7 sts. beginning next 2 rows, 4 sts. beginning next 2 rows, 3 sts. beginning next 2 rows and 2 sts. beginning next 14 rows. After ROW 389 put 57 needles on the right side into holding position and complete the left half first.

**ROWS 390-465:** After ROW 390 cast on 4 sts. on the right side for the opening facing. To do this, put 4 sts. from the right half on a stitch holder. After ROW 391 bind off 2 sts. on the left side, then on every other row bind off 2 sts. 2 x and 1 st. 33 x. After ROW 465 bind off the remaining 22 sts. Now move the Cam Box to the right side, turn the Row Counter to 389, bring all needles into working position, hang the sts. from the stitch holder back on the machine and work the right half, following the instructions from ROWS 390-465, but reverse the sides.

**FRONT:** (Figure I). Work the front the same as the back to ROW 370.

**ROWS 371-380:** Work even:

**ROWS 381-456:** ARMHOLE SHAPING: Bind off 12 sts. beginning next 2 rows, 4 sts. beginning next 2 rows, 3 sts. beginning next 2 rows, 2 sts. beginning next 20 rows and 1 st. beginning next 34 rows. After ROW 440 bind off the center 12 sts. for NECK. (See Notes to Knit By, inside back cover). Bind off 1 st. at Armhole Side and continue to shape armhole every other row by binding off 1 st. 6 x. AT THE SAME TIME, Shape NECK on every other row by binding off 4 sts. 1 x, 3 sts. 1 x, 2 sts. 1 x and 1 st. 4 x. After ROW 456 hang the remaining 3 sts. together, (the 2 outside sts. onto the center needle) then bind off.

**NECK BAND:** Cast on 160 sts. with orange. Work 34 rows stockinette st., 5 rows tension 4, 5 rows tension 3, 14 rows tension 2, 5 rows tension 3 and 5 rows tension 4. After 34 rows bind off all sts.

**FRONT ARMHOLE BAND:** Cast on 78 sts. with orange. Work 34 rows stockinette st., using the same tensions as on the neck band.

**ROWS 1-34:** Decrease 1 st. on the right side after ROWS 4, 8 and 12, then increase 1 st. on the right side after ROWS 22, 26 and 30. After ROW 34 bind off all sts. Work the second Front Armhole Band with reverse shaping. The BACK ARMHOLE BANDS are worked the same as the Front Armhole Bands, but cast on 94 sts.

**FINISHING:** Join front and back section at sides, easing the fullness at bustline of front section. Fold over 20 rows at lower edge and hem to right side. Turn under 4 sts. on each side at back opening and hem to wrong side. Join front and back armhole bands at shaped edges, (the purl side is the right side), then sew cast on edge to outside and bound off edge to inside of armhole edges. Sew neck band to neckline in the same manner, leaving about 3" between front and back section on each side free for shoulder. Sew in zipper.

## CROCHET FLOWER

Use a No. 4 crochet hook. With yellow yarn, make a slip loop on hook. ROW 1. Chain 1, into loop make 16 double crochet. Continue with single crochet and increase as follows: ROW 2. Mark the first stitch on every row with a piece of contrast yarn moving it up on each row. 1 single crochet in 1st double crochet, 2 single crochet in 2nd double crochet, \* 1 single crochet in next double crochet, 2 single crochet in next double crochet. Repeat from \* around (24 sts.) ROW 3. \* 1 single crochet in next 2 sts., 2 single crochet in next st. Repeat from \* around (32 sts.). ROW 4. 1 single crochet in each st. around. ROW 5. \* 1 single crochet in next 3 sts., 2 single crochet in next st. Repeat from \* around. (40 sts.). ROW 6. 1 single crochet in each st. around. ROW 7. \* 1 single crochet in next 4 sts., 2 single crochet in next st. Repeat from \* around (48 sts.). ROW 8. 1 single crochet in each st. around. Continue to increase in this way on one row, followed by a plain row until you have 20 rows and 96 sts. Change to orange yarn. ROW 21. \* 1 single crochet in next 11 sts., 2 single crochet in next st. Repeat from \* around (104 sts.). The center is now an octagon shape.

Each petal will be worked back and forth over 13 sts. on a section of the octagon. **FIRST PETAL:** 2 single crochet in 1st st., 1 single crochet in next 11 sts., 2 single crochet in 13th st. (15 sts. for petal), chain 1 turn. ROW 2. 1 single crochet in each st., chain 1 turn. ROW 3. INCREASE 1 st. at each end as before (17 sts.) chain 1 turn. DECREASE 1 st. at each end of the 5th, 7th, 9th, 11th, 13th, 15th and 16th rows 'til 3 sts. remain. One petal is now completed. Make 7 more petals in the same manner. When all the petals are completed, make 1 row of continuous single crochet around the flower edges. Sew flower to dress as illustrated.

## WOMAN'S PULLOVER, DP 7562



**SIZE:** 8/10. **MATERIAL:** 7 oz. red and 3½ oz. white KNITKING Subita 2 x 4. **TENSION:** KNITKING 6 to 8. **GAUGE:** Pattern Stitch 17 sts. 2", 20 rows 2". K1, P1, Ribbing 17 sts. 2", 22 rows 2". **PATTERN:** K1, P1, plus purl stitches according to chart and repeated color stripes of 16 rows white and 16 rows red. **COLLAR and EDGES:** K1, P1, Ribbing. **BACK:** (Figure II). Cast on 153 sts. with red.

**ROWS 1-18:** K1, P1, Ribbing. After row 18 set up the Pattern according

to chart and continue with Pattern Ribbing and the repeated color stripes.



**ROWS 19-158:** Increase 1 st. on each side after ROW 62, then again every following 24th row 3 x. (161 sts.)

**ROWS 159-176:** ARMHOLE SHAPING: Bind off 5 sts. begin-



ning next 2 rows, 4 sts. beginning next 2 rows, 3 sts. beginning next 2 rows, 2 sts. beginning next 4 rows, 1 st. beginning next 4 rows and 1 st. at each end of the following 4th row. (123 sts.)

**ROWS 177-222:** Work even.

**ROWS 223-234:** NECK and SHOULDER SHAPING: Both shapings are started at the same row. Bind off the center 13 sts.



for NECK. (See Notes to Knit By, inside back cover). Bind off 4 sts. at SHOULDER Side and continue to shape shoulder on every other row by binding off 5 sts. 6 x. AT THE SAME TIME, shape Neck on every other row by binding off 6 sts. 1 x, 5 sts. 1 x, 4 sts. 1 x and 3 sts. 2 x.

**FRONT:** (Figure I). Work the front the same as the back to ROW 202, then bind off the center 13 sts. for NECK, as you did on the back, then on every other row on NECK side bind off 5 sts. 1 x, 4 sts. 1 x, 3 sts. 1 x, 2 sts. 2 x, 1 st. 3 x and 1 st. on the next 4th and following 4th row. AT THE SAME TIME, after ROW 222, then on every other row SHAPE SHOULDER by binding off 4 sts. 1 x and 5 sts. 6 x.

**COLLAR:** Cast on 153 sts. with red and work 40 rows K1, P1, Ribbing, then transfer the ribber sts. to the left neighboring needles on the main machine, (occupied needles) bring the empty needles on main machine into working position and work 4 rows stockinette st. then bind off all sts. the crochet method.

**ARMHOLE BAND:** Make two. Cast on 133 sts. with red and work 8 rows K1, P1, Ribbing, then bind off all sts. the crochet method.

**FINISHING:** Join front and back section at sides and shoulders. Join short ends of collar then sew the stockinette edge to neckline and fold collar to outside. Join short ends of armbands, then sew cast on edge to inside and bound off edge to outside of armhole edge.

## WOMAN'S PULLOVER, DP 7561



**SIZE:** 12/14 and 16. **MATERIAL:** 14 oz. (15 3/4 oz.) light blue KNITTING Subita 2 x 4. **TENSION:** KNITTING 6 to 8. **GAUGE:** Pattern Stitch 18 sts. 2", 21 rows 2". **PATTERN:** K1, P1, plus purl stitches according to chart.

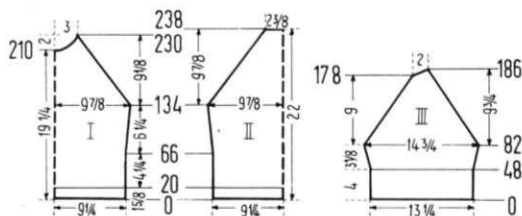
**EDGES:** K1, P1, Ribbing. (When increasing, watch the Pattern).

**SIZE:** 12/14. **BACK:** (Figure II). Cast on 169 sts.

**ROWS 1-20:** K1, P1, Ribbing. After ROW 20 set up the Pattern according to chart and continue with Pattern Ribbing.

**ROWS 21-134:** Increase 1 st. on each side after ROW 66, then again every following 10th row 2 x and every following 12th row 3 x. (181 sts.)

**ROWS 135-238:** RAGLAN SHAPING: (From ROWS 135-238, the 1st and 3rd sts. on each side have to be on the main machine and the 2nd and 4th sts. on each side have to be on the ribber). Decrease 2 sts. on each side after ROW 134, then again every following 3rd row 33 x by always



hanging the 5th and 6th sts. on each side onto the 7th needle, then moving the 4 end sts. inward to fill the empty needles. After ROW 238 bind off the remaining 45 sts.

**FRONT:** (Figure I). Work the front the same as the back to ROW 210, then bind off the center 13 sts. for NECK, (See Notes to Knit By, inside back cover) then on every other row on Neck side bind off 4 sts. 1 x, 3 sts. 1 x, 2 sts. 3 x and 1 st. 4 x. AT THE SAME TIME, after ROW 212 continue to Shape Raglan by decreasing 2 sts. 6 x more as you did before. After ROW 230 hang the remaining 3 sts. together (the 2 end sts. onto the center st.), then bind off.

**SLEEVE:** (Figure III). Cast on 121 sts.

**ROWS 1-48:** K1, P1, Ribbing. Now transfer the 2nd, 3rd, 6th, 7th, etc. Ribber sts. to main machine and continue with Pattern Ribbing.

**ROWS 49-82:** Increase 1 st. on each side after ROW 52, then again every following 4th row 6 x. (135 sts.)

**ROWS 83-178:** RAGLAN SHAPING: Decrease 1 st. on each side after ROW 82, then again every following 3rd row 7 x then 2 sts. on each side every following 3rd row 24 x. When decreasing 1 st. at a time, hang the 2nd st. on each side onto the 3rd needle and when decreasing 2 sts. at a time, hang the 2nd and 3rd sts. on each side onto the 4th needle, always moving the end st. inward to fill the empty needles. The end stitch is always on the main machine.

**ROWS 179-186:** Work Short Rows. On the left side put 4 needles 4 x into holding position. AT THE SAME TIME, decrease 2 sts. on the right side after ROWS 178 and 181 as before. After ROW 186 bring all needles into working position then bind off all 19 sts. Make second sleeve with reverse shaping.

**NECK BAND:** Cast on 169 sts. Work 24 ROW K1, P1, Ribbing, then bind off all sts.

**FINISHING:** Join front and back at sides. Sew sleeves together and weave to front and back section 1 st. in from each edge. Join short ends of neck band, then sew 1 long edge to inside and 1 long edge to outside of neckline.

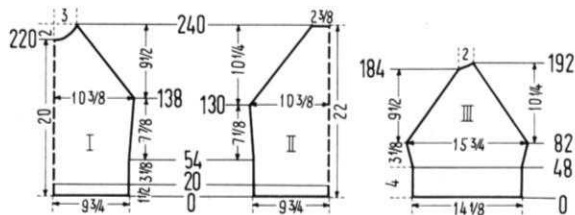
**SIZE:** 16. **BACK:** (Figure II). Cast on 179 sts. Starting on the left side with the 11th and 12th needles of the main machine. (First 2 sts. are on main machine).

**ROWS 1-20:** K1, P1, Ribbing. After ROW 20 transfer the 1st, 4th, 5th, 8th, 9th, etc. Ribber sts. to main machine and continue with Pattern Ribbing.

**ROWS 21-130:** Increase 1 st. on each side after ROW 54, then again every following 14th row 4 x. (189 sts.)

**ROWS 131-240:** RAGLAND SHAPING: (From ROWS 131-240 the 1st and 3rd sts. on each side have to be on the main machine and the 2nd and 4th sts. on each side have to be on the ribber). Decrease 2 sts. on each side after ROW 130, then again every following 3rd row 35 x by always hanging the 5th and 6th sts. on each side onto the 7th needle, then moving the 4th end sts. inward to fill the empty needles. After ROW 240 bind off the remaining 45 sts.

**FRONT:** (Figure I). Work the front the same as the back to ROW 130.









plete the left half, following the instructions from ROW 227-346, but reverse the sides.

For the **FRONT SECTION** cast on 102 sts. with yellow and follow the instructions for the back section, but omit the opening.

**SIDE SECTION:** (Figure II). Make two. Cast on 81 sts. with brown.

**ROWS 1-314:** Decrease 1 st. on each side after ROW 54, then again every following 24th row 7 x, every following 10th row 4 x, every following 8th row 3 x, every following 6th row 3 x and every following 4th row 2 x. Make decreases like you did on the back.

**ROWS 315-346:** Work even, then bind off the remaining 41 sts.

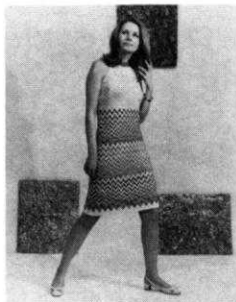
**INSET SECTION:** (Figure III). Make two. Cast on 22 sts. with green. Work 346 rows even, then bind off all sts.

**BELT:** Cast 197 sts. with brown. Work 30 rows even, then hang the cast on sts. back on the machine behind the latches. With tension 10 knit the sts. loosely together, then bind off the crochet method. Turn belt inside out.

**LOOPS:** Make four. Cast on 12 sts. with brown. Work 22 rows even, then bind off the sts.

**FINISHING:** Weave side sections to back section, inset sections to side sections and front section to inset sections, 1 st. in from each edge. Turn under 22 rows at lower edge and hem to wrong side. Turn under 4 sts. on each side of back opening and hem to wrong side. Turn under 16 rows at upper edge for waist band, hem to wrong side and insert an elastic band. Sew in zipper and sew on hooks and eyes. Fold loops in half lengthwise and sew to waistband in equal distances. Sew short ends of belt, and sew on buckle. Pull belt through loops.

## SUMMER DRESS, DK 7556



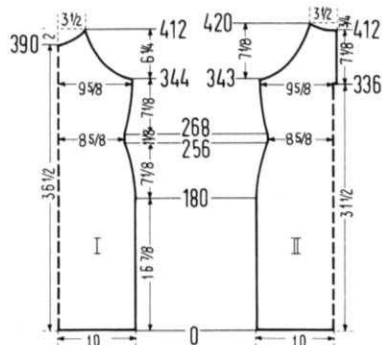
**SIZE:** 12/14. **MATERIAL:** 10½ oz. yellow, 7 oz. brown, 3½ oz. red and 3½ oz. turquoise **KNITTING** Subita 2 x 4. **TENSION:** KNITTING 6 to 8. **GAUGE:** 16 sts. 2", 21 rows 2". **PATTERN:** Norwegian Design according to chart, or use JAC 40 and Pattern No. 86a, a two card pattern. In the directions each row in the Norwegian Design is counted as 1 row, but several movements of the Cam Box are needed to complete 1 row.

**EDGES:** Stockinette Stitch. **BACK:** (Figure II). Cast on 163 sts. with yellow and work stockinette st.

**ROWS 1-30:** Work even. After ROW 30 begin the Norwegian Design. Each Pattern Set consists of 84 rows. The Main Color is always yellow. The contrast colors are: brown in the first Pattern Set, red in the second Pattern Set, brown in the third Pattern Set and turquoise in the fourth Pattern Set.

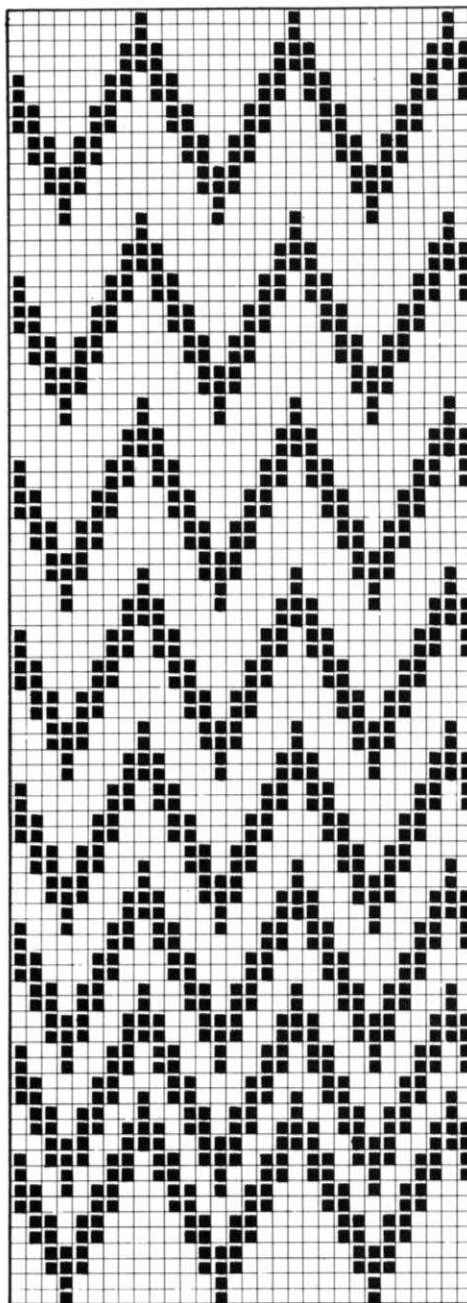
**ROWS 31-256:** Decrease 1 st. on each side after ROW 180, then again every following 12th row 2 x, every following 8th row 3 x, every following 6th row 3 x and every following 4th row 2 x. (141 sts.)

**ROWS 257-268:** Work even.



## THE JAC 40

IS A MUST!!



**ROWS 269-335:** Increase 1 st. on each side after ROW 268, then again every following 8th row 4 x and every following 10th row 3 x. (157 sts.) After ROW 335 put 78 needles on the right side into holding position and complete the left half first.

**ROWS 336-343:** After ROW 336 cast on 3 sts. on the right side for the opening facing. To do this, put 3 sts. from the right half on a stitch holder.



**ROWS 344-420: ARMHOLE SHAPING:** Bind off 4 sts. on the left side, then on every other row bind off 4 sts. 2 x, 3 sts. 3 x, 2 sts. 8 x, 1 st. 10 x and 1 st. on every following 4th row 6 x. AT THE SAME TIME, after ROW 366, continue with yellow and work stockinette st. After ROW 412, then on every other row SHAPE NECK by binding off 10 sts. 1 x, 6 sts. 1 x, 5 sts. 1 x and 4 sts. 2 x. Now move the Cam Box to the right side, turn the Row Counter back to 335, bring all needles back into working position, hang the 3 sts. from the stitch holder back on the machine and work the right half, following the instructions from ROWS 336-420, but reverse the sides.

**FRONT:** (Figure I). Work the front the same as the back to ROW 334.

**ROWS 335-344:** Work even.

**ROWS 345-412: ARMHOLE SHAPING:** Bind off 4 sts. beginning next 6 rows, 3 sts. beginning next 6 rows, 2 sts. beginning next 10 rows and 1 st. beginning next 22 rows. AT THE SAME TIME, after ROW 366, continue with yellow and work stockinette st. After ROW 390 bind off the center 9 sts. for NECK. (See Notes to Knit By, inside back cover). Decrease 1 st. at Arm edge, then again every other row 4 x and 1 st. every following 4th row 3 x. AT THE SAME TIME, Shape Neck on every other row by binding off 4 sts. 1 x, 3 sts. 3 x, 2 sts. 3 x and 1 st. 2 x. After ROW 412 hang the remaining 3 sts. together, (the 2 outside sts. onto the center needle) then bind off.

**NECK BAND:** Cast on 137 sts. with red and work stockinette st.

**ROWS 1-24:** For the pointed shaping, decrease 2 sts. after ROWS 3, 6 and 9 by hanging first the 68th and 70th sts. onto the 69th needle, then moving the end sts. inward to fill the empty needles. The next decreases lie directly above. Increase 2 sts. after ROWS 15, 18 and 21. The increases lie directly above the decreases. After ROW 24 bind off all sts.

**ARMHOLE FACING:** Make two. Cast on 140 sts. with yellow and work stockinette st., 3 rows tension 6, 3 rows tension 7 and 4 rows tension 8. After 10 rows bind off all sts.

**FINISHING:** Join front and back section at sides. Turn under 17 rows at lower edge and hem to wrong side. Turn under 3 sts. on each side at back opening and hem to wrong side. With right sides facing, sew facings to armhole edges, then turn to wrong side and hem. With pointed shaping at center front, sew 1 edge of neck band to inside and 1 edge to outside of neckline, leaving 2" between front and back section on each side free for shoulder. Close neckband with loops and buttons.

## SUMMER DRESS, DK 7559



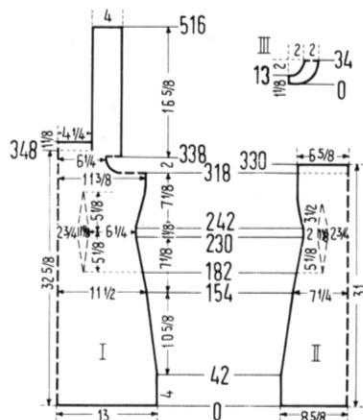
**SIZE:** 8/10. **MATERIAL:** 8<sup>3</sup>/<sub>4</sub> oz. white, 5<sup>1</sup>/<sub>4</sub> oz. lilac and 5<sup>1</sup>/<sub>4</sub> oz. orange KNITTING Subita 2 x 4. **TENSION:** KNITTING 6 to 8. **GAUGE:** 15 sts. 2", 21 rows 2". **PATTERN:** Stockinette Stitch and repeated color stripes of 14 rows white, 8 rows lilac and 8 rows orange.

**BACK:** (Figure II). Cast on 131 sts. with orange and at first work 8 rows orange, 18 rows lilac and 8 rows orange, then work the repeated color stripes.

**ROWS 1-230:** Decrease 1 st. on each side after ROW 42, then again every following 12th row 10 x, every following 8th row 4 x and every following 6th row 6 x by always hanging the 4th st. on each side onto the 3rd needle, then moving the end sts. inward to fill the empty needle. AT THE SAME TIME, after ROW 182 for the DARTS, decrease 2 sts. on each side, then again every following 16th row 3 x. To do this, for the first decrease, hang the 27th and 29th sts. on each side onto the 28th needle, then move the end sts. inward to fill the empty needles. The next decreases lie directly above. (73 sts.)

**ROWS 231-242:** Work even.

**ROWS 243-284:** Increase 1 st. on each side after ROW 242, then again every following 6th row 7 x, by always moving the 3 end sts. on each side 1 needle outward, then with work hook place the 4th st. from the row below onto the empty needle. AT THE SAME TIME, after ROW 242 for the



DARTS, increase 2 sts. on each side, then again every following 16th row 2 x. The increases lie directly above the decreases. (101 sts.)

**ROWS 285-330:** Work even, and after ROW 318 continue with white. After row 330 bind off all sts.

**ARMHOLE FACING:** (Figure III). Cast on 14 sts. with white.

**ROWS 1-34:** On the right side, after ROW 2, then on every other row increase 3 sts. 2 x, 2 sts. 2 x, 1 st. 2 x and on every following 4th row increase 1 st. 3 x. AT THE SAME TIME, after ROW 13, bind off 4 sts. on the left side then on every other row bind off 3 sts. 1 x, 2 sts. 2 x, 1 st. 2 x and 1 st. on the next 4th and following 4th row. After ROW 34 put the 14 sts. on a stitch holder. Make the second armhole facing with reverse shapings.

**FRONT:** (Figure I). Cast on 197 sts. with orange and at first work 8 rows orange, 18 rows lilac and 8 rows orange, then work the repeated color stripes.

**ROWS 1-230:** Decrease 1 st. on each side after ROW 42, then again every following 12th row 10 x, every following 8th row 4 x and every following 6th row 6 x as you did on the back. AT THE SAME TIME, after ROW 182 for the DARTS, decrease 2 sts. on each side, then again every following 16th row 3 x. To do this, for the first decrease, hang the 60th and 62nd sts. on each side onto the 61st needle, then move the end sts. inward to fill the empty needles. The next decreases lie directly above. (139 sts.)

**ROWS 231-242:** Work even.

**ROWS 243-296:** Increase 1 st. on each side after ROW 242, then again every following 6th row 9 x as you did on the back. AT THE SAME TIME, after ROW 242, for the DARTS, increase 2 sts. on each side, then again every following 16th row 3 x. The increases lie directly above the decreases. (175 sts.)

**ROWS 297-318:** Work even. After ROW 318 put 151 sts. on the left side into holding position and work over the remaining 24 sts. 12 rows even with white, then bind off these 24 sts. Now bring 24 needles on the outer left side into working position and work 12 rows even with white over these needles, then bind off these sts. Now move the Cam Box to the right side, turn the Row Counter back to 318, bring all needles into working position and continue working the striped pattern.

**ROWS 319-338:** ARMHOLE SHAPING: Bind off 4 sts. beginning next 2 rows, 3 sts. beginning next 2 rows, 2 sts. beginning next 4 rows, 1 st. beginning next 4 rows and 1 st. at each end of the next 4th and following 4th row. After ROW 338 add the sts. of the first Armhole Facing to the right side and the sts. of the second Armhole Facing to the left side and work the striped pattern over 125 sts.

**ROWS 339-348:** Work even. After ROW 348 put 96 needles on the left side into holding position and continue working the striped pattern over 29 sts. for the suspender.

**ROWS 349-516:** Work even, then bind off all sts. Now bring 67 needles on the right side into working position and work 12 rows with white, then bind off these sts. Now turn the Row Counter back to 348, bring the remaining 29 needles into working position and work the second suspender to ROW 516, then bind off all sts.

**POCKET FLAP:** Cast on 39 sts. with white and work 34 rows stockinette st., then bind off all sts.

**FINISHING:** Weave front and back section at sides, 1 st. in from each edge. Turn under 17 rows at lower edge and hem to wrong side. Sew armhole facings to armhole edges. Fold suspenders in half lengthwise and sew long edges. Turn under 12 rows on front and back neckline and on armhole edge, then hem to wrong side. Cross suspenders in the back and sew to dress. Fold Flap in half lengthwise and sew long edge, then sew to dress as illustrated.

## SUMMER DRESS, DK 7557



**SIZE:** 8/10. **MATERIAL:** 10½ oz. yellow, 3½ oz. orange and a small amount of red KNITKING Subita 2 x 3. **TENSION:** KNITKING 3 to 5. **GAUGE:** 18 sts. 2", 25 rows 2". **PATTERN:** Stockinette Stitch. The embroidery sts. are applied after the garment has been assembled.

**BACK:** (Figure II). Cast on 194 sts. with orange.

**ROWS 1-40:** Work even. After ROW 40 continue with yellow.

**ROWS 41-274:** Decrease 1 st. on each side after ROW 50, then again

every following 14th row 7 x, every following 12th row 3 x and every following 8th row 11 x. AT THE SAME TIME, after ROW 216 for the DARTS, decrease 2 sts. on each side and again every following 14th row 4 x. To do this, for the first decrease, hang the 52nd and 54th sts. on each side, onto the 53rd needle, then move the end sts. inward to fill the empty needles. The next decreases lie directly above. (130 stitches).

**ROWS 275-290:** Work even.

**ROWS 291-380:** Increase 1 st. on each side after ROW 290, then again every following 8th row 5 x and every following 10th row 4 x. AT THE SAME TIME, after ROW 290 for the DARTS, increase 2 sts. on each side, then again every 14th row 4 x. The increases lie directly above the decreases. (170 sts.)

**ROWS 381-406:** ARMHOLE SHAPING: Bind off 5 sts. beginning next 2 rows, 4 sts. beginning next 2 rows, 3 sts. beginning next 4 rows, 2 sts. beginning next 4 rows, 1 st. beginning next 6 rows and 1 st. at each end of the next 4th and following 4th row. (122 sts.)

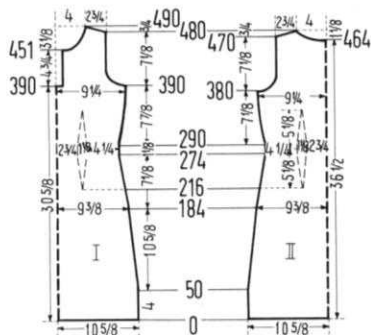
**ROWS 407-464:** Work even.

**ROWS 465-480:** NECK SHAPING: Bind off the center 18 sts. for NECK. (See Notes to Knit By, inside back cover), then on every other row on Neck Side bind off 6 sts. 1 x, 5 sts. 1 x, 4 sts. 2 x, 3 sts. 2 x and 2 sts. 1 x. AT THE SAME TIME, after ROW 470, then on every other row SHAPE SHOULDER by binding off 4 sts. 5 x and 5 sts. 1 x.

**FRONT:** (Figure I). Work the front the same as the back to ROW 380.

**ROWS 381-390:** Work even. After ROW 390 bind off the center 14 sts., put the needles on the left side into holding position and complete the right half first.

**ROWS 391-416:** ARMHOLE SHAPING: Bind off 5 sts. on the right side, then on every other row bind off 4 sts. 1 x, 3 sts.



2 x, 2 sts. 2 x, 1 st. 3 x and 1 st. on the next 4th and following 4th row.

**ROWS 417-451:** Work even.

**ROWS 452-490:** NECK SHAPING: Bind off 5 sts. on the left side, then on every other row bind off 4 sts. 1 x, 3 sts. 3 x, 2 sts. 2 x, 1 st. 4 x and on every following 4th row 1 st. 3 x. AT THE SAME TIME, after ROW 480, then on every other row SHAPE SHOULDER by binding off 4 sts. 5 x and 5 sts. 1 x. Now move the Cam Box to the left side, bring the needles on the left side into working position, turn Row Counter to 390 and complete the left half. Follow the instructions from ROW 391-490, but reverse the sides.

**NECK EDGING:** Cast on 147 sts. with orange and work 20 rows stockinette st., 5 rows tension 4, 10 rows tension 3 and 5 rows tension 4. After 20 rows bind off all sts.

**FRONT EDGING:** Make two. Cast on 43 sts. with orange and work 20 rows stockinette st. with tension 4, then bind off all sts.

**ARMHOLE EDGING:** Make two. Cast on 115 sts. with orange and work 20 rows stockinette st., using the same tensions as on the neck edging. After 20 rows bind off all sts.

**FINISHING:** Join front and back section at sides and shoulders, easing in the fullness at bustline of front section. Turn under 20 rows at lower edge and hem to wrong side. Join short ends of ARMHOLE edging. Sew 1 long edge of FRONT edging to inside and 1 long edge to outside of front opening edges. Sew NECK edging to neckline and ARMHOLE edgings to armhole edges in the same manner. Make embroidery on all edges as follows: (See illustration on page 32).

1. With red yarn make a row of running sts. 4 rows below and 4 rows above the color change. Each row of running stitches consists of 2 actual rows. Make the first row by going under 3 sts. and over 3 sts., followed by second row with reverse procedure (over, then under).

2. With a double strand of red yarn, embroider the figure 8 through lines of running stitches.

## BEACH JACKET, DP 7563



**SIZE:** 10/12. **MATERIAL:** 15¾ oz. turquoise and 1¾ oz. white KNITKING Medium Dralon (3 ply). **TENSION:** KNITKING 6 to 8. **GAUGE:** 16 sts. 2", 20 rows 2".

**PATTERN:** Stockinette Stitch and Norwegian Design according to chart, or use JAC 40 and Pattern No. 27a from ROWS 7-36. In the directions each row in the Norwegian Design is counted as 1 row, but several movements of the Cam Box are needed to complete 1 row.

**BACK:** (Figure II). Cast on 173 sts. with turquoise.

**ROWS 1-40:** Work even, 36 rows with turquoise and 4 rows with white. After ROW 40 hang the cast on sts. back on the machine behind the latches to form the hem.

**ROWS 41-44:** Work even with turquoise.

**ROWS 45-74:** Work the Norwegian Design, beginning with the 14th square of the chart. After ROW 74 continue with stockinette st.

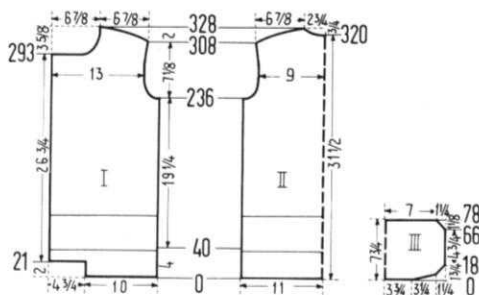
**ROWS 75-236:** Work even, 4 rows with turquoise, 4 rows with white, then continue with turquoise.

**ROWS 237-256:** ARMHOLE SHAPING: Bind off 4 sts. beginning next 2 rows, 3 sts. beginning next 4 rows, 2 sts. beginning next 2 rows, 1 st. beginning next 4 rows and 1 st. at each end of the next 4th and following 4th row. (141 sts.)

**ROWS 257-308:** Increase 1 st. on each side after ROWS 280, 290 and 300. (147 sts.)

**ROWS 309-328:** SHOULDER SHAPING: Bind off 2 sts. beginning next 4 rows, 3 sts. beginning next 6 rows and 6 sts. beginning next 2 rows. After ROW 320 bind off the center 15 sts. for NECK. (See Notes to Knit By, inside back cover). Bind off 6 sts. at Shoulder side and continue to shape shoulder on every other row by binding off 6 sts.





2 x and 7 sts. 2 x. AT THE SAME TIME, Shape Neck on every other row by binding off 6 sts. 1 x, 5 sts. 1 x and 4 sts. 1 x.

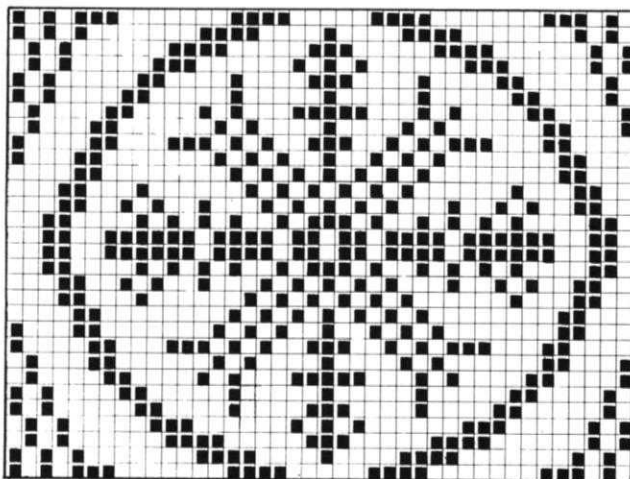
**FRONT:** (Figure I). Cast on 77 sts. with turquoise.

**ROWS 1-21:** Work even. After ROW 21 cast on 38 sts. on the left side.

**ROWS 22-40:** Work even and knit ROWS 37-40 with white. After ROW 40 hang the first 77 cast on sts. back on the machine behind the latches to form the hem.

**ROWS 41-44:** Work even with turquoise.

**ROWS 45-74:** Work the Norwegian Design, beginning with the 25th square of the chart. After ROW 74 continue with stockinette st.



□ TURQUOISE    ■ WHITE

**ROWS 75-236:** Work even, 4 rows with turquoise, 4 rows with white, then continue with turquoise.

**ROWS 237-256:** **ARMHOLE SHAPING:** Bind off 4 sts. on the right side, then on every other row bind off 3 sts. 2 x, 2 sts. 1 x, 1 st. 2 x and 1 st. on the next 4th and following 4th row. (99 sts.)

**ROWS 257-293:** Increase 1 st. on the right side after ROWS 280 and 290.

**ROWS 294-328:** **NECK SHAPING:** Bind off 38 sts. on the left side, then on every other row bind off 4 sts. 1 x, 3 sts. 1 x, 2 sts. 1 x, 1 st. 2 x and 1 st. on the next 4th and following 4th row. AT THE SAME TIME, increase 1 st. on the right side after ROW 300. After ROW 308, then on every other row **SHAPE SHOULDER** by binding off 2 sts. 2 x, 3 sts. 3 x, 6 sts. 4 x and 7 sts. 2 x. Make second front section with reverse shapings.

**COLLAR:** Cast on 129 sts. with white. Work Short Rows. (See Notes to Knit By, inside back cover).

**ROWS 1-18:** On the left side put 36 needles into holding position, knit 1 row. On the right side put 36 needles into holding position, knit 1 row. Now alternately on each side bring 9 needles 2 x, 8 needles 1 x and 2 needles 5 x back into working position.

**ROWS 19-66:** Work even.

**ROWS 67-76:** Alternately on each side put 2 needles 5 x into holding position.

**ROWS 77-78:** On the left side bring all needles into working

## THE JAC 40 IS A MUST

for fast easy knitting of  
Jacquard and Ski-sweater  
designs



Patterns are selected—row by row—through a pre-stamped card that is fed into the Jac.

There are over 140 cards available and illustrations of them are included with each Jac.

Jac 40's are made for most brands of machines (with the exception of Japanese machines). When ordering be sure to specify your brand of knitter as needle spacings vary. Simple to use and an essential tool for the modern knitter, Jac 40's are \$24.95 complete with 3 cards for practicing the 3 techniques, plus complete instructions.

Order from your dealer or direct from

### KNITTING

1128 Crenshaw Boulevard, Los Angeles, Calif. 90019

Shipping Cost \$1.50—California residents add 5% sales tax.

position, knit 1 row. On the right side bring all needles into working position, knit 1 row, then bind off all sts.

**BELT:** The belt is worked in 2 sections. For each section cast on 173 sts. and work 24 rows stockinette st, then hang the cast on sts. back on the machine and with tension 10 knit the sts. loosely together, then bind off the crochet method.

**FINISHING:** Join front and back sections at sides and shoulders. Turn under 19 sts. on each front edge and hem to wrong side. Turn under 3 sts. on armhole edges and hem to wrong side. Fold collar in half lengthwise and sew short edges. Sew cast on edge of collar to inside and bound off edge to outside of neckline, leaving 1" at both front edges free. Join belt sections at center back.

### MAN'S PULLOVER, HP 3512



**SIZE:** 42/44. **MATERIAL:** 17½ oz. beige Pauline Denham Nomotta Splendour and 1¾ oz. green KNITTING Subita 2 x 3. **TENSION:** KNITTING 4 to 6. **GAUGE:** 17 sts. 2", 27 rows 2". **PATTERN:** Stockinette St., worn on the purl side. **EDGES:** K1, P1, Ribbing.

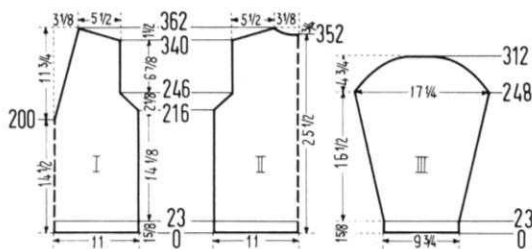
**BACK:** (Figure II). Cast on 191 sts. with green.

**ROWS 1-23:** K1, P1, Ribbing, 6 rows with green, 10 rows with beige, 6 rows with green and 1 row with beige. After ROW 23 transfer the

ribber sts. to main machine and with beige, continue with stockinette st.

**ROWS 24-216:** Work even.

**ROWS 217-246:** **ARMHOLE SHAPING:** Bind off 2 sts. begin-



ning next 2 rows and 1 st. beginning next 4 rows. Repeat these bind offs 4 x. (151 sts.).

**ROWS 247-340:** Work even.

**ROWS 341-362:** SHOULDER SHAPING: Bind off 4 sts. beginning next 12 rows. After ROW 352 bind off the center 19 sts. for NECK. (See Notes to Knit By, inside back cover). Bind off 4 sts. at Shoulder side and continue to shape shoulder on every other row by binding off 4 sts. 5 x. AT THE SAME TIME, shape Neck on every other row by binding off 6 sts. 1 x, 5 sts. 1 x, 4 sts. 1 x and 3 sts. 1 x.

**FRONT:** (Figure I). Work the front the same as the back to ROW 200, then hang the center st. onto the neighboring needle, put the needles on the left of center into holding position and complete the right half first.

**ROWS 201-362:** Decrease 1 st. on the left side after ROW 204, then again every following 4th row 4 x and every following 6th row 22 x. AT THE SAME TIME, after ROW 216, then on every other row SHAPE ARMHOLE, by binding off 2 sts. 1 x and 1 st. 2 x, then repeat these bind offs 4 x. (ROWS 217-246). After ROW 340, then on every other row SHAPE SHOULDER by binding off 4 sts. 12 x. Now move the Cam Box to the left side, bring all needles into working position, turn the Row Counter to 200 and complete the left side, following the instructions from ROW 201-362, but reverse the sides.

**SLEEVE:** (Figure III). Make two. Cast on 85 sts. with green.

**ROWS 1-23:** K1, P1, Ribbing, 6 rows with green, 10 rows with beige, 6 rows with green and 1 row with beige. After ROW 23 transfer the ribber sts. to main machine and with beige, continue with stockinette st.

**ROWS 24-248:** Increase 1 st. on each side after ROW 30, then again every following 8th row 12 x and every following 6th row 19 x. (149 sts.).

**ROWS 249-312:** CAP SHAPING: Bind off 1 st. beginning next 30 rows, 2 sts. beginning next 20 rows, 3 sts. beginning next 10 rows, 4 sts. beginning next 4 rows and after ROW 312 bind off the remaining 33 sts.

**NECK BAND:** Cast on 131 sts. with green. Work 16 rows K1, P1, Ribbing, 4 rows with green, 8 rows with beige and 4 rows with green. AT THE SAME TIME, after ROW 2, then again on every other row, bind off 3 sts. 7 x for front shaping. After ROW 16 bind off all sts. Make second neck band section with reverse shaping.

**FINISHING:** Join front and back section at sides and shoulders. Sew sleeves together and set in. Join neck band sections at center fronts and backs, then sew to neckline.

## WOMAN'S BEACH COVER-UP and BAG, DP 7564



**SIZE:** 8/10 and 12/14. **MATERIAL:** 12¼ oz. (14 oz.) KNITKING Linen Cotton, 2½ yards ready made trim, 1" wide. **TENSION:** KNITKING 3 to 5. **GAUGE:** 17 sts. 2", 23 rows 2". **PATTERN:** Stockinette Stitch, worn on the purl side.

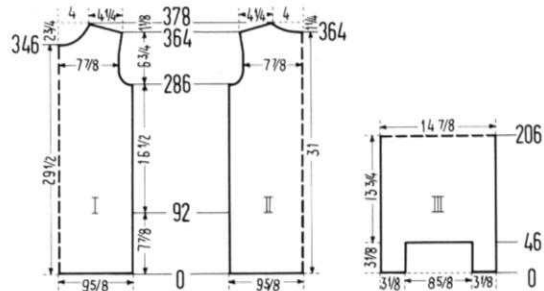
**SIZE: 8/10. BACK:** (Figure II). Cast on 166 sts.

**ROWS 1-286:** Work even.

**ROWS 287-304:** ARMHOLE SHAPING: Bind off 4 sts. beginning next 2 rows, 3 sts. beginning next 2 rows, 2 sts. beginning next 4 rows,

1 st. beginning next 6 rows and 1 st. at each end of the following 4th row. (136 sts.).

**ROWS 305-364:** Increase 1 st. on each side after ROWS



332, 342 and 352. (142 sts.)

**ROWS 365-378:** NECK and SHOULDER SHAPING: Both shapings are started at the same row. Bind off the center 20 sts. for NECK. (See Notes to Knit By, inside back cover). Bind off 4 sts. at Shoulder side, and continue to shape shoulder on every other row by binding off 4 sts. 2 x and 5 sts. 5 x. AT THE SAME TIME, shape Neck on every other row by binding off 6 sts. 1 x, 5 sts. 1 x, 4 sts. 2 x, 3 sts. 1 x and 2 sts. 1 x.

**FRONT:** (Figure I). Work the front the same as the back to ROW 346, then bind off the center 20 sts. for NECK, and on every other row on Neck side, bind off 4 sts. 2 x, 3 sts. 1 x, 2 sts. 3 x and 1 st. 7 x. AT THE SAME TIME, increase 1 st. at armhole side after ROW 352 and shape Shoulder as on back at ROWS 365-378.

**FINISHING:** Leaving 8" on each lower side seam open for the slits, join front and back section at sides and shoulders. Turn under 2" at lower edge and hem to wrong side. Turn under 4 sts. at armhole edges and hem to wrong side. Sew on trim as illustrated.

**SIZE: 12/14. BACK:** (Figure II). Cast on 184 sts.

**ROWS 1-286:** Work even.

**ROWS 287-304:** ARMHOLE SHAPING: Bind off 4 sts. beginning next 2 rows, 3 sts. beginning next 4 rows, 2 sts. beginning next 4 rows, 1 st. beginning next 4 rows and 1 st. at each end of the following 4th row. (150 sts.).

**ROWS 305-368:** Increase 1 st. on each side after ROWS 336, 346 and 356. (156 sts.).

**ROWS 369-386:** SHOULDER SHAPING: Bind off 4 sts. beginning next 4 rows. After ROW 372 bind off the center 20 sts. for NECK. (See Notes to Knit By, inside back cover). Bind off 4 sts. at Shoulder side, and continue to shape shoulder on every other row by binding off 4 sts. 3 x and 5 sts. 4 x. AT THE SAME TIME, shape NECK on every other row by binding off 6 sts. 1 x, 5 sts. 1 x, 4 sts. 2 x, 3 sts. 1 x and 2 sts. 1 x.

**FRONT:** (Figure I). Cast on 184 sts.

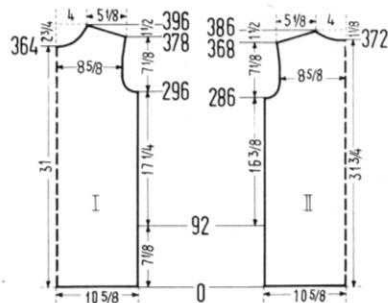
**ROWS 1-296:** Work even.

**ROWS 297-314:** ARMHOLE SHAPING: Bind off 4 sts. beginning next 2 rows, 3 sts. beginning next 4 rows, 2 sts. beginning next 4 rows, 1 st. beginning next 4 rows and 1 st. at each end of the following 4th row. (150 sts.).

**ROWS 315-364:** Increase 1 st. on each side after ROWS 346 and 356.

**ROWS 365-396:** NECK SHAPING: Bind off the 20 center sts. for NECK, then on every other row on Neck side bind off 4 sts. 2 x, 3 sts. 1 x, 2 sts. 3 x and 1 st. 7 x. AT THE SAME TIME, increase 1 st. at armhole side after ROW 366. After ROW 378, then on every other row, SHAPE SHOULDER by binding off 4 sts. 6 x and 5 sts. 4 x.

**FINISHING:** Follow directions for SIZE 8/10, but ease in fullness at bustline of front section.





## BEACH BAG

**MATERIAL:** 5¼ oz. KNITKING Linen Cotton, 2½ yards ready made trim, 1" wide and 2 bamboo rods, 15" long.  
**TENSION:** KNITKING 3 to 5. **GAUGE:** 17 sts. 2", 23 rows 2". **PATTERN:** Stockinette Stitch, the purl side is the right side.

**BAG:** (Figure III). With 2 separate balls of yarn and leaving the center 75 needles free, cast on 27 sts. on each side, then put the 27 needles on the **left side** into holding position and work the right section first.

**ROWS 1-46:** Work even. Now put the needles on the **right side** into holding position, bring the needles on the **left side** into working position, turn Row Counter to 0 and repeat ROWS 1-46 for the left section. Now move Cam Box to the right side, cast on 75 sts. over the center 75 needles, bring the needles on the right side into working position and continue working over all 129 sts.

**ROWS 47-366:** Work even, then bind off the center 75 sts., put the needles on the **left side** into holding position and work over the 27 needles on the **right side**.

**ROWS 367-412:** Work even, then bind off the 27 sts. Now bring the needles on the left side into working position, turn the Row Counter back to 366 and complete the left side. (ROWS 367-412).

**FINISHING:** Fold bag in half and join sides in a 10" seam, beginning at the fold line. Insert a piece of strong cardboard 3" x 12" in the bottom of the bag, fold the protruding corners inward and sew. Fold upper side sections in half and sew to wrong side. Line bag, gathering the upper edges to 12". Sew on trim as illustrated. Insert bamboo rods through loops.

## MAN'S CARDIGAN, HP 3513



**SIZE:** 40/42 and 44/46. **MATERIAL:** 21 oz. (23 oz.) white, 2 oz. (3 oz.) blue and 2 oz. red KNITKING Starlite Crepe. **TENSION:** KNITKING 8 to 10. **GAUGE:** Pattern 14 sts. 2", 19 rows 2". K1, P1, Ribbing 14 sts. 2", 22 rows 2". **PATTERN:** Stockinette Stitch with Cable Stripes. 1. Knit 10 rows. 2. With 2 double transfer tools cross the sts. as follows: **On each side**, hang the 11th and 12th sts. on the 9th and 10th needles and the 9th and 10th sts. on the 11th and 12th needles,

the 31st and 32nd sts. on the 29th and 30th needles and the 29th and 30th sts. on the 31st and 32nd needles, the 36th and 37th sts. on the 38th and 39th needles and the 38th and 39th sts. on the 36th and 37th needles, the 56th and 57th sts. on the 58th and 59th needles and the 58th and 59th sts. on the 56th and 57th needles. Repeat Steps 1 and 2 throughout. After about 40-50 rows, **on each side**, drop the 7th, 8th, 13th, 14th, 27th, 28th, 40th, 41st, 54th, 55th, 60th and 61st sts. and latch up into knit stitches. **EDGES:** K1, P1, Ribbing.

**SIZE: 40/42. BACK:** (Figure II). Cast on 151 sts.

**ROWS 1-18:** K1, P1, Ribbing. After ROW 18 transfer the ribber sts. to main machine, then continue with stockinette st. and work the Cable Stripes, crossing the stitches the first time after ROW 24.

**ROWS 19-158:** Work even.

**ROWS 159-178:** ARMHOLE SHAPING: Bind off 3 sts. begin-

ning next 4 rows, 2 sts. beginning next 4 rows, 1 st. beginning next 4 rows and 1 st. at each end of the next 4th and following 4th row. (123 sts.).

**ROWS 179-246:** Work even.

**ROWS 247-262:** SHOULDER SHAPING: Bind off 4 sts. beginning next 8 rows. After ROW 254 bind off the center 21 sts. for NECK. (See Notes to Knit By, inside back cover). Bind off 4 sts. at Shoulder and continue to shape shoulder on every other row by binding off 4 sts. 4 x. **AT THE SAME TIME**, shape NECK on every other row by binding off 7 sts. 1 x, 5 sts. 1 x and 3 sts. 1 x.

**FRONT:** (Figure I). Cast on 70 sts.

**ROWS 1-18:** K1, P1, Ribbing. After ROW 18 transfer the ribber sts. to main machine, then continue with stockinette st. and work the Cable Stripes, crossing the stitches the first time after ROW 24. (Set up the Pattern from the **right side**).

**ROWS 19-60:** Work even. After ROW 60 work the pocket. On the **left side** put 17 needles and on the **right side** put 14 needles into holding position. Over the remaining 39 needles in working position work 1 row stockinette st. with red, then work K1, P1, Ribbing, 4 rows with red and 5 rows with blue. (9 rows K1, P1, Ribbing). Now bind off these sts. With white, cast on 39 sts. over the empty needles for the pocket lining and work 42 rows stockinette st., then move the Cam Box to the **right side**, bring all needles into working position, turn Row Counter to 60 and continue working in Pattern over all needles.

**ROWS 61-140:** Work even.

**ROWS 141-262:** FRONT, ARMHOLE and SHOULDER SHAPING: Decrease 1 st. on the **left side** after ROW 140, then again every following 6th row 19 x by always hanging the 4th st. onto the 3rd needle, then moving the end sts. inward to fill the empty needle. **AT THE SAME TIME**, after ROW 158, bind off 3 sts. on the **right side** for ARMHOLE, then on every other row bind off 3 sts. 1 x, 2 sts. 2 x, 1 st. 2 x and 1 st. on the next 4th and following 4th row. After ROW 246, then on every other row SHAPE SHOULDER by binding off 4 sts. 9 x. Make second front section with reverse shapings and set up Pattern from the **left side**. **SLEEVE:** (Figure III). Make two. Cast on 73 sts. with blue. **ROWS 1-25:** K1, P1, Ribbing, working 8 rows with blue, 9 rows with red and 8 rows with blue. After ROW 25 transfer the ribber sts. to main machine and continue with stockinette st.

**ROWS 26:** Work even with blue. After ROW 26 continue with white and work the Cable Stripes on **each side** over the 12th-15th and 32nd-35th needles, crossing the sts. the first time after ROW 32. Drop appropriate sts. and latch up as before.

**ROWS 27-174:** Increase 1 st. on **each side** after ROW 26, then again every following 6th row 14 x and every following 8th row 7 x. (117 sts.).

**ROWS 175-186:** CAP SHAPING: Bind off 4 sts. beginning next 2 rows, 3 sts. beginning next 4 rows and 2 sts. beginning next 6 rows.

**ROWS 187-232:** Bind off 1 st. beginning next 6 rows and 2 sts. beginning next 2 rows. Repeat these bind offs 4 x, then bind off 2 sts. beginning next 2 rows, 4 sts. beginning next 2 rows, 5 sts. beginning next 2 rows and after ROW 232 bind off the remaining 13 sts.

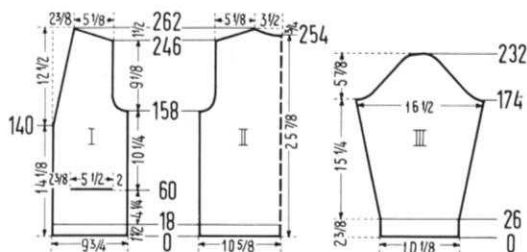
**BUTTON BAND:** Cast on 99 sts. with blue and work K1, P1, Ribbing, 6 rows with blue, 6 rows with red and 6 rows with blue. After 18 rows bind off all sts. The **BUTTONHOLE BAND** is worked the same, but make buttonholes after ROW 8 over the 8th-12th, 36th-40th, 64th-68th and 92nd-96th needles counting from the **right side**.

**NECK BAND:** Make two. Cast on 127 sts. with blue and work K1, P1, Ribbing, 6 rows with blue, 6 rows with red and 6 rows with blue, then bind off all sts.

**FINISHING:** Join front and back sections at sides and shoulders. Sew sleeves together and set in. On wrong side, sew pocket lining to front sections. Sew sides of pocket edging to cardigan. Weave 1 NECK band to **BUTTON** band and 1 NECK band to **BUTTONHOLE** band, then weave center back. Sew or weave band to neckline and front. Finish buttonholes, sew on buttons.

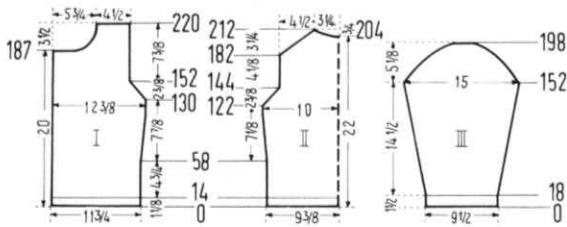
**SIZE: 44/46. BACK:** (Figure II). Cast on 163 sts.

**ROWS 1-18:** K1, P1, Ribbing. After ROW 18 transfer the ribber sts. to main machine, then continue with stockinette









**ROWS 153-187:** Work even and make buttonholes after ROW 162.

**ROWS 188-220:** NECK SHAPING: Bind off 22 sts. on the left side, then on every other row bind off 4 sts. 1 x, 3 sts. 1 x, 2 sts. 2 x, 1 st. 3 x and on every following 4th row 1 st. 2 x. After ROW 220 bind off the remaining 32 sts. for SHOULDER. Work second front section with reverse shapings and omit buttonholes.

**SLEEVE:** (Figure III). Make two. Cast on 67 sts.

**ROWS 1-18:** K1, P1, Ribbing. After ROW 18 transfer the ribber sts. to main machine and continue with stockinette stitch.

**ROWS 19-152:** Increase 1 st. on each side after ROW 18, then again every following 8th row 7 x and every following 6th row 12 x. (107 sts.).

**ROWS 153-176:** CAP SHAPING: Decrease 2 sts. on each side, then again every following 3rd row 7 x by always hanging the 2nd and 3rd sts. on each side onto the 4th and 5th needles, then moving the end st. inward to fill the empty needle.

**ROWS 177-198:** Bind off 2 sts. beginning next 10 rows, 3 sts. beginning next 12 rows and after ROW 198 bind off the remaining 19 sts.

**NECKBAND:** Cast on 147 sts. Work 26 rows K1, P1, Ribbing, making buttonholes after ROWS 5 and 20 over the 5th-9th needles. After 26 rows bind off all sts.

**FINISHING:** Join front and back sections at sides and shoulders, easing in the fullness at bustline of front sections. Sew sleeves together and set in. Turn under 11 sts. at each front edge, matching buttonholes, then hem to wrong side. Sew 1 edge of neckband to inside and 1 edge to outside of neckline, matching buttonholes. Finish buttonholes, sew on buttons.

**SIZE:** 16/18. **BACK:** (Figure II). Cast on 153 sts.

**ROWS 1-14:** K1, P1, Ribbing. After ROW 14 transfer the ribber sts. to main machine and continue with stockinette stitch.

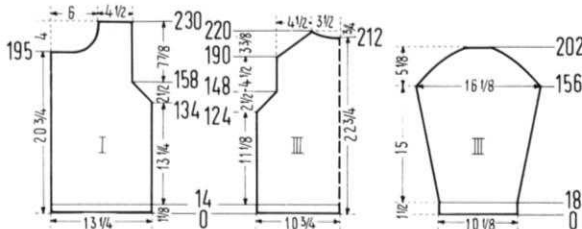
**ROWS 15-124:** Work even.

**ROWS 125-148:** ARMHOLE SHAPING: Decrease 2 sts. on each side, then again every following 3rd row 8 x by always hanging the 2nd and 3rd sts. on each side onto the 4th and 5th needles, then moving the end st. inward to fill the empty needle. (117 sts.).

**ROWS 149-190:** Work even.

**ROWS 191-220:** SHOULDER SHAPING: Decrease 2 sts. on each side, then again every other row 10 x by always hanging the 3rd and 4th sts. on each side onto the 5th and 6th needles, then moving the 2 end sts. inward to fill the empty needles. After ROW 212 bind off the center 15 sts. for NECK. (See Notes to Knit By, inside back cover). Decrease 2 sts. at Shoulder and continue to shape shoulder on every other row by decreasing 2 sts. 4 x as you did before. AT THE SAME TIME, shape NECK on every other row by binding off 6 sts. 1 x, 5 sts. 1 x and 4 sts. 2 x. **FRONT:** (Figure I). Cast on 93 sts.

**ROWS 1-14:** K1, P1, Ribbing, working buttonholes after ROW 6 over the 3rd-7th and 16th-20th needles counting



from the left side. After ROW 14 transfer the ribber sts. to main machine. Continue with stockinette st. and work the vertical Eyelet stripe over the 26th-39th needles counting from the left side.

**ROWS 15-134:** Work even and make buttonholes after ROWS 39, 71 and 103 over the same needles as before.

**ROWS 135-158:** ARMHOLE SHAPING: Decrease 2 sts. on the right side, then again every following 3rd row 8 x using the same method as on the back armhole. AT THE SAME TIME work buttonholes after ROW 135. (75 sts.).

**ROWS 159-195:** Work even, making buttonholes after ROW 167.

**ROWS 196-230:** NECK SHAPING: Bind off 22 sts. on the left side, then on every other row bind off 4 sts. 1 x, 3 sts. 2 x, 2 sts. 3 x, 1 st. 3 x and on every following 4th row 1 st. 2 x. After ROW 230 bind off the remaining 32 sts. for SHOULDER. Work second front section with reverse shapings and omit buttonholes.

**SLEEVE:** (Figure III). Make two. Cast on 73 sts.

**ROWS 1-18:** K1, P1, Ribbing. After ROW 18 transfer the ribber sts. to main machine and continue with stockinette stitch.

**ROWS 19-156:** Increase 1 st. on each side after ROW 18, then again every following 8th row 6 x and every following 6th row 14 x. (115 sts.).

**ROWS 157-182:** CAP SHAPING: Decrease 2 sts. on each side, then again every following 3rd row 8 x by always hanging the 2nd and 3rd sts. on each side onto the 4th and 5th needles, then moving the end st. inward to fill the empty needle.

**ROWS 183-202:** Bind off 2 sts. beginning next 8 rows, 3 sts. beginning next 8 rows, 4 sts. beginning next 4 rows and after ROW 202 bind off the remaining 23 sts.

**NECKBAND:** Cast on 161 sts. Work 26 rows K1, P1, Ribbing, making buttonholes after ROWS 5 and 20 over the 5th-9th needles. After 26 rows bind off all sts.

**FINISHING:** Follow directions for SIZE 12/14.

## WOMAN'S PULLOVER, DP 7566



**SIZE:** 8/10 and 12/14. **MATERIAL:** Both Sizes: 14 oz. yellow and 14 oz. blue KNITTING Subita 2 x 3.

**TENSION:** KNITTING 4 to 6. **GAUGE:** Fisherman's Rib 18 sts. 2", 42 rows 2". K1, P1, Ribbing 18 sts. 2", 26 rows 2". **PATTERN:** Fisherman's Rib, worn on the purl side and alternating color stripes of 46 rows yellow and 46 rows blue. **EDGES:** K1, P1, Ribbing.

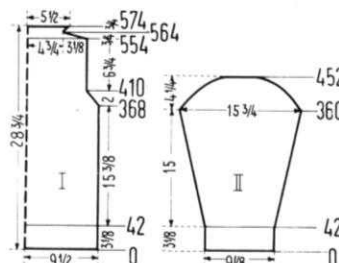
**SIZE:** 8/10. **BACK:** (Figure I). Cast on 173 sts. with blue. **ROWS 1-42:** K1, P1, Ribbing. After ROW 42 move the Gate Cam Release Lever of the main machine to the needle heels and continue with Fisherman's Rib, at first working 6 rows of blue, then starting the alternating color stripes.

**ROWS 43-368:** Work even. **ROWS 369-410:** ARMHOLE SHAPING: Bind off 1 st. on each side, then again every following 3rd row 13 x. (145 sts.).

**ROWS 411-554:** Work even. After ROW 554 continue with blue and work K1, P1, Ribbing. **ROWS 555-564:** SHOULDER SHAPING: Bind off 5 sts. beginning next 2 rows and 6 sts. beginning next 8 rows.

**ROWS 555-564:** SHOULDER SHAPING: Bind off 5 sts. beginning next 2 rows and 6 sts. beginning next 8 rows.

**ROWS 555-564:** SHOULDER SHAPING: Bind off 5 sts. beginning next 2 rows and 6 sts. beginning next 8 rows.



**ROWS 565-574:** Increase 3 sts. beginning next 2 rows and 2 sts. beginning next 4 rows. After ROW 574 bind off the remaining 101 sts.

The Front is worked the same as the Back.

**SLEEVE:** (Figure II). Make two. Cast on 83 sts. with blue. **ROWS 1-42:** K1, P1, Ribbing. After ROW 42 continue with Fisherman's Rib and start the alternating color stripes.

**ROWS 43-360:** Increase 1 st. on each side after ROW 52, then again every following 10th row 30 x. (145 sts.).

**ROWS 361-452:** CAP SHAPING: Bind off 1 st. on each side, then on every following 4th row bind off 1 st. 10 x, 2 sts. 4 x, 3 sts. 2 x, 4 sts. 2 x, 5 sts. 2 x, 6 sts. 2 x and after ROW 452 bind off the remaining 35 sts.

**FINISHING:** Join front and back at sides and shoulders. Sew sleeves together and set in. Fold lower edge, sleeve edges and neck edging in half and sew to wrong side.

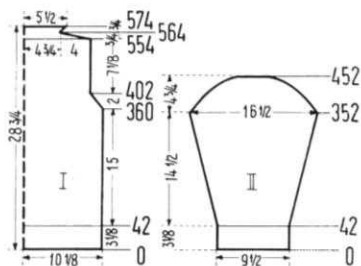
**SIZE:** 12/14. Cast on 187 sts. with blue.

**ROWS 1-42:** K1, P1, Ribbing. After ROW 42 move the Gate Cam Release Lever of the main machine to the needle heels and continue with Fisherman's Rib, at first working 6 rows of blue, then starting the alternating color stripes.

**ROWS 43-360:** Work even.

**ROWS 361-402:** ARMHOLE SHAPING: Bind off 1 st. on each side, then again every following 3rd row 13 x. (159 sts.).

**ROWS 403-554:** Work even. After ROW 554 continue with blue and work K1, P1, Ribbing.



**ROWS 555-564:** SHOULDER SHAPING: Bind off 7 sts. beginning next 8 rows and 8 sts. beginning next 2 rows.

**ROWS 565-574:** Increase 3 sts. beginning next 2 rows and 2 sts. beginning next 4 rows. After ROW 574 bind off the remaining 101 sts.

The Front is worked the same as the Back.

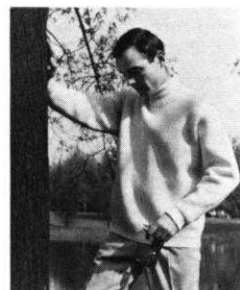
**SLEEVE:** (Figure II). Make two. Cast on 87 sts. with blue. **ROWS 1-42:** K1, P1, Ribbing. After ROW 42 continue with Fisherman's Rib and start the alternating color stripes.

**ROWS 43-352:** Increase 1 st. on each side after ROW 52, then again every following 10th row 21 x and every next following 8th row 10 x. (151 sts.).

**ROWS 353-452:** CAP SHAPING: Bind off 1 st. on each side, then on every following 4th row bind off 1 st. 11 x, 2 sts. 5 x, 3 sts. 2 x, 4 sts. 2 x, 5 sts. 2 x, 6 sts. 2 x and after ROW 452 bind off the remaining 35 sts.

**FINISHING:** Follow directions for SIZE 8/10.

## MAN'S PULLOVER, HP 3511



**SIZE:** 42/44 and 38/40. **MATERIAL:** 33 1/4 oz. (29 3/4 oz.) white. **KNITTING:** Nora. **TENSION:** KNITTING 7 to 9. **GAUGE:** Fisherman's Rib 33 sts. 4", 72 rows 4". K1, P1, Ribbing 33 sts. 4", 50 rows 4".

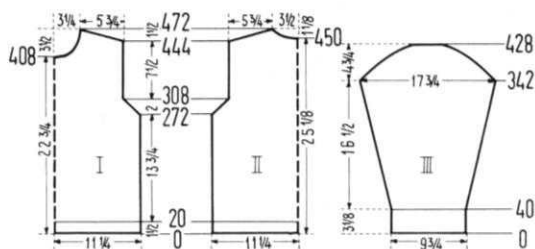
**PATTERN:** Fisherman's Rib, worn on the purl side. **COLLAR and EDGES:** K1, P1, Ribbing.

**SIZE:** 42/44. **BACK:** (Figure II). Cast on 187 sts.

**ROWS 1-20:** K1, P1, Ribbing. After ROW 20 move the Gate Cam Release Lever of the main machine to the

needle heels and continue with Fisherman's Rib.

**ROWS 21-272:** Work even.



**ROWS 273-308:** ARMHOLE SHAPING: Bind off 1 st. beginning next 36 rows. (151 sts.).

**ROWS 309-444:** Work even.

**ROWS 445-472:** SHOULDER SHAPING: Bind off 3 sts. beginning next 6 rows. After ROW 450 bind off the center 15 sts. for NECK. (See Notes to Knit By, inside back cover). Bind off 3 sts. at Shoulder Side and continue to shape shoulder on every other row by binding off 3 sts. 8 x and 4 sts. 3 x. AT THE SAME TIME, shape NECK on every other row by binding off 4 sts. 1 x, 3 sts. 2 x, 2 sts. 3 x and 1 st. 4 x.

**FRONT:** (Figure I). Work the front the same as the back to ROW 408, then bind off the center 15 sts. for NECK, then, on every following 4th row on Neck Side bind off 5 sts. 1 x, 4 sts. 1 x, 3 sts. 1 x, 2 sts. 1 x, 1 st. 2 x and on every following 6th row 1 st. 4 x. AT THE SAME TIME, after ROW 444, then on every other row SHAPE SHOULDER by binding off 3 sts. 12 x and 4 sts. 3 x.

**SLEEVE:** (Figure III). Make two. Cast on 83 sts.

**ROWS 1-40:** K1, P1, Ribbing. After ROW 40 continue with Fisherman's Rib.

**ROWS 41-342:** Increase 1 st. on each side after ROW 42, then again every following 10th row 14 x and every next following 8th row 18 x. (149 sts.).

**ROWS 343-428:** CAP SHAPING: Bind off 1 st. beginning next 62 rows, 2 sts. beginning next 18 rows, 3 sts. beginning next 4 rows, 4 sts. beginning next 2 rows and after ROW 428 bind off the remaining 31 sts.

**COLLAR:** Cast on 156 sts. Work K1, P1, Ribbing, 20 rows tension 6, 20 rows tension 5 and 20 rows tension 6. After ROW 60 bind off all sts.

**FINISHING:** Join front and back at sides and shoulders. Sew sleeves together and set in. Join short ends of collar and sew collar to neckline, then fold to outside.

**SIZE:** 38-40. **BACK:** (Figure II). Cast on 175 sts.

**ROWS 1-20:** K1, P1, Ribbing. After ROW 20 move the Gate Cam Release Lever of the main machine to the needle heels and continue with Fisherman's Rib.

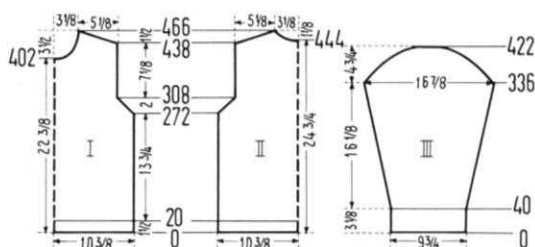
**ROWS 21-272:** Work even.

**ROWS 273-308:** ARMHOLE SHAPING: Bind off 1 st. beginning next 36 rows. (139 sts.).

**ROWS 309-438:** Work even.

**ROWS 439-466:** SHOULDER SHAPING: Bind off 2 sts. beginning next 4 rows and 3 sts. beginning next 2 rows. After ROW 444 bind off the center 13 sts. for NECK. (See Notes to Knit By, inside back cover). Bind off 3 sts. at Shoulder Side and continue to shape shoulder on every other row by binding off 3 sts. 11 x. AT THE SAME TIME, shape NECK on every other row by binding off 4 sts. 1 x, 3 sts. 2 x, 2 sts. 3 x and 1 st. 4 x.

**FRONT:** (Figure I). Work the front the same as the back to ROW 402, then bind off the center 13 sts. for NECK, then on every following 4th row on Neck Side bind off 5 sts. 1 x, 4 sts. 1 x, 3 sts. 1 x, 2 sts. 1 x, 1 st. 2 x and







1 x, 2 sts. 2 x, 1 st. 3 x, then 1 st. on the following 4th row 1 x and 1 st. on the next following 6th row 1 x. AT THE SAME TIME, increase 1 st. on the **right side** after ROWS 212 and 220. After ROW 228, then on every other row SHAPE SHOULDER by binding off 4 sts. 9 x. Make second front section with reverse shapings and omit the buttonholes.

**NECKBAND:** Cast on 105 sts. Work stockinette st., 3 rows tension 8, 3 rows tension 7, 8 rows tension 6, 3 rows tension 7 and 3 rows tension 8, making buttonholes after ROWS 5 and 14 over the 6th-9th needles. After ROW 20 bind off all sts.

**FINISHING:** Join front and back sections at sides and shoulders. Turn under 9 sts. at each front edge (matching buttonholes) and hem to wrong side. Turn under 3 sts. around armhole edges and hem to wrong side. Sew one long edge of neckband to inside and one long edge to outside of neckline. Finish buttonholes, sew on buttons.

### GIRL'S DRESS, MK 4969



**SIZE:** 10-11 years. **MATERIAL:** 8<sup>3</sup>/<sub>4</sub> oz. green and 3<sup>1</sup>/<sub>2</sub> oz. yellow KNITKING Medium Dralon (3 ply). **TENSION:** KNITTING 5 to 7. **GAUGE:** 33 sts. 4", 42 rows 4". **PATTERN:** Stockinette St. The Design is embroidered on finished garment.

**BACK:** (Figure II). Cast on 136 sts. with green.

**ROWS 1-278:** Work even, changing to yellow after ROW 264.

**ROWS 279-292:** ARMHOLE SHAPING: Bind off 4 sts. beginning next 2 rows, 3 sts. beginning next 2 rows,

2 sts. beginning next 2 rows, 1 st. beginning next 4 rows and 1 st. at each end of the following 4th row. (112 sts.).

**ROWS 293-340:** Increase 1 st. on each side after ROWS 310, 320 and 330 (118 sts.).

**ROWS 341-352:** SHOULDER SHAPING: Bind off 5 sts. beginning next 4 rows. After ROW 344 bind off the center 10 sts. for NECK. (See Notes to Knit By, inside back cover). Bind off 5 sts. on Shoulder Side and continue to shape shoulder on every other row by binding off 6 sts. 4 x. AT THE SAME TIME, shape NECK on every other row by binding off 6 sts. 1 x, 5 sts. 1 x and 4 sts. 1 x.

**FRONT:** (Figure I). Cast on 136 sts. with green.

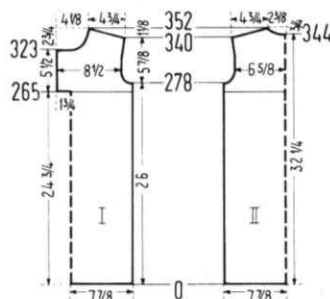
**ROWS 1-264:** Work even. After ROW 264 put 63 sts. on the left side on a stitch holder and changing to yellow, finish the right half first.

**ROWS 265-278:** After ROW 265 cast on 10 sts. on the left side for facing and make buttonholes after ROW 276 over the 3rd-6th and 15th-18th needles counting from the left side.

**ROWS 279-292:** ARMHOLE SHAPING: Bind off 4 sts. on the right side, then on every other row bind off 3 sts. 1 x, 2 sts. 1 x, 1 st. 2 x and 1 st on the following 4th row 1 x. (71 sts.).

**ROWS 293-323:** Make buttonholes after ROWS 296 and 316 over the same needles as before. AT THE SAME TIME increase 1 st. on the right side after ROWS 310 and 320.

**ROWS 324-352:** NECK SHAPING: Bind off 20 sts. on the left side, then on every other row bind off 4 sts. 1 x, 3 sts. 1 x, 2 sts. 2 x, 1 st. 2 x, then on the following 4th row 1 st. 1 x and on the next following 6th row 1 st. 1 x.



AT THE SAME TIME increase 1 st. on the **right side** after ROW 330. After ROW 340, then on every other row SHAPE SHOULDER by binding off 5 sts. 3 x and 6 sts. 4 x. Now move the Cam Box to the left side, turn the Row Counter back to 264, hang the stitches from the stitch holder back on the machine and complete the left half. Follow the instructions from ROWS 265-352, but reverse the sides and after ROW 265 cast on 20 sts. instead of 10 sts. on the **right side for facing**. Omit the buttonholes.

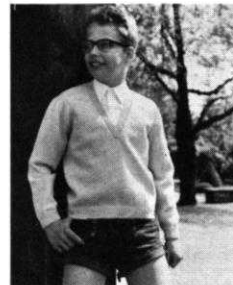
**NECKLINE FACING:** Cast on 90 sts. with yellow. Work stockinette stitch, 4 row tension 5 and 4 rows tension 6. After ROW 8 bind off all sts.

**BELT:** The belt is worked in 3 sections. With green, cast on 120 sts. for each section. Work 20 row stockinette stitch, then hang the cast on sts. back on the machine behind the latches and with tension 10 knit the sts. loosely together, then bind off the crochet method.

**FINISHING:** Join front and back section at sides and shoulders. Turn under 25 rows on lower edge and hem to wrong side. Turn under 10 sts. on each side of front opening, matching buttonholes and hem to wrong side. With right sides together, sew facing to neckline, then turn to wrong side and hem. Turn under 3 sts. around armhole edges and hem to wrong side. Now work the embroidered Design. (See picture). Using 4 strands of yarn, make a simulated rick rack stitch reaching over 4<sup>1</sup>/<sub>2</sub> sts. and 8 rows. Embroider with yellow on the green back ground and with green on the yellow back ground.

Weave belt sections together and sew short ends. Finish buttonholes, sew on buttons.

### BOY'S PULLOVER, KK 4971



**SIZE:** 12-13 years. **MATERIAL:** 14 oz. beige KNITKING Starlite Crepe. **TENSION:** KNITTING 8 to 10. **GAUGE:** Stockinette Stitch: 14 sts. 2", 18 rows 2". K1, P1, Ribbing: 14 sts. 2", 22 rows 2". **PATTERN:** Stockinette Stitch. **EDGES:** K1, P1, Ribbing.

**BACK:** (Figure II). Cast on 123 sts.

**ROWS 1-18:** K1, P1, Ribbing. After ROW 18 transfer the ribber sts. to the main machine and continue with stockinette st.

**ROWS 19-118:** Work even.

**ROWS 119-132:** ARMHOLE SHAPING: Bind off 2 sts. beginning next 2 rows. Now bind off 1 st. beginning next 2 rows and 2 sts. beginning next 2 rows, then repeat the last 4 rows 2 x. (101 sts.).

**ROWS 133-190:** Work even.

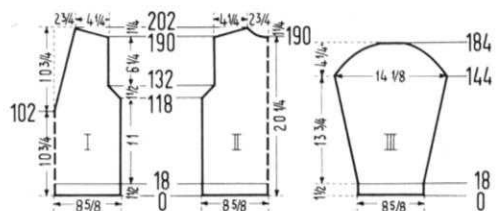
**ROWS 191-202:** NECK and SHOULDER SHAPING: Both shapings are started at the same row. Bind off the center 9 sts. (See Notes to Knit By, inside back cover). Bind off 4 sts. on Shoulder side and continue to shape shoulder on every other row by binding off 4 sts. 3 x and 5 sts. 3 x. AT THE SAME TIME, shape NECK on every other row by binding off 4 sts. 2 x, 3 sts. 1 x and 2 sts. 2 x.

**FRONT:** (Figure I). Cast on 123 sts.

**ROWS 1-18:** K1, P1, Ribbing. After ROW 18 transfer the ribber sts. to the main machine and continue with stockinette st.

**ROWS 19-102:** Work even. After ROW 102 hang the center st. onto the neighboring needle, put the needles on left side of center into holding position and complete the right half first.

**ROWS 103-118:** Decrease 1 st. on the left side after ROWS 107, 112 and 117. All decreases on the left side (Neck Side) are made by always hanging the 4th st. onto the







row by binding off 4 sts. 2 x, 3 sts. 1 x and 2 sts. 1 x.

**FRONT:** (Figure I). Cast on 63 sts.

**ROWS 1-13:** Work even. After ROW 13 cast on 27 sts. on the left side. (90 sts.)

**ROWS 14-162:** Work even, making buttonholes after ROWS 20, 49, 78, 107 and 136 over the 3rd-8th and 20th-25th needles counting from the left side.

**ROWS 163-180:** ARMHOLE SHAPING: Bind off 3 sts. on the right side, then on every other row bind off 3 sts. 1 x, 2 sts. 2 x, 1 st. 3 x and on the 4th row 1 st. 1 x. AT THE SAME TIME, make buttonholes after ROW 165 over the same needles as before. (76sts.)

**ROWS 181-221:** Work even.

**ROWS 222-250:** NECK SHAPING: Bind off 27 sts. on the left side, then on every other row bind off 3 sts. 1 x, 2 sts. 3 x, 1 st. 2 x and on every following 4th row 1 st. 2 x. AT THE SAME TIME, after ROW 236, then on every other row SHAPE SHOULDER by binding off 4 sts. 4 x and 5 sts. 4 x. Make second front section with reverse shapings and omit the buttonholes.

**SLEEVE:** (Figure III). Make two. Cast on 82 sts.

**ROWS 1-60:** Increase 1 st. on each side after ROW 24, then again on each side of every following 3rd row 6 x and on each side of every next following 4th row 3 x. (102 sts.)

**ROWS 61-72:** CAP SHAPING. Bind off 4 sts. beginning next 2 rows, 3 sts. beginning next 4 rows and 2 sts. beginning next 6 rows.

**ROWS 73-110:** Bind off 1 st. beginning next 4 rows and 2 sts. beginning next 2 rows. Repeat these bind offs 4 x, then bind off 2 sts. beginning next 4 rows, 3 sts. beginning next 4 rows and after ROW 110 bind off the remaining 10 sts.

**COLLAR:** (Figure IV). Cast on 88 sts. (Work Short Rows, see inside back cover)

**ROWS 1-14:** On the left side put 27 needles into holding position, knit 1 row. On the right side put 27 needles into holding position, knit 1 row. Now alternately on each side bring 9 needles 1 x, 8 needles 1 x, 3 needles 2 x and 2 needles 2 x back into working position.

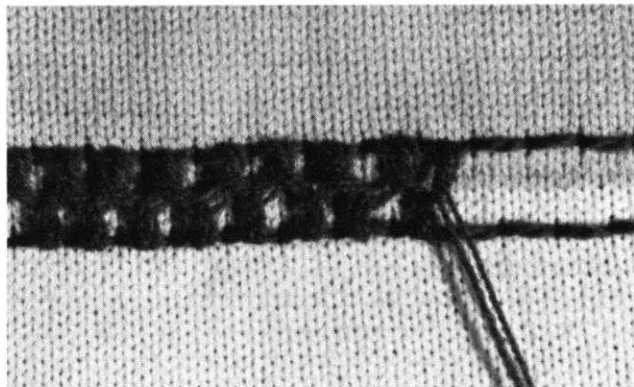
**ROWS 15-64:** Work even.

**ROWS 65-72:** Alternately on each side put 2 needles 2 x and 3 needles 2 x into holding position.

**ROWS 73-74:** On the left side bring all needles into working position, knit 1 row. On the right side bring all needles into working position, knit 1 row, then bind off all sts.

**POCKET:** Make two. Cast on 40 sts. and work 50 rows even, then bind off all sts.

**FINISHING:** Join front and back sections at sides and shoulders. Sew sleeves together and set in. Turn under 14 rows on lower edge and 12 rows on sleeve edges and hem to wrong side. Turn under 14 sts. at each front edge (matching buttonholes) and hem to wrong side. Fold collar in half lengthwise and sew or weave front edges. Sew collar (with cast on edge to inside and bound off edge to outside) to neckline, leaving  $\frac{3}{4}$ " at both front edges free. Finish buttonholes, sew on buttons. Turn under 10 rows on upper pocket edges and hem to wrong side. Sew pockets to shirt (see picture).



## INTERCHANGEABLE YARN CHART



**\$1.00**

plus 12 cents mailing  
Calif. residents add  
5 cents Sales Tax

Specially prepared to allow you to substitute Nationally distributed brand name yarns for the KNITKING YARNS used in KNITKING MAGAZINE. CHARTS are complete with ROWS and STITCHES per inch at various Tensions. Order from KNITKING, 1128 Crenshaw Blvd., Los Angeles, California 90019.





# KNITTING NEWS

May-June, 1968

## PRACTICAL KNITTING HINTS

This edition of KNITTING MAGAZINE is so full of patterns that we were unable to include our normal amount of Practical Knitting Hints....so we are including two in the Newsletter.

## RAGLAN SHAPING for DP 7561

When you are working the Raglan shaping on the front and back of the Pullover DP 7561, you will be decreasing 2 sts. at a time on each side by hanging the 5th and 6th sts. onto the 7th needle and then moving the end stitches over to fill the empty needles.

BEFORE you can do this, the appropriate Ribber sts. at each end MUST be transferred to the main machine first, then you can do the decreasing. After the end sts. have been moved over to fill the empty needles, you must ALWAYS return the 2nd and 4th sts. at each side back to the Ribber. Be sure to use your white strippers on each side and move them over (in) after each decrease is completed. When you are knitting the Sleeve sections, follow the instructions given for the sleeve decreasing and use the same method as above.

## BUTTONHOLES

As a general rule, we do not specify on which side to make the buttonholes when you are knitting a Neckband. Some may prefer to sew the Cast-on edge of the Neckband to the outside of their garment and others may prefer to sew the bound-off edge to the outside of the Neckline. If a Woman's garment is to be worn on the knit side, and you like the looks of the cast-on edge sewn to the outside of the Neckline, make your buttonhole on the LEFT side of the Neckband. However, if you prefer the finished look of the bound-off edge (using the crochet method) then make your buttonhole on the RIGHT side of the Neckband. When placing buttonholes for a Man or Boy's garment, you must remember to reverse the sides.

## EXPANSION SALE LITERATURE

In the last Newsletter, we suggested that readers drop us a line if they did not receive the Special Sales Newsletter within seven days of receiving their magazine. We now have to apologize for the several days delay in getting the Special Letter out....Because the Contractor building our extension did not provide sufficient water run-off during construction, our entire premises were flooded by a torrential rainstorm. Much of the Sales Literature was destroyed along with many hundreds of pounds of yarn, all of our carpets, thousands of books, magazines, etc., etc.... as a consequence, we had to reprint most of the literature and were a week late in getting it in the mail.



It is incredible, the time it takes for the mailings to reach the Eastern States. Some readers do not receive their magazines and Special Mailings in under four weeks and conditions in regard to mail seem to worsen despite the very substantial increases in mailing charges over the past few years. We complain to the Postal Authorities. We have regular visits from Postal Inspectors, but there is nothing much we can do to speed up deliveries to our customers. We do ask your indulgence and apologize again for delays that do not seem to be avoidable.

#### PROTECTION OF KNITTING MACHINES

We have been servicing an increasing number of machines recently, that have had working parts clogged up with Silicone and other lubricants that customers are spraying onto their machines. Please...only use top quality sewing machine oil to lubricate your knitter and then only on the parts recommended in your manual. Machines sometimes appear to work easier after the first spraying from a pressurized can, but the build-up after several sprayings can cause your knitter to stick and eventually jam up.

#### NEW KNITTING YARN CATALOGUE

We have already referred to the cause of the delays in production of the new KNITTING Yarn Catalogue in a Letter from the Publisher in this issue, but we want to add to it and tell all of our customers that the new Catalogue makes the old one obsolete. Many new types of yarn have been added in order to provide a complete range of weights from the very finest to the heaviest for use on your machine. The color range in all types is just fantastic and many new colors that are absolutely out of this world will be sold for the first time. Many of these colors are coordinated through the entire range of yarns so that it will be possible for you to knit one part of a garment in a light weight yarn and another in a heavier yarn in a matching color.

Among the additions is a new range of Dralons' (the perfect synthetic) extended to include a fine, a medium and the heavy Sonika. We are adding a beautiful cable yarn with metallic threads woven into it....some new baby yarns....plus some gorgeous new 100% wool yarns that have been awarded the International Wool Council Seal.

When you receive your new KNITTING Yarn Catalogue, compare it with any other you have. Check the color range and compare the prices. You will discover that no other range of yarns or colors can compare with KNITTING and our prices for top quality yarns are lower than those for inferior yarns in other Catalogues. For quality merchandise at sensible prices, it is impossible to beat KNITTING.



Because of the very high production costs of the new KNITKING Yarn Catalogue, we can only supply one to a customer and you must send your \$2.00 (California residents add 5% Sales Tax) with your order. The \$2.00 cannot be deducted from any yarn order until you have actually taken delivery of the Catalogue and the refund slip that is included with it.

#### SPECIALS for MAY and JUNE

We are illustrating in this Newsletter, a carrying bag that is normally just made up for our Salesmen to carry machines around in....many of our customers have seen these bags and asked if they could buy them. We, of course, have always supplied them when requested, but now the demand has grown so large that we have decided to include them as a regular item.

The carrying bags are made from heavy duty reinforced canvas plaid materials with a waterproof interior. They are designed to hold the latest KNITKING machine with Ribber attached. They will also hold any previous Model 197 needle KNITKING if the Cam Box is removed from the ribber.

The selling price is \$24.95 and to introduce them, they are being reduced to \$22.45 plus \$1.00 shipping costs. California residents add 5% Sales Tax.

#### SALES of DISCONTINUED YARNS

We have a large quantity of yarns in colors that will not be included in the new Catalogue and while they last, we are offering them at discounts of 50% and more from our normal low prices.



KNITKING CARRYING BAG



#### FRIGATE CABLE YARN

The most perfect yarn for bulky garments (it makes 5 stitches and 6 rows to the inch). Only three colors are available...light blue ...bottle green...and avocado green. It comes in 500 gram packets (17 1/2 ounces) and you have to buy two packets to get them at half price. Yarn of this quality would sell elsewhere for 75¢ an ounce, but during the Special Clearance Sale and strictly on a "first come, first serve" basis, the price is a low low 22 1/2¢ an ounce. A total of \$7.90 for 35 ounces (California residents add 5% Sales Tax) plus 95¢ shipping costs. Please give first, second and third choices.

#### REGAL FOUR-PLY FINGERING YARN

It knits up 7 1/2 stitches and 10 rows to the inch and is an excellent quality all purpose yarn. It too should normally sell for around 75¢ an ounce. Our regular low price is 45¢ and we have three colors available at half that price...they are #163, a very handsome light grey, red and blue mixture...#222 a medium blue and brown mixture...#500 a very attractive green, blue and yellow mixture. It comes in one pound packages and again you have to buy two which you will get for the price of one.

\$7.40 (California residents add 5% Sales Tax) plus 70¢ shipping costs. Please give first, second and third choices.

#### MUTELLA SPORTS WOOL

A beautiful tightly twisted top quality sports yarn that we sell at a regular low price of 55¢ an ounce. We have six colors on sale at half price, they are navy...forest green...steel grey.. teal blue...a beige mixture and a light green and black mixture.

Mutella comes in 3 1/2 ounce skeins and you have to buy 10 skeins (35 ounces) to get it at half price. \$9.60 (California residents add 5% Sales Tax) plus 95¢ shipping costs. Be sure to give first, second and third choices.

#### FINE SHETLAND TYPE YARN

This is not one of our regular Catalogue yarns, but we sell it in the Los Angeles store for 45¢ an ounce. It is 55% wool and 45% sarille and knits up 9 to 10 stitches to the inch. It comes in 50 ounce packages, 10 skeins to a package. We are offering it at lower than half price, but you have to buy a 50 ounce packet. The ridiculously low price is 20¢ an ounce, \$10.00 for 50 ounces. (California residents add 5% Sales Tax). We have three colors... green pasture...royal blue and chestnut brown. Be sure to give first, second and third preferences and include \$1.20 for shipping.

These Specials will sell out very fast so please don't delay getting your order in.



# NOTES TO KNIT BY . . .

## STITCH AND ROW GAUGE

Every KNITTING pattern calls for a specific number of stitches and rows for 2 inches and in order to obtain the correct size finished garment, you must be sure to knit at the correct tension. This means that before starting a garment, you must knit a sample swatch with the yarn you intend using for the garment.

Cast on over a sufficient number of needles to produce a swatch 4 inches wide. (If the pattern calls for 16 stitches to 2", 16 x 2 = 32 stitches) then knit 4 inches of rows at the first suggested tension (if the pattern calls for 22 rows to 2", 22 x 2 = 44 rows) knit 2 rows with a contrast color, change to the next higher tension, knit another 4", knit 2 rows with contrast color, change to a third higher tension and knit another 4", then bind off.

Roll the swatch into a cylinder over its length and pull on both ends. Unroll it and stretch it diagonally by pulling on the four corners. Allow the swatch to rest and settle (preferably overnight) then using a stitch gauge or ruler, count the number of stitches and rows over a 2" length in each of your 3 tensions. Select the tension that produces the stitches and rows called for in the pattern. If none of them are correct, you are most likely using the wrong weight of yarn.

## HOLDING POSITION

The needles are as far forward on the needle bed as they will go.

## NON-WORKING POSITION

The needles are as far back on the needle bed as they will go.

## BINDING OFF

See Instruction Manual for your own machine.

## CROCHET BIND OFF

Use this method for binding off neck and armbands, edgings, facings or collars. Knit a bind off row using 5 tensions higher than tension used for section and then with latch needle tool, and working from the opposite side of the yarn end, pull the second stitch through the first stitch, the 3rd through 2nd, the 4th through 3rd, etc. . . . When you reach the end of row, pull the loose end of yarn through the last stitch. If you are unable to turn the tension up 5 numbers because you already are working with a large tension, lay the yarn over the needles by hand and knit this one row by pulling each needle back and forward again completing a stitch. Leave approximately 1/4" loop for each stitch (depending on type of yarn used) then bind off crochet method.

## SHORT ROWS

Used for shaping of all kinds. Push the specified number of needles opposite the Cam Box into holding position and knit across to them. Now you must place the yarn OVER and UNDER the first inside needle that is in the holding position. Place the specified needles opposite Cam Box into holding position (other side) and knit across to these needles, and again place the yarn OVER and UNDER the first inside needle in the holding position. Repeat as many times as your pattern states. When you return these needles to the working position, the same procedure is used — bring the needles into work opposite the Cam Box, knit across to them, place the yarn OVER and UNDER the first inside needle in holding position and repeat for other side. Continue in this manner until all the needles are back in the working position.

## INCREASING, DECREASING

See the Instruction Manual for your own machine.

## INCREASING AND DECREASING WHEN USING RIBBER

When increasing, increase on the main knitter first, knit one row and then transfer the necessary stitches from the knitter to the ribber and continue.

When decreasing or binding off, you must transfer the ribber stitches to the main machine before decreasing or binding off.

**CONTROL KNOBS (Under the slide handle — one on each side on KNITTING and certain other machines.)**

1. When BOTH Control Knobs are UP, (or IN on the latest KNITTING) knit one row going from right to left. The needles knit and move back just beyond the front of the needle bed and the yarn hangs on the front of the needles. The slide will now move freely in either direction

with the needles remaining in a "SAFE POSITION". When you wish to resume knitting, press down (Out on the latest KNITTING) BOTH Control Knobs. The first movement of the slide is made without yarn and will bring the needles into working position, you then continue knitting.

2. **RIGHT CONTROL KNOB UP (IN on latest KNITTING).** Knit from right to left. The row knits, moves the needles back and the yarn is held in front of the latches. Knit from left to right, the yarn goes under the needles without knitting as the needles move into the working position. This is the operation used for making round cords (with 3 or 4 needles only) and also for knitting single rows of one color.

3. **LEFT CONTROL KNOB UP (IN for latest KNITTING).** The same as above but moving from left to right.

## NECK SHAPING

When the directions state to bind off the center stitches for NECK, one correct way is as follows: With a new ball of yarn, bind off the given number of stitches working from right to left. Leave this ball of yarn hanging to one side (to be picked up later) and put all the needles on the left side into holding position and complete the right side first as directed. When you have completed the right side, pick up the yarn that you used for the neck bind off, put it in the wool feeder, bring all the needles into working position and knit 1 row to the left side. Turn row counter back to the number on which you started your neck shaping and complete the left half with reverse shaping, making the same number of decreases and on the same row numbers as on the right half.

You may also use the SHORT ROW method for shaping your neck and shoulders provided the decreasing is made on every other row. When the shaping is completed, knit 1 row over all the neck stitches (or shoulder stitches) with tension set at least 5 numbers higher, and then bind off all stitches using the **crochet method**.

If you are hand feeding a Norwegian design, bind off the center neck stitches with a new ball of yarn, then work both sides of neck shaping at the same time, using two balls of yarn for each color.

## MISSING ROW NUMBERS

When there are row numbers missing in the instructions as for instance when you have completed the designated increases or decreases on a section of garment, continue knitting until you reach the next given row number.

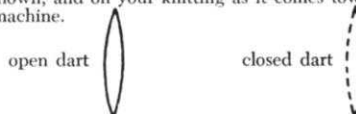
## READING OF SYMBOLS

Certain holding position and eyelet designs are sketched in the knitting patterns. The Chart with symbols is read as the work comes toward you from the machine. Where purl stitches are facing you, the purl symbol will be shown and where knit stitches are facing you, the knit symbol will be shown. On the sides of the chart are the row numbers, i.e. 1-8 indicates the first and last row number. In eyelet design patterns, specified stitches are transferred to another needle and the empty needles are returned to the knitting position each time. In holding position designs, selected needles are pushed into the holding position for the stated number of rows.

### PATTERN STITCH SYMBOLS

- = knit stitch
- ▣ = purl stitch
- = empty needle (leave in working position)
- ⊖ = needle not used (in the out of work position)
- ◻ = needle in holding position
- ◻ (with arrow) = 2 stitches on 1 needle — either transferred from the right side or the left side, then put the needle into holding position
- ◻ (with diagonal line) = needle holding 2 sts. Stitch has been transferred from the LEFT
- ◻ (with diagonal line) = needle holding 2 sts. Stitch has been transferred from the RIGHT
- ◻ (with 3 dots) = 3 stitches on 1 needle. The 1st and 3rd stitch in a group of 3 needles has been hung on the 2nd or center needle.

The diagrams for pattern work are followed just as they are shown, and on your knitting as it comes towards you on the machine.



**What's the only knitting machine  
better than a Knitking?**



**The new  Knitking!**

For color brochure and complete details on this magnificent new KNITKING write to:  
KNITKING • 1128 Crenshaw Blvd., Los Angeles, California 90019