

KNITTING

MAGAZINE



YARNS
by

Knitking

The Finest From Around the World . . .

If you want your garments to look as good as those in KNITKING MAGAZINE and keep their appearance through dozens of washes, you must knit them with gorgeous KNITKING yarns. KNITKING yarns are the finest quality obtainable anywhere and the prices cannot be beaten. Try them once and you will always use them.

Your orders will be filled the same day they arrive. Be sure to state your color preferences and alternates.



Pattern Numbers	YARN	Price Including Shipping
DK 7633	Subita 2 x 4	\$24.95
DK 7631	Subita 2 x 4	29.75
DK 7634	Subita 2 x 3	17.50
DK 7632	Starlite Crepe	25.79
DP 7637	Satin Cotton 2 x 8	10.30
DP 7635	Nanga Parbat	Size 14/16 16.38 Size 18/20 17.36
DP 7636	Subita 2 x 4	15.10
DP 7640	Subita Dralon 3-ply	9.10
DP 7639	Sonika Dralon	10.30
DP 7638	Frigate and Subita 2 x 4	14.16
HP 3537	Frigate and Subita 2 x 4	16.15
HP 3540	Sonika Dralon	22.30
HP 3538	Nora	13.44
HP 3539	Nanga Parbat	19.57
KK 5004	Subita 2 x 4	6.70
MK 5002	Subita 2 x 3	16.30
KK 5005	Nanga Parbat	Size 9-10 years 9.52 Size 11-12 years 10.50
MK 5001	Subita 2 x 3	16.30
MK 5003	Subita 2 x 4	19.90

California Residents please add 5% Sales Tax.

Send \$2.00 for LARGE COMPLETE YARN CATALOGUE.
(Refunded on your first \$10.00 order) to:

KNITKING YARNS, Dept. 19
1128 Crenshaw Blvd.
Los Angeles, California 90019

KNITKING

MAGAZINE

Vol. 4, No. 6

July/August, 1968

INDEX

Contents	Pattern No.	Page No.
Woman's Skirt, Jacket and Stockings	DK 7633	16
Woman's Coat	DK 7631	17
Woman's Dress	DK 7634	18
Woman's Suit	DK 7632	19
Woman's Pullover	DP 7637	20
Woman's Cardigan	DP 7635	20
Woman's Sweater	DP 7636	22
Woman's Pullover	DP 7640	22
Woman's Pullover	DP 7639	23
Woman's Pullover	DP 7638	23
Man's Pullover	HP 3537	24
Man's Twin-Set	HP 3540	25
Man's Shirt	HP 3538	26
Man's Cardigan	HP 3539	26
Boy's Pullover	KK 5004	27
Girl's Twin-Set	MK 5002	27
Boy's Pullover	KK 5005	28
Girl's Dress, Jacket and Stockings	MK 5001	29
Girl's Twin-set	MK 5003	30



COVER MODEL, DK 7633
TRAVEL TRENDS

Be prepared for town, country or campus in any selection of our smart knits for this issue . . . and our Cover Model outfit is a smashing success . . . Bold! Bright! Beautiful! See page 16.

Publisher: KNITKING CORPORATION, 1128 Crenshaw Blvd., Los Angeles, Calif. 90019, Telephone: WEbster 8-2079. Published bi-monthly. Subscriptions: USA—\$6.00 annually, single copies \$1.50; Canada—\$7.00; other parts of the world—\$10.00. The entire contents of KNITKING MAGAZINE are copyright and must not be reproduced in any shape or form without the express permission in writing, of the publisher. COPYRIGHT © by KNITKING CORPORATION 1968.

Printed by: George Rice & Sons, Los Angeles, California.

Letter from the Publisher

THIS issue of KNITKING MAGAZINE marks the end of our fourth year of publication . . . Four exciting years of continued effort on the part of our Designers and Magazine Staff to satisfy the needs of our ever increasing number of subscribers . . . Four years of endeavoring to write pattern instructions that can be understood by any reader and yet still provide up-to-the-minute styles in our garments . . . Four years of working to a deadline with our Printers in order to get the Magazine out prior to its publication date.

The many many hundreds of letters we receive from readers every month prove that our efforts are worthwhile and that KNITKING MAGAZINE is accepted as the finest source of knitting machine patterns in the entire continent of America and that with an average of twenty complete patterns in each issue, the cost of 5¢ a pattern is easily the lowest price at which knitting machine patterns can be obtained.

The fourth year of publication also showed the greatest growth rate of any year and we are pleased to say that our growth predictions were way off the mark. We found ourselves on three occasions under-estimating the print order and as a result, we were very rapidly completely sold out of three of the issues.

Fortunately, we did, as in previous years, put several hundred copies of each issue away for binding into Volumes at the end of the year and an advertisement for the latest Volume appears on page 32 of this issue. These bound Volumes always sell very fast, so if you want one, please get your order in as speedily as possible and avoid disappointment.

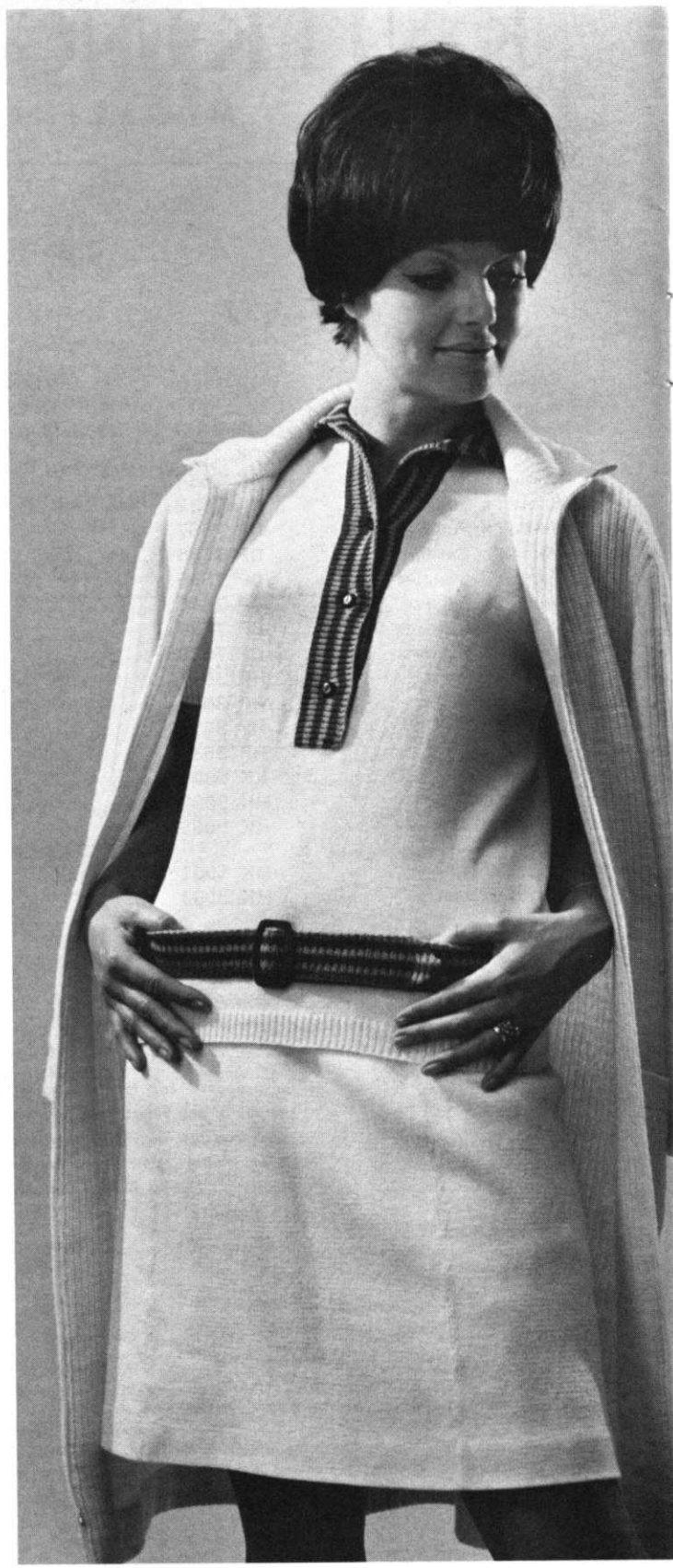
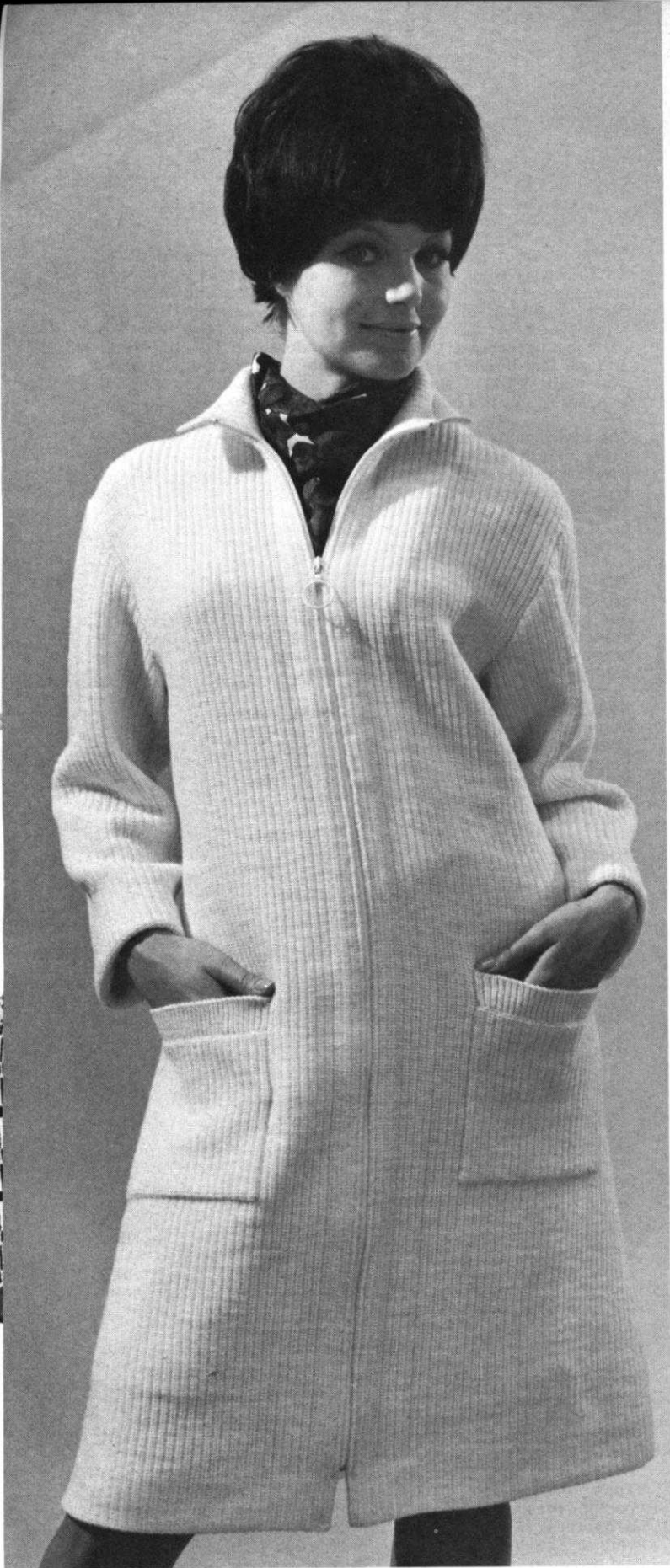
There is no other way of obtaining a complete Volume. This one is already a collectors item and the finest assortment of knitting machine patterns we or anybody else has ever produced.

The new KNITKING YARN CATALOGUE is out and it is GORGEOUS . . . It is without a doubt the finest Yarn Catalogue available in America with a range of yarn and colors unequaled by anybody. As a subscriber to KNITKING MAGAZINE, you really cannot do without our Yarn Catalogue even if you never buy the top quality low priced KNITKING YARNS, it is invaluable as a color guide and to take to your local store for the selection of alternate yarns.

The first issue of our fifth Volume is a beauty. The cover garment is an absolutely stunning full length Coat with a stand up collar and epaulets . . . In addition to being good looking, it is very easy to make. Also in the issue we have a Suit with a double breasted Jacket, some stylish Dresses—one with a mock turtle neckline and long sleeves, one in "A" line with an original design inset in the sleeves, and a third is a two piece sleeveless with an "A" line Skirt. There is a four way outfit with one Skirt, two Pullovers and one Cardigan. A very pretty Pullover in an eyelet and holding position Design and a sporty short sleeved Cardigan with three pockets.

We are including for the Men, a classic style Cardigan, a V-necked Pullover with full fashioned sleeves and a very heavy Jacket.

The Children are well catered for with a long pants Suit for the two to three year old, a very nice pleated Skirt for the eight to nine year old Girl for wearing with either of two Tops, one a turtle neck Sweater and the other a holding position design Cardigan. Also included is a very beautiful cable design Girl's Coat that zips up the front plus a very husky v-neck Pullover for a twelve to thirteen year old Boy.



FOR THE CAMPUS CROWD

DK 7631

Zip into this marvelous coat or wear it casually open . . . either way, you'll love it. The ribbed look is a simple holding position design with the Gate Cam Release Lever at the needle heels, then a 1 x 1 rib is used for edges of collar and pockets. Use the purl side for right side. Size 12/14. See page 17.

DK 7634

Total Triumph! Wear this 2 piece highly styled dress under the Coat DK 7631 to complete a perfect ensemble. Slight "A" line skirt is flattering to everyone. Knitted in stockinette stitch, 1 x 1 ribbing with the trim rib in 3 colors . . . the brightest you can find. Size 12/14. See page 18.

DK 7632

Suit Campaign! Get on the band wagon and knit this lovely suit. We made ours in bright red and white. The double breasted jacket has a new swooping neckline made for a sport or sissy shirt-waist . . . or a pretty scarf can be added for still another change. Size 10/12. See page 19.





FOR THE CAMPUS CROWD

DP 7637

Quickie! A very easy to knit 2-color pullover in stockinette stitch and using KNITKING Satin-Cotton. Monogram the pocket for a personal touch. Size 10/12. See page 20.

DK 7633

You're with it . . . when you wear this 3 piece outfit . . . Jacket . . . Skirt . . . and Stockings. The choice is yours for Mini or Regular . . . by changing the length of the "A" line skirt. A zipper on the Jacket is hidden under the front overlap. Size 8/10. See page 16.

DP 7635

Classy Cardigan! Pockets are added to this all season cardigan. Wear it over a dress . . . or knit a skirt to match for a casual, carefree suit. If you knit it with our lovely new KNITKING Nanga Parbat yarn . . . You will repeat your order for more of some. Size 14/16 and 18/20. See page 20.





DP 7636

Aristocratic! Break the monotony of the usual cardigan by knitting this one with its interesting collar and separate front band that combines stockinette stitch and 1 x 1 ribbing. Order enough yarn for a skirt to match and it turns into a complete outfit. Size 16/18. See page 22.



DP 7640

Introducing KNITKING Subita Dralon 3 ply for knitting this glowing Pullover . . . The flattering button-down collar, edge of bottom and sleeves are a 1 x 1 rib. Size 12/14. See page 22.

DP 7639

Inspiration! You'll be all prettied up in this quickly knitted pullover. The stand-away neckband with tab closure is very new and a perfect setting for the latest in jewelry . . . Size 14/16. See page 23.



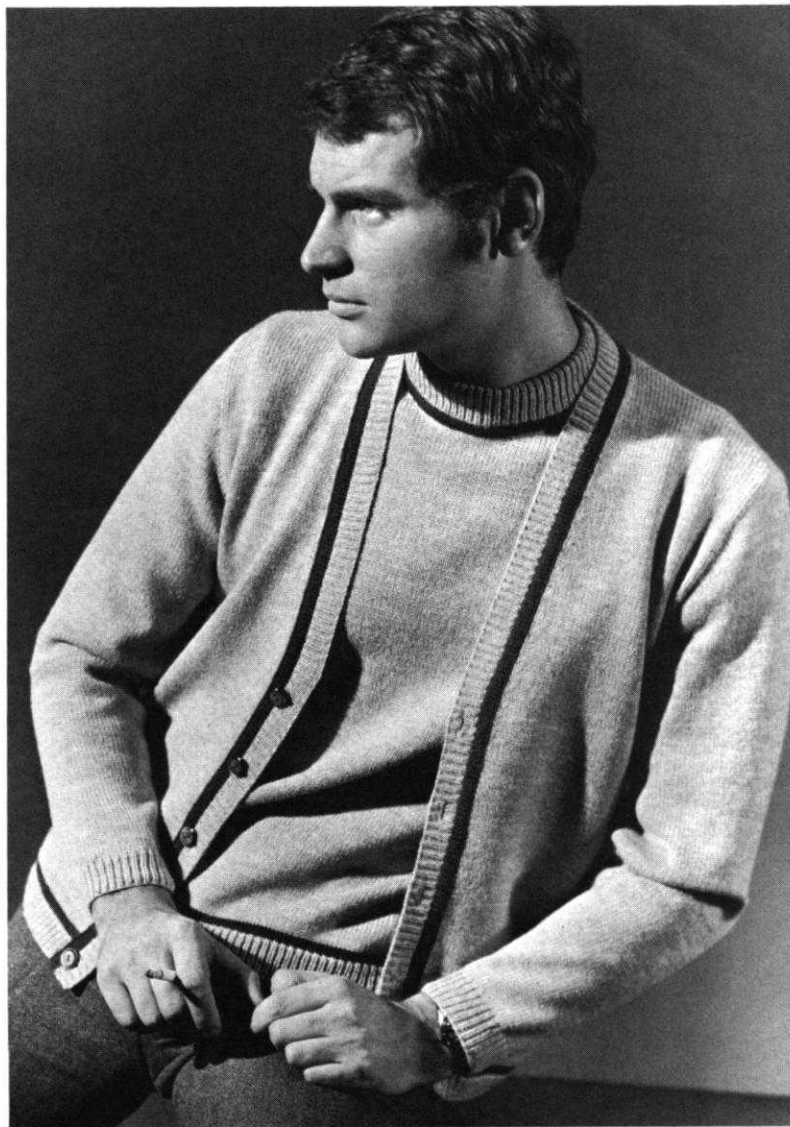
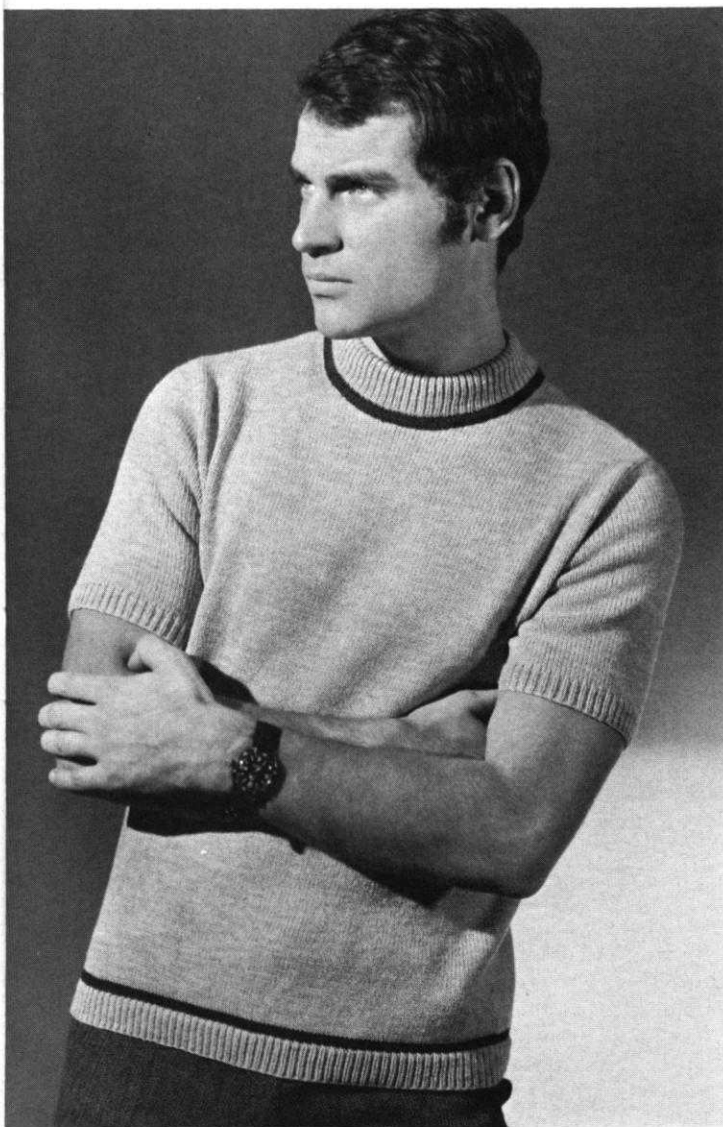


DP 7638

Spectator or active Sports? . . . no matter . . . take in the game with a two-color pullover knitted with two different weights of yarn. Make it 'personally yours' with huge initialed monogram. Size 14/16. See page 24.

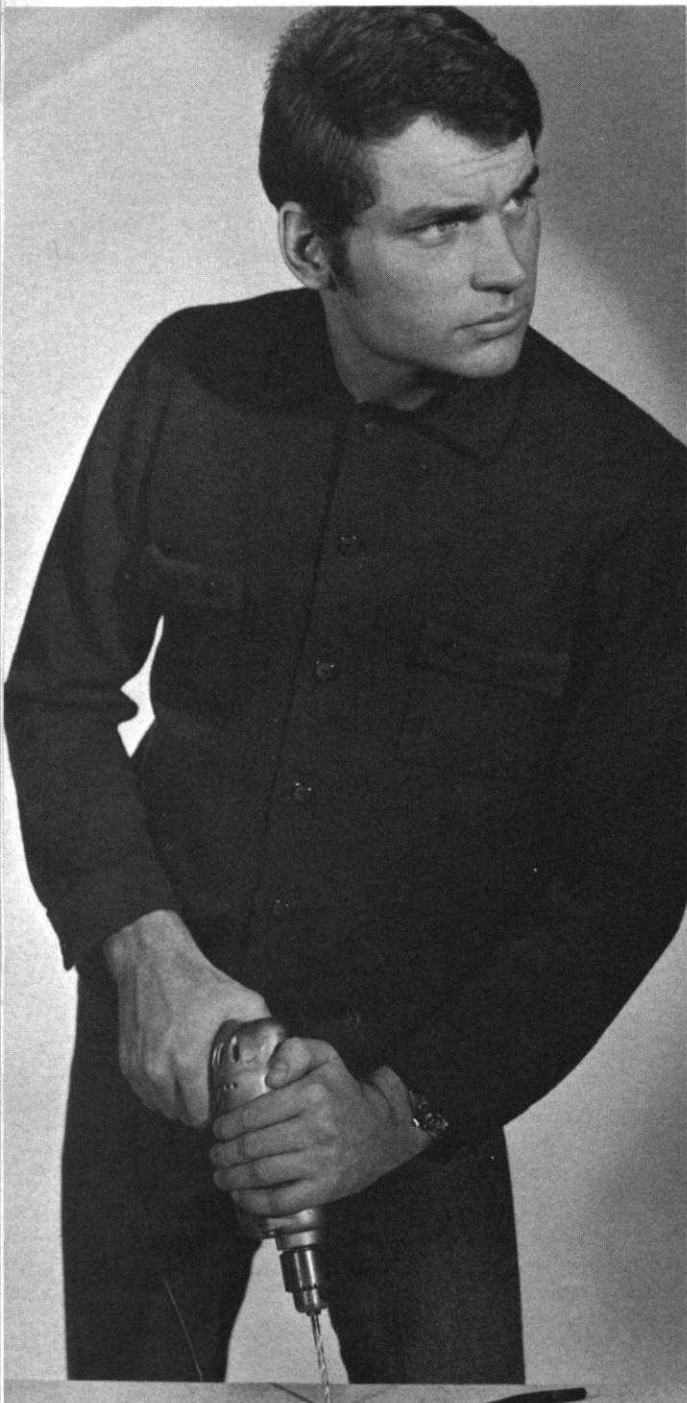
HP 3537

Complement! Knit your favorite Sportsman a similar pullover . . . same colors . . . same yarn as Woman's DP 7638 and he's yours forever . . . Size 40/42. See page 24.



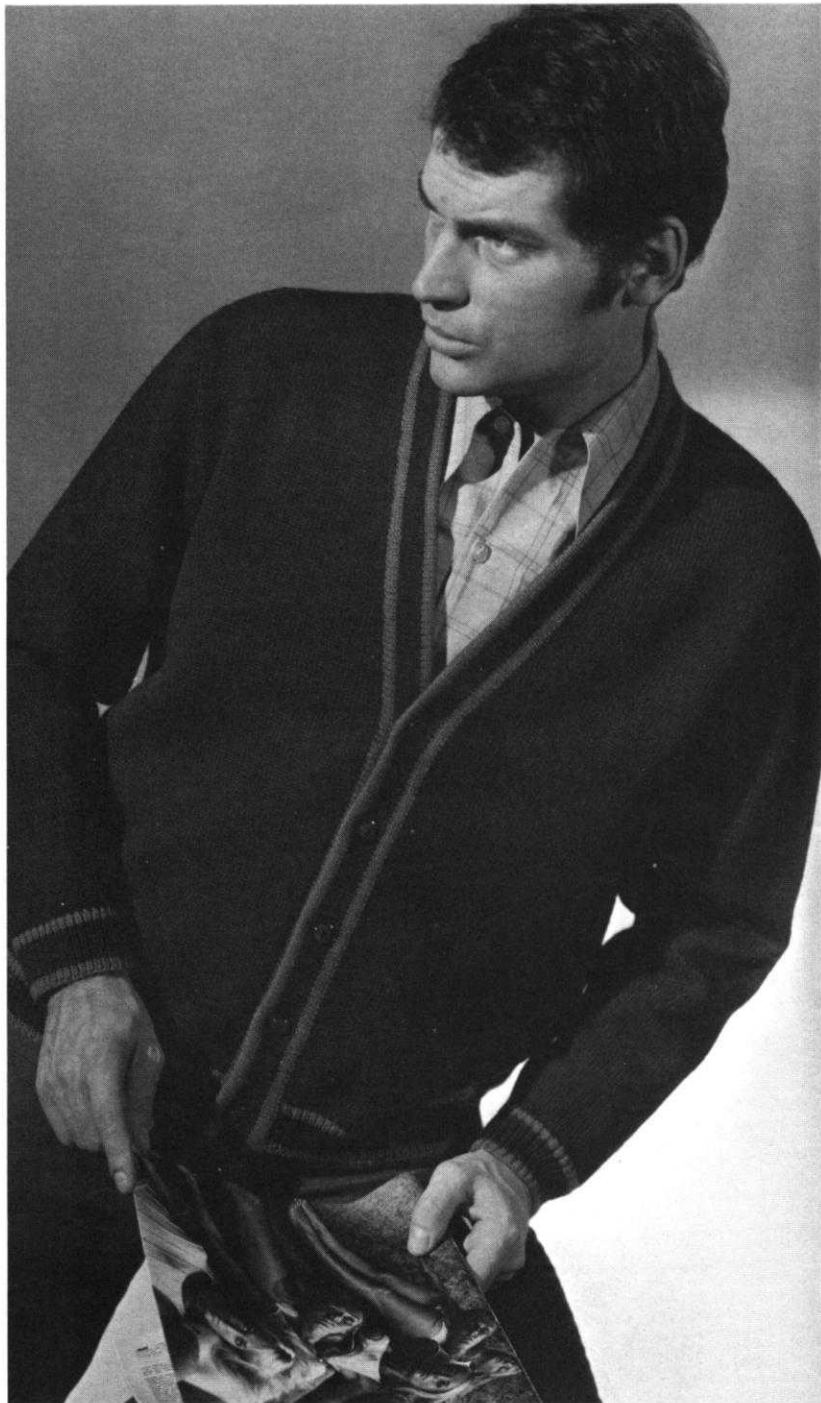
HP 3540

Natty! A double bonus in this twinset knitted in two colors for a man of distinctive taste. We used KNITKING'S hard wearing, machine washable Sonika Dralon . . . the perfect synthetic. Size 38/40. See page 25.



HP 3538

Check the price of knit sport shirts in your local department store and you'll find them very expensive . . . You can knit this one at a fraction of store price and let him select the perfect color . . . better still, order enough yarn for two of them . . . one light . . . one dark. Size 44/46. See page 26.



HP 3539

We used blue and red KNIT-KING Nanga Parbat for a man's two-color cardigan. It is knitted in stockinette stitch with a 1 x 1 rib at edge of bottom and sleeves. Size 44/46. See page 26.

KK 5005

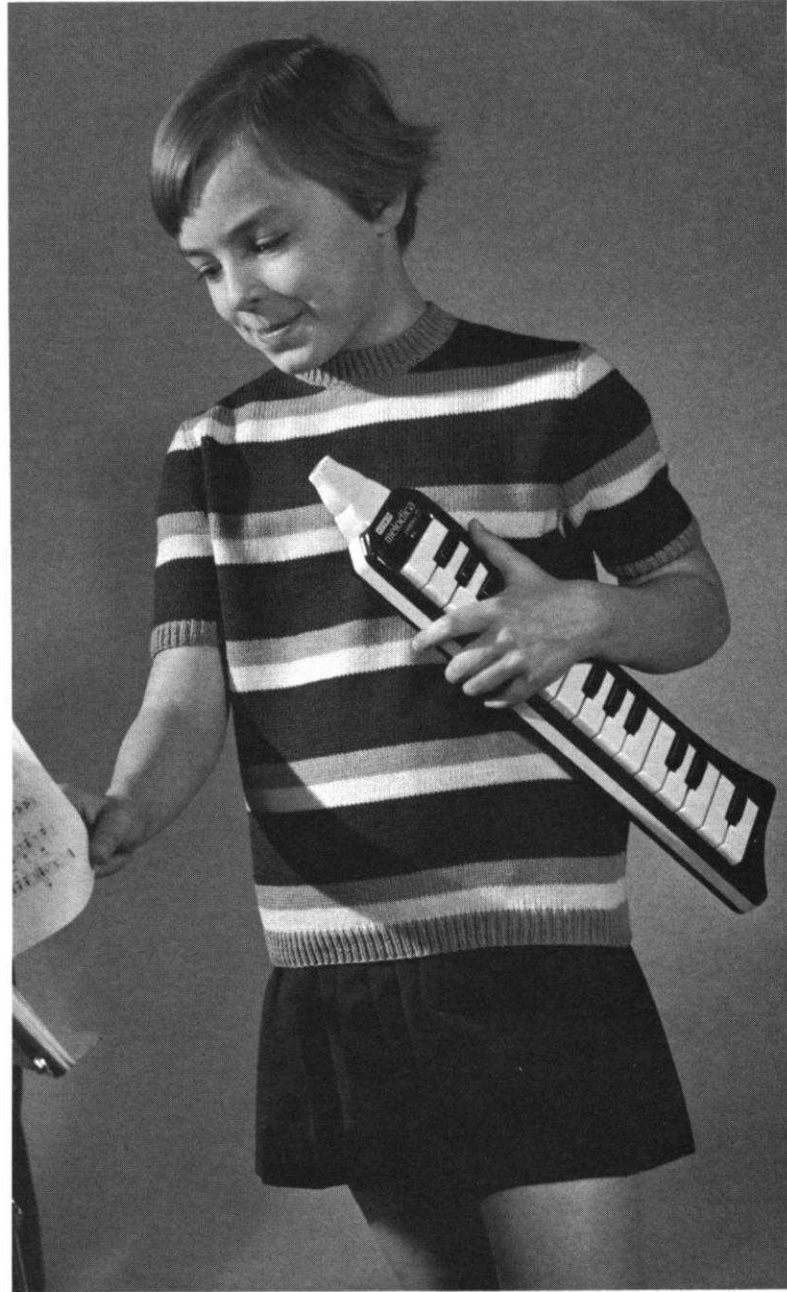
The chord is right . . . and so is his pullover with raglan sleeves. Knit this one in stockinette stitch with 1 x 1 ribbing at neckline, bottom and edge of sleeves. Size 9-10 and 11-12 years. See page 28.





KK 5004

Playtime . . . anytime . . . is time for a cozy pullover for a growing boy. Knit this one for him in stockinette stitch combined with stripes and a holding position design in contrast color. See page 27.



MK 5002

Tune up . . . to a twin-set for a pretty young lady. Stripe the pullover, then knit the cardigan with the color stripes at bottom and sleeve edges. Size 8-9 years. See page 27.

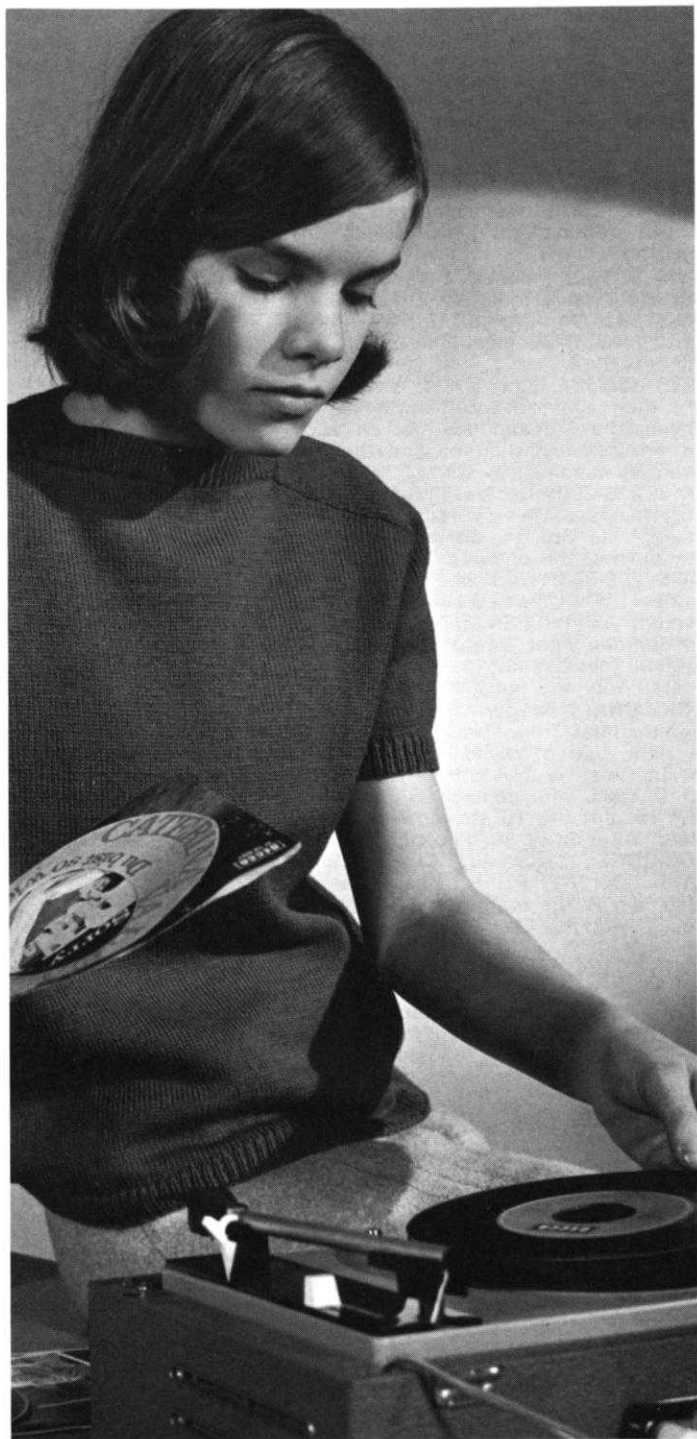
MK 5001

Coordinated! Don't keep her waiting too long for this complete and lovely outfit . . . dress . . . jacket . . . and stockings. We chose orange for the dress, with a blue and white trim. The jacket is white with orange and blue trim. Size 6-7 years. See page 29.



MK 5003

For the Record! . . . Saddle shoulders are very much "in" with the teen crowd. A double bonus of a twin-set is knitted with saddle shoulders on the stockinette pullover as well as on the cardigan which is knitted in a holding position design . . . or you may use JAC 40 and Pattern No. 70. Size 13-14 years. See page 30.



KNITTING INSTRUCTIONS

OUR COVER MODEL

SKIRT, JACKET and STOCKINGS, DK 7633



SIZE: 8/10. **MATERIAL:** 28 oz. blue, 5¼ oz. red and 1¾ oz. yellow **KNITTING** Subita 2 x 4 and a 22" Jacket type zipper. **TENSION:** KNITTING 6 to 8.

GAUGE: 31 sts. 4", 44 rows 4". **PATTERN:** Stockinette St. **EDGES:** K1, P1, Ribbing.

SKIRT BACK: (Figure V). Cast on 170 sts. with red and work stockinette st.

ROWS 1-52: Work even. After ROW 52 hang the cast on sts. back on the machine behind the latches to form the hem.

ROWS 53-268: Work 14 rows with yellow, then continue with blue and decrease 1 st. on each side after ROW 70, then again every following 12th row 7 x, every following 10th row 8 x, every following 8th row 2 x and every following 6th row 2 x by always hanging the 3rd st. on each side onto the 2nd needle and moving the end sts. inward to fill the empty needle. AT THE SAME TIME, after ROW 210 for the DARTS, decrease 2 sts. on each side, then again every following 8th row 7 x. For the first decrease hang the 41st and 43rd sts. on each side onto the 42nd needle, then move the end sts. inward to fill the empty needles. The next decreases lie directly above.

ROWS 269-294: Work even, then bind off the remaining 98 sts.

FRONT: (Figure IV). Work the front the same as the back with exception of the DARTS. For the darts after ROW 234, decrease 2 sts. on each side, then again every following 8th row 4 x. For the first decrease hang the 41st and 43rd sts. on each side onto the 42nd needle, then move the end sts. inward to fill the empty needles. The next decreases lie directly above. After ROW 294 bind off the remaining 110 sts.

MINI-SKIRT VERSION OF DK 7633

For Mini-Skirt version of DK 7633, cast on 164 sts. Knit 52 rows with red, then form the hem and work 14 rows with yellow. Now continue with blue and after you have knitted 4 rows with blue (Row Counter is at 70) turn Row Counter to 106 and follow the instructions for the regular length skirt. Make first decrease AFTER ROW 106, then decrease 1 st. each end on every following 12th row 4 x only instead of 7 x. Continue remaining decreases exactly as shown.

JACKET BACK: (Figure II). Cast on 149 sts. with red.

ROWS 1-30: K1, P1, Ribbing. After ROW 30 transfer the ribber sts. to the main machine and continue with stockinette st. first working 14 rows with yellow then continuing with blue.

ROWS 31-154: Work even.

ROWS 155-176: ARMHOLE SHAPING: Bind off 4 sts. beginning next 2 rows, 3 sts. beginning next 4 rows, 2 sts. beginning next 4 rows, 1 st. beginning next 8 rows and 1 st. at each end of the following 4th row. (111 sts.).

ROWS 177-216: Work even.

ROWS 217-246: SHOULDER SHAPING: Bind off 2 sts. beginning next 10 rows, 3 sts. beginning next 20 rows and after ROW 246 bind off the remaining 31 sts.

FRONT: (Figure I). Cast on 91 sts. with red.

ROWS 1-30: K1, P1, Ribbing over the first 75 needles counting from the right side and stockinette st. over the remaining 16 needles (Front Facing). After ROW 30 transfer the ribber sts. to the main machine and continue with stockinette st. over all needles, working first 14 rows with yellow, then continuing with blue.

ROWS 31-162: Work even.

ROWS 163-184: ARMHOLE SHAPING: Bind off 4 sts. on the right side, then on every other row bind off 2 sts. 2 x, 2 sts. 2 x, 1 st. 4 x and 1 st. on the following 4th row 1 x. (72 sts.).

ROWS 185-224: Work even.

ROWS 225-250: SHOULDER SHAPING: Bind off 2 sts. on the right side, then on every other row bind off 2 sts. 7 x and 3 sts. 6 x. AT THE SAME TIME, after ROW 232, put 16 sts. on the left side on a stitch holder and after ROW 233, then on every other row SHAPE NECK by binding off 7 sts. 1 x, 4 sts. 1 x, 3 sts. 1 x, 2 sts. 3 x, and 1 st. 2 x. Work the second front section with reverse shapings and omit the 16 sts. for the Front Facing. (Cast on only 75 sts.).

SLEEVE: (Figure III). Cast on 62 sts. with red.

ROWS 1-30: K1, P1, Ribbing. After ROW 30 transfer the ribber sts. to the main machine and continue with stockinette st., working first 14 rows with yellow, then continuing with blue.

ROWS 31-180: Increase 1 st. on each side after ROW 30, then again every following 6th row 24 x. (112 sts.).

ROWS 181-194: CAP SHAPING: Bind off 4 sts. beginning next 2 rows, 3 sts. beginning next 6 rows and 2 sts. beginning next 6 rows.

ROWS 195-232: Decrease 2 sts. on each side after ROW 196, then again every following 4th row 9 x by always hanging the 3rd and 4th sts. on each side onto the 5th and 6th needles, then moving the end sts. inward to fill the empty needles. (34 sts.).

ROWS 233-290: Decrease 1 st. on each side after ROW 236, then again every following 8th row 6 x by always hanging the 3rd st. on each side onto the 4th needle, then moving the end sts. inward to fill the empty needle.

ROWS 291-298: Work short rows. On the left side put 6 needles 1 x, 4 needles 1 x and 3 needles 2 x into holding position. AT THE SAME TIME, after ROW 292, decrease 1 st. on the right side as you did before. After ROW 298 bring all needles into working position and bind off all 19 sts. Work the second sleeve with reverse shapings.

NECKBAND: With purl side facing you, hang the 16 sts. from the first front section back on the machine and on the right side of these, cast on 110 sts. Work 30 rows stockinette st., 8 rows with tension 6, 14 rows with tension 5 and 8 rows with tension 6. AT THE SAME TIME, after ROW 15, put the 16 sts. on the left side back on a stitch holder. After ROW 30 bind off the remaining 110 sts.

STOCKINGS: (Figure VI). Cast on 93 sts. with red.

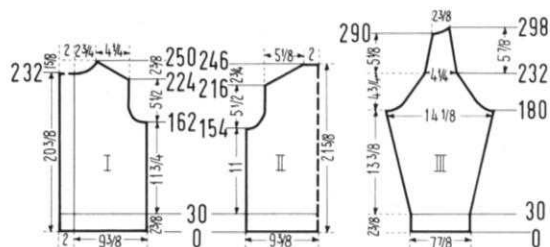
ROWS 1-30: K1, P1, Ribbing. After ROW 30 transfer the ribber sts. to the main machine and continue with stockinette st., working first 14 rows with yellow, then continuing with blue.

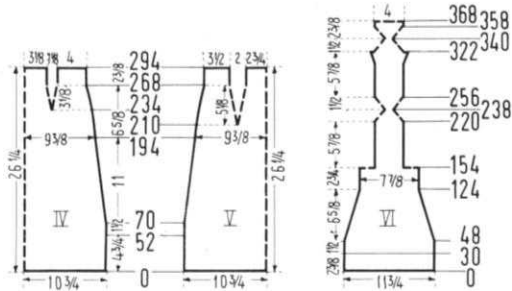
ROWS 31-124: Decrease 1 st. on each side after ROW 48, then again every following 6th row 10 x and every following 4th row 4 x by always hanging the 3rd st. on each side onto the 2nd needle, then moving the end sts. inward to fill the empty needle. (63 sts.).

ROWS 125-154: Work even, then put 16 sts. on each side on a stitch holder.

ROWS 155-220: For the INSTEP work even.

ROWS 221-238: For the TOE work short rows. (See Notes to Knit By, inside back cover). Alternately on each side





put 1 needle 7 x and 2 needles 2 x into holding position. **ROWS 239-256:** Alternately on each side bring 2 needles 2 x and 1 needle 7 x back into working position.

ROWS 257-322: Increase 1 st. on each side after ROW 302, then again every following 4th row 4 x.

ROWS 323-340: For the HEEL work short rows. Alternately on each side put 6 needles 1 x, 1 needle 6 x and 2 needles 2 x into holding position.

ROWS 341-358: Alternately on each side, bring 2 needles 2 x and 1 needle 7 x back into working position.

ROWS 359-368: (When decreasing, always move the end sts. inward to fill the empty needle, then put end needles back into holding position.) On the left side hang the 5th st. onto the 6th needle, knit 1 row. On the right side hang the 5th st. onto the 6th needle, knit 1 row. Now alternately on each side hang 1 st. 4 x onto that same needle. (The 4th st. onto the 5th needle, then the 3rd st. onto the 4th needle, etc.). After ROW 368 put all sts. on a stitch holder. Work second stocking the same.

FINISHING: SKIRT: Weave front and back section at sides, 1 st. in on each edge leaving an 8" opening on the left side for the zipper. Make a narrow hem around this opening. Turn under 13 rows at upper edge and hem to wrong side. Insert a 1" elastic band. Sew in zipper. Sew on hooks and eyes. Line the skirt with taffeta.

JACKET: Join front and back sections at sides, easing in the fullness at bustline of front sections. Sew sleeves together and join to front and back sections. Turn under 8 sts. on the right front section and hem to wrong side. Weave the open sts. of the neckband together, then sew cast-on edge of neckband to outside and bound-off edge to inside of neckline. Sew zipper to front edges.

STOCKINGS: Weave the back seam together, 1 st. in on each edge. Weave the sts. on the stitch holders together for the heel. Join sole and instep at sides.

WOMAN'S COAT, DK 7631



SIZE: 12/14. **MATERIAL:** 42 oz. white KNITTING Subita 2 x 4, a 37" Jacket type zipper and 3 1/2 yards taffeta. **TENSION:** KNITTING 6 to 8. **GAUGE:** 14 sts. 2", 38 rows 2". **PATTERN:** Holding Position Design, worn on the purl side. Put the Gate Cam Release Lever at the needle heels. 1. Put the 2nd, 4th, 6th, 8th, etc. needles into holding position and knit 1 row. 2. Bring the needles from holding position back into working position and knit 1 row. Repeat Steps 1 and 2 throughout.

KNITTING Dial-a-Stitch machines use Wheel 6. Push in the right retractor button to retract needles automatically.

POCKET and COLLAR EDGES: K1, P1, Ribbing.

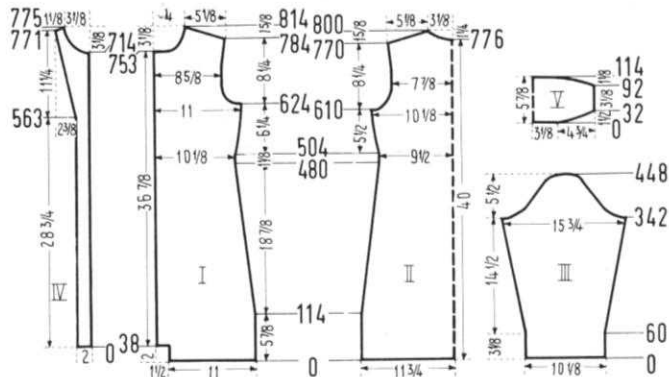
BACK: (Figure II). Cast on 167 sts. and work the Holding Position Design.

ROWS 1-480: Decrease 1 st. on each side after ROW 114, then again every following 26th row 2 x and every following 24th row 13 x. (135 sts.).

ROWS 481-504: Work even.

ROWS 505-610: Increase 1 st. on each side after ROW 504, then again every following 20th row 4 x. (145 sts.).

ROWS 611-648: ARMHOLE SHAPING: Bind off 5 sts. on each side, then on each side of every following 4th row bind off 3 sts. 1 x, 2 sts. 2 x, 1 st. 3 x and 1 st. at each



end of the next 6th and following 6th row. (111 sts.).

ROWS 649-770: Increase 1 st. on each side after ROWS 694, 718 and 742. (117 sts.).

ROWS 771-800: SHOULDER SHAPING: Bind off 2 sts. beginning next 6 rows. After ROW 776 bind off the center 11 sts. for NECK. (See Notes to Knit By, inside back cover). Bind off 2 sts. at Shoulder Side and continue to shape shoulder on every other row by binding off 2 sts. 8 x and 3 sts. 4 x. AT THE SAME TIME, Shape Neck on every other row by binding off 3 sts. 1 x, 2 sts. 4 x and 1 st. 6 x.

FRONT: (Figure I). Cast on 78 sts. and work the Holding Position Design.

ROWS 1-38: Work even. After ROW 38 cast on 11 sts. on the left side using a separate length of yarn.

ROWS 39-480: Decrease 1 st. on the right side after ROW 114, then again every following 26th row 2 x and every following 24th row 13 x. (73 sts.).

ROWS 481-504: Work even.

ROWS 505-624: Increase 1 st. on the right side after ROW 504, then again every following 20th row 4 x. (78 sts.).

ROWS 625-662: ARMHOLE SHAPING: Bind off 5 sts. on the right side, then on every following 4th row bind off 3 sts. 1 x, 2 sts. 2 x, 1 st. 3 x and 1 st. on the next 6th and following 6th row. (61 sts.).

ROWS 663-753: Increase 1 st. on the right side after ROWS 708 and 732.

ROWS 754-814: NECK SHAPING: Bind off 11 sts. on the left side, then on every other row bind off 3 sts. 1 x, 2 sts. 2 x, 1 st. 3 x, on every following 4th row 1 st. 3 x, on every following 6th row 1 st. 2 x and on every following 8th row 1 st. 2 x. AT THE SAME TIME, increase 1 st. on the right side after ROW 756. After ROW 784, then on every other row SHAPE SHOULDER by binding off 2 sts. 12 x and 3 sts. 4 x. Make second front section with reverse shapings.

SLEEVE: (Figure III). Make two. Cast on 73 sts. and work the Holding Position Design.

ROWS 1-342: Increase 1 st. on each side after ROW 60, then again every following 14th row 11 x and every following 16th row 7 x. (111).

ROWS 343-366: CAP SHAPING: Bind off 3 sts. on each side, then on each side of every following 4th row bind off 3 sts. 2 x and 2 sts. 3 x.

ROWS 367-448: On each side, then on each side of every following 4th row bind off 1 st. 2 x and 2 sts. 1 x and repeat these bind offs 5 x, then on each side of every following 4th row bind off 2 sts. 1 x, 4 sts. 1 x, 6 sts. 1 x and after ROW 448 bind off the remaining 9 sts.

FRONT FACING: (Figure IV). Cast on 14 sts. and work the Holding Position Design.

ROWS 1-563: Work even.

ROWS 564-771: Increase 1 st. on the left side after ROW 563, then again every following 12th row 16 x. AT THE SAME TIME, after ROW 714, SHAPE NECK by binding off 5 sts. on the right side, then on every other row bind off 3 sts. 1 x, 2 sts. 2 x, 1 st. 3 x, on every following 4th row 1 st. 3 x, on every following 6th row 1 st. 2 x and on every following 8th row 1 st. 2 x.

ROWS 772-775: Bind off 3 sts. on the left side after ROWS 771, 773 and 775. Make second front facing with reverse shapings.

COLLAR: (Figure V). Cast on 45 sts. and work the Holding Position Design.

ROWS 1-32: Work 2 rows even, then increase 5 sts. beginning next 4 rows, 4 sts. beginning next 4 rows, 3 sts. beginning next 4 rows, 2 sts. beginning next 4 rows, 1 st. beginning next 6 rows and 1 st. at each end of the next 4th and following 4th row. (111 sts.)

ROWS 33-92: Work even.

ROWS 93-114: Bind off 2 sts. beginning next 10 rows, 3 sts. beginning next 4 rows, 4 sts. beginning next 4 rows, 5 sts. beginning next 4 rows and after ROW 114 bind off the remaining 43 sts.

POCKET: Make two. Cast on 46 sts. and work 114 rows in Holding Position Design, then bind off all sts.

POCKET EDGING: Make two. Cast on 73 sts. and work 14 rows K1, P1, Ribbing, then bind off all sts.

COLLAR EDGING: Cast on 183 sts. and work 14 rows K1, P1, Ribbing, then bind off all sts.

FINISHING: Join front and back sections at sides and shoulders, easing in the fullness at bustline of front sections. Sew sleeves together and set in. Turn under 38 rows on lower edge and 30 rows on sleeve edges and hem to wrong side. Turn under 5 sts. at front edges and hem to wrong side. Sew zipper to front edges, leaving 1½" of upper zipper section unattached. Sew front facings against zipper bands. Fold collar in half lengthwise then sew cast-on and increased edge to inside and bound-off and decreased edge to outside of neckline and sew short ends to zipper. Sew Collar edging to the outer fold line of collar. Sew pocket edgings to upper pocket edges and sew pockets to coat. Line coat with taffeta.

WOMAN'S DRESS, DK 7634



SIZE: 12/14. **MATERIAL:** 19¼ oz. white, 1¾ oz. blue, 1¾ oz. pale green and 1¾ oz. orange KNIT-KING Subita 2 x 3. **TENSION:** KNITTING 3 to 5. **GAUGE:** 17 sts. 2", 24 rows 2". **PATTERN:** Stockinette Stitch. **COLLAR, BELT and EDGES:** K1, P1, Ribbing.

SKIRT: (Figure V). Cast on 109 sts. with white.

ROWS 1-288: Decrease 1 st. on each side after ROW 58, then again every following 16th row 9 x and every following 8th row 10 x by

always hanging the 3rd st. on each side onto the 2nd needle, then moving the end sts. inward to fill the empty needle. AT THE SAME TIME, after ROW 230 for the DARTS, decrease 2 sts. on each side, then again every following 12th row 4 x. For the first decrease hang the 41st and 43rd sts. on each side onto the 42nd needle, then move the end sts. inward to fill the empty needles. The next decreases lie directly above. After ROW 288 bind off the remaining 59 sts. Work 3 more sections like this.

BLOUSE: BACK: (Figure II). Cast on 156 sts. with white. **ROWS 1-18:** K1, P1, Ribbing. After ROW 18 transfer the ribber sts. to the main machine and continue with stockinette st.

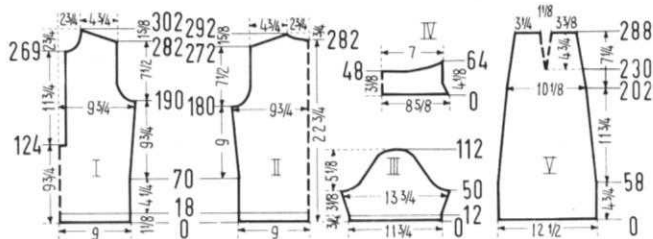
ROWS 19-180: Increase 1 st. on each side after ROW 70, then again every following 16th row 6 x. (170 sts.)

ROWS 181-202: ARMHOLE SHAPING: Bind off 5 sts. beginning next 2 rows, 4 sts. beginning next 2 rows, 3 sts. beginning next 2 rows, 2 sts. beginning next 4 rows, 1 st. beginning next 4 rows and 1 st. at each end of the next 4th and following 4th row. (130 sts.)

ROWS 203-272: Work even.

ROWS 273-292: SHOULDER SHAPING: Bind off 3 sts. beginning next 6 rows and 4 sts. beginning next 4 rows. After ROW 282 bind off the center 18 sts. for NECK. (See Notes to Knit By, inside back cover). Bind off 4 sts. on Shoulder Side and continue to shape shoulder on every other row by binding off 4 sts. 5 x. AT THE SAME TIME shape NECK on every other row by binding off 5 sts. 1 x, 4 sts. 1 x and 3 sts. 2 x.

FRONT: (Figure I). Cast on 156 sts. with white.



ROWS 1-18: K1, P1, Ribbing. After ROW 18 transfer the ribber sts. to the main machine and continue with stockinette st.

ROWS 19-124: Increase 1 st. on each side after ROW 70, then again every following 16th row 3 x. After ROW 124 bind off the center 12 sts., put all needles on the left side into holding position and complete the right half first.

ROWS 125-190: Increase 1 st. on the right side after ROWS 134, 150 and 166.

ROWS 191-212: ARMHOLE SHAPING: Bind off 5 sts. on the right side, then on every other row bind off 4 sts. 1 x, 3 sts. 1 x, 2 sts. 2 x, 1 st. 2 x and 1 st. on the next 4th and following 4th row.

ROWS 213-269: Work even.

ROWS 270-302: NECK SHAPING: Bind off 4 sts. on the left side, then on every other row bind off 3 sts. 2 x, 2 sts. 1 x, 1 st. 3 x and on every following 4th row 1 st. 3 x. AT THE SAME TIME, after ROW 282, then on every other row, SHAPE SHOULDER by binding off 3 sts. 3 x and 4 sts. 8 x. Now move the Cam Box to the left side, bring all needles into working position, turn Row Counter to 124 and complete the left half, following instructions from ROWS 125-302 and reversing the sides.

SLEEVE: (Figure III). Make two. Cast on 101 sts. with white.

ROWS 1-12: K1, P1, Ribbing. After ROW 12 transfer the ribber sts. to the main machine and continue with stockinette st.

ROWS 13-50: Increase 1 st. on each side after ROW 12, then again every following 4th row 8 x. (119 sts.)

ROWS 51-112: CAP SHAPING: Bind off 5 sts. beginning next 2 rows, 4 sts. beginning next 2 rows, 3 sts. beginning next 4 rows, 2 sts. beginning next 6 rows, 1 st. beginning next 40 rows, 2 sts. beginning next 2 rows, 3 sts. beginning next 2 rows, 4 sts. beginning next 4 rows and after row 112 bind off the remaining 11 sts.

COLLAR: (Figure IV). Cast on 167 sts. with green. K1, P1, Ribbing, always working 4 rows green, 4 rows blue, 4 rows orange and 4 rows blue.

ROWS 1-24: Decrease 2 sts. on each side after Row 6, then again every following 6th row 3 x by always hanging first the 3rd st. then the 4th st. on each side onto the 5th needle, then moving the end sts. inward to fill the empty needles. (Before decreasing transfer the end ribber sts. to main machine and after decreasing transfer the appropriate sts. back to the ribber.)

ROWS 25-48: Work even.

ROWS 49-64: Work short rows. (See Notes to Knit By, inside back cover). When working short rows using the ribber, all appropriate ribber sts. have to be transferred to the main machine before putting the needles into holding position. On the left side put 105 needles 1 x, 8 needles 3 x, 6 needles 2 x and 4 needles 2 x into holding position. After ROW 64 move the Cam Box to left side, turn the Row Counter to 48 and bring 46 needles on the left side into working position. (Transfer the appropriate sts. to the ribber).

ROW 65-64: Knit 2 rows, then work short rows. On the right side put 8 needles 3 x, 6 needles 2 x and 4 needles 2 x into holding position. After ROW 64 bring all needles into working position and bind off all sts.

BUTTON BAND: Cast on 115 sts. with green and work 24 rows K1, P1, Ribbing in striped pattern as on collar, then bind off all sts. The BUTTONHOLE BAND is worked the same, but make buttonholes after ROW 12 over the 9th-14th, 39th-44th, 69th-74th and 99th-104th needles.

BELT: Make two sections. Cast on 175 sts. with green and work 24 rows K1, P1, Ribbing in striped pattern, then bind off all sts.

FINISHING: Weave the skirt sections together, 1 st. in on each edge, leaving an 8" opening on 1 seam for the zipper. Make a narrow hem around this opening. Turn under 3 rows on upper edge and baste to wrong side. Sew an elastic band against the basting line on inside. Sew in zipper. Sew on hooks and eyes. Turn under 20 rows on lower edge and hem to wrong side. Line the skirt with taffeta.

BLOUSE: Join front and back section at sides and shoulders, easing in the fullness at bustline of front section. Sew sleeves together and set in. Sew bands to front opening. Sew collar to neckline, even with the bands. Finish buttonholes, sew on buttons. Join belt sections at center back, then line with grosgrain ribbon. Sew a buckle to one end and shape the other end to a point.

WOMAN'S SUIT, DK 7632



SIZE: 10/12. **MATERIAL:** 34 oz. red and 2 oz. white KNITKING Starlite Crepe. **TENSION:** KNITKING: 7 to 9. **GAUGE:** 14 sts. 2", 19 rows 2". **PATTERN:** Stockinette Stitch. **EDGING:** K1, P1, Ribbing. **SKIRT:** **BACK:** (Figure V). Cast on 157 sts. **ROWS 1-224:** Decrease 1 st. on each side after ROW 46, then again every following 12th row 9 x, every following 10th row 4 x, every following 8th row 2 x and every following 6th row 2 x, by always hanging the 3rd st. on each side onto the 2nd

needle, then moving the end sts. inward to fill the empty needle. AT THE SAME TIME, after ROW 174, for the DARTS, decrease 2 sts. on each side, then again every following 8th row 6 x. For the first decrease, hang the 40th and 42nd sts. on each side onto the 41st needle, then move the end sts. inward to fill the empty needles. The next decreases lie directly above.

ROWS 225-246: Work even. After ROW 246 bind off the remaining 93 sts.

FRONT: (Figure IV). Work the front the same as the back with exception of the DARTS. For the darts, after ROW 198, decrease 2 sts. on each side, then again every following 8th row 3 x. For the first decrease hang the 38th and 40th sts. on each side onto the 39th needle, then move the end sts. inward to fill the empty needles. The next decreases lie directly above. After ROW 246 bind off the remaining 105 sts.

JACKET: BACK: (Figure II). Cast on 128 sts.

ROWS 1-30: Work even. After ROW 30 hang the cast-on sts. back on the machine behind the latches to form the hem.

ROWS 31-156: Increase 1 st. on each side after ROW 60, then again every following 18th row 4 x. (138 sts.).

ROWS 157-174: ARMHOLE SHAPING: Bind off 4 sts. beginning next 2 rows, 3 sts. beginning next 4 rows, 2 sts. beginning next 4 rows, 1 st. beginning next 4 rows and 1 st. at each end of the following 4th row. (104 sts.).

ROWS 175-228: Work even.

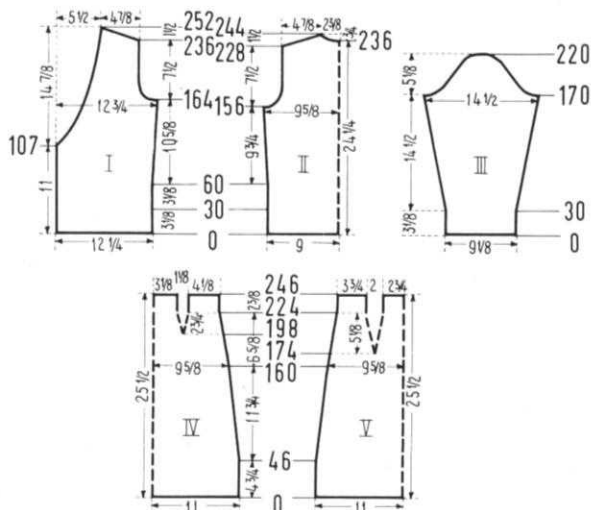
ROWS 229-244: SHOULDER SHAPING: Bind off 3 sts. beginning next 2 rows and 4 sts. beginning next 6 rows. After ROW 236 bind off the center 14 sts. for NECK. (See Notes to Knit By, inside back cover). Bind off 4 sts. on Shoulder Side and continue to shape shoulder on every other row by binding off 4 sts. 4 x. AT THE SAME TIME, shape NECK on every other row by binding off 4 sts. 1 x and 3 sts. 2 x.

FRONT: (Figure I). Cast on 87 sts.

ROWS 1-30: Work even. After ROW 30 hang the cast-on sts. back on the machine behind the latches to form the hem.

ROWS 31-107: Work buttonholes after ROWS 37, 67 and 97 over the 3rd-8th and 42nd-47th needles counting from the left side. AT THE SAME TIME, increase 1 st. on the right side after ROWS 60, 78 and 96.

ROWS 108-164: FRONT SHAPING: Bind off 3 sts. on the left side, then on every other row bind off 2 sts. 4 x,



1 st. 9 x and on every following 4th row 1 st. 7 x. AT THE SAME TIME, increase 1 st. on the right side after ROWS 114 and 132.

ROWS 165-182: ARMHOLE SHAPING: Bind off 4 sts. on the right side, then on every other row bind off 3 sts. 2 x, 2 sts. 2 x, 1 st. 2 x and on the following 4th row 1 st. 1 x. AT THE SAME TIME, decrease 1 st. on the left side after ROWS 165, 171 and 177.

ROWS 183-252: Continue to Shape Front by decreasing 1 st. after ROW 183, then again every following 6th row 6 x and every following 8th row 3 x. AT THE SAME TIME, after ROW 236, then on every other row SHAPE SHOULDER by binding off 3 sts. 1 x and 4 sts. 8 x. Make the second front section with reverse shapings and omit the buttonholes.

SLEEVE: (Figure III). Make two. Cast on 64 sts.

ROWS 1-30: Work even. After ROW 30 hang the cast on sts. back on the machine behind the latches to form the hem.

ROWS 31-170: Increase 1 st. on each side after ROW 32, then again every following 6th row 11 x and every following 8th row 8 x. (104 sts.).

ROWS 171-182: CAP SHAPING: Bind off 5 sts. beginning next 2 rows, 3 sts. beginning next 4 rows and 2 sts. beginning next 6 rows.

ROWS 183-220: Bind off 1 st. beginning next 6 rows and 2 sts. beginning next 2 rows. Repeat these bind offs 3 x, then bind off 2 sts. beginning next 2 rows, 3 sts. beginning next 2 rows, 4 sts. beginning next 2 rows and after ROW 220 bind off the remaining 12 sts.

FRONT EDGING: Each half is worked in 2 sections.

First half: Cast on 163 sts. with white and work K1, P1, Ribbing.

ROWS 1-9: After ROW 2 knit short rows. On the left side put 1 needle 4 x into holding position, laying the yarn behind the st. on needle in hold. (Lift st. off the needle, lay yarn over and around needle then put st. back on needle). After ROW 9 bind off 159 sts. and put the 4 sts. for the pointed shaping on a stitch holder. For the second section cast on 89 sts. and work 9 rows K1, P1, Ribbing.

ROWS 1-9: After ROW 1 knit short rows. On the right side put 1 needle 4 x into holding position, laying the yarn behind the st. After ROW 9 hang the 4 sts. from the stitch holder to the 4 sts. on the right side (sts. on needles in hold) then bind off all sts. Work the 2 sections of the second half with reverse shapings.

FINISHING SKIRT: Weave front and back section at sides, 1 st. in on each edge, leaving a 10" opening on the left side for the zipper. Make a narrow hem around this opening. Turn under 11 rows on upper edge, hem to wrong side and insert a 1" elastic band. Sew in zipper. Sew on hooks and eyes. Turn under 16 rows at lower edge and hem to wrong side. Line the skirt with taffeta.

JACKET: Join front and back sections at sides and shoulders, easing in the fullness at bustline of front sections. Sew

sleeves together and set in. Join edging at center back. With back stitch sew edging to front and neckline. Finish buttonholes, sew on buttons.

WOMAN'S PULLOVER, DP 7637



SIZE: 10/12. **MATERIAL:** 10½ oz. blue and 3½ oz. white KNITTING Satin Cotton.

TENSION: KNITTING 5 to 7. **GAUGE:** 16 sts. 2", 20 rows 2". **PATTERN:** Stockinette Stitch.

BACK: (Figure II). Cast on 144 sts. **ROWS 1-32:** Work even, then hang the cast on sts. back on the machine behind the latches to form the hem.

ROWS 33-160: Increase 1 st. on each side after ROW 72, then again every following 18th row 4 x. (154 stitches).

ROWS 161-180: ARMHOLE SHAPING: Bind off 5 sts. beginning next 2 rows, 4 sts. beginning next 2 rows, 3 sts. beginning next 2 rows, 2 sts. beginning next 2 rows, 1 st. beginning next 4 rows and 1 st. at each end of the next 4th and following 4th row. (118 sts.).

ROWS 181-236: Work even.

ROWS 237-252: SHOULDER SHAPING: Bind off 4 sts. beginning next 8 rows. After ROW 244 bind off the center 16 sts. for NECK. (See Notes to Knit By, inside back cover). Bind off 4 sts. at Shoulder Side and continue to shape shoulder on every other row by binding off 4 sts. 3 x and 5 sts. 1 x. AT THE SAME TIME, Shape Neck on every other row by binding off 6 sts. 1 x, 5 sts. 1 x and 3 sts. 1 x.

FRONT: (Figure I). Cast on 144 sts.

ROWS 1-32: Work even, then hang the cast-on sts. back on the machine behind the latches to form the hem.

ROWS 33-136: Increase 1 st. on each side after ROW 72, then again every following 18th row 3 x. After row 136 bind off the 12 center sts. for front opening, put the sts. on the left side into holding position and complete the right half first.

ROWS 137-168: Increase 1 st. on the right side after ROW 144.

ROWS 169-188: ARMHOLE SHAPING: Bind off 5 sts. on the right side, then on every other row bind off 4 sts. 1 x, 3 sts. 1 x, 2 sts. 1 x, 1 st. 2 x and 1 st. on the next 4th and following 4th row.

ROWS 189-233: Work even.

ROWS 234-260: NECK SHAPING: Bind off 4 sts. on the left side, then on every other row bind off 3 sts. 1 x, 2 sts. 2 x, 1 st. 3 x and 1 st. on the next 4th and following 4th row. AT THE SAME TIME, after ROW 244, then on every other row SHAPE SHOULDER by binding off 4 sts. 8 x and 5 sts. 1 x. Now move the Cam Box to the left side, bring all needles back into working position, turn the Row Counter back to 136 and complete the left half, following the instructions from ROW 137-260 and reversing the sides.

SLEEVE: (Figure III). Make two. Cast on 100 sts. with white.

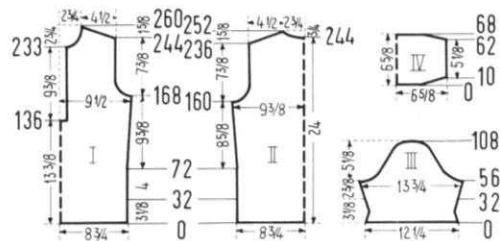
ROWS 1-32: Decrease 1 st. on each side after ROWS 4, 8 and 12, then increase 1 st on each side after ROWS 20, 24 and 28. After ROW 32 hang the cast-on sts. back on the machine behind the latches to form the hem and continue with blue.

ROWS 33-56: Increase 1 st. on each side after ROW 32, then again every following 4th row 5 x. (112 sts.).

ROWS 57-70: CAP SHAPING: Bind off 5 sts. beginning next 2 rows, 3 sts. beginning next 4 rows and 2 sts. beginning next 8 rows.

ROWS 71-108: Bind off 1 st. beginning next 4 rows and 2 sts. beginning next 2 rows. Repeat these bind offs 4 x, then bind off 2 sts. beginning next 2 rows, 3 sts. beginning next 4 rows, 4 sts. beginning next 2 rows and after row 108 bind off the remaining 10 sts.

COLLAR: Cast on 109 sts. with white and work with tension 5.



ROWS 1-10: Work short rows. (See Notes to Knit By, inside back cover). On the left side put 28 needles into holding position, knit 1 row. On the right side put 28 needles into holding position, knit 1 row. Now alternately on each side put 8 needles 2 x and 6 needles 2 x back into working position.

ROWS 11-62: Work even, Rows 17-28 with tension 6, Rows 29-40 with tension 7 and Rows 41-56 with tension 6, then continue with tension 5.

ROWS 63-66: Alternately on each side put 10 needles 2 x into holding position.

ROWS 67-68: On the left side bring all needles into working position, knit 1 row. On the right side bring all needles into working position, knit 1 row, then bind off all sts.

BUTTON BAND: Cast on 77 sts. with white and work 34 rows stockinette st., then bind off all sts. Work the BUTTON-HOLE BAND the same and make buttonholes after ROWS 8 and 25 over the 6th-10th, 30th-34th and 54th-58 needles counting from the right side.

POCKET: Cast on 32 sts. with blue and work 52 rows stockinette st., then bind off all sts.

FINISHING: Join front and back section at sides and shoulders, easing in the fullness at bustline of front section. Sew sleeves together and set in. Sew on button and buttonhole bands, 1 long edge to inside and 1 long edge to outside of front edges. Join lower edges of bands to pullover. Sew upper edges of bands. Fold collar in half lengthwise and sew short ends. Sew bound-off edge to outside and cast-on edge to inside of neckline, leaving the bands unattached. Turn under 8 rows on upper pocket edge and hem to wrong side. Embroider monogram on pocket, then sew pocket to pullover. Finish buttonholes and sew on buttons.

WOMAN'S CARDIGAN, DP 7635



SIZE: 14/16 and 18/20. **MATERIAL:** 28 oz. (29¾ oz.) KNITTING Nanga Parbat. **TENSION:** KNITTING 9 to 10. **GAUGE:** 13 sts. 2", 18 rows 2". **PATTERN:** Stockinette Stitch. **EDGES:** K1, P1, Ribbing.

SIZE: 14/16. **BACK:** (Figure II). Cast on 129 sts.

ROWS 1-14: K1, P1, Ribbing. After ROW 14 transfer the ribber sts. to the main machine and continue with stockinette st.

ROWS 15-132: Increase 1 st. on each side after ROW 50, then again every following 20th row 3 x. (137 sts.).

ROWS 133-150: ARMHOLE SHAPING: Bind off 4 sts. beginning next 2 rows, 3 sts. beginning next 4 rows, 2 sts. beginning next 4 rows, 1 st. beginning next 4 rows and 1 st. at each end of the following 4th row. (103 sts.).

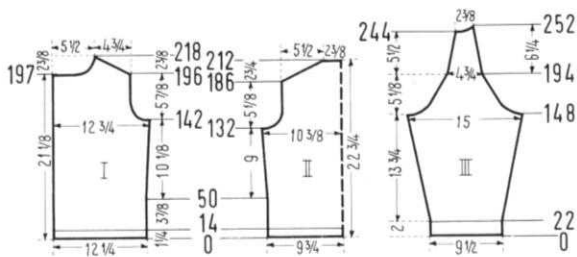
ROWS 151-186: Work even.

ROWS 187-212: SHOULDER SHAPING: Bind off 2 sts. beginning next 6 rows, 3 sts. beginning next 20 rows and after ROW 212 bind off the remaining 31 sts.

FRONT: (Figure I). Cast on 80 sts.

ROWS 1-14: K1, P1, Ribbing, working buttonholes after ROW 7 over the 2nd-6th and 15th-19th needles counting from the left side. After ROW 14 transfer the ribber sts. to the main machine and continue with stockinette st.

ROWS 15-142: Work buttonholes after ROWS 40, 73, 106 and 139 over the same needles as before. AT THE SAME



TIME, increase 1 st on the **right side** after ROW 50, then again every following 20th row 3 x. (84 sts.).

ROWS 143-160: ARMHOLE SHAPING: Bind off 4 sts. on the right side, then on every other row bind off 3 sts. 2 x, 2 sts. 2 x, 1 st. 2 x and on the following 4th row 1 st. 1 x. (67 sts.).

ROWS 161-196: Work even and make buttonholes after ROW 172.

ROWS 197-218: SHOULDER and NECK SHAPING: Bind off 2 sts. on the **right side**, then on every other row bind off 2 sts. 4 x and 3 sts. 7 x. **AT THE SAME TIME**, after ROW 197, then on every other row **SHAPE NECK** by binding off 20 sts. 1 x, 4 sts. 1 x, 3 sts. 1 x, 2 sts. 3 x, 1 st. 2 x and 1 st. on the following 4th row 1 x. Make second front section with reverse shapings and omit buttonholes.

SLEEVE: (Figure III). Cast on 63 sts.

ROWS 1-22: K1, P1, Ribbing. After ROW 22 transfer the ribber sts. to the main machine and continue with stockinette st.

ROWS 23-148: Increase 1 st. on **each side** after ROW 24, then again every following 8th row 7 x and every following 6th row 10 x. (99 sts.).

ROWS 149-160: CAP SHAPING: Bind off 5 sts. beginning next 2 rows, 4 sts. beginning next 2 rows, 3 sts. beginning next 2 rows and 2 sts. beginning next 4 rows.

ROWS 161-194: Decrease 2 sts. on **each side** after ROW 160, then again every following 4th row 8 x by always hanging the 3rd and 4th sts. on **each side** onto the 5th and 6th needles, then moving the end sts. inward to fill the empty needles. (31 sts.).

ROWS 194-244: Decrease 1 st. on **each side**, after ROW 198, then again every following 7th row 6 x by always hanging the 3rd st. on **each side** onto the 4th needle, then moving the end sts. inward to fill the empty needle.

ROWS 245-252: Work short rows. (See Notes to Knit By, inside back cover). On the **left side**, then on every other row put 5 needles 1 x, 4 needles 1 x, 3 needles 1 x and 2 needles 1 x into holding position. **AT THE SAME TIME**, decrease 1 st. on the **right side** after ROW 247 as before. After ROW 252 bring all needles into working position, then bind off all 16 sts. Make second sleeve with reverse shapings.

NECKBAND: Cast on 161 sts. and work 28 rows K1, P1, Ribbing, making buttonholes after ROWS 7 and 20 over the 6th-10th needles.

POCKET: Make two. Cast on 37 sts. and work stockinette stitch.

ROWS 1-36: Work even. After ROW 36 transfer every other st. to the ribber.

ROWS 37-50: K1, P1, Ribbing. After ROW 50 bind off all sts.

FINISHING: Join front and back sections at sides, easing in the fullness at bustline of front sections. Sew sleeves together and set in. Turn under 10 sts. on each front

edge matching buttonholes and hem to wrong side. Sew pockets to cardigan. Sew 1 long edge of neckband to inside and 1 long edge to outside of neckline. Finish buttonholes, sew on buttons.

SIZE: 18/20. BACK: (Figure II). Cast on 149 sts.

ROWS 1-14: K1, P1, Ribbing. After ROW 14 transfer the ribber sts. to the main machine and continue with stockinette st.

ROWS 15-130: Work even.

ROWS 131-152: ARMHOLE SHAPING: Bind off 4 sts. beginning next 2 rows, 3 sts. beginning next 4 rows, 2 sts. beginning next 6 rows, 1 st. beginning next 6 rows and 1 st. **at each end** of the following 4th row. (109 sts.).

ROWS 153-190: Work even.

ROWS 191-216: SHOULDER SHAPING: Bind off 3 sts. beginning next 26 rows and after ROW 216 bind off the remaining 31 sts.

FRONT: (Figure I). Cast on 90 sts.

ROWS 1-14: K1, P1, Ribbing, working buttonholes after ROW 7 over the 2nd-6th and 15th-19th needles counting from the left side. After ROW 14 transfer the ribber sts. to the main machine and continue with stockinette st.

ROWS 15-144: Work even and make buttonholes after ROWS 41, 75, 109 and 143 over the same needles as before.

ROWS 145-166. ARMHOLE SHAPING: Bind off 4 sts. on the right side, then on every other row bind off 3 sts. 2 x, 2 sts. 3 x, 1 st. 3 x and on the following 4th row 1 st. 1 x.

ROWS 167-204: Work even and make buttonholes after ROW 177.

ROWS 205-226: SHOULDER and NECK SHAPING: Bind off 2 sts. on the right side, then on every other row bind off 2 sts. 1 x and 3 sts. 10 x. **AT THE SAME TIME**, after ROW 205, then on every other row bind off 20 sts. 1 x, 4 sts. 1 x, 3 sts. 1 x, 2 sts. 3 x, 1 st. 2 x and on the following 4th row 1 st. 1 x. Make second front sections with reverse shapings and omit buttonholes.

SLEEVE: (Figure III). Cast on 67 sts.

ROWS 1-22: K1, P1, Ribbing. After ROW 22 transfer the ribber sts. to the main machine and continue with stockinette st.

ROWS 23-148: Increase 1 st. on **each side** after ROW 26, then again every following 6th row 19 x. (107 sts.).

ROWS 149-160: CAP SHAPING: Bind off 5 sts. beginning next 2 rows, 4 sts. beginning next 2 rows, 3 sts. beginning next 4 rows and 2 sts. beginning next 2 rows.

ROWS 161-198: Decrease 2 sts. on **each side** after ROW 160, then again every following 4th row 9 x by always hanging the 3rd and 4th sts. on **each side** onto the 5th and 6th needles, then moving the end sts. inward to fill the empty needles (33 sts.).

ROWS 199-252: Decrease 1 st. on **each side** after ROW 204, then again every following 6th row 7 x by always hanging the 3rd st. on **each side** onto the 4th needle, then moving the end sts. inward to fill the empty needle.

ROWS 253-260: Work short rows. (See Notes to Knit By, inside back cover). **On the left side** and on every other row put 5 needles 1 x, 4 needles 1 x, 3 needles 1 x and 2 needles 1 x into holding position. **AT THE SAME TIME**, decrease 1 st. on the **right side** after ROW 252 as before. After ROW 260 bring all needles into working position, then bind off all 16 sts. Make second sleeve with reverse shapings.

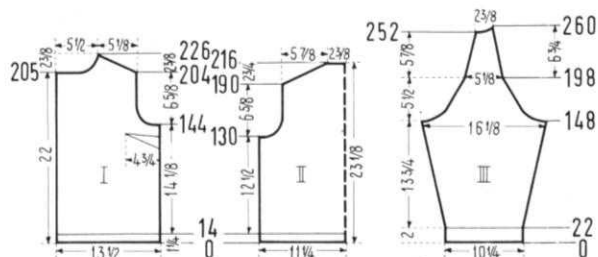
NECKBAND: Cast on 161 sts. and work 28 rows K1, P1, Ribbing, making buttonholes after ROWS 7 and 20 over the 6th-10th needles. After ROW 28 bind off all sts.

POCKET: Make two. Cast on 37 sts. and work stockinette stitch.

ROWS 1-36: Work even. After ROW 36 transfer every other stitch to the ribber.

ROWS 37-50: K1, P1, Ribbing. After ROW 50 bind off all sts.

FINISHING: Follow directions for SIZE 14/16 but make bust darts according to the diagram.



BE SURE TO USE YOUR ZIP CODE
IN ALL CORRESPONDENCE.

WOMAN'S SWEATER, DP 7636



SIZE: 16/18. **MATERIAL:** 21 oz. gold KNITKING Subita 2 x 4. **TENSION:** KNITKING 7 to 9. **GAUGE:** 15 sts. 2", 21 rows 2". **PATTERN:** Stockinette Stitch. **EDGES:** K1, P1, Ribbing.

BACK: (Figure II). Cast on 145 sts. **ROWS 1-18:** K1, P1, Ribbing. After ROW 18 transfer the ribber sts. to the main machine and continue with stockinette st.

ROWS 19-160: Increase 1 st. on each side after ROW 52, then again every following 20th row 4 x. (155 sts.).

ROWS 161-182: ARMHOLE SHAPING: Bind off 4 sts. beginning next 2 rows, 3 sts. beginning next 2 rows, 2 sts. beginning next 6 rows, 1 st. beginning next 8 rows and 1 st. at each end of the following 4th row. (119 sts.).

ROWS 183-244: Work even.

ROWS 245-260: SHOULDER SHAPING: Bind off 4 sts. beginning next 8 rows. AFTER ROW 252 bind off the center 21 sts. for NECK. (See Notes to Knit By, inside back cover). Bind off 4 sts. at shoulder side and continue to shape shoulder on every other row by binding off 4 sts. 1 x and 5 sts. 3 x. AT THE SAME TIME, shape NECK on every other row by binding off 5 sts. 1 x, 3 sts. 1 x and 2 sts. 1 x.

FRONT: (Figure I). Cast on 71 sts.

ROWS 1-18: K1, P1, Ribbing. After ROW 18 transfer the ribber sts. to the main machine and continue with stockinette st.

ROWS 19-172: Increase 1 st. on the right side after ROW 52, then again every following 20th row 4 x. (76 sts.).

ROWS 173-196: ARMHOLE SHAPING: Bind off 6 sts. on the right side, then on every every other row bind off 4 sts. 1 x, 3 sts. 1 x, 2 sts. 3 x, 1 st. 4 x and on the following 4th row 1 st. 1 x. (52 sts.).

ROWS 197-239: Decrease 1 st. on the left side after ROW 202, then again every following 12th row 2 x by always hanging the 4th st. on the left side onto the 5th needle and moving the 3 end sts. inward to fill the empty needle.

ROWS 240-272: NECK SHAPING: Bind off 2 sts. on the left side, then on every other row bind off 2 sts. 2 x, 1 st. 3 x and on the following 4th row 1 st. 1 x. AT THE SAME TIME, after ROW 256, then on every other row, SHAPE SHOULDER by binding off 4 sts. 6 x and 5 sts. 3 x. Make second front section with reverse shapings.

SLEEVE: (Figure III). Cast on 69 sts.

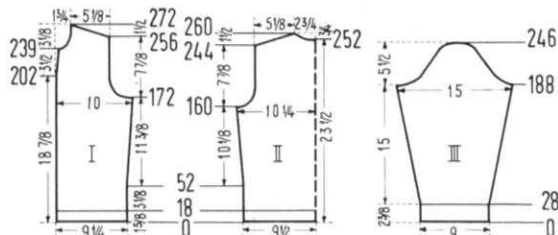
ROWS 1-28: Work K1, P1, Ribbing. After ROW 28 transfer the ribber sts. to the main machine and continue with stockinette st.

ROWS 29-188: Increase 1 st. on each side after ROW 28, then again every following 8th row 11 x and every following 6th row 11 x. (115 sts.).

ROWS 189-202: CAP SHAPING: On the right side (back of sleeve) and on every other row bind off 4 sts. 1 x, 3 sts. 2 x and 2 sts. 4 x. On the left side (front of sleeve) and on every other row bind off 6 sts. 1 x, 5 sts. 1 x, 4 sts. 1 x, 3 sts. 1 x and 2 sts. 3 x.

ROWS 203-246: Bind off 1 st. beginning next 36 rows, 2 sts. beginning next 2 rows, 3 sts. beginning next 4 rows, 4 sts. beginning next 2 rows and after row 246 bind off the remaining 13 sts. Make second sleeve with reverse shapings.

COLLAR: Cast on 115 sts.



ROWS 1-14: Work stockinette st. To form the hem, hang the cast on sts. back on the machine in front of the latches, then push the right Cam Control Button toward the back, (machines prior to AM 3 pull the Control knob up) and knit 2 rows without yarn, then push the Control Button forwards (or push down) and turn Row Counter back to 14. Now transfer every other st. to the ribber and continue with K1, P1, Ribbing.

ROWS 15-44: Work even.

ROWS 45-60: Decrease 2 sts. on each side after ROW 44, then again every following 4th row 3 x by always hanging the 3rd and 4th sts. on each side onto the 5th needle and moving the 2 end sts. inward to fill the empty needles. (Transfer the ribber sts. to main machine before decreasing, then transfer back to ribber) After row 60 bind off all sts. On each even worked short end of the collar pick up 20 sts. for the facing and work 14 rows stockinette st. then bind off all sts.

BUTTON BAND: Cast on 159 sts. and work stockinette st. **ROWS 1-14:** Work even, then form a hem as you did on the collar, and continue with K1, P1, Ribbing.

ROWS 15-28: Work even. After ROW 28 transfer the ribber sts. to the main machine and continue with stockinette st.

ROWS 29-35: Work even. After ROW 35 put all sts. on contrast yarn. Turn the work. Pick up 159 sts. from the first row of the 7 rows stockinette st. and work 7 rows stockinette st., then put all sts. on contrast yarn. Work the Buttonhole Band the same and make buttonholes after ROW 21 over the 5th-10th, 29th-34th, 53rd-58th, 77th-82nd, 101th-106th and 125th-130th needles counting from the right side.

FINISHING: Join front and back sections at sides and shoulders, easing in the fullness at bustline of front sections. Sew sleeves together and set in. Sew button and buttonhole bands to front. Using back stitch, sew 1 edge of open sts. to the wrong side and 1 edge of open sts. to the outside on front edges. Sew collar to neckline. Join shaped edges of collar to button and buttonhole bands. Turn under 7 rows on short ends of collar and hem to wrong side. Finish buttonholes, sew on buttons.

WOMAN'S PULLOVER, DP 7640



SIZE: 14/16. **MATERIAL:** 12¹/₄ oz. red KNITKING Subita Dralon 3 ply. **TENSION:** KNITKING 4 to 6. **GAUGE:** 15 sts. 2", 22 rows 2". **PATTERN:** Stockinette Stitch.

COLLAR AND EDGES: K1, P1, Ribbing.

BACK: (Figure II). Cast on 144 sts. **ROWS 1-22:** K1, P1, Ribbing. After ROW 22 transfer the ribber sts. to the main machine and continue with stockinette st.

ROWS 23-162: Increase 1 st. on each side after ROW 66, then again every following 16th row 5 x. (156 sts.).

ROWS 163-184: ARMHOLE SHAPING: Bind off 5 sts. beginning next 2 rows, 4 sts. beginning next 2 rows, 3 sts. beginning next 2 rows, 2 sts. beginning next 2 rows 1 st. beginning next 6 rows and 1 st. at each end of the next 4th and following 4th row. (118 sts.).

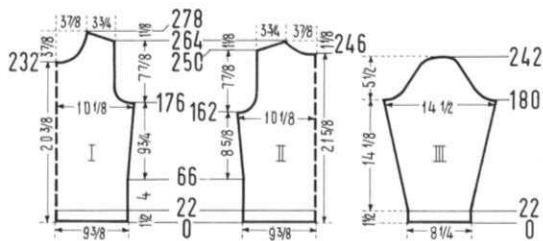
ROWS 185-246: Work even.

ROWS 247-264: NECK SHAPING: Bind off the center 18 sts. for NECK (See Notes to Knit By, inside back cover) then on every other row on Neck Side bind off 5 sts. 1 x, 4 sts. 1 x, 3 sts. 2 x, 2 sts. 2 x and 1 st. 2 x. AT THE SAME TIME, after ROW 250, then on every other row SHAPE SHOULDER by binding off 3 sts. 3 x and 4 sts. 5 x.

FRONT: (Figure I). Work the front the same as the back to ROW 162.

ROWS 163-176: Work even.

ROWS 177-198: ARMHOLE SHAPING: Bind off 5 sts. beginning next 2 rows, 4 sts. beginning next 2 rows, 3 sts. beginning next 2 rows, 2 sts. beginning next 2 rows, 1 st. beginning next 6 rows and 1 st. at each end of the next



4th and following 4th row. (118 sts.).

ROWS 199-232: Work even.

ROWS 233-278: NECK SHAPING: Bind off the center 16 sts. for NECK as you did on the back, then on every other row on Neck Side bind off 4 sts. 1 x, 3 sts. 2 x, 2 sts. 3 x, 1 st. 3 x, then 1 st. on the next 4th and following 4th row and 1 st. on the following 6th row. AT THE SAME TIME, after ROW 264, then on every other row SHAPE SHOULDER by binding off 3 sts. 3 x and 4 sts. 5 x.

SLEEVE: (Figure III). Make two. Cast on 63 sts.

ROWS 1-22: K1, P1, Ribbing. After ROW 22 transfer the ribber sts. to the main machine and continue with stockinette st.

ROWS 23-180: Increase 1 st. on each side after ROW 30, then again every following 8th row 2 x and every following 6th row 21 x. (111 sts.).

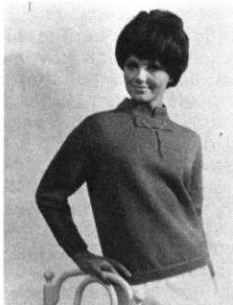
ROWS 181-242: CAP SHAPING: Bind off 4 sts. beginning next 4 rows, 3 sts. beginning next 4 rows, 2 sts. beginning next 4 rows, 1 st. beginning next 42 rows, 2 sts. beginning next 4 rows, 3 sts. beginning next 2 rows, 4 sts. beginning next 2 rows and after row 242 bind off the remaining 11 sts.

NECKBAND: Cast on 165 sts. and work stockinette st. 6 rows with tension 6, 14 rows with tension 5 and 6 rows with tension 6, making buttonholes after ROWS 6 and 20 over the 7th-12th needles counting from the left side. After 26 rows bind off all sts.

COLLAR: Cast on 171 sts. and work K1, P1, Ribbing, 22 rows with tension 7, 22 rows with tension 6 and 22 rows with tension 5. After 66 rows bind off all sts.

FINISHING: Join front and back section at sides and shoulders, easing in the fullness at bustline of front section. Sew sleeves together and set in. Sew short ends of neckband, then sew bound-off edge to inside and cast-on edge to outside of neckline, overlapping 1½" on each front edge of the band. Sew collar to inner seam on neckline and fasten collar to pullover by sewing 1 button to each collar point as illustrated. Finish buttonhole, sew on button.

WOMAN'S PULLOVER, DP 7639



SIZE: 14/16. **MATERIAL:** 14 oz. blue KNITKING Sonika Dralon. **TENSION:** KNITKING 7 to 9. **GAUGE:** 14 sts. 2", 19 rows 2". **PATTERN:** Stockinette Stitch.

EDGES: K1, P1, Ribbing.

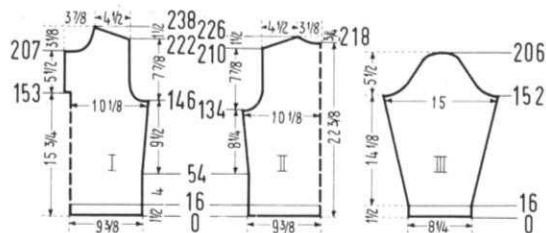
BACK: (Figure II). Cast on 134 sts. **ROWS 1-16:** K1, P1, Ribbing. After ROW 16 transfer the ribber sts. to the main machine and continue with stockinette st.

ROWS 17-134: Increase 1 st. on each side after ROW 54, then again every following 14th row 5 x. (146 sts.).

ROWS 135-152: ARMHOLE SHAPING: Bind off 5 sts. beginning next 2 rows, 3 sts. beginning next 4 rows, 2 sts. beginning next 4 rows, 1 st. beginning next 4 rows and 1 st. at each end of the following 4th row. (110 sts.).

ROWS 153-210: Work even.

ROWS 211-226: SHOULDER SHAPING: Bind off 3 sts. beginning next 8 rows. After ROW 218 bind off the center 18 sts. for NECK. (See Notes to Knit By, inside back cover). Bind off 4 sts. at Shoulder Side and continue to shape shoulder on every other row by binding off 4 sts. 4 x. AT THE SAME TIME, shape NECK on every other row



by binding off 6 sts. 1 x, 5 sts. 1 x and 3 sts. 1 x.

FRONT: (Figure I). Work the front the same as the back to ROW 134.

ROWS 135-146: Work even.

ROWS 147-152: ARMHOLE SHAPING: Bind off 5 sts. beginning next 2 rows and 3 sts. beginning next 4 rows. After ROW 152 put 62 needles on the left side into holding position and complete the right half first.

ROWS 153-164: Bind off 2 sts. on the right side for Armhole and after ROW 153 cast on 5 sts. on the left side for facing. To do this, put 5 sts. from the left half on a stitch holder. Continue to shape Armhole after ROW 154, then on every other row by binding off 2 sts. 1 x, 1 st. 2 x and on the following 4th row 1 st. 1 x.

ROWS 165-207: Work even.

ROWS 208-238: NECK SHAPING: Bind off 12 sts. on the left side, then on every other row bind off 4 sts. 1 x, 3 sts. 1 x, 2 sts. 2 x, 1 st. 2 x and on every following 4th row 1 st. 3 x. AT THE SAME TIME, after ROW 222, then on every other row SHAPE SHOULDER by binding off 3 sts. 4 x and 4 sts. 5 x. Now move the Cam Box to the left side, turn the Row Counter back to 152, bring all needles into working position, hang the 5 sts. from the stitch holder back on the machine and complete the left half, following the instructions from ROWS 153-238 and reversing the sides.

SLEEVE: (Figure III). Make two. Cast on 59 sts.

ROWS 1-16: K1, P1, Ribbing. After ROW 16 transfer the ribber sts. to the main machine and continue with stockinette st.

ROWS 17-152: Increase 1 st. on each side after ROW 22, then again every following 6th row 15 x and every following 4th row 8 x. (107 sts.).

ROWS 153-206: CAP SHAPING: Bind off 5 sts. beginning next 2 rows, 4 sts. beginning next 2 rows, 3 sts. beginning next 4 rows, 2 sts. beginning next 6 rows, 1 st. beginning next 32 rows, 2 sts. beginning next 2 rows, 3 sts. beginning next 4 rows, 4 sts. beginning next 2 rows and after ROW 206 bind off the remaining 9 sts.

NECKBAND: Cast on 117 sts. and work 38 rows stockinette st., 6 rows tension 9, 6 rows tension 8, 14 rows tension 7, 6 rows tension 8 and 6 rows tension 9. After 38 rows bind off all sts.

TAB: Cast on 34 sts. and work 26 rows stockinette st., making buttonholes after ROWS 6 and 18 on each side over the 6th-10th needles. After ROW 34 put all sts. on a stitch holder.

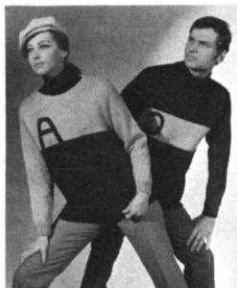
FINISHING: Join front and back section at sides and shoulders, easing in the fullness at bustline of front section. Sew sleeves together and set in. Turn under 5 sts. on each side of front opening and hem to wrong side. Fold neckband in half lengthwise and sew short ends. Sew cast on edge of neckband to outside and bound off edge to inside of neckline. Close neckband with hook and eye. Pull out the cast on row of the TAB, then weave the open sts. on both long ends together. Sew short ends. Finish buttonholes. Sew buttons to pullover and button tab to buttons.

CANADIAN READERS

Please note that KNITKING dealers based in the U.S.A. are unable to sell machines and accessories to residents of Canada. They are also unable to sell parts and service. Would all Canadian readers please contact the following appointed KNITKING dealer.

KNITKING Sales and Service
272 Yonge Street
Toronto 1, Ontario

WOMAN'S PULLOVER, DP 7638



SIZE: 14/16. **MATERIAL:** 10½ oz. rust and 14 oz. beige KNITKING Frigate, 1¾ oz. rust and 1¾ oz. beige KNITKING Subita 2 x 4. Color NOS. 876, 1429, 26 and 47. **TENSION:** KNITKING: Stockinette Stitch 10, K1, P1, Ribbing 6 to 8. **GAUGE:** Stockinette Stitch: 9 sts. 2", 14 rows 2". K1, P1, Ribbing: 18 sts. 2", 22 rows 2". **PATTERN:** Stockinette Stitch over every other needle. **EDGES:** K1, P1, Ribbing over every other needle on the main machine and every needle on the ribber.

BACK: (Figure II). Cast on 191 sts. with rust Subita.

ROWS 1-22: K1, P1, Ribbing. After ROW 22 transfer the ribber sts. to the neighboring needles of the main machine (occupied needles) and continue working stockinette st. over every other needle with rust Frigate. (96 sts.).

ROWS 23-112: Work even, changing to beige Frigate after ROW 108.

ROWS 113-126: ARMHOLE SHAPING: Bind off 4 sts. beginning next 2 rows, 3 sts. beginning next 2 rows, 2 sts. beginning next 2 rows, 1 st. beginning next 4 rows and 1 st. at each end of the following 4th row (72 sts.).

ROWS 127-168: Work even.

ROWS 169-174: SHOULDER SHAPING: Bind off 2 sts. beginning next 6 rows.

ROWS 175-180: Bind off 3 sts. at Shoulder Side. Now work short rows for the NECK SHAPING. (See Notes to Knit By, inside back cover). On the left side, put 37 needles 1 x, 6 needles 1 x and 5 needles 1 x into holding position. AT THE SAME TIME, continue to Shape Shoulder on the right side on every other row by binding off 3 sts. 3 x. After ROW 180 bring 30 needles on the left side into working position and knit 1 row (from right to left). Bind off 3 sts. on the left side for Shoulder and continue to shape shoulder or every other row by binding off 3 sts. 3 x. AT THE SAME TIME, work short rows on NECK SIDE by putting 7 needles 1 x, 6 needles 1 x and 5 needles 1 x into holding position. For the Facing bring the 36 needles from holding into working position and work 6 rows stockinette st., then bind off all sts. very loosely the crochet method.

FRONT: (Figure I). Work the front the same as the back to ROW 108. (Do not change color).

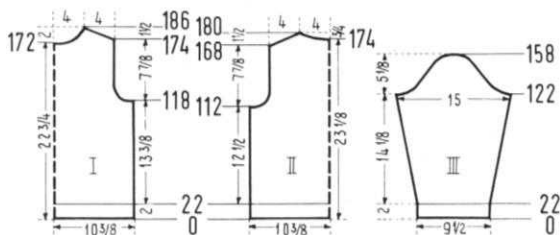
ROWS 109-118: Work even, changing to beige Frigate after ROW 114.

ROWS 119-132: ARMHOLE SHAPING: Bind off 4 sts. beginning next 2 rows, 3 sts. beginning next 2 rows, 2 sts. beginning next 2 rows, 1 st. beginning next 4 rows and 1 st. at each end of the following 4th row. (72 sts.).

ROWS 133-172: Work even.

ROWS 173-186: NECK SHAPING: Work short rows. On the left side, put 41 needles 1 x, 3 needles 2 x, 2 needles 3 x and 1 needle 1 x into holding position. AT THE SAME TIME, after ROW 174, then on every other row SHAPE SHOULDER by binding off 2 sts. 3 x and 3 sts. 4 x. After ROW 186 move the Cam Box to the left side, turn the Row Counter back to 172 and bring 31 needles on the left side into working position.

ROWS 173-186: Knit 2 rows and continue to knit short rows for NECK SHAPING by putting 3 needles 2 x, 2 needles 3 x and 1 needle 1 x into holding position. AT THE SAME TIME, after ROW 174, then on every other row Shape Shoulder by binding off 2 sts. 3 x and 3 sts. 4 x. For the Facing bring the 36 needles from holding into working



position and work 6 rows stockinette st., increasing 1 st. on each side after Rows 2 and 4. After 6 rows bind off all sts. very loosely the crochet method.

SLEEVE: (Figure III). Make two. Cast on 87 sts. with beige Subita.

ROWS 1-22: K1, P1, Ribbing. After ROW 22 transfer the ribber sts. to the neighboring needles of the main machine (Occupied needles) and continue working over every other needle with beige Frigate. (44 sts.).

ROWS 23-122: Increase 1 st. on each side after ROW 26, then again every following 8th row 11 x. (68 sts.).

ROWS 123-158: CAP SHAPING: Bind off 4 sts. beginning next 2 rows, 3 sts. beginning next 2 rows, 2 sts. beginning next 6 rows, 1 st. beginning next 20 rows, 2 sts. beginning next 4 rows, 3 sts. beginning next 2 rows and after ROW 158 bind off the remaining 8 sts.

FINISHING: Join front and back at sides and shoulders, easing in the fullness at bustline of front section. Sew sleeves together and set in. Turn under facing at neckline and hem to wrong side. Crochet your own monogram and sew in place as illustrated, or you may use duplicate stitch directly on pullover for the monogram.

MAN'S PULLOVER, HP 3537



SIZE: 40/42. **MATERIAL:** 21 oz. rust and 5¼ oz. beige KNITKING Frigate and 5¼ oz. rust KNITKING Subita 2 x 4. **TENSION:** KNITKING: Stockinette Stitch 10, K1, P1, Ribbing 6 to 8. **GAUGE:** Stockinette Stitch: 9 sts. 2", 14 rows 2". K1, P1, Ribbing: 18 sts. 2", 22 rows 2". **PATTERN:** Stockinette Stitch over every other needle. **COLLAR** and **EDGES:** K1, P1, Ribbing over every other needle on the Main machine and every needle on the Ribber.

BACK: (Figure II). Cast on 195 sts. with Subita.

ROWS 1-22: K1, P1, Ribbing. After ROW 22 transfer the ribber sts. to the empty needles of the main machine. On the right side, move the 1st stitch 1 needle outward, then hang the 3rd, 5th, 7th, etc. sts. onto the left neighboring needles and continue working stockinette st. over every other needle with rust Frigate. (99 sts.).

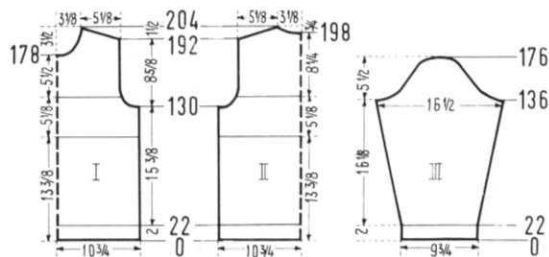
ROWS 23-130: Work even, changing to beige after ROW 102.

ROWS 131-144: ARMHOLE SHAPING: Bind off 4 sts. beginning next 2 rows, 3 sts. beginning next 2 rows, 2 sts. beginning next 2 rows, 1 st. beginning next 4 rows and 1 st. at each end of the following 4th row, changing to rust after ROW 138. (75 sts.).

ROWS 145-192: Work even.

ROWS 193-204: SHOULDER SHAPING: Bind off 3 sts. beginning next 6 rows. After ROW 198 bind off the center 11 sts. for NECK. (See Notes to Knit By, inside back cover). Bind off 3 sts. at Shoulder side and continue to shape shoulder on every other row by binding off 3 sts. 1 x and 4 sts. 2 x. AT THE SAME TIME, shape NECK on every other row by binding off 5 sts. 1 x and 4 sts. 1 x.

FRONT: (Figure I). Work the front the same as the back to ROW 178, then bind off the center 9 sts. for NECK as you did on the back, then on every other row on Neck side, bind off 3 sts. 1 x, 2 sts. 1 x, 1 st. 2 x and 1 st. on every following 4th row 3 x. AT THE SAME TIME,



after ROW 192, then on every other row SHAPE SHOULDER by binding off 3 sts. 5 x and 4 sts. 2 x.

SLEEVE: (Figure III). Make two. Cast on 91 sts. with Subita.

ROWS 1-22: K1, P1, Ribbing. After ROW 22 transfer the ribber sts. onto the left neighboring needles on the main machine (occupied needles) and continue working over every other needle with rust Frigate. (46 sts.).

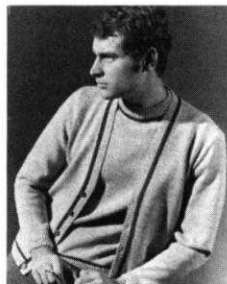
ROWS 23-136: Increase 1 st. on each side after ROW 30, then again every following 8th row 7 x and every following 6th row 7 x. (76 sts.).

ROWS 137-176: CAP SHAPING: Bind off 4 sts. beginning next 2 rows, 3 sts. beginning next 4 rows, 2 sts. beginning next 4 rows, 1 st. beginning next 24 rows, 2 sts. beginning next 2 rows, 3 sts. beginning next 4 rows and after ROW 176 bind off the remaining 8 sts.

COLLAR: Cast on 165 sts. with Subita. Work 72 rows K1, P1, Ribbing, 12 rows tension 8, 12 rows tension 7, 24 rows tension 6, 12 rows tension 7 and 12 rows tension 8. After 72 rows bind off all sts.

FINISHING: Join front and back section at sides and shoulders. Join short ends of collar, then sew 1 long edge to inside and 1 long edge of outside of neckline. Crochet your own monogram and sew in place as illustrated, or you may use duplicate stitch directly on pullover for the monogram.

MAN'S TWIN-SET, HP 3540



SIZE: 38/40. **MATERIAL:** 29 $\frac{3}{4}$ oz. beige and 1 $\frac{3}{4}$ oz. brown KNITTING Sonika Dralon. **TENSION:** KNITTING 7 to 9. **GAUGE:** 14 sts. 2", 19 rows 2".

PATTERN: Stockinette Stitch.

EDGES: K1, P1, Ribbing.

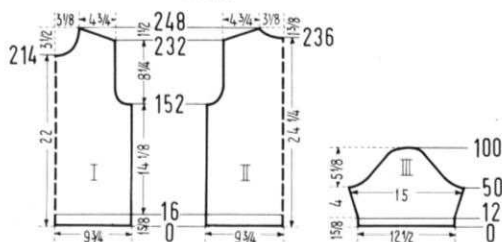
PULLOVER BACK: (Figure II). Cast on 143 sts.

ROWS 1-16: K1, P1, Ribbing. After ROW 16 transfer the ribber sts. to the main machine, continue with stockinette st.

ROWS 17-152: Work even, knitting ROWS 17-20 with brown.

ROWS 153-172: ARMHOLE SHAPING: Bind off 4 sts. beginning next 2 rows, 3 sts. beginning next 2 rows, 2 sts. beginning next 4 rows, 1 st. beginning next 4 rows and 1 st. at each end of the next 4th and following 4th row. (113 sts.).

ROWS 173-232: Work even.



ROWS 233-248: SHOULDER SHAPING: Bind off 3 sts. beginning next 4 rows. After ROW 236 bind off the center 13 sts. for NECK. (See Notes to Knit By, inside back cover). Bind off 4 sts. on Shoulder side and continue to shape shoulder on every other row by binding off 4 sts. 6 x. AT THE SAME TIME, shape NECK on every other row by binding off 5 sts. 1 x, 4 sts. 1 x, 3 sts. 1 x and 2 sts. 2 x.

FRONT: (Figure I). Work the front the same as the back to ROW 214, then bind off the center 13 sts. for NECK as you did on the back, then on every other row bind off 4 sts. 1 x, 3 sts. 1 x, 2 sts. 2 x, 1 st. 2 x and on every following 4th row 1 st. 3 x. AT THE SAME TIME, after ROW 232, then on every other row SHAPE SHOULDER by binding off 3 sts. 2 x and 4 sts. 7 x.

SLEEVE: (Figure III). Make two. Cast on 89 sts.

ROWS 1-12: K1, P1, Ribbing. After ROW 12 transfer the

ribber sts. to the main machine and continue with stockinette st.

ROWS 13-50: Increase 1 st. on each side after ROW 14, then again every following 4th row 8 x. (107 sts.).

ROWS 51-62: CAP SHAPING: Bind off 4 sts. beginning next 2 rows, 3 sts. beginning next 2 rows and 2 sts. beginning next 8 rows.

ROWS 63-100: Bind off 1 st. beginning next 2 rows and 2 sts. beginning next 2 rows. Repeat these bind offs 7 x, then bind off 2 sts. beginning next 2 rows, 3 sts. beginning next 2 rows, 4 sts. beginning next 2 rows and after ROW 100 bind off the remaining 11 sts.

COLLAR: Cast on 141 sts. with beige and knit 36 rows K1, P1, Ribbing, 6 rows tension 9, 6 rows tension 8, 12 rows tension 7, 6 rows tension 8 and 6 rows tension 9. After 36 rows transfer the ribber sts. to the main machine, turn tension to 8 and work 4 rows stockinette st. with brown. Now bind off all sts. the crochet method.

JACKET BACK: (Figure V). Cast on 151 sts.

ROWS 1-12: K1, P1, Ribbing. After ROW 12 transfer the ribber sts. to the main machine, continue with stockinette st.

ROWS 13-160: Work even, knitting ROWS 13-16 with brown.

ROWS 161-182: ARMHOLE SHAPING: Bind off 4 sts. beginning next 2 rows, 3 sts. beginning next 2 rows, 2 sts. beginning next 6 rows, 1 st. beginning next 4 rows and 1 st. at each end of the next 4th and following 4th row. (117 sts.).

ROWS 183-244: Work even.

ROWS 245-260: SHOULDER SHAPING: Bind off 4 sts. beginning next 8 rows. After ROW 252 bind off the center 19 sts. for NECK. (See Notes to Knit By, inside back cover). Bind off 4 sts. at Shoulder side, and continue to shape shoulder on every other row by binding off 4 sts. 4 x. AT THE SAME TIME, shape NECK on every other row by binding off 6 sts. 1 x, 4 sts. 1 x and 3 sts. 1 x.

FRONT: (Figure IV). Cast on 70 sts.

ROWS 1-12: K1, P1, Ribbing. After ROW 12 transfer the ribber sts. to the main machine, continue with stockinette st.

ROWS 13-50: Work even, knitting ROWS 13-16 with brown. After ROW 50 work the pocket. On the left side put 20 needles and on the right side put 11 needles into holding position. Over the needles in working position work 12 rows K1, P1, Ribbing, then bind off these sts. Now cast on 39 sts. over the empty needles for the pocket lining and work 38 rows stockinette st., then move the Cam Box to the right side, turn the Row Counter back to 50, bring all needles back into working position and continue working over all needles.

ROWS 51-141: Work even.

ROWS 142-260: FRONT SHAPING: Decrease 1 st. on the left side after ROW 141, then again every following 6th row 10 x and every following 8th row 6 x by always hanging the 4th st. onto the 3rd needle and moving the end sts. inward to fill the empty needle. AT THE SAME TIME, after ROW 160, then on every other row SHAPE ARMHOLE by binding off 4 sts. 1 x, 3 sts. 1 x, 2 sts. 3 x, 1 st. 2 x and 1 st. on the next 4th and following 4th row. After ROW 244, then on every other row SHAPE SHOULDER by binding off 4 sts. 9 x.

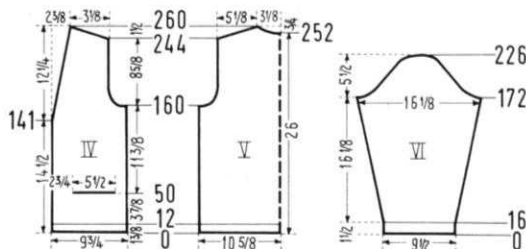
Make second front section with reverse shapings.

SLEEVE: (Figure VI). Make two. Cast on 67 sts.

ROWS 1-16: K1, P1, Ribbing. After ROW 16 transfer the ribber sts. to the main machine and continue with stockinette st.

ROWS 17-172: Increase 1 st. on each side after ROW 22, then again every following 6th row 23 x. (115 sts.).

ROWS 173-184: CAP SHAPING: Bind off 4 sts. beginning



next 2 rows, 3 sts. beginning next 4 rows and 2 sts. beginning next 6 rows.

ROWS 185-226: Bind off 1 st. beginning next 4 rows and 2 sts. beginning next 2 rows. Repeat these bind offs 5 x, then bind off 3 sts. beginning next 2 rows, 4 sts. beginning next 2 rows, 5 sts. beginning next 2 rows and after ROW 226 bind off the remaining 11 sts.

BUTTON BAND: Cast on 195 sts. with beige.

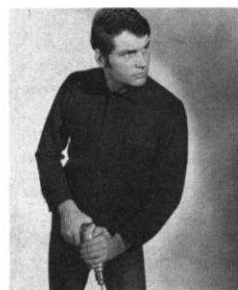
ROWS 1-12: K1, P1, Ribbing. After ROW 12 transfer the ribber sts. to the main machine, continue with stockinette st. and work with brown.

ROWS 13-16: Work even, then put all sts. on contrast yarn. Turn the work. Pick up 195 sts. from the first row of the 4 rows stockinette st. and work 4 rows stockinette st., then bind off these sts. and the sts. held on contrast, using the crochet method. The **BUTTONHOLE BAND** is worked the same, but make button holes after ROW 6 over the 4th-8th, 22nd-26th, 40th-44th, 58th-62nd and 76th-80th needles counting from the left side.

FINISHING: PULLOVER: Join front and back section at sides and shoulders. Sew sleeves together and set in. Join short ends of neckband, then sew cast-on edge to inside and bound-off edge to outside of neckline with the stockinette stitch rows on the right side.

JACKET: Join front and back sections at sides and shoulders. Sew sleeves together and set in. Join button and buttonhole band at center back, then sew to front and neckline. (1 stockinette stitch edge to the wrong side and the other stockinette stitch edge to the outside.) On wrong side, sew pocket lining against jacket. Sew sides of pocket edging to jacket. Finish buttonholes, sew on buttons.

MAN'S SHIRT, HP 3538



SIZE: 44/46. **MATERIAL:** 22 $\frac{3}{4}$ oz. blue KNITTING Nora. **TENSION:** KNITTING 5 to 7. **GAUGE:** 15 sts. 2", 20 rows 2". **PATTERN:** Stockinette Stitch.

BACK: (Figure II). Cast on 174 sts. **ROWS 1-32:** Work even. After ROW 32 hang the cast-on sts. back on the machine behind the latches to form the hem.

ROWS 33-188: Work even.

ROWS 189-212: ARMHOLE SHAPING: Bind off 5 sts. beginning next 2 rows, 3 sts. beginning next 4

rows, 2 sts. beginning next 2 rows, 1 st. beginning next 4 rows and 1 st. on each end of every following 4th row 3 x. (138 sts.)

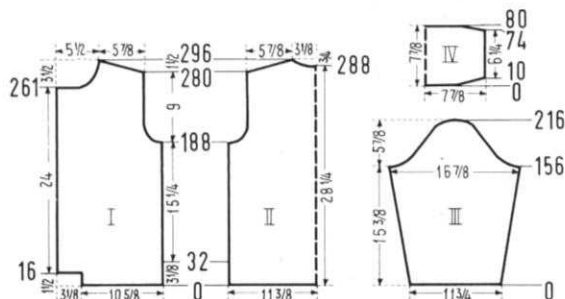
ROWS 213-280: Work even.

ROWS 281-296: SHOULDER SHAPING: Bind off 5 sts. beginning next 8 rows. After ROW 288 bind off the center 18 sts. for NECK. (See Notes to Knit By, inside back cover). Bind off 5 sts. at Shoulder side and continue to shape shoulder on every other row by binding off 5 sts. 4 x. AT THE SAME TIME, shape Neck on every other row by binding off 7 sts. 1 x, 5 sts. 1 x and 3 sts. 1 x.

FRONT: (Figure I). Cast on 81 sts.

ROWS 1-16: Work even. After ROW 16 cast on 24 sts. on the left side using a separate length of yarn.

ROWS 17-32: Work even. After ROW 32 hang the first 81 cast-on sts. back on the machine behind the latches to form the hem.



ROWS 33-188: Work even.

ROWS 189-212: ARMHOLE SHAPING: Bind off 5 sts. on the right side, then on every other row bind off 3 sts. 2 x, 2 sts. 1 x, 1 st. 2 x and 1 st. on every following 4th row 3 x. (87 sts.)

ROWS 213-261: Work even.

ROWS 262-296: NECK SHAPING: Bind off 24 sts. on the left side, then on every other row bind off 3 sts. 2 x, 2 sts. 3 x, 1 st. 4 x and 1 st. on the next 4th and following 4th row AT THE SAME TIME, after ROW 280, then on every other row SHAPE SHOULDER by binding off 5 sts. 9 x.

Work the second front section with reverse shapings and make buttonholes after ROWS 52, 92, 132, 172, 212 and 252 over the 3rd-7th and 18th-22nd needles counting from the right side.

SLEEVE: (Figure III). Make two. Cast on 91 sts.

ROWS 1-156: Increase 1 st. on each side after ROW 8, then again every following 8th row 16 x and every following 6th row 2 x. (129 sts.)

ROWS 157-168: CAP SHAPING: Bind off 5 sts. beginning next 2 rows, 4 sts. beginning next 2 rows, 3 sts. beginning next 2 rows and 2 sts. beginning next 6 rows.

ROWS 169-216: Bind off 1 st. beginning next 4 rows and 2 sts. beginning next 2 rows. Repeat these bind offs 6 x, then bind off 3 sts. beginning next 2 rows, 4 sts. beginning next 2 rows, 5 sts. beginning next 2 rows and after ROW 216 bind off the remaining 13 sts.

COLLAR: Cast on 120 sts. and work with tension 5.

ROWS 1-10: Work short rows. (See Notes to Knit By, inside back cover). On the left side, put 32 needles into holding position, knit 1 row. On the right side put 32 needles into holding position, knit 1 row. Now alternately on each side bring 8 needles 4 x back into working position.

ROWS 11-74: Work even, knitting ROWS 15-28 with tension 6, ROWS 29-52 with tension 7, ROWS 53-66 with tension 6, then continue with tension 5.

ROWS 75-78: Alternately on each side, put 12 needles 2 x into holding position.

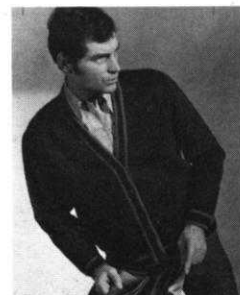
ROWS 79-80: On the left side, bring all needles into working position, knit 1 row. On the right side, bring all needles into working position, knit 1 row. After row 80 bind off all sts.

CUFF: Cast on 84 sts. and work 52 rows even, making buttonholes on one end after ROWS 11 and 39 over the 7th-11th needles. After ROW 52 bind off all sts. Make buttonholes on second cuff on opposite end.

POCKET: Make two. Cast on 36 sts. and work 88 rows even, then bind off all sts.

FINISHING: Join front and back sections at sides and shoulders. Sew sleeves together and set in. Turn under 12 sts. on each front edge, matching buttonholes and hem to wrong side. Fold collar in half lengthwise and sew short ends. Sew cast-on edge of collar to inside and bound-off edge to outside of neckline, leaving 1 $\frac{1}{2}$ " at both front edges unattached. Fold cuffs in half lengthwise and sew short ends. Make small pleats at lower edge of sleeves. Sew cuffs to sleeves, (1 long edge to inside and 1 long edge to outside of sleeve) leaving 1 $\frac{1}{2}$ " on each side of the cuffs and 1" on the sleeve edges unattached. Turn under 16 rows on upper pockets and hem to wrong side, then fold over 1" to right side and sew button to each side to hold edge in place. Sew pockets to shirt. Finish buttonholes, sew on buttons.

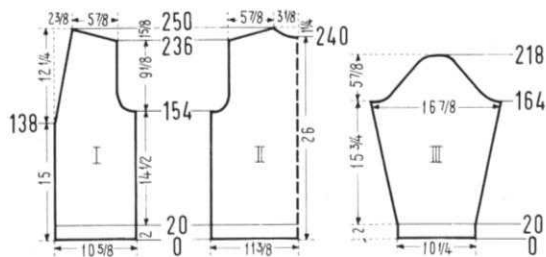
MAN'S CARDIGAN, HP 3539



SIZE: 44/46. **MATERIAL:** 29 $\frac{3}{4}$ oz. blue and 3 $\frac{1}{2}$ oz. red KNITTING Nanga Parbat. **TENSION:** KNITTING 9 to 10. **GAUGE:** 13 sts. 2", 18 rows 2". **PATTERN:** Stockinette St. **EDGES:** K1, P1, Ribbing.

BACK: (Figure II). Cast on 151 sts. with red.

ROWS 1-20: Work K1, P1, Ribbing, 4 rows red, 12 rows blue and 4 rows red. After ROW 20 transfer the ribber sts. to the main machine, continue with stockinette st. and work with blue.



ROWS 21-154: Work even.

ROWS 155-172: **ARMHOLE SHAPING:** Bind off 4 sts. beginning next 2 rows, 3 sts. beginning next 4 rows, 2 sts. beginning next 2 rows, 1 st. beginning next 6 rows and 1 st. at each end of the following 4th row (119 sts.).

ROWS 173-236: Work even.

ROWS 237-250: **SHOULDER SHAPING:** Bind off 4 sts. beginning next 2 rows and 5 sts. beginning next 2 rows. After ROW 240 bind off the center 15 sts. for **NECK**. (See Notes to Knit By, inside back cover). Bind off 5 sts. at Shoulder Side and continue to shape shoulder on every other row by binding off 5 sts. 5 x. **AT THE SAME TIME**, Shape Neck on every other row by binding off 4 sts. 2 x, 3 sts. 1 x and 2 sts. 1 x.

FRONT: (Figure I). Cast on 71 sts. with red.

ROWS 1-20: Work K1, P1, Ribbing, 4 rows red, 12 rows blue and 4 rows red. After ROW 20 transfer the ribber sts. to the main machine, continue with stockinette st. and work with blue.

ROWS 21-138: Work even.

ROWS 139-250: **FRONT, ARMHOLE and SHOULDER SHAPING:** Decrease 1 st. on the left side after ROW 138, then again every following 7th row 15 x by always hanging the 3rd st. onto the 2nd needle and moving the end sts. inward to fill the empty needle. **AT THE SAME TIME**, after ROW 154, then on every other row **SHAPE ARMHOLE** by binding off 4 sts. 1 x, 3 sts. 2 x, 2 sts. 1 x 1 st. 3 x and 1 st. on the following 4th row 1 x. After ROW 236, then on every other row **SHAPE SHOULDER** by binding off 4 sts. 1 x and 5 sts. 7 x. Make second front section with reverse shapings.

SLEEVE: (Figure III). Make two. Cast on 67 sts. with red. **ROWS 1-20:** Work K1, P1, Ribbing, 4 rows red, 12 rows blue and 4 rows red. After ROW 20 transfer the ribber sts. to the main machine, continue with stockinette st. and work with blue.

ROWS 21-164: Increase 1 st. on each side after ROW 20, then again every following 6th row 16 x and every following 8th row 5 x. (111 sts.).

ROWS 165-176: **CAP SHAPING:** Bind off 4 sts. beginning next 4 rows, 3 sts. beginning next 2 rows and 2 sts. beginning next 6 rows.

ROWS 177-218: Bind off 1 st. beginning next 4 rows and 2 sts. beginning next 2 rows. Repeat these bind offs 5 x, then bind off 3 sts. beginning next 4 rows, 4 sts. beginning next 2 rows and after ROW 218 bind off the remaining 9 sts.

FRONT BAND: Cast on 179 sts. with red and work stockinette st., 4 rows red, 8 rows blue, 8 rows red, 8 rows blue and 4 rows red. After 32 rows bind off all sts. Work the second band section the same, but make buttonholes after ROWS 7 and 24 over the 6th-10th, 24th-28th, 42nd-46th, 60th-64th and 78th-82nd needles counting from the right side.

FINISHING: Join front and back sections at sides and shoulders. Sew sleeves together and set in. Join bands at center back. Sew 1 long edge of band to inside and 1 long edge of band to outside of front and neckline, matching buttonholes. Finish buttonholes, sew on buttons.

**KNITKINGS' INTERCHANGEABLE YARN CHART
ALLOWS YOU TO SUBSTITUTE NATIONALLY SOLD
YARNS. PRICE \$1.00 PLUS 12c POSTAGE. CALIF.
RESIDENTS 5c SALES TAX.**

BOY'S PULLOVER, KK 5004

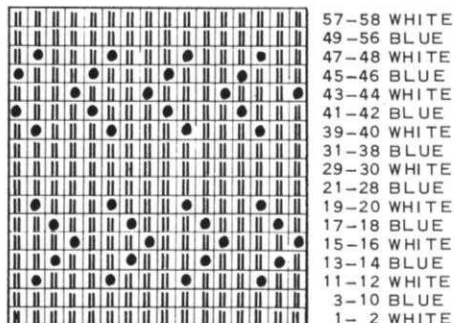


SIZE: 3-4 years. **MATERIAL:** 7 oz. medium blue and 1 3/4 oz. white **KNITTING** Subita 2 x 4. **TENSION:** 6 to 8. **GAUGE:** Stockinette Stitch: 15 sts. 2", 21 rows 2". Pattern Stitch and K1, P1, Ribbing: 15 sts. 2", 24 rows 2". **PATTERN:** Stockinette Stitch and Holding Position Design according to chart. **AM 3** or Automatic use Wheel 3. **EDGES:** K1 P1, Ribbing.

BACK: (Figure II). Cast on 96 sts. **ROWS 1-18:** K1, P1, Ribbing. After ROW 18 transfer the ribber sts. to the main machine and continue with stockinette st.

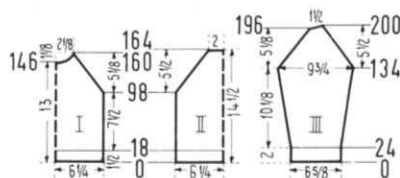
ROWS 19-98: Work even.

ROWS 99-164: **RAGLAN SHAPING:** Bind off 1 st. beginning



next 66 rows, working the holding position design after ROW 102. After ROW 164 bind off the remaining 30 sts.

FRONT: (Figure I). Work the front the same as the back to ROW 160, but **AT THE SAME TIME**, for the **NECK SHAPING**, after ROW 146, bind off the center 8 sts. (See Notes to Knit By, inside back cover), then on every other



row on Neck Side bind off 3 sts. 1 x, 2 sts. 2 x, 1 st. 3 x and after ROW 160 hang the remaining 3 sts. together, (2 outside sts. onto center st.) then bind off.

SLEEVE: (Figure III). Cast on 51 sts.

ROWS 1-24: K1, P1, Ribbing. After ROW 24 transfer the ribber sts. to the main machine and continue with stockinette st.

ROWS 25-134: Increase 1 st. on each side after ROW 30, then again every following 10th row 5 x and every following 8th row 6 x. (75 sts.).

ROWS 135-196: **RAGLAN SHAPING:** Decrease 1 st. beginning next 62 rows, working the holding position design after ROW 138.

ROWS 197-200: Work short rows. On the left side put 4 needles 2 x into holding position. **AT THE SAME TIME**, decrease 1 st. on the right side after ROWS 196 and 198. After ROW 200 bring all needles into working position and bind off the remaining 11 sts. Work second sleeve with reverse shaping.

NECKBAND: Cast on 91 sts. and work 26 rows K1, P1, Ribbing, then bind off all sts.

FINISHING: Join front and back section at sides. Sew sleeves together, then join to front and back section, leaving a 4" opening at the upper left back seam. Sew 1 edge of neckband to inside and 1 edge to outside of neckline, then sew in zipper.

GIRLS TWIN-SET, MK 5002

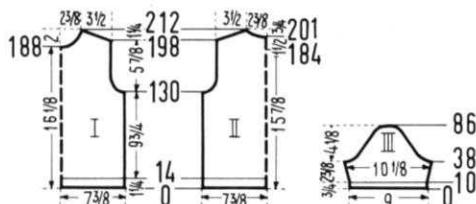


SIZE: 8-9 years. **MATERIAL:** 12¼ oz. green, 7 oz. blue and 3½ oz. yellow KNITKING Subita 2 x 3. **TENSION:** KNITKING 4 to 6. **GAUGE:** 17 sts. 2", 23 rows 2". **PATTERN:** Stockinette Stitch. **EDGES:** K1, P1, Ribbing.

PULLOVER: BACK: (Figure II). Cast on 128 sts. with green.

ROWS 1-14: K1, P1, Ribbing. After ROW 14 transfer the ribber sts. to the main machine and continue with stockinette st., always working 8 rows yellow, 8 rows green and 24 rows blue.

ROWS 15-130: Work even.



ROWS 131-144: ARMHOLE SHAPING: Bind off 4 sts. beginning next 2 rows, 3 sts. beginning next 2 rows, 2 sts. beginning next 4 rows and 1 st. beginning next 6 rows. (100 sts.).

ROWS 145-184: Work even. After ROW 184 divide the work in the center for the opening, put the 50 sts. on the left side into holding position and complete the right side first.

ROWS 185-198: Work even.

ROWS 199-212: SHOULDER SHAPING: Bind off 3 sts. on the right side, then on every other row bind off 3 sts. 1 x and 4 sts. 6 x. AT THE SAME TIME, after ROW 201, then on every other row SHAPE NECK by binding off 7 sts. 1 x, 5 sts. 1 x, 3 sts. 2 x and 2 sts. 1 x. Now move the Cam Box to the left side, bring all needles into working position, turn the Row Counter back to 184 and complete the left half following the instructions from ROWS 185-212 and reversing the sides.

FRONT: (Figure I). Work the front the same as the back to ROW 188 but omit the opening. After ROW 188 bind off the center 14 sts. for NECK (See Notes to Knit By, inside back cover) and on every other row on Neck Side bind off 4 sts. 1 x, 2 sts. 3 x, 1 st. 2 x and 1 st. on the following 4th row 1 x. AT THE SAME TIME, after ROW 198, then on every other row SHAPE SHOULDER by binding off 3 sts. 2 x and 4 sts. 6 x.

SLEEVE: (Figure III). Make two. Cast on 79 sts. with green. **ROWS 1-10:** K1, P1, Ribbing. After ROW 10 transfer the ribber sts. to the main machine and continue with stockinette st., always working 22 rows blue, 8 rows yellow and 8 rows green.

ROWS 11-38: Increase 1 st. on each side after ROW 14, then again every following 4th row 4 x. (89 sts.).

ROWS 39-86: CAP SHAPING: Bind off 4 sts. beginning next 2 rows, 3 sts. beginning next 4 rows, 2 sts. beginning next 6 rows, 1 st. beginning next 30 rows, 3 sts. beginning next 6 rows and after ROW 86 bind off the remaining 9 sts. **NECKBAND:** Cast on 119 sts. with green. Work K1, P1, Ribbing, 6 rows with tension 5 and 6 rows with tension 6. After 12 rows bind off all sts.

JACKET: BACK: (Figure V). Cast on 136 sts. with green. **ROWS 1-10:** K1, P1, Ribbing. After ROW 10 transfer the ribber sts. to the main machine and continue with stockinette st.

ROWS 11-138: Work even, knitting ROWS 11-18 with yellow and ROWS 19-42 with blue, then continue with green.

ROWS 139-154: ARMHOLE SHAPING: Bind off 4 sts. beginning next 2 rows, 3 sts. beginning next 4 rows, 2 sts. beginning next 2 rows, 1 st. beginning next 4 rows and 1 st. at each end of the following 4th row. (106 sts.).

ROWS 155-212: Work even.

ROWS 213-226: SHOULDER SHAPING: Bind off 4 sts. begin-

ning next 4 rows. After ROW 216 bind off the center 14 sts. for NECK. (See Notes to Knit By, inside back cover). Bind off 4 sts. on Shoulder Side and continue to shape shoulder on every other row by binding off 4 sts. 4 x and 5 sts. 1 x. AT THE SAME TIME, Shape Neck on every other row by binding off 5 sts. 1 x, 3 sts. 2 x and 2 sts. 1 x.

FRONT: (Figure IV). Cast on 70 sts. with green.

ROWS 1-10: K1, P1, Ribbing. After ROW 10 transfer the



ribber sts. to the main machine and continue with stockinette st. using the colors as you did on the back.

ROWS 11-129: Work even, making buttonholes after ROWS 10, 48, 86 and 124 over the 3-7th needles counting from the left side.

ROWS 130-226: FRONT SHAPING: Decrease 1 st. on the left side after ROW 129, then again every following 4th row 18 x and every following 6th row 3 x by always hanging the 3rd st. onto the 2nd needle and moving the end sts. inward to fill the empty needle. AT THE SAME TIME, after ROW 138, then on every other row, SHAPE ARMHOLE by binding off 4 sts. 1 x, 3 sts. 2 x, 2 sts. 1 x, 1 st. 2 x and 1 st. on the following 4th row 1 x. After ROW 212, then on every other row SHAPE SHOULDER by binding off 4 sts. 7 x and 5 sts. 1 x. Work the second front section with reverse shapings and omit the buttonholes.

SLEEVE: (Figure VI). Make two. Cast on 65 sts. with green.

ROWS 1-14: K1, P1, Ribbing. After ROW 14 transfer the ribber sts. to the main machine and continue with stockinette st.

ROWS 15-152: Working ROWS 15-22 with yellow and ROWS 23-46 with blue, increase 1 st. on each side after ROW 16, then again every following 8th row 16 x. (99 sts.).

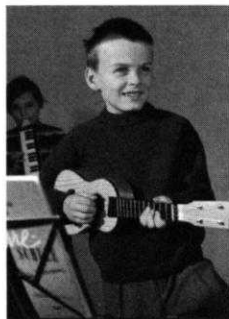
ROWS 153-202: CAP SHAPING: Bind off 4 sts. beginning next 2 rows, 3 sts. beginning next 4 rows, 2 sts. beginning next 6 rows, 1 st. beginning next 32 rows, 3 sts. beginning next 2 rows, 4 sts. beginning next 2 rows, 5 sts. beginning next 2 rows and after ROW 202 bind off the remaining 11 sts.

FRONT BAND: Make two. Cast on 197 sts. with green and work 12 rows K1, P1, Ribbing, then bind off all sts.

FINISHING PULLOVER: Join front and back section at sides and shoulders. Sew sleeves together and set in. Sew neckband to neckline. Work 1 row of single crochet around back opening and make 3 loops on the right side. Sew 3 buttons to the left side.

JACKET: Join front and back sections at sides and shoulders. Sew sleeves together and set in. Join front bands at center back and sew to front and neckline. Finish buttonholes, sew on buttons.

BOY'S PULLOVER, KK 5005



SIZE: 9-10 years and 11-12 years. **MATERIAL:** 15¾ oz. (17½ oz.) blue KNITKING Nanga Parbat. **TENSION:** KNITKING 9 to 10. **GAUGE:** 13 sts. 2", 18 rows 2". **PATTERN:** Stockinette Stitch. **EDGES:** K1, P1, Ribbing. **SIZE:** 9-10 years. **BACK:** (Figure II). Cast on 101 sts.

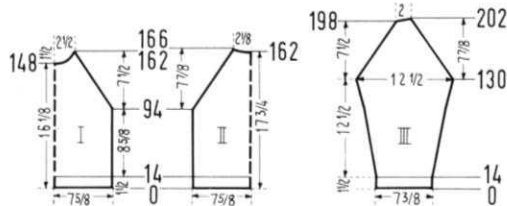
ROWS 1-14: K1, P1, Ribbing. After ROW 14 transfer the ribber sts. to the main machine and continue with stockinette st.

ROWS 15-94: Work even.

ROWS 95-166: RAGLAN SHAPING: Decrease 1 st. on each side after

ROW 94, then again on every other row 33 x by always hanging the 3rd st. on each side onto the 2nd needle and moving the end sts. inward to fill the empty needle. After ROW 162 bind off the center 15 sts. for NECK (See Notes to Knit By, inside back cover) and on every other row on Neck Side bind off 4 sts. 1 x and 3 sts. 1 x. AT THE SAME TIME, continue to Shape Raglan on every other row by decreasing 1 st. 2 x more.

FRONT: (Figure I). Work the front the same as the back to ROW 148, then bind off the center 9 sts. for NECK



as you did on the back, then on every other row on Neck Side bind off 3 sts. 1 x, 2 sts. 1 x and 1 st. 4 x. AT THE SAME TIME, continue to Shape Raglan on every other row by decreasing 1 st. 7 x more. After ROW 162 hang the remaining 3 sts. together and bind off.

SLEEVE: (Figure III). Cast on 49 sts.

ROWS 1-14: K1, P1, Ribbing. After ROW 14 transfer the ribber sts. to the main machine and continue with stockinette st.

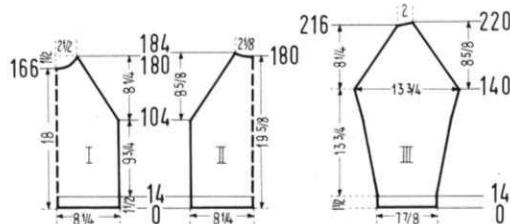
ROWS 15-130: Increase 1 st. on each side after ROW 16, then again every following 8th row 10 x, every following 6th row 3 x and every following 4th row 3 x. (83 sts.).

ROWS 131-198: RAGLAN SHAPING: Decrease 1 st. on each side after ROW 130, then again every other row 33 x as you did on the back.

ROWS 199-202: Work short rows. On the left side, put 4 needles 2 x into holding position and on the right side, decrease 1 st. after ROWS 198 and 200 as you did before. After ROW 202 bring all needles into working position and bind off all 13 sts. Work second sleeve with reverse shaping.

NECKBAND: Cast on 115 sts. and work K1, P1, Ribbing, 8 rows with tension 10, 12 rows with tension 9 and 8 rows with tension 10. After 28 rows bind off all sts.

FINISHING: Join front and back section at sides. Sew sleeves together and weave to front and back section, 1 st. in on each edge. Join short ends of neckband, then sew 1 long edge to inside and 1 long edge to outside of neckline.



SIZE: 11-12 years. **BACK:** (Figure II). Cast on 109 sts. **ROWS 1-14:** K1, P1, Ribbing. After ROW 14 transfer the ribber sts. to the main machine and continue with stockinette st.

ROWS 15-104: Work even.

ROWS 105-184: RAGLAN SHAPING: Decrease 1 st. on each side after ROW 104, then again every other row 37 x by always hanging the 3rd st. on each side onto the 2nd needle and moving the end sts. inward to fill the empty needle. After ROW 180 bind off the center 15 sts. for NECK (See Notes to Knit By, inside back cover) and on every other row on Neck Side bind off 4 sts. 1 x and 3 sts. 1 x. AT THE SAME TIME, continue to Shape Raglan on every other row by decreasing 1 st. 2 x more.

FRONT: (Figure I). Work the front the same as the back to ROW 166, then bind off the center 9 sts. for NECK as you did on the back and on every other row on Neck Side bind off 3 sts. 1 x, 2 sts. 1 x and 1 st. 4 x. AT THE SAME TIME, continue to SHAPE RAGLAN on every other row by decreasing 1 st. 7 x more. After ROW 180 hang the

remaining 3 sts. together.

SLEEVE: (Figure III). Cast on 53 sts.

ROWS 1-14: K1, P1, Ribbing. After ROW 14 transfer the ribber sts. to the main machine and continue with stockinette st.

ROWS 15-140: Increase 1 st. on each side after ROW 16, then again every following 8th row 10 x, every following 6th row 4 x and every following 4th row 4 x. (91 sts.).

ROWS 141-216: RAGLAN SHAPING: Decrease 1 st. on each side, then again every other row 37 x as you did on the back.

ROWS 217-220: Work short rows. On the left side, put 4 needles 2 x into holding position and on the right side decrease 1 st. after ROWS 216 and 218. After ROW 220 bring all needles into working position and bind off all 13 sts. Work second sleeve with reverse shaping.

NECKBAND: Cast on 115 sts. and work K1, P1, Ribbing, 8 rows with tension 10, 12 rows with tension 9 and 8 rows with tension 10. After 28 rows bind off all sts.

FINISHING: Follow instructions for Size 9-10 years.

GIRL'S DRESS, JACKET and STOCKINGS, MK 5001



SIZE: 6-7 years. **MATERIAL:** 10 1/2 oz. orange, 10 1/2 oz. white and 1 3/4 oz. blue KNITTING Subita 2 x 3. **TENSION:** KNITTING 3 to 5. **GAUGE:** 18 sts. 2", 24 rows 2". **PATTERN:** Stockinette Stitch. **EDGES:** K1, P1, Ribbing.

DRESS BACK: (Figure II). Cast on 184 sts. with orange.

ROWS 1-120: Decrease 1 st. on each side after ROW 58, then again every following 8th row 6 x and every following 6th row 2 x by always hanging the 3rd st. on each

side into the 2nd needle, then moving the end sts. inward to fill the empty needle. AT THE SAME TIME, after ROW 58 for the DARTS decrease 2 sts. on each side, then again every following 8th row 6 x and every following 6th row 2 x. For the first decrease, hang the 58th and 60th sts. on each side onto the 59th needle, then move the end sts. inward to fill the empty needles. The next decreases lie directly above. (130 sts.).

ROWS 121-130: Work even with blue. After ROW 130 continue with orange.

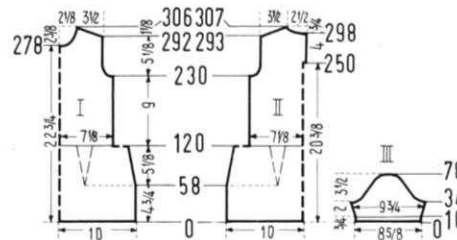
ROWS 131-230: Work even.

ROWS 231-246: ARMHOLE SHAPING: Bind off 3 sts. beginning next 4 rows, 2 sts. beginning next 4 rows, 1 st. beginning next 4 rows and 1 st. at each end of the following 4th row. (104 sts.).

ROWS 247-249: Work even. After ROW 249 put 52 needles on the right side into holding position and complete the left half first.

ROWS 250-293: After ROW 250 cast on 3 sts. on the right side for facing. To do this, put 3 sts. from the right half on a stitch holder, then work even.

ROWS 294-307: SHOULDER SHAPING: Bind off 4 sts. on the left side, then on every other row bind off 4 sts. 7 x. AT THE SAME TIME, after ROW 298 and on every other row SHAPE NECK by binding off 9 sts. 1 x, 6 sts. 1 x, 4 sts. 1 x and 2 sts. 2 x. Now move the Cam Box to the right



side, turn the Row Counter to 249, bring all needles into working position, hang the 3 sts. from the stitch holder back on the machine and complete the right half, following the directions from ROWS 250-307 but reverse the sides.

FRONT: (Figure I). Work the front the same as the back to ROW 278, but omit the opening.

ROWS 279-306: After ROW 278 bind off the center 10 sts. for NECK. (See Notes to Knit By, inside back cover), then on every other row on Neck Side bind off 3 sts. 2 x, 2 sts. 2 x, 1 st. 3 x and on the next 4th and following 4th row. At the same time, after ROW 292, then on every other row SHAPE SHOULDER by binding off 4 sts. 8 x.

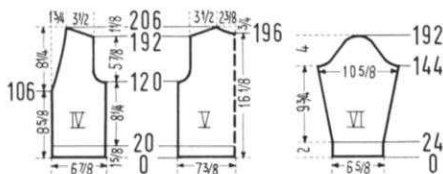
SLEEVE: (Figure III). Make two. Cast on 79 sts. with orange.

ROWS 1-10: K1, P1, Ribbing. After ROW 10 transfer the ribber sts. to the main machine and continue with stockinette st.

ROWS 11-34: Working ROWS 11-17 with blue and ROWS 18-24 with white, increase 1 st. on each side after ROW 10, then again every following 4th row 5 x. (91 sts.).

ROWS 35-44: CAP SHAPING: Bind off 4 sts. beginning next 2 rows, 3 sts. beginning next 4 rows and 2 sts. beginning next 4 rows.

ROWS 45-78: Bind off 1 st. beginning next 4 rows and 2 sts. beginning next 2 rows. Repeat these bind offs 4 x,



then bind off 3 sts. beginning next 2 rows, 4 sts. beginning next 2 rows and after ROW 78 bind off the remaining 9 sts.

NECKBAND: Cast on 115 sts. with blue, working K1, P1, ribbing, 7 rows blue with tension 3 and 7 rows white with tension 4. After 14 rows bind off all sts.

JACKET BACK: (Figure V). Cast on 137 sts. with blue and work stockinette st.

ROWS 1-20: Work even. After ROW 20 hang the cast-on sts. back on the machine behind the latches to form the hem and continue with white.

ROWS 21-120: Work even.

ROWS 121-138: ARMHOLE SHAPING: Bind off 4 sts. beginning next 2 rows, 3 sts. beginning next 2 rows, 2 sts. beginning next 4 rows, 1 st. beginning next 6 rows and 1 st. at each end of the following 4th row. (107 sts.).

ROWS 139-192: Work even.

ROWS 193-206: SHOULDER SHAPING: Bind off 4 sts. beginning next 4 rows. After ROW 196 bind off the center 13 sts. for NECK. (See Notes to Knit By, inside back cover). Bind off 4 sts. at Shoulder Side and continue to shape shoulder on every other row by binding off 4 sts. 5 x. AT THE SAME TIME, Shape Neck on every other row by binding off 6 sts. 1 x, 4 sts. 1 x, 3 sts. 1 x and 2 sts. 1 x.

FRONT: (Figure IV). Cast on 63 sts. with blue and work stockinette st.

ROWS 1-20: Work even, then hang the cast-on sts. back on the machine behind the latches to form the hem and continue with white.

ROWS 21-106: Work even.

ROWS 107-206: FRONT SHAPING: Decrease 1 st. on the left side after ROW 106, then again every following 5th row 6 x, every following 6th row 6 x and every following 8th row 3 x by always hanging the 3rd st. onto the 2nd needle, then moving the end sts. inward to fill the empty needle. AT THE SAME TIME, after ROW 120 and on every other row SHAPE ARMHOLE by binding off 4 sts. 1 x, 3 sts. 1 x, 2 sts. 2 x, 1 st. 3 x and on the following 4th row 1 st. 1 x. After ROW 192 and on every other row SHAPE SHOULDER by binding off 4 sts. 8 x. Make second front section with reverse shapings.

SLEEVE: (Figure VI). Make two. Cast on 61 sts. with white. **ROWS 1-24:** K1, P1, Ribbing. After ROW 24 transfer the ribber sts. to the main machine and continue with stockinette st.

ROWS 25-144: Working ROWS 25-31 with blue and ROWS 32-38 with orange, increase 1 st. on each side after ROW 26, then again every following 6th row 13 x and every following 8th row 4 x. (97 sts.).

ROWS 145-156: CAP SHAPING: Bind off 4 sts. beginning next 2 rows, 3 sts. beginning next 4 rows and 2 sts. beginning next 6 rows.

ROWS 157-192: Bind off 1 st. beginning next 4 rows and 2 sts. beginning next 2 rows. Repeat these bind offs 4 x, then bind off 2 sts. beginning next 2 rows, 3 sts. beginning next 4 rows and after ROW 192 bind off the remaining 9 sts.

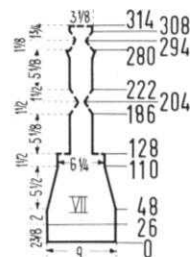
FRONT and NECKLINE BAND: Cast on 155 sts. with orange and work stockinette st., 7 rows orange, 14 rows blue and 7 rows orange. After 28 rows bind off all sts. Work second band section the same, making buttonholes after ROWS 6 and 21 over the 9th-13th, 34th-38th and 59th-63rd needles counting from the left side.

POCKET: Cast on 29 sts. with white and work stockinette st., 28 rows white, 6 rows orange and 12 rows blue. After 46 rows bind off all sts.

STOCKINGS: (Figure VII). Cast on 83 sts. with white and work stockinette st.

ROWS 1-26: Work even, then hang the cast-on sts. back on the machine behind the latches to form the hem.

ROW 27-48: Work ROWS 27-33 with blue and ROWS 34-40 with orange.



ROWS 49-110: Decrease 1 st. on each side after ROW 48, then again every following 6th row 9 x and every following 4th row 2 x by always hanging the 3rd st. on each side onto the 2nd needle, then moving the end sts. inward to fill the empty needle. (59 sts.).

ROWS 111-128: Work even, then put 15 sts. on each side on a stitch holder.

ROWS 129-186: For the INSTEP work even.

ROWS 187-204: For the TOE knit short rows. (See Notes to Knit By, inside back cover). Alternately on each side put 1 needle 7 x and 2 needles 2 x into holding position.

ROWS 205-222: Alternately on each side bring 2 needles 2 x and 1 needle 7 x back into working position.

ROWS 223-280: Increase 1 st. on each side after ROWS 268, 272 and 276.

ROWS 281-294: For the HEEL knit short rows. Alternately on each side put 4 needles 1 x, 1 needle 4 x, 2 needles 1 x and 3 needles 1 x into holding position.

ROWS 295-308: Alternately on each side bring 3 needles 1 x, 2 needles 1 x and 1 needle 5 x back into working position.

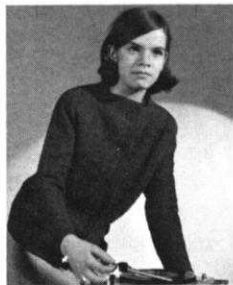
ROWS 309-314: (When decreasing, always move the end sts. inward to fill the empty needle, then put end needles back into holding position.) On the left side, hang the 3rd st. onto the 4th needle, knit 1 row. On the right side hang the 3rd st. onto the 4th needle, knit 1 row. Now alternately on each side hang 1 st. 2 x onto that same needle. (The 2nd st. onto the 3rd needle, then the 1st st. onto the 2nd needle). After ROW 314 put all sts. on a stitch holder. Work second stocking the same.

FINISHING: DRESS: Weave front and back section at sides, 1 st. in on each edge. Join shoulders. Sew sleeves together and set in. Turn under 20 rows at lower edge and hem to wrong side. Turn under 3 sts. at back opening and hem to wrong side. Sew bound-off edge of neckband to neckline. Sew in zipper.

JACKET: Join front and back sections at sides and shoulders. Sew sleeves together and set in. Join front edging at center back, then sew bound-off edge to inside and cast-on edge to outside of jacket front and neckline, matching buttonholes. Turn under 6 rows on upper pocket edge, hem to wrong side then sew to jacket. Finish buttonholes, sew on buttons.

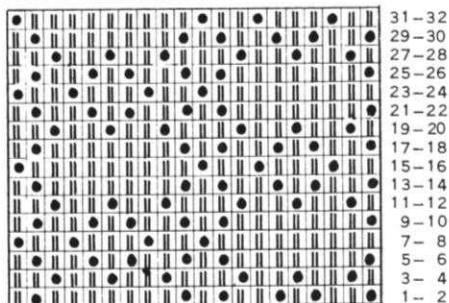
STOCKINGS: Weave the back seam together, 1 st. in on each edge. Weave the sts. on the stitch holders together for the heel. Join sole and instep at sides. Pull an elastic band through the upper edge.

GIRL'S TWIN-SET, MK 5003

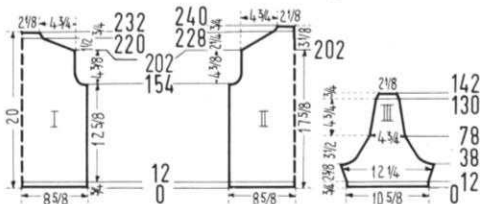


SIZE: 13-14 years. **MATERIAL:** 28 oz. green KNITTING Subita 2 x 4. **TENSION:** KNITTING: 6 to 8. **GAUGE:** Stockinette Stitch: 16 sts. 2", 22 rows 2". Pattern Stitch: 14 sts. 2", 32 rows 2". **PATTERN:** Pullover: Stockinette Stitch; Jacket: Holding position design according to chart, or use JAC 40 and Pattern No. 70. The purl side is the right side. **EDGES:** K1, P1, Ribbing. **PULLOVER: BACK:** (Figure II). Cast on 141 sts.

ROWS 1-12: K1, P1, Ribbing. After ROW 12 transfer the ribber sts. to the main machine and continue with stockinette st.
ROWS 13-154: Work even.
ROWS 155-170: ARMHOLE SHAPING: Bind off 4 sts. begin-



ning next 2 rows, 3 sts. beginning next 2 rows, 2 sts. beginning next 4 rows, 1 st. beginning next 4 rows and 1 st. at each end of the following 4th row. (113 sts.)
ROWS 171-202: Work even. After ROW 202, for the back opening, divide the sts. in the center, put 57 sts. on the left side into holding position and complete the right half first. (56 sts.)
ROWS 203-228: SHOULDER SHAPING: Bind off 2 sts. on the right side, then on every other row bind off 2 sts. 7 x and 3 sts. 6 x. After ROW 228 transfer every other st. to the ribber and work K1, P1, Ribbing.



ROWS 229-240: Decrease 1 st. on the right side after ROW 228, then again every other row 4 x. After ROW 240 bind off the remaining 17 sts. (18 sts. for the left half). Now move the Cam Box to the left side, turn the Row Counter to 202, bring all needles into working position and complete the left half following the instructions from ROWS 203-240 and reversing the sides.
FRONT: (Figure I). Work the front the same as the back to ROW 202. (Omit the opening).
ROWS 203-220: SHOULDER SHAPING: Bind off 3 sts. beginning next 12 rows and 4 sts. beginning next 8 rows. After ROW 220 transfer every other st. to the ribber and work K1, P1, Ribbing.
ROWS 221-232: Decrease 1 st. beginning next 10 rows. After ROW 232 bind off the remaining 35 sts.
SLEEVE: (Figure III). Make two. Cast on 87 sts.
ROWS 1-12: K1, P1, Ribbing. After ROW 12 transfer the ribber sts. to the main machine and continue with stockinette st.
ROWS 13-38: Increase 1 st. on each side after ROW 14, then again every following 4th row 5 x. (99 sts.)
ROWS 39-48: CAP SHAPING: Bind off 4 sts. beginning next 2 rows, 3 sts. beginning next 4 rows and 2 sts. beginning next 4 rows.
ROWS 49-130: Bind off 1 st. on each side, then again every

other row 15 x and every following 8th row 6 x by always hanging the 3rd st. on each side onto the 2nd needle, then moving the end sts. inward to fill the empty needle. After ROW 130 transfer every other st. to the ribber and work K1, P1, Ribbing.

ROWS 131-142: Decrease 1 st. beginning next 10 rows and after ROW 142 bind off the remaining 17 sts.

JACKET BACK: (Figure V). Cast on 129 sts.

ROWS 1-12: K1, P1, Ribbing. After ROW 12 transfer the ribber sts. to the main machine and continue in Holding Position Design.

ROWS 13-230: Work even.

ROWS 231-256: ARMHOLE SHAPING: Bind off 4 sts. beginning next 2 rows, then on each side of every following 4th row bind off 3 sts. 1 x, 2 sts. 2 x and 1 st. 3 x.

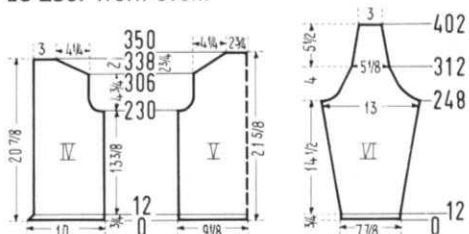
ROWS 257-306: Work even.

ROWS 307-350: SHOULDER SHAPING: Bind off 2 sts. beginning next 2 rows and 1 st. beginning next 4 rows. Repeat these bind offs 6 x, then bind off 3 sts. beginning next 2 rows and after ROW 350 bind off the remaining 39 sts.

FRONT: (Figure IV). Cast on 71 sts.

ROWS 1-12: Work K1, P1, Ribbing and decrease 1 st. on the left side after ROWS 2, 4, 6, 8 and 10. After ROW 12 transfer the ribber sts. to the main machine and continue in Holding Position Design.

ROWS 13-230: Work even.



ROWS 231-256: ARMHOLE SHAPING: Bind off 4 sts. on the right side, then on every following 4th row bind off 3 sts. 1 x, 2 sts. 2 x and 1 st. 3 x. (52 sts.)

ROWS 257-306: Work even.

ROWS 307-338: SHOULDER SHAPING: Bind off 1 st. on the right side, then on every other row bind off 2 sts. 15 x and after ROW 338 bind off the remaining 21 sts. Work the second front section with reverse shapings and make buttonholes after ROWS 11, 67, 131, 195, 259 and 323 over the 3rd-6th needles counting from the right side.

SLEEVE: (Figure VI). Make two. Cast on 57 sts.

ROWS 1-12: K1, P1, Ribbing. After ROWS 12 transfer the ribber sts. to the main machine and continue in Holding Position Design.

ROWS 13-248: Increase 1 st. on each side after ROW 24, then again every following 12th row 17 x. (93 sts.)

ROWS 249-402: CAP SHAPING: Bind off 4 sts. beginning next 2 rows, then on each side of every following 4th row bind off 4 sts. 1 x, 3 sts. 2 x, 2 sts. 1 x, 1 st. 12 x and 1 st. on each side of every following 10th row 8 x. After ROW 402 bind off the remaining 21 sts.

FRONT BAND: Make two. Cast on 173 sts. Work K1, P1, Ribbing and decrease 1 st. on each side after ROWS 2, 4, 6, 8 and 10. After ROW 12 bind off all sts.

BACK NECKBAND: Cast on 39 sts. Work K1, P1, Ribbing and increase 1 st. on each side after ROWS 2, 4, 6, 8 and 10. After ROW 12 bind off all sts.

SIDE NECKBAND: Make two. Cast on 19 sts. and work like the Back Neckband.

FRONT NECKBAND: Cast on 25 sts. Work K1, P1, Ribbing, increasing 1 st. on the right side and decreasing 1 st. on the left side after ROWS 2, 4, 6, 8 and 10. After ROW 12 bind off all sts. Make second Front Band with reverse shapings.

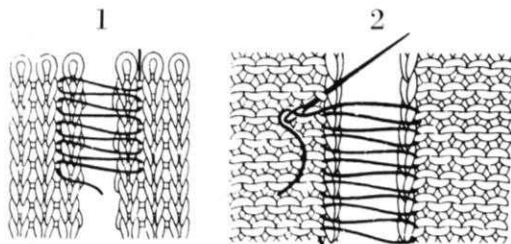
FINISHING PULLOVER: Join front and back section at sides. Sew sleeves together and join to front and back sections. Work a row of single crochet around back opening and make 3 loops on the right side. Sew 3 buttons to the left side.

JACKET: Join front and back sections at sides. Sew sleeves together and join to front and back sections. Join all bands and sew to fronts and neckline. Finish buttonholes, sew on buttons.

PRACTICAL KNITTING HINTS

WEAVING SEAMS TOGETHER

Straight edges and slanted or curved edges with full fashion shapings, such as raglan seams, skirt seams, sleeve seams etc., can be woven together invisibly. Thread a tapestry needle (your ribber transfer needle is an excellent needle for weaving) with yarn used for knitting your garment. Hold the edges together, right side up. Most seams are woven together **1 stitch in** from each edge. Working from top or bottom, begin by inserting the needle **between** the first and second stitches on one section, pass under **1 cross thread** and bring the needle up. Now insert needle between first and second stitches on corresponding row on opposite section, pass under **1 cross thread**, and bring needle up. Now insert needle into the same space you previously left on the first section, pass needle under **1 cross thread**, bring needle up and insert needle on opposite section into corresponding row, go under **1 cross thread** and bring needle up. Continue working from side to side, matching row to row. Pull the yarn every few inches, then



smooth seam out to keep it elastic. Practice on a sample first, using a contrast yarn for the weaving and you will

see what is taking place. The illustration will also help you with your first try.

If you are knitting with fine yarn . . . up to the weight of Subita 2 x 4, and the knit side is the right side, you may pick up **2 cross threads** at a time and obtain a satisfactory seam. When you use the **purl** side as your right side, you must **ALWAYS** go under **1 cross thread** at a time, as only in this way will the rows interlock.

HOW TO GET NEAT RIBBED SEAMS

When using the ribber, the first and last sts. **MUST** always be on the main machine. When joining the sections that are ribbed, the seam at the ribbed part is very noticeable. To prevent this, and to end up with a continuous ribbing of K1, P1 when weaving the seams together, you may use this method: On sleeves, round collars, armbands, etc., cast on an even number of stitches and put the first 2 sts. on the main machine. When knitting the bodice sections of a pullover, one of the sections only should have 2 sts. at each end on the main machine. On front bands that are knitted in 3 sections (which will be joined together), put 2 sts. at each end of the neckband section only on the main machine. For cardigans and jackets, have two sts. at each end of the back section only on the main machine, unless the cast-on stitches for the front sections are even number and in this case put 2 sts. on the side edge of each front section on the main machine. When you join the garment sections, always weave the ribbed part together 1 st. in on each edge and you will see that the seams are an even K1, P1 ribbing.



*A complete fourth volume of **KNITKING MAGAZINES** with a flexible, transparent plastic cover and specially bound so that it will stay open at any page, is available at the special price of \$6.95 postage paid anywhere in North America.*

If purchased separately the magazines would cost a total of \$9.00.

The volume contains over 120 fully illustrated complete stylish patterns for all members of the family, together with many valuable, practical knitting hints.

There is a very limited number of these volumes available and it will undoubtedly become a collectors item.

If you already have the entire set it will almost certainly be well thumbed and marked. Why not purchase a perfect mint condition volume for your bookshelf and ready reference at any time.

Place your order today and avoid disappointment. Send it to **KNITKING MAGAZINE, 1128 Crenshaw Boulevard, Los Angeles, California 90019.**



KNITKING NEWS

July-August, 1968

NEW KNITKING YARN CATALOGUE

Phew!!!!...for a while there, it looked as though we would never get our new Yarn Catalogue out...We began to think that the Catalogue was jinxed in some way...It seemed that everything possible went wrong during its production even to a complete breakdown on the machinery that inserts the yarn samples...but we are glad to say that it is out and that all outstanding orders have been filled.

We complicated production to a large extent because we designed a completely new style Catalogue that folds out to hang on the wall, with all types and colors of yarns visible at the same time and with a stitch gauge chart showing the stitches and rows per inch for every type of yarn...It's big...the range of colors is unexcelled by any other company...it's beautiful...and it costs about twice as much to produce as our asking price of \$2.00. We priced it low because we believe that once you see the gorgeous array of colors and are able to judge for yourself the superior quality and low prices of KNITKING YARNS, you will feel compelled to try them... We know that once you make some garments up in KNITKING YARNS, you will not easily be satisfied with other brands and since KNITKING MAGAZINE garments are made with KNITKING YARNS, you can use any of the patterns confident that your garments will knit to the correct size.

Because our new Yarn Catalogue was so expensive to produce, we have to limit them to one per customer. Even if you choose not to use KNITKING YARNS, a catalogue is invaluable for comparative purposes. You can take it to your local yarn store and choose a yarn of comparable weight. If you have KNITKING Interchangeable Yarn Chart, you can use it to select any nationally sold brand that produces the same stitch gauge called for in our patterns.

As a subscriber to KNITKING MAGAZINE, you really cannot afford to be without a KNITKING Yarn Catalogue, especially at the low price of \$2.00 (deductible from your first \$10.00 order at list prices). California residents must add 10¢ Sales Tax, but we pay the postage anywhere in the U.S.A.

WE GET LETTERS!...

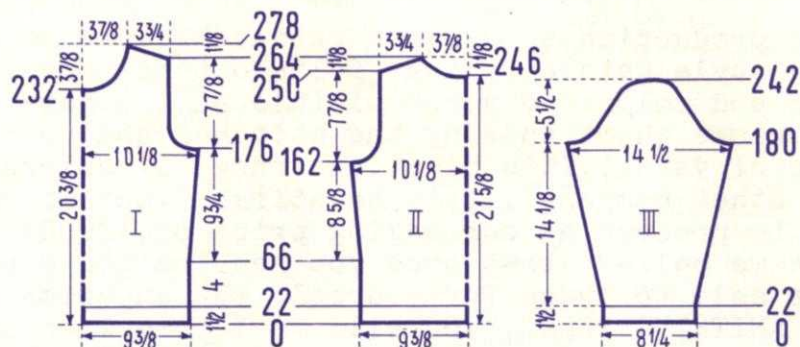
Hundreds of them...every week...and so many of them are repetitive that we feel it necessary to answer some in the Newsletter.

1. Many readers ask why we don't give chest and waist sizes, etc., in KNITKING MAGAZINE patterns...

The answer is...we do...every pattern in KNITKING MAGAZINE is ac-

companied by a set of charts...These charts give all dimensions, but it seems that many readers follow the written instructions only and ignore the charts...This is a pity...get used to following the charts and they will make it easier for you to alter the sizes of garments to suit your own needs...

Study the following charts (they are from Pattern DP 7640 on page 22 of this issue). Chart I, illustrates 1/2 of the front

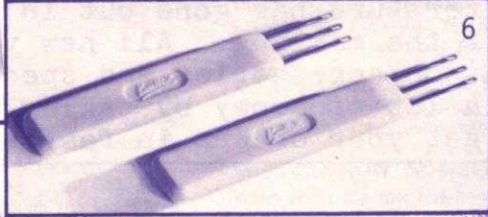
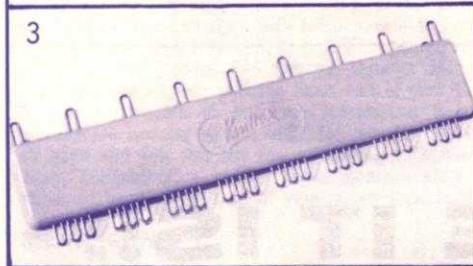
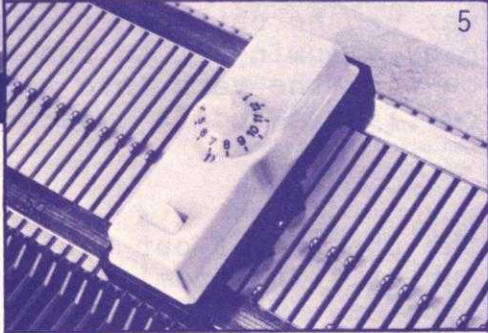
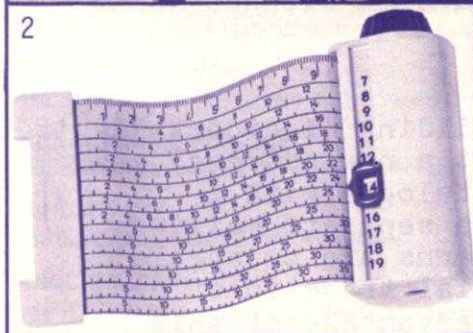
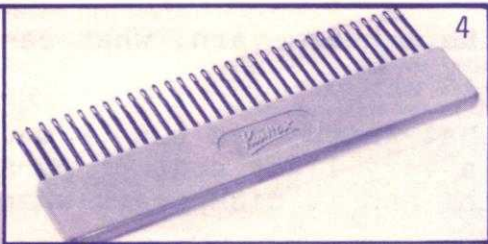
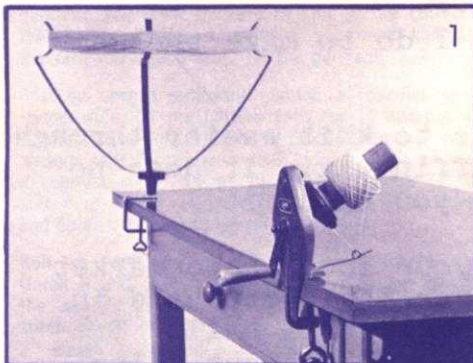


of the garment. You will see that at its widest point, it gives a dimension of 10 1/8 inches. Multiply this by 2 and the width of the front becomes 20 1/4 inches. Add the width of the back to it and the circumference of the pullover under the arms is 40 1/2 inches. It is a size 14/16, but you can easily adjust its size up and down by casting on a larger or smaller number of stitches...It is, of course, not advisable to make too large an adjustment without adjusting the armhole size...or you can increase or shorten its length by adjusting the distance to the first increasing row...The charts show it to be ROW 66. There are 11 rows to the inch, so if you need to make the pullover 2 inches shorter, you would reduce the 4 inch measurement to 2 inches by knitting 44 rows to the first increase. You should then set your Row Counter forward to 66 and continue the pattern as written...If you want your garment 2 inches longer, you would start increasing at ROW 88 when you should set the counter back to 66, continuing the pattern as written.

You will notice that KNITTING pullover patterns are designed to allow fullness in the front section, consequently, the back and front of garments are not identical in measurements. You ease the seams together when assembling them.

2. How can I get an elastic bind-off edge on ribbed sections?...

Answer...When you are knitting with tension 5 or higher, use this method: After completing the last row of ribbing, disconnect the Cam Boxes (both Cam Boxes are on the right side). Remove the yarn



Knitking

ACCESSORIES

1. Yarn Winder and Skein Holder. Heavy cast frame and nylon gears. \$14.95 plus \$1.00 shipping.
2. Converta Tape. For simple and speedy charting of custom knits. \$5.95 plus 25c shipping.
3. Adjustable Needle Selector. For setting unevenly spaced pattern stitches. \$2.95 plus 20c shipping.
4. 33 Needle Multi-transfer Tool. For decreasing in the middle of a row. \$2.75 plus 20c shipping.
5. Automatic Pattern Selector. For all KNITKING machines prior to the push-button. \$6.95 plus 30c shipping.
6. Treble Transfer Tools. For rapid transfer of stitches and for cable stitch. \$1.50 pair plus 15c shipping.
7. Reversing Bar. For easy hem turning or reversing of knitting. \$16.95 plus \$1.50 shipping.

California residents add 5% sales tax.



KNITKING
1128 Crenshaw Boulevard
Los Angeles, California 90019

from the Yarn Carrier and Yarn Feeder. Lay the yarn by hand over all the needles and pull the RIBBER needles down by hand, (being sure the yarn is under the hooks) forming loops of even length. The heavier the yarn the longer the loops should be. Now move the Cam Box of the main machine over the needle bed. You will notice that the needles on the main machine are forming stitches and the loops on the ribber needles become shorter. Now, transfer the ribber stitches to the main machine. After all stitches have been transferred, remove the Ribber, bring all the needles into holding position, press down on the back edge of sinkers to release the stitches and pull the knitting out from underneath the sinkers, with the latch needle tool bind off using the crochet method. When ribbing with tension 4 or lower, set your tension dial 6 tensions higher for your bind off row, then after knitting the row, transfer the ribber stitches to main machine and bind off crochet method.

3. How can I get a good cast-on edge when using fine yarns?...

Answer...Instead of hand casting on under the sinkers, cast on in front of them, wrapping the yarn counter clockwise around the needles working from left to right.

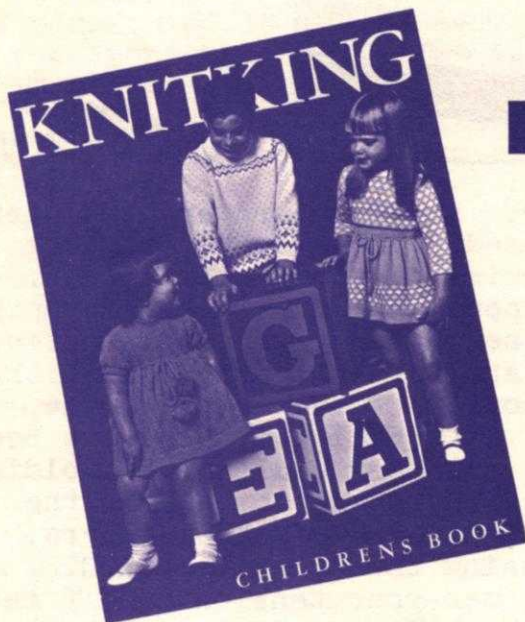
4. I am ribbing with a heavy yarn, what can I do to make the Cam Box easier to push?...

Answer...Any yarn that knits hard can be made to knit easier through the application of a very light coat of paraffin wax. It does no harm to your knitting and it disappears when you block it.

Blocks of paraffin wax can be obtained from your local supermarket and you wax the yarn by allowing it to run over the block held in your left hand as you wind the yarn into a center pull ball. If the yarn is wound too tight, wind it a second time without using the wax.

KNITKING SPECIALS

We are celebrating the opening of our new building (incidentally it is an extension to our existing premises, not a new address) and the introduction of the new KNITKING Yarn Catalogue with a "Special Sale". Literature has gone out in a separate mailing... be sure to watch for the mailing. All new yarns are on special and we have specials on accessories and special trade-in offers, etc. You can save a lot of money by taking advantage of this sale...but, please get your orders in fast.



HERE IT IS!!

\$2.95

Calif. residents add
15 cents Sales Tax
Mailing costs 40 cents.

THE BIG BEAUTIFUL BOOK OF CHILDRENS PATTERNS YOU HAVE BEEN ASKING FOR . . . OVER 50 complete and lovely patterns for infants and children to teen age . . . Buntings, Blankets and Baby outfits . . . Cute Dresses, Leotites, Skirts, Suits, Pullovers, Cardigans, Stockings, Trousers, etc. . . .

The only CHILDRENS BOOK for the machine knitter published in the U.S.A. Order direct from KNITKING, 1128 Crenshaw Blvd., Los Angeles, California 90019.

NOTES TO KNIT BY . . .

STITCH AND ROW GAUGE

Every KNITTING pattern calls for a specific number of stitches and rows for 2 inches and in order to obtain the correct size finished garment, you must be sure to knit at the correct tension. This means that before starting a garment, you must knit a sample swatch with the yarn you intend using for the garment.

Cast on over a sufficient number of needles to produce a swatch 4 inches wide. (If the pattern calls for 16 stitches to 2", 16 x 2 = 32 stitches) then knit 4 inches of rows at the first suggested tension (if the pattern calls for 22 rows to 2", 22 x 2 = 44 rows) knit 2 rows with a contrast color, change to the next higher tension, knit another 4", knit 2 rows with contrast color, change to a third higher tension and knit another 4", then bind off.

Roll the swatch into a cylinder over its length and pull on both ends. Unroll it and stretch it diagonally by pulling on the four corners. Allow the swatch to rest and settle (preferably overnight) then using a stitch gauge or ruler, count the number of stitches and rows over a 2" length in each of your 3 tensions. Select the tension that produces the stitches and rows called for in the pattern. If none of them are correct, you are most likely using the wrong weight of yarn.

HOLDING POSITION

The needles are as far forward on the needle bed as they will go.

NON-WORKING POSITION

The needles are as far back on the needle bed as they will go.

BINDING OFF

See Instruction Manual for your own machine.

CROCHET BIND OFF

Use this method for binding off neck and armbands, edgings, facings or collars. Knit a bind off row using 5 tensions higher than tension used for section and then with latch needle tool, and working from the opposite side of the yarn end, pull the second stitch through the first stitch, the 3rd through 2nd, the 4th through 3rd, etc. . . . When you reach the end of row, pull the loose end of yarn through the last stitch. If you are unable to turn the tension up 5 numbers because you already are working with a large tension, lay the yarn over the needles by hand and knit this one row by pulling each needle back and forward again completing a stitch. Leave approximately 1/4" loop for each stitch (depending on type of yarn used) then bind off crochet method.

SHORT ROWS

Used for shaping of all kinds. Push the specified number of needles opposite the Cam Box into holding position and knit across to them. Now you must place the yarn OVER and UNDER the first inside needle that is in the holding position. Place the specified needles opposite Cam Box into holding position (other side) and knit across to these needles, and again place the yarn OVER and UNDER the first inside needle in the holding position. Repeat as many times as your pattern states. When you return these needles to the working position, the same procedure is used — bring the needles into work opposite the Cam Box, knit across to them, place the yarn OVER and UNDER the first inside needle in holding position and repeat for other side. Continue in this manner until all the needles are back in the working position.

INCREASING, DECREASING

See the Instruction Manual for your own machine.

INCREASING AND DECREASING WHEN USING RIBBER

When increasing, increase on the main knitter first, knit one row and then transfer the necessary stitches from the knitter to the ribber and continue.

When decreasing or binding off, you must transfer the ribber stitches to the main machine before decreasing or binding off.

CONTROL KNOBS (Under the slide handle — one on each side on KNITTING and certain other machines.)

1. When BOTH Control Knobs are UP, (or IN on the latest KNITTING) knit one row going from right to left. The needles knit and move back just beyond the front of the needle bed and the yarn hangs on the front of the needles. The slide will now move freely in either direction

with the needles remaining in a "SAFE POSITION". When you wish to resume knitting, press down (Out on the latest KNITTING) BOTH Control Knobs. The first movement of the slide is made without yarn and will bring the needles into working position, you then continue knitting.

2. **RIGHT CONTROL KNOB UP (IN on latest KNITTING).** Knit from right to left. The row knits, moves the needles back and the yarn is held in front of the latches. Knit from left to right, the yarn goes under the needles without knitting as the needles move into the working position. This is the operation used for making round cords (with 3 or 4 needles only) and also for knitting single rows of one color.

3. **LEFT CONTROL KNOB UP (IN for latest KNITTING).** The same as above but moving from left to right.

NECK SHAPING

When the directions state to bind off the center stitches for NECK, one correct way is as follows: With a new ball of yarn, bind off the given number of stitches working from right to left. Leave this ball of yarn hanging to one side (to be picked up later) and put all the needles on the left side into holding position and complete the right side first as directed. When you have completed the right side, pick up the yarn that you used for the neck bind off, put it in the wool feeder, bring all the needles into working position and knit 1 row to the left side. Turn row counter back to the number on which you started your neck shaping and complete the left half with reverse shaping, making the same number of decreases and on the same row numbers as on the right half.

You may also use the SHORT ROW method for shaping your neck and shoulders provided the decreasing is made on every other row. When the shaping is completed, knit 1 row over all the neck stitches (or shoulder stitches) with tension set at least 5 numbers higher, and then bind off all stitches using the **crochet method**.

If you are hand feeding a Norwegian design, bind off the center neck stitches with a new ball of yarn, then work both sides of neck shaping at the same time, using two balls of yarn for each color.

MISSING ROW NUMBERS

When there are row numbers missing in the instructions as for instance when you have completed the designated increases or decreases on a section of garment, continue knitting until you reach the next given row number.

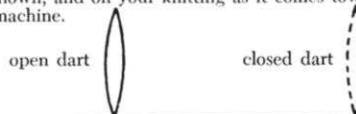
READING OF SYMBOLS

Certain holding position and eyelet designs are sketched in the knitting patterns. The Chart with symbols is read as the work comes toward you from the machine. Where purl stitches are facing you, the purl symbol will be shown and where knit stitches are facing you, the knit symbol will be shown. On the sides of the chart are the row numbers, i.e. 1-8 indicates the first and last row number. In eyelet design patterns, specified stitches are transferred to another needle and the empty needles are returned to the knitting position each time. In holding position designs, selected needles are pushed into the holding position for the stated number of rows.

PATTERN STITCH SYMBOLS

- = knit stitch
- ▣ = purl stitch
- = empty needle (leave in working position)
- ◻ = needle not used (in the out of work position)
- ◻ = needle in holding position
- ◻ = 2 stitches on 1 needle — either transferred from the right side or the left side, then put the needle into holding position
- ◻ = needle holding 2 sts. Stitch has been transferred from the LEFT
- ◻ = needle holding 2 sts. Stitch has been transferred from the RIGHT
- ◻ = 3 stitches on 1 needle. The 1st and 3rd stitch in a group of 3 needles has been hung on the 2nd or center needle.

The diagrams for pattern work are followed just as they are shown, and on your knitting as it comes towards you on the machine.



Available in many wood finishes



KNITTING DESK . . .

A knitting machine cabinet that automatically lifts your machine into the knitting position just by pulling a lever. The cabinet converts in seconds into a handsome desk suitable for any decor or any room in your house. Beautifully made in a variety of woods by craftsmen in West Germany.



Order from your local dealer or direct from **KNITKING**, 1128 Crenshaw Blvd., Los Angeles, California 90019