

KNITTING

MAGAZINE



Yarns
by

Knitking

The Finest From Around the World . . .

If you want your garments to look as good as those in KNITKING MAGAZINE and keep their appearance through dozens of washes, you must knit them with gorgeous KNITKING yarns. KNITKING yarns are the finest quality obtainable anywhere and the prices cannot be beaten. Try them once and you will always use them.

Your orders will be filled the same day they arrive. Be sure to state your color preferences and alternates.



Pattern Numbers	YARN	Price Including Shipping
DP 7614	Subita 2 x 4	\$16.30
DP 7615	Subita 2 x 4	17.50
DP 7611	Starlite Crepe	13.81
HP 3530	Starlite Crepe	17.95
DP 7612	Sonika Dralon	11.50
HP 3531	Subita 2 x 4	13.70
DP 7617	Subita 2 x 3	12.70
HP 3532	Subita 2 x 3	15.10
DP 7609	Starlite Crepe	16.57
DP 7610	Nora	Size 12/14 Size 16/18 12.46* 13.44*
HP 3529	Frigate and Nora	14.70
DP 7613	Sonika Dralon	Size 10/12 Size 14/16 12.70 13.20
HP 3528	Nora	Size 38/40 Size 42/44 14.42 15.40
DP 7616	Frigate and Subita 2 x 4	15.74
MK 4993	Sonika Dralon	9.10
MK 4991	Nora	Size 9-10 years Size 6-7 years 10.50* 8.54*
MK 4996	Sonika Dralon	15.10
MK 4994	Subita 2 x 3	11.50
KK 4995	Nora	12.46
KK 4992	Nora	Size 6-7 years Size 4-5 years 8.54* 7.56*

Items marked with a * do not include the small amounts of contrast yarns used in the pattern.

California Residents please add 5% Sales Tax.

Send \$2.00 for **LARGE COMPLETE YARN CATALOGUE.**
(Refunded on your first \$10.00 order) to:

KNITKING YARNS, Dept. 19
1128 Crenshaw Blvd.
Los Angeles, California 90019

KNITKING

MAGAZINE

Vol. 5, No. 2

November/December 1968

INDEX

Contents	Pattern No.	Page No.
Woman's Pullover and Cap	DP 7614	15
Woman's Pullover and Cap	DP 7615	15
Woman's Jacket	DP 7611	16
Man's Pullover Shirt	HP 3530	17
Woman's Pullover	DP 7612	17
Man's Pullover	HP 3531	18
Woman's Pullover	DP 7617	18
Man's Pullover	HP 3532	19
Woman's Pullover	DP 7609	19
Woman's Pullover	DP 7610	20
Man's Pullover	HP 3529	21
Woman's Pullover	DP 7613	21
Man's Pullover	HP 3528	22
Woman's Jacket	DP 7616	24
Girl's Pullover	MK 4993	25
Child's Jacket and Cap	MK 4991	26
Girl's Two Piece Skating Dress	MK 4996	27
Girl's Skating Dress	MK 4994	28
Child's Suit	KK 4995	28
Boy's Jacket and Cap	KK 4992	29
Practical Knitting Hints		32



COVER MODELS

DP 7614 and DP 7615

Warm the winter and keep your cool in any of these Fashion Smash Knits... The two Pullovers on the Cover have head-hugging Caps to match. Now... turn the pages and list your special selections.

Publisher: KNITKING CORPORATION, 1128 Crenshaw Blvd., Los Angeles, Calif. 90019, Telephone: WEbster 8-2079. Published bi-monthly. Subscriptions: USA—\$6.00 annually, single copies \$1.50; Canada—\$7.00; other parts of the world—\$10.00. The entire contents of KNITKING MAGAZINE are copyright and must not be reproduced in any shape or form without the express permission in writing, of the publisher. COPYRIGHT © by KNITKING CORPORATION 1968.

Printed by: George Rice & Sons, Los Angeles, California.

Letter from the Publisher

OUR recent exhibit at the Los Angeles County Fair caused the most favorable comment and interest of any display that we have created in the 15 years that we have exhibited there. The series of KNITKING MAGAZINE cover garments displayed, together with an assortment of handsome knits we will be featuring in future issues frequently caused the aisles to be blocked with visitors... many of whom wanted to buy display garments. Some stated that they couldn't believe such beautiful work can be done on an automatic knitter... We were, of course, proud to boast that no other knitting machines made, can knit like KNITKING.

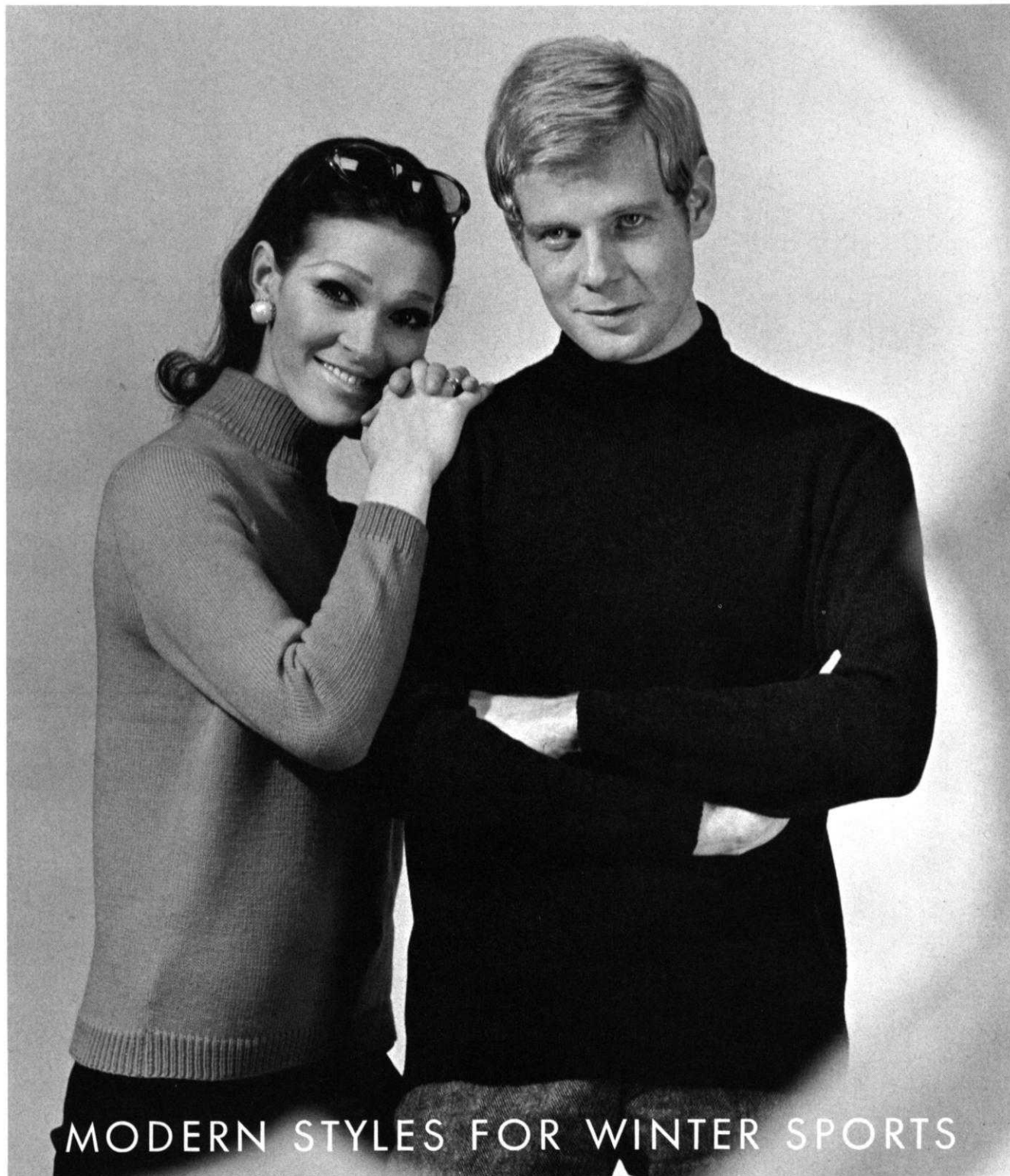
Again, as at all exhibitions we met hundreds of people who had knitting machines of obscure brands that they had paid an assortment of high and low prices for but were unable to use... because the manual was impossible to understand... because no personal instruction was available... and because no machine knit patterns could be obtained.

If an obsolete make or bankrupt stock machine is purchased from a discount house at a ridiculously low price, the customer usually understands that she is on her own after the purchase, but it is incredible how many knitting machines are sold at marked up prices of 500% and more with no possibility of the customer obtaining instruction in even the basic fundamentals of machine knitting, let alone some simple patterns to make.

At KNITKING we pride ourselves on the complete service we make available to our customers including the finest knitting machines obtainable anywhere... the only knitting machine magazine published in America plus the most beautiful assortment of top quality yarns put out by any yarn company... This month, (on page 9) we announce the publication of Practical Knitting Hints, yet another much needed book for machine knitters.

We forecast that the three piece suit to be featured on the cover of the next issue of KNITKING MAGAZINE will be one of the most popular outfits we have yet designed... in fact the whole issue is quite outstanding. It also contains a two piece dress, a stylish dress with matching jacket, three really beautiful bed jackets, a very good looking sporty dress with large pockets and zippered front with Nehru style collar, a shirt style sweater and a vest for women, an assortment of sweaters and pullovers for men... a short sleeve dress your teenage daughter will insist you make for her, and some unusual garments for the children.





MODERN STYLES FOR WINTER SPORTS

DP 7611 and HP 3530

DP 7611—Use white KNITKING Starlite Crepe for an easy to knit (hard to beat) raglan sleeve Jacket. Buy 4 yards of trim for an elegant finish and a zipper for closure. Size 12/14. See page 16. HP 3530—A Man's Pullover Shirt is easily knitted in stockinette stitch, then zipped in front and trimmed with a ready made braid as shown. Size 38/40. See page 17.

DP 7612 and HP 3531

DP 7612—Brighten the Winter Scene with a simple to knit Red Pullover that can be worn under Jacket DP 7611 shown on opposite page. Sizes 12/14. See page 17. HP 3531—He's happy too when he has a similar Pullover knitted just for him. It can be worn under zippered shirt HP 3530. Size 38/40. See page 18.





DP 7617 and HP 3532

Top priority! . . . Beautifully designed Pullovers for a Woman and a Man are knitted with the same Pattern Stitch that is a Holding Position Design combined with a Rib and worn on the purl side. The Man's Pullover has a large turtle neck Collar and the Woman's can be belted low. DP 7617 — Size 12/14. See page 18. HP 3532 — Size 40/42. See page 19.

DP 7614 and DP 7615

Pick a perfect Pullover . . . from either of these two. DP 7614—Pattern Design for top of bodice is made with the Ribber. Cap to match is the same as DP 7615. Size 12/14. See page 15. DP 7615—Combine 3 colors for stripes plus the checkered Pattern Design with the Ribber. The pocket on sleeve is very new, the matching Cap warm. Size 10/12. See page 15.



DP 7609

Change-about! Put two and two together . . . that is . . . two pieces for the front and two for the back (knit the ribbing first) and the secret of this quickly knitted pull-over is yours. All edges are 1 x 1 Rib. Size 12/14. See page 19.

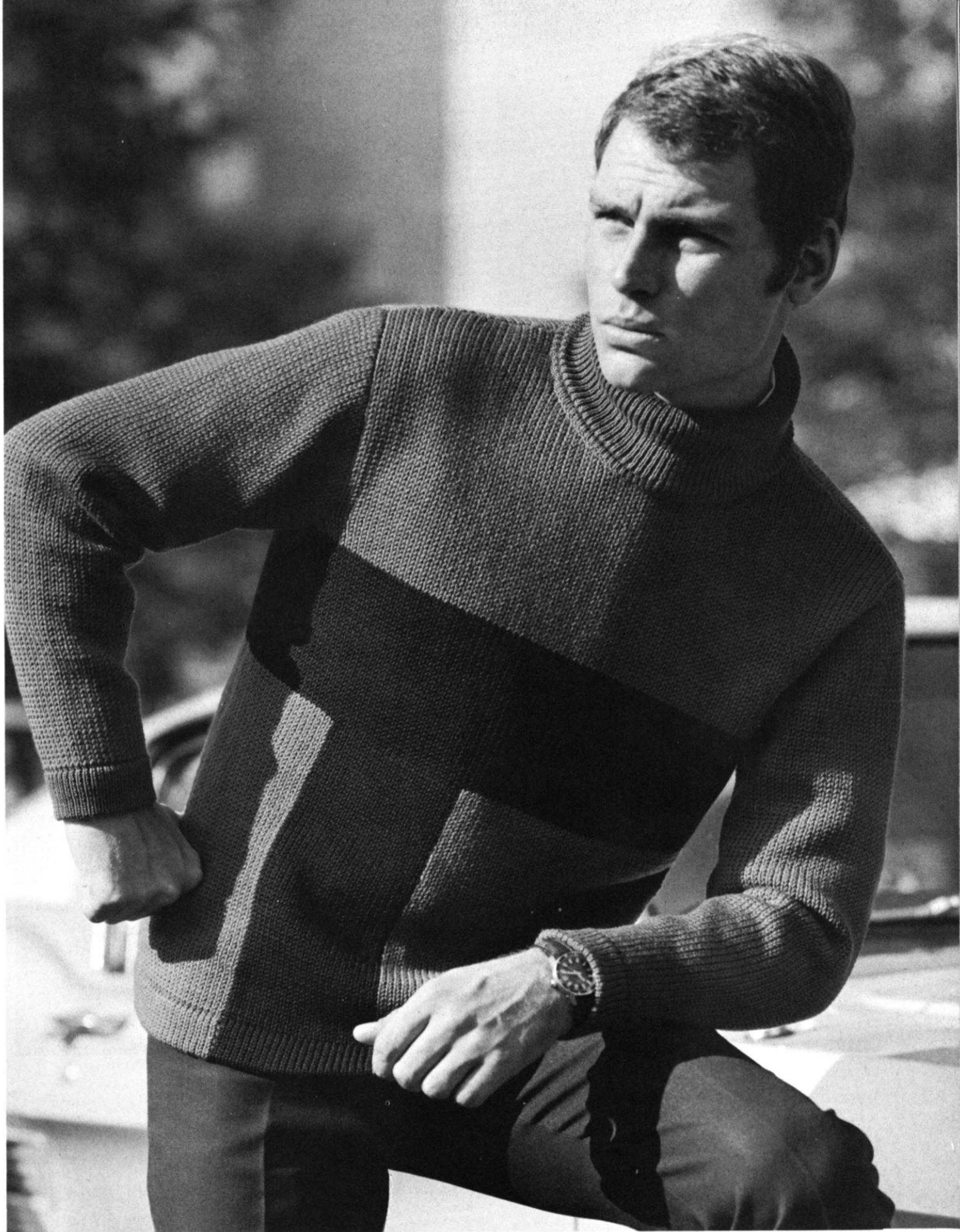


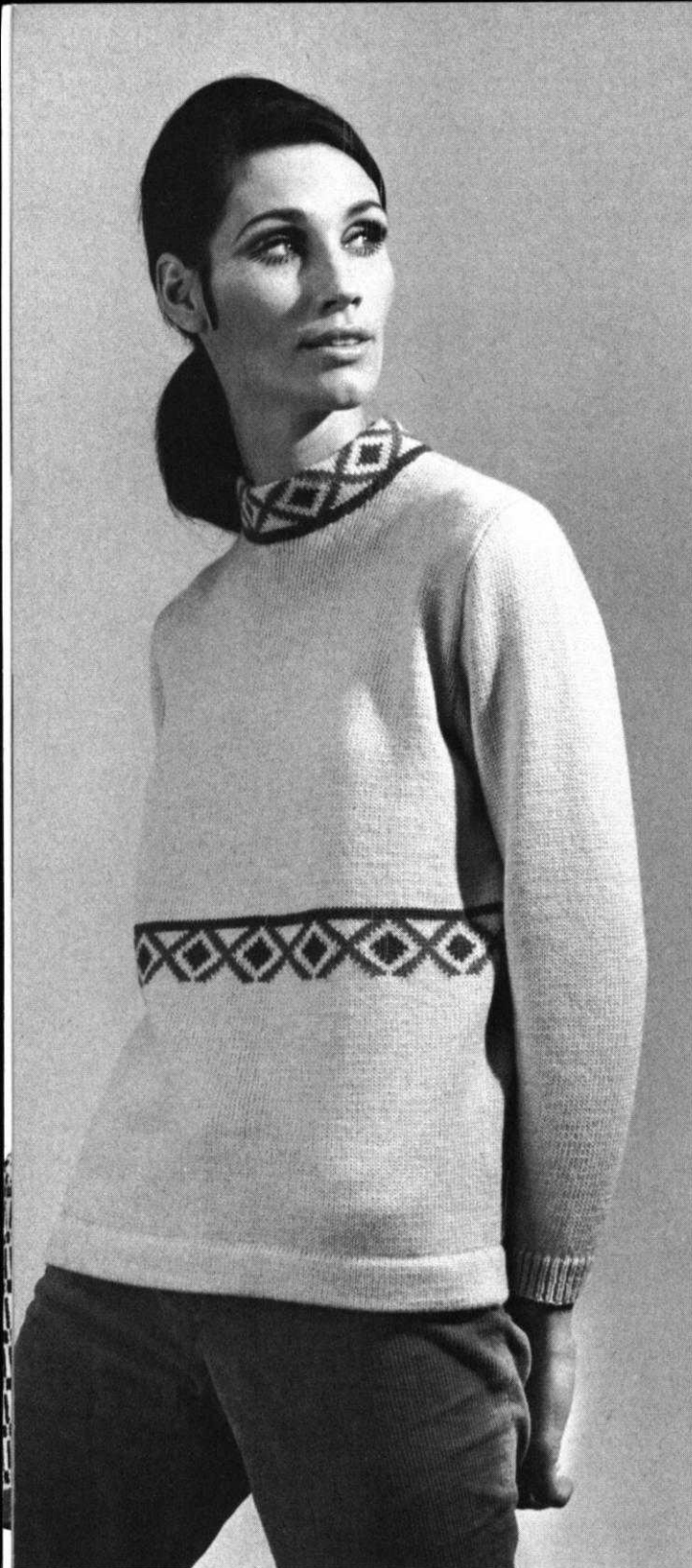
HP 3529

He'll play your game if you surprise him with this heavy weight pullover that is knitted over every other needle. Two colors are used for the front which is a lesson in hand feeding three balls of yarn. Try it . . . it's easy. Size 40/42. See page 21.

DP 7610

It's up your Sleeve! Stripes in three bright colors are ribbed high on the sleeves of this good looking Pull-over that is knitted in stockinette stitch. Very easy to knit. Make a skirt with stripes around the bottom to go with it. Size 12/14 and 16/18. See page 20.





DP 7613

Try KNITKING Sonika Dralon for a lush Pullover with a Norwegian Design Trim . . . or if you're nervous about following a chart—change it into stripes, or even knit it plain . . . it's still great! Size 10/12 and 14/16. See page 21.



HP 3528

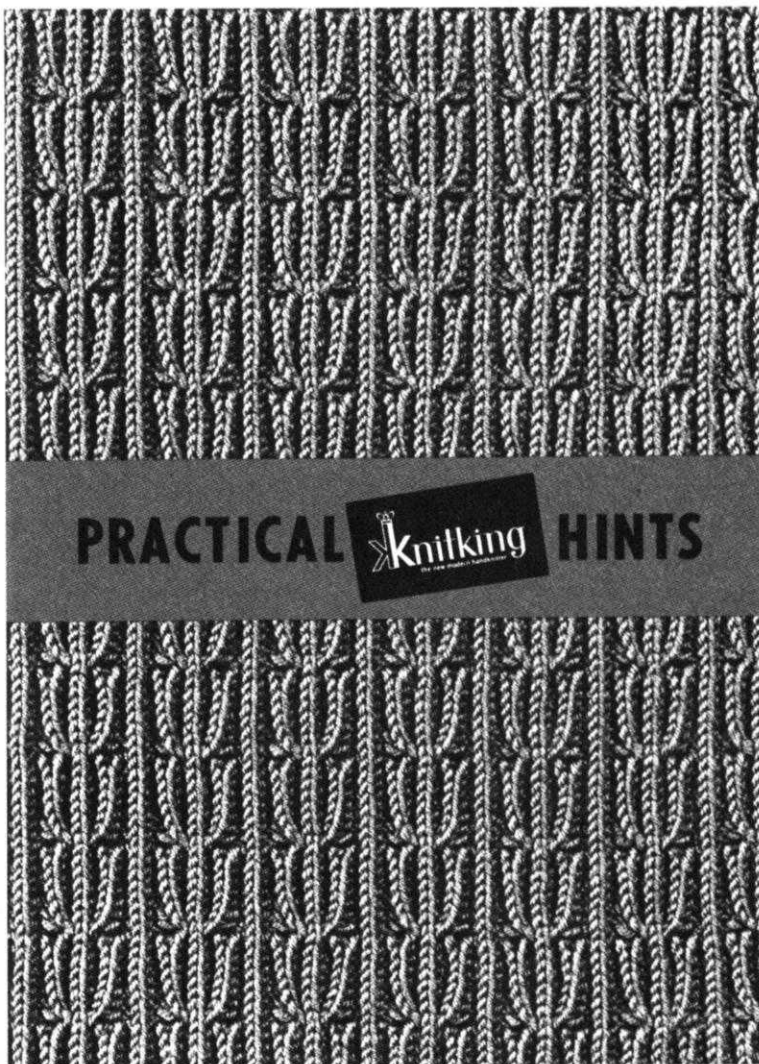
Male Call! The well groomed look of a sharp Pullover is appreciated by any man and especially the young Campus Crowd. He'll want more of this one that is knitted in stockinette stitch with two contrasting colors used for the deep-set Neckband in a 1 x 1 Rib. Sizes 38/40 and 42/44. See page 22.

Another First from Knitking . . .

A TEXT BOOK FOR MACHINE KNITTERS

\$2.95

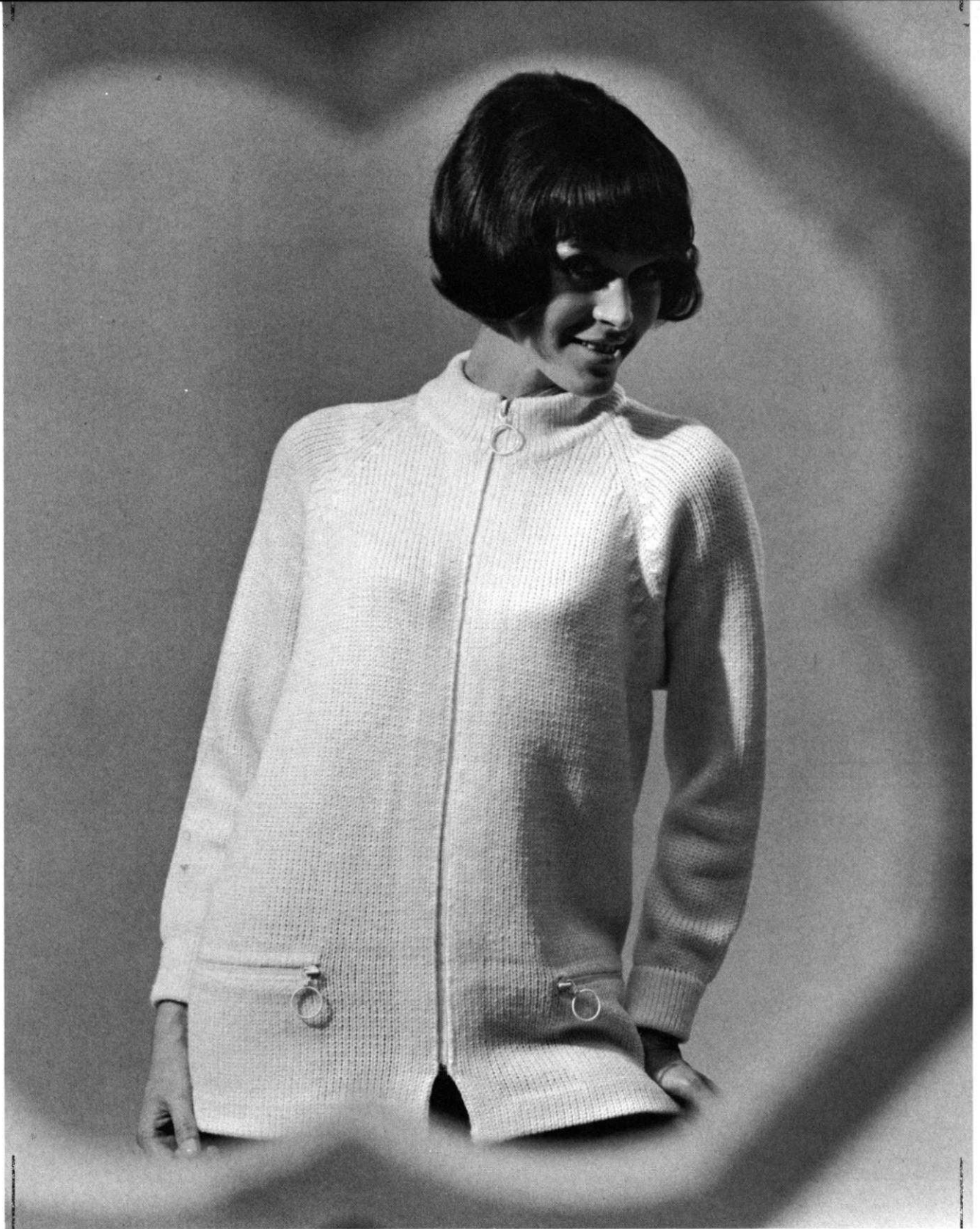
At long last . . . **PRACTICAL KNITTING HINTS** . . . the answer to requests from knitting machine owners from over the whole of the U.S.A. . . . "Give us **PRACTICAL** help with our knitting . . . **SHOW** us **HOW** we can end up with the kind of garments we can be proud of. ". . . Now **KNITKING** presents you with just **THAT** and **MORE** besides . . . There is not another knitting machine book available anywhere that will give you anything like the information in "**PRACTICAL KNITTING HINTS**". . . Looking for hints on how to put your garment together? . . . then turn to the Index and the heading "**Finishing Your Garment**". . . find the pages and the photographs or line drawings combined with simple instructions will literally **SHOW YOU HOW**. Want to know about "**Short Rows?**". . . the Index gives you the page number and your problem is solved . . . Need a Mitered corner for a Collar? . . . Want to know how to have a perfect Cast-on Edge? . . . How to knit and finish Buttonholes? . . . Want to Chart and knit a **BASIC PATTERN?** . . . make a Twisted or Knotted Cord? . . . how to keep in Pattern when shaping? . . . knit a Norwegian Design? . . . make every type of full fashioning? . . . All this information and much more is given together with photographs and line drawings to make it so easy you won't believe it. Every Knitting Machine owner regardless of the machine they have will be thrilled with our **PRACTICAL KNITTING HINTS** book . . . so . . . **PLEASE** don't wait another minute to place your order or you might find that our very first printing is completely sold out . . .



Be sure to include 40 cents mailing costs and California residents add 15 cents Sales Tax.

Order direct from:

KNITKING, 1128 Crenshaw Boulevard, Los Angeles, California 90019



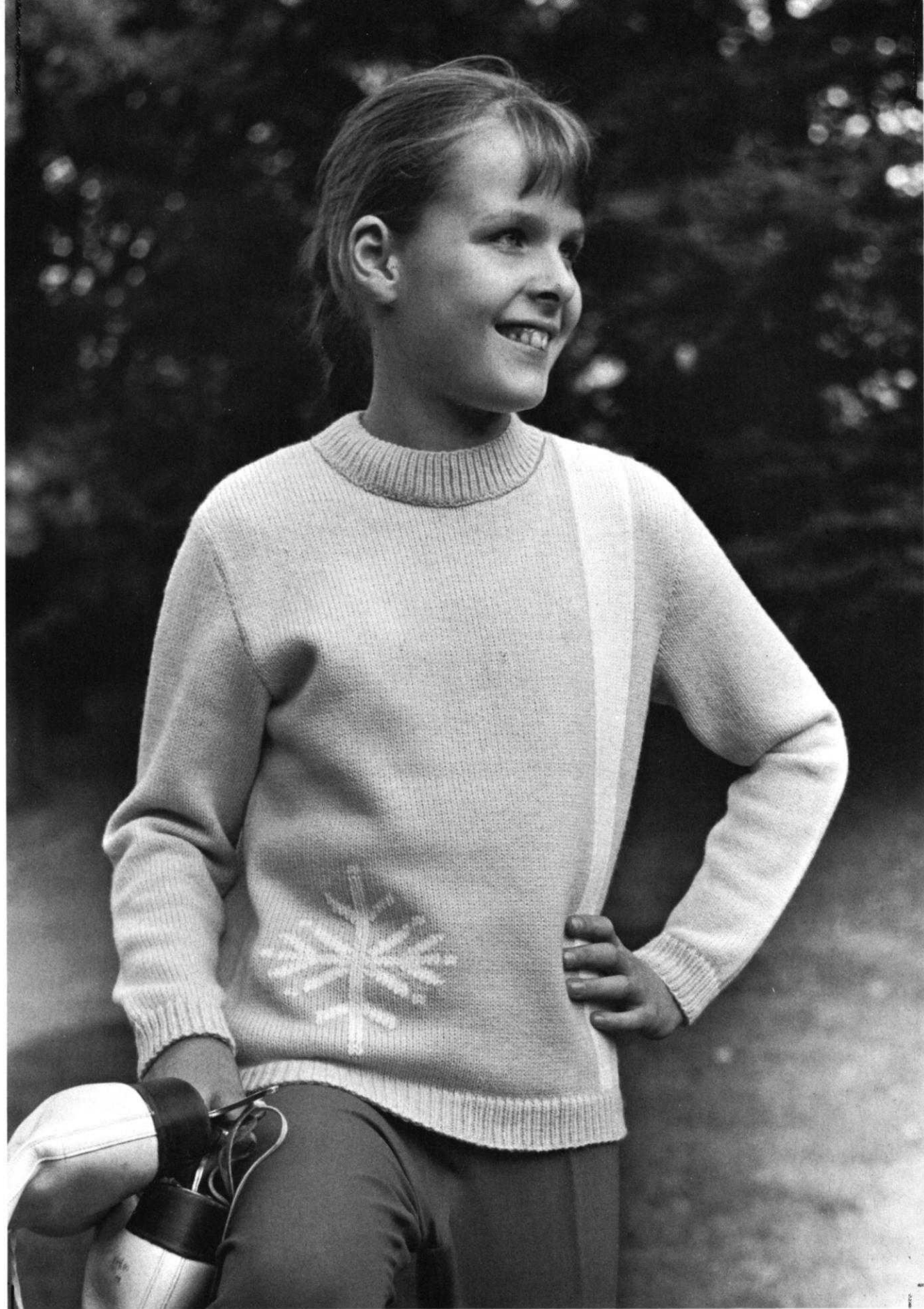
DP 7616

Tops in Toppers! We're not putting you on when we tell you to be sure and knit this Jacket. White KNITKING Frigate knitted over every other needle is used for the main sections, then Collar and Sleeve edges are knitted with Subita 2 x 4. Buy the specially tabbed zippers for front closure and pockets. Size 14/16. See page 24.

10

MK 4993

Let her be the envy of her crowd and knit this beautifully fashioned Pullover. When the garment is completed, you will work the stripe and design at lower edge using a duplicate stitch according to chart. Size 11/12 years. See page 25.





MK 4991

Child's delight! Boy or girl will flip over this warm zippered Jacket with Cap to match. Our model is knitted in blue with green and yellow stripes. Size 9-10 years and 6-7 years. See page 26.

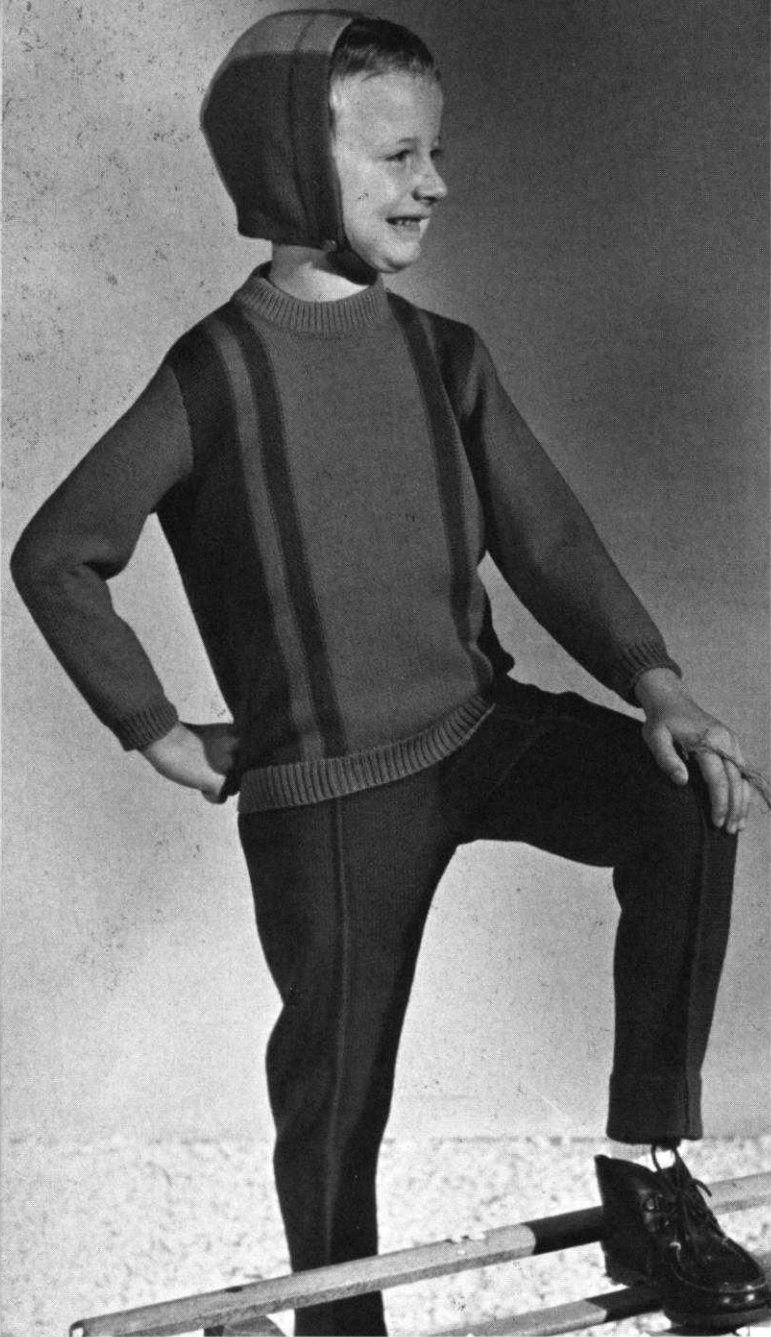
MK 4994

Fun on Ice! Dress a small girl in this exciting one piece Skating Dress she'll really adore. The top section is ribbed and resembles a Poor Boy Pullover. Size 8-9 years. See page 28.

MK 4996

She'll skate into first place in a bright 2 piece outfit knitted with KNITKING's Sonika Dralon. The skirt is a whirl of green that is topped with a wild orange Pullover with Cables down the front. Size 11-12 years. See page 27.



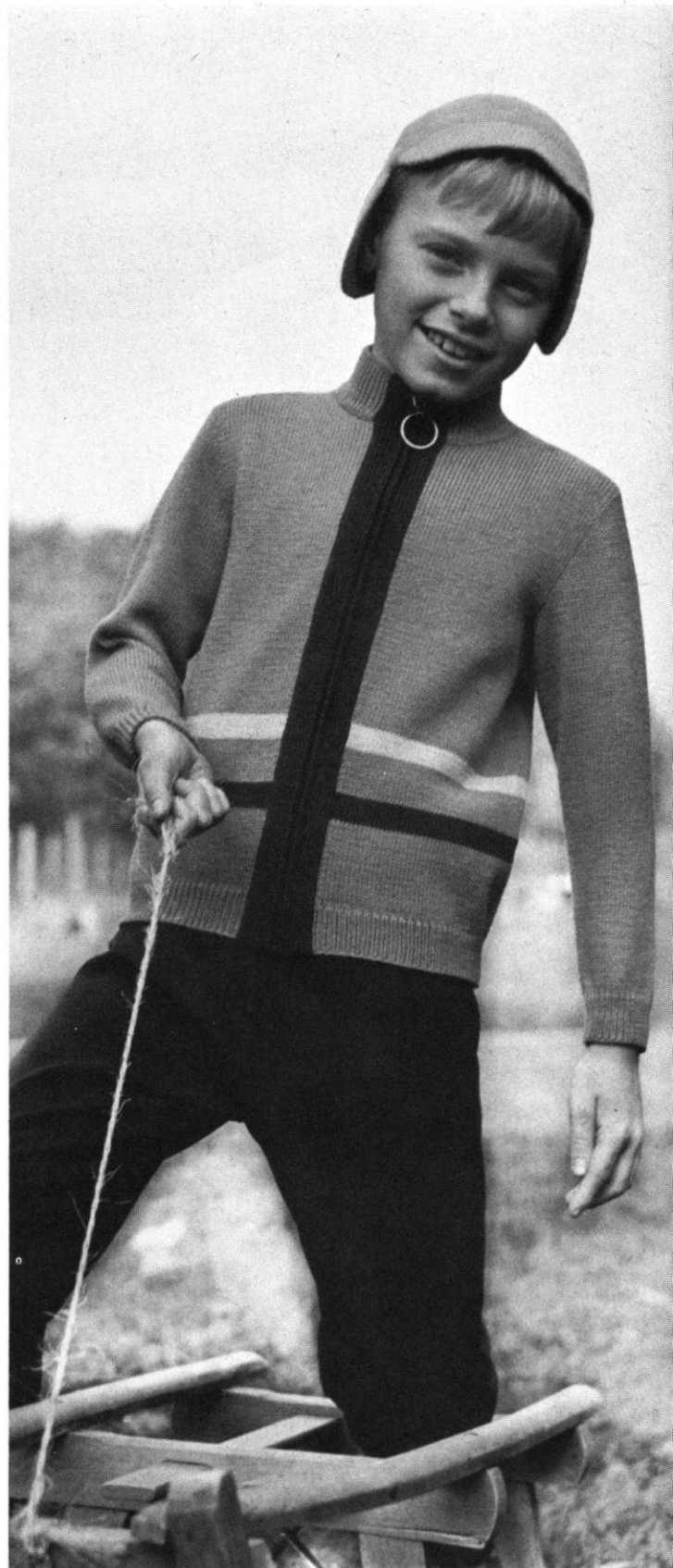


KK 4995

Snowbound! A child's three-piece Suit that is warm as toast. Knit one for your boy (or girl) and hide it for a surprise Christmas Gift. Size 5-6 years. See page 28.

KK 4992

Several sizes are given for this outfit for a small boy (or girl too if you like). The Jacket is zipped down the front for ease in dressing and the cozy Cap has ear flaps. Three colors of KNITKING Nora are used. Size 6-7 years and 4-5 years. See page 29.



KNITTING INSTRUCTIONS

OUR COVER MODELS WOMAN'S PULLOVER and CAP, DP 7614



SIZE: 12/14. **MATERIAL:** 19¼ oz. red and 3½ oz. white KNITKING Subita 2 x 4, Color No. 15 and No. 4. **TENSION:** KNITKING 6 to 8. **GAUGE:** Stockinette Stitch 15 sts. 2", 21 rows 2". Pattern Stitch 16 sts. 2", 21 rows 2". **PATTERN:** Stockinette Stitch worn on the knit side and checkered Pattern according to chart, using the Ribber; worn on the purl side.

BACK (Figure II). Cast on 155 sts. and work stockinette st.

ROWS 1-34: Work even, then hang the cast-on sts. back on the machine behind the latches to form the hem.

ROWS 35-168: Increase 1 st. on each side after ROW 76, then again every following 22nd row 4 x. AT THE SAME TIME, work ROWS 139-148 and ROWS 159-168 with white. After ROW 168 increase 12 sts. evenly spaced over the entire width by taking the work off the machine on contrast waste yarn, then hang the sts. back onto machine leaving first the 12th, then every following 14th needle empty, then pick up a stitch from the row below and hang it onto each empty needle. Remove waste yarn. (177 sts.)



ROW 169: Work with red. After ROW 169 turn the work, having the knit side facing you, (See Practical Hints on page 32). Then transfer stitches from main machine to ribber according to chart and continue working the Checkered Pattern.

ROWS 171-186: Work even.

ROWS 187-210: ARMHOLE SHAPING: Bind off 6 sts. beginning next 2 rows, 4 sts. beginning next 2 rows, 3 sts. beginning next 4 rows, 2 sts. beginning next 4 rows, 1 st. beginning next 4 rows and 1 st. on each side of the next 4th and following 4th row. (129 sts.)

ROWS 211-258: Work even, then, for the opening, put 64 sts. on the left side into holding position (transfer ribber sts. to main machine before putting them in hold) and complete the right half first.

ROWS 259-270: Work even.

ROWS 271-286: SHOULDER SHAPING: Bind off 3 sts. on the right side, then on every other row bind off 4 sts. 8 x. AT THE SAME TIME, after ROW 275, then on every other row SHAPE NECK by binding off 12 sts. 1 x, 6 sts. 1 x, 4 sts. 1 x, 3 sts. 2 x and 2 sts. 1 x. Now bring the needles on the left side back into working position according to Pattern, turn the Row Counter back to 258 and complete the left half, starting the Shoulder Shaping after ROW 269 and the Neck Shaping after ROW 274 and bind off 11 sts. instead of 12 sts. at first bind-off for Neck.

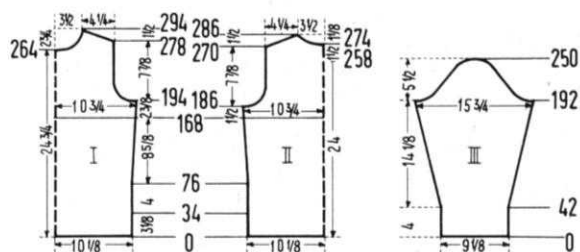
FRONT: (Figure I). Work the front the same as the back to ROW 169, then turn the work and set up Pattern, transferring first the 12th, 14th, 16th, 18th, 20th, 22nd, 24th and 26th sts. from the main machine to the ribber and continue working the Diamond Pattern.

ROWS 170-194: Work even.

ROWS 195-218: ARMHOLE SHAPING: Bind off 6 sts. beginning next 2 rows, 4 sts. beginning next 2 rows, 3 sts. beginning next 4 rows, 2 sts. beginning next 4 rows, 1 st. beginning next 4 rows and 1 st. on each side of the next 4th and following 4th row. (129 sts.)

ROWS 219-264: Work even.

ROWS 265-294: NECK SHAPING: Bind off the center 19 sts., (See Notes to Knit By, inside back cover), then on every other row on Neck Side bind off 5 sts. 1 x, 4 sts. 1 x, 3 sts. 1 x, 2 sts. 2 x, 1 st. 2 x and 1 st. on the next 4th and



following 4th row. AT THE SAME TIME, after ROW 278, then on every other row SHAPE SHOULDER by binding off 3 sts. 1 x and 4 sts. 8 x.

SLEEVE: (Figure III). Make two. Cast on 69 sts. with red and work stockinette st.

ROWS 1-42: Working even, knit ROWS 33-42 with white. After row 42 hang the cast-on sts. back on the machine behind the latches to form the hem.

ROWS 43-192: Increase 1 st. on each side after ROW 42, then again every following 6th row 22 x and every following 4th row 3 x and AT THE SAME TIME, knit ROWS 53-62 with white. (121 sts.)

ROWS 193-250: CAP SHAPING: Bind off 6 sts. beginning next 2 rows, 5 sts. beginning next 2 rows, 4 sts. beginning next 2 rows, 3 sts. beginning next 2 rows, 2 sts. beginning next 6 rows, 1 st. beginning next 36 rows, 2 sts. beginning next 2 rows, 3 sts. beginning next 2 rows, 4 sts. beginning next 4 rows and after row 250 bind off the remaining 11 sts.

COLLAR: Cast on 129 sts. with white and work 60 rows stockinette st., knitting 10 rows white and 10 rows red with tension 7, 20 rows white with tension 6 and 10 rows red and 10 rows white with tension 7. AT THE SAME TIME, for the SIDE SHAPING, decrease 2 sts. on each side after ROW 4, then again every following 4th row 5 x. For the first decrease hang the 28th and 30th sts. on each side onto the 29th needle, then move the ends sts. inward to fill the empty needles. The next decreases lie directly above. After ROW 36 increase 2 sts. on each side, then again every following 4th row 5 x. The increases lie directly above the decreases. After ROW 60 bind off all sts.

CAP: Follow the instructions for Cap in DP 7615, BUT work the side sections with red and the center section with white.

FINISHING: Join front and back section at side and shoulders, easing in the fullness at bustline of front section. Sew sleeves together and set in. Sew 1 edge of collar to inside and 1 edge to outside of neckline. Work 1 row of single crochet around back opening. Sew in zipper.

WOMAN'S PULLOVER and CAP, DP 7615

SIZE: 10/12. **MATERIAL:** 17½ oz. white, 5¼ oz. blue and 1¾ oz. red KNITKING Subita 2 x 4, Color No. 4, No. 1 and No. 31. **TENSION:** KNITKING 6 to 8. **GAUGE:** Pattern Stitch 16 sts. 2", 21 rows 2". Stockinette Stitch 15 sts. 2", 21 rows 2". **PATTERN:** Checkered Pattern using the Ribber according to chart. Worn on the purl side. LOWER EDGE BAND, SLEEVES, POCKET and SHOULDER SECTIONS: Stockinette Stitch worn on the knit side. COLLAR and SLEEVE EDGES: K1 P1, Ribbing.



BACK: (Figure II). Cast on 157 sts. with white, work 2 rows stockinette st., turn Row Counter to 0, set up Pattern according to chart then work Checkered Pattern.

ROWS 1-138: Work even.

ROWS 139-158: ARMHOLE SHAPING: Bind off 4 sts. beginning next 4 rows, 3 sts. beginning next 2 rows, 2 sts. beginning next 4 rows, 1 st. beginning next 2 rows and 1 st.

on each side of the next 4th and following 4th row. (121 sts.)

ROWS 159-210: Work even.

ROWS 211-226: SHOULDER SHAPING: Bind off 5 sts. beginning next 14 rows and 6 sts. beginning next 2 rows. After ROW 226 bind off the remaining 39 sts. For the LOWER EDGE BAND cast on 137 sts. with blue and work 68 rows stockinette st., knitting ROWS 47-56 with red. After ROW 68 bind off all sts. the crochet method.

FRONT: (Figure I). Work the front the same as the back to ROW 198, BUT set up the Checkered Pattern by transferring first the 2nd, 4th, 6th, 8th, 10th, 12th, 14th and 16th sts. from the main machine to the ribber.

ROWS 199-218: NECK SHAPING: Bind off the center 15 sts., (See Notes to Knit By, inside back cover and transfer ribber sts. to main machine before putting them in hold) then on every other row on Neck Side bind off 4 sts. 2 x, 3 sts. 1 x, 2 sts. 2 x, and 1 st. 3 x. AT THE SAME TIME, after ROW 206, then on every other row SHAPE SHOULDER by binding off 5 sts. 7 x. Work the LOWER EDGE BAND the same as for the back.

SLEEVE: (Figure III). Make two. Cast on 63 sts. with white.

ROWS 1-34: Working K1, P1, Ribbing, increase 1 st. on each side after ROWS 24 and 32. After ROW 34 transfer the ribber sts., to the main machine and continue with stockinette st.

ROWS 35-172: Increase 1 st. on each side after ROW 40, then again every following 8th row 3 x and every following 6th row 17 x. (109 sts.)

ROWS 173-186: CAP SHAPING: Bind off 4 sts. beginning next 2 rows, 3 sts. beginning next 4 rows and 2 sts. beginning next 8 rows.

ROWS 187-226: Bind off 1 st. beginning next 6 rows and 2 sts. beginning next 2 rows. Repeat these bind-offs 3 x, then bind off 2 sts. beginning next 2 rows, 3 sts. beginning next 4 rows, 4 sts. beginning next 2 rows and after ROW 226 bind off the remaining 9 sts.

SHOULDER SECTIONS: Cast on 36 sts. with blue.

ROWS 1-32: Working stockinette st., knit 11 rows blue, 10 rows red and 11 rows blue and AT THE SAME TIME, increase 1 st. on the left side after ROWS 15, 19, 23, 25, 27 and 29. After ROW 32 bind off all 42 sts. Make 1 more section like this and 2 more sections with reverse shaping.

POCKET: Cast on 36 sts. with white and working stockinette st., knit 26 rows white, 8 rows blue, 8 rows red and 16 rows blue. After ROW 58 bind off all sts.

COLLAR: Cast on 195 sts. with white. Work K1, P1, Ribbing, 18 rows with tension 7, 36 rows with tension 6 and 18 rows with tension 7. After ROW 72 bind off all sts.

CAP: (Figure V). Cast on 12 sts. with white.

ROWS 1-80: Increase 1 st. on the left side after ROW 39, then on every other row increase 1 st. 1 x, 2 sts. 3 x, 3 sts. 2 x, 4 sts. 1 x, 18 sts. 1 x, 1 st. 6 x and 1 st. on every following 4th row 3 x. AT THE SAME TIME, decrease 1 st. on the right side after ROWS 42, 58 and 74.

ROWS 81-122: Bind off 1 st. on the left side after ROW 107, then on every other row bind off 1 st. 2 x, 2 sts. 3 x and 3 sts. 2 x. AT THE SAME TIME, decrease 1 st. on the right side after ROWS 90, 106 and 120. (36 sts.) After ROW 122

cast on 60 sts. on the left side, using a separate length of yarn and continue with blue.

ROWS 123-132: Work even.

ROWS 133-144: Work short rows. (See Notes to Knit By, inside back cover). On the left side, put 50 needles into holding position, knit 2 rows. Now bring 10 needles 5 x back into working position.

ROWS 145-152: Work even. The center of the cap is now reached. The second half is worked in reverse.

ROWS 153-160: Work even.

ROWS 161-170: On the left side put 10 needles 5 x into holding position. Bring all needles into working position.

ROWS 171-182: Work even, then bind off 60 sts. on the left side and continue with white.

ROWS 183-198: Increase 1 st. on the right side after ROWS 182 and 196. AT THE SAME TIME, increase 3 sts. on the left side after ROW 183, then on every other row increase 3 sts. 1 x, 2 sts. 3 x and 1 st. 3 x.

ROWS 199-266: Increase 1 st. on the right side after ROWS 212, 228, 244 and 260. AT THE SAME TIME, bind off 1 st. on the left side after ROWS 225, 229, 233 and 237, then on every other row bind off 1 st. 5 x, 18 sts. 1 x, 4 sts. 1 x, 3 sts. 2 x, 2 sts. 3 x and 1 st. 2 x.

ROWS 267-304: Work even and make vertical buttonholes over 6 rows after ROWS 268 and 290, by dividing the work in the center and working for 6 rows in 2 sections. After ROW 304 bind off the remaining 12 sts.

FINISHING: PULLOVER: For a continuous Pattern, weave front section to back section at sides, 1 st. in on one edge and 2 sts. in on opposite edge on each side seam. Weave lower band at sides, 1 st. in on each edge. Backstitch bound-off edge of band to right side of lower edge of pull-over, even with the first row of Pattern. Fold band in half and hem to wrong side. Join shoulder sections to front and back section, then sew one shoulder section against wrong side. Turn under 8 rows on upper pocket, then sew or weave pocket to left sleeve. Sew sleeves together and set in. Join short ends of collar, then sew 1 edge of collar to inside and 1 edge to outside of neckline.

CAP: Join back section to side sections. Work 2 rows of single crochet around all edges, easing in the fullness at back edge. Finish buttonholes, sew on buttons.

WOMAN'S JACKET, DP 7611



SIZE: 12/14. **MATERIAL:** 19 oz. white KNITTING Starlite Crepe, Color No. 1, 4 yards trim, 1" wide and a 24" Jacket Type Zipper. **TENSION:** KNITTING 8 to 10. **GAUGE:** 14 sts. 2", 19 rows 2". **PATTERN:** Stockinette Stitch.

BACK: (Figure II). Cast on 148 sts.

ROWS 1-30: Work even, then hang the cast on sts. back on the machine behind the latches to form the hem.

ROWS 31-152: Work even.

ROWS 153-250: RAGLAN SHAPING:

Decrease 1 st. on each side after ROW 152, then again every other row 46 x by always hanging the 3rd st. on each side onto the 2nd needle, then moving the end sts. inward to fill the empty needle. After ROW 246 bind off the center 22 sts. for NECK. (See Notes to Knit By, inside back cover) then on every other row on NECK SIDE bind off 8 sts. 1 x and 6 sts. 1 x. AT THE SAME TIME, decrease 1 st. on Shoulder Side after ROWS 246 and 248.

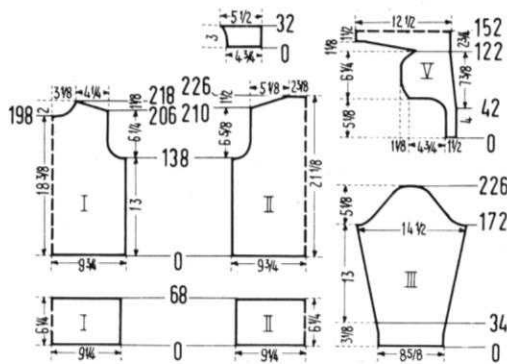
FRONT: (Figure I). Cast on 74 sts.

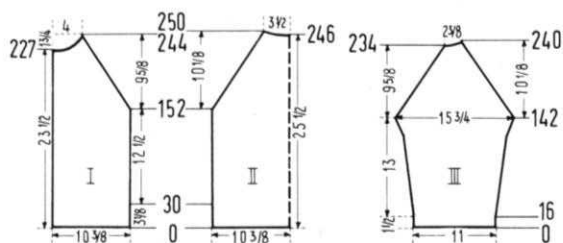
ROWS 1-30: Work even, then hang the cast on sts. back on the machine behind the latches to form the hem.

ROWS 31-152: Work even.

ROWS 153-244: RAGLAN SHAPING: Decrease 1 st. on the right side after ROW 152, then again every other row 45 x as you did on the back. AT THE SAME TIME, after ROW 227, then on every other row SHAPE NECK by binding off 10 sts.

1 x, 4 sts. 1 x, 3 sts. 2 x, 2 sts. 1 x, and 1 st. 3 x. After ROW 244 hang the remaining 3 sts. together, (the 2 outside sts. onto the center st.) then bind off. Make second front section with reverse shapings.





SLEEVE: (Figure III). Cast on 78 sts.

ROWS 1-142: Increase 1 st. on each side after ROW 16, then again every following 10th row 7 x, every following 8th row 4 x and every following 4th row 5 x. (112 sts.)

ROWS 143-234: RAGLAN SHAPING: Decrease 1 st. on each side after ROW 142, then again every other row 45 x as you did on the back.

ROWS 235-240: Work short rows. (See Notes to Knit By, inside back cover). On the left side put 7 needles 1 x, 5 needles 1 x and 3 needles 1 x into holding position. AT THE SAME TIME, decrease 1 st. on the right side after ROWS 234, 236 and 238. After ROW 240 bring all needles into working position, then bind off all 17 sts. Work second sleeve with reverse shaping.

FINISHING: Join front and back sections at sides. Sew sleeves together and weave to front and back sections, 1 st. in on each edge. Sew trim to front edges and sleeves. (See picture). For the NECKBAND cut 2 lengths of trim, then join on upper edge. Sew 1 long edge of neckband to inside and 1 long edge to outside of neckline. Sew on zipper.

MAN'S PULLOVER SHIRT, HP 3530

SIZE: 38/40. **MATERIAL:** 25 oz. olive KNITTING Starlite Crepe, Color No. 194, 4 1/2 yards trim, 1" wide and a 10" zipper. **TENSION:** KNITTING: 8 to 10. **GAUGE:** 14 sts. 2", 19 rows 2". **PATTERN:** Stockinette Stitch.

BACK: (Figure II). Cast on 158 sts.

ROWS 1-30: Work even, then hang the cast-on sts. back on the machine behind the latches to form the hem.

ROWS 31-178: Work even.

ROWS 179-198: ARMHOLE SHAPING: Bind off 1 st. beginning next 2 rows and 2 sts. beginning next 2 rows. Repeat these bind-offs 4 x. (128 sts.)

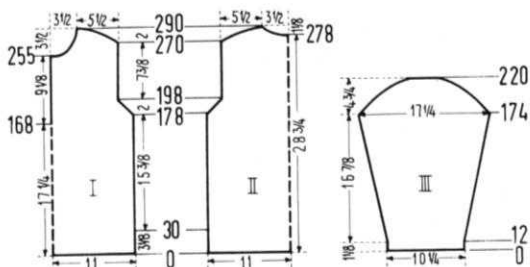
ROWS 199-270: Work even.

ROWS 271-290: SHOULDER SHAPING: Bind off 2 sts. beginning next 6 rows and 3 sts. beginning next 2 rows. After ROW 278 bind off the center 12 sts. for NECK. (See Notes to Knit By, inside back cover). Bind off 3 sts. at Shoulder Side and continue to shape shoulder on every other row by binding off 3 sts. 1 x, 4 sts. 2 x, 5 sts. 2 x and 6 sts. 1 x. AT THE SAME TIME, shape NECK on every other row by binding off 5 sts. 2 x, 4 sts. 1 x, 3 sts. 1 x and 2 sts. 1 x. **FRONT:** (Figure I). Work the front the same as the back to ROW 168, then, for the front opening, divide the sts. in the center, put the sts. on the left side into holding position and complete the right half first.

ROWS 169-178: Work even.

ROWS 179-198: ARMHOLE SHAPING: After ROW 178, then on every other row bind off 1 st. 1 x and 2 sts. 2 x. Repeat these bind-offs 4 x.

ROWS 199-255: Work even.



ROWS 256-290: NECK SHAPING: Bind off 10 sts. on the left side, then on every other row bind off 3 sts. 2 x, 2 sts. 2 x, 1 st. 2 x and 1 st. on the next 4th and following 4th row and 1 st. on the following 6th row. AT THE SAME TIME, after ROW 270, then on every other row SHAPE SHOULDER by binding off 2 sts. 3 x, 3 sts. 3 x, 4 sts. 2 x, 5 sts. 2 x and 6 sts. 1 x. Now move the Cam Box to the left side, turn the Row Counter back to 168, bring all needles into working position and complete the left half, following the instructions from ROWS 169-290, reversing the sides.

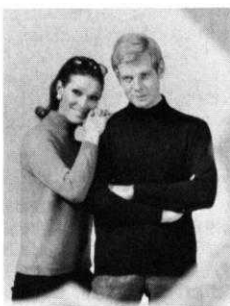
SLEEVE: (Figure III). Make two. Cast on 73 sts.

ROWS 1-174: Increase 1 st. on each side after ROW 12, then again every following 8th row 5 x and every following 6th row 19 x. (123 sts.)

ROWS 175-220: CAP SHAPING: Bind off 1 st. beginning next 2 rows and 2 sts. beginning next 2 rows. Repeat these bind-offs 4 x, then bind off 2 sts. beginning next 10 rows, 3 sts. beginning next 12 rows, 4 sts. beginning next 4 rows and after ROW 220 bind off the remaining 21 sts.

FINISHING: Join front and back at sides and shoulders. Sew sleeves together and set in. Sew trim to lower edge, sleeve edges and front opening (See picture.) Cut 2 lengths of trim for each shoulder, join trim for double width and sew to shoulder, back edge of trim even with shoulder seam. Cut 2 lengths of trim for the NECKBAND and join upper edge. Sew 1 long edge of neckband to inside and 1 long edge to outside of neckline. Sew on zipper.

WOMAN'S PULLOVER, DP 7612



SIZE: 12/14. **MATERIAL:** 15 3/4 oz. red KNITTING Sonika Dralon, Color No. 435. **TENSION:** KNITTING 7 to 9. **GAUGE:** 14 sts. 2", 19 rows 2".

PATTERN: Stockinette Stitch. **COLLAR and EDGES:** K1, P1, Ribbing. **BACK:** (Figure II). Cast on 133 sts.

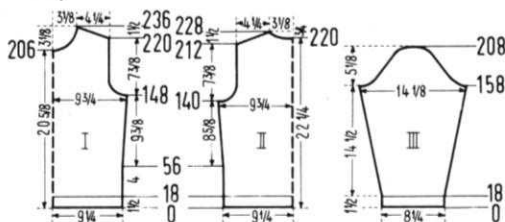
ROWS 1-18: K1, P1, Ribbing. After ROW 18 transfer the ribber sts. to the main machine and continue with stockinette st.

ROWS 19-140: Increase 1 st. on each side after ROW 56, then again every following 20th row 3 x. (141 sts.)

ROWS 141-160: ARMHOLE SHAPING: Bind off 5 sts. beginning next 2 rows, 3 sts. beginning next 4 rows, 2 sts. beginning next 2 rows, 1 st. beginning next 4 rows and 1 st. at each end of the next 4th and following 4th row. (107 sts.)

ROWS 161-212: Work even.

ROWS 213-228: SHOULDER SHAPING: Bind off 3 sts. beginning next 8 rows. After ROW 220 bind off the center 19 sts.



for NECK. (See Notes to Knit By, inside back cover). Bind off 3 sts. at Shoulder Side and continue to shape shoulder on every other row by binding off 4 sts. 4 x. AT THE SAME TIME, shape NECK on every other row by binding off 6 sts. 1 x, 4 sts. 1 x and 3 sts. 1 x.

FRONT: (Figure I). Work the front the same as the back to ROW 140.

ROWS 141-148: Work even.

ROWS 149-168: ARMHOLE SHAPING: Bind off 5 sts. beginning next 2 rows, 3 sts. beginning next 4 rows, 2 sts. beginning next 2 rows, 1 st. beginning next 4 rows and 1 st. at each end of the next 4th and following 4th row. (107 sts.)

ROWS 169-206: Work even.

ROWS 207-236: NECK SHAPING: Bind off the center 15 sts. as you did on the back, then on every other row on Neck Side bind off 3 sts. 2 x, 2 sts. 2 x, 1 st. 3 x and 1 st. on the next 4th and following 4th row. **AT THE SAME TIME,** after ROW 220, then on every other row **SHAPE SHOULDER** by binding off 3 sts. 5 x and 4 sts. 4 x.

SLEEVE: (Figure III). Make two. Cast on 59 sts.

ROWS 1-18: K1, P1, Ribbing. After ROW 18 transfer the ribber sts. to the main machine and continue with stockinette st.

ROWS 19-158: Increase 1 st. on each side after ROW 26, then again every following 8th row 2 x and every following 6th row 18 x. (101 sts.)

ROWS 159-208: CAP SHAPING: Bind off 4 sts. beginning next 4 rows, 3 sts. beginning next 4 rows, 2 sts. beginning next 4 rows, 1 st. beginning next 30 rows, 2 sts. beginning next 4 rows, 3 sts. beginning next 2 rows, 4 sts. beginning next 2 rows and after ROW 208 bind off the remaining 13 sts.

COLLAR: Cast on 131 sts. and work 52 rows K1, P1, ribbing, then transfer the ribber sts. to the main machine and work 4 rows stockinette st., then bind off all sts. the crochet method.

FINISHING: Join front and back at sides and shoulders, easing in the fullness at bustline of front section. Sew sleeves together and set in. Join short ends of collar. Sew cast-on edge of collar to inside and bound-off edge to outside of neckline, having the stockinette sts. on the right side.

MAN'S PULLOVER, HP 3531

SIZE: 38/40. **MATERIAL:** 19³/₄ oz. black KNITKING Subita 2 x 4, Color No. 16. **TENSION:** KNITKING 6 to 8. **GAUGE:** 16 sts. 2", 22 rows 2". **PATTERN:** Stockinette Stitch. **EDGES and COLLAR:** K1, P1, Ribbing.

BACK: (Figure II). Cast on 171 sts.

ROWS 1-20: K1, P1, Ribbing. After ROW 20 transfer the ribber sts. to the main machine and continue with stockinette st.

ROWS 21-178: Work even.

ROWS 179-200: ARMHOLE SHAPING: Bind off 4 sts. beginning next 2 rows, 3 sts. beginning next 4 rows, 2 sts. beginning next 4 rows, 1 st. beginning next 4 rows and 1 st. at each end of the next 4th and following 4th row. (135 sts.)

ROWS 201-276: Work even.

ROWS 277-294: SHOULDER SHAPING: Bind off 3 sts. beginning next 4 rows. After ROW 280 bind off the center 17 sts. for NECK. (See Notes to Knit By, inside back cover). Bind off 4 sts. on Shoulder Side and continue to shape shoulder on every other row by binding off 4 sts. 7 x. **AT THE SAME TIME,** Shape Neck on every other row by binding off 5 sts. 1 x, 4 sts. 2 x, 3 sts. 2 x and 2 sts. 1 x.

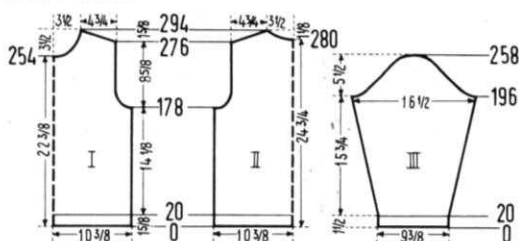
FRONT: (Figure I). Work the front the same as the back to ROW 254, then bind off the center 17 sts. for NECK as you did on the back, then on every other row on Neck Side bind off 5 sts. 1 x, 4 sts. 1 x, 3 sts. 1 x, 2 sts. 2 x, 1 st. 3 x and 1 st. on every following 4th row 3 x. **AT THE SAME TIME,** after ROW 276, then on every other row **SHAPE SHOULDER** by binding off 3 sts. 2 x and 4 sts. 8 x.

SLEEVES: (Figure III). Make two. Cast on 78 sts.

ROWS 1-20: K1, P1, Ribbing. After ROW 20 transfer the ribber sts. to the main machine and continue with stockinette st.

ROWS 21-196: Increase 1 st. on each side after ROW 20, then again every following 6th row 28 x. (136 sts.)

ROWS 197-208: CAP SHAPING: Bind off 4 sts. beginning next 2 rows, 3 sts. beginning next 4 rows and 2 sts. beginning next 6 rows.



ROWS 209-258: Bind off 1 st. beginning next 2 rows and 2 sts. beginning next 2 rows. Repeat these bind-offs 10 x, then bind off 3 sts. beginning next 2 rows, 4 sts. beginning next 2 rows, 5 sts. beginning next 2 rows and after ROW 258 bind off the remaining 14 sts.

COLLAR: Cast on 188 sts. and work K1, P1, Ribbing, 40 rows with tension 6 and 20 rows with tension 7. After 60 rows bind off all sts.

FINISHING: Join front and back section at sides and shoulders. Sew sleeves together and set in. Weave short ends of collar, 1 st. in on each edge. Sew collar to neckline, then fold to outside.

WOMAN'S PULLOVER, DP 7617

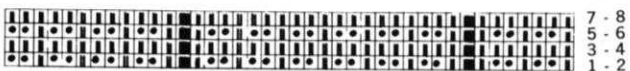


SIZE: 12/14. **MATERIAL:** 17¹/₂ oz. brick red KNITKING Subita 2 x 3, Color No. 149. **TENSION:** KNITKING 5 to 7. **GAUGE:** Pattern Stitch: 15 sts. 2", 38 rows 2". K1, P1, Ribbing: 15 sts. 2", 24 rows 2". **PATTERN:** Holding Position Design with the Ribber according to chart, worn on the purl side. The Gate Cam Release Lever of the Ribber is at the needle heels. Push in the left retractor Button to retract needles automatically.

LOWER EDGE: Stockinette Stitch, worn on the purl side. **SLEEVE EDGES and COLLAR:** K1, P1, Ribbing.

BACK: (Figure II). Cast on 155 sts.

ROWS 1-20: Work stockinette st. After ROW 20 transfer



the 8th, 28th, 48th, etc. sts. to the ribber, place the Gate Cam Release Lever of the ribber to the needle heels and continue with the Holding Position Design.

ROWS 21-300: Work even.

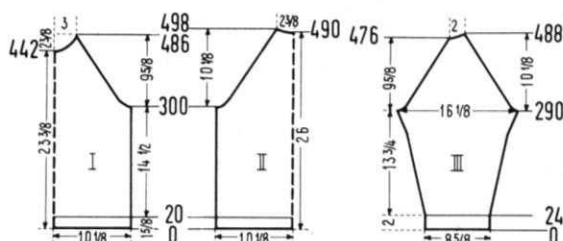
ROWS 301-498: RAGLAN SHAPING: Bind off 5 sts. beginning next 2 rows, 3 sts. beginning next 4 rows and 1 st. beginning next 2 rows. After ROW 310 decrease 1 st. on each side, then again every following 4th row 46 x. **AT THE SAME TIME,** after ROW 490, bind off the center 9 sts. for NECK, (See Notes to Knit By, inside back cover) then on every other row on Neck Side bind off 4 sts. 2 x and 3 sts. 2 x.

FRONT: (Figure I). Work the front the same as the back to ROW 442. (65 sts.) Now bind off the center 11 sts. for NECK as you did on the back, then on every following 4th row on Neck Side bind off 3 sts. 2 x, 2 sts. 1 x, 1 st. 2 x and on every following 6th row 1 st. 3 x. **AT THE SAME TIME,** after ROW 442 continue to Shape Raglan 11 x more as you did before. After ROW 486 hang the remaining 3 sts. together, (the 2 outside sts. onto the center needle) then bind off.

SLEEVE: (Figure III). Cast on 67 sts.

ROWS 1-24: K1, P1, Ribbing. After ROW 24 transfer the Ribber sts. onto the main machine, leaving the 14th, 34th and 54th sts. on the Ribber, place the Gate Cam Release Lever of the Ribber to the needle heels and continue with the Holding Position Design.

ROWS 25-290: Increase 1 st. on each side after ROW 26, then again every following 12th row 16 x and every following



6th row 11 x. (123 sts.) When increasing, be sure to follow the PATTERN.

ROWS 291-476: RAGLAN SHAPING: Bind off 4 sts. beginning next 2 rows, 2 sts. beginning next 4 rows and 1 st. beginning next 2 rows. After ROW 300 decrease 1 st. on each side, then again every following 4th row 43 x.

ROWS 477-488: Work short rows. (See Notes to Knit By, inside back cover). On the left side put 3 needles 2 x, 2 needles 2 x and 1 needle 2 x into holding position. AT THE SAME TIME, decrease 1 st. on the right side for Raglan Shaping after ROWS 476, 480 and 484. After ROW 488 bring all needles into working position and bind off all 14 sts. Work the second sleeve with reverse shaping.

COLLAR: Cast on 163 sts. and work K1, P1, Ribbing, 15 rows with tension 6, 30 rows with tension 5 and 15 rows with tension 6. After 60 rows bind off all sts.

FINISHING: Join front and back section at sides. Sew sleeves together and sew to front and back section. Join short ends of collar. Sew 1 edge of collar to inside and 1 edge to outside of neckline. Turn under 20 rows on lower edge and hem to wrong side.

MAN'S PULLOVER, HP 3532

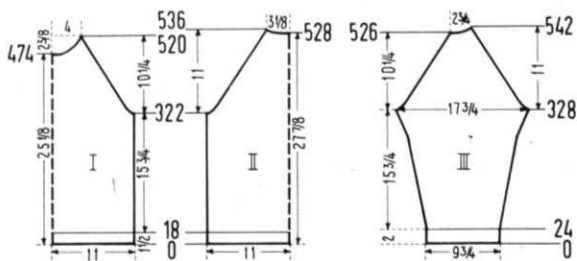
SIZE: 40/42. **MATERIAL:** 21 oz. beige KNITKING Subita 2 x 3, Color No. 133. **TENSION** KNITKING 5 to 7. **GAUGE:** Pattern Stitch: 15 sts. 2", 38 rows 2". K1, P1, Ribbing: 15 sts. 2", 24 rows 2". **PATTERN:** Holding Position Design according to chart DP 7617, using the Ribber; worn on the purl side. The Gate Cam Release Lever of the Ribber is at the needle heels. Push in the left Retractor Button to retract needles automatically. **LOWER EDGE:** Stockinette Stitch worn on the purl side. **SLEEVE EDGES** and **COLLAR:** K1, P1, Ribbing.

BACK: (Figure II). Cast on 169 sts.

ROWS 1-18: Work stockinette st. After ROW 18 transfer the 5th, 25th, 45th, etc. sts. to the Ribber, place the Gate Cam Release Lever of the Ribber to the needle heels and continue with the Holding Position Design.

ROWS 19-322: Work even.

ROWS 323-536: RAGLAN SHAPING: Bind off 4 sts. beginning next 2 rows, 2 sts. beginning next 4 rows and 1 st. beginning next 2 rows. After ROW 332 decrease 1 st. on each side, then again every following 4th row 51 x. AT THE SAME TIME, after ROW 528, bind off the center 15 sts. for NECK, (See Notes to Knit By, inside back cover) then on every other row on Neck Side bind off 6 sts. 1 x, 4 sts. 2 x and 3 sts. 1 x.



FRONT: (Figure I). Work the front the same as the back to ROW 474. (79 sts.) Now bind off the center 15 sts. for NECK as you did on the back, then on every following 4th row on Neck Side bind off 4 sts. 1 x, 3 sts. 2 x, 2 sts. 2 x, 1 st. 2 x and 1 st. on the next 6th row. AT THE SAME TIME, after ROW 476 continue to Shape Raglan 11 x more as you did before. After ROW 520 hang the remaining 3 sts. together, (the 2 outside sts. onto the center st.) then bind off.

SLEEVE: (Figure III). Cast on 75 sts.

ROWS 1-24: K1, P1, Ribbing. After ROW 24 transfer the Ribber sts. to the main machine, leaving the 18th, 38th, and 58th sts. on the Ribber to the needle heels and continue with the Holding Position Design.

ROWS 25-328: Increase 1 st. on each side after ROW 36, then again every following 12th row 15 x, every following

10th row 5 x and every following 6th row 9 x. (135 sts.) When increasing, be sure to follow the PATTERN.

ROWS 329-526: RAGLAN SHAPING: Bind off 3 sts. beginning next 2 rows, 2 sts. beginning next 4 rows and 1 st. beginning next 2 rows. After ROW 338 decrease 1 st. on each side, then again every following 4th row 46 x.

ROWS 527-542: Work the short rows. (See Notes to Knit By, inside back cover). On the left side put 3 needles 3 x and 2 needles 5 x into holding position. AT THE SAME TIME, decrease 1 st. on the right side after ROWS 526, 530, 534 and 538. After ROW 542 bring all needles back into working position and bind off all 21 sts. Work the second sleeve with reverse shaping.

COLLAR: Cast on 195 sts. and work K1, P1, Ribbing, 90 rows with tension 5 and 30 rows with tension 6. After 120 rows bind off all sts. the crochet method.

FINISHING: Join front and back section at sides. Sew sleeves together and join to front and back section. Join short ends of collar. Sew bound-off edge of collar to neckline, then fold to outside. Turn under 18 rows at lower edge and hem to wrong side.

WOMAN'S PULLOVER, DP 7609



SIZE: 12/14. **MATERIAL:** 16 oz. blue and 8 oz. red KNITKING Starlite Crepe, Color No. 298 and No. 86. **TENSION:** KNITKING 8 to 10. **GAUGE:** 14 sts. 2", 19 rows 2". **PATTERN:** Stockinette Stitch. **COLLAR** and **EDGES:** K1, P1, Ribbing. The front and the back are worked in 2 sections after the ribbing of the lower edges is completed.

BACK: (Figure II). Cast on 146 sts. with blue.

ROWS 1-20: K1, P1, Ribbing. After ROW 20 transfer the ribber sts. to

the main machine. Now take 73 sts. on the left side off on contrast waste yarn, cast on 1 st. on the left side, and continue working stockinette st. over 74 needles with red.

ROWS 21-156: Work even, changing to blue after ROW 122.

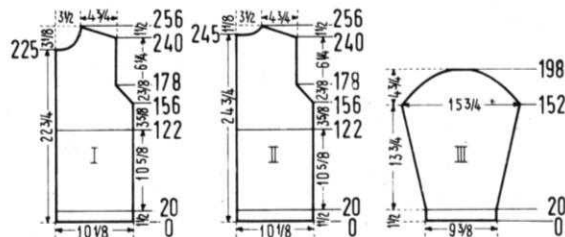
ROWS 157-178: ARMHOLE SHAPING: Bind off 2 sts. on the right side. After ROW 158, then on every other row bind off 1 st. 2 x and 2 sts. 1 x. Repeat these bind-offs 2 x and bind off 1 st. after ROW 176. (59 sts.)

ROWS 179-240: Work even.

ROWS 241-256: SHOULDER SHAPING: Bind off 3 sts. on the right side, then on every other row bind off 3 sts. 1 x and 4 sts. 7 x. AT THE SAME TIME, after ROW 245, then on every other row SHAPE NECK by binding off 9 sts. 1 x, 5 sts. 1 x, 4 sts. 1 x, 3 sts. 1 x and 2 sts. 2 x. Now move the Cam Box to the left side, turn the Row Counter back to 20, hang the 73 sts. that are on contrast yarn back on the machine, cast on 1 st. on the right side and complete the left half, following the instructions from ROWS 21-256, reversing the sides and working to ROW 122 with blue, then continuing with red.

FRONT: (Figure I). Work the front the same as the back to ROW 225, but reverse the colors after the lower ribbed edge has been knitted. After ROW 225 bind off 7 sts. for NECK, then on every other row bind off 4 sts. 1 x, 3 sts. 2 x, 2 sts. 2 x, 1 st. 2 x and 1 st. on the next 4th row. AT THE SAME TIME, after ROW 240, then on every other row SHAPE SHOULDER by binding off 3 sts. 2 x and 4 sts. 7 x.

SLEEVE: (Figure III). Make two. Cast on 67 sts. with blue.



ROWS 1-20: K1, P1, Ribbing. After ROW 20 transfer the ribber sts. to the main machine and continue with stockinette st.

ROWS 21-152: Increase 1 st. on each side after ROW 20, then again every following 6th row 21 x. (111 sts.)

ROWS 153-198: CAP SHAPING: Bind off 2 sts. beginning next 2 rows and 1 st. beginning next 4 rows. Repeat these bind-offs 3 x, then bind off 2 sts. beginning next 10 rows, 3 sts. beginning next 12 rows and after ROW 198 bind off the remaining 23 sts.

COLLAR: Cast on 163 sts. with blue and work K1, P1, Ribbing, 10 rows with tension 9, 24 rows with tension 8 and 10 rows with tension 9. After 44 rows bind off all sts.

FINISHING: Weave front sections and back sections together at centers, 1 st. in from each edge. Join front and back section at sides and shoulders. Sew sleeves together and set in. Join short ends off collar. Sew 1 edge of collar to inside and 1 edge to outside of neckline.

WOMAN'S PULLOVER, DP 7610



SIZE: 12/14. and 16/18. **MATERIAL:** 21 oz. (22³/₄ oz.) dark blue and small amounts of orange, pale green and white KNITTING Nora, Color No. 4052, No. 4102, No. 4099 and No. 4002. **TENSION:** KNITTING 6 to 8. **GAUGE:** 15 sts. 2", 21 rows 2". **PATTERN:** Stockinette Stitch. **COLLAR and SLEEVE EDGES:** K1, P1, Ribbing.

SIZE: 12/14. BACK: (Figure II). Cast on 144 sts. and work stockinette st.

ROWS 1-34: Work even, then hang the cast-on sts. back on the machine behind the latches to form the hem.

ROWS 35-186: Increase 1 st. on each side after ROW 76, then again every following 22nd row 4 x. (154 sts.)

ROWS 187-208: ARMHOLE SHAPING: Bind off 6 sts. beginning next 2 rows, 4 sts. beginning next 2 rows, 3 sts. beginning next 2 rows, 2 sts. beginning next 2 rows, 1 st. beginning next 6 rows and 1 st. at each end of the next 4th and following 4th row. (114 sts.)

ROWS 209-266: Work even.

ROWS 267-282: SHOULDER SHAPING: Bind off 3 sts. beginning next 4 rows. After ROW 270 bind off the center 14 sts. for NECK. (See Notes to Knit By, inside back cover). Bind off 3 sts. at Shoulder Side and continue to shape shoulder on every other row by binding off 4 sts. 6 x. AT THE SAME TIME, Shape Neck on every other row by binding off 5 sts. 1 x, 4 sts. 1 x, 3 sts. 2 x and 2 sts. 1 x.

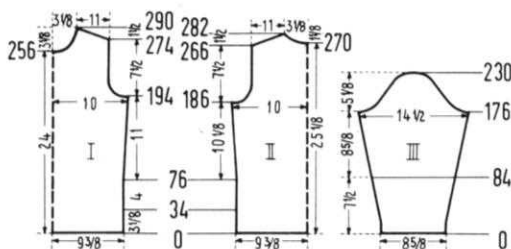
FRONT: (Figure I). Work the front the same as the back to ROW 186.

ROWS 187-194: Work even.

ROWS 195-216: ARMHOLE SHAPING: Bind off 6 sts. beginning next 2 rows, 4 sts. beginning next 2 rows, 3 sts. beginning next 2 rows, 2 sts. beginning next 2 rows, 1 st. beginning next 6 rows and 1 st. at each end of the next 4th and following 4th row. (114 sts.)

ROWS 217-256: Work even.

ROWS 257-290: NECK SHAPING: Bind off the center 12 sts. as you did on the back, then on every other row on Neck Side bind off 5 sts. 1 x, 3 sts. 1 x, 2 sts. 2 x, 1 st. 3 x and 1 st. on every following 4th row 3 x. AT THE SAME TIME, after ROW 274, then on every other row SHAPE SHOULDER by binding off 3 sts. 3 x and 4 sts. 6 x.



SLEEVE: (Figure III). Make two. Cast on 67 sts. with orange.

ROWS 1-84: K1, P1, Ribbing, working 4 rows orange, 6 rows blue, 4 rows white, 6 rows blue, 4 rows green and 6 rows blue. Repeat these rows 2 x, but the last time end with 4 rows green. AT THE SAME TIME, increase 1 st. on each side after ROW 20, then again every following 6th row 10 x. After ROW 84 transfer the ribber sts. to the main machine and continue with stockinette st., working with blue.

ROWS 85-176: Increase 1 st. on each side after ROW 88, then again every following 8th row 10 x. (111 sts.)

ROWS 177-230: CAP SHAPING: Bind off 6 sts. beginning next 2 rows, 4 sts. beginning next 2 rows, 3 sts. beginning next 4 rows, 2 sts. beginning next 4 rows, 1 st. beginning next 34 rows, 2 sts. beginning next 2 rows, 3 sts. beginning next 2 rows, 4 sts. beginning next 4 rows and after ROW 230 bind off the remaining 11 sts.

COLLAR: Cast on 145 sts. and work K1, P1, Ribbing, 22 rows with tension 8, 22 rows with tension 7 and 22 rows with tension 8. After 66 rows bind off all sts.

FINISHING: Join front and back section at sides and shoulders, easing in the fullness at bustline of front section. Sew sleeves together and set in. Join short ends of collar. Sew 1 edge of collar to inside and 1 edge to outside of neckline. **SIZE: 16/18. BACK:** (Figure II). Cast on 164 sts. and work stockinette st.

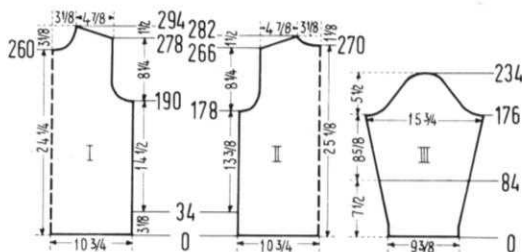
ROWS 1-34: Work even, then hang the cast-on sts. back on the machine behind the latches to form the hem.

ROWS 35-178: Work even.

ROWS 179-200: ARMHOLE SHAPING: Bind off 6 sts. beginning next 2 rows, 4 sts. beginning next 2 rows, 3 sts. beginning next 2 rows, 2 sts. beginning next 2 rows, 1 st. beginning next 6 rows and 1 st. at each end of the next 4th and following 4th row. (124 sts.)

ROWS 201-266: Work even.

ROWS 267-282: SHOULDER SHAPING: Bind off 4 sts. beginning next 4 rows. After ROW 270 bind off the center 14 sts. for NECK. (See Notes to Knit By, inside back cover). Bind off 4 sts. at Shoulder Side and continue to shape shoulder on every other row by binding off 4 sts. 4 x and 5 sts. 2 x.



AT THE SAME TIME, Shape Neck on every other row by binding off 5 sts. 1 x, 4 sts. 1 x, 3 sts. 2 x and 2 sts. 1 x. **FRONT:** (Figure I). Work the front the same as the back to ROW 178.

ROWS 179-190: Work even.

ROWS 191-212: ARMHOLE SHAPING: Bind off 6 sts. beginning next 2 rows, 4 sts. beginning next 2 rows, 3 sts. beginning next 2 rows, 2 sts. beginning next 2 rows, 1 st. beginning next 6 rows and 1 st. at each end of the next 4th and following 4th row.

ROWS 213-260: Work even.

ROWS 261-294: NECK SHAPING: Bind off the center 12 sts. as you did on the back, then on every other row on Neck Side bind off 5 sts. 1 x, 3 sts. 1 x, 2 sts. 2 x, 1 st. 3 x and 1 st. on every following 4th row 3 x. AT THE SAME TIME, after ROW 278, then on every other row SHAPE SHOULDER by binding off 4 sts. 7 x and 5 sts. 2 x.

SLEEVE: (Figure III). Make two. Cast on 73 sts. with orange.

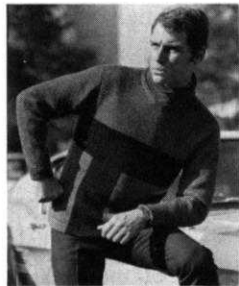
ROWS 1-84: K1, P1, Ribbing, working 4 rows orange, 6 rows blue, 4 rows white, 6 rows blue, 4 rows green and 6 rows blue. Repeat these rows 2 x, but the last time end with 4 rows green. AT THE SAME TIME, increase 1 st. on each side after ROW 20, then again every following 6th row 10 x. After ROW 84 transfer the ribber sts. to the main machine and continue with stockinette st., working with blue.

ROWS 85-176: Increase 1 st. on each side after ROW 86, then again every following 6th row 3 x and every following 8th row 8 x. (119 sts.)

ROWS 177-234: CAP SHAPING: Bind off 6 sts. beginning next 2 rows, 4 sts. beginning next 2 rows, 3 sts. beginning next 6 rows, 2 sts. beginning next 4 rows, 1 st. beginning next 34 rows, 2 sts. beginning next 4 rows, 3 sts. beginning next 4 rows, 4 sts. beginning next 2 rows and after ROW 234 bind off the remaining 11 sts.

COLLAR and FINISHING: Follow the instructions for SIZE 12/14.

MAN'S PULLOVER, HP 3529



SIZE: 40/42. **MATERIAL:** 17½ oz. red and 7 oz. black KNITKING Frigate and 5¼ oz. red KNITKING Nora, Color No. 1431, 1415 and 4105. **TENSION:** KNITKING Stockinette Stitch 10 (the yarn is hand fed); K1, P1, Ribbing 4 to 6. **GAUGE:** Stockinette Stitch 9 sts. 2", 12 rows 2". K1, P1, Ribbing 18 sts. 2", 24 rows 2". The omitted sts. when knitting Stockinette Stitch are NOT counted in the Gauge and instructions. **PATTERN:** Stockinette Stitch over every other needle. **COLLAR**

and **SLEEVE EDGES** K1, P1, Ribbing over every other needle on the main machine and every needle on the ribber.

BACK: (Figure II). Cast on 99 sts. over every other needle with red Frigate and work stockinette st.

ROWS 1-20: Work even, then hang the cast-on sts. back on the machine behind the latches to form the hem.

ROWS 21-114: Work even, changing to black after ROW 88.

ROWS 115-128: ARMHOLE SHAPING: Bind off 1 st. beginning next 2 rows and 2 sts. beginning next 2 rows. Repeat these bind-offs 2 x, then bind off 1 st. beginning next 2 rows. AT THE SAME TIME, change to red after ROW 120. (79 sts.)

ROWS 129-168: Work even.

ROWS 169-178: SHOULDER SHAPING: Bind off 3 sts. beginning next 2 rows. After ROW 170 bind off the center 13 sts. for NECK. (See Notes to Knit By, inside back cover). Bind off 4 sts. at Shoulder Side and continue to shape shoulder on every other row by binding off 4 sts. 4 x. AT THE SAME TIME, Shape Neck on every other row by binding off 5 sts. 1 x, 3 sts. 1 x and 2 sts. 1 x.

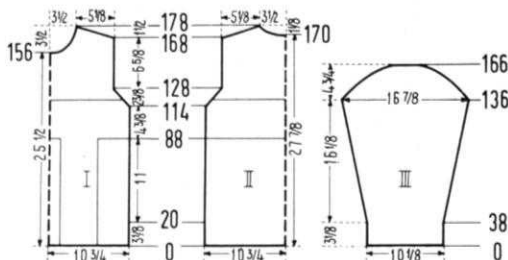
FRONT: (Figure I). The front is worked with 3 separate balls of yarn to ROW 88. (2 red and 1 black). Leaving every other needle in the non-working position, cast on over 99 needles as follows: Counting from the left side, cast on over 56 needles with red, over 22 needles with black and over 21 needles with red. The yarn must always be crossed where you change colors to prevent holes.

ROWS 1-20: Work even, then hang the cast-on sts. back on the machine behind the latches to form the hem.

ROWS 21-114: Work even and AT THE SAME TIME, after ROW 88, work with black over all 99 needles.

ROWS 115-128: ARMHOLE SHAPING: Bind off 1 st. beginning next 2 rows and 2 sts. beginning next 2 rows. Repeat these bind-offs 2 x, then bind off 1 st. beginning next 2 rows and AT THE SAME TIME, change to red after ROW 120. (79 sts.)

ROWS 129-156: Work even.



ROWS 157-178: NECK SHAPING: Bind off the center 9 sts. as you did on the back, then on every other row on Neck Side bind off 3 sts. 2 x 2 sts. 1 x, 1 st. 2 x and 1 st. on the next 4th and following 4th row. AT THE SAME TIME, after ROW 168, then on every other row SHAPE SHOULDER by binding off 3 sts. 1 x and 4 sts. 5 x.

SLEEVE: (Figure III). Make two. Using the ribber cast on 93 sts. with Nora. Tension 4 to 6.

ROWS 1-38: K1, P1, Ribbing. After ROW 38 transfer the ribber sts. to the neighboring needles on the main machine (occupied needles) then hang every other cast-on st. back on the machine (occupied needles) behind the latches to form the hem and continue working with Tension 10 over every other needle with red Frigate. (47 sts.)

ROWS 39-136: Increase 1 st. on each side after ROW 44, then again every following 6th row 14 x. (77 sts.)

ROWS 137-166: CAP SHAPING: Bind off 2 sts. beginning next 2 rows and 1 st. beginning next 2 rows. Repeat these bind-offs 2 x, then bind off 2 sts. beginning next 8 rows, 3 sts. beginning next 10 rows and after ROW 166 bind off the remaining 13 sts.

COLLAR: Using the Ribber, cast on 185 sts. with Nora. Work 148 rows K1, P1, Ribbing, with Tension 4 to 6, then bind off all sts.

FINISHING: Join front and back section at sides and shoulders. Sew sleeves together and set in. Join short ends of collar, then sew 1 edge of collar to inside and 1 edge to outside of neckline. Fold collar to outside.

WOMAN'S PULLOVER, DP 7613



SIZE: 10/12 and 14/16. **MATERIAL:** 14 oz. (15¾ oz.) beige, 1¾ oz. dark brown and 1¾ oz. medium brown KNITKING Sonika Dralon, Color No. 407, No. 442 and No. 431. **TENSION:** KNITKING 8 to 10. **GAUGE:** 14 sts. 2", 18 rows 2". **PATTERN:** Stockinette Stitch and Norwegian Design according to chart. In the directions, each row in the Norwegian Design is counted as 1 row, but several movements of the Cam Box are needed to complete 1 row. **SLEEVE EDGES:** K1, P1, Ribbing.

SIZE: 10/12. BACK: (Figure II). Cast on 132 sts. and work stockinette st.

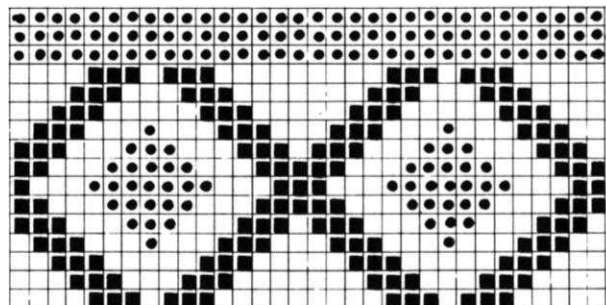
ROWS 1-30: Work even, then hang the cast-on sts. back on the machine behind the latches to form the hem.

ROWS 31-156: Increase 1 st. on each side after ROW 66, then again every following 22nd row 3 x and AT THE SAME TIME, work the Norwegian Design after ROW 100. (140 sts.)

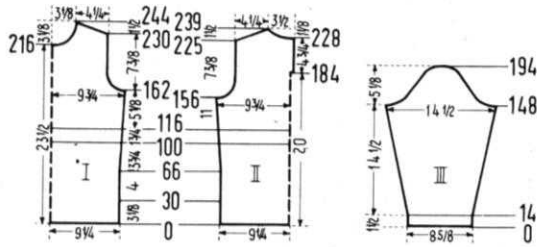
ROWS 157-174: ARMHOLE SHAPING: Bind off 4 sts. beginning next 2 rows, 3 sts. beginning next 4 rows, 2 sts. beginning next 4 rows, 1 st. beginning next 4 rows and 1 st. on each side of the following 4th row. (106 sts.)

ROWS 175-183: Work even, then put 53 needles on the right side into holding position and complete the left half first.

ROWS 184-225: After ROW 184 cast on 3 sts. on the right



□ beige ■ medium brown ● dark brown



side for the opening facing. To do this, put 3 sts. from the right half on a stitch holder.

ROWS 226-239: SHOULDER SHAPING: Bind off 3 sts. on the left side, then on every other row bind off 4 sts. 7 x. AT THE SAME TIME, after ROW 228, then on every other row SHAPE NECK by binding off 11 sts. 1 x, 5 sts. 1 x, 4 sts. 1 x 3 sts. 1 x and 2 sts. 1 x. Now move the Cam Box to the right side, turn the Row Counter back to 183, bring all needles back into working position, hang the 3 sts. from the stitch holder back on the machine and complete the right half. Follow the instructions from ROWS 184-239, but reverse the sides.

FRONT: (Figure I). Work the front the same as the back to ROW 156.

ROWS 157-162: Work even.

ROWS 163-180: ARMHOLE SHAPING: Bind off 4 sts. beginning next 2 rows, 3 sts. beginning next 4 rows, 2 sts. beginning next 4 rows, 1 st. beginning next 4 rows and 1 st. on each side of the following 4th row. (106 sts.)

ROWS 181-216: Work even.

ROWS 217-244: NECK SHAPING: Bind off the center 14 sts., (See Notes to Knit By, inside back cover) then on every other row on Neck Side bind off 4 sts. 1 x, 3 sts. 1 x, 2 sts. 2 x, 1 st. 2 x and 1 st. on the next 4th and following 4th row. AT THE SAME TIME, after ROW 230, then on every other row SHAPE SHOULDER by binding off 3 sts. 1 x and 4 sts. 7 x.

SLEEVE: (Figure III). Make two. Cast on 61 sts.

ROWS 1-14: K1, P1, Ribbing. After ROW 14 transfer the ribber sts. to the main machine and continue with stockinette st.

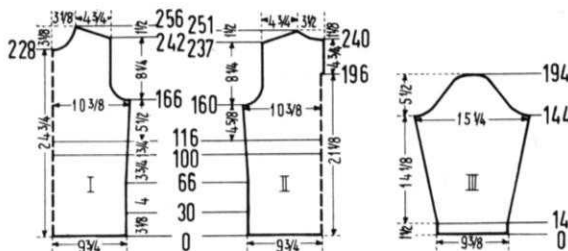
ROWS 15-148: Increase 1 st. on each side after ROW 20, then again every following 6th row 20 x. (103 sts.)

ROWS 149-160: CAP SHAPING: Bind off 4 sts. beginning next 2 rows, 3 sts. beginning next 4 rows and 2 sts. beginning next 6 rows.

ROWS 161-194: Bind off 1 st. beginning next 2 rows and 2 sts. beginning next 2 rows. Repeat these bind-offs 6 x, then bind off 2 sts. beginning next 2 rows, 3 sts. beginning next 2 rows, 4 sts. beginning next 2 rows and after ROW 194 bind off the remaining 11 sts.

NECKBAND: Cast on 112 sts. with beige and work 16 rows stockinette st. and 16 rows Norwegian Design, knitting 10 rows with tension 8, 12 rows with tension 7 and 10 rows with tension 8. After 32 rows bind off all sts. the crochet method.

FINISHING: Join front and back section at sides and shoulders, easing in the fullness at bustline of front section. Sew sleeves together and set in. Turn under 3 sts. on each side at back opening and hem to wrong side. Sew cast-on edge of neckband to inside and bound-off edge to outside of neckline. Sew in zipper.



SIZE: 14/16. BACK: (Figure II). Cast on 140 sts. and work stockinette st.

ROWS 1-30: Work even, then hang the cast-on sts. back on the machine behind the latches to form the hem.

ROWS 31-160: Increase 1 st. on each side after ROW 66, then again every following 22nd row 3 x and AT THE SAME TIME, work the Norwegian Design after ROW 100. (148 sts.)

ROWS 161-178: ARMHOLE SHAPING: Bind off 5 sts. beginning next 2 rows, 3 sts. beginning next 4 rows, 2 sts. beginning next 4 rows, 1 st. beginning next 4 rows and 1 st. on each side of the following 4th row. (112 sts.)

ROWS 179-195: Work even, then put 56 needles on the right side into holding position and complete the left half first.

ROWS 196-237: After ROW 196 cast on 3 sts. on the right side for the back facing. To do this, put 3 sts. from the right half on a stitch holder.

ROWS 238-251: SHOULDER SHAPING: Bind off 4 sts. on the left side, then on every other row bind off 4 sts. 5 x and 5 sts. 2 x. AT THE SAME TIME, after ROW 240, then on every other row SHAPE NECK by binding off 11 sts. 1 x, 5 sts. 1 x, 4 sts. 1 x, 3 sts. 1 x and 2 sts. 1 x. Now move the Cam Box to the right side, turn the Row Counter back to 195, bring all needles back into working position, hang the 3 sts. from the stitch holder back on the machine and complete the right half. Follow the instructions from ROWS 196-251, but reverse the sides.

FRONT: (Figure I). Work the front the same as the back to ROW 160.

ROWS 161-166: Work even.

ROWS 167-184: ARMHOLE SHAPING: Bind off 5 sts. beginning next 2 rows, 3 sts. beginning next 4 rows, 2 sts. beginning next 4 rows, 1 st. beginning next 4 rows and 1 st. on each side of the following 4th row. (112 sts.)

ROWS 185-228: Work even.

ROWS 229-256: NECK SHAPING: Bind off the center 14 sts., (See Notes to Knit By, inside back cover) then on every other row on Neck Side bind off 4 sts. 1 x, 3 sts. 1 x, 2 sts. 2 x, 1 st. 2 x and 1 st. on the next 4th and following 4th row. AT THE SAME TIME, after ROW 242, then on every other row SHAPE SHOULDER by binding off 4 sts. 6 x and 5 sts. 2 x.

SLEEVE: (Figure III). Make two. Cast on 67 sts.

ROWS 1-14: K1, P1, Ribbing. After ROW 14 transfer the ribber sts. to the main machine and continue with stockinette

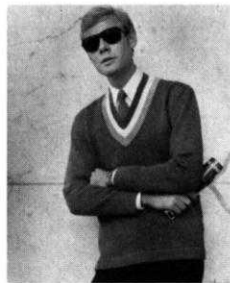
ROWS 15-144: Increase 1 st. on each side after ROW 16, then again every following 6th row 20 x. (109 sts.)

ROWS 145-156: CAP SHAPING: Bind off 5 sts. beginning next 2 rows, 3 sts. beginning next 2 rows and 2 sts. beginning next 8 rows.

ROWS 157-194: Bind off 1 st. beginning next 2 rows and 2 sts. beginning next 2 rows. Repeat these bind-offs 7 x, then bind off 2 sts. beginning next 2 rows, 3 sts. beginning next 2 rows, 4 sts. beginning next 2 rows and after ROW 194 bind off the remaining 11 sts.

NECKBAND and FINISHING: Follow the instructions for SIZE 10/12.

MAN'S PULLOVER, HP 3528



SIZE: 38/40 and 42/44. **MATERIAL:** 21 oz. (22 3/4 oz.) grey, 1 3/4 oz. yellow and 1 3/4 oz. white KNITTING Nora, Color No. 4077, No. 4100 and No. 4002. **TENSION:** KNITTING 5 to 7. **GAUGE:** 16 sts. 2", 21 rows 2".

PATTERN: Stockinette Stitch. **NECKBAND:** K1, P1, Ribbing.

SIZE: 38/40. **BACK:** Cast on 166 sts. and work stockinette st.

ROWS 1-34: Work even, then hang the cast-on sts. back on the machine behind the latches to form the hem.

ROWS 35-202: Increase 1 st. on each side after ROW 80, then again every following 24th row 4 x. (176 sts.)

ROWS 203-222: ARMHOLE SHAPING: Bind off 6 sts. beginning next 2 rows, 4 sts. beginning next 2 rows, 3 sts. beginning next 2 rows, 2 sts. beginning next 2 rows, 1 st. beginning next 4 rows and 1 st. at each end of the next 4th and following 4th row. (138 sts.)

ROWS 223-294: Work even.



A complete fourth volume of **KNITKING MAGAZINES** with a flexible, transparent plastic cover and specially bound so that it will stay open at any page, is available at the special price of \$6.95 postage paid anywhere in North America.

If purchased separately the magazines would cost a total of \$9.00.

The volume contains over 120 fully illustrated complete stylish patterns for all members of the family, together with many valuable, practical knitting hints.

There is a very limited number of these volumes available and it will undoubtedly become a collector's item.

If you already have the entire set it will almost certainly be well thumbed and marked. Why not purchase a perfect mint condition volume for your bookshelf and ready reference at any time.

Place your order today and avoid disappointment. Send it to **KNITKING MAGAZINE, 1128 Crenshaw Boulevard, Los Angeles, California 90019.**

ROWS 295-310: SHOULDER SHAPING: Bind off 4 sts. beginning next 4 rows. After ROW 298 bind off the center 18 sts. for NECK. (See Notes to Knit By, inside back cover). Bind off 4 sts. at Shoulder Side and continue to Shape Shoulder on every other row by binding off 4 sts. 3 x and 5 sts. 3 x. **AT THE SAME TIME,** Shape NECK on every other row by binding off 6 sts. 2 x, 4 sts. 1 x, 3 sts. 1 x and 2 sts. 1 x. **FRONT:** (Figure I). Work the front the same as the back to ROW 188, then put 88 sts. on the left side into holding position and complete the right half first.

ROWS 189-310: NECK, ARMHOLE and SHOULDER SHAPING: Decrease 1 st. on the left side after ROW 188, then again every other row 11 x, every following 4th row 10 x and every following 6th row 8 x by always hanging the 3rd st. on the left side onto the 2nd needle, then moving the end sts. inward to fill the empty needle. **AT THE SAME TIME,** after ROW 202, then on every other row SHAPE ARMHOLE by binding off 6 sts. 1 x, 4 sts. 1 x, 3 sts. 1 x, 2 sts. 1 x, 1 st. 2 x and 1 st. on the next 4th and following 4th row. After ROW 294, then on every other row SHAPE SHOULDER by binding off 4 sts. 6 x and 5 sts. 3 x. Now move the Cam Box to the left side, bring all needles into working position, turn the Row Counter back to 188 and complete the left half. Follow the instructions from ROWS 189-310 and

reverse the sides.

SLEEVE: (Figure III). Make two. Cast on 80 sts. and work stockinette st.

ROWS 1-34: Work even, then make the hem as you did on the back.

ROWS 35-210: Increase 1 st. on each side after ROW 36, then again every following 8th row 4 x and every following 6th row 21 x. (134 sts.)

ROWS 211-222: CAP SHAPING: Bind off 6 sts. beginning next 2 rows, 4 sts. beginning next 2 rows, 3 sts. beginning next 4 rows and 2 sts. beginning next 4 rows.

ROWS 223-268: Bind off 1 st. beginning next 2 rows and 2 sts. beginning next 2 rows. Repeat these bind-offs 9 x, then bind off 3 sts. beginning next 2 rows, 4 sts. beginning next 2 rows, 5 sts. beginning next 2 rows and after ROW 268 bind off the remaining 10 sts.

NECKBAND: Cast on 167 sts. with yellow and work K1, P1, Ribbing, 11 rows yellow, 11 rows white and 11 rows grey. **AT THE SAME TIME,** after ROW 2, then on every other row, decrease 1 st. 1 x and 2 sts. 1 x. Repeat these bind-offs 7 x. After 33 rows bind off all sts. the crochet method. Make second section with reverse shaping.

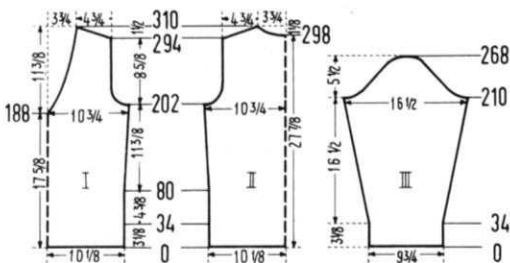
FINISHING: Join front and back section at sides and shoulders. Sew sleeves together and set in. Join neckband sections at center back and front, then sew neckband to neckline.

SIZE: 42/44. BACK: (Figure II). Cast on 180 sts. and work stockinette st.

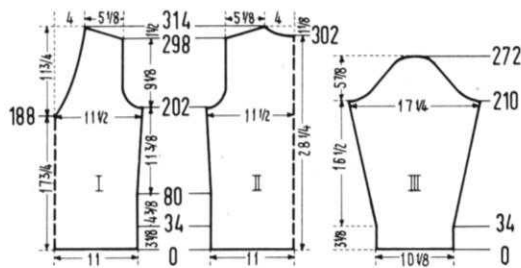
ROWS 1-34: Work even, then hang the cast-on sts. back on the machine behind the latches to form the hem.

ROWS 35-202: Increase 1 st. on each side after ROW 80, then again every following 24th row 4 x. (190 sts.)

ROWS 203-224: ARMHOLE SHAPING: Bind off 6 sts. beginning next 2 rows, 4 sts. beginning next 2 rows, 3 sts. beginning next 2 rows, 2 sts. beginning next 4 rows, 1 st. beginning next 4 rows and 1 st. at each end of the next 4th and following 4th row. (148 sts.)



WOMAN'S JACKET, DP 7616



SIZE: 14/16. **MATERIAL:** 28 oz. white KNITKING Frigate, 3 1/2 oz. white KNITKING Subita 2 x 4, Color No. 851 and No. 4, a 25" Jacket Type Zipper and two 6" zippers. **TENSION:** KNITKING Stockinette Stitch 10, K1, P1, Ribbing 6 to 8. **GAUGE:** Stockinette Stitch 9 sts. 2", 13 rows 2". K1, P1, Ribbing 18 sts. 2", 24 rows 2". The omitted sts. when working stockinette st. are NOT counted in the gauge and instructions. **PATTERN:** Stockinette Stitch over every other needle.

COLLAR and SLEEVE EDGES: K1, P1, Ribbing over every other needle on the main machine and every needle on the ribber.

BACK: (Figure II). Cast on 99 sts. over every other needle with Frigate.

ROWS 1-20: Work even, then hang the cast-on sts. back on the machine behind the latches to form the hem.

ROWS 21-114: Work even.

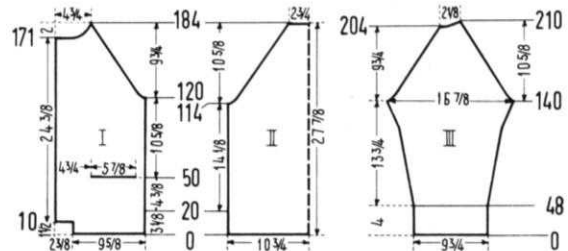
ROWS 115-118: RAGLAN SHAPING: Bind off 3 sts. beginning next 2 rows and 2 sts. beginning next 2 rows.

ROWS 119-184: Decrease 2 sts. on each side after ROW 120, then again every following 4th row 15 x by always hanging the 3rd and 4th sts. on each side onto the 5th and 6th needles, then moving the end sts. inward to fill the empty needles. After ROW 184 bind off the remaining 25 sts.

FRONT: (Figure I). Cast on 44 sts. over every other needle with Frigate.

ROWS 1-10: Work even, then cast on 11 sts. on the left side, using a separate length of yarn.

ROWS 11-20: Work even, then hang the first 44 cast-on sts. back on the machine behind the latches to form the hem.



ROWS 21-50: Work even. Now work the Pocket. On the left side put 22 needles and on the right side put 6 needles into holding position. Over the 27 needles in working position work 3 rows, then bind off these sts. On the right side bring the 6 needles from holding into working position and knit 2 rows, then put these needles back into holding position. On the left side bring the 22 needles from holding into working position and knit 2 rows, then put these needles back into holding position. Now cast on 27 sts. over the empty needles for the pocket lining and work 38 rows even, then move the Cam Box to the right side, bring all needles back into working position, turn the Row Counter back to 52 and continue working over all 55 needles.

ROWS 53-120: Work even.

ROWS 121-124: RAGLAN SHAPING: Bind off 3 sts. on the right side after ROW 120 and 2 sts. after ROW 122.

ROWS 125-184: Decrease 2 sts. on the right side after ROW 126, then again every following 4th row 13 x as you did on the back. AT THE SAME TIME, after ROW 171, then on every other row SHAPE NECK by binding off 11 sts. 1 x, 3 sts. 1 x, 2 sts. 1 x, 1 st. 3 x and after ROW 184 hang the remaining 3 sts. together. (The 2 outside sts. onto the center st.) then bind off. Make the second front section with reverse shapings. (Cast on from right to left.)

SLEEVE: (Figure III). Using the ribber cast on 91 sts. with Subita.

CANADIAN READERS

Please note that KNITKING dealers based in the U.S.A. are unable to sell machines and accessories to residents of Canada. They are also unable to sell parts and service. Would all Canadian readers please contact the following appointed KNITKING dealer.

KNITKING Sales and Service
272 Yonge Street
Toronto 1, Ontario

ROWS 1-48: K1, P1, Ribbing with tension 6 to 8. After ROW 48 transfer the ribber sts. to the neighboring needles on the main machine (occupied needles), then hang every other cast-on st. back on the machine (occupied needles) behind the latches to form the hem and continue working over every other needle with Frigate and tension 10. (46 sts.)

ROWS 49-140: Increase 1 st. on each side after ROW 50, then again every following 8th row 3 x, every following 6th row 7 x and every following 4th row 5 x. (78 sts.)

ROWS 141-204: RAGLAN SHAPING: Bind off 2 sts. beginning next 4 rows. After ROW 146, then on every following 4th row decrease 2 sts on each side 14 x as you did on the back and after ROW 202 decrease 2 sts on the right side.

ROWS 205-210: Work short rows. (See Notes to Knit By, inside back cover). On the left side put 3 needles 2 x and 2 needles 1 x into holding position. AT THE SAME TIME, decrease 2 sts. on the right side after ROW 206. After ROW 210 bring all needles back into working position and bind off all 10 sts. Work the second sleeve with reverse shapings.

COLLAR: Using the ribber cast on 173 sts. with Subita and work K1, P1, Ribbing, 12 rows with tension 7, 24 rows with tension 6 and 12 rows with tension 7. After 48 rows bind off all sts.

FINISHING: Join front and back sections at sides, easing in the fullness at bustline of front sections. Sew sleeves together and weave to front and back sections, 1 st. in on each edge. Turn under 3 rows on upper and lower pocket edge and hem to wrong side. Sew zippers to pockets. Sew pocket lining to jacket. Turn under 5 sts. on each front edge and hem to wrong side. Sew 1 edge of collar to inside and 1 edge to outside of neckline. Sew on zipper.

GIRL'S PULLOVER, MK 4993



SIZE: 11-12 years. **MATERIAL:** 10½ oz. turquoise and 1¾ oz. white KNITTING Sonika Dralon, Color No. 413 and No. 401. **TENSION:** KNITTING 8 to 10. **GAUGE:** 13 sts. 2", 19 rows 2". **PATTERN:** Stockinette Stitch. **EDGES:** K1, P1, Ribbing. The White Stripe and the Star are applied after the Pullover is knitted. **BACK:** (Figure II). Cast on 112 sts. **ROWS 1-16:** K1, P1, Ribbing. After ROW 16 transfer the ribber sts. to the main machine and continue with stockinette st.

ROWS 17-126: Work even.

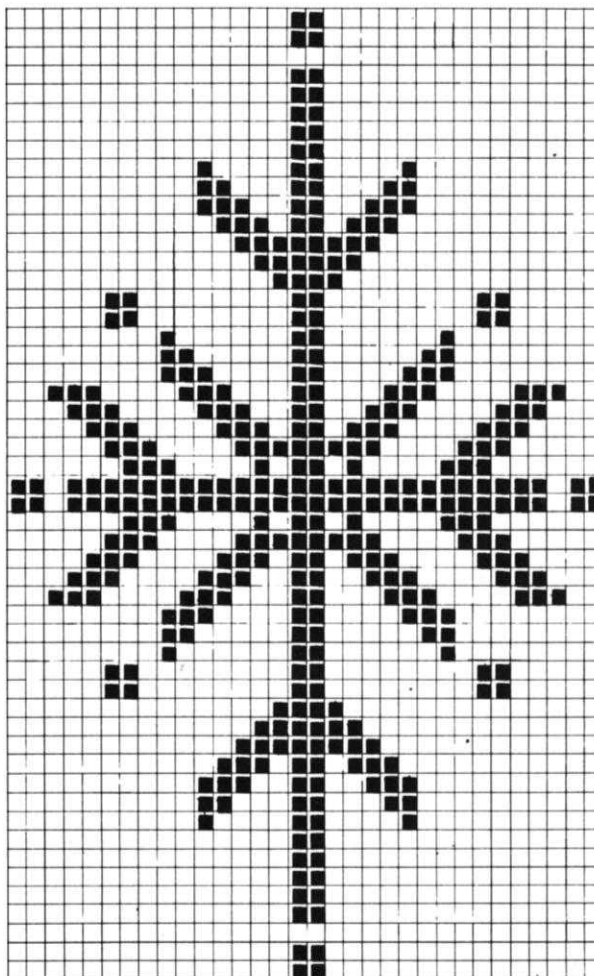
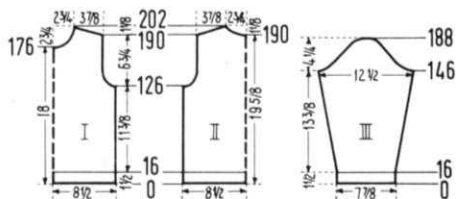
ROWS 127-142: ARMHOLE SHAPING: Bind off 4 sts. beginning next 2 rows, 2 sts. beginning next 4 rows, 1 st. beginning next 6 rows and 1 st. at each end of the following 4th row 1 x. (88 sts.)

ROWS 143-190: Work even.

ROWS 191-202: NECK and SHOULDER SHAPING: Both Shapings are started at the same row. Bind off the center 10 sts. for NECK. (See Notes to Knit By, inside back cover). Bind off 3 sts. at SHOULDER SIDE and continue to Shape Shoulder on every other row by binding off 3 sts. 1 x and 4 sts. 5 x. AT THE SAME TIME, Shape Neck on every other row by binding off 4 sts. 1 x, 3 sts. 1 x and 2 sts. 3 x.

FRONT: (Figure I). Work the front the same as the back to ROW 176, then bind off the center 10 sts. for NECK as you did on the back, then on every other row on Neck Side bind off 4 sts. 1 x, 3 sts. 1 x, 2 sts. 1 x, 1 st. 2 x and 1 st. on the next 4th and following 4th row. AT THE SAME TIME, after ROW 190, then on every other row SHAPE SHOULDER by binding off 3 sts. 2 x and 4 sts. 5 x.

SLEEVE: (Figure III). Make two. Cast on 51 sts.



□ turquoise ■ white

ROWS 1-16: K1, P1, Ribbing. After ROW 16 transfer the ribber sts. to the main machine and continue with stockinette st.

ROWS 17-146: Increase 1 st. on each side after ROW 18, then again every following 8th row 15 x. (83 sts.)

ROWS 147-154: CAP SHAPING: Bind off 4 sts. beginning next 2 rows, 3 sts. beginning next 2 rows and 2 sts. beginning next 4 rows.

ROWS 155-188: Bind off 1 st. beginning next 4 rows and 2 sts. beginning next 2 rows. Repeat these bind-offs 4 x, then bind off 3 sts. beginning next 2 rows, 4 sts. beginning next 2 rows and after ROW 188 bind off the remaining 7 sts.

NECKBAND: Cast on 115 sts. and work K1, P1, Ribbing, 8 rows with tension 8 and 8 rows with tension 9. After 16 rows bind off all sts. the crochet method.

TRIM STRIPE: Cast on 13 sts. with white and work stockinette st.

ROWS 1-181: Work even.

ROWS 182-185: Bind off 4 sts. on the left side, then on every other row bind off 4 sts. 1 x and 5 sts. 1 x.

FINISHING: Weave the white stripe to the front section, 1 st. in from each edge of the stripe and beginning above the ribbing between the 23rd and 24th sts. counting from the left side. For the Star work duplicate stitch according to chart, beginning 10 rows above the ribbing and in the 28th st. counting from the right side. Join front and back section at sides and shoulders. Sew sleeves together and set in. Join short ends of neckband, then sew the bound-off edge of neckband to neckline.

CHILD'S JACKET and CAP, MK 4991



SIZE: 9-10 years and 6-7 years.
MATERIAL: 14 oz. (10½ oz.) blue, 3½ oz. green and a small amount of yellow KNITKING Nora, Color No. 4005, No. 4009 and No. 4100 and a 20" (18") Jacket Type Zipper.

TENSION: KNITTING 4 to 6. **GAUGE:** 16 sts. 2", 22 rows 2". **PATTERN:** Stockinette Stitch. **NECKBAND and SLEEVE EDGES:** K1, P1, Ribbing. **SIZE: 9-10 years. JACKET: BACK:** (Figure II). Cast on 134 sts. with green.

ROWS 1-26: Work even, then hang the cast-on sts. back on the machine behind the latches to form the hem and continue with blue.

ROWS 27-140: Work even.
ROWS 141-232: RAGLAN SHAPING: Bind off 3 sts. beginning next 2 rows. Decrease 1 st. on each side after ROW 142, then again every other row 44 x by always hanging the 3rd st. on each side onto the 2nd needle, then moving the end sts. inward to fill the empty needle. After row 232 bind off the remaining 38 sts.

FRONT: (Figure I). Cast on 58 sts. with green.
ROWS 1-26: Work even, then form hem as you did on the back and continue with blue.
ROWS 27-140: Work even.

ROWS 141-228: RAGLAN SHAPING: Bind off 3 sts. on the right side, then on every other row decrease 1 st. 43 x as you did on the back. AT THE SAME TIME, after ROW 211, then on every other row, SHAPE NECK by binding off 3 sts. 1 x, 2 sts. 1 x, 1 st. 3 x and 1 st. on the following 4th row 1 x. After ROW 228 hang the remaining 3 sts. together, (2 outside sts. onto the center st.) then bind off. Make the second front section with reverse shapings.

SLEEVE: (Figure III). Cast on 67 sts. with blue.
ROWS 1-18: K1, P1, Ribbing. After ROW 18 transfer the ribber sts. to the main machine and continue with stockinette st.

ROWS 19-154: Increase 1 st. on each side after ROW 26, then again every following 8th row 7 x and every following 6th row 11 x. AT THE SAME TIME, work ROWS 121-132 with yellow. (105 sts.)

ROWS 155-242: RAGLAN SHAPING: Working ROWS 155-166 with green, bind off 2 sts. beginning next 2 rows. Decrease 1 st. on each side after ROW 156, then again every other row 42 x as you did on the back.

ROWS 243-246: Work short rows. (See Notes to Knit By, inside back cover). On the left side put 5 needles 1 x and 4 needles 1 x into holding position. AT THE SAME TIME, decrease 1 st. on the right side after ROWS 242 and 244. After ROW 246 bring all needles back into working position and bind off all 13 sts. Make the second sleeve with reverse shaping.

FRONT BAND: Make two. Cast on 20 sts. with green and work 222 rows stockinette st., then bind off all sts.

NECKBAND: Cast on 137 sts. with blue and work 26 rows K1, P1, Ribbing, then bind off all sts. the crochet method.
CAP: (Figure IV). Cast on 43 sts. with blue.

ROWS 1-6: Work even.
ROWS 7-14: Work short rows. (See Notes to Knit By, inside back cover). On the left side put 33 needles into holding position, knit 2 rows. Now bring 11 needles 3 x back into working position.

ROWS 15-40: Increase 1 st. on the left side after ROW 15, then again every following 6th row 4 x. AT THE SAME TIME, cast on 10 sts. on the right side after ROW 18.

ROWS 41-63: Work even.
ROWS 64-80: Bind off 1 st. on the left side after ROWS 63 and 67, then on every other row bind off 1 st. 3 x, 2 sts. 1 x and 3 sts. 2 x. Now cast on 64 sts. on the left side with green.

ROWS 81-96: Work even, knitting ROWS 81-92 with green.
ROWS 97-106: On the left side put 56 needles into holding position, knit 2 rows. Now bring 14 needles 4 x back into working position.

ROWS 107-108: Work even.
ROWS 109-116: On the left side put 14 needles 4 x into holding position. Bring all needles back into working position.

ROWS 117-132: Work even, knitting ROWS 121-132 with green. After ROW 132 bind off 64 sts. on the left side.
ROWS 133-150: Bind off 3 sts. on the left side after ROW 133, then on every other row bind off 3 sts. 1 x, 2 sts. 1 x, 1 st. 4 x and 1 st. on the following 4th row 1 x.

ROWS 151-172: Work even.
ROWS 173-198: Decrease 1 st. on the left side after ROW 173, then again every following 6th row 4 x. AT THE SAME TIME, bind off 10 sts. on the right side after ROW 194.

ROWS 199-204: On the left side put 11 needles 3 x into holding position. Bring all needles back into working position.
ROWS 205-212: Work even, then bind off all sts.

CHIN STRAP: Cast on 10 sts. with green.
ROWS 1-24: Work even.
ROWS 25-30: Alternately on each side, put 1 needle 3 x into holding position.

ROWS 31-36: Alternately on each side bring 1 needle 3 x back into working position.
ROWS 37-60: Work even. Repeat ROWS 1-60 1 x, then bind off all sts.

FINISHING: JACKET: Join front and back sections at sides. Sew sleeves together, then weave to front and back sections, 1 st. in on each edge. Sew neckband to neckline. Weave front bands to front edges, 1 st. in on each edge, then fold bands in half and hem against seam on wrong side. Set in zipper.

CAP: Join back section to side sections, easing in the fullness of back section. Turn under ¼" on the lower edge and 1¼" on the front edge, then hem to wrong side. Sew chin strap together. Make a loop on each end and sew buttons to cap.

SIZE: 6-7 years. JACKET: BACK: (Figure II). Cast on 126 sts. with green.

ROWS 1-22: Work even, then hang the cast-on sts. back on the machine behind the latches to form the hem and continue with blue.

ROWS 23-128: Work even.

ROWS 129-212: RAGLAN SHAPING: Bind off 3 sts. beginning next 2 rows. Decrease 1 st. on each side after ROW 130, then again every other ROW 40 x by always hanging the 3rd st. on each side onto the 2nd needle, then moving the end sts. inward to fill the empty needle. After ROW 212 bind off the remaining 38 sts.

FRONT: (Figure I). Cast on 54 sts. with green.

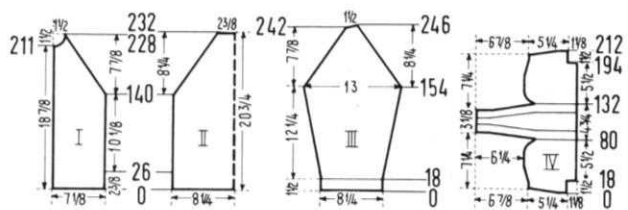
ROWS 1-22: Work even, then form hem as you did on the back and continue with blue.

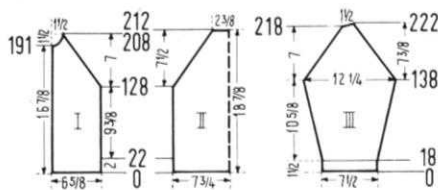
ROWS 23-128: Work even.

ROWS 129-208: RAGLAN SHAPING: Bind off 3 sts. on the right side, then on every other row decrease 1 st. 39 x as you did on the back. AT THE SAME TIME, after ROW 191, then on every other row SHAPE NECK by binding off 3 sts. 1 x, 2 sts. 1 x, 1 st. 3 x and 1 st. on the following 4th row 1 x. After ROW 208 hang the remaining 3 sts. together, (the 2 outside sts. onto the center st.) then bind off. Make the second front section with reverse shapings.

SLEEVE: (Figure III). Cast on 61 sts. with blue.
ROWS 1-18: K1, P1, Ribbing. After ROW 18 transfer the ribber sts. to the main machine and continue with stockinette st.

ROWS 19-138: Increase 1 st. on each side after ROW 24, then again every following 6th row 18 x. AT THE SAME TIME, work ROWS 111-120 with yellow. (99 sts.)





ROWS 139-218: RAGLAN SHAPING: Working ROWS 139-148 with green, bind off 3 sts. beginning next 2 rows. Decrease 1 st. on each side after ROW 140, then again every other row 38 x as you did on the back.

ROWS 219-222: Work short rows. (See Notes to Knit By, inside back cover). On the left side put 5 needles 1 x and 4 needles 1 x into holding position. AT THE SAME TIME, decrease 1 st. on the right side after ROWS 218 and 220. After ROW 222 bring all needles back into working position and bind off all 13 sts. Make the second sleeve with reverse shaping.

FRONT BAND: Make two. Cast on 18 sts. with green and work 200 rows stockinette st., then bind off all sts.

NECKBAND: Cast on 129 sts. with blue and work 22 rows K1, P1, Ribbing, then bind off all sts. the crochet method.

CAP and FINISHING: Follow the instructions for SIZE 9-10 years.

GIRLS'S TWO PIECE SKATING DRESS, MK 4996



SIZE: 11-12 years. **MATERIAL:** Pull-over: 12 1/4 oz. orange; Skirt: 8 3/4 oz. green KNITKING Sonika Dralon. Color No. 437 and No. 441. **TENSION:** KNITKING PULLOVER 7 to 9. SKIRT 8 to 10. **GAUGE:** PULLOVER 15 sts. 2", 20 rows 2". SKIRT 14 sts. 2", 19 rows 2". **PATTERN:** Pullover: Back section and sleeves: Stockinette Stitch. Front section: Stockinette Stitch with Cable Stripes and latched-up stitches. 1. Knit 8 rows. 2. On each side drop the 24th, 31st, 46th and 53rd sts., leave

empty needles in working position. 3. With 2 treble transfer tools hang the 25th, 26th and 27th sts. onto the 28th, 29th and 30th needles and the 28th, 29th and 30th sts. onto the 25th, 26th and 27th needles. Cross the 47th-52nd, the 69th-74th and the 91st-96th stitches the same way. Repeat Step 1 to 3 throughout. After each 40-50 rows, on each side drop the 9th, 14th, 19th, 24th, 31st, 36th, 41st, 46th, 53rd and 58th sts. and latch up into knit stitches. (The first time let sts. drop to ribbed edge). **COLLAR and EDGES:** K1, P1, Ribbing. **SKIRT:** Stockinette Stitch, worn on the purl side. **PULLOVER: BACK:** (Figure II). Cast on 120 sts.

ROWS 1-16: K1, P1, Ribbing. After ROW 16 transfer the ribber sts. to the main machine and continue with stockinette st.

ROWS 17-128: Increase 1 st. on each side after ROW 48, then again every following 26th row 2 x. (126 sts.)

ROWS 129-212: RAGLAN SHAPING: Decrease 1 st. on each side after ROW 128, then again every other row 39 x by always hanging the 3rd st. on each side onto the 2nd needle,

then moving the end sts. inward to fill the empty needle. After ROW 208 bind off the center 16 sts. for NECK, (See Notes to Knit By, inside back cover) then on every other row on Neck Side bind off 8 sts. 1 x and 5 sts. 1 x. AT THE SAME TIME, decrease 1 st. for Raglan Shaping after ROWS 208 and 210.

FRONT: (Figure I). Cast on 120 sts.

ROWS 1-16: K1, P1, Ribbing. After ROW 16 transfer the ribber sts. to the main machine, then continue with stockinette st. and the Cable Pattern, crossing the sts. the first time after ROW 20.

ROWS 17-128: Increase 1 st. on each side after ROW 48, then again every following 26th row 2 x. (126 sts.)

ROWS 129-208: RAGLAN SHAPING: Decrease 1 st. on each side then again every other row 29 x as you did on the back. After ROW 188 bind off the center 12 sts. for NECK as you did on the back. Decrease 1 st. on the right side and continue to Shape Raglan on every other row by decreasing 1 st. 8 x more. AT THE SAME TIME, Shape Neck on every other row by binding off 4 sts. 1 x, 3 sts. 1 x, 2 sts. 2 x, 1 st. 3 x and 1 st. on the following 4th row 1 x. After ROW 208 hang the remaining 3 sts. together. (the 2 outside sts. onto the center st.) then bind off.

SLEEVE: (Figure III). Cast on 55 sts.

ROWS 1-20: K1, P1, Ribbing. After ROW 20 transfer the ribber sts. to the main machine and continue with stockinette st.

ROWS 21-152: Increase 1 st. on each side after ROW 26, then again every following 6th row 20 x. (97 sts.)

ROWS 153-232: RAGLAN SHAPING: Decrease 1 st. on each side after ROW 152, then again every other row 39 x as you did on the back.

ROWS 233-236: Work short rows. (See Notes to Knit By, inside back cover). On the left side put 6 needles 1 x and 5 needles 1 x into holding position. AT THE SAME TIME, decrease 1 st. on the right side after ROW 232 and 234. After ROW 236 bring all needles into working position, then bind off all 15 sts. Make second sleeve with reverse shaping.

COLLAR: Cast on 163 sts. and work K1, P1, Ribbing, 16 rows with tension 8, 24 rows with tension 7 and 16 rows with tension 8. After 56 rows bind off all sts.

SKIRT: (Figure IV). The skirt is knitted sideways and is one continuous section. The bell shape is obtained by working short rows. (See Notes to Knit By, inside back cover). Cast on 79 sts. with contrast waste yarn and knit several rows, ending with the Cam Box on the right side. Turn Row Counter to 0 and change to Garment Yarn.

ROWS 1-6: Work even.

ROWS 7-22: On the left side, put 56 needles into holding position, knit 2 rows. Now bring 8 needles 3 x and 7 needles 4 x back into working position.

ROWS 23-36: On the left side put 7 needles 4 x and 8 needles 3 x in holding position. After ROW 36 bring all needles back into working position.

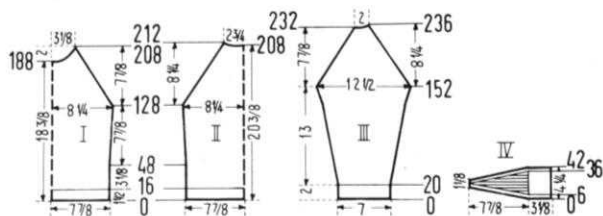
ROWS 37-42: Work even. One bell section is now completed. Repeat ROWS 1-42 23 x, working the 23rd repeat only to ROW 41, ending with the Cam Box on the left side. Now work several rows with contrasting waste yarn, then take skirt off machine.

WAISTBAND: Cast on 164 sts. and work 22 rows stockinette st., then bind off all sts.

BELT LOOPS: Make 4. Cast on 9 sts. and work 12 rows stockinette st., then bind off all sts.

FINISHING: PULLOVER: Join front and back sections at sides. Sew sleeves together, then weave to front and back section, 1 st. in on each edge. Join short ends of collar, then sew 1 edge of collar to inside and 1 edge to outside of neckline.

SKIRT: Join the skirt edges by weaving the sts., held on contrast yarn, together, but bind off 20 sts. on each upper side for the opening. Work a row of single crochet on each side of opening. Turn under 1 1/2" on lower edge and hem to wrong side. Sew 1 edge of waistband to inside and 1 edge to outside of upper edge. Insert a 1" elastic band and fasten to short ends of waistband. Fold each belt loop in half lengthwise and sew, having seam in center back. Sew loops evenly spaced to waistband. Sew on hooks and eyes.



GIRL'S SKATING DRESS, MK 4994



SIZE: 8-9 years. **MATERIAL:** 14 oz. yellow and 1 $\frac{3}{4}$ oz. blue KNITTING Subita 2 x 3, Color No. 105 and No. 103. **TENSION:** KNITTING 4 to 6. **GAUGE:** Stockinette Stitch 17 sts. 2", 23 rows 2". Pattern Stitch 18 sts. 2", 26 rows 2". **PATTERN:** SKIRT: Stockinette Stitch. TOP: Knit 3, Purl 1 Ribbing. COLLAR: K1, P1, Ribbing. SKIRT: (Figure IV). The skirt is knitted in 6 sections. Cast on 137 sts. and work stockinette st.

ROWS 1-36: Work even.

ROWS 37-92: For the DARTS, decrease 2 sts. on each side after ROW 36, then again every following 4th row 13 x and the following 2nd row 1 x. For the first decrease hang the 45th and 47th sts. on each side onto the 46th needle, then move the end sts. inward to fill the empty needles. The next decreases lie directly above. AT THE SAME TIME, decrease 1 st. on each side after ROW 36, then again every following 4th row 13 x and 1 st. on each side after ROW 90 by always hanging the 3rd st. on each side onto the 2nd needle, then moving the end sts. inward to fill the empty needle. After ROW 92 put the remaining 45 sts. on a stitch holder. Make 5 more sections like this. Now weave 3 sections together, 1 st. in each edge. Hang the sts. back on the machine, decreasing 1 st. on each side, then transfer the 4th, 8th, 12th, etc. sts. to the Ribber and work Knit 3 Purl 1 for the TOP. (135 sts.)

TOP: BACK: (Figure II). **ROWS 1-104:** Working even, knit 4 rows blue and 4 rows yellow, repeat these 8 rows 2 x, then knit 4 rows blue and continue with yellow.

ROWS 105-120: ARMHOLE SHAPING: Bind off 4 sts. beginning next 2 rows, 3 sts. beginning next 2 rows, 2 sts. beginning next 2 rows, 1 st. beginning next 6 rows and 1 st. at each end of the following 4th row. (109 sts.)

ROWS 121-182: Work even.

ROWS 183-198: SHOULDER SHAPING: Bind off 4 sts. beginning next 4 rows and 3 sts. beginning next 2 rows. After ROW 188 bind off the center 15 sts. for NECK. (See Notes to Knit By, inside back cover. Transfer Ribber sts. to main machine before putting them in hold). Bind off 3 sts. on Shoulder Side and continue to Shape Shoulder on every other row by binding off 3 sts. 5 x. AT THE SAME TIME, Shape Neck on every other row by binding off 6 sts. 1 x, 5 sts. 1 x, 4 sts. 1 x and 3 sts. 1 x.

FRONT: (Figure I). Work the front the same as the back to ROW 162. NOW bind off the center 11 sts. for NECK as you did on the back, then on every other row on Neck Side bind off 4 sts. 1 x, 3 sts. 2 x, 2 sts. 2 x, 1 st. 3 x and 1 st. on every following 4th row 3 x. AT THE SAME TIME, after ROW 182, then on every other row SHAPE SHOULDER by binding off 4 sts. 2 x and 3 sts. 7 x.

SLEEVE: (Figure II). Make two. Cast on 63 sts. with blue. **ROWS 1-4:** K1, P1, Ribbing. After ROW 4 transfer the 1st, 3rd, 5th, etc. Ribber sts. to the main machine and continue with Knit 3 Purl 1.

ROWS 5-168: Work 4 rows yellow and 4 rows blue, repeat these 8 rows 2 x, then continue with yellow. AT THE SAME TIME, increase 1 st. on each side after ROW 28, then again

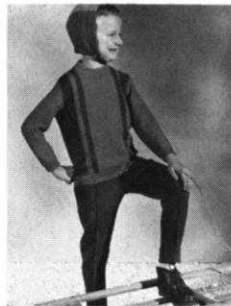
every following 6th row 6 x and every following 8th row 12 x. (101 sts.)

ROWS 169-220: CAP SHAPING: Bind off 4 sts. beginning next 4 rows, 3 sts. beginning next 2 rows, 2 sts. beginning next 4 rows, 1 st. beginning next 34 rows, 2 sts. beginning next 4 rows, 4 sts. beginning next 2 rows, 5 sts. beginning next 2 rows and after ROW 220 bind off the remaining 11 sts.

COLLAR: Cast on 151 sts. with blue and work K1, P1, Ribbing, always knitting 4 rows blue and 4 rows yellow and knitting 14 rows with tension 5, 28 rows with tension 4 and 14 rows with tension 5. After 56 rows bind off all sts.

FINISHING: Weave front section to back section at sides, 1 st. in on each edge. Join shoulders. Sew sleeves together and set in. Turn under 14 rows on lower edge and hem to wrong side. Join short ends of collar. Sew 1 edge of collar to inside and 1 edge to outside of neckline.

CHILD'S SUIT, KK 4995



SIZE: 5-6 years. **MATERIAL:** 14 oz. navy blue and 7oz. light blue KNITTING Nora, Color No. 4007 and No. 4037. **TENSION:** KNITTING 5 to 7. **GAUGE:** 15 sts. 2", 21 rows 2".

PATTERN: PULLOVER and CAP: Stockinette Stitch, worn on the purl side. **EDGES:** K1, P1, Ribbing. **TROUSERS:** Stockinette Stitch, worn on the knit side.

PULLOVER: The pullover is knitted sideways and started at the side edge.

BACK: (Figure II). Cast on 72 sts. with navy blue.

ROWS 1-16: ARMHOLE SHAPING: Increase 1 st. on the right side after ROW 4, then on every other row increase 1 st. 3 x, 2 sts. 1 x, 3 sts. 1 x and after ROW 16 cast on 33 sts.

ROWS 17-54: SHOULDER SHAPING: Increase 1 st. on the right side after ROWS 20 and 24, then again every following 6th row 4 x, working ROWS 35-42 with light blue, ROWS 43-50 with navy blue and then continuing with light blue. (120 sts.)

ROWS 55-76: Work even. After ROW 76 put 90 needles on the left side into holding position and for the opening facing, work 4 rows over the 30 needles in working position, then bind off these sts. Cast on 30 sts. over the empty needles, knit 4 rows, turn Row Counter back to 76 and continue working over all 120 needles.

ROWS 77-98: Work even.

ROWS 99-136: SHOULDER SHAPING: Decrease 1 st. on the right side after ROW 104, then again every following 6th row 4 x and on the following 4th row 1 x, working ROWS 103-110 with navy blue, ROWS 111-118 with light blue and then continuing with navy blue.

ROWS 137-152: ARMHOLE SHAPING: Bind off 33 sts. on the right side, then on every other row bind off 3 sts. 1 x, 2 sts. 1 x and 1 st. 4 x.

FRONT: (Figure I). Work the front the same as the back, but for the NECK SHAPING, after ROW 54, bind off 8 sts., then on every other row bind off 3 sts. 1 x, 2 sts. 2 x, 1 st. 1 x and 1 st. on the next 4th and following 4th row. Increase 1 st. after ROWS 82, 86 and 90, then on every other row increase 2 sts. 2 x, 3 sts. 1 x and 8 sts. 1 x.

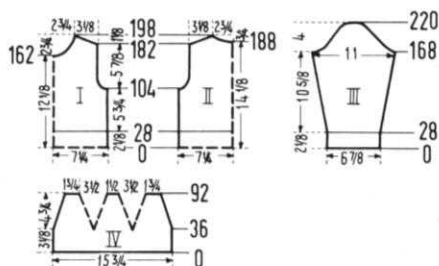
SLEEVE: (Figure III). Make two. Cast on 55 sts. with light blue.

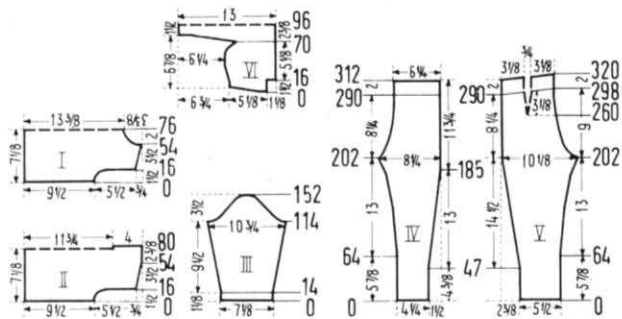
ROWS 1-14: K1, P1, Ribbing. After ROW 14 transfer the ribber sts. to the main machine and continue with stockinette st.

ROWS 15-114: Increase 1 st. on each side after ROW 20, then again every following 6th row 5 x and every following 8th row 7 x. (81 sts.)

ROWS 115-122: CAP SHAPING: Bind off 4 sts. beginning next 2 rows, 3 sts. beginning next 4 rows and 2 sts. beginning next 2 rows.

ROWS 123-152: Bind off 1 st. beginning next 4 rows and 2 sts. beginning next 2 rows. Repeat these bind-offs 3 x, then bind off 2 sts. beginning next 2 rows, 3 sts. beginning next 2 rows, 4 sts. beginning next 2 rows and after ROW 152 bind off the remaining 7 sts.





LOWER EDGE BAND: Make two. Cast on 109 sts. with light blue and work 18 rows K1, P1, Ribbing, then bind off all sts. the crochet method.

NECKBAND: Cast on 135 sts. with light blue and work 28 rows K1, P1, Ribbing, then bind off all sts. the crochet method.

TROUSERS: BACK: (Figure V). Cast on 42 sts. with navy blue.

ROWS 1-202: Increase 1 st. on the left side after ROW 47, then again every following 10th row 9 x and every following 8th row 8 x. AT THE SAME TIME, increase 1 st. on the right side after ROW 64, then again every following 18th row 2 x, every following 16th row 2 x, every following 8th row 5 x, every following 4th row 6 x and every other row 2 x. (78 sts.)

ROWS 203-290: Bind off 3 sts. on the right side, then on every other row bind off 3 sts. 1 x, 2 sts 3 x, and 1 st. 3 x, then 1 st. on every following 4th row 3 x, 1 st. on every following 6th row 3 x and 1 st. on every following 10th row 3 x. AT THE SAME TIME, for the DART, decrease 2 sts. after ROW 260, then again every following 14th row 2 x. For the first decrease hang the 26th and 28th sts. counting from the left side onto the 27th needle, then move the end sts. inward to fill the empty needles. The next decreases lie directly above.

ROWS 291-298: Work short rows. (See Notes to Knit By, inside back cover). On the left side put 9 needles 4 x into holding position.

ROWS 299-320: Bring all needles into working position and work even over all needles. After ROW 320 bind off the remaining 48 sts. Make the second back section with reverse shaping, casting on from right to left.

FRONT: (Figure IV). Cast on 33 sts., casting on from right to left.

ROWS 1-202: Increase 1 st. on the right side after ROW 47, then again every following 14th row 3 x and every following 12 row 8 x. AT THE SAME TIME, increase 1 st. on the left side after ROW 64, then again every following 18th row 2 x, every following 16th row 2 x, every following 8th row 5 x, every following 4th row 6 x and every other row 2 x. (63 sts.)

ROWS 203-270: Bind off 2 sts. on the left side, then on every other row bind off 2 sts. 1 x and 1 st. 3 x, then 1 st. on every following 4th row 4 x, 1 st. on every following 6th row 2 x and 1 st. on every following 12th row 2 x.

ROWS 271-312: Work even. After ROW 312 bind off the remaining 48 sts. Make the second front section with reverse shapings. (Cast on from left to right).

CAP: (Figure VI). Cast on 39 sts. with navy blue.

ROWS 1-8: Work even.

ROWS 9-16: Work short rows. (See Notes to Knit By, inside back cover). On the left side put 30 needles into holding position, knit 2 rows. Now bring 10 needles 3 x back into working position. After ROW 16 cast on 9 sts. on the right side.

ROWS 17-38: Increase 1 st. on the left side after ROWS 17, 21, 25, 31 and 37.

ROWS 39-55: Work even.

ROWS 56-70: Bind off 1 st. on the left side after ROWS 55 and 59, then on every other row bind off 1 st. 1 x, 2 sts. 3 x and 3 sts. 1 x. After ROW 70, cast on 58 sts. on the left side, using a separate length of light blue yarn and continue working with light blue.

ROWS 71-78: Work short rows. On the left side put 54 needles

into holding position, knit 2 rows. Now bring 18 needles 3 x back into working position.

ROWS 79-116: Work even, knitting ROWS 93-100 with navy blue.

ROWS 117-122: On the left side, put 18 needles 3 x into holding position. After ROW 122 bind off 58 sts. on the left side and continue working with navy blue.

ROWS 123-138: Bind off 3 sts. on the left side after ROW 123, then on every other row bind off 2 sts. 3 x, 1 st. 2 x and 1 st. on the following 4th row 1 x.

ROWS 139-154: Work even.

ROWS 155-176: Decrease 1 st. on the left side after ROWS 155, 161, 167, 171 and 175. After ROW 176 bind off 9 sts. on the right side.

ROWS 177-182: On the left side, put 18 needles 3 x into holding position. After ROW 182 bring all needles back into working position.

ROWS 183-192: Work even, then bind off all sts.

CHIN STRAP: Cast on 18 sts. with navy blue and work 60 rows stockinette st., then bind off all sts.

FINISHING: PULLOVER: Join front and back section at sides and shoulders. Sew sleeves together and set in. Turn under 4 rows on each side of back opening and hem to wrong side. Sew 1 edge of neckband to inside and 1 edge to outside of neckline. Sew on zipper. Join lower edge band at sides, then sew to lower edge of pullover.

TROUSERS: Join each front and back section at sides, then sew center front and center back seam. Join leg seams. Turn under 2" at lower edges and hem to wrong side. Turn under 1" at upper edge, hem to wrong side and insert an elastic band. With seam onto seam, steam-press trouser crease, then slip stitch crochet down on 1 front crease and up on the other.

CAP: Join back section to side sections, easing in the fullness of the back section. Turn under 3/4" on the lower edge and 1 1/4" on the front edge and hem to wrong side. Fold chin strap in half and sew edges, then sew 1 short end to cap. Work a loop on opposite short end, sew a button to cap.

BOY'S JACKET and CAP, KK 4992



SIZE: 6-7 years and 4-5 years. **MATERIAL:** 12 1/4 oz. (10 1/2 oz.) red, 1 3/4 oz. brown and a small amount of yellow KNITTING Nora, Color No. 4105, No. 4011 and No. 4100 and a 18" (16") Jacket Type Zipper. **TENSION: KNITTING 4 to 6. GAUGE:** 16 sts. 2", 22 rows 2". **PATTERN:** Stockinette Stitch. **EDGES:** K1, P1, Ribbing.

SIZE: 6-7 years. **BACK:** (Figure II). Cast on 125 sts. with red.

ROWS 1-18: K1, P1, Ribbing. After ROW 18 transfer the ribber sts. to

the main machine and continue with stockinette st.

ROWS 19-128: Working even, knit ROWS 45-52 with brown and ROWS 67-74 with yellow.

ROWS 129-142: ARMHOLE SHAPING: Bind off 4 sts. beginning next 2 rows, 3 sts. beginning next 2 rows, 2 sts. beginning next 4 rows and 1 st. beginning next 6 rows. (97 sts.)

ROWS 143-194: Work even.

ROWS 195-208: SHOULDER SHAPING: Bind off 4 sts. beginning next 12 rows, 5 sts. beginning next 2 rows and after ROW 208 bind off the remaining 39 sts.

FRONT: (Figure I). Cast on 56 sts. with red.

ROWS 1-18: K1, P1, Ribbing. After ROW 18 transfer the ribber sts. to the main machine and continue with stockinette st.

ROWS 19-128: Working even, knit ROWS 45-52 with brown and ROWS 67-74 with yellow.

ROWS 129-142: ARMHOLE SHAPING: Bind off 4 sts. on the right side, then on every other row bind off 3 sts. 1 x, 2 sts. 2 x and 1 st. 3 x. (42 sts.)

ROWS 143-181: Work even.

ROWS 182-208: NECK SHAPING: Bind off 4 sts. on the left side, then on every other row bind off 2 sts. 2 x, 1 st. 3 x and 1 st. on the next 4th and following 4th row. AT THE SAME TIME, after ROW 194, then on every other row SHAPE SHOULDER by binding off 3 sts. 3 x and 4 sts. 5 x. Make second front section with reverse shapings.

DO YOU HAVE A...

REVERSING BAR?

- With it you can turn a hem in one movement instead of lifting stitches one at a time.
- You can reverse your knitting, so that the knit side faces you, easily and speedily.
- Available for all KNITKING machines with 197 needles. Order from your dealer or direct from

KNITKING

1128 Crenshaw Blvd., Los Angeles, Calif. 90019

Price \$16.95 (California residents add 5% tax)

Plus \$1.50 shipping cost.

SLEEVE: (Figure III). Make two. Cast on 61 sts. with red. **ROWS 1-18:** K1, P1, Ribbing. After ROW 18 transfer the ribber sts. to the main machine and continue with stockinette st.

ROWS 19-132: Increase 1 st. on each side after ROW 26, then again every following 8th row 3 x and every following 6th row 12 x. (93 sts.)

ROWS 133-142: CAP SHAPING: Bind off 4 sts. beginning next 2 rows, 3 sts. beginning next 4 rows and 2 sts. beginning next 4 rows.

ROWS 143-172: Bind off 1 st. beginning next 2 rows and 2 sts. beginning next 2 rows. Repeat these bind-offs 5 x then bind off 3 sts. beginning next 4 rows, 4 sts. beginning next 2 rows and after ROW 172 bind off the remaining 9 sts. **FRONT BAND:** Make two. Cast on 15 sts. with brown and work 200 rows stockinette st., then bind off all sts.

NECKBAND: Cast on 129 sts. with red and work 20 rows K1, P1, Ribbing, then bind off all sts. the crochet method.

CAP: TOP SECTION: (Figure IV). The TOP is worked in 6 sections. Cast on 32 sts.

ROWS 1-88: Decrease 1 st. on each side after ROW 44, then again every following 4th row 8 x and every other row 5 x by always hanging the 2nd st. on each side onto the 3rd needle, then moving the end st. inward to fill the empty needle. After ROW 88 pull a thread through the remaining 4 sts. Make 1 more section like this. The next 4 sections are worked 12 rows shorter. To do this, set the Row Counter to 12, then work the same as the first section.

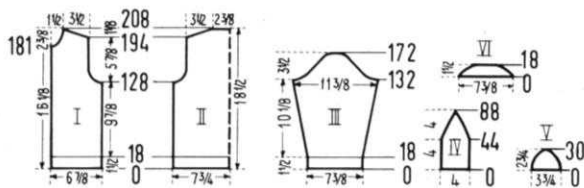
EAR FLAP: (Figure V). Make two. Cast on 30 sts.

ROWS 1-10: Work even.

ROWS 11-30: Work short rows. (See Notes to Knit By, inside back cover). Alternately on each side put 1 needle 7 x and 2 needles 3 x into holding position.

ROWS 31-50: Alternately on each side bring 2 needles 3 x and 1 needle 7 x back into working position.

ROWS 51-60: Work even, then bind off all sts.



VISOR: (Figure VI). Cast on 57 sts.

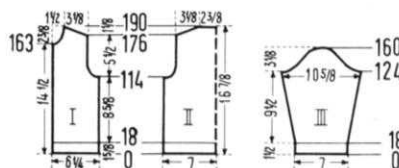
ROWS 1-18: Work short rows after ROW 2. Alternately on each side, put 1 needle 4 x, 2 needles 3 x and 3 needles 1 x into holding position.

ROWS 19-36: Alternately on each side bring 3 needles 1 x, 2 needles 3 x and 1 needle 4 x back into working position. After ROW 36 bind off all sts.

FINISHING: JACKET: Join front and back sections at sides and shoulders. Sew sleeves together and set in. Sew neckband to neckline. Weave front bands to front edges, 1 st. in on each edge, then fold bands in half and hem against seam on wrong side. Set in zipper.

CAP: Weave all top sections together, 1 st. in on each edge, having the 2 longer sections at center back. Pull the sts. on center top tightly together and sew in the thread. Sew an elastic band to the lower back portion to ease in fullness. Turn under 3/4" at lower edges and hem to wrong side. Insert press-on type stiffener in ear flaps and visor. Sew ear flaps in place and join to back section. Sew on visor.

SIZE: 4-5 years. **BACK:** (Figure II). Cast on 115 sts. with red. **ROWS 1-18:** K1, P1, Ribbing. After ROW 18 transfer the ribber sts. to the main machine and continue with stockinette st.



ROWS 19-114: Working even, knit ROWS 41-58 with brown and ROWS 63-70 with yellow.

ROWS 115-130: ARMHOLE SHAPING: Bind off 3 sts. beginning next 2 rows, 2 sts. beginning next 6 rows, 1 st. beginning next 4 rows and 1 st. on each side of the following 4th row. (91 sts.)

ROWS 131-176: Work even.

ROWS 177-190: SHOULDER SHAPING: Bind off 3 sts. beginning next 4 rows, 4 sts. beginning next 10 rows and after ROW 190 bind off the remaining 39 sts.

FRONT: (Figure I). Cast on 51 sts. with red.

ROWS 1-18: K1, P1, Ribbing. After ROW 18 transfer the ribber sts. to the main machine and continue with stockinette st.

ROWS 19-114: Working even, knit ROWS 41-48 with brown and ROWS 63-70 with yellow.

ROWS 115-130: ARMHOLE SHAPING: Bind off 3 sts. on the right side, then on every other row bind off 2 sts. 3 x, 1 st. 2 x and 1 st. on the following 4th row. (39 sts.)

ROWS 131-163: Work even.

ROWS 164-190: NECK SHAPING: Bind off 4 sts. on the left side, then on every other row bind off 2 sts. 2 x, 1 st. 3 x and 1 st. on the next 4th and following 4th row. AT THE SAME TIME, after ROW 176, then on every other row SHAPE SHOULDER by binding off 3 sts. 6 x and 4 sts. 2 x. Make second front section with reverse shapings.

SLEEVE: (Figure III). Make two. Cast on 57 sts. with red. **ROWS 1-18:** K1, P1, Ribbing. After ROW 18 transfer the ribber sts. to the main machine and continue with stockinette st.

ROWS 19-124: Increase 1 st. on each side after ROW 24, then again every following 8th row 5 x and every following 6th row 9 x. (87 sts.)

ROWS 125-134: CAP SHAPING: Bind off 4 sts. beginning next 2 rows, 3 sts. beginning next 4 rows and 2 sts. beginning next 4 rows.

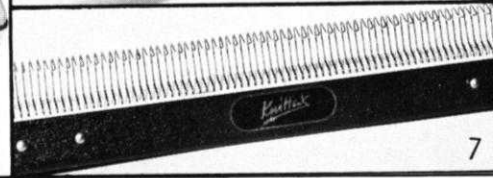
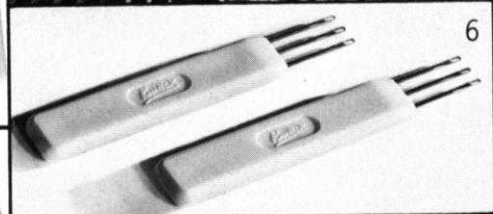
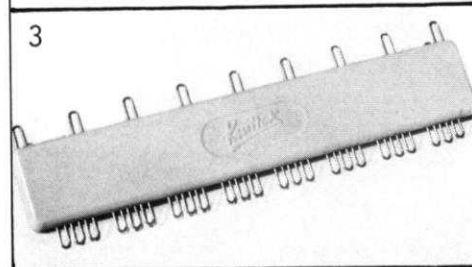
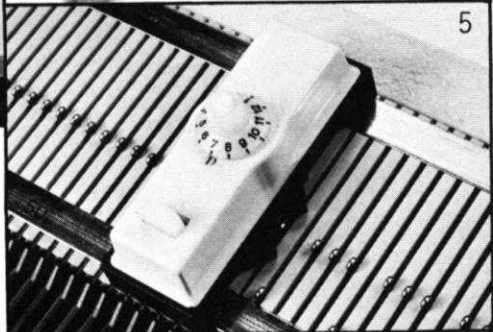
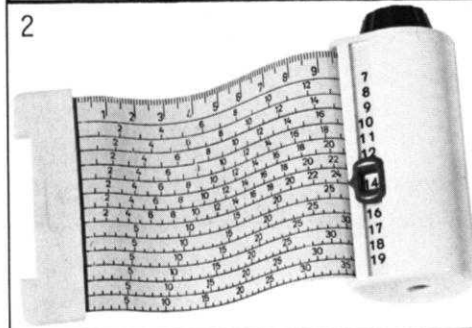
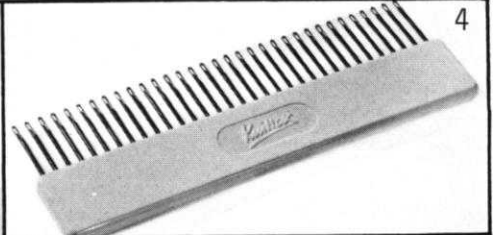
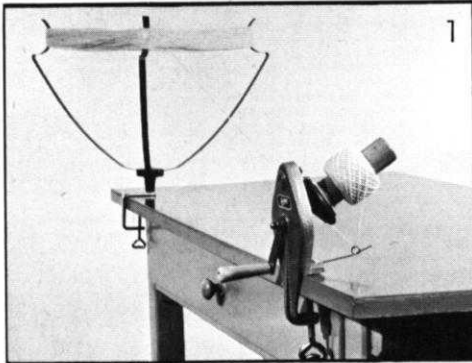
ROWS 135-160: Bind off 1 st. beginning next 2 rows and 2 sts. beginning next 2 rows. Repeat these bind-offs 4 x, then bind off 3 sts. beginning next 4 rows, 4 sts. beginning next 2 rows and after ROW 160 bind off the remaining 9 sts.

FRONT BAND: Make 2. Cast on 15 sts. with brown and work 182 rows stockinette st., then bind off all sts.

NECK BAND: Cast on 129 sts. with red and work 18 rows K1, P1, Ribbing, then bind off all sts. the crochet method.

CAP and FINISHING: Follow the instructions for SIZE 6-7 years.

Knitking ACCESSORIES



1. Yarn Winder and Skein Holder. Heavy cast frame and nylon gears. \$14.95 plus \$1.00 shipping.
 2. Converta Tape. For simple and speedy charting of custom knits. \$5.95 plus 25c shipping.
 3. Adjustable Needle Selector. For setting unevenly spaced pattern stitches. \$2.95 plus 20c shipping.
 4. 33 Needle Multi-transfer Tool. For decreasing in the middle of a row. \$2.75 plus 20c shipping.
 5. Automatic Pattern Selector. For all KNITKING machines prior to the push-button. \$6.95 plus 30c shipping.
 6. Treble Transfer Tools. For rapid transfer of stitches and for cable stitch. \$1.50 pair plus 15c shipping.
 7. Reversing Bar. For easy hem turning or reversing of knitting. \$16.95 plus \$1.50 shipping.
- California residents add 5% sales tax.



KNITKING
1128 Crenshaw Boulevard
Los Angeles, California 90019

ARE YOU UNHAPPY WITH YOUR PRESENT KNITTING MACHINE ?

DOES IT REFUSE TO KNIT FANCY DRESS YARNS?

DOES IT JAM UP WHEN YOU TRY TO KNIT LOOPED MOHAIR OR THICK AND THIN YARNS?

DOES IT DROP STITCHES ALL OVER THE PLACE?

ARE YOU CONTINUALLY HAVING TROUBLE WITH AWKWARD, CUMBERSOME WEIGHTS?

ARE YOU UNABLE TO MAKE A LARGE GARMENT WITH BULKY YARNS?

DO YOU HAVE TO SELECT PATTERN STITCHES MANUALLY?

DO YOU HAVE TO LATCH YOUR RIBBING BY HAND?

IF YOU ARE HAVING ANY OF THESE PROBLEMS YOU SHOULD TRADE UP TO A NEW FANTASTIC PUSH BUTTON KNITKING WITH COORDINATED RIBBER AND ENJOY KNITTING WITH THE WORLDS FINEST, MOST VERSATILE AND MOST AUTOMATIC KNITTER.

YOU WILL BE SURPRISED AT OUR GENEROUS TRADE-IN ALLOWANCE AND YOU CAN, IF YOU WISH, USE YOUR PRESENT MACHINE AS A DOWN-PAYMENT AND PURCHASE A COMPLETE KNITKING FOR JUST PENNIES A DAY. WRITE TODAY FOR FULL INFORMATION AND TELL US WHAT MACHINE YOU NOW OWN. THE ADDRESS IS:

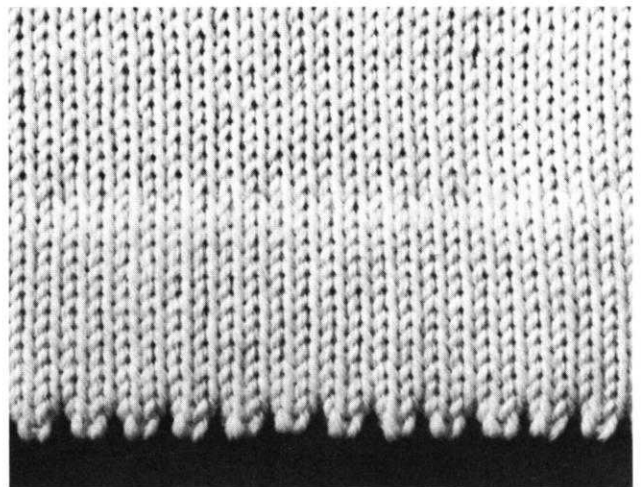
KNITKING, Dept. T-1, 1128 Crenshaw Blvd., Los Angeles, Calif. - 90019

PRACTICAL KNITTING HINTS

HEMS WITH DECORATIVE EDGES AND STRIPES

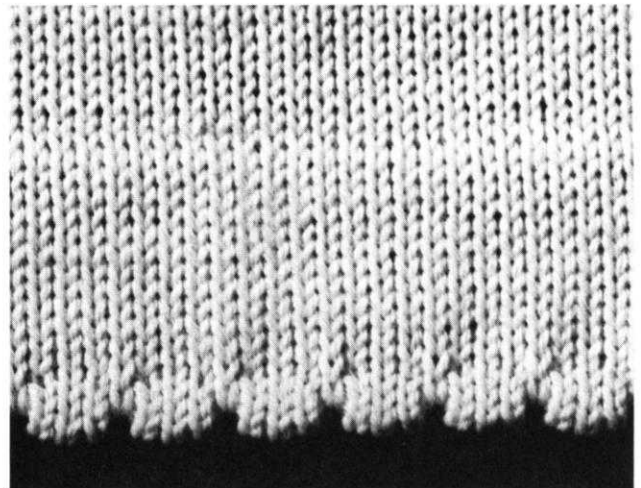
Illustration 1 shows a hem with a picot edge that is easily made without the transferring of stitches. Our sample was knitted with KNITKING Baby Yarn as follows:

For the needed width, bring only every other needle into working position and cast on over these needles. With Tension 3 to 5 knit the first 10 rows over the needles in working position, then bring the needles in the non-working position into work and knit 14 rows over all the needles. Now hang the cast-on stitches back onto machine over every other needle (the original cast on needles), put behind the latches and knit the stitches together with Tension 4 to 6. For this type hem, it is important that the picots are at the fold line of the hem. If too many rows are knitted over every other needle for the underside of the hem, the picots will fold over towards the front, and if not enough rows are knitted, the picots will turn towards the underside of the hem. To prevent this from happening, always be sure to make a small sample first. You will find that different kinds of yarn require different formulas. As a rule, the underside of the hem (knitted over every other needle) will need 3 to 6 rows less than the upper side of the hem (knitted over every needle). This is a very attractive edging and is less bulky than the usual type of hem.



Illus. 1

Illustration 2 was knitted with KNITKING Baby Yarn and the scalloped edging is made by putting needles into holding position. Cast on as usual over every needle and with Tension 3 to 5 knit 14 rows stockinette stitch. Now put every 4th needle into holding position and knit 6 rows (if a heavier ply yarn is used, knit only 4 rows), then bring all needles back into working position and knit 14 rows stockinette stitch. Hang the cast-on stitches back onto machine behind the latches and knit the stitches together with Tension 4 to 6. A very striking variation of this hem can be obtained if the holding position design rows and 2 rows before and 2 rows after the design are knitted with a contrasting color.



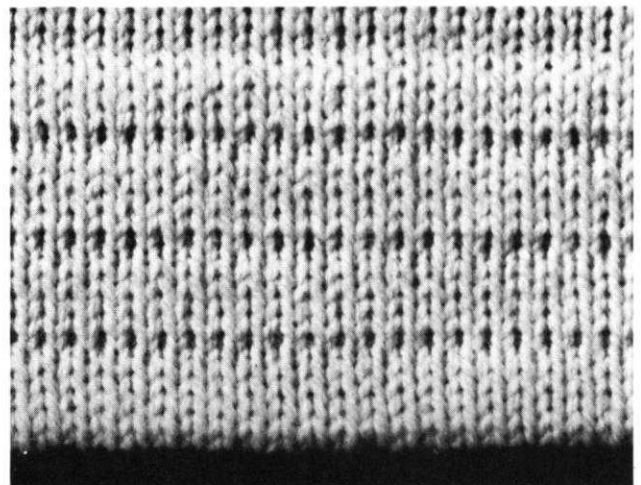
Illus. 2

Illustration 3 shows a hem in stockinette stitch with rows knitted tighter at certain intervals. This hem can be used in place of a ribbed edge, especially when you are knitting with a yarn that is extra soft and might lose its shape if ribbed in the usual way. If you wish, the hem and row divisions can be made larger. Our sample is made as follows: Cast on in the normal way over all needles, then knit

- 4 rows Tension 6 to 8
- 2 rows Tension 1
- 4 rows Tension 6 to 8
- 2 rows Tension 1
- 4 rows Tension 6 to 8
- 2 rows Tension 1
- 10 rows Tension 6 to 8
- 2 rows Tension 1
- 4 rows Tension 6 to 8
- 2 rows Tension 1
- 4 rows Tension 6 to 8
- 2 rows Tension 1
- 4 rows Tension 6 to 8

Hang the cast-on stitches back on the machine behind the latches and knit the stitches together with Tension 7 to 9. On this hem, the important thing to remember is that the difference between the tightly knitted rows and the normally knitted rows has to be at least 4 to 5 full tension settings.

A good thing to remember when hanging a hem is always to knit the doubled stitches together at least 1 setting higher than the tension used for knitting the actual hem.



Illus. 3



KNITTING NEWS

November/December, 1968

LETTERS FROM OUR READERS

It seems from correspondence and from conversations with readers that the sizes given for men's garments in KNITTING MAGAZINE are sometimes misunderstood; if the given size is, for example, 44 it means that the finished chest size of the garment is 44 inches and that the garment will be too tight for a man with a chest measurement of 44 inches.

Tastes vary in regard to how tight or loose a pullover or cardigan should be, but it is wise to knit it at least 2 inches and up to 4 inches larger than the man's snug chest measurement. This means that a size 44 would be worn by a man with a 41 or 42 inch chest measurement.

If a man with a 44 inch chest measurement wants a pullover that is given as size 44, the knitter should add sufficient stitches to the cast on rows for the back and front to increase the width of each piece by approximately 1 1/2 inches. All the instructions that follow can then be used as written.

If the man needs longer sleeves than called for in the instructions, extra rows should be included after the cuff has been knitted, for example; if the yarn used for the knitting produces 10 rows to the inch and you want the sleeve to be 1 inch longer than the pattern calls for, you will knit the extra 10 rows following the knitting of the cuff. You then set back the row counter by these 10 rows and continue the instructions as written.

THOSE ODD BALLS

Mrs. James Fergus of Downey has solved the problem of how to store and keep tidy all those odd balls of yarn that most knitters accumulate. She stores them in empty two pound coffee cans with plastic tops....the cans are stacked on top of each other in her cupboard and she can see any color she needs through the plastic....good idea....eh?...

MAKE A SAMPLE SWATCH

AGAIN we remind you about the importance of ALWAYS knitting a sample swatch BEFORE beginning to knit any garment. NO MATTER WHAT machine you own....the sample swatch is your KEY to the proper stitch and row gauge....and this in turn determines whether your knitted garment will be the correct size or not.

Our patterns in KNITTING MAGAZINE give you the stitch and row gauge to a 2 inch square and we give you 2 or 3 tension numbers to try in order to get the proper stitch and row gauge. You

MUST get the SAME stitch and row gauge on your sample swatch no matter what tension you get it on....for as little as 1/2 stitch or 1/2 row off (more or less) when multiplied over the full width or length of a section will change the size and appearance of a knitted garment. ALWAYS knit a good sized piece for your sample, casting on at LEAST 4 inches of knitting. Knit at LEAST 4 inches in length using 1 tension LOWER than that given in pattern instructions followed by 2 rows of a contrast yarn, then change the tension to the next higher number and knit at LEAST 4 inches, mark it again with the 2 rows of contrast yarn and continue through each of the tensions given in the pattern up through one number higher than the last tension given. This is especially true for those of you who do not have a KNITKING machine. KNITKING owners can knit their sample swatch using the actual numbers given. You can if you like, make eyelets across the first row of contrast yarn and leave the empty needles in work...make 3 eyelets for tension 3, 4 eyelets for tension 4, 5 eyelets for tension 5, etc., etc...then simply by counting the eyelets, you will know exactly at what tension each divided section was knitted. End with 2 rows of contrast yarn and then bind off. Pull the swatch in EVERY DIRECTION so that the stitches will fall into proper place and allow it to rest for several hours or even over night.

NOW measure a 2 inch square in each divided section....the stitches and rows as well MUST comply with the pattern stitch and row gauge given and you will find that if you are using the same yarn that is recommended and also if you have wound your yarn into a proper center-pull ball so that the yarn flows evenly from the center (this is really very important and ALL YARN should be wound this way for knitting on a machine) one of the marked tensions will be the correct one for you to use. The point is....it does not matter what ACTUAL tension you use to get the stitch and row gauge....just so that you get it with whatever yarn you wish to use for a specific garment. Knitting machines other than KNITKING might require you to use a HIGHER tension than the one we recommend or some might require you to use a LOWER tension....So...take the small amount of time to knit up a sample swatch and take the guesswork out of your knitting...end up with a beautiful garment in the size you want. You can always save the swatch for future reference....or rip it out and use the yarn.

KNITKING REVERSING BAR (for KNITKING machines with 197 needles only)

Turning your work with a KNITKING REVERSING BAR becomes a very simple operation and is a saving in valuable time as well. The

Reversing Bar will turn a small amount of stitches or it will turn all the stitches across the needle bed of the machine. The KNITKING Reversing Bar is used for other operations besides the turning of knitting. You may use it to begin your knitting (without casting on in the normal way) and after the specified number of rows have been knitted, with the aid of the Reversing Bar, you hang the stitches back onto the machine to form a hem and avoid the tedious work of hanging a hem stitch by stitch. Tucks can be made with your Reversing Bar, or it can be used as a marker in place of a colored thread when latching specified purl stitches into knit stitches as directed in a pattern design. There are endless opportunities to use the KNITKING Reversing Bar....so if you have one, make use of it and if you do not have one, be sure to take advantage of our "Special" and order one now....

CHRISTMAS SPECIALS

It's that time of year again....when you tell your husband and the family what would please you most as a Christmas gift.... and when you decide just what your knitting friends would like as a gift....In line with our adopted policy, we are reducing the prices on most KNITKING products in order that you can save money on gifts.... It is not possible to list them all in this Newsletter, so we will be doing a separate mailing for our "SPECIAL CHRISTMAS SALE"....watch out for it and if you haven't heard from us about the "Christmas Sale" by the first week in December, drop us a line and we will send you a duplicate.....

THE JAC 40 IS A MUST

for fast easy knitting of
Jaquard and Ski-sweater
designs



Patterns are selected—row by row—through a pre-stamped card that is fed into the Jac.

There are over 140 cards available and illustrations of them are included with each Jac.

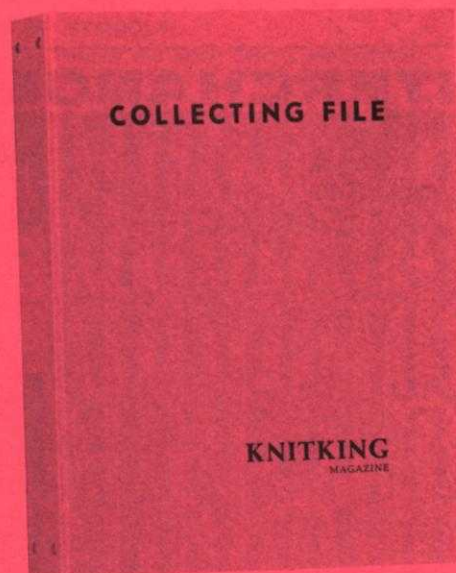
Jac 40's are made for most brands of machines (with the exception of Japanese machines). When ordering be sure to specify your brand of knitter as needle spacings vary. Simple to use and an essential tool for the modern knitter, Jac 40's are \$24.95 complete with 3 cards for practicing the 3 techniques, plus complete instructions.

Order from your dealer or direct from

KNITKING

1128 Crenshaw Boulevard, Los Angeles, Calif. 90019

Shipping Cost \$1.50—California residents add 5% sales tax.



A Binder to preserve your copies of KNITKING Magazine.

Holds 12 issues available for ready reference.

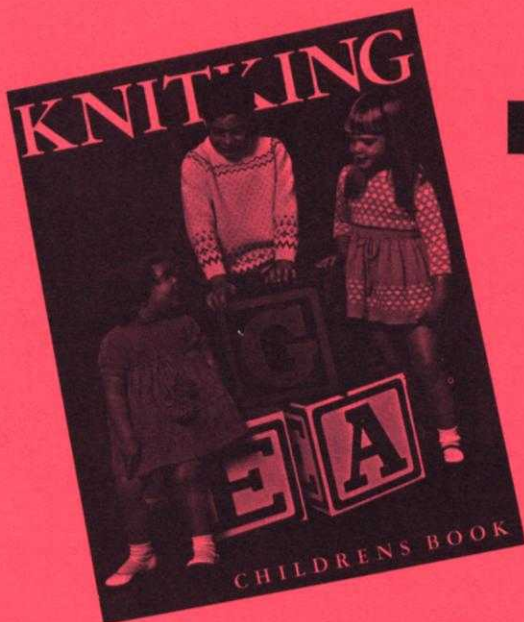
Price \$2.50 each. Mailing cost 50 cents.

(California residents add 13 cents sales tax)

Available only from . . .

KNITKING MAGAZINE

1128 Crenshaw Blvd., Los Angeles, Calif. 90019



HERE IT IS!!

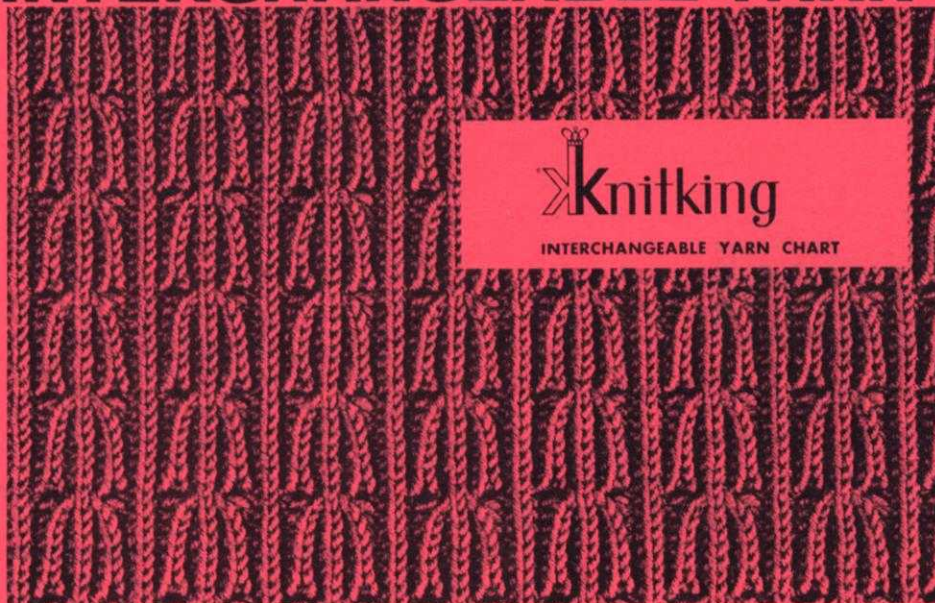
\$2.95

Calif. residents add
15 cents Sales Tax
Mailing costs 40 cents.

THE BIG BEAUTIFUL BOOK OF CHILDRENS PATTERNS YOU HAVE BEEN ASKING FOR . . . OVER 50 complete and lovely patterns for infants and children to teen age . . . Buntings, Blankets and Baby outfits . . . Cute Dresses, Leotites, Skirts, Suits, Pullovers, Cardigans, Stockings, Trousers, etc. . . .

The only CHILDRENS BOOK for the machine knitter published in the U.S.A. Order direct from KNITKING, 1128 Crenshaw Blvd., Los Angeles, California 90019.

INTERCHANGEABLE YARN CHART



\$1.00

plus 12 cents mailing
Calif. residents add
5 cents Sales Tax

Specially prepared to allow you to substitute Nationally distributed brand name yarns for the KNITKING YARNS used in KNITKING MAGAZINE. CHARTS are complete with ROWS and STITCHES per inch at various Tensions. Order from KNITKING, 1128 Crenshaw Blvd., Los Angeles, California 90019.

NOTES TO KNIT BY . . .

STITCH AND ROW GAUGE

Every KNITTING pattern calls for a specific number of stitches and rows for 2 inches and in order to obtain the correct size finished garment, you must be sure to knit at the correct tension. This means that before starting a garment, you must knit a sample swatch with the yarn you intend using for the garment.

Cast on over a sufficient number of needles to produce a swatch 4 inches wide. (If the pattern calls for 16 stitches to 2", 16 x 2 = 32 stitches) then knit 4 inches of rows at the first suggested tension (if the pattern calls for 22 rows to 2", 22 x 2 = 44 rows) knit 2 rows with a contrast color, change to the next higher tension, knit another 4", knit 2 rows with contrast color, change to a third higher tension and knit another 4", then bind off.

Roll the swatch into a cylinder over its length and pull on both ends. Unroll it and stretch it diagonally by pulling on the four corners. Allow the swatch to rest and settle (preferably overnight) then using a stitch gauge or ruler, count the number of stitches and rows over a 2" length in each of your 3 tensions. Select the tension that produces the stitches and rows called for in the pattern. If none of them are correct, you are most likely using the wrong weight of yarn.

HOLDING POSITION

The needles are as far forward on the needle bed as they will go.

NON-WORKING POSITION

The needles are as far back on the needle bed as they will go.

BINDING OFF

See Instruction Manual for your own machine.

CROCHET BIND OFF

Use this method for binding off neck and armbands, edgings, facings or collars. Knit a bind off row using 5 tensions higher than tension used for section and then with latch needle tool, and working from the opposite side of the yarn end, pull the second stitch through the first stitch, the 3rd through 2nd, the 4th through 3rd, etc. When you reach the end of row, pull the loose end of yarn through the last stitch. If you are unable to turn the tension up 5 numbers because you already are working with a large tension, lay the yarn over the needles by hand and knit this one row by pulling each needle back and forward again completing a stitch. Leave approximately 1/4" loop for each stitch (depending on type of yarn used) then bind off crochet method.

SHORT ROWS

Used for shaping of all kinds. Push the specified number of needles opposite the Cam Box into holding position and knit across to them. Now you **must** place the yarn OVER and UNDER the first inside needle that is in the holding position. Place the specified needles opposite Cam Box into holding position (other side) and knit across to these needles, and again place the yarn OVER and UNDER the first inside needle in the holding position. Repeat as many times as your pattern states. When you return these needles to the working position, the same procedure is used — bring the needles into work opposite the Cam Box, knit across to them, place the yarn OVER and UNDER the first inside needle in holding position and repeat for other side. Continue in this manner until all the needles are back in the working position.

INCREASING, DECREASING

See the Instruction Manual for your own machine.

INCREASING AND DECREASING WHEN USING RIBBER

When increasing, increase on the main knitter first, knit one row and then transfer the necessary stitches from the knitter to the ribber and continue.

When decreasing or binding off, you **must** transfer the ribber stitches to the main machine before decreasing or binding off.

CONTROL KNOBS (Under the slide handle — one on each side on KNITKING and certain other machines.)

1. When **BOTH Control Knobs are UP, (or IN on the latest KNITKING)** knit one row going from right to left. The needles knit and move back just beyond the front of the needle bed and the yarn hangs on the front of the needles. The slide will now move freely in either direction

with the needles remaining in a "SAFE POSITION". When you wish to resume knitting, press down (**Out on the latest KNITKING**) **BOTH Control Knobs**. The first movement of the slide is made without yarn and will bring the needles into working position, you then continue knitting.

2. **RIGHT CONTROL KNOB UP (IN on latest KNITKING)**. Knit from right to left. The row knits, moves the needles back and the yarn is held in front of the latches. Knit from left to right, the yarn goes under the needles without knitting as the needles move into the working position. This is the operation used for making round cords (with 3 or 4 needles only) and also for knitting single rows of one color.

3. **LEFT CONTROL KNOB UP (IN for latest KNITKING)**. The same as above but moving from left to right.

NECK SHAPING

When the directions state to bind off the center stitches for NECK, one correct way is as follows: With a new ball of yarn, bind off the given number of stitches working from **right to left**. Leave this ball of yarn hanging to one side (to be picked up later) and put all the needles on the left side into holding position and complete the right side first as directed. When you have completed the right side, pick up the yarn that you used for the neck bind off, put it in the wool feeder, bring all the needles into working position and knit 1 row to the left side. Turn row counter back to the number on which you started your neck shaping and complete the left half with reverse shaping, making the same number of decreases and on the same row numbers as on the right half.

You may also use the **SHORT ROW** method for shaping your neck and shoulders provided the decreasing is made on **every other row**. When the shaping is completed, knit 1 row over all the neck stitches (or shoulder stitches) with tension set at least 5 numbers higher, and then bind off all stitches using the **crochet method**.

If you are hand feeding a Norwegian design, bind off the center neck stitches with a new ball of yarn, then work both sides of neck shaping at the same time, using two balls of yarn for each color.








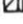

MISSING ROW NUMBERS

When there are row numbers missing in the instructions as for instance when you have completed the designated increases or decreases on a section of garment, continue knitting until you reach the next given row number.

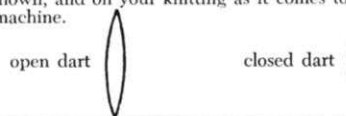
READING OF SYMBOLS

Certain holding position and eyelet designs are sketched in the knitting patterns. The Chart with symbols is read as the work comes toward you from the machine. Where purl stitches are facing you, the purl symbol will be shown and where knit stitches are facing you, the knit symbol will be shown. On the sides of the chart are the row numbers, i.e. 1-8 indicates the first and last row number. In eyelet design patterns, specified stitches are transferred to another needle and the empty needles are returned to the knitting position each time. In holding position designs, selected needles are pushed into the holding position for the stated number of rows.

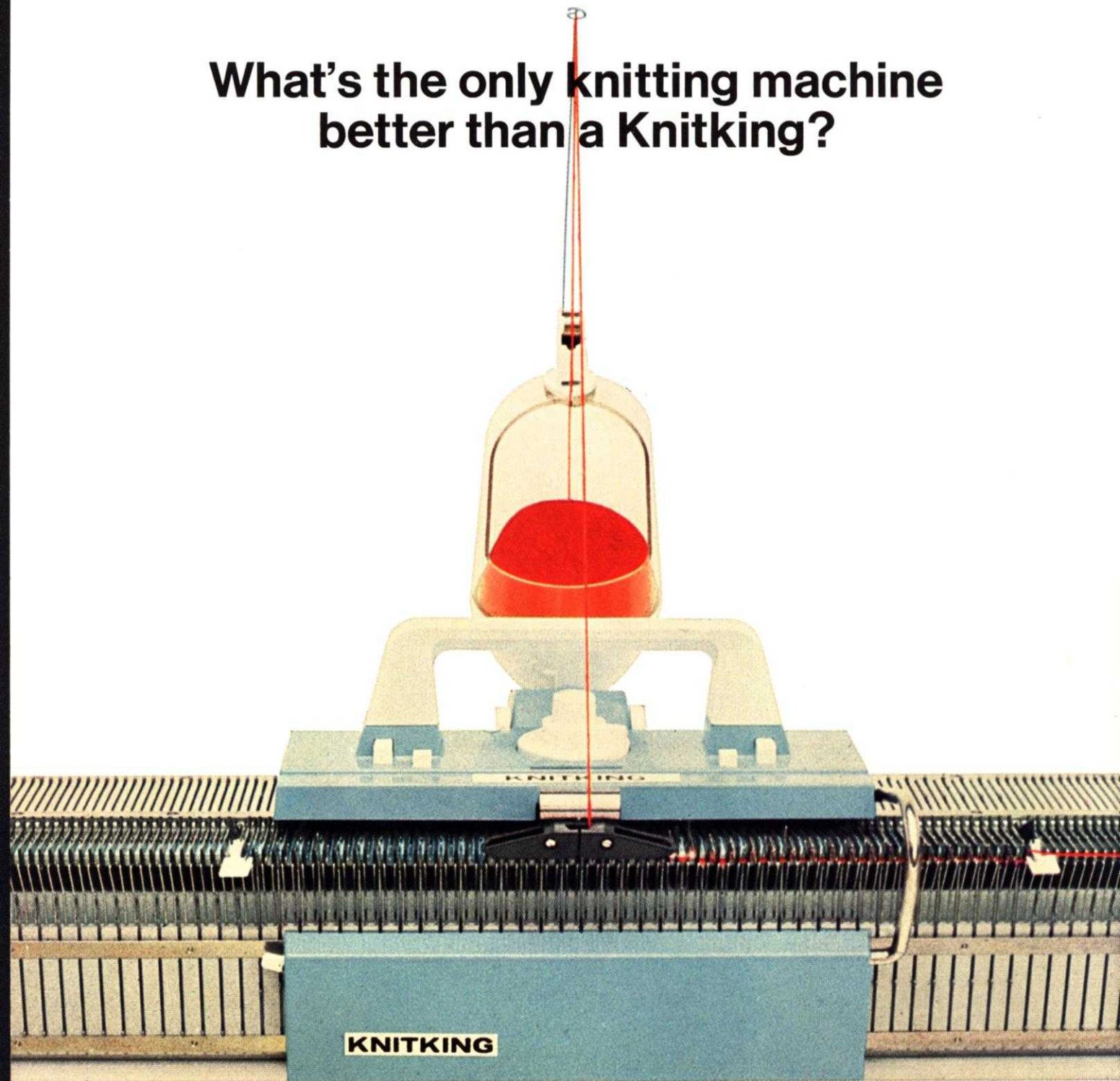
PATTERN STITCH SYMBOLS

-  = knit stitch
-  = purl stitch
-  = empty needle (leave in working position)
-  = needle not used (in the out of work position)
-  = needle in holding position
-  = 2 stitches on 1 needle — either transferred from the right side or the left side, then put the needle into holding position
-  = needle holding 2 sts. Stitch has been transferred from the LEFT
-  = needle holding 2 sts. Stitch has been transferred from the RIGHT
-  = 3 stitches on 1 needle. The 1st and 3rd stitch in a group of 3 needles has been hung on the 2nd or center needle.

The diagrams for pattern work are followed just as they are shown, and on your knitting as it comes towards you on the machine.



**What's the only knitting machine
better than a Knitking?**



The new  Knitking!

For color brochure and complete details on this magnificent new KNITKING write to:
KNITKING • 1128 Crenshaw Blvd., Los Angeles, California 90019