

KNITTING

MAGAZINE



yarns

64

Knitking

The Finest From Around the World . . .

If you want your garments to look as good as those in KNITKING MAGAZINE and keep their appearance through dozens of washes, you must knit them with gorgeous KNITKING yarns. KNITKING yarns are the finest quality obtainable anywhere and the prices cannot be beaten. Try them once and you will always use them.

Your orders will be filled the same day they arrive. Be sure to state your color preferences and alternates.



Pattern Numbers	YARN	Price Including Shipping
DK 7708	Nanga Parbat, Nora and Subita 2 x 4	\$36.28
DK 7709	Subita 2 x 4	22.30
HP 3563	Subita Dralon 3-ply	15.10
DP 7711	Nora	11.48*
DP 7712	Nora	9.52
DP 7710	Subita Crepe with Rayon	10.30
HP 3564	Nora	13.44
KK 5049	Subita 2 x 3	7.90
HP 3562	Nora	12.46
HP 3565	Subita Dralon 3-ply	12.70
MK 5048	Nora	11.48
DK 7656	Subita 2 x 3	19.90
DK 7626	Subita Crepe with Rayon	28.55
MK 5040	Subita 2 x 3	11.50
MK 5041	Subita Dralon 3-ply	9.10
KK 5045	Nora	4.62
DV 7713	Baby Yarn	8.98
DV 7717	Subita Dralon 2-ply	7.90
DV 7715	Baby Yarn	7.60

Items marked with a * do not include the small amounts of contrast yarns used in the pattern.

California Residents please add 5% Sales Tax.

Send \$2.00 for **LARGE COMPLETE YARN CATALOGUE.**
(Refunded on your first \$10.00 order) to:

KNITKING YARNS, Dept. 19
1128 Crenshaw Blvd.
Los Angeles, California 90019

KNITKING

MAGAZINE

Vol. 5, No. 3

January/February 1969

INDEX

Contents	Pattern No.	Page No.
Woman's 3 piece Suit	DK 7708	15
Woman's Two piece Dress	DK 7709	16
Man's Pullover	HP 3563	17
Woman's Pullover and Beret	DP 7711	18
Woman's Vest	DP 7712	19
Woman's Pullover	DP 7710	19
Man's Pullover	HP 3564	20
Boy's Pullover	KK 5049	20
Man's Pullover	HP 3562	21
Man's Pullover	HP 3565	22
Girl's Jacket	MK 5048	22
Woman's Dress and Stockings	DK 7656	23
Woman's Dress and Jacket	DK 7626	24
Girl's Dress	MK 5040	26
Girl's Dress	MK 5041	26
Boy's Pullover	KK 5045	27
Woman's Bed Jacket	DV 7713	27
Woman's Bed Jacket	DV 7717	28
Woman's Bed Jacket	DV 7715	30
Practical Knitting Hints		32



OUR COVER MODEL
DK 7708

Brighten any Winters day and look toward Spring in our one-two-three piece Suit shown on the cover of this issue . . . and that's not all . . . we've filled the pages with knits on a grand scale . . . with fashions for you, your family and special lucky friends.

Publisher: KNITKING CORPORATION, 1128 Crenshaw Blvd., Los Angeles, Calif. 90019, Telephone: WEbster 8-2079. Published bi-monthly. Subscriptions: USA—\$6.00 annually, single copies \$1.50; Canada—\$7.00; other parts of the world—\$10.00. The entire contents of KNITKING MAGAZINE are copyright and must not be reproduced in any shape or form without the express permission in writing, of the publisher. COPYRIGHT © by KNITKING CORPORATION 1968.

Printed by: George Rice & Sons, Los Angeles, California.

Letter from the Publisher

AS PART of our continuing effort to provide complete service to the all too frequently neglected knitting machine owner, we at KNITKING start each calendar year with an ambitious projected program aimed at satisfying the needs of every individual reader.

Despite the fact that there are many distributors of knitting machines in the U.S.A., KNITKING MAGAZINE is still the only knitting machine magazine published and KNITKING is still the only company that provides complete service to the machine knitter. We do not yet have sufficient Sales Outlets and Instruction Facilities throughout the U.S. but we are proceeding steadily in the setting up of a network of qualified Teachers and we are developing a Franchise Program that will ultimately insure Sales and Service Centers in each of the 50 states.

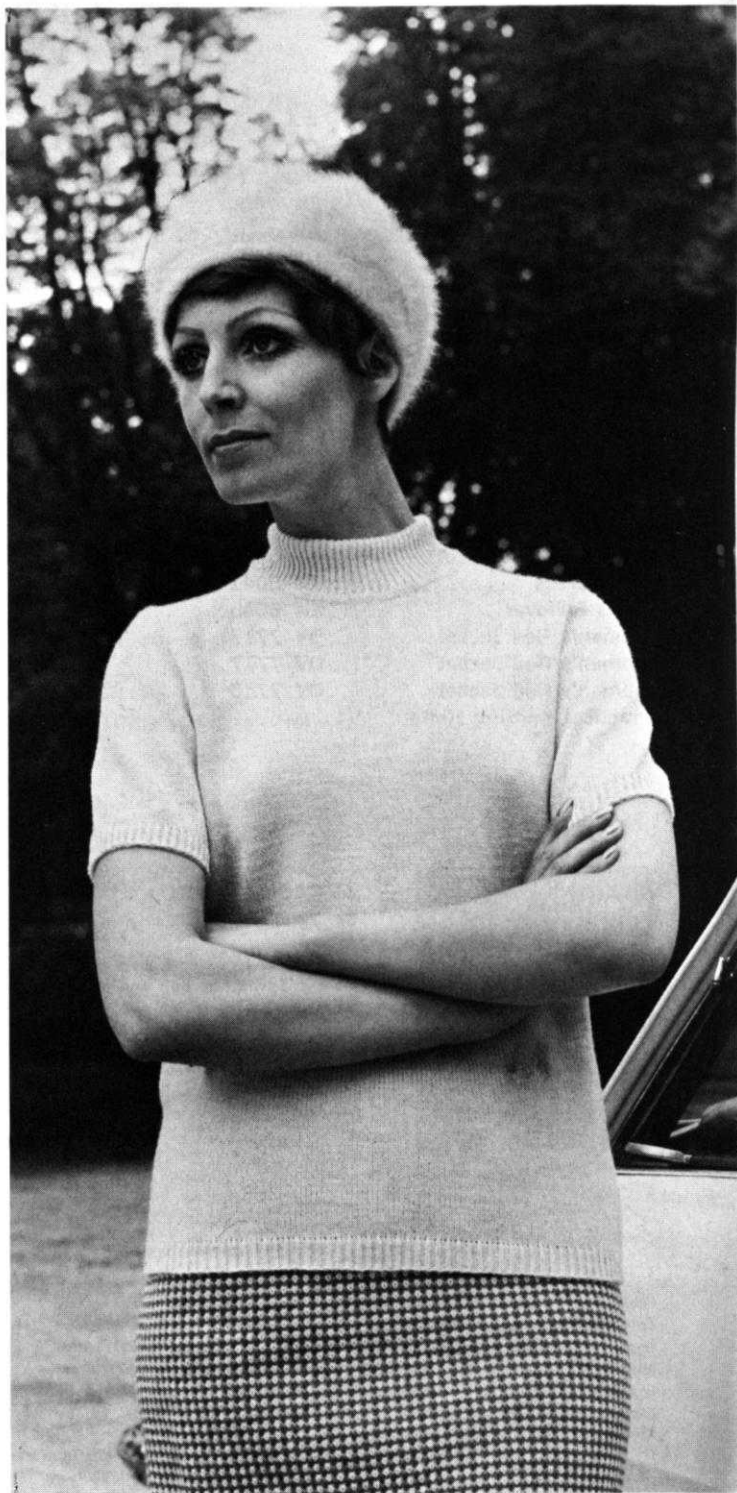
Every reader of KNITKING MAGAZINE is certain to be interested in machine knitting and possibly knows several other people who own knitting machines. It nevertheless is a fact that a very, very minute percentage of the population of the U.S. owns knitting machines. In point of fact, a study and analysis (made in 1967) of the more than two million women who buy and use McCall's Needlework and Crafts Magazine shows that only 4.4% of its readers own knitting machines, as compared with 96.1% that own sewing machines. Owners of potters wheels and kilns show 3% and are in the one category listed lower than owners of knitting machines. It is somewhat incredible but a fact nevertheless, that among the readers of Needlework and Crafts, owners of weaving looms show a percentage of 17.2, almost 4 times as many as knitting machine owners.

KNITKING MAGAZINE continues to conduct its own study and analysis of its readers needs and desires, and during 1969 we plan to satisfy the most prominent of them with the publication of several books including a book of Gift Items, several on Basic Garments for all members of the family, plus a complete Charting Course.

We will keep you posted in regard to these publications and include portions of them in Practical Knitting Hints from time to time. Turn to page 32 of this issue and you will see a page from our not yet published Charting Course.

The next issue of KNITKING MAGAZINE is also aimed at satisfying the requests of many readers. In it we have three really cute matching Mother-Daughter outfits and a handsome Father-Son sweater combination . . . plus some beautiful Eyelet Design Pullovers. The Cover Dress is also an Eyelet Design . . . there is another simple to make basic Dress and a smart fashionable Vest . . . a Shirt and a new style Sweater for the young men, plus 3 of the prettiest young girl's Dresses you have ever seen.

A Popcorn texture knitted with a simple holding position design in two colors makes up the top of this extra lovely two piece dress that can be worn anytime, anyplace. Choose one light, one dark color of KNITKING Subita 2 x 4 and get that expensive knit look. Size 14/16. See page 16.



DK 7708

A beautiful Pattern Design in two colors is used for knitting the Jacket and Skirt of this three piece Suit. Take special note of the two real pockets on the right side of Jacket and the designers touch in the bands of the darker shade. If you knit two pullovers, one in each color, you will have two lovely outfits. Size 10/12. See page 15.



Ensembles

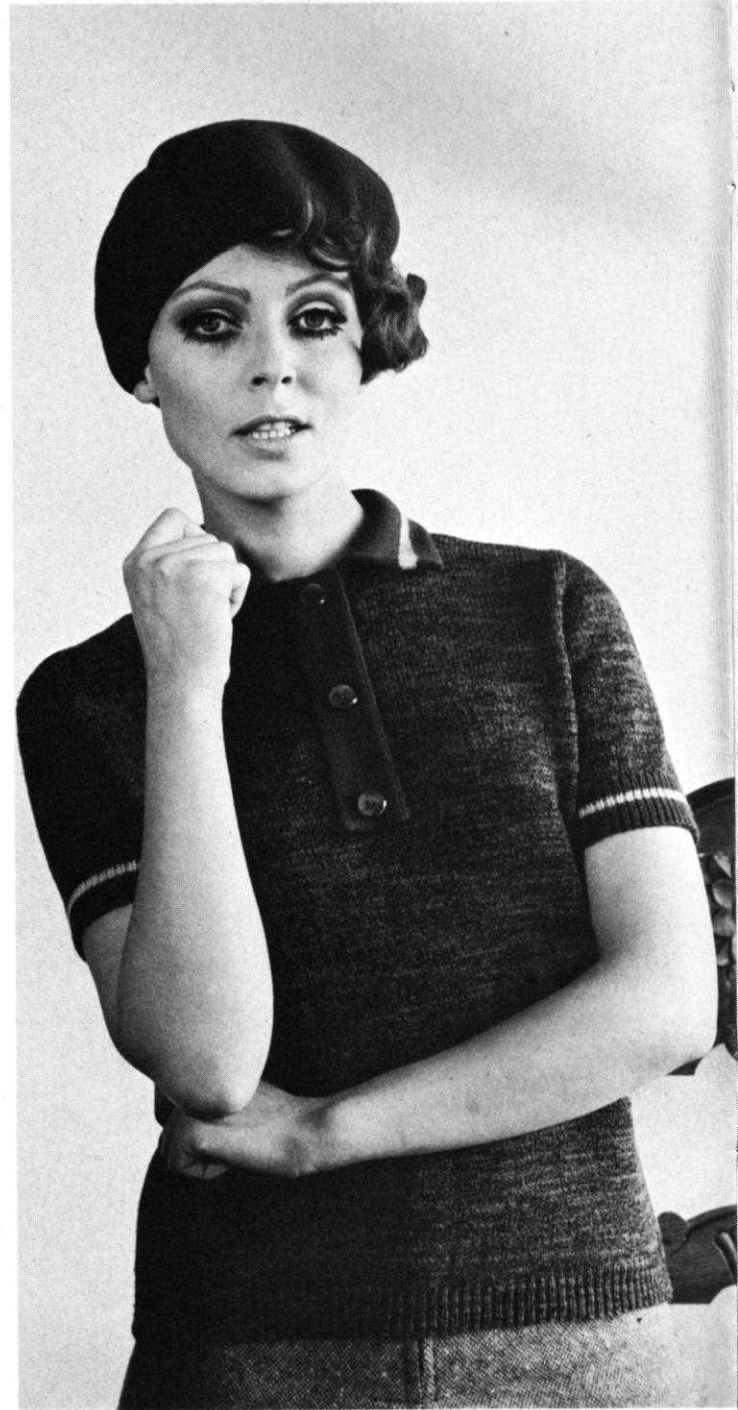
HP 3563

Our new KNITTING Subita 3-ply Dralon is knitted into a top fashion Pullover for a man. A very different Rib design combines with Raglan Sleeves. Beige is the main color and the stripe is Brown. Size 36/38. See page 17.

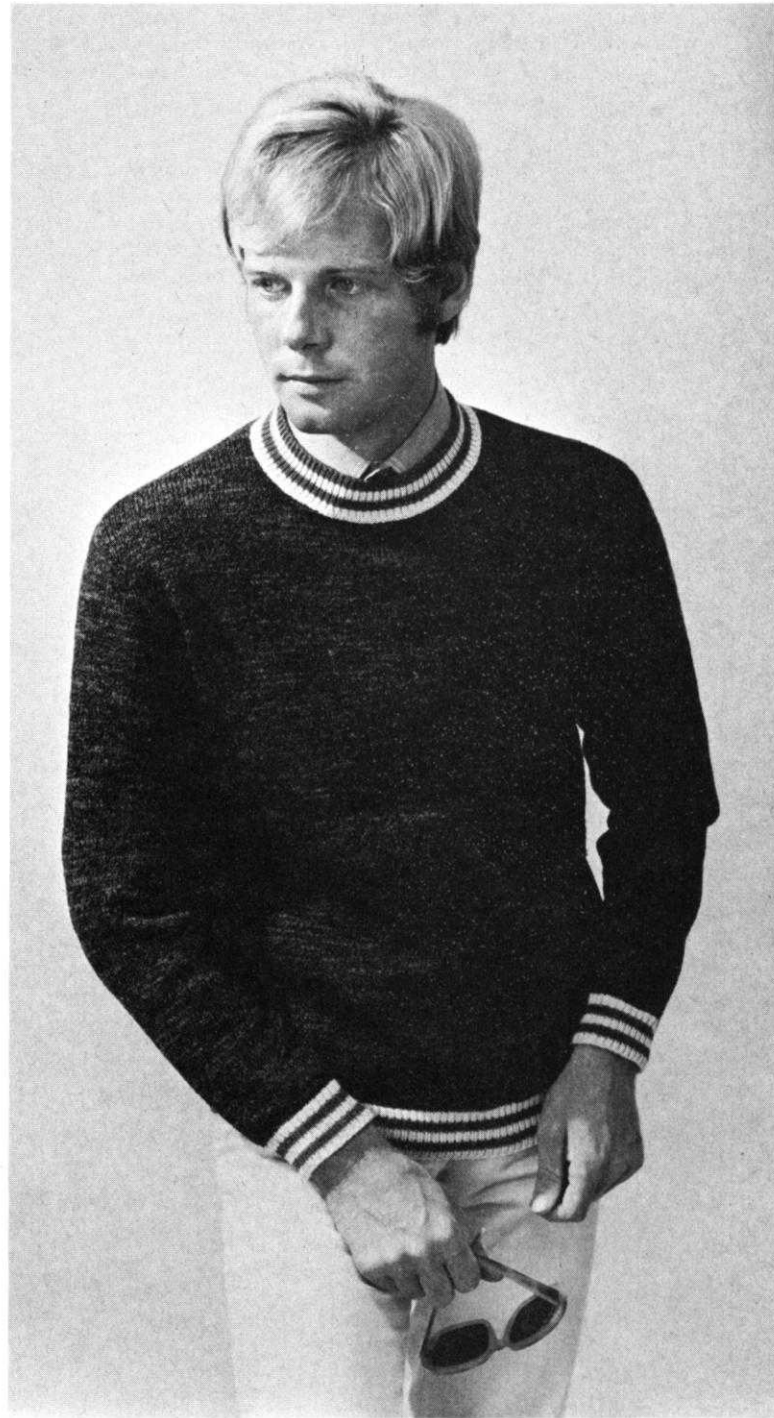


DP 7711

We've copied a man's Sport Shirt for this comfortable Pullover with bright stripes on Sleeves and Collar edges. Top it off with a real Beret that is easy to knit and you gain a lesson using "Short Rows." Size 8/10. See page 18.



This Pullover will be a favorite of your man. We knitted our Model in Black and White Tweed yarn. White stripes encircle the Neckline and other ribbed edges. Size 36/38. See page 20.



DP 7712

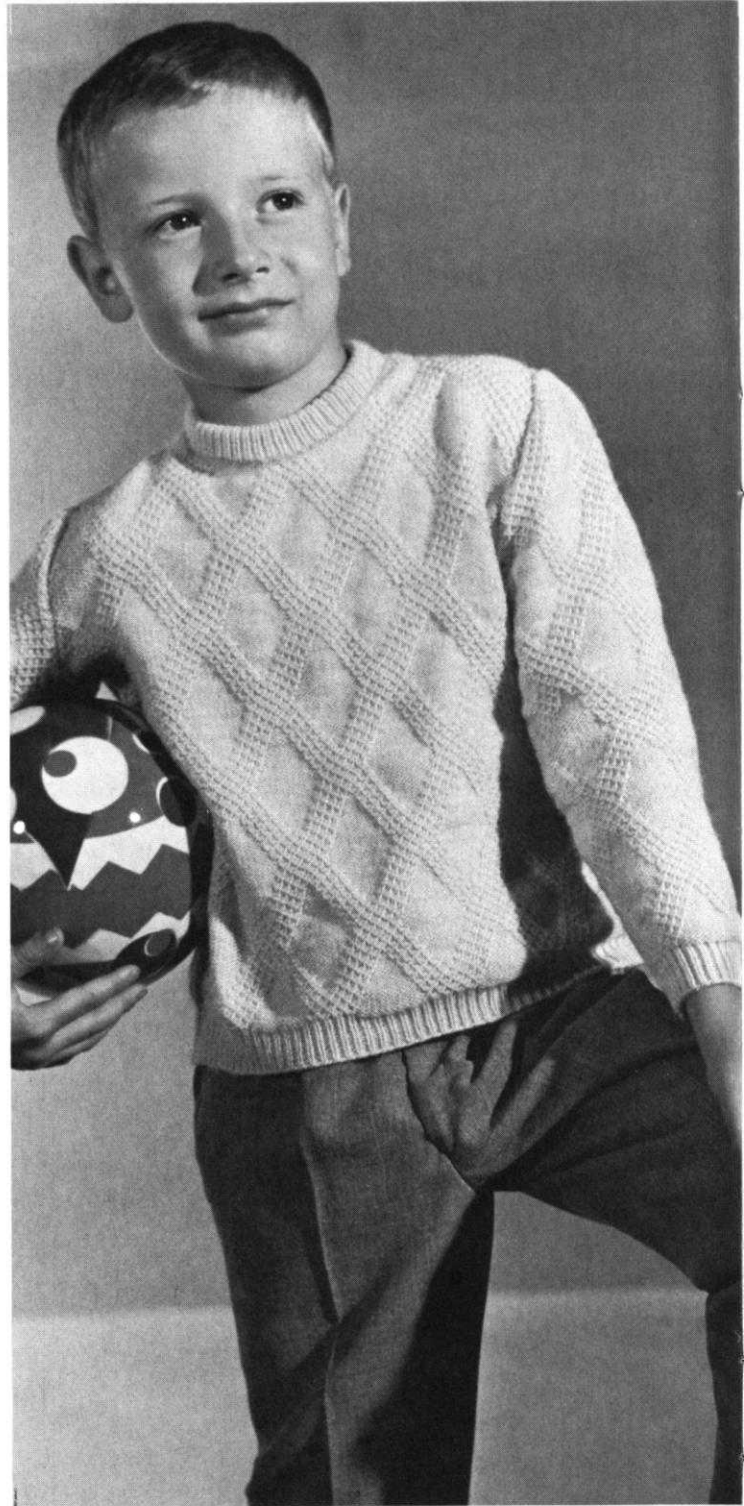
A Fashion First! Vests are very much in style today and this attractive one is knitted with our Black and White Tweed Nora. Trim the Pockets and edges with plain black. Do order extra yarn for a Skirt to match, or you could add extra rows for a very smart Jumper. Size 12/14. See Page 19.

KK 5049

Play Ball! He'll enjoy any game when wearing a warm Pullover...and this one is a Jacquard Pattern knitted with a holding position design that follows the chart...or use JAC 40 and Pattern No. 78a. Size 9-10 years (Chest 27" to 28"). See page 20.

DP 7710

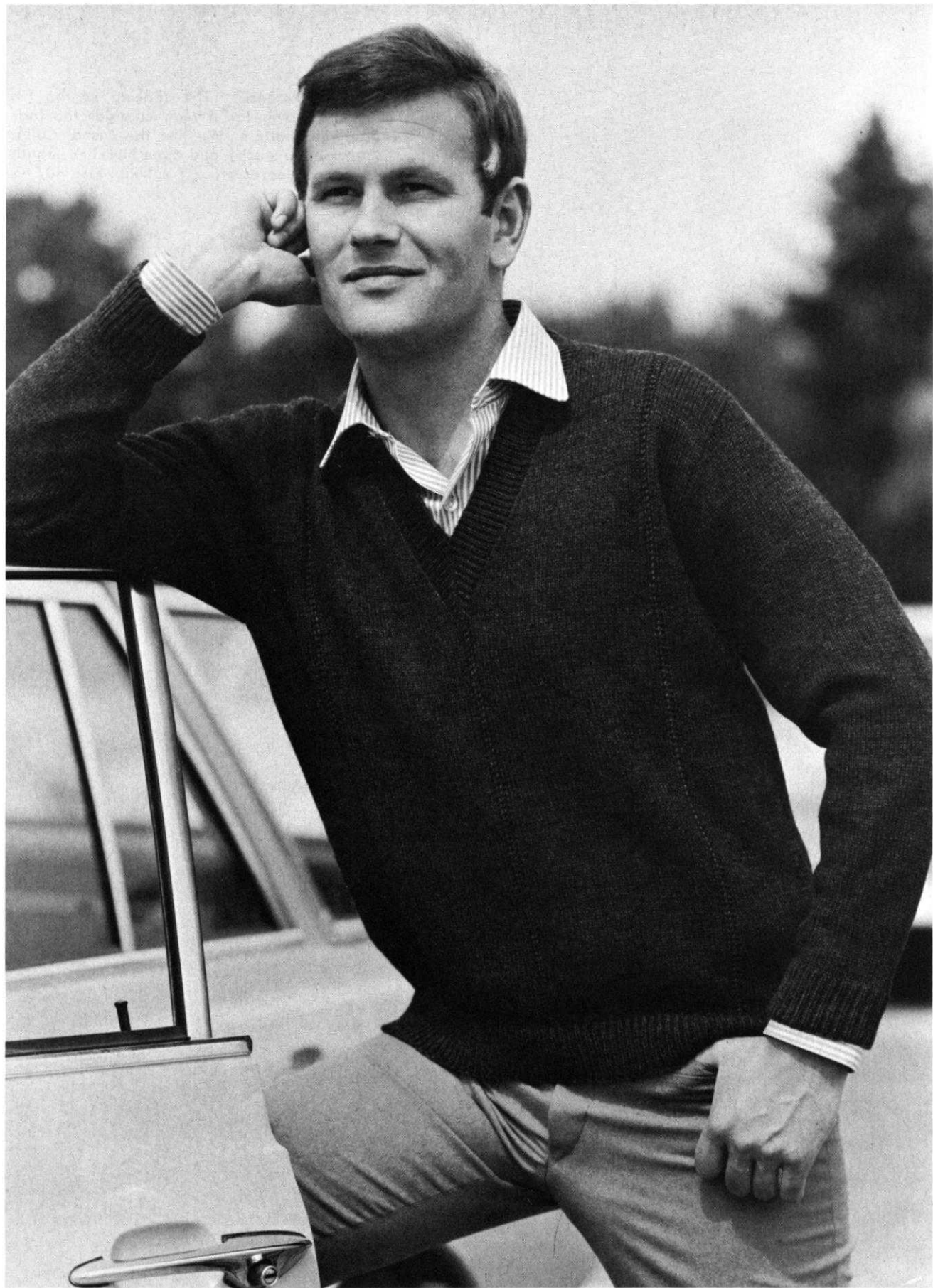
This very dressy Pullover has a lovely diamond Pattern and Cable Stripes knitted on the front section. The edges of Neck, Sleeves, and Lower Edge are a 1 x 1 Rib. It is especially beautiful if you use our KNITKING Subita Crepe with Rayon. Size 12/14. See page 19.



HP 3562 →

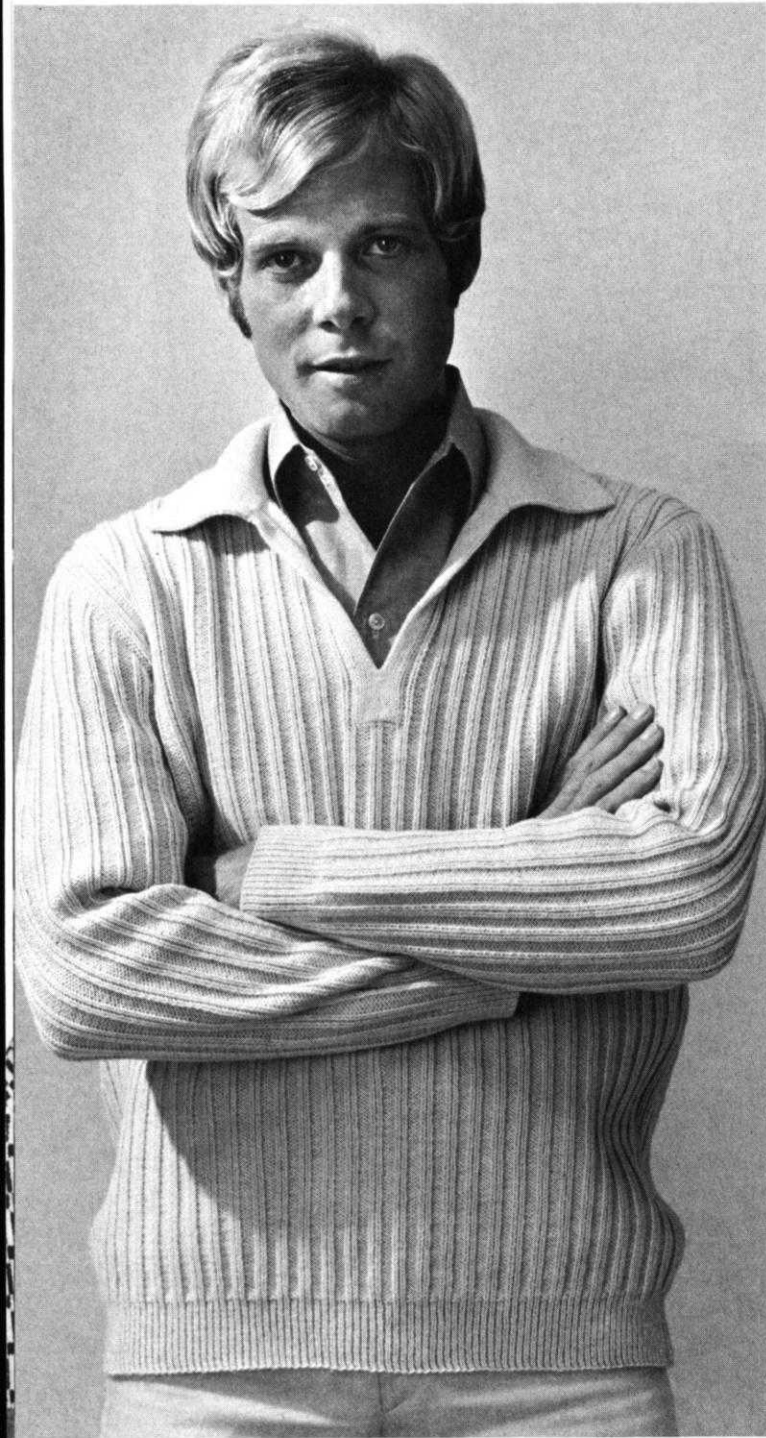
A brand new Pattern Stripe is introduced for this Man's handsome Pullover. Drop the specified stitches and then latch them up as directed for the interesting Pattern Design. Size 36/38. See page 21.





← HP 3565

Ribbing with a difference... The spacing of the Rib stitches on this Pullover for a Man changes the look from the usual Rib Pattern. We like the casual Collar (knitted in stockinette stitch) and open Neckline. Bands on lower edge and Sleeves are a 1 x 1 Rib. Size 40/42. See page 22.



MK 5048 →

Dress your pre-teen Girl in this lovely Jacket that is knitted in a ribbed Holding Position Design. We used KNITKING Nora in bright red and the pattern stitch is gorgeous. Size 11/12 years (Chest 29" to 30"). See page 22.



Stylish and Sporty

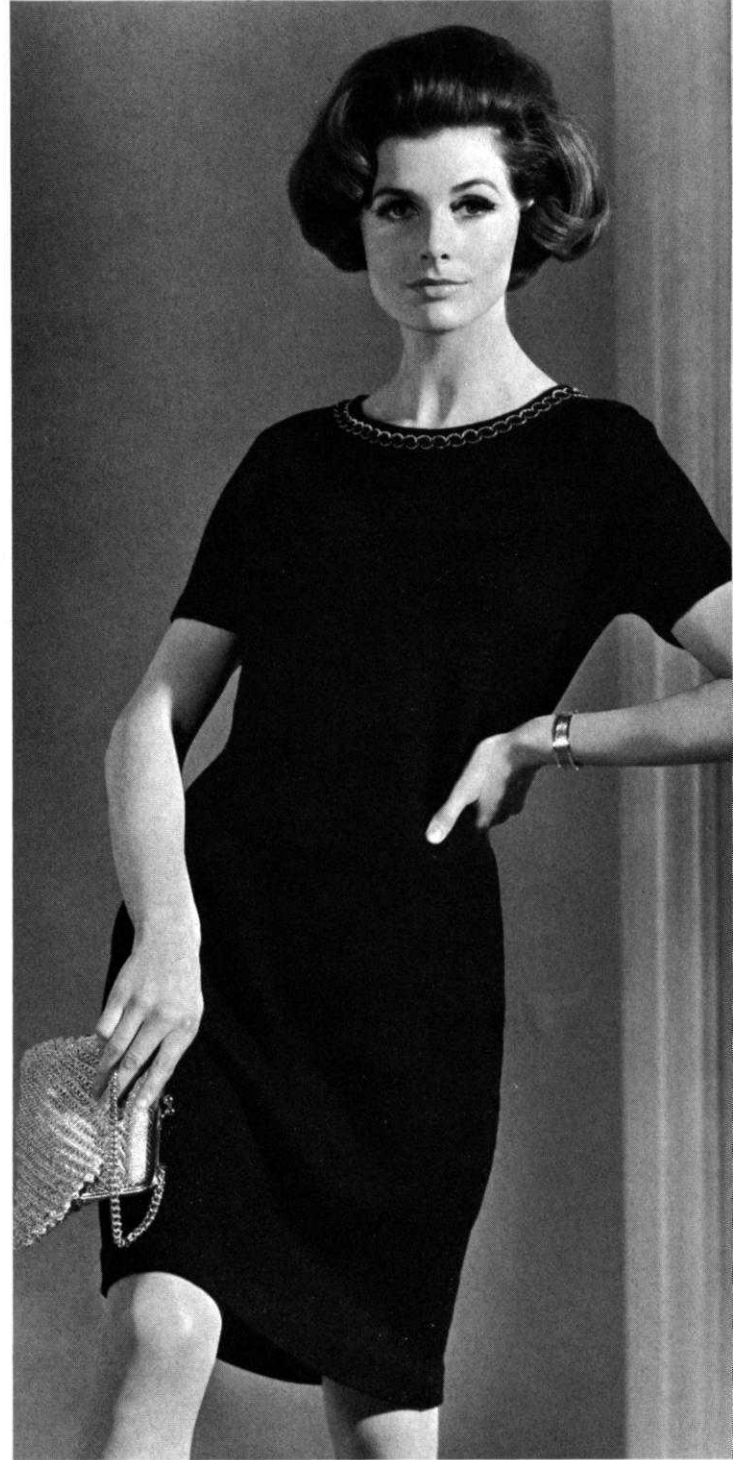
DK 7656

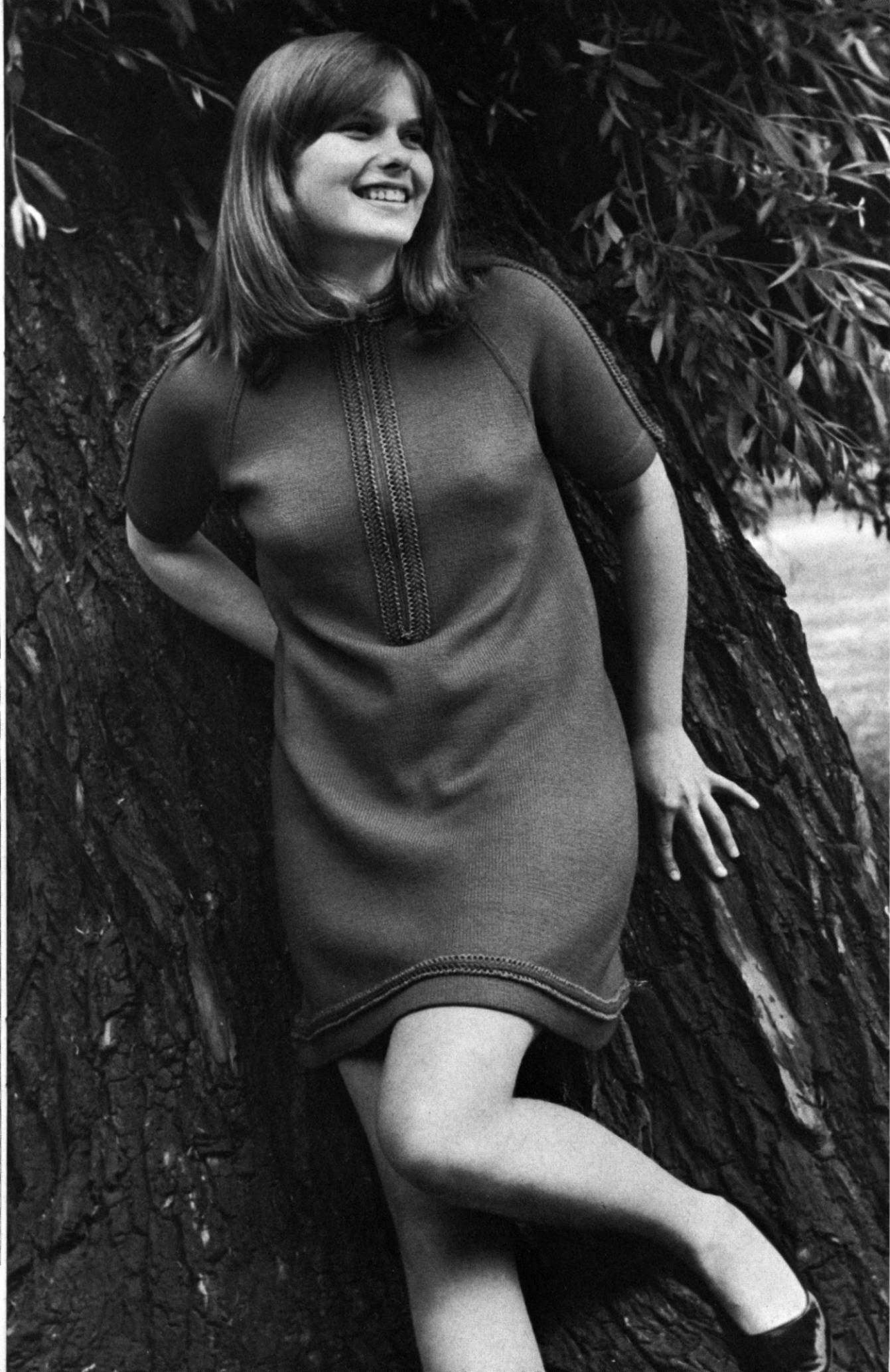
Ultra Smart! Stockinette stitch makes up this "Very Important Fashion Knit" with a zipper closing and large pockets. Trim it with a round knitted cord of contrast color that is woven to the folded edges of the doubled Collar and Pocket flaps. A wide (or narrow if you prefer) leather belt hugs the waistline. Knit the Stockings too . . . they really are fun to make and complete the smart yet sporty look of today. Size 10/12. See page 23.



Basic Beauty! Everyone can use a basic simple dress with a matching Jacket. Knit this one in stockinette stitch in our KNITKING Black Subita with Rayon, then pick up the sparkle with a Black and Silver trim at Neckline of dress and around the edges of Jacket as shown. Size 12/14. See page 24.

Perfect styling for your favorite Teenager . . . The dress is knitted in stockinette stitch with Raglan Sleeves. Purchase 4 yards of matching or contrasting trim. Size 12/13 ((Chest 30" to 31")). See page 26.





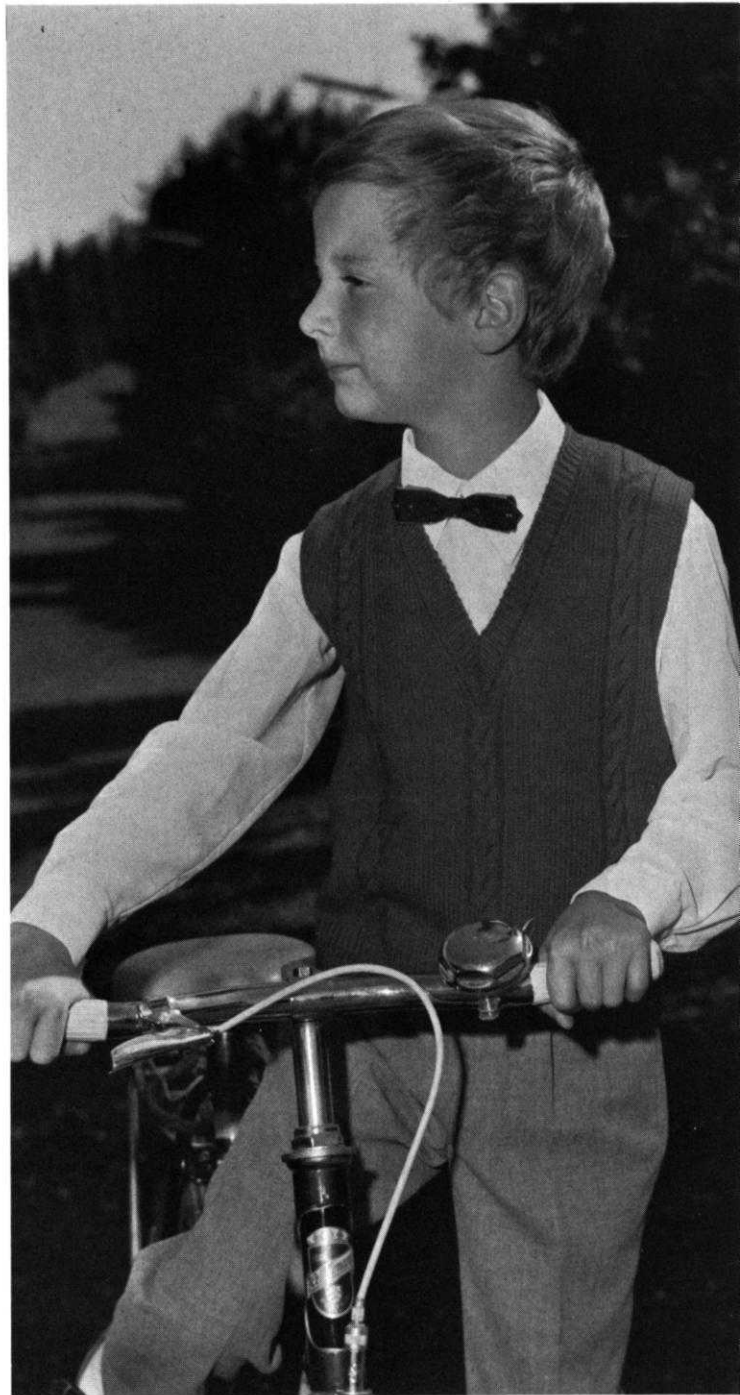
MK 5041

Carefree KNITTING Subita Dralon 3-ply is used in knitting this darling dress for a small girl. It is knitted in stockinette stitch with a small Norwegian Design border that follows a chart. Size 6-7 (Chest 24" to 25"); See page 26.



KK 5045

He's off to school wearing a sleeveless Pullover knitted in stockinette stitch with Cables on the front and back. Rib the Neckline and lower edge. Size 7-8 (Chest 25" to 26"). See page 27.



Bed Jackets

DV 7713

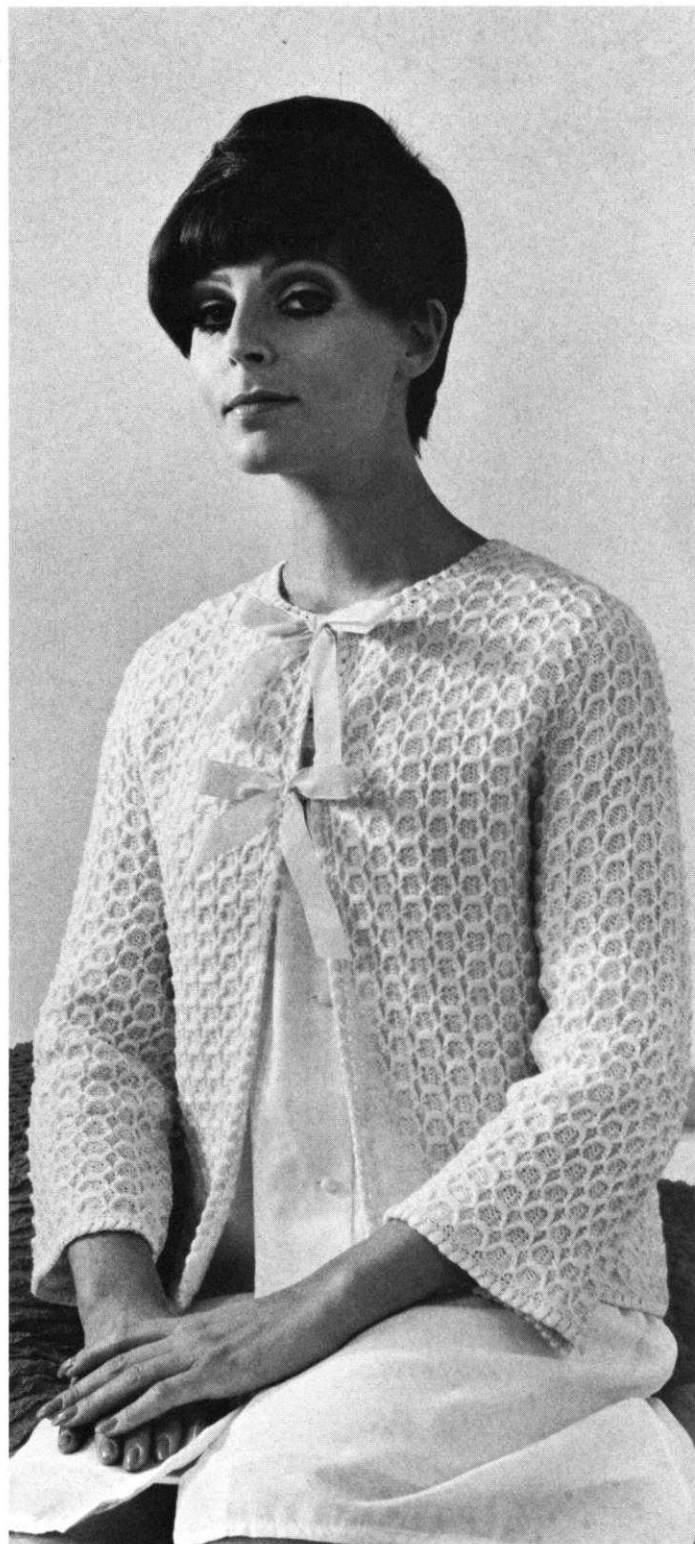
Feel pampered and elegant in a lovely Bed Jacket knitted with a Holding Position Design. Use KNIT-KING Baby Yarn in a soft pastel color... You could, if you wanted to, knit extra length at the bottom for a really exquisite Robe. Size 10/12. See page 27.





DV 7717

Snuggled up...with a book...or for breakfast in bed, this very unusual Bed Jacket is cozy and warm. Stockinette stitch was used for the main sections with Raglan Sleeves. The Bands and Collar are a Holding Position Design. Size 14/16. See page 28.



DV 7715

Another different Bed Jacket using KNITKING Baby Yarn. Some needles are left out of work for a lacy airy Pattern Stitch...and again, you can knit extra length for a beautiful Robe. Be sure to order enough yarn. Size 8/10. See page 30.

KNITTING INSTRUCTIONS

OUR COVER MODEL

WOMAN'S SUIT AND PULLOVER, DK 7708

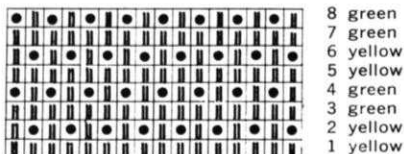


SIZE: 10/12. **MATERIAL:** SUIT: 21 oz. yellow and 21 oz. teal green KNITTING Nanga Parbat and 3½ oz. teal green KNITTING Nora. **PULLOVER:** 14 oz. yellow KNITTING Subita 2 x 4. Color #6019, #6074, #4083 and #5. Taffeta for lining skirt and jacket. **TENSION:** KNITTING: Pattern Stitch 8 to 10, Stockinette Stitch and K1, P1, Ribbing 5 to 7. **GAUGE:** Pattern Stitch 12 sts. 2", 26 rows 2". Stockinette Stitch 15 sts. 2", 22 rows 2". **PATTERN:** SUIT: Holding Position Design according to chart, worn on the knit side. KNITTING Push-Button Machines use Wheel 6 and push in the right retractor button. **EDGES:** Stockinette Stitch. **PULLOVER:** Stockinette

stitch. **EDGES:** K1, P1, Ribbing. All sections of the skirt and jacket have to be cast on from right to left and the Cam Box has to be on the left side at the beginning of ROW 1.

SKIRT: BACK: (Figure V) Cast on 117 sts. from right to left with yellow Nanga Parbat and work the Holding Position Design.

ROWS: 1-332: Decrease 1 st. on each side after ROW 238, then again on the following 22nd row 1 x, on every following 16th row 2x. on every following 10th row 2 x and on every



following 6th row 2 x. AT THE SAME TIME, after ROW 261 for the DARTS, decrease 2 sts. on each side, then again every following 12th row 5 x. For the first decrease hang the 33rd and 35th sts. on each side onto the 34th needle, then move the end sts. inward to fill the empty needles. The next decreases lie directly above. After row 332 bind off the remaining 77 sts.

FRONT: (Figure IV) Work the front the same as the back, but begin the PATTERN by putting the 2nd needle into holding position first. (No. 2 on your Dial), and for the DARTS, after ROW 291, decrease 2 sts. on each side, then again every following 10th row 3 x. For the first decrease hang the 31st and 33rd sts. on each side onto the 32nd needle, then move the end sts. inward to fill the empty needles. The next decreases lie directly above. After ROW 322 bind off the remaining 85 sts.

JACKET: BACK: (Figure II). Cast on 115 sts. (from right to left) with teal green Nora.

ROWS 1-14: Work stockinette st., then hang the cast-on sts. back on the machine behind the latches to form the hem and continue with Nanga Parbat in Holding Position Design.

ROWS 15-200: Increase 1 st. on each side after ROW 77, then again every following 30th row 3 x. (123 sts.)

ROWS 201-226: ARMHOLE SHAPING: Bind off 4 sts. on each side, then on each side of every following 4th row bind off 3 sts. 1 x, 2 sts. 3 x and 1 st. 2 x. (93 sts.)

ROWS 227-304: Work even.

ROWS 305-324: SHOULDER SHAPING: Bind off 2 sts. beginning next 6 rows. After ROW 310 bind off the center 13 sts. for NECK. (See Notes to Knit By, inside back cover, but put the needles on the right side into holding position first and do not use the retractor button until the left side is completed.) Bind off 2 sts. on Shoulder side and continue to shape shoulder on every other row by binding off 2 sts. 2 x and 3 sts. 5 x. AT THE SAME TIME, Shape Neck on every other row by binding off 4 sts. 1 x, 3 sts. 1 x, 2 sts. 2 x and 1 st. 2 x.

FRONT: (Figure I). Cast on 61 sts. (from right to left.) with teal green Nora.

ROWS 1-14: Work stockinette st., then make hem as you did on the back and continue with Nanga Parbat in Holding Position Design.

ROWS 15-67: Work even and make a buttonhole after ROW 53 over the 5th-8th needles counting from the left side. After ROW 67 work the pocket. On the left side put 24 needles and on the right side put 8 needles into holding position. Over the 29 needles in working position work 14 rows stockinette st. with Nora, then bind off these sts. Now cast on 29 sts. over the empty needles with Nanga Parbat for the pocket lining and work 52 rows in Holding Position Design, then turn the Row Counter back to 67 and continue working over all needles in PATTERN.

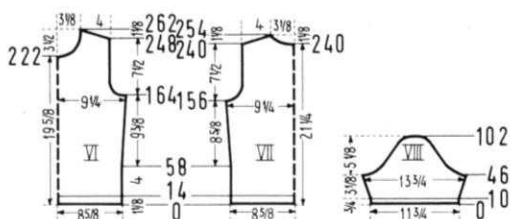
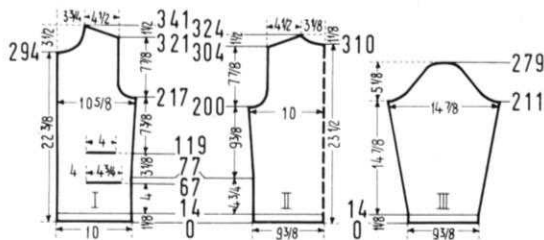
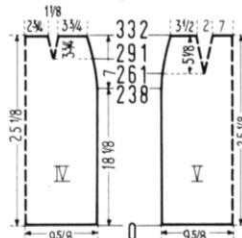
ROWS 68-119: Increase 1 st. on the right side after ROWS 77 and 107. AT THE SAME TIME, make a buttonhole after ROW 100. After ROW 119 work the second pocket. On the left side put 24 needles and on the right side put 15 needles into holding position. Over the 24 needles in working position work 14 rows stockinette st. with Nora, then bind off these sts. Now cast on 24 sts. over the empty needles with Nanga Parbat for the pocket lining and work 42 rows in Holding Position Design, then turn Row Counter back to 119 and continue working over all needles.

ROWS 120-217: Increase 1 st. on the right side after ROWS 137 and 167. AT THE SAME TIME make buttonholes after ROWS 147 and 194. (65 sts.)

ROWS 218-243: ARMHOLE SHAPING: Bind off 4 sts. on the right side, then on every following 4th row bind off 3 sts. 1 x, 2 sts. 3 x and 1 st. 2 x. AT THE SAME TIME, make a buttonhole after ROW 241. (50 sts.)

ROWS 244-294: Work even and make a buttonhole after ROW 288.

ROWS 295-341: NECK SHAPING: Bind off 4 sts. on the left side, then on every other row bind off 3 sts. 2 x, 2 sts.



3 x, 1 st. 3 x and on every following 4th row 1 st. 4 x. AT THE SAME TIME, after ROW 321, then on every other row SHAPE SHOULDER by binding off 2 sts. 6 x and 3 sts. 5 x. Make the second front section with reverse shapings, omit the buttonholes and the second pocket.

SLEEVE: (Figure III). Make two. Cast on 57 sts. from right to left with teal green Nora.

ROWS 1-14: Work stockinette st., then hang the cast-on sts. back on the machine behind the latches to form the hem and continue with Nanga Parbat in Holding Position Design.

ROWS 15-211: Increase 1 st. on each side after ROW 19, then again every following 10th row 6 x and every following 12th row 10 x. (91 sts.)

ROWS 212-227: CAP SHAPING: Bind off 5 sts. on each side, then on each side of every following 4th row bind off 4 sts. 1 x and 3 sts. 2 x.

ROWS 228-279: Bind off 2 sts. on each side after ROW 227 and 1 st. on each side after ROW 231. Repeat these bind-offs on every following 4th row 4 x, then on each side of every following 4th row bind off 2 sts. 1 x, 3 sts. 1 x, 5 sts. 1 x and after row 279 bind off the remaining 11 sts.

FRONT and NECK BAND: With 2 separate balls of teal green Nora cast on 12 sts. on each side of the machine, leaving 110 needles (for neck band) between the cast-on sts. free. Put the needles on the left side (with cast-on sts.) into holding position and work the right band first.

ROWS 1-212: Work even, then put these needles into holding position and work 212 rows over the needles for the left band. Now move the Cam Box to the right side, with the yarn of the left section cast on 110 sts. over the empty needles and with the yarn of the right section work over all 134 needles.

ROWS 213-219: Work even. After row 219 put 12 sts. on each side on stitch holders.

ROWS 220-226: Work even over 110 needles, then bind off these sts.

PULLOVER: BACK: (Figure VII). Cast on 132 sts. with Subita 2 x 4.

ROWS 1-14: K1, P1, Ribbing. After row 14 transfer the ribber sts. to the main machine and continue with stockinette st.

ROWS 15-156: Increase 1 st. on each side after ROW 58, then again every following 20th row 4 x. (142 sts.)

ROWS 157-178: ARMHOLE SHAPING: Bind off 4 sts. beginning next 2 rows, 3 sts. beginning next 2 rows, 2 sts. beginning next 6 rows, 1 st. beginning next 4 rows and 1 st. on each side of the next 4th and following 4th row (108 sts.)

ROWS 179-240: Work even.

ROWS 241-254: NECK and SHOULDER SHAPING: Both shapings are started at the same row. Bind off the center 12 sts. for NECK, (See Notes to Knit By, inside back cover) then on every other row on Neck Side bind off 4 sts. 2 x, 3 sts. 2 x and 2 sts. 2 x. AT THE SAME TIME, after ROW 240, then on every other row SHAPE SHOULDER by binding off 3 sts. 2 x and 4 sts. 6 x.

FRONT: (Figure VI). Work the front the same as the back to ROW 156.

ROWS 157-164: Work even.

ROWS 165-186: ARMHOLE SHAPING: Bind off 4 sts. beginning next 2 rows, 3 sts. beginning next 2 rows, 2 sts. beginning next 6 rows, 1 st. beginning next 4 rows and 1 st. on each side of the next 4th and following 4th row. (108 sts.)

ROWS 187-222: Work even.

ROWS 223-262: NECK SHAPING: Bind off the center 12 sts. for NECK as you did on the back, then on every other row on Neck Side bind off 4 sts. 1 x, 3 sts. 1 x, 2 sts. 3 x, 1 st. 2 x and on every following 4th row 1 st. 3 x. AT THE SAME TIME, after ROW 248, then on every other row SHAPE SHOULDER by binding off 3 sts. 2 x and 4 sts. 6 x.

SLEEVE: (Figure VIII). Make two. Cast on 91 sts.

ROWS 1-10: K1, P1, Ribbing. After ROW 10 transfer the ribber sts. to the main machine and continue with stockinette st.

ROWS 11-46: Increase 1 st. on each side after ROW 14, then again every following 4th row 6 x. (105 sts.)

ROWS 47-102: CAP SHAPING: Bind off 4 sts. beginning next 4 rows, 3 sts. beginning next 4 rows, 2 sts. beginning next 4 rows, 1 st. beginning next 38 rows, 2 sts. beginning next 2 rows, 3 sts. beginning next 2 rows, 4 sts beginning next

2 rows and after ROW 102 bind off the remaining 13 sts.

COLLAR: Cast on 136 sts. and work 50 rows K1, P1, Ribbing, then transfer the ribber sts. to the main machine and work 4 rows stockinette st., then bind off all sts. the crochet method.

FINISHING: SKIRT: Weave front and back section at sides, 1 st. in on each edge and leaving a 7" opening on the left side for the zipper. Make a narrow hem around this opening. Turn under 3 rows on upper edge and baste to wrong side, then sew an elastic band against the baste line on inside. Sew in zipper. Sew on hooks and eyes. Turn under 16 rows on lower edge and hem to wrong side. Line the skirt with taffeta.

JACKET: Join front and back sections at sides and shoulders, easing in the fullness at bustline of front sections. Sew sleeves together and set in. Sew pocket lining against jacket on wrong side. Fold under half of pocket edging and hem to wrong side. Sew sides of pocket edging to jacket. With 1 long edge to inside and 1 long edge to outside sew front bands to jacket. Weave the open sts. on upper bands together, then sew neckband to neckline, 1 edge to inside and 1 edge to outside. Finish buttonholes, sew on buttons.

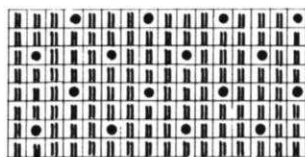
PULLOVER: Join front and back section at sides and shoulders, easing in the fullness at bustline of front section. Sew sleeves together and set in. Join short ends of collar, then sew cast-on edge to inside and bound-off edge to outside of neckline, having the stockinette st. rows on the right side.

WOMAN'S TWO PIECE DRESS, DK 7709



SIZE: 14/16. **MATERIAL:** 24½ oz. blue and 7 oz. white KNITTING Subita 2 x 4, Color #30 and #4. **TENSION:** KNITTING 6 to 8. **GAUGE:** Stockinette Stitch 15 sts. 2", 23 rows 2". Pattern Stitch 14 sts. 2", 30 rows 2". **PATTERN:** SKIRT: Stockinette Stitch. PULLOVER: Holding Position Design according to chart, worn on the knit side. KNITTING Push-Button Machines use Wheel 3. **SKIRT: BACK:** (Figure V). Cast on 164 sts. with blue and work stockinette stitch.

ROWS 1-280: Decrease 1 st. on each side after ROW 198, then again every following 10th row 4 x, every following 8th row 3 x and every following 6th row 3 x by always hanging the 3rd st. on each side onto the 2nd needle, then moving the end sts. inward to fill the empty needle. AT THE SAME TIME, after ROW 220 for the DARTS, decrease



21 - 24 blue
19 - 20 white
15 - 18 blue
13 - 14 white
9 - 12 blue
7 - 8 white
3 - 6 blue
1 - 2 white

2 sts. on each side, then again every following 10th row 6 x. For the first decrease hang the 42nd and 44th sts. on each side onto the 43rd needle, then move the end sts. inward to fill the empty needles. The next decreases lie directly above.

ROWS 281-298: Work even, then bind off the remaining 114 sts.

FRONT: (Figure IV). Work the front the same as the back with the exception of the DARTS. For the DARTS, after ROW 244 decrease 2 sts. on each side, then again every following 12th row 3 x. For the first decrease hang the 41st and 43rd sts. on each side onto the 42nd needle, then move the end sts. inward to fill the empty needles. The next decreases lie directly above. After ROW 298 bind off the remaining 126 sts.

PULLOVER: BACK: (Figure II). Cast on 137 sts. with blue. **ROWS 1-18:** Work stockinette st., then hang the cast-on sts. back on the machine behind the latches to form the hem and continue working in Holding Position Design.

ROWS 19-210: Increase 1 st. on each side after ROW 78, then again every following 32nd row 3 x. (145 sts.)

ROWS 211-238: ARMHOLE SHAPING: Bind off 4 sts. beginning next 2 rows, 3 sts. beginning next 2 rows, 2 sts. beginning next 4 rows, 1 st. beginning next 8 rows and on each side of every following 4th row 1 st. 3 x. (109 sts.)

ROWS 239-324: Work even.

ROWS 325-342: NECK and SHOULDER SHAPING: Both shapings are started at the same row. Bind off the center 11 sts. for NECK, (See Notes to Knit By, inside back cover) then on every other row on Neck Side bind off 4 sts. 2 x, 3 sts. 2 x, 2 sts. 2 x and 1 st. 2 x. AT THE SAME TIME, after ROW 324, then on every other row SHAPE SHOULDER by binding off 2 sts. 1 x and 3 sts. 9 x.

FRONT: (Figure I). Work the front the same as the back to ROW 210.

ROWS 211-228: Work even.

ROWS 229-256: ARMHOLE SHAPING: Bind off 4 sts. beginning next 2 rows, 3 sts. beginning next 2 rows, 2 sts. beginning next 4 rows, 1 st. beginning next 8 rows and on each side of every following 4th row 1 st. 3 x. (109 sts.)

ROWS 257-324: Work even.

ROWS 325-360: NECK SHAPING: Bind off the center 11 sts. as you did on the back, then on every other row on Neck Side bind off 4 sts. 1 x, 3 sts. 2 x, 2 sts. 2 x, 1 st. 3 x and on every following 4th row 1 st. 3 x. AT THE SAME TIME, after ROW 342, then on every other row SHAPE SHOULDER by binding off 2 sts. 1 x and 3 sts. 9 x.

SLEEVE: (Figure III). Make two. Cast on 91 sts. with blue.

ROWS 1-18: Work stockinette st., then hang the cast-on sts. back on the machine behind the latches to form the hem and continue working in Holding Position Design.

ROWS 19-48: Increase 1 st. on each side after ROW 18, then again every following 6th row 4 x. (101 sts.)

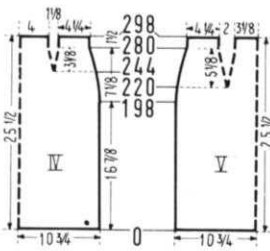
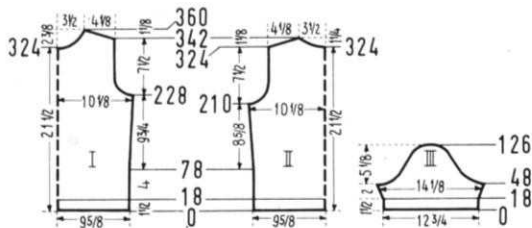
ROWS 49-68: CAP SHAPING: Bind off 6 sts. on each side, then on each side of every following 4th row bind off 4 sts. 1 x, 3 sts. 1 x and 2 sts. 2 x.

ROWS 69-126: Bind off 1 st. on each side after ROW 68 and 2 sts. on each side after ROW 72. Repeat these bind-offs on every following 4th row 5 x then on each side of every following 4th row bind off 3 sts. 2 x, 4 sts. 1 x and after ROW 126 bind off the remaining 11 sts.

NECKBAND: Cast on 131 sts. with blue and work 18 rows stockinette st., then bind off all sts.

FINISHING: SKIRT: Weave front and back sections together, 1 st. in on each edge. Turn under 1" on upper edge and hem to wrong side. Insert an elastic band. Turn under 1 1/2" on lower edge an hem to wrong side. (If you wish to have a zipper closure on skirt, leave left side seam open for 9")

PULLOVER: Join front and back section at sides and shoulders, easing in the fullness at bustline of front section. Sew sleeves together and set in. Join short ends of neckband, then sew 1 edge to inside and 1 edge to outside of neckline.



MAN'S PULLOVER, HP 3563



SIZE: 36/38. **MATERIAL:** 19 1/4 oz. beige and 1 3/4 oz. brown KNITKING Subita Dralon 3 ply, Color #447 and #448. **TENSION:** KNITKING 5 to 7. **GAUGE:** Pattern Stitch: 17 sts. 2", 28 rows 2". The omitted stitches are counted as stitches in the gauge and instructions. **PATTERN:** Pattern Ribbing according to chart and using the ribber. The Gate Cam Release Lever of the ribber is placed at the needle heels. **EDGES and COLLAR:** K1, P1, Ribbing.

BACK: (Figure II). Cast on 174 sts., beginning on the left side with the first st. on the main machine and ending on the right side with the last 2 sts. on the main machine.

ROWS 1-26: K1, P1, Ribbing. After ROW 26 set up the PATTERN according to chart, put the empty needles into the non-working position, place the Gate Cam Release Lever of the ribber to the needle heels and continue with Pattern Ribbing.



ROWS 27-216: Knitting ROWS 27-32 with brown, work even.

ROWS 217-368: RAGLAN SHAPING: Decrease 1 st. on each side, then again every following 3rd row 25 x and every other row 37 x by always hanging the 3rd st. on each side onto the 2nd needle, then moving the 2 end sts. inward to fill the empty needle. AT THE SAME TIME, after ROW 362, bind off the center 16 sts. for NECK, (See Notes to Knit By, inside back cover. When putting needles into holding position, the ribber sts. have to be transferred to the main machine first.) then on every other row on Neck side bind off 6 sts. 1 x and 5 sts. 2 x.

FRONT: (Figure I). Work the front the same as the back to ROW 322.

ROWS 323-356: After ROW 322 bind off the center 12 sts. for NECK as you did on the back, then on every other row on Neck Side bind off 4 sts. 1 x, 3 sts. 2 x, 2 sts. 3 x, 1 st. 1 x and on every following 4th row 1 st. 4 x. AT THE SAME TIME, after ROW 323 then on every other row continue to Shape Raglan by decreasing 1 st. 16 x more as you did before. After ROW 356 hang the remaining 3 sts. together (2 outside sts. onto center st.) then bind off.

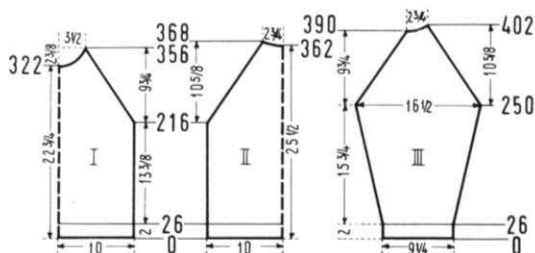
SLEEVE: (Figure III). Cast on 80 sts., again having the last 2 sts. on the right side on the main machine.

ROWS 1-26: K1, P1, Ribbing. After ROW 26 set up the PATTERN, transferring first the 5th st. (counting from the right side) to the ribber. Place the Gate Cam Release Lever on the ribber to the needle heels and continue with Pattern Ribbing.

ROWS 27-250: Knitting ROWS 27-32 with brown, increase 1 st. on each side after ROW 34, then again every following 8th row 12 x and every following 6th row 19 x. (144 sts.)

ROWS 251-390: RAGLAN SHAPING: Decrease 1 st. on each side, then again every following 3rd row 25 x and every other row 32 x as you did on the back.

ROWS 391-402: Work short rows (See Notes to Knit By, inside back cover.) On the left side put 6 needles 1 x, 4 needles 2 x, 3 needles 2 x and 2 needles 1 x into holding position. AT THE SAME TIME, decrease 1 st. on the right side after ROW 391, then again every other row 5 x more as you did before. After ROW 402 bring all needles into



WOMAN'S VEST, DP 7712



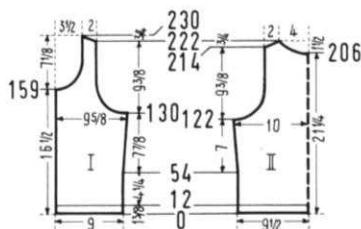
SIZE: 12/14. **MATERIAL:** 12¼ oz. black-white tweed and 3½ oz. black KNITKING Nora, Color #4088 and #4001. **TENSION:** KNITKING 7 to 9. **GAUGE:** 15 sts. 2", 19 rows 2". **PATTERN:** Stockinette Stitch. **EDGES:** K1, P1, Ribbing.

BACK: (Figure II). Cast on 143 sts. with tweed.

ROWS 1-12: K1, P1, Ribbing. After row 12 transfer the ribber sts. to the main machine and continue with stockinette st.

ROWS 13-122: Increase 1 st. on each side after ROW 54, then again every following 14th row 4 x. (153 sts.)

ROWS 123-152: ARMHOLE SHAPING: Bind off 6 sts. be-



ginning next 2 rows, 4 sts. beginning next 4 rows, 3 sts. beginning next 6 rows, 2 sts. beginning next 4 rows, 1 st. beginning next 6 rows and 1 st. on each side of the next 4th and following 4th row. (89 sts.)

ROWS 153-206: Work even.

ROWS 207-222: NECK SHAPING: Bind off the center 19 sts., (See Notes to Knit By, inside back cover) then on every other row on Neck Side bind off 4 sts. 2 x, 3 sts. 2 x and 2 sts. 3 x. AT THE SAME TIME, after ROW 214, then on every other row, bind off 3 sts. 5 x.

FRONT: (Figure I). Cast on 69 sts. with tweed.

ROWS 1-12: K1, P1, Ribbing. After ROW 12 transfer the ribber sts. to the main machine and continue with stockinette st.

ROWS 13-130: Increase 1 st. on the right side after ROW 54, then again every following 14th row 4 x. (74 sts.)

ROWS 131-159: ARMHOLE SHAPING: Bind off 6 sts. on the right side, then on every other row bind off 4 sts. 2 x, 3 sts. 3 x, 2 sts. 2 x, 1 st. 3 x and 1 st. on the next 4th and following 4th row. (42 sts.)

ROWS 160-222: NECK SHAPING: Bind off 6 sts. on the left side, then on every other row bind off 4 sts. 1 x, 3 sts. 2 x, 2 sts. 2 x, 1 st. 4 x and 1 st. after ROWS 181, 185 and 189, then work even.

ROWS 223-230: SHOULDER SHAPING: Bind off 3 sts. on the right side, then on every other row bind off 3 sts. 4 x. Make the second front section with reverse shapings.

POCKET: Make two. Cast on 39 sts. with tweed. Work 26 rows stockinette st. Now transfer every other st. to the ribber and with black work 10 rows K1, P1, Ribbing then bind off all sts.

BUTTON BAND: Cast on 14 sts. with black and work 160 rows stockinette st., then bind off all sts. Make the BUTTON-HOLE BAND the same, but work vertical buttonholes, 5 rows in length after ROWS 12, 41, 70, 99, 128 and 153 by dividing the work on each side between the 4th and 5th stitches. (See Vertical Buttonholes in Practical Knitting Hints.)

NECKBAND: Make two. Cast on 130 sts. with black and work 10 rows K1, P1, Ribbing, then bind off all sts.

ARM BAND: Make two. Cast on 195 sts. with black and work 10 rows K1, P1, Ribbing, then bind off all sts.

FINISHING: Join front and back sections at sides and shoulders, easing in the fullness at bustline of front sections. Sew pockets in place. Sew 1 long edge of button band to inside and 1 long edge to outside of left front edge. Sew

buttonhole band to right front edge in the same manner. Join neck band at center back, then sew to neckline. Join short ends of arm bands, then sew to armhole. Finish buttonholes, sew on buttons.

WOMAN'S PULLOVER, DP 7710



SIZE: 12/14. **MATERIAL:** 14 oz. gold KNITKING Subita Crepe with Rayon, Color #270. **TENSION:** KNITKING 5 to 7. **GAUGE:** 16 sts. 2", 23 rows 2". **PATTERN:** Stockinette Stitch with Diamond Pattern and Cable Stripes on front section. For the Diamond Pattern work as follows: Knit 2 rows, then with 2 single transfer tools, on each side hang the 59th st. onto the 60th needle and the 60th st. on the 59th needle, the 68th st. on the 69th needle and the 69th st. onto the 68th needle, knit

2 rows. On each side hang the 60th st. onto the 61st needle and the 61st st. onto the 60th needle, the 69th st. onto the 70th needle and the 70th st. onto the 69th needle, knit 2 rows. Repeat these steps for Diamond Pattern throughout and every 2 rows, on each side, shift the Pattern 1 st. toward the center. After 30 Pattern Rows the inner Diamond Pattern is complete. After 48 Pattern Rows the 2 outer Diamond Stripes meet and are then worked toward the outside in the same manner until 78 Pattern Rows have been worked. AT THE SAME TIME, after 64 Pattern Rows, begin the center Diamond by hanging the 74th st. onto the 75th needle and the 75th st. onto the 74th needle, then, after every 2 rows, on each side shift the Pattern 1 st. toward the outside. After 80 Pattern Rows start again with Step 1, taking the increases into consideration. For the Cable Stripe work as follows: First after 8 rows stockinette stitch, then after every following 14th row drop the 46th and 53rd sts. on each side, (this will ease the crossing of the sts.) leave empty needles in working position. Now with 2 treble transfer tools, on each side, hang the 50th, 51st and 52nd sts. onto the 47th, 48th and 49th needles and the 47th, 48th and 49th sts. onto the 50th, 51st and 52nd needles. Always cross the sts. in the same manner. After each 30-40 rows drop the 42nd, 46th, 53rd and 57th sts. on each side (the first time let sts. run to ribbing) then latch up the dropped sts. into knit stitches. EDGES: K1, P1, Ribbing.

BACK: (Figure II). Cast on 148 sts.

ROWS 1-16: K1, P1, Ribbing. After ROW 16 transfer the ribber sts. to the main machine and continue with stockinette st.

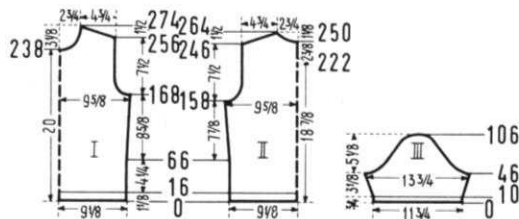
ROWS 17-158: Increase 1 st. on each side after ROW 66, then again every following 18th row 4 x. (158 sts.)

ROWS 159-180: ARMHOLE SHAPING: Bind off 4 sts. beginning next 2 rows, 3 sts. beginning next 4 rows, 2 sts. beginning next 4 rows, 1 st. beginning next 4 rows and 1 st. on each end of the next 4th and following 4th row (122 sts.)

ROWS 181-222: Work even, then divide the sts. in the center for the back opening, put the sts. on the left side into holding position and complete the right side first.

ROWS 223-246: Work even.

ROWS 247-264: SHOULDER SHAPING: Bind off 3 sts. on the right side, then on every other row bind off 4 sts. 9 x. AT THE SAME TIME, after ROW 251, then on every other row SHAPE NECK by binding off 6 sts. 1 x, 4 sts. 1 x, 3 sts. 2 x and 2 sts. 3 x. Now move the Cam Box to the left side,



turn the Row Counter back to 222, bring all needles back into working position and complete the left side. Follow the instructions from ROWS 223-264, reversing the sides.

FRONT: (Figure I). Cast on 148 sts.

ROWS 1-16: K1, P1, Ribbing. After row 16 transfer the ribber sts. to the main machine, continue with stockinette st. and work the Pattern Design over the center 66 stitches.

ROWS 17-168: Increase 1 st. on each side after ROW 66, then again every following 18th row 4 x. (158 sts.)

ROWS 169-190: ARMHOLE SHAPING: Bind off 4 sts. beginning next 2 rows, 3 sts. beginning next 4 rows, 2 sts. beginning next 4 rows, 1 st. beginning next 4 rows and 1 st. on each end of the next 4th and following 4th row (122 sts.)

ROWS 191-238: Work even.

ROWS 239-274: NECK SHAPING: Bind off the center 10 sts. (See Notes to Knit By, inside back cover) then on every other row on Neck Side bind off 3 sts. 2 x, 2 sts. 3 x, 1 st. 3 x and 1 st. on the next 4th and following 4th row. AT THE SAME TIME, after ROW 256, then on every other row SHAPE SHOULDER by binding off 3 sts. 1 x and 4 sts. 9 x.

SLEEVE: (Figure III). Make two. Cast on 96 sts.

ROWS 1-10: K1, P1, Ribbing. After ROW 10 transfer the ribber sts. to the main machine and continue with stockinette st.

ROWS 11-46: Increase 1 st. on each side after ROW 12, then again every following 4th row 7 x. (112 sts.)

ROWS 47-106: CAP SHAPING: Bind off 5 sts. beginning next 2 rows, 3 sts. beginning next 4 rows, 2 sts. beginning next 6 rows, 1 st. beginning next 40 rows, 2 sts. beginning next 2 rows, 3 sts. beginning next 4 rows, 4 sts. beginning next 2 rows and after ROW 106 bind off the remaining 14 sts.

NECKBAND: Cast on 149 sts. and work 14 rows K1, P1, Ribbing, then bind off all sts.

FINISHING: Join front and back section at sides and shoulders, easing in the fullness at bustline of front section. Sew sleeves together and set in. Sew neckband to neckline. Work 1 row of single crochet around back opening. Work 3 loops on 1 side, sew 3 buttons to other side.

MAN'S PULLOVER, HP 3564



SIZE: 36/38. **MATERIAL:** 19¼ oz. black-white tweed and 3½ oz. white KNITTING Nora, Color #4088 and #4002. **TENSION:** KNITTING 6 to 8. **GAUGE:** 14 sts. 2", 19 rows 2". **PATTERN:** Stockinette Stitch. **EDGES:** K1, P1, Ribbing.

BACK: (Figure II). Cast on 145 sts. with white.

ROWS 1-25: K1, P1, Ribbing, alternately working 5 rows with white and 5 rows with tweed, ending with 5 rows white. After ROW 25 transfer the ribber sts. to the main machine

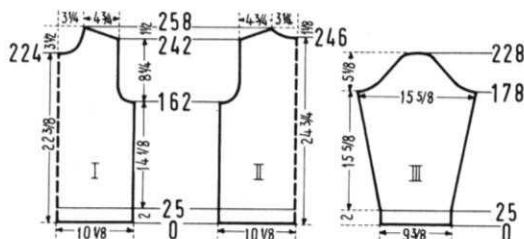
and continue working stockinette st. with tweed.

ROWS 26-162: Work even.

ROWS 163-182: ARMHOLE SHAPING: Bind off 4 sts. beginning next 2 rows, 3 sts. beginning next 2 rows, 2 sts. beginning next 4 rows, 1 st. beginning next 4 rows and 1 st. on each side of the next 4th and following 4th row.

ROWS 183-242: Work even.

ROWS 243-258: SHOULDER SHAPING: Bind off 3 sts. beginning next 4 rows. After ROW 246 bind off the center 15 sts. for NECK. (See Notes to Knit By, inside back cover). Bind off 4 sts. on Shoulder Side and continue to shape



shoulder on every other row by binding off 4 sts. 6 x. AT THE SAME TIME, Shape Neck on every other row by binding off 6 sts. 1 x, 3 sts. 2 x and 2 sts. 2 x.

FRONT: (Figure I). Work the front the same as the back to ROW 224, then bind off the center 11 sts. for NECK as you did on the back, and on every other row on Neck Side bind off 4 sts. 1 x, 3 sts. 2 x, 2 sts. 2 x, 1 st. 2 x and 1 st. on the next 4th and following 4th row. AT THE SAME TIME, after ROW 242, then on every other row SHAPE SHOULDER by binding off 3 sts. 2 x and 4 sts. 7 x.

SLEEVE: (Figure III). Make two. Cast on 67 sts. with white.

ROWS 1-25: K1, P1, Ribbing, alternating the colors as you did on the back. After ROW 25 transfer the ribber sts. to the main machine and continue working stockinette st. with tweed.

ROWS 26-178: Increase 1 st. on each side after ROW 30, then again every following 6th row 13 x and every following 8th row 8 x. (111 sts.)

ROWS 179-192: CAP SHAPING: Bind off 5 sts. beginning next 2 rows, 3 sts. beginning next 6 rows and 2 sts. beginning next 6 rows.

ROWS 193-228: Bind off 1 st. beginning next 4 rows and 2 sts. beginning next 2 rows. Repeat these bind-offs 4 x, then bind off 3 sts. beginning next 4 rows, 4 sts. beginning next 2 rows and after ROW 228 bind off the remaining 11 sts.

NECKBAND: Cast on 163 sts. with tweed, working K1, P1, Ribbing, 5 rows tweed, 5 rows white, 5 rows tweed and 5 rows white. After 20 rows bind off all sts. the crochet method.

FINISHING: Join front and back section at sides and shoulders. Sew sleeves together and set in. Join neckband at short ends, then sew bound-off edge to neckline.

BOY'S PULLOVER, KK 5049

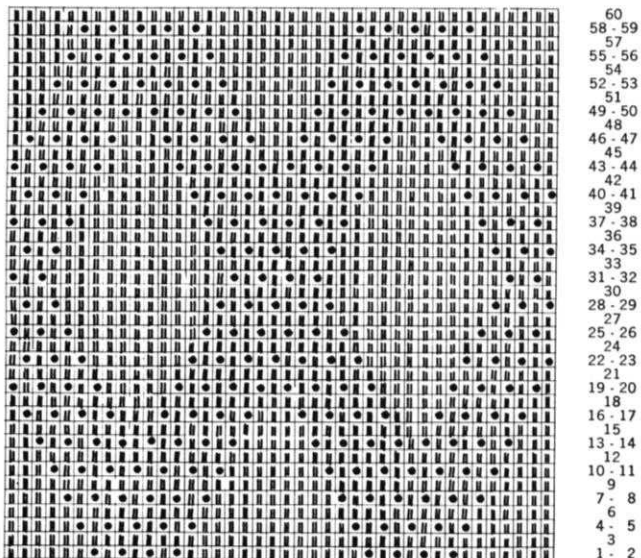


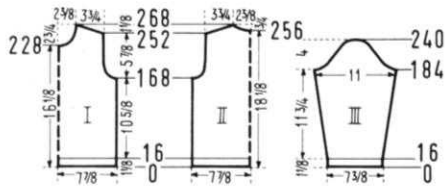
SIZE: 9-10. (CHEST: 27"-28") **MATERIAL:** 10½ oz. light blue KNITTING Subita 2x3, Color #118. **TENSION:** KNITTING 5 to 7. **GAUGE:** Pattern Stitch 15 sts. 2", 28 rows 2". **PATTERN:** Holding Position Design according to chart, or use JAC 40 and Pattern No. 78a. The Knit side is the right side. **EDGES:** K1, P1, Ribbing.

BACK: (Figure II) Cast on 121 sts. **ROWS 1-16:** K1, P1, Ribbing. After ROW 16 transfer the ribber sts. to the main machine and continue with Holding Position Design.

ROWS 17-168: Work even.

ROWS 169-192: ARMHOLE SHAPING: Bind off 3 sts. beginning next 2 rows, 2 sts. beginning next 6 rows, 1 st. be-





ginning next 4 rows and 1 st. on each side after ROWS 182, 186 and 190. (93 sts.)

ROWS 193-252: Work even.

ROWS 253-268: SHOULDER SHAPING: Bind off 3 sts. beginning next 4 rows. After ROW 256 bind off the center 11 sts. for NECK. (See Notes to Knit By, inside back cover). Bind off 3 sts. on Shoulder Side and continue to shape shoulder on every other row by binding off 3 sts. 5 x and 4 sts. 1 x. AT THE SAME TIME, shape Neck on every other row by binding off 4 sts. 1 x, 3 sts. 1 x and 2 sts. 3 x.

FRONT: (Figure I). Work the front the same as the back to ROW 228, then bind off the center 11 sts. for NECK as you did on the back and on every other ROW on Neck Side bind off 3 sts. 1 x, 2 sts. 2 x, 1 st. 2 x and 1 st. after ROWS 242, 246, 252 and 258. AT THE SAME TIME, after ROW 252, then on every other row SHAPE SHOULDER by binding off 3 sts. 8 x and 4 sts. 1 x.

SLEEVE: (Figure III). Make two. Cast on 57 sts.

ROWS 1-16: K1, P1, Ribbing. After row 16 transfer the ribber sts. to the main machine and continue with Holding Position Design.

ROWS 17-184: Increase 1 st. on each side after ROW 28, then again every following 12th row 8 x and every following 10th row 5 x (85 sts.)

ROWS 185-196: CAP SHAPING: Bind off 4 sts. beginning next 2 rows, 3 sts. beginning next 4 rows, 2 sts. beginning next 4 rows and 1 st. beginning next 2 rows.

ROWS 197-234: Bind off 2 sts. on each side after ROW 196 and 1 st. on each side after ROW 200. Repeat these bind-offs on every following 4th row 4 x.

ROWS 235-240: Bind off 2 sts. beginning next 2 rows, 3 sts. beginning next 4 rows and after ROW 240 bind off the remaining 9 sts.

NECKBAND: Cast on 129 sts. and work 24 rows K1, P1, Ribbing, then bind off all sts. the crochet method.

FINISHING: Join front and back section at sides and shoulders. Sew sleeves together and set in. Join neckband at short ends, then sew to neckline.

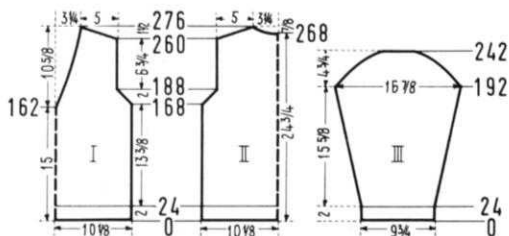
MAN'S PULLOVER, HP 3562



SIZE: 36/38. **MATERIAL:** 21 oz. charcoal KNITTING Nora, Color #4047 **TENSION:** KNITTING 5 to 7. **GAUGE:** 15 sts. 2", 21 rows 2".

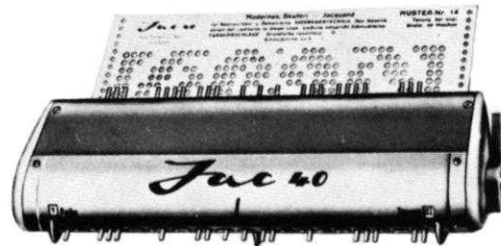
PATTERN: Stockinette Stitch with Pattern Stripes on front section. For the Pattern Stripes drop first the 35th, 78th and 121st st. off the needles (the first time up to the ribbing) then latch up into Knit Stitches as follows: Insert latch tool into stitch, bring tool up behind the first cross thread and pull the second cross thread through stitch on

tool, bring tool up behind the third cross thread and pull 4th cross thread through, etc. Then drop the 34th, 77th and 120th sts. from the needles, insert latch tool into stitch, then pull the first cross thread through, bring tool



THE JAC 40 IS A MUST

for fast easy knitting of
Jaquard and Ski-sweater
designs



Patterns are selected—row by row—through a pre-stamped card that is fed into the Jac.

There are over 140 cards available and illustrations of them are included with each Jac.

Jac 40's are made for most brands of machines (with the exception of Japanese machines). When ordering be sure to specify your brand of knitter as needle spacings vary. Simple to use and an essential tool for the modern knitter, Jac 40's are \$24.95 complete with 3 cards for practicing the 3 techniques, plus complete instructions.

Order from your dealer or direct from

KNITTING

1128 Crenshaw Boulevard, Los Angeles, Calif. 90019

Shipping Cost \$1.50—California residents add 5% sales tax.

up behind the second cross thread and pull the third cross thread through, bring tool up behind the fourth cross thread and pull the fifth cross thread through, etc. Drop the 36th, 79th and 122nd stitches and latch up as you did the 34th, 77th and 120th stitches. Drop and latch up stitches every 40-50 rows. **EDGES:** K1, P1, Ribbing.

BACK: (Figure II). Cast on 155 sts.

ROWS 1-24: K1, P1, Ribbing. After ROW 24 transfer the ribber sts. to the main machine and continue with stockinette st.

ROWS 25-168: Work even.

ROWS 169-188: ARMHOLE SHAPING: Bind off 2 sts. beginning next 2 rows and 1 st. beginning next 2 rows. Repeat these bind-offs 4 x. (125 sts.)

ROWS 189-260: Work even.

ROWS 261-276: SHOULDER SHAPING: Bind off 4 sts. beginning next 8 rows. After ROW 268 bind off the center 21 sts. for NECK. (See Notes to Knit By, inside back cover). Bind off 4 sts. on Shoulder Side and continue to shape shoulder on every other row by binding off 4 sts. 3 x and 5 sts. 1 x. AT THE SAME TIME, shape NECK on every other row by binding off 7 sts. 1 x and 4 sts. 2 x.

FRONT: (Figure I). Cast on 155 sts.

ROWS 1-24: K1, P1, Ribbing. After ROW 24 transfer the ribber sts. to the main machine and continue with stockinette st. and work the Pattern Stripes.

ROWS 25-162: Work even, then hang the center st. onto the neighboring needle, put all needles on the left side into holding position and complete the right half first.

ROWS 163-276: FRONT, ARMHOLE and SHOULDER SHAPING: Decrease 1 st. on the left side after ROW 164, then again every following 4th row 19 x and every following 6th row 5 x by always hanging the 3rd st. on the left side onto the 2nd needle, then moving the end sts. inward to fill the empty needle. AT THE SAME TIME, after ROW 168, then on every other row, SHAPE ARMHOLE by binding off 2 sts.

1 x and 1 st. 1 x, then repeat these bind-offs 4 x. After ROW 260, then on every other row SHAPE SHOULDER by binding off 4 sts. 8 x and 5 sts. 1 x. Now move the Cam Box to the left side, turn the Row Counter back to 162, bring all needles into working position and complete the left half. Follow the instructions from ROWS 163-276, but reverse the sides.

SLEEVE: (Figure III). Make two. Cast on 75 sts.

ROWS 1-24: K1, P1, Ribbing. After ROW 24 transfer the ribber sts. to the main machine and continue with stockinette st.

ROWS 25-192: Increase 1 st. on each side after ROW 30, then again every following 6th row 26 x. (129 sts.)

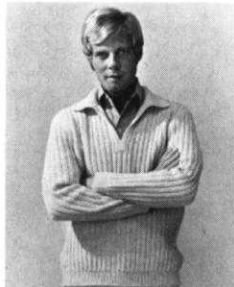
ROWS 193-242: CAP SHAPING: Bind off 2 sts. beginning next 2 rows and 1 st. beginning next 2 rows. Repeat these bind-offs 5 x, then bind off 2 sts. beginning next 16 rows, 3 sts. beginning next 6 rows, 4 sts. beginning next 4 rows and after row 242 bind off the remaining 27 sts.

NECKBAND: Cast on 131 sts. and work K1, P1 Ribbing.

ROWS 1-16: Bind off 3 sts. on the right side after ROW 2, then again every other row 6 x. After row 16 bind off all sts. the crochet method. Make the second section with reverse shaping, casting on from right to left.

FINISHING: Join front and back section at sides and shoulders. Sew sleeves together and set in. Join neckband at center back and front, then sew to neckline.

MAN'S PULLOVER, HP 3565



SIZE: 40/42. **MATERIAL:** 17½ oz. light blue KNITKING Subita Dralon 3 ply, Color #406. **TENSION:** KNITKING 5 to 7. **GAUGE:** Pattern Stitch 17 sts. 2", 20 rows 2". Stockinette Stitch 16 sts. 2", 20 rows 2". **PATTERN:** Ribbed Pattern according to chart, using the Ribber. **EDGES:** K1, P1, Ribbing. **COLLAR and BANDS:** Stockinette Stitch.

BACK: (Figure II). Cast on 193 sts., beginning with the 2nd needle of the main machine

ROWS 1-24: K1, P1, Ribbing. After

ROW 24 set up PATTERN according to chart and continue working in Pattern Ribbing.

ROWS 25-180: Work even.



ROWS 181-200: ARMHOLE SHAPING: Bind off 4 sts. beginning next 4 rows, 3 sts. beginning next 4 rows, 2 sts. beginning next 4 rows, 1 st. beginning next 4 rows, and 1 st. on each side of the next 4th row. (151 sts.)

ROWS 201-268: Work even.

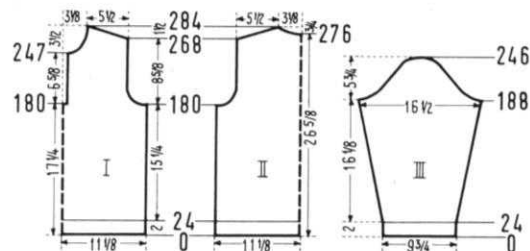
ROWS 269-284: SHOULDER SHAPING: Bind off 5 sts. beginning next 8 rows. After ROW 276 bind off the center 25 sts. for NECK. (See Notes to Knit By, inside back cover. When putting needles into holding position the ribber sts. have to be transferred to the main machine first. When bringing the needles back into working position, the appropriate ribber sts. have to be transferred back to the ribber needles.) Bind off 5 sts. on Shoulder Side and continue to shape shoulder on every other row by binding off 5 sts. 1 x and 6 sts. 3 x. AT THE SAME TIME, Shape Neck on every other row by binding off 6 sts. 1 x, 5 sts. 1 x and 4 sts. 1 x.

FRONT: (Figure 1). Work the front the same as the back to ROW 180, then bind off the center 9 sts., put the needles on the left side into holding position and complete the right half first.

ROWS 181-200: ARMHOLE SHAPING: Bind off 4 sts. on the right side, then on every other row bind off 4 sts. 1 x, 3 sts. 2 x, 2 sts. 2 x, 1 st. 2 x and 1 st. on the following 4th row 1 x.

ROWS 201-247: Work even.

ROWS 248-284: NECK SHAPING: Bind off 4 sts. on the left side, then on every other row bind off 4 sts. 1 x, 3 sts. 2 x, 2 sts. 2 x, 1 st. 3 x and 1 st. on the next 4th and following



4th row. AT THE SAME TIME, after ROW 268, then on every other row SHAPE SHOULDER by binding off 5 sts. 6 x and 6 sts. 3 x. Now move the Cam Box to the left side, turn the Row Counter back to 180, bring the needles on the left side back into working position and complete the left half. Follow the instructions from ROW 181-284, but reverse the sides.

SLEEVE: (Figure III). Make two. Cast on 85 sts.

ROWS 1-24: K1, P1, Ribbing. After ROW 24 set up PATTERN according to chart and continue working in Pattern Ribbing.

ROWS 25-188: Increase 1 st. on each side after ROW 26, then again every following 6th row 21 x and every following 4th row 7 x. (143 sts.)

ROWS 189-202: CAP SHAPING: Bind off 5 sts. beginning next 2 rows, 4 sts. beginning next 4 rows, 3 sts. beginning next 4 rows and 2 sts. beginning next 4 rows.

ROWS 203-246: Bind off 1 st. beginning next 2 rows and 2 sts. beginning next 2 rows. Repeat these bind-offs 8 x, then bind off 2 sts. beginning next 2 rows, 3 sts. beginning next 2 rows, 4 sts. beginning next 2 rows, 5 sts. beginning next 2 rows and after ROW 246 bind off the remaining 15 sts.

COLLAR: Cast on 128 sts. and work stockinette st.

ROWS 1-12: Work short rows. (See Notes to Knit By, inside back cover). On the left side put 38 needles into holding position, knit 1 row. On the right side put 38 needles into holding position, knit 1 row. Now, alternately on each side bring 10 needles 2 x and 6 needles 3 x back into working position.

ROWS 13-80: Work even.

ROWS 81-86: Alternately on each side put 12 needles 3 x into holding position.

ROWS 87-88: On the left side bring all needles back into working position, knit 1 row. On the right side bring all needles back into working position, knit 1 row, then bind off all sts.

FRONT BAND: Make two. Cast on 11 sts. and work 68 rows stockinette st., then bind off all sts.

FINISHING: Join front and back section at sides and shoulders. Sew sleeves together and set in. Sew a band to each side of front opening, 1 long edge to inside and 1 long edge to outside of opening edge. Weave bands together about 1½" up on lower edge, then sew lower edge to pullover. Fold collar in half lengthwise and sew side edges. Sew cast on edge of collar to inside and bound-off edge to outside of neckline.

GIRL'S JACKET, MK 5048

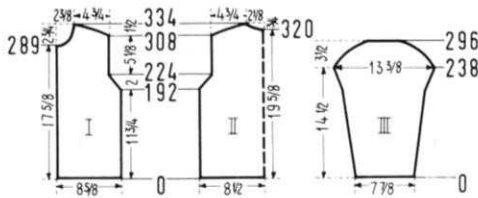


SIZE: 11-12. (Chest 29" to 30").

MATERIAL: 19¼ oz. red KNITKING Nora, Color #4105. **TENSION:** KNITKING 4 to 6. **GAUGE:** Pattern Stitch 19 sts. 2", 32 rows 2". The omitted stitches in the Pattern are counted as stitches in the gauge and directions.

PATTERN: Holding Position Design according to chart, using the ribber. Worn on the purl side. The Gate Cam Release Lever of the main machine is placed at the needle heels. KNITKING Push-Button Machines use Special Wheel 4, or

Needle Shifter. **EDGES:** Stockinette Stitch over every needle. The lower edges of the garment are worked after each sec-



tion is completed by hanging the sections back onto the machine.

BACK: (Figure II). Bring 163 needles into working position, then put the 2nd, 6th, 10th, etc. needles into the non-working position. The 4th, 8th, 12th etc. needles are ribber needles. Cast on and work the Holding Position Design according to chart.

ROWS 1-192: Work even.

ROWS 193-224: **ARMHOLE SHAPING:** Bind off 1 st. beginning next 32 rows. (131 sts.) (When decreasing be sure to count the omitted sts.)

ROWS 225-308: Work even.

ROWS 309-334: **SHOULDER SHAPING:** Bind off 2 sts. beginning next 10 rows and 3 sts. beginning next 2 rows. After ROW 320 bind off the center 9 sts. for **NECK**. (See Notes to Knit By, inside back cover. When putting needles into holding position, the ribber sts. have to be transferred to the main machine first.) Bind off 3 sts. on Shoulder Side and continue to shape shoulder on every other row by binding off 3 sts. 3 x and 5 sts. 4 x. **AT THE SAME TIME,** Shape Neck on every other row by binding off 4 sts. 1 x, 3 sts. 2 x and 2 sts. 3 x. With purl side facing you pick up 139 sts. on the lower edge and hang back onto machine. Work 14 rows stockinette st. then bind off all sts. the crochet method.

FRONT: (Figure I). Bring 83 needles into working position and cast on as you did on the back, then work the Holding Position Design according to chart.

ROWS 1-192: Work even.

ROWS 193-224: **ARMHOLE SHAPING:** Bind off 1 st. on the right side, then again every other row 15 x. (67 sts.)

ROWS 225-289: Work even.

ROWS 290-334: **NECK SHAPING:** Bind off 4 sts. on the left side, then on every other row bind off 3 sts. 2 x, 2 sts. 3 x, 1 st. 3 x and on every following 4th row 1 st. 3 x. **AT THE SAME TIME,** after ROW 308, then on every other row **SHAPE SHOULDER** by binding off 2 sts. 5 x, 3 sts. 5 x and 5 sts. 4 x. Now with purl side facing you pick up 70 sts. on the lower edge and hang back onto machine. Work 14 rows stockinette st., then bind off all sts. the crochet method. Make the second front section with reverse shapings and work buttonholes after ROWS 32, 82, 132, 182, 232 and 282 over the 5th-8th needles counting from the right side.

SLEEVE: (Figure III). Make two. Bring 75 needles into working position and cast on as you did on the back, then work in Holding Position Design according to chart.

ROWS 1-238: Increase 1 st. on each side after ROW 12, then again every following 10th row 16 x and every following 6th row 10 x. (129 sts.) (When increasing be sure to stay in Pattern).

ROWS 239-296: **CAP SHAPING:** Bind off 1 st. beginning next 32 rows, 2 sts. beginning next 10 rows, 3 sts. beginning next 10 rows, 5 sts. beginning next 6 rows and after ROW 296 bind off the remaining 17 sts. Now with purl side facing you pick up 64 sts. on the lower edge and hang back onto machine. Work 14 rows stockinette st., then bind off all sts. the crochet method.

NECKBAND: Cast on 105 sts. and work 14 rows stockinette st., then bind off all sts.

FRONT BAND: Make two. Cast on 11 sts. and work 200 rows stockinette st., then bind off all sts.

FINISHING: Join front and back sections at sides and shoulders. Sew sleeves together and set it. Fold lower edge and sleeve edges in half toward the right side and hem. Sew

front bands to front edges, (1 long edge to inside and 1 long edge to outside). Sew neckband to neckline in the same manner. Finish buttonholes, sew on buttons.

WOMAN'S DRESS AND STOCKINGS, DK 7656



SIZE: 10/12. Stockings: **SIZE 9.** **MATERIAL:** 26 1/4 oz. brown and 1 3/4 oz. beige **KNITTING** Subita 2x3, Color #127 and #134 and a 24" Zipper. **TENSION:** **KNITTING** 5 to 7. **GAUGE:** 17 sts. 2", 22 rows 2". **PATTERN:** Stockinette Stitch.

DRESS: BACK: (Figure II). Cast on 191 sts.

ROWS 1-260: Decrease 1 st. on each side after ROW 44, then again every following 12th row 11 x, every following 10th row 3 x, every following 8th row 3 x, every following 6th

row 3 x and every following 4th row 3 x by always hanging the 3rd st. on each side onto the 2nd needle, then moving the 2 end sts. inward to fill the empty needle. (143 sts.)

ROWS 261-274: Work even.

ROWS 275-348: Increase 1 st. on each side after Row 274, then again every following 6th row 4 x and every following 8th row 5 x. (163 sts.)

ROWS 349-370: **ARMHOLE SHAPING:** Bind off 5 sts. beginning next 2 rows, 4 sts. beginning next 2 rows, 3 sts. beginning next 2 rows, 2 sts. beginning next 2 rows, 1 st. beginning next 6 rows and 1 st. on each side of the next 4th and following 4th row. (125 sts.)

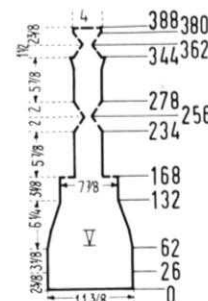
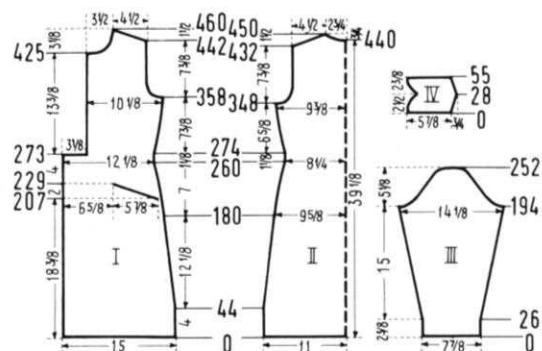
ROWS 371-432: Work even.

ROWS 433-450: **SHOULDER SHAPING:** Bind off 3 sts. beginning next 2 rows and 4 sts. beginning next 6 rows. After ROW 440 bind off the center 17 sts. for **NECK**. (See Notes to Knit By, inside back cover.) Bind off 4 sts. on Shoulder Side and continue to shape shoulder on every other row by binding off 4 sts. 5 x. **AT THE SAME TIME,** Shape Neck on every other row by binding off 5 sts. 1 x, 4 sts. 1 x and 3 sts. 2 x.

FRONT: (Figure I). Cast on 129 sts.

ROWS 1-207: Decrease 1 st. on the right side after ROW 44, then again every following 12th row 11 x and every following 10th row 3 x as you did on the back. After ROW 207 work the pocket.

ROWS 208-229: Work short rows. (See Notes to Knit By,



inside back cover.) On the **right side** put 5 needles 10 x and 6 needles 1 x into holding position.

ROW 230: Bring 51 needles back into working position, (5 needles on the right side are left in holding position), then knit 1 row. Now put 58 needles on the **left side** into holding position and knit 6 rows over the needles in working position, then bind off these sts. For the pocket lining, cast on 51 sts. over the empty needles and knit 67 rows. Now bring the 5 needles on the right side into working position and turn the Row Counter back to 207.

ROWS 208-230: Decrease 1 st. on the right side after ROWS 214 and 222 as you did before. After ROW 230 continue working over all needles.

ROWS 231-260: Decrease 1 st. on the **right side** after ROW 230, then again every following 6th row 3 x and every following 4th row 3 x as you did before (105 sts.)

ROWS 261-273: Work even.

ROW 274: Bind off 27 sts. on the **left side**, then knit 1 row.

ROWS 275-358: Increase 1 st. on the **right side** after ROW 274, then again every following 6th row 4 x and every following 8th row 5 x. (88 sts.)

ROWS 359-380: ARMHOLE SHAPING: Bind off 5 sts. on the right side, then on every other row bind off 4 sts. 1 x, 3 sts. 1 x, 2 sts. 1 x, 1 st. 3 x and 1 st. on the next 4th and following 4th row. (69 sts.)

ROWS 381-425: Work even.

ROWS 426-460: NECK SHAPING: Bind off 14 sts. on the left side, then on every other row bind off 4 sts. 1 x, 3 sts. 1 x, 2 sts. 2 x, 1 st. 3 x and 1 st. on the next 4th and following 4th row. AT THE SAME TIME, after ROW 442, then on every other row SHAPE SHOULDER by binding off 3 sts. 1 x and 4 sts. 9 x. Make the second front section with reverse shapings. (Cast on from right to left.)

SLEEVE: (Figure III): Make two. Cast on 68 sts.

ROWS 1-26: Work even, then hang the cast-on sts. back on the machine behind the latches to form the hem. (If you like to sew the hem, omit this step.)

ROWS 27-194: Increase 1 st. on **each side** after ROW 30, then again every following 6th row 26 x. (122 sts.)

ROWS 195-206: CAP SHAPING: Bind off 5 sts. beginning next 2 rows, 4 sts. beginning next 2 rows, 3 sts. beginning next 4 rows and 2 sts. beginning next 4 rows.

ROWS 207-252: Bind off 1 st. beginning next 6 rows and 2 sts. beginning next 2 rows. Repeat these bind-offs 4 x, then bind off 3 sts. beginning next 2 rows, 4 sts. beginning next 4 rows, and after row 252 bind off the remaining 12 sts.

POCKET FLAP: (Figure IV). Cast on 51 sts.

ROWS 1-28: Increase 1 st. on the **right side** after ROW 4, then again every following 4th row 5 x. AT THE SAME TIME, after ROW 10, work short rows on the **left side** by putting 1 needle 6 x and 2 needles 3 x into holding position.

ROWS 29-54: Decrease 1 st. on the **right side** after ROW 28, then again every following 4th row 5 x. AT THE SAME TIME, on the **left side** after ROW 28, bring 2 needles 3 x and 1 needle 6 x back into working position. After row 54 hang the cast-on sts. back on the machine behind the latches.

ROW 55: Knit the sts. together, then bind off all sts. the crochet method. Make the second pocket flap with reverse shapings. (Cast on from right to left.)

COLLAR: Cast on 129 sts., working 8 rows with tension 5, 16 rows with tension 4 and 8 rows with tension 5. After 32 rows bind off all sts.

STOCKINGS: Cast on 98 sts. with brown.

ROWS 1-26: Work even, knitting ROWS 17-24 with beige. After ROW 26 hang the cast-on sts. back on the machine behind the latches to form the hem.

ROWS 27-132: Decrease 1 st. on **each side** after ROW 62, then again every following 8th row 2 x, every following 6th row 3 x and every following 4th row 9 x by always hanging the 3rd st. on **each side** onto the 2nd needle, then moving the end sts. inward to fill the empty needle (68 sts.)

ROWS 133-168: Work even, then put 17 sts. on **each side** on stitch holders.

ROWS 169-234: For the INSTEP work even.

ROWS 235-256: For the TOE work short rows. (See Notes to Knit By, inside back cover). Alternately on **each side** put 1 needle 9 x and 2 needles 2 x into holding position.

ROWS 257-278: Alternately on **each side** bring 2 needles 2 x and 1 needle 9 x back into working position.

ROWS: 279-344: Increase 1 st. on **each side** after ROWS 328, 332, 336 and 340.

ROWS 345-362: For the HEEL work short rows. Alternately on **each side** put 5 needles 1 x, 1 needle 6 x, 2 needles 1 x and 3 needles 1 x into holding position.

ROWS 363-380: Alternately on **each side** bring 3 needles 1 x, 2 needles 1 x and 1 needle 7 x back into working position.

ROWS 381-388: (When decreasing, always move the end stitches inward to fill the empty needle, then put the end sts. back into holding position.) On the **left side** hang the 4th st. onto the 5th needle, then knit 1 row. On the **right side** hang the 4th st. onto the 5th needle, then knit 1 row. Now alternately on **each side** hang 1 st. 3 x onto that same needle. (The 3rd st. onto the 4th needle, then the 2nd st. onto the 3rd needle, etc.) After ROW 388 put all sts. on a stitch holder. Make second stocking the same.

FINISHING: DRESS: Weave the lower front sections together, 1 st. in from each edge. Turn under 6 sts. on each side of front opening and hem to wrong side, then follow with a 4" long pleat. Sew pocket lining to wrong side of dress. Turn under 6 rows on outer pocket edge and hem to wrong side. Join side edges of pocket flap. For the flap edging work 2 knitted cords with beige yarn over 5 needles and tension 2. Knit 140 rows. (The empty rows are counted). Weave the edging to the front and fold edge of the flap, then sew flap to pocket opening. Join front and back section at sides and shoulders, easing in the fullness at bustline of front section. Sew sleeves together and set in. Turn under 18 rows at lower edge and hem to wrong side. Attach press-on type interfacing to wrong side of collar, then fold collar in half and sew side edges. Work a knitted cord with beige over 5 needles and tension 2. Knit 260 rows. (The empty rows are counted) Weave the cord to the fold line and side edges of the collar. Sew 1 edge of collar to inside and 1 edge to outside of neckline. Sew in zipper, then sew down 2" more for pleat.

STOCKINGS: Weave the back seam together, 1 st. in on each edge. Weave the sts. on the stitch holders together for the heel. Join sole and instep at sides. Pull an elastic band through the upper edge.

WOMAN'S DRESS WITH JACKET, DK 7626



SIZE: 12/14. **MATERIAL:** DRESS 22 $\frac{3}{4}$ oz., JACKET: 17 $\frac{1}{2}$ oz. black KNITTING Subita with rayon, Color #263 and 5 yards ready made black-silver trim, 1" wide. **TENSION:** KNITTING 3 to 5. **GAUGE:** 18 sts. 2", 24 rows 2". **PATTERN:** Stockinette Stitch.

DRESS: BACK: (Figure II). Cast on 170 sts.

ROWS 1-130: Increase 1 st. on **each side** after ROW 48, then again every following 20th row 4 x. (180 sts.) (If no shapings on the lower part of

dress is desired, cast on 180 sts. and work even to ROW 206).

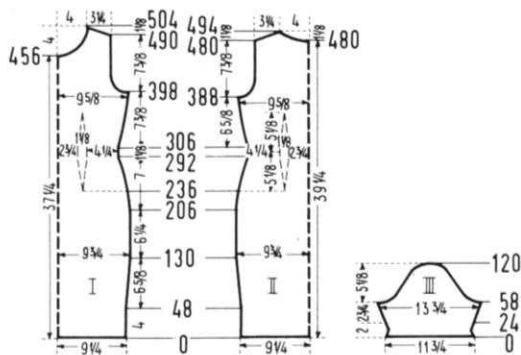
ROWS 131-206: Work even.

ROWS 207-292: Decrease 1 st. on **each side** after ROW 206, then again every following 8th row 4 x, every following 6th row 6 x and every following 4th row 4 x. AT THE SAME TIME, after ROW 236 for the DARTS, decrease 2 sts. on **each side**, then again every following 14th row 4 x. For the first decrease, hang the 56th and 58th sts. on **each side** onto the 57th needle, then move the end sts. inward to fill the empty needles. The next decreases lie directly above. (130 sts.)

ROWS 293-306: Work even.

ROWS 307-388: Increase 1 st. on **each side** after ROW 306, then again every following 6th row 12 x. AT THE SAME TIME, after ROW 306 for the DARTS, increase 2 sts. on **each side**, then again every following 14th row 4 x. The increases lie directly above the decreases. (176 sts.)

ROWS 389-412: ARMHOLE SHAPING: Bind off 5 sts. beginning next 2 rows, 4 sts. beginning next 2 rows, 3 sts. beginning next 2 rows, 2 sts. beginning next 4 rows, 1 st.



beginning next 6 rows and 1 st. on each side of the next 4th and following 4th row. (134 sts.)

ROWS 413-480: Work even.

ROWS 481-494: NECK and SHOULDER SHAPING: Both shapings are started at the same row. Bind off the center 24 sts. for NECK, (See Notes to Knit By, inside back cover) then on every other row on Neck Side bind off 6 sts. 1 x, 5 sts. 1 x, 4 sts. 2 x, 3 sts. 1 x and 2 sts. 1 x. AT THE SAME TIME, after ROW 480, then on every other row SHAPE SHOULDER by binding off 3 sts. 1 x and 4 sts. 7 x.

FRONT: (Figure I): Work the front the same as the back to ROW 388.

ROWS 389-398: Work even.

ROWS 399-422: ARMHOLE SHAPING: Bind off 5 sts. beginning next 2 rows, 4 sts. beginning next 2 rows, 3 sts. beginning next 2 rows, 2 sts. beginning next 4 rows, 1 st. beginning next 6 rows and 1 st. on each side of the next 4th and following 4th row. (134 sts.)

ROWS 423-456: Work even.

ROWS 457-504: NECK SHAPING: Bind off the center 18 sts. as you did on the back, then on every other row on Neck Side bind off 4 sts. 2 x, 3 sts. 2 x, 2 sts. 3 x, 1 st. 3 x, on every following 4th row 1 st. 3 x and on the following 6th row 1 st. 1 x. AT THE SAME TIME, after ROW 490, then on every other row SHAPE SHOULDER by binding off 3 sts. 1 x and 4 sts. 7 x.

SLEEVE: (Figure III). Make two. Cast on 108 sts.

ROWS 1-24: Decrease 1 st. on each side after ROWS 4 and 8, then increase 1 st. on each side after ROWS 16 and 20. After ROW 24 hang the cast-on sts. back on the machine behind the latches to form the hem.

ROWS 25-58: Increase 1 st. on each side after ROW 24, then again every following 4th row 8 x. (126 sts.)

ROWS 59-120: CAP SHAPING: Bind off 6 sts. beginning next 2 rows, 5 sts. beginning next 2 rows, 4 sts. beginning next 2 rows, 3 sts. beginning next 2 rows, 2 sts. beginning next 4 rows, 1 st. beginning next 42 rows, 2 sts. beginning next 4 rows, 3 sts. beginning next 2 rows, 5 sts. beginning next 2 rows and after ROW 120 bind off the remaining 16 sts.

NECK FACING: Make two sections. For the front section cast on 115 sts. and for the back section cast on 72 sts. Work 3 rows with tension 3, 3 rows with tension 4 and 4 rows with tension 5 and AT THE SAME TIME increase 1 st. on each side after ROWS 3 and 6. After 10 rows bind off all sts.

JACKET: BACK: (Figure V.) Cast on 173 sts.

ROWS 1-24: Work even, then hang the cast-on sts. back on the machine behind the latches to form the hem. (If you prefer to sew the hem, omit this step.)

ROWS: 25-168: Increase 1 st. on each side after ROW 62, then again every following 20th row 4 x. (183 sts.)

ROWS 169-192: ARMHOLE SHAPING: Bind off 5 sts. beginning next 2 rows, 4 sts. beginning next 2 rows, 3 sts. beginning next 4 rows, 2 sts. beginning next 4 rows, 1 st. beginning next 4 rows and 1 st. on each side of the next 4th and following 4th row. (137 sts.)

ROWS 193-264: Work even.

ROWS 265-288: SHOULDER SHAPING: Bind off 5 sts. beginning next 6 rows, 4 sts. beginning next 10 rows, 3 sts. beginning next 8 rows and after row 288 bind off the remaining 43 sts.

FRONT: (Figure IV). Cast on 60 sts.

ROWS 1-12: Work even, then cast on 18 sts. on the left side using a separate length of yarn.

ROWS 13-24: Work even, then hang the first 60 cast-on sts. back on the machine behind the latches to form the hem. (If you prefer to sew the hem, omit this step.)

ROWS 25-165: Increase 1 st. on the left side after ROW 25, then again every following 8th row 17 x. AT THE SAME TIME, increase 1 st. on the right side after ROW 62, then again every following 20th row 4 x. (101 sts.) After ROW 165 bind off 9 sts. on the left side, then immediately cast on 27 sts..

ROWS 166-178: Work even.

ROWS 179-202: ARMHOLE SHAPING: Bind off 5 sts. on the right side, then on every other row bind off 4 sts. 1 x, 3 sts. 2 x, 2 sts. 2 x, 1 st. 2 x and 1 st. on the next 4th and following 4th row. AT THE SAME TIME, after ROW 184, work buttonholes over the 4th-10th and 27th-33rd needles counting from the left side.

ROWS 203-265: Work even, making buttonholes after ROWS 218 and 252 over the same needles as before.

ROWS 266-298: NECK SHAPING: Bind off 36 sts. on the left side, then on every other row bind off 3 sts. 1 x, 2 sts. 2 x, 1 st. 3 x, on every following 4th row 1 st. 2 x and on the following 6th row 1 st. 1 x. AT THE SAME TIME, after ROW 274, then on every other row SHAPE SHOULDER by binding off 4 sts. 8 x and 3 sts. 5 x. Make the second front section with reverse shapings and omit the buttonholes.

SLEEVE: (Figure VI) Make two. Cast on 83 sts.

ROWS 1-24: Work even, then hang the cast-on sts. back on the machine behind the latches to form the hem. (If you prefer to sew the hem, omit this step.)

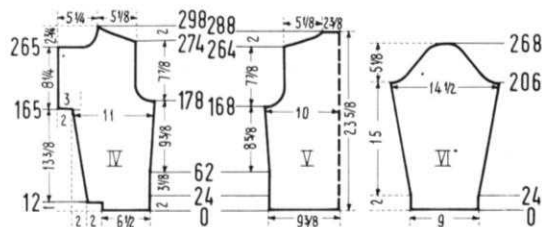
ROWS 25-206: Increase 1 st. on each side after ROW 26, then again every following 8th row 13 x and every following 6th row 11 x. (133 sts.)

ROWS 207-268: CAP SHAPING: Bind off 5 sts. beginning next 2 rows, 4 sts. beginning next 4 rows, 3 sts. beginning next 4 rows, 2 sts. beginning next 6 rows, 1 st. beginning next 36 rows, 2 sts. beginning next 4 rows, 3 sts. beginning next 2 rows, 4 sts. beginning next 2 rows, 5 sts. beginning next 2 rows and after ROW 268 bind off the remaining 15 sts.

NECK FACING: Cast on 101 sts. and work 3 rows with tension 3, 3 rows with tension 4 and 4 rows with tension 5. After 10 rows bind off all sts.

FINISHING: DRESS: Join front and back section at sides and shoulders, easing in the fullness at bustline of front section. Sew sleeves together and set in. Turn under 20 rows on lower edge and hem to wrong side. Join neck facings at short ends. With right sides together sew facing to neckline, then turn to wrong side and hem. Sew trim to neckline. See picture.

JACKET: Join front and back sections at sides and shoulders, easing in the fullness at bustline of front sections. Sew sleeves together and set in. Turn under 2" on buttonhole and button section and 1" on front edges and hem to wrong side. With right sides together, sew facing to neckline, then turn to wrong side and hem. Finish buttonholes, sew on buttons. Sew trim to front edge, lower edge and sleeve edges. For the bow, sew 2 strips of trim together forming a double width, then tie and sew to front as illustrated.



GIRL'S DRESS, MK 5040



SIZE: 12-13. (CHEST: 31"-32"). **MATERIAL:** 15 $\frac{3}{4}$ oz. red KNITKING Subita 2x3, Color #131 and 4 yards ready made wool trim. **TENSION:** KNITKING 4 to 6. **GAUGE:** 17 sts. 2", 24 rows 2". **PATTERN:** Stockinette Stitch.

BACK: (Figure II). Cast on 190 sts. **ROWS 1-302:** Decrease 1 st. on each side after ROW 72, then again every following 10th row 21 x by always hanging the 3rd st. on each side onto the 2nd needle, then moving the 2 end sts. inward to fill the empty needle. (146 sts.)

ROWS 303-412: RAGLAN SHAPING: Bind off 2 sts. on each side, then on each side of every other row decrease 1 st. 51 x by always hanging the 3rd st. on each side onto the 2nd needle, then moving the 2 end sts. inward to fill the empty needle. After ROW 406 bind off the center 10 sts. for NECK. (See Notes to Knit By, inside back cover) then on every other row on Neck Side bind off 6 sts. 1 x and 3 sts. 2 x. AT THE SAME TIME, continue to Shape Raglan by decreasing 1 st. after ROWS 406, 408 and 410.

FRONT: (Figure I). Cast on 190 sts.

ROWS 1-244: Decrease 1 st. on each side after ROW 72, then again every following 10th row 17 x as you did on the back. After ROW 244 put 77 needles on the left side into holding position and complete the right half first.

ROWS 245-302: After ROW 245 cast on 4 sts. on the left side for the facing. To do this, put 4 sts. from the left half onto a stitch holder. Decrease 1 st. on the right side after ROW 252, then again every following 10th row 3 x as you did before. (77 sts.)

ROWS 303-408: RAGLAN SHAPING: Bind off 2 sts. on the right side, then on every other row decrease 1 st. 52 x as you did on the back. After ROW 389, then on every other row SHAPE NECK by binding off 9 sts. 1 x, 3 sts. 1 x, 2 sts. 2 x, 1 st. 3 x and 1 st. on the following 4th row 1 x. After row 408 hang the remaining 3 sts. together (the 2 outside sts. onto the center st.), then bind off.

Now move the Cam Box to the left side, turn the Row Counter back to 244, bring all needles back into working position, hang the 4 sts. from the stitch holder back on the machine and complete the left half. Follow the instructions from ROWS 245-408, but reverse the sides.

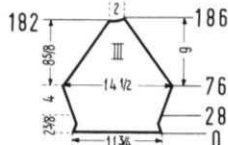
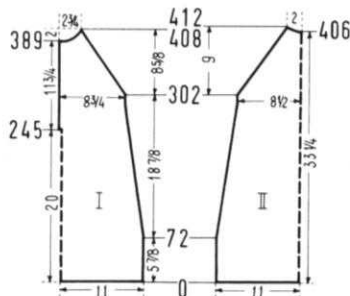
SLEEVE: (Figure III). Cast on 103 sts.

ROWS 1-28: Decrease 1 st. on each side after ROWS 2, 6 and 10. Increase 1 st. on each side after ROWS 18, 22 and 26. After ROW 28 hang the cast-on sts. back on the machine behind the latches to form the hem.

ROWS 29-76: Increase 1 st. on each side after ROW 30, then again every following 4th row 10 x and 1 st. on each side after ROW 72. (127 sts.)

ROWS 77-182: RAGLAN SHAPING: Bind off 2 sts. on each side, then on each side of every other row decrease 1 st. 52 x as you did on the back.

ROWS 183-186: Work short rows. (See Notes to Knit By, inside back cover). On the left side put 6 needles 2 x into holding position. AT THE SAME TIME, decrease 1 st. on the right side after ROWS 182 and 184 as you did before. After ROW 186 bring all needles into working position, then bind off all 17 sts. Make the second sleeve with reverse shaping.



NECKBAND: Cast on 115 sts. and work 24 rows stockinette st., then bind off all sts.

FINISHING: Join front and back section at sides. Sew sleeves together, then weave to front and back section, 1 st. in from each edge. Turn under 1 $\frac{1}{2}$ " on lower edge and hem to wrong side. Turn under 4 sts. on each side of front opening and hem to wrong side. Sew 1 edge of neckband to inside and 1 edge to outside of neckline. Sew in zipper. Sew ready made trim to lower edge, sleeve edges, neckband and to each side of front opening.

GIRL'S DRESS, MK 5041

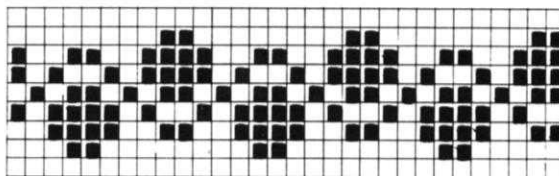


SIZE: 6-7. (CHEST: 24" - 25"). **MATERIAL:** 10 $\frac{1}{2}$ oz. blue and 1 $\frac{3}{4}$ oz. red KNITKING Subita Dralon 3 ply, Color #437 and 436. **TENSION:** KNITKING 5 to 7. **GAUGE:** 15 sts. 2", 21 rows 2". **PATTERN:** Stockinette Stitch and Norwegian Design according to chart. In the directions each row in the Norwegian Design is counted as 1 row, but several movements of the Cam Box are needed to complete 1 row.

BACK: (Figure II) Cast on 152 sts. with blue.

ROWS 1-50: Work even and AT THE SAME TIME work a Pattern Stripe after ROW 22 over 9 rows.

ROWS 51-152: Decrease 1 st. on each side after ROW 50, then again every following 8th row 3 x and every following 6th row 12 x by always hanging the 3rd st. on each side onto



□ = red ■ = blue

the 2nd needle, then moving the 2 end sts. inward to fill the empty needle. AT THE SAME TIME, work a Pattern Stripe after ROWS 57 and 92. (120 sts.)

ROWS 153-218: RAGLAN SHAPING: Decrease 1 st. on each side after ROW 152, then again every other row 30 x by always hanging the 3rd st. on each side onto the 2nd needle, then moving the 2 end sts. inward to fill the empty needle. After ROW 214 bind off the center 22 sts. for NECK (See Notes to Knit By, inside back cover), then on every other row on Neck Side bind off 8 sts. 2 x. AT THE SAME TIME, continue to Shape Raglan by decreasing 1 st. after ROWS 214 and 216.

FRONT: (Figure I). Work the front the same as the back to ROW 152.

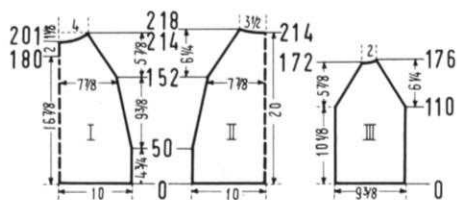
ROWS 153-180: RAGLAN SHAPING: Decrease 1 st. on each side after Row 152, then again every other row 13 x as you did on the back. After ROW 180, for the opening, divide the work in the center, put the needles on the left side into holding position and work the right half first.

ROWS 181-214: Continue to Shape Raglan by decreasing 1 st. on the right side after ROW 180, then again every other row 15 x as you did before. AT THE SAME TIME, after ROW 201, then on every other row SHAPE NECK by binding off 6 sts. 2 x, 4 sts. 2 x, 3 sts. 1 x, and 2 sts. 2 x. After ROW 214 hang the remaining 3 sts. together (2 outside sts. onto center st.) then bind off. Now move the Cam Box to the left side, bring all needles into working position, turn the Row Counter back to 180 and complete the left half, following the instructions from ROWS 181-214, reversing the sides.

SLEEVE: (Figure III). Cast on 72 sts. with blue and work stockinette st.

ROWS 1-110: Work even.

ROWS 111-172: RAGLAN SHAPING: Decrease 1 st. on each side, then again every following 4th row 4 x, then every other row 22 x as you did on the back.



ROWS 173-176: Work short rows. (See inside back cover) On the **left side** put 7 needles 1 x and 5 needles 1 x into holding position. **AT THE SAME TIME**, decrease 1 st. on the **right side** after ROWS 172 and 174. After ROW 176 bring all needles into working position and bind off all 16 sts. Make second sleeve with reverse shaping.

SLEEVE BAND: Make 2. Cast on 46 sts. with red. Work 9 rows of the Pattern Stripe and 11 rows plain stockinette st., then bind off all sts.

NECKBAND: Cast on 86 sts. with red. Work 9 rows of the Pattern Stripe and 11 rows plain stockinette st., then bind off all sts.

FINISHING: Join front and back section at sides. Sew sleeves together and weave to front and back section, 1 st. in from each edge. With running stitches gather neck edge to 11¼", then sew bound-off edge of neckband to inside and cast-on edge to outside of neckline, sew a button to the left side and work a loop on the right side of the neckband. Turn under 2" on the lower edge and hem to wrong side. With running stitches gather lower edge of sleeve, then sew bound-off edge of sleeve band to inside and cast-on edge to outside of sleeve edge. Close with buttons and loops.

ROW 172 bind off the center 16 sts. for NECK. (See Notes to Knit By, inside back cover.) Bind off 3 sts. on Shoulder Side and continue to shape shoulder on every other row by binding off 3 sts. 1 x and 4 sts. 3 x. **AT THE SAME TIME**, Shape Neck on every other row by binding off 4 sts. 1 x and 3 sts. 2 x.

FRONT: (Figure I). Work the front the same as the back to ROW 96, then divide the work in the center, put the needles on the left side into holding position and complete the right half first.

ROWS 97-180: NECK, ARMHOLE and SHOULDER SHAPING: Decrease 1 st. on the **left side** after ROW 96, then again every following 4th row 13 x and every following 6th row 4 x by always hanging the 4th st. onto the 3rd needle, then moving the 3 end sts. inward to fill the empty needle. **AT THE SAME TIME**, after ROW 108, then on every other row **SHAPE ARMHOLE** by binding off 3 sts. 1 x, 2 sts. 2 x and 1 st. 2 x. After ROW 168, then on every other row **SHAPE SHOULDER** by binding off 6 sts. 1 x, 3 sts. 3 x and 4 sts. 3 x. Now move the Cam Box to the left side, bring all needles into working position, turn the Row Counter back to 96 and complete the left half. Follow the instructions from ROWS 97-180, but reverse the sides.

NECKBAND: Cast on 95 sts. and work K1, P1, Ribbing, binding off 2 sts. on the left side after ROWS 1, 3, 5, 7 and 9. After 10 rows bind off all sts. the crochet method. Work the second section with reverse shaping. (Cast on from right to left).

FINISHING: Join front and back section at sides and shoulders. Turn under 3 sts. around armhole edges and hem to wrong side. Join neckband at center back and front, then sew to neckline.

BOY'S PULLOVER, KK 5045



SIZE: 7-8. (CHEST: 25" - 26"). **MATERIAL:** 7 oz. blue KNITKING Nora, Color #4005. **TENSION:** KNITKING 6 to 8. **GAUGE:** 15 sts. 2", 21 rows 2". **PATTERN:** Stockinette Stitch and Cable Stripes. Each Cable Stripe is 10 sts. wide and divided as follows: 2 purl stitches, 6 cable stitches and 2 purl stitches. **1.** Knit 8 rows. **2.** On each side, drop the 21st, 22nd, 29th, 30th, 50th and 51st stitches, leave the empty needles in working position. **3.** Using 2 treble transfer tools, and counting from the right

side cross the stitches by hanging first the 23rd, 24th and 25th sts. onto the 26th, 27th and 28th needles, then the 26th, 27th and 28th sts. onto the 23rd, 24th and 25th needles. Cross the 52nd-57th and the 81st-86th stitches in the same manner. Repeat Steps 1-3 throughout. After each 40-50 rows drop the 2 sts. on each side of the 6 cable stitches and latch up into knit stitches. (The first time let sts. run to ribbed edge).

EDGES: K1, P1, Ribbing.

BACK: (Figure II). Cast on 108 sts.

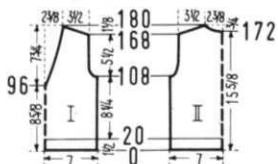
ROWS 1-20: K1, P1, Ribbing. After row 20 transfer the ribber sts. to the main machine and continue with stockinette st. and work the Cable Stripes, crossing the stitches the first time after ROW 24.

ROWS 21-108: Work even.

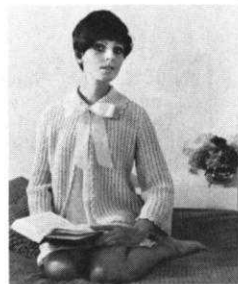
ROWS 109-118: ARMHOLE SHAPING: Bind off 3 sts. beginning next 2 rows, 2 sts. beginning next 4 rows and 1 st. beginning next 4 rows. (90 sts.)

ROWS 119-168: Work even.

ROWS 169-180: SHOULDER SHAPING: Bind off 6 sts. beginning next 2 rows and 3 sts. beginning next 2 rows. After



BED JACKET, DV 7713



SIZE: 10/12. **MATERIAL:** 12 oz. yellow KNITKING Baby yarn, Color #5 and 1½ yard yellow ribbon 2" wide. **TENSION:** KNITKING 5 to 7. **GAUGE:** Pattern Stitch 16 sts. 2", 34 rows 2". The omitted stitches in the Pattern are counted as stitches in the gauge and directions. **PATTERN:** Holding Position Design according to chart, worn on the purl side.

BACK: (Figure II). Cast on 163 sts.

ROWS 1-2: Work stockinette st., then transfer the 4th, 9th, 14th, 19th, etc. sts. to the right neighboring needles and the 5th, 10th, 15th, 20th, etc. sts. to the left neighboring needles, put the empty needles into non-working position and continue working in Holding Position Design.

ROWS 3-210: Work even.



ROWS 211-244: ARMHOLE SHAPING: Bind off 5 sts. on each side then on each side of every following 4th row bind off 4 sts. 2 x, 3 sts. 2 x, 2 sts. 2 x and 1 st. 2 x. (113 sts.)

ROWS 245-340: Work even.

ROWS 341-360: SHOULDER SHAPING: Bind off 3 sts. beginning next 6 rows. After ROW 346 bind off the center 15 sts. for NECK. (See Notes to Knit By, inside back cover.) Bind off 3 sts. on Shoulder Side and continue to shape shoulder on every other row by binding off 3 sts. 6 x and 4 sts. 1 x. **AT THE SAME TIME**, Shape Neck on every other row, by binding off 4 sts. 1 x, 3 sts. 2 x, 2 sts. 2 x and 1 st. 1 x.

FRONT: (Figure I). Cast on 83 sts.

ROWS 1-2: Work stockinette st., then transfer the sts. as you did on the back and continue working in Holding Position Design.

ROWS 3-224: Work even.

ROWS 225-258: ARMHOLE SHAPING: Bind off 5 sts. on the right side, then on every following 4th row bind off 4 sts. 2 x, 3 sts. 2 x, 2 sts. 2 x and 1 st. 2 x. (58 sts.)

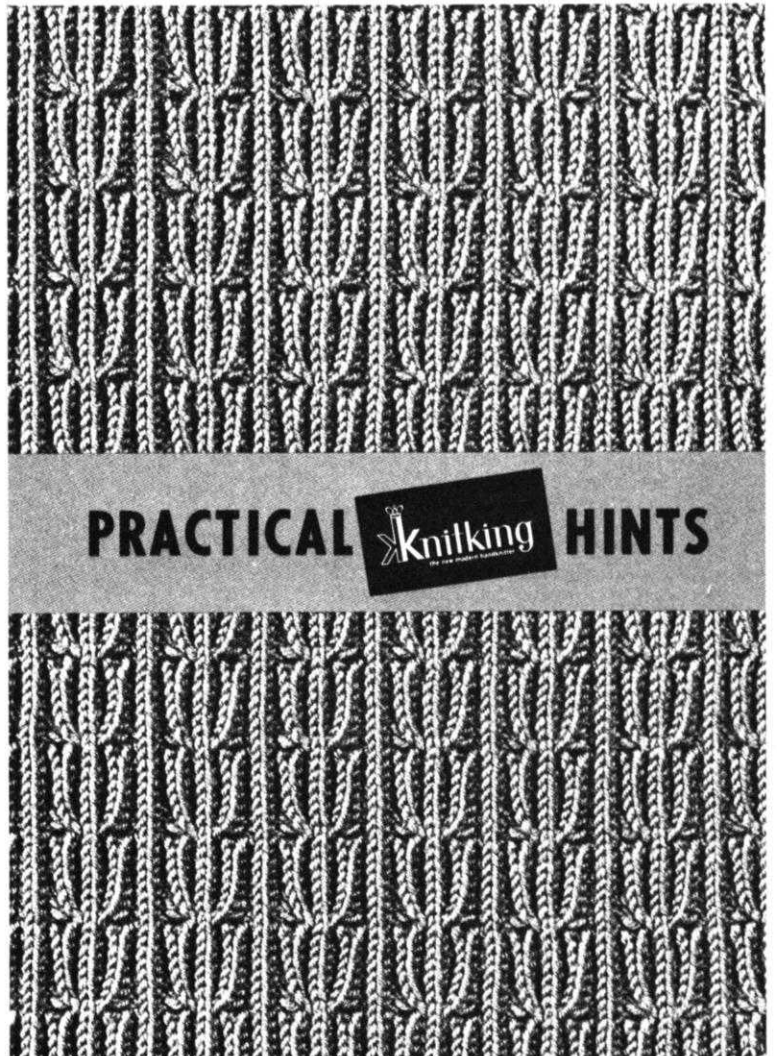
ROWS 259-319: Work even.

Another First from Knitking . . .

A TEXT BOOK FOR MACHINE KNITTERS

\$2.95

At long last . . . **PRACTICAL KNITTING HINTS** . . . the answer to requests from knitting machine owners from over the whole of the U.S.A. . . . "Give us **PRACTICAL** help with our knitting . . . **SHOW** us **HOW** we can end up with the kind of garments we can be proud of. ". . . Now **KNITKING** presents you with just **THAT** and **MORE** besides . . . There is not another knitting machine book available anywhere that will give you anything like the information in "**PRACTICAL KNITTING HINTS**". . . Looking for hints on how to put your garment together? . . . then turn to the Index and the heading "**Finishing Your Garment**". . . find the pages and the photographs or line drawings combined with simple instructions will literally **SHOW YOU HOW**. Want to know about "**Short Rows**"? . . . the Index gives you the page number and your problem is solved . . . Need a Mitered corner for a Collar? . . . Want to know how to have a perfect Cast-on Edge? . . . How to knit and finish Buttonholes? . . . Want to Chart and knit a **BASIC PATTERN**? . . . make a Twisted or Knotted Cord? . . . how to keep in Pattern when shaping? . . . knit a Norwegian Design? . . . make every type of full fashioning? . . . All this information and much more is given together with photographs and line drawings to make it so easy you won't believe it. Every Knitting Machine owner regardless of the machine they have will be thrilled with our **PRACTICAL KNITTING HINTS** book . . . so . . . **PLEASE** don't wait another minute to place your order or you might find that our very first printing is completely sold out . . .



Be sure to include 40 cents mailing costs and California residents add 15 cents Sales Tax.

Order direct from:

KNITKING, 1128 Crenshaw Boulevard, Los Angeles, California 90019

BED JACKET, DV 7715

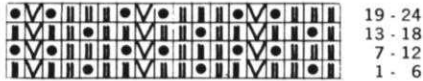


SIZE: 8/10. **MATERIAL:** 10 oz. pink KNITKING Baby yarn, Color #2. **TENSION:** KNITKING 6 to 8. **GAUGE:** 13 sts. 2", 38 rows 2". The omitted stitches are counted as stitches in the gauge and instructions. **PATTERN:** Holding position according to chart. Worn on the purl side.

BACK: (Figure II). Cast on 129 sts. **ROWS 1-2:** Work stockinette st. Now hang first the 5th, then every following 6th stitch onto the neighboring needles, put the empty needles into the non-working position and continue in Holding Position Design.

ROWS 3-228: Work even.

ROWS 229-266: ARMHOLE SHAPING: Bind off 4 sts. on



each side, then on each side of every following 4th row bind off 3 sts. 1 x, 2 sts. 2 x, 1 st. 3 x and 1 st. on the next 6th and following 6th row. (97 sts.)

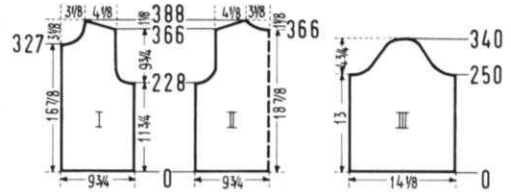
ROWS 267-366: Work even.

ROWS 367-388: NECK and SHOULDER SHAPING: Both shapings are started at the same row. Bind off the center 13 sts. for NECK, (See Notes to Knit By, inside back cover) then on every following 4th row on Neck Side bind off 4 sts. 1 x, 3 sts. 2 x and 2 sts. 2 x. AT THE SAME TIME after ROW 366, then on every other row SHAPE SHOULDER by binding off 2 sts. 8 x and 3 sts. 4 x.

FRONT: (Figure I). Cast on 64 sts.

ROWS 1-2: Work stockinette st. Now hang first the 5th, then every following 6th stitch onto the neighboring needles, put the empty needles into the non-working position and continue in Holding Position Design.

ROWS 3-228: Work even.



ROWS 229-266: ARMHOLE SHAPING: Bind off 4 sts. on the right side, then on every following 4th row bind off 3 sts. 1 x, 2 sts. 2 x, 1 st. 3 x and 1 st. on the next 6th and following 6th row. (48 sts.)

ROWS 267-327: Work even.

ROWS 328-388: NECK SHAPING: Bind off 5 sts. on the left side, then on every following 4th row bind off 3 sts. 2 x, 2 sts. 2 x, 1 st. 2 x and on every following 6th row 1 st. 3 x. AT THE SAME TIME, after ROW 366, then on every other row SHAPE SHOULDER by binding off 2 sts. 8 x and 3 sts. 4 x. Make the second front section with reverse shapings.

SLEEVE: (Figure III). Make two. Cast on 93 sts.

ROWS 1-2: Work stockinette st. Now hang first the 5th, then every following 6th stitch onto the neighboring needles, put the empty needles into the non-working position and continue in Holding Position Design.

ROWS 3-250: Work even.

ROWS 251-340: CAP SHAPING: Bind off 5 sts. on each side, then on each side of every following 4th row bind off 3 sts. 3 x, 2 sts. 2 x, 1 st. 13 x, 2 sts. 2 x, 3 sts. 2 x and after row 340 bind off the remaining 11 sts.

FINISHING: Join front and back sections at sides and shoulders. Sew sleeves together and set in. Work 1 row of single crochet around all edges. Make a Popcorn stitch over the row of single crochet as follows: Yarn over hook, go into first st. and pull up loop about 1/4 inch long, yarn over and go into same stitch and pull up loop 4 x more (5 loops made in same stitch). Yarn over and pull through all loops on hook; chain 1 to lock; skip 1 stitch and make popcorn in next stitch. Repeat around. Sew ribbon to front neckline and tie in bow.



A complete fourth volume of **KNITTING MAGAZINES** with a flexible, transparent plastic cover and specially bound so that it will stay open at any page, is available at the special price of \$6.95 postage paid anywhere in North America.

If purchased separately the magazines would cost a total of \$9.00.

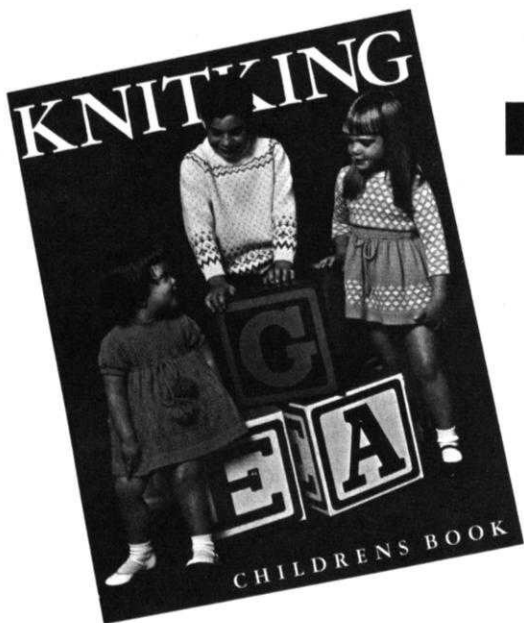
The volume contains over 120 fully illustrated complete stylish patterns for all members of the family, together with many valuable, practical knitting hints.

There is a very limited number of these volumes available and it will undoubtedly become a collector item.

If you already have the entire set it will almost certainly be well thumbed and marked. Why not purchase a perfect mint condition volume for your bookshelf and ready reference at any time.

• • •

Place your order today and avoid disappointment. Send it to **KNITTING MAGAZINE, 1128 Crenshaw Boulevard, Los Angeles, California 90019.**



HERE IT IS!!

\$2.95

Calif. residents add
15 cents Sales Tax
Mailing costs 40 cents.

THE BIG BEAUTIFUL BOOK OF CHILDRENS PATTERNS YOU HAVE BEEN ASKING FOR . . . OVER 50 complete and lovely patterns for infants and children to teen age . . . Buntings, Blankets and Baby outfits . . . Cute Dresses, Leotites, Skirts, Suits, Pullovers, Cardigans, Stockings, Trousers, etc. . . .

The only CHILDRENS BOOK for the machine knitter published in the U.S.A. Order direct from KNITKING, 1128 Crenshaw Blvd., Los Angeles, California 90019.

ARE YOU UNHAPPY WITH YOUR PRESENT KNITTING MACHINE ?

DOES IT REFUSE TO KNIT FANCY DRESS YARNS?

DOES IT JAM UP WHEN YOU TRY TO KNIT LOOPED MOHAIR OR THICK AND THIN YARNS?

DOES IT DROP STITCHES ALL OVER THE PLACE?

ARE YOU CONTINUALLY HAVING TROUBLE WITH AWKWARD, CUMBERSOME WEIGHTS?

ARE YOU UNABLE TO MAKE A LARGE GARMENT WITH BULKY YARNS?

DO YOU HAVE TO SELECT PATTERN STITCHES MANUALLY?

DO YOU HAVE TO LATCH YOUR RIBBING BY HAND?

IF YOU ARE HAVING ANY OF THESE PROBLEMS YOU SHOULD TRADE UP TO A NEW FANTASTIC PUSH BUTTON KNITKING WITH COORDINATED RIBBER AND ENJOY KNITTING WITH THE WORLDS FINEST, MOST VERSATILE AND MOST AUTOMATIC KNITTER.

YOU WILL BE SURPRISED AT OUR GENEROUS TRADE-IN ALLOWANCE AND YOU CAN, IF YOU WISH, USE YOUR PRESENT MACHINE AS A DOWN-PAYMENT AND PURCHASE A COMPLETE KNITKING FOR JUST PENNIES A DAY. WRITE TODAY FOR FULL INFORMATION AND TELL US WHAT MACHINE YOU NOW OWN. THE ADDRESS IS:

KNITKING, Dept. T-1, 1128 Crenshaw Blvd., Los Angeles, Calif. - 90019

PRACTICAL KNITTING HINTS

MEASUREMENTS

We illustrate for you on this page the correct way to take measurements. This is the start of the KNITTING MAGAZINE program to educate readers in procedures that must be used in charting garments to fit any figure. Have somebody help you take your own measurements and record them below.

- | | |
|---|----------------------|
| 1. Bust (Chest) | <input type="text"/> |
| 2. Waist | <input type="text"/> |
| 3a. Hip | <input type="text"/> |
| 3b. Hip | <input type="text"/> |
| 4. Back Length | <input type="text"/> |
| 5. Front Length | <input type="text"/> |
| 6. Length from Waist to the desired length of the garment | <input type="text"/> |
| 7. Shoulder Width | <input type="text"/> |
| 8. Back Width | <input type="text"/> |
| 9. Neck Circumference | <input type="text"/> |
| 10. Sleeve Length | <input type="text"/> |
| 11. Upper Arm | <input type="text"/> |
| 12. Wrist | <input type="text"/> |
| 13. Skirt Length | <input type="text"/> |

These are your actual measurements. You MUST add the necessary amount for ease where needed... See Practical Knitting Hints book... pages 1 through 4.



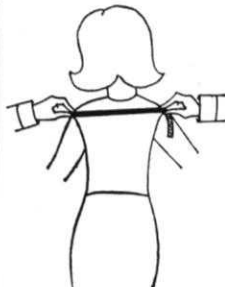
1. Bust

The measurement for the bust (or chest) is taken over the fullest part of the bust. It is essential that the tape does not sag in the back but is kept level.



4. Back Length

Measure from the highest point of the shoulder (where shoulder and neck meet) straight down to the waistline. It is a good idea to tie a cord around your waistline so you can measure to the same point when taking the front length measurement.



8. Shoulder to Shoulder Width

Measure across the back from the beginning of one arm to the beginning of the other arm, holding the tape level.



2. Waist

The tape should be placed loosely around the waistline.



5. Front Length

Measure from the same point as you did for the back length, over the bust to the cord at waistline.



9. Neck Circumference

Measure around the base of the neck where a round close fitting neckline would be. Do not hold the tape too loosely for this measurement.



3a. Hip

For Skirts and Dresses, measure around the fullest part of the hip. Take special care that the tape is kept level. For heavier figures, please measure around the fullest part at thigh level as well, because this measurement is sometimes greater than that of the hips.



6. Length from the waist to the desired length of the garment.



10. Sleeve Length

Leaving the arm down, measure from the beginning of the arm down to the wrist. When measuring for a $\frac{3}{4}$ or short sleeve, measure accordingly.



3b. Hip

For Pullovers and Jackets the measurement for the hips has to be taken at the hip level where the lower edge of the garment will be. This can be 4" to 6" or more below the waistline and depends on the individuals preference.



7. Shoulder Width

Measure from the base of the neck to the beginning of the arm with the arm down. For accuracy, measure both shoulders, as at times there is considerable difference. Where a difference in measurements exist, take the greater measurement as your basis.



11. Upper Arm

Measure the fullest part of the upper arm. The fullest part may be right below the shoulder or it could be over the muscle. The largest measurement is the one to use.



12. Wrist

Place the tape around the wrist. For $\frac{3}{4}$ or short sleeves, measure around the arm at the point where the sleeve will end. Also see—Sleeve Length.



13. Skirt Length

Measure from the waist (belt or waistband is the starting point) down to the desired skirt length.



KNITKING NEWS

January-February, 1969

SIZES FOR MENS GARMENTS

In the last Newsletter (November-December) we discussed a misunderstanding that has occurred in the past in regard to the sizes given in KNITKING MAGAZINE for mens garments, but we neglected to mention that commencing with that issue, we intend calculating the over allowances necessary into every garment.

This means that in all future issues, mens garments should be made just as the instructions say...for example, if the size given is 40, the garment will have the over allowance needed for a man with a 40 inch chest.

READERS WRITE ABOUT.....

WEAVING OPEN STITCHES TOGETHER

There are many occasions when you will want to weave open stitches together such as on the heels and toes of socks, skirts, facings, etc... To obtain the needed open stitches for weaving, you must begin and end your knitting with contrast waste yarn.

Some people steam the open ends and then struggle to weave the stitches from the right side. We at KNITKING have what we think is a better way and we want you to try it...

Please follow the directions exactly from start to finish and this will be your practice piece. In order for you to see the stitches easily, make your sample piece using KNITKING Frigate or a similar weight yarn (4-ply worsted is O.K.) knitted over every other needle.

Cast on a total of 30 stitches with contrast waste yarn of same weight as main yarn. Use the Automatic Cast-on method (See Practical Knitting Hints Book - page 12). Knit 3 to 5 rows ending with Cam Box (or Slide) on the left side. Now knit 1 row with a Ravel Cord. A piece of rayon crochet cotton (not too fine) makes an excellent Ravel Cord. Change to main yarn and knit 49 rows (an odd number) ending with Cam Box on the LEFT side. Leave a length of yarn about 3 times as wide as the knitting on machine, then cut. Knit 8 rows with contrast yarn and remove work from machine.

Now you are ready to weave the stitches together. Thread a Tapestry Needle or Ribber Transfer Needle with the long end of main yarn. NEVER use a pointed needle for weaving stitches together.

Take your sample of knitting and fold it in half with the KNIT side INSIDE and the PURL side OUTSIDE. The threaded needle should be on the RIGHT BACK HALF and the Ravel Cord on the FRONT HALF. Allow the edges knitted with the contrast yarn on both ends to roll toward the INSIDE (knit side) so that you are holding it in such a way as to see and match up the FIRST row of main knitting at each end.

Begin to weave... Pick up the threaded needle in your right hand and holding the knitting together in your left, go into the first stitch on the back section from the BACK. (Be careful here, as it is important that you go into the stitch made with the yarn end...pull the strand gently so you SEE it). Continuing with the needle coming toward you, go into the edge of front section...this is not a stitch but a loop with the Ravel Cord through it. Now go into the first stitch on the front section from the FRONT to back (away from you) across to the back section (away from you) into the original first stitch on the back section. Bring the needle into the second stitch on the back section from the BACK (toward you) across and into the first stitch (that you worked before) on the front section. Go into the second stitch on the front section from the FRONT to back (away from you) into the second stitch (that you worked before) on the back section...into the next stitch on the back section from BACK to front (toward you) and into stitch (that you worked before) on front section...etc., etc... Take note that you ALWAYS go into a stitch twice to complete it. ALWAYS pull up each stitch every time, just enough to match the main knitting...not too tight, nor too loose. If you will take a good look at your knitting, you will soon see that you are following the course of the Ravel Cord on one side and the contrast yarn on the other. When you come to the end, complete the weaving, being certain that you have gone into loop below where end of Ravel Cord is, then back to last stitch on the back section.

You are now ready to remove the contrast waste yarn. Turn your sample to the knit side out. When you knitting your sample piece, you ended with 8 rows of contrast waste yarn and this will rip out very easily - so just pull it out. The cast-on end holds the Ravel Cord. Release each end of the Ravel Cord by pulling it out of first stitch, then pull out the Ravel Cord and the waste yarn falls away. If it pulls hard, or if you have used a fine soft yarn when knitting a garment, you should really remove the Ravel Cord a few stitches at a time. If you have used rayon crochet cotton for a Ravel Cord (not a commercial cord) you can cut it every inch or so, then pull the pieces out and throw them away.

Now take a good look at your weaving.....pretty good eh?

HOW TO TURN (or REVERSE) your KNITTING

It is frequently necessary that you turn or reverse your knitting so that the knit side will then face you while you are knitting for a specified number of rows. One way to do this is to knit 8 to 10 rows using a contrast waste yarn, then slide the Cam Box (or Slide) without yarn, across the working needles so that your work will fall from the machine. Turn the knitting over with the knit side now facing you, hang the stitches one at a time back onto the machine. Remove the contrast waste yarn and secure the stitches under the sinkers. You must remember to now turn your Row Counter bak to the correct Row Number and continue following the directions.

Of course, those of you that own a KNITKING machine should use your Reversing Bar if you have one, for this certainly simplifies the turning of a complete row of knitting at one time. The KNITKING Reversing Bar is used for making hems and tucks as well as for turning your knitting. It is available for KNITKING machines with 197 needles only.

PRACTICAL KNITTING HINTS

This new KNITKING publication has already become one of our best selling books...it is crammed full of information and hints that knitting machine owners need...everything

written in it is clear and concise so that it can be understood by everybody from the rank beginner to the most experienced...it provides immediate answers to all the most frequently asked questions that knitters have written in about over the years... If you have not yet ordered one, please do so right away...it will help prevent delays in your knitting and save you many headaches. The price is only \$2.95 plus 40¢ mailing costs.

THIS IS VERY INTERESTING

We recently were notified by the Los Angeles office of the Better Business Bureau that one of our so called "competitors" had registered a complaint with them in regard to a "Letter from the Publisher" in KNITKING MAGAZINE, in which we discussed unethical companies in the knitting machine business and advised readers to heed the warning of the Better Business Bureau and investigate before they invest.

Isn't that Wierd...? Why would any "honest" competitor take exception to being investigated...? Could it be that readers are exercising caution in the purchasing of knitting machines and as a result our competitors business is not doing so good...?



NOTES TO KNIT BY . . .

STITCH AND ROW GAUGE

Every KNITTING pattern calls for a specific number of stitches and rows for 2 inches and in order to obtain the correct size finished garment, you must be sure to knit at the correct tension. This means that before starting a garment, you must knit a sample swatch with the yarn you intend using for the garment.

Cast on over a sufficient number of needles to produce a swatch 4 inches wide. (If the pattern calls for 16 stitches to 2", $16 \times 2 = 32$ stitches) then knit 4 inches of rows at the first suggested tension (if the pattern calls for 22 rows to 2", $22 \times 2 = 44$ rows) knit 2 rows with a contrast color, change to the next higher tension, knit another 4", knit 2 rows with contrast color, change to a third higher tension and knit another 4", then bind off.

Roll the swatch into a cylinder over its length and pull on both ends. Unroll it and stretch it diagonally by pulling on the four corners. Allow the swatch to rest and settle (preferably overnight) then using a stitch gauge or ruler, count the number of stitches and rows over a 2" length in each of your 3 tensions. Select the tension that produces the stitches and rows called for in the pattern. If none of them are correct, you are most likely using the wrong weight of yarn.

HOLDING POSITION

The needles are as far forward on the needle bed as they will go.

NON-WORKING POSITION

The needles are as far back on the needle bed as they will go.

BINDING OFF

See Instruction Manual for your own machine.

CROCHET BIND OFF

Use this method for binding off neck and armbands, edgings, facings or collars. Knit a bind off row using 5 tensions higher than tension used for section and then with latch needle tool, and working from the opposite side of the yarn end, pull the second stitch through the first stitch, the 3rd through 2nd, the 4th through 3rd, etc. . . . When you reach the end of row, pull the loose end of yarn through the last stitch. If you are unable to turn the tension up 5 numbers because you already are working with a large tension, lay the yarn over the needles by hand and knit this one row by pulling each needle back and forward again completing a stitch. Leave approximately $\frac{1}{4}$ " loop for each stitch (depending on type of yarn used) then bind off crochet method.

SHORT ROWS

Used for shaping of all kinds. Push the specified number of needles opposite the Cam Box into holding position and knit across to them. Now you **must** place the yarn **OVER** and **UNDER** the first inside needle that is in the holding position. Place the specified needles opposite Cam Box into holding position (other side) and knit across to these needles, and again place the yarn **OVER** and **UNDER** the first inside needle in the holding position. Repeat as many times as your pattern states. When you return these needles to the working position, the same procedure is used — bring the needles into work opposite the Cam Box, knit across to them, place the yarn **OVER** and **UNDER** the first inside needle in holding position and repeat for other side. Continue in this manner until all the needles are back in the working position.

INCREASING, DECREASING

See the Instruction Manual for your own machine.

INCREASING AND DECREASING WHEN USING RIBBER

When increasing, increase on the main knitter first, knit one row and then transfer the necessary stitches from the knitter to the ribber and continue.

When decreasing or binding off, you **must** transfer the ribber stitches to the main machine before decreasing or binding off.

CONTROL KNOBS (Under the slide handle — one on each side on KNITTING and certain other machines.)

1. When **BOTH** Control Knobs are **UP**, (or **IN** on the latest **KNITTING**) knit one row going from right to left. The needles knit and move back just beyond the front of the needle bed and the yarn hangs on the front of the needles. The slide will now move freely in either direction

with the needles remaining in a "SAFE POSITION". When you wish to resume knitting, press down (**Out on the latest KNITTING**) **BOTH** Control Knobs. The first movement of the slide is made without yarn and will bring the needles into working position, you then continue knitting.

2. **RIGHT CONTROL KNOB UP (IN on latest KNITTING)**. Knit from right to left. The row knits, moves the needles back and the yarn is held in front of the latches. Knit from left to right, the yarn goes under the needles without knitting as the needles move into the working position. This is the operation used for making round cords (with 3 or 4 needles only) and also for knitting single rows of one color.

3. **LEFT CONTROL KNOB UP (IN for latest KNITTING)**. The same as above but moving from left to right.

NECK SHAPING

When the directions state to bind off the center stitches for **NECK**, one correct way is as follows: With a new ball of yarn, bind off the given number of stitches working from **right to left**. Leave this ball of yarn hanging to one side (to be picked up later) and put all the needles on the left side into holding position and complete the right side first as directed. When you have completed the right side, pick up the yarn that you used for the neck bind off, put it in the wool feeder, bring all the needles into working position and knit 1 row to the left side. Turn row counter back to the number on which you started your neck shaping and complete the left half with reverse shaping, making the same number of decreases and on the same row numbers as on the right half.

You may also use the **SHORT ROW** method for shaping your neck and shoulders provided the decreasing is made on **every other row**. When the shaping is completed, knit 1 row over all the neck stitches (or shoulder stitches) with tension set at least 5 numbers higher, and then bind off all stitches using the **crochet method**.

If you are hand feeding a Norwegian design, bind off the center neck stitches with a new ball of yarn, then work both sides of neck shaping at the same time, using two balls of yarn for each color.


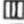







MISSING ROW NUMBERS

When there are row numbers missing in the instructions as for instance when you have completed the designated increases or decreases on a section of garment, continue knitting until you reach the next given row number.

READING OF SYMBOLS

Certain holding position and eyelet designs are sketched in the knitting patterns. The Chart with symbols is read as the work comes toward you from the machine. Where purl stitches are facing you, the purl symbol will be shown and where knit stitches are facing you, the knit symbol will be shown. On the sides of the chart are the row numbers, i.e. 1-8 indicates the first and last row number. In eyelet design patterns, specified stitches are transferred to another needle and the empty needles are returned to the knitting position each time. In holding position designs, selected needles are pushed into the holding position for the stated number of rows.

PATTERN STITCH SYMBOLS

-  = knit stitch
-  = purl stitch
-  = empty needle (leave in working position)
-  = needle not used (in the out of work position)
-  = needle in holding position
-  = 2 stitches on 1 needle — either transferred from the right side or the left side, then put the needle into holding position
-  = needle holding 2 sts. Stitch has been transferred from the **LEFT**
-  = needle holding 2 sts. Stitch has been transferred from the **RIGHT**
-  = 3 stitches on 1 needle. The 1st and 3rd stitch in a group of 3 needles has been hung on the 2nd or center needle.

The diagrams for pattern work are followed just as they are shown, and on your knitting as it comes towards you on the machine.

open dart



closed dart



Available in many wood finishes



KNITTING DESK . . .

A knitting machine cabinet that automatically lifts your machine into the knitting position just by pulling a lever. The cabinet converts in seconds into a handsome desk suitable for any decor or any room in your house. Beautifully made in a variety of woods by craftsmen in West Germany.



Order from your local dealer or direct from **KNITKING**, 1128 Crenshaw Blvd., Los Angeles, California 90019