

KNITTING

MAGAZINE



YARNS
by

Knitking

The Finest From Around the World . . .

If you want your garments to look as good as those in KNITKING MAGAZINE and keep their appearance through dozens of washes, you must knit them with gorgeous KNITKING yarns. KNITKING yarns are the finest quality obtainable anywhere and the prices cannot be beaten. Try them once and you will always use them.

Your orders will be filled the same day they arrive. Be sure to state your color preferences and alternates.



Pattern Numbers	YARN		Price Including Shipping
DP 7661	Subita Dralon 3 ply		\$11.50
DP 7664	Subita Crepe 2 x 3	Size 10/12 Size 14/16	6.70* 7.90*
MK 5020	Subita Crepe 2 x 3		5.50*
HP 3547	Subita Dralon 3 ply		13.90
KK 5025	Subita Dralon 3 ply		6.70*
DP 7670	Subita Dralon 3 ply		9.10
MK 5022	Subita Dralon 3 ply		5.50*
MK 5021	Subita Crepe 2 x 3		11.50
DP 7672	Subita Dralon 3 ply	Size 10/12 Size 14/16	7.90 9.10
DK 7662	Subita Dralon 2 ply	Size 8/10 Size 12/14	9.10 10.30
DP 7668	Subita Crepe with Rayon		9.10
DP 7667	Satin Cotton 2 x 4 ply	Size 12/14 Size 16/18	6.70 7.90
DP 7669	Subita Crepe 2 x 3		11.50
DP 7671	Nora		7.56
DK 7663	Subita Dralon 3 ply		13.90
HP 3549	Subita Crepe 2 x 4		15.10
HP 3548	Subita Dralon 2 ply		6.70*
MK 5023	Subita Dralon 3 ply		9.10
MK 5024	Nora		8.54*
MK 5019	Subita Dralon 3 ply		6.70*

Items marked with a * do not include the small amounts of contrast yarns used in the pattern.

California Residents please add 5% Sales Tax.

Send \$2.00 for **LARGE COMPLETE YARN CATALOGUE.**
(Refunded on your first \$10.00 order) to:

KNITKING YARNS, Dept. 19
1128 Crenshaw Blvd.
Los Angeles, California 90019

KNITKING

MAGAZINE

Vol. 5, No. 4

March / April 1969

INDEX

Contents	Pattern No.	Page No.
Woman's Dress	DK 7661	17
Woman's Pullover	DP 7664	17
Girl's Dress	MK 5020	18
Man's Pullover	HP 3547	19
Boy's Pullover	KK 5025	20
Woman's Pullover	DP 7670	20
Girl's Dress	MK 5022	21
Woman's Shell	DP 7666	22
Girl's Pullover & Pleated Skirt	MK 5021	22
Woman's Shell	DP 7672	23
Woman's Two Piece Dress	DK 7662	24
Woman's Pullover	DP 7668	25
Woman's Blouse	DP 7667	26
Woman's Pullover	DP 7669	27
Woman's Vest	DP 7671	28
Woman's Dress	DK 7663	29
Man's Pullover	HP 3549	30
Girl's Dress	MK 5024	30
Teen Age Sports Pullover	HP 3548	31
Girl's Dress	MK 5023	31
Girl's Dress	MK 5019	32



COVER MODEL

Spring is everywhere you look in this breath taking issue of KNITKING MAGAZINE... In addition to our Cover Model DK 7661 you'll find the very latest spring styles for your family... Mother-Daughter, Father-Son and Sisters and Brothers as well... and if you hurry, you can knit up that proverbial "storm" in time for the Easter Parade.

Letter from the Publisher

BIG NEWS FOR OUR READERS...

WE receive hundreds of letters each month from readers of KNITKING MAGAZINE thanking us for the beautiful patterns we prepare for each issue and for the effort we make to satisfy knitting machine owners irrespective of the brand of knitting machine they own.

We cannot, of course, chart our own patterns to suit all brands of knitting machines, as obviously we are in business to sell our own merchandise, but we are gradually educating readers of KNITKING MAGAZINE and our various other publications so that they will eventually be able to adjust or convert any pattern to suit their own individual needs and sizes.

As regular readers know, we have over the years, sent out many thousands of questionnaires regarding types, styles and sizes of garments each individual reader would like to see in KNITKING MAGAZINE. We always endeavor to satisfy the most universal needs (this issue for example resulted from many requests for mother-daughter, father-son outfits and the next issue is devoted to beach and sportswear. The issue after that is prepared with the larger person in mind.)

One most important fact above all others that we have learned is that over 80% of people who buy knitting machines have never knitted before and, therefore, have no knowledge of even the basic fundamentals of knitting... These are the people who have the greatest difficulty in following any sort of written or charted instructions and it is from them that we receive the greatest volume of correspondence in regard to KNITKING patterns.

All this is leading up to our really BIG NEWS... Because of your cooperation in filling in the questionnaires and because of our experts diligent analysis of them and the thousands of letters we have received over the years since KNITKING MAGAZINE was first published, we have gradually been able to develop an entirely new system of charting and presenting patterns. A method that we believe will be easily understood by the complete newcomer to machine knitting...!! It is so different from our present system that the magazine will have an entirely new and very exciting format.

Like all periodicals KNITKING MAGAZINE has to be planned and prepared several months in advance of publication date, so you will receive two more issues in the present format before the new format appears in the September-October edition. It will, in fact, mark the start of our sixth year of publication and we can hardly wait to hear all your comments when you see it for the first time.

One more reminder, the next issue May-June has a gorgeous assortment of beach and sportswear for all members of the family and the July-August has 12 garments for the larger women ranging in size up to 22½ plus some handsome garments for men and children.

Publisher: KNITKING CORPORATION, 1128 Crenshaw Blvd., Los Angeles, Calif. 90019, Telephone: WEbster 8-2079. Published bi-monthly. Subscriptions: USA—\$6.00 annually, single copies \$1.50; Canada—\$7.00; other parts of the world—\$10.00. The entire contents of KNITKING MAGAZINE are copyright and must not be reproduced in any shape or form without the express permission, in writing, of the publisher. COPYRIGHT © by KNITKING CORPORATION 1969.

Printed by: George Rice & Sons, Los Angeles, California.



MOTHER - DAUGHTER

DP 7664

Daisies do tell . . . when embroidered on a lovely feminine Pullover. Leave specified needles in the out of work position for the Yoke Design. All bands are ribbed. With a little effort you can easily convert the pattern to a dress. Size 10/12 and 14/16. See page 17.

MK 5020

She'll swing upon a Star . . . in embroidered dress copied from Mother's Pullover. Size 5-6 (Chest 23½"-24½"). See page 18.

FATHER - SON

HP 3547

Father's sharp looking Pullover is knitted in stockinette stitch using 3 colors of KNITKING Subita Dralon 3-ply. The Ribbed edges are striped. Size 44/46. See page 19.

KK 5025

Just like his Dad's, a small boy proudly wears a matching Pullover. Size 7-8 (Chest 25"-26"). See page 20.





DP 7670

Unique tailoring for a pullover is high fashion any-time, and this one with saddle type shoulder plus stripes of contrast color at rib edges and neckband is very smart. Size 14/16. See page 20.

MK 5022

Happiness is a delightful copy of Mother's pullover knitted into a perfect dress for your little girl. Size 3-4 (22"-23" chest). See page 21.

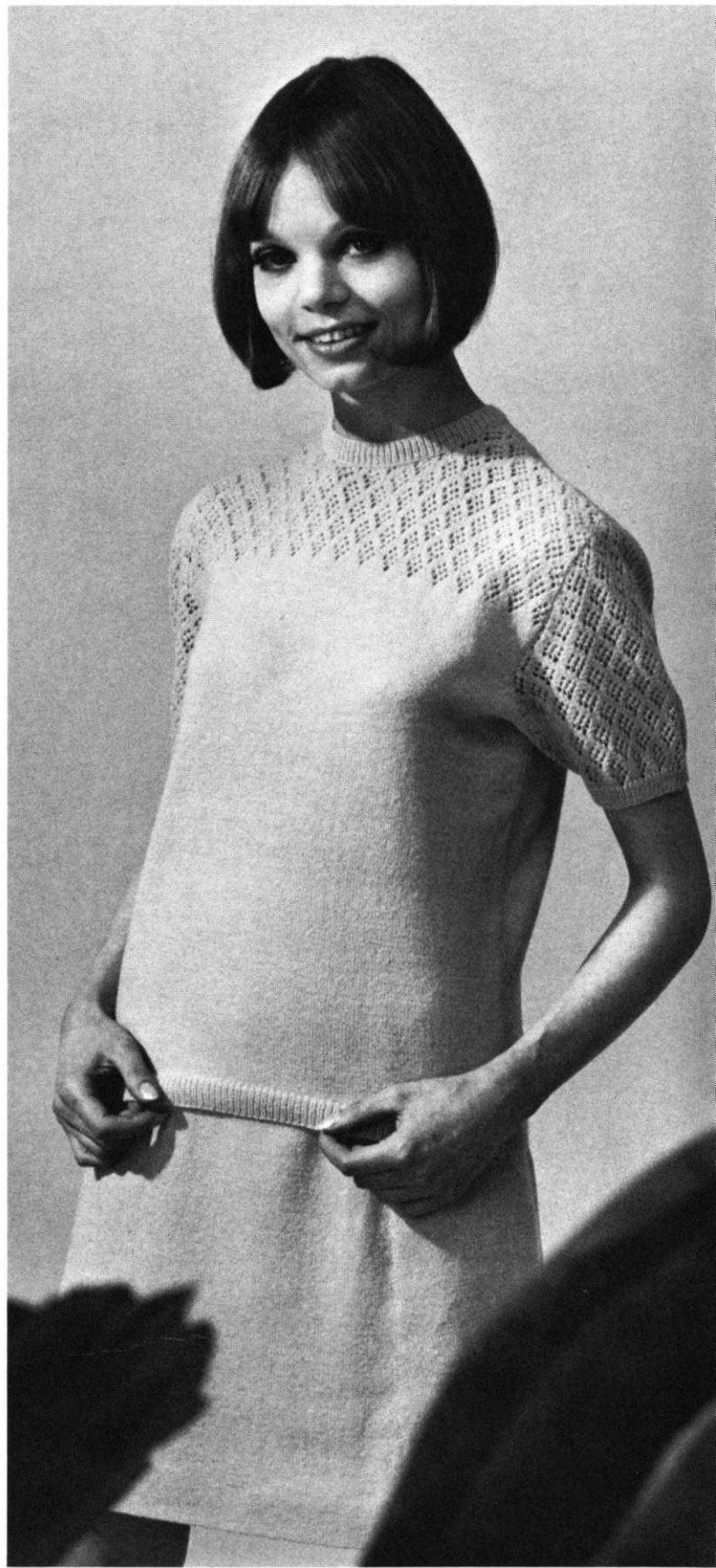
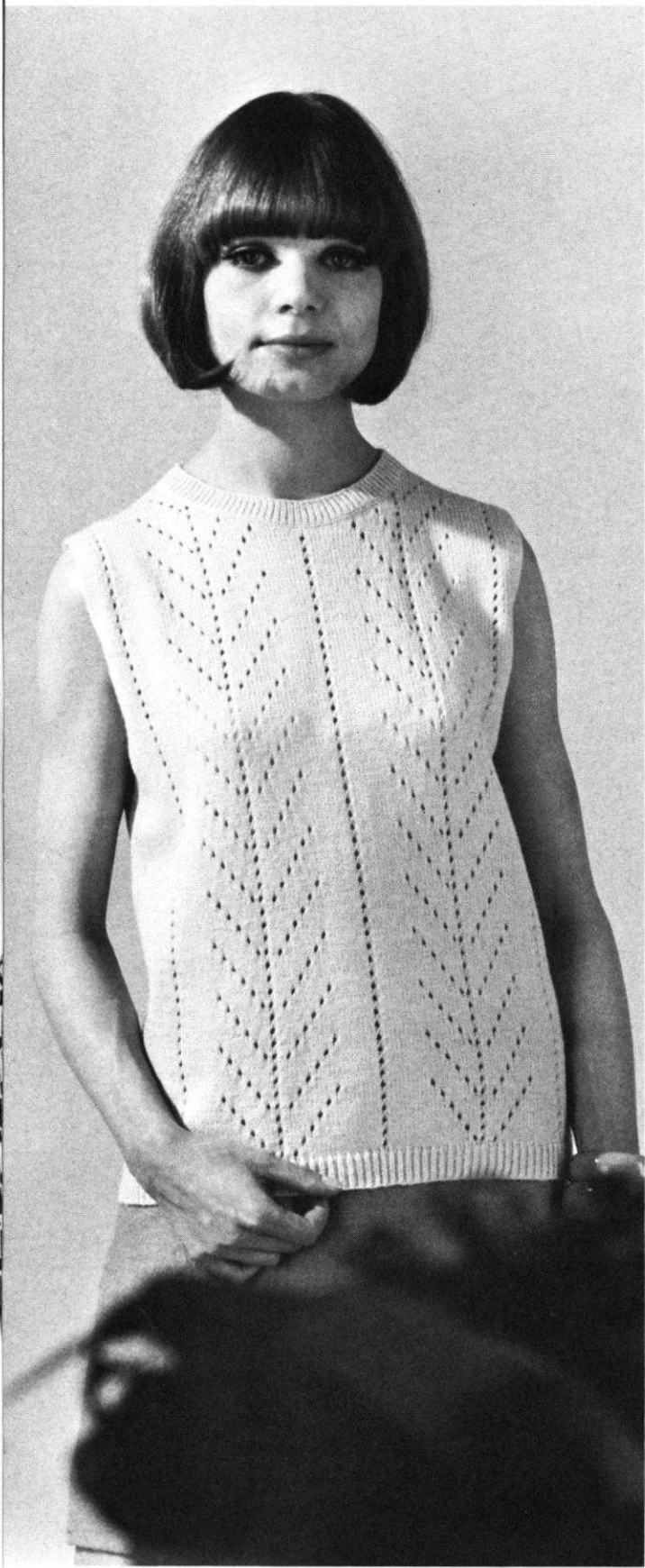
DP 7666

A textured Shell knitted in stockinette stitch is worn on the purl side. Bands are made in a sharp contrasting color. Use Short Rows for shaping, then reverse stockinette stitch across the shoulders. Size 12/14. See page 22.

MK 5021

Knit a pleated Skirt for a young lady, then top it with a Shell that is similar to Mother's DP 7666. Size 7-8 (Chest 25"-26"). See page 22.





LACY KNITS FOR SPRING

←← DP 7672

If you have never knitted an Eyelet Design, do try this simple one for a beginner and gain confidence. The Design is knitted on the front only and is very beautiful. Size 10/12 and 14/16. See page 23.

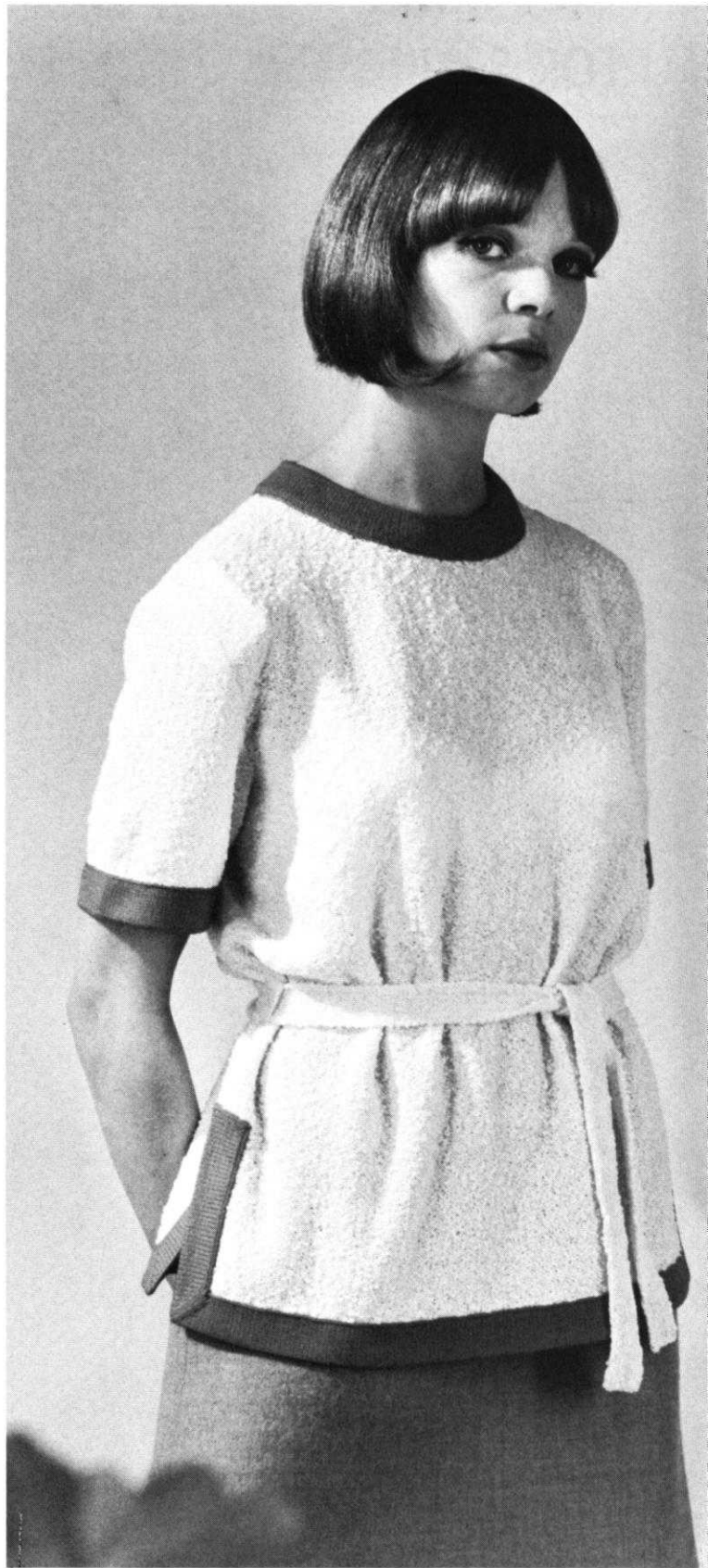
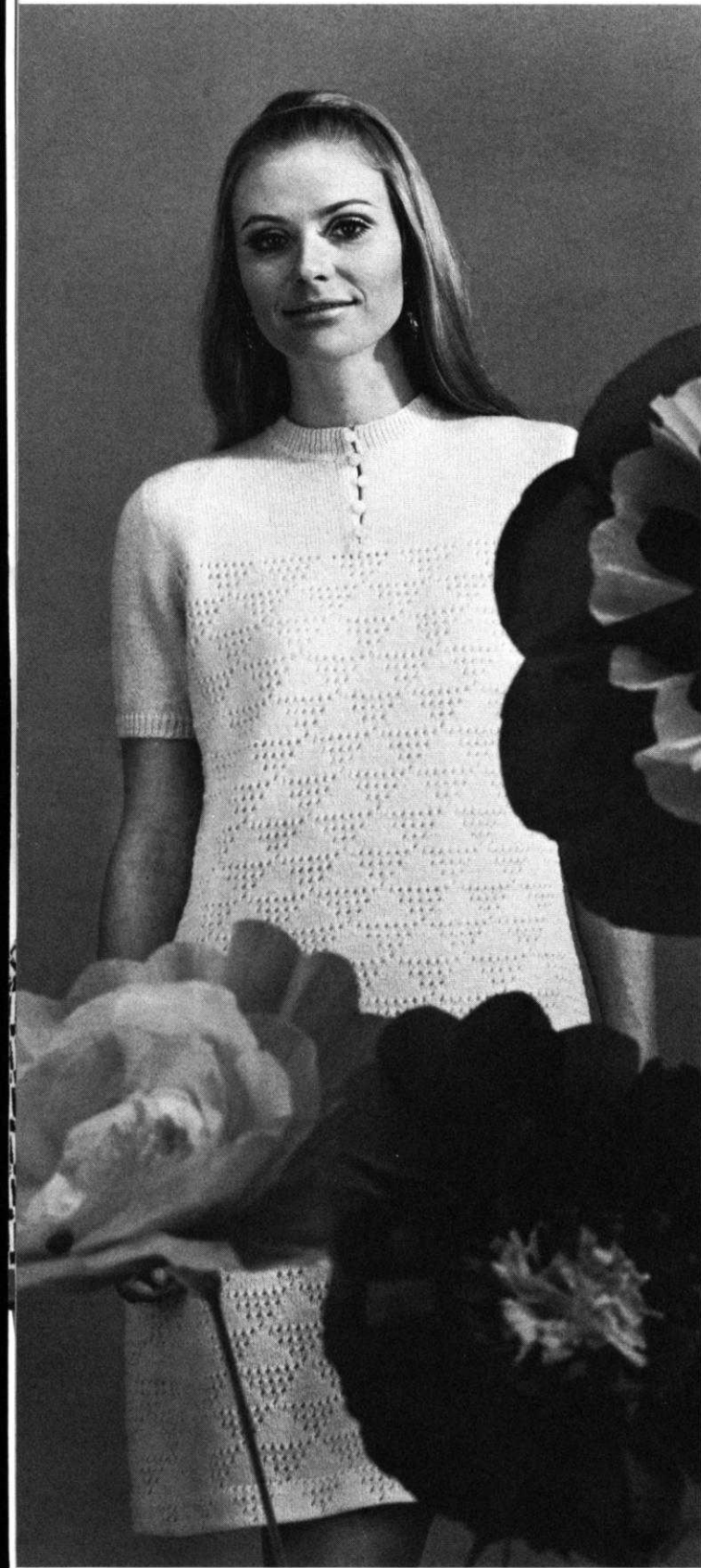
← DK 7662

Do knit this soft and flattering 2-piece dress of KNITTING "no care" Subita Dralon 2-ply. The delicate pattern for yoke and sleeves is an Eyelet Design. Size 8/10 and 12/14. See page 24.

DP 7668

The front of this pullover has a leaf type Eyelet Design plus a simulated Rib (needles out of work). Turn it into a fabulous dress by knitting the necessary extra rows. Size 14/16. See page 25.





←← DK 7661

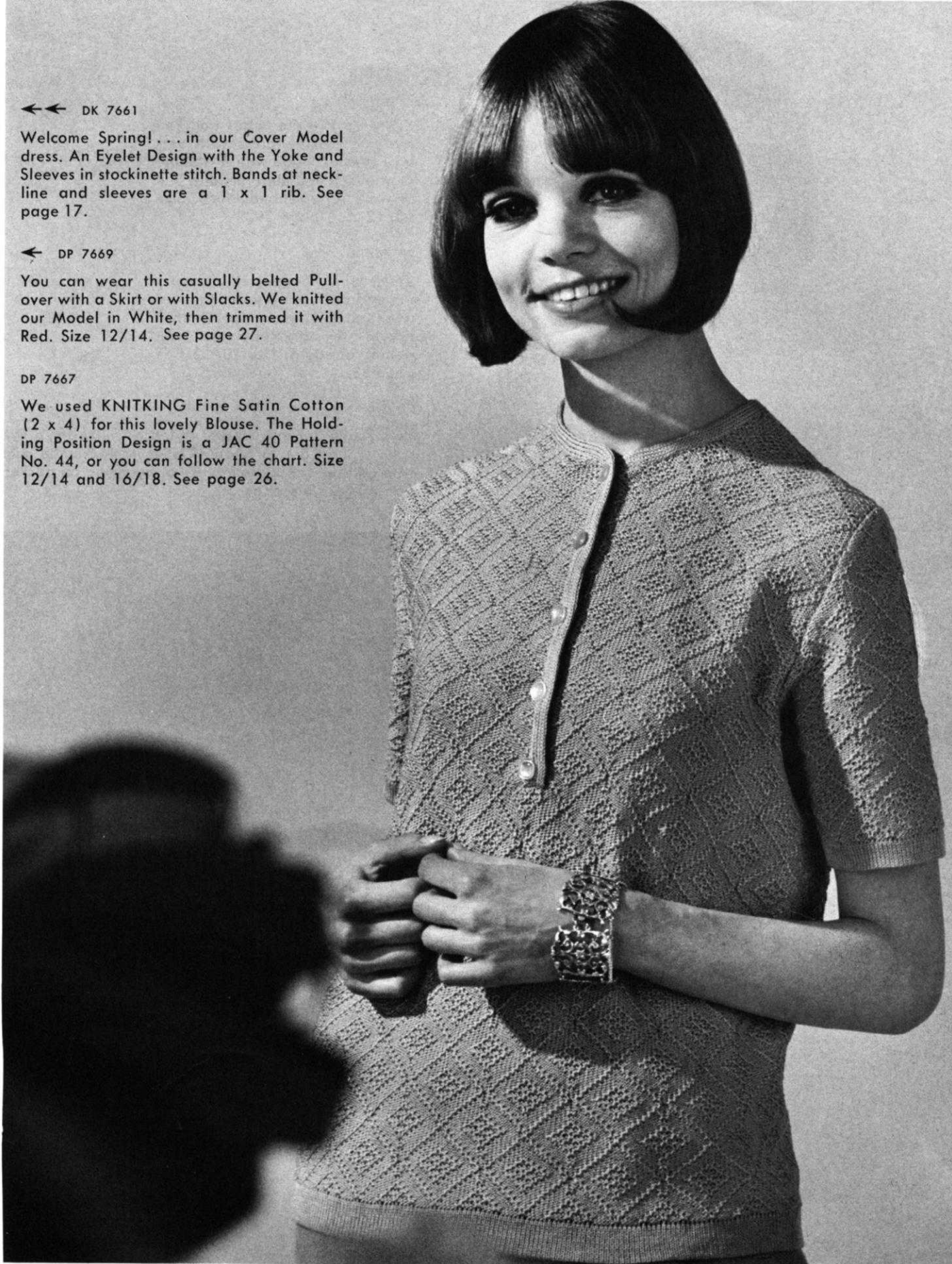
Welcome Spring! . . . in our Cover Model dress. An Eyelet Design with the Yoke and Sleeves in stockinette stitch. Bands at neckline and sleeves are a 1 x 1 rib. See page 17.

← DP 7669

You can wear this casually belted Pull-over with a Skirt or with Slacks. We knitted our Model in White, then trimmed it with Red. Size 12/14. See page 27.

DP 7667

We used KNITKING Fine Satin Cotton (2 x 4) for this lovely Blouse. The Holding Position Design is a JAC 40 Pattern No. 44, or you can follow the chart. Size 12/14 and 16/18. See page 26.



DK 7663

Choose 3 favorite colors and knit a smart looking dress with vertical striping made with a Holding Position Design and needles out of work for a ribbed effect. Size 10/12. See page 29.

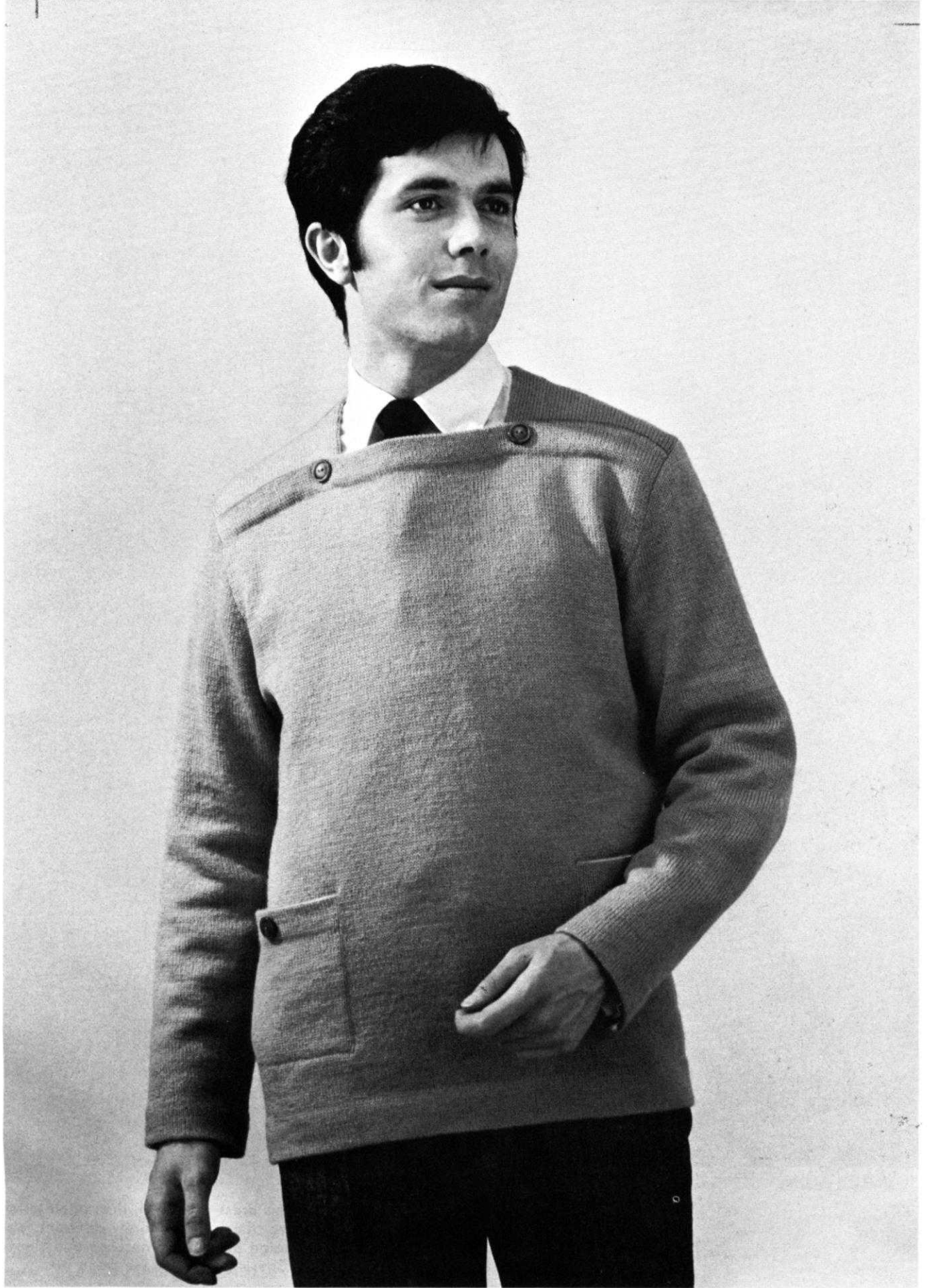
DP 7671

Vests are sweeping the country . . . and everybody seems to want one. Knit this lovely Vest (with 3 pockets) in stockinette stitch with ribbing at edges. Size 10/12. See page 28.

HP 3549 →

He'll really dig this unusual styled Neckline for a Pull-over . . . and ask for more. Knit it in stockinette stitch with buttons (no buttonholes) at neck and on pockets. Size 40/42. See page 30.

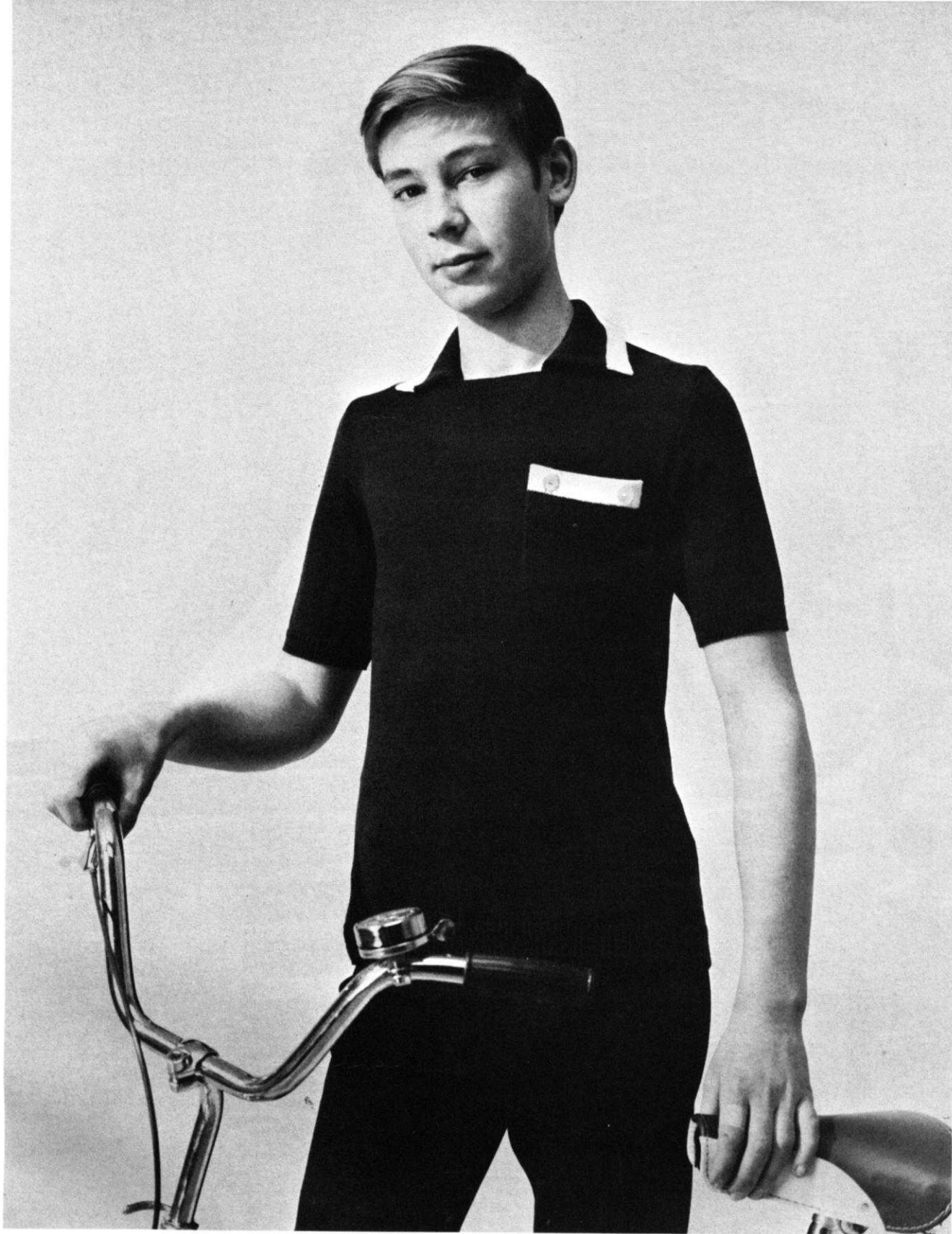






MK 5024

Changing! Knit this dress as shown, then again using another imaginative trim for an entirely different look . . . Try a floral Design around the neckline and sleeve edges. Size 8-9 (Chest 26"-27"). See page 30.



HP 3548

Knit your Teen-age Son a Sporty Pullover in his School Colors . . . and he's ready to take off for the afternoon game. Size 30/38. See page 31.



MK 5023

Adorable! Every little girl will want a dress such as this one knitted in Red with a White trim. The Eyelet Design on the front section is delightfully feminine. Size 7-8 (Chest 25½"-26½"). See page 31.

MK 5019

Perfection . . . for a small girl. Three colors combine beautifully for a charming dress knitted in stockinette stitch with an Eyelet Design on Yoke. Size 6-7 (Chest 24"-25"). See page 32.

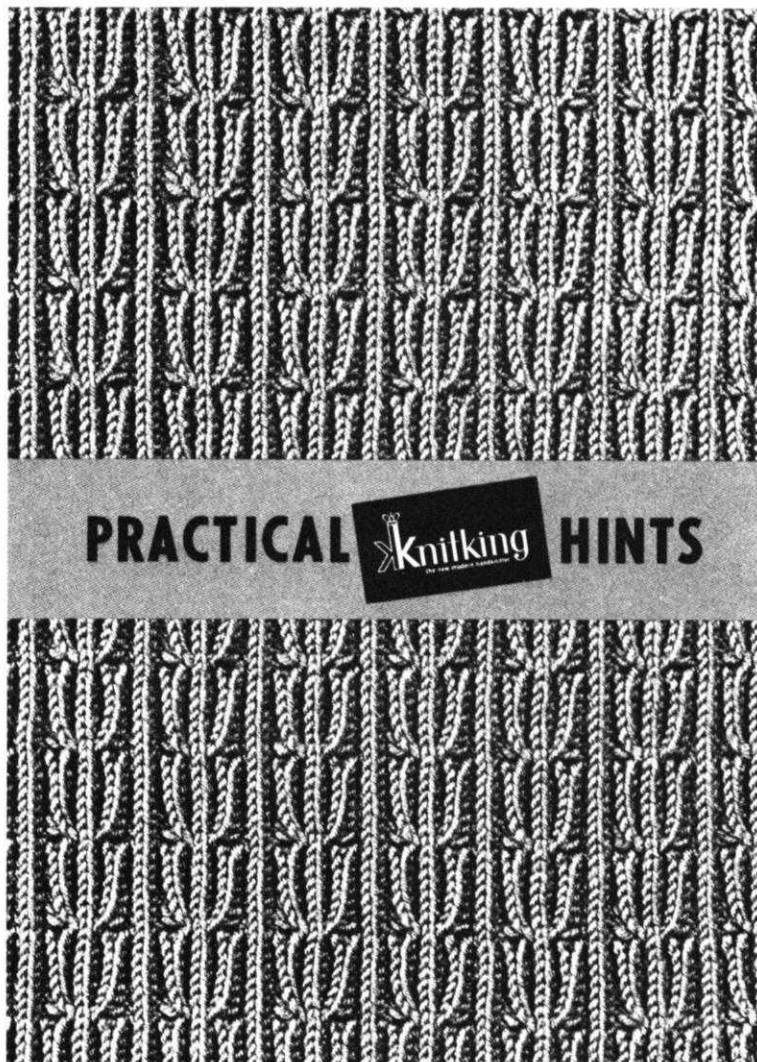


Another First from Knitking . . .

A TEXT BOOK FOR MACHINE KNITTERS

\$2.95

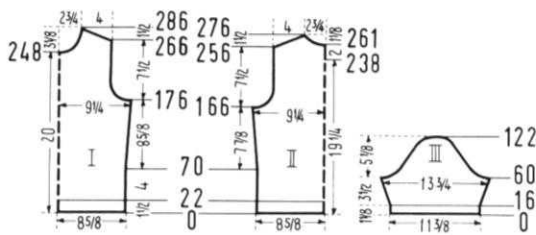
At long last . . . **PRACTICAL KNITTING HINTS** . . . the answer to requests from knitting machine owners from over the whole of the U.S.A. . . . "Give us **PRACTICAL** help with our knitting . . . **SHOW** us **HOW** we can end up with the kind of garments we can be proud of. " . . . Now **KNITKING** presents you with just **THAT** and **MORE** besides . . . There is not another knitting machine book available anywhere that will give you anything like the information in "**PRACTICAL KNITTING HINTS**". . . Looking for hints on how to put your garment together? . . . then turn to the Index and the heading "**Finishing Your Garment**". . . find the pages and the photographs or line drawings combined with simple instructions will literally **SHOW YOU HOW**. Want to know about "**Short Rows**"? . . . the Index gives you the page number and your problem is solved . . . Need a Mitered corner for a Collar? . . . Want to know how to have a perfect Cast-on Edge? . . . How to knit and finish Buttonholes? . . . Want to Chart and knit a **BASIC PATTERN**? . . . make a Twisted or Knotted Cord? . . . how to keep in Pattern when shaping? . . . knit a Norwegian Design? . . . make every type of full fashioning? . . . All this information and much more is given together with photographs and line drawings to make it so easy you won't believe it. Every Knitting Machine owner regardless of the machine they have will be thrilled with our **PRACTICAL KNITTING HINTS** book . . . so . . . **PLEASE** don't wait another minute to place your order or you might find that our very first printing is completely sold out . . .



Be sure to include 40 cents mailing costs and California residents add 15 cents Sales Tax.

Order direct from:

KNITKING, 1128 Crenshaw Boulevard, Los Angeles, California 90019



ROWS 191-238: Work even. After ROW 238 divide the stitches in the center for the back opening, put the needles on the left side into holding position and complete the right half first.

ROWS 239-256: Work even.

ROWS 257-276: SHOULDER SHAPING: Bind off 3 sts. on the right side, then on every other row bind off 3 sts. 7 x and 4 sts. 3 x. AT THE SAME TIME, after ROW 261, then on every other row SHAPE NECK by binding off 8 sts. 1 x, 4 sts. 2 x, 3 sts. 1 x and 2 sts. 3 x. Now move the Cam Box to the left side, turn the Row Counter back to 238, bring all needles back into working position and complete the left half. Follow the instructions from ROWS 239-276 and reverse the sides.

FRONT: (Figure I). Work the front the same as the back to ROW 166.

ROWS 167-176: Work even. After ROW 176 hang the 33rd, 48th, 63rd and 78th sts. on each side onto the neighboring needles, then put the empty needles into the non-working position.

ROWS 177-200: ARMHOLE SHAPING: Bind off 6 sts. beginning next 2 rows, 4 sts. beginning next 2 rows, 3 sts. beginning next 4 rows, 2 sts. beginning next 4 rows, 1 st. beginning next 4 rows and 1 st. on each side of the next 4th and following 4th row. (122 sts.)

ROWS 201-248: Work even.

ROWS 249-286: NECK SHAPING: Bind off the center 16 sts. for NECK, (See Notes to Knit By, inside back cover) then on every other row on Neck Side bind off 4 sts. 1 x, 3 sts. 1 x, 2 sts. 2 x, 1 st. 3 x and on every following 4th row 1 st. 3 x. AT THE SAME TIME, after ROW 266, then on every other row SHAPE SHOULDER by binding off 3 sts. 8 x and 4 sts. 3 x.

SLEEVE: (Figure III). Make two. Cast on 104 sts.

ROWS 1-16: K1, P1, Ribbing. After ROW 16 transfer the ribber sts. to the main machine and continue with stockinette st.

ROWS 17-60: Increase 1 st. on each side after ROW 16, then again every following 4th row 10 x. (126 sts.)

ROWS 61-122: CAP SHAPING: Bind off 6 sts. beginning next 2 rows, 4 sts. beginning next 4 rows, 3 sts. beginning next 2 rows, 2 sts. beginning next 6 rows, 1 st. beginning next 40 rows, 2 sts. beginning next 2 rows, 3 sts. beginning next 2 rows, 4 sts. beginning next 2 rows, 5 sts. beginning next 2 rows and after ROW 122 bind off the remaining 12 sts.

NECKBAND: Cast on 163 sts. and work K1, P1, Ribbing, 8 rows with tension 3 and 8 rows with tension 4. After 16 rows bind off all sts. the crochet method for ribbing.

FINISHING: Embroider small flowers on the front and back section as shown on the picture, using a lazy daisy stitch. Join front and back section at sides and shoulders, easing in the fullness at bustline of front section. Sew sleeves together and set in. Sew bound-off edge of neckband to neckline. Work 1 row of single crochet around back opening.

Make 3 loops on 1 side and sew 3 buttons to the other side of back opening.

SIZE: 14/16. **BACK:** (Figure II). Cast on 172 sts.

ROWS 1-22: K1, P1, Ribbing. After ROW 22 transfer the ribber sts. to the main machine and continue with stockinette st.

ROWS 23-166: Increase 1 st. on each side after ROW 70, then again every following 16th row 5 x. (184 sts.) After ROW 166 hang the 40th, 55th, 70th and 85th sts. on each side onto the neighboring needles, then put the empty needles into the non-working position.

ROWS 167-194: ARMHOLE SHAPING: Bind off 6 sts. beginning next 2 rows, 4 sts. beginning next 2 rows, 3 sts. beginning next 4 rows, 2 sts. beginning next 6 rows, 1 st. beginning next 6 rows and 1 st. on each side of the next 4th and following 4th row. (130 sts.)

ROWS 195-244: Work even. After ROW 244 divide the stitches in the center for the back opening, put the needles on the left side into holding position and complete the right half first.

ROWS 245-262: Work even.

ROWS 263-282: SHOULDER SHAPING: Bind off 3 sts. on the right side, then on every other row bind off 3 sts. 3 x and 4 sts. 7 x. AT THE SAME TIME, after ROW 267, then on every other row SHAPE NECK by binding off 8 sts. 1 x, 4 sts. 2 x, 3 sts. 1 x and 2 sts. 3 x. Now move the Cam Box to the left side, turn the Row Counter back to 244, bring all needles back into working position and complete the left half. Follow the instructions from ROWS 245-282 and reverse the sides.

FRONT: (Figure I). Work the front the same as the back to ROW 166.

ROWS 167-180: Work even. After ROW 180 hang the 40th, 55th, 70th and 85th sts. on each side onto the neighboring needles, then put the empty needles into the non-working position.

ROWS 181-208: ARMHOLE SHAPING: Bind off 6 sts. beginning next 2 rows, 4 sts. beginning next 2 rows, 3 sts. beginning next 4 rows, 2 sts. beginning next 6 rows, 1 st. beginning next 6 rows and 1 st. on each side of the next 4th and following 4th row. (130 sts.)

ROWS 209-258: Work even.

ROWS 259-296: NECK SHAPING: Bind off the center 16 sts. for NECK, (See Notes to Knit By, inside back cover) then on every other row on Neck Side bind off 4 sts. 1 x, 3 sts. 1 x, 2 sts. 2 x, 1 st. 3 x and on every following 4th row 1 st. 3 x. AT THE SAME TIME, after ROW 276, then on every other row SHAPE SHOULDER by binding off 3 sts. 4 x and 4 sts. 7 x.

SLEEVE: (Figure III). Make two. Cast on 111 sts.

ROWS 1-16: K1, P1, Ribbing. After ROW 16 transfer the ribber sts. to the main machine and continue with stockinette st.

ROWS 17-60: Increase 1 st. on each side after ROW 16, then again every following 4th row 10 x. (133 sts.)

ROWS 61-126: CAP SHAPING: Bind off 6 sts. beginning next 2 rows, 4 sts. beginning next 4 rows, 3 sts. beginning next 4 rows, 2 sts. beginning next 4 rows, 1 st. beginning next 44 rows, 2 sts. beginning next 2 rows, 3 sts. beginning next 2 rows, 4 sts. beginning next 2 rows, 5 sts. beginning next 2 rows and after ROW 126 bind off the remaining 13 sts.

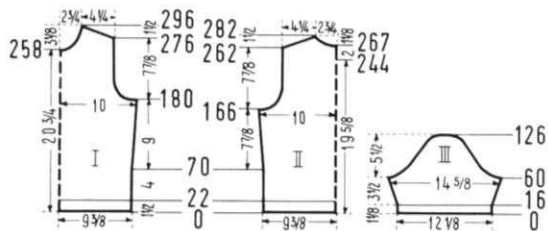
NECKBAND: Cast on 163 sts. and work K1, P1, Ribbing, 8 rows with tension 3 and 8 rows with tension 4. After 16 rows bind off all sts. the crochet method for ribbing.

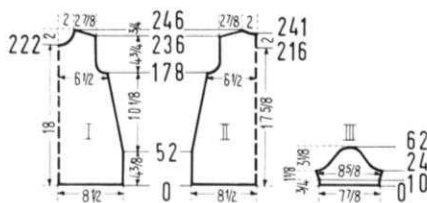
FINISHING: Follow the instructions for SIZE 10/12.

GIRL'S DRESS, MK 5020

SIZE: 5-6 (Chest 23 1/2"-24 1/2"). **MATERIAL:** 7 oz. white KNITTING Subita 2 x 3, Color #104 and a small amount of turquoise for the flowers. **TENSION:** KNITTING 3 to 5. **STITCH** and **ROW GAUGE:** 18 sts. 2", 24 rows 2". The omitted Stitches in the Pattern are counted as Stitches in the gauge and directions. **PATTERN:** Stockinette Stitch with omitted Stitches on the yoke section. **EDGES:** K1, P1, Ribbing.

BACK: (Figure II). Cast on 154 sts.





ROWS 1-178: Decrease 1 st. on each side after ROW 52, then again every following 8th row 8 x and every following 6th row 9 x by always hanging the 3rd st. on each side onto the 2nd needle, then moving the end sts. inward to fill the empty needle. (118 sts.) After ROW 178 hang the 21st, 32nd, 43rd and 54th sts. on each side onto the neighboring needles, then put the empty needles into the non-working position.

ROWS 179-194: ARMHOLE SHAPING: Bind off 4 sts. beginning next 2 rows, 3 sts. beginning next 2 rows, 2 sts. beginning next 4 rows, 1 st. beginning next 4 rows and 1 st. on each side of the following 4th row. (90 sts.)

ROWS 195-216: Work even, then divide the work in the center for the opening, put the needles on the left side into holding position and complete the right half first.

ROWS 217-236: Work even.

ROWS 237-246: SHOULDER SHAPING: Bind off 4 sts. on the right side, then on every other row bind off 4 sts. 2 x and 5 sts. 3 x. AT THE SAME TIME, after ROW 241, then on every other row SHAPE NECK by binding off 8 sts. 1 x, 6 sts. 1 x and 4 sts. 1 x. Now move the Cam Box to the left side, turn the Row Counter back to 216, bring all needles back into working position and complete the left half. Follow the instructions from ROWS 217-246, but reverse the sides.

FRONT: (Figure I). Work the front the same as the back but omit the opening and after ROW 222 bind off the center 10 sts. for NECK, (See Notes to Knit By, inside back cover) then on every other row on Neck Side bind off 4 sts. 1 x, 3 sts. 1 x, 2 sts. 1 x, 1 st. 2 x and 1 st. on the next 4th and following 4th row.

SLEEVE: (Figure III). Make two. Cast on 73 sts.

ROWS 1-10: K1, P1, Ribbing. After ROW 10 transfer the ribber sts. to the main machine and continue with stockinette st.

ROWS 11-24: Increase 1 st. on each side after ROW 12, then again every following 4th row 2 x. (79 sts.)

ROWS 25-62: CAP SHAPING: Bind off 4 sts. beginning next 2 rows, 3 sts. beginning next 2 rows, 2 sts. beginning next 6 rows, 1 st. beginning next 22 rows, 2 sts. beginning next 2 rows, 3 sts. beginning next 2 rows, 5 sts. beginning next 2 rows and after ROW 62 bind off the remaining 11 sts.

NECKBAND: Cast on 111 sts. and work K1, P1, Ribbing, 5 rows with tension 3 and 5 rows with tension 4. After ROW 10 bind off all sts. the crochet method for ribbing.

FINISHING: Embroider small flowers on the front and back section as shown on the picture, using a lazy daisy stitch. Weave front and back section together at sides, 1 st. in on each edge. Join shoulders. Sew sleeves together and set in. Turn under 2" at lower edge and hem to wrong side. Sew bound-off edge of neckband to neckline. Work a row of single crochet around the back opening. Make 3 loops on 1 side and sew 3 buttons to the other side of opening.

MAN'S PULLOVER, HP 3547



SIZE: 44/46. **MATERIAL:** 15 3/4 oz. beige, 1 3/4 oz. brown and 1 3/4 oz. blue KNITKING Subita DRALON 3 ply, Color # 447, 448 and 411. **TENSION:** KNITKING 4 to 6. **STITCH and ROW GAUGE:** 16 sts. 2", 21 rows 2". **PATTERN:** Stockinette Stitch. **EDGES:** K1, P1, Ribbing. **BACK:** (Figure II). Cast on 196 sts. with brown.

ROWS 1-32: K1, P1, Ribbing, working 5 rows brown, 5 rows blue and 22 rows beige. After ROW 32 transfer the ribber sts. to the main machine and with beige continue in stockinette st.

ROWS 33-180: Work even.

ROWS 181-206: ARMHOLE SHAPING: Bind off 5 sts. beginning next 2 rows, 4 sts. beginning next 2 rows, 3 sts. beginning next 2 rows, 2 sts. beginning next 4 rows, 1 st. beginning next 4 rows and 1 st. on each side of every following 4th row 3 x. (154 sts.)

ROWS 207-280: Work even.

ROWS 281-300: SHOULDER SHAPING: Bind off 4 sts. beginning next 8 rows. After ROW 288 bind off the center 16 sts. for NECK. (See Notes to Knit By, inside back cover). Bind off 4 sts. on Shoulder Side and continue to shape shoulder on every other row by binding off 4 sts. 2 x and 5 sts. 4 x. AT THE SAME TIME, Shape Neck on every other row by binding off 6 sts. 1 x, 5 sts. 1 x, 4 sts. 1 x and 3 sts. 2 x.

FRONT: (Figure I). Work the front the same as the back to ROW 162, then divide the stitches in the center for the opening, put the needles on the left side into holding position and complete the right half first.

ROWS 163-300: NECK, ARMHOLE and SHOULDER SHAPING: Decrease 1 st. on the left side after ROW 164, then again every following 3rd row 7 x and every following 5th row 21 x by always hanging the 4th st. on the left side onto the 3rd needle, then moving the end sts. inward to fill the empty needles. AT THE SAME TIME, after ROW 180, then on every other row SHAPE ARMHOLE by binding off 5 sts. 1 x, 4 sts. 1 x, 3 sts. 1 x, 2 sts. 2 x, 1 st. 2 x and 1 st. on every following 4th row 3 x. After ROW 280, then on every other row SHAPE SHOULDER by binding off 4 sts. 7 x and 5 sts. 4 x. Now move the Cam Box to the left side, turn the Row Counter back to 162, bring all needles back into working position and complete the left half. Follow the instructions from ROWS 163-300 and reverse the sides.

SLEEVE: (Figure III). Make two. Cast on 89 sts. with brown. **ROWS 1-32:** K1, P1, Ribbing, working 5 rows with brown, 5 rows with blue and 22 rows with beige. After ROW 32 transfer the ribber sts. to the main machine and with beige, continue in stockinette st.

ROWS 33-192: Increase 1 st. on each side after ROW 32, then again every following 6th row 25 x. (141 sts.)

ROWS 193-206: CAP SHAPING: Bind off 5 sts. beginning next 2 rows, 4 sts. beginning next 2 rows, 3 sts. beginning next 4 rows and 2 sts. beginning next 6 rows.

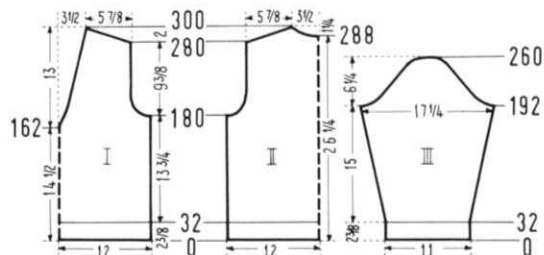
ROWS 207-260: Bind off 1 st. beginning next 4 rows and 2 sts. beginning next 2 rows. Repeat these bind-offs 7 x, then bind off 3 sts. beginning next 2 rows, 4 sts. beginning next 2 rows, 5 sts. beginning next 2 rows and after ROW 260 bind off the remaining 11 sts.

NECKBAND: Cast on 161 sts. with beige and work K1, P1,

CANADIAN READERS

Please note that KNITKING dealers based in the U.S.A. are unable to sell machines and accessories to residents of Canada. They are also unable to sell parts and service. Would all Canadian readers please contact the following appointed KNITKING dealer.

KNITKING Sales and Service
272 Yonge Street
Toronto 1, Ontario



Ribbing, 5 rows with beige, 5 rows with blue and 5 rows with brown. AT THE SAME TIME, bind off 2 sts. on the right side after ROW 2, then again every other row 6 x. After 15 rows bind off all sts. the crochet method for ribbing. Work the second section with reverse shaping, casting on from right to left.

FINISHING: Join front and back section at sides and shoulders. Sew sleeves together and set in. Join neckband at center back and front, then sew cast-on edge to neckline.

BOY'S PULLOVER, KK 5025

SIZE: 7-8. (Chest 25"-26".) **MATERIAL:** 8³/₄ oz. beige and small amounts of brown and blue KNITTING Subita DRALON 3 ply, Color # 447, 448 and 411. **TENSION:** KNITTING 4 to 6. **STITCH** and **ROW GAUGE:** 16 sts. 2", 21 rows 2". **PATTERN:** Stockinette Stitch. **EDGES:** K1, P1, Ribbing. **BACK:** (Figure II). Cast on 112 sts. with brown.

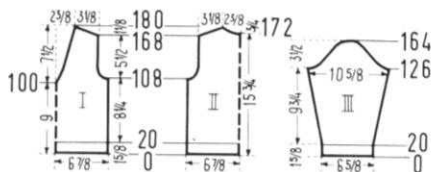
ROWS 1-20: K1, P1, Ribbing, working 4 rows brown, 4 rows blue and 12 rows beige. After ROW 20 transfer the ribber sts. to the main machine and with beige, continue in stockinette st.

ROWS 21-108: Work even.

ROWS 109-122: ARMHOLE SHAPING: Bind off 4 sts. beginning next 2 rows, 2 sts. beginning next 4 rows, 1 st. beginning next 4 rows and 1 st. on each end of the following 4th row. (90 sts.)

ROWS 123-168: Work even.

ROWS 169-180: SHOULDER SHAPING: Bind off 3 sts. beginning next 4 rows. After ROW 172 bind off the center



12 sts. for NECK. (See Notes to Knit By, inside back cover). Bind off 4 sts. on Shoulder Side and continue to shape shoulder on every other row by binding off 4 sts. 4 x. AT THE SAME TIME, Shape Neck on every other row by binding off 6 sts. 1 x, 4 sts. 1 x and 3 sts. 1 x.

FRONT: (Figure I). Work the front the same as the back to ROW 100, then divide the sts. in the center for the opening, put the needles on the left side into holding position and complete the right half first.

ROWS 101-180: NECK, ARMHOLE, and SHOULDER SHAPING: Decrease 1 st. on the left side after ROW 102, then again every following 3rd row 4 x and every following 4th row 14 x by always hanging the 4th st. on the left side onto the 3rd needle, then moving the end sts. inward to fill the empty needle. AT THE SAME TIME, after ROW 108, then on every other row SHAPE ARMHOLE by binding off 4 sts. 1 x, 2 sts. 2 x, 1 st. 2 x and 1 st. on the following 4th row 1 x. After ROW 168, then on every other row SHAPE SHOULDER by binding off 3 sts. 2 x and 4 sts. 5 x. Now move the Cam Box to the left side, turn the Row Counter back to 100, bring all needles back into working position and complete the left half. Follow the instructions from ROWS 101-180 and reverse the sides.

SLEEVE: (Figure III). Make two. Cast on 55 sts. with brown.

ROWS 1-20: K1, P1, Ribbing, working 4 rows brown, 4 rows blue and 12 rows beige. After ROW 20 transfer the ribber sts. to the main machine and with beige, continue in stockinette st.

ROWS 21-126: Increase 1 st. on each side after ROW 26, then again every following 6th row 15 x. (87 sts.)

ROWS 127-136: CAP SHAPING: Bind off 4 sts. beginning next 2 rows, 3 sts. beginning next 4 rows and 2 sts. beginning next 4 rows.

ROWS 137-164: Bind off 1 st. beginning next 2 rows and 2 sts. beginning next 2 rows. Repeat these bind-offs 5 x, then bind off 3 sts. beginning next 2 rows, 4 sts. beginning next 2 rows and after ROW 164 bind off the remaining 9 sts.

NECKBAND: Cast on 99 sts. with beige and work K1, P1, Ribbing, 4 rows beige, 4 rows blue and 4 rows brown. AT THE SAME TIME, bind off 2 sts. on the right side after ROW 2, then again every other row 4 x. After 12 rows bind off all sts. the crochet method for ribbing. Work the second section with reverse shaping, casting on from right to left. **FINISHING:** Join front and back section at side and shoulders. Sew sleeves together and set in. Join neckband at center back and front, then sew cast-on edge to neckline.

WOMAN'S PULLOVER, DP 7670



SIZE: 14/16. **MATERIAL:** 10¹/₂ oz. lilac and 1³/₄ oz. pink KNITTING Subita DRALON 3 ply, Color #407 and #405. **TENSION:** KNITTING 4 to 6. **STITCH** and **ROW GAUGE:** 16 sts. 2", 21 rows 2". **PATTERN:** Stockinette Stitch. **EDGES:** K1, P1, Ribbing.

BACK: (Figure II). Cast on 154 sts. with pink.

ROWS 1-16: K1, P1, Ribbing, working 5 rows pink, 5 rows lilac, 5 rows pink and 1 row lilac. After ROW 16 transfer the ribber sts. to the main machine and with lilac continue in stockinette st.

ROWS 17-146: Increase 1 st. on each side after ROW 58, then again every following 18th row 4 x. (164 sts.)

ROWS 147-168: ARMHOLE SHAPING: Bind off 5 sts. beginning next 2 rows, 4 sts. beginning next 2 rows, 3 sts. beginning next 4 rows, 2 sts. beginning next 2 rows, 1 st. beginning next 4 rows and 1 st. on each side of the next 4th and following 4th row. (122 sts.)

ROWS 169-208: Work even.

ROWS 209-238: SHOULDER SHAPING: Bind off 2 sts. beginning next 6 rows and 3 sts. beginning next 16 rows. After ROW 230 bind off the center 14 sts. for NECK. (See Notes to Knit By, inside back cover). Bind off 3 sts. on Shoulder Side and continue to shape shoulder on every other row by binding off 3 sts. 4 x. AT THE SAME TIME, Shape Neck on every other row by binding off 4 sts. 1 x, 3 sts. 1 x and 2 sts. 1 x.

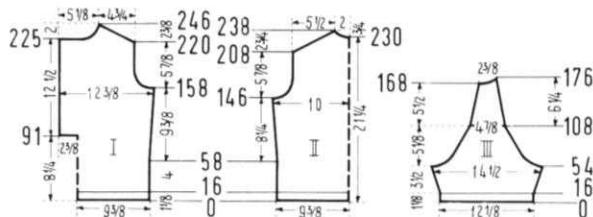
FRONT: (Figure I). Work the front the same as the back to ROW 90, then put 73 sts. on the left side on a stitch holder and complete the right half first.

ROWS 91-158: After Row 91 cast on 13 sts. on the left side for the facing. Increase 1 st. on the right side after ROW 94, then again every following 18th row 2 x. AT THE SAME TIME, work buttonholes after ROWS 107 and 141 over the 3rd-7th and 19th-23rd needles counting from the left side. (101 sts.)

ROWS 159-180: ARMHOLE SHAPING: Bind off 5 sts. on the right side, then on every other row bind off 4 sts. 1 x, 3 sts. 2 x, 2 sts. 1 x, 1 st. 2 x and 1 st. on the next 4th and following 4th row. AT THE SAME TIME, work buttonholes after ROW 175 over the same needles as before.

ROWS 181-220: Work even, and make buttonholes after ROW 209.

ROWS 221-246: SHOULDER SHAPING: Bind off 2 sts. on the right side, then on every other row bind off 2 sts. 3 x and 3 sts. 10 x. AT THE SAME TIME, after ROW 225, then on every other row SHAPE NECK by binding off 26 sts. 1 x, 4 sts. 2 x, 3 sts. 1 x, 2 sts. 1 x, and 1 st. 3 x. Now move the Cam Box to the left side, turn the Row Counter back to 90, hang the sts. from the stitch holder back on the machine and complete the left half. Follow



the instructions from ROWS 91-246 but reverse the sides and for the facing cast on 25 sts. instead of 13 sts. on the right side after ROW 91. Omit the buttonholes.

SLEEVE: (Figure III). Cast on 100 sts. with pink.

ROWS 1-16: K1, P1, Ribbing, working 5 rows pink, 5 rows lilac, 5 rows pink and 1 row lilac. After ROW 16 transfer the ribber sts. to the main machine and with lilac continue in stockinette st.

ROWS 17-54: Increase 1 st. on each side after ROW 16, then again every following 4th row 8 x. (118 sts.)

ROWS 55-66: CAP SHAPING: Bind off 5 sts. beginning next 2 rows, 4 sts. beginning next 2 rows, 3 sts. beginning next 4 rows and 2 sts. beginning next 4 rows.

ROWS 67-108: Decrease 2 sts. on each side after ROW 68, then again every following 4th row 9 x by always hanging the 3rd and 4th sts. on each side onto the 5th and 6th needles, then moving the end sts. inward to fill the empty needles.

ROWS 109-168: Decrease 1 st. on each side after ROW 110, then again every following 6th row 9 x by always hanging the 3rd st. on each side onto the 4th needle, then moving the end sts. inward to fill the empty needle.

ROWS 169-176: Work short rows. (See Notes to Knit By, inside back cover). On the left side put 5 needles 1 x, 4 needles 2 x and 3 needles 1 x into holding position. AT THE SAME TIME, decrease 1 st. on the right side after ROW 170. After ROW 176 bring all needles back into working position and bind off all remaining 19 sts. Work the second sleeve with reverse shaping.

NECKBAND: Cast on 141 sts. with pink and work stockinette st., 5 rows pink with tension 6, 5 rows lilac with tension 5, 10 rows pink with tension 4, 5 rows lilac with tension 5 and 5 rows pink with tension 6. AT THE SAME TIME, work buttonholes after ROWS 7 and 22 over the 4th-8th and 23rd-27th needles counting from the left side. After ROW 30 bind off all sts.

FINISHING: Join front and back section at sides, easing in the fullness at bustline of front section. Sew sleeves together and sew to front and back section. Turn under 13 sts. on each side of front opening and hem to wrong side. Sew 1 long edge of neckband to inside and 1 long edge to outside of neckline, overlapping $\frac{3}{4}$ " on each side of front opening. Finish buttonholes, sew on buttons.

GIRL'S DRESS, MK 5022

SIZE: 3-4 (Chest 22"-23".) **MATERIAL:** 7 oz. pink and a small amount of white KNITKING Subita DRALON 3 ply, Color #405 and #401. **TENSION:** KNITKING 4 to 6. **STITCH** and **ROW GAUGE:** 16 sts. 2", 21 rows 2". **PATTERN:** Stockinette Stitch. **EDGES:** K1, P1, Ribbing.

BACK: (Figure II). Cast on 134 sts.

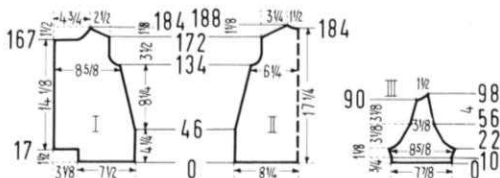
ROWS 1-134: Decrease 1 st. on each side after ROW 46, then again every following 6th row 12 x and every following 4th row 3 x by always hanging the 3rd st. on each side onto the 2nd needle, then moving the end sts. inward to fill the empty needle. (102 sts.)

ROWS 135-146: ARMHOLE SHAPING: Bind off 4 sts. beginning next 2 rows, 2 sts. beginning next 4 rows and 1 st. beginning next 6 rows. (80 sts.)

ROWS 147-172: Work even.

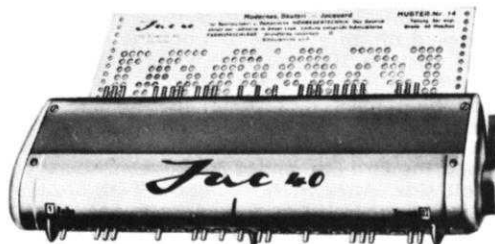
ROWS 173-188: SHOULDER SHAPING: Bind off 3 sts. beginning next 12 rows. After ROW 184 bind off the center 12 sts. for NECK. (See Notes to Knit By, inside back cover). Bind off 3 sts. on Shoulder Side and continue to shape shoulder on every other row by binding off 3 sts. 2 x. AT THE SAME TIME, Shape Neck after ROW 185 by binding off 7 sts. 1 x.

FRONT: (Figure I). Cast on 61 sts.



THE JAC 40 IS A MUST

for fast easy knitting of
Jaquard and Ski-sweater
designs



Patterns are selected—row by row—through a pre-stamped card that is fed into the Jac.

There are over 140 cards available and illustrations of them are included with each Jac.

Jac 40's are made for most brands of machines (with the exception of Japanese machines). When ordering be sure to specify your brand of knitter as needle spacings vary. Simple to use and an essential tool for the modern knitter, Jac 40's are \$24.95 complete with 3 cards for practicing the 3 techniques, plus complete instructions.

Order from your dealer or direct from

KNITKING

1128 Crenshaw Boulevard, Los Angeles, Calif. 90019

Shipping Cost \$1.50—California residents add 5% sales tax.

ROWS 1-17: Work even, then cast on 26 sts. on the left side. **ROWS 18-134:** Work buttonholes after ROWS 41, 68, 95 and 122 over the 4th-7th and 20th-23rd needles counting from the left side. AT THE SAME TIME, decrease 1 st. on the right side after ROW 46, then again every following 6th row 12 x and every following 4th row 3 x as you did on the back. (71 sts.)

ROWS 135-146: ARMHOLE SHAPING: Bind off 4 sts. on the right side, then on every other row bind off 2 sts. 2 x and 1 st. 3 x. (60 sts.)

ROWS 147-167: Work even and make buttonholes after ROW 149 over the same needles as before.

ROWS 168-184: NECK SHAPING: Bind off 26 sts. on the left side, then on every other row bind off 4 sts. 1 x, 3 sts. 1 x, 2 sts. 2 x and 1 st. 2 x. AT THE SAME TIME, after ROW 172, then on every other row SHAPE SHOULDER by binding off 3 sts. 7 x. Make second front section with reverse shapings and omit the buttonholes.

SLEEVE: (Figure III). Cast on 64 sts. with white.

ROWS 1-10: K1, P1, Ribbing, working 3 rows white, 3 rows pink, 3 rows white and 1 row pink. After ROW 10 transfer the ribber sts. to the main machine and with pink, continue in stockinette st.

ROWS 11-22: Increase 1 st. on each side after Rows 10, 14 and 18. (70 sts.)

ROWS 23-30: CAP SHAPING: Bind off 3 sts. beginning next 4 rows and 2 sts. beginning next 4 rows.

ROWS 31-56: Decrease 2 sts. on each side after ROW 32, then again every following 4th row 5 x by always hanging the 3rd and 4th sts. on each side onto the 5th and 6th needles, then moving the end sts. inward to fill the empty needles. (26 sts.)

ROWS 57-90: Decrease 1 st. on each side after ROW 58, then again every following 6th row 5 x by always hanging

the 3rd st. on each side onto the 4th needle, then moving the end sts. inward to fill the empty needle.

ROWS 91-98: Work short rows. (See Notes to Knit By, inside back cover). On the left side put 3 needles 3 x and 2 needles 1 x into holding position. AT THE SAME TIME, decrease 1 st. on the right side after ROW 94. After ROW 98 bring all needles back into working position, then bind off all remaining 13 sts. Work the second sleeve with reverse shaping.

POCKET: Make two. Cast on 35 sts. with pink.

ROWS 1-28: Work stockinette st. After ROW 28 transfer every other st. to the ribber and continue with K1, P1, Ribbing.

ROWS 29-37: Work 3 rows white, 3 rows pink and 3 rows white, then bind off all sts. the crochet method for ribbing.

NECKBAND: Cast on 103 sts. with white and work stockinette st., 3 rows with white and tension 6, 3 rows with pink and tension 5, 6 rows with white and tension 4, 3 rows with pink and tension 5 and 3 rows with white and tension 6. AT THE SAME TIME, work buttonholes after ROWS 4 and 13 over the 3rd-6th and 17th-20th needles counting from the left side. After ROW 18 bind off all sts.

FINISHING: Weave front and back sections together at sides, 1 st. in on each edge. Sew sleeves together and join to front and back sections. Turn under 13 sts. on front edges and 17 rows on lower edge and hem to wrong side. Sew 1 long edge of neckband to inside and 1 long edge to outside of neckline, overlapping about 1/2" on each side of front opening. (See picture) Finish buttonholes, sew on buttons.

WOMAN'S SHELL, DP 7666



SIZE: 12/14. **MATERIAL:** 8 oz. green Pauline Denham's Splendour and 3 1/2 oz. dark blue. **KNITTING** Subita Crepe 2 x 3. **TENSION:** KNITTING 4 to 6. **STITCH and ROW GAUGE:** 17 sts. 2", 23 rows 2". **PATTERN:** Stockinette Stitch, worn on the purl side. **EDGES:** Stockinette Stitch, worn on the knit side.

BACK: (Figure II). Cast on 157 sts. with blue and work stockinette st.

ROWS 1-46: Work even, then hang the cast-on sts. back on the machine behind the latches to form the hem.

ROW 47: Knit the sts. together with green, then turn the work.

ROWS 48-184: Increase 1 st. on each side after ROW 92, then again every following 18th row 4 x. (167 sts.)

ROWS 185-208: ARMHOLE SHAPING: Bind off 6 sts. beginning next 2 rows, 4 sts. beginning next 2 rows, 3 sts. beginning next 2 rows, 2 sts. beginning next 4 rows, 1 st. beginning next 6 rows and 1 st. on each side of the next 4th and following 4th row. (123 sts.)

ROWS 209-252: Work even.

ROWS 253-256: SHOULDER and NECK SHAPING: The Shoulder Shaping is obtained by knitting short rows. (See Notes to Knit By, inside back cover). Alternately on each side put 5 needles 2 x into holding position. After ROW 256 bind off the center 19 sts. for NECK, then put the needles on the right side into holding position and work the left half first.

ROWS 257-260: On the left side put 5 needles 1 x and 6 needles 1 x into holding position. AT THE SAME TIME,

bind off 6 sts. on the Neck Side after ROW 258.

ROW 261: Bind off 4 sts. on the Neck Side, bring the 21 needles on the left side into working position and knit 1 row. Now put all remaining needles on the left side into holding position. On the right side, bring all but the 10 needles which are in hold for the Shoulder Shaping into working position, turn the Row Counter back to 256 and work the right half. Follow the instructions from ROWS 257-261, but reverse the sides. After both shoulder sides have been worked to ROW 261 turn the work, put the needles on the left side into holding position and continue working the right half with blue. (Cam Box is at the right side and Row Counter at 261.)

ROWS 262-280: After ROW 262, then on every other row continue to Shape Neck by binding off 3 sts. 3 x, 2 sts. 2 x and 1 st. 2 x. After ROW 280 bind off the remaining 27 sts. Now move the Cam Box to the left side, bring the remaining needles into working position, turn the Row Counter back to 261 and complete the left half. Follow the instructions from ROWS 262-280.

FRONT: (Figure I). Work the front the same as the back to ROW 184.

ROWS 185-194: Work even.

ROWS 195-218: ARMHOLE SHAPING: Bind off 6 sts. beginning next 2 rows, 4 sts. beginning next 2 rows, 3 sts. beginning next 2 rows, 2 sts. beginning next 4 rows, 1 st. beginning next 6 rows and 1 st. on each side of the next 4th and following 4th row. (123 sts.)

ROWS 219-240: Work even.

ROWS 241-266: NECK and SHOULDER SHAPING: Bind off the center 25 sts. for NECK, then put the needles on the right side into holding position and work the left half first. After ROW 242, then on every other row on Neck Side bind off 5 sts. 1 x, 4 sts. 1 x, 3 sts. 1 x, 2 sts. 3 x, 1 st. 2 x and 1 st. on the next 4th and following 4th row. AT THE SAME TIME, after ROW 258, then on every other row SHAPE SHOULDER by putting 5 needles 3 x and 6 needles 1 x into holding position.

ROW 267: Bring the Shoulder needles into working position and knit 1 row, then put the needles back into holding position and work the right half. Turn the Row Counter back to 240 and follow the instructions from ROWS 241-267. After both Shoulder sides have been worked to ROW 267 turn the work, then put the needles on the left side into holding position and continue working the right half with blue. Cam Box is at right side and Row Counter at 267.

ROWS 268-290: Work even, then bind off the remaining 27 sts. Work the left half to correspond.

NECKBAND: Cast on 188 sts. with blue and work stockinette st., 3 rows with tension 5, 3 rows with tension 4, 8 rows with tension 3, 3 rows with tension 4 and 3 rows with tension 5. After 20 rows bind off all sts. the crochet method.

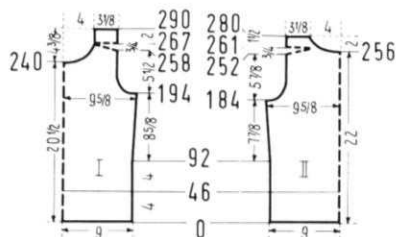
ARMHOLE BANDS: Make two. Cast on 120 sts. and work 20 rows stockinette st., using the same tensions as on the neckband and AT THE SAME TIME decreasing 1 st. on each side after ROWS 4 and 8, then increasing 1 st. on each side after ROWS 12 and 16. After 20 rows bind off all sts.

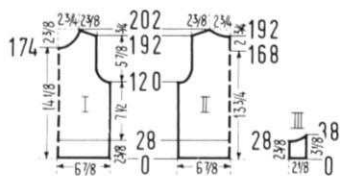
FINISHING: Join front and back section at sides and shoulders, easing in the fullness at bustline of front section. Join short ends of neckband and short ends of armhole bands. Sew 1 edge of neckband to inside and 1 edge to outside of neckline. Sew armhole bands to armholes in the same manner.

GIRL'S PLEATED SKIRT AND SHELL, MK 5021

SIZE: 7-8. (Chest 25"-26"). **MATERIAL:** SKIRT: 10 1/2 oz. white. SHELL: 3 1/2 oz. yellow and 1 3/4 oz. blue **KNITTING** Subita Crepe 2 x 3, Color #104, #105 and #118. **TENSION:** KNITTING 4 to 6. **STITCH and ROW GAUGE:** 17 sts. 2", 24 rows 2". **PATTERN:** Skirt: Alternately knit 31, purl 1. SHELL: Stockinette Stitch.

SKIRT: The Skirt is worked in 4 sections. Each section is 12" long. Cast on 191 sts. and work 144 rows knit 31 sts. and purl 1 st. (alternately 31 sts. on the main machine and 1 st. on the ribber). After 144 rows bind off all sts.





Make 3 more sections like this.

WAISTBAND: Cast on 185 sts. and work 24 rows stockinette st., then bind off all sts.

SHELL: BACK: (Figure II). Cast on 120 sts. with blue.

ROWS 1-28: Work even, then hang the cast-on sts. back on the machine behind the latches to form the hem, then continue working with yellow.

ROWS 29-120: Work even.

ROWS 121-140: ARMHOLE SHAPING: Bind off 5 sts. beginning next 2 rows, 3 sts. beginning next 2 rows, 2 sts. beginning next 4 rows, 1 st. beginning next 4 rows and 1 st. on each side of the next 4th and following 4th row. (88 sts.)

ROWS 141-168: Work even, then divide the sts. in the center for the opening, put the sts. on the left side into holding position and complete the right half first.

ROWS 169-192: Work even.

ROWS 193-202: SHOULDER SHAPING: Bind off 3 sts. on the right side, then on every other row bind off 3 sts. 3 x and 4 sts. 2 x. AT THE SAME TIME, after ROW 193, then on every other row SHAPE NECK by binding off 8 sts. 1 x, 6 sts. 1 x, 5 sts. 1 x, 3 sts. 1 x and 2 sts. 1 x. Now move the Cam Box to the left side, turn the Row Counter back to 168, bring all needles into working position and complete the left half. Follow the instructions from ROWS 169-202, but reverse the sides.

FRONT: (Figure I). Work the front the same as the back to ROW 174, but omit the opening.

ROWS 175-202: NECK SHAPING: Bind off the center 18 sts. (See Notes to Knit By, inside back cover), then on every other row on Neck Side bind off 4 sts. 1 x, 3 sts. 1 x, 2 sts. 2 x, 1 st. 2 x and 1 st. on the next 4th and following 4th row. AT THE SAME TIME, after ROW 192, then on every other row SHAPE SHOULDER by binding off 3 sts. 4 x and 4 sts. 2 x.

SHOULDER FLAP: (Figure III). Cast on 19 sts. with blue.

ROWS 1-28: Work even.

ROWS 29-38: Work short rows (See Notes to Knit By). On the left side put 6 needles 1 x, 4 needles 1 x, 3 needles 1 x and 2 needles 2 x into holding position. After ROW 38 bring all needles into working position and bind off all st. Make the second flap with reverse shaping.

NECKBAND: Cast on 104 sts. with blue. Work 3 rows with tension 6, 3 rows with tension 5, 8 rows with tension 4, 3 rows with tension 5 and 3 rows with tension 6. After 20 rows bind off all sts.

ARMHOLE BAND: Make two. Cast on 95 sts. Work 20 rows, using the same tensions as you did for the neckband and AT THE SAME TIME, decrease 1 st. on each side after ROWS 4 and 8, then increase 1 st. on each side after ROWS 12 and 16. After 20 rows bind off all sts.

FINISHING: SKIRT: The outer pleat folds are made by slip stitch crocheting. Beginning at the lower edge (cast-on edge) and working up toward the waistline, slip stitch crochet into each 11th knit stitch laying on the left side of each purl stitch ridge. After completing the pleats on each section, crochet the sections together, leaving 1 seam open, then steam press the pleats. Now crochet the last seam together, leaving a 2" opening. Work 1 row of single crochet around this opening. Sew an elastic band against upper edge, easing in the pleats. Sew 1 edge of waist band to inside, then fold band over the elastic band to outside and hem. Sew hooks and eyes to waist band.

SHELL: Join front and back section at sides and shoulders. Sew flaps to shoulders, centering the flaps over the shoulder seams. Join short ends of armhole bands. Sew 1 edge of neckband to inside and 1 edge to outside of neckline. Sew armhole bands to armholes in the same manner. Work

1 row of single crochet around back opening. Make 2 loops on 1 side and sew 2 buttons to other side of opening.

WOMAN'S SHELL, DP 7672



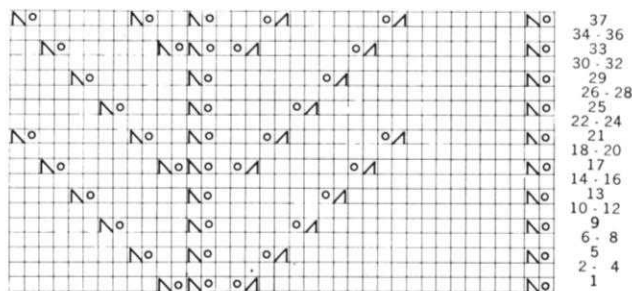
SIZE: 10/12 and 14/16. **MATERIAL:** 10 1/2 oz. (12 1/4 oz.) light blue KNIT-KING Subita DRALON 3 ply, Color #406. **TENSION:** KNITTING 4 to 6. **STITCH and ROW GAUGE:** 15 sts. 2", 21 rows 2". **PATTERN:** Stockinette Stitch with Eyelet Design on the front section according to chart. **EDGES:** K1, P1, Ribbing. **SIZE:** 10/12. **BACK:** (Figure II). Cast on 131 sts.

ROWS 1-16: K1, P1, Ribbing. After ROW 16 transfer the ribber sts. to the main machine and continue with stockinette st.

ROWS 17-164: Increase 1 st. on each side after ROW 58, then again every following 20th row 4 x. (141 sts.)

ROWS 165-184: ARMHOLE SHAPING: Bind off 3 sts. beginning next 4 rows, 2 sts. beginning next 4 rows, 1 st. beginning next 4 rows and 1 st. on each side of the next 4th and following 4th row (113 sts.)

ROWS 185-230: Work even.



ROWS 231-242: NECK and SHOULDER SHAPING: Both shapings are started at the same row. Bind off the center 17 sts. for NECK. (See Notes to Knit By, inside back cover), then on every other row on Neck Side bind off 6 sts. 1 x, 4 sts. 1 x, 3 sts. 2 x and 2 sts. 1 x. AT THE SAME TIME, after ROW 230, then on every other row SHAPE SHOULDER by binding off 4 sts. 5 x and 5 sts. 2 x.

FRONT: (Figure I). Cast on 131 sts.

ROWS 1-16: K1, P1, Ribbing. After ROW 16 transfer the ribber sts. to the main machine and continue with stockinette st.

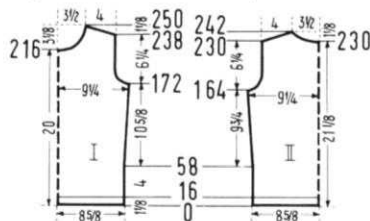
ROWS 17-18: Work even. After ROW 18 hang the 20th, 43rd, 45th, 66th, 89th, 91st and 112th sts. onto the left neighboring needles and the 41st and 87th sts. onto the right neighboring needles, then work the Eyelet Design according to chart, always repeating the Pattern beginning with ROW 6 of the chart.

ROWS 19-172: Increase 1 st. on each side after ROW 58, then again every following 20th row 4 x. (141 sts.)

ROWS 173-192: ARMHOLE SHAPING: Bind off 3 sts. beginning next 4 rows, 2 sts. beginning next 4 rows, 1 st. beginning next 4 rows and 1 st. on each side of the next 4th and following 4th row. (113 sts.)

ROWS 193-216: Work even.

ROWS 217-250: NECK SHAPING: Bind off the center 11 sts. for NECK as you did on the back, then on every other row



on Neck Side bind off 5 sts. 1 x, 4 sts. 1 x, 3 sts. 1 x, 2 sts. 2 x, 1 st. 2 x and 1 st. on every following 4th row 3 x. AT THE SAME TIME, after ROW 238, then on every other row SHAPE SHOULDER by binding off 4 sts. 5 x and 5 sts. 2 x.

NECKBAND: Cast on 163 sts. and work 10 rows K1, P1, Ribbing, then bind off all sts. the crochet method for ribbing.

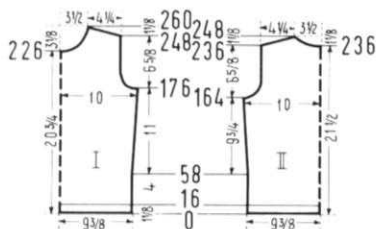
FINISHING: Join front and back section at sides and shoulders, easing in the fullness at bustline of front section. Join short ends of neckband, then sew neckband to neckline. Turn under 4 sts. around armhole and hem to wrong side.

SIZE: 14/16. **BACK:** (Figure II). Cast on 143 sts.

ROWS 1-16: K1, P1, Ribbing. After ROW 16 transfer the ribber sts. to the main machine and continue with stockinette st.

ROWS 17-164: Increase 1 st. on each side after ROW 58, then again every following 20th row 4 x. (153 sts.)

ROWS 165-186: **ARMHOLE SHAPING:** Bind off 4 sts. beginning next 2 rows, 3 sts. beginning next 2 rows, 2 sts.



beginning next 6 rows, 1 st. beginning next 4 rows and 1 st. on each side of the next 4th and following 4th row. (119 sts.)

ROWS 187-236: Work even.

ROWS 237-248: **NECK and SHOULDER SHAPING:** Both shapings are started at the same row. Bind off the center 17 sts. for NECK. (See Notes to Knit By, inside back cover) then on every other row on Neck Side bind off 6 sts. 1 x, 4 sts. 1 x, 3 sts. 2 x and 2 sts. 1 x. AT THE SAME TIME, after ROW 236, then on every other row SHAPE SHOULDER by binding off 4 sts. 2 x and 5 sts. 5 x.

FRONT: (Figure I). Cast on 143 sts.

ROWS 1-16: K1, P1, Ribbing. After ROW 16 transfer the ribber sts. to the main machine and continue with stockinette st.

ROWS 17-18: Work even. After ROW 18 hang the 26th, 49th, 51st, 72nd, 95th, 97th and 118th sts. onto the left neighboring needles and the 47th and 93rd sts. onto the right neighboring needles, then work the Eyelet Design according to chart, always repeating the Pattern beginning with ROW 6 of the chart.

ROWS 19-176: Increase 1 st. on each side after ROW 58, then again every following 20th row 4 x. (153 sts.)

ROWS 177-198: **ARMHOLE SHAPING:** Bind off 4 sts. beginning next 2 rows, 3 sts. beginning next 2 rows, 2 sts. beginning next 6 rows, 1 st. beginning next 4 rows and 1 st. on each side of the next 4th and following 4th row. (119 sts.)

ROWS 199-226: Work even.

ROWS 227-260: **NECK SHAPING:** Bind off the center 11 sts. as you did on the back, then on every other row on Neck Side bind off 5 sts. 1 x, 4 sts. 1 x, 3 sts. 1 x, 2 sts. 2 x, 1 st. 2 x, and 1 st. on every following 4th row 3 x. AT THE SAME TIME, after ROW 248, then on every other row SHAPE SHOULDER by binding off 4 sts. 2 x and 5 sts. 5 x.

NECKBAND and FINISHING: Follow the instructions for SIZE 10/12.

**KNITKINGS' INTERCHANGEABLE YARN CHART
ALLOWS YOU TO SUBSTITUTE NATIONALLY SOLD
YARNS. PRICE \$1.00 PLUS 12c POSTAGE. CALIF.
RESIDENTS 5c SALES TAX.**

WOMAN'S TWO PIECE DRESS, DK 7662



SIZE 8/10 and 12/14. MATERIAL: 12 1/4 oz. (14 oz.) turquoise KNIT-KING Subita DRALON 2 ply, Color #444 and taffeta to line the skirt.

TENSION: KNITTING 1 to 3. **STITCH and ROW GAUGE:** Stockinette Stitch and Pattern Stitch 20 sts. 2", 27 rows 2". **PATTERN:** Stockinette Stitch and Eyelet Design on the yoke and sleeves according to chart, always repeating the Pattern after ROW 10 on the chart. **EDGES:** K1, P1, Ribbing.

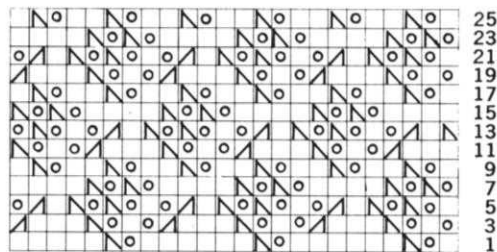
SIZE: 8/10. SKIRT: (Figure IV). Cast on 112 sts.

ROWS 1-302: Decrease 1 st. on each side after ROW 54, then again every following 20th row 8 x, every following 14th row 2 x and every following 12th row 5 x by always hanging the 4th st. on each side onto the 3rd needle, then moving the end sts. inward to fill the empty needle. AT THE SAME TIME, for the DART after ROW 246, decrease 2 sts., then again every following 8th row 7 x. For the first decrease hang the 45th and 47th sts. onto the 46th needle, then move the end sts. inward to fill the empty needles. The next decreases lie directly above.

ROWS 303-334: Work even, then bind off the remaining 64 sts. Make 3 more sections like this.

BLOUSE: BACK: (Figure II). Cast on 168 sts.

ROWS 1-18: K1, P1, Ribbing. After ROW 18 transfer the ribber sts. to the main machine and continue with stockinette st.



ROWS 19-186: Increase 1 st. on each side after ROW 78, then again every following 18th row 5 x. (180 sts.)

ROWS 187-210: **ARMHOLE SHAPING:** Bind off 5 sts. beginning next 2 rows, 3 sts. beginning next 4 rows, 2 sts. beginning next 4 rows, 1 st. beginning next 6 rows and 1 st. on each side of the next 4th and following 4th row. (140 sts.)

ROWS 211-254: Work even and AT THE SAME TIME, begin the Eyelet Design after ROW 228. After ROW 254 divide the stitches in the center for the opening, put the needles on the left side into holding position and complete the right half first.

ROWS 255-282: Work even.

ROWS 283-304: **SHOULDER SHAPING:** Bind off 3 sts. on the right side, then on every other row bind off 3 sts. 1 x and 4 sts. 10 x. AT THE SAME TIME, after ROW 287, then on every other row SHAPE NECK by binding off 6 sts. 1 x, 4 sts. 1 x, 3 sts. 2 x and 2 sts. 4 x. Now move the Cam Box to the left side, turn the Row Counter back to 254, bring all needles back into working position and complete the left half. Follow the instructions from ROWS 255-304 and reverse the sides.

FRONT: (Figure I). Work the front the same as the back to ROW 186.

ROWS 187-196: Work even.

ROWS 197-220: **ARMHOLE SHAPING:** Bind off 5 sts. beginning next 2 rows, 3 sts. beginning next 4 rows, 2 sts. beginning next 4 rows, 1 st. beginning next 6 rows and 1 st. on each side of the next 4th and following 4th row. (140 sts.)

ROWS 221-276: Work even and AT THE SAME TIME begin the Eyelet Design after ROW 238.

ROWS 1-14: K1, P1, Ribbing. After ROW 14 transfer the ribber sts. to the main machine and continue with stockinette st.

ROWS 15-156: Increase 1 st. on each side after ROW 60, then again every following 20th row 4 x. (164 sts.)

ROWS 157-180: ARMHOLE SHAPING: Bind off 5 sts. beginning next 2 rows, 4 sts. beginning next 2 rows, 3 sts. beginning next 2 rows, 2 sts. beginning next 4 rows, 1 st. beginning next 6 rows and 1 st. on each side of the next 4th and following 4th row (122 sts.)

ROWS 181-226: Work even.

ROWS 227-258: SHOULDER SHAPING: Bind off 2 sts. beginning next 4 rows. After ROW 230 divide the sts. in the center for the opening, put all sts. on the left side into holding position and complete the right half first. Bind off 2 sts. on the right side and continue to shape shoulder on every other row by binding off 2 sts. 3 x and 3 sts. 11 x. AT THE SAME TIME, after ROW 253, then on every other row SHAPE NECK by binding off 8 sts. 1 x, 5 sts. 1 x and 3 sts. 1 x. Now move the Cam Box to the left side, turn the Row Counter back to 230, bring all needles back into working position and complete the left half. Follow the instructions from ROWS 231-258 but reverse the sides.

FRONT: (Figure I). Cast on 154 sts.

ROWS 1-14: K1, P1, Ribbing. After ROW 14 transfer the ribber sts. to the main machine, then hang the 22nd, 28th, 53rd, 59th and 65th sts. on each side onto the neighboring needles, put the empty needles into the non-working position (the omitted stitches do count as stitches in the instructions) and work the Eyelet design Stripes on each side over the 34th-47th sts. and over the center 14 sts.

ROWS 15-170: Increase 1 st. on each side after ROW 60, then again every following 20th row 4 x. (164 sts.)

ROWS 171-194: ARMHOLE SHAPING: Bind off 5 sts. beginning next 2 rows, 4 sts. beginning next 2 rows, 3 sts. beginning next 2 rows, 2 sts. beginning next 4 rows, 1 st. beginning next 6 rows and 1 st. on each side of the next 4th and following 4th row. (122 sts.)

ROWS 195-240: Work even.

ROWS 241-268: SHOULDER SHAPING: Bind off 2 sts. beginning next 4 rows. After ROW 244 bind off the center 16 sts. for NECK. (See Notes to Knit By, inside back cover). Bind off 2 sts. on Shoulder Side and continue to shape shoulder on every other row by binding off 2 sts. 3 x and 3 sts. 9 x. AT THE SAME TIME, Shape Neck on every other row by binding off 5 sts. 1 x, 3 sts. 1 x, 2 sts. 1 x, 1 st. 2 x and 1 st. on the next 4th and following 4th row.

SLEEVE: (Figure III). Cast on 99 sts.

ROWS 1-14: K1, P1, Ribbing. After ROW 14 transfer the ribber sts. to the main machine and continue with stockinette st.

ROWS 15-56: Increase 1 st. on each side after ROW 16, then again every following 4th row 9 x. (119 sts.)

ROWS 57-72: CAP SHAPING: Bind off 4 sts. beginning next 2 rows, 3 sts. beginning next 6 rows and 2 sts. beginning

next 6 rows.

ROWS 73-116: Decrease 2 sts. on each side after ROW 72, then again every following 4th row 10 x by always hanging the 3rd and 4th sts. on each side onto the 5th and 6th needles, then moving the end sts. inward to fill the empty needles. (37 sts.)

ROWS 117-180: Decrease 1 st. on each side after ROW 120, then again every following 8th row 7 x by always hanging the 3rd st. on each side onto the 4th needle, then moving the end sts. inward to fill the empty needle.

ROWS 181-190: Work short rows. (See Notes to Knit By, inside back cover). On the left side put 5 needles 1 x, 4 needles 1 x and 3 needles 3 x into holding position. AT THE SAME TIME, decrease 1 st. on the right side after ROW 184. After ROW 190 bring all needles into working position and bind off all remaining 20 sts. Make the second sleeve with reverse shaping.

NECKBAND: Cast on 161 sts. and work K1, P1, Ribbing, 6 rows with tension 5, 10 rows with tension 4 and 6 rows with tension 5. After 22 rows bind off all sts. the crochet method for ribbing.

FINISHING: Join front and back section at sides, easing in the fullness at bustline of front section. Sew sleeves together and join to front and back section. Sew 1 long edge of neckband to inside and 1 long edge to outside of neckline. Work 1 row of single crochet around back opening. Make 2 loops on one side and sew 2 buttons to other side of opening.

WOMAN'S BLOUSE, DP 7667



SIZE: 12/14 and 16/18. **MATERIAL:** 8¾ oz. (10½ oz.) green KNITKING fine Satin-Cotton (2 x 4 ply), Color #733. **TENSION:** KNITKING 1 to 3.

STITCH and ROW GAUGE: Pattern Stitch 16 sts. 2", 36 rows 2". Stockinette Stitch 16 sts. 2", 27 rows 2".

PATTERN: Holding Position Design according to chart, or use JAC 40 and Pattern No. 44. The purl side is the right side. **EDGES:** Stockinette Stitch, worn on the knit side.

SIZE: 12/14. BACK: (Figure II). Cast on 147 sts.

ROWS 1-32: Work stockinette st., then to form the hem, hang the cast-on sts. back on the machine in front of the latches. Now push the right Cam Control Button toward the back (Machines prior to AM 3 pull the Control Knob up) and knit 2 rows without yarn, then push the Control Button forward (or push down), turn Row Counter back to 32 and continue working in Holding Position Design.

ROWS 33-256: Increase 1 st. on each side after ROW 112, then again every following 28th row 4 x. (157 sts.)

ROWS 257-294: ARMHOLE SHAPING: Bind off 5 sts. on each side, then on each side of every following 4th row bind off 4 sts. 1 x, 3 sts. 1 x, 2 sts. 1 x, 1 st. 2 x and 1 st. on each side of the next 8th and following 8th row. (121 sts.)

ROWS 295-394: Work even.

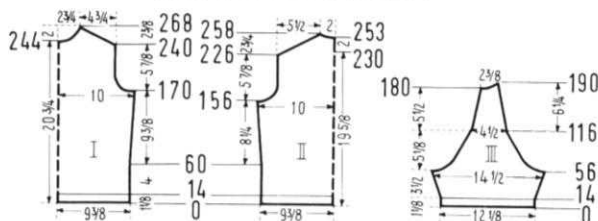
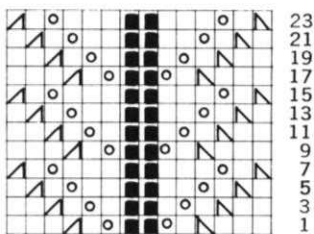
ROWS 395-422: SHOULDER SHAPING: Bind off 2 sts. beginning next 6 rows. After ROW 400 bind off the center 9 sts. for NECK. (See Notes to Knit By, inside back cover). Bind off 2 sts. at Shoulder Side and continue to shape shoulder on every other row by binding off 2 sts. 3 x and 3 sts. 8 x. AT THE SAME TIME, Shape Neck on every other row by binding off 4 sts. 1 x, 3 sts. 1 x, 2 sts. 3 x and 1 st. 5 x.

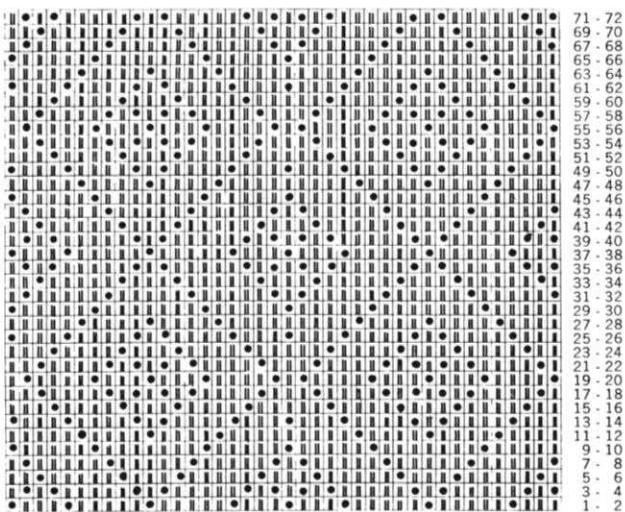
FRONT: (Figure I). Work the front the same as you did the back to ROW 220, then hang the center st. onto the neighboring needle, put the needles on the left side into holding position and complete the right half first.

ROWS 221-270: Increase 1 st. on the right side after ROW 224.

ROWS 271-308: ARMHOLE SHAPING: Bind off 5 sts. on the right side, then on every following 4th row bind off 4 sts. 1 x, 3 sts. 1 x, 2 sts. 1 x, 1 st. 2 x and 1 st. on the next 8th and following 8th row.

ROWS 309-379: Work even.





ROWS 380-436: NECK SHAPING: Bind off 6 sts. on the left side, then on every following 4th row bind off 4 sts. 1 x, 3 sts. 1 x, 2 sts. 2 x, 1 st. 3 x and 1 st. on the next 8th and following 8th row. AT THE SAME TIME, after ROW 408, then on every other row SHAPE SHOULDER by binding off 2 sts. 7 x and 3 sts. 8 x. Now bring the needles on the left side into working position, turn the Row Counter back to 220 and complete the left side. Follow the instructions from ROW 221-436, but reverse the sides and start the ARMHOLE SHAPING after ROW 271, the NECK SHAPING after ROW 380 and the SHOULDER SHAPING after ROW 409.

SLEEVE: (Figure III). Make two. Cast on 97 sts.

ROWS 1-22: Work stockinette st., then form the hem as you did on the back and continue in Holding Position Design.

ROWS 23-86: Increase 1 st. on each side after ROW 22, then again every following 8th row 7x. (113 sts.)

ROWS 87-110: CAP SHAPING: Bind off 4 sts. on each side, then on each side of every following 4th row bind off 4 sts. 1 x, 3 sts. 2 x and 2 sts. 2 x.

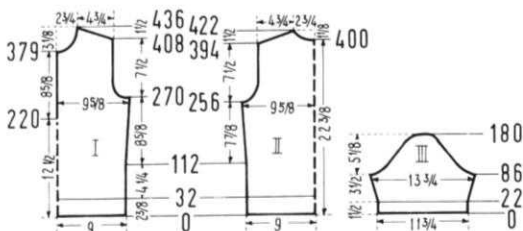
ROWS 111-180: On each side, then on each side of every following 4th row bind off 1 st. 1 x and 2 sts. 1 x. Repeat these bind-offs 6 x, then on each side of every following 4th row bind off 2 sts. 1 x, 3 sts. 2 x, 4 sts. 1 x and after ROW 180 bind off the remaining 11 sts.

FRONT and NECKBAND: Cast on 12 sts. and work 370 rows stockinette st., then bind off all sts.

FINISHING: Join front and back section at sides and shoulders, easing in the fullness at bustline of front section. Sew sleeves together and set in. Sew 1 edge of band to inside and 1 edge to outside around front opening and neckline, working in 6 buttonholes on the right side of opening. For each buttonhole leave about $\frac{5}{8}$ " free and space them about $1\frac{1}{2}$ " apart. Begin the first buttonhole $\frac{1}{2}$ " from the lower edge by leaving $\frac{5}{8}$ " free. Finish buttonholes, sew on buttons.

SIZE: 16/18. BACK: (Figure II). Cast on 173 sts.

ROWS 1-32: Work stockinette st., then to form the hem, hang the cast-on sts. back on the machine in front of the latches. Now push the right Cam Control Button toward the back (Machines prior to AM 3 pull the Control Button up) and knit 2 rows without yarn, then push the Control Button forward (or push down), turn Row Counter back to 32 and continue working in Holding Position Design.

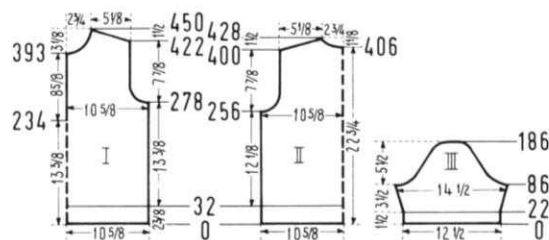


ROWS 33-256: Work even.
ROWS 257-294: ARMHOLE SHAPING: Bind off 5 sts. on each side, then on each side of every following 4th row bind off 4 sts. 1 x, 3 sts. 2 x, 2 sts. 2 x, and 1 st. 4 x. (127 sts.)

ROWS 295-400: Work even.
ROWS 401-428: SHOULDER SHAPING: Bind off 2 sts. beginning next 6 rows. After ROW 406 bind off the center 9 sts. for NECK. (See Notes to Knit By, inside back cover). Bind off 2 sts. on Shoulder Side and continue to shape shoulder on every other row by binding off 3 sts. 11 x. AT THE SAME TIME, Shape Neck on every other row by binding off 4 sts. 1 x, 3 sts. 1 x, 2 sts. 3 x and 1 st. 5 x. **FRONT:** (Figure I). Work the front the same as the back to ROW 234, then hang the center st. onto the neighboring needle, put the needles on the left side into holding position and complete the right half first.

ROWS 235-278: Work even.
ROWS 279-316: ARMHOLE SHAPING: Bind off 5 sts. on the right side, then on every following 4th row bind off 4 sts. 1 x, 3 sts. 2 x, 2 sts. 2 x and 1 st. 4 x.

ROWS 317-393: Work even.
ROWS 394-450: NECK SHAPING: Bind off 6 sts. on the left side, then on every following 4th row bind off 4 sts. 1 x, 3 sts. 1 x, 2 sts. 2 x, 1 st. 3 x and 1 st. on the next 8th and following 8th row. AT THE SAME TIME, after ROW



422, then on every other row SHAPE SHOULDER by binding off 2 sts. 4 x and 3 sts. 11 x. Now bring the needles on the left side back into working position, turn the Row Counter back to 234 and complete the left half. Follow the instructions from ROWS 235-450, but reverse the sides and start the ARMHOLE SHAPING after ROW 279, the NECK SHAPING after ROW 394 and the SHOULDER SHAPING after ROW 423.

SLEEVE: (Figure III). Make two. Cast on 102 sts.
ROWS 1-22: Work stockinette st., then form the hem as you did on the back and continue in Holding Position Design.

ROWS 23-86: Increase 1 st. on each side after ROW 22, then again every following 8th row 7x. (118 sts.)

ROWS 87-114: CAP SHAPING: Bind off 5 sts. on each side, then on each side of every following 4th row bind off 4 sts. 1 x, 3 sts. 2 x and 2 sts. 3 x.

ROWS 115-186: On each side, then on each side of every following 4th row bind off 1 st. 2 x and 2 st. 1 x. Repeat these bind-offs 4 x, then on each side of every following 4th row bind off 3 sts. 1 x, 4 sts. 1 x, 5 sts. 1 x and after ROW 186 bind off the remaining 12 sts.

FRONT and NECKBAND and FINISHING: Follow instructions for SIZE 12/14.

WOMAN'S PULLOVER, DP 7669



SIZE: 12/14. MATERIAL: 12 $\frac{1}{4}$ oz. white and 3 $\frac{1}{2}$ oz. red KNITTING Subita Crepe 2 x 3, Color #104 and 115. **TENSION:** KNITTING 4 to 6. **STITCH and ROW GAUGE:** 17 sts. 2", 23 rows 2". **PATTERN:** Stockinette Stitch, worn on the purl side. **EDGES:** Stockinette Stitch worn on the knit side.

BACK: (Figure II). Cast on 150 sts. with red.

ROWS 1-28: Increase 1 st. on each side after ROW 2, then again every other row 5 x. After ROW 16, then

on every other row decrease 1 st. on each side 6 x. After ROW 28 continue with white.

ROWS 29-82: Work even.

ROWS 83-202: Cast on 10 sts. on each side (on the left side with a separate length of yarn), then work even.

ROWS 203-224: ARMHOLE SHAPING: Bind off 5 sts. beginning next 2 rows, 4 sts. beginning next 2 rows, 3 sts. beginning next 2 rows, 2 sts. beginning next 4 rows, 1 st. beginning next 4 rows and 1 st. on each side of the next 4th and following 4th row. (130 sts.)

ROWS 225-262: Work even. After ROW 262 divide the sts. in the center for the opening, put the needles on the left side into holding position and complete the right half first.

ROWS 263-285: Work even.

ROWS 286-304: NECK SHAPING: Bind off 6 sts. on the left side, then on every other row bind off 5 sts. 1 x, 4 sts. 2 x, 3 sts. 2 x and 2 sts. 3 x. AT THE SAME TIME, after ROW 290, then on every other row SHAPE SHOULDER by binding off 4 sts. 6 x and 5 sts. 2 x. Now move the Cam Box to the left side, turn the Row Counter back to 262, bring all needles back into working position and complete the left half. Follow the instructions from ROWS 263-304 and reverse the sides.

FRONT: (Figure I). Work the front the same as the back to ROW 202.

ROWS 203-210: Work even.

ROWS 211-232: ARMHOLE SHAPING: Bind off 5 sts. beginning next 2 rows, 4 sts. beginning next 2 rows, 3 sts. beginning next 2 rows, 2 sts. beginning next 4 rows, 1 st. beginning next 4 rows and 1 st. on each side of the next 4th and following 4th row. (130 sts.)

ROWS 233-270: Work even.

ROWS 271-312: NECK SHAPING: Bind off the center 16 sts., (See Notes to Knit By, inside back cover) then on every other row on Neck Side bind off 5 sts. 1 x, 4 sts. 1 x, 3 sts. 1 x, 2 sts. 2 x, 1 st. 2 x and 1 st. on every following 4th row 3 x. AT THE SAME TIME, after ROW 298, then on every other row SHAPE SHOULDER by binding off 4 sts. 6 x and 5 sts. 2 x.

SLEEVE: (Figure III). Make two. Cast on 109 sts. with red.

ROWS 1-28: Decrease 1 st. on each side after ROWS 2, 6 and 10, then increase 1 st. on each side after ROWS 18, 22 and 26. After ROW 28 continue with white.

ROWS 29-64: Increase 1 st. on each side after ROW 32, then again every following 6th row 4 x. (119 sts.)

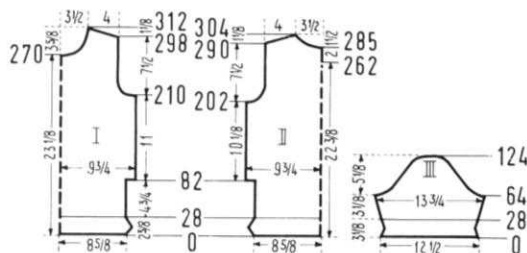
ROWS 65-124: CAP SHAPING: Bind off 5 sts. beginning next 2 rows, 4 sts. beginning next 2 rows, 3 sts. beginning next 4 rows, 2 sts. beginning next 6 rows, 1 st. beginning next 38 rows, 2 sts. beginning next 2 rows, 3 sts. beginning next 2 rows, 4 sts. beginning next 2 rows, 5 sts. beginning next 2 rows and after ROW 124 bind off the remaining 11 sts.

NECKBAND: Cast on 163 sts. with red and work stockinette st., 5 rows with tension 6, 5 rows with tension 5, 8 rows with tension 4, 5 rows with tension 5 and 5 rows with tension 6. After 28 rows bind off all sts.

SIDE BANDS: Cast on 41 sts. with red and work stockinette st.

ROWS 1-28: Increase 1 st. on the right side after ROW 2, then again every other row 5 x. Decrease 1 st. on the right side after ROW 16, then again every other row 5 x. After ROW 28 bind off all sts.

Make 1 more band like this and 2 bands with reverse shaping (For the reverse shaped bands cast on from right to left).



BELT: Cast on 21 sts. with white and work 520 rows K1, P1, Ribbing, then bind off all sts.

FINISHING: Join front and back section at sides and shoulders, easing in the fullness at bustline of front section. Sew sleeves together and set in. Turn over 14 rows on lower edge of sleeves and hem to right side (outside). Sew side bands to pullover, and join at pointed corners to lower band, then turn over half of lower and side bands and hem to right side (outside). Sew 1 edge of neckband to inside and 1 edge to outside of neckline. Work 1 row of single crochet around opening, making 2 loops on 1 side and sewing 2 buttons to other side of opening.

WOMAN'S VEST, DP 7671



SIZE: 10/12. **MATERIAL:** 12¼ oz. dark green KNITKING Nora, Color # 4081. **TENSION:** KNITKING 5 to 7. **STITCH and ROW GAUGE:** 15 sts. 2", 21 rows 2". **PATTERN:** Stockinette Stitch. **EDGES:** K1, P1, Ribbing. **BACK:** (Figure II). Cast on 145 sts. **ROWS 1-10:** K1, P1, Ribbing. After ROW 10 transfer the ribber sts. to the main machine and continue with stockinette st.

ROWS 11-152: Work even.

ROWS 153-178: ARMHOLE SHAPING: Bind off 4 sts. beginning next

4 rows, 3 sts. beginning next 2 rows, 2 sts. beginning next 4 rows, 1 st. beginning next 8 rows and 1 st. on each side of the next 4th and following 4th row. (103 sts.)

ROWS 179-240: Work even.

ROWS 241-256: SHOULDER SHAPING Bind off 3 sts. beginning next 6 rows and 4 sts. beginning next 2 rows. After ROW 248 bind off the center 13 sts. for NECK. (See Notes to Knit By, inside back cover). Bind off 4 sts. on Shoulder Side and continue to shape shoulder on every other row by binding off 4 sts. 4 x. AT THE SAME TIME, Shape Neck on every other row by binding off 5 sts. 1 x, 4 sts. 1 x and 3 sts. 1 x.

FRONT: (Figure I). Cast on 91 sts.

ROWS 1-10: K1, P1, Ribbing. After ROW 10 transfer the ribber sts. to the main machine and continue with stockinette st.

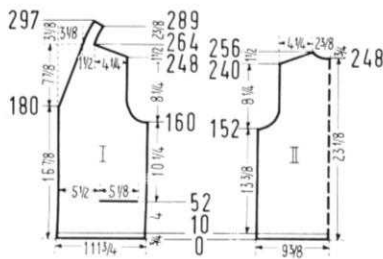
ROWS 11-52: Work even and AT THE SAME TIME work buttonholes after ROW 22 over the 2nd-7th and 20th-25th needles counting from the left side. After ROW 52 work the pocket. On the left side put 43 needles and on the right side put 9 needles into holding position. Now transfer every other stitch from the needles in working position to the ribber and work 10 rows K1, P1, ribbing, then bind off these sts. the crochet method for ribbing. Cast on 39 sts. over these empty needles for the pocket lining and work 42 rows stockinette st., then move the Cam Box to the right side, turn the Row Counter back to 52, bring all needles back into working position and continue working over all needles.

ROWS 53-160: Work even and AT THE SAME TIME work buttonholes after ROWS 60, 98 and 136 over the same needles as before.

ROWS 161-186: ARMHOLE SHAPING: Bind off 4 sts. on the right side, then on every other row bind off 4 sts. 1 x, 3 sts. 1 x, 2 sts. 2 x, 1 st. 4 x and 1 st. on the next 4th and following 4th row. AT THE SAME TIME, work buttonholes after ROW 174 and for the FRONT SHAPING decrease 1 st. on the left side after ROWS 180 and 183 by always hanging the 28th st. on the left side onto the 27th needle, then moving the end sts. inward to fill the empty needle.

ROWS 187-264: Continue to SHAPE FRONT by decreasing 1 st. after ROW 186 then again every following 3rd row 16 x and every following 4th row 5 x as you did before. AT THE SAME TIME, after ROW 248, then on every other row SHAPE SHOULDER by binding off 3 sts. 3 x and 4 sts. 6 x. After ROW 264 continue working over the remaining 13 sts. for the back facing.

ROWS 265-267: Work even.



ROWS 268-275: Work short rows. (See Notes to Knit By, inside back cover). On the **right side** put 8 needles into holding position, then knit 2 rows. Bring all needles into working position, knit 6 rows.

ROWS 276-297: Repeat **ROWS 268-275** 3 x, but on the first repeat put 4 needles into holding position, on the second repeat put 8 needles into holding position and on the last repeat put 4 needles into holding position and the last time knit only 4 rows instead of 6 rows even. After **ROW 297** put the stitches on a stitch holder.

Make the second front section with reverse shapings but omit the button holes and after **ROW 98** work the second **POCKET** as follows: On the **left side** put 43 needles and on the **right side** put 17 needles into holding position. Now transfer every other stitch with the needles in working position to the ribber and work 10 rows K1, P1, ribbing, then bind off these stitches the crochet method for ribbing. Cast on 31 sts. over these empty needles for the pocket lining and work 32 rows stockinette st., then move the Cam Box to the right side, turn the Row Counter back to 98, bring all needles back into working position and continue working over all needles.

ARM BAND: Make two. Cast on 163 sts. and work 10 rows K1, P1, ribbing, then bind off all sts. the crochet method for ribbing.

FINISHING: Join front and back sections at sides and shoulders, easing in the fullness at bustline of front sections. Weave open sts. of back facing together, then sew facing to neckline. Turn under 13 sts. on front edge and facing and hem to wrong side. Sew pocket lining to vest on wrong side. Sew sides of pocket edging to vest. Join short ends of arm bands, then sew bands to armholes. Finish buttonholes, sew on buttons.

WOMAN'S DRESS, DK 7663



SIZE: 10/12. **MATERIAL:** 12 $\frac{1}{4}$ oz. green, 5 $\frac{1}{4}$ oz. yellow and 1 $\frac{3}{4}$ oz. red **KNITTING** Subita DRALON 3 ply, Color #434, #425 and #415. **TENSION:** **KNITTING** 4 to 6. **STITCH** and **ROW GAUGE:** 16 sts. 2", 23 rows 2". The omitted stitches are counted as stitches in the **GAUGE** and **INSTRUCTIONS**. **PATTERN:** Stockinette Stitch with vertical stripes in Holding Position Design according to chart.

BACK: (Figure II). Cast on 178 sts. with yellow, leaving the 17th, 46th and 75th needles on each

side in the non-working position and work the Holding Position Design on each side of the omitted needles.

ROWS 1-56: Work even, then hang the cast-on sts. back on the machine behind the latches to form the hem and change to red.

ROWS 57-84: Working with red, decrease 1 st. on each side after **ROWS 58** and **74** by always hanging the 3rd st. on each side onto the 2nd needle, then moving the end sts. inward to fill the empty needles. After **ROW 84** continue with green.

ROWS 85-286: Decrease 1 st. on each side after **ROW 90**, then again on the following 16th row 1 x, every following 14th row 7 x, every following 10th row 4 x, and every following 6th row 7 x as you did before. (134 sts.)

ROWS 287-300: Work even.

ROWS 301-386: Increase 1 st. on each side after **ROW 300**, then again every following 10th row 7 x. (150 sts.) After **ROW 386** continue with red.

ROWS 387-406: **ARMHOLE SHAPING:** Bind off 4 sts. beginning next 2 rows, 3 sts. beginning next 2 rows, 2 sts. beginning next 2 rows, 1 st. beginning next 6 rows and 1 st. on each side of the next 4th and following 4th row (122 sts.)

ROWS 407-460: Work even and AT THE SAME TIME, change to yellow after **ROW 414**.

ROWS 461-474: **SHOULDER** and **NECK SHAPING:** For the Neck Shaping work short rows, (See Notes to Knit By, inside back cover). On the **right side**, after **ROW 460**, then on every other row Shape Shoulder by binding off 3 sts. 6 x and 4 sts. 2 x. AT THE SAME TIME, on the **left side** after **ROW 460**, then on every other row put 71 needles 1 x, 8 needles 1 x, 5 needles 2 x, 3 needles 1 x and 2 needles 2 x into holding position. After **ROW 474** move the Cam Box to the left side, turn the Row Counter back to 460 and bring 51 needles on the **left side** into working position.

ROWS 461-474: On the **left side**, after **ROW 460**, then on

every other row Shape Shoulder by binding off 3 sts. 6 x and 4 sts. 2 x. AT THE SAME TIME, on the **right side**, after **ROW 462**, then on every other row put 8 needles 1 x, 5 needles 2 x, 3 needles 1 x and 2 needles 2 x into holding position.

ROWS 475-484: **NECK FACING:** Bring the 70 center needles into working position and work plain stockinette stitch, 5 rows with tension 4 and 5 rows with tension 5. After **ROW 484** bind off all sts.

FRONT: (Figure 1). Work the front the same as the back to **ROW 386**.

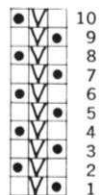
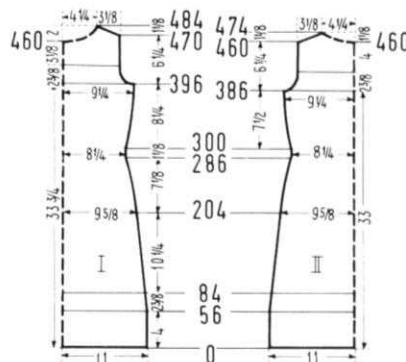
ROWS 387-396: Work even, then continue with red.

ROWS 397-416: **ARMHOLE SHAPING:** Bind off 4 sts. beginning next 2 rows, 3 sts. beginning next 2 rows, 2 sts. beginning next 2 rows, 1 st. beginning next 6 rows and 1 st. on each side of the next 4th and following 4th row. (122 sts.)

ROWS 417-460: Work even and AT THE SAME TIME, change to yellow after **ROW 424**.

ROWS 461-484: **NECK SHAPING:** Work short rows. On the left side after **ROW 460**, then on every other row put 70 needles 1 x, 4 needles 3 x, 3 needles 2 x, 2 needles 2 x and 1 needle 4 x into holding position. AT THE SAME TIME, after **ROW 470**, then on every other row SHAPE SHOULDER by binding off 3 sts. 6 x and 4 sts. 2 x. Now move the Cam Box to the left side, turn the Row Counter back to 460.

ROWS 461-484: On the **left side** bring 52 needles into working position and knit 2 rows. On the **right side**, after row 462, then on every other row put 4 needles 3 x, 3 needles 2 x, 2 needles 2 x and 1 needle 4 x into holding position. AT THE SAME TIME, after **ROW 470**, then on every other row SHAPE SHOULDER by binding off 3 sts. 6 x and 4 sts. 2 x.



ROWS 485-494: NECK FACING: Bring the center 70 needles into working position and work plain stockinette st., 5 rows with tension 4 and 5 rows with tension 5. After ROW 494 bind off all sts.

FINISHING: Join front and back section at sides and shoulders, easing in the fullness at bustline of front section. Turn under facing at neckline and hem to wrong side. Turn under 3 sts. around armhole and hem to wrong side.

MAN'S PULLOVER, HP 3549



SIZE: 40/42. **MATERIAL:** 21 oz. gold KNITKING Subita 2 x 4, Color #48. **TENSION:** KNITKING 6 to 8. **STITCH AND ROW GAUGE:** 16 sts. 2", 21 rows 2". **PATTERN:** Stockinette Stitch.

BACK: (Figure II). Cast on 179 sts.

ROWS 1-34: Work even, then hang the cast-on sts. back on the machine behind the latches to form the hem.

ROWS 35-194: Work even.

ROWS 195-216: ARMHOLE SHAPING: Bind off 5 sts. beginning next 2 rows, 4 sts. beginning next 2

rows, 3 sts. beginning next 2 rows, 2 sts. beginning next 2 rows, 1 st. beginning next 6 rows and 1 st. on each side of the next 4th and following 4th row (141 sts.)

ROWS 217-286: Work even.

ROWS 287-302: SHOULDER SHAPING: Work short rows. (See Notes to Knit By, inside back cover). Alternately on each side put 5 needles 2 x into holding position. On the left side, mark the needles for later identification. After ROW 290 bind off the center 13 sts. for NECK, (See Notes to Knit By) then on every other row on Neck Side bind off 5 sts. 1 x, 4 sts. 1 x, 3 sts. 1 x and 2 sts. 2 x. AT THE SAME TIME, after ROW 291, on the right side, continue to Shape Shoulder by putting 5 needles 4 x and 6 needles 2 x into holding position.

ROWS 303-318: After ROW 303, bring 6 needles 2 x and 5 needles 6 x back into working position.

ROWS 319-348: Work even, then bind off the remaining 48 sts.

FRONT: (Figure I). Work the front the same as the back to ROW 282, then bind off the remaining 141 sts.

SLEEVE: (Figure III). Make two. Cast on 80 sts.

ROWS 1-34: Work even, then hang the cast-on sts. behind the latches to form the hem.

ROWS 35-210: Increase 1 st. on each side after ROW 36, then again every following 8th row 5 x and every following 6th row 21 x. (134 sts.)

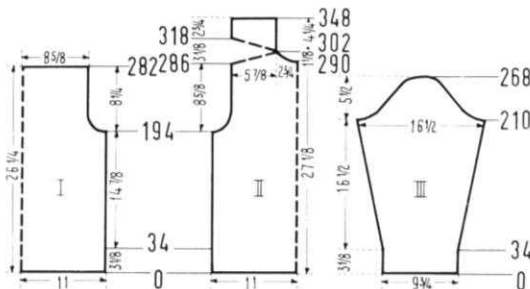
ROWS 211-224: CAP SHAPING: Bind off 5 sts. beginning next 2 rows, 4 sts. beginning next 2 rows, 3 sts. beginning next 2 rows and 2 sts. beginning next 8 rows.

ROWS 225-268: Bind off 1 st. beginning next 2 rows and 2 sts. beginning next 2 rows. Repeat these bind-offs 8 x, then bind off 2 sts. beginning next 2 rows, 3 sts. beginning next 2 rows, 4 sts. beginning next 2 rows, 5 sts. beginning next 2 rows and after ROW 268 bind off the remaining 12 sts.

POCKET: Make two. Cast on 48 sts. and work 68 rows even, then bind off all sts.

NECK FACING: Cast on 115 sts. and work even, 4 rows with tension 6, 4 rows with tension 7 and 4 rows with tension 8. After 12 rows bind off all sts.

FINISHING: Join front and back section at sides. With right



sides together sew facing to back neckline, then turn to wrong side and hem. Turn under 12 rows on upper edge of front section and hem to wrong side. Sew shoulder sections 12 rows below the upper edge of front section. Sew sleeves together and set in. Turn under 12 rows on upper pocket edges and hem to wrong side, then sew pockets to pullover. (See picture). Sew buttons to front as illustrated.

GIRL'S DRESS, MK 5024



SIZE: 8-9 (Chest 26"-27"). **MATERIAL:** 14 oz. pink KNITKING Nora, Color #4104 and a small amount of blue for the decorative sts. **TENSION:** KNITKING 6 to 8. **STITCH AND ROW GAUGE:** 15 sts. 2", 20 rows 2". **PATTERN:** Stockinette Stitch.

BACK: (Figure II). Cast on 148 sts.

ROWS 1-180: Decrease 1 st. on each side after ROW 60, then again every following 6th row 19 x by always hanging the 3rd st. on each side onto the 2nd needle, then moving the end sts. inward to fill the empty needles. (108 sts.)

ROWS 181-228: RAGLAN SHAPING: Decrease 1 st. on each side after ROW 180, then again every row 6 x and every other row 20 x by always hanging the 4th st. on each side onto the 3rd needle, then moving the end sts. inward to fill the empty needles. After ROW 228 divide the sts. in the center for the opening, put the needles on the left side into holding position and complete the right half first.

ROWS 229-252: Continue to Shape Raglan after ROW 228, then on every other row by decreasing 1 st. 12 x as you did before. AT THE SAME TIME, after ROW 249, then on every other row SHAPE NECK by binding off 7 sts. 1 x, 5 sts. 1 x and 3 sts. 1 x. Now move the Cam Box to the left side, move the Row Counter back to 228, bring all needles into working position and complete the left half. Follow the instructions from ROWS 229-252.

FRONT: (Figure I). Work the front the same as the back to ROW 232, but omit the opening.

ROWS 233-248: NECK SHAPING: Bind off the center 8 sts. for Neck, (See Notes to Knit By, inside back cover) then on every other row on Neck Side bind off 3 sts. 1 x, 2 sts. 2 x, 1 st. 2 x and 1 st. on the following 4th row 1 x. AT THE SAME TIME, after ROW 232, then on every other row continue to Shape Raglan by decreasing 1 st. 8 x. After ROW 248 hang the remaining 3 sts. together, (The outside sts. onto the center st.) then bind off.

SLEEVE: (Figure III). Cast on 71 sts.

ROWS 1-16: Decrease 1 st. on each side after ROWS 2, 4 and 6, then increase 1 st. on each side after ROWS 10, 12 and 14. After ROW 16 hang the cast-on sts. back on the machine behind the latches to form the hem.

ROWS 17-32: Increase 1 st. on each side after ROW 16, then again every other row 6 x. (85 sts.)

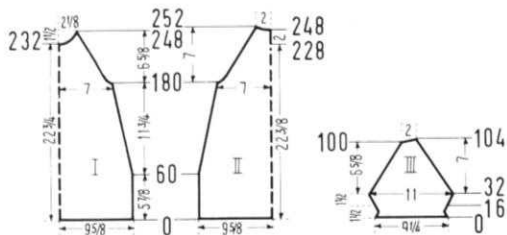
ROWS 33-100: RAGLAN SHAPING: Decrease 1 st. on each side after ROW 32, then again every other row 33 x by always hanging the 4th st. on each side onto the 3rd needle, then moving the end sts. inward to fill the empty needle.

ROWS 101-104: Work short rows: (See Notes to Knit By, inside back cover). On the left side put 5 needles 2 x into holding position. AT THE SAME TIME, decrease 1 st. on the right side after ROWS 100 and 102 as you did before. After ROW 104 bring all needles into working position and bind off all 15 sts. Work the second sleeve with reverse shaping.

NECK FACING: Cast on 96 sts. and work stockinette st., 4 rows with tension 6 and 4 rows with tension 7. After 8 rows bind off all sts.

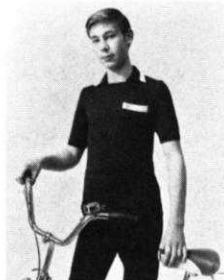
POCKET: Cast on 37 sts. and work 48 rows stockinette st., then bind off all sts.

FINISHING: Weave front and back section together at sides, 1 st. in on each edge. Sew sleeves together, then weave to front and back section 1 st. in on each edge. With right sides together sew facing to neckline, then turn to wrong side and hem. Work 1 row of single crochet around back opening and make 2 loops on one side and sew 2 buttons



to the other side. Turn under 2" on lower edge and hem to wrong side. With blue yarn, work the decorative stitches on the raglan seams. On each side of the seam, insert needle into the 2nd stitch then always pass the needle under 2 rows then over 2 rows. Turn under 8 rows on upper pocket, then embroider decorative stitches on pocket. (See picture). Sew pocket to dress.

TEEN-AGE SPORT PULLOVER, HP 3548



SIZE: 36/38. **MATERIAL:** 8³/₄ oz. green and a small amount of white **KNITTING** Subita DRALON 2 ply, Color #439 and #401. **TENSION:** KNITTING 2 to 4. **STITCH and ROW GAUGE:** 18 sts. 2", 26 rows 2". **PATTERN:** Stockinette Stitch. **EDGES:** K1, P1, Ribbing. **BACK:** (Figure II). Cast on 181 sts. **ROWS 1-22:** K1, P1, Ribbing. After ROW 22 transfer the ribber sts. to the main machine and continue with stockinette st. **ROWS 23-214:** Work even.

ROWS 215-242: ARMHOLE SHAPING: Bind off 5 sts. beginning next 2 rows, 3 sts. beginning next 2 rows, 2 sts. beginning next 6 rows, 1 st. beginning next 6 rows and 1 st. on each side of every following 4th row 3 x. (141 sts.)

ROWS 243-318: Work even.

ROWS 319-338: SHOULDER SHAPING: Bind off 4 sts. beginning next 10 rows. After ROW 328 bind off the center 17 sts. for NECK. (See Notes to Knit By, inside back cover.) Bind off 4 sts. at Shoulder Side and continue to shape shoulder on every other row by binding off 4 sts. 4 x and 5 sts. 1 x. AT THE SAME TIME, shape NECK on every other row by binding off 7 sts. 1 x, 5 sts. 1 x, 3 sts. 1 x and 2 sts. 1 x.

FRONT: (Figure I). Work the front the same as the back to ROW 290, then put 85 needles on the left side into holding position and complete the right half first.

ROWS 291-338: NECK SHAPING: On the left side, after ROW 291, bind off 2 sts., then on every other row bind off 1 st. 4x, on every following 4th row 1 st. 3 x and on every following 6th row 1 st. 2 x. AT THE SAME TIME, after ROW 318, then on every other row SHAPE SHOULDER by binding off 4 sts. 10 x and 5 sts. 1 x. Now bring 29 needles on the right side into working position and work 10 rows stockinette st., then bind off these sts. Move the Cam Box to the left side, bring the remaining needles back into working position, turn the Row Counter back to 290 and complete the left half. Follow the instructions from ROWS 291-338 but reverse the sides.

SLEEVE: (Figure III). Make two. Cast on 111 sts.

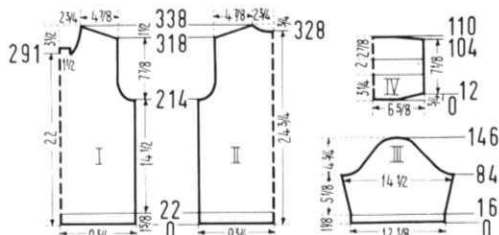
ROWS 1-16: K1, P1, Ribbing. After ROW 16 transfer the ribber sts. to the main machine and continue with stockinette st.

ROWS 17-84: Increase 1 st. on each side after ROW 18, then again every following 6th row 10 x. (133 sts.)

ROWS 85-100: CAP SHAPING: Bind off 5 sts. beginning next 2 rows, 3 sts. beginning next 4 rows and 2 sts. beginning next 10 rows.

ROWS 101-146: Bind off 1 st. beginning next 4 rows and 2 sts. beginning next 2 rows. Repeat these bind-offs 5 x, then bind off 2 sts. beginning next 2 rows, 3 sts. beginning next 4 rows, 4 sts. beginning next 4 rows and after ROW 146 bind off the remaining 11 sts.

COLLAR: (Figure IV). Cast on 123 sts. and work stockinette st. **ROWS 1-12:** Work short rows (See Notes to Knit By, inside back cover). On the left side put 29 needles into holding



position, knit 1 row. On the right side put 29 needles into holding position, knit 1 row. Now alternately on each side bring 7 needles 2 x and 5 needles 3 x back into working position.

ROWS 13-104: Work even and knit ROWS 45-70 with white. **ROWS 105-108:** Alternately on each side put 14 needles 2 x into holding position.

ROWS 109-110: On the left side bring all needles into working position, knit 1 row. On the right side bring all needles into working position, knit 1 row, then bind off all sts. the crochet method.

POCKET: Cast on 40 sts. and work stockinette st., 44 rows with green and 26 rows with white, then bind off all sts.

FINISHING: Join front and back section at sides and shoulders. Sew sleeves together and set in. Fold collar in half lengthwise and sew short ends. On center of front neckline turn under 10 rows and hem to wrong side. Sew 1 long edge of collar to inside and 1 long edge to outside of neckline, leaving the straight center portion of neckline free. Turn under half of white pocket edge and hem to wrong side. Sew pocket to shirt. (See Picture).

GIRL'S DRESS, MK 5023



SIZE: 7-8 (Chest 25¹/₂"-26¹/₂"). **MATERIAL:** 10¹/₂ oz. red and 3³/₄ oz. white **KNITTING** Subita Dralon 3 ply, Color #436 and #401. **TENSION:** KNITTING 4 to 6. **STITCH and ROW GAUGE:** 15 sts. 2", 22 rows 2". **PATTERN:** Stockinette Stitch with Eyelet Design on front section. **BAND:** K1, P1, Ribbing. **BACK:** (Figure II). Cast on 145 sts. **ROWS 1-206:** Decrease 1 st on each side after ROW 48, then again every following 10th row 7 x and every following 8th row 10 x by always

hanging the 3rd st. on each side onto the 2nd needle, then moving the end sts. inward to fill the empty needle. (109 sts.)

ROWS 207-218: ARMHOLE SHAPING: Bind off 3 sts. beginning next 2 rows, 2 sts. beginning next 4 rows, 1 st. beginning next 2 rows and 1 st. on each side of the following 4th row 1 x. (91 sts.)

ROWS 219-236: Work even, then for the opening, hang the center stitch onto the neighboring needle, put all needles on the left side into holding position and complete the right half first.

ROWS 237-254: Work even.

ROWS 255-268: SHOULDER SHAPING: Bind off 3 sts. on the right side, then on every other row bind off 3 sts. 4 x and 4 sts. 3 x. AT THE SAME TIME, after ROW 263, then on every other row SHAPE NECK by binding off 10 sts. 1 x, 5 sts. 1 x and 3 sts. 1 x. Now move the Cam Box to the left side, bring the remaining needles into working position, turn the Row Counter to 236 and complete the left half. Follow the instructions from ROWS 237-268 but reverse the sides.

FRONT: (Figure I). Work the front the same as the back to ROW 168, then begin the Eyelet Design by hanging first the center stitch onto the left neighboring needle. (This Stripe is not on the chart.)

ROWS 169-206: Decrease 1 st. on each side after ROW 174, then again every following 8th row 3 x. AT THE SAME TIME begin a new Eyelet Stripe on each side of center after ROWS 174, 180, 186 and 192. (There are 8 sts. between each empty needle.) (109 sts.)

ROWS 207-218: ARMHOLE SHAPING: Bind off 3 sts. begin-

ARE YOU UNHAPPY WITH YOUR PRESENT KNITTING MACHINE ?

DOES IT REFUSE TO KNIT FANCY DRESS YARNS?

DOES IT JAM UP WHEN YOU TRY TO KNIT LOOPED MOHAIR OR THICK AND THIN YARNS?

DOES IT DROP STITCHES ALL OVER THE PLACE?

ARE YOU CONTINUALLY HAVING TROUBLE WITH AWKWARD, CUMBERSOME WEIGHTS?

ARE YOU UNABLE TO MAKE A LARGE GARMENT WITH BULKY YARNS?

DO YOU HAVE TO SELECT PATTERN STITCHES MANUALLY?

DO YOU HAVE TO LATCH YOUR RIBBING BY HAND?

IF YOU ARE HAVING ANY OF THESE PROBLEMS YOU SHOULD TRADE UP TO A NEW FANTASTIC PUSH BUTTON KNITTING WITH COORDINATED RIBBER AND ENJOY KNITTING WITH THE WORLDS FINEST, MOST VERSATILE AND MOST AUTOMATIC KNITTER.

YOU WILL BE SURPRISED AT OUR GENEROUS TRADE-IN ALLOWANCE AND YOU CAN, IF YOU WISH, USE YOUR PRESENT MACHINE AS A DOWN-PAYMENT AND PURCHASE A COMPLETE KNITTING FOR JUST PENNIES A DAY. WRITE TODAY FOR FULL INFORMATION AND TELL US WHAT MACHINE YOU NOW OWN. THE ADDRESS IS:

KNITKING, Dept. T-1, 1128 Crenshaw Blvd., Los Angeles, Calif. - 90019

OUNCES TO GRAMS...TO OUNCES

KNITKING patterns have, in the past, always stated the number of ounces needed for each garment, but as many of our yarns come in 50 gram balls, some readers have mentioned the problem that they have in converting grams to ounces. We will, therefore, in future issues give the number of ounces plus the number of balls of the yarn called for that comes in 50 gram balls.... This will not be necessary when Starlite Crepe, Gleam or Baby Yarn is used as these still come in 1 ounce balls....

To make this easier for you, when ordering yarns for patterns in back issues of KNITKING MAGAZINE, we have prepared the chart opposite.

OUNCES

BALLS

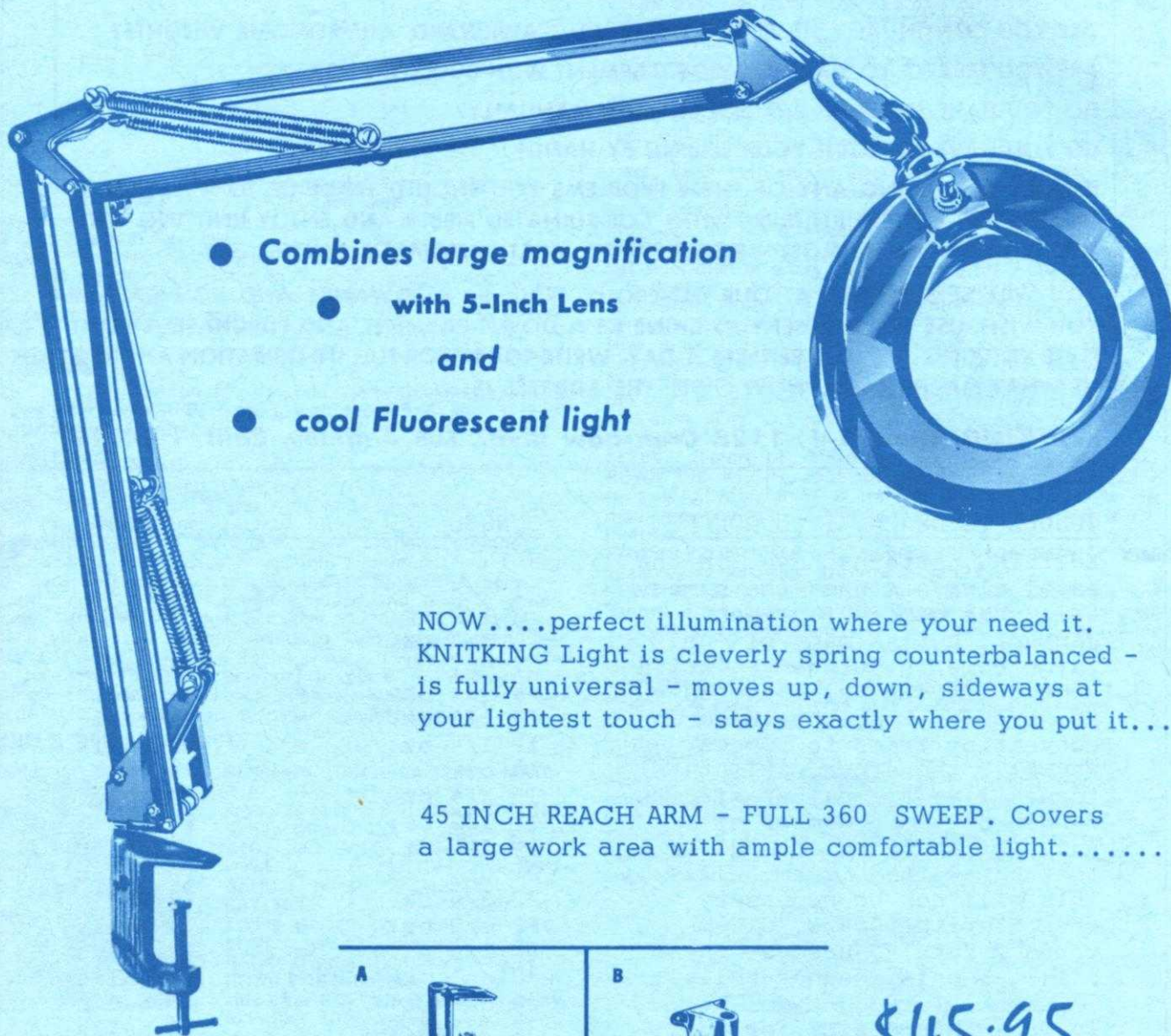
1 3/4 oz.	=	1 ball
3 1/2 oz.	=	2 balls
5 1/4 oz.	=	3 balls
7 oz.	=	4 balls
8 3/4 oz.	=	5 balls
10 1/2 oz.	=	6 balls
12 1/4 oz.	=	7 balls
14 oz.	=	8 balls
15 3/4 oz.	=	9 balls
17 1/2 oz.	=	10 balls
19 1/4 oz.	=	11 balls
21 oz.	=	12 balls
22 3/4 oz.	=	13 balls
24 1/2 oz.	=	14 balls
26 1/4 oz.	=	15 balls
28 oz.	=	16 balls
29 3/4 oz.	=	17 balls
31 1/2 oz.	=	18 balls
33 1/4 oz.	=	19 balls
35 oz.	=	20 balls

Lets you easily check your knitting gauge.
 Illuminates your work without heat.....
 Helps prevent eye strain.....
 Makes it easy to assemble garments.....



ILLUMINATED MAGNIFIER

... for precision viewing!



- **Combines large magnification**
 - **with 5-Inch Lens**
 - and**
 - **cool Fluorescent light**

NOW... perfect illumination where your need it. KNITKING Light is cleverly spring counterbalanced - is fully universal - moves up, down, sideways at your lightest touch - stays exactly where you put it....

45 INCH REACH ARM - FULL 360 SWEEP. Covers a large work area with ample comfortable light.....

A



Clamps to level surface edge of table or desk...

B



Screws to vertical surface, wall, cabinet or partition.

\$45.95

COMPLETE

Specify A or B fitting.



KNITKING NEWS

March-April, 1969

THE READERS WRITE ABOUT.....

PLACEMENT OF BUST DARTS

In KNITKING MAGAZINE you will find most Dresses and Pullovers for Women allow for a bust dart by making the front section with more rows knitted to the beginning of underarm shaping than are knitted on the back section. When finishing the garment you are told to EASE IN THE FULLNESS at bustline of front section or sometimes you are told to sew in a dart at the bustline. The actual PLACEMENT of a bust dart is a question that many ask us about and this always depends on the individual build of the person for whom the garment is knitted.

Here is a very easy way to find the PLACEMENT of a bust dart and this method can be used no matter whether you sew it in.....or knit it in using the short row method. The short row method is really the nicest way and in our Practical Knitting Hints Book, information on HOW to make a bust dart using short rows is given on page 18. Here, we will only tell you how to find the PLACEMENT of a dart.

Knit the Back section of your garment first, then block it to the proper dimensions. When it is completely dry, take the back section and hold it up to your front (or the front of person the garment is being knitted for) and pin the shoulder at shoulder seam of garment worn, then smooth the armhole down under the arm. Now place your finger on the side edge of knitted piece at the center of the bustline or slightly below center for a fuller bust and put a pin at this point (use a safety pin so it won't fall out). Now remove all other pins at shoulder, and then count the rows from the first armhole bind-off of back down to where you placed the safety pin. This is the PLACEMENT of your bust dart and it is here where you will make the dart on the front section whether it is knitted in or sewn in.

Let us suppose the number of rows from the first bind-off at armhole on back section down to safety pin is 24 rows. You MUST ADD the Rows allowed for the dart on the front section to the number 24 and then subtract this amount from the total number of rows given on the front (to the beginning of armhole shaping) and THIS NUMBER will be the ROW to begin a knitted in bust dart...or you can mark the edges with colored yarn for sewing a dart in later.

CANADIAN READERS WRITE.....

We have been receiving letters from Canadian subscribers asking why they do not receive the KNITKING NEWSLETTER and we have to say

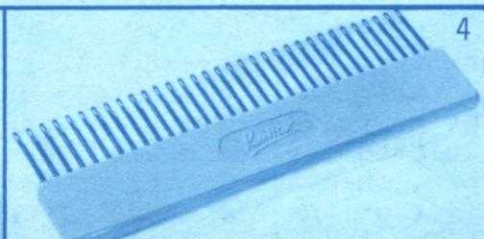
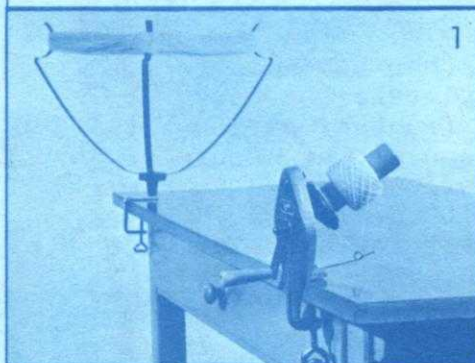
that it has been because we usually have a list of items on special in the NEWSLETTER and the specials on KNITKING machines and accessories can only be purchased by residents of the U.S.A.

We do however, agree that Canadian readers can benefit from the useful hints that we include in the NEWSLETTER and since our "specials" have recently been going out in separate mailings to U.S. subscribers, we will bend to the persuasion of our Canadian friends and the NEWSLETTER will, in future, be included in magazines to Canadian subscribers....

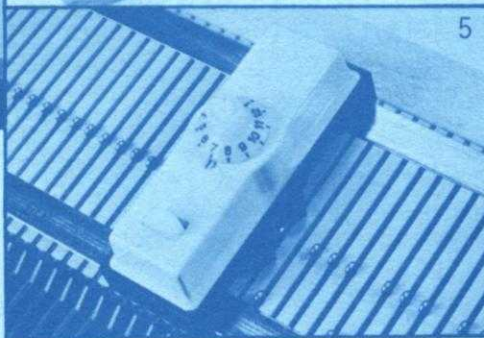
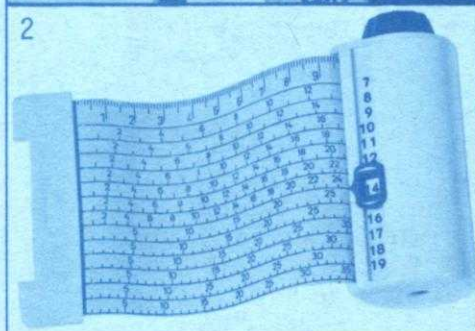
PRE-INVENTORY SALE.....

Notice of a pre-inventory sale went out to all U.S. subscribers a week before this magazine was mailed, so if you do not receive your sales notice (dozens of them seem to get lost in each mailing) within a week of receiving this magazine, please drop us a line and we will send another notice.

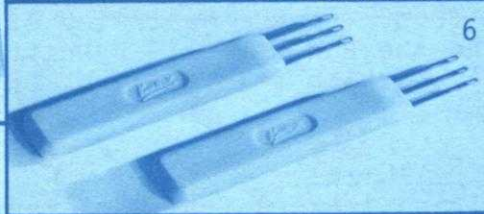
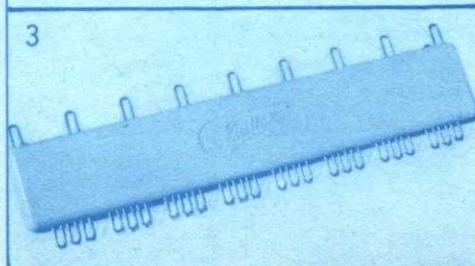
Don't miss out on this wonderful pre-inventory sale. It is your opportunity to make substantial savings on KNITKING accessories and yarns. If you do not yet have a gorgeous KNITKING YARN CATALOGUE, send in your order for one immediately. Full information is given on the inside front cover of this issue.



ACCESSORIES



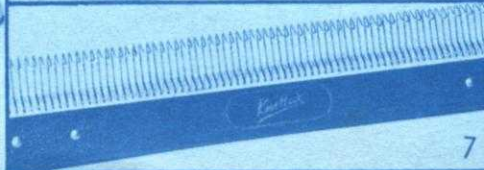
1. Yarn Winder and Skein Holder. Heavy cast frame and nylon gears. \$14.95 plus \$1.00 shipping.
2. Converta Tape. For simple and speedy charting of custom knits. \$5.95 plus 25c shipping.
3. Adjustable Needle Selector. For setting unevenly spaced pattern stitches. \$2.95 plus 20c shipping.
4. 33 Needle Multi-transfer Tool. For decreasing in the middle of a row. \$2.75 plus 20c shipping.
5. Automatic Pattern Selector. For all KNITKING machines prior to the push-button. \$6.95 plus 30c shipping.
6. Treble Transfer Tools. For rapid transfer of stitches and for cable stitch. \$1.50 pair plus 15c shipping.
7. Reversing Bar. For easy hem turning or reversing of knitting. \$16.95 plus \$1.50 shipping.



California residents add
5% sales tax.



KNITKING
1128 Crenshaw Boulevard
Los Angeles, California 90019



NOTES TO KNIT BY . . .

STITCH AND ROW GAUGE

Every KNITTING pattern calls for a specific number of stitches and rows for 2 inches and in order to obtain the correct size finished garment, you must be sure to knit at the correct tension. This means that before starting a garment, you must knit a sample swatch with the yarn you intend using for the garment.

Cast on over a sufficient number of needles to produce a swatch 4 inches wide. (If the pattern calls for 16 stitches to 2", 16 x 2 = 32 stitches) then knit 4 inches of rows at the first suggested tension (if the pattern calls for 22 rows to 2", 22 x 2 = 44 rows) knit 2 rows with a contrast color, change to the next higher tension, knit another 4", knit 2 rows with contrast color, change to a third higher tension and knit another 4", then bind off.

Roll the swatch into a cylinder over its length and pull on both ends. Unroll it and stretch it diagonally by pulling on the four corners. Allow the swatch to rest and settle (preferably overnight) then using a stitch gauge or ruler, count the number of stitches and rows over a 2" length in each of your 3 tensions. Select the tension that produces the stitches and rows called for in the pattern. If none of them are correct, you are most likely using the wrong weight of yarn.

HOLDING POSITION

The needles are as far forward on the needle bed as they will go.

NON-WORKING POSITION

The needles are as far back on the needle bed as they will go.

BINDING OFF

See Instruction Manual for your own machine.

CROCHET BIND OFF

Use this method for binding off neck and armbands, edgings, facings or collars. Knit a bind off row using 5 tensions higher than tension used for section and then with latch needle tool, and working from the opposite side of the yarn end, pull the second stitch through the first stitch, the 3rd through 2nd, the 4th through 3rd, etc. When you reach the end of row, pull the loose end of yarn through the last stitch. If you are unable to turn the tension up 5 numbers because you already are working with a large tension, lay the yarn over the needles by hand and knit this one row by pulling each needle back and forward again completing a stitch. Leave approximately 1/4" loop for each stitch (depending on type of yarn used) then bind off crochet method.

SHORT ROWS

Used for shaping of all kinds. Push the specified number of needles opposite the Cam Box into holding position and knit across to them. Now you must place the yarn OVER and UNDER the first inside needle that is in the holding position. Place the specified needles opposite Cam Box into holding position (other side) and knit across to these needles, and again place the yarn OVER and UNDER the first inside needle in the holding position. Repeat as many times as your pattern states. When you return these needles to the working position, the same procedure is used — bring the needles into work opposite the Cam Box, knit across to them, place the yarn OVER and UNDER the first inside needle in holding position and repeat for other side. Continue in this manner until all the needles are back in the working position.

INCREASING, DECREASING

See the Instruction Manual for your own machine.

INCREASING AND DECREASING WHEN USING RIBBER

When increasing, increase on the main knitter first, knit one row and then transfer the necessary stitches from the knitter to the ribber and continue.

When decreasing or binding off, you must transfer the ribber stitches to the main machine before decreasing or binding off.

CONTROL KNOBS (Under the slide handle — one on each side on KNITTING and certain other machines.)

1. When BOTH Control Knobs are UP, (or IN on the latest KNITTING) knit one row going from right to left. The needles knit and move back just beyond the front of the needle bed and the yarn hangs on the front of the needles. The slide will now move freely in either direction

with the needles remaining in a "SAFE POSITION". When you wish to resume knitting, press down (Out on the latest KNITTING) BOTH Control Knobs. The first movement of the slide is made without yarn and will bring the needles into working position, you then continue knitting.

2. RIGHT CONTROL KNOB UP (IN on latest KNITTING). Knit from right to left. The row knits, moves the needles back and the yarn is held in front of the latches. Knit from left to right, the yarn goes under the needles without knitting as the needles move into the working position. This is the operation used for making round cords (with 3 or 4 needles only) and also for knitting single rows of one color.

3. LEFT CONTROL KNOB UP (IN for latest KNITTING). The same as above but moving from left to right.

NECK SHAPING

When the directions state to bind off the center stitches for NECK, one correct way is as follows: With a new ball of yarn, bind off the given number of stitches working from right to left. Leave this ball of yarn hanging to one side (to be picked up later) and put all the needles on the left side into holding position and complete the right side first as directed. When you have completed the right side, pick up the yarn that you used for the neck bind off, put it in the wool feeder, bring all the needles into working position and knit 1 row to the left side. Turn row counter back to the number on which you started your neck shaping and complete the left half with reverse shaping, making the same number of decreases and on the same row numbers as on the right half.

You may also use the SHORT ROW method for shaping your neck and shoulders provided the decreasing is made on every other row. When the shaping is completed, knit 1 row over all the neck stitches (or shoulder stitches) with tension set at least 5 numbers higher, and then bind off all stitches using the crochet method.

If you are hand feeding a Norwegian design, bind off the center neck stitches with a new ball of yarn, then work both sides of neck shaping at the same time, using two balls of yarn for each color.

MISSING ROW NUMBERS

When there are row numbers missing in the instructions as for instance when you have completed the designated increases or decreases on a section of garment, continue knitting until you reach the next given row number.

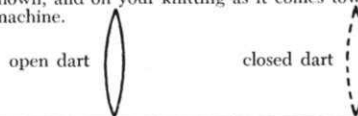
READING OF SYMBOLS

Certain holding position and eyelet designs are sketched in the knitting patterns. The Chart with symbols is read as the work comes toward you from the machine. Where purl stitches are facing you, the purl symbol will be shown and where knit stitches are facing you, the knit symbol will be shown. On the sides of the chart are the row numbers, i.e. 1-8 indicates the first and last row number. In eyelet design patterns, specified stitches are transferred to another needle and the empty needles are returned to the knitting position each time. In holding position designs, selected needles are pushed into the holding position for the stated number of rows.

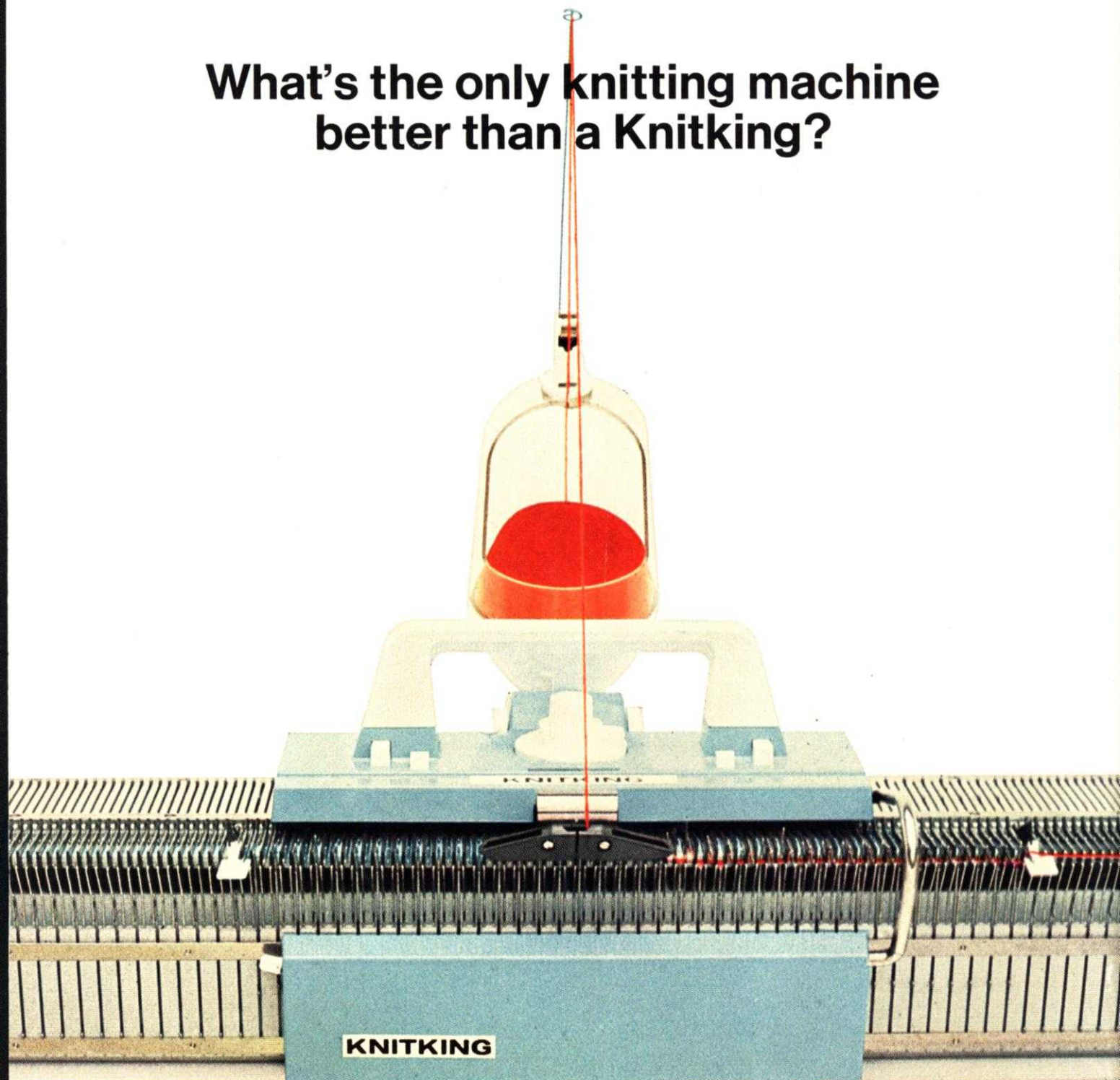
PATTERN STITCH SYMBOLS

- = knit stitch
- ▣ = purl stitch
- = empty needle (leave in working position)
- ⊗ = needle not used (in the out of work position)
- ◻ = needle in holding position
- ◻ = 2 stitches on 1 needle — either transferred from the right side or the left side, then put the needle into holding position
- ◻ = needle holding 2 sts. Stitch has been transferred from the LEFT
- ◻ = needle holding 2 sts. Stitch has been transferred from the RIGHT
- ◻ = 3 stitches on 1 needle. The 1st and 3rd stitch in a group of 3 needles has been hung on the 2nd or center needle.

The diagrams for pattern work are followed just as they are shown, and on your knitting as it comes towards you on the machine.



**What's the only knitting machine
better than a Knitking?**



The new  Knitking!

For color brochure and complete details on this magnificent new KNITKING write to:

KNITKING • 1128 Crenshaw Blvd., Los Angeles, California 90019