

KNITTING

MAGAZINE



YAKNS

64

Knitking

The Finest From Around the World . . .

If you want your garments to look as good as those in KNITKING MAGAZINE and keep their appearance through dozens of washes, you must knit them with gorgeous KNITKING yarns. KNITKING yarns are the finest quality obtainable anywhere and the prices cannot be beaten. Try them once and you will always use them.

Your orders will be filled the same day they arrive. Be sure to state your color preferences and alternates.



Pattern Numbers	YARN		Price Including Shipping
DP 7687	Subita Crepe 2 x 3	SIZE 12/14 SIZE 16/18	\$ 9.10 10.30
DK 7693	Subita Crepe 2 x 4		23.75
DK 7697	Subita Crepe 2 x 4		27.35
DK 7690	Subita Crepe with Rayon		32.15
DP 7692	Subita Dralon 2 Ply		6.70
DP 7691	Subita Dralon 2 ply		9.10
DK 7694	Subita Crepe 2 x 4		22.30
DP 7689	Subita Dralon 3 ply		11.50
DP 7688	Subita Dralon 3 ply		9.10
DP 7695	Subita Crepe 2 x 4		16.30
DP 7696	Nora		14.42
DP 7698	Subita Dralon 3 ply		10.30
HP 3554	Subita Crepe 2 x 4		10.30
HP 3556	Subita Crepe 2 x 4		15.10
HP 3555	Nora		10.50
HP 3557	Subita Dralon 3 ply		10.30
KK 5037	Subita Crepe 2 x 3		11.50
MK 5034	Subita Dralon 3 ply		9.10
MK 5033	Subita Dralon 3 ply		6.70
MK 5032	Subita Crepe 2 x 4		9.10
MK 5036	Subita Dralon 2 ply		4.30*
MK 5035	Subita Dralon 2 ply		5.50*

Items marked with a * do not include the small amounts of contrast yarns used in the pattern.

California Residents please add 5% Sales Tax.

Send \$2.00 for **LARGE COMPLETE YARN CATALOGUE.**
(Refunded on your first \$10.00 order) to:

KNITKING YARNS, Dept. 19
1128 Crenshaw Blvd.
Los Angeles, California 90019

KNITKING

MAGAZINE

Vol. 5, No. 6

July/August 1969

INDEX

Contents	Pattern No.	Page No.
Woman's Blouse	DP 7687	16
Woman's 2 Piece Dress	DK 7693	17
Woman's 3 Piece Suit	DK 7697	18
Woman's 3 Piece Suit	DK 7690	20
Woman's Blouse	DP 7692	21
Woman's Blouse	DP 7691	22
Woman's Dress	DK 7694	23
Woman's Cardigan	DP 7689	24
Woman's Blouse	DP 7688	24
Woman's Cardigan	DP 7695	25
Woman's Cardigan	DP 7696	26
Woman's Pullover	DP 7698	26
Man's Vest	HP 3554	27
Man's Jacket	HP 3556	28
Man's Pullover	HP 3555	28
Man's Sleeveless Pullover	HP 3557	29
Boy's 3 Piece Suit	KK 5037	29
Girl's Dress	MK 5034	30
Girl's Pullover	MK 5033	31
Girl's Jumper	MK 5032	31
Girl's Dress	MK 5036	32
Girl's Dress	MK 5035	32



COVER MODEL
DP 7687

Larger sizes steal the scene in this special issue of KNITKING MAGAZINE. You'll find beautiful knits to select for any occasion. Our sumptuous Cover model Blouse DP 7687 has directions for the equivalent of 4 sizes and the dainty eyelet design is an easy one. See page 16.

Letter from the Publisher

WHEN the Singer Sewing Machine Company decided a little over three years ago to publish their own magazine (it comes out three times a year) they were confident of an immediate and substantial circulation. Obviously, with 48,000,000 families in the U.S.A. and an estimated 40,000,000 owning sewing machines, if only 1% of them purchased Singer's Sewing Fashions Magazine, they would obtain a circulation of 400,000. Actually, Singer started with a print order for a much lower quantity, but their circulation has since reached the 400,000 mark.

It was a little over six years ago that we decided to publish KNITKING MAGAZINE and we made the decision knowing that there was, at that time, less than 100,000 knitting machine owners in the U.S.A. . . . We decided that if we wanted to substantially increase the number of knitting machine owners, something would have to be done to provide them with a continuing source of excellent patterns. . . . Owners of sewing machines have a practically unlimited supply of patterns available, but no knitting machine distributor in America had ever published a knitting machine magazine. We were endeavoring to satisfy the need for patterns at that time by distributing a magazine published and printed by our colleagues in England, but it was not possible to obtain the yarns recommended and the English styles were not entirely acceptable. We had around a thousand subscribers to the English publication (1% of knitting machine owners) . . . so you can readily understand we were taking a big risk of financial loss in launching the very expensive to produce KNITKING MAGAZINE. The risk, nevertheless, was a calculated one, either we took it and satisfied the needs of all our customers, or we waited several more years until larger numbers of knitting machines were sold and we could be sure of a larger initial circulation.

We went ahead, prepared to lose money on the magazine for several years . . . And we have . . . The first two years were the toughest, but we continually strive to improve the quality of the written instructions and to satisfy the garment needs of our readers . . . Our magazine production costs, even after five years of publication, are more than twice our income, but we seem to be heading in the right direction as our subscriber circulation has increased by nearly 500% in the past four years . . . In that same period of time, we have also published several books and introduced our exclusive range of beautiful KNITKING YARNS. With the next issue of KNITKING MAGAZINE we will present a completely new format and method of presenting stylish KNITKING patterns.

We acknowledge and thank the many hundreds of readers who have taken the time to write and tell us what they would like to see in KNITKING MAGAZINE . . . We need your cooperation in order to maintain our high standards and to prepare and publish additional books, so please . . . keep those cards and letters coming in and look for the new modern KNITKING MAGAZINE in September.

Publisher: KNITKING CORPORATION, 1128 Crenshaw Blvd., Los Angeles, Calif. 90019, Telephone: WEbster 8-2079. Published bi-monthly. Subscriptions: USA—\$6.00 annually, single copies \$1.50; Canada—\$7.00; other parts of the world—\$10.00. The entire contents of KNITKING MAGAZINE are copyright and must not be reproduced in any shape or form without the express permission, in writing, of the publisher. COPYRIGHT © by KNITKING CORPORATION 1969.

Printed by: George Rice & Sons, Los Angeles, California.



**ESPECIALLY
FOR THE NOT
TOO SLIM . . .**

**Sizes 18/20
and 20½/22½**

DK 7693

Knit a flattering 2-piece dress of KNIT-KING Subita Crepe 2 x 4. Follow a Chart for the vertical Eyelet Design on the front sections . . . it's pretty and slimming as well. Size 20½ - 22½. See page 17.



DK 7697

Fashion First! Don't pass up this lovely 3-piece suit that is knitted in stockinette stitch and worn on the purl side. The Skirt is A-line . . . the Shell gaily striped . . . and the Chanel type Jacket is bound on all edges with a round knitted cord. Size 18/20. See page 18.





DK 7690

Two colors . . . one dark . . . one light, of KNITTING Subita Crepe with Rayon are knitted into a 3-piece Suit that literally takes a prize for elegance. It's dressy . . . and beautiful . . . Size 16 1/2 - 18 1/2 . See page 20.

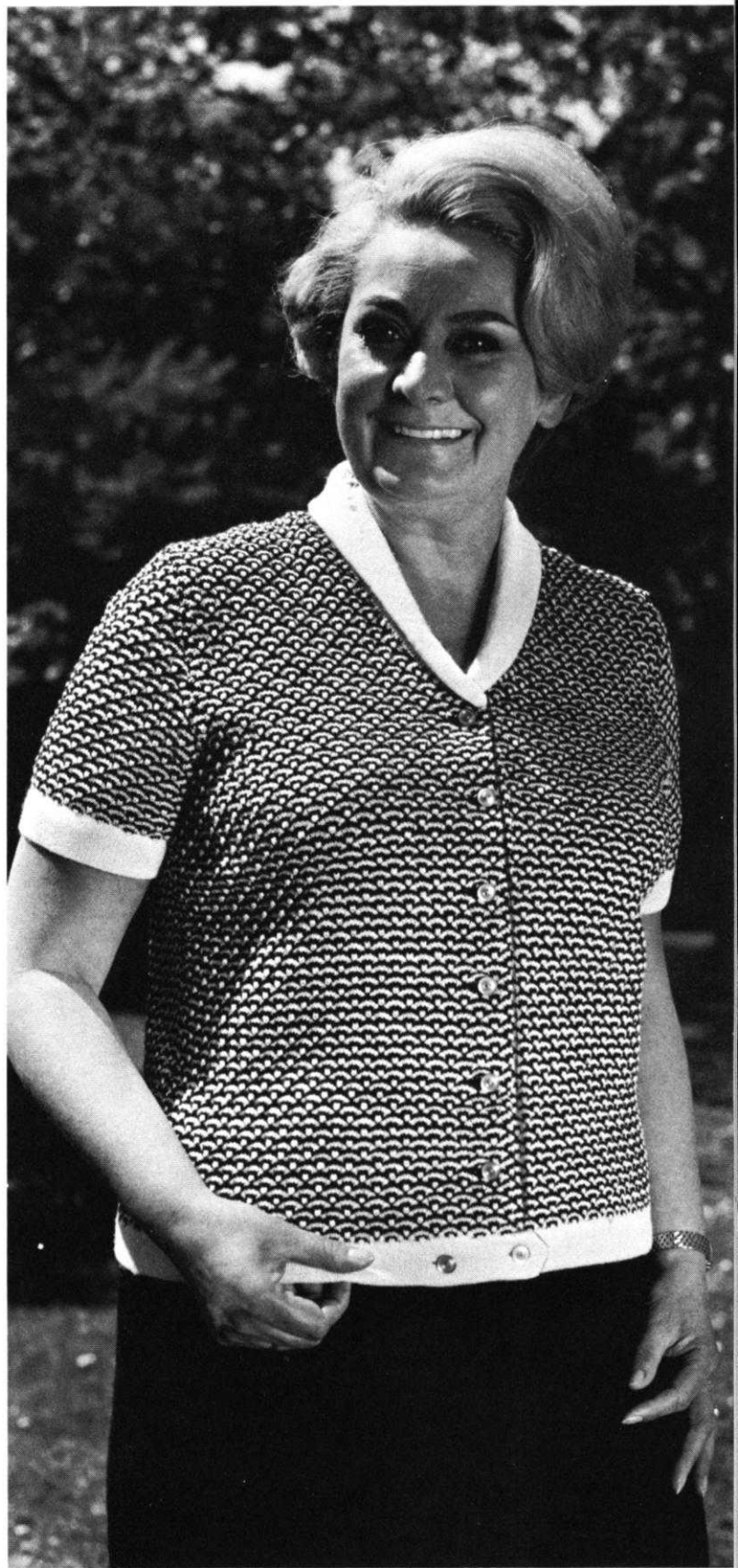


DP 7692

Combine an Eyelet Design and Holding Position Design for a lacy Blouse that is worn on the purl side. Use KNITKING'S easy to care for Subita Dralon 2-ply. Size 16 1/2 - 18 1/2. See page 21.

DP 7691

Wear a Blouse knitted in two striking colors . . . such as KNITKING Pink and Red Subita Dralon 2-ply. The Holding Position Design is very pretty and the soft rolled Collar flattering. Size 16 1/2 - 18 1/2. See page 22.





**ESPECIALLY
FOR THE NOT
TOO SLIM . . .
Sizes 18½/20½
and 22½/24½**

DK 7694

Slim line Dress has bright stripes for a happy accent on Pockets as well as on the Collar and front Facing, which are knitted at the same time. See Practical Knitting Hints on page 32. Size 18½ - 20½. See page 23.

DP 7689

Fairweather Cardigan in an Eyelet and Holding Position Design is certain to please you . . . Follow the Chart or use JAC 40 and Pattern No. 325. Size 20½ - 22½. See page 24.

DP 7688

All eyes are on this lovely Blouse with stripes in a delicate Eyelet Design. You will appreciate the unusual oval Neck-line and short capped Sleeves. Size 38. See page 24.



DP 7695

Special Requests for a Classic Cardigan in a large size bring you a perfect design. We've accented the Raglan Sleeves and added pockets. Size 22½ - 24½. See page 25.

DP 7698 →

A most attractive Pullover with an Eyelet Design on the front section could also be knitted into a Dress by adding the necessary rows at lower edge. Size 18/20. See page 26.

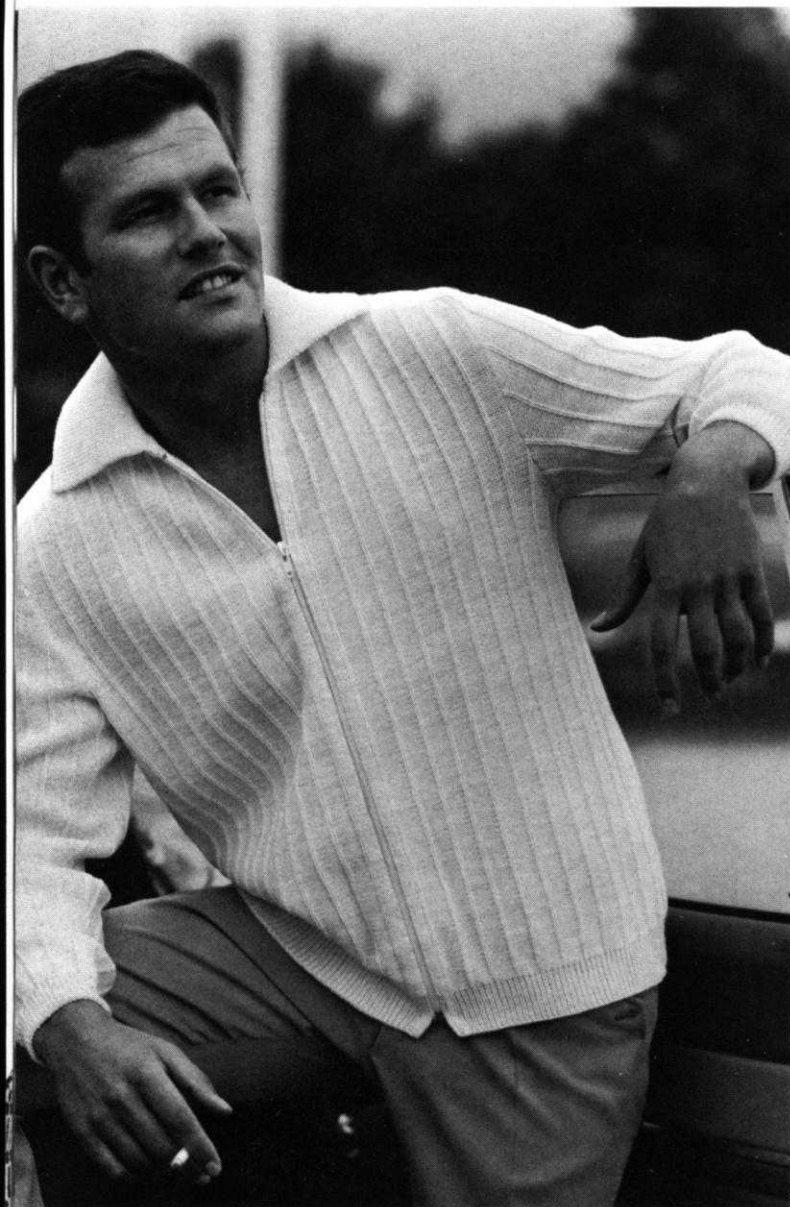
DP 7696

Another Classic Cardigan . . . this one with set-in Sleeves and Cable Stripes on the front sections. Size 38-40. See page 26.





FOR THE BIG MAN

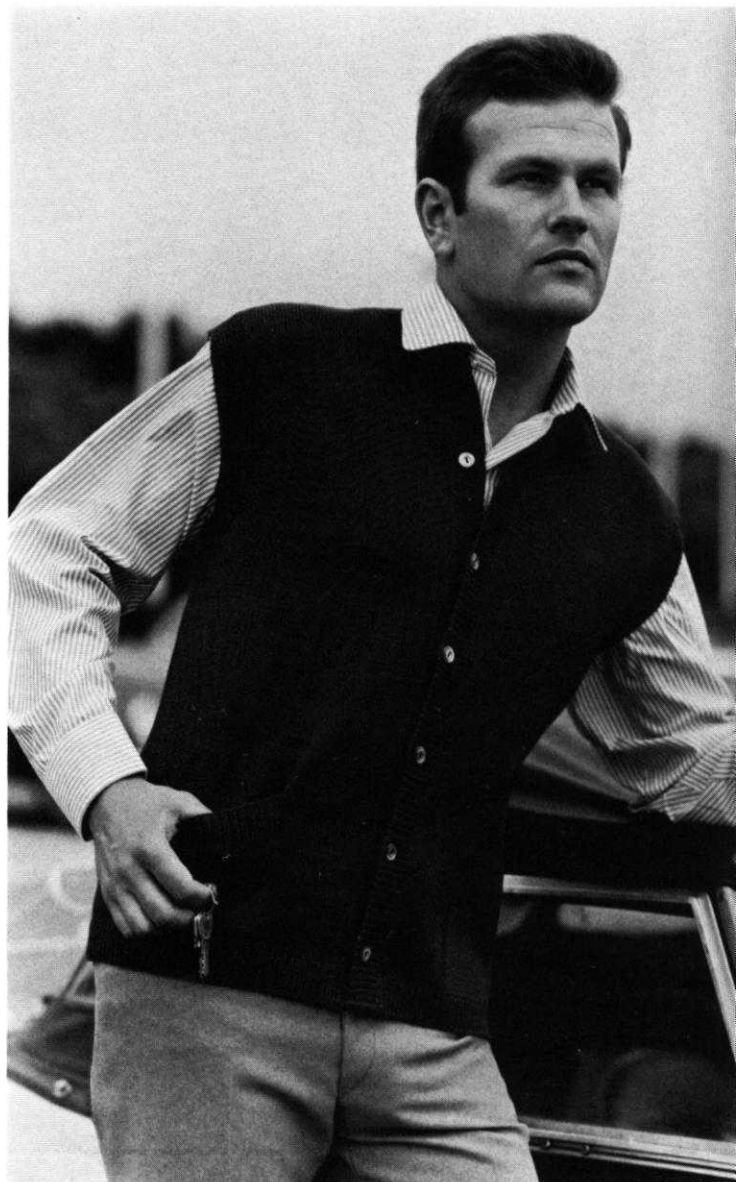


HP 3556

A ribbed design is used for this Man's very good looking zippered Jacket. We used KNITKING White Subita Crepe 2 x 4 for our Model. Size 42/44. See page 28.

HP 3554

Vests are always popular with men . . . and your Sportsman will enjoy wearing this one knitted in stockinette stitch with ribbed edges. Size 40/42. See page 27.





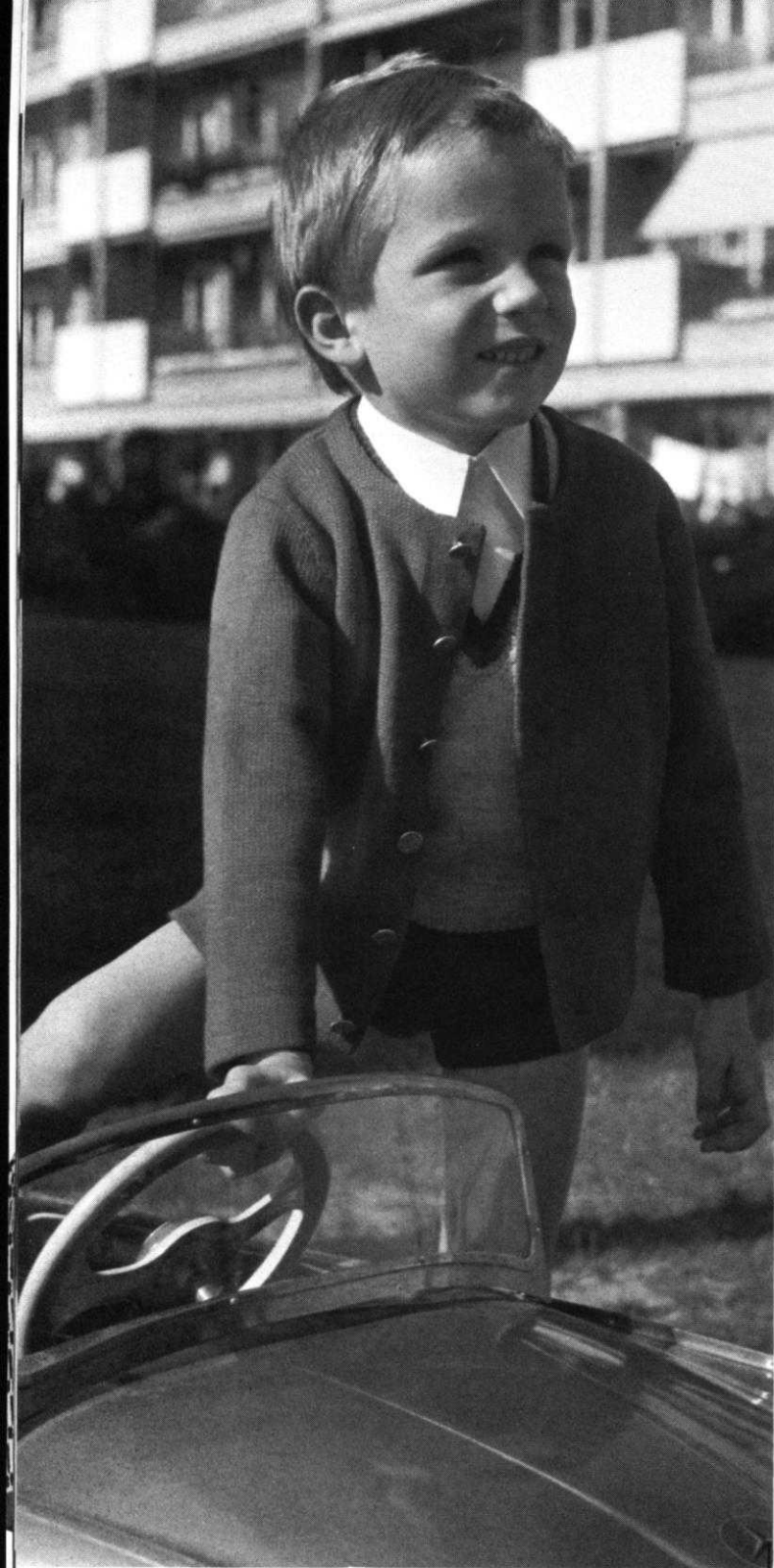
HP 3557

Use KNITKING White and Red Subita Dralon 3-ply for knitting a sleeveless Pullover for your man. Stockinette stitch with ribbed edges. Size 44/46. See page 29.

HP 3555

Another easy and quick to knit Man's sleeveless Pullover is made with KNITKING Nora. All edges are ribbed. Size 44/46. See page 28.





KK 5037

A 3-piece Suit for a very young man is knitted in stockinette stitch with a 1 x 1 rib on edges of sleeveless Pull-over. We used Brown and Beige KNITKING Subita Crepe 2 x 3. Size 5-6. See page 29.



MK 5034

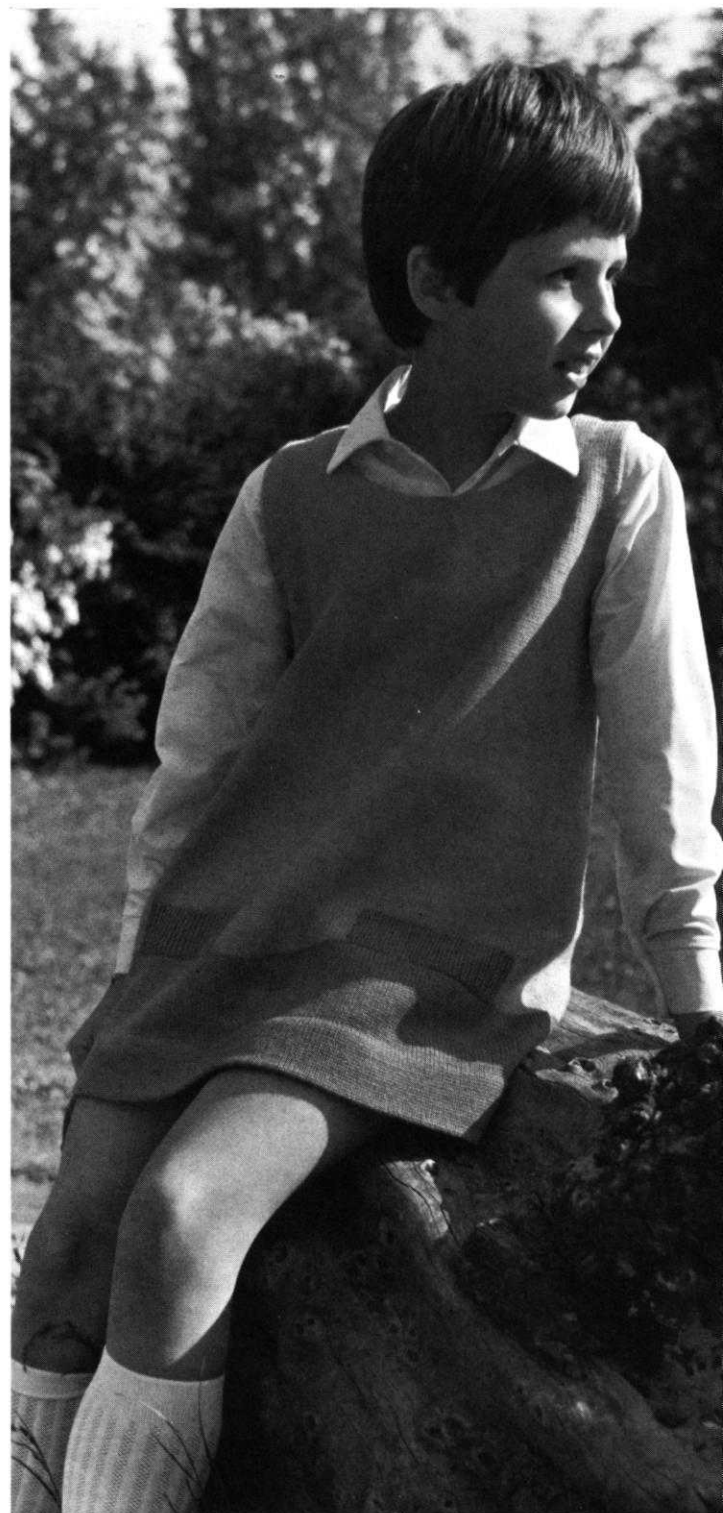
Fresh as a Daisy . . . She'll pose happily if you knit her this charming Dress of KNITKING Subita Dralon 3-ply in pale Pink and bright Pink. The Daisies are embroidered after the Dress is assembled. Size 9-10. See page 30.





MK 5033

Stripes of white are knitted into the yoke of a pale Pink Pullover for a little girl . . . Easy stockinette stitch with Raglan Sleeves. Size 10-11. See page 31.



MK 5032

Every little girl needs a Jumper and this neat and perky one will charm her. Yellow and Blue KNITKING Subita Crepe 2 x 4 knitted in stockinette stitch. Size 8-9. See page 31.



MK 5036

You can knit this darling Dress for a little girl in an evening. Stockinette stitch with crochet around Neckline and Armholes. Embroider the daisies as shown. Size 4-5. See page 32.

MK 5035

Daisies embroidered around the lower sections of this Dress knitted with Subita Dralon 2-ply (as is MK 5036) will delight your daughter. Edges are finished with a scallop crochet. Size 6-7. See page 32.



KNITTING INSTRUCTIONS

OUR COVER MODEL WOMAN'S BLOUSE, DP 7687



SIZE: 12/14 and 16/18. **MATERIAL:** Size 12/14: 12¼ oz. (7 balls), Size 16/18: 14 oz. (8 balls) brick red KNITTING Subita Crepe 2 x 3, Color #149. **TENSION:** KNITTING 3 to 5. **STITCH and ROW GAUGE:** 16 sts. 2", 25 rows 2". **PATTERN:** Stockinette Stitch with vertical Eyelet Design Stripes according to chart. **EDGES:** K1, P1, Ribbing. **SIZE:** 12/14. **BACK:** (Figure II). Cast on 146 sts.

ROWS 1-16: K1, P1, Ribbing. After ROW 16 transfer the ribber sts. to the main machine and continue with stockinette st. and the Eyelet Design.

the main machine and continue with stockinette st. and the Eyelet Design.

ROWS 17-176: Increase 1 st. on each side after ROW 70, then again every following 20th row 4 x. (156 sts.)

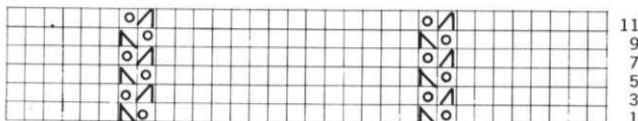
ROWS 177-200: ARMHOLE SHAPING: Bind off 4 sts. beginning next 2 rows, 3 sts. beginning next 4 rows, 2 sts. beginning next 4 rows, 1 st. beginning next 6 rows and 1 st. on each side of the next 4th and following 4th row. (118 sts.)

ROWS 201-272: Work even.

ROWS 273-292: SHOULDER SHAPING: Bind off 3 sts. beginning next 8 rows and 4 sts. beginning next 2 rows. After ROW 282 bind off the center 12 sts. for NECK. (See Notes to Knit By, inside back cover). Bind off 4 sts. on Shoulder Side and continue to Shape Shoulder on every other row by binding off 4 sts. 5 x. AT THE SAME TIME, Shape Neck on every other row by binding off 4 sts. 2 x, 3 sts. 1 x and 2 sts. 1 x.

FRONT: (Figure I). Cast on 146 sts.

ROWS 1-16: K1, P1, Ribbing. After ROW 16 transfer the



ribber sts. to the main machine and continue with stockinette st. and the Eyelet Design.

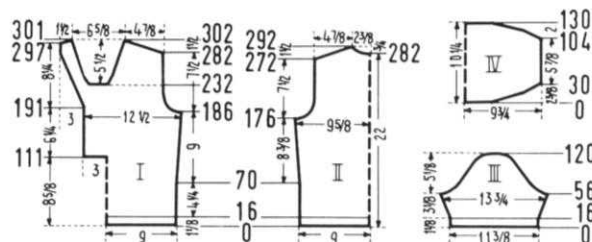
ROWS 17-110: Increase 1 st. on each side after ROWS 70 and 90. After ROW 110 put 67 sts. on the left side on a stitch holder and complete the right half first.

ROWS 111-186: On the right side, increase 1 st. after ROWS 110, 130 and 150, and on the left side, for the FACING, cast on 16 sts. after ROW 111. AT THE SAME TIME, make vertical buttonholes after ROWS 123, 151 and 179 by dividing the work between the 8th and 9th needles and between the 24th and 25th needles counting from the left side and working for 7 rows in 3 sections. (See Practical Knitting Hints Book, page 35). (102 sts.)

ROWS 187-210: ARMHOLE SHAPING: Bind off 4 sts. on the right side, then on every other row bind off 3 sts. 2 x, 2 sts. 2 x, 1 st. 3 x and 1 st. on the next 4th and following 4th row. AT THE SAME TIME, increase 1 st. on the left side after ROW 191, then again every following 4th row 4 x.

ROWS 211-232: Increase 1 st. on the left side after ROW 211, then again every following 4th row 5 x.

ROWS 233-302: NECK SHAPING: Bind off the 59th-76th sts. counting from the right side, put the needles on the left side into holding position and complete the right side first. After ROW 233 bind off 1 st. on the left side (Neck Side) then again every other row 3 x and every following 4th row 14 x. After ROW 282, then on every other row SHAPE SHOULDER by binding off 3 sts. 4 x and 4 sts. 7 x. Now bring the needles on the left side back into working position, turn the Row Counter back to 232 and complete the left side of the Neck Shaping.



ROWS 233-301: Decrease 1 st. on the right side (Neck Side) after ROW 234, then again every other row 3 x and every following 4th row 14 x. AT THE SAME TIME, increase 1 st. on the left side after ROW 235, then again every following 4th row 12 x. After ROW 297, then on every other row Shape Shoulder by binding off 4 sts. 2 x and 5 sts. 1 x. Now move the Cam Box to the left side, turn the Row Counter back to 110, hang the sts. from the stitch holder back on the machine and complete the left half. Follow the instructions from ROWS 111-302, reverse the sides, omit the buttonholes and after ROW 111, for the FACING, cast on 32 sts. on the right side instead of 16 sts.

SLEEVE: (Figure III). Make two. Cast on 94 sts.

ROWS 1-16: K1, P1, Ribbing. After ROW 16 transfer the ribber sts. to the main machine and continue with stockinette st. and the Eyelet Design.

ROWS 17-56: Increase 1 st. on each side after ROW 18, then again every following 4th row 8 x. (112 sts.)

ROWS 57-120: CAP SHAPING: Bind off 5 sts. beginning next 2 rows, 3 sts. beginning next 4 rows, 2 sts. beginning next 6 rows, 1 st. beginning next 44 rows, 2 sts. beginning next 2 rows, 3 sts. beginning next 4 rows, 4 sts. beginning next 2 rows and after ROW 120 bind off the remaining 10 sts.

COLLAR: (Figure IV). Cast on 160 sts. and work plain stockinette st.

ROWS 1-30: Work short rows. (See Notes to Knit By). On the left side put 58 needles into holding position, knit 1 row. On the right side put 58 needles into holding position, knit 1 row. Now alternately on each side bring 6 needles 4 x, 4 needles 4 x and 3 needles 6 x back into working position.

ROWS 31-104: Work even.

ROWS 105-128: Alternately on each side put 3 needles 6 x, 6 needles 4 x and 8 needles 2 x into holding position.

ROWS 129-130: On the left side bring all needles into working position, knit 1 row. On the right side bring all needles into working position, knit 1 row, then bind off all sts.

FINISHING: Join front and back section at sides and shoulders, easing in the fullness at bustline of front section. Sew sleeves together and set in. Turn under 16 sts. on front opening edges and hem to wrong side. Fold collar in half lengthwise and sew side edges. Sew cast-on edge of collar to inside and bound-off edge to outside of neckline. Finish buttonholes, sew on buttons.

SIZE 16/18 (The eyelet stripes for this size are spaced differently than is shown on picture).

BACK: (Figure II). Cast on 164 sts.

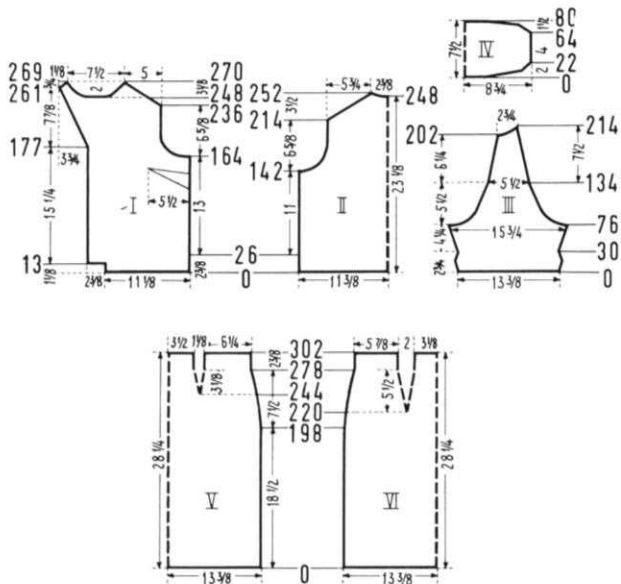
ROWS 1-16: K1, P1, Ribbing. After ROW 16 transfer the ribber sts. to the main machine and continue with stockinette st. and the Eyelet Design, hanging first the 10th st. onto the left neighboring needle.

ROWS 17-176: Increase 1 st. on each side after ROW 70, then again every following 20th row 4 x. (174 sts.)

ROWS 177-202: ARMHOLE SHAPING: Bind off 5 sts. beginning next 2 rows, 4 sts. beginning next 2 rows, 3 sts. beginning next 4 rows, 2 sts. beginning next 4 rows, 1 st. beginning next 6 rows and 1 st. on each side of the next 4th and following 4th row. (126 sts.)

ROWS 203-276: Work even.

ROWS 277-296: SHOULDER SHAPING: Bind off 3 sts. beginning next 4 rows and 4 sts. beginning next 6 rows. After



Notes to Knit By, inside back cover). Bind off 3 sts. on Shoulder Side, then again every other row 2 x. AT THE SAME TIME, bind off 6 sts. on Neck Side after ROW 249.

FRONT: (Figure I). Cast on 86 sts.

ROWS 1-13: Work even. After ROW 13 cast on 18 sts. on the left side.

ROWS 14-26: Work even and AT THE SAME TIME, after ROW 19, work vertical buttonholes by dividing the work between the 4th and 5th sts. and the 14th and 15th sts. counting from the left side and working for 5 rows in 3 sections. (See Practical Knitting Hints Book, Page 35). After ROW 26 hang the first 86 cast-on sts. back on the machine behind the latches to form the hem.

ROWS 27-164: Work even and AT THE SAME TIME, after ROW 28, work the Eyelet Design over the 22nd-36th needles counting from the left side and work vertical buttonholes after ROWS 48, 77, 106, 135 and 164 as you did before.

ROWS 165-190: ARMHOLE SHAPING: Bind off 8 sts. on the right side, then on every other row bind off 4 sts. 1 x, 3 sts. 2 x, 2 sts. 3 x, 1 st. 2 x and 1 st. on the next 4th and following 4th row. AT THE SAME TIME, for the FRONT SHAPING, increase 1 st. after ROW 177, then again every following 3rd row 4 x by moving the 2 end sts. on the left side 1 needle outward, then placing the 3rd st. from the row below onto the empty needle.

ROWS 191-248: Increase 1 st. on the left side after ROW 192, then again every following 3rd row 18 x as you did before. AT THE SAME TIME, SHAPE SHOULDER after ROW 236 by binding off 2 sts. on the right side, then again every other row 5 x. After ROW 248 bind off the 45th-64th sts. counting from the right side for NECK, put the needles on the left side into holding position and complete the right side first.

ROWS 249-270: Bind off 2 sts. on Shoulder side and continue to Shape Shoulder on every other row by binding off 2 sts. 9 x and 3 sts. 2 x. AT THE SAME TIME, Shape Neck on every other row by binding off 5 sts. 1 x, 3 sts. 2 x, 2 sts. 2 x and 1 st. 3 x. Now bring the needles on the left side back into working position, turn the Row Counter back to 248 and complete the left side.

ROWS 249-269: Increase 1 st. on the left side after ROW 249, then again every following 3rd row 3 x as you did before. After ROW 261 bind off 2 sts. on the left side for SHOULDER, then on every other row bind off 2 sts. 1 x and 3 sts. 2 x. AT THE SAME TIME, after ROW 250, then on every other row SHAPE NECK by binding off 5 sts. 1 x, 3 sts. 2 x, 2 sts. 2 x and 1 st. 3 x. Work the second front section with reverse shapings and omit the buttonholes.

SLEEVE: (Figure III). Cast on 102 sts.

ROWS 1-30: Increase 1 st. on each side after ROWS 8 and

14, then decrease 1 st. on each side after ROWS 22 and 28. **ROWS 31-76:** Increase 1 st. on each side after ROW 34, then again every following 6th row 3 x and every following 4th row 5 x. (120 sts.)

ROWS 77-90: CAP SHAPING: Bind off 6 sts. beginning next 2 rows, 4 sts. beginning next 4 rows, 3 sts. beginning next 4 rows and 2 sts. beginning next 4 rows.

ROWS 91-202: Decrease 1 st. on each side after ROW 90, then again every following 3rd row 15 x and every following 7th row 9 x by always hanging the 3rd st. on each side onto the 2nd needle, then moving the end sts. inward to fill the empty needle.

ROWS 203-214: Work short rows. (See Notes to Knit By). On the left side put 5 needles 1 x, 4 needles 1 x, 3 needles 2 x and 2 needles 2 x into holding position. AT THE SAME TIME, decrease 1 st. on the right side after ROW 205. After ROW 214 bring all needles back into working position then bind off all 21 sts. Work the second sleeve with reverse shapings.

COLLAR: Cast on 135 sts.

ROWS 1-22: Work short rows. On the left side put 48 needles into holding position, knit 1 row. On the right side put 48 needles into holding position, knit 1 row. Now alternately on each side bring 9 needles 2 x, 8 needles 2 x, 3 needles 2 x and 2 needles 4 x back into working position.

ROWS 23-64: Work even.

ROWS 65-78: Alternately on each side put 2 needles 3 x, 3 needles 2 x and 18 needles 2 x into holding position.

ROWS 79-80: On the left side bring all needles back into working position, knit 1 row. On the right side bring all needles back into working position, knit 1 row. After ROW 80 bind off all sts.

FINISHING: SKIRT: Weave skirt sections together at sides, 1 st. in from each edge, leaving a 9" opening on the left side for the zipper. (If skirt is not to be lined, sew up all the way and omit zipper) Make a narrow hem around this opening. Turn under 12 rows on upper edge and hem to wrong side. Insert an elastic band. Sew in zipper. Sew on hooks and eyes. Turn under 18 rows on lower edge and hem to wrong side. Line the skirt with taffeta.

BLOUSE: Sew bust darts into front sections according to the diagram. Join front and back sections at sides. Sew sleeves together and join to front and back sections. Turn under 18 rows on sleeve edges and hem to wrong side, then fold over to right side. Turn under 9 sts. on front edges, matching buttonholes and hem to wrong side. Fold collar in half lengthwise and sew side edges. Sew cast-on edge of collar to inside and bound-off edge to outside of neckline. Finish buttonholes, sew on buttons.

WOMAN'S 3 PIECE SUIT, DK 7697



SIZE: 18/20, (Bust 40" - 42"). **MATERIAL:** Skirt and Jacket: 28 oz. (16 balls) gold; Shell: 5 1/4 oz. (3 balls), green, 3 1/2 oz. (2 balls) gold and 1 3/4 oz. (1 ball) orange KNITTING Subita Crepe 2 x 4, Color #48, #11 and #38. **TENSION:** KNITTING 7 to 9. **STITCH and ROW GAUGE:** 14 sts. 2", 22 rows 2". **PATTERN:** Stockinette Stitch worn on the purl side.

SKIRT: BACK: (Figure V). Cast on 188 sts.

ROWS 1-278: Decrease 1 st. on each side after ROW 30, then again every following 12th row 3 x, every following 8th row 3 x, every following 6th row 3 x and every following 4th row 2 x by always hanging the 3rd st. on each side onto the 2nd needle, then moving the end sts. inward to fill the empty needle. AT THE SAME TIME, for the DARTS, decrease 2 sts. on each side after ROW 218 then again every following 10th row 6 x. For the first decrease, hang the 47th and 49th sts. on each side onto the 48th needle, then move the end sts. inward to fill the empty needles. The next decreases lie directly above.

ROWS 279-296: Work even, then bind off the remaining 118 sts.

FRONT: (Figure IV). Work the front section the same as the

WOMAN'S 3 PIECE SUIT, DK 7690



SIZE: 16 $\frac{1}{2}$ -18 $\frac{1}{2}$, (Bust 39" - 41").
MATERIAL: 29 $\frac{3}{4}$ oz. (17 balls) dark blue and 15 $\frac{3}{4}$ oz. (9 balls) grey KNITTING Subita Crepe with Rayon, Color #255 and #262. **TENSION:** KNITTING 5 to 7. **STITCH and ROW GAUGE:** 16 sts. 2", 23 rows 2".
PATTERN: Stockinette Stitch.

SKIRT: BACK: (Figure V). Cast on 182 sts. with blue.

ROWS 1-294: Decrease 1 st. on each side after ROW 212, then again every following 10th row 2 x, every following 8th row 4 x and every

following 6th row 5 x. AT THE SAME TIME, for the DARTS, decrease 2 sts. on each side after ROW 234, then again every following 10th row 2 x and every following 8th row 5 x. For the first decrease hang the 54th and 56th sts. on each side onto the 55th needle, then move the end sts. inward to fill the empty needles. The next decreases lie directly above.

ROWS 295-322: Work even, then bind off the remaining 126 sts.

FRONT: (Figure IV). Work the front the same as the back, but for the DARTS, decrease 2 sts. on each side after ROW 258, then again every following 10th row 2 x and every following 8th row 2 x. For the first decrease hang the 51st and 53rd sts. on each side onto the 52nd needle, then move the end sts. inward to fill the empty needles. The next decreases lie directly above. After Row 322 bind off the remaining 138 sts.

PULLOVER: BACK: (Figure II). Cast on 160 sts. with grey. **ROWS 1-28:** Work even, then hang the cast-on sts. back on the machine behind the latches to form the hem.

ROWS 29-166: Increase 1 st. on each side after ROW 60, then again every 22nd row 4 x and AT THE SAME TIME, work ROWS 75-84 with dark blue. (170 sts.)

ROWS 167-190: ARMHOLE SHAPING: Bind off 4 sts. beginning next 4 rows, 3 sts. beginning next 4 rows, 2 sts.

beginning next 4 rows, 1 st. beginning next 4 rows and 1 st. on each side of the next 4th and following 4th row. (126 sts.)

ROWS 191-234: Work even. After ROW 234 divide the sts. in the center, put the needles on the left side into holding position and complete the right half first.

ROWS 235-258: Work even.

ROWS 259-276: SHOULDER SHAPING: Bind off 3 sts. on the right side, then on every other row bind off 4 sts. 9 x. AT THE SAME TIME, after ROW 263, then on every other row SHAPE NECK by binding off 12 sts. 1 x, 3 sts. 2 x, 2 sts. 2 x and 1 st. 2 x. Now move the Cam Box to the left side, bring all needles back into working position, turn the Row Counter back to 234 and complete the left half. Follow the instructions from ROWS 235-276 and reverse the sides.

FRONT: (Figure I). Work the front the same as the back to ROW 166.

ROWS 167-180: Work even.

ROWS 181-204: ARMHOLE SHAPING: Bind off 4 sts. beginning next 4 rows, 3 sts. beginning next 4 rows, 2 sts. beginning next 4 rows, 1 st. beginning next 4 rows and 1 st. on each side of the next 4th and following 4th row. (126 sts.)

ROWS 205-248: Work even.

ROWS 249-290: NECK SHAPING: Bind off the center 14 sts. for NECK, (See Notes to Knit By, inside back cover) then on every other row on Neck Side bind off 3 sts. 2 x, 2 sts. 2 x, 1 st. 4 x and 1 st. on every following 4th row 3 x. AT THE SAME TIME, after ROW 272, then on every other row SHAPE SHOULDER by binding off 3 sts. 1 x and 4 sts. 9 x.

SLEEVE: (Figure III). Make two. Cast on 105 sts.

ROWS 1-28: Decrease 1 st. on each side after ROWS 4, 8 and 12, then increase 1 st. on each side after ROWS 18, 22 and 26. After ROW 28 hang the cast-on sts. back on the machine behind the latches to form the hem.

ROWS 29-60: Increase 1 st. on each side after ROW 30, then again every following 4th row 6 x. (119 sts.)

ROWS 61-120: CAP SHAPING: Bind off 5 sts. beginning next 2 rows, 4 sts. beginning next 2 rows, 3 sts. beginning next 6 rows, 2 sts. beginning next 4 rows, 1 st. beginning next 36 rows, 2 sts. beginning next 4 rows, 3 sts. beginning next 4 rows, 4 sts. beginning next 2 rows and after Row 120 bind off the remaining 11 sts.

NECKBAND: Cast on 128 sts. with dark blue and work stockinette st., 5 rows with tension 5, 10 rows with tension 4 and 5 rows with tension 5. After 20 rows bind off all sts. the crochet method.

JACKET: BACK: (Figure VII). Cast on 167 sts. with grey. **ROWS 1-18:** Work even, then hang the cast-on sts. back on the machine behind the latches to form the hem and continue with dark blue.

ROWS 19-170: Increase 1 st. on each side after ROW 64, then again every following 22nd row 4 x. (177 sts.)

ROWS 171-194: ARMHOLE SHAPING: Bind off 5 sts. beginning next 2 rows, 4 sts. beginning next 2 rows, 3 sts. beginning next 4 rows, 2 sts. beginning next 4 rows, 1 st. beginning next 4 rows and 1 st. on each side of the next 4th and following 4th row. (131 sts.)

ROWS 195-266: Work even.

ROWS 267-284: SHOULDER SHAPING: Bind off 4 sts. beginning next 4 rows. After ROW 270 bind off the center 27 sts. for NECK. (See Notes to Knit By) Bind off 4 sts. on Shoulder Side and continue to Shape Shoulder on every other row by binding off 4 sts. 7 x. AT THE SAME TIME, Shape Neck on every other row by binding off 3 sts. 2 x, 2 sts. 2 x and 1 st. 2 x.

FRONT: (Figure VI). Cast on 77 sts. with grey.

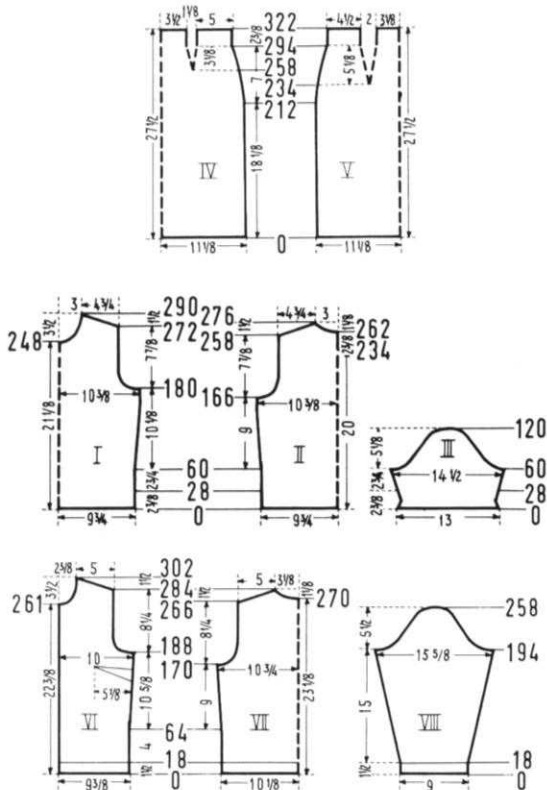
ROWS 1-18: Work even, then hang the cast-on sts. back on the machine behind the latches to form the hem and continue with dark blue.

ROWS 19-188: Increase 1 st. on the right side after ROW 64, then again every following 22nd row 4 x. (82 sts.)

ROWS 189-212: ARMHOLE SHAPING: Bind off 5 sts. on the right side, then on every other row bind off 4 sts. 1 x, 3 sts. 2 x, 2 sts. 2 x, 1 st. 2 x and 1 st. on the next 4th and following 4th row. (59 sts.)

ROWS 213-261: Work even.

ROWS 262-302: NECK SHAPING: Bind off 4 sts. on the left



side, then on every other row bind off 3 sts. 1 x, 2 sts. 3 x, 1 st. 3 x and 1 st. on every following 4th row 3 x. AT THE SAME TIME, after ROW 284, then on every other row SHAPE SHOULDER by binding off 4 sts. 10 x. Work the second front section with reverse shapings.

SLEEVE: (Figure VIII). Make two. Cast on 74 sts. with grey. **ROWS 1-18:** Work even, then hang the cast-on sts. back on the machine behind the latches to form the hem and continue with dark blue.

ROWS 19-194: Increase 1 st. on each side after ROW 18, then again every following 6th row 20 x and every following 8th row 6 x. (128 sts.)

ROWS 195-258: CAP SHAPING: Bind off 5 sts. beginning next 2 rows, 4 sts. beginning next 4 rows, 3 sts. beginning next 4 rows, 2 sts. beginning next 4 rows, 1 st. beginning next 40 rows, 2 sts. beginning next 4 rows, 3 sts. beginning next 4 rows, 4 sts. beginning next 2 rows and after ROW 258 bind off the remaining 14 sts.

FRONT and NECK BAND: Leaving the center 112 needles in the non-working position, and using 2 separate balls of yarn, cast on 14 sts. on each side of these non-working position needles, then put the 14 needles with the cast-on sts. on the left side into holding position and work the right side first.

ROWS 1-252: Work even. After ROW 252 put the needles on the right side into holding position, turn the Row Counter back to 0 and work 252 rows over the 14 needles on the left side. Now, move the Cam Box all the way to the right and with the yarn on the left side cast on 112 sts. over the center 112 needles, bring the 14 needles on the right side into working position and continue working over 140 needles with the yarn of the right side.

ROWS 253-261: Work even. After ROW 261 put 14 sts. on each side on stitch holders.

ROWS 262-270: Work even, then bind off these 112 sts. the crochet method.

FINISHING: SKIRT: Weave skirt together at sides, 1 st. in from each edge, leaving a 9" opening on the left side for the zipper. (If skirt is not to be lined, sew up all the way and omit zipper). Make a narrow hem around this opening. Turn under 14 rows on upper edge and hem to wrong side. Insert an elastic band. Sew in zipper. Sew on hooks and eyes. Turn under 18 rows on lower edge and hem to wrong side. Line the skirt with taffeta.

PULLOVER: Join front and back section at sides and shoulders, easing in the fullness at bustline of front section. Sew sleeves together and set in. Sew 1 long edge of neckband to inside and 1 long edge to outside of neckline. Work 1 row of single crochet around back opening. Work 3 loops on 1 side and sew 3 buttons to other side of opening.

JACKET: Sew Bust Darts into front sections according to diagram. Join front and back sections at sides and shoulders. Sew sleeves together and set in. Weave bands to front edges, 1 st. in from each edge, then fold bands over half and hem to wrong side. On upper edge of bands weave the open sts. together. Sew 1 edge of neckband to inside and 1 edge to outside of neckline.

WOMAN'S BLOUSE, DP 7692



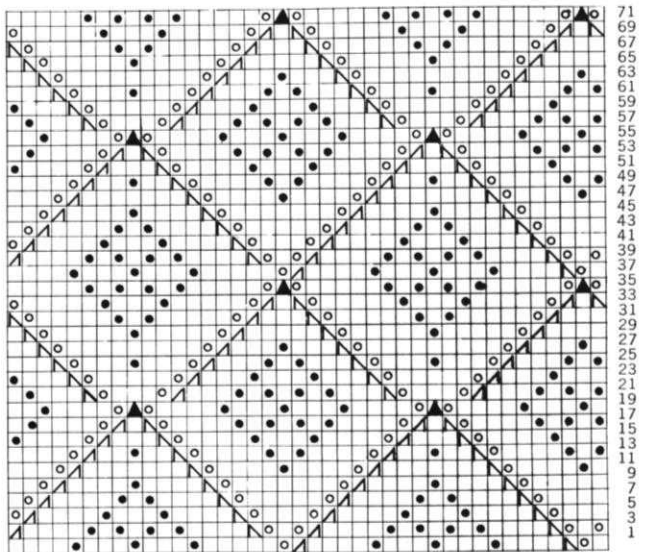
SIZE: 16½-18½, (Bust 39" - 41").
MATERIAL: 8¾ oz. (5 balls) pink KNITKING Subita Dralon 2 ply, Color #405. **TENSION:** KNITKING 1 to 3.
STITCH and ROW GAUGE: Pattern Stitch 17 sts. 2", 40 rows 2". Stockinette Stitch 17 sts. 2", 30 rows 2".
PATTERN: Holding Position and Eyelet Design according to chart, worn on the purl side.

EDGES: Stockinette Stitch.

BACK: (Figure II). Cast on 183 sts. and work stockinette st.

ROWS 1-26: Work even. To form the

hem after ROW 26, hang the cast-on sts. back on the machine in front of the latches, then push the right Cam Control Button toward the back (machines prior to AM 3 pull the Cam Control Knob up) and knit 2 rows without yarn, then push the Control Button forward, (or push



down) turn Row Counter back to 26 and continue working in Pattern Stitch.

ROWS 27-282: Work even.

ROWS 283-330: ARMHOLE SHAPING: Bind off 4 sts. beginning next 2 rows, 3 sts. beginning next 4 rows, 2 sts. beginning next 6 rows, 1 st. beginning next 6 rows, then 1 st. on each side of every following 4th row 3 x and 1 st. on each side of every following 6th row 3 x. (133 sts.)

ROWS 331-402: Work even, then divide the sts. in the center, put the needles on the left side into holding position and complete the right half first.

ROWS 403-442: Work even.

ROWS 443-474: SHOULDER SHAPING: Bind off 2 sts. on the right side, then on every other row bind off 2 sts. 9 x and 3 sts. 7 x. AT THE SAME TIME, after ROW 451, then on every other row SHAPE NECK by binding off 9 sts. (8 sts.) 1 x, 3 sts. 2 x, 2 sts. 4 x and 1 st. 3 x. Now bring the needles on the left side back into working position, turn the Row Counter back to 402 and complete the left half. Follow the instructions from ROWS 403-474, reverse the sides and begin the Shoulder Shaping after ROW 443 and the Neck Shaping after ROW 452.

FRONT: (Figure I). Work the front the same as the back to ROW 282.

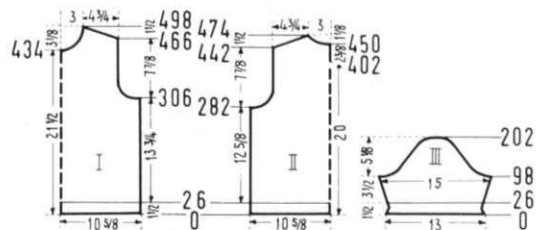
ROWS 283-306: Work even.

ROWS 307-346: ARMHOLE SHAPING: Bind off 5 sts. beginning next 2 rows, 4 sts. beginning next 2 rows, 3 sts. beginning next 4 rows, 2 sts. beginning next 4 rows, 1 st. beginning next 2 rows, then 1 st. on each side after ROWS 322, 326, 332, 338 and 344. (133 sts.)

ROWS 347-434: Work even.

ROWS 435-498: NECK SHAPING: Bind off the center 13 sts. for NECK, (See Notes to Knit By, inside back cover) then on every other row on Neck Side bind off 3 sts. 2 x, 2 sts. 2 x, 1 st. 3 x, then on every following 4th row 1 st. 3 x and on every following 6th row 1 st. 3 x. AT THE SAME TIME, after ROW 466, then on every other row SHAPE SHOULDER by binding off 2 sts. 10 x and 3 sts. 7 x.

SLEEVE: (Figure III). Make two. Cast on 111 sts. and work stockinette st.



ROWS 1-26: Decrease 1 st. on each side after ROWS 4, 8 and 12, then increase 1 st. on each side after ROWS 16, 20 and 24. After Row 26 form the hem as you did on the back, then continue in Pattern Stitch.

ROWS 27-98: Increase 1 st. on each side after ROW 30, then again every following 6th row 2 x and every following 8th row 6 x. (129 sts.)

ROWS 99-130: CAP SHAPING: Bind off 6 sts. on each side, then on each side of every following 4th row bind off 4 sts. 1 x, 3 sts. 3 x and 2 sts. 3 x.

ROWS 131-202: Bind off 1 st. on each side after ROW 130, then 2 sts. on each side after ROW 134. Repeat these bind-offs 6 x, (Always knit 4 rows after each bind-off) then on each side of every following 4th row bind off 2 sts. 1 x, 3 sts. 2 x, 5 sts. 1 x and after row 202 bind off the remaining 11 sts.

NECKBAND: Cast on 157 sts. and work 26 rows stockinette st., then bind off all sts. the crochet method.

FINISHING: Join front and back section at sides and shoulders, easing in the fullness at bustline of front section. Sew sleeves together and set in. Sew 1 long edge of neckband to inside and 1 long edge to outside of neckline. Work 1 row of single crochet around back opening. Work 3 loops on 1 side and sew 3 buttons to other side of opening.

WOMAN'S BLOUSE, DP 7691

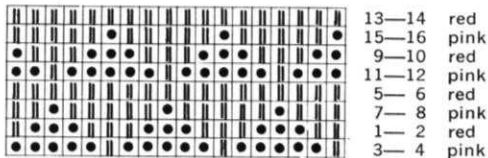


SIZE: 16½-18½, (Bust 39" - 41").
MATERIAL: 7 oz. (4 balls) pink and 5¼ oz. (3 balls) red KNITTING Subita Dralon 2 ply, Color #405 and #418. **TENSION:** KNITTING 1 to 3. **STITCH and ROW GAUGE:** Pattern Stitch 15 sts. 2", 51 rows 2". Stockinette Stitch at lower EDGE 15 sts. 2", 32 rows 2", at COLLAR 19 sts. 2", 29 rows 2". **PATTERN:** Holding Position Design according to chart. The knit side is the right side. **EDGES and COLLAR:** Stockinette Stitch.

BACK: (Figure II). Cast on 163 sts. with pink.

ROWS 1-40: Work stockinette st. After ROW 40 continue in Holding Position Design.

ROWS 41-356: Work even.



ROWS 357-406: ARMHOLE SHAPING: Bind off 4 sts. on each side, then on each side of every following 4th row bind off 4 sts. 1 x, 3 sts. 2 x, 2 sts. 2 x, 1 st. 3 x and 1 st. on each side of the next 8th and following 8th row. (117 sts.)

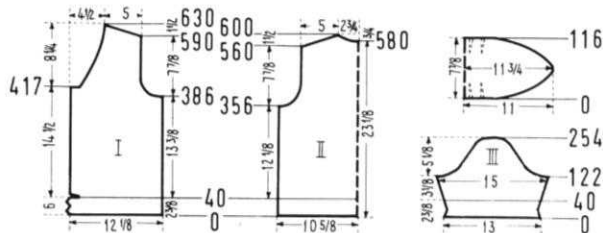
ROWS 407-560: Work even.

ROWS 561-600: SHOULDER SHAPING: Bind off 1 st. beginning next 10 rows and 2 sts. beginning next 10 rows. After ROW 580 bind off the center 23 sts. for NECK. (See Notes to Knit By, inside back cover). Bind off 2 sts. on Shoulder Side and continue to Shape Shoulder on every other row by binding off 2 sts. 10 x. AT THE SAME TIME, Shape Neck after ROW 583, then on every following 4th row by binding off 3 sts. 2 x and 2 sts. 2 x.

FRONT: (Figure I). Cast on 93 sts. with pink.

ROWS 1-20: Increase 1 st. on the left side for the pointed shaping after ROWS 1, 3, 5 and 7, then decrease 1 st. after ROWS 11, 13, 15 and 17. AT THE SAME TIME, work buttonholes after ROW 9 over the 8th-12th and 26th-30th needles counting from the left side.

ROWS 21-40: Increase 1 st. on the left side for the pointed shaping after ROWS 23, 25, 27 and 29, then decrease 1 st. after ROWS 33, 35, 37 and 39. AT THE SAME TIME, work



buttonholes after ROW 30 over the same needles as before. After ROW 40 bind off 8 sts. on the left side, using a separate length of yarn, then cast on 9 new sts. Continue working in Holding Position Design.

ROWS 41-386: Work even and make buttonholes after ROWS 87, 151, 215, 279 and 343 over the 2nd-6th and 14th-18th needles.

ROWS 387-436: ARMHOLE and NECK SHAPING: Bind off 4 sts. on the right side, then on every following 4th row bind off 4 sts. 1 x, 3 sts. 2 x, 2 sts. 2 x, 1 st. 3 x and 1 st. on the next 8th and following 8th row. AT THE SAME TIME work buttonholes after ROW 407 over the same needles as before. After ROW 417, bind off 9 sts. on the left side for the NECK SHAPING and continue to Shape Neck by decreasing 1 st. after ROWS 421, 425, 429 and 435.

ROWS 437-630: Decrease 1 st. on the left side after ROW 441, then again every following 6th row 4 x, every following 8th row 9 x and every following 10th row 7 x. AT THE SAME TIME, after ROW 590, then on every other row SHAPE SHOULDER by binding off 1 st. 5 x and 2 sts. 16 x. Work the second front section with reverse shapings and omit the buttonholes.

SLEEVE: (Figure III). Make two. Cast on 99 sts. with pink. **ROWS 1-40:** Work stockinette st. and decrease 1 st. on each side after ROWS 6, 12 and 18, then increase 1 st. on each side after ROWS 24, 30 and 36. After ROW 40 continue in Holding Position Design.

ROWS 41-122: Increase 1 st. on each side after ROW 48, then again every following 8th row 3 x and every following 10th row 4 x. (115 sts.)

ROWS 123-254: CAP SHAPING: Bind off 4 sts. on each side, then on each side of every following 4th row bind off 3 sts. 3 x, 2 sts. 3 x, 1 st. 21 x, 2 sts. 3 x, 3 sts. 2 x and after ROW 254 bind off the remaining 11 sts.

COLLAR: (Figure IV). Cast on 106 sts. with pink and work stockinette st.

ROW 1: Knit 1 row over all needles.

ROWS 2-56: Work short rows. (See Notes to Knit By) On the right side put 77 needles into holding position, knit 2 rows. Now, in succession bring 5 needles 4 x, 4 needles 4 x, 3 needles 7 x, 2 needles 8 x and 1 needle 4 x back into working position. AT THE SAME TIME, on the left side, for each of the 2 DARTS, increase 2 sts. after ROWS 6, 14, 22 and 30. The first increases are made between the 9th-10th-11th sts. and between the 19th-20th-21st sts. counting from the left side. The next increases lie directly above.

ROWS 57-61: Work even.

ROWS 62-115: On the right side, put 1 needle 4 x, 2 needles 8 x, 3 needles 7 x, 4 needles 4 x and 5 needles 4 x into holding position. AT THE SAME TIME, decrease 2 sts. on the left side after ROWS 86, 94, 102 and 110. The decreases lie directly above the increases.

ROW 116: Bring all needles into working position and knit 1 row, then bind off all sts. Work the second collar section with reverse shapings, casting on from right to left.

FINISHING: Join front and back sections at sides and shoulders, easing in the fullness at bustline of front sections. Sew sleeves together and set in. Turn under half of lower edge and sleeve edges, hem to wrong side and join pointed shapings. Turn under 9 sts. on front edges and hem to wrong side. Weave collar sections together, 1 st. in from each edge. Sew 1 long edge of collar to inside and 1 long edge to outside of neckline. Finish buttonholes, sew on buttons.

WOMAN'S DRESS, DK 7694



SIZE 18½-20½. (Bust 41"-43").
MATERIAL: 29¾ oz. (17 balls) blue and 1¾ oz. (1 ball) white KNITKING Subita Crepe 2x4, Color #37 and #4. **TENSION:** KNITKING 6 to 8. **STITCH and ROW GAUGE:** 16 sts. 2", 22 rows 2". **PATTERN:** Stockinette Stitch.

BACK: (Figure II). Cast on 192 sts. **ROWS 1-294:** Decrease 1 st. on each side after ROW 210, then again every following 12th row 2 x, every following 8th row 5 x, and every following 6th row 3 x. AT THE SAME

TIME, after ROW 244, decrease 2 sts. on each side for the DARTS, then again every following 12th row 4 x. For the first decrease hang the 57th and 59th sts. on each side onto the 58th needle, then move the end sts. inward to fill the empty needles. The next decreases lie directly above. (150 sts.)

ROWS 295-308: Work even.

ROWS 309-374: Increase 1 st. on each side after ROW 308, then again every following 12th row 4 x. AT THE SAME TIME, after ROW 308 increase 2 sts. on each side for the DARTS, then again every following 12th row 4 x. The increases lie directly above the decreases. (180 sts.)

ROWS 375-406: ARMHOLE SHAPING: Bind off 4 sts. beginning next 4 rows, 3 sts. beginning next 4 rows, 2 sts. beginning next 6 rows, 1 st. beginning next 6 rows and 1 st. on each side of every following 4th row 3 x. (128 sts.)

ROWS 407-466: Work even.

ROWS 467-484: SHOULDER SHAPING: Bind off 3 sts. beginning next 4 rows. After ROW 470 bind off the center 22 sts. for NECK, (See Notes to Knit By, inside back cover). Bind off 3 sts. on Shoulder Side and continue to Shape Shoulder on every other row by binding off 3 sts. 2 x and 4 sts. 5 x. AT THE SAME TIME, Shape Neck on every other row by binding off 4 sts. 2 x, 3 sts. 2 x and 2 sts. 2 x.

FRONT: (Figure I). Cast on 192 sts.

ROWS 1-228: Decrease 1 st. on each side after ROWS 140 and 222. After ROW 228 work the pocket. On each side, bind off the 16th-60th sts., then put all but the 45 empty needles on the right side into holding position. Cast on 45 sts. over the empty needles on the right side and work 48 rows for the pocket lining. Now put these needles into holding position, then cast on 45 sts. over the empty needles on the left side and work 48 rows stockinette st. Move the Cam Box to the right side, turn the Row Counter back to 228, bring all needles back into working position and continue working over all needles.

ROWS 229-294: Decrease 1 st. on each side after ROW 234, then again every following 8th row 5 x and every following 6th row 3 x. AT THE SAME TIME, after ROW 244, decrease 2 sts. on each side for the DARTS, then again every following 12th row 4 x. For the first decrease hang the 57th and 59th sts. on each side onto the 58th needles, then move the end sts. inward to fill the empty needles. The next decreases lie directly above. (150 sts.)

ROWS 295-308: Work even. After ROW 308 bind off the cen-

ter 12 sts., put the needles on the left side into holding position (or on a stitch holder) and complete the right half first.

ROWS 309-392: Increase 1 st. on the right side after ROW 308, then again every 12th row 4 x. AT THE SAME TIME, after ROW 308 increase 2 sts. for the DART, then again every 12th row 4 x. The increases lie directly above the decreases.

ROWS 393-502: ARMHOLE, NECK and SHOULDER SHAPING: Bind off 6 sts. on the right side, then on every other row bind off 4 sts. 1 x, 3 sts. 2 x, 2 sts. 3 x, 1 st. 2 x and 1 st. on the next 4th and following 4th row. AT THE SAME TIME, decrease 1 st. on the left side for NECK after ROW 414, then again every following 3rd row 6 x and every following 4th row 16 x by always hanging the 3rd st. on the left side onto the 2nd needle, then moving the end sts. inward to fill the empty needle. After ROW 484, then on every other row SHAPE SHOULDER by binding off 3 sts. 5 x and 4 sts. 5 x. Now move the Cam Box to the left side, bring the needles back into working position, turn the Row Counter back to 308 and complete the left half. Follow instructions from ROWS 309-502 and reverse the sides.

SLEEVE: (Figure III). Make two. Cast on 108 sts.

ROWS 1-26: Decrease 1 st. on each side after ROWS 4, 8 and 12, then increase 1 st. on each side after ROWS 16, 20 and 24. After Row 26 hang the cast-on sts. back on the machine behind the latches to form the hem.

ROWS 27-62: Increase 1 st. on each side after ROW 28, then again every following 4th row 7 x. (124 sts.)

ROWS 63-124: CAP SHAPING: Bind off 5 sts. beginning next 2 rows, 4 sts. beginning next 4 rows, 3 sts. beginning next 4 rows, 2 sts. beginning next 4 rows, 1 st. beginning next 40 rows, 2 sts. beginning next 2 rows, 3 sts. beginning next 4 rows, 5 sts. beginning next 2 rows and after ROW 124 bind off the remaining 12 sts.

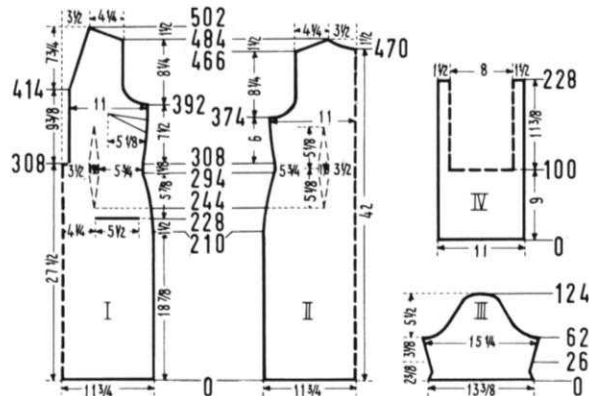
COLLAR: (Figure IV) Cast on 90 sts. with white (use Open Cast on method — See Practical Knitting Hints). For the Striped Pattern, work first 4 rows with white, then alternately work 8 rows blue and 8 rows white.

ROWS 1-100: Work even. After ROW 100 put 13 needles on each side into holding position. With a contrast waste yarn work several rows over the center 64 stitches, then take these sts. of the machine and hang the 13 sts. from each side together and continue working the Striped Pattern over 26 needles (Row Counter at 100).

ROWS 101-228: Work even. After ROW 228 bind off all sts. Work the second collar section the same, but make vertical buttonholes after ROWS 132, 172 and 212 by dividing the work on each side between the 7th and 8th sts. and working for 7 rows in 3 sections. (See Practical Knitting Hints Book, page 35).

POCKET BANDS: Make two. Cast on 26 sts. with white and work 56 rows stockinette st., alternately knitting 8 rows blue and 8 rows white, then bind off all sts.

FINISHING: Sew Bust Darts into front section according to the diagram. Join front and back section at sides and shoulders. Sew sleeves together and set in. Turn under 18 rows on lower edge and hem to wrong side. On wrong side, sew pocket lining to dress. Sew bands to pocket slits. Join collar at center back. Weave open sts. of front collar edges together. With 1 long edge to inside and 1 long edge to outside sew collar to front edges and neckline. Finish buttonholes, sew on buttons.



CANADIAN READERS

Please note that KNITKING dealers based in the U.S.A. are unable to sell machines and accessories to residents of Canada. They are also unable to sell parts and service. Would all Canadian readers please contact the following appointed KNITKING dealer.

KNITKING Sales and Service
 2243 Danforth Ave.
 Toronto 13, Ontario

WOMAN'S CARDIGAN, DP 7689



SIZE: 20½-22½, (Bust 43" - 45").
MATERIAL: 15¼ oz. (9 balls) turquoise KNITKING Subita Dralon 3 ply, Color #444. **TENSION:** KNITKING 4 to 6. **STITCH and ROW GAUGE:** Pattern Stitch 15 sts. 2", 25 rows 2". Stockinette Stitch 16 sts. 2", 21 rows 2". **PATTERN:** Holding Position and Eyelet Design according to chart, or use JAC 40 and Pattern No. 325. The purl side is the right side.

EDGES: K1, P1, Ribbing.

BACK: (Figure II). Cast on 181 sts.

ROWS 1-16: K1, P1, Ribbing. After ROW 16 transfer the ribber sts. to the main machine and continue in Pattern Stitch.

ROWS 17-162: Work even.

ROWS 163-202: ARMHOLE SHAPING: Bind off 5 sts. beginning next 2 rows, 4 sts. beginning next 2 rows, 3 sts. beginning next 4 rows, 2 sts. beginning next 6 rows, 1 st. beginning next 6 rows and 1 st. on each side after ROWS 184, 188, 194 and 200. (125 sts.)

ROWS 203-272: Work even.

ROWS 273-292: SHOULDER SHAPING: Bind off 3 sts. beginning next 4 rows. After ROW 276 bind off the center 11 sts. for NECK. (See Notes to Knit By, inside back cover). Bind off 3 sts. on Shoulder Side and continue to Shape Shoulder on every other row by binding off 3 sts. 2 x and 4 sts. 6 x. AT THE SAME TIME, Shape Neck on every other row by binding off 4 sts. 1 x, 3 sts. 2 x and 2 sts. 4 x.

FRONT: (Figure I). Cast on 86 sts.

ROWS 1-16: K1, P1, Ribbing. After ROW 16 transfer the ribber sts. to the main machine and continue in Pattern Stitch.

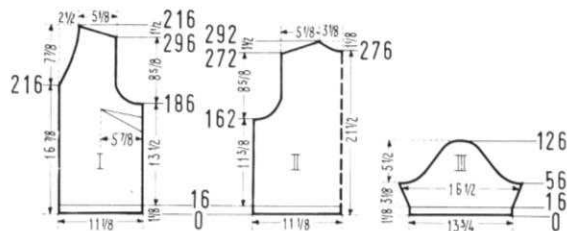
ROWS 17-186: Work even.

ROWS 187-216: ARMHOLE SHAPING: Bind off 6 sts. on the right side, then on every other row bind off 4 sts. 1 x, 3 sts. 2 x, 2 sts. 3 x, 1 st. 4 x and 1 st. on the next 4th and following 4th row. (58 sts.)

ROWS 217-316: NECK SHAPING: Decrease 1 st. on the left side after ROW 216, then again every following 2nd row 3 x, every following 4th row 4 x and every following 6th row 11 x. AT THE SAME TIME, after ROW 296, then on every other row SHAPE SHOULDER by binding off 3 sts. 5 x and 4 st. 6 x. Work the second front section with reverse shapings.

SLEEVE: (Figure III). Make two. Cast on 105 sts.

ROWS 1-16: K1, P1, Ribbing. After ROW 16 transfer the



ribber sts. to the main machine and continue in Pattern Stitch.

ROWS 17-56: Increase 1 st. on each side after ROW 16, then again every following 4th row 9 x. (125 sts.)

ROWS 57-126: CAP SHAPING: Bind off 5 sts. beginning next 2 rows, 3 sts. beginning next 6 rows, 2 sts. beginning next 10 rows, 1 st. beginning next 42 rows, 2 sts. beginning next 4 rows, 3 sts. beginning next 4 rows, 4 sts. beginning next 2 rows and after ROW 126 bind off the remaining 7 sts.

FRONT and NECK BAND: Cast on 19 sts. and work 596 rows stockinette st., making vertical buttonholes after ROWS 6, 38, 70, 102, 134 and 166 by dividing the sts. on each side between the 5th and 6th sts. and working for 7 rows in 3 sections. (See practical Knitting Hints Book, page 35). After ROW 596 bind off all sts.

FINISHING: Sew Bust Darts into front sections according to the diagram. Join front and back sections at sides and shoulders. Sew sleeves together and set in. Sew 1 long edge of band to inside and 1 long edge to outside around front and neckline edges, having buttonhole section on the right side of cardigan. Finish buttonholes, sew on buttons.

WOMAN'S BLOUSE, DP 7688



SIZE: 38, (Bust 42)". **MATERIAL:** 12¼ oz. (7 balls) pale yellow KNITKING Subita Dralon 3 ply, Color #409. **TENSION:** KNITKING 4 to 6. **STITCH and ROW GAUGE:** 16 sts. 2", 21 rows 2". **PATTERN:** Stockinette Stitch with Eyelet Design according to chart.

One Eyelet Stripe reaches over 17 sts. For each stripe, always hang the 8th and 10th sts. onto the 9th needle, then on each side, move 5 sts. toward the center of the stripe. On the second Pattern Row move 4 sts. on each side toward the center, on the 3rd Pattern Row move 3 sts. on each side toward the center, etc. After each 30-40 rows drop the 1st and 2nd, then the 16th and 17th sts. of the Pattern Stripe and latch up into knit sts. (The first time let sts. to run to ribbed edge.)

LOWER EDGE: K1, P1, Ribbing.

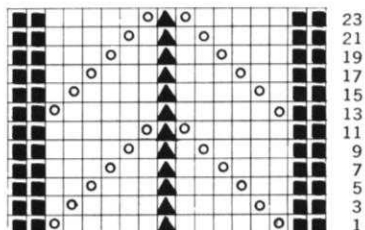
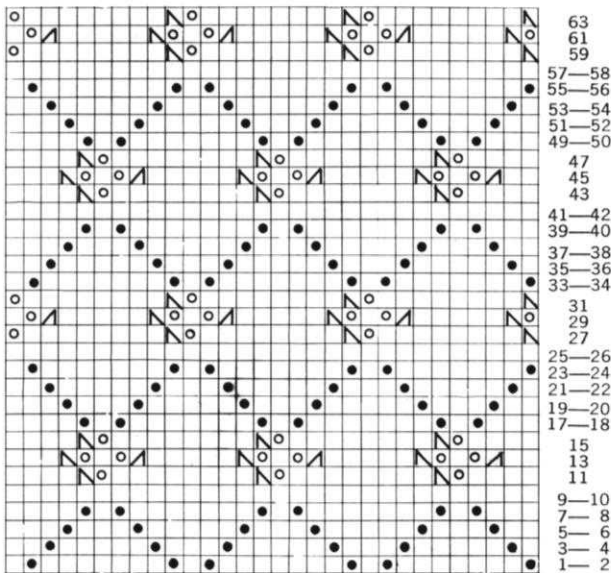
BACK: (Figure II). Cast on 169 sts.

ROWS 1-12: K1, P1, Ribbing. After ROW 12 transfer the ribber sts. to the main machine, continue in stockinette st. and work the Eyelet Design Stripes on each side over the 20th-36th and 58th-74th needles. (4 stripes).

ROWS 13-146: Increase 1 st. on each side after ROW 50, then again every following 18th row 4 x. (179 sts.)

ROWS 147-158: ARMHOLE SHAPING: Bind off 3 sts. beginning next 2 rows, 2 sts. beginning next 4 rows, 1 st. beginning next 2 rows and 1 st. on each side of the following 4th. row. (161 sts.)

ROWS 159-218: Increase 1 st. on each side after ROW 172,





then again every following 6th row 4 x and every following 4th row 4 x. (179 sts.)

ROWS 219-252: SHOULDER SHAPING: Bind off 2 sts. beginning next 16 rows and 3 sts. beginning next 2 rows. After ROW 236 bind off the center 23 sts. for NECK. (See Notes to Knit By, inside back cover). Bind off 3 sts. on Shoulder Side and continue to Shape Shoulder on every other row by binding off 3 sts. 2 x and 5 sts. 6 x. AT THE SAME TIME, Shape Neck on every other row by binding off 4 sts. 2 x, 3 sts. 2 x and 2 sts. 3 x.

FRONT: (Figure I). Work the front the same as the back to ROW 146.

ROWS 147-164: Work even.

ROWS 165-176: ARMHOLE SHAPING: Bind off 3 sts. beginning next 2 rows, 2 sts. beginning next 4 rows, 1 st. beginning next 2 rows and 1 st. on each side of the following 4th row. (161 sts.)

ROWS 177-194: Increase 1 st. on each side after ROW 190.

ROWS 195-236: NECK SHAPING: Bind off the center 19 sts. for NECK as you did on the back, then on every other row on Neck Side bind off 4 sts. 1 x, 3 sts. 2 x, 2 sts. 2 x, 1 st. 4 x and 1 st. on every following 4th row 4 x. AT THE SAME TIME, increase 1 st. on Armhole Side after ROW 196, then again every following 6th row 3 x and every following 4th row 4 x.

ROWS 237-270: SHOULDER SHAPING: Bind off 2 sts. on the right side, then on every other row bind off 2 sts. 7 x, 3 sts. 4 x and 5 sts. 6 x.

NECKBAND: Cast on 179 sts. and work stockinette st., 3 rows with tension 6, 3 rows with tension 5, 6 rows with tension 4, 3 rows with tension 5 and 3 rows with tension 6. After 18 rows bind off all sts.

ARMHOLE BAND: Make two. Cast on 101 sts. and work 18 rows stockinette st., using the same tensions as on the neckband, then bind off all sts.

FINISHING: Join front and back section at sides and shoulders, easing in the fullness at bustline of front section. Join short ends of armhole bands. Join short ends of neck band. Sew 1 edge of neckband to inside and 1 edge to outside of neckline. Sew armhole bands to armholes in the same manner.

WOMAN'S CARDIGAN, DP 7695



SIZE: 22½-24½. (Bust 45" - 47").

MATERIAL: 22¾ oz. (13 balls) green KNITTING Subita Crepe 2 x 4, Color #42. **TENSION:** KNITTING 6 to 8.

STITCH and ROW GAUGE: 15 sts. 2", 21 rows 2". **PATTERN:** Stockinette Stitch. **EDGES:** K1, P1, Ribbing.

BACK: (Figure II). Cast on 192 sts. **ROWS 1-16:** K1, P1, Ribbing. After row 16 transfer the ribber sts. to the main machine and continue with stockinette st.

ROWS 17-138: Work even.

ROWS 139-256: RAGLAN SHAPING:

Decrease 2 sts. on each side after Row 138, then again every following 2nd row 13 x and every following 4th row 22 x by always hanging the 3rd and 4th sts. on each side onto the 5th and 6th needles, then moving the end sts. inward to fill the empty needles. AT THE SAME TIME, after ROW 252, bind off the center 22 sts. for NECK, (See Notes to Knit By, inside back cover) then on every other row on Neck Side bind off 8 sts. 1 x and 5 sts. 1 x.

FRONT: (Figure I). Cast on 114 sts.

ROWS 1-16: K1, P1, Ribbing. After row 16 transfer the ribber sts. to the main machine and continue with stockinette st.

THE JAC 40 IS A MUST

for fast easy knitting of Jaquard and Ski-sweater designs



Patterns are selected—row by row—through a pre-stamped card that is fed into the Jac.

There are over 140 cards available and illustrations of them are included with each Jac.

Jac 40's are made for most brands of machines (with the exception of Japanese machines). When ordering be sure to specify your brand of knitter as needle spacings vary. Simple to use and an essential tool for the modern knitter, Jac 40's are \$24.95 complete with 3 cards for practicing the 3 techniques, plus complete instructions.

Order from your dealer or direct from

KNITTING

1128 Crenshaw Boulevard, Los Angeles, Calif. 90019

Shipping Cost \$1.50—California residents add 5% sales tax.

ROWS 17-154: Work even and AT THE SAME TIME, make buttonholes after ROWS 16, 54, 92 and 130 over the 2nd-6th and 19th-23rd needles counting from the left side.

ROWS 155-264: RAGLAN SHAPING: Decrease 2 st. on the right side after ROW 154, then again every following 2nd row 13 x and every following 4th row 20 x as you did on the back. AT THE SAME TIME, make buttonholes after ROWS 168 and 206 over the same needles as before. After ROW 243, then on every other row SHAPE NECK by binding off 24 sts. 1 x, 4 sts. 1 x, 3 sts. 2 x, 2 sts. 3 x and 1 st. 3 x. After ROW 264 hang the remaining 3 sts. together, (the 2 outside sts. onto the center st.) then bind off. Work the second front section with reverse shapings and omit the buttonholes.

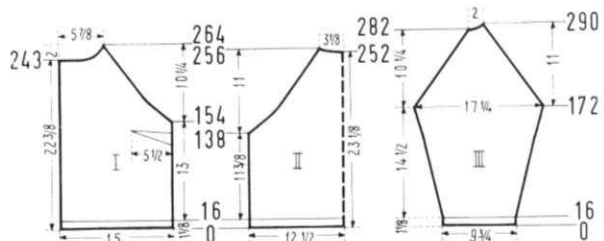
SLEEVE: (Fig. III). Cast on 75 sts.

ROWS 1-16: K1, P1, Ribbing. After ROW 16 transfer the ribber sts. to the main machine and continue with stockinette st.

ROWS 17-172: Increase 1 st. on each side after ROW 22, then again every following 6th row 18 x and every following 4th row 9 x. (131 sts.)

ROWS 173-282: RAGLAN SHAPING: Decrease 2 sts. on each side after ROWS 172 and 174, then again every following 4th row 26 x as you did on the back.

ROWS 283-290: Work short rows. (See Notes to Knit By).



On the **left side** put 4 needles 2 x, 3 needles 1 x and 2 needles 1 x into holding position. AT THE SAME TIME, decrease 2 sts. on the **right side** after ROWS 282 and 286 as you did before. After ROW 290 bring all needles back into working position and bind off all 15 sts. Work the second sleeve with reverse shaping, casting on from right to left.

POCKET: Make two. Cast on 45 sts. and work 38 rows stockinette st., then transfer every other st. to the ribber and work 16 rows K1, P1, Ribbing. After ROW 54 bind off all sts. the crochet method for ribbing.

NECKBAND: Cast on 195 sts. and work 16 rows K1, P1, Ribbing, then bind off all sts. the crochet method for ribbing.

FINISHING: Sew Bust Darts into front sections according to the diagram. Join front and back sections at sides. Sew sleeves together, then weave to front and back sections, 1 st. in on each edge.

Sew pockets to cardigan as shown on the picture. Turn under 12 sts. on each front edge and hem to wrong side. Sew neckband to neckline, leaving a small opening on the right side for a buttonhole. Finish buttonholes, sew on buttons.

WOMAN'S CARDIGAN, DP 7696



SIZE: 38/40, (Bust 42" - 44"). **MATERIAL:** 24½ oz. (14 balls) beige KNITKING Nora, Color #4003. **TENSION:** KNITKING 7 to 9. **STITCH and ROW GAUGE:** 14 sts. 2", 19 rows 2". **PATTERN:** Stockinette Stitch with Cable Design on front edges. The Cable Design reaches over 10 sts. and consists of 2 purl sts., 6 cable sts. and 2 purl sts. **1.** Knit 4 rows. **2.** Using 2 double transfer tools, hang the 5th and 6th st. of the 10 designated sts. onto the 3rd and 4th needle and the 3rd and 4th

st. onto the 5th and 6th needle. **3.** Knit 4 rows. **4.** Hang the 5th and 6th st. of the 10 designated sts. onto the 7th and 8th needle and the 7th and 8th st. onto the 5th and 6th needle. Repeat Steps 1 to 4 throughout. After each 40-50 rows drop the 1st, 2nd, 9th and 10th st. of the 10 designated sts. and latch up into knit sts. (The first time let sts. run to ribbed edge). **EDGES:** K1, P1, Ribbing.

BACK: (Figure II). Cast on 163 sts.

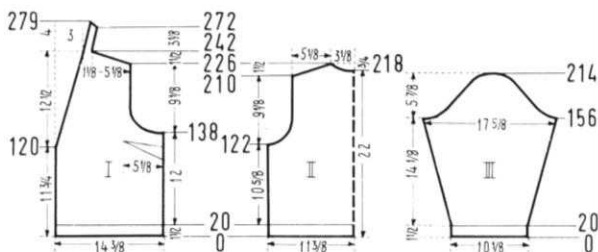
ROWS 1-20: K1, P1, Ribbing. After ROW 20 transfer the ribber sts. to the main machine and continue with stockinette st.

ROWS 21-122: Work even.

ROWS 123-152: ARMHOLE SHAPING: Bind off 5 sts. beginning next 2 rows, 3 sts. beginning next 4 rows, 2 sts. beginning next 6 rows, 1 st. beginning next 6 rows and 1 st. on each side of every following 4th row 3 x. (117 sts.)

ROWS 153-210: Work even.

ROWS 211-226: SHOULDER SHAPING: Bind off 4 sts. beginning next 8 rows. After ROW 218 bind off the center 17 sts. for NECK. (See Notes to Knit By, inside back cover). Bind off 4 sts on Shoulder Side and continue to Shape Shoulder on every other row by binding off 4 sts. 4 x. AT THE SAME TIME, Shape Neck on every other row by binding off 6 sts. 1 x and 4 sts. 2 x.



FRONT: (Figure I). Cast on 102 sts.

ROWS 1-20: K1, P1, Ribbing, working buttonholes after ROW 9 over the 3rd-6th and 12th-15th needles, counting from the left side. After ROW 20 transfer the ribber sts. to the main machine, continue with stockinette sts. and work the Cable Design over the 18th-27th sts. counting from the left side.

ROWS 21-120: Work even, making buttonholes after ROWS 37, 61, 87 and 109 over the same needles as before.

ROWS 121-226: FRONT and ARMHOLE SHAPING: Decrease 1 st. on the **left side** after ROW 120, then again every following 4th row 20 x and every following 5th row 5 x by always hanging the 29th st. on the **left side** onto the 28th needle, then moving the end sts. inward to fill the empty needle. AT THE SAME TIME, after ROW 138, then on every other row SHAPE ARMHOLE by binding off 8 sts. 1 x, 6 sts. 1 x, 3 sts. 2 x, 2 sts. 3 x, 1 st. 3 x and 1 st. on the next 4th and following 4th row.

ROW 227-242: SHOULDER SHAPING: Bind off 4 sts. on the **right side**, then on every other row bind off 4 sts. 8 x. Continue working over the remaining 9 sts. for the back facing.

ROWS 243-247: Work even.

ROWS 248-255: Work short rows. (See Notes to Knit By) On the **right side** put 6 needles into holding position, knit 2 rows. Bring all needles into working position, knit 6 rows.

ROWS 256-279: Repeat ROWS 248-255 3 x, but on the first repeat put 3 needles, on the second repeat put 6 needles and on the third repeat put 3 needles into holding position. After ROW 279 put the 9 sts. on a stitch holder. Work the second front section with reverse shapings and omit the buttonholes.

SLEEVE: (Figure III). Cast on 73 sts.

ROWS 1-20: K1, P1, Ribbing. After ROW 20 transfer the ribber sts. to the main machine and continue with stockinette st.

ROWS 21-156: Increase 1 st. on each side after ROW 22, then again every following 6th row 12 x and every following 4th row 14 x. (127 sts.)

ROWS 157-170: CAP SHAPING: On the **right side**, (back of sleeve) then on every other row bind off 4 sts. 1 x, 3 sts. 3 x and 2 sts. 3 x. AT THE SAME TIME, on the **left side**, (front of sleeve) then on every other row bind off 8 sts. 1 x, 5 sts. 1 x, 3 sts. 2 x and 2 sts. 3 x.

ROWS 171-214: Bind off 1 st. beginning next 4 rows and 2 sts. beginning next 2 rows. Repeat these bind-offs 5 x, then bind off 2 sts. beginning next 2 rows, 3 sts. beginning next 4 rows, 4 sts. beginning next 2 rows and after ROW 214 bind off the remaining 11 sts. Work the second sleeve with reverse shaping.

FINISHING: Sew Bust Darts into front sections according to the diagram. Join front and back sections at sides and shoulders. Sew sleeves together and set in, matching front and back. Weave the open sts. together at center back of facing. Sew facing to neckline. Turn under 9 sts. at front edges and back facing and hem to wrong side. Finish buttonholes, sew on buttons.

WOMAN'S PULLOVER, DP 7698



SIZE: 18/20, (Bust 40" - 42"). **MATERIAL:** 14 oz. (8 balls) lilac KNITKING Subita Dralon 3 ply, Color #407. **TENSION:** KNITKING 4 to 6. **STITCH and ROW GAUGE:** 15 sts. 2", 23 rows 2". **PATTERN:** Stockinette Stitch with Eyelet Design on front section according to chart.

EDGES: K1, P1, Ribbing. **BACK:** (Figure II). Cast on 169 sts. **ROWS 1-16:** K1, P1, Ribbing. After ROW 16 transfer the ribber sts. to the main machine and continue with stockinette st.

ROWS 17-154: Work even.

ROWS 155-184: ARMHOLE SHAPING: Bind off 4 sts. beginning next 4 rows, 3 sts. beginning next 4 rows 2 sts. beginning next 4 rows, 1 st. beginning next 6 rows and 1 st. on each side of every following 4th row 3 x. (121 sts.)

MAN'S JACKET, HP 3556



SIZE 42/44. MATERIAL: 21 oz. (12 balls) white KNITKING Subita Crepe 2 x 4, Color # 4 and a 22" jacket type zipper. **TENSION:** KNITKING 5 to 7. **STITCH and ROW GAUGE:** Pattern Stitch 17 sts. 2", 22 rows 2". **PATTERN:** Pattern Ribbing of alternately purl 7 and knit 1. **EDGES and COLLAR:** K1, P1, Ribbing.

BACK: (Figure II). Cast on 197 sts. (2 end sts. on each side are on the main machine).

ROWS 1-26: K1, P1, Ribbing. After ROW 26 transfer the appropriate

ribber stitches to the main machine, having first the 7th, then every following 8th st. on the ribber and continue in Pattern Ribbing.

ROWS 27-188: Work even.

ROWS 189-212: ARMHOLE SHAPING: Bind off 4 sts. beginning next 4 rows, 3 sts. beginning next 4 rows, 2 sts. beginning next 4 rows, 1 st. beginning next 4 rows and 1 st. on each side of the next 4th and following 4th row. (153 sts.)

ROWS 213-264: Work even.

ROWS 265-304: SHOULDER SHAPING: Bind off 3 sts. beginning next 40 rows, then bind off the remaining 33 sts.

FRONT: (Figure I) Cast on 102 sts., having the last 2 sts. on the right side on the main machine.

ROWS 1-26: K1, P1, Ribbing. After ROW 26 transfer the appropriate ribber sts. to the main machine, having first the 7th, then every following 8th st. on the ribber and continue in Pattern Ribbing.

ROWS 27-188: Work even.

ROWS 189-212: ARMHOLE SHAPING: Bind off 4 sts. on the right side, then on every other row bind off 4 sts. 1 x, 3 sts. 2 x, 2 sts. 2 x, 1 st. 2 x and 1 st. on the next 4th and following 4th row. (80 sts.)

ROWS 213-264: Work even.

ROWS 265-294: SHOULDER and NECK SHAPING: Bind off 3 sts. on the right side, then on every other row bind off 3 sts. 14 x and 4 sts. 1 x. AT THE SAME TIME, after ROW 267, then on every other row SHAPE NECK by binding off 13 sts. 1 x, 4 sts. 1 x, 3 sts. 2 x, 2 sts. 2 x, 1 st. 3 x and 1 st. on the following 4th row 1 x. Work the second front section with reverse shapings, casting on from right to left and having the first 2 sts. on the left side on the main machine.

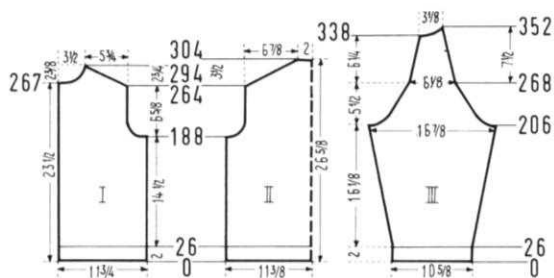
SLEEVE: (Figure III). Cast on 93 sts. (2 ends sts. on each side are on main machine).

ROWS 1-26: K1, P1, Ribbing. After ROW 26 transfer the appropriate ribber sts. to the main machine, having first the 3rd, then every following 8th st. on the ribber, (counting from the right side) and continue in Pattern Ribbing.

ROWS 27-206: Increase 1 st. on each side after ROW 26, then again every following 8th row 8 x and every following 6th row 18 x. (147 sts.) (Stay in Pattern when increasing).

ROWS 207-220: CAP SHAPING: Bind off 4 sts. beginning next 6 rows, 3 sts. beginning next 4 rows and 2 sts. beginning next 4 rows.

ROWS 221-338: Decrease 1 st. on each side after ROW 220, then again every other row 25 x and every following 6th row 11 x.



ROWS 339-352: Work short rows. (See Notes to Knit By, inside back cover). On the left side put 6 needles 1 x, 4 needles 2 x, 3 needles 3 x and 2 needles 1 x into holding position. (Always transfer ribber sts. to the main machine before putting them in hold) AT THE SAME TIME, decrease 1 st. on the right side after ROWS 342 and 348. After ROW 352 bring all needles back into working position, then bind off all 27 sts. Work the second sleeve with reverse shaping, casting on from right to left.

COLLAR: Cast on 195 sts. and work K1, P1, Ribbing, 20 rows with tension 7, 16 rows with tension 6 and 14 rows with tension 5. After ROW 50 thread your ribber transfer needle with a contrast yarn then transfer all ribber sts. onto this contrast yarn. Now transfer your main machine sts. onto a contrast yarn in the same manner, then hang these 98 sts. back on the main machine onto 98 needles and work 4 rows stockinette st. with tension 6, then bind off these sts. the crochet method. Now turn the work, hang the 97 rib sts. onto the main machine and work 4 rows stockinette st. with tension 6, then bind off all sts. the crochet method.

FINISHING: Weave front and back section together at sides, 1 1/2 sts. in on each edge. Sew sleeves together, then join to front and back section. Turn under 3 sts. on each front edge and hem to wrong side. Sew 1 stockinette st. edge of collar to inside and 1 edge to outside of neckline. Sew in zipper.

MAN'S PULLOVER, HP 3555



SIZE: 44/46. **MATERIAL:** 17 1/2 oz. (10 balls) charcoal KNITKING Nora, Color #4047. **TENSION:** KNITKING 6 to 8. **STITCH and ROW GAUGE:** 16 sts. 2", 20 rows 2". **PATTERN:** Stockinette Stitch. **EDGES:** K1, P1, Ribbing.

BACK: (Figure II). Cast on 195 sts. **ROWS 1-24:** K1, P1, Ribbing. After ROW 24 transfer the ribber sts. to the main machine and continue with stockinette st.

ROWS 25-164: Work even.

ROWS 165-188: ARMHOLE SHAPING: Bind off 6 sts. beginning next 2 rows, 4 sts. beginning next 2 rows, 3 sts. beginning next 4 rows, 2 sts. beginning next 4 rows, 1 st. beginning next 4 rows and 1 st. on each side of the next 4th and following 4th row. (147 sts.)

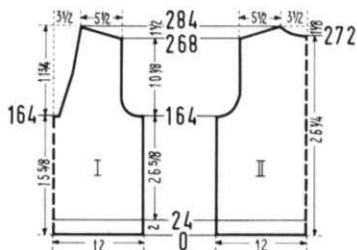
ROWS 189-268: Work even.

ROWS 269-284: SHOULDER SHAPING: Bind off 5 sts. beginning next 4 rows. After ROW 272 bind off the center 17 sts. for NECK. (See Notes to Knit By, inside back cover) Bind off 5 sts. on Shoulder Side and continue to Shape Shoulder on every other row by binding off 5 sts. 6 x. AT THE SAME TIME, Shape Neck on every other row by binding off 5 sts. 2 x, 4 sts. 2 x and 2 sts. 1 x.

FRONT: (Figure I). Cast on 195 sts.

ROWS 1-24: K1, P1, Ribbing. After ROW 24 transfer the ribber sts. to the main machine and continue with stockinette st.

ROWS 25-140: Work even. After ROW 140 work the pocket. On the left side put 29 needles and on the right side put 123 needles into holding position. Now transfer every other st. of the needles in working position to the ribber and work 10 rows K1, P1, Ribbing, then bind off these sts. the



crochet method for ribbing. For the lining, cast on 43 sts. over the empty needles and work 40 rows stockinette st. Now move the Cam Box to the right side, turn the Row Counter back to 140, bring all needles back into working position and continue working over all 195 needles.

ROWS 141-164: Work even. After ROW 164 bind off the center 11 sts., put the needles on the left side into holding position and complete the right side first.

ROWS 165-284: ARMHOLE, NECK and SHOULDER SHAPING: Bind off 6 sts. on the **right side**, then on every other row bind off 4 sts. 1 x, 3 sts. 2 x, 2 sts. 2 x, 1 st. 2 x and 1 st. on the next 4th and following 4th row. **AT THE SAME TIME**, after ROW 168 decrease 1 st. on the **left side**, then again every following 4th row 12 x and every following 6th row 10 x by always hanging the 4th st. on the **left side** onto the 3rd needle, then moving the end sts. inward to fill the empty needle. Alter ROW 268, then on every other row **SHAPE SHOULDER** by binding off 5 sts. 9 x. Now move the Cam Box to the left side, turn the Row Counter back to 164, bring the needles back into working position and complete the left side. Follow the instructions from ROWS 165-284 and reverse the sides.

NECKBAND: Make two. Cast on 157 sts. and work 14 rows K1, P1, Ribbing, then bind off all sts. the crochet method for ribbing.

ARMBAND: Make two. Cast on 195 sts. and work 12 rows K1, P1, Ribbing, then bind off all sts. the crochet method for ribbing.

FINISHING: Join front and back section at sides and shoulders. Sew pocket lining against pullover on wrong side. Sew sides of pocket edging to pullover. Join neckband sections at center back, then sew neckband to neckline, overlapping the front edges. Join short ends of armbands, then sew bands to armholes.

MAN'S SLEEVELESS PULLOVER, HP 3557



SIZE: 44/46. **MATERIAL:** 12¼ oz. (7 balls) white and 1¾ oz. (1 ball) red KNITKING Subita Dralon 3 ply, Color #401 and #436. **TENSION:** KNITKING 6 to 8. **STITCH and ROW GAUGE:** 15 sts. 2", 20 rows 2". **PATTERN:** Stockinette Stitch. **EDGES:** K1, P1, Ribbing.

BACK: (Figure II). Cast on 176 sts. with white.

ROWS 1-20: K1, P1, Ribbing and **AT THE SAME TIME**, work ROWS 5-8 and 13-16 with red. After ROW 20 transfer the ribber sts. to the

main machine and continue with stockinette st.

ROWS 21-164: Work even.

ROWS 165-190: ARMHOLE SHAPING: Bind off 5 sts. beginning next 2 rows, 3 sts. beginning next 4 rows, 2 sts. beginning next 6 rows, 1 st. beginning next 6 rows and 1 st. on **each side** of the next 4th and following 4th row. (132 sts.)

ROWS 191-264: Work even.

ROWS 265-280: SHOULDER SHAPING: Bind off 4 sts. beginning next 4 rows. After ROW 268 bind off the center 18 sts. for NECK. (See Notes to Knit By, inside back cover). Bind off 4 sts. on Shoulder Side and continue to shape shoulder on every other row by binding off 4 sts. 3 x and 5 sts. 3 x. **AT THE SAME TIME**, Shape Neck on every other row by binding off 8 sts. 1 x, 3 sts. 2 x and 2 sts. 2 x.

FRONT: Work the front the same as the back to ROW 160, then divide the sts. in the center, put the needles on the **left side** into holding position and complete the right half first.

ROWS 161-280: FRONT, ARMHOLE and SHOULDER SHAPING: Decrease 1 st. on the **left side** after ROW 160, then again every following 3rd row 10 x and every following 5th row 16 x by always hanging the 4th st. on the left side onto the 3rd needle, then moving the end sts. inward to fill the empty needle. **AT THE SAME TIME**, after ROW 164, then on every other row **SHAPE ARMHOLE** by binding off 5 sts. 1 x, 3 sts. 2 x, 2 sts. 3 x, 1 st. 3 x and 1 st. on the next 4th and following 4th row. After ROW 264, then on



every other row **SHAPE SHOULDER** by binding off 4 sts. 6 x and 5 sts. 3 x. Now move the Cam Box to the left side, turn the Row Counter back to 160, bring the needles back into working position and complete the left half. Follow the instructions from ROWS 161-280 and reverse the sides.

NECKBAND: Cast on 151 sts. with white and work K1, P1, Ribbing, binding off 2 st. on the **right side** after ROW 2, then again every other row 5 x and **AT THE SAME TIME** working ROWS 6-9 with red. After ROW 14 bind off all sts. the crochet method for ribbing. Work the second section with reverse shaping, casting on from right to left.

ARMHOLE BANDS: Make two. Cast on 195 sts. with white and work 10 rows K1, P1, Ribbing, then bind off all sts. the crochet method for ribbing.

FINISHING: Join front and back section at sides and shoulders. Join neckband sections at front and center back, then sew to neckline. Join short ends of armbands then sew bands to armholes.

BOY'S 3 PIECE SUIT, KK 5037



SIZE: 5-6 (Chest 23" - 24"). **MATERIAL:** 12¼ oz. (7 balls) brown and 3½ oz. (2 balls) beige KNITKING Subita Crepe 2 x 3, Color #127 and #134. **TENSION:** KNITKING 4 to 6. **STITCH and ROW GAUGE:** 17 sts. 2", 24 rows 2". **PATTERN:** Stockinette Stitch. **EDGES:** on Pullover: K1, P1, Ribbing.

PANTS: FRONT: (Figure VI). Cast on 102 sts. with brown.

ROWS 1-24: Work even, then hang the cast-on sts. back on the machine to form the hem.

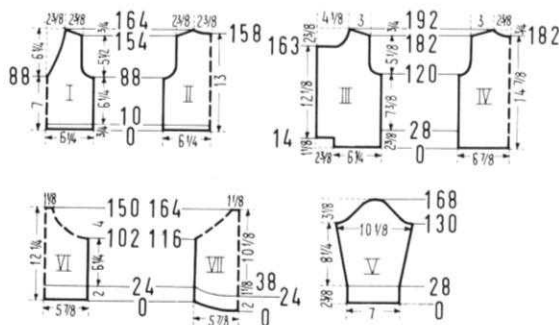
ROWS 25-102: Work even.

ROWS 103-140: LEG SHAPING: Work short rows. (See Notes to Knit By, inside back cover) Alternately on **each side** put 4 needles 3 x, 3 needles 4 x, 2 needles 5 x and 1 needle 7 x into holding position.

ROWS 141-150: Work even. After ROW 150 put the center 20 sts. on a stitch holder, bring the needles on the **right side** into working position, cast on 8 sts. on the **left side** (use separate length of yarn) and work 20 rows even for the LEG BAND, then bind off these sts. Move the Cam Box to the left side, turn the Row Counter back to 150 and work the left LEG BAND, casting on 8 sts. on the **right side**.

BACK: (Figure VII). Cast on 102 sts.

ROWS 1-24: Work even, then make hem as you did on the front.



ROWS 25-38: For the back shaping work short rows. On the left side put 34 needles into holding position, knit 1 row. On the right side put 34 needles into holding position, knit 1 row. Now, alternately on **each side** bring 6 needles 4 x and 5 needles 2 x back into working position.

ROWS 39-116: Work even.

ROWS 117-164: For the LEG SHAPING work short rows. Alternately on **each side** put 2 needles 19 x and 1 needle 3 x into holding position, then work even. After ROW 164 put the center 20 sts. on a stitch holder, bring the needles on the right side back into working position, cast on 4 sts. on the **left side** and work 20 rows even for the LEG BAND, then bind off these sts., move the Cam Box to the left side, turn the Row Counter back to 164 and work the left Leg Band, casting on 4 sts. on the **right side**.

PULLOVER: BACK (Figure II). Cast on 109 sts. with brown.

ROWS 1-10: K1, P1, Ribbing, 8 rows with brown and 2 rows with beige. After ROW 10 transfer the ribber sts. to the main machine and with beige continue with stockinette st.

ROWS 11-88: Work even.

ROWS 89-102: ARMHOLE SHAPING: Bind off 4 sts. beginning next 2 rows, 3 sts. beginning next 2 rows, 2 sts. beginning next 4 rows and 1 st. beginning next 6 rows. (81 sts.)

ROWS 103-154: Work even.

ROWS 155-164: SHOULDER SHAPING: Bind off 3 sts. beginning next 4 rows. After ROW 158 bind off the center 21 sts. for NECK. (See Notes to Knit By, inside back cover). Bind off 3 sts. on Shoulder Side and continue to Shape Shoulder on every other row by binding off 3 sts. 1 x and 4 sts. 2 x. AT THE SAME TIME, Shape Neck on every other row by binding off 5 sts. 2 x.

FRONT: Work the front the same as the back to ROW 88; then hang the center st. onto the neighboring needle, put the needles on the **left side** into holding position and complete the right half first.

ROWS 89-164: ARMHOLE, FRONT and SHOULDER SHAPING: Bind off 4 sts. on the **right side**, then on every other row bind off 3 sts. 1 x, 2 sts. 2 x and 1 st. 3 x. AT THE SAME TIME, after ROW 90, decrease 1 st. on the **left side**, then again every other row 4 x and every following 4th row 15 x by always hanging the 3rd st. on the left side onto the 2nd needle, then moving the end sts. inward to fill the empty needle. After ROW 154, then on every other row SHAPE SHOULDER by binding off 3 sts. 4 x and 4 sts. 2 x. Now move the Cam Box to the left side, turn the Row Counter back to 88, bring the needles back into working position and complete the left half. Follow the instructions from ROWS 89-164 and reverse the sides.

NECKBAND: Cast on 191 sts. with beige and work K1, P1, Ribbing, 2 rows with beige and 8 rows with brown and AT THE SAME TIME, after ROW 2 bind off 2 sts. beginning the next 8 rows. After 10 rows bind off all sts. the crochet method for ribbing.

ARMBAND: Make two. Cast on 125 sts. with beige and work K1, P1, Ribbing, 2 rows with beige and 8 rows with brown. After 10 rows bind off all sts. the crochet method for ribbing.

JACKET: BACK: (Figure IV) Cast on 119 sts. with brown. **ROWS 1-28:** Work even, then hang the cast-on sts. back on the machine behind the latches to form the hem.

ROWS 29-120: Work even.

ROWS 121-134: ARMHOLE SHAPING: Bind off 4 sts. beginning next 2 rows, 3 sts. beginning next 2 rows, 2 sts. beginning next 4 rows and 1 st. beginning next 6 rows. (91 sts.)

ROWS 135-182: Work even.

ROWS 183-192: NECK and SHOULDER SHAPING: Both shapings are started at the same row. Bind off the center 13 sts. for NECK. (See Notes to Knit By, inside back cover) then on every other row on Neck Side bind off 4 sts. 2 x and 3 sts. 2 x. AT THE SAME TIME, after ROW 182, then on every other row SHAPE SHOULDER by binding off 4 sts. 5 x and 5 sts. 1 x.

FRONT: (Figure III). Cast on 55 sts.

ROWS 1-14: Work even. After ROW 14 cast on 20 sts. on the **left side** using a separate length of yarn.

ROWS 15-28: Work even, then hang the first 55 cast-on sts. back on the machine behind the latches to form the hem.

ROWS 29-120: Work even.

ROWS 121-134: ARMHOLE SHAPING: Bind off 4 sts. on the **right side**, then on every other row bind off 3 sts. 1 x, 2 sts. 2 x and 1 st. 3 x. (61 sts.)

ROWS 135-163: Work even.

ROWS 164-192: NECK SHAPING: Bind off 20 sts. on the **left side**, then on every other row bind off 3 sts. 2 x, 2 sts. 3 x, 1 st. 2 x and 1 st. on the next 4th and following 4th row. AT THE SAME TIME, after ROW 182, then on every other row SHAPE SHOULDER by binding off 4 sts. 5 x and 5 sts. 1 x. Work the second front section with reverse shapings and make buttonholes after ROWS 25, 51, 77, 103, 129 and 155 over the 2nd-6th and 15th-19th needles counting from the right side.

SLEEVE: (Figure V) Make two. Cast on 61 sts.

ROWS 1-28: Work even, then form hem as you did on the back.

ROWS 29-130: Increase 1 st. on **each side** after ROW 30, then again every following 6th row 7 x and every following 8th row 6 x. (89 sts.)

ROWS 131-140: CAP SHAPING: Bind off 4 sts. beginning next 2 rows, 3 sts. beginning next 4 rows and 2 sts. beginning next 4 rows.

ROWS 141-168: Bind off 1 st. beginning next 2 rows and 2 sts. beginning next 2 rows. Repeat these bind-offs 5 x, then bind off 3 sts. beginning next 2 rows, 4 sts. beginning next 2 rows and after ROW 168 bind off the remaining 11 sts.

NECK FACING: Cast on 80 sts. and work Stockinette Stitch, 4 rows with tension 4 and 4 rows with tension 5, after 8 rows bind off all sts.

FINISHING: PANTS: Join front and back sections at sides. Weave the stitches on the stitch holders together. Join short ends of leg bands and sew to crotch, then turn bands under in half and hem to wrong side. Insert an elastic band into waistline band.

PULLOVER: Join front and back section at sides and shoulders. Join pointed shapings of neckband then sew neckband to neckline. Join short ends of armbands then sew to armholes.

JACKET: Join front and back sections at sides and shoulders. Sew sleeves together and set in. Turn under 10 sts. on each front edge and hem to wrong side. With right sides together sew facing to neckline, then turn to wrong side and hem. Finish buttonholes. Sew on buttons.

GIRL'S DRESS, MK 5034



SIZE: 9-10 (Chest 27½" - 28½").

MATERIAL: 10½ oz. (6 balls) pale pink and 1¾ oz. (1 ball) bright pink KNITTING Subita Dralon 3 ply, Color #405 and #442. **TENSION:** KNITTING 4 to 6. **STITCH and ROW GAUGE:** 16 sts. 2", 21 rows 2".

PATTERN: Stockinette Stitch.

BACK: (Figure II). Cast on 170 sts. with pale pink.

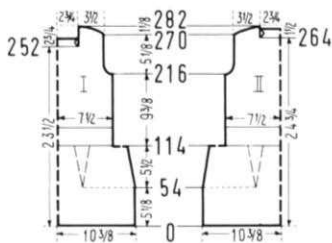
ROWS 1-114: Decrease 1 st. on **each side** after ROW 54, then again every following 10th row 2 x and every following 8th row 5 x by always

hanging the 3rd st. on **each side** onto the 2nd needle, then moving the end sts. inward to fill the empty needle. AT THE SAME TIME, after ROW 54 decrease 2 sts. on **each side** for the DARTS, then again every following 10th row 2 x and every following 8th row 5 x. For the first DART decrease, hang the 57th and 59th sts. on **each side** onto the 58th needle, then move the end sts. inward to fill the empty needles. The next decreases lie directly above. (122 sts.)

ROWS 115-216: Work even and AT THE SAME TIME work ROWS 115-120 and ROWS 132-138 with bright pink.

ROWS 217-228: ARMHOLE SHAPING: Bind off 3 sts. beginning next 2 rows, 2 sts. beginning next 4 rows and 1 st. beginning next 6 rows. (102 sts.)

ROWS 229-264: Work even. After ROW 264 put 29 needles on **each side** into holding position. With bright pink work 12 rows over the center 44 needles for the NECKLINE BAND, decreasing 1 st. on **each side** after the 2nd and 4th row and increasing 1 st. on **each side** after the 8th and 10th row.



After 12 rows bind off these 44 sts. Now move the Cam Box to the right side, turn the Row Counter back to 264, bring the needles on the right side back into working position, increase 1 st. on NECK SIDE and complete the right Shoulder Section.

ROWS 265-270: Work even.

ROWS 271-282: SHOULDER SHAPING: Bind off 2 sts. on the right side, then on every other row bind off 2 sts. 2 x, 4 sts. 2 x and 8 sts. 2 x. Now move the Cam Box to the left side, turn the Row Counter back to 264, bring the remaining 29 needles back into working position, increase 1 st. on NECK SIDE and work the left Shoulder Section. Follow the instructions from ROWS 265-282 and reverse the sides.

FRONT: (Figure I). Work the front the same as the back, but work the NECKLINE BAND after ROW 252 over the center 44 needles as you did on the back.

SIDE BAND FOR NECKLINE: Make two. Cast on 33 sts. with bright pink and work 12 rows stockinette st., decreasing 1 st. on each side after ROWS 2 and 4, then increasing 1 st. on each side after ROWS 8 and 10. After ROW 12 bind off all sts.

FINISHING: Weave front and back section together at sides, 1 st. in on each edge. Join shoulders. Turn under 3 sts. around armholes and hem to wrong side. Weave Side Bands to sides of Neckline, 1 st. in on each edge. Join corners of side bands to corners of front and back neckline bands. Fold neckline band in half and hem to wrong side. Turn under 2" on lower edge and hem to wrong side. With bright pink and a lazy daisy stitch, embroider flowers between the 2 bright pink stripes of dress. (See Picture.)

GIRL'S PULLOVER, MK 5033



SIZE: 10-11 (Chest 28" - 29"). **MATERIAL:** 7 oz. (4 balls) pink and 1 3/4 oz. (1 ball) white KNITTING Subita Dralon 3 ply, Color #405 and #401. **TENSION:** KNITTING 4 to 6. **STITCH and ROW GAUGE:** 16 sts. 2", 21 rows 2". **PATTERN:** Stockinette Stitch.

BACK: (Figure I). Cast on 121 sts. with white.

ROWS 1-12: Work even, then hang the cast-on sts. back on the machine behind the latches to form the hem and continue with pink.

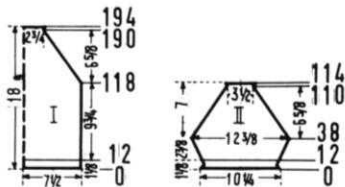
ROWS 13-118: Work even.

ROWS 119-190: RAGLAN SHAPING: Bind off 3 sts. beginning next 2 rows. After ROW 120, then on every other row, decrease 1 st. on each side 35 x by always hanging the 3rd st. on each side onto the 2nd needle, then moving the end sts. inward to fill the empty needle. AT THE SAME TIME, after ROW 138, alternately work 4 rows white and 8 rows pink. After ROW 190 continue with white. (45 sts.)

ROWS 191-194: Increase 1 st. on each side after ROW 192. After ROW 194 bind off all sts. The front is worked the same as the back.

SLEEVE: (Figure II). Make two. Cast on 83 sts. with white.

ROWS 1-12: Decrease 1 st. on each side after ROW 4, then



increase 1 st. on each side after ROW 8. After ROW 12 hang the cast-on sts. back on the machine behind the latches to form the hem and continue with pink.

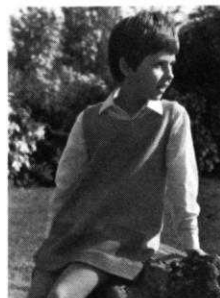
ROWS 13-38: Increase 1 st. on each side after ROW 12, then again every following 4th row 3 x and every other row 5 x. (101 sts.)

ROWS 39-110: RAGLAN SHAPING: Decrease 1 st. on each side after ROW 38, then again every other row 35 x as you did on the back and AT THE SAME TIME, after ROW 58, alternately work 4 rows white and 8 rows pink. After ROW 110 continue with white. (29 sts.)

ROWS 111-114: Increase 1 st. on each side after ROW 112. After ROW 114 bind off all sts.

FINISHING: Join front and back section at sides. Sew sleeves together, then weave to front and back section, 1 st. in on each edge. Turn under 4 rows around neckline and hem to wrong side.

GIRL'S JUMPER, MK 5032



SIZE: 8-9 (Chest 26" - 27"). **MATERIAL:** 8 3/4 oz. (5 balls) yellow and 3 1/2 oz. (2 balls) blue KNITTING Subita Crepe 2 x 4, Color #39 and #2. **TENSION:** KNITTING 6 to 8. **STITCH and ROW GAUGE:** 16 sts. 2", 21 rows 2". **PATTERN:** Stockinette Stitch. **POCKET FLAPS:** K1, P1, Ribbing.

BACK: (Figure II). Cast on 157 sts. with blue.

ROWS 1-72: Work even, then continue with yellow.

ROWS 73-202: Decrease 1 st. on each side after ROW 72, then again every following 8th row 2 x and every following 6th row 17 x by always hanging the 3rd st. on each side onto the 2nd needle, then moving the end sts. inward to fill the empty needle. (117 sts.)

ROWS 203-214: ARMHOLE SHAPING: Bind off 3 sts. beginning next 4 rows, 2 sts. beginning next 2 rows and 1 st. beginning next 6 rows (95 sts.)

ROWS 215-256: Work even.

ROWS 257-268: NECK SHAPING: Bind off the center 21 sts. for NECK. (See Notes to Knit By, inside back cover) then on every other row on Neck Side bind off 5 sts. 2 x, 3 sts. 2 x and 2 sts. 1 x. AT THE SAME TIME, after ROW 260, then on every other row SHAPE SHOULDER by binding off 3 sts. 1 x and 4 sts. 4 x.

FRONT: (Figure I). Work the front the same as the back, but start the NECK SHAPING after ROW 226 by binding off the center 13 sts. as you did on the back, then on every other row on Neck Side bind off 4 sts. 1 x, 3 sts. 2 x, 2 sts. 3 x, 1 st. 3 x and on every following 4th row 1 st. 3 x.

POCKET FLAPS: Make two. Cast on 39 sts. with blue and work 20 rows K1, P1, ribbing, then bind off all sts. the crochet method for ribbing.

NECK FACING: FRONT: Cast on 90 sts. with yellow and work stockinette st.

ROWS 1-8: Increase 1 st. on each side after ROWS 2, 4 and 6. After 8 rows bind off all sts. Work the Back Section in the same manner, but cast on only 58 sts.

FINISHING: Weave front and back section together at sides, 1 st. in on each edge. Turn under 2" on lower edge and hem to wrong side. Sew Pocket Flaps to front as shown on picture. Join short ends of facing, then with right sides together sew facing to neckline, turn to wrong side and hem. Turn under 3 sts. around armholes and hem to wrong side.



GIRL'S DRESS, MK 5036



SIZE: 4-5 (Chest 23" - 24"). **MATERIAL:** 5¼ oz. (3 balls) white KNITKING Subita Dralon 2 ply, Color #401 and small amounts of yellow, blue and pink yarn for the flowers. **TENSION:** KNITKING 1 to 3. **STITCH** and **ROW GAUGE:** 19 sts. 2", 29 rows 2". **PATTERN:** Stockinette Stitch.

BACK: (Figure II). Cast on 164 sts. **ROWS 1-220:** Decrease 1 st. on each side after ROW 88, then again every following 8th row 3 x and every following 6th row 17 x by always hanging the 3rd st. on each side onto the 2nd needle, then moving the end sts. inward to fill the empty needle. (122 sts.)

ROWS 221-240: ARMHOLE SHAPING: Bind off 3 sts. beginning next 4 rows, 2 sts. beginning next 4 rows, 1 st. beginning next 4 rows and 1 st. on each side of the next 4th and following 4th row. (94 sts.)

ROWS 241-250: Work even, then divide the sts. in the center for the opening, put the needles on the left side into holding position and complete the right half first.

ROWS 251-284: Work even.



ROWS 285-296: SHOULDER and NECK SHAPING: Bind off 3 sts. on the right side, then on every other row bind off 3 sts. 4 x and 4 sts. 2 x. AT THE SAME TIME, after ROW 285, then on every other row SHAPE NECK by binding off 10 sts. 1 x, 4 sts. 1 x, 3 sts. 2 x and 2 sts. 2 x. Now move the Cam Box to the left side, turn the Row Counter back to 250, bring the needles back into working position and complete the left half. Follow the instructions from ROWS 251-296 and reverse the sides.

FRONT: (Figure I). Work the front the same as the back but omit the opening and start the NECK SHAPING after ROW 262 by binding off the center 12 sts. (See Notes to Knit By, inside back cover) then on every other row on Neck Side bind off 3 sts. 3 x, 2 sts. 2 x, 1 st. 3 x and 1 st. on the next 4th and following 4th row.

FINISHING: Weave front and back section together at sides, 1 st. in on each edge. Join shoulders. Turn under 2" on lower edge. (Make all crochet from the right side). With White, work 1 row of single crochet around neckline, back opening and armholes. With Pink, work 1 row of single crochet around neckline and armholes. Over this row crochet as follows: Into 3rd stitch work 5 double crochet, 1 single crochet in 6th st., 5 double crochet in 9th st., 1 single crochet into 12th st., etc. Make 3 loops on one side of back opening and sew 3 buttons to other side. Embroider small flowers in lazy daisy stitch on Yoke of dress (see picture).

GIRL'S DRESS, MK 5035



SIZE: 6-7 (Chest 24" - 25"). **MATERIAL:** 7 oz. (4 balls) white KNITKING Subita Dralon 2 ply, Color #401 and small amounts of yellow, blue and pink yarn for the flowers. **TENSION:** KNITKING 1 to 3. **STITCH** and **ROW GAUGE:** 19 sts. 2", 29 rows 2". **PATTERN:** Stockinette Stitch.

BACK: (Figure II). Cast on 176 sts. **ROWS 1-250:** Decrease 1 st. on each side after ROW 88, then again every following 8th row 12 x and every following 6th row 10 x by always hanging the 3rd st. on each side



onto the 2nd needle, then moving the end sts. inward to fill the empty needle. (130 sts.)

ROWS 251-270: ARMHOLE SHAPING: Bind off 4 sts. beginning next 2 rows, 3 sts. beginning next 2 rows, 2 sts. beginning next 2 rows, 1 st. beginning next 6 rows and 1 st. on each side of the next 4th and following 4th row. (102 sts.)

ROWS 271-290: Work even, then divide the sts. in the center for the opening, put the needles on the left side into holding position and complete the right half first.

ROWS 291-324: Work even.

ROWS 325-336: NECK and SHOULDER SHAPING: Bind off 3 sts. on the right side, then on every other row bind off 3 sts. 2 x and 4 sts. 4 x. AT THE SAME TIME, after ROW 325, then on every other row SHAPE NECK by binding off 10 sts. 1 x, 6 sts. 1 x, 3 sts. 2 x and 2 sts. 2 x. Now move the Cam Box to the left side, turn the Row Counter back to 290, bring the needles back into working position and complete the left half. Follow the instructions from ROWS 291-336 and reverse the sides.

FRONT: (Figure I). Work the front the same as the back, but omit the opening and for the NECK SHAPING, after ROW 296, bind off the center 12 sts. (See Notes to Knit By, inside back cover) then on every other row on Neck Side bind off 3 sts. 3 x, 2 sts. 3 x, 1 st. 3 x and 1 st. on the next 4th and following 4th row.

FINISHING: Weave front and back section together, 1 st. in on each edge. Join shoulders. Turn under 2" on lower edge and hem to wrong side. (Make all rows of crochet from the right side). With white, work 1 row of single crochet around neckline, back opening and armholes. With blue, work 1 row of single crochet around neckline and armholes. Over this row crochet as follows: Into 3rd stitch work 5 double crochet, 1 single crochet in 6th st., 5 double crochet in 9th st., 1 single crochet into 12th st., etc. Make 3 loops on one side of back opening and sew 3 buttons to other side. Embroider small flowers in lazy daisy stitch on lower edge of dress. (See picture).

PRACTICAL KNITTING HINTS

DK 7694

OPEN CAST ON METHOD should be used for knitting the Collar that is combined with front band for Dress DK 7694. If you have never used this method, here is the way it is done.

Cast on the necessary number of stitches with a contrast waste yarn. Knit several rows ending with Cam Box (or Slide) on the left side. Knit 1 row to the right side with a Ravel Cord (Rayon crochet thread makes excellent Ravel cord). Set the Row Counter to 0 and knit the section of collar. Repeat for second half. When you are ready to put the garment together, weave together the two sets of stitches from sections of collar, release the Ravel cord at each end and pull out so that the waste knitting will fall away and you will have a perfect knitted seam.



KNITKING NEWS

July-August, 1969

OUR READERS WRITE

One of the most frequently asked questions in readers correspondence is... "Why don't you give instruction for all sizes in each KNITKING MAGAZINE pattern....?" The answer is almost as complex as the human figure... but we will try to make the explanation simple and at the same time tell you of the lengths to which we are going in our endeavors to make it easy for any knitter to produce the garment of her choice in any size and shape.

First of all about sizes.... If every dress was a straight sheath and every pullover had no shaping, it would be a relatively simple matter to tell readers how many stitches to cast on and how many rows to knit, but KNITKING garments are just not made that way.... Study the women's garments in this issue, they are specially prepared for the larger woman, many of them have bust darts.... There is decreasing within rows in order to make garments fit the fuller figure and armhole shaping is of necessity much deeper.

Using DK 7694 as an example, you will understand that it would be necessary to completely re-chart it for a size 12 as different sized bust darts would be needed and the shapings in the middle of the garments would be different. The armhole shapings would start on a higher row number.... The neck shapings would be reduced, the sleeve shape would be quite different, etc., etc.... In actual fact, you would need a different chart for every one or two sizes.... Now refer to the previous issue of KNITKING MAGAZINE where we featured garments for the smaller figure. We think most readers already understand that garment styles are designed with a particular size in mind and what suits the petite figure is generally unsuitable for the larger full bodied person.... that simple reason alone is justification for not giving instruction for all sizes....

Examine the chart for pattern DK 7679 on page 19.... It is for size 10/12, and think of the problems you would encounter if you wanted to make it a size 20.... Size 20 needs bust darts and as soon as you put darts in a striped design, you no longer can line up the front of the garment with the back.... Decreases in the middle of rows will also foul up any pronounced design or pattern stitch. Larger women are invariably shorter waisted and the armhole shaping would have to start lower and be deeper, they also have necks of larger circumference and neck shapings would have to be deeper and wider.... In fact, the entire shoulder design would have to be changed.

The new format KNITKING MAGAZINE as explained in the Letter from the Publisher in this issue will be introduced in the next issue. It will feature much larger charts than at present and it will be

impossible to include several charts for each different size.... So we have to make it possible for readers to easily convert any pattern she likes into the size she requires.....

We told you in the recent special "Katy's Birthday" edition of KNITKING NEWS about the seven book Charting Course we are producing.... it goes into great detail and gives numerous examples in many basic garments, the patterns for which are included in the books.... We are also developing special simple to understand tools that do all the arithmetic for you.... We hope to eliminate the headaches from charting and teach every reader to be an expert. Watch future issues of KNITKING MAGAZINE for more information.

SPECIAL YARN SALE

We told you in the last issue of KNITKING MAGAZINE about the very large quantity of beautiful French yarns we had purchased from that country's foremost manufacturers.... It turned out to be the most spectacular yarn sale we have ever had.... Truck loads of parcels left our warehouse every day for two weeks after the magazine was mailed.... At the end of that time we were completely sold out and the orders were still pouring in.... Many were repeat orders from customers who had purchased two kilos to find out if the yarn was as good as we said it was.... Some of these repeat orders were for over \$200.00 worth.... We knew after the first few days that there would not be enough yarn to satisfy demand so we cabled our suppliers in France promising a repeat order if they would waive their regulations of 8 to 10 weeks dispatch.... They agreed and at the time of going to press with this issue, the yarn is well on its way.... We actually purchased their entire stock of this wonderful machine washable yarn.... All outstanding orders will be filled and we will have several thousand pounds of it available at the same ridiculously low price.

When it is gone, there will be no more available for at least a year, so please get your orders in early and be sure to give two alternate color choices. If you didn't order last time, don't miss this special... it is fantastic.

These special synthetics are 73% acrylic, 10% polyamide, 10% viscose and 7% chlorofibre. Their texture is soft and luxurious and yet garments made with them are hard wearing and can be washed in your washing machine without fear of shrinking or stretching.... They are light in weight which means that the yardage is excellent and can be easily knitted over a wide range of tensions.

Tension number 7 on the KNITKING approximately produces 7 stitches and 10 rows to the inch. Tension 8 produces 6 1/2 stitches and

9 rows to the inch.

It comes in ten different colors, every one of which is lovely... The colors are Pink Parfait, Pearl Grey, Butterscotch Yellow, Camel-tone, Cornflower Blue, Sea Foam Green, Cloud White, Watermellow Red, Charcoal Blue, Sand Beige.

The minimum quantity you can order of any color is 1 kilo (35 ounces). The minimum quantity you can purchase is also 1 kilo and the price for a single kilo is \$9.00. The price for a second kilo and every following kilo ordered at the same time is \$8.00. \$17.00 for two kilos, \$25.00 for 3 kilos, etc... Just think of it, 70 ounces of yarn for \$17.00.... less than 25¢ an ounce. You will pay up to 3 times this price for comparable yarns in your local store.... Remember you can order as many colors as you wish, but we cannot break packages at these prices.... the minimum quantity you can get in any one color is 1 kilo. Don't forget to include shippings costs, 70¢ for the first kilo and 50¢ for each additional kilo. California residents must add 5% Sales Tax on the yarn prices.

BOUND VOLUMES OF KNITTING MAGAZINE

Every year at this time we bind a quantity of complete volumes of KNITTING MAGAZINE and no matter how many we retain of each issue we never seem to have enough to satisfy the demand. If you want to be sure of obtaining a bound volume of over 120 complete patterns, send in \$6.95 plus 85¢ mailing costs. This is the only complete volume available.... All previous years are sold out and cannot be reprinted.



A complete fifth volume of KNITTING MAGAZINES with a flexible, transparent plastic cover and specially bound so that it will stay open at any page, is available at the special price of \$6.95 (plus 85 cents mailing costs).

If purchased separately the magazines would cost a total of \$9.00.

The volume contains over 120 fully illustrated complete stylish patterns for all members of the family, together with many valuable, practical knitting hints.

There is a very limited number of these volumes available and it will undoubtedly become a collectors item.

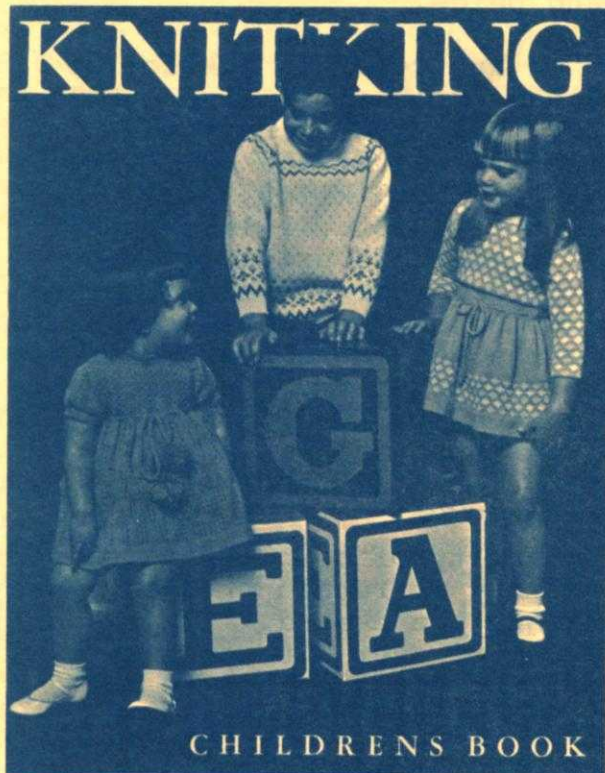
If you already have the entire set it will almost certainly be well thumbed and marked. Why not purchase a perfect mint condition volume for your bookshelf and ready reference at any time.

o o o

Place your order today and avoid disappointment. Send it to KNITTING MAGAZINE, 1128 Crenshaw Boulevard, Los Angeles, California 90019.

SPECIAL!! Limited time offer **TWO books for the price of ONE . . .**

Buy the **CHILDRENS BOOK** at its regular price of \$2.95 and we will include at no extra cost the book **INTERCHANGEABLE YARN CHART**.



THE BIG BEAUTIFUL BOOK OF CHILDRENS PATTERNS YOU HAVE BEEN ASKING FOR . . . OVER 50 complete and lovely patterns for infants and children to teen age . . . Buntings, Blankets and Baby outfits . . . Cute Dresses, Leotites, Skirts, Suits, Pullovers, Cardigans, Stockings, Trousers, etc. . . . The only **CHILDRENS BOOK** for the machine knitter published in the U.S.A.

Specially prepared to allow you to substitute Nationally distributed brand name yarns for the **KNITTING YARNS** used in **KNITTING MAGAZINE**. **CHARTS** are complete with **ROWS** and **STITCHES** per inch at various Tensions.



Send \$2.95 (Calif. residents add 15 cents Sales Tax) plus 40 cents mailing costs to:
KNITKING • 1128 Crenshaw Boulevard, Los Angeles, California 90019

NOTES TO KNIT BY . . .

STITCH AND ROW GAUGE

Every KNITKING pattern calls for a specific number of stitches and rows for 2 inches and in order to obtain the correct size finished garment, you must be sure to knit at the correct tension. This means that before starting a garment, you must knit a sample swatch with the yarn you intend using for the garment.

Cast on over a sufficient number of needles to produce a swatch 4 inches wide. (If the pattern calls for 16 stitches to 2", 16 x 2 = 32 stitches) then knit 4 inches of rows at the first suggested tension (if the pattern calls for 22 rows to 2", 22 x 2 = 44 rows) knit 2 rows with a contrast color, change to the next higher tension, knit another 4", knit 2 rows with contrast color, change to a third higher tension and knit another 4", then bind off.

Roll the swatch into a cylinder over its length and pull on both ends. Unroll it and stretch it diagonally by pulling on the four corners. Allow the swatch to rest and settle (preferably overnight) then using a stitch gauge or ruler, count the number of stitches and rows over a 2" length in each of your 3 tensions. Select the tension that produces the stitches and rows called for in the pattern. If none of them are correct, you are most likely using the wrong weight of yarn.

HOLDING POSITION

The needles are as far forward on the needle bed as they will go.

NON-WORKING POSITION

The needles are as far back on the needle bed as they will go.

BINDING OFF

See Instruction Manual for your own machine.

CROCHET BIND OFF

Use this method for binding off neck and armbands, edgings, facings or collars. Knit a bind off row using 5 tensions higher than tension used for section and then with latch needle tool, and working from the opposite side of the yarn end, pull the second stitch through the first stitch, the 3rd through 2nd, the 4th through 3rd, etc. When you reach the end of row, pull the loose end of yarn through the last stitch. If you are unable to turn the tension up 5 numbers because you already are working with a large tension, lay the yarn over the needles by hand and knit this one row by pulling each needle back and forward again completing a stitch. Leave approximately 1/4" loop for each stitch (depending on type of yarn used) then bind off crochet method.

SHORT ROWS

Used for shaping of all kinds. Push the specified number of needles opposite the Cam Box into holding position and knit across to them. Now you **must** place the yarn OVER and UNDER the first inside needle that is in the holding position. Place the specified needles opposite Cam Box into holding position (other side) and knit across to these needles, and again place the yarn OVER and UNDER the first inside needle in the holding position. Repeat as many times as your pattern states. When you return these needles to the working position, the same procedure is used — bring the needles into work opposite the Cam Box, knit across to them, place the yarn OVER and UNDER the first inside needle in holding position and repeat for other side. Continue in this manner until all the needles are back in the working position.

INCREASING, DECREASING

See the Instruction Manual for your own machine.

INCREASING AND DECREASING WHEN USING RIBBER

When increasing, increase on the main knitter first, knit one row and then transfer the necessary stitches from the knitter to the ribber and continue.

When decreasing or binding off, you **must** transfer the ribber stitches to the main machine before decreasing or binding off.

CONTROL KNOBS (Under the slide handle — one on each side on KNITKING and certain other machines.)

1. When BOTH Control Knobs are UP, (or IN on the latest KNITKING) knit one row going from right to left. The needles knit and move back just beyond the front of the needle bed and the yarn hangs on the front of the needles. The slide will now move freely in either direction

with the needles remaining in a "SAFE POSITION". When you wish to resume knitting, press down (Out on the latest KNITKING) BOTH Control Knobs. The first movement of the slide is made without yarn and will bring the needles into working position, you then continue knitting.

2. RIGHT CONTROL KNOB UP (IN on latest KNITKING). Knit from right to left. The row knits, moves the needles back and the yarn is held in front of the latches. Knit from left to right, the yarn goes under the needles without knitting as the needles move into the working position. This is the operation used for making round cords (with 3 or 4 needles only) and also for knitting single rows of one color.

3. LEFT CONTROL KNOB UP (IN for latest KNITKING). The same as above but moving from left to right.

NECK SHAPING

When the directions state to bind off the center stitches for NECK, one correct way is as follows: With a new ball of yarn, bind off the given number of stitches working from right to left. Leave this ball of yarn hanging to one side (to be picked up later) and put all the needles on the left side into holding position and complete the right side first as directed. When you have completed the right side, pick up the yarn that you used for the neck bind off, put it in the wool feeder, bring all the needles into working position and knit 1 row to the left side. Turn row counter back to the number on which you started your neck shaping and complete the left half with reverse shaping, making the same number of decreases and on the same row numbers as on the right half.

You may also use the SHORT ROW method for shaping your neck and shoulders provided the decreasing is made on every other row. When the shaping is completed, knit 1 row over all the neck stitches (or shoulder stitches) with tension set at least 5 numbers higher, and then bind off all stitches using the **crochet method**.

If you are hand feeding a Norwegian design, bind off the center neck stitches with a new ball of yarn, then work both sides of neck shaping at the same time, using two balls of yarn for each color.










MISSING ROW NUMBERS

When there are row numbers missing in the instructions as for instance when you have completed the designated increases or decreases on a section of garment, continue knitting until you reach the next given row number.

READING OF SYMBOLS

Certain holding position and eyelet designs are sketched in the knitting patterns. The Chart with symbols is read as the work comes toward you from the machine. Where purl stitches are facing you, the purl symbol will be shown and where knit stitches are facing you, the knit symbol will be shown. On the sides of the chart are the row numbers, i.e. 1-8 indicates the first and last row number. In eyelet design patterns, specified stitches are transferred to another needle and the empty needles are returned to the knitting position each time. In holding position designs, selected needles are pushed into the holding position for the stated number of rows.

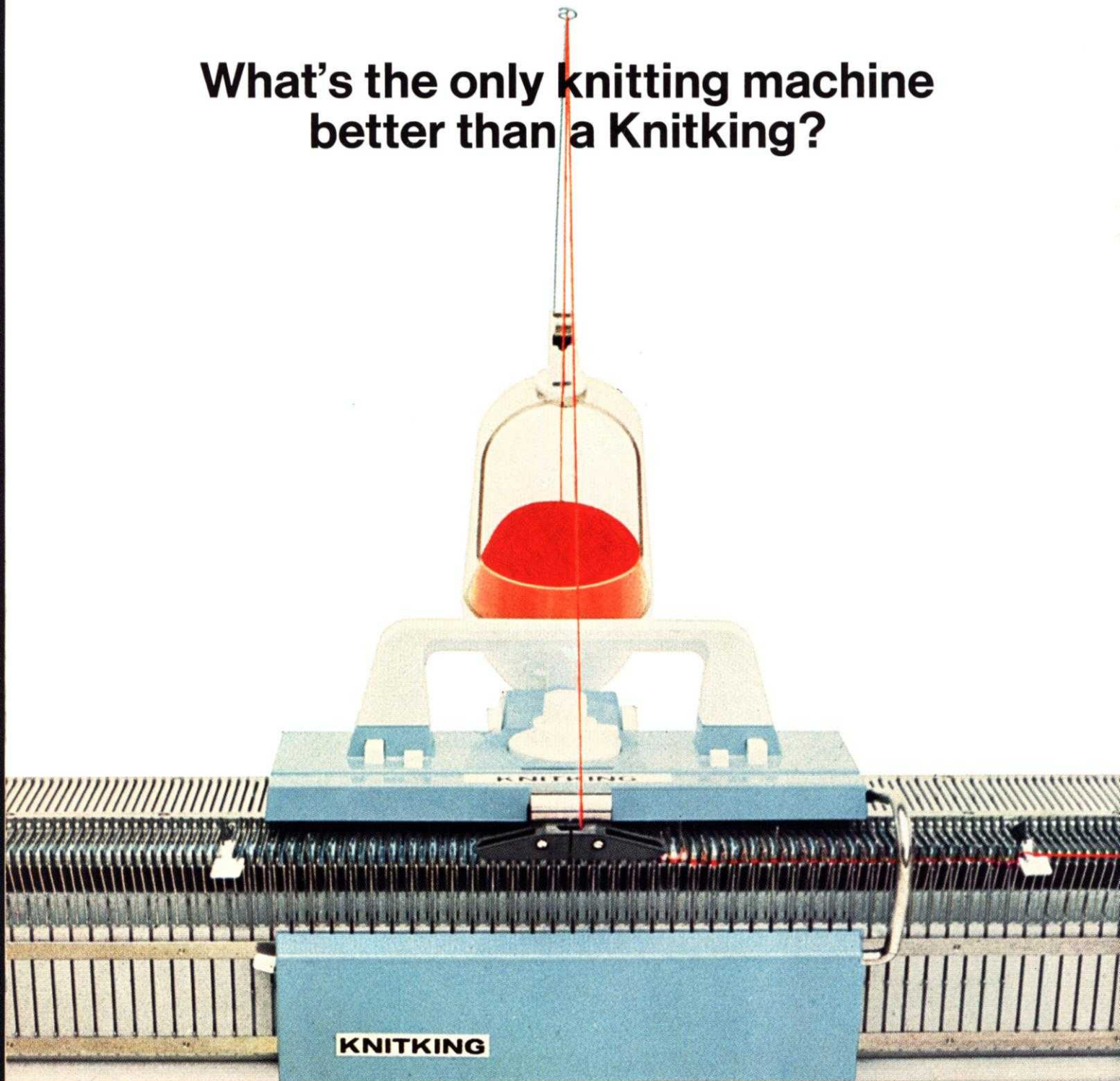
PATTERN STITCH SYMBOLS

-  = knit stitch
-  = purl stitch
-  = empty needle (leave in working position)
-  = needle not used (in the out of work position)
-  = needle in holding position
-  = 2 stitches on 1 needle — either transferred from the right side or the left side, then put the needle into holding position
-  = needle holding 2 sts. Stitch has been transferred from the LEFT
-  = needle holding 2 sts. Stitch has been transferred from the RIGHT
-  = 3 stitches on 1 needle. The 1st and 3rd stitch in a group of 3 needles has been hung on the 2nd or center needle.

The diagrams for pattern work are followed just as they are shown, and on your knitting as it comes towards you on the machine.



**What's the only knitting machine
better than a Knitking?**



The new  Knitking!

For color brochure and complete details on this magnificent new KNITKING write to:
KNITKING • 1128 Crenshaw Blvd., Los Angeles, California 90019