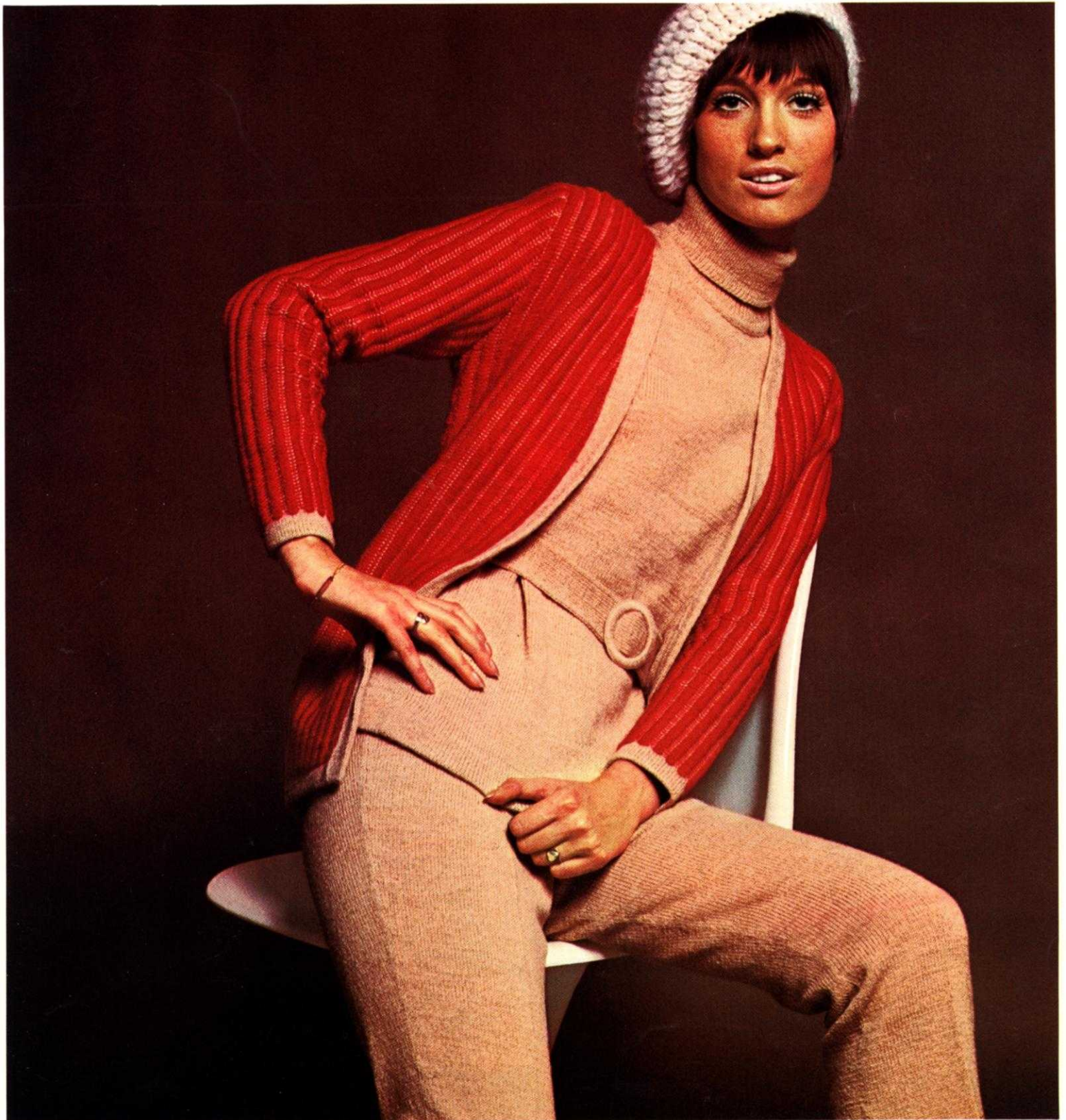


# knitking

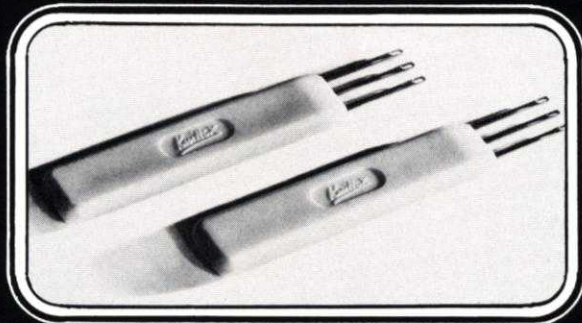
*magazine*

july/aug '70



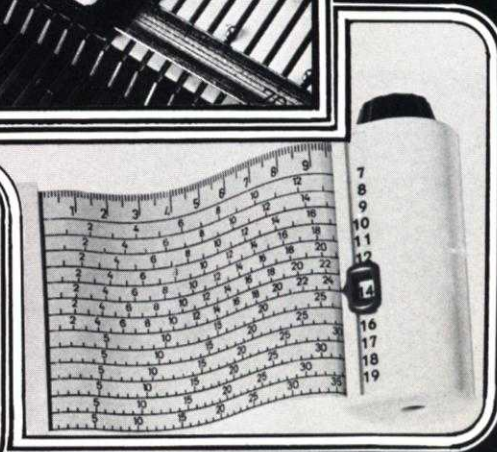
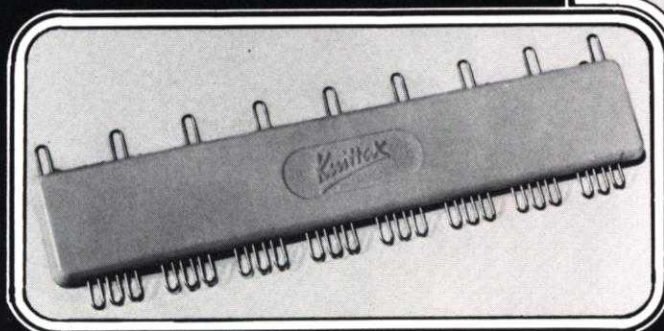
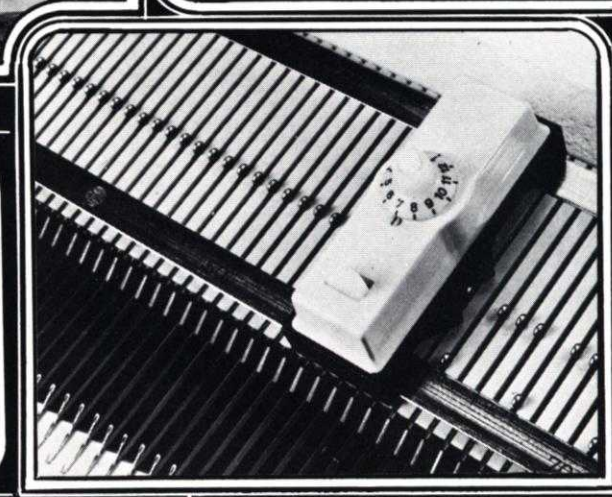
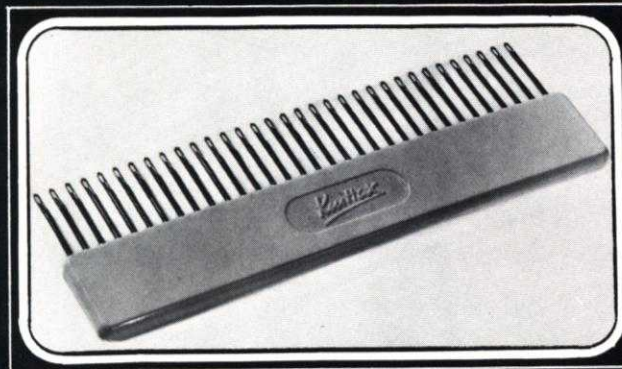
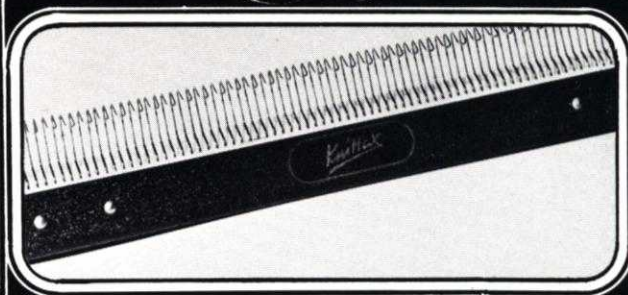
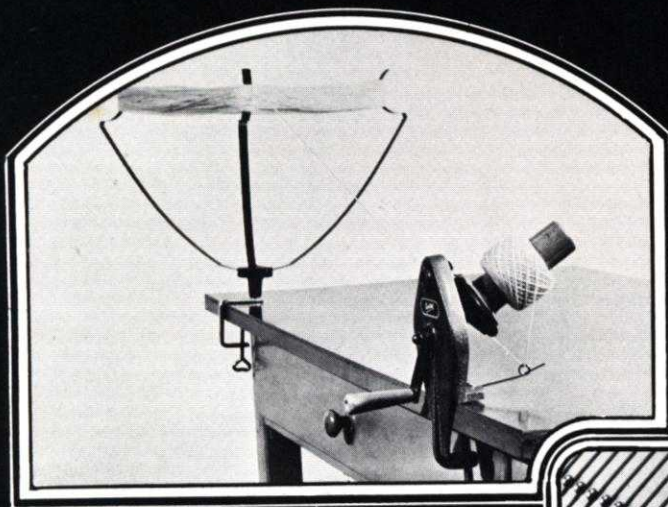
# Accessories

1. Treble Transfer-Tools. For rapid transfer of stitches and for cable stitch. \$1.50 pair plus 25c shipping.
2. Yarn Winder and Skein Holder. Heavy cast frame and nylon gears. \$15.95 plus \$1.00 shipping.
3. 33 Needle Multi-Transfer Tool. For decreasing in the middle of a row. \$3.25 plus 25c shipping.
4. Adjustable Needle Selector. For setting unevenly spaced pattern stitches. \$3.50 plus 25c shipping.



5. Reversing Bar. For easy hem turning or reversing of knitting. \$17.95 plus \$1.50 shipping.
6. Automatic Pattern Selector. For all KNITTING machines prior to Push Button. \$7.95 plus 35c shipping.
7. Converta Tape. For simple and speedy charting of custom knits. \$6.95 plus 30c shipping.

California residents add  
5% sales tax.



# knitking magazine

INDEX	PAGE NO.
DK 7882	Woman's Slacks and Pullover . . . . . 14
DP 7883	Woman's Jacket . . . . . 16
DP 7888	Woman's Vest . . . . . 16
DP 7886	Woman's Sleeveless Pullover . . . . . 18
DP 7887	Woman's Cardigan . . . . . 19
DK 7866	Woman's Skirt, Pullover and Vest . . 20
DK 7870	Woman's Dress . . . . . 22
DK 7860	Woman's Shell . . . . . 23
DK 7862	Woman's Dress . . . . . 24
HP 3619	Man's Cardigan . . . . . 25
HP 3620	Man's Jacket . . . . . 26
MK 5233	Girl's Dress . . . . . 27
MK 5234	Girl's Dress . . . . . 28
KK 5237	Boy's Pullover . . . . . 28
MK 5235	Girl's Dress . . . . . 29
KK 5236	Boy's Jacket . . . . . 30
MK 5232	Girl's Dress and Panty . . . . . 31
KG 1908	Round Baby Shawl . . . . . 32
KG 1909	Novelty Tissue Cover . . . . . 32

## knitking magazine



A smashing collection of KNIT-KING knits that easily swings from Summer into Fall. A grand slam

for vacation games, leisure hours or the work-a-day world. Our Cover Model Pants Suit is a big fashion news . . . The Jacket is knitted in a brand new pattern stitch using the KNITKING WEAVER . . . Order yours today and learn all about Pattern Weaving . . .

Publisher: KNITKING CORPORATION, 1128 Crenshaw Blvd., Los Angeles, Calif. 90019. Telephone: WEbster 8-2079. Published bi-monthly. Subscriptions: USA — \$6.00 annually, single copies \$1.50; Canada — \$7.00; other parts of the world — \$10.00. The entire contents of KNIT-KING MAGAZINE are copyright and must not be reproduced in any shape or form without the express permission, in writing of the publisher. COPYRIGHT © by KNITKING CORPORATION 1970.

Printed by George Rice & Sons, Los Angeles, California

# knitking magazine

This issue of KNITKING MAGAZINE completes Volume 6 and as is our custom, we have retained a quantity of each issue to bind into complete volumes . . . Many subscribers buy them at the special price of \$6.95 (plus 85¢ mailing costs) in order to have a perfect set . . . You can be sure of your copy by ordering it now . . .

Be sure to study "Notes to Knit By" on the inside back cover of this issue . . . It has been altered since the last issue and there are some added symbols as well as detailed instructions on how to read them.

We strive to keep symbols to a minimum and not to frighten readers with what might seem to be complicated instructions . . . Since the introduction of the new KNITKING pattern format in September of last year, we have modified it from time to time and it is very important that you are aware of any modifications especially as they are made to simplify the reading of patterns.

You will notice that three symbols have been added . . . The diagonal cross inside a square is used to signify when you must put needles back into the knitting position after knitting Short Rows . . . The solid black triangle marks the center of your garment section and represents the center needle on your machine . . . The numeral inside a square indicates the number of rows to be knitted between shapings.

You will save time and headaches if you always refer to "Notes to Knit By" whenever you are not sure about a particular symbol . . . Learn to use them and you will discover for yourself how easy it is to knit with KNITKING patterns . . . We have some very nice ones for the next issue.

We feature on the Cover . . . Some good-looking matching Mother and Daughter outfits consisting of Pullovers, flared Skirts and double breasted Jackets. We have Father and Son matching Pullovers on the inside, together with a smart tweed Suit for Women which has a new deep ribbing on the Jacket and high Collar . . . Also for the Women, we have a two-piece Shell and Jacket . . . A Pullover and Jacket . . . Some really cute Mother and Daughter Jumpers that can also be worn as dresses . . . A handsome zippered Jacket for a Man . . . some good-looking back to school Dresses for Girls, and in the Gift and Accessory section, some fun Puppet Mittens and Socks in a complete range of sizes from Infant's to Men's . . .



**DP 7888**

Wear a Vest over Pants or Skirt and belt it casually with a wide leather belt (fashion accessory of today). KNITTING Nora is the yarn that is knitted in stockinette stitch with a 1 x 1 ribbing for all edges. Large pockets are important detail. Size 14/16. See page 16.



**DP 7886**

A long lean Sleeveless Tunic with attractive cables down the front section is designed so that you can wear it over a blouse or not . . . Change it into a Mini, Midi, or Maxi Dress by adding extra rows. Rib the bands and the wide Belt. Use KNITTING Subita Crepe 2 x 4. Size 10/12. See page 18.



**DP 7887**

Combine a Cable Stitch and Eyelet Design down the front section and sleeves of a comfortably classic Raglan Cardigan. Knitted with KNITKING Starlite Crepe. Ribbing is used on sleeve cuffs only. Size 12/14. See page 19.



**DK 7866**

Three in one . . . A Skirt, long sleeved Pullover and a Vest for a change-a-bout outfit. The deep Ribbing and wide Belt pulled through side front carriers is an old innovation brought back to top fashion. Purchase trim for the Vest, or make up a knitted trim of your own in a contrasting color. Knit it with KNITKING Subita Crepe 2 x 3. Size 14/16. See page 20.



**DK 7870**

A high Empire waistline with smocking worked over the 3 x 1 ribbing at lower edge of bodice, has a baby doll look that is flattering to the figure. Rib the sleeves and use a Shell stitch crochet around hem and neckline. KNITTING Subita Crepe 2 x 3 is our choice of yarn. Size 8/10. See page 22.





**DK 7860**

Dress up a simple Shell and it can be worn for gala occasions as well as sports wear. This one is knitted in KNITKING Subita 2 x 3. The diagonal Pattern Design follows a chart and KNITKING machines may use Cam Wheel W-1. Size 10/12. See page 23.



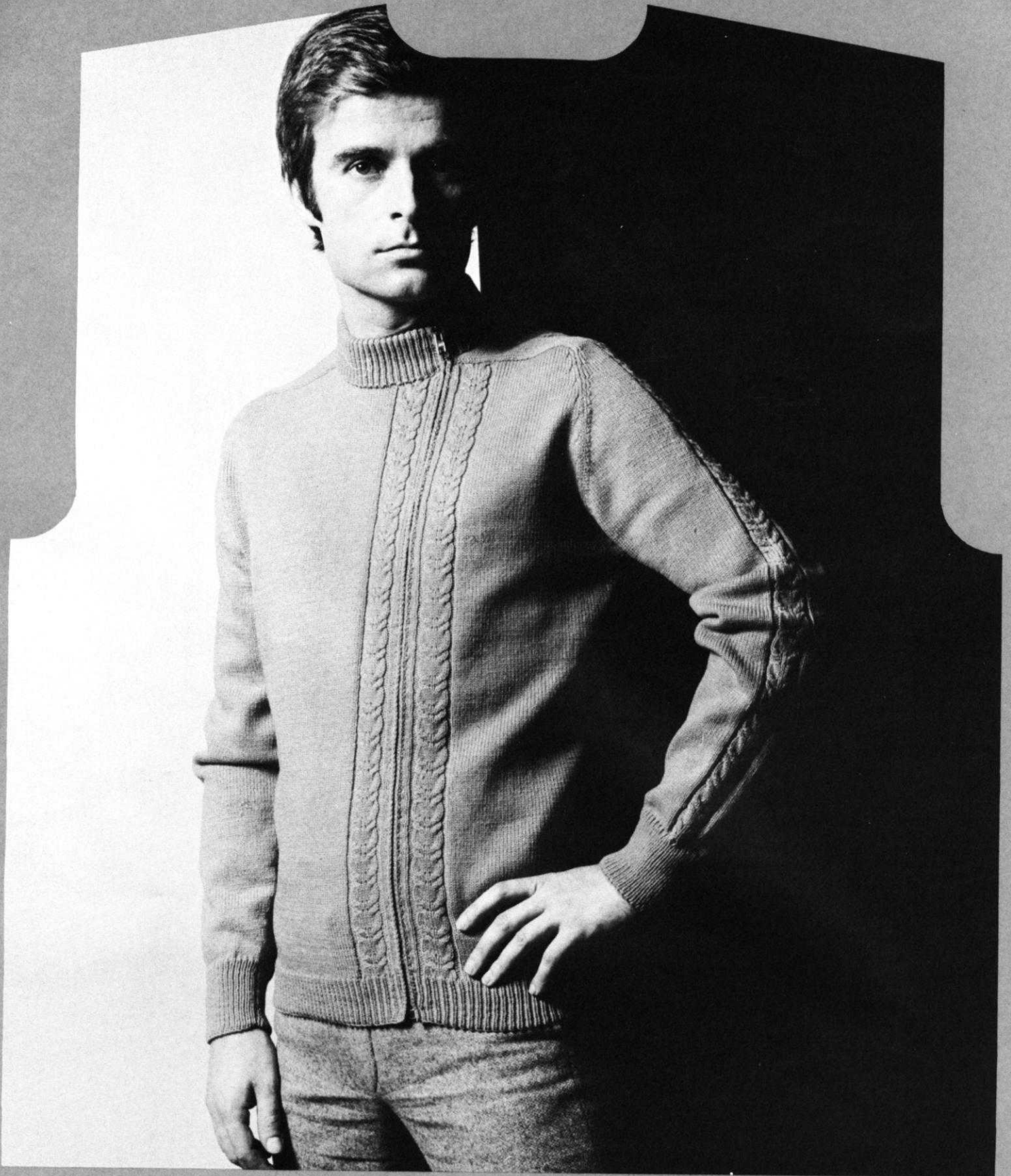
**DK 7862**

We're in the mood . . . Maxi, Midi, or Mini . . . Choose your own favorite length by subtracting rows from our Maxi length shown here. Fun to knit and to wear as well. The Collar and Sleeves are knitted in a 3 x 1 single Fisherman's Rib. Use KNITKING Cable yarn with Lurex for an elegant sparkling look. Size 10/12. See page 24.



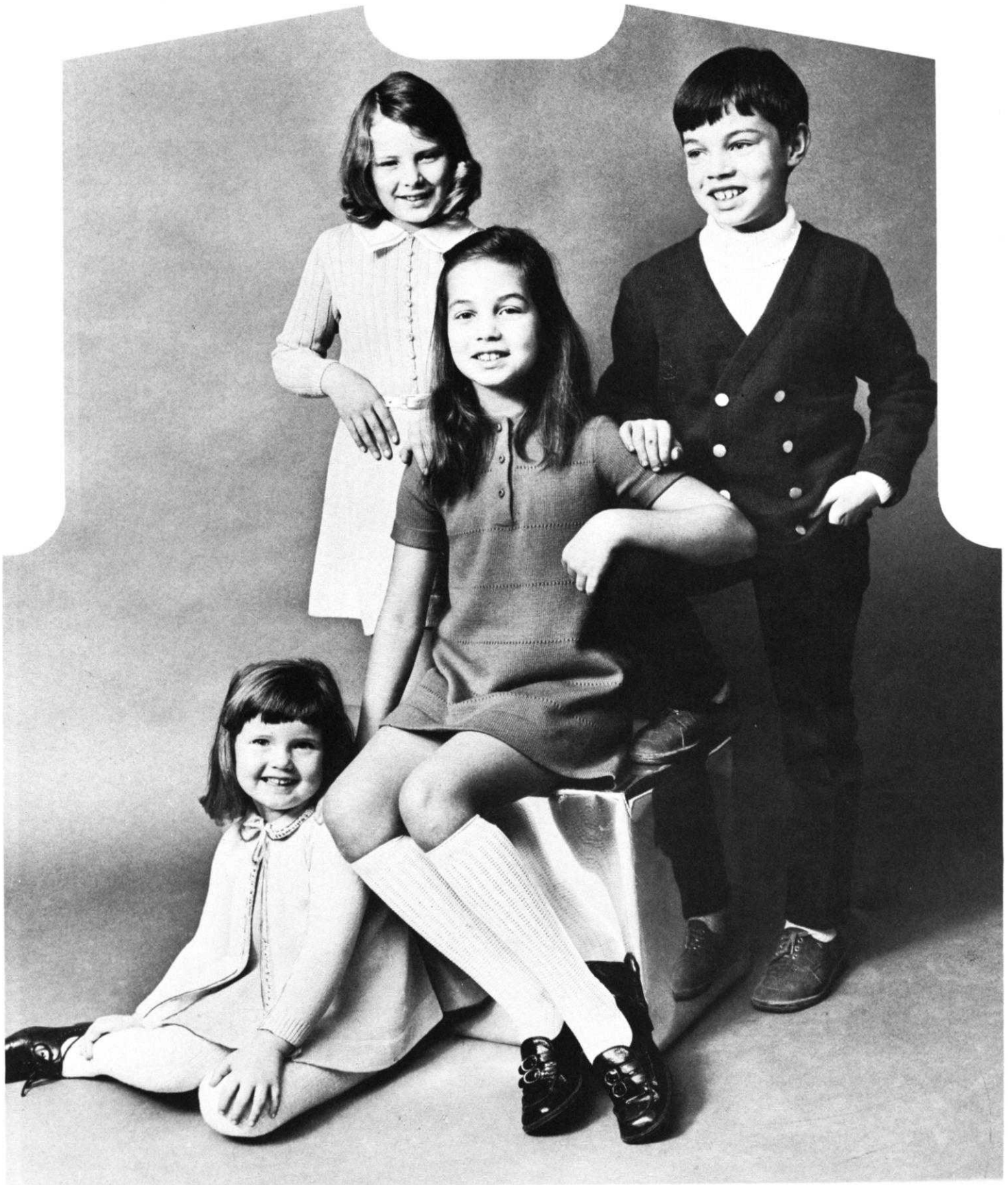
**HP 3619**

Any man will be delighted if you knit him this Raglan sleeved Cardigan with large handy pockets. It's easy to knit with KNITKING Nora. Use a 1 x 1 rib at sleeves, pockets and lower edges. Size 40/42. See page 25.



**HP 3620**

Let him live it up a bit dressed in a newly designed Raglan Jacket with a side zipper closure. The accented Raglan decreases and Cable Design down the front section add up to hi-style. KNITKING Subita Crepe 2 x 4. Size 38/40. See page 26.



Bright and happy faces . . . Children pose for their portrait dressed in KNITKING knits.

**MK 5233**

Girl's Dress knitted in two colors of Subita Crepe 2 x 3 in Size 4 to 5. Purchase a Trim for the edges of the deep pleat on the front and the Collar. See page 27.

**MK 5234**

Girl's Dress with horizontal Eyelet Design in Size 8 to 9 is knitted with machine washable Subita Dralon 2-ply. See page 28.

**MK 5235**

Girl's Dress in Size 10 to 11 is knitted with Subita Crepe 2 x 3, with Bodice and Sleeves in a pretty holding position Design. See page 29.

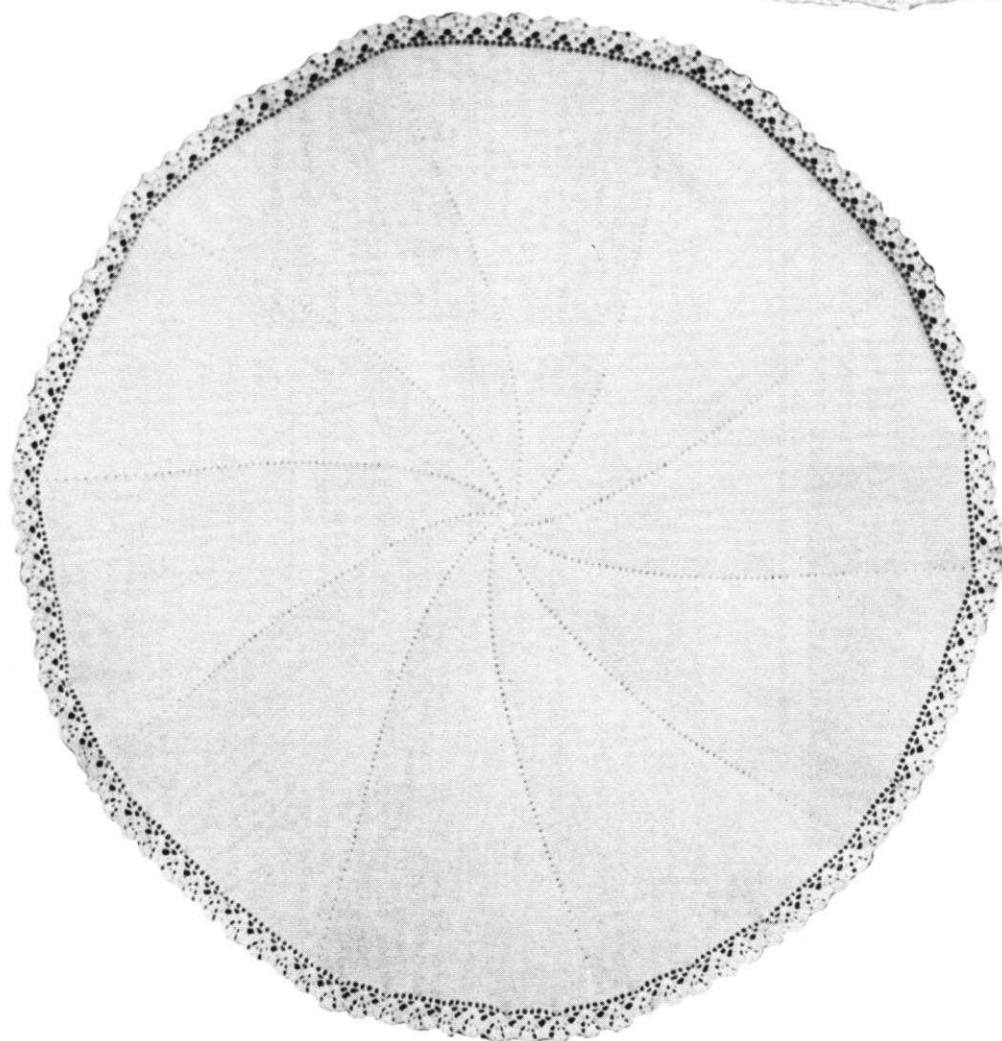
**KK 5236**

Boy's double breasted Jacket knitted in Sonika Dralon and **KK 5237** — Pullover worn underneath Jacket, knitted in Subita Dralon 3-ply (all machine washable) are both in Size 10 to 11. Jacket see page 30, Pullover see page 28.



**MK 5232**

Here she comes, dressed in the sweetest outfit we could make up. Knit the Dress with Panty to match in the never-a-care KNITKING Subita Dralon 3-ply. Stockinette stitch with a holding position Design for Yoke, Cuffs and Panty. Size Toddler 1 to 2. See page 31.

**KG 1908**

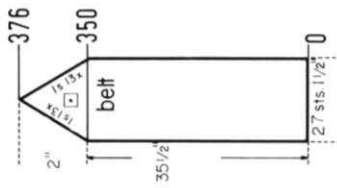
Wrap your new Baby (or Grand-baby) in a fluff of a circular shawl that is very easy to knit using Short Rows. Mother will love the easy care KNITKING Subita Dralon 3-ply that can be tossed into washer and dryer. Four rows of fancy crochet trim the edge. You don't have a baby? . . . then you can knit it in Satin-Cotton 2 x 8 ply for an elegant round Table Cover. See page 32.

**KG 1909**

Cover a half roll of tissue for a decorative makeup blotter to keep on your dressing table or give away for a gift. Fancy short rows turn into a lacy design using KNITKING Satin-Cotton 2 x 8 ply. After you have made several of them, try adding extra stitches in pattern sets, then knitting enough rows to make a lovely collar and cuffs for a dress. See page 32.

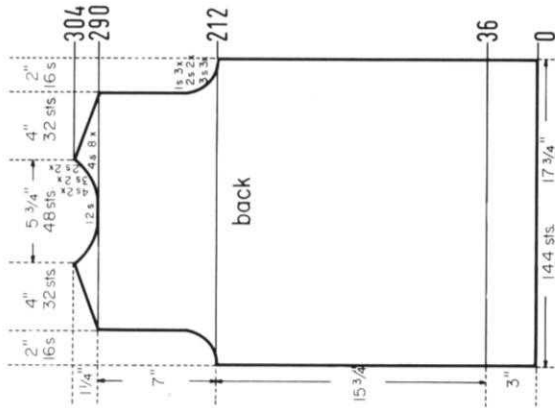
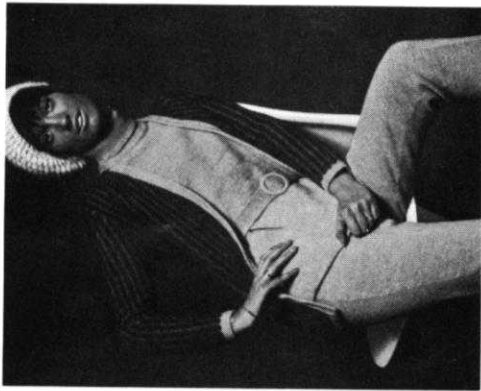
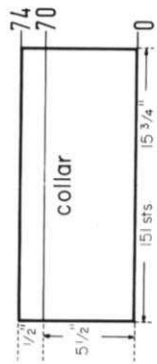
**SIZE:** 8/10. **MATERIAL:** Pullover 15½ oz. (9 balls); Slacks 17½ oz. (10 balls) tan KNITTING: Subita Crepe 2 x 4, Color No. 33. **TENSION:** KNITTING 6 to 8, STITCH GAUGE: Stockinette Stitch 16 sts. 2", 22 rows 2". **PATTERN:** Stockinette Stitch. **COLLAR and BELT:** K1, P1, Ribbing. Make the increases on the sleeves and ALL increases and decreases of 1 st. on the slacks, Full-fashion. **INCREASES:** After rows indicated, move the 2 end sts. on the appropriate sides 1 needle outward, then place the 3rd st. from the row below onto the empty needle. **DECREASES:** After rows indicated, hang the 3rd st. on the appropriate sides onto the 2nd st. then move the end sts. inward to fill the empty needles. Begin the Slack Darts by hanging the sts. together as marked on the diagram. The following decreases for the darts lie directly above. When working Short Rows for the pointed shaping of the belt, transfer the appropriate sts. from the ribber onto the main machine.

**FINISHING:** Block all sections to measurements given. **PULLOVER:** Join front and back section at sides and shoulders. Sew sleeves together and set in. Turn under 9 rows on sleeve edges and 18 rows on lower edge and hem to wrong side. Join short ends of collar. Sew cast-on edge of collar to inside and bound-off edge to outside of neckline, having the stockinette st. rows on the right side. Fold collar to outside. **SLACKS:** Join front and back sections at sides. Sew inner leg seams together, then join sections at center back and front. Turn under 18 rows on upper edge and 22 rows on leg edges and hem to wrong side. Insert an elastic band into upper hem. To form the Cuffs on lower leg edges, separate the 2 layers of the hem and fold up, having the hem seam line in the inner center of the hem. Fasten cuffs in place at the side seams.



Work Short Rows for the shaping. ON OPPOSITE SIDE of CAM BOX put into holding position 1 needle after Rows 350, 351, 352, 353, 354, 355, 356, 357, 358, 359, 360, 361, 362, 363, 364, 365, 366, 367, 368, 369, 370, 371, 372, 373, 374, 375. After Row 376 bring all needles back into working position, then bind off all sts.

Cast on 27 sts. and work 350 Rows K1, P1, Ribbing.



Move the Cam Box to the left side, turn the Row Counter back to 290 and complete the left half. Follow the instructions from \*.

\* ON CAM BOX SIDE, bind off 4 sts. after Rows 290 (EVEN ROWS = SHOULDER SHAPING), 291 (ODD ROWS = NECK SHAPING), 292, 293, 294; 3 sts. after Row 295; 4 sts. after Row 296; 3 sts. after Row 297; 4 sts. after Row 298; 2 sts. after Row 299; 4 sts. after Row 300; 2 sts. after Row 301; 4 sts. after Rows 302, 304.

ON CAM BOX SIDE, bind off 3 sts. after Rows 212, 213, 214, 215, 216, 217; 2 sts. after Rows 218, 219, 220, 221; 1 st. after Rows 222, 223, 224, 225, 226, 227. Now knit to Row 290, then bind off the center 12 sts., put the needles on the left side into holding position and complete the right half first.

ROWS 0 to 212: Knit even. (For Front Section knit even to Row 190).

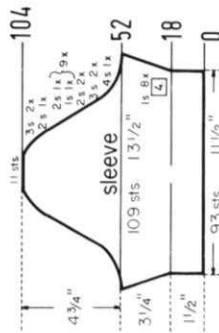
Cast on 144 sts. and work stockinette st.

ON CAM BOX SIDE, bind off 4 sts. after Rows 52, 53; 3 sts. after Rows 54, 55, 56, 57; 2 sts. after Rows 58, 59, 60, 61; 1 st. after Rows 62, 63; 2 sts. after Rows 64, 65; 1 st. after Rows 66, 67; 2 sts. after Rows 68, 69; 1 st. after Rows 70, 71; 2 sts. after Rows 72, 73; 1 st. after Rows 74, 75; 2 sts. after Rows 76, 77; 1 st. after Rows 78, 79; 2 sts. after Rows 80, 81; 1 st. after Rows 82, 83; 2 sts. after Rows 84, 85; 1 st. after Rows 86, 87; 2 sts. after Rows 88, 89; 1 st. after Rows 90, 91; 2 sts. after Rows 92, 93; 1 st. after Rows 94, 95; 2 sts. after Rows 96, 97, 98, 99; 3 sts. after Rows 100, 101, 102, 103; 11 sts. after Row 104.

ON EACH SIDE, increase 1 st. after Rows 18, 22, 26, 30, 34, 38, 42, 46, then knit to Row 52.

ROWS 0 to 18: Knit even.

Cast on 93 sts. and work stockinette st.



Cast on 151 sts. and work 70 rows K1, P1, Ribbing, then transfer the ribber sts. to the main machine and knit 4 rows stockinette st. After Row 74 bind off all sts. the crochet method.

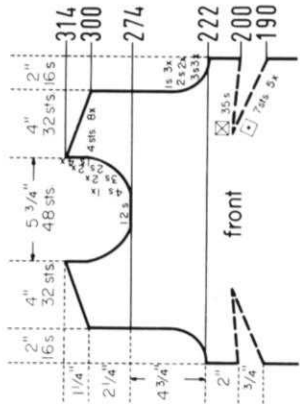
Move the Cam Box to the left side, turn the Row Counter back to 274 and complete the left half. Follow the instructions from \*.

\* ON CAM BOX SIDE, bind off 4 sts. after Row 275 (ODD ROWS = NECK SHAPING); 3 sts. after Rows 277, 279; 2 sts. after Rows 281, 283; 1 st. after Rows 285, 287, 289, 291. For SHOULDER bind off 4 sts. after Rows 300, 302, 304, 306, 308, 310, 312, 314.

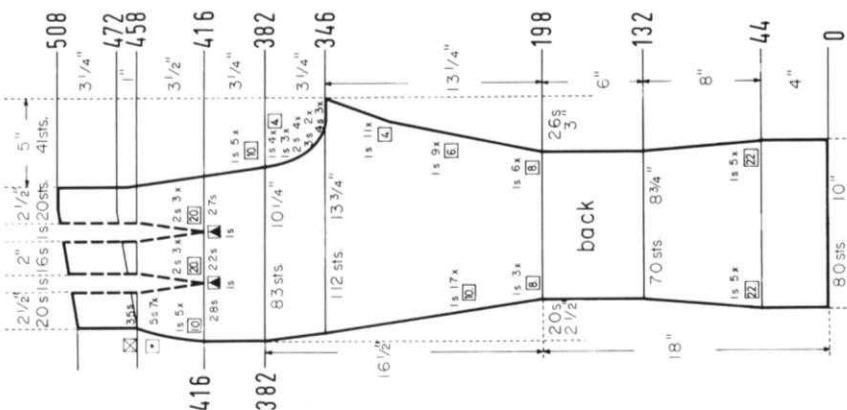
ON CAM BOX SIDE, bind off 3 sts. after Rows 222, 223, 224, 225, 226, 227; 2 sts. after Rows 228, 229, 230, 231; 1 st. after Rows 232, 233, 234, 235, 236, 237. Now knit to Row 274, then bind off the center 12 sts., put the needles on the left side into holding position and complete the right half first.

Work Short Rows for the Bust Darts. ON OPPOSITE SIDE of CAM BOX put into holding position 7 needles after Rows 190, 191, 192, 193, 194, 195, 196, 197, 198, 199. ON OPPOSITE SIDE of CAM BOX bring back into working position all needles after Rows 200, 201, then knit to Row 222.

Work the Front Section the same as the Back Section to Row 190.







Work the second back section with reverse shapings, casting on from right to left. (Cam Box will be on the LEFT side at Row 0).

Work Short Rows for the Shaping. ON OPPOSITE SIDE of CAM BOX put into holding position 5 needles after Rows 458, 460, 462, 464, 466, 468, 470, 472. After Row 472 bring all needles back into working position, knit to Row 508, then bind off the remaining 58 sts.

Decrease 2 sts. for EACH Dart after Rows in ( ). ON EACH SIDE, decrease 1 st. after Rows 416, (416), 426, 436, (436), 446, 456, (456), then knit to Row 458.

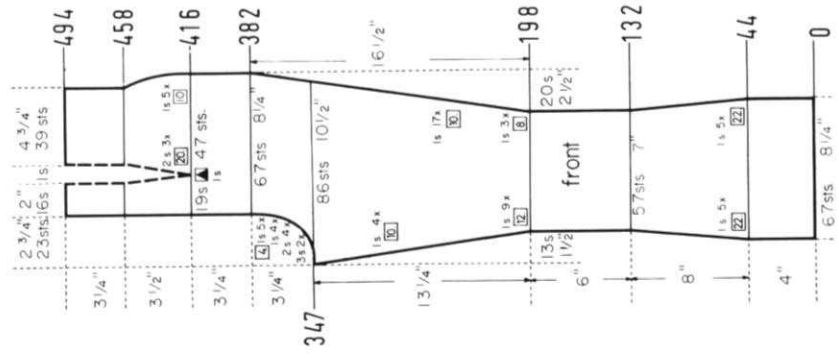
ON OPPOSITE SIDE of CAM BOX continue to INCREASE 1 st. after Rows in ( ). ON CAM BOX SIDE, bind off 4 sts. after Rows 346, 348, 350; 3 sts. after Rows 352, (352), 354; 2 sts. after rows 356, 358, 360, 362; 1 st. after Rows 364, 366, 368, 370, (372), 374, 378, 382, (382), Last INCREASE, 386, 396, 406, then knit to Row 416.

ON OPPOSITE SIDE of CAM BOX (Side Seam) increase 1 st. after Rows in ( ). ON CAM BOX SIDE (Inner Seam) increase 1 st. after Rows 198, (198), 206, (206), 214, (214), 222, (222), 230, (232), 238, (242), 246, 252, (252), 258, (262), 264, 270, (272), 276, 282, (282), 288, (292), 294, 300, (302), 304, 308, 312, (312), 316, 320, (322), 324, 328, 332, (332), 336, 340, (342), then knit to Row 346.

ON EACH SIDE, decrease 1 st. after Rows 44, 66, 88, 110, 132, then knit to Row 198.

ROWS 0 to 44: Knit even.

Cast on 80 sts. and work stockinette st.



Work the second front section with reverse shapings, casting on from right to left. (Cam Box will be on the LEFT side at Row 0).

Decrease 2 sts. for the Dart after Rows in ( ). ON CAM BOX SIDE, decrease 1 st. after Rows 416, (416), 426, 436, (436), 446, 456, (456), then knit to Row 494 and bind off the remaining 56 sts.

Continue to INCREASE 1 st. ON CAM BOX SIDE after Rows in ( ). ON CAM BOX SIDE, bind off 3 sts. after Rows 347, 349; 2 sts. after Rows 351, (352), 353, 355, 357; 1 st. after Rows 359, 361, (362), 363, 365, 367, 369, (372), 373, 377, 381, (382), then knit to Row 416.

ON OPPOSITE SIDE of CAM BOX (Inner Seam) increase 1 st. after Rows in ( ). ON CAM BOX SIDE (Side Seam) increase 1 st. after Rows 198, (198), 206, (210), 214, 222, (222), 232, (234), 242, (246), 252, (258), 262, (270), 272, 282, (282), 292, (294), 302, (306), 312, (316), 322, (326), 332, (336), 342, then knit to Row 347.

ON EACH SIDE, decrease 1 st. after Rows 44, 66, 88, 110, 132, then knit to Row 198.

ROWS 0 to 44: Knit even.

Cast on 67 sts. and work stockinette st.

**A complete fifth volume of KNITTING MAGAZINES with a flexible, transparent plastic cover and specially bound so that it will stay open at any page, is available at the special price of \$6.95 (plus 95 cents mailing costs).**

If purchased separately the magazines would cost a total of \$9.00.

The volume contains over 120 fully illustrated complete stylish patterns for all members of the family, together with many valuable, practical knitting hints.

There is a very limited number of these volumes available and it will undoubtedly become a collectors item.

If you already have the entire set it will almost certainly be well thumbed and marked. Why not purchase a perfect mint condition volume for your bookshelf and ready reference at any time.

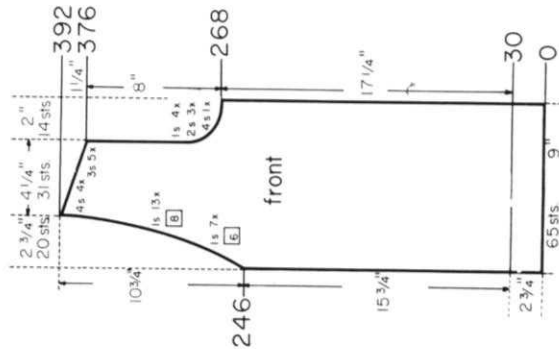
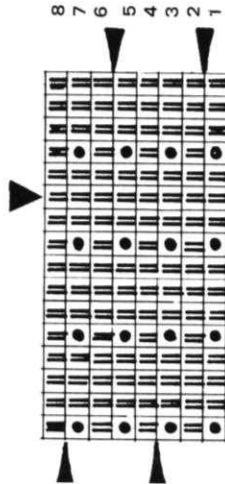
**Place your order today and avoid disappointment. Send it to KNITTING MAGAZINE, 1128 Crenshaw Boulevard, Los Angeles, California 90019.**



# DP 7883

**SIZE:** 8/10. **MATERIAL:** 17½ oz. (10 balls) tan KNITTING Subita Crepe 2 x 4, Color No. 33 and 12½ oz. (7 balls) red KNITTING Nanga Parbat, Color No. 6010. **TENSION:** KNITTING, Pattern Stitch 7 to 9; Stockinette Stitch 6 to 8. **STITCH GAUGE:** Pattern Stitch 14 sts. 2", 22 rows 2"; Stockinette Stitch 16 sts. 2", 27 rows 2". **PATTERN:** Weaving Pattern according to Line Drawing, using the NEW Weaving accessory and Wheel No. 3. The purl side is the right side. **EDGES:** Stockinette st. worn on the knit side. To form the hems, hang the cast-on sts. back on the machine in FRONT of the latches, then push in the right Cam Control Button (machines prior to AM 3 pull the Cam Control Knob up) and knit 2 rows without yarn, then push the Cam Control Button back into normal position and turn the Row counter back to 30.

**FINISHING:** Block all sections to measurements given. (Subtract the hem allowance). Join front and back sections at sides and shoulders, easing in the fullness at bustline of front sections. Sew sleeves together and set in. Sew 1 edge of facing band to inside and 1 edge to outside of front edges and neckline.



Work the second front section with reverse shaping. Cast on the regular way (from left to right). Knit 30 rows stockinette st. and form the hem. Now knit 1 row in PATTERN to the left side, turn the Row Counter back to 30 and follow the instructions as written. Continue to set up the PATTERN from right to left.

**ON CAM BOX SIDE,** bind off 4 sts. after Row 268; 2 sts. after Rows 270, (270), 272, 274; 1 st. after Rows 276, (276), 278, 280, 282; (282). The Armhole is now completed. Continue to decrease 1 st. ON OPPOSITE SIDE of CAM BOX after Rows 288, 296, 304, 312, 320, 328, 336, 344, 352, 360, 368, then again after Rows in ( ). For SHOULDER, bind off 3 sts. after Rows 376, (376), 378, 380, 382, 384; (384 last time for Neck), 4 sts. after Rows 386, 388, 390, 392.

**ON OPPOSITE SIDE of CAM BOX** hang the 1st st. onto the 2nd st. after Rows 246, 252, 258, 264, then continue to decrease 1 st. ON OPPOSITE SIDE of CAM BOX after Rows in ( ). Knit to Row 268.

**ROWS 31 to 246:** Knit even.

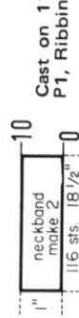
**ROWS 0 to 30:** Knit even, then form the hem and begin the Pattern Stitch.

Cast on 65 sts. with tan and work stockinette st.

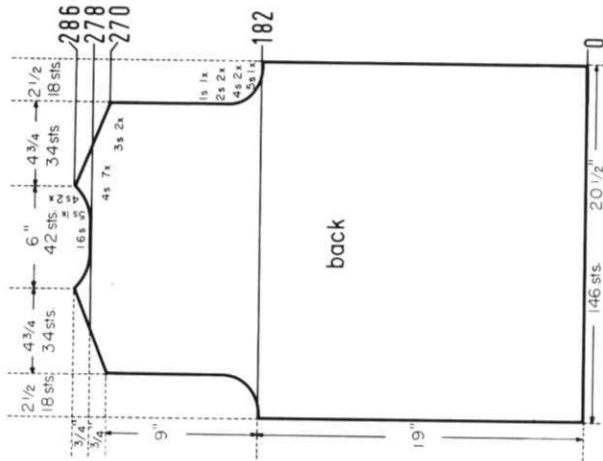
# DP 7888

**SIZE:** 14/16. **MATERIAL:** 19¼ oz. (11 balls) beige KNITTING Nora, Color No. 4048. **TENSION:** KNITTING 7 to 9. **STITCH GAUGE:** 14 sts. 2", 19 rows 2". **PATTERN:** Stockinette Stitch. **BANDS and Pocket EDGES:** K1, P1, Ribbing. **Neckline Decreases:** After rows indicated, hang the 3rd st. ON NECK SIDE onto the 2nd st., then move the end sts. inward to fill the empty needle. Bind off all Ribbing the crochet method for ribbing.

**FINISHING:** Block all sections to measurements given. Join front and back sections at sides and shoulders. Turn under 15 rows on lower edge and hem to wrong side. Sew pockets in place. Join neckbands at center back, then sew neckband to front bands. Sew band around front edges and neckline, leaving 5 spaces of 3/4" on the right side free for buttonholes. Begin the first buttonhole spaced 4" from the lower edge. The following buttonhole spaces are 2" apart. Finish buttonholes, sew on buttons.



Cast on 116 sts. and work 10 rows K1, P1, Ribbing, then bind off all sts.



Move the Cam Box to the left side, turn the Row Counter back to 278 and complete the left half. Follow the instructions from \*.

\* **ON CAM BOX SIDE** bind off 4 sts. after Row 278 (EVEN ROWS = SHOULDER SHAPING); 5 sts. after Row 279 (ODD ROWS = NECK SHAPING); 4 sts. after Rows 280, 281, 282, 283, 284, 286.

**ON CAM BOX SIDE,** bind off 3 sts. after Rows 270, 271, 272, 273; 4 sts. after Rows 274, 275, 276, 277. After Row 278 bind off the center 16 sts., put the needles on the left side into holding position and complete the right half first.

**ON CAM BOX SIDE,** bind off 5 sts. after Rows 182, 183; 4 sts. after Rows 184, 185, 186, 187; 2 sts. after Rows 188, 189, 190, 191; 1 st. after Rows 192, 193, then knit to Row 270.

**ROWS 0 to 182:** Knit even.

Cast on 146 sts. and work stockinette st.



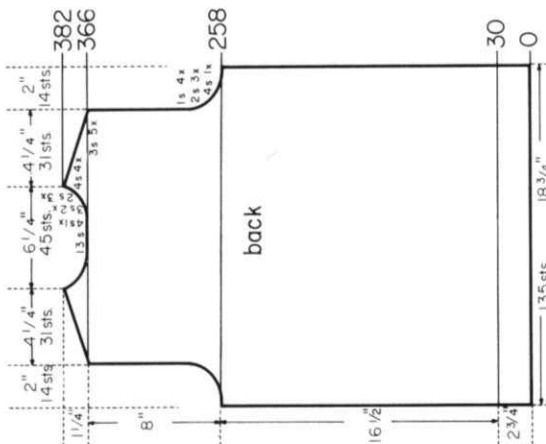
Bring the needles on the left side into working position and knit 1 row in PATTERN to the left side. Turn the Row Counter back to 366 and complete the left side. Follow the instructions from \*. Continue to set up PATTERN from the right side.

\* ON CAM BOX SIDE, bind off 3 sts. after Row 366 (EVEN ROWS = SHOULDER SHAPING); 4 sts. after Row 367 (ODD ROWS = NECK SHAPING); 3 sts. after Rows 368, 369, 370, 371, 372; 2 sts. after Row 373; 3 sts. after Rows 374; 2 sts. after Row 375; 4 sts. after Row 376; 2 sts. after Row 377; 4 sts. after Rows 378, 380, 382.

ON CAM BOX SIDE, bind off 4 sts. after Rows 258, 259; 2 sts. after Rows 260, 261, 262, 263, 264, 265; 1 st. after Rows 266, 267, 268, 269, 270, 271, 272, 273. Now knit to Row 366, then bind off the center 13 sts., put the needles on the left side into holding position and complete the right half first.

ROWS 31 to 258: Knit even.  
ROWS 0 to 30: Knit even, then form the hem and begin the Pattern Stitch.

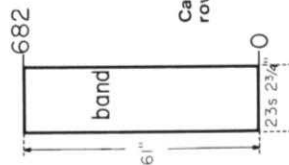
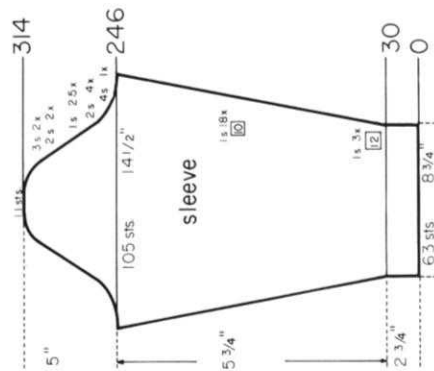
Cast on 135 sts. with tan and work stockinette st.



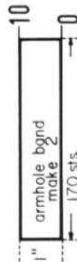
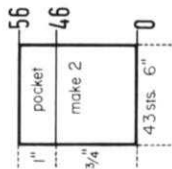
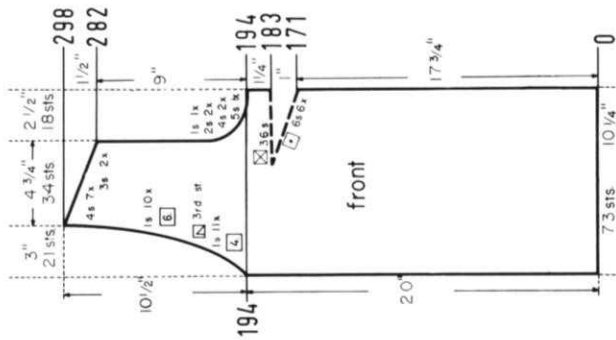
ON CAM BOX SIDE, bind off 4 sts. after Rows 246, 247; 2 sts. after Rows 248, 249, 250, 251, 252, 253, 254, 255.  
ON EACH SIDE, hang the 1st st. onto the 2nd st. after Rows 256, 258, 260, 262, 264, 266, 268, 270, 272, 274, 276, 278, 280, 282, 284, 286, 288, 290, 292, 294, 296, 298, 300, 302, 304. ON CAM BOX SIDE, bind off 2 sts. after Rows 306, 307, 308, 309; 3 sts. after Rows 310, 311, 312, 313; 11 sts. after Row 314.

ON EACH SIDE, hang the last st. from the row below onto the next empty needle after Rows 30, 42, 54, 66, 76, 86, 96, 106, 116, 126, 136, 146, 156, 166, 176, 186, 196, 206, 216, 226, 236, then knit to Row 246.

ROWS 0 to 30: Knit even, then form the hem and begin the Pattern Stitch.  
Cast on 63 sts. with tan and work stockinette st.



Cast on 23 sts. with tan and work 682 rows stockinette st., then bind off all sts.



Cast on 170 sts. and work 10 rows K1, P1, Ribbing, then bind off all sts.



Cast on 160 sts. and work 10 rows K1, P1, Ribbing, then bind off all sts.

Work the second front section with reverse shapings, casting on from right to left. (Cam Box will be at the LEFT side at Row 0).

ON OPPOSITE SIDE of CAM BOX, decrease 1 st. after Rows in ( ). ON CAM BOX SIDE, bind off 5 sts. after Row 194, (194), 4 sts. after Rows 196, 198; (198), 2 sts. after Rows 200, 202; (202), 1 st. after Row 204. The Armhole is now completed. Continue to decrease 1 st. ON OPPOSITE SIDE of CAM BOX after Rows 206, 210, 214, 218, 222, 226, 230, 234, 238, 244, 250, 256, 262, 268, 274, 280, then again after Rows in ( ). For SHOULDER bind off 3 sts. after Rows 282, 284; 4 sts. after Rows 286, (286), 288, 290, 292, (292), 294, 296, 298.

Work Short Rows for the Bust Dart. ON OPPOSITE SIDE of CAM BOX put into holding position 6 needles after Rows 171, 173, 175, 177, 179, 181. Bring all needles back into working position after Row 183, then knit to Row 194.

ROWS 0 to 171: Knit even.

Cast on 73 sts. and work stockinette st.

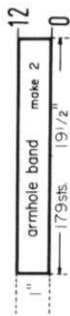
Cast on 43 sts. and work 46 rows stockinette st., then transfer over other st. to the ribber and work 10 rows K1, P1, Ribbing. After Row 56 bind off all sts.

KNITKINGS' INTERCHANGEABLE YARN CHART  
ALLOWS YOU TO SUBSTITUTE NATIONALLY SOLD  
YARNS. PRICE \$1.00 PLUS 12c POSTAGE. CALIF.  
RESIDENTS 5c SALES TAX.

# DP 7886

**SIZE:** 10/12. **MATERIAL:** 14 oz. (8 balls) beige KNOTTING Subita Crepe 2 x 4, Color No. 34. **TENSION:** KNITTING 6 to 8. **STITCH GAUGE:** Stockinette Stitch 15 sts., 2", 21 rows 2". **PATTERN:** Stockinette Stitch and a Cable Design on the front section. (See Line Drawing for Cable Design instructions). **EDGES:** K1, P1, Ribbing. Bind off all ribbed sections the crochet method for ribbing. Side Seam Decreases: After rows indicated, hang the 3rd st. ON EACH SIDE onto the 2nd st., then move the end sts. inward to fill the empty needle.

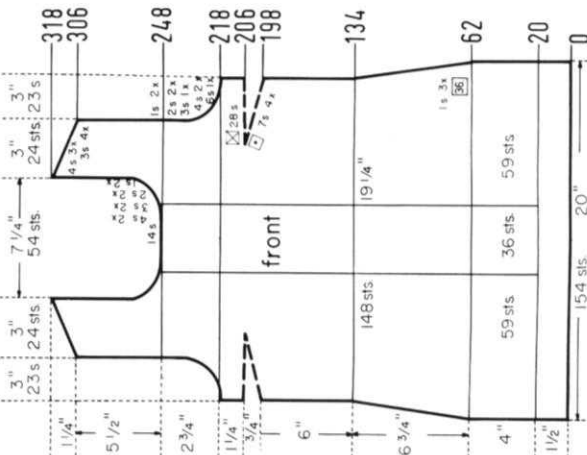
**FINISHING:** Block the sections to measurements given. Do NOT block ribbing. Join front and back sections at sides and shoulders. Sew short ends of armhole bands together, then sew bands to armholes. Join neckband sections, then sew neckband to neckline. Sew a buckle to the belt.



Cast on 179 sts. and work 12 rows K1, P1, Ribbing, then bind off all sts.

Move the Cam Box to the left side, turn the Row Counter back to 248 and complete the left half. Follow the instructions from \*.

\* ON CAM BOX SIDE, bind off 4 sts. after Rows 249, 251 (ODD ROWS = NECK SHAPING); 3 sts. after Rows 253, 255; 2 sts. after Rows 257, 259; 1 st. after Rows 261, 263. For SHOULDER, bind off 3 sts. after Rows 306, 308, 310, 312; 4 sts. after Rows 314, 316, 318.



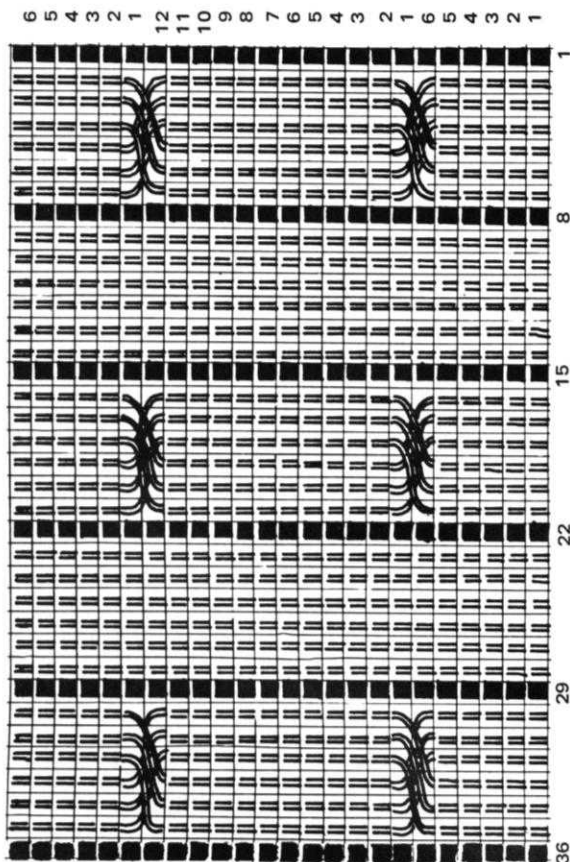
ON CAM BOX SIDE, bind off 6 sts. after Rows 218, 219; 4 sts. after Rows 220, 221, 222, 223; 3 sts. after Rows 224, 225; 2 sts. after Rows 226, 227, 228, 229; 1 st. after Rows 230, 231, 232, 233. Now knit to Row 248, then bind off the center 14 sts., put the needles on the left side into holding position and complete the right half first.

Work Short Rows for the Bust Darts. ON OPPOSITE SIDE of CAM BOX, put into holding position 7 needles after Rows 198, 199, 200, 201, 202, 203, 204, 205. ON OPPOSITE SIDE of CAM BOX bring back into working position all needles after Rows 206, 207, then knit to Row 218.

ON EACH SIDE, decrease 1 st. after Rows 62, 98, 134, then knit to Row 198.

ROWS 21 to 62: Knit even. ROWS 0 to 20: Knit even, then change to stockinette st. and work the Cable Design over the sts. marked on the diagram. Cross the sts. the first time after Row 26.

Cast on 154 sts. and work K1, P1, Ribbing.



The Cable Design reaches over 36 sts. Counting from the right side, let the 1st, 8th, 15th, 22nd, 29th and 36th sts. slide off the needles. With 2 treble transfer tools, hang the 2nd, 3rd and 4th sts. after the 5th, 6th and 7th needles, then onto the 5th, 6th and 7th sts. onto the 2nd, 3rd and 4th needles. Cross the 16th, 17th and 18th sts. with the 19th, 20th and 21st sts., then the 30th, 31st

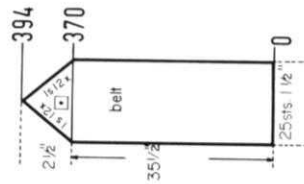
and 32nd sts. with the 33rd, 34th and 35th sts. in the same manner. Bring the empty needles back into working position and knit. Cross the sts. the first time after 6 rows of stockinette st., then after every following 12th row. After each 30 to 40 rows let the 1st, 8th, 15th, 22nd, 29th and 36th sts. slide off the needles and allow to run down (the first time down to the ribbing), then latch up into knit sts.



Cast on 159 sts. and work 12 rows K1, P1, Ribbing, then bind off all sts.



Cast on 79 sts. and work 12 rows K1, P1, Ribbing, then bind off all sts.



Work Short Rows for the shaping. ON OPPOSITE SIDE of CAM BOX put into holding position 1 needle after Rows 370, 371, 372, 373, 374, 375, 376, 377, 378, 379, 380, 381, 382, 383, 384, 385, 386, 387, 388, 389, 390, 391, 392, 393. After Row 394 bring all needles back into working position, then bind off all sts.

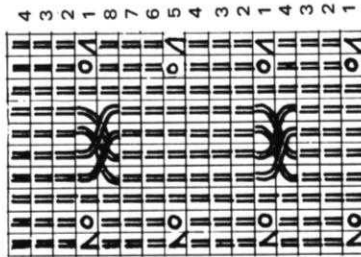
ROWS 0 to 370: Knit even.

Cast on 25 sts. and work K1, P1, Ribbing.

# DP 7887

**SIZE:** 12/14. **MATERIAL:** 26 oz. rust KNOTTING Starline Crepe, Color No. 429. **TENSION:** KNIT-KING 7 to 9. **STITCH GAUGE:** 14 sts, 2", 20 rows 2". **PATTERN:** Stockinette Stitch and a Cable Design with Eyelets on front sections and sleeves. (See Line Drawing for instructions). **Sleeve EDGES:** K1, P1, Ribbing. **RAGLAN DECREASES:** After rows indicated, hang the 3rd st., then on the appropriate sides onto the 2nd st., then move the end sts. inward to fill the empty needle. **Sleeve INCREASES:** After rows indicated, move the 2 end sts. ON EACH SIDE 1 needle outward, then place the 3rd st. from the row below onto the empty needle.

**FINISHING:** Block all sections to measurements given. Join front and back sections together at sides. Sew sleeves together, then weave sleeves to front and back sections, 1 st. in from each edge. Turn under 16 rows on lower edge and hem to wrong side. Turn under 11 sts. on front edges and hem to wrong side. Sew 1 edge of neckband to inside and 1 edge to outside of neckline, leaving 3/4" of the front edges free. Sew open edges together. Finish buttonholes, sew on buttons.



The cable Design reaches over 10 sts. 1. Of the 10 cable sts., hang the 2nd st. ON EACH SIDE onto the 1st st. 2. Knit 4 rows. 3. Using 2 double transfer tools, hang the 4th and 5th sts. onto the 6th and 7th needles, then the 6th and 7th sts. onto the 4th and 5th needles, then hang the 2nd st. ON EACH SIDE onto the 1st st. 4. Knit 4 rows. Repeat Steps 1 to 4 throughout.

Work the second sleeve with reverse shaping, casting on from right to left. (Cam Box will be on the LEFT side at Row 0).

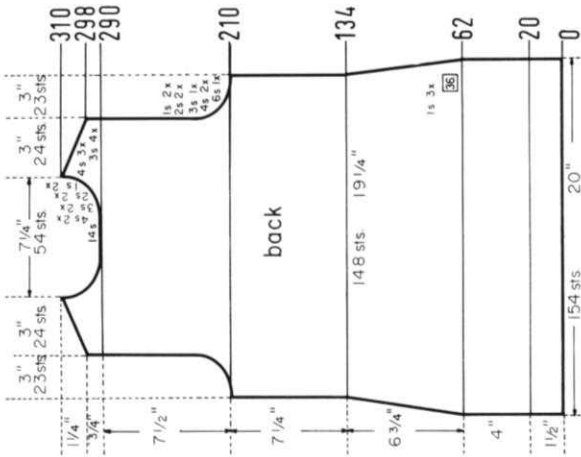
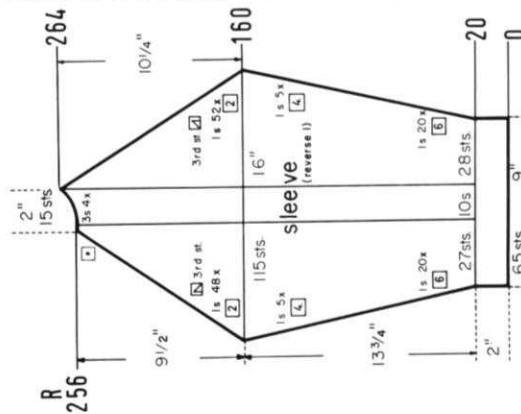
ON CAM BOX SIDE, continue to decrease 1 st. for RAGLAN after Rows in ( ) ON OPPOSITE SIDE of CAM BOX put into holding position 3 needles after Rows 256, (256), 258, (258), 260, (260), 262, (262). After Row 264 bring all needles back into working position, then bind off all 15 sts.

ON EACH SIDE, decrease 1 st. for RAGLAN after Rows 160, 162, 164, 166, 168, 170, 172, 174, 176, 178, 180, 182, 184, 186, 188, 190, 192, 194, 196, 198, 200, 202, 204, 206, 208, 210, 212, 214, 216, 218, 220, 222, 224, 226, 228, 230, 232, 234, 236, 238, 240, 242, 244, 246, 248, 250, 252, 254, then knit to Row 256.

ON EACH SIDE, increase 1 st. after Rows 20, 26, 32, 38, 44, 50, 56, 62, 68, 74, 80, 86, 92, 98, 104, 110, 116, 122, 128, 134, 140, 144, 148, 152, 156, then knit to Row 160.

ROWS 0 to 20: Knit even, then change to stockinette st. and work the Cable Design over the sts. marked on the diagram. Mark the Cable needles before the first increase. Cross the sts. the first time after Row 24.

Cast on 65 sts. and work K1, P1, Ribbing.



Move the Cam Box to the left side, turn the Row Counter back to 290 and complete the left half. Follow the instructions from \*.

\* ON CAM BOX SIDE, bind off 4 sts. after Rows 291, 293 (ODD ROWS = NECK SHAPING); 3 sts. after Rows 295, 297, 298 (EVEN ROWS = SHOULDER SHAPING); 2 sts. after Row 299; 3 sts. after Row 300; 2 sts. after Row 301; 3 sts. after Row 302; 1 st. after Row 303; 3 sts. after Row 304; 1 st. after Row 305; 4 sts. after Rows 306, 308, 310.

ON CAM BOX SIDE, bind off 6 sts. after Rows 210, 211; 4 sts. after Rows 212, 213, 214, 215; 3 sts. after Rows 216, 217; 2 sts. after Rows 218, 219, 220, 221; 1 st. after Rows 222, 223, 224, 225. Now knit to Row 290, then bind off the center 14 sts., put the needles on the left side into holding position and complete the right half first.

ON EACH SIDE, decrease 1 st. after Rows 62, 98, 134, then knit to Row 210.

ROWS 21 to 62: Knit even.

Cast on 154 sts. and work K1, P1, Ribbing.

Work the second front section with reverse shapings, casting on from right to left. (Cam Box will be on the LEFT side at Row 0). Omit the buttonholes.

Continue to decrease 1 st. for RAGLAN after Rows in ( ). ON CAM BOX SIDE, bind off 22 sts. after Row 231 (ODD ROWS = NECK SHAPING); (232), 237, after Rows 233, (234), 235, (236), 237, (238), 1 st. after Rows 239, (240), 241, (242), 243, (244), 245, (246), 247, (248), 249, (250), 251, (252), 253, (254). After Row 256 hang the remaining 3 sts. together, then bind off.

ON CAM BOX SIDE, decrease 1 st. for RAGLAN after Rows 160, 162, 164, 166, 168, 170, 172, 174, 176, 178, 180, 182, 184, 186, 188, 190, (Make buttonholes after Row 192) 192, 194, 196, 198, 200, 202, 204, 206, 208, 210, 212, 214, 216, 218, 220, 222, 224, 226, 228, 230, then knit to Row 231.

Work Short Rows for the Bust Dart. ON OPPOSITE SIDE of CAM BOX, put into holding position 8 needles after Rows 137, 139, 141, 143. Bring all needles back into working position after Row 152, 145. Make buttonholes after Row 152, then knit to Row 160.

ROWS 17 to 137: Make buttonholes after Rows 32, 72, 112 over the 2nd-6th and 17th-21st sts. counting from the left side.

ROWS 0 to 16: Knit even, then cast on 22 sts. ON OPPOSITE SIDE of CAM BOX. (Use a separate length of yarn).

Cast on 65 sts., work stockinette st. and the Cable Design with Eyelets over the sts. marked on the diagram.

Continued on next page





Move the Cam Box to the left side, turn the Row Counter back to 286 and complete the left half. Follow the instructions from \*.

\* ON CAM BOX SIDE, bind off 5 sts. after Rows 286 (EVEN ROWS = SHOULDER SHAPING), 287 (ODD ROWS = NECK SHAPING), 288, 289, 290; 3 sts. after Row 291; 5 sts. after Row 292; 3 sts. after Row 293; 5 sts. after Row 294; 2 sts. after Row 295; 5 sts. after Row 296; 2 sts. after Row 297; 5 sts. after Row 298; 6 sts. after Row 300.

ON CAM BOX SIDE, bind off 6 sts. after Rows 190, 191; 3 sts. after Rows 192, 193, 194, 195; 2 sts. after Rows 196, 197, 198, 199, 200, 201; 1 st. after Rows 202, 203, 204, 205, 206, 207, 208, 209. Now knit to Row 286, then bind off the center 18 sts., put the needles on the left side into holding position and complete the right half first.

ROWS 81 to 190: ON EACH SIDE, increase 1 st. after Rows 80, 102, 124, 146, 168, then knit to Row 190. (For the FRONT SECTION knit to Row 170).

ROWS 0 to 80: Knit even.  
Cast on 174 sts. and work stockinette st.

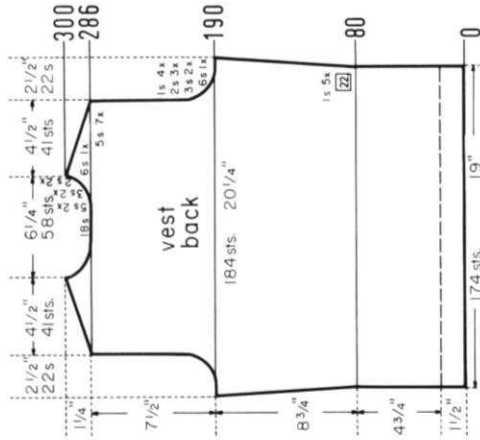
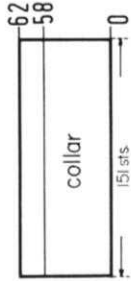
Move the Cam Box to the left side, turn the Row Counter back to 206 and complete the left half. Follow the instructions from \*.

\* ON CAM BOX SIDE, bind off 6 sts. after Row 206 (EVEN ROWS = ARM-HOLE SHAPING); 4 sts. after Row 207 (ODD ROWS = NECK SHAPING); 3 sts. after Rows 208, 209, 210, 211; 2 sts. after Rows 212, 213, 214, 215, 216, 217; 1 st. after Rows 218, 219, 220, 221, 222, 223, 224 (last time for Arm-hole), 225, 229, 233, then knit to Row 302. For SHOULDER, bind off 5 sts. after Rows 302, 304, 306, 308, 310, 312, 314; 6 sts. after Row 316.

Work Short Rows for the Bust Darts. ON OPPOSITE SIDE of CAM BOX put into holding position 5 needles after Rows 170, 171, 172, 173, 174, 175, 176, 177, 178, 179, 180, 181, 182, 183, 184, 185. ON OPPOSITE SIDE of CAM BOX bring all needles back into working position after Rows 186, 187. Now knit to Row 206, then bind off the center 14 sts., put the needles on the left side into holding position and complete the right half first.

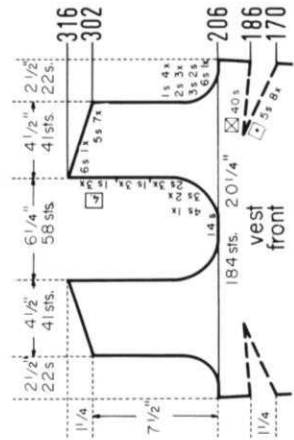
Work the Front Section the same as the Back Section to Row 170.

Cast on 151 sts. and work 58 rows K1, P1, Ribbing, then transfer the ribber sts. to the main machine and work 4 rows stockinette st. After Row 62 bind off all sts. the crochet method.



Decrease 2 sts. for each DART after Rows in ( ). ON EACH SIDE, decrease 1 st. after Rows 214, 224, (234), 234, (242), 244, (250), 254, (258), 264, (266), 274, (274), (282), 284, (290), 292, (298), 300. Now knit even to Row 326, then bind off the remaining 134 sts. ROWS 0 to 214. Knit even.

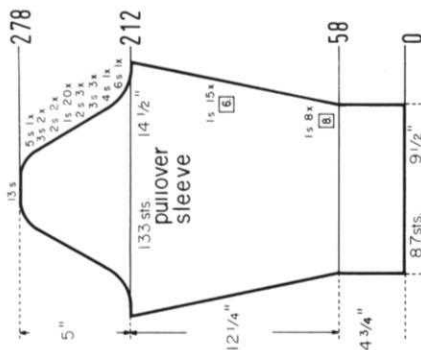
Cast on 190 sts. and work stockinette st.



ON CAM BOX SIDE, bind off 6 sts. after Rows 212, 213; 4 sts. after Rows 218, 219, 220, 221; 2 sts. after Rows 222, 223, 224, 225, 226, 227. ON EACH SIDE, hang the 1st st. onto the 2nd st. after Rows 228, 230, 232, 234, 236, 238, 240, 242, 244, 246, 248, 250, 252, 254, 256, 258, 260, 262, 264, 266. ON CAM BOX SIDE, bind off 2 sts. after Rows 268, 269, 270, 271; 3 sts. after Rows 272, 273, 274, 275; 5 sts. after Rows 276, 277; 13 sts. after Row 278.

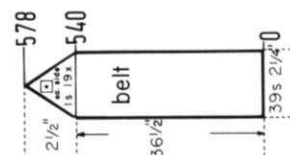
ON EACH SIDE, increase 1 st. after Rows 58, 66, 74, 82, 90, 98, 106, 114, 122, 128, 134, 140, 146, 152, 158, 164, 170, 176, 182, 188, 194, 200, 206, then knit to Row 212.

ROWS 0 to 58: Knit even, then change to stockinette st.  
Cast on 87 sts. and work K1, P1, Ribbing.



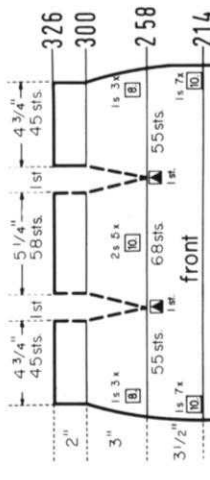
ON OPPOSITE SIDE of CAM BOX put into holding position 1 needle after Rows 540, 541, 542, 543, 544, 545, 546, 547, 548, 549, 550, 551, 552, 553, 554, 555, 556, 557, 558, 559, 560, 561, 562, 563, 564, 565, 566, 567, 568, 569, 570, 571, 572, 573, 574, 575, 576, 577. After Row 578 bring all needles back into working position, then bind off all sts.

ROWS 0 to 540: Knit even.  
Cast on 39 sts. and work K1, P1, Ribbing.



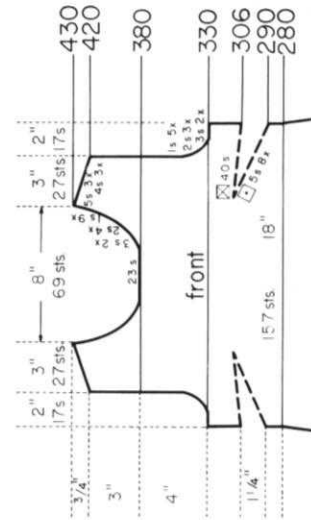
Decrease 2 sts. for each DART after Rows in ( ). ON EACH SIDE, decrease 1 st. after Rows 214, 224, 234, 244, 254, (258), 264, (268), 274, (278), 284, (288), 292, (298), 300. Now knit even to Row 326, then bind off the remaining 150 sts.

Work the Front Section the same as the Back Section to Row 214.



# DK 7870

**SIZE:** 8/10. **MATERIAL:** 22½ oz. (13 balls) turquoise **KNITTING** Subita Crepe 2 x 3. **Color No. 145. TENSION:** **KNITTING** 4 to 6. **STITCH PATTERN:** Stockinette Stitch 17 sts. 2", 24 rows 2"; Gauge: Stockinette Stitch 17 sts. 2", 25 rows 2". **PATTERN:** Skirt Section Stockinette Stitch, worn on the knit side; Bodice Section and Sleeves Purl 3, Knit 1, Ribbing, worn on the purl side. To turn the knitting, use your reversing bar, or knit several rows with contrast waste yarn, then remove the knitting from the machine and with knit side facing you hang the garment sts. back on the machine. Remove waste yarn and set Row Counter back to 280. Decreases on side seams: After rows indicated, hang the 4th st. **ON EACH SIDE** onto the 3rd st., then move the end sts. inward to fill the empty needle. Increases on sleeves: After rows indicated, move the end st. **ON EACH SIDE** 1 needle outward, then place the 2nd st. from the row below onto the empty needle. (Keep in Pattern). When working Short Rows for the Bust Darts, transfer the appropriate ribber sts. to the main machine before putting the needles into holding position and return the sts. to the ribber before bringing all needles back into working position. The finished length of the dress is 34".



**FINISHING:** Block all sections to measurements given. Now work 4 rows of smocking. The Smocking is worked over the 1st, 8th, 16th and 24th rows of the ribbing. Thread a tapestry needle with 3 strands of yarn. Insert the needle into the 1st and 2nd rib sts. of the 1st row and sew around these sts. twice, then insert the needle into the 2nd and 3rd rib sts. of the 8th row and sew around these sts. twice. Go back into the 1st row and sew around the 3rd and 4th rib sts., etc. Work the smocking on the 16th and 24th rows in the same manner. Join front and back sections at sides and shoulders. Sew sleeves together and set in. Work 2 rows of single crochet around neckline and around lower edge. Crochet the next row as follows: 2 double crochet, 2 triple crochet, 2 double crochet in 1st st. \* Chain 1, skip 1, single crochet in next st. Chain 1, skip 1, 2 double crochet, 2 triple crochet, 2 double crochet in next st. **REPEAT** from \*.



Move the Cam Box to the left side, turn the Row Counter back to 380 and complete the left half. Follow the instructions from \*. (Replace the Ribber Sts.).

\* **ON CAM BOX SIDE,** bind off 3 sts. after Rows 381, 383 (ODD ROWS = NECK SHAPING); 2 sts. after Rows 385, 387, 389, 391; 1 st. after Rows 393, 395, 397, 399, 401, 403, 405, 407, 409. For **SHOULDER,** bind off 4 sts. after Rows 420, 422, 424; 5 sts. after Rows 426, 428, 430.

**ON CAM BOX SIDE,** bind off 3 sts. after Rows 330, 331, 332, 333; 2 sts. after Rows 334, 335, 336, 337, 338, 339; 1 st. after Rows 340, 341, 342, 343, 344, 345, 346, 347, 348, 349. Now knit even to Row 380, then bind off the center 23 sts., put the needles on the left side into holding position (transfer the Ribber Sts.) and complete the right half first.

**Work Short Rows for the Bust Darts. ON OPPOSITE SIDE** of CAM BOX put into holding position 5 needles after Rows 290, 291, 292, 293, 294, 295, 296, 297, 298, 299, 300, 301, 302, 303, 304, 305. **ON OPPOSITE SIDE** of CAM BOX bring all needles back into working position after Rows 306, 307, then knit even to Row 330.

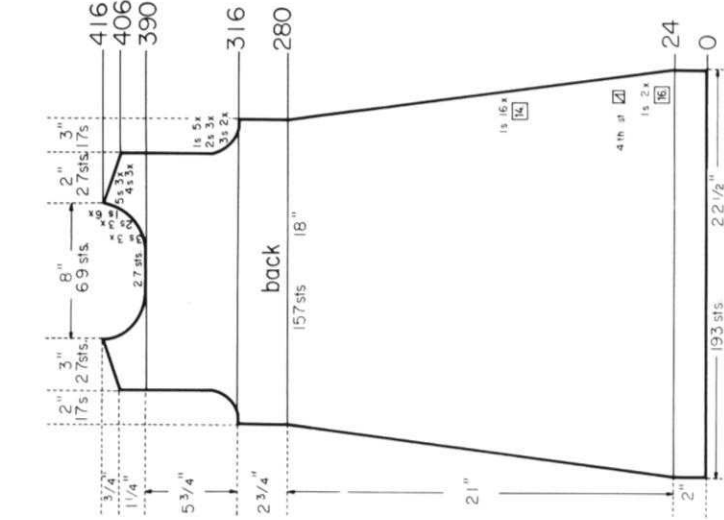
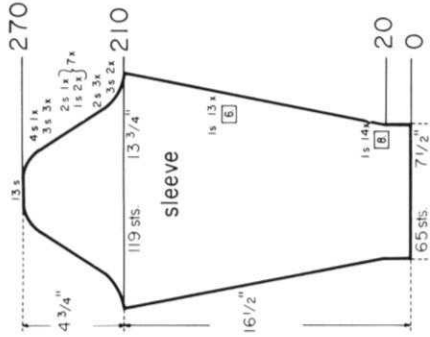
**ROWS 281 to 290:** Knit even. Work the front section the same as the back section to Row 280, turn the knitting and continue working purl 3, knit 1, ribbing.

**ON CAM BOX SIDE,** bind off 3 sts. after Rows 210, 211, 212, 213; 2 sts. after Rows 214, 215, 216, 217, 218, 219; 1 st. after Rows 220, 221, 222, 223; 2 sts. after Rows 224, 225; 1 st. after Rows 226, 227, 228, 229; 2 sts. after Rows 230, 231; 1 st. after Rows 232, 233, 234, 235; 2 sts. after Rows 236, 237; 1 st. after Rows 238, 239, 240, 241; 2 sts. after Rows 242, 243; 1 st. after Rows 244, 245, 246, 247; 2 sts. after Rows 248, 249; 1 st. after Rows 250, 251, 252, 253; 2 sts. after Rows 254, 255; 1 st. after Rows 256, 257, 258, 259; 2 sts. after Rows 260, 261; 3 sts. after Rows 262, 263, 264, 265, 266, 267; 4 sts. after Rows 268, 269; 13 sts. after Row 270.

**ON EACH SIDE,** increase 1 st. after Rows 20, 28, 36, 44, 52, 60, 68, 76, 84, 92, 100, 108, 116, 124, 132, 138, 144, 150, 156, 162, 168, 174, 180, 186, 192, 198, 204, then knit to Row 210.

**ROWS 0 to 20:** Knit even.

Cast on 65 sts. and work purl 3, knit 1, ribbing.



Move the Cam Box to the left side, turn the Row Counter back to 390 and complete the left half. Follow the instructions from \*. (Replace the Ribber Sts.).

\* **ON CAM BOX SIDE,** bind off 3 sts. after Rows 391, 393, 395 (ODD ROWS = NECK SHAPING); 2 sts. after Rows 397, 399, 401; 1 st. after Rows 403, 405; 4 sts. after Row 406 (EVEN ROWS = SHOULDER SHAPING); 1 st. after Row 407; 4 sts. after Row 408; 1 st. after Row 409; 4 sts. after Row 410; 1 st. after Row 411; 5 sts. after Row 412; 1 st. after Row 413; 5 sts. after Rows 414, 416.

**ON CAM BOX SIDE,** bind off 3 sts. after Rows 316, 317, 318, 319; 2 sts. after Rows 320, 321, 322, 323, 324, 325; 1 st. after Rows 326, 327, 328, 329, 330, 331, 332, 333, 334, 335. Now knit even to Row 390, then bind off the center 27 sts., put the needles on the left side into holding position (transfer the Ribber Sts.) and complete the right half first.

**ROWS 281 to 316:** Knit even. **ON EACH SIDE,** decrease 1 st. after Rows 24, 40, 56, 70, 84, 98, 112, 126, 140, 154, 168, 182, 196, 210, 224, 238, 252, 266. Now knit to Row 280, then turn the knitting, transfer the appropriate sts. to the ribber and continue working purl 3, knit 1, ribbing.

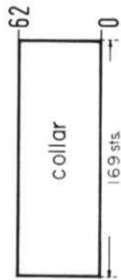
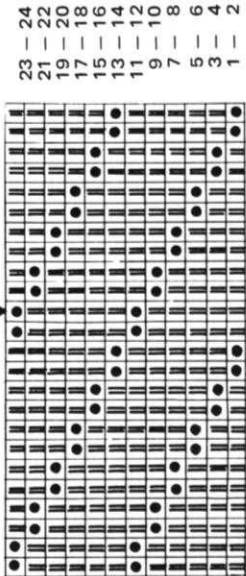
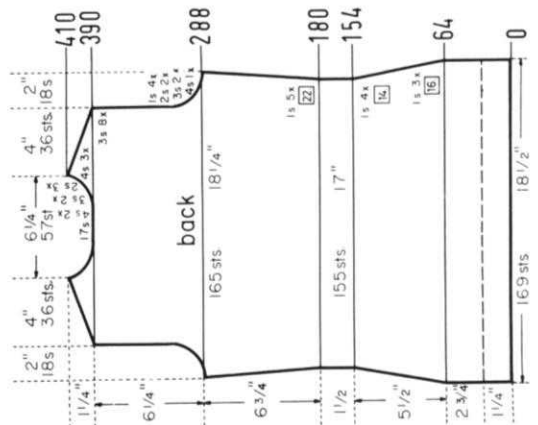
**ROWS 0 to 24:** Knit even. Cast on 193 sts. and work stockinette st.



# DK 7860

**SIZE:** 10/12. **MATERIAL:** 10 1/2 oz. (6 balls) pink KNITTING Subita Crepe 2 x 3, Color No. 117. **TENSION:** KNITTING 3 to 5. **STITCH GAUGE:** Pattern Stitch 18 sts, 2", 32 rows". **PATTERN:** Holding Position Design according to Line Drawing, worn on the purl side. **KNITTING Push-Button Machines** use Wheel W 1. **COLLAR:** K1, P1, Ribbing. **DECREASES:** After rows indicated, hang the 1st st. **ON EACH SIDE** onto the 2nd st. **INCREASES:** After rows indicated, move the 1st st. **ON EACH SIDE** 1 needle outward, then place the 2nd st. from the row below onto the empty needle. Remember to reset Pattern Dial Number after all shapings.

**FINISHING:** Block the sections to measurements given. Join front and back section at sides and shoulders, easing in the fullness at bustline of front section. Turn under 4 sts. around armhole edges and hem to wrong side. Turn under 20 rows on lower edge and hem to wrong side. Join short ends of collar, then sew 1 edge of collar to inside and 1 edge to outside of neckline.



Cast on 169 sts. and work 62 rows K1, P1, Ribbing, then bind off all sts. the crochet method for ribbing.

Bring the needles on the left side into working position, knit 1 row in PATTERN to the left side, turn the Row Counter back to 390 and complete the left half. Follow the instructions from \*. Continue to set up PATTERN from the right side.

\* ON CAM BOX SIDE, bind off 3 sts. after Row 390 (EVEN ROWS = SHOULDER SHAPING); 4 sts. after Row 391 (ODD ROWS = NECK SHAPING); 3 sts. after Row 392; 4 sts. after Row 393; 3 sts. after Rows 394, 395, 396, 397, 398; 2 sts. after Row 399; 3 sts. after Row 400; 2 sts. after Row 401; 3 sts. after Row 402; 2 sts. after Row 403; 3 sts. after Row 404; 4 sts. after Rows 406, 408, 410.

ON CAM BOX SIDE, bind off 4 sts. after Rows 288, 289; 3 sts. after Rows 290, 291, 292, 293; 2 sts. after Rows 294, 295, 296, 297; 1 st. after Rows 298, 299, 300, 301, 302, 303, 304, 305. Now knit even to Row 390, then bind off the center 17 sts., put the needles on the left side into holding position and complete the right half first.

ON EACH SIDE, increase 1 st. after Rows 180, 202, 224, 246, 268, then knit to Row 288.

ON EACH SIDE, decrease 1 st. after Rows 64, 80, 96, 112, 126, 140, 154, then knit to Row 180.

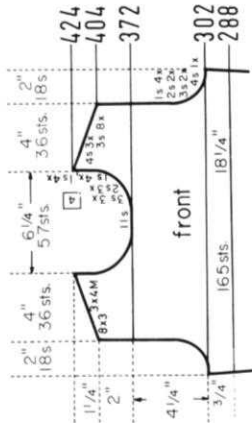
Cast on 169 sts. and work the Holding Position Design.

Bring the needles on the left side into working position, knit 1 row in PATTERN to the left side, turn the Row Counter back to 372 and complete the left half. Follow the instructions from \*. Continue to set up PATTERN from the right side.

\* ON CAM BOX SIDE, bind off 3 sts. after Rows 373, 375, 377 (ODD ROWS = NECK SHAPING); 2 sts. after Rows 379, 381, 383; 1 st. after Rows 385, 387, 389, 391, 393, 397, 401; 3 sts. after Row 404 (EVEN ROWS = SHOULDER SHAPING); 1 st. after Row 405 (last time for Neck); 3 sts. after Rows 406, 408, 410, 412, 414, 416, 418; 4 sts. after Rows 420, 422, 424.

ON CAM BOX SIDE, bind off 4 sts. after Rows 302, 303; 3 sts. after Rows 304, 305, 306, 307; 2 sts. after Rows 308, 309, 310, 311; 1 st. after Rows 312, 313, 314, 315, 316, 317, 318, 319. Now knit to Row 372, then bind off the center 11 sts., put the needles on the left side into holding position and complete the right half first.

ROWS 289 to 302: Knit even. Work the front section the same as the back section to Row 288.



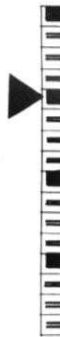
## CANADIAN READERS

Please note that KNITTING dealers based in the U.S.A. are unable to sell machines and accessories to residents of Canada. They are also unable to sell parts and service. Would all Canadian readers please contact the following appointed KNITTING dealer.

**KNITTING Sales and Service**  
2243 Danforth Ave.  
Toronto 13, Ontario

**SIZE:** 10/12. **MATERIAL:** 29½ oz. (17 balls). **KNITTING** Cable with Lurex. **TENSION** 6 to 8. **STITCH GAUGE:** Stockinette Stitch: 15½ sts, 2", 20 rows 2"; Pattern Stitch: 17 sts, 2", 25 rows 2". **PATTERN:** Stockinette Stitch. **SLEEVES** and **COLLAR:** Knit 3, Purl 1, Ribbing according to Line Drawing. Place the Gate Cam Release Lever of the Ribber at the needle heels. The knit side is the right side. **Side Seam Decreases:** Hang the 3rd st. ON EACH SIDE onto the 2nd st., then move the end sts. inward to fill the empty needle. Begin the Skirt Darts by hanging the 69th st. ON EACH SIDE onto the 70th st., then move the end sts. inward to fill the empty needle. The following decreases for the darts are made by alternately hanging a st. from the center panel onto the side panel, then a st. from the side panel onto the center panel. (See diagram). **Side Seam Increases:** Move the 2 end sts. ON EACH SIDE 1 needle outward, then place the 3rd st. from the row below onto the empty needle. **Sleeve Increases:** Move the end st. ON EACH SIDE 1 needle outward, then place the 2nd st. from the row below onto the empty needle. The finished length of the dress is 51½".

**FINISHING:** Block all sections to measurements given. Join front and back section at sides and shoulders. Sew sleeves together and set in. Turn under 16 rows on lower edge and hem to wrong side. Join short ends of collar. Sew 1 edge of collar to inside and 1 edge to outside of neckline.



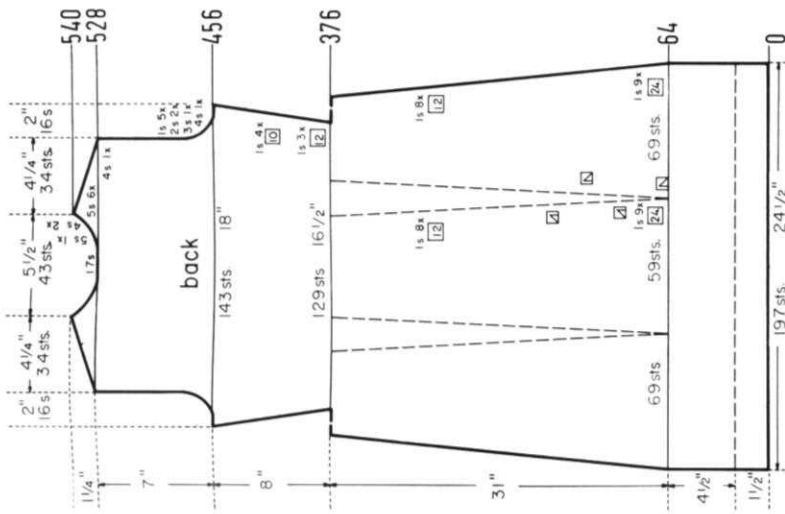
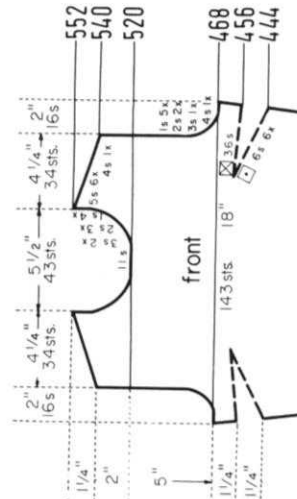
Move the Cam Box to the left side, turn the Row Counter back to 520 and complete left half. Follow the instructions from \*.

\* ON CAM BOX SIDE, bind off 3 sts. after Rows 521, 523 (ODD ROWS = NECK SHAPING); 2 sts. after Rows 525, 527, 529; 1 st. after Rows 531, 533, 535, 537. For SHOULDER bind off 4 sts. after Row 540; 5 sts. after Rows 542, 544, 546, 548, 550, 552.

ON CAM BOX SIDE, bind off 4 sts. after Rows 468, 469; 3 sts. after Rows 470, 471; 2 sts. after Rows 472, 473, 474, 475; 1 st. after Rows 476, 477, 478, 479, 480, 481, 482, 483, 484, 485. Now knit to Row 520, then bind off the center 11 sts., put the needles on the left side into holding position and complete the right half first.

Work Short Rows for the Bust Darts. ON OPPOSITE SIDE of CAM BOX put into holding position 6 needles after Rows 444, 445, 446, 447, 448, 449, 450, 451, 452, 453, 454, 455. ON OPPOSITE SIDE of CAM BOX bring all needles back into working position after Rows 456, 457, then knit to Row 468.

Work the Front Section the same as the Back Section to ROW 444.



Move the Cam Box to the left side, turn the Row Counter back to 528 and complete the left half. Follow the instructions from \*.

\* ON CAM BOX SIDE, bind off 4 sts. after Row 528 (EVEN ROWS = SHOULDER SHAPING); 5 sts. after Rows 529 (ODD ROWS = NECK SHAPING), 530; 4 sts. after Row 531; 5 sts. after Row 532; 4 sts. after Row 533; 5 sts. after Rows 534, 536, 538, 540.

ON CAM BOX SIDE, bind off 4 sts. after Rows 456, 457; 3 sts. after Rows 458, 459; 2 sts. after Rows 460, 461, 462, 463; 1 st. after Rows 464, 465, 466, 467, 468, 469, 470, 471, 472, 473. Now knit even to Row 528, then bind off the center 17 sts., put the needles on the left side into holding position and complete the right half first.

ON EACH SIDE increase 1 st. after Rows 376, 388, 400, 412, 422, 432, 442, then knit to Row 456. (For the Front Section knit to ROW 444).

Decrease 1 st. for EACH DART and 1 st. ON EACH SIDE after Rows 64, 88, 112, 136, 160, 184, 208, 232, 256, 280, 292, 304, 316, 328, 340, 352, 364, then knit to Row 376.

ROWS 0 to 64: Knit even.

Cast on 197 sts. and work stockinette st.



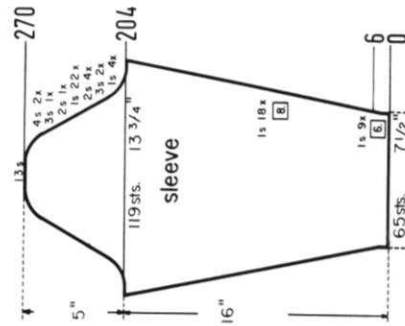
Cast on 139 sts. and work Knit 3, Purl 1, Ribbing, placing the Gate Cam Release Lever of the Ribber at the needle heels. Knit 66 rows even, then bind off all sts.

ON CAM BOX SIDE, bind off 4 sts. after Rows 204, 205; 3 sts. after Rows 206, 207, 208, 209; 2 sts. after Rows 210, 211, 212, 213, 214, 215, 216, 217.

ON EACH SIDE, hang the 1st st. onto the 2nd st. after Rows 218, 220, 222, 224, 226, 228, 230, 232, 234, 236, 238, 240, 242, 244, 246, 248, 250, 252, 254, 256, 258, 260. ON CAM BOX SIDE, bind off 2 sts. after Rows 262, 263; 3 sts. after Rows 264, 265; 4 sts. after Rows 266, 267, 268, 269; 13 sts. after Row 270.

ON EACH SIDE, increase 1 st. after Rows 6, 12, 18, 24, 30, 36, 42, 48, 54, 60, 66, 72, 78, 84, 90, 100, 108, 116, 124, 132, 140, 148, 156, 164, 172, 180, 188, 196, then knit to Row 204.

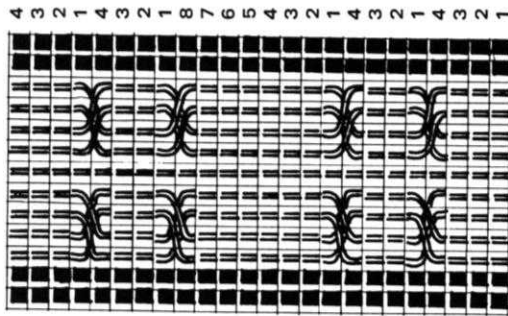
Cast on 65 sts. and work Knit 3, Purl 1, Ribbing, placing the Gate Cam Release Lever of the Ribber at the needle heels.



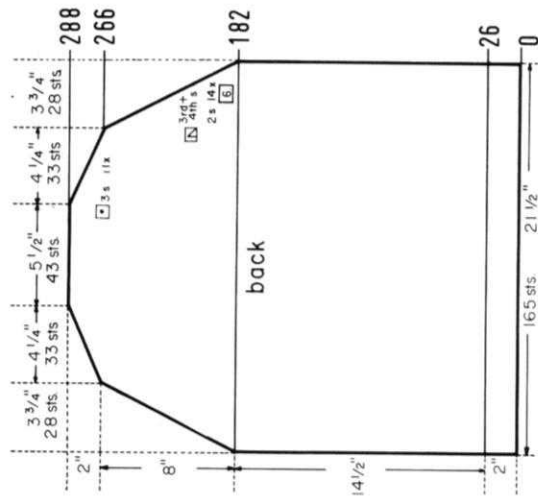


SIZE: 38/40. MATERIAL: 22 1/2 oz. (13 balls) gold KNITTING Subita Crepe 2 x 4, Color No. 48 and a 26" Jacket Type Zipper. TENSION: KNITTING 6 to 8. STITCH GAUGE: Stockinette Stitch 15 sts, 2", 21 rows 2", PATTERN: Stockinette Stitch and Cable Design Stripes on the front sections and the sleeves. (See Line Drawing for Cable instructions). EDGES: K1, P1, Ribbing. RAGLAN DECRESSES: After rows indicated, hang the 3rd and 4th sts. on the appropriate sides onto the 5th and 6th sts., then move the end sts. inward to fill the empty needles. SLEEVE INCREASES: After rows indicated, move the 2 end sts. ON EACH SIDE 1 needle outward, then place the 3rd st. from the row below onto the empty needle.

FINISHING: Block all sections to measurements given. (Do NOT block Ribbing). Join front and back sections at sides. Sew sleeves together, then weave sleeves to front and back sections, 1 st. in from each edge. Work 1 row of single crochet around front edges. Sew 1 edge of collar to inside and 1 edge to outside of neckline. Sew in zipper.



The Cable Design reaches over 13 sts. 1. Counting from each side, let the 1st and 2nd cable design sts. slide off the needles. 2. Using 2 double transfer tools, hang the 3rd and 4th sts. ON EACH SIDE onto the 5th and 6th needles, then hang the 5th and 6th sts. onto the 3rd and 4th needles. 3. Bring empty needles back into working position. 4. Knit 4 rows. Repeat Steps 1 to 3, then knit 8 rows. Repeat these steps throughout. After each 20 to 30 rows let the 1st and 2nd sts. ON EACH SIDE slide off the needles (the first time let the sts. run down to the ribbing), then latch up into knit sts.



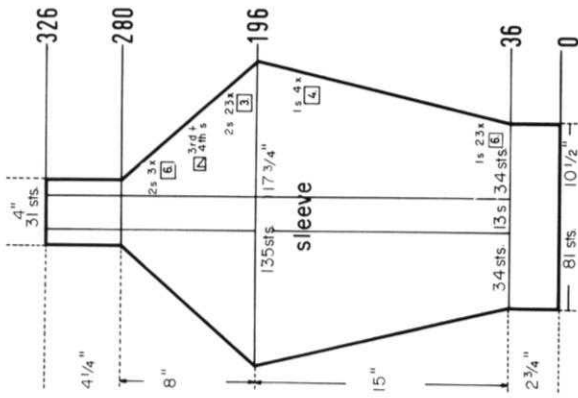
Work Short Rows for the Shoulder Shaping. ON OPPOSITE SIDE of CAM BOX put into holding position 3 needles after Rows 266, 267, 268, 269, 270, 271, 272, 273, 274, 275, 276, 277, 278, 279, 280, 281, 282, 283, 284, 285, 286, 287. After Row 288 bring all needles back into working position, mark the center 43 sts. (Neck sts.) and bind off all sts. the crochet method.

ON EACH SIDE, decrease 2 sts. for RAGLAN after Rows 182, 188, 194, 200, 206, 212, 218, 224, 230, 236, 242, 248, 254, 260, then knit to Row 266.

ROWS 27 to 182: Knit even.

ROWS 0 to 26: Knit even then change to stockinette st.

Cast on 165 sts. and work K1, P1, Ribbing.



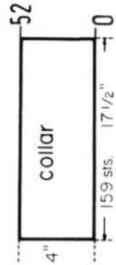
Work the second sleeve the same.

ON EACH SIDE, decrease 2 sts. for RAGLAN after Rows 196, 199, 202, 205, 208, 211, 214, 217, 220, 223, 226, 229, 232, 235, 238, 241, 244, 247, 250, 253, 256, 259, 262, 265, 271, 277. Continue working over the remaining 31 sts. to Row 326, then bind off all sts.

ON EACH SIDE, increase 1 st. after Rows 36, 42, 48, 54, 60, 66, 72, 78, 84, 90, 96, 102, 108, 114, 120, 126, 132, 138, 144, 150, 156, 162, 168, 174, 178, 182, 186, then knit to Row 196.

ROWS 0 to 36: Knit even, then change to stockinette st. and work the Cable Design over the sts. marked on the diagram. Mark the Cable needles before the first increase. Cross the sts. the first time after Row 40.

Cast on 81 sts. and work K1, P1, Ribbing.



Cast on 159 sts. and work 52 rows K1, P1, Ribbing, then bind off all sts. the crochet method for ribbing.

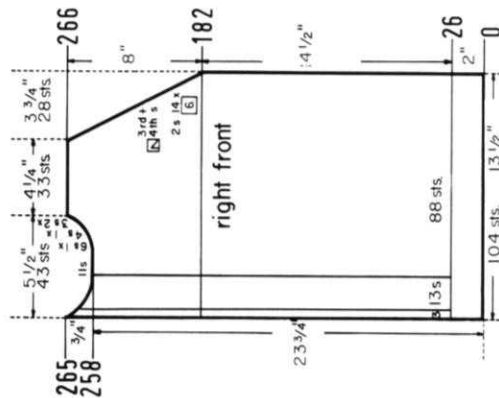
Move the Cam Box to the left side, turn the Row Counter back to 258 and complete the left side. ON CAM BOX SIDE, bind off 6 sts. after Row 259 (ODD ROWS = NECK SHAPING); 4 sts. after Row 261; 3 sts. after Rows 263, 265, 266, 268, 270, 272, 274, 276, 278, 280, 282, 284, 286, 288, 290, 292, 294, 296, 298, 300, 302, 304, 306, 308, 310, 312, 314, 316, 318, 320, 322, 324, 326, 328, 330, 332, 334, 336, 338, 340, 342, 344, 346, 348, 350, 352, 354, 356, 358, 360, 362, 364, 366, 368, 370, 372, 374, 376, 378, 380, 382, 384, 386, 388, 390, 392, 394, 396, 398, 400, 402, 404, 406, 408, 410, 412, 414, 416, 418, 420, 422, 424, 426, 428, 430, 432, 434, 436, 438, 440, 442, 444, 446, 448, 450, 452, 454, 456, 458, 460, 462, 464, 466, 468, 470, 472, 474, 476, 478, 480, 482, 484, 486, 488, 490, 492, 494, 496, 498, 500, 502, 504, 506, 508, 510, 512, 514, 516, 518, 520, 522, 524, 526, 528, 530, 532, 534, 536, 538, 540, 542, 544, 546, 548, 550, 552, 554, 556, 558, 560, 562, 564, 566, 568, 570, 572, 574, 576, 578, 580, 582, 584, 586, 588, 590, 592, 594, 596, 598, 600, 602, 604, 606, 608, 610, 612, 614, 616, 618, 620, 622, 624, 626, 628, 630, 632, 634, 636, 638, 640, 642, 644, 646, 648, 650, 652, 654, 656, 658, 660, 662, 664, 666, 668, 670, 672, 674, 676, 678, 680, 682, 684, 686, 688, 690, 692, 694, 696, 698, 700, 702, 704, 706, 708, 710, 712, 714, 716, 718, 720, 722, 724, 726, 728, 730, 732, 734, 736, 738, 740, 742, 744, 746, 748, 750, 752, 754, 756, 758, 760, 762, 764, 766, 768, 770, 772, 774, 776, 778, 780, 782, 784, 786, 788, 790, 792, 794, 796, 798, 800, 802, 804, 806, 808, 810, 812, 814, 816, 818, 820, 822, 824, 826, 828, 830, 832, 834, 836, 838, 840, 842, 844, 846, 848, 850, 852, 854, 856, 858, 860, 862, 864, 866, 868, 870, 872, 874, 876, 878, 880, 882, 884, 886, 888, 890, 892, 894, 896, 898, 900, 902, 904, 906, 908, 910, 912, 914, 916, 918, 920, 922, 924, 926, 928, 930, 932, 934, 936, 938, 940, 942, 944, 946, 948, 950, 952, 954, 956, 958, 960, 962, 964, 966, 968, 970, 972, 974, 976, 978, 980, 982, 984, 986, 988, 990, 992, 994, 996, 998, 1000.

ON CAM BOX SIDE, decrease 2 sts. for RAGLAN after Rows 182, 188, 194, 200, 206, 212, 218, 224, 230, 236, 242, 248, 254, 260. Now knit to Row 266, 24 1/2" then bind off the remaining 33 sts.

ROWS 27 to 182: Knit even.

ROWS 0 to 26: Knit even, then change to stockinette st. and work the Cable Design over the sts. marked on the diagram. Cross the sts. the first time after Row 30.

From right to left, cast on 61 sts. and work K1, P1, Ribbing. (Cam Box will be on the LEFT side at Row 0).



ON CAM BOX SIDE, decrease 2 sts. for Raglan after Rows 182, 188, 194, 200, 206, 212, 218, 224, 230, 236, 242, 248, 254. Now knit to Row 258, then bind off the 17th-27th sts. (11 sts.) counting on from the left side, put the 16 needles on the left side into holding position and complete the right half first. ON CAM BOX SIDE, bind off 6 sts. after Row 259 (ODD ROWS = NECK SHAPING); decrease 2 more sts. for RAGLAN after Row 260; bind off 4 sts. after Row 261; 3 sts. after Rows 263, 265, 266. After Row 266 bind off the remaining 33 sts.

ROWS 27 to 182: Knit even.

ROWS 0 to 26: Knit even, then change to stockinette st. and work the Cable Design over the sts. marked on the diagram. Cross the sts. the first time after Row 30.

Cast on 104 sts. and work K1, P1, Ribbing.

# MK 5233

SIZE: 4-5 (Chest 23"-24"). MATERIAL: 8 3/4 oz. (5 balls) yellow and 1 1/2 oz. (1 ball) pale blue KNITTING Subita Crepe 2 x 3, Color Nos. 105 and 118 and 2 yards ready made trim, 1/2" wide. TENSION: KNITTING 3 to 5. STITCH GAUGE: 18 sts, 2", 24 rows 2". PATTERN: Stockinette Stitch. Sleeve EDGES: K1, P1, Ribbing. DECREASING: After rows indicated, hang the 3rd st. on the appropriate sides onto the 2nd st., then move the end sts. inward to fill the empty needle. INCREASES: After rows indicated, move the 2 end sts. ON EACH SIDE 1 needle outward, then place the 3rd st. from the row below onto the empty needle. The finished length of the dress is 17".

FINISHING: Block all sections to measurements given. Weave the pleat section to the front sections, 1 st. in from each edge. Form a 2" deep pleat and sew in place at center of neckline. (See picture and diagram). Weave the back sections together, 1 st. in from each edge, leaving a 4" opening at the top. Join front and back section at sides and shoulders. Sew sleeves together and set in. Turn under 20 rows on lower edge and hem to wrong side. Fold each collar section in half lengthwise and sew front and back edges. Sew 1 edge of collar sections to inside and 1 edge to outside of neckline. Work 1 row of single crochet around back opening. Work 4 loops on one side and sew 4 buttons to opposite side of opening. Sew trim to collar edges and to pleat edges.



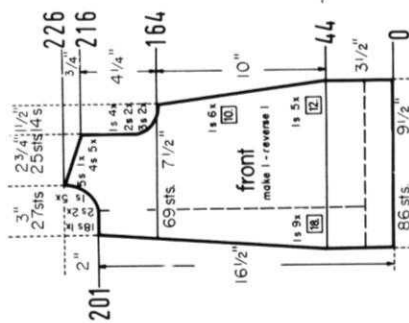
Work the second front section with reverse shapings, casting on from right to left. (Cam Box will be on the LEFT side at Row 0).

ON CAM BOX SIDE, bind off 18 sts. after Row 201 (ODD ROWS = NECK SHAPING); 2 sts. after Rows 203, 205; 1 st. after Rows 207, 209, 211, 213, 215. For SHOULDER bind off 4 sts. after Rows 216, 218, 220, 222, 224; 5 sts. after Row 226.

Continue to decrease 1 st. ON OPPOSITE SIDE of CAM BOX after Rows in ( ). ON CAM BOX SIDE, bind off 3 sts. after Rows 164, 166; 2 sts. after Rows 172, 174, 176, 178; (188), then knit to Row 201.

Decrease 1 st. ON OPPOSITE SIDE of CAM BOX after Rows in ( ). ON CAM BOX SIDE, decrease 1 st. after Rows 44, (44), 56, (62), 68, 80, (80), 92, (98), 104, 114, (116), 124, 134, (134), 144, (152), 154, then knit to Row 164.

ROWS 0 to 44: Knit even.  
Cast on 86 sts. and work stockinette st.



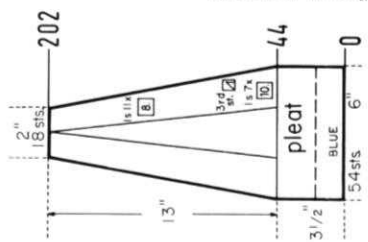
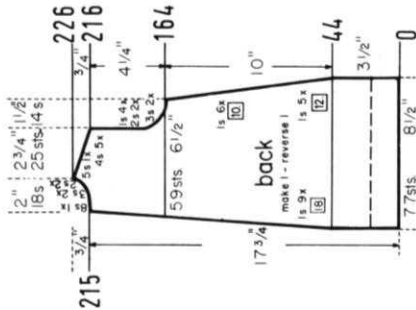
Work the second back section with reverse shapings, casting on from right to left. (Cam Box will be on the LEFT side at Row 0).

ON CAM BOX SIDE, bind off 8 sts. after Row 215 (ODD ROWS = NECK SHAPING); 4 sts. after Row 216 (EVEN ROWS = SHOULDER SHAPING); 3 sts. after Row 217; 4 sts. after Row 218; 3 sts. after Row 219; 4 sts. after Row 220; 2 sts. after Row 221; 4 sts. after Row 222; 2 sts. after Row 223; 4 sts. after Row 224; 5 sts. after Row 226.

Continue to decrease 1 st. ON OPPOSITE SIDE of CAM BOX after Rows in ( ). ON CAM BOX SIDE, bind off 3 sts. after Rows 164, 166; 2 sts. after Rows 168, 170; (170), 1 st. after Rows 172, 174, 176, 178; (188), then knit to Row 215.

Decrease 1 st. ON OPPOSITE SIDE of CAM BOX after Rows in ( ). ON CAM BOX SIDE, decrease 1 st. after Rows 44, (44), 56, (62), 68, 80, (80), 92, (98), 104, 114, (116), 124, 134, (134), 144, (152), 154, then knit to Row 164.

ROWS 0 to 44: Knit even.  
Cast on 77 sts. and work stockinette st.

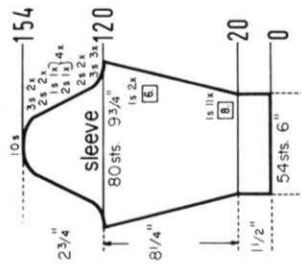


ON EACH SIDE, decrease 1 st. after Rows 44, 54, 64, 74, 84, 94, 104, 114, 122, 130, 138, 146, 154, 162, 170, 178, 186, 194. Now knit to Row 202, then bind off the remaining 18 sts.  
ROWS 0 to 44: Knit even.  
Cast on 54 sts. with blue and work stockinette st.

Work the second collar section with reverse shapings, casting on from right to left. (Cam Box will be on the LEFT side at Row 0).

Work Short Rows for the shaping. ON OPPOSITE SIDE of CAM BOX put into holding position 1 needle after Rows 14, 16, 18; 2 needles after Row 20, 22. ON OPPOSITE SIDE of CAM BOX bring back into working position 2 needles after Rows 24, 26; 1 needle after Rows 28, 30, 32. Now knit even to Row 46, then bind off all sts.

ROWS 0 to 14: Knit even.  
Cast on 50 sts. and work stockinette st.

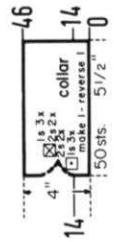


ON CAM BOX SIDE, bind off 3 sts. after Rows 120, 121, 122, 123, 124, 125; 2 sts. after Rows 126, 127, 128, 129, 130, 131; 1 st. after Rows 132, 133; 2 sts. after Rows 134, 135; 1 st. after Rows 136, 137; 2 sts. after Rows 138, 139; 1 st. after Rows 140, 141; 2 sts. after Rows 142, 143; 1 st. after Rows 144, 145; 2 sts. after Rows 146, 147, 148, 149; 3 sts. after Rows 150, 151, 152, 153; 10 sts. after Row 154.

ON EACH SIDE, increase 1 st. after Rows 20, 28, 36, 44, 52, 60, 68, 76, 84, 92, 100, 108, 114, then knit to Row 120.

ROWS 0 to 20: Knit even, then change to stockinette st.

Cast on 54 sts. and work K1, P1, Ribbing.



# MK 5234

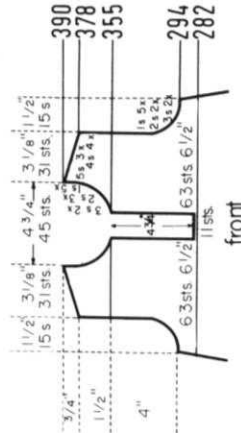
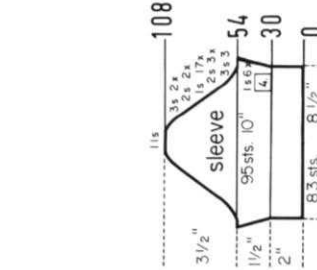
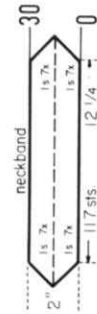
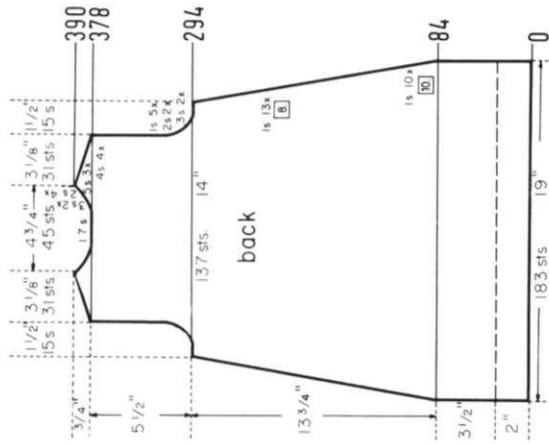
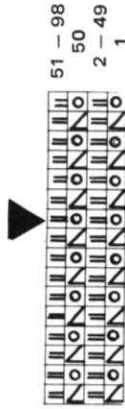
SIZE: 8-9 (Chest 26"-27"), MATERIAL: 8% oz. (5 balls) red KNITKING Subita Dralon 2 ply, Color No. 436. TENSION: KNITKING 1 to 3. STITCH GAUGE: 19 sts, 2", 30 rows 2". PATTERN: Stockinette Stitch with Eyelet Design Stripes on front and back section. Sleeve EDGES and BANDS: Stockinette Stitch worn on the purl side. DECREASES: After rows indicated, hang the 3rd st. on the appropriate sides onto the 2nd st., then move the end sts. inward to fill the empty needle. INCREASES: After rows indicated, move the 2 end sts. on the appropriate sides 1 needle outward, then place the 3rd st. from the row below onto the empty needle. The finished length of the dress is 23 1/2".

FINISHING: Block all sections to measurements given. (Do NOT use hot iron). Join front and back section at sides and shoulders. Sew sleeves together and set in. Turn over 15 rows on sleeve edges and hem to right side. Turn under 30 rows on lower edge and hem to wrong side. Join buttonhole band and button band to neckband (purl side is the right side) at shaped edges, leaving a small opening on the right side for a buttonhole. Sew 1 edge of band to inside and 1 edge to outside of front edges and neckline. Finish buttonholes, sew on buttons.

# KK 5237

SIZE: 10-11 (Chest 28"-29"). MATERIAL: 10 1/2 oz. (6 balls) white KNITKING Subita Dralon 3 ply, Color No. 401. TENSION: KNITKING 6 to 8. STITCH GAUGE: Stockinette Stitch 15 sts, 2", 20 rows 2". PATTERN: Stockinette Stitch, EDGES and COLLAR: K1, P1, Ribbing. Sleeve increases: After rows indicated, move the 2 end sts. ON EACH SIDE 1 needle outward, then place the 3rd st. from the row below onto the empty needle.

FINISHING: Block all sections to measurements given (do NOT use hot iron). Join front and back section at sides and shoulders. Sew sleeves together and set in. Sew short ends of collar together, then sew one edge of collar to inside and one edge to outside of neckline.



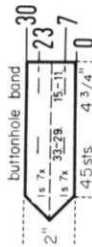
Move the Cam Box to the left side, turn the Row Counter back to 378 and complete the left half. Follow the instructions from \*.

\* ON CAM BOX SIDE, bind off 4 sts. after Row 378 (EVEN ROWS = SHOULDER SHAPING); 3 sts. after Row 379 (ODD ROWS = NECK SHAPING); 4 sts. after Row 380; 3 sts. after Row 381; 4 sts. after Row 382; 2 sts. after Row 383; 4 sts. after Row 384; 2 sts. after Row 385; 5 sts. after Row 386; 2 sts. after Row 387; 5 sts. after Row 388; 2 sts. after Row 389; 5 sts. after Row 390.

ON CAM BOX SIDE, bind off 3 sts. after Rows 294, 295, 296, 297; 2 sts. after Rows 298, 299, 300, 301; 1 st. after Rows 302, 303, 304, 305, 306, 307, 308, 309, 310, 311. Now knit to Row 378, then bind off the center 17 sts., put the needles on the left side into holding position and complete the right half first.

ON EACH SIDE, decrease 1 st. after Rows 84, 94, 104, 114, 124, 134, 144, 154, 164, 174, 184, 192, 200, 208, 216, 224, 232, 240, 248, 256, 264, 272, 280, then knit to Row 294. (For the Front Section knit to Row 282).

ROWS 0 to 84: Knit even, then continue working the Eyelet Design Stripes. Cast on 183 sts. and work stockinette st.



Cast on 45 sts. and work stockinette st. Make buttonholes after Rows in ( ) over the 11th-15th and 29th-33rd sts. ON OPPOSITE SIDE of CAM BOX increase 1 st. after Rows 2, 4, 6, (7), 8, 10, 12, 14, then decrease 1 st. after Rows 16, 18, 20, 22, (23), 24, 26, 28. After Row 30 bind off all sts. Work the button band the same, but omit the buttonholes.

Move the Cam Box to the left side, turn the Row Counter back to 282 and complete the left half. Follow the instructions from \*.

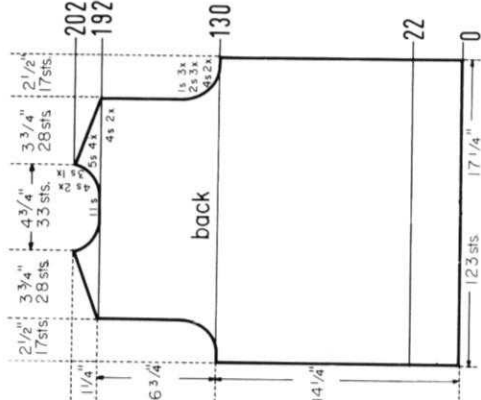
ON CAM BOX SIDE, bind off 3 sts. after Rows 355, 357 (ODD ROWS = NECK SHAPING); 2 sts. after Rows 359, 361, 363; 1 st. after Rows 365, 367, 369, 371, 373. For SHOULDER bind off 4 sts. after Rows 378, 380, 382, 384; 5 sts. after Rows 386, 388, 390.

ON CAM BOX SIDE, bind off 3 sts. after Rows 294, 296; 2 sts. after Rows 298, 300; 1 st. after Rows 302, 304, 306, 308, 310, then knit to Row 355.

\* ROWS 283 to 294: Knit even. Work the front section the same as the back section to Row 282, then bind off the center 11 sts., put the needles on the left side into holding position and complete the right half first.



**SIZE:** 10-11 (Chest 28"-29"), **MATERIAL:** 12 1/2 oz. (7 balls) dark blue KNITTING Sonika Dralon, Color No. 443. **TENSION:** KNITTING 7 to 9. **STITCH GAUGE:** 14 sts. 2", 18 rows 2". **PATTERN:** Stockinette Stitch, Neckline Decreases: After rows indicated, hang the 19th st. on NECK SIDE onto the 18th st., then move the end sts. inward to fill the empty needle. Sleeve Increases: After rows indicated, move the 2 end sts. ON EACH SIDE 1 needle outward, then place the 3rd st. from the row below onto the empty needle. **FINISHING:** Block all sections to measurements given. (Do NOT use a hot iron). Join front and back sections at sides and shoulders. Sew sleeves together and set in. Turn under 11 rows on lower edge and sleeve edges and hem to wrong side. Weave facing sts. together, then sew facing to neckline. Turn under 9 sts. around front edges and neckline and hem to wrong side. Turn under 7 rows on upper pocket edge and hem to wrong side. Sew pocket to left front section. Finish buttonholes, sew on buttons.

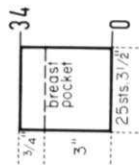


Move the Cam Box to the left side, turn the Row Counter back to 192 and complete the left half. Follow the instructions from \*.

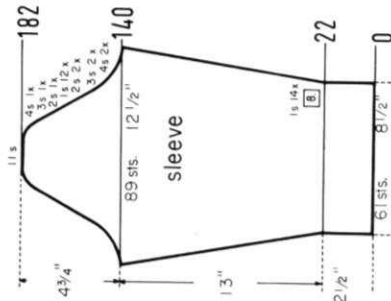
\* ON CAM BOX SIDE, bind off 4 sts. after Rows 192 (EVEN ROWS = SHOULDER SHAPING), 193 (ODD ROWS = NECK SHAPING), 194, 195; 5 sts. after Row 196; 3 sts. after Row 197; 5 sts. after Rows 198, 200, 202.

ON CAM BOX SIDE, bind off 4 sts. after Rows 130, 131, 132, 133; 2 sts. after Rows 134, 135, 136, 137, 138, 139; 1 st. after Rows 140, 141, 142, 143, 144, 145. Now knit to Row 192, then bind off the center 11 sts., put the needles on the left side into holding position and complete the right half first.

ROWS 0 to 130: Knit even.  
Cast on 123 sts. and work stockinette st.



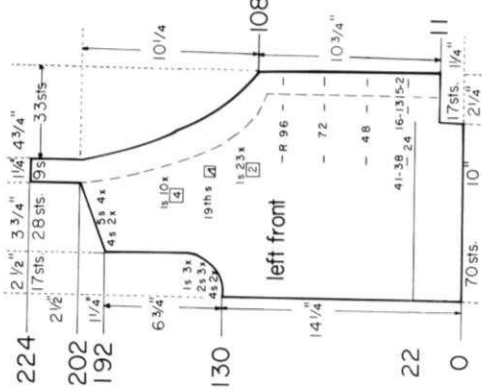
Cast on 25 sts. and work 34 rows stockinette st., then bind off all sts.



ON CAM BOX SIDE, bind off 4 sts. after Rows 140, 141, 142, 143; 3 sts. after Rows 144, 145, 146, 147; 2 sts. after Rows 148, 149, 150, 151. ON EACH SIDE, hang the 1st st. onto the 2nd st. after Rows 152, 154, 156, 158, 160, 162, 164, 166, 168, 170, 172, 174. ON CAM BOX SIDE, bind off 2 sts. after Rows 176, 177; 3 sts. after Rows 178, 179; 4 sts. after Rows 180, 181; 11 sts. after Row 182.

ON EACH SIDE, increase 1 st. after Rows 22, 30, 38, 46, 54, 62, 70, 78, 86, 94, 102, 110, 118, 126, then knit to Row 140.

ROWS 0 to 22: Knit even.  
Cast on 61 sts. and work stockinette st.



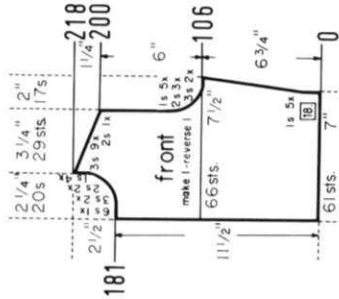
Work the second front section with reverse shapings, casting on from right to left. (Cam Box will be on the LEFT side at Row 0).

ON CAM BOX SIDE, bind off 6 sts. after Row 181 (ODD ROWS = NECK SHAPING); 3 sts. after Rows 183, 185; 2 sts. after Rows 187, 189; 1 st. after Rows 191, 193, 195, 197. For SHOULDER, bind off 2 sts. after Row 200; 3 sts. after Rows 202, 204, 206, 208, 210, 212, 214, 216, 218.

ON CAM BOX SIDE, bind off 3 sts. after Rows 106, 108; 2 sts. after Rows 110, 112, 114; 1 st. after Rows 116, 118, 120, 122, 124, then knit to Row 181.

ON CAM BOX SIDE, increase 1 st. after Rows 18, 36, 54, 72, 90, then knit to Row 106.

Cast on 61 sts. according to the Line Drawing and work the Holding Position Design.



Work the second front section with reverse shapings, casting on from left to right. (Cam Box will be on the RIGHT side at Row 0). Omit the buttonholes.

ON CAM BOX SIDE, bind off 4 sts. after Rows 130, (130), 132, (132), 2 sts. after Rows 134, (134), 136, (136), 138; (138), 1 st. after Rows 140, (140), 142, (142), 144, (144). The Armhole is now completed. Continue to decrease 1 st. ON OPPOSITE SIDE of CAM BOX after Rows 146, 148, 150, 152, 154, 156, 162, 166, 170, 174, 178, 182, 186, 190. For SHOULDER, bind off 4 sts. after Rows 192, 194; 5 sts. after Rows 196, 198, 200, 202. For the Facing, continue to work over the remaining 9 sts. to Row 224, then put the 9 sts. on a stitch holder.

ON OPPOSITE SIDE of CAM BOX (Neck Side) decrease 1 st. after Rows 108, 110, 112, 114, 116, 118, 120, 122, 124, 126, 128, then knit to Row 130 and continue to decrease 1 st. ON OPPOSITE SIDE of CAM BOX after Rows in ( ).

ROWS 12 to 108: Make buttonholes after Rows 24, 48, 72, and 96 over the 2nd-5th, 13th-16th and 38th-41st sts. counting from the right side, then knit to Row 108.

ROWS 0 to 11: Knit even, then cast on 17 sts.

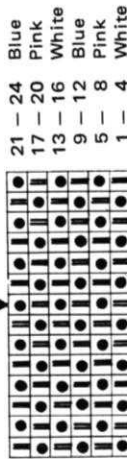
From right to left, cast on 70 sts. and work stockinette st. (Cam Box will be on the LEFT side at Row 0).



# MK 5232

SIZE: 1-2 (Chest 21"-22"). MATERIAL: 8 3/4 oz. (5 balls) blue, 1 3/4 oz. (1 ball) white and 1 3/4 oz. (1 ball) pink KNITTING Subita Dralon 3 ply, Color Nos. 411, 401 and 405. TENSION: 6 to 8. STITCH GAUGE: Stockinette Stitch 15 sts. 2", 21 rows 2". Pattern Stitch 14 sts. 2", 59 rows 2". PATTERN: Skirt, Sleeves and Bands: Stockinette Stitch, worn on the knit side; Yoke, Panty and Cuffs: Holding Position Design according to Line Drawing, worn on the purl side. Skirt Decrease: After rows indicated, hang the 3rd st. on the appropriate side onto the 2nd st., then move the end st. inward to fill the empty needle. Finished length of the dress is 17".

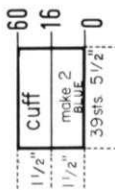
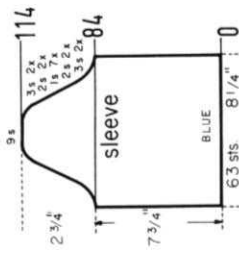
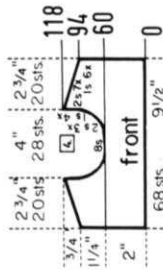
**FINISHING:** Block all sections to measurements given. (Do NOT use iron, but dampen sections only, then let dry). DRESS: Weave skirt sections together, 1 st. in from each edge, leaving a 2" opening at the center back. Join front and back yoke sections at sides and shoulders. Sew yoke to skirt. Sew sleeves together, leaving a 1" opening at the lower edges. Sew sleeves to dress. Gather the lower sleeve edges to 5 1/2". Fold cuffs in half lengthwise and close short ends. Sew 1 edge of cuffs to inside and 1 edge to outside of sleeve edges. Work 1 row of single crochet around sleeve slits. Work a loop and sew a button to each cuff. Sew 1 edge of neckband to inside and 1 edge to outside of neckline. Work 1 row of single crochet around back opening. Make 3 loops on one side and sew 3 buttons to opposite side of opening. Turn under 18 rows on lower edge and hem to wrong side. PANTY: Join front and back section at sides and at the crotch. Insert an elastic band into upper hem. Join short ends of leg bands then sew 1 edge of bands to inside and 1 edge to outside of leg edges.



Work the second section with reverse shapings. Cast on the regular method (from left to right). Knit 1 row in PATTERN to the left side, turn the Row Counter back to 0 and follow the instructions as written. Continue to set up needles for PATTERN from right to left.

ON CAM BOX SIDE, bind off 1 st. after Row 94 (EVEN ROWS = SHOULDER SHAPING); 3 sts. after Row 95 (ODD ROWS = NECK SHAPING); 1 st. after Row 96; 2 sts. after Row 97; 1 st. after Row 98; 2 sts. after Row 99; 1 st. after Row 100; 2 sts. after Row 101; 1 st. after Row 102; 103, 104, 105; 2 sts. after Row 106; 1 st. after Row 107; 2 sts. after Row 108; 1 st. after Row 109; 2 sts. after Row 110; 1 st. after Row 111; 2 sts. after Rows 112, 114, 116, 118.

ROWS 0 to 94: Knit even.  
Cast on 34 sts. with white and work the Holding Position Design.



Cast on 39 sts. with blue, work 16 rows stockinette st., then change to white and work 44 rows in Holding Position Design. After Row 60 bind off all sts.

Work 1 more section the same and 2 more sections with reverse shapings. For the 2 sections with reverse shapings cast on from right to left. (Cam Box will be on the LEFT side at Row 0).

ON CAM BOX SIDE, bind off 3 sts. after Row 146; 2 sts. after Rows 148, 150; (150), 1 st. after Rows 152, 154, 156. Now knit to Row 160, then bind off the remaining 36 sts.

ON OPPOSITE SIDE of CAM BOX decrease 1 st. after Rows in ( ). ON CAM BOX SIDE, decrease 1 st. after Rows 38, (38), 50, (52), 62, (66), 74, (80), 86, (94), 98, (108), 110, 122, (122), 134, (136), then decrease 1 more st. on OPPOSITE SIDE of CAM BOX after Row in ( ). Knit to Row 146.

ROWS 0 to 38: Knit even.  
Cast on 64 sts. with blue and work stockinette st.

ON CAM BOX SIDE, bind off 8 sts. after Rows 120, 121; 3 sts. after Rows 124, 125, 128, 129; 2 sts. after Rows 132, 133, 136, 137, 140, 141. ON EACH SIDE, hang the 1st st. onto the 2nd st. after Rows 144, 148, 152, 158, 164, 170, 176, 182, 188, 194, 200. Now knit to Row 250, then bind off the remaining 11 sts.

ROWS 15 to 120: Knit even.  
ROWS 0 to 14: Knit even the Row 13, then hang the cast-on sts. back on the machine behind the latches to form the hem, knit 1 row to the right side. Now change to white and continue working the Holding Position Design.

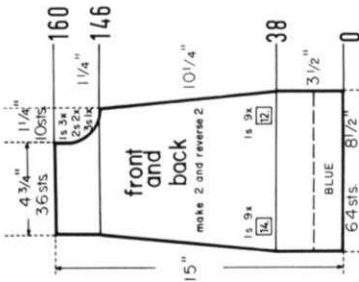
Cast on 73 sts. with blue and work stockinette st.

ON EACH SIDE, hang the 1st st. onto the 2nd st. after Rows 156, 160, 164, 168, 172, 176, 180, 184, 188, 192, 196, 200, 204, 208, 212, 216, 220, 224, 228, 232, 236, 240, 244, 248, 252, 256, 260, 264, 268, 272, 276. Now knit to Row 286, then bind off the remaining 11 sts.

ON OPPOSITE SIDE of CAM BOX bring back into working position 1 needle after Rows 14, 15, 16, 17, 18, 19, 20, 21, 22, 23, 24, 25, 26, 27, 28, 29, 30, 31, 32, 33, 34, 35, 36, 37, 39, 40, 41; 2 needles after Rows 42, 43, 44, 45, 46, 47, 48, 49, then knit to Row 156.

ROWS 0 to 14: Knit even to Row 13, then hang the cast-on sts. back on the machine behind the latches to form the hem, then knit 1 row to the right side. ON EACH SIDE, put 22 needles into holding position to work Short Rows for the shaping. Change to white and continue working the Holding Position Design.

Cast on 73 sts. with blue and work stockinette st.



Bring the needles on the left side into working position according to the PATTERN, knit 1 row to the left side, turn the Row Counter back to 60 and complete the left half. Follow the instructions from \* (Continue to set up needles for the PATTERN from right to left).

\* ON CAM BOX SIDE, bind off 2 sts. after Rows 63, 67, 71 (ODD ROWS = NECK SHAPING); 1 st. after Rows 75, 79, 83, 87. For SHOULDER bind off 1 st. after Rows 94, 96, 98, 100, 102, 104; 2 sts. after Rows 106, 108, 110, 112, 114, 116, 118.

ROWS 0 to 60: Knit even, then bind off the center 8 sts., put the needles on the left side into holding position and complete the right half first. (Set up PATTERN manually).

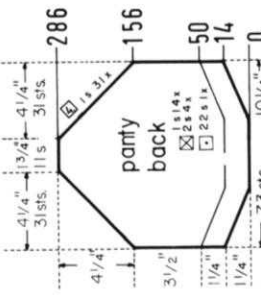
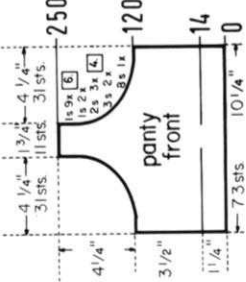
Cast on 68 sts. with white and work the Holding Position Design.

Cast on 78 sts. with blue and work 10 rows stockinette st., then bind off all sts.

Cast on 90 sts. with blue and work 16 rows stockinette st., then bind off all sts.

ON CAM BOX SIDE, bind off 3 sts. after Rows 88, 89, 90, 91. ON EACH SIDE, hang the 1st st. onto the 2nd st. after Rows 92, 94, 96, 98, 100, 102, 104. ON CAM BOX SIDE, bind off 2 sts. after Rows 106, 107, 108, 109; 3 sts. after Rows 110, 111, 112, 113; 9 sts. after Row 114.

ROWS 0 to 84: Knit even.  
Cast on 63 sts. with blue and work stockinette st.



# KG 1908

(40" in diameter without crochet edge)

**MATERIAL:** 14 oz. (8 balls) KNITKING Subita Dralon 3-ply, TENSION 6 to 8. GAUGE: 14 sts. 2", 20 rows 2".

**FINISHING:** Weave the sts. together that are held on contrast waste yarn, then remove waste yarn. Thread a tapestry needle, make a running stitch around center opening and pull up to close. Pin into a circle then dampen and let dry (do not use iron). Crochet around edge as follows, using a #2 crochet hook.

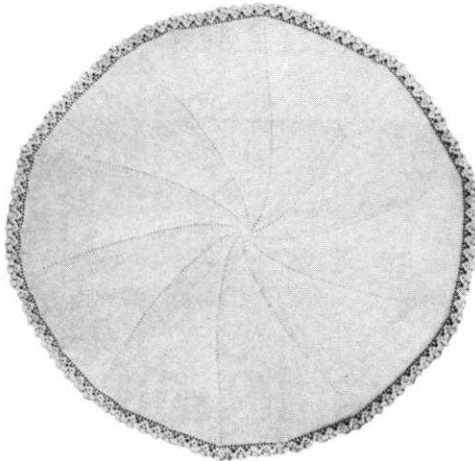
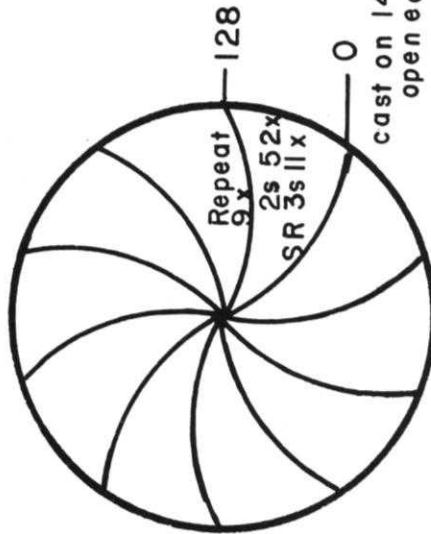
Abbreviations for crochet: ch = chain, sc = single crochet, dc = double crochet.

**ROW 1:** Attach yarn at edge, ch 4, \* skip 2 sts., dc in next st., ch 1; REPEAT from \* ending with slip st. in 3rd st. of chain.

**ROW 2:** Sc in same st. \* ch 2, skip 1 dc; in top of next dc, make 2 dc, ch 2, 2 dc; ch 2, skip next dc, single crochet in top of next dc. REPEAT from \* ending ch 2, slip st. in 1st sc.

**ROW 3:** Slip st. to 1st dc; ch 3, dc in top of next dc; \* ch 2; in ch 2 space make dc, ch 2, dc; ch 2, dc in top of next 4 dc; REPEAT from \* ending slip st. in top of ch 3.

**ROW 4:** Ch 3, dc in top of next dc; \* ch 2; in next ch 2 space make 2 dc, ch 2, 2 dc; ch 2, 1 dc in top of next 4 dc. REPEAT from \* ending with slip st. in top of ch 3.



**REPEAT ROWS 0 - 128** 9 x more (10 sections), then knit several rows with contrast waste yarn and remove work from machine.

**ROWS 0 - 128:** Knit 1 row to the RIGHT side, then begin the Short Rows (do NOT wrap the yarn, as the holes are part of the design). ON THE LEFT SIDE, put into holding position 137 needles and knit 2 rows over the 3 needles left in working position. After Row 3, then on every 2nd row bring 3 needles back into working position 11 x (36 needles are now in working position) and 2 needles 52 x, ending with the Cam Box on the LEFT side.

Open cast-on 140 sts. using contrast waste yarn. Knit several rows, then knit 1 row with a Ravel cord to the LEFT side. Turn counter to 0 and attach main yarn.

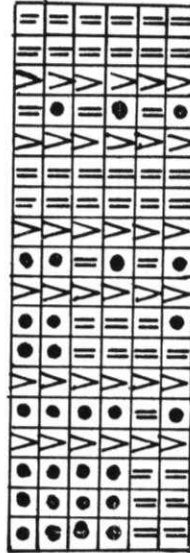
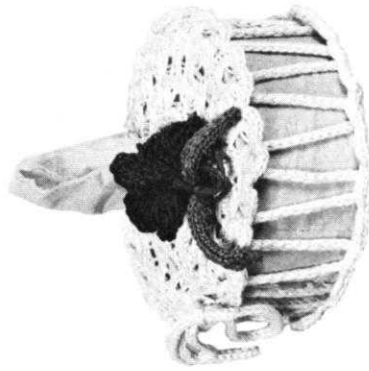
# KG 1909

(for blotting excess makeup)

**MATERIAL:** 1 1/2 oz. (1 ball) KNITKING Satin Cotton 2 x 8 ply and 1/2 roll colored toilet tissue. TENSION: 3 to 5. GAUGE: 12 sts. (length of cast on) 2 1/2", 24 rows 2" measured over Pattern:

**FINISHING:** Weave ends of circles together and remove waste yarn. Cut a roll of tissue in half (see picture). Take off a length of tissue to go around outside edge. Cut piece of flexible cardboard to fit outside edge and tape in place, then cover with tissue. Put 1 section on top, 1 on bottom and weave the cord (beginning at top) through hole near scallop, bring cord down through hole on lower section, up in next hole on lower section through hole on top section. Continue to weave cord in and out ending with the cord on top. Tie in bow. Make a flower trim for top.

Bring 18 needles into working position, then from right to left, cast on 12 sts. according to the 1-line Line Drawing. Knit 1 row stockinette st. to the right side, turn the Row Counter to 0 and knit 24 rows Holding Position Design and Short Rows according to Line Drawing. The Short Rows begin after Row 8, but wrap the yarn around the nearest needle in working position only after Rows 15 and 23. After Row 24, bring all needles back into working position, then set up again for the Holding Position and Short Row Design. Repeat Rows 0-24 7x (192 rows), then knit 1 row to the left side and bind off all 12 sts. Be sure to make 1 chain st. where there are empty needles. Work the second section the same. NOTE: You may if you prefer, use the Open Cast on Method and take the sts. off on waste yarn, then weave the open ends together.



cast on

## ROUND KNITTED CORD

Cast on 3 sts., push in the Right Cam Control Button and with Tension 1 or 2, knit 900 rows (empty rows do count), then bind off the sts. Hold Cord down while knitting.



# KNITTING NEWS

July/August, 1970

## OUR READERS WRITE

Ruby Miller of Seattle, Washington sent us a very good hint that makes a machine turned hem look as if it were hand turned by an expert seamstress... We thank Mrs. Miller and are happy to pass the hint on to our readers....

## HANGING A HEM

Cast on the specified number of stitches using waste yarn and one tension number lower than will be used for knitting garment, knit several rows ending with knitting 1 row to the right side using a Ravel Cord... (open Cast-on). Now with sewing thread only (same color as garment) knit 2 rows. \*Change to garment yarn and still using lower tension, knit the underside of hem (which will be turned under)- for example - The 20 rows shown for the underside of hem in Pattern DP 7866 (in this issue) is made up of 2 rows sewing thread and 18 rows of garment yarn. Turn tension to garment tension and knit 20 rows... Now pick up the first row of thread knitting and hang the stitches on the needles behind the latches and continue knitting.

It is so much easier with a KNITTING Reversing Bar... Hang the Bar on the machine, knit 1 row with thread - release Bar, knit 1 more row with thread, then follow the instructions above from \*

If the yarn is bulky, you can use every other needle for casting on with thread, then knit the underside of hem and pick up a stitch from the row below to fill each empty needle, knit the depth of hem and pick up the first thread row onto every other needle, knit the hem together and continue knitting. If you want a pico edge, you may bring the empty needles into working position (if you use every other needle for underside of hem) and continue with hem depth. This is especially nice for edges of Baby garments, Shells, Sweaters, Jackets and Sleeves.

## PRACTICAL KNITTING HINTS

### CABLE DESIGNS

When you are working a Cable Design - (for example the one used for the front section of the Woman's Pullover DP 7886 in this issue), simplify your work by following this method.....

It can be confusing to always look and count stitches for your Cable Design each time you want to cross the stitches... so first of all, with a china Marking Pencil or a bright Crayon, put a mark on the Needle Rail directly in back of the first and the last needle that will be used for making EACH Cable. Now you see at a glance each group of 6 needles that will be your Cable stitches. The first time you will cross these stitches is after Row 26 and the Cable Pattern is repeated every 12 rows. Add 12 to 26 and your next Cable will be made after Row 38... add 12 again and the next Cable will be made after Row 50. Keep adding 12 to each Cable row and write the row numbers down on a slip of paper BEFORE you begin your knitting. Now if the telephone rings or you have some other interruption - no matter - you know exactly where you are by looking at your

paper and your Row Counter. When you reach a Cable row, always drop the stitch on either side of the Cables as shown in the line drawing (leave the empty needles in the non-working position) BEFORE you cross the stitches, allow them to run down so the Cable stitches will be easy to cross... (release the Cable stitches from under the sinkers first, then cross them) and when all Cables have been crossed, bring the empty needles (from the dropped stitches) back into working position before knitting to the next Cable row.. After each 30 or 40 rows, latch up the dropped stitches into knit stitches. Another thing to remember is that when you have a section of garment with increases shown - such as on sleeves - you must be sure to mark your needle bed Rail BEFORE beginning the increases in order to maintain the correct pattern while knitting this section.

## THE KNITTING WEAVING ACCESSORY

After you have become familiar with the operation of your KNITTING WEAVER, here is a way to always have neat edges. Select the needles and knit 1 row with main yarn. When you are using a Cam Wheel, the selection of the needles is made for you as you knit the one row. When using the Adjustable Needle Selector - or selecting needles by hand, set up the Pattern, knit 1 row with main yarn and you are then ready to place the weaving yarn over the needles. If the weaving yarn is hanging from the 2nd, 3rd, 4th, (or more) needles counting from the end, bring the very first needle into holding position. This will always be on the same side as your Weaving Yarn end. Now bring the weaving yarn UP and OVER this end needle and across the needles as directed in the instructions, then use the Weaving Accessory as usual. Another thing to remember is to be sure to lift the weaving yarn from under the sinkers before you lay the yarn over the needles.

## SORRY.... SORRY.... SORRY...!

In our last magazine we neglected to give you the color sequence for Pattern DK 7806. The color stripes are: 14 rows purple, 14 rows lilac and 14 rows white.....

## NEW KNITTING YARN CATALOGUE

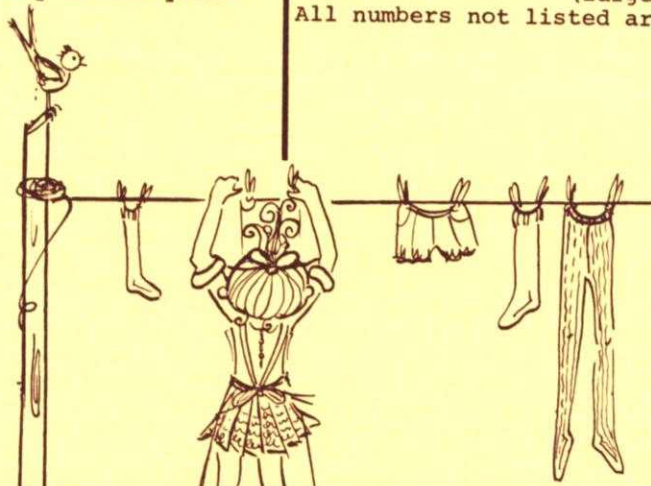
Since the introduction of our present catalogue a little over 2 years ago, we have received hundreds of letters from customers telling us how beautiful KNITTING YARNS are and that our Catalogue is the finest they have ever seen...! Such yarns and such praise are difficult to improve upon, but we have continued to search the world over for yarns to add to our already extensive range... Our new Catalogue is in production and we believe that when you see it you will say that "KNITTING has done it again...."

The extremely popular Subita Crepes and Dralon yarns will still be available and we are adding some handsome new heavier crepe yarns... plus an assortment of fancy yarns... dreamy Mohairs... dressy Metallics... handsome Nubbys... plus some especially lovely synthetics, etc...all exclusive to KNITTING and almost all (even including the 100% wool yarns) machine washable.

Despite the fact that KNITKING YARNS are absolutely the finest obtainable, our prices will still be kept at literally wholesale for all of our customers.... Nowhere else in America will you be able to buy such magnificent yarns at such low prices. We believe that only the best is good enough for KNITKING customers and that it is a waste of time and effort to knit garments in cheap poor quality yarns... It costs such a small amount more to knit with superior quality KNITKING yarns and your garments will retain their shape... fit...and good looks so much longer.

Be sure to look for our beautiful new 2 page color advertisement in McCall's Needlework & Crafts magazine... It should be on the stands around July 15th and you will read more about the new KNITKING YARN CATALOGUE plus some information on new things that KNITKING is doing.

If you have a KNITKING Yarn Catalogue and have not yet cashed in your \$2.00 credit certificate, we suggest that you do so before the end of July. You can deduct the \$2.00 from any \$10.00 (or more) order that you send in at regular prices... It represents a 20% savings on any of the yarns in the Catalogue.



#### BACK ISSUES OF KNITKING MAGAZINE

For those of you who might be interested in some back issues of KNITKING MAGAZINE, we do have a few complete Volumes from our last years publication. This is Volume 5 and includes the 6 issues from September/October 1968 through July/August 1969, bound in a plastic Cover.. It is well worth the \$6.95 plus 85¢ mailing costs. If you want one of them, hurry and order... when our supply is gone, there will be no more.

Also, we are listing single back issues of KNITKING MAGAZINE that you might want. They cost \$1.50 each postage paid, or \$6.00 for 6 or more copies. Again, we remind you that some are in very short supply and of course will be out of print when they are gone.

VOLUME 1 - Numbers 2, 4, 5, 6  
(large sizes in No. 5)

VOLUME 2 - Number 2

VOLUME 3 - None available

VOLUME 4 - Numbers 4, 5, 6

(large sizes in No. 4)

VOLUME 5 - Numbers 1, 2, 3, 4, 5, 6

(large sizes in No. 6)

VOLUME 6 - Numbers 1, 2, 3, 4, 5

(large sizes in No's 3, 4, 5)

All numbers not listed are sold out.

## ARE YOU UNHAPPY WITH YOUR PRESENT KNITTING MACHINE ?

DOES IT REFUSE TO KNIT FANCY DRESS YARNS?

DOES IT JAM UP WHEN YOU TRY TO KNIT LOOPED MOHAIR OR THICK AND THIN YARNS?

DOES IT DROP STITCHES ALL OVER THE PLACE?

ARE YOU CONTINUALLY HAVING TROUBLE WITH AWKWARD, CUMBERSOME WEIGHTS?

ARE YOU UNABLE TO MAKE A LARGE GARMENT WITH BULKY YARNS?

DO YOU HAVE TO SELECT PATTERN STITCHES MANUALLY?

DO YOU HAVE TO LATCH YOUR RIBBING BY HAND?

IF YOU ARE HAVING ANY OF THESE PROBLEMS YOU SHOULD TRADE UP TO A NEW FANTASTIC PUSH BUTTON KNITKING WITH COORDINATED RIBBER AND ENJOY KNITTING WITH THE WORLDS FINEST, MOST VERSATILE AND MOST AUTOMATIC KNITTER.

YOU WILL BE SURPRISED AT OUR GENEROUS TRADE-IN ALLOWANCE AND YOU CAN, IF YOU WISH, USE YOUR PRESENT MACHINE AS A DOWN-PAYMENT AND PURCHASE A COMPLETE KNITKING FOR JUST PENNIES A DAY. WRITE TODAY FOR FULL INFORMATION AND TELL US WHAT MACHINE YOU NOW OWN. THE ADDRESS IS:

**KNITKING, Dept. T-1, 1128 Crenshaw Blvd., Los Angeles, Calif. - 90019**

# NOTES TO KNIT BY . . .

## STITCH AND ROW GAUGE

KNIT A SAMPLE SWATCH . . . before you begin to knit any garment . . . for this is the MOST IMPORTANT STEP toward the correct size and the proper fit of any garment you wish to make. You MUST use the SAME YARN for your sample swatch that you will use to knit your garment and your sample swatch must be knitted large enough and using several different tension numbers on your machine. When you have done this, then you can determine the number of stitches and the number of rows in a two-inch measure. KNITTING MAGAZINE PATTERNS give you 3 tensions to try and one of them should give you the correct stitch and row gauge if you are using the yarn we recommend or a similar weight yarn. Here is the way to make your sample swatch.

Cast on over a sufficient number of needles to produce a swatch at least 4 inches wide. (If the pattern calls for 16 stitches to 2", then 16 x 2 = 32 stitches to cast on). Now knit 4 inches of rows at the first suggested tension number. (If the pattern calls for 22 rows to 2", 22 x 2 = 44 rows to knit). Knit 2 rows using a contrast color, change to the next higher tension and with garment yarn knit another 4", knit 2 rows with contrast color, change to the 3rd higher tension and knit another 4" and then bind off.




Roll the swatch into a cylinder over its length and pull on both ends, unroll it and stretch it diagonally by pulling on the four corners. Allow the swatch to rest and settle (preferably overnight) and then using a stitch gauge or a ruler, count the number of stitches over a 2" width, then the number of rows over a 2" length in EACH of the 3 tensions. Select the tension number that produces the stitches and rows called for in the pattern. If none of them are correct, you are most likely using the wrong weight of yarn.




## READING OF CHARTS

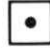
You will notice the instructions start at the bottom of the Chart and work UP. Follow the charts exactly as written and providing your sample stitch and row gauge is correct, your garment will come out the right size. Please remember that the section of garment as it is knitted on the machine, faces the same way as the Charts are in this magazine. Where two front pieces are needed, (or any other part of a garment that needs two sections) only one section is normally shown and the second section is usually made with reverse shaping. Set in sleeves are usually identical, but raglan sleeves have to be knitted with reverse shaping for the second sleeve.


## READING OF SYMBOLS

To simplify Pattern Knitting, we use Symbols in the Line Drawings and the Chart Diagrams. In the Line Drawings the symbols are shown and are to be read as you look at them while knitting a garment. For instance, if

a Purl stitch faces you, the Purl stitch Symbol  is shown; if a knit stitch faces you (as when using the Ribber) then this Symbol  is shown. The Symbol  at the top of the Line Drawing is the center of the garment section and you use this as a guide for setting up the needles.

The following Symbols    are used for Eyelet Designs in the Line Drawings and also for Full Fashion shaping on the Charts. The Line Drawings have row numbers on the right side. Missing Row numbers are always knitted straight or plain.

In Holding Position Designs  selected needles are pushed into holding position for the stated number of rows. The numbers of rows appear at the right of the Line Drawings; Example: 1-4 means knit Rows 1 to 4; 5 to 7 means knit Rows 5 to 7, etc. This same Symbol is also shown on the Charts and is used for putting needles into holding position for Short Rows. The

Symbol  on the Charts is used to put needles back into working position when knitting Short Rows.

A number in a box stands for the number of rows to be knitted between shapings. Make shaping first, then knit the necessary number of rows. If for instance it reads:

1 st. 8 x



1 st. 10 x




As you will be reading the instructions from the bottom up, here is the way you will follow them: . . . Decrease or increase (depending on the direction of the garment outline) 1 st. at the row where the shaping begins, then knit 8 rows, make the next decrease, then knit 8 rows, until you have decreased (or increased) 1 st. 10 x and you have knitted 8 rows after each decrease (or increase) (1 st. 10 x + 8 rows 10 x). Now begin the first decrease (or increase) for the shaping (which has to be made 8 x) in every 6th row. Decrease (or increase) 1 st. first, then knit 6 rows until you have decreased 1 st. 6 x and after each decrease (or increase) have knitted 6 rows (1 st. 8 x + 6 rows 8 x).

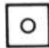
Where shapings are given without a boxed number as on most armholes, necklines, etc., make the shapings on every second row (on each side of course).


(See below for more Pattern Stitch Symbols.)


### PATTERN STITCH SYMBOLS


 = knit stitch


 = purl stitch


 = empty needle (leave in working position)


 = needle not used (in the out of work position)


 = needle in the holding position

 = Needles back into working position.


 = 2 stitches on 1 needle either transferred from the right side or the left side, then put the needle into holding position

 = needle holding 2 stitches. Stitch has been transferred from the LEFT

 = needle holding 2 stitches. Stitch has been transferred from the RIGHT

 = 3 stitches on 1 needle. The 1st and 3rd stitch in a group of 3 needles has been hung on the 2nd or center needle.

 = Center of Garment Section.

 = Number of rows to be knitted between shapings.

The diagrams (Line Drawings) for pattern work are followed just as they are shown and are to be read as you look at them while knitting the garment.

open darts



closed darts



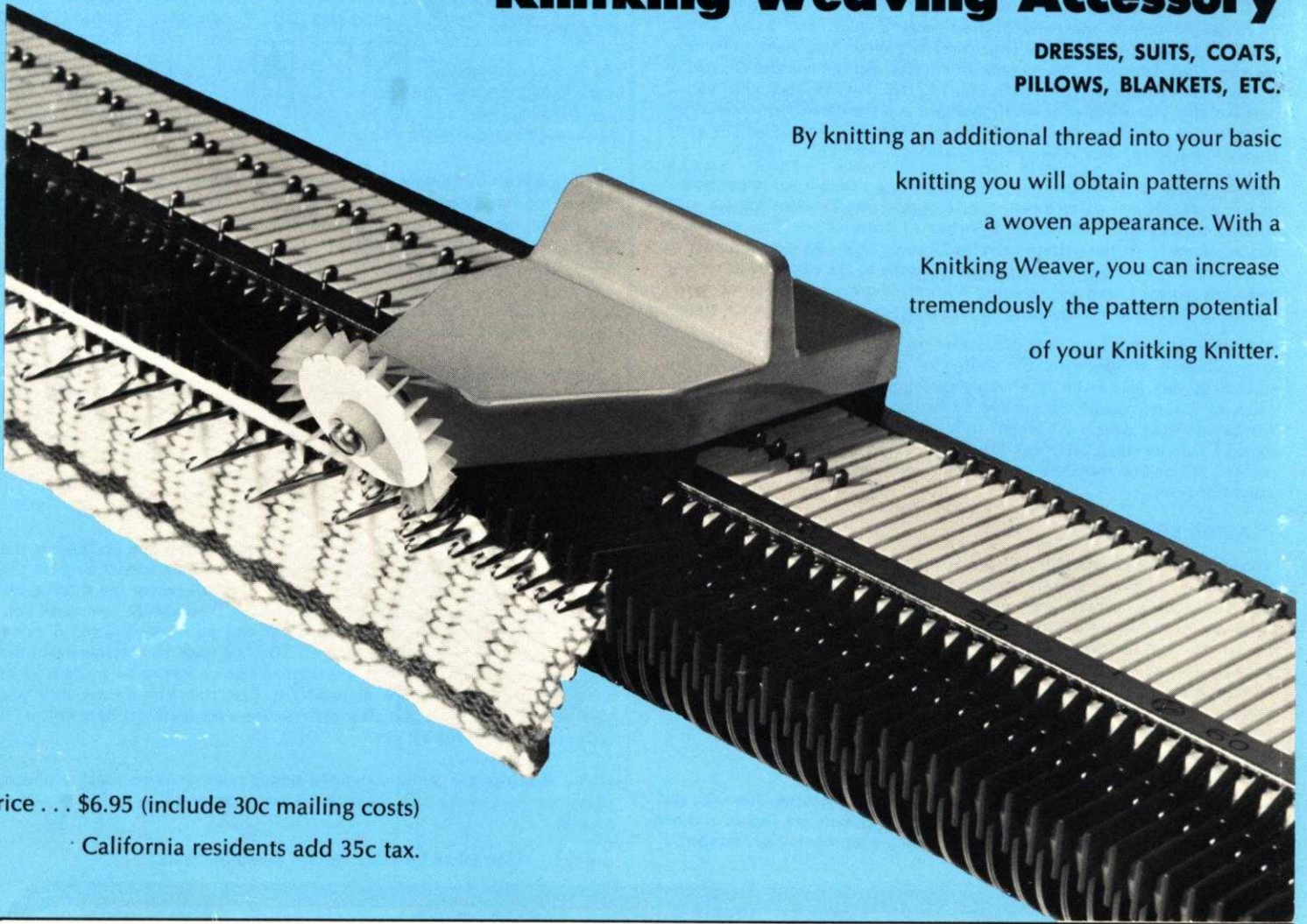
# WEAVE KNITTING

WITH THE

## Knitking Weaving Accessory

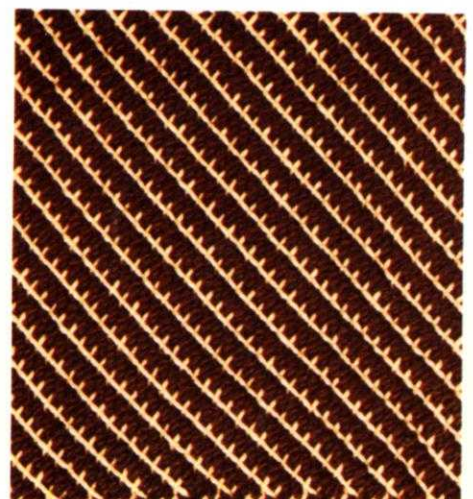
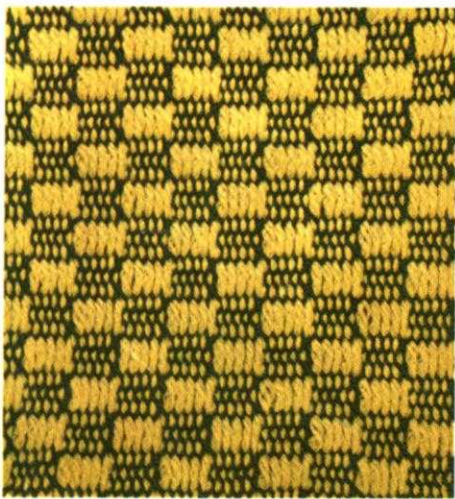
DRESSES, SUITS, COATS,  
PILLOWS, BLANKETS, ETC.

By knitting an additional thread into your basic knitting you will obtain patterns with a woven appearance. With a Knitking Weaver, you can increase tremendously the pattern potential of your Knitking Knitter.



Price . . . \$6.95 (include 30c mailing costs)

California residents add 35c tax.



1128 Crenshaw Blvd., Los Angeles, California 90019

**knitking**