

Vol. 19 # 3

Norma

**knitking**  
magazine



Elegance  
is back...

...and you can  
duplicate this  
handsome outfit  
for only \$54.00

## Color Focus

443

The rave of the day is color knitting and this lively Pullover has bright tucks made by using Short Rows and picking up stitches to form the eye catching Design. Use 1 x 1 Ribbing for the bands. Five colors of Venetia are used...  
Sizes 6 to 16.





# Table of Contents

VOLUME 19 NO. 3

	PAGE NO.
441—Woman's Fine Lace Top . . . . .	13
442—Woman's Pullover Vest . . . . .	14
443—Woman's Top . . . . .	15
444—Girl's Butterfly Dress . . . . .	17
445—Child's Pullover . . . . .	18
446—Child's Pullover . . . . .	19
447—Woman's Dress . . . . .	21
448—A—Skirt & Scarf . . . . .	22
448—B—Woman's Blouse . . . . .	24
449—Man's 'V' Neck Pullover . . . . .	25
450—Man's Pullover . . . . .	26
451—Woman's Pants & Pullover . . . . .	27
452—Woman's Top . . . . .	29
453—Woman's Pullover . . . . .	30
454—Woman's Pullover . . . . .	32
455—Man's Pullover . . . . .	33
456—Slippers . . . . .	34
457—Child's Puppet Mittens . . . . .	35
458—Boy's Hat & Scarf . . . . .	35
459—Girl's Hat & Scarf . . . . .	36
460—Victorian Pillow . . . . .	37
KNITKING NEWS . . . . .	38

## Cover

# 448



## Enjoy...

Our newest issue of  
**KNITKING MAGAZINE**  
 can fulfill your dreams  
 for beautiful knits. The  
 elegant Cover Model is  
 made on the KH 910  
 Electronic machine with  
 Ribber. No floats are on  
 the back of the Fair Isle  
 Design. Cloud soft Show  
 is the yarn we used and  
 you can make it in sizes  
 6 to 16.

# Editorial

For a while there we worried about the way knit fashions and knit designs were going. Knits were becoming grotesque and shapeless... Styles were becoming primitive with odds and ends of various materials attached just about anywhere on garments with fit apparently not even a matter for consideration.

During our more than 30 years in the knitting and knitting machine business, we have seen a veritable multitude of weird so called fashions introduced... Outlandish styles developed in the minds of flash in the pan designers whose sometimes rapid rise to fame was often followed even more speedily by their demise.

Thank goodness style always prevails both in women's and men's clothing and that good taste is invincible. Perhaps we would appreciate the truly great clothing designers less were it not for the occasional intrusion of the revolutionary ones. We receive many of the great fashion magazines from around the world and are excited to see how rapidly the pendulum is swinging back. Elegant knits that conform to the shape of the female figure are featured both in advertising and featured articles. Dresses are again classic in style and because every body looks better in knits, women look like women again, in fact with enthusiasm for exercise and an ever increasing awareness of diet and nutrition, the physique of the nation has never been better.

Credit must also be given to television, especially to such popular shows as Dynasty where the weekly budget for beautiful clothing for the women and handsome suits and sweaters for the men runs into tens of thousands of dollars. Many of the stunning knits worn by such stars as Linda Evans and Joan Collins are made on the same type of knitting machines you own. Most female newscasters brighten up TV screens by wearing stylish, colorful sweaters made on home knitting machines. We have a customer in Los Angeles who apparently can see a sweater once and duplicate it. She recently saw a gorgeous wool and angora sweater worn by Joan Collins... two days later she wore it to our store. The original undoubtedly cost several hundred dollars, the duplicate she told us cost twenty six.

When we introduced KNITKING MAGAZINE 21 years ago, we dedicated ourselves to upgrading the standard of knitting in the U.S. Prior to that time, hand made and home knitting machine made garments were dull, dowdy, generally shapeless and badly put together. Spin the pages of this issue and you will see how well we have succeeded. We are especially proud that we can help our readers dress like film and television stars at budget prices.

Take a look through the knits in Bergdorf Goodman, I. Magnin, Gucci and other high class stores. Anything comparable to the beautiful outfit on the cover of this issue would sell for over six hundred dollars. We make it possible for you to knit and wear it for a mere fifty four dollars. Check the prices of the kits for all the other knits in this issue. Wear clothes like these and you will be the envy of all your friends and neighbors. With KNITKING knits you will always look good, and to look good is to feel good and there is nothing more KNITKING MAGAZINE wants than for its readers to feel good, always...

A woman with dark hair pulled back, wearing a black sweater with a small, colorful pattern and brown pants, is sitting on a light-colored rug. She is smiling and looking at the camera. To her left is a large green plant. The background consists of vertical blinds. A light blue banner with the word 'Elegant' is in the top left corner. A black box with the number '453' is in the top right corner. A white text box with a red diagonal line is on the right side of the page.

**Elegant**

**453**

Three yarns are used to make a beautiful Pull-over that is knitted sideways on the machine. A brand new Pattern Stitch combines weaving with Lace. Use Venetia for the knitting and Alpacana and Mami-Rex together for the weaving. The knit side is the right side. Bands are Stockinette stitch. Sizes 4 to 14.

Feminine...

441


Flattering to all figures,  
a fine lace Pullover with  
Cap Sleeves. It's quick  
and easy to knit using  
our thin Venetia yarn.  
Wear it with a Suit or  
Pants. Sizes 6 to 16.

A woman with dark hair styled in a bun, wearing a blue long-sleeved knit dress with a lace-trimmed yoke and hem, stands next to a white classical column. On top of the column is a grey vase containing pink chrysanthemums and dried grasses. The background consists of vertical blinds. A pink banner with the word 'Update!' is in the upper right. A black box with the number '447' is to the right of the woman. A white text box with a blue border is in the lower right.

**Update!**

**447**

A lovely one piece dress combines Stockinette Stitch, Lace and Ribbing with long glittery fringe across the front Yoke. It is pretty enough to be worn to any day or evening special affair. Knit it with Venetia and Mami-Rex. Sizes 8 to 18.

A woman with dark hair pulled back, smiling, wearing a light green short-sleeved pullover with large dark polka dots. She is holding a flute glass of champagne in her right hand. She is wearing a long pearl necklace, a bracelet on her left wrist, and rings on her fingers. The background consists of vertical blinds and a large green plant on the left.

**Treasure!**

**454**

A beautiful Pullover with large Polka Dots can be made so quickly on the KH 891 with KG 89 Electric Carriage. You will be amazed at the results when you knit it with our lovely Cordella yarn. 8 to 18 for a big range of sizes.



**Sensational!**



**451**

It's a beautiful dressy Pullover with matching stylish fitted Pants. All Stockinette stitch. Long Fringe trims the neckline. Make it with Rayon Boucle in sizes 6 to 16.

# Textured Knitting

452

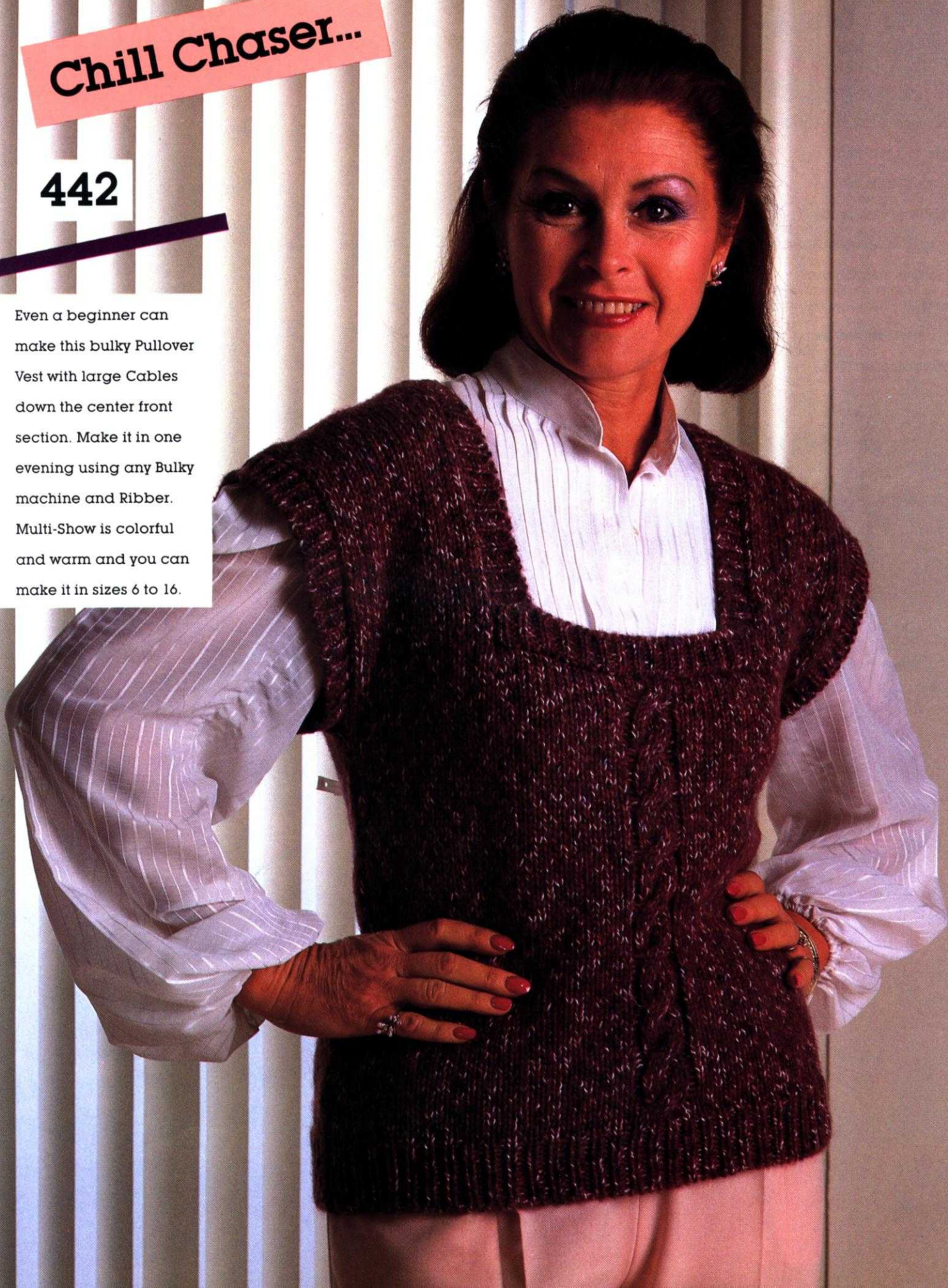
Make this lovely cap sleeve Pullover to wear anytime, anyplace... It's knitted in a combination of a Tuck stitch Pattern with alternating rows of Stockinette stitch using single and double strands of yarn to form stripes. Make the cord belt and adorn it with pretty shells or baubles of your choice. Venetia. Sizes 6 to 16.



# Chill Chaser...

442

Even a beginner can make this bulky Pullover Vest with large Cables down the center front section. Make it in one evening using any Bulky machine and Ribber. Multi-Show is colorful and warm and you can make it in sizes 6 to 16.



457

Have fun making  
Puppet Mittens for  
children of all ages.  
Make them on any Bulky  
Machine with Ribber  
using our Bravo yarn.  
Change tensions for  
different sizes.



**Puppets With Personality!**



# General Instructions

## THE PRINTED INSTRUCTIONS

Follow the printed instructions or use them in combination with the Charts. Where there is any question in the instructions, you have the Charts to show you how the section will look.

Be sure to READ AHEAD so that you KNOW what to do for the size you are knitting. In the shapings, where the number of stitches are the same but the number of times different, you might find shapings like this...3 sts. 1 x (2x) [3x]—so that for the first size you will bind off 3 sts. 1x, 2nd size 3 sts. 2x, 3rd size 3 sts. 3x. Sometimes the ROWS will be different for each size—so you must watch out for different row numbers.

Shoulder and neck shapings for the back section of a garment usually are shaped at the same time—so ALWAYS WATCH for the words AT THE SAME TIME.

## HOLDING STITCHES ON THE LEFT SIDE WHILE SHAPING THE RIGHT SIDE

There are different ways to hold stitches on one side while completing the other side. Usually, we tell you to bind off the center sts. for neck and put the left side into holding position while completing the right side. The easiest way and really the best way for beginners is to take a piece of RAVEL CORD and hand knit the center neck stitches, pulling them back against the needle bed of machine to the "A" or out of work position. The stitches remain in the HOOKS of the needles so you are really only knitting them HALF WAY. With another color of Ravel Cord, knit the remaining sts. on the left side in the SAME WAY.

It is important to protect these held stitches in some way—so you can either hang a REVERSING BAR so that the EYES of the Bar go BETWEEN the Gate Pegs on the machine and that the UPPER TIPS of Bar only—show above the needle bed...OR the simplest way is to use a piece of 1 inch masking tape and GENTLY place it beneath the knitting—right below the gate pegs. Do NOT press the tape—only enough pressure to hold it in place. This will prevent the Carriage (or Slide) from marking the held section.

It is VERY IMPORTANT that you mark the PATTERN ROW where you divide for the split for NECK (or SHOULDER) shaping....If you are using a PUNCH CARD—MARK THE CARD—if you are using an ELECTRONIC machine, MARK THE DESIGN WINDOW. Also take note of the Row number for the division. When you are ready to work the left section, bring the HELD stitches back to B (working) position by pulling each end of the Ravel Cord GENTLY and rip it off—be sure to align all needles straight in the B or knitting position.

Now you are ready to REFER TO YOUR OWN INSTRUCTION MANUAL for your machine—to set the controls to begin knitting the left half. The neck stitches can be bound off after completing the right side or you can leave them in hold until each side is finished, then bind them off or remove them onto contrast waste yarn ready to be picked up for knitting a neckband or for other finishing.

## FULL FASHION DECREASING OR INCREASING

For Stockinette stitch, use the Full Fashion method for decreasing or increasing (except for regular cap shaping on sleeves where you decrease the edge stitch).

TO DECREASE: Hang the 3rd stitch onto the 2nd stitch then move the end stitches in to fill the empty needle.

TO INCREASE: Move the 2nd end stitches 1 needle outward, then pick up the 3rd stitch from the row below and hang it onto empty needle.

## PATTERN SYMBOLS

( ) Symbol for 2nd size.

[ ] Symbol for 3rd size.

There are up to 3 sizes given for Patterns in KNITTING MAGAZINE. For example, the Charts and printed instructions will show the cast-on as...124—First size. (132)—Second size. [140]—Third size.

R= ROW

◻ Needles in holding position.

◻ Needles back into working position.

< For Short Row Knitting

## THE SAMPLE SWATCH

Before you knit any garment, you must knit a sample swatch using the yarn you have chosen for your garment. If you do not get the correct Stitch and Row Gauge as given for a Pattern in KNITTING MAGAZINE—try different tensions. If you are using the specified yarn, you should be able to get the correct gauge using one of the tensions shown. If you are using other yarns, you may have to make several swatches—but the gauge is very important.

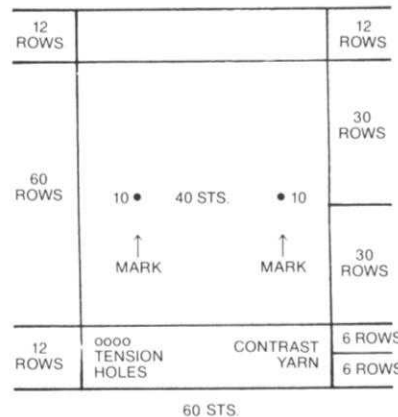
To make a sample swatch—Cast on 60 stitches with waste yarn and knit 6 rows. Mark the tension number for your sample swatch by making holes (you can do this with a Lace Carriage or by hand), 4 transfers for Tension 4, 6 transfers for Tension 6, etc. Knit 6 more rows.

Change to garment yarn and set Counter at 0. Knit 30 rows (in Stockinette stitch or Pattern stitch—according to the garment). With contrast waste yarn knit the 10th stitch FROM EACH SIDE—by hand. Knit 30 rows. Change to waste yarn and knit 12 rows. Remove the sts. from the machine by pushing the Carriage (or Slide) across without yarn.

Pull and stretch the sample swatch both lengthwise and diagonally from corner to corner, then lengthwise again. Gently block the swatch (KNITTING PRESSING CLOTHS are great for this)—or you can allow the sample to rest several hours or even over night so that the stitches can return to their basic form. USE KNITTING CONVERTA TAPE for MEASURING YOUR SAMPLE (or the KNITTING INSTANT STITCH AND ROW GAUGE MEASURE).

If you use the Converta Tape, pull out the Tape to measure BETWEEN the 40 marked stitches in the center of your swatch. Move the red marker on the Tape so that it points to 40 stitches on the TAPE. Your stitch gauge to 2" (5 cm) will show in the RED WINDOW. To find the number of rows in 2" (5 cm), place the Tape to measure over the 60 rows, push the red marker to 60 on the Tape and your row gauge for 2" (5 cm) will show in the red window.

If you do not own a KNITTING CONVERTA TAPE or a Stitch and Row Measure, you must count the number of stitches and rows to 2" (5 cm) after marking a 2-inch square in the center of your knitting.



## FINISHING

Gently block all sections—For PULLOVERS, JACKETS and DRESSES: Join the front to back at shoulders and sides. Sew sleeves together and set in. Hem lower edge and sleeve edges if needed. For a double neckband or armhole, band sew 1 edge to inside and 1 to the outside of neck or armhole. For a single ribbed band, sew 1 edge to the outside of neck or armhole edge. For a cardigan or jacket with buttonholes, finish buttonholes and sew on buttons.

PANTS: Join front to back at sides. Sew inside leg seams, then join to center front and back. Make hem at waistline and insert elastic. Hem lower edge of pants' legs.

◻ Needle not used—in out of work position.

3x1

[4] The number in the box is the number of Rows between shapings. The 3 x 1 above the box gives you the sts. and number of times to make the decreases (or increases)—FOR EXAMPLE: 3 x 1 over the box with 4 means—At the given Row number, \*decrease 1 st. knit 4 rows\* and REPEAT from \* to \* 2 times more for a total of 3 times in all. All decreasing (or increasing) WITHOUT ROW NUMBER IN BOX must be made on EVERY 2nd ROW.



### WOMAN'S FINE LACE TOP

SIZES: 6/8 (10/12) [14/16]  
 YARN: Venetia (fine)  
 AMOUNT: 9oz. 11oz. 13 oz.  
 TENSION: 5 Ribbing 1/1  
 GAUGE: 17 sts. 26 rows = 2" (5 cm)

A FINE LACE Pattern. Punch Card K1, P1 Ribbing for Waistband. Crochet around neckline and Sleeve edges.

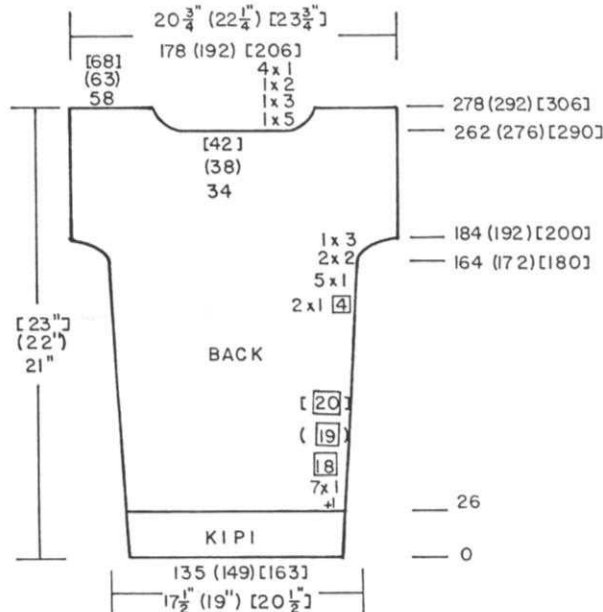
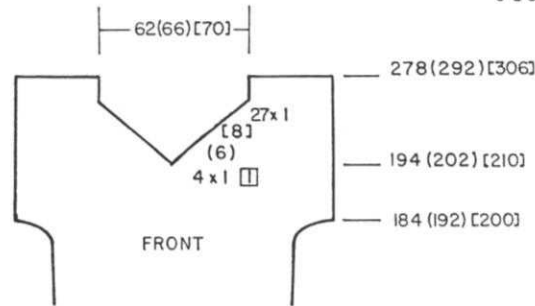
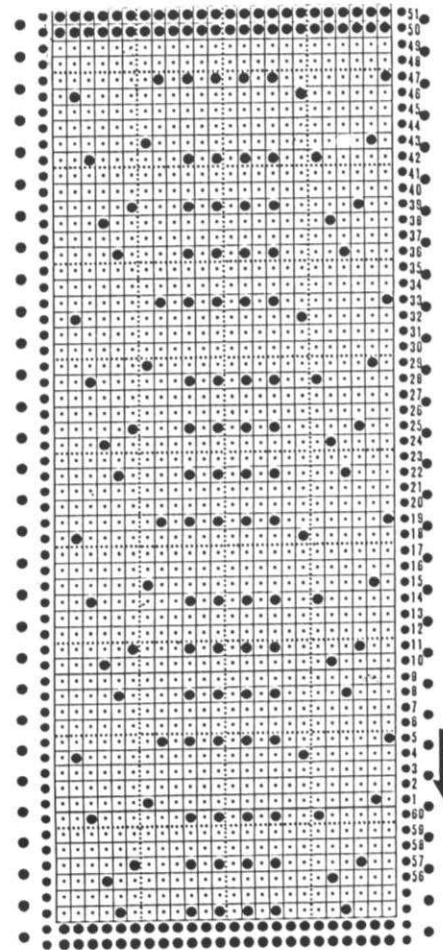
### BACK:

Cast on 135 (149) [163] sts. and work 26 rows K1, P1 Ribbing. Transfer the ribber sts. to main machine and increase 1 st. on the right edge. Continue in FINE LACE PATTERN. Set controls on Lace Carriage to FINE LACE. ON EACH SIDE, increase 1 st. every 18th (19th) [20th] row 7x. After Row 164 (172) [180] ON EACH SIDE, increase 1 st. every 4th row 2x, then 1 st. every 2nd row 5x, 2 sts. 2x, 3 sts. 1x. After Row 262 (276) [290], bind off the center 34 (38) [42] sts. and put the needles on the left side in A (holding) position by using a Ravel Cord to knit the sts. pulling them back to A position. Mark ROW NUMBER ON PUNCH CARD. Complete the right side first. \*ON NECK SIDE, bind off 5 sts. 1x, 3 sts. 1x, 2 sts. 1x, 1 st. 4x. After Row 278 (292) [306], bind off (or you can remove the sts. onto waste yarn - See Practical Knitting hints this issue) the remaining sts. Set the Punch Card back to marked row. Bring needles on the left into working position and AFTER using the lace carriage, knit 1 row to the left THEN set the Row Counter back to 262 (276) [290] and complete the left half. Follow the instructions from \*.

### FRONT:

Work the front the same as the back to Row 194 (202) [210]. Divide in the center, put the needles on the left into A (holding) position same as you did for the back. MARK ROW NUMBER on Punch Card. \*ON NECK SIDE, decrease 1 st. EVERY ROW 4x (6x) [8x] then every 2nd row decrease 1 st. 27x. After Row 278 (292) [306], bind off or remove the remaining sts. onto contrast waste yarn. Bring the needles on the left into working position. Use Lace Carriage then knit 1 row to the left side. Turn the Row Counter back to Row 194 (202) [210] BE SURE TO SET PUNCH CARD TO THE PROPER MARKED ROW before using the Lace Carriage. Complete the left half. Follow the instructions from \*.

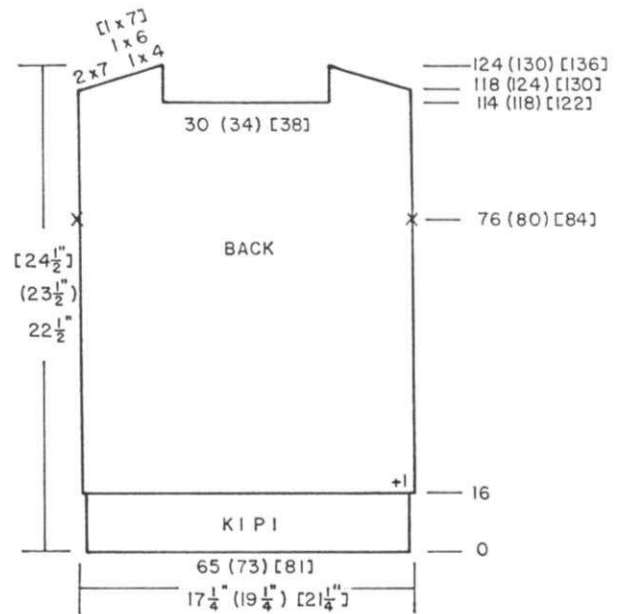
FINISHING: See General Instructions. With 1 strand of yarn, work 1 row single crochet around neckline and Sleeve edges, then 1 row REVERSE single crochet.





**BACK:**

Work the back the same as the front except for NECK SHAPING and OMIT THE CABLES. Work to Row 114 (118) [122]. Bind off the center 30 (34) [38] sts., put the needles on the left into holding position and complete the right side first. \*Knit to Row 118 (124) [130] then shape shoulder same as the front. Bring the needles on the left into working position, knit 1 row to the left side, turn the Row Counter back to 114 (114) [118] and complete the left half. Follow the instructions from \*.



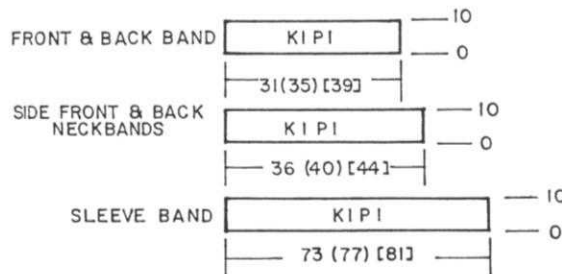
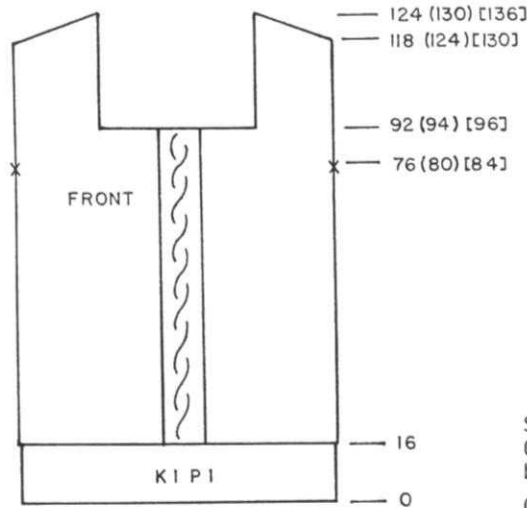
**WOMAN'S PULLOVER VEST**

**SIZES:** 6/8 (10/12) [14/16]  
**YARN:** Multi-Show  
**AMOUNT:** 7 7 8 Balls  
**TENSION:** 8 Ribber 2/2  
**GAUGE:** 7 1/2 sts. 10 1/2 rows = 2"

Made on the KH 230 BULKY Machine but can be made on any Bulky Knitter. A Cable design on the center front. Bands are K1, P1 Ribbing.

**FRONT:**

Cast on 65 (73) [81] sts. and work 16 rows K1, P1 Ribbing. Transfer the ribber sts. to main machine and increase 1 st. on the right side. Continue in Stockinette stitch, making CABLES over the center 8 sts. Begin the cables after Row 20 then every 8th row thereafter. Cross the center 6 sts. using 3 x 3 tool. Always cross in the same direction and be sure to DROP 1 st. each side BEFORE crossing the sts. From time to time, unravel the stitch on each side of Crossed Cable and latch up into a knit stitch. After Row 76 (80) [84], mark each side with a strand of yarn for attaching bands. After Row 92 (94) [96], bind off the center 30 (34) [38] sts. (or you can remove them onto waste yarn). Put the needles on the left into holding position and complete the right side first. \*Knit to Row 118 (124) [130]. **SHAPE SHOULDER:** Bind off 7 sts. 2x, 4 (6) [7] sts. 1x. Bring the needles on the left into working position, knit 1 row to the left side, turn the Row Counter back to 92 (94) [96] and complete the left half. Follow the instructions from \*



**SIDE FRONT AND BACK NECKBANDS.** Make 2. Close shoulders and knit these bands FIRST.

Cast on 36 (40) [44] sts. and work 10 rows K1, P1 Ribbing. Transfer the ribber sts. to main machine and hang the side front and back edge onto these needles with purl side facing you. Knit 1 LOOSE ROW then bind off the crochet method.

**FRONT AND BACK BANDS.** Make 2.

Cast on 31 (35) [39] sts. and work 10 rows K1, P1 Ribbing. Transfer the ribber sts. to main machine then hang the front neck edge with purl side facing you onto these needles. Complete same as from side front and back bands.

**SLEEVE BANDS:** Make 2.

Cast on 73 (77) [81] sts. and work 10 rows K1, P1 Ribbing. Transfer the ribber sts. to main machine then hang sleeve edge with purl side facing you. Knit 1 LOOSE ROW and complete same as other bands.

**FINISHING:** See General Instructions. Sew the edges of front and back bands down over the side bands (see picture).



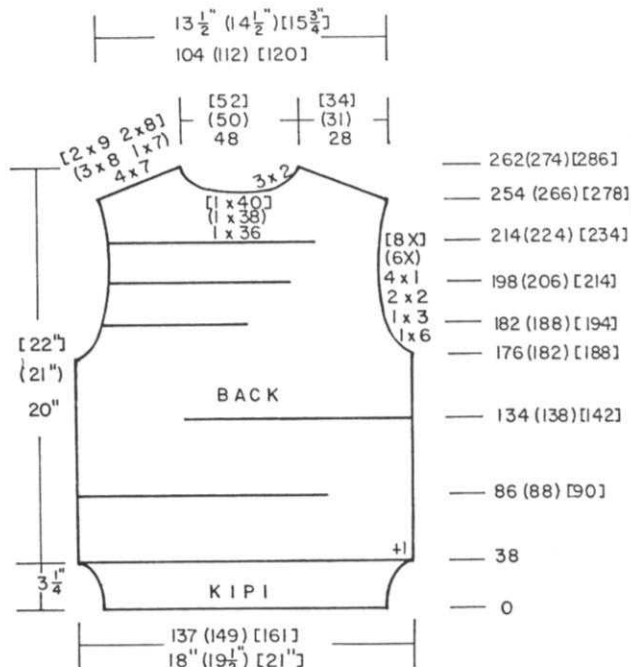
### WOMAN'S TOP

**SIZES:** 6/8 (10/12) [14/16]  
**YARN:** Venetia  
**AMOUNT:**  
 color 1- 6 6 6 oz.  
 color 2- 2 2 2 oz.  
 color 3- 3 3 4 oz.  
 color 4- 3 3 4 oz.  
 color 5- 6 6 6 oz.  
**TENSION:** 6.1 Ribbing 1.2/1 II  
**GAUGE:** 15 sts. 22 rows = 2" (5 cm)

The Top is knitted with color stripes and Short Rows with bands in K1, P1 Ribbing.

### SPECIAL INSTRUCTIONS

The Short Rows used for the color Design ARE NOT COUNTED in the instructions so you must TURN THE COUNTER OFF each time and when the Short Rows are completed, turn the Row Counter ON AGAIN. Follow the Chart to make the Short Rows. Each time you finish a short row section you will have needles that are in holding position. You must bring these needles back into working position and put the stitches into the HOOKS of the needles. You may use a transfer tool to put the stitches back OR you can knit 1 row over ALL needles with a Ravel Cord (DO NOT COUNT THIS ROW) and then rip this row of Ravel Cord out. When the stitches are all in the hooks of the needles PICK UP each stitch from the first row of contrast color and hang onto the corresponding needles then turn the Row Counter on and continue to follow the Chart and Instructions to the next Short Row Design. Remember that all Short Row Sections are in COLOR 2.



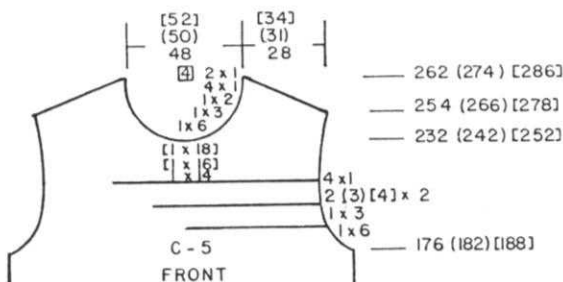
### BACK:

With color 1, cast on 137 (149) [161] sts. and work 38 rows K1, P1 Ribbing.  
 Transfer the ribber sts. to main machine and increase 1 st. on the right side.  
 Continue with color 1 and Stockinette stitch.  
 Knit to Row 36 (88) [90].  
 Put all needles into holding position, holding Cam on Holding. Move the Carriage to the LEFT side. Do not Count this row and leave Counter off until Short Rows are completed.  
 Attach color 2 on the left and begin the push back Short Rows. Push back 18 (20) [22] sts. 6x. Work holding position short rows. Bring into holding position 18 (20) [22] sts. 6x.  
 Pick up the first row of contrast as per the SPECIAL INSTRUCTIONS. All needles in work, turn row counter on and with color 3, knit to Row 134 (138) [142].  
 Turn Row Counter off and continue with Push back short rows on the right as you did before following the Chart.

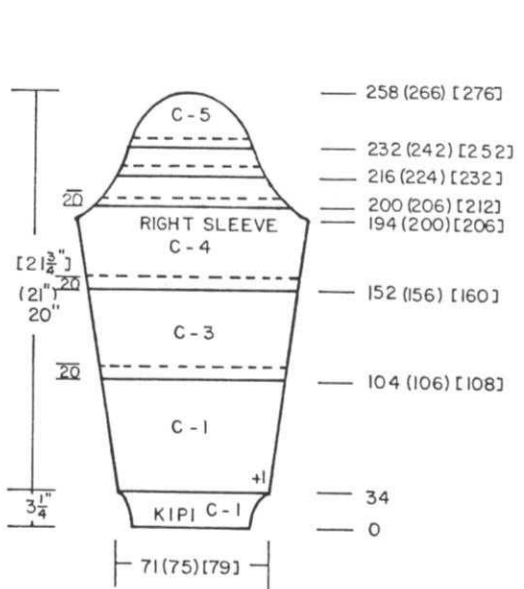
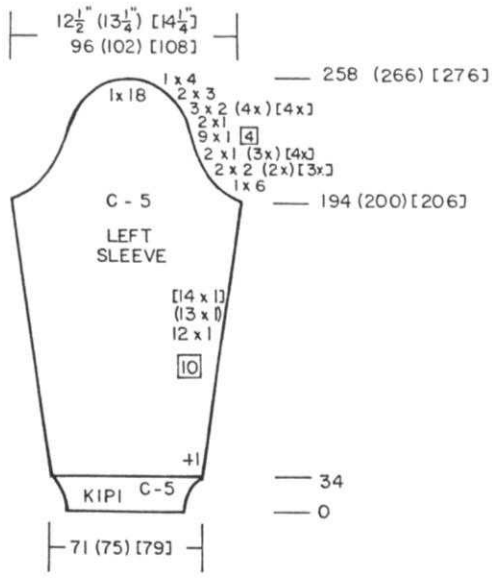
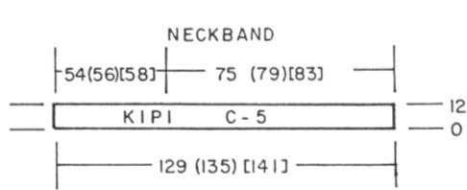
When Short Rows are completed, with color 4, knit to Row 176 (182) [188].  
**SHAPE ARMHOLE:** ON EACH SIDE, bind off as shown on the Chart, BUT AT THE SAME TIME, after Row 182 (188) [194], Work the SHORT ROWS on the LEFT side as you did before, following the Chart. Color 5 will be used for plain stockinette stitch rows for the rest of back. Continue with the Short Rows as shown on the Chart and after Row 254 (266) [278], bind off the center 36 (38) [40] sts. Put the needles on the left into holding position and **SHAPE SHOULDER AND NECK AT THE SAME TIME:**  
 \*ON NECK SIDE, bind off 2 sts. 3x and for SHOULDER, bind off 7 sts. 4x  
 (8 sts. 3x, 1 st. 7x)  
 (9 sts. 2x, 8 sts. 2x)  
 Bring the needles on the left into working position, turn the Row Counter back to 254 (266) [278] and complete the left half. Follow the instructions from \*.

### FRONT:

Work the front the same as the back to Row 176 (182) [188] BUT REVERSE THE SIDE FOR THE SHORT ROWS.  
**SHAPE ARMHOLE:** ON EACH SIDE, bind off 6 sts. 1x, 3 sts. 1x, 2 sts. 2 (3) [4]x, 1 st. 4x. Continue in pattern as established then at Row 232 (242) [252], SHAPE NECK. Bind off the center 14, (16) [18] sts., put the needles on the left into holding position and complete the right side first.  
 \*ON NECK SIDE, bind off 6 sts. 1x, 3 sts. 1x, 2 sts. 1x, 1 st. 4x, 1 st. every 4th row 2x AND AT THE SAME TIME after Row 254 (266) [278], SHAPE SHOULDER same as the back.  
 Bring the needles on the left into working position, turn the Row Counter back to 232 (242) [252] and complete the left half. Follow the instructions from \*.



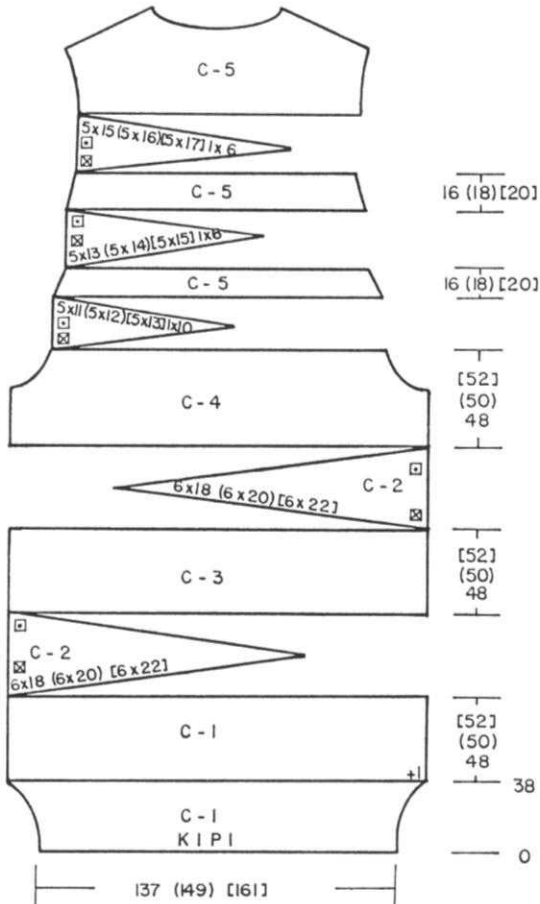




**NECKBAND:**

With color 5, cast on 129 (135) [141] sts. and work 12 rows K1, P1 Ribbing. Transfer the ribber sts. to main machine. Close one shoulder first then hang BACK NECK edge from open shoulder to shoulder with 54 (56) [58] sts. for back neck and the remaining sts. for front. Bind off LOOSELY.

**SHORT ROW PATTERN AND COLOR CHART**



**LEFT SLEEVE:**

With color 5, cast on 71 (75) [79] sts. and work 34 rows K1, P1 Ribbing. Transfer the ribber sts. to main machine and increase 1 st. on the right side. Continue with color 5 and Stockinette stitch. ON EACH SIDE, increase 1 st. every 10th row 12x (13x) [14x]. After Row 194 (200) [206], SHAPE CAP: ON EACH SIDE bind off 6 sts. 1x, 2 sts. 2x (2x) [3x], 1 st. 2x (3x) [4x], 1 st. every 4th row 9x for all sizes then 1 st. 2x, 2 sts. 3x (4x) [4x], 3 sts. 2x, 4 sts. 1x. After Row 258 (266) [276], bind off the remaining sts.

**RIGHT SLEEVE:**

The right sleeve is worked with the same increases and Cap Shaping as the left sleeve but cast on and work the ribbing with color 1. Follow the CHART for the color changes AND AFTER ROW 104 (106) [108], \*STOP COUNTER and work 20 rows with color 2. HANG THE first row of contrast same as you did for back to form the tuck. TURN ROW COUNTER BACK ON AGAIN. \*\* Change to color 3 and knit to Row 152 (156) [160]. STOP COUNTER. Work 20 rows with color 2, hang the sts. for tuck same as before. Turn Counter on again and continue with color 4. SHAPE THE CAP same as you did for left sleeve after Row 194 (200) [206]. AT THE SAME TIME, REPEAT THE INSTRUCTIONS from \* to \*\* using color 2 on the following rows: 200 (206) [212], 216 (224) [232], 232 (242) [252]. Continue with color 5 to Row 258 (266) [276] then bind off the remaining sts.

FINISHING: See General Instructions.

**MACHINE KNIT FASHION**

Written for the KH 891, KH 910 and the Bulky, with a special KNITLEADER section, this beautiful 8 1/4 x 11 1/2 full color fashion Magazine from ENGLAND illustrates and gives complete instructions for 36 Patterns for Women, Men and Children.

An excellent buy at \$6.95 including postage anywhere in the U.S.A. California residents must include Sales Tax.

Order direct from: KNITKING, 1128 Crenshaw Blvd., Los Angeles, CA 90019





### GIRLS BUTTERFLY DRESS

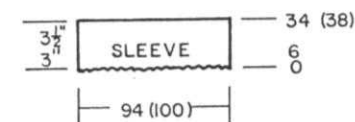
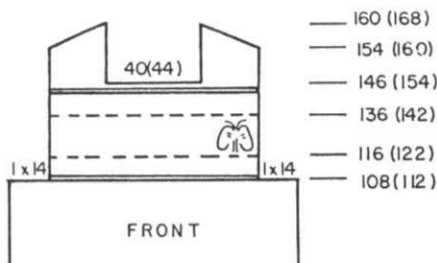
**SIZES:** 3/4 (5/6)  
**YARN:** Roma and Mami Rex

**AMOUNT:**  
 color 1 Roma - 8 oz.  
 color 2 Roma - 2 oz.  
 color 3 Mami Rex - Small amount

**TENSION:** Stockinette st. Tension 5  
 Lace Border - Tension 6  
 Fair Isle - Tension 5  
 Mami-Rex - Tension 3

**GAUGE:** Stockinette - 16 sts. 22 rows = 2" (5 cm)

Stockinette stitch with a border  
 Lace Design, color stripes and  
 Fair Isle Design. Punch Cards  
 No. I and II. Scallop crochet  
 around neckline.



### SLEEVES:

USE OPEN CAST ON AND LACE PATTERN the same as you did for back and front.  
 Continue in Stockinette stitch to Row 34 (38) then bind off loosely.

### SKIRT: Make 2 sections.

With contrast waste yarn, cast on 188 (200) sts. Knit at least 2" of waste knitting then 1 row with Ravel Cord from LEFT to RIGHT. 'e' cast on over the Ravel Cord. Put Counter at 0. Color 1 Knit 2 rows Stockinette stitch then work LACE BORDER - PATTERN I. Knit to Row 16, setting PATTERN II before knitting the 16th row. Work Fair Isle Design to Row 36. Knit 8 rows with color 1 (Row 44). Knit 2 rows color 3.  
 Continue in Stockinette stitch with color 1 to Row 114 (122). Remove the stitches onto contrast waste yarn.

**BACK BODICE:** Bring 102 (110) needles into working position. Hang the sts. of Skirt section onto these needles doubling the sts. as follows:  
 2-2-2-2-1 and REPEAT ACROSS.  
 Continue in Stockinette stitch with color 1.

ON EACH SIDE, decrease 1 st. every 6th row 7x.  
 ON EACH SIDE, increase 1 st. every 10th row 6x.

Knit to Row 108 (112).  
 ON EACH SIDE, bind off 14 sts. Knit to Row 154 (160).  
 Bind off the center 40 (44) sts. for neck. Put the needles on the left into holding position and complete the right side first.

\*SHAPE SHOULDER: Bind off 5 sts. 2x, 6 sts. 1x. (6 sts. 3x).  
 Bring the needles on the left into working position, knit 1 row to the left side, turn the Row Counter back to 154 (160) and complete the left half. Follow the instructions from \*.

### FRONT BODICE:

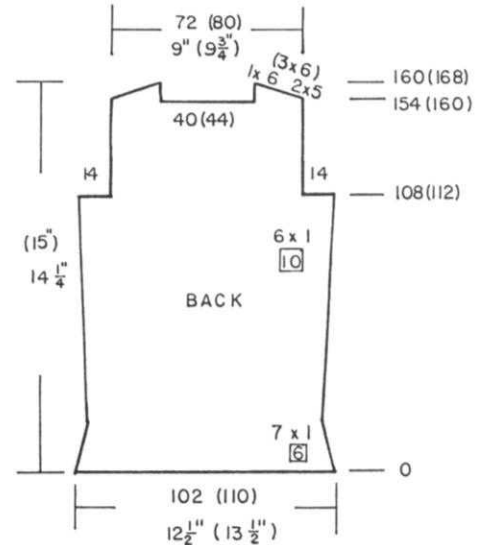
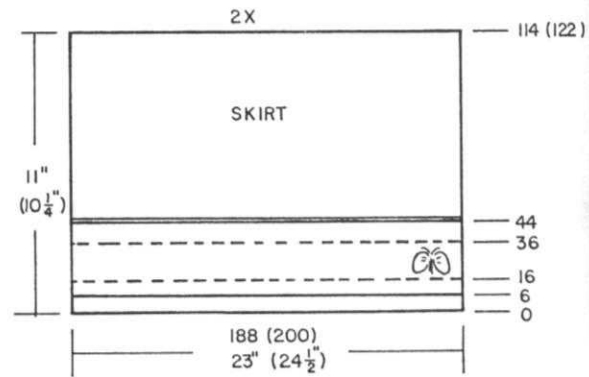
Hang the second skirt section back onto the machine and work the same as back bodice to Row 108 (112).  
 ON EACH SIDE, bind off 14 sts., Knit 2 rows color 3 then 6 (8) rows Stockinette stitch, setting the Fair Isle Pattern (Pattern II) before knitting the last row. Fair Isle Design completed after Row 136 (142).

Knit 6 (8) rows Stockinette st. with color 1. Knit 2 rows color 3. Knit 2 rows color 1 and after Row 146 (154) bind off the center 40 (44) sts., put the needles on the left into holding position and complete the right side first.

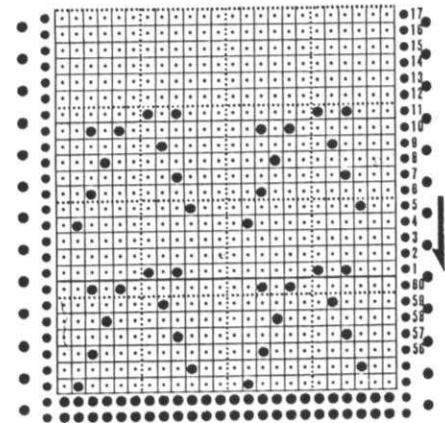
\*Knit to Row 154 (160) then SHAPE SHOULDER same as the back.  
 Bring the needles on the left into working position, knit 1 row to the left side, turn the Row Counter back to 146 (154) and complete the left half. Follow the instructions from \*.

### FINISHING: See General Instructions.

Set in sleeves. Work 1 row single crochet around neckline then work Scallop as follows:  
 3 double crochet, chain 1, 3 double crochet in first stitch. \*Skip 1, single crochet into next stitch, skip 1, 3 double crochet, chain 1, 3 double crochet into next stitch and REPEAT FROM \*.

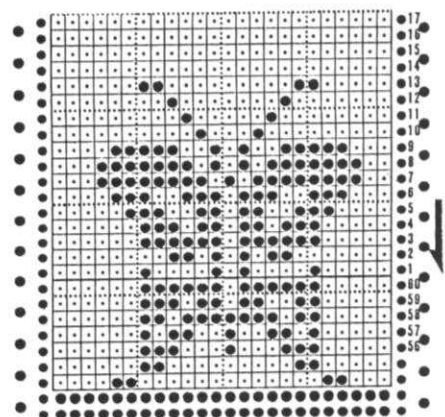


NO. 1



**PATTERN I** - Move the Lace Carriage 10x - Knit 2 rows.  
 Move the Lace Carriage 10x, - Knit 2 rows.

NO. 2



**PATTERN II** - 20 Rows Colors 1 and 2.

## The Bunnies Hop...

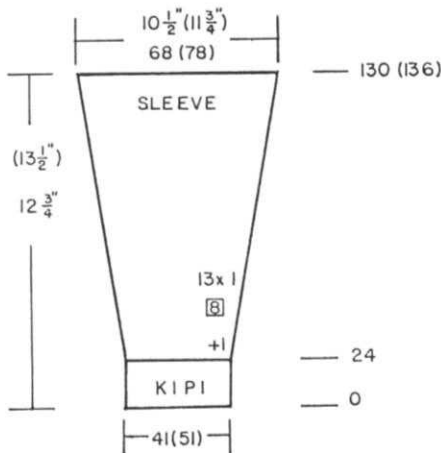


445

### CHILD'S PULLOVER

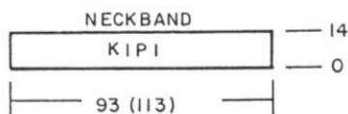
**SIZES:** 4/6 (8/10)  
**YARN:** Alanda  
 color 1 5 6 balls  
 color 2 1 1 ball  
 color 3 small amount  
**TENSION:** 9.1 and 10 for Fair Isle  
**GAUGE:** 13 sts. 19 rows = 2" (5 cm)  
**RIBBING TENSION** 5/5 I

Stockinette stitch with ISOLATED FAIR ISLE Designs. Punch Cards. For 8/10 size, you can use any 24 stitch Punch Cards of your choice. Bands are K1, P1 Ribbing.



### SLEEVES:

Cast on 41 (51) sts. with color 1 and work 24 rows K1, P1 Ribbing. Transfer the ribber sts. to main machine and continue in Stockinette stitch. Increase 1 st. on the right side. ON EACH SIDE, increase 1 st. every 8th row 13x. After Row 130 (136) Bind off or remove the sts. onto contrast waste yarn.



### BACK:

Cast on 89 (99) sts. with color 1 and work 14 rows K1, P1 Ribbing. Transfer the ribber sts. to main machine and increase 1 st. on the right side. Knit Stockinette stitch with color 1 to row 18, setting Pattern A before knitting the 18th row. ISOLATE the Pattern over the center 72 sts. (SEE YOUR INSTRUCTION MANUAL for Isolating a design). Continue in Fair Isle Design to Row 60. Continue in Stockinette stitch with color 1. After Row 82 (86), mark each side with a bit of contrast yarn for setting in sleeves. After Row 90 (98), divide in the center. Put the needles on the left into holding position and complete the right half first.

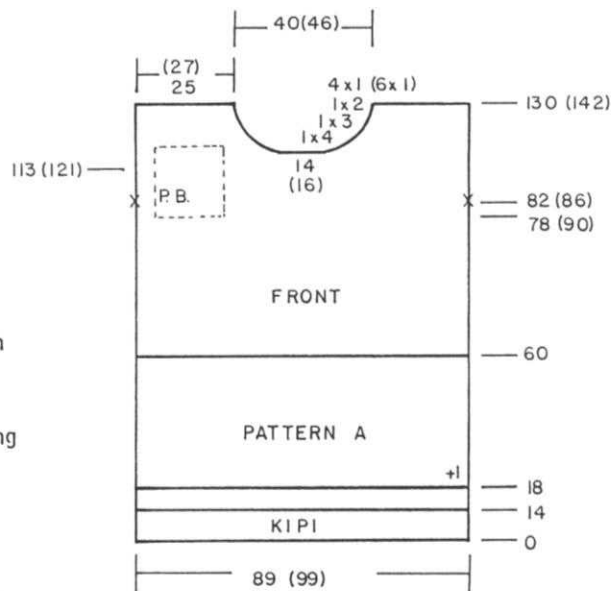
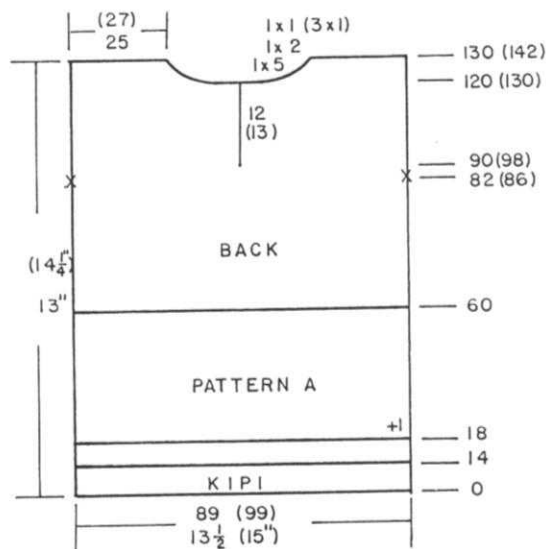
\*After Row 120 (130) SHAPE NECK. Bind off 12 (13) sts. then on NECK SIDE, bind off 5 sts. 1x. 2 sts. 1x, 1 st. 1x (3x). After Row 130 (142), bind off the remaining sts. (or you can remove the sts. onto contrast waste yarn. Bring the needles on the left into working position, knit 1 row to the left side, turn the Row Counter back to 120 (130) and complete the left half. Follow the instructions from \*.

### FRONT:

Work the front the same as the back to Row 77 (89). Set the isolated Pattern B from needle 13 to 36 on the LEFT side, counting from 0. Set Pattern. and continue in Pattern. AT THE SAME TIME, After Row 113 (121), bind off the center 14 (16) sts. for neck. Put the needles on the RIGHT into holding position and complete the left side first.

\*ON NECK SIDE, bind off 4 sts. 1x, 3 sts. 1x, 2 sts. 1x, 1 st. 4x (6x). After Row 130 (142), bind off (or remove onto waste yarn) the remaining sts.

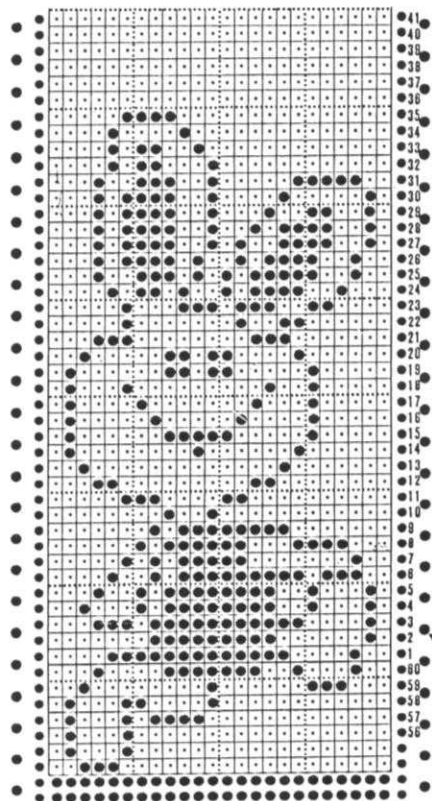
Bring the needles on the right into working position. Attach yarn on the left, knit 1 row to the right side and turn the Row Counter back to 114 (122) and continue in Stockinette stitch to complete the right half. Follow the instructions from \*.



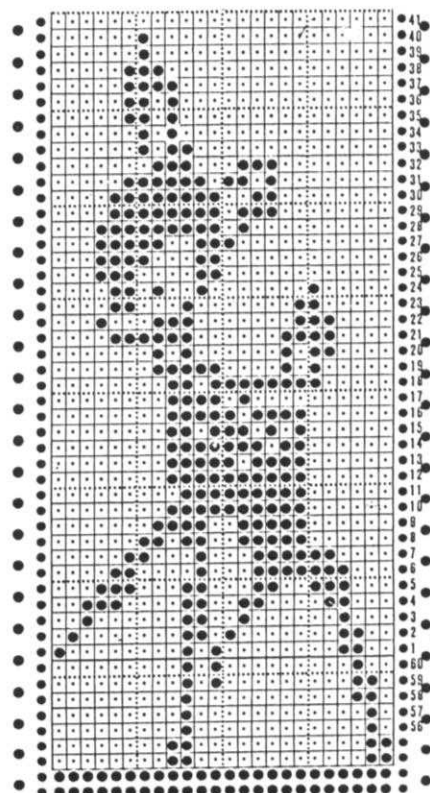
### NECKBAND:

Cast on 93 (113) sts. with color 1 and work 14 rows K1, P1 Ribbing. Transfer the ribber sts. to main machine. Close both shoulders first. Pick up HALF the sts. around the neck beginning at one side of back opening. Knit 1 loose row then bind off the crochet method. Pick up other half from center to opening, knit 1 loose row then bind off the same way.

**FINISHING:** See General Instructions. Work 1 row single crochet around neck opening. Make chain loop for button-hole and sew button to other edge.



PATTERN A  
Color 1 in A Feeder  
Color 2 in B Feeder



PATTERN B  
Color 1 in A Feeder  
Color 3 in B Feeder

446



CHILD'S PULLOVER

SIZES: 4/6 (8/10)

YARN: Bravo

AMOUNT:

color 1 5 balls  
color 2 1 ball  
color 3 1 ball (black)

TENSION: 6 Ribber 1/1

GAUGE: 8 sts. 12 rows = 2" (5 cm)

Knitted on the 260 BULKY PUNCH CARD MACHINE. A SINGLE MOTIF FAIR ISLE Pattern. The K1, P1 Bands are made on the KH 230 Bulky Ribber.

BACK:

Cast on 55 (61) sts. with color 2 and work K1, P1 Ribbing.

8 rows color 2, 2 rows color 3, 6 rows color 1.

Change to Stockinette stitch with color 1 and work 4 rows, setting Pattern 2 before knitting the 4th row.

Work Pattern 2 in Fair Isle Design following the color changes as shown along side Punch Card. Continue in Stockinette stitch with color 1.

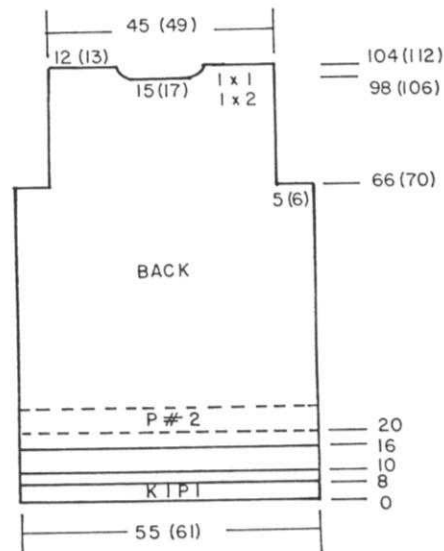
After Row 66 (70), SHAPE ARMHOLE: ON EACH SIDE, bind off 5 (6) sts. Knit to Row 100 (106).

Bind off the center 15 (17) sts. put the needles on the left into holding position and complete the right side first.

\*ON NECK SIDE, bind off 2 sts. 1x, 1 st. 1x.

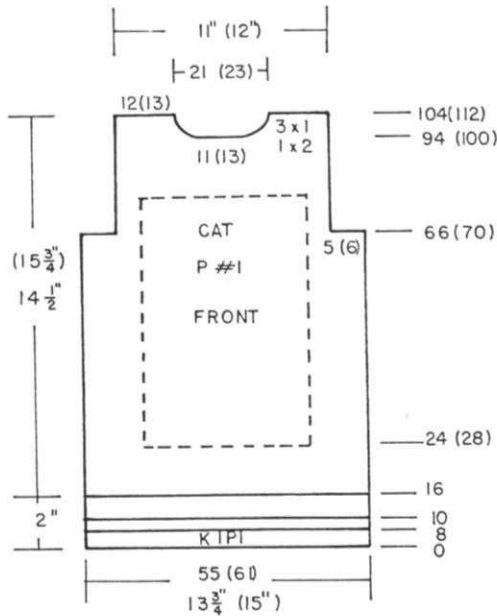
After Row 104 (112), bind off or remove the remaining sts. onto waste yarn.

Bring the needles on the left into working position, knit 1 row stockinette st. to the left side, turn the Row Counter back to 100 (106) and complete the left half. Follow the instructions from \*.



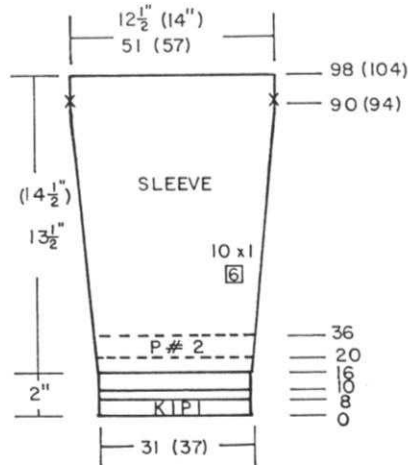
**FRONT:**

With color 2, cast on 55 (61) sts. Work K1, P1 Ribbing same as you did for the back.  
 After Row 16, continue in Stockinette st. with color 1 to Row 24 (28), setting Pattern 1 BEFORE knitting Row 28. Continue in FAIR ISLE design (Cat) with colors 1 and 3. AT THE SAME TIME, after Row 66 (70), SHAPE ARMHOLE same as the back then knit to Row 94 (100) when Cat is completed, using color 1. After Row 94 (100) SHAPE NECK: Bind of the center 11 (13) sts., put the needles on the left into holding position and complete the right side first.  
 \*ON NECK SIDE, bind off 2 sts. 1x, 1 st. 3x.  
 After Row 104 (112) bind off or remove onto waste yarn the remaining sts. Bring the needles on the left into working position, knit 1 row to the left side, turn the Row Counter back to 94 (100) and complete the left half. Follow the instructions from \*.



**NECKBAND:**

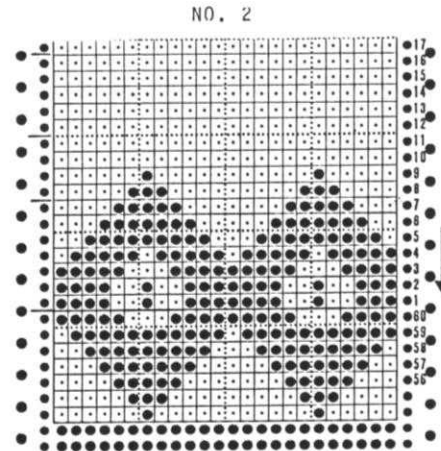
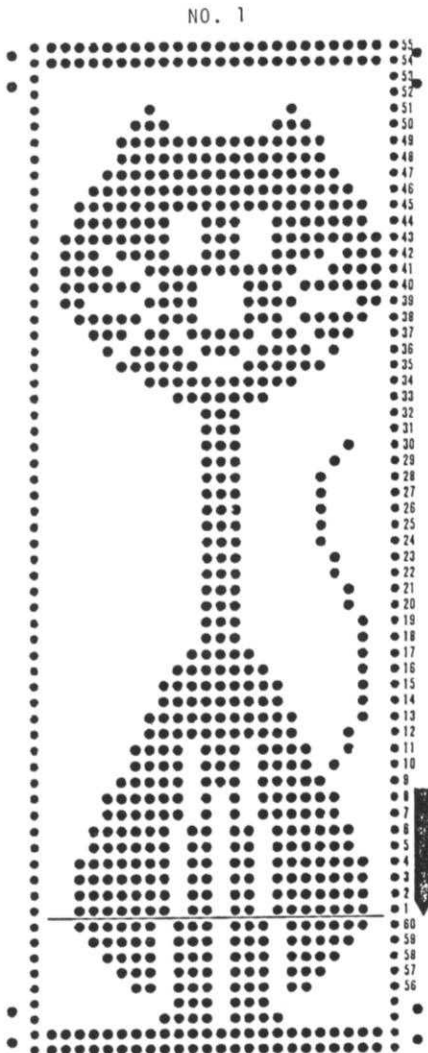
With color 1, cast on 75 (85) sts. and work 3 rows K1, P1 Ribbing. Close 1 shoulder first, then hang the neck sts. onto band and bind off LOOSELY.



**SLEEVES:**

With color 2, cast on 31 (37) sts. and work K1, P1 Ribbing the same as you did for back and front to Row 16. Work Pattern 2 same as for back then continue in Stockinette stitch with color 1.  
 After Row 36, ON EACH SIDE, increase 1 st. every 6th row 10x AND AT THE SAME TIME, after Row 90 (94) MARK EACH SIDE with bit of yarn for setting in sleeves.  
 After Row 98 (104), bind off loosely or remove onto waste yarn.

**FINISHING:** See General Instructions.



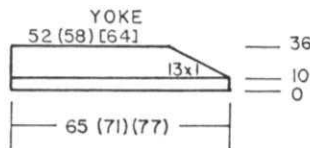
FEEDER	A	B
7 ROWS COLORS	1	2
4 ROWS COLORS	3	2
5 ROWS COLORS	1	2



## WOMAN'S DRESS

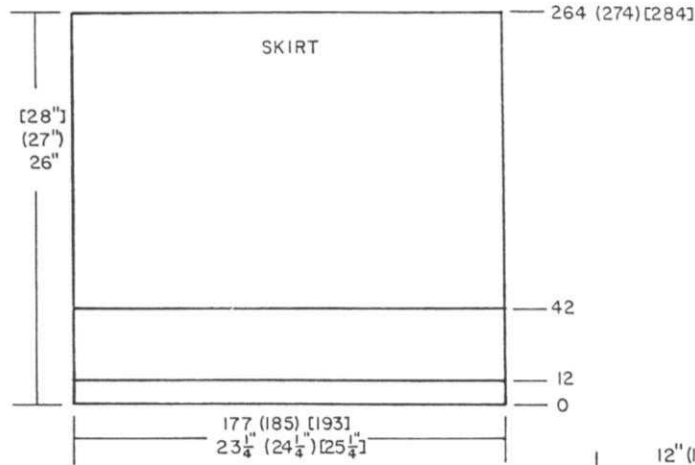
**SIZES:** 8/10 (12/14) [16/18]  
**YARN:** Venetia (thin) = color 1  
 Mami Rex = color 2  
**AMOUNT:**  
 color 1 1 1/2 lbs.  
 color 2 1 Spool  
**TENSION:** 5.1 for Skirt Section  
 5 for bodice and Lace  
**RIBBING - 1/1 I**  
 0/0 for Sleeve Cuffs  
**GAUGE:** Stockinette at Tension 5.1  
 15 sts. 20 rows = 2" (5 cm)

Stockinette stitch, Lace and  
 K1, P1 Ribbing at tensions given.  
 Punch Card.



### FRONT YOKE: Make 1, REVERSE 1.

Bring 65 (71)[77] needles into working position.  
 With waste yarn, cast on over these needles. Knit 9 to 11 rows then 1 row with Ravel Cord to the right side.  
 Begin at the LEFT (right for 2nd section) and leave\*3 needles in work then DROP THE NEXT 2 sts. REPEAT from \* across. Push the EMPTY NEEDLES to A (out of work) position.  
 With GARMENT YARN, 'e' cast on over the remaining needles in work. Knit 2 rows stockinette stitch. Bring the center of each group of 3 needles in work into holding position. Set Cam to hold needles. Put weights across your knitting. Knit 4 rows. RELEASE HOLDING CAM and bring only 1 of the needles out of work, into working position, knit 1 row then bring other empty needle into work and knit 1 row. Knit 2 rows then begin LACE PATTERN. ON THE RIGHT, decrease 1 st. every 2nd row 13x. After Row 36, bind off the remaining sts.  
 REVERSE SHAPING ON 2nd section.

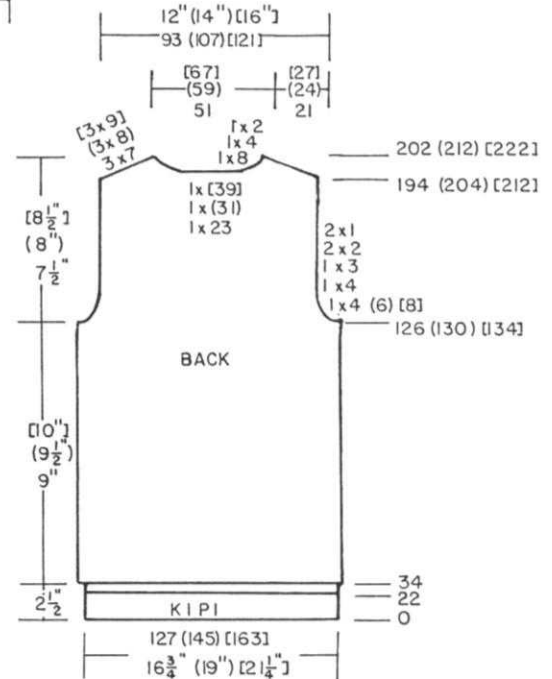


### SKIRT SECTION: Make 2 the same.

With color 1, cast on 177 (185) [193] sts. and work 12 rows K1, P1 Ribbing - Ten. 0/0 I for 4 circular rows, Ten. 1/1 I for 8 rows.  
 Transfer the ribber sts. to main machine and work 2 rows Stockinette stitch (Ten. 5) with color 1 then 2 rows Mami Rex.  
 Work the 24 rows Lace Pattern with color 1, Ten. 5, 2 rows Stockinette stitch with Mami Rex. (ROW 42).  
 Change to Tension 5.1 and continue in Stockinette stitch with color 1.  
 Knit to Row 264 (274) [284].  
 Remove the sts. onto contrast waste yarn.

### BACK BODICE

Bring 127 (145) [163] needles into working position.  
 Hang the skirt section held on waste yarn onto the machine. Hang the center st. on center needle then 1 st. on 12 single needles at each end. Hang the remaining sts. on each side, doubling the sts. as needed. Knit 1 row from left to right. Transfer every other stitch to the Ribber. COUNTER AT 0. With Tension 1/1 I, work 22 rows K1, P1 Ribbing.  
 Change Tension to 2/2 I and depress LEFT PART BUTTON, right PR of Ribber UP.  
 Work 12 rows circular ribbing for elastic casing.  
 Transfer the ribber sts. to main machine and continue in Stockinette stitch with color 1.  
 Knit to Row 126 (130) [134].



### SHAPE ARMHOLE: ON EACH SIDE, bind off

4 (6) [8] sts. 1x, 4 sts. 1x, 3 sts. 1x, 2 sts. 2x, 1 st. 2x. After Row 194 (204) [212], bind off the center 23 (31) [39] sts., put the needles on the left into holding position and complete the right side first.  
 \*SHAPE SHOULDER AND NECK AT THE SAME TIME.  
 FOR SHOULDER, bind off 7 sts. 3x, (8 sts. 3x) [9 sts. 3x].  
 FOR NECK, bind off 8 sts. 1x, 4 sts. 1x, 2 sts. 1x. Bring the needles on the left into working position, knit 1 row to the left side, turn the Row Counter back to 194 (204) [212] and complete the left half. Follow the instructions from \*.

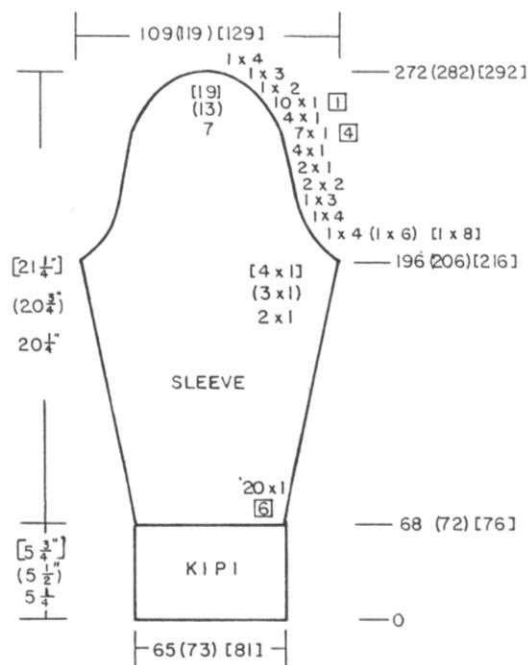
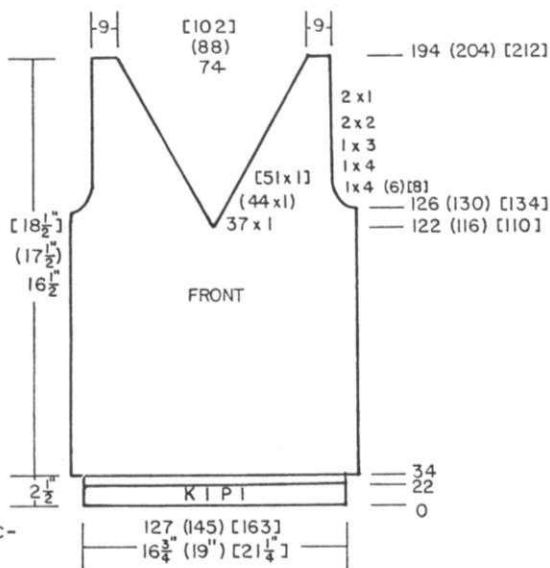
**FRONT BODICE:**

Work the front the same as the back to Row 122 (116) [110]. Transfer the center st. to a neighboring needle and put empty needle out of work. Put all the sts. on the left into holding position and complete the right side first.

\*ON NECK SIDE, decrease 1 st. every 2nd row 37x (44x) [51x] BUT AT THE SAME TIME AFTER ROW 126 (130) [134], SHAPE ARMHOLE SAME AS THE BACK.

After Row 194 (204) [212], bind off the remaining 9 sts.

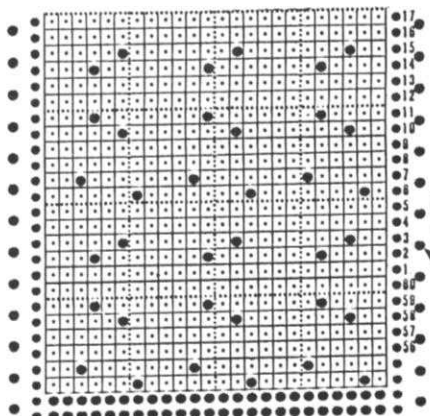
Bring the needles on the left into working position, knit 1 row to the left side, turn the Row Counter back to 122 (116) [110] and complete the left half. Follow the instructions from \*.



**SLEEVES:**

Cast on 65 (73) [81] sts. and work 68 (72) [76] rows K1, P1 Ribbing. Transfer the ribber sts. to main machine and continue in Stockinette stitch. ON EACH SIDE, increase 1 st. every 6th row 20x then increase 1 st. every 2nd row 2x (3x) [4x]. After Row 196 (206) [216], SHAPE CAP: Please follow the bind-offs ON EACH SIDE AS SHOWN ON THE CHART FOR YOUR SIZE.

**FINISHING:** See General Instructions. Gather top of sleeve and fit into armhole. Sew Yoke in place (see picture), gathering the back shoulder a bit to fit into front. With double strand of yarn, single crochet around neck edge, pulling in the back as needed. Make FRINGE: Cut yarn 19" long. Use 7 strands of Venetia, plus 1 of Mami Rex. Fold in half and pull through to make fringe (see picture).



REPEAT the Pattern through Row 41 then punch 2 rows of holes for connecting Card.

**448**



No. 448-A

SKIRT & SCARF

SIZES: 6/8 (10/12) [14/16]

YARN: Show

AMOUNT:

color 1 9 9 10 Balls

color 2 6 6 7 Balls

TENSION: RIBBER - 3.1/3.1 I

GAUGE: 15 sts. 40 rows = 2" (5 cm)

Knitted on the KH 910 machine with Ribber and 830 Color Changer. A Full Needle Fair Isle Pattern.

In order to knit the Scarf, you need the 900 Ribber or if you have an 830 Ribber, Punch a Card for every other needle. Alternate each row on Card. Set for Skip or Slip Stitch.

SPECIAL INSTRUCTIONS FOR THE FULL NEEDLE FAIR ISLE PATTERN KNITTING. - Carriage on the left. Set Pattern (KC) Push UP BOTH PR Controls on Ribber.

Knit 1 row to the right. Push in both Part Buttons (Skip) on main machine Carriage.

Knit 1 row to the left.

\*Change to color 2 (contrast).

Release Ribber Controls.

Knit 2 rows.

Change to color 1, PR Controls UP.

Knit 2 rows.

REPEAT FROM \* for Pattern.

**Continued**

**SCARF:**

With color 1, cast on 83 sts. on Ribber and main machine - Full needle Rib. Work circular knitting for 16 rows.

Set for Fair Isle Pattern - see PROGRAM CHART. Set up 830 Color Changer and follow SPECIAL INSTRUCTIONS for FULL NEEDLE FAIR ISLE PATTERN.

Knit in Pattern to Row 258  
Change to 1/1 Needle Selection Pattern as shown on Page 38 in the 900 Ribber Instruction Manual.  
Knit to Row 808.

Change to Fair Isle Pattern and knit to Row 1050 then circular Rib to Row 1066. Knit 20 rows CIRCULAR knitting with waste yarn and remove from machine. Overcast the open edges then remove the waste knitting.

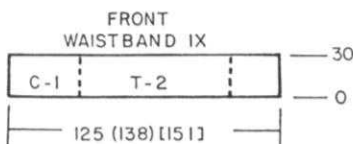
**RIGHT FRONT:**

Cast on 111 (118) [130] sts. and work circular knitting same as the back to Row 20. Set the PROGRAM FOR THE RIGHT FRONT and continue in the same way as for back, changing the tensions as shown.

After Row 378 (398) [418], ON THE RIGHT SIDE, decrease 1 st. every 10th row 10x.  
After Row 478 (498) [518], transfer all the sts. from the ribber to main machine (2 sts. on each needle). Knit 1 row then remove the sts. onto contrast waste yarn.

**LEFT FRONT:**

Cast on 124 (137) [150] sts. and work the same as for the RIGHT FRONT but do the decreasing on the LEFT SIDE.

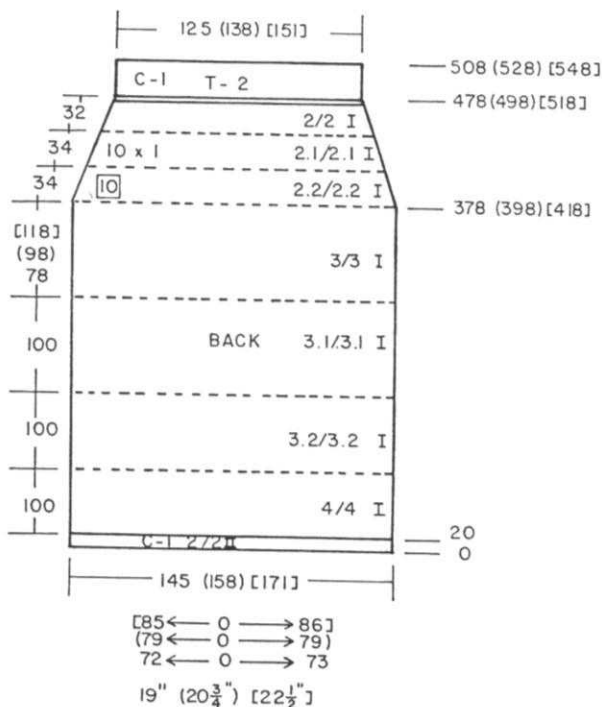
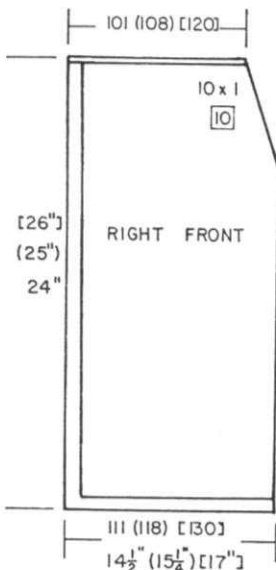
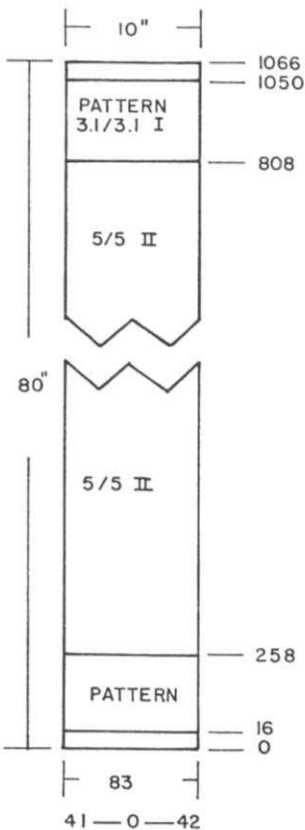


**FRONT WAISTBAND: Make 1.**

Bring 125 (138) [151] needles into working position. Beginning with the RIGHT FRONT hang the open sts. with wrong side facing you onto the extreme right side needles. Hang the LEFT FRONT open sts. beginning AT THE EXTREME LEFT SIDE onto the needles. There will be doubled sts. across the center. With tension 2, knit 30 rows (Hang Cast on comb first and work same as back) Hang the hem and bind off loosely.

**SKIRT FINISHING:**

Close side seams being sure to match Pattern. Insert elastic in waist. With color 1, work 1 row slip stitch crochet down front edge of skirt.

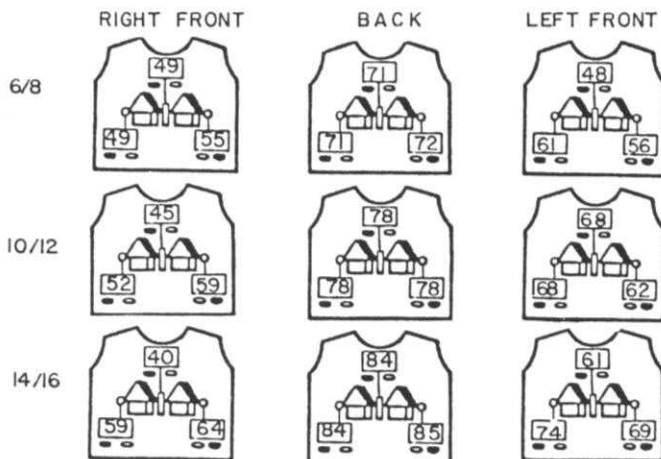


**SKIRT:**

BE SURE TO WATCH THE CHARTS FOR CHANGES IN TENSION THROUGHOUT.

**BACK:**

Cast on FULL NEEDLE RIB -Color 1, 145 (158) [171] sts. using the needle set up as shown below chart. 20 rows circular. Work in Pattern setting the Program as shown. Change tensions as shown on chart and knit to Row 378 (398) [418]. Continue to change tensions and AT THE SAME TIME, ON EACH SIDE, decrease 1 st. every 10th row 10x.  
After Row 478 (498) [518]. Transfer all ribber sts. to main machine (2 sts. on each needle) Knit 1 row, then hang the cast-on comb. Bring every other needle to holding position, (or MARK THE NEXT ROW BAND).  
Knit 1 row, drop comb but DO NOT REMOVE IT. Knit Stockinette st. to Row 508 (528) [548]. Hang the hem from cast on comb (or the loops from marked row onto every other needle). Bind off LOOSELY.





WOMAN'S BLOUSE

SIZES: 6/8 (10/12) [14/16]  
 YARN: Show  
 AMOUNT: 6 7 7 Balls  
 TENSION English Rib 3.1/3.1 I  
 Bands K1, P1 Ribbing  
 Tension 1/1 II  
 GAUGE: 16 sts. 25 rows = 2" (5 cm)

An English Rib Pattern (See any Ribber Instruction Manual). Bands are K1, P1 Ribbing.

FRONT AND BACK THE SAME.

Cast on 143 (155) [167] and work 30 rows K1, P1 Ribbing. SET FOR ENGLISH RIB.

Knit in Pattern to Row 160 (166) [170].

SHAPE ARMHOLE: ON EACH SIDE, bind off

16 (18) [20] sts. Continue in Pattern to Row

246 (260) [272]. Change to K1, P1 Ribbing and knit to Row 260 (274) [286].

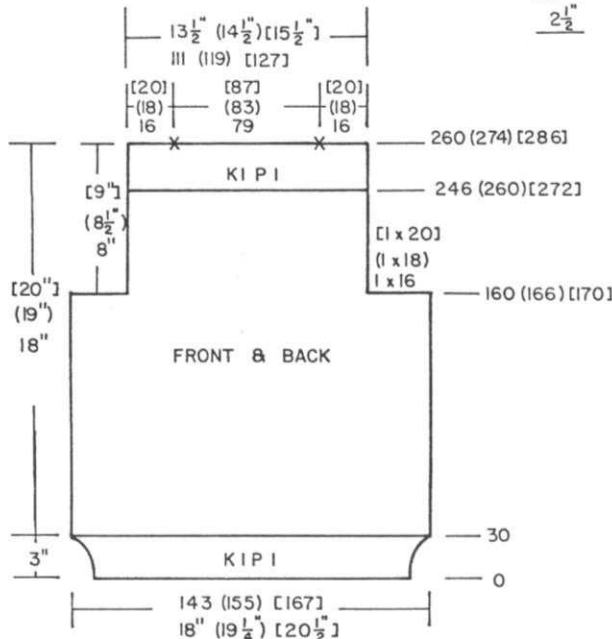
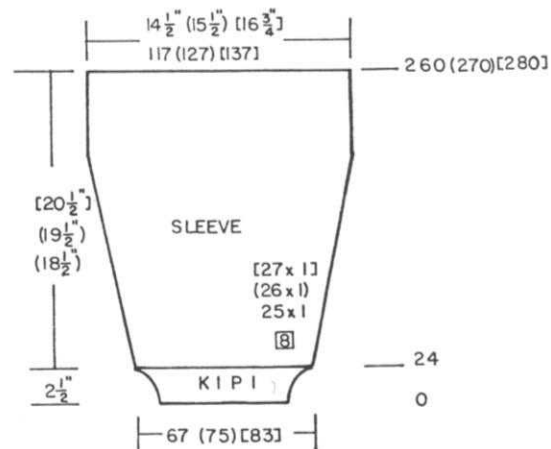
Transfer the ribber sts. FROM EACH SHOULDER to main machine. Put the center sts. from both beds into holding position. With waste yarn knit about 10 rows over each set of shoulder sts. then remove them from the machine.

Over the remaining neck sts. Put the ribber sts. back into the hooks of needles and return the main machine sts. to the hooks of needles.

Attach yarn and circular knit 2 rows. With waste yarn, continue circular knitting for 20 rows. Remove these sts. from machine.

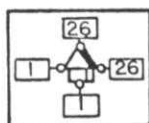
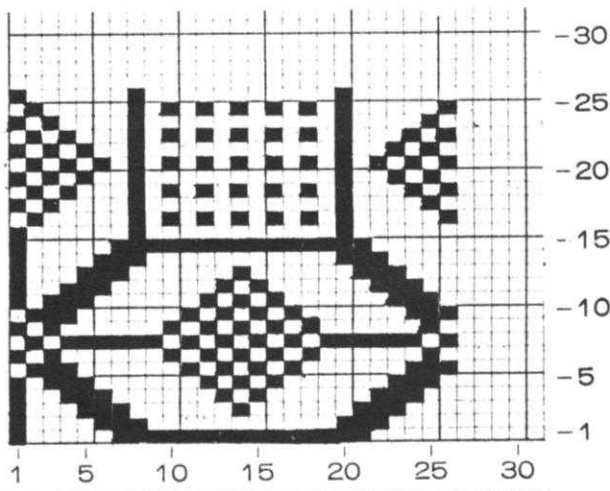
SLEEVES:

Cast on 67 (75) [83] sts. and work 24 rows K1, P1 Ribbing. Continue in English Rib Pattern. ON EACH SIDE, increase 1 st. every 8th row 25x (26x) [27x]. Knit to Row 260 (270) [280]. RELEASE THE ENGLISH RIB SETTING and knit 1 row in regular rib then transfer the sts. from ribber to main machine. Remove the sts. onto contrast waste yarn.



FINISHING:

Close shoulders first. Weave the neck sts. to finish off (See Instruction Manual). Bring 117 (127) [137] needles into working position. With right side facing you, hang back and front onto these needles, then hang the open sts. with wrong side facing onto the same needles. Knit 1 LOOSE ROW over the doubled sts. and then bind off LOOSELY. Close side seams.



SCARF



KNITKING introduces

# The Twister

A two-way Winder.

Twist your way to multi-color garments... Create your own original yarns by twisting your own selection of colors and textures. It will also wind a single strand of yarn into a ball.

with Twister      without Twister

PRICE: \$27.95—California residents add Sales Tax. SHIPPING costs—\$2.50

Order direct from your dealer or from: KNITKING, 1128 Crenshaw Blvd., Los Angeles, Calif. 90019



### MAN'S 'V' NECK PULLOVER

SIZES: 34/36 (38/40) [42/44]

YARN: Cordella

AMOUNT:

color 1 7 8 9 Balls  
color 2 2 2 2 Balls

TENSION: 6.2 to 7 Rib. 2/1.2 II

GAUGE: 14 sts. 20 rows = 2" (5 cm)

Stockinette stitch with a Patterned Insert on the front section.  
Bands are K2, P2 Ribbing.

#### FRONT:

With color 1 cast on 134 (146) [154] sts. Work K2, P2 Ribbing and BE SURE to have 2 sts. on each side on the main machine. Knit in ribbing to Row 44. Transfer the ribber sts. to main machine then increase 1 st. on the right side.

Work Stockinette stitch to Row 100. DIVIDE IN THE CENTER. Put the left side sts. into holding position and work the right side first.

Work SHORT ROWS.

ON OPPOSITE SIDE OF CARRIAGE, put into holding position

1 st. 67x (73x) [77x]. AT THE SAME TIME mark the side edge with strand of yarn after Row 164 (168) [172]. BE SURE TO WRAP THE INSIDE NEEDLE IN HOLDING POSITION IF YOU DO NOT USE THE AUTOMATIC WRAP.

After Row 234 (246) [254], begin in the center, turn Row Counter to 100, move the Carriage to the left side. Bring the LEFT HALF of needles into working position. Work the SHORT ROWS over these needles same as you did for the right half.

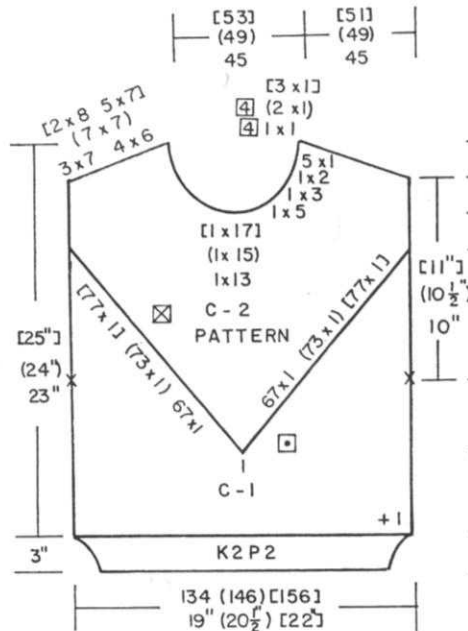


Transfer center st. to the neighboring needle and put empty needle into A (out of work) position. USE COLOR 2. Move the Carriage to the right side. Now work the INSERT from the center OUT. Work INCREASE SHORT ROWS. Push back into working position 1 needle opposite carriage BEGINNING EACH ROW \*BUT AT THE SAME TIME, after EVERY 13th row (Carriage will be on the LEFT) knit 1 row to the right with Tension 9. After this row, turn Tension back to garment tension and also transfer the 7th st. ON EACH SIDE to the inside neighboring needle. Put the empty needles out of work (A) position. Continue in this way, working the increase short rows and following the instructions from \* as well.

After Row 248 (256) [264], SHAPE NECK: Bind off the center 13 (15) [17] sts. put the needles on the left into holding position and complete the right side first. \*ON NECK SIDE, bind off

5 sts. 1x, 3 sts. 1x, 2 sts. 1x, 1 st. 5x, 1 st. every 4th row 1x (2x) [3x] and AT THE SAME TIME, after Row 264 (274) [284], SHAPE SHOULDER: Bind off 7 sts. 3x, 6 sts. 4x (7 sts. 7x) [8 sts. 2x, 7 sts. 5x].

Bring the needles on the left into working position, turn the Row Counter back to 248 (256) [264] and complete the left half. Follow the instructions from \*.



#### BACK:

Work the back the same as the front but OMIT THE INSERT, working stockinette stitch with color 1 to Row 264 (274) [284]. SHAPE SHOULDER same as the front and AT THE SAME TIME, after Row 270 (280) [290], bind off the center 36 (40) [44] sts. put the needles on the left into holding position and complete the right side first.

\*ON NECK SIDE, bind off 2 sts. 2x, 1 st. 1x.

Bring the needles on the left into working position, turn the Row Counter back to 270 (280) [290] and complete the left half. Follow the instructions from \*

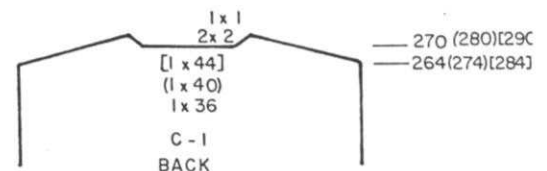
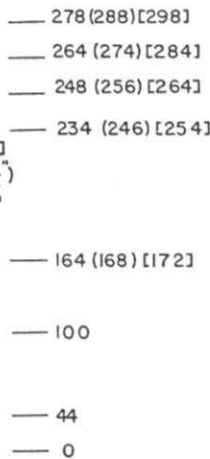
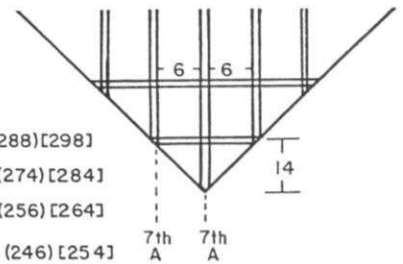
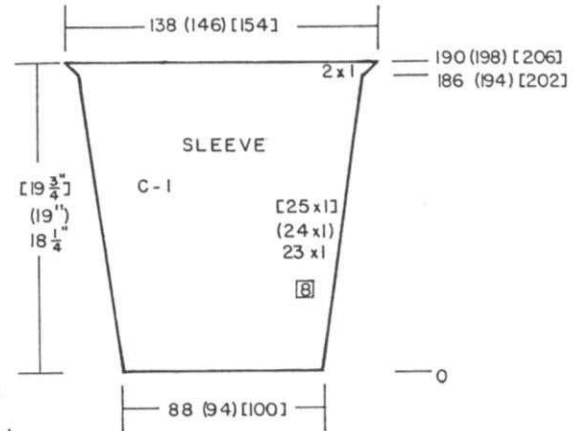
#### SLEEVES:

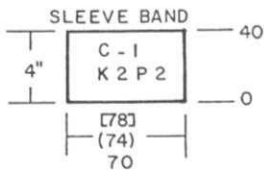
OPEN CAST ON 38 (94) [100] sts. Knit 9 to 11 rows with waste yarn then 1 row with Ravel Cord to the right side.

Turn Counter to 0 and continue with color 1.

ON EACH SIDE, increase 1 st. every 8th row 23x [24x] [25x]. After Row 186 (194) [202] ON EACH SIDE, cast on 1 st. 2x.

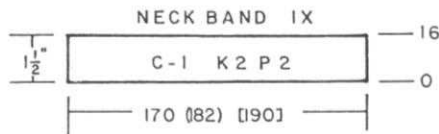
After Row 190 (198) [206] remove the sts. onto contrast waste yarn.





**SLEEVE BAND:**

Cast on 70 (74) [78] sts. with color 1 and work 40 rows K2, P2 Ribbing. Transfer the ribber sts. to main machine then hang cast on sts. held on waste yarn onto these needles doubling (approximately) every 3rd st. Knit 1 loose row then bind off LOOSELY.



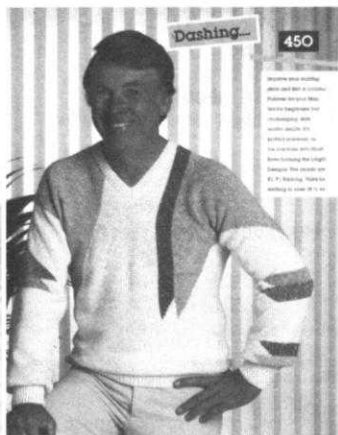
**NECKBAND:**

Cast on 170 (182) [190] sts. with color 1 and work 16 rows K2, P2 Ribbing. Transfer the ribber sts. to main machine. Close 1 shoulder then pick up sts. evenly around neckline and hang onto these needles. Knit 1 loose row then bind off LOOSELY.

**FINISHING:**

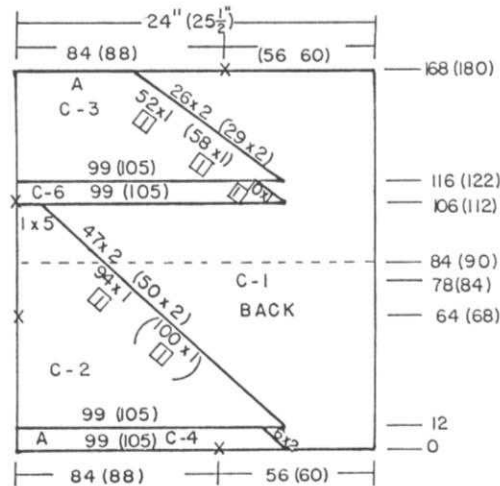
See General Instructions. Weave the sleeve into marked armhole and remove waste yarn. FOR THE INSERT - Work OUTLINE STITCH horizontally over the LOOSE ROWS and vertically over the out of work needles. Vertical (down) - work over 3 strands and BACK 1. Horizontally (across) work over 2 sts. and back 1. (See Picture and Drawing).

**450**



Attach main yarn and bring main color needles to working position on the right side and work the INCREASE Short Rows on the Right. When completed, do the same on the LEFT side. Begin again - center design FIRST with contrast and work the decrease Short Rows on each side as before. FOLLOW THE CHART for each section. You must cut the yarn each time for every completed section or you can use 3 balls of yarn. There is no actual wrapping of the needles. If you follow the instructions, the needles will be wrapped automatically for the center design using the contrast yarn. For the INCREASE short rows with main color yarn, you will need to wrap the inside needle in holding OR you can use the automatic wrap.

With contrast waste yarn, cast on 56 (60) sts. on the right side. Continue in Pattern as shown on the chart and AT THE SAME TIME, ON THE LEFT, mark the edge with a bit of yarn after Row 64 (68). Mark the left edge in the same way after Row 106 (112). Continue in pattern to Row 168 (180) Remove the 56 (60) sts. onto contrast waste yarn then remove the remaining 84 (88) onto separate waste yarn.



**MAN'S PULLOVER**

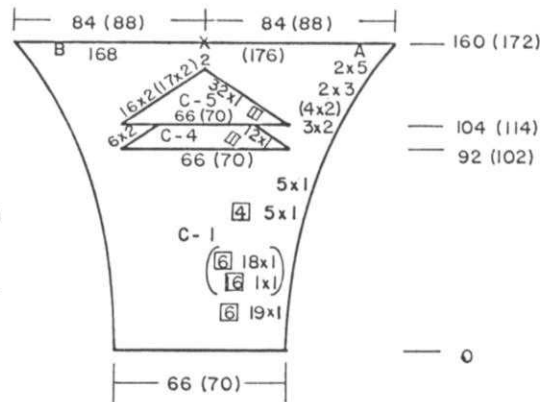
**SIZES** 38/40 (42/44)  
**YARN:** Viola  
 color 1 10 10 balls  
 colors 2 and 3 - 2 balls of each color  
 colors 4, 5, 6, 7, 8 - 1 ball each color.  
**TENSION:** 10  
**RIBBER TENSION**  
 Waistband - 8/7 II  
 Cuffs 9/8 II  
 Neckband 8.1/7.1 II  
**GAUGE:** 11 1/2 sts. 16 rows = 2" (5 cm)

Stockinette stitch with SPECIAL SHORT ROWS - Bands are K1, P1 Ribbing. Knitted sideways on the machine.

**SPECIAL INSTRUCTIONS**

**CENTER DESIGN** - The DECREASE Short Rows are ALWAYS knitted FIRST using the contrast color yarn. Attach contrast color and bring needles EACH SIDE OF DESIGN into E (holding) position. Knit 1 row across center needles with contrast \*then bring 1 design needle ON EACH SIDE to holding position. Knit across and REPEAT FROM \* till first design is completed and needles are all in holding.

**OPEN CAST-ON** with waste yarn 66 (70) sts. After knitting 9 to 11 rows, knit 1 row with ravel cord to the right. Change to color 1 and put counter at 0. FOLLOW THE CHART for the INCREASES ON EACH SIDE, BUT AT THE SAME TIME, after Row 92 (102), begin the CENTER DESIGN as shown on the Chart (SEE SPECIAL INSTRUCTIONS). Continue to work the increases ON EACH SIDE and the DESIGN as shown to Row 160 (172). Divide in the center and remove each side separately onto contrast waste yarn. To the extreme LEFT, hang the stitches MARKED A onto the machine. Put Counter at 0



**Continued**

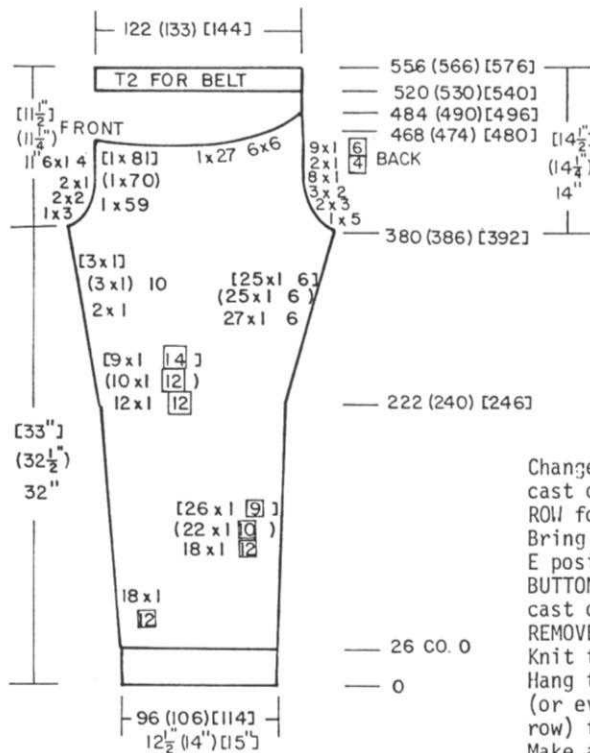
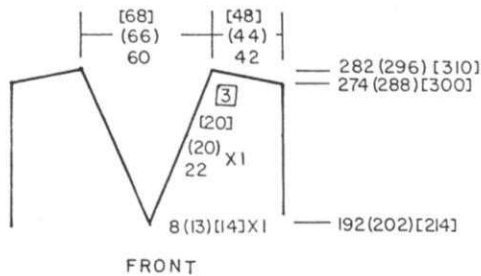
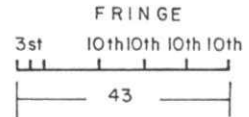


FRONT:

Work the front the same as the back to Row 192 (202) [214]. Divide in the center. Put the needles on the left into holding position and complete the right side first.  
 \*Work the CABLES ON ARM SIDE same as you did for the back and AT THE SAME TIME, ON NECK SIDE, decrease 1 st. every 2nd row 8x (13x) [14x] then decrease 1 st. EVERY 3rd ROW 22x (20x) [20x].  
 After Row 274 (288) [300], SHAPE SHOULDER same as the back.  
 Bring the needles on the left into working position, knit 1 row to the left side, turn the Row Counter back to 192 (202) [214] and complete the left half. Follow the instructions from \*.

FRINGE:

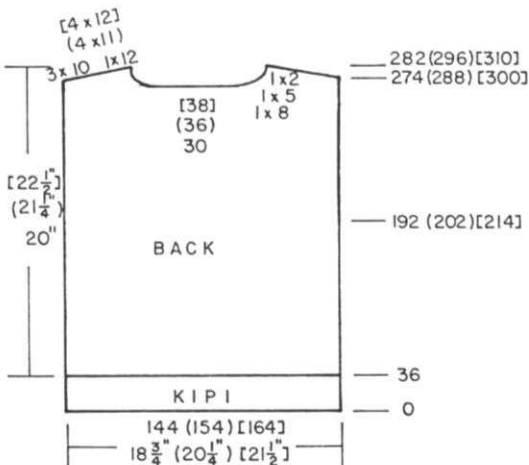
Bring 43 needles into working position. Leave 3 needles in work then every 10th needle in work. Push back all needles between these 7 needles in work to 'A' (out of work) position. With a DOUBLE STRAND OF YARN, cast on over the 7 needles.  
 Knit 10 rows. Be sure to hang some weights onto the machine. Drop the 4 SINGLE NEEDLE STITCHES from the machine. Continue to knit and drop the same stitches from the machine every 10 rows.  
 Continue in this way until fringe measures approximately 19" (20") [21"]. Bind off the 3 sts. on the left and pull out all the single sts. to form the fringe.



PANTS: MAKE 1, REVERSE 1

Use CAST ON COMB HEM.  
 Cast on 96 (106) [114] sts. and work Stockinette stitch.  
 After Row 26, hang the hem. Counter at 0.  
 ON THE RIGHT, increase 1 st. every 12th row 18x (every 10th row 22x) [every 9th row 26x]  
 BUT AT THE SAME TIME, on the LEFT, increase 1 st. every 12th row 18x FOR ALL SIZES.

Change to Tension 2. Hang cast on comb (or MARK THE NEXT ROW for belt).  
 Bring every other needle to E position, push in both PART BUTTONS, knit 1 row, drop the cast on comb but DO NOT REMOVE IT).  
 Knit to Row 556 (566) [576]. Hang the hem from cast on comb (or every other loop from marked row) then bind off LOOSELY. Make a second section with REVERSE SHAPING.



After Row 222 (240) [246], PLEASE FOLLOW THE DIFFERENT SHAPINGS ON EACH SIDE as shown on the Chart for YOUR SIZE.

After Row 380 (386) [392] WORK THE DECREASES EACH SIDE AS SHOWN ON THE CHART FOR YOUR SIZE.

After Row 468 (474) [480], work SHORT ROWS.  
 ON OPPOSITE SIDE OF CARRIAGE, put into holding position 59 (70) [81] sts. 1x, then 27 sts. 1x, 6 sts. 6x for all sizes.

After Row 484 (490) [496] bring all the needles into working position. Knit to Row 520 (530) [540].

FINISHING: Close front and back crotch sections then close leg seams. Leave one side of waistband open then put in elastic and close seam.

FINISHING: THE PURL SIDE IS THE RIGHT SIDE OF TOP.  
 Close Shoulders and sew side seams. With double strand of yarn, work 1 row single crochet around neck edge. Attach fringe to front neckline (see picture).



### WOMAN'S TOP

SIZES: 6/8 (10/12) [14/16]  
 YARN: Venetia (thin)  
 AMOUNT: 1 lb. 1 1/4 lbs. 1 1/2 lbs.  
 TENSION: 4  
 GAUGE: 16 sts. 30 rows = 2" (5 cm)

A Tuck stitch Pattern combined with Stockinette stitch with stripes using 2 strands of yarn. Punch Card. Single crochet around neck and armholes.

#### PATTERN:

30 Rows Tuck Stitch-Single Yarn  
 \* 2 Rows Doubled Yarn  
 6 Rows Single Yarn  
 REPEAT FROM \* until there are 5 stripes of Double Yarn.  
 Knit 1 row from RIGHT to LEFT  
 SETTING TUCK PATTERN - then begin again with the 30 rows of TUCK STITCH.  
 REPEAT PATTERN THROUGHOUT.

BACK & FRONT - The same.

Hang the Cast-on Comb. (Other machine owners use Ravel Cord). Bring 160 (174) [186] needles into working position. With Needle Selector, bring every 2nd needle to 'E' position. Push in BOTH PART BUTTONS and knit 1 row right to left. Release Part Buttons and drop the Cast-on Comb.

Knit 3 rows. Hang the cast on LOOPS onto every other needle (makes a Picot edge). Knit to Row 6, setting the TUCK PATTERN before knitting Row 6.

CONTINUE IN PATTERN as established above.

After Row 260, mark each side with a bit of contrast yarn for arm opening.

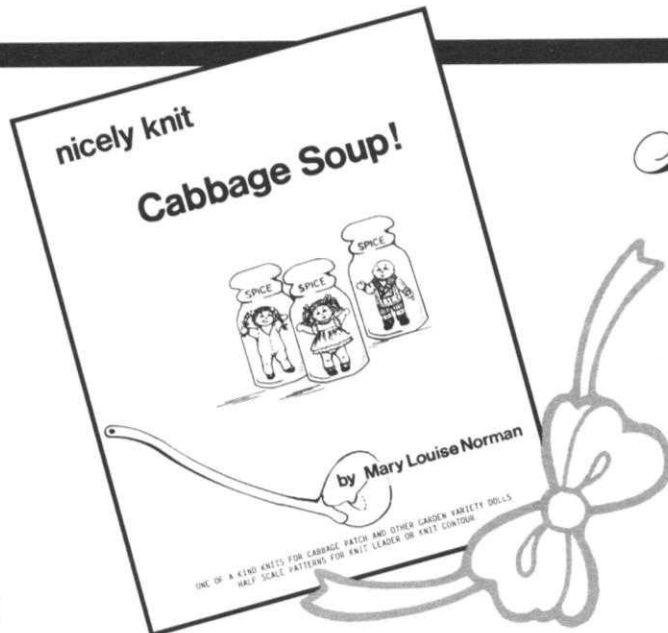
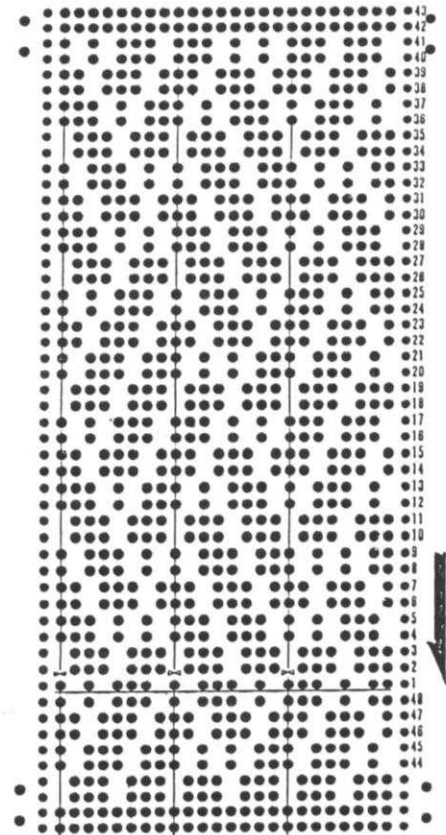
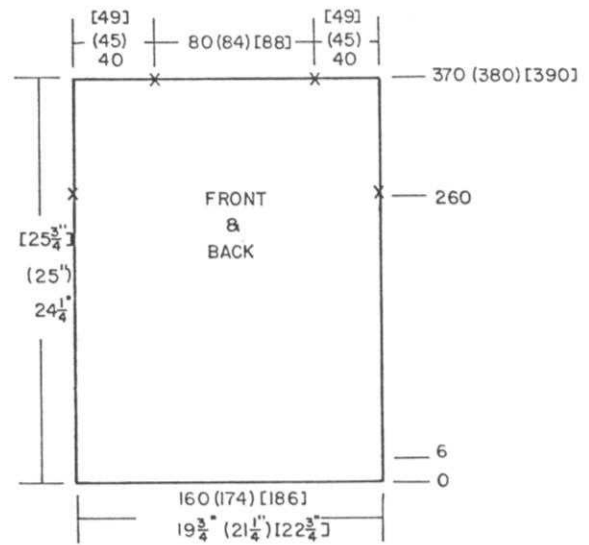
Continue in Pattern to Row 370 (380) [390].

Bind off (or remove onto waste yarn) 40 (45) [49] sts. for each shoulder then remove the remaining 30 (84) [88] sts. onto separate waste yarn.

Make another section the same.

#### FINISHING:

Close the shoulders and side seams to marked row. Work 1 row single crochet using double strand of yarn around armholes and neckline. Make 3 TISTED CORDS, using 3 strands of yarn for each one (When doubled over for final twist will be 6 strands). Make 1 cord each 44" - 45" - 46" long ( " 47" - 48" - 49" long) [ " 50" - 51" - 52" long] Knot the 3 cords together and trim ends with beads or shells (see Picture).



## Nicely Knit Lines

There's another excellent book from the pen of Mary Louise Norman. Dedicated to "The knitters of the world who love dolls," it contains 33 garment patterns for Cabbage Patch and other Dolls plus a lot of Practical Knitting Hints...

Price \$15.50 (Calif. residents add Sales Tax) plus \$1.50 mailing costs.

Order direct from KNITKING-1128 Crenshaw Blvd., Los Angeles, CA 90019



### WOMAN'S PULLOVER

SIZES: 4/6 (8/10) [12/14]

YARN: Venetia, Alpacana, Mami-Rex

Color 1 = Venetia

Colors 2, 3, 4, 5 = Alpacana

Colors 6, 7, 8, 9 = Mami-Rex

#### AMOUNT:

Venetia - Approx. 1 lb. for all sizes.

Alpacana - 1 1 2 balls of each of 4 colors.

Mami-Rex 1 SPOOL each color to MATCH the 4 colors of Alpacana

TENSION: 7 Ribber 0/0 I

GAUGE: 13 sts. 21 rows in PATTERN.

A combination of Lace and Weaving. Weave with the Alpacana and Mami-Rex held together. Punch Card. Bands are K1, P1 Ribbing for Waistband, Neckband and cuffs are Stockinette stitch. Knitted sideways on the machine.

#### SPECIAL PATTERN INSTRUCTIONS.

The needles for Pattern are selected by BOTH LACE CARRIAGE and the KNIT CARRIAGE. BEGIN - Knit 2 rows stockinette st. Set KC and move the brushes DOWN for WEAVING, CHANGING COLOR as shown.

\* LACE CARRIAGE - 2x

Knit 2 rows with Weaving yarns over the selected needles.

LACE CARRIAGE - 2x

Knit 2 rows with Weaving Yarns over the selected needles.

LACE CARRIAGE - 4x

Knit 2 rows with Weaving yarns over the selected needles. \*

REPEAT FROM \* TO \* .

#### COLOR CHART

48	2 (5) [4]	12
	5 (4) [3]	12
	4 (3) [2]	12
	3 (2) [5]	12

### SLEEVE No. 1.

With color 1, cast on 52 (60) [68] sts. and work 20 rows Stockinette stitch with Tension 2.

Change to Tension 3 and knit to Row 36. Hang the hem.

Follow the SPECIAL PATTERN INSTRUCTIONS USING THE COLOR SEQUENCE AS SHOWN ON THE CHART IN YOUR SIZE. The WEAVING COLORS CHANGE EVERY 12 ROWS. BE SURE TO BEGIN with the CORRECT Weaving color.

ON EACH SIDE, increase 1 st. every 4th row 37x (38x) [39x] then increase 1 st. every 3rd row 8x for all sizes.

After Row 208 (212) [216], ON EACH SIDE, increase 1 st. every 2nd row 5x (6x) [7x], then cast on 2 sts. 2x for all sizes.

After Row 224 (230) [236], divide in the center and remove each side separately onto contrast waste yarn.

#### FRONT:

TO THE LEFT OF 0, bring 72 needles into working position and to the RIGHT OF 0, bring 53, (61) [69] needles into working position. Hang A section of sleeve onto the left side needles (Needle 72 to the left of 0). Using a cast on rag (a separate piece of waste knitting) hang this onto the remaining needles to the right.

Keeping in SPECIAL PATTERN, (Counter at 0), knit to Row 37.

SHAPE NECK: Bind off 2 sts. 2x then decrease 1 st. 4x. Knit to Row 96 (102) [108]. This is CENTER of garment.

GO BACKWARD WITH ALL COLOR CHANGES.

Continue in Pattern to Row 145 (157) [169].

ON NECK SIDE, increase 1 st. 4x then cast on 2 sts. 2x.

Knit to Row 192 (204) [216].

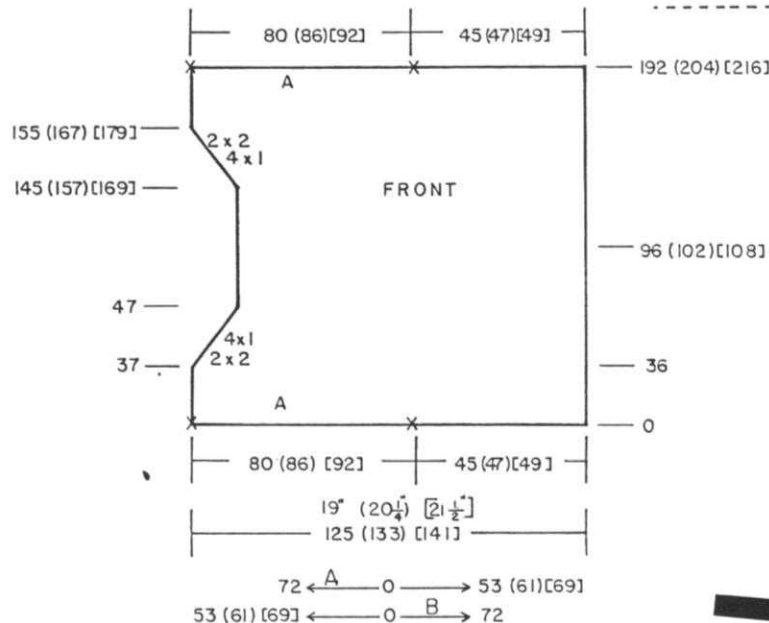
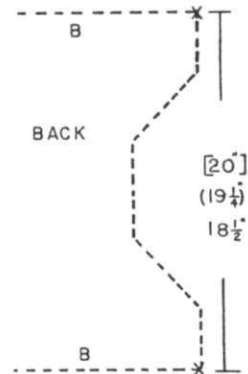
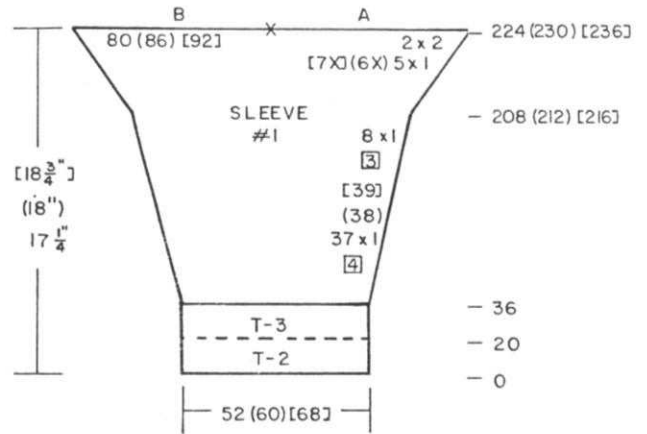
Remove 45 (47) [49] sts. on the RIGHT onto contrast waste yarn then remove the 80 (86) [92] sts. on the LEFT onto separate waste yarn.

#### BACK:

Bring 72 needles on the RIGHT of 0 into working position and 53 (61) [69] needles on the LEFT of 0 into working position.

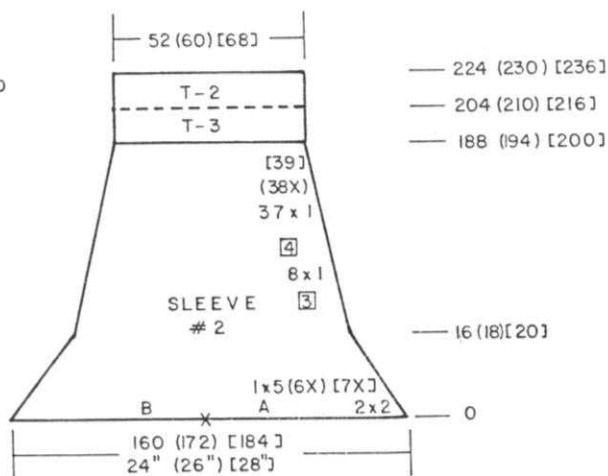
Hang B section of sleeve onto 80 (86) [92] needles on the RIGHT SIDE and the cast on rag over the remaining needles on the LEFT side. Counter 0. Continue in Pattern same as the front but with REVERSE SHAPING.

When completed, remove the stitches onto separate waste yarn same as you did for the front.



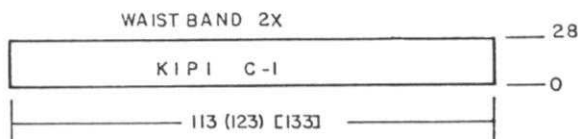
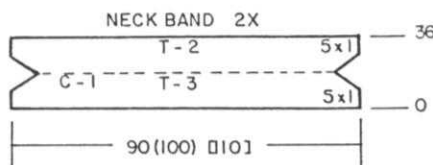
SLEEVE NO. 2.

Bring 160 (172) [184] needles into working position.  
 Hang A side of FRONT onto the needles on the right side.  
 Hang B SIDE of BACK onto the needles on the LEFT.  
 Counter at 0.  
 Continue in PATTERN and follow the chart where you will DECREASE instead of Increase for the sleeve shaping.  
 After Row 188 (194) [200], Change to Tension 3, color 3 and work Stockinette stitch to Row 204 (210) [216].  
 Change to Tension 2 and knit to row 224 (230) [236].  
 Hang the first Row of Stockinette stitch and bind off loosely.



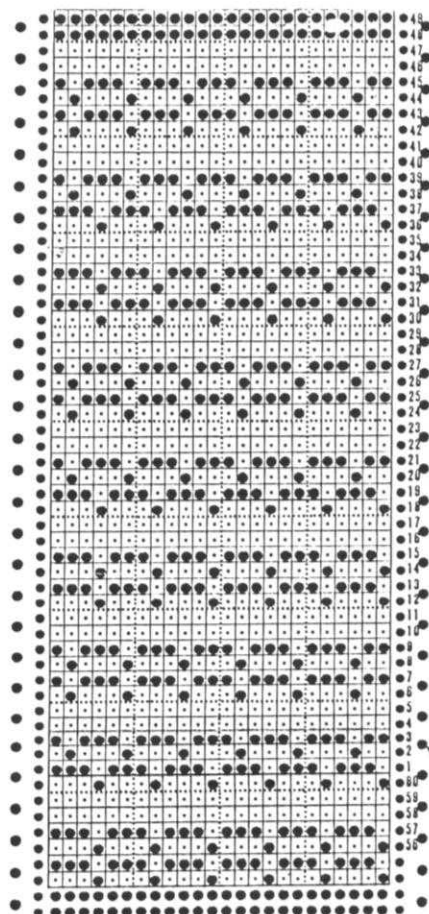
NECKBAND: Make 2.

With color 1, cast on 90 (100) [110] sts. and with Tension 3, work Stockinette stitch. Knit 4 rows, then ON EACH SIDE, decrease 1 st. every 2nd row 5x. Change to Tension 2 and ON EACH SIDE, increase 1 st. every 2nd row 5x. Knit 4 rows. After Row 36, hang the cast on sts. onto these needles. Pick up the sts. from neck edge with wrong side facing you and hang onto these needles evenly spaced across. Knit 1 row, then bind off LOOSELY.  
 REPEAT for other Neckband.



WAIST BAND - Make 2.

Cast on 113 (123) [133] sts. with color 1 and work 28 rows K1, P1 Ribbing. Transfer the ribber sts. to main machine.  
 Hang 1 edge of waist onto these needles. Knit 1 row then bind off loosely.  
 Make other band the same.



FINISHING: See General Instructions.

# knitking

# SEMINAR & OPEN HOUSE 1985



It will run from September 16th through the 21st and will be held as usual on our premises at 1128 Crenshaw Blvd., Los Angeles, Calif. 90019.

All experts at KNITKING will be in attendance plus many **acknowledged guest authorities**... We will repeat our very successful daily Fashion Show and Contest with daily prizes and the daily winners will be eligible for the finals and a **GRAND PRIZE** at the end of the Seminar. All types of garments and household items will be eligible. So, start preparing now. Knitting machine dealers and KNITKING employees will not be eligible for the contests.

You will be seeing the **NEW KNITKING PUNCH CARD BULKY, KNITTING COMPUTER** and the **NEW ELECTRIC CARRIAGES KG 88, KG 89.**

Admission to KNITKING Seminars is **FREE**. Coffee and doughnuts are available all day every day free of charge.

Regular Seminar visitors will tell you that ours are the best... So, enter the dates in your diary now... **September 16th through 21st** and plan to be with us.





## WOMAN'S PULLOVER

**SIZES:** 8/10 (12/14) [16/18]  
**YARN:** Cordella  
**AMOUNT** 5 6 7 balls  
**TENSION** 8 Ribber 5  
**GAUGE:** 13 sts. 21 rows = 2" (5 cm)

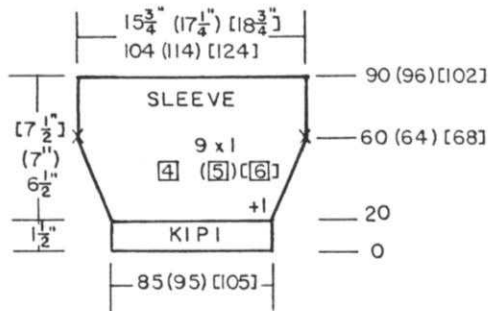
Made on the KH 891 with KG 89 ELECTRIC CARRIAGE. K1, P1 for bands. Punch Card for Design.

BACK & FRONT the same.

Cast on 125 (137) [149] sts. and work 60 rows K1, P1 Ribbing. Continue in Pattern.

Knit to Row 176 (182) [188].  
**SHAPE ARMHOLE:** ON EACH SIDE bind off 20 (22) [24] sts. then knit to Row 240 (252) [264]. Bind off the center 37 (43) [49] sts. Put the needles on the left into 'A' holding position using a Ravel Cord. Mark the Punch Card and complete the right side first.

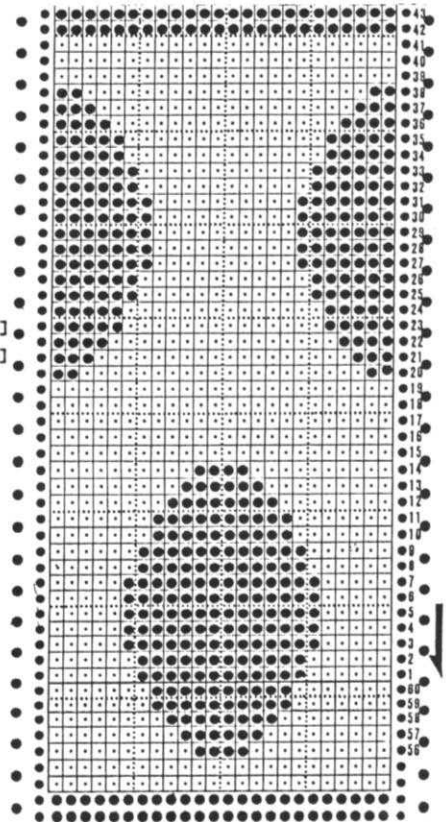
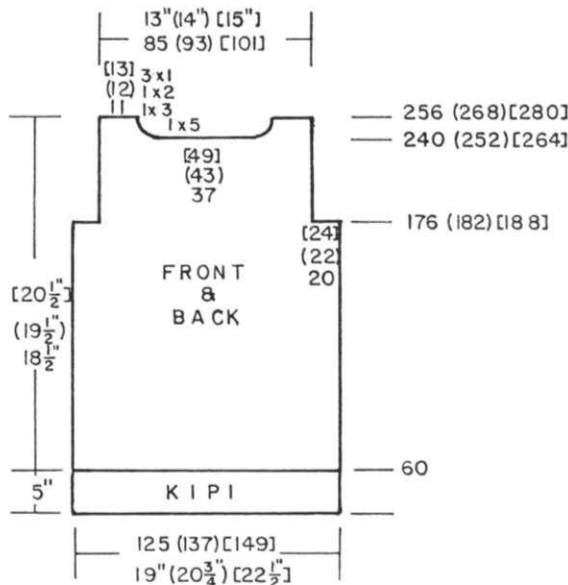
\*ON NECK SIDE, bind off 5 sts. 1x, 3 sts. 1x, 2 sts. 1x, 1 st. 3x. Bind off the remaining sts. after Row 256 (268) [280]. Bring the needles on the left into working position. turn Punch Card back to marked row and UNLOCK CARD. Row Counter to 240 (252) [264] and complete the left half. Follow the instructions from \*.  
 Make another section the same.



## SLEEVES:

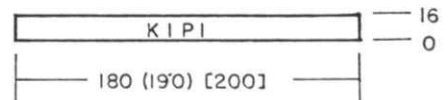
Cast on 85 (95) [105] sts. and work 20 rows K1, P1 Ribbing. Increase 1 st. on the right side. Continue in Pattern.

ON EACH SIDE, increase 1 st. every 4th (5th) [6th] row 9x. AT THE SAME TIME, mark each side with a bit of yarn after Row 60 (64) [68] for setting in sleeves. After Row 90 (96) [102], bind off the remaining sts.

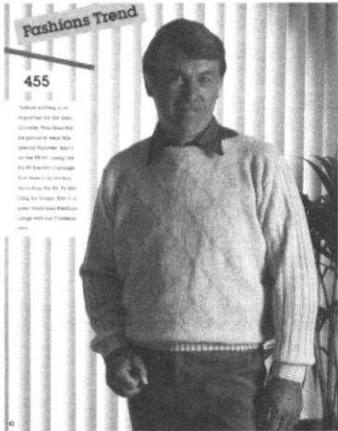


## NECKBAND:

Cast on 180 (190) [200] sts. and work 16 rows K1, P1 Ribbing. Knit 1 row stockinette stitch. Remove the sts. onto contrast waste yarn.

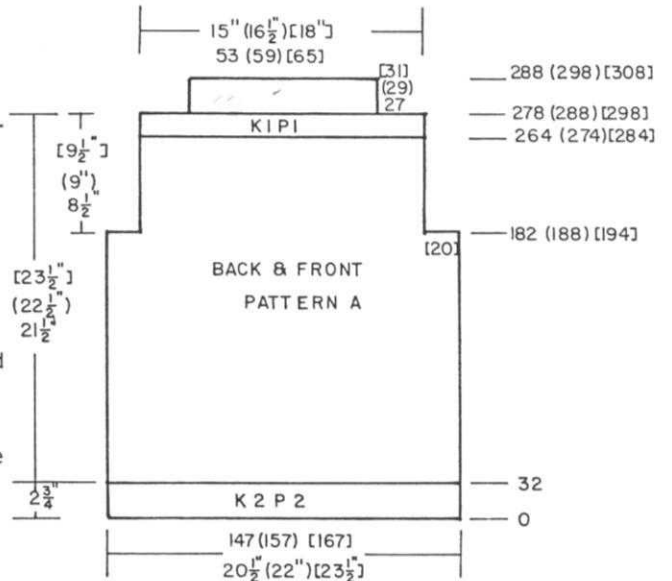


**FINISHING:** See General Instructions. Set in sleeves. Weave the open sts. of neckband to neckline and remove the waste yarn.



**BACK and FRONT:**

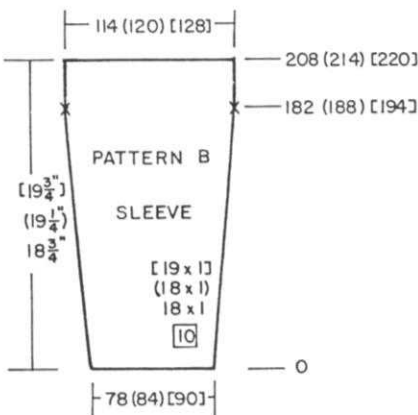
'e' cast on 147 (157) [167] sts. and work 32 rows K2, P2 Ribbing. Put in a BLANK CARD when ribbing is completed, knit 2 rows Stockinette stitch and THEN put in Pattern Card for Pattern A. Continue in Pattern. Knit to Row 182 (188) [194]. SHAPE ARMHOLE: ON EACH SIDE, bind off 20 sts. Knit to Row 264 (274) [284]. Work 14 rows K1, P1 Ribbing. Remove Electric Carriage from machine and replace with standard Carriage. Tension 6. ON EACH SIDE, remove 27, (29) [31] sts. for shoulder. Over the remaining sts. work 10 rows Stockinette stitch. Bind off loosely. Make another section the same.



**MAN'S PULLOVER**

**SIZES:** Small (Medium) [Large]  
**YARN:** Cordella  
**AMOUNT:** 8 8 9 balls  
**TENSION** 8 Ribbing - 5  
**GAUGE:** 14 sts. 22 rows = 2" (5 cm)

Made on the KH 891 with Electric Carriage KG 89. Sleeve and Waist bands are K2,P2 Ribbing. Neckband is K1, P1 with facing Stockinette stitch. Punch 2 Cards, A and B Patterns.

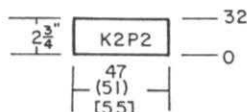


**SLEEVES:**

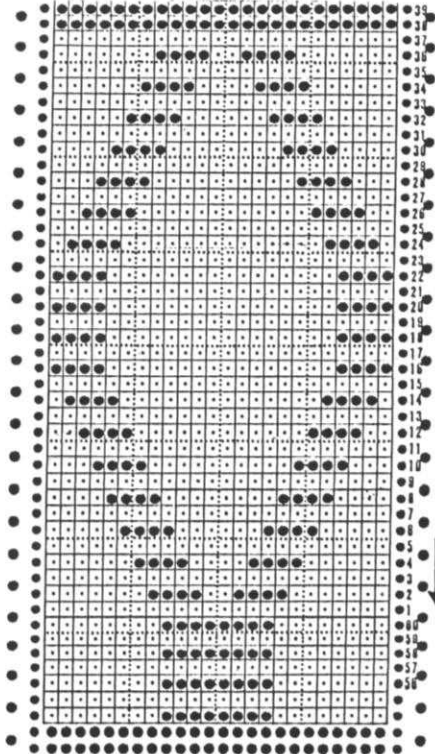
USE THE NORMAL CARRIAGE and OPEN CAST ON with contrast waste yarn. 78 (84) [90] sts. Knit 9 to 11 rows and 1 row with a Ravel Cord to the right side. COUNTER AT 0. With GARMENT YARN, knit 2 rows Stockinette stitch. CHANGE TO THE ELECTRIC CARRIAGE and SET PATTERN B and continue in Pattern. ON EACH SIDE, increase 1 st. every 10th row 18 (18) [19]x AND after Row 182 (188) [194] mark each side with a bit of contrast yarn. After Row 208 (214) [220], bind off loosely.

**SLEEVE BANDS:**

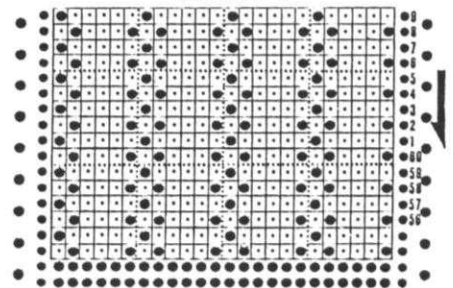
ELECTRIC CARRIAGE: - 'e' cast on 47 (51) [55] sts. and work 32 rows K2, P2 ribbing. Change to normal carriage and knit 1 row Stockinette stitch. Hang the OPEN STS. of sleeve onto the machine doubling the sts. as follows - 1-2-2 across. Bind off loosely.



**PATTERN A**



**PATTERN B**

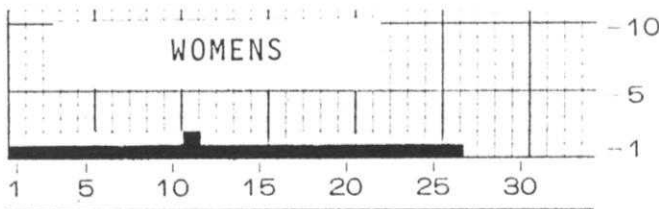
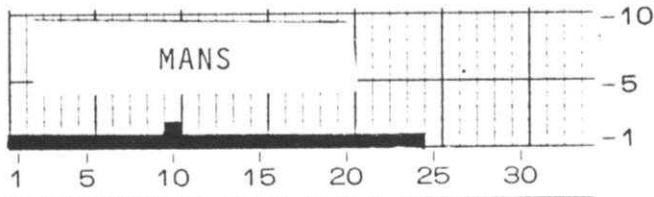
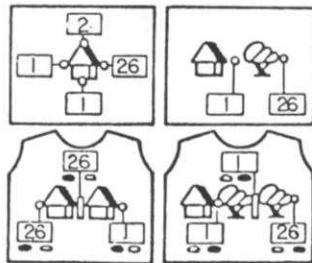
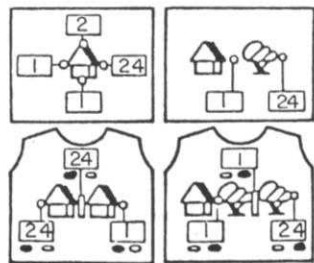


REPEAT the Pattern through Row 41 then punch 2 rows of holes for connecting Card.

**FINISHING:** See General Instructions. Set Sleeves in from marked row. Fold Facing of neckband to the inside and sew in place loosely.

WOMAN

MAN



**PATTERN A - SLIPPERS**

**SIZES:** Small/Medium (Medium/Large)  
**YARN:** Multi-Show  
**AMOUNT:** 2 balls for both sizes.  
 Use any left over yarn to make the POM-PONS.

K1, P1 Ribbing OVER EVERY 4th NEEDLE ON BOTH BEDS.

Make 2.

Cast on 117 (121) sts. using every 4th needle on main machine and every 4th needle (between the main machine needles) on Ribber. Tension 10/8 I Pitch of Ribber on P.  
 After cast on, hang comb and weights then work 3 circular rows (selvage). Continue in K1, P1 Ribbing to Row 52 (60).  
 Transfer the ribber sts. to main machine then remove the Knit sts. onto 1 strand of yarn and then the purl sts. onto another strand of yarn. Pull up each group of sts. separately and tie firmly.

**FINISHING:** Fold slipper in half and sew up back seam. Sew front seam approximately 4" from toe. Make POM-PON out of any left over yarns and sew in place. See picture.

**PATTERN B - SLIPPERS (Men's & Woman's)**

**SIZES:** Small (Medium) [Large]  
**YARN:** Extra or Alanda  
**AMOUNT:** 2 balls for all sizes.

Made on the 910 with KG 88 Electric Carriage.

Make 2 TENSION 10 plus.

'e' cast on

<u>MENS</u>	<u>WOMANS</u>
52 sts.	48 sts.
SET ELECTRIC CARRIAGE FOR	
44 (50) [56]	42 (46) [50] ROWS
Knit in Pattern.	

SET FOR K1, P1 Ribbing  
 SET ELECTRIC CARRIAGE TO KNIT  
 22 (24) [26] ROWS 22 (22) [24]

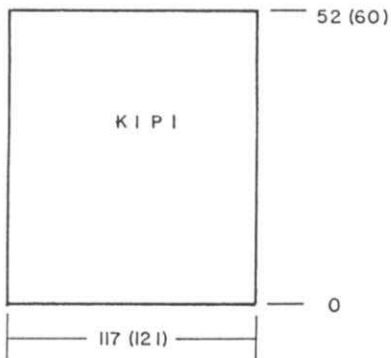
Remove the knit sts. onto one strand of yarn then the purl sts. onto another strand of yarn. Pull each group of sts. and tie firmly,

**FINISHING:**

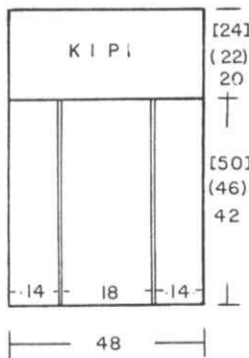
Sew up back seam but gather the last few sts. at heel to round it off. Sew front seam from toe to end of K1, P1 Ribbing.  
 Crochet around top for beading. Attach yarn, chain 3, skip 2 rows, \*double crochet into next st. Skip 2 rows and REPEAT FROM \*.  
 Make Cord. Cast on over 2 needles and with tension 7 or 8, make cord 38 inches long. Pull through eyelets and tie in front.

**PATTERN B**

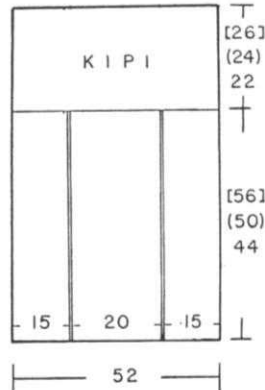
**PATTERN A**



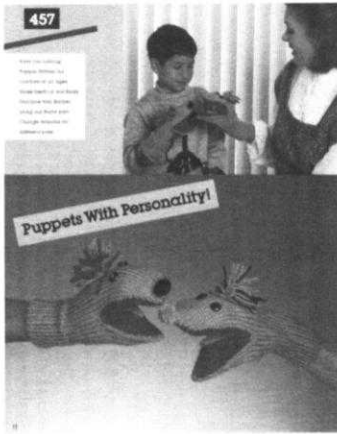
**WOMAN'S**



**MAN'S**



# 457

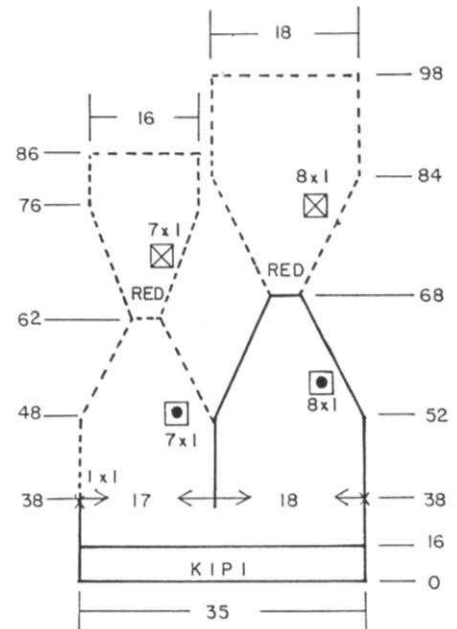


### CHILD'S PUPPET MITTENS

SIZE: 4 to 6 year old  
 YARN: Bravo  
 AMOUNT: 3 balls color 1  
 1 ball color 2 - Red  
 for mouth  
 Will make 2 pair.  
 TENSION: 3 or 4 for Stockinette st.  
 2/2 for K1, P1 Ribbing.  
 GAUGE: 12 sts. 13 rows = 2" (5cm)

Knitted on the KH 230 BULKY machine.  
 Stockinette stitch and K1, P1  
 Ribbing for cuffs. Use lower  
 tension for smaller size.

With color 1, cast on 35 sts. and  
 work 16 rows K1, P1 Ribbing.  
 Transfer the Ribber sts. to main  
 machine and continue in Stockin-  
 ette stitch.  
 Knit to Row 38. Mark each side  
 with a bit of contrast yarn.  
 Put 17 sts. on the left into holding  
 position then knit the right half  
 first.  
 knit to Row 52 then work SHORT  
 ROWS.  
 ON EACH SIDE, put into holding  
 position 1 st. 8x ON EACH SIDE  
 SIDE.  
 Be sure to wrap inside needle in  
 holding position to prevent a hole  
 OR you can use the automatic wrap.  
 After Row 68, CHANGE TO RED.  
 WORK SHORT ROWS; Bring back into  
 working position, 1 st. 8x ON  
 EACH SIDE.  
 After Row 84, knit to Row 98 then  
 remove the sts. onto contrast waste  
 yarn.  
 Bring the needles on the left into  
 working position. Decrease 1 st.  
 on inner edge. Turn the Row Counter  
 back to 48 and work Short Rows  
 same as before with color 1  
 Put into holding position 1 st. 7x  
 ON EACH SIDE.  
 After Row 62, change to Red. Bring  
 back into working position 1 st. 7x  
 ON EACH SIDE.  
 Knit to Row 86 then remove the sts.  
 onto contrast waste yarn.



#### FINISHING:

Fold the two sections  
 in half and weave the open  
 sts. together from the KNIT  
 SIDE so a ridge will be formed.  
 Tuck the mouth section inside  
 the hand section and match the  
 marked edges. Weave all  
 seams.  
 Sew Buttons on for eyes or you  
 can embroider them and embroider  
 nose with black yarn. Make  
 a fluffy pom-pom for each  
 mitten and sew in place.  
 See Picture.

# 458



### BOY'S HAT & SCARF

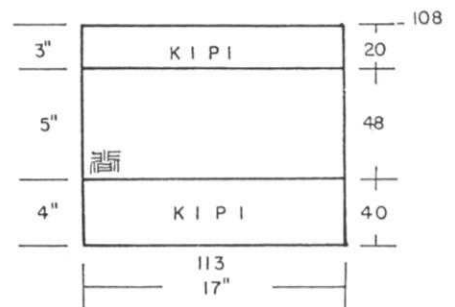
SIZE: Fits head size 22" to 24"  
 YARN: Alanda  
 AMOUNT: 6 balls  
 TENSION: 10+ - Ribbing 9  
 GAUGE: 13 sts. 16 rows = 2" (5 cm)

Knitted on the KH 910 with KG 88  
 Electric Carriage.  
 Bands are K1, P1 Ribbing.

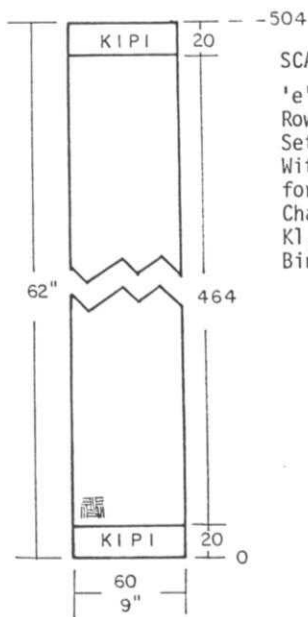
#### HAT:

'e' cast on 113 sts. and with  
 Tension 9, work 40 rows K1, P1  
 Ribbing.  
 Change to K1, P1 Ribbing and  
 with Tension 9, work 20 rows.  
 Change to Tension 10+ and set in  
 Pattern. Work 48 rows.

Thread a tapestry needle or double  
 eyed needle with strand of yarn  
 and remove all the knit sts. onto  
 yarn then remove all the purl sts.  
 onto separate strand of yarn.

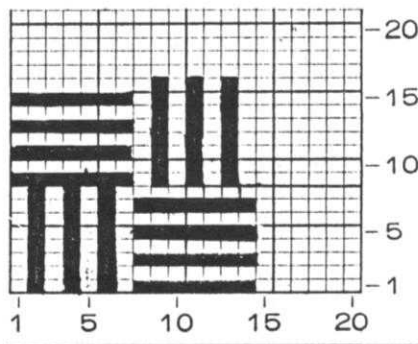
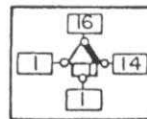


FINISHING: HAT. Weave the  
 long seam of hat from the right  
 side except for half of band  
 which is for turn over at lower edge  
 and should be woven from the wrong  
 side. Pull up the knit sts.  
 held on strand of yarn at the top  
 and tie securely then pull up  
 the purl sts. in the same way and  
 secure.  
 Make a soft Pom Pon by cutting  
 approximately 20 strand of yarn  
 20" long and winding them around  
 2" cardboard. Tie at one end  
 and cut other end. Fluff and trim  
 then sew to top of hat.



SCARF:

'e' Cast on 60 sts. Work 20 Rows K1, P1 Ribbing with Tension 9. Set in Pattern (See Program Chart). With Tension 10+, work in Pattern for 464 rows. Change to Tension 9 and work 20 rows K1, P1 Ribbing. Bind off LOOSELY.



459

SCARF:

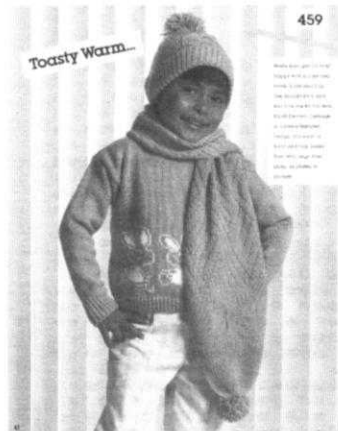
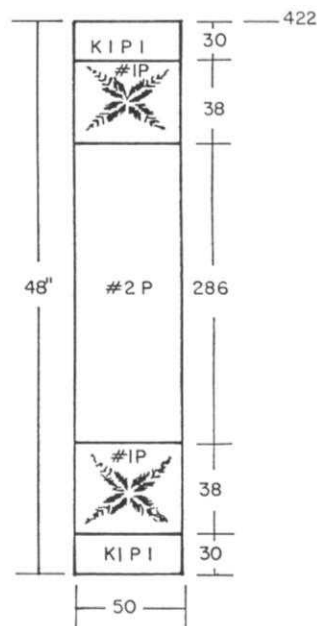
'e' Cast on 50 sts. Tension 9. K1, P1 Ribbing for 30 rows. CHANGE TO PATTERN I - Pattern Sheet No. 107-2. See Program Chart. Knit 38 Rows Tension 10+. CHANGE TO PATTERN 2. Pattern Sheet No. 2-8 (from original set of sheets that come with KH 910). Work 286 rows. Change to PATTERN I. Knit 38 Rows. Change to K1, P1 Ribbing and work 30 rows. Bind off Loosely.

HAT:

'e' Cast on 101 sts. Work 36 rows K1, P1 Ribbing Tension 9. CHANGE TO PATTERN I (same as for Scarf), and work 38 rows. Change to K1, P1 Ribbing and work 30 rows Tension 9. With strand of yarn threaded into tapestry needle or double eyed needle, remove only the knit sts. onto the yarn then with separate strand of yarn, remove the purl sts. Pull up each separate strand and tie and secure.

FINISHING:

SCARF: - Gather up each end. Make SOFT POM PON and sew to each end. HAT: - Weave seam from the right side first leaving half of HEADBAND free, turn to the WRONG side then weave remaining half of band. Turn up head band half way (see Picture). Make POM PON and sew to top of hat (see picture).

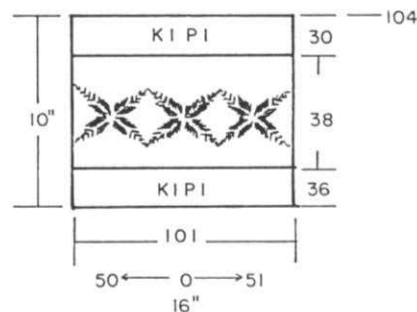


GIRL'S HAT & SCARF

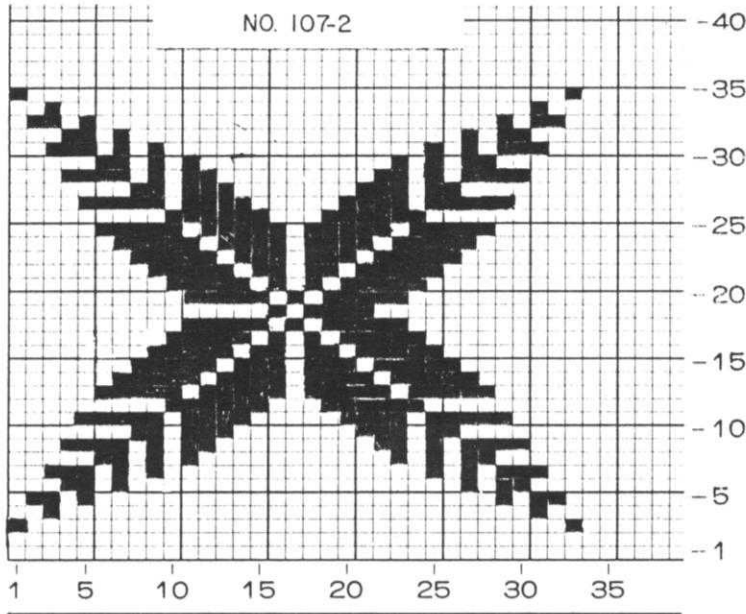
SIZE: Fits Head Measurement 19" to 21".

YARN: Alanda  
AMOUNT: 6 balls  
TENSION: 10+ - Ribbing 9  
GAUGE: 11 st. 17 rows = 2" (5 cm)

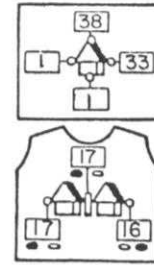
Knitted on the KH 910 with KG 88 Electric Carriage.  
Bands are K1, P1 Ribbing



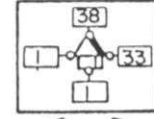
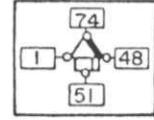
Continued



SCARF  
P #1 NO. 107-2



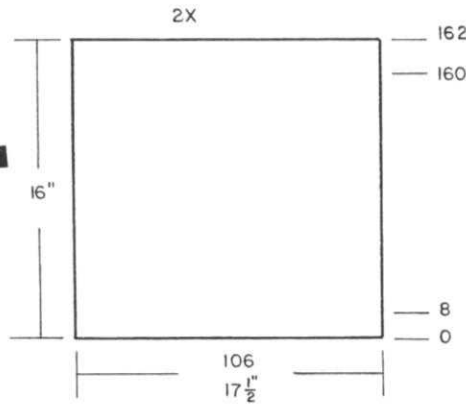
P #2 NO 2-8



P #1 HAT



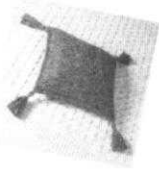
460



Cast on 106 sts. with colors 1 and 2 held together. Work 8 rows Stockinette stitch. Continue in WEAVING PATTERN using color 3 for Weaving. After Row 160, stop Pattern knit 2 rows colors 1 and 2 in Stockinette stitch. Bind off the crochet method LOOSELY. Make a second section the same.

Shades of Yesterday...

460



VICTORIAN PILLOW

SIZE: 16" x 17 1/2"

YARN:

- color 1 Venetia - for knitting
- color 2 Mami-Rex - knitted along with Venetia
- color 3 Multi-Show for Weaving.

AMOUNT:

- color 1 - 4 or 5 oz. can use left over yarn.
- color 2 spools
- color 3 4 balls

TENSION:

8

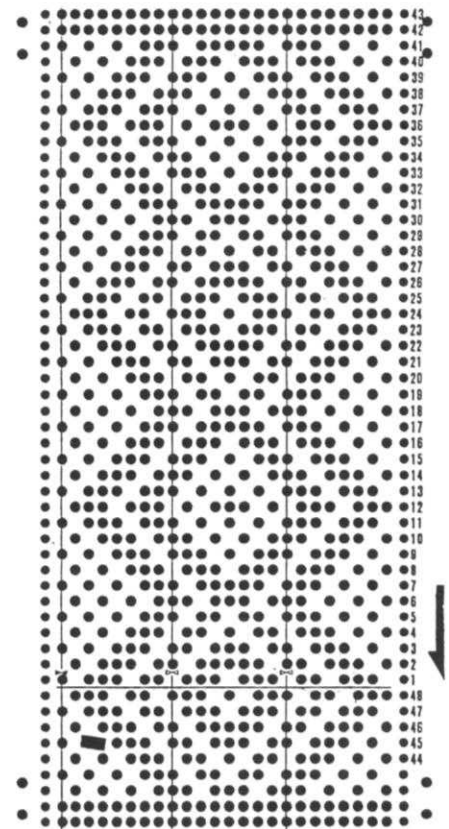
GAUGE: 12 sts. 20 rows = 2" (5 cm)

You will need a 16" PLUMP Pillow Form.

A Weaving Pattern. Use Punch Card No. 8J if you have it - if not, punch your own Card as shown.

FINISHING:

With wrong sides together, use 1 strand of color 3 (Multi-Show) and work 1 row single crochet around outside edges but work the crochet over a single edge on one side (for zipper opening). Using 2 strands of color 1 and 2 strands of color 3 held together, work 1 row reverse single crochet around. Sew a 12 or 14" zipper in place. Put in Pillow form. Make 4 Tassels mixing the 3 colors. Wrap 30 times around a 6" Cardboard and then cut only 1 edge. With Mami-Rex, wrap around the doubled yarns at top approximately 1", tie and secure ends. Trim then sew tassels at each corner (see picture).



# Knitkng News

## PRACTICAL KNITTING HINTS

### FAIR ISLE DESIGNS using the RIBBER AND RIBBER COLOR CHANGER

Here is an excellent way to make FAIR ISLE DESIGNS that would ordinarily have large floats on the back of your work. This is the method that we used for Pattern NO. 448 A in this issue of KNITKING MAGAZINE. Use the normal Ribber cast-on with EVERY NEEDLE ON BOTH BEDS.

Knit the required number of rows before beginning the Design. End with Carriage on the LEFT SIDE. On the Ribber Carriage, push UP BOTH PR (part) Buttons.

SET PATTERN FROM LEFT TO RIGHT.

Carriage is now on the RIGHT side.

ON MAIN MACHINE CARRIAGE, push in BOTH PART BUTTONS and LEAVE THEM THERE THROUGHOUT.

Knit to the left.

Change color.

\*Release Ribber PR Buttons. Knit 2 rows.

Change to main color.

Push up BOTH PR Buttons on the Ribber.

Knit 2 rows.

Change color. REPEAT FROM \*.

## RIBBER CAST-ON

Perhaps you are looking for a different cast-on for your Ribbing. This may be just what you are looking for and you should try making a sample of this method... It's really super and is especially nice if you own a KH 230 Bulky machine (or any bulky machine with Ribber).

0/0 Tension on a standard machine with ribber but 1/1 on the Bulky. Use knitting worsted weight yarn for the Bulky machine.

Make the zig-zag row from right to left then hang Comb and Heights.

Set machine so that it will knit the knitter needles only (RIGHT PR UP on Ribber for KNITKING KH 230 machine). Knit 1 row from left to right. Return PR to DOWN position.

Take the horizontal strand BETWEEN EACH MAIN MACHINE needle and HANG IT ONTO EACH RIBBER NEEDLE BELOW.

ALL CONTROLS NORMAL. Rib the required number of rows. When your garment is completed. RELEASE the cast on end of ribbing then on the opposite side, pull this row of knitting OUT. Now take a look at the cast-on - nice?

## PIN TUCK WITH RIBBER

### FULL NEEDLE RIB

\*BOTH PR Controls UP - ONLY MAIN MACHINE NEEDLES KNIT.

Knit 10 rows or as many rows as you want.

BOTH PR Controls DOWN - Both beds knit.

Knit 10 rows or as many rows as you want.

REPEAT FROM \*.

## YARN KITS FOR GARMENTS IN THIS ISSUE

Most of the garments in this issue of KNITKING MAGAZINE were knitted with yarns from our YARN CATALOGUE which illustrates the full range of colors available and includes actual yarn samples. If you do not have our Catalogue, please send \$3.00 and we will mail you one immediately and you will be able to choose your own colors.

VENETIA, our best selling yarn is not shown in the Catalogue. We have 20 colors available and if you tell us the color or colors you want, we will select a color as close as possible to your selection.

THIN VENETIA which is listed for some of the garments in this issue (it is also called FINE VENETIA) is available only in the following colors. TEAL - YELLOW - RED - TAUPE - WINE RED - OLIVE. It is always a good idea to give 2 ALTERNATE colors.

No. 441 - Yarn:	Venetia (Thin)		
SIZES:	6/8 (10/12)	[14/16]	
Price:	\$11.61 \$14.19	\$16.77	
Shipping:	1.85 1.85	1.85	

No. 442 - Yarn:	Multi-Show		
SIZES:	6/8 (10/12)	[14/16]	
Price:	\$20.65 \$20.65	\$23.60	
Shipping:	1.85 1.85	1.85	
No. 443 - Yarn:	Venetia		
SIZES:	6/9 (10/12)	[14/16]	
Price:	\$25.80 \$25.80	\$29.67	
Shipping:	1.85 1.85	1.85	
No. 444 - Yarn:	Roma		
SIZES:	3/4 (5/6)		
Price:	\$12.65 \$12.65		
Shipping:	1.85 1.85		
No. 445 - Yarn:	Alanda		
SIZES:	4/6 (8/10)		
Price:	\$ 9.60 \$11.20		
Shipping:	1.85 1.85		
No. 446 - Yarn:	Bravo		
SIZES:	4/6 (8/10)		
Price:	\$10.85 \$10.85		
Shipping:	1.85 1.85		
No. 447 - Yarn:	Venetia (Thin)		
SIZES:	8/10 (12/14)	[16/18]	
Price:	\$36.71 \$36.71	\$36.71	
Shipping:	2.20 2.20	2.20	
No. 448A - Yarn:	Show		
SIZES:	6/8 (10/12)	[14/16]	
Price:	\$36.75 \$36.75	\$41.65	
Shipping:	1.85 1.85	1.85	
No. 443B - Yarn:	Show		
SIZES:	6/8 (10/12)	[14/16]	
Price:	\$14.70 \$17.15	\$17.15	
Shipping:	1.85 1.85	1.85	
No. 449 - Yarn:	Cordella		
SIZES:	34/36 (38/40)	[42/44]	
Price:	17.91 \$19.90	\$21.89	
Shipping:	1.85 1.85	1.85	
No. 450 - Yarn:	Viola		
SIZES:	38/40 (42/44)		
Price:	\$40.85 \$40.85		
Shipping:	1.85 1.85		
No. 451 - Yarn:	Rayon Boucle		
AVAILABLE COLORS - Lilac, Red only.			
SIZES:	5/6 (10/12)	[14/16]	
Price:	\$18.96 \$25.29	\$25.29	
Shipping:	2.20 2.20	2.20	
No. 452 - Yarn:	Venetia		
SIZES:	6/8 (10/12)	[14/16]	
Price:	\$20.64 \$23.22	\$25.80	
Shipping:	2.20 2.20	2.20	
No. 453 - Yarn:	Venetia, Alpacana, Mami-Rex		
SIZES:	4/6 (8/10)	[12/14]	
Price:	\$43.72 \$43.72	\$54.12	
Shipping:	2.50 2.50	2.50	
No. 454 - Yarn:	Cordella		
SIZES:	8/10 (12/14)	[16/18]	
Price:	\$ 9.95 \$11.94	\$13.93	
Shipping:	1.85 1.85	1.85	
No. 455 - Yarn:	Cordella		
SIZES:	Small (Medium) [Large]		
Price:	\$15.92 \$15.92 \$17.91		
Shipping:	1.85 1.85 1.85		
No. 456A - YARN:	Multi-Show		
SIZES:	Small/Medium (Medium/Large)		
Price:	\$ 5.90 \$5.90 \$5.90		
Shipping:	1.85 1.85 1.85		
No. 456B - Yarn:	Alanda		
SIZES:	Small (Medium) [Large]		
Price:	\$3.20 \$3.20 \$3.20		
Shipping:	1.85 1.85 1.85		
No. 457 - Yarn:	Bravo		
SIZES:	4/6		
Price:	\$6.20 Will make 2 Pair		
Shipping:	1.85		
No. 458 - Yarn:	Alanda		
SIZES:	Child Size- fits 22" to 24" head size.		
Price	\$9.60		
Shipping	1.85		
No. 459 - Yarn:	Alanda		
SIZES:	Fits head size 19" to 21"		
Price:	\$9.60		
Shipping:	1.85		
No. 460 - Yarn:	Multi-Show & Mami-Rex		
SIZE	Approximately 16" X 16"		
Price:	\$23.30		
Shipping:	2.00		

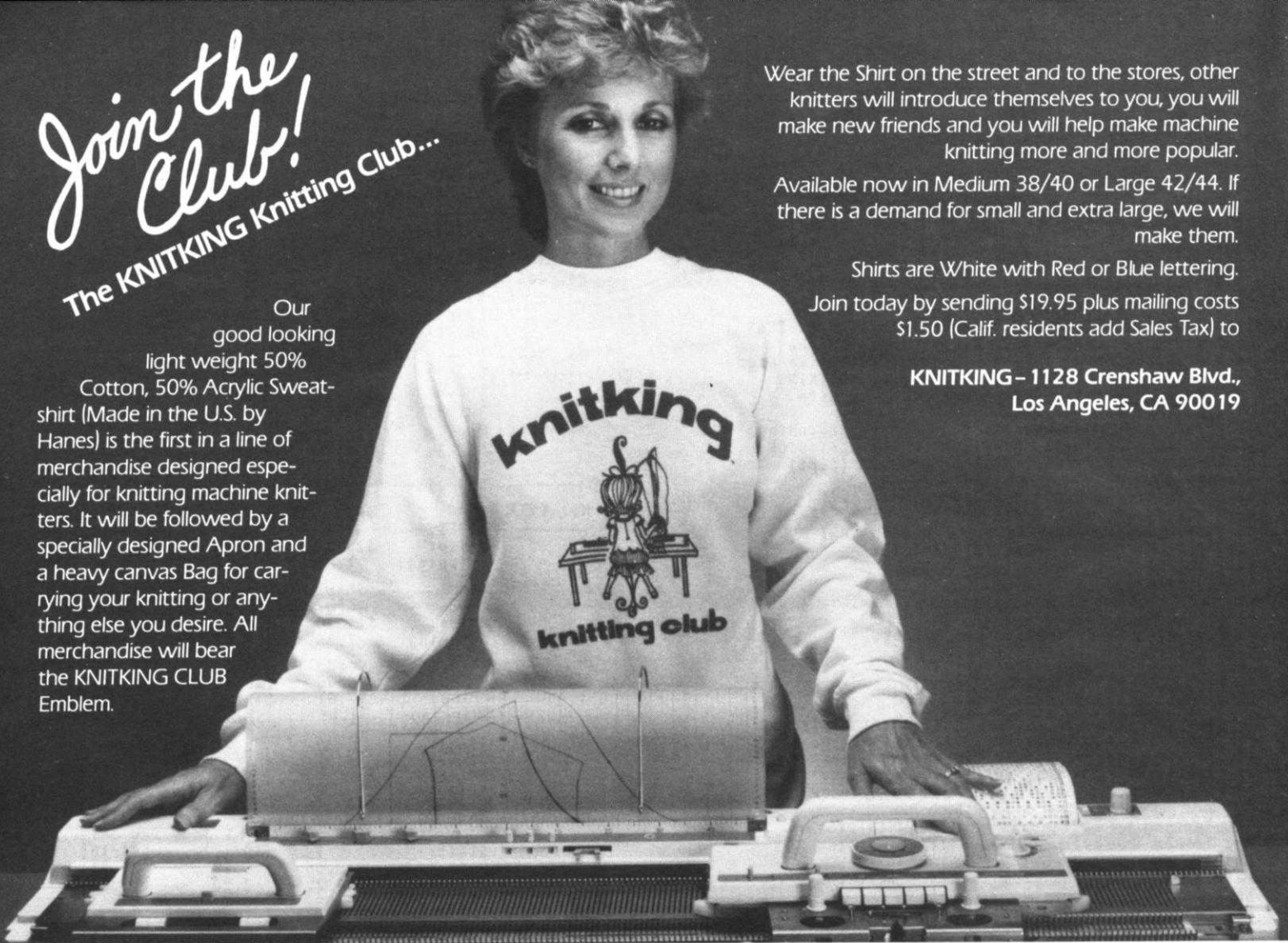
*Join the Club!*  
The KNITKING Knitting Club...

Our good looking light weight 50% Cotton, 50% Acrylic Sweat-shirt (Made in the U.S. by Hanes) is the first in a line of merchandise designed especially for knitting machine knitters. It will be followed by a specially designed Apron and a heavy canvas Bag for carrying your knitting or anything else you desire. All merchandise will bear the KNITKING CLUB Emblem.

Wear the Shirt on the street and to the stores, other knitters will introduce themselves to you, you will make new friends and you will help make machine knitting more and more popular. Available now in Medium 38/40 or Large 42/44. If there is a demand for small and extra large, we will make them.

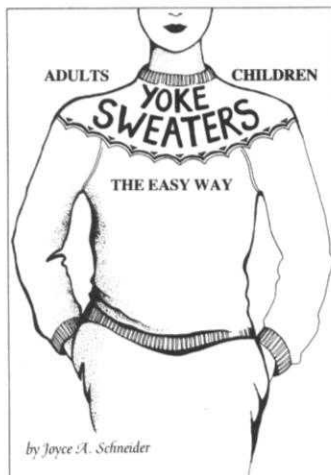
Shirts are White with Red or Blue lettering. Join today by sending \$19.95 plus mailing costs \$1.50 (Calif. residents add Sales Tax) to

**KNITKING - 1128 Crenshaw Blvd.,  
Los Angeles, CA 90019**



## THREE BOOKS FROM THE GOLDEN UNICORN.

### The 'YOKE' Specialists



*Yoke Sweaters the Easy Way.* Well illustrated Round Yoke Sweaters in 24 sizes and with 16 Punch Card Designs. Introduced in 1982 it's in its 10th printing. Pattern 365 appearing at pages 11 and 20 of KNITKING MAGAZINE, Volume 18 Number 3 originated from "Yoke Sweaters the Easy Way" by Joyce Schneider, pages 29, 30 and 50.

Regular Price \$13.95  
KNITKING Price \$11.95-Shipping \$1.50



*Yoke Cardigans & Tab Fronts the Easy Way.* The latest and biggest (112 pages) filled with an excellent assortment in 24 sizes. 16 new Punch Card Designs that are interchangeable with designs in the other two books.

Regular Price \$16.50  
KNITKING Price \$13.50-Shipping \$1.50

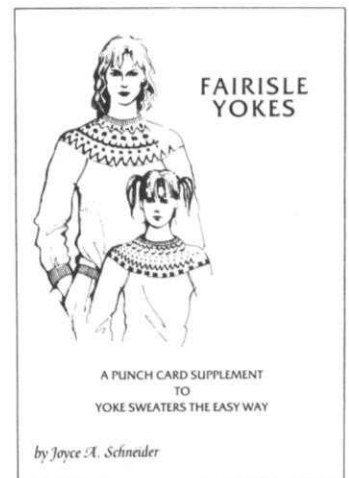


#### YOKE CARDIGANS & TAB FRONTS



THE EASY WAY

by Joyce A. Schneider



*Fair Isle Yokes.* 24 Punch Card Designs supplement for use with the other two books.

Regular Price \$10.95  
KNITKING Price \$8.95-Shipping \$1.00  
(California residents add Sales Tax)

Send your order to KNITKING -  
1128 Crenshaw Blvd.,  
Los Angeles, CA 90019  
Telephone: 213-938-2077



## Butterflies Fly...

444



... around the full skirt section and flit across the front Yoke of a darling dress for a special little girl. A few rows of metallic accent the design. The edges of skirt and sleeves are a new cast-on Lace Design you must try. Knit the dress with our newest yarn, Roma, Mami-Rex for the small stripes. Sizes 3 to 6.

# Take Your Pick

456

Two different Slipper Patterns for you to knit.

One is made on the Standard Knitting Machine with Ribber using Multi-Show yarn and the other is knitted on the KH 910 with KG Electric Carriage using Alandra. Both are easy and quick to make and are welcome gifts.

Pattern A in sizes Small/Medium (Medium/Large) and Pattern B for Men and Women in Sizes Small (Medium) (Large).



456



## Shades of Yesterday....

460

Everyone can use a lovely Victorian Design Pillow... It's a Weaving Pattern with Venetia and Mami-Rex knitted together and one strand of Multi-Show for Weaving. Make Tassels for each corner.



# Fashions Trend

455

Texture knitting is so important for the knits of today. Your Man will be proud to wear this special Pullover. Knit it on the KH 891 using the KG 89 Electric Carriage that does it all for you, including the K2, P2 Ribbing for bands. Knit it in sizes Small and Medium Large with our Cordella yarn.



# Different

449

Learn a new technique for knitting the wide, special Short Rows insert on a great Pull-over for your handsome Man. Explicit instructions insure your success and his pride in wearing it. We used Cordella and made it in sizes 34 to 44.



Fat Cat...

446

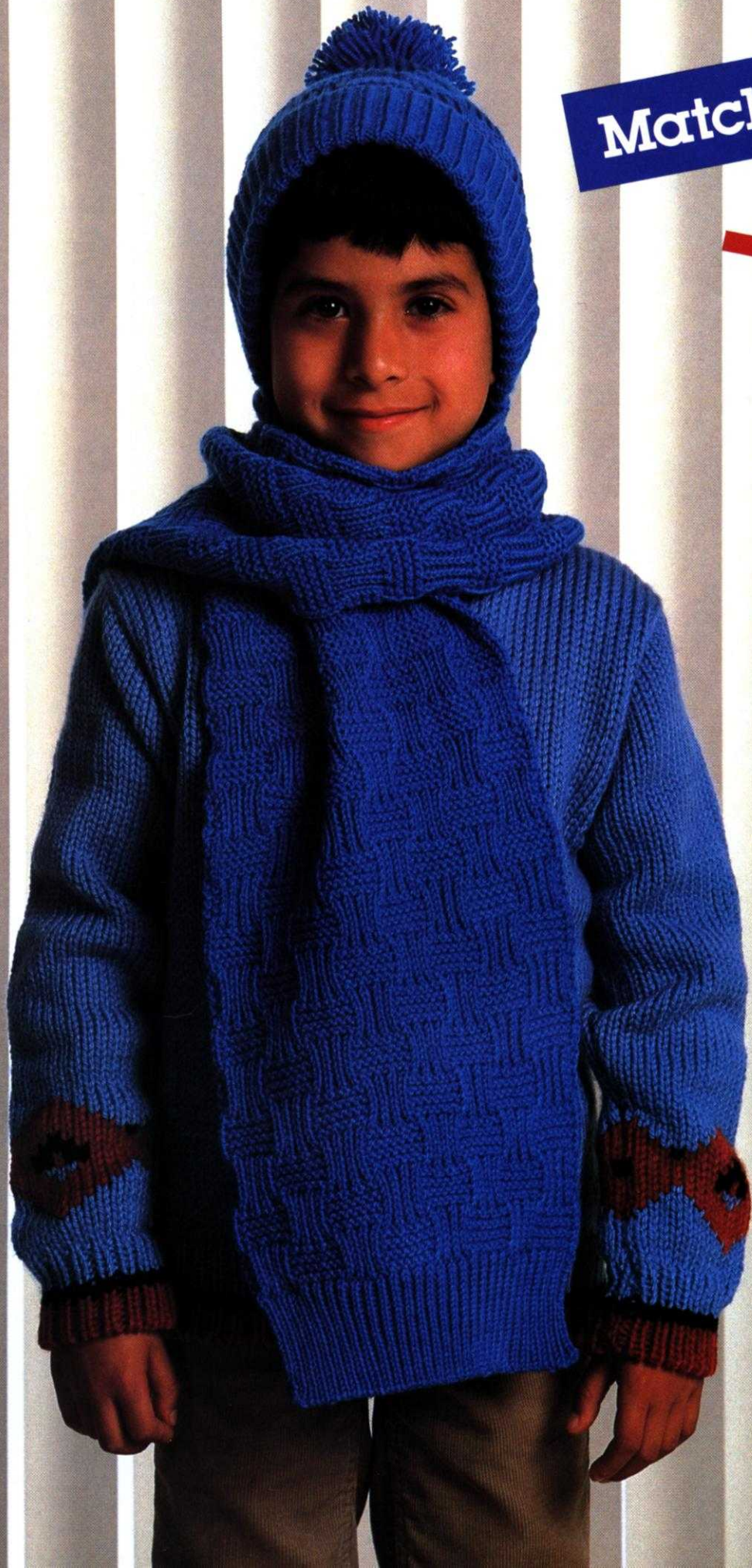


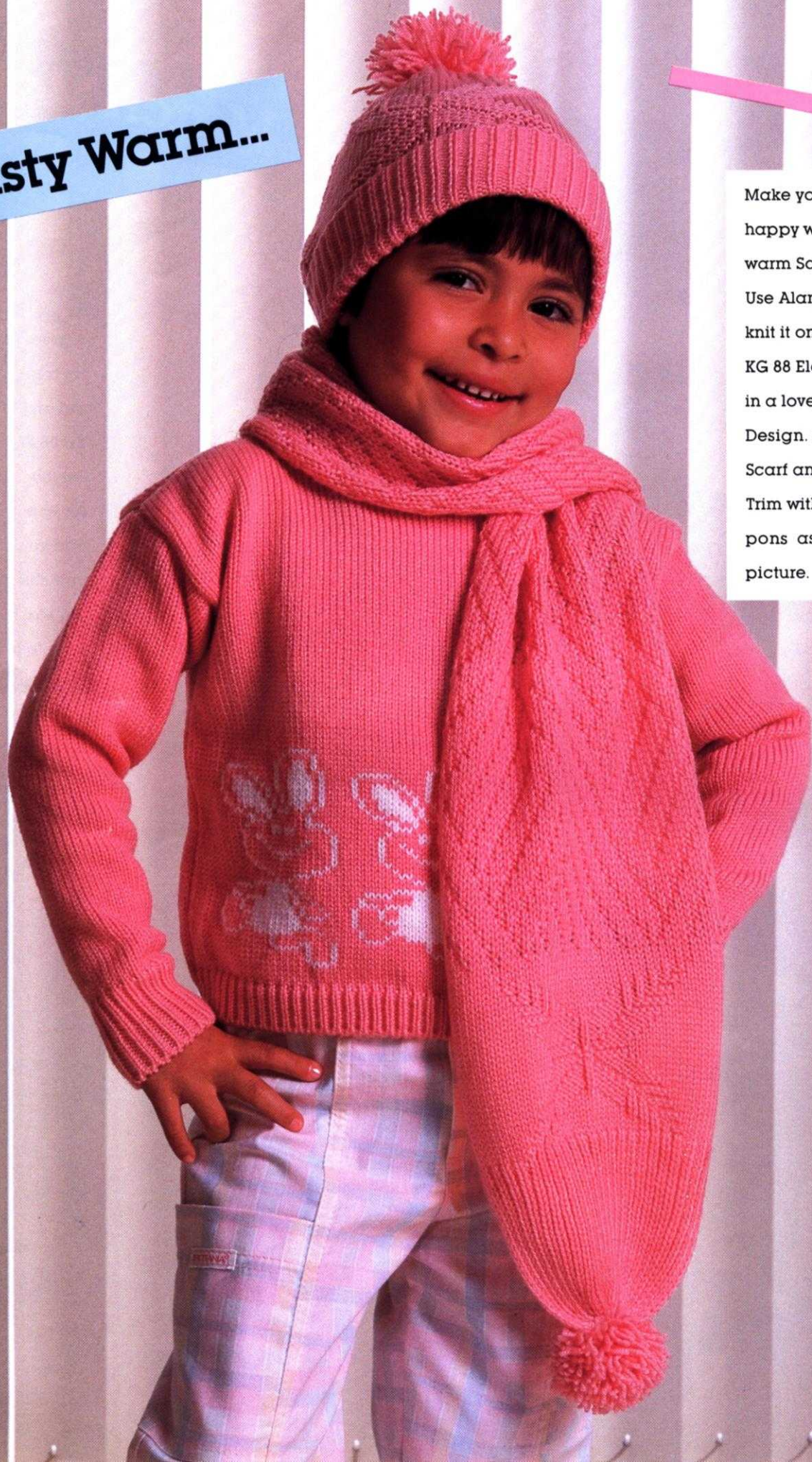
For Boy or Girl. It's knitted on the new Punch Card Bulky KH 260 with Ribbing that is transferred from the KH 230 and Ribber (no Ribber is available for the 260 as yet). Isolate the Cat on the front section and use another Punch Card Design above the Ribbing on the sleeves. Bravo is the yarn and knitting instructions are for sizes 4 to 10.

# Match Mates

458

A great Scarf and Cap for a boy (or Girl) is knitted on the KH 910 with KG 88 Electric Carriage. Set the number of rows for Pattern or Ribbing and you can walk away until the machine shuts off. Make a fat Pom-pom to trim the top of Cap. Use our Alanda yarn.



**Toasty Warm...**

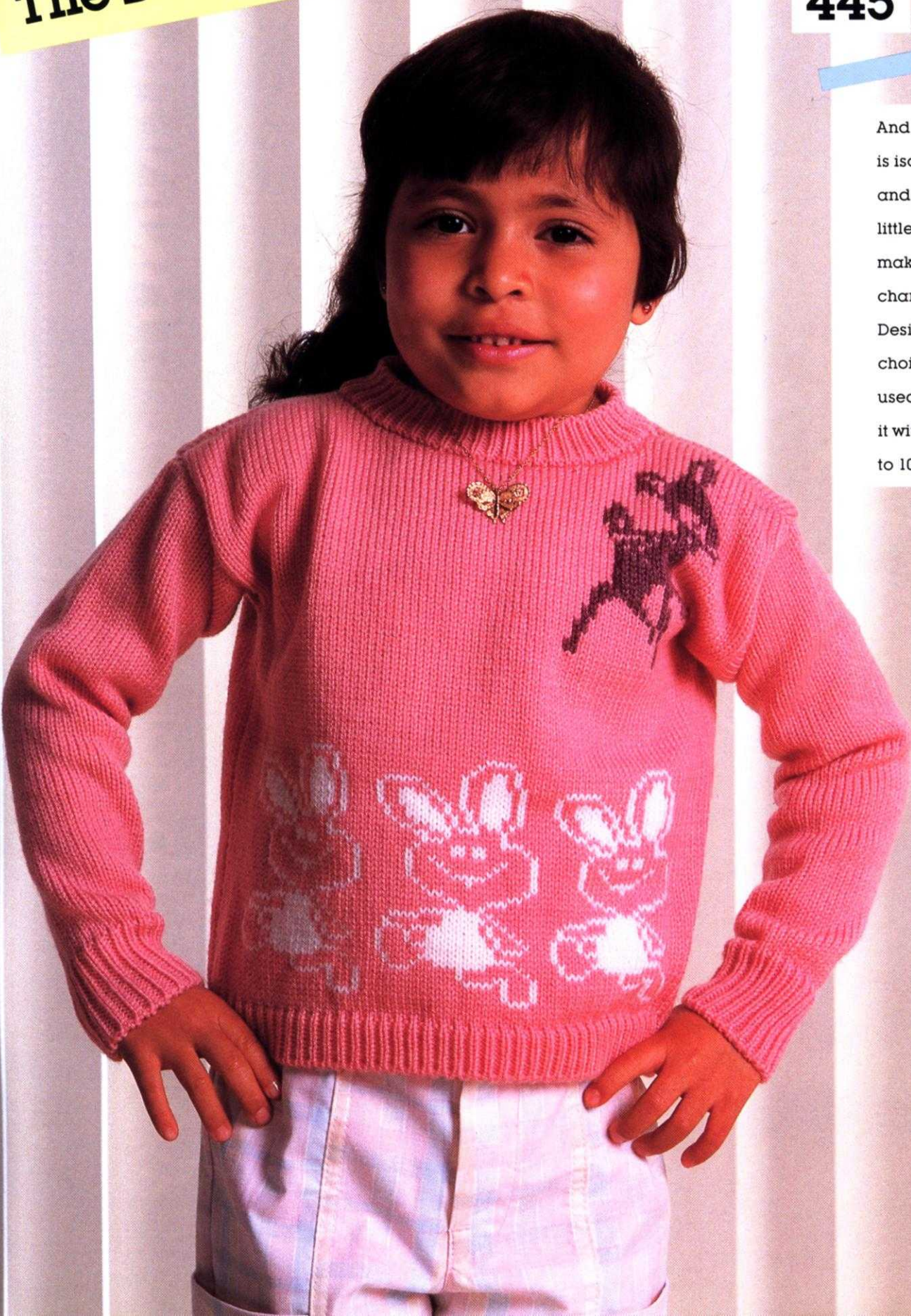
Make your girl (or boy) happy with a cozy and warm Scarf and Cap. Use Alanda yarn and knit it on the KH 910 with KG 88 Electric Carriage in a lovely textured Design. Rib ends of Scarf and Cap band. Trim with large Pom-poms as shown in picture.



# The Bunnies Hop...

445

And a single motif Deer is isolated on a warm and cozy Pullover for a little girl... You can make it for a boy by changing the Fair Isle Designs to any of his choice. 1 x 1 Ribbing is used for all bands. Knit it with Alanda in sizes 4 to 10.

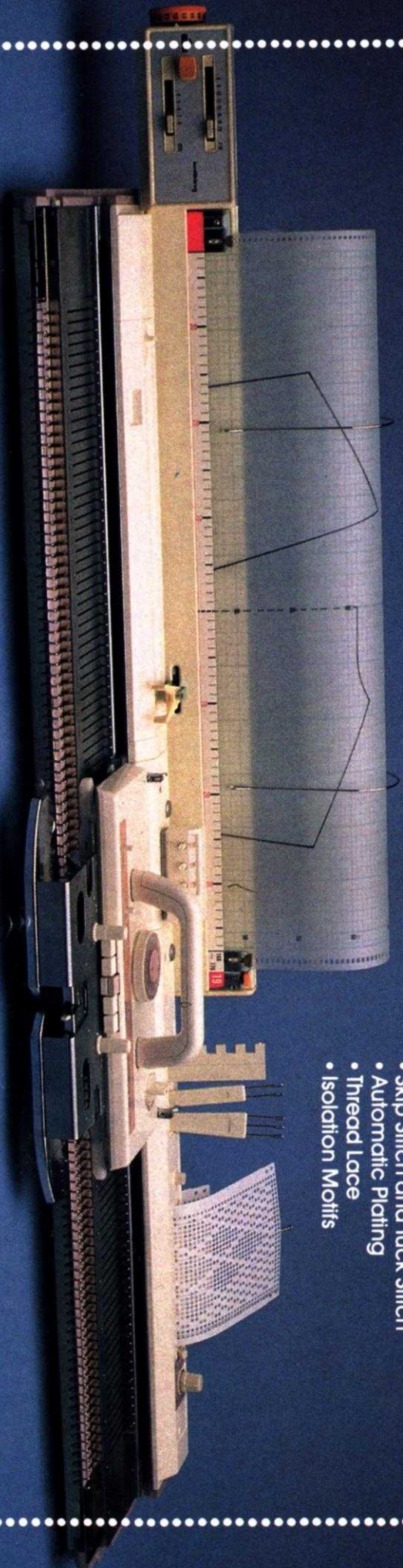


# KNITKING Punch Card Programmed Bulky

The very latest and easily the most versatile of all Bulky knitting machines. It's the first with automatic PUNCH CARD PATTERN selection and it knits a range of yarns from sport weight to jumbo, including Angora, Mohair, Boucle, Ribbon, Cotton, Acrylic, etc. The KNITKING KH 260 has 114 stainless steel needles in a needle bed 40" wide. At 3 stitches per inch, it knits up to 38" wide. The Tension Control Dial has 30 tensions for knitting different weights of yarn... Comes complete with TWIN OVERHEAD FEEDERS, 15 PRE-PUNCHED PATTERN CARDS, ROW COUNTER, complete TOOL KIT, STITCH MEASURE SCALES for Knitheader, CARRYING CASE, a detailed, well illustrated, easy to understand INSTRUCTION MANUAL and a one year warranty on parts and service.

Accepts standard 24 stitch Punch Cards for:

- Fair Isle Patterns
- Weaving
- Skip Stitch and Tuck Stitch
- Automatic Plating
- Thread Lace
- Isolation Motifs



## Model KH 260

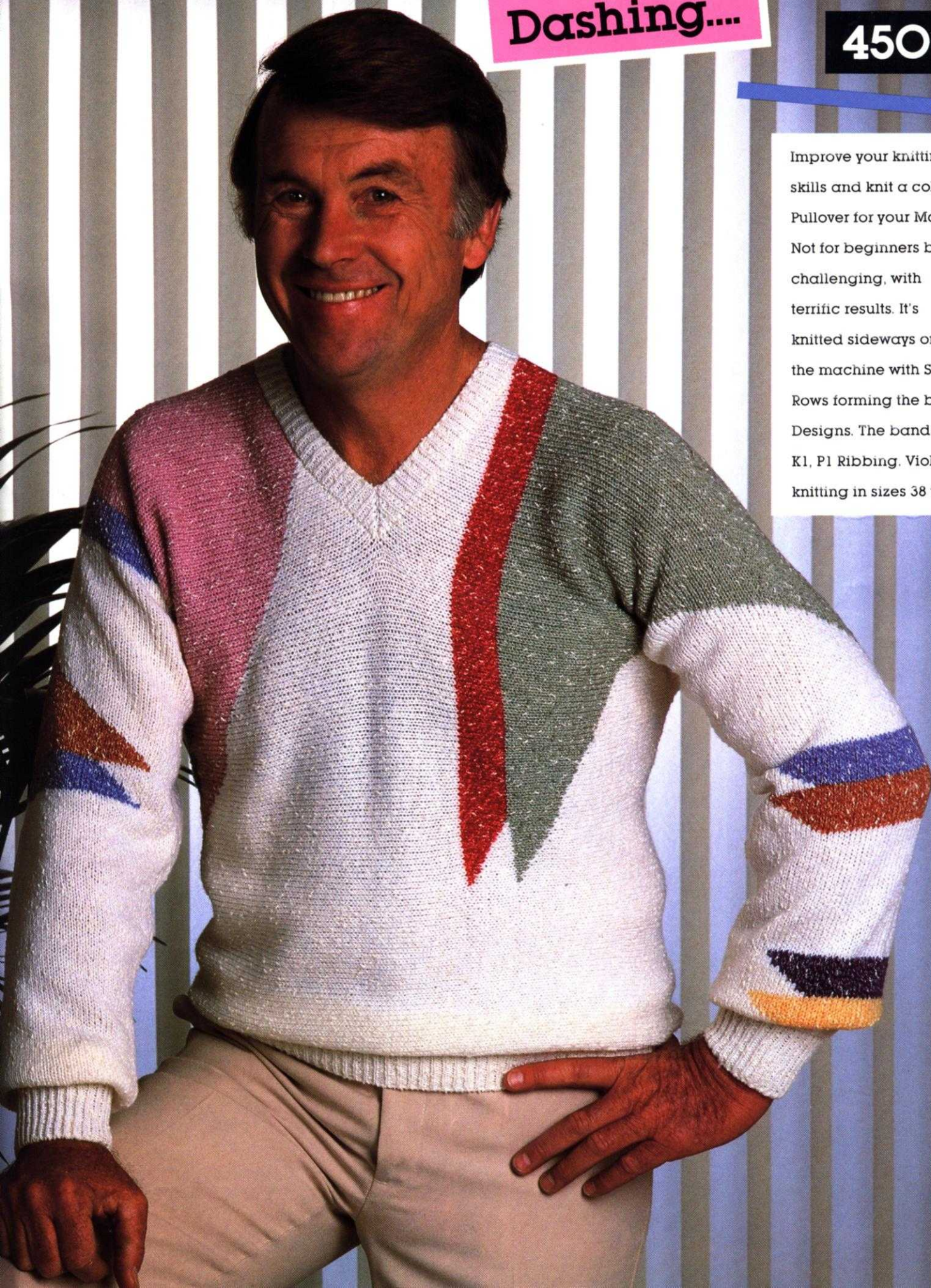
Order from your local Dealer or direct from:  
KNITKING CORPORATION—1128 Crenshaw Blvd.,

Los Angeles, CA 90019 Telephone: (213) 938-2077

## Dashing....

450

Improve your knitting skills and knit a colorful Pullover for your Man. Not for beginners but challenging, with terrific results. It's knitted sideways on the machine with Short Rows forming the bright Designs. The bands are K1, P1 Ribbing. Viola for knitting in sizes 38 to 44.



# COMPUKNIT KH 910

'The world's finest knitting machine'

- Incredibly versatile... Anything you can trace or draw is automatically reproduced in your knitting in the colors and yarns of your choice.
- Simple to program and easy to operate, the COMPUKNIT KH 910 is the 'State of the Art' in home knitting machines. It is the only knitter made that has a memory unit to retain your program if you suffer a power outage or wish to move your knitter from one place to another.
- The maximum width of motif or pattern design possible on any punch card machine is 30 stitches (the standard is 24). The COMPUKNIT has no limit. It is possible to knit a single picture or lace design over the full width (200) needles of the needle bed. It will, in fact, do everything that's possible on a punch card machine and much much more.
- If you already own a knitting machine, you must consider trading up to a fantastic COMPUKNIT 910. If you have never owned a knitter before, start at the top and save money and save all the intermediate steps.



Order from your local Dealer or direct from  
VISA and MASTERCARD accepted

## KNITTING

1128 Crenshaw Blvd.  
Los Angeles, CA 90019  
Telephone: (213) 938-2077