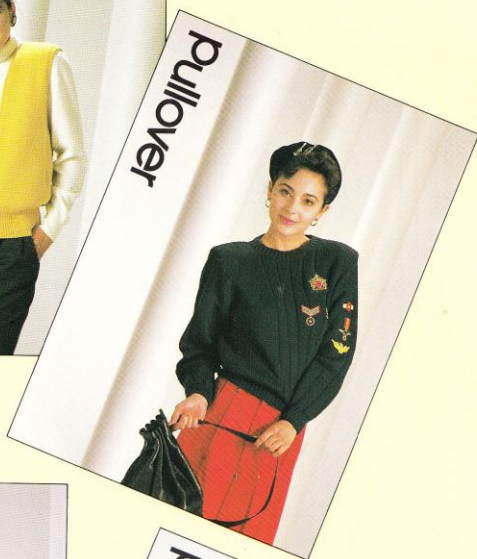
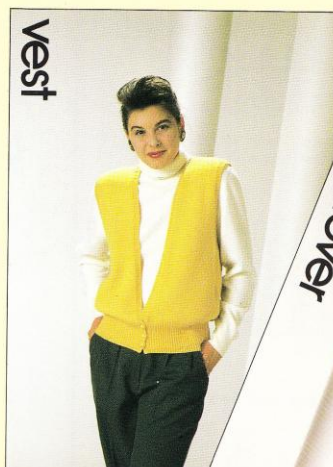


brother®

home knitter  KX-350

KNITTING PATTERNS



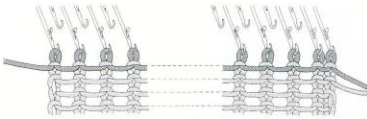
ABBREVIATIONS

| | |
|------|-----------------------|
| alt | alternate |
| beg | begin(ning) |
| CC | contrasting color |
| cm | centimeter(s) |
| dec | decreas(e)(ing) |
| g | gram(s) |
| HP | holding or E position |
| inc | increas(e)(ing) |
| MC | main color |
| N(s) | needle(s) |
| oz | ounce(s) |

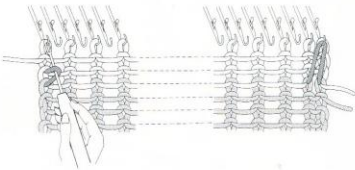
| | |
|------------|--|
| RC | row counter |
| RC000 | set row counter to 000 |
| rem | remain(s)(ing) |
| RS | right side |
| st(s) | stitch(es) |
| TD | tension dial |
| WP | working or B position |
| WS | wrong side |
| WY | waste yarn |
| x | times |
| waste knit | Change to waste yarn, knit a few rows and release from machine |

FINISHED CAST-ON EDGES

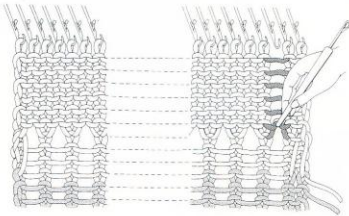
METHOD 1(1×1RIB)



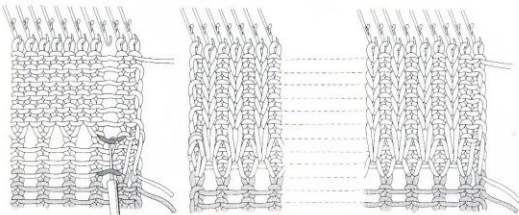
1. Push every other N to WP (2Ns at right are in WP). Set TD to 4 numbers lower than main TD. Knit a few rows with WY, carriage ending at right. Knit 3 rows with MC.



2. Pick up both end loops of 1st row and hang them onto both end Ns. Push all Ns to WP.

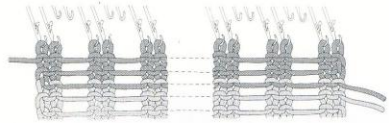


3. Set TD to 2 numbers lower than main TD. Knit required rows. Drop 3rd st from right end and unravel sts.

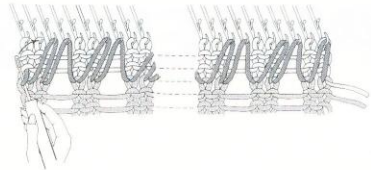


4. Insert latch tool under loop of 1st row and catch 4th parallel thread (skip 2 rows), then pull latch tool towards you to make a plain st. Repeat this until you reach top, hook st onto N. Repeat procedure on every other N.

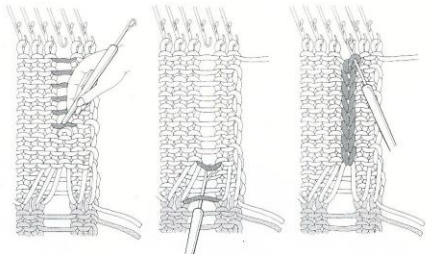
METHOD 2(2×2RIB)



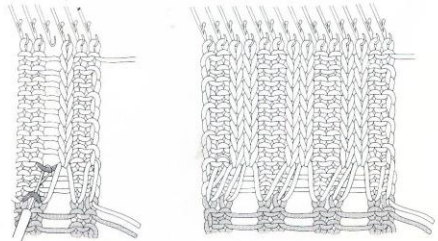
1. Waste knit a few rows with all required Ns. Push back every 3rd and 4th Ns into non-WP. Change to MC. Knit 3 rows with TD set 4 numbers lower than main TD.



2. Pick up sinker loops of 1st row and hang them onto Ns, as above.



3. Set TD to 2 numbers lower than main TD. Knit required rows. Drop 3rd st from right and unravel sts. Insert latch tool under sinker loop of 1st row and catch 4th parallel thread (skip 2 rows), then pull it towards you to make a plain st. Repeat this until you reach top and hook last st onto N.



4. Drop 4th st and repeat above step. Repeat these steps at interval of 2 Ns to make 2x2RIB.

pullover



brother

1 Pullover

SIZES

To fit 34(38)"/86(96) cm bust. Directions are for smaller size with larger size in parentheses. If there is only one set of figures it applies to both sizes.

KNITTED MEASUREMENTS

Finished bust measurement at underarm 38(42)"/96(106) cm
Length 23(23½)"/58.5(59.5) cm

MATERIALS

10(12) 1¼oz/50g balls of Patons SUPER-SOFT D.K. in #2284 white (MC)

1 ball each of Patons SUPERSOFT D.K. in #2286 green (CC 1), #2287 yellow (CC 2), #2289 light pink (CC 3), #2290 dark pink (CC 4), #2279 salmon (CC 5)

GAUGE/TENSION

21 sts and 33 rows to 4"/10 cm in stockinette st with TD5

NOTE

Finished cast on for 2x2 RIB
Refer to METHOD 2 on wrong side of cover.

BACK

Start with WY. Using MC, finished cast on 102 (114) sts as 2x2RIB. Knit 31 rows TD3. Make 2x2RIB. Change to TD5. RC000. Work even to RC92.

Armhole shaping

At beg of next 2 rows, bind off 2 (4) sts at each end. Bind off 2 sts 1(2)x, 1 st 6 x every other row at each end. Work even to RC160 (166). Place WY marker at each sinker of 24 and 25 Ns. Waste knit.

FRONT

As BACK to RC136 (142)

Neck shaping

RC000. Bring 48 (50) Ns at left in HP. Knit 1 row. At beg of next and alt rows, bind off 4 sts 1x, 2 sts 4x, 1 st 5x. Work even to RC24 and waste knit rem 17 (19) sts. Waste knit 14 center sts. Push Ns at left back into WP. Knit left side to match right side, reversing shaping.

SLEEVES

Start with WY. Using MC, finished cast on 74 (82) sts as 2x2RIB. Knit 9 rows TD3. Make 2x2RIB. RC000. Change to TD5. Knit 6 rows and inc 1 st at each end. Then inc 1 st at each end every 8 rows to 82(90) sts to RC38.

Cap shaping

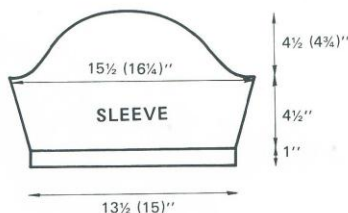
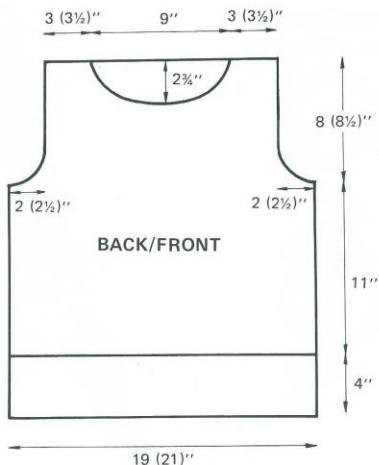
Bind off 4 sts at beg of next 4 rows at each end. Bind off 2 st 4(5)x, 1 st 9(8)x, 2 sts 2x, 3 sts 2(3)x at each end every other row. Bind off rem sts.

NECKBAND

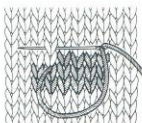
Start with WY. Using MC, finished cast on 110 sts as 2x2RIB. Knit 7 rows TD3. Make 2x2RIB and waste knit.

FINISHING

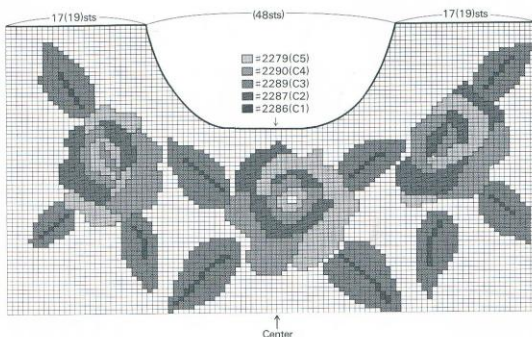
With WS up, block and press pieces omitting ribs. Join right shoulder. With RS facing you, place 62 sts evenly along FRONT neck edge and 48 sts between WY markers of BACK. Place neckband and knit 1 row. Bind off. Join left shoulder and sleeve seams. With chain st, join bodice and sleeve. Swiss darning on FRONT according to diagram.



SWISS DARNING



HOW TO ATTACH SLEEVE WITH CHAIN ST



vest



brother

2 vest

SIZE

To fit 34(38)"/86(96) cm bust. Directions are for smaller size with larger size in parentheses. If there is only one set of figures it applies to both sizes.

KNITTED MEASUREMENTS

Finished bust measurement at underarm 39(43)"/99(109) cm

Length 23(24)"/58.5(61) cm

MATERIALS

8 (9)2oz/56.7g skeins of COATS & CLARK RED HEART Luster Sheen in #723 Gold (MC)
Buttons (3 pcs)

GAUGE/TENSION

19 sts and 24 rows to 4"/10 cm in stockinette st with TD6 (2 strands of yarn)

NOTE

Finished cast on for 1x1RIB

Refer to METHOD 1 on wrong side of cover

BACK

Start with WY. Using MC, finished cast on 92 (102) sts as 1x1RIB. Knit 25 rows TD5. Make 1x1RIB. RC000. Change to TD6 and work even to RC58 (62).

Armhole shaping

At beg of next 2 rows, bind off 3 sts at each end. Bind off 2 sts 1x, 1 st 6(7)x every other row at each end. Work even to RC118 (124). Place WY marker at each sinker of 13 (14) and 14 (15) Ns. Waste knit.

RIGHT FRONT

Start with WY. Using MC, finished cast on 50 (54) sts as 1x1RIB. Knit 25 rows TD5, making buttonholes every 7th row. Make 1x1RIB. RC000. Change to TD6. Knit 1 row and bind off 4(3) sts at beg of next row. Knit 8 rows. Dec 1 st at left end every 8 row 10(12)x, then 1 st every 10 row 3(2)x. Work even to RC118(124), shaping armhole at right as BACK after RC58 (62).

LEFT FRONT

As RIGHT FRONT reversing shaping without buttonhole.

NECKBAND

Start with WY. Using MC, finished cast on 26 (28) sts as 1x1RIB. Make 1x1RIB of 5 rows TD5. Waste knit.

FRONT BANDS

As NECKBAND with 106 (110) sts

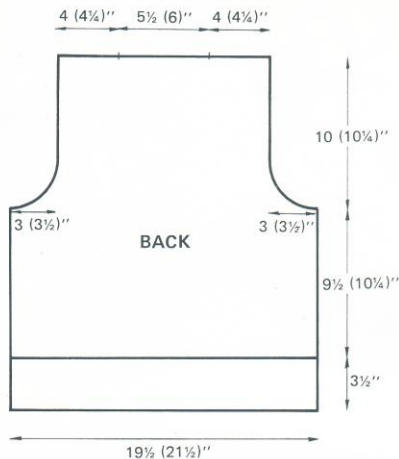
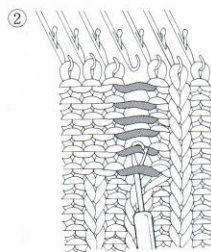
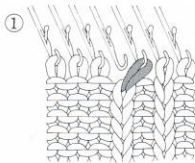
ARMBANDS

As NECKBAND with 114 (120) sts

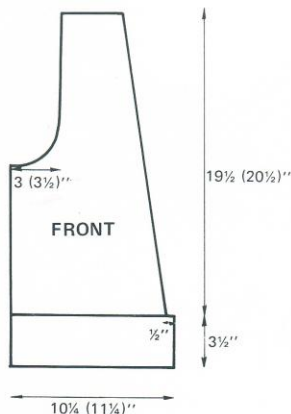
FINISHING

With WS up, block and press pieces omitting ribs. With RS of FRONT facing you, place 106 (110) sts evenly along opening. Place last row of FRONT BAND and knit 1 row. Bind off. With RS of BACK, place 26 (28) sts between WY markers and place NECKBAND. Knit 1 row and bind off. Join band seams. Join both shoulders. Attach ARMBAND to bodice. Join side and band seams. Attach buttons.

HOW TO MAKE A BUTTONHOLE



4 (4 1/4)\" 2 (3)\"



pullover



brother

3 Pullover

SIZES

To fit 34(38)"/86(96) cm bust. Directions are for smaller size with larger size in parentheses. If there is only one set of figures it applies to both sizes.

KNITTED MEASUREMENTS

Finished bust measurement at underarm 39 (43)"/99 (109) cm
Length 23(24¼)"/58(62) cm

MATERIALS

8(9) 3½oz/99.2g skeins of COATS & CLARK RED HEART 4 PLY "WINTUK" in #1 White (MC)

GAUGE/TENSION

17 sts and 26 rows to 4"/10 cm in stockinette st with TD9

NOTE

Finished cast on for 1x1RIB
Refer to METHOD 1 on wrong side of cover.

BACK

Start with WY. Using MC, finished cast on 84 (94) sts as 1x1RIB. Knit 23 rows TD7. Make 1x1RIB. RC000. Change to TD9. Knit to RC68 (70).
Armhole shaping
Bind off 8 sts at beg of next 2 rows. Work even to RC124 (138). Place WY marker at each sinker of 17 (19) and 18 (20) Ns. Waste knit.

FRONT

As BACK to RC62(66). Knit in lace according to diagram to RC98 (102). Knit 10 rows in stockinette st.
Neck shaping
RC000. Place 39 (44) Ns at left in HP. Knit 1 row. At beg of next and alt rows, bind off 3(4) sts 1x, 2 sts 2x, and 1 st 5 (6)x. Work even to RC26 and waste knit. Waste knit 10 center sts. Push Ns at left back into WP. Knit left side to match right side, reversing shaping.

SLEEVES

Using WY, cast on 52 (54) sts. RC000. Knit 4 rows TD9. Inc 1 st at each end every 4th row to 92(94) sts. Knit 16(20) rows to RC96(100).
Cap shaping
At beg of next 2 rows, bind off 6 sts. At beg of next 4 rows, bind off 4 sts. Then bind off 2 sts 7(8)x, 4 sts 2x, every 2nd row. Bind off rem sts.

CUFFS

Start with WY. Using MC, finished cast on 44 (46) sts as 1x1RIB. Knit 21 rows TD7. Make 1x1RIB. Waste knit.

NECKBAND

As CUFF with 98(106) sts of 9 rows.

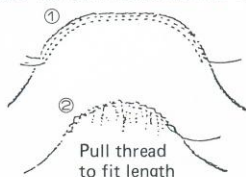
CORDS

Set part lever on either side to WP. Cast on 3 sts by "e"wrap method and knit 460 rows TD9. Bind off. Make 2 pcs.

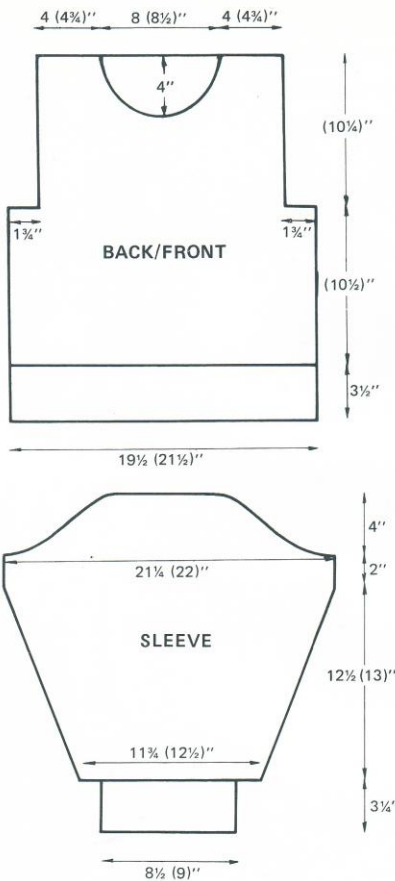
FINISHING

With WS up, block and press pieces omitting ribs. With RS of sleeve facing you, place 44 (46) sts by overlapping sts on every 6 sts. Place sts of cuff onto needles. Knit 1 row and bind off. Join right shoulder. With RS facing you, place 64 (68) sts evenly along FRONT neck edge and 34(38) sts between WY markers of BACK. Place neckband and knit 1 row. Bind off. Join left shoulder and neckband seam. Gather sleeve cap to fit armhole length with baste thread. Join side and sleeve seams. With chain st, attach sleeve to bodice. Attach cord around armhole leaving 17"/43cm on each side and tie on shoulder points.

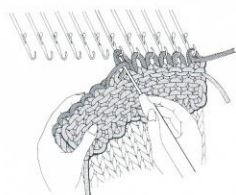
HOW TO GATHER SLEEVE CAP



HOW TO ATTACH SLEEVE WITH CHAIN ST



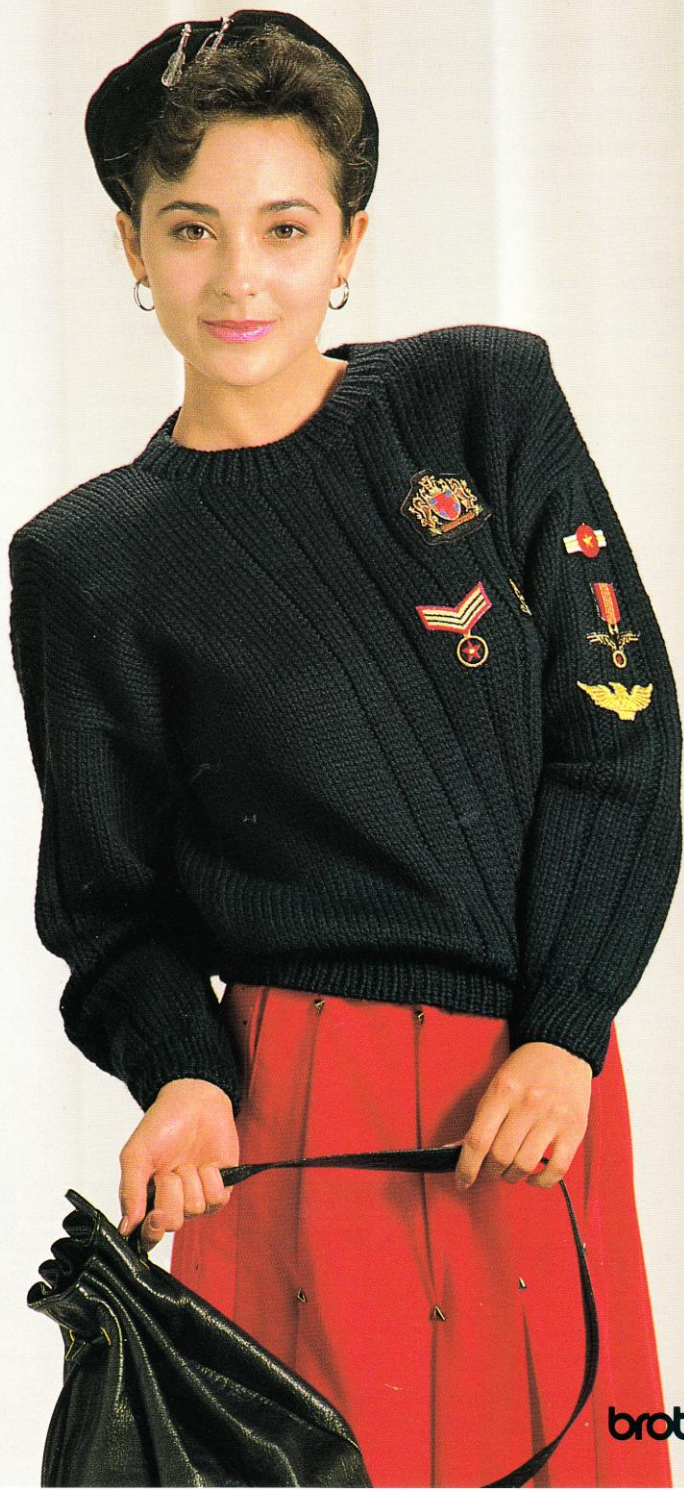
HOW TO OVERLAP STS



LACE PATTERN

| | | | | | | | | | | |
|----|--|---|---|---|---|---|---|---|--|--|
| 10 | | | | | | | | | | |
| 9 | | | | | | | | | | |
| 8 | | | | | | | | | | |
| 7 | | | | | | | | | | |
| 6 | | | | | | | | | | |
| 5 | | ○ | △ | ○ | | ○ | △ | ○ | | |
| 4 | | ○ | △ | ○ | | ○ | △ | ○ | | |
| 3 | | ○ | △ | ○ | | ○ | △ | ○ | | |
| 2 | | ○ | △ | ○ | | ○ | △ | ○ | | |
| 1 | | ○ | △ | ○ | | ○ | △ | ○ | | |
| | | 1 | 2 | 3 | 4 | 5 | 6 | | | |

pullover



brother

4 Pullover

SIZES

To fit 34 (38)"/86 (96) cm bust. Directions are for smaller size with larger size in parentheses. If there is only one set of figures it applies to both sizes.

KNITTED MEASUREMENTS

Finished bust measurement at underarm 40 (44)"/101 (111) cm.
Length 25 (25½)"/63.5 (65) cm

MATERIALS

7 (8) 3½ oz/99.2g skeins of COATS & CLARK RED HEART 4PLY "WINTUK" in #860 Medium Navy Emblems

GAUGE/TENSION

17 sts and 26 rows to 4"/10 cm in stockinette st with TD9

18 sts and 26 rows to 4"/10 cm in 4x2 RIB with TD9

NOTE

Finished cast on for 1x1RIB
Refer to METHOD 1 on wrong side of cover

BACK

Start with WY. Using MC, finished cast on 90 (100) sts as 1x1RIB. Knit 19 rows TD7. Make 1x1RIB. RC000. Change to TD9. Make 4x2RIB using center 34 sts. Latch up every 20 rows. Work even to RC80. Place WY marker at each end. Work even to RC146 (150). Place WY marker at each sinker of 20 (21) and 21 (22) Ns and waste knit.

FRONT

As BACK to RC122 (124)
Neck shaping
RC000. Place 51 (55) Ns at left in HP. Knit 1 row. At beg of next and alt rows, bind off 4 (5) sts 1x, 2 sts 3x, and 1 st 4 (5)x. Work even to RC24 (26) and waste knit. Waste knit 12 (10) center sts. Push Ns at left back into WP. Knit left side to match right side reversing shaping.

SLEEVES

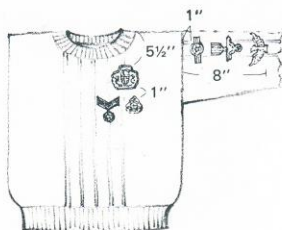
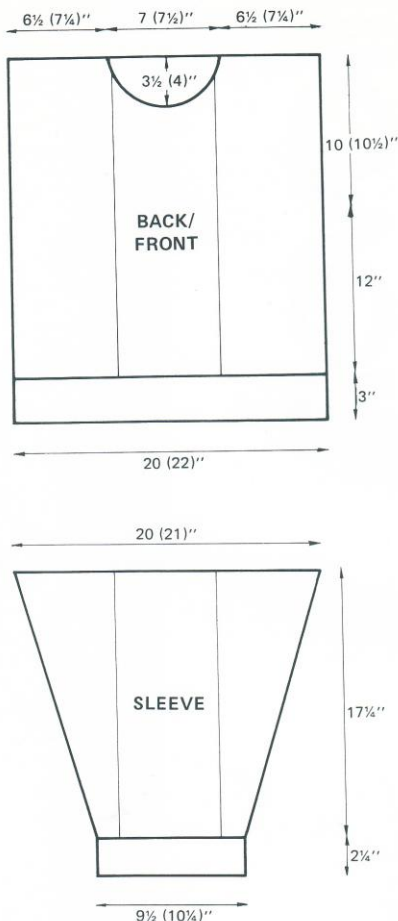
Start with WY. Using MC, finished cast on 44 (48) sts as 1x1RIB. Knit 15 rows TD7. Make 1x1RIB. RC000. Change to TD9. Knit 4 rows. Inc 1 st each end on every 4 rows to 58 (62) sts. Inc 1 st at each end every 6 rows to 86 (90) sts. Work even to RC116, making 4x2RIB at center. Waste knit.

NECKBAND

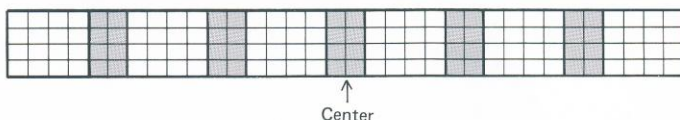
Start with WY. Using MC, finished cast on 94 (98) sts as 1x1RIB. Knit 7 rows TD7. Make 1x1RIB. Waste knit.

FINISHING

With WS up, block and press pieces omitting ribs. Join right shoulder. With RS facing you, place 54 (56) sts evenly along FRONT neck edge and 40 (42) sts between WY marker of BACK. Place neckband. Knit 1 row and bind off. Join left shoulder and neckband seam. Attach sleeves to bodice. Mattress st side seams and sleeves. Attach emblems to pullover.



4x2RIB PATTERN



□ Purl stitch
■ Plain stitch (wrong side)

pullover



brother

5 Pullover

SIZES

To fit 34(38)"/86(96) cm bust. Directions are for smaller size with larger size in parentheses. If there is only one set of figures it applies to both sizes.

KNITTED MEASUREMENTS

Finished bust measurement at underarm 39(43)"/99(109) cm
Length 28½ (29)"/72.5 (73.5) cm

MATERIALS

5(6) 3oz/85g skeins of COATS & CLARK RED HEART 4PLY "CARESS" in #112 Ebony Sparkle (MC), 3(4) skeins in #514 Teal (CC1)
1 skein of COATS & CLARK RED HEART 4PLY "WINTUK" in #12 Black (CC2)

GAUGE/TENSION

17 sts and 23 rows to 4"/10 cm in stockinette st with TD7 (stripe of every 18 rows with MC and CC1)

NOTE

Finished cast on for 2x2RIB
Refer to METHOD 2 on wrong side of cover.

BACK

Start with WY. Using CC1, finished cast on 82 (94) sts as 2x2RIB. Knit 7 rows TD5. Make 2x2RIB. RC000. Change to TD7. Start with MC. Knit to RC104, changing MC and CC1 on every 18 rows. Place WY marker at each end to indicate armhole. Knit in multi-color skip according to diagram to RC120. Knit in stripe to RC170 (174). Place WY marker at each sinker of 15 (16) and 16 (17) Ns. Waste knit.

FRONT

As BACK to RC152 (156).
Neck shaping
RC000. Place 46 (52) needles at left in HP. Knit 1 row. At beg of next and alt rows, bind off 3 (4) sts 1x, 2 sts 2(1)x, and 1 st 3(5)x. Work even to RC18 and waste knit. Waste knit 10 center sts. Push Ns at left into WP. Knit left side to match right side, reversing shaping.

SLEEVES

Start with WY. Using CC1, finished cast on 42 (46) sts as 2x2RIB. Knit 15 rows TD5. Make 2x2RIB. RC000. Change to TD7. Using MC, knit 6 rows. Inc 1 st at each end every 6 rows to 46 (50) sts. Inc 1 st at each end every 4 rows to 84 (88) sts. Knit to RC92, Knit in multi-color skip with MC and CC2 to RC108. Waste knit.

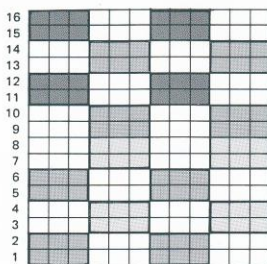
NECKBAND

Start with WY. Using MC, finished cast on 86 (90) sts as 2x2RIB. Knit 46 rows TD5, making 2x2RIB on every 20 row. Waste knit.

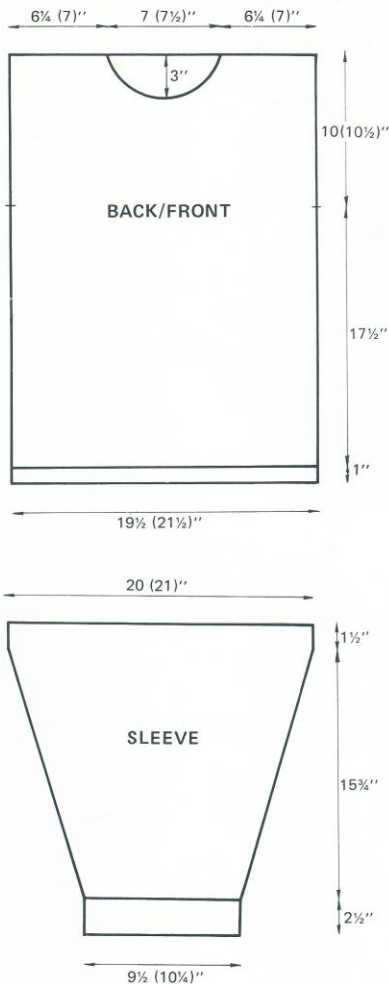
FINISHING

With WS up, block and press pieces omitting ribs. Join right shoulder. With RS facing you, place 56 (58) sts evenly along FRONT neck edge and 30 (32) sts between WY marker of BACK. Attach neckband to bodice. Join left shoulder and neckband seam. Attach sleeves to bodice. Mattress st side seams and sleeve seams.

MULTI-COLOR SKIP PATTERN



-  Knit in CC1
-  Knit in CC2
-  Knit in MC



KX-350

Homeknitter

brother®



ROUND NECK SWEATER

SIZES 22 (24 26 28 30 32 34 36 38 40 42) ins
55 (60 65 70 75 80 85 90 95 100 105) cms

ACTUAL MEASUREMENT 26 (28 30 32 34 36 38 40 42 44 46) ins

Approx Length 11¼ (13 15 17¼ 20 21½ 23¼ 24 25 25½ 26½)

MATERIALS 200 (300 350 400 450 500 550 550 700 750 800) gms. BK Superwash Wool
Used two ends throughout

TENSION 20 sts x 30 rs = (4ins) 10 cms
Tension Dial 4

NOTE Instructions are given for the basic pattern.
The basic pattern can be used to create a selection of different designs by adding a second or third colour see photograph.
Instructions are given for both 1 x 1 mock rib and 2 x 1 rib each with alternative neckbands.

BACK

For 2 x 1 rib C.on in WY 69 (75 81 87 93 99 105 111 117 123 129) sts
K few rs ending with carriage at right

For 1 x 1 rib C.on in WY 69 (75 81 87 93 99 105 111 117 123 129) sts
K few rs ending with carriage at left.
T2 K 10 (10 10 12 12 12 14 14 16 16 16)rs T6 K 1r
T2 K 10 (10 10 12 12 12 14 14 16 16 16)rs
turn up hem to form mock rib

RC 000 MY T4 K 44 (54 66 80 94 104 112 116 118 120 124) rs
If required shorten or lengthen here.

SHAPE ARMHOLE

C. off 3 (3 3 3 4 4 5 6 7 7 8) sts beg next 2 rs
Dec 1 st both ends next & foll alt rs
4 (4 5 5 5 6 6 6 7 8 9) times. Cont to k until RC
80 (90 106 126 144 158 168 174 180 186 192)

SHAPE SHOULDER

Always taking yarn round last ns in HP
Set carr for Partial Knitting At oppo end to carr
Bring 4 (4 5 5 5 6 6 6 7 7 7) sts into HP next 6 rs
Bring 3 (6 4 6 7 5 6 7 5 6 7) sts into HP next 2 rs
Mark both sides remaining cnt
25 (25 27 29 31 33 35 37 37 39 39) sts
Rel work on WY

FRONT

K as for back until RC
66 (74 92 110 128 142 150 156 160 164 170) rs

SHAPE NECK

Bring 33 (36 38 42 44 47 49 52 53 54 56) sts at left into HP
Set carriage Partial knitting.
Always taking yarn round last n in HP
At neck edge bring 1 st into HP next 4 rs
Bring 1 st into HP next & foll alt until
15 (18 19 21 22 23 24 25 26 27 28) sts rem
Cont to K until RC
80 (90 106 126 144 158 168 174 180 186 192)

SHAPE SHOULDERS

(Knit one row extra for right side)
Always taking yarn round last ns in HP
Bring 4 (4 5 5 5 6 6 6 7 7 7) sts at outside edge
into HP next & Foll alt rs 3 times
Bring 3 (6 4 6 7 5 6 7 5 6 7) sts into HP
Rel 15 (18 19 21 22 23 24 25 26 27 28) sts onto WY
Work right side to match

Pick up 2 (3 3 3 3 3 4 4 4 5 5) sts
both sides centre to complete front shaping
K few rs with WY & rel from mach.

SLEEVES

For 2 x 1 rib C.on in WY 37 (41 43 45 47 49 51 53 55 57 59) sts
K few rs ending with carr at right

For 1 x 1 rib C.on in WY 1 x 1 37 (41 43 45 47 49 51 53 55 57 59) sts
K few rs ending with carr at left.
T2 K 10 (10 10 12 12 12 14 14 16 16 16)rs T6 K 1r
T2 K 10 (10 10 12 12 12 14 14 16 16 16)rs
turn up hem to form mock rib

RC 000 MY T4 K 2 rs
Inc 1 st both ends next & foll 8th rs
until 51 (51 57 63 67 71 75 77 83 87 91) sts
Cont to K until RC 56 (72 88 104 110 118 124 124 132 134 138)

SHAPE ARMHOLE & TOP

C.off 2 (2 3 3 3 3 4 4 5 5 6) sts beg next 2 rs
Dec 1 st both ends next & foll alt rs 4 times
Dec 1 st both ends next 0 (1 1 1 1 1 1 1 1 1) r.
K 0 (3 3 3 3 3 3 3 3 3 3)rs.
RC 66 (86 102 118 124 132 138 138 146 148 152)
Dec 1 st both ends next & foll alt rs
1 (1 2 5 6 8 8 9 10 12 12) times
RC 68 (88 (106 128 136 148 154 156 166 172 176)
Dec 1 st both ends next 10 rs. C.off rem sts

BACK WELT

(refer to page 46 of Instruction book)
Bring forward 69 (75 81 87 93 99 105 111 117 123 129) sts
With wrong side facing pick up sts from back
RC 000 MY T3 K 19 rs. T10 K 1 r. Reform sts into 2 x 1 rib
C.off with latch tool. Rep for front

SLEEVE WELT

Bring forward 37 (41 43 45 47 49 51 53 55 57 59) sts
With wrong side facing pick up sts from sleeve
RC 000 MY T3 K 19 rs T10 K 1 r. Reform sts into 2 x 1 rib
C.off with latch tool. Rep for other sleeve

NECKBAND

Graft one shoulder on machine.
with wrong side facing Pick up sts held on WY from back & front neck

For 2 x 1 rib with roll RC 000 MY T4 K 2 rs. T3 K 6 rs. T2 K 4 rs
Reform sts to 2 x 1 rib. T4 K 7 rs. T8 K 1 r.
C.off with latch tool.

For 2 x 1 double band RC 000 MY T4 K 2 rs. T3 K 6 rs. T2 K 4 rs.
T6 Knit 1r. T2 K 4rs. T3 K 6rs. T4 K 2rs
Reform sts to 2 x 1 rib. turn up to form double band
C.off loosely.

For 1 x 1 mock rib RC000 MY T2 K6rs. T1 K4rs. T6 K1r.
T1 K4rs. T2 K6rs. turn up hem to form mock rib
Cast off loosely.

TO MAKE UP

Block and steam press all pieces wrong side first.
Graft shoulder seam, insert sleeves & sew sleeve &
side seams. Steam press omitting ribs.

ABBREVIATIONS

| | | | | | |
|--------|-------------|------|-----------|-------|-------------|
| Alt | Alternate | Dec | Decrease | N | Needle |
| Beg | Beginning | Foll | Following | Oppos | Opposite |
| Carr | Carriage | Gms | Grams | RC | Row counter |
| Cent | Centre | HP | Holding | Rel | Release |
| Col | Colour | | position | Rem | Remain |
| C. off | Cast off | Inc | Increase | Rs | Rows |
| C. on | Cast on | Ins | Inches | Sts | Stitches |
| Cont | Continue | K | Knit | T | Tension |
| Cms | Centimetres | MY | Main yarn | WY | Waste Yarn |

KX-350

Homeknitter

brother®



ROUND NECK CARDIGAN

SIZES 22 (24 26 28 30 32 34 36 38 40 42) ins
55 (60 65 70 75 80 85 90 95 100 105) cms

ACTUAL MEASUREMENT 26 (28 30 32 34 36 38 40 42 44 46) ins

Approx length 13 (13 15 18 20 22 23 1/4 24 1/4 25 26 26 1/4) ins

MATERIALS 250 (325 375 450 500 550 600 650 700 750 800)gms BK Superwash Wool
Used two ends throughout

TENSION 20 sts x 30 rs = (4ins) 10 cms
Tension Dial 4

NOTES Instructions are given for the basic pattern
The basic pattern can be used to give a selection of different designs by adding a second or third colour, see photograph.

BACK

C on in WY 1 x 1. 69 (75 81 87 93 99 105 111 117 123 129) sts
K few rs ending with carriage at left
RC000 MY. T2 K 14 (14 16 16 18 18 20 20 22 22 22) rs.
T6 K 1 r. T2 K 14 (14 16 16 18 18 20 20 22 22 22) rs.
Turn up mock rib
RC000 MY. T4. K 48 (54 66 80 94 104 112 116 118 120 124) rs
If required shorten or lengthen here.

SHAPE ARMHOLE

C. off 3 (3 3 4 4 5 6 7 7 8) sts beg next 2 rs
Dec 1 st both ends next & foll alt rs
4 (4 5 5 5 6 6 6 7 8 9) times. Cont to k until RC
88 (90 106 126 144 158 168 174 180 186 192)

SHAPE SHOULDER

Always taking yarn round last ns in HP
Set carriage for Partial Knitting At opps end to carr
Bring 4 (4 5 5 5 6 6 6 7 7 7) sts into HP next 6 rs
Bring 3 (6 4 6 7 5 6 7 5 6 7) sts into HP next 2 rs
Mark both sides centre, 25 (25 27 29 31 33 35 37 37 39 39) sts
and release all sts onto WY

RIGHT FRONT

C.on in WY 1 x 1 31 (35 39 41 45 47 51 53 57 59 63) sts
K few rs ending with carriage at left
RC000 MY. T2 K 14 (14 16 16 18 18 20 20 22 22 22) rs.
T6 K 1 r. T2 K 14 (14 16 16 18 18 20 20 22 22 22) rs.
Turn up mock rib
RC000 MY. T4. K 48 (54 66 80 94 104 112 116 118 120 124) rs

SHAPE ARMHOLE

(Knit one row extra for left front)
C. off 3 (3 3 4 4 5 6 7 7 8) sts beg next r. K 1 r
Dec 1 st beg next & foll alt rs
4 (4 5 5 5 6 6 6 7 8 9) times. Cont to k until RC
70 (70 82 102 116 130 138 144 148 154 160)

SHAPE FRONT

Set carriage for Partial Knitting
Always taking yarn round last n in HP
At neck edge Bring 3 (3 4 4 5 5 6 6 7 7 8) into HP
K 1 r. At neck edge bring 1 st into HP next 4 rs
Bring 1 st into HP next & foll alt until
15 (18 19 21 22 23 24 25 26 27 28) sts rem
Cont to K until RC 87 (89 105 125 143 157 167 173 179 185 191)

SHAPE SHOULDER

Always taking yarn round last ns in HP
Bring 4 (4 5 5 5 6 6 6 7 7 7) sts at outside edge
into HP next & Foll alt rs 3 times
Bring 3 (6 4 6 7 5 6 7 5 6 7) sts into HP

Rel shoulder onto WY
Pick up 2 (2 2 2 2 3 4 4 4 4 4) sts along front shaping
K few rs with WY & rel from machine.
Work other front to match

SLEEVES

C.on in WY 1 x 1 rib 37 (41 43 45 47 49 51 53 55 57 59) sts
K few rs ending with carr at left
RC000 MY. T2 K 14 (14 16 16 18 18 20 20 22 22 22) rs.
T6 K 1 r. T2 K 14 (14 16 16 18 18 20 20 22 22 22) rs.
Turn up mock rib. RC 000 MY T4 K 2 rs
Inc 1 st both ends next & foll 6th rs
until 51 (51 57 63 67 71 75 77 83 87 91) sts
Cont to K until RC 56 (72 88 104 110 118 124 124 132 134 138)

SHAPE TOP

C.off 2 (2 3 3 3 3 4 4 5 5 6) sts beg next 2 rs
Dec 1 st both ends next & foll alt rs 4 times
Dec 1 st both ends next 0 (1 1 1 1 1 1 1 1 1) r.
K 0 (3 3 3 3 3 3 3 3 3) rs.
RC 66 (86 102 118 124 132 138 138 146 148 152)
Dec 1 st both ends next & foll alt rs 1 (1 2 5 6 8 8 9 10 12 12) times
RC 68 (88 (106 128 136 148 154 156 166 172 176)
Dec 1 st both ends next 10 rs. C.off rem sts

BUTTON BAND

Bring forward 63 (63 71 85 99 105 113 117 121 125 127) ns
Leave 1 stitch at welt edge. empty Carriage at left
With wrong side facing pick up 11 (11 13 13 15 15 17 17 19 19 19) sts
from front welt and along front edge.

For 1 x 1 mock rib Transfer sts for 1 x 1 rib
RC000 MY T2 K 10 (10 10 10 12 12 12 12 14 14 14) rs
T6 K 1 r T2 K 10 (10 10 10 12 12 12 12 14 14 14) rs
pick up sts to form mock rib, Bind off with tapestry needle.

For Stocking stitch band

RC000 MY T3 K 10 (10 10 10 12 12 12 12 14 14 14) rs
T6 K 1 r T3 K 10 (10 10 10 12 12 12 12 14 14 14) rs
pick up sts to form hem, Bind off with tapestry needle.

BUTTONHOLE BAND

Knit as above working buttonholes across 6 (6 6 6 7 7 7 7 8 8)th
and 16 (16 16 16 19 19 19 19 22 22)nd rows

For buttonholes - transfer 1 stitch onto adjacent needle,
leave empty needle in WP. work buttonholes evenly across row.

NECKBAND

Graft shoulders (up to marker) on machine.
With wrong side facing pick up sts from front band, sts held on WY
from front shaping, back, front shaping and front band.
For Stocking st RC 000 MY T4 K 4 rs. T3 K 6 rs. T2 K 4 rs
T6 K 1 r. T2 K 4 rs. T3 K 6 rs. T4 K 4 rs pick up sts to form double hem
Bind off with tapestry needle.
For 1 x 1 Mock Rib Carr at right RC000 MY T4 K 1 r.
Transfer sts to 1 x 1 rib T2 K 10 (10 10 10 12 12 12 12 14 14 14)rs
T6 K 1 r. T2 K 10 (10 10 10 12 12 12 12 14 14 14)rs.
Bring all needles back into WP T4 K 1 r
pick up sts to form mock rib. Bind off with tapestry needle.

TO MAKE UP

Block and steam press all pieces wrong side first.
Insert sleeves, sew sleeve & side seams.
Sew on buttons, Steam press omitting ribs.

ABBREVIATIONS

| | | | | | |
|--------|-------------|------|------------------|-------|-------------|
| Alt | Alternate | Dec | Decrease | N | Needle |
| Beg | Beginning | Foll | Following | Oppos | Opposite |
| Carr | Carriage | Gms | Grams | RC | Row counter |
| Cent | Centre | HP | Holding position | Rel | Release |
| Col | Colour | | | Rem | Remain |
| C. off | Cast off | Inc | Increase | Rs | Rows |
| C. on | Cast on | Ins | Inches | Sts | Stitches |
| Cont | Continue | K | Knit | T | Tension |
| Cms | Centimetres | MY | Main yarn | WY | Waste Yarn |

KX-350

Homeknitter

brother®



NATURALLY CLASSIC

SIZES 34 (36 38 40 42 44) ins
85 (90 95 100 105 110) cms

ACTUAL MEASUREMENT 38 (40 42 44 46 48) ins

APPROX LENGTH 24 (25 26 27 28 29) ins

MATERIALS Naturally DK pure wool
250 (300 350 400 450 500) Col A Bracken
100 (100 125 200 200 250) Col B Oatmeal
100 (100 125 225 225 250) Col C Cream

TENSION 22 sts x 30 rs = (4ins) 10 cms
Tension Dial 4.5

BACK

C on for 1 x 1 rib in WY 99 (105 111 117 123 129) sts
K few rs ending with carriage at left
Col A RC 000 T2 12 (14 14 16 18 20) rs
T6 K 1r. T2 12 (14 14 16 18 20) rs
Turn up hem to form mock rib
RC000 MT K 68 (76 86 90 98 104) rs
If required shorten or lengthen here.
Col C K 4rs. Col A K 2rs
Col B K until RC 108 (116 126 130 138 144) rs

SHAPE ARMHOLE

C. off 4 (5 6 7 7 8) sts beg next 2 rs
Dec 1 st both ends next & foll alt rs
until RC 114 (122 128 136 144 150)
Col A Dec 1 st both ends next & foll alt rs
until RC 118 (126 132 140 148 154)rs
Col B Dec 1 st both ends next r. K 1r.
RC 120 (128 134 142 150 156)
Col C Dec 1 st both ends next & foll alt rs
1 (1 1 2 4 4) times. until 79 (83 87 89 91 95)sts
Cont to K until RC 170 (178 186 192 200 206)

SHAPE SHOULDER

Always taking yarn round last ns in HP
Set carr for Partial Knitting At oppo end to carr
Bring 6 (6 6 7 7 7) sts into HP next 6 rs
Bring 5 (6 7 5 6 7) sts into HP next 2 rs
Mark both sides remaining cent
33 (35 37 37 37 39) sts
Rel work on WY

FRONT

K as for back until RC 152 (158 166 172 180 184)rs

SHAPE NECK

Bring 47 (49 52 53 54 56) sts at left into HP
Set carriage Partial knitting.
Always taking yarn round last needle in HP
At neck edge bring 1 st into HP next 4 rs
Bring 1 st into HP next & foll alt until
23 (24 25 26 27 28) sts rem
Cont to K until RC 170 (178 186 192 200 206) rs

SHAPE SHOULDERS

(Knit one row extra for right side)
Always taking yarn round last ns in HP
Bring 4 (6 6 7 7 7) sts at outside edge
into HP next & Foll alt rs 3 times
Bring 5 (6 7 5 6 7) sts into HP
Rel 23 (24 25 26 27 28) sts onto WY
Reset RC to 170 (178 186 192 200 206)

Work right side to match
Pick up 10 (12 12 12 12 13) sts
both sides centre to complete front shaping
MY K 1r. K few rs with WY & rel from mach.

SLEEVES

C.on for 1 x 1 rib in WY 49 (51 53 55 57 59) sts
K few rs ending with carr at left
Col A RC 000 T2 K 12 (14 14 16 18 20) rs
T6 K 1r. T2 K 12 (14 14 16 18 20) rs
Turn up hem to form mock rib
RC000 MT K 2 rs. AT SAME TIME
Inc 1 st both ends next & foll 8th rs
until 71 (75 77 83 87 91) sts and change cols on
RC 70 (76 78 86 90 90) work in Col C
RC 74 (80 82 90 94 94) work in Col A
RC 76 (82 84 92 96 96) work in Col B
Cont to K until RC 108 (116 118 126 130 130)

SHAPE TOP and AT SAME TIME CHANGE COLOURS

(Please read complete section for colour changes)
C.off 3 (4 4 5 5 6) sts beg next 2 rs
Dec 1 st both ends next & foll alt rs 4 times
Dec 1 st both ends next r. K 3 rs.
RC 130 (130 132 140 144 144)
Dec 1 st both ends next & foll alt rs
8 (8 9 10 12 12) times
RC 146 (146 150 160 168 168)
Dec 1 st both ends next 10 rs. C.off rem sts
and AT SAME TIME CHANGE COLOURS on
RC 116 (122 124 132 136 136) work in Col A
RC 120 (126 128 136 140 140) work in Col B
RC 122 (128 130 138 142 142) work in Col C to end.

NECKBAND

Graft one shoulder on machine.
With wrong side facing, pick up sts held on WY from back & front neck
Transfer sts to 1 x 1 mock rib.
Col C T3 K 2rs. T2 K 6rs. Col A T1 K 1r.
T6 K 1r. T1 K 1r. Col C T2 K 6 rs. T3 K 2rs.
Pick up sts to form mock rib.
T10 K 1r. Cast off with latch tool.

TO MAKE UP

Block and steam press all pieces wrong side first.
Graft shoulder seam, insert sleeves & sew sleeve & side seams. Steam press omitting ribs.

ABBREVIATIONS

| | | | | | |
|--------|-------------|------|------------------|-------|-------------|
| Alt | Alternate | Dec | Decrease | N | Needle |
| Beg | Beginning | Foll | Following | Oppos | Opposite |
| Carr | Carriage | Gms | Grams | RC | Row counter |
| Cent | Centre | HP | Holding position | Rel | Release |
| Col | Colour | | | Rem | Remain |
| C. off | Cast off | Inc | Increase | Rs | Rows |
| C. on | Cast on | Ins | Inches | Sts | Stitches |
| Cont | Continue | K | Knit | T | Tension |
| Cms | Centimetres | MY | Main yarn | WY | Waste Yarn |

KX-350

Homeknitter

brother®



CROP TOP

SIZES 32 (34 36 38 40 42) ins
75 (80 85 90 95 100) cms

ACTUAL MEASUREMENT 36 (38 40 42 44 46) ins

MATERIALS 200g Craft Courtelle DK Col A
small amount Courtelle DK Col B

TENSION 22 sts x 30 rs = (4ins) 10 cms
Tension Dial 4.5

BACK & FRONT

C on in WY 99 (105 111 117 123 129) sts
K few rs ending with carriage at right
Cast on by hand (e wrap method) over all needles
RC000 * Col A K 16 Col B K 6 rs *
repeat from * to * throughout
Cont to K until RC 44 (52 56 56 56 66) rs

SHAPE ARMHOLE

C. off 4 (5 6 7 7 8) sts beg next 2 rs
Dec 1 st both ends next & foll alt rs
6 (6 6 7 9 9) times. Cont to k until
RC 76 (84 98 98 98 110) rs.

SHAPE NECK

Bring 59 (61 63 64 65 67) sts at left into HP
Set carriage Partial knitting.
Always taking yarn round last n in HP
At neck edge bring 1 st into HP next 4 rs
Bring 1 st into HP next & foll alt rs 6 times
until 10 (12 14 15 16 18) sts rem
Cont to K until RC 96 (104 118 118 118 130) rs
Rel work on WY
Leave (49)sts at centre in HP
Work right side to match

Pick up 2 sts both sides neck shaping to complete front shaping
MY K 3 rs T 10 k 1r. Cast off with latch tool.

SLEEVES

C.on for WY 67 (71 73 79 83 87) sts
K few rs ending with carr at right
RC 000 Cast on by hand (e wrap method) over all needles
Working in stripe pattern RC000 K 2 rs
Inc 1 st both ends next & foll alt r. K 3rs
RC 8

SHAPE TOP

C.off 3 (4 4 5 5 6) sts beg next 2 rs
Dec 1 st both ends next & foll 4th rs 3 times
K 3rs. RC22
Dec 1 st both ends next & foll alt rs
8 (8 9 10 12 12) times
RC 38 (38 40 42 46 46)
Dec 1 st both ends next 10 rs. C.off rem sts

TO MAKE UP

Do not remove WY cast on until after blocking and pressing all pieces wrong side first.
Graft shoulder seams, insert sleeves.
Sew sleeve & side seams.
Roll neck edge to front.

ABBREVIATIONS

| | | | | | |
|--------|-------------|------|------------------|-------|-------------|
| Alt | Alternate | Dec | Decrease | N | Needle |
| Beg | Beginning | Foll | Following | Oppos | Opposite |
| Carr | Carriage | Gms | Grams | RC | Row counter |
| Cent | Centre | HP | Holding position | Rel | Release |
| Col | Colour | | | Rem | Remain |
| C. off | Cast off | Inc | Increase | Rs | Rows |
| C. on | Cast on | Ins | Inches | Sts | Stitches |
| Cont | Continue | K | Knit | T | Tension |
| Cms | Centimetres | MY | Main yarn | WY | Waste Yarn |

KX-350

Homeknitter

brother®



V NECK CARDIGAN

SIZES 22 (24 26 28 30 32 34 36 38 40 42) ins
55 (60 65 70 75 80 85 90 95 100 105) cms

ACTUAL MEASUREMENT 26 (28 30 32 34 36 38 40 42 44 46) ins

MATERIALS 1 (1 1½ 1½ 2 2 2 2 2) cones
BK 4 ply Trophy
Used two ends throughout

TENSION 20 sts x 32 rs = (4ins) 10 cms
Tension Dial 4

NOTES The Instructions are for the basic pattern.
The basic pattern can be used to create a selection of different designs by adding a second colour, see photograph.

BACK

C on for 1 x 1 rib in WY 69 (75 81 87 93 99 105 111 117 123 129) sts
K few rs ending with carriage at left
T2 K 10 (10 10 12 12 12 12 14 14 14 16 16) rs. T4 K 1r.
T2 K 10 (10 10 12 12 12 14 14 14 16 16) rs.
turn up hem to form mock rib.
RC 000 MY T4 K 44 (54 66 80 94 104 112 116 118 120 124) rs
If required shorten or lengthen here.

SHAPE ARMHOLE

C. off 3 (3 3 4 4 5 6 7 7 8) sts beg next 2 rs
Dec 1 st both ends next & foll alt rs
4 (4 5 5 5 6 6 6 7 8 9) times. Cont to k until RC
80 (90 106 126 144 158 168 174 180 186 192)

SHAPE SHOULDER & NECK

Bring 40 (43 46 50 53 56 59 62 63 66 67) sts at left into HP
Always taking yarn round last ns in HP
Set carr for Partial Knitting At oppo end to carr
Bring 1 st at centre into HP next r.
Bring 4 (4 5 5 5 6 6 6 7 7 7) sts into HP next r.
Repeat twice more (3 times in all)
Bring 3 (6 4 6 7 5 6 7 5 6 7) sts into HP next r
Rel shoulder onto WY.
Leave centre 22 (22 24 26 28 30 32 34 34 36 36) sts in HP
Work left side to match.

BACK NECKBAND

Sizes 22 ins - 34 ins only Transfer sts to 1 x 1 rib
or work in Stocking stitch
RC000 T2 K 8 (8 8 10 10 10 12 12 12 12 12) rs. T4 K 1r.
RC000 T2 K 8 (8 8 10 10 10 12 12 12 12 12) rs
Turn up hem. T4 K 1r. Bind off with tapestry needle.
Sizes 36 ins - 42 ins rel work onto WY.
Work later with front bands.

FRONT

C on in WY 31 (35 39 41 45 47 51 53 57 59 63) sts
K few rs ending with carriage at left
T2 K 10 (10 10 12 12 12 14 14 14 16 16) rs. T4 K 1r.
T2 K 10 (10 10 12 12 12 14 14 14 16 16) rs.
turn up hem to form mock rib.
RC 000 MY T4 K 44 (54 66 80 94 104 112 116 118 120 124) rs

SHAPE ARMHOLE

(Knit one row extra for right front)
C. off 3 (3 3 3 4 4 5 6 7 7 8) sts beg next r
AT SAME TIME, AT ARMHOLE EDGE Dec 1 st beg next & foll alt
rs 4 (4 5 5 5 6 6 6 7 8 9) times. and **AT NECK EDGE**
using 3 prong transfer tool Dec 1 st next & foll 4th rs until
15 (18 19 21 22 23 24 25 26 27 28) sts rem
ON ROW COUNTER 80 (90 106 126 144 158 168 174 180 186 192)

SHAPE SHOULDERS

(Knit one row extra for right side)
Always taking yarn round last ns in HP
Bring 4 (4 5 5 5 6 6 6 7 7 7) sts at outside edge
into HP next & Foll alt rs 3 times
Bring 3 (6 4 6 7 5 6 7 5 6 7) sts into HP
Rel 15 (18 19 21 22 23 24 25 26 27 28) sts onto WY
Work right side to match

SLEEVES

C.on for 1 x 1 rib in WY 37 (41 43 45 47 49 51 53 55 57 59) sts
K few rs ending with carriage at left
T2 K 10 (10 10 12 12 12 14 14 14 16 16) rs. T4 K 1r.
T2 K 10 (10 10 12 12 12 14 14 14 16 16) rs.
turn up hem to form mock rib.
RC 000 MY T4 K 2 rs
Inc 1 st both ends next & foll 8th rs
until 51 (51 57 63 67 71 75 77 83 87 91) sts
Cont to K until RC 56 (72 88 104 110 118 124 124 132 134 138)

SHAPE TOP

C.off 2 (2 3 3 3 3 4 4 5 5 6) sts beg next 2 rs
Dec 1 st both ends next & foll alt rs 4 times
Dec 1 st both ends next r. 0 (1 1 1 1 1 1 1 1 1) r
K 0 (3 3 3 3 3 3 3 3 3 3)rs.
RC 66 (86 102 118 124 132 138 138 146 148 152)
Dec 1 st both ends next & foll alt rs
1 (1 2 5 6 8 8 9 10 12 12) times
RC 68 (88 (106 128 136 148 154 156 166 172 176)
Dec 1 st both ends next 10 rs. C.off rem sts

BUTTON BAND

For first 7 sizes (22 ins - 34 ins)

With wrong side facing pick up as many sts as you can
from front welt and along front edge.
T4 K 1r. Transfer sts for 1 x 1 rib or work in Stocking Stitch
RC000 T2 K 8 (8 8 10 10 10 12 12 12 12 12) rs. T4 K 1r.
RC000 T2 K 8 (8 8 10 10 10 12 12 12 12 12) rs
Turn up hem. T4 K 1r. Bind off with tapestry needle.

BUTTON HOLE BAND

Knit as above working buttonholes across 4 (4 4 5 5 5 6 6 6 6 7 7)ths
and 12 (12 12 16 16 16 18 18 18 18 20)ths rs

For buttonholes - transfer 1 stitch onto adjacent needle,
leave empty needle in WP. work buttonholes evenly across row.

For larger sizes (36 ins - 42 ins) Join shoulders, work in three
sections.

1. Lower front button band.
2. Top front & across back neck, & Top front.
3. Lower front buttonhole band.

TO MAKE UP

Block press, graft shoulders, (join bands), insert sleeves,
sew side and sleeve seams. Sew on buttons.

ABBREVIATIONS

| | | | | | |
|--------|-------------|------|-----------|-------|-------------|
| Alt | Alternate | Dec | Decrease | N | Needle |
| Beg | Beginning | Foll | Following | Oppos | Opposite |
| Carr | Carriage | Gms | Grams | RC | Row counter |
| Cent | Centre | HP | Holding | Rel | Release |
| Col | Colour | | position | Rem | Remain |
| C. off | Cast off | Inc | Increase | Rs | Rows |
| C. on | Cast on | Ins | Inches | Sts | Stitches |
| Cont | Continue | K | Knit | T | Tension |
| Cms | Centimetres | MY | Main yarn | WY | Waste Yarn |

KX-350

Homeknitter

brother®



V NECK SWEATER

SIZES 22 (24 26 28 30 32 34 36 38 40 42) ins
55 (60 65 70 75 80 85 90 95 100 105) cms

ACTUAL MEASUREMENT 26 (28 30 32 34 36 38 40 42 44 46) ins

MATERIALS 1 (1 1 1 2 2 2 2 2 2) cones
BK 4 ply Trophy
Used two ends throughout

TENSION 20 sts x 32 rs = (4ins) 10 cms
Tension Dial 4

NOTES The basic pattern can be used to create a selection of designs by adding a second or third colour.
The Harlequin design was knitted in 4 colours. After knitting mock ribs, bring all needles left centre 0 into HP. Set carriage for Partial Knitting, transfer 1 st at left onto adjacent needle. Work on right side only. Inc 1 st at centre of right side. (for seaming)
Follow pattern changing colours where required. Rel work onto WY.

Work left side. Transfer centre stitch back onto adjacent needle and Inc 1 st at centre. At back neckline, place stitches held on WY back onto needles. (there will be 2 extra stitches)
T4 K 1r. T10 K 1r. C.off with latch tool.
Join centre seams with ladder stitch.

BACK

C on in WY 1 x 1 rib 69(75 81 87 93 99 105 111 117 123 129)sts
K few rs ending with carriage at left
RC 000 MY T2 K 10 (10 10 12 12 12 14 14 14 16 16) rs
T6 K 1r. T2 K 10 (10 10 12 12 12 14 14 14 16 16) rs
Turn up hem to form mock rib
RC 000 MT K 36 (40 50 60 74 84 92 96 98 100 104) rs
If required shorten or lengthen here.

SHAPE ARMHOLE

C. off 3 (3 3 3 4 4 5 6 7 7 8) sts beg next 2 rs
Dec 1 st both ends next & foll alt rs
4 (4 5 5 5 6 6 6 7 8 9) times. Cont to k until RC
74 (78 92 106 124 138 148 154 160 166 172)

SHAPE SHOULDER

Bring 40 (43 46 50 53 56 59 62 63 66 67) sts at left into HP
Always taking yarn round last ns in HP
Set carr for Partial Knitting
Bring 1 st into HP at neck edge next r
Bring 4 (4 5 5 5 6 6 6 7 7 7) sts next r.
Repeat last two rs twice (3 times in all)
Bring 3 (6 4 6 7 5 6 7 5 6 7) sts into HP next r.
Rel shoulder onto WY
Leave centre 22 (22 24 26 28 30 32 34 34 36 36)sts in HP
Work left side to match.
MT K 1 r T10 K 1r across centre
25 (25 27 29 31 33 35 37 37 39 39) sts
Cast off with latch tool.

FRONT

K as for back until
RC 000 36 (40 50 60 74 84 92 96 98 100 104)rs
C. off 3 (3 3 3 4 4 5 6 7 7 8) sts beg next 2 rs

DIVIDE WORK. Dec cent st. Pull all needles left cent 0 into HP
Set carriage for Partial Knitting and
AT SAME TIME at ARMHOLE

Dec 1 st at armhole edge next & foll alt rs
4 (4 5 5 5 6 6 6 7 8 9) times.

At NECK EDGE

Using 3 prong transfer tool Dec 1st next & foll
4th (4th 4th 4th 5th 5th 5th 5th 6th 6th 6th) rs until
15 (18 19 21 22 23 24 25 26 27 28) sts rem
Cont to K until RC
74 (78 92 106 124 138 148 154 160 166 172)

SHAPE SHOULDERS

(Knit one row extra for right side)
Always taking yarn round last ns in HP
Bring 4 (4 5 5 5 6 6 6 7 7 7) sts at outside edge
into HP next & Foll alt rs 3 times
Bring 3 (6 4 6 7 5 6 7 5 6 7) sts into HP
Rel 15 (18 19 21 22 23 24 25 26 27 28) sts onto WY
Work right side to match

SLEEVES

C.on in WY for 1 x 1 rib 37 (41 43 45 47 49 51 53 55 57 59) sts
K few rs ending with carr at left
RC 000 MY T2 K 10 (10 10 12 12 12 14 14 14 16 16) rs
T6 K 1r. T2 K 10 (10 10 12 12 12 14 14 14 16 16) rs
Turn up hem to form mock rib
RC 000 MY T4 K 2 rs
Inc 1 st both ends next & foll 8th rs
until 51 (51 57 63 67 71 75 77 83 87 91) sts
Cont to K until RC 56 (62 78 94 100 108 114 114 122 124 128)

SHAPE TOP

C.off 2 (2 3 3 3 3 4 4 5 5 6) sts beg next 2 rs
Dec 1 st both ends next & foll alt rs 4 times
Dec 1 st both ends next r. K 0 (3 3 3 3 3 3 3 3 3 3)rs.
RC 56 (76 92 108 114 122 128 128 136 138 142)
Dec 1 st both ends next & foll alt rs
1 (1 2 5 6 8 8 9 10 12 12) times
RC 58 (78 96 108 126 138 144 146 156 162 166)
Dec 1 st both ends next 10 rs. C.off rem sts

TO MAKE UP

Block and press all pieces wrong side first.
Graft shoulder seams, insert sleeves & sew sleeve & side seams. Press omitting ribs.

ABBREVIATIONS

| | | | | | |
|--------|-------------|------|------------------|-------|-------------|
| Alt | Alternate | Dec | Decrease | N | Needle |
| Beg | Beginning | Foll | Following | Oppos | Opposite |
| Carr | Carriage | Gms | Grams | RC | Row counter |
| Cent | Centre | HP | Holding position | Rel | Release |
| Col | Colour | Inc | Increase | Rem | Remain |
| C. off | Cast off | Ins | Inches | Rs | Rows |
| C. on | Cast on | K | Knit | Sts | Stitches |
| Cont | Continue | K | Knit | T | Tension |
| Cms | Centimetres | MY | Main yarn | WY | Waste Yarn |