

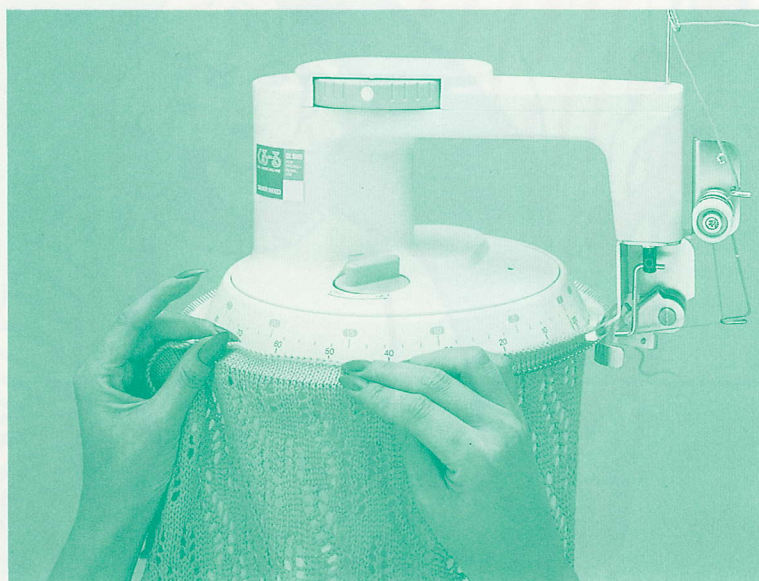
SYMBOLS ABBRIVIATIONS

SD	— SD stands for Stitch Dial and the figure in circle indicates Stitch Dial number.	pos.	— position
		st. (sts.)	— stitch or stitches
		Nd. (Nds.)	— needle or needles
		Col. A	— identifies colour of each yarn (Col. B)

Electric Linking Machine DL1000

The attractive DL1000 is a circular linking machine that takes all the fuss out of making up knitted garments.

It's the perfect little device for beginners because it's so easy to use. Whether you're joining parts together, attaching collars, or simply doing a little shirring, you'll be amazed at the time you save. And at the professional finish!



Your letters to "Knits for Joy" are always welcomed at the following address:—

S.S.C.
P.O. Box 5095, Tokyo International
Tokyo, 100-31, Japan

© Silver Knitting Institute, Tokyo, Japan
Printed in Japan 87.5.4M(31)

MEN'S PULLOVER

Finished measurements size: cm.

	A	B	C
Chest	108	116	120
Length	66	68	70
Sleeve length	61	63	65

Materials/others:

Vrey thick Yarn (wool 100%)

Col. A (off white) 530g

Col. B (light brown) 100g

waste yarn reasonable amount

Machines. Mod. 150, 151, 155

Tension Gauge

15sts. by 18 rows over the swatch of Stockinet with Stitch Dial at ⑧.

19sts. by 22 rows over swatch of K1.P1. Rib with stitch Dial at ⑤.

To knit

Knit right back and front, plaits, left back & front side panels, right & left sleeves, neckband, welts & cuffs, following the patterns given on pages 4 — 7 and instructions below.

(Right Back)

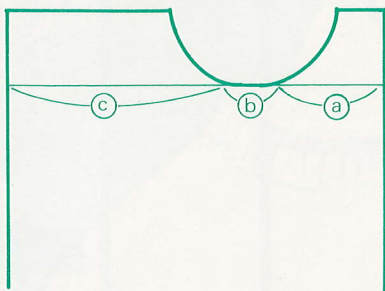
Purl side is worn.

- Set the pattern paper for right back and lock at starting line.
- Set the Carriage for Stockinet.
- Arrange required number of Nds. in B pos.
- Cast on and knit several rows with waste yarn.
- Knit 1 row with Ravel Cord.
- Release pattern paper.
- SD⑧, Col.A in yarn feeder, knit up to armhole, following the contour line.
- Shape armhole by decreasing sts. following the contour line.
- Knit up to shoulder.

- Remove the sts. for right shoulder, neck edge and left shoulder on waste knitting respectively.

(Right Front)

- Knit up to front neckline in the same manner as for right back.
- Set both Russel Levers to 1.
- Push the Nds. on the opposite side of Carriage (section (c) and (b)) to D pos.



- Following contour line shape front neckline by decreasing sts.
- Remove the section on waste knitting and push back the empty Nds. to A pos.
- Return pattern paper to front neckline and lock it.
- Remove the sts. in section (b) on waste knitting and push back the empty Nds. to A pos.
- Set both Russel Levers II and release Pattern paper.
- Work section (c) in the same manner as done for section (a).

(Right sleeve)

Purl side is worn.

- SD ⑧, cast on and knit several rows with waste yarn.
- Col. A in yarn feeder, knit in Stockinet, decreasing sts. to shape underarm.
- Remove the fabric on waste knitting.

(Plait)

Knit 2 pieces in off white (A) and 2 pieces in light brown (B).

Knit side is used as right side.

pattern chart

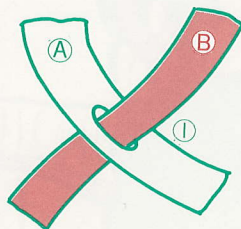
—	—	—	—	—	—
—	—	—	—	—	—
—	—	∩	—	—	—
—	∩	○	○	∩	—
—	—	—	—	—	—
—	—	—	—	—	—

open work

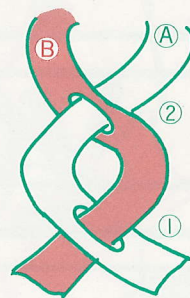
-purl stitch
- ∩right over left
- ∩left over right
-empty Nd. in B pos.
- ∩push the needle to D pos. with Russel Levers to 1.

- SD ⑧, knit required number of rows in Stockinet, following the contour line.
- Make holes at required positions, following the chart above, and put yarn marks at the marked position.
- Block out each piece to size and press with steam iron.
- Plait 2 pieces ((A) and (B)) in the following manner.

- (1) Thread (B) through the first hole 1 on (A) from the purl side.



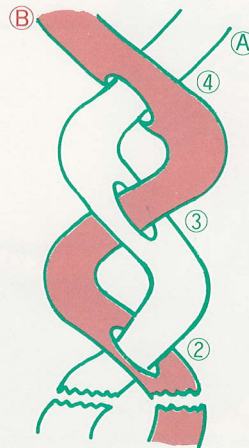
- (2) Thread (A) through the first hole 2 on (B) from the knit side.



- (3) Thread (B) through the second hole 3 on (A) from the purl side.



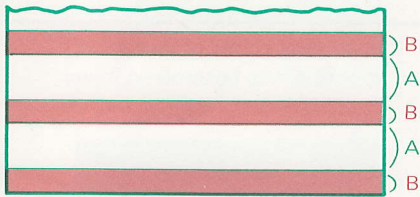
- (4) Thread (A) through the second hole 4 on (B) from the knit side.



- (5) Repeat steps (1) — (4).
 — Plait another 2 pieces in the same manner as instructed above.

(Left front side panel)

- Set the pattern paper for left front side panel and lock at starting line.
- Push the required number of Nds. to B pos.
- With purl side facing you, pick up the sts. from the plait evenly with the yarn marks as a guide and place them onto the Nds. in B pos.
- Working in striped sequence given on the chart below, knit the required number of rows with SD ⑧.



A — 4 rows with col. A
 B — 2 rows with col. B

- Remove the sts. for sleeve and side seam on waste knitting respectively.

(Left back side panel)

- Work in the same manner as instructed for left front side panel.

(Left sleeve)

- Join back and front plaits to back and front by blind stitch respectively.
- Join left shoulder in the following manner.
 - (1) Join left back & front shoulder and back & front plaits on the machine.
- Push the same number of Nds. as the number of sts. on the left shoulder of back & front and the sts. on the last row of a piece for plait to B pos.
- With the right side of back facing you, pick up the sts. of back shoulder and the sts. on the last row of back plait,

and place them on the Nds. in B pos. (each Nd. for plait has two sts. -one in Col.A and another in Col.B)

- With the wrong side of front facing you, pick up the sts. of front shoulder and the sts. on the last row of front plait, and place them on the top of the sts. of back shoulder and plait (each Nd. for plait has 4 sts. and the rest have two sts. on each Nd.) SD ⑧, knit 1 row with Col.A and cast off the sts. with back stitch method.

(2) Join left front & back side panel by bling stitch.

- Push the Required number of Nds. for sleeve to B pos.
- With wrong side of back & front facing you, pick up the sts. for sleeve from the last row of left back & front panel and place them onto the Nds. in B pos., starting from centre(O) on the Needle Bed.
- Working in striped sequence continuously, knit sleeve in Stockinet, decreasing sts. to shape underarm.
- Remove the fabric on waste knitting.

(Neckband)

Push the required number of Nds. for neckband to B pos.

- With the wrong side of back & front facing you, pick up the sts. from back and front neckedge evenly and place them onto the Nds. in B pos.
- Exchange Col.A for Col.B knit required number of rows.
- Reform every second st. by using a Tappet Tool to have K1.P1. Rib.
- Push the Nds. with reformed st. to D pos.
- Set the Carriage as follows.

Side Lever.....	●
Russel Levers.....	II
Cam Lever.....	Slip
- Knit 1 row with waste yarn, set Cam Lever to Stockinet and knit several rows.
- Remove the fabric from machine.
- Graft the sts. on the last row of neckband.

(Welt)

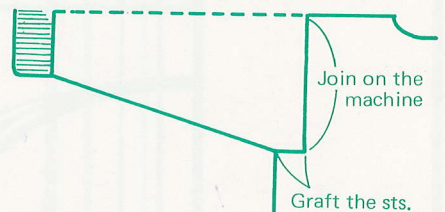
- Push the required number of Nds. for welt to B pos.
- With wrong side of back facing you, pick up the sts. from the first row of back & plait and the lower edge of left back side panel evenly and place them onto the Nds. in B pos.
- Work in the same manner as for neckband.
- Knit front welt in the same manner as for back welt.

(Cuffs)

- Push the required number of Nds. for cuff to B pos.
- With wrong side of sleeve facing you, pick up the sts. from the last row of sleeve and place them onto the Nds. in B pos., decreasing sts. evenly along the row.
- Work in the same manner as for neckband.

To make up

- Block out each section to size and press with a steam iron.
- Join right shoulder on the machine.
- Join both edges of neckband by blind sts.
- Join right sleeve to right armhole in the following manner.



- Join underarms by blind stitch.
- Join right side by blind stitch.
- Join left side on the machine.
- Join left edge of welt by blind stitch.

NECKER

Measurements size: cm.

	A	108	116	120
	B			
	C			
		61	66	70
		63	68	70
		65		

Notes:

(wool 100%)
 530g
 (white) 100g
 reasonable amount
 Mod. 150, 151, 155

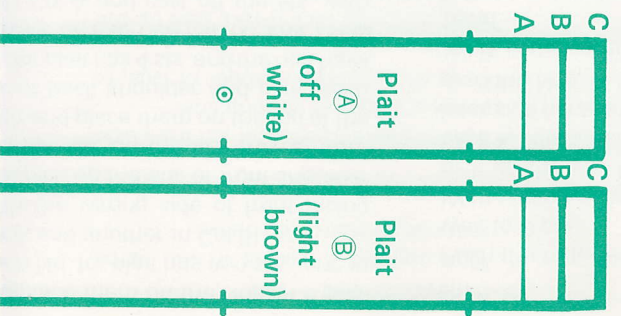
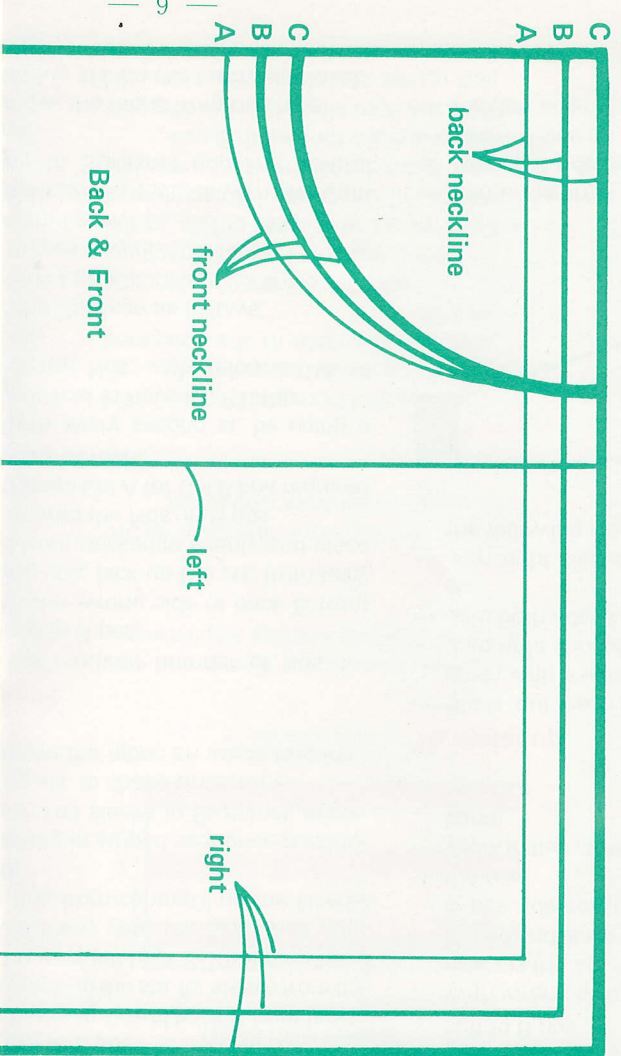
rows over the swatch of
 Stich Dial at ⑧.

rows over swatch of K1.P1.
 Dial at ⑤.

and front, platts, left back &
 sleeves, right & left sleeves,
 & cuffs, following the
 on pages 4 — 7 and
 low.

tern paper for right back and
 ing line.
 rriage for Stockinet.
 quired number of Nds. in
 and knit several rows with
 with Ravel Cord.
 tern paper.
 A in yarn feeder, knit up to
 following the contour line.
 hole by decreasing sts. fol-
 contour line.
 shoulder.





- Remove neck e knitting

(Right Fro

- Knit up manne
- Set bo
- Push t Carria pos.

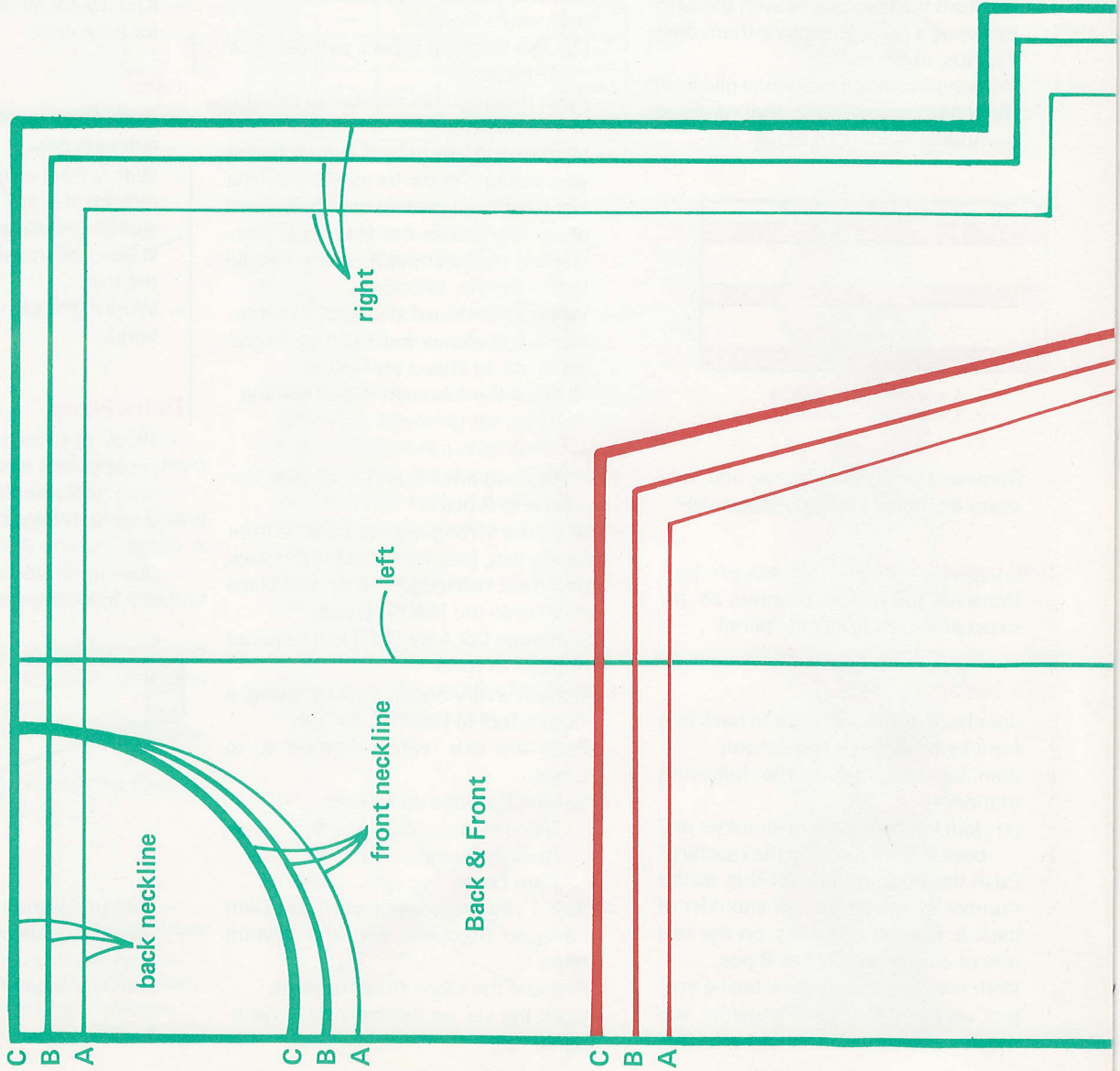
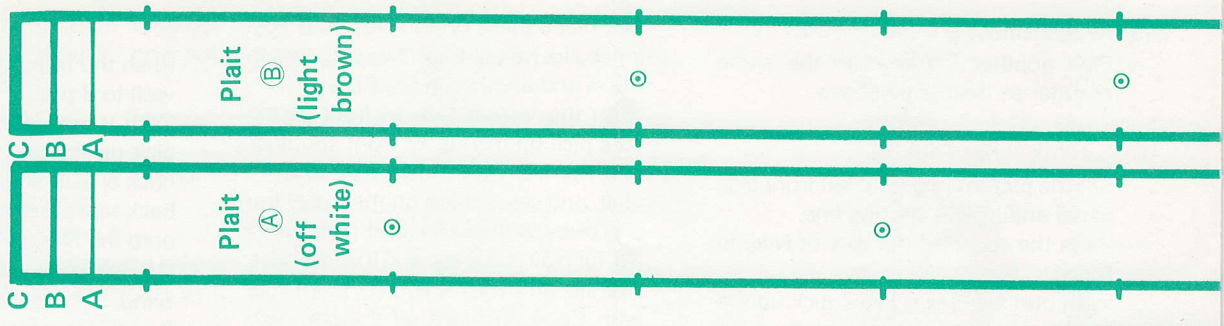


- Follow necklin
- Remove and pi pos.
- Return and lo
- Remove waste empty
- Set bo Pattern
- Work s as dor

(Right sle

- Purl side
- SD® with v
- Col.A i decrea
- Remove







Neckband

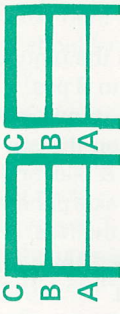


Left Side Panel

armhole

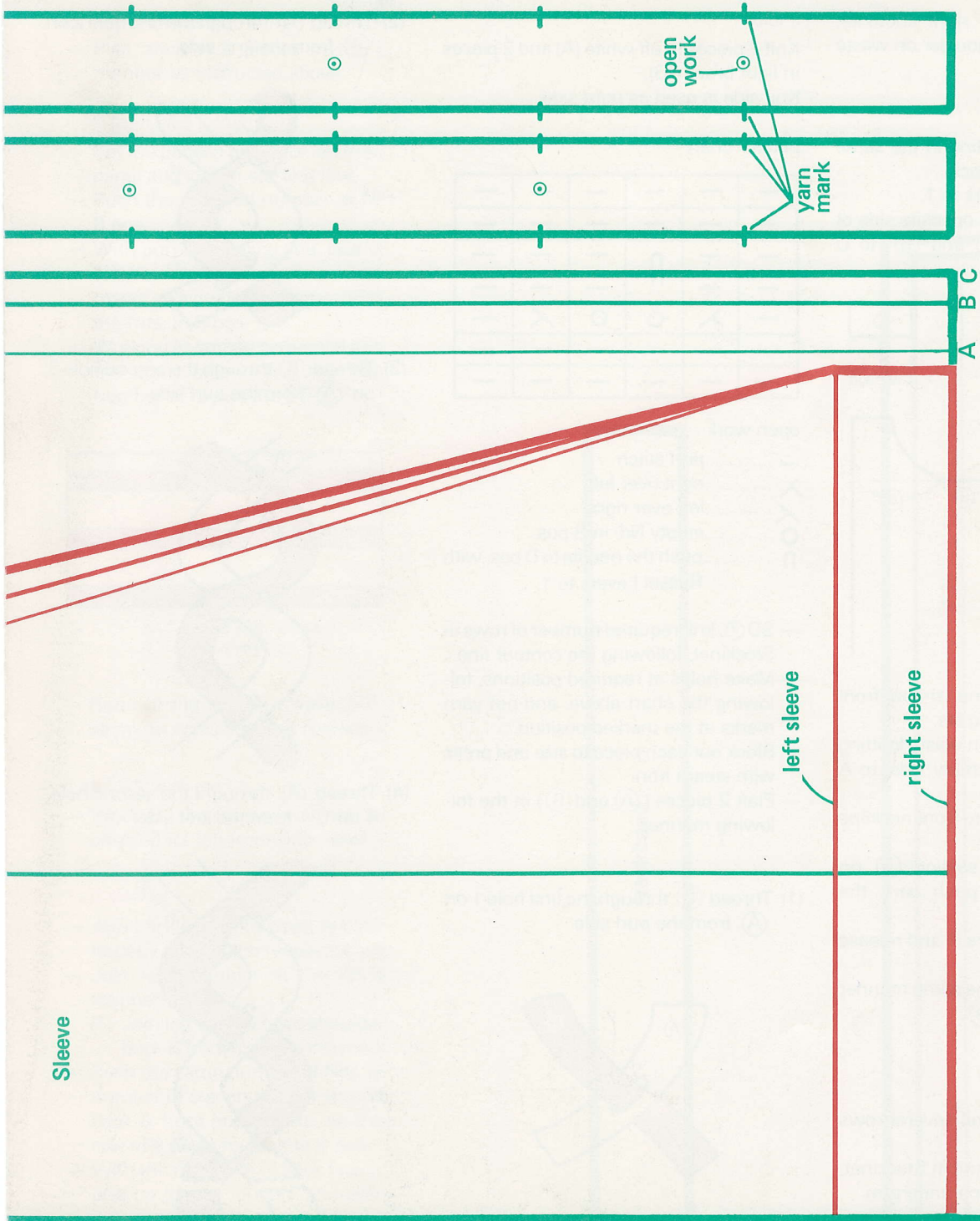
ABC

ABC



C
B
A

C
B
A



Trace the patterns on the blank pattern paper or set this paper in the Knit Contour.