



**SINGER**

VOL. 111



**TO READERS:**

With a help of the Automatic Weaving Arm, weaving on the knitting machine became quite easy and simple, and weaving effect creates elegant looks for a knitted garment. And more, if combination of yarns, thick and thin, and colours match with the pattern is successful, bulky fashionable garment is knitted at will.

Your letters to "Knits for Joy" must be addressed to:—

S.S.C.  
P.O.Box 5095, Tokyo International  
Tokyo, 100-31, Japan

**SYMBOLS/ABBREVIATIONS**

- SD ① — SD stands for Stitch Dial and the figure in circle indicates Stitch Dial number.
- pos. — position
- st.(sts.) — stitch or stitches
- Nd.(Nds.) — needle or needles
- CM — Card Memory number of Punch Card.
- R.C. — Row Counter number.

**LADY'S VEST AND SKIRT**

Finished measurements Size: cm.

	A	B	C
Bust	96	100	104
Top Length	53	54	55
Waist	64-68	69-72	73-76
Hip	105	112	119
Skirt Length	66	68	70

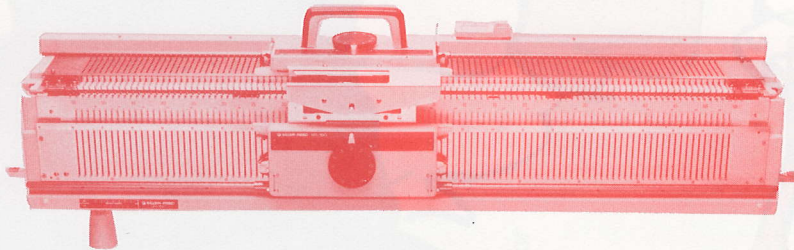
**Materials/others:**

- Yarn A (ground yarn)  
2ply wool.....200gs.
- Yarn B (weaving yarn)  
Medium weight knobby yarn.....210gs.
- Waste Yarn.....reasonable amount
- Elastic band.....3cm. wide, 70-80cm. long.
- 10 buttons.....2cm. in diameter
- Punch Cards  
Card No.8 (for vest).....accessory card  
Card A (for skirt).....Punch as shown below.

**Chunky Knitter & Chunky Ribber**

These newly developed chunky knitter Model 150 and the matching chunky ribber Model SR-150 will be sure to fulfill you desire to knit fashionable chunky garments.

Up to extra thick yarns are knitted smoothly and by selecting needles by hand, fancy stitch patterns are also knitted with ease.

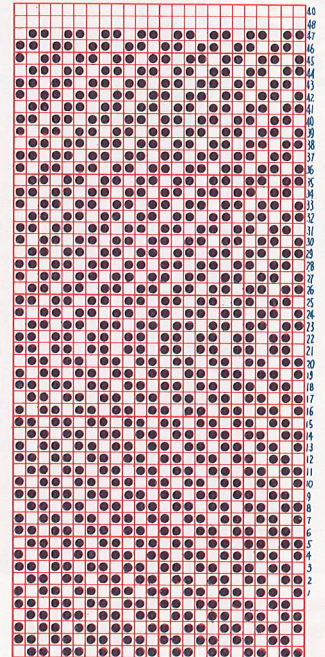


**General Specifications**

Chunky Knitter Mod. 150  
No. of needle: 110 needles  
Needle Pitch: 9 mm

Chunky Ribber SR-150  
No. of needle: 110 needles  
Needle Pitch: 9 mm  
Racking: 6 needle pitch

**Card A**





## Tension Gauge:

25 sts. by 43 rows over the swatch of Weaving using Card No.8, with the Stitch Dial at ⑥.

23 sts. by 46 rows over the swatch of Weaving using Card A, with the Stitch Dial at ⑥.

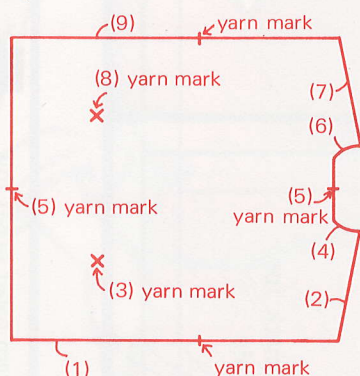
N.B. Pull the tension swatch in sideways direction before taking a tension gauge, as sideways skirts have a tendency to be stretched while being worn.

## Vest

Knit back, front and half-belts sideways, following the patterns given on pages 4 - 5 and instructions below.

## To knit

(back)



(1) — Set Punch Card No.8 and lock at CM 1.

— Cast-on the required number of sts. and knit several rows with waste yarn.

— SD ⑥, Yarn A in Yarn Feeder, knit 1 row in Stockinet.

— Release the Card and set the Carriage as follows:

Cam Lever..... Stockinet

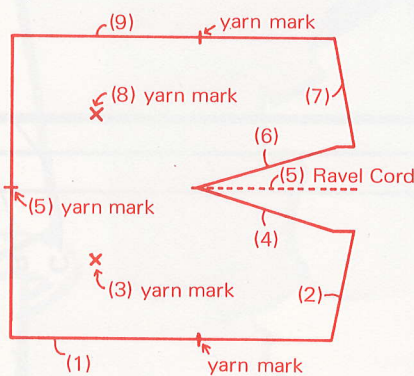
Side Levers..... ▼

Weaving Knobs..... ~

\* If you own AW-1, exchange the Main Arm for AW-1.

- Hook yarn B onto the Weaving Yarn Holder and knit in Weaving.
- Put yarn mark for armhole.
- (2) — Shape shoulder by increasing sts. at the edge.
- (3) — Put yarn mark at button position.
- (4) — Shape back neckline by decreasing sts.
- (5) — Put yarn marks for centre back on both sides of the fabric.
- (6) — Shape back neckline by increasing sts.
- (7) — Shape shoulder by decreasing sts.
- (8) — Put yarn mark at button position.
- (9) — Knit 1 row in Stockinet with yarn A.
- Put yarn mark for armhole.
- Knit several rows with waste yarn and remove the fabric from the machine.

(front)

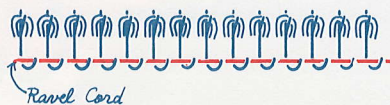


(1) — (3) — Work in the same manner as instructed in (1) — (3) for back.

(4) — Work partial knitting by decreasing sts. to shape front neckline.

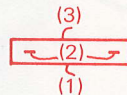
N.B. Have the Carriage at the side of lower edge to start shaping front neckline by partial knitting.

(5) — Lay Ravel Cord over the hook of Nds. in D position.



- Knit back the Nds. to B pos. by hand and push up these Nds. to D pos.
- Put yarn mark for centre front on right side of the fabric.
- (6) — Work partial knitting by increasing sts. to shape front neckline.
- (7) — (9) — Knit in the same manner as for back.

(half-belt) — two pieces —



— Set Punch Card No.8 and lock at CM 1.

— Cast-on the required number of sts. and knit several rows with waste yarn.

— SD ⑥, Yarn A in Yarn Feeder, knit 1 row in Stockinet.

(1) — Release the Card and set each part for Weaving.

(2) — Push up the Nds. for buttonholes to D pos. and lay contrast yarn over the needle hooks.

— Knit back the Nds. to B pos. by hand.

— Continue to knit in Weaving.

(3) — Knit 1 row in Stockinet with yarn A.

— Knit several rows with waste yarn and remove the fabric from the machine.

## To make up

— Block each piece to size and press with steam iron.

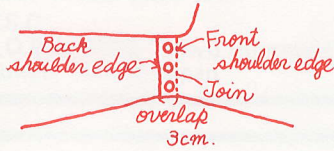
— Join side seams on the machine.

— Work 1 row of double crochet with Yarn B along the lower edge of front and back.

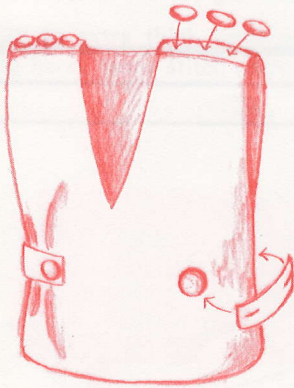
— Work 1 row of double crochet with yarn B along the front armhole — front shoulder edge — front neckline — front shoulder edge — front armhole — back armhole — back shoulder edge — back neckline — back shoulder edge — back armhole, continuously.



- Work 1 row of double crochet with Yarn B along the lower, upper and side edges of half-belts.
- With wrong side of half-belt facing, finish the open sts. of buttonholes with the back stitch method using the Tapestry Needle.
- Remove the contrast yarn and Ravel Cord.
- Join both shoulders as illustrated below.



- Sew buttons on both shoulder.
- Sew buttons at the yarn marks on the front and back.

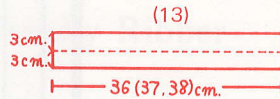
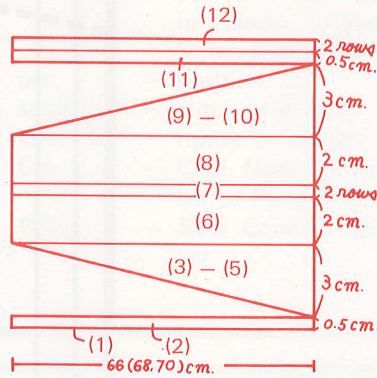


## SKIRT

This pleated skirt is knitted sideways in Weaving. Knitting 2 rows with the tightest tension will form outside crease and 2 rows of Stockinet between Weaving will form inside crease which gives a effect of Sun Ray Pleats.

## To knit

(Numbers in bracket refer to the sizes B and C)



- Set Punch Card A and lock at CM 1.

(1)- Cast-on 152 (156, 160) sts. and knit several rows with waste yarn, ending with the Carriage at right.

- Set the Carriage as follows:  
Cam Lever..... Stockinet  
Side Levers ..... ▼  
Russel Levers ..... —  
Weaving knobs ..... ~

\* If you own AW-1, Exchange the Main Arm for AW-1.

- Release Card, Row Counter to 000.

(2)- SD ⑥, Yarn A in Yarn Feeder and Yarn B onto the left Weaving Yarn Holder, knit 2 rows in Weaving without shaping.

(3)- Bring out 133 (137, 141) Nds. to D pos. on the opposite side of the Carriage and knit 1 row.

- Pass both yarns under the first inside Nd. in D pos. and over the other Nds.

- Knit 1 row by moving the Carriage back.

(4)- Push 19 Nds. back to B pos., using a Transfer Tool and knit 1 row.

- Pass both yarns under the first inside Nd. in D pos. and over the other Nds.

- Knit 1 row by moving the Carriage back.

(5)- Repeat step (4) another 5 times. R.C.016.

(6)- Knit 9 rows without shaping.

(7)- SD ⑩, knit 2 rows without shaping.

(8)- SD ⑥, knit 9 rows without shaping.

(9)- Bring out 19 Nds. to D pos. on the opposite side of the Carriage and knit 1 row.

- Pass both yarns under the first inside Nd. in D pos. and over the other Nds.

- Knit 1 row by moving the Carriage back.

(10)- Repeat step (9) another 6 times. R.C.050.

(11)- Knit 2 rows without shaping.

(12)- Remove weaving yarn from the Weaving Yarn Holder and place it at the cut-out on the side of Needle Bed.

- SD ⑧, knit 2 rows in Stockinet without shaping. R.C.054

\* To knit in Stockinet with AW-1, pull the weaving yarn forward to let it out of the weaving yarn pathway, hold the yarn by hand and move the Carriage being careful of the yarn not to be tangled around the brushes.

- Repeat the procedure (2)-(12) to knit continuously 15 (16, 17) sections in all.

- Knit several rows with waste yarn and remove the fabric from the machine.

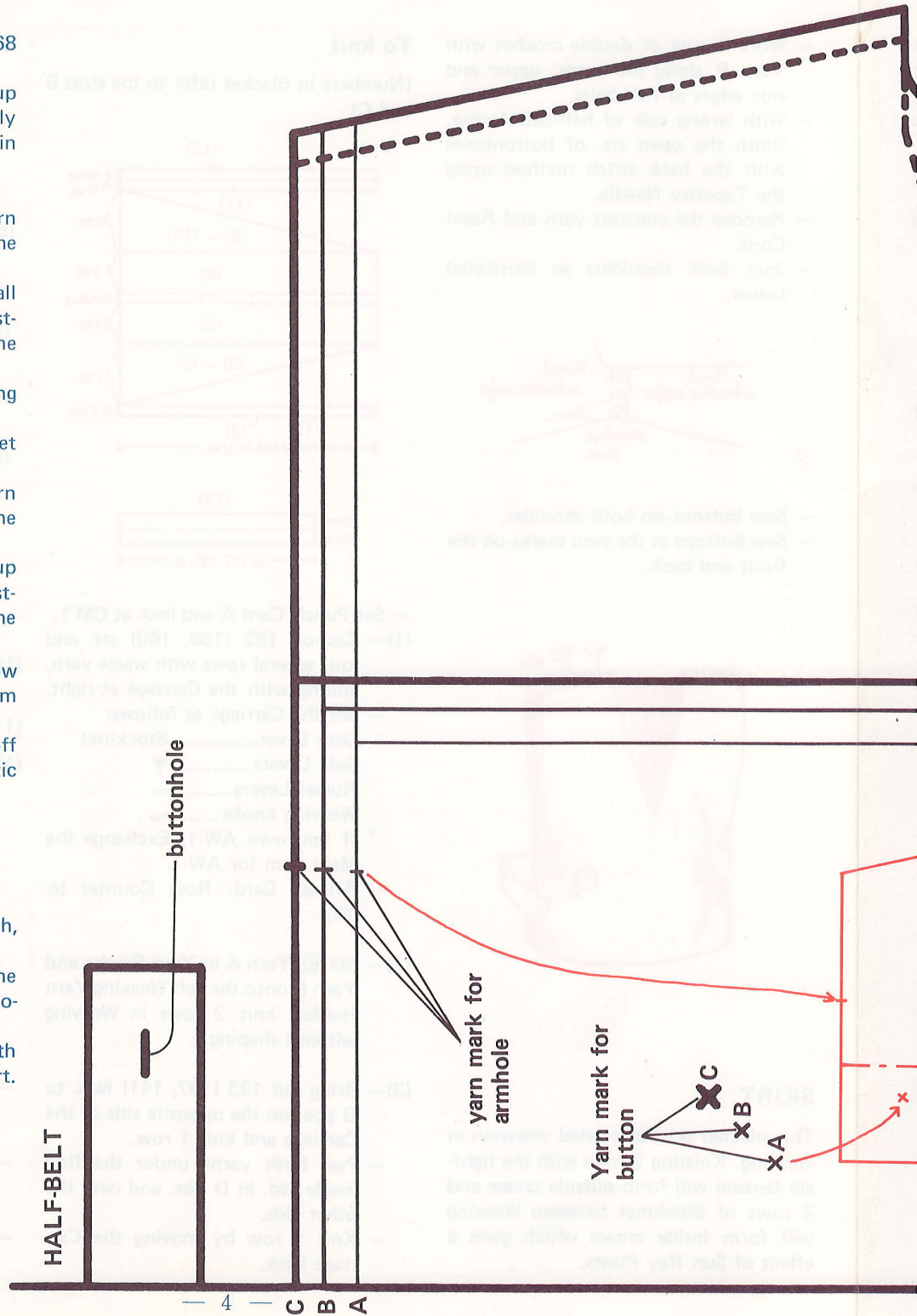
- Block out the skirt to size and press it with steam iron.

(13)– To knit waistband, bring out 168 (176, 184) Nds. to B pos.

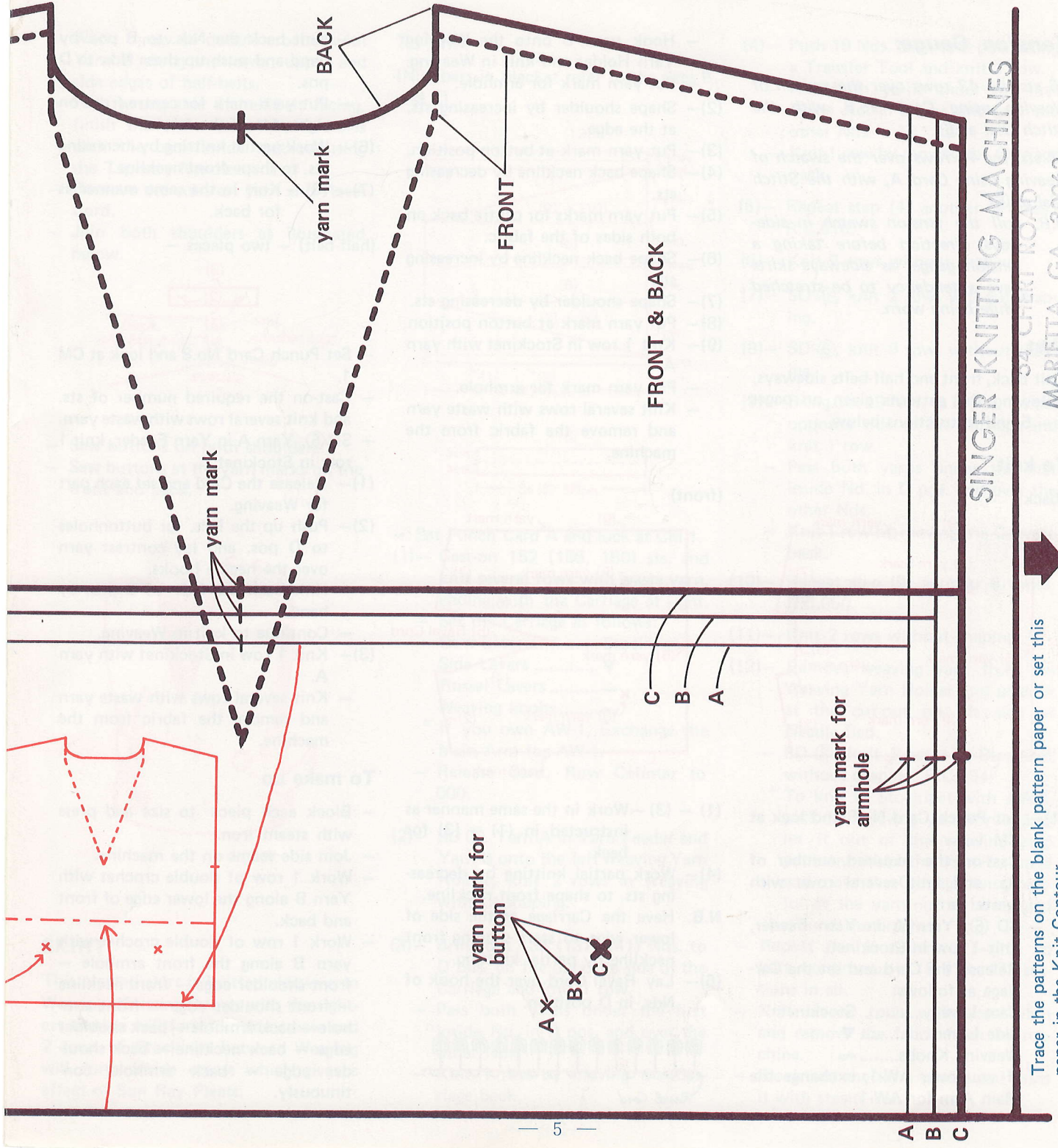
- With wrong side facing, pick up sts. from the waist edge evenly and place them onto the Nds. in B pos.
- SD ⑧, knit 1 row in Stockinet.
- Knit several rows with waste yarn and remove the fabric from the machine.
- With right side facing, pick up all sts. from the first row of waistband and place them onto the Nds. in B pos.
- SD ⑥, knit 14 rows in Weaving without shaping.
- SD ⑤, knit 14 rows in Stockinet without shaping.
- Knit several rows with waste yarn and remove the fabric from the machine.
- With wrong side facing, pick up all sts. from the last row of waistband and place them onto the Nds. in B pos.
- Pick up the sts. of the first row of the waistband and place them onto the corresponding Nds.
- SD ⑩, knit 1 row and cast off using a Tappet Tool or Automatic Linker.

**To make up**

- Join side seam on the machine.
- Join waistband seam with blind stitch, leaving an opening for elastic.
- Insert the elastic band through the waistband and join both ends together.
- Work 1 row of double crochet with Yarn B along the lower edge of skirt.







SINGER KNITTING MACHINES

54 CHEST ROAD  
 MARIETTA, GA. 30062  
 404-424-1385

Trace the patterns on the blank pattern paper or set this paper in the Knit Contour.