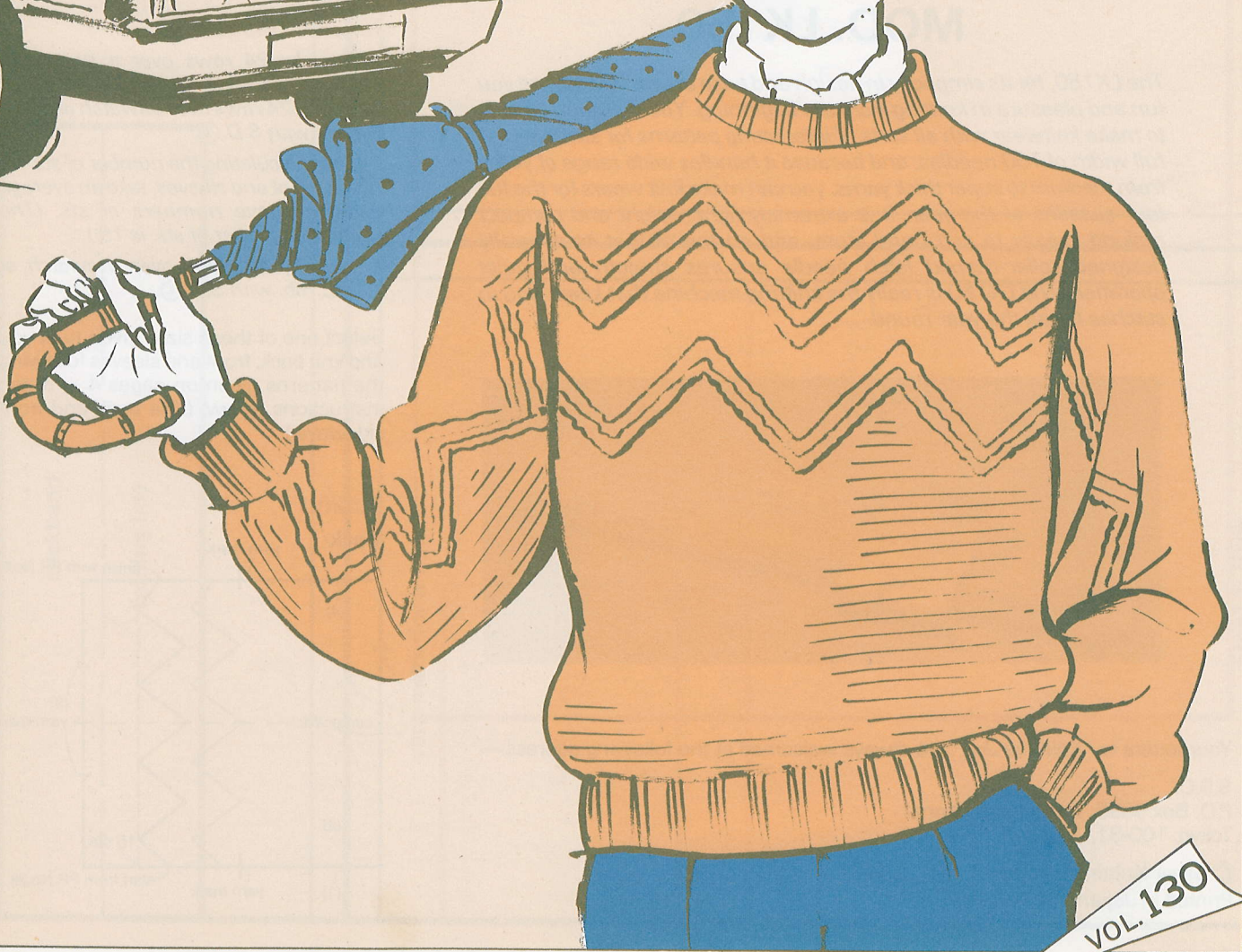
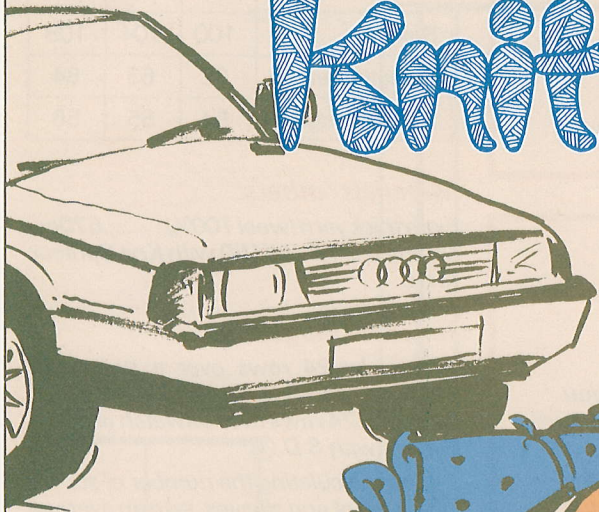


Knits for Joy



VOL. 130

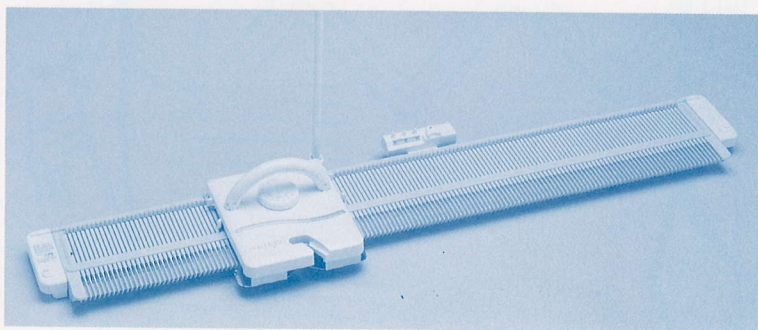
SYMBOLS/ABBREVIATIONS

S.D.	— Stitch Dial (The figure in circle indicates Stitch Dial number.)
pos.	— position
st. (sts.)	— stitch or stitches
Nd. (Nds.)	— needle or needles
PR No.	— pattern row number of pattern chart.

It's so much fun to knit, and happy to wear

MOD. LK150

The LK150, for its simplicity in design and ease of use, will assure you fun and pleasure in knitting from the beginning. You will soon be able to make knitwear with all sorts of interesting patterns for size over the full width of 150 needles, and because it handles wide range of yarns from medium to super thick yarns, you can make knit wears for the full four seasons of the year. It is extremely light weight and compact making it easy to carry and store, and on top of that its specially designed roller-capped latch needle ensures smooth and quiet operation. The LK150 is really the knitting machine that keeps you in stitches for all the year round.



Your letters to "Knits for Joy" are always welcomed at the following address:—

S.S.C.
P.O. Box 5095, Tokyo International
Tokyo, 100-31, Japan

© Silver Knitting Institute, Tokyo, Japan
Printed in Japan 90.07.4M(40)

LADY'S SWEATER

Finished measurements Size: cm.

	A	B	C
Bust	100	104	108
Sweater Length	62	63	64
Sleeve Length	54	55	56

Materials/others:

Extra thick yarn (wool 100%).....670gs.
Machine.....LK150 with Knit Contour
KR10.

Tension Gauges:

17 sts. by 24 rows over a swatch of
Stockinet with S.D. ⑦.

21 sts. by 24 rows over a swatch of Cable
Pattern with S.D. ⑦.

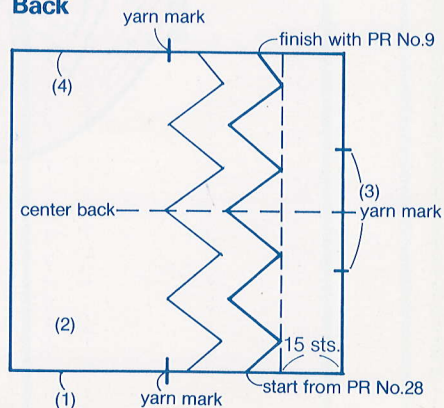
* When calculating the number of sts. for
back, front and sleeves, take an average
of the above numbers of sts. (The
average number of sts. is 19.)

17 sts. by 26 rows over a swatch of
K2.P2. Rib. with S.D. ⑥.

Select one of those sizes given to fit you
and knit back, front and sleeves following
the patterns given on pages 4 ~ 5 and
instructions below. (Knit back and front
sideways.)

To knit

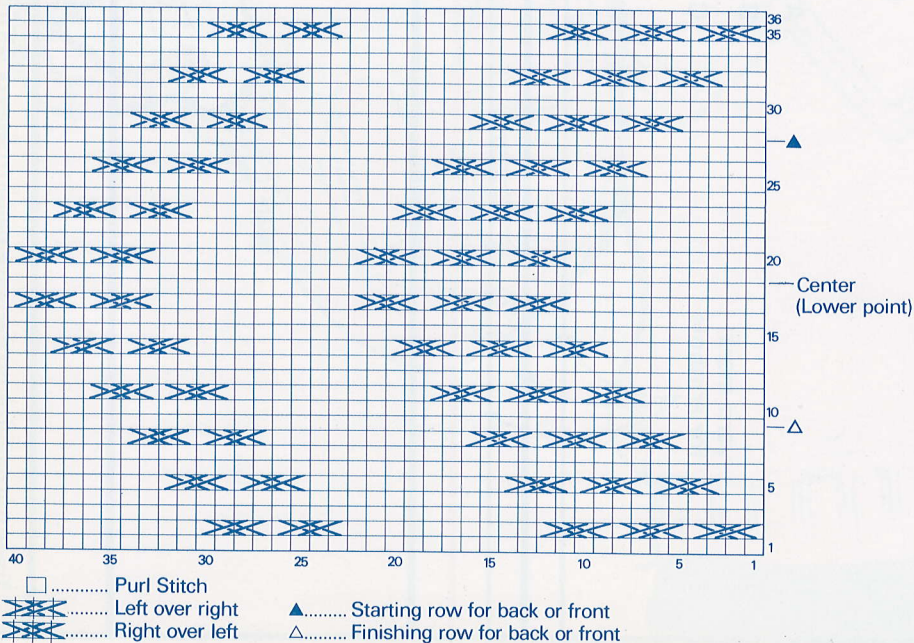
Back



- (1) — Set the Row Number and the Stitch Scale according to the tension gauge (19 sts. by 24 rows.)
 - Set the Pattern Paper and lock at the starting line.
 - Set the Carriage as follows.
Side Levers..... ▲
Russel Levers..... II
Stitch Dial..... ⑦
 - Arrange the required number of Nds. in B pos. and cast on with waste yarn.
 - Put yarn mark for armhole at the marked pos.
- (2) — Thread main yarn into Yarn Feeder ① and release the Pattern Paper.
 - Knit 2 rows following the pattern chart below, but start from PR No.28 to center the lower point of cable pattern on back as illustrated in the figure of back. Don't start from PR No.1.

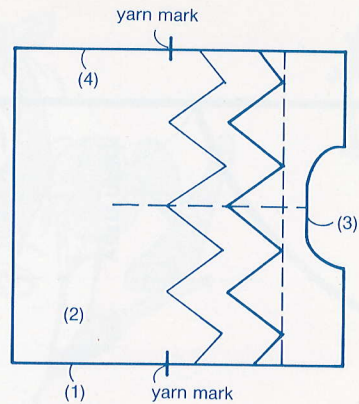
** If your tension gauge is different from the one given on page 1, calculate PR No. to start from, counting row numbers of pattern downwards (from PR No.18) in the same number of rows as the ones to knit up to center back.*

Pattern chart



- Cross the sts. marked with X on PR No.29 by using two 2-prong Transfer Tools.
 - Bring all the Nds. involved in the crossing to D pos. to knit easily without jamming the Carriage and breaking the yarn.
 - Knit back crossing the sts. every three rows according to the pattern chart.
- (3) — Put yarn marks for neckline at the marked pos.
 - Continue to knit.
 - (4) — Put yarn mark for armhole at the marked pos.
 - Knit several rows with waste yarn and remove the knitting from the machine.

Front

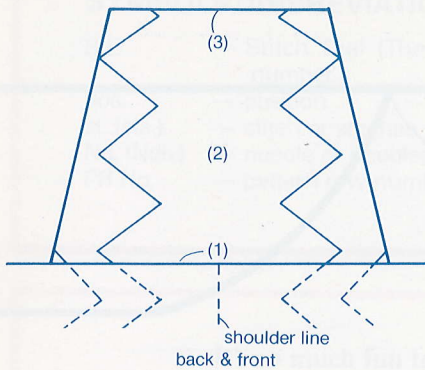


- (1) ~ (2) — Work in the same manner as instructed in steps (1) ~ (2) for back.
- (3) — Shape front neckline by decreasing and increasing the sts.
- (4) — Work in the same manner as done in step (4) for back.

Neckband

- Pin out back and front to correct the size and press with a steam iron.
 - Join the right shoulder by blind stitch.
- (1) — Reset the Row Number and Stitch Scale for Rib. Stitch.
 - Arrange the required number of Nds. for neckband in B pos.
 - With the wrong side of back and front facing you, pick up the sts. along the neckedge and place them onto the Nds.
 - (2) — With S.D. at ⑥, knit the required number of rows for neckband in Stockinet and finish knitting with the Carriage on the left side.
 - (3) — Reform the sts. for K2.P2. Rib. by using a Tappet Tool.
 - Knit several rows with waste yarn and remove the knitting from the machine.

Sleeves



- Join the left shoulder by blind stitch.
- Knit the right and left sleeve alike.
- (1) — Reset the Row Number and Stitch Scale for sleeve.
- Set the Pattern Paper for sleeve.
- Arrange the required number of Nds. for armhole in B pos.
- With the wrong side of back and front facing you, pick up the sts. along the armhole and place them onto the Nds.
- (2) — Work cable knitting in the same manner as done for back and front, and shape underarm by decreasing the sts.
- * *When crossing the sts., do them in the same direction as each one for back and front to continue their zig-zag patterns as shown in the figure of sleeve.*
- (3) — Knit several rows with waste yarn and remove the knitting from the machine.
- Pin out each sleeve to correct the size and press with a steam iron.

Welts

- (1) — Reset the Row Number and the Stitch Scale for Rib. Stitch.
- Set the Pattern Paper for welt.
- Arrange the required number of Nds. in B pos.
- With the wrong side of back or front facing you, pick up the sts. evenly along the lower edge and place them onto the Nds.

- Push the Nds. in B pos. to D pos. and set the Russel Levers to II.
- (2) — Work in the same manner as done in steps (2) ~ (3) for neckband. But after reforming the sts. and when knitting with waste yarn, push the Nds. with the reformed sts. to D pos., set the Side Lever of the leading side to ● and knit 1 row with waste yarn.
- Reset the Side Lever to ▲ and knit several rows.
- Remove the knitting from the machine.

To make up

- (1) — Fold neckband in half to inside and graft the sts. on the last row to the loops on the first row.
- (2) — Close the open sts. of welts and cuffs as illustrated below.
- (3) — Join side seams on the machine.
- (4) — Join underarm seams and both ends of welts and cuffs by blind stitch.
- (5) — Give a final press.

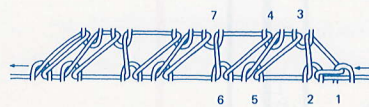
Cuffs

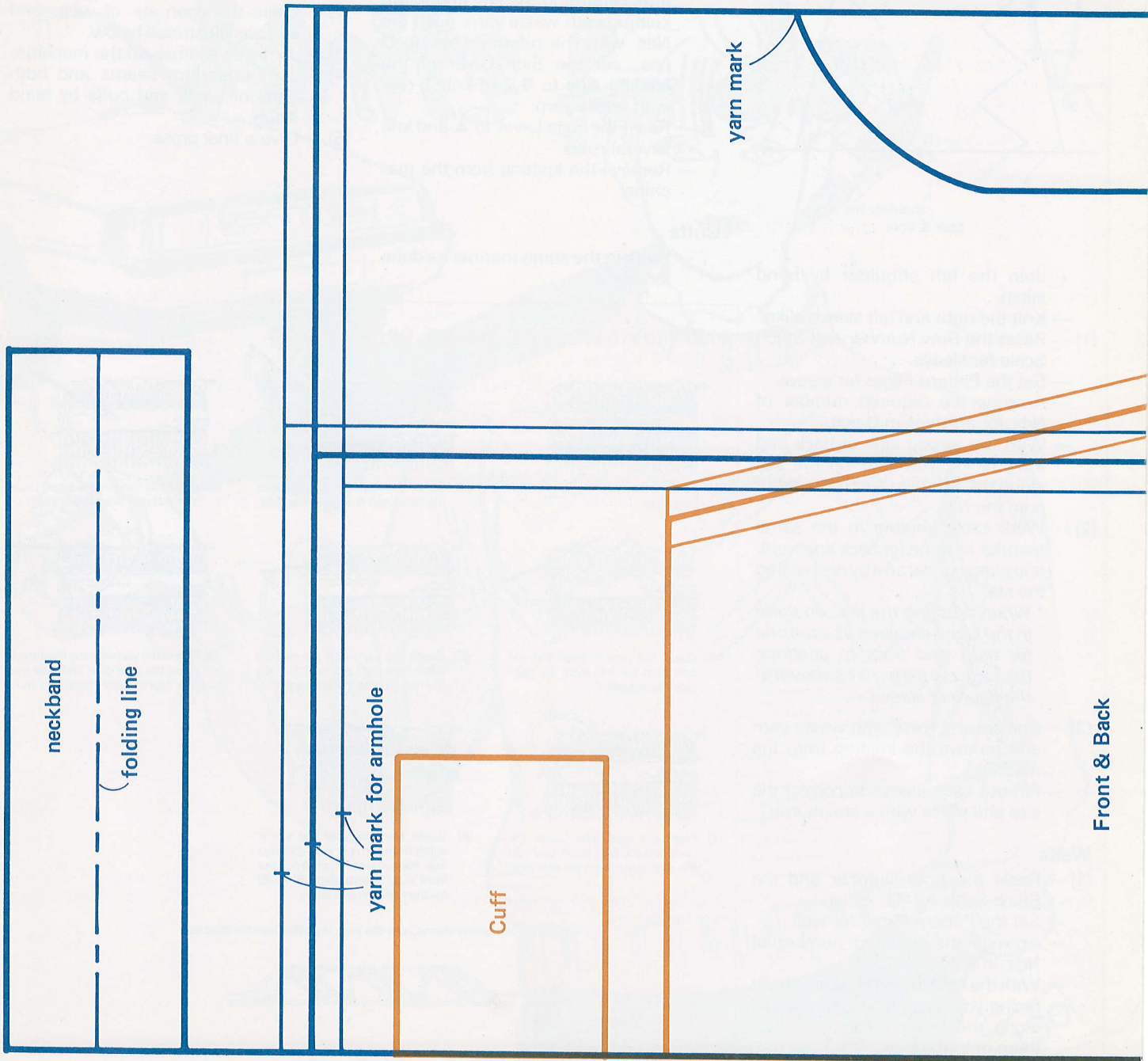
- Work in the same manner as done for welt.

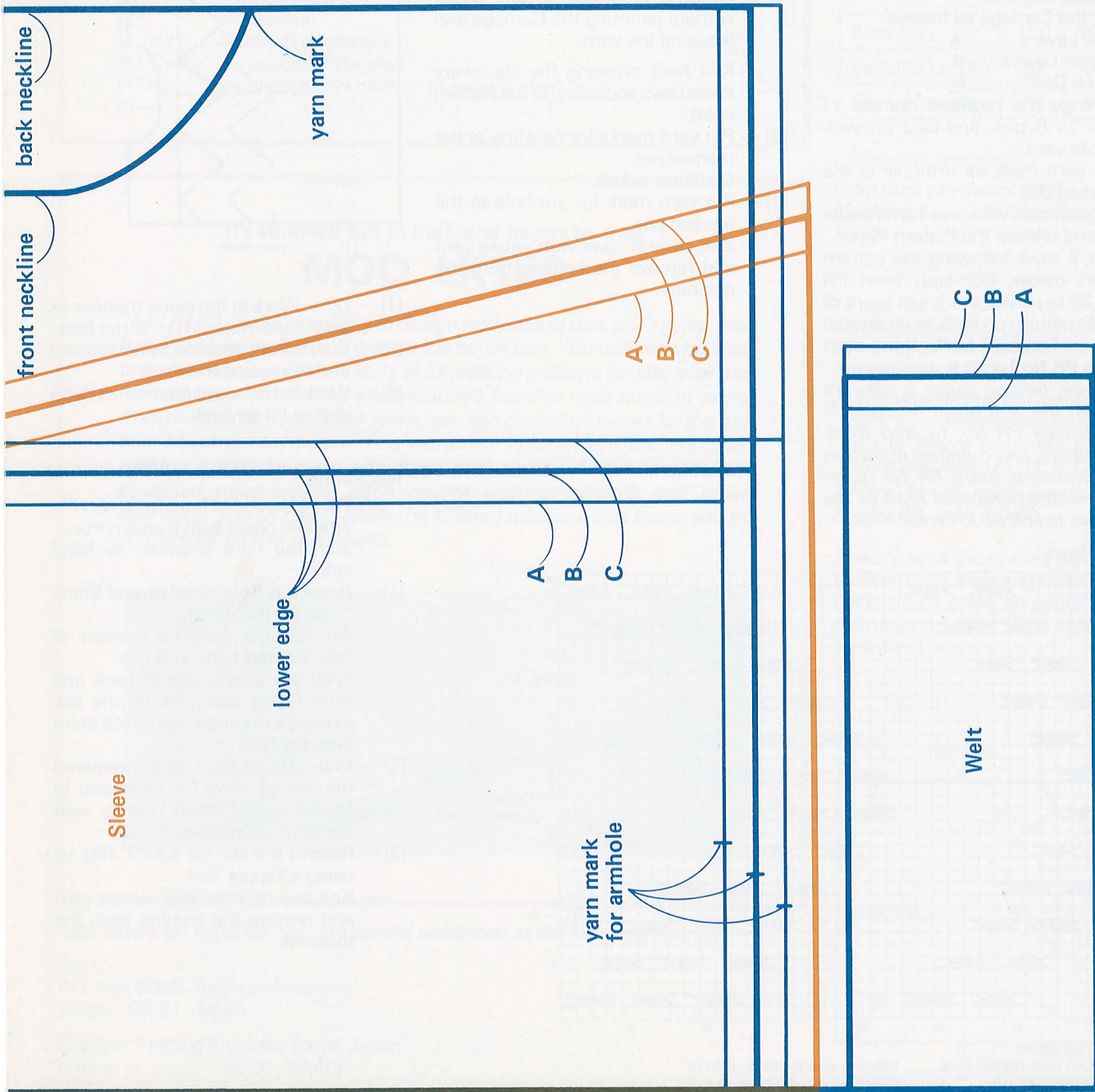
How to close stitches (K2.P2. Rib.)

- (1) Fold the waste knitting onto the right side.
- (2) Guide the Tapestry Needle into the end stitch from the rear side.
- (3) Guide the yarn in the same manner through the second stitch.
- (4) Guide the yarn through the end and third stitches from the right side respectively.
- (5) Guide the yarn into the second stitch from right side and through the rear side of the fifth stitch.
- (6) Guide the yarn into the third stitch from the rear side and also into the fourth stitch from the front side.
- (7) From the right side, guide the yarn into the fifth stitch and into the sixth stitch from the rear side.
- (8) Guide the yarn into the fourth stitch from the rear side and also into the seventh stitch from the front side. Repeat steps (5) — (8) for the remaining stitches.

The illustration below shows how the yarn is guided into the stitches.







Trace the patterns on the blank pattern paper or set this paper in the Knit Contour. 